



DX NEWS

*the magazine of the
National Radio Club*

— SINCE 1933 —

Volume 45, Number 10 Monday, Dec. 19, 1977.

CPC TESTS

- Monday, Dec. 19 KBOI-670 Boise, Idaho 0210-0225 with 50 Kw non-directional. Will use open carrier, with IDs twice during test. This test will run every Monday morning at this time until further notice! Veries to: Milton P. Daniels, CE, KBOI Radio, Box 1280, Boise, Idaho 83701. Arr: Steve Francis.
- Monday, Dec. 19 KTIIL-1590 Tillamook, Ore. 0400-0500 with 5000w. Tones, IDs, mentions of GWDXA. Will operate non-directional 0400-0430, directional, 0430-0500. Prepaid calls to : (503) 842-4422, with veries from: Jeff Lindorff, ACE, KTIIL Radio, Box 112, Tillamook, Ore. 97141. Arr: Pete Nolan, GWDXA.
- Monday, Dec. 19 KVNU-610 Logan, Utah 0300-0400, 5000w. non-directional. Tones, voice and code IDs, music to be included. Veries to: Bill Traue KVNU, P.O. Box 267, Logan, Utah 84321. Prepaid calls to: (801) 752-5141 or 753-1977. Arr: Ron Musco.
- Monday, Dec. 19 CKSW-570 Swift Current, Sask. 0300-???? with 10 Kw. Program: many announcements, some code IDs, veries to: Mike Klippenstein, CE, CKSW Radio, Box 570, Swift Current, Sask., Canada. Return postage is required! Program will be dedicated to NNRC. Notification to IRCA DX Monitor by Ken L.A. Burgess (and thanks to IRCA for the info!)
- Tuesday, Dec.20 KNFT-950 Bayard, N.M. 0200-0215 with 5000w. Test will include 1000 cycle tones, IDs and purpose for being on the air. (a frequency check with a Missouri station). This will become a regular frequency check the 3rd Tuesday of each month hereafter! Veries to: Keith LeMay, KNFT Radio, U.S. 180 East, Silver City, N.M. 88061. S.Francis
- Thursday, Dec.22 WLBZ-620 Bangor, Maine 0010-0040, 5000w. Loud music (like marches, etc) and information about the station. Reports to Howie Soule, K1CZ, CE, WLBZ Radio, 861 Broadway, Bangor, Maine 04401. Arr: Steve Francis.
- Monday, Dec. 26 WORX-1270 Madison, Ind. 0200-0230, 1000w. directional (NE-SW). Test will include march music, Tones, frequent IDs. Arr: Ted Fleischaker with thanks to CE Dave Burns!
- Monday, Dec. 26 WJOB-1230 Hammond, Ind. 0115-0200 with 1000w. Test is special arranged by John Zondlo and will include special programming, including test tones, etc. Veries to: Gordon Boss, CE, WJOB Radio, 6405 Olcott Avenue, Hammond, Ind. 46323. Prepaid calls to: (219) 844-1230. Arr: Zondlo, IRCA.

LOOK INSIDE

CPC TESTS CONTINUED ON PAGE 2

International DX Digest.....	3
Contests.....	6
DXChange.....	7
AM Stations Carrying College Basketball.....	8
Musings of the Members.....	10, 15
An AC Power Supply for the FET Loop Amplifier.....	11
You Told Us Where to Go-Survey Review.....	12

DX NEWS WILL NEXT APPEAR ON FRIDAY, DECEMBER 30. HAPPY HOLIDAYS TO ALL.

THE WORLD'S OLDEST AND LARGEST ALL MEDIUM-WAVE DX CLUB

(Continued from cover)

Monday, Jan. 30 WKEM-1490 Immokalee, Fla. 0430-0500, 1000w. Tones, voice-code-singing IDs, band music. Announcing by NR Cer Steve Kennedy. Prepaid calls accepted (number to follow). WKEM, Box 520, Immokalee, Fla. 33934.

TIPS, etc.

George Kesteven reports CHRB, 1280 khz, 10 kw, located in High River, Alberta was testing during the week of Nov. 28-Dec. 2. They were to sign on fulltime NSP effective Dec. 3. Format is MOR daytime, classical midnight to 6 a.m.

Jim Hopkins reports we should be on the lookout for WDBX-1620, a pirate in the New York City area. He heard their Nov. 27 sign off at 0200 stating "As long as there is radio, there will always be pirates."

STATIC FROM HQ

Ted has the day off. Thanks to John D. Bowker who came to our aid in summarizing the member survey which appeared additional material in DX News later. *Get Hartlage* some months back. We'll be printing OUR NEXT ISSUE IS DECEMBER 30.

A member recently asked us for information on several new clubs. Over the years many clubs have come and gone, so we ask our members to check out any new group or association carefully. A possible source for information on new clubs is the Association of North American Radio Clubs (ANARC), 557 N. Madison Avenue, Pasadena, Calif. 91101.

THEY JOINED

A hearty WELCOME to new members. Please Muse soon and introduce yourself.

Richard D. Bender, 2281 Elm Hill Road, Pittsburgh, Pa. 15221
Robert Greenlee, 1900 Polson, Suite 104, Boulder, Colorado 80302
Robert Munro, P.O. Box 81, Florence, Mass. 01060

DOMESTIC DX DIGEST

ERIC RITTENHOUSE
2545 HILLEGASS ST., #7
BERKELEY, CALIF. 94704

Eric's column was not received by the publishing session nor was word from him. We expect his column will appear in the December 30 issue.

Attend the **LADS** holiday season get-together!! Sat. Dec. 31st. 9 a.m. to midnight at the home of Pat Hartlage, 9200 Wendell Way, Jeffersonstown, Kentucky. Your hosts are the Louisville Area DXers. Cost is \$1.00. To get there take the I-64 exit at Hurstborne Lane South, then go 1 mile to Taylorsville Road, hang a left at the T-intersection. Proceed to the second street on the right which is Gleeson Lane, then follow the road a short distance to Wendell Way. Pat's house is on the corner. The location is about 16 miles east of downtown Louisville. If you get lost call (502) 491-1789. Anyone planning to attend should let Pat know in advance. See you.

BEVERAGE-ANTENNA PARTY ON THE WASHINGTON COAST-DEC. 31 TO JAN. 2

Bill and Nancy Hardy will host a DXpedition to the coast of Washington state over New Year's weekend. The main attraction will be a Beverage antenna, some 1000 feet long, oriented east-west. Other attractions include a warm fireplace, refreshments, and a view of the ocean. It's free but you may need to get nearby accommodations. Write to Bill Hardy, 2301 Pacific Avenue, Aberdeen, WA 98520 for full details. All DXers are invited, but Bill and Nancy caution that the place is impossible to find without advance directions, so they will meet everyone in Aberdeen 12/31 and all go out together. Bill asks you to write before Christmas (hurry!) if you are interested, so he'll have a chance to reply in time.

INTERNATIONAL DX DIGEST

CHUCK HUTTON
P.O. BOX 2087
DECATUR, GA. 30030
404-633-1198
(BEFORE 2300 ELT)

Times are GMT. For ELT subtract 5 hours. Deadlines are usually Monday.

- 164 FRANCE Allouis 11/21 at 0700 very poor, traces of voice fading in and out every five seconds. Low het heard. Thunderstorm static and loud buzz static. (Poda) 11/4 at 0350 and then 11/26 at 0135 outstanding sig, FF light mx, female singer. (Jones)
- 180 WEST GERMANY Saarlouis Europa One, FF semi-classical mx at 0350. This is a commercial stn with pgms directed towards FF market. Sometimes AN pgms-ID as "Ici Europa 1". (Jones)
- 200 MOROCCO Azilal 11/26 at 0150 AA/Mid-East mx, 11/27 at 0245 AA chanting, QRM from beacon SYS. (Jones)
- 227 COSTA RICA TICAL R. Rumbos 11/26 at 0100, fair sig w/SS and local pop mx. (Jones) fair almost nightly 0300 or so to 0500 s/off w/ SS mx, low key anncts. Deep fades some nights. (Bobbitt)
- 228 UNID beacon UUP 0705 10/16. Vy slow. Any ideas as to QTH? (Bobbitt) Don't know much about this and the other beacon Chris, suggest u contact the LWCA for info-CH
- 229 ALGERIA Ain Beida at strong carrier level w/weak audio; male AA chanting at 2229 on 11/25. (Connelly)
- 330 GRENADA Mournie Rouge 11/19 fair sig w/island/EE mx. (Jones) 11/24 from 0022 till 0234 s/off. Woman reading local events at 0022, ended 0030 w/Lord's Prayer, then local nx and mx. At 0200 a pgm syndicated from Philly was ID'ed with "This is Coast to Coast Gospel Radio". At 0230 a rel message, anthem, and carrier cut. (Musco)
- 340 COLOMBIA HJKA Bogota logged for first time 11/7 from 1031 to 1102. Excellent at times. (Wilkinson)
- 345 DOMINICA Roseau R. Jumbo good at s/on 1000 10/31, 11/11, and 11/21. Lasts 15-20 minutes. (Wilkinson) 11/21 0045 fair w/mx, poor at 0055 w/FF talk. (Poda) 11/19 FF/Caribbean island mx, one of the most consistent Caribbean stns here. (Jones)
- 348 ALGERIA Oran good to excellent w/AA chanting and flutes // 529 at 2230 11/25. (Connelly)
- 375 COSTA RICA TIXE R. Omega 11/19 at 0115 exlnt sig, local pop mx and DJ patter, ID. (Jones) 11/20 at 0201 fair w/mx and SS talk. Faded at 0210. Also 11/21 at 0055 fair. (Poda)
- 612 MOROCCO Sebaa-Aioun xint w/classical style guitar instrumental 2232 11/25. Loud w/AA talk by woman interspersed w/old time US instrumental pop mx then talk by man followed by AA mx 0000-0006 11/26. Outrageously strong w/AA wailing 0121 11/26. (Connelly)
- 620 HAWAII KIPA Hilo 11/21 at 0924 w/spots then rock mx, first time here o/CJCI. (Vernon)
- 638 SPAIN La Corona weak w/fast SS talk 2233 11/25. (Connelly)
- 650 HAWAII Honolulu KORK 11/27 at 1441 man anncr w/ID and rock mx, fair. (Bryan)
- UNID 11/28 0915 fair w/SS u/WSM OC. ID? and freq? in SS then into mx with woman singing and guitars. May have looped SW but hard to tell w/WSM on. (Poda) Down here Em. Monserrate dominates-CH
- 650 EL SALVADOR San Salvador, R. Nacional 11/27 at 0515 fair w/ man in SS and marching band mx after each sentence. ID 0518 and much marching band mx until 0520 fade. (Poda)
- 660 NORTH KOREA Pyongyang 11/27 at 1353 w/man talking in KK, fair. (Bryan)
- 660 MEXICO Mexico City XERPM R. Uno 11/28 at 0503 w/rock mx, a man gave an ID, poor sig. (Bryan)
- 685 PORTUGAL Lisboa fair o/u WRKO slop-man in PP at 2234 11/25. (Con)
- 700 COLOMBIA HJCK R. Sutatenza, Cali 11/19 at 0135 over-riding WLW during auroral cx. (Jones)
- UNID u/WLW w/wal to wall mx, fades at ID times. (George)
- 701 MOROCCO Sebaa-Aioun definitely here on 701 w/no carriers discernable on 702; female AA chanting potent, blasting WLW into oblivion (WLW carrier 20 dB lower) at 2237 11/25. (Connelly)

705 ST. VINCENT Kingstown, 11/19 at 0120 brief opening then faded out. EE and calypso mx. (Jones)

715 SOUTH KOREA Seoul HLKA 11/27 at 1413 w/man talking in KK, brief mx then YL talk. (Bryan) In vy early at 0935 11/6. Woman anncrs, KBS ID, 3 short and one long beep with HLKA at 0959. (Wilkinson)

719 PORTUGAL Norte good w/PP talk 2251 11/17. PP talk by m and f then medieval mx, atop a rough SAH believed to be from the Tunisian 2238 11/25. (Connelly)

725 SURINAM SRS 11/19 at 0130, good sig w/local pop mx. (Jones)

730 MEXICO Mexico City XEX 11/20 at 0150 fair w/SS talk, CHYR QRM looped out. (Poda)

737 SPAIN Barcelona fair w/SS talk o/mains QRN and slight CBNM/YVNC slop. CBL nulled at 2240 11/25. (Connelly)

746 UPPER VOLTA Ougadougou poor w/FF sounding talk 2241 11/25. (Con)

755 PORTUGAL Lisboa vy loud w/cl violin mx 2242 11/25. (Connelly)

764 SENEGAL Dakar good w/female African vocal w/unusual repetitive instrumentation akin to AA mx 2335 11/15. Like a local on car rx; FF talk then exotic mx at 2210, solid copy and consistently stronger than WABC/WJR, right thru to 2250 when AA mx noted, on 11/17. (Connelly)

770 JAPAN JOUB Akita good 1530 on 11/29, EE and JJ ID, pips, and mx. (Segalas)

773 SPAIN Caceres/San Sebastian loud w/man in SS o/heavy 2.4 hz SAH and second audio which sounded like AA pgm 2244 11/25. Stn u/Spain hard to hear because of WABC slop; several possibilities here. (Connelly)

782 PORTUGAL Miramar good w/pop mx 2252 11/17. Loud w/"Hotel California" 2245 11/25. (Connelly)

800 MEXICO? Ciudad Juarez, XEROK 11/28 at 0850 in CKLW partial null heard r&r, at 0900 ad for record album "42 hits" and phone # 800-243-5000 to answer ad. Fair at peaks but usually quite poor u/CKLW. Looped SW/NE. (Poda) That's XEROK all right-CH

809 SPAIN Sevilla good w/SS talk during pauses in C/JVA/WGY slop 2246 11/25. SS stn's audio compressed and restricted like a CB rig so copy thru QRM was enhanced. (Connelly)

810 COLOMBIA HJCY R. Sutatenza solid copy w/WGY off 0940 11/28. (Allen)

818 ANDORRA La Vieja suddenly rose atop Morocco, completely taking over. FF ads/nx items broken up by Star Wars type ray gun sounds 2249 11/25. (Connelly)

MOROCCO Rabat good w/AA instrumental 2248 11/25. Bombing in o/faint WBAP het w/female AA vocal 2349 11/25. (Connelly)

825 PANAMA Macaracas, HOR56 R. Peninsula logged 1109-1132 11/28. Tnx Don Reynolds! (Wilkinson)

827 SPAIN/UNID Barcelona loud w/SS talk battling it out w/an equally loud AA stn, either Morocco or Libya. (Connelly)

830 VENEZUELA R. Sensacion w/ID 0936 11/28. (Allen)

HAWAII Honolulu KIKI heard 11/27 at 1427 w/man anncr, 3 ID's and rock mx, fair. (Bryan)

JAPAN Osaka JOBB 11/27 at 1433 w/EE story pgm, good to poor w/fades. (Bryan)

834 BELIZE R. Belize 11/19 at 0140 w/EE American Top 40 records, outstanding sig. (Jones) 11/20 at 0148 w/Andy Gibb record in EE. At 0150 man w/British accent talked about songs then more mx, all at fair volume. (Poda)

836 UNID bad low pitched het growl u/WHDH slop, no audio recognisable 2251 11/25. (Connelly)

840 USSR Spassk Dalni 11/21 1036+ w/Mayak pgm, IS at 1100. (Vernon)

844 GILBERT ISLAND Bairiki VSZ1 becoming a regular of late between 0900 and 1100. Should be getting into mid U.S. (Wilkinson)

854 PERU Lima OAX4 was vy strong from 0949 to 0955 and later on 11/28 with their native style mx and group vocals, male anncr and R. Nacional de Peru ID. (Wilkinson)

860 MEXICO Tijuana XEMO 11/28 at 0710 fair in EE. ad to call 297-6000 for pgm sked. Travel promo for Mexico City and into quiet mx. At 0728 "This is XEMO, voice of inspiration for the SW, represented by the Gates Co. of San Diego". Volume equal to KFI. (Poda)

872 SPAIN Zaragoza poor w/time pips, SS talk o/low het and WHDH slop 2300 11/25. (Connelly)

890 UNID R. Nacional heard 1030 on 12/5, 4 pips between nx items. (Allen) Tnx for the call, still no idea here on this-CH

891 FIJI Lautoka 11/18 at 1013+, talk, 2 OM's, one operated a Radio Sunshine, this w/a terrible het on AFRS 890, strong sig tho. (Vernon)

895 HAITI 4VB R. Artibonite 11/17 at 0105 w/FF pop mx. brief then a fade. (Jones) This is probably 4VRMN below; they have buried R.

(895, continued) Artibonite ever since they switched to this freq. They are much stronger than Artibonite ever was-CH.

HAITI Port-au-Prince, 4VRMN vy good w/Xmas carol pgm 11/17 from 0257 to 0347. (Wilkinson)

900 MEXICO Mexico City XEW 11/29 at 0322, lots of nice Mexican mx and ID by a male. (Bryan)

908 USSR unlisted, heard 11/21 1036+, noted // 840, 1376 at various times when checked, Mayak pgm, weak w/het on ABC 910 stns. (Vernon)

917 UNID probably Spain, carrier in slop w/WJAR nulled, 2305 11/25. (Connelly)

935 UNID 11/22 heard instrumental mx to 0600, no IS, later mx in EE, sort of trombone IS at 0630, then OM nx sounding E. European but the EE song?? (Vernon) The German on 1358 and one other have moved here. USSR also possible I suppose although its late for them-CH

1010 AUSTRALIA 4IP Ipswich 11/21 at 1150 w/many spots and rock mx, almost a nightly pest of late w/either r&r or talk. (Vernon)

UNID w/mentions of Santo Domingo 1010 11/28, Radio Comercial suspected but no ID. (Allen)

1025 COSTA RICA San Jose, TIAC R. Fides 1115-1128 11/21 w/religious hymns and songs w/f anncr. Again 11/28 at 1151. (Wilkinson)

UNID 11/20 at 0135 fair volume, loops south. Spanish talk on religion, Alleluja after every sentence, repeated until fade at 0142. (Poda) Definitely R. Fides-CH

1034 UNID 11/22 w/instrumental mx, OM and YL anncts at 0520 but not quite strong enough to ID lingo. (Vernon)

1035 HAITI 4VEC Cap Haitien 11/17 at 0115 w/EE rel pgm. (Jones)

1040 HAWAII Honolulu KPOI 11/21 at 0651 w/album rock "on the new K-poy one hundred" after 3 straight songs; DJ called it "K-poy total mx hour". Perhaps they are straight top 40 days but play more albums after dark? Fair-good w/WHO nulled. (Hardy)

1044 MOROCCO Sebaa-Aioun good w/jazz, then FF talk 2206 11/25. (Connelly)

1045 UNID 11/20 at 0135 fair in Spanish, looped south but faded out. (Poda) Only stn on 1045 is Ondas del Canajagua, Panama-CH

1050 UNID 11/20 at 0130 fair, heard Spanish looping south/southeast. (Poda)

MEXICO? Monterrey XEG 11/20 at 0130, good volume w/EE religion, looped SW. (Poda) That's them for sure-CH

1061 PORTUGAL Norte fair/poor w/PP talk in slop 2207 11/25. (Connelly)

1070 UNID w/mentions of Venezuela, possibly R. Zulia. (Allen)

1080 VENEZUELA R. Barcelona w/ID's 0925 11/28 u/WTIC. (Allen)

1090 COLOMBIA L.V. de Cucuta poor w/ID 0900 11/28. (Allen)

1100 ANTIGUA St. John's ZDK strong at s/on 1100 11/28. (Allen)

1110 VENEZUELA YVQT R. Carupano good 0130 12/5. (Allen)

1120 VENEZUELA Ondas del Lagos w/ID 0043 12/5. (Allen)

1165 ANTIGUA St. John's Caribbean Radio Lighthouse, 11/17 at 0300 w/EE rel pgm. (Jones) pounding in 12/5 evening. (Allen)

1200 AUSTRALIA 4GG Southport 11/21 1208+ w/TC for both Queensland and "across the border" (NSW), then r&r and guess ID is 4 double G, though sounded like "4 double 2". (Vernon)

1205 CAYMAN ISLANDS w/talk and organ from 1156 to 1159 11/28. Eastern sigs were still quite strong as late as 1227 on 11/28. (Wilkinson)

1210 CHILE Re Marc Bergman's reception in the 10/30 IDXD, it is indeed this stn. I listened to the tape and all I can say is "amazing"-the clarity is beyond belief! A top notch catch, Marc-CH

1210 GREENLAND AFRS Sondre Stromfjord 11/15, Mutual nx 0912-0914, brief mx the AFTRS ID and AFRTS nx noted thru 0921, all items about US Air Force. Only AFRTS stn noted on 1210, 1425 Thule very loud and not // (Vernon)

1214 ENGLAND BBC Radio One/Two 11/22 heard OM talking in EE at 0615, caught only a few words. Poor. (Vernon)

1250 USSR Vladivostok 11/21 at 1050, OM w/CC pgm, very strong though strong hum in background, maybe a jammer? (Vernon)

1265 ST. KITTS Basseterre 11/20 at 0125, fair, man w/EE rel. (Poda)

R. Paradise 11/17 0315 w/EE cpuntry style mx, this stn usually carries rel pgms. (Poda)

1268 WEST GERMANY Neumunster DLF 11/22 very strong, OM w/talk, IS at 0540, then talk interjected u/FF mx, poor sig. (Vernon)

1375 ST. PIERRE ET MIQUELON R. France fair w/woman in PP 2220 11/25. (Connelly)

1376 FRANCE Lille 11/22 0639+, OM in FF, talking o/instrumental mx, then talk interjected w/FF mx, poor signal. (Vernon)

USSR Vladivostok 11/21, Mayak IS at 1030, // 840, 908 later. Mayak not listed here per WRTH 77. (Vernon) good from 1150-1205 11/21. Russians on lower band didn't make it in this AM. (Wilkinson)

- 1394 ALBANIA Lushnje poor/fair w/talk by man & woman o/SAH 2222 on 11/25. (Connelly)
- 1403 GUINEA? Conakry 11/26 at 0010 poor, looped south of east, man and woman talking in FF. Not sure of this, but FF on 1400 or 1403-and who has FF on Friday eve looping E? Het almost always was there and was quite good this night together with 1044 het until whole AM band became abruptly poor after 0000-WWV had minor geomagnetic storm occurring. (Poda) Gotta be Guinea-CH. In with strong carrier-sometimes unmodulated, occasional mx heard at low audio level-very regular slow rolling fades apparent 0112 11/26. (Connelly)
- 1440 JAPAN Sapporo JOWF atop the freq 1058-1115 10/31 w/lively mx. (Wilkinson)
- 1466 MONACO Monte Carlo fair w/talk, then rel mx 2226 11/25. Adjacent channel slop higher than usual during enhanced short skip cx on the high end of the band. (Connelly)
- 1475 MALAYSIA, Sabah especially strong on 11/21 and 11/24 between 1145 and 1300 w/popular US recordings. (Wilkinson)
- 1555 CAYMAN ISLANDS pounded in from 1131 to 1140 11/21 w/hymn selection and vocal, anct and rel talk. (Wilkinson)
- 1570 SOUHT KOREA Cheju Island HLDA quite loud on 11/23 1300-1330 and 11/28 1200-1215 w/rel pgm. (Wilkinson)

Reporters. . .

Doug Allen	Schenectady, NY	HQ180, 20 m dipole
Chris Bobbitt	Berea, Ky.	TRF, R392, 80' LW
James Bryan	Tracy, Ca.	SPR4, FRG7, R300, SM1, DA3, LW
Mark Connelly	Arlington, Mass.	R390A, TRF, SM2
Charles George	Dallas, Texas	SSR1, SM2
Bill Hardy	Aberdeen, Wa.	HE30, SM1
Harry Jones	Vienna, Va.	SPR4, DA3, LW's
Ron Musco	Windsor, Ct.	HQ180, Sanserino loop
Louis Poda	Akron, Ohio	R300, Lafayette 7700, LW & tuner
Rich Segalas	San Fran, Ca.	????? ?????
Brian Vernon	Elsa, Yukon Terr.	DX160, SM2, 200' LW, whale oil
Hank Wilkinson	Santa Rosa, Ca.	HQ180, SP600, Sanserino loop

Thanks one and all. Welcome to James Bryan, Chris Bobbitt, Harry Jones, and lastly Rich Segalas. Report! Report! Report!

CONTESTS

BOB WALKER
2220 WEST HWY. 524
WESTPORT, KY, 40077

Hello again everyone! It's time again for Contests and unfortunately I still have not received the results from Eric for the first contest. I am still waiting for these to get to me here in Westport. Hopefully they'll be here by the first of the year. So that's the explanation why I haven't run the results of the first contest.

The Thanksgiving seems to have come off quite well as indicated by the early returns. You still have a few days left as the deadline for getting your Thanksgiving results in is December 31, 1977.

The next contest will be the Christmas contest lasting from December 20 (1800) to January 3 (0600). There will be a three station per state limit during the contest. Also--the bonus for this contest will be a 25 point bonus for each test heard during this time. As of this writing there are only two tests scheduled, but there may be more.

The Christmas Contest is an "A" Contest meaning the prize is either a pattern book or a log book.

Hope all of you have a good Christmas season and good luck in this contest. Before I forget--deadlines for results and entries in the Christmas Contest will be February 1, 1978.

DX CHANGE

R. J. EDMUNDS
P.O. BOX 127
BOONTON, N.J. 07005

FOR SALE (receivers) (*) denotes shipping included /or/ paid.

REALISTIC DX-150, needs some re-adjustments and bandswitch cleaned, not very good for ECB below 1000 kHz. \$50 plus shipping. (Frank Aden, 1535 NW Ithaca Ave., Bend OR 97701)

HALLICRAFTERS S-40B. Need some new wax caps and re-adjustment. Should make good ECB rx. \$35 plus shipping. (Aden)

WARDS AIRLINE portable. MW + 2.4 - 6.6 MHz. Just the thing for WWV; TRUETONE AM-FM; SEMINEL AM (not working); WESTINGHOUSE portable. Trade, make offer, etc. (Paul Swearingen, P.O. Box 500, Moran, KS 66755 - (316) 237-4584) Would like stereo cassette unit, a ECB loop, photo equipt. (*)

WARDS AIRLINE AM-FM. Good DX rig for backup. (RJE) Make offer.

DRAKES: R4C, w/all filters, NB and extra crystals, \$580; SW-4A, \$235; SPR-4 w/NB and all crystals for SWBC, MW, ute, ham, CB - \$485; (Bill Whitacre, 2609 Devonshire Ave, Lansing, MI 48910) (*)

BARLOW-WADLEY XCR-30 MkII, \$240 (Whitacre) (*)

R-390A, mint cx, just aligned by Charles Taylor. \$475 + shipping or pick-up, or I deliver within 100 miles. (Whitacre)

HAMMARLUND HQ-180AC, exceptionally clean in and out, complete manual, many new tubes, some spares. \$300. (Ted Langley, 61 Willow St., Pleasantville, NY 10570 -- 20 mi. No. of NYC -- (914) 769-6925 after 1900 EST.)

(meters, test equipment)

LAFAYETTE VOM w/ leads. (# 99-50734) like new. (Swearingen) (*)

HEWLITT-PACKARD FREQUENCY COUNTER HP-524D. 10-sec. gate time, ideal for freq. msmt. (Glenn Jacobs, K3WEI, Box 354A, RD #1, Moscow, PA 18444. (717)-842-8245)

RCA MODEL WV-516A volt/ohm meter. Made by RCA at Harrison NJ. Exc. cx, complete with test leads and operating instrs. Vy useful for quick circuit checks on any receiver. Will sell for \$27.50. Postage within the US included. Foreign, please write. (Albert S. Lobel, 10514 Caminito Baywood, San Diego, CA 92126 (714) 566-0092)

TEXAS INSTRUMENTS PROGRAMMABLE CALCULATOR SR-52. Complete, one yr old, but rarely used. Can be used for GC distances, numerous other functions. Reviewed in the March-April 1977 Elementary Electronics (pp. 21-22). Bought new at \$305; sell for \$240, including registered postage. Please write w/SASE. (Mike Hardester, Adrs: HM2 Michael S. Hardester, USN; Box 2723, USNAVREGMEDCEN; FPO Seattle, WA 98778)

(miscellaneous)

Misc. radio hdwre, resistors, condensors, transistors, etc. -- several pounds; old radio tubes (used) incl. 2) 12SK7; 1 ea) 12SQ7, 12SA7, 35L6, 12SG7, 3505, 12SJ7. Terms as above. (Swearingen) (*)

Sell or trade: RCA # 861 Transmitting tube. (Fil. 11 v. @ 10a.; plate 3500v, 400w. out., 17" hi, 7" d. Plate 3/8"sq. Fantastic conversation piece or a lamp can be made from it. Make offer. I need \$\$, SM2, transistorized oscilloscope, signal generator, counter, etc. (Langley)

(publications)

1972 SAMS 2nd Class Radiotelephone License Handbook; 1971 Sams Tube Substitution Handbook; 1973 Same SW Listeners' Guide. Same terms as above (Swearingen)

That's it for now! 73's de RJE *ME*

A LIST OF AM STATIONS CARRYING COLLEGE BASKETBALL GAMES-1977-78
Compiled from Street and Smith's Yearbook

Alabama-960 WERC	New Mexico St.-1450 KOBE
Appalachian St.-1450 WATA	New Mexico-770 KOB
Arizona-790 KCEE	New Orleans-1280 WGSO
Arizona St.-960 KOOL	North Carolina St.-680 WPTF
Arkansas-920 KARN	No. Arizona-600 KCLS
Austin Peay St.-1400 WJZM	No. Ill.-1360 WLBK
Ball State-1340 WLBC	Notre Dame-960 WSBT
Baylor-1230 KWTX	Ohio State-610 WTVN
Biscayne-1360 WKAT	Old Dominion-790 WTAR
Boise St.-670 KBOI	Oral Roberts-740 KRMG
Bowling Green St.-1430 WFPB	Oregon-590 KUGN
Buffalo-970 WEBR	Oregon St.-1190 KEX
California-1530 KFBK	Pacific-1280 KJOY
Calif. St. Poly.-1510 KSOM	Penn. State-1450 WMAJ
Calif. (Riverside)-1440 KPPO	Pittsburgh-1250 WTAE
Centenary-1130 WKWH	Portland-1230 KRDR
Cincinnati-550 WKRC	Providence-920 WJAR
Cleveland St.-850 WJW	Puget Sound-1360 KMO
Colorado-850 KOA/1490 KBOL	Purdue-1450 WASK
Colorado St.-1410 KCOL	Richmond-910 WRNL
Creighton-1490 KYNN	Rutgers-1450 WCTC
Dayton-1290 WHIO	St. Bonaventure-1450 WHDL
DePaul-1390 WVON	St. Francis (NY)-830 WNYC
Drake-1040 WHO	San Diego St.-760 KFMB
Duke-620 WDNC	San Francisco-680 KNBR
East Carolina-1320 WOOW	Santa Clara-1370 KEEN
Evansville-1400 WROZ	Seattle-1300 KMP5
Fairfield-1320 WATR	South Carolina-560 WIS
Florida-850 WRUF	So. Florida-970 WFLA
Fresno St.-580 KMJ	S. W. Louisiana-1420 KEPL
Geo. Washington-1600 WINX	So. California-640 KFI
Georgia-960 WRFC	Southern Illinois-1340 WJPF
Ga. Southern-850 WPTB	Southern Methodist-1080 KRLD
Holy Cross-580 WTAG	Southern Mississippi-1400 WFOR
Houston-950 KPRC	Stanford-560 KSFO
Howard Payne-1380 KBWD	Stetson-1490 WETO
Idaho-1400 KRPL	Syracuse-570 WSYR
Idaho St.-930 KSEI	Tennessee-990 WNOX
Illinois-1400 WQWS	Tennessee Tech.-1400 WHUH
Illinois St.-1230 WJBC	Texas-590 KLBJ
Indiana-1430 WIRE	Texas El Paso-600 KRQD
Indiana St.-1480 WTHI	Texas A&M-1240 KTAM
Iowa-600 WMT	Texas Christian-1540 KRXX
Iowa St.-1040 WHO	Texas Tech.-790 KFYO
Kansas-K. U. Network	Toledo-1370-WSPD
Kansas St.-580 WIBW	Tulane-1350 WSMB
Kentucky-840 WHAS	Utah-910 KALL
Lafayette-1400 WEST	Vanderbilt-650 WSM
Long Island-590 WLIV	Vermont-620 WVMT
Louisiana St.-1150 WJBO	Virginia-1070 WINA
Manhattan-970 WRCM	Virginia Military Institute-1450 WREL
Marquette-1130 WISN	Wake Forest-600 WSJS
Maryland-630 WJLA	Washington-710 KIRO
Massachusetts-1400 WHMP	Washington St.-1250 KWSU
Michigan-1600 WAAM	West Texas St.-710 KGNC
Michigan St. 1130 WCAR	West Virginia-1440 WAJR
Minnesota-830 WCCO	Western Carolina-680 WRGC
Mississippi St.-1240 WSSO	Western Michigan-590 WKGC
Missouri-1400 KFRU	Wichita State-1240 KAKE
Montana St.-1490 KXXL	Wisconsin (Eau Claire)-1400 WBIZ
Murray St.-1340 WNB5	Wisconsin-620 WTMJ
Navy-1430 WNAV	Xavier-1480 WCIN
Nevada-920 KOLO	Yale-1340 WNHG

...Compiled by Ken Onyschuk
...Typed by Paul Swearingen

Holiday Greetings



Orin Truax *Jul Kuhl* *Mike Anderson*
Pat Hartlage *Bob Walker* *Wayne Murphy*
David A. Peters Sr. *Jay Peters*

WREN

"The good life"

RADIO 1250
P. O. BOX 1280
TOPEKA, KS. 66601
913-232-0505

Sir;

I am sorry to inform you that we cannot confirm your reception of WREN. The information that you listed for confirmation did not include any that we could check on the program log.

In all fairness, we can only confirm (QSL) reception reports that list items that were broadcast at that particular time and can be checked in the stations program log.

To assist you in the future, the following guidelines are listed:

- (1) NEVER rely on song titles as the only time any station keeps a record of what songs were played is during ASCAP or BMI ascertainment week.
- (2) NEVER give any of the patter that a DJ says...there is no record of it and DJ's memories are extremely short.
- (3) NEVER give weather or news or sports stories...they are covered on all stations and are not peculiar to any one broadcast.
- (4) DO list the name of any sponsor and the time of the commercial, as they are required by law to be recorded on the stations program log.
- (5) DO list any unusual program types...such as a remote broadcast of a local football game (list the team names) or a shopping center remote broadcast.
- (6) look for the following and list them in your reception report:
 - public service announcements & times (i.e. American Cancer Society)
 - commercials, sponsors, & times
 - promotional announcements (i.e. up coming programs, events, etc)
 - program titles & times (i.e. Lum&Abner Comedy Hour, Back-to-the-Bible, Howard Cosell's Speaking of Sports)
 - political ads or broadcasts & times & names
 - news bulletins, special reports, live coverage, etc.
 - any sports play-by-play broadcast, listing teams, scores, etc.

Basically, listen for anything that the station will have to put down in its program log. Better luck next time and keep listening.

See

Lee Yazell
Chief Engineer

MUSINGS

The opinions expressed in this column are those of the individual members, and do not necessarily reflect those of the editors, publishers or NRC.

ERNEST R. COOPER
5 ANTHONY STREET
PROVINCETOWN, MASS. 02657

HARRY J. HAYES - Star Route - Box 226c - Gouldsboro, Pennsylvania - 18424 Times EST
The DX keeps on a-flowin'. I only wish I had more time to spend DXing. The greeting card company that I'm working freelance for has me turning out Christmas cards for 1978. That's really advance planning! Only 12 new catches for November but some good ones. 11/2- 5pm, WKLP-1390 Keyser, WV sneaking through w/ID on the hour & SID. 11/3- 5:15pm, WLKR-1510 Ohio snagged finally, still no WLGW from there. 11/11- 2am WIOD-610 in u./IP w/promo for gossip show. 4:42pm, WCLN-1170 N.C. blasting in w/oodles of ads for places in Clinton. 5:13, CKJD-1110 Ont. first time heard w/Big Boy Restaurant ad. 5:17, unnn WPUV-1580 Va. w/s/off. 5:45, WLJ-1580 Tenn. weak at first, then all of a sudden just blasting in on s/off as though they threw a 5kw switch, or something. 6-6:35pm unID-1580 switching XR on & off w/intermental mx. 11/15- AU tonight which knocked CROR & CKIM into never-never-land. 5:45pm, WTOX-1570 Ala. w/soul. 6:20, unID-1570 w/SS. 11/16 I was in downtown Wilkes-Barre today at my aunt's house so I thought I'd check on her RX to see if AU was still in effect @ SSS. It wasn't, but I heard WTSA-1450 Brattleboro, Vt. absolutely blasting through & this was a needed station also. This station was bagged here also a few days later. It makes no difference, really, where I heard it since I have about a third of my loggings from Wilkes-Barre anyway. 11/19- 5:12pm, WJXY-1050 S.C. ex-WJAL cutting through WHN/CHUM. 5:15, WCIR-1070 WV s/off. 11/21- Some MM DXing, first time in a long time. I noted pest CHWD was nowhere to be found but WTAE was in there w/TTS and IDs, messing up the channel as usual. I thought I'd check out the channel anyway. There was weak, distorted Beethoven mx way in the background which turned out to be CHSM-1250 Manitoba, a real surprise. Calls self "Family Radio" & gives triple ID, CFAM/CHSM/CJRB. I only made out the first & last calls as they took a convenient fade the two seconds that "CHSM" was mentioned. Counted anyway. Murphy's Law will not get the best of me! 11/25- I tuned in about 2:25pm and noted skip in already. WKHW-1520 was in w/nighttime-like signal. T-40 mx @ 3pm mixing w/WKER turned out to be badly needed WQFT-1500 Youngstown. 3:50pm mention of Trumbull Co. on 1570, which must have been WTCL-1570 Ohio. Tough, as the two pests from Canada were in already. At 5:14, WKTE-1090 King, N.C. cutting up right through WBAL w/full ID. 5:40, WEUP-1600 Ala. giving WUNR/WVRL fits. I checked for other 5kw regionals from the area, but no luck. 11/28- 6am, WAYN - 00 N.C. s/on before all the others w/IDs preceded by a medley of Yankee Doodle Dandy, My Country 'Tis of Three & any other patriotic song you might mention. I better get out of here.

DOUG ALLEN - Apt. 64 - 15 Lafayette Street - Schenectady, New York - 12305

Having gotten my feet wet with a QR-666 in April, adding an SM-2 in September, & hearing my first TA soon afterwards I began lusting after better equipment. One month ago an HQ-180A appeared at the local Adirondack Radio. The first evening with the 180 netted 12 new stations including R. Jumbo, R. Omega, R. Nouveau Monde, WestDeutscher Rundfunk, & Monaco, all new catches to bring my total up to 20 countries. During the next two weeks I added ZDK Antigua & Albania-1394. On Oct. 28 Barbados-900 and ZJB Montserrat-885 brought my totals up to 24. State #33, WQSC, S.C. was IDed on Oct. 17. My impression is that the QR-666 was as sensitive as the 180, but the selectivity & readout of the 180 is superior. The 180 doesn't overload quite as much on locals WGY, WPTR, WWWD & WTRY all within a few miles of here. Battery operation of the QR-666 produced a little less line noise, and was a plus for it. Station total as of 11/1/77 was 429 with 100 new ones this Fall. Happy DX to all.

PAUL MOUNT - 507B Carman Hall - Columbia U. - New York, N. Y. - 10027 212-280-6925

I took the tip of Ron Schiller & got a 10 1/2" turntable for my TRF. I don't know why I hadn't thought of this. The trouble is that the patch cords from the TRF to the tapedeck get twisted as the table turns. Also, with the cord in the back of the TRF I can't get the Space Magnet right next to it; also the SM is on a lower place than the built-in TRF antenna. Anyway, 10/17 from Teaneck: KYW-1060 good @ 12:15am, usually an indicator of good CX if it's good w/WHN on. WDEL-1150 Del. w/ some DJ 12:16-12:21. KSL-1160 first time this season w/SLC Eagles vs. Phoenix hockey 12:27-12:58; spots for Coors among them. Signal ranged from loud to weak. WINS s/off @ 1. No WXAP-860 TEST, only SS. SS on 820 w/versions of US rock hits o/WBAP 1:16-1:32. PJB-800 first time this season, loud in SS. EZL-40's mx on 720, presumed WGN, also a TTer on/off 1:40-2:06, & an SS, none IDed. Male singing in SS on 580, familiar "WKAQ Mas Musica" jx 2:12, CHIC-790 now a pest @ 2:25. Someone w/continuous c/w on 910 o/u WSBA 2:29-2:37. WOKO/WAXC-1460 2:53-3:01. WQSC-1450 Glens Falls NY w/NX 3:05, later w/rr. 10/24- Possibly WRJZ -620 @ 3:54 but very tired so I didn't count it. 10/26- In bed; ABC NX & a TTer on 14-0 got me out @ 2:55. ABC NX went into rr, TTgone, WNCR w/NX. Rock was WQOK, Greenville, S.C. per phone call, heard once before, listened till 3:15, when lost. 10/28- On the roof listening for info on 990-Philly but I couldn't make out much more than the mx & a laid-back DJ, no IDs, slogans heard. Next time, Ohio. 73.

YOUR BUSY BUT HAPPY EDITOR WISHES TO THANK EACH AND EVERY ONE OF YOU MUSERS FOR MAKING THIS A BANG-UP GOOD SECTION ONCE AGAIN THIS WEEK! HOW ABOUT SOME MORE OF YOU GOOD DXERS ENTERING?

CONTINUED ON PAGE 15

AN AC POWER SUPPLY FOR THE FET LOOP AMPLIFIER

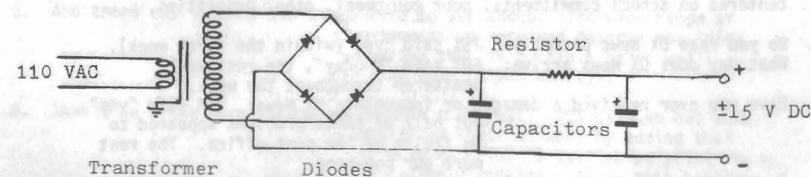
J. Hagan and R. Edmunds

Many active DX'ers discover as they use their NRC Altazimuth Loops that they encounter relatively short battery life and high expense for battery power for their FET amplifiers. In addition, those DX'ers using the remote-tape method for DX TESTS are forced to run the amplifier all night, thus further depleting the batteries unnecessarily. While a relay system could be used to eliminate this problem, we present here a simple and inexpensive power supply which will power the loop amplifier from an AC source, which can then be served by a timer switch along with the remote tape recorder. This supply is both easy to build and inexpensive to construct.

The FET plans call for a power source of approximately 18 volts DC at an optimum current drain of about 8 mA. The source detailed here will provide about 15 volts at up to 1 ampere, which is quite sufficient for our use. The difference in voltage has proven to be almost negligible in practise, and the current rating is due to the consideration of inexpensive and ready parts availability. Actually, a current rating of .25 - .5 ampere is also suitable.

All of the parts should be available either right in your parts box, or at a local Radio Shack or Lafayette outlet. You will need 4 diodes rated at 50 PIV at 1 ampere or more; one 100 ohm 1/2 watt resistor; a transformer with a 110 VAC primary and a 20 V, .25-1 amp AC secondary (The value for transformer secondary voltage is not higher owing to the scarcity and cost of such items); and two 200 uf electrolytic capacitors rated at 20+ volts.

Wiring is not critical, and the only precaution to be taken is to be sure to ground the core of the transformer to minimize any potential hum generation. The circuit diagram appears below. When placing the unit in operation, be sure to test for the proper voltage before applying it to the FET amplifier, and also be sure to set the current drain control on the amplifier to its minimum setting, and then slowly increase it. (It should be noted here that operation in excess of 9 mA will reduce the operating voltage of the unit.)



YOU TOLD US WHERE TO GO!

In our July 18, 1977 edition of DX News, we printed a two-page questionnaire asking each member of the NRC to comment on the Club and on DX News. Since then there has been a stream of responses; they started just three days after that issue "hit the streets" and continued right up to the middle of November! We started compiling some results several months ago but, part way through, we realized that more good ideas were coming into Headquarters with each passing week. So we decided to wait until things quieted down a bit...and here we are six months later!

By now we've compiled so many statistics, comments and great ideas we don't know really where to begin. So what is printed here is a more-or-less statistical count of the responses we received to the numbered questions. Later we'll try to gather all the comments in as easy-to-read form as possible...good ideas and bad ones...and you'll be able to help us sort which is which!

Many of you attached sheets to the questionnaires and I'm fully aware that you haven't received answers to some of the questions you raised. It's just that when you suddenly get 100 letters in the mail it's tough to collect your wits and, as I said, the mail has continued to arrive well into the fall.

So here's a start; the questions (and answers) below are in the same order we printed them back in July -- I've changed the format a little so as to give room for the range of answers:

1. Your age: The range is from 15 to 73; average is 36.
 Years you have DXed: Range is from zero to 64 years; average = 17 years.
 Is DXing your primary hobby: 63% said yes.
 Your verie philosophy: Go after all = 25%
 Just selected stations = 42%
 Tape only = 11%
 Don't tape or verie = 22%
 I also DX: SWBC = 65%
 FM = 60%
 TV = 47%
 LW = 17%
 Ham = 15%
 Other = 4%
 Have you ever dropped out of the hobby: 42% said "yes". The reasons centered on school commitments, poor equipment, other priorities.
2. Do you read DX News promptly: 75% said "yes" (within the first week).
 What day does DX News arrive: 60% said "Monday", the rest were scattered throughout the week.
 Have you ever received a damaged or incomplete DX News: 20% said "yes" but half of those problems appeared to be faults of the post office. The rest were our boo-boos.
 Is the type size in DX News large enough: 68% said "yes", 23% said it gave them problems -- the rest didn't answer.

**Compiled by John D. Bowker and LPC
 Typed by John

2 (Con't.)

Is the DX News easy to read in its present form: While well over half of you said "yes", this matter deserves a more complete discussion which will be printed shortly.

With the impending increase in postal rates, would any change in NRC dues cause you not to renew your membership: Again, most of the members said that any necessary reasonable increase would be okay, but there were comments on how we might cut down on expenses as an alternative. These will be discussed later on too.

What alternatives would you suggest: We got some beauties; those we can print will soon appear!

3. What order do you read the columns that appear in DX News:

There was an unbelievable spread of answers to this question; we intended that the responses indicate which of the columns were the most popular and we believe that, by sifting carefully, we have listed the correct impressions here. Every column received more than one "Most favorite" vote and each received more than one "least read" vote. Since each column was to be ranked 1-9 (with 1 being the first to be read) we show here the percentage of 1, 2, 3 and 4 votes for each column: CPC = 62% (38% 1st-place)
 Musings = 68%
 IDXD = 50% (26% 1st-place)
 DDXD = 74%
 GYDX = 20%
 DDXA = 14%
 IDXA = 10%
 Log Update = 38%
 AM Switch = 52% (15% 1st-place)

4. In your opinion are the columns arranged in the right order: Generally there was little comment except that the CPC should be shown on the front cover for quick reference and the Index to the issue of DX News should also be on the front cover.
5. Are there any columns you would like to see added: The wide range of responses we received deserve more discussion than is possible here; we'll bring them to you shortly.
6. Should we print more issues of DX News each year: 70% said no but some qualified their answers by adding that if good material is available, print it in a timely fashion. Also, most people would like to see a Christmas-week issue if it can be worked out.

14

6 (con't.)

Do items appear in DX News promptly enough: If we take out the comments about receiving CPC Test notices on the day after the test was run, 97% said that DX News arrived in time for their use.

7. Are there too few technical articles in DX News: 38% said "yes"

Are there too many: 14% said "yes"

While there was a 25% absentee rating on this question, the rest said we were printing the right number of technical articles.

What technical articles would you like to see: The largest number of bonafide responses call for comparisons of receivers now on the market. This subject needs further discussion at a later time.

What technical articles have you read in DX News: The largest votes were for receiver comparisons and for antenna design articles. Most of those who responded to this said the articles were easy to follow and understand.

Did you read the article because you were interested in the topic: Most readers who responded to this said either that they read all technical articles or they read all of DX News. 21% responded that they read only selected technical articles.

8. What about our feature articles: Too Few = 20%

Too Many = 16%

Just enough = 44%

Those who asked for more features were seeking information about broadcasting operations; pictures, facilities, FCC Rules, history.

9. Would you like to see more photos of other DXers: Here the response was about 60-40 in favor provided the photos were clear and didn't take up too much space (i.e., not used just for "filler" material) and that we take care not to show the same people over and over again. Maybe we should ask members to send in photos of their "shacks"? We'll discuss it later on.

10. Do you have any other comments: Wow, did we get answers to this one!

We've got to hand it to you NRCers! Rather than start right here on this page with a listing of your thoughts, we'll make it a feature article (!) separate from this.

Okay everyone...this is our first cut at compiling all the answers we got to our questionnaire. We know we owe you a lot more and we assure you you'll get it as soon as I can get another good ribbon for my typewriter. So hang in there! Oh! Before I forget! You all were unanimous in taking us to task for printing the survey so you had to rip your DX News apart to get at it! Sorry 'bout that. Live and learn.

STEPHEN FRANCIS - 1620 Lodge Street - Alcoa, Tennessee - 37701

Very little heard of late, but here it is: 11/14- Try for KVVU-610-TEST netted only a weak TT @ 3:28 which changed pitch @ 3:31 & ended @ 3:32. No other TT or code was heard during the hour, so it was probably somebody else. I will give it the old Francis try again next month, though. WTCO-1450 Ky. fair ending r/c w/ID @ 4:28 turned out to be my only MM newie of November, & it wasn't due to a lack of trying. 11/16- Tylertown exists! WTYL-1290 Miss. fair @ atop @ 6:01pm s/off. 11/17- WYKR-1490-TEST not heard; ditto WNHV-910, although I scarcely left 910 the whole time, this on 11/23. Same story w/KLUC-1140 on 11/28. 11/29- Success! WCHE-1520-TEST heard w/code IDs u/WKRW from 12:46-12:55. I had only heard superweak TT earlier & was about to write this one off as another unheard when that lovely sound began. Thanks, Dave! Much-welcome Delaware verie (WDEL-1150) from our own Joe Jones, who says mine's the first report received since going AN in October. The KEOI-670 info in this issue or last should come in handy next time WMAQ's off - they took three MM SPs in September & have had none since, so I guess there's no way to figure 'em ahead of time. Current totals are 2,163/46 7/36. In case WMAQ has a MM SP before you get the 12/12 issue, KEOI says they test w/OC & two IDs (they didn't say when) for 15 minutes every MM beginning at 2:10 EST with the ND 50kw day rig!

ALLEN A. LUCKEY - 26 Gene Avenue - New Castle, Delaware - 19720

Greetings again. I would have Mused sooner but I was kept busy painting the house as much company is expected over the holidays. Not too much new DX-wise here as time has been a rare commodity. I did manage to get my TRF back into service again. It seems one of the dialstrong pulleys broke loose. Crazy Glue to the rescue & all is well again. I never could resist tweaking the innards of electronic equipment so out came the alignment set and I duly attacked the RF trimmers in the TRF. This has resulted in a significant improvement in reception. I was surprised that the unit to work and fire it up on the bench to do the job right. Latest DX includes the following: 10/17- WRUF-850 @ 1:35am good signal, WBRB-1340 @ 12:55am "All NX Radio" on top. WNCX-1070 @ 8am very good this morning, all alone. 10/21- WQVA-1550 @ 8:10am w/WSER. 11/6- CROF-1250 @ 12:10am s/off, with good signal. I must be hearing things but it sure sounded as if they IDed as CEO. 11/14- CKJD-1110 @ 1:05am chewing holes in WBT, probably on day power/pattern. 11/26- WHJB-620 SSS. 'his is my only SSS catch in quite some time as I normally work till 6. 11/29- CKTS-900 very good in CHML null. CX were good tonight but wouldn't you know it, only one newie, which was WTRY-980 @ 1:55am u/WRC, poor. 11/30- WVPO noted w/ET @ 12:05am, my old hometown station on 840, heard clearly w/TRF but WHAS definitely had the upper hand. I DXed for about an hour 11/24 early AM w/the TRF & a piece of scrap newspaper as log in shack where house guest was getting some Z's. I had at least one new catch & other possibles as many normally congested frequencies had unfamiliar voices on them this evening. However, I made the mistake of leaving the scrap in the living room when I retired & it was nowhere to be found the next day. Nobody knew anything. That's what I get for my absent-mindedness. As I mentioned in my first Muse (#4) my main RX is an older (to be kind) Philco & I would be interested in hearing from anyone using similar RX. Well, that's all for now so Happy Holidays and good DX to all. 73s.

BRANDON JORDAN - 4821 Arms - Memphis, Tennessee - 38128

Hi everybody! This is my first Muse & I hope to Muse every week this DX season. I just received my best verie for a long time to come. AFRTS-1420 Sondre Stromfjorel with 250 watts! I reported on 1425 but it's on 1420. Here's an excerpt from the letter. "We received your reception report today, and quite frankly we were surprised. As a matter of fact, we receive so very few reports that we do not have a formal QSL." 7/11, 8:09pm, YNRM-1350 Nicaragua, u/WSMB; 8:37pm, TGVC-1390 Guatemala u/KCRC; 8:45pm XEEM-1420 Mexico u/WOC; 10:30pm YSS-655 El Salvador; 11:53pm CMGN-720 Cuba u/WGN; 11:53pm, TWR-800, Neth. Antilles; 11:42pm, TIWA-575 Costa Rica; 12:26pm, TGV-640 Guatemala; 12:29pm, YNX-750 Nicaragua. Recent veries: VOA-1180, KORL-650, WCKY-1530, WJR-760. I've just started QSLing domestic. Best DX to everybody, even ERC who always has it! (Welcome to the NRC & Musings, Brandon! We will be looking for those promised weekly Musings, and thanks! -ERC)

MIKE HEPPE - Box 7 - Houston, Mississippi - 38851

As I sit here anticipating Thanksgiving and the new contest, I wait patiently. I have, I believe, recuperated from being in the hospital. Now my DXing has gone to pot, since my crazy working hours keep me from doing anything but working & sleeping. I work from 4pm to 2am and sleep to 11am. I can't get any SRS or SSS DXing done. My congratulations go to Russ Edmunds with his article and pictures of his monitoring post or should I say DXing corner. Russ how do you turn your loop in that picture? I forgot, that was the 73 magazine. Very impressive, I wished my room looks that neat. Why can't NRC have a picture column of Club members stations in each issue or monthly issue showing the radio & antenna that are used? Also a sneaky way of cleaning up house for a picture. I would like to see that. Any opinions, please state in Musings. Back to Russ Edmunds' article, very fine article describing ECB DX. Many many more members will spring up because of such reading material. Good job, Russ. Bob Walker, how about a rundown on scores of the first contest? If you have printed them by the time this is read, I will say many thanks. Charlie Barfield, on the automobile radios, they are absolutely great. I used a Pontiac radio when I don't use my other radios. If interested, I will send a wiring schematic of my Double-Radio DX portable. I called Jeff Parish in Memphis but I found out from his parents that he is in Oregon. I was getting ready to come up to see him last weekend. No wonder he heard Alaska. I have been trying for a long time to get that. I didn't know that Radio West was Grant Manning's outfit. Long time, no hear from. Old news, I repeat myself. What's going on, the EX-2 antenna has popped up in the Musings. I noticed three people were talking about or getting them. I picked up the WCAZ TEST.

HILL HARDY - 2301 Pacific Avenue - Aberdeen, Washington - 98520

Since the year is nearly over, maybe this would be a good time for a re-intro. I am 30 years old, & have been DXing from this location since 1960 (except for such interruptions as college, Army, etc.) I joined NRC in 1974 without having to pay to get in, mainly because I married an NRC member - the former Nancy Gantzer of Fredonia, N.Y. My current equipment is Nancy's HE-30 RX w/SM-1. We are considering getting a better RX when we have the money, and possibly building a Wedge or other loop antenna. I was in the broadcasting industry for 12 years up through last July. I have now permanently gotten out of broadcasting as a career, & am 99% sure I will never return. However, as of this writing 11/23 I haven't found a new career & am still looking. For any DXers who will be in the Pacific Northwest around year's end, Nancy & I plan to hose a Beverage antenna party New Year's weekend on a 1,200' long plot of land along the Washington coast. However, since the place is virtually impossible to find even if you've been there before, I'll ask you to write to me now for further details if you think you'd like to be there. We tentatively plan to rendezvous with all interested, at a specific time & location in Aberdeen, and then "carpool it" out to the beach. I'll also send you helpful info on motel accommodations there, which are limited & which could fill up early for New Year's Eve. Just write to me at the above address - the sooner, the better! I'd like to comment now on the suggestions for DX TEST methods outlined in the 11/7 issue. Very good suggestions. Let me add that there are some stations that do NOT have any march mx or polkas in their record libraries, nor tone-generating equipment to send out TTs, so if they prefer to TEST with their "regular format" & frequent VIDs, I hope the CPCCer arranging the TEST won't get too uptight. Morse Code IDs are quite helpful. I ran two TESTS at KGHQ-1560 in 10/74 & ran CIDs, which I produced by keying on-and-off the 1k TT from the old "EBS Test" tape! This CID was the only thing that cut through the static & Cuban QRM to make it as far E as the Mississippi. Perhaps an imaginative CPCCer with 7 1/2-ips-full-track tape equipment could record CIDs or even TT or marches, polkas, etc. & VIDs, if the station doesn't have the resources to do it themselves. However, ask first - they might not appreciate an unsolicited tape. I'll be back next week, & I hope all you will be, too. MUSE! 73.

HANK WILKINSON - 5028 Maiden Lane - Santa Rosa, California - 95405

I'm glad to see that the West Coast may get the Convention in '78. DX results at this den for November indicated a general increase in reception from the CA, SA, & Caribbean areas; a decrease from the Asian area; and, Australia-New Zealand almost non-existent except for 2NR-700. I have tried for some TAs in the early evenings but have not "lucked out" on any TA openings so far. The best Asian DX so far this season was on 10/31. Best dates (here) for LA DX were evening of 11/17 & morning of 11/28. In fact, the morning of 11/28 was slightly fantastic. My big gripe this season is the same as Ernie's (and many others) and that is the lack of replies to reception reports by the "new breed" CE/SMs at radio stations all over the world. I have changed my style of approach on my reception report letters this fall in an attempt to increase the percentage of replies. New Zealand/Australian DXers classify South America as the "Dark Continent" in regards to percentage of replies when comparisons were made of all continents in reports sent. Of course, you should never give up. One DXer got a verie 4 1/2 years after mailing his original report! Welcome back, Hank Holbrook! 73.

PETE TAYLOR - KFOG - 900 North Point - San Francisco, California - 94109

I have been doing a great deal of traveling the past six months. In August, driving between Denver & Parker, I noted KQMP-1010 at s/off. In Orlando, I noted CMJK-1220 SS for the first time. In Europe, I noted the 1546 London outlet with pretty good coverage. In Fez, Morocco, I noted Denver-Oakland FB on Sun. 10/30 @ 2215 GMT on 1484 & presume it was ARFS-Kenitra. Also, Rabat-818 was not good in either Fez or Marrakech, so I presume it is directional. I drove by Sebba-Aioum between Fez & Rabat but didn't drop in to say hello. Marrakech-971 is by far the most overmodulated and distorted station I have ever heard. Libya-1250 extremely strong in Morocco. No real surprises in London, Paris, or Madrid, except that what I presume to have been Italy-1448 was so loud that I thought it might have been another Paris local. A great deal of U.S. mx is played in Madrid. Portuguese stations are very strong in Morocco. I got to Orlando early, & noted quite a bit of U.S. mx on 630/640; very noticeable. Also there, I noted a WKIS image on 1160; the Winter Park 1440 outlet (religion) was off the air Saturday evening 11/12 from at least 6-8pm EST. On the carrier current scene, Disney World was on 650 the last time I was there. This year, they have signs for 1200, but this is chopped up by the 1190 local. They are also on 1030, presumably testing. Happy Holidays!

HILL HARANG - 811 Nevada Avenue - San Jose, California - 95125

During my trip to Colorado Springs, we had WX which was certainly different from what was going on at the same time here. While the Bay Area's temperatures were in the 50s & 60s, Colorado Springs had a low of 23o on Wednesday, 11/2, and it got down to 19o the same morning in Pueblo. Colorado Springs got its first snowfall of the season on Halloween night. KWZB-1150 faces severe QRM from KSAJ on SSS. Radio conditions over there were a different ballpark. No Bay Area station really put a super signal into there during evenings. KWKA dominates there on 680 instead of KNER. KVFC-740 was, by the way, heard way underneath KSSS. On 810, KQMO and KAFE usually came in better than KQO.

CESAR F. OBJIO - Calle Enrique Henriquez 69 - Santo Domingo 1, Dominican Republic

Hi, DXers. I have just read a very good news in the last issue of DX NEWS received here (#6) & it is that the 1978 Convention will be held in Atlanta - that's great, & I hope it will be approved as I will be able to attend. Last Convention I attended was 1972 in Miami, co-host with Ronald F. Schatz, Richard Clark & Bill Brubaker. As I still visit Miami in my yearly vacation I only have to take a plane to Atlanta and meet the old gang again.

(Objio) As I am told this is a beautiful city I have never been in. So, please vote everybody for Atlanta. Now to other subjects: Perhaps many of you might be thinking that I am in touch with Richard Clark who is now living in this country, but that's not so. I have a telephone but he doesn't as he lives in the country near La Vega, and no telephone lines are connected in the country unless you pay a high fee, and he doesn't need one. I don't have a car to visit him on the weekends. So I only can talk to him when he comes to the capital, or read his Musings. I have started DXing again digging for new stations even though I don't have a count on them, but it is always interesting to get a new one. My usual listening time is Sunday evenings from 10pm on (0200 GMT) as most of Santo Domingo start s/off at about this time, but I am really sorry that I could not DX on November 2nd, All Souls Day, as I was working till late that evening and only went home to go to bed. In this date most Dominican stations keep silent. I recently bought a digital clock showing hours, minutes & seconds which is a very good help for the exact time, it only has to be synchronized to WWV. Well, I think I am over 30 lines, see you all in Atlanta, I hope. 73s.

BRUCE A. CONTI - 39 Bayberry Drive - West Warwick, Rhode Island - 02893

We would like to thank our GTG host, Ernie Cooper, for a nice day in Provincetown. Mickey Theroux, West Warwick's UNID DXer, & I enjoyed the day. (The UNID West Warwickie can't wait to see his picture in DX NEWS with the rest of us at the GTG). It's too bad many NRCers couldn't make it to the Cape Tip. I guess the bad weather scared them off. The wind did a good job pushing my VW around out there! Seeing some of ERC's & Ray Arruda's veries makes my collection look like nothing, hi! So after a New England Thanksgiving, I'm back in Glen Cove, N.Y. I'll be back in R.I. for Christmas, & then I'm moving back to Boston in 1978. With all the travelling I did between N.Y., R.I., & Mass., I didn't get to DX over the first of the holiday season. But I did add three catches to my log in Glen Cove N.Y. on 11/30: WEAM-1390 was heard @ 6:25pm u/ FBL, WERE-1300 was heard @ 6:35pm w/report on possible schools shut-down for Cleveland, and I caught R. Paradise-1265 w/ID @ 6:45pm after "Radio Chapel Hour" from St. Kitts. I now have 194 stations heard in Glen Cove. I would like to condemn WHIM for depriving Rhode Islanders of their only c/w mx station on FM Stereo. Recently, WHIM-FM changed to WHJY-FM & dumped c/w for BFL mx. Now, the only station that comes close to c/w on FM which R.I. can hear is WTTK (TK-101) in Boston. WTTK is "progressive country." WHJY-FM says their BFL mx is the "joy" of New England, but the loss of c/w on FM doesn't bring joy to R.I.'s c/w fans! At least WHIM-1110 was nice enough to keep the c/w format on AM (even though they broadcast daytime only). I guess R.I. c/w fans will tune to WSM, GHML, WRN, & WPOR more often now (or there will be a boom in extra sensitive FM stereo tuner sales, so they can tune in WOKY-FM, "OK Country-98" in Dover, N.H.)! 73s, and as they may say in Mexico, "Merry XMAS"!!! (Thanks for the kind words, Bruce! 'Twas swell meeting you! -ERC)

RAY ARRUDA - 47 Burt Street - Acushnet, Massachusetts - 02743

DX has been fair to good the last part of November. Here is the latest from this end. Sunday 11/27 4:30pm s/off of WDEW-1570 up briefly o/WPEP/WRCN, but not enough for a report. MM 11/28, all times AM - very quiet with KLUC-1140-TEST tried in vain from 3-4, but no luck. I was a bit disappointed not hearing this one, but WRVA was quite strong here. The AN situation continues to worsen. WAXC-1460 on top 1:57-2:12 with female DJ, T-40 & waxey IDs. No WOKO. WGNG-550 & WOR-710 noted off. WKIX-850 N.C. noted fading in and out most of the AM. The 11/29 WCHE TEST made it fairly well w/a series of IDs in code & voice from 12:47-12:53 during WKBN's NX. Thanks Dave Schmidt! Veries are back from WWEL-1430, WVQB-1520, & most welcome CKLQ-1570 Manitoba. WWEL sent back w/f, AM & FM QMs & fact sheets and various station info. Make ERC happy by Musing often! 73.

MARK CONNELLY - 52 Ansden Street - Arlington, Massachusetts - 02174

There seems to be a desire among many DXers to make their Realistic TRF's compatible with loops, Space Magnets, & external wire aerials. I have arrived at a solution which works well for me. Open the TRF up & observe the inside of the back cover piece. Drill two holes adjacent to the external antenna jack & put two screws through the case. On the inside at one screw install a spade lug with a wire soldered to it; solder the other end of the wire to the black ground lead on the side of the earphone jack. One lead from a .01 microfarad capacitor should be soldered to a spade lug on the other screw (inside back); the other capacitor lead should go to the yellow lead connection at the external antenna jack. Note that the yellow lead is that which is wrapped a few turns around the ferrite rod inside the TRF. The capacitor isolates the radio & the loop amplifier circuitry DC-wise. Connect the loop to the "high" & "ground" terminals just installed; adjust the loop tuning capacitor for peak signal strength on a weak station. If feedback or regeneration occurs, first move the loop away from the TRF, at least two feet. If the loop has been moved the greatest practical distance away & the regeneration is still a problem, add a series resistance between the loop high lead & the corresponding TRF screw terminal input. Adjust the resistance to the point at which regeneration stops & a good signal results. Connecting an LW directly to the "high" antenna input may cause overloading & "spurs" at urban locations. Try a simple tank circuit w/a standard BC variable capacitor in series w/a ferrite loopstick; this two-port network should be inserted between the wire aerial & the TRF "high" input screw. The ground terminal may be connected to a good ground or to a second aerial, tuned or untuned. Or, try a parallel tank circuit from antenna to ground. The possibility of phased-beverage operation with the TRF has yet to be explored. I hope this article will spur others on to further experimentation & more in-septh research, possibly culminating in a formal technical article. To all out there, Merry Christmas & the best of DX in the New Year, 1978.

KONSTANTINE RYCHALSKY - 22 Carroll Court - Bridgeport, Connecticut - 06607

XIII. SEND A MUSE! As of DX NEWS #7, the highest number of Musings per issue for Vol. 45 is 30; the least - 22. The average number of Musings thus far is 25. That's poor when you can count 699 members in #7. Ernie, after 30 years of 30 issues you must be reaching your 1,000th Musing soon. (I reckon I've passed it, Kon - I Mused about six years before becoming Editor, hi! -ERC) Veries in the mail are: CJCH-920 CM card. On to the DX: 11/16- Tentative WOA-1180 @ 8:20pm w/SS NX; @ 1:45am both CHOW-1470 Ont. & WLAM-Me. were filling my earphones, both unheard before. 11/22- Sitting on 1490 1-2am spat out WPOR Me., and WOPA-Ill. both for reports; WXIT-W Va. popped up also. 1420 spat out WBSY Mass. & CPT Ont. both for reports. 11/24 found WYOU Tampa ET on 1550 w/announcement @ 1:15am, then gone; CFNB-550 louder than normal @ 1:30. 11/28- CKCY Ont. in for a f/up report @ 12:39am; newie WSAW-1470 Pa. in w/soul mx @ 1:42am. I was thrilled @ 2:08 when someone (WUNR?) signed off 1600 to leave WEUP Huntsville Ala. clear with "24 hour soul from the city." This is state #32 for me (and who said Christmas doesn't come early?) Now to top things off, the next day 11/29 WAAY, also Huntsville, Ala. came through after CBE s/off @ 1:10. WQXR later killed it @ 1:15 w/OC. Also WCHE ET was heard @ 1:50am w/announcement & code, well after their published time, thanks Dave! Veries now at 245 w/222 still out not answered since 9/77. This season has been good with 21 new loggings. I finally saw the TRF everyone's talking about - I thought of picking it up but decided not to. I'd like same radio but in table top design & a bit higher priced. Any ideas? This is towish everyone a happy Christmas and may your stocking be full of QSLs that your family has been hiding for the past month. Thanks Frank Dailey for call, sorry I didn't hear 'em. I would like to welcome John Kenyhercz to NRC - now there's two members from Bridgeport, Conn.! 73s & SNOW!

DAN HAGGETT - 89 Maple Street - White River Junction, Vermont - 05001

I guess it's time for another Muse. Not too many new stations to report except WANT-990 & Albania-529. I'm also sending out some reports from SSS listening: WHNC, WFNC, WVSP etc. I've also been in Maine recently where I have had the time, space, and wire to construct a loaded beverage about 750' long with 1,150' of wire. It is located on an island near the coast 35 miles NE of Portland and faces WSW, & is surrounded by salt water. It pulls in stations well but could be more directional. The wire might not be completely straight as it's located in a heavily wooded area. During the daytime, WTAG WLW WBEM WOSU WNYC WHCU WHAM and WKOX are all armchair copy, & sometimes I can get WHLO WSM & WUST. WACQ is about even with the usually dominant WSKW, & WEAN takes the place of WRUM. WNBC, WGBS & WABC all pin the meter as expected. The only trouble is, with my DX-160 WGAN, WRKO, etc. all destroy a lot of adjacent frequencies, so I can't get WMAQ WGN KDKA WLS & others. Sometime I should put a mechanical filter in. I forgot to mention - I used four loading coils with 90'-100' with 150' of wire in between. The remaining wire was put before the first coil. Only other thing to report is the havoc created by CJVA on WGY, which makes WGY unlistenable at times. Probably nothing compared to what happens to CJVA 50 miles from its XR, a la WQWO/CHTN. The FCC, not to be outdone is making WOTR 50kw. Meanwhile, I better get veries from 1060 while I can. 73s.

MICKEY THEROUX - 41 Mill Street - West Warwick, Rhode Island - 02893

On 11/26 I went to Ernie's GTQ with Bruce Conti & an unID person. After three hours of riding, & a short stop at the sand dunes outside of Provincetown, we arrived at 5 Anthony Street. Ernie greeted us at the door & we entered his DX shack. Inside we met Ken who had arrived shortly before we had. It seemed like no time had passed at all when Ray Arruda arrived with his wife. Once everyone was settled & had their beer (I had root beer) we talked about many DX related topics. Everyone expressed his opinion on whether or not a station that changes their calls should be counted once or twice. A few stations were mentioned who are changing their calls in the near future, in hopes that we have already logged them. We also talked about some general catches we each have made and of course the graveyards. Then Ernie gave us a demonstration of his HQ-180 and loop. WPOR-1490 sounded like a semi-local & WKW was starting to amke the scene at 3:30pm on 1520. We checked out 1450 in hopes of WKRI, but there was just jumble. We had a bite to eat and then a picture was taken of us at the table to capture the day's experience. The five hour gathering was over & it was time to depart. On the way home we listened to WOCB for the most part & then to WPRO. It was a great pleasure to meet Ernie, Bob, Ken, Ray & Arlene. I'm looking forward to seeing you all again sometime, hi. Next time I'll have some DX. It was a pleasure to meet you, Ernie! (likewise, Mickey, & maybe we'll meet again at the Nutmeggers' Jamboree -ERC)

CHARLES GEORGE - 6407 Howard - Dallas, Texas - 75227

I received only one new verie; it was from KYEN. I managed to log a new station to fatten my log while I was being fattened with turkey, CBK. I heard them at 1:35 ELT with Nightbeat program of jazz & classical mx, hosted by an old man. I heard him well since XEWA was not on 540 at the time. I may be getting on as a DJ at KSWA. If Ted Fleischaker got on at WHAS, he could use some of their public service time to do a show on MW DX. I like traditional folk mx - I wish there were a station to hear that plays traditional folk music. I appreciate the help other DXers have given me. I hope I can return the favor sometime. I have been hearing a Spanish station u/WLW but every time it starts to ID they are wiped out; I wonder who they could be. I have recently heard a station on 715k beating against WGN but not enough to find out who they are. I like the antenna & receiver manuals - now if I could read the schematics better I might build a few things. 73s.

YES, THE SECTION IS LOOKIN' GOOD - THANKS TO YOU N.R.C.ers WHO CARE! PLEASE KEEP IT UP, AND IT'S NEVER TOO LATE FOR MORE OF YOU HAPPY HOLIDAY CELEBRATORS AND DXERS TO GET INTO PRINT HERE IN MUSINGS! YOU'LL ALL BE WELCOME - WRITE IN AND SEE FOR YOURSELVES! THIRTY LINE LIMIT.

BILL KARSCH - 27 Olive Street - Galesburg, Illinois - 61401

I just had to find out if all the talk about the TRF was true. Well, in less than two weeks of owning a TRF, I've yanked in 31 new stations! Best catches so far have been KNOE-540, KEMD-1380, & KRLW-1320. Yes, I am truly happy with this dynamite little RX. Now to figure out some kind of antenna for the TRF, so I can pull in 30 stations every week, rather than every two weeks. Thanksgiving DX was good: 11/23- WJEO-1150, alone @ 2am with Stylistics mx, ID, & NBC NX. 11/27- While looking for WCSJ-810, I stumbled onto WMTS with 5:30pm local NX & mention of s/off 15 minutes later. KCMO then decided to dominate 810. MM 11/18- KOWW-1380 "NX Radio-1380" s/off @ 1am. WRR-1310 w/Jepko @ 1:07; CKRM-980 w/c/w @ 2:10, booming over usual WONE. Next door on 970, FF rocker CKCH o/u some SS station, maybe XEJ? I spent a half hour on 910, finally pulling WBSA out of the slop @ 2:45am, then KPof & religious mx took over till 3. In my 15 months at WGIL, we've had NO reports from DXers. Of course, with over 200 other stations on 1400, we're not the easiest catch. I'd be more than happy to verify correct reports - personally! One note - WGIL simulcasts between midnight & 6am CST, so if you hear the call WAAG, that's still us. (How about a MM TEST w/1kw, Bill? -ERC) May Santa bring you 50 new catches this holiday season. 73s.

KARL FORTH - 630 South Ardmore - Villa Park, Illinois - 60181

I was home for a week over Thanksgiving and from the DXing I did it looks like it will be a good season - at least over Christmas for me. MM 11/21 found WPRO-630 in w/PSA, SID, etc. u/KHOW @ 4:33am, & on 11/23 WJAR-920 was heard @ 1:32am w/ID, WX, etc. These two haven't been heard in several seasons. I didn't hear Maine yet, but I did get what I think was CJEM-570 on 11/21 w/0 Canada, FF talk & NX @ 4:59am, and FF talk in & out for the next 40 minutes; New Englanders, was this CJEM? (Verily, Karl - for Maine, WCSI-970 is now NSP-MOR -ERC) Good news on the NSP situation: Local WVON-1390 was off both MM 11/21 & MM 11/28, hopefully a new regular SP. A few other new stations heard during the week: 11/26 brought WAVS-1190 Fla. w/s/on u/WOVO @ 6:46am, & SSS, which was poor most of the week, brought two much-sought-after Arkansas stations on 11/27: KCGS-1600 w/s/off @ 6pm, & KAMO-1390 u/WVON/CHOO @ s/off @ 6:14pm EST. Veries have been non-existent since August, but I did get a few reports off. I have been doing some DX w/a TRF at school, nothing outstanding heard out of about 450 stations heard. Glad to see member Jeff Roberts down at school too. See you at Christmas.

JOHN CLEMMER - 2937 West Gilbert - Peoria, Illinois - 61604

DX continues to be good here although not as spectacular as during the Aurora in late October. S.C. was heard for state #33. I got back a w/1 from KMUS, Muskogee, Okla. for my reception of them in October. The letter was very friendly and as proof of my reception they sent back a copy of the logbook during the time I was hearing them. I received the SM-2 I ordered a while back and it works great w/the TRF. The SM-2 has real good gain & nulls stations pretty well. 11/22 was sorta unusual as stations from the N & S of here were at relatively equal strength. Usually stations from one area dominate. WAAX, Gadsden, Ala. was heard as was KFYZ Bismarck, N.D. I've had some nice phone calls recently from NRCers Rick Carr, Ed Hepe, & two nice chas from the one and only Ted Fleischaker. (If you know Ted you know what I mean, hi). Thanks to a call from Ted last night, 11/25, I heard WLCB-1430, Hodgenville, Ky. on a PoP test. Thanks for the tip, Ted. I'm going to visit Louisville starting the third of January. It ought to be a lot of fun & I'll be a guest of Fleischaker. I hope you all get some good DX. 73s.

KEN ONYSCHUK - 16771 Shea Avenue - Hazel Crest, Illinois - 60429

Another fact-filled Musing for ERC's ambitious typewriter. Recent DX: 11/5- WVOX-690 Ala. o/KSTL @ 5:23pm w/VID & program taking calls; WDXN-540 Tenn. 5:28-5:30pm w/VID during NX final; Tenn. #27. 1550, unid KJWB N.D. atop region mess @ 5:58 w/WX, 520. Are they 5,000 U-2 now? 1150, unid KXLR Ark., a rare appearance @ 5:59pm w/c/w, VID. KRMG-740 Okla. @ 6:10pm w/FF wrap-up o/CBL. I still want KCMC. Que. #12, CKAC-730 Montreal w/WGN looped, in well w/FF pop tune alone, 6:25-6:30pm. Sun. 11/27, during all-day snow, I decided to stay in & check for anything unusual. I finally caught my last N.W. Indiana unheard, WKVI-1520 Knox, that elusive 250 watter, @ 3-3:05pm w/AP NX, local NX, WX, 240, definitely skywave, w/WHOW nulled. LSS now: KLPW-1220 Mo. w/WGAR looped & o/KZYM w/obits, & VID, 5:32-5:40. Still on at 6:05, 25 minutes past LSS. KMCW-1190 Ark. w/WOVO nowhere & strong KAYQ nulled @ 5:55-6pm w/ARN, WX, local ads, s/off, heard again Mon. 11/29. WBAL-1090 Md. @ 6:50-7pm w/KAAJ looped, unusually strong w/talk show. I had vague hopes for KRSG Mont. Mon. 11/29, WNTS-1590 Ind. @ 5:31pm, I caught end of religious vocal group, VID, then gone. Then after a few minutes, I heard mentions of WX for the Tri-State area. Only guess was WSWW-1590, since KDTH-1370 Du-buque, in the same area, also serves the Tri-State, Ill.-Ia.-Wis. Unfortunately no IDs heard. Then EZL mx @ 5:40 till announcer gave weak WAIK Galesburg s/off, barely audible. UnID Canadian on 1220 @ 6:02pm w/femme announcer doing Ont.-Que. NXCst. Any ideas? Enough. I updated my frequency and location log books on Sun. 11/27. I was startled to find 714 stations - I thought I still was around 690. I'm gonna number them from now on. How about a pattern book updater soon, huh? I haven't seen one for a while. I believe I'm missing night patterns & hours of operation for KMTX-950 Mont., WXCE-1260 Wis., WOBEL-1320 O.C., KKBJ-1360 Minn., KDTH-1370 Ia. for 2,500w, WEIC-1380 N.C., WINI-1420 Ill., WBRB-1430 Mich., KRLJ-1460 Mo., KVAN-1480 Wash., KQWB-1550 N.D., & KRGO-1550 Utah. I don't remember seeing them. As they say in Arlington Heights, Ill., WMMW - We Want More Musings. 73s.

DX IS TRADITIONALLY GOOD AROUND THE END-OF-THE-YEAR HOLIDAYS. WE'D ALL LIKE TO READ ABOUT WHAT YOU HEARD AT YOUR BUNGALOW! YOUR CHRISTMAS GIFT TO YOUR FELLOW N.R.C.ers THEN, COULD BE TELLING THEM ABOUT YOUR CATCHES BY DATE, TIME, AND FREQUENCY, IN ELT, A.M. & P.M. PLEASE BE SURE TO DOBLE SPACE. PLEASE, NO PERSONAL MESSAGES TO INDIVIDUALS IN MUSINGS WHICH DO NOT INTEREST OR CONCERN THE REST OF THE MEMBERS TO AVOID WRITING A LETTER, O.K.? -ERC.

JACK FAULKNER - 233 East Division - Rockford, Michigan - 49341
 Greetings; SSS has been great lately with many new catches. 11/11 netted WNFL -1440 @ 10:54pm w/ID, WSMB-1350 in New Orleans 10:59. The last two aren't sunset, but nice just the same. These ARE SSS: 11/3- KLTR-1580 on topfrom 6:07 to 6:27pm, report sent. WEYY -1580 Ala. "Great American Country" s/off @ 5:44. UNID-1580 @ 5:49 w/"Weekend Up-Date with Chevy Chase", then switched to night pattern @ 5:52pm & I lost it. Any ideas? WESY-1580 s/ @ 6 w/"tin can" audio & potent signal. My first CY, WAOV-1450, @ 7:53pm, mentioned WAOV-FM. I had listened only five minutes when this came in! 11/4- WLLI-1580 s/off @ 5:46 w/poor audio & signal. WTOP-1500 w/ID @ 6:29 w/WDEE. 11/5 brought in KIMN-950 w/WAJ/CKBB from 12:08-12:25 am, report was sent & within a week a letter discussing how many of KIMN's listeners use FET loops & how well the DX season is going, a CM, & a colorful bumper sticker were sent by the CE who is a ham. It's CE's like this one who make up for all of the unanswered reports I've sent! On 11/6, KFQO-790 was strong @ 1:57am w/legal ID. I have another unID, this time on 860 @ 2:24 w/CJCB null'd, an announcer said, "This has been the Voice of Inspiration in the West" & mentioned a program that would be on KLRO-95 FM. The announcer's name was Dean Long, if that helps any. KLRO-95 is in San Diego & the only station on 860 in Cal. is KTRB. If KLRO-95-FM is the sister station of KTRB-860, any info would be most helpful since Cal. would be my farthest state heard. (Sure sounds like XEMO, Tijuana, to me, Jack! -ERC) 11/20- WPGC-1580 @ 4:41pm w/"WPGC Sound-off" & blockbuster signal. Was KDAY-1580 broadcasting a stock-car race around 5pm? At 5:45 there were 20 laps to go & the name of the race had Cal. in it. 11/22- WTAE-1250 @ 5:17pm w/legal ID & mention of "Hit Parade" program. Well, since this is a Thanksgiving Muse, here are the stations heard during the holiday. 11/23- WOKK-910 @ 6:50 w/IDs & PSA. WSEA-910 @ 6:53 w/ad for Santa & ID, KGLR-910 @ 7:13 w/ID & FB ad. 11/24 was an excellent evening, KMO-810 @ 5:17pm w/ID before WGY faded in, WJSO-1590 @ 5:53 w/ID & ad for department store sale, MWGM-1600 @ 5:36 w/WX & ID, WCGO-1600 s/s/off @ 6, KQXX-1560 s/off @ 6:14 o/WDXR/WQXR, WOC-1420 @ 7:28 w/ID, WX, WFBC-1330 @ 8:01pm w/ID & WX. 11/25 brought in KCGS-1600 @ 5:18pm, WNST-1600 @ 5:20, WAGL-1560 s/off @ 5:48, WSAO-1550 s/off @ 5:52pm. 11/26- WCHV-1260 @ 12:57am w/ID & local WX, KFDF-1580 @ 6:11, & KWOO-1560 @ 6:23pm. 11/27- WERG-960 @ 2:25am w/ID, WFIR-960 @ 2:29 w/ID & CBS ad, WNOX-990 @ 2:12am w/ID & WX, & WEPN-1600 @ 4:46pm w/ID & local ads. Whew, the slate is cleaned for another week! With the way Musings are lately, I don't think there are 700+ members. Let's make this issue a BIG one. 73s.

MICHAEL L. HOGAN - 9224 Cottage Grove Avenue - Highland, Indiana - 46322
 DX continues to trickle in here at the NW Indiana DX location. A few words now about DX CX in another part of the country. I went on vacation from 11/22 to 11/25 and ended up DXing from a location at 90 miles SSW of St. Louis. It was nice to get away from the Chicago powerhouses; but I still managed to hear 5,000w stations WIND-560 & WVON-1390, both at a distance of 400 miles. The DX gear for the trip included the Radio Shack TRF. As a rule stations from the St. Louis area send a crummy signal up here to Indiana, especially KMOX-1120 which is prone to fading. From the vacation DX spot, the Chicago powerhouses seemed to send out a much clearer & crisper signal. Also on the way through St. Louis calls were made to NRC members Rich Eddie and Walt Breville - good luck on your new RX, Walt! 73s till next Musing.

NEIL ZANK - 2445 "E" Street - Apt. 6 - Lincoln, Nebraska - 68510
 It is time to Muse again before I snooze. And some DX has reached Lincoln the past few weeks, to wit: 11/4 brought WSLI-930 Jackson, Miss. in at SSS for a report. 11/9- CKNS-930 Espanola, Ont. s/on @ 5:30am into progressive c/w. 11/14- KEYH-850 Houston, TX w/WX into s/off @ 6:30pm (they are running 1W ND due to fire at their 10kW directional site). 11/25- KXIC-800 Iowa City, w/WX @ 8:15am weak mixed w/WDX. 11/26- TIV-775 San Jose, noted quite good 2-2:30am w/EE pop mx. 11/28 was my first good MM with two new catches: KOZA-1230 Odessa, Tex. on r/c per list with decent signal & CJDV-910 Drumheller, Alta. very good w/c/w, ID @ 3:15 but no talk between songs. 11/29- WFIT-730 Pittsburgh fair around 7:15am with canned religion. Only two recent veries, KEYH & WPDR for PoP in October. Only TESTs heard here so far have been WAEN, WPDR & a tiny bit of KXNU at least tentative. Speaking of TESTs, I received today an answer to a CPC letter in which the Owner-CE offers to TEST @ 11:15am MST! I believe the fellow misinterpreted my suggested time! Musing along with some of my personal thought, I sure would like to see the NRC Log include an alphabetical by call letter - location or alphabetical by state-location-call letter section. This rather than so much time & effort spent on the Formatology angle, because this format information is by far the most changeable information we deal with. I do not mean to knock the Formatology efforts, but to pose an idea. I know that an alphabetical listing of this type would be of great help to me in my DXing. I am still searching for that elusive signal from Newfoundland on 540 here, I would like to add them to my list so far of 740 & 990, hi. Remember, "A TEST a day would keep the sleep away." If any of you would like a R. New Zealand pennant plus a green Tiki, send an SASE & the top of your radio to the above address. Also, LINCOLN Convention booklets are available for the cost of the postage.

STEPHEN H. PONDER - Box 22,635 - Fort Worth, Texas - 76122
 Greetings again from Cowtown! In my last Muse I promised that I'd include what I heard while at home for Thanksgiving - well, savor those "goodies" that I caught with my TRF: 11/24- WVMi-570 o/WFAA @ 5:50pm w/Biloxi ads, & SIDs; WELQ-580 @ 11:50pm o/KALB/WLWB w/NX; KTKO-1000 (finally!!) o/CFML @ 6:24pm w/Oklahoma City NX & WX. 11/25- WNAK-570 o/WFAA @ 1:00am w/Midwest WX, Yankton MX; WRTN-590 w/"WRTN Music for the Good Life" ID @ 1:39am; KXKX-950 o/KFSA/KPRC w/Bobby Goldsboro mx @ 11:43am; KELD-1400 heard o/KWLA/KEBE w/live broadcast from Gibson's Discount @ 12:19pm; WMP5-680 o/KYX @ 12:48pm w/WMP5 NX & WX; KCRG-1600 @ 4:54pm w/K-16 WX for Cedar Rapids. 11/26- WOV-590 @ 9:07pm w/Omaha WX, o/WPLO; WSGN-610 @ 9:51 (con'd)

(Ponder, con'd.) w/plenty of IDs, o/WDAF; & CBL-740 (finally!!) o/KRMG/KCMC w/CBC Literary program "Anthology", plus CBC-740 Toronto ID @ 11pm. Veries that I found in my box when I got back to school were: KOY-550, a v/l; WTAW-1150, a CM, two bumper stickers for both the AM & FM stations, a personal letter, & a v/f w/a personal note typed on it! Also KIOX-1270 (at last!) Something on 1270 other than KFJZJ! with a photostat of their one and only verie card (letter says they keep it as a souvenir!). I also got my letter sent to KIKK back w/"Addressee Unknown" stamped on it by USPS. Help, please - the address given in NRC Log is, therefore, invalid! WREN-1250, Topeka, sent me a letter saying they could not verify my reception. They listed several items that they need to verify a reception, all of which I had included in my report to them! H'm'm. I am sending a copy of the letter to ERC for subsequent publishing in DX NEWS. I think my space is up - 73 from the AN capital of the U.S.!

BOB FOXWORTH - GPO - Box 2111 - New York, New York - 10001 Mailed 11/29 Rec'd 12/1
 CX have not been very good for Europeans so far this year, with seemingly constantly recurring geomag disturbances keeping the band in mostly poor shape. One interesting event was reception of a beacon on Ascension Island on 360k during the big upset at the end of October. The New CJVA-810 has been on the air for at least a couple of weeks, & has been heard twice at equal level to, or atop WGY. They s/off @ 10:56pm w/C Canada sung in FF by a chorus, & a great tape was made of them at s/off, way on top. Bad news: WTOP-1500 was sold two weeks ago to the outfit that runs WJAR-920 among others - look for possibility WTOP will go AN, maybe AN-7. I'm sure glad I bagged Togo-1502 last Fall, though they may still be possible at LSS when CX are good again, if ever. WCB5 was off for two AMs in early October to allow replacement of the emergency antenna, installing a 200' tower (main stick is 500'). I logged Spain-872 one of those AMs but with terrible strength; not even a taped ID gotten. MM 11/21 I heard WCOO s/off asking for reports on what listeners heard after the carrier went off, to send to the CE. I debated writing them, complaining that WCOO was interfering with APK Karachi, Pakistan, on 330 but demurred, realizing it is in our interest to take the side of WCOO in the battle with WNYC over the latter's application to go 50kw fulltime on 830 - just what the NYC area needs. Ugh. Congrats to ERC for logging TGK on 1240, a truly superb logging! I am most envious & hope they answer for you. (Not yet, Bob! -ERC) I enjoyed hearing Mark Connelly check in on the NRC net which was on 3851k last Sunday 11pm & he's right - I don't have 75 meter capability but do listen every week. Maybe I can scrounge a rig yet, but then, no room for a decent antenna either. Incidentally, in the Clear Channel proceeding before the FCC last year one consulting firm did propose the clears be broken down to allow 7-8 kw fulltimes on 1160 in the E & a like number in the W on frequencies such as 650. That in my opinion would only marginally increase the utility of the frequencies to an absolute total of listeners, & they might as well go on VHF err. FM. It would, in the meantime, ruin DXing on those frequencies. I vote no, hi. Well, WOR was off 11/21 & 11/28 for what was probably their annual PoP which they do about this time every year. Nothing really great heard, a R. Super there on the 28th probably another Colombian, ho hum. As I get older, staying up on MMs gets harder & harder, hi. Thanks to Frank Dailey for KTWQ tip on 11/21; I did not hear them by 3am & WHN testing w/a loud TT & poor CX again, so I missed the boat on that one, if indeed they were on that AM. (They were, Bob - bye-bye boatie, hi -ERC) One TEST I wanted was WYKR-1490 & I forgot to look. I wonder if they were on? Those NE GY's are my favorite DX targets. 73.

RON MUSCO - Box 118 - Poquonock, Connecticut - 06064
 Back-tracking to Wed. 11/16: WLTN-1400 Littleton, N.H. heard w/PoP 12:03 to 2am. WLTN is #24 from N.H. 11/17 I tried for WYKR-1490 Wells River, Vt. with no success but a call that afternoon to the CE's home discovered they were on with 870w nominal. One of the owners went 20 miles outside of town & even he couldn't hear his own station so that must have proved interesting! (Did he fire the CE, Ron, hi -ERC) 11/25- For those of you who tried the WICY-1490 Malone N.Y. f/c he was on at midnight to 12:03am folo by much-wanted WKE-1490 Newport, Vt. w/combinaton ET & f/c. I called the CE who I had contacted three weeks before in hopes of a TEST or ET & he told me that he didn't think he would have time to notify me of his f/c. So two new ones on 1490 both with f/c's & covering semi-local WYUS who is still all-NX. WICY is N.Y. #131 heard with no call changes and WKE is #17 heard from that state. The WNHV-910 PoP was heard earlier, so two left to complete Vermont on the AM side: WDOT-1400 who is 24 hours, & WYKR-1490 who I'm trying to arrange a TEST with. My latest contact has been with WRUM-790 Rumford, Me. who has a r/c first Saturday at midnight to 12:30am w/IDs & OC & TT. This CE also has WKIV-1450 (Radio 14) South Paris, Me. and their r/c is second Saturday also at midnight. Slowly but surely Cambridge Crystals' f/c's are being discovered. Best wishes from the Membership Center for a very Merry Christmas & a very Happy New Year! 73.

MIKE TUGGLE - 909 Moores Hill Road - Bel Air, Maryland - 21014
 My 1480 "Easy Radio" of last Muse has been verified as WELU, Salem, Va. - they seek a call change to WUEZ. Also veries from WDDY-1420 ("same-day service" on this one), and from WSVS-800 on a tentative reception @ 6:04am, 11/17. WSVS says that they have a PSA of 418w starting @ 6am. Dave Schmidt, is your "local" CKGM-980 still coming in? They used to be quite strong over here, but are not heard at all this season. I guess they decided to share the power. For anyone needing southern states, 690 at SSS can be a real trip: 11/18- WAFB Fla. strong until power drop, then WVOK Ala. until s/off, then WTLX La. very weak, not loggable (on crystal set, anyway). Another good bet is 940 which can get you N.C., Ga., Fla., & Miss. Other recent new loggings: WPLV-1590, WYGO-1330, WOIC-1320, CKNX-920, WAJR-1440, WCVI-1340 and, surprise of the season, CHYR-7-730. I'd given 730 up to CKAC long time ago! 73.
 NEXT MUSINGS DEADLINES IN PROVINGTOWN ARE FRIDAYS, DECEMBER 24 & 31; then BACK TO MONDAYS!

RANDY TOMER - Box 2674 - McKinleyville, California - 95521

I just read with amazement that the SM-2 is no longer being produced. I don't know for sure if the Sanserino loop is being made any more, either. (The SM-2 is DEFINITELY still being made, per phone call from Steve Kennedy, Randy! -ERC) Does anyone know about this? Potential antenna buyers, have no fear, Radio West is coming out with a ferrite loop that's supposed to be a real hum-dinger. It's composed of several ferrite rods instead of just one & it's supposed to have extra good nulling properties. Also being developed with it are interchangeable coils that allow it to tune L & also the tropical SW bands - amazing! I, too, have been considering the Prime Electronics Variable Audio Filter. I have the brochure right here and the unit looks real good. Seems to be a CB-oriented product, but the way I see it, if it can filter out some of the racket that occurs during intense CB skip, it should be a cinch to work well on MW. Not a whole lot of DX lately, I've been busy goofing off. I did get some good SSS while at my parents' home near Morro Bay, also a tentative of JOUF-1310, Osaka. Trouble with non-NHL J's is that they'll come in like a ton of bricks, but they never want to say who they are! I had fun DXing the Eureka area stations while at my folks', WNCR-1090 was in really good w/XEPRS null; KNCR had its usual gospel format. They put out a good signal to the S in spite of XEPRS. KRED was also heard w/ease; I didn't bother w/KINS-980, due to the proximity of KVEC, but it might make an interesting project. A San Luis Obispo station that really gets out is KSLY-1400. They're the dominant one up here, 500 miles North; I've still never heard KRE Berkeley, which is much closer. KSLY's XR is high on a hilltop-73.

JAMES E. CRITCHETT - 1635 Walbridge Street - Red Bluff, California - 96080

Notes of possible interest to Western DXers, John Callarman, CPC arrangers & acquaintances. Finishing where I left off 11/14. At 4am on 710, KPCC went off @ 4:03, KERE, Denver, IDed as "71 Country KERE." Perhaps they have changed their night pattern since the book was published. Tuesday morning @ 4 on 1100 KFAK went off, & WWB gave the NBC NX. KFD-580 also went off @ 4, & I finally heard an ID by WJWB, Topeka with the Herb Jepko Show @ 4:45 u/KMJ. Thurs. 11/17 I was pleasantly surprised at 9:24am by an ID by KUNA-1400; I don't know s/on & s/off times, though. Continuing Graveyard DXing, Sat. 11/19 @ 3:51 on 1230, KCEN, Reno, crept by AN KRDG for an ID. Mon. 11/21 there was no KOMO @ 6, but WOLF was not heard; just HJQA with the NX, mentioning Bogota several times. Tues. 11/22 @ 3:28 on 1230, KEMO, Grand Junction, Col. IDed with KRDG. For JAC's NRC Log, KCOS-1220 gave APR NX @ 10 Tues., 11/22. Wed. 11/23, another GY station was KEYE-1450, "Key Radio" @ 3:43 & 3:57. Fri. 11/25 at 3:17 on 1400, KAAP came through with an ID & ad for Ventura. Sun. 11/27 @ 9:56 on 1280, KAZA, Gilroy, Cal. IDed during their SS program, before KHBL, Chico, came on @ 8:58. MM 11/28 at 3:05 on 920, KOLD went off, solo by KXLY @ 3:05 s/off, change the Log, please. WOKR & KITT were still there. I finally went to 1140, and at 3:25 CKXL had mx; then @ 3:27 KLUC turned on their OC & IDed @ 3:30 "conducting a transmitter test." Still there at 4:22 with the WX & ID. On 710, KMFG was already gone, & KIRO went off @ 4. KERE IDed @ 4:02, & @ 4:07 I was agreeably surprised by an L&C ID by Don Schatz' pest, WGSB, Miami, just the ID, obviously testing. As I am typing this report, @ 12:02 on 690, CBU is still coming through w/CBC NX. On 550, which is usually gone, KOAC has music. 5pm, my wife Frances was operated on this morning for the removal of tumors. Doctors think they removed it all. I hope so. 73s. (We ALL hope so, Jim, and lots of luck and blessing to her -ERC)

NANCY HARDY - 2301 Pacific Avenue - Aberdeen, Washington - 98520

Lo and behold, a VERIE arrived here the week before last for me! It was a reply from KVVU for my report of their DX TEST run 11/14. That makes my verie return rate for Aberdeen 100%, two veries for two reports. In case you missed it in Bill's last Yusing, we are holding a Beverage antenna party on the Washington coast New Year's weekend. It will begin on Saturday morning (or possibly Friday night) & run till Monday 1/2. We plan to meet in Aberdeen and go out together so that everyone can find it. If you are interested, please write now so that everyone can find it. If you are interested please write now so that we can give you full details. Now on to DX. 11/23- 10:31pm, CFOR-1370 in good w/local spots; 10:32 community billboard type program. Just 20 minutes later 10:52, CJDV-910 in, carrying religious program "Voice of China and Asia", ID @ 11pm. 11/25- 1:23am Crystal Gayle song solo by promo for "Know Your Government" on CIOK-1310, very good signal w/KIRO-1320 slop nullled. 11/25- WBNM-1060 @ 6:42pm "Christian Radio for the Boise Valley" playing religious mx, excellent, w/CPCN nullled. I'd been trying for KRSP-1060 for the contest, but no sign of them. 11/26- KSVN-730 7pm, playing c/w on "Super Country Weekend." @ 8:05pm, KMFB-1300 ID at end of NX & WX excellent, w/KMPS nullled. According to my SRS/SSS map for November they should have s/off @ 8pm. 11/28- KWSL-1470 call letters heard @ 6:56am, then into mx. And finally, 11/29, KTHO-590 7:25pm, local ads solo by "K-Tahoe" TC, poor w/KUGN. I really enjoyed NRC Contest #2, as I heard several new stations during the days it was on. Have a happy holiday season! 73, 88 to Bill.

JERRY W. NEWRS - 3951 Colby Way - San Bruno, California - 94066

I had a chance to be with some of the fellows at the BARF meeting in Daly City last Saturday. I saw the FRG-7 with digital readout (by wizard Grant Manning). I played with it for a while. My impression: Stunning RX as modified by Grant. The readout is just GREAT. Also this Frog had the Collins 2.9 mechanical filter installed, switchable. Neat job by Grant. Another item that really impressed me was an MW ferrite loop w/a pre-amp. The rotation of this loop & its tilting abilities are just super-smooth, as far as nulling abilities? Terrific! All I can say is I have to get the loop & FRG-7 with Collins filter & read-out. After I can convince my wife, hi. Even though I only played with above units for a while, they certainly are impressive. Write to Grant for price list catalog. His workmanship is terrific.

MO TH BALL MEMORIES

CHAPTER LXVI - Continuing with the interview with the CE of XERF-1570 - Part III.
(Written by Jim O'Brien & Ernie Cooper; submitted by Skip Dabelstein)

ERC: But where are most of your listeners located?
JIM: We have so many listeners in Texas we are going to start using the slogan, "Forget the Alamo."
ERC: Where have you gotten some of your better DX reports from?
JIM: Señor, we got one the other day from an Irishman in Jamestown. (Ed. Note: Pat Reilly).
ERC: Oh really?
JIM: No - Reilly. And we got a letter from a Jimmy Crickets in San Diego.
ERC: (laughs) And who else?
JIM: We got one from a Rolls Royce in Indianapolis. (Ed. note: Former NRC'er David Roys)
ERC: Are you sure that wasn't from our own David Roys? Better get his name straight or maybe he won't like you.
JIM: I got news for you, Gringo - he don't like us anyhow. I like his friend there much better. As your Patrick Henry once said, "Gimme Liberty." (Ed. note: We then had an active member, Terry Liberty).
ERC: Have you ever heard from a fellow by the name of Larry Godwin?
JIM: Oh, si - that's the guy who went all the way to Alaska to get away from our signal. Ha-but we still came in loud and clear!
ERC: I take it then that he's not exactly an XERF Fan Club member.
JIM: I don't teenk so - he even suggested we change our frequency.
ERC: To what?
JIM: 150 kilocycles. AND, WE'LL WRAP THIS UP NEXT ISSUE, AND RETURN TO MORE SERIOUS STUFF FROM THE GOOD OLD DAYS "NEXT YEAR."

BRIAN VERNON - Elsa, Yukon Territory, Canada - YOB 1J0

Another DX season and yet another location, and Elsa is located in the central Yukon, 250 miles N of Whitehorse. A letter from a G. T. Waters, Director of Engineering for R.T.E. Dublin, mentions they operate a "Community Radio Service" on 1484k w/100 watts. It is a mobile XR, visits carnivals and the like in Ireland, could well be worth looking for, if anybody has a holiday over there. Note for tape ID catchers, East Anglian Productions of 21, Walton Road, Finton-on-Sea, Essex, England, have released a double LP or cassette commercially called "World of Medium Wave radio stations". It contains over 80 'quality' IDs from MW stations around the world, cost \$4.99 for LPs; \$5.75 cassettes. Books about pirate radio etc. are also available at same address (no, I don't get a commission, hi!) Domestic DX is not very good here, though NWT stations CHAK-860, CFYK-1340 & a number of their LPRT's have been noted, both networks relay CFEB-1210's morning shows beginning @ 6am weekdays, 7am weekends. The Alaskan AFRN stations ID on the hour as "The Alaskan Forces Radio Network". They've been noted so far on 890/970/1360/1400/1490, though I have no idea where many of those small XRs are! DU DX is incredible, with many small Aussies noted around 6am + the only 10 & 20kw Zedders noted so far, I cannot seem to get any audio for Tonga-1020 though. John Oldfield no doubt will insist there is such an animal, hi! TP & TA DX is possible here, some TAs noted, though very weak except DLF-1258 noted 12:38am 11/22 very strong. As regards times, please note that the Yukon is always on PST, year round, though it's called Yukon Time here, & Saskatchewan is always on CST though they call it MDT during the Summer. There are a number of Log changes here, as regards Alaskans. KERW-680 for instance is U-1, 10kw D, 5kw N; anyway, more sent to AM Switch. If I hear a "White Christmas" record this year, one radio station is going to get a hate letter, but 'Season's Greetings' to everyone else. 73s. Times used, EST.

ERNIE COOPER - The Cape Tip DXer - 5 Anthony St. - Provincetown, Mass. - 02657 617-487-9337

Please observe; sleeping time generally is 9pm-1am; then 3-5am. I had phone calls this week from Bill Coleman, Rick Carr, Warren Powis, and Steve Kennedy - thank you, men, for your calls. Two v/l's in, WYKR-1490-TEST, and CKRS-590 in FF, putting the count at 4,072. Here's the D-Action of the week here: Pirate on 1620 IDing as WDBX, Brooklyn, N.Y. and giving phone numbers 212-399-9979 and 212-626-9906 @ 1:17am, hefty signal, too. The FCC ought not have much trouble finding this bird! Unn WFIP-1500 Tting on/off o/u WTOP on late with a hockey game, 1:34 ID, this on 11/30. This eve we completed enough of a log for a report to WCLN-1170 in Clinton, N.C. 12/2- Auroral somewhat - on 980, 1:37-1:49 a Venezuelan in nicely and all alone, but then in came CKGM & other domestics, and blooze went the YV, unID. Another YV was on 990, but also unID, ok not too good. 12/3- Unn WQWW-1380 Tting & VID @ 12:28. 1220 had one Tting @ 12:36, unID. WYU-1550 testing a rx n, noted @ 12:45. A weak SS was pushing in on 625, very weak, no ID discernable. Unn WSHY-1560 on r/c-TT ending @ 1:16am, a first Saturday. UnID SS really giving it to local WHDH-850 circa 1:37. In the evening, a super signal from newie "R. Anzoategui", YVQZ-1210 and absolutely no sign of WCAU at all, logged 4:45-5:12pm w/ only slight QRM from another SS. SM 12/4- Another solid AU a-glimmerin' in the Northern Sky! It was no fluke, boys - TGK-1240 was in again today, 1:15-2:02 s/off, & I see an IRCA-er also logged this one back on 10/30, the last time I heard them, so on the next Aurora, give this a real try! On 900, "La Voz de Cali" making it with little Canadian AN interference due to the AU but under a loud OC which turned to TT @ 2:22, anybody find out who this was? Unn R. Tigre-1500 topping XERF @ 1:15-ish. My still unID "Provincia Central" on 740 AN w/strong signal, I can't even catch the country or time zone, or anything! Help! MM 12:45- AU had died down. WCAU-1210 seemed silent, ditto WINS-1010. On 1210 somebody IDing as "R. Internacional" heard @ 1:34 but he died away before ID. Nothing like that is shown in WRTH. An A'er holding forth on 895 all AM, very staticky & I didn't stay with him, likely the Haitian. Do I detect a jammer just above 1010, or is that a hetrodyne, mayhap? WRKO-680 off, & CJCN ANing there o/u "Union Radio" which is old 675 friend YND; CJCN gave several calls including the key station, "CJYQ-930, St. Johns" so it must be that CJCN has changed calls! I could not hear them there. WHN-1350 also off, w/CHIM was an EE with XERF-like ads but a San Diego address; XEG or XED?