

F R E N D X

The SHORT WAVE BROADCAST Journal - Since 1962

NORTH AMERICAN SHORTWAVE ASSOCIATION

Vol. XII No. 5

May 1973



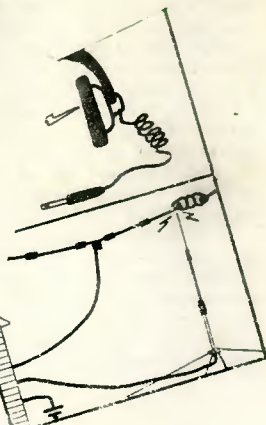
NORTH AMERICAN SHORT WAVE ASSOCIATION
P.O. BOX 8452, 20. CHARLESTON, W.VA.

A SPECIAL NASWA PUBLICATION

Reprinted from FRIEND X

Rx For Receiver Selection.....	Apr 68
Three "m" Features of Receiver Performance.....	Aug, Sep, Oct 67
Know Your Short Wave Receiver.....	Oct, Nov, Dec 69 (Excerpts)
Frequency Determination.....	Jul 67
Your Short Wave Antenna.....	Jan, Feb 68
Prescription for Reception.....	Jan 71 (Excerpts)

by Al R. Niblack



G
 Receive Selectivity
 Mx Kw NASWA
 Mx gpc SENSITIVITY
 Mx SWB Antenna
 SWBC Mx DX
 SBCX

NEW BOOKS AVAILABLE - SEE HQ SECTION

THE LOUDENBOOMER REPORT

For once I must confess to having had second thoughts about publishing a particular column. For the subject matter involved here is of such a volitive nature as to cause all sorts of repercussions, including some small chance that certain elements about to be described herein, may set out with the intention of doing harm to my person.

However, being the high-minded fellow that I am, and believing in the public's right to know, I feel I cannot fail to alert my fellow hobbists to the information which I have uncovered.

The subject is that old, old, old one of country lists! A subject that stirs the fires of missionary zeal in each of us. A true believer in a particular country list theory will go to almost any lengths to have "the right way" become the standard way.

Everyone is aware of the various viewpoints involved, the many ins and outs which arise whenever this subject is discussed. But no one has had even the faintest idea of the real wars that rage in the subterranean depths of hobby activity.

An obscure reference here, a hint there, a look between the lines there, and soon I was on the track! Discreet inquiries, good fortune in getting a couple of people to talk and I have now been able to put at least a set of skeleton facts together.

And the fact is, your country list viewpoints, no matter what they may be, are being controlled! You are at the mercy of a highly efficient group of super-secret organizations, each vying to have you accept its own country list philosophy. The organizations are so secret that 99% of DXing is not even aware of their existence. In fact, members of the organizations usually don't even know each other exists!

First there is the Society for the Preservation of Existing Country Lists (SPECI). This group is totally committed to the maintenance of the status quo, and whenever a new list or new approach is put forth, you can be sure that SPECI will do everything in its power to scuttle the idea. They carry things so far that name changes in countries are verboten. Even spelling changes are fought with the ferocity of a thirty year expert hot on the trail of Tristan.

Next there is DUNCE. That's the Development of Unlimited New Country Expansion. For these folks, the sky is the limit. Indeed, they have already added "Outer Space" to their list as well as the UN, the ITU, NATO and all the tiny little places which don't even have stations such as the Sultanate of Ombudsman.

And there is the Committee for Overall Reduction and Redistribution of Excess Country Totals (CORRECT). This group has the rather unique philosophy that all DXers should have an equal opportunity to hear everything on a list. So therefore inactive countries cannot be counted. And for that matter, any country with no stations of 100KW or more is removed from the list since only old timers have any chance at hearing stations of less than 100KW and therefore their inclusion would result in an unequal list.

Lastly there is the Associated Group for an All-Purpose Enumeration (AGAPE) whose worthy goal is that oft-sought, never-to-be-reached aim of a list which will be all things to DXers. A place which any listener can call home.

So with all this going on, I have decided to form my own super-secret country list organization--The Committee Aiming to Negate Country Efforts by Listeners (CANCEL). Our purpose shall be to banish from the minds of DXers decades of accumulated country-mania. Of course, simply counting stations isn't enough for the serious DXer and we reject as impractical past suggestions of frequencies, transmitter locations, states etc. CANCEL will aim its efforts at developing a revolutionary counting concept. CANCEL proposes that DXers count individual station studios!

73,

Charlie L.

Shortwave Center



EDITOR
Alvin V. Sizor
22 Country Way,
North Haven, Ct. 06473
Deadline 15th of Month

NIBI NIBI

Hoax Or Satire?

By JOHN CALLARMAN

When any two DXers get together, if they talk long enough, they get to some of the "legends of DX"...and one of the most repeated legends is the Nibi Nibi story.

The storm over a phony report to the Deutsche Welle DX bulletin in 1958 about a radio station on the non-existent South Sea island of "Nibi Nibi" may have blown it out of all realistic proportion, taken on its own merits. An examination of the history of the Nibi Nibi "hoax" leads to the conclusion that if anyone

A NASWA Exclusive

else than the actual author of the Nibi Nibi "tip" had been involved, it may very well have been brushed off as clever satire. Because the DXer involved had engaged in other, far-more devious DX activities, there was no hesitation on the part of the "DX Establishment" to "drum him out of the lodge" for the PROVABLE offense.

I played a central role in this enforced DX-ile, and while I do not take the hobby quite as all-important seriously as I did then, I probably would act the same way now, given the same set of circumstances.

Before we examine "Nibi Nibi" itself, a couple of background notes---In 1958, shortwave editor Kenneth R.Boord was publishing a circular letter (five copies, or circuits, of three to six DXers mailing Boord's compilation of reports chain-letter fashion.) One of the key contributors was a long-time DXer who was working for the Foreign Broadcast Information Service, an arm of the CIA, stationed on Cyprus.. Because he was in top-secret duty, he requested that his name and location be kept secret---so he was known publicly as "Middle East Correspondent". A few people in the DX establishment knew the name he'd DXed under in "civilian" life---even fewer knew his full, Greek name from which his shorter DX name derived.

In the summer of 1958 I returned to the States from Army duty in Germany, became one of the editors of the Universal Radio DX Club bulletin and took off one day for a six-week tour of the West that included many visits with DXers.

Another URDXC editor, Rolan Kunkel of Redlands, Calif., had received, shortly before my visit, a page-long report from "Southern California DX Correspondent", otherwise unidentified, postmarked San Diego.. The report consisted of about 8 or 10 "tips" of a satirical nature, exotic catches, program descriptions similar to Middle East Correspondent's material.. I could not recall later if reference to Nibi Nibi was made.....

(Please Turn to NEXT PAGE)



NIBI NIBI— (CONTINUED)...in this particular report, but the "tips" were "Nibi Nibi-like". Kunkel recognized the typewriter and the general style of presentation---the excessive use of hand-stamps, for example---as that of a DXer I'll call "David X.King". I compared "Southern California DX Correspondent's" report with the one received from King last and came to the same conclusion. King's residence was on my list of DXers to visit (Bill Flynn had specifically suggested I visit him) and it certainly was an interesting evening. A perusal of his QSL-collection produced many observations, among them, these:

1. A letter from Radio Brazzaville criticizing him in no uncertain terms for his bad manners in writing continually nasty letters about the way they QSLed.
2. A letter from a 500-watt Japanese medium wave station saying, "This verifies your reception of JO--. It's too bad you didn't send any program details so we could check them against our log."
3. A letter from Radio Bahrein, 610 kHz, 10 kw (a frequency occupied by a 24-hour-a-day, 7-days-a-week Californian) verifying a follow-up report of July reception, saying the original report was never delivered.
4. A QSL card from Sender Freies Berlin, 566 kHz, then 5 kw, with no blanks filled in which D.X. King told me was sent in response to his request for a sample QSL. (Later, King reported a S.F.B. verie to the QSL section of the DWDXB.)

These and many other similar "verifications" in his large collection convinced me he had perfected several techniques for extracting verifications without going through the hard work of hearing the station.

When Deutsche Welle DX Bulletin editor Horst A.C.Krieger published the "Nibi Nibi" item, attributed to the otherwise unidentified "DED5, Southern California DX Correspondent", it was subsequently picked up as at least "possibly real" by other DX bulletins. My initial reactions were two-fold: 1) that David X.King had sent his satirical tips to Krieger and 2) that Krieger had been a little careless in running the item straight-faced without some question (or some laughter).

Another quirk-- the name of the verie signer for Nibi Nibi was phonetically similar (though not 100% correct, spelling-wise), to the real name of "Middle East Correspondent", indicating a DXer with at least some "inside knowledge" of the hobby's personalities--knowledge that David X. King was known to have.

I still believe that the DX hobby world over-reacted to Nibi Nibi. Many DXers and editors were fooled, accepting the tip at face value and later were particularly angry at the hoax. One long-time phony DXer was caught, actually claiming reception in a report to another club bulletin.

From several different sources came evidence that D.X.King had perpetrated "Nibi Nibi". Dick Labate, then editing an Odds and Ends column in the NNRC bulletin, had a reference from King to Nibi Nibi that was mailed well before the DWDXB was published, to cite one example.

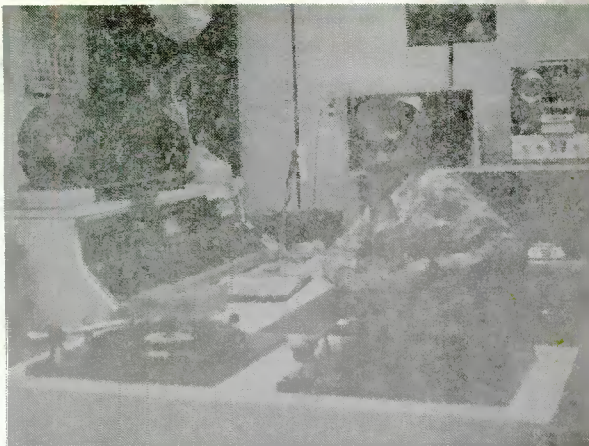
I wrote King, suggesting that indeed Nibi Nibi wasn't really that important, but his manner of..... (Please Turn to Page 4)

DX Tips

If your local post office claims it doesn't handle IRCs, International Reply Coupons, don't believe them. After a clerk in a branch here told me that I asked the postmaster who said they had always handled them. Make sure they validate them at the top circle with a dated stamp. Again I ran into trouble with a clerk who did not think he should stamp them. Again, the postmaster told us they are worthless unless they are stamped... Todd Hyder
Miami Springs, Fla.

Costa Rican Snapshots

These photos of two Costa Rican stations were sent to FRENEX by Ernst G. Loche of Alexandria, Va. The one at right shows announcer and studio of RadioAtenea on 6150 kHz. Below is antenna tower at Atenea and at right the studios or Radio Reloj, 6006 kHz. Both stations are tough to verify.



WORLD HOLIDAYS--By Steve Sykes--Plan Ahead for June DXing.
 June 1 Kenya, Madaraka D; Uganda, Muslim Supreme Council D; Tunisia, NH.
 2 Tunisia, NH; Grenada, Queen's Birthday. 3 Uganda, Namugongo Martyrs Shrine D. 4 Australia, New Zealand, Queen's Birthday. 5 Denmark, Constitution D.; Taiwan, Dragon Boat Fest. 6 Israel, Shavuoth D, Korea, Memorial D. 7 Malaysia, Birthday of H.M. the Yang diPertuan Agong; Papua and New Guinea, Queen's Birthday. 11 Most Christian countries, Whit Monday; Fiji, Queen's Birthday; Swaziland, Commonwealth D.
 12 Paraguay, Peace with Bolivia D; Philippines, Independence D.
 13 Nepal, King's Birthday; Portugal, City D. 17 Iceland, National Hol.

NIBI NIBI--(Continued from Page 2)

...obtaining QSLs was. I suggested that all the effort he put into fabricating reception reports could have been constructively spent in genuine listening and information-gathering for various clubs--that the glory-seeking accumulation of verifications from impossible catches only served to eliminate any possibility of acceptance of any legitimate achievement he might attain. I offered him the opportunity of confession to the inner circles of the hobby and a fresh start...but the response was to deny all and to scoff at the entire situation. He claimed all his verifications were legitimate, and that he had nothing to do with Nibi Nibi. When Horst Krieger turned to the German police and they proved that Southern California DX Correspondent's Nibi Nibi report had been typed on the same typewriter and by the same typist as David X. King's reports, his identity became public knowledge...and his name never showed again in DX publications.



"And now, Folks, from the beautiful isle of Nibi Nibi, that popular quiz show--"Hoax or Satire?"

Nibi Nibi is quite a legend--but there have been other satirical items appear that haven't caused the stir Nibi Nibi did. Maybe it was its seeming acceptance at face value by the DWDXB editor that was really responsible for the subsequent hassle and the ultimate legend.

The larger moral, though, can be drawn from D.X.King's overall activities, divorced from "Nibi Nibi". And that is this---a verification is only as good as the word of its recipient.

****AFTERWORD....

Several months after the Nibi Nibi flap was ended, I received a letter from David X.King. I was then news director at a radio station in Texas and King was getting started in broadcasting at a tiny FM'er in San Diego. He asked for any hints I could give him on "making it in broadcasting".

Well, today, the latest listing of members of the Radio and Television News Directors Association (in the 1972 Broadcasting Year-book) shows someone with D.X.King's name serving as News Director at a medium market television station in the South.

Question: Would you believe his newscasts?

FEEDBACK: "John Callarman's article in March FRENEX (about using the Felomar frequency standard with the HQ 180A) is most interesting, particularly since I use a 180A. I use the graph method of kHz calibration on one axis and bandspread logging scale on the other to locate (or try) stations along 'blank' spots; station hunting rather than measuring; or, to help pinpoint possibilities.

"If I take Mr.Callarman literally, he has to disconnect his antenna from his rx to use his calibrator, a time-consuming task. Installing a DPDT or SPDT switch between antenna and rx would simplify matters (single or double throw switch depending upon type of lead-in). The center terminals are connected to the rx, the outer poles to the calibrator and antenna. Then one can easily switch the rx to either antenna or calibrator."

...John T. Soneff Jr., New Orleans.

DX Thrills "I was band-tripping in the last hours of day and getting pretty dry.I set my dial on a Spanish-speaking station and left for the kitchen,figuring I know nothing about Spanish and couldn't miss a thing.From the kitchen I hear booming in English, "KGEI, the Voice of Friendship". I dropped the drink on floor and scrambled to take notes.When I look at my QSL card and pennant I chuckle like a hunter bagging a wily fox." ..Miss Diane Levesque

In Search Of Cook Islands

By RICHARD B. ODLIN II

Raratonga has frustrated many a DX'er, I'm told, so in January, 1973, I decided I would try to do something about that! Having read in FRENDX how the last logging was made by Dr. Richard E. Wood when he was at his Hawaii QTH, and noticing that the annual Mid-Pacific Contract Bridge Tournament was being held in Hawaii Jan.9-16, I put two and two together and decided--- what the h---, why not?

You have to know a little something about duplicate bridge nuts, of whom I am one. If there's a tournament anywhere within a few hundred miles, off they go to bask in smoke-filled rooms 8 hours a day, playing a total of 676 cards a day, all for what?..money?... filthy stuff! For master points!..a silly little slip of paper that says you played well (or maybe were lucky) enough to be a little better than the others. Get 300 of them and you're a life master. But that is a different story---on to the DX part!

In November I ordered from Gilfer Associates a Barlow-Wadley XCR-30 portable receiver. I'd heard about it, read about it, and decided here's just the ticket. Who wants to lug an R-4B all the way to Hawaii anyway? It came a few days before my planned trip and trying it out I was impressed!

With dreams of conch-shell QSLs, I trot over to the Seattle-Tacoma International Airport on the morning of Jan.8 with a heavy winter overcoat. (There's 3 inches of snow on the ground here and besides, I want to carry my B-W with me and need something to wrap it up in and protect it from Pan Am's vibrations). With one bag and the XCR-30 clutched close, I check in at the ticket counter.

"Hawaii?" the guy said.

"You bet!"

"Why the overcoat? Don'tcha know it's seventy--nice over there."

"Yeah, but it's twenny-nine here!"

He gives me a fishy look, charges me \$8 for overweight and tells me to go to Gate 6 and hurry up about it, you're late!"

Now two days before the airport put into effect the new search and electronics routine to foil hijackers and I could just see what was going through the guy's mind when I staggered up to the metal detector after running the half mile in a little over 3 minutes.

"Why the big overcoat, fella; whaddya got stashed away in there?"

"Nothing, really," I replied, trying to look like a law-abiding citizen.

"What's that?"

"Oh--that's a portable radio."

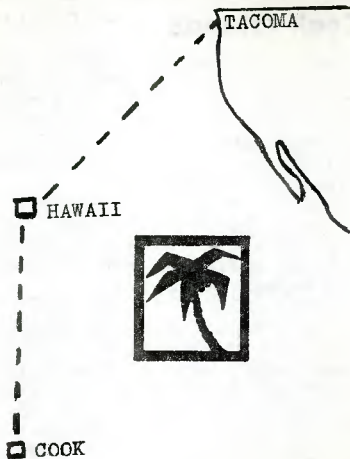
"Funny, I never saw one like that. Open it up!"

So I did and he gave me the fishy stare as he examined it.

"What are all these wires and funny colored things all about, fella? Whaddya got here anyway and who'd want to take a radio to Hawaii anyway?"

No sense trying to explain to him about shortwaves bouncing off the ionosphere and all that, but after giving it a good look and consulting his superiors, he let me go through.

It was a nice flight and I got settled... (Turn to Next Page)



Cook Islands ---- (Continued)... (Sketch by Miss Diane Levesque)

...at the Princess Kaiulani later that night, anxious to try things out. It bombed! The hotel is well built; I couldn't even raise WWVH at 5 MHz until I dangled the rx over the lanai, 60 feet above the busy street. Then I could also raise R.Santa Fe on 4965 weakly, AFRTS on 6110 was only fair and VOA on 5995 was only poor-fair. No good. Need an outdoor antenna.

The next morning I hopped a cab for a \$1.20 ride to the nearest electronics store, purchased a 75 foot, 75¢ length of insulated wire, stripped one end, fastened it to the whip with an alligator clip, tossed the other end out the window and turned the set on.

Holy Toledo! VOA on 21485 better than in Tacoma, AFRTS on 21500 booming! BBC excellent on 15260 // 15320; R.Havana Cuba blasting in with an IS on 15230 at 2152 // 15190; R.Japan like in the back yard on 15105 at 2156 // 15195. At 2202 both 11825 and 11860 were heavily jammed so assume both were R. Liberty. RSA with a super IS at 2208 on 11970. This is going to work great, I thought, but first some lunch and some bridge!

All my finesses were working and the suits were right so I got a 4th and a 1st in the two sessions. After dinner at the Ilikai I checked one of those electronic maps in the lobby that shows you what places in the world are dark and light at the same time. It runs all the time and you can watch the dark creep westward. A great gimmick for you in your shack but probably costs as much as two Drake DSR-1s! But anyway I could see at a glance that Hawaii would be dark for half an hour after Cook Island signed on 5045 at 1630 and that Raratonga should be just about dawn then...and so, maybe!

I left a call for the operator for 6:15 a.m. and staggered out of bed to tune up the next morning. Unfortunately, conditions were either not too good or else the B-W wasn't sensitive enough to pick up the tiny ones, for I heard very little that morning: a Chinese on 4800, a RR on 4940 and 5045 was absolutely blank until I gave up the ghost at 6:45 and went back to the sack.

Next morning it was the same but that afternoon after bridge, Tahiti was absolutely super at 0255, R.Yerevan great up 10 kHz at 15180, VOA and HCJB were fighting their interminable battle on 9530 at 0305. An unid SS was bouncing in nicely at 9620 and RAE was unbelievable in EE on 9690. Heard what I think was Springbok on 6190 very well, 6160 SS was fair, VOA on 5995 very good, Peking on 7095 fine, Taiwan nice on 17890 and the race results from Australia and the stock market report came in smooth as silk on 21480.

I tried one more morning for Cook Islands with negative results and even tested 9695 at 2330 when they are scheduled for a signoff but RSA was holding forth in all its splendor. Then, with the swaying palms and wahines and the bridge taking most of my waking hours I decided to get a little sleep mornings and stay up late for bridge.

Anyway, the tournament ended on a Monday night and I was slated to fly out the next day around noon. I decided to give it one more try and left a 6:15 a.m. call. Things seemed a little better on the rx that morning. I got an excellent CC signal on about 9650 at 1618. Something was brewing on 5020 a little later and I stepped up to 5045 and waited. There was some QRM on the frequency--maybe it was Rangoon about 5040--then 0628 on 5045 through the QRM....

(Did Odlin log Cook? You'll have to see next page to find out).





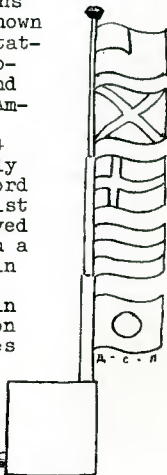
The Marseillaise

National Anthems As An Aid To Identification

By JOHN CAMPBELL

Often reports of unidentified stations in log sections of DX bulletins say such things as "signs off with unknown anthem." One way to identify at least the country of stations which oblige with patriotic music is to have a library of national anthems. Two records which I have found particularly useful are: 1) a collection of all Latin American anthems played by the Spanish Air Force Band on Montilla (a label which originates in the U.S.A.), Fm 94 and 2) the anthems of Communist countries (unfortunately the USSR is assumed to be only one country on this record because the producers haven't seen the NASWA country list but there are also some exotic ones like Mongolia) played by the "Representative Orchestra of the Polish Army" on a Muza (Polskie Nagranie) record which may be available in the U.S.A. via distributors of Polish imported records. (I don't quote the number because it may be different in Europe and the U.S.A.). Another source of information on records of anthems, including the more conventional ones of Western Europe, is the monthly Schwann catalogue, obtainable at your friendly local record dealer for 85¢.

It seems the most important collections of anthems not yet covered are those of Africa and the 14 other republics of the USSR with the same legal status as the Russian SFSR. However, maybe someone else can write in with information in case I have missed any records for these areas.



(Sketch courtesy of
Diane Levesque)

EDITOR'S NOTE: Please do send us such information so we can spread it around. In the meantime Stan Kenton fan Gerry Dexter has come forward with the following important addenda to John's item. Gerry notes that the renditions here are not literal (polite way of saying they are uptempo) but the main theme is usually easily recognizable.

Creative World Inc., P.O. Box 35216, Los Angeles, Calif. 90036 and also N.Z.Voorburgwal 288, Amsterdam, Holland, has released an album, "National Anthems of the World" (ST1060) which features the famous Stan Kenton orchestra playing 38 countries' anthems. The album costs \$10 (two disks) and is available as a cassette (ST1060-C) and as an 8-track tape (ST1060-8) in addition to the LPs.

Countries represented on the Kenton release are France, Germany, England, China, Taiwan, USSR, Burma, Korea, Ghana, Guinea, Israel, Hungary, Chile, Peru, Venezuela, Holland, Ireland, Denmark, Sweden, Norway, Finland, Iceland, Greece, Switzerland, Poland, Portugal, India, Wales, Spain, Austria, Italy, Canada, Bulgaria, Luxembourg, Belgium, Czechoslovakia, Japan and the U.S.A. (FOR MORE ON ANTHEMS SEE PAGE 11)

P.S.---"National Anthems of the World" played by the Vienna State Orchestra on an Everest LP (3239), \$2.98 list, has anthems of 19 nations, Austria, Great Britain, Germany, France, Italy, Russia, U.S.A., Israel, Belgium, Japan, Norway, Canada, Sweden, Spanish, Holland, Finland, Switzerland, Denmark and Turkey. Excellent record, paid \$2.49 for it.

COOK ISLANDS-(Concluded)...What do I hear?? It sounds like chanting and a nice big fat het! 0630 under the QR---It sounds like a conch shell! Yeah, but wait! Was it a conch or chanting from an Indonesian? Can't tell....Then I couldn't get anything more intelligible. It might have been---who knows?

Oh, well, there's another bridge tournament next January!

DXpedition To Ottawa

By GEORGE SCHNABEL
With Photos by Author

Gregg Calkin stopped by a red-lettered signboard which had suddenly materialized on the white expanse of the snow covered plain and the three of us, Gregg, Ottawa DXer Alan Hamilton and myself, piled out. We had arrived at 45 degrees 17' 47" North Latitude, 75 degrees 45' 22" West Longitude, Greenbank Road on the northwestern outskirts of Ottawa, the site of CHU, Canada's Time Service Station. From the road a driveway led between five foot snow drifts to the small white transmitter building. We stomped about in the 5 degree F chill and investigated the three antenna towers but the building itself was closed.

Luckily we did possess a press release from the station which gave the following information:

"Continuous transmission is made on three frequencies, 3330, 7335 and 14670 kHz. Transmitter power output is 3 kw on 3330 and 14670 and on 7335 it is 10 kw. Vertical antenna systems are employed.

The three transmitter frequencies and time signals are derived from a cesium frequency standard which is referred daily to the Canadian cesium primary standard. (Cesium atomic clock).

The seconds pulses consist of 200 cycles of a 1000 Hz tone. The beginning of the pulse marks the exact second. The zero pulse marks the exact minute. The zero pulse of each minute is one half second long and the zero pulse of the hour is one second long. The pulses occur at the rate of one each second with the following exceptions.

1. The 29th pulse of each minute is omitted.
2. The 51st to the 59th pulses inclusive of each minute are omitted. During this interval station identification and time are announced by voice.
3. The 1st to 10th pulses inclusive are omitted on the first minute of each hour.

A voice announcement of the time occurs each minute in the ten second gap between the 50th and 60th second. It refers to the beginning of the minute or hour pulse that follows. The announcement is on the 24 hour system alternating in French and English:

'CHU, CANADA, EASTERN STANDARD TIME...HOURS...MINUTES...HEURES...MINUTES.' (Even minutes).

'CHU CANADA, HEURE NORMALE DE L'EST...HEURES...MINUTES...HOURS...MINUTES.' (Odd minutes).

'CHU CANADA, EASTERN STANDARD TIME...HOURS EXACTLY...HEURES PRECIES.' (On the hour)."

Minutes away from CHU, we rounded a corner, sped down a flat stretch between isolated farms and the famed 105 ft tower with the 63 ft Log Periodic rotatable boom riding on top hove into view. Next to the driveway leading towards a neat brick building was a sign which proclaimed:

CBC
MONITORING STATION
POSTE DE RECEPTION
RADIO-CANADA

We drove up to the building, parked and walked in. The structure is a split level. The basement contains store rooms for outdoor work equipment. On the main level are three studios, offices and a maintenance shop. We went up... (Please turn to Page 10)



Sign for CHU-Canada. Alan Hamilton, left, George Schnabel, right.



CHU transmitter building with Hamilton in front.



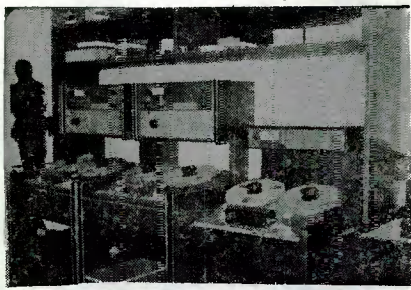
Stanley Corners, CBC Monitoring Station sign. Calkin, l., Hamilton.



Stanley Corners Monitoring Station from the driveway.



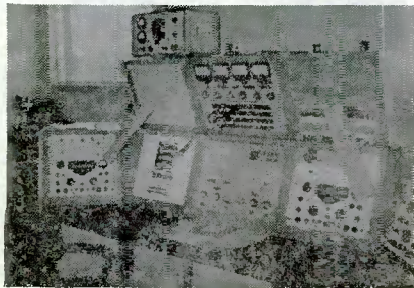
Stanley Corners Aperiodic loop array. Hamilton, l., Calkin



Main studio at Stanley Corners with bank of Ampex recorders.



Greg Calkin at Stanley console. Consolè of Racal receivers, Studio 1.



OTTAWA EXPEDITION--(Cont.).....a short staircase and were met by Mr. Del McNamee, the technician on duty just then. He kindly answered our questions and showed us around the studios. A staff of seven, one supervisor and six technicians, operate the monitoring station 24 hours a day, 5 days a week and 16 hours a day on the weekend.

The three of us, eyes bulging, admired the banks of Ampex recorders, Racal receivers and stand-up consoles containing antenna switching and adjustment controls.

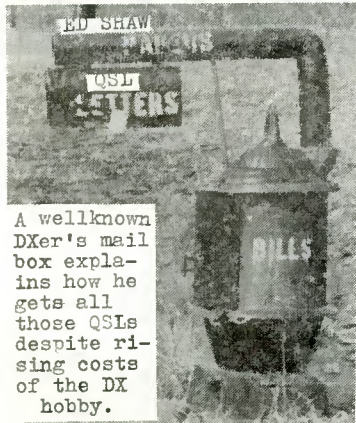
The Monitoring Station performs two prime missions. The first, known as technical monitoring, is the measurement of frequencies and preparation of technical data on reception conditions of the shortwave transmissions beamed to Canada by foreign broadcasters. This data is sent to the organization originating the broadcast, on an exchange basis, to insure that both they and the CBC International Service obtain the best results possible from their overseas transmissions.

The second mission consists of regular daily assignments and special requests. The former is made up of news, commentary and sports results, much picked up from BBC broadcasts. The special requests come from various government offices wanting immediate news broadcasts from Moscow, Cuba, Peking, Latin America and Japan. While we were at the studio a call came in for the latest news from Cairo which had already been taped and was then transmitted directly via phone lines to the office requesting the information.

Our question and answer period over, we meandered out the back to visit the unique APERIODIC Loop array. These are set up in a system of three arrays of eight loops each. Two are set in space diversity for pickup of programs from Europe and the third is directional to Africa. Each of the loop elements is a welded assembly of aluminum alloy tubing weighing only 10 pounds, set on tripods. The assembly is stressed to withstand wind speeds of 200 miles per hour. The length of each array is approximately 30 meters. There's also a Telefunken omnipole calibrated antenna system for use with Racal receivers.

Returning to the studio building we thanked our host and drove back to Ottawa.

 ***** EDITOR'S CORNER *****



A wellknown DXer's mail box explains how he gets all those QSLs despite rising costs of the DX hobby.

Lots of good things on tap for Frendx readers. In June we'll start Don Jensen's fine series on getting to the top of the Dx hobby. F.Earle Hall shares his expertise on antenna switching. Ed Shaw tells how the tape recorder should be used and Al Reyholds relates how he publicizes the hobby with displays. Plus a lot more.

One request--please do not send us articles you are sending to other bulletins, at least not without telling us about it. And if you send us pictures, black and white is best although color sometimes can be used without losing too much..AVS

Side effect ---MORE ON ANTHEMS (Editor's Note: We had no sooner finished Page 7 on National Anthems as a DX aid than by a strange but happy coincidence the following article arrived in the mail).

By JOHN D. TUCHSCHERER

With the price of meats currently in the ionosphere, millions of housewives across the nation are using "hamburger helper" to stretch their food dollar. There is a DX helper too, probably overlooked, even by the most serious listener. Namely, the National Anthems.

Two excellent source books are "National Anthems of the World" by Martin Shaw and Henry Coleman and "National Anthems" by Paul Nettl. Either, or both, are probably available in your local library.

The extent to which the anthems may be utilized is limited only by your musical knowledge or ingenuity. Those who can read music need only copy the first or last 8 bars of the anthem in which they are interested, for ready reference. But, if you prefer the entire score most libraries will make Xerox copies for 10 cents per page.

Even if B Flat means the second floor apartment to you, you can still tape the anthems. They can be played on any instrument. Your only interest is to become familiar with the melody, not the instrumentation. Your music source can be a member of the family, home organist, church organist, in brief, any musician of your acquaintance.

You can tape 20 to 40 anthems an hour, dependent on the countries of your choice. New members, who are totally unfamiliar with anthems can start their "anthem collection" by taping "off the air" with the anthems of the Dominican Republic, Colombia, Venezuela, etc. and after a few playings you should know them as well as "Yankee Doodle!"

+++ +++ +++ +++ +++ +++ +++ +++ +++ +++ +++

Lightning Arrester ... A Must For All

By ANDY KEHR



A lightning arrester is simply a device placed on the transmission line (lead-in) between your antenna and receiver. If your antenna is struck by lightning the very high voltage will be grounded rather than traveling down the transmission line into your rx, causing havoc to it and possibly to your home, self and family. With the thunderstorm season at hand it is the cheapest form of insurance you can buy. Prices vary but the most you should have to pay is \$4.50. Several models are available but the most common are the TV twin lead and the coaxial, shown above left and right. If you have a single wire lead-in get the TV type at most electronic stores (Radio Shack, Lafayette etc.) Simply follow directions and connect the single wire to one side of the arrester.



If you have a coax lead-in you will need the coaxial type arrester (also available Radio Shack, Lafayette or mail order outfits like Burstein-Applebee, 3199 Mercier St., Kansas City MO 64111).

You may mount the arresters at the rx or on the antenna mast. If mast-mounted, be sure to use a water proofer and seal the device. If you have more than one aerial, mount the arrester at the rx and you will need only one arrester.

The most important thing with an arrester is to have a good ground and this is not simply a piece of #18 wire (like lamp cord) attached to a cold water pipe. Use at least #14 or larger solid copper wire and, if possible, attach it to a ground rod driven 8 feet into the ground. Otherwise attach it to a cold water pipe (not a hot water or gas pipe). If you use a ground rod, do not attach to the telephone ground. A side benefit of the lightning arrester, by the way, is that it will drain your antenna of static buildup. So with all the good things an arrester can do for you, don't you think you need one. (Editor's Note: You'd better believe it!)

USE A LIGHTNING ARRESTER---BE WITH US FOR THE NEXT DX SEASON!

The Telephone Can Boost Your DX Total



Sometimes DX news is so hot and short-lived that despite efforts of bulletin editors to give you the latest scoop, the DX has gone by publication time. A good example of this was given by the recent brief appearance of a new Guatemalan, noted in the Midwest on 4835 kh, immediately listed in a weekly DX newsletter but vanished from SW before members received the letter.

Then, too, there is the case of unusual propagation, such as the solar storm of last August which made reception of Falkland Islands possible for one night in the northeast. Or there are very short, unscheduled appearances made on SW by rare stations like Turks Island, broadcasting a hurricane warning, a sports event or an especially for a special holiday.

What's the answer?

While there is no complete solution--for one thing someone has to have a DX tip that is worth passing on in the first place-- a telephone relay system is something DXers might consider on a geographical basis.

Here's how it works:

You select a number of DXers in your area, how many and the extent of the area is up to you, who will agree to exchange tips and pay for the phone calls involved. You make a list of these DXers, their phone numbers, the times they are likely to be home and any special data such as the countries and stations they are, or are not, interested in. Copies of the list are then passed around to all participating DXers with a traffic routing plan.

The routing plan arranges everyone in any order you please, alphabetically, etc. However, if toll calls are involved, it should be possible to work out a system where each call involves the shortest distance possible.

Now what happens?

Joe Doakes of Manchester hears Turks Island on a special broadcast and looks at his list. He sees Ed Sparkley of Simsbury follows him. He calls Ed. Ed looks at his list and sees Bill Spikes of Hartford is next and calls him. And so the relay goes.

Each call is made collect. If a person is not home the caller passes on to the next man on the list. Or if the phone is busy for over 5 minutes. There must be an understanding that if you are unavailable it was your tough luck. The person at the bottom of the list moves to the top and so the relay goes until all calls have been made. How do you know this? A person called the second time will refuse the call, thus signifying the circle has been completed.

A variation in routing is to name a "ring leader". Any tip received by any member will be phoned to the leader first and he will determine its value and how it should be passed along.

One possibility--if you have a group that works well together with no fear of arguments, you could eliminate collect calling by having each person accept the cost of calling the next person on the list station-to-station. This would be cheaper--and faster.

Members can also "train" family members to take down tips for them when they are not home.

Certainly there are pitfalls and chances for foul-ups in a phone relay system but on the other hand there may be some rare DX to be had by this plan that can be had no other way.

If you are interested in setting up a telephone relay in your area send us your name and address and the area you wish to cover (50 mile radius around Cleveland, for instance) and we'll publish it with a request interested DXers in your area contact you. The rest is up to you. But one other thing--if you have a hot tip on Tristan da Cunha, don't forget to call us too!



HEADQUARTERS CALLING

NASWA, P.O.Box 8452, S.Charleston, W.Va. 25303 USA

NEW EDITORS- MAKE NOTE OF THESE CHANGES:

QSL REPORT - beginning with the July issue (deadline June 12), the editor of the QSL section will be Larry Yamron, 6830 Linden Lane, Pittsburgh, PA 15208.

LISTENER'S NOTEBOOK - Beginning with the June issue (deadline 15 May), the editor of the Listener's Notebook will be Dan Jamison, 310 Roanoke Street, Apt. 21, Richmond, VA 23225.

LOG REPORT - Beginning with the June issue, deadline May 12, all reports for the loggings sections should go to M.R.(Mac) Leonhardt, P.O. Box 13, Liberty, Indiana, 47353. (For the June issue, reports sent to HQ will also reach the editors.)

Also, the lower 1/4 of the Log Report will be edited by Elliot R. Straus, 300 Brindley Avenue., Bradley Beach, NJ 07720. (Reports still go to the Liberty, Indiana, address of Mac Leonhardt, given above.)

That first announcement above will probably come as quite a shock to many. Gregg Calkin has edited the QSL Report longer than I have been a member of NASWA! He has consistently turned out excellent QSL sections. He has edited from Canada and from Mexico. However, he will be in Spain for several months, and feels he must resign from the editorial post. We regret losing such a capable editor, but rejoice with Gregg in this new assignment. Gregg we look forward to seeing your reports to FRENDX from Spain. (DF)

Our new AWARDS CHAIRMAN IS DAN HENDERSON, from whom we received the following...

ATTENTION!!

ATTENTION!!

As the new NASWA Awards Chairman, I would like to announce that the NASWA Awards Program is being revamped and updated to provide the experienced and novice DXer new and exciting goals to achieve. In addition, the awards certificate format and appearance are under review by the chairman and NASWA headquarters. It is hoped that the certificates can be improved to make them more appealing and meaningful. At the present time, the awards listed below are being offered. Details relating to each award can be obtained from the Awards Chairman for a self-addressed stamped envelope. Further awards for excellence in verifying administrative areas or individual states in selected countries will be announced soon. Countries under consideration include Indonesia, India, Nigeria, and Venezuela. The Awards Chairman would solicit your ideas regarding the current awards and your ideas and suggestions for additional awards to be added in the future.

Dan Henderson
317 Brock Bridge Road
Laurel, Maryland 20810

AVAILABLE AWARDS...ALL CONTINENT "QRP" DXER, for 50, 25, 10, 5, and 2 kilowatt. EUROPEAN CONTINENTAL DXER, AFRICAN CONTINENTAL DXER, ASAIN CONTINENTAL DXER, NORTH AMERICAN CONTINENTAL DXER, SOUTH AMERICAN CONTINENTAL DXER, DXER de PACIFICA, ALL VOICE OF AMERICA DXER, MAPLE LEAF DXER, SOVIET SPHERE DXER, GRAND ISLANDER DXER, ECCLESIASTIC DXER, DX CENTURIAN, SENIOR DX CENTURIAN, MASTER DX CENTURIAN.

HQ Note...We are working on different designs for certificates for each award.

NEW BOOKLETS AVAILABLE Remember the series Ed Shaw wrote for Shortwave Center on the Darkness Pattern? Kinda hard digging out those old issues from a year ago, to check on the data there? Or maybe you are a newer member and didn't get the issues from last spring? We've got the solution to your problem....AFTER THE SUN GOES DOWN is the title of a new NASWA reprint. This 11 page booklet contains the sunrise and sunset times in tables, and tells you how to use these times in your DXing. Especially useful on the low frequencies. And it's really not hard to use the tables. If you can add and subtract you've got the problem licked! So, get this booklet! Cost is only 50 cents, postpaid in NA.

ANOTHER BOOKLET....Do you remember the articles written by Al Niblack, our FLASHSHEET editor, and which appeared in the Shortwave Center over the past few years? How about "Rx for Receiver Selection", from the April 1968 issue? Or, "The Three 'S' Features of Receiver Performance"? "Know Your Shortwave Receiver"? "Frequency Determination"? "Your Short Wave Antenna"? "Prescription for Reception"? If you remember them or if you don't, they nevertheless contain a wealth of useful information. And it is again available, in a 20 page booklet, containing all these articles. Cost is just US\$1, postpaid in NA. Get your copy now! Find the answers to those questions you've been afraid to ask! Order the "Niblack reprint booklet" today!

AND ANOTHER BOOKLET???...Yes, another one! This time it's the COUNTRY LIST, in greatly expanded form. The new Country List is 24 pages long, with listings by continent for tabulation purposes, a master alphabetical list, a cross reference, and a section explaining the use of the list, plus an explanation of the nature of the NASWA Country List, and the NASWA Station Counting Rules....In years past it was common to mail a copy of a new edition of the Country List to every member. More recently we asked for a SASE. Due to the cost of printing this expanded edition of the country list, we are asking that those who wish a copy send 25 cents to help cover the cost of printing it. The 25 cents will get you a copy postpaid. Just write NASWA HDQ.

Concerning the Country List....There are a few changes that should be noted by all the Country List Committee reviewed its definition of standard time/frequency stations and concluded that it has been too broad. The committee concluded that criticisms concerning the counting of standard time/frequency stations with no voice announcements as SWBC stations were valid. As a result, such stations will no longer be considered SWBC. It should be stressed, however, that time/frequency stations which do have voice transmissions, such as WWV, WWVH, CHU, etc., will continue to be considered SWBC stations....As a result Guam has been eliminated from the country list. Canal Zone remains on the list on the strength of true SWBC broadcasts from there in the early '50s. But for many counting the Canal Zone on the strength of reception of non-voice broadcasts of a standard time/frequency station, it will mean the loss of a country. The committee regrets this situation, but it seems better to change the rule than to perpetuate a situation that seemed to the majority of the committee to be illogical; a general audience cannot be expected to have a knowledge of CW Morse....The committee has removed Pitcairn Island from the list, after finding no credible evidence that SWBC broadcasts ever originated from the island. Thus this should affect no one's totals....On the plus side, the five old countries comprising Indonesia have been changed to seven, or an addition of two. The former Celebes and Moluccas have been split into the new Celebes (Sulawesi, Indonesia) and Molucca Islands (Maluku, Indonesia). Also, a new country has been added: Bali and Lesser Sunda Islands (Indonesia), which will include stations at Denpasar and Singaradja, on Bali; Mataram, on Lombok Island, and Kupang, on Indonesian Timor. Also added were the Channel Islands, on the strength of a member's verified report of Radio Channel International, a pirate station operating from the Channel Island of Jersey....The committee also reaffirmed its position of not counting harmonics of medium wave (MW) stations, heard in the SW range of frequencies, as SWBC stations....Comments concerning the country list should be directed to the Chairman of the Country List Committee (Don Jensen), via NASWA HDQ.

IF YOU ARE CALLING NASWA HDQ, may we suggest you call after 0300 GMT. Best time is between 0300-0500 GMT, as we do sleep occasionally, hi! 1-304-346-5738 gets DF on the phone.

"ON TO THE TOP" The six-part series by Don Jensen is now scheduled to begin in the June issue, according to SWC editor Al Sizer.

"As being a member five years ago, I was shocked when I received your bulletin a few days ago. The club has come a long way. All for the better. It'll be nice to be back."....Dan Trigilo, San Antonio, Texas.

"HELPING HAND"... "Urgently require one U.S. Navy type medium frequency receiver, the AN/PRR-22. Frequency range .25 to 8.0 MHz. Must be in working condition. I pay all costs. Send offers before you ship, please." Charles A. Wooten, USNCS P.O. Box 507, FPO New York 09544.

For Sale 72 WRTH, Shortwave Voices of the World, SWL Address Book + 2 updaters, SWL Antenna Construction Projects, 99 Ways to Improve Your Shortwave Listening. \$12 or best offer takes all. Write Dillard Stone, Jr., 1306 West 11, Freeport, TX 77541.

AREA GET-TOGETHER In an effort to promote the NASWA slogan--Unity and Friendship--a gettogether of all Washington D.C., Northern Virginia, and Maryland Short-wave Listeners/DXers is being planned tentatively for the second Saturday in August (Aug. 11th) at either the home of Dan Henderson or Scott Reeves, or at a local Picnic area. The primary purpose for a get together of this sort is to get to know other local DXers/SWLs and to have "eyeball QSOs. Of course, there will be plenty of envying others' QSL cards and telling the inevitable "sea stories" about DXing experiences. In addition, there will be plenty of discussion of receivers and antennas and maybe some advance information on the propagation conditions conditions for the coming DX season. Of interest to all DXers will be discussions on DXing techniques and to the QSL chaser, discussions of various QSL techniques will also be included. All of the above discussion areas are just a sample of what will be included in this get together. However, it's "do your own thing"--no formal program is being considered at the present time. If you are interested in attending, please give Dan Henderson a call at 301-725-3408 or write to him at 317 Brook Bridge Road, Laurel, MD 20810. Please give me your ideas/suggestions about this get-together. Further plans will be announced in the next two month's bulletins and will be also promulgated to those responding.

Dan Henderson
317 Brook Bridge Road
Laurel, MD 20810

The MID-MONTH FLASHSHEET Last month we announced rates for the MMFS. Many have already subscribed to this. When we announced the rates we also asked that you subscribe to the FS only if you would actually use it. This was done to prevent too much additional work here at HDQ. Since then arrangements have been made to get the MMFS published and mailed from another location should it become necessary or desirable. Therefore we are not quite as touchy about the thing as before. We still believe that it is pretty useless to spend the money for the MMFS unless you are an active listener. But that decision is up to you! Subscriptions are still \$2.00 per year for first class delivery, \$2.36 for airmail delivery in NA. We believe active DXers will find the MMFS extremely useful during the coming DX season, so get your subscription in now! And support MMFS with your reports!

ANARC CONVENTION Site has not been determined at this writing. Either San Diego or New York.

ANARC MAN OF THE YEAR The ANARC AWARDS COMMITTEE is receiving nominations for the 1973 ANARC MAN OF THE YEAR. The MoY award is given to someone each year who has made significant contributions to the DX hobby, either during the last year or over a number of years. If you wish to nominate someone, send full details to the ANARC AWARDS CHAIRMAN, Dan Ferguson, Box 8452, S.Charleston, W.Va. 25303 USA. Deadline for receipt is June 20, 1973.

NASWA JACKET EMBLEMS are on order. We expect to receive them during May, and they will be mailed as soon as received. We remind you that the emblem design is the same as the design of the NASWA rubber stamp. Cost of the emblems is US\$2.50 or 2 for US\$.50 in NA. Order from HDQ.

NASWA RUBBER STAMPS continue to be available. Only one or two comments on the question of whether or not to change the design of the stamp. Thus it will not be changed. The stamp is seen at right. Cost is only \$2.00. Order from HDQ.

STATION COUNTING RULES Concerning comment in

comment in this month's HHH re the Country List Committee voting to "exclude" MW harmonics, perhaps a clarification is in order. Actually, the committee voted not to include MW harmonics - they were already excluded; see previous editions of the country list which included the station counting rules...With one exception, the committee felt that intention was the important factor. I.e., 4 of 5 members opposed the inclusion of stations which did not intentionally operate as SWBCers. Thus excluded are such stations as the 60 meter Sahara outlet (as far as can be determined it is intended as a utility operation), CUROM, MW harmonics, etc.

TV/FM DX. We don't suggest you give up SWBC DXing during the summer, but it is the best season for DX on the FM and TV bands. R. Nederland's "DX Juke Box" is broadcasting a TVDX Course currently; the "NASWA" of the TV/FM field is the Worldwide TV-FM DX Association, Box 163, Deerfield, IL 60015, an ANARC member club. WTFDA publishes a monthly offset magazine, "VHF-UHF Digest"; a sample costs 50¢; yearly dues are \$9 by first class mail, \$7 third class, \$8 overseas. Also available a free information sheet on the club and basic data on propagation, TV, FM, and VHF utility DX. (Hauser)

73 from NASWA HDQ

+ +

LISTENER'S Notebook!



NEW LN EDITOR!: Beginning next month the LN editor will be

Dan Jamison
301 Roanoke St., Apt. 21
Richmond, VA 23225

Deadline: 15th

This month LN is again edited by Dan Ferguson.....

CONCERNING "ASIAN" RUSSIANS... from Bill Davis, California... The April LR carries a note suggesting that the 11990 item in Feb LR might be Dushanbe, not Vladivostok. No way! From here Dushanbe would be a polar flutter signal and far from daily. 11990 is heard here daily, solid and consistent. From other Russians I've heard identify and from stations beyond Russia to the south (Colombo, Delhi, Teheran, etc.) I can almost draw a line down through Soviet Asia where the polar flutter fading starts. It should run from Khatanga (72N, 103E) down through Russia to Urumchi, China. East of that line signals will nearly always be fairly steady. Stations west of that line will nearly always have our old friend, polar flutter fade.

From the signal strength and fading characteristics, I'm quite certain that all the "Asian" Soviets I've reported are east of that line, or only slightly west of it.

Another thing that bothers me some is the apparent boundless faith in the Russian "listings" in WRTH! If you go by the listings, half those stations must have wings! I'll give you an example - 7210 kHz...WRTH 65 Irkutsk, WRTH 67 Vladivostok, WRTH Summer 67, Vladivostok, WRTH 68, summer 68, 71, 72, Vladivostok. WRTH 73 says it's

Khabarovsk. Now, back through my "listen log" for the same period, still 7210 kHz. "Govorit Khabarovsk IDs at 0510, 10/26/65; 0509, 12/3/65; 0910, 4/9/66, 1310, 4/9/66; 0510, 12/29/66, 0929, 4/1/73.

Granted some of the listings seem OK, but the announcements from the stations seem a lot more consistent than the WRTH listings: Other examples - 9375 was listed for Khabarovsk in 1965, not listed since. Yet they have been doing business on 9375 at least as far back as 3/5/66(0659 "Govorit Khabarovsk") and carrying "Mayak" programs since 11/7/71 when I first noted Mayak on them.

Magadan on 12240 has only been listed since 71, my first ID note on this freq is 0700, 9/24/66 "Govorit Magadan". 12040 has no Asian listing yet, and as far as I know hasn't had. Vladivostok has been grinding out the kw here since at least 1965, possibly longer.

I think the lists may be a hopeful guide, but who is actually there by announcement means more! Sorry my lists and charts don't agree better with the BBC MS and ITU and WRTH versions, but I just call them as the microvolts dribble in off the antenna.

If any one wants some tips on when to hear the local stations identification - the most likely time appears to be just before or just after the "on the hour" news from Moscow. Few of the Asian Soviets have any consistent time for local ID. And - once you hear those "Mayak" chimes, forget it. Go on to something else and listen a while. I have never heard an Asian Soviet ID while carrying the Mayak pgm.

Petropavlovsk still uses the "old" ID format. A typical announcement would be: "gnemonie, govorit Petropavlovsk Kamchatski, Kamchatski vreimyak dvadtsat dva chasoff, trinadtsat mingost." Literally, "Attention, speaks Petro.Kam., Kamchatska time, twenty two hours, thirteen minutes." All the others I've heard omit the "attention" (gnemonie).

Bill continues with some updated information on Soviet HS from Asian txers...

| | | |
|-------|-------------|---|
| 4940, | Yakutsk | apparently no longer in use |
| 5910 | ? | no longer in use |
| 6200 | ? | no longer in use |
| 9375 | Khabarovsk | s/on 2330, 0800 s/off. All Mayak |
| 9690 | ? | no longer in use |
| 9770 | Vladivostok | *2300, 0800* all regular HS, no Mayak |
| 11800 | ? | hrd 0300 when qrm drops off, still going 0930. All Mayak. Best after Tenerife off 0600. |
| 11835 | ? | Mayak chimes hrd as early as 2300, usually hrd from 0300. Still going 0900. All Mayak. Site Krasnoyarsk? |
| 11895 | Magadan | Hrd from 0300 to after 0900. Local px 0330-0400. ID 0345. |
| 11990 | | *2230, to 0830*. All Mayak |
| 12240 | Magadan | *1800, still going 1030. Sometimes on early at 1600. Pgm is 1600-1800 Mayak(if on), rest regular HS. Local px 1800-1900, exercises 1815(0415 Magadan time!) |

Many thanks Bill, for sharing the results of your studies of the Asian Russians with us. We look forward to further communications from you. DF

 This ends my stint as LN editor. It has become apparent over the past few months that the section was suffering (and didn't even appear last month) due to it being necessary to spend more & more time with NASWA HDQ duties. Dan Jamison begins as LN editor next month. Dan is an experienced DXer, and has been quite active in NASWA. His most recent efforts resulted in the Vietnamese, Urdu and Persian report forms (which will be included in the new reporting book being put together). We urge you to support Dan in his efforts for the club.

MAIL CALL

LETTERS FROM MEMBERS WITH PROBLEMS

Deadline: 20th of Month

Edward C. Shaw
621 Burleigh Avenue
Norfolk, Virginia 23505

Dear Ed: Can you tell me just how many different programs can be heard over the Soviet transmitters? I remember you said that different interval signals do not necessarily mean different stations, but only program changes.

Answer: As far as I can determine there are nine separate interval signals in current use. Thumbing through past loggings of FRIENDX and other Swedish and Danish publications, I have found references to the following programs:

- | | |
|------------------------------------|---|
| Foreign service (Moscow)- | To various regions abroad for foreigners |
| Radio Majak (Lighthouse)- | Home service general entertainment |
| Radio Gorod Lenina - | Leningrad. For Soviet Baltic fishermen |
| Radiostansiya Rodina - | For Soviet citizens abroad |
| Radiostansiya Atlantika - | Maritime service for Atlantic fleet |
| Radio Peace & Progress - | Voice of Soviet Public Opinion |
| Radiostansiya Yunost - | Home service for Komsomol youth. Political. |
| Radiostansiya Tikhil - | Maritime service for Pacific Fleet |
| Radio Kiev, Vilnius, Yerevan, etc. | are taped programs produced in the city for which the program is named, but usually transmitted over the facilities of powerful Radio Moscow - mostly in the R.S.F.S.R. |

Dear Ed: How low in frequency does Short Wave broadcast go below 120 meters, and is anything to be found there for NASWA's DXers?

Answer: NASWA maintains that anything found above 1605 kHz is fair game (up to 30,000 kHz). You'll be interested to know about several possible tricks that are found in this low frequency area. There may be more. To my knowledge, none of these have ever been reported in North America, with the exception of (perhaps) "De Hoop". If you ever hear one of these - give a big smile and drop me a card.

- | | | |
|---|-----------------------------|------------------------|
| Thailand | PTO, Army Anti-Air Division | 1608 kHz |
| Jan Mayen Island (200 watts)(Norway) | | 1722 kHz |
| Bjørnøya (Big Bear Island) (200 watts)(Norway) | | 1757 kHz |
| China, Fukien front | | 2200 kHz |
| Australia (300 watts) University of Adelaide | | 1630 kHz |
| West Germany (370 KW) Bayerischer Rundfunk | | 1602 kHz (below limit) |
| International Water. Dutch Hospital/Church Ship | | 2182 kHz (De Hoop) |

Dear Ed: I use a Barlow-Wadley XCR-30 portable and I think it's the greatest. I wonder why the U.S. has never come out with something like this? Why couldn't my SX-122 be made to function like this portable?

Answer: The Barlow-Wadley is a South African product. I'm not too familiar with the circuit theory, but I do know that the circuit was developed by RACAL, Ltd of Berkshire, England. It employs crystal controlled circuitry to permit very accurate frequency readout with no gaps over the entire spectrum of shortwaves. The U. S. Navy, for one, also uses this design in their 1051 receiver - so it must be available in the U. S. as the military normally does not purchase foreign communications equipment to my knowledge. In addition, Dykes DSR-1 gives digital readout you describe. Perhaps this uses the same circuitry...how about it out there readers? In any case, I have heard of no U.S. or other manufacturer of this type fixed or portable radio other than the South African outlet. Latest word from GILFER is that the Japanese may come forth with something of their own in this field.

NOTE: At this writing, the most reliable word I've heard suggests that the annual ANARC convention will be held in California. It's about time this went west. The past several years have seen exciting, enjoyable, and worthwhile conventions of great success. Make your plans for summer to include this year's convention!! Look for further word in future issues of FRIENDX. It's really a grand time for all.

FLASHSHEET

The FLASHSHEET is published twice monthly by NASWA, Box 8452, S. Charleston, W. Va.

MAY 1973

Freq: KCS

Time: GMT

AL NIBLACK, Editor, 420 Shelby Street., Vincennes, Ind. 47591 DEADLINES: 15 & 26 Month

ALBANIA Tirana sent a "confused" QSL, listing date twice, for mint stamps not used, was my fourth attempt. (Ed Insinger, N.J.)...I have just received a QSL from Radio Tirana after waiting two years. The outlet send a paper folder with a black and white lithograph of building on cover, data inside. Date, time, fgy in meters. (S.W. Eichenhorn, Mich.) (Well, at least you fellows received confirmation, Editor)...Regional Radio Kukesi operates with low power on 6660, where the station can be heard from "time to time". (SWCDXERS)

ARGENTINA RAE on 11710, 2310 in EE; music, news of Argentina industry, technology. Poor to fair lvl. (Ed Insinger)

AUSTRALIA Regional Lymhurst in EE at 0245 beyond 0330, music, stock exchange report from Sydney. WRTN lists both 10 and 20kW. Good lvl anyway. (Ed Insinger)(No fgy quote)

BRAZIL 3315 Radio Gazeta de Alagos big 20/89 lvl with a beautiful PP ID at 2337. Airing pops and organ music from 2330 tuning...11965 R. Record local-like lvl 0205-0210 with a sporting event in PP...R. Inconfidencia great lvl 0150-0202, 15190, with music. One ID and gongs, ad for Pepsi, all PP...4875 The one that shows here 2355-0005 checks is presumed R. Jornal do Brasil...3255 0020-0030 with native music and PP, possible ID for Radio Assuncao...17815 R. Cultura de Sao Paulo with alternating PP men anncrs 2250-2300, through QRM...11868 R. Clube de Pernambuco has shifted upwards in fgy, vy powerful lvl 0150-0200, several IDs, pops, mod, PP...6065 R. Nacional de Brasilia 0005-0012, when heard with ID, sporting event in progress, PP, nice. (Al Niblack, Ind.)

BANGLADESH 11650 RB in language 1530; EE regularly 1700-1800, fair lvl. (August Balbi, Cal.)

HAITI I have a letter, all data, confirming R. Citadel, 6148, signed by Denis Bastien Engineer, on letterhead. (Al Sizer, Conn.)

HONDURAS(BR) Radio Belize outlet of 3300 is, "not in service until mid-1973", according to a QSL received recently for MW outlet of 834 kcs. Sked for MW is 1200-0500 GMT daily. (Woody Seymour, Jr., N.C.) (The SW outlet has been heard testing, at times, Editor)

INDONESIA 11715 RRI in language 0830; EE 0900-0930, poor to fair lvl, Voice of Indonesia, Djakarta. (August Balbi)

IRAQ Radio Baghdad's Foreign Svc in EE, 9745, is scheduled 1930-2020; GG 2020-2110; FF 2110-2200. (Ed Insinger)

ISRAEL IBA heard since 4/12 in EE to WCNA 0500-0515; in FF to 0530, on new 11945, 7/9009. On 15165, EE from 2000-2045*, with good sigs, 4/16. (August Balbi)

PARAGUAY Radio Encarnacion, 1194EM, 0025-0030, with piano music and rapid SS, amidst QRM, man anncr. (Al Niblack)

PERU 3320 Radio Station Estrella del Sur with FB signal, SS IDs, 0315. (Al Sizer)...9534 R. Mac del Peru de Tacna noted with SS ID at 2359. Prior to that, native music, MCing by man anncr. (Al Niblack)

POLAND An anncr direct from Polskie Radio, Warszawa, mentions Free Trips To Poland Contest; many valuable prizes. Give answers to at least one of these two questions: (1) What type of tour/visiting historical and architectural relics, travelling around the country, hunting, fishing, etc./ organized by ORBIS(The Polish Travel Office), would you enjoy most - and why? (2) Planes of LOT - the Polish Airlines - operating on the recently opened Warsaw-Amsterdam-New York route bear the names of famous Poles. Give at least two of these names. Entries must not be posted later than June 15, 1973, to: Polish Radio, P.O. Box 46, 00-950, Warsaw, Poland, with the word "Competition" on the envelop.

(continued)

POLAND (continued) The list of prize winners will be announced in all the Polish Radio External Svc broadcasts on June 30, 1973...Radio Warszawa gives the following current EE schedule: 0630-0700, 31 and 41 meterbands; 1200-1230, 31 and 41 meterbands; 1600-1630, 31, 41, and 49 meterbands; 1830-1900, 31, 41, and 49 meterbands; 2030-2100, 31 and 41 meterbands; and, 2230-2300, 31, 41, 49 meterbands, and 200 meters. (Radio Warszawa)

ST. HELENA (FLASH) (Repeated from Mid-April Flashsheet because of importance) Jamestown has registered assignments for May-Sept., on 6100, and 11830. Sked as per WRTH, power 400 watts. (ITU via Don Jensen, Wisc.) (Sic 'em, DXers, Editor)

SRI LANKA 15120 Ceylon Beasting Svc at 1600 with BBC News//11725. Some QRM de Nigeria on first mentioned freq. (August Balbi)

TURKEY I have received a rather curious QSL: Voice of Turkey, 11880, with 250kW, for a GG Language xmission for Western Europe. Included the following information not included in the 1973 WRTH-

TRT Voice of Turkey is beasting on only two freqs: 9515, 100kW, in Turkish only; 11880, 250kW, for other overseas svcs. Target areas are restricted to: 11880 NW Europe, SE Europe, ME; 9515, WE Europe. Sked effective to May 6, 1973. (Richard A. Schwartz, Dover, Del.)

VIETNAM(N) 15012 Fgy varies, Hanoi heard regularly at 1800 in EE news; FF at 1830-1900, weak lvl at 1530. Best on 10038V, EE news. (August Balbi)

ZAMBIA ZBS, 1810-1900, EE, on 17895, with cntry, music, news about Zambia, but tough copy. (Ed Insinger)...RZ, 17895, audible most days with FF 2000; EE News at 2100, but fades out shortly. Still suffers severe QRM de VOA, Bethany, at times. (August Balbi)

CLANDESTINE Radio Libertacao, 2245-2302 S/off. Clear ID as, "Istos E Radio Libertacao", musical prgm. Audio is somewhat clipped but good lvl when UTEs absent. (Ed Insinger) (Or, Jammer, Editor)...LIBERATION RADIO, PROSVN, sent letter of verification from Paris for EE report. (Ed Insinger)...EUZKADI is QSLing once again; antenna-map card for last August EE reports. (Ed Insinger)...RADIO VERONICA was badly damaged by high winds and waves. Crew escaped in lifeboat. Radio facilities destroyed. (Via HCJB's DX Party Line, Ed Insinger)

MARCH 1973

SUNSPOT COUNT AS FURNISHED BY THE ZURICH OBSERVATORY, 4-6-73: 1-40, 2-38, 3-35, 4-32, 5-22, 6-32, 7-38, 8-50, 9-53, 10-67, 11-69, 12-92, 13-79, 14-78, 15-73, 16-64, 17-52, 18-44, 19-34, 20-23, 21-20, 22-30, 23-37, 24-29, 25-27, 26-23, 27-32, 28-43, 29-46, 30-50, 31-56. MEAN—45.4

PREDICTED: APR-40 MAY-38 JUN-36 JUL-34 AUG-32 SEP-30(Grady Ferguson, S. C.)

REQUIREMENT: Harry van Gelder of the DX Juke Box of Radio Nederland, has had to leave the station because of failing health. To replace Harry, RN has employed Serge Newman (just previously of Indiana) who will appear next month with Harry, and will take over when necessary. (SWCDXERS)...(Many of us know Serge, and send him Best Wishes, Editor)

PROPAGATION: CQ Magazine has come up with DIAL-A-PROP, a new way for radio amateurs to receive updated shortwave propagation forecasts. Simply by dialing 615-883-6223, a two minute recorded message prepared by George Jacobs, will bring you the latest propagation data for the amateur bands, at any time of the day or night. The only charge involved is the cost of the call. (From CQ Magazine, April 1973 Issue). (This service could be used by the DXer, vry probably to advantage, paying only the cost of the call, Editor)

ACKNOWLEDGEMENT: To all, thanks for the support and material that made this issue of the Flashsheet possible. Without your assistance it would not exist. Last minute Flash items may be phoned in to: 812-882-3976, after 2200 GMT. Good DX,

HQ NOTE:

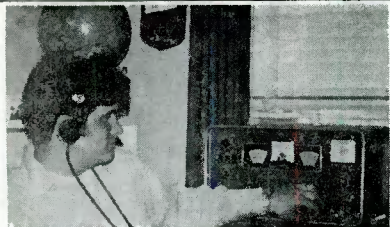
We apparently weren't very clear on the MID-MONTH FLASHSHEET subscription set up. There are two ways to get the mid-month FS. You can send an SASE (one at a time) OR subscribe (\$2 per year, \$2.36 AIRMAIL). Subscribers need not send SASE. DF

...Vy 73, AL

FRENDX FOTOS

Edward C. Shaw
EDITOR: FRENDX FOTOS
621 Burtleigh Avenue
Norfolk, Virginia 23505

SUBMIT CLEAR PHOTOS WITH DX BIOGRAPHY TO FRENDX FOTO EDITOR. NO PHOTOS RETURNED.

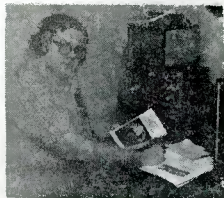


Dan Ferguson - NASWA's Executive Editor

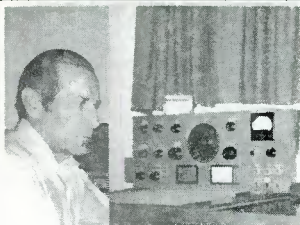
Here he is, folks - by popular demand! It has always been interesting how one person can picture another in his mind only to find the image vastly different when a picture or the real person is finally seen. Dan has been with NASWA a good number of years, first accepting responsibility of Log Report to provide renewed stability and accuracy after a shaky period when the former Log Report Editor, Del Hirst of Texas, retired ill.

Dan was pursuing graduate studies and teaching on the side in Miami all the while he managed Log Report, and where he also published the first of his acclaimed 60 meter surveys. Returning to home in Charleston, W. Va., Dan continued the excellent administration of Log Report and later, Listener's Notebook. NASWA's former Executive Editor, Bill Eddings, had suffered severe heart ailments with complications and in March 1972, Dan Ferguson accepted the publishing responsibilities from Ed Shaw, then temporarily publishing FRENDX by mimeograph method. The following summer, upon death of Bill Eddings, Dan also accepted the executive responsibility for NASWA, and our club continues to outshine all others. In the photo above, we see Dan testing a recently purchased HQ-145 (used) which backs up his Heath SB-310. In addition, he uses a Heath Scanalyzer to "see" signals on a scope. Although QSLs have been of only mild interest, Dan has logged approximately 180 countries and favors the 60 meter band DX. Dan is a devoted husband and father, active in church and on campus where he teaches math at Morris Harvey College. Member of several clubs, including one fraternity of exceptionally dedicated and experienced DXers, Dan is probably one of the few North American DXers who can tune a receiver left-handed while balancing a globe on his head.

Jerry's another long-time NASWA member - as far back as I can remember. During his hobby career, he has wrung some 275 QSLs out of 130 countries. We bet there are some tall tales you could tell us in those years of DX, Jer. Jerry works in the emergency room at a local hospital in his home town of Lawton, Oklahoma. His equipment includes the SX-190 and the DX-150B, as well as a 60 foot "V" antenna. Here we see Jerry in his shack corner with membership certificates proudly displayed. Jer, if I'm not mistaken, I believe I also see a PCL-P pre-amplifier, too. Right?



JERRY STUART



Bill Davis

Bill's first experience with DX fever came in the 1930's when he constructed his first shortwave receiver. First catch was W8XX (the SW relay of old KDKA - no?) A few years as a ham ended with WWII, and Bill took employment with the FBIS section of the FCC. This reacquaintance with DXing has stayed with him. All his receivers have been homebrew as the one pictured. Bill is 57, 'barely' retired, and lives with his wife near the Pacific coast south of Los Angeles. Bill's interest is currently with keeping track of Chinese and Russian home scees. We'll look for your meaningful contributions to Log Report and Short Wave Center, Bill.

Cam is a nineteen year old university student to get hooked on shortwave over at a friend's house who worked for CBC. He has logged 45 stations in the past eight months and although he has QSLed 31 countries, he expects to get them all. Cam uses a Hallicrafters S-120A and hopes to graduate to a bigger and better set one day. Favorite QSLs are Tashkent, FBEC, and Papua. Cam plays hockey, and may go Pro someday.



CAM BIRGE

**A Whole
New World
Could
Be Yours**

**HARMONIC
HUNTING**
with
HAUSER



Glenn Hauser
Box 62
Von Ormy TX 78073

attitudes are changing......but not fast enough to keep the NASWA Country List Committee from voting to exclude MW harmonics falling on SW frequencies (as may be announced elsewhere in this issue). This means such stations cannot be included in HIS totals, or in case a new country is involved, in HIC totals! Such harmonics have never been eligible for station and country totals in MW clubs since they, quite rightly, impose a frequency cutoff at the upper end of the MW band. MW harmonics cannot seriously be grouped with utility stations, so **WHAT ARE THEY?** We feel they should be welcomed into the SWEC fold. Since the CLC made its ruling without prior announcement to the membership, YOU may not have had the chance to express your opinion. Do YOU think it is fair to rule out this category of shortwave broadcasters (the unintentional ones)? The CLC has reversed itself on other matters, and it might do so again based on member response. Please express your views directly to CLC members for the benefit of their future deliberations!



Don Jensen (chairman), 5204 70th St., Kenosha WI 53140
Dan Ferguson, 1521 Smith Rd., Apt. 7, Charleston WV 25314
Gerry Dexter, RR4, Box 80-D, Lake Geneva WI 53147
Gregg Calkin (see QSL Report for latest change)
Jerry Berg, 38 Eastern Ave., Lexington MA 02173



"I've heard comments that your receiving antenna and receiver are somewhat 'detuned' to enable you to hear harmonics. I pass no judgement on this rumor, nor do I intend to give it any validity. To my way of thinking, that is one of the few possible explanations as to how one might hear the number of harmonics from domestics as you do, but I presume nothing. I hope that this is not the case, as many DXers who have already commented on the subject feel that such a practice is unethical. I would feel that such a judgement was prejudiced by their initial antagonism to the idea of harmonics which is a sort of puristic attitude on their parts." --Russ J. Edmunds, NRC Domestic DX Digest ed.

I can't imagine any of the few DXers who have actually visited my shack making such a statement (by the way, I enjoy visitors here near San Antonio; please write ahead for directions). Yes, it certainly would be unethical, and an exercise in futility to misadjust one's antenna or receiver so as to pick up the MW band in the 2 MHz area. I assure you that the harmonics I report involve no such hanky-panky. True harmonics always 'peak' at the same antenna trimmer setting as nearby fundamental stations, while images and mixing products peak at other points ('detuning'). Perhaps my 'secret' is an out-board 6BA6-amplified mechanical filter which not only increases selectivity greatly but boosts all signals several S-units. Some other DX receivers I've tried without this option seem quite a bit less sensitive. As for the proportion of domestic to foreign MW harmonics I hear, I think it is about what one would expect, balancing America's much tighter technical standards with the huge number of domestic stations. It's simple to tell whether a MW station heard in the 2-3 MHz area is a true harmonic or not. Check the corresponding MW fundamental frequency. Seldom is the station audible there at the same time as the harmonic, due to different propagation conditions. Even if you can hear the station on both frequencies, interference conditions should differ. Harmonics never suffer the jumble of QRM that plagues the MW band. The harmonic will have the same 'sound' on both frequencies only if your receiver is at fault. At local range, MW stations may overload your receiver even if they actually are putting out a bit of harmonic--making it hard to tell whether the signal is propagated or receiver generated. For this reason, local-area harmonic loggings should not be reported.

"What's the difference between an overtone and a harmonic?" One. That is, 'overtone,' a term found mostly in music calls twice the fundamental frequency the first overtone. In radio, twice the fundamental is the second harmonic--obviously a more convenient system.

EVERYONE who requested the harmonic bandscan offered in the March issue should now have received his copy. Thanks for your interest, and be sure to report your own harmonic DXing results!
...until the next, 73 de Glenn

Clandestine

Bulletin



REPORT ON CLANDESTINE, REVOLUTIONARY, PIRATE & ESPIONAGE RADIO & TV ACTIVITY

Larry Magne, PO Box 2133, Mid-City Station, Philadelphia PA 19103, Tel 215-FI5-7699
 Deadline: May 10

"U.S. IMPERIALISM IS UP IN ARMS TO DESTROY US, BUT WE SHALL KEEP OUR FISTS CLENCHED IN RESISTANCE!"

Hanoi? Peking? Havana?

Would you believe Philadelphia?

Yes, Philadelphia, Pennsylvania, home of supercop-mayor Frank Rizzo, law-and-order king of the East, is also home for the new "Radio Free Women", aired for 12 hours on International Women's Day, March 8, utilizing the facilities of non-commercial radio station WUHY-FM.

Although Radio Free Women covered all sorts of programming of interest to women's liberationists, it included revolutionary programming, such as "Triple Jeopardy", a program dealing with the problems of third-world women.

Among other things, "Triple Jeopardy" quoted Ho Chi Minh on women, the African National Congress (ANC) on South Africa, and played revolutionary songs and poems from China, North Korea, and North Vietnam. It summed its political philosophy as follows:

"The primary oppressor of women, as with all people, is capitalism and imperialism... Women in this country must become revolutionaries... The goal... must be total freedom to build a world-wide society predicated on the positive values of all human life -- free of all forms of capitalist exploitation."

Radio Free Women is now regularly aired twice weekly over WUHY, whose transmitter (11 kw ERP) site is in central Philadelphia, with studios in west Philadelphia. As of now, the schedule is:

2330-2400 GMT* Wednesdays 90.9 MHz VHF

1800-1830 GMT* Thursdays 90.9 MHz VHF

*Summer time, add one hour for winter time.

Requests for verification should be sent to: "Radio Free Women", c/o WUHY-FM, 4548 Market Street, Philadelphia PA 19139. Financial contributions are accepted at the same address.

BOOTING THE PORTUGUESE OUT OF AFRICA, PART II

ANGOLAN REVOLUTIONARY STATIONS

Last month, we detailed for you the new anti-Portuguese clandestine station, "Radio Liberation", dedicated to driving the Portuguese administrations from Guinea-Bissau and the Cape Verde Islands.

In order to round out the picture, here is a brief summary of the revolutionary radio operations beamed to another Portuguese colony -- Angola.

VOICE OF FIGHTING ANGOLA ("A Voz de Angola Combatente"), a/k/a VOICE OF ANGOLAN REV-

CLUTION ("A Voz da Revolucao Angolana"): This is the program -- regularly audible in North America -- of the Moscow-oriented "Popular Liberation Movement of Angola" (MPLA), which has offices in Lusaka, Zambia. It broadcasts daily in Portuguese and Angolan vernaculars, plus irregularly in French, to Angola via facilities of the Zambian Broadcasting Service ("Radio Zambia") and RTV Congolaise. The transmissions via RTV Congolaise started sometime before 1967.

Voice of Fighting Angola signs on with an orchestral anthem and signs off with a man giving martial orders, followed by a choral anthem without instrumental accompaniment.

The current schedule appears to be:

| | |
|-----------------------|---|
| 1800-1825* Not daily+ | 1475, 1520N, 3232, 4765, 4843N, 6114, 9715, 15190 kHz |
| 1915-1955**Sundays | 3346, 4965, 6165, 17890v kHz |
| 2015-2055***Mon-Fri | 3346, 4965, 6165, 17890v kHz |
| 2115-2155**Saturdays | 3346, 4965, 6165, 17890v kHz |

+Exact days not determined

*via RTV Congolaise

**via Radio Zambia

N=Pointe Noire relay, Congo

So far, the verification policy hasn't been determined, but you can try having your report forwarded via ZBS or RTVC.

VOICE OF FREE ANGOLA ("A Voz de Angola Livre"): This is the program of the Angolan Provisional Government-in-Exile (GRAE), which traditionally has been at odds with the MPLA (see above), but which is now working in loose confederation with it.

It has been broadcasting Monday through Saturday since 1967 via the facilities of the Voice of Zaire and Radio Lubumbashi. Listeners in North America should try the higher frequencies of the Voice of Zaire between 1930-2030 when African conditions are good. The complete schedule is:

| | | |
|-----------|----------------------------------|--|
| 1800-2000 | Portuguese, English & French | 4750 kHz (via R. Lubumbashi) |
| 1930-2030 | Portuguese & Angolan vernaculars | 692, 4880, 7115, 9770*, 11795, 15245v kHz & 90.0 MHz VHF |

*Irregular operation

The verification policy is unknown, but you can try having your report forwarded via the Voice of Zaire.

PAIGC REVOLUTIONARY STATIONS

As you saw last month in this column, the PAIGC is apparently operating a new clandestine station, "Radio Liberation".

Further checks tend to confirm the original suspicion that Radio Liberation is located in the Republic of Guinea, although this still remains an educated guess. However, the PAIGC does have a revolutionary broadcast emanating from Senegal three times a week via the facilities of Radio Senegal's National Network. Of course, this broadcast is beamed to Guinea-Bissau and the Cape Verde Islands, as are the broadcasts of Radio Liberation. The PAIGC/Senegal schedule is:

| | | |
|-----------|----------|---------------------|
| 2130-2145 | Tuesday | 764, 4890, 7170 kHz |
| 2135-2150 | Thursday | 764, 4890, 7170 kHz |
| 2105-2120 | Saturday | 764, 4890, 7170 kHz |

No verifications are known to exist, but you can try having your report forwarded via Radio Senegal.

Those who made this Africa section possible: BBC Monitoring Service, John Campbell, Don Jensen, Newsweek, SCDX, and the World Radio Bulletin. Merci!

NEW IRANIAN CLANDESTINE FIRES UP TRANSMITTER

On January 13, 1973, Ernie Behr of Ontario first traced a new Moscow-leaning pro-Communist Persian clandestine operating from 1445-1545 on 9555v. However, by late March the station could no longer be traced on that frequency, possibly due to co-channel interference.

On March 19, another Persian clandestine with a similar political orientation was first traced by the BBC Monitoring Service from 1500-1600 on 17720 kHz, claiming to be "the mouthpiece of all the toilers and strugglers from the various fraternal nationalities in Iran". Calling itself the "Voice of the United Front of the

Peoples of Iran", its broadcasts are anti-Shah and anti-Bhutto. Although the site has not as yet been determined, it very likely is in the USSR or one of its client states. The schedule, per the BBC Monitoring Service, follows, although reception has proven difficult due to the CRTF on the same channel.

1500-1520 Farsi 17720 kHz
 1520-1540 Arabic 17720 kHz
 1540-1600 Baluchi 17720 kHz

It identifies in Farsi (Persian), "Seda-ye Hebbe-ye Mottahed-e Melal-e Iran"; and in Arabic as "Saut Jebhat al-Qawmiyyat al-Muttahidah fi Iran" (meaning "Voice of the Front of the United Nationalities in Iran", a slightly different title than that given in Farsi). Because it is a new station, there has been as yet no chance to establish the verification policy. Nevertheless, it is unlikely that it will verify, even if an address for reports could be unearthed.

RADIO TANZANIA REVOLUTIONARY PROGRAMS REVISE SCHEDULES

According to the BBC Monitoring Service, the several revolutionary programs aired via the facilities of Radio Tanzania have new schedules. These changes are as follows:

| | | | |
|---|-----------|-----------------|-----------|
| <u>African National Congress (ANC):</u> | 1945-2000 | Sun/Mon/Wed/Fri | 15435 kHz |
| <u>Movement for the Liberation of the Comoro Islands (Molinnaco):</u> | 1815-1830 | Daily | 15345 kHz |
| <u>Front for the Liberation of Mozambique (Frelimo):</u> | 1830-1845 | Daily | 15435 kHz |
| <u>Pan-African Congress (PAC):</u> | 0515-0530 | Monday | 6105 kHz |
| | 1915-1930 | Sun/Tue/Thu/Sat | 15435 kHz |
| <u>South West African People's Organization (SWAPO):</u> | 0515-0530 | Sunday | 6105 kHz |
| | 1910-1930 | Monday | 15435 kHz |
| | 1915-1930 | Wed/Fri | 15435 kHz |
| | 1945-2000 | Tue/Thu/Sat | 15435 kHz |
| <u>Zimbabwe African National Union (ZANU):</u> | 1930-1945 | Sun/Mon/Wed/Fri | 15435 kHz |
| <u>Zimbabwe African People's Union (ZAPU):</u> | 1930-1945 | Tue/Thu/Sat | 15435 kHz |

VIETCONG'S "LIBERATION RADIO" FINAL SCHEDULE

Thanks to the BBC Monitoring Service, Bob Bundy, and John Campbell, we now have the final new Liberation Radio schedule, complete:

To Europe & North America:

| | | | |
|-----------|------------|---------------------------|-----|
| 1900-2000 | Vietnamese | 10010v*, 12115v, 14990v** | kHz |
| 2000-2030 | French | 10010v*, 12115v, 14990v** | kHz |
| 2030-2047 | English | 10010v*, 12115v, 14990v** | kHz |

*Winter frequency **Summer frequency

To Indochina:

| | | | | | |
|-----------|---------|---------------|-----------|------------|---------------|
| 2300-2330 | French | 7470v, 10010v | 1200-1230 | Vietnamese | 7470v, 10010v |
| 2330-2400 | English | 7470v, 10010v | 1230-1300 | English | 7470v, 10010v |
| 0400-0430 | Laotian | 7470v, 10010v | 1300-1330 | Laotian | 7470v, 10010v |
| 0430-0500 | Khmer | 7470v, 10010v | 1330-1400 | Khmer | 7470v, 10010v |
| 1100-1130 | English | 7470v, 10010v | 1400-1430 | French | 7470v, 10010v |
| 1130-1200 | Khmer | 7470v, 10010v | 1430-1500 | English | 7470v, 10010v |

Vietnamese Home Service:

| | | | |
|-----------|--------------|-----------|--------------|
| 2200-2400 | 7416, 10224v | 0700-0845 | Dictation- |
| 0330-0600 | 7416, 10224v | | speed news |
| | | 0845-0855 | 7416, 10224v |
| | | 0900-1700 | 7416, 10224v |

As of late, numerous DXers have received letter-type verifications from Liberation Radio, allegedly from "South Viet Nam". While this might seem, at first blush, to be a ruse, John Campbell reasons that the poor-quality paper and the lack of accents in the French-language verifications (some are in French, others are in English) makes "South Viet Nam" quite plausible, despite the fact they are post-marked from France. Of course, the transmitters are still located in North Vietnam.

U.S. PROTESTS "VOICE OF PALESTINE" BROADCAST

by Dusko Doder of The Washington Post
(via Al Sizer)

The United States lodged a stiff protest with the Algerian government April 11 over a radio broadcast emanating from Algiers which urged the Arabs to attack U.S. embassies and to "assassinate everyone who is American".

The highly inflammatory statement was made by the Voice of Palestine, a radio station located in Algeria and operated by Palestinians, in a broadcast beamed at the Middle East Tuesday night.

It was understood that the Administration has demanded that Algeria prevent recurrences of such broadcasts by the Palestinian radio.

The Palestinian broadcast, which was monitored here (by the F.B.I.S. - Ed.), accused U.S. intelligence of complicity in the Israeli raid on Palestinian guerrilla camps and offices in the Beirut region Tuesday.

"Masses of our Arab Nation," the broadcast said, "the American-Zionist alliance is like a dog going for the Arab Nation and planning to subjugate it to the Zionist will. For this reason, our Arab masses are required to strike everywhere at American interests and embassies and to kill and assassinate everyone who is American because all of them work in the service of American intelligence and the world colonial movement."

Well, given these sentiments, it is no wonder Voice of Palestine never verifies! However, for those who wish to hear these broadcasts firsthand in Arabic -- and they are easily audible via Algiers -- here is the schedule as of April, although it is due to change slightly in early May:

| | | |
|-----------|---------------|--|
| 1630-1730 | Radio Baghdad | 760, 7210 kHz |
| 1730-1930 | Radio Cairo | 872, 9755 kHz |
| 1830-1930 | RTVA, Algiers | 533, 548, 980, 9610, 11715, 11910, 11965, 15160, 15320, 15370v kHz |
| 0430-0530 | Dar'a, Syria | 928 kHz |
| 1300-1400 | Dar'a, Syria | 928 kHz |

As you probably know, this is the station of the Palestine Liberation Organization (PLO), with programs prepared in Beirut by the Al-Wafa Press Agency. The ID, in Arabic, is "Saut al-Filistina, Saut ath-Thowrah al-Filistiniyah" (i.e., "Voice of Palestine, Voice of the Palestinian Revolution"). It no longer signs on and off with "The East Is Red". Salaam!

VOICE OF PEACE, PART II

Further to last month's writeup in this column on the Voice of Peace, we are informed via Steve Bohac that NRC kingpin Gordon Nelson feels 1546 kHz is a frequency to watch in the next few weeks. If all goes according to plan, this station should be operating by the time you read this -- listen to "Sweden Calling DXers" for details.

One rub is that the recent Arab guerilla action on Cyprus may serve to jeopardize the chances of the Voice of Peace's using Cyprus as a resupply port. If this comes about, the operation will likely try and make do from canned provisions on board adequate to last several months.

NEW ESPIONAGE STATION -- RADIO DAMASCUS!

In the recent trial of six pro-Arab Israeli Jews for spying and sabotage, it was pointed out that these agents "gave information to Syrian intelligence, arranged to receive weapons and explosives that never arrived, and arranged to receive coded instructions via Radio Damascus and to transmit information."

This according to Moshe Brilliant, Tel Aviv correspondent for The New York Times.

RADIO VERONICA -- SON OF THE BEACH

On April 2, pop pirate "Radio Veronica", 557 kHz, was blown up on the Dutch beach of Scheveningen by a powerful hurricane. Dutch PIT officials have indicated they will not seize the ship and it is expected that it will return to the air in short order. Radio Nordsee International survived the big blow, however. (DSWCI)

LOG REPORT

NEW ADDRESS: NEW ADDRESS:

NOTE NEW ADDRESS: -- -- -- -- -->

NASWA LOG REPORT

M.R. LEONHARDT

P.O. BOX 13

LIBERTY, INDIANA 47353

DEADLINE: 12th of month:

FOUR "MUSTS" for LR Contributors: 1. Meet the deadline; 2. Arrange items in order of frequency; 3. Put your last name after EACH item; 4. Leave a line between items. You can also help improve the LR by including INTERESTING program data, and dates, especially for frequency variants or other unusual receptions. Thank you!

- 2060ht MEXICO dance mx, SS vocals segued to 0634 runoff, 0635* w/out anmt 3/20; typical distortion points to XELJ-1030 equipment test (Hauser)
- 2200h NICARAGUA is on EST now!--per "hora oficial" TCs on La Mdr 4/18 0220-0300*; "-- Musical" pgm but lots of DJ talk; "La Mdr en audiencia" 0239 2x1100 (Hauser)
- 2240h MEXICO Visiting Valles XETR-1120 harmonic much stronger than other locals (Hauser)
- 2346 RHODESIA RBC EE nx 0410 3/23, E (Henderson, NU)
- 2390 MEXICO XEJN R Huayacocotla 0155-0259* 3/13 lesson, record, partly SS, some not SS, 0208 ID; no Atitlán (strange for a Thursday -ed) (Ferguson, NU)
- 2446 REUNION ORTF really booming in *0239 3/19 (Hall, NU) 0230 3/28 ID, P (Shaw) hrd about 20 days during March (incl 3/32? hi? -ed) seldom G however (Heutte)
- 2679h MEXICO XEKL-1339½ harmonic found only SLP 2 MHz BCER during my visit (Hauser)
- 2940h GUATEMALA cf Apr LR only new 1470 stn 3/19 0335-0359* is in Santa Rosa Dept. (Hauser)
- 3204.5t INDONESIA (JAVA) RRI Bandung 1329 OM IL, 1343 ID?, chants 242 4/5 (Williams)
- 3204.5 NIGERIA NBC Ibadan 0600-0610 EE nx, R Nigeria ID, orch mx, G (Perry, NU)
- 3223t INDONESIA (LESSER SUNDA IS) RRI Mataram 1348 II tk, vocals, 1339 ID? RTTY (Williams)
- 3227 LIBERIA ELWA 0620 vern, Afr choral, drums, 0624 EE ID 3/23 221 (Williams)
- 3245 PAPUA R Kerema 1220 lang anmts, uke mx, ute QRM, G (Perry NU) 1230-1300* (Behr)
- 3250 SOUTH AFRICA Springbok 0015-0101 EE/AFK pops, TCs, RTTY F (D'Angelo) 0345 EE mx, ads, talk, heavy QRM, VP 3/24 (Lineback)
- 3255 VENEZUELA LV de El Tigre 0245-0300* SS mx, anmts, ID, freq, NA, P 3/27 (Lineback)
- 3260 NEM GUINEA R Madang 1230 mx, Pidgin to 1300* (Behr)
- 3265 MOZAMBIQUE ROM B px 0353 EE & PP tune, pops, ID on hour, 0402* (Perry NU)
- 3275nf GUYANA R Demerara 0100 EE pop mx 3/28 E local quality (Shaw) (last reported in Nov LR as temporarily inactive on 3265 -ed)
- 3275 VENEZUELA R Marra 0030 LA, US pops, CWQRM, F-G 3/9 (Herson) 0350-0357* SS, NA, heavy QRM, P 3/24 (Lineback)
- 3277t INDONESIA (JAVA) Djakarta 1408 M&W EE lessons, II anmts, 1426 "Studio Djakarta"; not //4805 1408-1430, 242 3/21 (Williams)
- 3286 PHILIPPINES PBS DUB4 1345 EE, lang pop mx, 1357 ID, Indo QRM 222 3/21 (Williams)
- 3290 GUYANA Action R 0000 EE pops, IDs, VG 3/17 (Herson)
- 3295 GHANA GEC local mx, talk, comtry 1803, EE, 333 (Wootten-Morocco)
- 3300 BURUNDI LV Revolution 2045 all FF OM, nat mx, humongous QRM! P 3/28 (Shaw)
- 3300 GRENADA R Grenada 2345 EE contry on air travel, "keep smiling" F 3/19 (Mayer)
- 3308t RHODESIA RBC 0405 t/in, man in EE, muffled, P (Perry NU) (nom 3306 -ed)
- 3316 SIERRA LEONE RSL 2300-2330* pops (Reeves) 0630 EE ID, tk, rock mx, P (Draut) 0640 spectacular level, lang talk (Perry NU) 0712 EE BBC nx, QRM, VP 3/18 (Herson)
- 3320 PERU cf Apr LR only LA audible here is R Estrella del Sur, Cañete w/many IDs and ads around 2330; no het (Perolo-Brazil) (was thought to be Ecuador -ed)
- 3325 ECUADOR Ondas Quevedeñas 0422 req mx, 0550 ID, 0612 t/o; few IDs 3/18 (Auchscherer)
- 3345.5 PHILIPPINES FEBC EE ID at 1430*, usual blocker Pontianak-3346 gone 3/9, F (Bundy) 1446 rel EE talk, 1500 ID, audible on LSB only 3/22 222 (Williams)
- 3346 ZAMBIA RZ Lusaka best ever 0310, EE man talk (Heutte)
- 3355 DOMINICAN REPUBLIC LV de La Romana 0415 light USA type mx, 232 3/17 (Ronda)
- 3365 DOMINICAN REPUBLIC R Exitos back after silence 0130 ID, G (Niblack, NU) 0000 instl mx, ID, F 3/19 (Mayer) 0030 LA mx, IDs, best station on 90m 3/9 (Herson) 0305, 0430-0440 SS ID w/freq, mx, F 3/12, 3/27 (Lineback) 0400 local mx, jingles 443 3/20 (Zilmer) 0430-0458 IDs, classical (7-ed) mx 353 3/27 (Nebron)
- 3366 GHANA GEC Comm Sce 0612 EE nx, 0614 ment Accra, QRM 242 3/22 (Williams)
- 3375 ANGOLA EO Luanda 2345-2400* PP OM nx, 2359 ID, AP, s/off, F 3/18 (Mayer)
- 3380 GUATEMALA R Chortis, Chiquimula *0300 (? -ed) SS anmt, mx, G (Treibel) 0405 local mx, talk, 322 3/20 (Zilmer)
- 3380 MALAWI MBC Blantyre 0405-0415 EE/lang nx, mx pops, P 3/27 (Lineback) 0355 M&W dialog, 0400 ID, nx, 0410 local mx, Chichewa, P 3/31 (Mayer) 0305 EE, Iris QRM, F (Heutte)

- 3385 GULIANA FRENCH ORTF 0900 FF ID "Ici Cayenne" F (Draut)
 3385 VENEZUELA YVQI R Barcelona 0355 SS talk 433 3/20 (Zilmer)
 3396 RHODESIA REC 0400 EE ID as R Rhodesia, EE nx E (Draut) 3395 0405 EE nx -0415, 0410 ID, 0420 lost to QRN, P 3/29 (Mayer)
 3560 KOREA NORTH Pyongyang 1405 FF talk, G 3/28 (Cabral)
 3668 TIMOR PORTUGUESE RT 1405 OM PP talk, some mx, F 3/24 (Cabral) ± 1111 PP OM talk traces, 111 3/23 (Gendron)
 3700mf CHINA RP 2015 Polish ex-3800, believe likewise other ex-3800 langs, P 3/9 (Bundy)
 3883 CABO VERDE ROCV 2340 PP mx, pop, QRN, G (Martin-UK)
 3910 CABO VERDE R Barlavento 2315 PP "I've Got Nothing to Show", CWQRN, G (Martin-UK) (cf 3930 where NA DXers hear it, as Shaw, overlooked in Apr LR, sorry! -ed)
 3915 MALAYSIA BRCFB 1500-1515 Radio Newsreel 454 3/30 (Nebron)
 3925 JAPAN JOZ 1445-1500 EE lesson, 454 3/20 (Nebron)
 3930 CABO VERDE R Barlavento 0044 'just out of reach', mx bits, hard to hold, lost or s/off 0100a. Someday... (Dexter) (assume your 3390 freq was typo, Cap'n -ed)
 3980ua ? lang, non-western mx, OM talk, ARO QRN 0425 3/10 (Herson)
 3990ua ? 0427 ID w/ship dinner gong, Morse V, 0430 EE nx, SSB slop, 0440 pop mx; damn mess, CW, ham hets, etc. VOA-Monrovia? not sked; 0500 gone, F (Brookwell-Mexico)
 3997 SOUTH AFRICA Springbok 0040, 0405 EE/AFK mx, ads, TC, 3/28, 3/12 F-G (Lineback) 0230-0300 slow mx, talks, over AROs, F 3/17 (Wiseberg)
 4157 BOLIVIA of Mar LR, Riberalta stn here is R Abaroa, not R Paraguaná; runs 300w since 1971 move from 4655, 120w (Perolo-Brazil, NU); Abaroa? so stressed (Hauser)
 4635 TADZHIK SSR Dushanbê 0008 RR piano, exercises, rainy (? -ed) 4/2 (Shaw)
 4679 ECUADOR R Nac Espejo 0430 LA mx, CWQRN, 0430 ID 3/17 (Herson) 4680, 0445 SS mx 3/17, 333 (Ronda) 0430-0440 talk, mx, many IDs, 353 4/8 on 4688 (Nebron)
 4700u ? 0933 nonstop oriental mx, no anmts, severe QRN, 1002 ID in SSB for "Station One" Washington, testing, 4/8 (Tuchscherer) (aero band so not VOA fixed -ed)
 4725 BURMA Rangoon 1350 talk, lang pop mx, G 3/23 (Cabral)
 4731 AZAD KASHMIR AKR 1345 talk, F, some QRN 3/27 (Cabral)
 4747 BRAZIL Emissora Acreana 1010 very blurred mx px to 1042 fade 3/12 (Field)
 4750t CHINA Urumchi 1207-1220 t/out M&W CG talk 3/13 (Tuchscherer)
 4755 BRAZIL Rdif do Maranhão supposed 0910 Braz mx, PP anmt, F-G w/hets (Reeves) 2330 long PP talk, ID, mx, P (Leonhardt)
 4766 BRAZIL R Soc Feira de Santana 2310-0030 ads, IDs, TCs, FF, mx (Reeves)
 4770 VENEZUELA R Bolívar 1000 SS nx, IDs, chime between items, P (Castello)
 4774 DOMINICAN REPUBLIC Onda Musical 0230 SS pops, comtry, ID, F-P 3/18 (Eichenhorn) 4775 0200 LA mx, ads, G (Ball) 0210 LA mx, SS IDs, 343 3/15 (Ronda) 0347-0435* LA mx, talk, IDs, NA, s/off, G 3/26 (Perdue)
 4775 AFGHANISTAN RA 1427 native mx, EE anmts 1428, 1430 lang, 232 4/4 (Williams)
 4777 GABON RTVC 2225 FF req px, Af, EE pop mx, 333 3/16 (Ronda) 2230 FF ID, QRN de Juticalpa (Alleman) ± 0435-0523 after Onda Musical s/off, YL ancr, AF mx, E but no ID hrd 3/26 (Perdue)
 4780 HONDURAS R Juticalpa 0315 ID, mx, SS talk (Leonhardt)
 4785t BRAZIL R Caiara 1000 mx px, 1040 fade, sked and f/out time fit 3/11 (Field)
 4785 PERU R Atlántida 0300 ID, SS nx, F (Leonhardt)
 4788 MALI R Mali, 0703 FF nx, G (Alleman) (cf Apr LR, varies to 4783 -ed)
 4790 ECUADOR Sistema Emisoras Atalaya 0105 clear ID, nx, mx, F (Leonhardt)
 4794v ECUADOR LV de los Carás 0520* late, VG (Alleman) 4795 0510-0517* Sun morn, full ID & off after Ec mx, no 500w (Reeves) 0404*, F (Leonhardt) (date? -ed)
 4795t BRAZIL R Tabajara 2230-2330 the usual; QRN, QSB, F (Reeves)
 4797 BOLIVIA R Nueva América 0405 Carás off; LA mx, M&W ancrs-0431 3/27 (Tuchscherer)
 4800 LESOTHO RL Maseru 0415 lang, F (Heutte) 0441 Afr chant, choral pieces, F 3/20, a socko night for Africans (Perry NU)
 4800 ECUADOR R Popular 0541 SS anmts, Ec mx, 0544 ID, TC, 3/22 (Williams)
 4800 VENEZUELA R Iara 0215 SS mx, IDs, noisy, 333 3/15 (Ronda) same P 0220 (Leonhardt)
 4802 CHINA Peking HSI 1537 t/in, severe ute QRN, P 3/9, moved over to give me a better shot at Hyderabad (Bundy-Truk) (Whom do you know? hi -ed)
 4804t INDONESIA (JAVA) RRI Djakarta 1545 II YL singing, 1500* sudden, 222 3/18 (Williams)
 4805t BRAZIL R Amazonas 0220 mx, perhaps PP anmts, fierce QRN 3/19 (Ronda)
 4810 VENEZUELA R Popular 0210 pops, G (Smallshaw)
 4820 HONDURAS LV Evangélica HRVE EE *0300, rel px, some QRN, G (Agner) 0345-0400 rel px, SS ID, 454 4/6 (Nebron) 0355 EE rel px, hymns, IDs 3/10 (Herson) 0430* EE ID and off, 232 3/18 (Ronda)
 4820 ECUADOR R Paz y Bien 0935 ID, 'música ecuatoriana' -1000 HRVC s/on 3/12 (Field)

- 4820 GAMBIA R Gambia 2228-2235 mx, ID, on late (Alleman) 2245* w/full ID, NA after
rel px 3/25 (Herson) 2300* EE 3/17 (Field) OM lang talk, YL EE closing on freqs
4820 and 94.1, NA, 2300* P (Leonhardt) 0702 EE nx, F (Peters)
- 4822t INDONESIA (KALIHANTAN) RRI Pontianak 1432 Indian type mx, Indo anmts, Djakarta
ment, 1458 RRI ID, 242 4/5 (Williams)
- 4825t BRAZIL R Educadora de Parnaiba 0906 mx px, fits WRTVH sked 3/17 (Field)
- 4825 DOMINICAN REPUBLIC LV Fuerzas Armadas 0400 LA mx, ID after every song, QRM
3/10 (Herson) not hrd recently but something is on freq (Reeves)
- 4825 ECUADOR Enisora Cultural Luz y Vida, Andean mx, YL anmts to 0838* abrupt; on
late for local carnival 3/4, G (Calkin)
- 4825 VIETNAM NORTH Hanoi HS, YL in VV 2158, 2200 ID "Dai la Dai tieng noi Viet-Nam,
phat-thanh to-Hanoi", 2215 quick fade, 3/8 & 3/19 (Alleman) (fine polar twillite
zone QSP: I improved your spelling but is not yet fully correct -ed)
- 4830 VENEZUELA R Tachira reactivated; last reported May 72 LR; 0201-0210 IDs, AST,
"37 años de la canción bolero ranchero", G 4/18 (Hauser) u Mexican? 0030-0200
hvy QRM de R Capital, ID seemed "R Visibilidad", typical Mex mx 4/5 (Shaw)
- 4832 COSTA RICA R Capital 0025 fiesta mx, equally strong but noisy at 0620 (Martin-
UK) 0440 SS nx, TC, ID, P (Castello) 0515 SS, LA mx, IDs, F (Birge, Alleman)
- 4833t CHINA Shenyang 1149 CC dialog M2W, 1200 mx, more -1203 t/out 3/13 (Tuchscherer)
- 4839 ZAIRE R Bukavu 0511 FF u/R Valera (Alleman)
- 4840 INDONESIA (MOLUKKAS) Ambon 1155-1330 choral, OM II anmts, G-VG (Treibel)
- 4840 VENEZUELA R Valera 0510-0515 SS mx, IDs (Alleman)
- 4840t ? If no one else reports this, perhaps is my first rx problem, but BEC AA again
0410-0450 fade; feed or harmonic? (Reeves) (cf Apr LR; no likely fundamental -ed)
- 4845 BOTSWANA R Botswana *0400, rel px (Field) 0407 3/23 E (Henderson NU) 0410 best
over, EE nx, cntry (Heutte) (date?-ed) 0415 vern YL talk, 0418 local mx, 0430
EE ID, F-P 3/27 (Mayer) ± 0408-0420 EE/lang nx tk, hvy QRM, VP 3/24 (Lineback)
- 4845 BRAZIL R Teresina 0320 LA mx, 0348 ute, P 3/27 (Tuchscherer) later than usual
3/28 w/mx px to 0400* (Field)
- 4850 MAURITANIA RNM Nouakchott 2210 slow rhythm guitar mx, ute QRM (Martin-UK) 2215
AA chanting (Alleman) chanting, AA anmt, NA, 2232* P (Leonhardt) 2250-AA chants
2301 ID, NA, off, F (Mayer) irregular s/off, today 2302* (Reeves) (what day? -ed)
*0700 IS, FF s/on, chants, F (Draut) ± 0705-0738 AA chants, BIG sig 3/27 (Perdue)
- 4850 UZBEK SSR Tashkent 0023-0030 exercise, piano, 0030 maybe nx, G (Niblack NU)
- 4855 BRAZIL Rdf Taubaté 0035 mx px, P 3/23 (Field)
- 4855 MOGAMBIQUE RCM "A" px PP mx, chimes, 2/21 lite ute CCI, G (Calkin) (no time -ed)
- 4860 VENEZUELA R Maracaibo 0145 LA mx, fast tempo G 3/22 (Mayer) 0230 SS ID, 243 3/16
(Ronda) 0350 LA pop, E 3/10 (Herson) 0335-0400* plug R Rumbos, G 3/26 (Perdue)
- 4865 AÇORES Em Regional 2213 PP tk, mx; mis-IDed as Em Oficial Angola Feb LR (Alleman)
- 4865 MOGAMBIQUE RCM 1910 FF OM rather vehement nx, noisy (Martin-UK) (sked Ronga or
Shangane at this time, not FF -ed)
- 4865t CHINA Lanchow 1153-1202 CC talk, mx bits 4/1 (Tuchscherer)
- 4867 COLOMBIA LV del Cinaruco, 0720 Fiesta px on late 3/25 (Padula-Australia)
- 4870 ECUADOR R Rfo Amazonas 1110-1130 Indian rel px, F (Smallshaw)
- 4871 DAHOMEY Cotonou 2210-2215 FF, P (Alleman) 4870 watch for late px 2210-2301* on
a Fri, then a Thurs; FF pops and talk, IDs, TCs, off w/NA (Reeves)
- 4875 SOUTH AFRICA SABC 0410 Afrikaans tk re golden Delicious apples, P 3/15 (Eichenhorn)
0430 Afk mx, talk, super strength like DW maybe! (Heutte)
- 4875 BOLIVIA La Cruz del Sur 1010 Indian px, G, QSLed (Smallshaw)
- 4875 BRAZIL R Jornal do Brasil 0235 PP anmts, 222 3/15 (Ronda)
- 4880 DOMINICAN REPUBLIC R Comercial 0420 LA mx, SS ads, talk, F 3/13 (Perdue) (cf 4881)
- 4880 VENEZUELA R Universo 2240 SS canciones, het, P (Martin-UK) 2300 ID, G (Agner)
0350-0358* LA mx, NA 3/10 (Tuchscherer)
- 4881t DOMINICAN REPUBLIC R Comercial 0501 ID, ad (Alleman) (oops; cf 4880 -ed)
- 4885 COLOMBIA Ondas del Meta 0230 SS talk, music ID, P (Leonhardt) 0500 Todelar ID
(Alleman)
- 4890 SARAWAK Kuching 1215 MM cuntry by 2 OMs, chants, G (Treibel)
- 4890 PAPUA ABC VLT4 1100 EE nx, pop mx, G (Birge) 1245-1250 EE class mx, F (Lineback)
- 4890 SENEGAL Dakar 0700 FF nx, F (Ball)
- 4890 VENEZUELA Rdf Venezuela 0330 SS nx (Alleman)
- 4891 MOGAMBIQUE Beira RCM 0420 orch mx, gongs, 0429 drums, PP, Afr mx P-F 3/20 (Perry,
NU) 4890 0415-0420 PP mx, pops, ID, P 3/27 (Lineback)
- 4896 ANGOLA Cf Apr LR 2230 horrible QRM mess, 2259 AP NA 3/13; prob. RC B16 but by
2300 Baré dominated (Hall, NU) Lower quarter compilation by Glenn Hauser; 73!

- 4840 BFC QSLed for the station here, which turns out to be a suppressed-carrier (DSB) relay, probably a low-power Mediterranean xmtr (Reeves) FB, Scottt
- 4900 INDONESIA BRI-Gorontalo weak but clear at 1325 with native mx (Treibel)
- 4905 CHAD RMT at 2147-2230 in FF, often runs late now (Alleman, Heutte, Reeves)
- 4905 COLOMBIA Em Atlantico good at 0344 with dance mx, TCs, anmts (Calkin)
- 4907 KHEHEHE REP RNK fair-exc at 1400-1530 with local mx and talks (Cabral, Williams)
- 4910 GUINEA Conakry exc at 0540 with string mx (Reeves)
- 4910 VENEZUELA R Carora strong at 0115 with ads, IDs, freqs; het (Martin-Eu)
- 4911t ZAMBIA Lusaka poor with dialect and local mx at 0504-0525 (Perdue)
- 4911v DOMINICAN REP R HIN at 0000-0500*, though often runs all night; good-exc with LA mx, IDs, report requests, also IDs as Q-M Radio (Ball, Herson, Padula, Castello, Dexter, Calkin)
- 4915 GHANA Accra good at 0610 with EE nx (Perdue) EE nx here too 0605; very unusual for this time in the year; usually only in mid-winter (Padula-Pac)
- 4916 COLOMBIA R Guatapurí good at 0340-0456* with LA mx, ads (Alleman, Herson)
- 4917 MANCHURIA Ha-erh-pin dual 5950 with mx, EIR at 1230, good (Treibel)
- 4920 AUSTRALIA VLM4 fair with orchestra mx, EE at 1240-1245 (Lineback)
- 4920 HONDURAS R Progreso at 0000-0430 with mx, IDs, talks, ads, fair-good (Alleman, Herson, Eichenhorn, Koziomkowski, Lineback, Martin, Perdue)
- 4923 MOZAMBIQUE RCM weak at 0340 with musical program (Field)
- 4925 BRASIL Unid at 2320; heavy fade, vocals, TCs, IDs in network (Reeves)
- 4926 EQUATORIAL GUINEA R Bata at *0433 weak in SS (Field) * Herson
- 4930 DOMINICAN REP R Mil good at 0335-0500* with LA mx, ads, IDs (Guarducci, *)
- 4932 INDONESIA BRI*Surakarta at 1240-1300 in native mx, IS, nx (Smallshaw, Treibel)
- 4935 MARTINIQUE cf APRIL LR: the utility stn here QSLed quickly, but they said that they require no further reports (Lohe) FB, Ernie!
- 4937 ANGOLA R Clube do Lobito at 2220-2301* with mx, IDs, TCs on 4-17 (Reeves)
- 4939 ECUADOR R Nac with mx, SS at 0430-0500* (Calkin, Guarducci, Ronda, Tuchscherer)
- 4940 IVORY COAST Abidjan good in FF with local mx at 2300 dual 11920 (Zilmer) On 4938v at 2220 (Alleman)
- 4940 ASIATIC RSEFR R Yakutsk dual 5015 at 0907 but splitting at 0910 (Hauser) 1300-1330 local RR pgm, then Moscow relay; said "22 hours" at 1300 (Behr)
- 4940 VENEZUELA R Yacarauc fair with het at 0330, fair to good; pops (Herson)
- 4945 COLOMBIA R Colosal at 0100-0650 with SS (Castello, Eichenhorn, Estes, Herson)
- 4945 SOUTH AFRICA Springbok R at 2230 with nx and mx, EE/Afr (Alleman, Ball)
- 4955 COLOMBIA R Nac at 0330-0410* with classical mx, SS ID, NA, exc (Ball)
- 4960 ECUADOR R Federacion fair-good at 0130 with SS IDs, LA mx (Barto)
- 4960 VENEZUELA R Sucre; strong, more power?-2330-0405* with mx, Rumbos net (Reeves)
- 4965 COLOMBIA R Santa Fé at 0430-0800 with many IDs, mx, TCs (Ball, Birge, Nebron)
- 4965 SOUTH AFRICA R South Africa fair with EE farm nx, wx, mix Santa Fe (Perdue)
- 4970 VENEZUELA R Rumbos good at 0300 with SS ID, mx, talk (Draut)
- 4972.5 CAMEROUN R Yaoundé at 2200 with FF nx (Alleman)
- 4972v FRENCH GUIANA Cayenne seems to run to 0141* now, FF, light mx, good (Reeves)
- 4980 GHANA Ejura good with EE nx, ads, QRM at 0600 (Perdue) 2300 with EE ID and religious program (Ronda) Neal, you sure about that calibration? FH
- 4980 VENEZUELA Ecos del Torbes at 2235-0400* with SS IDs, ads, mx (Estes, Perdue)
- 4985t MALAYSIA RM poor with nx, ads in EE at 1200 (Castello)
- 4990 CHINA Assume Changsha poor with opera, man & woman ancrs (Treibel) 1200
- 4995 BRASIL R Brasil Central good in FF at 0000-0130 (Draut, Herson, Lineback)
- 5000t NEPAL Kathmandu weak in language, mx, 1415-1515 (Cabral, Williams)
- 5005NF CHINA China Press Agency with YL in dictation nx, fair at 1600 (Bundy-Pac)
- 5010 DOMINICAN REP R Cristal good with IDs, mx, talks 0100-0300 (Koziomkowski, Mayer)
- 5015 BRASIL Rdif de Poços de Caldas with musical program at 2345 (Field)
- 5015 WINDWARD ISLANDS R Grenada with BEC nx, EE anmts, stock market, local mx, at 2235-2340 (Agner, Alleman, Martin-Eu)
- 5025 BRASIL Unid with sung aguardente ad, flat chime, AST TC 0912 (Hauser)
- 5030 CHINA RP EE at 1605, formerly Urdm this time per BEC MS (Bundy-Pac)
- 5030 VENEZUELA R Continente good at 0040-0415 with mx, chimes (Martin-Eu, Nebron)
- 5035 BRASIL R Anhanguera good with ads at 0919 (Hauser)
- 5035 COLOMBIA LV de Caqueta active during Easter season, mx, talks, quite strong and little QRM; 24-hour sked but only active on holidays (Heutte, Reeves)
- 5038 CENTRAL AFRICAN REP Bangui poor at 0500-0540 with mx, talks in FF and a/Her-lang (Lineback) 2215-2259* in FF with mx, ID, NA at close (Alleman, Ball, son)

- 5039 SUDAN Omdurman good with AA chants 0435 (Heutte) 2115 AA talk (Martin-Eu)
 5040 BURMA BBS good at 1230 with Burmese rx read by a TL (Smallshaw)
 5040 Unid at 0503-0525 with rel. pgms, prayers, Afr chants, songs, fair (Perdue)
 5041 PORTUGUESE GUINEA Emissora Oficial fair at 0800-0930 in PP (Draut, Reeves)
 5042 PERU R Libertad de Junin fair with SS ID and mx at 0419 (Heutte)
 5045 PERU Unid at 0245-0350 with Andean mx, nx, LA tunes, amnts mentioning both
 La Convención and Quillabamba; QRN and het pretty bad (Schnabel)
 5047 TOGO Lomé at *0530-0630 with IS, ID, mx, Afr and classical mx (Herson,
 Lineback) 2245-2300* with FF amnts, EE pops, nx, NA, then off, fair (Ronda)
 5050 TANZANIA Dar-es-Salaam good after 0400 with language talks and chants; may
 have recently been reactivated during this time period (Field, Heutte)
 5050 VENEZUELA R Mundial exc at 2330-0400* with no ute QRN (Reeves)
 5055 Unid in lang on 19 Mar, very weak at 0400 (Field)
 5060t VENEZUELA R Litoral very poor, no ID heard; 0135 with LA mx, SS (Herson)
 5060.5 ANGOLA R Clube de Huambo good at 2215-2300* with quiet mx, amnts (Reeves)
 5075 COLOMBIA R Sutatenza at 0330-0359* with Mundo Noticias, ID, NA, off (Ball)
 5200 CHINA Fukien Front at 1642 dual 3900 etc; perhaps 2x2600.intentional?(Bundy)
 5273 PARAGUAY R Nac good until covered by ute at 0045, talks in SS (Herson)
 5568 COLOMBIA Ecos de Puerto Martínez, 150 watts, town is 150 miles up a river
 and accesible only by canoe; heard regularly around 0100-0300 though sign
 off is extremely variable; LA mx and amnts (Dexter, Hauser, Heutte, Lineback,
 Tuchscherer) The pilots must be tearing their hair over this one; Don Jensen
 has a QSL so it can be reached by mail (albeit wet from canoe trip!) FH
 5804 YEMEN R Sana poor at 0345-0415 with AA chants, talks, mx at 0400 (Wiseberg)
 5870 NORTH KOREA KCBS presumed at 1053 with KK vocals; believe *1330 (Mundy-Pac)
 5875 HONDURAS LV de Honduras poor at 0345 with SS sports, mx, QRN (Estes, Herson)
 5914v USSR Majak and RS Rodina pgms at 2320-0000 in RR, mx (Reeves)
 5930 CZECHOSLOVAKIA R Prague at *0100-0155* and *0300-0355* in EE with nx,
 commentary, features, mx (Custodio, Fino)
 5935 TIBET Lhasa good in lang at 1315 (Cabral)
 5950 MANCHURIA Ha-erh-pin with revolutionary-type choral mx at 0935 (Shaw)
 5950 NETHERLANDS RNL with His & Hers at 2200 (Dolyak) Are you sure about this fqp
 5951 PERU R Arequipa weak at 0215 with SS ads and singing (Heutte)
 5955 PERU Unid at 0945-1000 with martial and Andean mx, SS nx, could swear said
 Arequipa (freq correct), commercials, Indian langs to 1015 (Shaw) Huancayo?
 5955 GUATEMALA fair at 0310-0345 with EE rel pgms (Fino, Herson) IGNA at 1100 with
 mx (Reeves)
 5960 CANADA RCJ Northern Svc in EE, FF and Eskimo at 0330-0350, mx, good (Fino)
 EE mx and mx at 0200-0215 (Nebron)
 5960 FRANCE ORTF with variety mx, bulletins in SS at 2235-2252 (Tuchscherer)
 5965 ENGLAND BBC exc with RR at *0345, dual with 6195 (Alleman)
 5966-5975 DOMINICAN REP RTV Dominicana having slight (ahem!) xmr troubles at
 2355-0400 and *1000; often jumps 5 kHz abruptly (Reeves) Slightly variable!
 5970 GERMAN FEDERAL REP RFE at 0010-0030 with Euro langs, rock mx; letterbox in
 accented EE, dual 5985 (Reeves) RFE in EE? That's new to me! FH
 5976.5 PARAGUAY R Guairá mixing with R Guaraja at 1030; pops and SS amnts, het(Shaw)
 5980 EL SALVADOR R Nac at 2230-0445 with SS, sports, mx (Herson, Koziomkowski, Per-
 ARGENTINA R Splendid at 0000 and 0910-1030 with nx, mx, IDs, call (due)
 letters, música popular; better in morning (Field, Lohe, Reeves) Smallshaw
 5985 TANZANIA Dar-es-Salaam at *0300 with IS, anthem, ID, chants (Alleman, Draut/
 5995 MALI Bamako good with FF, vernaculare, drum mx at 2145 (Peters) t 2320-0000*
 with African mx, signed off with march mx; wiped out at 0000 by VR (Perdue)
 5990 JAPAN NHK GOS exc with EE cmtry at 1017 (Perdue) 1200 ES nx (Leonhardt,
 5995 MALI Bamako heard at 2230 and 0730 (Wiseberg) Sorry about mixup /Peters)
 6005 CANADA CFCX heard at 1719 with man talking on phone, poor (Eichenhorn)
 6008 COSTA RICA R Reloj exc at 1110 with SS, ID (Lineback)
 6010v BOLIVIA R Progreso exc at 1015-1030 with SS ID, mx, talks (Lohe)
 6010 VENEZUELA R Los Andes presumed, only 'Merida' hrd; 1100 mx, ads (Field)
 6015 COLOMBIA R Mira very weak at 1108 with SS ID and mx (Field)
 6015 DODCANESE VOA-Rhodes at 2330-0000* in EE with jazz, talks, ID (Wiseberg)
 6020 COLOMBIA LV de Colombia good at 0100 with SS mx and amnts (Agner)
 6025 PORTUGAL RP good with EE at 0200-0245 and 0400 with nx, letters, mx, IDs,
 contest amnt (Custodio, Eichenhorn, Koziomkowski, Perdue, Schwartz)

- 6025 BRASIL Emissora Pirahininga at 0835 with evangelist in PP with a Texas accent (a rather unusual combination, hll)(Hauser, Reeves)
- 6030NF FRANCE ORTF Fair-good at 0525 in EE, 0545 in FF, news (Perdue, Tuchscherer)
- 6035 BRASIL R Globo at 0115 with woman ancr in PP, classical mx, fair (Mayer)
- 6040 COLOMBIA La Voz del Tolima at 0100-0400* with mx, ads, IDs; Deutsche Welle wipes them out around 0126-0250 (Lohe, Herson) 1115 with talk (Lineback)
- 6045 PERU R Santa Rosa weak with talking, perhaps nx, at 0000 (Field)
- 6045 INDONESIA RRI-Djakarta at 1245-1315 with Indon mx, nx (Smallshaw, Tuchscherer)
- 6045 MEXICO XEQOC R Universidad, San Luis Potosí, says SW xmtr removed after it fell apart but another one is on order (Hauser, visiting the station) Wise-
- 6050 ECUADOR HCJB good-exc at 2300-0350 in SS with IDs, rel pgms (Castello, Berg)
- 6050 UZBEK SSR R Tashkent good at 1400 in EE with cmtry (Birge) 6025, no? FH
- 6055 BRASIL R Panamericana good at 0030 with PP mx, talks, ads (Lohe) Very good!
- 6055 RWANDA Kigali good with singing, FF woman at 0419 (Heutte) t at 0409-0430 with African choral mx, chants, FF or dialects, FF nx 0430; poor (Perdue)
- 6065 BRASIL R Nac all night with PP pops, anmts, IDs, good-exc, no R Super (Lohe)
- 6065 COLOMBIA R Super good at 0526 on 6064 (Alleman) 1030 LA pgms (Smallshaw)
- 6065 SPAIN RNE at *0100 and *0300 with EE nx, talks, mx, IDs, dual 11925 (Archard, Geir, Perdue, Schwartz)
- 6070 CANADA CFRX (though usually IDs as CFRB) with usual EE variety pgm: 0140 (Archard) 0300 (Estes) 0606 (Castello) 0700 (Perdue)
- 6070 CANADA RCI at 1250 with talk on food boycott (Eichenhorn) Sure abt freq? FH
- 6070 INDONESIA RRI-Djajapura clear around 0830-0900 if CFRX is blocked (Trébal)
- 6070 VENEZUELA R San Sebastián recently reactivated, heard around 0900-1300 and 2200-0400*, also IDs as R Confirmación Musical (does that mean Western Union will deliver your QSL by singing telegram? FH) SS IDs, ads, mx, TCS, sorta steps on CFRX (Barto, Field, Heutte, Leonhardt, Lohe, Miller, Reeves)
- 6075 AUSTRALIA RA poor at *2130 after IS with EE ID, fade out, new? (Shaw)
- 6080 ENGLAND VOA-Woolferton at *0530 in Czech (Alleman)
- 6080 SOUTH AFRICA R RSA at 0000-0015 with EE xmsn; Afrikaans by Radio (Schwartz)
- 6085 BRASIL R Jornal do Comercio good with talk in PP at 0045 (Zilmer)
- 6085 CANADA Deutsche Welle and RCI; at 0150-0205 (Mayer)-Sorry, CM, your writing
- 6085 COLOMBIA Ondas del Darien, Turbo, exc at 1045 (Calkin) vy difficult to read.
- 6085 GERMAN FEDERAL REP DMR34 with light mx, GG talk at 0636-0645 (Tuchscherer)
- 6085Z TAIPE R Kisangani with African mx, some FF at 0415-0450 (Field, Hauser)
- 6090 LUXEMBOURG RLI in GG, DD, EE at 2350-0100 with nx, IDs, anmts, rock mx, ads for AFAL gasoline (Eichenhorn, Geir, Schwartz) *0445 GG, unsked (Lineback)
- 6090 MEXICO XECMT, Ciudad Mante Tamps, assures return to SW when they deliver 833 final ordered from USA (Hauser, visiting XECMT)
- 6090 NIGERIA RTV Kaduna at *0430-0530 with lang, drums, IDs, call to morning prayer, nx in ESat 0500, cmtry (Lineback, Reeves)
- 6095 BRASIL R Tupi at 0000 with PP mx, talk (Zilmer) 0900-0930 anmts (Lohe)
- 6095 COLOMBIA La Voz del Centro at 0100-0450 with SS IDs, ads, LA vocals, talks; fair-good (Lineback, Lohe) 1040 La Hora Super pgm which R Super used to carry (Lohe) Speaking of which, has R Super been active recently?
- 6095 IRAQ R Baghdad good in AA at 2130-2330* ,chants, talks (Alleman, Wiseberg)
- 6097 SOMALILAND Mogadishu at 2305-2350* with chanting; QRM from Maidugari (Field)
- 6100 CHILE R Calama at 1030 with several IDs, musical pgm (Field)
- 6100 NIGERIA NBC-Maidugari at 2205-2305* with mx, nx, anmts in EE, lang (Field)
- 6100 RSPSR ASIATIC Vladivostok 11sted; 0845 JJ talk per sked, mixing YVTO (Hauser)
- 6105 MEXICO Sistema R Yucatan at 0215-0400 with US rock mx, anmts, IDs, TCS, ads, nx (Leonhardt, Lineback, Lohe) 1247 with nx and cmtry pgm (Smallshaw)
- 6115 CONGO RTVC sudden *0451 with dialect nx and FF, exc (Lohe) 0600 with FF nx; again unusual; normally heard this time slot only in mid-winter (Bundy-Pac)
- 6115 PERU R Union at 0348-0415 with SS IDs, classical and LA mx (Barto)
- 6120 VENEZUELA R Angostura at *0905-1030 with SS IDs, mx, ads (Lohe, Reeves) 6119
- 6120 ARGENTINA R El Mundo at 0415 with SS IDs, LA and US pops, QRM (Herson)
- 6125 BRASIL R Nac São Paulo fair with PP talks, mx, ads, IDs at 2300-2315(Perdue)
- 6125RF GERMAN DEMOCRATIC REP RBI at 0446-0500*; unlist at this time but dominating frequency with talk, time checks, popular songs, progrom preview (Rakow)
- 6125 HONDURAS R Suyapa at 0115 good with mx, anmts and regular clue: La Cariñosa de la hora; frequent TCS (Calkin) 1055-1105 with IDs, mx, TC, QRM (Lohe)
- 6130 CANADA CFMX at 2215 with EE ads, mx, IDs (Mayer)

- 6130 GHANA RG at 2135 with EE mx about Africa and African mx, fair (Archard)
 6135 POLAND PR fair with EE cmtry, talk, news, ID at 0333 (Koziomkowski)
 6142 COLOMBIA R El Sol good-exc at 0300-0700 with SS mx, anmts, IDs, TODELAR net (Agner, Calkin, Alleman, Eichenhorn, Lohe, Perdue, Smallshaw)
 6144 NIGERIA NBC-Calabar at 2230-2304* with EE, mx, mx at 2300 (Archard, Leonhardt)
 6145 GERMAN FEDERAL REP DW poor at 0435 with EE mx, cmtry (Castello)
 6147 HAITI R Citadelle exc at 0045-0130 with LA mx, FF mx, IDs (Reeves)
 6150 CHILE LV de Chile fair at 0150 with SS talk by man, TC, ID (Williams)
 6150 COSTA RICA R Atenea at 0345-0430* and 0910-1010 with SS anmts, IDs, IA mx, Volvo ads (Lohe, Tuchscherer, Smallshaw, Reeves)
 6153 Unid with pop mx, EE talk, poor; DW off (Perdue) Maybe Swazi off freq? FH
 6155 AUSTRIA ORF at 2355-0105, 0220-0230, GG nx, mx, ID (Schwartz) 0331 in EE with mx (Koziomkowski) *0455-0500 in GG with IS and sign on (Perdue)
 6155 JAPAN FEN 'Late Report' fair at 1300 (Smallshaw)
 6155 USSR RM IS, talk with man and woman ancrs, light and piano mx (Tuchscherer)
 6159 VENEZUELA R Canaima at 0930-1040 with SS, Rumbos net (Barto, Tuchscherer, Smallshaw, Reeves)
 6160 COLOMBIA Em Nueva Granada at 0400-0850 with LA mx, ads, IDs in /Reeves)
 6160 GREECE VOA-Thessaloniki at 2130-2200 in EE (Alleman) /Wiseberg, Zilmer)
 6160 HUNGARY R Budapest good at 0315 with EE pgm; Slavic mx (Custodio)
 6165 MEXICO LV de la América Latina good at 0430 with mx and ad for TV (Calkin)
 6165 SPAIN RNE good at 0205-0235 with ID, nx, mx (Schwartz)
 6165RF SWEDEN RS at 0000-0100 in SS, EE; 11,795 didn't work out (Agner, Zilmer)
 6165 SWITZERLAND SBC good in EE at 0710 (Eichenhorn-Venezuela)
 6165t USSR RM or R Kiev at 2130-2205 in GG (Schwartz)
 6169.5 FRENCH GUIANA Cayenne exc in FF at 0950-1010; not on 3385 (Lohe, Reeves)
 6170 GERMAN FEDERAL REP Cf April LR, this is R Liberty-Lamperthem (Foxy)
 6170 VOA Jazz Hour at 1215 (Dolyak)
 6170 VENEZUELA R Nac at 2300-0455* and 1105-1215, again active with mx, TCs, IDs, last YV to fade in the morning; ex-11725? (Calkin, Dexter, Heutte, Reeves)
 6175 BRASIL R Guarani fair at 2355 with PP talk (Zilmer)
 6175 FRANCE ORTF at 2145 with France Inter relay (Alleman)
 6175 MALAYSIA RM at 1145-1245 with local mx (Gendron, Smallshaw)
 6175 PERU R Tahuantisqyp good at 1030-1130 with mx and SS ID (Field)
 6180 GUATEMALA LV de Guatemala with mx, ID and call letters at 0230 (Field)
 6180 VENEZUELA R Turismo at 1015-1030 with mx, several IDs, VOA QRM 1030 (Field)
 6185 GERMAN FEDERAL REP DW in GG at 0600-0615, dual 6100 6155 (Schwartz)
 6185 Unid USB stn with PP anmts, IDs, US pops at 2150-2250, cf March LR (Reeves)
 6190 GERMAN FEDERAL REP Sender Preies Berlin fair with GG at 2133 (Wootten-Mor)
 6195 BRASIL Em Continental fair with Portuguese nx at 0345 (Heutte) 0849 with mx program on Mar 7 only (Field)
 6195RF ENGLAND BBC with IS, *0345 in RR, dual 5965 (Alleman, Estes)
 6195 NETHERLANDS RNL with DD nx to Eu at 0805; additional fq this time (Bundy-Pac)
 6195 NIGERIA NBC-Sokoto good at 0430 with West African chants, EE nx; no Radio South Africa (Reeves)
 6195 TUNISIA RTV Tunisienne fair-poor with AA chants, talk at 2230 (Mayer)
 6200 ALBANIA R Tirana good with EE commentary at 0245 (Custodio)
 6240 CLANDESTINE R Liberdade fair-exc at 2130-2300* with highlife mx, talks in PP and dialects by a woman and man, IDs (Dexter, Heutte, Lohe, Reeves)

March was, I am afraid, a rather slow month for DXing. In the past couple of weeks here in April, there has been another (the fourth this year) geomagnetic storm. Loggings should pick up a little, but even with the approach of the summer and its static, don't give up on the lower frequencies. Due to the efficiency (ha!) of the post office, Ernie Lohe's report was not delivered to headquarters in time, and the items you see here in my section were dictated over the telephone. We're only sorry that the rest of his fine report was not included. To old vets of reporting and newcomers alike, many thanks. Your continued support is greatly appreciated. A new addition in the shack here is an R-390 receiver, which I got for a song, and which is certainly one heckuva rig! Comments, complaints, suggestions always welcome here. Perhaps I'll meet some of you at the WARC Picnic on June 17 in Baltol 73-Fred Heutte, Jr. WA3QIA-WDX3FH 1600 Newton Street, N.E. Washington, D.C. 20018

In the absence of David Potter, this portion of LR is being edited by Dan Ferguson. David will be back next month.

- 6200 CLANDESTINE V Pathet Lao; 1140 theme mx, VV IDs; fcy may stabilize?(Bundy)
 6200 UNID pirate, EE w/NA accent, ID 0328, mostly unreadable, "W7??". Px called "Amer. Top 40 Show", not harmonic - stated they were BCing in 49 mb. Covered by RI after 0330(Morisseau)
- 6210 UNID Tentatively China, 2238-2257, YL in Asian lang, opera mx(Perdue)
 6240 CLANDESTINE R.Libertaco, 2200-2300*, sometimes jammed, Af mx, tlks, no FP 3/16 per Tuchscherer; s/off w/anthem(Tuchscherer/Calkin/Behr/Perdue)
- 6259 CHANNEL ISLANDS R.Channel International, 1030 EE/FF testing, giving ID, not as good as usual. (Martin-England)
- 6270 CHINA RP, *1200 EE nx, lbox, 353 3/28(Zilmer)
 6340 TURKEY Ankara Police Radio, 1845 -1902* Turkish, QRM(Martin-England) Does this ever operate at a time better for propagation to NA?(DF)
- 6540 CHINA RP EE, 2x3270, 1705, GG 1800(Bundy-Truk)
 6538 CHINA RP in CC to Afr 1800, QRM the above stn.(Bundy)
 6550 CHINA RP Cantonese tik, ID, //15270 et al; seems RCDSEB, unlist BBC MS(Bundy)
 6610 CHINA (presumed) Peking? Chi dialect, not //FS outlets(Bundy)
 6850 POLAND Polish Pathfinders Stn, 1500 Polish, //7306; QSL gives sked as WRTH, but 300 watts on both. Also varies by card. (Martin-England)
- 7010 CHINA Peking w/ CC tik 2154(Wootten-Morocco)
 7037 CLANDESTINE VNUFK, Khmer tik 1125, //9990v, first hrd this band since Dec bombing raids. (Bundy)
- 7065 IRAN R.Tehran, Farsi(presumed) HS here already at 1230, //15084. Is this hrd stateside at this time?(Bundy-Truk)
- 7070 ALBANIA Tirana, AA 0430-0458*, mx, cmtry, chants(Urbelis)
 7075 EGYPT Cairo, *0359-0515+, 2230-2300, AA, chants, nx, etc(Urbelis)
 7085 UNID Viet mystery stn, 1512, pretty VV pops //7460v; suspect *1500. Seems to be *1230-1330*, *1500-1800* approximately. (Bundy-Truk)
- 7099.9 MALAWI Lakeland Radio, 1925-1940+ EE rel px "Radio Outreach" to 1933 EE IDs then EE pops, past 2000; NF ex 9760, ex 9550, ex 9510, or something like that! (Bundy-Truk) Yes, it's hard to keep track of this one!(DF)
- 7103 N.VIETNAM Hanoi, VV 2150, also abt 1000, NF(Padula-Australia)
 7105a THAILAND Thai TV, 1205 Thai mx, tik, 222 3/18(Gendron)
 7105 SPAIN RNE, 2000-2130* SS nx, mx, tlks(Urbelis)
 7110 DODECANESE IS VoA-Rhodes, *1359-0600 AA px(Urbelis)
 7115 ZAIRE Kinshasa, 0450-0530 poor in lang, drums, Af mx(Urbelis)
 7125 GUINEA LV du Rev., 0730 FF, native mx(Mayer)
 7170 GRECE VoA Kavala, 2300-0000* EE(d'Adolf, D'Angelo, Wiseberg, Behr)
 7170 NEW CALEDONIA ORTF, -0602*, this & 9510 left air 0602*, //11710 continued. Incorrectly listed as 9500 in March LR. Should be 9510.(Bundy-Truk)
- 7175 SICILY RAI-Caltanissetta, 0600-0645 It mx, pops(Urbelis) Or Italy-Rome?(GH) ITU continues to show Caltanissetta. They don't list things that are not submitted. I suggest that the listing of Rome on a RAI sked was simply an error at RAI. There have been no other indications that this is anything but Caltanissetta. (DF)
- 7180 POLAND Warsaw, 0638 English cmtry, ID, mx(Koziomkowski)
 7210 SWITZERLAND Red Cross, *2300-2325, EE 2305-2320, then FF(Urbelis)Date?Test(DF)
 7215 INDIA AIR-Delhi, 2200-2230* EE to Australia(Urbelis)
 7215 GRECE NBI-Avlis, Gk mx, amnts for Turkey 0540, NF ex 6175(Padula-Australia)
 7216 CLANDESTINE *1100-1200* V of the Pat Mil Front, VV px continues w/IDs as before "peace agreement". Believe also *1400-1500*(Bundy-Truk)
- 7225 PHILIPPINES FEBC, 1154 EE ID, nx(Miller)Lnag rel px 1300(Smallshaw)
 7225 RWANDA, Kigali relay of DW, EE 0430-0500 nx, mx, tik(Urbelis)
 7225 IRSACL IBA, EE 0500-0515 nx, then FF(Urbelis)
 7235 NIGERIA(Biafra) Emugu, ECSBCS, 0500 EE after 5 min drum IS, tik, nx(Mayer)
 7255 W.GERMANY RFE Biblis(per ITU-DF), *0355-0700 Rumanian(Urbelis)
 7255 NIGERIA VoN, 0600-0730 EE nx, tlks, mx(Urbelis)
 7265 W.GERMANY SWF; *0351-0800 all GG, nx, pops, amnts, TCs(Urbelis)
 7270 INDONESIA RRI, 1015 Indon, soft voiced YL w/pretty mx, good.(Shaw)

- 7275 ITALY RAI, EE to Med, *0415-0440, rx, editorial, mx(Urbelis)
 7290 UNID(LA??) 4/7, 0242 t/i, M&M tlk w/may mentions of Uruguay, LA style pgms, 0401*, harmonic? (B.Peters)
- 7295 GREECE VoA-Kavala; EE to Eur 0535, 3/10, exc lvl, additional fqy(Padula)
 7300 ALBANIA Tirana, EE 0345-0400(Fino) Smallshaw
 7310 CLANDESTINE LV Pathet Lao finally hrd 1245-1300, RTTY gone; tlk, mx /
 7340 PAKISTAN Karachi, EE 2030-2115, Hindi mx, tlks, QRM CHU(Urbelis)
 7377.5v CLANDESTINE 0944-1035+ Liberation Radio; YL w/VV dictation toabt 1015, VV vocals, 1030 YL IDs twice "Day la Dai Phat Thanh Giai-Phong", or possibly mountain dialect equivalent, not //10225v, new svc, 3/17...3/9 VV or similar lang on 7379 to 1458* w/ //15017 which continued(Bundy-Truk)
- 7395.5 PHILIPPINES(apparently) 0850-0915a* UNID, apparently USB UTE, probably some kind of studio link; live coverage in EE of Junior lightweight championship of the world(boxing) w/a Filipino vs a Japanese boy; mentioned that was via satellite; complete w/ads & occ pop ms(Bundy-Truk)
- 7425 CHINA CPA, t/i 1611, YL in CC dictation on another HF(Bundy-Truk)
 7460 UNID *0930- Viet Mystery Stn; new s/on time, seems continuous to 1800* on this fqy, also uses 7085, 9715, 11655.(Bundy-Truk)
- 7504 CHINA RP HS, CC, 1430-1730* //8965, 8980, 11290(Davis) (Bundy-Truk)
 7540 CHINA CPA, *1500 w/"Int" ID & CC dictation on NF ex 7525 //NF 5005, NF 7425/
 7735 N.VIETNAM VoV, -1025-1030+ VV HS ID, not //7102, 10060, apparently NF, ex-7760(Bundy-Truk)
 7760 N.VIETNAM VoV; SEA vocals, 1521 HS ID, not //7102, 10060. 7735 & 7760 not hrd simultaneously(Bundy-Truk)
- 7814 UNIDENTIFIED -1040-1135+, YL w/EE dictation in strong SEA accent w/POW info to 1113, then SEA vocals, then SEA lang dictation, no ID hrd(Bundy-Truk)
 7925 USSR(presume European RSFSR) t/i 1540 RM USB feeder, CC IDs(Bundy)
 7935 CHINA t/i 1540 Peking HSI, CC mx, //7145 on NF(Bundy-Truk)
 8333a CLANDESTINE R.Free Portugal, 3/10 2320-2350 M&M tlk, mx bits, good(Field)
 8754 CHINA Peking HSI, 1345 //7095(Bundy-Truk)
 9380 KAZAKH SSR Alma Ata, *000-0045 IS, anthem, rx, mx(D'Angelo) 0025 RR, piano & Xylo mx, RR(Tuchscherer)
- 7402.3 POLAND Polish Pathfinders 4/5, 0438-0504, EE, rptd:"This is the Polish Pathfind service transmission fro receivers in Glasking(?) from the radio technical station located in Warsaw, Poland."Fair, LSB best(B.Peters)Out order
- 9090 CANADA CFRB Toronto, last 4 weeks afternoons around 2030-2300// 6070; call to stn said only one tx on 6070, must be faulty tx; better than 6070 at this time.(Hagen)2110 EE, 9x1010(Shaw)
- 9505 DOM REP RTV Dominicana, SS 2345, rx(Custodio)
 9510 TAIWAN VoFC, 1815 EE, mx, tlk(Birge)
 9515 FRANCE ORTF, FF cmtry on elections 2230, NF well hrd(Padula-Australia)
 9515 TURKEY Ankara 0600 GG nx, local mx(Martin-England)
 9515 N.KOREA Pyongyang; *1200 EE nx, cmtry(Miller, Zilmer)
 9520 PAPUA ABC, 0725 EE play(Gendron)
 9520 SPAIN RNE, *0000-0425+ SS to NA/CA/SA(Pardue, Castello)
 9520 NEW ZEALAND RNZ, 1125-1145* light mx, EE(Zilmer)
 9525 S.AFRICA R.RSA in lang, EE s/off 1750, WRTH lists Chichewa(Castello)
 9525 INDIA AIR-Delhi; 2014 EE tlk abt Pak(Miller)
 9540 N.ZEALAND RNZ 0720 EE nx(Castello)
 9543 BRAZIL R.Paranaense, 0100-0215* PP, futebol, tlk(Miller, Zilmer)
 9545 GHANA RG, Tema, 2106-2214+, EE, Af mx, IDs, nx, exc(Pardue, Fino)
 9562 PERU R.Nacional, 1150 SS tlk, mx, seldom hrd(Zilmer)
 9570 NIGERIA RTV Kaduna, 2215 EE/Hausa, 3/26, EE nx, chants(Zilmer)
 9570 HUMANIA Bucharest, 0226* EE mx, tlk(Dolyak)
 9572a CHILE R.Portales, 1155 & 0200 SS tlk, mx(Zilmer) 0300 SS(Draut)
 9575 PAKISTAN R.Pak, GOS here in Urdu nx to Eur 2110-2130* NF ex 9460(Padula)
 9580 PHILIPPINES VoP, 0820-0930 EE, rel px, nx(Pardue)1315 EE opera Sundays (Smallshaw)Extended sked now to 1900*. Anncs return for 0700, also anncs 11950, which has not been hrd, even tho conditions seem favorable(Davis)
- 9585 S.AFRICA R.RSA *2215-2315* EE to Eur, NF ex 9695(Padula-Aust, Zilmer)
 9590 CHILE R.Pres.Balmaceda, 1150 SS(Zilmer)0010 pops(Martin-England)0450-0515 EE pops, hrd after RN-Bonaire s/off 0450(Mayer)
 9600 KUWAIT RK, EE to Ceylon/India, nx(Wootten-Morocco)

- 9610T MAURITANIA Nouakchott, *0758-0805, guitar IS, s/on, MW in AA, QRM(Perdue)
 9615 MOROCCO RDTVM, 0000 AA t/k, //11735(Zilmer)
 9620 BRAZIL R. Novo de Julho, *0756 full ID, calls in PP, into JJ 0800(Padula)
 0000 PP ads, t/k, mx(Zilmer)0015 PP, ID, jazz(Martin-England)
 9620 YUGOSLAVIA R.Belgrad, 2200 EE nx, cntry, ID(Koziomkowski)
 9623 PERU R. Atlántida, Andean rhythms, SS anmts 0435, unusual reception this time
 of year. (Padula-Australia)
 9635 BRAZIL R.Aparecida, 3/26, ID & mx 0055(Field)
 9640 S.KOREA VoFK, 0900-0930 EE, mx, lbx(Birge, Castello)1103-1130* EE, Asian nx,
 Listener's Corner px(Perdue)
 9640 CZECHOSLOVAKIA Prague, *0100 EE nx, cntry, folk mx(Geir)
 9645 COSTA RICA TIFC, *1010 full ID, etc, SS rel px, rare here(Padula-Australia)
 0300 EE rel px(Zilmer)0100 SS rel px(Field)0335 EE, VoA QRM from 0400(Jordan)
 9645 ISRAEL IEA, EE *0500-0515, FF to 0530*, annd //9009 + 7225(Padula, Perdue)
 9650 GUINEA Conakry, 0505-0550 FF, Af mx(Perdue)
 9655 SYRIA Damascus, 2030 EE(Miller)2130 EE(Gendron)
 9660T ANGOLA A Voz de Angola, 0630-0702, Af nx, lang, many mentions Angola(Perdue)
 9660 VENEZUELA R.Rumbos, 0403 SS, mx, ads, IDs, exc(Perdue)
 9665 BRAZIL R.Nac., 0020 PP pops & talk on Amazonian project(Martin-England)
 9675 PERU R. del Pacifico, 1145 SS rel mx(Zilmer)1215 SS rel px, under RM from
 1230(Smallshaw) Smallshaw/
 9680T SYRIA Damascus, AA pops & YL talks around 1930, after WRTH s/off time(
 9680 S.AFRICA SABC, good from 1440-1620*(Cavis)0555 EE(Castello)0609-0628* w/vx,
 rel px, abrupt off(Perdue)
 9685 BRAZIL R.Gazeta, 2330 sports(Field)0025 PP talk(Zilmer)
 9688.5 ARGENTINA RAE, 0101 SS(Shaw)0300 EE mx(Zilmer)0315 Latin mx(Custodio)
 9695 S.AFRICA R.SA end DX px in EE 0116*, Thursday(GMT)(Perdue)
 9695 BRAZIL R. Rio Mar, 0305 PP talks(Zilmet)
 9709 MAURITIUS MBC, Indian mx 1505, fair sked, extended sked?(Cabral)
 9715 CONGO RTVC, 2035-2125 FF, Af mx, IDs, 3/24, A index 41(Perdue)
 9743 IRAQ Baghdad, 1955 EE, mx, t/k on AA costumes(Martin-England)2000AA(Shaw)
 9750 TAHITI ORTF Papeete, FF t/k 0330 all over Berne, ex 9730 usual(Padula)Over
 Berne 0430 w/US & Fr pops, So.Sea mx(Treibel)
 9750 CHILE R.Mineria, 0200 SS t/k, 3.25(Zilmer)
 9755 BRAZIL R.Br.Central, 0200 sports(Field)
 9760 BELGIUM RTB, Belgium Speaking 2306, EE, DX mx(Koziomkowski)
 9785 USSR RP&P 1530 IS & EE, //9810, 11720, 15200(Behr)
 9912 INDIA AIR-Delhi, 2150 EE?, vocal mx, YL anmts in EE?, CW QRM(Ronda)
 10010 CLANDESTINE 1350-1358*, *1400-; I now believe Khmer to 1358, not Lao as I
 previously gave; FF *1400(Bundy-Truk) 2300 FF, 2330 EE, 0003*(Behr)1248 EE
 talks on Vietnam(Draut)
 10039v N.VIETNAM VoV, FS seems to have only 2 fqys in svc at once now; usually
 10039v & 15104v are //; e.g., Indo 0930, EE 1000, Thai/Lao 1030, Chi(believe
 Cantonese) 1100, unlk 1130. EE txs give a 3rd fqy as 7030, but not traced.
 EE 1300, FF 1330. 9 March 10039 silent at 1430 while 15104 //15012, but at
 1500 only 15104 //10039v hrd in Indonesian(Bundy-Truk)1300 EE(Zilmer)10042,
 good in JJ 1600-1625*(Davis)
 10110 UNID in SS 2026, t/k, pops(Wootten-Morocco)R.Esp. Indep.?(GH)
 10228 CLANDESTINE 0715-0930 t/o Liberation Radio, VV dict by OM, QRM got 'em 0735,
 0810 located again still w/VV dict, to abt 0900; regular pggmg seemingly VV
 thru to past 0930. Fqy varies day to day(Bundy-Truk)
 11290 CHINA RP HS in CC, *2000, f/o 0500a(Davis)
 11330 CHINA RP HS in CC, //11290, but s/on 2335 to 2345(Davis)
 11350 N.KOREA Pyongyang, HS in KK, *2000 after chimes from 1950; 0420*(Davis)
 11375 European or W.China(Urumchi?) relay of RP. SS 0000-0055, EE 0100-0155(Davis)
 11505 CHINA RP HS in CC, *0100, not //11290, usual f/o is 0500(Davis)
 11650 BANGLADESH Dacca, 1445 Indian type mx, t/k(Cabral)EE nx to Eur 1705, NF ex
 11540, new time also, ex 1710 s/on this svc(Padula-Australia)
 11650 CHINA RP, 1256* EE, International(Perdue)

Mail svc has not been good this month. Some reports arriving late, when they were
 mailed in plenty of time. ...Remember new address of LOG REPORT!! 73,

DF

- 11705 N ZEALAND RNZ 0950 EE, nx, tlk, F (Perdue)
 11710 AUSTRALIA RA 1245 EE, mx, G (Eichenhorn)
 11710 ARGENTINA RAE 2300 EE, nx, mx, F (Zilmer)
 11710 N CALEDONIA ORTF 1055-1105* FF, mx, tlk, s/off w/anthem, P (Lineback)
 11715 PHILIPPINES VoA 1145 Lang, tlk, to SEA, G (Zilmer)
 11715 SWITZERLAND SBC 0210, 0315* GG, G (Machen, Jordan)
 11715.5vNF FRANCE ORTF 1830 FF, //15120, 17765, (Behr)
 11720 CHINA RP 0835, 0936-0950 EE, nx, anti-USSR cntry, CC mx, //11600,
 F (QSB), (Perdue, Treibel)
 11720 BRAZIL R Nac 0002 PP, ID, mx, (Koziomkowski)
 11720 SWITZERLAND SBC 1956 PP, 2300 PP, 2030 SS, 1820 GG, ID, mx, nx, cmntry,
 //11870, 15305 (2000), F-G (Rakow, Leonhardt, Schwartz)
 11730NF? FRANCE ORTF 0100 SS, nx, mx, //11965, G (Zilmer). NF or vary from 11725?
 11730 NETH ANT RN 0300-0330, *0500 EE, mx, tlk, E (Machen, Fino)
 11735 MOROCCO RIM 0000 AA, tlk, F (Zilmer)
 11750 ENGLAND BBC *2115-0330* EE, G (Machen)
 11755 USSR HS 1635-1659* Lang, RR vocals & piano mx, (Tuchscherer)
 11760 FRANCE ORTF 1900 FF to Africa, //9680, 15295, 15315, (Behr)
 11765 BRAZIL R Dif São Paulo 2245 PP, tlk, P (Zilmer)
 11765 AUSTRALIA RA 0735 EE, DX px, mx, ID, (Koziomkowski)
 11770 UNID 1700 AA, s/on w/pips, Koran, nx, weak (Shaw). Nigeria sched in AA
 this time, but not this freq.-ed.
 11770 SPAIN R Liberty 2045 RR, tlk, QRM, P (Gendron)
 11775NF? NETH ANT TWR 0450-0505 Lang, ID, G (Hewitt). Unlisted freq.
 11780 N ZEALAND RNZ *0612-0800 EE, DX world & other px, G-E (Nebron, Castello)
 11780 MOZAMBIQUE RCM 0605-0612 EE, pops, ads, ID, wiped out by RNZ s/on, (Perdue)
 11780 ARGENTINA R Belgrano 2330, 0050 SS, ID, nx, futebol, G (Calkin, Mayer).
 ID 2330 "Transmite LRY R Belgrano, desde Buenos Aires, capital de la
 Republica de Argentina".
 11780NF NETH ANT TWR 0450 AA, rel px, ex 9760, E (Padula-Australia)
 11785 NETH ANT TWR 2215-2225 SS, rel px, ID, F-G (Perdue, Herson)
 11785 BRAZIL R Guaiaba 0000-0111 PP, ads, nx, dance mx, tlk, F-G (Guarducci,
 Zilmer, Miller)
 11790 MOROCCO VoA Tangier 0430 EE ID, IS, nx in Czech, G (Wiseberg)
 11790 S AFRICA SABC 1442-1500 EE, pops, tlk, (Alleman)
 11795 BRAZIL R Nac 0000-0125 PP, TC, nx, tlk, F (Guarducci, Zilmer)
 11795 ZAIRE LV du Zaire 0200, 0620 FF, African mx, tlk, //15245, F-G (Perdue,
 Mayer)
 11795 GERMANY (FR) DW 1830-1850* AA, chants, pops, tlk, ID, IS, F (Wiseberg)
 11800 CANARY ISLANDS RNE *2000-0600* SS, nx, mx, //15365, P-F (Davis, Guarducci)
 11800 SRI LANKA R Ceylon, 1450 Lang, 1600-1730* Hindi, local mx, ID at 1700,
 F-G (Gabral, Davis)
 11800 USSR Novosibirsk 0300-0930 RR, Majak HS, hrd under RNE until 0600, (Davis)
 11805 BRAZIL R Globo 0020-0145 PP, tlk, ID, pops, F-G (Zilmer, Mayer)
 11810 INDIA AIR 1645 EE, Indian mx, ID, P in QRM, (Herson)
 11810 ITALY RAI *0140 II, nx to SA, G (Guarducci)
 11820 MEXICO L Dif de la Pantera 1700, 1835-1850 SS, ID, ads, EE/SS pops, F-P
 in QSB (Smallshaw, Castello)
 11820 NETH ANT TWR 0040 EE, cmntry, ID, (Koziomkowski)
 11820 ASCENSION IS BBC 0230, 0300 SS, mx, EE LL, tlk, P-G (Mayer, Guarducci)
 11825 TAHITI RT 0345-0400 FF/Tahitian, ads, ID, FF/Polyn. mx, F (Guarducci,
 Archard)
 11835 USSR Krasnoyarsk, f/i 0300-0900 RR, Majak HS, (Davis)
 11835 URUGUAY R el Espectador 2340-2358, 0032 SS, ads, tlk, mx, G until VoA s/on
 0000 on 11830, (Leonhardt, Miller)
 11835 HAITI 4VEH 1350, 1445, 1630, 1700 EE, 2240-2300 Creole, rel px, mx, ID,
 IS at 1704, P-F (Eichenhorn, Perdue, Herson, Alleman, Padula-Australia)
 11840 POLAND RP Warsaw *0205 EE to NA, ID, E (Schwartz)
 11840 PORTUGAL R Nac 0100 PP, 0305-0345* EE, This wk in Lisbon, nx, ID, F-G,
 (Perdue, Miller)
 11850 NORWAY RN 2200 Sunday EE px, nx, tlks, mx, P (Wiseberg)
 11850 SRI LANKA VoA Columbo 1700-1815*, jazz, G (Davis); 1500-1530 nx, features,
 P (Wiseberg)

- 11855 USA WNYW 2210 EE, basketball, VP (Wiseberg); 0130 SS, rel px, E (Machen)
 11855 BRAZIL R América 2235-2250, 2345-0000 PP, tlc px, ID, US/Braz mx,
 (Zilmer, Leonhardt, Tuchscherer)
 11865 CHINA RP 1500 CC, tlc, mx, G (Wiseberg)
 11865 BRAZIL RC Pernambuco, 0000, 0050-0130, 0345 PP, mx, tlc, futebol, F-E
 (Guarducci, Smallshaw, Zilmer)
 11870 AUSTRALIA RA 1329, EE ID into Thai, IS, F (Miller)
 11875 ANGOLA Em Oficial 0600-0800 PP tlks, PP/FF/EE pops, P-G (Perdue, Gendron)
 11875 ITALY RAI 1440-1455* FF, lt mx, Eu. svce., (Tuchscherer)
 11875 PORTUGAL R Nac 1900-1915* EE to Africa, nx, ID, s/off w/NA, F (Wiseberg)
 11875 JAPAN NHK *0928 EE, IS, ID, nx to Aust. & NZ, F (Perdue)
 11880 TURKEY VoT *2200-2231* EE, IS, NA, nx, local mx, rock mx, P-G (Palmer,
 Perdue, Archard)
 11880 ARGENTINA R Splendid 1030-1045, tangos, local ads, QRM de NHK 11875 after
 1045, not as sched WRTH, (Padula-Australia)
 11890 GERMANY (DR) RBT 0145-0230 EE into GG at 0145, "DDR Magazin", cmntry,
 G-E (Lineback, Schwartz)
 11890 PHILIPPINES FEBC 1703-1731* GG, F (Rakow). RR listed-ed.
 11890NF ECUADOR HCBJ 2150 SS to Eu, ex 11810, 11860, (Padula-Australia)
 11895 USSR Magadan f/i 0300-0900 RR, HS, not Majak, local ID 0345, (Davis)
 11900 S AFRICA RSA 0010, 0430 EE, DX px, nx, F-G (Zilmer, Guarducci)
 11905 MALAYSIA BBC 1145 EE, quiz show, F (Gendron)
 11905 GERMANY (FR) DW *0600 EE to Africa, nx, F (Castello)
 11910NF CUBA RHC 0520-0535 EE, VoV px, mx, announced //11760, (Tuchscherer)
 11920 IVORY COAST RTVI 2146-0000* FF, African mx, tlc by YW, some pops, some
 mx sans announcements, F-E (Ronda, Eichenhorn, Perdue, Palmer)
 11920 PHILIPPINES FEBC 1215-1230* EE, rel px, G (King)
 11925 SPAIN RNE 0115-0300 EE, SS mx, features, cmntry, P-E (Machen, Fino,
 Palmer, Wiseberg, Castello)
 11925 BRAZIL R Bandeirantes 0005-0032, 1130 PP, carnival mx, US pops, tlc,
 F (Zilmer, Leonhardt, Smallshaw, Guarducci)
 11935 PORTUGAL R Nac 0235, 0400-0430* EE, nx, ID, tlc abt. Portugal, (Schwartz,
 Jordan, Palmer)
 11935 S AFRICA SABC 0635-0650 EE, ads, pops, F-G (Perdue)
 11940 LIBERIA ELWA 2039 EE, rel px, rel nx, F (King)
 11940 ROMANIA RB 0435-0457* EE, ID, IS, nx, tlc abt treaty, G-E (Schwartz, Perdue)
 11940 SINGAPORE RS 1430-1630* EE, nx at 1530, G-E (Davis, Gabral)
 11950 MALAGASY REP RN 2000-2120 DD, P-F (Davis)
 11950 S VIETNAM VTVN *0610-0625 EE ID, VW mx, tlc, New Flute IS to 0615, (Tuch-er)
 11950 BRAZIL R Min de Educaçao 0015-0200, 0955 PP, pops, class mx, ID, F-G
 (Herson, Leonhardt, Padula-Australia)
 11950 LIBERIA ELWA 0630-0650 EE/Lang, ID, tlc, EE rel px, F-G (Perdue)
 11955 SEYCHELLES FEBA 1730-1800 EE to 1800 then AA, G-E (Calkin, Guarducci)
 11960NF ALGERIA RTVA 1930 FF px, mx, //11835, not//11965, (Behr)
 11960 GREECE VoA Kavalla 1500-1730*, Eastern Eu. langs, ID, (Behr)
 11965 ALGERIA RTVA 1545-1615, 1740, 2015, 2250 AA, chants, ID, nx, //11715,
 11910 at times, F (Archard, Leonhardt, Miller, Wiseberg)
 11970 S AFRICA RSA 2200-2330 EE, IS, ID, nx, tlc, G (Fino, Dolyak)
 11985 ALBANIA RT 1400 EE, nx, cmntry, G (Leonhardt)
 11990 CZECH/SLOVAKIA RP *1730-1827*, 0130 EE, mx, nx, cmntry, ID, G (Eichenhorn,
 Guarducci, and ??)
 12000 USSR RM 1945, 0345 EE, cmntry, P-F (Machen, Archard)
 12000 AUSTRALIA VNG time station 0600-0630 EE ID during each 15th min., F
 (Morisseau, Gendron)
 12080 VENEZUELA R Euzkadi 2025-2130 SS, mx, tlc, ID, Jammed, P (Gendron, Wiseberg)
 12115 VIETNAM (CLAND) Liberation R 2015 EE/FF, local mx, nx in FF, tlc in EE,
 F (Martin-Europe)
 12175.5 ICELAND Gufunes 1230-1300 or 1313v, relay of HS px, G-E (Behr, Calkin)
 14995v UNID 1533-1545, 1902, Lang, tlc by M & W (nx?), flutter, weak, possibly
 Peking?, (D'Angelo, Tuchscherer)
 15000t CHINA BPV CW time, 0215-0230, ID each 30 min, (Smallshaw)
 15000 ARGENTINA LOL time, morse ID and SS ID by YW every 4th min, 2300, (Morisseau)
 15008.5 CHINA RP HS 1335 CC mx, 2 X 7504.25, F (Bundy-Truk)

- 15012v N VIETNAM VoV 1300-1305, 1430-1458* VV/JJ or Lang, tlk, drama, mx, some-times //15104 in JJ or 7379 in VV, also reported 15014, 17, and 18, generally poor, (Estes, Zilmer, Gendron, Bundy-Truk)
- 15060 CHINA RP 0130, 0230 EE, cmntry, P-G (Palmer, Eichenhorn)
- 15083a IRAN RI 1605 AA, mx, tlk, G-E (Herson). Unlisted this time-ed.
- 15095 CHINA RP 1400 EE, nx, F (Zilmer)
- 15105 BRAZIL R Rural 2020-2030, 2245 PP, old mx, LA mx, jazz, ID, ads, nx, QRM de RFE in Eu at 2037, F-G (Zilmer, Herson, Martin-Europe)
- 15105 CYPRUS BBC 0447 EE, nx, mx, (Koziomkowski)
- 15105 JAPAN NHK 0202-0215*, 0400 EE, nx, G (Perdue, Palmer)
- 15110 N ZEALAND RNZ 0250-0302, 0412-0445 EE, nx, quiz px, mx, features, F-G (Zilmer, Eichenhorn, Tuchscherer)
- 15115 ECUADOR HCJB 1330, 1500, rel px; 0200 EE Ecuadorian nx, //11745, 9560, F (Dolyak, Castello)
- 15120 FRANCE ORTF 2045-2115 FF, ID, IS, political tlk, pops, G (Fino)
- 15120 NIGERIA VoN 1917 EE/FF, pops, ID, (Koziomkowski)
- 15125 MEXICO R Mex 1330, 0357* SS, mx, nx, (Dolyak, Alleman)
- 15125 TAIWAN VoFC *0159-0242 EE, IS, ID, usual EE px, //17720, 17890, G (Perdue)
- 15130 USA WNYW 2301 EE/SS, ID, freq., nx, (Koziomkowski)
- 15140 USSR Petropavlovsk 0100-0130, 0300 EE, tlk on USSR, nx, //15200, P-G (Wiseberg, Palmer)
- 15145 BRAZIL R Journal do Comercio 2045, 2245 PP, tlk, local mx, ads, pops, QRN, P-F (Zilmer, Herson)
- 15150 CHILE R Corporacion 0200-0320 SS, mx, nx, carnival mx, ads, ID, P-F (Zilmer, Tuchscherer, Lineback, Padula-Australia)
- 15150 N KOREA R Pyongyang 2330 KK, tlk, mx, P (Gendron)
- 15150 USSR R Stantsiya Atlantika 1230 RR, ID, theme from "Love Story" F (Miller)
- 15155 S AFRICA RSA 2215 EE, nx, F (Zilmer)
- 15155 BRAZIL R Dif São Paulo 2210, 0000, 0230, PP, mx, tlk, covered by RSA at 2215, F (Herson, Gendron, Ball)
- 15160 AUSTRALIA RA 2025, 2232, 0410-0440 EE, mx, comedy, F (Zilmer, Mayer, Morriseau, Guarducci)
- 15160NF ALGERIA RTVA 1930 AA, tlk, mx, //11965 (Behr); VoPalestine 1830-1930 AA tlk, nx, //11910, 11965, 11715, 15320, G (Wiseberg)
- 15165 DENMARK RD 1430-1445 Danish to Greenland, EE ID, 1730-1755 Danish, IS, EE ID, nx, tlk on Cambodia, G (Mayer, Smallshaw, Schwartz)
- 15170 LIBERIA ELWA 2230 FF, non-stop mx, ID at 2230, (Herson)
- 15170 TAHITI RT *0300-0443, *1600-2300* FF/Tahitian, EE nx at 1745, tlk, pops, //11825, P-G (Dexter, Tuchscherer, Ball, Koziomkowski, Alleman, Davis)
- 15175 S AFRICA RSA 1846 EE, nx, cmntry to GB and Ireland, F (Eichenhorn)
- 15175 NORWAY RN 2220 EE, 1t mx, tlk, F (D'Angelo)
- 15180 USSR RM 1450-1530 RR, ID, IS, tlk, mixed mx, F-G (Fino)
- 15180v NIGERIA VoN 0805-0815 EE, 0705-0725 EE on 15183, nx, ID, mx, F-G (Perdue, Schwartz). Lists on 15185-ed.
- 15185 FINLAND RFV 1400-1430 EE, nx, features, E, (Schwartz)
- 15190 CONGO RTVC LV de la Revolution Congolaise 1945, 2115 FF, African mx, nx, cmntry, F-G (Ronda, Herson)
- 15190 BRAZIL R Inconfidencia 2200-2230, 0250 PP, nx, tlk, mx, P-F (Eichenhorn, Wiseberg, Zilmer)
- 15195 MALAGASY REP RN 2235 DD, nx, cmntry, (Herson)
- 15195 MOROCCO VoA Tangier 1628-1631 EE/Lang, ID Tangier, F (QRM), (D'Angelo). Rept. as 15200, but Tangier sched this time on 15195-ed.
- 15200 USSR RM 0705-0726 EE, letters, cmntry, //15180, F (Perdue)
- 15200NF? AUSTRIA ORF 1830-1845 EE, nx, rept from Austria px, (Tuchscherer). List-ed on 15210-ed.
- 15210 VATICAN VR 1630 EE to Africa, nx, G (Eichenhorn)
- 15220 MALAGASY REP RN 1940 FF, nice mx, G (Guarducci). Rept as Lopik, but Malagasy listed.
- 15225 BRAZIL R Cult da Bahia 1545 PP, tlk, sports, under VoA, P (Zilmer)
- 15230c AUSTRALIA VLIH15 Melbourne 0600 EE, M & W discussion px, P (Morisseau)
- 15235 BELGIUM RTB 2317-2332, EE ID at 2327, military band, (Tuchscherer)
- 15240 YUGOSLAVIA RB 1543 EE, Slovenian mx, tlk by YW, F (Miller)
- 15240 PAKISTAN 1312 EE, nx, P (Gendron)

- 15240 AUSTRALIA RA 0402-0440, 0600 EE, world nx, features, mx, //15160, G (Perdue, Zilmer, Morrisseau)
- 15245 ZAIRE LV du Zaire 2245 FF, African mx, ID, QRM de VoA 15250, (Herson)
- 15245NF AUSTRIA ORF 0025 GG nx for C. America, Ex 15145, (Padula-Australia)
- 15260 ASCENSION IS BBC 2115-2205 EE, story, lt mx, ID, F-G (Archard, Schwartz)
- 15265 AFGANISTAN R Afganistan 1730 EE?, tlk, mx, P (Gendron). GG listed-ed.
- 15273.3 URUGUAY SODRE 0015-0045 SS, fast SS mx; 0200-0253* SS, concert mx, weak, (Behr, Reeves)
- 15280 USA KEGI 2230-2300 EE, Billy Graham, G (King)
- 15290 PHILIPPINES VoA 2300-2310 EE, nx, (Tuchscherer)
- 15305 SWITZERLAND SBC 1730 AA, IS, ID, tlk, mx; 1910 II, nx; 2330-2315 GG, ID, F-G (Mayer, Schwartz, Guarducci)
- 15335 S KOREA VoFK *0230-0330* EE(someSS) to Americas, nx, tlk abt Korea, mx, P-E (Gendron, Perdue, Geir, Smallshaw)
- 15340 PORTUGAL R Nac 2030 PP to Port. Africa, E (Shaw)
- 15345 ARGENTINA RAE 1230 SS, auto racing, P (Zilmer)
- 15360 MOROCCO RTM 1900 AA, mx, G (Gendron)
- 15385 MEXICO R Mex 1423 SS, ID, local mx, G (Miller)
- 15385 ITALY RAI 1830 II, px to Canada, G, //15400 F, (Guarducci)
- 15400 ASCENSION IS BBC 1235-1245 EE, WS, P (D'Angelo)
- 15415 BRAZIL RC Ribeirão Preto 2010, 2345, 0025-0205, 0315-0400 PP, DJ tlk, carnival mx, local mx, pops, sports, F-G (several)
- 15415 KUWAIT RK 1650-1806 EE, pops, local nx, wx, TC, ID, features, F-G (several)
- 15420 CYPRUS BBC 1700-1800 EE, nx, tlk, F (Wiseberg)
- 15425 AUSTRALIA ABC Perth 0030-0047 EE, mx, soap opera, F (Miller, Archard)
- 15435 TANZANIA RT *1900-2000* EE, nx, pol tlk, QRM (Martin -Europe, Perdue)
- 15440 PHILIPPINES FEBC *2325-0300v f/o EE, some QRM de NHK, (Davis)
- 15445v BRAZIL R Nac 0025-0030, 0100-0330 PP, discussion, pops, F-G (Miller, Padula-Australia, Zilmer). Rept 15445 & 48, list on 15447.
- 15455 BANGLADESH RB 1235-1300* EE, nx, GOS, jammed, P (Bundy-Truk, Lineback)
- 15510 CHINA RP 1245 EE, anti-US prop, P (Zilmer)
- 15520 CHINA RP *0100-0155* EE, nx, EE version of CC opera; *0300-0355* SS; *0400-0455* CC, P-G (Zilmer, Davis, Perdue)
- 15522 BANGLADESH RB 0140-0158 EE, nx, mixed w/Peking, clear after RP s/off, G (Perdue)
- 15789.5 CLAND VoMalayan Rev *2200-2359* Malay/CC, mostly tlk, little mx, G (Davis)
- 17655 EGYPT R Cairo 1730-1845 EE to ME & Africa, nx, mx, tlk, AA by Radio, VG (Wiseberg, Eichenhorn, Perdue)
- 17670 EGYPT R Cario HS 1700-1730 AA, chants, tlk, mx, G (Wiseberg)
- 17700 USSR R P&P 1450-1457* EE cmntry, F (Eichenhorn); RM 1700-1730 FF, nx, tlk, ID, E (Wiseberg)
- 17705 ENGLAND BBC 1500 EE, nx, G (Eichenhorn)
- 17720 TAIWAN VoFC *0200-0230 EE, nx, folk mx, //17780, 17890, (Perdue, Zilmer)
- 17725 EGYPT R Cairo 2055 EE, AA by radio, G (Wootten-Morocco)
- 17730 MALAGASY REP R Madagascar 1515-1520 EE, pops, tlk, ID, (Smallshaw)
- 17770 N ZEALAND RNZ 0225, 0445 EE, quiz px, class mx, F (Mayer, Zilmer)
- 17775 USSR R YEREVAN 0300-0335 EE, Cmnty, sched T, W, F, & Sat., F (Palmer)
- 17780 AUSTRIA ORF 1800 GG, ID, //15200, 15335, (Behr)
- 17795 AUSTRALIA RA 0055-0115, 0205-0230 EE, nx, mx, DX px, G-E (Palmer, Nebron)
- 17810 MALAGASY REP RN *1400 EE, Happy Sta, nx, //21480, P (Herson, Zilmer)
- 17815 SWEDEN RS 1450-1500 Swedish, nx, ID, E (Schwartz); *1400 EE Sat show to NA, G (Zilmer)
- 17820 AUSTRALIA RA 0430 EE, nx to Africa, F (Zilmer)
- 17825 JAPAN NHK 0200 EE, GOS, F (Palmer)
- 17840 VATICAN VR 1150-1203 EE, rel px to Africa, (Tuchscherer)
- 17865NF AUSTRIA ORF 0730 GG, nx for Australia, ex 21720, QRM de RFE, (Padula-Aust.)
- 17870 USSR RM 0236 EE, mx from Moscow, G (Palmer)
- 17880 JAPAN NHK 0200-0215* EE, nx, F-G (Perdue, Palmer)
- 17893vt MALI R Mali, Bamako, 2030 FF, opera "Figaro", P (Eichenhorn)
- 17895v ZAMBIA RZ 1730-2022 EE, nx, tlk, ID, local mx, press review, P-G (Perdue, Gendron, Mayer, Draut). Rept 17890-95.
- 17900NF VATICAN VR 1615-1635 EE, rel px, nx, tlk, G (Wiseberg)
- 17920t EGYPT R Cairo 1530-1545 AA, chants, talk, VP (Wiseberg)

18315 COLUMBIA UNID 0020 SS, suspect 3x6105 R Vision, (Shaw)
 21460 GREECE NBI Avlis 0800 Greek to Australia, nx, ex 21610, (Padula-Australia)
 21495 PORTUGAL R NAC 1945 EE to Africa, tlk abt off-shore radio sta, F (Archard)
 21515 PHILIPPINES FEBC 0850 EE, weekdays, NF this time period, (Padula-Australia)
 21540 GERMANY (FR) 1040, Pushto for Afghanistan, //21560, new svce., (Padula)
 21570 NETH ANT RN 1830-1950 EE to Eu and Africa, G (Archard, Davis)
 21615NF? GHANA RG *1700, drum & mx s/on, P (Estes)
 21655 NORWAY RN 1200 EE, nx, cmtry, mx, G (Wootten-Morocco)

We ran a little over this month. Thanks to all who sent in reports. Keep up the good work.

73 to all

Jerry A. Lineback

THANKS to this month's 61 LR Contributors:

MIKE AGNER, Waldwick NJ, Midland 11-500,
 Lafayette 17-0190L
 TOM ALLEGAN, Williamstown MA, SX190
 MALCOLM ARCHARD, Ludington MI, SW4A
 DAVID R. BALL, Downsview Ont, DX150A
 SAM BARTO, Morris CT, HQ Super Pro
 ERNIE BEHR, Kenora Ont, R4B
 CAM BIRGE, North Vancouver BC
 LARRY BROCKWELL, Chapala Jal MEX, DX150
 BOB BUNDY, Moen, Truk, SPR4/SB310
 STANLEY F. CABRAL, Oakland CA
 GRIGG A. CALKIN, Ottawa Ont, SW4A/S108
 GEORGE CASTELLO, Los Angeles CA Triumph 818
 LARY CUSTODIO, Brooklyn NY, Guardian 7000
 STEVEN P. D'ADOLF, Madison NJ, R530
 RICH D'ANGELO, Brooklyn NY
 WILLIAM F. DAVIS, Laguna Niguel CA, homebr
 GERRY DEXTER, Lake Geneva WI, HQ180/R4B
 EVELYN DOLYAK, Griswold IA, A2685
 ERIC DRAUT, Wheeling IL, R-7000-1
 SANDY EICHENHORN, Troy MI, SX190
 STEVE ESTES, Newport News VA, S40B
 MARLIN A. FIELD, Benton Harbor MI, SX100 ?
 HENRY E FINO, Rochester NY, 1936 RCA Victor
 CHARLES R FOXK Jr, Suffolk VA
 LESLIE GEYR, EDINBURG ND, SB310
 JOHN GENDRON, Arlington VA, SX190
 CIRO GIARDUCCI, Casslar PG, HA200A
 JIM HAGEN, Portsmouth VA, R390
 GLENN HAUSER, Von Ormy TX, HQ160
 ERIC HERSON, Columbus OH, SX110
 FRED HEUTTE, Washington DC, HQ129X
 ELTON HEWITT, Pocatello ID, NC57B/A20
 PAUL JORDAN, Houston TX, Zenith 4600
 DON KING, Havertown PA, DX150A
 ROBERT J. KOZIONKOWSKI, Amsterdam NY,
 DX150/DX120
 MAC LEONHARDT, Liberty IN, SB310
 JERRY LINEBACK, St. Joseph IL, SPRL4
 DAVE "ED" MACHEN, Oshkosh WI, 549/GE P2950
 A.E. MARTIN, Warrington Lancs UK, AR88D
 ALAN MAYER, Park Forest IL, SB310/NC173/
 SX110/A20
 ALBERT A. MILLER Jr, Youngstown OH, HRO500
 DAN MORRISSEAU, Omaha NE
 LARRY NEBRON, Daly City CA, SX190
 BOB PADULA, Surrey Hills Vic, Marconi CR100
 PAUL PALMER, New Orleans LA, SX190

NEAL A. PERDUE, TN, SW4A/A20
 BARRY PETERS, Ambler PA, SB310
 HANS J. RAKOW, Sherwood Park Alta, R4A
 SCOTT REEVES, Laurel MD, SX190
 JIM RONDA, Youngstown OH, SW4A/HQ180/A20
 GEORGE SCHNABEL, Rochester NY, SW4
 RICHARD A. SCHWARTZ, Dover DE, SW4A
 ED SHAW, Norfolk VA, SP600/SX190
 JOHN SMALLSHAW, Wauwatosa WI, SW4A
 WALLACE C. TREIBEL, Seattle WA
 JOHN TUCHSCHERER, Milwaukee WI, HQ100A
 ERROL URBELIS, Greenlawn LINY, SX43
 DAVE WILLIAMS, Astoria OR, SPR4/75S-3C
 MIKE WISEBERG, Weston Ont, SX190
 CHARLES A.WOOTEN, Morocco, USN SRR13,
 Zenith Transoceanic
 ROBERT A. ZILMER, Milwaukee WI, SPR4
 IN ADDITION, items marked NU are used
 with permission of Don Jensen, editor
 of the SWBC Weekly, Numero Uno
 DAN FERGUSON, Charleston WV, SB310/
 R388/URR
 F. EARLE HALL, Winchendon MA
 DAN HENDERSON, Laurel MD, HQ180A
 AL NIBLACK, Vincennes IN, SX100/HQ200
 GIACOMO PEROLO, São Paulo SP, BRAZIL
 RALPH W. FERRY, Champaign IL, SX100/A20

NOTE: Material in FRENDX may be used
 in other DX publications and on broad-
 cast DX programs provided both NASWA,
 Box 8452, S. Charleston, WV 25303 USA,
 and the originator of the items used
 are credited. NASWA cannot grant reprint
 rights for copyrighted items it uses
 with the permission of BBC Monitoring
 Service (BBCMS), British Association of
 DXers (BADX), or of the SWBC Weekly,
 Numero Uno (NU).



Return to:
NASWA
P.O. Box 8452
So. Charleston,
West Virginia 25303
U. S. A.



FIRST CLASS MAIL

