

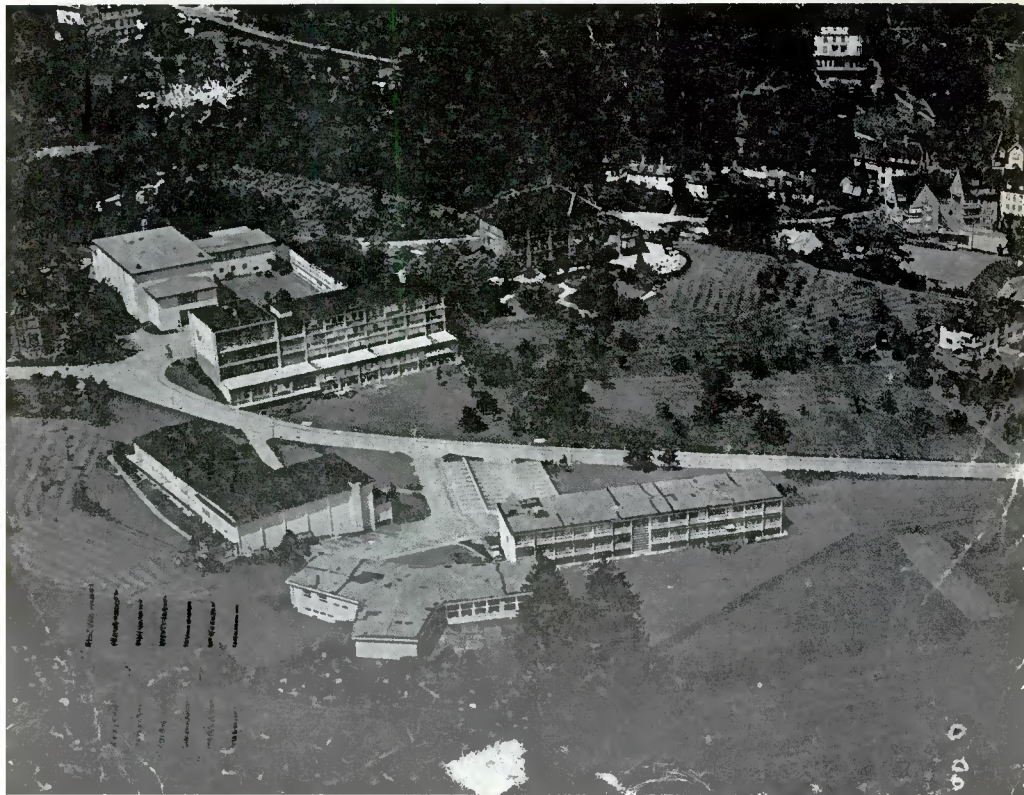
# FRIENDS

The SHORT WAVE BROADCAST Journal - Since 1962

NORTH AMERICAN SHORTWAVE ASSOCIATION

Vol. XI No. 11

November 1972





# HEADQUARTERS CALLING

NASWA, P.O.Box 8452, S.Charleston, W.Va. 25303 USA

## INCREASE YOUR QSL PERCENTAGE!!

Send your report to the person who actually signs the QSLs! Many have found this technique to greatly increase their rate of return on the really hard to QSL stations. And NASWA lists the QSL signers of almost 300 stations around the world in a 20 page booklet called QSL VERIFICATION SIGNATURES. Cost is only US\$1 (or \$1 in mint US stamps.) Send your order to NASWA HDQ, P.O. Box 8452, S.Charleston, W.Va. 25303 USA. Start bringing those QSLs!!

## INCREASE YOUR QSL PERCENTAGE!!

\*\*\*\*\* With membership standing at well over 600, and still growing, the need for a better method of maintaining the mailing list is becoming more and more obvious. This is one of the factors involved in getting FRENEX to you, the member, more quickly. With the turn-around time being cut to the minimum, the addressing procedure remains as a slowdown point. Therefore, to speed FRENEX to you, we are beginning a special fund to be used for the purchase of an addressing machine. Contributions of any size are welcomed, and should be sent to NASWA HDQ, P.O. Box 8452, S.Charleston, W.Va. 25303 USA. Checks & money orders should be made payable to "NASWA". Be sure to indicate that you are donating to the fund for the addressing machine.

Once again we would remind all that material in FRENEX credited to the BBC Monitoring Service (BBC MS) is copyright material, used by permission of the BBC MS. It should never be reprinted without prior permission of the BBC MS....Material credited to "BADX" (British Association of DXers) is copyrighted, and should not be reprinted. BADX is strictly limited in size and asks that we mention that they cannot honor requests for membership. ....

\*\*\*\*\*

## COUNTRY LIST

A new, revised edition of the NASWA Country List is now available. Those wishing a copy can obtain one by sending a self addressed stamped (16 cents) envelope to NASWA headquarters. While on the subject of the country list it seems a good idea to call the attention of members to the first pages of the list, where they will find the explanation of criteria used in the making of the list. Especially it is to be noted that once a particular area is counted separate from other areas, it will not again, in the NASWA list, be listed together with other areas. For example, those portions of Nigeria which were formerly listed as Biafra continue to count as a separate region from the rest of Nigeria. The NASWA list has no out-of dates, except that all stations must have been heard since September 1, 1945.

\*\*\*\*\*

Similarly, we count stations according to the rules mentioned on the second page of the list. A careful reading of the first two pages of the list should answer most questions. If not, questions can be addressed to the Country List Committee, c/o NASA headquarters, address on the bulletin cover.

\*\*\*\*\*

NEW MEMBER PACKETS are almost completed. Those who have joined since headquarters was transferred to S.Charleston will be receiving the packets in a couple of weeks. Those few who joined before the HDQ change was made, and who do not receive the packet before Thanksgiving should drop a card to HDQ & the packet will be sent.

IS YOUR NAME LISTED AS A REPORTER TO THE SECTIONS OF FRENEX?? SUPPORT NASWA BY REPORTING!! DO IT TODAY!!

DISCOUNT PRICES TO NASWA MEMBERS!!

In line with our policy of arranging discounts for members on DX publications, NASWA will offer the 1973 WORLD RADIO TV HANDBOOK (WRTH) to members for \$5.95, a substantial reduction in price. Current plans call for the books to be mailed to those ordering them before the middle of January. Orders must be received here at NASWA HEADQUARTERS no later than December 16. Orders received after that date cannot/will not be accepted. The book will be shipped directly to the members ordering, postpaid, after being shipped to the US by AIR. This should enable all ordering to get their 1973 WRTH quickly. Send sufficient money (\$5.95 per copy) in check or money order, payable to NASWA. Canadian

1  
9  
7  
3

**WORLD  
RADIO  
TV  
HANDBOOK**

1  
9  
7  
3

members should remit via postal money order or check, but in US dollars. This offer valid only for members in USA, Canada, Mexico. Be sure to mail your order so that it will reach NASWA HDQ no later than the 16th of December....And, remember the Christmas mail rush will be in full swing by then!

\*\*\*\*\*

GIVING THANKS

We in the states this month celebrate a day of "bountiful harvest"...Thanksgiving!!! It is a holiday filled with pleasure from "table full". A day when relatives & perhaps friends from afar oft times gather together in a common home to enjoy best foods and to recollect old memories. It is a good day, one for giving thanks. We brothers in hobby though, in states or worldwide, should not set aside just one day for being thankful. Our blessings are many, our harvest bountiful, far too numerous for just one days thankfulness. Surely the pleasures we find and the friends we make through our hobby/club efforts are worth threefold thanks and more. So let us stop for a moment, think, count our blessings and give thanks. We be all the better doing. Let us join together, both in heart and mind, no matter the club(s) we belong to or the type(s) of listening we prefer. Let us join together thankfully as common friends. Cast out the criticisms and belittlenesses, let to enter in the compliments and the commendations. Give to the art of understanding and thankfulness. Find ourselves being recipient of same in return. Learn the meaning of being thanked, yet moreso of giving thanks. Let us resolve to help one another, share with one another, give happiness and pleasure through cooperation and friendship. Let us work side by side, each doing our part as best we can, not for ourselves alone, but for the overall combined. Bill Eddings.

(Above is an editorial written by the late Bill Eddings, long time NASWA Executive Editor. It appeared in the November 1969 FRENDX. We reprint it here as a reminder of Bill's untiring efforts on behalf of "UNITY AND FRIENDSHIP" in the DX hobby. We need all keep ever in mind this club motto.)

\*\*\*\*\*

THOSE MEMBERS who have not received the gold seal for renewal should drop a note to headquarters, and they will receive it promptly.

\*\*\*\*\*

Those members who thought the September issue was smaller than usual would, had they counted the pages, have found the usual 52 pages. The thinner bulletin was the result of the use of better paper; not worse, as one suggested. This paper, though of improved quality, is of lighter weight, and will allow for increased bulletin size those months when it is necessary.

\*\*\*\*\*

Those who might be interested in some sort of permanent binder for issues of the monthly FRENDX should contact HDQ. If enough are interested, we may be able to make such available.

## THE LOUDENBOOMER REPORT

No exciting stories to pass along this month gang. And I haven't had much in the way of exciting adventures either. So I've picked out a few bits and pieces that have been collecting in my files and thus bring you...

## "A Magnificent Malange of Miscellaneous Mishmash"

Here's a tip for DXing some of those time stations which have only very limited operating schedules: You must know the correct time!

Noted on the pink sheet of a major DX bulletin: "Now if someone will just explain to me how 'QRM' can, by any stretch of logic, serve as an abbreviation for 'interference', I'll jump on the bandwagon and use it. Til then it's 'TFF' in this bulletin!"

There was a DXer Labinsky  
Who had a friend, Lapinsky  
One day in his mail  
Lapinsky cried with a wail  
"Holy cow!  
"It's a QSL from Minsky!"  
And Labinsky got mad  
And cried  
"Oh you cad!"  
And kicked Lapinsky in the shinsky!

I met the ultimate in gung-ho DXers the other day. This guy is so far out his car license is "DX-7388," and those same figures are the last four digits of his phone number! He lives at 73 MacArthur Parkway, but he's appealed to the city council to have the street name changed to "Reception Lane" or something like that.

Rumor has it that TV's "All In The Family" will do a DX show next season. Rob is to take up the hobby whereupon Archie will rant and rave about his sending reports to all those \$\$\$\*#@\* Commie stations!

Radio Transylvania is holding another one of those crazy essay contests. Twelve words or less on "Why I believe in Count Dracula." The winner receives an all-expense paid bite in the neck!

And there's a new clandestine station reported to be on the air. It's The Voice of Free In Guezzan, supposedly operating from Niger under the control of The Free In Guezzan Independence Movement. Apparently they feel In Guezzan should be "In Niger."

A couple of questions to take care of this month too.

Q. I recently purchased a Hy-Guy antenna kit, but I can't seem to get the box open. What do you suggest?

A. Try reading the directions. But they're probably inside the box.

Q. I just joined the Radio Burundi DX Club. My problem is that I can't seem to hear the station. What should I do?

A. You can either resign, write to the club president and complain, or move to Bujumbura.

Q. I'm having difficulty in getting really exact frequency measurements off my receiver. Have you any suggestions?

A. Well, one method I've found that works pretty well is to place a magnifying glass over the receiver dial.

# MAIL CALL!

Reply to: (Deadline 20th)

Edward C. Shaw  
621 Burleigh Avenue  
Norfolk, Virginia 23505

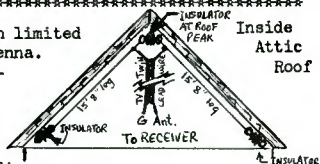
LETTERS TO THE CORRESPONDING SECRETARY

\*\*\*\*\*  
Thanks loads for the continuing response, especially to those who have become regular clientele. As mentioned in the past, all questions submitted cannot be fielded due to space limitations or lack of general membership interest.

\*\*\*\*\*  
Dear Ed: What is a 'heterodyne'? (sic) I've been told my receiver is one of the best available, but I've noticed a lot of these whistles or heterodynes, especially around stations close together.

Answer: Heterodynes are much misunderstood, and are often variously, but mistakenly thought to be direct QRM, QRN, jamming, or other interference of a direct nature. Actually, the answer is simple and easily explained. You are hearing a frequency note equal to the difference between the two stations' frequencies. For instance, if you are listening to Montreal on 6,005 KHz and hear a whistle, it is probably due to the very close proximity of Radio Reloj on 6,006 KHz. In this case, you will hear a 1 KHz (1,000 cycles per second) note - the difference between the two frequencies.

Dear Uncle Ed: I am a retired, but ardent SWLer with limited income. My small lot will not allow an outside antenna. I would purchase a book on the subject, but hope instead you will suggest a satisfactory antenna that I can erect in my attic which will permit reception of a good variety of countries heard.



Answer: A pleasure to help out, OM. The adjacent diagram is similar to one found in Howard Sam's SWL Antenna Construction Projects, although the design is basic. You will need 32 feet of antenna wire (in two halves), 3 ceramic insulators, a 50' roll of TV twin lead wire, and a soldering gun. The gun you can borrow, but the antenna itself should cost you no more than \$5.00 in parts. It is cut for the 15 MHz band, which is used by most of the major countries throughout the world. Good listening!

## INVERTED "V" DIPOLE

Dear Ed: Can you tell me, in simple terms, what causes fading? I used to think that it was only because of the change of night to day, but I have heard lots of fading throughout the night, too.

Answer: The transition from night to day is certainly one cause of fading, being a normal degeneration of the signal due to dissipation of the reflective ionospheric layers in daylight. This is called SKIP fading. Another kind of fading is called INTERFERENCE fading, caused by multiple signals received from the same source, but out of phase. This is to say that part of the heard signal was reflected off a higher ionospheric layer, and part was reflected off a lower layer - resulting in reception of the two segments at slightly different times. It may sound like a rapidly pulsating signal. Still another familiar fade is the rapid POLAR FLUTTER heard as signals pass over the pole through the Aurora Borealis curtain. This type is most noticeable during Winter. ABSORPTION fading is similar to skip fading, but may occur anytime at night as well when the ionosphere is too 'soft' in spots to reflect the signal consistently. This results in sometimes rather abrupt fade out, occurring at random. There are other types of fades, but we have covered the most common here.

Dear Ed: What is meant by "The Great Circle" when referring to orientation of one's antenna? I would like to erect my outside antenna to favor Africa. On my map, that looks South East, but I read that it is really East. How come?

Answer: Fred, the best thing for you to do is to examine a globe carefully. If you stretched a rubber band from your Ohio location to Johannesburg, you would see that the direction it leaves Ohio is East - but, as it continues in a straight line around the globe it travels directly across the Cape Verde Islands, Senegal, the Ivory Coast, Ghana, across the Gulf of Guinea, through Angola and finally to South Africa. Before you erect your antenna, keep in mind that it is important to determine the directivity of your antenna for a specific meter band.

And, a big 73 to all this month - and, welcome to the Winter DX season! Ed Shaw

# Shortwave-Center!

# Shortwave-Center!

Temporary Editor - Dan Ferguson. The new editor, Al Sizer, begins with the December issue. Until then, send all material for the SWC section should be sent to the HQ address: NASWA, P.O. Box 8452, So. Charleston, W.Va. 25303 USA.

## WWV BROADCAST FORMAT (TYPICAL)

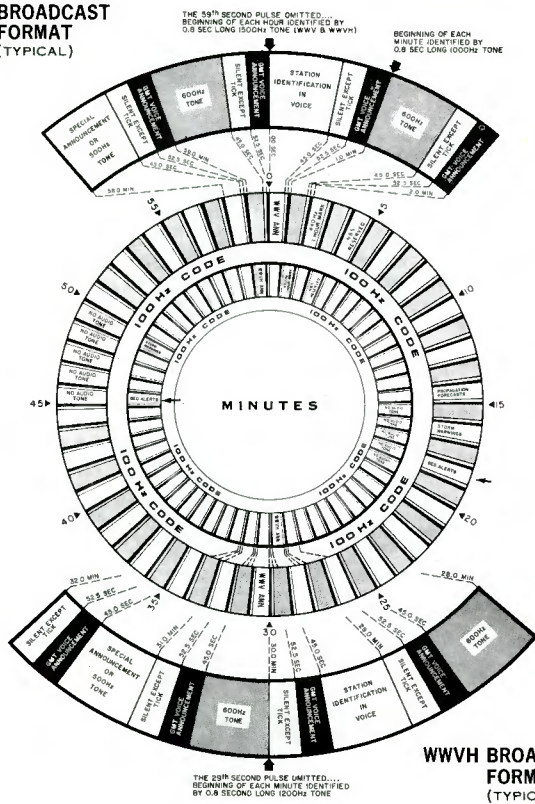


Fig. 1

SOLAR AND GEOPHYSICAL INFORMATION BROADCAST

The solar and geophysical information broadcast is by voice in the English language. These voice announcements will appear in the space available for special announcements as shown on the format wheel (Figure 1). For WWV this will be at 18 minutes after the hour, and for WWVH at 45 minutes after the hour. The information will be changed daily immediately after 0400 UT, but since this is a more flexible system, outstanding events, as soon as they are identified, will be added to the next hourly announcement. This means that experimenters using these broadcasts may wish to check the announcements more frequently than once a day to keep informed of the latest developments.

The information is provided by the Space Environment Services Center of the Space Environment Laboratory, National Oceanic and Atmospheric Administration, in their role as the World Warning Agency of the International Ursigram and World Days Service.

OTHER PARTICULARS CONCERNING WWV AND WWVH BROADCASTS

Voice announcements of time of day (UT) will be given once a minute. The WWV announcements will be made by a male voice and the WWVH announcements by a female voice.

The audio tones, 440, 500 and 600 Hz will be of 45-seconds duration. See format wheel for the times of the tones (Figure 1).

There will be no Morse Code anywhere in the format. UT2 corrections, GEOALERTS and other announcements will be in plain language.

There will be no double tick on the minute. This double tick will be replaced by a seconds pulse lengthened to 0.8 second duration. Also, there will be no 29th or 59th second pulse. The zero (60th) second pulse of 0.8 second duration is changed from 0.8 second of 1000 Hz on WWV and 0.8 second of 1200 Hz on WWVH to 0.8 second of 1500 Hz on the zero second of the first minute of the hour.

The standard IRIG-H time code will be broadcast continuously. This is a 1 pps code of one minute time frame carried on a 100 Hz audio subcarrier.

There will be no silent period on either station. A quasi-silent period will be in effect at the times shown on the format wheel. During these periods only seconds pulses, voice time announcements, and the 100 Hz code will be broadcast.

The 440 Hz 1 hour mark is deleted during the first hour of the UT day.

## VOICE MESSAGE FOR WWV AND WWVH

A. Solar terrestrial conditions for \_\_\_\_\_ follow:  
(month - day(s))

(Always includes first two)

- (1) Solar flux \_\_\_\_\_
- (2) A-index \_\_\_\_\_
- (3) Solar activity was (very low) (low) (moderate) (high) (very high)
- (4) Geomagnetic field was (quiet) (unsettled) (active)

or A (minor) (major) geomagnetic storm (began at \_\_\_\_\_ UT)  
 (day - hour)  
 (is in progress)  
 (ended at \_\_\_\_\_ UT)  
 (day - hour)

- (5) Major solar flare at \_\_\_\_\_ UT  
 (coordinates)
- (6) Proton flare at \_\_\_\_\_ UT  
 (coordinates)
- (7) Proton event on satellite (began at \_\_\_\_\_ UT)  
 (day - hour)  
 (is in progress)  
 (ended at \_\_\_\_\_ UT)  
 (day - hour)
- (8) Polar cap absorption event (began at \_\_\_\_\_ UT)  
 (day - hour)  
 (is in progress)  
 (ended at \_\_\_\_\_ UT)  
 (day - hour)

B The forecast for \_\_\_\_\_ follows:

(Includes any of the following that pertain)

- (1) Solar activity will be (very low) (low) (moderate) (high) (very high)
- (2) Geomagnetic field will be (quiet) (unsettled) (active)  
 or Geomagnetic storm expected \_\_\_\_\_  
 (date(s))
- (3) Proton flare expected \_\_\_\_\_  
 (coordinates)
- (4) Stratwam alert provided by National Weather Service

---

This information is provided by the NOAA Space Environment Laboratory  
 on behalf of the International Ursigram and World Days Service

#### SOURCES AND DEFINITIONS FOR PRECEDING STATEMENTS

(we include only those which are likely to be of interest to DXers)-editor

A-index = value based upon K-index observations from 0000-2100 UT by NOAA's  
 geomagnetic observatory at Boulder, Colorado and based upon  
 K-index from 2100-2400 UT from visual magnetometer at the NOAA  
 Space Environment Services Center.

#### Geomagnetic Field

Quiet = A less than or equal to 7, usually no K-indices greater than 2.



Geomagnetic Field(continued)

Unsettled = 7 less than A less than 15, K-indices usually not greater than 3.

Active = 15 less than or equal to A less than 30, a few K-indices of 4.

Geomagnetic Storm:

Minor = 30 less than or equal to A less than 50, K-indices mostly 4 & 5.

Major = A greater than or equal to 50, some K-indices 6 or greater.

Sudden commencement indicated by beginning time given to nearest minute.

Gradual commencements indicated by beginning time to nearest hour.

PROPAGATION FORECASTS

WWV broadcasts a radio propagation forecast during the 15th minute of every hour. (Editor's note - that's at 14 minutes past the hour.) The forecast code consists of a phonetic letter and a number. The phonetic letter indicates the propagation quality at the time the forecast is made. The number indicates the propagation quality expected during the next six hours after the forecast is issued. (Forecasts are issued at 0100, 0700, 1300, and 1900 UT)

The meaning of the phonetics and numbers are as follows:

<u>Phonetic</u>	<u>Meaning</u>
Whiskey	Disturbed
Uniform	Unsettled
November	Normal
<u>Number</u>	<u>Meaning</u>
One	Useless
Two	Very Poor
Three	Poor
Four	Poor-to-Fair
Five	Fair
Six	Fair-to-Good
Seven	Good
Eight	Very Good
Nine	Excellent

Thus the forecast "November Six" means that radio propagation conditions are normal and are expected to be fair-to-good during the next six hours.

Strictly speaking, the propagation forecasts broadcast by WWV are applicable only to a North Atlantic path, such as New York to London or Washington to Paris. Details regarding these forecasts may be obtained from Mr. John Harris, Telecommunications Services Center, OT, Boulder, Colorado 80302.

(Our thanks to Mr. Ralph F. Desch of NBS for permission to use this material, and to member Neal Perdue for obtaining the material and the permission to use it.)

Preliminary data, obtained by Don Jensen, Alan Thompson and myself does seem to indicate a correlation between improved reception of signals from the south, on 90 meters (and 60 meters) with increased "A" index. We were pointed to this possibility by Gordon Nelson at Boston last summer. However, there have been numerous instances of good reception at times when the A-index was rather low. All we can suggest at present is that when the A-index, as broadcast by WWV (and the forecast), is high, then it is a good time to try the low frequencies for signals which do not have to pass through the auroral zone. (DF)

REPORT ON A BONANZA DX SAFARI

After talking about it for weeks, the three of us finally pulled it off - a trek into the hills away from electrical disturbances. We envisioned earphones full of exotic afternoon Africans, and late evening Latins without the buzz and crackle of electric razors, auto ignition, or TV emissions. And so, with DX-adventure forethought, the three of us headed for the hills - Messrs Dan Jamison, Dan Ferguson, and myself. What a shaky ensemble this was!

The small cabin atop 1300 foot Red Oak mountain peak presented a most breath-taking view in all directions. We were a bit skeptical of the forest ranger's testimony that the tip of the Washington monument could be seen over 30 miles away with powerful binoculars. The cabin was a fire lookout tower about three miles over winding dirt road from the main highway. The only area habitants along the way were a few grovers at work harvesting their produce. It is the middle of apple season for Virginia.

Friday evening was spent engineering and erecting our antenna farm. Fortunately, a plentiful supply of split rails for fences was at hand, and by lashing a couple of these together, we were able to guy-up a 20 foot main mast. This was the furthest terminal for our 150 foot long wire. Another pole or two went up and we presently had a 75 footer out at right angles to the first, and also a 75 foot Windom. Then, when Ferguson finished his work we also had a near 400 foot long wire that stretched all the way across the mountain peak and was made secure on the gate to an apple orchard (whereupon a few Yellow Delicious were sampled for quality). But now, our array was complete and we settled into the cabin for supper and to fire up our rigs. Mmmmm!! Beefstew ald Barquisimeto!

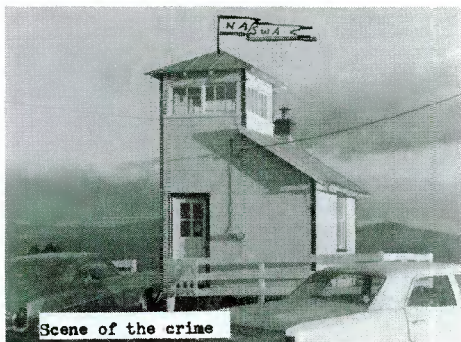
Actually, though the antennas performed admirably, we weren't really too impressed with the propagation conditions. WWV announced some spectacularly low opinions for the prospects. However, we were anything but disappointed, for fellowship is worth something. Jamison did succeed in getting a worthwhile signal out of Rhodesia on 3,396 KHz at 0400 GMT, and ORTF Martinique on 3,315 KHz at 2315 GMT had not been so good in months and months. Also, while listening for the flute interval signal of ORTN in Niger on 9,705 at 0700 GMT Sunday morning (which wasn't audible, if even there) we discovered an unknown interval signal on organ, weak and deep in the antenna noise. O930 GMT on until dawn and after brought in the Asians - most all we'd heard before. Though ID's were lacking we were confident of the likelihood of Taipei, Taiwan on 7,129 at 0940 GMT, and Thai TV on 7,106 at a little later time. Notably, though, the times were a bit earlier than usually expected. The parallel outlets of F.U.N.K. were also well heard on 10,080 and 9,986 at 1030 GMT with ID's by both YL and OM.

Of course, there were numerous times when it was necessary to sojourn out-of-doors into the chill breeze whipping across the mountain top, since there were not any facilities of even basest description. A few old plug horses in retired leisure grazed around us - causing us a bad case of frantics whenever they got close to the guy wires supporting our antennas. But, somehow our jury-rigged systems survived the horses' and brisk winds all weekend. If it hadn't been for the little wood stove (which we fondly dubbed 'Little Magne' - for all the hot air) we would have froze in the night. There wasn't a chance for loneliness with all the company of critters we saw. Moths as large as bats fluttered around our single light, spiders of every kind and description were crawling everywhere, and the foxes yapped far and near.

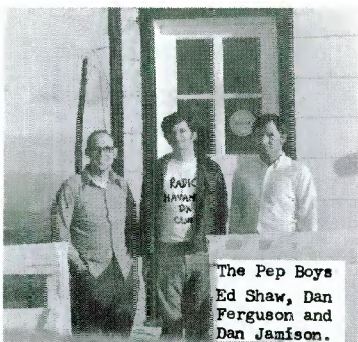
It was more a camp-out than a DX-pedition, but we know what to expect next time, and that may be at hand before long. The first thing to remember is that a considerable amount of planning and time goes into the construction of an antenna system. Allow for planned, but staggered periods of rest, and don't push for endurance records. Otherwise, fatigue and sleep will eventually overcome you and erode precious time to DX. Already, we are proposing another jaunt for the Christmas holiday period. Some relatives of Ferguson may have an available location. In any event, I wouldn't have missed this weekend for the world. It was only an appetizer, and now I'm ready for the main course. Try it yourself. sometime. 73 for now!

Ed Shaw, DXer, Mountaineer, Trailblazer,  
Apple thief, Steeplechase, and Tourist.

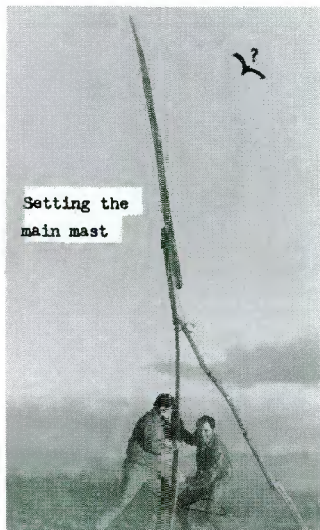
# BONANZA DX SAFARI



Scene of the crime



The Pep Boys  
Ed Shaw, Dan  
Ferguson and  
Dan Jamison.



Setting the  
main mast



Home on the range



Getting down to work



DXer misses Tristan...again.



The weekend's catch

## PHENOMENON OF THE DARKNESS PATTERN - EXPLAINED

Part VIII

by Edward Shaw

This is the eighth part in the series of configurations for determining sunrise and sunset times for any part of the world. Knowing these for both your location and the desired station will enable you to determine whether there is even the possibility it can be heard. This month we are providing example configurations for a listener in Tulsa, Oklahoma who desires to listen to A Voz do Oeste in Cuiaba, Brazil. As in each series the cardinal points to remember are:

1. Low frequency transmissions will only propagate between two points in darkness.
2. Exact GMT for any longitude on the globe may be easily figured by adding 4 minutes of time for each degree West of 0° Greenwich, or subtracting that amount of time for East of 0° Greenwich. This is the Sidereal Time difference.
3. The accompanying chart tells when sunrise and sunset will occur (within a few minutes) in local time for most latitudes. Nearly exact estimates may be interpolated for latitudes between those listed.

RECEPTION OF TRANSMISSIONS BELOW 7,000 KHz

Reception unlikely after...				LAT °	Reception unlikely before...			
SUNRISE (Local Time)*					SUNSET (Local Time) *			
1/17	1/27	2/7	2/17		1/17	1/27	2/7	2/17
0845	0828	0800	0736	60	1536	1558	1630	1653
0831	0816	0751	0729	58	1550	1610	1638	1700
0819	0806	0743	0724	56	1602	1620	1646	1706
0809	0757	0736	0718	54	1612	1629	1653	1711
0759	0749	0730	0714	52	1621	1637	1659	1715
0751	0742	0725	0709	50	1629	1644	1704	1720
0734	0726	0713	0700	45	1647	1659	1716	1729
0719	0714	0703	0652	40	1701	1712	1726	1737
0707	0703	0654	0645	35	1713	1722	1735	1743
0656	0654	0647	0639	30	1724	1732	1742	1749
0638	0637	0633	0629	20	1742	1748	1755	1800
0622	0623	0622	0620	10	1758	1803	1807	1809
0607	0609	0611	0611	0 Equator	1814	1816	1818	1818
0551	0555	0600	0602	10	1829	1830	1829	1826
0534	0540	0547	0552	20	1846	1845	1841	1836
0515	0523	0534	0541	30	1905	1902	1854	1847
0504	0513	0526	0534	35	1916	1912	1902	1853
0451	0501	0516	0527	40	1929	1923	1912	1901
0435	0448	0505	0518	45	1944	1937	1922	1909
0416	0431	0452	0508	50	2003	1953	1935	1919

(\*) Add Sidereal Time difference for longitudes West of Greenwich  
 Subtract.....for longitudes East of Greenwich

EXAMPLE CONFIGURATIONS for January 27th, 1973 between: Tulsa, OK at 96°W 36°N and Cuiaba Brazil 56°W 16°S

- a. Tulsa: 96°W x 4 mins equals 06hrs 24 mins Sidereal Time difference, added to 36°N local sunrise (0705) equaling 1329 GMT  
 36°N local sunset (1720) equaling 2344 GMT
- b. Cuiaba: 56°W x 4 mins equals 03hrs 44 mins Sidereal Time difference, added to 16°S local sunrise (0546) equaling 0930 GMT  
 16°S local sunset (1839) equaling 2223 GMT

Stations of the Brazilian Mata Grosso typically operate between 1000-0300 GMT. So, we immediately can see that the sun sets in Tulsa less than 1½ hours after setting in Cuiaba. Both locations are in darkness when the station signs-off at late night, and the signal may well be audible. However, note that the sun rises in Cuiaba at 0930 GMT - a half hour before the station signs-on. Although still dark in Tulsa at that time the darkness path is broken, nonetheless, and reception of Cuiaba is not likely until sunset again in Tulsa when the darkness path will be complete once more.

# QSL Report

G. A. Calkin  
P.O. Box 1345  
Station "B"  
Ottawa, Ontario K1P 5R4  
CANADA

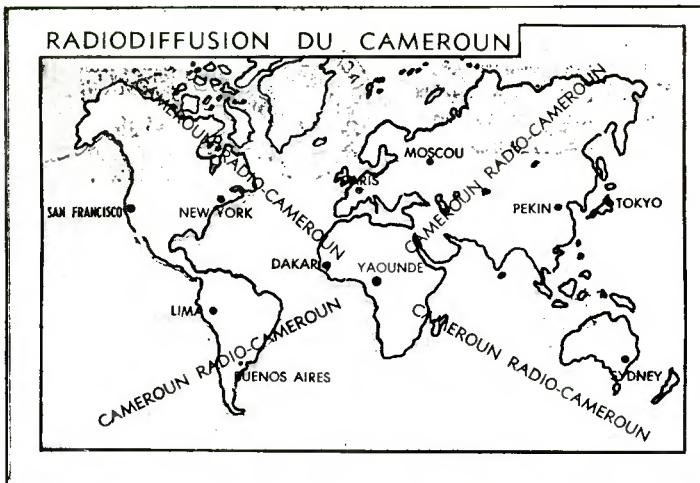
Deadline: 12th

## QSLs RECEIVED

This month, your editor would draw your particular attention to one of the rarest QSLs of all time, the FALKLAND ISLANDS. Also Gerry Dexter has received perhaps the first-ever QSL from LA VOZ DE ATITLAN in GUATEMALA. Several DXers have received verifications from the re-activated RADIO BELIZE, while QSLs from the Clandestine RADIO ESPANA INDEPENDIENTE and the rarely heard station in MAURITIUS are also among this month's catches.

- AFARS AND ISSAS:** Djibouti, 4780, folder card in 16 days airmail for 3 IRCs and including a full verification. (Hancheruk)
- AFGHANISTAN:** Radio Afghanistan, Kabul, 15265, replied by aerogramme-letter with full data in 2 months for 2 IRCs. (Norko) aerogramme veri in 10 weeks for 3 IRCs (D. Johnson) 55 days by air for 4 IRCs (Wiseling) aerogramme in 4 weeks for 2 IRCs and photo of me and rx. (Perdue) minimum-content aerogram giving full data in 1 month by air for 3 IRCs and registered report. Are they out of cards? (Reynolds) 2 months for 3 IRCs (Seymour)
- ALGERIA:** RTA, Algiers, 9510, card in French & Arabic with full data and report forms; air in 2 months for 1 IRC (McGregor)
- ARGENTINA:** RAE, 9690, no data card except for the frequency in 50 days sea; air for 3 IRCs. (Wiseling) 9690/11710, globe card with frequency only in 2 1/2 months. (Plum)
- ARMENIAN S.S.R.:** Radio Moscow relay, 21505, sent brown/red card w/full data (Barto)
- ASCENSION IS:** BBC South Atlantic Relay, 9510, Thames River card, by air in 2 weeks (Smith)
- AUSTRALIA:** VNG, Lyndhurst, 12000, folder QSL with all data in 14 days airmail. V/S: Claire J Doolan, returning my IRC. (Duba) 43 days air returning my IRC (Wiseling) 22 days (Imbert) Radio Australia, 21740, large card with full data for Shepparton in 5 months for English report. No IRCs. (Howard) card with full data in 6 months after f/up (Smith) 1 year, 4 months, 2 days, card by seammil (Isaac) 9 months from V/S: Merryl Donnison (Sykes) 22 days for 7235, large card with "Radio Australia" shown in continental code. (M. Marshall)
- AUSTRIA:** ORF, Vienna, sent large silver card with some black/red designs; full data, no IRC (Barto) scenic card of Burg Forchtenstein, with all information via airmail after 36 days. (E. Johnson) 11970, full data card in 2 months; no IRCs (Norko)
- BANGLADESH:** Radio Bangladesh, Dacca, 17935.5, sent complete full verification on a card, signed by H. Habibullah together with program schedule and personal letter. Reported with 2 IRCs and via registered airmail. Total time: 2 weeks! (Kusalik) card air in 24 days for 3 IRCs (Nikolich) 12 days on 2nd try for 1 IRC (McGregor)
- BELGIUM:** RTB, Brussels, 9550, usual card, multi-colored, with full data. Also a formal card with compliments, a new schedule in English, copy of the Sept. 7 mailbag program; airmail in 23 days. No IRCs. (Pino) 27 days air for 2 IRCs (Yamron) 14 days (M. Marshall) 20 days from V/S: Jackie Marshall (Perdue)
- BRAZIL:** Radio Nacional de Brasilia, 15445, full data card except for the time in 30 days by air for 5 IRCs. V/S: Walter M. Barbosa). Also sent postcards, pennant and a data sheet on Brazil's trade fair (Wiseling) very attractive scenic card of Brasil Turistico with all data together with pennant; 5 IRCs sent; reply in 30 days (E. Johnson) 3 months for 1 IRC (McGregor) 26 days air for mint stamps (Imbert) 3 weeks for 5 IRCs (Rodman)
- BRITISH HONDURAS:** Radio Belize, 3300, usual card in two weeks for 2 IRCs. Sent report on first week they were back on air (Reynolds) 1 week air for 1 IRC; full data (Hayer) 6 days airmail for 1 IRC (Norko) 8 days for 2 IRCs (Isaac) 2 weeks airmail for English report, 3 IRCs and a post card (Howard)
- BOUGAINVILLE:** Radio Bougainville, VLSBA, Kieta, 3322.5, QSL data sheet from V/S: Keith Jackson in 22 days airmail for 2 IRCs. (Norko)
- BOTSWANA:** Radio Botswana, 4845, color 'Police Camel' card giving frequency only; 21 weeks for an English report with 3 IRCs (Howard) 4845, p/card depicting bull giraffe with frequency in 3 1/2 weeks air for 3 IRCs. (Matsuura)
- BULGARIA:** Radio Sofia, 9700, full verification in 5 months seammil; no return postage sent. (Yamron)

**CAMEROON:** Youmde, 4972, received 4 cards, all at different intervals for one English rpt. and a f/up. All arrived via seammil. Total time between my initial report and arrival of



last card: 6 months. (Duba) sent card with map of the world with tower on face. Full data on reverse side. Sent NASWA French language report with 2 IRCs and registered airmail. Reply in 6 1/2 months after 2nd follow-up. (Kusalik) Tnx to Mark Duba who sent us the above QSL from Yaounde (Ed.)

**CANADA:** CFRX, Toronto, 6070, skyline card without time in 5 days for 10-cent Canadian stamp. Card returned to station for addition of time and returned with correction in 18 days from V/S: Clive Eastwood. (Sykes)

CPCX, Montreal, 6005, long card with date and frequency in 27 weeks ~~small~~-rate for mint stamps. (Imbert)

CFVP, Calgary, 6030, card with picture of station transmitter site in 4 days for no return postage. Also sent 6 page history of the station. (Swatkoff)

CKZU, Vancouver, 6160, blue card with industries shown and "VANCOUVER" printed on front in 31 d. Station was heard while staying in Calgary. V/S: R. C. McDonald (M. Marshall) Radio Canada International, 9625, full data card in 14 days for mint stamps from v/s: Brian Townsley (Wiseling)

**CANAL ZONE:** NBA, U.S. Naval Time Signal, Balboa, 17695.5 kHz sent full verification letter form, with particulars and power. 1 IRC sent (Kusalik)

**CANARY ISLANDS:** RNE, 15365, antenna tower card with all data but time. Spanish report sent. For 2 IRCs and reply came in 18 days airmail. (D. Johnson)

**CHILE:** Radio Soc. de Minería, 9750, form letter with date only and red pennant in 3 weeks airmail for no IRCs. Reported in Spanish. (Swatkoff)

**CHINA:** Radio Peking, 17735, card with date and frequency only showing dancing girls rifle drill team, plus personal letter w/schedule. 3 weeks airmail for no return postage sent. (D. Johnson) 2 weeks with no data (Smith) 17890, green, blue and white card with schedule and info on Taiwan; 1 month airmail; no return postage. (Nebron) 15095/17673, red detachment of women card with date and frequency; received in 17 days for no IRCs (Norko)

**-CLANDESTINE:** Radio Espana Independiente, 12140, card using Picasso design with full data, and vague verification statement. Reported in English on a week of reception and mailed to Prague. Reply came from Paris. Sent French mint stamps, but not used. (Reynolds)

**COLOMBIA:** Emisoras Nuevo Mundo, 4755, CARACOL network card with date/frequency in 7 days for Spanish report and mint stamps. (D. Johnson)

Radio Colosal, 4945, Spanish form letter and beautiful blue and yellow pennant airmail for 1 IRC. (Swatkoff)

Radio Santa Fe, 4965, green and white card with no data!! just thank you for p/ card and note that they are returning 4 IRCs as they are no good to them. I had only sent 1 and none of the returned ones were mine!!! Also sent pennant, green and white, in 1 month airmail. (Swatkoff)

Radio Sutatenza, 5075, Spanish/English folder card, no time, in 5 months for an English report and mint stamps, not used. (Reynolds)

**COSTA RICA:** Faro del Caribe, TIPC, 9645, card together with letter of apology by air in 26 days for mint stamps. (Nikolich)

**CUBA:** Radio Havana Cuba, 11815, sent long multi-colored card with full data after a second report. 24 days for no IRCs sent (Pino)



CASILLA 5782 - LA PAZ  
TELEFONO 24422 - TELEX 3560022  
FRECUENCIAS DE EMISION  
1.300 Kc. - 6.155 Kc.  
4.845 Kc. - 97 Mc.

La Paz, 6 JUN. 1972

Señor

Ernest G. Johe

De mi mayor consideración :

Efectivamente, los datos que Ud. nos proporciona corresponden a la programación y características de nuestra emisora.

Para corresponder a su interés, le facilitamos datos técnicos de RADIO FIDES:

Tenemos cuatro transmisores: dos locales para la ciudad de La Paz, y dos de alcance nacional. Sus características son las siguientes:

- 1).- Transmisor de Frecuencia Modulada, de 50wattios; 97Mc. con dos horarios de Estereofonía.
- 2).- Transmisor de Onda Corta, banda de 49 metros, de 1 kilowattio; 6.155 Kc.
- 3).- Transmisor de Onda Media, de 1 kilowattio; 1.300 Kc .
- 4).- Transmisor de Onda Corta, banda de 60 metros, de 5 kilowattios (Onda tropical); 4845Kc.


También le remitimos un banderín de nuestra emisora, como recuerdo.

La saluda atentamente.

  
Director de RADIO FIDES



- **CUBA:** Radio Rebelde, 8<sup>th</sup> Harmonic of 590 kHz, 4720 kHz, replied with a black and white cd from El Instituto Cubano de Radiodifusion confirming Rebelde with time and date, but no frequency noted. Also received a flashy red, white and black Rebelde card with time and date, but also no frequency noted, in 247 days surface mail. Stamped and signed by V/S: Luis Mas Martin, Director. (Hall) Very good OM! (Ed.)
- CYBUS:** BBC, 11955, Thames card in 36 days for no return postage; card had site typed in, but no other data. (Mayer) 15420, Thames card wir in 22 days (Nikolich)
- CZECHOSLOVAKIA:** Radio Prague, 11990, p/p/card with all data in 15 weeks seairmail, no IRCs (Imbert) 3 color cards with full data airmail in 1 month (Smith)
- DENMARK:** Radio Denmark, Copenhagen, 15165, QSL card airmail in 23 days for 1 IRC (Nikolich)
- ECUADOR:** HCJB, Quito, 11745 kHz, full data Galapagos card in 24 days airmail for 2 IRCs. Also sent a programme schedule, religious pamphlets, antenna handbook and a small pennant. (Wiseling) airmail in approximately 30 days (Smith) 15115/11745, two cards in 22 days air (Swatkoff) Cactus on Galapagos card with usual enclosures in 11 days air; 3 IRCs. (M. Marshall)
- EL SALVADOR:** Radio Nacional, YSS, San Salvador, 5980, blue no data card in 40 days air for Spanish report and SASE; also pennant. (Dildine)
- ENGLAND:** BBC, 6110, Thames card by air in 2 weeks. (Smith)
- ETHIOPIA:** Radio Voice of the Gospel/ETLF, Addis Ababa, 9730, blue card in 9 weeks air for 2 IRCs. (Plum) 7145, usual long blue card with full data, received by 2nd class airmail in 11 weeks. Sent tape recording and 3 IRCs. V/S: Menkir Esayas (Lobdell)
- **FALKLAND ISLANDS:** P.I.B.S., Port Stanley, replied by airletter in 55 days from V/S: Mrs. M. J. Kerr, Broadcast Secretary, for mint stamps and report on 3943 kHz. Still notes frequency of 3958 kHz, whereas reception was actually on measured 3943 kHz. (Hall) Fantastic, OM! (ed.)
- FINLAND:** Radio Finland, Helsinki, 15185, headphones map card w/sked in 42 days for no return postage. (Noroko)
- FRANCE:** ORTF, Paris, 17730, full verification in 3 months airmail for 2 IRCs (Noroko) (Yamron) 15135, airmail in 24 days for no IRCs (Pino)
- FRENCH GUIANA:** ORTF, Cayenne, 3385, French letter with date and frequency in 16 days airmail for NASWA French report and 1 IRC. (Noroko) form letter with veri statement and a personal letter of confirmation from the Chef d'Etablissement, together with programme schedule. Reported using NASWA French language reception report form. 115 days (Kusalik)
- GAMBIA:** Radio Gambia, 4820, form letter with date/frequency, station info and sked in 2 weeks airmail for 2 IRCs. (D. Johnson) form letter in 21 days airmail for 2 IRCs (Imbert)
- GEORGIAN S.S.R.** Radio Moscow, Tbilisi, 11820, black/red/yellow card from Radio Moscow's African Service with all data except frequency (site is included) in 4 months seairmail. Personal letter, sked and p/cards also included (Lobdell)

	<p>2K5</p> <p>(((C(C(+)D)))D)))</p> <p>Acknowledging your receipt of our signals on 5045 k/c/s. 60 m at 0644-0054 hrs. EST. G.M.T. 26.4.72</p> <p>STATION INFORMATION</p> <p>Frequency 5045 k/c/s</p> <p>On the air 0430 - 0745 hrs</p> <p>Transmitter 300 w</p> <p>Antenna Two 1/2 waves in phase</p> <p>Many Thanks for your Report.</p> <p><i>R. Henderson</i> Station Manager.</p> <p>(((C(C(+)D)))D)))</p>
--	---

2K5, Rarotonga, Cook Islands, 5045 kHz - Rarely heard or verified.



G.D.R. Radio Berlin International, 11970, colored p/card with full data. Seemail in 53 days for no IRCs. (Fino) 2 months air for 11970 (Smith)

G.P.R. Deutsche Welle, 11925, blue card with yellow map of Africa; full data and sked; air in 63 days. No IRCs (Fino) Are you sure this isn't for Kigali, Rwanda? (Ed.) 9625, olympic card and "Hallo Friends" in 41 days air (Fino) 9735, orange, green and blue card for Julich site in 98 days (Self)

GHANA: Radio Ghana, 11850, received a letter from Accra stating report being checked and reply would be forthcoming. (Wiseling)

GREECE: NHBI, Athens, 15345 kHz, white card in 4 weeks airmail with all details for 3 IRCs. (Perdue)

GREENLAND: Radio Greenland, 11745 kHz, folder card with color "radiohouse" in Godthab, w/ picture and sked and info on the country. 2 IRCs sent and reply via seemail in 19 weeks. V/S: B. Krogh. (Blossom)

GUAM: U.S. Naval Communication Station NPN, 21760, blue/gold card with full data, stating that the transmission heard was a general composite broadcast to ships with a power of 40 kW; 10 weeks seemail. (Matsura)

GUATEMALA: La Voz de Atitlan, TGDF, Santiago Atitlan, 2390 kHz, replied by letter, typed schedule, airmail in 1 month from V/S: Juan Ajtzip Alvarado. Follow-up required. (Dexter)

Radio Cultural, TGNA, Quetzal card in 2 months for 1 IRC: 9505 kHz (McGregor)

9505 is TGNE, no? (ed.) TGNA/5955, Quetzal card in 2½ months for English report and 3 IRCs. (Orcutt)

GUYANA: GBS, 3290 kHz, confirmation letter with all data in 15 days airmail for 2 IRCs. V/S: N. A. Rayman, C.E. Letter also contained interesting information on GBS (Duba)

HAITI: 4VEH, Cap Haitien, 11835 kHz, black and white folder card with full data in 75 days for 1 IRC from the QSL Secretary, Mrs. Claude Beachy. (Norko) 1 month airmail for 2 IRCs. (Yamron)

HAWAII: WVVH, 15000, brown card plus booklet describing NBS services on request, in 18 days (M.J. Kelleher) air in 1 week (Smith) 1 week (M. Marshall)

HONDURAS: La Voz Evangelica, HRVC, 4820, card with all details in 16 days airmail for mint stamps and photo. (Perdue) 2 weeks for 1 IRC (Smith)

La Voz de Occidente, HRRH, Santa Rosa de Copan, 5962 (nominal 5960), replied w/ friendly letter in Spanish and apologizing for the delay in replying. V/S: Miriam Audely Rosa, Depto. de Reportajes. Reply received in 86 days airmail, 16 days after f/up with SASE (used) sent. Station also sent color photo of famous Copan ruins. (Calkin)

Radio Suyapa, 6125 kHz, letter, QSL card and pennant from V/S: Francisco Elortegui, Gerente. Airmail in 3 weeks. (Dexter)

HUNGARY: Radio Budapest, 11910, full data card with beautiful (pant, pant) girl in native costume. Schedule too. 2 months seemail for report form without RP. (D. Johnson) 9833, blue card with view of castle and full data; air in 24 days (Fino)

INTERNATIONAL WATERS: Radio Nordsee International, 6205 kHz, Mebo II card with no data in 3½ months for 2 IRCs. (Orcutt) 109 days for 3 IRCs airmail (E. Johnson)

IRAN: Radio Tehran, 15084, envelope containing tourist info, sked, booklet and a long white full data card via registered surface mail in 81 days for 2 IRCs. (Duba) 2 months via registered mail for 2 IRCs. (Norko) 50 days registered airmail for 2 IRCs (Wiseling)

IRAQ: Radio Baghdad, 9745, full data post card verie in 36 days airmail for 2 IRCs (Norko) 15400, map card with full data and tourist info; 2½ months for 1 IRC. Reported in Arabic. (McGregor)

ITALY: RAI, 11810, tower card in 92 days seemail; date, time and frequency specified. 2 IRCs sent. (Isaac) 9575, map/antenna card with full data in 47 days for no return postage (Norko)

JAPAN: Radio Japan, 17785, sent "Bingata" style card which is a cloth pattern showing geese in flight; by air in 12 days for no return postage. (Lobdell) 15445, sacred crane QSL air in 19 days (Nikolich)

NSB, 9590, yellow 'QSL Story' card in 6 days airmail for no IRCs. No data. (Swatkoff)

KOREA: (REP) VOFK, Seoul, "Ring Fight" card with full data in 3 weeks airmail for English report with 3 IRCs. Interesting pic, worth display. (Reynolds) p/card verie with full data in 26 days airmail for 2 IRCs. (Norko) 15335, card in 23 days for 2 IRCs (Nikolich)

KUWAIT: Radio Kuwait, 15415 kHz, folder info card in 1 month airmail for 1 IRC (Plum)

LIBERIA: Voice of America, Monrovia, 7280, and 9670, cards from Washington (Barto) 30th Anniversary card in 1 week (Smith)

LITHUANIAN S.S.R. "Radio Vilnius", 11790, white flower card with full data in 1 month for no IRCs. (Swatkoff) 11850, flower card in 5½ months (M. Marshall)

## RADIODIFUSORAS

**X. E. Q. K.** EN ONDA LARGA 1350 KCS.  
EN ONDA CORTA 9555 KCS.

LA UNICA HORA EXACTA DEL OBSERVATORIO NACIONAL DE MEXICO

TIBER No. 100-9o. PISO  
MEXICO 5, D. F.  
TEL. 11-08-14

a 29 de Agosto de 1971.

SR. GREGG A. CLAKIN  
Río Balsas No. 35-702  
México 5, D.F.

Muy estimado señor:

En contestación a su atenta de fecha 14 de los corrientes, en la cual nos da un reporte de nuestra Emisora en la frecuencia de - 9,555 Kcs. Onda Corta.

Mucho le agradecemos que nos comunique que la señal es buena y - fuerte y perfectamente inteligible.

La verificación que hace usted es correcta, lo mismo los detalles de la transmisión. Estas emisoras tanto en onda larga como en corta, dan la hora del Observatorio Astronómico Nacional casa minuto y durante 55 segundos anuncios comerciales.

Una vez más le agradecemos su reporte y nos es grato repetirnos de usted afectísimos, attos. y Ss. Ss.

HORA EXACTA, S.A.

Ing. Felipe Gomez B.

MAS DE UN MILLON Y MEDIO DE OYENTES LAS ESCUCHAN CADA DIA

**MALAGASY REP:** Radio Nederland, Talata, 15105, QSL map card of island in 11 days airmail for no IRCs. (Norko) 15260, Happy Station 25th Anniversary card with all details in 10 days airmail for 2 IRCs. (Perdue) 21480, via airmail in 2 weeks. (Barto)  
**MALAYSIA:** Radio Malaysia, 9660, map/flag card with no data and personal letter from the Director General with all data in 13 days for registered English report with 3 IRCs. (Orcutt) 11900, card in 2 weeks for 1 IRC (McGregor)

BBC-11750 kHz, Thames card by air in 36 days (Nikolich)

→ **MAURITIUS:** Mauritius Broadcasting Corporation, 9710, red/blue/yellow/green stripes card with date and "correct" statement in 3 weeks airmail for 3 IRCs. (Matsuura)

**MEXICO:** Radio Mexico, XERMX, Mexico City, 17835, printed form letter with full data, plus considerable technical data in 11 months from V/S: Ing. Manuel Cerrillo L., El Director General, Direccion General Tecnico, Dpto. de Radio Mexico, Subsecretaria de Radiodifusion, Secretaria de Comunicaciones y Transportes. (Calkin)

**MONACO:** Trans-World Radio, 7290, card air in 65 days (Nikolich)

**MOZAMBIQUE:** Beira, 6090, card via RCM in Lourenco Marques, after 1½ months for an English report and mint stamps. (Orcutt)

**NETHERLANDS ANTILLES:** Radio Nederland, 21570, 25<sup>th</sup> anniversary card in 7 weeks (Barto) 11730, card in 1 week by air (M. Marshall) 11730, color p/card (Fino)

**NETHERLANDS:** Radio Nederland, Lopik, 11730, full data card in 10 days air for 2 IRCs. (Wiseling)



**NEW GUINEA:** Radio Morobe, 3220, usual folder plus form letter with full details noting that no QSL cards are available. Received in 200 days airmail for mint stamps from V/S: J. J. Waters as Station Manager, confirming 1971 rpt. Confirmation of 2nd report in 1972 was already received in 22 days airmail with personal letter from Richard C. Barlow as Station Manager. (Hall)

**NEW ZEALAND:** RNZ, Wellington, 11780, globe card seammil in 153 days for 2 IRCs. (Nikolich) 17770 KHZ, multicolored globe card in 118 days; no IRCs or postage sent. Seammil (E. Johnson)

**NIGER:** ORIN, Niamey, 3260, card in 16 days for 2 IRCs and French report. (Norko)

**NIGERIA:** Voice of Nigeria, 15185, flag card air in 58 days for 2 IRCs. (Nikolich) green/white card with all data in 20 days airmail. No return postage. (Imbert) two months returning IRC for 15185 (Sykes) 146 days air (Isaac) 2 months with sked (Yamron) 7255/Ikorodu, green/white card with full data in 7 months airmail w/IRC returned. (Swatkooff)

**NORWAY:** Radio Norway, card from E. Thokle in 39 days; no IRCs (Smith) 9610, card air in 13 days (Nikolich) 11850, card in 1 month with info on station (Yamron) 15175, 50 days seammil, with full data (Plum)

Radio Liberty Network Operations Arabellastraße 18 8 Munich 27 Germany		 Postkarte
<b>Verification of Reception Report</b>		Mr. Edward J. Insinger
We are pleased to verify your reception of Radio Liberty transmissions from		24 Madison Avenue
SPAIN _____ GERMANY _____		Summit, N.J. 07901
TAIWAN <input checked="" type="checkbox"/> on Kcs 17720 on 6/20/72, at 1855 - GMT.		USA
Thank you and best wishes from Radio Liberty.		

RADIO LIBERTY BROADCASTS FROM 3 SITES - THIS QSL IS FROM TAIWAN/17720

**PAPUA:** Radio Milne Bay, 3360, verification letter from G. V. Lever, Assistant Manager, stating with the increase in power and the change in frequency, they greatly appreciate receiving reception reports. New QSL cards are now being printed. Address: P. O. Box 111, Aiotau. 3 weeks air for 1 IRC (Matsuura)

PAPUA: VLT4, 4890, Port Moresby, card seammil in 46 days for 3 IRCs. (Nikolich) VLT9, 9520, map card with all data in 15 days airmail (Duba)

PHILIPPINES: VOA/Para, 15345, card from Washington in 1 week (Barto) card in 1 week seammil from Washington (Barto)

- FEBC, Manila, 15300, map card in 93 days seammil. 3 IRCs sent (Isaac) 11 wks airmail for 3 IRCs (Seymour) 11890, card, sked and religious lit. in 3 months for 3 IRCs, reply by airmail (Rodman)

POLAND: Warsaw, card for 7270 kHz, in 2 months showing cartographic card of Poland. No IRCs sent. V/S: Lech Stanislawski, Ed. in Chief. (Barto) 15120, full data map card and personal letter in 34 days for no IRCs. (Norko)

PORTUGAL: Radio Portugal, 11840 kHz, beautiful QSL in 12 days airmail for 2 IRCs. (Perdue)

IBRA Radio, 9670, full data antenna card and blue paper pennant received in 9 days airmail for 1 IRC; reported to Sweden and also received sked. (Mayer)

QATAR: Qatar Broadcasting Service, 9570, letter with full data in 3 weeks airmail for 3 IRCs from v/s: Mahmoud El-Dhahid. (Matsuura)

RHODESIA: RBC, 3396, card in 2½ weeks showing gazelle and Salisbury. Reported in English w/3 IRCs. (Reynolds)

ROMANIA: Radio Bucharest, card airmail in 3 months. No IRCs sent. (Smith) 79 days w/card of Romanian folk architecture; air for no return postage. (Isaac)

RUSSIAN S.P.S.R. Radio Moscow, card and sked airmail in 27 days; no return postage sent. (Smith)

Radio Moscow, Armavir, 12000, card plus pennant in 3 weeks air, giving site (Plum)

Radio Moscow, Moscow, card giving site in 1½ months (Dildine) 15210, card for Moscow site in 18 days (Imbert)

Radio Moscow, Tula, 11710, card from V/S: Tamara Shulga in 5 months via seammil for African service. No IRCs sent (Barto)

Radio Peace and Progress, 15350, card with all data except site; 135 days seammil with sked. (Mayer)

RWANDA: Deutsche Welle, Kigali, 17765, map card with all data received in 92 days for no return postage; also sked in German. (Mayer)

SABAH: Radio Malaysia Sabah, 5980, full data card in 17 days airmail; 2 IRCs sent. Sked and personal note also received. (D. Johnson)

Kingdom of Saudi Arabia  
Ministry of Information - Saudi Arabian Broadcasting

Riyadh 28 June 1972

Q.S.L.

To: Mr. Edward J. Insinger

Dear Listener,

Thank you very much for your listening report. We have pleasure of verifying your reception of our transmissions as follows:

Frequency: 11 855 Kc/s; Date: 21 June 1972  
GRT 1929 - 2000

We are grateful for your cooperation and hope to hear again from you.

*Werner Storg*  
Werner Storg  
Chief Engineer

SAUDI ARABIA: Saudi Arabian Broadcasting, 11855, crossed swords card with all data in 3 months for 2 IRCs and an English report. V/S: Werner Storg (Orcutt)

SEYCHELLES: FEBA, 11950, card airmail in 177 days for 2 IRCs. (Nikolich) 15270, card in 1 month airmail from V/S: Mary Berry. 3 IRCs sent (Perdue)

SINGAPORE: Radio Singapore, 9635, p/p/card verie with full data except time in 15 days airmail for 2 IRCs. (Norko)

**RADIO HONG KONG**

government broadcasting services : prince's building, hong kong.

tel: H-235081

cables: broadcast hongkong

2nd September 1968.

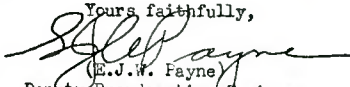
Dear Sir,

Thank you for your letter of 15th August in which you accurately reported reception of our transmission of same date.

I am confirming your reception report on our now discontinued short wave service, and it is the last correct report received. Our card is herewith enclosed as requested.

This short wave transmission was originally intended for our local fishing fleets. It was discontinued because of age, and it was uneconomical to run, and our newly installed AM transmitters are more efficient than the old ones and serve the local fishing fleets equally well.

Yours faithfully,



(E.J.W. Fayne)  
Deputy Broadcasting Engineer,  
for Director of Broadcasting.

Mr. Edward C. Shaw,  
6350 Blanchard Road,  
La Mesa California, 92041  
U.S.A.

(Editor's Note: Radio Hong Kong is now a page of SWBC DX History, having transmitted its final programme on August 15, 1968, the date Ed Shaw, NASWA's Secretary, logged it. An exotic QSL FROM THE PAST and a first in a series which will be featured from time to time in QSL REPORT.)

**SOUTH AFRICA:** Radio RSA, 21535, beautiful card showing photo of lions; no v/s, but complete verbi data. 3 months; no IRCs (Barto) 11970, full data card via airmail in 12 days for 1 IRC. (Norko)

**SPAIN:** RKE, Madrid, 11925, black and white photo card with transmitting station shown; 29 days seammal for no IRCs. Station also sent a typewritten note in English expressing thanks and appreciation for listening to their programmes. (Pino)

**SRI LANKA:** Radio Ceylon, 15120, fruit vendors card with full data in 5 1/2 months for 3 IRCs asking reports be sent to: English Service, Ceylon Broadcasting Corp., P. O. Box 1510, Colombo, Ceylon (Sri Lanka). (Sykes)

**SWAZILAND:** Swazi Radio, 6155, veri letter with date only, sked card, two bumper stickers reading: LISTEN TO THE SUPER SOUND OF SWAZI RADIO and RADIO SWAZI IS WHERE ITS ALL AT, BABY. Letter is signed by Miss Barbara Christensen. 14 weeks seammal for 3 IRCs. (D. Johnson)

**SWEDEN:** Radio Sweden, 11705, northern lights card with pennant in 7 days airmail. No return postage sent. (Nebron) card in 11 days air (Smith)

**SWITZERLAND:** SBC, Berne, card seammal in approximately 60 days. (Smith)

**TAHITI:** Radio Tahiti, 15170, mermaid card in 3 months after f/up and 2 IRCs (Orcutt) 5 weeks air with all details for 3 IRCs and French language report, w/sked (Perdue)

**TAIWAN:** VOFC, Taipei, card air in 25 days for 2 IRCs. (Nikolich)

**TOGO:** Radio Togo, 5047, globe card in 2 months for English report with 3 IRCs. All data. (Orcutt)

**TURKEY:** TRT-15195, card air in 158 days airmail for 3 IRCs. (Nikolich)

## RADIO UNIVERSO

"LA VOZ AMIGA DE VENEZUELA"

**YVMT 730 Kc/s**

ONDA LARGA  
10 KW



**YVMS 4.850 Kc/s**

ONDA CORTA  
10 KW

**YVMT - FM 98,5 Mc/s**

MODULACION DE FRECUENCIA

APARTADO POSTAL 567 y 576

BARQUISIMETO - VENEZUELA

RADIO UNIVERSO'S QSL IS SIMILAR TO OTHERS IN THE SAME NETWORK.

**UKRAINIAN S.S.R.** Radio Kiev, card airmail in approximately 40 days for their programme. No transmitter site given. (Smith)

Radio Moscow, Lvov, 11900, card with all data and site; 18 days; no IRCs (Imbert) 30 days airmail w/site (Norko)

Radio Moscow, Vinnitsa, 11730, full data card w/site marked in 30 days airmail. (Norko) 11850, card with all data and site in 23 days (Imbert)

Radio Moscow, Ivano-Frankovsk, 9660, card with all data and giving site in 17 days. No return postage. (Imbert) 1 month air for 9660 (Plum)

**UNITED ARAB EMIRATES:** Abu Dhabi Broadcasting and Television Service, 9620, thank-u letter w/no data in 11 weeks airmail for 3 IRCs, from V/S: Farouk Jarrar. (Matsuura)

**UNITED NATIONS:** United Nations Radio, card with full data and transmitter site given in 1 month. (Smith) Which site, OM? (Ed.)

**U.S.A.** WIMB, Red Lion, Pa., 15185, full data card in 35 days (Norko)

AFRTS, 9755, card in 4 days with full data. For transmission via Bethany. (Self)

Did they state site on QSL, OM? (Ed.)

WVW Time Signal, Fort Collins, Colorado, 10,000 kHz, card in 9 days for 1 IRC, which was returned. (Pino)

Greenville, 11730, 9635, 15410, 15445, 6125, 17785, 21560, cards in 1-2 weeks. (Barto)

**UZBEK S.S.R.** Radio Tashkent, 11925, "Chimes Tower" card in 11 weeks (Reynolds)

## " LA VOZ DEL JUNCO "

LA PRIMERA EMISORA DE OCCIDENTE  
SANTA BARBARA, HONDURAS, C. A.

H. R. M. H. S.  
6,075 Kcs.  
HONDA CORTA

H. R. M. H.  
1,500 Kcs.  
HONDA LARGO



3 de Julio de 1972.-

MR. GREGG A. CALKIN  
EMBAJADA DEL CANADA  
Melchor Ocampo 463-7  
México 5, D.F.-  
MEXICO.-

Muy distinguido Radioescucha:

Con mucho placer hemos recibido su magnifico REPORTE DE TRANSMISION de fecha 3 de Junio de 1972, en el cuál nos informa que hbs escucha muy bien en Onda Corta, en 6,075 Kcs. Banda Internacional de 49 Metros.-

Los datos de nuestros Programas que usted anota en su atenta están de confgrmidad; es decir, son EXACTOS; eso prueba la sintonía de "La Voz del Junco" allá por aquellos lares Mexicanos.-

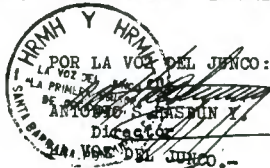
Mil y mil gracias por este reporte y nosotros en recompensa, le adjuntamos un BANDERIN DE LA VOZ DEL JUNCO, como un Recuerdo.-

Le comunicamos que La Voz del Junco comienza sus labores a las 4:30 de la mañana y cierra sus labores a las 9:00 de la noche.- A las 5:00 de la Mañana ( de 5 a 6 de la mañana), hay un Programa que se llama Despertar Ranchero, el que perfectamente bien lo puede escuchar y el que está a cargo de este servidor que le escribe Antonio Salvador Hasbun Yacamán, Director de La Voz del Junco.-Nos escucha a esa hora y le agradeceremos NOS reporte nuevamente.-

De la Colonia Ferrocarrilera, Tanetampala Estado de México, siempre me escucha un buen amigo en el programa despertar Ranchero; él se llama Don - LUIS SANTOS DE LA ROSA.; siempre me Reporta que me escucha.-

Nuevamente mil gracias Sr. CALKIN, ya sabe que por acá tiene siempre sus amigos a sus fíenes, pues desde Ya, lo incluimos en la gran lista de -- Oyentes de esta potente Emispra.-

Reciba el afecto, el aprecio sincero de todos y cada uno de los que laboramos en esta Empresa de Radio.- Fraternalmente le saludamos:

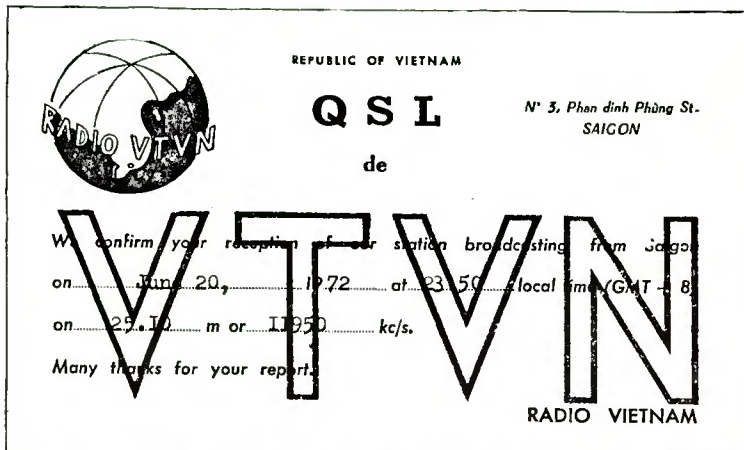


**VATICAN CITY:** Vatican Radio, 11725, full data card in 6 weeks airmail for 1 IRC. (Swatkoff) studio building card airmail in 13 days (Smith)

**VENEZUELA:** Radio Barquisimeto, 4990, card in 37 days for an English report and 2 IRCs. (HJ Kelleher)

Radio Juventud, 4900, dancing teens card in 1 month for English report and no return postage. (Orcutt)

**VIETNAM (REP):** VTVN, Saigon, 11950 replied with this card for a June 20, 1972 reception. Unfortunately the reporter who sent this in neglected to add his name to the QSL, but thanks anyway:



**VIETNAM (DEM REP):** Voice of Vietnam, 10040, letter, full details in 5 months seemail; no return postage sent. Schedules also received with QSL-letter. (Nebron)

**WINDWARD ISLANDS:** Radio Grenada, 5015, standard green card with frequency, sked and "WIBS" scratched out and new name written in. No IRCs sent. QSL received in 4 months, w/ full and complete information. (Barto)

**ZAIRE:** La Voix du Zaire, Kinshasa, 11720, French letter with date and frequency in 35 days airmail for 2 IRCs and NASWA French language report form. V/S: Nikuna Diavioka. (Norko)

And that rounds out another month's reports. Many thanks to the following DXers who sent in their QSL data this month:

Samuel Barto, Connecticut  
Tom Blossom, Indiana  
Gregg A. Calkin, Mexico  
Gerry Dexter, Wisconsin  
R. Stephen Dildine, Virginia  
Mark Duba, Vermont  
H. E. Fino, New York  
F. Earle Hall, Massachusetts  
Norman Hancheruk, P. Q.  
Ron Howard, Maryland  
Don Johnson, California  
Elmer Johnson, Florida

Martin Imbert, Virginia  
Shirley D. Isaac, South Carolina  
M. J. Kelleher, New York  
Edward Kusalik, Ontario  
Christopher Lobdell, Mass.  
Mrs. Mildred Marshall, N. Dak.  
Hiroatsu Matsuura, Japan  
Alan Mayer, Illinois  
Scott McGregor, Missouri  
Neal Percdue, Tennessee  
Larry Yarnon, Louisiana

Larry Nebron, Calif.  
Bob Norko, Conn.  
W. J. Plum, New Jersey  
Frank Orcutt  
Al Reynolds, Tennessee  
Dennis Rodman, New York  
Charles Self III, Minn.  
Woody Seymour, N. C.  
Arthur Smith, Alabama  
Ken Swatkoff, Alberta  
Steven E. Sykes, Ohio  
Michael Wiseling, Ont.

#### SCOREBOARD

Just a reminder that next month, December, we will feature again our tri-monthly SCOREBOARD. The spotlight next month will fall on NORTH AMERICA, so be sure and update your totals.

Until December, best 73, GREGG



# LISTENER'S

# NOTEBOOK

Dan Ferguson, 1521 Smith Road, Apt. 7, Charleston, W.Va. 25314 Phone (304) 346-5738

\*\*\*\*\*

CHINA - REGIONAL OUTLETS...we continue with Larry Magne's study of the Chinese regional stations.

## SINKIANG-Uighur Autonomous Region

### Urumchi

Uighur Program	2310-0030		7050, 5441, 4110
	0030-0115	RP Uigh HS	7050, 5441, 4110
	0115-0630		7050, 5441, 4110
	1100-1300		7050, 5441, 4110
	1300-1345	RP Uigh HS	7050, 5441, 4110
	1345-1635		7050, 5441, 4110

Uighur: "Sinkiang Radyo Stanski"

SPECIAL THANKS GO TO  
BOB BUNDY WHO DID MOST  
OF THE MONITORING FOR  
THIS STUDY...BOB HAS  
REALLY BEEN DIGGING UP  
THE INFORMATION FROM HIS  
TRUK LISTENING POST!!!

Mongolian Program	2340-0300		5800, 4400
	1200-1230	RP Mong HS	5800, 4400
	1230-1700		5800, 4400

Chinese Program	2200-1635		6280, 4500
-----------------	-----------	--	------------

Chi: "Singchiang Jenmin Kwangpo Tientai"

## TIBET-Autonomous Region

### Lhasa

	-1130	Chinese	9490, 5935
	1130-1500	Chinese	9490, 5935, 4035#
	1500-1545	Tibetan	9490, 5935, 4035#

#4035 sometimes not used

Chi: "Hsi Tsang Jenmin Kwangpo Tientai"

Tibetan: "Injo Memai Changga Duebo Tsang"

## TSINGHAI

### Ch'eng-to

- 3245

Chi: "Szechuan Jenmin Kwangpo Tientai"

### Hsi-ning

	-1500	Dialect	6500
	-1555	Chinese	6260, 3950

Chi: "Tsinghai Jenmin Kwangpo Tientai"

Dialect: "Tsing-chih Chi Won Wu Cheh Pun Wu Abai Chih Shengat"

## YUNNAN

### K'un-ming

	2120-0530		6935v, 4785v, 4759v
	0530-0800		4785v, 4759v
	1030-1735		6935v, 4785v, 4759v

Chi: "Yunnan Jenmin Kwangpo Tientai"

CHINA-Regionals(continued from last page)For all regional outlets:

S/on: vocal "The East Is Red". S/off: vocal "Internationals".

Verifications: Reports not wanted.

Portions of this study were derived from BBC Monitoring Service publications and have been used by permission of the BBC MS. NASWA cannot authorize further reprinting of this material, as it is copyright by the BBC MS.

SAHARA In the 20 September issue of "BANDSPREAD", published by BADX, Alan Thompson, Frank Baldwin, and Mike Barraclough, all in Great Britain, report this station, Radio Sahara, now on 4627 kHz, 1930-2158a s/off. This one was formerly on 7230 kHz, and suffered heavy interference at the 0800 s/on time. Perhaps, it will make it to NA during afternoons. The 2200 s/off should be audible, anyway. (BADX)

ALBANIA According to the BBC MS, Albania is again on standard time, now GMT + 1. That will put the s/on of the Tirana HS at 0430, instead of 0330. Frequency is 5063, and it's a regular in NA. Should also leave 5060 fairly clear for a shot at SOUTH YEMEN.

CHILE BBC MS reports that Chile is now on Daylight time, GMT - #, till the first Saturday in March.

SUDAN time is now GMT + 2. (BBC MS)

SYRIA - time is now GMT + 2. (BBC MS)

TOGO The BBC MS reports that a 50 kw and a 10 kw SW transmitter is to be installed in the interior, near Lamakara. Work is expected to be completed within eight months. (BBC MS)

ALBANIA The Home Service transmission on 5063 kHz mentioned above will now be operating at 0430-2157v s/off. (BBC MS, D. Ferguson)

SRI LANKA The External Services operate as follows:

The broadcast for South Asia, in English, with songs in Sinhalese, Tamil, Hindi and Japanese, at 1030-1130 on 17830, 15120, 11740 kHz.

The ENGLISH SERVICE operates on  
15120 at 0030-0430, 1230-1730  
9720 0030-0430, 1230-1730  
7190 1230-1730  
6075 0030-0230

The HINDI SERVICE is on  
11800 at 0030-0430, 0630-0830,  
1330-1730  
7180 0030-0430, 0630-0830  
6075 1330-1730

The TAMIL SERVICE is on  
11800 at 1030-1330(Sa/Su 0830-1330)  
7180 at 0830-1030 Sa/Su

Tamil Home Svc, Channel One at  
0300-0630(Su 1230-1700) on 7145.  
At 0045-0300 & 1230-1700 on 4940.  
Channel Two on 7145 at 0630-1030,  
6005 at 0300-0430, 4968 at 0045-  
0300, 4940 at 1030-1230.

The Home Services of the Sri Lanka Broadcasting Corporation are schedules as follows:

English Services (Channel One)  
0430-0730(Su) 6005 kHz  
1330-1730 4968 kHz (from 1230 Sa/Su)

English Service (Channel Two)  
0045-0300 5020 kHz  
0300-0330 6130 kHz (to 0430 Sa/Su)  
0730-0930 6130  
1130-1730 6130 (Su 0730-1030)  
1130-1730 5020 (Su 1030-1730)

Sinhala Service(Channel One)  
6075 kHz 0230-1030  
4902  
3385 0025-0230, 1030-1710  
(Operational Spans: M-Sa 0025-0230, 1125-1710.  
Su/Holidays 0025-0800, 1125-1710.  
Full Moon 0025-0800, 0930-0030.)  
Sinhala Service(Channel two)  
6185 0230-1030  
4870 0030-0230, 1030-1700

This schedule reprinted by permission of the BBC Monitoring Service!!!

NEW HEBRIDES According to a note from John McNeil, Broadcasting Officer at RADIO VILA, the station is anticipating extending the evening broadcast hours from 30 October. The evening broadcast will run 0600-0900 GMT on 3945 kHz. Languages are English 0600-0700, Pidgin 0700-0745, French 0745-0900. (John McNeil, Radio Vila, via Ralph Perry)

MANNERS!! Yes, manners! John McNeil, in his note to Ralph Perry, informing us of the anticipated extension of Radio Vila broadcasts hours, also mentions the lack of manners on the part of many who write. Mr. McNeil writes, "We don't mind handling inquiries from overseas, but I get very fed up with tatty little postcards containing two sentence messages -- example, 'send me your transmission schedule' -- with no pleases, thank yous, or whatever. I don't know if it is in fact your members to blame, because the senders never identify themselves, or say what they want the information for."

"I'm sure DX-ers generally would get a lot better treatment from stations if they used a little more manners...."

"Regards to all your readers."

We would like to think that, in fact, such messages do not come from NASWA members. But it does each of us good to think occasionally on how we might help improve the relations between our hobby and the radio stations to which we listen, and with whom we have correspondence. To think on the motto of the Association, "UNITY AND FRIENDSHIP"

FIFTY YEARS OF THE BBC On 14 November the BBC celebrates the 50th anniversary of the start of regular broadcasting. Two special features will follow the BBC past the landmarks of the half-century -- the 1926 general strike which was the first big test of the BBC's independence, the start of overseas broadcasting in 1932 in spite of the Government's seeming indifference, the war years, and the new challenges of the post-war television era, including the setting up of commercial television. Talking about the past 50 years will be men who have known and worked with the corporation since the 1920s. Charles Curran, the present Director-General will be taking part. So will his predecessor Sir Hugh Greene, politician and broadcaster Richard Crossman and historian Asa Briggs. 6th, 13th at 0230, repeated at 1615; 7th, 14th at 1130 GMT. (London Calling, via John Tuchscherer)

#### THE STORY OF BROADCASTING

In this series of three programmes, Charles Chilton traces the story of British broadcasting from its beginnings in 1922 to the present day. All the main developments of popular broadcasting will be discussed with a special leaning towards the kind of programme that has made the British broadcasting famous throughout the world. On the 8th, 15th, 22nd at 0030, repeated at 1515. On the 10th, 17th, 24th at 2030. (London Calling, via John Tuchscherer)

PIRATES?? Recent moves by certain international broadcasters onto frequencies traditionally used by other broadcasters have been noticed by several DXers. Some have gone so far as to refer to such moves as banditry or piracy. Certainly if the stations operating (on MW or SW) from various ships on already occupied frequencies deserve the name "pirate", then so do the stations operated by government or private concerns when they pull the same trick out of the bag. Recent blatant examples of this sort of thing would be the DW-W tests, as well as the absurd saturation of a band by DW with the same program, and the move of Moscow onto 9580 kHz, forcing BBC WS to NA onto 9765. Perhaps letters to the stations and embassies might help!!

ENGLAND To avoid the interference from the Moscow NA svc, on 9580 (see above), BBC has replaced 9580 by 9765 kHz, formerly carrying the LA svc in Spanish, which is now on 9600. 9765 is in use 0000-0330; 9600 until 0415 s/off. Other frequencies remain unchanged. (Richard E. Wood)

HAS ANYONE HEARD RADIO HANOI LATELY?? RADIO MADRID?? RADIO WASHINGTON??

???

LATIN AMERICA LISTENING TESTLATIN AMERICA LISTENING TEST

Not a contest, but a test. The purpose is to improve our knowledge of what is actually on 60 meters in Latin America, through simultaneous listening from various locations, both in North America and elsewhere. Those interested are requested to monitor the Latin Americans on 60 meters (for the purposes of this test, that means stations operating between 4000 and 5700 kHz) between November 22 and December 4, 1972. It is not necessary to monitor every night during that time, but the period does contain two weekends, including November 23, Thanksgiving Day in the United States. Many, because of family gatherings and other reasons will be unable to do any listening that first weekend. But also, many will have time to do more than the usual amount of listening then. With the two weekends available for the test, as well as the intervening days, we should be able to obtain quite a number of loggings made simultaneously.

Those who wish to participate are requested to indicate via postal card or other means that they will be participating. This is not an absolute requirement, but will help in planning the report of the test. For the complete report, with details of everything heard will be sent (mimeographed form) to all who participate on more than a token basis. (Double stamped SASE would be appreciated for that report, but again, not required.) For those who do not participate, a short evaluation of the results will be given in this section, with the details included in the regular Log Report section, assuming participants report to LR.\*

Details of receptions during the period should be sent to Dan Ferguson, address at the beginning of this section, and should arrive here no later than the 14th of December. Details given should include frequency, date, time, station, whether definite or tentative, etc. Please include complete loggings notes - everything heard. The simultaneous listening should help greatly in identifying the UNIDS, too. So list & report everything you hear - someone else may have heard an ID on your UNID station.

\* We at NASWA feel that members, since they receive the information shared by other members, should share their loggings and other useful information with the rest of the members, too. Remember, it's member support that keeps the various sections going. It's part of carrying out the club motto, "UNITY AND FRIENDSHIP". Part of friendship is sharing your loggings and tips with other DXers! Support LOG REPORT!

LA LISTENING TEST, November 22 thru 4 December (GMT), anytime, frequencies between 4000 and 5700 kHz; reports to Dan Ferguson, address at head of this column.

\*\*\*\*\*  
Members who might be interested in a club patch (cloth) are requested to drop a note to Ed Shaw, 621 Burleigh Ave., Norfolk, VA 23505.

\*\*\*\*\*  
CIMBRER DX CLUB has a new address - P.O. Box 32, DK-2930 Klampenborg, DENMARK.

\*\*\*\*\*  
WRTH LA NEWS lists: Nicaragua 5945 YNM, .5kw, new, RDif Nac, Managua; 5995 YNRJ, .5kw, new, R Juvenil, Managua; 9640 YNOC, .15kw, new, R.Ondas de Luz, Managua. Peru 3270 R Pillaro ex 4990; 3290 LV de Alausi, Alausi, Chimborazo; 3300 LV de Agoyan, Banos, ex 3295; 3320 R.Pastaza, Pastaza, ex 3315; 3325 Ondas Quevedanas, ex 3308; 3350 R.Cotacachi, Ibarra, Bolivar 12, Inabura, new; 3370 R.Melodia, Quito, Pichinga, new; 3985 Escuelas R.Popular, Riobamba, added fqy(nonsense, been here for years-DF); 4985 R. Pillaro, ex 4990(see also above 3270); 5040 R.Nacional Espejo, El Puyo, Pastaza, new.

\*\*\*\*\*  
BBC WORLD RADIO CLUB, has an international membership of 12000, is broadcast in the World Service at 1330 Thursdays, Fridays at 2345, Sundays at 0815. Those reporting Anniversary Edition Nov 9, 10 or 12, will receive special QSL. Membership free, write WORLD RADIO CLUB, BBC, Bush House, London, England. (BBC)

Larry Magne & Dan Ferguson (pro tem)  
 NASWA Log Report  
 P.O. Box 2133  
 Middle-City Station  
 Philadelphia, PA 19103

# LOG REPORT

DEADLINE: Here by 11 November

Presumably we, of all people, are aware of the degeneration of international shortwave broadcasting due to overcrowding, ionospheric pollution and jamming. Although international SWBC isn't dead, or likely to ever be entirely killed off, it has already ceased to be an effective medium of mass international communications.

Aware of this, broadcasters have been contemplating radio and TV satellite broadcasting directly into homes, a feat within the current technological and economic means of at least some countries. Such a step should strongly revive interest in international broadcasting and possibly even free up SWBC channels for use by less prosperous countries.

However, on August 8, the Soviet Union, in the person of Andrei Gromyko, proposed in the United Nations that any government should have the legal right to control satellite TV broadcasts at their source. As Dr. Frank Stanton of CBS indicated in the October 22 New York Times, "it envisages not merely jamming incoming broadcasts, but also taking action directly against satellites themselves, ... (to) destroy satellites. ... the UNESCO Draft Declaration was adopted by a multi-nation committee at the end of last year. What is astonishing is that the draft was accepted by a body which included a delegate from the United States. (In fact, the draft includes) not only TV broadcasts, but also, going the Russians one better, radio broadcasts as well."

It is beyond the scope of Log Report to delve into this odious legislation. However, this matter has scarcely been covered by the U.S. press, so your letters to the United States Ambassador at the U.N., George Bush, with carbon copies to the White House, ought to be particularly effective.

\*0100 s/on; 0100\* s/off; // parallel; a approx; EE English (SS Spanish, etc); EGFP exc-good-fair-poor; EIR East Is Red; f/i fade in; f/o fade out; GSTQ God Save The Queen; Indon Indonesian; Int Internationale; IS Interval Signal or Island(s); JKT Jenjin Kwangpo Tientai; lbx letterbox; LL language lesson; LM light music; loc local; M man; mx music; NA National Anthem or North America; NF new fq; nx news; px programming; QRM interference; QRN static; rel religious; RF reactivated fq; t tentative; TC time check; tx transmitter; v varies; w/with; W woman; wx weather; As Asia; Eu Europe; Pac Pacific; C/SAM Central/South Amer.

## 1605 - 2299.9 kHz

- 1980 MEXICO XEER-LV de Cuauhtemoc, Ciudad Cuauhtemoc, Chih, "Musica Internacional del Recuerdo", 0225-0358\*, ID "Canal 99", G (GH) 2x990  
 2200 NICARAGUA YNQ (2x1100) ex-Vox de la Victoria, now "La Lider", 0315-0503\*, Bayer Aspirin girlie calendar ad, ID, P (GH)  
 2240 MEXICO? R Ritmo (likely 2x1120) 0010, CST TC, jingle, Muebleria Sanchez ad, 2 Mexican stns known on 1120, P (GH)  
 2280 MEXICO XEMR-Monterrey 2251 & 0007, editorial, ID "R Alegria", E (GH)

## 120 Meter Band

- 2340RFt VENEZ R Nueva Esparta 0400-0430 SS, LA pops, no clear ID, weak (DCJ)  
 2340 CHINA Fu-chou HS-1, Fukien Province, (not Fukien Front), 1225 CC (GH)  
 2360 GUATEMALA R Maya de Barillas 0200-0300a\* SS/lang, hymns, ballads, rel px, OM talk, cyclical QSB, weak-to-fair, 3325 better (DCJ,RWP)  
 2390 GUATEMALA LV de Atitlan 0215-0335\* SS, ID, TCs, long multi-stanzaed vocal NA, F, stronger than 2360 (RWP,GH) t at 0335 (Ed)  
 2475 CHINA Hang-chou, Chekiang Province, 1145-1225 CC, talk, theme mx, TS, ID 1200, fair by 1225 (GH)

## 2498 - 3199.9 kHz

- 2680 UNID 0315, LA MOR-type mx, strain (RWP) Cf following, Ralphus (Ed)  
 2680 HONDURAS HRHC (new call), R El Mundo, (2x1240), San Pedro Sula, 0505-0700\*, requests, jingles, TC jingle, ads, IDs, "R Cadena Maya" net ID, loc ID "La Mundo" (for La Raif El Mundo), no NA, E (GH)  
 2788 PIRATE (GUYANA) Porkcrocker's Broadcasting Service, Kwakwani, 40 watts,

- \*0000-0100\* Irr weekends only, non-political pirate, "porkcrocker" is a Guyanese bushman-pro prospector or frontiersman, typical example of stretching rules for PTP tx, as they are beyond the reach of police, am trying for QSL, there are other pirates like this in LA (JC-SAM) ! (Ed)
- 2800 UNID 2x1400 likely, 0430, singing, SAH, QRN (GH) For the uninitiated, SAH is "sub-audible harmonic", beloved of BCBers (Ed)
- 2850 N KOREA KCBS 1227, KK singing, P (GH)
- 2880 COLOMBIA R Reloj de Tulua (2x1440) 0326, P under HRHC (GH)
- 3199.7 DOM REP HIFA-LV de las Fuerzas Armadas (2x1600) 0324-0436\*, mx, IDs, NA, F (GH) Cf 4825.4 for reactivated SWBC outlet of this stn (Ed)
- 90 Meter Band
- 3200 MEXICO XERTP now inaudible here due to new tx, seen during visit to stn w/Calkin, but actual name is "Radio~~rama~~ Musical", not "Alma" (GH)
- 3204 NIGERIA NBC-Ibadan 2230-2305\* EE, ID, nx, NA (FH) 0530 EE, ads, P (BB)
- 3216 DOM REP R Libertad 0323 SS, nx, ID, strong (RWP) 1100 SS, ID, P (CP)
- 3225 VENEZ R Occidente, Tovar, 0130-0200\* SS, LA mx, NA (FH) 0346-0402\* SS, lively LA mx, ID "R Occidente, Tovar" oft, UTE QRM, P (CP)
- 3227 LIBERIA ELWA 2215\* EE, ID, px preview for next day (RFB) 0600, F (BB)
- 3240 SURINAM R Nickerie Rani, staff indicates stn has been off SW for at least 5 yrs, is now only 940 MW \*0930-1800\* & \*2000-0130\* in Hindi, Indon & quasi-Dutch, overmod, BCB DXers ought to try Indon in their rpts for a QSL (JC-SAM) Measures 923 kHz (BADX) Well, that solves that long-standing mystery. Perhaps you can find us a "porkcrocker" stn down there, hi! (Ed)
- 3241 MLUCCAS RRI-Ambon 1215-1230 Indon, chimes or organ notes, talks, US rock, C&W, ID, G (RWP)
- 3245 VENEZ R Libertador 0300-0340 SS, IDs, mx, M&W talks, ads, P (DCJ,RZ,CP)
- 3250 S AF Springbok 0422-0438 EE, concert mx, noise, het, P (CP)
- 3255 VENEZ LV del Tigre 0345-0430 SS, LA pops, guitar mx, many IDs (RZ,DCJ)
- 3255.3 BRAZIL RC de Marrilia 0830 PP, ID, F (BB)
- 3260 N GUINEA R Madang 1210-1225+ Pidgin, late or new time?, oldies, ID (RWP)
- 3260 NIGER ORTN-Niamey 2230-2300\* FF, 2300\* on Sat only, mx, F but RMTY (FH)
- 3260a ESPIONAGE 1020-1025\* SS, 5# groups by M (CC)
- 3265 BRAZIL R Riberao Preto 2300 PP, ID, talks, fanfare, echoey audio (FH) t 0830 PP, pops, "Preto" hrd twice, F (BB)
- 3265 GUYANA R Demerara, inactive on SWBC (here & 5980), altho irr weak sigs noted, due to defective leased land line between studio & tx, altho still active on MW, will take a while to repair (JC-SAM)
- 3280RFA GRENADA R Grenada Oct 4-5 only, 2300-0216 EE, IDs etc, presumably to escape Belize, E (FH,CP) Belize now gone, cf 3300 (Ed)
- 3290 GUYANA Action R 0122-0340\* (s/off Su) EE, rugby, tobacco ad, discs, quality varies greatly (AAM,CP,RZ,ARN) Noted here well beyond 0340 Su, so s/off must vary somewhat (Ed)
- 3295 VENEZ R Trujillo 0152-0245+, US & LA pops, TCs (GLD)
- 3295.5t BRAZIL R Ed Rural 0915 PP, F (BB)
- 3300 BR HONDURAS R Belize gone for past week or so as of 10/22 (FH,GAC,LM)
- 3300 GRENADA R Grenada 2300-0215a\*, oldies, nx, BBC nx, prayer (FH,RWP)
- 3305 PAPUA R Daru 1207, recent US pops, "Badfinger", G (RWP)
- 3315 MARTINIQUE ORTF \*1000 FF, NA, Carib pops, F (AR)
- 3315.5 ECUADOR R Pastaza 0410-0428\* SS, ID "R Pastaza, LV del Puyo, Rep Ecuatoriana", mx, abrupt off, perhaps irr, G (FH,DCJ)
- 3316 SIERRA LEONE 2300-2330\* EE, mx, F but QRM (FH) 0615 EE, talk, G (BB)
- 3320 GUATEMALA R Maya, Barillas, 1045-1103 SS/Indian lang, US pops, ID (CP)
- 3323 BOUGAINVILLE IS R Bougainville 1123 EE, C&W, PF (AAM)
- 3325 GUATEMALA R Maya 0150 MW (RWP) \*1035-1100 SS, ID, marimbas (SR,RZ) Imagine 3320 above s/b 3325 if this mixes YV (Ed)
- 3325 VENEZ R Monagas 0330, merengues, ID (RWP)
- 3325.4 ECUADOR Ondas Quevedenas 0630-0642 SS, ID, off before 0700, F (BB,FH)
- 3335 N GUINEA R Wewak 1230 Pidgin, drumbeats, Is chants, anns, G (RWP)
- 3344 INDONESIA Unid 1145-1202 Indon, soft ballads, few anns, 1159 missed ID, no chimes at hr, RRI or non-RRI? (RWP) Maybe RRI-Pontinak, Borneo (Ed)
- 3345 PHILIPPINES FEBC 1348-1355 EE, rel px, TC 1355, ID for 680 MW (DW)
- 3346 ZAMBIA R Zambia 1800 EE, nx & talk (RFB-Eu)
- 3350 GHANA RG 0600 EE //3365,4915,4980, mx, mx (DCJ)
- 3355 INDIA AIR-Kurseong 1658 lang, loc mx, G (RFB-Eu)
- 3355 N CALEDONIA Cf Oct LR-2. ORTF 1000-1103\* FF, pops, talks, "Marseillaise" extended time noted 10 Sept apparently special xmission (HMa-As)
- 3360 GUATEMALA LV de Nahuala 0200-0406\* SS, marimbas, ID, NA (DCJ,RZ,JDt)
- 3360 PAPUA R Milne Bay 1145 Pidgin, rock, ID, G (RWP)

- 3365 VENEZ R Puerto la Cruz 2350-0349 SS, LA mx, ID "R Puerto la Cruz", QRM de Nahuala, F (JDT,DCJ,CP)
- 3365 DOM REP R Exitos 0315 SS, mx, P (RZ)
- 3375 ANGOLA Em Oficial 2250 PP, W sing "Love Story", ID 2300, F (AEM-Eu)
- 3380 GUATEMALA R Chortis 0300 SS, marimbas, P (RZ)
- 3380 MALAWI Blantyre 1800 EE, nx (RFB-Eu)
- 3381 ECUADOR R Iris 0130 SS, LA mx, IDs, EE mx (DCJ) 0455\* SS, NA, G (JDT)
- 3385 FR GUIANA ORTF-Cayenne 0900, W ancor, mx, G (FH)
- 3385 VENEZ R Barcelona 0330 SS, mx, ads, P (RZ)
- 3385 N BRITAIN R Rabaul 1114 Pidgin, loc mx, F (AAM) 1138-1240 EE/Pidgin, odies, anns, beating out nice chorals, G (RWP)
- 3390 ECUADOR R Zaracay 0430-0552 SS, ID "RZ en la Rep Ecutoriana", LA/EC pops, short talks, best ever, TC (FH, DCJ, JDT) 1039-1101 SS, Pepsi ad, non-EC mx (neo-ranchera), noise, fading, ID "en R Zaracay", FF (CP)
- 3395a VENEZ R Unversidad 0320-0400\* SS, LA mx, ID, NA, P (RZ,DCJ)
- 3396 RHODESIA R Rhodesia 1745 EE, ID, nx, CW QRM, a new country for me (RFB-Eu) Congrats! (Ed) RBC 0407 EE, nx, ID "the RBC", G (RWP) Cf Oct SWG-10. Rhodesia is an "enemy" country and per vy recent Supreme Ct decision, QSL cards, considered "printed matter", are likely illegal w/out Govt license, altho personal letter not paid for is likely OK. The decision, handed down 10/16/72, was the final appeal of the case from this district rptd on in the July SWG and also covers unsolicited free printed matter. Of course, in practical terms it hardly seems likely the law will be enforced for trivia going to non-protesting citizens (Ed)

3400 - 3899.9 kHz

- 3400 CHINA Fukien Front Stn 1129 lang, F (AAM)
- 3408 JAVA R Angkatan Udara no longer active here since early Sept, nor on 11324 (GVG-As) Anybody know why or if it's permanent? (Ed)
- 3516.5 ESPIONAGE 0250 SS, #s (SB)
- 3883 CAPE VERDE RC de Cabo Verde 2315-2325+, extended sked, pops, PP (ARN)

75 Meter Band

- 3905 INDIA AIR-Delhi 2355 EE, loc mx, M&W ancrs, ID 0000 (AEM-Eu)
- 3952 S AF SABC 0445 Afr, cmtY (RWP)
- 3970 JAPAN NHK HS-1, Sapporo, \*1100-1200\* JJ, baseball, off w/ID which translates "JKU20, this is Nopporo SW fixed stn" (Nopporo is tx site near Sapporo), Matsuyama then comes on \*1200, FG (HMa-As) Cf 6005. Also, other organizations that find information in NASWA of sufficient interest to include in their material do so at their own risk and should at the very minimum credit NASWA and the reporter who went to the trouble to gather such data, such as Hiro for the JJ locals (Ed)
- 3990 TAIWAN AFNT-Taipei 1200-1330 //7215 EE, ID "This is the American Forces Network, Taiwan", nx, wx, US pops, F, seems a bit strong for list 1 kw (HMa-As, DWF-Pac) 1450-1500 EE, net show, ID & nx 1500, F (DW)

4000 - 4749.9 kHz

- 4046 UNID 1055, weak, unuseable (RWP) Likely Rawalpindi or Tay Bac drifting (Ed)
- 4380 CHINA Fukien Front Stn 1105 CC, M talk, G (RWP)
- 4384 ESPIONAGE 0507 Eu lang, 4 notes on piano or organ, then #s, QRM (RWP)
- 4485t RSFSR(As) Petropavlovsk-Kamchatka 1115 RR, piano clas mx, talks (RWP)
- 4500 AUSTRALIA VNG 1115 EE, ID, time anns, pips, strong (RWP)
- 4525 E GERMANY DDR-15, Potsdam, "Central Earth Physics Institute Time Svc", pips 0002, F (RWP)
- 4610 RSFSR(As) Khabarovsk 1120, talks, bad mod, RR, FG (RWP)
- 4620t CHINA RP 1128 KK FS list //5975, W talk, exotic mx (RWP)
- 4627NF SPANISH SAHARA R Sahara 1824 f/i SS/AA, nx, ID, LSB best (RFB-Eu) 2115-2145 SS, nonstop pops, rare anns, believed 2200\* but blocked 2145 by CW s/on, F (AVS) Now to get them to verify! (Ed)
- 4635 USSR Dushambe \*0000 RR, IS 2358, chimes, ID "Doo-sham-bay" (AEM-Eu)
- 4679 ECUADOR R Nac de Espejo 0245 SS, F (RZ) 0500 SS, mx, IDs, ads (DCJ)
- 4698 INDONESIA Unid RRI 1255-1300 Indon, talk, mx, 1259 RRI theme, nx (GH)
- 4719 SULLAWESI RRI-Makassar 1230 Indon, jazz, loc tunes, C&W, chimes, G (RWP)
- 4725 BURMA BBS 1350-1415\* lang, SEA mx, off w/ID & Burmese mx, F (HMa-As)

60 Meter Band

- 4755 COLOMBIA Em Nuevo Mundo 0650 SS, TC, CARACOL ID, G (RWP)
- 4765 ECUADOR CRE 0350-0408\* SS, speech (CC) 1059 SS, rel talk, ID, F (AAM)
- 4765.5 CONGO RTVC 0530 FF, G (BB) t 0506-0528+ lang, M talk, FF (NAP)
- 4769.4 N KOREA KCBS 1130-1230+, martial mx, big het (RWP)
- 4770t LIBERIA ELWA 0656-0705 EE/lang, BBC WS nx, rel chorals, FF (NAP)

- 4772 ECUADOR R Genit 0405-0432\* SS, ID, mx, G (JDT) Also noted here (Ed)  
 4774.4 DOM REP Onda Musical 2330 SS, ID (AEM-Eu) 0300 SS, IDs (DCJ)  
 4776.5 GABON RTVG 2302\* FF/Vern, mx, ID, march mx, P (RZ) 0515 FF/lang, ID (DCJ)  
 4780 VENEZ LV de Carabobo 0110-0146 SS, mx, IDs (FH) 0950 SS, mx, IDs (NAP)  
 4780 AFARS & ISSAS ORTF 2145-2226 w/Ramadan sked, nonstop Af-Arab chant mx, no anns, sig OK but RTTY rough, hrd 3 days (AVS) Ramadan ends 11/7 (Ed)  
 4785 PERU R Atlantida 0340-0400, ID "R Atlantida", gongs, mx, G (RWP)  
 4785t TANZANIA R Tanzania 0646-0655+ lang, talk, Af mx, P (NAP)  
 4790 MALAYA R Malaysia-Penang 1235 Malay, anns, orch mx, loc tunes, P (RWP)  
 4790 ECUADOR LV de los Caras 0218-0403\* SS, ID, LA mx, "Caraquez", many ads, nx, no NA, usually G (FH,RWP,CC,AR) 0502-0519\* SS, Sun late (NAP,JDT)  
 4794av  
 4795t BRAZIL R Congonhas 0915 FF, pops (BB)  
 4800 VENEZ R Lara 2342-0400\* SS, LA pops, IDs, chimes (JDT,DCJ)  
 4800 LESOTHO R Lesotho 0430-0500 EE, nx 0500, Af mx, FP (SR)  
 4805a BRAZIL R Amazonas 0245-0255 PP, sports?, ID (JDT) 0414-0430, cnty (SK)  
 4807 ECUADOR R Popular 0400-0625 SS, Andean requests, IDs, P-G (DCJ,SK,NAP,CC)  
 4810 VENEZ R Popular 0022 SS, LA songs, ID, F (AAM)  
 4814a BRAZIL Unid 0830 FF, talk, cock crows, pips off by 3', P (CC)  
 4814.7 ECUADOR Canal Manabita 0407-0735, ID, LA pops, ads, jingles (BB,RWP,AAM)  
 4815 UPPER VOLTA RTVV 1735 FF/vern (AEM-Eu) 2230-2301\* FF, ID "Ici Rdif du Haute Volta", must be 100 kw ex-4 kw at this hour, US pops, rock, FF mx, ID "Ici Ouagadougou", NA (FH,NAP) \*0600 FF, ID, AA chants, PF (JER)  
 4820 HONDURAS HRVC 0350-0438\* EE, ID, rel px, G (MI,SES) 0415-0500\* EE, rel px, G (JER) \*0958 SS, anns, G (NAP)  
 4820 GAMBIA R Gambia, Bathurst, 0625-0710+ EE/vern, cora IS, AA chants, ID, BBC nx 0700, F (JER,SR) SR, arse put in leading zero for time, tnx (Ed)  
 4825.4RFDOM REP LV de las Fuerzas Armadas 0400 SS, Cf Oct SWC-5, ID, clas mx, LM, F (LM) 0435\* SS, ID, G (RWP) Cf 3199.7 (Ed)  
 4825 ECUADOR R Luz y Vida 0350, Andean mx, IDs, W ancr, F w/QRM HRVC (FH) to 0700 weekends SS, Andean mx, G (JC)  
 4830t GABON Franceville, LV de la Renovation, 2130-2200\* FF, Af singing, but no ID (AVS) I think I read somewhere this is now off, but not sure (Ed)  
 4839 MOLUCCAS RRI-Ambon 0940 Indon, "Ambon" hrd oft, F (CC) 1240 f/i-1250 Indon, talks, oldies, anns, F (RWP) Interesting how f/i in IL is at least 3 hrs later than LA, maybe due partly to daily variations (Ed)  
 4839.7v BRAZIL Rdif Roraima 0132 FF, talk, 2 IDs in 1/2 hr (GLD)  
 4840 VENEZ R Valera 0417-0425 SS, LA mx, P (JDT)  
 4840 IVORY COAST Abidjan 1849 FF, talk (RFB-Eu)  
 4845 BOLIVIA R Fides, La Paz, 0020, ID, E (GAC) 0745, sked AN, ID, F (BB)  
 4845 BRAZIL Rdif de Teresina 2230 FF, lively mx, F (FH) 0045, mx, weak (MAF)  
 4845 COLOMBIA R Bucaramanga 2329-0001 SS, LA mx (JDT) -Bu  
 4845 BOTSWANA Gaberones 2020 EE, talk on Uganda, futebol scores, Af jazz (AEM)  
 4850 MAURITANIA RN de Mauritanie 2200-2300\* FF, AA chants, ID, extended Sun sked, FG (FH,NAP,ARN) \*0700-0730, IS, ID, Koran chant, FF nx 0730 (DCJ, JER,NAP)  
 4853v MOZAMBIQUE RC de Mozambique 0420 PP, LM, P (CC)  
 4855 BRAZIL Rdif Taubate 0100, mix SS, mx (MAF) 0337-0400\* PP, ID, LA mx (JDT)  
 4860 VENEZ R Maracaibo 0210-0400\* SS, LA pops, IDs, anns, F (MAF,DCJ)  
 4865 BRAZIL RC do Para 0001 PP, mx, nx?, FF (AAM)  
 4865 COLOMBIA LV del Cinaruco 0400-0408\* SS, mx, ID, "Arauca" hrd, NA, F (CC)  
 4865 AZORES Em Regional 2300-0100\*, mx, over Para (MAF)  
 4870 VENEZ R Tropical \*1000 SS, LA mx, IDs, GE (SR)  
 4871 W IRIAN Cf Sept LR-5. RRI-Sorong 1100-1402\* Indon, pops, talks, nx, ID "Ini-lah RRI Studio Sorong", F but vry poor mod, almost nothing hrd when relaying net px 1200,1230,1300, may trick into wrong s/off time (HMa-As)  
 4875 S AF SABC 2150-2205\* Afr, LM, ID, G (FH,RFB-Eu) 0420-0445 Afr (RWP,CC)  
 4881 DOM REP R Comercial 0500-0625 SS, LA LM, IDs, ads (DCJ,NAP,JCF)  
 4885 COLOMBIA Ondas del Meta 0220-0458\* SS, LA pops, ID "HJIG", chimes, TC, NA (FH,DCJ,JDT,CC)  
 4886 UNID 0820-0847 SS, LA mx, many ads, no IDs, FP w/QRN (NAP)  
 4890 PERU R San Juan 0400-0430\*, after YV off, LA mx, weak (AVS)  
 4890 VENEZ Rdif Venez \*0955-1003 SS, NA, easy LA mx, Papua gone, E (SR,NAP)  
 4890 SENEGAL Dakar \*0600-0715+ FF, IS, ID, AA chants, mx, nx, F (JER,NAP)  
 4890 PAPUA ABC-Port Moresby \*0745, het Dakar, F (BB)  
 4891a UNID non-LA stn 0407-0437, after YV off, Af mx, 0447 f/o suggests E Af, is in GMT time zone per annts, was here last yr (JDT) During Ramadan?(Ed)  
 4895 BRAZIL R Bare 0245 PP, sports, P (RZ) 0935 PP, TCs, pops, G (CC)  
 4895t SARAWAK RMS-Kuching 1210-1235 Indon?, weird chants, mx 1230 (CC,RWP)  
 4896.3 PERU R Chanchamayo 0320-0330, ranchera mx, ID, talk on Peru, P (RWP) t 0515-0550 SS, Andean mx, M&W ancns, weak (JDT)



- 4900 VENEZ R Juventud apparently inactive for a while (many)  
 4900-11v GUINEA R Conakry 0320 FF, vy unstable in this range for past few weeks.  
 (LM) Many rpts of tent & unid Af stns in here, suggest rechecking for  
 // w/7125 R Conakry (Ed)
- 4900RF NIGERIA NBC-Maiduguri 0615-0645, hilife mx, IDs, TC, F (JER) Lang? (Ed)  
 4905 COLOMBIA Em Atlantico 0501\* SS, IDs, NA, G (NAP)  
 4907 CAMBODIA RNK 1540-1600\* Khmer?, instr mx, W anns, NA (DW)  
 4914.4v COLOMBIA R Guatapurí 0302\*, ID/fqs, NA, early close Mon (RWP) 0430-  
 0455\* SS, LA mx, IDs, NA, F (NAP)
- 4914.5 BRAZIL R Cultura de Araguara 0304\* PP, ID, sudden off, uncovered by  
 early Mon HJ close, G (RWP)
- 4914.7 BRAZIL Rdif Macapa 0915-0935 PP, mx, talk, "Macapa" hrd oft, F (RL)  
 Cf Sept LR-5. Not part of net, strange IDs hrd were "an accident", signal  
 rattles windows at all hrs here in Macapa (JC-SAM) If Columbus could  
 go from Europe to India via the Americas, then I guess DXers can go to  
 Europe from N. America via Macapa, hi (Ed) Of course, he never made it  
 to India, either...
- 4915 GHANA RG-Accra 2245-2300\* EE, Af chorals, nx, FG (RZ,SES) 2305\* FF,  
 ID, NA, F (NAP) FF? Not used in Ghana, maybe Conakry wandering? (Ed)  
 0600-0616 EE/lang, ID, nx, G (NAP)
- 4915 KENYA VoK 0303-0315 Swahili, chant, pops, ID, PF (RWP)
- 4915 CHINA Ha-erh-pin, Heilungkiang Province, carrying RP HS-1 CC px, het  
 \* (RWP) //5950, cf Oct LN-2, right above Ha-erh-pin write in Heilungkiang,  
 \* as without this (inadvertently omitted from my typed manuscript) it  
 \* suggests Ha-erh-pin is part of Fukien Province! (Ed)
- 4915 UNID 1300-1400 Indon?, talks & mx, strong but noisy tx w/poor mod (ESB)  
 4920 HONDURAS R Progreso 0055-0520\* SS, ads, IS, fast mx, G (AAM,DCJ,CC,NAP,  
 JER) Noted at incredible strength one nite here (Ed)
- 4920 AUSTRALIA ABC-Brisbane 0700 EE, ID, TC, loc px (CC) 1125 EE, f/i under  
 Progreso, LM, anns (FH)
- 4920 USSR RM 2130 GG/Eu, ID, nx, usual, G (FH)
- 4923.2 ECUADOR R Quito 0305-0432\* SS, sports, LM, close w/Indian Love Call, F  
 (EL,JDt)
- 4926.5 SUMATRA RRI-Djambi 1524-1537 Indon, loc mx, RRI ID 1529, chants, wk (DW)  
 4930 DOM REP R Mil 0230-0555+ SS, LA/EE pops, IDs, cinema themes (DCJ,RWP,NAP)  
 4930 ECUADOR R Casa de la Cultura 0400 SS, ID, over DR, G (BB) Over Mil (GLD)  
 Time? (Ed) Measures 4929.8 (BB)
- 4931.5 JAVA RRI-Surakarta 1507-1521 Indon, nx by M, nx, mx between items, ID  
 1521 (DW)
- 4932 NIGERIA Benin City 2215, Af LM, anns, G but DR fading in (FH)  
 4936 PERU R Tropical 0357, "Love Story", ID, F but UTE QRM (GLD)
- 4939RF ECUADOR Rdif Nac del Ecuador, Quito, 0240-0405 SS, drama, orch mx, ID  
 "en R Nac de Ecuador", dedications, ID 0405 "desde la capital de la Rep  
 Ecuatoriana, Rdif Nac del Ecuador" (RWP,GAG) 0410-0506\* SS, LA mx, pips,  
 IDs, NA (JDt,CC)
- 4940 VENEZ R Yaracuy 0200-0400\* SS, LA mx, IDs (DCJ)  
 4940 IVORY COAST RTI, Abidjan, 2220-2300 FF, loc mx, some EE discs, F (NAP,  
 RZ) 0605 FF, nx, mx (CC)
- 4945 COLOMBIA R Colosal 0510-0700 SS, nx, ads, LA pops, IDs (JCF,DCJ)  
 4945 S AF Springbok R 1845-2215 EE, G (RFB-Eu) 2215-2305 EE/Afr (NAP,SES,RZ)  
 0414-0436 EE/Afr, F (NAP,RWP) IDs as "R South Africa", not SABC, howcum?  
 (NAP) For over a year SABC has Ided as "R South Africa" & "R Suid Afrika",  
 perhaps WRTH-73 will have clue. Suspect for now we ought to stick w/SABC-  
 Springbok to differentiate from RSA Foreign Svc of same name (Ed)
- 4950 SARAWAK RMS-Kuching 1200-1255 EE/lang, nx, ad for Mexico (!-Ed), IDs,  
 mx, oldies, F-G (CC,RWP)
- 4955 COLOMBIA R Nac 0000-0235 SS, rel mx, chorals, G (EH,RWP)  
 4965 COLOMBIA R Santa Fe 0600-0610 SS, LA pops, IDs between items (DCJ,JCF)  
 4970 VENEZ R Rumbos 0010-0403 SS //4860, baseball, LA mx, IDs, talks (EH,  
 DCJ,SK) \*0859 SS, IDs, E (NAP)
- 4970t SABAH RM-Sabah, Kota-Kinabalu, 1230 f/i Malay/lang, nx, talks, P (RWP)  
 4976 UGANDA R Uganda 1847 EE, W talk (RFB-Eu)
- 4980 VENEZ Ecos del Torbes 0100-0400\* SS, F (DCJ,EL,WT) 1008 SS, FG (NAP)  
 4990 VENEZ R Barquisimeto 0100-0400\*, pops, IDs, G (DCJ,COM)  
 4995 BRAZIL R Brasil Central 2315-2340 PP, ID "Brasil Central", mx, F (RZ,  
 EH) 0245-0300 PP, LA mx, G (SB) Pse use stn title, Sam, tnx (Ed)
- 4996 PERU 0300 SS, Peruvian mx, IDs (DCJ) t 0545-0630 SS, LA mx, maybe s/  
 off 0630 Mon? (CC)
- 4999.9t NEPAL R Nepal 1437-1500 EE/Nepali?, nx or cmty, chant-like songs, ID? \*  
 1445 (DW) Still here (GVG) Not VNUFK at this hour (Ed)
- 5005t PERU R Jaen 0215-0230 SS, low W, LA LM, "Peru" hrd 0230 (RWP)

- 5010 DOM REP R Cristal 2356-0531 SS, LA mx, ads, IDs (AAM,MAF,SLB,NAP)  
 5010 SINGAPORE Cf Oct LR-5. R Singapore 1329 CC, talk, mx, ad, NBC-like  
 chimes, ID, F (GH) Tnx! (Ed) \*2130-1630\*, G (GVG-As) Ditto (Ed)  
 5015 BOLIVIA R Universo 0145-0155 SS, IDs, loc mx, G (ARN)  
 5015 GRENADA R Grenada 2300-0001\* EE, BBC nx, EDT TC, mx, ID (RZ,SR)  
 5015 RSFSR(As) R Vladivostok 1045-1255 RR, pops, talk, F (RZ,AR,RWP)  
 5015 RSFSR(Eu) Arkhangelsk 0255-0300 RR, OC, then chimes, F (GLD)  
 5015 ESPIONAGE 0635 GG, 5# groups by W, G (RWP)  
 5016 UNID LA 0425-0630 checks, "atencion" hrd, no ID noted, PF (GLD)  
 5020 VENEZ R Nacional 0300 SS, IDs, mx, lots of blab, to 0400\* (DCJ) What's  
 this? Off w/YV NA? If this is a new stn or fq, pse so indicate, as I  
 have no record of a R Nac in Venezuela here (Ed)  
 5030 VENEZ R Continente 0330 SS, LA LM, IDs (DCJ)  
 5030 SARAWAK RMS 1215 lang, orch mx, talk, Bidayah, F (RWP)  
 5030 ESPIONAGE 0510-0514\* GG, 5# groups by W, F, DSD?(GC)  
 5038 CENT AF REP RNC-Bangui 2104 FF, loc mx (RFB-Eu) 2210-2230 FF/vern, Af  
 mx, reception quality from P to GE (JER,RZ)  
 5039 SUDAN Omurman 0330 AA, chants, mx, F (FH) Still here? (Ed)  
 5040 ECUADOR R Nac Espejo 0315-0330 SS, ID "R Nac Ecuatoriana...R Nac Espejo  
 de Puyo", Andean mx, up-and-down reception (FH)  
 5040 VENEZ R Maturin 0200 SS, talk, P w/het (RWP) Het HC? (Ed)  
 5040 BURMA BBS 1215, loc & US mx, PF (RWP) 1440 EE, mx, nx (DCJ)  
 5040 GEORGIAN SSR Tbilisi \*0200, mx box IS, strange anth, IDs, F (LM)  
 5041 PORT GUINEA Em Oficial \*0701 PP, NA, anms, mx (JGF)  
 UNID 2218-2300\* lang, piano mx, strong at times, NA by orch, then sung  
 by group, Bissau? (NAP) A Portuguesa? If so, likely yes. (Ed)  
 5044.6a BOLIVIA LV del Altiplano 0130-0855 SS, LA pops, ads, nx, IDs (DCJ,JC,ECS)  
 But not very good 0300, tx troubles? (RWP)  
 5044.8v CUBA Cf Aug LR-5, Sept LR-6. R Rebelde (likely 8x630.6, but maybe  
 7x720.7) 0500 SS, Fidel talk, found w/mech filter of R390 (JC) The 11400  
 harmonic has QRM de 11760 RHO, surely a result of a nefarious Yanqui  
 plot. DF has suggested a Band Survey of Cuban harmonics to help w/UNIDS,  
 maybe a good idea but awfully costly due to length (Ed) Hi.  
 5047a TOGO Rdif-du Togo 2106 FF (RFB-Eu) 2140-2302\* FF, tangos, IDs, drums,  
 nx (EL,RZ,SR) \*0530-0600 FF, NA, ID, mx, nx (DCJ,NAP,JER)  
 5050.3 VENEZ R Mundial 0010-0458\* SS, LA mx (AAM,AEW-Eu,RWP,NAP) 0920-1005(SR)  
 5050 UNID 2350 PP, futbol scores, CW QRM, lost under Petro 0000 (AEM-Eu)  
 5054 JAVA RRI-Bandung 1200\*Indon, ID, SEA mx, ID, abrupt off, G (RWP)
- 5060 - 5949.9 kHz
- 5060t ANGOLA 0515 PP (SB) Beware Tirana (Ed) Also, Sam, pse use one set of  
 initials, SLB best, but not both SB & SLB, to relieve confusion, tnx (Ed)  
 5063v ALBANIA R Tirana now \*0430, ex-\*0330 (Ed)  
 5071 ESPIONAGE 0409 SS, "Atencion", E, also 1100 on 5801 (SB)  
 5075v COLOMBIA R Sutatenza 0230 SS, IDs, LA pops (DCJ)  
 5075 CHINA RP HS-2 1203-1220 CC //5161.5, rev mx (RWP,CC) 5162 is a legit  
 //, Balf, not a spur, in answer to yr question (Ed)  
 5125 W GERMANY RFE 2145-2205 Czech LSB/Romanian USB feeder, IDs, G (LM)  
 5145 CHINA RP 1225 Mongolian, F (CC)  
 5170 CHINA PLA-Fukien Front Stn 1100-1125 CC //5240 (SLB) 1210 CC, G (RWP)  
 5239 ESPIONAGE 0540 SS, 4# groups by W (SLB)  
 5273 PARAGUAY R Nacional 0145-0212 SS, clas mx, ID "Esto concierto dominical  
 esta presente por R Nacional, LV del Paraguay", P (JER) Anybody know  
 the sked of this stn, if it has one? (Ed)  
 5290 CHINA 0020 CC, piano exercises, strong (RWP) Unlist here (Ed)  
 5345 CLANDESTINE Radio of the South Yemeni Revolution 1230-1500\* \*1630-2000\*  
 AA //8404 daily (GVG-As) Is 2100\* for Ramadan (Ed)  
 5560 INDONESIA Unid RRI 1257-1300 Indon, Surabaya, RRI theme, 7 or more  
 chimes overlapping, warta berita from RRI, F (GH) Has anyone heard a  
 loc ID on this one yet? (Ed)  
 5850 CHINA RP 1045-1100 CC, opera (SLB) ID? (Ed)  
 5869.8 N KOREA KCBS 1045-1115 KK //6250 w/HS-2, KK mx, UTE QRM, unlist WRTH,  
 P (SLB,LM)  
 5874.7 HONDURAS HRN-LV de Honduras 0015-0452\* SS, nx, ads, basketball game,  
 ID "HRN" & "La Emisora Int" & "LV de Honduras", FG (EL,LM,DCJ,JCF)  
 1050-1136 SS, ID, lecture?, F w/NSS QRM (SLB,AAM)  
 5890 UNID Sabah? 1020a f/i, mostly talk (MAF)  
 5910 USSR 0410 RR, talk, F (RWP)  
 5920 CHINA RP 1050 lang (SLB) Why Peking? Not list here (Ed)  
 5935 LATVIAN SSR R Riga \*2130-2200\* Swedish, ID "R Riga" & "Runa Riga" (RFB-  
 Eu) Mayak RR, Mayak ID, E (FH) Time? (Ed) Cf Sept LR-7. R Moscow \*0300-

- 0500 RR, Mayak IS, nx, mx, Mayak ID, perhaps Riga but no loc px or IDs (ESB) Anything is possible, cf 7420 (Ed)
- 5945 ALBANIA R Tirana 0510 GG, talks, P w/UTE QRM (CC)
- 49 Meter Band
- 5950 PERU R Arequipa 0115, ID, LA orch mx, F (RWP)
- 5950t CHINA Ha-erh-pin, Heilungkiang Province, 1025 CC or As lang, M&W talk (MAF) Pse write in Heilungkiang above Ha-erh-pin in Oct LN-2 CC sked (Ed)
- 5950NF EGYPT R Cairo 2100 AA HS //9475, G (BB)
- 5954 COSTA RICA TTQ 0505 EE, mx, Coke ad, P (SWE)
- 5955 GUATEMALA TGNA 0440 EE, rel px, G (AG) Pse list country, tnx (Ed)
- 5955RF G GERMANY RBI 0145-0230 GG/NA //9730, F (BB)
- 5960 RSFSR(As) R Vladivostok \*1055 EE //9750, IDs, nx (SLB) ? (Ed)
- 5960 FRANCE ORTF 2300\* FF, multi-lingual anns, choral "Marseillaise" (ARN)
- 5960NF CANADA RCI Northern Svc 0100-0705 EE/FF/Eskimo //9625,11720 ex-15190, E (BB) 0325, rock, F (AG)
- 5965 BRAZIL R Guiba 0059 PP, pretty mx, ID, F (AAM)
- 5970 PERU R El Sol 1045 Quechua?, Andean mx, E (CC) Could be, as new law requires much more Indian-lang programming (Ed)
- 5970NF CANADA RCI 1215-1315 EE/ECNA ex-0625 //11720 etc, E (BB)
- 5975 BRAZIL R Guaraja 0915 PP, anns, mx (FH)
- 5975 UNID \*1015a SS, s/on anns unhrd, mx, G (MAF)
- 5976.5 CHILE R Pres Balmaceda \*1010 SS //9590v, ID, wedged between China on 5975.5 and Brazil on 5977.3, F (BB) As now widely known, the Chilean Govt has taken control of all radio & TV stns in the country, at least for now, so future of these stns as independent outlets is in some doubt. Original rpts indicated all Chilean stns boasting a common net px, but recent rpts indicate loc px have been reactivated (Ed)
- 5980 EL SALVADOR YSS-R Nacional 0000-0330 SS, LA mx, nx, ID "R y TV de Francia, Paris" when relaying ORTF tape, then YSS ID (EH,ENR,AR)
- 5980 PERU R Panamericana 1250 SS, nx, cmty, P (SWR)
- 5980t SABAH R Malaysia-Kota Kinabalu 0930 lang, M ancr, As mx, het 5982 (ECS) 1100 Malay, nx, P (BB)
- 5980NF CANADA CBC Northern Svc 0601 EE //5960, why?, G (KWS) 5960 beamed to northern Canada, 5980 to Canadian Forces in Europe (Ed) 0715-0745 EE/Eu //9625 ex-11720, E (BB)
- 5985 ARGENTINA R Splendid 0915-0938 SS, nx, ID 0918, FG (EL) 1015-1030 SS, light piano rumbas, F (BB,MAF) Also 0030 (MAF)
- 5985NF SPAIN RNE 2230 FF, then AA ex-6140 (ARN)
- 5985 W GERMANY RFE 0540-0600 Hungarian, discs, nx 0600 (SK)
- 5987 SULAWESI RRI-Manado 1105 Indon, "Dial Soap" ad in EE! (CC) rel songs in EE (MAF) Time, pse (Ed)
- 5991vNF SAUDI ARABIA 2130 AA ex-5987v, F (BB) Drifts all over (Ed)
- 5995 AUSTRALIA RA 1210 EE, nx, mx, G (SWE)
- 5995a MALI Rdfir du Mali 2330-0000\* FF/vern, FF mx, NAs (2), FG (RZ,JCF)
- 5995RF VATICAN VR 0050-0105 EE/ECNA //9615,11725 ex-15240, E (BB)
- 5997.5 SAUDI ARABIA Riyadh 1150 AA, Holy Koran chants, flute IS, well hrd, also 1700 a couple of weeks ago (ECS) Local sunrise in Riyadh was 0300 GMT, while 1150 GMT = 2:50 pm local time in bright daylight (Ed)
- 5998 ALGERIA RTVA 2200 AA, chants, F (BB)
- 5998.6 BRAZIL R Inconfidencia 2300-2315 PP, LA mx, E (SLB) 0025 PP, ID, nx headlines, G (RWP) LA DX-peditioners have found that stns often run with powers different from those generally listed, Sam (Ed)
- 6000 SAUDI ARABIA Djeddah 2320 AA, chants, G (FH) Likely Riyadh (Ed)
- 6005 JAPAN NHK HS-1 Fukuoka \*0800-0839\*, Nagoya \*0839-1000, Fukuoka loc nx 0803, two sigs overlap 0839 for 5', signal level changes, Fukuoka G, Nagoya F, Nagoya loc px 0950, watch for loc nx/wx to locate QTH (Hma-As)
- 6005 CANADA CFOX 0020 EE, pops (EH) 1231 EE (SWE)
- 6006.7 COSTA RICA R Reloj 0020 SS, LA mx, US pops, IDs (EH) 1120 SS, ID, F (EL)
- 6010v MEXICO R Mil still xmtg OC, vly faint audio when near tx site, noted recently on 6008, may cause het for NA DXers (GAC)
- 6010NF PORTUGAL DW-Sines 0620 Polish ex-11865 (BP-Pac)
- 6010NF W GERMANY DW 0130-0250 EE/ECNA //9615, likelyWertachtal, G (BB)
- 6010 CANADA CJCX-Sydney 2304-0105 EE (AAM,AEM-Eu,EH,COM) 1100 EE, G (EL)
- 6015 COLOMBIA R Mira 0132, TC, ID, lost in QRM (RWP) 1030-1100 SS, ID, mx, F (RZ,MAF)
- 6025 NIGERIA NBC-Enugu 2205-2306\*, pops, nx, drums, NA, P (ARN,JCF)
- 6025 MALAYA RM-KL 1115, CG songs, F (BB)
- 6030 W GERMANY Sueddeutscher Rundfunk 2310-2320\* GG, nx, ID, F (EL)
- 6030 COLOMBIA R Nac 0030-0205 SS //4955, nx, mx, mix AFRTS, F (FH,CC)
- 6035 BRAZIL R Globo 2345 PP, talk, P (RZ)

- 6035 USSR Vladivostok list 1305 RR, clas mx //6080 Komsomolsk (CC)  
 6039.7 COLOMBIA LV del Tolima 0120-0255 SS, ID, TC, mx, ads, FG (EL,JDT) 1045 SS, mx, F (RZ)
- 6045 BRAZIL RC Paranaense 0005 PP, talk, P (RZ)  
 6045 JAVA RRI-Djakarta 1250-1310 Indon, nx, ID, C&W, F (CC,RWP)  
 6045t PAKISTAN R Pakistan 1150, Pak IS as part of longer song for 2 days only, no longer hrd (ECS)
- 6045.5 PERU R Santa Rosa 1045 SS, talk, P (BB)  
 6050 MOZAMBIQUE RCM 0440, Big Band 1940's mx, G (FH)  
 6050 ENGLAND? UN Radio 0505 Hebrew, UN nx, into FF 0510, G (AR)  
 6055 BRAZIL R Panamericana 0030-0200, mix UNID, sports (MAF)  
 6055 RWANDA R Rwanda 0350-0430 FF/lang, ID, Olympic hymn, nx, FF (AR)  
 6055 ESTONIAN SSR Tallinn2340-0000 EE/UK //77440,7360,7250,6195 (SLB) Well, this may or may not be the QTH for this, presumably a relay of RM FS (Ed)
- 6060 CUBA RHC 0010 SS, LA mx (RH)  
 6065 BRAZIL R Rural 2300-2331\* PP, mx, IDs, F over Sweden //15105 (ESB)  
 6065 MALAYA BBC \*1315 Thai, IS, Thai px, strong (DWF-Pac,ESB)  
 6065.6 COLOMBIA R Super 0640-0710, IDs, LA mx (FH,SK) 1045 SS, ID, G (JPR)  
 6070 CANADA CFRX 2345 EE, ads, mx, F (JPR) 1340 EE, ads, ID, mx, G (MI)  
 6070.6 THAILAND TNBS 1030 lang, P (BB) How identified? (Ed)  
 6075 COLOMBIA R Sutatenza 0120 SS, nx, G w/DW QRM (EL)  
 6075RF W GERMANY DW 0400-0430 RR ex-6130 //7130, F (BB)  
 6082VNF E GERMANY RBI 2310 EE, nx, ID, P (MI) 0420-0459\* GG/WCNA via Nauen 500 kw apparently, no // found, ID, NA, awfully weak for 500 kw, P (LM)
- 6085 BRAZIL R Jornal do Comercio 2345-0000 PP //15145, ads, mx, anns, talk, FF (FH,RZ) 0855-0910 PP, rel px, Braz mx, FG (EL)
- 6085 COLOMBIA Ecos del Pasto 0225-0240 SS, tanzas, G (ARN)  
 6085NF NETHERLANDS R Nederland \*2130-2200 SS/NA ex-15425, ID, F (BP-Pac,EL)  
 6085NF CANADA RCI 0100-0200 EE/ECNA //9635NF ex-9625,11945 (BB)  
 6085NF CANADA DW 0200-0410 GG/NA //9605 ex-9625,11865, E (BB) 0340 GG //6100, ID, nx, E (JDT)
- 6090 MEXICO R Mante 1235 SS, many ads, QTH given oft, G (CC)  
 6090 RSFSR(As) RM-Irkutsk list 1045-1100, clas mx, .pips (JCF)  
 6090 AUSTRALIA ABC-Sydney 1140-1240 EE, LM, pops, F (SB,CC)  
 6090 LUX R Lux 0000-0140 EE, pops, rock, nx (EH,SB,GHa) GHa, could you use your three initials (1st, middle & last) next time, as Glenn Hauser already uses "GH", tnx (Ed)
- 6095 BRAZIL Rdf Sao Paulo "Super Tupi" 2310 PP (CC) 0805-0934 PP, ID (EL)  
 6095 COLOMBIA LV del Centro 0400-0440 SS, ID, LA mx, F (SLB,RWP) 1030-1100 SS, mx, ID, G (EL)
- 6099.4 VENEZ Senales H 0628-0735 SS, TC, ID, F (SLB,WT)  
 6100 NIGERIA Maiduguri 2255-2305\* EE, chants, TC/nx, talking drums, over LA QRM (JDT,ARN) Cf 4900, wasn't this ex-4900, so one or the other ought to now be inactive if that was the case (Ed)
- 6100NF FRANCE ORTF 0600-0705 FF ex-5960, nx on the hour, ID "Ici Paris", FF songs, E (BP-Pac,JDT)
- 6100 YUGOSLAVIA R Belgrade 2200 SS, IS, EE anns, FG (EL)  
 6105 COLOMBIA R Vision 1040 SS, talk, mx, PF (RZ)  
 6115 COLOMBIA LV del Llano 0135 SS, ID, cuckoo TCs, ID, loc pops, F w/QRM (CC,RWP) 1050 SS, mx, ID, G (JPR)
- 6115 MEXICO R Universidad de Sonora 0145 SS, ID, mix HJ (CC)  
 6120 HAITI 4VE de 4VEH 0015-0100\*EE, ID, rel px, off w/bells, F (CC,EL)  
 6120 NICARAGUA R Atlantico 1030 SS, mx, PF (RZ)  
 6120 VENEZ R Angostura SS, LA mx, G (SB) Must have time, pse (Ed)  
 6120RF W GERMANY DW 0230-0350 SS/LA //6130,9645,11945, F (BB)  
 6120 UNID 0110-0140 SS, mx, talk, lost to SBC 0140, P (CC)  
 6125.2 HONDURAS HRQ 1130 SS, vocals, P (BB)  
 6130 GHANA RG-Tema 2145-2215\* EE/WAF, LM, nx, ID, NA (JPR,JDT)  
 6130RF NORWAY RN 0500-0630 NN/ECNA/Iceland, G (BB)  
 6130RF W GERMANY DW 0800-0825 SC //6040,7130,9605, F (BB)  
 6130 CANADA CHNX 2250 EE, pops, ID, FG (MI) 0007 EE, mx, F (WT) 0708 EE(SWE)  
 6135 TAHITI R Tahiti 0453 //15170, Tahitian mx, G (KWS)  
 6135 ALBANIA R Peking 2300 SS/LA, G (JCF)  
 6135.7t S KOREA KBS HS 1100 lang, P (BB) Px details, pse (Ed)
- 6140 COLOMBIA R El Sol 2345 SS, LA mx, ads, PF (AAM) 0425, sports, like a local (RWP) 0635 SS, pops, G (KWS)
- 6150 COSTA RICA R Atenea 0030-0159 SS, ads, rel px, G (MAF,ARN) 0408-0427 SS, LA mx, IDs, E (JDT) 1040-1100\* SS, ID, F (CC,JPR) Strange s/off time (Ed)
- 6150 AUSTRALIA ABC-Melbourne 0900 EE, ABC nx, variety (ECS)  
 6153.8t SINGAPORE 1100, flutter, P (BB)

- 6155 JAPAN FEN 1130-1200 EE, LM, nx, wx (CC) 1300, sports, LM, nx, G (JC)  
 6158v CLANDESTINE (USA) Unid 1000, irr diatribes against telephone tax, no ID, technical quality excellent, QRM FEN (JC) Telephone tax is a favorite target of anti-Vietnam War groups (Ed)
- 6160 COLOMBIA Em Nueva Grenada 0630 SS, mx, talk, F (KWS) 0925 ditto (JPR)  
 6160NF W GERMANY DW-J \*2140 PP/Brazil ex-15435 (BF-Pac)  
 6160 CANADA CKCN-St John's 1140-1200 EE, rel px, QRM (EL)  
 6165 MEXICO LV de America Latina 0420, Mexicali pops, E (RWP)  
 6175 BRAZIL R Guarani 0145 PP, futebol, G (EL)  
 6175 ANGOLA A Voz de Angola 2150-2200,EE/PP/AF pops, no anns, sked 1630-2300 per SCDX //7265 but not traced there (DWF-Pac)
- 6180 GUATEMALA LV de Guatemala 0435 SS, mx, talk (KWS)  
 6185 MEXICO XEICM-LV del Maestro, per recent visit, runs 1/2 rated power, i.e. 500w, soon to move to new QTH and change sked to 2200-0400 or 0500, noted 1425 SS, "XE" ID, XEICM format, then almost gone, P (GH)  
 6190 W GERMANY R Bremen 0500 GG, P (BB)  
 6195NF CYPRUS BBC 0030-0300 WS/SEA, P (BB)

6200 - 7099.9 kHz

- 6200 W GERMANY Sender Freies Berlin 1500 GG, nx, ads, orch mx, noisy (AEM-Eu) Doesn't seem like a harmonic, is this a new SW outlet? (Ed)
- 6207v INT WATERS RNI 2300-2351 EE, pops (SLB,EH,JPR,GHa) 0330-0705 EE/DD, pops, rock, ads, G (ESB,RWP,DWF-Pac)
- 6224.5 PIRATE World Music Radio 2135-2218 EE, Gospel mx, soul, rel px, nx, fast fading, strong but UTE QRM, seems Sun only, F-G (SB,AVS) Erik Kjøie of Denmark says this is now on 6250. 6225 is filled with sundry pirates, maybe this is another? Or was an ID hrd for WMR? (Ed)
- 6225 PIRATE (ENGLAND) R Venus 1252-1400\* EE, pops, seasonal bcaster Su(AEM-Eu)  
 6225 UNID 1045-1250 As lang, Sun weak, As mx, talk by W (NAP) Check RP HS-1 fqs for // (Ed)
- 6230 PIRATE Blossom R 0930 Sun & one w'day only (AEM-Eu)  
 6250 N KOREA KCBS 1040-1100 KK, F (JCF,SB) 1230 KK HS-2, strong (RWP) t1011 lang, march mx (NAP)
- 6250.2 EQ GUINEA R Santa Isabel 2200-2258\* SS, Af mx, "Los Voluntarios", E (SB,JCF) \*0500-0625 SS, Af pops, soul, ID, G (JER,BB,RWP)
- 6255 AUSTRIA OEY21 Austrian Army Stn 1845-1900 GG, nonstop pops, ID (AEM-Eu) Cf Sept LR-9. Two stns on this fq: OEY21 & OEY52, in Vienna & Wals near Salzburg, using alternate skeds, 0445 presumably Wals tx (ESB) Tnx (Ed)
- 6280 PIRATE (ENGLAND) R Atlantis North, A35 23 Dorset Gardens, Brighton, BMZ 10L, Sussex (AEM) Time, pse (Ed)
- 6290 PIRATE (ENGLAND) R Atlantis South 0915 Sun, ID, QSLed (AEM-Eu) Cf 6280.  
 6290 UNID 1110-1125 lang, M talk, P, RP/KCBS both list (NAP) Yup, try //s(Ed)  
 6340 TURKEY Ankara Polis Radyo 1745-1858\* TP, TT & pop mx, strong (RFB-Eu)  
 6520 CHINA RP 1105-1120 lang, F (SLB) Malay, then Khmer (BBC MS)  
 6540 N KOREA KCBS 1100-1120 JJ, As mx, G (SB) t 1057-1123+ SEA lang, UTE QRM (NAP) Vy likely you are right, Neil, KCBS JJ Svc (Ed)
- 6580 N KOREA KCBS 0839 EE, talk, F (KWS)  
 6599.3 N KOREA KCBS KK HS-2 0845 KK, UTE QRM, P (KWS)  
 6610 CHINA RP 2200 EE, E (RFB)
- 6725a ESPIONAGE 0158-0210\* SS, 4# groups by W (SK)  
 6730 CHINA RP 1110-1127 lang, G (SLB) ID hrd? (Ed)
- 6815 Liberty Radio 1040 EE, nx, beam heading to London on hi-power (how high is "high"-Ed), Box 41, 22 Coldershaw Road, West Ealing, London (AEM-Eu) If 1 kw or more, ought to make it here around 0900 or 2000 in winter(Ed)
- 6870NF USSR Unid Soviet regional 0125-0140 RR, talk, mx, ID 0130 unreadable, flutter, beware VoA RR LSB on 6874!, NF or new stn, it seems, F (LM)
- 6874 USA VoA 0657-0700 feeder, Af Svc, E (SK) Also RR 0130, cf above (Ed)  
 6890NF USSR RM HS LSB feeder 2145-2220 RR //7310, 7320 etc, G (LM)  
 6955 CHINA RP 1145-1200, Chi opera, G (SLB) KK (BBC MS)  
 7025 CHINA Fukien Front Stn 1100 CC, F (BB) Likely will be sked here 2330-0600 after 11/15. Also, Bill, Mandarin has been superceded by the nearly identical "Standard Chinese", often termed simply "Chinese" (Ed)

41 Meter Band

- 7105 SPAIN RNE 2100 SS, nx, G (SR)  
 7115 ZAIRE LV du Zaire 0230 FF/vern, loc mx, P (RZ) 0405 FF, nx, F (FH)  
 7125 INDIA AIR 1328-1400+ EE/Hindi, IS, nx (ESB)  
 7125 GUINEA R Conakry 0445-0645 FF, cora mx, F-P (SB,JER)  
 7139.2 MOLUCCAS RRI-Ambon 1100 Indon, P (BB)  
 7140 AUSTRALIA RA-S 1217 EE, useless w/QRM (WT)  
 7145NF ETHIOPIA ETEF test 0320-0325 multilingual, also 7165 later hour (ARN)

7145.2NEJORDAN R Amman \*0330 AA, ID, "Azan", ex-7155 to avoid jams, F (BB)  
 7150 TAIWAN BCC 1300-1500 CC, mx, ID, new format in Sept, 11905 gone (ESB)  
 7165 ETHIOPIA ETLF 0300 EE/vern, EE ID, loc mx, test fq, F (RZ)  
 7175NF FRANCE ORTF 0515-0545 EE, "Paris Calling Af" (BB) No longer relayed by Brazzaville, of course, which is now "LV de la Rev Congolaise" (Ed)  
 7185 E GERMANY RBI 2330-0015 FF/Eu //6080,6115,9730,7260W, weak (BB)  
 7190 SPAIN RNE-N 2105 SS //6065,11920 Sun, mx, spl Sun px (BP-Pac)  
 7201.5 MALAYA RM-Penang 1145 Malay, P (BB)  
 7214.7 BRUNEI RB 1000-1100 CC, western-influenced vocal LM, N Indian px 1100, F w/ARO QR (JC)  
 7215 TAIWAN AFNT 1505-1520 EE, loc ID, oldies, het VoPMF (DW)  
 7216 BLACK CLANDESTINE (SOUTH VIETNAM) Voice of the Patriotic Militiamen's Front 1450-1502\* VV, talk by M&W, drums & cymbals IS, G (DW) Will be very interesting to see what the upcoming cease fire and peace treaties will do to clandestine activity in Indochina, currently a hotbed of such activity! (Ed)  
 7235 NIGERIA ECSBS, Enugu, \*0500-0540 EE, drum IS, 5' rel px, P (AR)  
 7235RF W GERMANY DW 0520-0620 AA //9605,11795, G (BB)  
 7240 W GERMANY RFE\*0400 Bulgarian, IS, ID "Tuk-e R Svobodna Evropa", jam (FH)  
 7245 W GERMANY RFE 0545 Polish, nice mx, IDs, G (AR) 7240 and 7245 used simultaneously? (Ed)  
 7255 NIGERIA NBC-Lagos 0559 EE, prog sked, ID, nx, F (SWE)  
 7260 E GERMANY RBI-Nauen 0210-0330 GG HS, mx, F (BB)  
 7265 W GERMANY Sudwestfunk, Rohrdorf, 0400-0455 GG, pops, nx, W ancr, G (BB, AR,AVS) 0630-0745+ GG, pops (DWF-Pac)  
 7270 ALGERIA RTVA 0730 AA, nx, big sig, on fq for a change (RWP)  
 7275RF W GERMANY DW 0440-0510 TT ex-9640 //6130,7130, F (BB)  
 7290V MONACO \*0625-0800\* EE, rel px, E (SLB,JCF)  
 7300 - 9499.9 kHz  
 7330NF PAKISTAN R Pakistan on unlist fq, QTH unk, 1155 EE, civil service openings, into Pak 1200 (AVS)  
 7335 CLANDESTINE (BULGARIA) VoTruth 0724\* Greek, "Alithias" thot hrd, P (RWP)  
 7360 USSR R Moscow 2125 EE, talk on harvests (RWP) 0200, ID "Govorit Minsk"?, F (BB) Doubtful, as is list by BBC MS as RM HS-1 (Ed)  
 7400 USSR RP&P 2200-2230\* RR //7350, F (RWP,SLB)  
 7416 CAMBODIA SVN Liberation R 1100-1117 VV, mx, G (SLB) Too, this stn, Vo Pathet Lao & VNUFK, considered "clandestine" in many quarters, may tend to evolve into "legitimate" bcasters, depending on how peace terms work out in practice, but it ought to be a while before this is clear (Ed)  
 7420 USSR RM HS 2120-2135 RR, under Minsk, RM IS 2129, ID 2130, then lost under Minsk chatter, Minsk //7370, F (LM) Unid 0320-0345 RR, gymnastics, talks (KAE) Try for a // w/Moscow (Ed)  
 7420 BYELORUSSIAN SSR Minsk 2159\*, RR folk mx, talks, over another Soviet stn (RWP) Yep, cf above (Ed)  
 7425 N VIETNAM Tay Bac 1100-1124 VV, F (SLB) New?? Pse provide px details(Ed)  
 7500 AUSTRALIA VNG 0740, pips, F (FH)  
 7504 CHINA RF 1100-1115 lang, G (SLB) HS-1 //7520v (Ed)  
 7546v N VIETNAM VoV 1130 Lao, then Thai //15150v, G (SLB)  
 7580NF N KOREA KCBS 1055-1150\* CC, mx, talk, DPRK NA, F (LM)  
 7645 USSR RM 0415-0430 RR, SSB feeder, nx, QR RM VoA on 7651 (SLB) Cf 6870 & 6874, might these Soviet and VoA tx be so close for a special reason?(Ed)  
 7670t BULGARIA RS 2300 SS, ID, G (SLB)  
 7780NF CHINA RF 1100-1130 Cantonese/SEA //7620, G (SLB)  
 8404 CLANDESTINE Radio of the South Yemeni Revolution a/k/a Voice of Free South 2030-2100\* AA, Ramadan sked ex-2000\*, AA mx, nx, chants, ID, anth, CWQR, F (LM)

Late item, thanks to our friendly latter-day Sherlock Holmes in Wales, Alan Thompson of BADX, it is now confirmed that 4627 "R Sahara" is a PTF tx relaying px from El Aaiun to Villa Cisneros w/5 kw power, and is no relation to the now-inactive 7230 SWBC tx, per Johann Wiespointer.

This seems as appropriate place as any to remind those few that need such reminders that BBC MS & BADX info is copyright, and along w/UADX items, may not be reproduced without prior written permission from the organization concerned.

On rx's, serious DXers will be happy to hear that our favorite SWBC supplier, GILFER Associates, is now carrying the Drake R-4B receiver, nicely priced at \$420 each, likely making it the best buy for serious DX this side of a Collins unit. That price is complete with noise blanker, RTTY provisions, 25 kHz cal, 4 bandwidths, etc. Only xtals (\$4.75 ea) and spkr (\$20) are needed! 73, Larry

- 9030VNF IRAN R Iran 0310-0415 Farsi, Persian mx, seems ex 3778, poor (LM)  
 9172 CHINA RP, Chinese 1040-1100 (SB)  
 9375 UNID Long, non-stop piano pieces, 0704 OM tlk, but lang unreadable, weak sig. T/o 0715. WRTH lists Moscow here...(RWP)
- 9463.5VRF PAKISTAN R.Pakistan 2045 Urdu chants, sked uncertain, duals unfn'd(BB)  
 9470 PAKISTAN Islamabad, 1630 EE, local mx, ID 1630, FG(AEM)  
 9475 EGYPT Cairo; EE 0300-0330, mailbag, talk; GE(AG, KWS)  
 9480 ALBANIA Tirana, 2040 EE cmtry, mx; s/off 2055; F(QRM UTES) (ENR)  
 9480 USSR RP&P, 0009-0030\* cmtry, G w/CW QRM(GHa)  
 9490 AZERBAIJHAN SSR Baku; 1200 RR, clear mention Baku, "Govorit" unhrd(AR)  
 9491 TIBET Lhasa, CC or lang, 1151-1206, F (SB)
- 9500VRF E.GERMANY RBI 0330-0415 EE to WCNA //9650, 9725, prob ex 11890 (BB)  
 9504 SUDAN Omdurman, AA, mx, voice distorted, //11835 (SLB)  
 9504.8 BRAZIL R. Record 0940, fair(LM)  
 9505 GUATEMALA TGNA; 1300 mx, nx 1305; G(FH) Exo in EE 0330 (AG)  
 9505 PHILIPPINES FEBC; 2335 Khmer rel best, hymns(DWF)  
 9505v DOM REP RTV Dominicana; \*1000, LA mx, IDs, TCs; E(JER)1343 SS hymns, mixed w/NHK from 1357(JDT) 2340 SS, TCs, IDs, best ever! (AEM) see also 9512. (DF)
- 9510NF MALAWI Lakeland Radio, "Soul Music" 2130, 2200\* w/EE ID, address, fqy quote. Strong lvl here, NF ex 49 mb(BP-Australia)  
 9510 ENGLAND BBC WS 0005 nx, Radio Newsreel; V Good(HEF)  
 9512 DOM REP RTV Dominicana; 1307 ads, mx, talks, IDs(FH)0130-0140 ads, mx; is mostly covered by BBC later on. One time observed on 9536, but that seemingly was temporary (ARN) 2255 ads, ID, not often hrd here(BP-Australia) Back on the air after a lengthy absence. (DF)
- 9514.5v N.KOREA KCBS, 1200-1300 EE, new time. Pwr up?, fair 5 Sept(BB) 1200 nx, cmtry; poor-fair(RZ)  
 9515 MALAYA RM-Penang; 2315 Malay pgm, poor (DWF-Australia)  
 9515 INDIA AIR GOS, EE to Africa 2015, NF ex 9595, //9525 also hrd(BP\_Australia)  
 9520 NEW ZEALAND RNZ; 1030 EE, jazz; FG(RZ)  
 9520 PAPUA ABC 2335 good over RNE w/pops (DWF-Australia)  
 9520 SPAIN RNE, 0015 SS mx, tlk, mailbag, E(HEF) 0602\* w/ID&NA, 40/9 lately(NAP)  
 9525 INDIA AIR 2100 EE nx, P(RZ)
- 9530NF FRANCE ORTF 0100 SS to LA, under Moscow, 11 Sept(LM)  
 9535NF AUSTRIA OR; 2300-0000 GG to SA, QC ex 9680, poor(BB, RZ)  
 9535NF W.GERMANY DW Wertachtal 2300-0110 GG to SA for Olympics till 10 Sept(BB)  
 9535 INDIA AIR; 1225 EE, summary of sked, then nx, PF(RZ)  
 9540 AUSTRALIA RA 1115-1400 EE nx, mx (WFH)  
 9540 W.GERMANY DW 0520 GG mx, tlk, HEF)  
 9545 BRAZIL Presume Emissora Paranaense, V poor w/ PP anmts, Brazilian mx(JCF)  
 9545 W.GERMANY DW, \*2258, piano IS, German, G(KWS) (AEM/SWS)  
 9545 GHANA R.Ghana, 2200-2215+; ID given as R.Ghana..."Voice of the Resistance" /  
 9550 BELGIUM RTB; 0050 nx, G(RMa) 2305-2315 EE, then FF; tlk, M&W, G(KWS)  
 9550v LEBANON RB; 0130 FF, 0200 AA, 0230 EE(annos 11955)(ARN/BSB/KWS/ENR/JDT/WWS)  
 9550VNF MONACO TWR Monte Carlo; 0445\* w/EE ID "to SW Afr", lang must have been Zulu, in new sked 4 Sept(BB) 4 Sept? Plenty of time to get it reported by 12 Sept!(DF)
- 9550 NETHERLANDS RN, SS to LA 0400-0415, exo(SLB)  
 9555 MEXICO La Hora Exacta is occasionally active; visited xmtr site where new studios are being built. Uses oblique longwire antenna for SW(Y)
- 9555NF MALAGASY RN Talata Volon; 1700-1920 EE to E.Afr(BB)  
 9555RF ENGLAND BBC WS 0400, unsked on any BBC skeds; have noted this fqy used before when unsked. (BB)
- 9550RF NORWAY R.Norway, 0300-0430 NN to WCNA, ex 11735, //9610, 9645, 1578(BB)  
 9560 S.AFRICA R.RSA, 2330 EE nx, fair(JPR)  
 9562 PERU R.Nacional, Lima; 0515-0600+ LA mx, Andean flutes, ads, IDs, SS(JER)  
 9570T QATAR Qatar BC Svc; 1508-1531 t/o AA(?), Continuous mx, AA style vocals; severe slop from 9565 VoA at times; weak(DW)
- 9570T NIGERIA RTV Kaduna, 0505-0522 EE/lang; Af mx/EE tlk; het, QRN, QSB, Vy P(NAP)  
 9570 ROMANIA RB; 0215 EE tlk, jazz, 0227\* G(KWS)  
 9572v CHILE R.Portales; 0130 SS (BB)  
 9575 ITALY RAI; EE 0100-0120, FF to 0140, then It; nx & mx(WFH, KWS)

- 9575 TAIWAN (?) #w stn, s/on 1330 slow Chinese to 1400 s/off, jammed(ESB)  
 9576v ETHIOPIA (?) - Unid lang & mx 1400-1429\*; was on 7579 earlier, rarely hrd.  
 Cf Sept LR-12 & Flashsheet(ESB)
- 9580 ENGLAND BBC 2345-0115 EE WS/ECNA, under Moscow LA svc, a classic case of fgy  
 - pirating!!! (LM)
- 9581 PHILIPPINES VoP at great level 1300-1331+, mx, tlk, ID, TC(RWP) 1300-1402\*  
 (CC, AR, ESB) Now back to 9580(ESB) 0800-0900 feature pgm was strictly mx 1  
 October thru 8 Oct. (SK) 1045 EE, pop dance mx, PF(RZ)
- 9581 NICARAGUA R.Mar; good lvl, bad het, 1320 ID(FH)
- 9585 FINLAND OYA 0200-0300 EE to NA, heavy QRM, V.poor(RZ)
- 9585 BRAZIL R. excelsior; 0925 Brazilian & Japanese pops, Jap amnts(DWF-Australia)
- 9590 NETHERLANDS RN, 0200 SS to SA/JHEF)
- 9590 CHILE R. Pres. Balmaceda; exc at s/on 1000 after anthem, mx 1030(JER)
- 9595 JAPAN NSB; 0802 Jap mx, tlk; G(KWS) 1045 JJ lesson, free tape of lessons  
 offered(JC)
- 9600 MEXICO R. Universidad, XEYU, currently off due transmitter breakdown; stn also  
 has internal administration difficulties. Visited site north of Mexico City,  
 learning that may soon return to regular broadcasting. Uses dipole a few feet  
 above the roof of xmt'r bldg. (Y) (ESB)
- 9605 CANADA DW Relay; 0200-0415\* GG over HCJB, //6085; their banditry continues!
- 9610 AUSTRALIA ABC, 1300-1400 EE, mx, horse racing, G(SES)1330 EE, horse race(MI)
- 9610 MAURITANIA(tent) RTVM; AA mx 0805, unable to get ID(JCF)
- 9615 ENGLAND Begin replay of CBC RR svc 0330, NF ex 11780 (BP-Australia)
- 9618.7v UoArab Emirates Abu Dhabi, 1500 AA(BE) How much does it vary?(DF)
- 9620NF W.GERMANY DW, GG 1600-1810 to ME //9655, 11795; ex 15320(BE)
- 9620NF SPAIN RNE; 1700 SS Sun px //11920 etc, QRM DW, Yugo(BB)
- 9620 BRAZIL R.Novo de Julho; 0815 Brazilian mx, PP amnts(JCF)
- 9620 S.VIETNAM VTVN; 0000 VV mx(DWF-Australia) 1530 VV px, mx in QRM; //11950 is  
 in the clear (ESB)
- 9620 YUGOSLAVIA R.Belgrade; 2200-2215\* EE mx, good(GHA, MI)
- 9622 PERU R.Atlantida; 1015-1045+ w/LA, Peru mx, IDs, TCs, SS; fair(JER)
- 9625 ISRAEL IBA; \*2035 EE, mx, talk, past 2100(ENR, RZ)
- 9625 CANADA CBC No.Svc; 0100-0705, ex 9700, /5960, 11720(BB) RCI in SS 0030(HEF)
- 9635 COLOMBIA R.Nacional, Bogota; LA rhythms 2305, SS amnts, long path(BP-Australia)
- 9635 SINGAPORE RS, 2350 CC songs, amnts(DWF-Australia)
- 9640 S.KOREA VoFK; 1130 EE, mx(RMA) 1200 EE mx, cntry, mx(NAP, RZ, JCF)
- 9640 BELGIUM RTB 0430-0540 DD; 9610, 11770, 11880 all blocked(BB)
- 9640NF LIBERIA ELWA 1815-1945 vernaculars to W.Afr(BB)
- 9645 NORWAY RN; 0200 EE, Norway This Week(Sunday) (RZ)
- 9645 VATICAN VR; 2050 EE rel pgm, fair to good(RZ) Nx 2050-2055 (ARN)
- 9650 GUINEA Conakry; 0425-0520+ lang, mx, steel drums(NAP)
- 9650 PORTUGAL DW-Sines; Polish mx 0600, NF ex 9615(BP-Australia)
- 9660 VENEZUELA R.Rumbos; 1115 SS, IDs, ads; F(JPR) LA tunes, good 0144(RWP)
- 9665 MALAYA RM-Kuala Lumpur; 2330 N:E, f/o 0000(DWF-Australia)
- 9675 POLAND RW; 1600 EE, 1630 Po; G 14 Sept(ESB)
- 9675 BRAZIL R. Diario da Manha; \*0800, seldom hrd this time(BP-Australia)
- 9678vRF MONACO TWR; 1015 RR, 17 Sept(BE)
- 9680 AUSTRALIA VLH9, Melbourne; mx, TC, cl mx; 1205-1230 EE(SE)
- 9680NF FRANCE ORTF 0700 relay France Inter to Africa(BB)
- 9685 TAIWAN VoFC; 2235 CC px under RM to 2300 f/o (DWF-Australia)
- 9689.2v CHILE LV de Chile 0200 full SS ID(BB) How much does it vary?(DF)
- 9690.1v ARGENTINA RAE 0300-0400 EE to NA(BB) "(DF) Tangoes till 0650, cntry in SS,  
 nx, then EE px; modulation a little weird(JER)
- 9695 BRAZIL R.Rio Mar; soccer in PP, no strain lvl at 0132, as RSA off 0131 w/ tx  
 problems(RWP)1010-1105+ PP, mx; FG(EL)
- 9695NF ETHIOPIA ETLF; 1830-1910 EE to Afr, ex 9705(BE)
- 9700 BULGARIA RS 2145-2200 EE; DX show F-1 1945(SES)1945 EE tlk(MI)2130 EE(WT)
- 9700 BULGARIA R.Moscow 0330-0400 EE to NA; mx, nx, cntry(HEF)
- 9705 BRAZIL R. Maua; 2200-2205 PP, futebol(EL)
- 9710 USSR RM 2315 CC, v good; Rodina px 2330-0030(DWF-Australia)
- 9710 ECUADOR HCJB; 0245-0258 lang, rel tlk(HEF)



- 9709.5V MAURITIUS MBC, Forest Side; 15 Oct surprising sig, no QRM, 1215-1300\*, w/  
Indian mx, chanting, brief Indian(Hindustani?) anmts between numbers by a  
man, some FF. Definite ID as "Maurice" heard. S/off 1300 w/FF, fairly brief  
w/no NA(AVS) 1245, fades in to fair lvl by 1250, abrupt s/off, sometimes w/  
anthem, sometimes not(RWP)1235 lang, Indian mx to 1300\*(FH)1255 lang, Indian  
or AA mx, 1300 pips & abrupt off(CC) Various AMs from abt 1235 to 1300\*, no  
ID, but s/off as in WRTH; mostly mx, nx at end I think(MAF)
- 9715 NF ORTF 0100-0200 SS to LA, ex 9700(BB)
- 9715 PHILIPPINES FEBG, EE 1425(AG)
- 9715RF SWEDEN RS 2015-2115 RR, Sw to FB, ex 11970, at least 3 others on fqy(BB)
- 9720 SAUDI ARABIA Riyadh, \*0315 Gen AA px w/chants, QRM DW, RFE(JC)
- 9722.6vNF IRAQ Baghdad RB 1930-2015 EE to UK, ex 9745v(BB)
- 9725 E.GERMANY RBI; \*0330 EE to WNA, NF // 9650(BP)(BB)
- 9730 E.GERMANY RBI 2350 EE nx (RZ)
- 9730 ETHIOPIA ETFL; N:E 0401(GAC) 0330 EE ID, to Tanzania(SWE)
- 9740 MALAYA BBC FES; \*0900-1615\* //11750 to SEA & WCNA w/WS(BB, RZ)
- 9740 USA VoA 0105-0140 EE nx, cmtry(HEF)
- 9745 USSR R.Moscow; 0410-0420 EE w/questions- sez Russians discovered cancer-  
smoking link, //9685(NAP) Before the Russians discovered antennas DXers had to  
hook their coax to any nearby barbed wire fence, which the Russians discovered  
and before that....(DF)
- 9745 BRAZIL R.Cultura, 0036 PP, rel mx(WT)
- 9745 IRAQ Baghdad, 1930 EE, ID, mx, nx(MI) 2000-2015 EE(SES) 1930-2015 EE nx, mx(MN)
- 9750 SWITZERLAND SBC 0428 EE, IS(SWE)0145-0415 to NA, app ex 15305(BE)Lang? That's  
a long stretch o' listening! hi! (DF)
- 9760 PHILIPPINES Tinang, Voa science px in EE 1418-1430(SK)
- 9756.2v PERU R.Sideral; 1100 SS tlk, 3 Sept(BB) If not reported for Oct, should  
have been left unreported, else relogged for report;(DF)
- 9765 W.GERMANY DW-W; 0700-0745 FF to W.AF, //9615, 9700, 11785, 11905, 15275(BB)
- 9765 ENGLAND BBC BBC now here evenings, ex 9580, to avoid Moscow frequency  
banditry!(DF) Excellent 0300 tune(DF)
- 9770 JAVA RRI; 0005 Indonesian songs, anmts (DWF-Australia)
- 9770 AUSTRIA Vienna; 0030 N:E, good(SWE)
- 9770 NETH.ANT. R.Nederland; 0800 Dutch to S.Pac. good(ESE)
- 9780 ALBANIA Tirana; 0015 EE(HEF) Peking relay end EE to ECNA 0157\*(SK)0300-0400  
EE(HEF, SWE)
- 9805 EGYPT Cairo; 0325 EE(SWE) 2245 EE cmtry(SWE)2145 EE(SLB)2235-2258 EE nx(RZ)
- 9833 HUNGARY R.Budapest; 0300-0330 EE(HEF)0317 EE, mx, tlk(SWE)
- 9850 EGYPT Cairo; AA chanting 2140-2200(SLB)
- 9880 UNID Peking? 1057-1113+, lang, tk abt Taiwan, Laos, in SEA lang(NAP)
- 9900 FRANCE ORTF 0105-0120 SS//9715, bad mod, odd fqy, prob tx trouble(LM)
- 9900 UNID Peking? 1135-1142+ man w/talk in SEA lang(NAP)
- 9912 INDIA AIR 2100 EE nx, v.poor(RZ)2315-0015 Hindi to S.As. (BB)
- 9915 ENGLAND BBC s/on 0130 Bengali/Asia, mix PTT\_Guantanamo Bay, Cuba; EE ID, into  
Bengali px(LM)
- 9920 UNID R.Liberation?/R.Peking? 1135-1141+ YL in lang, exc(NAP)
- 9945 UNID R.Peking? 1134-1140+, YL in SEA lang(NAP)
- 9970 UNID 1102-1110+, talk in SEA lang(NAP)
- 9990T CHINA Kunming; fair in lang 1120(SLB)
- 9992 UNID Asian lang tlks 1320. Peking? VFUNK not sked now...but Peking doesn't  
usually use split fqys, do they? (RWP) At times(DF)
- 10000 HAWAII WVVH overriding WVW at 0300(GLD)
- 10005 UNID Russian w/nx 0555(SLB)
- 10040 N.VIETNAM Hanoi, 1100-1120 CC, //12025(SLB)
- 10044T N.VIETNAM VoV; lang tlks, 1105-1133+, nx(?), good(NAP)
- 10121v N.VIETNAM VoV; lang talks at 1325, fair(RWP)
- 10530 KAZAKH SSR Alma Ata; RR 1101-1225(SB)
- 10727 NUMBERS 2 groups of 5 digits 1125(SLB) These are not really SWEC transmissions  
at all. Some are, as so often reported, "spy" stations; but simply because  
some of the "numbers" stations are "spy" stations does not mean that all are.  
Such credulousness should be eschewed by the serious DXer. These comments are  
not so much in reference to this item here, but to the whole subject of  
"numbers" stations. See also the station counting guidelines. (DF)

- 10974.5 USA VoA 1930-2013 LSB AA feeder, pulse on USB, ID 2000 "Voz y Amerikiyah", not "Saut..." (LM)
- 11347 NUMBERS (Taiwan) 2215-2225 CC, YL w/#s?, modern CC mx, jammed (LM)
- 11375 CHINA R.Peking; 2240 PP px, fair sig but poor mod.(GH)
- 11413 CLANDESTINE R Peyk-e-Iran; 1532 Farsi, //11695, both strong(RFB-Europe)
- 11575T RFE in East European lang -0025, mx; USB(SLB) feeder(DF)
- 11620 INDIA AIR 2100 EE nx, poor(RZ)
- 11630 CHINA Peking; mix, but over Cairo's chants, fair 1450(RWP)
- 11630 EGYPT Cairo; AA 2045-2100, excellent(SLB)
- 11650 CHINA Peking; EE 1222+, //11685(RZ)
- 11685 CHINA Peking; \*1200 EE, nx(SLB) 1222 EE(WT)
- 11690 ARMENIA Erevan; \*1225 RR nx, excellent(SLB)
- 11700 E.GERMANY REI 0515-0615(BB)
- 11700 USSR RS Rodina; 2000 RR, IS, ID, mx ((MN))
- 11705RF SWEDEN RS; 1830-1930 EE, Sw to ME, ex 11790(BB)0330 EE nx(KWS)0030 SS, into PP, mx, ID, nx(EL)
- 11705 N.ZEALAND RNZ; 0900-1145 EE to ANZ, //9520, ex 6080 this quarter(BB, RZ)
- 11710 N.CALEDONIA Noumea; 0550-1030+ FF, mx, (SB, FH, ARN, RZ, BP)
- 11710NF ECUADOR HCJB; 0550 EE, mix Noumea(BP-Australia)0615 EE/NA, NF, //11745 (DWF-Australia)0230-0400 RR to Americas, 0730 EE to S.Pac(BB)
- 11710 INDIA AIR; 2300-2330+ EE nx, Indian (BB)(GHA)
- 11710 AUSTRALIA RA; 1115-1215 EE nx, mx(WFH)
- 11715 SWITZERLAND SBC; \*0144-0215\* EE, nx, mx, tlk(SES)2100 EE, Dateline(RZ)
- 11720 ZAIRE Kinshasa, good lvl in local mx 2120-2130, FF(ARN)
- 11720 BRAZIL RN Brasilia; 0744 PP tlk, Brazilian mx(KWS)
- 11725 VATICAN VR; 0030-0108, SS, EE(HEF)
- 11730 CHINA of Sept LR...is 2nd px, Peking HS, list BBC MS at 0950-1130(SS)
- 11730 MALAGASY RN; \*0030 EE to SEA, NF, exc; ex 7285(BP/DWF-Australia)
- 11730 NETHERLANDS RN; 0250-0315 EE tlk, nx, mx, etc(HEF)
- 11730 UZBEK SSR Tashkent, 1500 IS & Hindi, //11925, 15415, F(ESB)
- 11730 FRANCE ORTF \*0035 PP px, 0100 SS, //11920, 11965, E (ESB)
- 11735 INDIA AIR 1225-1235 EE pgm summary, nx, NF(RZ)
- 11740 MALAGASY RN; \*1400 EE, exc lvl, anns 17810 as //(ARN)1400-1520(BB/DWF/RZ)
- 11740 SRI LANKA RC 1100 EE to SEA to 1130\*, irregular(DWF-Australia)
- 11745 GREENLAND Godthab at 1458-1500 IS, then well smeared by ORTF(ARN)
- 11745 FRANCE ORTF 0800 s/on FF HS relay till f/o or s/off 1000(DWF-Australia)
- 11745 ECUADOR HCJB 0400-0430 EE rel mx, tlk, good to fair(HEF, KWS)
- 11750 UNID AA chanting s/off abt 1800, under BBC, prob Algiers(BB)
- 11750 JAPAN FEN 0730 after BBC-UK s/off, to 0845, when BBC-FES carrier(DWF-Aust)
- 11755 FINLAND OYA; 1800-1830 EE to Eur, poor(RZ)
- 11760 CUBA RHC; 0250 SS(ENR)0045- SS(HEF)
- 11765 BRAZIL Rdif São Paulo; 0915 PP songs, anmts, past 1015(DWF-Australia)
- 11770 MEXICO XERMX; 1405 Mex songs, SS anmts, //9705(DWF-Australia)
- 11775 SPAIN RNE; \*1030 SS, past 1200(DWF-Australia) 2200-0400+ SS to LA(SLB/SWE)
- 11775 W.GERMANY DW 1930-2020 EE to W.Afr, //new 15400, ex 11785(BB)
- 11775 ROMANIA Bucharest; 2025 EE tlk, mx, nice lvl(MN)
- 11780 ECUADOR HCJB; \*0715 EE to Eur //6015/9605, ex 11765(BB)GG/Bur 2100(BP)
- 11780 MOZAMBIQUE RCM; 0545-0615 EE; pops, ads, IDs, chimes, etc(WWS)
- 11785 BRAZIL R.Guaiba; \*0800, //5965.2, PP, IS of lite mx, Braz. dance mx(LM)(DWF) 0015 PP sports(RZ)
- 11790 AUSTRALIA RA Shapparton; 1145 EE to S. As., ex 7140(BB)
- 11793 INDONESIA RRI, 1400 Indo & mx to 1600\*, alternates w/11719(ESB)Tentative, 1202 lang(SWE)
- 11795 LIBYA Tripoli; 0330 AA, man w/ID, poor(SWE)
- 11800 SRI LANKA CeBC; 1100-1400 Hindi com'l svc; mx, nx, some EE IDs(RWP, JC, SLB)
- 11805 BRAZIL R.Globo; \*0855 PP ID(DWF-Australia)0000 PP sports(RZ)
- 11810 INDIA AIR Delhi \*1330 EE nx, poor(RZ)1400EE tlk(SWE)
- 11810 ITALY RAI 0120-0130 FF to NA; nx, talk(HEF)0100-0120 EE(RMA, SES)
- 11814.2 BRAZIL R.Brasil Central; 2030 PP futebol(BB) (RMA)
- 11815 POLAND Warsaw; 0300 EE ID, nx, cmtry(SWE)0212-0225 EE/NA(GHA)0220 EE, Po
- 11815 USSR RSAtlantika; 1300 ID, choral singing(AEM-Europe)
- 11819 MOZAMBIQUE RCM 0415 mx, PP IDs, anmts(ESB)
- 11820 MEXICO R. BH; 2115-2117 SS briefly while BBC off air(WWS)

- 11820 GEORGIAN SSR RM-Tbilisi; 1502 EE ID, nx, tlks, po or(MN)
- 11849v PHILIPPINES R.Veritas; 1231 VV px, ID, 1301\*; fqy varies daily(ESB)
- 11850 INDIA AIR 1225 EE, 1235 Hindi to 1250\*; //9535 continues to 1305\*(ESB, RZ)
- 11850 GHANA RG; 2000-2100 EE tlk, nx, etc(SWE, WT, RMa) Looking for Chile, found 2 stns abt 1 kc apart; one is RG w/Afr mx; other w/M&W tlk, 0400\*, believe USSR(MAF)
- 11855 CZECH R.Prague; 0700-0715 N+E, fair(SLB)
- 11855 PHILIPPINES FEBC 1115 EE declaration of martial law, 23 9, in place of reg. Asian langs sked, //11920, 6170(PBS); a news rpt said all Phil. stns being the speech, but MW DYLA 1555 still carried religious prgmmg then. (DWF)
- 11855 ISRAEL IBA; \*0343 IS, 0345 RR to 0447\*, //9009, strong under jammer(ESB, GAC) 2045 EE, ending nx; mx, QRM; //9625(MN)
- 11855 BRAZIL R.America, 2300 PP talk, poor(RZ)0915 ID, PP tlks & mx(SR) Please use 4 digits when quoting times, thanks(DF) Mx px 0450, 1 Oct; first time heard so late.(MAF)
- 11855 SAUDI ARABIA Djeddah; 1945 FF(?), mx, tlk by man(EH)
- 11860 ??? R.Nederland, 2200-2250 w/DX Jukebox on Wed(!); not //11730, not listed. Which? Where?(FH)
- 11865 BRAZIL RC Pernambuco, 0900 fiesta mx, ads, PP(DWF-Australia) 2230 PP sports (FH) 0020 sports(RZ) 0300-0400\* PP, mx, IDs, ads(JER)
- 11870 E.GERMANY RBI; 0315 Swahili (?), 0445 EE, new sked(ESB)
- 11870 PHILIPPINES VoA \*1600 Bengali, EE ID(RFB)
- 11870 SWITZERLAND SEC EE to Afr 2120, NF ex 11865(BP)2100 EE, 2130 GG & It to 2245\*, //15305(ESB)
- 11875 NICARAGUA R.Nac.; 1328 SS, mx(SWE)
- 11875 ANGOLA R.Angola; 1400 PP & mx, 1500 EE nx, rarely hrd(ESB)
- 11875 UNID 0530 in what seems to be PP(Angola listed), weak, gone 0550. What happened to Nicaragua, are they off the air?(JER) On at 2245, as just checked & got ID, still strong; possibly tx troubles the day of your logging(DF)
- 11875 JAPAN NHK; 1125 EE nx, fair(RZ)
- 11875 ENGLAND BBC, 1300 Greek, 1315 Polish, 1330\*, QRM(ESB)
- 11875 PORTUGAL R. Nacional, 1830 EE, pop mx, tlk, editorial(ENR)
- 11877 PORTUGAL EN app testing USB-RC w/PP sports at 1430; if qy shift is intentional, this is a good illustration of the split fqy possibilities of SSB in besting. Avoids RAI completely. Probably intended as PTP feed to Afr at this time(BB) SSB might be OK for reaching those with receivers equipped for it, but would be totally useless for reaching large numbers of people, the only logical reason for international broadcasting. (DF)
- 11879 TURKEY Ankara, 0350 IS, into lang, chants(SES)0351-0505\* tlk, mx, lang(NAP)
- 11880 RSFSR(Eur) "R.Vilnius" (Moscow tx site-DF); 1830-1845 EE, good(SLB)
- 11880 ARGENTINA R.Splendid, 1000 good w/"Informe Splendid"(JCF)
- 11888v HUMANIA RB; 1600-1655\* AA, //11773-5v(ESB)
- 11890 ESTONIAN SSR RM via Tallinn, 0400-0430 AA(BB) This is Tallinn in the 0330-0600 time slot, according to the ITU lists, beamed to ME/E.Afr, during the fall quarter. Not listed for the winter quarter.(DF)
- 11890 MALAGASY RN; 2130-2250 EE/Australia, ex 7295(BB, SES, JDT)
- 11890 PHILIPPINES FEBC, 1700 RR, 1758 EE ID & anthem to 1805\*(ESB)
- 11895NF NETH ANTILLES TWR; 1000-1030 GG to SA, NF ex 11870(DWF-Australia), ex 11820(BB)
- 11900 MALAYA RM-Kajang; \*1100-1230+ CC svc; good, clear, intelligible spkrs(JC)
- 11900 S.AFRICA R.RSA; 1450 EE, strong, mx, IDs(MN)
- 11901v TUNISIA RTVT; 1600 AA & chants to 1700, strong(ESB)
- 11905 RWANDA DW; 0605 EE, mx, cmtry, good(MN)
- 11905NF ALGERIA(Quasi-clandestine) VoLiberty \*0016, Su only(LM)
- 11910 ALGERIA Kabyle svo now here 0745, ex 11905 & others(BP)
- 11910 ETHIOPIA ETLF; 1955-2015\* EE rel px, mx, VoA QRM(EH) ex 11955(BB)
- 11915 ECUADOR HCJB, 0230-0245 EE rel tlk & mx, good(REF)
- 11920 PHILIPPINES FEBC 1245 EE rel px, fair(RZ)\*1145 EE rel px, historical info abt Phil.(JC)1220-1235 EE rel px, ID 1235(EL)
- 11920 SPAIN RNE 0900 s/on Sundays, SS to SS seamen(DWF-Australia)
- 11920 IVORY COAST Abidjan; 0645-0700 FF, nx, //7215(SLB) 1920 EE, mx(RMa)2045 1el mx, Idd by WRTH(SWE)

- 11920 ALGERIA(Quasi-clandestine) VoPalestine \*1830-1930\*//11965(LM, AEM)  
 11920 ALGERIA RTVA AA svc now here, 2245, //11965, also hrd, NF(BP-Australia)  
 11925 BRAZIL R.Bandierantes, 0040 PP(KWS)0240 sports(BP-Australia)0800 Pfpops, armts, past 1030, some days excellent(DWF-Australia)  
 11925 UZBEK SSR Tashkent; EE 1200-1230(SR)  
 11925 CYPRUS BBC 2016 EE under DW(MN)  
 11925 SPAIN RNE 0325-0345 EE mx, s/off(HEF)  
 11930 BELGIUM RTB; FF pops, Dutch armts, 2130, NF(BP-Australia) 1800 DD/FF, // 17860, poor(RZ)  
 11930 SWEDEN RS; 1600-1630 ER to ME on NF, //15240, ex 11790(BB)  
 11935 S.AFRICA Springbok Radio; EE & Ak armts, ads, 1350(BP-Australia)1420 EE & Ak, w/ads, pops; quite good & unusual for Melbourne at this time(DWF-Austr.)  
 11935 PORTUGAL R.Port; 0410 EE, mx(SWE)0345-0400 PP, then EE, mx, cmtry(HEF)  
 11940 SWEDEN RS 0515-0545 EE/ANZ, NF ex 11895(BB)  
 11940 EGYPT Cairo w/chants, mix RA CC svc 1340(BP-Australia)  
 11940 SINGAPORE RS; EE HS 11---1300; mx, cmtry, F-G(JC)1605 pops, EE ID, anthem, 1630\*, 9/9 only; very rare in Ontario(ESB)  
 11940 USSR ?? 1430 RR IS, still there 1530 check(JDT)  
 11940 LIBERIA ELWA 2100 EE IS under Bucharest(MN)  
 11945 CANADA CBC, 0000-0058 SS mx, cmtry(HEF)  
 11948 PARAGUAY R.Encarnacion 2245 after DW s/off & before CBC/VoA s/on 2300(MAF)  
 11950 LIBERIA ELWA; 0745 EE, local mx, fair(SWE)  
 11950 FRANCE ORTF; 1726 IS, FF 1730, //15120, good(ESB)  
 11950 RWANDA DW Kigali; 2130 GG to 2240\*, //15380, G(ESB)  
 11950 BRAZIL R.Ministerio da Educacão; ID, cal, fqys, TC 0900, over Saigon (BP-Australia)  
 11955 ETHIOPIA ETLF; EE nx 1335, ID, beautiful sig(RWP)NxE 1335(NAP)2000-2015 EE nice lvl under VoA(MN)  
 11955 SEYCHELLES FEBA; 1730 EE, IS, ID, rel px(MN)  
 11960 NETHERLANDS RN, 1230 SS, //15130; P-F(ESB)  
 11965RF ALGERIA(Quasi-clandestine) VoPalestine, \*1830-1930\*//11920, ex 15410v(LM)  
 11965 ALGERIA RTVA; 2200-0000\* AA(ESB)2007 AA talk, mx, good (KWS)  
 11970 TAIWAN(?) 1030-1145\* CC, 1200 CC ID & E.As. lang to 1330\*w/march; jammed. Any info?(ESB)  
 11970 TUNISIA RTVT; 0800 AA px in clear after VoA s/off, //11900(DWF-Australia)  
 11970 S.AFRICA R.RSA 2330 EE to NA; mx, mx(EH) (JER)  
 11975 GRENADA WBS; 0000-0215\*; cl mx, nx, rel px, IDs, BBC nx(RZ/EL/GHs/SWE/RWP)  
 11975 LIBERIA ELWA, EE rel px 0759(RMa)  
 11975 USSR RP&P 0120 talks(RMa) Presume in EE. ??(DF)  
 11975 ETHIOPIA ETLF; FF 0254, good(RMa)  
 11980 USSR RP&P; 1530 EE nx, cmtry, poor(MN)  
 11990 CZECH R.Prague; 0300-0400 EE to NA; mx, mx, cmtry, mailbag(HEF)1845 FF nx, mx, talk on Czech(EH)  
 12000 AUSTRALIA VNG, 0650 pips, 0700 EE ID(FH)  
 12015 CHINA Peking, 1100-1117 lang, fair(SLB)  
 12020 N.VIETNAM VoV; 1300 EE nx, cmtry, mx, //15005(RZ)  
 12030 CUBA RHC 0405 EE nx, ex(NAP)  
 12040 ENGLAND(?) VoA, \*0200 Ukr, 0300 RR, no ID; QRM USSR HS. What site? Might this be 2nd harm of 6020 which is, I believe, Woofferton?(DF)  
 12405 NUMBERS EE numbers 1218, 4 digit by mechanical YL. (GH)  
 12060 USSR Moscow, RR 2010, RR mx, ID(ENR) ID for what px?(DF)  
 12190 AUSTRALIA RA, Mandarin to 1230, then Cantonese, //6100, but this is SSB feeder(SLB)Thus not SWBC(DF)  
 12450 CHINA Peking; CC 1130-1144(SLB)  
 13236.5 CLANDESTINE R.Buskadi; \*2225-2259\*, free(temporarily?) from jammers. EE 2250, when they feel like it - abt once a week(JC)  
 14481 RUMANIA R.Bsp. Indep.; //12140 in SS 2000-2019(SLB)  
 14670 CANADA CHU; 1916 EE & FF time sigs(RFB)  
 14860 USSR 1155-1210, believe RR, 6 bell IS at 1200-tx in Central Asia?(SLB)Not necessarily. The number of pips do not tell time on the RM HS txs(DF)  
 15006 N.VIETNAM VoV; 1300-1328 EE(SES)1300 EE nx, cmtry(RZ)(MN)  
 15030 CHINA Peking; 1945 mx & talks(RMa) Lang?(DF) RP Uighur HS \*0030-0128\*, ex 0115\*, nx, Uighur mx...Kazakh HS \*0130-0228\*, ex 0215\*, tx off 0230 & not traced again. Where is RR HS ???(LM)

- 15060 CHINA Peking 1115 Khmer; Sihanouk delivering his lecture not only in Khmer, but also EE & FF, very interesting, since nr rpts ascribe recent increase in fighting ard Phnom-Penh to these latest beasts(LM)
- 15080 INDIA AIR-Bombay; 1910 strain lvl EE tlks(RWP)1930 EE, weak(WWS)
- 15084 IRAN R.Iran, daily at perfect listening quality, 1900 regional ME mx(RWP) k335 Farsi mx(SWE)0323 Farsi tlk, also 1804(KWS)2045 AA(MN)
- 15100 E.GERMANY RBI 1715 GG on NF(ARN)
- 15105 BRAZIL R.Rural 2300-2330 t/o, PP, mx, IDs, TCs(JER)2200 PP, fair(SLB) 2230 PP, exc(AEM)2145 PP, mx, IDs(ENR)
- 15105 MALAGASY RN, \*1955, Dutch(SB) 2050 Dutch(EH)
- 15105 SWEDEN RS; 1230 EE to FR(RZ)
- 15108 GRENADA WBS; EE requests 2055, strong lvl(BP-Australia)
- 15110 NEW ZEALAND RNZ; 0230-0430+; mx, nx, play, wx, IDs(SES/JDT/KWS/MN/RZ)
- 15119 NIGERIA VoN; 1630-1640 EE nx, ID(DW)
- 15119 SRI LANKA RC 0200-0230 EE rel px, BBC nx(SES)
- 15120 SRI LANKA; RC up from 15118, 0125 recent US rock, //9720 smeared 0130(DWF-Australia) 1645-1730\* EE, mx, fair(DW)
- 15120 POLAND Warsaw 0110 Po to NA(DWF-Australia)
- 15125 MEXICO XERNX; 0120 SS(SWE)0330 SS(SWE)0045 EE ID(FH)
- 15125 BELGIUM RTB; 0635 FF pops, FF, NF(BP-Australia)
- 15125 TAIWAN VoFC; Taipei; N:E 0300, f/o 0310(FH)
- 15130 RSFSR(As) Vladivostok(per ITU) RM EE to NA 0330(KWS)
- 15131.1 PAKISTAN RPAK; 1330 Urdu chanting(BB)
- 15135 FRANCE ORTF 1900 FF nx, tlk(EH)
- 15135 W.GERMANY DW 1300 GG px, //15275, P-F(ESB)
- 15140 USSR RP&P; 1044-1055+ EE, //15455(NAP)
- 15140 CUBA RHC; 2030 EE(ENR) 2140 EE, ex 15285(BP-Australia)
- 15140 CYPRUS BBC 2325-0000 EE//6110/6005/9580/15260/11780/9410/7130/others(SLB)
- 15143 BRAZIL R.Jornal do Comercio; PP 2230(SLB)2330 PP, mx(FH)
- 15145 SPAIN RNE 0230-0300 SS to LA(HEF)
- 15150 CHILE R.Corporacion, 2210 comedy px(BP-Australia)0420 IDs for many Chilean outlets(SLB)
- 15150.8 N.KOREA 0800-0900 EE to SEA(BB)
- 15155 PHILIPPINES Poro listed, "Philippines" local ID 1700\*(SK)
- 15155 BRAZIL R.Tupi; São Paulo; futebol 2230-0210+(SLB, JER, FH, BP-Australia)
- 15155 FRANCE ORTF, 1040 EE(RZ) 1600 FF //15160, 17720, 17730, 17765(ESB)
- 15155 VATICAN VR; 1400 EE(EH)
- 15160 AUSTRALIA RA, 1618 pop mx(KWS)
- 15160 HUNGARY Budapest; 2130 EE nx, cmtry(RZ)
- 15160 IRAQ Baghdad, //15400 at 0300 in AA. Prob spurious(ARN)
- 15160 GREECE VoA at 1500\* w/ ID for Rhodes(RZ)
- 15165 SYRIA Damascus; 2230\* AA(SLB)0000 AA to LA(BB)
- 15165 DENMARK RD; \*1130 EE, IS, ID, into Danish nx(GHa)1200 Danish(SR)
- 15170 TAHITI RT, 0356 Tahitian mx(KWS)0530 FF, mx, cmtry(SWE)Regular here(DF)
- 15170 E.GERMANY RBI Swahili to E.Afr//15145, 15390, added tx(BB)
- 15175 S.AFRICA R.RSA, 1915 N:E(EH)
- 15180 RSFSR(As) Petropavlovsk; 0700 EE to NA(SLB)
- 15185 NIGERIA VoN; 0515-0630 EE(GHa)0645-0700 EE, nx 0700(SLB)
- 15185 FINLAND OYA; \*1800 EE mx, tlk(KWS)(MAF) 1200-1315 Finnish to NA, new time and fqy(RZ)
- 15185 USA WINB, 2203-2312+ EE nx, mx(GHa, MI) NF(GHa)
- 15190 CONGO R.Brazzaville; 2035 FF, Af mx(JPR) After being closed for a time, this is now reported as being // RTC outlets(DF)
- 15190 ETHIOPIA ETLF 1330 EE nx(RZ)
- 15195 BRAZIL R. Inconfidencia; 2300 PP(SLB)
- 15195 MALAGASY RN; 1143 EE(MN)1200-1220 EE to Australia(RZ)1100-1220(SR, BB)
- 15195 TURKEY Ankara; 2220 EE, mx(SWE) 2215 EE, pops(AG) N:E 2200-2230\*(FH)
- 15205 INDIA AIR 1035-1055+ EE, nx, Indian mx(NAP)
- 15210 AUSTRIA ORF; 1900 GG(EH)
- 15216 TUNISIA RTT; AA mx, //11900(SLB)
- 15220 MALAGASY RN 2000-2120 FF to Af, //11730L, 21570B(BB)1830-1950 FF, 2000-2120 FF(KWS, ESB)

- 15225 ALGERIA RTVA 1600 AA sports, mix VoA(BB)  
15235 BELGIUM RTB; 2307 EE(WT)  
15240 CHINA Peking, \*1300 EE(RFB)  
15240 SWEDEN RS; 1850 EE, //11705(RZ)  
15245 ZAIRE Kinshasa 0130-0200+, Af lang, Af mx, FF 0146(JER)0046 ID(GAC)0600-0615 FF mx(SLB)  
15250 AUSTRIA OR 0000-0200 GG to CA, ex 15145(B)  
15250 ROMANIA Bucharest; EE by YL(AG)1305  
15255 ROMANIA Bucharest; \*2130 PP/Eur, NF this svc(BP-Australia)  
15265 AFGHANISTAN RA 1800 EE nx, mx, ID(MN) 1815 EE, QRM Czech(RWP)  
15265 BRAZIL R.Excelsior; 2345-0000 PP, mx(SLB)  
15270 ENGLAND BBC PP nx to Eur 1235, recent NF(BP-Australia)  
15270 LIBERIA VoA; 1700-1800 Swahili to Afr(SR)  
15280 HAITI 4VWL; 0030 EE ID, mx(SWE)  
15290 SYRIA Damascus; IS 0158, preceding s/on, recent NF(ARN)  
15290 ARGENTINA R. El Mundo; 1030 SS, tlk, rare for Melbourne(DWF-Australia)  
15290 PHILIPPINES VoA 0130 EE, Bkfst show(RZ)  
15295 FRANCE 1040 EE from ORTF(RZ)  
15295 SWEDEN RS; 0031-0045+ EE to NA(NAP)  
15300 PHILIPPINES FEBC 0900-0945 Amoy to S.China, chanting(BB)  
15300 JAPAN NHK 1400 EE nx in Gen Svc(EH)  
15310 GUINEA Conakry, 0750-0800+ FF, 1cl mx, tlk(NAP)0655-0715 FF(SLB)  
15310 MALAYA BBC Tebrau; 1500 EE nx(RZ) 1400 WS(BB)  
15310 SWEDEN RS; 1400 EE nx, tlk(EH)(SWE)  
15315 ETHIOPIA ETLF; 1345-1430 Telugu to India (BB)  
15320 E.GERMANY RBI on NF 1200-1245 EE to S. As. (BB)  
15324 PAKISTAN R.Pak; 1730-1830 AA(BB)  
15325 CANADA RCI w/2 tx on fgy, total 300 kw, 1515 sig flutters, out of phase(ESB)  
15335 S.KOREA VOFK; 0245-0317 SS, then EE at 0300, poor(JER)0315 EE(MN)\*0300-0330 EE, nx(SVE)  
15335 INDIA AIR; GOS poor 1328 IS, \*1330(RWP)  
15335 LUXEMBOURG RL; GG pops & amnts, peaks 2030, seems //6090(BP-Australia)  
15340 INDIA AIR 0103-0115\* EE(NAP)(RZ)  
15345 ARGENTINA R.Nac.; 2030 orch mx, ID 2045, rare(BP-Australia)  
15345 KUWAIT RK; 0510 EE, EE(?) 1845(WWS)  
15345 GREECE NHBI; 1930 Gk/EE, vy poor(MN)  
15345 NETH ANT TWR w/ PP px 2220, ID 2230(FH)  
15345 NORWAY Oslo, NF in EE 1715-1725(ARN) presume Sunday?(DF)  
15385 ITALY RAI; 2330-0000 on NF w/pops, AA mx & lang(ARN) 1830 It, //15400, 17770(ESB) 1905\* Sports px to NA BCN stns, 0140 It to LA(BB)  
15385 PHILIPPINES FEBC 0845 EE to Japan, Singapore(BB)  
15388 ALGERIA RTVA 2230-0000\* FF & mx, 9/9 only(ESB)  
15390 LEBANON Beirut; 2300 NA & PP, 0030 SS(ESB)  
15400 W.GERMANY DW; 1930-2020 EE to W.Af, //9765, 11775, 15150(BB)  
15410 BELGIUM RTB; 1915 FF IDs, by YL(EH)  
15415 UZBEK SSR Tashkent, \*1200 EE(RFB, SB)  
15415 KUWAIT RK; \*1615 AA, \*1730 EE to 1900(SLB, ESB, GHa, SWE)  
15420 VATICAN VR; EE to ANZ 2210, NF ex 15200(BP-Australia)0110 FF(SWE)  
15425 USSR RM EE/Af, vy gud 1350...site?(RWP)Simferopol per ITU(DF)  
15428 GREECE HNEI; Gk songs, Gk amnts, 2030, 2100\*(BP-Australia) opening 1730 after IS, lang by YL. Local mx, good lvl, seems to move around(ARN)  
15430 E.GERMANY RBI; 0445-0530 EE to W.Afr//11870(BB)  
15430 INDIA AIR; 1225-1235 EE px sked, nx(RZ)  
15435 TANZANIA RT, Dar es Salaam; 1858 drums, 1900 pips, EE ID, NxE, lost to QRM splash(RWP)1735-1800 t/o EE, ID 1745, pips & mx, 1800(DW)  
15435 ENGLAND BBC Eur Svc, FF, IS 1355, ID 1400(RWP)  
15435 MALAYA BBC Tebrau; WRC 2345, nx 0000(FH) Day for World Radio Club?(DF)  
15445 JAPAN NHK; 2345-0045 EE to NA(WFH)  
15445 BRAZIL RNac Bras.; 0015 PP(ASM)0030-0100+, PP, mx, IDs, I thot supposed to be EE. ??(JER)  
15450 CHINA RP HS-2; 9/16 to 1125\*, under RM(LM)  
15520 PAKISTAN RP 2008-2030 EE, nx, mx, into Urdu 2030(GHa)  
15524a PAKISTAN RP-Karachi; 2100 EE to Eur(RZ)

- 17700 E.GERMANY RBI, 1400 EE nx, poor(RZ)  
 17715 CHINA Peking, 0220-0240+ EE nx, tlk(NAP)  
 17720 TAIWAN VoFC; 0218-0255+ EE nx, nx(NAP)\*0200-0230 EE nx, rq. rpts(SES)0200 EE, sked(RZ)0320 EE nx(MN)0225 anti-Jap tlk in ER(BP-Australia)  
 17720 FRANCE ORTF 1040 EE(RZ)  
 17740 BELGIUM RTB; 1230-1300 FF/DD; nx, tlk to sailors(RZ)  
 17745 EGYPT Cairo; 1615 IS, AA to 1825\*(ESB)  
 17750 SPAIN R.Liberty 1800 RR IS, ID, nx(CC)  
 17755 ECUADOR HCJB; GG to Eur 2120, NF ex 17816, exc lvl(BP-Australia)  
 17755 E.GERMANY RBI 1400-1445 GG to NW Af (BB)  
 17755 ITALY RAI, NF, 1430\* sports in It to LA(BB)1400 EE ID, to Toronto(SWE)  
 17755 USSR RM, EE 1555 to Afr, 1558\*(CC)(RWP)  
 17780 TAIWAN VoFC; 0200 EE, fqys, nx(RZ)  
 17790 ALGERIA RTVA; AA svo now here 1050, mixed BBC RR svo(BP-Australia)  
 17795 AUSTRALIA RA; 0240 EE stock rpt(NAP)  
 17795 BELGIUM RTB; 1700 Congo px, 1800 FF, ex 17870, different px on 17860, both good(ESB)  
 17795 NORWAY RN; 2139 EE w/ nx(RMa) Presume Sunday. ??(DF)  
 17795 USSR RM, 1605 EE nx(SWE)  
 17800 NORWAY RN; 0620-0630 EE, //6130, 9645, fair(SLB)  
 17805 S.AFRICA R.RSA; \*0400 FF to Malagsy, Nf ex 3980(BP-Australia)  
 17810 NETH ANTILLES 2300-0020 DD to SA, ex 17835(BB)  
 17810 MALAGASY RN; 1400-1520 EE to S.As, //11740(BB)1355 IS, \*1400 EE under Sweden QRM(FH)  
 17815 BRAZIL R.Cultura, 0000 PP ID, last logging was Dec '67(BB)  
 17815 SWEDEN RS exc w/EE to NA 1400, nx, cmtry(FH)  
 17815 CUBA RHC; FF to Med. 2120, NF ex 17885(BP-Australia)2045 lang, IDs & nx, RTTY QRM(EH)  
 17825 JAPAN NHK 0015 EE, JJ lesson(MI)0220-0235 EE, nx, exc, //17725(NAP)  
 17825 BULGARIA Sofia; 1915 EE/Afr, much tlk re nothing(AEM)  
 17825 NORWAY RN; 1400 EE, Norway this Week(RZ, SWE)  
 17860 BELGIUM RTB 1800 DD/FF, px for Belgians(RZ)  
 17880 USSR RM 0335-0345+, EE nx, tlk(NAP)  
 17890 TAIWAN VoFC; 1320 lang(ENR)0200 EE fqys, nx(RZ)0350\* app in CC instead of EE to NA some days. Positive ID at close, //17780 also hrd(JC)  
 17895 PORTUGAL RP 1345 EE nx, cmtry to SEA(RZ)  
 17900 VATICAN VR 1620-1635 EE to E.Afr(BB) NF, 1708 bells, good lvl(ARN)  
 17900 USSR Moscow, \*1230 in lang(SLB)  
 17935 BANGLADESH RB; 1235 EE cmtry, ID, nx(SWE)1240-1300\* EE nx, IDs, local nx (NAP)...17937(NAP)...17940, 1230-1245 nx(SLB)17935a, 1247 EE(MI) 17935, 1230 EE nx, anti Bhuto speech(AEM)...17935, \*1230 EE to 1300\*(RFB)...17935, \*1230 EE, nx, cmtry(ENR);..17935, 1245 GoS to Europe(MN)  
 1972+ USSR Moscow feeder, 1844 RR(RWP)  
 19750 USA VoA, Gvl; RR nx 1620-1630, SSB feeder(SLB)  
 19830 USSR RWW76, Tass nx, Moscow; nx w/M&W in RR 1700-1715 on SSB(SLB)  
 21455 MOROCCO VoA-Tangiers 1740 EE tlks, 1800\*(KWS)  
 21460 BELGIUM RTB; 1400 FF/DD, nx, tlk(RZ)  
 21470 ENGLAND BBC, 1705 EE nx, tlk on Afr(EH)  
 21475 BELGIUM RTB; 1230-1300 FF/DD, nx, tlk, to sailors(RZ)  
 21485 AUSTRALIA RA, EE, nx, pops, 0700, //17870, 17715, 17820, 15240, 15320, 15160(SLB)  
 21495 PORTUGAL RP; 1730 IS, ID in FF; nx(SWE)  
 21500 E.GERMANY RBI, 1400-1445 GG to ME, //17755(BB)  
 21500 CONGO R.Brazzaville 0715 not on air since 23 Sept after BBC nx said ORTF nationalised by Congolese government(DWF-Australia)  
 21540 MOROCCO VoA 1641, RR tlk(KWS)  
 21545 GHANA RG; 1445-1530 EE to C.Afr; nx, tlk(BB, RWP)  
 21555 BELGIUM RTB; 1330-1700 DD, ex 17845(BB) 1230-1300 FF/DD(RZ)  
 21560 ITALY RAI 1400 It, tlk(EH)  
 21570 NETHERLANDS RN; 1900 EE tlk, nx(KWS)  
 21580 FRANCE ORTF, 1732 FF, pops(KWS)  
 21585 AUSTRALIA OR 1000-1200 GG on N F to Australia, ex 17785(BB)  
 21605 KUWAIT RK 0805 AA children's show, //21685(DWF-Australia)  
 21610 ALGERIA RTVA 0725 AA nx, up from 21605(DWF-Australia)

Our thanks to those who made this section reach a record 20 pages:

AAM Albert Miller, OH/HRO500  
 AEM A.E.Martin, England/AR88  
 AG Andrew Graham, Kan/NC60  
 AR Al Reynolds, TN/SPR4, SX130  
 ARN Al Niblack, IN/SX100, HQ200  
 AVS Al Sizer, CT/HQ180/SPR4  
 BB Bill Berghammer, NY/SP600  
 BP Bob Padula, Australia/CR100  
 DCJ Don Johnson, CA/SPR4/SX190  
 DWF David Foster, Austr./Trio

9R-59DS  
 ECS Ed Shaw, VA/SX190  
 EH Eric Herson, OH/SX110  
 ENR Ed Richezza, PA/SW4A  
 GAC Gregg Calkin, Mexico/SW4A  
 GH Glenn Hauser, TX/HQ160  
 GHa Gary Hafer, PA/  
 GLD Gerry Dexter, WI/HQ180/R4B  
 GVG Victor Goonstilleke, Sri Lanka/  
 HEF Henry Fino, NY/RCA  
 HMa Hiro Matsaura, Japan A-2515  
 JC John Campbell, S.America,  
 R-390 & portable

JCF John Fisher, Ont/636x  
 JER Jim Roberts, /Kenwood  
 JPR Jim Ronda, OH/SW4A  
 KAE Ken Earhart, PA/DX150A  
 LM Larry Magne, PA/R4B  
 MAF Marlin Field, MI/SX100  
 MI Martin Imbert, VA/DX150A  
 MN Mike Nikolich, IL/SX190  
 NAP Neal Perdue, TN/SW4A  
 RFB Robert Bruce, Scotland/Eddy

830/7  
 RMa Rich Marchak, PA/SW4A/DX150A  
 RZ Robert Zilmer, WI/SPR4/R4B  
 SLB Samuel Barto, CT/Super-Pro  
 SS Si Scheiner, NJ/51J1  
 WFH William Highan, OH/Magnavox  
 WT Walt Trkula, PA/

(After wondering why there were no more credits one slightly tired-from doing 4 sections this month;- editor found the rest of them. Very sorry, but we have two credit lists this time!(DF))

CC Charles Conner, LA/SW4A, DX150A  
 COM Calvin O. McCall, VA/S-20R  
 CP Pat Patterson, GA/  
 DW Dave Williams, OR/SPR4, 75S-3C  
 EL Ernst Lohe, VA/R4B  
 ESB Ernie Behr, Ont./NC400  
 JDT John Tuchscherer, WI/HQ100A  
 KWS Ken Swatkoff, Abta, SPR4  
 RWP Ralph Perry, IL/SX100  
 SB Samual Barto, CT/  
 SES Steven Sykes, OH/SX190

SK Steve Kamp, CA/HQ140X  
 SR Scott Reeves, MD/S125  
 SWE S.W. Eichenhorn, MI/  
 WWS Woody Seymour, NC/SX190  
 Y = GH + GAC, TX/HQ160

Again, thanks for your support. Your rpts make possible this monthly run-down of what has been heard.

SUCCESS CAUSES PROBLEMS. And this is surely the case with the Log Report! Over the years the Log Report has proved to be very popular with DXers, resulting in increased support, with the result being increases in the size of the LR. This was just too much for one editor to handle, so we split it into two "halves". Now "upper half" editor Dan Henderson has found it necessary to resign the post due his job now involving considerable travel on a regular basis, something he thought would not be the case when he took the upper half.

The result?? We are looking for additional editors, both regular, and back-up editors. If you are interested, please write HDQ. Thanks.

\*\*\*\*\*  
 Remember the VERIE SIGNERS LIST, just \$1 postpaid from headquarters.

Also, the 1604-4000 kHz band survey is still in stock, cost is \$1.50.

The 60 meter band survey is still free for a (long) SASE w/24 cents postage (in NA), while the current printing lasts, so get yours now. From headquarters.

Some reprints you can be looking for in the coming months include the complete Loudenboomer series, the series of articles on The Art of Verifying, some antenna articles, etc. Watch the pages of FRENDX for announcements of the availability of these.

\*\*\*\*\*  
 LATE WORD from Radio Cordac, in Burundi, says the station is now back on the air(JDT)

Richard Wood notes that all overseas tx from RNE SPAIN now use the guitar ID formerly used only by Noblejas; often runs as much as half an hour before the transmission begins.

That's it till next month.

73, Dan



## FLASHSHEET

FREQ: KCS

TIME: GMT

AL NIBLACK, EDITOR; 420 SHELBY ST., VINCENNES, INDIANA 47591 DEADLINE 20TH MONTH

TIMOR FLASH-FLASH-FLASH 3668 1240-1415 T/out, Emisora de R.difusao de Timor Portugues; Dili noted here this evening on new fqy, ex-3268, seemingly increased power; many EE pops, FF tunes. Definite ID, "Aqui Dili, Emisora da R.difusao de Timor Portugues", at 1400. This 16 Oct...3268 has seemed silent for a couple months, but doubt they have been on this new fqy all the time. (Bob Bundy, Truk) (Vy gud, Edi-  
ALGERIA RTVA, 6080, under RSA, 0025 with chants. (Ralph Perry, Ill.)... / tor)  
9510 RTVA logged 0600-0630 time slot, FF pops, good sigs. (Scott McGregor, Mo.)  
ARGENTINA 11710 RAE At 2303 ID and fqy by YL, into yak, poor lvl.(M.R.Leonhardt,  
AUSTRALIA 6140 VLW6 Perth, 1340, EE //9610, poor lvl.(M.R.Leonhardt)... / Ind.)  
15425 VLW15, 2330 records and EE chatter, good lvl. (M.R.Leonhardt)  
AUSTRIA 9770 0030-0045, Vienna, with EE ID, nx, cmtry, mx. (Donald Rydell, N.Y.)  
BANGLADESH 17938 RB, 1235, with EE nx, talk. (Paul Palmer, La.)...17935 RB, Dacca,  
 5 minutes EE news in HS, at 0730; also native music and Bengali. (Bob Bundy)  
BOLIVIA R. Nuevo America, fair 0325-0430 leaving, SS, 4795A. (Ralph Perry)  
CANADA CJCX, 6010 heard at 0015 in EE with news, WR, and pops, relaying. (Michael Wiseberg, Canada)...CHU Time Signals heard on unusual 6425, beyond 1900. Complex harmonic?? (Ed Insinger, N.J.) (Image; 7355 minus 910 kcs(455 IF x 2) equals 6425,  
CHILE R. Portales 9570A, and Balmaceda Radio 9590, 2315-2330, seemed / Editor) quite normal 10/13, though news media stated that Pres. Allende had taken control of all Chilean stations on this day. (Ralph Perry)  
CHINA 15095 R. Peking hrd surprisingly well with EE nx, mx, 0410(Craig Wicks, Miss.)  
COLOMBIA 6086 Seldom heard Ecos de Pasto, 0429-0458 close, with some native music, but mostly SS talk by man, 9/25. (John Tuchscherer, Wisc.)...4965 R. Santa Fe at 0415 with SS music. (Dave Megyesy; no QTH included, Editor)  
CZECHOSLOVAKIA Prague, new 21680, replacing 21735, EE news 1530. (August Balbi, Calif.)  
DENMARK 9550 R. Denmark in DD(must be new fqy), 0045, 10/10, good lvl(Joe Helm, Ind.)  
DOMINICAN REP contrary to some reports, La Voz de los Fuerzas Armadas, 4825, is indeed active, IDs noted 0400, 0435. S/off at this time. Prging dreamy mood mx.(Ralph  
ECUADOR 6070 R. El Mercurio, Cuenca, from 0445, frequent SS IDs, TCs, and / Perry) mx.(Marlin Field, Mich.)...3261 Seldom reported LV del Rio Carrizal, 10/6, from 0033 time, with LA and USA pops, clear ID 0059A. (John Tuchscherer)...3260 This Ecuadorian now a regular on this fqy, S/off 0330A, all SS. (Marlin Field)  
ETHIOPIA 15190 1330-1400 ETLF in EE with first class reception here. (Grady Ferguson, S.C.)...15250 ETLF at 0438 in AA, religious prgm, hymn, good lvl(Paul Palmer, La.)  
EL SALVADOR 5980 0130-0200 YSS in SS, with records and ID, QRMary(Grady Ferguson)  
FIJI 3230 No longer being heard; my last logging was 14 Sept. (Bob Bundy) (Some reports say the SW transmitters are being rebuilt into ECB or FM transmitters, Eri-  
FINLAND Oy Yleisradio Ab lists the following xmissions to ECNA and WCNA;1400- / tor) 1555, 15185; and 0300-0400, ECNA, WCNA, 9585 EE 0300-0330.(Woody Seymour Jr., N.C.)  
FRANCE ORTF, 17800, FF 2000-2230, powerful 500kW being used. (August Balbi)  
GALAPAGOS IS(ECUADOR) 6150 This one in a move to this fqy, is futile to date, our evening chexb. (John Tuchscherer) (Real DX, if dug out of the mess here, Editor)  
GHANA 6130 RG, 2200 EE news of Africa; S/off 2214. (Neal Perdus, Tenn.)  
GAMBIA 4820 EE 0630-0715, BEC nx at 0700. Good lvl. (Mike Nikolich, Ill.)  
GRENADA 5015 Radio Grenada 2358 closing, EE, amctts, several IDs. (Neal Perdus)  
GUINEA(Bq) 6250 Sta Isabel, S/on at 0500, on 6250, SS and music.(Scott McGregor)  
GUINEA(PORT) 5045 Em. de Guine noted up to this fqy, S/off 0100, PP.(Al Niblack, Ind.)  
INDIA AIR poppin' up all over. Good lvl with sitar mx from 2138 time, 11620; and // 9912 vy good also. 11810, AIR GOS, S9 plus, S/on 1330, //15335. (Ralph Perry)...AIR, 11710, noted 2328 in EE commentary and discussion, FB. (Paul Palmer)  
INDONESIA 9585 RRI in EE at 1445, vy poor lvl. (Mike Nikolich)...3905 Tuning 2145, RRI, DjaJapura, heard //7165.5...4763.5 Is RRI, Medan, Sumatra, with apparent S/on at 1200, 10/15...5560 Tune in 1150; 1157 non-RRI ID, "Inilah Radio Puso..."...6070 W. Irian, is RRI, DjaJapura(according to Bundy), from 1030(when CFX absent) tuning, with musical prgm.(Marlin Field)...9745 S/on 2110-2300 S/off, surprised to catch ID as, "RRI, Studio Merauke". (Bob Bundy; also above second and third items credit to Bob Bundy)  
ISRAEL 11855 IBA with EE nx 2035 and 2110; 9625, 2115. (August Balbi)

PLEASE TURN OVER

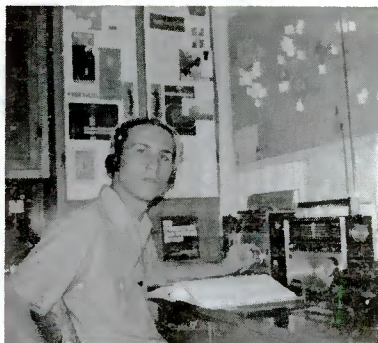
JAPAN 17725 NHK, 0200, EE General Svc //17825. (Paul Palmer)  
KOREA(N) 3560 0830, R. Pyongyang in EE, YL with stilted talks, ARO QRM(Bob Bundy)  
KOREA(S) VOFK, 9640, EE Overseas Svc, fair to good. (Ed Insigner)...15335 VOFK, Seoul, 0300 in EE Svc, talk, music. (Paul Palmer)  
KUWAIT 21685 RK with AA from 1415, good lvl, EE ID 1430. (Joe Helm)  
LIBERIA 15095 ELWA at 1615 with IS, ID, into AA prgming. (M.R.Leehardt)  
MALI 11960 Bamako with sports on a Saturday at 1700. (August Balbi)  
MADAGASCAR RN Helay, 11890, 2250 S/off in EE good lvl(Michael Wiseberg; August  
MAURITANIA EM at 0723-0750 in FF, on 4850, fair lvl.(Mike Nikolich) / Balbi)  
MONACO TWR, 7294, at 0625, EE religious sv, vy strong lvl. (August Balbi)  
MONGOLIA (TENT) 4762 Tuning 1130, R. Ulan Bator with Mongolian talks. (Bob Bundy)  
NEW HEERIDES In letter from John McNeil (Beasting Officer) is indicated Radio Vila is going to new hours from Oct 30th; times, 0600-0900, on new 3945, prgming in EE, Pidgin, and FF. This one should be audible Stateside FLASHES Halpms Perry(Sic-em, PAKISTAN 21589 RP 1330-1345, with dictation news to MR(Paul Palmer)/ DXers, Editor) ...21590 GOS to ME irregularly 1330-1345, good lvl. (Ed Insigner; Joe Helm)  
PAPUA/NG 6140 R. Wewak. 0230, EE C&W music, Pidgin anncs. (Bob Bundy)  
PARAGUAY R. Encarnacion, 11948, fair from 2230, LA pops, and SS talk. (Ralph Perry)  
PERU 4896 R. Chanchamaya(TENT) from 0515, nice Andean music. (John Tuhscherer)  
PHILIPPINES 3268 1210-1215 segment, is DUB4-PES, OM w/EE political speech. (Bob ...11855 FEBC, 1055, Pres Marcos with speech in EE, nice.(Grady Ferguson) / Bundy)  
ROUMANIA Bucharest on new 11773, strong lvl at 1930 in EE news. (August Balbi)  
SINGAPORE RS in EE at 1440 on 11940, weak lvl, with USA pops. (Mike Nikolich)  
SPAIN RNE on new 5985, IS from 2150; 2200 FF ID and news. (John Tuhscherer)... 9520 Madrid at 2200 S/on in SS ID, mx, and talk. (Donald Rydell)  
SRI LANKA R. Ceylon in EE/Hindi at 1606-1700. ID as, "This the CeBC", on 11800. Thought this fcy was Hindi Svc only. (Mike Nikolich)...11800 Hindi Cm Svc, local tunes, unique ads, chimes, good lvl 1400, EE ID. (Ralph Perry on his SX-100)  
SUDAN 11835 Omdurman with AA chant logged 0300-0320, strain lvl.(Scott McGregor)  
TAIWAN 17720 VOPC, 0159, EE, chimes IS of five notes(Paul Palmer;Michael Wiseberg)  
TUNISIA RT, 6195, till 2330 S/off, with AA chants, poor under BBC.(Scott McGregor)  
UPPER VOLTA (TENT) 4814 In FF at 0645, much chanting, though no ID. (Mike Nikolich) (Is Ouagadougou, has been showing here in Indiana around 2300 closings, Editor)  
USSR 5940 ASIATIC RSFSR) Tune in 1100, OM with clear local ID in RR as, "Govorit Magadan", several anncs, mx. (Bob Bundy)...9610 Radio Vilnius, LITHUANIAN SSR, 0030 in EE ID, cmtry, talk, (Donald Rydell)...17865 R. Yerevan, ARMENIAN SSR, 0327, in EE to Europe on Tues, Weds, Frids, Sats. (Paul Palmer)  
VENEZUELA 3255 LV del Tigre, musical prgming with frequent IDs. (Marlin Field)... 3385 Radio Barcelona at 0200 in SS, much QRM. (Dave Magyesy)...6175 R. Nacional at 0130 in SS. (Dave Magyesy)  
VIETNAM(N) Possibly Tay Bac the one under bigge het with lingo, chants 1235, fcy of 4750. (Ralph Perry)...15006V VoV, 1309 in EE, same old propaganda(Paul Palmer)  
UNITED ARAB AMIRATES (FLASH) Voice of the Arab Amirates from tuning after Beograd S/off; musical prgming, mostly Arabic, still going past 0000, 9620.(Marlin Field)  
ZAMBIA 4911 RZ(TENT) 0445 in vernacular, weak lvl. (John Tuhscherer; Joe Helm)  
ZAIRE 4880 R. Kinshasa from tuning at 0340, probably news at 0400. (Marlin Field)  
NETHERLANDS(PIRATE) (FLASH-FLASH-FLASH) World Music Radio, 6225, 60 watts, logged here from 2155-2218, definite ID. Carried religious gospel type mx, some pops, with prgming in EE. Heavy RMTY/QRM some strain, some pain lvl.(Samuel Barto, Conn.) (Vy excellent, Editor)...My unidentified, 14997A, was, "Id Liberation"(Ed Insigner)  
SEPTEMBER 1972: SUNSPOT COUNT AS FURNISHED BY THE ZURICH OBSERVATORY, 10-6-1972-1-121, 2-91, 3-69, 4-68, 5-77, 6-78, 7-73, 8-65, 9-57, 10-43, 11-43, 12-33, 13-31, 14-35, 15-42, 16-53, 17-44, 18-35, 19-30, 20-44, 21-60, 22-69, 23-59, 24-71, 25-82, 26-78, 27-77, 28-67, 29-70, 30-75 MEAN-61.3  
PREDICTED: OCT-57 NOV-55 DEC-52 JAN-50 FEB-47 MAR-45 (Grady Ferguson, S.C.)  
SUGGESTED READING: In Nov 1972 Popular Electronics there is a review and lab tests of HA-500, DX-150B, SX-190, and SB-313. This is interesting reading(Larry Nebron, Calif)  
ACKNOWLEDGEMENT: Thanks to all contributors for the robust support this month. The DX season is with us again...Final word from Perry Ferrrell, he has coaxed the Last HQ-180A out of Hammarlund-the receiver is no more...Sincere Congrats to Dr. Earl Hall who recently logged Falkland Islands and QSLed them...Technical questions may be referred to the Flashsheet Department; include an SASE. Last minute flashes may be phoned to 882-3976 after 2200. Keep shootin' in the reports to this department. Happy DXing and,

# F R E N D X

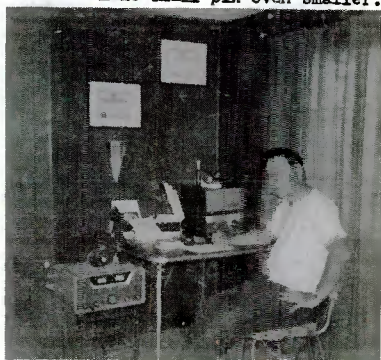
fotos fotos fotos fotos

Send entries to:  
Edward C. Shaw  
621 Burleigh Avenue  
Norfolk, Virginia 23505

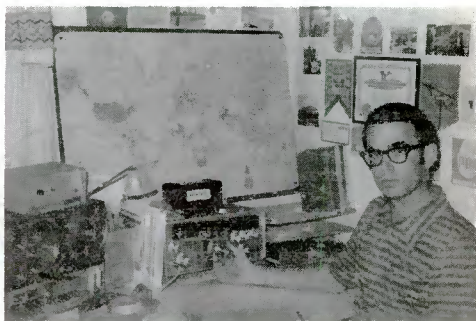
Please - Keep photos close-up.  
Regular 3x3½ or 3x5 only.  
Reduction during printing  
make small pix even smaller.



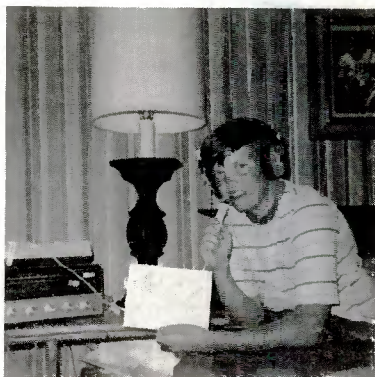
Ken Hunt



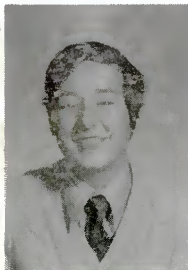
Neal Perdue



Larry Marshall



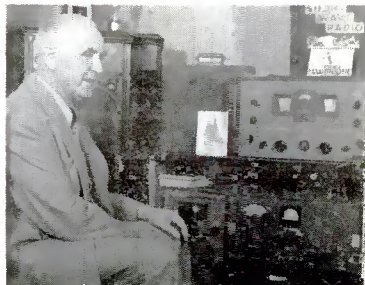
Ralph Richards



Eric Herson



Jan Tuner



August Balbi

IF THE BLANK is stamped with a date, your membership in NASWA will expire with the \_\_\_\_\_ issue.

It is the hope of the bulletin staff that you have found your membership useful and enjoyable, and we look forward to having you with us another year. It will help us if you renew early, so we can be sure you continue receiving FRENEX without any interruptions. Dues for members in North America are still US\$10, for First Class delivery of the bulletins. (US\$11 for airmail).

OVERSEAS MEMBERS - due to slowness of seammall, we recommend AIRMAIL delivery. Cost for airmail to your QTH is \_\_\_\_\_ per year. However,

if you wish the lower rate, seammall delivery is available for US\$10. All members outside the United States should remit via International Money Order, or via a check on a US bank, drawn in US funds....Checks and/or money orders should be made payable to NORTH AMERICAN SHORTWAVE ASSOCIATION, or simply, NASWA....When renewing (And when not, for that matter!) be sure to take advantage of the opportunity to comment on FRENEX and/or the club. Let us know what you like and dislike about the bulletin.

Cover Photo:  
Südwestfunk Baden Baden  
(Courtesy Gregg Calkin)

Return to:  
NASWA  
P.O. Box 8452  
So. Charleston,  
West Virginia 25303  
U. S. A.



FIRST CLASS MAIL