

THE GLOBE CIRCLER AND AMA-TOURING

10¢

COMPLETE GUIDE-BOOK FOR SHORT-WAVE LISTENERS

TGWA OLR3A ZBW3 OAX4T HH3W VK2ME IRF VUD2 PMN PCJ RAN
VLR W2XAF WYEM COCM XEFT
DYN LRA
VPD2 PSH
ZAF OZF
JZI EAQ
GSB PSH
XEDQ W2XAD
DYN IZF
TPB12 DJA
ALBTA ZBW3
ZRH XEFT
VPD2 W2XAF
LKC YDB
GSB
OZF
OAX4T



THE NEW GENERAL ELECTRIC FREQUENCY MODULATION
TRANSLATOR IN USE (See Page 3)

LONDON'S DAILY SHORT-WAVE PROGRAM FOR NORTH AMERICA

EST (P.M.)

Over: GSN (11.82), GSD (11.75), GSC (9.58)

- 5:42—Program Announcements.
- 5:45—NEWS and Topical Talk.
- 7:15—Canada Calls from London.
- 8:00—NEWS.
- 8:15—Variety: Stars of Stage and Screen.
- 8:30—BRITAIN SPEAKS: Leslie Howard, J. B. Priestley and others.
- 8:45—HEADLINE NEWS.
- 9:00—Features, Plays, Recitals, Variety, with Bebe Daniels and Ben Lyon.

- 10:00—WITHIN THE FORTRESS: Sir Hugh Walpole, Clemence Dane, Warren Irvin, H. Wickham Steed.
- 10:15—Requests Concert.
- 10:30—RADIO NEWSREEL: "The War in Sound." Eye-witness Accounts from Observers on Land, at Sea, in the Air.
- 11:15—"Britain Speaks" (Repeat).
- 11:30—Late News Summary.
- 11:35—(Close down).

INTERNATIONAL DX'ERS ALLIANCE

ZRM VUD2 W3XAU VK2ME GSC LRX
RAN W2XAF WYEM HH3W JFO XEFT PCJ
CXAR

PUBLISHED MONTHLY
EXCEPTING JULY


The GLOBE CIRCLER

CHARLES A. MORRISON
EDITORINTERNATIONAL DX'ERS ALLIANCE
BLOOMINGTON, ILLINOIS, U. S. A.

Volume 8

November, 1940

Number 10

HOW YOU CAN HELP THE IDA?

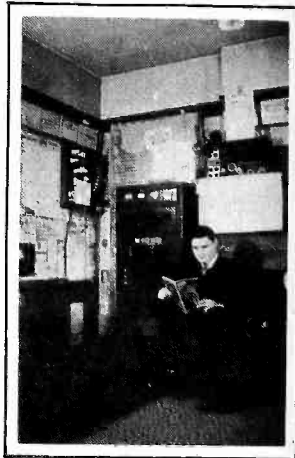
ENROLLMENT OF NEW MEMBERS: New members are the life blood of any organization-- Sell your radio friends and correspondents on the advantages of IDA membership (We will gladly send free copies of the Globe Circler to any prospects you may name)

RENEWALS: Prompt payment of your own renewal is proof of your loyalty to our organization.

CONTRIBUTION OF NOTES: Items concerning shortwave reception or stations are always important for publication. No item is unimportant. Be an active contributor. We appreciate it greatly.

FINANCIAL CONTRIBUTIONS: The financial burden of maintaining a dx organization is very heavy in these troubled days. Any contributions towards running expenses (no matter how small) are gratefully received

PURCHASE OF RADIO EQUIPMENT: We represent two well known radio lines, **RME** and **HALLICRAFTERS** (Inquiries promptly answered. Literature sent upon request). We would appreciate handling any orders for merchandise from one of these manufacturers. The small sales commission is immediately turned into the IDA treasury.



W9QWM, H. Schrock, well known dx'er and amateur of Pontiac, Ill.

NEW MEMBERS AND RENEWALS

NEW: Miss D. Surrige, Kingston, Jamaica; A. E. Marten, St. Helens, Lancs, England; Dyer Matlock Jr., Mt. Pleasant Tenn; Edwin McClelland, New Castle, Pa; John C. Jacobs, South Pasadena, Calif.

RENEWALS: J. Picard; J. J. Kolibonso; H. Gustafson; Owen A. West; Ray Messer; A. W. Field; Chas. Trezise; Gail Beyer; W. Emmet Jones; Lyle M. Nelson; Emile Page.

CONTRIBUTION: L. T. Jones, Los Altos, Calif... **SALE:** RME-99 to F. H. Moreland, Palmer Sanatorium, Springfield, Ill.

CHAPTER NOTES

ACC (Detroit): New Officers: H. Rowley, Chairman; E. Payette, Vice-Chairman; Bill Mathers, Sec/Treas. Al Allen, well known S.W. Editor of Detroit News, is a loyal booster for chapt. Next meeting on Nov. 19 (8pm), will include a short-business session in Detroit News Conference Room and a visit to the radio studios of WJR. All dx'ers invited....

SO. CALIF (Los Angeles area): Next meeting on Sat. Nov. 30, will be held at home of A. Balbi, 1328 Angelus Ave., Los Angeles. Average attendance is 15 - 25. For further details contact H. Clein,

1427 Maltman Avenue, Los Angeles, Cal. ... **WINDY CITY CHAPT.** and **WORLD WIDE DIAL CLUB (Chicagoland)**... Next meeting will be held Wed., Nov. 13, at the Central YMCA, 19 So. La Salle St., Chicago. For details contact Gail Beyer, 3226 Sunnyside Ave., Chicago. An informal dx and social get-together is held last Sat. in each month. Zana Kandle, 1206 E. 82nd St., entertained the gang on Sat., Oct. 26.. For details concerning other IDA meetings contact one of the following: **DELTA (Lansing)**, J. DeMyer, 2230 Maplewood; ... **SO. JERSEY (Philadelphia)**, L. Cavileer, 1223 Keswick Ave, Haddon Heights, N.J. **LAKES (Minneapolis)**, L. Lundberg, 1020 Lowry Ave., North, Minneapolis, Minn.

"OUR TOWN" DX BROADCASTS NNRC

Nov.-	Call kcs.	Location	A.M.-EST
7	WMAS 1420	Springfield, Mass.	2-3
9	CFRN 960	Edmonton, Alta.	3-4
10	WEDC 1210	Chicago, Ill.	3-4
11	CKNB 1210	Campbellton, N.B.	3-4
12	CKBI 1210	Prince Albert, Sas.	3-4
18	TGWA 9685	Guatemala City,	11PM
22	HOK 640	Colon, Panama	3-4
24	WHAT 1210	Greenfield, Mass.	2-3

Note: Dx'ers invited to report above

SHORT WAVE NOTES

EDITOR-IN-CHIEF: Chas.A.Morrison; ASSOCIATE EDITORS: M.W.Soplop,R.Skyten;
ULTRA-HIGH FREQUENCY EDITOR: Perry Ferrell Jr.; FREQUENCY CHECKING EDITORS:
R.B.Oxrieder,John Larsen; AMA-TOURING EDITORS: Roger Legge, Roy Waite

PRESS DEADLINES: For DECEMBER Globe Circler (including Ama-Touring), Nov. 15; For DECEMBER STOP PRESS SHEET, Nov.29; For DECEMBER AMA-TOURING, Nov. 9 (For Ama-Touring send news items to Roger Legge,20 Beethoven St.,Binghamton, New York). . . MAKE OUT SHORT-WAVE REPORTS AS FOLLOWS: Double space lines.. Use one side of page only...group items by continents and state time used.. Items in order of importance are: NEW stations; exact frequencies or frequency changes; exact schedules or addresses; news periods in English;identifying signals and unusual receptions..RUSH IMPORTANT NEWS BY FASTEST MAIL (A postcard will do)...FOUR STAR ITEMS denote exceptional merit...EACH FIVE STAR ITEM pays its contributor \$2.00.

LA PAZ, BOLIVIA TO PUT ON SPECIAL PROGRAM FOR SHORT WAVE LISTENERS

Early Thursday morning, November 14, from 12:01 to 2:00 a.m. EST, the short wave stations of La Paz, Bolivia-high in the Andes- will broadcast a dx program especially dedicated to the National Radio Club. The following stations, each with a power of 5,000 watts, will take part: CP43 (15.165), CP2 (6.110) and CP38 (9.505),Reports will be verified for a dime and should be sent to Casilla 596, La Paz, Bolivia (Mann)

NEW TRANSLATOR BY GENERAL ELECTRIC MAKE FREQUENCY MODULATION BROADCASTS AVAILABLE ON PRESENT TYPE SETS

A new frequency modulation "translator", by the use of which the owner of a present-type amplitude modulation radio receiver can pick up the new FM broadcasts, has been developed by G.E. Used in conjunction with the present type receiver, it brings in the high-fidelity and relatively static free FM programs. The translator, housed in a walnut cabinet, 9 x 15½ x 8", is provided with a shielded cable for connection to the conventional radio. The translator has its own dial scale, with a tuning range of 42 to 50 megs and 6 tuning keys located below the illuminated dial. A plug-in connector on the back of the translator chassis permits easy attachment of a television picture receiver. A wired-type of record player may also be used in conjunction with the translator. The selling price will be \$49.95.

TELEVISION AND FREQUENCY MODULATION

Non-commercial educational FM stations have been allotted the following freqs.: 42.1, 42.3, 42.5, 42.7, 42.9 megs. . . WBOE (42.5), 1kW, Cleveland City Board of Education, is now on the air as a FM educational broadcaster, and serves 156 receivers in the Cleveland area. . . G.E. has applied for permission to raise the power of FM station W2XOY (43.9), in the Helderberg Mts.,near Schenectady, to 50,000 watts. Programs will be relayed from the Schenectady studios; electrical recordings and relayed programs from other FM stations. . . TELEVISION---- Construction permit: New (96-102),Bamberger Broadcasting Service, New York City...Calls issued for new stations under construction: W3XNB (60-66),NBC,Washington,D.C.; W9XBE (60-66),Balaban Katz, Chicago, Ill; W3XWT (78-84), Allen DuMont Labs.Inc., Washington, D.C.; W6XTP (78-84),Television Productions Inc.,Los Angeles; W3XAU (84-90), WCAU Broadcasting Company,Philadelphia,Pa.; W3XPP (102-108),NBC,Philadelphia,Penna.

NORTH AND CENTRAL AMERICA

E.S.T. CANADA NEW: The CBC is building a 7½ KW gov't station at Quebec.Power will later be raised to 50 KW. A omni-directional aerial will provide reception for N.A. and S.A.,and occasionally Europe (**Willis)...CJRX(11.72) and CJRO (6.15) have been off the air again since Sept. 29 (Balbi)...CKFX (6.08) is badly QRM'd by OAX4Z until 12 mid. when the Lima station leaves the air.After that time CKFX still has a bad heterodyne but it seems to be caused by some defect in the transmitter of CKFX itself (*Cook)
E.S.T. CANAL ZONE WZA (7.305),Albrook Field,heard R9 at 8:50pm (Kriebel)

COSTA RICA TIPG (9.615), "La Voz de la Victor", Aptdo 225, San Jose, is QRM'd by CX46 (9.625) until its sign-off at 9pm (Dissinger, Larsen)... TIWS varies in freq. from 6.375 to 6.38 (Larsen)... TI7RVM (5.985) signs at 10pm (JL)

CUBA COCH is back on 9.44 (Larsen)... COCY (11.465), Parque Vidal, Num. 5, Santa Clara, relays the RHC, Cadena Azul network, daily 6:50am-1am (*Skyten, Dissinger, Balbi, Larsen, Acton, Roberts)... COK is now on 11.535 (Larsen)

D.R. HIH is now on 6.805 (Larsen)... HI2G (9.29), "Radiola Opinion," Stgo. Rodriguez 12, Ciudad Trujillo, is received nightly with varying signal strength (Dissinger)... HI7P (6.76), HI5G (6.66) and HI2D (6.195) are believed off air. Has anyone heard recently? -Ed.

EL SALVADOR HUB (7.08), San Salvador, heard at 8:30pm, contacting 40 M.Hams (Legge)... YSM (11.71), Radiodifusora Nacional, San Salvador, heard with an announcement in English at 8:30pm; verifies (Dissinger)... NEW: YSPB (6.575), "La Voz de Cuscatlan", relays YSP-YSPA, San Salvador, with excellent signals nightly to 11:58 p.m. Gongs before identification (**Dissinger, Roberts)

GUADELOUPE FG8AH (7.45), operates nightly 6-7pm; French news at 6:15pm

GUATEMALA TGQA is now on 6.4; TGWB on 6.465 (Larsen)... TGX1 is on 5.855.

HAITI HH3W is now on 9.88; HH3W on 6.57 believed off air (Larsen)

MEXICO XEFT (9.55), "La Voz de Veracruz", Av. Independencia 28, Veracruz, is heard weakly nightly after WGEA signs (Dissinger)... XEWX is back on 9.503 mcs. (Cook, Larsen)... XEYU (9.60), Mexico D.F., operates 1:55-3:30, and 6:35-11:15pm; XEDQ (6.135), Guadalajara, operates 8am-10pm; XEKW (6.03), Morelia, operates 8am-1, 5-11pm; XEBF (6.09), Jalapa, operates 8am-1, 3-11pm.

PANAMA HP5J (9.605), is QRM'd by CB960 (Dissinger)

U.S.A. WBOS (9.57), Boston, off air since Aug. 1, will soon inaugurate new 50 KW, multi-wave transmitter (*Wilson, Balbi)... See list for revised sked for WCAB, Philadelphia... The new CBS 50 KW station at Brentwood, N.Y., will operate under the call WCRC... WCBX now operates as follows: on 17.83, 8am-2pm (Sat. to 1:30pm), on 9.65, 2:30-6pm (Sat. 2-6pm), on 11.83, 6:30-11pm, and on 6.17, 11:30pm-2am (WCBX, Wilson)... WGEA has been conducting tests on 6.19, nightly 10-10:30pm (Sat. to 11pm); some QRM from TG2. Reception reports are requested (*Cook)... WLWO, Cincinnati, whose new 50 KW transmitter, was officially inaugurated on Oct. 12, now operates as follows: on 17.800, 12 noon-6pm; on 15.27, Su/Tu/Wd/Fr 6-9pm, Mo/Th 6-10pm, Sa. 6-11:30pm; on 9.59, Su/Tu/Wd/Fr 9pm-1am, Mo/Th 10pm-1am; on 11.87, Sa. 11:30pm-1am.. WLWO seeks to delete freqs. 15.27 and 11.87; add freqs. 15.25 and 11.71 (FCC).. WNBI (17.78) now operates 9am-4 to Europe; 4-8pm to So. America (NBC)

SOUTH AMERICA

BOLIVIA CP43 (15.162), heard 6-9:37pm (Waite)... NEW: CP2 (6.110), and CP38 (9.505), each 5 KW, La Paz, are operating nightly to 11:30pm. Reports will be verified for a dime and should be sent to Casilla 596, La Paz (Mann)

BRAZIL PSL (7.935) and PSF (14.69), operate 6-7pm, in parallel with PSH (Legge, Kriebel)... Unidentified on 4.865, signing at 8pm with Brazilian National Anthem (Legge)

CHILE CB960 (9.60), "Radio la Americana", Casilla 13,155, Santiago, operates 8pm-12 mid. (Dissinger, Balbi)... CB970 (9.75), "La Voz de Chile para toda America, Casilla 37-V, Valparaiso, received near 9pm; verifies (Dissinger)... CB1174 (11.74), "Radio Hucke", Casilla 6009, Santiago, has an excellent signal from 6:30 to 9pm, when band begins to fade; verifies with a very beautiful card (Dissinger)

COLOMBIA HJAP (4.925), "Radio Cartagena", Aptdo 37, Cartagena, now coming in R9 plus; verifies (Dissinger)... HJFK (4.865), "La Voz de Almibar", Apartado Postal 99, Departamento de Caldas, Pereira, heard R9; verifies promptly (*Moreland, Dissinger)... HJR (14.94), Cartagena, heard contacting WNC, 7:50am

DUTCH GUIANA PZH (11.383), Paramaribo, first heard Sept. 14, now heard irreg. 6:41-8:15pm. A six-note melody is sometimes used as a signature. Entire programs are in Dutch (**Acton)... PZH now on 6.79 irreg. (Larsen)

ECUADOR HCLGQ (9.17), Nariz del Diablo, Apartado 159, Quito, is still on air and operating nightly to 12 mid. (Dissinger, Larsen*)... NEW: HC2AK (9.265), Compania del Ecuador, Guayaquil, relays HC2AJ, nightly 7-11pm; signs in English (**Larsen, Legge, Dissinger)... HC2ET now on 9.19 (Larsen)... The Ecuadorian on 5.97 is believed to be HCK, Quito (250w).

PARAGUAY ZP8 (11.85), 500w, Asuncion, is supposed to be on the air (C.B.)

PERU OAX4J (9.34), now operates from 6pm on; verifies with a orange & red folder (Dissinger, Waite)... OAX4R (15.15) heard at 11am with Spanish

program (Cook)...OAX5C (9.425), "Las Ondas de Ica", Av. San Luis s/n, Ica, operates nightly to 11pm, signing with organ selection (Larsen, Dissinger)....
 OAX4T (9.56), believed to be in operation now nightly irreg. (Dissinger)
 RUGUAY CXA6 (9.62), relays CX6 nightly to approx. 10:15pm; verifies (Dissinger)...CXA8 (9.64) verifies by letter from LR3, Belgrano 1841, Buenos Aires, the station it relays (Field, Dissinger)...CXA19 (11.705), Difusora de Espectador, Olimar, 1364 esp. a 18 de Julio, Montevideo, being heard 6:30-7pm.
 VENEZUELA ALL the YV's have changed frequency with exception of several on the 85 meter band. Ones located so far on their new freqs. follow:

1.92 YV5RN	Radio Caracas, Caracas	3.49 YV3RF	La Voz de Llano, Acarigua
1.89 YV5RM	Radiodifusora Venezuela, Caracas		
1.86 YV5RU	Estudios Universo, Caracas	3.48 YV4RQ	Radio Puerto Cabello,
1.84 YV1RZ	Radio Valera, Valera	3.45 YV6RZ	La Voz de Anzoategui,
1.83 YV2RN	La Voz del Tachira, San Cristobal		Barcelona.
1.81 YV1RL	Radio Popular, Maracaibo	3.40 YV5RW	Radio Tropical, Caracas
1.79 YV6RU	Ecoss del Orinoco, Bolivar	3.39 YV3RX	Radio America, Barquisi-
1.78 YV3RN	Radio Barquisimeto, Barquisimeto		meto.
1.77 YV1RY	Radio Coro, Coro	3.38 YV5RY	Radio Continente, Caracas
1.76 YV4RO	La Voz de Carabobo, Valencia	3.36 YV1RT	La Voz de la Fe, Mara-
1.75 YV1RV	Ecoss del Zulia, Maracaibo		caibo
1.50 YV5RV	Emisora Vargas, La Guaira	3.34 YV1RO	Radio Trujillo, Trujillo.

Check for new locations of YV1RJ-1RU-1RX-4RP-4RX-5RO-5RS and 6RT.
 ***Legge; Dissinger, Larsen, Balbi, Cook, Skyten)

AFRICA

CONGO On Oct. 1, "Radio Congo Belge" at Leopoldville, instituted daily broadcasts (in French) as follows: over OPM (10.14), 2-2:45pm and over OPL (20.04), 6-7:15am. For 5 mins. preceding each broadcast a 4-note interval signal then repeated chords of native music is sounded (****Waite, Kriebel)
 NEGAL (Fr. West Africa) FGA (9.39), "Radio DAKAR, at Dakar, is on the air. Broadcasts in French irreg. 2:30-3:30 and 6-7pm, identifying as follows, "Allo, allo, Ici Radio Dakar". Also heard calling and working station at Conou, Dahomey, 4-4:25pm (**** Waite, Kriebel)
 AFRICA ZRL (9.615), relays BBC news in English at 1:15am (*Balbi)

EUROPE

GLAND New York City address of BBC is 620- 5th Ave. (Acton)...NEW BBC Home Service Station" (6.145), broadcasts daily 1am-6:20pm, English news at 6pm. Programs are different from Daventry (**Skyten)...GRY (9.60), broadcasts to E. Africa, 2:30-5:25pm (BBC, Wilson)...GSL (6.11), broadcasts to N. America, 9:30-11:35pm, not GSA as given in last GC (Cook, Balbi, BBC)..... See list for other revisions in BBC schedules.

FINLAND OFD (9.5) and OIE (15.19), Lahti, operate 6:15-7:15pm; English news at 6:15pm. OFE (11.78), operates 11am-5:15pm; English news 1:15 & 4:15
 FRANCE "Paris Mondial" now broadcasts the Berlin program to N.A. (pm over Y (9.52), nightly 4:50pm- 11pm (RRG**)

GERMANY Berlin broadcasts to NA as follows: 6-9am (DJL), 11:30-11:45am, and 12:30-12:45pm (DJB), 1:30-2:00 pm (DJB), 3:30-4pm (DJB-DJZ-DXM 7.27), 4:30-4:45pm (DZD-DJZ); 4:50-11pm (DJD), 4:50-11pm (Y-9.52), 7-11pm (DZD-10.54), 11pm-1am (DJC-6.02) (**Wilson, Balbi, Cook, Skyten, Waite, RRG)...Berlin broadcasts to SA as follows: 4:50-11pm, over DJA (9.56), DJW (9.65), DZC (10.29), DJP (11.85) and DJQ (15.28) (Wilson, Balbi, Cook)...Berlin broadcasts to So. & Asia, 12-2am, over DJP (11.85), DJW (9.65) and DJR (15.34)...DJR also broadcasts 9-11am (Balbi)

IRELAND PDV (12.06) is heard broadcasting 3-4pm irregularly (Kriebel)
 ITALY IRW (19.52), heard 7-10am irreg., in parallel with 2R08; news in English at 8:30am (**Skyten)...2R04 (11.81), broadcasts a French program at 2:30am (Cook)...NEW: Rome station on 9.765 now relays "American Hour" in parallel with 2R03, 2R04, 2R06, 2R014 and 2R015 (*Cook)

PORTUGAL NEW: "Radio Portugal" (10.15), Lisbon, heard approx. 2-3pm with a French program. Announces "Ici Radio Portugal." Signs-off with Portuguese anthem (Skyten)...CSW7 (9.74) broadcasts in English, Tu/Wed/Sat 8:40-9:05pm (DeBaecke)...CUS2 (15.89), Lisbon, fones DON (10.13), daily near 3-5pm...CTV2 (11.148), Monsanto, heard 5:30pm, calling Rio de Janeiro (Legge)

SLOVAKIA NEW: Bratislava (15.12), broadcasts 6-7pm. Announce in Slovak and English and request reports. Heard R7-9 (****Hart) (Kriebel)

SPAIN EAQ (9.85-9.86), heard weekdays 12-1pm with Moorish program

SWITZERLAND HBL (9.345), heard 6:30-7pm, testing and relaying program from Romania to CBS in the U.S. (Waite)
U.S.S.R. RV96 (15.18) broadcasts additional program to N.A. now daily, 9-9:30pm (Italian), 9:30-10pm (English). RV96 also operates 11pm-12 mid. (Balbi)...RV96 (6.03) heard 9-10:30am (Balbi)...Moscow (12.07), heard 6-7pm (Italian) (Skyten)...Moscow (11.83) heard 1:30-1:55am (English) (Cook)...NEW unidentified on 9.56, possibly at Khabarovsk, heard irreg. 6:30-7:30am, with program in Chinese (Skyten*)...See lists for other Moscow sked changes.

ASIA AND OCEANIA

AUSTRALIA VLQ9 (7.25) now broadcasts to New Caledonia, 5:55-6:30am, in place of VLQ (9.615) (Breen, Simpson)...VLQ (9.615), broadcasts to England, daily 2-2:30am (Balbi)...VLQ7 (11.88), broadcasts 8:10-9:45am to S.E. Asia, replacing VLQ5 (9.68) (Balbi)...See list for other ABC changes.

CHINA FFZ (12.05), logged at 7am with English announcement (Roberts).
 ...NEW: XGRX (announce 11.88, but actually on 11.92), "The Voice of the Far East," Shanghai, broadcasts daily 5:30-9am approx. Announcements are in German and English; strong anti-British sentiment. Interval is 4 chime notes. (**Simpson, Breen)...XGOY on additional freq. of 9.72, heard daily 8-10am (**Balbi)...XMHA, Shanghai, now heard on 11.855 mcs. (Breen) (kc)

FIJI'S VPD2 heard with Fahnstock broadcast on special freq. of 14425

INDIA A new 5 KW xmtr. is to be installed at either Mysore or Bangalore (Com.Bul.)...VUD4 (15.29), Delhi, broadcasts English news at 10:20pm.

IRAN The 14 KW Teheran station operates as follows: over EQC (9.68), 8:45am-12 noon, over EQB (6.155), 12 noon-3pm, and over EPB (15.100), 3-4:30pm

JAPAN JWV3 (11.72) broadcasts irreg. 11:30pm-2am (Balbi)...The Overseas broadcasts of the JBC are now as follows: 12-1:30am, for West N.A., over JZJ (11.8); 2-3am, for Hawaii, over JZK (15.16); 7-9:30am, for South Seas, over JZJ and JZK (15.16); 10-11am, for S.W. Asia, over JZI (9.535); 2-4pm, for Europe, over JZI (9.535), or JLG2 (9.505), and JLG (7.285) or JWV (7.257); 4:30-5:30pm, for S.A., over JZJ (11.8), JZK (15.16); 8-9pm, for E. NA, over JZK. (JBC, Wilson, Cook, Balbi)

JAVA NEW: PLA (19.500), broadcasts 2:15-8:15 and 11am-12noon. Program in English 7:15-8am, with news at 7:45am. Before signing-off the following announcement is made, "This is the Netherlands East Indies, Calling over PLA at Batavia" (**** Skyten)

MANCHUKUO The Hsinking station broadcasts daily over MTCY (11.775 and 9.545), 9:30-10:30am (**Balbi)

NEW CALEDONIA "Radio Pacifique", Radioelectrique, Noumea, 100w, broadcast at 3:30 and 7:30pm, on 6.48 mcs. Also operates mornings on 3.805 (DXTRA)

S.S. The Singapore station is again broadcasting as ZHN, on 7.25 mcs.

SIAM Bangkok commercial freqs. are, HSP (17.74), HSP4 (11.507), HSE2 (19.02) and HSP6 (7.968), each with power of 10 KW (Com.Bul.)

TURKEY TAP (9.465) is now on to 5:15pm, with a lady dictating news dispatches in Turkish, from 4:30-5:15pm (*Kriebel)

ANTARCTICA:-- The snow cruiser left on Oct. 17, for a six weeks dash to the North Pole. No transmissions will be made from the snow cruiser during the trip. KC4USB (14.25, 14.28, 28.54), East Base, will continue to be heard. Expedition QSL cards will be sent to the A.R.R.L. next May (**W9QWM)

CORRESPONDENCE CORNER: A.R. Willis, ...Chas Mouzis, 742 W. Winnebago, Mil-103 Stanley St., St. Thomas, Ont., Canada. waukee, Wisc., (unable to answer correspondence temporarily)

Mercury St., Butte, Montana (swap let BUY CHRISTMAS CARDS FROM A SHUT-IN
 ters with shut-in members)...J. Shino, 21 assorted folders \$1.00. Print-686 Powell St., Vancouver, B.C., Canada. name & address, and send m.o. to Mil. (swap SWL cards if return postage encl) Brehmer, 350 Halstead, Mamaroneck, N.Y.

(Clip Out)

SUBSCRIPTION BLANK

(Clip Out)

INTERNATIONAL DX'ERS ALLIANCE
 Bloomington, Illinois

Herewith attached you will find \$1.50 for one year's dues in the International Dx'ers Alliance, including subscription to the GLOBE CIRCLER.

NAME _____ ADDRESS _____

CITY and STATE _____ COUNTRY _____

SHORT-WAVE BROADCASTING STATIONS ⁷

SYMBOLS: N-NEW stations; F-Frequency changes; S- Change in sked; J- Stations persisting in hopping about; V- varying in frequency; * See shortwave notes... Important English news periods are marked in list as NEWS

METERS	MEGS.	CALL	STATION	LOCATION	TIME-----EASTERN STANDARD
13 METER BAND					
13.92S	21.55	GST	London, England		5:40-11:30am (9-11:30am to NA)....
13.93S	21.53	GSJ	London, England		5:40-8:45, 9-11:30am (NEWS- 11am
13.96	21.50	WGEA	Schenectady, N.Y.		8-11am to Latin America.
13.97S	21.47	GSH	London, England		5:40-11:45am to Africa
16 METER BAND					
14.97N	20.04	OPL	Leopoldville, Belgian Congo		6-7:15am *
15.38N	19.50	PLA	Batavia, Java		2:15-8:15, 11am-12 noon... NEWS-7:45
15.77	19.02	HS6PJ	Bangkok, Thailand		Mondays 8-10am. (am
16.18	18.54		Moscow, U.S.S.R.		1-1:30am (French), 6-6:30am (Eng.)
16.26	18.45	HBF	Geneva, Switzerland		Fri. 8:45-10:10am to Orient.
16.60	18.06S	PCV	Kootwijk, Holland		7:30-10am... NEWS- 9:30am
16 METER BAND					
16.82	17.84S	DJH	Berlin, Germany		12:05-11am.
16.82S	17.84	EIRE	Athlone, Ireland		7:30-8:30, 9am-1:30pm... NEWS-12:30p
16.82S	17.84	HI3X	Trujillo City, D.R.		6:30-8:30 or 9:30pm.
16.83S	17.83	WCBX	New York City, N.Y.		8am-2pm (Sat. to 1:30pm) *
16.84	17.82	2R08	Rome, Italy		4:30-4:55, 5-7:15, 7:20-9:25, 9:30-10:50am, 3-5:30, 6-7:55, 8:05-10pm to NA, 10:05-10P15pm... NEWS- at 9:45pm
16.85S	17.81	GSV	London, England		5:40-8:45 (7:15-8:45am to NA), 9-11:45am... NEWS- 8am
16.85	17.80	VLQ8	Sydney, Australia		12:55-1:45am to Western No. America
16.85S	17.80	WLWO	Cincinnati, Ohio		12 noon-6pm *
16.86S	17.79	GSG	London, England		5:40-9:45am to India & Australia.
16.87S	17.78	WNBI	New York City, N.Y.		9am-4pm to Europe, 4-8pm to S.A.
16.89	17.76	DJE	Berlin, Germany		12:05-11am
19 METER BAND					
19.09N	15.71S		Moscow, U.S.S.R.		6-6:30am (English)
19.35	15.500		Moscow, U.S.S.R.		1:07-1:30pm (French)
19.53	15.36	DZG	Berlin, Germany		11:30am-12:30pm (Arabic)
19.56	15.34	DJR	Berlin, Germany		12-2, 9-11am *
19.57	15.33	WGEA	Schenectady, N.Y.		11:15am-6pm to Europe
19.57	15.33	KGEI	San Francisco, Calif.		6:30-11:15pm to Latin America
19.59	15.31S	YDB	Soerabaja, Java		10:30pm-2am; Sat. 7:30pm-2am.
19.59	15.31S	VLQ3	Sydney, Australia		6:10-7:00pm to Eastern No. America.
19.60S	15.31	GSP	London, England		2:45-5:15, 5:40-7am to NA... NEWS-6a
19.61	15.30	2R06	Rome, Italy		1-2:30, 5-7:15, 10:35am-2:35, 3-5:30p
19.62	15.29	LRU	Buenos Aires, Argentina		6:15-7:15am (pm... NEWS-10:20
19.62	15.29	VUD4	Delhi, India		1:30-2:30, 6:30am-12:30, 9:30-11:30-
19.63S	15.28	DJQ	Berlin, Germany		12:05-11:10am, 4:50-11pm to SA. *
19.64S	15.27	WLWO	Cincinnati, Ohio		Su/Tu/Wd/Fr 6-9pm, Mon/Th 6-10pm, Sat. 11:30pm-1am. *
19.64	15.27	WCAB	Philadelphia, Pa.		12-2, 2:15-3:45pm ex. Sat/Sun, Sat. 12-5pm, Sun. 12-4:30pm.
19.66S	15.26	GSI	London, England		1:15-5:15, 11:55am-2:15, 2:15-5:25pm
19.67S	15.25	WRUL	Boston, Mass.		2:30-5:30pm ex. Sa/Su, Sa. 1:45-5:30p
19.68	15.24	YUF/YUG	Belgrade, Yugoslavia		7:55-8:50pm to SA, 8:55-9:55pm
19.68S	15.24	Y	Paris, France		12 noon. (to NA
19.70	15.23	2R014	Rome, Italy		11:15-11:40am, 12:15-1:10, 8:05-10, 10:05-10P15pm... NEWS- 9:45pm.
19.71	15.22	PCJ2	Huizen, Holland		7:30am-10am... NEWS- 9:30am.
19.72	15.21	WPIT	Pittsburgh, Penna.		6-8am.
19.74S	15.20	DJB	Berlin, Germany		11:30-11:45am, 12:30-12:45, 1:30-1:45, 3:30-4, 4:15-4:30 to NA, 4:50-11pm... NEWS-11:30am, 12:30, 1:30, 3:30,
19.74	15.19S	TAQ	Ankara, Turkey		5:30-8:30am, 11:30pm-12:30am (4:15p
19.75	15.19	XGOX	Chungking, China		7-8:05, 8:30-9:35pm to NA

19.75S	15.19	OIE	Lahti, Finland	12:30-2am, 6:15-7:15pm... NEWS-6:15
19.76S	15.18	RV96	Moscow, U.S.S.R.	1:30-2:30, 3-4am, 1:30-2:30, 3-3:30, 4-6; 7-8 (Eng), 8-8:20 (Fr), 8:20-9 (Span), 9-9:30 (Ital), 9:30-10pm (Eng) to NA... News- 7:00, 9:30pm.
19.78S	15.17	TGWA	Guatemala, Guatemala	12:45-1:45pm to NA; Sun. 1:45-5:15
19.78	15.17	LKV	Oslo, Norway	4:30-5:30pm to NA (pm
19.78S	15.162	CP43	Cotagaita, Bolivia	5-9:30pm (NEWS-8:15pm *
19.79S	15.16	JZK	Tokio, Japan	2-3am, 4:30-5:30, 8-9pm to NA.....
19.80	15.155	SBT	Motala, Sweden	1-4:30, 8-9pm to NA, Sun. 3am-4:30pm
19.81	15.15	YDC	Bandoeng, Java	4:30-10:30am; 6-9pm.
19.81S	15.15	OAX4R	Lima, Peru	8-8:30am irreg.; Sa. 5-5:45pm to NA
19.82S	15.14	GSF	London, England	4:00-5:15, 9-11:30, 11:55am-2:15, 4- 5:25, 5:42-9:15pm. (noon
19.83S	15.13	WRUW/WRUL	Boston, Mass.	10am-12:30pm ex. Sa/Su; Su. 11am-12
19.84N	15.12		Bratislava, Slovakia	6-7pm. (Wed. 2:30-3pm
19.84	15.12	HVJ	Vatican City,	Sun. 7-8:30pm; Tu. 8-9, 10-10:30am,
19.85S	15.11	DJL	Berlin, Germany	12-2, 6-8:45am to NA... NEWS-6:30,
19.85S	15.10	EPB	Teheran, Iran	3-4:30pm. * (8:15am
19.95	15.04	RKI	Moscow, U.S.S.R.	11:45am-12, 12:30-1:30, 3-3:30, 6-7 to SA; 7-8 (Eng), 8-8:20 (Fr) to NA... NEWS- 7pm.
20.07	14.935	PSE	Rio de Janeiro, Brazil	Wed. 4-4:30pm, Th/Sat 3-3:30pm.
20.38	14.717		Moscow, U.S.S.R.	6-6:30, 7:30-8, 11-11:30am, 12:30-1pm *
20.42N	14.69	PSF	Rio de Janeiro, Brazil	6-7pm with PSH. *
20.55	14.600	JVH	Tokio, Japan	10-11pm.
20.64	14.535	HBJ	Geneva, Switzerland	Mon/Wed 8:45-10:10pm to NA.
20.75	14.46	DZH	Berlin, Germany	4:50-11pm to C.A.
24.02	12.49	H1LN	Trujillo City, D.R.	11:40am-1:40, 7:10-9:10pm.
24.08	12.46	HCJB	Quito, Ecuador	7-8:15, 11:30am-2:30, 6-10pm.
24.88N	12.06	PDV	Kootwijk, Holland	3-4pm irreg. *
24.94	12.05	FFZ	Shanghai, China	6-10am... NEWS- 8am.
25 METER BAND				
25.00S	12.00	RNE	Moscow, U.S.S.R.	6:30-7:30am, 4-6, 6-7pm, 7-8 (Eng), 8-8:20 (Fr), 8:20-9pm (Span) to NA Also Sun. 7-7:30, 9-9:30am, 12-3pm.
25.08	11.96		Anti-British Station	3:30-4, 4:30-5; Sun. 11:30am-12 N
25.12	11.945	CB1180	Santiago, Chile	6:30-8am, 4:50-11pm.
25.17	11.92		Moscow, U.S.S.R.	3-3:30pm (Ital.), 4-4:30pm (Span.)
25.17	11.92	XOJD	Hankow, China	6-8am. Has anyone heard lately?
25.22	11.895	XGOY	Chungking, China	5:15-8:55, 9:55-11, 11:05-11:25, 11:30-11:50am, 12-12:35, 2-4:20, 4:30
25.23	11.89	WNBI	New York City, N.Y.	8:15pm-1am. (-5:30, 11:30pm-1:05a
25.23	11.89	KZRH	Manila, Philippines	11am-12 noon to NA.
25.25N	11.88	XGRX	Shanghai, China	5:30-9am. *
25.25S	11.88	VLQ7	Sydney, Australia	8:10-9:45am, 2-4pm.
25.27	11.87	VLQ2	Sydney, Australia	12:55-1:55pm to So. Europe.
25.27	11.87	WPIT	Pittsburgh, Pa.	8am-8:55pm.
25.27S	11.87	WLWO	Cincinnati, Ohio	Sat. 11:30pm-1am. *
25.30S	11.86	GSE	London, England	1:10-3:45, 5:40-11:30am, 5:42-9:30p
25.30F	11.855	XMHA	Shanghai, China	From 4am on. *
25.30	11.855	DJP	Berlin, Germany	12-2am, 4:50-11pm to S.A. *
25.32	11.85	VLR3	Melbourne, Australia	5:15pm-2:15am... NEWS- at 1:30am.
25.34	11.84	DXW	Prague, Bohemia	6-8:20pm.
25.36	11.83	VUD4	Delhi, India	8:30am-12:30, 9:30-11:30pm.
25.36	11.83	VLW3	Perth, W. Australia	2-5am, 5:30-9:15, 11pm-2am.
25.36	11.83	VLR6	Melbourne, Australia	3:30-5:10pm.
25.36S	11.83	WCBX	New York City, N.Y.	6:30-11pm.
25.37	11.825	CXA14	Colonia, Uruguay	3:30-9:05pm.
25.38C	11.82	XEBN	Hermosillo, Mexico	8am-12 mid.
25.38S	11.82	GSN	London, England	6:10-8:45 am, 5:42-11:35pm to C.A.
25.40	11.81	2R04	Rome, Italy	3:30-3:45, 4:30-4:55, 9:30-10:50, 11- am-2:35, 3-5:30, 6-7:55, 8:05-11pm to NA, 10:05-10:15pm... NEWS- 9:45p

25.42	11.80	COGF	Matanzas, Cuba	8am-10pm irreg.
25.42S	11.80	DJZ	Berlin, Germany	3:30-4:4 pm to NA...NEWS- at 3:30pm.
25.42S	11.80	JZJ	Tokio, Japan	12-1:30am to NA, 7-9:30am, 4:30-5:30pm...NEWS- 12:03am.
25.45S	11.79	WRUL/WRUW	Boston, Mass.	2:30-5:30, 5:45-7:30pm ex. Sat/Sun Sa. 1:45-5:30pm, Su. 11am-12, 2:30-
25.47S	11.78		Saigon, F. Indo-China	5:45-9:45, 10:30-11am to NA, (7pm 6:35-7:15pm...NEWS-6, 10:45am. 11am-5:15pm...NEWS- 1:15, 4:15pm.
25.47S	11.78	OFE	Lahti, Finland	1:30-2:20, 9:30-10:30am, 4-4:50pm.
25.48S	11.775	MTCY	Hsinking, Manchukuo	12-1:30, 6-10pm; Sun. 9am-12 noon.
25.48	11.775	HP5G	Panama City, Panama	4:50pm-1am to NA...NEWS- 6, 8:15, 10:30pm, 12 mid.
25.49S	11.77	DJD	Berlin, Germany	10:35-11:30am, 12:15-1:10, 1:15-3:45, 5:30-6, 8:05-10pm to NA, 10:05-1015
25.51	11.76	2R015	Rome, Italy	1:10-3:45, 9-11:30am, 11:55am-3:45- (2:15-5:25pm to NA), 5:42-9, 9:45-11:35pm...NEWS-3:45, 5:45, 8, 8:45, 6-11pm. (11:35p)
25.53S	11.75	GSD	London, England	Sun./Thurs 8:30-9pm to NA, Thurs. 4:30-5:30pm to NA. (8-8:30pm.
25.55	11.74	CB1174	Santiago, Chile	7:30-10:30pm ex. Sat/Sun.
25.55	11.74	HVJ	Vatican City,	11:30pm-2, 4:55-5am.
25.57	11.735	LKQ	Oslo, Norway	Operates irregularly. *
25.58S	11.73	WRUW/WRUL	Boston, Mass.	4-7:50pm; Sat/Sun 11am-6pm.
25.59S	11.725	JVW3	Tokio, Japan	8-10am ex. Mon...NEWS- 8:50am.
25.60	11.72	CJRX	Winnipeg, Canada	12-1, 4:30-6:30am, 12-4pm; Sun. 5-7, 10am-2pm.
25.60	11.72	ZP14	Villarrica, Paraguay	1-1:30, 3-6:30pm.
25.60	11.72	HSP5	Bangkok, Thailand	6:30-7pm. * (NA*
25.62	11.718	CR7BH	Lourenco Marques, Mozambique	1-4:15 (Sun. 3am-4:30pm), 8-9pm to
25.62	11.71	YSM	San Salvador, El Salvador	7-10:40am, 5-10:45pm; Su. 6-10:45pm.
25.62S	11.71	RIA	Moscow, U.S.S.R.	5:20-5:40am, 1:50-2:30pm.
25.62S	11.71	CXA19	Montevideo, Uruguay	5-7am irreg., 7-9am...NEWS-8:10am
25.63	11.705	SBP	Motala, Sweden	12:30-1:30am, 6:30-7pm.
25.64	11.70	HP5A	Panama City, Panama	
25.64	11.70	IQY	Rome, Italy	
25.77	11.64	XGOK	Canton, China	
25.77S	11.64		Moscow, U.S.S.R.	
26.01F	11.535	COK	Havana, Cuba	12 noon-11:30pm irreg.
26.09	11.50		Moscow, U.S.S.R.	6-6:25am (English), 6:25-7am (Fr.)
26.17F	11.465	COCY	Havana, Cuba	6:50am-1am. *
26.31	11.402	HBO	Geneva, Switzerland	Mon/Wed 6:45-8:10, 8:45-10:10pm, Tues/Sat 12:45-2:10pm.
26.35S	11.383		Paramaribo, Dutch Guiana	6:41-8:15pm irreg. *
27.17	11.04	CSW3	Lisbon, Portugal	12noon-3 (Sun. to 4:45) to Angola.
27.27	11.00	PLP	Bandoeng, Java	4:30-10:30am or later, 6-9, 10:30pm
27.39	10.953	CR6BD	Benguela, Angola	2:30-4pm; Sun. 11am-noon. (p2am
28.30	10.60	ZIK2	Belize, Brit. Honduras	Tu/Th/Sat 1:30-2, 8:30-9pm.
28.45S	10.543	DZD	Berlin, Germany	4:30-4:45, 5:30-11pm to NA...NEWS- 4:30, 5:30, 6, 8:15, 10:30p.m.
28.55	10.40	YSP	San Salvador, El Salvador	8:10-9am, 1-3, 6:30-11:30pm.
29.15S	10.29	DZC	Berlin, Germany	4:50-11pm. (10:30pm-2am ex. Sun.
29.24	10.26	PMN	Bandoeng, Java	4:30-11:30am, -irreg. to 5pm, 5-9,
29.35	10.22	PSH	Rio de Janeiro, Brazil	5:55-7pm; Mon. 8-8:30pm to NA.
29.59N	10.14	OPM	Leopoldville, Bel. Congo	2-2:45pm. *
29.83	10.065	TIEM	San Jose, C.R.	4:30-8pm.
29.88	10.042	DZB	Podebrady, Bohemia	2:40-3:25pm.
30.12V	9.96		Dutch Freiheitsender	Heard 3-4pm and irreg.
30.33F	9.88	HH3W	Port-au-Prince, Haiti	12-3:15, 7-9pm; Sun. 12-2:15, 5-8p
30.43S	9.86	EAQ	Madrid, Spain	12-1, 3:55-7:30, 7:30-9:30pm, Sat. 1-
30.51	9.835	COCM	Havana, Cuba	8am-12 mid.; Sun. 8am-11pm. (3pm
30.57V	9.815	IRF	Rome, Italy	5:20-5:40am, 1:50-2:30pm.
30.58	9.81	HJAG	Barranquilla, Colombia	From 8am on.
30.74V	9.76	XGSA	Ching Yuen, No. China	7-9am. Has anyone heard lately?
30.76	9.755	ZRO	Durban, So. Africa	11:45-1:45, 3:30-11:30, 11:45am-4 pm, Sun. 1:15-1:45, 3:55am-4pm.

30.78	9.75	CB970	Valparaiso, Chile	7am-11:30pm intermittently	*
30.80	9.74	CSW7	Lisbon, Portugal	4:15-7, 7:05-9pm to NA.	
30.83	9.73	HJFK	Pereira, Colombia	7-9am.	
30.85	9.725		Anti-British Station	3:30-4, 4:30-5pm; Su. 11:30am-noon.	
30.86N	9.72	XGOY	Chungking, China	8-10am.	*
30.90	9.71	CR7BE	Lourenco Marques, Mozambique	2-4pm ex. Sun.	
30.92	9.705		Fort-de-France, Martinique	11:15am-12:45pm, 5:30-8pm.	
30.92	9.705	ZHP	Singapore, S.S.	4:40-10:10am; Wed/Sat 12:40-1:40am;	
30.95	9.695	JIE3	Tyureki, Taiwan	9:05-10:20am. (Sun. 5:40-10:10am)	
30.96	9.69	TI4NRH	Heredia, Costa Rica	Tu/Th/Sat 9-10pm.	
30.96S	9.69	GRX	London, England	11:55am-6, 6:20-8, 10:55pm-5am.	
30.96	9.688	LRA1	Buenos Aires, Argen.	10:30am-1, 2:30-3:30, 4-9pm.	
30.98	9.685	TGWA	Guatemala, Guatemala	10-11:30am ex. Sun; 7pm-12 mid.	
30.99	9.68	XEQQ	Mexico D.F., Mexico	9:55am-12:45am.	
30.99S	9.68	EQC	Teheran, Iran	8:45am-12 noon. (-11am to NA*	
30.99	9.68	VLQ5	Sydney, Australia	7:25-8am to Ea. NA; 8:10-9:45, 10:25	

31 METER BAND

31.01	9.675	DJX	Berlin, Germany	12 mid.-2am to So. and Ea. Asia.	
31.02	9.67	WRCA	New York City, N.Y.	4pm-1am to S.A.	
31.02	9.67	KGEI	San Francisco, Calif	12 mid.-3, 7am-12 noon to Asia.	
31.03	9.667	2RO9	Rome, Italy	1:15-3:45, 5:30-6, 7-7:40pm.	
31.06	9.66	LRX	Buenos Aires, Argen.	10:15am-10pm.	
31.06	9.66	HVJ	Vatican City,	Sun. 5-5:30am (French)	
31.08	9.655	VLW4	Perth, W. Australia	11:55am-12:30pm to So. Africa.	
31.09	9.65	12AA	Addis Abeba, I.E.A.	3:30-5:30, 8am-2:30pm.	
31.09S	9.65	DJW	Berlin, Germany	12-2:30am, 4:50-11pm to S.A.	*
31.09S	9.65	WCBX	New York City, N.Y.	2:30-6 (Sat. 2-6pm).	
31.11	9.645	VLW2	Perth, W. Australia	6-10:15am, 12-11:30pm, Su. 7am-12:15p,	
31.12	9.64	CXA8	Colonia, Uruguay	5-11pm; Sat. to 12 mid. (1-10:30pm	
31.14	9.635	KZRH	Manila, Philippines	5pm-11am.	
31.14	9.63	2RO3	Rome, Italy	1-2:30am, 1:15-2:50, 3-5:30, 6-7:55,	
				8:05-10pm to NA, 10:05-10:15pm.....	
31.15	9.63	JFO	Tainoku, Taiwan	4-10:30am. (NEWS-9:45pm	
31.15	9.63	HJCT	Bogota, Colombia	10am-2, 5:15-11:30pm.	
31.17	9.625	XGOY	Chungking, China	9-9:45am to NA.	
31.19S	9.62	CXA6	Montevideo, Uruguay	10:30am-12:30, 3:30-10:15pm.	
31.19	9.62	TIPG	San Jose, Costa Rica	7-9:30am, 12-2, 7-11:30pm.	
31.21	9.615	ZRL	Capetown, So. Africa	11:45pm-1:45am, 3:15-11:45am; Sun.	
				1:15-1:45, 3:30-11:45am... NEWS-115a	
31.21S	9.615	VLQ	Sydney, Australia	2-2:30am, 6:40-7:15am.	*
31.22	9.605	HP5J	Panama City, Panama	7-8am, 12-1:30, 6:30-10:30pm.	
31.22	9.61	DXB	Berlin, Germany	Not in use at present.	
31.25	9.60	RAN	Moscow, U.S.S.R.	5-7, 7-8 (Eng), 8-8:20 (Fr), 8:20-9	
				(Span), 9-9:30 (Ital), 9:30-10pm	
				(Eng.) to NA... NEWS-7, 9:30pm.	
31.25	9.60	GRY	Moscow, U.S.S.R.	2:30-5:25pm to East Africa.	
31.28S	9.59	WCAB	Philadelphia, Pa.	4:15-9pm ex. Sa/Su; Su. 4:45-9pm.	
31.28S	9.59	WLWO	Cincinnati, Ohio	Su/Tu/Wd/Fr 9pm-1am; Mo/Th 10pm-1a	
31.28	9.59	VUD2	Delhi, India	1:30-3:30, 6:30am-12:30pm, 9:30-11pm	
31.32	9.59	VLR	Melbourne, Australia	2:30-9am, Sun. 2:30-8am.	
31.32S	9.58	GSC	London, England	1:10-5:15am to NA, 11:55am-1:40,	
				2:15-5:25, 5:42-11:35pm to NA, 12:15	
				-1am... NEWS-1:15, 3:30am, 5:45, 8,	
31.35	9.57	KZRM	Manila, Philippines	5:30pm-10:30am. (8:45, 11:30pm	
31.35	9.57	WBOS	Boston, Mass.	Will be on air again soon.	*
31.35	9.57	CXA2	Montevideo, Uruguay	11am-4, 4:30-9:30pm.	
31.37	9.562	OAX4T	Lima, Peru	11:30am-1:30pm.	*
31.38	9.56	DJA	Berlin, Germany	12-2:30am, 9am-10:50pm.	
31.38S	9.555	XETA	Monterrey, Mexico	7:55am-12 mid.	
31.40	9.55	YDB	Soerabaja, Java	4:30-10:30am, 6-9, 10:30pm-2am.	
31.40	9.55	VUB2	Bombay, India	1:30-3:30, 5-6am, 9:30-10:30pm.	
31.41	9.55	WGEA	Schenectady, N.Y.	6:15-9:15pm to Latin America.	
31.41	9.55	XEFT	Veracruz, Mexico	8am-12 mid.	
31.43S	9.545	MTCY	Hsinking, Manchukuo	9:30-10:30am.	*
31.47S	9.535	ZJI	Tokio, Japan	7-9:30am, 10-11am, 2-4pm.	

31.47	9.535	SBU	Motala, Sweden	4:30-5pm.
31.47	9.535	VPD2	Suva, Fiji's	12-12:30, 3:50-5am...NEWS- 4am.
31.48	9.53	WGEO	Schenectady, N.Y.	3pm-12 mid.
31.48	9.528	VUC2	Calcutta, India	2-4am, 10pm-2am.
31.50	9.525	ZBW3	Hongkong, Hongkong	5-9:30am, 11:30pm-1:15am.
31.50	9.523	ZRG	Johannesburg, So. Africa	3:15-7, 9:30am-11, Sun. 3am-noon
31.50	9.52		Paris, France	4:50-11:00pm. to NA.
31.50	9.52	RV96	Moscow, U.S.S.R.	1:30-2:30am, 1:30-6pm. (11:35pm)
31.55S	9.51	GSB	London, England	1:10-3:45, 9-11:30, 11:55am-6, 6:20-
31.57	9.505	CP38	La Paz, Bolivia	Nightly to 11:30pm.
31.57	9.505	JLG2	Tokio, Japan	2-4pm irreg.
31.57	9.502	KZIB	Manila, Philippines	4-10am; 1-2:40am ex. Fri/Sat.
31.57	9.502	XEWW	Mexico D.F., Mexico	7:45am-1:45am.
31.58	9.50	OFD	Lahti, Finland	6:15-7:15pm...NEWS- 6:15pm.
31.63	9.485	CXA5	Montevideo, Uruguay	7-8:20pm irreg. (-6:27pm)
31.70S	9.465	TAP	Ankara, Turkey	1-5:15pm; Sun. 5:50-6:10; Wed. 6:07
31.77	9.445	HCODA	Guayaquil, Ecuador	8:15-10:15pm ex. Sundays.
31.78F	9.44	COCH	Havana, Cuba	6:40am-12 mid.
31.80J	9.435	OAX5C	Ica, Peru	7-11pm.
31.95N	9.39	FGA	Dakar, Senegal, F. West Africa,	2:30-3:30, 6-7pm irreg.

32.05	9.36	COBC	Havana, Cuba	7am-12 mid; Sun. 7am-10:30pm.
32.07	9.355	HCETC	Quito, Ecuador	7:45-10:15pm; Sun. 3-5pm.
32.11	9.345	HBL	Geneva, Switzerland	Heard testing 6:30-7pm. *
32.12S	9.34	OAX4J	Lima, Peru	8-9am, 12-3, 6pm-12 mid.
32.29F	9.29	HI2G	Trujillo City, D.R.	7:10-8:40, 11:40am-2:10, 7:10-9:40pm *
32.38N	9.265	HC2AK	Guayaquil, Ecuador	7-11pm. *
32.61	9.20	COCX	Havana, Cuba	8am-12 mid.
32.64	9.19	HC2ET	Guayaquil, Ecuador	8pm-12:30am, Sun. 8:30-10:30pm.
32.72	9.17	HCLGQ	Quito, Ecuador	Nightly to 12 mid. *
32.88	9.125	HAT4	Budapest, Hungary	6-7:20, 7:30-9pm to N.A.
32.97J	9.10	HC2CW	Guayaquil, Ecuador	11am-1, 7-11pm.
33.22	9.03	COBZ	Havana, Cuba	7:45am-12 mid.; Sun. 7:45am-1am.
33.48	8.96	COKG	Santiago, Cuba	6:42am-12 mid. irreg.
33.90V	8.85	COCQ	Havana, Cuba	6:50am-1am.
34.48	8.70	COCO	Havana, Cuba	7:30am-12 mid.
34.62	8.665	COJK	Camaguey, Cuba	11:30am-12:30, 3:30-7, 8-8:30pm.
35.42	8.47	XPSA	Kweichow, China	5:30-11:10am, 4:30-5:30pm.
37.27	8.05	XGOK	Canton, China	5-7am irreg.
37.65	7.968	HSP6	Bangkok, Thailand	Off air at present.
37.81	7.935	PSL	Rio de Janeiro, Brazil	6-7pm in parallel with PSH.
38.00	7.894	YSD	San Salvador, El Salvador	7-10:30pm.
38.12	7.87	HCLRB	Quito, Ecuador	8:30-11:30pm.
38.15	7.865	SUX	Cairo, Egypt	12:30-3:30pm (Arabic)
38.20	7.854	HC2JSB	Guayaquil, Ecuador	11am-2, 4-11pm.
38.25	7.85	ZAA	Tirana, Albania	6:30-8am (Su. 6:30-8:30am)
38.98	7.695	COLB	Belen, Cuba	12:15-1pm.
39.16	7.66	YNDG	Leon, Nicaragua	8:30-9:30am ex. Sundays.
39.76	7.545		Moscow, U.S.S.R.	1:35-2, 2:30-3, 4-6pm.
40.05	7.49	EAJ43	Tenerife, Canarias	7-8pm.
40.27F	7.45	FG8AH	Pointe-a-Pitre, Guadeloupe	6-7:10pm; Sun. 9:30-11am.

41 METER BAND

41.13	7.295	JIE	Tyureki, Taiwan	9:05-10:20am.
41.15	7.29	DJI	Berlin, Germany	5-5:30pm (English)
41.19	7.285	YNLIP	Managua, Nicaragua	Sunday 10-11am.
41.19	7.285	JLG	Tokio, Japan	2-4pm irreg.
41.32	7.26	TG5JG	Guatemala, Guatemala	Broadcasts to 11pm.
41.34	7.257	JVW	Tokio, Japan	2-4pm irreg.
41.38	7.25	YDA	Bandoeng, Java	10:30pm-2am; Sat. 7:30pm-2am.
41.38N	7.25	VLQ9	Sydney, Australia	5:55-6:30am to New Caledonia.
41.44	7.24	DXJ	Berlin, Germany	8-8:15, 8:15-8:30pm (English)
41.55	7.22	YDX	Medan, Sumatra	6-10:30am; 10:30pm-2am.
41.55	7.22	EAJ9	Malaga, Spain	4-6pm.
42.24	7.10	FO8AA	Papeete, Tahiti	Tues/Fri 11pm-12 mid.

42.96	6.985	VQF	Kuching, Sarawak	Fridays at 7:10pm.
43.67	6.87	YNOW	Managua, Nicaragua	7-10pm.
43.73V	6.86	YNOP	Managua, Nicaragua	8-9:30pm; Sun. 2-3pm.
44.09F	6.805	HIH	San Pedro, D.R.	7-8pm; Su. 5:20-6:40pm.
44.18F	6.79	PZH	Paramaribo, D. Guiana	Tues/Fri 5:40-8:40pm; Su. 8:40-1040 am; 1st & 3rd Thurs. 6:40-8:40pm.
44.38	6.76	YNRS	Managua, Nicaragua	6:40-10:40pm.
44.64	6.72	PMH	Bandoeng, Java	4:30-11am; Sun. 8:30pm-1:30am.
44.81	6.695	TIEP	San Jose, C.R.	7pm-12 mid.

49 METER BAND

45.22	6.635	HC2RL	Guayaquil, Ecuador	Sun. 5:45-7:45, Tu. 9:15-11:15pm.
45.25	6.63	HIT	Trujillo City, D.R.	12:10-1:40, 4:40-8:40pm.
45.39	6.61	YNLG	Managua, Nicaragua	1:30-2:30, 6-10:15pm.
45.63N	6.575	YSPB	San Salvador, El Salvador	Nightly to 11:58pm. *
45.70	6.565	HI5P	Puerto Plata, D.R.	5:40-7:40, 9:40-11:40pm.
45.87	6.54	YN1GG	Managua, Nicaragua	1-2:30, 8-10pm ex. Sundays.
46.15	6.50	HIL	Trujillo City, D.R.	12:30-2, 6-8pm ex. Sun.
46.26	6.485	H11L	Santiago, d.l.c., D.R.	5:30-7:30pm ex. Sundays.
46.30F	6.48		Noumea, New Caledonia	3:30-4, 7:30-8pm *
46.41	6.465	TGWB	Guatemala, Guatemala	7:45-9, 12:45-3:45, 7:30pm-12:15am, Sun. 10:30am-5:15, 7pm-12 mid.
46.48	6.455	COHI	Santa Clara, Cuba	6:42am-12:15am.
46.66	6.43	H11S	Santiago, D.R.	5:40-9:10pm ex. Sundays.
46.88F	6.40	TGQA	Quezaltenango, Guatemala	7:40-8:40pm.
46.92	6.395	HI9B	Santiago, D.R.	7:40-8:40pm.
46.99	6.384	ZIZ	Basseterre, St. Kitts	4-4:45, Wed. 7-7:30pm.
47.06V	6.375	TIWS	Puntarenas, C.R.	4-11pm; Sun. 2-8pm.
47.14	6.365	COCQ	Havana, Cuba	6:50am-1am.
47.20	6.355	IAC	Rome, Italy	3-3:25pm.
47.26	6.348	HRP1	San Pedro Sula, Hon.	6-7:30am, 6-10:30pm.
47.32	6.34	HIX	Trujillo City, D.R.	8:10-10:10pm; Sun. 7:40-9:40am.
47.36	6.335	OAX1A	Chiclayo, Peru	7:30-11:30pm.
47.39	6.33	COCW	Havana, Cuba	7:55am-12:15am; Sun. 9:55am-12:05am
47.50	6.316	HIZ	Trujillo City, D.R.	11:40am-12:40pm; 5:10-7:40pm.
47.69	6.29	H11G	Trujillo City, D.R.	7:10-8:40, 11:40am-2:10, 3:40-9:40pm
47.96	6.255	CPI2	La Paz, Bolivia	7-9pm.
48.04	6.245	H11N	Trujillo City, D.R.	11:40am-1:40, 7:10-10:10pm.
48.11	6.235	HRD	La Ceiba, Honduras	8-11pm; Sun. 4-6pm.
48.31	6.21		Saigon, F. Indo-China	5:45-9:30, 10-11am, 6:35-7:15, 8-845p
48.39	6.20	CP5	La Paz, Bolivia	6:15-8am, 6:30-11pm.
48.39	6.20	TG2	Guatemala, Guatemala	7:30-10am, 6-11:30pm, Sa. 6pm-3am,
48.47	6.19	H11A	Santiago, D.R.	6:40-9:40pm. (Sun. 3:00-8:00pm
48.47	6.19	EIRE	Athlone, Ireland	3:45-5:10pm... NEWS- 4:15pm.
48.47	6.19	HVJ	Vatican City,	2-3pm or later ex. Sundays.
48.47	6.19	WGEA	Schenectady, N.Y.	10-10:30pm (Sat. to 11pm) *
48.47	6.19	OAX4G	Lima, Peru	6pm-12:30am.
48.51	6.185	TIRCC	San Jose, C.R.	Tu/Th/Sat. 6-7pm; Sun. 8-10pm.
48.54	6.18	LRA2	Buenos Aires, Argen.	6-9pm; Sat/Sun 7-9pm.
48.54	6.18	XEXA	Mexico D.F., Mexico	8-11am, 2:30-4, 7:30pm-12:30am.
48.62F	6.17	WCBX	New York City, N.Y.	11:30pm-2am.
48.62	6.17		Schwarzenburg, Switzerland	3-4:30pm.
48.66	6.165	T11S	San Jose, C.R.	7:30-8:30am, 12-2:30, 6-11pm.
48.70	6.16	HJCD	Bogota, Colombia	4-11pm.
48.74	6.155	CSL?	Lisbon, Portugal	3-5:05pm.
48.74	6.155	EQB	Teheran, Iran	12 noon-3pm. *
48.78	6.15	HI3C	La Romana, D.R.	4:55-6 or 8pm.
48.81	6.147	ZRD	Durban, So. Africa	11:45pm-1:45am; Sun. 1:15-1:45am.
48.82	6.145	HJDE	Medellin, Colombia	9:30am-1, 5-11:30pm.
48.82N	6.145		London, England	1am-6:20pm... NEWS- 6pm. *
48.86	6.14	WPIT	Pittsburgh, Pa.	9-10pm.
48.86	6.14	KZRF	Manila, Philippines	4:30pm-11am; Sun. 6pm-11am.
48.88	6.137CR7AA		Lourenco Marques, Mozambique	3am-4pm; Sun. 3am-1:15pm.
48.90	6.135	FK8AA	Noumea, New Caledonia	2:30-3:30am ex. Sundays.
48.93	6.132	COCD	Havana, Cuba	9am-10:30pm; Sun. 5:30-8pm.
48.93	6.132	CHNX	Halifax, N.S., Canada	7am-11:15pm; Sat. 8am-11:30pm.

48.94	6.13	VP3BG	Georgetown, B. Guiana	3:45-7:45pm ex. Su; Su. 12-11pm.
49.00	6.122	HP5H	Panama City, Panama	6-10:30pm; to mid. irreg.
49.04	6.117	XEUZ	Mexico D.F., Mexico	9am-1, 7pm-2am.
49.08	6.115	HI6H	Trujillo City, D.R.	9:40am-5:40pm. (to NA...NEWS-1130p)
49.10S	6.110	GSL	London, England	5:10-8:45, 11:55am-6, 9:30-11:35pm
49.14	6.105	KZRC	Cebu, Philippines	4-9am, 5-7, 11pm-12 mid. & irreg.
49.18	6.101	KOJD	Hankow, China	8-8:30am.
49.18F	6.100	HJFB	Manizales, Colombia	5:30-10pm ex. Sun.
49.18	6.100	YUA	Belgrade, Yugoslavia	News in English at 4:15pm.
49.20	6.097	ZRK	Capetown, So. Africa	12:00-3:50pm.
49.20	6.097	ZRJ	Johannesburg, So. Africa	Not in use at present.
49.23	6.094	ZHJ	Penang, S.S.	5:40-8:40am ex. Sun.
49.25	6.090	ZEW2	Hongkong, Hongkong	9:30-10am.
49.25	6.090	ZNS2	Nassau, Bahamas	8-9am, 1:30-2, 6:30-11pm...NEWS-8:15am
49.25	6.090	XEBF	Jalapa, Mexico	To 9:30pm.
49.32	6.083	VQ7LO	Nairobi, Kenya	5:45-6:15am, 12-3pm.
49.33	6.082	OAX4Z	Lima, Peru	7pm-1:30am.
49.34	6.080	CRY9	Macao, Macao	Mondays 7:30-10am.
49.34	6.080	CKFX	Vancouver, B.C., Canada	9:30am-3am (Sun. to 4:30am)
49.42	6.070	CFRX	Toronto, Canada	6:45am-12:30am; Sun. 10am-11pm.
49.46	6.065	SBO	Motala, Sweden	4:15-5pm.
49.50	6.06	WCAB	Philadelphia, Pa.	9:15pm-2am; Sat. 5:30pm-2am.
49.55	6.054	HJFA	Pereira, Colombia	9am-noon, 6:30-11pm. (6:20-8pm.)
49.56S	6.05	GSA	London, England	10:55pm-5, 5:40-11:30, 11:55am-6,
49.56	6.05	HP5F	Colon, Panama	7-9pm.
49.63	6.045	XETW	Tampico, Mexico	7pm-1am. (Sun. 2:30-7:00pm)
49.66S	6.04	WRUL	Boston, Mass.	6:00-10:30pm ex. Sa/Su; Sa 6-9pm,
49.67	6.04	KZTB	Manila, Philippines	4-10am; 1-2:40am ex. Fri/Sat.
49.73	6.03	HP5B	Panama City, Panama	10:30am-2, 6-10pm.
49.75	6.03	CFVP	Calgary, Alta., Canada	10am-2am.
49.75S	6.03	XEKW	Morelia, Mexico	8am-1, 5-11:40pm.
49.81	6.023	XEUW	Veracruz, Mexico	10pm-1am. (8:15, 10:30pm, 12 mid.)
49.83S	6.02	DJC	Berlin, Germany	11:30am-4:25pm, 8:30pm-1am...NEWS
49.83	6.02	HI3U	Santiago, D.R.	7:10-8:55, 11:40am-1:40, 4:40-6:40pm
49.85	6.018	HJCX	Bogota, Colombia	7-8, 10:30am-25:30-11:30pm.
49.92	6.01	PRA9	Pernambuco, Brazil	3:30-9pm.
49.92	6.01	CJCX	Sydney, Nova Scotia	7am-1:30, 8-11:30pm.
49.94	6.007	XYZ	Rangoon, Burma	6:30am-10, 9-11pm, Sa. 9:30-11:30pm.
49.94	6.007	ZRH	Johannesburg, So. Afr.	11am-4pm; Sun. 12:15-3:50pm.
49.96	6.005	CFCX	Montreal, Canada	8am-1am; Sun 9am-11:15pm.
49.96	6.005	XEBT	Mexico D.F., Mexico	10am-1:45am...NEWS- 12:20am.

50.12S	5.985	TI7RVM	La Junta Abangares, C.R.	Broadcasts to 10pm.
50.25	5.97	HI1J	San Pedro, D.R.	11:40am-1:40, 6:10-8:40pm.
50.25	5.97	VONG	St. John's, Nfld.	8:30am-12:30, 4:30-9:30pm ex. Sun.
50.42J	5.95	HI2S	Port-au-Prince, Haiti	6:30-10pm.
50.51	5.94	OAX2A	Trujillo, Peru	Tues/Wed/Sat/Sun 7-10pm.
50.54	5.936	PJCl	Curacao, D.W.I.	6:36-8:36pm.
51.07	5.875	HRN	Tegucigalpa, Honduras	6-11pm; Sun. 6-9:30pm.
51.46	5.83	TIGPH/TIX	San Jose, C.R.	7:10-8am, 7-10pm, 10pm-12 mid.
52.26	5.74	YNJAT	Leon, Nicaragua	7-10:20pm.
52.40	5.725	HCLPM	Quito, Ecuador	Mon/Tues/Thurs/Sat 8-10pm.
58.31	5.14	PMY	Bandoeng, Java	5:30am-noon.

60 METER BAND

60.48	4.96	VUD2	Delhi, India	7:30am-12:30pm.
60.67	4.945	HJCW	Bogota, Colombia	7-8am, 7:30-11pm (Sat. to 11:40pm)
60.92	4.925	HJAP	Cartagena, Colombia	9am-1:30, 7-10:15pm ex. Sundays.
60.98F	4.92	YV5RN	Caracas, Venezuela	4-7:30pm; Sun. 3:30-7pm.
60.98	4.92	VUM2	Madras, India	6:30am-12 noon
61.16	4.905	HJAG	Barranquilla, Colom.	11am-11pm; Sun. 11am-8pm.
61.29	4.895	HJCH	Bogota, Colombia	11:30am-2, 6-11pm.
61.35	4.89	YV5RM	Caracas, Venezuela	3:30-10:15pm; Sun. 8am-10:30pm.
61.42	4.885	HJDP	Medellin, Colombia	8am-2, 6-11pm.
61.48	4.88	VUB2	Bombay, India	7:30am-12:30pm.

Note: Completely revised listings for the 60 Meter Band in the December GC

AMA-TOURING

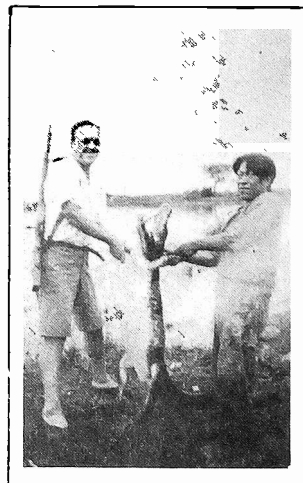
Editor in Chief
Roger Legge,
 20 Beethoven St.
 Binghamton, N. Y.
 Asst. Ed., Roy Waite

Devoted exclusively
 to reception on the
 amateur bands.

Subscription: To the
Globe Circler including
AMA-TOURING De-
 partment, \$1.50 per
 year.

This department is prepared exclusively for those dx'ers interested in reception on the amateur bands. Amateurs listed under each country are those being heard at present. Best hours for reception are given by continents, countries or by individual stations. Tell your friends about AMA-TOURING.

REPORTS FOR AMA-TOURING: We invite all our readers to submit regular items for publication. Your report must reach ROGER LEGGE, on or before Nov. 9, for the DECEMBER issue, and on or before Dec. 11, for the JANUARY issue, and should be compiled as follows: Double space items and lines; divide items by continents and countries; give frequency and hour heard. Send new or changed QRA's, descriptions of interesting QSL cards and any other items of general interest. *Ed.



AMATEUR 20 METER PHONE BAND (14,000-14,400 Mcs.)

(E.S.T.) HAWAII Heard 9 to 12 mid. --- K6LCV (14.23), K6OJI (14.17), K6OPR (14.18), K6PHD (14.21), K6SRZ (14.23), K6SYM (14.17) (Mann) ZP2GA of the Gran Chaco with an alligator he has just captured.

PUERTO RICO K4GQO (14.22), K4GSG (14.20), K4KD (14.16) (Mann). K4KD has worked all states on 20, 40 and 80 meters; lacks only 7 states on 10 meters. He went on fone for first time on Sept. 20th, after operating on CW for past 25 years. K4GTH is in charge of radio for the Army in Puerto Rico. He will be there for 8 months more.

SALVADOR Heard 5 to 11 P.M. --- YS1A (14.08), YS1R (14.09), YS1AM (14.13), YS1GJM (14.02), YS1JR (14.05), YS1RC (14.13), YS2RW (14.11) (Waite, Mann). YS2RW, 20 watts, verified in 3 weeks with blue and white card, blue call, and Foto at left. Antenna is a 2 element rotary (RL)

SWAN ISLAND KD4GYM (14.23) heard 10-12 mid and 7-8 A.M. The chief op. is Stephen Paull (W9FPF) from Michigan (Jones, Waite, Mann, Kriebel)

SOUTH AMERICA

Heard 5 to 10 p.m.

ARGENTINA LU1FC (14.08), LU1JC (14.01), LU2XC (14.26), LU3BAC (14.10), LU4AW (14.05), LU4CJ (14.25), LU4JD (14.11), LU4FW (14.04), LU4KB (14.09), LU4VA (14.09), LU8DP (14.11), LU8EM (14.00), LU8HE (14.02) (Mann, Waite)

BRAZIL PY2HJ (14.10), PY2HV (14.10), PY7AE (14.30), PY7AO (14.14), PY7AS (14.14), PY8AB (14.27), PY8GA (14.13) (Waite)

CHILE CE2AS (14.12), CE2CE (14.01), CE2BX (14.03), CE3BV (14.09), CE3CM (14.07), CE3EE (14.13). CE5BM, (17 watts), on 14.190, qsl'd with red and white card (Breen)

EUROPE

ESTONIA ES2F, 50 watts, verified report on May 6th with white card with large blue call, postmarked Aug. 6th. ES4G, 20 watts, verified with white card with red call, postmarked July 23rd (RL, Waite). Mail from Estonia,

Latvia, Lithuania, Poland, Germany and other Central European countries is now sent via the trans-Siberian Railroad and the Pacific Ocean.

ASIA AND OCEANIA

CANTON ISL. W7DBR/KF6 (14.22) heard 12 to 7 a.m. He has had 1000 qsl's printed, but they are in Honolulu, and will be mailed from there (Wells, Jones, Mann).

CHINA Heard 6-8 a.m. ---XULB (14.10), XU6MJ (14.07), XU8AM (14.02), XUBRJ (14.08) (Wells, RL)

GUAM KB6CBN (14.245), KB6OCL (14.23) heard 7-8:30 a.m. (Kriebel, Mann)
KB6OCL qsl'd via airmail with white card with large green call (Wells)

JAPAN Any SWL's who have sent report to J5CW and failed to get a qsl, can send report and return postage to Cliff Tavener, Rosenberg, Texas, who has J5CW cards and a copy of his logs.

JARVIS ISL. KF6JEG/KG6 (14.195) heard at 3 a.m. (Jones)

PALMYRA ISLAND KG6MV sent green and blue card with large call on back ground map of the North Pacific Ocean (Jones)

PHILIPPINE ISLANDS Heard 6 to 10 a.m. ---KALAC (14.13), KALAG (14.24), KALAR (14.25), KAIBB (14.255), KALCM (14.07), KALRX (14.09) (Waite, Mann, NK). KALCM, 450 watts, sent white card with 1" red call. He plans to put up a Twin 3 Rotary Beam soon to boost his signal in the U.S. KA4LH mentioned he plans to be on 28 mcs. with 1 kw in Nov. when 14 mcs. becomes poor (Wells). KALMM is believed to have returned to the U.S., as reply card veri was post marked Salt Lake City, Utah. The ex-KALMM xmtr. is now being used by KALHQ (RL). KALYL sent folding card on yellow parchment with large yacht in black (Green)

ANTARCTICA KC4USA (14.255), West Base, heard for hours every evening with strong signals. KC4USB (14.25)(14.28), East Base, heard as early as 5:30 p.m., but usually best 8-10 p.m. KC4USC (14.245), the Snow Cruiser, is heard occasionally 9 to 11 p.m. KC4USC is 200 yards from KC4USA at present, while KC4USB is 1600 miles to the east. During recent weeks, the temperature at Little America has been as low as 75 degrees below zero. The expedition members expect to arrive in Seattle, Washington, about the middle of April (Jones, Mann, Waite, Kriebel, RL).

AMATEUR 10 METER PHONE BAND (28,000-30,000 Mcs.)

KC4USB (28.64) and KC4USC (28.44)(28.60) operate daily 2 to 6:30 p.m., contacting numerous W's in all sections of the U.S. Will QSL in May (Waite, RL, W9QWM). . . KG6JEG (28.500), Jarvis Island, 1550 miles south of Hawaii, power 250 watts, Lazy H beam toward Honolulu, contacts K6SBM daily at 2 p.m. . .

Heard 10 a.m. to 7 p.m. --- CX2CO (28.1), NY4AD (28.65), K4EIL (28.60), K4ENT (28.7), K4EZR (28.8), K4FAB (28.58), K4GPS (28.55), K4GTH (28.9), K4KD (28.75), K6MVV (28.9), K6QQM (28.9), K6PAS (28.7), K6PCF (28.91), K6QLG (28.8), K6RUA (28.62), K6RVG (29.0), K6RVG (29.0), K6SWV (29.1), KF6JEG/KG6 (28.5). K6's are best in the East 5 to 6:30 p.m. (Mann, Waite, RL, W9QWM)

AMATEUR 40 METER PHONE BAND

Heard 6 p.m. to 1 a.m. --- CE3CG (7.24), CE5BK (7.02), PY2JQ (7.03), HC1GJ (7.02), YV1AQ (7.04), HK3CI (7.01), HK3CO (7.28), HK4DC (7.02), HK7EZ (7.00), HK7GA (7.15), YN2LT (7.18), YN3AD (7.10), YN6EE (7.24), YS2RW (7.05), HUB (San-Salvador) (7.18), TI3FH (7.18), TI3RC (7.26), TI4AC (7.19), TI4JR (7.11), TI5RG (7.13) (7.25), XE2LG (7.00), CLA5 (7.08), COLAC (7.02), CO2ML (7.02), CO6AX (7.21), CO7AB (7.05) (Kriebel, Wells, Waite). . . KG6JEG operates on the 40 M band at 1:30 a.m. Jarvis time (W9QWM)

NEW QRA's

- CO6AX- Baldomero Espino, Calle Colon 33, Sante Clara, Cuba.
- CP1EA- Hugo Moreno, Casilla 15, Cochabamba, Bolivia.
- CP2AA- Shoji Aoki, Casilla 212, La Paz, Bolivia.
- HK3CM- Alfonso Hernandez Rodriguez, Apartado 300, Bogota, Colombia.
- K4GQO- Joseph Nicholson, El Morro, Post of San Juan, San Juan, Puerto Rico
- K6JDD- Bob Barrington, c/o KTOH, Lihue, Hawaii
- K7GJW- John W. Dudley, Juneau, Alaska
- KALAR- (ex-W8QFI), Capt. C.H. White, Fort Santiago, Manila, P.I.
- KALRX- 19 East Cabezas, San Roque, Cavite, Philippine Islands.

TI3CV- Carlos Videba, Apartado 1066, San Jose, Costa Rica. (Rica)
 TI2VH- Verry Huertas Lopez, Avenida Central Calles 11-13, San Jose, Costa-
 TI2MG- Manuel Enrique Guerra, Apartado 115, San Jose, Costa Rica.
 TI4JR- Gonzalez Alvarez Alvarado, Heredia, Costa Rica.
 TI5RG- Guillermo Rodriguez, Apartado 25, Grecia, Costa Rica.
 TI8CM- Camilo y Carlos Francisco Moya, Puntarenas, Costa Rica.
 YS1JR- Jose Rodriguez, Cojutepeque, El Salvador.

OSL'S RECEIVED

Alan Breen (New Zealand);-- KUELA, VK6SC, ZL1NH, KALYL-11R-1MN, ES1T, PK1PK
 10G-3JK-K6NYD/KB6, VP2LC, CX3CJ, CE1AS-1AB-1BD-5BM, LU2DG-4NS, YV6ACH, KERC,
 XYZ, YDA, YBFS, YDF, OQ3B. Steve Mann:-- PK6XX, EA9AI, HA6C, YS2HW, CR2AC,
 K4FAB, HK3CC, HK4DJ, YV1AG, KEPLZ, K6GAS, CO7PR, COSMP. Roy Waite:-- ES4G
 CP3AB, OQ5IM, YS1OL, K6SPS-6SRZ-6KRG, CE1AA, PY1JA, LUSHA-7BK-7BU. Jack
 Wells:-- KB6CBN, KB6OCL, KC6OKS, PK6XX, CP8AI, KALCM, HA6C, K6HYU, OA4II,
 YS1JS. E. Roberts:-- VK4HN*, PK6XX*, KA7EF, PK2IZ. C. Pavener:-- VQ4CRB, VS7JB,
 PK6XX, VK4HN, YS3PL, PK3KT, KB6CBN. N. Kriebel:-- OQ5IM, YS3PL, TI2VH, TI6HP, PY4DM
 (40), KALAK, KALCM, K6GMV*, N1X*, ES4G, OI3E, CP6XF, YS1JR, YS1OL, YS2HW, HK2BB,
 HK4DD, TI2JC, TI4AC, TI4JSL, TI7HT, HK1AT. Wm. Jones:-- K6GMV, KP6JBC*, K6G
 OKS*, PK6XX, VK4HN, OQ5IM, CR6AF, CPLXA*. K. Lezys:-- J2KJ, ES2F, KALCM,
 KALAK, KALMM*, K6GMV*, K4KD (10-20), K6SPS, K6PKR, LU7DJM, LU2EE (40), VK2
 AHA, VK2AFM*, K4GTH, LU1HB, LUSAD. (Note: * denotes reply cards).

CODE LESSONS FOR SHORT WAVE LISTENERS (A.R.R.L.)

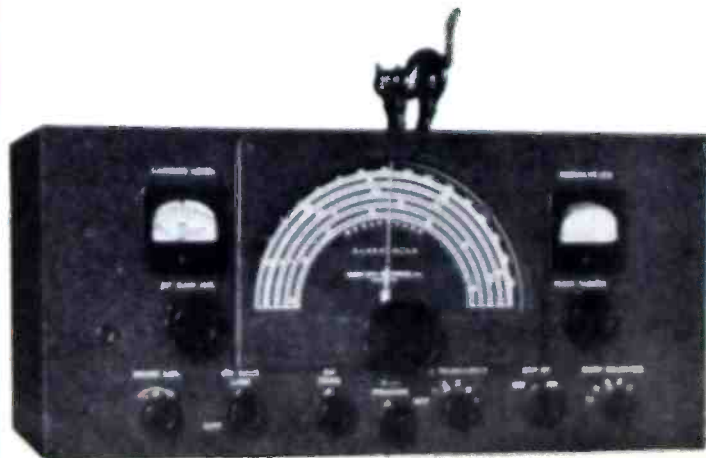
Days	Hours (E.S.T.)	Call	Freq.	Location
Daily (Dec)	8:30-9:30 p.m.	W9HSP		
		W9UA	1908	Olathe, Kansas
Weekdays	8:00-9:00 p.m.	W9BB	1950	Crete, Nebraska
M-T-W-T-F	7:50-8:10 a.m.	W6NQS	1952	Dearborn, Michigan
M-T- T-F	6:30-7:00 p.m.	W1JNU	1978	Methuen, Massachusetts.
M- W- F	6:30-7:00 p.m.	W8RPM	1814	Altoona, Pennsylvania.
M- W-	5:00-6:00 p.m.	W2MOY	1813	New York City, New York.
M- T-	10:30-11:30 pm	W6DPT	1790	Compton, California.
M- F	10:30-11:30 pm	W6HUX	1960	Los Angeles, California.
Mondays	6:30-7:30 p.m.	W5SDO	1989	Miamisburg, Ohio.
T- T-	3:00-4:00 p.m.	W2MOY	1813	New York City, New York.
T- T-	7:30-8:30 p.m.	W9CHJ	1921	Junction City, Kansas.
Tuesdays	6:30-7:30 p.m.	W8CBI	1990	Centerville, Ohio
W-T-	9:00-10:00 pm	W9EGH	1900	Centerville, Ohio
W- F	12 mid.-1 a.m.	W6BKZ	1850	La Jolla, California.
Wednesdays	7:30-8:00 p.m.	W6QBU	1815	Buffalo, New York
Fridays	6:00-7:00 p.m.	W3HBE	1915	Wilmington, Delaware
Saturdays	8:30-9:00 p.m.	W9EGH	1900	Colorado Springs, Colorado

Note: Effective Nov. 1, the 160 meter amateur band will be revised as follows: Frequencies of 2000 to 2050 kcs. will be added in place of 1715 to 1750 kcs. which are being relinquished pursuant to Inter-American Radio Con. agreement.

The New RME-99

A Worthy Successor

To The RME-69



For Full Details

Write To

International DX'ers Alliance,
Bloomington, Illinois, U. S. A.