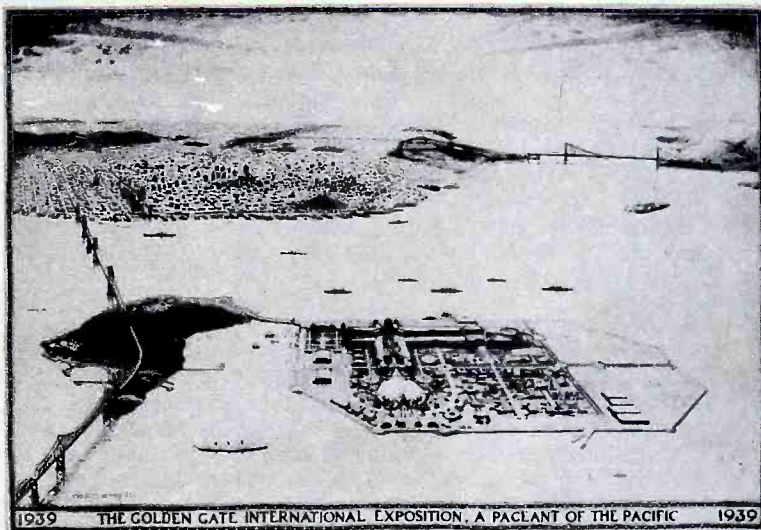


# THE GLOBE CIRCLER

FEBRUARY, 1939



1939 THE GOLDEN GATE INTERNATIONAL EXPOSITION, A PAGEANT OF THE PACIFIC 1939

TREASURE ISLAND, SITE OF THE "GOLDEN GATE INTERNATIONAL EXPOSITION," WHICH OPENS IN SAN FRANCISCO, CALIFORNIA, THIS MONTH. THE "IDA DX FESTIVAL" WILL BE HELD HERE ON JULY 11.

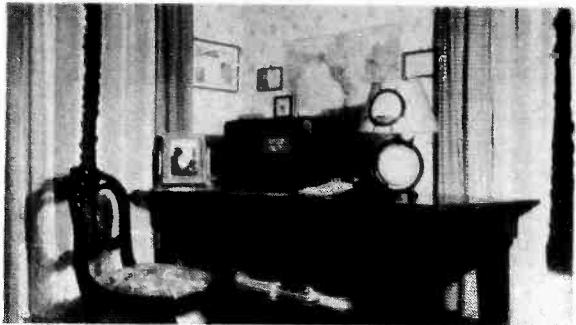
## *In this issue*

Trans-Atlantic Broadcast Band Reception Chart—Broadcast-Band DX Notes—"Treasure Island IDA DX Festival"—SPATARI, The New Radio Language—International Friendship Programs—Short-Wave Notes—Accurate Short-Wave List.

This Issue Dedicated to the  
GOLDEN GATE INTERNATIONAL EXPOSITION

*ten cents*

# INTERNATIONAL DX'ERS ALLIANCE



DX CORNER OF D. HUTCHINSON, MANCHESTER, CONN.



H. SCHROCK, W9QWM, PONTIAC, ILL., IN SHACK (Note RME-69 and RME xmtr)

## SHORT WAVE NOTES

Editor-in-Chief, Charles A. Morrison; Ama-Touring Editors, Roger Legge, Roy Waite; Frequency Checking Editors, R.B. Oxrieder, John Larsen.

INTERNATIONAL FRIENDSHIP PROGRAMS; See complete list on page 13.

AMA-TOURING: Each issue seems to get better. For example, the January A-T included: a report on the Meissner "All-Wave 8" receiver; a complete list of non-QSL'ing hams; a 40 Meter Reception Chart, and notes; a 20 Meter Reception Chart, and notes; 80 Meter notes; 10 Meter notes; Ship Notes; Jottings, New QRA's; QSL Card description; Last Minute Notes; Amateur Panel on W2HXQ and W2EOA, and many other features. Send for a free copy, or subscribe today; 75¢ per year, or also including the Globe Circler \$1.75 per yr

The DSW Degree has been conferred upon J.R. Graham (Verdun, P.Q., Canada)

DEADLINE: For MARCH GLOBE CIRCLER, Feb. 15; for MARCH STOP PRESS SHEET, Feb. 27; for MARCH AMA-TOURING, Feb. 18 (For Ama-Touring send your news items to Roger Legge, 20 Beethoven St., Binghamton, N.Y.); for next VIC/VAC LIST, Feb. 9 (send your revised listings to your District Director). The March Globe Circler will probably not be mailed until March 2, due to Feb. being short month

Trinidad, the Orkney, and the Shetland Islands, may each be counted as separate countries for classification on your VIC/VAC records (Ed).

WANTED: A "Eleven Meter Band" Editor, who will give us each month an accurate and complete list of 11 meter S.W. stations with schedules for each

MAKE OUT YOUR SHORT-WAVE REPORT AS FOLLOWS: Double space lines; use one side page only; group items by continents, and state time used. Items in order of importance are: NEW stations; exact frequencies, or frequency changes; exact schedules, or addresses; identifying signals and unusual receptions. RUSH important items by fastest mail... FOUR STAR items denote exceptional merit. EACH FIVE STAR (\*\*\*\*\*) item pays contributor \$1.00.

EST)

==== NORTH AND CENTRAL AMERICA ====

(EST)

ZX9AM (14.12-14.2), is a llw xmtr. operated by W9AM, aboard the oil tanker "S.S. California," which left Port Arthur, Texas, on Dec. 10, on a whaling expedition to the Antarctic regions 1800 miles south of the Cape of Good-Hope. The transmitter is being heard with good signal strength near 3 to 4, and 9 to 11pm EST. The op, Rhea Johnson also expects to work on 28mc phone. (A-T)

ALASKA K7XFS (8.09), Fairbanks, broadcasts weather reports, and contacts other Alaskan stations, some of them on the same frequency, intermittently between 12:30 and 9 p.m. (\*\*\*Walcott-Calif)

BARBADOS VP6MY (40 meter band), broadcast the cricket matches from Kensington Ground, daily at 10am, from Jan. 7 to 21, inclusive (\*\*Thomas-Barbados)

CANADA Trans-Canada Air Lines' radio circuit is operated days on 5.6425; nights on 3.2125, and for traffic on 7.46 (\*\*Cunningham)... CFU (8.72) Peace River, Alta., heard calling CZBX at 7:05pm (Olthoff)... CJCX (6.01), QRMs VK9MI badly when it comes on air prior to 7am (\*Wells); CJRX (11.72), now being heard Saturdays 6pm to Sun 4am (CLP, Tuff); New call for VE9CA is CFVP (Fern). Also reported as CFBT (Oskay)

C.R.

TIEP (now 6.69), announces call frequently in English (Larsen,

There still is an active Costa Rican (TIGPH2?) on 5.825 nightly (Larsen) CUBA NEW: COCE, a short-wave relay for CMC (1530kc), is now under construction (Radio Guia)...COCM, Havana, is now on 9.81 (Larsen).

CURACAO Has anyone heard PJCL (9.091) recently?

D.R. New calls for HIG, are H1G (6.29), and H12G (9.295) (Legge, Oskay, CLP, Larsen)...H1H (6.78), being heard daily near Ilam (CLP)...H1Z (6.315), broadcasts "The Girl with the Voice of Gold" program at 11:45am (CLP)...H140 (6.56), Trujillo City, heard from 6:10 to 7:40pm (Tuff)...H14V (6.455), 100w, "La Voz de los Almacenes Hnos Chabebe, "San Francisco de Macoris, is owned by Louis Raul Betances Recare (CLP)...H18Q, Trujillo City, is reported to be operating again on 6.2 (NNRC) -(Lundberg).

EL SALVADOR YSP (10.4) often operates in parallel with YSD evenings-

GREENLAND OX7OU (14), is the xmtr. of the Oxford University Expedition to Greenland. Reports should be sent to A. Croft, Leckhampton House, Cambridge England (NNRC)...OX7ZL (14.02), Angmagssalik, East Greenland, heard with R7 signals at 9:30pm. Operators name is "Stilling Berg" (\*\*Clein-Calif)

GUADELOUPE FG8AH (now on 7.435), "Radio Guadeloupe", operated by Andre Haan, broadcasts nightly from 6 to 7, or 7:30pm. English announcements, which are given two or three times during the program and just before sign-off, give the mailing address as P.O.Box 125, Pointe-a-Pitre, Guadeloupe, F.W.I. (\*\*RBO, Althoff, Waite, Lundberg, Larsen, Rockwell)

HAWAII KQH (14.92), now on Saturdays from 11 to 11:30pm (CLP); heard testing Sunday Jan 1. at 7pm, and Jan. 8, 2:30-4pm (Blanchard); KQH and KKH broadcast the "Voice of Hawaii" program now Sat. 1-1:30am (Gallagher)

HONDURAS HRN (5.875), operates from 6 to 11pm (Larsen)

NICARAGUA YNOP (5.46), Managua, operates 8:30 to 10, or 10:30pm; gives station announcement every quarter-hour and uses 5 tinkling notes (all same pitch) for interval signal; verifies with a plain black and white cd. (Larsen, Wells)...YNRF (6.76), and YNPR (8.58), operating in parallel, an nounce simply as "Radio Pilot y Radio Nicaraguente simultaneamente" (RBO)...YN3DG (7.12), 200w, Estacion Radiodifusora "Gilfillan", Leon, under the management of D.E.Gallo, is operating evenings (\*Clein, Hetzel, RBO)

PANAMA HOA (2.34), "Ron Dalley", box 1121, Panama City, operates in parallel with HP5G nightly 6-10pm. Theme song is Prelude from La Traviata (Fern)...HP5A (11.7) card is Magenta, blue and white. Address is Apartado 954, Panama City (Wells)

ST. VINCENT Amateur VP2SA (7.1), owned by Weston Lewis, P.O.Box 73, Edinboro, St. Vincent, B.W.I., is being heard near 4 to 6 p.m.; verifies (\*\*Rockwell, A-T-). St. Vincent may be considered as a separate country for VIC.-Ed

UNITED STATES EXPEDITIONS: The Ellsworth 1938-39 Antarctic Exped. aboard the "Wyatt Earp", bound for the Enderby Quadrant in Antarctica, transmits on c.w. and occasionally phone, under call LDUC, on 14 or 14.06mc (\*NNRC)

... BROADCAST: W1XAL relays BBC and MBS programs occasionally (Oskay, CM) The sked for W2XE has been partially revised as follows: on 11.83mc, Mon. thru Fri., 3:30-6, and 6:30-10pm, and Sat/Sun 3-6, and 6:30-11pm; on 9.65mc, Mon. thru Fri., 10:30-11:30pm to S.A., and on 6.17mc, Mon. thru Fri., mid-lam, and Sat/Sun 11:30pm-1am. (W2XE)... Five frequencies in all, namely 6.06, 9.59, 15.27, 21.52 and 25.725mc, are now assigned to W3XAU. The station has been heard testing on 15.27mc (W3XAU-CAM)... Dual 50kw xmtrs. are now in construction for W3XAL, to replace the present 10kw one. W3XAL will then broadcast on six different frequencies to all parts of the world (SRN). The present sked for W3XAL (6.06) is Sundays 8am-noon; Mon/Thurs/Sat 5:45am-2am -Tues/Wed/Fri 5:45am-noon, and 11pm-2am, and Wed. 9pm-2am (NNRC)... It is believed GE's new 100kw xmtr. at Schenectady will be completed shortly.. W6XBE will be completed at Treasure Island, San Francisco, by opening of exposition, it is said. (GE) ... TELEVISION: GE will install a 10kw television xmtr. at Indian Ladder in the Helderberg Hills, 12 miles from Schenectady, N.Y. The aerial will be strung on 100' towers on top of a 1500' hill. Both visual and aural frequencies will be in the 66-72mc band (GE) . .

... COMMERCIAL: WAFX, Pan American Airways Co., Port Washington Seaplane Base, Port Wash. N.Y., will operate on 2.87mc. A new 16w xmtr. owned by the same company will transmit from Treasure Island, Calif. on 3.08mc (FCC)....

W9XRI (1.614, 6.425, 8.655 and 12.8625), 400w, Lake Bluff, Ill, is a Coastal telephone xmtr. which often contacts W10XJF, a 15w xmtr. aboard Thorne Donnelly's yacht, the "Mako", now cruising in the West Indies (Campbell, Roberts,

shaffar, Gardner) . . . UHF: NEW: W6XDA (35.6), to relay KNX-CBS in Hollywood, 4-7, and 10pm-lam daily, will take the air this month (\*\*Honda); KMTR 40.6mc (FCC) . . . W9XA (26.45), broadcasts news at 12:30pm, and 6pm; dx news Tues/Thurs at 12:45pm, and FCC news Mon/Wed/Fri 12:45pm (\*\*Dillard) . . . W9XAZ (26.4), 500w, Milwaukee, Wisconsin, operates daily 1pm to mid. (The Radio Engineer) . . . W9XUP (26.15), is heard well in afternoons (Oskay-N.J.)

### SOUTH AMERICA

ARGENTINA LRA (9.69), is also authorized to operate on 6.18, and 11.73mc with a power of 10kW . . . LRX (9.66) verifies with a pale blue on white card; interval sig. is 4 vibraphone notes (Wells, Oskay) . . . LSX (10.35), has been on a lot lately near 4:45 to 5:15, and 11:15 to 11:30pm (Schubert, Lundberg)

BRAZIL PSH (10.22), still operates daily 6-7pm; and Mondays 8-8:30pm. (CAM, Schubert, Larsen, Lundberg) . . . PRA8 (6.015), verifies with a white & Blue card picturing a light house and antenna mast, at night (Alfred) . . . PPU (19.26) / PUS (19.97), "Radio Bras", 50kW, is strongest phone xmtr. in South America. Reports are welcomed (\*\*Amers)

BRITISH GUIANA VP3BG (6.13), operates weekdays 10:15-11:15am, and daily 3:45-7:45pm. Signs-off with "Good Night" song (CLP, Oskay)

CHILE Com. xmtr. CEC, Santiago, 30kW, compania Internacional de Radio, operates telephone circuits to Magalles, Bogota, Lima, and Tokio, on the following frequencies: 7.74, 9.35, 10.67, 13.07, 15.865, 16.21, and 20.62 . . . Chile Exploration Co. operates a xmtr. at Chuquicamata (8.3), and Tocopilla (7.6) . . . Compania de Telfonos de Chile, has a 1kW xmtr. at Santiago, and a 1kW xmtr. at Antofagasta. Antofagasta is operating on the following frequencies --4.895, 5.82, and 8.71, while Santiago, is operating on 7.74, 9.35, 13.07, 15.865, 16.21, 8.035 and 10.23mc (NNRC) . . . NEW: CB960 (9.6), "Radio La Americano, Compania de Seguros de Vida", P.O. Box 1-B, Santiago, first heard Dec. 7, is now operating 8:30 to 10:30, or 11pm. Relays CB130 (\*\*Roberts, Shaffar, Oskay, Legge) . . . Slogan for CB970 (9.725) is "La Voz de Chile para toda America". Studio is at Agustinas 1253 (Casilla 13130), Santiago (\*\*Shaffar, Oskay, Larsen) . . . CD1190 is now on 11.91 (Larsen)

COLOMBIA An HRK is being heard on 5.8 regularly (RBO) . . . Slogan for HJ3CAF (4.855) is "La Voz de Colombia" (Olthoff) . . . Sked for HJ3CAB (4.845) is 6-11:30pm (Olthoff, Tuff) . . . Sked for HJ3CAH is 11:30am-2, and 6-11pm (Tuff) . . . HJ3CAX (now 6.02), signs-off in English at 11pm (Olthoff) . . . Sked for HJ4DAP (4.885), Medellin, is 8am-2, 6-11pm (Tuff) . . . HJ4DAE (6.15), Medellin, "La Voz de Antioquia", operates 5-11:30pm (Alfred) . . . HJ6ABB (not using new call of HJ6FAB yet), reported on 6.105 by Legge; on 6.054 by Oxrieder.

ECUADOR HC2RL (6.635), P.O. Box 759, Guayaquil, 150w, operates Sun. 5:45-7:45pm, and Tues. 9:15-11:15pm. Program begins and ends with National Anthem --verifies promptly with blue and white card picturing station (Vargas) . . . HC2CW, now using increased power, is reported to be on 9.35mc (Lundberg)

PARAGUAY ZPL4, "Radio Cultura, "Villarica, is being heard on a new frequency of 11.72mc, from 7:07 to 9:07pm (Fern-Hawaii)

PERU OAX1A (6.334), verifies with a letter in Spanish (Amers, Hetzel) . . . OAX5C, Ica, is now in the clear on 9.39mc (\*RBO, Larsen, Roberts)

URUGUAY CXA4 (6.125) off the air during rebuilding of xmtr. When new xmtr. is completed will move to 9.62mc, and operate under call CXA6 (\*\*Oskay). Station giving broadcast call CX6, heard on 9.7, may be above xmtr. (CLP) . . . CXA8 (9.64), Colonia, heard signing off 10:45 to 11pm; Sat nights to lam (Fern). According to announcement sked is 5am to mid. (E. Roberts)

VENEZUELA Station announcing as "Radio Valencia", and Radio Moderno, Valencia, heard on approx. 11.8mc, at 2pm (CLP) . . . NEW: YV1CB (7.66), heard calling "Cealeo" at 6:27pm (NNRC) . . . YV1RB (5.845) comes on air at 5:30am, as does YV1RL (5.935), YV5RC (5.973), YV1RD (6.081); and YV5RD (6.16) at 6am (Oskay) . . . YV1RE (5.83), Maracaibo, is heard 6-8pm (Tuff-England) . . . YV3RX, formerly YV3RA, La Voz de Lara, now on 4.99mc, relays BC xmtr. YV3RA, nightly to 9:30pm (\*\*Larsen, RBO) . . . YV4RB (6.52), operates daily noon-lpm, 6-10pm; verifies promptly with white card having red call letters (Amers) . . . YV5RM (5.01) ex-YV5RD, "Radiodifusora Venezuela, "Caracas, relays broadcast station YV5RB (or D) nightly (\*\*Legge, CLP, Larsen, Balbi, Roberts) . . . An official list gives YV2RN (4.87), "La Voz de Tachira", San Cristobal; YV3RN (4.82), "Radio-Barquisimeto, "Barquisimeto, and YV6RU (4.88), "Ecos del Orinoco, "Ciudad Bolivar, "Bolivar (NZDXRA)



## EUROPE

- ALBANIA** The Address for the new station is ZAA, "Radio Tirana", Directorate General of Posts and Telegraphs, Tirana, Albania (WRM)
- CZECHOSLOVAKIA** OLR2A (6.01), is heard Wed 4-4:30pm (Lundberg); OLR2B (6.03) is heard in late afternoons (Oskay); N.A. Programs are now heard over OLR3B (9.67), nightly except Saturdays 7:55-10:50pm (Sekach); OLR4B (11.76) is now being used irreg. in mornings (Schubert); OLR5A (15.23) is on the air as early as 5:45am (Reinhard); OLR5C (15.16) signs-off at 1:45pm.
- DENMARK** OZH is now transmitting Sundays, 8am-1:30pm, on a new frequency of 15.32mc. Time signal at lpm (\*\*Pedersen)
- ENGLAND** An Arabic program is broadcast over GSC (9.58), daily 12:17-1:15pm... A new freq., GSV (17.81), V for Valor, beamed on S.A., is now in use daily 12:20-4pm. GSG (17.79) is beamed on Africa. (Larsen, Weber, Oskay)
- FINLAND** The new Finnish xmtr. OIE (15.19), lokW, is being heard mornings (\*\*Amers-Calif). What is the sked for OIE? - Ed.
- FRANCE** The official sked for Paris Mondial follows: Daily: To Africa, 2-5am, over TPA3 (11.885), and 11:15am-7pm, over TPB11 (9.55); to Asia, 6-11am, over TPA2 (15.243) and TPB6 (15.13); to S.A., 7-9:15pm, over TPB6, and TPA4 (11.713); to N.A., 9:30pm-mid., over TPB7 (11.885), and TPA4 (Guilbert).
- GERMANY** DJJ (21.565), is beamed on S.A. daily 6-7:50am, while DJS (21.45), is beamed on Asia, daily 12:05-5:30am; DJX (9.675), is beamed on Africa, daily 10:35am-4:25pm; DJH (17.84), is beamed on Africa, daily 11am-lpm. Other sked revisions shown in list (RRG, Larsen)... "Deutsche Freiheits Sender" heard on HF side of WLXAL (11.79), at 3:32pm (Gardner)
- HOLLAND** PCJ2 (15.22), is operating Tues. 3-4:30am, and Wed. 9:30-11:30am (Brisset)
- IRELAND** NEW: "Radio Eireann," at Moydrum, near Athlone, will soon be operating on 17.835, 11.74, 9.593 and 6.19mc (\*\*NRC)
- ITALY** SCOOP: OFFICIAL SKED OF ALL ITALIAN TRANSMISSIONS: Daily: 2R04 (11.81), 4:40-8:45, and 10am-12:05pm; 2R03 (9.63), 12:10-9pm; 2R08 (17.82), 5-7:30am; 2R06 (15.3), 10am-2:30pm; 2R09 (9.67- actually 9.667 to escape some of the QRM from W3XAL), 3-10pm; IQY (11.67), 5-5:15am, 12:10-3, 3-3:30pm; IRF (9.83), 12:40-1, 1:37-2:14, 2:15-2:55, 3-3:30, 6-7:35, 7:30-9pm; ICC (6.35), 3-3:30pm (\*\*\*\*E.I.A.R.) (Olthoff, Balbi, Larsen, Sekach, Oskay, Lundberg)
- NORWAY** Present sked of Jeloy transmitters is: Daily 4:30-9am (Sundays from 2:30am), over LKC (9.527) and LKQ (11.72); and after 10:30am, over LKC (9.527) and (15.166) (this last period may be Sundays only-Ed)... LKQ is also reported on frequencies of 11.73, and 11.74mc. (Brisset)
- ORKNEY ISLAND** GMSTR (7.05), owned by J. Critchley Graham, Air Ministry Control station, Wideford Aerodrome, Kirkwall, Orkney, may often be heard near 3:30am; reports welcome. May be counted as country for VIC (\*\*Ama-Touring)
- POLAND** Two NEW 5kW xmtrs., namely SP31 (9.52), and SP48 (6.14), have been added to the Polish network (E.Radio)... SPW (13.635) will broadcast a special program for the RSSE, Feb. 11, 7-7:30pm (NNRC)
- PORTUGAL** CSW5 (11.04), Lisbon, operates noon-5:30pm, and CSW7 (9.735), operates from 5:45 to 9pm. Signs-off with clock striking two, and the national anthem (\*\*Brisset, Larsen, CLP)
- SPAIN** Radio Nacional de Espana, heard on new channel of 7.66; also Insurgent relay still heard on 11.01mc (\*RBO)
- SWEDEN** SMGSX (15.156), won't verify unless exact time, frequency & program details are given as programs are frequently confused with those of the "Kgl. Telegrafstyrelsen" stations (\*Byrn)
- SWITZERLAND** The new 25kW xmtr. at Schwarzenburg is still under construction, but meanwhile a 100w test xmtr. near the same site is radiating experimental programs on 9.535mc, daily, as follows: 1-2pm for Africa; 6:45-7:45pm for S.A. and from 8-9pm for N.A. (\*\*RPS)
- U.S.S.R.** For official skeds of following Soviet stations consult the list: RV96 (15.185, 9.52, 6.03); RKI (15.083); RNE (12); RIA (11.71); RAN (9.6); RV59 (6), and xmtrs. on 14.96, and 7.52mc (Radio Committee-Moscow\*\*\*\*)
- VATICAN CITY** HVJ (17.84), heard sending program to Argentina at lpm (Weber)

## AFRICA

- CANARY ISLANDS** EJ43 (7.49) is the xmtr. at Tenerife (RBO)... E8AE (7.2), Las Palmas, works S.A. hams nightly from 11 to 11:30pm (Lundberg)
- EGYPT** SUZ (13.82), works Europe occasionally near 11am (Lundberg)
- ETHIOPIA** SCOOP: STAZIONE DI ADDIS ABEBA, IABA (9.65), is definitely

on the air on this frequency, and operating daily 11am-1pm (\*\*R. Cor.)  
KENYA VQAKTB (14.06), will verify reports in a few months (\*Weber)  
MADAGASCAR Radio Tananarive (6.063), is being heard on west coast daily  
 from 10 to 11am; sometimes with remarkably good volume (\*\*Walcott)  
MOZAMBIQUE CR7AA (6.137), audible from 10:30-11am in Calif. (\*\*Walcott)  
SO. AFRICA ZRH (9.523), now operates daily 5-7:30am, Sundays 5:30-7am. See  
 list for revised skeds for all other South African transmissions (\*\*SABC)  
SPAN. MOROCCO EA9AH (13.997), Tetuan, gives war news in English, daily at  
 5:15pm, and relays war news from "Radio Nacional" at 6:30, and 9pm (\*\*CRC)..  
 ...EA9BJ (7.12) heard broadcasting music, Sat. at 10:30pm (\*DeMyer)

### ASIA AND OCEANIA

AUSTRALIA VK2MA (6.72), heard relaying VK2ME, Sun. 4:30-8:30am (Oskay)...  
VK9MI (6.01) signs-on with "Sweet Dreams" and "God Save the King" (Oskay)  
CHINA The Shanghai fone xmtr. on 9.295 has discontinued its morn-  
 ing programs. It is used to fone Tokio intermittently to 10am (\*\*Walcott)..  
XGAP, not XUD (9.56), verifies promptly, including 8 beautiful scenic postal  
 cards. This station controls all broadcasting in N. China. Send reports to S.  
 Yoshimura, Director, Peking Central Station, Hsi-chan-an Chieh, Peking. (\*\*Wal-  
 cott, Hetzel)...XGRV (11.38), "The Voice of China," "Chungking (replacing XTJ  
Hankow), broadcasts daily 1-1:30am in Chinese & Japanese, and 8-8:30am in En-  
 glish and French. Send reports to H.K. Tong, China Information Committee, Box  
 90, Hankow, XGOX (15.19), Chungking, is being heard 7 to 9pm irreg. (\*\*Wells,  
 Pratt, Balbi)...NEW: XOJD (6.88), Hankow, broadcasts in Chinese, daily 6-8am.  
 Signs-off after playing 8 chimes (\*\*Walcott)...XPSA (7.01), is now broad-  
 casting mornings from 5:30, or 6 to 11am. English news at 9am (\*\*Walcott)  
ENDERBURY..JARVIS..PHOENIX..HAWAII KF6DHW, Canton, contacts KBNF, Honolulu,  
 at 2:40am, and K6PPR, Schofield Barracks, Hawaii, at 3:30 to 4:30am. KG6HCQ  
 on Jarvis, works KF6DHW irreg. near 3, and 4am. KF6ODC, Enderbury, works the  
 above stations irreg. These are the new South Seas American stations, which  
 provide weather reports for Pan-American Airways, and all contacts are made  
 on 8.1mc, with the exception of K6PPR to KF6DHW, which is made on 20 meter  
 phone. Occasionally a quartet puts on a program over KBNF, and the operator  
 asks for reports. KF6DHW, Canton, is the best heard station (\*\*Walcott)  
INDIA VUC2 (9.528), Calcutta, heard R9 at 5:30am, (Roberts)...VUD4  
 (15.29) heard at 9:45pm in parallel with VUD2 (9.59), Delhi...The 62M India  
 stations have slightly shifted frequencies as follows: VUD2, Delhi, to  
 4.96 to 4.973; VUM2 to 4.92; VUB2 to 4.885, and VUC2 to 4.83. Sunday 7:30 to  
 8:30am, is a good time to log VUC2, during church services in English (\*\*  
 Walcott, Legge, DeMyer, Tuff, Loyd, Roberts)  
JAPAN NEW: JLG (7.285), Tokio, broadcasts to Europe, daily 2:30-4pm  
 (\*\*Walcott, KHK)...The following new JV- phones have been added: JVW (7.26)  
JVW2 (9.673); JVW3 (11.725), and JVW4 (17.823) (\*\*NRC)...JZK (15.16), still  
 broadcasts to N.A., nightly 8-8:30pm (\*\*Larsen, CAM)  
MANCHOUKOU JDY (9.925), Konei Murata, Director, Shotokugai 3, Darien, 10kW.  
 operates daily 7-8am; news in English 7:45am. QSL is black, yellow, red, grey  
 and orange, picturing native girl, and large black call (\*\*Wells, Reinhard)..  
TDD (5.83), Hsinking, phones Tokio intermittently 6-9am (\*\*Walcott) (itius)  
MAURITIUS J. May, Penna., has received a QSL card from VQ8AE, Phoenix, Maur  
N.Z. NEW: ZL4ZB (4.3, may soon be altered), Dunedin, 30 watts, is  
 operating weekly, Fridays 9pm to Sundays 7am; verifies reception (\*\*Breen)  
PALESTINE NEW: Amateur ZC6EC, heard on 14.04mc, at 7:30am (\*\*Reinhard)  
ZC6EC, heard on 14.1, late in the afternoon (\*\*DeMyer)  
PHILIPPINES KZIB (now 9.49 to 9.495 to get out from under VK3ME), Manila,  
 is best heard near 6:30am (Roberts-Ind); heard signing off at 9:57am on a  
 Sunday morning, giving the call as KZIB (Eders-Minn)  
S.S. The Malayan Govt. is constructing a new station on the East  
 coast, at Kuantan, in Pahang. It will be on the air in the near future.  
TAIWAN Interval signal for JIB (10.53), Taihoku, is a series of  
 chimes (NNRC)  
TURKEY TAP (9.465) is being heard daily for the first hour of its  
 scheduled broadcast starting at 11:30am sharp (\*Walcott-Calif). TAP is be-  
 ing heard afternoons to 4, or 5pm, announcing in English, just before the  
 national anthem is played as a signature selection. (Larsen, Wells, CAM)  
U.S.S.R. RCH (15.01), Kerbi, heard at 1:30am (Gallagher)...RIM (15.25),  
 Tashkent, Turkestan, can be heard near 8:30am, phoning Moscow (Roberts-Ind).

# SHORT-WAVE BROADCASTING STATIONS

SYMBOLS: N- NEW stations; F. Frequency change; S- Change in sked; B- Frequency calibrations according to Oxrieder-IDA Frequency Bureau; J- stations persisting in hopping about; V- varying in frequency; Y- does not verify; X- does not verify direct; U- Frequency in doubt; \* See short-wave notes.

DIAL METERS	MEGS.	CALL	STATION	TIME-----	EASTERN STANDARD
13.91N	21.57	W2XE	New York City, N.Y.	7:30-10am;	Sat/Sun 8am-1pm.
13.91N	21.565	DJG	ZEESEN, GERMANY	6-7:50am, to S.A.	*
13.93	21.54	W8XK	Pittsburgh, Penna.	6:45-9am.	
13.93YS	21.53	GSJ	Daventry, England	5:45-8:50am, to West Indies.	13M
13.96	21.50	W2XAD	Schenectady, N.Y.	8am-noon, to S.A.	
13.97Y	21.47	GSH	Daventry, England	5:45-8:50, 9am-noon, to Africa.	
13.99N	21.45	DJS	ZEESEN, GERMANY	12:05-5:30am, to Asia.	
15.77	19.02	HS6PJ	Bangkok, Siam	Mondays 8-10am.	
16.84SC	17.82	ZRO8	Rome, Italy	5-7:30am.	*
16.84	17.815	DJG	Vienna, Germany	11:15am-1pm.	16M
16.85	17.81	TPB3	Essarts, France	9:30-11am.	
16.85N	17.81	GSV	DAVENTRY, ENGLAND	5:45-8:50am, 12:20-4pm	*
16.86S	17.79	GSG	Daventry, England	5:45-8:50, 9am-10:15, 12:20-4pm.	
16.87	17.78	W3XL	New York City, N.Y.	9am-5pm to Europe, 5-11pm to SA	
16.88	17.77	PHI2	Huizen, Holland	Sun 6:25-9:40am, Mon/Thur 7:30-8:55am, Tu/W/F/Sa 7:40-8:40am.	
16.89	17.76	DJE	Zeesen, Germany	12:05-5:50, 6-7:50am.	
19.52	15.37	HAS3	Budapest, Hungary	Sundays 9-10am.	
19.56	15.34	DJR	Zeesen, Germany	12:05-11am, to Asia.	
19.57	15.33	W2XAD	Schenectady, N.Y.	12:15-7pm.	
19.57N	15.33	W6XBE	SAN FRANCISCO, CALIF	3-9am.	
19.58F	15.32	OZH	Skamlebak, Denmark	Sundays 8am-1:30pm.	*
19.60Y	15.31	GSP	Daventry, England	1:45-4pm, to Canada	
19.61SC	15.30	ZRO6	Rome, Italy	10am-2:30pm.	*
19.62	15.29	LRU	Buenos Aires, Argentina	7-9am. (11:10am-12:25pm.	
19.63	15.28	DJQ	Zeesen, Germany	12:05-11am, 4:50-10:50pm; Sun.	
19.64	15.27	H13X	Trujillo City, D.R.	Tues/Fri 8:10-10:10pm & Sun AM	
19.64S	15.27	W2XE	New York City, N.Y.	1-3pm; Sat/Sun 1:30-2:30pm.	
19.64N	15.27	W3XAU	Philadelphia, Penna.	3, or 3:30pm on (Tests)	*
19.66	15.26	GSI	Daventry, England	3-5:15am, 12:20-1:30pm.	
19.67	15.25	WLXAL	Boston, Mass.	2-3:30, or 4pm ex. Sat. & Sun	19M
19.68	15.243	TPA2	Pontoise, France	6-11am, to Asia.	*
19.70	15.23	HS6PJ	Bangkok, Siam	Mondays 8-10am.	
19.71	15.22	PCJ2	Huizen, Holland	Tues 3-4:30am, Wed. 9:30-11:30am	
19.72	15.21	W8XK	Pittsburgh, Penna.	9am-1pm. -12:25pm)	
19.74S	15.20	DJB	Zeesen, Germany	8-9am, 4:50-10:50pm; Sun. 11:10am	
19.74	15.195	TAQ	Ankara, Turkey	5:30-7 irr.; 9:30-11am.	
19.75N	15.19	OIE	LAHTI, FINLAND	1:05-4, 9am-5pm.	*
19.76FS	15.18	RV96	Moscow, U.S.S.R.	3-4am, in English	
19.76Y	15.18	GSO	Daventry, England	3-5:15am, 4:15-6, 6:20-8:30pm.	
19.78	15.17	TGWA	Guatemala, Guatemala	12:15-1:15pm; Sun 12:45-5:15pm.	
19.78N	15.166		OSLO, NORWAY	Testing 10:30am-12:30pm approx	
19.79	15.16	VUD3	Delhi, India	9:30-11:30pm, 1:30-3:30am.	
19.79	15.16	TZK	Tokio, Japan	8-8:30pm, to E. No. America.	*
19.79	15.16	OLR5C	Prague, Czechoslovakia	Daily to 1:45pm.	*
19.80	15.155	SM5SX	Stockholm, Sweden	11am-5pm; Sundays 9am-5pm.	
19.80	15.15	YDC	Bandoeng, Java	4:30-10:30am; 6-7:30pm ex. Sat.	
19.82	15.14	GSF	Daventry, England	10:30pm-2am; Sat. 7:30pm-2am.	
19.83	15.13	TPB6	Essarts, France	3-5:15am, 5:45-8:50, 9am-noon.	
19.83	15.13	WLXAL	Boston, Mass.	7-9:15pm, to S.A.	
19.84	15.12	SP1 9	Warsaw, Poland	Sundays 10am-1pm.	
19.84	15.12	HVJ	Vatican City, Italy	6-9pm. (am	
19.85	15.11	DJL	Zeesen, Germany	Sun. 1-1:30pm; Tues. 10:30-10:45	
19.85	15.11	DJL	Zeesen, Germany	12:05-2, 8-9, 10:35am-4:25pm.	
19.89S	15.083	RKI	Moscow, U.S.S.R.	7-9:15pm, in English	
20.11S	14.92	KQH	Kahuku, Hawaii	Sat. 1-1:30am, 11-11:30pm.	
20.64	14.535	HBJ	Geneva, Switzerland	Sun. 10:45-11:30am, Mon. 4-4:15am	
20.79	14.43	HCL1B	Quito, Ecuador	10-10:30pm except Mondays.	

21.43	13.997	EA9AH	Tetuan, Span. Morocco	5:15-6:15, 6:30-7:30, 9-10pm. *
22.00	13.635	SPW	Warsaw, Poland	6-9pm.
24.03	12.486	HIN	Trujillo City, D.R.	7:10-10:10pm.
24.08	12.46	HCJB	Quito, Ecuador	8-10:30pm ex. Mondays
24.53	12.235	TFJ	Reykjavik, Iceland	Sundays 1:30-2:30pm
25.00S	12.00	RNE	Moscow, U.S.S.R.	Su 6-10am; M/W/F 6-6:30am, 8:30-9pm; Tu/Th 6-6:30am, Sat 6-8am.
25.02	11.99	RR6	Vitoria, Spain	4-4:30, 8-10am, 1-1:50, 4-7pm; Tu/7-11pm. (Fri 8:30-10pm)
25.02	11.99	CB1180	Santiago, Chile	Tues/Fri 8:10-10:10pm.
25.06	11.97	HI2X	Trujillo City, D.R.	10am-noon, 4-10pm.
25.12	11.935	TI2XD	San Jose, Costa Rica	Daily 3:45-4:15, 7-9:30am.
25.19	11.91		Hanoi, F. Indo-China	10am-lpm. and 7-10pm.
25.19F	11.91	CD1190	Valdivia, Chile	7:30pm-mid; Sun. 12:30-2pm.
25.21	11.90	XEWI	Mexico City, D.R., Mexico	2-5, 11:15am-6pm. *
25.23S	11.885	TPA3	Pontoise, France	9:30pm-mid. to N.A. *
25.23S	11.885	TPB7	Essarts, France	3:30pm-3am.
25.25	11.88	VLR3	Melbourne, Australia	1-11pm.
25.27	11.87	WSXK	Pittsburgh, Penna.	3-5:15, 5:45-10:30am; Su 1-1:30p
25.30YS	11.86	GSE	Daventry, England	Sat. 6-11pm & irreg.
25.32	11.85	CB1185	Santiago, Chile	Testing on this frequency.
25.32	11.85	OAX2A	Trujillo, Peru	(6:30-11pm)
25.34S	11.84	OLR4A	Prague, Czechoslovakia	3:30-6, 6:30-10pm; Sat/Sun 3-6, -
25.36S	11.83	W2XE	New York City, N.Y.	9-11am, 8-10:30pm, or later.
25.37	11.826	XEBR	Hermosillo, Mexico	4:40-8:45, 10am-12:05pm. *
25.40S	11.81	2RO4	Rome, Italy	4:50-10:50pm to N.A.
25.42	11.801	DJZ	Vienna, Germany	6pm-midnight.
25.42	11.80	COGF	Matanzas, Cuba	12:30-1:30, 7-7:30, 8-9:30am, (25M)
25.42	11.80	JZJ	Tokio, Japan	2:30-4, 4:30-5:30, 8-8:30pm.
25.45	11.79	WLXAL	Boston, Mass.	4:40-6:30pm; Sat 1:45-6pm; Sun 3
25.47	11.78	HP5G	Panama City, Panama	6-10pm. (-6:30pm)
25.47S	11.78	OFE	Lahti, Finland	1:05-12:05pm.
25.49	11.77	DJD	Zeesen, Germany	11:30am-4:25, 4:50-10:50pm.
25.50	11.76	XETA	Monterrey, Mexico	Noon-3:30pm.
25.53Y	11.75	GSD	Daventry, England	3-5:15, 9am-noon, 12:20-6, 6:20-
25.55	11.74	SP25	Warsaw, Poland	6-9pm. (8:30pm)
25.55S	11.74	HVJ	Vatican City, Italy	Wed. 2:30-3pm, & irreg.
25.55	11.74	COCX	Havana, Cuba.	8am-1am.
25.58	11.73	WLXAL	Boston, Mass.	9:15-11:30pm ex. Sat/Sun.
25.58N	11.73	LKQ	OSLO, NORWAY	4:30-9am; Sundays 2:30-9am. *
25.58	11.73	PHI	Huizen, Holland	Weekdays 6:15-6:45pm; Sat 7:15-
25.60S	11.72	CJRX	Winnipeg, Canada	Sat. 6pm-Sun. 4am. *(7:45pm)
25.60N	11.72	ZP14	Villarica, Paraguay	7:07-9:07pm. *
25.60	11.718	CR7BH	Laurenco, Mozambique	12-1, 4:30-6:30, 9-11am, noon-4pm
25.61	11.713	TPA4	Pontoise, France	-Sun 5-7, 10am-2pm.
25.62	11.71	YSM	San Salvador, El Salvador	7-9:15, 9:30pm-mid. to N.A. *
25.62	11.71		Saigon, F. Indo-China	7:30-9:15am.
25.63	11.705	SBP	Motala, Sweden	(Sat 8-9pm.)
25.64	11.70	HP5A	Panama City, Panama	1-4:15pm; Sun 1:15-4:15pm; Wed &
25.64	11.70	CB1170	Santiago, Chile	7-8:30am, 10am-1, 5-10pm; Su 6-10
25.74S	11.67	IQY	Rome, Italy	10am-2, 3:30-11pm. (pm)
26.01	11.535	SPD	Warsaw, Poland	5-5:15am, 12:10-1, 3-3:30pm. *
26.32	11.402	HBO	Geneva, Switzerland	6-9pm.
26.32VS	11.40	XGRV	Chungking, China	Sun. 1:45-2:30pm; Mon 3:30-3:45a
27.17SC	11.04	CSW5	Lisbon, Portugal	1-1:30am, 8-8:35am, 7-7:30pm. *
27.27	11.00	PLP	Bandoeng, Java	Noon-5:30pm. *(am ex. Sat. *
27.40	10.95		Tananarive, Madagascar	4:30-10:30am 6-7:30, 10:30pm-2
28.14	10.66	JVN	Tokio, Japan	12:30-12:45, 10-11am; 2:30-4
28.30	10.60	ZIK2	Belize, Br. Honduras	1:50-7:40am. (am ex. Sun.)
28.48	10.535	JIB	Taihoku, Taiwan	Tu/Th/Sat 1:30-2, 8:30-9pm.
28.55V	10.40	YSP	San Salvador, El Salvador	Relays JFAK 9-9:55am.
28.96V	10.36	EAJ43	Tenerife, Canarias	1-3, 6:30-11pm. *
29.04	10.33	ORK	Ruyssselede, Belgium	3-4:30, 5-7, 7:45-8:45, 9-10pm. *
29.24	10.26	PMN	Bandoeng, Java	1:30-3pm to Belgian Congo (ex S
				4:30-10:30am, 6-7, 10:30pm-2am -



29.35S	10.22	PSH	Rio de Janeiro, Brazil	6-7pm; Mondays 8-8:30pm.	*
29.70	10.10		Deutsche Freiheits	Sender 4-5pm.	
29.85	10.05	TIEM	San Jose, D.R.	4:30-8pm.	
30.05V	9.985	COBC	Havana, Cuba	6:55-1am.	
30.23	9.925	JDY	Darien, Manchoukou	7-8am, or later (8:30-9pm.	
30.45V	9.855	EAQ	Madrid, Spain	3:45-4:05am, 4:45-5:05, 7:30-8,	
30.52VS	9.83	IRF	Rome, Italy	12:40-1, 1:37-3:30, 6-9pm.	*
30.58J	9.81	COCM	Havana, Cuba	8am-12:30am; irreg. to 2am.	
30.82S	9.735	CSW7	Lisbon, Portugal	5:45-9pm, to N.A.	*
30.85F	9.725	CB970	Valpariso, Chile	6:30-11:30pm, or midnight.	
30.86S	9.72	ZRD	Durban, So. Africa	11:45pm-12:45am, 3:30-7:30, 9-11:45am; Sun 5:30-7, 9-11:30am.	
30.92	9.705		Fort-de-France, Martinique	6-8:10, or 9:30pm.	
30.95	9.692	TI4NRH	Heredia, Costa Rica	Tu/Th/Sat 9-10pm; Sun. 7-8am.	
30.96	9.69	ZHP	Singapore, S.S.	4:40-9:40am; Wed/Sat 12:40-1:40 am; Sun 5:40-9:40am. (Sa/Su 7-9p	
30.96	9.69	LRA	Buenos Aires, Argen.	Mon to Th. 6-9pm; Fri 4-9pm; -	
30.98	9.685	TGWA	Guatemala, Guatemala	10-11:30pm ex. Sun; Sun 7-10:45p	
31.01S	9.675	DJX	Vienna, Germany	10:35am-4:25pm to Africa.	
31.02	9.67	OLR3B	Prague, Czechoslovakia	7:55-10:50pm ex. Sat.	*
31.02	9.67	W3XAL	New York City, N.Y.	5pm-1am.	
31.03	9.667	2R09	Rome, Italy	3-10pm.	*
31.06	9.66	LRX	Buenos Aires, Argen.	9:30am-10pm; Sat. to mid.	
31.09	9.65	CS2WA	Lisbon, Portugal	Tues/Thurs/Sat 4-7pm.	
31.09S	9.65	W2XE	New York City, N.Y.	10:30-11:30pm ex. Sat. & Sun.*	
31.09N	9.65	IABA	ADDIS ABEBA, ETHIOPIA	11am-1pm.	*
31.11	9.645	HH3W	Port-au-Prince, Haiti	1-3, 7-9pm.	
31.12S	9.64	CXA8	Colonia, Uruguay	5am-10:45pm, or 11pm; Sat. to lam	
31.12	9.64	ZP8	Asuncion, Paraguay	6:30-8pm.	
31.13	9.636	JFO	Taihoku, Taiwan	4-10:30am.	
31.15	9.63	2R03	Rome, Italy	12:10-9pm.	
31.20	9.618	HJLABP	Cartagena, Colombia	Weekdays 9am-1:30pm, 4:30-10:15	
31.22S	9.61	ZRK	Klipheuvell, S. Africa	11:45pm-12:45am ex. Sa; 3:20-720 9-11:45am; Su 4-5, 5:30-11:45am.	
31.24V	9.604	HP5J	Panama City, Panama	Noon-1:30pm, 6:30-10:30pm. (pm	
31.25S	9.60	RAN	Moscow, U.S.S.R.	6-7, 7-9:10, 9:15-10pm.	
31.25N	9.60	CB960	SANTIAGO, CHILE	8-10:30, or 11pm.	*
31.28	9.59	PGJ	Huizen, Holland	Su 2-3, 7:15-8:15, 8:25-9:25pm, Tu 1:45-3:30, 7:15-10:30pm; Wed. 7:15-8:40pm, Fri. 8-9pm.	
31.28	9.59	VK6ME	Perth, W. Australia	Weekdays 6-8am.	
31.28	9.59	VK2ME	Sydney, Australia	Sundays 1-3, 5-11am.	(31M)
31.28	9.59	W3XAU	Philadelphia, Penna.	Irreg. at present. *(12:30p*	
31.28	9.59	VUD2/3	Delhi, India	8:30-10:30pm, 1:30-3:30, 6:30am-	
31.32SY	9.58	GSC	Daventry, England	12:17-1:15, 4:15-6, 6:20-8:30, -	
31.32	9.58	VLR	Melbourne, Australia	Weekdays 3:15-8:30am (920-1120	
31.35	9.57	WLXK	Springfield, Mass.	6am-1am.	
31.35	9.57	KZRM	Manila, Philippines	Weekdays 4:30-6pm; Mon. to Fri. 5-9pm; Sat. 5-10am; Sun 4-10am. 4-9am.	
31.38	9.56	XGAP	Peking, China	4-9am.	
31.38	9.562	OAX4T	Lima, Peru	7-8, 11:30am-1:30, 4-6:15pm.	
31.38	9.56	DJA	Zeesen, Germany	12:05-11am, 4:50-10:50pm.	
31.41	9.55	YDB	Soerabaja, Java	4:30-10:30am; 6-7:30, 10:30pm-2am ex. Sat; Sat 7:30pm-2am. 9:30-10:30pm, 1-3:30am.	
31.41	9.55	VUB2	Bombay, India	9:30-10:30pm, 1-3:30am.	
31.41	9.55 or 9.66	HVJ	Vatican City,	Sundays 5-5:30am.	
31.41S	9.55	TPB11	Essarts, France	2-5am; 11:15am-7pm.	
31.41	9.55	W2XAD	Schenectady, N.Y.	7:15-10pm, to S.A.	
31.41X	9.55	XEFT	Veracruz, Mexico	7:30pm-midnight.	
31.45	9.54	DJN	Zeesen, Germany	12:05-11am, 4:50-10:50pm.	
31.46	9.538	VPD2	Suva, Fiji's	5:30-7am ex. Sundays.	
31.47S	9.535	JVI	Tokio, Japan	4:30-5:30pm.	
31.47N	9.535		Schwarzenburg, Switzerland	1-2, 6:45-7:45, 8-9pm.	*
31.48	9.53	W2XAF	Schenectady, N.Y.	4pm-mid.	
31.48	9.53	W6XBE	SAN FRANCISCO, CALIF.	3-9am.	

31.48	9.528	VUC2	Calcutta, India	2:06-4:06am, and later	*
31.50	9.526	XEDQ	Guadalajara, Mexico	Noon-4:30, 8-11:30pm.	
31.50S	9.525	ZBW3	Hong King, Hong Kong	5-10am, 11:30pm-1:15am; Su 5-9:30	
31.50S	9.525	ZRH	Pretoria, So. Africa	5-7:30am; 5:30-7am Sun. (am	
31.50S	9.525	LKC	Oslo, Norway	4:30-9am (Sun 2:30am on); 10:30	
31.51	9.52	OZF	Skamlebak, Denmark	8-9:30, 8L30-11pm. (am-5pm ir.	
31.51S	9.52	RV96	Moscow, U.S.S.R.	4-5am, 1-3, 4-5pm; Sun. 10-11am.	
31.51N	9.526	SP31	WARSAW, POLAND	3-5:30pm.	*
31.55Y	9.51	GSB	Daventry, England	1:30-4, 4:15-6, 6:20-8:30, 9:20-	
31.55V	9.51	HS8PJ	Bangkok, Siam	Thurs. 8-10am. (11:20pm	
31.55	9.51		Tananarive, Madagascar	12:30-12:45am, 10-11am, 2:30-4	
31.57	9.503	XEWW	Mexico D.F., Mexico	8am-12:30am. (am ex.Sun.	
31.58	9.501	PRF5	Rio de Janeiro, Brazil	4:45-5:55pm ex.Sun.	
31.58	9.50	OFD	Lahti, Finland	12:15-5pm.	
31.58	9.50	VK3ME	Melbourne, Australia	4-7am except Sundays.	
31.61VF	9.49	KZIB	Manila, P.I.	6-9:05am.	*
31.62V	9.488	EAP	Madrid, Spain	3:40-4, 7:30-8, 8:40-9pm.	
31.70	9.465	TAP	Ankara, Turkey	11:30am-4, or 5pm.	*
31.77	9.445	HCODA	Guayaquil, Ecuador	8:15-10:15pm ex. Sundays.	
31.79	9.436	COCH	Havana, Cuba	8am-11pm; Sun. 8am-10pm.	
31.95JF	9.39	OAX5C	Ica, Peru	7-11:30pm.	*
32.07V	9.354	HC1ETC	Quito, Ecuador	8-11pm Saturdays. (8:15p	
32.11	9.345	HLB	Geneva, Switzerland	Sun 7-7:45, 8-8:45pm; Mon. 6:50-	
32.12	9.34	OAX4J	Lima, Peru	Noon-3, and 5pm-mid. (4:40pm	
32.28XC	9.295	HI2G	Trujillo City, D.R.	6:40-8:40, 11:40am-2:10, 3:40-	
32.61V	9.20	COBX	Havana, Cuba	Relays CMBX 8am-11:30pm.	
32.68V	9.18	HC1GQ	Quito, Ecuador	Mon/Wed/Sat 9-10:30pm.	
32.86J	9.13	HC2CW	Guayaquil, Ecuador	7-10:30pm; Sun 3:30-6pm.	*
32.88V	9.125	HAT4	Budapest, Hungary	7-8pm; Sat 6-7pm.	
32.97V	9.10	COCA	Havana, Cuba	Noon-12:15am, or later.	
33.00	9.091	PJCI	Curacao, D.W.I.	6:36-8:36pm; Su 10:36am-12:36pm	
33.24	9.025	COBZ	Havana, Cuba	7:45am-1:15am.	
33.48	8.96	COKG	Santiago, Cuba	5-6, 9:30-10:30pm.	
33.98J	8.83	COCQ	Havana, Cuba	6:55am-1am. (10pm.	
34.54V	8.685	COJK	Camaguey, Cuba	11:30am-12:30pm, 8:30-6, 8-9, or	
34.67V	8.652	HJ4DAU	Medellin, Colombia	Weekdays 7-10pm.	
34.97	8.58	YNPR	Managua, Nicaragua	12:45-2:15, 6:45-10:15pm.	
35.02	8.572		Bucharest, Roumania	8:15-10:30am, 4-7pm. (pm-2am	
37.08	8.09	YDX	Medan, Sumatra	Weekdays 10:30pm-2am; Sun 7:30-	
38.00	7.894	YSD	San Salvador, El Salvador	7-10:30pm.	
38.12	7.87	HC1RB	Quito, Ecuador	8:30-11:30pm.	
38.20	7.854	HC2JSB	Guayaquil, Ecuador	11am-2pm, 4-11pm.	
38.48	7.797	HBP	Geneva, Switzerland	Mondays 6:50-8:15pm.	
39.16F	7.66		"Radio Nacional de Espana,"	4-4:30, 9-10am, 1:30-4:30	
39.39	7.614	CR6AA	Lobito, Angola	5:30-8:45, 8-10pm.	*
39.89S	7.52	KKH	Kahuku, Hawaii	Wed/Sat 2:45-4:30pm.	
39.89N	7.52	RKI	Moscow, U.S.S.R.	Sa. 1-1:30am, 11-11:30p.m.	
39.95	7.51	JVP	Tokio, Japan	Weekdays 2:30-3pm, in Czech.	*
40.05S	7.49	EAJ43	Tenerife, Canarias	8-9:30am.	
40.27	7.45	TI2RS	San Jose, Costa Rica	8-9pm & irreg.	*
40.35FC	7.435	FG8AH	Pointe-A-Pitre, Guadeloupe,	6-7pm.	*
40.65	7.38	XECR	Mexico D.F., Mexico	Sundays 7-8pm.	*
40.79	7.353	FET5	Burgos, Spain	5:45-7:15, or 7:30pm.	
41.01S	7.31	VIG	Port Moresby, Papua	Feb. 18, Mar. 4/18, 3-5am.	
41.18N	7.285	JLG	Tokio, Japan	2:30-4pm, to Europe.	*
41.80	7.177	CR6AA	Lobito, Angola	Wed/Sat 2:45-4:30pm.	
42.09	7.128	YN3DG	Leon, Nicaragua	2-2:30, 8:30-9:30pm ex.Sunday.	
42.25	7.10	PO8AA	Papeete, Tahiti	Tues/Fri 11pm-12:30am.	
42.80S	7.01	XGSA, or XPSA,	Kweiyang, China,	5:30, or 6-11am, 6:30-7:30pm	*
43.10	6.96	2ZB	Wellington, N.Z.	Mid.-7am.	
43.60N	6.88	XOJD	HANKOW, CHINA	6-8am.	*
44.12	6.80	PZH	Paramaribo, D. Guiana	Mon/Wed/Fri 5:41-8:41pm.	
44.25F	6.78	HIH	San Pedro, D.R.	7:40-8:40pm; Sun. 5:20-6:40pm.*	
44.38V	6.76	HI7P	Trujillo City, D.R.	7:10-8:40pm; Sun 9:40-10:40pm.	

44.38V	6.76	YNRF	Managua, Nicaragua	6:45-10:15pm, or 11pm.
44.51	6.74	HC1TQ	Quito, Ecuador	Sundays 5-7pm.
44.58	6.73	HI3C	La Romana, D.R.	Who knows schedule?
44.60	6.727	PMH	Bandong, Java	4:30-11am; Sun 8:30pm-1:30am.
44.81	6.695	TIEP	San Jose, C.R.	7-11pm.
44.95	6.676	HBQ	Geneva, Switzerland	Sun 1:45-2:30, 2:30-2:45pm.
44.98	6.67	HI9B	Santiago, D.R.	6:40-7:40pm.
45.05	6.66	HI5G	Trujillo City, D.R.	Who knows schedule? (pm)
45.22S	6.635	HC2RL	Guayaquil, Ecuador	Sun. 5:45-7:45, & Tues. 9:15-1115
45.25X	6.63	HIT	Trujillo City, D.R.	12:10-1:40, 4:40-8:40pm.
45.29B	6.625	PRADO	Riobamba, Ecuador	Thursdays 9-11pm.
45.39V	6.61	YNLG	Managua, Nicaragua	1:30-2:30, 6-10:15pm.
45.70	6.565	HI5P	Puerto Plata, D.R.	5:40-7:40, 9:40-11:40pm.
45.80	6.55	TIRCC	San Jose, C.R.	Tu/Th/Sa 6-7pm; Sun 8-10pm.
45.84X	6.545	YV6RB	Bolivar, Venezuela	6:30-9:30pm ex. Sundays.
45.87J	6.54	YN1GG	Managua, Nicaragua	1-2:30, 8-10pm ex. Sundays.
46.01VS	6.52	YV4RB	Valencia, Venezuela	Noon-1, 6-10pm. *
46.15	6.50	HIL	Trujillo City, D.R.	12:30-2, 6-8, or 9pm ex. Sun.
46.19	6.495	TGWB	Guatemala, Guatemala	7:45-9am, 12:45-3:45, 7:30pm-12:45am; Sun. 10:30am-mid.
46.26	6.485	HILL	Santiago, d.l.c., DR	Weekdays 5:30-9:30pm.
46.41	6.465	YV3RD	Barquisimeto, Venez.	11:30am-1:30, 5:30-9:30pm.
46.44	6.455	HI4V	S.F. de Macoris, D.R.	5:10-7:40pm; to 10pm irreg.
46.66Y	6.43	HILS	Santiago, D.R.	5:40-7:10pm ex. Sundays.
46.77	6.416	YV6RC	Bolivar, Venezuela	10:30am-1:30pm, 4:30-9:30pm.
46.80V	6.41	TIPG	San Jose, C.R.	7-9:30am, 12-2, 4-11:30pm.
46.88	6.40	YV5RH	Caracas, Venezuela	5-9:30pm ex. Sundays.
46.88J	6.40	TGQA	Quezaltenango, Guatemala	Mon/Fri 9-11pm, Sat 10pm-1am; Sun 1-3am, 1-3pm.
46.99	6.384	ZIZ	Basseterre, St. Kitts	4-4:45pm; Wed. 7-7:30pm.
47.02	6.38	YV5RF	Caracas, Venezuela	11am-1pm, 5:30-9:30pm ex. Sunday
47.06	6.375	TIWS	Puntarenas, C.R.	5-7, 7:30-10; Sun 5-6pm
47.14	6.365	YV1RH	Maracaibo, Venezuela	10:30am-1:30, 4:30-10:30pm. (pm)
47.20S	6.357	HRP1	San Pedro Sula, Honduras	6-7:30am, 2-4pm; irreg. to 10
47.24N	6.35	ICC	Rome, Italy	3-3:30pm.
47.32	6.34	HILX	Trujillo City, D.R.	Tues/Fri 8:10-10:10pm.
47.36	6.334	OAX1A	Chiclayo, Peru	8-11pm. (49M)
47.43	6.324	COCW	Havana, Cuba	6:55am-1am; Sun 9:55am-10pm.
47.51	6.315	HIZ	Trujillo City, D.R.	11:40am-12:40pm, 5:10-7:40pm ex
47.62	6.30	YV4RD	Maracay, Venezuela	6-11pm except Sundays. (Sun.
47.66	6.295	OAX4G	Lima, Peru	6, or 7pm to mid. (9:40pm)
47.69VC	6.29	HILG	Trujillo City, D.R.	6:40-8:40, 11:40am-2:10, 3:40-
47.18V	6.275	YV5RP	Caracas, Venezuela	4:30-9:30pm, or later.
47.96	6.255	YV5RJ	Caracas, Venezuela	5:30-8pm.
48.05XV	6.243	HIN	Trujillo City, D.R.	5:25-10:10pm, or later.
48.08	6.24	ZGE	Kuala Lumpur, F.M.S.	Sun/Tues/Fri 6:40-8:40am.
48.11	6.235	HRD	La Ceiba, Honduras	8-11pm; Sun 4-6pm.
48.15	6.23	YV1RG	Valera, Venezuela	11:30am-1pm, 5:45-8:45pm.
48.31	6.21		Saigon, F. Indo-China	7:30-9:15am & irreg.
48.35V	6.205	YV1RI	Coro, Venezuela	6:30-9:30pm ex. Sundays.
48.39FV	6.20	TG2	Guatemala, Guatemala	7:30-9am; Mon/Fri 6-11pm; Sat 6pm-1am; Sun 1-3am, 3-8pm.
48.43	6.195	HI2D	Trujillo City, D.R.	5:10-7:10pm.
48.47	6.19	or 6.03	HVJ, Vatican City	M/Tu/T/F 2-3pm; Wed 2-2:30, 3-3:30pm; Sat 2-3:30pm.
48.47	6.19	HILA	Santiago, D.R.	10:40am-1:40, 6:40-9:40pm.
48.58F	6.175	XEXA	Mexico D.F., Mexico	8:30-10:30am, 2:40-4:30, 7pm-mid
48.62S	6.17	W2XE	New York City, N.Y.	12-1am; Sat/Sun 11:30pm-1am.
48.78	6.15	HJ4DAE	Medellin, Colombia	9:30am-1pm, 5-11:30pm.
48.78	6.15	VPB	Colombo, Ceylon	7-11am, or later.
48.78	6.15	ZP14	Villarica, Paraguay	4-6pm.
48.78VS	6.147	CJRO	Winnipeg, Canada	Sat. 6pm-Sun 4am. *
48.86	6.14	W8XK	Pittsburgh, Penna.	11pm-1am.
48.86	6.14		Leopoldville, Belgian Congo	Sundays 5:35-7am.
48.86N	6.14	SP48	WARSAW, POLAND	3-5:30pm. *

48.88	6.137	CR7AA	Laurencio Marques, Moz.	12-1, 4:30-6:30, 9-11am, noon-4
48.93S	6.132	CHNX	Halifax, N.S., Canada	pm, Sun 5-7, 10am-2pm. 7am-11:15pm; Sat 8am-11:30pm; Sun 12-11:15pm (Sun.)
48.94S	6.13	VP3BG	Georgetown, B. Guiana	10:15-11:15am, 3:45-7:45pm ex.
48.94	6.13	LKJ	Jeloy, Norway	10:30am-5pm. (lam)
48.94V	6.13	COCB	Havana, Cuba	10am-11pm; Sun 10am-9pm; ir to-
49.00	6.122	FK8AA	Noumea, New Caledonia	Wed/Sat 2:30-3:30am.
49.00V	6.122	HP5H	Panama City, Panama	6-10pm; to mid. irreg.
49.02	6.12	HI9T	San Cristobal, D.R.	Who knows correct sked?
49.04B	6.117	XEUZ	Mexico D.F., Mexico	9am-1pm, 7pm-2am.
49.10	6.11	GSL	Daventry, England	6:20-8:30, 9:20-11:20pm. (pm)
49.14	6.105	HJ6ABB	(FAB), Manizales, Colom.	5:30-10pm ex. Sun; Sat to 11
49.18	6.10	W9XF	Chicago, Illinois	4-6:50pm (Sat to 5:30), 1-2am.
49.18V	6.10	YUA	Belgrade, Yugoslavia	1-3, 6:30-8:30am, 12-6:30pm
49.20S	6.097	ZRK	Klipheuveel, S. Africa	12-4pm; Sun. 12-3:20pm.
49.20S	6.097	ZRJ	Johannesburg, S. Afr.	11:45pm-11:30am inter. ex. Sat; Sundays 3:30-11:30am inter.
49.32	6.083	VQ7LO	Nairobi, Kenya	5:30-6, 11:15am-2:15pm; Tues/Th-
49.33	6.081	YV1RD	Maracaibo, Venezuela	5-10, or 11pm *(8:15-9:15am
49.34N	6.080	CRY9	Macao, Macao	Mondays 8:30-10am; Wed 8:30-910
49.35	6.079	DJM	Zeesen, Germany	4:50-10:50pm. (am)
49.37	6.077	OAX4Z	Lima, Peru	7am-1:30am ex. Sundays.
49.42	6.07	CFRX	Toronto, Canada	7:30am-mid; Sun. 10am-11pm.
49.46	6.065	SBO	Motala, Sweden	4:15-5pm.
49.46	6.065	HJ4DAC	Quibdo, Colombia	Heard testing late evenings. *
49.48	6.063		Tananarive, Madagascar	12:30-12:45, 10-11am; 2:30-4am
49.50	6.06	W3XAU	Philadelphia, Penna.	Irreg. at present.
49.50S	6.06	W8XAL	Cincinnati, Ohio	Sun 8am-noon; M/Th/Sa 5:45am-2am; T/W/F/ 5:45am-11pm-2am; W. 9pm
49.53	6.057	ZHJ	Penang, S.S.	6:40-8:40am ex. Sundays. (-2am
49.56	6.054	HJ6ABB	Manizales	5:30-10pm ex. Sun; Sat to 11pm. *
49.59YS	6.05	GSA	Daventry, England	10:45am-noon, 12:20-6pm.
49.59	6.05	HJLABG	Barranquilla, Colom.	11am-11pm; Sun 11am-8pm.
49.63	6.045	XETW	Tampico, Mexico	7-11pm.
49.67	6.04	WLXAL	Boston, Mass.	7-8:30, or 9pm ex. Saturdays.
49.67	6.04	W4XB	Miami, Florida	1-3, 9pm-mid; Sun 4-6, 9pm-mid.
49.67	6.04	YDA	Tandjong Priok, Java	4:30-10:30am & irreg.
49.73B	6.033	HP5B	Panama City, Panama	10:30am-2, 6-10pm.
49.75C	6.03	CFVP	Calgary, Alta., Canada	10am-2am. *
49.75	6.03	OLR2B	Prague, Czechoslovakia	1:55-4:50pm. (pm ex. Sun
49.75S	6.03	RV96	Moscow, U.S.S.R.	Sun 10-11am, 2-3, 4-5pm; 1-2, 4-5
49.81	6.023	XEUW	Veracruz, Mexico	10pm-1am.
49.83S	6.02	DJC	Zeesen, Germany	1-4:25pm.
49.83FX	6.02	HJ3CAX	Bogota, Colombia	5:30-11pm; Sun 6-11pm. *
49.92	6.01	OLR2A	Prague, Czechoslovakia	1:55-4:50pm.
49.92	6.01	CJXC	Sydney, Nova Scotia	7am-1:30, 4-8:30pm. (week
49.92	6.01	9MI	S.S. Kanimbla	7-7:30am, two or three times a
49.92V	6.01	COCO	Havana, Cuba	7:55am-midnight.
49.94	6.007	KYO	Rangoon, Burma	7-10am, 9-11pm (Sat 9:30-11pm)
49.94S	6.007	ZRH	Pretoria, So. Africa	11:45pm-12:45am ex. Sat, 10am- 3:30pm; Sun 9am-3:15pm.
49.94	6.007	ZRJ	Klipheuveel, So. Africa	3:30-4pm.
49.95V	6.005	CFCX	Montreal, Canada	7:45am-1am; Sun 9am-11:15pm.
49.95V	6.005	HP5K	Colon, Panama	7-9am, 12-1, 6-11pm.
49.99	6.002	CXA2	Montevideo, Uruguay	5:30-10:30pm.
50.00	6.00	XEBT	Mexico D.F., Mexico	10am-1:45am. (-1-2, 3-6pm.
50.00	6.00	RV59	Moscow, U.S.S.R.	Sun 10-11am, 1-2, 3-7pm; Weekdays
50.20	5.977	CS2WD	Lisbon, Portugal	2:30-5:30pm; Sun/Thurs 6-7am.
50.21	5.975	OAX4P	Huancayo, Peru	9-11pm. (9:30p
50.22	5.973	YV5RC	Caracas, Venezuela	4-10pm; Sun 8:30-11:30am; 3:30-
50.42	5.95	HH2S	Port-au-Prince, Haiti	6-10:15pm ex. Sun.
50.51	5.94	TG2X	Guatemala, Guatemala	Mon/Thur 9-11:30pm; Sa 10pm-mid
50.55	5.935	YV1RL	Maracaibo, Venezuela	11am-1pm, 4:30-10:30pm.
50.68	5.92	YV4RH	Valencia, Venezuela	5-9:30pm.

# TRANS-ATLANTIC BROADCAST-BAND RECEPTION CHART

(Compiled at IDA International CBB Reception Posts of E.B.Roberts, Danvers, Mass; W.Reichardt, Reading, Mass., and R.H.Tomlinson, Portchester, N.Y.)

NOTE: All stations listed below were recorded with meter readings of QSA5/R7 to 9, between the dates of December 24, and January 15, 1939.

Kc/s	Station	Periods Best Heard		Kc/s	Station	Periods Best Heard	
		A.M.	P.M.			AM.	P.M.
<b>LONG-WAVES</b>							
160	Hilversum 1	2:40-4	2-6:40	904	Hamburg	12-5	4-6
172	Moscow 1	12-1	3-6, 9 $\frac{1}{2}$	913	Radio-Toulouse	3-4	3:30-7
182	Radio-Paris	1:30-3	3-7	932	Brussels 2	1:30-2:30	5-6
183	Ankara		4-5	950	Breslau	2-4	
191	Deutschland-sender.	12-3	4-6	959	Poste Parisien	1:30-5	3:30-7
			4-7	986	Torun	1:05-1:30	
200	Droitwich		4-7	995	Hilversum 2	2:40-4	
208	Reykjavik		4-6:30	1013	England	5:15-5:40	4-7
232	Luxembourg		4-6:30	1031	Konigsberg	4-4:45	
				1040	Rennes	1:20-4	
<b>MEDIUM-WAVES</b>							
546	Budapest	12:45-1:30	5-6	1077	Bordeaux-Laf.	1:30-3	3:30-6
556	Beromunster	12:35-1	4:30-5	1095	Normandie	1:30-4	3:30-8
574	Stuttgart	12-4	4-6	1095	Vinnitsa (RV75)	12-12:25	
638	Prague 1	12:45-4	4-5	1104	Kuldiga	11:45-1	
648	Lyons PTT	1:30-3	4-6	1104	Tripoli	1:45-2:30	3:30-6
658	Cologne	1:05-4	4-5	1122	Stagsshaw	5:15-5:30	4:30-7
668	N.Regional	5:15-5:25	4-7	1131	Horby	1:20-2:05	4:30-5
677	Sottens		4:35-5	1176	Copenhagen	1-2	5-6
695	Paris PTT	1:30-4	4-6	1185	Nice	1:30-3	4-6
740	Munich	1:05-3		1195	Frankfurt	12-4	4-7
749	Marseilles	1:30-3	4 $\frac{1}{2}$ -5 $\frac{1}{2}$	1213	Lille	1:30-3	4-5
767	England	5:15-5:30	4-7	1222	Rome 2		4-5:30
776	Toulouse PTT	1:30-4	4-6	1267	Nurnberg	12-2	5-6
785	Leipzig	12-4	5-6	1276	Varna	12-12:45	
832	Stavanger	Su.2:30-4		1330	Germany	1-2	
841	Berlin	3-4		1366	Bordeaux S.O.	2-3	4-7
859	Strasbourg	1:30-2:30	4-5	1393	Radio-Lyons		4-7
888	Tunis	2-3	4-5	1526	Sweden	1:20-2:05	
877	England	5:15-5:30	4-7				

## == BROADCAST BAND DX NOTES ==

"Reception of European xmtrs. has been extraordinary of late, as good if not better than any period I can remember. Day after day, 50 to 60 stations as clear and strong as one could wish for. Steady signals from 12 to 4 a.m. and later. Stations by the score coming in as early as 4 pm. every afternoon." (Roberts-Mass). . . "The New Year started off with a bang as far as dx is concerned. Up to Jan. 8 I have actually heard around 150 TA stations, including such catches as Varna, Stara Zagora, Danzig, Odessa, Vinnitsa, Tunis, Sofia, Radio 37, Turi, Pori, Klaipeda, Bucharest etc. Without doubt this has been the most unusual and best TA reception period on record... Veri's have been received thus far this year from: 2NZ, 3WV, 3CV, 2ZB, 4SB, TIPG, 2BL, 3BA, 4ZB 3SR, 3GI, PRG2, Brussels 2, and YSS... ZNS heard on 799kC one night. LRA is on testing after 1 a.m. EST often. Long-waves are fair at times. Most remarkable is Ankara coming right through Radio Paris." (Reichardt-Mass). . . "Reception from Europe has been good with the outstanding stations logged as follows: Lille, Nice, P.P., Toulouse (776 and 913), Strasbourg, Marseilles, Rennes and Lyons (1398) in France; Frankfurt, Leipzig and Hamburg in Germany; Madrid (1095); Kuldiga (1104); Italians on 1104, 1140, 986 and 814; Berlin, Droitwich, Paris, Moscow, Lhati, Holland and Brasov on the long-waves. Also logged ZNS on 785, YV5RQ on 882 and Lima on 854. LR5 and LR6 are the best BA stations." (Tomlinson-N.Y.). . . "Aussies aren't much better than R5, and the JO's only slightly stronger. The only consistent ones from down under, exclusive of the Zedders are 4BH (1380), the best; 4QN, 2NR, 4QG, 4RK (when XENT is off), 2GZ, 2NZ, 2CH, 4AK and 2NC. The only consistent Japanese are JOAK1 & 2, JOIK and JOHK. Signals are best heard 2 a.m. PST" (Walcott-Calif). . . "KGU (750) tests irregularly near 5 a.m. EST" (Honda-Calif). . . "Veri's received recently are YSS and PRG2, the latter making my 10th SA veri! (See page 15)



International

Published Monthly Excepting July


  
 BLOOMINGTON, ILLINOIS, U. S. A.

Dx'ers Alliance

CHARLES A. MORRISON  
EDITOR

Volume 7

February, 1939

Number 2

## NEW MEMBERS

F.W.Norris, New York City, N.Y... Jos Hardy, Roxbury, Mass... J. Stanley Dep- tula, Southampton, Mass... E.Walker, Mid- dlesborough, ENGLAND... K.Miller, Chi- cago, Ill... J.G.Jenkins Jr., Glen El- lyn, Ill... D.Roneker, San Antonio, Tex- as... H.B.Schubert, Britt, Iowa... G.H. Crandall, Portland, Maine... R.R.Owens, Tulsa, Okla... C.E.Hempel, Berwyn, Ill... A.N.Willett, Oakland, Calif... Robt. L.Blanchard, Brooklyn, N.Y... E.Fuentes New York City, N.Y... W.W.Morris, De- troit, Mich... S.Koenig, New York City, N.Y... H.I.D.Levey, Baltimore, Md... Don Martinez, San Francisco, Calif... Edw. G.Ludtke Jr., New Orleans, Calif.



DX CORNER OF R.SHAFFAR, WATERLOO, IOWA.

## CHAPTERS

ACC (Detroit): MEETINGS HELD 3rd Tues. of month, 8pm EST, at the News Bldg: next, Feb.21. For further in- formation contact R.Verbrugge, 10904 East Warren, Detroit, Michigan.

BETA (NYC): MEETINGS ARE HELD ON alternate Saturday nights at home of Edw.Goss, 812 Prospect Place, Brooklyn: next Feb.4. All dx'ers in this area are cordially invited.

GOLDEN GATE: The first meeting of the New Year was held at the home of G.Sholin, IDA Gen.Mgr. for N.Calif, on the evening of Sat., Jan.7. Chapt. has been completely reorganized, and busi- ness will be handled exclusively by an Executive Committee with G.Sholin as Chairman, ex-officio. Time and place of meetings will be subject to change without notice, at least ten- tatively, and anyone interested should phone VAlencia 0612. IDA mem- bers in other parts of Northern Cal- ifornia, interested in organizing local chapters in their towns, should write immediately to G.Sholin, 55 La- pidge St., San Francisco, California.

REGINA JUBILEE (Regina): Chapt. is sponsoring a dx tip period over CKCK (1010), from 5:15 to 5:30pm EST. This program is by the courtesy of the RCA Victor Heintzman & Co, and anyone wishing further details about the program, or chapt. should contact J. C.Hodges, 1551 Elphinstone St., Regina.

SO.CALIF (Los Angeles): Chapt. is cooperating in the sponsoring of Good will programs broadcast over short wave station W6XKG, and dedicated to various foreign countries and sta- tions. All actual arrangements are in the hands of SC Chapt. Sec., Harold B. Clein, 1821 Santa Ynez St., Los Angeles who will also be glad to furnish any dx'er in the area information concern- ing SC Chapter.

SO.JERSEY (Philadelphia area): Meet- ings are held every Sat. evening at home of L.Cavileer, 1223 Keswick Ave., Haddon Heights, N.J. After the meetings there is a class in CW, radio service, and a gab fest. The chapter visits a ham shack or radio station once a month. Average attendance is 15 to 20; total enrollment of Chapt. is 21. At the last meeting the following offi- cers were elected: Pres, L. Cavileer; V.P., Wm. McMillan (W3BMA); Sec., D.Pow- ell; Treas. K.Morgan. All dx'ers in the area are cordially invited to the meetings.

WINDY CITY (Chicago area): Last meeting of the chapt. on Wed. Jan.11; was well attended. Next meeting will be held Wed., Feb.8, at 8pm CST, at the CENTRAL YMCA BLDG., 19 So. La Salle St. Chicago, Ill. All dx'ers welcome.

### ==RETURN POSTAGE BUREAU==

The Return Postage Bureau, 85 Fran- cisco Ave., Rutherford, N.J., has new price lists now available giving sep- arate prices for 1st class, and print- ed matter, mint stamps.

(Broadcast Band DX Notes cont. from page 13)- YSS (640) may be heard regularly from 8 to 10 p.m. CST, at which time they sign-off. Some evenings they give KFI a real struggle. Have also heard TIX, LR3 and the Colombian on 1104" (Gustafson-Ill). . . "Just received a veri' from PRG2. Have heard LRA testing, and reported to TIXD on the special" (Bradford-N.Y.). . . "CMCK (970) has been riding in right over WCFL in Chicago. TGW (1520) comes in good although there is some QRM from KITE on 1530. I am hearing an unidentified Spanish station on 990kC?" (Schubert-Iowa). . . "Am hearing a Baranquilla, Colombia, station on approx. 1180kC" (CLP-P.R.). . . "CMCF blasting everything off 810kC. Veri' has been received from PRG2, and also XEFV (1210), the latter stating I can take the letter to the "Barrel House" wine and beer depot, 109 Juarez Ave., Juarez, Chih, and get a 25% discount on all purchases" (Shaffar-Iowa)

#### "TREASURE ISLAND IDA DX FESTIVAL"

Tuesday, July 11, "Dx'ers Day" at the San Francisco Golden Gate International Exposition, has been set as the official date for the IDA DX FESTIVAL. The Golden Gate IDA chapter under the chairmanship of IDA executive G.C. Sholin, is making all arrangements for the entertainment of guests. Plans are under way for making this a day long to be remembered - a real dx'ers outing. In addition to visits to outstanding points of dx interest, the committee hopes for a special broadcast over GE's new S.W. station W6XBE, with as many delegates taking part as possible, and a real 'California Barbecue," to climax the day's activities. Special arrangements will be made for the entertainment of domestic, and foreign members coming from long distances, who will be visiting the "Exposition" for several days. Those driving through from distant points who are willing to pick up other dx'ers enroute to help share expenses should so register with IDA HQ as soon as possible. Each chapter is urged to have at least one member attend, if possible, and any members planning to attend should notify G.C. Sholin, 55 Lapidge St., San Francisco, Calif., at once. Members of other DX Clubs are cordially invited to attend the IDA DX FESTIVAL IN 'FRISCO ON TUES, JULY 11

#### SCOTT RECEIVER FOR SALE

For Sale- Scott 15 tube receiver in good condition, complete with console. Price \$60.00. For particulars write to W.C. Reichardt, 21 Grant St., Reading, Mass.

#### FORWARD AGAINST MAN-MADE QRM

The battle against man-made QRM goes forward. Latest organizations to get behind the movement are the Toledo Radio Club, the Cleveland Radio Club, and the World-Wide Dial Club. Enlist your Senators support at once.

#### = "SPATARI" = THE NEW RADIO LANGUAGE

Since our initial article concerning SPATARI- the new international radio language, appeared in the October issue of the Globe Circler, this worthy project has made great progress. Many publications have widely publicized the new language, among them: Radio Guide, Radio News, African Radio Announcer, Radio Guia, Southern Radio News, Radio Fortschritt, Ama-Touring the NRC News, and the RSSL Bulletin. Practically all dx organizations, including the IDA, ISWC, NZDXRA, NRC, JSWL and the WWDC, are endorsing SPATARI, and helping to promote its wide spread useage. Several radio stations have broadcast SPATARI programs or messages recently, among them W6XKG, W8XWJ, KSL, CFAC, TG1-TG2-TG3, CMHJ, and CMHM. SPATARI lessons are a regular feature of the KSL dx broadcasts, Thursdays at 2:45am, while SPATARI messages are a part of each goodwill program over W6XKG.

This language is simple and practical, requiring no study of grammar, or memorizing of vocabulary. It is not 'learned! It is a spoken code language, with which anyone can send or receive messages after a few minutes of study. SPATARI is based upon the 8 names for the notes of the musical scale, namely, DO, RE, MI, FA, SO, LA, SI and BO, which pronounced the same in practically every language have been combined into countless word forms, each in a definite, logical and yet absurdly simple sequence.

The Spatari Code Manual, which is the only equipment needed for coding or decoding messages in Spatari is being offered to the members of all participating clubs at the special absolute printing cost price of \$2 (8/-) each. To order a manual or for further information write to Professor Carlo Spatari, 27-20 25th Avenue - Astoria, New York. The IDA heartily endorses the SPATARI movement.

## BROADCAST STATION NEWS

AUSTRALIA NEW: ON THE AIR: 2FC (610), 10kW, testing; 2CY (850), Canberra, 10kW was opened in January; 3LO (770), Melbourne, inaugurated its new 10kW xmtr. on Oct. 29; 4AT (680), Queensland, 100w, opened in December; 6WN (790), Perth, using 1kw at present, will be increased in power to 10kW later... 3SH, Swan Hill, increased in power to 200w (Forrest, Tune-In, ADXC)

FRENCH W. AFRICA Construction has started on a high-power station for Dakar.

FRANCE "Radio Normandie," Louvetot, is now operating on 1095kc exclusively

INDIA NEW: VUA (1070, to be 1465 soon), 100w, Allahabad, operates daily 8-10am EST; A new 5kW station is to be erected in Travancore State... Due to the Govt. economy program the new stations scheduled for installation at Dacca, and Trichinopoly, will not be built for the present (Com. Bul.)

MEXICO XEL (1150), is now Mexico City's only all-nighter. XEM (1390), The Herald of the North, P.O. Box 233, Chihuahua, Chih., requests reports on its dx programs, Tuesday mornings to 4am EST. Power is 500w (Walcott)

N.Z. Now off the air: 2ZH (820), 2ZP (900), 2ZD (1170) and 2ZL (1240).

TUNISIA The new 20kW station at Djedeida, is operating on 868, not 870kc.

U.S.A. Calls issued for new stations by the FCC: KTOH, Lihue, Hawaii; WJLS Beckley, W. Va.; KFDA, Amarillo, Texas; KWAL, Wallace, Idaho; WCKY (1490KC), Covington, Ky., and KSTP (1460), St. Paul, Minn., have each been authorized to boost power to 50kW. . . The new Oklahoma State Network, which is now functioning comprises the following stations: KVSO, Ardmore; KASA, Elk City; KCRC, Enid; KADA, Ada; WBBZ, Ponca City; KTOK, Oklahoma City; KGFF, Shawnee, and KBIX, Muskogee (The Radio Engineer)

### I. D. A. INTERNATIONAL FRIENDSHIP PROGRAMS

FEB. 5, SUNDAY, 1-2:30am EST NRC Santiago, Cuba 750kc CMKW

FEB. 8, WED. From 5:45am EST on, Lincoln, Nebraska 770 KFAB

FEB. 8, WED. 3pm EST, Los Angeles, Calif. 25950\* W6XKG

Good-will broadcast dedicated to YSD and El Salvador.

FEB. 11, SAT. 2-4am EST, NRC Camaguey, Cuba 1070 CMJW

FEB. 12, SUN. 3-4am EST, IDA Akron, Ohio HT 1320\*# WADC

FEB. 12, SUN. 10-10:15am EST, IDA RIGA, LATVIA RL 28080 YL2CD

(To be repeated on Sun, Feb. 26, 10-10:15am EST, if conditions for the first broadcast were favorable). A real feature IDA DX broadcast including greetings to IDA, and a description of ham radio in Latvia. Send reports accompanied by an IRC, to Arvids Vitolins, Miera iela 52-5, Riga, Latvia. Add Latvia to your log!

FEB. 15, WED. 2pm EST, Los Angeles, Calif. 25950\* W6XKG

Good-will broadcast dedicated to XEBR, and Mexico.

FEB. 19, SUN. 5:20-6:20am EST, IDA Ciudad Trujillo, D.R. HT 6630 HIT

FEB. 22, WED. 3pm EST, Los Angeles, Calif. 25950\* W6XKG

Good-will broadcast dedicated to YN3DG, and Nicaragua.

MAR. 20, MONDAY, 1-2am EST, IDA San Salvador, El Sal- 7894 YSD

IDA vador. LA 640 YSS

#### == TIPS BROADCASTS ==

1st & 3rd Sundays monthly, 2-4am EST, Baton Rouge, La. 1120 WJBO

Tuesdays, 5:30-6pm EST (IDA Tips) Schenectady, N.Y. 15380/9530 W2XAD/F

Tues. & Thurs., 12:45-1pm EST, Kansas City, Mo. 26450 W9XA

Thursdays, 2:45-3am EST, Salt Lake City, Utah 1130\* KSL

NOTE: Programs arranged by: HT, Herb Tucker; LA, L. Ambrosius; RL, R. Legge.

\* Special announcements and items in SPATARI, the new radio language.

# Date tentative. Your cooperation in reporting these programs will be sincerely appreciated. Will any listeners who heard the broadcasts of EAJ7, Radio Strasbourg, or CMAB, please write to IDA Programs Director, Herbert Tucker, 57 Kenilworth Drive, Akron, Ohio.

### I. D. A. EXCHANGE CORNER

P.J. Montenegro, M., Este 6 #113-bix, Caracas, Venezuela, would like someone to correspond with him in English (IGE). . . Wm. C. Palmer, 7240 Ridge Road, Parma, Ohio, will exchange SWL cards with anyone in the world. . . If you like to correspond, and swap, with dx'ers in Foreign countries join the International Round Table, W.H. Stark, 2117 N. 62nd St., Wauwatosa, Wisconsin.