

# The Scott News

Vol. 5

MARCH, 1933

No. 2

## I TAKE 20,000-MILE CRUISE TO GIVE RADIO ANOTHER HARD RECEPTION TEST

In my eight intensive, eventful years in radio, I have never made a claim for my receiver that I had not *first proven* to my own satisfaction.

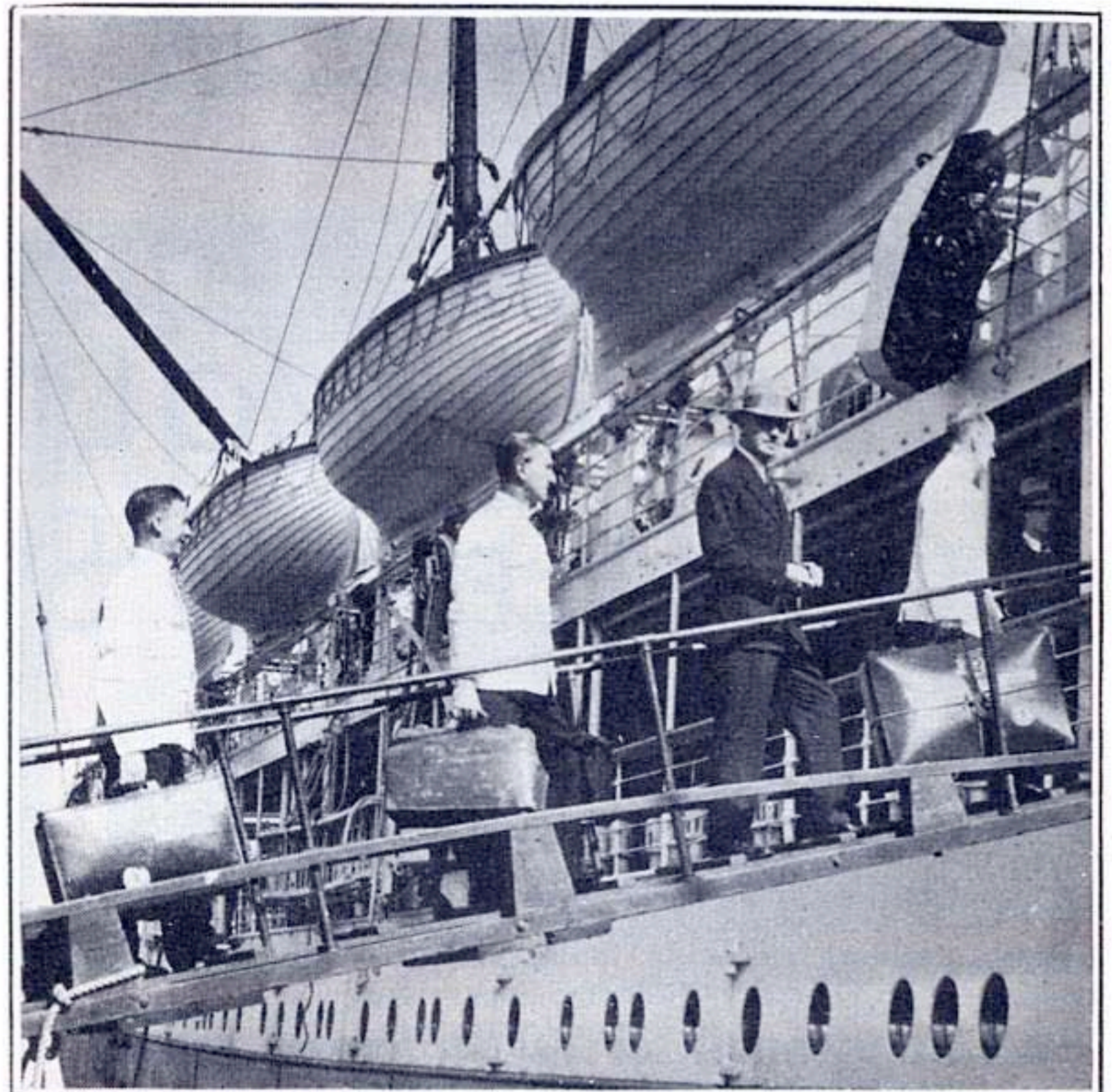
Those familiar with radio history know of the first World's Record 10,000 mile reception feat made by me through WGN in the early days of this great art.

It is of record now how for one solid year I logged in my Chicago home, every program put into the air by *any* station and made a phonograph record of it. I have *definitely* proved the reception.

For some time I have received requests for definite results from our receivers on shipboard. I should not definitely answer these requests nor make the claims I know my receiver justifies before *conclusively* proving them myself by actual test.

Therefore, long before you read these lines I shall be way out in the Pacific, aboard the good ship Maunganui with a Scott Allwave Deluxe Receiver with which I shall furnish dance music to my fellow passengers each night of the eighteen we are aboard, New Zealand bound.

I will thoroughly log each day's reception. Radiogram reports to the stations covered—principally WBBM, Chicago—will be made.



"BAG AND BAGGAGE" WE BOARD THE GOOD SHIP MAUNGANUI, UNION STEAMSHIP CO., AT SAN FRANCISCO

Thus, will I again prove, beyond question or doubt, the world-wide range of my receivers, even under the adverse conditions surrounding reception aboard an ocean going liner. And, again, this proof will be real proof, based upon facts and actual experience, thoroughly done and not on hearsay nor occasional reports by exceptional operators.

When I return, I will report the results, fully, truthfully, definitely verified.



## Postal Telegraph

THE INTERNATIONAL SYSTEM

Commercial Cables    Mackay Radio    All America Cables

RECEIVED AT

**1821 WILSON AVENUE**

**SUNNYSIDE 4109**

STANDARD TIME INDICATED ON THIS MESSAGE

This is a full rate Telegram, Cablegram or Radiogram unless otherwise indicated by signal in the check or in the address.

DL	DAY LETTER
NL	NIGHT LETTER
NM	NIGHT MESSAGE
LCO	DEFERRED CABLE
NLT	NIGHT CABLE LETTER
WLT	WEEK END CABLE LETTER
	RADIOGRAM

Form 15    **NC47 26 RADIO**    **VIA MACKAYRADIO=SS MAUNGANUI VIA**

**SANFRANCISCO CALIF 21 1010P**

**SCOMACO ( E H SCOTT RADIO LAB INC=**  
**4450 RAVENSWOOD AVE ) WBBM CHICAGOILL=**

ROUND TOWN ORCHESTRA CAME IN SO STRONG TONIGHT USED MUSIC FOR  
 PICTURE SHOW EVERYONE ON BOARD AMAZED AT CLARITY AND VOLUME=  
**SCOTT.**

Telephone Your Telegrams to **Postal Telegraph**

# CONCERT VOLUME ON SHIP 4000 MILES *from* STATION WBBM!

As these lines are written Mr. Scott is already nearing New Zealand. The radiogram from him reproduced above came to us exactly one week from the day he sailed from San Francisco aboard the Union Steamship Company S S Maunganui. It tells its own amazing story! Broadcast reception, aboard a ship, 4000 miles!

Here's another interesting radiogram from Mr. Scott, reaching us on February 20th:

“OUT NEAR MIDDLE OF PACIFIC OCEAN AND APPROXIMATELY FOUR THOUSAND MILES DISTANT FROM CHICAGO EVERY WORD OF ANNOUNCEMENTS AND DANCE NUMBERS COMING IN LOUD ENOUGH TO BE HEARD ALL OVER SHIP ASK BEN POLLACK TO PLAY WABASH BLUES AGAIN TOMORROW NIGHT AND DEDICATE IT TO CAPTAIN TOTEN AND OFFICERS ON MAUNGANUI.”  
**SCOTT**

Then, the next day came this thrilling report:

“NOW NEARING EQUATOR YET ROUND TOWN PROGRAM CAME IN AGAIN TONIGHT WITH TREMENDOUS VOLUME STOP STARTING TOMORROW WILL TEST YOUR DAYLIGHT RANGE.”  
**SCOTT**

Going on, on the 24th we hear:

“CROSSED EQUATOR THIS MORNING ALTHOUGH STATIC BAD TONIGHT CAPTAIN TOTEN SELF HEARD CLEARLY YOUR ANNOUNCEMENT AFTER POLLACKS CLOSING NUMBER ALSO SECOND ANNOUNCEMENT AFTER HERBIES FIRST NUMBER.”  
**SCOTT.**

The results continued on the same for the next three days, with the passengers on the Maunganui nightly dancing to the tuneful melodies of WBBM'S popular 'Round the Town program.

Then on the 26th we hear from Mr. Scott again:

“NOW OVER SIX THOUSAND MILES DISTANT ALTHOUGH STATIC BAD TONIGHT YOUR SIGNAL CAME IN SO STRONG LOGGED PROGRAM COMPLETE STOP ANNOUNCEMENT TO ME TWELVE THIRTY AND TWO CAME IN PERFECTLY STOP GENTLEMEN FROM GEORGIA STOP I AM FALLING STOP SHINE ON HARVEST MOON FEW OF NUMBERS PLAYED BELIEVE YOUR SIGNAL COULD BE PICKED UP IN MARS IF THEY HAD SCOTT RECEIVERS.”  
**SCOTT**

The next day, the 27th, we have this radiogram:

“THANK YOU TED LEWIS STARTED TONIGHT ON LAST LAP OF VOYAGE TO NEW ZEALAND YOUR SONG TO ME WHAT HAVE I GOT TO LOSE CAME IN FINE AND ACCEPT WITH PLEASURE YOUR INVITATION.”  
**SCOTT**

That is all, as we go to press. Think of it, a 25,000 watt station heard over 6000 miles on the broadcast band! May we not have hats off to WBBM, to Mr. Scott and last but not least to the SCOTT ALLWAVE DELUXE RECEIVER!

We leave this now as the beginning of the next world's record of long distance reception, Mr. Scott will have established at the conclusion of his trip, the full results of which will be reported in Scott News for April.

# WE EXPAND OUR FACILITIES and WORKING SPACE

It is a significant fact that despite the poor conditions generally during the past two years, our business has steadily forged ahead. This ever increasing demand for our receivers is, we believe, signal testimony to the quality, value and operating capabilities of the receiver itself.

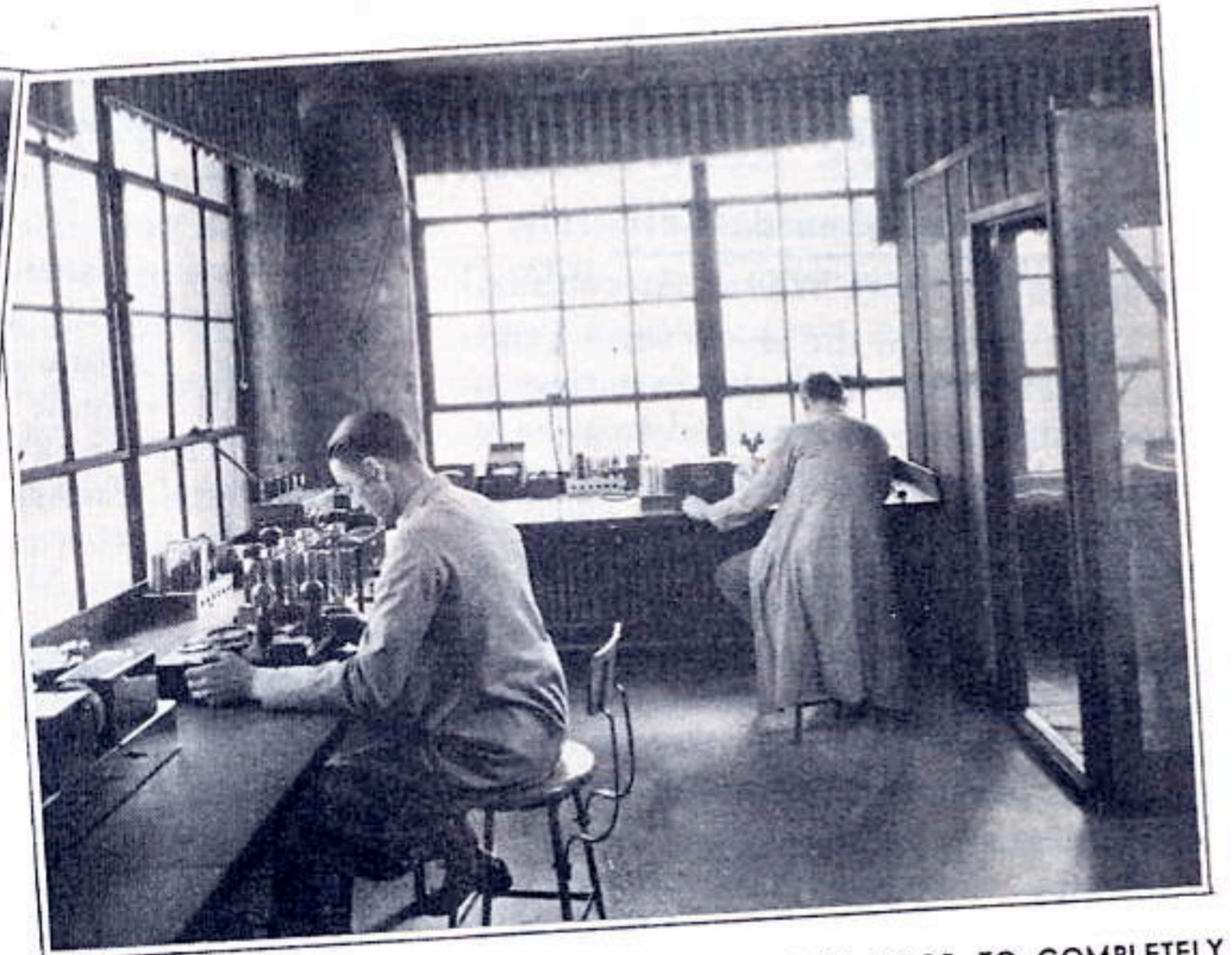
The acceptance of the DeLuxe model as the outstanding radio receiver of all times brought it a quick popularity that overtaxed our previous facilities. So,



MR. SCOTT'S OFFICE "WHEN HE IS IN IT, WHICH IS SELDOM"



THE GENERAL OFFICES



CORNER OF RESEARCH LABORATORY. AT RIGHT IS DOOR TO COMPLETELY SHIELDED ROOM WITH COMPLETE EQUIPMENT OF SIGNAL GENERATOR, 470-KC OSCILLATOR AND THE MOST ELABORATE APPARATUS TO BE FOUND IN ANY RESEARCH LABORATORY ANYWHERE

on January 1st we were obliged to double our working space and add somewhat to our staff. This last step is a most difficult one inasmuch as we may permit only skilled, trained, experienced radio engineers to build our receiver to the high standards of quality we have established and the rigid guarantees we maintain.

On this page you may see a part of our new Offices, the New Research Laboratory, the new Studios and Mr. Scott's new office. In the next issue we will show you "behind the scenes" in our new, improved Laboratories where your Scott Allwave DeLuxe receiver will be custom built.

Corner of Our Main Studio to Accommodate Visitors to Our Laboratories



# LET SCOTT OWNERS THEMSELVES PROVE THE POWER, SELECTIVITY AND TONE FIDELITY OF THE SCOTT ALLWAVE DELUXE

## Scott Allwave DeLuxe Best Yet

"I must admit that the SCOTT ALLWAVE DELUXE is the finest radio I have ever listened to and it certainly comes up to all that you claim it to be. I have installed it in my brother's home which is only a few yards from the electric train lines and I am glad to say that it does not pick up any noise from the passing trains.

"Regarding the tone — Well, nothing could be finer. In fact, it is perfect in every way. I first started in with the World's Record Super Eight then I have had everyone of your sets up to date and the DELUXE is the best of a wonderful lot."

Fred Wolfe, Alameda, California.

## Reception on Short Waves Astonishing!

"The results on the short wave bands were astonishing. For the first time in my experience I am enabled to tune in foreign short wave stations loud enough and clearly enough to enjoy the program instead of merely DX'ing for call letters.

"I did not expect much in the way of European reception during these Winter months which usually are not satisfactory but they come in on the DELUXE just like broadcast stations a few hundred miles away.

"During the week I have received and enjoyed: Rabat, Morocco, France, England, Germany, Spain, Portugal, Denmark, Guatemala, Venezuela, Colombia, Australia and Italy."

J. Q. Stansfield, Washington, D. C.

## Germany — England — Italy — Holland Portugal — Venezuela — Australia Verify Reception Reports

"So far I have received reports of verifications from Germany, England, Italy, Holland, Portugal, Ecuador, Venezuela, and Australia.

"On one particular day where we had a warm spell this kind of weather was great for reception on short waves. I listened to Germany, France, England and Italy on the 25 meter band and they all came in with quality and volume to compare very favorably with our local station. By that I mean, reception was very clear, and loud, no noise and not a bit of fading.

"The best heard stations were: DJD, Germany, PHI, Holland, Pontoise,

France, 12RO, Italy, GSD and GSA in England."

T. W. Chlosta, Williamansett, Mass.

## Excellent Tone Quality

"My receiver is operating very satisfactorily and so far has lived up to your claims. We have succeeded in hearing, amongst others, Berlin, Paris, Madrid, Rome, Caracas, and Buenos Aires with good loud speaker volume. The tone quality is unusually good and we are very well pleased with it."

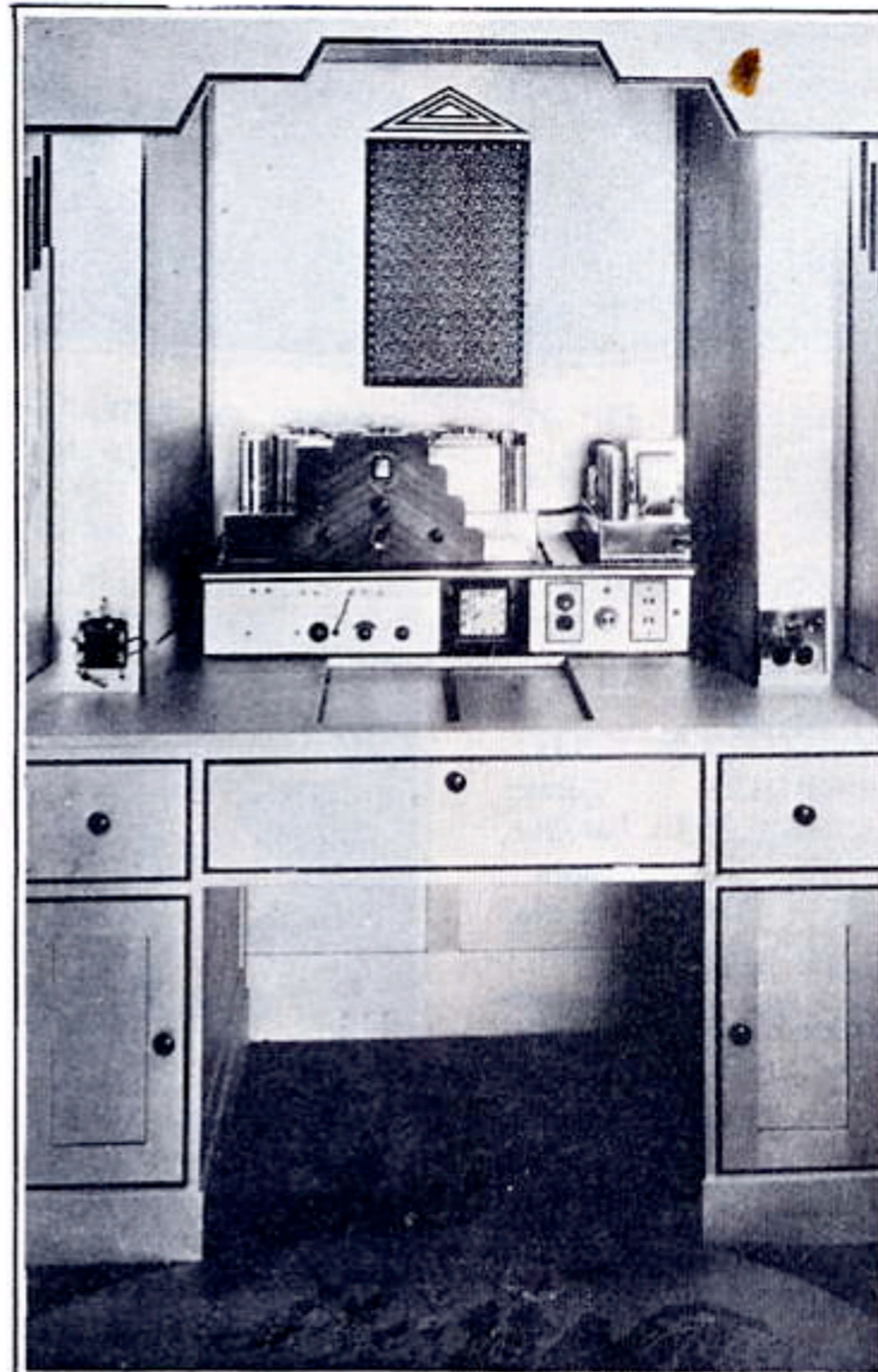
F. E. Godwin, Detroit, Michigan.

## Delighted With DeLuxe

"I want to let you know how delighted I am with your new DELUXE Receiver. I am having excellent results.

"The following list of stations I am receiving continuously and generally with full volume: France, Germany, Italy, Winnipeg, Bermuda, Spain, Switzerland, England as well as many of the U. S. short wave stations."

W. G. Berman, New Brunswick, N. J.



SPECIAL INSTALLATION OF HIS  
SCOTT DELUXE RECEIVER  
BY FRED BAUM, ST. LOUIS, MO.

## 'Round the World Reception Clear as Local

"I have just had the SCOTT ALLWAVE DELUXE RECEIVER one week and have received the following stations just as plain and loud as local stations: Germany, England, Italy, France, 12RO, Rome, Canada, Spain, Denmark, Australia, Venezuela and also a number of American short wave stations."

R. Burdick, Union, N. Y.

## Broadcast Band Perfect

"The SCOTT ALLWAVE DELUXE couldn't be finer and Europe is just a matter of setting the dials, and there it is, with plenty of volume.

"England, Spain, Morocco, Australia and South America come in with a bang, and am I proud, well I'll say I am. The broadcast band is perfect and brings in just about everything there is."

C. R. Lynch, Detroit, Michigan.

## Receives 218 Stations on Broadcast Band S. W. Reception — Wonderful

"Since receiving my DELUXE SCOTT I have had the most pleasure that any radio has ever given. To date (2/7/33) I have received 218 stations on the regular 200-550 meter band; 18 being on the Pacific Coast.

"Now About S. W. Reception — Wonderful! To date I have received PLE, Pontoise, DJB, HVJ, GSE, 12RO, GSD, DJD, VE9JR, CT3AQ, EAQ, CTIAA, GSC, HBL, DJA, GSA, VK3ME, Rabat, HV3AB, YV1BC and many U. S. stations.

"You advertise world-wide reception daily! I have *never missed* a day that foreign stations have been received."

E. C. Balch, Corapolis, Pa.

## Hears France — Italy — England Germany — Venezuela and Canada All in One Day

"Just listened to England sign off 2:00 P.M. with the chimes. Today I listened to France, Italy, England, two stations in Germany, Venezuela and Canada.

"I get Spain pretty regular, also quite a few Spanish speaking stations in the evening but cannot get the call letters."

E. P. Riedel, Appleton, Wisconsin.

# WORLD'S FINEST BROADCAST RECEIVER

## ASIDE *from* SHORT WAVE FEATURE

SAY SCOTT OWNERS EVERYWHERE , , , ,

### Very Sensitive and Selective

"For the regular broadcast band it is selective and very sensitive and the quality of reproduction is very good. I get WSM, WAAF, WGN, WSB, WFAA, KWKH, WENR, WJZ, WOA1, XEW and many other Mexican stations as well as Canadian."

T. A. Bedford, Sacramento, Calif.

### The Best Obtainable

"On the general broadcast band I have been very successful and I am satisfied to know that I have the best receiver obtainable for this kind of reception."

M. M. Kipfer, New Kensington, Pa.

### Good Results in Difficult Spot

"Received the Scott DeLuxe Radio which we ordered today and we sure are well pleased with it. Within a half hour after we got it we were bringing in short wave stations and real clear too."

Elmer Johnson,  
Iron Mountain, Michigan.

### A Well Built Machine

"I like the radio very much. Am not a short wave fan, but have brought in London, Paris, Madrid, Rome, Germany and Australia. I do not spend much time with it only in the evenings, and like the tone on the long waves. It is certainly a well built machine."

H. H. Brewer, Presque Isle, Maine.

### Gets Spain Consistently

"I have been wanting to write you for a long time but have been having too much fun with my 'SCOTT.' It certainly is a wonderful radio. Having never tuned short waves before it was quite some time before we got any foreign stations except Australia (VK2ME). This station came in the first Sunday morning I had the set and was I thrilled.

"However, lately we have been doing some more traveling as we have logged EAQ, 12RO, GSC, DJB, HKD, YV1BC, not to mention the American, Canadian and Mexican short wave stations. Spain is the most consistent station for Europe.

All the stations come in loud or they don't come in at all."

Sidney Havenar, Lake Charles, La.

### Excellent Results on France

"I wish to say that I have been very successful in tuning in FYA, Pontoise, France on the 25.20 meter length, and received several excellent programs."

James Stewart, Yakima, Washington.

### Zeesen, Germany 100 Feet Away

"This morning I listened to ZEESEN on 19.7 meters with tremendous volume and clarity. With the set's local distance switch set on the local tap. ZEESEN could be heard 100 feet from the set with the volume control turned about half on. This is indeed remarkable reception and one must actually hear it to believe it can be done. The tone was so perfect and the carrier so steady and positively quiet that it sounded like

WVL, a 10,000 watt station in New Orleans."

F. L. Pullen,  
Baton Rouge, Louisiana.

### 10 KC Selectivity 100% Correct

"Without question this is the most sensitive radio receiver I have ever seen, and frankly I have owned or had available practically every set built. Local service men also concur with me in this thought. As to selectivity, I find your claim of 10 KC selectivity is 100% correct."

S. G. Persons,  
Montgomery, Alabama.

### Did Not Believe Radio Had Reached Such Degree of Perfection

"Ten years' experience with radios of every type and make has made me a bit skeptical of all claims you make. I did not believe a radio receiver had reached quite the degree of perfection you claim for the DELUXE. Here's my apology—your set is all that you have claimed for it."

H. C. Jung, Berkeley, California.

### Foreign Reception Any Day

"I am more and more pleased with my DELUXE RECEIVER every day. On the regular broadcast band I have heard one or more stations on every channel. I hear Californian stations almost every evening and Mexico every night. On the short wave bands I can get foreign reception any day—France, Italy, England, Germany, and Spain come in good and I am also able to get the two Australian stations whenever they are on the air.

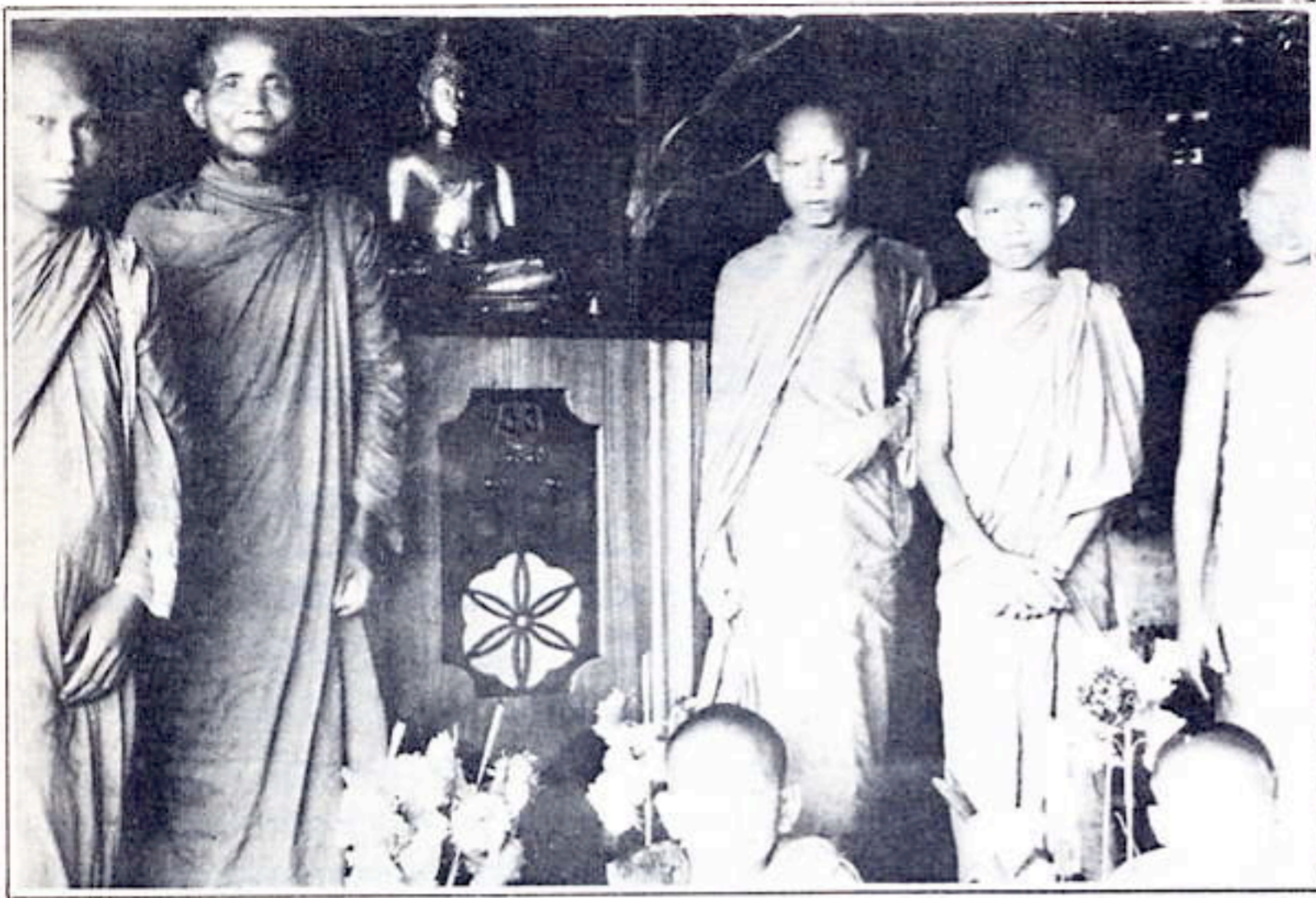
"My new Receiver came on Wednesday. We had it set up in about an hour and never before have any of us heard such wonderful tone or so much power. The next day I began to use the short waves and heard Italy, England, France and on Saturday morning I heard VK3ME, Melbourne and this morning VK2ME at Sydney came in strong—also Germany."

R. P. Hess, Meriden, Conn.



BEAUTIFUL MODERNISTIC SETTING FOR HIS  
SCOTT DELUXE

BY G. W. ROSE, WICHITA, KANS.



"Radio Prayers" in SIAM

"When Mr. George Wyga of Lampang, Siam received his set, two tubes were faulty so that his reception was at a standstill until he could secure replacements from a nearby city. We now quote from an interesting letter he writes in connection with this incident.

I am sending you herewith a couple photos which you will probably appreciate very much. The natives 'round here kept on telling me that all my trouble was due to the fact that a malicious devil got into my set, probably in Bangkok.

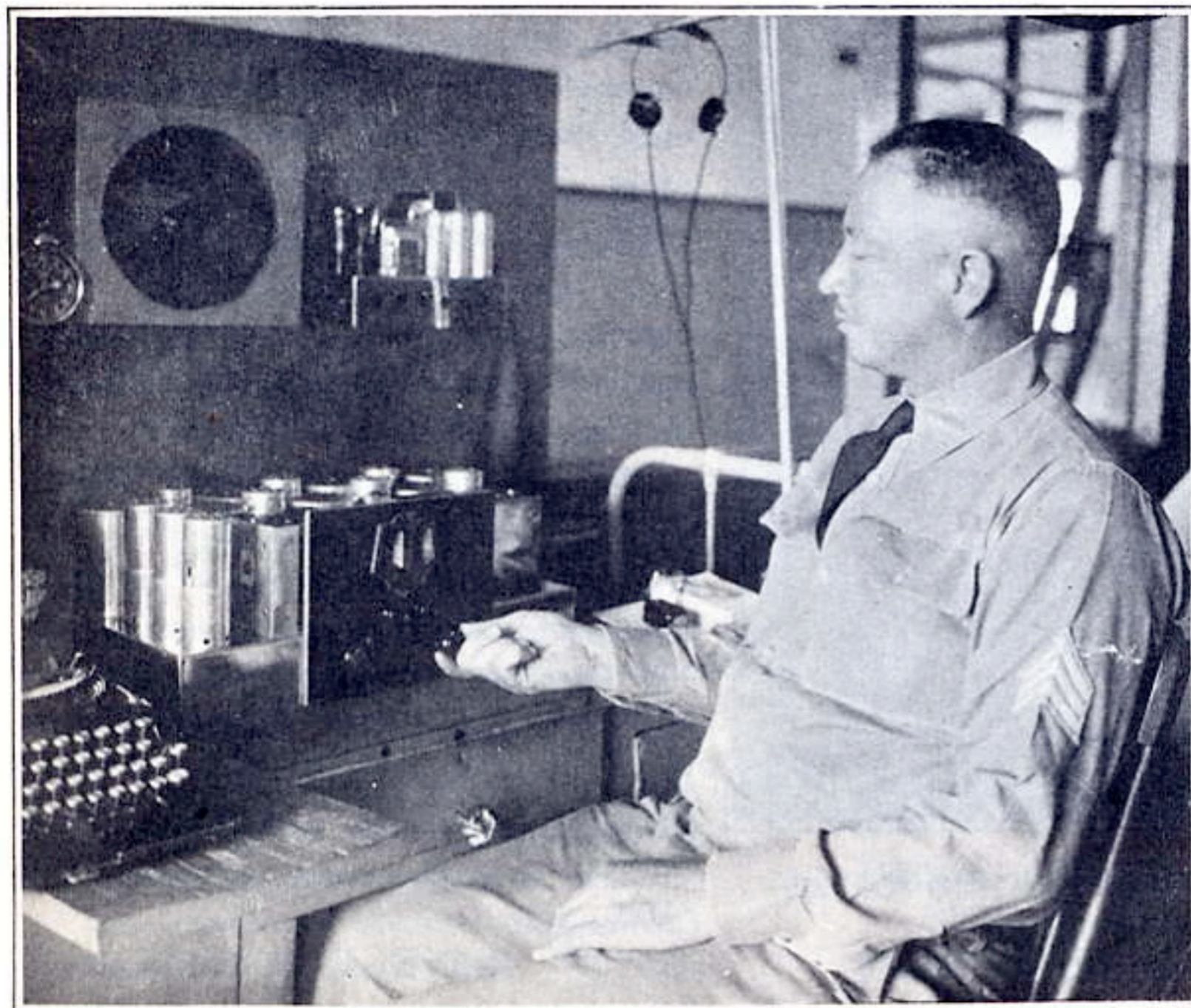
'In order to propitiate this devil I should ask the local priesthood down to my place in order to hold prayers over the Scott receiver and then of course give a big feast afterwards. I realized that here was a chance of getting a remarkable photo, so I told them to make all arrangements.

'I connected up the gramophone in another room to the set and when I considered the prayers had lasted long enough, I ordered my boy to play a few records.

'When the set burst out into music without any apparent effort on my part, they stood for a little while dumbfounded and then started to dance and yell. They were of course all certain that their prayers had met with the greatest success.

Mr. George Wyga, Lakon Lampang, Siam.'

"P. S.—Let me assure you that I am very pleased with the reproduction and the general appearance of the set. I really do not understand how you can produce such a splendid set for so little money."

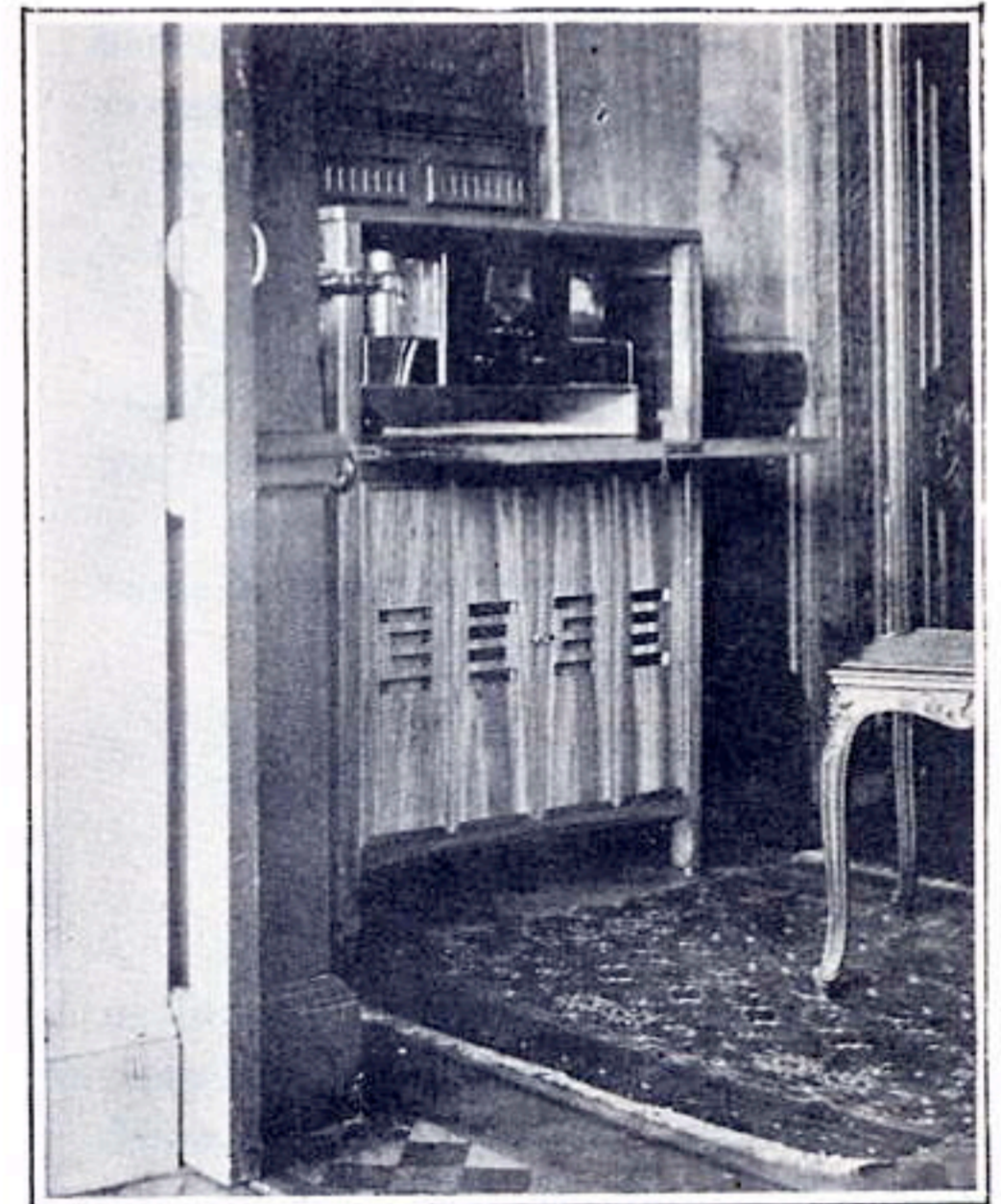


## 'ROUND THE V SCOTT RECEIVERS IN DAILY TOUCH WITH

In virtually every land on the globe you will find Scott Receivers. In the remote isolated far away places of the world its sensitivity and unparalleled reception range brings daily the voice and music of civilization.

Thus, the world indeed is a small place in which to live if you have a Scott Receiver!

Last year, we shipped receivers to over 76



### BELGIUM — Gets U. S. Strong

"Being rather young in S.W. and having started in the beginning of the bad season I haven't got much. 2RO Rome, can't be better around 21 meters and U. S. A. stations and a Mexican one. U. S. strong. Many others such as Radio Havoc, New York Radio, Paris, Russian. Italian. The best one Zeesen, Germany. Schenectady at midnight, fading but good. Palma de Malorca (Spain). All the amateurs. Rome on 42.70 meters or 43 meters. Moscow (Russia) on 50 meters. Vatican. U. S. W3XAL on 5 AM dance music but loud speaker fair.

R. Windfohr, Brussels, Belgium.

### HOLLAND — Surpasses Everything!

"Just one word to tell you, that the ALLWAVE receiver has come in, in splendid condition.

"I tried it on the long wave band and am really enthusiastic about selectivity and tone quality, which surpass anything I have seen or heard in all my experience.

Henri Meijer, Arnhem, Netherlands, Holland.

# WHOLE WORLD KEEP THEIR OWNERS TH ALL MANKIND » » »

foreign countries and rarely a week passes that this roster does not mount — more than 84 countries are now enrolled!

Mr. Scott's unique stamp collection drawn entirely from his own mail, now represents practically every country in the world.

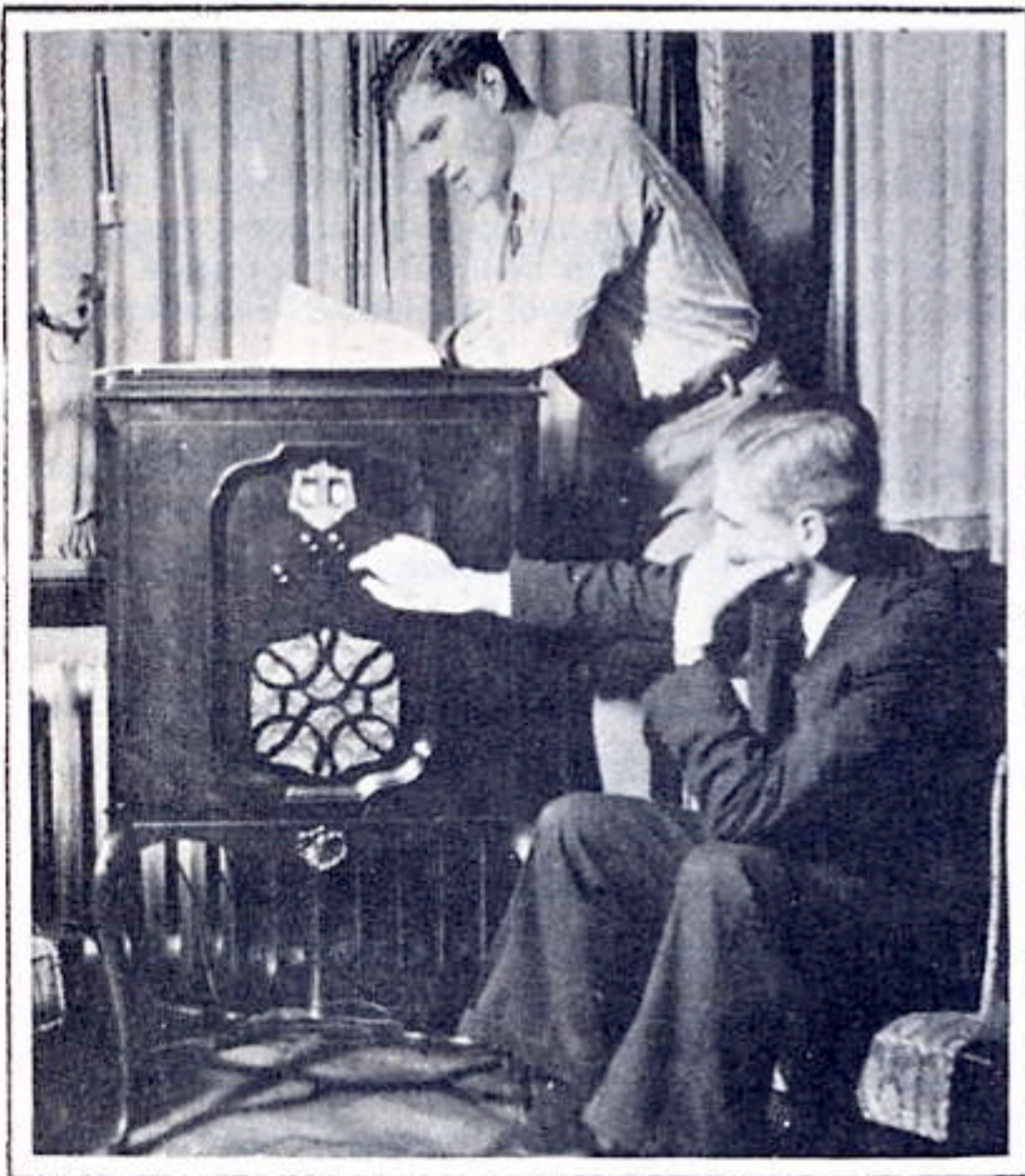
What more eloquent proof might one seek of the extraordinary operating capabilities of the receiver itself than this universal acceptance the world around!



MEXICO — His First Great Radio — GERMANY

"I wanted to buy the best receiver that is built nowadays, but as another make appealed to me more than your Standard model, on account of the simple switch device for short wave, I went to see and hear that particular make in operation. As I was leaving the store, the salesman told me: 'But you know, among ourselves, the Scott is better.' Then came out your new Deluxe model and I bought it without stopping to think. I have not been disappointed with it. The receiver gives whatever results can be secured. Altho located nearly in the center part of Mexico, I have been able to hear daily Germany, France, Spain and Australia on definite days. And this is my first great radio. I am still unfamiliar with the tuning of stations. The tone is faultless. The radio is still not definitely installed, because I am traveling and I have already shipped it to Germany, in my home country."

Baron V. Turckheim, Mexico City, Mexico.



## NORWAY — Most Sensitive Ever Handled

"With regard to the Scott Allwave Receiver I don't think I say too much when I say it is the most sensitive set I have ever handled. The tone quality is also very good."

Ragner Stenersen, Vinderen V. Aker, Norway.

## PHILLIPINES — Will Never Buy Any Other Receiver

"I do not know, Sir, just how to go about expressing my comments, only I will say that I do not see how any other set can outperform a Scott Receiver. Russia, France, England, comes in just wonderful. I will never buy any other receiver but a Scott as long as they make them.

"You are obliged Mr. Scott to publish my comments, I am with you Sir in your desire to see the very best appreciation of the Scott in any country, I am very sorry that I could not get it sooner, but our Army officers are very careful about pictures on the Fort, all pictures are required to be censored, before they can leave the Fortress."

Gratefully and cordially yours,  
Frank Sublette — U. S. Army,  
Sergeant Battery "F" 60th C.A.C.  
Fort Mills Cavite, P. I.



# RADIO BROADCAST ARTISTS AND OFFICIALS ARE ENTHUSIASTIC SCOTT OWNERS

**Columbia**  
BROADCASTING SYSTEM, INC.  
WESTERN OFFICE  
410 NORTH MICHIGAN AVENUE  
CHICAGO  
M-T-F 11:00-12:00

February first,  
1933.

Mr. E. H. Scott,  
Scott Radio Laboratories,  
4450 Ravenswood Avenue,  
Chicago, Illinois.

Dear Mr. Scott:-  
Just a word of appreciation for the satisfaction I am having in the using of your set. In the years I have been making and broadcasting radio programs, I have been wanting a radio set that would give me what I wanted. I have wanted a set that was precise, that would enable me to check my programs from a local station against an out of town station and know that I could get it as surely as I could a telephone number. I want you to know that I have it in your set and I desire to thank you.

So far, on the short wave band I have E A Q from Madrid whenever they are on, Venezuela, and have also heard Ecuador. In addition I have much fun listening to plane talks, amatuers, police calls, etc. I should probably have better reports on the short wave band, but have not had time to really devote myself to the proper workings of the set. But it is what I have been looking for ever since I entered the radio game, and once more, my sincere thanks for a radio instrument that is really dependable and accurate.

Sincerely yours,  
*Frank Westphal*  
Frank Westphal.

-7-



Scott receivers are the proud possessions of countless radio broadcast artists and officials. Typical of this class of owner and their attitude toward their Scott receivers are Frank Westphal, Guy Lombardo and J. Kelly Smith whose letters are here reproduced.

STATE OF ILLINOIS }  
COUNTY OF COOK }

February 10, 1933

I, E. H. Scott, President of the E. H. Scott Radio Laboratories, Inc., hereby affirm that the three letters reproduced on this page from Messrs. Frank Westphal, Guy Lombardo and J. Kelly Smith were absolutely spontaneous expressions of their opinion of their receivers, wholly unsolicited by me.

I further affirm that they ordered and paid for SCOTT ALL-WAVE DELUXE RECEIVERS in the ordinary process of our business without solicitation from us and the letters reproduced on this page were given by them without any promise either implied or actual, of remuneration of any kind whatsoever for them.

SIGNED: E. H. SCOTT

Subscribed and sworn to before me this 10th day of February, 1933.

ATTEST: E. B. BARNARD, Notary Public  
My commission expires Nov. 8th, 1934.

**MUSIC CORPORATION OF AMERICA**  
312 WEST HANCOCK STREET  
CHICAGO  
PHONE STATE 1807

PARAMOUNT BUILDING  
NEW YORK  
PHONE CHICKERING 9400

OVATT BUILDING  
LOS ANGELES  
PHONE TRINITY 2263

ADDRESS REPLY TO NEW YORK

Mr. E. H. Scott  
E. H. Scott Radio Laboratories Inc.,  
4450 Ravenswood Avenue  
Chicago, Illinois

Dear Mr. Scott:

I want to take this occasion to tell you that the pleasure I have derived from my new Scott Radio, is far beyond anything I had anticipated. Being vitally interested in radio, I naturally pay particular attention to tone qualities of the various sets, and in my opinion, Scott Radio produces the finest and truest qualities of any radio I have ever heard. I do not think that the tone can be improved - it is already perfect. Scott Radio is more than an instrument - it is the product of a master craftsman and produces the true qualities of master artists.

Sincerely yours,  
*Guy Lombardo*

GL:CS



**WBBM**  
410 NORTH MICHIGAN AVE  
PHONE W-T-F 11:00-12:00  
CHICAGO

February 10, 1933

Mr. E. H. Scott  
E. H. Scott Radio Laboratories  
4450 Ravenswood Avenue  
Chicago, Illinois

Dear Mr. Scott:

I am getting a big kick out of my new Scott Deluxe All Wave Receiver. It is converting me into a confirmed enthusiast for the high frequencies.

I know that you will be glad to learn that I am having consistent reception, with good volume and quality, from practically every European Capital and several of the South American centers.

Last Sunday afternoon was especially interesting. I listened at will to 12 RO in Rome, FYA in Paris, GSC in London (broadcasting to the African Zone) and DJB in Berlin.

The short wave station, HJB, operated by the League of Nations and located in Geneva, Switzerland came in with all the volume and clarity of a local.

On last Tuesday night, I made an interesting recording of the opening and closing announcements together with the chimes of Big Ben from GSA in London, England on 49.6 meters. I would like for you to hear it sometime at your convenience. I believe that even you will be surprised at the distinctness and remarkable volume of this recording, although it is made on aluminum.

You are to be congratulated on designing and producing a radio receiver of such extreme sensitivity. But one other thing I cannot overlook, and that is the really marvelous tone quality of the receiver on the broadcast band. This alone would justify your receiver, even though the short wave feature were eliminated entirely.

Many thanks for the consideration and cooperation you have extended to me since I purchased my Scott.

With all good wishes,

Very sincerely,

*J. Kelly Smith*  
J. Kelly Smith  
Commercial Manager.

J  
K  
S



**CUSTOM BUILT BY**  
**E. H. SCOTT RADIO LABORATORIES, INC.**  
 CHICAGO U.S.A. SERIAL NO  
**L 61**

LICENSED ONLY FOR RADIO AMATEUR, EXPERIMENTAL AND BROADCAST RECEPTION UNDER THE FOLLOWING PATENTS OF RADIO CORPORATION OF AMERICA, GENERAL ELECTRIC CO., WESTERN ELECTRIC CO., WESTINGHOUSE ELECTRIC CO., AMERICAN TELEPHONE & TELEGRAPH CO. AND PATENTS APPLIED FOR BY E. H. SCOTT.

THE MANUFACTURE AND / OR SALE OF THIS APPARATUS DOES NOT IMPLY ANY LICENSE UNDER ANY PATENT RELATING TO THE STRUCTURE OR MANUFACTURE OF RADIO TUBES.

*"The Fine Things Are Always Hand Made"*

1171079	1387984	1508151	1618017	1740331
1191532	1398065	1520994	1631646	1770838
1201272	1401475	1537708	1639713	1795214
1211764	1403932	1544081	1702833	1811095
1234852	1426754	1558437	1707617	1849651
1251377	1447773	1559679	1714149	1852068
1273627	1459412	1573374	1728879	1868443
1297108	1465332	1574780	1734038	1869323
1313044	1465961	1611848	1734132	1878579
1329283	1477898			
1342885	1484605			
1349252	1491774			
1377405	1507016			
1385973	1507017			

*The* **SCOTT NEWS**

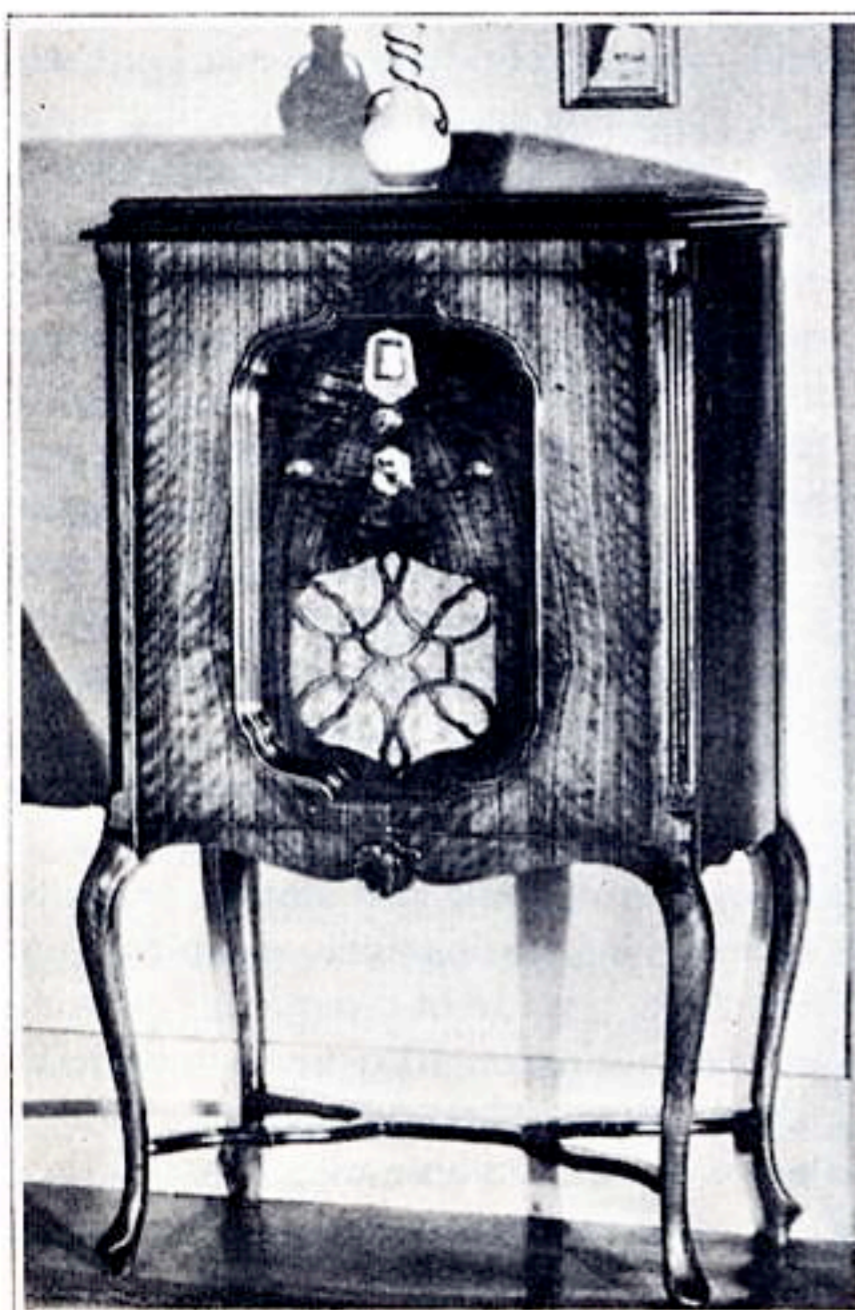
*Published Frequently at Chicago by*  
**E. H. SCOTT RADIO LABORATORIES**  
 FORMERLY  
**THE SCOTT TRANSFORMER Co.**  
 4450 Ravenswood Ave.  
 Chicago  
 E. H. SCOTT, Editor

# THE ONLY CUSTOM-BUILT RECEIVER WITH THESE VALUABLE FRANCHISES

In addition to our own exclusive patents we now can command the vast engineering resources and patents of Radio Corporation of America, General Electric Company, Western Electric Company, Westinghouse Electric Company and American Telephone and Telegraph Company.

Scott receivers have long been famed the world over for their consummate, perfected engineering and precision hand-built manufacture. Now, by cross license arrangement with the above great concerns, we command virtually the entire engineering genius of the radio industry. To our best knowledge, this is the only Custom-Built receiver so made.

Such an instrument as this requires an amount of engineering effort and research well beyond the comprehension of the ordinary observer. For more than 18 months we toiled early and late with all this combined experience and talent to draw upon before the first working models of the Allwave Deluxe were complete. Then came more weeks of trial and test. Out of this painstaking, unremitting effort came the first of these super receivers. In its design had been incorporated all the advanced, proven developments the radio art offered. It proved of such outstanding efficiency, such unrivaled reception range and tonal perfection that it took its place as preeminently the outstanding radio receiver of all times. Its acceptance everywhere on this basis was instantaneous so that today it is impregnably established as the world's finest radio receiver.



## The Warrington Console

The Warrington console is a dainty Queen Anne design in selected Walnut. Its design bespeaks an era of restraint, good manners, of much literary production, a generation of culture. This period style has always enjoyed widespread popularity amongst those who study closely the furnishings of their homes. The Warrington's gracefulness, courtly elegance, and the luxurious richness of its hand rubbed finish, combine to make it one of our most beautiful consoles. It is shown here as a return offering by us by popular demand.

## TRUTHFUL ADVERTISING

When purchasing the Scott Allwave Deluxe Receiver recently, all I had to guide me before making my purchase was your advertisement in a Radio Monthly and allowing for the fact that I had no knowledge of a similar receiver being available for test under Australian conditions I came to the conclusion that if the Receiver was half as good as advertised it would be one worth possessing, so relying mainly on your advertisement I despatched my order. On its receipt I was more than delighted with its remarkably fine appearance and finish. The vital question 'Would it do all that was claimed' had next to be answered. I must say I was astounded and highly delighted with the purity of tone, the absence of 'background' and the simplicity of tuning. Here in Melbourne it is simplicity itself, with your receiver to tune in New York and then tour the world—Berlin, Paris, London, Madrid and receive them all at full loudspeaker strength. I consider that you are very modest in your advertised claims for the Deluxe and the description as outlined therein does not really do justice to its unparalleled excellence."

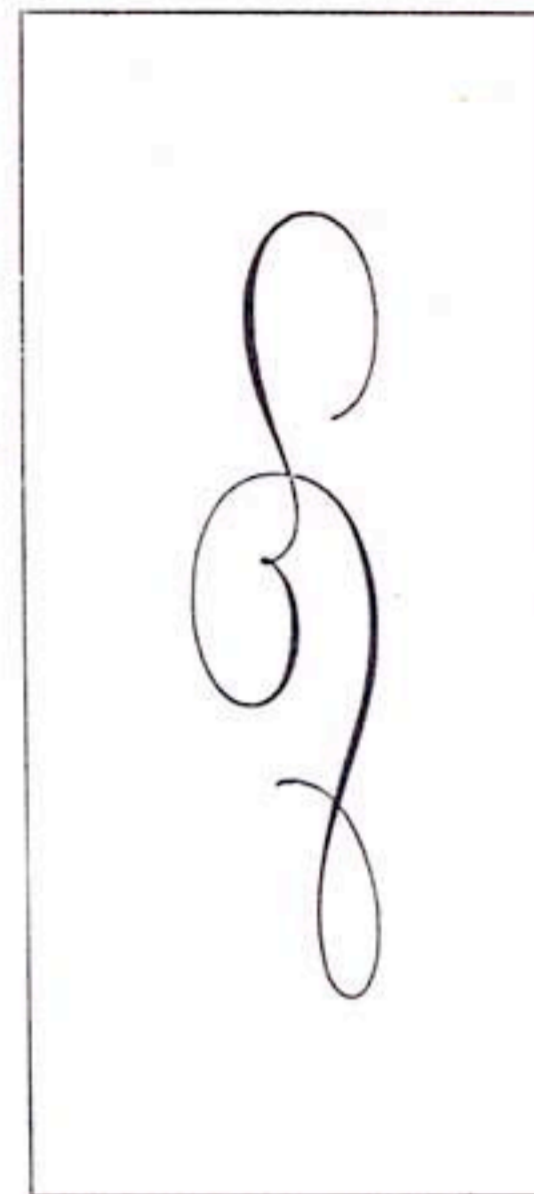
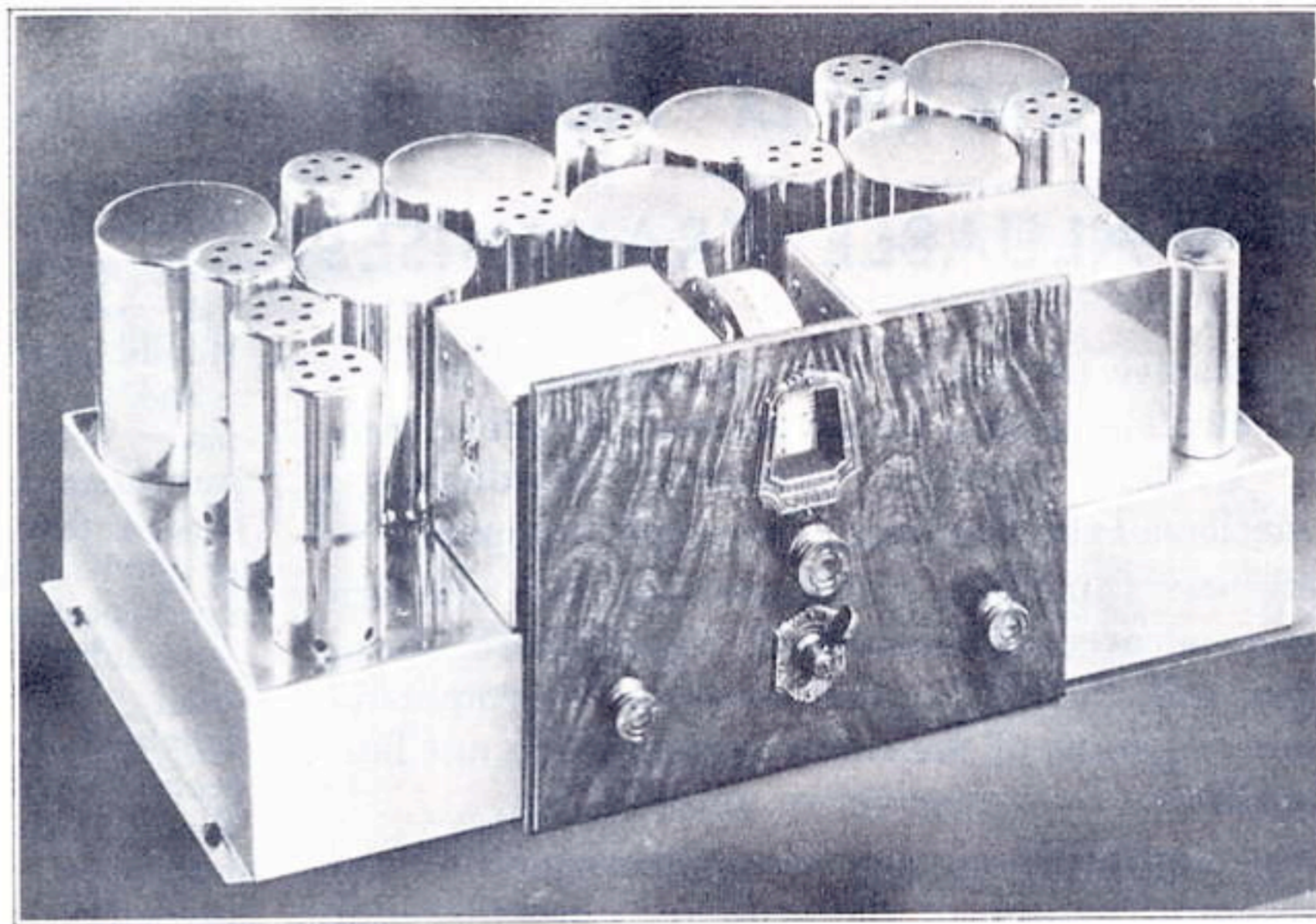
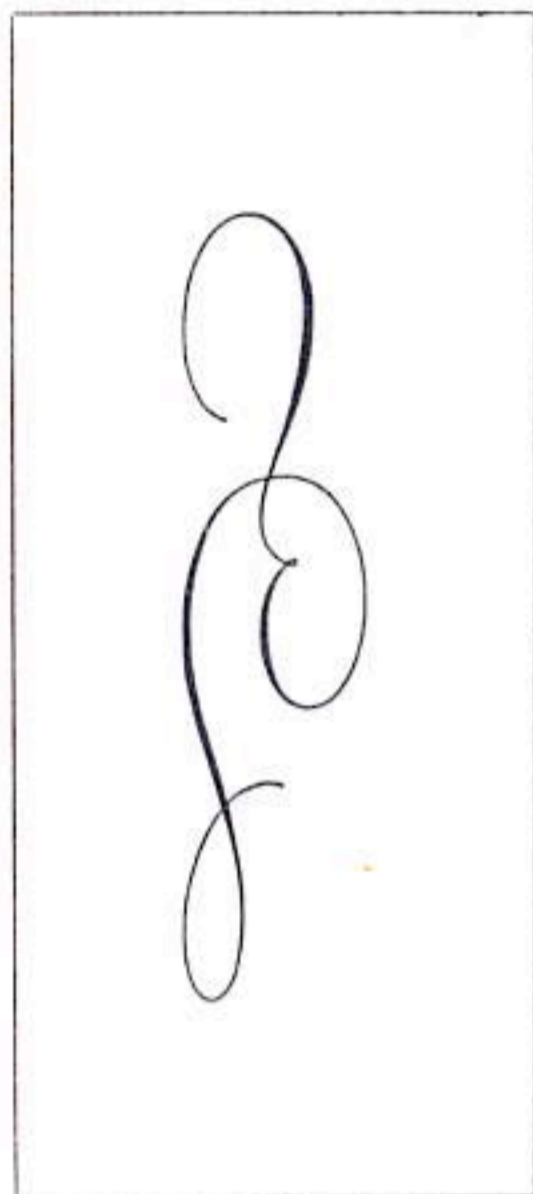
G. A. Heinrichs,

73 Ormond Esplanade, Elwood S.3, Victoria



# MORE INFORMATION ON THE Latest Scott All-Wave Super

*Reception tests with this receiver were discussed in detail in the two preceding articles of this series. This month two interesting incidents of the test are described and more information is given on the receiver itself*



THE RECEIVER CHASSIS

*Totally inclosed in chromium-plated shields, the chassis is a thing of beauty. The power-amplifier, power-supply unit (not shown) is a fitting mate for this chassis in both utility and appearance*

IN two preceding articles (August and September issues) the results of reception tests covering both the short-wave and broadcast-band reception were described. These tests demonstrated the sensitivity and the selectivity of the new Scott DeLuxe all-wave receiver and provided an ample check on the characteristics as shown by means of curves in the August article.

Since writing the first two articles there have been two interesting experiences with this receiver which may well go on the record. The first one is not particularly unusual but is cited to show one of the "stunts" which add to the pleasure of possessing a good all-wave receiver. The second is unusual—so much so that the reader cannot be blamed if he takes it with a grain of salt. No one who had not actually witnessed the feat could be blamed for being skeptical, but it was actually demonstrated and was witnessed by two members of the Radio News staff, who can vouch for its authenticity.

The first experience occurred on the Fourth of July, or on the Saturday following (the log is not clear as to the date). About 6:50 p.m., while idly tuning in the short-wave range, a phone station which signed itself WEF (a commercial 'phone station) was heard calling LSX of Buenos Aires. Contact was established and WEF explained that it was calling to arrange test details, preparatory to an American rebroadcast of the LSX program. Tuning the receiver then to LSX, this South American station was picked up, and thereafter both sides of the conversation and tests were brought in by shifting back and forth between the dial settings of the two stations. This continued until about 7:10 p.m., after which LSX stayed on the air continuously.

It developed that the rebroadcasting was to be done by the Columbia chain, beginning at 7:15 p.m. Switching the receiver to WABC'S setting

on the broadcast band, the rebroadcast was heard to start shortly after this hour, and thereafter, switching the receiver back and forth between 349 meters (WABC) and 30 meters (LSX), a comparison was made possible.

The quality of reception direct from LSX was a surprisingly close approach to that of the rebroadcast from WABC—surprising because here we were using a Scott receiver with a mediocre antenna and only an average location (Fairchild, Connecticut), while the commercial station which was picking up and relaying the program via land wire to WABC had the advantage of receiving equipment costing many times as much as our receiver, plus probably an ideal directional antenna, in an excellent location. Actually, the only substantial difference between the original and the rebroadcast was found in the occasional interference caused by the ignition systems of automobiles pass-

ing on a road about 30 feet from the receiving antenna. The program as received direct was strong and clear, free from background noise (except the automobile ignition interference, and this was only slight), with fading so slight as to be almost imperceptible. In every respect the direct reception was such as to be thoroughly enjoyable.

It is not intended to convey the idea that the comparison between direct and rebroadcast reception is always so favorable. When fading is bad, for instance, the special antenna equipment and almost unlimited facilities of the commercial phone receiving stations may permit volume to be held at more constant levels. Also, the use of directional antennas helps to hold background noise to a minimum. But, given reasonably favorable conditions, a really good all-wave receiver such as the one under discussion can provide the thrill of enjoyable direct reception of important foreign programs, eliminating dependence on local broadcast

By S. Gordon Taylor

stations which may or may not be rebroadcasting the desired programs.

The second experience referred to above occurred one evening in the middle of July. About 8:15 p.m., EAQ of Madrid, Spain, was tuned in and was found to be somewhat stronger than usual.

### *Europe Without an Antenna*

After listening to the program for a few minutes, the outside antenna was disconnected and a short indoor antenna connected in its place. This worked very well, so it in turn was replaced with a 6-foot wire then a 1-foot wire, and finally the antenna was eliminated entirely and still signals came in with sufficient strength to be heard by a member of the family sitting on the porch about 12 feet from the speaker.

With such a completely shielded receiver (even the tubes are shielded, except for the vent holes in the caps), it appeared that the pick-up must come either through the ground lead or through the metal body of the antenna binding post itself. The next step was to disconnect the ground lead from the receiver, and—believe it or not—the station was not only audible, but understandable (announcements are made in both Spanish and English) out on the porch. This meant that, with nothing connected to either the antenna or ground binding posts, the program from several thousand miles away was still being heard!

On Monday, July 25, shortly before 6 p.m., the same thing was tried on 12RO, Rome, and the same results obtained as previously with EAQ. Then it was repeated on the Eiffel Tower station in Paris, proving that antennaless reception was not just a freak of the 30.4-meter wavelength on which EAQ transmits.

It might be well to add that to eliminate the possibility that pick-up was being transferred from the nearby antenna lead which had been disconnected from the receiver, this lead was first grounded and later removed entirely from the vicinity of the receiver, without any noticeable decrease in the received signals.

### *Single-Control Tuning*

In the first article of this series the outstanding features of this receiver were mentioned. Since that time the author has had considerable experience with the receiver, operating on all wavelengths, and more detailed first-hand information can now be given on some of these points.

The true single-control tuning has proven during these reception tests to be all that was claimed for it. It is no great trick to provide a single control for a broadcast superheterodyne, but to extend single-control operation, with no auxiliary verniers of any type throughout the entire wave-band from 550 meters down to 15 meters, is a real accomplishment. That it has been accomplished effectively in this receiver is quite evident from the sensitivity and selectivity demonstrated on all wave-bands. The success of this system is due to a feature of the electrical design of the receiver which makes tracking of the circuits mostly automatic. It would be impossible to apply the ordinary methods of ganging over such a wide frequency band, but by combining these methods with special coupling design, the seemingly impossible has been accomplished.

In the broadcast band there are three tuned circuits—the r.f. tube input, the first detector input and the oscillator. When the band switch is thrown for any of the three short-wave bands, the tuned input circuit of the r.f. tube is automatically taken out of the circuit and, instead, the primary of the broadcast antenna coupler is connected directly into the grid circuit of this tube. The result is that for short waves the antenna is conductively coupled to the r.f. tube and, by means of the local-distance tap switch, even this circuit is partially tuned. The first detector input

and the oscillator circuits are both tuned when operating on the short-wave bands, the same as on the broadcast waves.

The band-switching system has proven itself flawless in operation. A simple throw of this switch to any one of its four positions selects the desired wave-band. An interesting illustration of the simplicity of this arrangement is found in tuning from W8XK, the Pittsburgh short-wave station that operates on 48.86 meters, to WEAF. It so happens that W8XK comes in at exactly the same point on the dial as does WEAF. Thus with the band switch set for the 23-61 meter band and with W8XK tuned in, a turn of the band selector switch to the broadcast range is all that is necessary to bring in WEAF.

Another interesting point disclosed in tests was the accuracy of the frequency calibration on the broadcast band from 550 kc. to approximately 1000 kc. Every channel below 1000 kc. may be tuned in right on the dot as indicated by the frequency scale. From 1000 kc. up, the calibration is slightly off, but the maximum variation is less than one channel (10 kc). The advantage of this degree of accuracy is seen when a station is tuned in and one can tell at a glance the frequency upon which it is operated. For the DX enthusiast this feature is invaluable. Even to those who are not particularly interested in DX reception, it is most decidedly an advantage to be able to set the receiver for the frequency of any desired station with the assurance that that station will be heard.

The receiver employs two stages of audio amplification feeding into a push-pull stage, using a pair of type —45 tubes, a total of three stages in all. This unusually large amount of audio amplification makes the audio system excellent for phonograph or microphone reproduction. A pair of binding posts for connection of these devices is provided on the back of the chassis. Likewise plenty of amplification and power are available for home recording.

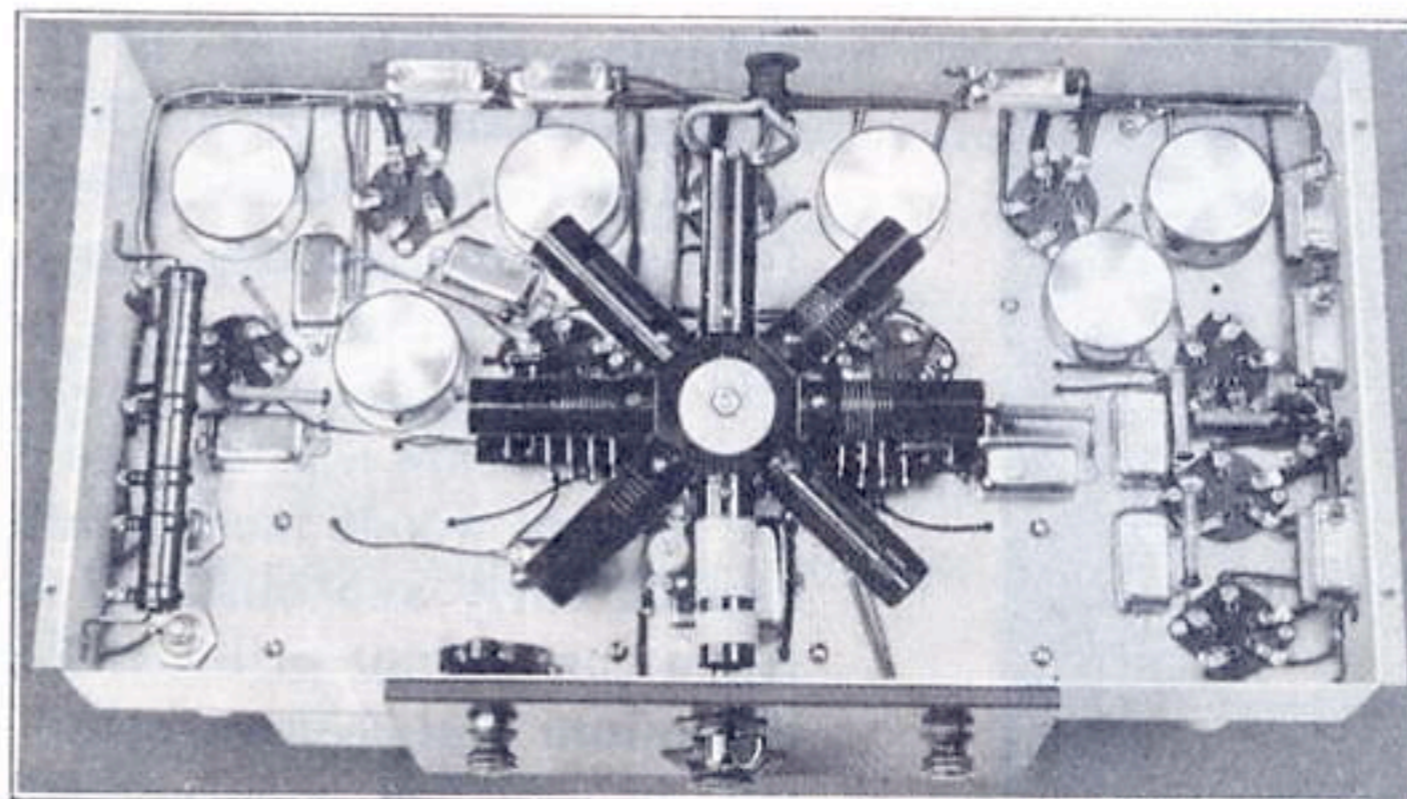
### *Antenna Requirements*

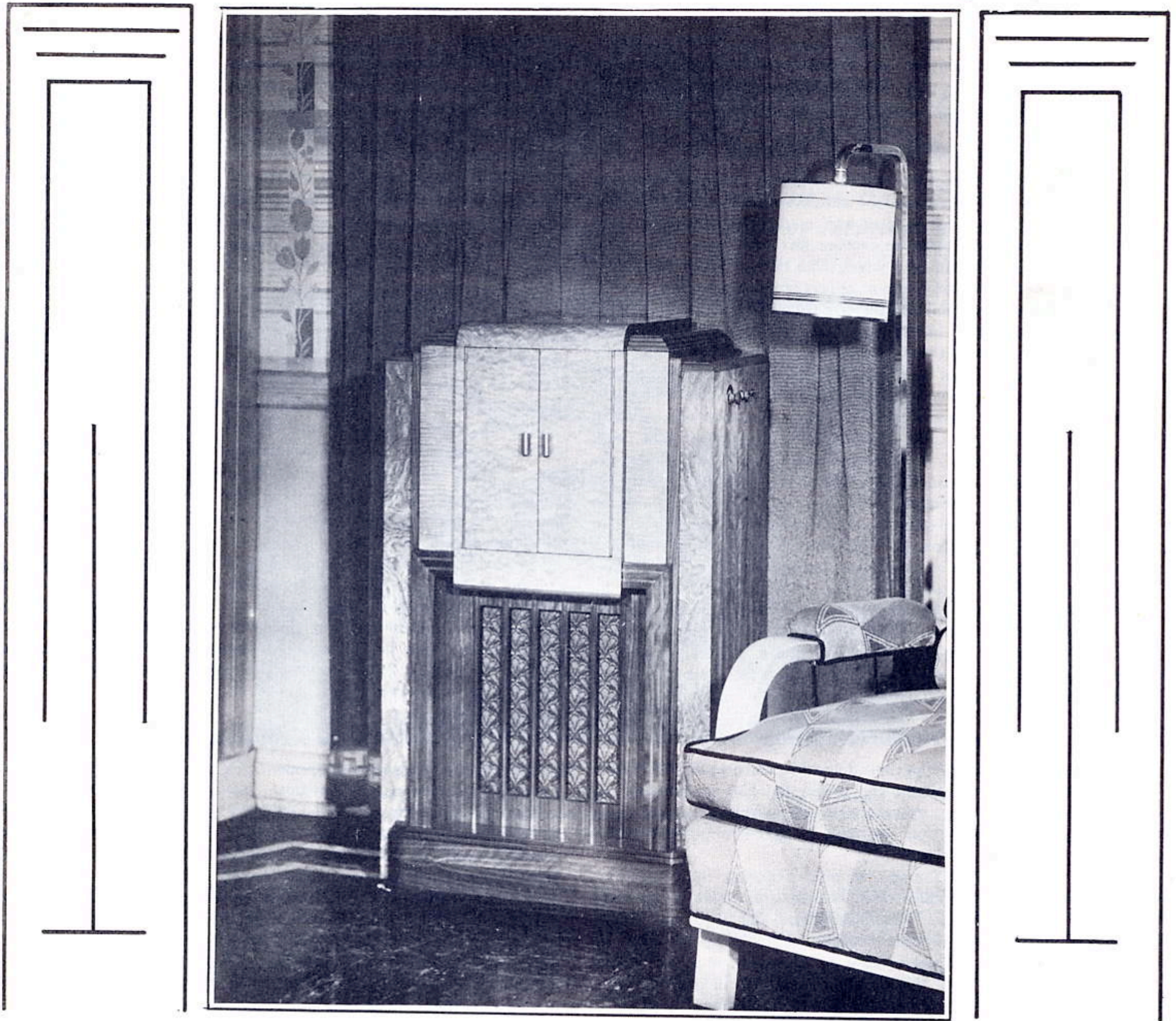
Naturally, the antenna requirements are an important consideration in the case of a modern receiver. In the tests conducted by RADIO NEWS various antennas have been tried with the set. The one used in most of the tests is approximately sixty feet long, and with this the all-around results on both the short wave and broadcast bands are excellent. On the other hand, an antenna approximately 200 feet long and with an unobstructed elevation of 100 feet has been tried. Naturally the signal strength from distant stations was greatly increased by this tremendous antenna. As for selectivity, WEAF, the strongest "local" station, just barely reached over into the adjacent channel occupied by WMAQ of Chicago. Other New York stations, about fifty or sixty miles distant from this antenna and using up to 50 kw. power, were confined strictly to their own channels, permitting out-of-town stations to be tuned in on the adjacent channels on either side. From this it would appear that in average location there is almost no limit to the size of the antenna that may be employed. With a short antenna, such as is normally used with a high-powered receiver, the results will be excellent and the selectivity almost unbelievable, whereas with a very large antenna the signal strength will be greater and the selectivity still good enough for all practical purposes.

On the whole, this receiver seems to be one which will meet the demands of every type of radio listener. Its operation is so simple that even a novice will not have the least difficulty in using it. On the other hand, its performance is such as to satisfy the requirements of the most rabid DX fan, and not the least of advantages is the fact that maximum performance is easily obtained, even by one who knows nothing about the technical side of radio.

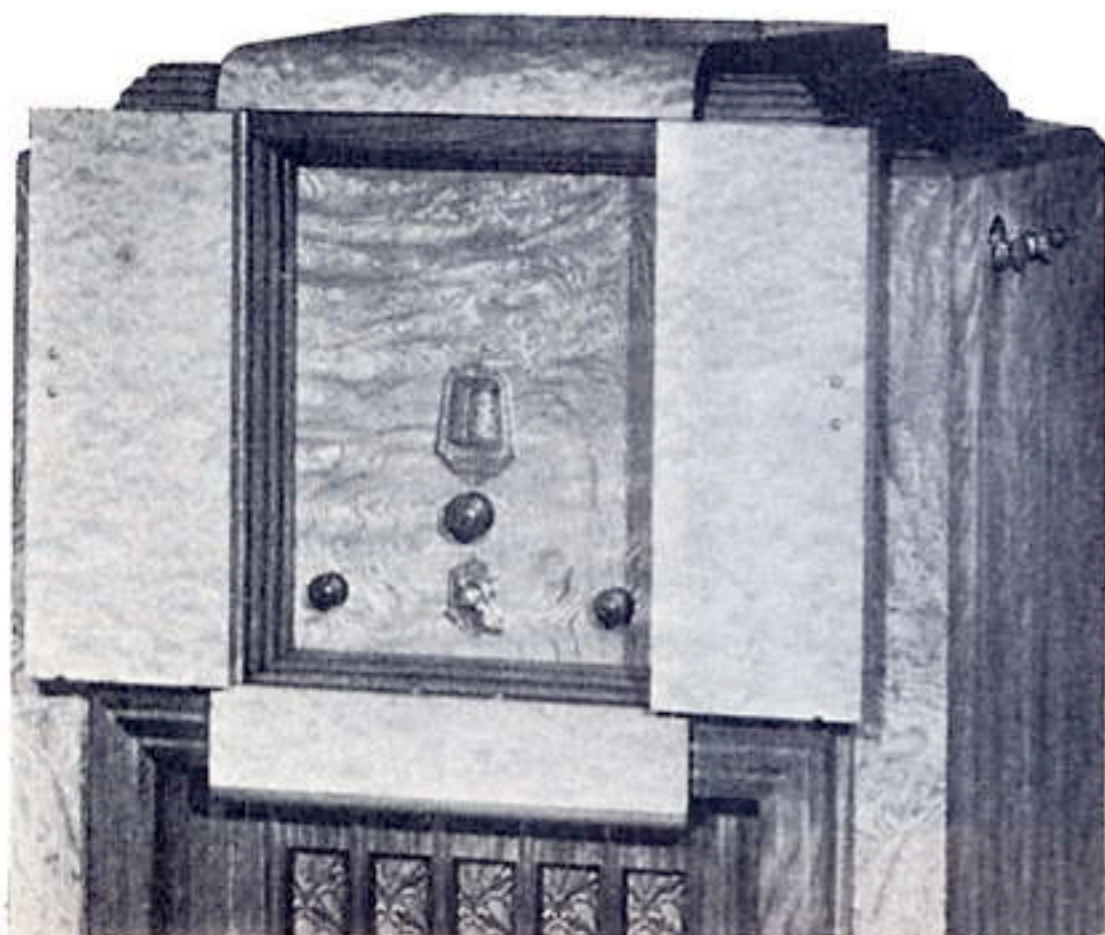
#### THE MULTI-WAVE COIL ASSEMBLY

*Some idea of the precision construction of the receiver is gained from this bottom view of the chassis with shield plate removed*





# The New WESTERLY GRANDE MODEL



A logical and spirited interpretation of today — of the spirit of radio itself, our most modern great possession. A beautiful, livable piece of furniture is the Westerly Grande Model, its modernity of line achieved through a keynote of simplicity and a strict adherence to its function as a perfect setting for the receiver. Its construction is unique in its extraordinary sturdiness — a perfected baffle for the speaker, effectively eliminating vibration and destructive resonance.

Especial care was taken to dramatize the inherent beauty of the natural woods incorporating aspen sides, Tasmanian oak panels, curly and blistered maple top and upper front with American walnut grille and base. German silver pulls and chromium plated brass grille ornamentation. For those who will be satisfied only with the ultimate in quality and the vogue of the hour.