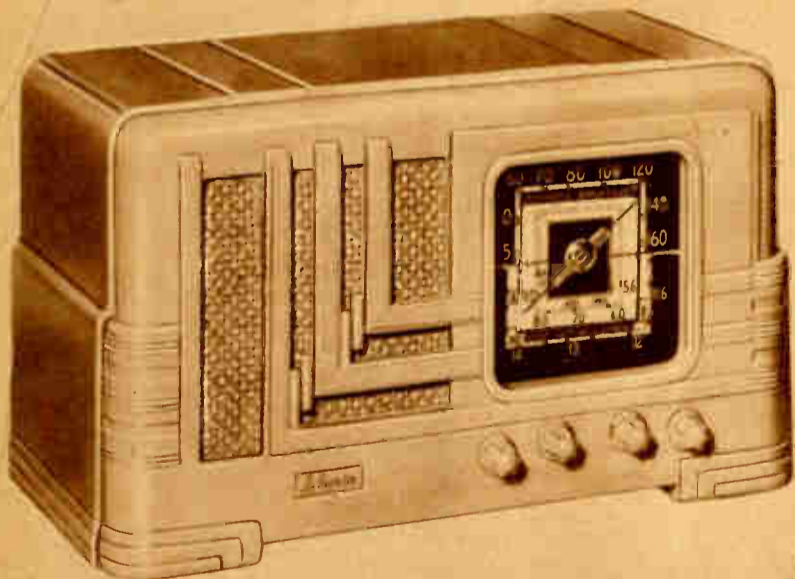
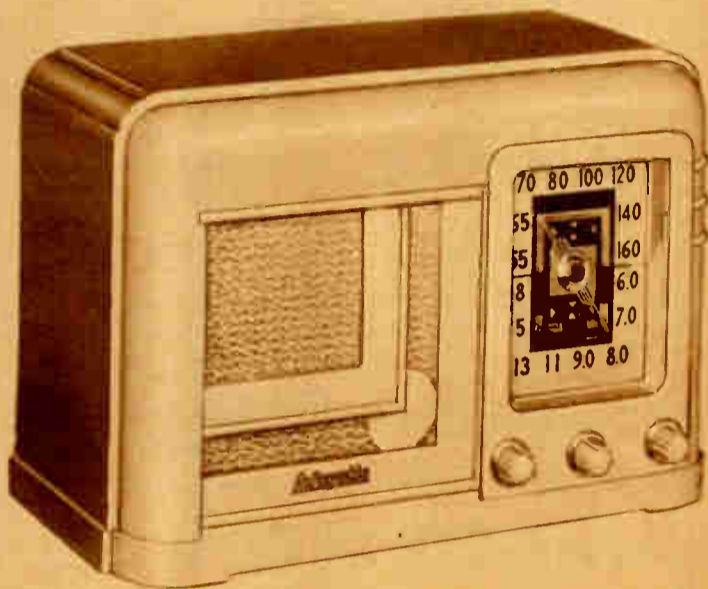


LAFAYETTES

WINNING LINE-UP



THE PRICES SHOWN IN THIS FLYER INCLUDE ALL THE NEW FEDERAL TAXES!

Lafayette 5-TUBE A.C.-D.C. SUPER

A new improved version of a very popular model. Compact, beautifully styled and capable of excellent performance. More than ample volume with crystal clear reproduction. Tone quality that will delight you. Its extended broadcast range includes all of the usual American broadcast station frequencies, providing a wealth of entertainment. It is a truly grand set and an outstanding value at this unusually low price.

Among its features you will find:

MAGIC ANTENNAIRE—Lafayette's famous built-in loop aerial that eliminates the need for any connections except power. Just plug it in—turn it on—and tune in.

BEAM POWER OUTPUT: 3 beam-power amplifier provides 2 watts of audio power. The tube lineup includes: 1-12SA7GT, 1-12K7GT, 1-12SQ7GT, 1-50L6GT and 1-35Z5GT rectifier.

TUNING RANGE: is from 835 kc to 1720 kc thus

including some police calls and high fidelity stations.

FULL TONE DYNAMIC SPEAKER provides a high degree of efficiency and good tonal reproduction.

FULL-VISION DIAL is calibrated in both kilocycles and meters. Double edged pointer covers both scales. Ample dial illumination is provided. Other features include: automatic volume control circuit to minimize fading; operation on either AC or DC at 110 volts, operating the ideal auxiliary radio.

MODEL JS-166: Lafayette 5-Tube AC-DC Super complete with tubes in Walnut plastic case 9 1/2" x 6" x 6". For 110 volts AC or DC. Shpg. wt. 10 lbs.

EACH (with Federal taxes) **\$11.95**

MODEL JS-167: Same as above but in Ivory colored plastic case. **YOUR COST EACH** **\$12.95**

Lafayette 6-TUBE A.C.-D.C. 2 BAND

Next styling, fine tone quality and EXTRA VALUE—that's the story of this new two-band Lafayette superheterodyne. It brings you all the wealth of entertainment afforded on the domestic broadcast band, plus the increasingly popular European short wave stations. And the chassis is housed in a gleaming molded plastic case (either Ivory or Walnut) that will go well with almost any furnishings. Get one today for the bedroom, library, den or living room—Lafayette's 30-Day Home Trial is your ironclad guarantee of complete satisfaction!

"ANTENNAIRE" built-in loop operates on the broadcast band and eliminates the need for any external aerial or ground wires. Terminals for short-wave antenna provided.

"BEAM POWER" OUTPUT insures high power with minimum distortion. Tubes used: 12SA7 osc.-modulator; 12SK7 i.f. amp.; 12SQ7 detector; 12SQ7 audio amp.; 35L6 "beam" power output and a 35Z5 rectifier. A matched dynamic speaker provides good frequency response; tones are clear and natural.

GETS EUROPE DIRECT: In addition to bringing in all the domestic broadcast stations, you can tune the popular foreign short-wave stations on the high frequency band. Broadcast range: 540 to 1650 kilocycles (includes some high fidelity stations). Short-wave band: 5.8 to 18 mc (16.6 to 51.7 meters).

"AIRPLANE" TYPE DIAL is edge illuminated and calibrated in both kilocycles and meters in order to provide simplified tuning. Other features include powerful automatic volume control circuit to minimize fading; durable and washable plastic cases; a.c.-d.c. operation.

MODEL JS186: Lafayette 6-Tube 2 Band A.C.-D.C. superhet complete with tubes in WALNUT plastic case. For 110 volts a.c. or d.c. Size 7 1/2" high, 11" wide, 6" deep. Shpg. wt. 11 lbs.

YOUR COST (with all Federal taxes) **\$14.95**

MODEL JS187: Same as above, but in IVORY plastic case. **YOUR COST** **\$15.95**

For 220 volt operation, add 75c

Lafayette 5 TUBE A.C.-D.C. SUPER

... smoothly stream-lined exterior you will find a radio price all of the features you expect—molded plastic cabinet with a convenient carrying handle—terminal antenna connections—wide range frequency coverage—AC-DC operation—etc. Yet with all these outstanding features it is priced surprisingly low—far lower than you'd ever expect. A sensational value!

HIGH EFFICIENCY TUBES are included in the lineup consisting of 1-12SA7, 1-12SK7, 1-12SQ7, 1-50L6GT and 1-35Z5GT/G rectifier, thus including many police calls and the high fidelity stations.

MAGIC ANTENNAIRE—built-in loop antenna permits reception of locals without external aerial. Terminals are provided, however, for attaching an antenna to receive weak and distant stations.

"BEAM POWER" OUTPUT assures ample volume with excellent tone quality at all levels.

AUTOMATIC VOLUME CONTROL keeps output at a constant level, minimizing fading.

ILLUMINATED DIAL is of the open face airplane type with both frequency (kilocycles) and wave-length (meters) calibrations.

BEAUTIFUL PLASTIC CABINET. Moulded construction permits production of a "sculptured" cabinet design that is almost impossible to duplicate by any other method. Cabinets are available in either Walnut or Ivory color suitable for use with any style of room furnishings.

MODEL D-247—Lafayette 5-tube AC-DC Super with tubes. Moulded plastic cabinet in Walnut color—10 1/2" x 7 1/2" x 8 1/2" deep. Shpg. wt. 9 lbs. Code ARST.

EACH (with all Federal taxes) **\$13.75**

MODEL D-248—As above but with Ivory color plastic cabinet. Code WATCH.

YOUR COST EACH **\$14.75**

For 220 volt Adapter cord, add 75c

Lafayette 6-TUBE A.C.-D.C. 3 BAND

Here's a versatile performer that takes a leading role in Lafayette's 1942 winning line-up. Its three tuning bands bring you a "world" of entertainment—all the popular domestic stations and a host of thrilling direct-from-Europe programs on the short-wave bands. And the modern superhet circuit is designed to give extra sensitivity and selectivity, resulting in fine quality of reproduction. You can't go wrong when you order this new receiver—Lafayette's famous 30-day Home Trial offer insures you complete satisfaction.

Here are some outstanding features: **"ANTENNAIRE"** loop aerial that operates on the broadcast band and makes it unnecessary to attach outside wires. Terminals for short-wave antenna are incorporated (required for best short-wave reception).

R.F. STAGE in the powerful superhet circuit means reduced noise pick-up. Tube complement includes: 6SK7 untuned R.F. stage; 6SA7 modulator and oscillator; 6SK7 i.f. amp.; 6SQ7 detector and first audio; 25L6 "BEAM POWER" output and a 25Z6 rectifier tube. A matched electro-dynamic speaker reproduces the receiver output with good fidelity.

THREE TUNING BANDS cover the American broadcasts, Amateurs, Ships at sea, Aviation and International Short-Wave reception. Bands are: broadcast from 540 to 1620 kilocycles; first short-wave from 11.5 to 16 mc (18.7 to 26.1 meters); second short-wave from 5.25 to 10.25 mc (29.2 to 57 meters).

ILLUMINATED DIAL of the full vision type is calibrated in both kilocycles and meters (mc), double edged pointer covers bands.

FULL TONE CONTROL of the continuously variable type permits individual adjustment of the high frequency response. Other features: powerful automatic volume control circuit to minimize fading; universal a.c.-d.c. operation.

MODEL JS188: Lafayette 6-Tube 3 Band A.C.-D.C. superhet complete with tubes in WALNUT plastic case 14 1/2" wide, 8 1/2" high and 7 1/2" deep. For 110 volts a.c. or d.c. Shpg. wt. 15 lbs.

YOUR COST (with ALL Federal taxes) **\$22.50**

MODEL JS189: Same as above, but in IVORY plastic case. **YOUR COST** **\$23.95**

For 220 volt operation, add 75c

LAFAYETTE RADIO

Radio Wire Television Inc

NEW YORK 100 SIXTH AVE. CHICAGO 901 W. JACKSON BLVD. ATLANTA 265 PEACHTREE ST.

BOSTON 110 FEDERAL ST. NEWARK 24 CENTRAL AVE. BRONX 542 E. FORDHAM RD.

FLYER C-26

Entire contents copyrighted 1941 by Radio Wire Television, Inc. Printed, published and distributed by R.W.T., New York, N. Y., U. S. A.





Lafayette 6-TUBE 3-BAND A.C.-D.C. SUPER

A box seat to a "world" of entertainment is yours when you own this versatile receiver. Not only does it bring you all the domestic stations, but short wave reception from the far corners of the earth as well, on its two short-wave bands. Quality of reproduction is excellent too—and the neat walnut case will blend with almost any room furnishing.

ANTENNAIRE, Lafayette's special built-in loop, operates on the broadcast band. Terminals for external aerial and ground provided on chassis (required for best short-wave pickup).

EXTRA SENSITIVITY provided by an untuned R.F. stage means reduced noise pickup. Tubes used: 6SK7 untuned R.F. amp.; 6SA7 oscillator-modulator; 6SK7 i.f. amp.; 6SQ7 detector and first audio; 25L6 **BEAM POWER** output stage (extra power with minimum distortion) and a 25Z6 rectifier. A matched electro-dynamic speaker reproduces the set output with good fidelity.

TONE CONTROL, continuously variable type, permits adjustment of the high range to suit the taste of the operator.

THREE BANDS afford a great variety of reception. American broadcasts, amateurs, ships at sea, aviation and international s.w. signals. Bands are: 540 to 1620 kc; first short wave from 11.5 to 16 mc (18.7-26.1 meters); overseas Spread Band from 5.25 to 10.25 mc (29.2-57 meters)

AIRPLANE DIAL is well illuminated, and each band is individually calibrated. Double edged pointer covers dial markings to insure accurate logging. Other features include: powerful automatic volume control circuit to minimize fading; phono-FM-television jack; universal a.c.-d.c. operation.

WALNUT CABINET is sturdily made and styled to harmonize with most room settings. Overall size: 16 3/4" wide, 9 1/2" high and 7 3/4" deep.

MODEL JS-190—Lafayette 6-Tube 3 Band a.c.-d.c. superhet complete with tubes. For operation on 110 volts d.c. or a.c. (50/60 cycles). Shpg. wt. 17 lbs.

YOUR COST, including Federal taxes, **\$26.95**
For 220 volt operation, add **75c**



Lafayette 6-TUBE A.C. SPREAD BAND SUPER

This new "roll front" Lafayette will make a welcome addition to any home. It gives you big set performance, with greatly improved overseas reception provided by the s-p-r-e-a-d band. European stations are as easily tuned as the regular domestic programs. Here are some of the features that make model C-219 an outstanding value:

R. F. AMPLIFIER operates on both bands and affords higher sensitivity and lower noise level. The powerful superhet circuit uses: 7H7 r.f. amplifier; 6SA7 oscillator; 6SK7 i.f. amp.; 6SQ7 diode detector, a.v.c. and first audio; 6K6 power output and 5Y3 rectifier.

ANTENNAIRE, built-in Lafayette loop, operates on broadcast band. Terminals for external aerial and ground provided (for best s.w. reception).

TONE CONTROL, continuously variable type, permits individual adjustment of the high frequency response. Overcomes difficult room acoustics.

SLIDE RULE DIAL is edge illuminated and has each band individually calibrated in either kilocycles or meters. Band switch on front panel. Four panel knobs govern all operations.

GETS EUROPE DIRECT: all domestic broadcast programs are brought in on the 530 to 1630 kilocycle range. Short wave programs, amateurs, etc. on the 5.6 to 18.5 mc range (16.2 to 53.6 meters); special overseas spread band from 9.4 to 12 mc (25 to 31.9 meters) simplifies tuning of the popular European short wave stations.

Other circuit features: phono-television-FM jack controlled from band switch; matched 5" electro-dynamic speaker; 2 1/2 watts of audio power; powerful automatic volume control circuit to minimize fading and to prevent inter-station "blasting".

WALNUT TABLE CABINET designed with the popular "roll" front. Selected walnut veneers, rubbed to a high polish, are used in its construction. Overall size: 10" high, 15 1/2" wide, 8" deep.

MODEL C-219—Lafayette 6-Tube a.c. "spread band" superhet complete with tubes. For operation on 110/120 volts, 60 cycles a.c. only. Shpg. wt. 19 lbs.

YOUR COST, including Federal taxes, **\$26.95**
For 220 volt operation, add **\$2.50**



Lafayette 6-TUBE 2-BAND A.C.-D.C. SUPER

Well suited for the small apartment, or for use as an auxiliary radio, this compact superheterodyne will afford a high quality of radio entertainment. And its pleasingly modern design will harmonize with almost any type of furniture. Try one in your home today—Lafayette's famous 30-day Home Trial offer is your ironclad guarantee of complete satisfaction. Among the circuit features are:

MULTI-PURPOSE TUBES are used for maximum efficiency. 12SA7 converter; 12SK7 i.f. amplifier; 12SQ7 detector and 35Z5GT rectifier.

INVERSE FEED BACK CIRCUIT provides greater output, reduced noise level and better tone quality.

ANTENNAIRE, built-in loop aerial, eliminates the need for any outside wires. Terminals for external antenna included however, for best s.w. reception.

SLIDE RULE DIAL is well illuminated and has each band legibly calibrated; broadcast range in kilocycles, short wave range in megacycles.

AUTOMATIC VOLUME CONTROL circuit minimizes fading and prevents inter-station "blasting".

OVERSEAS RECEPTION: in addition to bringing you all the domestic broadcast programs on the 540 to 1630 kilocycle band, you can tune in the popular European short wave stations on the special overseas spread band from 8.9 to 12.1 megacycles (25 to 31 meters). The short wave band is spread over the entire dial width to insure easy separation of the close s.w. stations. The band switch is operated by a convenient panel knob. (Three knobs govern all operation.)

ATTRACTIVE CABINET is built of fine walnut veneers. Has recessed dial surrounded by streamlined oval and clever three-way separation of louvers, resulting in a smooth appearance that would be difficult to improve upon. Overall dimensions: 12 1/2" wide, 8 1/4" high and 6 5/8" deep.

MODEL D-294—Lafayette 6-Tube 2 Band a.c.-d.c. superhet complete with tubes. For operation on 110 volts d.c. or a.c. (50/60 cycles). Shpg. wt. 15 lbs.

YOUR COST, including Federal taxes, **\$20.95**
For 220 volt operation, add **75c**



Lafayette 7-TUBE 2-BAND A.C.-D.C. SUPER

Combining smart styling with versatile performance and new ease of operation, this superb new Lafayette superheterodyne joins our 1942 winning line-up of radio values. Capable of supplying truly fine performance on two tuning bands it is, nevertheless, priced to help you save. Check these value-packed features for comparative purposes.

PUSH BUTTON TUNING: four buttons on the front panel permit instant selection of any one of your four favorite domestic broadcast stations. Buttons are easy to set (from front) and can be reset in a few minutes at any time. Manual tuning, of course, is also provided for.

BEAM POWER OUTPUT stage for high power with minimum distortion. Tubes used: 6SA7 converter; 6SK7 i.f. amplifier; 6SQ7 detector and a.v.c.; 6SQ7 first audio; two 25L6GT's in PUSH-PULL "beam" power output stage; 25Z6GT rectifier. Inverse feed back circuit for noise reduction and finer tone quality. Reception is clear and crisp.

ANTENNAIRE built-in loop eliminates need for outside wires. Terminals for external aerial and ground incorporated, for best s.w. reception.

GET EUROPE DIRECT on the special overseas spread band from 8.9 to 12.1 mc (25 to 31 meters). It's easier to tune these popular s.w. programs because the band is s-p-r-e-a-d over the entire dial. Standard American broadcast stations are brought in on the 540 to 1630 kilocycle range.

TONE CONTROL having three positions permits you to vary the response to suit your desires.

ELLIPTICAL SPEAKER of the electro-dynamic type affords excellent quality of reproduction over the entire audio range.

WALNUT CABINET has graceful rolling front with inset striping on either side, and an unusually attractive grille. Overall dimensions are: 16" wide, 10 1/2" high and 7" deep. The receiver operates with equal facility on either 110 volts d.c. or 50/60 cycles a.c.

MODEL D-251—Lafayette 7-Tube a.c.-d.c. 2 band push-button superheterodyne complete with all tubes. Shpg. wt. 16 lbs.

YOUR COST, including Federal taxes, **\$25.95**
For 220 volt operation, add **75c**



Lafayette 8-TUBE A. C. EXTENDED RANGE SUPER

Excellent performance, easy operation and beauty of design are characteristic of this new Lafayette super-heterodyne. It has been specially constructed to cover the entire domestic broadcast range only—without short wave or police bands, and many of the most modern circuit refinements have been incorporated to insure fine performance. Model C-200 is, therefore, the ideal mantle model receiver for your apartment. Remember too, that Lafayette's famous 30-day Home Trial plan is your complete guarantee of satisfaction.

EIGHT MULTI-PURPOSE TUBES provide more than ample power with good sensitivity and selectivity. These include: 6SA7 converter; 6SK7 i.f. amplifier; 6SQ7 diode detector, a.v.c. and first audio; 6SQ7 phase inverter; two 6K6 push-pull power tubes; 6U5 tuning indicator and a 5Y3 rectifier tube.

MAGIC "ANTENNAIRE", a built-in loop antenna, eliminates the need for any external aerial or ground connections. You need merely plug in the power line attachment, turn on and tune. Terminals for external aerial are provided (for distant pickup).

EXTENDED TUNING RANGE, covering from 530 to 1630 kilocycles, bring you all domestic broadcast programs, including some high fidelity stations.

PUSH-PULL AUDIO OUTPUT STAGE employing two 6K6 tubes provides almost 5 watts of undistorted power—more than required for normal home operation.

VISUAL TUNING is provided by the cathode ray tuning "eye." You just tune till the "eye" shows the smallest possible dark sector and you get maximum efficiency in reception.

8" DYNAMIC SPEAKER reproduces the receiver output with fine fidelity. Tone is realistic.

TONE CONTROL, continuously variable type, permits operator to adjust tone to suit himself.

TWO-TONE WALNUT CABINET measures 9 $\frac{3}{4}$ " high, 19 $\frac{1}{2}$ " wide and 11" deep. Beautifully finished.

MODEL C-200—Lafayette 8-Tube A.C. Superhet complete with tubes. For 115 volts, 60 cycles a.c. only. Shpg. wt. 23 lbs.

YOUR COST (with Federal taxes) **\$29.95**
For 220 volt operation, add..... **\$2.50**



Lafayette 8-TUBE A. C. 3 BAND SUPER

With The New Overseas "Spread Band"

Coincident with the increased interest in direct from Europe news, with foreign stations operating under full time schedules, comes this new and improved Lafayette "Air Scout" that easily separates the crowded short-wave stations and provides clear, distinct reception. One dial-wide scale s-p-r-a-a-d-s the high frequency 25 to 31 meter band so that you'll get stations you never heard before.

THREE BANDS: domestic broadcasts from 530 to 1630 kc; short wave band from 5.6 to 18.5 mc (16 to 53.6 meters); Overseas "Spread Band" from 9.4 to 12 mc (25-31 meters).

"ANTENNAIRE," built-in loop, eliminates need for outside aerial on domestic broadcast band. Terminals for external antenna provided (use good s.w. aerial for best European reception).

POWERFUL SUPERHET uses 8 high-gain tubes: 6SA7 converter; 6SK7 i.f. amplifier; 6SQ7 diode det., a.v.c. and first audio; 6SQ7 phase inverter; two 6K6 push-

pull power tubes; 6U5 "eye"; 5Y3 rectifier.
TONE CONTROL, continuously variable, permits individual control of response.

OTHER FEATURES: 8" electro-dynamic speaker provides fine tone, visual tuning "eye"; band switch controlled phono-Television-FM jack; 3.6 watts undistorted power output (7.6 watts peak); fine walnut cabinet with hand rubbed finish.

MODEL C-205—Lafayette 8-Tube 3-Band a.c. superhet with tubes. For 115 volts, 50/60 cycles a.c. Size: 19 $\frac{1}{2}$ x 11 $\frac{1}{4}$ x 9 $\frac{3}{4}$ " high. Shpg. wt. 25 lbs.

YOUR COST (with Federal taxes) **\$32.50**

9-TUBE A.C.-D.C. MODEL C-201

Like above, but operates on 110/120 volts d.c. or a.c. Has 9 tubes plus a ballast.

Code GENTL. Shpg. wt. 26 lbs. **EACH** **\$32.50**
For 220 volt operation (either above), add **\$2.50**



Lafayette 8-TUBE A. C. 3 BAND SUPER

In Deluxe Period Model Mahogany Cabinet

A chassis that is as modern as tomorrow in a cabinet that reflects all the charm of period furniture. Rich, reddish-brown mahogany hand rubbed to a deep lustrous gloss. Deeply carved corner posts and top and bottom mouldings. A gracefully designed grille backed by luxurious brocade. All these contribute toward the making of a cabinet that is truly beautiful.

The chassis is the brilliant new Lafayette 8-tube 3-band superhet with the "Overseas Spread Band." A powerful 8 tube circuit capable of giving excellent performance and employing the following tube lineup: 6SA7 converter, 6SK7 i.f. amplifier, 6SQ7 det.-AVC-1st audio amplifier, 6SQ7 phase inverter, 2-6K6 push-pull power amplifiers, 5Y3 rectifier and a 6U5 tuning indicator "eye." All tubes are of the latest type. Undistorted power output of 3.6 watts is more than sufficient for normal home requirements.

Tuning range is from 530 kc to 18.5 mc in three ranges:

Broadcast—530-1630 kc; Short Wave—5.6-18.5 mc (16.8 to 53.6 meters); "Overseas Spread Band"—9.4 to 12 mc (25 to 31 meters). The spread band provides easy tuning on the 25 and 31 meter bands.

Other features include: built-in Magic Antennaire loop antenna; 4.5 watts undistorted and 9.4 watts maximum power output; continuously variable tone control; band switch operated phono-Television-FM jack; magic eye tuning indicator; edge lighted slide rule dial.

Your complete satisfaction is guaranteed by Lafayette's famous 30-day Home Trial offer!

MODEL C-223—Lafayette 3-Band 8-Tube Overseas Spread Band Superhet in Period cabinet. Complete with tubes. Dimensions: 19 $\frac{1}{8}$ " W x 10 $\frac{3}{4}$ " D x 10 $\frac{1}{2}$ " H. Shpg. wt. 26 lbs. Code GR1PE.

YOUR COST (with Federal taxes) **\$34.95**
For 220 Volt operation, add..... **\$2.50**



Lafayette 11-TUBE 3 BAND SUPER

Operates on Either A.C. or D.C.

Lafayette's new 1942 extra powerful a.c.-d.c. three band super! Eleven modern tubes in a highly perfected circuit that provides a new high in performance for this type of radio. Delivers 4.9 watts of undistorted power (7.6 watts maximum). Excellent sensitivity and selectivity characteristics on all bands. Feature after feature that means greater enjoyment and more value for you!

TUNED R.F. STAGE on the broadcast band (three gang variable condenser) for maximum selectivity and sensitivity. Eleven tube circuit uses: 6SK7 tuned r.f. stage (on broadcast); 6A8 osc.-converter; 6SK7 i.f. amp.; 12SQ7 diode det.; 12SQ7 first audio; 12SQ7 phase inverter two 25L6 power tubes in push-pull output stage; two 25Z6 rectifiers; 6U5 cathode ray tuning "eye." A type 6.170 ballast is also used.

8" ELECTRO-DYNAMIC SPEAKER, matched to the set output, affords excellent frequency response. Tones are clear and crisp at all volume levels.

"ANTENNAIRE," built-in loop for broadcast reception. Terminals for external aerial are provided.

THREE TUNING BANDS: 530 to 1630 kc for domestic broadcasts; 2.1 to 6.3 mc (47.6 to 143 meters) for amateurs and s.w. stations; 5.8 to 22.5 mc (13.3 to 52 meters) for foreign s.w. stations.

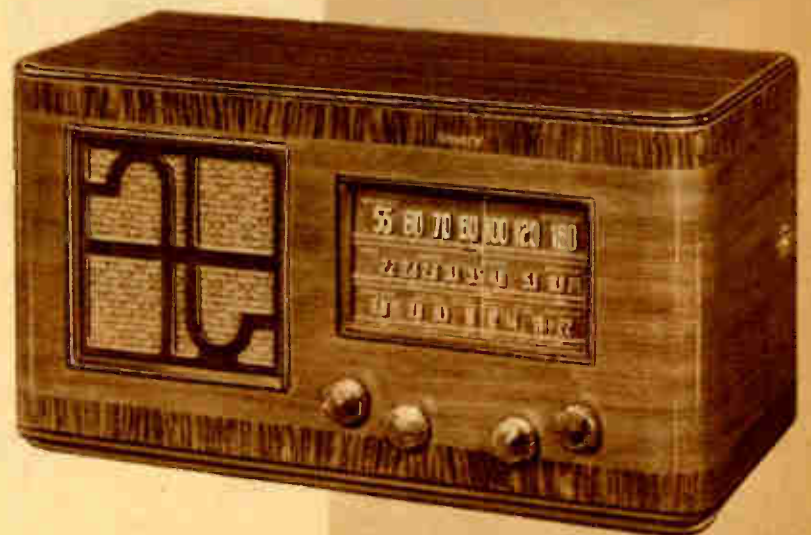
8" ELECTRO-DYNAMIC SPEAKER brings you crystal clear reception with fine frequency response.

VARIABLE TONE CONTROL allows you to adjust response to suit your desires. Other features: band switch controlled phono-Television-FM jack; simplified visual tuning "eye" tube.

WALNUT TABLE CABINET measures 10 $\frac{3}{4}$ " high, 21 $\frac{1}{2}$ " wide and 10 $\frac{1}{2}$ " deep. Hand rubbed finish.

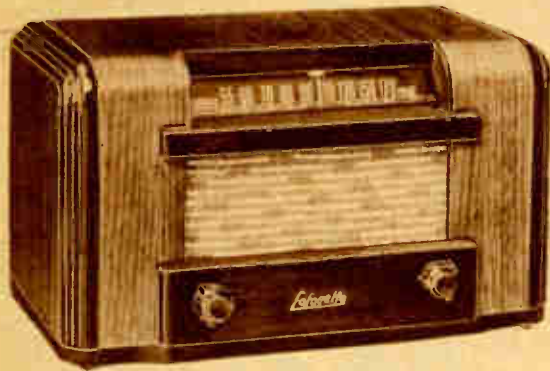
MODEL C-216—Lafayette 11-Tube 3-band a.c.-d.c. super with tubes. For 105/125 volts a.c. or d.c. Shpg. wt. 24 lbs. Code GRASP.

YOUR COST (with Federal taxes) **\$42.95**
For 220 volt operation, add..... **\$2.50**



**LAFAYETTE
VALUES!**





Lafayette 5-TUBE A.C.-D.C. "Roll Front" Super

For dependable performance plus styling that's bound to meet with approval, choose this new Lafayette compact superheterodyne. Tone quality and volume will exceed your expectations—and the price reflects the long established Lafayette value policy. Just compare these features:

ANTENNAIRE, Lafayettes built-in loop aerial, eliminates the need for any outside wires. You just plug the line cord in, turn the set on and tune in your favorite stations. Terminals for outside aerial provided for distant station pick-up.

"BEAM" OUTPUT insures minimum distortion and extra power. Tubes used: 12SA7 converter, 12SK7 i.f. amplifier; 12SQ7 detector, a.v.c. and first audio; 50L6GT "beam" output and 35Z5GT rectifier.

SLIDE RULE DIAL is edge lighted and legibly calibrated. Range from 550 to 1650 kc (all domestic broadcasts plus police and some high fidelity).

ELECTRO-DYNAMIC SPEAKER, matched to the audio output, affords fine tone quality.

WALNUT CABINET has the delightful roll front design, with recessed dial and modern grille. Rubber bumper feet protect furniture. Size: 11 3/4" wide, 6 1/2" high and 6 1/2" deep.

MODEL S-165—Lafayette 5-tube a.c.-d.c. super complete with all tubes. For operation on 110 volts d.c. or 60 cycle a.c. Shpg. wt. 9 lbs.

YOUR COST, with Federal taxes..... **\$14.95**
For 220 volt adapter cord, add.....75c



Lafayette 9-TUBE A. C. 3 BAND Table Model Superheterodyne

From every standpoint—Efficiency—Quality of Reproduction—Extra power, this new Lafayette is outstanding. Our engineers have succeeded in incorporating expensive console features in this deluxe table model superhet to insure dependable, high quality performance. Its circuit features include:

TUNED R.F. STAGE for increased sensitivity and selectivity, and reduced noise level. Tubes used: 6SK7GT r.f. amp.; 6SA7GT detector-converter; 6SK7GT i.f. amp.; 6SQ7GT diode det. and first audio; 6SQ7GT phase inverter; two 6K6GT push-pull output; 6U5 tuning "eye" and an 80 rectifier tube.

ANTENNAIRE, built-in loop, operates on broadcast band. Terminals for outside aerial and ground on chassis, for best s.w. pickup.

8" DYNAMIC SPEAKER for excellent reproduction of all tones.

VISUAL TUNING by means of cathode ray "eye" tube (operates on all tuning bands).

INVERSE FEEDBACK in audio circuit for wide fidelity response.

THREE BANDS bring you all domestic broadcasts, amateurs, ships at sea, intermediate s.w. and direct from Europe reception. Ranges are: 538 to 1620 kc; 2.2 to 7.2 mc (41.4 to 136.3 meters); 7.3 to 24 mc (12.5 to 41.2 meters).

TONE CONTROL has special bass boost position for restoring low frequency tones ordinarily lost in transmission. Other features: slide-rule dial; 5-watts output; 3-gang condenser; phono-television-FM jack.

MODEL JS-306: Complete with tubes, in walnut table cabinet 24 1/2" wide, 12 1/2" high, 11 3/4" deep. For 110/120 volts, 50/60 cycles a.c. Shpg. wt. 40 lbs.

YOUR COST, with Federal taxes..... **\$42.50**
For 220 volt operation, add.....\$3.00

CHASSIS, SPEAKER AND TUBES
Like above, but less cabinet. With instructions. Shpg. wt. 28 lbs.

MODEL JS-191: **YOUR COST**..... **\$34.50**

If 12" speaker is desired, specify on order and add.....\$2.00



Lafayette 5-TUBE A.C.-D.C. Plastic Super

Dressed in gleaming jewel-like plastic, this charmingly styled 1942 Lafayette compact super will prove a faithful home companion. It brings in all the domestic stations with more than ample volume, and with unusually fine tone quality for so inexpensive a receiver.

NO OUTSIDE WIRES are required—Lafayette's built-in Antennaire eliminates the need for any connections other than power line. Terminals for outside antenna included, however, for use where distant station pick-up is desired.

MULTI-PURPOSE TUBES, including a "beam power" amplifier, are employed to insure high sensitivity and selectivity. Tubes used: 12SA7 converter; 12SK7 i.f. amp.; 12SQ7 det., a.v.c. and first audio; 50L6GT beam power stage and 35Z5GT rectifier.

Tuning range covers from 540 to 1630 kc. Receiver operates on 110 volts d.c. or a.c. (50/60 cycles).

CHOICE OF CABINETS: You may choose either Walnut or Ivory plastic case. Cases are durable and washable. Size: 8 7/8" wide, 6 1/4" high and 4 1/4" deep.

MODEL D-314—Lafayette 5-Tube super in WALNUT plastic case. Complete with tubes. Shpg. wt. 9 lbs.

YOUR COST, with Federal taxes..... **\$10.95**

MODEL D-315—Like above, but in IVORY plastic case. **YOUR COST**, with Federal taxes..... **\$11.95**
For 220 volt adapter cord, either of the above models, add.....75c

Equisite CHAIR-SIDE MODELS



Lafayette 9-TUBE A. C. 3 BAND COMBINATION

Relax in the comfort of your favorite easy chair while you tune in on a world of radio entertainment—or you can listen to long, uninterrupted programs of your selected recordings played by the easy-to-operate automatic record changer. This new Lafayette model is designed to fit unobtrusively with your living room set—ready at a moment's notice to bring you superb quality radio or phono reproduction. Get one today—Lafayette's famous 30-day Home Trial Offer is your guarantee of complete satisfaction. Radio features incorporated:

TUNED R.F. STAGE for reduced noise level and increased sensitivity. Tube complement includes: 6SK7GT tuned R.F. amplifier; 6SA7GT det.-converter; 6SK7GT i.f. amp.; 6SQ7GT diode det., a.v.c. and first audio; 6SQ7GT phase inverter; two 6K6GT push-pull power stage; 6U5 tuning "eye"; 80 rectifier. Power output fully 5-watts.

INVERSE FEEDBACK in audio system insures increased frequency range for higher fidelity reproduction.

12" CONCERT SPEAKER, perfectly matched, brings you reception with "in the studio" quality. Tones are clear and distinct at all volume levels.

GETS EUROPE DIRECT: in addition to bringing in the domestic broadcast stations, you can tune intermediate short-waves and the popular European short wave stations on the three bands. Ranges are: 538 to 1620 kc; 2.2 to 7.2 mc (41.4 to 136.3 meters); 7.3 to 24 mc (12.5 to 41.2 meters).

ANTENNAIRE, built-in loop, operates on broadcast band. For s.w. reception use aerial and ground terminals on chassis.

VISUAL TUNING, insures simple, accurate station logging. Employs "eye" tube.

BASS BOOST position on tone control especially valuable in restoring low notes usually lost on recordings.

AUTOMATIC CHANGER plays twelve 10" or ten 12" records without interruption. Has constant speed motor and lightweight CRYSTAL pickup that provides fine range.

MAHOGANY CONSOLE in beautiful chairside design has pul-out drawer for automatic record changer, lid over control panel.

MODEL JS-301: Complete with tubes. For 110/120 volts, 60 cycles a.c. Size: 18 1/2" wide, 28 1/2" high, 30 1/8" deep. Shpg. wt. 128 lbs.

YOUR COST, including Federal taxes..... **\$139.50**

Above available in bleached mahogany at additional.....\$10.00



Lafayette 8-TUBE A. C. "SPREAD BAND" COMB.

Luxurious ease of operation, coupled with versatile radio and phono facilities makes this handsome chairside combination a highly desirable unit for your home. Tone quality is unusually good on both radio and recordings, and the price quoted makes it an outstanding value!

PUSH-PULL OUTPUT stage in the efficient superhet circuit insures extra reserve power (4.5 watts undistorted). Tubes used: 6SA7 converter; 6SK7 i.f. amplifier; 6SQ7 det., a.v.c. and first audio; 6SQ7 phase inverter; two 6K6's in push-pull output stage; 6U5 tuning "eye" and 5Y3 rectifier.

ANTENNAIRE built-in loop for broadcast band reception. Terminals provided for external aerial and ground (use for good s.w. pickup and for weak distant stations).

TONE CONTROL, continuously variable type, permits individual adjustment of the high frequency range to suit the desires of the operator. **VISUAL TUNING** by means of the cathode ray "eye" tube insures accurate, simplified station logging.

SLIDE RULE DIAL is well illuminated and has each band calibrated clearly. Knife edge pointer covers bands. Popular s.w. stations are marked on dial.

SPECIAL SPREAD BAND makes tuning of the close overseas stations as simple as tuning the broadcast band. Bands are: 530 to 1630 kc for domestic programs; 5.6 to 18.5 mc (16.2 to 53.4 meters) for amateurs and short-wave stations; special overseas spread band from 9.4 to 12 mc (25 to 31.3 meters).

8" ELECTRO-DYNAMIC SPEAKER reproduces the entire set output with fine realism. Has good fidelity response.

AUTOMATIC RECORD CHANGER incorporates a constant speed motor and latest type feather-weight CRYSTAL pickup. You can load up to twelve 10" or ten 12" records at a time. Has reject device.

WALNUT CABINET is designed to harmonize with most surroundings. Record changer housed in compartment with top lid. Control panel is exposed. Has record album storage compartment that takes up to seven large size albums. Size: 17 1/2" wide, 25 1/4" high, 28 1/4" deep.

MODEL C-224: Lafayette 8-Tube A.C. spread band combination complete with tubes. For 110/120 volts, 60 cycles a.c. Shpg. wt. 88 lbs.

YOUR COST, including Federal taxes..... **\$79.95**

Lafayette 11-TUBE A. C. 2 BAND COMBINATIONS

No matter what type of furniture is required to blend with your home decoration, you'll find one of these deluxe Lafayette consoles will match. The three handsome styles shown here all house a super-power 11 tube superheterodyne, used in conjunction with an efficient automatic record changer that permits you to listen to long programs of recorded entertainment. And there's an overseas short-wave band for those who wish to get their news direct from Europe. In all, there's a complete diversification of the type of reception available—and tone quality is of an unusually high standard. Pick the model best suited for your home now—Lafayette's famous 30-day Home Trial offer is your assurance of complete satisfaction. Highlights of the receiver are:

HIGH SENSITIVITY and reduced noise level is achieved by means of a tuned R.F. amplifier that operates on both bands. Tubes used: 6SK7 r.f. amplifier; 6SK7 i.f. amplifier; 6SJ7 first detector; 6J5GT oscillator; 6SQ7 second detector; 6SQ7 audio amplifier; 6SQ7 balancing exciter; two 6K6GT's in push-pull power stage; 6U5 tuning indicator; 5Y3G rectifier.

AUTOMATIC BUTTON TUNING: six buttons on front panel permit instant selection of any one of your six favorite domestic broadcast stations. Buttons are easy to set from front of the receiver, and can be reset in a few minutes at any time.

ANTENNAIRE: special built-in "High Q" loop for broadcast band reception; self contained counter-poise for short-wave reception. No outside wires are necessary. Provision is made for connecting external aerial and ground if desired.

TWO TUNING BANDS: in addition to bringing in all the domestic broadcast stations on the 535 to 1600 kc range, you can tune the popular European stations on the overseas short-wave band from 5.35 to 18.3 mc (16.4 to 56 meters).

VISUAL TUNING by means of the "eye" tube makes critical s.w. logging simple.

12" AUDITORIUM SPEAKER is designed to reproduce the entire range of audible frequencies with fine fidelity. Reproduction is clear and realistic at all volume levels.

TONE CONTROL, variable type, allows complete gradation of tone from low bass to brilliant highs. Other features are: three-gang tuning condenser; 8½" illuminated slide-rule dial; 5-watts of audio power; diode automatic volume control to minimize fading and reduce inter-station "blasting!"

AUTOMATIC RECORD CHANGER plays twelve 10" or ten 12" records in sequence without interruption. It incorporates a constant speed motor that requires no attention, and a featherweight CRYSTAL pickup of the wide range type. Any record may be rejected at will by merely pressing the reject lever. Tone and volume controls operate on phono.

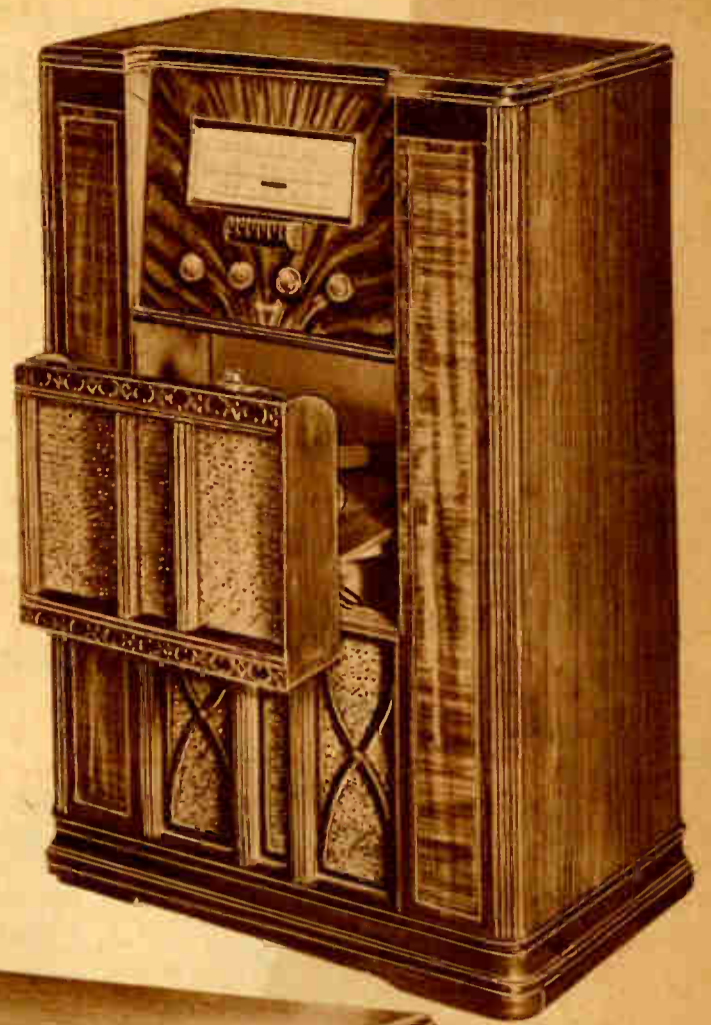
The deluxe phono-radio combination described at left is available in either of the three console cabinets pictured.

UPRIGHT MAHOGANY CONSOLE: Shown at top, right. Constructed of fine mahogany veneers with highly polished finish. Has concealed type "pull-out" compartment for record changer. Semi-inclined control panel. Fluted side pillars, bar and lattice grille and matched base piece combine to present a highly attractive finished ensemble. This console is also available in Walnut.

MAHOGANY LOWBOY CONSOLE: Copied from a superb 18th century period piece, this beautiful console will add charm to its surroundings. Has concealed type "pull-out" compartment for record changer. Hinged door covers control panel. Massive legs, matched lattice work grilles, fluted side pillars and carved top are blended perfectly. Fine matching hardware is employed. This console is also available in Walnut.

WALNUT CLOSED FRONT CONSOLE: Illustrated at left, below. Constructed in the modern manner, of fine walnut veneers. Has rounded sides. Doors and center top panel of specially selected swirl grain veneers. Full length top affords access to control panel and automatic record changer. Compression type lid hinge keeps top open in any position desired. Base molding is flush with floor. With doors closed, there are no projections of any kind; door pulls are recessed.

Sizes and prices, all models, shown below.



MODEL B-274 IN WALNUT CONSOLE WITH CLOSED FRONT

Lafayette 11-tube 2 band a.c. superhet complete with all tubes in walnut console shown at left below. For 110/120 volts, 60 cycles a.c. Overall size: 35¾" high, 31" wide and 17" deep. Shpg. wt. 107 lbs. YOUR COST, including Federal taxes **\$124.50**
For 220 volt operation of above model, add **\$5.00**

MODEL B-275 IN UPRIGHT MAHOGANY CONSOLE CABINET

Complete with all tubes. For 110/120 volts, 60 cycles a.c. Size: 40½" high, 27¼" wide and 16¼" deep. Shpg. wt. 126 lbs. YOUR COST, with Federal taxes **\$104.50**
MODEL B-275W—Same as above, but in Walnut console. YOUR COST, with Federal taxes **\$104.50**
For 220 volt operation, either above models, add **\$5.00**

MODEL B-273 IN DELUXE MAHOGANY LOWBOY CONSOLE

Complete with tubes. For 110/120 volts, 60 cycles a.c. Size: 37" wide, 35" high and 18½" deep. Shpg. wt. 125 lbs. YOUR COST, with Federal taxes **\$129.50**
MODEL B-273W—Same as above, but in Walnut cabinet. YOUR COST, with Federal taxes **\$129.50**
For 220 volt operation, either above models, add **\$5.00**



Lafayette 9-TUBE A. C. 3 BAND COMBINATION

Reflecting all the charm of 18th century period styling, this fine mahogany console houses a combination radio and automatic record changer that will provide you with excellent entertainment. Not only can you tune in on a "world" of radio transmission, but you can build your own programs of choice recordings—listen to ½ to ¾ hour disc reproduction without interruption. Your home will be "richer"—more livable when you own model JS-302. Many desirable features are incorporated in the design of the superheterodyne radio circuit, including:

EXTRA SENSITIVITY and reduced noise level because of the tuned R.F. STAGE. Tubes used: 6SK7GT tuned r.f. stage; 6SA7GT converter; 6SK7GT i.f. amplifier; 6SQ7GT diode detector, a.v.c. and first audio; 6SQ7GT phase inverter; two 6K6GT's in push-pull output stage; 6U5 tuning "eye" tube and 80 rectifier.

BASS BOOST CIRCUIT, separate position on the tone control, restores low notes usually lost in transmission; control also adjusts high frequency response to suit the taste of the operator.

INVERSE FEEDBACK circuit insures extra wide range frequency response.

ANTENNAIRE built-in loop for broadcast reception. Terminals for outside aerial on chassis.

THREE TUNING BANDS permits reception of all domestic broadcasts, amateurs, ships at sea, intermediate short-waves and European short wave stations. Ranges: 538 to 1620 kc; 2.2 to 7.2 mc (41.6 to 136.3 meters); 7.3 to 24 mc (12.5 to 41.5 meters). Critical tuning is greatly simplified by the cathode ray tuning "eye" tube.

SLIDE RULE DIAL is well illuminated and fully calibrated in kc and mc.

12" CONCERT SPEAKER reproduces all the tones in the audible range with good fidelity. Other features: three gang tuning condenser; powerful automatic volume control to minimize fading; tone compensated volume control.

AUTOMATIC RECORD CHANGER plays twelve 10" or ten 12" records in sequence. Has constant speed motor and latest type featherweight CRYSTAL pickup. Has reject device.

MAHOGANY CONSOLE is beautifully designed and has hand rubbed finish. Matched doors and decorative hardware. Size: 35¾" high, 25" wide and 18½" deep.

MODEL JS-302—Complete with tubes. For 110/120 volts, 60 cycles a.c. Shpg. wt. 128 lbs. YOUR COST, including Federal taxes **\$119.50**

For 220 volt operation, add **\$5.00**

Lafayette 3-Way 5-Tube Portable

"LOW IN PRICE BUT HIGH IN QUALITY!"

Combining both quality and economy this new Lafayette D246 is definitely one of the year's best buys! Economical in first cost and in upkeep it is just the set for limited budgets yet includes all of the quality features you expect to find in more expensive models. Operates from any of three power sources—115 V. 60 cycles AC—115 V. DC—or its own self-contained batteries. Highly efficient 5-tube superhet circuit employs the following: 1A7GT converter, 1N5GT IF amplifier, 1H5GT detector—AVC—1st audio amplifier, 1T5GT power amplifier and a 35Z5GT rectifier. Matched 5" PM speaker assures excellent tone quality. Designed particularly for loop operation but has provision for attaching aerial if desired. Attractive simulated leather covered case with disappearing key-locked door. Other features: automatic volume control, full vision airplane dial, beam power amplification, etc. Dim.: 12 1/4" long, 9 3/4" high, 6 1/2" deep. Shpg. wt. 17 lbs.



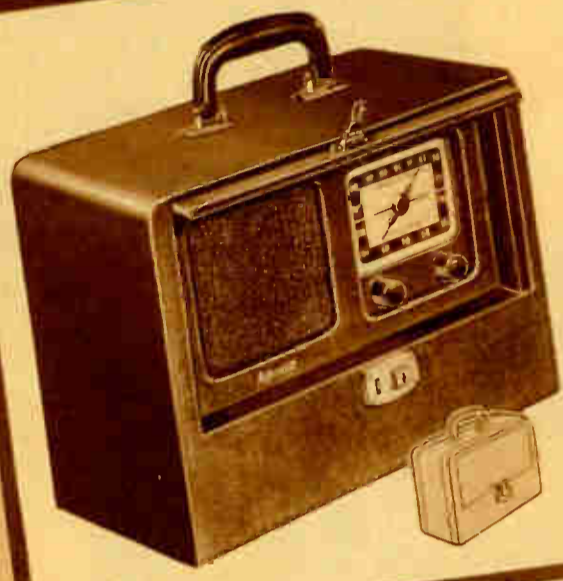
IT'S LAFAYETTE

- MODEL D246—Lafayette 3-Way 5-Tube Portable with tubes. \$22.95
- YOUR COST (including batteries and all Federal taxes) \$20.95
- MODEL D233—As above, but in open face case (no cover). \$3.00
- YOUR COST SPECIAL (including batteries and all Federal taxes)
- K20186—Extra Battery Pack for either above models.

Lafayette 3-Way 6-Tube Portable

"AN EXCEPTIONALLY FINE VALUE!"

Good to look at—a pleasure to listen to—and extremely easy to buy! In short—a grand value! A tuned RF stage employing a three gang tuning condenser assures maximum sensitivity and selectivity—far beyond that of the average run of portables. In fact through careful design you get the equivalent of 8 tube performance with only 6 tubes. Tubes used include: 2-1N5GT's, 1-1A7GT, 1-1H5GT, 1-3Q5GT and 1-35Z5GT rectifier. The "Beam Power" output stage (3Q5GT) assures ample power at all frequencies. A specially matched 5" PM Dynamic Speaker provides excellent tonal reproduction. Tuning range of the receiver is from 540—1550 kc (55-182 meters) thus including the complete standard broadcast band and a number of police call frequencies. Battery drain is exceptionally low (approximate battery life 200-250 hrs.). Other circuit features include: a built-in Lafayette Magic Antenna antenna with provision for attaching an external antenna when necessary; a tunable RF stage; automatic volume control to keep output level constant; automatic power shift which cuts off batteries when receiver is used on house current, etc. Designed for operation on 110 V. 60 cycles AC, 110 V. DC or its own self-contained batteries. Attractive leatherette covered case with key-locked drop front cover.



SEPTEMBER

Lafayette Special 4-Way Portable

"DESIGNED TO OPERATE IN YOUR CAR TOO!"

The ideal universal radio—designed to operate anywhere! Use it in your home, your hotel room, at the beach, at the ball park or in your car! It doesn't just happen to work in your car but is actually designed for this type of operation. With the adapter kit (available separately) it is instantly interchangeable with a standard car antenna of the whip type. Best of all it is instantly interchangeable from one type of operation to the other. Indoors it operates from any standard 110 V. 60 cycle AC or 110 V. DC power line outlet. Outdoors and in your car it operates on its own self-contained batteries. Board of Underwriters Approved and employs six tubes as follows: 1-1A7GT converter, 2-1N5GT IF amplifiers, 1-1H5GT diode detector, AVC and audio amplifier, 1-3Q5GT power amplifier and 1-35Z5GT rectifier. Tuning range is from 540 to 1600 kc. An "Economizer Switch" assures maximum tube and battery life. Other features include a 6-inch PM dynamic speaker accurately matched to the output, self-contained loop, "car operation" antenna plug-in coil socket, etc. Handsome simulated blue leatherette covered case. Shpg. wt. 21 lbs.



- MODEL B196— \$27.95
- YOUR COST complete with batteries and all Federal taxes \$4.25
- K16792—AUTO ADAPTER KIT (ant. coil, whip aerial, etc. Wt. 3 lbs.) \$3.30
- K20196—Extra Kit of Batteries

Lafayette De Luxe 3-Way 7-Tube Portable

"FINEST PORTABLE WE EVER MADE"

Those who have seen this new Lafayette DeLuxe Portable call it the finest one we have ever made—same in fact say its the best they have ever seen anywhere. Its easy to believe, too, because we know what has gone into it. Let's just take a look at some of its more important features:

- ★ Tuned RF Stage on all three ranges.
- ★ Hi-Gain Iron Core IF Transformers.
- ★ Jack for headphone operation.
- ★ Separate Power Amplifiers for battery and house current operation.
- ★ Precision Three-gang Condenser.
- ★ Loop operation on all bands.
- ★ Key-Locked disappearing door.

It operates from 115 V. 60 cycles AC, 110 V. DC or its own self-contained batteries. Be prepared to hear a portable that outperforms many home type console radios. It has amazingly vibrant life-like tone—loads of power—excellent sensitivity and selectivity. Tuning range is from 540-1630 kc. 3 to 9 mc (33.3-100 meters) and 9 to 18 mc (16.7-33.3 meters) with a tuned RF stage on all ranges. Tube line-up includes: 1N5GT RF amplifier, 1R5GT converter, 1N5GT IF amplifier, 1H5GT det.-AVC-1st audio, 3Q5GT battery power amplifier, 50L6GT AC-DC power amplifier and a 35Z5GT rectifier. Case covered with two toned attractive and durable fabric. 14" x 10 1/2" x 8" deep. Shpg. wt. 21 lbs.



- MODEL C232—Complete with batteries and all Federal taxes \$39.50
- K20196—Extra Set of Batteries \$3.30

Lafayette 6-Tube Super Auto Radio

"A FINE HIGHWAY COMPANION"

A fitting companion for the most expensive cars, yet priced to fit the purse of even the used car buyer. Another example of Lafayette's ability to save you money on any kind of radiol High in quality of components and workmanship and outstanding in performance. An exceptional value!

Licensed 6-tube superhet circuit employs: 6SK7 RF amp.; 6SA7 converter; 6SK7 IF amp.; 6SQ7 det.-AVC-audio; 6K6GT power output amp. and a 6X5GT rectifier.

Permeability Circuits—by means of a three-circuit permeability system a great improvement over the ordinary condenser system is realized.

Flat AVC—a highly efficient automatic volume control system keeps the receiver output volume at a constant level minimizing fading of stations.

Mobile Dynamic Speaker—a 6" electro dynamic designed for mounting directly behind the instrument panel on most cars. May also be mounted in separate housing (listed below) in cars not equipped with speaker grille.

Other Features—include a power output of 5 watts maximum—3 watts undistorted, 4 tuned IF circuits, improved noise filtering circuit, etc. 9" x 8" x 7".



- MODEL B110—Lafayette 6-Tube Auto Radio complete with tubes, distributor suppressor, generator condenser and speaker. Shpg. wt. 20 lbs. \$23.95
- YOUR COST including all Federal taxes \$1.65
- "Customized" Control Plate (specify make, year, model of car) \$2.15
- K19157—Speaker housing and mounting kit (sold only with radio)

JULY

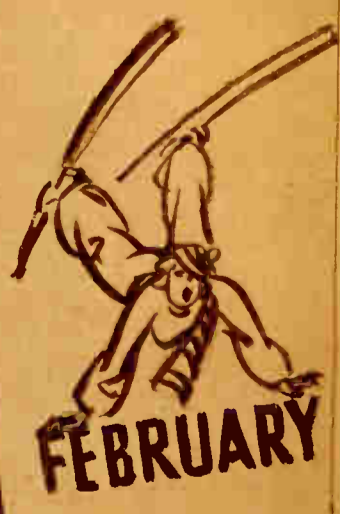
ALL YEAR ROUND



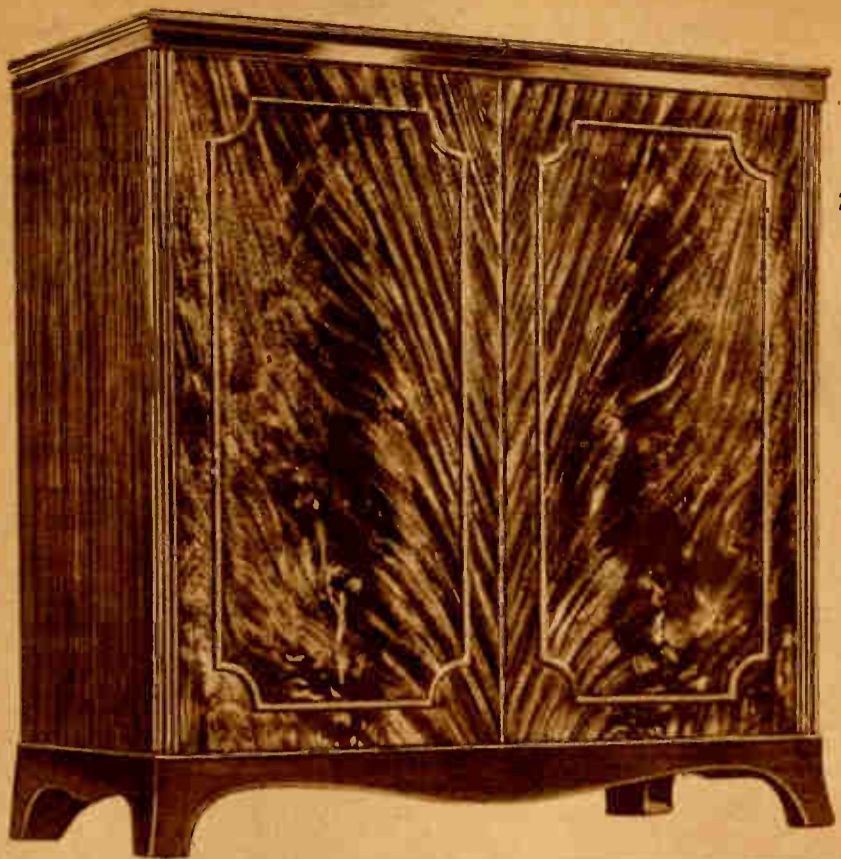
OCTOBER



MAY



FEBRUARY

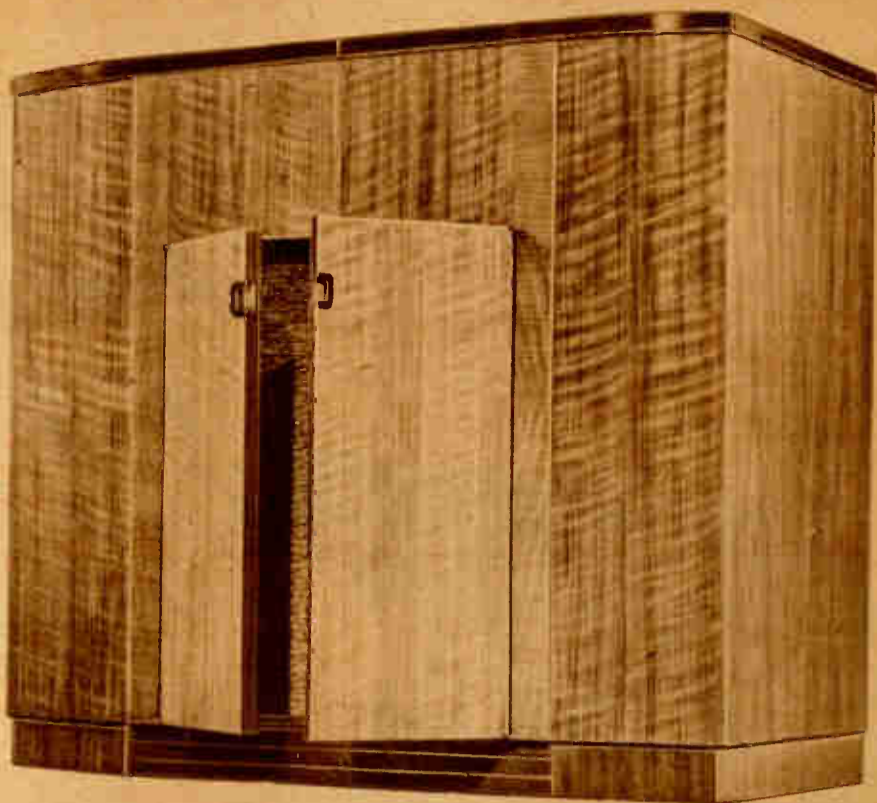


And Now
4

"SPREAD BANDS"

1. 19M Spread Band
2. 25M Spread Band
3. 31M Spread Band
4. 49M Spread Band
5. Broadcast Band

Plus
12-Tube
Performance



Lafayette 12-TUBE 5-BAND A. C. PHONO-RADIO COMBINATIONS

Not one, but four "spread bands" in this new 12 tube Lafayette! A separate and distinct scale for each of the four important short wave channels—19 meters, 25 meters, 31 meters and 49 meters! These are, of course, in addition to the standard broadcast band for the reception of domestic stations. For the first time you can now have the same type of "band spread tuning" on all four channels in your home receiver as previously available only in expensive communications receivers.

FIVE SEPARATE BANDS cover the following ranges: Broadcast—540-1600 kc, 49 Meter Short Wave—5.9-6.2 mc, 31 Meter Short Wave—9.1-10.0 mc, 25 Meter Short Wave—11.4-12.2 mc, 19 meter Short Wave—14.9-15.5 mc.

12-TUBE SUPERHETERODYNE CIRCUIT employs the following tube lineup: 6SK7 RF amplifier, 6SA7 converter, 2 6SK7 IF amplifiers, 6SQ7 diode-det. AVC, 6SQ7 1st audio amplifier, 6SQ7 2nd audio amplifiers, 6J5GT inverter, 2 6V6GT push-pull power amplifiers, 5Y3G rectifier and a 6U5 tuning eye. 10 watts power output.

6 STATION PUSH BUTTON TUNING. Six buttons are provided for use on the broadcast band. Easily set for any desired station. **CATHODE RAY TUNING EYE** assures accurate tuning-in of stations even with volume control turned down.

BASS AND TREBLE COMPENSATION. Separate controls permit adjusting both bass and treble response at will. Either can be set at more or less than normal as desired.

MAGIC ANTENNAIRE. A built-in loop antenna provides satisfactory reception of most broadcast stations without the use of an external antenna. For receiving distant and short wave stations a suitable antenna should be connected to the terminals provided.

AUTOMATIC RECORD CHANGER. An all-American made changer accommodates twelve 10" or ten 12" records at a time playing each one in sequence without further attention until all have been played. Smooth acting and gentle to your records.

LIGHTWEIGHT CRYSTAL PICKUP. Latest lightweight type provides excellent reproduction with a minimum of record wear. Correct angle of head assures perfect groove tracking.

CHOICE OF MODERN OR PERIOD CABINET. This excellent chassis is available in either a Period or Modern cabinet. **PERIOD CABINET** illustrated at top left is an exceptionally beautiful piece of mahogany furniture in traditional period style.

MODERNE CABINET illustrated at top right features the clean cut lines of good modern furniture in fine walnut.

MODEL FE-255—Lafayette 12-Tube 5 Band Super Combination with domestic changer in Period cabinet. 35 3/4" h. x 35" w. x 17 1/4" d. With tubes. For 110V. 60 cycles A.C. **\$159.50**

Shpg. wt. 159 lbs. **YOUR COST**.....
MODEL FE-254—Same as above but in Modern walnut cabinet. 34" h. x 37 1/2" w. x 18" d. **\$159.50**

YOUR COST.....
Either above for 220 V. operation, add..... **\$5.00**

EITHER ABOVE WITH GARRARD RECORD CHANGER RC-30. (If and when available.) **ON ORDER AT ADDITIONAL \$25.00**

Note: FE-254 also available in Mahogany or Wheat Finish Walnut. Specify which finish desired and add..... **\$10.00**



Lafayette "CONTINENTAL"

Table Model Phono-Radio

6-Tube

A smart new Lafayette in the "modern manner." Refreshingly simple in design yet outstandingly beautiful. A happy blending of smooth flowing lines and satiny texture. Designed particularly for those desiring the finest. It is expressly built for single band (broadcast band) radio reception and the reproduction of fine recordings. By the elimination of non-essentials the quality has been kept high and the price surprisingly low.

HIGHLY EFFICIENT SUPERHET CIRCUIT licensed under Hazeltine and RCA patents covers the broadcast range from 550 to 1700 kc.

6 TUBES EMPLOYED include a 12SK7 as RF amplifier, 12SA7 converter, 12SK7 IF amplifier, 12SQ7 detector-AVC-audio amplifier, 35L6GT beam power output amplifier and 35Z5GT rectifier.

CRYSTAL PICKUP has an off-set head for better tracking and provides excellent fidelity.

OTHER FEATURES include: constant speed motor, matched 5" speaker, tone control, etc.

MODEL S-316—As described, in Walnut finished cabinet 14 1/4" x 13" x 10" high. For 115 V. 60 cycles A.C. Shpg. wt. 19 lbs. **\$27.95**

YOUR COST SPECIAL.....

Lafayette 12-Tube 5-Band AC Console

- 5 Bands Including 4 "Spread Bands"
- RF Amplifier Stage On All Bands

One of the most sensational radio developments in years! Also one of the most logical. International short wave broadcasters operate only in the 19, 25, 31 and 49 meter channels. Why then, squeeze these channels in to a very small space on the dial in order to include a large number of other frequencies practically never listened to? Lafayette engineers designed this new Lafayette to give each of these channels a complete band on the dial to itself. Now tuning in short wave stations is a real pleasure. No more "hair trigger" tuning to bring in the station you want. Stations are now s-p-r-e-a-d over the complete dial with much more room between stations. You'll get a new thrill out of short wave tuning with this new Lafayette.

This, however, is not the only feature of this remarkable receiver. Note these others:

RF STAGE ON ALL BANDS assures excellent sensitivity and selectivity at any point on the dial.

- 6-Station Push Button Tuning
- Treble And Bass Compensators
- 6-Station Push Button Tuning system tunes in any of 6 pre-selected stations.
- **SEPARATE BASS AND TREBLE COMPENSATORS**—not to be confused with ordinary tone controls—permit individual adjustment of bass and treble frequencies.
- **12-TUBE SUPERHET CIRCUIT** employs the following lineup: 6SK7 RF amp., 6SA7 converter, 2-6SK7 IF amp., 6SQ7 Det-AVC, 6SQ7 1st audio, 6SQ7 2nd audio, 6J5GT inverter, 2-6V6GT PP power amp., 5Y3G rectifier and 6U5 tuning "eye." Terminals are provided for attaching a phono pickup or mike amplifier. Other features described at top of page.
- **BEAUTIFUL MODERN WALNUT CABINET**—measures 35 1/4" high, 17 1/2" wide, 11" deep.
- **MODEL FE-253**—complete with tubes. Shpg. wt. 85 lbs. for 110V. 60 cycles A.C. **\$84.50**
- **YOUR COST**.....
- **MODEL FE-252**—12-Tube chassis. Speaker and tubes only. Chassis: 16" w. x 12" d. x 9" h. Shpg. wt. 45 lbs. **YOUR COST**..... **\$64.50**
- Either above 220 V., add..... **\$3.00**

Record Player Table

(Illustrated at left) A neat, well-built table especially designed to hold the average size record player, or table model combination, on top together with a quantity of records and record albums on a shelf underneath. The top is 20" wide and 15" deep. The overall height of the table is 24 1/2"—just right to place the top of the record player at a convenient height. The table is sturdily built and beautifully finished in walnut rubbed and polished to a high gloss. The shelf is equipped with end pieces, a back stop panel and two dividers. (Albums shown in photo not included.) Shpg. wt. 33 lbs. **MODEL 903**—Cabinet only..... **\$7.95**

Deluxe Album Cabinet

(Illustrated at right.) A beautiful walnut finished two-compartment record album cabinet designed to hold 240 individual records or sixteen 12-pocket albums. Top is large enough to hold a standard record player or table model combination. Overall cabinet dimensions are: 31" high, 19 1/4" wide and 14 3/4" deep. Cabinet is raised off floor on short legs for easy cleaning. Shpg. wt. 37 lbs. **MODEL 1035**—(less albums). **\$12.95**

SPECIAL.....

Phono-Radio

BY
LAFAYETTE



Lafayette "NEW YORKER" Special Value Phono-Radio

5-Tubes A complete phono-radio combination at the price of a good record player alone! In fact you can disregard either phono or radio and still have a fine value that would be hard to beat anywhere! Proof again of Lafayette's ability to give you more—far more—for your money!

THE RADIO is a well engineered superhet with good sensitivity and selectivity. It employs 5 tubes including: 1-12SQ7GT, 1-12SA7GT, 1-12SK7GT, 1-50L6GT, and 1-35Z5GT rectifier.

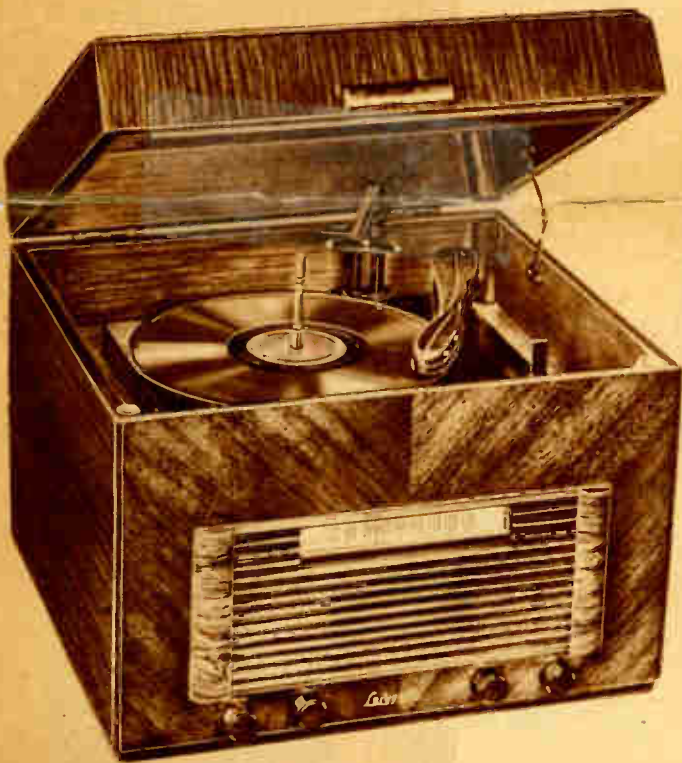
TUNING RANGE is from 545 to 1750kc thus including all standard broadcast band frequencies. **BUILT-IN MAGIC ANTENNAIRE** loop antenna eliminates the need for an external antenna for local reception. Terminals for attaching an antenna to receive distant weak stations are provided.

CONSTANT SPEED MOTOR has its speed controlled automatically by the line frequency like an electric clock.

OFFSET HEAD CRYSTAL PICKUP is of the modern lightweight type.

CABINET is walnut finished and measures 14 3/4" x 14" x 8" high. Plays with cover closed.

MODEL EB-240—Complete with tubes. Shpg. wt. 18 lbs. **YOUR COST** **\$19.95**



Lafayette "COSMOPOLITAN" Automatic Table Combination

6-Tubes Another beautiful version of Lafayette's new moderns. This one is especially handsome with a novel combination dial-grille. Finished of fine walnut veneers and hand rubbed to a rich lustrous gloss. It incorporates a completely automatic record changer that will play up to ten 12" or twelve 10" records in sequence automatically. A highly perfected crystal pickup reproduces every note of your favorite recordings with exceptional clarity and volume.

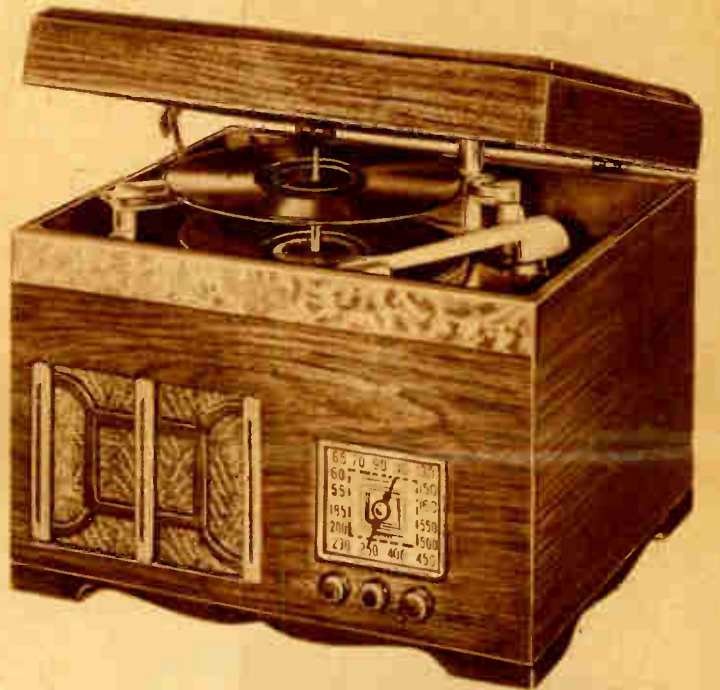
THE RADIO is an advanced superhet employing six tubes including: 2-12SK7's, 1-12SQ7, 1-12SA7, 1-35L6GT and 1-35Z5GT rectifier.

THE TUNING RANGE from 545 to 1764kc (170-555 meters). Covers all domestic broadcast band frequencies plus a number of police band frequencies and some high fidelity stations.

MANY IMPORTANT FEATURES include: matched electro-dynamic speaker, illuminated easy-vision slide rule dial, full size power transformer, automatic volume control, beam power output, built-in **MAGIC ANTENNAIRE** loop antenna, tone control, 3-watt output power, etc.

Overall dimensions of the cabinet are: 16 1/4" long, 14 1/2" deep and 13 1/2" high.

MODEL S-317—Lafayette "Cosmopolitan" 6-Tube Table Model Automatic Combination in modern cabinet. Complete with tubes. For 110 V. 60 cycles AC. Shpg. wt. 35 lbs. **YOUR COST** **\$47.50**



Lafayette "COLONIAL" Automatic Table Combination

7-Tubes A remarkably fine combination at a remarkably low price! Unquestionably one of the best values this year. An excellent radio plus a fine domestic record changer in a handsome table model cabinet that will blend well with practically any style of furnishings. From every standpoint—appearance—performance—price—it is outstanding.

THE RADIO has excellent tone, volume, sensitivity and selectivity. It is easy to operate. Since it is designed expressly for the reception of broadcast band stations only, its efficiency is remarkably high.

THE SEVEN TUBE SUPERHETERODYNE CIRCUIT employs the following tube lineup: 6SA7 converter, 6SK7 1F amplifier, 6SQ7 detector-AVC-1st audio amplifier, 6SQ7 phase inverter, 2-25L6GT PP "beam power" output amplifiers and a 25Z6GT rectifier.

BUILT-IN MAGIC ANTENNAIRE makes it unnecessary for you to connect an aerial for the reception of local broadcast stations. Provision has been made, however, for attaching an external antenna when necessary for reception of weak and distant stations.

MATCHED DYNAMIC SPEAKER accurately matched to the output of the radio assures maximum efficiency of reproduction.

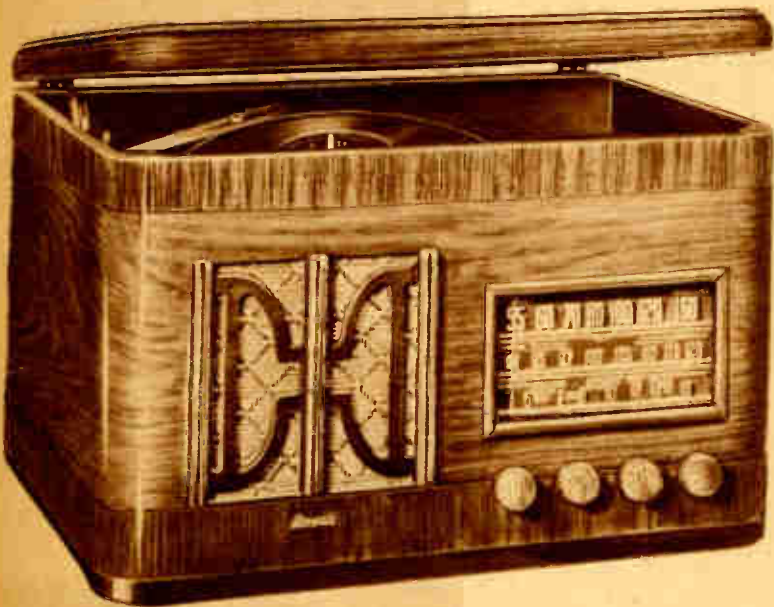
OTHER RADIO FEATURES INCLUDE: automatic volume control to prevent blasting and minimize fading, large open face o-plane dial, tone selector for radio and phono.

THE AUTOMATIC CHANGER is an all-American product and a perfect model of simplicity. It is easy to operate and very gentle with your records. As many as 12—10" or 10—12" records may be loaded onto the changer at a time.

THE CRYSTAL PICKUP is of the modern lightweight type that puts very little pressure on your records and thus prolongs their life considerably. Pickup head offset at the proper angle for perfect tracking.

THE CABINET is in a modified Colonial design devoid of excessive ornamentation thus making it suitable for use with any style of furnishings. Handsomely finished in Walnut it measures 17 1/4" x 15 1/4" x 13 1/2" high. Shpg. wt. 38 lbs.

MODEL C-104—Complete with tubes. For 115 V. 60 cycles AC. **YOUR COST** **\$49.50**



Lafayette "SPREAD BAND" Phono-Radio Combinations

8-Tubes Here is the combination you short wave listeners have been looking for! It incorporates a new "s-p-r-e-a-d band" for greater ease in tuning in your favorite overseas broadcasts on the 25 and 31 meter bands! It has excellent sensitivity and 4 1/2 watts undistorted power output (9.6 watts maximum). Reproduction of your favorite recordings as well as your broadcasts is thrillingly clear and true to the original.

3 TUNING RANGES: Broadcast-530-1630kc; Short Wave-5.6-18.5mc; Overseas Spread Band-9.4-12mc.

TUBE LINEUP: 6SA7 converter; 6SK7 1F amp.; 6SQ7 det.-AVC-1st audio; 6SQ7 phase inverter; 2-6K6 PP power amplifiers; 5Y3 rectifier and 6U5 "eye".

MAGIC ANTENNAIRE: Built-in loop for broadcast band reception. Terminals provided for aerial connection for S.W. station reception.

TONE CONTROL: Continuously variable type.

CONSTANT SPEED MOTOR: Speed controlled by line frequency like an electric clock.

LIGHTWEIGHT CRYSTAL PICKUP: Excellent reproduction and minimum record wear.

MODEL C-210—Lafayette 8-Tube 3-Band Spread Band Combination in cabinet 21" x 15" x 13 3/4". For 110 V. 60 cycles AC. Shpg. wt. 42 lbs. **YOUR COST** **\$47.50**

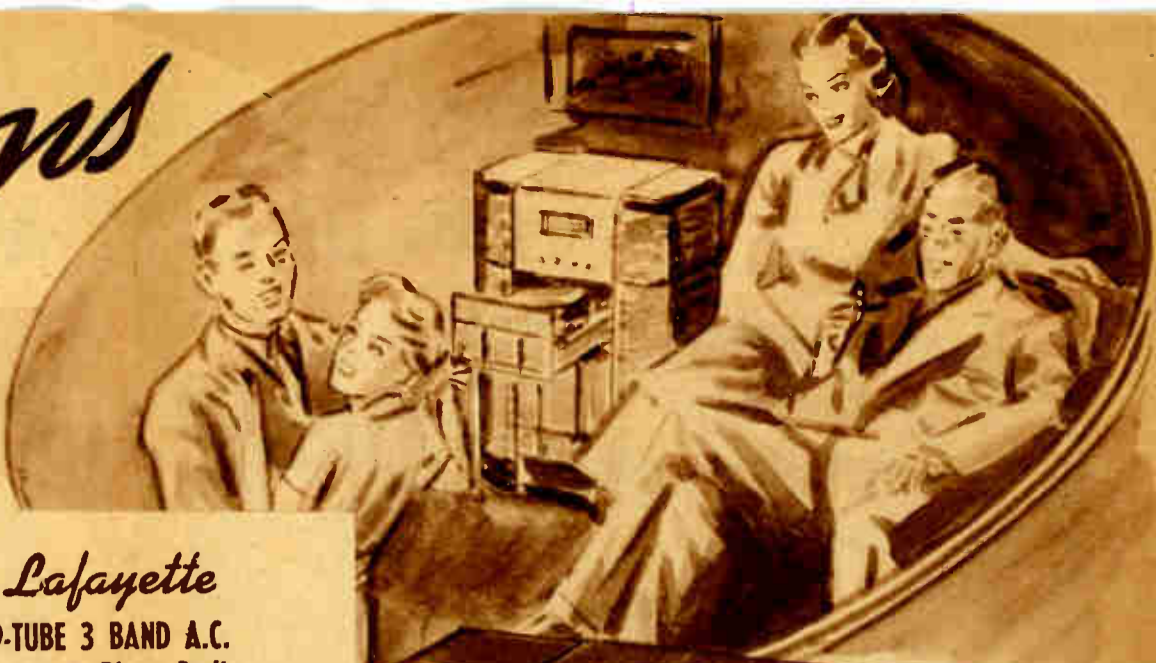
9 Tube AC-DC Model

Similar to the above but for AC or DC operation. Tubes: 6SA7, 6SK7, 2-12SQ7, 2-25L6, 2-25Z6 rectifiers, 6U5 eye. A 6.170 ballast also used. Power output 7.6 watts max. (3.6 watts undistorted).

MODEL C-203—**YOUR COST** **\$57.50**

For 220 V. either model, add **\$5.00**

Combinations



Lafayette 9-TUBE 3 BAND A.C. Automatic Phono-Radio

A winning combination! Fresh from the production line comes this superb Lafayette phono-radio combination, embodying every essential for fine quality reproduction. The cabinetry too, bespeaks the consummate skill of our master craftsmen. Rich, warm mahogany veneers are employed in a style that is charming. Let model JS-300 add beauty to your home, and provide you with a wealth of radio and recorded entertainment.

TUNED R.F. STAGE insures extra sensitivity and selectivity. The powerful superhet circuit uses: 6SK7GT R.F. amplifier; 6SA7GT converter; 6SK7GT i.f. amplifier; 6SQ7GT diode detector, a.v.c. and first audio; 6SQ7GT phase inverter; two 6K6GT push-pull power amplifier; 6U5 tuning "eye" and 80 rectifier.

12" DYNAMIC SPEAKER, exactly matched to the audio system, affords excellent frequency range with minimum distortion.

THREE BANDS: domestic broadcasts brought in on the 538 to 1620 kc range; intermediate short wave stations from 2.2 to 7.2 mc (41.1 to 136.4 meters); European short waves 7.3 to 24 mc (12.5 to 41.1 meters).

TONE CONTROL, variable type, incorporates a "bass boost" position to restore low register tones usually lost in transmission. High range can be "cut-off" to suit the desires of the operator.

ANTENNAIRE, special Lafayette loop, picks up all domestic broadcast signals. Aerial and ground required for short-wave reception (terminals on chassis).

Other features: three gang variable condenser; 5 watts audio power.

AUTOMATIC CHANGER plays ten 12" or twelve 10" records at one time. Motor is constant speed type. Reject feature included. Pick-up is latest featherweight CRYSTAL unit.

DELUXE CONSOLE built of selected mahogany veneers with hand rubbed finish. Has split top. Size: 33 1/4" high, 30 1/2" wide and 17 1/4" deep.

MODEL JS-300—With tubes. For 110/120 volts, 60 cycles a.c. Shpg. wt. 98 lbs.

YOUR COST, including Federal taxes, **\$99.50**

For 220 volt operation, add **\$5.00**

NOTE: Above also available in Walnut (Specify JS-300W) at the same price.



Lafayette 8-TUBE 3-BAND A.C. Super With Automatic Changer

The beauty of rich, reddish mahogany has been coupled with charming design to result in this outstanding Lafayette phono-radio combination. And versatility of operating features plus high quality reproduction characterize the chassis and automatic record changer employed. Compare these qualities:

GETS EUROPE DIRECT: In addition to bringing in all the domestic stations on the 530 to 1630 kc band, two short wave bands are provided. From 5.6 to 18.5 mc (16.3-53.5 meters) and the special spread band from 9.4 to 12 mc (25 to 31.8 meters) for overseas reception.

ANTENNAIRE, Lafayette's built-in loop, for broadcast use. Use aerial and ground for good s.w. reception (terminals provided).

POWERFUL SUPERHET employs 6SA7 converter, 6SK7 i.f. amp.; 6SQ7 diode det., a.v.c. and first audio; 6SQ7 phase inverter; two 6K6 p.p. power output; 6U5 tuning "eye" and 5Y3 rectifier.

12" DYNAMIC SPEAKER matched to set output, provides realistic reproduction on both radio and record player.

TONE CONTROL, continuously variable, permits you to emphasize the bass response at will. Other features: calibrated slide rule dial; visual "eye" tube tuning; push-pull output; spread band for efficient overseas reception. Four controls govern all operations.

RECORD CHANGER is easy to operate, and permits you to enjoy long, uninterrupted recorded programs. You can load up to twelve 10" records or ten 12" records at a time. Constant speed synchronous motor requires no adjustment. Pick-up is the latest type featherweight CRYSTAL unit for wide-range response. Unit has reject switch.

MAHOGANY CONSOLE measures 33 1/4" high, 30 1/2" wide and 17 1/4" deep. Has hand rubbed finish.

MODEL C-213—Complete with tubes. For 110/120 volts, 60 cycles a.c. Shpg. wt. 93 lbs.

YOUR COST, with Federal taxes, **\$84.50**

NOTE: Above also available in Walnut (specify C-213W) at the same price.

9-TUBE "RADIOCODER"

Like above, but includes home recording equipment. Not only changes records, but **MAKES** them. You can record radio programs, your own voice or music, or use the radio as a public address system. Neon volume level indicator. Hand-desk CRYSTAL microphone supplied. Uses same tubes as above set, plus a 6SQ7 mike amplifier. With tubes, crystal mike, trial record discs, recording needle. Shpg. wt. 110 lbs.

MODEL C-214— **\$114.50**

YOUR COST..... **\$5.00**

For 220 volt operation, either above models, add

Lafayette 11-TUBE A.C. 2 Band Super With Automatic Record Changer

Here's Lafayette's 1942 version of the popular pull-out drawer combination phono-radio—with a more powerful superhet chassis—better tone quality—a more attractive console. And the price is surprisingly low for so fine an instrument. Just examine these value packed features:

HIGH POWER SUPERHET makes use of the following tubes (several multi-purpose types included): 6SK7 R.F. AMPLIFIER that gives increased selectivity and sensitivity; 6SA7 converter; 6SK7 i.f. amp.; 6SK7 second i.f. amp.; 6SQ7 first audio amp.; 6J5GT phase inverter; two 6F6G push-pull power output; 5Y3G rectifier; 6U5 tuning "eye." A three-gang tuning condenser is employed.

TWO RANGES: 540 to 1600 kc for the domestic broadcast stations; 5.5 to 18.5 mc (16.4 to 54.5 meters) for direct-from-Europe short-wave programs. Band switch operated from a panel knob.

ANTENNAIRE built-in loop eliminates need for aerial on broadcast band. Built-in condenser type antenna for s.w. reception; (use external aerial for best s.w. reception; terminals on chassis).

10" DYNAMIC SPEAKER handles the entire set output with good fidelity.

TONE CONTROL, continuously variable, permits individual adjustment of frequency response. Bass notes can be emphasized at will.

VISUAL TUNING by means of the "eye" tube insures accurate dial setting. Other features: illuminated slide-rule dial; inclined control panel; powerful automatic volume control circuit.

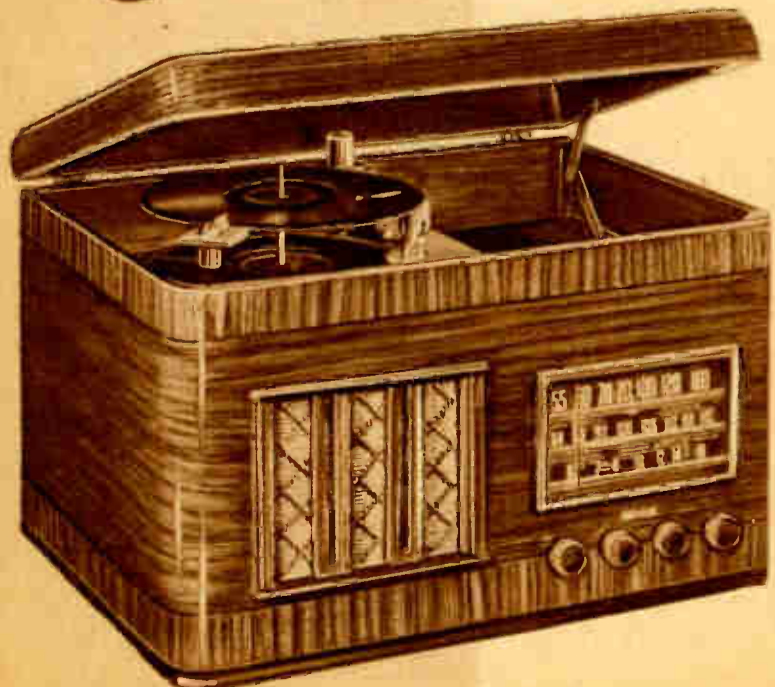
AUTOMATIC CHANGER incorporates a constant speed motor and a featherweight CRYSTAL pick-up. Up to ten 12" records or twelve 10" records can be loaded on the carrier at one time. Records can be rejected at will.

WALNUT CONSOLE is neatly styled, with rounded sides, "slide-in" phono unit and matched grille. Size: 37 1/2" high, 29" wide and 15" deep.

MODEL FE-286—Lafayette 11-Tube 2 Band A.C. phono-radio combination complete with all tubes. For 110/120 volts, 60 cycles a.c. only. Shpg. wt. 92 lbs.

YOUR COST, including Federal taxes, **\$89.95**

For 220 volt operation, add **\$5.00**



Lafayette 8-TUBE 3-BAND A.C. Phono-Radio With Automatic Changer

This new Lafayette table model combination is unusually versatile in operation. Not only does it bring you all the domestic stations and many thrilling European broadcasts on its radio bands, but you need only load the efficient automatic record changer to enjoy long, uninterrupted programs of recorded entertainment. Reproduction is clear and life-like—and the price is exceptionally low!

THREE BANDS: domestic broadcasts from 530 to 1630 kc; short wave from 5.6 to 18.5 mc (16.3-53.5 meters); Overseas S-p-r-e-a-d band from 9.4 to 12 mc (25 to 31.8 meters).

MULTI-PURPOSE TUBES include: 6SA7 converter; 6SK7 i.f. amp.; 6SQ7 det., a.v.c. and first audio; 6SQ7 phase inverter; two 6K6 push-pull power amplifier; 5Y3 rectifier and a 6U5 visual tuning "eye" tube.

ANTENNAIRE built-in loop for broadcast band; terminals for external aerial and ground provided.

TONE CONTROL, continuously variable, permits individual setting of response characteristics.

PUSH-PULL OUTPUT stage furnishes 4.5 watts of undistorted audio power (9.6 watts peak); more than sufficient for home use.

LARGE SLIDE-RULE DIAL is edge illuminated, and each band is fully calibrated. You see the station settings at a glance.

VISUAL TUNING by means of the cathode ray tuning "eye" tube insures simplified, accurate tuning. Four panel knobs govern all radio and phono operations.

AUTOMATIC CHANGER employs an efficient constant speed motor that requires no adjustments. Carrier permits loading up to ten 12" records or twelve 10" records at a time—30 to 45 minutes of continuous recorded entertainment. Reject lever permits instant rejection of any record at will. Latest type featherweight CRYSTAL pick-up furnishes wide range reproduction. Easy to operate.

WALNUT TABLE MODEL is attractively designed and beautifully finished. Size: 22 1/2" wide, 16 1/4" high, 14 1/2" deep.

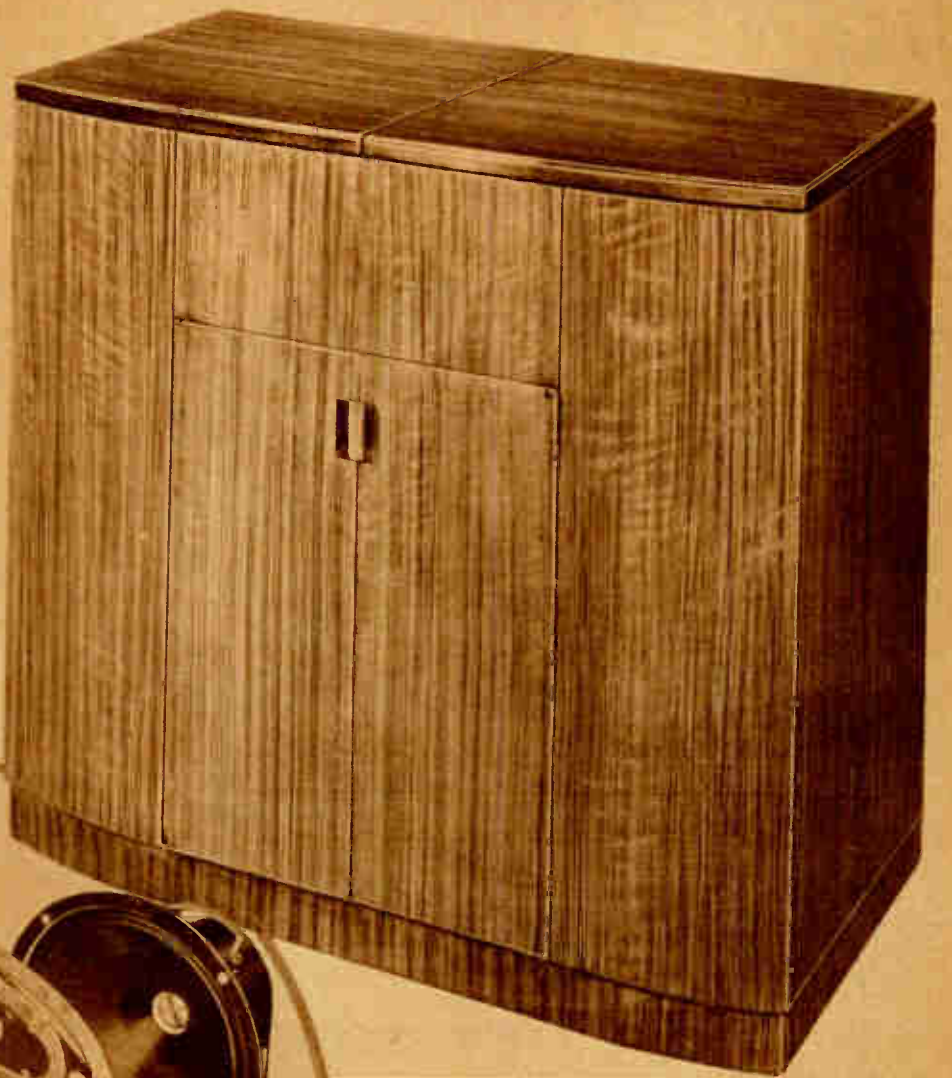
MODEL C-211—Lafayette 8-tube 3 band a.c. combination complete with tubes. For 110/120 volts, 60 cycles a.c. Shpg. wt. 46 lbs.

YOUR COST, including Federal taxes, **\$62.50**

For 220 volt operation, add **\$5.00**

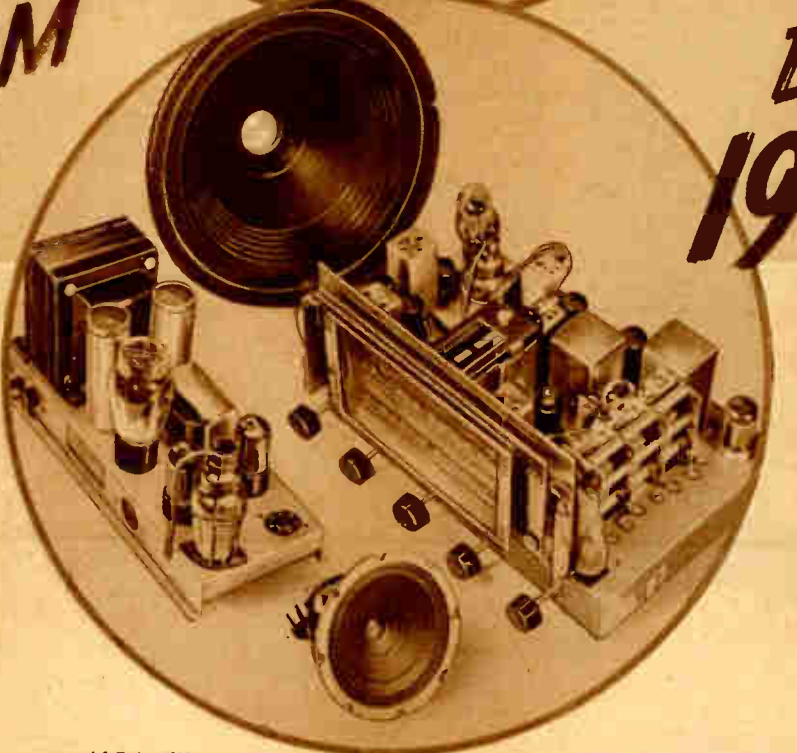
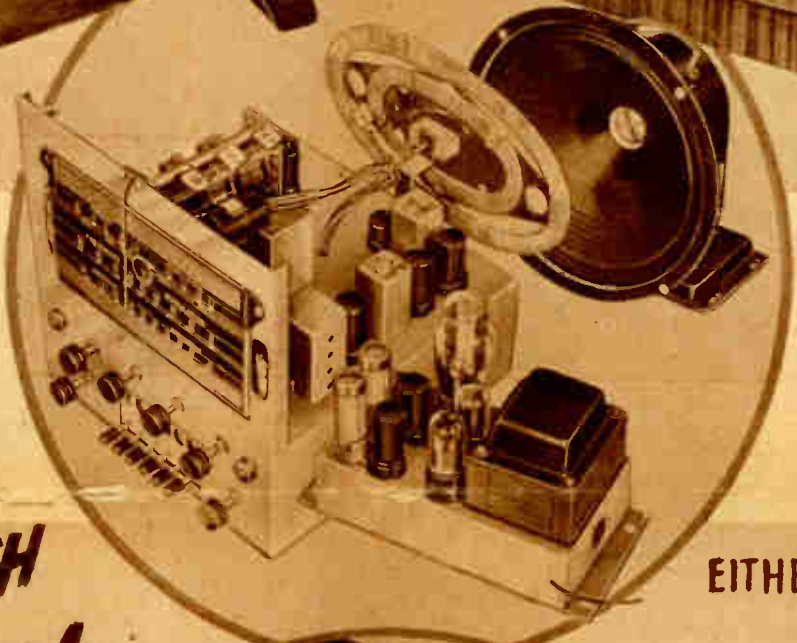
Sit Back... and listen to a new thrill

WITH THESE DE LUXE AM-FM COMBINATIONS



Two new Lafayettes that are the most modern and highly perfected phono-radio combinations available! If you haven't heard them, you just cannot realize how wonderfully clear and life-like radio reception can be. Other radios, even those designed less than a year ago, seem woefully out of date by comparison. The Lafayette "Concerto" and "Symphonie" models are actually two radios in one! First of all, they are real high fidelity receivers of the type of broadcasting with which we are most familiar—AM. They have no peer as receivers of this type. For tone quality they are unsurpassable. Even if you just want an AM receiver, one of these should still be your choice.

Today, however, if you want the finest possible reception that modern science can provide, you must listen to the FM or "frequency modulated" stations. Employing an entirely new system of transmission, developed by Major Armstrong, they transmit a far greater range of tones than AM stations. The FM system also permits practically "noiseless" reception. But, in order to realize the full benefit of this new scientific development, you must use a real FM receiver. These Lafayette models are genuine FM receivers licensed under Major Armstrong's patents. You get both AM and FM receivers in these new Lafayettes plus the finest of phonograph record reproducers.



EITHER CABINET
**EQUIPPED WITH
16 TUBE FM-AM**

EITHER CABINET
**EQUIPPED WITH
19 TUBE FM-AM**

Lafayette "Symphonie"

New 16-Tube FM-AM Combinations

These new 16-tube combinations incorporate the highly efficient 16-tube chassis illustrated above (center). This chassis is without question one of the finest ever developed. It features a multitude of new developments including: 6-station push button tuning on the broadcast band, continuous "bass" and "treble" tone controls, tuned RF stage on all bands, complete Armstrong System of noise suppression on FM, double limiter, center-tuned discriminator, separate oscillator and high-gain converter on FM, high fidelity 12" dynamic speaker, etc. **SUPERHETERODYNE FM-AM CIRCUIT** employs the following tube lineup: 6SG7 RF Amp., 6SA7 AM converter, 6AB7 FM converter, 6J5 FM oscillator, 2-6SG7 IF amp., 2-6SG7 limiters, 6SQ7 AM detector-audio, 6H6 FM discriminator, 6SQ7 audio, 6SQ7 inverter, 2-6K6 PP power amps., 6U5 tuning "eye" and a 5Z3 rectifier—a total of 16 tubes. **THREE TUNING BANDS** are as follows: Broadcast—540 to 1620 kc; Short Wave—4.7 to 16.0 mc (18.7-63.8M); Frequency Modulation—41.0 to 50.0mc. Provide complete coverage of all important international short wave broadcasting channels plus the standard broadcast and the FM channels. **BUILT-IN MAGIC ANTENNAIRE** loop antenna for use on the broadcast band eliminates the need for an external antenna when using this band. Connections are provided for suitable antennas for short wave and FM reception. **BASS AND TREBLE EQUALIZATION** controls provide a full range of adjustment from less than normal to more than normal response. Either end of the scale can be boosted or subdued at will in any desired combination. **ARMSTRONG SYSTEM OF NOISE SUPPRESSION** on the FM receiver assures quiet, noiseless reception—a new thrill for those located where electrical disturbances are prevalent. **TUNED RF STAGE ON ALL BANDS** for maximum sensitivity and selectivity at any tunable frequency. **HIGH FIDELITY AUDIO SYSTEM** employing a high fidelity 12" dynamic speaker, inverse feedback, push pull amplification, treble and bass equalizers and having a power output of 10 watts gives new meaning to fullness of tonal reproduction of both radio and records. **PRECISION BUILT RECORD CHANGER** of domestic manufacture may be loaded with up to twelve 10" or ten 12" records at a time. Positive, smooth and quiet operation at all times. Excellent design makes for simple operation. **LIGHTWEIGHT CRYSTAL PICKUP** of the latest type reproduces every record with the utmost fidelity. Light weight reduces record wear and prolongs life of records considerably.

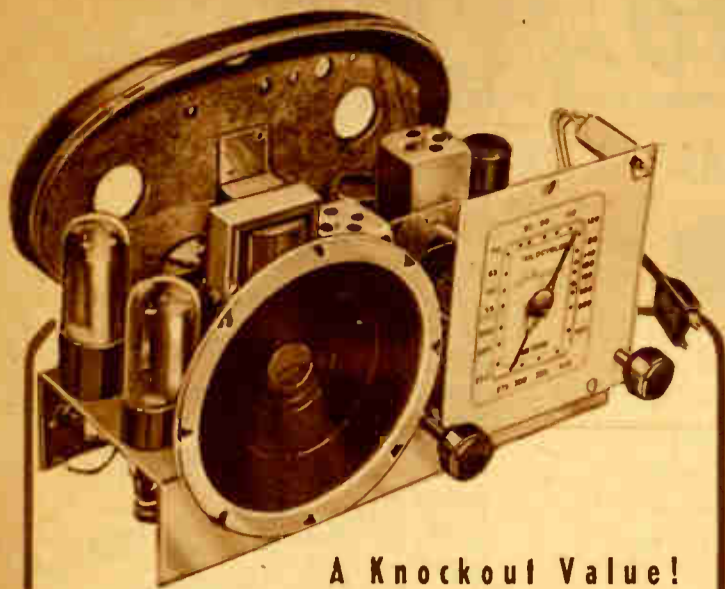
16-Tube "Symphonie"
The "Symphonie" 16-Tube FM-AM Super is available as a combination in either of the two attractive cabinets shown above. **THE PERIOD CONSOLE** (illustrated top left) is built of fine mahogany veneers hand finished to a rich lustrous gloss. Dimensions are: 35 1/4" high, 35" wide and 17 1/4" deep. **THE MODERNE CONSOLE** (at top right) is in the new flowing modern design built of handsome walnut veneers. Overall dimensions are: 34" high, 37 1/2" wide and 18" deep. **MODEL JS-304—Lafayette 16-Tube "Symphonie" Phono-Radio Combination** with domestic record changer in mahogany Period Console. Complete with tubes. For 110 volts 60 cycles AC. Shpg. wt. 175 lbs. **YOUR COST \$199.50**
MODEL JS-303—Lafayette 16-Tube "Symphonie" Phono-Radio Combination with domestic record changer in walnut Moderne Console. Complete with tubes. For 110 volts 60 cycles AC. Shpg. wt. 175 lbs. **YOUR COST \$199.50**
MODEL JS-303—Available in Mahogany or Wheat Finished Walnut. Specify finish desired and add. **\$10.00**
MODEL JS-192—Lafayette 16-Tube "Symphonie" Chassis, 12" dynamic speaker and tubes only. Chassis dim.: 11 1/2" x 11 1/2" x 13 1/2" deep. For 110 volts 60 cycles AC. Shpg. wt. 55 lbs. **YOUR COST \$107.50**
Any above for 220 V. add. \$5.00
NOTE: Model JS-304 or Model JS-303 may be had with British made Garrard RC-30 changer (when and if available) at an additional \$25.00. Specify on order.

19-Tube "Concerto"
The "Concerto" 19-Tube AM-FM Super is available as a combination in either of the two cabinets shown above. **THE PERIOD CONSOLE** (top left) is an authentic design in rich mahogany veneers hand rubbed to a deep lustrous gloss. Dimensions: 35 1/4" h x 35" w x 17 1/4" deep. **THE MODERNE CONSOLE** (top right) is in the new flowing modern design built of fine walnut veneers. 34x37 1/2x18" deep. **MODEL TC-312—Lafayette 19-Tube "Concerto" Phono-Radio Combination** with domestic record changer in mahogany Period console. Complete with tubes. For 110V 60 cycles AC. Shpg. wt. 185 lbs. **YOUR COST \$229.50**
MODEL TC-299—Lafayette 19-Tube "Concerto" Phono-Radio Combination with domestic record changer in walnut Moderne console. Complete with tubes. For 110V 60 cycles AC. Shpg. wt. 185 lbs. **YOUR COST \$229.50**
Model TC-299 available in Mahogany or Wheat Finished Walnut. Specify finish desired and add. **\$10.00**
MODEL TC-287—Lafayette 19-Tube "Concerto" Chassis, dual speakers and tubes only. For use in your own cabinet. Dim.: Tuner 15 1/4 x 11 1/2 x 8 1/2". Pack 13 1/2 x 5 1/2 x 7". Speakers 12x8. 5x2. Shpg. wt. 75 lbs. **YOUR COST \$137.50**
Any above for 220V. add. \$5.00
NOTE: Model TC-312 or TC-299 may be had with British made Garrard RC-30 changer (when and if available) at an additional \$25.00. Specify when ordering.

Lafayette "Concerto"

New 19-Tube FM-AM Combinations

With all sincerity we believe that the new Lafayette "Concertos" are the finest musical reproducing instruments ever developed. All of our many years of experience plus all that science and research have to offer has gone into the making of these brilliant instruments. Others may and do cost more, because the manufacturers do not have the merchandising advantages Lafayette enjoys, but they cannot and do not offer more in the way of a fine AM-FM Phono-Radio Combination. We invite you to come into any one of our branches to hear for yourself this remarkable instrument. Just note the following features:
HIGHLY PERFECTED AM-FM SUPERHET CIRCUIT is licensed under the Armstrong patents and employs the following tube lineup: FM section—7H7 antenna coupling tube, 7H7 tuned RF amp., 6K8 converter, 2-7H7 IF amps., 6SJ7 or 6SH7 limiter, 6H6 discriminator, VR-150 voltage regulator, AM section—6SK7 tuned RF amp., 6K8 converter, 6SK7 IF amp., 6H6 det-AVC, Audio; & Power Supply Section—6U5 tuning "eye", 6J5 1st audio, 6C8 bass and treble equalizer, 6F8 phase inverter, 2-6V6 PP output amps. and a 5U4 rectifier. **THREE TUNING RANGES** include: standard broadcast (AM) from 550 to 1600kc (545-187m.), Short Wave (AM) from 5.5 to 20mc (54.5-15m.) and FM from 42 to 50.5mc. (7.1-5.9m.). **FULL "BASS" AND "TREBLE" EQUALIZATION** gives complete control of tone response. Not to be confused with ordinary tone controls which can only reduce response—with equalizers tone can be boosted, held at normal or subdued. **INDEPENDENT RF AND IF CIRCUITS** for AM and FM to insure maximum efficiency. VR150 voltage regulator keeps plate voltage constant on FM for maximum stability. **FLAT FREQUENCY RESPONSE.** Virtually flat from 25 to 15,000 cycles providing a tonal response as near perfect as science can make it. You have a new thrill waiting for you when you hear your favorite record or radio program. **14 WATTS POWER OUTPUT** assures a more than ample reserve for any demand placed upon the audio system. **DUAL SPEAKER SYSTEM.** A 12" "woofer" and a 5" "tweeter" between them cover the entire audio range reproduced by the receiver. Double assurance of perfect tonal reproduction. **OTHER FEATURES** include: no drift discriminator circuit, separate AM and FM antenna inputs, cathode ray "eye" tuning indicator, precision-built record changer (for full description see listing under "Symphonie" model), light weight crystal pickup choice of cabinets, etc.



A Knockout Value!

Lafayette 5-Tube AC-DC Super Kit

We contracted for several hundred of these fine kits some time ago—if we wanted to duplicate the order today we would have to pay a great deal more for them. They are not just "unassembled" parts of ordinary midgets but kits that are especially designed for educational purposes. They are extremely easy to assemble and wire. IF transformers are factory-tuned and no padding condenser is required. Tuning range of the receiver is from 540 to 1600 kc. IF frequency is 456kc. Tube lineup: 12SA7 mixer-oscillator, 12SK7 IF amplifier, 12SQ7 diode-detector and first audio, 50L6GT beam power output amplifier and a 35Z5GT rectifier. Operates on 110 V. DC or 50/60 cycles AC.

Kit is furnished complete in every detail (except cabinet) including all components, hardware, wire, solder, etc. Detailed printed instructions with both schematic and pictorial wiring diagrams are supplied. A pre-wound loop antenna eliminates the need for an external antenna connection. Operation of the receiver is very easy involving the use of only two knobs—a combined volume control and on-off switch—and the tuning knob. Shipping wt. 6 lbs.

K20370—YOUR COST SPECIAL (with tubes and speaker)..... \$10.75

RECORD PLAYER SALE!

GARRARD De Luxe Player

One of the finest electric record players ever built—and because of a fortunate purchase, we are able to offer it at a price for below its actual value! Housed in a genuine walnut cabinet, it has the following quality features:

GARRARD deluxe heavy duty motor with 12" turntable. Governor controlled with speed adjustment lever on top panel. For 110-120 volts 60 cycles AC.

TANGENT ARM CRYSTAL PICKUP provides true fidelity response. Molded bakelite construction.

AUTOMATIC START SWITCH starts motor when pickup is moved into operating position.

AUTOMATIC STOP SWITCH turns motor off after record has been played. Quiet and smooth in operation.

VOLUME CONTROL together with on-off switch and needle cup is mounted on top panel. Plays all 10" and 12" records with top closed. Size: 15 1/4" wide, 13" deep, 7 1/4" high. Shpg. wt. 20 lbs.

K22380—YOUR COST SPECIAL..... \$23.55

Wireless "Mystery" Record Player

Called a "mystery" player because no connections need be made between the player and your radio. Transmits the sound of your records to your radio like a miniature broadcasting station and will therefore work with any radio. Has powerful constant speed motor, tangent arm Astatic Crystal Pickup, genuine walnut cabinet, volume control and switch. Plays 10" and 12" records. Size: 15 1/2" x 13 1/4" x 7 1/4" high. Shpg. wt. 17 lbs.

K21871—For 110V. 60 cycles A.C. \$18.95

PORTABLE MODEL: same as above but in leathette covered portable case: 7x15 1/4x13 1/2". Wt. 16 lbs. \$17.95

K21873—YOUR COST SPECIAL..... \$17.95



Special Meter Values



New!

Ultra Compact APPLIANCE TESTER

Radio and Refrigeration Service Engineers, Electricians and Servicemen here is the test instrument you have been waiting for! Test both DC and AC voltage, DC and AC amperage, DC and AC wattage. Checks both home type appliances and industrial equipment consuming up to 6000 watts! Employs a highly accurate D'Arsonval movement meter in its own plastic "safety" case. Clear sharp scale calibrations make reading extremely easy and accurate. Plastic insulated "safety" post terminals. Fully enclosed switches. Heavy duty weatherproof cord and molded plug. Ranges available on both DC and AC are as follows: 0-250 volts; 0-1-5-25 amperes; 0-30-120-600-3000 watts at 120 volts and 0-60-240-1200-6000 watts at 240 volts. All ranges read on four easy-to-read scales. Power-factor classification chart and correction curves furnished with each meter. All wood case with hinged cover and leather handle. Shpg. wt. 7 lbs.

K10477—Model 417P—Appliance Tester in portable wood case with cover. \$14.65

K10478—Model 417—Same as above but in open face wood case without handle. \$12.69



Model 446 MULTITESTER

An excellent general test instrument at a very reasonable price. We have sold thousands of this justly popular model. For the average type of service work encountered in the field this meter is ideal. It incorporates a wide selection of worthwhile ranges within a very convenient and compact walnut finish case. The accuracy of the bakelite cased 3 inch square D'Arsonval movement meter is within 2% on DC. Ranges are as follows: DC Volts—0-5-50-250-500-2500; DC Milliampere—0-1-10-100-1000; DC Amperes—0-10; AC Voltmeter—0-10-100-500-1000; Ohmmeter—0-500-100,000-1 meg. Low Range Ohmmeter reads as low as 1 ohm; 4DB Ranges—-8 to +55; Four Output Ranges same as AC volts. Meter sensitivity 1000 Ohms per Volt. Convenient selector switch operation. Exceptionally attractive with etched panel and multicolored dial. Case is walnut finished and provided with a compartment for test leads, etc. Overall dimension: 8 1/2" x 6 1/2" x 4 1/2". Shpg. wt.—5 lbs.

K10504—Model 446P—YOUR COST..... \$13.67

K10503—Model 446—Same as above but in open face walnut finished case (no cover). Size: 3" x 8 1/2" x 5". Shpg. wt. 5 lbs. (No space for accessories). \$11.71

YOUR COST SPECIAL..... \$11.71



New!

Model 661 ELECTRONIC MULTITESTER

Undoubtedly one of the biggest sensations in the test equipment field today! Combines in a single instrument the following direct reading functions:—DC Vacuum Tube Voltmeter—AC Vacuum Tube Voltmeter—Vacuum Tube Ohmmeter—Vacuum Tube Capacity Meter. It permits making complete tests on any A.M., FM or television circuit while the circuit is "hot" and without disturbing the circuit constants. Provides quick, clear readings on a 4 1/2" scale of the 4 1/2" D'Arsonval meter. Meter accuracy 2% full scale. Linear calibration. High voltage test leads and special signal tracing probe furnished. Ranges: DC and AC Volts—(sensitivity and input resistance on high ranges 160 Megs., low ranges 16 Megs. Input capacity .00005 mfd.) 0-6-30-150-600-1500-6000 Volts; Ohmmeter: (lowest readable value .1 ohm) 0-1000-10,000-100,000 Ohms—1 Meg-10 Meg-100 Meg-1000 Meg.; Capacity Meter: (lowest readable value .00003 mfd.) 0-.001-.01-.1-1.0-10.-100.-1000 mfd. When using the ohmmeter it is not necessary to short the test leads or to reset the meter when changing ranges. There is no danger of shock when checking low capacity values on the capacity meter. Size: 9 3/4" x 9 1/4" x 7 3/4". Shpg. wt. 10 lbs.

K21793—Model 661—YOUR COST..... \$38.17



Model 803 TUBE AND SET TESTER

An outstanding value in a portable servicing unit consisting of a set tester and a complete tube tester with mechanical roll chart built in. Tests all tubes including miniatures, ballasts, etc. Tests for shorts, leaks, noise, etc. Set tester ranges: DC and AC Volts—0-10-50-500-1000; DC Milliamps—0-1-10-100-1000; DC Amps—0-10; Ohms—0-500-5000-1 Meg-10 Meg. (battery operated to 1 Meg. AC from 1 to 10 Megs.). DB ranges: -8 to +55. Rollindex Chart lists all new tubes. Size: 14 1/2" x 13 1/2" x 6". Shpg. wt. 14 lbs.

K21777—Model 803—YOUR COST..... \$39.15

Model 802—Same as 803 but less Rollindex Chart. Size: 12x12 1/2x6". Shpg. wt. 13 lbs. \$33.27

K21641—YOUR COST..... \$33.27

NOTE: Above models are also available with Model 506 plug-in analyzer unit built into cover. Write for details and prices.

Carrying Case Only

A black fibrikoid covered wood case similar to the case illustrated above fitted with a plastic handle. Dimensions: 12" x 12 1/2" x 6" deep. Shpg. wt. 7 lbs.

K21794—YOUR COST SPECIAL..... \$2.39



Hallicrafters New "Skyrider 32" for 1942!

Most Popular Communications Receiver Ever Designed

- 13 Tubes
- 6 Bands
- 2 RF Stages
- Crystal Control
- Wide Angle "S" Meter
- 6-step Variable Selectivity

More features than ever before! 13-tubes! 6-bands! World renown "hallicrafter" quality and workmanship. Tuning range 500kc to 40mc in six overlapping bands for most satisfactory L/C ratio: 500-1455kc, 1400-2800kc, 2870-5800kc, 5.3-11.3mc, 10.8-23.1mc, 20.8-40mc. Two stages of RF on bands 3, 4, 5 & 6. Tube lineup: 6AB7 RF amp., 6SK7 RF amp., 6SA7 mixer, 6SA7 temperature compensated HF oscillator, 6SK7 IF amp., 6SK7 IF amp., 6B8 AVC amp., 6H6 ANL & 2nd det., 6J5 BFO, 6SC7 audio amp., 2-6V6GT's PP power amp., 5Z3 rectifier. Controls: main tuning with micrometer scale; calibrated band-spread with inertia control; tone and AC on-off switch; BFO; AF gain; RF gain; band switch; antenna trimmer; 6-pos. selectivity control; crystal phasing; send-receive switch; AVC-BFO switch; phone jack. Features: wide angle "S" meter; machine tool gray wrinkle finished case 20 1/2" x 14 1/2" x 9 1/2"; Morocco finished panel.

K21319—Skyrider SX-32 with crystal and tubes but less speaker. Shpg. wt. 87 lbs. \$149.50

YOUR COST..... \$149.50

K21153—Jensen bass-reflex 12" speaker. 30x16x22 1/2". EACH \$34.50

K21152—Jensen bass-reflex 8" speaker. 23 1/2x10 1/4x17 1/2". EACH \$29.95

First Time at This Price!

Original "Les-Tet" 5-10M. Converter Kit Only \$19.95!

Here's your chance to make up one of W2AMJ's famous 5-10 converters! It's one of the sweetest jobs you ever saw—brings 'em rolling in several "R's" better than most sets. Lets you make a lot more contacts than you have been getting—cases where the other guy hears you but you can't hear him. With a Les-Tet 5-10 you step up your listening efficiency 100%. It is extremely easy to build because all parts fit—perfectly. Wiring is not too difficult and lining-up is a cinch! Looks mighty swell when it's finished. Has a copper-plated chassis all formed and punched; two large National variable ratio dials; built-in power supply (no need to dig into your set for power leads); stand-by switch; oscillator pads plug in with coils; Alsimog insulation; etc. Output approximately 5.7mc—use your present communication receiver. Circuit employs an 1853 as RF amplifier (tuned grid and plate); a 6K8GT as combined mixer-oscillator and an 80 rectifier. Comes complete with steel cabinet 7x14x8". Shpg. wt. 18 lbs.

K21100—Kit complete with all parts except tubes. \$19.95

YOUR COST SPECIAL, WHILE THEY LAST..... \$19.95



- Extremely Sensitive
- Excellent Selectivity
- Easy To Wire
- Highest Quality Parts
- Built-in Power Supply
- Professional Appearance



EXCUSE ME! I JUST REMEMBERED

THE FALL PHOTO SALE
AT *Lafayette*



Special Values IN DARKROOM OUTFITS

Lafayette darkroom outfits have always been outstanding values! But now, with the sensational rise in the cost of chemicals and all darkroom equipment, they are greater values than ever before! It will pay you to buy now—today! Each and every kit includes fine components and pure Lafayette chemicals. Kits are easy to use and are truly remarkable values. You can't go wrong by buying today! Remember, the increasing demand by defense industries for all types of chemicals is taxing the production facilities of all manufacturers to the utmost—prices can't help but go up!

ECONOMY

LIST \$2.85
NOW \$1.98!

A reasonably priced outfit for both developing and printing designed for those desiring just the necessary essentials. Each item has been carefully selected and is of excellent quality. The outfit is complete enough to enable you to do good work right at the start. It provides an excellent foundation for the beginner to which other items may be added as his skill increases in order to do more advanced work. It is an excellent gift for the youngster or grown-up just developing an interest in photography. At this sensationally low price it is an extremely economical way to get into this fascinating hobby. Kit contains:
3 4x6" Hard Rubber Trays
1 3/4x5 1/2" Printing Frame
1 Thermometer
1 Ruby Bulb
1 4 oz. Graduate
2 Film Clips
20 2 1/4x4 1/4" Contact Paper
1 1/2 lb. Box Acid Fixer
1 Glass Stirring Rod
4 Tubes Developer
1 "Darkroom Handbook"
Shpg. wt. 5 lbs. (boxed). List \$2.85
PH2606—
YOUR COST **\$1.98**

STANDARD

LIST \$4.50
NOW \$2.98!

Priced only a little higher than our Economy outfit, the Standard Outfit provides a much wider range of working facilities. Includes a larger (8 oz.) graduate as well as a pair of "sure grip" film clips and a larger quantity of essential chemicals. The contact paper is large, too, enabling you to print larger size negatives or to cut it up into a larger number of smaller size prints. Also included are two stainless steel print tongs. An easy-to-understand instruction book is included. All components are of unquestionably high quality including the purest of photographic chemicals.
1 3/4x5 1/2" Printing Frame
1 Special Thermometer
3 4x6" Hard Rubber Trays
1 1 lb. Acid Fixer
5 Tubes Developer
1 Ruby Bulb
20 3/4x5 1/2" Contact paper
1 8 oz. Glass Graduate
1 Glass Stirring Rod
2 "Sure Grip" Film Clips
2 Stainless Steel Trays
1 "Darkroom Handbook"
Shpg. wt. 6 1/2 lbs. (boxed). List \$4.50
PH2607—
YOUR COST **\$2.98**

DE LUXE

LIST \$7.50
NOW \$5.89!

A splendid de luxe kit that enables you to make real professional "glossy" prints. An excellent outfit for both beginner and advanced amateur at a sensationally low price. Includes a real "safe-light" with both red and amber filters, genuine porcelain trays and beautifully finished ferrotype plates plus a generous size bottle of ferrotype polish. All items are of exceptionally high quality. Kit includes:
1 3/4x5 1/2" Metal Printing Frame
1 Metal-backed Tray Thermometer
2 Stainless Steel Print Tongs
3 5x7" Porcelain Enamelled Trays
1 Deluxe Safelight with two safelight filter glasses.
2 Ferrotype Plates
1 4" Print Roller
6 Tubes MQ Developer
1 8-oz. Glass Graduate
1 Glass Stirring Rod
1 4-oz. Bottle Ferrotype Polish
20 3/4x5 1/2" Contact Paper
1 1/2 Gallon Size Acid Fixer
2 "Sure Grip" Film Clips
1 "Beginner's Darkroom Handbook"
Shpg. wt. 10 lbs. (boxed). List Value \$7.50
PH2614—
YOUR COST **\$5.89**

Lafayette ROLL FILM DEVELOPING KIT

WORTH \$4.25
ONLY \$2.98

Complete
A complete fine-grain roll film developing outfit at a tremendous reduction in price! Easily worth \$4.25 at present day manufacturing costs! Includes the popular Lafayette Adjustable Roll Film Tank (takes all sizes from 35mm to 116) complete with agitator, a 32-oz. size can of Lafayette Minigrain Developer, a 64-oz. size (1/2 Gal.) can of Lafayette Acid-Fixer, two sure-grip film clips, and a copy of the "Darkroom Handbook." Shpg. wt. 5 lbs.
PH2609—
YOUR COST SPECIAL **\$2.98**

Lafayette FILM DEVELOPING TANKS



For Roll Film

Only Lafayette quantity production can give you a value like this! A perfectly designed, die-molded bakelite tank fully adjustable for all sizes from 35mm to 116 at only \$1.98! It is light-proof, stain-proof and chemical-proof! Designed to permit all operations except loading in broad daylight.
Shpg. wt. 2 lbs.
PH9267—EACH **\$1.98**
Extra Reel for above. Shpg. wt. 1 lb. PH9271 98c
Cut Film Reel for above. Shpg. wt. 1 lb. PH9274 \$1.98

For Cut Film

Equally as good a buy for the cut film user as is the tank at the left for the roll film user. Accommodates cut or pack film from 35mm to 2 1/2x3 1/2" (6.5x9 cm.). A cleverly grooved negative holder will hold up to a full dozen films at a time. Films cannot buckle and touch each other and daylight operation. Shpg. wt. 2 lbs.
PH9273—EACH **\$3.19**
Extra Reel. Fits most tanks. Wt. 1 lb. PH9274 \$1.98
Roll Film Reel for above. Shpg. wt. 1 lb. PH9271 98c

Enamelled Steel Fixing and Washing Tanks



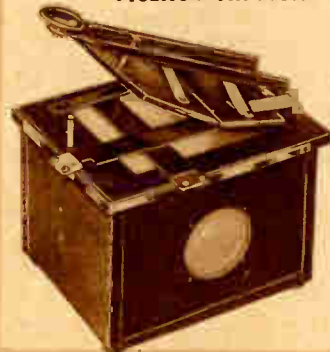
Reel Tank

Here's a value that is a value! Genuine enamelled steel tanks that will accommodate all normal size developing reels for fixing, washing, etc. Over 33 1/3% off their regular value! 5 1/4" d., 3 1/4" h. Wt. 1 lb.
PH8225—EACH **39c**

Print Tank

Over 55% off list! A real whopper of a tray for fixing, toning and washing prints. Holds up to 14 1/2 quarts! Takes all prints up to 11x14"! Actual dimensions: 16x11 1/2x5". Seamless with rounded corners. Heavy gauge steel with special acid-resistant Cesco white enamel. Shpg. wt. 7 lbs.
PH100—WHILE THEY LAST **98c**

VICEROY All-Metal Contact Printer



4x5" Size. A new method of making the actual exposure permits the use of this unit as both a printer and a safe-light. Safelight is always on. Accommodates all negatives from 35mm to 4x5". Positive paper alignment assured by metal guides set for accurate 3/16" margins. Masking bands fully adjustable. Double hinged sponge rubber covered pressure back. Hinged top all-steel and brass construction. Size: 7x7x9 1/2". Less bulb. Shpg. wt. 5 lbs.
List \$7.65.
PH8666—EACH **\$5.49**



SPECIAL! ELWOOD AM Enlarger

A sensational bargain! Discontinued by Elwood (new model has different finish but is essentially the same). Takes all negatives from 35mm to 2 1/4x3 1/4". Silvered reflector. Micrometer focusing. Study steel upright. Glass pressure plates. Enlarges to 15 diameters with 2" lens. Lens not furnished (for suitable lenses refer to our large catalog No. 85). QUANTITY LIMITED. Shipping wt. 30 lbs.
PH2520—Elwood Model AM Enlarger with 100-watt bulb but less lens. YOUR COST **\$21.95**
SPECIAL

BARGAIN! VERTEX 4x4cm Enlarger

Regular advertised list price is \$35.00 and well worth it! But Lafayette brings it to you at only \$18.89! Better than 40% off list! It's the famous VERTEX 4x4cm (1 1/2x1 1/2") enlarger with condenser lens system and a fully corrected Laock DEFINON anastigmat f:4.5 enlarging lens! Adjustable diaphragm. 23" column. 11 1/4x15 1/2" baseboard. Enlarges to 10 diameters on baseboard—larger on floor. Excellent ventilation. Shpg. wt. 20 lbs.
PH2507—SPECIAL **\$18.89**

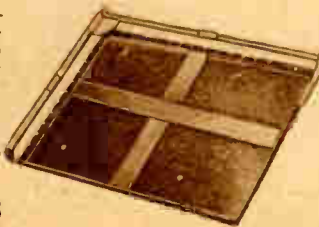


Enlarger Cover

Made of Pliofilm! Will fit practically all enlargers. Durable, attractive, non-cracking and non-inflammable. 30 1/2" long, 23" wide. With draw string. Shpg. wt. 8 oz. PH9918—SPECIAL **79c**

All-Metal VICEROY Easel

A triumph of American production genius! Excellent design makes for simple operation. Steel and masonite construction. Rustproofed. Takes all paper up to 11x14". Makes borders 1/8" to 1 1/2"—adjusted by a lever. Wt. 6 lbs.
PH9311— **\$4.98**



NEGATIVE PRESERVERS

Why wait till that prize negative is scratched? At these new low prices you'll save money as well as negatives. Not just ordinary envelopes but specially designed preservers made of glassine and with a special harmless adhesive. Wt. 6 oz. per 100.
PH9429—2 1/4x2 3/4" 100 For 39c 200 For \$1.49
PH9430—2 1/4x3 3/4" 100 For 39c 200 For 69c
PH9431—3 1/4x4 3/4" 100 For 49c 200 For 89c
PH9432—4 1/8x5 1/8" 100 For 54c 200 For 98c
PH9433—5 1/4x7 1/4" 100 For 69c 200 For \$1.19



NEGATIVE FILES

Excellent Value! Sturdy cases that will accommodate from 300 to 600 negatives each according to size. No. 1 for 6 frame strips of 35mm.; No. 2 for 127 or A8 Film (3 frame strips or 6 1/2-size); No. 3 for 116 and 120 film (2 2 1/4x3 1/4" or 3 2 1/4x2 1/4" frames). Complete with 100 glassine sheaths and two index cards. Shpg. wt. 2 lbs. each.
PH9409—No. 1 Size } \$1.69
PH9410—No. 2 Size } EACH
PH9411—No. 3 Size }
Extra packets of 100 glassine sheaths and index cards. Wt. 8 oz.
PH9412—For No. 1 Size } 69c
PH9413—For No. 2 Size } EACH
PH9414—For No. 3 Size }

"PORT-O-LAB" DARKROOM OUTFIT

Again Lafayette scores with an amazing value! A value that is doubly amazing in view of the rapidly rising cost of all photographic equipment. The Lafayette Port-O-Lab Darkroom Outfit is now being used by many schools and other educational institutions as well as amateur photographers who like to develop and print their negatives right on the spot to check up on whether or not the shot will have to be made over again. The outfit contains EVERYTHING necessary for expert developing and printing—a complete processing lab in a suitcase! The sturdy wood-reinforced case is covered with attractive airplane cloth and measures 16 1/2" long, 11" high and 6" deep. It has a sturdy carrying handle and all hardware is beautifully finished. Snap locks are of the key-locked type. All of the components (listed at right) included in the outfit are of the highest quality. Only photographically pure chemicals are included.

Quan.	Item	List Price
1	Lafayette Adjustable Tank	\$2.50
3	Acc Hard Rubber Trays (4x6")	.75
1	All-Metal Print Frame	.60
1	8-oz. Glass Graduate	.25
1	Catalin Stirring Rod	.20
1	Lafayette Tank Thermometer	.50
2	Sure-Grip Film Clips	.30
2	Stainless Steel Tongs	.50
2	10x14" Ferrotype Plates	.40
1	4" Squeegee Roller	.30
1	4 oz. Bottle Polish	.30
2	32 oz. Bottles	.50
1	Qt. Size Minigrain Powder	.60
24	Convira Paper (3/4x5 1/2")	.25
6	Lafayette M-Q Tubes	.30
1	Lafayette 1/2 Gal. Acid Fixer	.25
1	Practo Safelight	1.65
1	Carrying Case	3.00
1	Instruction Book	.25
PH2612—Lafayette Port-O-Lab De Luxe Darkroom outfit, as described above. Wt. 14 lbs. List Price \$13.40.		\$9.98
YOUR COST		

***\$13.40 Value For Only \$9.98**



Lafayette Radio

100 SIXTH AVENUE NEW YORK, N. Y.

RETURN POSTAGE GUARANTEED

Sec. 562, P. L. & R.
U. S. POSTAGE
PAID
NEW YORK, N. Y.
PERMIT No. 8486

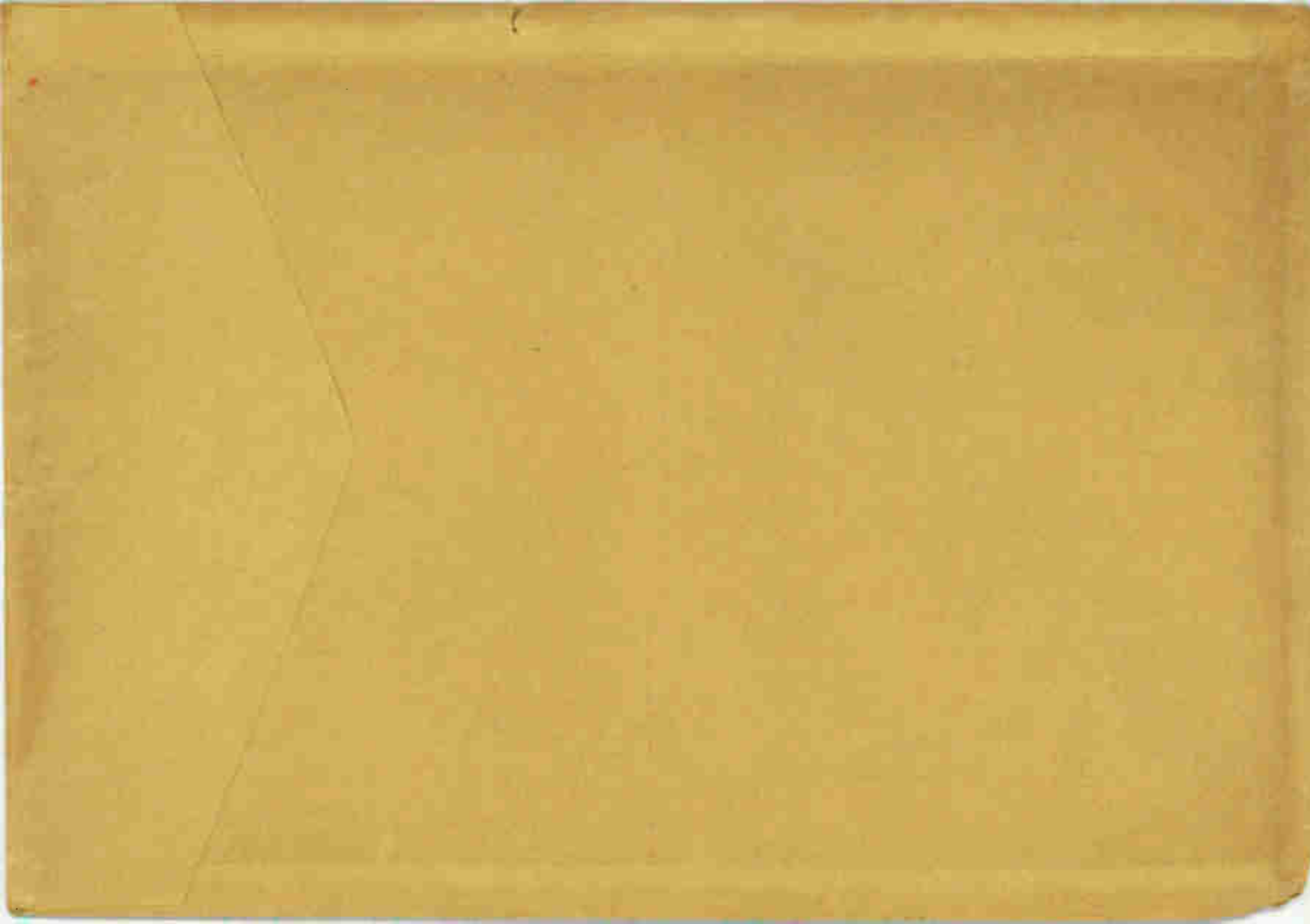
**LAFAYETTE'S
WINNING
LINE-UP**



**OF
1942
RADIOS**

YOUNG LOUIS
SAN LUIS OBISPO CALIF
P O BOX 342 28
141 MISC 81R

POSTMASTER: — If addressee has removed and new address is known, notify sender on **FORM 3547** postage for which is guaranteed.



PLACE
STAMP
HERE

Radio Wire Television Inc
Lafayette Radio

901 W. JACKSON BLVD.

CHICAGO, ILL.

PLEASE WRITE OR PRINT NAME AND ADDRESS PLAINLY

NAME _____

RURAL ROUTE _____ BOX No. _____

STREET ADDRESS _____

POSTOFFICE _____

STATE _____

BEFORE SEALING BE SURE TO

- 1. Write or print your name and address plainly**
- 2. Figure and total your order correctly**
- 3. Include the correct amount for postage**

RUSH ORDER

MAIL TO OUR NEAREST WAREHOUSE

IMPORTANT
SEE OTHER SIDE FOR TERMS
AND SHIPPING INFORMATION

ORDERED BY _____ PRINT CLEARLY IN INK—TO AVOID ERROR

STREET ADDRESS _____ RFD _____ P. O. BOX _____

TOWN OR CITY _____ STATE _____

Lafayette Radio *Radio Wire Television Inc.*

NEW YORK, N. Y. 100 SIXTH AVENUE	CHICAGO, ILL. 901 W. JACKSON BLVD.	ATLANTA, GA. 265 PEACHTREE ST.
--	--	--

Please give here shipping point if different from above; or other additional shipping instructions.
SHIP TO

To insure prompt delivery and avoid error by the Post Office, please make certain that our full name appears on the envelope.
ORDER RADIO SETS SHIPPED BY EXPRESS ONLY

FILL IN AMOUNT ENCLOSED
INCLUDE SUFFICIENT MONEY FOR POSTAGE. WE REFUND UNUSED AMOUNTS

MONEY ORDER _____

CASH _____

CHECK _____

DATE _____

DO NOT USE

PLEASE SEND CASH BY REGISTERED MAIL ONLY

SHIP VIA Parcel Post Express Freight Boat Best Way

Standard equipment when rebuilt or modified to meet customers' special requirements, and equipment specially built or ordered for customers, not subject to exchange, credit or refund.

MERCHANDISE ORDERED FROM CATALOG NO. _____

IMPORTANT: To avoid delay in shipment and to get prompt response, please use a separate sheet for all inquiries and correspondence having no immediate connection with this order.

HAVE YOU BOUGHT FROM US BEFORE?
YES NO

R C T P H Y E							Shipped <input checked="" type="checkbox"/>	Quantity Required	PAGE NO.	OUR STOCK NO.	DESCRIPTION	PRICE	TOTALS	DO NOT USE

Shall we make partial shipment if we are temporarily short of any items. YES

Buyer's Signature _____

NO. ITEMS	FILLED	T-FILLED	COMPLETED	CHECKED	PACKED	ZONE	POSTAGE
BOXES	CRATES	CARTONS	PKGES.	TOTAL	MARKED	VALUE	INSURANCE
	BILLED	RECHECKED	PASSED FOR FILING	WEIGHT	RATE	C.O.D. FEE	

DATE SHIPPED NO. _____ DAY _____ YR. _____

VIA _____ EXP. - L ' C ' L - F ' T - P. P.

REC'T NO. _____

C. O. D.

Amount for Goods Additional for Postage or Prepaid Express TOTAL

NO.	BY	DATE

DO NOT USE

C-26

Lafayette Radio Radio Wire Television Inc

Mail Your Orders to Warehouses at:

NEW YORK, N. Y.
100 Sixth Ave. Phone: WAlker 5-8883

CHICAGO, ILL.
901 W. Jackson Blvd. Phone: HAYmarket 0422

ATLANTA, GA.
265 Peachtree St. Phone: WAlnut 5140

Local Sales and Display Rooms at:

NEWARK, N. J.
24 Central Ave. Phone: MArkEt 2-1661

BRONX, N. Y.
542 E. Fordham Road Phone: RAYmond 9-8813

BOSTON, MASS.
110 Federal St. Phone: HUBbard 0474

HOW TO ORDER

Use our convenient order blank (additional blanks sent on request). Please write in ink, legibly, and not more than ONE item to a line. Make sure you write the exact stock number and that the price is the one quoted for the item you want. Specify how we shall make shipment by checking the preferred square "Parcel Post", "Express", etc. We shall follow your instructions, but will change them wherever we are sure that such a change is to your better interest. Please keep all correspondence or remarks relative to your order on a separate sheet of paper. Make sure you include sufficient postage; all overpayments promptly refunded (if overpayment is under 10¢, we will credit your account).

NOTE: In many instances, especially in the tabulated lists of merchandise, it is impossible to show shipping weights. In practically all cases, it is a simple matter to estimate the weight of each article. Please be sure to include sufficient postage. We will credit you with any overpayments.

DOMESTIC ORDERS

We buy for cash and sell for cash; this explains our low price policy. We do not carry credit accounts, and we pass on to our customers all savings affected by the elimination of costly book-keeping. We will ship C.O.D. if desired, providing a deposit of at least 20% accompanies your order. C.O.D. parcels may be shipped ONLY to places in the 48 states of the U.S. and to U.S. territories. On small orders, remittance in full saves you extra collection costs.

FOREIGN ORDERS

On all foreign orders we require payment in the United States by irrevocable and confirmed letter of credit against documents, or 50% deposit with order, balance sight draft against B/L. All quotations are F.O.B. our warehouse, with slight additional charge for export packing. Orders up to \$25.00 payable in full, in advance, including postage. All remittances payable in U.S. funds.

2% TRANSPORTATION ALLOWANCE

On mail orders of \$25.00 or more, we allow you to deduct 2% from the total as transportation allowance, with the following exceptions. All Lafayette and National Co. products; all items sold under Fair Trade regulations; all items marked "shipped Postpaid"

RETURNING MERCHANDISE

If you find it necessary to return any merchandise for adjustments, please write in advance stating the following: reason for return—when and where purchased—number of sales slip (if purchased over the counter). If your shipment is received damaged, obtain a report from the postmaster or express agent and mail it to us. Use a separate sheet of paper for all adjustment matter; do not add remarks to a new order for parts. Do not include money in the package you return. When returning merchandise, pack carefully, insure, and write your name and address on all packages and letters before returning to us.

FINAL PRICES

Prices shown in this catalog are net, and except where marked POSTPAID, do not include postage. All discounts have been deducted, including 2% discounts for cash. Prices are subject to change without notice; we give customers the benefit of all reductions taking place after the catalog is published.

POSTPAID ITEMS

Items marked "Shipped Postpaid" do not require postage. Please note that Postpaid items refer only to shipments made within the 48 states of the U.S. only (does not include U.S. possessions).

SENDING MONEY

The safest and best way to send money is by: American Express; Post Office or Telegraph Money Order; bank drafts; firm checks; stamps. Do not send cash. If absolutely necessary to remit cash, send by registered mail only. Do not hesitate to include sufficient postage; over-payments are promptly refunded.

PARCEL POST RATES FOR ALL ZONES

Parcels up to 8 ounces may be shipped anywhere in the United States for 6¢. Parcel post shipments to any zone must not exceed 70 pounds. The limit of size on all parcel post packages is 100 inches in length and girth combined, at

widest point. Example: a package 35 in. long, 10 in. wide and 5 in. high measures 65 in. in length and girth combined (length 35 in. plus twice 10 in. width, plus twice 5 in. height, equals 65 in.).

Weight In Pounds	ZONES							
	First Up to 50 Mi.	Second 50 to 150 Mi.	Third 150 to 300 Mi.	Fourth 300 to 600 Mi.	Fifth 600 to 1000 Mi.	Sixth 1000 to 1400 Mi.	Seventh 1400 to 1800 Mi.	Eighth Over 1800 Mi.
1	\$.08	\$.08	\$.09	\$.10	\$.11	\$.12	\$.14	\$.15
2	.10	.10	.11	.14	.17	.19	.23	.26
3	.11	.11	.13	.17	.22	.26	.32	.37
4	.12	.12	.15	.21	.27	.33	.41	.48
5	.13	.13	.17	.24	.33	.40	.50	.59
6	.14	.14	.19	.28	.38	.47	.59	.70
7	.15	.15	.21	.31	.43	.54	.68	.81
8	.16	.16	.23	.35	.49	.61	.77	.92
9	.17	.17	.25	.38	.54	.68	.86	1.03
10	.18	.18	.27	.42	.59	.75	.95	1.14
11	.19	.19	.29	.45	.64	.82	1.04	1.25
12	.21	.21	.31	.49	.70	.89	1.13	1.36
13	.22	.22	.33	.52	.75	.96	1.22	1.47
14	.23	.23	.35	.56	.80	1.03	1.31	1.58
15	.24	.24	.37	.59	.86	1.10	1.40	1.69
16	.25	.25	.39	.63	.91	1.17	1.49	1.80
17	.26	.26	.41	.66	.96	1.24	1.58	1.91
18	.27	.27	.43	.70	1.02	1.31	1.67	2.02
19	.28	.28	.45	.73	1.07	1.38	1.76	2.13
20	.29	.29	.47	.77	1.12	1.45	1.85	2.24
For Each Added lb. Add	1¢	1¢	2¢	3½¢	5¢	7¢	9¢	11¢

EXPRESS CHARGES

Express charges are also determined by the weight of the shipment and distance of the consignee from shipper. The following chart enables you to estimate charges.

Maximum Distance in miles	50 Mi.	150 Mi.	300 Mi.	500 Mi.	750 Mi.	1000 Mi.	1500 Mi.	2000 Mi.
cost up to 5 lb.	\$0.25	\$0.25	\$0.25	\$0.30	\$0.35	\$0.45	\$0.50	\$0.72
" " 10 lbs.	.30	.30	.31	.40	.50	.65	.70	1.34
" " 15 lbs.	.30	.34	.41	.51	.67	.73	1.00	1.96
" " 20 lbs.	.30	.42	.51	.64	.85	.94	1.30	2.57
" " 25 lbs.	.35	.50	.61	.78	1.04	1.15	1.60	3.19
" " 35 lbs.	.45	.66	.82	1.05	1.41	1.57	2.20	4.42
" " 45 lbs.	.55	.82	1.02	1.34	1.79	1.99	2.80	5.66
" " 55 lbs.	.65	.98	1.23	1.59	2.16	2.40	3.40	6.89
" " 75 lbs.	.85	1.30	1.63	2.13	2.91	3.24	4.60	9.36
" " 95 lbs.	.99	1.60	2.04	2.67	3.66	4.08	5.80	11.83
For Ea. 100 lbs.	.99	1.60	2.04	2.70	3.74	4.18	6.00	12.34

INSURANCE

Parcel post insurance rates are: 5¢ for parcels up to \$5.00; 10¢ for parcels from \$5.00 to \$25.00; 15¢ for parcels from \$25.00 to \$50.00; 25¢ for parcels from \$50 to \$100.00. After \$100.00 the charge for each additional \$50.00 is 5¢ extra. All parcels that we ship are insured.

Express insurance rates are: for shipments under \$50.00, no extra insurance charge; for shipments valued from \$50.00 to \$150.00 charge is 10¢. For each additional \$100.00 value or portion thereof, charge is 10¢.

EXPRESS & FREIGHT SHIPMENTS

Express and freight shipments are sent transportation charges collect. If your station has no agent, please send sufficient money to cover transportation. Charges are the same either way. All over-payments are promptly refunded.

C. O. D. SHIPMENTS

Transportation charges on C.O.D. parcels are slightly higher than those sent prepaid. C.O.D. charges in addition to the regular postage costs outlined above are as follows (including insurance): When value of parcel is up to \$5.00 the extra charge is 12¢; \$5.00 to \$25.00 the extra charge is 17¢; \$25.00 to \$50.00 the extra charge is 22¢; \$50.00 to \$100.00 the extra charge is 32¢; \$100.00 to \$150.00 the extra charge is 40¢; \$150.00 to \$200.00 the extra charge is 45¢. For each \$50.00 value above \$200.00 the charge is 5¢ more (including insurance). The Post Office also charges an extra small money order fee on each C.O.D. parcel. Save these fees by remitting in full.

NOTE: Equipment built or ordered especially to meet customers requirements not subject to exchange, credit or refund. All orders for special merchandise must be accompanied by a deposit.