

# Broadcast Weekly

*America's Pioneer  
Radio Program  
Guide*

10¢  
COPY

For Week of July 7th to 13th



# The Week's Special Events on the Air

By THE FORECASTER

HIGHLIGHTS for the week include an airing of the "All Star Baseball Game" from Cleveland, over CBS and NBC net, Monday at 10:15 a. m. At 1:45, CBS airs a new program—"Judy and the Jester." Other new CBS features for the week include: Tuesday and Thursday, 9:30 a. m., "Time on My Hands"; Thursday, 10:30 a. m., "Broadway to Hollywood." NBC specials include the Goldman Band, KPO net, Wednesday, 6 p. m., and "Lights out," a mystery drama at 8:30 p. m.

The Standard Symphony presents its 40th concert on Thursday, July 11 at 8:15 p. m., over KPO net. The program in full: Overture to "Rienzi," Wagner; "Tally-Ho" Chaminade; the Glazounov "Concert Waltz" and "Marche Joyeuse" by E. Chabrier; the "Adagio for Strings" by Guilliame Leku and Georges Enesco's brilliant "Roumanian Rhapsody" in A Major.

The third annual all-star baseball game between the leading players of the American and National Leagues will be described over the nationwide Columbia network from Cleveland, Ohio, on Monday, July 8. The game is scheduled to begin at 9:45 a. m.

Columbia announcers who will handle the game will be France Laux of KMOX, Columbia's St. Louis affiliate, and Jack Graney of WHK, the CBS Cleveland outlet. Laux, a former Oklahoma athlete, has covered previous all-star games as well as the World Series for Columbia. Graney played with the Cleveland Indians from 1910 and 1922 and was in the World Series of 1920. He has been with WHK as baseball announcer and commentator since 1930.

The American League team won the classic event in the past two years—at Chicago in 1933 and New York in 1934. This year, players of the senior circuit undoubtedly will be seeking revenge. Despite the loss of previous games, the National League probably can claim the most brilliant individual performance which came last year when Carl Hubbell of the New York Giants set down Babe Ruth, Lou Gehrig and Jimmy Foxx by the strikeout route.

## *The Girl on the Cover*

PATTI CHAPIN, youthful CBS star, featured singer in Jack Pearl's "Family Hotel" program, now is heard in her own broadcast and other programs over a CBS network.



MANY programs fade this week or change time of broadcast. "Hollywood Church of the Air" is silent, also "Court of Human Relations," Friday, 4:30 p. m., over CBS. Among NBC features discontinued are Lux Radio Theatre, Sunday, 10:30 a. m., replaced by Radio Guild; Tony Won's "House by the Side of the Road," Joe Penner, Sunday, 3:30 p. m. and Silken Strings 8 p. m. The "Champions," on Monday 9 p. m., are also missing from the week's schedule.

Police Chief William J. Quinn, whose "Strange Cases," dramatized by Samuel Dickson, have been a popular Saturday night feature on NBC station KGO, will be away from the air lanes during the month of July.

Following his broadcast June 29, Chief Quinn left for Atlantic City, N. J., where he attended the National Convention of Police Chiefs. He is vice-president of the National Association of Police Chiefs, and a member of the executive committee. While in the East, Chief Quinn will visit Radio City. He will be back before the NBC microphone early in August.

Julius Brunton Sons, Co., operators of KJBS, San Francisco, have applied for a wave length for a 250 watt daylight station in Fresno.

When the current Jack Benny series terminates July 14, Jack and Mary Livingstone will remain in Hollywood, Don Wilson will go fishing in the High Sierras, Don Bestor returns to New York, and Frank Parker plans to visit Honolulu, where he will gather a group of native Hawaiian songs.

Miss Thelma Robertson, 17-year-old concert pianist, has been added to the KFOX staff, and broadcasts Tuesdays, Thursdays, and Saturdays at 8:15 p. m.

BROADCAST WEEKLY, Vol. XIV, No. 27. Dated July 6, 1935. Published at 1114 Mission Street, San Francisco, California. Subscription price, \$3.00 per year (\$5.00 foreign). Single copies, 10 cents. Entered as second-class matter, March 25, 1923, at the Post Office, San Francisco, California, under the Act of March 3, 1879. Howard Way, Editor. Joseph H. Connell, Advertising Manager. Phone UNDERhill 7676.

### *New Town Hall Show*

Charles O. Locke, author of the operetta "Cyrano," and many other stage and radio successes has taken over the writing of the Town Hall Tonight show and Jim Harkins, former amateur show casting director, steps into Fred Allen's shoes as master of ceremonies. Allen, Portland Hoffa, and Harry Tugend, his writing assistant, left the show recently for a 13-weeks' stay in Hollywood.

Locke brings to Town Hall a writing experience that dates back 15 years to Tiffin, Ohio, where he first pounded a typewriter on his father's newspaper. His first efforts in "show business" were comic skits for burlesque and vaudeville acts. Later he collaborated on Broadway musical comedies and plays. For more than a year he has been writing radio adaptations of famous operettas for the Beauty Box Theatre.

He will shape the new Town Hall program about the genial, mellow personality of Jim Harkins, using a lively assortment of amateurs and the music of Peter Van Steeden. Jack Smart, a star of the Mighty Allen Art Players will be introduced as Pop Mullen, humorous town character.

### *Captain Marble's B. K. T. A. on KGO*

Captain Ed Marble, known to radio listeners as "Smiling" Ed Marble, introduces a new program designed for children and other lovers of pets on Monday, July 1, at 5:30 p. m., P. S. T., over KGO.

Entitled—Captain Marble's Be Kind to Animals Club, the quarter-hour programs will be heard daily except Saturday and Sunday at the same time. Since 1927 Captain Marble has broadcast over a number of radio stations in various parts of the West.

### *Lanny Ross on Benny Spot*

If unsolicited awards are any criterion of a radio performer's worth, the forthcoming "Lanny Ross and His State Fair Concert" program bids well to be a show of dial-headliners. Filling the time to be made available by Jack Benny's vacation, the new program will be heard Sunday evenings on the NBC network from 7 to 7:30 for a period of seven weeks.

Lanny Ross, star tenor, Howard Barlow, orchestra conductor, and Helen Celheim, contralto of Captain Henry's Show Boat, will be the outstanding performers. All three have been honored recently by individual awards from different sources.

Midge Williams has been given a fifteen-minute spot on KFRC Thursdays at 5 p. m. She will be accompanied by a rhythm combination.

### *Rudy Wiedoeft Back on KNX*

Rudy Wiedoeft, internationally famed saxophonist, steps into the KNX limelight at 9:30 Monday night.

Mona Content at the piano and Earl Hatch with xylophone and accordion supply the musical accompaniment, while Stuart Buchanan and Bill Lawrence team as masters of ceremony.

### *New Morning Program on KFRC*

"Time on My Hands" is a new morning program on KFRC net at 9:30 o'clock and broadcast every Tuesday and Thursday mornings.

Artists featured include Jean Ellington and "Brick" Holton in solo and duet arrangements, the double piano team of Eunice Steel and Dave Strech, Bea Benederet, who has made a decided hit as narrator on the Sunday evening Salon Moderne, will be heard in a similar capacity on "Time on My Hands."

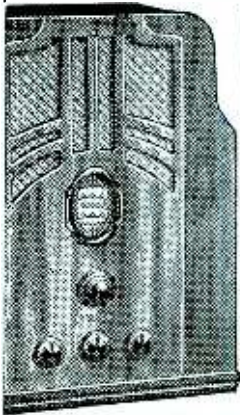
James Melton, popular tenor star of "Music at the Haydn's" and the CBS "Headliners," who leaves for Hollywood July 15 to make "Thin Air" for Warner Brothers, has been booked for guest star appearances in Chicago, Denver, and Seattle en route to Los Angeles. Melton will consider a starring role in a new musical while on the Coast.

*Buy Your*

# 1936 PHILCO

ON OUR

## SPECIAL EASY TERMS



As low as

\$1 PER WEEK

ONLY

\$39.95

For this WORLD WAVE PHILCO

I. S. Cohen & Sons LTD.

1025 Market Street  
Tel. MARKET 4868

# SHORT WAVE FEATURELOG

Watch this new department for day by day American and Foreign features on the short waves. New stations will be added from week to week. Please cooperate by reporting reception to ALL-WAVE EDITOR, BROADCAST WEEKLY, 1114 Mission Street, San Francisco.

(Frequencies in megacycles. Listings, Pacific Standard Time.)

## STATION DIRECTORY

4.25	Khabarovsk	RV15
5.78	Lima, Peru	OAX4D
5.85	Costa Rica	TIGPH
5.86	Maracaibo	YV6RMO
5.95	Medellin	HJ4ABE
6.00	Mexico City	XEBT
6.00	Mexico City	XEWB
6.01	Havana	COC
6.02	Singapore	ZHI
6.03	Calgary	VE9CA
6.04	Barranquilla	HJ1ABG
6.06	Cincinnati, Ohio	W8XAL
6.11	Manizales	HJ4ABL
6.11	Cartagena	HJ1ABE
6.11	Caracas, Venezuela	YV2RC
6.12	Bandoeng	YDA
6.14	Pittsburgh, Pa.	W8XK
6.14	Santiago	CO9GO
6.23	Lima	OAX4G
6.27	San Pedro de Macaris	HIH
6.31	Santo Domingo	HIZ
6.45	Barranquilla	HJ1ABE
6.62	Guayaquil	HC24L
6.66	Guayaquil	HC2BL
6.66	Riobamba	PRABD
7.38	Mexico City	XECR
7.80	Bogota, Colombia	HKV
9.35	Schenectady	W2XAF
9.42	Bandoeng	PLV
9.43	Havana, Cuba	COH
9.51	Daventry	GSB
9.51	Melbourne	VK3ME
9.58	Daventry	GSO
9.58	Melbourne	3LR
9.59	Sydney	VK2ME
9.59	Panama City	HP5A
9.64	Rome, Italy	2RO
10.34	Miramar, Cuba	CEC
10.35	Buenos Aires	LSX
10.66	Tokio	JVN
10.74	Tokio	JVM
11.71	Pontoise, France	FYA
11.75	Daventry	GSD
13.07	Suva	VJD
14.00	Tokio	JVJ
15.11	Vatican City	HVJ
15.34	Schenectady	W2XAD

### A.M. Sunday, July 7

1:30	Recordings	VK2ME
2:00	News (daily)	JVM
11:00	Levitov Ensemble	W2XAD
11:30	Penthouse Serenade	W2XAD
P.M.		
12:00	Cadle Choir	W8XAL
1:00	Roses and Drums	W8XK
2:00	Catholic Hour	W2XAF
2:30	Horse Sense	W2XAF
2:30	Vox Humana	W8XAL
2:45	Continental Variety	W2XAF
3:00	Biblical Drama	W8XAL
3:00	K-7 Drama	W2XAF
3:00	Government Program	XECR
3:00	To Europe	PRADO
3:30	Fireside Recitals	W2XAF
3:45	Fitch program	W2XAF
4:00	Major Bowes Hour	W2XAF
5:00	Merry Go Round	W2XAF
5:30	Amer. Musical Revue	W2XAF
6:00	The Gibson Family	W2XAF
6:00	Crosley Folies	W8XAL
6:30	Band Concert	YV2RC
7:00	London Tunes	GSC & GSD
7:00	Stubby Gordon Orch.	W2XAF
7:15	Jesse Crawford	W2XAF
7:30	Press-Radio News	W2XAF
7:35	Leo Reisman's Orch.	W2XAF
8:00	Program Resume	W2XAF
8:00	Dance Band	FYA
8:30	Tennis Matches	GSC & GSD
9:00	Int'l Program	JVH

9:30	Classical Music	3LR
10:00	Unsolved Mysteries	W8XAL

### A.M. Monday, July 8

9:00	Joe Emerson Hymns (daily except Sunday)	W8XAL
11:00	*Home Sweet Home	W2XAD
11:15	*Vic and Sade	W2XAD
11:15	*Morning Housewarmers	W8XAL
11:30	*Ma Perkins	W2XAD
11:45	The Sizzlers	W2XAD
P.M.		
12:00	*Arthur Chandler, Jr. organist	W8XAL
2:30	News (English)	W2XAF
2:35	*Ereivities	W2XAF
2:45	Lang Sisters	W2XAF
3:00	Jim Healey	W2XAF
3:15	Black Chamber	W2XAF
3:30	*Stock Markets	W2XAF
3:50	*News (Spanish)	W2XAF
4:00	Spanish Program	W2XAF
4:15	*Arnold Douglas Drama	W8XAL
4:30	Voice of Firestone	W2XAF
5:00	A. & P. Gypsies	W2XAF
5:30	Musical Program	W2XAF
6:00	Dance Orchestra	TIGPH
6:00	Contented Hour	W2XAF
6:15	*Old Fashioned Grl.	W8XAL
6:30	*Bob Newhall, Sports	W2XAF
6:30	Lucky Smith	W2XAF
7:00	John B. Kennedy	W2XAF
7:15	Johnny Albright	W2XAF
7:30	Leonard Keller Orch.	W2XAF
7:30	Special Program for Short Wave Clubs of United States and Canada featuring "Hawaiian Boys of HJ1ABE"	HJ1ABE
7:45	Hoofinghams	W2XAF
8:00	Program Resume	W2XAF
9:00	Japanese Music	JVH
9:00	League of Nations	3LR
10:15	*Lum & Abner	W8XAL
11:30	Dreams in the Night	W8XAL

### A.M. Tuesday, July 9

1:30	Moon River Daily	W8XAL
7:00	Oriental Music	PLV
7:30	Religious News	HVJ
11:45	Dreams Come True	W2XAD
P.M.		
1:15	Pan-American Prog.	W2XAF
2:30	News (English)	W2XAF
2:40	QST Drama	W2XAF
3:00	Three Scamps	W2XAF
3:15	Hall & Gruen	W2XAF
3:30	*High Spots	GSC & GSD
4:00	Spanish Program	W2XAF
4:30	Wayne King's Orch.	W2XAF
5:00	Ben Bernie's Orch.	W2XAF
5:30	Eddie Duchin's Orch.	W2XAF
6:00	Beauty Box Theatre	W2XAF
7:00	Dr. Stanley High	W2XAF
7:00	Classical Music	HC2RL
7:15	Ausable Orch.	W2XAF
7:45	Hoofingham	W2XAF
8:00	Program Resume	W2XAF
9:00	Japanese Music	JVH
10:00	Pathe News of Air	W8XAL
10:30	Waltzing Thru Europe	W8XAL
11:15	Tea Leaves & Jade Drama	W8XAL

### A.M. Wednesday, July 10

10:00	Jack Berch	W8XAL
11:45	Dreams Come True	W2XAD
P.M.		
2:30	News (English)	W2XAF
2:45	Annette McCullough	W2XAF
3:00	Jim Healey	W2XAF
3:15	Black Chamber	W2XAF
4:00	Latin-Amer. Concert	W2XAF

4:00	Kyte's Band	GSC & GSD
4:30	Wayne King Orch.	W2XAF
5:00	Town Hall Tonight	W2XAF
6:00	Guy Lombardo Orch.	W2XAF
6:00	Spanish Music	OAX4G
6:00	The Virginians Negro Quartet	W8XAL
6:30	Int'l Program	OAX4D
6:30	Ray Noble's Orch.	W2XAF
7:00	John B. Kennedy	W2XAF
7:15	Ferdinando's Orch.	W2XAF
7:45	Hoofinghams	W2XAF
7:45	Mail bag and dedicated selections to listeners	COH
8:00	Program Resume	W2XAF
9:00	Int'l Program	JVH
9:35	Recordings	VFD

### A.M. Thursday, July 11

10:00	Academy of Medicines Talk	W8XAL
11:45	Dreams Come True	W2XAD
P.M.		
2:30	News (English)	W2XAF
2:45	Roger Sweet, tenor	W2XAF
3:00	Tom Coakley's Orch.	W2XAF
4:00	Rudy Vallee Hour	W2XAF
5:00	Show Boat	W2XAF
6:00	Paul Whiteman	W2XAF
6:00	Band Concert	YV2RC
6:30	Marimba Orchestra	HJ1ABE
7:00	Hall's Orch.	GSC & GSD
7:00	Spanish Program	W2XAF
7:30	Nat'l Radio Forum	W2XAF
8:00	Program Resume	W2XAF
8:00	Cy Hopkins' Band	VE9CA
8:30	Musical Show	GSC & GSD
9:00	Letters from listeners	XEBT
10:00	Pathe News of Air	W8XAL
10:30	Seats on All Floors	W8XAL

### A.M. Friday, July 12

8:30	Divano String Trio	W8XAL
10:00	Jack Berch	W8XAL
11:45	Herald of Sanity	W2XAD
P.M.		
2:30	News (English)	W2XAF
2:45	Musical Program	W2XAF
3:00	Spanish Program	W2XAF
4:00	Cities Service Concert	W2XAF
4:30	WGY Farm Forum	W2XAF
5:00	Abe Lyman's Orch.	W2XAF
5:30	Tom Coakley	W2XAF
6:00	First Nighter	W2XAF
6:15	Venezuelan Music	YV2RC
6:30	Silver Town Program	W2XAF
7:00	Geo. R. Holmes	W2XAF
7:15	Ferdinando's Orch.	W2XAF
7:45	Hoofinghams	W2XAF
8:00	Program Resume	W2XAF
8:30	Short Wave Tips	W8XK
9:00	Int'l Program	JVH
9:15	Football; Races	3LR
10:00	Gene Burchell's Orch.	W8XAL
10:50	News	JVM

### A.M. Saturday, July 13

12:15	Short Wave Tips	3LR
8:30	Rhythm Jesters	W8XAL
11:00	Week-end Revue	W2XAD
11:30	NBC Musical Guild	W2XAD
P.M.		
2:30	News (English)	W2XAF
2:35	Bonities	W2XAF
2:45	Sonfellows Quartet	W2XAF
3:00	Cricket Matches	GSC & GSD
3:00	Gen. Electric Prog.	W2XAF
3:30	Ferdinando's Orch.	W2XAF
3:30	Stock Market	W2XAF
3:45	Briggs Sport Parade	W2XAF
4:00	Royal Review	GSC & GSD
4:00	Hit Parade	W2XAF

(Continued on Page 31)  
\* Monday through Friday.

# BROADCAST WEEKLY

Vol. XIV

San Francisco, California, July 6, 1935

No. 27

## *News and Comment*

THE Ford Sunday Evening Hour, one of the outstanding broadcasts originated during the past radio season, will be resumed September 29, following a summer intermission.

The 1935-6 series is scheduled for thirty-nine weeks, presenting the Ford Symphony Orchestra and Chorus, under direction of Victor Kolar, associate director of the Detroit Symphony Orchestra. An internationally known soloist will be presented each week as guest artist, as during the current series.

Guest artists for the first fourteen programs have already been engaged. The schedule is:

- September 29.—Jascha Heifetz, violinist.
- October 6.—Lucrezia Bori, soprano.
- October 13.—Julius Huehn, bass-baritone.
- October 20.—Dalies Frantz, pianist.
- October 27.—Richard Crooks, tenor.
- November 3.—Joseph Szigetil, violinist, in his radio premiere.
- November 10.—Mischa Levitzki, pianist.
- November 17.—Cyrena Van Gordon, contralto.
- November 24.—Kirsten Flagstad, sensational new Swedish soprano.
- December 1.—Albert Spalding, violinist.
- December 8.—Lawrence Melchior, tenor.
- December 15.—Elizabeth Rethberg, soprano.
- December 22.—An operatic quartet consisting of Grete Stueckgold, soprano; Kathryn Meisille, contralto; Richard Crooks, tenor, and Ezio Pinza, basso.
- December 29.—Jose Iturbi, pianist.

### *Twenty Letter Writers Win Trip to Europe*

Twenty top winners in the Palmolive travel contest heard good news Tuesday evening, July 2, when their names were announced on the Beauty Box Theatre radio program.

Each winner had a choice of an all-expense tour of Europe or \$1,000 in cash. Those taking the European trip will travel both ways from New York on the steamship Normandie, newest, largest and fastest ship in the world.

They will visit London, Paris, Vienna (or Berlin), Venice, Amsterdam, The Hague, Geneva, Brussels, Rome and other cities, and in addition to being provided the best of everything on the tour, they will be given \$300 each for spending money.

The party will leave New York on July 31, after a day or two of sight-seeing in the metropolis, and will return there September 2.

A thousand other entrants in the letter-writing contest also were awarded prizes—beauty boxes for women and shaving kits for men.

### *Al Pearce Seeks Real New Yorker*

Al Pearce hasn't seen a real New Yorker since he and his Gang reached Manhattan to begin their new series over NBC. (Not heard in the West.) "It's my first trip to New York and I don't want to miss any sights," says Al. "The first day I went to the Statue of Liberty, the next day to Grant's Tomb, and so on, to the RCA Building roof and the Metropolitan Museum. But everybody I meet is from Iowa or Kansas or St. Joe, Missouri. I guess maybe the real New Yorker wouldn't be caught dead around an old landmark."

### *"Concert Hall" Returns*

"Columbia Concert Hall," one of the CBS chain's most popular programs last winter and winner of a special award made by the Women's National Radio Committee, has been resumed by popular demand of radio listeners and will be heard over the nationwide network throughout the summer.

The new series was inaugurated Saturday, June 22, from 5 to 5:30 p. m., P. S. T., and is heard each week at the same time.

When the "Concert Hall" made its debut, only artists of established reputation were featured with Conductor Howard Barlow and his Columbia Symphony Orchestra. The new summer series, however, will reverse this policy and introduce comparatively unknown vocalists who show promise of developing into stars.

# Artists Form "Five Year Club"

*How Many of Your Favorites Are on This List of Broadcasting "Veterans"?*

ARTISTS of the Columbia Broadcasting System have started a new club. It is called the "Five Year Club." It's not formal, it collects no dues, and it's not exclusive, except that each member must have performed on the CBS chain for five years or more. There are at least twenty-five Columbia artists who qualify for "The Five Year Club." They are:

Ted Husing . . . Ex-city salesman. . . . Landed in radio in 1925. . . . First with Columbia in 1927, announced the True Story Hour. . . . Has covered almost every major sports event since 1930. . . . Currently at work with Ethel Merman in "Rhythm at Eight." Julia Sanderson and Frank Crumit . . . Columbia stars since Blackstone Plantation nights in 1929. . . . With radio since crystal set days, are currently heard on Sunday p. m.'s in Bond Bread's aerial musicales. David Ross, announcer, narrator, poet, joined up in 1929. . . . Opened the station with the janitor. . . . Remembered widely for his "Poet's Gold." . . . Currently in "Romance" series with Emery Deutsch. Bradley Barker, writer, director, actor. . . . Jack-of-all-sounds. . . . Joined CBS in 1930 as one of the cast of "Mr. and Mrs." . . . Sometimes working twelve programs a week, is currently taking the part of the "zoo" in "Mickey of the Circus." Bill Adams, John Barrymore's one-time director in "Hamlet." . . . President Roosevelt's "voice" in "March of Time." . . . Is now at work in "Marie, the Little French Princess" and his seventh year with CBS. Fred Feibel started his "Organ Reveille" for Columbia in 1929. . . . Still at it. . . . Commutes from Ridgefield, N. Y., on the 5:15

a. m. local to open key station WABC. Evan Evans, baritone, has been a favorite since Ward Tip-Top played the Columbia network in 1930. . . . Now heard with Mary Eastman in "He, She, and They" and other programs.

Andre Kostelanetz joined Columbia in 1929, conducting its "Ballad Hour." . . . Petrograd born. . . . Dates on American tennis. Parker Fennelly made his CBS debut in 1929's "Fires of Men." . . . Ex-stock company player, is now busy on Kate Smith's weekly hour. Ken Niles, Columbia west coast announcer at KHJ, started microphone work on the Pacific airways in 1929.

Director Mark Warnow won his Columbia spurs in 1929 with Ward Baking. . . . Currently known for his personal program, "Presenting Mark Warnow." Himan Brown, director, producer. . . . One-time writer. . . . Found room for himself on the Philco Hour in 1930. . . . Still at it and is currently producing "Marie, the Little French Princess" and "Dick Tracy." Kay Thompson got her start on Columbia airwaves through KMOX in St. Louis. . . . Now one of the principal reasons for some of Fred Waring's glee club effects. . . . Frederic William Wile, veteran Columbian. . . . Airs astute opinions of "The Political Situation in Washington Tonight." . . . Joined up in 1929. . . . Has represented CBS in all parts of the world.

Freddie Rich's Columbia allegiance dates to the days of 1927 and Ceco's Couriers. . . . Like classmates Cantor, Berlin and Gershwin, Freddie, too, has gone places since. . . . Worked with such as Bing Crosby, Kate Smith and Gertrude Niesen. . . . Now in

(Continued on Page 10)



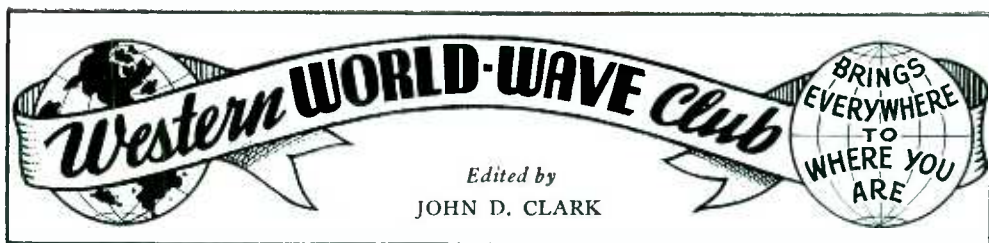
RAYMOND PAIGE



KAY THOMPSON



KEN NILES



THE British Broadcasting Corporation has now commenced a new series of experimental transmissions over stations "GSE for Empire, 25.3 meters, and GSD for Daventry, 25.5 meters." These broadcasts are being conducted every day between 5:15 and 6:40 p. m., and a complete record of the programs is being kept for verification purposes. Here, after many years, is a chance for short wave fans to actually *verify* London. Because of the fact that advance schedules have always been published for all six normal transmission periods, the Daventry stations have consistently refused to verify any reports in the past, but since no advance program material is being given out regarding the new experimental broadcasts from GSD and GSE, the announcer has stated that all reports addressed to the Chief Engineer, Broadcasting House, London W-1, England, will be promptly verified.

\* \* \*

Another interesting development during the past week has been the shift in time schedule for the Japanese international short wave broadcasts. Station JVH, operating on 14.60 meg., is now carrying these programs every night from 9 to 10 p. m., instead of from 5:30 to 6:30 p. m. The new schedule has resulted in a tremendous jump in signal strength, and listeners should now have little trouble in enjoying these fine broadcasts which are announced in both English and Japanese. It is interesting to note that the English announcer is a former graduate of the University of California, and has been previously employed at the microphone of KFI in Los Angeles.

\* \* \*

A slight change in the schedule of Australia's VK2ME became effective on July 1, and this famous "Kookaburra" station is now being heard on Sunday morning from 1:30 to 5:30 p. m., an advance in time of thirty minutes. No change has been made in the Saturday evening broadcasts which are still being heard on the regular frequency of 9:59 meg. between 9 and 11 p. m.

\* \* \*

Station HJ4ABB of Manizales, Colombia, is now broadcasting regular DX programs for all English-speaking peoples every Wednesday evening between 7 and 8:15 p. m. The frequency used is 6.11 meg. Mr. Van den Enden, famous four-language announcer of HJ4ABL fame, cautions listeners to make sure of their station and to log some portion

of the program if they wish a verification card. Letters that do not contain sufficient data to justify a verification will not be answered.

\* \* \*

Since June 30, the Schenectady short wave stations have been operating on a new schedule. W2XAF on 9.53 meg. is now on the air with Sunday broadcasts between 1:15 and 9 p. m., and W2XAD on 15.34 meg. works from 7:30 a. m. to 1 p. m.

\* \* \*

A slight change in European reception was noted last week. With the improvement of the 31-meter band, England's GSC and GSB have been sending the strongest trans-Atlantic signals to the Pacific Coast, followed closely by DJN of Zeesen, Germany. Twenty-five meters, although weaker, continues to be the quietest of all short wave bands.

Attention should be called to the fact that station GSB on 9.51 meg. is now heard in the

(Continued on Page 9)



*Special Offer for  
Short Wave Fans!*

**Join the  
Western World Wave Club**

6 months membership only

**\$1.00**

Increase your Short Wave listening pleasure 1000% by joining the Western World Wave Club today. A 6-months' membership costs you only \$1, and you receive twice monthly the beautiful two-color Western World Wave Club Bulletin, giving accurate information on the tuning of Short Wave stations on the Pacific Coast. There is no other service that can compare with the Western World Wave Club for Pacific Coast listeners. Actual reception conditions are reported to you by a corps of Short Wave experts located in the leading Pacific Coast cities.

Join now! Send name and address and money order, check, or currency, in the amount of \$1 to

**Western World Wave Club**

218 Fremont Street

San Francisco, Calif.

# ◆ FANFARE ◆

By J. LESTER MALLOY

Radio has brought fame to many accents but it neglected the laugh-provoking dialect of Ben Rogowitz. Ben, a Broadway musical comedy comedian of other seasons, found a meagre welcome at the gates of the air lanes. Last winter, he was featured on one of San Francisco's lesser stations, but his bigger ambitions did not materialize. So Ben packed up and left for the South. It is rumored that he will soon be seen in comedy shorts. Meanwhile, he is a popular performer at Hollywood's Cave Club.

Two songsters who can read lines are Tommy Harris and Cliff Nazarro. More important than that, both boys have a decided flair for comedy. On the Carefree Carnival of late, Cliff has been doing an unusual brand of word-garbling that's very funny. And just as amusing is the Henry Armetta Italian offered by Tommy. So it seems that even song stylists like to have an "ace in the hole."

Now that Dr. Seth Maker (The Philistine) has finished his NBC contract, he and Mrs.

Maker will embark on an extended and interesting vacation trip. They plan to take a leisurely and roundabout way to New York and back. The trip will include Louisiana, Washington, D. C., Boston and Canada, and a lot of other places too numerous to mention. When The Philistine returns to the air, he will either be presented by Columbia or on a Southern California chain.

## To Whom it May Concern, Station KFRC.

Dear Concerned One: Sam Moore is such a swell showman and that 2 to 3 spot is such a grand air time that—well, why not embellish it with more good talent? We're not panning the current cast. We're merely suggesting some worthy additions to that Happy-Go-Lucky gang of troupers. Best wishes—J.L.M.

Although Helen Stryker, talented and attractive actress, found it difficult to get dramatic work in Seattle studios, things were different for her in San Francisco. Stopping over on her way to a Southern California vacation, she was immediately auditioned at NBC and, just like that, she had won for herself the new ingenue rôle in "One Man's Family." Seattle papers, please copy.

## Gertrude Berg Has Real House of Glass

An admirer of Gertrude Berg's has sent her a two-foot house of glass complete in every detail. It even has little rocking chairs on the porches, linen on the beds, and tiny splinters of wood in the kitchen stove.

Since Richard Himber's latest composition, "Time Will Tell," has become so popular on the radio, Dick has been unable to clear the number so he can answer requests for his Champions Orchestra to play it over the CBS network.

Phil Baker owns an interest in a West Coast fighter he has never even seen. The comedian, who is heard over NBC-WJZ on Friday nights at 9:30 Eastern Daylight Saving Time, says that, judging by reports, his interest spends most of the time reclining gracefully on the canvas.

Believe it or not, Don Bestor received a pair of red, white and blue spats from a patriotic fan in Springfield, Illinois.

Mary: "That's a Hollywood mosquito."  
Jack: "How Come?"  
Mary: "He just passed a screen test!"

Hal Nichols and Alice de la Vergne will play principal rôles in "Al and Molly," comedy skit, heard Monday over KFOX at 5:50 p. m. Al and Molly have been fighting out their differences for nearly three years, and have never settled anything yet.



## FOR EMERGENCY RADIO SERVICE

The following members of RADIO MANUFACTURERS SERVICE have qualified by training and experience to give expert and reliable radio service.

Among members of this national organization:

### San Francisco

(WESTERN)

### Gilbert Electric & Supply Co.

536 Jones Street FRanklin 2262

(VALENCIA)

### Walker's Radio Service

228 Valencia Street UNderhill 1467

(MISSION)

### Art Bennett Radio Service

2841 Mission Street VAlencia 5361

Phone Us . . . . . and  
We'll Be Right Over!



### New Voice on KQW

Daily listeners of KQW are inquiring about that new voice on the air. The voice is that of Cedric C. Davey, who is working full time at the San Jose station during the vacation season. His voice, however, is not new to all radio fans, for he has been announcing at various times since 1928 when he worked at KPO. Then, too, he has been announcing part time at KQW and its member station of the NCBS for several months, and between the two stations getting in practically full time. Ced has had a very interesting career to date. He was born in Fremantle, West Australia, and came to the United States at the age of 16. He has gained a wide experience in the radio field, having studied electrical engineering and having worked at stations in the Bay District and several in Southern California. His fields of endeavor have also included the Hollywood motion picture studios.

### WORLD-WAVE CLUB

(Continued from Page 7)

morning between 10 a. m. and 1 p. m. as well as in the evening between 8:30 and 10:30 p. m.

\* \* \*

And if GSC continues to occupy the 9.58 meg. frequency between 8:30 and 10:30 p. m., the evening broadcasts from 3LR of Melbourne, Australia, must either cease entirely or cause an unpleasant heterodyne with Britain's famous transmitter. During the past few weeks 3LR has been wafting some fine musical programs over the abbreviated wavelengths on Sunday evenings between 9 and 11:30 p. m., and it is hoped that these may be continued in the future.

\* \* \*

HJ1ABB of Barranquilla, Colombia, has abbreviated its popular Saturday night dancing party, and now signs off at 7:30 p. m. on that day. However, the latter portion of the program is still devoted to a fine dance band with a featured drummer who sits close to the microphone and wields the drum sticks in a manner which would put most of our experts to shame.

\* \* \*

Many listeners seem to be baffled by the apparent inability of their receivers to pull in the famous RV15 of Khabarovsk. U. S. S. R. Fans should bear in mind the fact that this transmitter employs a very low frequency (4:25 meg.), with the result that reception during the summer months could hardly be classed as satisfactory. Although on the air from 11 p. m. until 6:30 a. m., the long days and warm atmospheric conditions make reception impossible on such low frequencies until after 2 a. m. It will be noted that RV15 is heard well at the present time only between 3 and 5 a. m.

Three new Spanish-speaking transmitters have appeared in the short wave spectrum. The first was heard on 6.01 meg. Saturday night and Sunday morning until 2 a. m.; the second on 6.13 meg. between 6 and 8 p. m.; and the third on about 6.40 meg. between 6:30 and 8 p. m. If any of you listeners have identified these newcomers, we would appreciate hearing from you.

## The DX Corner

**VE9CS of Vancouver, B. C.**, "the little station with the big voice," is now broadcasting recorded programs of popular music on Saturday and Sunday nights until well after midnight. This transmitter operates on 6.07 meg. with a power of only 2 watts, and is a good catch for any DX fan. It has been logged as far south as Los Angeles with fair signal strength.

\* \* \*

**PCJ of Eindhoven, Holland**, has been reported on the Pacific Coast every Wednesday and Sunday morning for the past two weeks. A frequency of 15.22 meg. is being employed, and the weak signal necessitates extremely careful tuning.

\* \* \*

**HJ5ABE of Cali, Colombia**, a new station on approximately 14.10 meg. broadcasts musical programs irregularly between 4 and 7 p. m.

\* \* \*

**YV6RV of Valencia, Venezuela**, does not seem to be on any definite schedule at the present time, but has been doing a lot of testing lately after 8 p. m.

Open 8 a.m. to 9 p.m.

6 months free membership with purchase of a LONG and SHORT WAVE



PHILCO RADIO

If you prefer a new set, we'll sell you one. If not, by all means let us fix up the old one.

Prompt and efficient service on all makes of radios. A written guarantee with each job.

Best workmanship, tubes and parts.

Byrne Radio Shop

6173 Mission Street

RAndolph 7782

Member Radio Manufacturers Service

## ARTISTS FIVE YEAR CLUB

(Continued from Page 6)

"Roadways of Romance." . . . H. V. Kaltenborn's "Current Events" were known to Columbia listeners back in 1928. . . . Now busy in "Kaltenborn Edits the News." Howard Barlow . . . one-time conductor of Denver's Methodist choir. . . . First crossed Columbia's portals in 1927. . . . Currently known for his Sunday afternoon "Symphonic Hour." Jack Shilkret's been painting the air with his colorful arrangements for seven years. Emery Deutsch. . . . The man with the "Gypsy Violin." . . . Joined Columbia in 1929 to work in "Gypsy Camp." Raymond Paige, orchestra leader since Sunday School days in Wisconsin. . . . Now maestro-in-chief of "Hollywood Hotel." . . . Has directed many prominent west coast programs. . . . Doubled as program director at KHJ. Leith Stevens, with five years' service in Columbia's musical ranks as a background. . . . Noted for choral and orchestral work. . . . Is currently operating in his popular "Harmonies." Jack Smart . . . started with "Mr. and Mrs." in 1930. . . . Famed for his character work in the "March of Time." Harry Von Zell came on with CBS in 1929. . . . Hand-picked announcer for Whiteman's Old Gold program. . . . Recently "contact" man with the Byrd broadcasts. Arnold Johnson, back in 1928, was doing the music props for Majestic and its "Mighty Monarch." . . . Now on National Amateur Night Ben Bernie, Abe Lyman and Guy Lombardo are eligible for associate memberships. . . . Full club privileges. . . . For meritorious service in many of Columbia's outstanding programs.

Buck Rogers' prophesies seem to be bearing fruit. A concern named Radio Vision, Inc., of Columbus, Ohio, plans extensive explorations of the outer air beyond the stratosphere, using a liquid fuel rocket. The rockets would be sent to heights of more than 100,000 feet, carrying government recording instruments and a special technicolor camera. First flights are planned in six months, possibly on the Tobyhanna Heavy Artillery Range stop at Poconos.

Latest

## UNITED PRESS NEWS

Daily

6 A.M.  
3 P.M.10 A.M.  
6 P.M.12 Noon  
9 P.M.

Sunday 6 P.M.

KJBS

1070 Kcys.

TOPICAL  
FEATURELOG

## PROGRAM CLASSIFICATIONS

- |                           |                        |
|---------------------------|------------------------|
| 1. Comedy, Revue          | 12. Military Bands     |
| 2. Concert Orch. Solos    | 13. Miscellany Musical |
| 4. Choral Music           | 14. Musical Comedy     |
| 5. Commentators           | 15. News Broadcasts    |
| 6. Dance Orchestras       | 16. Religious Topics   |
| 7. Dramatic Features      | 17. Symphony, Opera    |
| 8. Educat'n, Econ'mics    | 18. Skits and Serials  |
| 9. Farm Topics            | 19. Sports             |
| 11. Literary, Poetry, Art | 21. Women's Interests  |

## 1—Comedy, Revue

- | P.M.   | Sunday  |
|--------|---|
| 12:30— | SUNDAY SPECIAL—"Castle Cragmont," with Colonel Rod. "Song of Life," drama by Carlton E. Morse; Velvet Violin; Hazel Warner and Charles Runyan, organist. KPO-KFI net. |
| 2:00—  | RAY PERKINS, M. C., "National Amateur Night." Lively patter and better amateurs. CBS net.   |
| 4:00—  | MAJOR BOWES' AMATEUR HOUR—Variety with music. KPO-KFI net.  |
| 6:30—  | KFOX School Kids. Sun. to Sat. KFOX.  |
| 7:30—  | JACK BENNY—Don Bestor's Orchestra. Frank Parker and Mary Livingstone. KPO-KFI & net.  |
| P. M.  | Monday  |
| 2:00—  | HAPPY-GO-LUCKY HOUR—Popular variety, daily Monday to Friday. KFRC and net.  |
| 7:30—  | PICK AND PAT—One Night Stands. KFRC and net.  |
| 8:30—  | "ROAD TO FAME"—Program of amateurs. KHJ-KFRC and net.   |
| P.M.   | Tuesday   |
| 5:30—  | EDDIE DUCHINS' ORCHESTRA. NBC net.  |
| P.M.   | Wednesday   |
| 6:00—  | ADVENTURES OF GRACIE ALLEN—classic nonsense. Ferde Grofe's Orchestra. CBS net.  |
| P.M.   | Thursday  |
| 4:00—  | RUDY VALLEE HOUR—guests artists. Always a consistently good performance. NBC net.   |
| 5:00—  | SHOW BOAT—Dock this old favorite each week. Good comedy and music. NBC net.   |
| 6:00—  | PAUL WHITEMAN'S MUSIC HALL—Lou Holtz, comedian; Helen Jepson, soprano. KPO and net.   |
| 9:00—  | MOBIL MAGAZINE—Music, news dramatizations and humor, with David Broekman's Orchestra. KHJ-KFRC and net.   |
| P.M.   | Friday  |
| 5:00—  | HOLLYWOOD HOTEL—Dick Powell, Louella Parsons, Raymond Paige's Orchestra and guest artists. CBS net.   |
| 5:30—  | PHIL BAKER—Estella Jayne, Harry McNaughton, Madriguera's Orchestra. NBC net.  |
| 6:30—  | CIRCUS NIGHT IN SILVERTOWN—Joe Cook, B. A. Rolfe's Orchestra, Tim and Irene, comedians; Phil Ducey and Peg LaCentra, vocalists. NBC net.                              |
| P.M.   | Saturday  |
| 5:30—  | AL JOLSON—Guest Artists; vocalists and Victor Young's Orchestra. NBC net.   |
| 7:30—  | JUVENILE REVUE. KFOX.   |
| 6:30—  | CAREFREE CARNIVAL—variety show, comedians, vocalists, orchestra. KPO net.   |
| 7:00—  | NATIONAL BARN DANCE—Novelty Orchestra, guest artists and comedians. The best of this type show. NBC net.  |

**2—Concert Orchestra, Solos**

A.M. Sunday	
8:00	MAJOR BOWES CAPITAL FAMILY—Orchestra, soloists, vocal trio. NBC net.
8:30	RADIO CITY MUSIC HALL—Concert from Radio City. Orchestra and soloists. NBC net.
P.M.	
5:00	MANHATTAN MERRY-GO-ROUND — A n d y Sannella's Orchestra, with "Men About Town" trio and soloists. NBC net.
5:30	MUSICAL REVUE—Frank Munn, tenor; Vivienne Segal, soprano; Gus Haenschen's Orchestra. KPO-KFI net.
P.M. Monday	
6:00	CONTENTED PROGRAM—Morgan L. East—Orch. Lullaby Lady and vocalists. NBC net.
7:30	WM. DALY'S ORCHESTRA, with operatic guest star and chorus. NBC net.
P.M. Wednesday	
5:00	JOHN CHARLES THOMAS, baritone, with vocal ensemble and dramatic cast. NBC net.
8:00	KCB'S RADIO COLUMN—With Raymond Paige Orchestra. KHJ-KFRC & net.
P.M. Thursday	
6:30	HEIDT'S BRIGADIERS—Horace Heidt's Orchestra, Glee Club and Radio Ramblers. CBS net.
P.M. Friday	
8:15	EMIL POLAK'S ORCHESTRA, with mixed quartet. KPO net.
P.M. Saturday	
4:00	HIT PARADE—With Lennie Hayton's Orchestra, Gogo DeLys, Kay Thompson. NBC net.
5:00	RADIO CITY PARTY—NBC net.
5:30	CALIFORNIA MELODIES—With David Broekman's Orchestra. KHJ-KFRC net.

**4—Choral Music**

A.M. Sunday	
8:00	SALT LAKE TABERNACLE—Famous choir and organ from Salt Lake City. CBS net.

**5—Commentators**

P.M. Sunday	
10:00	SAM HAYES—News flashes. Daily except Saturday. NBC net.
P.M. Monday	
1:00	FRIENDLY STREET—Philosophy, news of stage and screen personalities, music. Mon. to Fri. KQW.
P.M. Tuesday	
6:30	EDWIN C. HILL. Also Wed. 4:15. CBS net.
P.M. Thursday	
8:00	FLOYD GIBBONS, Headline Hunter. NBC net.
8:00	HARVEY MOSS, Commentator. KFOX.
P.M. Saturday	
2:00	FREDERICK WILLIAM WILE—Noted political writer from Washington. CBS net.

**6—Dance Orchestras**

P.M. Sunday	
6:00	WAYNE KING'S ORCHESTRA—Also Monday. CBS net.
10:00	SCOTT HELD'S ORCHESTRA—nightly, except Monday, KQW.
10:15	PAUL PENDARVIS. KPO.
10:30	ORVILLE KNAPP & ORCHESTRA. Tuesday to Friday; Saturday, 9:00; KHJ and net.
11:00	TOM GERUN'S ORCHESTRA. Also Tuesday & Wednesday, 10:15; Thursday, 10:30, KGO; Friday, 10:30, KPO.
11:00	LES HITE'S ORCHESTRA—Also Mon., Tues., Wed., Thurs., Fri., 11:30. KHJ-KFRC net.
11:30	JAN GARBER'S ORCHESTRA—Wed., 8:30; Thurs., 9:30; Fri., 9:30; CBS net.
P.M. Monday	
10:00	JIMMY DAVIS' ORCHESTRA. CBS net.
11:00	DON BESTOR'S ORCHESTRA—Tuesday to Thursday, 11; Saturday's, 11:00. KHJ-KFRC net.
11:00	FREDDIE MARTIN'S ORCHESTRA—Monday to Friday. KGO net.

**IN THE RADIO SPOTLIGHT**

By DICK TEMPLETON  
New York Correspondent

JUST in case anybody believes that youth hasn't a chance in radio, let them look over the latest folks to step into the spotlight.

Lennie Hayton, who directs the music on the "Hit Parade" every Saturday night, isn't 30. Famous as a pianist and arranger for Paul Whiteman before he was 25, young Hayton ranks with the top ten baton-wavers, and yet there is no one who doesn't classify a "Hayton arrangement" along with the other big name arrangers in the country.

Sultan of Scat is what they call young Johnny Hauser. There is no one in radio who can lend the color to off beat tempos like the young man who could be coroner of his home town in New Jersey if he chose to hold public office. He's done everything except hit 26 years of age—been a school teacher, a trumpeter, sold books—and today stands out as the leading disciple of "hot singin'" on the air.

When the sponsors of the Fred Allen program—number one in the Crosley ratings at this writing—sought a batoneer to put punch into their music, they didn't look for a gray-beard. Instead they nominated young Peter Van Steeden, who still looks like a collar ad or a college senior, and turned the baton over to him. His music is making him famous—and 35 is a long way off for the young Holland-born maestro.

Virginia Verrill is the talk of the town among the new "discoveries," and she is a star in her own right. And at 18. And just as everybody on the Coast swore by "One Man's Family" when it was first adopted for eastern sponsorship, try and find a Native Son, or anyone else on the Coast in fact, who will tell you they don't think young Virginia is radio's next "best bet."

(Continued on Page 13)

**Latest UNITED PRESS NEWS**

Daily  
7 A.M. 10 A.M. 12 Noon  
4 P.M. 7 P.M. 9 P.M.

Sunday 6 P.M.

**KQW**

1010 Kcys.

## THE WEEKLY HORRORS-COPE

By FRANK COPE

☐ Greetings . . . radio fans !! Speaking of radio fans . . . if we had two more fans we could check out of radio and run competitively to **Sally Rand** . . . ☐ "**Woody**" KQW **Wooding** is suffering from a strange malady . . . (not the picture "Broadway Malady") . . . hoof and mouth disease . . . A hoss kicked him in the face t'other day . . . ☐ What Bay Region newscaster shuns the word "municipal" . . . because his upper plate bounces out when he tackles that particular woid? . . . we suggested he walk on his hands to keep the dear old tooth in place . . . ☐ Telephone companies promise a scoop on **television** . . . "Call—look" over the tellyphone by 1936 . . . enabling caller to see party called and vice versa . . . We gamble this will hurt the extension telephone bizness . . . Catch on? . . . Toe nail descriptions: . . . ☐ **Ben Bernie** . . . kewpie doll smoking a stogie . . . **Frank Black** . . . a pair of horn-rimmed specs with a musical education . . . **David Ross** . . . a waxed mustache in short pants . . . **Kay Kyser** . . . the village school master with a southern drawl . . . **Gene KJBS Clark** . . . the red ink on the family budget . . . **Mae West** . . . "posed for by a professional model." . . . **Frank Munn** . . . before taking in a reducing drug ad . . . **This Scribe** . . . before taking in hair restorer ad . . . ☐ **Ben Old Mousetrap Bernie** is taking a mighty verbal shellacking . . . for his recent pantomime on the Gettysburg address . . . Mayhap the mousetrap thought it had been declared illegal by the Supreme Court along with NRA . . . ☐ Slips that pass in the mike: **Charlie KJBS Parker** was once handling a one man request program . . . answering the phones . . . announcing . . . and playing the phony-graph records . . . Business became so good that Chas. was a bit excited . . . In the middle of a conversation on the phone a record ran out . . . Excusing himself from the conversation he opens the mike and yodels . . . "Our next number is for Miss Susie Bluge, who is sweet sixteen today . . . Paul Whiteman and his orchestra play 'When You and I Were Sweet Sixteen.'" . . . **A telephone number** . . . (sounds more to us like an electrical transgression) . . . ☐ We received a letter a short time ago from our pal, **Ted KDYL Rogers** . . . who inquires about Bay Region radio activities . . . and wants to know if this naval observatory time he hears about refers to the gals that line the docks when the fleet is in . . . We'll refer that to our maritime dept . . . ☐ So many

**P. M. Tuesday**  
7:30—LEO REISMAN'S ORCHESTRA. NBC net.  
8:30—DEL WHITE'S ORCHESTRA. KFRC & net.  
10:15—PAUL PENDARVIS' ORCHESTRA. Wed., 9:15; Thursday, 10:15. KPO net.

**P. M. Wednesday**  
6:30—RAY NOBLE'S ORCHESTRA. NBC net.  
9:00—BILL FLECK'S ORCHESTRA. KFRC net.

### 7—Dramatic Features

**P. M. Sunday**  
2:30—GRAND HOTEL—Drama with Anne Seymour and Don Ameche. NBC net.  
3:00—K-7. Spy story. KGO net.  
7:15—CORNELIA OTIS SKINNER. KPO and net.  
8:30—ONE MAN'S FAMILY—Serial drama by Carlton E. Morse. NBC net.

**P. M. Monday**  
3:15—STORIES OF THE BLACK CHAMBER—Spy drama (Wed. and Fri. also). NBC net.

**P. M. Tuesday**  
8:30—DEATH VALLEY DAYS—The Old Ranger, Charles Marshall, singing cowboy, and others. Romantic California well presented. NBC net.

**P. M. Wednesday**  
4:00—ONE MAN'S FAMILY (same episode as Sunday broadcast). NBC net.  
7:30—"HOUSE OF GLASS"—drama by Gertrude Berg. NBC net.

**P. M. Friday**  
6:00—FIRST NIGHTER—Original drama with June Meredith, Don Ameche, Eric Sagerquist's Orchestra. NBC net.

### 8—Education—Economics

**A. M. Sunday**  
8:15—WHAT HOME MEANS TO ME—Inspirational Feature. NBC net.

**A. M. Monday**  
9:30—THE NEW WORLD—Educational Talks. NBC  
**P. M.**  
1:30—UNIVERSITY OF THE AIR—Monday to Friday. KFRC net.

**P. M. Tuesday**  
3:45—YOU AND YOUR GOVERNMENT—Popular Political Economy. NBC net.

### 9—Farm Topics

**P. M. Monday**  
12:15—WESTERN FARM AND HOME HOUR—Special farm and ranch interests of West Coast. Monday to Friday. NBC net (not on July 8.)  
12:30—MARKET PRICES—Federal and State, covering Fruit, Vegetables, Livestock, etc. Monday to Saturday. KQW.  
6:00—STATE DEPT. AGRICULTURE—From KQW studio in Sacramento. Monday to Friday.  
6:15—MARKET REPORTS—Eastern prices. Livestock quotations. Monday to Friday. KQW.

**A. M. Friday**  
9:30—NATIONAL FARM AND HOME HOUR—Reviews and discussions from various parts of the U. S. Also Saturday. NBC net.

### 12—Military Bands

**A. M. Tuesday**  
10:05—ARMY BAND CONCERT. Also Wednesday at 7:30 a. m. NBC net.

**A. M. Thursday**  
7:30—U. S. NAVY BAND. KPO and net.

**A. M. Friday**  
7:00—U. S. MARINE BAND. KPO net.  
**P. M.**  
12:30—U. S. ARMY BAND. CBS net.

**13—Miscellany Musical**

P. M.	Sunday
2:00—	MARJORIE LEE—Pianist and vocalist. KJBS-KQW.
4:45—	ART FADDEN—pianist. KJBS-KQW.
P.M.	Monday
6:30—	LILAC TIME—With Night Singer. CBS net.

**14—Musical Comedy**

P.M.	Sunday
6:00—	THE GIBSON FAMILY — Original musical comedy. Vocalists, dramatic artists with Don Voorhees' Orchestra. NBC net.
P. M.	Monday
5:30—	MUSIC AT THE HAYDNS—Musical drama by Otto Harbach, Al Goodman's Orchestra, vocalists. KPO and net.
P.M.	Tuesday
6:00—	BEAUTY BOX THEATRE — All-star production of best operettas and musical comedies. Noted singers and splendid orch. NBC net.

**15—News Broadcasts**

P.M.	Sunday
6:00—	SPECIAL EDITION—KQW-KJBS.
10:00—	NEWS FLASHES—Also Monday to Friday. KPO and net.
10:00—	NEWS FLASHES. KHJ (Sunday to Saturday).
10:55—	PRESS RADIO NEWS—News flashes. (Monday to Friday, 10:55 p. m.) KGO-KPO net.
11:00—	PRESS RADIO NEWS. KFRC Sunday to Sat.
A. M.	Monday
6:45—	NEWS BROADCAST—In Portuguese, Monday to Saturday. KQW.
7:00—	MORNING EDITION—Daily. KQW.
8:00—	FINANCIAL SERVICE—Daily from New York. NBC net.
10:00—	FEMININE EDITION—Daily. KQW-KJBS.
P. M.	
12:00—	NOONDAY HEADLINES—Daily. KQW-KJBS.
3:00—	AFTERNOON EDITION—Daily. KJBS.
4:00—	AFTERNOON EDITION—Daily. KQW-KJBS.
6:00—	HOME EDITION—Daily. KJBS.
6:30—	NEWS—In Italian to 6:45; English, 7:00 to 7:15; Portuguese 7:15 to 7:45. Monday to Saturday. KQW.
7:00—	HOME EDITION—Daily. KQW.
9:00—	FINAL EDITION—Daily. KQW-KJBS.

**16—Religious Topics**

A. M.	Sunday
8:15—	CHRISTIAN SCIENCE READING—Monday to Tuesday, 8:00 a. m. KYA.
9:30—	THE SUNDAY FORUM—Dr. Ralph Sockman, speaker. Music and vocalists. NBC.
P. M.	
2:00—	CATHOLIC HOUR—Very Rev. James M. Gills. Father Finn and choir. KGO net.

**17—Symphony—Opera**

A.M.	Sunday
11:00—	SYMPHONIC HOUR. CBS net.
P. M.	
1:00—	RHYTHM SYMPHONY—Kansas City Philharmonic Orchestra. De Wolf Hopper, narrator. NBC net.
P.M.	Wednesday
12:00—	LA FORGE BERUMEN MUSICAL. CBS net.
P.M.	Thursday
8:15—	STANDARD SYMPHONY HOUR — Gaetano Merola, conductor. Selections: "Rienzi," Von Wagner; "Tilly-Lo," Camminade; "Concert Waltz," Glazounov; "March Joyeuse," Charrier; "Adagio for Strings," Lekeu Guillian; "Roumanian Rhapsody" in A major, George Enesco. NBC net.

staff personnel changes have taken place in radio circles of late that it has become common practice to have a studio manager introduce a stranger to an old timer as follows . . . "Mr, Old Timer meet Mr. New Comer. Mr. New Comer is leaving us tomorrow." . . . We'll be leaving you until next week. . . .

**IN THE RADIO SPOTLIGHT**

(Continued from Page 11)

Jack and Loretta Clemens, both in their early twenties, are high in ranking as stars in Uncle Charlie's Ivory Tent Show Sunday nights. You'll generally find white-haired Charlie Winner giving tips to young Jack Clemens, and he'll tell anybody—and he already has told quite a few—that Jack Clemens is "goin' places."

The older, more settled brains in broadcasting can be looked on for the steady, consistent performances on the air. But it is to youth that radio has to look for the startling achievements most of the time. And radio, like the stage and screen, is doing just that. They have made way for youth—and youth is apparently making its own way for radio.

Archie Taft, manager of Station KOL, has just returned from a month's trip to California and Mexico. . . . Lee Kroll of WGR-WKBW, New York, was a recent visitor to KOL.

**Before Purchasing Any  
Radio . . . See and  
Hear the NEW**

**1936 PHILCO**

*A real radio for every purse and  
purpose priced from \$22.90 to \$625.*

There is an Authorized PHILCO  
dealer in your vicinity.

**SAN FRANCISCO**

(DOWNTOWN)

**I. S. COHEN SONS, LTD.**

1025 Market Street Market 6868

**COAST RADIO COMPANY**

1106 Market Street Underhill 3335

**HUNTER MUSIC HOUSE**

1205 Market Street Underhill 5723

(UPPER MARKET)

**JOHN DANZIGER**

1649 Market Street Underhill 2063

(OUTER MISSION)

**BYRNE RADIO SHOP**

6173 Mission Street RAndolph 7782

# Ether Jottings

Bob Kinney, whose orchestra broadcasts every Friday and Saturday night over the Columbia-Don Lee Network from the Hotel Del Monte, is a graduate of the University of California Law School. His band is composed of former University of California students.

Before going to Del Monte eighteen months ago, Kinney had played successful engagements at Yosemite Valley and at the Claremont and Hotel Oakland, in Oakland. Bob Saunders, Jim Tosteson, Gil Wilkie are the vocalists with the band. Saunders was a baseball star at the university.

Wednesday, on KFRC's Happy-Go-Lucky program, hereafter will be known as "Vacation Day." The program will open with the theme song, "In the Good Old Summer Time."

Harry Conn, Jack Benny's script writer, rises and shines with this nifty, "A lot of folks squawk about their relatives borrowing \$10, \$50 and even \$100. That's nothing, my relatives are all G men!"

Jack Strock, announcer, character actor, and harmonica player, has rejoined the staff of KFOX after an absence of several months.

## STATION DIRECTORY

### • NBC Network Stations

Station	Location	Meters	Kcs.
KECA	Los Angeles	209.7	1430
KEX	Portland, Ore.	254.1	1180
KFI	Los Angeles	468.5	640
KFSD	San Diego	499.7	600
KGO	Oakland-San Francisco	379.5	790
KGW	Portland, Ore.	483.6	620
KHQ	Spokane, Wash.	508.2	590
KJR	Seattle, Wash.	309.1	970
KOA	Denver, Colo.	361.2	820
KOMO	Seattle, Wash.	325.9	920
KPO	San Francisco	440.9	680
KYA	San Francisco	243.8	1230

### ★ CBS Network Stations

KFRC	San Francisco	491.5	610
KGB	San Diego, Calif.	225.4	1330
KHJ	Los Angeles	333.1	900
KOIN	Portland, Ore.	319.0	940
KOL	Seattle, Wash.	236.1	1270
KSL	Salt Lake City	268.3	1130
KVI	Tacoma, Wash.	526	570

### Independent Stations

KFOX	Long Beach, Calif.	239.9	1250
KFWB	Hollywood, Calif.	315.6	950
KGDM	Stockton, Calif.	272.6	1100
KGGC	San Francisco	211.1	1420
KJBS	San Francisco	280.2	1070
KLX	Oakland, Calif.	340.7	880
KNX	Los Angeles	285.8	1050
KQW	San Jose, Calif.	285.5	1010
KROW	Oakland-San Francisco	322.4	930
KSFO	Oakland-San Francisco	535.4	560

## 18—Skits and Serials

A.M.	Monday
8:15	—THE GUMPS—Andy and Min, Monday to Friday. CBS net.
8:30	—MARY MARLIN—Monday to Friday. CBS net.
10:00	—MARIE, LITTLE FRENCH PRINCESS—Monday to Friday. CBS net.
10:15	—ROMANCE OF HELEN TRENT—Monday to Friday. CBS net.
11:15	—VIC AND SADE—Mon. to Fri. NBC net.
11:30	—MA PERKINS—Monday to Friday. NBC net.
P.M.	
12:00	—BETTY AND BOB—Mon. to Fri. NBC net.
1:45	—SAM AND DICK—also Wednesday and Friday. KPO net.
2:45	—THE DESERT KID—Monday, Wednesday, Friday. KGO, KDYL.
5:20	—CECIL & SALLY. Daily except Sunday. KFOX.
5:45	—JACK ARMSTRONG. Mon. to Fri. KGO.
5:50	—AL & MOLLY. Daily except Sunday. KFOX.
7:00	—AMOS 'N' ANDY—Mon. to Fri. NBC net.
7:00	—EB & ZEB. Daily except Sat. and Sun. KFOX.
7:15	—TONY AND GUS—Monday to Friday. NBC net.
7:30	—THE IN-LAWS—With Hal Berger, Charlotte Woodruff, Dale Nash and Bill Boucher. Monday to Friday. KNX.
8:15	—FRANK WATANABE and Hon. Archie. Mon. to Fri. KNX.

A. M.	Tuesday
11:45	—DREAMS COME TRUE — Barry McKinley, baritone. Also Wed. and Thurs. NBC net.
P. M.	
1:45	—BETTY MARLOWE—Also Thursday. NBC net.
p.m.	Friday
4:00	—IRENE RICH—dramatic sketch. NBC net.

## 19—Sports

P.M.	Monday
8:30	—SPORTING HIGHLIGHTS. Also Wed. KROW.
P.M.	Tuesday
9:30	—WRESTLING MATCHES. Also Fri. KROW.
P.M.	Wednesday
9:15	—BOXING MATCHES. KROW.
P.M.	Thursday
8:00	—SPORTS HEADLINERS. KGO.

## 21—Women's Interests

A. M.	Monday
10:30	—HOME ECONOMICS—Auspices U. S. Dept. of Agriculture. Monday to Saturday. KQW.
10:45	—ELMA HACKETT—Mon. to Fri. KFRC.
P. M.	
2:00	—MAGAZINE OF THE AIR—Various topics of special interest to women. Monday to Friday. NBC net.
3:30	—HOUSEWIFE'S PROTECTIVE LEAGUE—With Fletcher Wiley. Debunking false advertising claims. Monday to Friday. KNX.
3:30	—HOSTESS HI-LITES—Music and timely tips to hostesses and entertainers. Also Wednesday and Friday. KJBS-KQW.
A.M.	Tuesday
10:30	—MARTHA MEADE—Hazel Warner, contralto. NBC net. Also Thursday.
A.M.	Wednesday
8:00	—BETTY CROCKER—Also Friday. KOA.
8:45	—MAGIC RECIPES—Jane Ellison. NBC net.
9:45	—BETTY CROCKER—Also Friday. KFRC and net.
A.M.	Friday
10:30	—FRANCES LEE BARTON—"Kitchen Party" with Warren Hull, m.c. Vocalists and piano duo. From New York. NBC net.

### *New Service for Radio Owners*

The Radio Manufacturers Service and the Western Union Telegraph Company have entered into an agreement to provide a quick, reliable service for radio owners whose sets may need adjusting or repair, it was announced today.

The arrangement enables radio owners to obtain radio servicemen by simply telephoning Western Union. No charge is made for this contact service.

The Radio Manufacturers Service, created by the Philco Radio & Television Corporation, Philadelphia, is a nationwide organization of trained, experienced and properly equipped servicemen who are helping radio owners everywhere obtain maximum performance from their sets.

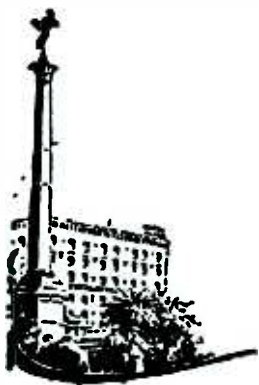
Their training includes courses from technical books prepared by radio engineers covering all types of installation and service problems on all sets. Their ability to perform their work satisfactorily is guaranteed by endorsement of Philco distributors who pass on their qualifications before they are admitted to membership in the Radio Manufacturers Service. There are 13,000 of these service men in the United States. They are identified by their Radio Manufacturers Service membership cards.

Veterans interested is maintained on station KROW through programs of the American Legion (heard Sundays at 1:45 p. m.), and the Veterans of Foreign Wars (heard Mondays at 9:45 p. m.). Items of current interest to all Veterans are discussed.

Credit—or blame—for the most egregious pun of recent radio days goes probably to somebody on the Stoopnagle and Budd program. It was during rehearsal and an engineer signaled to Carlyle Stevens, CBS announcer, to take a test for "level," studio term for the correct sound volume for broadcasting. Piped up Budd, dryly, "Who is this guy 'Level' anyway?" . . . "Oh, he," came the reply from the control room, "is the former Premier of France!" The Colonel fainted dead away.

Radio Stamp Club, under the leadership of Norman Shepard, well-known stamp collector, is assuming large proportions. Each week hundreds of new members are added.

Connie Gates, the young contralto from Cleveland who is heard on numerous CBS programs, says that she was once a living example of a coincidence. At twelve o'clock noon on May 12, 1912, when Connie was twelve weeks old, she weighed exactly twelve pounds.



## THE PLAZA

A nationally known hotel, facing beautiful Union Square... in the heart of San Francisco's smartest retail shopping district. Near the theatres, cafes, and places of amusement. Restaurant and Tap Room.

*Post and Stockton Streets  
San Francisco*

ATTRACTIVE RATES / FROM \$2

# PROGRAMS for SUNDAY. . . . July 7

7:00 to 7:30 A. M.

KNX—Breakfast Club  
KFOX—El Despertador  
KSL—Uncle Tom and Comics

7:30 to 8:00 A. M.

KOA—Major Bowes Prog. to 8:15  
KFOX—Orchestra; Aristocrats  
KSL—Tabernacle Choir and Organ

8:00 to 8:30 A. M.

• KPO & net—Major Bowes Family; 8:15, What Home Means  
KGO—Studio Program  
KYA—8:15, Christ, Science Reading  
KROW—Musical Eye-Openers  
KJBS—Close Harmonies  
KGDM—Comics; News  
\* KFRC & net—Salt Lake Tabernacle Choir and Organ  
KOL—P. I. Comics  
KOIN—Sunday Concert; Journal  
KNX—Carefree Capers  
KFI—Church Quarter Hour to 8:15  
KFWB—Records; Funny Paper  
KFOX—Percy and His Father; 8:15, Examiner Comics  
KECA—8:15, Classic Hour

8:30 to 9:00 A. M.

• KPO & net—Radio City Music Hall of the Air  
KGO—Electrical Transcriptions  
KYA—Science; Sabbath Hymns  
KROW—Swedish Meditations  
KJBS—Morning Concert  
KGDM—Chapel  
KVI—Radio Gospel League  
\* KFRC & net—Romany Trail; 8:45, Sir Frederic Whyte  
KJR—Recorded Program  
KFWB—Funny Paper Man  
KNX—Metropolitan Moods  
KSL—Gems of Melody

9:00 to 9:30 A. M.

• KPO & net—Music Hall  
KGO—Bobbie Rockwell, comics  
KYA—“Fellowship of the Air”; 9:15, Funny Paper Man to 10:15  
KROW—Musical; 9:15, Stamp Club  
KJBS—Popular Hits; Old Songs  
KGGC—Band Concert  
KQW—Organ Melodies  
KGDM—The Bondons  
\* KFRC & net—Compinsky Trio  
KJR—Gospel Airlines  
KNX—Talk on Hindu Philosophy  
KFWB—Recorded Music  
KECA—9:15, Roaming in South Seas

9:30 to 10:00 A. M.

• KPO & net—The Sunday Forum; Dr. Ralph Sockman, speaker  
KGO—Timely Tunes  
KROW—Popular Rflew  
KJBS—Dance Orchestra; Melodies  
KQW—Funnies; Contest  
KGGC—Hillbillie Music  
\* KFRC & net—Eddie Dunstedter  
KOMO—Stradivarieties; Sacred Lyrics  
KOL—Democratic Talk to 9:45  
KFI—Real Estate, talk; 9:45, Dr. Casselberry  
KNX—Marshall Grant, organist  
KFWB—Popular Music  
KGB—9:45, Californians  
KSL—9:45, Bible Students

10:00 to 10:30 A. M.

• KPO & net—Your English; 10:15, Mildred Dilling, harpist  
KGO—Electrical Transcription  
KYA—Funny Paper Man; 10:15, Band Concert  
KROW—Musical Program  
KJBS—Music Beautiful  
KQW—Salon Orchestra; 10:15, Baptist Church  
KGGC—Recorded Program  
KGDM—Echoes of the Nineties

\* KFRC & net—Vivian Della Chiesa  
KHQ—10:15, Covered Wagon  
KJR—Music Shop  
KNX—Health Talk; Music  
KECA—Maurice Zam, pianist  
KFOX—Music; Beauty Talk

10:30 to 11:00 A. M.

• KPO & net—Radio Guild  
KGO—Beaux Arts Trio  
KYA—Song Serenaders  
KROW—Organ; Watchtower  
KJBS—Dance Recordings  
KQW—Baptist Church  
KGGC—Request Hour  
KGDM—Echoes of the Nineties  
\* KFRC & net—Between the Bookends; Happy Hollow  
KJR—Operatic Gems  
KNX—Concert; Baptist Church  
KFWB—Family Circle  
KECA—Musical program to 1:30

11:00 to 11:30 A. M.

• KPO & net—Radio Guild  
KGO—Beaux Arts Trio; 11:15, Harry Stanton, basso  
KYA—To be announced  
KROW—Musical Program  
KJBS—Modern Melodies  
KQW—First Baptist Church  
KGDM—Baptist Church Services  
\* KFRC & network—Symphonic Hr.  
KVI—Central Lutheran Church  
KJR—Musical; Judge Rutherford  
KNX—Temple Baptist Church  
KFWB—Jean Leonard, pianist  
KFOX—St. Luke's Church

11:30 to 12:00 Noon

• KPO & net—National Vespers  
KGO—Studio Program  
KYA—Lead Kindly Light  
KROW—Marek Weber's Orchestra  
KGGC—Organalities  
KJBS—Dance Recordings; 11:45, Salon Orchestra  
KQW—First Baptist Church  
\* KFRC & net—Symphonic Hour  
KJR—Middy Concert  
KFOX—St. Luke's Church

12:00 to 12:30 P. M.

• KPO & net—Pedro Via's Orchestra  
KGO—Electrical Transcriptions  
KYA—Organ Sonata  
KROW—Music Box Revue to 1:30  
KJBS—Records  
KJBS—Orch.; Big Ten Melodies  
KGGC—Jewish Program  
KQW—Church; 12:15, Opera Stars  
KGDM—12:15, Portuguese Melodies  
\* KFRC & net—St. Louis Parade  
KQW—Tommy Luke  
KJR—Headliners  
KFWB—Gold Star Rangers  
KNX—Church; Concert Orchestra

12:30 to 1:00 P. M.

• KPO & network—Sperry Sunday Special: Drama and Music; Col. Rod, with a dramatic cast; vocalist, violinist and organ  
KGO—Everybody Sing  
KYA—Marche Parade  
KJBS—Musical Program  
KJBS—Popular Tunes  
KQW—New and Old Tunes  
KJR—Rhythm Rulers  
\* KFRC & net—St. Louis Parade  
KNX—Emil Baffa's Concert Orch.  
KFOX—Organ; Moods Musical  
KFWB—Gold Star Rangers  
KOA—Melody Master; “While the City Sleeps”

1:00 to 1:30 P. M.

• KPO & network—America's First Rhythm Symphony: De Wolf Hopfer, narrator, with 86 artists  
KGO—Pair of Pianos  
KYA—Waltz Time  
KJBS—Music; Spice of Life

KROW—Music Box Revue  
KJBS—News; Dance Music  
KQW—Melodies; All Request  
\* KFRC & net—To be announced  
KJR—International Musical  
KNX—Emil Baffa's Orchestra  
KFWB—G. Allison, talk  
KFOX—Foster Rucker and Lloyd Hart  
KSL—Sunday Players

1:30 to 2:00 P. M.

• KPO & net—South Sea Islanders: instrumental; 1:45, Ray Heathertone, baritone  
KGO—Tally-Ho; Instrumentalists  
KYA—Salon Melodies  
KJBS—Recordings to 2:30  
KJBS—Popular Concert  
KROW—March Time; Amer. Legion  
KQW—All Request  
KGDM—Lonesome Hoboe  
\* KFRC & net—Eunice Steel, organist; 1:45, Murray & Harris  
KOL—1:45, Five Minute Drama  
KOIN—Sunday Players  
KVI—The Character Adviser to 1:45  
KJR—Rev. Henry Ness  
KNX—L. Johnson, Cosmic Law  
KECA—Vocal Adj.; Music Cons.  
KFWB—Popular Recordings  
KFOX—“The Tower of Babel”  
KSL—Musical; Soloist

2:00 to 2:30 P. M.

• KGO & net—Catholic Hour  
KPO—Hollywood Gossip; 2:15, Sarah Kreindler, violinist  
KYA—Singing Strings  
KROW—Concert Waltzes  
KQW—Marjorie Lee; 2:15, Vocal  
KJBS—Marjorie Lee, pianist; Rec'ds  
\* KFRC & net—Nat'l Amateur Nite  
KOMO—Old Songs of the Church  
KFI—Makers of History  
KNX—Exposition Park Concert  
KFOX—Christian Science program  
KSL—Old-Time Program

2:30 to 3:00 P. M.

• KPO & network—Grand Hotel: Drama, with Anne Seymour and Don Ameche  
KGO—Vagabonds Quartet  
KYA—Lost & Found; Light Opera  
KJBS—Piarist; Musical Jigsaw  
KROW—Zaragoza Spanish Sextette  
KGGC—Sunday School  
KGDM—Honolulu Serenader; Orch.  
KQW—2:45, Songs of Romance  
\* KFRC & net—Three Brown Bears; 2:45, Interlude in Music  
KOL—2:45, Studio Musicale  
KVI—2:45, Judge Rutherford  
KJR—Presbyterian Church  
KECA—Records; South Sea Roaming  
KNX—Exposition Park Concert  
KFOX—Orchestra; Quartet  
KSL—2:45, Jesse Crawford, Organist

3:00 to 3:30 P. M.

• KGO & net—K-7, Spy Story  
KPO—To be announced; 3:15, Paul Martin, Jean Allen, Ted White  
KYA—Light Opera  
KROW—Dance Matinee  
KJBS—Orch.; Philco Concert  
KGGC—Church Services  
KQW—Violinist; Musical Program  
KGDM—Orchestra; Piano Moderne  
\* KFRC & net—Roadways of Romance  
KOIN—Old Church Songs  
KQW—Orchestra; Doumiffs  
KOMO—Tune Time; Royal Foursome  
KNX—Concert  
KFOX—Orch.; Whispering Strings  
KECA—Classic Hour  
KOA—James Sykes, pianist; 3:15, Quarles Trio

3:30 to 4:00 P. M.

• KPO & net—NBC String Symphony  
KGO—Sunday Concert



KYA—Harmonies; Travel Talk  
 KLX—Carefree Capers  
 KROW—Dance Matinee  
 KJBS—Dance Orchestra  
 KQW—Catholic Quarter Hour; 3:45,  
 Semi-Classic Instrumental  
 \*KFRC net—Roadways of Romance  
 KFRC—3:45, Knox Elec. Trans.  
 KJR—Cornish School Program  
 KNX—Concert  
 KFOK—Talk; Walkathon

4:00 to 4:30 P. M.

\*KPO & network—Mayor Bowes' Amateur Hour  
 KGO—Sunday Concert  
 KYA—Children's Matinee; Concert  
 KROW—Recreation Singers  
 KJBS—Musical Styles  
 KQW—Bible; 4:15, Semi-Classic  
 KGDM—4:15, Ansel Roby & Gang  
 \*KFRC & net—"Rhythm at Eight," with Ethel Merman, Al Goodman's Orchestra  
 KJR—Melody Time  
 KNX—Adventures in Literature  
 KFOK—Freddie Carter's Orchestra  
 KFSD—Exposition Program

4:30 to 5:00 P. M.

\*KPO & net—Amateur Hour  
 KGO—Paul Carson, Organist  
 KYA—S. F. Church Federation  
 KRW—World Revue  
 KROW—Dance Encores; Antone Bakarich  
 KJBS—Records; Art Fadden, pianist  
 KQW—Records; Art Fadden, pianist  
 KGDM—Ansel Roby and Gang  
 \*KFRC & netw—Rabbi Magnin; 4:45, Marshal Sohl, tenor  
 KOIN—Variety Hour to 4:45  
 KJR—World Revue  
 KNX—Dr. Martin Luther Thomas  
 KECA—U. S. C. College of Music  
 KFOK—Nazarene Church  
 KFSD—Shut-In Protest  
 KSL—Makers of History; Rhythm

5:00 to 5:30 P. M.

\*KPO & netw—Manhattan Merry-Go-Round; Orch. and vocalists  
 KGO—Community Forum  
 KYA—Concert; Shut-in Circle  
 KLX—Talk; Music  
 KROW—Contest News  
 KJBS—Popular Melodies; Pianst  
 KQW—Organ Melodies  
 \*KFRC & net—Ted Pio-Rito's Summer Serenade  
 KJR—Emmanuel Tabernacle  
 KNX—Ethel Hubler; Dr. Matthews  
 KECA—Chamber Music  
 KFOK—Hi Hilarities  
 KFSD—Symphony Concert

5:30 to 6:00 P. M.

\*KPO & netw—American Musical Revue; Frank Munn, tenor; Vivienne Segal, soprano; piano duo; violinist; orchestra  
 KGO—Melodiana; Orch. & Vocalist  
 KYA—Shut-in Circle; 5:45, Organ  
 KLX—Covered Wagon Jubilee  
 KROW—Theatre of the Air  
 KQW—Seventh Day Adventists  
 \*KFRC & net—Summer Serenade  
 KJR—The Sunday Players  
 KNX—Dr. John Matthews  
 KFWE—Sunday Players  
 KECA—Chamber Music  
 KFOK—News; Music; Flash Gordon  
 KFSD—Symphony Concert

6:00 to 6:30 P. M.

\*KPO & network—Gibson Family; Original musical comedy  
 KGO—Walter Kelsey, violinist; 6:15 Henry M. Hyde  
 KYA—Organ; Sunset Songs  
 KLX—Mixed Quartet  
 KROW—Headlines; Music  
 KJBS—News; Fay Fraser  
 KQW—News; Bits of Philosophy  
 \*KFRC & network—Wayne King's Orchestra

KJR—The Angelus Hour  
 KFWE—News; Melodies of Eventide  
 KNX—Calmon Luboviski & Claire Mellonio, recital  
 KECA—News; Organ; Violinist  
 KFOK—News; Talk; Drama  
 KFSD—Symphony

6:30 to 7:00 P. M.

\*KPO & net—Gibson Family  
 KGO—Palace Hotel Ensemble  
 KYA—Jack Kirkwood; 6:45, Pianist  
 KLX—Pop Concert  
 KROW—Grace Herold Trio  
 KJBS—Dinner Music  
 KQW—Family Robinson; Orchestra  
 \*KFRC & net—Benay Venuta, vocalist; 6:45, Congressional Opinion  
 KJR—The Angelus Hour  
 KFWE—Russian Gypsies; Pioneers  
 KNX—Rev. C. E. Fuller  
 KFOK—KFOK School Kids; 6:45, Romance in Songs  
 KECA—W. Tourtellotte, organist  
 KFSD—6:45, Furbmitt Program

7:00 to 7:30 P. M.

\*KPO & netw—Morin Sisters and Ranch Boys; 7:15, Cornelia Otis Skinner  
 KGO—Personal Closeups, Artist interviewed by Gypsy; 7:15, Forty-five Minutes from Broadway  
 KYA—Pianist; Headliners  
 KLX—Alice Blue; Variety Hour  
 KROW—Royal Hawaiians; Watchtower Lecture  
 KJBS—Italian News; Music  
 KGGC—Church Services  
 KQW—Concert Orchestra  
 \*KFRC & net—Musical Mirror  
 KOIN—Songs for you to 7:05  
 KVI—Musical Interlude; Orchestra  
 KJR—Collegians  
 KNX—Rev. C. E. Fuller  
 KFWE—For Mother and Dad  
 KECA—Recorded Program  
 KFOK—For Mother and Dad  
 KSL—News; Hamp's Orchestra

7:30 to 8:00 P. M.

\*KPO & network—Jack Benny and Artists; Don Bestor's Orchestra  
 KGO—45 Minutes from Broadway  
 KYA—Headliners; Song Magic  
 KLX—Weather; 7:45, William Don, eccentric comedian  
 KROW—Oakland Bible Center  
 KGGC—Church Service  
 KQW—First Baptist Church Service  
 \*KFRC & net—Minute Melodies; Frankie Master's Orchestra  
 KJR—New Tunes for Old  
 KNX—Music; Judge Rutherford  
 KFWE—Music; Comedy Stars  
 KFOK—Boy Detective; Ballads  
 KECA—Nick Harris Prog.; Records

8:00 to 8:30 P. M.

\*KPO & network—To be announced  
 KGO—Reverie; violin, cello, piano  
 KYA—Opera Recordings to 9:45  
 KLX—Melodies; Iberian Quintet  
 KROW—Popular Hits  
 \*KFRC & net—Joe Haymes' Orch.  
 KFRC—8:15, Beauty That Endures  
 KOIN—8:15, Comedy Stars  
 KOI—8:15, Comedy Stars  
 KJR—Church of Christ Scientist  
 KNX—Presbyterian Church  
 KFWE—Hi Jinks Amateur Show  
 KFOK—Christian Science Church  
 KECA—Concert Favorites  
 KFSD—8:15, Farley's Rangers  
 KSL—Philosopher and Organ

8:30 to 9:00 P. M.

\*KPO & netw—One Man's Family  
 KGO—Roy Maxon's Orchestra  
 KLX—Hour of Melody  
 KROW—Sparkling Melodies  
 KQW—Baptist Church Services  
 \*KFRC & net—Salon Moderne  
 KOIN—Little Show to 8:45  
 KJR—Presbyterian Church  
 KNX—Presbyterian Church

KECA—Concert Favorites  
 KFWE—Carol Lofner's Orchestra  
 KFSD—Exposition Symphony  
 KSL—L. D. S. Services

9:00 to 9:30 P. M.

KPO—Bennie Walker and his Entertainers  
 \*KPO & net—9:15, Leonard Keller's Orchestra  
 KGO—Talk of the Town; 9:15, John Teel, baritone  
 KLX—New Tunes; Pioneer Trail  
 KROW—Foreign Watch Tower  
 KJBS—Variety Program; Sports  
 KQW—Organ Concert  
 \*KFRC & net—Horatio Zito's Orch.  
 KJR—News to 9:15  
 KHQ—Musical Moments  
 KOMO—Romance Time  
 KFWB—"Vanity Fair"  
 KNX—News; 9:15, Religious talk  
 KECA—News; 9:15, Records  
 KFOK—Beverly Hill Billies

9:30 to 10:00 P. M.

KPO—Arlie Simmons' Orchestra  
 \*KGO & net—Reader's Guide  
 KYA—Opera; 9:45, News  
 KLX—News; Song Souvenirs  
 KROW—Rhythm Revue  
 KJBS—Sports; Music  
 KQW—"Home Again Hour"  
 KFRC—Musical Moments  
 \*KFRC & net—Del White's Orch.  
 KOMO—Nights in Old Vienna  
 KVI—9:45, News Flashes  
 KOI—Orchestra; 9:45, News Flashes  
 KOIN—Organ; Nikola Zan  
 KFI—The Three Musketeers  
 KFWE—Slumbertime  
 KNX—Dude Ranch; Wranglers  
 KFOK—Beverly Hillbillies  
 KSL—Organ, Violin and Vocalist  
 KOA—Arlie Simmonds' Orchestra

10:00 to 10:30 P. M.

\*KPO & network—Richfield Reporter; Sam Hayes  
 KPO—10:15, Paul Pendarvis and Orchestra  
 KGO—So. Harmony Four  
 \*KGO & network—10:15, Paul Carson, organist  
 KYA—Evening Concert  
 KLX—Chinese Phantasies; Jess Stafford's Orchestra  
 KROW—Rhythm Revue  
 KJBS—Light Classics  
 \*KFRC & net—Slim Martin's Orch.  
 KOMO—10:15, Cubanettes  
 KVI—Gospel League  
 KJR—Medical Auction  
 KFI—10:15, Backyard Astronomer  
 KNX—Arizona Wranglers  
 KFWE—News; Kings Men  
 KFOK—News; Walkathon  
 KGB—News; Orchestra  
 KECA—Musical Celebrities

10:30 to 11:00 P. M.

\*KGO & net—Paul Carson, organist  
 KPO—Paul Pendarvis' Orch.; News  
 KYA—Leon Mojica's Orchestra  
 KLX—Orchestra; Records  
 KROW—Variety Show  
 KJBS—Light Classics  
 \*KFRC & net—Orr. Knapp's Orch.  
 KOMO—Lamplit Hour  
 KOIN—Golden Voices  
 KFOK—Nick Stuart's Orchestra  
 KFWE—Carol Lofner's Orchestra  
 KNX—First Radio Church  
 KOA—Huffman Harmonies; News

11:00 to 11:30 P. M.

\*KGO & net—Baj Tabarin Orch.  
 KPO—Midnight Melodies  
 KTAB—Zohn's Orch.; Melodies  
 KROW—Dance of the Hour  
 KJBS—Dance Time  
 KFRC—Press-Radio News to 11:10  
 \*KFRC & net—Les Hite's Orch.  
 KOIN—Jantzen Beach Orchestra  
 KVI—Jantzen Beach Orchestra  
 KFWE—Bill Warren's Orchestra

# PROGRAMS for MONDAY. . . July 8

7:00 to 7:30 A. M.

• KPO & net—Honeymooners; 7:15, Tony Wons  
 KYA—Musical Clock  
 KROW—Commuters Clock  
 KJBS—Alarm Klok Klub Program  
 KQW—The Breakfast Hour  
 KGDM—News; Eb and Zeb  
 KFRC—Breakfast with Bob Bence  
 KVI—Radio Gospel League  
 KOL—Sunrise Express  
 KHQ—Morning News to 7:15  
 KNX—Bill Sharples, "Sharplesville"  
 KECA—Recordings  
 KFSD—Early Birds; Pep & Ginger  
 KGB—7 o'Clock Club

7:30 to 8:00 A. M.

KPO—Organ Concert  
 • KGO & net—U. S. Navy Band  
 KROW—7:45, Contest News  
 KQW—Voices of Courage  
 KFRC—Stocks; Bob Bence  
 KJR—7:45, Christian Science Prog.  
 KVI—Varieties; The Cadets  
 KHQ—7:45, Island Echoes  
 KECA—Bible Fellowship; Records

8:00 to 8:30 A. M.

• KPO & network—Financial Service; 8:15, Mort Werner, songs  
 KGO—U. S. Navy Band  
 KYA—Christian Science Reading; 8:15, Mr. & Mrs. Reader  
 KROW—Contest; News  
 KJBS—Popular Music  
 KQW—Concert; Religious Forum  
 KGDM—Serenader; 8:15, Records  
 • KFRC & net—Fred Feibel, organ; 8:15, The Gumps  
 KOMO—8:15, Morning Reveries  
 KGW—Anything Goes  
 KFI—Church Quarter Hour; 8:15, Airplane Man  
 KNX—Popular Concert; New Tunes

8:30 to 9:00 A. M.

• KPO & net—Melody Mixers  
 KGO—Morning Eye-Opener  
 KYA—Morning Concert  
 KLX—Covered Wagon Jubilee  
 KROW—Music Box Revue  
 KJBS—Dance Matinee  
 KQW—Morning Concert  
 KGDM—Records; 8:45, Health Talk  
 • KFRC & net—Mary Marlin; 8:45, Five-Star Jones  
 KVI—8:45, Morning Friends  
 KOMO—Reveries; Three-Four Time  
 KHQ—Early Birds to 8:45  
 KNX—Religious Talk  
 KECA—Musical Program  
 KFSD—Stock Reports to 8:45  
 KGB—8:45, Stocks and Records  
 KOA—8:45, Marietta Vasconcelles

9:00 to 9:30 A. M.

• KPO & net—Roy Maxon's Orch.; 9:15, Two Hearts in Song  
 KGO—Monday Blues  
 KYA—Music; 9:15, Prudence  
 KROW—Music Box Revue  
 KJBS—Song Hits  
 KQW—Tuneful Topics  
 KGCC—Morning Parade  
 KGDM—Better Vision; Mabel Rubin  
 • KFRC & net—Carlton & Shaw; 9:15, Maree De Veaux, vocalist  
 KJR—Reminiscing  
 KNX—Carefree Capers  
 KECA—French Lesson; Records  
 KFSD—Good Cheer; Dr. McCoy  
 KGB—9:15, Jennie Lee, stylist  
 KOA—Roy Maxon's Orch. to 9:15

9:30 to 10:00 A. M.

• KPO & network—The New World, educational talks and music  
 KGO—Monday Blues  
 KYA—Waltz Time  
 KLX—Clinic of the Air; Records  
 KROW—Health Chat

KJBS-KQW—9:45, Ruth Evans  
 KGCC—Song Shop; Star of Today  
 KGDM—News; Records  
 KQW—Vocalist; Calodine  
 • KFRC & net—Pete Woolery and Friends; 9:45, All Star Baseball Game  
 KFRC—9:40, Goodwill Industries  
 KOL—Prudence Penny; Orchestra  
 KVI—Mystic Melodies; Orchestra  
 KOIN—Theatre of Romance to 9:45  
 KQW—Edna Mae Jacks, pianist  
 KHQ—Walt & Marion  
 KJR—News; Early Echoes  
 KFI—Waikikians; 9:45, News  
 KNX—Music; 9:45, News  
 KGB—News to 9:35  
 KSL—Good Morning Judge  
 KOA—Farm and Home Hour

10:00 to 10:30 A. M.

• KGO & net—News Flashes; 10:05, Pair of Pianos; Gertrude Lyne and Otto Clare  
 KPO—Menu Flashes to 10:15  
 • KPO & net—10:15, All Star Baseball Game  
 KYA—Columbia on Parade; 10:15, Concert Stars  
 KLX—Talk; Stocks; News  
 KROW—Rhythm Revue  
 KJBS—News; Dance Orchestra  
 KGCC—The Fiesta  
 KQW—News; Old Tunes  
 • KFRC & network—Little French Trent  
 KJBS—Home Makers Time; 10:15, Music Shop  
 KHQ—News; Miniature Revue  
 KOIN—Art Kirkham, This & That  
 KOL—News; Melodies  
 KFI—Ann Warner Chats  
 KNX—Eddie Albright's Family  
 KGB—Recordings  
 KFSD—News to 10:05

10:30 to 11:00 A. M.

• KPO & network—Baseball Game  
 KGO—Musical Clock  
 KYA—Organ Recital  
 KTX—International Kitchen  
 KROW—Music; Larry Canelo  
 KJBS—Orchestra; Songs  
 KQW—Aunt Sammy; 10:45, Songs  
 KGCC—Hits of Today  
 KGDM—Hollywood Impressions  
 • KFRC & net—All Star Baseball Game  
 KFRC—10:45, Wife Begins  
 KJR—Club Minutes; Bowers Garden  
 KNX—Home Management; Music  
 KFWB—"Family Circle"  
 KFSD—World Cooking School  
 KOA—10:45, Livestock and Produce

11:00 to 11:30 A. M.

• KPO & network—Baseball Game  
 KGO—Something Simple  
 KTX—Records; Tonic Tunes  
 KQW—Health Talk; Music  
 KJBS—Hits of Past; Records  
 KQW—Popular Orchestra  
 KGCC—Health Talk; Orchestra  
 KGDM—Organ Recital  
 • KFRC & net—Baseball  
 KHQ—Musical Gems to 11:15  
 KOT—Ocell Solly to 11:15  
 KOIN—Consumer's News to 11:15  
 KJR—Rhythm Rulers  
 KNX—Housewives Protective League  
 KECA—Recordings

11:30 to 12:00 Noon

• KPO & network—Baseball Game  
 KGO—Nell Cook, popular singer; 11:45, Agricultural Bulletin  
 KYA—Fashions; Snapshots  
 KLX—Recorded Program  
 KROW—Concert Melodies  
 KJBS—Dance Orchestra  
 KGCC—Band; Mountain Music  
 KQW—Vocalists; Theatre News  
 • KFRC & net—Baseball

KOIN—11:45, Home Makers  
 KOMO—11:45, The Zisslers  
 KNX—Popular Music

12:00 to 12:30 P. M.

• KPO & network—Baseball Game  
 KGO—Luncheon Concert  
 KYA—News; 12:05, Concert  
 KLX—Dance Music  
 KROW—News; California Farm  
 KJBS—News; Popular Records  
 KQW—News; Noontime Tunes  
 • KFRC & net—Baseball; 12:15, Chicago Variety Hour  
 KOMO—12:15, Popular Varieties  
 KGW—12:15, News Flashes  
 KHQ—12:15, Organ Concert  
 KVI—12:15, Front Page Headlines  
 KJR—12:12, Grain Reports  
 KOIN—Radio Show; 12:15, Meier & Frank

KFWB—"Hi-Noon Hi-Lites"  
 KNX—News; Druy Lane, tenor  
 KECA—Records; 12:15, News  
 KGB—12:15, Stocks; Farm Flashes  
 KSL—Suggestions to Shoppers  
 KOA—12:15, Gale Page, songs

12:30 to 1:00 P. M.

• KPO & net—Baseball Game  
 KGO—Luncheon Concert  
 KLX—Guitar Duo; Musical Prog.  
 KOMO—Farm Talk; Cowboy Joe  
 KROW—Portuguese Program  
 KJBS—Orchestra; Accordionist  
 KQW—Weather & Mkt. Reports  
 • KFRC & net—Variety Show; 12:45, Baby Bonds

KHQ—Organ; Song Recital  
 KVI—Records; Walkathon  
 KFWB—Music; Deputy Emerson  
 KNX—Major League Baseball  
 KECA—Contract Bridge Lesson

1:00 to 1:30 P. M.

• KGO & net—Temple of Song  
 KPO—Radio Reporter  
 KGO—1:15, Harry Stanton, basso  
 KYA—Sa on Melodies  
 KLX—1:15, Martha Lee, Economics  
 KJBS—Stock Reports; Records  
 KQW—Friendly Street  
 • KFRC & net—Patti Chapin; 1:15, Melodic Moments  
 KFRC—1:15, Christian Science News; Stocks  
 KJR—1:15, Headliners  
 KOI—Julie Day to 1:15  
 KHQ—Business and Pleasure  
 KOMO—Jack & Adele to 1:15  
 KOIN—Fook of Life  
 KFI—Fed & State Mkt. Report  
 KNX—Major League Baseball  
 KFSD—Musical Program

1:30 to 2:00 P. M.

• KPO & net—Alice in Orchestra; 1:45, Sam & Dick  
 KGO—Ann Warner's Chat  
 KYA—Barker Frivolities  
 KLX—Popular Concert  
 KROW—Oak Schools; Music  
 KJBS—Concert; Dance Melodies  
 KGDM—Musical Program  
 • KFRC & net—University of the Air; 1:45, Judy and the Jesters  
 KQW—Me and My Shadow  
 KJR—Headliners; Recordings  
 KHQ—News Album  
 KOIN—Melodious Melodies to 1:45  
 KFI—Agnes White's Kitchen  
 KNX—Fontrell's Orchestra  
 KFWB—1:45, City Hall Broadcast

2:00 to 2:30 P. M.

• KPO & network—Woman's Magazine of the Air  
 KGO—U. S. Army Band; 2:15, Meredith Willson's Orchestra  
 KLX—Music; Talk; Stocks  
 KROW—Story Time  
 KQW—Traffic Court  
 KJBS—Popular Tunes

KGDM—Records; News  
 \*KFRC & netwk—Happy-Go-Lucky Hour  
 KJR—Salon Hour  
 KNX—The Bookworm  
 KECA—Classic Hour  
 KFWE—Talk on Dogs to 2:15  
 KSL—Pianist; Judy's Jestors

## 2:30 to 3:00 P. M.

\*KPO & net—Woman's Magazine of the Air  
 KGO—Organ Melodies; 2:35, Carol Deis, soprano; The Desert Kid  
 KYA—Lost and Found; Novelities  
 KLX—Records; Opportunity Hour  
 KROW—Dance Matinee  
 KJBS—Events of Interest; Concert  
 KQW—Orchestra; 2:45, Songs  
 KGDM—Afternoon Musicale  
 \*KFRC & netwk—Happy-Go-Lucky Hour; 2:55, Minute Melodies  
 KNX—Symphonies  
 KSL—News; Concert Miniatures  
 KOA—News; Desert Kid

## 3:00 to 3:30 P. M.

\*KPO & network—Rush Hughes, Pictorial; 3:15, Stories of the Black Chamber  
 KGO—Gould & Shefter, piano duo; 3:15, Modern Woman at Home  
 KYA—Music; Business Talk  
 KLX—Opportunity Hour  
 KROW—Hits of Today; Pianist  
 KJBS—News; Songs of Hawaii  
 KQW—Stock Reports; Music  
 \*KFRC & netwk—Feminine Fancies  
 KHQ—Club Bulletin to 3:15  
 KJR—Siesta; Easy Chair  
 KNX—"Lady Margaret"; Orchestra  
 KECA—Alexander Bevani; Records  
 KFSD—To be announced  
 KSL—News; Junior Hour  
 KOA—News; Gould & Shefter

## 3:30 to 4:00 P. M.

\*KPO & net—Kurt Brownell, tenor  
 KPO—3:45, Tea Chats  
 KGO—Brahms Festival  
 KYA—Art Lecture; 3:45, Community Chest Question Box  
 KLX—Career Careers  
 KROW—SER, Choral Ensemble  
 KJBS—KQW—Concert  
 KFRC—Just Plain Bill  
 \*KFRC & network—Musical Nick Nacks; 3:45, University of Calif.  
 KOIN—Newspaper of the Air  
 KHQ—News; 3:45, Sylvia Grey  
 KOMO—Trio Romantique; Talk  
 KFI—Plain Bill to 3:45  
 KNX—Housewives' Protective League  
 KFWE—Better Business Bureau  
 KGB—3:40, Along the Airways

## 4:00 to 4:30 P. M.

\*KPO & net—American Adventure  
 KGO—Brahms Festival  
 KYA—Old Songs; Tea Dance  
 KLX—Records; 4:15, Helen Parmelee, piano  
 KROW—Waltz Time; Calif. Family  
 KJBS—Dance Tunes  
 KQW—News; Popular Tunes  
 \*KFRC & net—Land o' Dreams pianists; 4:15, Edwin C. Hill  
 KOIN—Newspaper of the Air  
 KJR—Goodwill Industries; Music  
 KNX—Haven of Rest

## 4:30 to 5:00 P. M.

\*KGO & net—Brahms Festival  
 KPO—Radio Reporter; Pianist  
 KYA—Cocktail Hour; 4:55, News  
 KLX—Pianist; Health School  
 KJBS—Orchestra; 4:45, Records  
 KQW—Story Time; 4:45, Songs of the Islands  
 KROW—Janice McAllister; Talk  
 KGDM—Uncle Jerry; Records  
 \*KFRC & net—The Harmonettes; 4:45, Secret Service Club  
 KOIN—Bob and Dolly to 4:45  
 KHQ—Northwest on Parade  
 KGW—Sam Gordon to 4:45

KJR—Snapshots  
 KFI—Organ; 4:45, Easy Aces  
 KNX—Fireside Phantasies; Talk  
 KFSD—Dr. McCoy to 4:45  
 KOA—The Forty-Niners

## 5:00 to 5:30 P. M.

\*KPO & net—Musical Grab Bag  
 KGO—Art Revue; 5:15, Pat O'Shea, tenor  
 KYA—Uncle Harry; Melodies  
 KLX—Bro. Bob's Club  
 KROW—Contest News  
 KQW—Sunshine League  
 KGGC—Dancing Echoes  
 KGDM—Cecil and Sally; Records  
 \*KFRC & net—Six-Gun Justice  
 KGW—Concert Trio  
 KJR—Steamboat Bill; Romancing  
 KFI—Radio Pen Friend; Robert Hurd, tenor; Margaret Duncan, pianist  
 KNX—Marshall Grant, organist  
 KFOX—Quartet; Cecil & Sally  
 KECA—How Songs Grew; Story Hr.  
 KOA—Sinclair Minstrels  
 KSL—Boxing Contest to 5:15

## 5:30 to 6:00 P. M.

\*KPO and network—Music at the Haydens  
 KGO—Capt. Marble's B. K. T. A. Club; 5:45, Jack Armstrong  
 KYA—Sonny & Buddy; 5:40, Campbell Corner  
 KLX—Covered Wagon Jubilee  
 KROW—Health Chat  
 KGDM—The Hawk; Records  
 KQW—Comic Side of News; Music  
 \*KFRC & netwk—Salvation Army Choir  
 KFRC—5:45, Dr. Campbell  
 KGO—Lecture  
 KJR—Jack Armstrong to 5:45  
 KNX—Son of Fire; Orphan Annie  
 KFOX—News; 5:45, Organ; Skit  
 KECA—Records; Once Upon a Time  
 KSL—The Big Show

## 6:00 to 6:30 P. M.

\*KPO & net—Contented Program; Orchestra and Vocalists  
 KGO—Dinner Concert  
 KYA—Og, Son of Fire; Orchestra  
 KLX—Arlon Trio  
 KROW—News; Melodies  
 KJBS—News; Variety  
 KGGC—Dinner Dance  
 KQW—Dept. of Agric.; Mkt. Repts.  
 KGDM—Quartet; Records  
 \*KFRC & net—Wayne King's Orch.  
 KJR—Scandinavian Reporter; Music  
 KFWE—News; Records; Organ  
 KNX—Jack Armstrong; 6:15, News  
 KFOX—News; Texas Ramblers  
 KECA—Board of Education; News

## 6:30 to 7:00 P. M.

\*KPO & net—Lucky Smith, drama starring Max Baer  
 KGO—Safety First; 6:45, Air Adventures of Jimmy Allen  
 KYA—Orchestra; Desert Heritage  
 KLX—Arlon Trio  
 KROW—Dinner Dance; Congo  
 KJBS—Variety; Aubrey Loux, pianist  
 KQW—Globe Trotter; Contest  
 \*KFRC & net—Lilac Time with the Night Singer  
 KGGC—Dinner Dance  
 KJR—News; Jimmie Allen  
 KNX—Lum & Abner; Jimmie Allen  
 KFWE—Tarzan; 6:45, Jimmie Allen  
 KECA—6:45, Organ and Vocalist  
 KFOX—School Kids; Jimmie Allen

## 7:00 to 7:30 P. M.

\*KPO & net—Amos 'n' Andy; 7:15, Tony and Gus  
 KGO—Berkeley Singers  
 KYA—Sport Page; Music  
 KLX—News; Musical Program  
 KROW—Hammond; L'Italia News  
 KJBS—Italian News; Music  
 KGGC—Musical Program  
 KQW—Weather; Voice of Portugal

\*KFRC & net—Abe Lyman's Orch.  
 KGDM—El Capitan  
 KOL—Orchestra; talk  
 KOIN—Jimmy Allen's Adventures; 7:15, Who's Your Hosier?  
 KVI—Stardust Melodies; Beauty talk  
 KJR—Tonic Tunes  
 KNX—Elec. Transc.; 7:15, Vocalists  
 KFWE—Song Silhouettes; 7:15, Oscar & Elmer  
 KECA—Organ and Vocalist  
 KFOX—Eb and Zeb; Bobby & Betty  
 KFSD—Jimmie Allen to 7:15  
 KSL—Pinto Pete to 7:15

## 7:30 to 8:00 P. M.

\*KPO & net—Voice of Firestone  
 KGO—Beaux Arts Trio  
 KYA—Joe Siet's Band; Gold Rush  
 KLX—Silver Strains; Pianist  
 KROW—Echoes of Italy  
 KGGC—Between the Lines  
 KQW—Voice of Portugal; Orchestra  
 \*KFRC & net—Pick and Pat  
 KJR—Request Hour  
 KNX—In-Laws; King Cowboy  
 KFWE—News Behind the News; 7:45, Betty Rhodes and Orchestra  
 KFOX—Boy Detective; Cheerio Boys  
 KECA—Music; 7:45, Law Talk

## 8:00 to 8:30 P. M.

\*KPO & net—Henry King's Orch.  
 KGO—Stanford University; 8:15, Talk of the Town  
 KYA—News; 8:05, Amateur Hour  
 KLX—Song Market; Drama  
 KROW—Italian News and Program  
 KGGC—Spanish-American Program  
 KQW—Dance Frolic  
 \*KFRC & net—Bert Block's Orch.  
 KOL—Evening Serenade to 8:15  
 KVI—Fact Finder; Orchestra  
 KHQ—Orogrande Romance  
 KJR—Dollars & Sense to 8:15  
 KOMO—8:15, Optimists  
 KFI—Elec. Trans.; 8:15, Capt. Don Wilkie, "Crime Laboratory"  
 KNX—Concert Orchestra; 8:15, Watanabe and Archie  
 KFOX—Musical; Success Doctor  
 KFWE—After Sundown; Pioneers  
 KFSD—Farley's Rangers  
 KOA—Ford Rangers Revue

## 8:30 to 9:00 P. M.

\*KPO & network—Freddie Martin's Orchestra  
 KGO—Comedy Stars of Hollywood  
 8:45, To be announced  
 KYA—Amateur Hour  
 KLX—Ann Wakefield, soprano; New Tunes for Old  
 KROW—Sports Highlights; 8:45, Royal Hawaiians  
 KQW—Symphonic Selections  
 KGGC—Musical Program  
 \*KFRC & net—Road to Fame: Amateur Program  
 KOMO—8:45, Musical Moments  
 KHQ—Vagabonds  
 KJR—Highlight Hour  
 KFWE-KFOX—Parisian Nights  
 KNX—Quartet; Townsend Plan Talk  
 KECA—Memories of the Waltz; Contract Bridge  
 KOA—Comedy Stars; Orchestra

## 9:00 to 9:30 P. M.

\*KPO & netwk—To be announced  
 KGO—Tune Types  
 KYA—Sportsman's Corner; 9:15, Nat'l Defense  
 KLX—Nevada Night Herders  
 KROW—News; Melodies  
 KJBS—News; Western World Wave Club  
 KQW—News; Orchestra  
 KFRC—John Nesbitt to 9:15  
 KJR—News; Song Souvenirs  
 \*KFRC & net—Bill Fleck's Orch.  
 KOL—Vocalist to 9:15  
 KOIN—9:15, Leon Drews, organist  
 KNX—News; Musical  
 KFWE—Musical Comedy  
 KFOX—Beverly Hillbillies  
 KECA—News; 9:15, Orchestra

## 9:30 to 10:00 P. M.

KPO—Ft. Des Moines Hotel Orch.  
 \*KGO & net—Marshall's Mavericks  
 KYA—Down by Herman's; America;  
 9:45, News, Darrell Donnell  
 KLX—News; Fireside Phantasies  
 KROW—Rhythm Revue; Vets of  
 Foreign Wars  
 KJBS—KQW—Vacation Guide  
 KGGC—Wyoming Cowboys  
 \*KFRC & net—Jan Garber's Orch.  
 KOMO—Penthouse Party; 9:45,  
 Three Peas in a Pod  
 KHQ—Chapel of Chimes; Doughboys  
 KOL—9:45, News Flashes  
 KVI—Walkathon; 9:45, News  
 KJR—Music; C. of C. Talk  
 KNX—Rudy Wiedoeft, saxophone;  
 Wranglers  
 KFWB—Stumbertine  
 KFOX—Beverly Hillbillies  
 KOA—Elliott Bros.; 9:45, Junior  
 Chamber of Commerce

## 10:00 to 10:30 P. M.

\*KPO & network—The Richfield  
 Reporter; Sid McNutt's Orchestra

KGO—Silhouettes; Henry King's  
 Orchestra

KYA—Concert Orchestra  
 KROW—Poetry & Music; Hillbillies  
 KJBS—Light Classics to 11:00  
 KGGC—Ten o'Clock Review  
 \*KFRC & net—Jimmy Davis Orch.  
 KJR—Musical Scrapbook  
 KNX—Wranglers; June Irwin  
 KFI—10:15, Hollywood Boulevardier  
 KFWB—News; 10:15, Organ  
 KECA—Fishing & Hunting Talk  
 KFOX—News; Walkathon  
 KGB—Press Radio News to 10:10

## 10:30 to 11:00 P. M.

\*KPO & net—Sid McNutt's Orch.;  
 10:55, News  
 KGO—Orchestra; News  
 KYA—Trobbe's Orchestra  
 KLX—Blue Reflections, Alice Blue  
 \*KFRC & net—Merle Carlson  
 KJR—Waltzes and Tangos  
 KFI—Bridge Lesson to 10:45  
 KNX—Russian Eagle Quartet; Pon-  
 trelli's Orchestra  
 KFOX—Aristocrats; Orchestra  
 KFWB—Tex Howard's Orchestra

## 11:00 to 11:30 P. M.

\*KGO & net—Freddie Martin's Orch.  
 KPO—Lampit Hour; Organ  
 KYA—Sandman Organ  
 KROW—Dance of the Hour  
 KJBS—Dance Time  
 KFRC—News to 11:10  
 \*KFRC & net—Don Bestor's Orch.  
 KOMO—Musical Comedy Moments  
 KNX—Pontrelli's Orchestra  
 KFWB—Dance Orchestra  
 KFOX—Eddie Eben, organist

## 11:30 to 12:00 Midnight

\*KGO & net—Jimmie Grier's Orch.  
 KPO—Organ Concert  
 KSFQ—Midnight Vagabond  
 KROW—Music; News  
 KJBS—Dance Time  
 \*KFRC & net—Les Hite's Orch.  
 KFWB—Carol Wax's Orchestra  
 KNX—Carol Wax's; 11:45, News  
 KFOX—Freddie Carter's Orchestra

## 12:00 to Sign Off

KROW—Midnight Jamboree  
 KJBS—Owl Program to 6 a. m.

## PROGRAMS for TUESDAY. . . . July 9

## 7:00 to 7:30 A. M.

\*KPO & net—Honeymooners; 7:15,  
 Your Child  
 KYA—Musical Clock  
 KROW—Commuters Clock  
 KJBS—Alarm, Klot, Klub  
 KGDM—News; 7:15, Elb and Zeb  
 KFRC—Records; 7:25, N. Y. Stocks  
 KOL—Sunrise Express  
 KVI—Radio Gospel League  
 KHQ—Morning News to 7:15  
 KGB—Seven o'Clock Club

## 7:30 to 8:00 A. M.

\*KPO & net—George Hessberger's  
 Bavarian Orchestra  
 KGO—Rise 'n' Shine  
 KYA—Musical Clock  
 KROW—7:45, Contest News  
 KQW—The Breakfast Hour  
 KFRC—Breakfast with Bob Bence  
 KVI—Varieties; The Cadets  
 KHQ—Covered Wagon to 7:45  
 KJR—Market Quotations; Music  
 KFI—Health Exercises to 7:45  
 KNX—Shirleyville  
 KECA—Bible Fellowship; Records  
 KGB—Parson Roberts to 7:45

## 8:00 to 8:30 A. M.

\*KPO & net—Financial Service;  
 8:15, Newsday Sunshine  
 KGO—Simpson Boys of Sprucehead  
 Bay  
 KYA—Christian Science Reading;  
 8:15, Mr. and Mrs. Reader  
 KLX—Records; N. Y. Stocks  
 KROW—Contest; News  
 KJBS—Band Concert; Favorite Tunes  
 KQW—Concert & Organ; 8:15, Reli-  
 gious Forum  
 \*KFRC & net—Waltz Time; 8:15,  
 The Gumps  
 KHQ—8:15, Silver Strains  
 KOMO—8:15, Morning Reveries  
 KNX—Song Market; Music  
 KFI—Church Quarter Hour to 8:15  
 KECA—Musical Program

## 8:30 to 9:00 A. M.

\*KPO & net—Words and Music  
 KGO—Morning Eye-Opener  
 KYA—Familiar Melodies  
 KLX—Covered Wagon Jubilee  
 KROW—Music Box Revue  
 KQW—Concert  
 KGDM—Records; Health Talk  
 \*KFRC & net—"Mary Marlin";  
 8:45, Five Star Jones  
 KOMO—8:45, Sweet Rhythm

KHQ—Early Birds to 8:45  
 KVI—8:45, Morning Friends  
 KFI—Walkikings; 8:45, Julia Hayes  
 KNX—Religious Talk  
 KFSD—Stock Reports to 8:45  
 KGB—8:45, Stocks and Records

## 9:00 to 9:30 A. M.

\*KPO & net—Maurice Spitalny's  
 Orchestra  
 KGO—Morning Eye-Opener  
 KYA—9:15, Prudence Penny  
 KLX—The Shopping List  
 KROW—Music Box Revue  
 KQW—Tuneful Topics  
 KGGC—Morning Parade  
 KGDM—Better Vision; Mabel Rubin  
 \*KFRC & net—Herdan & Hughes;  
 9:15, The Islanders  
 KOL—9:15, Prudence Penny  
 KJR—Reminiscing  
 KFI—9:15, Shopping Tour  
 KNX—Beauty Talk; Carefree Capers  
 KFSD—Good Cheer; Dr. McCoy  
 KSL—Music; Jennie Lee, stylist

## 9:30 to 10:00 A. M.

\*KGO & net—Pair of Planos  
 KPO—Sax Appeal; 9:45, Kitchen  
 Sink Songs  
 KYA—Waltz Time  
 KLX—Clinic of the Air; Records  
 KROW—Health Chat  
 KJBS—Songs of Romance; Dance  
 KGGC—Song Shop; Star of Today  
 KQW—Songs of Romance; Classics  
 KGDM—News and Records  
 \*KFRC & net—Time on My Hands;  
 Milton Charles, organist  
 KOL—Prudence Penny to 9:45  
 KHQ—This and That to 9:45  
 KVI—9:45, Dr. Burns  
 KJR—News; Music  
 KFI—9:45, News Release  
 KECA—Musical Prog; 9:45, News  
 KGB—Dental Clinic; News; Organ  
 KOA—National Farm and Home  
 KSL—Mary & John to 9:45

## 10:00 to 10:30 A. M.

\*KGO & net—News; 10:05, Army  
 Band Concert  
 KPO—Walter Kelsey, violinist  
 10:15, News  
 KYA—Col. Parade; Concert Stars  
 KLX—Song Market; Stocks; News  
 KROW—Rhythm Revue  
 KJBS—News; Dance Music  
 KGGC—The Fleeta  
 KQW—News; Old Tunes

KGDM—Records; Bondons  
 KVI—10:15, Character Adviser  
 \*KFRC & net—Little French Prin-  
 cess; 10:15, Romance of Helen  
 Trent  
 KOL—News; 10:15, Melodies  
 KHQ—News; Miniature Revue  
 KOMO—10:15, Home Service Prog.  
 KJR—Home Makers; Irish Minstrel  
 KOIN—Art Kirkham  
 KFI—Ann Warner Chats  
 KNX—Eddie Albricht's Family  
 KGB—News; Chuck Wagon Opera

## 10:30 to 11:00 A. M.

\*KPO & network—Martha Meade  
 and Hazel Warner, contralto  
 KGO—Musical Clock  
 KYA—Organ Concert  
 KLX—International Kitchen  
 KROW—Records; Larry Canelo  
 KJBS—Dance Music  
 KQW—Aunt Sammy; Hillbillies  
 KGDM—10:45, Coleman Cox  
 \*KFRC & net—Between the Book-  
 ends; 10:45, Happy Hollow  
 KFRC—10:45, Wife Begins  
 KJR—Music Shop; Boviers  
 KFWB—Family Circle  
 KECA—Creative Thinking; James  
 Ellie, tenor  
 KNX—Mary Holmes; 10:45, Music  
 KOA—Livestock & Produce to 10:45

## 11:00 to 11:30 A. M.

\*KPO & net—The Ranch Boys;  
 11:15, Vic and Sade  
 KGO—Musicalities  
 KYA—Organ Concert  
 KLX—Records; Tonic Tunes  
 KROW—Health Talk; Music  
 KJBS—Records; Medical Talk  
 KGGC—Health Talk; Recordings  
 KGDM—Organ Recital  
 KFRC—Theatre of Romance to 11:15  
 \*KFRC & net—Dalton Brothers;  
 11:15, National Education Prog.  
 KOL—Ceil Solly to 11:15  
 KOIN—Consumer's News to 11:15  
 KVI—Melodies; Observer  
 KJR—Rhythm Rulers  
 KNX—Fletcher Wiley  
 KECA—11:15, Medical Assoc. Talk

## 11:30 to 12:00 Noon

\*KPO & net—Ma Perkins; 11:45,  
 Barry McKinley baritone  
 KGO—Ted White, tenor; 11:45,  
 Agricultural Bulletin  
 KYA—Dance Time; Snapshots  
 KROW—Concert Melodies

KLX—Margaret Reynolds; 11:45, Musical Scrapbook  
 KJBS—Dance Orch.; Salon Music  
 KQW—Vocal Varieties  
 KGGC—Harlem Sketches; Music  
 KFRC—Better Business Bureau  
 \*KFRC & net—Do You Remember  
 KNX—Elec. Transc.; Music  
 KECA—Recordings

12:00 to 12:30 P. M.

\*KPO & net—Betty & Bob; 12:15, Western Farm and Home Hour  
 KGO—Luncheon Concert  
 KYA—News; Noonday Concert  
 KLX—Dance Music  
 KROW—News; 12:15, California Farm Program  
 KJBS—News; Popular Tunes  
 KQW—News; Music  
 KFRW—Winifred Worth  
 \*KFRC & net—Concordia College Band  
 KOMO—12:15, Hawaiian Sunlight  
 KVI—12:15, Front Page Headlines  
 KOIN—Radio Show to 12:15  
 KGW—12:15, News Flashes  
 KHQ—12:15, Chamber of Commerce  
 KJR—12:12, Grain Reports  
 KNX—News; Musical Auction  
 KECA—12:15, News Releases  
 KGB—12:15, Stocks; Farm Flashes  
 KOA—12:15, Don Rodolfo's Band

12:30 to 1:00 P. M.

\*KPO & net—Farm Hour  
 KGO—Luncheon Concert  
 KLX—Guitarists; Paths of Memory  
 KROW—Latin-American Program  
 KJBS—Dance Matinee  
 KQW—Weather; Market Reports  
 \*KFRC & net—Educ. Feature; 12:45, Connie Gates, vocalist  
 KOMO—Stradivarieties; 12:45, Cowboy Joe  
 KGW—News; Pianist  
 KVI—Chats; Records; Walkathon  
 KNX—Major League Baseball  
 KECA—Concert Favorites  
 KSL—State Agric. College to 12:45  
 KOA—Orch.; 12:45, Temple of Song

1:00 to 1:30 P. M.

\*KGO & net—Pan-Americana  
 KPO—News; Mort Werner, vocalist  
 KYA—Women's Institute; Hawaiians  
 KLX—Records; 1:15, Martha Lee  
 KJBS—Stock Reports; Song Hits  
 KQW—Friendly Street  
 KGDM—Recordings  
 KFRC—1:25, N. Y. Stocks  
 \*KFRC & net—Merrymakers  
 KOL—Julie Day to 1:15  
 KOMO—Jack & Adele to 1:15  
 KJR—1:15, Uncle Hank  
 KHQ—Business & Pleasure  
 KOIN—Book of Life  
 KFI—Fed & St. Mkt. Rpts. to 1:15  
 KNX—Major League Baseball

1:30 to 2:00 P. M.

\*KPO & net—Vocal soloist; 1:45, Betty Marlowe  
 KGO—Ann Warner's Chats  
 KYA—Barker Frivolities  
 KLX—Popular Concert  
 KROW—Ross Love; Hawaiians  
 KQW—Concert  
 KJBS—Dance Orchestra  
 \*KFRC & net—University of the Air; 1:45, Texas Ranger  
 KHQ—News Album to 1:45  
 KGW—My Shadow to 1:45  
 KVI—Billie Bailey to 1:45  
 KJR—Paths of Memory  
 KNX—Pontrelli's Orchestra

2:00 to 2:30 P. M.

\*KPO & network—Woman's Magazine of the Air  
 KGO—Otto Thurn's Orchestra; 2:15, Midwest Hymn Sing  
 KYA—Barker Frivolities  
 KLX—Jean Ardath, pianist; Stocks; 2:25, Baseball Game  
 KROW—Story Time

KJBS—Better Business Talk; 2:15, Tango Orchestra  
 KQW—Dance Matinee  
 KGDM—Serenader; News  
 \*KFRC & net—Happy-Go-Lucky Hour  
 KJR—Salon Hour  
 KNX—The Bookworm  
 KECA—Classic Hour

2:30 to 3:00 P. M.

\*KPO & network—Woman's Magazine of the Air  
 KGO—Organ; Mary Small; Norman Nielson, vocalist  
 KYA—Lost & Found; Rhythm Princes  
 KLX—Baseball Game  
 KROW—Dance Matinee  
 KJBS—Events of Interest; Songs  
 KGDM—Afternoon Musicale  
 \*KFRC & net—Happy-Go-Lucky Hour; 2:55, Minute Melodies  
 KOIN—2:45, The Cronaders  
 KNX—Piano Recordings  
 KOA—Huffman Reporter; News

3:00 to 3:30 P. M.

\*KPO & network—Pictorial, Rush Hughes to 3:15  
 KPO—3:15, As Woman to Woman  
 KGO—Maurice Spitalny's Orch.  
 \*KGO & net—3:15, Hall & Gruen, piano duo  
 KYA—Rhythm Princes; Symphony  
 KLX—Baseball Game  
 KROW—Music; Katherine Sherry  
 KJBS—News; Music  
 \*KFRC & net—Feminine Fancies  
 KJB—Magic Harmony  
 KQW—Stocks; 3:05, Variety  
 KHQ—Bulletin; Practical Hostess  
 KNX—Federation of Women's Clubs  
 KECA—Recorded Program  
 KOA—University of Denver  
 KFSD—Exposition Symphony

3:30 to 4:00 P. M.

KPO—Easy Aces; 3:45, Tea Chats  
 \*KGO & net—Grace Hayes, vocalist; 3:45, You and Your Government  
 KYA—Symphony Sketches  
 KLX—Baseball Game  
 KROW—Recorded Program  
 KJBS—Musical Comedy selections; 3:45, SERA Program  
 KFB—Just Plain Bill  
 \*KFRC & net—Melodies of Manhattan; 3:45, Bob Ailen, pianist  
 KOMO—Cubanettes  
 KOIN—Newspaper of the Air  
 KHQ—News; 3:45, Sylvia Grey  
 KFI—Plain Bill; Vocal and Piano  
 KNX—Housewives' Protective League  
 KGB—3:40, Along the Airways

4:00 to 4:30 P. M.

\*KGO & net—Hotel Bismarck Orch.  
 KPO—Beaux Arts Trio  
 KYA—Tea Dance  
 KLX—Baseball Game  
 KROW—Waltz Time; Anthony Fonseca  
 KJBS—Dance Tunes  
 KQW—News; Popular Tunes  
 \*KFRC & net—Leith Stevens Harmonies  
 KOIN—Newspaper of the Air  
 KOMO—King County Talk  
 KJR—Educ. Talk; Tea Dansant  
 KNX—Haven of Rest  
 KGB—Girl Scouts to 4:15

4:30 to 5:00 P. M.

\*KGO & net—Stringtime  
 KPO—News; Pianist  
 KYA—Waltzes; Serenader; News  
 KLX—Helen Parmelee; Health School  
 KROW—Larry Lincoln; Talk  
 KJBS—Song Hits; Orchestra  
 KQW—Story Time; 4:45, Songs of the Islands  
 KOIN—Bob and Dolly to 4:45  
 \*KFRC & net—Edith Karen with Orchestra  
 KHQ—Radio Personalities to 4:45  
 KJR—Snapshots  
 KFI—Organ; Easy Aces

KNX—Fire Dept. Program; Talk  
 KFSD—Dr. McCoy to 4:45  
 KOA—The Forty-Niners to 4:45

5:00 to 5:30 P. M.

\*KPO & net—To be announced  
 KGO—Sensible Fashions; 5:15, Nell Cook, singing pianist  
 KYA—Uncle Harry; Melody Lady  
 KLX—Bro. Bob's Club  
 KROW—Contest News  
 KJBS—Dance Orchestra  
 KQW—Airs of South America  
 KGGC—Dancing Echoes  
 KGDM—Cecil & Sally; News  
 \*KFRC & net—Lud Gluskin Presents  
 KOMO—Songs My Mother Taught Me; 5:15, Tommy Thomas  
 KFWR—Music; Gold Star Rangers  
 KNX—Organ; U. S. C.  
 KECA—Recorded Program

5:30 to 6:00 P. M.

\*KPO & network—Eddie Duchin's Orchestra  
 KGO—Capt. Marble's B. K. T. A. Club; 5:45, Jack Armstrong  
 KYA—Sonny & Buddy; Music  
 KLX—Covered Wagon Jubilee  
 KROW—Health Talk  
 KJBS—Dance Orchestra  
 KGGC—Talk; 5:45, Irish Gems  
 KQW—Modern Melodies  
 \*KFRC & net—Waring's Pennsylvanians with Stoopnagle & Budd  
 KJR—Jack Armstrong to 5:45  
 KNX—Drama; 5:45, Orphan Annie  
 KECA—Musical Program  
 KPOX—News; Organ; Skit

6:00 to 6:30 P. M.

\*KPO & network—Beauty Box Theatre of the Air; Operetta  
 KGO—Dinner Concert  
 KYA—Cyrus Trobber's Orchestra  
 KLX—Arlon Trio  
 KROW—News; Congoin  
 KJBS—News; Pianist  
 KGGC—Dinner Dance  
 KQW—Dept. of Agric.; Mkt. Repts.  
 \*KFRC & net—Waring's Pennsylvanians  
 KOIN—Little Show to 6:15  
 KJR—Scandinavian Reporter; Music  
 KNX—Jack Armstrong; News  
 KECA—Children's Records; News  
 KFWRB—News; Music; B'nai B'rith program  
 KPOX—News; Skit; Ramblers

6:30 to 7:00 P. M.

\*KPO & net—Beauty Box Theatre  
 KGO—Review of Activities, S. F. Municipal Government; 6:45, Edna Fischer, pianist  
 KYA—Orchestra  
 KLX—Arlon Trio  
 KROW—Dinner Dance  
 KJBS—Dinner Dance  
 KGGC—Dinner Dance  
 KQW—Globe Trotter; Contest  
 \*KFRC & net—Edwin C. Hill; 6:45, Fray & Braggiotti, pianists  
 KOL—Evening Serenade to 6:45  
 KVI—Masters Music Room to 6:45  
 KJR—News; Tonic Tunes  
 KPOX—School Kids; Thrill Hunter  
 KFWRB—Good Egg Club; Vanities  
 KNX—Lum & Abner; Spice of Life  
 KECA—6:45, Organ Recital

7:00 to 7:30 P. M.

\*KPO & network—Amos 'n' Andy; 7:15, Tony and Gus  
 KGO—America Sings  
 KYA—Sport Page; Vocalist  
 KLX—News; Magic Harmony  
 KROW—Questions; L'Italia News  
 KJBS—Italian News; Music  
 KGGC—Orchestra  
 KQW—Weather; Voice of Portugal  
 \*KFRC & net—Freddie Bergin's Orchestra  
 KOL—Sports; Speaker Stevenson  
 KVI—Musical Programs  
 KOIN—7:15, Musical Moments  
 KJR—Tonic Tunes; Song Contest

KECA—Recordings  
 KNX—Musical Program  
 KFVB—Ray de O'Fan; Segar Ellis  
 KFOX—Ed & Zeb; Bobby & Betty  
 KGB—7:15, Musical Moments  
 KFSD—Funfest to 7:15

7:30 to 8:00 P. M.

•KPO & network—Leo Reisman's Orchestra; Phil Ducey, baritone  
 KGO—Cliff Nazarro, tenor; Southern Harmony Four  
 KYA—Townsend Plan Talk; Gold Rush  
 KLX—Merlyn Morse, tenor; Voyage of Discovery  
 KNOW—Herold Trio; Latin-American Program  
 KGQC—Between the Lines; Orch.  
 KQW—Voice of Portugal; Talk  
 \*KFRC & net—Calling All Cars  
 KOIN—Sport Flashes  
 KVI—Talk; 7:45, The Fact Finder  
 KJR—Fisher's Half Hour  
 KNX—The In-Laws; King Cowboy  
 KFOX—Boy Detective; Vocal Trio  
 KFVB—News; Average Family

8:00 to 8:30 P. M.

•KPO & net—To be announced  
 KGO—Calif. State Chamber of Commerce; Talk of the Town  
 KYA—News; Old Singing Class  
 KLX—World Revue  
 KQW—Latin-American Program  
 KGQC—Band Concert  
 \*KFRC & net—Los Angeles Symphony Orchestra  
 KOIN—Organ; Comedy Stars  
 KOL—Merry Men; Comedy Stars  
 KVI—Musical Masterpieces to 8:15  
 KJR—"It's a Case of Books"  
 KNX—Orchestra; 8:15, Frank & Archie  
 KFVB—Rhythmic Strings  
 KFOX—Travel Talk; Pianist  
 KECA—Composers Series  
 KGB—Comedy Stars to 8:15  
 KFSD—8:15, Farley's Rangers

8:30 to 9:00 P. M.

•KPO & netw—Death Valley Days  
 KGO—Arlie Simmonds' Orchestra  
 KYA—Paul Pendarvis' Orchestra  
 8:45, Constitution Society  
 KLX—Old Gospel Hymns  
 KROW—Italian Program  
 KGQC—Andy Potter Presents

KQW—You and Your Radio; Music  
 \*KFRC & net—Del White's Orch.  
 KJR—Mr. Rex Roudebush; Musical  
 KVI—Dance Time  
 KNX—Mona Lowe; Musical  
 KFVB—Dance Orchestra  
 KECA—The Waikikians  
 KFOX—Dance Orchestra  
 KOA—Arlie Simmonds Orch.

9:00 to 9:30 P. M.

•KPO & net—Fanfare; Orchestra  
 KGO—Beaux Arts Trio  
 KYA—Fiesta  
 KLX—Nevada Nightholders  
 KROW—News; Melodies  
 KGQC—Organalities  
 KQW—News; Orchestra  
 KJBS—News; Variety  
 \*KFRC & net—Bill Fleck's Orch.; Les Hite's Orchestra  
 KOMO—Musical Mannequins  
 KHQ—The Audience Decides to 9:15  
 KGW—Musical Mannequins  
 KOIN—Northwest Neighbors  
 KVI—Julia Todd Hallen to 9:15  
 KJR—News to 9:15  
 KNX—News; 9:15, Enchanted Seas  
 KFVB—Latin-American Program  
 KFOX—Beverly Hillbillies to 10  
 KECA—News; Chamber Music  
 KGB—Crooners to 9:15  
 KSL—Old Pipe Smoker

9:30 to 10:00 P. M.

•KPO & net—Henry King's Orch.  
 KGO—Paul Christiansen's Orch.  
 KYA—Fiesta; News; America  
 KLX—News; Fireside Phantasies  
 KROW—Wrestling Matches  
 KJBS—Radio Short Stories; Music  
 KGQC—Wyoming Cowboy  
 KQW—Little Kirk of Sleep Hollow  
 \*KFRC & net—Univ. of California; 8:45, Gino Mancini  
 KOL—9:45, Editorial Commentator  
 KOMO—Treasure Mansion; Orch.  
 KOIN—Jantzen Beach Orchestra  
 KVI—Walkathon; News  
 KFI—U. C. L. A. Glee Club  
 KNX—Talk; Wranglers  
 KFVB—Slumbertime Program  
 KOA—Elliott Bros. to 9:45  
 KSL—Bob Young's Orchestra

10:00 to 10:30 P. M.

•KPO & network—Richfield Reporter; 10:15, Paul Pendarvis Orch.

KGO—Ricardo, violinist; 10:15, Tom Gerun's Orchestra  
 KYA—Musical Soliloquy; Pianist  
 KJR—Vocalist; Jess Stafford's Orch.  
 KROW—Wrestling Matches  
 KJBS—Classic; Dog Reporter  
 KGQC—Ten o'Clock Review  
 \*KFRC & net—Slim Martin's Orch.  
 KJR—Till Tomorrow  
 KFVB—News; King's Men  
 KNX—Arizona Wranglers  
 KFOX—News; Walkathon  
 KGB—News to 10:10

10:30 to 11:00 P. M.

•KPO & net—Paul Pendarvis Orchestra; 10:55, Press-Radio News  
 KGO—Orchestra; News  
 KYA—Echoes of Erin  
 KLX—Lotus Land; Alice Blue  
 KJBS—Light Classics  
 \*KFRC & net—Orville Knapp Orch.  
 KGQC—Ten o'Clock Review  
 KJR—Popular Concert  
 KNX—Wranglers; Orchestra  
 KFVB—Tex Howard's Orch.  
 KFOX—Aristocrat's; Orchestra  
 KOA—Huffman Harmonies; News

11:00 to 11:30 P. M.

•KGO & net—Freddie Martin's Orchestra  
 KPO—Organ Recital  
 KYA—Sandman Organ  
 KFRC—News to 11:10  
 \*KFRC & net—Don Bestor's Orch.  
 KJBS—Roundup Room  
 KOMO—Divertissement  
 KOIN—Dance Orchestra  
 KNX—Pontrelli's Orchestra  
 KFOX—Eddy Eben, organist  
 KFVB—Dance Orchestra

11:30 to 12:00 Midnight

•KGO & net—Jimmie Grier's Orch.  
 KPO—Organ Concert  
 KYA—Sandman Organ  
 KQW—Dance Music; News  
 \*KFRC & net—Les Hite's Orch.  
 KJR—Starlight Hours  
 KNX—Pontrelli's Orchestra; News  
 KFVB—KFOX—Dance Orchestra

12:00 to Sign Off

KTAB—Midnight Vagabond  
 KROW—Midnight Jamboree  
 KNX—Transpacific News to 12:15  
 KJBS—12:01, Owl program to 7 a.m.

## PROGRAMS for WEDNESDAY, July 10

7:00 to 7:30 A. M.

•KPO & net—Honeymooners; Grace and Eddie, songs; 7:15, Wendell Hall  
 KYA—Musical Clock  
 KROW—Commuters Clock  
 KJBS—Alarm Klok Club  
 KGDM—News; Breakfast Hour  
 \*KFRC & net—Breakfast with Bob Bence; 7:25, N. Y. Stocks  
 KOL—Sunrise Express  
 KHQ—News to 7:15  
 KVI—Radio Gospel League  
 KEX—Rev. Willard Pope  
 KNX—Sharplesville  
 KECA—Musical Program  
 KGB—Seven o'Clock Club  
 KFSD—Early Birds; Pep & Ginger

7:30 to 8:00 A. M.

•KPO & net—U. S. Army Band  
 KGO—Rise 'n' Shine  
 KYA—Musical Clock  
 KROW—7:45, Contest News  
 KQW—Modern Tunes  
 KFRC—Recordings  
 KOL—Sunrise Express  
 KVI—Talk; Varieties; Cadets

KHQ—7:45, Echoes of the Islands  
 KJR—Mkt. Quotations; Records  
 KQW—Ronald Buck  
 KECA—Bible Fellowship to 7:45  
 KGB—Seven o'Clock Club to 7:45

8:00 to 8:30 A. M.

•KPO & net—Financial Service; 8:15, Merry Macs  
 KGO—Simpson Boys of Sprucehead Bay; 8:15, Elec. Transc.  
 KYA—Christian Science Reading; 8:15, Mr. and Mrs. Reader  
 KLX—Records; 8:20, Stocks  
 KROW—Contest Prog.; 8:15, News  
 KJBS—Popular Selections  
 KQW—Concert; Religious Forum  
 \*KFRC & net—Fred Fiebel, organ; 8:15, The Gumps  
 KOMO—8:15, Morning Reveries  
 KGW—Anything Goes  
 KFI—Church Quarter Hour to 8:15  
 KNX—Concert; 8:15, New and Old Tunes  
 KECA—Recital Series to 9:00  
 KFOX—Grain Reports; Songs  
 KOA—Betty Crocker; 8:15, While the City Sleeps  
 KSL—Saving Sue to 8:15

8:30 to 9:00 A. M.

•KPO & net—Merry Madcaps; 8:45, Magic Recipes  
 KGO—Morning Eye-Opener  
 KYA—Morning Concert  
 KLX—Covered Wagon Jubilee  
 KROW—Music Box Revue  
 KJBS—Dance Orchestra  
 KQW—Morning Concert  
 KGDM—Records; Health Talk  
 \*KFRC & net—Mary Marlin; 8:45, Five Star Jones  
 KHQ—Early Birds to 8:45  
 KJR—8:45, Concert Stars  
 KVI—8:45, Morning Friends  
 KNX—Religious Talk  
 KFSD—Stock Reports to 8:45  
 KGB—8:45, Stocks and Bonds

9:00 to 9:30 A. M.

•KPO & net—National Education Assn.; 9:15, Don Jose, vocalist  
 KGO—Morning Eye-Opener  
 KYA—Music; 9:15, Prudence Penny  
 KROW—Music Box Revue  
 KJBS—Popular Varieties; Records  
 KGQC—Morning Parade  
 KQW—Tuneful Topics  
 KGDM—Talk; Mabel Rubin

\*KFRC & netwk—Martha Holmes, Federal Housing Administration; 9:15, 9:15, Gravel Pit Courtroom  
 KGW—Trio  
 KJR—Reminiscing  
 KNX—Caféfree Capers  
 KFSD—Good Cheer; Dr. McCoy  
 KSL—9:15, Jennie Lee, stylist  
 KOA—Lee Gordon's Orchestra; 9:15, Theatre of Romance

9:30 to 10:00 A. M.

•KPO & net—California Federation of Women's Clubs  
 KGO—Elec. Transcription; 9:45, Jean Abbey, Shop News  
 KYA—Waltz Time  
 KLX—Clinic of the Air  
 KROW—Health Chat  
 KJBS—Records; Ruth Clark Evans  
 KGGC—At the Song Shop; 9:45, Star of Today  
 KGDM—News; Records  
 KQW—Calwhye; Calodine  
 \*KFRC & net—Concert Miniatures; 9:45, Betty Crocker  
 KOL—Prudence Penny  
 KJR—News; Early Echoes  
 KVI—Mystic Melodies to 9:45  
 KFI—Walkikians; 9:45, News  
 KNX—Music; 9:45, News  
 KGB—News to 9:35  
 KSL—Good Morning Judge  
 KOA—National Farm & Home

10:00 to 10:30 A. M.

•KGO & net—News; Beau Arts Trio  
 KPO—Johnny O'Brien, harmonica; 10:15, Radio Reporter  
 KYA—Recordings; Concert Stars  
 KLX—Talk; 10:15, Stocks; News  
 KROW—Rhythm Revue  
 KJBS—News; Organ  
 KGGC—The Fiesta  
 KQW—News; Old Tunes  
 \*KFRC & netwk—Little French Princess; 10:15, Helen Trent Romance  
 KOL—News; 10:15, Melodies  
 KVI—10:15, Character Adviser  
 KHQ—News; 10:15, Miniature Revue  
 KOMO—Mary Mills, pianist; Theatre of Romance  
 KJR—Homemakers to 10:15  
 KOIN—Art Kirkham, This & That  
 KNX—Eddie Albright's Family  
 KFI—Ann Warner Chats  
 KGB—Recordings

10:30 to 11:00 A. M.

•KPO & net—Golden Melodies  
 KGO—Musical Clock  
 KYA—Organ Concert  
 KLX—International Kitchen  
 KROW—Music; Larry Canelo  
 KGGC—Hits of Today  
 KJBS—Orch.; Songs of Romance  
 KQW—Aunt Sammy; Music  
 KGDM—Impressions; Records  
 \*KFRC & net—Between the Bookends; Wife Begins at 10:45  
 KJR—Music Shop; Boviers  
 KNX—Mary Holmes; 10:45, Music  
 KECA—Frankie Patten, pianist  
 KFWB—"Family Circle"  
 KFSD—Cooking School; Golden Melodies  
 KOA—Golden Melodies  
 KSL—10:45, Happy Hollow

11:00 to 11:30 A. M.

•KGO—Hollywood Varieties  
 KGO—11:15, Tally-Ho  
 KPO—Samuel Barber, pianist and baritone  
 •KPO & net—11:15, Vic & Sade  
 KYA—Organ Concert  
 KLX—Records; Tonic Tunes  
 KROW—Health Talk; Rhythms  
 KJBS—Popular Tunes; Concert  
 KGGC—Health Chat; Orchestra  
 KGDM—Organ Recital  
 KQW—Popular Orchestra  
 \*KFRC & net—Jack Brooks and Orchestra

KOL—Cecl Solly to 11:15  
 KVI—Melodies; Observer  
 KOIN—Consumer News to 11:15  
 KJR—Rhythm Rulers  
 KHQ—Gems of Melody to 11:15  
 KFI—English Lesson to 11:15  
 KNX—Housewives Protective League  
 KECA—Records; Chinese Lesson  
 KOA—Farm Question Box

11:30 to 12:00 Noon

•KPO & net—Ma Perkins; 11:45, Barry McKinley, baritone  
 KGO—Tally Ho; Agric. Bulletin  
 KYA—Fashion Mirror; Harmonies  
 KLX—Records; Castles in Music  
 KROW—Concert Melodies  
 KJBS—Dance Orchestra  
 KGGC—Concert; Mountain Music  
 KQW—Vocal and Theatre News  
 \*KFRC & net—"Whoa Pincus"  
 KJR—Rhythm Rulers  
 KECA—Recordings  
 KNX—Book Reviews; Music

12:00 to 12:30 P. M.

•KPO & net—Betty & Bob; 12:15, Western Farm and Home Hour  
 KGO—Luncheon Concert  
 KYA—News; 12:05, Concert  
 KLX—Dance Music  
 KROW—News; Calif. Farm Prog.  
 KJBS—News; Song Hits  
 KQW—News; Noontime Tunes  
 KGDM—Recordings; Serenader  
 KFRC—Winifred Worth to 12:05  
 \*KFRC & net—La Forge Berumen Musical  
 KGW—12:15, News Flashes  
 KOMO—12:15, Tyroleans  
 KHQ—12:15, Organ Concert  
 KVI—12:15, Front Page Headlines  
 KJR—12:12, Grain Reports  
 KOIN—Radio Show; Meler & Frank  
 KNX—News; Tenor and Organ  
 KECA—Records; News  
 KGB—12:15, Stocks; Farm Flashes

12:30 to 1:00 P. M.

•KPO & netwk—Western Farm and Home Hour  
 KGO—Luncheon Concert  
 KLX—Guitar Duo; Musical Auction  
 KROW—Latin-American Program  
 KJBS—Dance Matinee  
 KQW—Market Reports  
 KGDM—Recorded Program  
 KHQ—Organ; Song Recital  
 \*KFRC & net—Loretta Lee, Clubmen, and Stevens Orchestra  
 KOMO—Tyroleans; Cowboy Joe  
 KNX—Major League Baseball  
 KECA—Contract Bridge; Records  
 KOA—Don Rodolfo's Orchestra

1:00 to 1:30 P. M.

•KGO & net—Crosscuts from Log of the Day  
 KPO—News; Nell Cook, vocalist  
 KYA—Musical Strings  
 KIX—Records; 1:15, Martha Lee  
 KROW—Portuguese Program  
 KJBS—Stock Reports and Records  
 KQW—Friendly Street  
 KGDM—Records; Chats  
 \*KFRC & net—Mount & Gest; 1:15, Melodic Melodies  
 KFRC—1:15, Christ. Stock News; 1:25, Closing N. Y. Stocks  
 KOL—Julie Day to 1:15  
 KOIN—Book of Life  
 KOMO—Jack & Adele; Music  
 KHQ—Business and Pleasure  
 KFI—Fed. & St. Mkt Rpts., to 1:15  
 KNX—Major League Baseball  
 KECA—1:15, Recordings

1:30 to 2:00 P. M.

•KPO & net—James Wilkinson, Baritone; 1:45, Sam & Dick  
 KIX—Records; 1:45, Sam & Dick  
 KYA—Barker Frivolities  
 KLX—Music; Amer. Legion Aux. Program  
 KROW—School Program  
 KJBS—Variety Program

KQW—Afternoon Concert  
 \*KFRC & net—Univ. of the Air; 1:45, Those McCarthy Girls  
 KGW—Me and My Shadow  
 KHQ—News Album to 1:45  
 KJR—Headliners; Paths of Memory  
 KOIN—1:45, Jeannette Cramer  
 KNX—Pontrelli's Orchestra  
 KFI—Agnès White's Kitchen  
 KOA—1:45, Goodwill Industries

2:00 to 2:30 P. M.

•KPO & netwk—Woman's Magazine of the Air  
 KGO—To be announced; 2:15, Dudley Bros.  
 KYA—Barker Frivolities  
 KLX—Romance; Talk; Stocks  
 KROW—Story Time  
 KJBS—Matthew Brady; Records  
 KQW—Dance Matinee  
 KGDM—Records; News  
 \*KFRC & netwk—Happy-Go-Lucky  
 KJR—Salon Hour  
 KNX—The Bookworm  
 KFWB—2:10, Baseball Game to 4:30  
 KSL—2:15, Parents and Teachers

2:30 to 3:00 P. M.

•KPO & net—Woman's Magazine  
 KGO—Organ Melodies; 2:35, Ausable Orch.; 2:45, Desert Kid  
 KYA—Lost & Found; Baseball  
 KIX—Musical Program  
 KROW—Dance Matinee  
 KJBS—Popular Hits; Book Chat  
 KQW—Dance Matinee; "Books"  
 KGDM—Afternoon Musicale  
 \*KFRC & netwk—Happy-Go-Lucky Hour; 2:45, Pooder Strings  
 KFRC—2:45, Benaderet & Holton  
 KNX—Modern Piano Music  
 KOA—News; 2:45, Desert Kid  
 KSL—News Flashes

3:00 to 3:30 P. M.

•KPO & netwk—Pictorial with Rush Hughes; 3:15, Stories of Black Chamber  
 KGO—Melodiana; Instrumentalists  
 KYA—Baseball Game to 4:45  
 KROW—Hits of Today; Pianist  
 KLX—Musical Jigsaw  
 KJBS—News; Dance Melodies  
 KQW—Stocks & Bonds; Variety  
 KGDM—Records; Piano Melodies  
 \*KFRC & netwk—Feminine Fancies  
 KHQ—Club Bulletin to 3:15  
 KJR—Siesta; Easy Chair  
 KNX—Lady Margaret; Orchestra  
 KECA—Poet's Corner; Records  
 KOA—News; Franz Pfan, pianist, to 3:15  
 KSL—Review; 3:15, Junior Hour

3:30 to 4:00 P. M.

KPO—Easy Aces; 3:45, Tea Chats  
 \*KGO & net—To be announced; 3:45, Little Concert  
 KROW—Oakland Public Schools  
 KJBS—KQW—Afternoon Concert  
 KFRC—Just Plain Bill to 3:45  
 \*KFRC & netwk—Musical Nick Nacks; 3:45, University of Calif.  
 KOMO—Borowsky's Russian Gypsies  
 KHQ—News; 3:45, Sylvia Gray  
 KOIN—Newspaper of the Air  
 KFI—Plain Bill; 3:45, Organ Recital  
 KNX—Housewives' Protective League  
 KGB—3:40, Along the Airways  
 KSL—Musical Program  
 KOA—Soloist to 3:45

4:00 to 4:30 P. M.

•KPO & netwk—One Man's Family  
 KGO—Masterpieces  
 KLX—Jewel Box; Music  
 KROW—Waltzes; Family Robinson  
 KJBS—Popular Melodies  
 KQW—News; Music  
 \*KFRC & net—The Harmonettes; 4:15, Edw. C. Hill  
 KOIN—Newspaper of the Air  
 KJR—Better Business; Dansant  
 KNX—Haven of Rest  
 KFSD—Exposition Symphony

## 4:30 to 5:00 P. M.

●KGO & network—Just Around the Corner  
 KPO—Sax Appeal; News  
 KYA—4:45, Metropolitans; News  
 KLX—Alice Blue; Health School  
 KROW—Katherine Sherry; Talk  
 KQW—Story Time; Music  
 KJBS—Dance Tunes  
 KGD—American Family Robinson  
 \*KFRC & net—Sunset Serenade  
 KVI—Walkathon to 4:45  
 KJR—Tea Dansant  
 KHQ—Russian Gypsies to 4:45  
 KGW—Abe Bercovitz, violinist  
 KNX—Jewel Box; Health Talk  
 KFI—4:45, Easy Aces  
 KFWR—Popular Music  
 KECA—Better Business Talk to 4:45  
 KFSD—Dr. McCoy to 4:45  
 KOA—Forty Niners to 4:45

## 5:00 to 5:30 P. M.

●KPO & network—John Charles Thomas, baritone, with dramatic cast orchestra & vocal ensemble  
 KGO—Music of the Masters  
 KYA—Uncle Harry; Greta Gahler  
 KLX—Bro. Bob's Club  
 KROW—Contest News  
 KJBS—KQW—Musical Programs  
 KGGC—Dancing Echoes  
 KGD—Cecil & Sally; Records  
 \*KFRC & net—Romance  
 KJR—Steamboat Bill; Romancing  
 KNX—Marshall Grant, organist  
 KFWR—Popular Recordings; 5:15, Gold Star Rangers  
 KECA—Time Clock of Ideas; Records  
 KFOX—Music; 5:20, Cecil & Sally  
 KFSD—Better Business; Music  
 KSL—Melody Parade to 5:15

## 5:30 to 6:00 P. M.

●KPO & net—Our Home on the Range; 5:45, Education in the News  
 KGO—Capt. Marble's B. K. T. A. Club; 5:45, Jack Armstrong  
 KYA—Sonny & Buddy; Music  
 KLX—Covered Wagon Jubilee  
 KROW—Health Chat  
 KGGC—Lecture; Irish Gems  
 KQW—Comic Side of News; Music  
 \*KFRC & net—Presenting Mark Warnow  
 KOIN—Bob & Dolly to 5:45  
 KHQ—5:45, Singing Secretary  
 KJR—Jack Armstrong to 5:45  
 KNX—Son of Fire; Orphan Annie  
 KECA—5:45, Once Upon a Time  
 KFOX—News; Organ; Skit  
 KGB—5:45, Moving Stories of Life  
 KOA—5:45, While the City Sleeps

## 6:00 to 6:30 P. M.

●KPO & net—Frank Goldman Band  
 KGO—Dinner Concert  
 KYA—Og, Son of Fire; Concert  
 KLX—Arion Trio to 7  
 KROW—News; Sparkling Melodies  
 KJBS—News; Variety Program  
 KQW—California Department of Agriculture; 6:15, Mkt. Reports  
 KGGC—Dinner Dance  
 KGD—Do You Believe in Ghosts?  
 \*KFRC & net—Adventures of Gracie  
 KHQ—6:15, Cubanettes  
 KJR—Scandinavian Reporter; Music  
 KNX—Jack Armstrong; News  
 KFWR—News; Music; Organ  
 KECA—Children's Program; News  
 KFOX—News; Vocal Trio; Ramblers  
 KOA—6:15, Comedy Stars

## 6:30 to 7:00 P. M.

●KPO & network—Ray Noble's Orchestra  
 KGO—The Back Seat Driver; 6:45, Jimmy Allen  
 KYA—Orchestra  
 KLX—Arion Trio  
 KROW—Dinner Dance; Congoin  
 KJBS—Concert; Aub. Loux, pianist  
 KGGC—Dance Review

\*KFRC & net—Melody Masterpieces  
 KQW—Globe Trotter; Contest  
 KOL—Beautiful Lady; 6:45, Talk  
 KVI—Stray Hollister to 6:45  
 KJR—News; Jimmie Allen  
 KFWR—Tarzan; 6:45, Jimmie Allen  
 KNX—Lum & Abner; 6:45, Jimmie Allen, Air Adventures  
 KECA—Records; Organ Recital  
 KFOX—School Kids; Jimmie Allen  
 KFSD—Los Flores Mountaineers

## 7:00 to 7:30 P. M.

●KPO & net—Amos 'n' Andy; 7:15, Tony & Gus  
 KGO—Singable Songs  
 KYA—Sport Page; 7:15, Music  
 KLX—News; 7:15, Musicales  
 KROW—C. W. Hammond; L'Italia  
 KJBS—Italian News; News  
 KGGC—Music  
 KQW—Weather; Voice of Portugal  
 \*KFRC & net—Claude Hopkins' Orchestra  
 KOL—7:15, Speaker Stevenson  
 KVI—Stardust Melodies; Talk; Orch.  
 KOIN—Jimmie Allen; Wanderer  
 KJR—Music in the Modern Manner  
 KFWR—Quartet; Oscar and Elmer  
 KECA—Opera Hour; Records  
 KNX—Joe Bishop and Orchestra  
 KQW—Bb & Zeb; Bobby & Betty  
 KGB—Melodic Memories  
 KFSD—Jimmie Allen to 7:15

## 7:30 to 8:00 P. M.

●KPO & net—"House of Glass"; Drama by Gertrude Berg  
 KGO—Agriculture Today; 7:45, Californians on Parade  
 KYA—Joe Sief's Band; 7:45, Gold Rush Days  
 KLX—Alice Blue; Silver Strains  
 KROW—Arthur Nolan; Hawaiians  
 KGGC—Between the Lines; Vocalist  
 KQW—Voice of Portugal; Orchestra  
 \*KFRC & net—Connie Gates and Organ; 7:45, Strange As It Seems  
 KOIN—Amer. Family Robinson  
 KVI—7:40, The Fact Finder  
 KJR—Carefree Capers  
 KNX—In-Laws; 7:45, King Cowboy  
 KFWR—News; 7:45, Pioneer Sons  
 KECA—Opera Hour Records  
 KFOX—Boy Detective; Vocal Duet  
 KFSD—Furmit Prog. to 7:45  
 KSL—7:45, Comedy Satrs

## 8:00 to 8:30 P. M.

●KPO & net—Ben Pollack's Orch.  
 KGO—Californians on Parade; 8:15, Talk of the Town  
 KYA—News; Mountaineers; Orch.  
 KLX—Rhythmic Reporters  
 KROW—Melodies; Watch Tower  
 KGGC—Jewish Program  
 KQW—Music of the Masters  
 \*KFRC & net—KCB's Radio Column; 8:15, Judy Starr, songs  
 KJR—Damski's Neapolitans  
 KNX—Music; 8:15, Frank & Archie  
 KECA—Opera Recordings  
 KFWR—Music; 8:15, Editorial  
 KFOX—Musical; Success Doctor  
 KFSD—8:15, Farley's Rangers

## 8:30 to 9:00 P. M.

●KPO & net—Lights Out, Mystery drama  
 KGO—Comedy Stars; 8:45, To be announced  
 KYA—Paul Pendarvis; 8:45, San Francisco Quarter Hour  
 KLX—Souvenirs of Song; Talk  
 KROW—Sporting Highlights; 8:45, SERA Violinist  
 KGGC—Andy Potter Presents  
 KQW—Music of the Masters  
 \*KFRC & net—Jan Garber's Orch.  
 KJR—Silver Strains  
 KNX—Entertainers; Argentina  
 KFWR—Dance Orchestra  
 KFOX—Dance Orchestra  
 KECA—Contract Bridge  
 KFSD—Gordon Henderson's Orch.

## 9:00 to 9:30 P. M.

●KGO & network—Leonard Keller's Orchestra  
 KPO—Spotlight Review; Paul Pendarvis' Orchestra  
 KYA—Stories in Songs; Comedy Caravan  
 KLX—Nevada Nite Herders  
 KROW—News; Boxing Matches  
 KJBS—News; Western World Wave Club  
 KQW—News; Orchestra  
 KGGC—Wyoming Cowboys  
 KFRC—John Nesbitt to 9:15  
 \*KFRC & net—Bill Fleck's Orch.  
 KOL—Singing Bus Driver  
 KVI—Orch. 9:15, Otto Case  
 KOIN—The Journal  
 KOMO—Blue Streaks; Musical Moments  
 KHQ—Musical Moments; Radio Revels  
 KJR—News; Orchestra  
 KFI—Orchestra and Soloist  
 KNX—News; Musical Moments  
 KFWR—String Orchestra  
 KECA—News; Chamber Music  
 KFOX—Beverly Hill Billies  
 KFSD—Exposition Symphony  
 KOA—Four Harmony Aces to 9:15

## 9:30 to 10:00 P. M.

●KPO—Paul Pendarvis' Orchestra  
 \*KGO & net—Wandering Minstrel  
 KYA—Comedy Caravan; 9:45, News  
 KLX—News; Fire; Phantasies  
 KROW—Boxing Matches  
 KJBS—Vacation Guide  
 KGGC—Wyoming Cowboys  
 KQW—Vacation Guide  
 \*KFRC & net—Les Hite's Orch.  
 KOMO—30 Minutes of Music  
 KHQ—Vagabonds; 9:45, Doughboys  
 KOL—9:55, News  
 KVI—Walkathon; 9:45, News  
 KJR—9:45, Junior Ch. of Com.  
 KOIN—9:45, Leon Drews, organist  
 KNX—Rudy Widoert, saxophone; Wranglers  
 KFWR—Jack Joy's Orchestra  
 KECA—News and Records  
 KFOX—Beverly Hillbillies  
 KSL—Fed. Relief Speaker; Orch.  
 KOA—Elliott Bros. to 9:45

## 10:00 to 10:30 P. M.

●KPO & network—Richfield News; 10:15, Henry King's Orchestra  
 KGO—Ricardo and his violin; 10:15, Tom Gerun's Orchestra  
 KYA—Leon Mojica's Orchestra  
 KLX—Jess Stafford's Orchestra  
 KROW—Boxing Matches; Music  
 KJBS—Light Classics  
 \*KFRC & net—Slim Martin's Orch.  
 KJR—Till Tomorrow  
 KVI—Lutheran Welfare Society  
 KFI—10:15, Al Gayle, accordionist  
 KNX—Wranglers; Beauty Talk  
 KFWR—Press News; King's Men  
 KFOX—News; 10:15, Walkathon  
 KECA—Musical Celebrities  
 KGB—News to 10:10

## 10:30 to 11:00 P. M.

●KPO & net—Henry King's Orch.  
 10:55, Press-Radio News  
 KGO—Orchestra; 10:55, News  
 KYA—Supper Concert  
 KLX—Lotus Land; 10:45, Alice Blue  
 KROW—Musical Program  
 \*KFRC & net—Orville Knapp Orch.  
 KJR—Popular Concert  
 KFI—Contract Bridge Lesson  
 KNX—Russian Eagle Quartet  
 KFWR—Tex Howard's Orchestra  
 KFOX—Aristocrats; Orchestra  
 KGB—News; Dance Orchestra

## 11:00 to 11:30 P. M.

●KGO & net—Freddie Martin's Orch.  
 KPO—Home Sweet Home, Organ  
 KYA—Sandman Orchestra  
 KROW—Dance of the Hour  
 KJBS—Dance Time to 12:00  
 KFRC—News to 11:10



\* KFRC & net—Don Bestor's Orch.  
 KOL—Archie Loveland's Orchestra  
 KVI—Jantzen Beach Orchestra  
 KOMO—Musical Comedy  
 KHQ—Roundup Room  
 KNX—Pontrelli's Orchestra  
 KFWE—Dance Orchestra  
 KFOX—Eddie Eben, organist

11:30 to 12:00 Midnight  
 KPO—Organ Concert  
 \* KGO & net—Club Victor Orchestra  
 KYA—Organ Recital  
 KROW—Dance of the Hour; News  
 KGDM—Fritz Woicott's Orchestra  
 \* KFRC & net—Les Hite's Orch.  
 KFOX—Freddie Carter's Orchestra

KJR—Starlight Hours  
 KNX—Pontrelli's Orchestra; News  
 KFWE—Carol Wax's Orchestra  
 12:00 to Sign Off  
 KTAB—Midnight Vagabond  
 KROW—Dancing Party  
 KJBS—12:01, Owl! Program to 6 a.m.

PROGRAMS for THURSDAY.. July 11

7:00 to 7:30 A. M.  
 \* KPO & net—Grace and Eddie Albert, songs; 7:15, House Detective, Federal Housing Program  
 KYA—Musical Clock  
 KROW—Commuters Clock  
 KJBS—Alarm, Klok Klub  
 KQW—News; Breakfast Hour  
 KGDM—News; Eh & Zeb  
 KFRC—Records; 7:25, Stocks  
 KOL—Sunrise Express  
 KHQ—Morning News  
 KGB—Seven O'Clock Club

7:30 to 8:00 A. M.  
 \* KPO & net—U. S. Navy Band  
 KGO—Rise 'n' Shine  
 KROW—Music; Contest News  
 KQW—Breakfast Hour  
 KFRC—Breakfast with Bob Bence  
 KGW—Ronald Buck to 7:45  
 KHQ—Morning Melodies  
 KJR—Market Quotations; 7:45, Christian Science Program  
 KVI—Varieties; Cadets  
 KFI—Health Exercises to 7:45  
 KECA—Bible Fellowship; Records  
 KGB—Seven o'Clock Club to 7:45

8:00 to 8:30 A. M.  
 \* KPO & net—Financial Service; 8:15, Merry Macs; Vocalists  
 KGO—Simpson Boys of Sprucehead Bay; Electrical Transcription  
 KYA—Christian Science Reading; 8:15, Mr. and Mrs. Reader  
 KLY—Recordings; Stocks  
 KROW—Contest Program; News  
 KJBS—Band Concert; 8:15, Dance Tunes  
 KQW—Organ; Religious Forum  
 KGDM—Recordings  
 \* KFRC & net—To be announced; 8:15, The Gumps  
 KOMO—8:15, Morning Reveries  
 KHQ—8:15, Happy Feet  
 KFI—Church Quarter Hour to 8:15  
 KNX—Song Market; Old Tunes

8:30 to 9:00 A. M.  
 \* KPO & netwk—Words and Music  
 KGO—Morning Eye-Opener  
 KYA—Morning Concert  
 ELX—Covered Wagon Jubilee  
 KROW—Music Box Revue  
 KJBS—Dance Melodies  
 KQW—Morning Concert  
 KGDM—Records; 8:45, Health Talk  
 \* KFRC & netwk—Mary Marlin; 8:45, Five Star Jones  
 KOMO—Music; Sweet Rhythm  
 KHQ—Early Birds to 8:45  
 KVI—Morning Friends  
 KFI—Accordionist; 8:45, Julia Hayes  
 KNX—Religious Talk  
 KOA—Huffman Harmonies; Marietta Vasconcelles

9:00 to 9:30 A. M.  
 \* KPO & net—Rex Battle Concert Ensemble  
 KGO—Morning Eye-Opener  
 KYA—Melodies; Prudence Penny  
 KROW—Music Box Revue  
 KJBS—Popular Concert  
 KGCC—Morning Parade  
 KQW—Tuneful Topics  
 KGDM—Better Vision; Talk  
 KVI—9:15, Dr. Burns

\* KFRC & net—Jack Shannon; 9:15, The Islanders  
 KJR—Reminiscing  
 KNX—Musical Program  
 KFSD—Good Cheer; Dr. McCoy  
 KSL—Mary & Bennie; Jennie Lee

9:30 to 10:00 A. M.  
 \* KPO & net—Cliff Nazarro, tenor  
 KPO—9:45, Kitchen Sink Songs  
 KGO—Studio Program  
 KYA—Waltz Time  
 KLY—Clinic of the Air; Records  
 KROW—Health Chat  
 KGCC—At the Song Shop  
 KJBS—KQW—Songs of Romance  
 KGDM—News and Music  
 \* KFRC & net—Time on My Hands; 9:45, George Wald Ensemble  
 KOMO—9:45, Edna Fischer, pianist  
 KJR—News; Early Echoes  
 KHQ—This & That; Pianist  
 KFI—9:45, News Release  
 KNX—Musical Program; 9:45, News  
 KECA—Records; 9:45, Pianist  
 KFSD—9:45, Piano Vignettes  
 KGB—News to 9:35  
 KSL—Mary & John to 9:45  
 KOA—Farm and Home

10:00 to 10:30 A. M.  
 \* KGO & net—News; 10:05, Marshall's Mavericks  
 KPO—Pianist; 10:15, News  
 KYA—Columbia on Parade; 10:15, Fifth Avenue Mountaineers  
 KLY—Music; Stocks; News  
 KROW—Rhythm Revue  
 KJBS—News; Organ  
 KGCC—The Fiesta  
 KQW—News; Old Tunes  
 \* KFRC & net—Little French Princess; 10:15, Helen Trent  
 KOT—News; Morning Melodies  
 KVI—10:15, Character Adviser  
 KHQ—News; Miniature Revue  
 KJR—Home Makers; 10:15, Irish Minstrels  
 KOIN—This & That  
 KFI—Ann Warner Chats  
 KNX—Eddie Albright's Family  
 KGB—Recordings

10:30 to 11:00 A. M.  
 \* KPO & netwk—Martha Meade and Hazel Warner  
 KGO—Musical Clock  
 KYA—Organ Concert  
 KTX—International Kitchen  
 KROW—March Time; Larry Canelo  
 KJBS—Vocalists; Orchestra  
 KQW—Aunt Sammy; Tunes  
 KGCC—Hits of Today  
 KGDM—10:45, Coleman Cox  
 KFRG—10:45, Wife Begins  
 \* KFRC & net—Broadway to Hollywood  
 KJR—Music Shop; 10:45, Boviers  
 KFWE—"Family Circle"  
 KNX—Mary Holmes; Music  
 KECA—Recorded Program  
 KOA—Livestock & Produce; C. A. C.  
 KSL—Melodies to 10:45

11:00 to 11:30 A. M.  
 \* KPO & net—Platt and Nierman, plantists; 11:15, Vic & Sade  
 KGO—Newsical Sunshine; 11:15, Pair of Pianos  
 KYA—Organ; Dance Music

KLY—Records; Tonic Tunes  
 KROW—Health Talk; Music  
 KQW—Popular Orchestra  
 KGCC—Health Talk; Orchestra  
 KGDM—Organ Recital  
 KFRC—Theatre of Romance to 11:15  
 \* KFRC & netwk—Dalton Brothers; 11:15, Waltz Time  
 KOL—Cecil Solly to 11:15  
 KVI—Melodies; The Observer  
 KOIN—Consumers News to 11:15  
 KJR—Rhythm Rulers  
 KNX—Housewives' Protective League  
 KSL—11:15, Beauty Talk

11:30 to 12:00 Noon  
 \* KPO & netwk—Ma Perkins; 11:45, Barry McKinley, baritone  
 KGO—Pair of Pianos; 11:45, Agricultural Bulletin  
 KYA—Dance Time; Talk; Harmonies; 11:57, Scriptures  
 KLY—Margaret Reynolds; Musical  
 KROW—Concert Melodies  
 KJBS—Salon Orchestra  
 KGCC—Musical Program  
 KQW—Vocalists; News  
 KFRC—Better Business to 11:45  
 \* KFRC & net—Connie Gates & Jim Brierly with Orchestra  
 KNX—Better Business; Music

12:00 to 12:30 P. M.  
 \* KPO & net—Betty & Bob; 12:15, Western Farm and Home Hour  
 KGO—Luncheon Concert  
 KYA—News; Concert  
 KLY—Dance Music  
 KROW—News; Calif. Farm  
 KQW—News; Nootime Tunes  
 KJBS—News; Musical Program  
 \* KFRC & net—Current questions before Congress; 12:15, Salvation Army Band  
 KVI—12:15, Front Page Headlines  
 KOIN—Radio Show; Meier & Frank  
 KGW—12:15, News Flashes  
 KHQ—12:15, Organ Concert  
 KOMO—12:15, Hawaiian Sunlight  
 KNX—News; 12:15, Music  
 KOA—12:15, Don Rodolph's Band

12:30 to 1:00 P. M.  
 \* KPO & net—Farm Hour  
 KGO—Luncheon Concert  
 KYA—Concert  
 KLY—Guitar Duo; Memory Paths  
 KROW—Latin-American Prog.  
 KJBS—Dance Matinee  
 KQW—Market Reports  
 \* KFRC & net—Greetings from Old Kentucky  
 KOMO—Saxophone; Cowboy Joe  
 KHQ—Organ  
 KNX—Major League Baseball  
 KECA—Concert Favorites  
 KOA—Soloist; Harvest of Song  
 KSL—Utah St. Agric. College

1:00 to 1:30 P. M.  
 \* KGO & netwk—Meredith Willson's Orchestra  
 KPO—News; 1:15, Piano Vignettes  
 KYA—Concert Stars; Tango Time  
 KLY—Records; 1:15, Martha Lee  
 KROW—Latin-American  
 KJBS—Stocks; Recordings  
 KQW—Friendly Street  
 KJR—Uncle Hank; Headliners  
 KOIN—Book of Life

\* KFRC & net—Howell & Wright;  
1:15, Patti Chapin, vocalist  
KFRC—Medical Society; 1:15, Christian Science News  
KOL—Julie Day to 1:15  
KHQ—Business and Pleasure  
KFI—Federal & State Mkt. Reports  
KNX—Major League Baseball  
KOA—P. T. A. Conference

## 1:30 to 2:00 P. M.

\* KPO & net—Kay Foster, songs;  
1:45, Betty Marlowe  
KGO—Ann Warner's Chats  
KYA—Barker Frivolities  
KLX—Popular Concert  
KROW—Ross Love; Hawaiians  
KQW—Concert  
KFRC—N. Y. Stocks to 1:35  
\* KFRC & net—Univ. of the Air;  
1:45, Goopy Geer  
KGW—Me and My Shadow  
KVI—Organ; A. M. A. Talk  
KJR—Headliners; Musical  
KHQ—News Album  
KNX—Pontrelli's Orch.; Lawrence King and Organ

## 2:00 to 2:30 P. M.

\* KPO & network—Woman's Magazine of the Air  
KGO—Martha Mears, contralto;  
2:15, Stubby Gordon's Orchestra  
KYA—Barker Frivolities  
KLX—Contract Bridge; Baseball  
KROW—Story Time  
KJBS—KQW—Concert  
KQDM—Records; News  
\* KFRC & netw—Happy-Go-Lucky  
KJR—Salon Hour  
KNX—Bookworm  
KECA—Classic Hour to 3  
KSL—Maurie Sherman's Orchestra

## 2:30 to 3:00 P. M.

\* KPO & net—Woman's Magazine  
KGO—Organ; Mary Small, singer;  
2:45, Norman Nelson, baritone  
KYA—Lost & Found; Rhythm; 2:43, Baseball Game to 4:45  
KLX—Baseball Game to 4:30  
KROW—Dance Matinee  
KJBS—Events of Interest; Songs  
KQW—Guide; Visiting Nurses  
KQDM—Afternoon Musicale  
\* KFRC & net—Happy-Go-Lucky;  
2:45, Minute Melodies  
KJR—Salon Hour  
KNX—Symphonies and Light Operas  
KSL—News  
KOA—News; Orchestra

## 3:00 to 3:30 P. M.

\* KPO & net—Rush Hughes  
KPO—3:15, Fashion Flashes  
KGO—The Modern Woman at Home  
\* KGO & net—3:15, Dorsey Bros. Orchestra  
KROW—Records; Katherine Sherry  
KJBS—News; Ballroom Favorites  
KQW—Stocks & Bonds; Variety  
\* KFRC & netw—Feminine Fancies  
KHQ—Club Bulletin; Prac. Hostess  
KJR—Siesta  
KNX—Louise Johnson, Cosmic Law  
KECA—Spanish & Mexican Records  
KSL—Review; 3:15, Juniors  
KOA—News; Univ. of Denver

## 3:30 to 4:00 P. M.

\* KGO & netw—Brahms Festival  
KPO—Easy Aces; 3:45, Tea Chats  
KROW—Wade Forrester; Melodies  
KJBS—Concert; SERRA Program  
KFRC—Just Plain Bill; 3:45, Music  
\* KFRC net—Melodies of Manhattan; 3:45, Let's Go to Europe  
KQMO—Cubanesettes to 3:45  
KHQ—News; Sylvia Grey  
KQIN—Newspaper of the Air to 4:30  
KFI—Just Plain Bill; Organ  
KNX—Housewives' Protective League  
KGB—4:45, Recordings

## 4:00 to 4:30 P. M.

\* KPO & network—Rudy Vallee and Orchestra with guest artists

KGO—Brahms Festival  
KROW—4:15, Anthony Fonseca  
KJBS—U.S. Flag Association; 4:15, Dance Music

\* KFRC & net—Kate Smith Hour  
KJR—Health Program; Dansant  
KNX—Haven of Rest  
KECA—Story Teller; Music  
KSL—4:15, Jack Armstrong

## 4:30 to 5:00 P. M.

\* KPO & net—Rudy Vallee Artists  
KGO—Brahms Festival  
KYA—4:45, Music; News  
KSFO—Jack Hall and Artist  
KLX—Pianist; Health School  
KROW—Anna Marina; Health Talk  
KQW—Story Time; 4:45, Music  
KJBS—Popular Selections to 6:00  
\* KFRC & net—Kate Smith Hour  
KJR—Snapshots  
KNX—Radio Church; Health Talk  
KECA—Educational Speech; Music  
KFSO—Dr. McCoy; Studio program  
KSL—4:45, Dance Numbers

## 5:00 to 5:30 P. M.

\* KPO & net—Capt. Henry's Showboat with Gus Haenschen's Band  
KGO—Children's Program; 5:15, Ted White, tenor  
KYA—Uncle Harry; 5:15, Greta Gahler, Melody Lady  
KLX—Bro. Bob's Club  
KROW—Contest News  
KJBS—Popular Selections  
KQW—Airs of South America  
KGGC—Dancing Echoes  
KQDM—Cecil and Sally; News  
\* KFRC & net—To be announced  
KQIN—Save-a-Life Club  
KJR—Romancing  
KNX—Orchestra and Organ  
KFOX—Music; Cecil and Sally

## 5:30 to 6:00 P. M.

\* KPO & net—Showboat  
KGO—Capt. Marble's B. K. T. A. Club; 5:45, Jack Armstrong  
KYA—Sonny & Buddy; Music  
KLX—Covered Wagon Jubilee  
KROW—Health Chat  
KGGC—Health Talk; Irish Gems  
KQDM—Melodies; Coming Events  
KQDM—The Hawk  
\* KFRC net—To be announced  
KJR—Jack Armstrong to 5:45  
KNX—Song Service; Orphan Annie  
KFOX—News; Organ; Skit

## 6:00 to 6:30 P. M.

\* KPO & net—Paul Whiteman's Orchestra; Helen Jepson & Lou Holtz  
KGO—Dinner Concert  
KYA—Junior Birdmen; Orchestra  
KLX—Arion Trio  
KROW—News; Congoin Program  
KJBS—News; Variety Program  
KGGC—Dinner Dance  
KQW—California State Dept. of Agriculture; Market Reports  
KQDM—So. Americans  
\* KFRC & net—U. S. Navy Band  
KJR—Scandinavian Reporter; Music  
KNX—Jack Armstrong; News  
KFWB—News; Music; Organ  
KECA—Records; 6:15, News  
KFOX—News; Ramblers  
KFSO—Studio program

## 6:30 to 7:00 P. M.

\* KPO & net—Paul Whiteman  
KGO—Federal Business Talk 6:45, Sax Appeal, Mickey Gillette  
KYA—Cy Trobber's Orchestra  
KLX—Arion Trio  
KROW—Dinner Dance; Dr. Facci  
KJBS—Dinner Concert  
KGGC—Sports; Music  
KQDM—Mother Lode Range Riders  
KQW—Italian Globe Trotter; Music  
\* KFRC & netw—Horace Heidt's Brigadiers  
KJR—News; Tonic Tunes  
KNX—Lum & Abner; Spice of Life  
KFWB—Good Egg Club; Music

KECA—Wesley Tourteillotte, organist  
KFOX—School Kids; Thrill Hunter  
KFSO—Marie Kriete, vocalist

## 7:00 to 7:30 P. M.

\* KPO & net—Amos 'n' Andy; 7:15, Tony and Gus  
KGO—California Dons  
KYA—Ernie Smith's Sport Page; 7:15, Sportsman's Corner  
KLX—News; 7:15, Pianist  
KROW—C. W. Hammond; L'Italia  
KJBS—Italian News; Music  
KGGC—Records; Orchestra  
KQW—Weather; News; Portugal  
\* KFRC & net—Johnny Hamp's Orchestra  
KOL—Sports; 7:15, Talk  
KJR—Tonic Tunes; Washington Hr.  
KOIN—7:15, Musical Moments  
KVI—Beyond Blue Horizon; Music  
KNX—Magic of Music  
KFWB—Jr. Birdmen; Segar Ellis  
KECA—Recorded Programs  
KFOX—Eb & Zeb; Bobby & Betty  
KGB—7:15, Musical Moments  
KSL—The Hawk; Orchestra

## 7:30 to 8:00 P. M.

\* KPO & net—Winning the West  
KGO—National Radio Forum  
KYA—Jack Kirkwood; Gold Rush  
KLX—Magic Harmony; 7:45, Edna Parker, contralto  
KROW—Grace Herold Trio; 7:45, Portuguese Program  
KGGC—Between the Lines; Records  
KQW—Voice of Portugal; Orchestra  
\* KFRC & net—Ted Fio-Rito's Orch.  
KJR—7:45, Jewel Box  
KNX—In-Laws; King Cowboy  
KFWB—News; Outdoor Reporter  
KFOX—Boy Detective; Vocal Duo  
KECA—Light Opera  
KFSO—Amateur Program  
KOA—Ford Rangers Revue

## 8:00 to 8:30 P. M.

\* KPO & net—Floyd Gibbons; 8:15, Standard Symphony Hour  
KGO—Sports; Talk of the Town  
KYA—News; Minstrel Show  
KLX—Spice of Life; American Legion Program  
KROW—Latin-American Program  
KGGC—Spanish-American Program  
KQW—Band Music  
\* KFRC & net—Portland Symphony  
KOIN—Little Show; Comedy Stars  
KVI—Beauty Talk to 8:05  
KOL—8:15, Comedy Stars  
KJR—Dollars and Sense; Waltzes  
KNX—Orch.; 8:15, Frank & Archie  
KFWB—Cubanesettes; Studio Whispers  
KECA—Musical Program to 9  
KFOX—News; Piano; Orchestra  
KFSO—8:15, Farley's Rangers  
KGB—Comedy Stars to 8:15  
KSL—Ethel Hogan, organist; 8:15, Comedy Capers

## 8:30 to 9:00 P. M.

\* KPO & net—Standard Symp. Hr.  
KGO—Dancing in Twin Cities  
KYA—Paul Pendarvis' Orch; 8:45, To be announced  
KLX—Music; Joseph Pulvino, violin  
KROW—Italian program  
KGGC—Andy Potter Presents  
KQW—Joy Storm; Short Stories  
KFRC—Constitution Society to 8:45  
\* KFRC & net—Bill Hogan's Orch.  
KVI—Fact Finder to 8:45  
KOIN—Organ Recital to 8:45  
KJR—8:45, Organ Melodies  
KNX—Quartet; Drama  
KFWB—Dance Orchestra  
KFOX—Dance Orchestra  
KFSO—Gordon Henderson's Orch.  
KSL—KSL Players  
KOA—The Barrett Family

## 9:00 to 9:30 P. M.

\* KPO & network—Standard Symphony Hour; 9:15, Jones Boys

KGO—Glenn Lee's Orchestra  
 KYA—Sports Parade  
 KLX—Nevada Nite Herders  
 KROW—Headlines; 9:15, Melodies  
 KJBS—News; Variety Program  
 KGGC—Organalities  
 KQW—News; Dance Frolic  
 \*KFRC & network—Mobil Magazine  
 KOMO—9:15, Royal Foursome  
 KHQ—9:15, Romance of Achievement  
 KJR—News; University Review  
 KNX—News; Male Quartet  
 KFOX—Beverly Hillbillies  
 KFWB—Popular String Program  
 KECA—News Release; Records  
 KOA—Community Chest; Orchestra

9:30 to 10:00 P. M.

KPO—Book Parade; Orchestra  
 \*KGO & net—Arlie Simmonds' Orch.  
 KLY—News; Melody Palette  
 KXA—Stories in Song; News  
 KROW—Rhythm Revue; Vocalist  
 KJBS—Radio Short Stories  
 KGGC—Wyoming Cowboys  
 KQW—Dance Frolic; Drama  
 \*KFRC & net—Jan Garber's Orch.  
 KOIN—Walkathon; News  
 KOIN—Jantzen Beach Orchestra  
 KJR—9:45, Souvenirs of Song  
 KHQ—9:45, Vagabonds  
 KFWB—Slumbertime  
 KNX—Short Stories; 9:45, Arizona Wranglers

KFOX—Beverly Hillbillies  
 KOA—Arlie Simmonds Orchestra

10:00 to 10:30 P. M.

\*KPO & netw—Richfield Reporter; 10:15, Paul Pendarvis Orch.  
 KGO—Henry King's Orchestra  
 KYA—Leon Mollica's Orchestra  
 KLX—Jess Stafford's Orchestra  
 KROW—March Time; Orchestra  
 KJBS—Light Classics to 11:00  
 KGGC—Ten o'Clock Review  
 \*KFRC & net—Bill Fleck's Orch.  
 KJR—Songs; Nightcaps  
 KFI—10:15, Bill Roberts, songs  
 KFWB—News; King's Men, vocalists  
 KNX—Wranglers; Beauty Talk  
 KFOX—News; Walkathon  
 KGB—News to 10:10  
 KSL—Hawallan Music

10:30 to 11:00 P. M.

\*KPO & net—Paul Pendarvis and Orchestra; News  
 KGO—Tom Gerun's Orchestra; News  
 KYA—Arioso Ensemble  
 KLX—Orch.; Alice Blue, Reflections  
 KROW—Royal Hawaiians  
 \*KFRC & net—Orv. Knapp's Orch.  
 KOL—10:45, American Weekly  
 KOIN—Master Miniatures; Orch.  
 KGW—10:45, Bart Woodyard's Orch  
 KJR—Waltzes and Tangos  
 KNX—Russian Eagle Quartet; Orch.

KFWB—Tex Howard's Orchestra  
 KFOX—Aristocrats; Orchestra

11:00 to 11:30 P. M.

\*KGO & net—Freddie Martin's Orchestra  
 KPO—Organ Recital; Chas. Runyan  
 KYA—Organ Recital  
 KROW—Dance of the Hour  
 KJBS—Dance Tunes to 12:00  
 KFGC—News Release to 11:10  
 \*KFRC & net—Don Bestor's Orch.  
 KHQ—Roundup Room  
 KOMO—Divertissement  
 KNX—Pontrelli's Orchestra  
 KFWB—Orchestra Program  
 KFOX—Eddy Eben, organist

11:30 to 12:00 Midnight

\*KGO & network—Jimmy Grier's Orchestra  
 KPO—Organ Recital  
 KROW—Dance; News  
 \*KFRC & network—Les Hite's Orchestra  
 KOIN—Orchestra  
 KJR—Starlight Hours  
 KFOX—Freddie Carter's Orchestra  
 KFWB—Carol Wax's Orchestra  
 KNX—Pontrelli's Orchestra; News

12:00 to Sign Off

KROW—Midnite Jamboree  
 KJBS—12:01, Owl Program to 6 a.m.

PROGRAMS for FRIDAY. . . . July 12

7:30 to 8:00 A. M.

\*KPO & net—U. S. Marine Band  
 KGO—Rise 'n' Shine  
 KFRC—Music, Bob Bence  
 KROW—7:45, Contest News  
 KHQ—7:45, Echoes of the Islands  
 KJR—Market Quotations to 7:45  
 KVI—Talk; Varieties; Cadets  
 KECA—Musical Program  
 KGB—Seven o'Clock Club to 7:45

8:00 to 8:30 A. M.

\*KPO & net—Financial Service; 8:15, Merrie Macs  
 KGO—Simpson Boys of Sprucehead Bay; 8:15, Electrical transcription  
 KYA—Christian Science Reading; 8:15, Mr. and Mrs. Reader  
 KROW—Contest News; Headlines  
 KJBS—Pop Music to 9:15  
 KQW—Organ; Religious Forum  
 \*KFRC & net—Fred Feibel, organ; 8:15, The Gumps  
 KOMO—8:15, Morning Reveries  
 KHQ—8:15, Silver Strains  
 KFI—Church Quarter Hour to 8:15  
 KNX—Concert; Old & New Tunes  
 KOA—Betty Crocker; 8:15, Music  
 KSL—Saving Sue to 8:15

8:30 to 9:00 A. M.

\*KPO & net—Words and Music  
 KGO—Morning Eye-Opener  
 KYA—Familiar Melodies  
 KLX—Covered Wagon Jubilee  
 KROW—Music Box Revue  
 KJBS—Dance Melodies  
 KQW—Morning Concert  
 KVI—8:45, Morning Friends  
 \*KFRC & net—Mary Marlin; 8:45, Five Star Jones  
 KOMO—8:45, Tuning Around  
 KHQ—Early Birds  
 KNX—Religious Talk  
 KGB—8:45, Stocks and Records  
 KSL—8:45, Vocal, Organ Piano

9:00 to 9:30 A. M.

\*KPO & net—Roy Maxon's Orch.; 9:15, Oleanders  
 KGO—Morning Eye-Opener  
 KYA—9:15, Prudence Penny  
 KROW—Music Box Revue  
 KGGC—Morning Parade

KQW—Tuneful Topics  
 KGDm—Better Vision; Mabel Rubin  
 \*KFRC & net—The Eton Boys; 9:15, Gravel Pit Courtroom  
 KVI—Hal Ross Walkathon  
 KJR—Reminiscing  
 KNX—Talk; Carefree Capers  
 KFI—9:15, Better Business Talk  
 KECA—Spanish Lesson to 9:15  
 KFSD—Good Cheer; Dr. McCoy  
 KOA—Orch.; Theatre of Romance  
 KSL—9:15, Jennie Lee

9:30 to 10:00 A. M.

\*KPO & network—National Farm and Home Hour  
 KGO—Studio Program  
 KYA—Waltz Time  
 KLX—Clinic of the Air; Records  
 KROW—Health Chat  
 KJBS—KQW—Oddities Program  
 KGGC—At the Song Shop  
 KGDm—News and Records  
 KVI—Mystic Melodies to 9:45  
 \*KFRC & net—Pete Woolery and Friends; 9:45, Betty Crocker  
 KOL—Prudence Penny to 9:45  
 KOIN—Theatre of Romance to 9:45  
 KHQ—Walt & Marion; Flash Gordon  
 KGW—Keyboard Kapers  
 KJR—News; Early Echoes  
 KFI—Helen Guest, ballads; News  
 KNX—Carefree Capers; 9:45, News  
 KGB—News to 9:35  
 KSL—Good Morning Judge; Orch.

10:00 to 10:30 A. M.

\*KGO & network—News; 10:05, Pair of Pianos  
 KPO—Menu Flashes; 10:15, News  
 KYA—Music; 10:15, Concert Stars  
 KLX—Music; News  
 KROW—Rhythm Revue  
 KJBS—News; Organ  
 KGGC—The Fiesta  
 KQW—News; Old Tunes  
 KGDm—Easy Chair; Records  
 \*KFRC & net—Little French Princess; Romance of Helen Trent  
 KOIN—Art Kirkham, This & That  
 KOL—News; Melodies  
 KVI—Records; Character Adviser  
 KOMO—10:15, Theatre of Romance  
 KHQ—News; 10:15, Miniature Revue  
 KJR—Home Makers; Music Shop

KFI—Ann Warner Chats  
 KNX—Eddie Albright's Family

10:30 to 11:00 A. M.

\*KPO & net—Frances Lee Barton's Kitchen Party  
 KGO—Musical Clock  
 KYA—Organ Concert  
 KLX—International Kitchen  
 KROW—Records; Larry Canelo  
 KJBS—Dance Tunes; Songs  
 KQW—Aunt Sammy; Songs  
 KGGC—Hits of Today  
 KGDm—Mary Kitchen; Talk  
 \*KFRC & net—Between the Bookends; Happy Hollow  
 KFRC—10:45, Wife Begins  
 KJR—Club Minutes; Boviers Garden  
 KNX—Mary Holmes; Tonic Tunes  
 KECA—Chaparral Club; Records  
 KFSD—Cooking School

11:00 to 11:30 A. M.

\*KPO & net—Songfellows, quartet; 11:15, Vic & Sade  
 KGO—Beaux Arts Trio  
 KYA—Organ Concert  
 KLX—Records; Tonic Tunes  
 KROW—Talk; Music  
 KJBS—Dance Melodies  
 KGGC—Health Talk; Orchestra  
 KQW—Popular Orchestra  
 KGDm—Organ Recital  
 \*KFRC & net—Connie Gates, songs; Instrumentalists  
 KOL—Cecil Solly to 11:15  
 KOIN—News to 11:15  
 KVI—Melodies; Observer  
 KHQ—Musical Gems to 11:15  
 KJR—Rhythm Rulers  
 KFI—Inside Stories to 11:15  
 KNX—Housewives' Protective League  
 KECA—11:15, Recordings  
 KFSD—Song Fellows  
 KOA—Livestock & Produce

11:30 to 12:00 Noon

\*KPO & net—Ma Perkins; 11:45, Morin Sisters  
 KGO—Beaux Arts Trio; 11:45, Agricultural Bulletin  
 KYA—Fashions; Harmonies  
 KLX—Records; Screen & Radio  
 KROW—Concert Melodies

KGCC—Concert; Mountain Music  
KQW—Varieties; Theatre News  
\*KFRC & netw—Eddie Dunstedter  
Presents  
KFRC—Ida Bailey Allen to 11:45  
KGW—11:45, Abe Bercovitz, violin  
KFT—11:45, Listeners' Forum  
KECA—Frankie Patten, pianist  
KNX—Musical Program

12:00 to 12:30 P. M.

\*KPO & net—Betty & Bob; 12:15,  
Western Farm & Home Hour  
KGO—Agriculture; Concert  
KYA—News; Concert  
KLX—Dance Music  
KROW—News; 12:15, Cal. Farm  
KJBS-KQW—News; Contest  
KGD—Records  
\*KFRC & net—The Grab Bag  
KFRC—Winifred Worth to 12:05  
KVI—12:15, Front Page Headlines  
KOIN—Radio Show; Meier & Frank  
KGW—12:15, News Flashes  
KOMO—12:15, Popular Varieties  
KHQ—12:15, Organ Recital  
KECA—Records; 12:15, News  
KNX—News; 12:15, Pop Music  
KGB—12:15, Stocks; Farm Flashes  
KSL—Musical Matinee

12:30 to 1:00 P. M.

\*KPO & network—Western Farm  
and Home Hour  
KGO—Concert; 12:45, Commonwealth  
Club Luncheon  
KYA—Concert  
KLX—Guitar Duo; Musical Auction  
KROW—Portuguese Program  
KJBS—Dance Hits  
KQW—Weather; Market Reports  
\*KFRC & net—U. S. Army Band  
KOMO—Varieties; Cowboy Joe  
KHQ—Organ; 12:45, Songs  
KVI—12:45, Walkathon  
KECA—Contract Bridge; Concert  
KNX—Major League Ball Game  
KOA—Talk; Music

1:00 to 1:30 P. M.

KPO—News to 1:15  
\*KPO & net—Don Rodolfo's Orch.  
KGO—Commonwealth Luncheon  
KYA—Women's Institute; Hawaiian  
KLX—Records; 1:15, Martha Lee  
KROW—Portuguese Program  
KJBS—Stocks; Recordings  
KQW—Friendly Street  
KGD—Records; Watchtower  
\*KFRC & net—Patti Chapin, vocal-  
ist; 1:15, Melodic Moments  
KFRC—1:15, Christian Science;  
1:25, Stocks  
KGW—Platt & Nierman to 1:15  
KOIN—Book of Life  
KOL—Julie Day to 1:15  
KJR—Chamber of Com. Luncheon  
KHQ—Business & Pleasure  
KOMO—Jack & Adele to 1:15  
KFT—Federal & State Mtg. Reports  
KNX—Major League Baseball  
KFSD—Platt & Nierman to 1:15

1:30 to 2:00 P. M.

\*KPO & net—Nellie Revell, inter-  
view; 1:45, Sam & Dick  
KGO—Ann Warner's Chats  
KYA—Barker Frivolities  
KROW—Oakland Public Schools;  
1:45, Dance Masters  
KLX—SERA  
KJBS—Dance Orchestra  
KQW—Afternoon Concert  
\*KFRC & net—University of the  
Air; 1:45, Mickey of the Circus  
KJR—International Musical  
KHQ—News Album to 1:45  
KFT—Agnes White's Kitchen  
KNX—Pontrelli's Orchestra

2:00 to 2:30 P. M.

\*KPO & network—Woman's Maga-  
zine of the Air  
KGO—Congress Speaks  
KYA—Barker Frivolities  
KLX—Records; Talks; Stocks

KROW—Story Time  
KJBS—Better Business Talk; 2:15,  
Events of Interest  
KQW—Dance Matinee  
KGD—Serenader; News  
\*KFRC & net—Mickey of the Circus;  
2:15, Happy Go Lucky Hour  
KJR—Salon Hour  
KNX—The Bookworm  
KGB—Mickey of the Circus to 2:15  
KSL—2:15, World Traveler

2:30 to 3:00 P. M.

\*KPO & net—Woman's Magazine  
KGO—Organ; Arlene Jackson; 2:45,  
Desert Kid  
KYA—Los & Found; Songs  
KLX—Concert  
KROW—Dance Matinee  
KJBS-KQW—Seiffert Players; Songs  
KGD—Musical  
\*KFRC & netw—Happy-Go-Lucky  
Hour; 2:55, Minute Melodies  
KOIN—2:45, The Crooners  
KNX—Recordings  
KOA—Huffman Reporter; News  
KSL—News Flashes

3:00 to 3:30 P. M.

\*KPO & netw—Pictorial by Rush  
Hughes; 3:15, Stories of Black  
Chamber, Spy drama  
KGO—Maurice Spitalny's Orchestra;  
3:15, Nell Cook, songs and piano  
KYA—Matinee; Serenader  
KLX—Popular Concert  
KROW—Records; Katherine Sherry  
KJBS—News; Dance Melodies  
KQW—Stocks & Bonds; Music  
KGD—Records; Soprano  
\*KFRC & netw—Feminine Fancies  
KJR—Siesta; Easy Chair  
KHQ—Club Bulletin to 3:15  
KNX—"Lady Margaret"; U. S. C.  
KECA—Talk; Music  
KFSD—Curiosity Hunters  
KSL—News; Junior Hour  
KOA—News to 3:15

3:30 to 4:00 P. M.

\*KGO & net—Pickens Sisters; 3:45,  
Little Concert  
KPO—Johnny Toffoli, accordionist;  
3:45, Tea Chats  
KYA—S. S. Pres. Coolidge, sailing  
KLX—Musical Program  
KROW—SERA Choral Ensemble  
KJBS-KQW—Afternoon Concert  
KFRC—Just Plain Bill to 3:45  
\*KFRC & net—Dailey's Orchestra;  
3:45, University of California  
KOIN—Newspaper of the Air  
KOL—Comedy Capers to 3:45  
KOMO—Salon Trio; Talk  
KHQ—News; Sylvia Grey  
KFT—Plain Bill to 3:45  
KNX—Housewives' Protective League  
KGB—3:40, Along the Airways.  
KOA—3:45, Big Top  
KSL—Melody Moods

4:00 to 4:30 P. M.

\*KPO & net—Irene Rich, dramatic  
sketch; 4:15, Old World Music  
KGO—Cliff Nazarro, tenor; 4:15,  
Sax Appeal, Mickey Gillette  
KYA—Calling All Stars  
KLX—Records; 4:15, Pianist  
KROW—Waltz Time; Calif. Family  
KJBS—Dance Hits  
KQW—News; Navy Recruiting  
\*KFRC & net—L. Nazir Kurkdjie  
Ensemble  
KJR—Tea Dansant  
KVI—Hal Ross Walkathon to 4:15  
KHQ—4:15, N. W. on Parade  
KFT—4:15, Organ Recital with Vir-  
ginia Flohrl, soprano  
KNX—Haven of Rest  
KOA—Jessica Dragonette with quart-  
et and orchestra  
KSL—4:15, Jack Armstrong

4:30 to 5:00 P. M.

KPO—News; Edna Fischer, pianist  
KGO—For Girls and Boys Only

KYA—Vocalist; Art Talk  
KLX—Pianist; Health talk  
KROW—Vocalist; Health Talk  
KJBS—Song Hits  
KQW—Story Time; Songs  
KGD—Uncle Jerry; Music  
\*KFRC net—Edith Karen, soprano;  
The Harmonettes  
KHQ—4:45, Homer McDonald  
KGW—Abe Bercovitz, violinist  
KOMO—Music; 4:45, Pianist  
KJR—Tea Dansant  
KFT—Organ and Vocal; 4:45, Chas.  
Wellman & Helen Hill  
KNX—Musical Prog.; Talk  
KFO—Health & Psychology; 4:45,  
Organ Recital  
KECA—Recordings  
KFSD—Dr. McCoy's; 4:45, Pianist

5:00 to 5:30 P. M.

\*KPO & network—To be announced  
KGO—Stage & Screen; 5:15, Mort  
Werner, songs and piano  
KYA—Uncle Harry; Flash Gordon  
KLX—Bro. Bob's Club  
KROW—Contest News  
KJBS—Popular Tunes  
KGCC—Dancing Echoes  
KQW—Musical Program  
KGD—Cecil & Sally; News  
\*KFRC & ret—Hollywood Hotel  
KJR—Steamboat Bill; Romancing  
KNX—Synagogue of the Air  
KFWB—Records; 5:15, Gold Star  
Rangers  
KECA—5:15, Care of the Eyes  
KFO—Music; Cecil and Sally

5:30 to 6:00 P. M.

\*KPO & net—Phil Baker & artists  
KGO—Capt. Marble's B. K. T. A.  
Club; 5:45, Jack Armstrong  
KYA—Song Magic; Recordings  
KLX—Covered Wagon Jubilee  
KROW—Health Chat  
KJBS—Front Page Dramas  
KGCC—Lecture; Irish Gems  
KQW—Comic Side of News; Music  
\*KFRC & net—Hollywood Hotel  
KJR—Jack Armstrong to 5:45  
KNX—Og, Son of Fire; 5:45, Or-  
phan Annie  
KFSD—Jr. Chamber of Commerce;  
5:45, To be announced  
KFWB—Gold Star Rangers  
KFO—News; Organ; Skit  
KECA—Records

6:00 to 6:30 P. M.

\*KPO & net—First Nighter; June  
Meredith and Don Ameche  
KGO—Dinner Concert  
KYA—Og, Son of Fire; Concert  
KLX—Arlon Trio  
KROW—News; Melodies  
KJBS—News; Variety Program  
KQW—Department of Agriculture;  
6:15, Market Reports  
KGCC—Dinner Dance  
KGD—Pianist; American Weekly  
\*KFRC & net—Secret Service Club;  
6:15, The Islanders  
KVI—6:15, Organ recital  
KOIN—6:15, Chamber of Commerce  
KJR—Scandinavian Reporter; Music  
KNX—Jack Armstrong; News  
KFWB—News; Records; Organ  
KFO—News; Texas Ramblers  
KECA—Talk; 6:15, News  
KSL—Organ recital

6:30 to 7:00 P. M.

\*KPO & net—Circus Night in Sil-  
vertown  
KGO—Mindways; 6:45, Air Adven-  
tures of Jimmie Allen  
KYA—Orchestra  
KLX—Arlon Trio  
KROW—Dinner Dance; Congoin  
KGCC—Dance Review  
KJBS—Dinner Concert  
KQW—Italian News; Tango Time  
\*KFRC & net—He, She and They  
KVI—Stray Hollister to 6:45  
KJR—News; Jimmie Allen

KNX—Lum & Abner; 6:45, Jimmie Allen, Air Adventures  
 KFWB—Tarzan; Jimmie Allen  
 KECA—Wesley Tourtelotte, organist  
 KFOX—School Kids; Jimmie Allen

7:00 to 7:30 P. M.

•KPO & net—Amos 'n' Andy; 7:15, Tony and Gus  
 KGO—Every Man's Palace  
 KYA—Ernie Smith's Sport Page; 7:15, Musical Moments  
 KLX—News; 7:15, Music  
 KROW—Hammond; L'Italia News  
 KJBS—Italian News; Music  
 KQW—Weather; News; Voice of Portugal  
 KGGC—Recordings; Orchestra  
 \*KFRC & net—Chas. Dornberger's Orchestra  
 KOL—Sports; 7:15, Talk  
 KVI—Stardust Melodies; Beauty Talk  
 KOIN—Jimmie Allen to 7:15  
 KJR—Tonic Tunes; Fish Flashes  
 KFWB—Jimmie Tolson & Bert Fiske; 7:15, Oscar & Elmer  
 KNX—Musical Program  
 KFOX—Eb & Zeb; Bobby & Betty  
 KECA—Records; Sports Talk  
 KFSB—Jimmie Allen's Adv. to 7:15

7:30 to 8:00 P. M.

•KPO & net—Reggie Child's Orch.  
 KGO—Chester Rowell; 7:45, Crosscuts from Log of the Day  
 KYA—Joe Stef's Band; Gold Rush  
 KLX—Musical Jigsaw; Vocalist  
 KROW—Echoes of Italy  
 KGGC—Between the Lines; Orch.  
 KQW—Voice of Portugal; Orchestra  
 \*KFRC & net—Luigi Romanelli & Orch.; 7:45, Strange as It Seems  
 KOIN—Family Robinson to 7:45  
 KHQ—Cubanettes; Vagabonds  
 KOMO—Romance Time  
 KFI—Male Quartet; Drama, Orch.  
 KNX—The In-Laws; King Cowboy  
 KECA—Records; Traffic Ass'n Talk  
 KFWB—News; Average Family  
 KECA—Memories of the Waltz  
 KFOX—Boy Detective; Vocal Duo  
 KGB—Oddities of Life to 7:45  
 KSL—7:45, Comedy Stars  
 KOA—Don Rodolfo's Orchestra

8:00 to 8:30 P. M.

•KPO & net—Henry King's Orch.; 8:15, Emil Polak's Orchestra  
 KGO—Crosscuts; Talk of the Town; KYA—News; Erev Shabbath  
 KLX—World Revue  
 KROW—Echoes of Italy; Labor News  
 KGGC—Spanish-American Program  
 KQW—Recreation Revels  
 \*KFRC & net—Don Bestor's Orch.  
 KOL—News; Orchestra  
 KVI—Musical Masterpieces; 8:15, The Fact Finder  
 KOIN—8:15, Fishing Bulletin

KJR—8:15, Three Peas in a Pod  
 KNX—Rheba Crawford talk; 8:15, Frank Watanabe and Archie  
 KFWB—String Orchestra; Editorial  
 KFOX—Music; Success Doctor  
 KECA—Classic Hour  
 KGB—Magic Words to 8:15  
 KFSB—8:15, Farley's Rangers  
 KOA—8:15, Musical Varieties  
 KSL—Gene Halliday, organist; 8:15, Leroy Smith's Orchestra

8:30 to 9:00 P. M.

•KPO & net—Roy Maxon's Orch.  
 KGO—Comedy Stars of Hollywood; 8:45, To be announced  
 KYA—Paul Pendarvis; Soliloquy  
 KLX—Adventures in Science Play  
 KROW—Harmolita Time; 8:45, Orch.  
 KGGC—Andy Potter Presents  
 KQW—Variety; War Camp  
 \*KFRC & net—Richard Humber's Orchestra  
 KJR—Fireside Phantasies  
 KHQ—8:45, Musical Moments  
 KGO—8:45, Musical Moments  
 KNX—Orchestra; 8:45, Talk  
 KFWB—KFOX—Dance Orchestra  
 KECA—Music; Contract Bridge  
 KOA—8:45, Musical Varieties

9:00 to 9:30 P. M.

•KGO & net—Reflections  
 KPO—Leonard Keller's Orch.; Arlie Simmonds' Orch.  
 KYA—Drama; Headliners  
 KLX—Nevada Nighthanders  
 KROW—Headlines; Watchtower  
 KGGC—The Jewel Box  
 KJBS—News; Western World Wave Club  
 KQW—News; Orchestra  
 \*KFRC & net—Horacio Zito's Orch.  
 KFRS—Headlines of the Past to 9:15  
 KOL—Hollywood Newshawk to 9:15  
 KOMO—9:15, Montag Fireside Hr.  
 KJR—News; 9:15, Reflections  
 KHJ—"Witches Tale"  
 KNX—News; 9:15, Music  
 KFWB—Nick Stuart's Orchestra  
 KECA—News; Records  
 KFOX—Beverly Hill Billies  
 KGB—Crooners to 9:15  
 KSL—9:15, Wrestling Matches

9:30 to 10:00 P. M.

•KPO & net—Roy Maxon's Orch.; 9:45, Ben Pollack's Orchestra  
 KGO—Paul Pendarvis' Orchestra  
 KYA—Headliners; News; America  
 KLX—News; Road Information. 9:45, New and Old Tunes  
 KROW—Wrestling Matches  
 KJBS—KQW—Vacation Guide  
 KGGC—Wyoming Cowboys  
 \*KFRC & net—Bob Kinney & Orch.  
 KOL—9:45, Editorial; News  
 KOIN—Jantzen Beach Orchestra  
 KOMO—9:45, Fashion Notes  
 KVI—9:45, News Flashes

KJR—Stars of Tomorrow to 9:45  
 KFWB—Al Lyon's Orchestra  
 KNX—Sport Revue; 9:45, Fights  
 KOA—Elliott Bros.; Orchestra

10:00 to 10:30 P. M.

•KPO & net—Richfield Reporter; 10:15, Jimmy Grier's Orchestra  
 KGO—Paul Pendarvis' Orchestra; 10:15, Henry King's Orchestra  
 KYA—Fireside Ensemble  
 KLX—Stafford's Orchestra  
 KROW—Wrestling Matches  
 KJBS—Light Classics to 11  
 KQW—Roosevelt Recreation Dance  
 KGGC—Ten o'Clock Review  
 \*KFRC & net—Bill Fleck's Orch.  
 KJR—Henri Damski's Orchestra  
 KNX—Fights, Hollywood Stadium  
 KFWB—Orchestra; King's Men  
 KGB—News to 10:10  
 KFOX—News; Walkathon

10:30 to 11:00 P. M.

•KPO & net—Tom Gerun's Orch.; 10:55, Press-Radio News  
 KGO—Orchestra; 10:55, News  
 KYA—Fireside Ensemble  
 KLX—Orch.; Alice Blue, pianist  
 KROW—Musical Program  
 \*KFRC & network—Orville Knapp's Orchestra  
 KJR—Popular Concert  
 KFI—Bridge Lesson; Walkikians  
 KFOX—Aristocrats; Orchestra  
 KFWB—News; Dance Orchestra  
 KNX—Fights

11:00 to 11:30 P. M.

•KGO & net—Freddie Martin's Orchestra  
 KPO—Organ Concert  
 KYA—Organ Concert  
 KJBS—Dance Time  
 KFRS—News Release to 11:10  
 \*KFRC & net—Del White's Orch.  
 KQW—Don De Forest Orchestra  
 KOMO—Henri Damski's Orchestra  
 KNX—Pasadena Civic Program  
 KFWB—Dance Orchestra  
 KFOX—Eddy Eben, organist

11:30 to 12:00 Midnight

•KGO & net—Laurie Higgin's Orch.  
 KPO—Organ Concert  
 KROW—Music; Headlines  
 \*KFRC & netw—Les Hite's Orch.  
 KQW—Woodyard's Orchestra  
 KOIN—Archie Loveland's Orchestra  
 KFI—Around the Radio World  
 KNX—Pontrelli's Orchestra; News  
 KFWB—Carol Wax's Orchestra  
 KFOX—Freddie Carter's Orchestra

12:00 to Sign Off

KSFO—Midnight Vagabond  
 KROW—Dance Party  
 KNX—Transpacific News  
 KJBS—12:01, Owl Program to 6 a.m.

## PROGRAMS for SATURDAY. . . July 13

7:00 to 7:30 A. M.

•KPO & net—The Honeymooners; 7:15, The Vass Family  
 KYA—Musical Clock  
 KROW—Commuters Clock  
 KJBS—Alarm Klok Klub  
 KQW—The Breakfast Hour  
 KFRC—Breakfast with Bob Bence; 7:25, N. Y. Stocks  
 KOL—Sunrise Express to 8:00  
 KHQ—Morning News to 7:15  
 KNX—Sharplesville  
 KGB—Seven O'Clock Club  
 KSL—Current Melodies

7:30 to 8:00 A. M.

•KPO & net—Rhythm Ramblers; 7:45, Edna Fischer, pianist

KGO—Rise 'n' Shine; 7:45, Whitney Ensemble  
 KROW—7:45, Contest News  
 KQW—Breakfast Hour  
 KFRC—Recorded Program  
 KJR—Market Quotations; Music  
 KVI—Varieties; Cadets  
 KFI—Health Exercises to 7:45  
 KECA—Bible Fellowship; Records  
 KGB—Parson Roberts; Music

8:00 to 8:30 A. M.

•KPO & net—Financial Service; 8:15, Genia Fonarova, soprano  
 KGO—Simpson Boys of Sprucehead Bay; 8:15, Latin Rhythm  
 KYA—Christian Science Reading; 8:15, Mr. and Mrs. Reader

KLX—Records; Stocks  
 KROW—8:15, Headlines  
 KJBS—Band Concert; Popular Tunes  
 KQW—Concert; Religious Forum  
 KGD—Honolulu Serenader  
 \*KFRC & net—Orientele  
 KGW—Jack Sprigg's Orch.  
 KHQ—8:15, Shoe Doctors  
 KOMO—8:15, Morning Reveries  
 KFI—Church Quarter Hour to 8:15  
 KNX—Health Talk; Music  
 KSL—Saving Sue

8:30 to 9:00 A. M.

•KPO & net—Words and Music  
 KGO—Morning Eye-Opener  
 KYA—Morning Concert  
 KLX—Covered Wagon Jubilee

KROW—Music Box Revue  
 KQW—Morning Concert  
 KGDM—Health talk; Music  
 \*KFRC & net—Al Roth and his  
 Syncopators  
 KHQ—Early Birds  
 KOMO—8:45, Sweet Rhythm  
 KNX—Religious Talk  
 KFOX—Health and Efficiency; 8:40,  
 Electrical Transcription

9:00 to 9:30 A. M.

•KPO & net—Roy Maxon's Orch.  
 KPO—9:15, News Reporter  
 KGO—Morning Eye-Opener  
 KYA—9:15, Prudence Penny  
 KROW—Music Box Revue  
 KGGC—Morning Parade  
 KJBS—Popular Vocalists  
 KQW—Tuneful Topics  
 KGDM—Records  
 \*KFRC & net—Jack Shannon,  
 tenor; 9:15, Jack & Gil  
 KOL—9:15, Prudence Penny  
 KOMO—Now and Then  
 KVI—Hal Ross Walkathon  
 KGW—Trilo  
 KFT—Metrical Talk; 9:15, News  
 KNX—Carefree Capers  
 KFOX—9:15, Health and Psych.  
 KFSD—Good Cheer; Dr. McCoy  
 KSL—9:15, Jennie Lee, stylist

9:30 to 10:00 A. M.

•KPO & net—Amer. Farm Bureau  
 KGO—Studio Program  
 KYA—Waltz Time  
 KLX—Clinic of the Air; Records  
 KROW—Health Chat  
 KJBS—Songs of Romance  
 KGGC—At the Song Shop  
 KGDM—News and Music  
 KQW—Songs of Romance; Classics  
 \*KFRC & network—Billy Mills and  
 Company  
 KOL—Julie Day to 9:45  
 KVI—Orchestra; Dr. Burns  
 KJR—News; Early Echoes  
 KNX—Music; 9:45, News  
 KFOX—9:45, Press Radio News  
 KGB—News; Stocks  
 KSL—Junior Amateur Revue

10:00 to 10:30 A. M.

•KPO & net—Amer. Farm Bureau  
 KGO—News; Music  
 KYA—Records; 10:15, Concert  
 KLX—Music; 10:15, Stocks; News  
 KROW—Rhythm Revue  
 KJBS—Radio News; Organ  
 KQW—News; Old Tunes  
 KGGC—Hits of Today  
 KGDM—Aunt Mary and Kliddies  
 \*KFRC & net—Madison Ensemble  
 KOIN—Art Kirkham  
 KOL—News Flashes; Melodies  
 KJR—Music Shop  
 KNX—Modern Piano Music  
 KFOX—Music; Talk; Ballads

10:30 to 11:00 A. M.

•KPO & net—Miniature Theatre  
 KGO—Musical Clock  
 KYA—Organ Concert  
 KLX—International Kitchen  
 KROW—Hot Shots; Larry Canelo  
 KJBS—Popular Selections  
 KGGC—Children's Happytime Revue  
 KQW—Aunt Sammy; Favorite Tunes  
 \*KFRC & net—Maurie Sherman's  
 Orchestra  
 KHQ—Miniature Revue; News  
 KJR—Music Shop; Uncle Hank  
 KNX—Magic Harmony  
 KFOX—Orchestra; Vocalist  
 KOA—Stock Reports

11:00 to 11:30 A. M.

•KPO & net—Week-End Revue  
 KGO—Josef Hornik's Orchestra  
 KLX—Recordings; Tonic Tunes  
 KROW—Health Talk; Music  
 KJBS—Hits of the Past; 11:15,  
 Traffic Safety  
 KQW—Popular Orchestra  
 KGGC—Musical Program

KGDM—Organ Recital  
 \*KFRC & net—On the Village Green  
 KOIN—Fred Meyer to 11:15  
 KOL—Cecil Solly to 11:15  
 KVI—Talk; 11:15, The Observer  
 KGW—Stars of Tomorrow  
 KJR—Rhythm Rulers  
 KNX—Musical Program  
 KECA—Classic Music  
 KFOX—Organ; Real Life Sketches

11:30 to 12:00 Noon

•KPO & net—NBC Music Guild  
 KGO—Organ Concert  
 KYA—Dance Time; Musical  
 KLX—Records; Scrapbook  
 KROW—Concert Melodies  
 KJBS—Dance Orchestra  
 KQW—Stocks & Bonds; News  
 \*KFRC & net—Buffalo Presents  
 KGGC—Mountain Music  
 KNX—Musical Program  
 KFOX—News; Ballads

12:00 to 12:30 P. M.

KGO—Organ, 12:15, Ken Sparnon  
 String Ensemble  
 •KPO & net—Music Guild; 12:15,  
 Western Agriculture  
 KYA—News; 12:03, Concert  
 KLY—Closing S. F. Stocks; Music  
 KROW—Headlines; Cal. Farm Prog.  
 KJBS—News; 12:05, Music  
 KQW—News; Noontime Tunes  
 KGDM—Road Reports; Serenader  
 KJR—Grain Reports; Brief Notes  
 \*KFRC & net—Among Our Souve-  
 nirs  
 KHQ—12:15, Organ Concert  
 KOIN—Radio Show to 12:15  
 KVI—12:15, Front Page Headlines  
 KNX—News; 12:15, Drury Lane  
 KECA—Records; News  
 KFVB—Al Jarvis, talk  
 KFOX—Popular Ballads

12:30 to 1:00 P. M.

•KPO & network—West. Agricul.  
 KGO—String Ensemble; 12:45,  
 Teddy Hill's Orchestra  
 KLX—Guitar Duo; Song Market  
 KROW—Portuguese Program  
 KJBS—Dance Music  
 \*KFRC & net—Chicagans with  
 Marshall Sosson  
 KJR—Children's Matinee  
 KNX—Major League Baseball

1:00 to 1:30 P. M.

KPO—Radio News Reporter; 1:15,  
 Vagabonds Quartet  
 •KGO & net—Teddy Hill's Orch.;  
 1:15, Jackie Heller, tenor  
 KYA—Songs; 1:15, Tango Time  
 KLX—Records; S.F.R.A. Concert  
 KROW—Portuguese Program  
 KJBS—Musical Novelties  
 KQW—Friendly Street  
 KGDM—Education; Bondons  
 \*KFRC & net—Eugene Jelenik's  
 Orchestra  
 KFRC—1:25, N. Y. Stocks  
 KOIN—Book of Life  
 KHQ—Business & Pleasure  
 KFT—Market Reports to 1:15  
 KNX—Major League Baseball  
 KSL—Rhythm Rambles

1:30 to 2:00 P. M.

•KPO & net—Austin Wylie's Orch.  
 KGO—Vagabonds Quartet  
 KLY—Popular melodies  
 KROW—Popular Concert  
 KROW—Ross Love; Dance Masters  
 KJBS—Musical Novelties  
 KQW—Afternoon Concert  
 KGDM—The Bondons; Records  
 \*KFRC & net—Elsie Thompson and  
 Evelyn MacGregor  
 KHQ—MacGregor to 1:45  
 KJR—Headliners; Memory Paths  
 KNX—Pontrelli's Orchestra

2:00 to 2:30 P. M.

•KPO & net—Kearney Walton's  
 Orchestra

KGO—Electrical Transcription  
 KYA—Musical Strings  
 KLX—Records; 2:25, Baseball Game  
 KROW—Story Time  
 KJBS—Dance Music  
 KQW—Dance Matinee  
 KGDM—Records; News Flashes  
 \*KFRC & net—Frederic William  
 Wile; Dalton Brothers  
 KJR—Salon Hour  
 KNX—Amateur Hall of Fame  
 KECA—Classic Hour  
 KFVB—Musical Program  
 KFOX—Christian Science Program  
 KECA—Classic Hour

2:30 to 3:00 P. M.

•KPO & net—Morin Sisters; 2:45,  
 Master Builder  
 KGO—Electrical Transcription  
 KYA—Lost & Found; Music; 2:43,  
 Baseball Game to 4:45  
 KROW—Dance Matinee  
 KLX—Baseball Game to 4:30  
 KJBS—Events of Interest; Music  
 KQW—Matinee; Songs  
 KGDM—Musical  
 \*KFRC—Frank Dailey & Orch.  
 KFRC—2:55, Recordings  
 KOIN—2:55, Songs for You  
 KNX—Amateur Hall of Fame  
 KFOX—Los Caballeros  
 KSL—News Flashes to 2:45  
 KOA—News to 2:35

3:00 to 3:30 P. M.

•KGO & net—At the Piano; 3:05,  
 Art of Living; Jamboree  
 KPO—Musical; Instrumentalists  
 KROW—Records; Katherine Sherry  
 KJBS—Opera Selections  
 KQW—Variety Program  
 KGDM—Records; Al and Jack  
 \*KFRC & net—Portland Symphony  
 Orchestra  
 KHQ—Club Bulletin; Covered Wagon  
 KJR—Vindobonians  
 KFOX—Carol Wax's Orch.  
 KSL—News; Boy Scouts Program  
 KNX—Amateur Hall of Fame  
 KOA—3:05, Microphone News

3:30 to 4:00 P. M.

•KGO & net—Variety Musicale;  
 3:45, Sax Appeal  
 KPO—Pair of Pianos  
 KROW—Recorded Programs  
 KJBS—Dance Orchestra  
 \*KFRC & net—Symphony Orchestra  
 KOIN—Newspaper of the Air  
 KHQ—News; 3:45, Sylvia Gray  
 KJR—Enchanted Islands  
 KFOX—Cheerio Boys; Talk  
 KOA—"Highway Frolic" to 3:45

4:00 to 4:30 P. M.

•KPO & net—Hit Parade; Gogo De-  
 Lys, Kay Thompson, Lennie Hay-  
 ton's Orchestra  
 KGO—Net Cook, popular singer;  
 4:15, Beaux Art Trio  
 KQW—News; Popular Tunes  
 KGGC—Studio Program  
 KROW—Gems of Melody; 4:15,  
 Accordionist  
 KJBS—Dance Orchestra  
 \*KFRC & net—Modern Minstrels  
 KJR—Goodwill Talk; Dansant  
 KNX—Haven of Rest  
 KFOX—News; Music  
 KSL—Merchants' Radio Column

4:30 to 5:00 P. M.

•KPO & net—Hit Parade  
 KGO—Beaux Arts Trio  
 KYA—4:45, American Youth; News  
 KLX—Helen Parmelee, pianist  
 KROW—Katherine Sherry; Talk  
 KJBS—Song Hits  
 KQW—Children's Story Time; Songs  
 of the Islands  
 \*KFRC & net—Modern Minstrels  
 KFRC—4:45, Campbell Program  
 KOIN—Newspaper of the Air  
 KNX—Musical Program  
 KSL—Merchants' Radio Column

5:00 to 5:30 P. M.

•KPO & net—Radio City Party  
 KGO—Paul Pendarvis' Orchestra  
 KYA—Uncle Harry, Metropolitans  
 KLX—Bro. Bob's Club  
 KROW—Contest News  
 KJBS—Popular Selections  
 KGGC—The Street Singer; 5:15, Go to Church Tomorrow  
 KQW—Airs of South America  
 KGDM—Cecil & Sally; News  
 \*KFRC & net—Columbia's Concert Hall  
 KJR—Over the Skyways, talk; 5:15, Magic Harmony  
 KNX—First Radio Church  
 KFWB—Playtime Lady; Rangers  
 KFOX—Quartet; Cecil & Sally

5:30 to 6:00 P. M.

•KPO & net—Shell Chateau, starring Al Jolson with guest stars  
 KGO—Dinner Concert  
 KYA—Serenader; Records  
 KLX—Covered Wagon Jubilee  
 KPOW—Travelogue  
 KJBS—Popular Selections  
 KGGC—Dancing Echoes; Irish Gems  
 KQW—Modern Melodies  
 \*KFRC & net—Calif. Melodies  
 KFRC—5:45, Dr. Campbell Prog.  
 KJR—Candlelight Time  
 KNX—Organ Recital  
 KFWB—Gold Star Rangers  
 KFOX—Theatre News; Organ

6:00 to 6:30 P. M.

•KPO & net—Al Jolson  
 KGO—Dinner Concert  
 KYA—Cyrus Trobbe's Orchestra  
 KLX—Arion Trio  
 KROW—News; Congo  
 KJBS—News; Lost & Found; Variety  
 KQW—Voice of Portugal  
 KGGC—Dinner Dance Revue  
 \*KFRC & net—Fiesta from Canada  
 KJR—Scandinavian Reporter; Music  
 KNX—Concert Orchestra; News  
 KFWB—News; This and That  
 KFOX—News; Texas Ramblers

6:30 to 7:00 P. M.

•KPO & net—Carefree Carnival  
 KGO—Ted White, tenor; 6:45, Education Today  
 KYA—Cyrus Trobbe's Orchestra  
 KLX—Arion Trio  
 KROW—Dinner Dance; Dr. Fauci  
 KJBS—Dinner Concert  
 KQW—Italian Globe Trotter  
 KGGC—Dance Review  
 \*KFRC & net—Jan Garber's Orch.  
 KGDM—Records; Flash Gordon  
 KJR—News; Tonic Tunes  
 KGW—Oregonian on Review  
 KNX—Orch.; Spice of Life  
 KFWB—Vanities; 6:45, American Weekly  
 KECA—Wesley Tourtellotte, organ  
 KFOX—KFOX School Kids; Drama

7:00 to 7:30 P. M.

•KPO & network—National Barn Dance, variety program  
 KGO—John Teel, baritone; 7:15, Edna Fischer, pianist  
 KYA—Sport Page; Laces and Graces  
 KLX—News; Ben Murphy, baritone  
 KROW—Hammond; L'Italia News  
 KJBS—Italian News; Music  
 KQW—News; Law Enforcement  
 KGGC—Musical Program  
 \*KFRC & net—Abe Lyman's Orch.  
 KOL—Sports; 7:15, Talk  
 KVI—7:15, Musical Moments  
 KOIN—7:15, Musical Moments  
 KJR—Los Argentinos  
 KNX—Calmon Luboviski, violinist  
 KFWB—Hawaiian Sunlight; Flash Gordon  
 KECA—Raine Bennett, Poet  
 KFOX—Vagabonds; Bobby & Betty  
 KFSD—Los Flores Mountaineers  
 KGB—7:15, Musical Moments

7:30 to 8:00 P. M.

•KPO & net—Barn Dance  
 KGO—Spiritual Fantasy  
 KYA—Drama  
 KLX—Metropolitan Moods  
 KROW—Grace Herold Trio; Portuguese Program  
 KGGC—Between the Lines; 7:45, Helen Schneider  
 KQW—"Calling All Cars"  
 \*KFRC & net—Claude Hopkins Or.  
 KOIN—The Journal; Orchestra  
 KJR—World Revue  
 KFWB—Juvenile Revue  
 KQW—Dance-a-While  
 KFOX—Juvenile Revue  
 KECA—Musical Program  
 KFSD—Accordion Melodies to 7:45  
 KSL—Harry Clarke, baritone and Peter Spraynozzle

8:00 to 8:30 P. M.

•KPO & net—Freddie Martin's Orchestra  
 KGO—Cliff Nazarro, tenor; 8:15, Talk of the Town  
 KYA—News; Amateur Hour  
 KLX—Musical Soiree  
 KROW—Latin-American Program  
 KGGC—Spanish-American Program  
 KQW—Italian Radio Theatre  
 KHQ—Old-Time Party  
 \*KFRC & net—Bob Kinney's Orch.  
 KOMO—Sweethearts on Parade  
 KFWB—Now and Then  
 KNX—Hollywood Barn Dance  
 KECA—Dept. of Playground  
 KFOX—Travel Talk; 8:15, Pianist  
 KGB—Comedy Stars to 8:15  
 KOA—Arlie Simmonds' Orchestra

8:30 to 9:00 P. M.

•KPO & net—Paul Pendarvis and Orchestra  
 KGO—Josef Hornik's Orchestra  
 KYA—Amateur Hour  
 KLX—Musical Soiree  
 KROW—Latin-American Program  
 KQW—Theatre; Vocalist  
 KGGC—Recorded Program  
 \*KFRC & net—Little Jack Little's Orchestra  
 KOL—Junior Birdmen to 8:45  
 KOIN—8:45, Leon Drew, organist  
 KOMO—Rocky Mountaineers  
 KNX—Hollywood Barn Dance  
 KFWB—Sons of the Pioneers  
 KECA—Recordings  
 KFOX—Sons of the Pioneers

9:00 to 9:30 P. M.

•KPO & network—Waltz Time  
 KGO—Leonard Keller's Orchestra  
 KYA—Leon Mojica's Orchestra  
 KLX—Faucit Theater of the Air  
 KROW—News; Music  
 KGGC—Musical Program  
 KQW—News; Orchestra  
 \*KFRC & net—Orville Knapp's Orch.  
 KOL—Public Bench to 9:15  
 KOMO—Thirty Minutes of Music  
 KJR—News to 9:15  
 KNX—News; Barn Dance  
 KFOX—Al Lyon's Orchestra  
 KFWB—Al Lyon's Orchestra  
 KOA—Don Rodolfo's Orch.

9:30 to 10:00 P. M.

•KPO & net—Pan-Americana  
 KGO—Roy Maxon's Orchestra  
 KYA—Bathday Party  
 KLX—News; Dance Music  
 KROW—Rhythm Revue; Detective Story  
 KJBS—News; Variety Program  
 KGGC—Wyoming Cowboys  
 KQW—Hits of the Past  
 KFRC—Musical Moments to 9:45  
 \*KFRC & net—Al Dien & Orchestra  
 KOL—9:45, News Flashes  
 YJR—Metropolitan Moods  
 KFWB—KFOX—Slumbertime  
 KVI—9:45, Ledger News Flashes  
 KECA—Chamber Music; Records  
 KNX—Hollywood Barn Dance

10:00 to 10:30 P. M.

KPO—Beaux Arts Trio  
 \*KGO & net—Quartet Time; 10:15, Henry King's Orchestra  
 KYA—Bathday Party  
 KLX—Dance Music; Jess Stafford's Orchestra  
 KROW—Nerino Turchet; Dancing Party  
 KJBS—Variety Program to 11  
 KGGC—Pen-o'Clock Review  
 Clark; 10:15, Dance Review  
 KQW—Scott Held's Orchestra  
 \*KFRC & net—Dick Jurgen's Orch.  
 KOL—10:15, Harrison Mason  
 KJR—Till Tomorrow  
 KNX—Pasadena Civic Program  
 KFWB—News; Orchestra  
 KFOX—News; Walkathon  
 KECA—Musical Celebrities; Records  
 KGB—News Flashes to 10:10

10:30 to 11:00 P. M.

KPO—Bal Tabarin Orchestra  
 •KGO & net—Henry King's Orch.; 10:55, News  
 KYA—Voice of Erin  
 KLX—Carefree Capers  
 KROW—Music; Judge Rutherford  
 KQW—Dance Music  
 \*KFRC & net—Archie Loveland's Orchestra  
 KJR—Damski's Orchestra  
 KVI—Dance Orchestra  
 KNX—Valesco's Quartet; 10:45, Pontrelli's Orchestra  
 KFWB—Dance Orchestra  
 KFOX—Aristocrats; Orchestra  
 KFSD—Laurie Higgins Orchestra

11:00 to 11:30 P. M.

KPO—Organ Recital  
 \*KGO & net—Dick Jurgen's Orch.  
 KYA—Sandman Organ  
 KROW—Dance of the Hour  
 KJBS—Dance Time to 12  
 KFRC—News to 11:10  
 \*KFRC & net—Don Bestor's Orch.  
 KNX—Pontrelli's Dance Orchestra  
 KFOX—Eddy Ebel, organist  
 KFWB—Dance Orchestra

11:30 to 12:00 Midnight

KPO—Organ Music  
 \*KGO & net—Mann Bros. Orchestra  
 \*KFRC & net—Les Hite's Orch.  
 KYA—Organ Recital  
 KROW—Dance Music; Headlines  
 KOMO—Henri Damski's Orchestra  
 KFWB—Dance Orchestra  
 KNX—Pontrelli's Orchestra  
 KFOX—Dance Orchestra

12:00 to Sign Off

KROW—Midnite Jamboree  
 KJRS—12:01 Owl Program to 8 a.m.

Short Wave Features

(Continued from Page 4)

5:00 Radio City Party.....	W2XAF
5:30 Al Jolson Chateau.....	W2XAF
6:15 Jeannine Macy and Her Men.....	W8XAL
.....	W2XAF
6:30 Summer Follies.....	W8XAL
6:45 The Virginians.....	W2XAF
7:00 Ace Brigade's Orch.....	W2XAF
7:00 Spanish Music.....	HJ1ABG
7:00 Cricket Matches.....	GSC & GSD
7:00 Special English Program for North American Listeners.....	HJ4ABL
.....	HJ4ABL
7:00 Special DX Broadcast for American Listeners.....	HIZ
7:00 Spanish Dance Music.....	HJ1ABG
7:30 Ben Pollack's Orch.....	W2XAF
8:00 Program Resume.....	W2XAF
8:30 Cuban Music.....	COC
9:00 Int'l Program.....	JVH
9:00 Baseball Game.....	JXM
9:00 Test Broadcast.....	C09GC
11:40 Special program announced in English for short wave clubs.....	HHH

• Monday through Friday.

# Supreme!

## 1936 PHILCO

ALL-WAVE  
HIGH FIDELITY  
*116X Model Receiver*

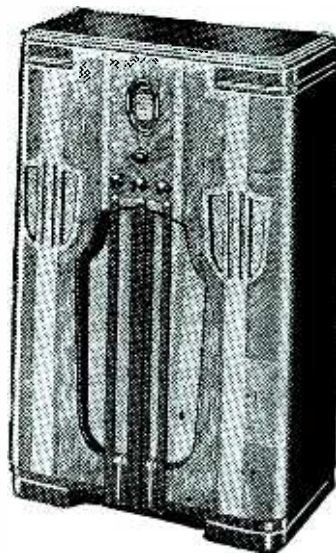
---

*See It! . . . Hear It!*

---

### SPECIAL OFFER

Philco dealers everywhere in the 11 western states offer you a unique service. With the purchase of a new 1936 Philco World Wave radio they will present you with a six months' membership in the Western World Wave Club. Think of it! All the latest short wave information, actual tuning conditions as they exist on the Pacific Coast, brought to you every two weeks for a period of six months at no cost to you. Your enjoyment of the marvelous performing Philco will be increased 1000 per cent by this service. Investigate this offer at once. See your nearest Philco dealer immediately!



Above is shown the finest Philco radio ever built. Now you can have famous Philco High Fidelity in an all wave radio. Hear the overtones that are so necessary to the enjoyment of music and the speaking voice. And remember that this radio brings you every broadcast service on the air . . . daytime and nighttime American and Foreign short wave stations . . . amateurs . . . aircraft . . . both police bands . . . regular broadcast . . . and the new U. S. Government Weather broadcast band on ultra long wave! The performance of this radio will amaze, the tone will delight you, the cabinet is the most beautiful piece of radio furniture ever created! The Philco 116-X is priced at \$185. With Philco All Wave Aerial \$190.

*Remember, Philco World Wave radios start at . . . \$39.95*

### THE 1936 LINE OF PHILCO RADIOS

43 Models from \$22.90 to \$625 have arrived at your local *Philco* dealer store

# PHILCO