

9 to 9:30  
NBC Network

“SUNDAY MORNING SPECIAL”

# BROADCAST WEEKLY

OCTOBER 14th to 20th



Rosaline Greene, dramatic artist, who is the speaking voice of "Mary Lou" on Capt. Henry's Showboat. Muriel Wilson is the singing "Mary Lou."


10¢

65 70 75

LEADING RADIO PROGRAM OF THE PACIFIC COAST

# A SURE Way to get BETTER Reception—

*Unconditional Written Guarantee Protects You*

	<b>NATIONAL UNION RADIO CORPORATION</b> <small>OF NEW YORK</small>	
	<b>Factory Guarantee</b> <span style="float: right;">(NO ERASURES PERMITTED)</span>	
<p>Whereas: NATIONAL UNION RADIO CORPORATION uses only the finest materials obtainable and manufactures to exacting specifications with constant supervision and test</p> <p>Each National Union Radio Tube when dated both on the tube and entered below with purchaser's name and countersigned by dealer carries this unconditional guarantee:</p> <p><b>TO GIVE SATISFACTORY OPERATING SERVICE FOR SIX MONTHS FROM DATE OF SALE.</b></p>		
Date Sold _____	Type(s) _____	and Quantity _____
Purchaser's Name _____	Dealer's Name _____	
<small>VOID: IF FORM IS NOT ISSUED TO PURCHASER BY DEALER ON OR BEFORE APRIL 1, 1935 FOR PURCHASER'S PROTECTION NATIONAL UNION ISSUES THESE FORMS TO DEALERS TWICE YEARLY</small>		

ENJOY Radio at its BEST. Give your set a chance. No receiver can be better than its tubes. Try "Professional" NATIONAL UNION Tubes and hear the difference yourself. They cost no more, and you take no chances. You are protected IN WRITING. You KNOW you are getting the BEST Radio performance money can buy, because—

- NATIONAL UNION is the ONLY Tube that gives you a six-months' unconditional written guarantee.
- MORE radio manufacturers, engineers, and repair experts use NATIONAL UNIONS than any other Tube
- NATIONAL UNION is the ONLY Tube with the CORRUGATED Plate
- X-RAY examinations substantiates NATIONAL UNION'S superior performance features and accuracy of manufacture.

## NATIONAL UNION RADIO TUBES



★  
SEE THE  
NEW 1935

### STEWART -WARNER

WORLD-WIDE  
Radios with the  
"MAGIC DIAL"

FREE—The NATIONAL UNION Dealer in your vicinity will gladly test your Tubes for you FREE and give you a demonstration of NATIONAL UNIONS. Demand the WRITTEN GUARANTEE when you buy ANY Radio Tube. For Dealers' names or further information, write—

**MOORE ELECTRIC SUPPLY CO.**  
550 5TH STREET, SAN FRANCISCO, CALIF.

DISTRIBUTORS—National Union Radio Tubes and Stewart-Warner World-Wide Radios.

Hear "CAPT. DOBBSIE" every MON., WED. and FRI., 8 to 8:15 A. M. over Columbia network

# BROADCAST WEEKLY

(FORMERLY RADIOCAST WEEKLY • ESTABLISHED 1922 AS BROADCAST PROGRAM)

Published weekly by PACIFIC PERIODICAL CORPORATION

**Publication Office**  
1114 Mission Street  
SAN FRANCISCO

**Telephone**  
Underhill 7676

10 Cents the Copy from All  
Newsdealers

\$1.50 Per Year by Subscription



**O. J. NUSSER**  
*Editor and Manager*

Entered as second-class matter,  
March 25, 1923, by the Postoffice,  
San Francisco, California, under  
Act of March 3, 1879.

Vol. XIII

San Francisco, California, October 13, 1934

No. 40

**P**OLITICALLY neutral, yet believing that neither Radio nor this publication can serve a greater purpose than the happiness and comfort of the American home, BROADCAST WEEKLY invites the attention of its "family" to the opportunities for home modernization and improvement under the federal government's "*National Housing Act.*"

In availing himself promptly of these opportunities the owner not only minimizes the cost of making necessary or desirable improvements and enhances the value of his property, but aids in multiplying business activity and in increasing employment—factors of prime importance in hastening the return of general prosperity.

Is *your* home completely modern? Are there repairs or improvements which you have postponed or neglected because of their cost? Delayed longer, the expense may be even greater. If you act *now* the entire machinery of the government is organized to assist you in every way possible.

Plumbing, heating, painting, lighting, floors, roofs, walls, woodwork, additions, repairs—work, materials, and appurtenances of every conceivable kind are included, provided only that such improvements become an integral part of the property and are not "movables."

The plan is very simple. Ask any building material dealer, contractor, or architect for the name of your neighborhood bank with whom the government has arranged to make such loans. Then you borrow the necessary money from this bank for any period not exceeding three years, and at not more than \$5 per \$100. There is no other charge for any reason whatsoever, and you need not be a depositor in the bank from which you borrow. The only requirements are that you have good credit standing in your community and your total annual income be at least five times the annual payment on the note.

Following are excerpts from the Radio speech of James A. Moffett, Federal Housing Administrator, delivered at 9:00 p. m., September 19, over a national hook-up.

"The main objectives of the Modernization Program are: first, to induce the home owners of America to modernize, repair or otherwise improve their residence and business properties; second, to have the banks make loans to the property owners for modernization purposes; and, third, to demonstrate to labor and everybody else financially interested in the building and durable goods industries that this campaign, together with others planned under the National Housing Act, offers them the biggest and most permanent potential market for labor, materials and general business stimulation that this or any other country has ever had."

"From field reports we estimate that one million dollars a day of loans are being made under our plan; and from experience in past community modernization campaigns we are sure that double that amount of cash business is being done. That amounts to three million dollars a day, more than a billion dollars a year, going into modernization and repairs throughout the United States. It is needless to comment on the benefits derived by all lines of business from the expenditure of that much money."

"The fact is that the principal items in building costs are below the price level of 1926; and that every owner of home or business property will be wise to modernize and repair while present prices prevail. In the general prosperity which our campaign is intended to promote, price levels will probably go up. That is expected, and it is desirable. Furthermore, even after advance of the existing price level to the level of 1926, money spent on building would still represent a good investment. So the moral of the situation is plain: the sooner the property owner modernizes and repairs, or puts up new buildings, the better off he will be; and whenever he may make such improvements, he will be both benefiting himself and playing the part of the good citizen and patriot in contributing his fair share to the movement that means prosperity and happiness once more for all Americans."



# MICROPHONE GOSSIP



• • • The NBC microphone seems to fascinate the stork, for he has made his second visit within a month to a feminine star.

Nanette La Salle, contralto ballad singer, is at Mt. Zion Hospital with an eight-pound baby son, born Sunday afternoon, September 30.

Miss La Salle, who is Mrs. Harry Sarkin in private life, was a Los Angeles business girl when a friend of her employer heard her singing and insisted upon an audition with Charlie Wellman, at KFI. Wellman immediately put her under contract and she sang with him until Lew Frost, Program Manager of NBC's Western Division signed her for the San Francisco staff. She was heard at various times on the Carefree Carnival, Big Ten and other popular broadcasts until the advent of the bird with the long legs and the big bill.

The Sarkins have named the baby Jan Sarkin.

• • • Vincent Lopez who is heard with his orchestra on the M-J-B Demi Tasse Revue, says, the greatest thrill in his life came in 1930 when he signed a contract with the management of the Hotel St. Regis in New York for \$1,000,000. His second greatest thrill came, when on an NBC broadcast, Major Bowes of the Roxy Theatre, New York, paid tribute to Lopez as a conductor, pianist and composer.

• • • Arnold Maguire, one of KFRC's illustrious members, can be seen most any day gazing longingly at roller skate advertisements. Since he has been made sustaining program director for the Don Lee station, and insists upon keeping his former roles of writer and producer of Hodge Podge Lodge, Adhesive Pontoon of the Blue Monday Jamboree, and a few other characters, he has been busier than the now proverbial bird dog.

• • • Being six feet five-inches tall has its handicaps, take it from John Barclay, leading man of the Palmolive Beauty Box Theatre. The microphones are usually a little too low for him. To vary the height, Mr. Barclay has a habit of working with legs wide apart and sliding them out. The audience is always amused but sometimes fellow actors are exasperated at having to avoid the obstruction as they approach the mike.

• • • Fred Allen and his Art Group wondered why the studio audience "sat on their hands" for the first half of last week's Town Hall Tonight show. No matter how funny Fred was there was no response from the

audience. Portland pumped it as hard as she could. Still not a ripple. And then they solved the mystery. Somebody had forgotten to turn on the studio amplifiers.

• • • Another radio romance with a happy ending came to light today when Imelda Montagne, petite contralto member of the Coquettes Trio, 'fessed up to the fact that she has been Mrs. Mel Waters since Tuesday, August 28. Her marriage to the well known San Francisco cafe owner took place at Tia Juana on that date, with Marjorie Primley, another Coquette, as bridesmaid.

• • • Sometimes, if you get mad enough, you can get what you want. That's how Irene Hubbard, who creates the rôles of Maria on Captain Henry's Show Boat, got her start in radio. Miss Hubbard gave audition after audition without success—and without pay. One day, while she was giving still another one, the seeming uselessness of the whole thing overwhelmed her. She broke off short in the middle of a scene from "The Road to Rome," Robert Sherwood's excellent play. "That's all, gentlemen," she announced through the microphone to the listeners somewhere in the broadcasting building. Then she walked out. An hour later the studio telephoned her home and informed her that they had a job for her. That was her first one on the air.

• • • The Vagabond Al Pearce Gang seems to have settled down in Los Angeles and Hollywood for a long stay. Al Pearce has leased a house on Queen's Road, Hollywood, and it is always full of guests. Carlyle Bennett and wife have a home in Beverly Hills, next door to Helen Hayes, where they do lots of entertaining. Morey Amsterdam and Tony Romano also have moved into a Hollywood furnished house, as has Hazel Warner. Most of the rest of the Gang are tucked away in apartments. However, all this settling down may be just an omen that the Gang is about to move on again. A sailor always figures that if he paints his cabin he has a poor chance of making another trip.

• • • Roderick "Voice With the Smile" Mays, who m. c.'s the weekly KYA Bathday Party, is now producing two programs written by H. C. Connette over this station.

• • • Betty Barthell is the recipient of fan mail from one of the world's most isolated regions—the Antarctic continent. Members of the Byrd Expedition recently sent a radio-gram congratulating her on her singing during a CBS Byrd program.

• • • Discussing the forest fire fighting over the NBC is right up the alley of commentator Sam Hayes, Richfield reporter. Sam was once park ranger in Yosemite and led the night crew against the famous Wawona fire in 1926. He still carries on his brow the scars of injuries received from a falling tree.

• • • All members of Cyrus Trobbe's KYA concert orchestra has been with the genial director for over ten years. During that time this group has appeared in hotel concerts and on outstanding radio programs.

• • • MacGregor & Sollie electrical transcription studios have just completed a series of programs for the Knox Company of St. Louis. The series is a dramatization of Doc Savage stories from the Street & Smith publication of that name. Edwin Max played the title role, with Karl Kroenke as second lead. The stories were dramatized by Kenneth Robeson, produced by John Eugene Hasty, with S. A. Sollie technical director.

• • • James Melton's first job was clerking in a Nashville grocery store for 50c a day.

• • • Gracie Allen is a direct descendant of Rob Roy of Scotland, famous Scottish chieftain.

• • • Morton Downey never engages in any sports, preferring strenuous rub-downs as a means of keeping fit.

• • • Frank Black, the NBC general musical director, whose string symphony broadcasts set a new high in classical music broadcasting, began his conducting career in the popular music field. Black got his start in New York seventeen years ago as assistant conductor at the Century Theater.

• • • If Sunny Lee, first trombonist with Isham Jones' orchestra, isn't on the air these days he's in it—he just got his pilot's license.

• • • Martin Provensen, NBC announcer, has a son who is a talented sculptor.

• • • Tony Romano, Al Pearce singer and guitarist, started out playing the violin at 14. He was the leader of the Madera, California, High School Orchestra. That was four years ago.

• • • In a recent interview over a southern California station, Al Pearce stated that he has been married for four years to the former Audrey Carter of San Francisco, that he considers her very pretty and that he is very much in love with her.

• • • Over one thousand persons were heard at the open house auditions given by Al Pearce at the Radio Playhouse last week. Girl singers were predominant.

• • • Emery Detusch, who was an Olympic high-jump star in 1922, lays aside his gypsy violin at least twice weekly and hurries out to Columbia University's Baker Field, where he still can take it "on high."

• • • Pet peeve of Elliot Shaw, the Revelers' baritone, is, of all things, golf! For some unexplained reason Shaw has a distinct aversion to the game and even refuses to touch foot on a links.

• • • "You can't even speak good English," writes a listener to Yogi Yorgesson, Al Pearce comedy mystic. Yogi, under the name of Harry Stewart, was once an announcer for a Northwest station.

• • • The Revelers, NBC quartet who are real veterans in the radio game, will celebrate their thirteenth anniversary on the air this October. The famous quartet began broadcasting from the old Westinghouse studio in Newark in the days when it was a triumph if their program was picked up by a workman stationed in the roof with a crystal set.

• • • Gene, of Gene and Glenn, the famous comics heard over NBC networks, keeps himself fit by going on a diet every six months. Glenn doesn't go in for the diet fads of the hour, either. He merely cuts out all lunches and confines himself to a mild dinner.

• • • A friend of Madame Ernestine Schumann-Heink, the "world's best loved mother" now heard on NBC, tells this story about her:

Caruso entered a restaurant just after an operatic performance to find the noted diva seated at a table with a huge double steak before her.

"Why Tina," he exclaimed, "surely you are not going to eat that all alone?"

"No," she flashed. "Mit potatoes."

• • • Those weird gadgets Joe Cook describes on his NBC Colgate House Party programs may not be so goofy, after all. Since Cook has been on the air some twenty inventors have approached him, claiming they have made models proving that the inventions really are practical.

• • • Phil Hanna, top tenor with the Al Pearce Three Cheers, made tennis history in the recent Southwest Tennis Championship tournament. Paired with another Los Angeles boy he was leading Lott and Stofen, national doubles champions, when the game was called on account of darkness. On the playoff the following day the Los Angeles boys lost.

• • • June Meredith, star of NBC's First Nighter program, once received 45,000 letters in less than a week.

# SILHOUETTES

CAPTAIN NICHOLAS LACEY, fascinating young British suitor for the hand of Claudia in *One Man's Family*, is just as charming in private life as he sounds before the microphone.

Walter Beacen Paterson is the name to which he answers in real life. The pleasant English voice and accent which makes Captain Nicky an interesting contrast to the

Walter returned to his South African home and tried ranching on his own, but gave it up as a battle against too many odds. Africa's gifts to the farmer, he says, include not only wind, rust and drought, but the ferocious snakes and wild animals to whom a private ranch is just a natural larder. So he quit the ranch and came to America five years ago.

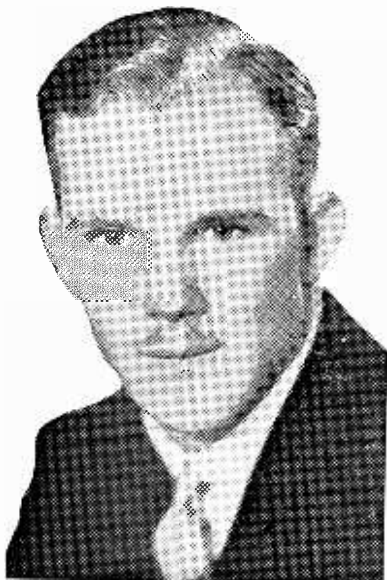
He had made his theatrical debut in Kensington, and had played before the microphone with the Public School Shakespearean Players, sponsored by the British Broadcasting Company, so he turned to the theater and radio when he arrived in San Francisco.

"And believe it or not, I got a job within a month!" he says triumphantly. "Of course, it WAS washing dishes behind the counter in a sandwich shop—but the coffee and sandwiches tasted good to a hungry young man from London."

Just as gaily as he took that job because it was the only one that presented itself, he passed through a succession of other occupations not unfamiliar to ambitious youth of the present era—selling real estate and washing automobiles were some of them. By night he acted with the Wayfarers, noted Little Theater group, and wrote.

He made his first radio appearance in California in *Tropic Terrors*, a series of adventure skits which he wrote for the *M. J. B. Demi-Tasse Revue*, producing and acting in them as well. His voice proved to have such promising qualities for the microphone that the automobile-washing days have been left behind, and he is kept busy appearing in a number of radio productions now. When Carlton E. Morse, author of *One Man's Family*, decided to have Captain Nicky follow Claudia to America he had the Captain's portrayer already chosen in his mind, and no auditions were necessary. Paterson had played in a number of NBC dramas and serials, including the *Chief Quinn* series.

When he isn't writing or tapping out stories and continuities on his typewriter, you don't find Paterson indoors. He has all the traditional English love of sports, and is an excellent swimmer and tennis player, a boxer and a track man. His hobby is drawing; his only superstition concerns a lucky piece that he carries in his pocket everywhere he goes, and his most embarrassing radio experience was when he was playing an intense love scene on the air, and called the heroine by the wrong name, being occupied mentally with another girl. His ambition at present is to become an American citizen and he has taken steps in that direction.



WALTER B. PATERSON

other characters of the serial, has brought scores of letters from English residents in this country, approving its genuineness; but that isn't surprising, for it's his own voice and accent.

The tall, blond, blue-eyed young man who owns it was born in Bulawayo, Rhodesia, South Africa. He has just passed his thirty-third birthday, and has been acting, at intervals, since he was nineteen. Other activities have included law studies in England, ranching in South Africa, and writing.

The son of a Canadian father who became an American citizen, Paterson early wanted to come to the United States. His mother persuaded him to go to England first for his schooling, and he attended Wrekin College, in Shropshire. He studied law and passed his preliminary law examination at Birmingham just as the depression set in, and put an end to further study.

# The OPEN CIRCUIT



This department is open to all. Send in your letters. Anonymous letters will not be published. Give full name and address.

## Adds Voice of Distaste

Dear Sirs: In response to your request in "Broadcast Program," Vol. 1, No. 8, under date of January 13, 1923, and repeated in Vol. 13, No. 37, under date of September 22, 1934, I shall be pleased to add my voice of distaste to the discordant notes which come through my loud speaker, which tend to reduce the otherwise acceptable programs. It is only in recent years that the hoarse soprano (so-called) and shrill female tenor have seemed to pre-eminence in many of the programs, and talk their music instead of singing. Only a few years that we have been compelled to indulge the crooners. By statistics in your "Weekly" it showed that hardly 15 per cent of the critics who wrote in, favored these programs. By far the majority prefer real music as it was known and is known today. How the sponsors of the big programs continue to use these discordant singers and crooners, only they can tell you. They certainly do not obtain attention from one-fifth the number of listeners that they would otherwise have, and their sales values are damaged thereby. Jazz bands are all right when you are dancing and need the rhythm, but when you are listening in over the air about all you hear is the traps and saxophones for rhythm, and the harmony on a lone instrument is practically drowned out. However, there is still plenty for the discriminating ear to listen to and with "Broadcast Weekly," assisted by the morning paper to check up last-minute changes of program, we can still be happy. "Broadcast Program" and now "Broadcast Weekly" has been on the top of my radio since issue No. 1 of Vol. No. 1, November 26, 1922—and enclosed is subscription for another year, and may you live long and prosper.

Yours truly,  
G. H. H., San Francisco, Calif.

## Second the Motion for Better Programs

I do so appreciate your "Broadcast Weekly," and wonder how I ever got along without it. The program arrangements are perfect, and I enjoy reading every word in the different departments.

Your editorial in the issue September 23 to 29, is so fine that I was greatly touched, and feel that you want your readers to come closer into the family circle and talk things out. That is the spirit that will get worthwhile results.

I, too, had wondered why there hadn't been more protests when "Crosscuts" from the Log of the Day" was taken from the morning, and moved to 10 p. m.

On August 13 I wrote you such a fiery letter in regard to the change of time, and my other grievances about programs, and then decided not to mail said letter.

After reading your fine editorial, I felt you really want an expression from your family of radio listeners.

It was hard to say "Good-bye" to "Crosscuts," but my pet sprig of poison ivy is the fact that the day-time audience is not considered, it seems.

I hold no brief for the orchestras that went on a sympathy strike, but when I read that my favorite station found that by letting them go they could use cheap "fillers" and so spend more on the night programs, I was "burned up."

There is much said about the "Producer is the backbone of the country"; well, we happen to be in the producer class. We do not hold up service stations or banks, but attend strictly to the work in hand; we ask no favors from

the social service; we do not expect some one else to pluck an old age pension for us from Santa Claus' pocket, and therefore we retire when these other classes feel that the evening (?) is just beginning.

We are supposed to be "hicks," but I'll wager that a good many of the producing and working class have better taste in their reading, music, and drama, than a majority of the revelers and night owls who turn night into day. I pride myself on being a good sport, and if the stations could not afford anything better than the drivel that is put on hour after hour in the daytime, I would take it on the chin.

Recently one of your readers said, "The average critic usually is the person who turns in his radio at random." That is not the case with me. I go through the days' programs, and mark with red the things that I know will be good or hope they will be, on the stations that we can get here in the Valley.

So I second the motion for better programs: good quartets, fine band and symphony concerts, pipe organ, the good old songs, fine, inspiring quarter hours like "Between the Bookends," in short, really good things of every description, and have them in the daytime between 7 a. m. and 9 p. m.

A thousand pardons for the length of this, my first letter.

Sincerely,  
Anna A. L., Porterville Calif.

## Happy and Contented

I have a kick to make, and it is towards the unkind people who criticize the artists and other radio people in the columns of your Open Circuit. They don't need to listen to any artist or program that they don't like, and besides it is all free entertainment. I read so many comments people make, and I just have a good laugh. All I do is to turn the dial off or turn to another program.

I would like to give my praiseworthy comment to Josef Hornik. I enjoy every program he puts on the radio and never miss one if I am home. More power to you, Josef Hornik. I wish you and all the artists that are on the program best of luck, health and success. When it is convenient I would like someone to play for me "Silver Threads Among the Gold."

Wishing your magazine continued success,  
Mrs. R. M. F., Santa Rosa.

## To a Magic Violin

BEAUTIFUL MUSIC—so soft and so sweet,  
Expressing joy, contentment, and peace,  
Cones wafting to our ears each day,  
And we hope it's on the "air" to stay.

SWEET MUSIC—of tones so low and mellow  
One thinks it may be a cello—  
Until up the scales to notes so high and clear  
You know it's a "MAGIC VIOLIN" that you hear.

HOT MUSIC—peppy, and arrangements new,  
They almost burn the "strings" in two—  
When from them those notes come dripping  
That just keep your toes a-tripping.

From one violin all this music strays—  
Truly a "MAGIC VIOLIN" that he plays.  
Yes, it's WALTER KELSEY with his nimble fingers  
That sends us this music, and long in our memory it lingers.

A. D. L., Sacramento.



# NEWS *and* COMMENT

President Roosevelt, of all men and women in the public eye, is the supreme master of correct speech, according to Vida Sutton, noted speech authority, who recently began her seventh season of weekly "Magic of Speech" broadcasts, over an NBC nationwide network.

"The President possesses almost perfect speech technique," says Miss Sutton. "That is, he keeps the vocal passages well open, the tongue well forward, and the lips neither too open nor too closed, so that sounds are effectively made. His voice is well modulated and is used at the proper pitch, and he has an easy speaking rhythm. Mr. Roosevelt also has the nearest to perfect cosmopolitan speech of any of our public figures."

In her fall and winter "Magic of Speech" programs over the NBC network, Miss Sutton will employ round table discussions and dramalogues to illustrate the principles of correct speaking. Many New York City high school and college students will appear in the dramas after competitive auditions.

Among the subjects to be covered in the series are pronunciation and usage, what and how to read, vocabulary building, grammar today and yesterday, and speech and personality.

▼

Professional football games, played by teams of the Pacific Football League at night in Seals Stadium, San Francisco, will be broadcast over NBC station KGO every Wednesday between 8:15 and 10:30 o'clock.

Clinton Twiss, well known NBC announcer, who has broadcast football games in the past over stations in Spokane and San Jose will be at the microphone to describe the game for radio listeners.

Six teams are members of the newly organized Pacific Football League—the Moraga Wolves and the California Giants; the Westwood Cubs, consisting of former U. C. L. A. players; the U. S. C. Maroons; the Shamrocks, in which are ex-Loyola and Notre Dame men, and Shipley's Braves, comprising former Stanford stars. These teams will play games in San Francisco and Los Angeles.

▼

Hal Wolf, chief announcer of KOMO-KJR, will be the Sports Announcer at the Northwestern end of the NBC lines this fall. A master of ad lib announcing, Hal Wolf has handled all kinds of sports events; among them the Yale-Washington 150-lb. crew race in 1931; football for the season of 1931 together with Curly Harris; the football contests of 1932 and 1933 with Al Schuss and the high school football games in the Seattle High School League last year.

One of the most spectacular sport events which Wolf has handled was the Washington-California crew race on Lake Washington, 1934. Hal Wolf and Al Schuss took turns broadcasting from the official boat following the shells, the pull by pull description being carried by short wave to the University of Washington Stadium where it was picked up by direct wire to KJR. During the race track season just concluded, Hal handled the announcing in cooperation with Joe Hernandez. The Long Acres' Broadcast continued each day but Sunday.

The last important broadcast which Hal Wolf handled took place August 19 when the broadcast from Mt. Ranier was sent Coast to Coast by the National Broadcasting Company and was a great success. Hal served as master of ceremonies. He occupied the post at Paradise Valley and shunted the program back and forth between the high caves underneath Paradise Glacier and the crevices on the upper slopes of the mountain.

In a poll recently conducted by the Seattle Post Intelligencer, Wolf won first place in the announcer class.

▼

Famous stars of Hollywood and Broadway in full hour versions of celebrated plays which have established box office records will be added to the airs' drama fare when the makers of Lux inaugurate a new Sunday series of programs over a nationwide NBC network on Sunday, October 14, at 11:30 a.m. The radio rights to many of the outstanding stage and screen productions in the history of the American theatre have been secured for this new Sunday series, and dramatic talent of first rank ability, recruited from both Hollywood and Broadway, will be cast in the leading roles.

▼

The 18-day diet has swept down on KFRC like a blanket of early morning fog. And out of that somewhat weighty elemental matter can occasionally be seen the wan and in some cases, emaciated faces of KFRC artists who are still walking around in the fog.

Out of the five vocalists who started the diet, only one remains—with the result that Helene Hughes, popular Feminine Fancies vocalist, has lost 19 pounds.

Edna O'Keefe gave up the effort after the first day, and Jean Ellington just couldn't sacrifice her ice-cream sodas, and signed off before the contest started. Claude Sweeten, KFRC's hefty musical director, has gone in for reducing via the golf course route. He can be seen most any morning at the Harding course conducting a golf ball with an ultra-long baton.



Bob Bence, KFRC chief announcer, and Mel Venter, an able assistant, go through their paces daily, keeping fit at a well known local gym. But these boys needn't bother over their appearance—they already have a weight above them.

ψ

With a greatly augmented crew of entertainers, Ted Fio-Rito and his dancing music returned to the Cocoanut Grove of the Ambassador Hotel, Los Angeles, October 1.

Acknowledged as one of the nation's leading maestro-composers Fio-Rito presides at the piano as usual, thrilling listeners with his inimitable keyboard renditions.

Such artists as Muzzy Marcellino, Johnny Candido, the Three Debutantes, the Campbell Twins, Don Juan, Two and Three, Frank Papile, Louis Chico and Cy Bernard are to be heard with Fio-Rito each night. Marcellino, curly-haired singer and guitarist, has been with Fio-Rito since joining him at the Hotel St. Francis, San Francisco, several years ago. Candido is the versatile bass player, whose double voiced songs are a comedy high light of each program. The Campbell Twins are comely Detroit lasses recently signed by the orchestra leader for his group. Don Juan, Two and Three—facetiously named singing trio, are others upholding vocal honors of the Fio-Rito organization.

The band has just returned from a suc-

cessful tour of the country, playing theatres, ballrooms and cafes, as well as continuing to make the phonograph records that have set many marks for high sales.

This is the third engagement for Fio-Rito's orchestra at the Cocoanut Grove, the group scoring a hit last year during an extended stay which followed a booking the season before. A number of starred motion pictures and short subjects have starred this versatile organization.

ψ

NBC's Plant and Announcing Departments are looking longingly at two portable short wave transmitters which arrived a few days ago in San Francisco.

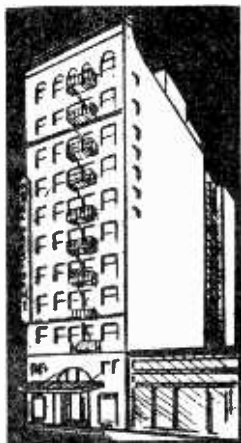
Each transmitter weighs about forty pounds and is encased in black leather, with shoulder straps. The transmitters can be carried like knapsacks on the back of announcers on roving assignments. Hand microphones will be plugged in, making it possible for speakers to broadcast from such spots as bridge towers, mountain peaks, railway stations, parades and similar spots.

Tests on the transmitters will begin as soon as licenses arrive. The portables will operate on 37.6 megacycles, and will have an output of one watt, with a radius of approximately twenty-five miles, according to A. H. Saxton, Division Engineer who will supervise the tests.

## The NEW PRESIDENT HOTEL

935 Geary Street

San Francisco



*The Comforts and Luxuries of a Modern  
New Hotel at no more than the Cost of  
Ordinary Accommodations*

**S**PACIOUS airy rooms with ample closet space, full length mirrors, artistic appointments and colorful new furnishings. Deep, soft beds that make sleep a certainty, with a refreshing morning shower—or tub, if you prefer. Rates as low as \$2 per day for rooms with bath. Special low weekly and monthly rates including garage. Write for reservations or further information.

*Coffee Shop in Connection*

"Will you please come right over to the University and help us record the cries of a dinosaur?"

This unusual request greeted Professor Frederick Orr of the University of Washington Division of Speech when he answered the telephone on a recent afternoon.

It seems that Don McQuade and John Nickerson, sound technicians from Station KJR, needed the sound effect of a dinosaur for Thursday night's episode of the thrilling air serial, "The Purple Ray," and had approached Tom Herbert of the University's Department of Drama in search of one. Herbert had been unable to oblige; but had suggested that they all go over to the Department of Speech and borrow Professor Orr's voice recording apparatus to concoct an effect of their own. Hence the astounding phone call.

The ever-obliging Professor Orr put in his appearance immediately and all four repaired to the recording room in the Speech Department's laboratories in Parrington Hall. The Professor handled the machines and the others clustered about the microphone.

A few moments later the phone rang in Campus Marshal Davies office. "Please," stammered the terrified feminine voice at the other end of the wire, "Please come over

right away. Something awful is happening in the Speech Department office!"

And now a dinosaur's yell, or what is supposed to be a dinosaur's yell, is recorded.

ψ

Reversing the time honored "go West, young man" Armand Girard, youthful basso, went East from California to the New York studios of the National Broadcasting Company, his trek brought about by his steadily growing popularity with a nationwide audience of radio listeners.

Girard is heard over an NBC transcontinental network.

A member of the Knickerbocker quartet when it made its first appearance on the Del Monte Ship of Joy, Girard was presented as soloist by Captain Hugh Barrett Dobbs and was such an instantaneous success that he came back again and again as guest artist. Before he went on the air he sang in churches, in concert and in vaudeville in many cities.

A French-Canadian born in Kansas, Girard is tall and dark and vigorous, fond of motoring and golf, of reading and gardening. He is especially interested in Negro spirituals and old Canadian ballads, and makes his own arrangements of them for professional use.

## THOUSANDS WERE THRILLED LAST SUNDAY!

BY THE PREMIERE BROADCAST OF SPERRY'S

# "SUNDAY MORNING SPECIAL"

**I**F YOU heard the opening show last Sunday you will not need this reminder. If not, let us suggest that you tune in next Sunday morning when this mystery train again pulls into NBC stations with a cargo of special entertainment. That man of many voices, Colonel Rod, will be among the passengers, bringing further strange stories of adventure at Castle Craigmont. And again, Carlton E. Morse and his beloved troupe of radio performers will present a new playlet that is as unusual as it is true to life.

**CARLTON E. MORSE:** Famous author of the popular "One Man's Family" brings his genius to Sperry's new radio show, "Sunday Morning Special," in another novel production titled "Songs-of-Life."

**COLONEL ROD:** Radio's genial story-teller introduces the trainload of talented entertainers who ride on the "Sunday Morning Special" and adds his own clever dramatizations to the show.



## ALL ABOARD

Don't miss this fascinating show.  
Every Sunday from 9 to 9:30 a.m. over the NBC network.

KPO - KFI - KGW - KOMO - KHQ

# SUNDAY Programs

Oct. 14, 1934

## 7:00 to 7:30 A. M.

KNX—Breakfast Club  
KGDM—Weather, Records  
KSL—Church of the Air  
KFOX—El Despertador  
KOA—Radio Pulpit

## 7:30 to 8:00 A. M.

• KPO & network—Good Morning: Mickey Gillette; 7:45, Lee S. Roberts and guest artists  
KNX—Bill Sharples, Breakfast Club  
KGDM—Organ Recital  
KVI—7:45, Temple Baptist Church  
KFOX—Recordings  
KSL—News; Comic Strips  
KOA—Samovar Serenade

## 8:00 to 8:30 A. M.

• KPO & netwk—Morning Musicale  
KGO—Organ Concert  
KYA—8:15, Christ. Science Reading  
KROW—Commuters Time Clock  
KJBS—Close Harmony  
KGDM—Organ; News  
\* KFRC & network—Imperial Hawaiians  
KJR—Coast to Coast, recorded  
KEX—Sacred Music; 8:15 Concert  
KVI—Church to 8:15  
KHJ—Sunday Times Comic  
KNX—Breakfast Club  
KFWB—Records; Funnies  
KGR—Sunday Comics  
KFOX—Percy and His Father; 8:15, Funny Paper Man  
KSL—Comic Strips  
KOA—News; 8:05, Music

## 8:30 to 9:00 A. M.

• KPO & network—Major Bowes' Capitol Family  
KGO—Mickey Gillette and Music  
KYA—Science Reading; 8:45, Sabbath Hymns  
KTAB—Sunrise Symphony  
KROW—Swedish Meditations  
KJBS—Popular Hits  
KGDM—Chapel  
\* KFRC & network—Salt Lake Tabernacle Choir and Organ  
KOL—P. 1. Comic Section  
KVI—Radio Gospel League  
KJR—Coast to Coast, Recorded  
KEX—8:45, Council of Churches  
KFWB—Funny Paper Man  
KNX—Bill Sharples, Breakfast Club  
KECA—Recordings  
KFOX—Funny Paper Man  
KGB—Signs of the Times  
KSL—Mormon Tabernacle  
KOA—Capitol Family

## 9:00 to 9:30 A. M.

• KPO & network—Sunday Morning Special: Col. Rod, narrator, drama by Carlton E. Morse; dramatic cast  
KGO—Chronicle Comics  
KYA—“Fellowship of the Air”; 9:15, Funny Paper Man  
KTAB—Moment's Halt; Musical  
KROW—Morning Concert  
\* KFRC—Dance Orchestra  
KGGC—Morning Melodies; Examiner  
KGDM—Bondons  
KQW—Organ Melodies  
\* KFRC & network—Hollywood Country Church  
KHQ—American Weekly Comics  
KEX—Counc. Churches; C. E. Union  
KNX—Bob Shuler and Quartet  
KFWB—Electrical Transcription  
KECA—Church; 9:15, Dr. Casselberry  
KFSD—Studio Program  
KFOX—Recordings  
KSL—Mormon Tabernacle  
KOA—Capitol Family



WAYNE KING  
CBS—7 P. M.

## 9:30 to 10:00 A. M.

• KGO & network—Radio City Music Hall on the Air  
KPO—Singable Songs: Emil Polak's Orchestra  
KYA—Funny Paper Man  
KTAB—Watch Tower; Music  
KROW—Novelty Review  
KJBS—Dance Orchestra; Records  
KGDM—Watch Tower; 9:45, Echoes of the Nineties  
KQW—Light Opera Gems  
KGGC—Popular Concert  
\* KFRC & network—To be announced; 9:45, A Visitor Looks at America  
KOL—Democratic Talk to 9:45  
KEX—Reading the Funnies  
KNX—Quartet; 9:45, Organ  
KFOX—Recordings  
KECA—Dr. Casselberry  
KFWB—Records  
KSL—Studio Ensemble; Watch Tower

## 10:00 to 10:30 A. M.

• KGO & network—Radio City Music Hall on the Air  
KPO—Beaux Arts Trio; Instrumentalists  
KYA—Uncle Harry; 10:15, Novelties  
KTAB—10th Ave. Baptist Church  
KROW—Watch Tower Program  
KJBS—Favorite Melodies; Orchestra  
KGGC—Theatre of the Air; Songs  
KQW—Salon Orchestra; 10:15, Baptist Church  
KGDM—Echoes of Nineties  
\* KFRC & network—Church of the Air  
KEX—Lost and Found; Records  
KECA—Music; Forms; Lecture  
KHJ—10:15, Randall String Quartet  
KNX—Castles in Music  
KFWB—Recordings  
KFOX—Radio Sunday School

## 10:30 to 11:00 A. M.

• KPO & network—Highlights of the Bible: Dr. Frederick K. Stamm; male quartet direction Keith McLeod  
KGO—Sparklets: Coquettes, vocalists  
KYA—Magic Strings  
KTAB—Church Services  
KROW—Salon Group

KJBS—Popular Melodies  
KGGC—Request Hour  
KQW—Baptist Church Services  
KGDM—Recordings  
\* KFRC & network—Eaton Boys; 10:45, Kassel's Orchestra with Pat Kennedy  
KGW—Tommy Luke  
KEX—Symphony Hour  
KNX—Congoin: Silver Strains  
KFI—Chas. Hamp; Studio Program  
KFWB—“The Family Circle”  
KFOX—Recordings  
KECA—Recordings  
KSL—Optical Program to 10:45  
KOA—Huffman Theatre Harmonies

## 11:00 to 11:30 A. M.

• KPO & network—Mohawk Treasure Chest: Ralph Kirbery, baritone; Harold Levey's Orchestra  
KGO—Melody Lingers On: Josef Hornik's Orchestra  
KYA—Old St. Mary's Church Serv.  
KTAB—Church Services  
KROW—Oakland Community Church  
KJBS—Popular Melodies  
KGGC—Request Hour  
KQW—First Baptist Church  
KGDM—First Baptist Church  
\* KFRC & network—Lazy Dan the Minstrel Man  
KEX—Recordings  
KNX—Marshall Grant, Organ  
KFWB—Maude Hughes, pianist  
KECA—Recordings  
KFOX—St. Lukes Church  
KFSD—Choralia

## 11:30 to 12:00 Noon

• KPO & network—Lever Bros. Program: Drama  
KGO—Concert Gems: Emil Polak's Orchestra  
KYA—Old St. Mary's Church Serv.  
KTAB—Church Services  
KROW—Oakland Community Church  
KJBS—Dance Recordings; 11:45, Song Favorites  
KGGC—Organalities; Records  
KQW—First Baptist Church  
KGO—Church Services  
\* KFRC & network—Hills Nose Drops  
KHJ—Sunday Serenade  
KEX—Recordings  
KNX—La! Chand Mehra  
KFWB—Records  
KFOX—St. Lukes Church  
KECA—Recordings

## 12:00 to 12:30 P. M.

• KPO & network—Lever Bros. KGO—Bible Stories: Paul Carson, organist  
KYA—Organ Concert  
KTAB—Church Services  
KIX—Records  
KROW—All Request Program  
KJBS—Orch.; 12:15, Melodies  
KGGC—Waltz Time; Marjorie Lee  
KGDM—Records; Portuguese Melodies  
KQW—Church; 12:15, Opera Stars  
\* KFRC & network—New York Philharmonic Symphony  
KFWB—Gold Star Rangers  
KNX—Concert Group  
KFOX—St. Lukes Church  
KECA—Recordings  
KFSD—Organ Recital

## 12:30 to 1:00 P. M.

• KPO & network—The Maybelline Musical Romance: guest star; Don Mario, tenor; Jimmy Fidler, master of ceremonies  
KGO—Bible Stories  
KYA—Band Concert  
KTAB—Church Services; 12:45, Tabernacle Quartet  
KROW—All Request Program



KLX—Jeannette Stock, soprano; Merlyn Morse, tenor; Helen Parlee, pianist; Anita & Orsco  
 KJBS—Dance; Recordings  
 KGGC—Marjorie Lee  
 KGDM—Portuguese Melodies  
 KQW—Symphony Hour  
 \*KFRC & netwk—Symphony Orch.  
 KEX—Orchestra; 12:45, Rev. Pope  
 KNX—Concert Group  
 KECA—U. S. C. College of Music  
 KFOX—Records; Baritone  
 KFWB—Gold Star Rangers

**1:00 to 1:30 P. M.**

•KPO & network—Kansas City Symphony Orch.; De Wolf Hopper, narrator  
 KGO—Melody Train  
 KYA—Waltz Time  
 KTAB—Church of Latter Day Saints  
 KLX—Pianist and vocalist  
 KROW—Recordings  
 KJBS—Dixie Marsh; 1:15, Records  
 KGDM—Melodies; 1:15, Records  
 KQW—Dixie Marsh, pianist; 1:15, Vocal Rhythm  
 \*KFRC & netwk—Symphony Orch.  
 KHQ—Cystex-Knox Co.  
 KEX—Rev. Willard Pope  
 KNX—Louise Johnson, Astro-Analyst  
 KECA—Recordings  
 KFWB—Black and Tan; Records  
 KFOX—Recorded Orchestra; 1:15, Man About Town

**1:30 to 2:00 P. M.**

•KPO & network—The House by the Side of the Road; Tony Wons and artists  
 KGO—Melody Train  
 KYA—Drama  
 KTAB—George Kruger, pianist  
 KLX—Recorded Program  
 KROW—Luncheon Concert  
 KJBS—College Airs; Records  
 KQW—Venetian Ensemble  
 KGDM—Records; Lonesome Hobo  
 \*KFRC & netwk—Symphony Orch.  
 KEX—Rev. Pope; 1:45, Piano  
 KNX—Playing the Song Market  
 KFWB—Recordings  
 KECA—Vocalational Adjustment; Cons. of Music  
 KFOX—Electrical Transcription

**2:00 to 2:30 P. M.**

•KPO & network—Sentinels Serenade; Orch. & vocalists  
 KGO—John & Ned; 2:15, Football; Olympic Club vs. S. Cal. All Stars  
 KYA—Discovery Hour  
 KTAB—Chamber of Commerce; 2:15, Moods Modernistic  
 KLX—Recorded Program  
 KROW—The Observer  
 KJBS—Marjorie Lee, pianist; Orch.  
 KGDM—Louis Kohler & Ansel Roby  
 \*KFRC & network—Open House  
 KQW—Marjorie Lee; 2:15, Instrumental Trio  
 KEX—Nick's Home; Eddie King  
 KFWB—Records; 2:15, Professional Football Game  
 KNX—Exposition Park Concert  
 KECA—Classic Hour; Records  
 KFOX—Christian Science; 2:15, Football Game  
 KFSD—Old-Time Program

**2:30 to 3:00 P. M.**

•KPO & network—American Bosch Radio Explorers Club; 2:45, Tune Dome Drama  
 KGO—Football Game  
 KTAB—Alex Pirie, organist  
 KYA—Light Opera  
 KLX—Merrill Bond, basso; 2:45, Song Souvenirs  
 KROW—Matinee Melodies  
 KJBS—Medicine Show  
 KGGC—Sunday School  
 KGDM—Ansel Roby & Louis Kohler

\*KFRC & network—Salon Moderne  
 KQW—Medicine Show  
 KVI—2:45, Judge Rutherford  
 KEV—Orchestra  
 KOL—2:45, Musicale  
 KOX—Concert  
 KECA—Recordings  
 KFWB—Football Game  
 KFOX—Football Game  
 KGB—Community Chest Program  
 KFSD—Old Time Program  
 KSI—Victor Herbert's Melodies; Gene Halliday, Organist

**3:00 to 3:30 P. M.**

•KPO & network—Catholic Hour  
 KGO—Football Game  
 KYA—Light Opera  
 KTAB—Moods Modernistic  
 KLX—Records  
 KROW—Matinee Melodies  
 KJBS—Recordings  
 KGGC—Church Service  
 KGDM—Honolulu Serenaders  
 KQW—Violinist; Ind. Merchants  
 \*KFRC & network—Music by Gershwin  
 KQW—Nicks Flowers; Eddie King  
 KJVB—Cornish School Program  
 KEX—3:10, Home Plate; Baseball  
 KFI—Makers of History  
 KNX—Concert  
 KFOX—Football Game  
 KFWB—Football Game  
 KFSD—Royal Brown, organist  
 KOA—Home Sweet Home

**3:30 to 4:00 P. M.**

•KPO & network—Grand Hotel; Drama, with Anne Seymour and Don Arcehe  
 KGO—Football Game  
 KYA—Light Opera  
 KTAB—Afternoon Concert  
 KLX—String Orchestra; Records  
 KROW—Stories; Records  
 KJBS—Concert Favorites  
 KGGC—Church Service  
 KQW—Concert Favorites  
 KGDM—Mt. Diablo Hillbillies  
 \*KFRC & network—Smilin' Ed McConnell  
 KFRC—3:45, Cystex Newspaper Adventures  
 KOL—3:45, Footpaths of Music  
 KVI—3:45, Amusement Tips  
 KEX—Varieties  
 KNX—Concert  
 KFWB—Football Game  
 KECA—Recordings  
 KFOX—Football Game  
 KGB—3:45, Newspaper Adventure  
 KFSD—Symphony

**4:00 to 4:30 P. M.**

•KPO & network—To be announced  
 KGO—Football Game  
 KYA—Piano Concert  
 KTAB—Male Quartet; 4:25, Bargain  
 KLX—Records  
 KROW—Afternoon Concert  
 KJBS—Dance Orchestra  
 KQW—Bible; 4:15, Instrumentalists  
 KGDM—Recordings  
 \*KFRC & network—Calif. Melodies  
 KOL—Drama to 4:05  
 KEX—Varieties  
 KNX—Amagon; Carefree Capers  
 KFWB—Football Game  
 KFOX—Jimmy Mann's Orchestra  
 KECA—Piano Recital; Records  
 KFSD—Symphony Concert  
 KSL—Studio; 4:15, Musical Portraits  
 KOA—4:15, Melody Masters

**4:30 to 5:00 P. M.**

•KPO & netwk—Joe Penner, comedian; Harriet Hilliard, vocalist; Ozzie Nelson's Orchestra  
 KGO—Football Game  
 KYA—Vesper Services  
 KTAB—Episcopal Radio Mission  
 KLX—Musical Headlines

KROW—Afternoon Concert  
 KJBS—Art Fadden, pianist; Records  
 KQW—Art Fadden  
 KGDM—Sierra Lumberjacks  
 \*KFRC & network—Edgewater Beach Concert Orchestra  
 KFWB—Football Game  
 KNX—Records; 4:45, Silver Strains  
 KECA—Recordings  
 KFOX—Nazarene Church  
 KFSD—Symphony Concert

**5:00 to 5:30 P. M.**

•KPO & network—Chase and Sanborn Program; Eddie Cantor, comedian; Rubinoff's Orchestra  
 KGO—Mickey Gillette's Music  
 KYA—Symphony Concert  
 KTAB—Religious Services  
 KLX—Old Man Soliloquy; 5:15, Melody Palette  
 KROW—Melodies; Church Fed.  
 KJBS—Dance Recordings  
 KQW—Musical Comedy  
 KGDM—Dance Band  
 \*KFRC & netwk—Ford Symphony Orchestra  
 KJR—Emanuel Tabernacle  
 KNX—Ethel Hubler; Dr. Matthews  
 KECA—Chamber Music  
 KFWB—Recordings  
 KFOX—Hi Hilarities  
 KFSD—Symphony

**5:30 to 6:00 P. M.**

•KPO & network—Chase and Sanborn Program; Eddie Cantor, comedian; Rubinoff's Orchestra  
 KGO—SERA Symphony Concert  
 KYA—Symphony Concert  
 KTAB—Religious Services  
 KLX—Covered Wagon Jubilee  
 KROW—Church; Sylvia Dale  
 KQW—Popular Orchestra  
 \*KFRC & netwk—Ford Symphony Orchestra  
 KJR—Vindabonian  
 KNX—Dr. John Matthews  
 KECA—Chamber Music  
 KFWB—Gold Star Rangers  
 KFOX—Sunset Quartet  
 KFSD—5:45, Farley's Rangers

**6:00 to 6:30 P. M.**

•KPO & netwk—Manhattan Merry-Go-Round; Orch. and vocalists  
 KGO—Henry M. Hyde; 6:15, Personal Closeups; Radio Artist interviewed by Gypsy  
 KYA—Drama; St. Mary's Alumni  
 KTAB—Hillbillie Tunes  
 KLX—Mixed Quartet  
 KROW—Wilma McVey; Watch Tower  
 KQW—Song of the Islands; Records  
 KJR—Angelus Hour  
 \*KFRC & network—Alexander Woolcott  
 KFWB—News; Music  
 KECA—Wesley Tourtellotte, organ  
 KNX—Souvenirs of Song  
 KFOX—News; Rolly Ray; Drama  
 KFSD—Twilight Melodies

**6:30 to 7:00 P. M.**

•KPO & network—The American Album of Familiar Music; Frank Munn, tenor; Virginia Rea, soprano  
 KGO—Palace Hotel Ensemble  
 KYA—Graham Dexter, tenor; 6:45, Melodettes, quartet  
 KTAB—To be announced  
 KLX—Alice Blue; 6:45, Variety  
 KROW—Ran Wilde's Orchestra  
 KQW—Popular Orchestra  
 \*KFRC & network—To be announced  
 KOL—The Pioneers  
 KVI—To be announced  
 KFWB—Fun Fest; 6:45, Orchestra  
 KNX—Rev. C. E. Fuller  
 KFOX—School Kids; Concert Group  
 KECA—W. Tourtellotte, organist  
 KFSD—Twilight Melodies

7:00 to 7:30 P. M.

•KPO & network—Hall of Fame; KGO—Tales from Shakespeare; dramatic sketch KYA—Dinner Concert KLX—Variety Hour KTAB—Echoes of Portugal; 7:15, Bellevue Trio KROW—Melodies; 7:45, Y. M. C. A. KGGC—Church Service KQW—Concert Orchestra \*KFRC & netwk—Wayne King's Orch. KJR—Metropolitan Moods KNX—Calmon Luboviski and Claire Mellonino, Violin and Piano KFWE—Jack Joy's Orchestra; 7:15, Birthday of Shah Jehan KECA—Pierce Bros. Quartet KFOX—Warner Bros. Show KFSD—Furnblitt's; 7:15, Vocalist

7:30 to 8:00 P. M.

•KPO & netwk—Pontiac Program: Jane Froman, contralto; the Modern Choir; Frank Black's Orch. KGO—Rudy Seiger's Orchestra KYA—Political Talk; 7:45, Gold Rush Days KTAB—Church Serv. Bapt. Church KLX—Musical Auction; 7:45, William Don, eccentric comedian KROW—Recordings KGGC—Church Service KQW—First Baptist Church Service \*KFRC & netwk—Merrymakers KJR—To be announced KFWE—Birthday of Shah Jehan; 7:45, Comedy Stars KFOX—Boy Detective; Songs KECA—Recordings KNX—Musical Program KOA—Ford Rangers

8:00 to 8:30 P. M.

•KPO & network—Wendell Hall & His Ukulele; 8:15, Madame Schumann-Heink, and Harvey Hays KGO—Hornik's Viennese Program KYA—Opera recordings KTAB—Church Services, Baptist KLX—Hour of Melody KROW—Oakland Community Church KQW—Baptist Church Services \*KFRC & network—Merrymakers KEX—First Church of Christ KNX—Presbyterian Church KFWE—Hi-Jinks, Don Smith, M.C. KFOX—Christian Science Church KFSD—Moments of Melody

8:30 to 9:00 P. M.

•KPO & network—Jack Benny and Artists KGO—To be announced; 8:45, Paul Martin's Music KYA—Opera Recordings KTAB—Church Services KLX—Hour of Melody KROW—Oakland Community Church KQW—Baptist Church Services \*KFRC & network—Haymes' Orch. KOIN—Little Show; Magic Mirror KHQ—8:45, Memories KGW—8:45, Baby's Boudoir KEX—First Church of Christ KFWE—Hi-Jinks KNX—Church Services KFI—Concert Orchestra KFOX—Christian Science KSL—L. D. S. Services

9:00 to 9:30 P. M.

•KPO & network—Souvenirs; 9:15, The Phillistine KGO—Reader's Guide KYA—Opera KTAB—Church Services; 9:15, Rod Hendrickson, Humor Stories KLX—Neighborly Songs & Poems; 9:15, World Revue KROW—Foreign Watch Tower KQW—Church; Vocal Genes KGW—G. A. Paine; 9:15., Orch.

\*KFRC & netwk—Hi-Jinks KOIN—Nikola Zan, baritone KOMO—Paul Pendarvis Orchestra KMQ—Paul Pendarvis Orchestra KEX—9:05, Abe Bereovitz KFWE—Kay Van Ripar, Drama KFI—9:15, The Phillistine KEX—News; 9:15, Judge Rutherford KECA—Countess Le Suoro, pianist; 9:15, Records KFOX—Beverly Hillbillies KFSD—9:15, The Phillistine KOA—Comedy Stars; Lee's Orch. KSL—Old Spinning Wheel

9:30 to 10:00 P. M.

•KGO & network—Coakley's Orch. KPO—Univ. of California Explorer KYA—Recordings; 9:45, News KTAB—Chapel of the Chimes, organ; 9:45, Political Program KLX—World Revue; 9:45, News; 9:50, Jewel Box KEOW—Dance Varieties KFWE—Concert Memories \*EFRC & netwk—Hi-Jinks KVI—News; Gospel League KHQ—Summer Serenade; Col. Jack KFI—Dream Dramas; Studio Prog. KNX—The Crocketis KFWE—Skit; Orchestra KFOX—Beverly Hillbillies KECA—Univ. of Calif. KFSD—University of California KSL—Temple Square

10:00 to 10:30 P. M.

•KPO & network—Richfield Reporter: Sam Hayes KPO—10:15, Book Parade KGO—Vocalist; Organ Concert KYA—Jackie Souders Orchestra KTAB—Japanese-American Broadcasting Society Program KLX—Dance Program KROW—Harmonies; Records KFRC—News to 10:10

\*KFRC & network—Dance Music; Joe Sullivan, pianist KEX—Rev. W. H. Pope KGW—10:15, Kelly's Kavaleros KHJ—News; 10:19, Dance Orchestra KNX—The Crocketis KFWE—News; Eddie Eben, organ KFOX—News; Orchestra KECA—Musical Celebrities KOA—Cosmopolitan Orchestra KGB—News; Orchestra; Pianist

10:30 to 11:00 P. M.

KPO—Gene Quaw's Orchestra KGO—Paul Carson, organist KYA—Jerry Andrews' Little Show KTAB—Hal Girvin's Orchestra KLX—Dance Program KROW—Concert Echoes \*KFRC & network—Lopez' Orch. KVI—Dance Orchestra KEX—Ray Willard Pone KFOX—Tex Howard's Orchestra KFWE—Dance Orchestra KOA—Doorways to Yesterday

11:00 to 11:30 P. M.

•KPO & netwk—Press-Radio News; 11:05, Tom Gerun's Orchestra KGO—News; Tom Gerun's Orchestra \*KFRC & network—Jurgens' Orch. KTAB—Orchestra KROW—Dance of the Hour KHJ—Dance Orchestra KFOX—Jimmy Mann's Orchestra

11:30 to Sign off

•KGO & netwk—Tom Gerun's Orch. KFRC—Organ Recital KTAB—Club Tivoli Orchestra KROW—Music; Midnight Vagabond KJBB—12:01, Owl Program to 7 a.m. KGDM—12, Music and News KOL—Organ Recital KVI—Organ Recital KHJ—Midnight Moods

It Costs you Less Than 3c a Copy By Subscribing to Broadcast Weekly

----- USE THIS COUPON -----

BROADCAST WEEKLY, 1114 Mission Street, San Francisco.

Gentlemen: Send me BROADCAST WEEKLY for one year (or six months). I enclose herewith \$1.50 (or \$1.00).

Name \_\_\_\_\_

Address \_\_\_\_\_

City \_\_\_\_\_

State \_\_\_\_\_

NEW  RENEWAL  EXTENSION C

# MONDAY Programs

Oct. 15, 1934

## 7:30 to 8:00 A. M.

- KPO & network—Financial Service; 7:45, Accordiana, Johnny Toffoli
- KGO—Morning Parade; 7:45, Forecast; 7:50, Radio Kitchen
- KYA—Musical Clock
- KTAB—Hillbillie Tunes
- KROW—Commuters' Time Clock
- KJBS—Alarm Clock Club
- KQW—Breakfast Hour
- KFRC—Seal Rocks Broadcast
- KGDM—Gilmore Oil Program
- KGW—Ronald Buck to 7:45
- KOL—Organ Program
- KVI—Talk; Varieties; Quartet
- KJR—Sunrises; 7:45, Shadows on the Clock
- KEX—Varieties
- KHQ—Dental Hygiene
- KFI—Stocks; Songs and Piano
- KHJ—Records and Stocks
- KNX—Bill Sharples Breakfast Club
- KECA—Morning Bible Study to 7:45
- KGB—Seven o'Clock Club
- KSL—Morning Watch; 7:45, Adv. Review

## 8:00 to 8:30 A. M.

- KPO & network—Hour of Memories; U. S. Navy Band
- KGO—Crosscuts Log of the Day
- KYA—Christian Science Reading; 8:15, Mr. & Mrs. Reader
- KTAB—Mobile Melodies
- KLX—Recorded Program
- KROW—Commuters Time Clock
- KJBS—Morning Varieties
- KQW—Morning Melodies
- KGDM—Honolulu Serenaders; 8:15, Recordings
- \* KFRC & netwk—To be announced; 8:15, Round Towners
- KEX—8:15, Recordings
- KGW—Ronald Buck to 8:15
- KHQ—Studio Programs
- KFI—Church Quarter Hour to 8:15
- KNX—Gene Autrey
- KECA—Recordings
- KGB—Records to 8:15
- KSL—Mrs. Annette Pick to 8:15

## 8:30 to 9:00 A. M.

- KPO & network—U. S. Navy Band
- KGO—Crosscuts of the Day
- KYA—Morning Concert
- KTAB—Radio Shoppers' Digest
- KLX—Covered Wagon Jubilee
- KROW—Novelty Review
- KQW—Morning Concert
- KGDM—Records; 8:45, Health Talk
- KJBS—Dance Music
- \* KFRC & netwk—Hollywood Country Church
- KOL—Ceil and Sally to 8:45
- KOMO—Resume; 8:33, String Trio
- KHQ—Studio; 8:45, Home Comfort
- KEX—Salon Orchestra; Tango Time
- KFI—8:45, Julia Hayes Hints
- KSL—Good Morning Judge; Morning Melodies

## 9:00 to 9:30 A. M.

- KGO & network—Fields & Hall; songs and patter
- KPO—Barbara Lee, Breakfast Club
- KGO—To be announced
- KPO & network—9:15, Josephine Gibson, hostess council
- KYA—Concert; 9:15, Prudence Penny
- KTAB—Hour of Prayer
- KLX—Shopping List
- KROW—Morning Concert
- KJBS—Song Hits; Bargains
- KGCC—Records; 9:15, Old Songs
- KQW—Tuneful Topics
- KGDM—Records; 9:15, Talk
- KOL—9:15, Prudence Penny
- KVI—9:15, Mystic Melodies



CARLYLE BENNETT  
NBC—2 P. M.

- \* KFRC & network—Voice of Experience; Elizabeth Barthell
- KFRC—9:15, Samuels on the Air
- KOMO—Mary's Friendly Garden
- KHQ—Studio; Tull and Gibbs
- KEX—Orchestra; Requests
- KNX—"Song Bag"
- KFSD—9:15, Good Cheer
- KSL—9:15, Jennie Lee
- KOA—9:15, Marietta Vasconcelles

## 9:30 to 10:00 A. M.

- KPO & network—The New World, educational talks
- KGO—Black Diamond, novelty program with Jack Meakin, pianist
- KYA—Feminine Notebook; Waltz Time
- KTAB—Health Talk
- KLX—Clinic of the Air
- KROW—Diet and Health
- KJBS—Visiting Faye Ward
- KGCC—Recordings
- KQW—Visiting Faye Ward
- KGDM—News; Records
- KOMO—9:55, Pianologue
- KFRC—Joanne to 9:45
- \* KFRC & network—Al Kavelin's Orchestra
- KVI—Lesson in English to 9:45
- KOL—9:45, Beautiful Melodies
- KGW—9:45, Cooking School
- KJR—Shuffling Feet
- KFI—Studio Program; News
- KHJ—Press-Radio News to 9:35
- KNX—Amagon Program; 9:45, News
- KFSD—Stock Reports to 9:40
- KGB—News to 9:35

## 10:00 to 10:30 A. M.

- KGO & netwk—Press-Radio News; 10:05, Pair of Planos
- KPO—Golden State Menu Flashes; 10:15, News
- KYA—Columbia on Parade; 10:15, Musical Milkman
- KTAB—Bargain Broadcast; Old Bachelor
- KLX—Clinic; 10:15, Stocks
- KROW—Musical Grab Bag
- KJBS—News; 10:05, Organ
- KGCC—Cal King
- KQW—Popular Orchestra
- KGDM—Recordings
- KJR—Walks of Life; 10:20, Early Echoes

- \* KFRC & network—Just Plain Bill; 10:15, George Hall's Orchestra
- KOIN—10:15, Air Shopping
- KVI—10:15, Health Scientist
- KEX—Lost & Found; Ronald Buck
- KHQ—Tull & Gibbs; Cella Lee
- KNX—Eddie Albright's Family
- KECA—Food Economist; Records

## 10:30 to 11:00 A. M.

- KPO & network—Woman's Magazine of the Air
- KGO—Vic and Sade; 10:45, Great Composers Program
- KYA—Organ Concert
- KTAB—Health Talk; Dude Martin
- KLX—International Kitchen
- KROW—The Observer
- KJBS—Orchestra; Col. Shaddy
- KGCC—Hits of Today
- KQW—Aunt Sammy; 10:45, Music
- \* KFRC & network—Artist Recital; 10:45, Pat Kennedy & Kassel's Orchestra
- KOL—Morning Melodies
- KVI—Musical Gems
- KEX—Orchestra; Hill Billies
- KJR—Club Minutes; Serenader
- KNX—M. Holmes; Rhythm Encores
- KECA—Recordings
- KOA—Livestock and Produce

## 11:00 to 11:30 A. M.

- KPO & network—Woman's Magazine of the Air
- KGO—Great Composers Program
- KYA—Organ, Glen Goff
- KTAB—Bargains; Blues; Fashions
- KLX—Recordings; 11:15, Music
- KROW—Health Talk; 11:15, Music
- KJBS—Popular Hits; Records
- KGCC—Mlady's Date Book; 11:15, Dance Tunes
- KGDM—Organ Recital
- KQW—Light Classics
- KFRC—Business Bureau to 11:15
- \* KFRC & network—Ann Leaf, organist
- KVI—The Observer to 11:15
- KOL—Garden Talk to 11:15
- KOIN—Art Kirkham
- KEX—Music; Cobwebs and Nuts
- KJR—Rhythm Rulers
- KNX—Organ Recital
- KECA—French Lesson; Records

## 11:30 to 12:00 Noon

- KPO & netwk—Merriam for Governor; 11:45, California Federation of Women's Clubs
- KGO—Smackout; Marion and Jim Jordan; 11:45, Agricultural Bulletin
- KYA—Dance Times
- KTAB—Modern Rhythm; Kahn's
- KLX—Anita & Orosco; 11:45, Castles in Music
- KROW—Latin-American Program
- KJBS—Dance Orchestra
- KGCC—Talk; News; Requests
- KQW—Variety and Theatre New.
- KGDM—Organ Recital
- KFRC—Women's Forum to 11:45
- \* KFRC & network—Poetic Strings
- KHQ—Organ Recital
- KOMO—Organ Concert to 11:35
- KJR—Measured Steps
- KEX—Cobwebs & Nuts; Records
- KGW—Pianist; 11:45, Cheerlo
- KFI—Fashion Tours; 11:45, Market
- KNX—Jewel Box; 11:45, Talk
- KSL—Poetic Strings
- KOA—Brown Palace Orchestra

## 12:00 to 12:30 P. M.

- KPO & network—Vocational Agriculture; Edna Fischer, pianist; 12:15, Western Farm and Home Hour
- KGO—Radio Guild, dramatic sketch
- KYA—Scriptures; 12:03, Concert



KTAB—News; 12:15, Organ Concert  
 KLX—Dance Music  
 KROW—Latin American Program  
 KJBS—Records and Accordionist  
 KGGC—Request Hour  
 KQW—Orchestra; 12:15, Mark Green  
 KGDM—Recordings  
 \*KFRC & network—Four Showmen;  
 12:15, Emery Deutch's Orchestra  
 KOL—The Carnival Hour  
 KVI—12:15, Front Page Headline  
 KOIN—Ron Myron's Scrapbook;  
 Ken and Wally  
 KGW—12:15, Meier & Frank  
 KHQ—Business and Pleasure  
 KEX—Dance Frolic to 12:15  
 KNX—News; 12:15, Congo  
 KECA—News; 12:15, Records  
 KHJ—Better Business Bur. to 12:15  
 KGB—Farm Flashes to 12:15  
 KSL—Broadcasters Review

## 12:30 to 1:00 P. M.

\*KPO & network—Western Farm  
 and Home Hour  
 KGO—Radio Guild  
 KYA—Noonday Concert  
 KTAB—Echoes of Portugal  
 KLX—Don Brose; 12:45, Reflections  
 of Romance  
 KROW—California Farm Hour  
 KJBS—Dance Orchestra  
 KGGC—Firate Cowboys  
 KQW—Weather and Market Reports  
 KGDM—Recordings  
 \*KFRC & network—Emery Deutch's  
 Orch.; 12:45, Chansonette  
 KOL—The Carnival Hour  
 KOIN—12:45, Annie Brun  
 KHQ—Business and Pleasure  
 KVI—News & Comment to 12:45  
 KEX—Studio; Forum Luncheon  
 KGW—Dr. Semler; 12:45, Chat  
 KJR—Headliners  
 KNX—Concert Group  
 KECA—Recordings  
 KGB—12:55, Stocks  
 KSL—Manhattan Moods

## 1:00 to 1:30 P. M.

\*KPO & network—Betty & Bob;  
 1:15, Gale Page, songs  
 KGO—Contract Bridge; 1:15, Ann  
 Warner's Chats  
 KYA—Royal Serenaders  
 KTAB—Radio Frolic, Geo. Taylor  
 KLX—Records; 1:15, Martha Lee  
 KROW—Concert Melodies  
 KJBS—Stocks; Recordings  
 KQW—Friendly Hour  
 KGDM—Records; 1:15, The World  
 Today  
 \*KFRC & network—National Student  
 Federation; 1:15, Salvation Army  
 Band  
 KOL—1:15, Julie Dav  
 KVI—1:15, Reichmuth Family  
 KGW—Chat, 1:15, Dental Clinic  
 KEX—Forum Luncheon  
 KHQ—1:15, Sylvia Gray  
 KNX—Pontrell's Orchestra  
 KECA—Records  
 KFSD—Studio Program to 1:15  
 KSL—Payroll Builder

## 1:30 to 2:00 P. M.

\*KPO & network—Oxydol's Own Ma  
 Perkins; 1:45, Dreams Come True,  
 Barry McKinley, baritone  
 KGO—Ann Warner's Chats; 1:45,  
 Mickey Gillette's Music  
 KYA—Symphony Concert  
 KTAB—Jean Kent  
 KLX—Song Bag  
 KROW—Home Beautiful; Music  
 KJBS—Concert Recordings  
 KQW—Afternoon Concert  
 KGDM—Recordings  
 KFRC—Closing stocks to 1:35  
 \*KFRC & network—Chicago Variety  
 Program  
 KJR—The Sun Dial  
 KEX—Financial Reports; Music  
 KNX—Pontrell's Orchestra

KHJ—Dow Jones' Reports; 1:45,  
 Nolan and Sherr  
 KECA—Recordings  
 KFSD—Old Time Program

## 2:00 to 2:30 P. M.

\*KPO & network—Al Pearce and  
 His Gang  
 KGO—Mickey Gillette's Music; 2:15,  
 Jackie Heller, tenor  
 KYA—Symphony Concert  
 KTAB—Globe Trotter; Romancin'  
 KLX—Lost & Found; 2:05, Records  
 KROW—2:15, Chas. Goodman, vocal  
 KJBS—Popular Tunes of the Day  
 KGDM—Records; News  
 KQW—Dance Matinee  
 \*KFRC & network—Happy Go  
 Lucky Hour  
 KEEX—World Bookman; Musical Gems  
 KJR—Salon Hour, recorded  
 KNX—The Bookworm  
 KECA—Classic Hour; records  
 KSL—Music; 2:15, Dental Clinic  
 KOA—Huffman Reporter; 2:15,  
 Rowdy Wright

## 2:30 to 3:00 P. M.

\*KPO & network—Al Pearce Gang  
 KGO—Vagabonds Quartet, Instru-  
 mentalists  
 KYA—Vignettes of Life; 2:45,  
 Modern Notes  
 KTAB—Three Four Time; Tranquil-  
 ity  
 KLX—Talk; 2:35, Stocks; 2:40, Op-  
 portunity Hour  
 KROW—Dell Perry; Recordings  
 KJBS—Popular Tunes  
 KGDM—The Romancers  
 KQW—Dance Matinee  
 \*KFRC & network—Happy Go  
 Lucky Hour  
 KJR—Salon Hour  
 KEX—Musical Gems  
 KECA—Classic Hour, records  
 KNX—Foreign Recordings  
 KFSD—2:45, Studio Program  
 KSL—Edw. Wurtzbach's Orch.; 2:45,  
 Tom Baker and Norm Sherr  
 KOA—Margaret West; Ranch Boys

## 3:00 to 3:30 P. M.

\*KPO & network—Langendorf Pic-  
 torial; 3:15, John and Ned, har-  
 mony duo  
 KGO—United States Army Band  
 KYA—P. T. A. Talk; Better Busi-  
 ness Talk  
 KTAB—Recordings  
 KLX—Opportunity Hour  
 KROW—Mary Dowd Reardon  
 KJBS—Orchestra; 3:15, Word Man  
 KQW—Stock Reports; Music; 3:15,  
 Word Man and Music  
 KGDM—Recordings  
 \*KFRC & network—Feminine Fancies  
 KOL—P. T. A. Program  
 KOMO—3:15, Julia Hayes  
 KJR—Easy Chair to 3:15  
 KQW—Concert Trio  
 KHQ—Hostess Hints; Club Bulletin  
 KEX—Concert Echoes  
 KFI—3:15, English Lesson  
 KNX—Concert Orchestra  
 KECA—Alexander Bevani to 3:15  
 KSL—Songs of Long Ago; Texas  
 Rangers  
 KOA—3:15, University of Denver

## 3:30 to 4:00 P. M.

\*KPO & network—Slices of Life;  
 2:35, Three X Sisters, vocal trio  
 KPO—3:45, University of California  
 KGO—Family Cook Book  
 \*KGO & network—3:45, Singing  
 Strings  
 KYA—Art Lecture; 3:45, Commu-  
 nity Chest Question Box  
 KTAB—Royal Sophistication; Preview  
 KLX—Records; 3:45, Musical Jigsaw  
 KROW—Spanish Tunes; Records  
 KJBS—Dance Records  
 KGDM—Recordings

KQW—Variety Program  
 \*KFRC & network—Club Matinee  
 KEX—Request Program  
 KHQ—Tull & Gibbs; Happy Feet  
 KOL—Harriet Lincks  
 KOIN—Newspaper of the Air  
 KFI—Ann Warner's Chats  
 KHJ—Stimulating Soothers to 3:45  
 KNX—Housewife's Protective League  
 KGB—3:55, Along the Airways  
 KFSD—3:45, Univ. of California  
 KSL—Junior Hour; 3:55, News  
 KOA—3:45, Microphone News

## 4:00 to 4:30 P. M.

\*KPO & network—Gould and Shef-  
 ter, piano duo; 4:15, Herman  
 Crone's Orchestra  
 KGO—Something Simple, Josef Hor-  
 nik's Orchestra  
 KYA—Talk; Old Songs; Dance  
 KTAB—Keep Smiling Revue  
 KLX—Records; 4:15, Helen Parme-  
 lee, pianist  
 KROW—Waltz Time; Songs  
 KJBS—Star Reporter; Bill & Coo  
 KGDM—Gilmore Oil Program  
 KQW—Star Reporter; Bill & Coo  
 KFRC—Town Topics to 4:05  
 \*KFRC & network—Dan Russo's  
 Orchestra  
 KOIN—Newspaper of the Air  
 KOL—4:15, Historical Flashes  
 KHQ—Happy Feet; Schooldays  
 KJR—Goodwill Program; Records  
 KEX—Recordings  
 KNX—Haven of Rest  
 KECA—Piano Recital  
 KSL—Broadcasters' Review  
 KOA—Memories; 4:15, Stamp Club

## 4:30 to 5:00 P. M.

\*KGO & network—Studio Chatter  
 KGO—Elmore Vincent, tenor; 4:45,  
 News  
 KYA—Tea Dance Parade  
 KTAB—Lauretta La Marr  
 KLX—Pianist; Health School  
 KROW—Hill Billy Music  
 KJBS—Orchestra; 4:45, Melodies  
 KQW—Story Time; 4:45, Records  
 KGDM—Ernie Cruz; Program  
 KRC—Records to 4:45  
 \*KFRC & network—4:45, Between  
 the Bookends  
 KOIN—Bob and Dolly  
 KVI—Studio to 4:45  
 KJR—Records; Steamboat Bill  
 KGW—Sam Gordon to 4:45  
 KHQ—4:45, Tull & Gibbs  
 KFI—Organ Recital  
 KNX—Recordings; Peter Holland  
 KGB—To be announced  
 KSL—Adventures of Robin Hood;  
 4:45, Broadcasters Review  
 KOA—Skit; 4:45, Orphan Annie

## 5:00 to 5:30 P. M.

\*KPO & network—Jan Garber's  
 Supper Club  
 KGO—Art and Music; 5:15, Edna  
 Fischer, pianist  
 KYA—Children's Hour  
 KTAB—Health Talk; 5:15, Songs  
 KLX—Brother Bob's Club  
 KROW—Memory Lane; Records  
 KJBS—Popular Vocalist; 5:15, News  
 KGGC—Studio Frolic  
 KQW—Sunshine League  
 KGDM—Recordings  
 \*KFRC & network—Bar X Days &  
 Nights; 5:15, Billy Bachelor  
 KEX—Hawaiian Serenaders  
 KNX—Storytown Express; Music  
 KFOX—Playtime Lady; Records  
 KECA—Recordings  
 KFSD—Studio Program  
 KSL—5:15, Tarzan

## 5:30 to 6:00 P. M.

\*KPO & network—To be announced;  
 5:45, Little Orphan Annie  
 KGO—Life of the Reilly's; 5:45, Tim  
 Healy's Ivory Stamp Club

KTAB—Dr. Thompson, talk  
 KYA—Metropolitans; 5:45, Campbell Corner  
 KLX—Covered Wagon Jubilee  
 KROW—Eating Your Way to Health  
 KGGC—Dance Echoes; Irish Gems  
 KQW—Popular Orchestra; 5:45, Voice of Portugal  
 \*KFRC & network—Atwater Kent Program  
 KJR—Romancing; Cecil Solly  
 KFI—Elec. Transcription to 5:45  
 KNX—Radio Gossip Club; Song Serv.  
 KECA—Story Teller; Catholic Mission  
 KFOX—Recordings  
 KFSD—5:45, Farley's Rangers  
 KOA—Pit and Pat

### 6:00 to 6:30 P. M.

\*KGO & network—String Time  
 KPO—Sinclair Greater Minstrels  
 KYA—Cy Trobbe and Orchestra  
 KTAB—Dinner Concert  
 KLX—KLX Trio  
 KROW—News; Rhythm Aces  
 KGGC—Dinner Dance Review  
 KQW—Dept. of Agriculture; 6:15, Popular program  
 KGDM—Recordings  
 \*KFRC & network—Chesterfield Program  
 KHQ—Covered Wagon; Hired Man  
 KFWE—News; Records; Organ  
 KFI—Sinclair Greater Minstrels  
 KNX—News; 6:15, Dinner Dance  
 KFOX—News; Al and Mohly; Cecil and Sally  
 KECA—Board of Education; News  
 KFSD—Sinclair Greater Minstrels  
 KOA—Sinclair Minstrels

### 6:30 to 7:00 P. M.

\*KPO & network—Colgate House Party  
 KGO—Safety First; 6:45, Air Adventures of Jimmy Allen  
 KYA—Cy Trobbe's Orchestra  
 KTAB—Sport Page; Political  
 KLX—Trio  
 KROW—Ne'er Do Well  
 KGGC—Theatre of the Air; Pillow Sunshine  
 KQW—Mkt. Reports; 6:45, Torrid Tunes  
 \*KFRC & network—To be announced  
 KOIN—6:45, Sport Flashes  
 KOL—To be announced  
 KVI—To be announced  
 KJR—Musical Auction; Jimmie Allen  
 KNX—Concert; 6:45, Jimmie Allen  
 KFWE—Organ; 6:45, Jimmie Allen  
 KECA—Organist; Violinist; Cellist  
 KFOX—School Kids; Jimmy Allen  
 KGB—Political; Gridiron Guesses  
 KSL—The Big Show

### 7:00 to 7:30 P. M.

\*KPO & network—Carnation Contented Program  
 KGO—Organ Symphony  
 KYA—Sports; Aviation Forum  
 KTAB—Communications; Italian News  
 KROW—C. W. Hammond; Orch.  
 KLX—News; 7:15, Lovable Liars  
 KGGC—Recordings; Gypsies  
 KQW—Weather; Varieties  
 \*KFRC & network—Wayne King's Orchestra  
 KNX—Watanabe & Archie; Music  
 KFWE—Football Talk; Syncopators  
 KECA—Organist, Violinist & Cellist  
 KFOX—Eb and Zeb; 7:15, Bobby & Betty  
 KFSD—Feature; Sonny & Buddy

### 7:30 to 8:00 P. M.

\*KPO & network—Demi-Tasse Revue; Vincent Lopez' Orchestra  
 KGO—Comedy Stars of Hollywood; 7:45, Stanford University Program  
 KYA—Cowboys; Louise Tager  
 KTAB—Ople & Viney; Organ

KLX—Silver Strains; 7:45, Clinic of the Air  
 KROW—Golden Memories  
 KGW—Italian Radio Theatre  
 KGGC—Orchestra; 7:45, Frank Lorrenti  
 \*KFRC & netwk—End Poverty League; 7:45, Rocket Gas Drama  
 KOL—Radio Speaker Stevenson to 7:45

KVI—Dr. Mellor to 7:45  
 KNX—Studio; King Cowboy  
 KFWE—Syncopators; Betty Rhodes  
 KFOX—Boy Detective; Vagabonds  
 KECA—News 7:45, Law Talk  
 KSL—Crazy Crystals; 7:45, Comedy

### 8:00 to 8:30 P. M.

\*KPO & network—Amos 'n' Andy; 8:15, Gene and Glenn  
 KGO—Cliff Nazario; songs; 8:15, College Daze, comedy sketch with Helen Troy and Frank Provo  
 KYA—Business Hour; Organ  
 KTAB—Itchy & Scratchy; Ballads  
 KLX—Clinic of the Air  
 KGGC—Spanish-American Program  
 KROW—American Magazine Program; Watch Tower  
 KQW—Vocalists; Tango Time  
 \*KFRC & network—Myrt & Marge; 8:15, Edwin C. Hill  
 KEX—News; 8:15, Blackbirds  
 KJR—Highlight Hour  
 KNX—The In-Laws; Music  
 KFWE—Jack Joy's Orchestra  
 KECA—Records; 8:15, Philosopher and Country Jane  
 KFOX—Organ; Piano; Ballads  
 KFSD—Adventures of Jimmie Allen

### 8:30 to 9:00 P. M.

\*KPO & network—Voice of Firestone Garden Concert; Gladys Swarthout, mezzo-soprano  
 KGO—NBC Drama Hour  
 KYA—Organ  
 KTAB—Butchers Union; Vocalist  
 KLX—Uncle Adolph's Rangers  
 KROW—Sunny Brook's Band; Melodies  
 KGGC—Timely Tunes; Records  
 KQW—Popular Orchestra  
 \*KFRC & network—Blue Monday Jamboree  
 KJR—Purple Ray; Carefree Capers  
 KEX—Orchestra  
 KFWE—Drama  
 KNX—Electrical Transcription  
 KECA—SERA Orchestra  
 KFOX—Christian Science; Trio

### 9:00 to 9:30 P. M.

\*KPO & netwk—Shell Show; Rush Hughes, master of ceremonies; guest artists  
 KGO—Waltz Time, Ben Klassen, tenor, orchestra  
 KYA—National Defense Series  
 KTAB—Crockett Family; Nighthiders  
 KLX—Faucit Theatre of the Air  
 KROW—Dillon Players of the Masters  
 KGGC—Music of the Masters  
 KQW—News; Wyoming Cowboys  
 \*KFRC & network—Blue Monday Jamboree  
 KJR—Souvenirs; 9:15, Chamber of Commerce  
 KNX—News; Mary Kirk, songs  
 KFWE—Slumbertime  
 KECA—9:15, Fishing & Hunting Talk  
 KFOX—Beverly Hillbillies  
 KFSD—Furmbilt Program; 9:15, To be announced

### 9:30 to 10:00 P. M.

\*KPO & network—Shell Show  
 KGO—News; 9:35, Williams-Walsh Orchestra  
 KTAB—Communist Party of Oakland; Music Arts Society  
 KYA—Concert Orchestra; 9:45, News  
 KLX—Pioneers; 9:45, News

KROW—St. Mary's College  
 KGGC—Alois Krejciok; Flying Carpet  
 KQW—Dance Frolic  
 \*KFRC & network—George Hall's Orchestra  
 KVI—News Flashes; 9:45, Orch.  
 KJR—Recordings  
 KEX—Orchestra; 9:45, Wrestling  
 KNX—The Crockette  
 KFWE—Sons of Pioneers  
 KECA—Recordings  
 KHJ—Witches Tales'  
 KROW—Beverly Hill Billies  
 KGB—9:45, Community Chest  
 KFSD—To be announced  
 KSL—Pinle Pete Ranch Boys; Milt Taggart's Orchestra

### 10:00 to 10:30 P. M.

\*KPO & network—The Richfield Reporter; 10:15, Red Davis  
 KGO—Clef Dwellers; 10:15, Doorways to Yesterday  
 KYA—Lyric Quartet; Rhyme Land  
 KTAB—Dansapation  
 KLX—Dance Music  
 KROW—Quiet Harmonies; Hawaiians  
 KGGC—Records; Joe Garcia's Orch.  
 KFRC—News; 10:10, Elec. Trans.; 10:15, Joe Sullivan  
 KOL—Ken Stuart's Sunshine Prog.  
 KVI—To be announced  
 KJR—Till Tomorrow  
 KEX—Wrestling  
 KHJ—News Items; 10:10, Music  
 KNX—The Crocketts  
 KFWE—News; Orchestra  
 KECA—Song Recital  
 KFOX—News; Orchestra  
 KGB—News; Orchestra; Piano

### 10:30 to 11:00 P. M.

\*KPO & network—Marshall's Mavericks; 10:55, News  
 KGO—Doorways to Yesterday; 10:45, Beal-Taylor's Orchestra  
 KYA—Concert Orchestra  
 KTAB—Dansapations  
 KLX—Dance Records  
 KROW—Veterans' Prog.; Records  
 KGGC—Merry Melodies  
 KFRC—Great Moments in Sports to 10:35  
 \*KFRC & network—Vincent Lopez' Orchestra  
 KOL—Dance Music  
 KGW—McElroy's Orchestra  
 KOMO—Light Classics  
 KOIN—Elmer Gene to 10:45  
 KNX—Pontrelli's Orchestra  
 KHJ—The Islanders  
 KFOX—Tex Howard's Orchestra  
 KFWE—Tex Howard's Orchestra  
 KECA—Recordings

### 11:00 to 11:30 P. M.

\*KPO & network—Ted Fio-Rito's Orchestra  
 KGO—Beal-Taylor's Orchestra  
 KYA—Organ  
 KTAB—Dansapations  
 KROW—Dance of the Hour  
 \*KFRC & network—To be announced  
 KOMO—Moonlight Melodies  
 KEX—Lonesome Club  
 KNX—Pontrelli's Orchestra  
 KFWE—Harry Sosnik's Orchestra  
 KFOX—Harry Sosnik's Orchestra

### 11:30 to Sign Off

\*KGO & network—Jimmy Grier's Orchestra  
 KPO—Organ Concert  
 KYA—Jerry Andrews Show  
 KTAB—El Cortez Club  
 KROW—Dance Music; Vagabond  
 KGDM—12, Records to 6  
 \*KFRC & network—To be announced  
 KOL—Merle Carlson's Orchestra  
 KOMO—Biltmore Orchestra  
 KJR—Fireside Phantasies; Songs  
 KFOX—Jimmy Mann's Orchestra  
 KJBS—12:01, Owl Program to 7 a.m.

# TUESDAY Programs

Oct. 16, 1934

## 7:30 to 8:00 A. M.

- KPO & network—Financial Service; 7:45, Lee S. Roberts and guest artists
- KGO—Morning Parade; 7:45, Forecast; 7:50, Radio Kitchen
- KYA—Musical Clock
- KTAB—Hillbillie Tunes
- KROW—Commuters Time Clock
- KJBS—Alarm Klok Club
- KQW—The Breakfast Hour
- KGDM—Gilmore Oil
- KFRFC—Seal Rocks Broadcast
- KOL—Organ Music
- KVI—Talk; 7:35, Varieties
- KGW—Piano
- KHQ—Dental Hygiene to 7:45
- KJR—Sunrisers; Market Quotations
- KEX—Varieties
- KHJ—Recordings and Stocks
- KNX—Bill Sharples Breakfast Club
- KECA—Morning Bible Fellowship; 7:45, Records
- KFSD—7:45, Studio Program
- KGB—Records; 7:55, Prog. Resume
- KSL—Advertisers Review; Music

## 8:00 to 8:30 A. M.

- KGO & network—Johnny O'Brien KGO—8:15, Organ
- KPO—Songs by the Kitchen Sink
- KPO & network—8:15, Your Child
- KYA—Christian Science Reading; 8:15, Mr. and Mrs. Reader
- KTAB—Mobile Melodies
- KLX—Records
- KROW—Time Clock
- KJBS—Morning Varieties
- KQW—Melodies of the Day
- KGDM—Serenaders; Records
- KFRFC—Exercises to 8:15
- ★ KFRFC & network—U. S. Navy Band
- KOL—8:15, Cecil and Sally
- KHQ—8:15, Crazy Wells Program
- KEX—Calvary Tabernacle
- KGW—Ronald Buck to 8:15
- KVI—8:15, Market Specials
- KNX—Musical Program
- KFI—Terence Vincent to 8:15
- KECA—8:15, Records
- KGB—Records to 8:15
- KSL—Studio Ensemble
- KOA—Galaxy of Stars to 8:15

## 8:30 to 9:00 A. M.

- KGO & network—U. S. Marine Band
- KPO—To be announced
- KYA—Concert
- KTAB—Radio Shoppers' Digest
- KLX—Covered Wagon Jubilee
- KROW—Novelty Review
- KJBS—Dance Melodies
- KQW—Morning Concert
- KGDM—Records; Health Talk
- ★ KFRFC & network—Hollywood Country Church
- KOL—Cecil & Sally to 8:45
- KHQ—Review; 8:45, Home Comfort
- KEX—Breakfast Club
- KNX—Song Bag
- KFI—Studio; 8:45, Julia Hayes
- KSL—8:45, Mary Taylor and Bennie Walker

## 9:00 to 9:30 A. M.

- KGO & network—U. S. Marine Band
- KPO—Three of a Kind; 9:15, Barbara Lee, Breakfast Club
- KYA—Concert; 9:15, Pru. Penny
- KTAB—Hour of Prayer
- KLX—Shopping List
- KROW—Morning Concert
- KJBS—Song Concert; Bargains
- KGCC—Records; 9:15, Songs
- KQW—Tuneful Topics
- KGDM—Records; 9:15, Personalities



GRAHAM McNAMEE  
NBC—6:30 P. M.

- ★ KFRFC & network—Voice of Experience; 9:15, Connie Gates
- KFRFC—9:25, Goodwill Industries
- KOL—9:15, Prudence Penny
- KVI—9:15, Mystic Melodies
- KHQ—9:15, Tull & Gibbs
- KEX—Recorded Program
- KFI—9:15, Jean Abbey
- KECA—Records to 9:15
- KNX—To be announced
- KFSD—Magic Hour; Good Cheer
- KSL—9:15, Jennie Lee

## 9:30 to 10:00 A. M.

- KPO & network—Martha Meade Society; 9:45, Clay Landen, songs
- KGO—Beaux Arts Trio
- KYA—Waltz Idylls
- KTAB—Health Talk
- KLX—Clinic of the Air
- KROW—Diet and Health
- KJBS—Light Classics
- KGCC—Recordings
- KQW—Gems of Melody
- KGDM—News; Records
- ★ KFRFC & network—Al Kavelin's Orchestra
- KVI—News; Orchestra
- KOL—9:45, Beautiful Melodies
- KJR—Shuffling Feet to 9:45
- KGW—9:45, Cooking School
- KFI—9:45, News Release
- KNX—Drury Lane; 9:45, News
- KECA—Records to 9:45
- KFSD—Studio Program
- KGB—Stocks; News to 9:35

## 10:00 to 10:30 A. M.

- KGO & network—Press-Radio News; 10:05, Thirtieth Infantry Band
- KPO—As Woman to Woman; 10:15, Elmore Vincent, tenor
- KYA—Columbia on Parade; 10:15, The Novelty Shop
- KTAB—Bargain Broadcast; 10:15, The Old Bachelor
- KLX—Clinic; Stocks; News
- KROW—Musical Grab Bag
- KJBS—News; Orch.; Melody Parade
- KGCC—Cal King
- KQW—Popular Orchestra
- KGDM—So This is Hollywood
- ★ KFRFC & network—Just Plain Bill; 10:15, George Hall's Orchestra
- KOL—10:15, Morning Melodies

- KOIN—10:15, Air Shopping
- KEX—Lost and Found Items; 10:02, Classical Soloist
- KHQ—10:15, Celia Lee
- KFI—10:15, Hollywood Looking Glass
- KNX—Eddie Albright's Family
- KECA—Recordings

## 10:30 to 11:00 A. M.

- KPO & network—Woman's Magazine of the Air
- KGO—Vic and Sade; 10:45, Morin Sisters
- KYA—Organ Concert
- KTAB—Health Talk; Dude Martin
- KLX—International Kitchen
- KROW—The Observer
- KJBS—Organ; 10:45, Melodies
- KQW—Aunt Sammy; 10:45, Music
- KGCC—Hits of Today
- ★ KFRFC & network—Esther Velas Ensemble
- KFRFC—10:45, Mort Werner, pianist
- KOIN—Shopping; Studio Program
- KGDM—The Bondons
- KOL—Morning Melodies
- KVI—10:45, Amusement Tips
- KJR—Club Minutes; Uncle Hank
- KEX—Ronald Buck; 10:45, Hillbillies
- KNX—Mary Holmes; 10:45, Records
- KECA—Song Recital
- KGB—10:45, To be announced
- KOA—10:45, Livestock & Produce

## 11:00 to 11:30 A. M.

- KPO & network—Woman's Magazine of the Air
- KGO—Crosscuts Log o' the Day
- KYA—Organ Concert
- KTAB—Blue Moments; Beauty Facts
- KLX—Records; Rhythm Encores
- KROW—Health Talk; 11:15, Music
- KJBS—Oreh.; 11:15, Medical Talk
- KGCC—Milady's Date Book; 11:15, Waltz Time Classics
- KQW—Light Classics
- KGDM—Organ
- KOL—Garden Talk to 11:15
- ★ KFRFC & network—Eton Boys; KJR—Rhythma Rulers
- KVI—The Observer to 11:15
- KOIN—Art Kirkham
- KEX—Band; Cobwebs & Nuts
- KNX—Board of Education; Organ
- KECA—Records; Medical Talk

## 11:30 to 12:00 Noon

- KPO & network—King's Men, male quartet; 11:45, Nellie Revell at Large, Interview
- KGO—Financial Flashes; 11:35, Piano Vignettes; 11:45, Agricultural Bulletin
- KYA—Dance Time
- KTAB—Modern Rhythms; News
- KROW—Latin-American Program
- KLX—Anita and Orosco; 11:45, Lotus Land
- KJBS—Dance Orchestra
- KGCC—Records; News; Requests
- KQW—Accordion Capers; News
- KGDM—Organ
- KHQ—Organ Concert
- KFRFC—Home Forum to 11:45
- ★ KFRFC & network—Artist Recital
- KOIN—Art Kirkham
- KGW—"Cheerio"
- KEX—Cobwebs and Nuts to 11:45
- KFI—Fashion Tour; Market Reports
- KNX—Spice of Life; Ionizer Talk
- KSL—Artist Recital
- KOA—CAC Extension Service

## 12:00 to 12:30 P. M.

- KGO & network—Tommy Tucker's Orchestra
- KGO—Financial Flashes; 12:20, Tally-Ho, instrumentalists direction Paul Carson
- KPO—News



•KPO & network—12:15, Western Farm and Home Hour  
 KYA—Scriptures; Noonday Concert  
 KTAB—News; Event Book; Organ  
 KLX—Dance Music  
 KROW—Latin-American Program  
 KJBS—Song Hits; 12:15, Records  
 KGCC—Request Hour  
 KQW—Popular Orchestra  
 KGDM—Road Report; Recordings  
 \*KFRC & network—Metropolitan Parade  
 KOL—Carnival Hour  
 KVI—12:15, Front Page Headlines  
 KOIN—Ron Myron; Annie Brunner  
 KJR—12:15, Grain Report  
 KEX—Dance Frolic  
 KHQ—Business & Pleasure; 12:15, Chamber of Commerce  
 KGW—12:15, Meier & Frank  
 KNX—News; 12:15, Congou  
 KECA—News; 12:15, Records  
 KGB—Farm Flashes to 12:15  
 KSL—Payroll Builder

**12:30 to 1:00 P. M.**

•KPO & network—Western Farm and Home Hour  
 KGO—Tally-Ho; 12:45, Pair of Pianos  
 KYA—Noonday Concert  
 KTAB—Echoes of Portugal  
 KLX—Don Brose; 12:45, Fireside Phantasies  
 KROW—Calf. Farm Hour; Records  
 KJBS—Dance Matinee  
 KGCC—Pirate Cowboys  
 KQW—Weather Forecast; Mkt. Rep.  
 \*KFRC & network—Ann Leaf, Organ  
 KOL—Carnival Hour  
 KGDM—Recordings  
 \*KJR—Headliners, record  
 KGW—Dr. Semler; Studio  
 KEX—American Prod. to 12:35  
 KHQ—Chamber of Commerce  
 KNX—Concert Group  
 KECA—Recordings  
 KSL—Utah Agric. College to 12:45

**1:00 to 1:30 P. M.**

•KPO & network—Betty and Bob; 1:15, Platt & Nierman, piano duo  
 KGO—Fair of Pianos; 1:15, Ann Warner's Chats  
 KYA—Women's Institute of the Air; 1:15, Musical Strings  
 KTAB—Radio Frolic  
 KLX—Records; Martha Lee  
 KROW—Concert Melodies  
 KJBS—Stock Reports; Song Hits  
 KQW—Friendly Hour  
 KGDM—Recordings; Organ  
 \*KFRC & network—Visiting America's "Little House"  
 KPHC—1:10, Hesusu Society Talk  
 KOL—1:15, Julie Day  
 KPO—1:15, Sylvia Gray  
 KGW—1:15, Dental Clinic  
 KPT—1:15, Al Cayle, accordionist  
 KNX—Pontrelli's Orchestra  
 KECA—Recordings to 1:15  
 KFSD—Stock Report to 1:15  
 KGB—Stocks to 1:15  
 KSL—Payroll Builder

**1:30 to 2:00 P. M.**

•KPO & network—Oxydol's Own Ma Perkins; 1:45, Betty Marlowe, talk  
 KGO—Ann Warner's Chats; 1:45, Alvin Rey, guitarist  
 KYA—Piano Concert  
 KTAB—Jean Kent, economics  
 RLX—Song Bag  
 KROW—Recordings  
 KJBS—Dance Orchestra  
 KQW—Afternoon Concert  
 KGDM—Organ; Recordings  
 KFRC—Closing N. Y. Stocks to 1:35  
 \*KFRC & network—Dick Messner's Orchestra  
 KOIN—Book of Life  
 KEX—Grain Reports; Records  
 KNX—Pontrelli's Orchestra

KECA—Recordings  
 KFSD—Old Time Program

**2:00 to 2:30 P. M.**

•KPO & network—Al Pearce and His Gang  
 KGO—Blue Room Echoes  
 KYA—Footlight Favorites  
 KTAB—Globe Trotter; Romancin'  
 KLX—Recordings  
 KROW—Musical Matinee; Vocalist  
 KJBS—Better Business Talk; 2:15, Tango Orchestra  
 \*KFRC & network—Happy Go Lucky Hour  
 KQW—Dance Matinee  
 KGDM—Records and News  
 KJR—Salon Hour  
 KEX—World Bookman; Music  
 KNX—The Bookworm  
 KECA—Classic Hour  
 KSL—Volga; 2:15, Dental Clinic  
 KOA—Theatre News; Blue Room Echoes

**2:30 to 3:00 P. M.**

•KPO & network—Al Pearce Gang  
 KGO—Mickey Gillette's Music  
 KYA—Vignettes of Life; 2:45, Modern Notes  
 KTAB—Three-Four Time; Records  
 KLX—Records; 2:35, Stocks; 2:40, Records  
 KROW—Dell Perry; 2:45, Vocalist  
 KQW—Dance Matinee  
 KJBS—Recorded Tunes  
 KGDM—The Romancers  
 \*KFRC & network—Happy Go Lucky Hour  
 KJR—Salon Hour  
 KEX—Music  
 KNX—Recordings  
 KECA—Classic Hour  
 KSL—Milton Charles

**3:00 to 3:30 P. M.**

•KPO & network—Langendorf Pictorial; 3:15, Will Aubrey, Bard of the Byways  
 KGO—Waldorf-Astoria Orchestra; 3:15, Mid-Week Hymn Sing  
 KYA—Band Concert  
 KTAB—Recordings; Talk  
 KLX—Recordings; Jean Ardath  
 KROW—Mary Dowd Reardon  
 KJBS—Records  
 KQW—Stocks; 3:15, Musicales  
 KGDM—Recordings  
 \*KFRC & network—Feminine Fancies  
 KROW—Studio Program  
 KHQ—Economic Housewife; Club Bulletin  
 KNX—Concert Orchestra  
 KECA—Recordings  
 KSL—Men of Notes Trio; 3:15, Sis Mirandy  
 KOA—Orchestra

**3:30 to 4:00 P. M.**

•KPO & network—Slices of Life; dramatic skit by Carlton E. Morse, with Bennie Walker and Bobbe Deane; 3:35, Dorothy Page, contralto  
 KPO—3:45, University of California  
 KGO—The Well-Dressed Woman  
 \*KGO & network—3:45, The Song-fellows Quartet  
 KYA—Symphony Highlights  
 KTAB—Sophistication; Picture Talk  
 KLX—Recordings  
 KJBS—Dance Melodies  
 KROW—Singing Strings; Records  
 KQW—Variety Program  
 KOI—Lost and Found; 3:35, Studio  
 \*KFRC & network—Club Matinee  
 KOIN—Newspaper of the Air  
 KPT—Ann Warner's Chats  
 KNX—Housewife's Protective League  
 KECA—3:45, Univ. of California  
 KFSD—3:45, Univ. of California  
 KGB—3:55, Along the Airways  
 KSL—The Junior Hour

**4:00 to 4:30 P. M.**

•KPO & network—Gould & Shefter, piano duo  
 KPO—4:15, Herman Crone's Orch.  
 KGO—Immortal Melodies; Emil Polak's Orchestra  
 KYA—Tea Dance Parade  
 KTAB—Keep Smiling Keue  
 KLX—Melody Race; Pianist  
 KROW—Waltz Time; Safety Council  
 KJBS—Hollywood Gossip; Bill & Co  
 KGDM—Gilmore Oil Program  
 KQW—Star Reporter; Bill & Co; Headline Memories  
 \*KFRC & network—Dan Russo's Orchestra  
 KOL—4:15, Historical Flashes  
 KOIN—Newspaper of the Air  
 KJR—Tea Dansant  
 KFI—Nick Harris Program to 4:15  
 KNX—Haven of Rest  
 KECA—4:15, Recordings  
 KSL—Town Crier  
 KOA—4:15, Orchestra

**4:30 to 5:00 P. M.**

•KPO & network—You and Your Government  
 KPO—4:45, News  
 KGO—Immortal Melodies  
 \*KGO & network—4:45, Coquettes, vocal trio  
 KYA—Tea Dance Parade  
 KTAB—Lauretta La Marr  
 KLX—Pianist; Health School  
 KROW—Hillbilly Music  
 KJBS—Dance Orchestra  
 KQW—Story Time; 4:45, Songs  
 KHQ—4:45, Tull & Gibbs  
 KGDM—Ernie Cruz Program  
 \*KFRC & network—Correct English; 4:45, Between the Bookends  
 KGW—Orchestra  
 KJR—4:45, Steamboat Bill  
 KFI—Organ Recital  
 KNX—Recordings; U. S. C.  
 KSL—Town Crier  
 KOA—4:45, Orphan Annie

**5:00 to 5:30 P. M.**

•KPO & network—Nomads, Josef Hornik's Orchestra  
 KGO—Back Stage Chatter; 5:15, Edna Fischer, pianist  
 KYA—Children's Hour  
 KTAB—Memories in Melody; 5:15, Popular Songs  
 KLX—Brother Bob's Club  
 KROW—Memory Lane; Ramona and Romero  
 KJBS—Orchestra; 5:15, News  
 KGCC—Studio Frolic  
 KQW—Popular Concert  
 KGDM—Serenader; Records  
 \*KFRC & network—Dodge Motor Company; 5:15, Billy Bachelor  
 KOIN—Bob and Dolly  
 KHQ—5:15, Donald Ayers Adventures  
 KGW—Milton L. Gumbert to 5:05  
 KNX—Mummy Club; 5:15, Organ  
 KECA—Records  
 KPOX—Playtime Lady; Records  
 KSL—5:15, Tarzan

**5:30 to 6:00 P. M.**

•KGO & network—Chester Rowell; 5:45, Song Shots  
 KPO—Behind the Footlights  
 \*KPO & network—5:45, Little Orphan Annie  
 KYA—Metropolitan; 5:45, Campbell  
 KTAB—Health Talk  
 RLX—Covered Wagon Jubilee  
 KROW—Eating Your Way to Health  
 KGCC—Records; 5:45, Irish Gems  
 KQW—Popular Quartet; 5:45, Voice of Portugal  
 \*KFRC & network—Bob Price's Orch.  
 KOIN—Merry Men  
 KVI—Rocky Mountain Wranglers to 5:45  
 KNX—Organ; "Mongoose" Murder  
 KFI—Your Pal Jimmy to 5:45

KECA—5:45, Recordings  
 KFOX—Recordings  
 KFSD—5:45, Farley's Rangers  
 KGB—Robin Hood to 5:45  
 KSL—Auerbach; Crossmyer & Cohen  
 KOA—Tim and Irene to 5:45

**6:00 to 6:30 P. M.**

• KPO & network—Melodiana, ensemble direction Ernie Gill  
 KGO—Community Forum  
 KYA—Cyrus Trobber Orchestra  
 KTAB—Dinner Concert  
 KLX—Trio  
 KROW—News; 6:15, Melodies  
 KGGC—Re-creation Football Game  
 KQW—Department of Agriculture; 6:15, Popular Program  
 \* KFRC & network—Bing Crosby & Boswell Sisters  
 KJR—News Reporter to 6:15  
 KGW—Musical Mannequins  
 KHQ—Northwest Parade  
 KFWE—News; Records; Organ  
 KNX—News; 6:15, Dinner Dance  
 KFI—Crazy Mountainers; Charlie Hamp  
 KECA—Children of All Lands; News  
 KFOX—News; Al & Molly; Cecil & Sally

**6:30 to 7:00 P. M.**

• KPO & network—Ed Wynne, the Texaco Fire Chief; Graham McNamee, Eddie Duchin's Orchestra  
 KGO—Argentine Trio; 6:45, Air Adventures of Jimmy Allen  
 KYA—Orchestra  
 KTAB—Sport Page; Political  
 KLX—Concert Trio  
 KROW—Powder River Wranglers; 6:45, Dr. G. Facci  
 KGGC—Theatre of the Air; Music  
 KQW—Market Reports; Records  
 \* KFRC & network—Isham Jones' Orchestra  
 KJR—Melody Race; Jimmy Allen  
 KFOX—School Kids; Jimmy Allen  
 KFWE—Organ; 6:45, Jimmy Allen  
 KNX—Concert; 6:45, Jimmy Allen  
 KCA—Wesley Tourtelotte, organ  
 KGB—To be announced

**7:00 to 7:30 P. M.**

• KPO & netwk—Palmolive Beauty Box Theatre of the Air; Operetta, with Gladys Swarthout, mezzo-soprano; John Barclay; Nat Shilkret's Orchestra  
 KGO—Diary of a Cosmopolitan  
 KYA—Ernie Smith's Sport Page; 7:15, Memory Strains  
 KTAB—Studio; 7:15, Italian News  
 KLX—News; Political Talk  
 KROW—C. W. Hammond; 7:15, Calvary Meditations  
 KGGC—Oddities; Mountain Music  
 KQW—Weather; 7:15, Accordiona  
 \* KFRC & network—Camel Caravan  
 KECA—Paul Roberts, tenor; 7:15, Romance at Fifty  
 KNX—Frank Watanabe; 7:15, Lawrence King, vocalist  
 KFWE—Ray de O'Fan; Hollywood Hilarities  
 KFOX—Eb & Zeb; Bobby & Betty

**7:30 to 8:00 P. M.**

• KPO & network—Palmolive Beauty Box Theatre  
 KGO—Just Around the Corner, Emil Polak's Orchestra  
 KYA—Dixie Marsh, "Talk of the Town"; 7:45, Gold Rush Days  
 KTAB—Opie & Winey; Organ  
 KLX—Merlyn Morse, tenor; 7:45, Spice of Life  
 KROW—Calvary Meditations; Records  
 KGGC—Recordings  
 KQW—Italian Radio Theatre  
 KFRC—Beauty That Endures  
 \* KFRC & network—7:45, Mystery Drama

KOL—Radio Speaker Stevenson to 7:45  
 KVI—Dr. Mellor to 7:45  
 KJR—Sweethearts; Silver Strains  
 KNX—The Ir-Laws; King Cowboy  
 KFWE—Mrs. Pasquale  
 KECA—Recordings  
 KFOX—Boy Detective; Aristocrats  
 KGB—Geo. Givot to 7:45  
 KSL—Crazy Crystals; Origin of Superstition

**8:00 to 8:30 P. M.**

• KPO & network—Amos 'n' Andy; 8:15, Gene and Glenn  
 KGO—California State Chamber of Commerce Program; 8:15, Merriam for Governor  
 KYA—Orchestra; Musical Milkman  
 KTAB—Itchy & Scratchy; 8:15, London Fantasy  
 KLX—Mania Stringed Orchestra  
 KROW—Latin-American Program  
 KGGC—Spanish-American Program  
 KQW—Melody Round-Up  
 \* KFRC & network—Myrt & Marge; 8:15, Frank Dailey's Orchestra  
 KOL—8:15, To be announced  
 KOIN—8:15, Comedy Stars  
 KEX—News; 8:15, Humboldt  
 KVI—8:15, Political Program  
 KNX—Musical Program  
 KFWE—Welcome Lewis; 8:15, Orch.  
 KFOX—Garden Talks; Melodies  
 KECA—Recordings  
 KFSD—Jimmie Allen to 8:15  
 KGB—8:15, To be announced  
 KSL—8:15, Mirth Parade

**8:30 to 9:00 P. M.**

• KPO & netwk—Death Valley Days  
 KGO—Neapolitan Echoes, novelty instrumental trio  
 KYA—Tom Coakley's Orchestra; 8:45, Bob Beal's Orchestra  
 KTAB—London Fantasy; Political  
 KLX—Carefree Capers  
 KROW—Italian Program  
 KGGC—Timely Tunes; 8:45, Reeds  
 KQW—Melody Round-Up  
 \* KFRC & netwk—Calling All Cars  
 KOIN—Little Show to 8:45  
 KVI—Musical Creditors  
 KJR—Musical Auction; Jewel Box  
 KFWE—Pioneers' Sons; Orchestra  
 KNX—Forge of Freedom  
 KECA—Dr. Geo. Lebling, pianist  
 KFOX—Pioneers' Sons; Orchestra  
 KFSD—Moments of Melody  
 KSL—Auerbach; Melodies  
 KOA—Musical Program

**9:00 to 9:30 P. M.**

• KPO & network—Ben Bernie's Orchestra  
 KGO—Rainbow Harmonies  
 KYA—Orchestra; Radio Players  
 KTAB—Crockett Family; 9:15, Nevada Nighthiders  
 KLX—Old Gospel Hymns  
 KROW—9:15, Motorcycle Races  
 KQW—Dance Frolic  
 KGGC—News; Wyoming Cowboys  
 \* KFRC & network—Boleros; 9:15, Herbie Kaye's Orchestra  
 KOIN—Golden Voices  
 KVI—Dance Music  
 KGW—Gervurtz Furniture Co.  
 KNX—News; 9:15, Political  
 KFWE—Don Cave's Orch.; News  
 KFOX—Beverly Hillbillies  
 KECA—Recordings  
 KFSD—Studio; 9:15, Angelita  
 KGB—Comedy Stars to 9:15  
 KSL—Orchestra; 9:15, Smoke Rings  
 KOA—Comedy Stars; Studio

**9:30 to 10:00 P. M.**

• KPO & network—Leo Reisman's Orchestra  
 KGO—Press-Radio News; 9:35, Williams-Walsh Orchestra  
 KTAB—Vedder Players

KYA—Radio Players; News; Answer Man  
 KLX—Pioneer Sons; 9:45, News  
 KROW—Motorcycle Race  
 KGGC—Concert; Danceable Tunes  
 \* KFRC & network—Enoch Light's Orchestra  
 KOL—9:45, News Flashes  
 KQW—Dance Frolic  
 KVI—News Flashes to 9:45  
 KEX—Fights  
 KNX—The Crocketts  
 KFWE—Boxing Bouts  
 KFOX—Fights, Olympic Auditorium  
 KECA—Recordings  
 KFSD—To be announced  
 KSL—Smoke Rings; Mary & John  
 KOA—Cosmopolitan Orchestra

**10:00 to 10:30 P. M.**

• KPO & network—Richfield Reporter; 10:15, The Story Behind the Claim  
 KGO—Nobody Home, variety program  
 KYA—Venetians; 10:15, Rhyme Land  
 KTAB—Club Tivoli  
 KLX—Recordings  
 KROW—Races; Recordings  
 KGGC—Joe Garcia's Orchestra  
 KFRC—News; Elec. Trans. to 10:15  
 \* KFRC & network—10:15, Joe Sullivan, pianist  
 KVI—To be announced to 10:15  
 KEX—Fights  
 KQW—10:15, Kelly's Kavaleros  
 KFWE—Boxing Bouts  
 KECA—Musical Celebrities, records  
 KNX—The Crocketts  
 KFOX—Fights  
 KGB—10:10, To be announced  
 KSL—El Dorado Orchestra  
 KOA—Studio Program

**10:30 to 11:00 P. M.**

• KPO & network—Tom Coakley's Orchestra; 10:55, Press-Radio News  
 KGO—Beal-Taylor's Orchestra  
 KYA—Jackie Souders' Orchestra  
 KTAB—Danceapations  
 KLX—Recordings  
 KROW—Royal Hawaiians; Varieties  
 KGGC—Merry Melodies  
 KFRC—Great Moments in History to 10:35  
 \* KFRC & network—Vincent Lopez' Orchestra  
 KOIN—Anthony's Orchestra  
 KEX—Piano; Olympians  
 KNX—Pontrelli's Orchestra  
 KFWE—Dance Orchestra  
 KFOX—Tex Howard's Orchestra  
 KOA—Huffman Harmonies

**11:00 to 11:30 P. M.**

• KGO & network—Ted Fio-Rito's Orchestra  
 KPO—News; Organ Concert  
 KYA—Sandman Organ  
 KTAB—Danceapations  
 KROW—Dance of the Hour  
 \* KFRC & network—Dick Jurgens' Orchestra  
 KOMO—News; Music  
 KGW—Jack Bain's Orchestra  
 KNX—Pontrelli's Orchestra  
 KFWE—Harry Sosnik's Orchestra  
 KFOX—Harry Sosnik's Orchestra

**11:30 to Sign Off**

• KGO & network—Orville Knapp's Orchestra  
 KPO—Organ Concert  
 KYA—Jerry Andrews Little Show  
 KTAB—Club El Cortez  
 KROW—Dance Music; Vagabond  
 KFRC—Ben Pollack Orchestra  
 KVI—Dance Orchestra  
 KHJ—Music  
 KGB—Dance Orchestra  
 KFOX—Jimmy Mann's Orchestra  
 KJBS—12:01, Owl Program to 7 a.m.

# WEDNESDAY Programs

Oct. 17, 1934

## 7:30 to 8:00 A. M.

- KPO & network—Financial Service
- KPO—7:45, Sam Moore, guitarist
- KGO—Three Scamps; Forecast
- KGO—7:45, Organ Concert
- KYA—Musical Clock
- KTAB—Hill Billie Tunes
- KROW—Commuters Time Clock
- KJBS—Alarm Klok Klub
- KQW—Breakfast Hour
- KGDM—Gilmore Oil Program
- KFRC—Seal Rocks Broadcast
- KOL—Organ Program
- KVI—Talk; Varieties
- KGW—Ronald Buck
- KEX—Varieties
- KJR—Market Quotations; Shadows on Clock
- KHQ—Dental Hygiene
- KFI—Church; Helen Hill, pianist
- KNX—Bill Sharples' Club
- KHJ—Recordings and Stocks
- KECA—Bible Study to 7:45
- KGB—Stocks; Seven O'Clock Club
- KSL—Broadcasters Review

## 8:00 to 8:30 A. M.

- KPO & network—The Honey-mooners, Grace and Eddie Albert; 8:15, Tony Wons' Scrapbook
- KGO—Crosscuts Log o' Day
- KYA—Christian Science Reading; 8:15, Mr. and Mrs. Reader
- KTAB—Mobile Melodies; Four-Four Time
- KLX—Records; 8:20, Stocks
- KROW—Commuters Time Clock
- KJBS—Morning Varieties
- KQW—Morning Melodies
- KGDM—Recorded Program
- KFRC—Exercises and Records
- KOL—Music; 8:15, Cecil & Sally
- KVI—Music; Market Specials
- KGW—Ronald Buck
- KHQ—8:15, Economy Comments
- KEX—Calvary Tabernacle
- KNX—Gene Autrey; Elec. Trans.
- KECA—8:15, Recordings
- KFOX—Grain Reports; Songs
- KFI—Church Quarter Hour to 8:15
- KSL—Informal Music

## 8:30 to 9:00 A. M.

- KPO & netwk—U. S. Army Band
- KGO—Crosscuts Log o' the Day
- KYA—Morning Concert
- KTAB—Radio Shoppers' Digest
- KLX—Covered Wagon Jubilee
- KROW—Novelty Review
- KJBS—Dance Orchestra
- KQW—Morning Concert
- KGDM—Records; 8:45, Health Talk
- KFRC & network—Rambles in \*Rhythm; 8:45, Jane Ellison
- KGW—Cheerio
- KOMO—Vlennese Vagabonds
- KHQ—Comments; Home Comfort
- KJR—8:45, Morning Miracles
- KEX—Studio; Orchestra
- KFI—Studio; 8:45, Julia Hayes
- KNX—Song Bag
- KSL—Good Morning Judge; 8:45, Booth Fisheries

## 9:00 to 9:30 A. M.

- KGO & network—Fields & Hall, songs and patter
- KGO—9:15, To be announced
- KPO—Barbara Lee
- KPO & network—9:15, Josephine Gibson
- KYA—Concert; 9:15, Prudence Penny
- KTAB—Hour of Prayer
- KLX—Shopping List
- KROW—Morning Concert
- KJBS—Popular Varieties; Records
- KGCC—Star of Today; Songs
- KQW—Tuneful Topics



**JAMES MELTON**  
NBC—9 P. M.

- KFRC & network—Voice of Experience; Elizabeth Barthell
- KGDM—Recordings; Mabel Rubin
- KOL—9:15, Prudence Penny
- KVI—9:15, Mystic Melodies
- KHQ—Musical; Morning Service
- KOMO—Mary's Friendly Garden
- KEX—Dance Rhythm; Request Prog.
- KECA—Records to 9:15
- KFSD—Magic Hour; Good Cheer
- KNX—To be announced
- KSL—9:15, Jennie Lee
- KOA—Booth Fisheries to 9:15

## 9:30 to 10:00 A. M.

- KPO & network—Marshall's Mavericks
- KGO—Piano Vignettes; 9:45, Jean Abbey, news of the shops for women
- KYA—Feminine Notebook; Waltz Idylls
- KTAB—Health Talk
- KLX—Clinic of the Air
- KROW—Diet and Health
- KJBS—Visiting Faye Ward
- KGCC—Memory Melodies; Records
- KQW—Faye Ward
- KGDM—News of the Day; Records
- KFRC & network—Betty Crocker; 9:45, Al Kavelin's Orchestra
- KGW—9:45, Cooking School
- KOMO—String Trio
- KHQ—Magis Travels
- KOL—9:45, Beautiful Melodies
- KOIN—9:45, Experiences from Life
- KVI—9:45, Tyeo Oyster Talk
- KFI—Talk; 9:45, News
- KNX—Drury Lane; 9:45, News
- KFSD—Stock Reports
- KGB—News; 9:50, Stocks

## 10:00 to 10:30 A. M.

- KGO & netwk—Press-Radio News; 10:05, Beaux Arts Trio
- KPO—Organ Concert; 10:15, News
- KYA—Columbia on Parade; 10:15, Musical Milkman
- KTAB—Bargains; Old Bachelor
- KLX—Clinic; 10:15, Stocks; News
- KROW—Musical Grab Bag
- KJBS—News; 10:05, Organ
- KGCC—Cal King
- KQW—Orchestra
- KGDM—Recordings

- KFRC & network—Just Plain Bill; George Hall's Orchestra
- KOIN—10:15, Air Shopping
- KHQ—Crazy Wells; 10:15, Cella Lee
- KOMO—Jack & Jill
- KEX—Lost & Found; Ronald Buck
- KJR—News; 10:05, Early Echoes
- KNX—Eddie Albricht's Family
- KECA—Talk; Records

## 10:30 to 11:00 A. M.

- KPO & network—Woman's Magazine of the Air
- KGO—Vic & Sade; 10:45, Words & Music
- KYA—Organ Concert
- KLX—International Kitchen
- KTAB—Health Talk; Dude Martin
- KROW—The Observer
- KJBS—Dance Orchestra; Col. Shaddy
- KQW—Aunt Sammy; 10:45, Music
- KGCC—Hits of Today
- KGDM—Recordings
- KFRC & network—Dan Russo's Orchestra
- KFRC—10:45, Mort Werner, pianist
- KOL—Morning Melodies
- KVI—10:45, Amusement Tips
- KJR—Club Minutes; Serenader
- KEX—Orchestra; Hillbillies
- KECA—Records; 10:45, Piano
- KNX—Mary Holmes; 10:45, Rhythm Encores
- KOA—Ida Bailey Allen; 10:45, Betty Moore
- KSL—Triangle Club to 10:45

## 11:00 to 11:30 A. M.

- KPO & network—Woman's Magazine of the Air
- KGO—The Wandering Minstrel
- KYA—Organ, Glen Goff
- KTAB—Bargains; Blue Moments; Fashions
- KLX—Records; 11:15, Rhythm
- KROW—Health Talk; Modern Music
- KJBS—Popular Hits
- KGCC—Milady's Date Book; 11:15, Health Talk
- KGDM—Organ Recital
- KQW—Light Classics
- KFRC & network—Romany Trail
- KOL—Garden Talk to 11:15
- KVI—The Observer to 11:15
- KOIN—Art Kirkham
- KEX—Band Music; Cobwebs & Nuts
- KJR—Rhythm Rulers Recorded
- KNX—Organ Recital
- RECA—Records; German Lesson
- KOA—Livestock and Produce

## 11:30 to 12:00 Noon

- KPO & netwk—Smackout, Marjion and Jim Jordan, comedy duo; 11:45, Solist
- KGO—Edna Fischer, pianist; 11:45, Agriculture Bulletin
- KYA—Dance Time
- KTAB—Modern Rhythms; News
- KLX—Anita and Oresco; Records
- KROW—Latin American Program
- KGCC—Talk; News; Requests
- KJBS—Dance Orchestra
- KQW—Variety and Theatre News
- KGDM—Organ Recital
- KGW—11:45, "Cheerio"
- KFRC—Women's Home Forum to 11:45
- KFRC & netwk—Ann Leaf, Organ
- KHQ—Organ Recital
- KJR—Measured Steps
- KEX—Cobwebs and Nuts to 11:45
- KFI—Fashion Tours; 11:45, State Market Reports
- KNX—Music; 11:45, Ironizer Talk

## 12:00 to 12:30 P. M.

- KGO & network—Don Carlos Orch.
- KGO—12:15, Financial Flashes; 12:20, Music



KPO—News  
 • KPO & network—12:15, Western Farm and Home Hour  
 KYA—Mentures; 12:03, Concert  
 KTAB—News; Event Book  
 KLX—Dance Music  
 KROW—Latin-American Program  
 KQW—Orchestra; 12:15, Mark Green  
 KGGC—Request Hour  
 KJBS—Song Hits  
 KGDM—Records; Serenaders  
 \*KFRC & network—Kate Smith's Matinee  
 KFRC—Women's Home Forum  
 KOL—The Carnival Hour  
 KOIN—Ron Myron's Scrapbook; Ken and Wally  
 KGW—12:15, Meier & Frank  
 KEX—Dance Frolic  
 KHQ—Business and Pleasure  
 KJR—Twelve o'Clock Tunes; 12:15, Grain Reports; Records  
 KVI—12:15, Front Page Headlines  
 KNX—News; 12:15, Congo  
 KECA—News; Records  
 KSL—Payroll Builder  
 KOA—Stan Miles Orchestra

**12:30 to 1:00 P. M.**

• KPO & network—Western Farm and Home Hour  
 KGO—Mickey Gillette's Music; 12:45, Pair of Pianos, Grace Frankel and Gertrude Lyne  
 KYA—Noonday Concert  
 KTAB—Echoes of Portugal  
 KLX—Don Bree; Garden Tips  
 KROW—California Farm Hour; 12:45, Records  
 KJBS—Dance Matinee  
 KGGC—Pirate Cowboys  
 KQW—Federal Market Reports  
 KGDM—Records  
 \*KFRC & network—Kate Smith's Matinee  
 KOL—The Carnival Hour  
 KOIN—Annie Brun  
 KVI—News & Comment to 12:45  
 KJR—Headliners  
 KEX—American Produce to 12:35  
 KGW—Dr. Semler; Friendly Chat  
 KHQ—Kinman Schooldays; Stories  
 KNX—Luca's Concert Ensemble  
 KECA—Concert Favorites, records  
 KOA—Orchestra; Vocalist

**1:00 to 1:30 P. M.**

• KPO & network—Betty and Bob; 1:15, Dorothy Page, contralto  
 KGO—Pair of Pianos; 1:15, Ann Warner's Chats  
 KYA—S. F. Ad Club Luncheon  
 KTAB—Radio Frolic  
 KLX—Records; 1:15, Martha Lee  
 KROW—Concert Melodies  
 KJBS—Stock Reports and Records  
 KQW—Friendly Hour  
 KGDM—Records; Theatre Talk  
 \*KFRC & network—National Student Federation; Jack Brooks' Orch.  
 KOL—1:15, Julie Day  
 KVI—1:15, Reichmuth Family  
 KGW—1:15, Dental Clinic  
 KHQ—1:15, Sylvia Gray  
 KNX—Pontrelli's Orchestra  
 KPT—1:15, Home Nursing Hints  
 KNX—Pontrelli's Orchestra  
 KECA—Records to 1:15  
 KFSD—Ad Club  
 KGB—1:15, Stocks; 1:20, Jack Brooks' Orchestra  
 KSL—Payroll Builder to 1:15

**1:30 to 2:00 P. M.**

• KPO & network—Oxydol's Own Ma Perkins; 1:45, Dreams Come True, Barry McKinley, baritone  
 KGO—Ann Warner's Chats; 1:45, Vagabonds Quartet, instrumentalists  
 KYA—Modern Maestros  
 KTAB—Jean Kent, Economics  
 KLX—Song Bag  
 KJBS—Afternoon Popular Concert

KROW—Tango Tempos; Musical Matinee  
 KQW—Afternoon Concert  
 KGDM—Accordion Boys; Records  
 KFRC—1:45, N. Y. Stocks to 1:50  
 \*KFRC & network—Educational Feature; Swinging Along  
 KOIN—Book of Life  
 KJR—The Sun Dial  
 KEX—Reports; Operatic Gems  
 KNX—Pontrelli's Orchestra  
 KECA—Recordings  
 KFSD—Old Time Program

**2:00 to 2:30 P. M.**

• KPO & network—Al Pearce and His Gang  
 KGO—Vagabonds Quartet; 2:15, Jack Heller, tenor  
 KYA—Light Opera Concert  
 KTAB—Globe Trotter; Romancin'  
 KLX—Recordings  
 KJBS—Gerald Kenney; Records  
 KROW—Musical Matinee; Vocalist  
 KQW—Dance Matinee  
 KGDM—Records; News  
 \*KFRC & network—Happy Go Lucky Hour  
 KJR—Salon Hour, recorded  
 KEX—World Bookman; Music  
 KNX—The Bookworm  
 KECA—Recordings  
 KSL—Music; 2:15, Dental Clinic  
 KOA—Huffman Reporter; Rowdy Wright

**2:30 to 3:00 P. M.**

• KPO & network—Al Pearce Gang  
 KGO—Midweek Concert  
 KYA—Vignettes of Life; 2:45, Modern Notes  
 KTAB—Three Four Time; 2:45, Tranquility  
 KLX—Talk; Stock; 2:40, Records  
 KROW—Dell Perry; 2:45, Annette Thompson  
 KJBS—Dance Recordings  
 KQW—Dance Matinee  
 KGDM—Romancers  
 \*KFRC & network—Happy Go Lucky Hour  
 KEX—Recordings  
 KJR—Salon Hour, recorded  
 KECA—Classic Hour  
 KNX—Recordings  
 KFSD—2:45, Studio Program  
 KSL—Parent-Teachers'; Organ

**3:00 to 3:30 P. M.**

• KPO & network—Langendorf Pictorial; 3:15, John and Ned  
 KGO—Education in the News; 3:15, Alma Kitchell, contralto  
 KYA—Band Concert  
 KTAB—Recordings  
 KLX—World Revue  
 KROW—Mary Dowd Reardon  
 KJBS—Instrumentalists; Word Man  
 KQW—Stocks; 3:05, Music; 3:15, Word Man  
 KGDM—Recordings  
 \*KFRC & network—Feminine Fancies  
 KJR—Easy Chair to 3:15  
 KOMO—3:15, Julia Hayes  
 KGW—Eddie King, pianist; 3:15, Concert Trio  
 KHQ—Hints; Club Bulletin  
 KPT—3:15, Studio Program  
 KNX—Concert Orchestra  
 KECA—Raine Bennett; Records  
 KSL—Men of Notes Trio; 3:15, Texas Rangers  
 KOA—3:15, University of Denver

**3:30 to 4:00 P. M.**

• KPO & network—Slices of Life; 3:35, To be announced  
 KPO—3:45, Univ. of Calif. Program  
 KGO—What a Woman Thinketh  
 \*KGO & network—3:45, Dot Kay, contralto  
 KYA—Symphony Highlights  
 KLX—Recordings

KTAB—Sophistication; Talk  
 KROW—Spanish Tunes; Records  
 KQW—Art Padden, pianist; Music  
 KJBS—Art Padden, pianist  
 KGDM—Recordings  
 \*KFRC & network—Club Matinee  
 KOL—Harriet Lincks; Studio Prog.  
 KOIN—Newspaper of the Air  
 KHQ—Club Bulletin; Happy Feet  
 KOMO—Concert Ensemble  
 KEX—3:45, Request Program  
 KFI—Ann Warner's Chats  
 KNX—Housewives' Protective League  
 KGB—3:55, Along the Airways  
 KFSD—3:45, Univ. of California  
 KSL—Junior Hour  
 KOA—Vocalist; News

**4:00 to 4:30 P. M.**

• KPO & network—Herman Crone's Orch.; Johnny Johnson's Orch.  
 KGO—Mickey Gillette's Music  
 KYA—Tea Dance Parade  
 KTAB—Keep Smiling Revue  
 KLX—Musical Jigsaws; 4:15, Recds.  
 KROW—Waltzes; Songs at Eventide  
 KJBS—Hollywood Gossip; Bill & Co  
 KGDM—Gilmore Gil Program  
 KQW—Star Reporter; Bill & Co  
 \*KFRC & network—Dan Russo's Orchestra  
 KOIN—Newspaper of the Air  
 KJR—Tea Dansant  
 KEX—Music  
 KNX—Haven of Rest  
 KECA—Good Old Songs; Records  
 KGB—Police Talk to 4:05  
 KSL—Town Crier  
 KOA—Memories; Stamp Club

**4:30 to 5:00 P. M.**

• KPO & network—Personalities; Vocalist and Orchestra  
 KGO—4:45, News  
 KGO—Mickey Gillette's Music  
 \*KGO & network—4:45, Clef Dwellers, vocal trio  
 KYA—Tea Dance  
 KTAB—Laurette La Marr  
 KLX—Studio; 4:45, Health School  
 KROW—Hillbilly Music  
 KQW—Story Time; 4:45, Songs of the Islands  
 KJBS—Orch.; Hillbilly Tunes  
 KGDM—Ernie Cruz Program  
 KHQ—Studio Program  
 KFRC—Recordings  
 \*KFRC & network—4:45, Between the Bookends  
 KOIN—Studio to 4:45  
 KVI—Records to 4:45  
 KEX—To be announced  
 KJR—Snapshots; Steamboat Bill  
 KNX—U. S. C.; Songs  
 KFI—Organ Recital  
 KGB—To be announced  
 KSL—Town Crier  
 KOA—Skit; 4:45, Orphan Annie

**5:00 to 5:30 P. M.**

• KPO & network—Royal Gelatine Revue, dramatic series starring Mary Pickford  
 KGO—Children's Hour; 5:15, Music Room  
 KYA—Children's Hour  
 KTAB—Health Talk; Songs  
 KLX—Brother Bob's Club  
 KROW—Memory Lane; Mello-Duettes  
 KJBS—Popular Selections; News  
 KGGC—Studio Frolic  
 KQW—Popular Concert  
 KGDM—Records; Sports  
 \*KFRC & network—Al Roth and Orchestra; 5:15, Billy Bachelor  
 KOIN—Bob and Dolly to 5:15  
 KEX—Orchestra  
 KJR—Waltzes and Tangos  
 KNX—To be announced; Organ  
 KECA—Recordings  
 KFSD—Studio Program  
 KSL—Republican State Committee; 5:15, Tarzan

**5:30 to 6:00 P. M.**

• KPO & network—Cliff Nazarro, songs; 5:45, Little Orphan Annie  
 KGO—Music Room; 5:45, Tim Healy's Ivory Stamp Club  
 KYA—Metropolitans; 5:45, Campbell Corner  
 KTAB—Dr. Thompson, talk  
 KLX—Covered Wagon Jubilee  
 KROW—Eating Your Way to Health  
 KGGC—Dance Echoes; Irish Gems  
 KQW—Orchestra; Voice of Portugal  
 \*KFRC & network—Everett Marshall's Broadway Varieties  
 KJR—Romancing; Cecil Solly  
 KNX—Orchestra; 5:45, "Mongoose"  
 KFI—Elec. Transcription to 5:45  
 KECA—Recordings; Song Recital  
 KFSD—Studio; Farley's Rangers  
 KOA—Democratic Central Committee; Ford Rangers

**6:00 to 6:30 P. M.**

• KPO & network—Warden Lewis E. Lawes in 20,000 Years in Sing Sing  
 KGO—45 Minutes from Broadway  
 KYA—Cyrus Trobbe's Orchestra  
 KTAB—Dinner Concert  
 KLX—KLX Trio  
 KROW—News; Rhythm Aces  
 KGGC—Dinner Dance Review  
 KQW—California Department of Agriculture; 6:15, Popular Program  
 \*KFRC & network—Chesterfield Program  
 KFWB—News; Records; Sports  
 KNX—News; 6:15, Dinner Dance  
 KECA—Board of Education; News  
 KFOX—News; Al & Molly; Cecil & Sally  
 KFSD—Dinner Concert

**6:30 to 7:00 P. M.**

• KPO & network—John McCormack, tenor  
 KGO—45 Minutes from Broadway; 6:45, Air Adventures of Jimmy Allen  
 KYA—Cy Trobbe's Orchestra  
 KTAB—Sport Page; Schooldays  
 KLX—KLX Trio  
 KROW—Ne-er Do Well  
 KGGC—Theatre of the Air; Music  
 KQW—Market Reports; Records  
 \*KFRC & network—Adventures of Gracie  
 KOMO—Musical Mannequins  
 KJR—6:45, Jimmie Allen  
 KFWB—Fun Fest; 6:45, Jimmie Allen  
 KNX—Concert; 6:45, Elec. Trans.  
 KECA—Wesley Tourtellotte, organ  
 KFOX—School Kids; Jimmy Allen  
 KFSD—Dinner Concert; Elec. Trans.

**7:00 to 7:30 P. M.**

• KPO & network—Dennis King with Louis Katzman's Orchestra; 7:15, Madame Sylvia  
 KGO—Sports Revue; 7:15, Agriculture Today, Jennings Pierce  
 KLX—News; 7:15, Lovable Liars  
 KYA—Ernie Smith's Sport Page; 7:15, Sports; Orchestra  
 KTAB—Vocalist; 7:15, Italian News  
 KROW—C. W. Hammond; Sports  
 KQW—Weather Forecast; News and Forum; 7:15, Musical Varieties  
 KGGC—Jewish Radio Hour  
 \*KFRC & network—Byrd Expedition Broadcast  
 KJR—Ace, King, Queen, Jack; Vindabonians  
 KFWB—Syncoptars  
 KNX—Watanabe & Archie; Music  
 KECA—Echoes of the Opera, records  
 KFOX—Eb & Zeb; Bobby & Betty  
 KFSD—7:15, Sonny & Buddy

**7:30 to 8:00 P. M.**

• KPO & network—Memory Lane, drama by Ted Maxwell

KGO—Comedy Stars of Hollywood; 7:45, Californians on Parade  
 KYA—Cowboys; Louise Taber  
 KTAB—Opie & Viney; 7:45, Organ  
 KLX—Kay Discovery Program  
 KROW—Golden Memories  
 KGGC—Jewish Radio Hour  
 KQW—Italian Radio Theatre  
 \*KFRC & network—Melody Masterpieces; 7:45, Mystery Drama  
 KVI—Dr. R. M. Mellor to 7:45  
 KOL—Speaker Stevenson to 7:45  
 KJR—Vindabonians; Lotus Land  
 KNX—In-Laws; 7:45, King Cowboy  
 KFWB—Pioneers; Comedy Stars  
 KECA—News; Echoes of the Opera  
 KFOX—Boy Detective; vocalist  
 KSL—Crazy Crystals; Comedy Stars  
 KOA—Jack Denny's Orchestra

**8:00 to 8:30 P. M.**

• KPO & network—Amos 'n' Andy; 8:15, Gene and Glenn  
 KGO—Californians on Parade; 8:15, Professional Football from Seal Stadium  
 KYA—Mysteries; Jean Wakefield  
 KTAB—Itchy & Scratchy; 8:15, Jimmy Cook's Sidelines  
 KLX—Great Moments in Sport; Silver Strains; Rhythmic Reporters  
 KROW—Crime Stories; 8:15, Watchtower  
 KGGC—Recordings; 8:15, Gypsies  
 KQW—Orch.; Red Cross; Drama  
 \*KFRC & network—Myrt & Marge; 8:15, Edwin C. Hill  
 KJR—Neapolitans  
 KEX—News; Hans, Fritz & Kate  
 KNX—Orchestra; Elec. Trans.  
 KFWB—Orchestra Program  
 KECA—Echoes of the Opera  
 KFOX—Three Vagabonds; Orch.  
 KFSD—Jimmie Allen Adventures to 8:15

**8:30 to 9:00 P. M.**

• KPO & network—Lanny Ross and His Log Cabin Orchestra  
 KGO—Professional Football  
 KYA—Dance Orchestra  
 KTAB—Accordion; Political  
 KLX—Male Quartet; Harriet French  
 KROW—Melodies; Sunny Brook's Band  
 KGGC—Timely Tunes; Songs  
 KQW—Drama; Orchestra  
 \*KFRC & network—Voice of Experience; 8:45, Treasures of Time  
 KOL—8:45, Mirth Parade  
 KVI—8:45, Lone Star Rangers  
 KJR—Drama; 8:45, Magic Harmony  
 KEX—Studio Program; Sports Talk  
 KNX—Pluto; 8:45, Rosicrucian  
 KFWB—Jack Joy's Orchestra  
 KECA—Recordings  
 KFOX—Organ and Piano  
 KSL—8:45, Orchestra  
 KOA—Orchestra

**9:00 to 9:30 P. M.**

• KPO & network—Town Hall Tonight; Fred Allen, comedian; Lenzie Hayton's Orchestra; James Melton, tenor  
 KGO—Professional Football  
 KYA—Dance Orch.; 9:15, Riot Squad  
 KTAB—Crocketts; Nighthanders  
 KLX—Metropolitan Moods  
 KROW—Boxing Matches  
 KQW—Amer. Legion; 9:15, Pianist  
 KGGC—News; Wyoming Cowboys  
 \*KFRC & network—Treasures of Time; 9:15, Boleros  
 KOL—Public Bench; Hop Revue  
 KOIN—9:15, Blue Star Revue  
 KVI—Wednesday Night Mixer  
 KJR—Souvenirs; 9:15, Orchestra  
 KEX—9:15, Wrestling  
 KNX—News; 9:15, Reveries  
 KFWB—Don Cave's Orchestra  
 KFOX—Beverly Hillbillies  
 KECA—Recordings

KFSD—Furmhill's Program; 9:15, Ratliff Ballroom  
 KSL—Boyle Furniture Prog.; Orch.

**9:30 to 10:00 P. M.**

• KPO & network—Town Hall Tonight  
 KGO—Professional Football  
 KYA—Riot Squad; 9:45, News  
 KLX—Sons of Pioneers; 9:45, News  
 KTAB—SERA Choral Society  
 KROW—Boxing Matches  
 KQW—Dance Time  
 KGGC—Records; Magic Carpet  
 \*KFRC & network—Hal Grayson's Orchestra  
 KOL—9:45, News Flashes  
 KVI—News Flashes; Orch.  
 KOIN—Revue; Political  
 KJR—9:45, Melody Palette  
 KNX—The Crocketts  
 KFWB—Dance Music  
 KECA—Records  
 KFOX—Beverly Hillbillies  
 KFSD—9:45, Community Chest  
 KSL—Dance Orchestra

**10:00 to 10:30 P. M.**

• KPO & network—Richfield Reporter; 10:15, Red Davis, dramatic series  
 KGO—Professional Football  
 KYA—Orchestra; Organ  
 KTAB—Club Tivoli  
 KLX—Recordings  
 KROW—Boxing Matches  
 KGGC—Records; Joe Garcia's Orch.  
 KFRC—News; Lifebuoy Soap; Joe Sullivan, pianist  
 KVI—Dance Orchestra  
 KOL—Dance Music  
 KOIN—McElroy's Band  
 KNX—Crocketts  
 KFWB—News; Orchestra  
 KECA—Musical Celebrities  
 KFOX—News; 10:15, Orchestra  
 KGB—News; Studio; Pianist  
 KSL—Melody Lane; 10:15, Studio  
 KOA—Glenn Lee's Orchestra

**10:30 to 11:00 P. M.**

• KPO & network—Tom Coakley's Orch.; 10:55, Press-Radio News  
 KGO—News; 10:35, Beal-Taylor's Orchestra  
 KYA—Jackie Souder's Orchestra  
 KTAB—Dansapations  
 KROW—Recordings; Hawaiians  
 KGGC—Merry Melodies  
 KFRC—Glimore Oil Co. to 10:35  
 \*KFRC & network—Vincent Lopez's Orchestra  
 KOIN—Dance Orchestra  
 KNX—Pontrelli's Orchestra  
 KFWB—Tex Howard's Orchestra  
 KFOX—Tex Howard's Orchestra

**11:00 to 11:30 P. M.**

• KGO & network—Ted Fio-Rito's Orchestra  
 KPO—Tom Gerun's Orchestra  
 KYA—Organ  
 KTAB—Dance Tunes  
 KROW—Dance of the Hour  
 \*KFRC & network—Dick Jurgen's Orchestra  
 KOMO—Moonlight Melodies  
 KNX—Pontrelli's Orchestra  
 KFWB—Dance Orchestra  
 KFOX—Harry Sosnik's Orchestra

**11:30 to Sign Off**

• KGO & network—Bart Woodyard's Orchestra  
 KPO—Organ Concert  
 KYA—Jerry Andrews Show  
 KTAB—El Cortez Club; Dawn Club  
 KROW—Dance Music  
 \*KFRC & network—Organ Recital  
 KGDm—Fritz Woolcott's Orchestra  
 KEX—Organ Music  
 KJR—Club Victor Orchestra  
 KFOX—Jimmy Mann's Orchestra  
 KJBS—12:01, Owl Program to 7 a.m.

# THURSDAY Programs

Oct. 18, 1934

## 7:30 to 8:00 A. M.

- KPO & network—Financial Service; 7:45, Lee S. Roberts and His Old Memory Box
- KGO—Morning Parade; 7:45, Forecast; Radio Kitchen
- KYA—Musical Clock
- KTAB—Hill Billy Tunes
- KROW—Commuters' Time Clock
- KJBS—Alarm Klok Klub
- KQW—Breakfast Hour
- KFRC—Seal Rocks Broadcast
- KGDM—Gillmore Oil Program
- KOL—Organ Program
- KJR—Market Quotations; Records
- KEX—7:45, Christian Science
- KHQ—Dental Hygiene to 7:45
- KVI—Varieties; 7:45, Crazy Crystals
- KFT—Stock Market to 7:45
- K.H.—Recordings and stock\*
- KNX—Bill Sharples and his Breakfast Club Gang
- KECA—Bible Fellowship; Records
- KFSD—7:45, Studio Program
- KGB—Stocks; Seven O'Clock Club
- KSL—Morning Watch; Melodies

## 8:00 to 8:30 A. M.

- KPO—Songs by the Kitchen Sink
- KPO & network—8:15, Tony Wom's Scrapbook
- KGO—Crosscuts from Log o' Day
- KYA—Christian Science Reading; 8:15, Mr. and Mrs. Reader
- KTAB—Mobile Melodies
- KLX—Recordings; 8:20, Stocks
- KROW—Time Clock
- KJBS—Morning Varieties
- KQW—Morning Melodies
- KGDM—Recordings
- KFRC—Recordings
- KFRC & network—8:15, Swinging Along
- KOL—8:15, Cecil & Sally
- KGW—Ronald Book to 8:15
- KOMO—Musical Program
- KHQ—8:15, Crazy Wells
- KVI—Music; Market Special
- KEX—Calvary Tabernacle
- KFT—Church Quarter Hour to 8:15
- KNX—Gene Autrey; Elec. Trans.
- KECA—Recordings
- KSL—Melodies Swinging Along
- KOA—Galaxy of Stars; Band

## 8:30 to 9:00 A. M.

- KPO & network—U. S. Navy Band
- KGO—Crosscuts Log o' the Day
- KYA—Morning Concert
- KTAB—Radio Shoppers' Digest
- KLX—Covered Wagon Jubilee
- KROW—Novelty Review
- KQW—Morning Concert
- KJBS—Dance Music
- KGDM—Records; 8:45, Talk
- KFRC & network—Hollywood Country Church
- KHQ—Studio Program
- KOMO—Musical Program
- KEX—Renee Chemet; Records
- KHQ—Program; Home Comfort
- KFT—Studio; 8:45, Julia Hayes
- KNX—Song Bag
- KECA—Nick Harris Program; Records
- KSL—Orch.; 8:45, Mary & Bennie
- KOA—U. S. Navy Band

## 9:00 to 9:30 A. M.

- KPO & network—Mohawk Treasure Chest; Ralph Kirbery, baritone; Harold Levey's Orchestra
- KPO—9:15, Breakfast Club
- KGO—To be announced
- KGO & network—9:15, Merrie Macs, Cheri McKay, contralto, male trio
- KYA—Concert; 9:15, Prudence Penny
- KTAB—Hour of Prayer



MYRT and MARGE  
CBS—8 P. M.

- KLX—Shopping List
- KROW—Morning Concert
- KJBS—Popular Concert; Bargain
- KGCC—Recordings
- KQW—Tuneful Topics
- KGDM—Records; Personalities
- KFRC & network—Voice of Experience; 9:15, Connie Gates
- KOL—9:15, Prudence Penny
- KVI—9:15, Mystic Melodies
- KOMO—Mary's Friendly Garden
- KHQ—9:15, Tull & Gibbs
- KEX—Songs of the Past
- KNX—Sherman Health Talk
- KECA—Story Teller; Records
- KFSD—Magic Hour; Good Cheer
- KSL—9:15, Jennie Lee

## 9:30 to 10:00 A. M.

- KPO & network—Martha Meade Society
- KFO—9:45, Through the Looking Glass with Frances Ingram
- KGO—Elmore Vincent, tenor
- KGO & network—9:45, Press-Radio News; 9:50, Piano Vignettes, Charles Runyan
- KYA—Waltz Time
- KTAB—Health Talk
- KLX—Clinic of the Air
- KROW—Diet and Health
- KJBS—Light Classics
- KGCC—Memory Melodies
- KQW—Gems of Melody
- KGDM—News; Records
- KFRC & network—Smiltin' Ed McConnell; Al Kavelin's Orch.
- KVI—9:45, Dr. Burns
- KHQ—9:45, Happy Caravan
- KGW—9:45, Cooking School
- KOMO—9:45, Julia Hayes
- KFT—9:45, News Release
- KFSD—Stock Reports
- KNX—Music; 9:45, News
- KOA—Farm and Home

## 10:00 to 10:30 A. M.

- KPO & network—Woman's Magazine of the Air
- KGO—Organ Concert
- KYA—Columbia on Parade; 10:15, The Novelty Shop
- KTAB—Bargain Broadcast; 10:15, The Old Bachelor

- KLX—Clinic; Stocks; News
- KROW—East Bay Reporter
- KJBS—News; 10:05, Organ
- KGCC—Cal King
- KGDM—Recordings
- KQW—Popular Orchestra
- KFRC & network—Just Plain Bill; 10:15, George Hall's Orchestra
- KOL—10:15, Morning Melodies
- KOIN—10:15, Air Shopping
- KJR—Early Echoes
- KEX—Lost and Found; Records
- KNX—Eddie Albright's Family
- KECA—Recorded Program

## 10:30 to 11:00 A. M.

- KPO & network—Woman's Magazine of the Air
- KGO—Vic and Sade; 10:45, Great Composers Program
- KYA—Organ Concert
- KTAB—Health Talk; Dude Martin
- KLX—International Kitchen
- KJBS—Vocalists; Melodies
- KROW—The Observer
- KGCC—Hits of Today
- KGDM—Recordings
- KQW—Aunt Sammy; Music
- KFRC—Mort Werner, pianist to 10:45
- KFRC & network—Art Kassel's Orchestra
- KOL—Morning Melodies
- KVI—Musical Gems to 10:45
- KJR—Club Minutes; Uncle Hank
- KEX—Soloist; Hill Billies
- KECA—Recordings
- KNX—Mary Holmes; 10:45, Rhythm
- KSL—Colonial Dames to 10:45
- KOA—10:45, Livestock & Produce

## 11:00 to 11:30 A. M.

- KPO & network—Standard School Broadcast; Elementary and advanced lesson; Arion Trio, instrumentalists
- KGO—Great Composers Program
- KYA—Organ Concert
- KTAB—Blue Moments; Beauty Facts
- KLX—Records; Rhythm Encores
- KROW—Health Talk; 11:15, Music
- KGCC—Milday's Date Book; Music
- KJBS—Dance Orchestra
- KQW—Light Classics; Records
- KGDM—Organ Recital
- KFRC—Better Business Bureau to 11:15
- KFRC & network—Ann Leaf, organ
- KOL—Garden Talk
- KOIN—This and That
- KVI—The Observer to 11:15
- KEX—Orch.; 11:15, Cobwebs & Nuts
- KNX—Board of Education; Organ
- KECA—Recordings
- KOA—Produce; Farm Question Box

## 11:30 to 12:00 Noon

- KPO & network—Standard School Broadcast; 11:45, Echoes of Erin
- KGO—Smackout; 11:45, Agricultural Bulletin
- KYA—Dance Time
- KLX—Anita and Orosco; 11:45, Lotus Land
- KTAB—Modern Rhythms; News
- KROW—Latin-American Program
- KJBS—Popular Hits
- KGCC—Records; News; Requests
- KQW—Accordian Capers; News
- KGDM—Organ Recital
- KFRC—Women's Forum to 11:45
- KFRC & network—Poetic Strings
- KOIN—Ron Myron's Scrapbook
- KHQ—11:45, Organ Recital
- KGW—11:45, "Cheerio"
- KJR—Shades of Old Erin; Records
- KEX—11:45, Hawaiian Serenaders
- KFT—11:45, State Market Reports
- KECA—Recordings to 11:45
- KNX—Talk; 11:45, Ionizer Talk
- KOA—Theatre Harmonies



**12:00 to 12:30 P. M.**

•KGO & network—Tommy Tucker's Orchestra  
 KGO—12:15, Financial Flashes; 12:20, Melody Revue  
 KPO—News  
 •KPO & network—12:15, Western Farm and Home Hour  
 KYA—Scriptures; 12:03, Concert  
 KTAB—News; Event Book; Concert  
 KLX—Dance Music  
 KROW—Latin American Program  
 KJBS—Vocal and Instrumental  
 KGGC—Request Hour  
 KQW—Popular Orchestra  
 KGDM—Recordings  
 \*KFRC & network—Metropolitan Parade  
 KOL—The Carnival Hour  
 KVI—12:15, Front Page Headlines  
 KOIN—Mary Cullen; Annie Brunne  
 KGW—12:15, Meier & Frank  
 KHQ—Business and Pleasure  
 KJR—Records; 12:15, Grain Reports  
 KEX—Dance Frolic  
 KNX—News; 12:15, Congo  
 KECA—News; 12:15, Records  
 KGB—Farm Flashes to 12:15  
 KFI—Payroll Builder  
 KOA—Orchestra

**12:30 to 1:00 P. M.**

•KPO & network—Western Farm and Home  
 KGO—Melody Revue  
 KYA—Noonday Concert  
 KTAB—Echoes of Portugal  
 KLX—Don Brose; Reflections  
 KJBS—Dance Matinee  
 KROW—California Farm Hour; 12:45, Hits of Today  
 KGGC—Pirate Cowboys  
 KQW—Fed. & State Market Reports  
 KGDM—Recordings  
 \*KFRC & network—Dansant from Chicago  
 KOL—Carnival Hour  
 KJR—Headliners, recorded  
 KEX—12:45, Business Men's Club  
 KGW—Dr. Semler; 12:45, Chat  
 KNX—Concert Group  
 KECA—Recordings  
 KGB—12:55, Stocks  
 KSL—Utah State Agric. College; 12:45, Dansant

**1:00 to 1:30 P. M.**

•KPO & network—Betty and Bob, dramatic sketch  
 KPO—1:15, Dorothy Page, contralto  
 KGO—Edna Fischer, pianist; 1:15, Ann Warner's Chats  
 KYA—Shrine Luncheon  
 KTAB—Radio Frolic  
 KLX—Records; 1:15, Martha Lee  
 KROW—Concert Melodies  
 KJBS—Stocks; Recordings  
 KQW—Friendly Hour  
 KGDM—Recordings; 1:15, Quartet  
 \*KFRC & network—Visiting America's Little House; 1:15, Round Towners  
 KFRC—1:10, N. Y. Stocks  
 KOL—1:15, Julie Day  
 KHQ—1:15, Sylvia Gray  
 KOMO—Harp Melodies; Records  
 KGW—1:15, Dental Clinic  
 KNX—Pontrelli's Orchestra  
 KFI—1:15, Accordion and Piano  
 KECA—Recordings  
 KFSD—Studio Program to 1:15  
 KSL—Payroll Builder

**1:30 to 2:00 P. M.**

•KPO & netwk—Oxydyl's Own Ma Perkins; 1:45, Dreams Come True, Barry McKinley  
 KGO—Ann Warner's Chats; 1:45, Alvino Rey, guitarist  
 KYA—Modern Maestros  
 KTAB—Jean Kent, Economics  
 KLX—Song Bag  
 KJBS—Dance Orchestra

KROW—Recordings  
 KQW—Afternoon Concert  
 KGDM—Education; Recordings  
 KFRC—N. Y. Stocks to 1:35  
 \*KFRC & network—Dick Messner's Orchestra  
 KOIN—Book of Life  
 KEX—Financial and Grain Reports  
 KNX—Pontrelli's Orchestra  
 KECA—Recordings  
 KFSD—Old Time Program  
 KGB—Parent-Teachers' Association

**2:00 to 2:30 P. M.**

•KPO & network—Al Pearce and His Gang  
 KGO—National Congress of Parents and Teachers  
 KYA—Old Songs  
 KTAB—Globe Trotter; Romancin'  
 KLX—Bridge Talk; 2:15, Records  
 KROW—Musical; Allen & Willis  
 KJBS—Blindcraft Ensemble  
 KGDM—Records; News  
 KQW—Blindcraft Ensemble  
 \*KFRC & network—Happy Go Lucky Hour  
 KJR—Salon Hour  
 KEX—World Bookman; Music  
 KNX—The Bookworm  
 KECA—Classic Hour  
 KSL—Loretta Lee; Dental Clinic  
 KOA—Theatre Reporter; P. T. A. Conference

**2:30 to 3:00 P. M.**

•KPO & network—Al Pearce Gang  
 KGO—Pair of Pianos; Gertrude Lyne and Grace Frankel, piano duo  
 KYA—Vignettes of Life; 2:45, Modern Notes  
 KTAB—Three-Four Time; 2:45, Tranquility  
 KLX—F. Stocks; 2:40, Records  
 KROW—Dell Perry, pianist; Records  
 KJBS—Dance Orchestra  
 KQW—Dance Matinee  
 KGDM—The Romancers  
 \*KFRC & network—Happy Go Lucky Hour  
 KJR—Salon Hour, records  
 KNX—Recordings  
 KFSD—2:45, Studio Program  
 KSL—Organ and A. M. A. Speaker; 2:45, To be announced

**3:00 to 3:30 P. M.**

•KPO & network—Langendorf Pictorial; 3:15, John and Ned  
 KGO—Tom Coakley's Orchestra  
 KYA—Band Concert  
 KTAB—Tranquility; Little Serenade  
 KLX—Records; Jean Ardath  
 KROW—Mary Dowd Reardon  
 KJBS—Ballroom Favorites; Col. Shaddy  
 KQW—Stock and Bonds; Vocalist; Musical Program  
 KGDM—Recordings  
 \*KFRC & netwkr—Feminine Fancies  
 KHQ—Studio Program; 3:15, Bulletin  
 KQW—Studio Program  
 KJR—Song Market  
 KOMO—3:15, Birnbaum Bavarians  
 KFI—3:15, Studio Program  
 KECA—Dr. Meyers, talk to 3:15  
 KNX—Louise Johnson, Astro Analyst  
 KSL—Men of Notes; Those McCarthy Girls

**3:30 to 4:00 P. M.**

•KPO & network—Slices of Life; 3:35, Walter Preston, baritone  
 KPO—3:45, University of California Program (KFSD & KECA)  
 KGO—The Family Cook Book  
 •KGO & network—3:45, Singing Strings  
 KYA—Symphony Highlights  
 KTAB—Sophistication; Talk  
 KLX—Recordings  
 KROW—Spanish Tunes  
 KJBS—Dobbie's Radio Jubilee

KQW—Radio Jubilee  
 \*KFRC & network—Book Review; 3:45, Club Matinee  
 KOL—Harry Linkns; 3:45, Studio  
 KOIN—Newspaper of the Air  
 KGDM—Piano Melodies; Recordings  
 KOMO—Talk; Organ Recital  
 KEX—Musical Program  
 KFI—Ann Warner's Chat  
 KNX—Housewives League  
 KSL—The Junior Hour  
 KGB—3:45, Along the Airways  
 KOA—News; Vocalist

**4:00 to 4:30 P. M.**

•KPO & network—Jack & Loretta Clemens; 4:15, Freddie Martin's Orchestra  
 KGO—The Restful Hour, concert orchestra direction Emil Polak  
 KYA—Tea Dance Parade  
 KTAB—Keep Smiling Revue  
 KLX—Melody Race; Helen Parmelee, pianist  
 KROW—Waltz Time; Safety Council  
 KJBS—Hollywood Gossip; Bill & Co  
 KQW—Star Reporter; Bill & Co  
 KGDM—Gilmore Oil Program  
 \*KFRC & network—Dan Russo's Orchestra  
 KOL—To be announced  
 KGW—Friendly Chat  
 KNX—Haven of Rest  
 KECA—Chamber Music  
 KSL—Broadcaster's Review to 4:15

**4:30 to 5:00 P. M.**

•KPO & network—Danny Malone, tenor  
 KPO—4:45, News  
 KGO—The Restful Hour  
 •KGO & network—4:45, Shirley Howard, songs  
 KYA—Tea Dance  
 KTAB—Lauretta La Marr  
 KLX—Pianist; 4:45, Health School  
 KROW—Hillbilly Music  
 KQW—Story Time; 4:45, Songs of the Islands  
 KJBS—Dance Orchestra  
 KGDM—Recordings; 4:45, Vocalist  
 \*KFRC & netwk—To be announced; 4:45, Between the Bookends  
 KHQ—4:45, Tull & Gibbs  
 KEX—Symphony  
 KNX—Dr. Matthews  
 KFI—Organ Recital  
 KGB—P. T. A. to 5:15  
 KSL—Broadcasters Review

**5:00 to 5:30 P. M.**

•KPO & netwk—Fleischmann Variety Hour; Rudy Vallee and his Connecticut Yankees  
 KGO—Art Revue; 5:15, Beaux Arts Trio  
 KYA—Children's Hour  
 KTAB—Memories in Melody; Records  
 KLX—Brother Bob's Club  
 KROW—Memory Lane; Ramona & Romera  
 KGGC—Studio Frolic  
 KQW—Popular Concert  
 KJBS—Dance Melodies; News  
 KGDM—Studio; Ernie Cruz  
 \*KFRC & netwk—Al Roth & Orch; 5:15, Billy Bachelor  
 KOL—Treasure Adventures to 5:15  
 KOIN—Bob & Dolly to 5:15  
 KEX—Symphony  
 KNX—Melody Race; Drama  
 KECA—Recordings  
 KFSD—Chamber of Commerce  
 KSL—Evening Melodies; Tarzan

**5:30 to 6:00 P. M.**

•KPO & netwk—Fleischmann Variety Hour  
 KGO—Beaux Arts Trio; 5:45, Mindways; Stories of Human Behavior  
 KYA—Metropolitans; 5:45, Campbell  
 KTAB—Health Talk  
 KLX—Covered Wagon Jubilee  
 KROW—Eating Your Way to Health

KGCC—Dance Echoes; Irish Gems  
 KQW—Orch.; 5:45, Voice of Portugal  
 \*KFRC & network—Dodge Motor  
 Program; 5:45, Scorecast  
 KJR—Romancing; Cecil Solly  
 KNX—Serenade; "Mongoose"  
 KECA—Records; Talk  
 KFSD—5:45, Farley's Rangers  
 KSL—Spinning Wheel; 5:45; Cross-  
 myer & Cohen

**6:00 to 6:30 P. M.**

• KPO & network—Captain Henry's  
 Maxwell House Show Boat; Chas.  
 Winninger; Lanny Ross, tenor;  
 Conrad Thibault, baritone; Mo-  
 lasses 'n' January, comedy duo;  
 Muriel Wilson, soprano; dramatic  
 cast

KGQ—Everybody Sing, Emil Polak's  
 Orchestra  
 KYA—Cy Trobbe's Orchestra  
 KTAB—Dinner Concert  
 KIX—Concert Trio  
 KROW—News; 6:15, Melodies  
 KGCC—Football Game  
 KQW—Department of Agriculture;  
 6:15, Popular Program  
 \*KFRC & network—Romance of  
 Travel  
 KOL—To be announced  
 KVI—Goodrich Transcription to 6:05  
 KJR—Song Bag; Los Argentinos  
 KNX—News; 6:15, Dinner Dance  
 KECA—Records; 6:15, News  
 KFWB—News; Records; Organ  
 KFOX—News; Al & Molly; Cecil &  
 Sally  
 KSL—Political State Committee;  
 Radio Studio Mystery

**6:30 to 7:00 P. M.**

• KPO & network—Captain Henry's  
 Show Boat  
 KGO—Federal Business Talk; 6:45,  
 Air Adventures of Jimmy Allen  
 KYA—Cyrus Trobbe's Orchestra  
 KTAB—Sports; Political  
 KIX—KIX Trio  
 KROW—Powder River Wranglers;  
 6:45, Dr. Faccl  
 KGCC—Theatre of the Air; Music  
 KQW—State Market Reports; 6:45,  
 Torrid Tunes  
 \*KFRC & network—Fred Waring's  
 Pennsylvanians  
 KJR—Los Argentinos; Jimmy Allen  
 KNX—Concert; 6:45, Jimmy Allen  
 KFWB—Fun Fest; Jimmie Allen  
 KECA—Wesley Tourtellotte, organ  
 KFOX—School Kids; Jimmie Allen

**7:00 to 7:30 P. M.**

• KPO & network—Paul Whiteman's  
 Music Hall  
 KGO—Ricardo and His Violin; 7:15,  
 Review of Activities of the San  
 Francisco Municipal Government  
 KYA—Ernie Smith's Sport Page;  
 7:15, Sportsman's Corner  
 KTAB—Studio Program; 7:15,  
 Italian News  
 KIX—News; 7:15, Song Market  
 KROW—C. W. Hammond; Sports  
 KGCC—Tango Time; Collegiana  
 KQW—Weather; News and Forum;  
 7:15, Accordiona  
 \*KFRC & network—Barnyard Serenade  
 KOIN—Little Show; Day Is Done  
 KOL—To be announced  
 KVI—To be announced  
 KNX—Watanabe & Archie; Music  
 KFWB—Interview; Syncopators  
 KECA—Orchestra and Vocalist  
 KFOX—Eb and Zeb; 7:15, Bobby &  
 Betty  
 KFSD—Feature; Sonny & Buddy  
 KSL—"45 Minutes in Hollywood"

**7:30 to 8:00 P. M.**

• KPO & network—Paul Whiteman's  
 Music Hall  
 KGO—Paul Martin and His Music  
 KTAB—Opie & Viney; Organist

KYA—Uncut Gems Orchestra; 7:45,  
 Louise Taber  
 KIX—Studio; 7:45, Sports  
 KROW—Golden Memories Program  
 KGCC—Recordings; 7:45, Organ  
 KQW—Italian Radio Theatre  
 \*KFRC & netwk—To be announced;  
 7:45, Fray & Braggiotti  
 KOL—Speaker Stevenson to 7:45  
 KVI—Dr. K. M. Meior to 7:45  
 KOIN—Jimmy Allen; Gene Baker  
 KNX—In-Laws; King Cowboy  
 KFWB—Outdoor Reporter; Music  
 KFOX—Boy Detective; Aristocrats  
 KECA—Records  
 KFSD—Y. M. C. A. Harmonica Band  
 KGB—Studio; Gridiron Guesses  
 KSL—45 Minutes in Hollywood;  
 7:45, Sports Flash

**8:00 to 8:30 P. M.**

• KPO & network—Amos 'n' Andy;  
 8:15, Standard Symphony Hour  
 KGO—Claf Dwellers, vocal trio;  
 8:15, College Daze  
 KYA—Mysteries; Musical Milkman  
 KTAB—Itchy & Scratchy; 8:15,  
 Golden Gate Junior College  
 KIX—Jewel Box; Amer. Legion, talk  
 KROW—Latin-American Program  
 KGCC—Spanish-American Program  
 KQW—Vocalist; Man Hunter  
 \*KFRC & network—Myrt & Marge;  
 8:15, Parke Pals  
 KOIN—8:15, Comedy Stars  
 KEX—News; Humboldt Beer  
 KVI—8:15, Musical Creditors  
 KNX—Picture Parade  
 KFWB—Welcome Lewis; Orchestra  
 KECA—Records  
 KFOX—Talent Discovery Program  
 KFSD—Jimmie Allen; Community  
 Chest  
 KSL—8:15, Mirth Parade

**8:30 to 9:00 P. M.**

• KPO & network—Standard Sym-  
 phony Hour  
 KGO—Johnny Johnson's Orchestra;  
 8:45, Big Ben Dream Dramas  
 KYA—Tom Coakley's Orchestra;  
 8:45, Tango Time Orchestra  
 KTAB—Junior College; Political  
 KIX—Spice of Life; 8:45, Vocalist  
 KROW—Italian Program  
 KGCC—Concert; Timely Tunes  
 KQW—Dance Time  
 \*KFRC & network—Camel Caravan  
 KEX—Studio Program  
 KNX—Drury Lane; Lamplighter  
 KECA—Nick Harris; 8:45, Songs  
 KFWB—Film Adaptation  
 KFOX—Christian Science; Trio  
 KFSD—Ratliff's Orchestra  
 KOA—Sports on Tap; Orchestra

**9:00 to 9:30 P. M.**

• KPO & network—Standard Sym-  
 phony Hour; 9:15, Winning the  
 West  
 KGO—Eno Crime Clues  
 KYA—Sports Parade  
 KTAB—Crocketts; Nightherders  
 KIX—Melody Palette; 9:15, Violinist  
 KROW—Italian Prog.; 9:15, Varieties  
 KGCC—News; Wyoming Cowboys  
 KQW—Music Masters  
 \*KFRC & network—Country Fair  
 and Horse Show  
 KOL—Orchestra  
 KNX—News; 9:15, Political  
 KFOX—Beverly Hillbillies  
 KFWB—Slumbertime  
 KECA—Bedouin Hermes to 9:15  
 KSL—Carlos Molina Orchestra;  
 9:15, Skiles Family  
 KFSD—Drama Hour  
 KOA—Comedy Stars; Orchestra

**9:30 to 10:00 P. M.**

• KPO & netwk—Winning the West  
 KGO—9:45, Tom Mitchell, baritone  
 KGO—Dancing in Twin Cities

KYA—Lyric Quartet; 9:45, News;  
 9:55, Answer Man  
 KTAB—Golden Gate Players  
 KIX—Pioneer Sons; 9:45, News  
 KROW—KROW Varieties  
 KGCC—Records  
 KQW—Dance Frolic  
 KFRC—Junior C. C. to 9:45  
 \*KFRC & network—9:45, Orchestra  
 KOL—9:45, News Flashes  
 KVI—News Flashes; Orchestra  
 KOIN—Serenade  
 KEX—9:45, Coakley's Orchestra  
 KJR—9:45, Musical Headlines  
 KFWB—Orchestra  
 KFI—9:45, Coakley's Orchestra  
 KNX—The Crocketts  
 KFOX—Beverly Hillbillies  
 KFSD—Feature; Orchestra  
 KSL—Democratic State Committee;  
 Mary & John

**10:00 to 10:30 P. M.**

• KPO & netwk—Richfield Reporter  
 KPO—10:15, Merriam for Governor  
 KGO—Music Box  
 KYA—The Venetians; Rhyme Land  
 KTAB—Club Tivoli  
 KIX—Dance Music  
 KROW—Varieties; Harmonies  
 KGCC—Joe Garcia's Orchestra  
 KFRG—News; Elec. Trans.; Pianist  
 KHG—10:15, Big Ten  
 KUL—Dance Music  
 KJR—Until Tomorrow  
 KGW—10:15, Kelly's Kavaleros  
 KFI—10:15, Big Ten  
 KFWB—News; Orchestra  
 KNX—Crocketts  
 KECA—Musical Celebrities  
 KFOX—News; Orchestra  
 KFSD—10:15, Big Ten  
 KGB—News; To be announced  
 KSL—Club El Dorado Orchestra;  
 Kalawaua Beach Boys

**10:30 to 11:00 P. M.**

• KPO & network—Big Ten; 10:45,  
 Coquettes, vocal trio; 10:55, Press-  
 Radio News  
 KGO—Press-Radio News; 10:35,  
 Williams-Walsh Orchestra  
 KYA—Jackie Souder's Orchestra  
 KTAB—Hal Grivin's Orchestra  
 KROW—Hawaiians; Vocalists  
 KGCC—Merry Melodies  
 KFRC—Great Moments in Sports to  
 10:35  
 \*KFRC & network—Vincent Lopez'  
 Orchestra  
 KOL—10:45, American Weekly  
 KOMO—Club Victor Orch.  
 KEX—Lonesome Club  
 KNX—Pontrelli's Orchestra  
 KFWB—Tex Howard's Orchestra  
 KFOX—Tex Howard's Orchestra

**11:00 to 11:30 P. M.**

KPO—Tom Gerun's Orchestra  
 • KGO & network—Ted Fio-Rito's  
 Orchestra  
 KYA—Sandman Organ  
 KTAB—Dansapations  
 KROW—Dance of the Hour  
 \*KFRC & network—Dick Jurgen's  
 Orchestra  
 KOMO—Moonlight Melodies  
 KHJ—Organ  
 KNX—Pontrelli's Orchestra  
 KFWB—Harry Sosnick's Orchestra  
 KFOX—Dance Orchestra

**11:30 to Sign Off**

• KGO & network—Jimmy Grier's  
 Orchestra  
 KPO—Chas. Runyan, Organist  
 KYA—Jerry Andrews Little Show  
 KTAB—El Cortez Club  
 KFRC—Organ Recital  
 KVI—Organ Recital  
 KJR—Club Victor Orchestra  
 KHJ—Organ and Records  
 KGB—Organ  
 KJBS—12:01, Owl Program to 7 a.m.

# FRIDAY Programs

Oct. 19, 1934

## 7:30 to 8:00 A. M.

- KPO & network—Financial Service; Alvino Rey
- KGO—Joe White; Forecast; Edna Fischer
- KYA—Musical Clock
- KTAB—Hill Billy Tunes
- KROW—Commuters Time Clock
- KJBS—Alarm Klok Klub
- KQW—Breakfast Hour
- KFRG—Seal Rocks Broadcast
- KGDM—Gilmore Oil Program
- KHQ—Dental Hygiene
- KGW—Ronald Buck
- KOL—Organ Program
- KVI—Varieties; 7:45, Quartet
- KJR—Market Quotation; 7:45, Shadows on the Clock
- KEX—Varieties
- KFI—Stocks; 7:45, Church
- KHJ—Records and Stock Reports
- KNX—Bill Sharples Breakfast Club
- KECA—Radio Bible Fellowship, Rev. Milo F. Jamison to 7:45
- KFSD—7:45, Good Cheer Program
- KGB—Seven O'Clock Club
- KSL—Morning Melodies

## 8:00 to 8:30 A. M.

- KPO & network—Music Appreciation Hour, Dr. Walter Damrosch
- KGO—Crosscuts Log o' the Day
- KYA—Christian Science readings; 8:15, Mr. and Mrs. Reader
- KTAB—Mobile Melodies
- KLX—Records; 8:20, Stocks
- KROW—Recordings
- KJBS—Morning Varieties
- KQW—Morning Melodies
- KGDM—Serenaders; Records
- ★ KFRG & netwk—Recordings; 8:15, Rambles in Rhythm
- KOL—8:15, Cecil and Sally
- KVI—Music; Market Specials
- KEX—Calvary Tabernacle
- KOMO—Stradivarieties; 8:15, Morning Reveries
- KNX—Gene Autrey; 8:15, Held for the Day
- KSL—Studio Ensemble to 8:15

## 8:30 to 9:00 A. M.

- KPO & netwk—Music Appreciation
- KGO—Crosscuts Log o' the Day
- KPO—Studio Program
- KYA—Morning Concert
- KTAB—Radio Shopper's Digest
- KLX—Covered Wagon Jubilee
- KROW—Novelty Review
- KQW—Morning Concert
- KGDM—Recordings; Health Talk
- KJBS—Dance Music
- ★ KFRG & netwk—Country Church
- KOMO—Resume; 8:35, Vagabonds
- KHQ—8:45, Home Comfort
- KEX—8:45, Classical Soloist
- KNX—Song Bag
- KECA—Recordings
- KSL—Good Morning Judge; Studio

## 9:00 to 9:30 A. M.

- KGO & network—Fields & Hall, songs and patter
- KGO—9:15, Organ Recital
- KPO—Barbara Lee, Breakfast Club
- KPO & network—9:15, Josephine Gibson
- KYA—Concert; Prudence Penny
- KTAB—Hour of Prayer
- KLX—Shopping List
- KROW—Morning Concert
- KJBS—Popular vocalists
- KGCC—Recordings
- KQW—Tuneful Topics
- KGDM—Records; 9:15, Mabel Rubin
- ★ KFRG & network—Voice of Experience; 9:15, Elizabeth Barthell
- KOL—9:15, Prudence Penny
- KHQ—9:15, Morning Service
- KOMO—Mary's Friendly Garden



CLAUDE SWEETEN  
KFRC—MUSICAL DIRECTOR

- KEX—Request Program
- KVI—9:15, Mystic Melodies
- KOL—Prudence Penny to 9:15
- KFI—Julia Hayes to 9:15
- KNX—Sherman Health Talk
- KFSD—Magic Hour; Good Cheer
- KSL—9:15, Jennie Lee
- KOA—Cookbook Sherlocks; 9:15, Marietta Vasconcelles

## 9:30 to 10:00 A. M.

- KPO & network—National Farm and Home Hour
- KGO—Organ Concert
- KYA—Feminine Notebook; Waltz Time
- KTAB—Health Talk
- KLX—Clinic of the Air
- KROW—Dist and Health
- KJBS—A Visit with Faye Ward
- KQW—Faye Ward
- KGCC—Memory Melodies
- KGDM—News; 9:45, Records
- ★ KFRG & network—Betsy Crocker; 9:45, Al Kavein's Orchestra
- KOL—9:45, Beautiful Melodies
- KVI—9:45, Dr. Burns
- KGW—Eddie King; Cooking School
- KJR—Shuffling Feet
- KHJ—9:45, News Items to 9:50
- KNX—Music; 9:45, News
- KECA—Recital Series
- KGB—9:45, News to 9:50

## 10:00 to 10:30 A. M.

- KPO—Golden State Menu Flashes; 10:15, News
- KGO & netwk—News; 10:05, Novellettes, Mickey Gillette's Music
- KYA—Columbia on Parade; Music
- KTAB—Bargain Broadcast; 10:15, The Old Bachelor
- KLX—Clinic; Stocks; News
- KROW—Musical Grab Bag
- KJBS—News; 10:05, Organ
- KGCC—Cal King
- KQW—Popular Orchestra
- KGDM—Recordings
- ★ KFRG & network—Just Plain Bill; 10:15, George Hall's Orchestra
- KOIN—Air Shopping
- KOL—10:15, Morning Melodies
- KVI—10:15, Health Scientist
- KHQ—10:15, Celia Lee

- KEX—Lost and Found; Music
- KNX—Eddie Albright's Family
- KECA—Food Economist talk; Rec.

## 10:30 to 11:00 A. M.

- KPO & network—Woman's Magazine of the Air
- KGO—Vic & Sade; 10:45, Words & Music; Frederick Bittke, baritone
- KYA—Organ Concert
- KTAB—Health Talk; Dude Martin
- KLX—International Kitchen
- KROW—The Observer
- KJBS—Dance Tunes; Col. Shaddy
- KGCC—Hits of Today
- KQW—Aunt Sammy; Records
- KGDM—So This is Hollywood
- KFRG—Mort Werner, pianist to 10:45
- ★ KFRG & netwk—Allan Leifer Orchestra
- KOL—Morning Melodies
- KVI—Cal-O-Dine; 10:45, Amusement Tips
- KOIN—Air Shopping to 10:45
- KJR—Club Minutes; Serenader
- KEX—Salon Orchestra; Hill Billies
- KOL—Morning Melodies
- KNX—Mary Holmes; Rhythm Encores
- KECA—Chaparral Club; Records
- KOA—Ida Bailey Allen; 10:45, Live-stock & Produce

## 11:00 to 11:30 A. M.

- KPO & network—Magazine of Air
- KGO—Magic of Speech
- KYA—Organ
- KTAB—Blue Moments; Fashions
- KROW—Health Talk; 11:15, Music
- KLX—Records; Rhythm Encores
- KJBS—Orchestra and Trio
- KQW—Light Classics
- KGCC—Date Book; Dance Tunes
- KGDM—Organ Recital
- ★ KFRG & network—The Eton Boys; The Instrumentalists
- KOIN—This & That
- KOL—Garden of the Air to 11:15
- KVI—The Observer to 11:15
- KJR—Rhythm Rulers, recorded
- KEX—Band Music; Cobwebs & Nuts
- KNX—Marshall Grant, Organist
- KHJ—Beauty Program to 11:15
- KECA—Spanish Lessons; 11:15, Frankie Patten, pianist

## 11:30 to 12:00 Noon

- KPO—Merriam for Governor
- KPO & network—11:45, Alden Edkins, basso
- KGO—Johnny O'Brien; 11:45, Agricultural Bulletin
- KYA—Dance Time
- KTAB—Modern Rhythms; News
- KLX—Anita & Orsoco; Music
- KROW—Latin-American Program
- KGCC—Talk; News; Requests
- KJBS—Dance Melodies
- KQW—Popular Variety; News
- KGDM—Organ Recital
- KFRG—Home Forum to 11:45
- ★ KFRG & netwk—Memories Garden
- KOL—11:45, Democratic News
- KHQ—Organ
- KOMO—Smackout to 11:45
- KJR—Measured Steps
- KEX—Cobwebs & Nuts; Orchestra
- KQW—Smackout; 11:45, "Cheerio"
- KECA—Smackout to 11:45
- KFSD—Smackout to 11:45
- KFI—Fashion Tour; 11:45, Market Reports
- KNX—Spice of Life

## 12:00 to 12:30 P. M.

- KPO—News
- KPO & network—12:15, Western Farm and Home Hour
- KGO—Agriculture; Financial; Pi-anists



**KYA**—Scriptures: 12:03, Concert  
**KTAB**—News; 12:05, Event Book  
**KLX**—Dance Music  
**KROW**—Latin-American Program  
**KQW**—Orchestra; Mark Green  
**KJBS**—Song Hits  
**KGCC**—Request Hour  
**KGDM**—Records  
 \* **KFRC** & network—To be announced  
**KOL**—The Carnival  
**KVI**—12:15, Front Page Headlines  
**KHQ**—Sally, Irene & Larry to 12:15  
**KOIN**—Ron Myron's Scrapbook;  
 Ken & Wally  
**KEK**—O. Plummer to 12:15  
**KJR**—Sally, Irene & Larry to 12:15  
**KGW**—Sally, Irene & Larry to 12:15  
**KFI**—Sally, Irene & Larry to 12:15  
**KECA**—News; 12:15, Records  
**KNX**—News; 12:15, Congoin  
**KDX**—Farm Flashes to 12:15  
**KFSD**—Sally, Irene & Larry to 12:15  
**KSL**—Payroll Builder

**12:30 to 1:00 P. M.**

• **KPO** & network—Western Farm and Home Hour  
**KGO**—Pair of Planos; 12:45, Commonwealth Club Luncheon  
**KYA**—Noonday Concert  
**KTAB**—Echoes of Portugal  
**KLX**—Don Brose; Recordings  
**KROW**—Call. Farm Hour; Records  
**KJBS**—Dance Hits  
**KGCC**—Pirate Cowboys  
**KQW**—Federal, State Market Rpts.  
**KGDM**—Recordings  
 \* **KFRC** & network—To be announced  
**KOL**—The Carnival  
**KOIN**—12:45, Annie Brunn  
**KGW**—Dr. Semler; Meter & Frank  
**KHQ**—12:45, Stories of the North  
**KVI**—News and Comment to 12:45  
**KJR**—Headliners, recorded  
**KEK**—Studio Programs  
**KNX**—Dr. John Matthews  
**KECA**—Concert Favorites, records  
**KGB**—12:55, Stocks  
**KOA**—Temple of Song

**1:00 to 1:30 P. M.**

• **KPO** & network—Betty & Bob; 1:15, Platt & Nierman, piano duo  
**KGO**—Commonwealth Club Luncheon  
**KYA**—Women's Institute of the Air; 1:15, Hawaiians  
**KTAB**—Radio Frolic  
**KLX**—Records; 1:15, Martha Lee  
**KROW**—Concert Melodies  
**KJBS**—Stocks; Recordings  
**KQW**—Friendly Hour  
**KGDM**—Records; Watchtower  
 \* **KFRC** & network—To be announced  
**KOL**—1:15, Julie Day  
**KVI**—1:15, Reichmuth Family  
**KEK**—Orchestra  
**KGW**—1:15, Dental Clinic  
**KHQ**—1:15, Sylvia Gray  
**KNX**—Pontrelli's Orchestra  
**KFI**—1:15, Home Nursing Hints  
**KFSD**—Stocks to 1:15  
**KSL**—Payroll Builder

**1:30 to 2:00 P. M.**

• **KPO** & network—Oxydol's Own Ma Perkins; 1:45, Betty Marlowe, talk  
**KGO**—Ann Warner's Chats  
**KYA**—Modern Maestros  
**KTAB**—Jean Kent, Economics  
**KLX**—Song Bag  
**KROW**—Recordings  
**KJBS**—Dance Orchestra  
**KQW**—Friendly Hour  
**KGDM**—Conservatory Concert  
**KFRC**—N. Y. Stocks to 1:35  
 \* **KFRC** & network—U. S. Army Band  
**KJBS**—Financial & Grain Reports  
**KJR**—The Sun Dial; Magic Harmony  
**KOIN**—Book of Life  
**KNX**—Pontrelli's Orchestra  
**KECA**—Recordings  
**KFSD**—Old Time Program

**2:00 to 2:30 P.**

• **KPO** & network—Al Pearce and His Gang  
**KGO**—John Teel, baritone; 2:15, Mid-Afternoon Musicales  
**KYA**—Symphony Concert  
**KTAB**—Globe Trotter; Salon Music  
**KLX**—Recordings  
**KROW**—Records; Vocalist  
**KJBS**—Better Business Talk; 2:15, Dance Melodies  
**KQW**—Dance Matinee  
**KGDM**—Records and News  
 \* **KFRC** & network—Happy Go Lucky Hour  
**KJR**—Salon Hour, recorded  
**KEX**—World Bookman; 2:05, Musical Gems  
**KNX**—The Bookworm  
**KECA**—Classic Hour  
**KFSD**—2:15, Studio Program  
**KSL**—Studio; Dental Clinic  
**KOA**—Theatre Reporter; 2:15, Rowdy Wright

**2:30 to 3:00 P. M.**

• **KPO** & network—Al Pearce Gang  
**KGO**—Mid-Afternoon Musicales  
**KYA**—Vignettes of Life; Modern Notes  
**KTAB**—3:4 Time; Recordings  
**KLX**—Better Business Talk; 2:35, Stocks; 2:40, Records  
**KROW**—Dell Perry, pianist; 2:45, Vocalist  
**KJBS**—Seiffert Players; Orchestra  
**KQW**—John Seiffert Players; Orch.  
**KGDM**—The Romancier  
 \* **KFRC** & network—Happy Go Lucky Hour  
**KJR**—Salon Hour  
**KEX**—Musical Gems  
**KNX**—Recordings  
**KECA**—Recordings  
**KSL**—Milton Charles; 2:45, To be announced

**3:00 to 3:30 P. M.**

• **KPO** & network—Langendorf Pictorial; 3:15, Will Aubrey, Bard of the Byways  
**KGO**—Jack Berger's Orchestra  
**KYA**—Band Concert  
**KTAB**—Tranquility; Little Serenade  
**KLX**—Musical Jigsaw; Records  
**KROW**—Mary Dowd Reardon  
**KJBS**—Dance Tunes; 3:15, The Word Man  
**KQW**—Stocks; Music; Word Man  
**KGDM**—Recordings  
 \* **KFRC** & network—Feminine Fancies  
**KOMO**—3:15, Julia Hayes  
**KJR**—Easy Chair; Lotus Land  
**KHQ**—A. & K. Market; Club Bulletin  
**KFX**—Serenaders  
**KGW**—Eddie King to 3:15  
**KNX**—Fed. Women's Clubs  
**KECA**—Recordings  
**KSL**—H. V. Kaltenborn; 3:15, Texas Rangers

**3:30 to 4:00 P. M.**

• **KPO** & network—Slices of Life; 3:35, Dorothy Page, contralto  
**KGO**—3:45, University of California  
**KYA**—The Well Dressed Woman  
 • **KGO** & network—3:45, Singing Strings  
**KYA**—Symphony Highlights  
**KTAB**—Sophistication; 3:45, Picture Preview  
**KLX**—SERA Orchestra  
**KROW**—Spanish Tunes; Records  
**KJBS**—Front Page Drama; Records  
**KQW**—Variety Program; Music  
**KGDM**—Tom Castle's Orchestra  
 \* **KFRC** & network—Club Matinee  
**KFRC**—3:55, Town Topics  
**KGW**—3:45, Concert Trio  
**KOL**—Harriet Lincks  
**KOIN**—Newspaper of the Air  
**KOL**—Harriet Lincks; 3:45, Studio  
**KHQ**—3:45, Parade of Happy Feet

**KFI**—Ann Warner's Chats  
**KNX**—Housewives' League  
**KECA**—University of California  
**KFSD**—University of California  
**KGB**—Hollywood Reporter to 3:35  
**KSL**—The Junior Hour  
**KOA**—Announcements; Vocalists; Microphone News

**4:00 to 4:30 P. M.**

• **KPO** & network—To be announced; 4:15, Herman Crone's Orchestra  
**KGO**—Beaux Arts Trio  
**KYA**—Tea Dance  
**KTAB**—Keep Smiling Revue  
**KLX**—Records; 4:15, Pianist  
**KROW**—Waltz Time  
**KJBS**—Hollywood Gossip; 4:15, Bill and Co  
**KGDM**—Gillmore Oil Program  
**KQW**—Star Reporter; Bill and Co  
 \* **KFRC** & network—Russo's Orch.  
**KFRC**—4:15, Recordings  
**KGW**—Friendly Chat  
**KJR**—Tea Dants  
**KFI**—Calif. Teachers Assn; Organ  
**KNX**—Haven of Rest  
**KSL**—Payroll Builder  
**KOA**—Memories; Stamp Club

**4:30 to 5:00 P. M.**

• **KPO** & network—Eileen Piggott, soprano  
**KPO**—4:45, News  
**KGO**—For Girls and Boys Only  
**KTAB**—Lauretta La Marr  
**KYA**—Tea Dance Parade  
**KLX**—Pianist; 4:45, Health School  
**KROW**—Hillbilly Music  
**KJBS**—Dance Orchestra; Records  
**KQW**—Story Time; 4:45, Dog Stories  
**KGDM**—Ernie Cruz Program  
 \* **KFRC** & network—Danny Russo's Orch.; 4:45, Between the Bookends  
**KOL**—Bureau of Fisheries to 4:45  
**KOIN**—Bob & Dolly to 4:45  
**KHQ**—4:45, Tull and Gibbs  
**KJR**—Snapshots; Steamboat Bill  
**KEK**—Three-Four Time  
**KFI**—Music; Bible Stories  
**KNX**—Elec. Trans.; Fire Dept.  
**KSL**—Adventures of Robin Hood; 4:45, Town Crier  
**KOA**—Skit; 4:45, Orphan Annie

**5:00 to 5:30 P. M.**

• **KPO** & network—Flirtations: Dot Kay, contralto; Clef Dwellers, vocal trio  
**KGO**—High School Hour; 5:15, Sax appeal, Mickey Gillette  
**KYA**—Children's Hour  
**KTAB**—Health Talk; Records  
**KLX**—Brother Bob's Club  
**KROW**—Memory Lane; Guitarist  
**KJBS**—Popular Vocalist; News  
**KGCC**—Studio Frolic  
**KQW**—Popular Concert  
**KGDM**—Bob Allen; Records; Sports  
 \* **KFRC** & network—Dodge Motor Co.; 5:15, Billy Bachelor  
**KOIN**—Treasure of Adventures  
**KJR**—Waltzes and Tango  
**KEX**—Symphony  
**KNX**—Melody Race; 5:15, Synagogue of the Air  
**KFI**—Bible Stories to 5:15  
**KSL**—Pulman Tailors; 5:15, Tarzan  
**KOA**—Cities Service Concert

**5:30 to 6:00 P. M.**

• **KPO** & network—Fashion Flashes to 5:45; Little Orphan Annie  
**KGO**—Life of the Railys; 5:45, Tim Healy's Ivory Stamp Club  
**KYA**—Metropolitans; 5:45, Campbell  
**KTAB**—Dr. Thompson, talk  
**KLX**—Covered Wagon Jubilee  
**KROW**—Eating Your Way to Health  
**KGCC**—Dance Echoes; Irish Gems  
**KQW**—Orchestra; Voice of Portugal

\*KFRC & network—Real Life Dramas; 5:45, Scorecast  
 KVI—Mountain Wranglers to 5:45  
 KOIN—Merry Men to 5:45  
 KJR—Melody Race; 5:45, Cecil Solly  
 KFI—Elec. Transcription to 5:45  
 KNX—Synagogue; 5:45, "Mongoose"  
 KECA—Ricardo, violinist, to 5:45  
 KFSD—Ricardo, violinist, to 5:45  
 KSL—Granite Furniture Program; Memory Garden  
 KOA—Cities Service Concert

### 6:00 to 6:30 P. M.

•KPO & network—Let's Listen to Harris; Phil Harris' Orchestra, with Leah Ray, vocalist  
 KGO—Five Cards, Coquettes, vocal trio, Alvin Rey, guitarist  
 KYA—Cyrus Trobber's Orchestra  
 KTAB—Dinner Concert  
 KLX—Concert Trio  
 KROW—News; 6:15, Rhythm Aces  
 KGGC—Football  
 KQW—Department of Agriculture; 6:15, Popular Program  
 \*KFRC & network—March of Time  
 KJR—Song Bag  
 KNX—News; Dinner Dance  
 KFWB—News; Records; Organ  
 KECA—Recordings; 6:15, News  
 KFOX—News; Al & Molly; Cecil and Sally  
 KFSD—Junior Chamber of Commerce; Dinner Concert

### 6:30 to 7:00 P. M.

•KPO & network—Armour Program, featuring Phil Baker  
 KGO—Ricardo and his violin; 6:45, Air Adventures of Jimmy Allen  
 KYA—Cyrus Trobber's Orchestra  
 KTAB—Sport Page; Political  
 KLX—Trio  
 KROW—Ne'er Do Well  
 KGGC—Air Theatre; Sunshine  
 KQW—State Market Reports; 6:45, Torrid Tunes  
 \*KFRC & netwk—Hollywood Hotel, featuring Dick Powell, Ted Fiorito's Orchestra  
 KJR—Hollywood on Parade; Jimmie Allen  
 KNX—Concert Group; Adventures of Jimmie Allen  
 KFWB—Fun-Fest; Jimmie Allen  
 KECA—Wesley Tourtellotte, organist  
 KFOX—School Kids; Jimmy Allen

### 7:00 to 7:30 P. M.

•KPO & netwk—The First Nighter, drama, Don Ameche, June Meredith  
 KGO—Barbara Merkle, harpist; 7:15, Chester Rowell  
 KYA—Ernie Smith's Sport Page; 7:15 Jean Wakefield  
 KTAB—Studio; Italian News  
 KLX—News; 7:15, Lovable Liars  
 KROW—Hammond, Sports  
 KQW—Weather; Musical Varieties  
 KGGC—Arnet Amos; Music  
 \*KFRC & netwk—Hollywood Hotel  
 KJR—Mystic Asia  
 KFWB—Football Talk; Hilarities  
 KFOX—Eb and Zeb; Bobby & Betty  
 KNX—Watanabe & Archie; Songs  
 KECA—Recordings

### 7:30 to 8:00 P. M.

•KPO & netwk—One Man's Family  
 KGO—Comedy Stars of Hollywood; 7:45, Mickey Gillette's Music  
 KYA—Cowboys; Louise Taber  
 KTAB—Opie & Viney; Organ  
 KLX—Silver Strains; 7:45, Pianist  
 KROW—Golden Memories  
 KGGC—Concert; Dance  
 KQW—Italian Theatre  
 \*KFRC & netwk—Borden's Friday Frolic  
 KFWB—Pioneers; Comedy Stars  
 KNX—The In-Laws; King Cowboy  
 KFI—Eno Crime Clues

KFOX—Boy Detective; Katy and King  
 KECA—Robert Hurd, tenor to 7:45  
 KSL—Crazy Crystals; Alka Seltzer  
 KOA—One Man's Family

### 8:00 to 8:30 P. M.

•KPO & network—Amos 'n' Andy; 8:15, Gene and Glenn  
 KGO—Concert Miniature; 8:15, College Daze  
 KYA—Orchestra  
 KTAB—Itchy & Scratchy; 8:15, Fishin' Fool  
 KLX—Great Moments in Sports; World Revue  
 KROW—Sullivan & Soloman; 8:15, Nurino Turchete, accordionist  
 KGGC—Spanish-American Program  
 KQW—Dixie Marsh; Drama  
 KEX—News; 8:15, Blackbirds  
 \*KFRC & network—Myrt & Marge; 8:15, Edwin C. Hill  
 KJR—8:15, Metropolitans  
 KNX—Songs; Elec. Trans.  
 KECA—Records; Burr McIntosh  
 KFWB—Football Prediction; Orch.  
 KFOX—Vagabonds; Orchestra  
 KFSD—Jimmie Allen to 8:15

### 8:30 to 9:00 P. M.

•KPO & network—Emerson Drug Program  
 KGO—Echoes from Orchestra Pit  
 KYA—Dance Orchestras  
 KTAB—St. Mary's College; 8:45, Political  
 KLX—Ann Wakefield, soprano; Harriet French  
 KROW—Melodies; Sunny Brook's Band  
 KGGC—Concert; Timely Tunes  
 KQW—Popular Orchestra  
 \*KFRC & netwk—Court of Human Relations  
 KJR—Metropolitans; 8:45, Carefree Capers  
 KFX—Studio Program  
 KNX—Elec. Trans.; Songs  
 KECA—Records; 8:45, Romance of Africa  
 KFWB—Jack Joy's Orchestra  
 KFOX—Market Basket  
 KFSD—Geo. Bacon & John Tyres  
 KOA—Fred Schmitt's Jolly Brewers

### 9:00 to 9:30 P. M.

•KPO & network—Caswell Concert  
 KGO—9:15, Night Editor, Hal Burdick, the story teller  
 KGO—Eno Crime Clues  
 KYA—Drama; 9:15 Neighbors  
 KTAB—Earl G. Linsley, astronomer; 9:15, Nighthiders  
 KLX—Vocalist; Musical Auction  
 KROW—Orchestra; Hawaiians  
 KGGC—News; 9:05, Cowboys  
 KQW—Dance Time; Piano Moods  
 \*KFRC & network—Rio Grande  
 Crack Police Band; 9:15, Herbie Kaye Orchestra  
 KOL—Radio Speaker Stevenson; Hobbies  
 KVI—9:25, John Bjorkland  
 KOMO—9:15, Royal Foursome  
 KNO—9:15, Crazy Wells  
 KGW—9:15, Fireside Hour  
 KEX—9:15, Orchestra  
 KJR—Souvenirs to 9:15  
 KNX—News; 9:15, Amagon  
 KFI—9:15, Chas. W. Hamp  
 KFWB—Don Cave's Orchestra  
 KECA—Recordings; Orchestra  
 KFOX—Beverly Hillbillies  
 KFSD—Furmbit Program; Orch.  
 KSL—Organ; Democratic Committee

### 9:30 to 10:00 P. M.

•KPO & network—Hollywood on the Air; movie celebrities and music  
 KGO—Pick and Pat  
 KYA—Dixie Marsh; 9:45, News  
 KTAB—Babes in Radio  
 KLX—Pioneer Sons; 9:45, News;

9:50, Road Information  
 KROW—Buck Royce Cowboys  
 KGGC—Danceable Tunes  
 KQW—Music Crusader; 9:45, Front Page Drama  
 \*KFRC & netwk—Hal Grayson and Orchestra  
 KOL—Music; 9:45, News  
 KVI—News Flashes to 9:45  
 KFI—Rochelle; Cardinal or King  
 KFWB—Dance Orchestra  
 KNX—Musical Hillbillies; Fights  
 KFOX—Beverly Hillbillies  
 KSL—Wrestling Matches

### 10:00 to 10:30 P. M.

•KPO & netwk—Richfield Reporter; 10:15, Red Davis, dramatic sketch  
 KGO—Reflections, orchestra  
 KYA—Erev Shaboth  
 KTAB—Tivoli Club  
 KLX—Recorded Music  
 KROW—Recordings  
 KGGC—Records; Orchestra  
 KFC—News; 10:10, Elec. Trans.  
 \*KFRC & netwk—10:15, Joe Sullivan, pianist  
 KOIN—Oregana  
 KEX—Pianist  
 KNX—Fights, Hollywood Stadium  
 KFWB—News; Orchestra  
 KECA—Musical Celebrities  
 KGB—News to 10:15  
 KFOX—News; Orchestra  
 KSL—Wrestling Matches; 10:15, Melody Lane  
 KOA Les Weelans

### 10:30 to 11:00 P. M.

•KPO & network—Tom Coakley's Orch.; 10:55, Press-Radio News  
 KGO—Press-Radio News; 10:35, Beal-Taylor's Orchestra  
 KYA—Jackie Souder's Orchestra  
 KTAB—Hal Girvin's Orchestra  
 KROW—Recordings  
 KGGC—Merry Melodies  
 \*KFRC & network—Vincent Lopez' Orchestra  
 KJR—Northern Lights, Damski  
 KEX—Lonesome Club  
 KOMO—Orchestra; Memory Garden  
 KFWB—Tex Howard's Orchestra  
 KNX—Fights; 10:45, Orchestra  
 KFOX—Tex Howard's Orchestra

### 11:00 to 11:30 P. M.

•KGO & network—Ambassador Hotel Orchestra  
 KPO—Tom Gerun's Orchestra  
 KYA—Sandman Organ  
 KTAB—Dance Orchestra  
 KROW—Dance Music  
 \*KFRC & network—Dick Jurgen's Orchestra  
 KJR—Hollywood Temple  
 KFWB—Harry Sosnick Orchestra  
 KFOX—Harry Sosnick Orchestra

### 11:30 to Sign Off

•KGO & network—Cole McElroy's Orchestra  
 KPO—Organ Concert  
 KGB—To be announced  
 KYA—Jerry Andrews Show  
 KTAB—Santa Clara Valley  
 KFRC—To be announced  
 KJR—Club Victor Orchestra  
 KFOX—Jimmy Mann's Orchestra

A BRAND NEW SHOW  
 FOR A GRAND OLD BRAND  
 THE Borden  
 FRIDAY FROLIC  
 Tonight  
 7:30

# SATURDAY Programs

Oct. 20, 1934

## 7:00 to 7:30 A. M.

- KPO & network—Gospel Service; 7:15, Morning Parade
- KYA—Musical Clock
- KTAB—Cuckoo Club
- KROW—Commuters' Time Clock
- KJBS—Alarm Klok Klub
- KQW—The Breakfast Hour
- KGDM—Breakfast News; Records
- KFRC—Records; 7:25, Stories
- KOL—Organ Program
- KVI—Radio Gospel League
- KHQ—Morning News
- KHJ—Recordings
- KNX—Bill Sharples and his Breakfast Club Gang
- KECA—Records
- KGB—Seven o'Clock Club
- KFSD—Early Birds; Pep & Ginger

## 7:30 to 8:00 A. M.

- KPO & network—Financial Service; 7:45, Lee S. Roberts and His Old Memory Box
- KGO—Morning Parade; 7:45, Forecast; 7:50, Originalities
- KYA—Musical Clock
- KTAB—Hill Billie Tunes
- KROW—Commuters' Time Clock
- KJBS—Alarm Klok Klub
- KQW—The Breakfast Hour
- KGDM—Gilmore Oil Program
- KFRC—Seal Rocks Broadcast
- KOL—Organ Program
- KVI—Talk; Varieties
- KGW—Ronald Buck to 7:45
- KJR—Market Quotations; Shadows on the Clock
- KEX—Varieties
- KHQ—Dental Hygiene to 7:45
- KFI—Church to 7:45
- KHJ—Recordings
- KNX—Bill Sharples and his Breakfast Club Gang
- KECA—Bible Fellowship to 7:45
- KFSD—7:45, Good Cheer Program
- KGB—Club; 7:55, Program Resume

## 8:00 to 8:30 A. M.

- KPO & network—Johnny O'Brien, harmonica; 8:15, The Vass Family
- KGO—Crosscuts, Log o' the Day
- KYA—Christian Science Reading; Mr. and Mrs. Reader
- KTAB—Mobile Melodies
- KLX—Records; 8:20, Stocks
- KROW—Time Clock
- KJBS—Morning Varieties
- KQW—Melodies and Varieties
- KFRC & netwk—Pete Woolery Orchestra
- KOL—Studio; Cecil and Sally
- KVI—8:15, Market Specials
- KGDM—Serenader; Recordings
- KEX—Calvary Tabernacle
- KOMO—Stray Varieties
- KHQ—8:15, Comments
- KGW—Ronald Buck to 8:15
- KFI—Church Quarter Hour to 8:15
- KNX—Bill Sharples Breakfast Club
- KECA—Memories of the Waltz
- KOA—Galaxy of Stars to 8:15

## 8:30 to 9:00 A. M.

- KPO & network—Down Lovers' Lane
- KGO—Crosscuts Log o' the Day
- KYA—Morning Concert
- KLX—Covered Wagon Jubilee
- KTAB—Radio Shopper's Digest
- KROW—Novelty Review
- KJBS—Records; Melodies
- KGDM—Recordings; Talk
- KQW—Morning Concert
- KFRC & network—Hollywood Country Church
- KEX—Recordings
- KHQ—Musical Gems
- KOMO—Resume; 8:33, Vagabonds



MONA LOWE  
KHJ—7:30 P. M.

- KFI—Down Lovers' Lane
- KNX—Bill Sharples Breakfast Club
- KECA—Records to 8:45
- KOA—Westminster Choir
- KSL—Children's Entertainment; Miniatures

## 9:00 to 9:30 A. M.

- KPO & netwk—Armchair Quartet
- KFO—News
- KGO—To be announced
- KGO & network—9:15, Genia Fomariova, soprano
- KYA—Concert; Prudence Penny
- KTAB—Hour of Prayer
- KLX—Shopping List
- KQW—Morning Concert
- KJBS—Vocalists; Bargain Basement
- KJBC—Recordings
- KGW—Tuneful Topics
- KGDM—Recordings
- KFRC & network—Connie Gates; 9:15 Along the Volga
- KOL—9:15, Prudence Penny
- KV—Crazy Quartet; Lystic Melodies
- KGW—Cooking School to 9:15
- KEK—Crazy Wells; Tull & Gibbs
- KEK—9:15, Request Program
- KOLO—Clef Dwellers
- KFI—Medical Talk; 9:15, News
- KNX—World Revue
- KSL—9:15, Jennie Lee

## 9:30 to 10:00 A. M.

- KPO & network—National Grange Program
- KGQ—Organ Concert; 9:55, Press-Radio News
- KYA—Waltz Time
- KTAB—Dr. Thompson, health talk
- KLX—Records; Bess Olsen
- KROW—Diet and Health
- KJBS—Morning Concert
- KGGC—Memory Melodies
- KQW—Gems of Melody
- KGDM—News; 9:45, Kiddies' Prog.
- KFRC & netwk—Abram Chasins
- KVI—Tye Oyster talk; Music
- KJR—Shuffling Feet
- KOL—Julie Day; 9:45, Football Broadcast
- KEX—Request Program
- KNX—Amagon; 9:45, News
- KECA—L. A. School Program
- KGB—Radio News to 9:35

## 10:00 to 10:30 A. M.

- KPO & network—National Grange
- KGO—Coquettes, vocal trio; 10:15, Accordiana, Johnny Toffoli
- KYA—Columbia Paarde; Dance Time
- KTAB—Bargain Broadcast; 10:15, The Old Bachelor
- KLX—Records; 10:15, S. F. Stocks; 10:20, News Items
- KROW—Hits from Hollywood
- KJBS—Radio News; Orchestra
- KQW—Popular Orchestra
- KGDM—Kiddies Program; 10:15, Sunshine Girl
- KFRC—Junior Artist Recital
- KOIN—10:15, Air Shopping
- KVI—10:15, Health Scientist
- KGCC—Cal King
- KJR—Early Echoes
- KEX—Lost & Found; Orchestra
- KNX—Eddie Albright's Family
- KECA—City School Program
- KGB—Stocks to 10:15

## 10:30 to 11:00 A. M.

- KPO—Interlude to 10:35
- KPO & network—10:35, Woman's Magazine of the Air
- KGO—Vic and Sade; 10:45, To be announced
- KYA—Community Chest Program
- KTAB—Health Talk; Dude Martin
- KLX—International Kitchen
- KROW—The Observer
- KJBS—Organ; 10:45, Records
- KGCC—Hits of Today
- KQW—Records; 10:45, Musical
- KGDM—Juvenile Program
- KVI—Cal-O-Dine; 10:45, Amusement Tips
- KOL—Football Broadcast
- KFRC—Junior Artist Recital
- KGW—10:45, "Cheerio"
- KJR—Club Minutes; Uncle Hank
- KEX—Classical Soloist
- KNX—Playing the Song Market
- KECA—Classic Hour
- KOA—10:45, Livestock & Produce

## 11:00 to 11:30 A. M.

- KPO & network—Woman's Magazine of the Air
- KGO—To be announced
- KYA—Organ
- KTAB—Blue Moments; Beauty Facts
- KLX—Recordings
- KGCC—Milady's Date Book; Music
- KJBS—Hits of the Past
- KGCC—Milady's Date Book; Music
- KGW—Light Classics
- KGDM—Organ Recital
- KFRC & network—Danny Russo's Orchestra
- KOIN—This and That
- KVI—The Observer to 11:15
- KGW—Studio Program
- KJR—Rhythm Rules
- KEX—Records; Cobwebs & Nuts
- KNX—Musical Program
- KECA—Classic Hour, Records

## 11:30 to 12:00 Noon

- KPO & network—Herman Crone's Orchestra
- KGO—Financial Flashes; 11:35, Edna Fischer, pianist; 11:45, Agricultural Bulletin
- KYA—Organ Concert
- KTAB—Modern Rhythms; News
- KLX—Anita & Orosco; Records
- KROW—Latin-American Program
- KJBS—Dance Orchestra
- KGCC—Requests; 11:45, News
- KGW—Stocks and Bonds; Accordian; Theatre News
- KGDM—Organ Recital
- KFRC & netwk—Round Towners
- KJR—Measured Steps
- KEX—Cobwebs and Nuts to 11:45



KHQ—Organ Concert  
KNX—Musical Auction; Talk  
KFI—Bennie Watson, songs; 11:45.  
Market Reports

### 12:00 to 12:30 P. M.

- KGO & network—Tommy Tucker's Orchestra
- KPO—News
- KPO & network—12:15, Western Agriculture
- KYA—Scriptures; 12:03, Concert
- KTAB—News; Event Book; Organ
- KLX—Stocks; 12:05, Dance Music
- KROW—Latin-American Program
- KJBS—Instrumental and Vocal
- KQW—Popular Orchestra
- KGDM—Request Hour
- KGDM—Road Reports; Records
- \* KFRC & network—Chansonette
- KOIN—Ron Myron's Scrapbook; 12:15, Amie Brunn
- KVI—12:15, Front Page Headlines
- KHQ—Business and Pleasure
- KGW—12:15, Meler & Frank
- KJR—Records; 12:15, Grain Report
- KEX—Band Music
- KNX—News; 12:15, Congo
- KECA—News; 12:15, Records
- KSL—Broadcaster's Review

### 12:30 to 1:00 P. M.

- KPO & network—Western Agriculture
- KGO—Week End Revue, variety musicale with Tommy Harris, tenor, and others
- KYA—Noonday Concert
- KTAB—Echoes of Portugal
- KLX—Don Brose; Magic Harmony
- KROW—U. S. Army Band
- KJBS—Dance Matinee
- KGCC—Pirate Cowboys
- KQW—Weather; Market Reports
- KGDM—Records; News
- \* KFRC & network—Captivators
- KGW—Dr. Semler; Friendly Chat
- KHQ—12:45, American Weekly
- KEX—American Produce to 12:35
- KJR—Uncle Frank's Children Mat.
- KNX—Concert Group
- KECA—Concert Favorites

### 1:00 to 1:30 P. M.

- KPO & network—Mickey Gillette's Music
- KGO—Week End Revue
- KYA—Hawaiian Troubadours
- KTAB—Songs of the Past
- KLX—Records
- KROW—Concert Melodies
- KJBS—Musical Novelties
- KQW—Friendly Hour
- KGDM—Records
- \* KFRC & network—Ann Leaf, Organ
- KOIN—Book of Life
- KGW—Chat; Dental Clinic
- KJR—Uncle Frank's Children Mat.
- KHQ—Drama; 1:15, Sylvia Gray
- KFI—1:15, Accordion and Piano
- KNX—Pontrelli's Orchestra
- KSL—Payroll Builder
- KECA—Records to 1:15

### 1:30 to 2:00 P. M.

- KPO & network—Palmer Clark's Orchestra
- KGO—Cecilians; Barbara Blanchard, soprano; Eva Gruninger, contralto; organ
- KYA—Rhythm Princes
- KTAB—Jean Kent, Economics
- KLX—Song Bag
- KROW—Records; Musical Matinee
- KJBS—Afternoon Popular Concert
- KQW—Afternoon Concert
- KGDM—Recorded Program
- KFRC—N. Y. Stocks to 1:35
- \* KFRC & network—Allan Leifer and Orchestra
- KJR—The Sun Dial
- KEX—Grain Reports; Records; Bookman

KFI—Biltmore Concert Quartet  
KNX—Pontrelli's Orchestra  
KECA—Recordings

### 2:00 to 2:30 P. M.

- KGO—Associated Football: University S. F. vs. Stanford
- KPO—Orlando's Tea Music
- KYA—Spanish Serenaders
- KTAB—Dance Tunes; Romancin'
- KLX—Records
- KJBS—Popular Dance Recordings
- KROW—Musical; Dorothy Allen, vocalist
- KQW—Dance Matinee
- KGDM—2:15, News
- \* KFRC & network—Little Jack Little 2:15, Football: U. C. vs. UCLA
- KHQ—Football: C. P. S. vs. Gonzaga
- KOIN—Idaho vs. Oregon, Football
- KMO—Football: U. S. C. vs. O. S. C.
- KGW—Football: U. S. C. vs. O. S. C.
- KJR—International Musicale
- KEX—World Bookman; Symphony
- KFI—Football: U. S. C. vs. O. S. C.
- KNX—World Revue
- KECA—Classical Recordings
- KFSD—Football Game
- KSL—2:15, Dental Clinic
- KOA—Huffman Theatre Reporter

### 2:30 to 3:00 P. M.

- KGO & network—Football Game
- KPO—Chick Webb's Orchestra
- KYA—Vignettes of Life; 2:45, Modern Notes
- KTAB—Three-Four Time; Records
- KLX—Melody Race
- KROW—Pianist and vocalist
- KJBS—Popular Dance Recordings
- KQW—Dance Matinee
- KGDM—The Romancer
- \* KFRC & network—Football: U. C. vs. U. C. L. A.
- KOIN—Football Game
- KOMO—Football Game
- KHQ—Football Game
- KEX—Symphony
- KJR—Boeing Talk; Sesta Moods
- KGW—Football Game
- KFI—Football Game
- KNX—To be announced
- KECA—Classic Hour
- KFSD—Football Game
- KOA—Our American Schools

### 3:00 to 3:30 P. M.

- KGO & network—Football Game
- KPO—Vagabonds Quartet
- KYA—Band Concert
- KLX—Records
- KTAB—Recordings
- KROW—Mary Dowd Reardon
- KQW—Vocal and musical
- KJBS—Light Opera; 3:15, Colonel Shaddy
- KGDM—Recordings
- \* KFRC & network—Football Game
- KOIN—Football Game
- KOMO—Football Game
- KEX—Symphony
- KHQ—Football Game
- KGW—Football Game
- KFI—Football Game
- KNX—To be announced
- KECA—Organ Recital
- KFSD—Football Game
- KSL—Frederic Wm. Wile; Music
- KOA—Studio Program

### 3:30 to 4:00 P. M.

- KGO & network—Football Game
- KPO—Tid-Bit; 3:35, Twenty Fingers of Harmony; 3:45, John Herrick, baritone
- KYA—Symphony Highlights
- KLX—Silver Strains; Records
- KTAB—Sophistication; 3:45, Talk
- KROW—Singing Strings
- KQW—Variety Program
- KGDM—Pa and Ma Bondon
- \* KFRC & network—Football Game

KOIN—Football Game  
KOMO—Football Game  
KHQ—Football Game  
KOMO—Birnbauer's Bavarians  
KGW—Football Game  
KEX—3:45, Melody Salon  
KNX—To be announced  
KFI—Football Game  
KECA—Recordings  
KFSD—Football Game  
KSL—The Junior Hour; News  
KOA—Orchestra; News

### 4:00 to 4:30 P. M.

- KGO & network—Football Game
- KPO—Flying with Captain Al Williams; 4:15, Religion in the News
- KYA—Tea Dance Parade
- KTAB—Cobweb Chasers
- KLX—Recordings
- KROW—Waltzes; Gossip; Orch.
- KJBS—Hollywood Gossip; Orch.
- KGDM—Gilmore Oil Program
- KQW—Star Reporter; Variety
- \* KFRC & network—Football Game; 4:15, Elder Michaux Congregation
- KOIN—Football Game
- KGW—Football Game
- KOMO—Football Game
- KHQ—Football Game
- KJR—Tea Dansant
- KFI—Football Game
- KNX—To be announced
- KECA—Recordings
- KFSD—Football Game
- KSL—Broadcasters Review

### 4:30 to 5:00 P. M.

- KGO & network—Football Game
- KPO—Bert Black's Orchestra; 4:45, To be announced
- KYA—Tea Dance Parade
- KTAB—Rhythm Rambles
- KLX—Helen Parmelee, pianist
- KROW—Hillbille Music
- KJBS—Orch.; 4:45, Harmony Trio
- KQW—Story Time; Songs
- KGDM—Ernie Cruz Program
- \* KFRC & network—Edgewater Beach Concert Orchestra; Lawyer and the Public
- KOIN—Newspaper of the Air
- KOMO—Football Game
- KHQ—Football Game
- KJR—Snapshots
- KEX—4:45, Musical Gems
- KGW—Football Game
- KFI—Football Game
- KECA—Records to 5:30
- KNX—To be announced
- KFSD—Football Game
- KSL—Broadcasters Review
- KOA—4:45, Ford Rangers and Football Scores

### 5:00 to 5:30 P. M.

- KPO & network—Swift Hour; music direction Sigmund Romberg
- KGO—Pastels, woodwind ensemble direction Willard Flashman
- KYA—Children's Prog.; Donald Ayer
- KTAB—Memory in Melody; 5:15, Song Favorites
- KLX—Brother Bob's Club
- KROW—Memory Lane; Records
- KJBS—Dance Hits; 5:15, News
- KGCC—Serenade; 5:15, Go to Church
- KGDM—Orchestra
- KQW—Concert
- \* KFRC & network—Roxy Revue
- KEX—Popular Concert
- KJR—Waltzes and Tangos
- KNX—Melody Race; Radio Church
- KECA—Recordings

### 5:30 to 6:00 P. M.

- KPO & network—Swift Hour
- KGO—Pair of Pianos, Grace Frankel and Gertrude Lyne
- KYA—Metropolitans; Campbell
- KTAB—The Funnies; Blue Moments
- KLX—Covered Wagon Jubilee
- KROW—Eating Your Way to Health

KGCC—Recordings; Irish Gems  
 KQW—Musical Impressions; 5:45,  
 Voice of Portugal  
 \*KFRC & network—Roxy Revue;  
 5:45, Scorecast  
 KOL—5:45, Sport Talk  
 KJR—Romancing  
 KNX—John Matthews; Gossip Club  
 KECA—Temple Baptist; Records  
 KSL—5:45, Crossmyer & Cohen

**6:00 to 6:30 P. M.**

\*KPO & netwk—Radio City Party;  
 John B. Kennedy, master of cere-  
 monies; guest artists; Frank  
 Black's Orchestra  
 KGO—Beaux Arts Trio  
 KYA—Cyrus Trobde Orchestra  
 KTAB—Echoes of Portugal  
 KLX—KLX Trio  
 KROW—News; 6:15, Rhythm Aces  
 KGCC—Dinner Dance Review  
 KQW—Concert; Popular Program  
 \*KFRC & network—Chesterfield  
 Program  
 KJR—Song Bag  
 KNX—News; 6:15, Dance Music  
 KFWE—News; Records; Organ  
 KECA—Records; News  
 KFOX—News; Al & Molly; Cecil and  
 Sally  
 KFSD—Community Chest Program

**6:30 to 7:00 P. M.**

\*KPO & network—Gibson Family,  
 original musical comedy  
 KGO—Spiritual Fantasy, Southern  
 Harmony Four, male quartet  
 KYA—Orchestra  
 KTAB—Sport Page; Political  
 KLX—KLX Trio  
 KROW—Dr. G. Facci; Labor Journal  
 KGCC—Theatre Program; Sunshine  
 KQW—Gerald Kenny; 6:45, Torrid  
 Tunes  
 \*KFRC & netwk—To be announced  
 KJR—Los Argentinos  
 KVI—Musical Crediters to 6:45  
 KNX—Concert Group  
 KFWE—Organ; Amer. Weekly  
 KECA—Recordings  
 KFOX—School Kids; Studio Prog.  
 KFSD—6:45, Saturday Special  
 KSL—Studio Group; Comedy Stars

**7:00 to 7:30 P. M.**

\*KPO & network—Gibson Family  
 KGO—Education Today; 7:15,  
 Mickey Gillette's Music  
 KYA—Ernie Smith's Sport Page;  
 7:15, Sonia Sapiro, pianist  
 KTAB—Stamps; 7:15, Italian News  
 KLX—News Items; 7:15, Soprano  
 KROW—C. W. Hammond; Sports  
 KGCC—Recordings; Organalities  
 KQW—News; Musical Program  
 \*KFRC & netwk—Carborundum  
 Band  
 KJR—Symphonettes  
 KFWE—Interview; Pioneers  
 KECA—Raine Bennett, poet  
 KNX—Watanabe and Archie; 7:15,  
 Calmon Luboviski, violinist  
 KFOX—Wiggsville; Bobby & Betty

**7:30 to 8:00 P. M.**

KPO—Tom Mitchell, baritone  
 \*KPO & network—7:45, Siberian  
 Singers  
 KGO—Mickey Gillette's Music  
 KTAB—Chasin' Horizons  
 KYA—Shadow of Kali-om, Drama  
 KLX—Carefree Capers  
 KROW—Golden Memories Program  
 \*KFRC & network—Mona Lowe &  
 Joe Sullivan; 7:45, To be announced  
 KOIN—Jimmy Allen to 7:45  
 KQW—Italian Radio Theatre  
 KOL—Radio Speaker Stevenson  
 KVI—Dr. M. M. Mellor to 7:45  
 KJR—Melody Time; 7:45, Music  
 KHQ—Danny Malone, tenor  
 KFI—Eno Crime Clues  
 KNX—Calmon Luboviski, violinist

KFWE—Juvenile Revue  
 KFOX—Juvenile Revue  
 KECA—Danny Malone to 7:45  
 KFSD—Danny Malone to 7:45

**8:00 to 8:30 P. M.**

\*KPO & network—National Barn  
 Dance  
 KGO—Pan-Americana, Jose Rami-  
 rez, tenor; Argentine Trio, Instru-  
 mentalists  
 KYA—Political; Bob Beal's Orch.  
 KTAB—Home Favorites  
 KLX—Musical Solree  
 KROW—Latin-American Program  
 KQW—Popular Orchestra  
 KGCC—Spanish Program  
 \*KFRC & network—Richard Him-  
 ber's Champions  
 KJR—Song Market  
 KOMO—8:15, Scandinavian Songs  
 KGW—8:15, Mark Daniels, baritone  
 KECA—News Flashes to 8:15  
 KFWE—Charles Kaley & Burt Fiske;  
 Jay Whidden's Orchestra  
 KNX—Hollywood Barn Dance  
 KECA—Playground Dept. Musical  
 KFOX—Organ and Piano  
 KFSD—To be announced

**8:30 to 9:00 P. M.**

\*KPO & network—National Barn  
 Dance  
 KGO—Tom Gerun's Orchestra  
 KYA—Bob Beal's Orchestra  
 KTAB—R. Baker, tenor; Political  
 KLX—Musical Solree  
 KROW—Latin-American Program  
 KGCC—Recordings  
 KQW—Musical Program  
 \*KFRC & netwk—To be announced  
 KOIN—Comedy Stars to 8:45  
 KOL—Orchestra  
 KOMO—Fisher's Blend Half Hour  
 KGW—Fisher's Blend Half Hour  
 KNX—Hollywood Barn Dance  
 KFWE—Musical Newsy  
 KECA—Musical Program; Records  
 KFOX—Christian Science; Man  
 About Town

**9:00 to 9:30 P. M.**

\*KPO & network—Johns—Manville  
 Program; 9:15, Carefree Carnival,  
 variety show, Ned Tollinger, mas-  
 ter of ceremonies  
 KGO—Tom Gerun's Orchestra; Musi-  
 cal Treasure Chest  
 KYA—Orch.; Lyric Quartet  
 KTAB—Crochets; 9:15, Hillbillies  
 KLX—Faucit Theater of the Air  
 KROW—Italian Program  
 KGCC—News; Wyoming Cowboys  
 KQW—Dance Frolic  
 \*KFRC & network—To be announced  
 KGW—Concert Trio  
 KOL—Dance Music  
 KOIN—McElroy's Orchestra  
 KNX—News; Hollywood Barn Dance  
 KFWE—Dance Orchestra  
 KFOA—Don Cave's Orchestra  
 KECA—Recordings  
 KGB—Comedy Stars to 9:15  
 KSL—Adlerika Program; Harry  
 Clarke & Peter Spraynozzie

**9:30 to 10:00 P. M.**

\*KPO & network—Carefree Carnival  
 KGO—Musical Treasure Chest  
 KYA—Jackie Souders' Orchestra  
 KTAB—Football Resume  
 KLX—Sons of Pioneers; News  
 KROW—Dance Varieties  
 KJBS—Morning Concert  
 KGCC—Band; Hawaiians  
 KQW—Dance Frolic  
 \*KFRC & network—Hal Grayson's  
 Orchestra  
 KOL—Dance Music; 9:45, News  
 KVI—Ledger News Flashes to 9:45  
 KJR—Spice of Life; Fireside Phan-  
 tasia  
 KNX—Hollywood Barn Dance  
 KECA—Recordings

KFWE—Slumbertime  
 KFOX—Dance Orchestra  
 KSL—Merle Mack Orchestra; Joe  
 Haynes Orchestra

**10:00 to 10:30 P. M.**

\*KPO & network—Blue Moonlight;  
 Alvino Rey, guitarist; Paul Car-  
 son, organist  
 KGO—Williams-Walsh Orchestra  
 KYA—Bath-Day Party  
 KTAB—Club Tivoli Orchestra  
 KLX—Records  
 KGCC—Records; Orchestra  
 KROW—Recordings  
 KFRC—News; 10:10, Ironized Yeast;  
 To be announced  
 KOL—Dance Orchestra  
 KJR—Rocky Mountaineers  
 KEX—Olympians; Eddie King  
 KHJ—News Items; 10:10, Orchestra  
 KNX—World Revue  
 KFWE—News; Organ  
 KFOX—News; Orchestra  
 KGB—News Flashes; Music  
 KECA—Recordings

**10:30 to 11:00 P. M.**

\*KPO & network—Tom Coakley's  
 Orch.; 10:35, Press-Radio News  
 KGO—Press-Radio News; 10:35, Emil  
 Polak's Orchestra  
 KYA—Bath-Day Party  
 KTAB—Hal Girvin's Orchestra  
 KLX—Records  
 KROW—Rhythm-Fest  
 KGCC—Merry Melodies  
 \*KFRC & network—Vincent Lopez'  
 Orchestra  
 KOIN—Anthony's Columbians  
 KOL—Dance Orchestra  
 KJR—Artistic Trio  
 KOMO—Club Victor Orch.; 10:55,  
 Memory's Garden  
 KFI—Biltmore Hotel Orchestra  
 KNX—Pontrelli's Orchestra  
 KFWE—Orchestra  
 KFOX—Dance Orchestra

**11:00 to 11:30 P. M.**

\*KPO & network—Ted Fio-Rito's  
 Orchestra  
 KGO—Orville Knapp's Orchestra  
 KYA—Sandman Organ  
 KTAB—Orchestra  
 KROW—Midnight Vagabond  
 \*KFRC & network—Dick Jurgen's  
 Orchestra  
 KOIN—Club Victor Orchestra  
 KEX—Dance Frolic  
 KFWE—Dance Orchestra  
 KFOX—Dance Orchestra  
 KGB—Orchestra

**11:30 to Sign Off**

\*KGO & netwk—Dwight Johnson's  
 Orchestra  
 KPO—Organ Concert  
 KYA—Jerry Andrews' Little Show  
 KTAB—Tony Wallace's Orchestra  
 KROW—Vagabond and Music  
 \*KFRC & network—To be announced  
 KEX—Organ Music  
 KJR—Club Victor Orchestra  
 KHJ—Recordings

**FOUND MONEY**

in the form of

**Diamonds • Old Gold Jewelry**  
 Convert them into Cash  
 see

**GUS FARBER**

464 Phelan Bldg., San Francisco

Listen to Morning Announcements

**STATION KJBS**

Mon., 7:45 a.m. Thurs., 8:35 a.m.  
 Tues., 8:35 a.m. Fri., 10:20 a.m.  
 Wed., 7:25 a.m. Sat., 8:55 a.m.

# CHAIN PROGRAMS CLASSIFIED

## PACIFIC STANDARD TIME

### COMEDIANS

Allen, Fred, Wednesday, 9 p.m.	NBC
Baker, Phil, Friday, 6:30 p.m.	NBC
Benny, Jack, Sunday, 8:30 p.m.	NBC
Cook, Joe, Monday, 6:30 p.m.	NBC
Cantor, Eddie, Sunday, 5 p.m.	NBC
Penner, Joe, Sunday, 4:30 p.m.	NBC
Wynn, Ed, Tuesday, 4:30 p.m.	NBC

### DRAMAS

Bible Stories, Sunday, 12 noon	KGO
Death Valley Days, Tuesday, 8:30 p.m.	NBC
Drama Hour, Monday, 8:30 p.m.	KGO
Eno Crime Clues, Thurs. and Fri., 9 p.m.	KGO
First Nighter, Friday, 7 p.m.	NBC
Grand Hotel, Sunday, 3:30 p.m.	NBC
Lever Bros., Drama, Sunday, 11:30 a.m.	NBC
Memory Lane, Wednesday, 7:30 p.m.	NBC
One Man's Family, Friday, 7:30 p.m.	NBC
Radio Guild, Monday, 12 noon	KGO
Royal Gelatine Dramatic Series, starring Mary Pickford, Wednesday, 5 p.m.	NBC
Sunday Morning Special, Sunday, 9 a.m.	NBC
True Story Court, Friday, 8:30 p.m.	CBS
Twenty Thousand Years in Sing Sing, Wednesday, 6 p.m.	NBC
Winning the West, Thursday, 9:15 p.m.	NBC

### EDUCATIONAL PROGRAMS

Commonwealth Club Luncheon, Fri., 12:45 p.m.	KGO
Education Today, Saturday, 7 p.m.	KGO
Educational Feature, Wednesday, 1:30 p.m.	CBS
Hill, Edwin C., Mon., Wed., Fri., 8:15, p.m.	CBS
Hyde, Henry M., Sunday, 6 p.m.	KGO
Standard School Broadcast, Thursday, 11 a.m.	KPO
Stanford University, Monday, 7:45 p.m.	KGO
The New World, Monday, 9:30 a.m.	NBC
The University of California, Sunday, 9:30 p.m.; Mon., Tues., Wed., Thurs., Fri., 3:45 p.m.	NBC
You and Your Government, Tues., 4:30 p.m.	NBC

### POPULAR PROGRAMS

Adventures of Gracie, Wednesday, 6:30 p.m.	CBS
American Album of Familiar Music, Sunday, 6:30 p.m.	NBC
Atwater-Kent, Monday, 5:30 p.m.	CBS
Bernie, Ben, Tuesday, 9 p.m.	NBC
Boswell Sisters, Tuesday, 6 p.m.	CBS
California Melodies, Friday, 7:30 p.m.	CBS
Carnation Contented Program, Monday, 7 p.m.	NBC
Chesterfield Program, Mon., Wed., Sat., 6 p.m.	CBS
Crosby, Bing, Tuesday, 6 p.m.	CBS
Feminine Fancies, Mon. to Fri., 3 p.m.	*KFRC
Gibbons, Floyd, Saturday, 9 p.m.	NBC
Hollywood Hotel, Friday, 6:30 p.m.	CBS
Marshall's Varieties, Everett, Wed., 5:30 p.m.	CBS
Madame Schumann-Heink, Sunday, 8:15 p.m.	NBC
Manhattan Merry-Go-Round, Sunday, 6 p.m.	NBC
March of Time, Friday, 6 p.m.	CBS
McCormack, John, Wednesday, 6:30 p.m.	KPO
Personal Closeups, Interview by Gypsy, Sunday, 6:15 p.m.	KGO
Treasures of Time, Wednesday, 8:45 p.m.	CBS
Voice of Experience, Monday to Friday, 9 a.m.; Wednesday, 8:30 p.m.	CBS
Voice of Firestone, Monday, 8:30 p.m.	NBC

### SKITS

Adventures of Jimmy Allen, Monday to Friday, inclusive, 6:45 p.m.	KGO
Amos 'n' Andy, Mon. to Fri., inclusive, 8 p.m.	NBC
Betty and Bob, Monday to Friday, 1 p.m.	NBC
Bachelor, Billy, Monday to Friday, inclusive, 5:15 p.m.	*KFRC
Gene and Glenn, Monday, Tuesday, Wednesday and Friday, 8:15 p.m.	NBC
Myrt and Marge, Monday to Friday, inclusive, 8 p.m.	CBS
Orphan Annie, Monday, Tuesday, Wednesday and Friday, 5:45 p.m.	NBC
Oxydol's Own Ma Perkins, Monday to Friday, 1:30 p.m.	NBC
Vic and Sade, Mon. to Fri. inclusive, 10:30 a.m.	KGO

### SYMPHONY ORCHESTRAS

Ford Symphony Orch., Sunday, 5 p.m.	CBS
N. Y. Philharmonic Orchestra, Sunday, 12 noon	CBS
Radio City Music Hall, Sunday, 9:30 a.m.	NBC
Standard Symphony, Thursday, 8:15 p.m.	NBC
SERA Symphony Concert, Sunday, 5:30 p.m.	KGO

### VARIETY PROGRAMS

Armour Program, Friday, 6:30 p.m.	NBC
Blue Monday Jamboree, Monday, 8:30 p.m.	*KFRC
Captain Henry's Showboat, Thursday, 6 p.m.	NBC
Carefree Carnival, Saturday, 9:15 p.m.	NBC
Chase & Sanborn: Eddie Cantor, Sunday, 5 p.m.	NBC
Colgate House Party, Monday, 6:30 p.m.	NBC
Crosscuts Log o' the Day, Mon., Wed., Thurs., Fri. and Sat., 8:15 a.m. (Tues. 11 a.m.)	KGO
Demi-Tasse Revue, Monday, 7:30 p.m.	NBC
Fleischmann Hour, Thursday, 5 p.m.	NBC
Gibson Family, Saturday, 6:30 p.m.	NBC
Happy-Go-Lucky Hour, Monday to Friday, inclusive, 2 p.m.	*KFRC
Hall of Fame, Sunday, 7 p.m.	NBC
Hi-Jinks, Sunday, 9 p.m.	CBS
National Barn Dance, Saturday, 8 p.m.	NBC
Palmolive Beauty Box, Tuesday, 7 p.m.	NBC
Pearce, Al. and Gang, Mon. to Fri., 2 p.m.	NBC
Roberts, Lee, Sunday, Tuesday, Thursday and Saturday, 7:45 a.m.	NBC
Roxy Revue, Saturday, 5 p.m.	CBS
Shell Show, Monday, 9 p.m.	NBC
S. & W. Merrymakers, Sunday, 7:30 p.m.	*KFRC
Town Hall Tonight, Wednesday, 9 p.m.	NBC
Waring's Pennsylvanians, Thurs., 6:30 p.m.	CBS
Whiteman, Paul, Thursday, 7 p.m.	NBC

## STATION DIRECTORY

### • NBC Network Stations

Station	Meters	Kcs.
KECA	209.7	1430
KEX	254.1	1180
KFI	468.5	640
KFSD	499.7	600
KGO	379.5	790
KGW	483.6	620
KHQ	508.2	590
KJR	309.1	970
KOA	361.2	830
KOMO	325.9	920
KPO	440.9	680
KYA	243.8	1230

### \* CBS Network Stations

KFRC	491.5	610
KGB	225.4	1330
KHJ	333.1	900
KOIN	319.0	940
KOL	236.1	1270
KSL	265.3	1130
KVI	526	570

### Independent Stations

KFOX	239.9	1250
KFWB	315.6	950
KGDM	272.6	1100
KGGC	211.1	1420
KJBS	280.2	1070
KLX	340.7	880
KNX	285.5	1050
KQW	296.6	1010
KROW	322.4	930
KTAB	535.4	560