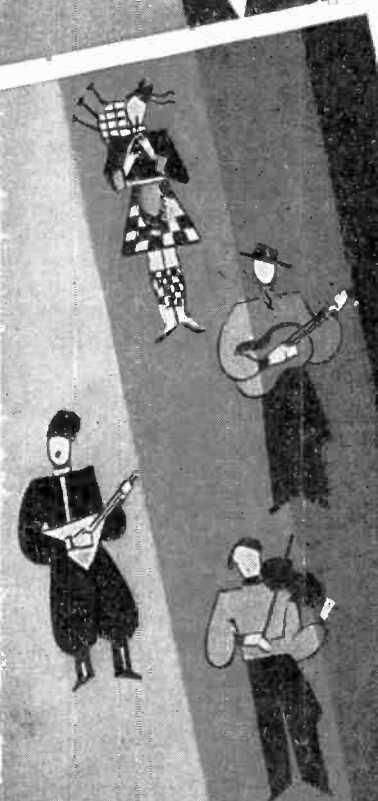


FOR WEEK OF
September
10th to 16th

BROADCAST WEEKLY



KAY KYSER
Who is heard with his entertaining Orchestra broad-
casting from the Bal Tabarin in San Francisco over
NBC-KGO stations nightly, except Monday
and Wednesday.



THE LEADING RADIO GUIDE OF THE PACIFIC COAST





GLEN GOFF—*Organist*
KYA—Week Days, 10 to 11 p.m.

Why You Should BUY Your New Majestic Radio

AT

BROADCAST WEEKLY'S OWN RADIO STORE

36 Powell Street 1 1 1 San Francisco

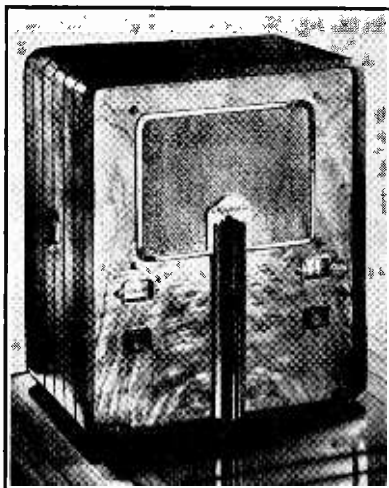
Best Service Possible

A 100% GUARANTEE

Brand New Models

to choose from

Installation by expert radio engineers.
Well experienced radio salesmen to
help you make your selection. Con-
venient location to downtown
shopping district.



Model 461—"MASTER"
List Price \$42.50

Convenient Payment Plan

Backed up by a

PIONEER RADIO CONCERN

ETHER GLEANINGS

By J. CLARENCE MYERS

YANK out the weeping rags, m'lads, for I've a sad, sad story to tell. Sleuthing Sherlock Holmes and his bosom pal and confederate, Doctor Watson, are not coming back on the air! They've been dumped into that radio heap of discarded broadcast features, there to die. But they'll not be forgotten.

For financial reasons, their sponsor, the G. Washington Coffee Company, who had brought them into our homes four years or more ago, and endeared them to us, found it necessary to cancel their broadcasting order. The pair was scheduled to return to the NBC networks again September 27, after a lay-off during the summer. The cancellation came as sudden and unexpected as an earth tremor. And believe us, it caused no end of consternation about the NBC camp here in San Francisco.

In a number of different surveys and popularity contests the Sherlock Holmes dramas were voted the outstanding radio program in its field. They were popular with young and old alike and became regular household visitors in tens of millions of homes throughout the country every week.

Never have we heard a Sherlock Holmes drama that was not clean, well acted and excellently produced. The principals and plays of minor rôles alike deserve a tribute for their sincere endeavors in behalf of the radio audience.

It is regrettable that their sponsor saw fit to cancel this very worthy and high calibre broadcast feature.

Personally we are very sad about it and hope that some good spirited sponsor will come along and resurrect them from that heap of discarded radio programs.

How's about the NBC sustaining them?

C'mon gang, are you with me: Shout it loud:

WE WANT SHERLOCK HOLMES!

* * *

That Shell Show, Monday night Don Lee chain affair, is making a strong bid for first place among the various variety type shows broadcast here on the Coast. It has succeeded in keeping up a good pace of fast moving and good entertainment.

The program took on added zest Monday night, August 28, when Horace Heidt and his Californians joined the ranks. Lively gang, that and swell showmen. E. H. Sanders, Shell advertising boss, knew that. He engaged them some years ago on Dobbsie's program,

In rapid fire succession the acts paraded before the KFRC mikes, each producing a laugh or a pleasing tune. That grand old lady of the stage, Trixie Friganza was guest star and wise-cracked with Benny Rubin. She sang, too. Rubin's "sitting down clog dance" was a scream and Terry Kendall literally "bowed them over" with her imitation of Garbo. Yahbut and Cheerily had a smart act in which they sought the elusive pearl in the South Sea waters. The audience joined in the Shell Show festivities with the popular song "Johnny Schmoker."

* * *

Harold Peary is back home in San Francisco and joins the NBC ranks once again in Wheatonville, which returns to the air September 24.

* * *

John D. Barry, widely known newspaper columnist and lecturer, has been signed by KTAB. He speaks under the title: "Current Events" Tuesday nights from 8:45 to 9 o'clock.

* * *

Mac (Harry McClintock), seasoned veteran of quite a few thousand radio broadcasts, all of which have been over KFRC and the Don Lee chain, has joined up with Ralph Brunton's station, KJBS. He's doing an act daily except Sunday from 8 to 8:30 a. m., which is sponsored by the Peninsula Properties Company.

* * *

Hard luck has traveled along with the good as far as Myrt and Marge are concerned. Some months ago Myrt was seriously injured in an automobile smashup in the East and was incapacitated for a long time. She had to be written out of the radio scripts at the time. And now Marge, who is her daughter in real life, is suffering from a broken arm and bruises that she received when she fell into a stone fireplace in a mountain near Idylwild, a short distance from Pasadena, a few days ago. They are scheduled back on CBS September 25.

* * *

Safeway, which already has Eddie Peabody on the NBC, brings out its second broadcast program over the same network on September 8, in which it will ballyhoo its Brown Derby and Humboldt Beer. The broadcast will be Fridays and Mondays from 9:45 to 10 p. m., and will feature Ryan and Noblette, comedians; Lyne and Frankel, "pair of pianos" and a male quartet.

Edward McCallum, KYA chief is back from a vacation to Salt Lake City.

* * *

'Tis rumored that Will Rogers will be on an NBC network regularly beginning late in October. Here's hopin'.

* * *

Eddie Cantor is scheduled back on the Chase and Sanborn coffee program September 10.

* * *

Swift and Company, who are bringing Olsen and Johnson on the air on September 29, cancelled their NBC contract and are going on CBS.

* * *

The KFRC Blue Monday Jamboree gang is going barnstorming again. They opened at the Paramount in Los Angeles this week and from there they will probably go to Long Beach and Pasadena.

* * *

R. H. Lamb, director of the Western Farm and Home Hour on the NBC has been given charge of the Radio Service activities of the United States Department of Agriculture on the Pacific Coast. He has been replaced on the Farm and Home Hour by Alan Dailey, who came out here from Washington, D. C.

Mary Wood will leave for a Hollywood screen test soon.

* * *

Bernard Litten, violinist, who was featured on KFRC six years ago and since has played on KPO and other bay district stations, is now appearing in violin concerts thrice weekly over KQW.

He is assisted by Gilbert Picou, well-known San Francisco pianist and instructor. They play Monday, Wednesday and Friday evening from 5:45 to 6 o'clock, on the Musical Impressions program.

* * *

Petite Edna O'Keefe is back at the KFRC studios telling the gang all about her thrilling experiences before the Hollywood movie cameras and displaying a bruised foot (to particular friends) where a studio cow stepped on it. In a comedy short in which Edna was appearing with Ted Fio-Rito's orchestra, she was supposed to be singing a love ballad to a cow. But old Bossy evidently didn't think so much of Edna's song and rudely walked right across her foot.

* * *

The Ford dealers of California are sponsoring the Merrymakers on the Don Lee chain now.

HOTEL PLAZA

Ray Maxwell, Manager

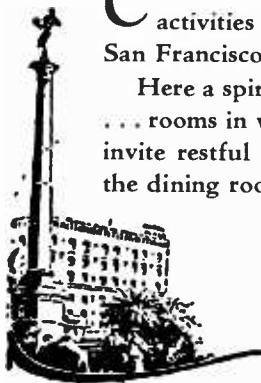
POST STREET at STOCKTON / / / SAN FRANCISCO

CENTRALLY located in the heart of business and amusement activities . . . facing beautiful Union Square . . . your stay at San Francisco will be more enjoyable at the Hotel Plaza.

Here a spirit of real hospitality awaits you . . . the best of service . . . rooms in which you will feel at home . . . comfortable beds that invite restful sleep . . . and food to tempt your appetite served in the dining room at popular prices.

*Private dining rooms for group luncheons
and conventions*

RATES NOW BEGIN AT—
\$2 SINGLE WITH BATH
\$3 DOUBLE WITH BATH



The title "SILHOUETTES" is written in a large, bold, serif font. On either side of the title is a silhouette illustration. On the left, a figure is shown playing a saxophone. On the right, a figure is shown sitting at a typewriter. The entire title and illustrations are framed by decorative flourishes.

SILHOUETTES

IT WAS at a church social in Jellico, Tennessee, that Grace Moore first sang in public. Before that she had been singing quite a bit, but only before her parents' fireside. Her parents were reluctant to have her seek a professional career.

The church social, though, broke the ice, and soon Miss Moore progressed to a broader field. This was a county fair at which she won third prize for singing, and first prize for a chocolate cake she had baked. Gradually Miss Moore's parents were won to consent to her going on the stage.

At the age of seventeen Miss Moore had sung in a concert with Martinelli in Washington, and the music critics had encouraged her to develop her talents. Fortified by her parents' more lenient attitude toward the theatre she went on with her studies. Like many others for whom lights have subsequently shone on Broadway, Miss Moore's first real stage job was with a touring troupe. The play was "Suite Sixteen." Her salary was \$75 a week—when she collected. Again, like all the noted troupers, she gravitated toward New York. In a small, but popular Greenwich Village cafe she sang each night until she had saved enough to go to Europe. About this time—1924 was the year—Irving Berlin began to look around for performers for his celebrated "Music Box Revue." He met Grace Moore, heard her sing, and the next day, over a luncheon table, watched her sign her name to a contract.

Miss Moore's rich soprano voice was an integral part of the "Music Box Revue" for the length of its successful Broadway run that year. Less than four years after her musical comedy debut she was engaged by the Metropolitan Opera Company. The next year it was the Opera Comique and a tour of the principal opera houses of France and Belgium. Back in America, once again she made a round of personal appearances and sang in the motion picture version of "The New Moon" as co-star with Lawrence Tibbett.

In July, 1931, Miss Moore married Valentin de Parera of Madrid, whom she had met on board the steamship Ile de France en route to Europe. Since then she has been setting an example of how to have a career and yet be happily married. Concert engagements and broadcasting have occupied part of her time. Her husband and home and friends occupy the remainder. Last winter she returned to the stage for a season of

operetta in the successful production, "The DuBarry." At present she is singing with Lou Holtz and Lennie Hayton's Orchestra over the Columbia Broadcasting System.

TWO and a half years ago a pretty, eighteen-year-old girl with blonde hair made her radio debut in NBC's San Francisco studios. The program was "Memory Lane," and William Andrews, now supervisor in charge of the announcing staff, was officiating at the microphone. It was his voice which first pronounced the name of Helen Musselman on the ether—and Monday, August 21, he changed the last half of it to Andrews.

Thus, recently, Helen and "Big Bill," as he is known to his NBC associates, blushing admitted a romance that has blossomed behind the scenes of the ether stage. The ceremony took place in the First Congregational Church in Alameda. Dr. Gail Cleland read the marriage ceremony.

Helen and Bill are two of the youngest members on the NBC staff in San Francisco. The bride was born in Chico, California, and moved to San Jose while she was still in her teens in order to attend the State Teachers College there. She showed so much talent in student productions that Henry Duffy offered her a part and she played in his stock companies during her summer vacations. Her first rôle at NBC was Lucy Ellen Harbison in "Memory Lane," and now she plays in numerous dramas presented before the microphone. She appeared in "The Golden Flame," serial story of the life of Cellini, and in several of Carlton E. Morse's serials. Recently she sang before the microphone for the first time, in a Talent Parade program and qualified immediately as a vocalist as well as an actress.

Andrews' voice is known wherever "One Man's Family" is heard—which covers a wide range, now that this popular NBC serial is broadcast transcontinentally. Born in Oakland, California, he was educated there. He is one of the pioneers of the radio industry, for he was building sets while he was still in knickerbockers, and he was one of the youngest radio operators in the West when he turned to the announcing field. He joined the NBC staff in 1928. He has announced "One Man's Family" since it first went on the air. He recently was appointed supervisor of announcers, succeeding Jennings Pierce, now in charge of agricultural broadcasts.



FOR YOUR

**CAR
ONLY**

\$54⁵⁰

Majestic
ALL-IN-ONE

AUTO - RADIO

Music, news, sports events, your favorite program always at your finger tips—night or day—in the city or on the highways! Steering column control, six-tube super-heterodyne, dynamic speaker and many other features.

● Quick and easy to install without marring car. Price includes tubes, suppressors and Federal tax paid. See and hear it today!

THOMPSON & HOLMES, LTD.

Wholesale Distributors

171 Bluxome Street

San Francisco



MICROPHONE GOSSIP



• • • Roger Krupp, formerly with KFI before doing a turn with NBC in San Francisco, is once more a member of the KFI-KECA announcing staff.

• • • Newscaster Sam Hayes has returned from a two weeks' vacation in and about Yosemite National Park, where he and Mrs. Hayes were the guests of Major Thompson, superintendent of the layout.

During the absence of Sam Hayes, his place was taken by Burton Bennett.

• • • Tim Ryan is going to have to open a real night club if he doesn't stop making his NBC program Friday nights sound so realistic. The moment "Tim Ryan's Nite Club" goes on the air, lights flash on in the NBC switchboard, and night operators are kept busy informing dozens of anxious, would-be merrymakers that the night club is a mythical one. The program is open to studio visitors, however, and many of those who come in as spectators find themselves clapping, shouting, and otherwise participating in the background noises.

• • • Bob Robb, who handles the KYA Sports Review heard each Thursday evening, is proudly exhibiting a brand new commission in the United States Army. The appointment was effective August 1, and places Bob as a second lieutenant in the Military Intelligence Reserve.

• • • Whenever anything goes wrong on the sloop owned by Wilfred Glenn of the Revelers, Big Bill fixes her up himself . . . because he was a sailor before the mast before he took up bassoon on a large scale. . . .

• • • Five trunks full of music from Vienna, the musical comedy type so scarce in America, have just been received by Frank Black, NBC general musical director, for fall use. They include all the late works of such noted composers as Franz Lehar, Leo Blech, Edmund Eysler, Leo Ascher, Hugo Hirsch, and Michael Krausz.

• • • Figures compiled by John De Jara Almonte, NBC night executive in charge, show that for the month of June nearly 10,000 guests were present at broadcasts of programs at 711 Fifth Avenue, New York, and that 14,000 persons witnessed broadcasts at the Times Square studio. Nearly 1,700 artists entertained this audience at Times Square, and 4,674 artists were on the evening programs broadcast from the Fifth Avenue studios. Among the guests during the month were celebrities including Carrie Jacobs Bond, composer; Dr. Harold W. Dodds, new president of Princeton University; R. D. Blumenfeld, former editor of the London *Daily Express*; Police Commissioner Bolan of New York City; Nicholas Roosevelt, former Ambassador to Hungary, and Edward P. Mulrooney, head of the New York State Liquor Control Commission.

• • • A listener in Mobile, Alabama, has advised the Men About Town that she has named three male kittens "The Men About Town" and calls them Jack after Jack Parker, Frank after Frank Luther, and Phil after Phil Duey. And they have had her letter framed—no kittin'!

• • • The first money ever earned by Muriel Wilson, the Mary Lou of Captain Henry's

Show Boat, was made by doing her brother's piano practising for him when she was eight years old. . . . Lanny Ross is one of those fellows who likes puns. . . . Charley Winger's parents wanted him to be a priest. . . . Annette Hanshaw received a letter from a fan telling her that when Captain Henry's Show Boat came to New Orleans a man was found selling tickets to it for fifty cents! And they were going like hot cakes, too!

• • • Membership cards in Hodge Podge Lodge are in great and increasing demand. The latest report is that some "outside members" are flashing them on speed cops with gratifying results. President Parks says there's no guarantee goes with the cards, but if any members can get away with it—"Why, that's very, very good."

• • • Harold Smithson, until recently KFWI's commercial manager, is now affiliated with KGGC as their commercial manager, working from their new studios and offices in the Olympic Hotel, Eddy and Taylor Streets.

• • • Meredith Willson, NBC orchestra supervisor, and Mrs. Willson, are one of those rare matrimonial teams who can play contract bridge without so much as one mutual glare. Meredith calls Mrs. Willson "my dove" through every hand.

• • • Radiana Pazmore, contralto, who is well known to radio dialers of the East and who has just returned to her home in California, following artistic achievements in Europe and New York, will be presented in concert at the Community Playhouse, 609

Sutter Street, Sunday afternoon, September 17.

Miss Pazmore is the daughter of Henry Bickford Pazmore, dean of Pacific Coast composers and sister of the noted Pazmore Sisters Instrumental Trio, popular radio artists of western radio stations.

European critics acclaimed her as one of the greatest artists of the concert stage in the world today and a foremost authority on song interpretation. It is a rare opportunity afforded singers, teachers and students to hear so great an artist in person. Miss Pazmore is appearing under the direction of Carl T. Nunan, former publicity manager of KPO.

• • • Taylor Holmes, the fire-chief's uncle, has a boyhood ambition to be a trap drummer, which was never quite realized, and in his apartment you'll find a wide range of drums on which he plays to radio accompaniment when he's alone. . . .

• • • Honest, we don't know of anyone who has more fun in radio than this big bucko chap with the villainous mustache, known as Charlie Forsythe. Someone has kiddingly remarked (and the 200-pound guy can take it) that "Here's Charlie, arrived at maturity—and then some—enjoying to the full the fondest dreams of a small boy."

Well, be that as it may, Forsythe will have completed 1,000 hours on the air at precisely 8:15 o'clock Sunday evening, halfway through the "Richelieu" dramatic program. A detailed check reveals that this rather well known sound-effect engineer has, during that time, responded punctually (as a rule) to more than 33,000 cues.

Just think of all the fun he has had—slamming 8,027 doors, ringing 384 door bells, jangling 2,528 telephones, firing 1,785 pistol shots, manu-

facturing 193 storms (at sea and otherwise), reproducing 572 automobiles in action, putting on 19 train wrecks, 29 landslides, 3 earthquakes, 38 shipwrecks, 153 explosions, imitating 135 airplanes, 66 water-falls, 62 stage coaches, 106 battle scenes, 12 infernal machines, and 1 seven-headed hydra!

And, of course, Sound Expert Forsythe is the author and finisher of all devices used in all simulatons.

• • • Gypsy, NBC interviewer of radio celebrities who is heard Sunday nights at 7:15, over KPO, always goes to one of the windows which looks out of the 111 Sutter Street Building's twenty-second floor, and relaxes by watching the city lights before she begins a Personal Closeup.

• • • Rush Hughes, swift-speaking reporter heard in his Pictorial Program five afternoons a week over an NBC-KGO network, got a unique tribute from a listener the other day. It came wrapped in ice—a big lake trout—and Rush, after the manner of radio stars, just devoured his fan mail.

• • • Don Ross, baritone, will be heard as the Pontiac Minstrel in a series of semi-weekly broadcasts each Tuesday and Thursday over the Pacific Coast Columbia outlets at 12:00 to 12:15 p. m. In private life, Don Ross is the husband of Jane Froman, well-known radio songstress now appearing over CBS. He is a popular vocalist in his own right, having for some time been one-half of the harmony team, Brooks and Ross. This duo was heard over the air-waves from Chicago before each embarked upon his own as a soloist. Ross hails from Ohio, the son of a minister. While playing a prominent part in amateur theatricals at Ohio State University he met Jack Brooks.

They paired up and their brand of entertainment was so successfully received by their fellow undergraduates that they decided to try it on the "big time." That began their vaudeville career which eventually brought them to the broadcasting studios.

• • • If you look at the left wrists of the three Boswell sisters—Connie, Vet, and Martha—you will notice three slave bracelets bearing their names and "N. O. A. C." And thereby hangs a tale. Eight years ago, when the three girls were in pigtails, they appeared at a reception held by the New Orleans Athletic Club (then possessed of another name), and made their first public appearance. It was there a record company executive heard their weird harmonies and signed them to become "recording artists." When the girls spent a two weeks' vacation home, they only appeared in public once—before 1,200 persons at the New Orleans Athletic Club—on the eighth anniversary of their appearance in pigtails. Not only were they cheered (they broke into tears on the platform and everything) but they were presented with the slave bracelets by the club president, J. A. Cousins.

• • • And here are the very "first jobs" of some of Columbia's better known artists: Grace Moore, in the road show of "Suite Sixteen," occasionally was paid \$75 a week—when, how, and if the manager had the money. Lou Holtz worked as a clerk for the Southern Pacific Railroad at \$25 a month. Edwin C. Hill, Columbia's "human side of the news" broadcaster, began work as a newspaper reporter in Indiana at exactly no salary. Vera Van, Columbia's new California songstress, started off right; at seven years of age, leading a toe-dancing ballet of children, she was earning \$100 a week.

TUNE IN
Borden's
"CAPERS"
ON KTAB

560 KILOCYCLES

7-9 p. m. EVERY THURSDAY

Forty sizzling acts and musical treats—two solid hours packed with fun, melodraymer and melody!

What a show — a real KTAB production for the Oakland division of the country's leading milk company —Borden's!



The OPEN CIRCUIT



This department is open to all. Send in your letters. Anonymous letters will not be published. Give full name and address.

PLEASE add my name to your list of interested readers, having always enjoyed BROADCAST WEEKLY and its radio news. I have an urge to write you, asking questions and passing along my opinion of various radio programs, which I assure you is done purely in a spirit of constructive interest.

The first rendition of the "Standard on Parade" program, over KPO on Sundays at 8 p. m., was excellent and compared favorably with the high grade eastern programs. However, since then the producer's inspirational light (?) seems to have faded somewhat! Nevertheless, Bart Yarborough proves to be a mighty fine master of ceremonies. I like that man's work—fine expression and voice placement, with inflection that indicates a marvelous sense of humor.

NBC is to be congratulated on the acquisition of Lew Tobin; he is very clever. Also, Bob Stevens certainly thrills with that velvety tenor of his. But Don Wilkie's talks spoil this program. His stories might be interesting, but he is a very poor talker and dulls the good effect of the program.

The Care-Free Carnival is a snappy and stirring program. "Senator Fishface" is a screaming piece of comedy and I, for one, could stand a good deal of such. Also, the best work done by that old vaudeville team, Ryan and Noble, is done right on this program. Cynthia is not so hot, nor does Ned Tollinger "burn up the genius crop"!

I am especially fond of good organ music, and miss that lovely "Reminiscences" hour, which featured Dollo Sargent. To me, it was the most colorful organ program on the air. What has become of it? It seems that several good things have come to listeners over NBC only to disappear very suddenly and mysteriously. What is the reason for this?

I enjoy immensely the work of Robert Turner, young concert pianist, only just recently heard over NBC. I think his work infinitely better than Gunnar Johansen's. Cannot we have the pleasure of that lovely music more often?

In my enthusiasm I have rambled. However, believe me to be a loyal radio fan and interested in the profession, and this "shop talk" is given in a friendly, cooperative spirit, which I trust you will accept as such.

Marie L. R., San Francisco.

I AM taking this opportunity to tell you how much I enjoy BROADCAST WEEKLY. We look forward with keen anticipation for its arrival.

I like best the pictures and the gossip. They seem more real and closer to me after having read about them.

I am so enthusiastic about BROADCAST WEEKLY that I have persuaded four of my friends to subscribe.

My two mainstays on the radio are drama and popular dance orchestras. Of course "One Man's Family" is unsurpassed. I would appreciate pictures of the cast, especially Billy Page.

I am enclosing \$1 to extend my subscription.

My best wishes for every future success.

Yours truly,

Jane E. K., San Jose, Calif.

YOUR interesting little weekly sometimes asks its readers to comment upon the type of program which appeals to them, so I am taking the liberty of expressing my views. The New York Life Insurance Company sponsored a program called "Great Personalities," short biographical sketches given by Frazier Hunt, which was very interesting and worth while. I'd like to see (or hear) more of that type. Also travelogues.

The popularity of "One Man's Family" and "Memory Lane" surely indicates that the public loves good, wholesome, clean dramas. May they supplant the deluge of crime stories which we had last year. One worried mother said even her six-year-old son listened with the utmost fascination to those, and "the Crime Does Not Pay" at the end makes so little impression. "The Mind Grows by What It Feeds On." Whatever things are good, whatever things are pure, think on these. Let us not have any radio schooling in crime.

May I ask two questions I often hear asked?

What has become of "Wee Willie" Hancock?

(Editor's Note: "Wee Willie" is not on the air at the present time.)

And has Dobbsie gone to New York permanently?

(Editor's Note: Dobbsie returns to San Francisco in September.)

Sincerely yours,

Mrs. C. W. S., Sunnyvale, Calif.

Save \$3.20

BY SUBSCRIBING TO BROADCAST WEEKLY

☐ It costs you less than four cents a week to subscribe to BROADCAST WEEKLY and have it delivered to your door. Why not subscribe right now and be assured of getting your copy every week. It costs only \$2 a year or \$1 for six months.

----- USE THIS COUPON -----

BROADCAST WEEKLY,
36 Powell Street, San Francisco.

Gentlemen: Send me BROADCAST WEEKLY for one year (or six months). I enclose herewith two dollars (or one dollar).

Name.....

Address.....

City..... State.....

NEW

RENEWAL

EXTENSION



PAUL WHITEMAN
Orchestra Director



LUCILLE WALL
Dramatic Artist



PHIL HARRIS
Orchestra Director

★ Stars of the Radio ★



MEREDITH WILLSON
Orchestra Director



JANE FROMAN
Vocalist



GEORGE OLSEN
Orchestra Director

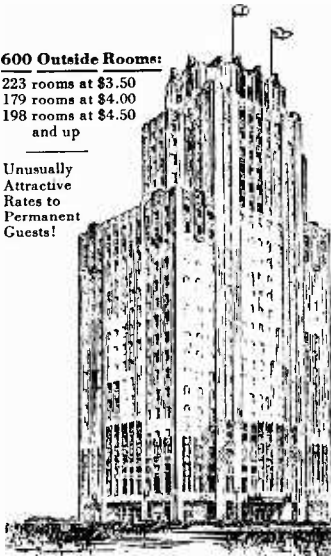


San Francisco's Newest AND MOST MODERN *Downtown Hotel!*

600 Outside Rooms:

223 rooms at \$3.50
179 rooms at \$4.00
198 rooms at \$4.50
and up

Unusually
Attractive
Rates to
Permanent
Guests!



Private garage in basement of hotel building with direct elevator service to Lobby and all guest-room floors!

Hotel Sir Francis Drake—just off Union Square—most convenient to theaters, shops, stores, business and financial district.

Only California hotel offering Servidor feature—thus enabling you to combine “maximum privacy with minimum tipping”.

All rooms in the Tower with Western exposure have ultra-violet-ray (sun-bath) windows.

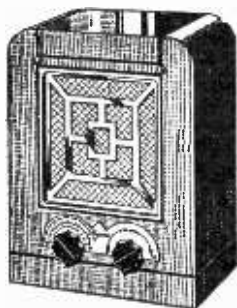
In every room—connection for radio reception, running filtered ice water, both tub and shower.

Dinner in Coffee Shop from 75¢ up—in Main Dining Room from \$1.25 up. Also a la carte service.

Hotel **SIR FRANCIS DRAKE**

Powell Street at Sutter • San Francisco

THE SMART SET
Majestic



Gets police calls and airplane,
 ship, and other short-wave
 signals, to 3500 kilocycles

PRICE
\$23.50
 COMPLETE

The finest
 small radio we have ever seen

We mean exactly that—and we've seen a lot of them. But *never* have we seen such a "performer"—for its size—as this new Majestic!

It's only 11 inches high—but it packs a superheterodyne with a 6-tube wallop. Ma-

jestic Spray-Shield tubes; Majestic super-dynamic speaker; Majestic power, selectivity, and *colorful* tone.

The *Smart Set* cabinet is one of the handsomest jobs you ever laid eyes on. See and hear it today.



THOMPSON & HOLMES, LTD.

Wholesale Distributors

171 Bluxome Street

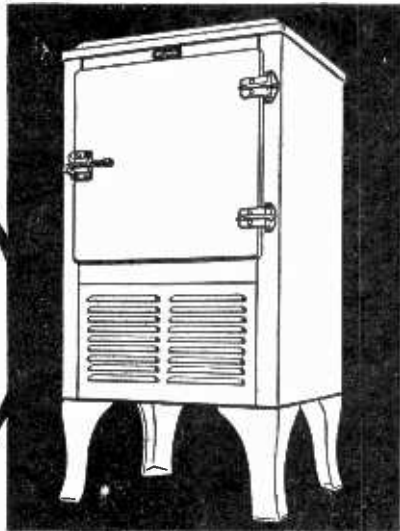
San Francisco

A *Majestic*

AND
ONLY

\$99⁵⁰

CONVENIENT
TERMS



In electric refrigeration, "Majestic" means trouble-free, economical service. And here's the Majestic you've wanted, ideal for small family or compact apartment, at a remarkable price.

This is a BIG small refrigerator—not an undersized refrigerator with its capacity overstated to

mislead you! Food storage space, 8.5 sq. ft.; 2 ice trays; 42 ice cubes.

Outside finish is chip-proof Elasto; inside is acid-resisting porcelain. Has Majestic rotary compressor, exceedingly economical and dependable in operation. See this unsurpassed VALUE in a really fine refrigerator.

THOMPSON & HOLMES, LTD.

Wholesale Distributors

171 Bluxome Street

San Francisco

SUNDAY Programs • • • • • September 10, 1933

379.5 Mtrs. **NBC-KGO** Sutter 1920
790 Kcys. 7500 Watts
National Broadcast. Co., San Francisco
8 A.M.—Chronicle Comics
8:30—Arion Trio
9:15—Palmer House Ensemble
9:30—Highlights of the Bible
10—Gene Arnold Commodores
10:15—International Radio Forum
10:30—Yeast Foamers
11—Lady Esther Serenade
11:30—Radio Pulpit
12 noon—Fiddlers Three
12:15—Wildroot program
12:30—Organ Recital
1—The Friendly Hour
1:30—Eva Jessye Choir
2—Nathan Abas, violinist
2:30—Tunes of the Times
3—Real Silk program
3:30—Desert Guns: Dramatic series
4—Chase and Sanborn program
5—Manhattan Merry-Go-Round
5:30—Album of Familiar Music
6—Col. Lewis Howe
6:15—Impressions of Italy
6:45—Sunday at Seth Parker's
7:15—NRA Talk
7:30—Orchestral Gems
8—Standard on Parade
9—S. & W. Ghost Adventurer
9:15—Reader's Guide
9:30—Charles Hart: Instrumentalists
10—Richfield News Flashes
10:15—Paul Carson, organist
11 to 12 midnight—Bal Tabarin Orch.

243.8 Meters **KYA** Prospect 3456
1230 Kcys. 1000 Watts
Pac. Broadcast. Corp., San Francisco
8:15 A.M.—Christian Science Devotions
8:30—Sabbath Reveries
9:30—Pianoforte Etudes
10—Village Boys
10:30—Three Four Melodies
10:45—Musical Strings
11—Old St. Mary's Church Services
12 noon—Pipe Organ Concert
12:30—Paraders; Waltz Idylls
2—Light Opera Group
3:30—Chamber Group
4—Royal Serenaders
4:30—Symphony Concert
5:30—Violin Masters
6—Sacred Hour
7—Heart Throb Harmonies
7:30—Opera
9:30 to 11 P.M.—Concert Memories

440.9 Meters **KPO** Sutter 1920
680 Kcys. 50,000 Watts
National Broadcast. Co., San Francisco
8 A.M.—Major Bowes' Family
8:15—Radio City Concert
9:15—Palmer House Concert Ensemble
9:30—Melody Mixers: Orchestra
10:30—Cecilians: Vocal and Instr.
11—Bible Stories
12 noon—Music Garden
1—Melody Train: Orchestra
2—Catholic Hour
2:30—Pollikoff Novelty Ensemble
3—Pastels: Orchestra and vocal
3:45—S. F. Municipal Organ
4—Community Forum
4:30—Song Thots: Vocalists
5—Louis Ford, violinist
5:15—Coquettes: Vocal trio
5:30—Evening Concert
6—Melodians: Orchestra
6:30—Silhouettes: Orch. and vocal
7:15—Personal Close-ups: NBC Artist interviewed by Gypsy

7:30—Gunnar Johansen, pianist
8—Dance Nocturne
8:30—Carlos Molinas Tango Orch.
9—Rudy Seiger and his Fairmont Hotel Orchestra
9:30—University of California prog.
10—Hotel Cosmopolitan Orchestra
10:30—On Wings of Music
11 to 12 mid.—Charles Runyan, organist

322.4 Meters **KROW** Glenc. 6774
930 Kcys. 1000 Watts
Educa. Broad. Corp., Oakland, Calif.
8 A.M. to 12—Various programs
12 noon—Muse and Music
12:30—Popular Recordings
1—Jane Arnold, soprano
1:15—Johnny Bozto, accordion
1:30—Bible Questions and Answers
2—Marie George, soprano
2:30—Sunday Miniatures
3—Melody Rambles
3:15—Novelty Airs
3:30—International Serenaders
4—An Hour with the Masters
5—Madrid Trio
5:30—Children's Story Hour
5:45—Oliver and his Banjo
6—Watch Tower program
6:30—Cumberland Mountaineers
7—Madelon Dunning, soprano
7:15—Gladys Kaulf, pianist
7:30—Homeland Melodies
8—Vagabonds of the Hills
9—Japanese Watch Tower
9:30—Omega Gamma Dance
10 to 11 P.M.—Dance Music

280.2 Meters **KJBS** Ord. 4148-49
1070 Kcys. 100 Watts
J. Brunton & Sons, San Francisco
8 A.M. to 6:15—Recordings; News
6:15 P.M.—Silent period
12:01 to 6 A.M.—Owl program

296.6 Meters **KQW** Ballard 777
1010 Kcys. 500 Watts
Pac. Agric. Foundation, Ltd., San Jose
10:15 A.M.—Sunday School Lesson, First Baptist Church
11—First Baptist Church Services
12:30 P.M.—Silent period
7:30 to 9 P.M.—Church Services

499.7 Meters **KFSB** Franklin 6353
600 Kcys. 1000 Watts
Airfan Radio Corp., Ltd., San Diego
7:45 A.M. to 12—Various programs
12 noon—NBC, Fiddlers Three
12:15—Studio program
12:30—Organ Recital
1—NBC, Friendly Hour
1:30—NBC, Eva Jessye Choir
2—Old Time program
2:30—NBC, Pollikoff Novelty Orch.
3—Musical program
3:30—NBC, Desert Guns: Drama
4—Concert; Morales Hawaiians
5:30—Twilight Hour
6—Mountain Music
6:15—NBC, Impressions of Italy
6:45—NBC, Seth Parker
7:15—NBC, NRA program
7:30—Mollie Thompson, organist
7:45—NBC, Orchestral Gems
8—NBC, Standard on Parade
9—To be announced
9:15—NBC, Reader's Guide
9:30—University of California prog.
10—NBC, Richfield News Flashes
10:15—NBC, Bridge to Dreamland
11 to 12—NBC, Bal Tabarin Orch.

491.5 Meters **KFRC** Prospect 0100
610 Kcys. 1000 Watts
Don Lee Broadcast. System, S. F., Cal.
8 A.M.—Examiner Comics
8:30—CBS, Salon Orchestra
9—CBS, Church of the Air
9:30—CBS, Compinsky Trio
10—Home Sweet Home Concert
11—Organ and Vocalist
11:15—CBS, Symphonic Hour
12 noon—Cathedral Hour
1—CBS, Willard Robison
1:15—CBS, Vera Van and Orchestra
1:30—"Melodies Organistique"
1:45—Claude Sweeten and Orchestra
2—CBS Program
2:30—Program to be announced
2:45—CBS, Chicago Knights
3—CBS, Current Events Talk
3:15—CBS, Modern Male Chorus
3:30—CBS, John Henry
3:45—CBS, Chicago variety program
4:15—CBS, John Henry
4:30—"In the Modern Manner"
5—CBS, Triple Bar X Boys
5:30—CBS, The Gauchos
6—CBS, Variety program
6:30—CBS, Quiet Harmonies
7—CBS, Guy Lombardo's Canadians
7:30—Don Novis & Sterling Holloway
8—Salon Moderne
8:30—CBS, Ted Lewis' Orchestra
9—The Merry-makers
10—Darrell Donnell, news
10:10—St. Francis Hotel Orchestra
11 to 12 midnight—Organ Selections

535.4 Meters **KTAB** Garfield 4700
560 Kcys. 1000 Watts
Assoc. Broadcasters, Oakland, Calif.
8:30 A.M. to 1—Various programs
1 P.M.—Church of Latter Day Saints
1:30—Golden Memories
2—Little Journeys
2:30—Municipal Band Concert
3:30—Isle of Dreams
4—Opera Gems
4:30—Rhythm Four and Soloist
5—Organ Concert
6—Echoes of Portugal
7—Prof. George Kruger, pianist
7:15—Amateur Sports News
7:30—Church Services
8:15—Rod Hendrickson; Organ
9:45—Studio program; Orchestra
10:30 to 11 P.M.—Records

340.7 Meters **KLX** Lake. 6000
880 Kcys. 1000 Watts
Tribune Pub. Co., Oakland, Calif.
12 noon—Records
12:30—John Wharry Lewis' Quintet and Corynne Sidney, soprano
1:30—Recordings
2:30—Mary Anderson, contralto; Merriel Bond, baritone; Arco and Anita, novelty guitar duo; Jean Ardath, pianist
3:30—Records
4:30—Violin Ensemble
5—Covered Wagon Jubilee
5:30—Old Man Soliloquy
5:45—Dot Kay and Nancy Hersey
6—Mixed Quartet
6:30—Hotel Oakland Trio
7:30—Neighborly Songs and Poems
7:45—William Don, "The Count of Monte Cristo"
8—Aspre String Orchestra
8:30—Florence Hertzog, contralto; Henry Sheffoff, basso; Helen Parmelee, pianist
9:15—Brahms Trio
9:45—Freddie Skinner
10 to 11 P.M.—Dance program

468.5 Meters **KFI** Richm'd 6111
640 Kcys. 50,000 Watts
Earle C. Anthony, Inc., Los Angeles
9 A.M. to 12:15—Various programs
12:15 P.M.—NBC, Wildroot Institute
12:30—Dr. Casseberry
12:45—Barbara Jamieson, pianist
1—Classic Hour; String Trio
1:30—NBC, Eva Jessye Choir
2—Wesley Tourtellotte, organist
2:30—U. S. C. College of Music
3—NBC, Real Silk program
3:30—NBC, Desert Guns; Drama
4—NBC, Chase and Sanborn prog.
5—NBC, Manhattan Merry-Go-Round
5:30—NBC, American Album of Familiar Music
6—NBC, Col. Louis Howe
6:15—Impressions of Italy
6:45—Studio program
7:15—NBC, Talks under auspices of National Recovery Administration
7:30—Organ Recital by Wesley Tourtellotte, with Howard Griffin, violinist
8—NBC, Standard on Parade
9—NBC, S. & W. Ghost Adventurer
9:15—The Gaities of '33
10—NBC, Richfield Reporter
10:15 to 11 P.M.—NBC, Bridge to Dreamland

325.9 Meters **KOMO** Elliott 5890
920 Kcys. 1000 Watts
Fisher's Blend Station, Inc., Seattle
(Seattle Daylight Saving Time)
9 A.M. to 12—Various programs
12 noon—NBC, Lady Esther Serenade
12:30—NBC, Radio Pulpit
1—Sonata Recital
1:15—NBC, Wildroot Institute
1:30—Old Songs of the Church
2—Aeolian Trio
2:30—NBC, Eva Jessye Choir
3—Lyric Melodies; Etchings
4—NBC, Real Silk Hosiery
4:30—NBC, Desert Guns
5—NBC, Chase and Sanborn prog.
6—NBC, Manhattan Merry-Go-Round
6:30—NBC, Album of Familiar Music
7—NBC, Col. Louis Howe
7:15—Impressions of Italy
7:45—NBC, Sunday at Seth Parker's
8:15—Lee Sisters; Pioneers
9—NBC, Standard on Parade
10—NBC, S. & W. Ghost Adventurer
10:15—Rhythmers
10:30—Greater Washington Hour
11—NBC, Richfield News Flashes
11:15—Varieties
11:30 to 12—Viennese Vagabonds

526 Meters **KVI** Broadway 4211
570 Kcys. 1000 Watts
Puget Sound Broadcast. Co., Tacoma
8 A.M. to 12—Various programs
12 noon—CBS, Programs to 1:30
1:30—Melodies, Organistque
1:45—Claude Sweeten's Orchestra
2—To be announced
2:15—CBS, Eddie Duchin's Orch.
2:30—Acme Lead Co.
2:45—Judge Rutherford
3—CBS, Current Events
3:15—CBS Programs to 6:15
6:15—Proctor's
6:30—CBS, Quiet Harmonies
7—CBS, Guy Lombardo's Canadians
7:30—Donald Novis
8—Salone Moderne
8:30—CBS, Ted Lewis' Orchestra
9—To be announced
10—St. Francis Orchestra
11 to 12 mid.—Midnight Moods

483.6 Meters **KGW** Atwater 2121
620 Kcys. 1000 Watts
Morning Oregonian, Portland, Ore.
8 A.M. to 12—Various programs
12 noon—NBC-KGO prog. to 7:15
7:15—Talk on NRA
7:30—Portland Cleaning Works
7:35—NBC, Orchestral Gems
7:40—Club Kaleidoscope
7:45—Venetian Quarter Hour
8—NBC, Standard on Parade
9—S. & W. Ghost Adventurer
9:15—The Old Refrain
9:30—NBC, Charles Hart
10 to 12 mid.—NBC-KGO programs

319 Meters **KOIN** Atwater 3333
940 Kcys. 1000 Watts
The Journal, Portland, Oregon
8 A.M. to 12—Various programs
12 noon—CBS, Cathedral Hour
1—CBS, Synopacted Sermons
1:15—CBS, Vera Van
1:30—Dream Fantasies
1:45—Little Concert
2—CBS, Eddie Duchin's Orchestra
2:30—CBS, Chicago Knights
3—CBS, Gauchos and Tito Guizar
3:30—CBS, John Henry
3:45—CBS, Chicago variety program
4:15—CBS, John Henry
4:30—To be announced
6:30—CBS program
7—CBS, Guy Lombardo's Canadians
7:30—Salon Moderne
8—The Journal Column
8:15—CBS, Isham Jones' Orchestra
8:30—CBS, Ted Lewis' Band
9—The Merry-makers
10—St. Francis Hotel Orchestra
11 to 12—Johnny Robinson's Orch.

285.5 Meters **KNX** Hemp. 4101
1050 Kcys. 25,000 Watts
Western Broadcast. Co., Los Angeles
7 A.M. to 5—Various programs
5 P.M.—Speaker; Organ
5:30—First Radio Church
6:30—Humanist Society
7—The Complaint Department
7:15—Mayfair Concert Orchestra
7:30—Range Riders
8—First Presbyterian Church
9—News Service
9:15—Judge Rutherford
9:30 to 10:30 P.M.—Calmon Luboviski and Claire Mellonino

225.4 Meters **KGB** Franklin 6151
1330 Kcys. 1000 Watts
Don Lee Broadcast. System, S. D., Cal.
8 A.M. to 3—Various programs
3 P.M.—CBS, Current Events
3:15—CBS, Modern Male Chorus
3:30—CBS, John Henry
3:45—CBS, Chicago variety program
4:15—CBS, John Henry
4:30—In the Modern Manner
5—CBS, Triple Bar X Days
5:30—CBS, Gauchos and Tito Guizar
6—CBS, Freddie Rich's Entertainers
6:30—CBS, Quiet Harmonies
7—CBS, Guy Lombardo's Orchestra
7:30—Donald Novis and Sterling Holloway
8—Salon Moderne
8:30—CBS, Ted Lewis' Orchestra
9—Merry-makers
10—World-Wide News
10:10—St. Francis Hotel Orch.
11—Midnight Moods
12 to 1 A.M.—Recordings

333.1 Meters **KHJ** Vandike 7111
900 Kcys. 1000 Watts
Don Lee Broadcast. System, L. A., Cal.
8 A.M. to 12—Various Programs
12 noon—CBS, The Cathedral Hour
1—CBS, Willard Robinson
1:15—CBS, Vera Van
1:30—KFRG Program
1:45—Little Concert
2—CBS, Smiling Ed McConnell
2:15—CBS, Eddie Duchin Orch.
2:30—Prof. Lindsley
2:45—Rabbi Magnin
3—CBS, Current Events
3:15—CBS, Modern Male Chorus
3:30—CBS, John Henry
3:45—CBS, Chicago Variety Hour
4:15—CBS, John Henry
4:30—To be announced
5—Triple Bar X Days
5:30—CBS, The Gauchos
6—CBS, Freddie Rich Entertainers
6:30—CBS, Quiet Harmonies
7—CBS, Guy Lombardo's Orch.
7:30—Donald Novis and Sterling Holloway
8—CBS, Musical Program
8:30—CBS, Ted Lewis' Orchestra
9—The Merry-makers
10—News Items; Orchestra
11 to 12 midnight—Organ Recital

508.2 Meters **KHQ** Main 5383
590 Kcys. 1000 Watts
Luis Wasmer, Inc., Spokane, Wash.
(Spokane Daylight Saving Time)
9 A.M. to 1—Various programs
1 P.M.—U. S. Forest Service
1:15—NBC, Wildroot Institute
1:30—NBC, Organ Recital
2—Northwest on Parade
2:30—NBC, Eva Jessye Choir
3—NBC, Catholic Hour
3:30—NBC, Polikoff Orchestra
4—NBC, Real Silk program
4:30—NBC, Desert Guns
5—NBC, Chase and Sanborn Hour
6—NBC, Merry-Go-Round
6:30—NBC, American Album
7—To be announced
7:45—NBC, Sunday at Seth Parker's
8:15—NBC, NRA Talk
8:30—Crazy Wells
8:45—Trues Oil
9—NBC, Standard on Parade
10—The Hawk
10:30—NBC, Hart Instrumentalists
11—NBC, Richfield News Flashes
11:15—NBC, Bridge to Dreamland
12 to 1 A.M.—NBC, Bal Tabarin Or.

309.1 Meters **KJR** Seneca 1515
970 Kcys. 5000 Watts
Northwest Broad. System, Seattle, Wn.
(Seattle Daylight Saving Time)
9 A.M. to 1—Various programs
1 P.M.—NBC, Fiddlers Three
1:15—Sohl & Lundberg, vocal
1:30—NBC, Organ Concert
2—NBC, The Friendly Hour
2:30—Cornish School
3—NBC, Catholic Hour
3:30—NBC, Polikoff Novelty Orch.
4—Records; Ensemble
5—Lyric Melodies; Varieties
5:45—Jess Lee Hall
6—Angelus Hour
7—Green Cathedral
7:30—Viennese Vagabonds
8—Lee Sisters; Silver Strings
9:30—Aeolian Trio
10:15—NBC, Reader's Guide
10:30—NBC, Charles Hart
11—Harp Melodies, Hubert Graf
11:15 to 12 mid.—NBC, Bridge to Dreamland

SEE PAGE 13

MONDAY Programs

September 11, 1933

379.5 Mtrs. **NBC-KGO** Sutter 1920
790 Kcys. 7500 Watts
National Broadcast. Co., San Francisco
7 A.M.—Hour of Memories
8—Salt and Peanuts
8:15—Lee S. Roberts' Memory Box
8:30—The Merrie Men
8:45—Pat Kennedy, songs
9—Vic and Sade
9:15—Buckaroos: Marshall-Maxwell
9:30—Organ Concert
9:45—Tim and Irene
10—Max-o-Tunes
10:30—Magazine of the Air
11:30—Financial Flashes
11:45—Morin Sisters; Vocal trio
12 noon—Sarah Kreindler, violinist
12:15—Farm and Home Hour
1—Paul Ash and Orchestra
1:30—Society Sidelights
1:45—John and Ned, harmony duo
2—Al Pearce and Gang
3—Langendorf Pictorial
3:15—Meyer Davis' Orchestra
3:30—Marion and Jim Jordan
3:45—The Well-Dressed Woman
4—Arion Trio
4:30—Mickey Gillette, saxophonist
4:45—Ortiz Tirado
5—Stories of Human Behavior
5:15—Organ Concert
5:30—Crime Must Go
6—The Hour Glass
6:30—Gus Haenschen's Parade
7—Amos 'n' Andy
7:15—Chester H. Rowell
7:30—Demi-Tasse Revue
8—Hollywood on the Air
8:30—Stars of the West
9—Ted Weems' Orchestra
9:30—Buddy Rogers' Orchestra
10—Richfield News Flashes
10:15—Melody Mixers
11—Organ Concert
11:30 to 12 midnight—Arion Trio

440.9 Meters **KPO** Sutter 1920
680 Kcys. 50,000 Watts
National Broadcast. Co., San Francisco
7:30 A.M.—Organ Concert
7:45—Financial Service; Organ
8:15—Crosscuts, Log o' the Day
9:15—Dick Fiddler's Orchestra
9:30—Johnnie O'Brien, harmonica
9:45—News; Tom Mitchell, baritone
10:15—Organ Concert
10:30—Revolving Stage
11—Alcyclopedia, Walter Casey
11:15—Words and Music
11:30—Harvey Peterson, violinist
11:40—Pontiac Singers
11:45—Agricultural Bulletins
12 noon—Radio Guild
1—News; 1:15, Ann Warner chats
1:45—Melodic Wanderings
2—Elizabeth Arden program
2:05—Viennese Ensemble
2:30—Drake's Drums (dramatic)
3—Meyer Davis' Orchestra
3:15—Ramblers' Orchestra
3:30—Canzonetta; Arion Trio
3:45—University of California
4—Oahu Serenaders
4:15—Arnold and Amber Adventures
4:30—The Sizzlers; Vocal trio
4:45—Stringwood Ensemble
5:15—Pair of Pianos; 5:45, News
6—Rhythm Vendors
6:30—Safety First; Traffic talk
6:45—Detectives Black and Blue
7—Edna Fischer, pianist
7:15—Tarzan of the Apes
7:30—Charles W. Hamp
7:45—Charles Hart; Instrumentalists
8—Powderpuff Revue

8:30—Terrace Garden's Orchestra
9—NBC Drama Hour
9:30—Aesop's Fables
10—Pacific Serenaders
11—Ambassador Hotel Orchestra
11:30 to 12 mid.—Paul Carson, organist

491.5 Meters **KFRC** Prospect 0100
610 Kcys. 1000 Watts
Don Lee Broadcast. System, S.F., Cal.
7 A.M.—Recordings; Stocks
7:30—Exercise Period, Bob Bence
8—CBS, Voice of Experience
8:15—CBS, Geo. Hall's Orch.
8:30—CBS, Concert Miniatures
9—CBS, Jack Griffin's Orchestra
9:30—CBS, Madison Ensemble
10—CBS, The Round Towners
10:15—CBS, The Captivators
10:30—Better Business Lecture
10:45—CBS, Ann Leaf, organist
11:15—Prudence Penny
11:30—CBS, Symphony Orchestra
12 noon—Noonday Concert
1—Recordings
1:15—CBS, Syracuse Spotlight
1:30—Closing New York Stocks
1:35—Recordings; Beauty Talk
2—Happy-Go-Lucky Hour
3—Feminine Fancies
4—CBS, The Village Choir
4:15—Hodge Podge Lodge
4:45—Lost and Found Items
5—CBS, Records; Town Topics
5—CBS, Fray & Braggiotti, Franco-Italian two-piano team
5:15—CBS, Kate Smith
5:30—CBS, The Theatre of Today
6—CBS, Andre Kostelanetz Presents
6:30—CBS, Little Jack Little
6:45—CBS, Howard Barlow's Orch.
7:15—Connie Moffat, fashion talk
7:30—CBS, Casa Loma Orchestra
8—Shell Show
9—Blue Monday Jamboree
10—Darrall Donnell, News
10:10—"Melodies Organistique"
10:15—"Intimate Hollywood News"
10:20—Gypsy Serenaders
10:30—"The Islanders"
11—Earl Dancer's Harlem Band
12 to 1 A.M.—Recordings

280.2 Meters **KJBS** Ord. 4148-49
1070 Kcys. 100 Watts
J. Brunton & Sons, San Francisco
6 A.M. to 6:15—Records; News; Talks
6:15 P.M.—Silent period
12:01 to 6 A.M.—Owl program

535.4 Meters **KTAB** Garfield 4700
560 Kcys. 1000 Watts
Assoc. Broadcasters, Oakland, Calif.
7 A.M. to 1—Various programs
1 P.M.—Radio Frolic
1:30—Over the Teacups
2—News; Town Crier
3—X-Bar-B Boys
3:30—Records; Old Rajah
4:30—Studio; Travelogue
5—Smile Club; Health Talk
6—Auto Question Box
6:15—Studio program; News
7—Popular Concert
7:15—Melba Brookshier, pianist
7:30—Elbert La Chelle, organist
7:45—Famous Campers
8—Opera Gems
8:30—Miles of Melody
9—News; Souvenirs
9:45—Herb Allen, pianist
10—Musical Memories
10:30—Paul Kellar, pianist
10:45 to 12 midnight—Records

243.8 Meters **KYA** Prospect 3456
1230 Kcys. 1000 Watts
Pac. Broadcast. Corp., San Francisco
7:30 A.M. to 12—Various programs
12 noon—Scriptures
12:03—Harmonies; Organ
1—Concert; NBC, Piano Duo
1:45—Royal Serenaders
2—Parent-Teachers' Association
2:15—Modern Maestros; Organ
3:45—"Reflections in the Water"
4—Music Masters; Sunset Revue
5:45—Campbell Digest
6—Paraders; Waltz Idylls
6:45—"Eb and Zeb"
7—Musical Novelties
7:15—NBC, Major, Sharp, Minor
7:30—Musical Whims
8—Eugene Mancini & Virginia Miller
8:30—Hawaiian Entertainers
8:45—Bob Allen, piano stylist
9—News Flashes
9:15—"National Defense"
9:30—Captain Argus
10—Organ Serenade
11 to 12 midnight—Concert Memories

340.7 Meters **KLX** Lake. 6000
880 Kcys. 1000 Watts
Tribune Pub. Co., Oakland, Calif.
8 A.M.—Records; Stocks
8:30—Covered Wagon Jubilee
9—Records; Clinic of the Air
10:15—Stocks; News Flashes
10:30—International Kitchen
11—Studio program; News
11:30—Novelty Guitar Duo
11:45—Madelon Sivyver and Nancy Hersey
12 noon—Jack Delaney's Band
1—Jean's Hi-Lights; News Flashes
2—Records; News; Stocks
2:45—Opportunity Hour
3:30—News Flashes; Records
4:15—Brother Bob's Club
4:45—McCoy Health School
5—Covered Wagon Jubilee
5:30—Lovable Liars
5:45—Helem Parmelee, pianist
6—Betty Babish Band
7—News Items
7:30—Clark Sisters
7:45—Club News Parade
8—Helen Parmelee, pianist
8:15—Studio program
8:25—Better Business Talk
8:30—Faucit Theater Players
9—Nevada Night Herders
9:30—Bungling Bunglers
9:45—Freddie Skinner
10 to 11 P.M.—Dance program

648.5 Meters **KFI** Richm'd 6111
640 Kcys. 50,000 Watts
Earle C. Anthony, Inc., Los Angeles
7:45 A.M. to 5—Various programs
5 P.M.—NBC, Mindway Stories
5:15—The Philosopher' Corner
5:30—The Counselor
5:45—Margaret Duncan, pianist
6—NBC, The Hour Glass
6:15—Raine Bennett, Poet's Corner
6:30—NBC, Parade of Melody
7—NBC, Amos 'n' Andy
7:15—Horatius at the Bridge Table
7:30—NBC, Demi-Tasse Revue
8—"Makers of History"
8:30—NBC, Stars of the West
9—Singing Service Men
9:15—L. A. Philharmonic Group
9:45—NBC, Tim & Irene
10—NBC, Richfield Reporter
10:15—NBC, Melody Mixers
10:30—Dance Music
11:30 to 12 midnight—Arion Trio

322.4 Meters KROW Glenc. 6774
930 Kcys. 1000 Watts
Educa. Broad. Corp., Oakland, Calif.

7 A.M. to 5—Various programs
5 P.M.—Popular Records
5:15—Twilight Reveries
6—Gypsy Melodies
6:15—Dell Perry
6:30—Organ; Senator Loyal
7:15—Sports Review
7:30—Italian program
8—Topics of the Day
8:15—Tom King, Crime News
8:30—Vagabonds of the Hills
9—Radio Playmakers
9:30—Monday Concert
10 to 12 midnight—Dance Music

319 Meters KOIN Atwater 3333
940 Kcys. 1000 Watts
The Journal, Portland, Oregon

6:30 A.M. to 6—Various programs
6 P.M.—CBS, Andre Kostelanetz
6:30—CBS, Little Jack Little
6:45—CBS, Col. Symphony Orch.
7:15—CBS, Phil Regan, tenor
7:30—Black and Blue
7:45—CBS, Casa Loma Orchestra
8—Shell Show
9—Blue Monday Jamboree
10—Leather Pushers
10:15—I. Zingari
10:30—The Islanders
11 to 1 A.M.—Dance Music

499.7 Meters KFSD Franklin 6353
600 Kcys. 1000 Watts
Airfan Radio Corp., Ltd., San Diego

7:30 A.M. to 6—Various programs
6 P.M.—NBC, The Hour Glass
6:15—Picturizing the News
6:30—Studio; Manuel Dehesa
7—Chamber of Commerce program
7:15—NBC, Chester Rowell
7:30—NBC, Demi-Tasse Revue
8—NBC, Hollywood on the Air
8:30—NBC, Stars of the West
9—NBC, Drama Hour
9:30—NBC, Aesop's Fables
10—NBC, Richfield News Flashes
10:15—NBC, Melody Mixers
11—NBC, Ambassador Hotel Orch.
11:30 to 12 mid.—NBC, Arion Trio

296.6 Meters KQW Ballard 777
1010 Kcys. 500 Watts
Pac. Agric. Foundation, Ltd., San Jose

6:30 A.M. to 6—Various programs
6 P.M.—Dinner Music
6:15—Franco's program
6:30—Fed. State Market Reports
6:45—Farmers' Exchange and Market Place
7—U. S. Weather Forecast
7:03—Radio News and Forum
7:30—Minute Man
7:45—Famous Campers
8—Sacred and Golden Memories
9—Accordion Capers
9:30 to 10 P.M.—Mauna Keans

526 Meters KVI Broadway 4211
570 Kcys. 1000 Watts
Puget Sound Broadcast. Co., Tacoma

6 A.M. to 6 P.M.—Various programs
6—CBS, Andre Kostelanetz
6:30—Franklyn, Dennis
6:45—CBS, Columbia Symphony
7:15—Civic Affairs
7:30—CBS, Casa Loma Orchestra
8—Shell Show
10—Melodies Organistique
10:15—I'Zingari; Serenaders
10:30—"The Islanders"
11 to 12 mid.—Earl Dancer's Orch.

483.6 Meters KGW Atwater 2121
620 Kcys. 1000 Watts
Morning Oregonian, Portland, Ore.

7 A.M. to 12:35—Various programs
12:35—NBC-KGO programs to 1:30
1:30—Dental Clinic of the Air
1:45—NBC-KGO programs to 3:15
3:15—Allyn's prog.; Friendly Chat
4—NBC-KGO programs to 5:25
5:25—Highland Lassie
5:30—Supercurling program
5:35—Orchestra; S. P. program
5:45—Piano Surprises
6—Captain Ervin Traffic Talk
6:15—NBC-KGO programs to 7:15
7:15—Arkansas Travelers
7:30—NBC, Demi-Tasse Revue
8—Covered Wagon Days
8:30—NBC, Stars of the West
9—Four Shades of Rhythm
9:30—F. A. Cook Local News
9:45—NBC, Tim & Irene
10 to 12 mid.—NBC-KGO programs

325.9 Meters KOMO Elliott 5890
920 Kcys. 1000 Watts
Fisher's Blend Station, Inc., Seattle
(Seattle Daylight Saving Time)

8 A.M. to 1—Various programs
1 P.M.—Proctor's, Inc.; Betty
1:15—NBC, Farm and Home Hour
2—NBC, Casino Orchestra
2:30—Easy Chair; Red Shadow
3—NBC, Al Pearce and Gang
4—Varieties; 4:15, The Observer
4:30—Melody Musketiers
5—NBC-KGO Program to 5:45
5:45—Vocalist; Dinner Dansant
6:30—Evening Melodists
6:45—Financial News Reporter
7—Thirty Minutes of Music
7:30—Gus Haenschen's Parade
8—NBC, Amos 'n' Andy
8:15—Arkansas Travelers
8:30—NBC, Demi-Tasse Revue
9—Tess Wilson
9:15—Dollars and Cents
9:30—NBC, Stars of the West
9:45—Tim and Irene
10—Four Shades of Rhythm
10:30—Ensemble; Rhythmeers
10:45—NBC, Tim & Irene
11—NBC, Richfield News Flashes
11:15 to 12—Club New Yorker Orch.

508.2 Meters KHQ Main 5383
590 Kcys. 1000 Watts
Louis Wasmer, Inc., Spokane, Wash.
(Spokane Daylight Saving Time)

7 A.M. to 2:30—Various programs
2:30—NBC, Schirmer and Schmitt
2:45—Club Bulletin
3—NBC, Al Pearce and Gang
4—Prestology program
4:15—Theatrical Review
4:30—NBC, Marion & Jim Jordan
4:45—Studio programs
5:15—NBC, Arion Trio
5:30—NBC, Sax Appeal
5:45—NBC, Gould and Sheffer
6—NBC, Mindways Stories
6:15—NBC, Organ Concert
6:30—To be announced
6:45—Voice of Texas
7—Hour Glass
8—NBC, Amos 'n' Andy
8:15—NBC, Chester Rowell
8:30—Demi-Tasse Revue
9—Black and Blue
9:15—Frank Funkhouser
9:30—W. S. C. program
10—The Hawk
10:15—Radio Specialties
10:45—To be announced
11—NBC, Richfield News Flashes
11:15—Dance Music
12:30 to 1 A.M.—NBC, Arion Trio

285.5 Meters KNX Hemp. 4101
1050 Kcys. 25,000 Watts
Western Broadcast. Co., Los Angeles

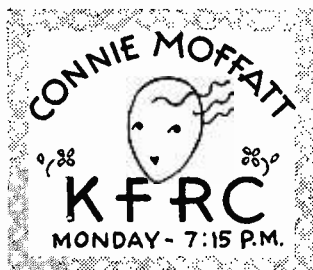
6:45 A.M. to 6—Various programs
6 P.M.—News Service
6:15—Cowboy Revue
6:30—Lawrence King and Orchestra
6:45—"Growin' Up"
7—Frank Watanabe and Archie
7:15—Black and Blue
7:30—The Hawk
7:45—Count of Monte Cristo
8—Calmon Luboviski and Claire Mellonino
9—News Service
9:15—Dance Orchestra
10:15—Marian Mansfield, vocalist
10:30 to 11:30 P.M.—Dance Orch.

333.1 Meters KHJ VAndike 7111
900 Kcys. 1000 Watts
Don Lee Broadcast. System, L. A., Cal.

7 A.M. to 5—Various Programs
5 P.M.—CBS program
5:30—CBS, Theater of Today
6—CBS, Andre Kostelanetz
6:30—CBS, Little Jack Little
6:45—CBS, Columbia Symphony Or.
7:15—Inglewood Park Ass'n
7:45—CBS, Casa Loma Orch.
8—Shell Show
9—Blue Monday Jamboree
10—News; Hollywood Mirror
10:15—I. Zingari; Islanders
11—Earl Dancer's Band
12 to 1 A.M.—Claude Reimer, organ

309.1 Meters KJR Seneca 1515
970 Kcys. 5000 Watts
Northwest Broad. System, Seattle, Wn.
(Seattle Daylight Saving Time)

8:30 A.M. to 1:15—Various programs
1:15 P.M.—Piano Master Works
1:30—The Monday Musicale
2:30—NBC, Schirmer and Schmitt
2:45—NBC, John and Ned
3—Recorded program
3:30—NBC program
5—Steamboat Bill
5:15—Metropolitans
5:45—NBC programs to 6:30
6:30—Shades of Yesterday
6:45—Ralph's Racing Digest
7—Hymn Tunes
7:15—Tarzan (E. T.)
7:30—Seattle Times News
7:45—Northwest Mines Reporter
8—Lee Sisters
8:15—NBC, Chester Rowell
8:30—The South Americans
8:45—Chamber of Commerce Talk
9—Hollywood on the Air
9:30—Musical Favorites
10—NBC, Drama Hour
10:30—Aesop's Fables
11—Accordionette
11:15 to 12—NBC, Melody Mixers



TUESDAY Programs

September 12, 1933

379.5 Mtrs. **NBC-KGO** Sutter 1920
790 Kcys. 7500 Watts

National Broadcast. Co., San Francisco

7 A.M.—Organ Concert
7:30—United States Army Band
8—Curtis Burnley Railing
8:15—Pollock & Lownhurst, pianists
8:30—Rex Concert Ensemble
9—Vic and Sade
9:15—Buckaroos
9:30—Martha Meade Society
9:45—Tom Mitchell, baritone
10—Organ Concert
10:30—Woman's Magazine of the Air
11:30—Financial Flashes
11:35—Argentine Trio
11:45—Meredith Willson's Orchestra
12:15—Farm and Home Hour
1—Paul Ash's Orchestra
1:30—Contract Bridge
1:45—Little Colleen
2—Al Pearce and Gang
3—Langendorf Pictorial
3:15—Rhythm Vendors
3:45—Ray Heatherton, baritone
4—The Family Cook Book
4:15—Concert Petite
4:30—John and Ned
4:45—Back Stage Chatter
5—Balladettes' Orchestra
5:30—Texaco Fire Chief program
6—Lives at Stake
6:30—National Radio Forum
7—Amos 'n' Andy
7:15—Memory Lane
7:45—Horlick's Adventures in Health
8—Ben Bernie's Orchestra
8:30—The Philistine; Dr. Maker
8:45—Mark Fisher's Orchestra
9—Piano Pictures
9:30—Souvenirs of Song
10—Richfield News Flashes
10:15—Anson Weeks' Orchestra
11—Organ Concert
11:30 to 12 mid.—Bal Tabarin Orch.

440.9 Meters **KPO** Sutter 1920
680 Kcys. 50,000 Watts

National Broadcast. Co., San Francisco

7:30 A.M.—Dollo Sargent, organist
7:45—Financial Service
8—Organ Concert
8:15—Log o' the Day Crosscuts
9:15—Ralph Ginsberg Ensemble
9:30—Johnny O'Brien, harmonica
9:45—News
10—New Kitchen Secrets
10:15—Songs by the Kitchen Sink
10:30—Synopators: Dance music
10:45—To be announced
11—Blue Room Echoes
11:15—Words and Music
11:45—Agricultural Bulletins
12 noon—Middy Musicales; News
1:15—Ann Warner
1:45—Nursery Rhymes
2—Viennese Ensemble
2:30—Federation Hymn Sing
2:45—Shirley Howard, songs
3—The Sizzlers: Male trio
3:15—Radio in Education
3:45—University of California prog.
4—Vincent Lopez's Orchestra
4:30—Mickey Gillette, saxophonist
4:45—The Rollickers: Male quartet
5—Arlon Trio: Instrumentalists
5:45—News; Stringwood Ensemble
6:45—Irving Kennedy, tenor
7—Edna Fischer, pianist
7:15—Book Parade
7:30—Charles W. Hamp
7:45—California State Chamber of
Commerce program
8—Kramarenko Balalaika Orch.
8:15—The Hollywood Looking Glass

8:30—Eno Crime Clues

9—Carefree Carnival
10—Music Box
10:30—Melody Mixers: Orchestra
11—Ambassador Hotel Orchestra
11:30 to 12 midnight—Organ Concert

491.5 Meters **KFRC** Prospect 0100
610 Kcys. 1000 Watts

Don Lee Broadcast. System, S.F., Cal.

7 A.M.—Recordings; Stocks
7:30—Exercise Period
8—Program to be announced
8:15—U. S. Marine Band
8:30—CBS, Concert Miniatures
9—CBS, Harold Knight's Orchestra
9:30—CBS, George Scherban's Orch.
10—CBS, Ann Leaf, organist
10:15—Mary Sears Garden Party
10:30—The Islanders
10:45—CBS, Salon Orchestra
11—Prudence Penny
11:15—Frances Lee Barton
11:30—CBS, Jack Brooks' Orchestra
12 noon—Don Ross, Pontiac Minstrel
12:15—Noonday Concert
1:15—The Melodeers: Male quartet
1:30—Stocks; Health Talk
1:45—CBS, George Hall's Orchestra
2—Happy-Go-Lucky Hour
3—Feminine Fancies
4—CBS, The Boswells
4:15—To be announced
4:45—Lost and Found Items
4:50—"The Singing Chef"
4:55—Town Topics
5—Children's Radio Theatre
5:15—CBS, Poet's Gold
5:30—CBS, Nino Martini and Orch.
6—CBS, California Melodies
6:30—CBS, Leon Belasco's Orch.
6:45—CBS, Light Opera Gems
7:15—CBS, Little Jack Little
7:30—CBS, Singin' Sam
7:45—Program to be announced
8—Globe Headlines
8:15—S. & W. "Mellow'd Melodies"
8:30—CBS program
8:45—The Buccaneers
9—St. Francis Hotel Orchestra
9:30—Hodge Podge Lodge
10—News Editor of the Air
10:10—"Melodes Organistique"
10:15—"Intimate Hollywood News"
10:20—Vocalists and Organ
10:30—"The Islanders"
11—Earl Dancer's Orchestra
12 to 1 A.M.—Recordings

535.4 Meters **KTAB** Garfield 4700
560 Kcys. 1000 Watts

Assoc. Broadcasters, Oakland, Calif.

7 A.M. to 1—Various programs
1 P.M.—Radio Frolic
1:30—Over the Teacups
2—News; Town Crier
3—X-Bar-B Boys; Records
3:45—Studio program; Old Rajah
4:45—Jane Sands, pianist
5—Smile Club; Health Talk
6—Elbert La Chelle, organist
6:30—News; Sport Page
7—Popular Concert
7:15—Rera Miller and Symphonettes
7:45—Voice of Democracy
8—Minstrel Show
8:30—"In the Gloaming"
8:45—John D. Barry
9—News; Souvenirs
9:45—Herb Allen, pianist
10—Kelli-Widner Orchestra
10:30—Heart Songs
11—Paul Kellar, pianist
11:15 to 12 mid.—Records; Orch.

243.8 Meters **KYA** Prospect 3456
1230 Kcys. 1000 Watts

Pac. Broadcast. Corp., San Francisco

7:30 A.M. to 12—Various programs
12 noon—Scriptures; Concert
12:45—Aviation Club
1:15—Footlight Features
1:30—NBC, Piano Duo
1:45—Symphonic Band; Srenaders
2:30—New Era Symphony
3—Organ Matinee; Recordings
5:45—Campbell Digest
6—Social Service News
6:15—Waltz Idylls
6:45—Lavender and Old Lace
7—Musical Novelties
7:15—Romance of Music
7:30—Maurice Gunsky Revue
8—Bob Allen, piano stylist
8:15—Orchestra
8:30—Sydney Dixon, vocalist
9—News Flashes
9:15—Jack and Ethel in "Roads to
Hollywood"
9:30—The Cub Reporter
9:45—Opera Phantoms; Organ
11 to 12 midnight—Concert Memories

340.7 Meters **KLX** Lake. 6000
880 Kcys. 1000 Watts

Tribune Pub. Co., Oakland, Calif.

8 A.M.—Records; Stocks
8:30—Covered Wagon Jubilee
9—Records
9:15—Julia Lee Wright; Records
9:45—Carmen Rushing, pianist
10—Records; Stocks
10:30—International Kitchen
11—Studio program
11:30—Novelty Guitar Duo
11:45—Fred Skinner
12 noon—Jack Delaney's Band
1—Jean's Hi-Lights
2—Recordings; News
3:15—Lola Chatfield, pianist
3:30—News Flashes; Records
4—Timely Garden Tips
4:15—Brother Bob's Club
4:45—McCoy Health School
5—Covered Wagon Jubilee
5:30—Helen Parmelee, pianist
6—Hotel Oakland Trio
7—News Items
7:30—Arco's Novelty Quartet
7:45—Helen Parmelee, pianist
8—John Wharry Lewis Quintet
9—Old Gospel Hymns
9:30—Bungling Bunglers
9:45—Nevada Night Herders
10:15 to 11 P.M.—Dance program

526 Meters **KVI** Broadway 4211
1 P.M. Kcys. 1000 Watts

Puget Sound Broadcast. Co., Tacoma

6 A.M. to 6—Various programs
6 P.M.—California Melodies
6:30—CBS, Oldsmobile Program
6:45—Dr. Mellor
7—CBS, Light Opera Gems
7:15—Public Library program
7:30—"Singin' Sam"
7:45—CBS, Wasey Products Prog.
8—CBS, Freddie Martin's Orch.
8:15—S & W Mellow'd Melodies
8:30—Baseball Game
9—Systematic Bible Study
9:30—Hodge Podge Lodge
10—"Melodies Organistique"
10:15—Kay Thompson, Walt Ruick
and Claude Reimer
10:30—The Islanders
11 to 12 mid.—Earl Dancer's Orch.

309.1 Meters KJR Seneca 1515
970 Kcys. 5000 Watts
Northwest Broad. System, Seattle, Wn.
(Seattle Daylight Saving Time)

8:30 A.M. to 1:15—Various programs
1:15 P.M.—Piano Master Works
1:30—Musical Madcaps
2—NBC programs to 3
3—Recorded programs
4—Saxophone Melodies
4:15—NBC programs to 6
6—Dance Recordings
6:15—Dinner Dansant
6:45—Radio Ralph's Racing Digest
7—Venetian Ensemble
7:30—NBC, National Radio Forum
8—Seattle Times News
8:15—Wandering Minstrel
8:30—Rhythm Aces
9—Musical program
9:30—Viennese Vagabonds
10—NBC, Carefree Carnival
11—The Drawing Room
11:15 to 12 mid.—NBC, Hotel Mark Hopkins Orchestra

483.6 Meters KGW Atwater 2121
620 Kcys. 1000 Watts
Morning Oregonian, Portland, Ore.

7 A.M. to 12—Various programs
12 noon—Oregonian of the Air
12:15—NBC, Farm and Home Hour
12:30—Pontiac Singers
12:35—NBC-KGO programs to 1:30
1:30—Dental Clinic of the Air
1:45—NBC-KGO programs to 3:15
3:15—Allyn's prog.; Friendly Chat
4—NBC-KGO programs to 5:25
5:25—Old Portland Landmarks
5:30—NBC, Texaco Program
6—NBC, Lives at Stake
6:30—Studio prog.; Concert Trio
6:55—Southern Pacific
7—NBC-KGO programs to 8
8—NBC, Ben Bernie's Orchestra
8:30—Musical program
9—Musical Mannequins
9:30—Homicide Squad
10 to 12 mid.—News; Dance Music

319 Meters KOIN Atwater 3333
940 Kcys. 1000 Watts
The Journal, Portland, Oregon

6:30 A.M. to 6—Various programs
6 P.M.—California Melodies
6:30—CBS, Barbara Maurer & Orch.
6:45—CBS, Light Opera Gems
7:15—CBS, Little Jack Little
7:30—CBS, Singin' Sam
7:45—Tarzan of the Apes
8—CBS, Freddie Martin's Orch.
8:15—S & W Mellow'd Melodies
8:30—CBS, Johnny Hamp's Orch.
9—Fights Broadcast
10:30—The Islanders
11 to 1 A.M.—Dance Music

322.4 Meters KROW Glenc. 6774
930 Kcys. 1000 Watts
Educa. Broad. Corp., Oakland, Calif.

7 A.M. to 5—Various programs
5 P.M.—Popular Records
5:15—Twilight Reveries
6—Gypsy Melodies
6:15—Dell Perry
6:30—Organ Echoes
7—Senator Loyal
7:15—Sports Review
7:30—Bobbie Lee
7:45—San Doval Twins
8—Topics of the Day
8:15—Watch Tower program
8:30—Vagabonds of the Hills
9—Motorcycle Races
10—Bill Roth
10:30 to 12 midnight—Dance Music

468.5 Meters KFI Richm'd 6111
640 Kcys. 50,000 Watts
Earle C. Anthony, Inc., Los Angeles

6:30 to 5—Various programs
5 P.M.—NBC, Arlon Trio
5:15—Douglas Steade, tenor
5:30—NBC-KGO programs to 6:30
6:30—Pierce Bros. Quartet
6:45—Orchestra
7—NBC-KGO programs to 9:30
9:30—Eddo Crime Clues
10—NBC, Richfield Reporter
10:15 to 12 midnight—Dance Orch.

333.1 Meters KHJ Vandike 7111
900 Kcys. 1000 Watts
Don Lee Broadcast. System, L. A., Cal.

7 A.M. to 5—Various programs
5 P.M.—Children's Radio Taehre
5:15—Town Topics
5:20—CBS, Frank Westphal's Orch.
5:30—CBS, Nino Martini
6—CBS, California Melodies
6:30—CBS, Oldsmobile
6:45—CBS, Light Opera Gems
7:15—CBS, Little Jack Little
7:30—CBS, Singin' Sam
7:45—CBS, Isham Jones' Orchestra
8—'Globe Headlines'
8:15—S. & W. "Mellow'd Melodies"
8:30—CBS program
9—St. Francis Hotel Orchestra
9:30—Hodge Podge Lodge
10—News Items
10:10—Hollywood Mirror
10:15—Kay Thompson, Walter Ruick
10:30—Islanders; Orchestra
12 to 1 A.M.—Claude Reimer, organ

225.4 Meters KGB Franklin 6151
1330 Kcys. 1000 Watts
Don Lee Broadcast. System, S. D., Cal.

7 A.M. to 5—Various programs
5 P.M.—Children's Radio Theatre
5:15—CBS, Poets Gold
5:30—CBS, Nino Martini and Orch.
5:45—Eb and Zeb
6—CBS, California Melodies
6:30—CBS, Oldsmobile
6:45—CBS, Light Opera Gems
7—Chandu (transcription)
7:15—CBS, Little Jack Little
7:30—CBS, Singin' Sam
7:45—CBS program
8—Headlines; Records
8:30—Johnny Hamp's Orchestra
8:45—Buccaneers
9—CBS, St. Francis Hotel Orch.
9:30—Hodge Podge Lodge
10—World-Wide News
10:10—Dick Auranit, organist
10:15—Kay Thompson
11—Earl Dandlers
10:30—Earl Dancer's Band
12 to 1 A.M.—Recordings

296.5 Meters KQW Ballard 777
1010 Kcys. 500 Watts
Pac. Agric. Foundation, Ltd., San Jose

6:30 A.M. to 6—Various programs
6 P.M.—Dinner Music
6:15—Franco's program
6:30—Fed. State Market Reports
6:45—Farmers' Exchange
7—U. S. Weather Reports
7:03—Radio News and Forum
7:30—Minute Man; Band Concert
8 to 10 P.M.—You Never Can Tell

280.2 Meters KJBS Ord. 4148-49
1070 Kcys. 100 Watts
J. Brunton & Sons, San Francisco

6 A.M. to 6:15—Records; News; Talks
6:15 P.M.—Silent period
12:01 to 6 A.M.—Owl program

508.2 Meters KHQ Main 5383
590 Kcys. 1000 Watts
Louis Wasmer, Inc., Spokane, Wash.
(Spokane Daylight Saving Time)

7:30 A.M. to 1—Various programs
1 P.M.—Sylvia Grey
1:15—NBC, Farm and Home Hour
2—Business and Pleasure
2:30—NBC, Schirmer and Schmitt
2:45—Club Bulletin
3—NBC, Al Pearce and Gang
4—Theatrical Review
4:15—Nat'l Adv. Council on Radio
4:45—NBC, Solist
5—Tull and Gibbs Express
5:15—NBC-KGO programs to 9
9—NBC, Ben Bernie's Orchestra
9:30—Musical program
10—The Hawk
10:15—NBC, Carefree Carnival
10:30—Radio Specialties
11—NBC, Richfield News Flashes
11:15 to 12 mid.—Dance Music

325.9 Meters KOMO Elliott 5890
920 Kcys. 1000 Watts
Fisher's Blend Station, Inc., Seattle
(Seattle Daylight Saving Time)

8 A.M. to 1—Various programs
1 P.M.—Proctor's, Inc.; Betty
1:15—NBC, Farm and Home Hour
2—Melody Musketiers
2:30—Rhapsody in Rhythm
3—NBC, Al Pearce and Gang
4—NBC, The Sizzlers
4:15—The Observer
4:30—Modern Concert Ensemble
5—Pastel Harmonies
5:30—Varieties; Rhythmeers
6—NBC, Arlon Trio
6:30—NBC-KGO programs to 7:30
7:30—Clef Dwellers
8—NBC-KGO programs to 9
9—NBC, Ben Bernie's Orchestra
9:30—Musical program
10—Musical Mannequins
10:30—Artistic Ensemble
11—NBC, Richfield News Flashes
11:15 to 12—Club New Yorker Orch.

285.5 Meters KNX Hemp. 4101
1050 Kcys. 25,000 Watts
Western Broadcast. Co., Los Angeles

6:45 A.M. to 6—Various programs
6 P.M.—News Service
6:15—Mayfair Concert Orchestra
6:30—Lawrence King, tenor
6:45—Grownin' Up
7—Frank Watanabe and Archie
7:15—Quartet and Band
7:45—Court of Monte Cristo
8—Hotel Roosevelt Orchestra
8:15—Wilbur Hatch's Orchestra
8:45—Drury Lane, News
9:15—Miles of Melody
9:45—Dance Orchestra
10:15—Marian Mansfield, ballads
10:30 to 11:30 P.M.—Dance Orch.

499.7 Meters KFSD Franklin 6353
860 Kcys. 1000 Watts
Airfan Radio Corp., Ltd., San Diego

7:30 A.M. to 6—Various programs
6—Postal Talk; Studio program
6:15—Picturizing the News
6:30—NBC, National Radio Forum
7—Sport Talk
7:15—NBC, Memory Lane
7:45—Thurman Robertson
8—NBC, Balalaika Orchestra
8:30—NBC, The Philistine
8:45—Viratelle Quartette
9—NBC, Carefree Carnival
10—NBC, Richfield News Flashes
10:15 to 12 mid.—Dance Music

WEDNESDAY Programs

Sept. 13, 1933

379.5 Mtrs. **NBC-KGO** Sutter 1920
790 Kcys. 7500 Watts
National Broadcast. Co., San Francisco

7 A.M.—Organ Concert
7:30—Rhythm Ramblers
8—Eva Taylor, crooner
8:15—Lee S. Roberts' Memory Box
8:30—Merrie Men: Male quartet
8:45—Pat Kennedy, songs
9—Vic and Sade: Domestic comedy
9:15—The Buckaroos: Ted Maxwell
and Charles Marshall
9:30—Organ Concert
9:45—Jean Abbey, Shop News
10—Sarah Kreindler, violinist
10:15—Books for Children
10:30—Woman's Magazine of the Air
11:30—Magic Moments
11:45—Financial Flashes
11:50—Sax-o-Tunes
12 noon—Southern Symphonies
12:15—Farm and Home Hour
1—Paul Ash's Orchestra
1:30—The Three Jesters
1:45—John and Ned: Harmony duo
2—Al Pearce and Gang
3—Langendorf Pictorial
3:15—Ernie Holst's Orchestra
3:30—Art and Music
3:45—Richard Himbler's Ensemble
4—Ramblers: Orchestra
4:30—To be announced
5—American Legion Broadcast
5:30—Concert Miniature
6—Corn Cob Pipe Club
6:30—Ship of Joy
7—Amos 'n' Andy
7:15—Chester H. Rowell
7:30—Eddie Peabody, entertainer
8—Mills' Musical Playboys
8:30—Mark Fisher's Orchestra
9—One Man's Family
9:30—Benny Meroff's Orchestra
10—Richfield News Flashes
10:15—Anson Weeks' Orchestra
11—Organ Concert
11:30 to 12 midnight—Melody Mixers

440.9 Meters **KPO** Sutter 1920
680 Kcys. 50,000 Watts
National Broadcast. Co., San Francisco

7:30 A.M.—Dollo Sargent, organist
7:45—Financial Service
8—Organ Concert
8:15—Crosscuts, Log o' the Day
9:15—Ralph Ginsberg Ensemble
9:30—Johnny O'Brien, harmonica
9:45—News; Tom Mitchell, baritone
10:15—Fashion Flashes
10:30—Two Seats in a Balcony
11—Grand Trio: Instrumental
11:15—Words and Music
11:30—Happy Days in Dixie
11:40—Pontiac Singers
11:45—Agricultural Bulletins
12 noon—Midday Musicales; 1, News
1:15—Ann Warner's Chats
1:45—Melodic Wanderings
2—Elizabeth Arden program
2:05—Viennese Ensemble
2:30—Back of the News
2:45—John Pierce, tenor; Louis
Katzman's Orchestra
3—Ernie Holst Orchestra
3:15—Charles Hart: Instrumentalists
3:45—University of California prog.
4—To be announced
4:30—Facing the Music
4:45—Kenneth Spencer, basso
5—Tea Dansant: Miss Cynthia, blues
singer; Tommy Harris, tenor; or-
chestra direction Josef Hornik
5:30—Rhythm Rascals: Male trio
5:45—News; 6, Paul Carson, organ
6:15—Knickerbockers

6:45—Detectives Black and Blue
7—Edna Fischer, pianist
7:15—Tarzan of the Apes
7:30—Charles W. Hamp
7:45—Agriculture Today
8—Callifornians on Parade
8:30—Eno Crime Clues
9—Kay Kyser Orchestra
9:30—Waltz Time
10—Marshall's Mavericks
10:30—Seven Seas: Orchestra
11—Ambassador Hotel Orchestra
11:30 to 12 mid.—Organ Concert

243.8 Meters **KYA** Prospect 3456
1230 Kcys. 1000 Watts
Pac. Broadcast. Corp., San Francisco

7:30 A.M. to 12—Various programs
12 noon—Scriptures; Concert
12:30—Organ; Royal Serenaders
1:30—Art Lecture
1:45—Modern Maestros; Quartette
2:30—Com. Chest Question Box
2:45—Organ Matinee
3:30—Essex House Ensemble
3:45—Mountain Boys
4:15—Better Business Bureau
4:30—Recordings
5:45—Campbell Digest
6—Paraders; Waltz Idylls
6:45—"Eb and Zeb"
7—Bob Allen, piano stylist
7:15—NBC, Poet Prince
7:30—Light Opera
8—"Souvenirs of Italy"
9—News Flashes
9:15—John Wolohan's Orchestra
10—Organ Serenade
11 to 12 midnight—Concert Memories

535.4 Meters **KTAB** Garfield 4700
560 Kcys. 1000 Watts
Assoc. Broadcasters, Oakland, Calif.

7 A.M. to 1—Various programs
1 P.M.—Radio Frolic
1:30—Over the Teacups
2—News; Town Crier
3—X-Bar-B Boys
3:30—Studio program
3:45—Records; Old Rajah
4:45—Studio program
5—Smile Club; Health Talk
6—Auto Question Box
6:15—Elbert La Chelle, organist
6:30—Columbia News Page
6:45—Ernie Smith's Sport Page
7—Popular Concert
7:15—Crazy Quilt
7:30—Wee Bit o' Scotch
7:45—Famous Campers; Brevities
8:30—Miles of Melody
9—News; Souvenirs
9:45—Herb Allen, pianist
10—Gypsy Vignettes
10:30—Paul Kellar, pianist
10:45 to 12 midnight—Records

322.4 Meters **KROW** Glenc. 6774
930 Kcys. 1000 Watts
Educa. Broad. Corp., Oakland, Calif.

7 A.M. to 5—Various programs
5 P.M.—Popular records
5:15—Twilight Reveries
6—Gypsy Melodies
6:15—Dell Perry
6:30—Organ; Senator Loyal
7:15—Sports Review
7:30—Italian program
8—Topics of the Day
8:15—Pyramid Club
8:30—Vagabonds of the Hills
9—Maud Nickerson
9:15—Voice of the Past
9:30—International Serenaders
10 to 12 midnight—Dance Music

491.5 Meters **KFRC** Prospect 0100
610 Kcys. 1000 Watts
Don Lee Broadcast. System, S.F., Cal.

7 A.M.—Recordings; Stocks
7:30—Exercise Period
8:15—CBS, Vincent Travers' Orch.
8:30—CBS, Concert Miniatures
9—CBS, George Hall's Orchestra
9:30—Betty Crocker
9:45—CBS, Madison Ensemble
10—CBS, Ann Lear, organist
10:15—Mary Sears Garden Party
10:30—CBS, Don Russo's Orchestra
10:45—CBS, The Captivators
11—Mary Lewis Haines
11:10—Goodwill Industries Talk
11:15—Prudence Penny's Hints
11:30—CBS, Soloist and Orchestra
11:45—Luis Russell's Orchestra
12 noon—Noonday Concert
1—Recordings
1:15—CBS, Jack Brooks' Orchestra
1:30—Stock Quotations; Records
1:45—CBS, Round Towners
2—Happy-Go-Lucky Hour
3—Feminine Fancies; Records
4:15—Hodge Podge Lodge
4:45—Lost and Found Items
4:50—Recordings; Town Topics
5:15—CBS, Kate Smith
5:30—Bobs, Sports Authority
5:45—"Melodies Organistique"
6—CBS, Old Gold program
6:30—CBS, Alexander Woolcott
6:45—CBS program
7:15—CBS, Vera Van Orchestra
7:30—CBS, Donald Novis and Ster-
ling Holloway
8—Globe Headlines
8:15—CBS, Ted Lewis' Orchestra
8:30—Lombardo; Burns & Allen
9—CBS, St. Francis Hotel Orch.
9:30—Catherine, the Great
10—Darrall Donnell, news
10:10—Johnny Robinson's Orchestra
10:15—"Intimate Hollywood News"
10:20—Johnny Robinson's Orchestra
10:30—"Isle of Golden Dreams"
11—Dance Orchestra
12 to 1 A.M.—Recordings

340.7 Meters **KLX** Lake. 6000
880 Kcys. 1000 Watts
Tribune Pub. Co., Oakland, Calif.

8 A.M.—Records; Stocks
8:30—Covered Wagon Jubilee
9—Records
9:45—Carmen Rushing, pianist
10—Records; Stocks
10:30—International Kitchen
11—Romance Behind the News
11:30—Novelty Guitar Duo
11:45—Clark Sisters
12 noon—Jack Delaney's Band
1—Timely Garden Tips
1:15—Jean's Hi-Lights; News
2—Recordings; News
2:35—Better Business Talk
2:40—Stocks; Recordings
3:15—Nancy Ann Hersey, pianist
3:30—News Flashes; Records
4:15—Brother Bob's Club
4:45—McCoy Health School
5—Covered Wagon Jubilee
5:30—Lovable Liars
5:45—Helen Parmelee, pianist
6—Hotel Oakland Trio
7—News Items
7:30—Amerigo Frediani, tenor
7:45—Helen Parmelee, pianist
8—Miniature Revue
8—Manila String Orchestra
9:30—Bungling Bunglers
9:45—Freddie Skinner
10 to 11 P.M.—Dance program

333.1 Meters KHJ VAndike 7111
900 Kcys. 1000 Watts
Don Lee Broadcast. System, L. A., Cal.

7 A.M. to 5—Various programs
5 P.M.—Nora Schiller
5:15—Town Topics
5:20—CBS, Kate Smith
5:30—Kay Thompson
5:45—Charlie Lung and Gang
6—CBS, Waring's Pennsylvanians
6:30—CBS, Alexander Wolcott
6:45—CBS program
7:15—Chandu, the Magician
7:30—Donald Novis and Sterling Holloway
7:45—Francisco Del Campo
8—“Globe Headlines”
8:15—CBS, Ted Lewis' Orchestra
8:30—Lombardo, Burns and Allen
9—Gus Arnheim's Orchestra
9:30—Catherine, the Great
10—News Items
10:10—Hollywood Mirror
10:15—Johnny Robinson's Orch.
10:30—Isle of Golden Dreams
11—Dance Orchestra
11:30—McElroy's Oregonians
12 to 1 A.M.—Claude Reimer, organ

468.5 Meters KFI Richm'd 6111
640 Kcys. 50,000 Watts
Earle C. Anthony, Inc., Los Angeles

6:30 A.M. to 6—Various programs
9 P.M.—NBC, Corn Cob Pipe Club
6:30—NBC, Ship of Joy
7—NBC, Amos 'n' Andy
7:15—John P. Mills talk
7:30—NBC, Eddie Peabody
8—Hollywood Looking Glass
8:15—Orchestra and Soloists
8:45—NBC, Edgewater Beach Orch.
9—NBC, One Man's Family
9:30—Eno Crime Club
10—NBC, Richfield Reporter
10:15 to 12 mid.—Dance Music

285.5 Meters KNX Hemp. 4101
1050 Kcys. 25,000 Watts
Western Broadcast. Co., Los Angeles

6:45 A.M. to 6—Various programs
6 P.M.—News Service
6:15—Cowboy Revue
6:30—Lawrence King, tenor
6:45—“Growin' Up”
7—Frank Watanabe and Archie
7:15—“Black and Blue”
7:30—“The Hawk”
7:45—Count of Monte Cristo
8—Grocer's Basket of Fun
9—News; Orchestra
9:30—Poetry, Prose, Melody
10:15 to 11:30—Dance Orchestra

225.4 Meters KGB Franklin 6151
1330 Kcys. 1000 Watts
Don Lee Broadcast. System, S. D., Cal.

7 A.M. to 5—Various programs
5 P.M.—Police Talk; Town Topics
5:15—CBS, Kate Smith
5:30—Kay Thompson
5:45—Charlie Lung's Gang
6—CBS, Waring's Pennsylvanians
6:30—CBS program
7—Chandu (transcription)
7:15—CBS, Vera Van and Orch.
7:30—Donald Novis
8—Headlines
8:15—CBS, Ted Lewis' Orch.
8:30—CBS, Lombardo, Burns, Allen
9—Heroes of U. S. Service
9:30—Catherine, the Great
10—World-Wide News
10:10—Robinson's Orchestra
10:30—Isle of Golden Dreams
11—Dance Orchestra
12 to 1 A.M.—Recordings

483.6 Meters KGW Atwater 2121
620 Kcys. 1000 Watts
Morning Oregonian, Portland, Ore.

7 A.M. to 12—Various programs
12 noon—The Oregonian of the Air
12:15—Star Furniture Company
1:25—CBS, Casino Orchestra
1:30—Dental Clinic of the Air
1:45—NBC-KGO programs to 3:15
3:15—Allyn's prog.; Friendly Chat
4—NBC-KGO programs to 5
5—Highland Lassie
5:05—NBC program
5:45—Piano Surprises
6—Cornob Pipe Club
6:30—The Arkansas Travelers
6:45—Concert Trio
7—NBC, Amos 'n' Andy
7:15—News of the Air
7:20—Studio program
7:25—Let's Go Traveling
7:30—NBC, Eddie Peabody
8—NBC, Mills Musical Playboys
8:30—Club Kaleidoscope
8:35—Edgewater Beach Orchestra
8:55—Southern Pacific
9—NBC, One Man's Family
9:30—Frances Ingram
9:45—NBC-KGO programs to 10:30
10:30—Old Portland Landmarks
10:35 to 12 midnight—Dance Music

319 Meters KOIN Atwater 3333
940 Kcys. 1000 Watts
The Journal, Portland, Oregon

6:30 A.M. to 6—Various programs
6 P.M.—CBS, Old Gold
6:30—CBS, Alexander Woolcott
6:45—CBS, Col. Symphony Orch.
7:30—Black and Blue
7:45—Francesco del Campo, tenor
8—CBS, Ted Lewis and Band
8:15—Bells of Harmony
8:30—CBS, Lombardo, Burns, Allen
9—Gus Arnheim's Orchetra
9:30—“The Wanderer”
10—Johnny Robinson's Orchestra
10:30—Isle of Golden Dreams
11 to 1 A.M.—Dance Music

526 Meters KVI Broadway 4211
570 Kcys. 1000 Watts
Puget Sound Broadcast. Co., Tacoma

6 A.M. to 6—Various program
6 P.M.—CBS, Old Gold
6:30—Investment program
6:45—Dr. Mellor
7—CBS, Columbia Symphony
7:15—CBS, Vera Van and Orchestra
7:30—Donald Novis
8—CBS, Ted Lewis' Orchestra
8:30—CBS, Lombardo; Burns & Allen
9—Ted Pio-Rito's Orchestra
9:30—The Wanderers
10—Johnny Robinson's Orchestra
10:30—Isle of Golden Dreams
11 to 12—Dance Music

296.6 Meters KQW Ballard 777
1010 Kcys. 500 Watts
Pac. Agric. Foundation, Ltd., San Jose

6:30 A.M. to 6—Various programs
6 P.M.—Dinner Music
6:15—Franco's program
6:30—State Market Reports
6:45—Farmers' Exchange
7—U. S. Weather Forecast
7:03—Radio News and Forum
7:30—State Chamber of Commerce
7:45—Famous Campers
8—American Legion War Camp
8:15—Mabel Adams, “Favorites”
8:30—Half-hour of Melodies
9—A. Caro Miller and his Vibraharp
9:30 to 10 P.M.—Monarch Melodists

325.9 Meters KOMO Elliott 5890
920 Kcys. 1000 Watts
Fisher's Blend Station, Inc., Seattle
(Seattle Daylight Saving Time)

8 A.M. to 1—Various programs
1 P.M.—Proctor's, Inc.; Betty
1:15—NBC, Farm and Home Hour
2—NBC, Casino Orchestra
2:30—Easy Chair; Red Shadow
3—NBC, Al Pearce and Gang
4—NBC, Jack and Loretta Clemens
4:15—The Observer
4:30—Pastel Harmonies
5—NBC, The Ramblers
5:30—Aeolian Trio; Dansant
6:30—The Play Boys; News
7—Corn Cob Pipe Club
7:30—Arkansas Travelers
7:45—Dollars and Cents
8—NBC, Amos 'n' Andy
8:15—Tess Wilson
8:30—NBC, Eddie Peabody
9—Thirty Minutes of Music
9:30—NBC, Edgewater Beach Orch.
10—NBC, One Man's Family
10:30—Viennese Vagabonds
11—NBC, Richfield News Flashes
11:15 to 12—Club New Yorker Orch.

508.2 Meters KHQ Main 5383
590 Kcys. 1000 Watts
Louis Wasmer, Inc., Spokane, Wash.
(Spokane Daylight Saving Time)

7 A.M. to 1—Various programs
1 P.M.—Sylvia Grey
1:15—NBC, Farm and Home Hour
2—Business and Pleasure
2:30—NBC, The Three Jesters
2:45—Club Bulletin
3—NBC, Al Pearce and Gang
4—Prestoligo program
4:15—Theatrical Review
4:30—Diamond Ice program
4:45—NBC, Essex House Ensemble
5—Tull and Gibbs Express
5:15—NBC programs to 6:45
6:45—Voice of Texas
7—NBC, Corn Cob Pipe Club
7:30—NBC-KGO programs to 9
9—Black and Blue
9:15—Erystol Meyer
9:30—NBC, Edgewater Beach Orch.
10—NBC, One Man's Family
10:30—Radio Specialities
11 to 1 A.M.—News; Dance Music

309.1 Meters KJR Seneca 1515
970 Kcys. 5000 Watts
Northwest Broad. System, Seattle, Wn.
(Seattle Daylight Saving Time)

8:30 A.M. to 1—Various programs
1 P.M.—NBC, Southern Symphonies
1:15—Master Works of the Piano
1:30—Recorded program
2:30—NBC-KGO programs to 3
3—Recorded programs
4—Sohl and Lundberg
4:15—NBC programs to 5
5—Steamboat Bill
5:15—Tunes for Tots
5:30—To be announced
6—NBC programs to 6:45
6:45—Radio Ralph's Racing Digest
7—Rhapsody in Rhythm
7:15—Tarzan (E. T.)
7:30—Ship of Joy
8—Seattle Times News
8:15—Northwest Mines Reporter
8:30—The South Americans
8:45—Around the Town
9—Cotton Club Orchestra
9:30—Artistic Ensemble
10—Melodies and Memories
10:30—NBC, Waltz Time
11—Harp Melodies (Hubert Graf)
11:15 to 12 midnight—Dance Music

THURSDAY Programs

September 14, 1933

379.5 Mtrs. **NBC-KGO** Sutter 1920
790 Kcys. 7500 Watts
National Broadcast. Co., San Francisco

7 A.M.—Singing Strings
7:30—United States Navy Band
8—Rhythm Rascals: Vocal trio
8:15—Originalities
8:30—Rex Battle Concert Ensemble
9—Vic and Sade
9:15—The Buckaroos
9:30—Martha Meade Society
9:45—Johnny Toffoli, accordionist
10—Woman's Magazine of the Air
11—Standard School Broadcast
11:45—Financial Flashes; Organ
12:15—Farrin and Home Hour
1—General Federation of Women's Clubs Talks
1:15—Paul Ash and Orchestra
1:30—Trio Romantique
1:45—John and Ned, harmony duo
2—Al Pearce and Gang
3—Langendorf Pictorial
3:15—Concert Footlights
3:30—The Well Dressed Woman
3:45—Tune Detective
4—Rudy Vallee and Orchestra
5—Children's Corner
5:15—Dance Journal
5:30—Memory's Melody
6—Al Jolson, Paul Whiteman
7—Amos 'n' Andy
7:15—S. & W. Ghost Adventurer
7:30—Death Valley Days
8—Standard Symphony Hour
9—Captain Henry's Showboat
10—Richfield News Flashes
10:15—Anson Weeks' Orchestra
11—Organ Concert
11:30 to 12 mid.—Kay Kyser's Orch.

491.5 Meters **KFRC** Prospect 0100
610 Kcys. 1000 Watts

Don Lee Broadcast. System, S.F., Cal.
7 A.M.—Records; Stocks
7:30—Exercise Period
8—Program to be announced
8:15—CBS, Frank La Marr's Orch.
8:30—CBS, Concert Miniatures
9—CBS, Harold Knight's Orchestra
9:30—CBS, George Scherban's Orch.
10—CBS, Ann Leaf at the Organ
10:15—Mary Sears Garden Party
10:30—Popular Selections
10:45—CBS, The Merymakers
11—Prudence Penny
11:15—Frances Lee Barton
11:30—CBS, Singing Jack Brooks
12 noon—"The Pontiac Minstrel"
12:15—Noonday Concert
1—Discovery Hour
1:30—Stocks; Records
1:45—CBS, John Kelvin, tenor
2—Happy-Go-Lucky Hour
3—Feminine Fancies
4—CBS, The Boswells
4:15—Dick Auerand, organist
4:45—Lost and Found Items
4:50—The Singing Chef
4:55—Town Topics
5—Children's Radio Theatre
5:15—CBS, Presenting Mark Warnow
5:30—CBS, U. S. Marine Band
6—CBS, Deep River
6:30—Leon Belasco's Orchestra
6:45—CBS, Gladys Rice and Orch.
7:15—CBS, Phil Regan, tenor
7:30—CBS, Singing Sam
7:45—CBS, Freddie Martin's Orch.
8—Globe Headlines
8:15—CBS, Glen Gray's Orchestra
8:30—Sports Parade
9—Hotel St. Francis Orchestra
9:30—Frank Cookson Orchestra
10—Darrell Donnell, news

10:10—Claude Reimer, organist
10:15—"Intimate Hollywood News"
10:20—The Georgians
10:30—The Islanders
11—Earl Dancer's Orchestra
12 to 1 A.M.—Midnight Request Hr.

535.4 Meters **KTAB** Garfield 4700
560 Kcys. 1000 Watts
Assoc. Broadcasters, Oakland, Calif.

7 A.M. to 1—Various programs
1 P.M.—Radio Frolic
1:30—Over the Teacups
2—News; Town Crier
3—X-Bar-B Boys
3:30—Studio program; Old Rajah
4:30—Alvin Eller, pianist
4:45—Studio program
5—Smile Club; Health Talk
6—Elbert La Chelle, organist
6:15—Iron House, mystery drama
6:30—Columbia News Page
6:45—Ernie Smith's Sport Page
7—Borden "Capers"
9—News; Souvenirs
9:45—Herb Allen, pianist
10—Kell-Widner Orchestra
10:30—Paul Kellar, pianist
10:45 to 12 mid.—Records; Orchestra

340.7 Meters **KLX** Lake. 6000
880 Kcys. 1000 Watts
Tribune Pub. Co., Oakland, Calif.

8 A.M.—Records; Stocks
8:30—Covered Wagon Jubilee
9—Records
9:30—Clinic of the Air
10:15—Stocks; News Flashes
10:30—International Kitchen
11—Romance Behind the News
11:30—Curtain Calls
11:45—Fred Skinner
12 noon—Jack Delaney's Band
1—Jean's Hi-Lights
2—Recordings; News
2:40—S. F. Stocks; Records
3:15—Lola Chatfield, pianist
3:30—News Flashes; Records
4:15—Brother Bob's Club
4:30—News Flashes
4:45—McCoy Health School
5—Covered Wagon Jubilee
5:30—High School News
6—Hotel Oakland Trio; News
7:30—Arco's Novelty Quartet
7:45—Sports Hi-Lights
8—Dot Kay, contralto; Herb Kennedy, tenor; Nancy Ann Hersey, pianist; The Three Echoes
8:30—Helen Parmelee, pianist
8:45—Studio program
9—Nevada Night Herders
9:30—Bungling Bunglers
9:45—Helen Parmelee, pianist
10 to 11 P.M.—Dance Music

499.7 Meters **KFSD** Franklin 6353
600 Kcys. 1000 Watts
Airfan Radio Corp., Ltd., San Diego

7:30 A.M. to 5—Various programs
5 P.M.—NBC, Dance Journal
5:20—NBC, Memory's Melodies
5:55—Theodora Warfield
6—Studio program; News
6:30—Manuel Dehesa
7—Know Your San Diego
7:15—NBC, Rhythm Rascals
7:30—Dr. Straus' Sketchbook
8—Voice, Violin and Piano
8:30—Samoloff Hour
9—NBC, Capt. Henry's Showboat
10—NBC, Richfield News Flashes
10:15 to 12 midnight—Dance Music

440.9 Meters **KPO** Sutter 1920
680 Kcys. 50,000 Watts
National Broadcast. Co., San Francisco

7:30 A.M.—Dollo Sargent, organist
7:45—Financial Service
8—Organ Concert
8:15—Log o' the Day Crosscuts
9:15—Ralph Ginsberg Ensemble
9:30—Johnny O'Brien, harmonica
9:45—News
10—New Kitchen Secrets
10:15—Song of the Kitchen Sink
10:30—The Pioneers: Male quartet
10:45—Happy Jack Turner, songs
11—Standard School Broadcast
11:45—Agricultural Bulletin
12 noon—Thursday Special
12:15—Melody Mixers; 1, News
1:15—Ann Warner's Chats
1:45—Ray Heatherton, baritone
2—Viennese Ensemble
2:30—John B. Kennedy
2:35—Village Barn Orchestra
3—Twenty Fingers of Harmony
3:15—Rhythm Vendors
3:45—University of California prog.
4—California Dons
4:30—Arion Trio
5:15—Behind the Footlights
5:30—Tom Mitchell, baritone; News
6—Tone Portraits; Orchestra
6:30—Federal Business Talk
6:45—Irving Kennedy, tenor
7—Edna Fischer, pianist
7:15—Review of Activities of San Francisco Municipal Government
7:30—Charles W. Hamp
7:45—United States Army Band
8—Ernie Holst Orchestra
8:30—Dancing in Twin Cities
9—Doric Quartet: Male quartet
9:30—The Orchestra
10—Rhythm Aces
10:30—Voice of Pan
11—Ambassador Hotel Orchestra
11:30 to 12 midnight—Organ Concert

322.4 Meters **KROW** Glenc. 6774
930 Kcys. 1000 Watts
Educa. Broad. Corp., Oakland, Calif.

7 A.M. to 5—Various programs
5 P.M.—Popular Records
5:15—Twilight Reveries
6—Gypsy Melodies
6:15—Dell Perry
6:30—Organ Echoes
7—Senator Loyal
7:15—Sports Review
7:30—Madrid Trio
8—Topics of the Day
8:15—Watch Tower program
8:30—Vagabonds of the Hills
9—Pemm Repertory Players
9:30—Musical
10—Cumberland Mountaineers
10:30 to 12 midnight—Dance Music

296.6 Meters **KQW** Ballard 777
1010 Kcys. 500 Watts

Pac. Agric. Foundation, Ltd., San Jose
6:30 A.M. to 6—Various programs
6 P.M.—Dinner Music
6:15—Franco's program
6:30—State Market Reports
6:45—Farmers' Exchange
7—Weather Forecast
7:03—Radio News and Forum
7:30—Minute Man
7:45—Kenneth Adcock, tenor
8—The Old Church Choir
9—Gene Mancini, tenor
9:15—Musical Meditations
9:30—Musical Readings
9:45 to 10 P.M.—Studio program

243.8 Meters KYA Prospect 3456
1230 Kcys. 1000 Watts
Pac. Broadcast. Corp., San Francisco
7:30 A.M. to 12—Various programs
12 noon—Scriptures
12:03—Tango Time; Organ
1—Mid-day Concert
2—International Troubadours
2:15—Hawaiian Melodies
2:45—Musical Strings
3—Mountain Boys
3:30—Concert Footlights
3:45—Organ Matinee; Records
4:15—Recordings
5:30—Jules Landes, violinist
5:45—Campbell Digest
6—Harmony Highlights
6:15—Waltz Idylls
6:45—Lavender and Old Lace
7—Musical Novelties
7:15—Sportsman's Corner
7:30—NBC, U. S. Army Band
7:45—Bob Robb's Sports Review
8—John Wolohan's Orchestra
9—News; Choir Interlude
9:30—The Cub Reporters
9:45—Opera Phantoms; Organ
11 to 12 midnight—Concert Memories

468.5 Meters KFI Richm'd 6111
640 Kcys. 50,000 Watts
Earle C. Anthony, Inc., Los Angeles
6:30 A.M. to 6—Various programs
6 P.M.—NBC, Whiteman and Jolson
7—NBC, Amos 'n' Andy
7:15—NBC, S. & W. Ghost Adventurer
7:30—NBC, Death Valley Days
8—NBC, Standard Symphony Hour
9—NBC, Captain Henry's Showboat
10—NBC, Richfield Reporter
10:15 to 12 midnight—Dance Music

285.5 Meters KNX Hemp. 4101
1050 Kcys. 25,000 Watts
Western Broadcast. Co., Los Angeles
6:45 A.M. to 6—Various programs
6 P.M.—News Service
6:15—Mayfair Concert Orchestra
6:30—Lawrence King and Orchestra
6:45—"Growin' Up"
7—Frank Watanabe and Archie
7:15—Light Opera
7:45—Count of Monte Cristo
8—KNX Parade
8:30—Feature Program Preview
8:45—Drury Lane
9—News Service
9:15—Miles of Melody
9:45 to 11:30 P.M.—Dance Orchestra

225.4 Meters KGB Franklin 6151
1330 Kcys. 1000 Watts
Don Lee Broadcast. System, S. D., Cal.
7 A.M. to 5—Various programs
5 P.M.—Children's Radio Theatre
5:15—Town Topics; Safety Talk
5:30—Chamber of Commerce
5:45—CBS, U. S. Marine Band
6—CBS, Deep River
6:30—CBS, Oldsmobile program
6:45—CBS, Gladys Rice and Orch.
7—Chandu (transcription)
7:15—CBS, Phil Regan
7:30—CBS, Singin' Sam
7:45—CBS, Freddie Martin's Orch.
8—Headlines
8:15—CBS, Casa Loma Orchestra
8:30—CBS, Johnny Hamp's Orch.
9—St. Francis Hotel Orchestra
9:30—Frank Cookson's Orchestra
10—World-Wide News
10:10—Claude Reimer, organist
10:15—Georgians; Islanders
11—Earl Dancer's Band
12 to 1 A.M.—Recordings

333.1 Meters KHJ Vandike 7111
900 Kcys. 1000 Watts
Don Lee Broadcast. System, L. A., Cal.
7 A.M. to 5—Various programs
5 P.M.—Fire Department Talks
5:15—Town Topics
5:20—CBS, Mark Warnow's Orch.
5:30—CBS, U. S. Marine Band
6—CBS, Deep River
6:30—CBS, Oldsmobile program
6:45—CBS, Gladys Rice
7:15—Chandu, the Magician
7:30—CBS program
7:45—Freddie Martin's Orchestra
8—Casa Loma Orchestra
8:15—Laff Clinic
9—Gus Arnheim's Orchestra
9:30—Frank Cookson Orchestra
10—News Items; Hollywood Mirror
10:15—Georgians; Islanders
11—Earl Dancer's Band
12 to 1 A.M.—Claude Reimer, organ

309.1 Meters KJR Seneca 1515
970 Kcys. 5000 Watts
Northwest Broad. System, Seattle, Wn.
(Seattle Daylight Saving Time)
8:30 A.M. to 1:15—Various programs
1:15—Master Works of the Piano
1:30—Musical Madcaps
2—NBC-KGO programs to 3
3—Recorded program
4—Sohl and Lundberg, vocalists
4:15—NBC programs to 5
5—Aeolean Trio
5:30—Recorded program
6—Dinner Dansant
6:30—Moment Musicale
6:45—Ralph's Racing Digest
7—Olympians (Abe Brashen)
7:30—Seattle Times News
7:45—Rhythmeers
8—Blue Streaks
8:30—Orpheus Ensemble
9—Viennese Vagabonds
9:30—Rhythm Aces
10—Woodwind Ensemble
11—Harp Solos, Hubert Graf
11:15 to 12 midnight—Orchestra

526 Meters KVI Broadway 4211
570 Kcys. 1000 Watts
Puget Sound Broadcast. Co., Tacoma
6 A.M. to 6—Various programs
6 P.M.—CBS, Deep River
6:30—CBS, Ted Husings Sport Talk
6:45—CBS, Gladys Rice with Orchestra
7:15—CBS, Phil Regan, tenor
7:30—CBS, "Singin' Sam"
7:45—CBS, Freddie Rich's Orch.
8—Baseball Game
9:45—Frank Cookson's Orchestra
10—Claude Reimer, Organist
10:15—The Georgians; Islanders
11 to 12 mid.—Earl Dancer's Orch.

265 Meters KSL Wasatch 3901
1130 Kcys. 50,000 Watts
Radio Serv. Corp. of Utah, Salt Lake
5:45 A.M. to 6—Various programs
6 P.M.—CBS, Deep River
6:30—CBS, Oldsmobile program
6:45—CBS, Gladys Rice and Orch.
7:15—Crazy Crystals program
7:30—CBS program
7:45—CBS, Freddie Martin's Orch.
8—Famous Furniture Stories
8:15—CBS, Glen Gray's Orchestra
8:30—CBS, Johnny Hamp's Orch.
9—Studio Music
9:30—Frank Cookson's Orchestra
10—Claude Reimer, organist
10:15—The Georgians
10:30 to 11 P.M.—The Islanders

508.2 Meters KHQ Main 5383
590 Kcys. 1000 Watts
Louis Wasmer, Inc., Spokane, Wash.
(Spokane Daylight Saving Time)

7 A.M. to 1—Various programs
1 P.M.—Sylvia Grey
1:15—NBC, Farm and Home Hour
2—Business and Pleasure
2:30—NBC, Trio Romantic
2:45—Club Bulletin
3—NBC, Al Pearce and Gang
4—NBC, Phantom Fiddlers
4:15—Theatrical Review
4:30—NBC, Concert Footlights
4:45—Studio program
5—NBC-KGO programs to 6:45
6:45—Crazy Wells
7—NBC, Whiteman and Jolson
8—NBC, Amos 'n' Andy
8:15—Thursday Review
8:30—NBC-KGO programs to 11:15
11:15—Radio Specials
11:45 to 1 A.M.—NBC, Dance Music

325.9 Meters KOMO Elliott 5890
920 Kcys. 1000 Watts
Fisher's Blend Station, Inc., Seattle
(Seattle Daylight Saving Time)

8 A.M. to 1—Various programs
1 P.M.—Betty
1:15—NBC, Farm and Home Hour
2—Melody Musketters
2:30—Vindabonians
3—NBC, Al Pearce and Gang
4—NBC, The Sizzlers
4:15—The Observer
4:30—Pastel Harmonies
5—NBC, Fleischmann Sunshine Hr.
6—NBC, Dance Journal
6:30—NBC, Memory's Melody
7—Whiteman's Orch. and Jolson
8:15—NBC, S. & W. Ghost Adventurer
8:30—NBC, Death Valley Days
9—NBC, Standard Symphony Hour
10—NBC, Capt. Henry's Show Boat
11—NBC, Richfield News Flashes
11:15 to 12 mid.—Dance Orchestra

483.6 Meters KGW Atwater 2121
620 Kcys. 1000 Watts
Morning Oregonian, Portland, Ore.
7 A.M. to 12—Various programs
12 noon—Oregonian of the Air
12:15—NBC-KGO programs to 1:30
1:30—Dental Clinic of the Air
1:45—NBC-KGO programs to 3
3—Crazy Crystals program
3:15—Allyn's prog.; Friendly Chat
4—NBC, Fleischmann Hour
5—NBC, Dance Journal
5:30—Highland Lassie
5:35—NBC, Memory's Melody
5:40—Southern Pacific
5:45—Collins and Erwin
6 to 12 mid.—NBC-KGO programs

319 Meters KOIN Atwater 3333
940 Kcys. 1000 Watts
The Journal, Portland, Oregon

6:30 A.M. to 6—Various programs
6 P.M.—CBS, Deep River
6:30—CBS, Barbara Maurel
6:45—CBS, Gladys Rice, soprano
7:15—CBS, Phil Regan, tenor
7:30—CBS Feature
7:45—Tarzan of the Apes
8—Seberling Singers
8:15—CBS, Glen Gray's Orchestra
8:30—CBS, Johnny Hamp's Orch.
9—Gus Arnheim's Orchestra
9:30—Dorothy Dix Dramatization
10—Claude Reimer, organist
10:15—Georgians Quartette
10:30—The Islanders
11 to 1 A.M.—Dance Music

FRIDAY Programs

September 15, 1933

379.5 Mtrs. **NBC-KGO** Sutter 1920
790 Kcys. 7500 Watts
National Broadcast. Co., San Francisco
7 A.M.—United States Marine Band
8—Ivy Scott, soprano
8:15—Lee S. Roberts' Memory Box
8:30—Merrie Men: Male quartet
8:45—Pat Kennedy, songs
9—Vic and Sade
9:15—The Buckaroos; Organ
10—Arion Trio
10:30—Woman's Magazine of the Air
11:30—To be announced
11:45—Financial Flashes
12 noon—Five Cards: Vocal, guitar
12:15—Farm and Home Hour
1—Norman L. Cloudtzer's Orchestra
1:30—Jack and Loretta Clemens
1:45—John and Ned, harmony duo
2—Al Pearce and Gang
3—Langendorf Pictorial
3:15—The Rollickers
3:30—Ernie Holist's Orchestra
4—The Family Cook Book
4:15—Pair of Pianos
4:45—Southern Harmony Four
5—Let's Listen to Harris
5:30—Out of the East
6—The First Nighter
6:30—Mario Cozzi, baritone
6:45—The Headline Hunter
7—Amos 'n' Andy
7:15—Chester Rowell
7:30—Fred Allen's Revue
8—Sports Headliners
8:15—Gilmore Circus
9:15—Phil Baker, Armour Jester
9:45—Tim and Irene: Comedy
10—Richfield News Flashes
10:15—Anson Weeks' Orchestra
11—Organ Concert
11:30 to 12 mid.—Kay Kyser's Orch.

440.9 Meters **KPO** Sutter 1920
680 Kcys. 50,000 Watts
National Broadcast. Co., San Francisco
7:30 A.M.—Dollo Sargent, organist
7:45—Financial Service
8—Organ Concert
8:15—Log o' the Day Crosscuts
9:15—Ralph Ginsberg Ensemble
9:30—Alvino Rey, guitarist
9:45—News
10—Tom Mitchell, baritone
10:15—Fashion Flashes
10:30—Canzonetta: Arion Trio
11—Sonata Recital
11:15—Shirley Howard, vocalist
11:30—Organ Concert
11:40—Pontiac Singers
11:45—Agricultural Bulletin
12 noon—State Department of Agric.
12:15—Midday Musicale
12:45—Commonwealth Club Lunch
1:30—Ann Warner's Chats
2—Elizabeth Arden program
2:05—Viennese Ensemble
2:30—News Service
2:45—Just Relax: Comedy sketch
3—Twenty Fingers of Harmony
3:15—Stringwood Ensemble
3:45—University of California prog.
4—Winston Petty, cellist
4:15—Eileen Figgott, soprano
4:30—Arion Trio
5:15—For Girls and Boys Only
5:45—News
6—Josef Hornik, concert orchestra
6:30—Kramarenko's Balalaika Orch.
6:45—Detectives Black and Blue
7—Edna Fischer, pianist
7:15—Tarzan of the Apes
7:30—Charles W. Hamp
7:45—To be announced
8—Mills Musical Playboys

8:15—Sports Revue
8:30—Maxim Lowe and Orchestra
9—Story Teller
9:30—Sunburst of Song
10—Tim Ryan's Nite Club
10:30—Piano Pictures
11—Ambassador Hotel Orchestra
11:30 to 12 midnight—Organ Concert

243.8 Meters **KYA** Prospect 3456
1230 Kcys. 1000 Watts
Pac. Broadcast. Corp., San Francisco
7:30 A.M. to 12—Various programs
12 noon—Scriptures; Concert
1—Hawaiians; Modern Maestros
1:45—NBC, Melodic Wandering
2—International Troubadours
2:30—Gould & Shefter, piano duo
2:45—Violin Masters; Organ
4—Artist Celebrities
4:30—Mountain Boys
5—Revue; Campbell Digest
6—Paraders; Waltz Idylls
6:45—"Eb and Zeb"
7—Bob Allen, piano stylist
7:15—Romance of Music
7:30—Maurice Gunsky Revue
8—John Wolohan's Orchestra
9—News Flashes
9:15—Jack and Ethel, "Roads to Hollywood"
9:30—Dance Hour
10—Organ Serenade
11 to 12 midnight—Concert Memories

535.4 Meters **KTAB** Garfield 4700
560 Kcys. 1000 Watts
Assoc. Broadcasters, Oakland, Calif.
7 A.M. to 1—Various programs
1 P.M.—Radio Frolic
1:30—Over the Teacups
2—News; Town Crier
3—X-Bar-B Boys
3:30—Studio program
4—The Old Rajah; Concert
5—Smile Club; Health Talk
6—Auto Question Box
6:15—Fishin' Pool; News
6:45—Ernie Smith's Sport Page
7—Elbert La Chelle, organist
7:15—Dot and Dash
7:30—Artist's Recital
7:45—Famous Campers
8—Song Recital, Refa Miller
8:15—American Weekly Drama
8:30—Miles of Melody
9—News; Souvenirs
9:45—Herb Allen, pianist
10—Musical Comedy program
10:30—Paul Kellar, pianist
10:45 to 12 mid.—Records; Orchestra

499.7 Meters **KFSD** Franklin 6353
600 Kcys. 1000 Watts
Airfan Radio Corp., Ltd., San Diego
7:30 A.M. to 5—Various programs
5 P.M.—Morales Entertainers
5:30—NBC, Out of the East
5:45—Carlton program
6—Safety Talk; Studio
6:15—Picturizing the News
6:30—NBC, Soloist
6:45—NBC, Floyd Gibbons
7—Studio program
7:15—NBC, Chester Rowell
7:30—NBC, Fred Allen's Revue
8—NBC, Mills Musical Playboys
8:15—Fairway Facts
8:30—L'Heure Exquise
9—Yucataca Duo
9:30—Piano Moods
9:45—To be announced
10—NBC, Richfield News Flashes
10:15 to 12 midnight—Dance Music

491.5 Meters **KFRG** Prospect 0100
610 Kcys. 1000 Watts
Don Lee Broadcast. System, S.F., Cal.
7 A.M.—Records; Stocks
7:30—Exercise Period
8—Program to be announced
8:15—CBS, Harold Knight's Orch.
8:30—CBS, Concert Miniatures
9—CBS, Frank La Marr's Orch
9:30—Betty Crocker, Cooking School
9:45—CBS, Madison Ensemble
10—CBS, Mark Warnow Orchestra
10:15—Mary Sears Garden Party
10:30—Artist Recital
10:45—CBS, Col. Educa. Features
11—Prudence, Penny
11:15—CBS, Alex Semmler, pianist
11:30—CBS, Harrisburg variety prog.
12 noon—Noonday Concert
1—Popular Selections
1:15—CBS, John Kelvin, tenor
1:30—Stocks; Records
1:45—CBS, Nat Brusiloff's Orchestra
2—Happy-Go-Lucky Hour
3—Feminine Fancies
4—Hodge Podge Lodge
4:30—CBS, Ann Leaf, organist
4:45—Lost and Found Items
4:50—Records; Town Topics
5—Soprano and Organist
5:15—CBS, Kate Smith
5:30—CBS, The Texas Rangers
5:45—Doc Williams
6—CBS, The Columbians
6:30—CBS, Alexander Woolcott
6:45—CBS, Evan Evans, baritone
7:15—CBS, Vera Van, contralto
7:30—CBS, Guy Lombardo's Orch.
7:45—Francisco Del Campo
8—Globe Headlines
8:15—S. and W. Mellor'd Melodies
8:30—CBS, Tom Gerwyn's Orchestra
9—Hotel St. Francis Orchestra
9:30—Symphonic Hour
10—Darrell Donnell, news
10:10—Claude Reimer, organist
10:15—Intimate Hollywood News
10:20—Nora Schiller and Two Pianos
10:30—Ruth Holloway and Orch.
11—Earl Dancer's Band
12 to 1 A.M.—Request Hour

340.7 Meters **KLX** Lake. 6000
880 Kcys. 1000 Watts
Tribune Pub. Co., Oakland, Calif.
8 A.M.—Records; Stocks
8:30—Covered Wagon Jubilee
9—Records; 9:15, Julia Lee Wright
9:30—Clinic of the Air
10:15—Stocks; News
10:30—International Kitchen
11—Studio program
11:30—Novelty Guitar Duo
11:45—Madelon Siverly and Nancy Ann Hersey
12 noon—Jack Delaney's Band
1—Jean's Hi-Lights; 1:30, News
2—Recordings; News
2:35—Better Business Talk
2:40—Stocks; Records
3:15—Lola Chatfield, pianist
3:30—News Flashes; Records
4:15—Brother Bob's Club
4:30—News Flashes
4:45—McCoy Health School
5—Covered Wagon Jubilee
5:30—Lovable Liars
5:45—Helen Parmelee, pianist
6—Hotel Oakland Trio
7—News Items
7:30—Dr. Ross Pet Clinic
7:45—Helen Parmelee, pianist
8—KLX Hi-Jinks
10 to 11 P.M.—Dance program

468.5 Meters KFI Richm'd 6111
640 Kcys. 50,000 Watts
Earle C. Anthony, Inc., Los Angeles
6:30 A.M. to 6—Various programs
6 P.M.—NBC, First Nighter
6:30—NBC, Mario Cozzi
6:45—L. A. County Fair program
7—NBC, Amos 'n' Andy
7:15—Horatius at the Bridge Table
7:30—NBC, Fred Allen's Gazette
8—Outdoor Girl Musical Gazette
8:15—NBC, Gilmore Circus
9:15—NBC, Armour Hour
9:45—NBC, Tim & Irene
10—NBC, Richfield Reporter
10:15 to 12 midnight—Dance Music

333.1 Meters KHJ VAndike 7111
900 Kcys. 1000 Watts
Don Lee Broadcast. System, L. A., Cal.
7 A.M. to 5—Various programs
5 P.M.—Town Topics
5:15—CBS, Kate Smith
5:30—CBS, Texas Rangers
5:45—CBS, In the Gloaming
6—CBS, The Columbians
6:30—CBS, Alexander Wolcott
6:45—CBS, Orchestra and Vocal
7:15—CBS, Vera Van
7:30—CBS, Guy Lombardo's Orch.
8—Globe Headlines
8:15—S. & W. Mellow'd Melodies
8:30—CBS, Tom Gerun's Orchestra
9—Hotel St. Francis Orchestra
9:30—Philharmonic Orchestra Group
10—News; Hollywood Mirror
10:15—Nora Schiller & Two Pianos
10:30—Berceuse, Ruth Holloway
11—Earl Dancer's Orchestra
12 to 1 A.M.—Midnight Moods

322.4 Meters KROW Glenc. 6774
930 Kcys. 1000 Watts
Educa. Broad. Corp., Oakland, Calif.
7 A.M. to 5—Various program
5 P.M.—Popular Records
5:15—Twilight Reveries
6—Gypsy Melodies
6:15—Dell Perry
6:30—Organ Echoes
7—Senator Loyal
7:15—Sports Review
7:30—Echoes of Yesterday
7:45—Transcription
8—Topics of the Day
8:15—Nellie Alsing
8:30—Vagabonds of the Hills
9—Wrestling Matches
10:30 to 12 midnight—Dance Music

225.4 Meters KGB Franklin 6151
1330 Kcys. 1000 Watts
Don Lee Broadcast. System, S. D., Cal.
7 A.M. to 5—Various programs
5 P.M.—Town Topics
5:15—CBS, Kate Smith
5:30—CBS, Texas Rangers
5:45—Eb and Zeb
6—CBS, Columbians
6:30—Town Crier
6:45—CBS, Evan Evans
7—Chandu
7:15—CBS, Vera Van and Orchestra
7:30—Tarzan
7:45—Francesco del Campo
8—Headlines; Recordings
8:30—CBS, Tom Gerun's Orchestra
9—Ted Fio-Rito Orchestra
9:30—Symphonic Hour
10—World-Wide News
10:15—Claude Reimer, organist
10:30—Berceuse
11—Earl Dancer's Band
12 to 1 A.M.—Recordings

285.5 Meters KNX Hemp. 4101
1050 Kcys. 25,000 Watts
Western Broadcast. Co., Los Angeles
6:45 A.M. to 6—Various programs
6 P.M.—News Service
6:15—Cowboy Revue
6:30—Lawrence King and Orchestra
6:45—"Growin' Up"
7—Frank Watanabe and Archie
7:15—"Black and Blue"
7:30—"The Hawk"
7:45—Count of Monte Cristo
8—Optimistic Revue
9—News Service
9:15—Organ recital
9:20—Dance Orchestra
9:30—Marion Mansfield
9:45—Hollywood Legion Fights
10:45 to 11 P.M.—Dance Orchestra

319 Meters KOIN Atwater 3333
940 Kcys. 1000 Watts
The Journal, Portland, Oregon
6:30 A.M. to 6—Various programs
6 P.M.—Columbia Feature
6:30—CBS, Alexander Woolcott
6:45—CBS, Orchestra and Vocalist
7:30—Black and Blue
7:45—Fishing Bulletin
8—CBS, Leon Belasco's Orchestra
8:15—S & W Mellow'd Melodies
8:30—Dance Music
8:45—"Navy Program"
9:15—Dance Music
9:30—Symphony Group
10 to 1 A.M.—Music

309.1 Meters KJR Seneca 1515
970 Kcys. 5000 Watts
Northwest Broad. System, Seattle, Wn.
(Seattle Daylight Saving Time)
8:30 A.M. to 1—Various programs
1 P.M.—Chamber of Comm. Lunch
1:30—Recorded program
2:30—NBC-KGO programs to 3
3—Recorded programs
4—Sohl and Lundberg, vocalists
4:15—NBC-KGO programs to 5
5—Steamboat Bill
5:15—Melody Musketeers
5:45—NBC, Southern Harmony Four
6—Concert Ensemble
6:30—Musical Madcaps
6:45—Ralph's Racing Digest
7—Lee Sisters
7:15—Tarzan (E. T.)
7:30—Seattle Times News
7:45—Northwest Mines Reporter
8—Blue Streaks
8:15—Wheat Reduction Campaign
8:30—The South Americans
8:45—Viennese Vagabonds
9—NBC, Mills Musical Playboys
9:15—Clef Dwellers; Ensemble
10—Merrie Maniacs
10:30—Tone Poems
10:45—Terrace Gardens Orchestra
11—Northern Lights
11:30 to 12 midnight—Orchestra

296.6 Meters KQW Ballard 777
1010 Kcys. 500 Watts
Pac. Agric. Foundation, Ltd., San Jose
6:30 A.M. to 6—Various programs
6 P.M.—Dinner Music
6:15—Franco's program
6:30—Fed. State Market Reports
6:45—Farmers' Exchange
7—Weather Forecast
7:03—Radio News and Forum
7:30—Minute Man
7:45—Famous Campers
8—San Jose Accordion Club
8:30—Junior Concert Orchestra
9—Fireside program
9:30 to 10 P.M.—Mauna Keans

483.6 Meters KGW Atwater 2121
620 Kcys. 1000 Watts
Morning Oregonian, Portland, Ore.
7 A.M. to 12—Various programs
12 noon—Oregonian of the Air
12:15—NBC, Farm and Home Hour
12:30—Pontiac Singers
12:45—O. M. Plummer
1—Manhattan Beach Band
1:30—Dental Clinic of the Air
1:45—NBC-KGO programs to 3:15
3:15—Allyn's prog.; Friendly Chat
4—NBC-KGO programs to 5:30
5:30—Supercurline program
5:35—NBC, Out of the East
5:45—Sam Gordon, the Kibitzer
6—NBC, First Nighter
6:30—The Arkansas Travellers
6:45—NBC-KGO programs to 7:15
7:15—News of the Air
7:20—Club Kaleidoscope; Orchestra
7:30—Fred Allen's Revue
8—Tarola Venetian Quarter Hour
8:15—NBC, Gilmore Circus
9:15—NBC, Armour Hour
9:45—Portland Cleaning Works
9:50 to 12 mid.—NBC-KGO progs.

325.9 Meters KOMO Elliott 5890
920 Kcys. 1000 Watts
Fisher's Blend Station, Inc., Seattle
(Seattle Daylight Saving Time)

8 A.M. to 1—Various programs
1 P.M.—Proctor's, Inc.; Betty
1:15—NBC, Farm and Home Hour
2—NBC, Manhattan Beach Band
2:30—Easy Chair; Red Shadow
3—NBC, Al Pearce and Gang
4—The Rollickers
4:15—The Observer
4:30—Pastel Harmonies
5—NBC, Winston Petty
5:15—NBC, Pair of Pianos
5:45—Melodists
6—NBC, Phil Harris Orchestra
6:30—NBC, Out of the East
7—NBC, The First Nighter
7:30—The Arkansas Travellers
7:45—Dollars and Cents
8—NBC, Amos 'n' Andy
8:15—Crazy Crystals Quartet
8:30—NBC, Best Foods Revue
9—Tess Wilson
9:15—NBC, Gilmore Circus
10:15—NBC, The Armour Hour
10:45—NBC, Tim & Irene
11—NBC, Richfield News Flashes
11:15 to 12 mid.—Dance Orchestra

508.2 Meters KHQ Main 5383
590 Kcys. 1000 Watts
Louis Wasmer, Inc., Spokane, Wash.
(Spokane Daylight Saving Time)

7:45 A.M. to 1—Various programs
1 P.M.—Sylvia Grey
1:15—NBC, Farm and Home Hour
2—Business and Pleasure
2:30—NBC, Jack and Loretta
2:45—Club Bulletin
3—NBC, Al Pearce and Gang
4—Prestolog program
4:15—Theatrical Review
4:30—Longview Country Club Orch.
5:15—NBC, Pair of Pianos
5:45—NBC-KGO programs to 6:30
6:30—Crazy Wells Water Co.
6:45—NBC-KGO programs to 7:30
7:30—Bohemian Breweries
8—NBC-KGO programs to 9
9—Black and Blue
9:30—Radio Specialties
10—The Hawk
10:15—NBC, Phil Baker
10:45—Musical program
11—Richfield News Flashes
11:15 to 1 A.M.—Dance Music

SATURDAY Programs · · · September 16, 1933

379.5 Mtrs. **NBC-KGO** Sutter 1920
790 Kcys. 7500 Watts
National Broadcast. Co., San Francisco

7 A.M.—Vass Family
7:15—Organ Concert
7:30—Down Lovers' Lane
8—Salt and Peanuts
8:15—American Legion Campaign
8:30—Syncoptors
9—Vic and Sade
9:15—Ralph Ginsberg's Ensemble
9:30—National Grange program
10:30—Woman's Magazine of the Air
11:30—Financial Flashes
11:35—Marshall's Mavericks
12 noon—Rhythm Rascals
12:15—Western Agriculture
1—Paul Ash's Orchestra
1:30—Organ Concert
1:45—John and Ned
2—Melody Mixers
3—Meyer Davis' Orchestra
3:30—Jack and Loretta Clemens
3:45—The Optimistic Mrs. Jones
4—Dick Messner's Orchestra
4:30—Edna Fischer, pianist
4:45—Stringwood Ensemble
5—Antobal's Cubans
5:15—Harry Stanton, basso
5:30—Organ Concert
6—Saturday Night Dancing Party
7—Chas. Hart Instrumentalists
7:30—Wm. Scotti Orchestra
8—Caswell Concert
8:15—Kramarenko's Balalaika Orch.
8:30—Maxim Lowe's Orchestra
9—Ted Weems' Orchestra
9:30—Benny Meroff's Orchestra
10—Kay Kyser's Orchestra
10:30—Serenata: Orchestra
11—Organ Concert
11:30 to 12 mid.—Rhythm Vendors

440.9 Meters **KPO** Sutter 1920
680 Kcys. 50,000 Watts
National Broadcast. Co., San Francisco

7:30 A.M.—Dollo Sargent, organist
7:45—Financial Service
8—Organ Concert
8:15—Log o' the Day Crosscuts
9:15—Arion Trio; 9:45, News
10—Tom Mitchell, baritone
10:15—Johnnie Toffol, accordionist
10:30—Concert Echoes
11—Words and Music
11:30—Wealth of Harmony
11:45—Agricultural Bulletins
12 noon—Dancing Masters
12:30—Concert Favorites; 1, News
1:15—Charles Runyan, organist
1:30—Arlene Jackson, blues singer
1:45—Three Scamps: Vocal trio
2—Viennese Ensemble
2:30—Drake's Drums: Drama
3—Arion Trio; 4, News
4:15—Paul Carson, organist
4:30—Sous Les Ponts de Paris
5—Graduation Exercises, American Institute of Banking
5:30—K-7: Secret Service spy story
6—Music Echoes: G. Taylor, soprano
6:30—Education at Crossroads
6:45—Irving Kennedy, tenor
7—Vincent Lopez' Orchestra
7:30—Kay Kyser's Orchestra
8—Ralph Kirby, dream singer
8:05—Dick Messner's Orchestra
8:15—Concert Petite
8:30—Magnolia Minstrels
9—Ted Weems' Orchestra
9:30—Anson Weeks' Orchestra
10—Jack Walton's Orchestra
10:30—Blue Moonlight
11—Ambassador Hotel Orchestra
11:30 to 12 midnight—Organ Concert

491.5 Meters **KFRC** Prospect 0100
610 Kcys. 1000 Watts
Don Lee Broadcast. System, S.F., Cal.

7 A.M.—Records; Exercise Period
8—Vincent Travers' Orchestra
8:30—CBS, Frank La Marr's Orch.
9—CBS, George Hall's Orchestra
9:30—CBS, Madison Ensemble
10—Junior Artists program
10:55—Church Announcements
11—CBS, Italian Idyll
11:15—Prudence Penny
11:30—CBS, Mark Warnow's Orch.
12 noon—Noonday Concert
1—CBS, Dancing by the Sea
1:30—Popular Selections
1:45—CBS, Tito Guizar, tenor
2—CBS, Irving Conn's Orchestra
2:30—Popular Selections
2:45—CBS, Eddie Duchin's Orch.
3—Frederick William Wile
3:15—Mildred Bailey, contralto
3:30—CBS, Hon. Elder Michaux
4—Lost and Found Items
4:05—Town Topics; Records
4:15—Hotel St. Francis Orchestra
4:45—CBS, Gertrude Niesen, vocalist
5—CBS, Ann Leaf, organist
5:15—Dance Music from England
5:30—CBS, Willard Robison's Orch.
6—CBS, Columbia Public Affairs
6:15—CBS, Isham Jones' Orchestra
6:30—CBS, Singing Strings
7—CBS, Jerry Freeman's Orchestra
7:30—CBS, Charlie Davis' Orch.
8—CBS, Barney Rapp's Orchestra
8:30—CBS, Hotel St. Francis Orch.
9—Ray West's Orchestra
10—Darrall Donnell, news
10:10—Hotel St. Francis Orchestra
11—Earl Dancer's Band
12 to 1 A.M.—Request Hour

243.8 Meters **KYA** Prospect 3456
1230 Kcys. 1000 Watts
Pac. Broadcast. Corp., San Francisco

7:30 A.M. to 12—Various programs
12 noon—Scriptures
12:03—Harmony Highlights; Concert
1:30—Hawaiian Entertainers
2—Rhythmic Ripples
2:30—Song Vogue; Organ
4—Symphony Series
4—Review; Campbell Digest
6—Paraders; Waltz Idylls
6:45—Lavender and Old Lace
7—Musical Novelties
7:15—Mountain Boys
7:30—Musical Whims
8—Virginia Miller, pianist
8:15—Serenaders; Tango Time
8:45—Bob Allen, piano stylist
9—News; Musical Strings
9:30—The Cub Reporters
9:45—Opera Phantoms; Organ
11 to 12 midnight—Concert Memories

322.4 Meters **KROW** Glenc. 6774
930 Kcys. 1000 Watts
Educa. Broad. Corp., Oakland, Calif.

7 A.M. to 5—Various programs
5 P.M.—Popular Records
5:15—Twilight Reveries
6—Gypsy Melodies; 6:15, Dell Perry
6:30—Organ Echoes
7—Senator Loyal
7:15—Sports Review
7:30—Poet's Gold
7:45—Jack Warren
8—Topics of the Day
8:15—Annette Thompson
8:30—Latin-American program
9:30—Italian program
10:30 to 12 midnight—Dance Music

535.4 Meters **KTAB** Garfield 4700
560 Kcys. 1000 Watts
Assoc. Broadcasters, Oakland, Calif.

7 A.M. to 1—Various programs
1—Concert, Lyric Ensemble
2—Ye Olde Towne Crier
3—Madelon Sevier, violinist
3:30—Lyric Ensemble
4—Troubadours; Studio program
4:45—Post-Enquirer Funnies
5—Young People's program
5:30—Travelogue
6—Hits of Broadway
6:30—Columbia News Page
6:45—Ernie Smith's Sport Page
7—Studio program
7:15—Isle of Dreams
7:45—Dot and Dash
8—Home Favorites
8:30—Jess Stafford's Orchestra
9—News; Souvenirs
9:45—Herb Allen, pianist
10—Kelli-Widner Orchestra
10:30—Paul Kellar, pianist
10:45 to 12 mid.—Records; Orchestra

340.7 Meters **KLX** Lake. 6000
880 Kcys. 1000 Watts
Tribune Pub. Co., Oakland, Calif.

8 A.M.—Records
8:30—Covered Wagon Jubilee
9—Records
9:30—Clinic of the Air
10:15—Financial Information
10:30—International Kitchen
11—Romance Behind the News
11:30—Novelty Guitar Duo
11:45—Fred Skinner
12:05 P.M.—Jack Delaney's Band
1—Jean's Hi-Lights
2—Recordings; News
2:45—Jean Ardath, pianist
3—Records; Guitar Duo
4:15—Brother Bob's Club
5—Covered Wagon Jubilee
5:30—Helen Parmelee, pianist
6—Hotel Oakland Trio
7—News; Clark Sisters
7:45—Studio program
8—Musical Soiree
9—Faucit Theater Players
9:30—Eleanor Nielsen and Oran Rickard; Thelma Olin
10 to 12 midnight—Dance program

508.2 Meters **KHQ** Main 5383
590 Kcys. 1000 Watts
Louis Wasmer, Inc., Spokane, Wash.
(Spokane Daylight Saving Time)

7:30 A.M. to 1—Various programs
1 P.M.—Sylvia Grey
1:15—NBC, Western Agriculture
2—Business and Pleasure
2:30—NBC, Organ Recital
2:45—Club Bulletin
3—NBC, Melody Mixers
4—NBC, Soloist
4:15—NBC, Annie Judy and Zeke
4:30—NBC, Jack and Loretta Clemmens
4:45—NBC, Optimistic Mrs. Jones
5—Tull and Gibbs Express
5:15—NBC, Waldorf Astoria Orch.
5:30—Sous Les Ponts De Paris
6—NBC, Antobal's Cubans
6—American Weekly
6—NBC, Charles Hart
8:30—NBC, Hotel Mountclair Orch.
9—NBC, Caswell Concert
9:15—NBC-KGO program
11—Radio Specialties
11:30—NBC, Blue Moonlight
12 to 1 A.M.—Dance Music

468.5 Meters **KFI** Richm'd 6111
640 Kcys. 50,000 Watts
Earle C. Anthony, Inc., Los Angeles
6:45 A.M. to 6—Various programs
6 P.M.—NBC, Saturday Night Dancing Party
7—NBC, Charles Hart, instrumentalists
7:15—L. A. County Fair program
7:30—NBC, Montclair Orchestra
8—NBC, Caswell Coffee Concert
8:15—To be announced
8:30—NBC, Maxim Lowe Orchestra
9—NBC, Ted Weems' Orch.
9:30—NBC, Benny Meroff Orch.
10 to 12 midnight—Dance Music

285.5 Meters **KNX** Hemp. 4101
1050 Kcys. 25,000 Watts
Western Broadcast. Co., Los Angeles
6:45 A.M. to 6—Various programs
6 P.M.—News Service
6:15—Electrical Transcription
6:30—Lawrence King and Orchestra
6:45—Philip Musgrave
7—Frank Watanabe and Archie
7:15—Julie Kellar, Harp Concert
7:30—Hotel Roosevelt Orchestra
8—KNX Varieties
9—News Service
9:15—Miles of Melody
9:45—Marion Mansfield
10 to 11 P.M.—Dance Orchestra

225.4 Meters **KGB** Franklin 6151
1330 Kcys. 1000 Watts
Don Lee Broadcast. System, S. D., Cal.
7 A.M. to 5—Various programs
5 P.M.—CBS, Ann Leaf, organist
5:15—Town Topics
5:20—CBS, Ann Leaf, organist
5:30—CBS, Willard Robinson
6:30—CBS, Singing Strings
7—Chandu
7:15—CBS, Dance Music
10—World-Wide News
10:10—Ted Fio-Rito's Orchestra
11—Dance Orchestra
12 to 1 A.M.—Recordings

325.9 Meters **KOMO** Elliott 5890
920 Kcys. 1000 Watts
Fisher's Blend Station, Inc., Seattle
(Seattle Daylight Saving Time)
8 A.M. to 12:30—Various programs
12:30 P.M.—Smoke Rings
12:45—Grain Reports
12:48—The Olympians
1:15—NBC, Western Agriculture
2—Rhapsody in Rhythm
2:30—Uncle Frank's Matinee
3—NBC, Melody Mixers
4—NBC, Meyer Davis Orchestra
4:15—The Observer
4:30—Artistic Ensemble
5—Melody Musketeers
5:30—Sous Les Ponts De Paris
6—NBC, Antobals Cubans
6:30—NBC, K-7 Drama
7—Saturday Night Dancing party
8—Pastel Harmonies
8:30—NBC, Maxim Lowe Orch.
9—NBC, Caswell Coffee Concert
9:15—Lee Sisters
9:30—Fisher's Blend Half Hour
10—Melodic Moods; Nocturne
11 to 12 mid.—Dance Orchestra

333.1 Meters **KHJ** Vandike 7111
900 Kcys. 1000 Watts
Don Lee Broadcast. System, L. A. Cal.
7 A.M. to 5—Various programs
5 P.M.—Ann Leaf and Chas. Carlile
5:30—CBS, Willard Robinson's Orch.
6—CBS, Isham Jones' Orchestra
7—CBS, Jerry Freeman's Orchestra
7:15—Chandu, the Magician
7:30—CBS, Charles Davis' Orchestra
8—CBS, Barney Rapp's Orchestra
8:30—Hotel St. Francis Orchestra
9—Orchestra; News
10:10—Hotel St. Francis Orchestra
11—Dance Orchestra
12 to 1 A.M.—Claude Reimer, organ

499.7 Meters **KFSD** Franklin 6353
600 Kcys. 1000 Watts
Airfan Radio Corp., Ltd., San Diego
7:30 A.M. to 5—Various programs
5 P.M.—NBC, Antobals Cubans
5:30—NBC, K-7: Drama
6—Studio program
6:15—Ray de O'Fan
6:30—Thurman Robertson and Ed-die Cota
7—Musical program
7:30—NBC, Hotel Montclair
8—American Weekly
8:15—NBC, Balalaika Orchestra
8:30—NBC Dance Music
10:30—NBC, Blue Moonlight
11 to 12 midnight—Dance Music

483.6 Meters **KGW** Atwater 2121
620 Kcys. 1000 Watts
Morning Oregonian, Portland, Ore.
7 A.M. to 12—Various programs
12 noon—Oregonian of the Air
1:15—Star Furniture Company
1:15—NBC, Casino Orchestra
1:30—Dental Clinic of the Air
1:45—NBC-KGO programs to 3:15
3:15—Alyn's prog.; Friendly Chat
4—NBC-KGO programs to 8:15
8:15—Mark Daniels, baritone
8:30—Fisher's Blend Half Hour
9—Homer Siegfried, tenor
9:15—String Duo
9:30—Revue on Broadway
10—Dance Music
10:30—Blue Moonlight
11 to 12 midnight—Dance Music

309.1 Meters **KJR** Seneca 1515
970 Kcys. 5000 Watts
Northwest Broad. System, Seattle, Wn.
(Seattle Daylight Saving Time)
8:30 A.M. to 1—Various programs
1 P.M.—NBC, Rhythm Rascals
1:15—Master Works of the Piano
1:30—Musical Madcaps
2—NBC-KGO programs to 3
3—Afternoon Concert
3:30—Over the Skyways, talk
3:45—Recorded program
4—NBC-KGO programs to 5:30
5:30—Recorded program
6—Dinner Dansant
6:30—Musical Etchings
6:45—Ralph's Racing Digest
7—Aeolian Trio
7:30—Seattle Times News
7:45—Blue Streaks

8—NBC, Charles Hart
8:30—Latin American Nights
9—Recorded program
9:15—To be announced
9:30—Dance Music
11:30 to 12—NBC, Blue Moonlight

526 Meters **KVI** Broadway 4211
570 Kcys. 1000 Watts
Puget Sound Broadcast. Co., Tacoma
6 A.M. to 6—Various programs
6 P.M.—Columbia Public Affairs
6:15—Mary March
6:30—CBS, Singing Strings
7—CBS, Jerry Freeman's Orch.
7:30—Baseball Game
9—To be announced
10—Ted Fio Rito's Orchestra
10:45—Johnny Robinson's Orch.
11 to 12 mid.—Earl Dancer's Orch.

319 Meters **KOIN** Atwater 3333
940 Kcys. 1000 Watts
The Journal, Portland, Oregon
6:30 A.M. to 6—Various programs
6 P.M.—CBS, Isham Jones' Orch.
6:30—CBS, Columbia Exchange prog.
7—CBS, Jerry Freeman's Orchestra
7:30—CBS, Charlie Davis' Orchestra
7:45—Tarzan of the Apes
8—CBS, Orchestra
9—McElroy's Oregonians
9:30—CBS, Orchestra
10:30 to 1 A.M.—Dance Music

265 Meters **KSL** Wasatch 3901
1130 Kcys. 50,000 Watts
Radio Serv. Corp. of Utah, Salt Lake
5:45 A.M. to 5—Various programs
5 P.M.—CBS, Ann Leaf, organist
5:30—Saturday Night Meditations
5:45—CBS, Willard Robinson's Orch.
6—Columbia Public Affairs
6:15—CBS, Isham Jones' Orchestra
6:30—CBS, Singing Strings
7—CBS, Jerry Freeman's Orchestra
7:30—Peter Spraynozzle
8—CBS, Barney Rapp's Orchestra
8:30—Ted Fio-Rito's Orchestra
9—Jack Passey's Orchestra
9:30—Old Mill Dance Band
10 to 11 P.M.—Gus Arnheim's Orch.

280.2 Meters **KJBS** Ord. 4148-49
1070 Kcys. 100 Watts
J. Brunton & Sons, San Francisco
6 A.M. to 8:15—Records; News
6:15 P.M.—Silent period
12:01 to 8 A.M.—Owl program

296.6 Meters **KQW** Ballard 777
1010 Kcys. 500 Watts
Pac. Agric. Foundation, Ltd., San Jose
6:30 A.M. to 6—Various programs
6 P.M.—Dinner Music
6:15—Franco's program
6:30—Band Music
6:45—Farmers' Exchange and Market Place
7—U. S. Weather Forecast
7:03—Radio News and Forum
7:20—Twenty Minutes in Paris
7:30—Soul of Portugal
8—Music Lovers' Half-hour
8:30—Spanish program
8:45 to 10 P.M.—Italian program

Published weekly by the Broadcast Weekly Publishing Company, 36 Powell Street, San Francisco, Calif.
Telephone DOuglas 5272

Vol. XII, No. 36

A. J. URBAIN, Editor and Publisher

September 2, 1933

Yearly subscription: \$2 in the United States. Entered as second class matter, March 25, 1923,
at the Post Office, San Francisco, Calif., under Act of March 3, 1879.

Copyright, 1933, by Broadcast Weekly Publishing Company.

DO YOU BELIEVE IN GHOSTS?

S&W presents: Harold P. Burdick

★ **S&W GHOST ADVENTURER**

*A brand new type of radio entertainment...
tense ... dramatic ... thrilling ... true!*

DIAL NBC

KGO - San Francisco
KCW - Portland

KFI - Los Angeles
KOMO - Seattle

TWICE WEEKLY

Every SUNDAY at 9:00 p.m. (Beginning September 3)
Every THURSDAY at 7:15 p.m. (Beginning September 7*)

*Until Sept. 24, then 9:15 p.m.



DO YOU LIKE GOLDEN VOICES?



S&W presents:

★ **S&W MELLOW'D MELODIES**

RAYMOND PAIGE, *symphonic conductor,*
with HAZEL WARNER and NORMAN
NIELSEN, *songbirds of the West.*

DIAL DON LEE - CBS

KFRC - San Francisco
KFBK - Sacramento
KOIN - Portland
KOL - Seattle
KVI - Tacoma

KIJ - Los Angeles
KDB - Santa Barbara
KERN - Bakersfield
KMJ - Fresno
KWC - Stockton

TWICE WEEKLY

Every FRIDAY at 8:15 p.m. (Beginning September 1)
Every TUESDAY at 8:15 p.m. (Beginning September 5)

S&W



**FINE FOOD
PRODUCTS**