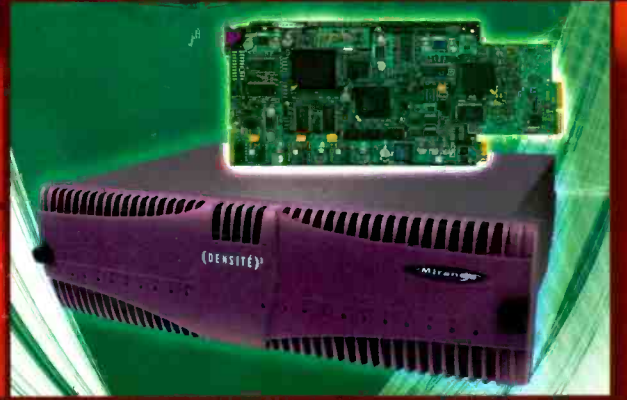


A supplement to **BroadcastEngineering** magazine - June 2008

Special Report

Hot new products from **NAB2008**





WHEATSTONE D-9 Audio Control Surface
at WPEC-TV, West Palm Beach, Florida

Hands ON or Hands OFF, Wheatstone TV Gets the Job Done

ALL Wheatstone D-Series digital audio control surfaces have traditional layouts, making them operator friendly—no long learning curve required. From our smaller D-7 through the D-9, D-10 and feature-rich D-12, right on up to our D-5.1 master audio control console, all Wheatstone networked audio control surfaces are *also* AUTOMATION READY, giving you the *best* of both worlds.

Choose Wheatstone digital for your television audio solutions!



D-5.1 Master Control

 **Wheatstone**



Many Affordable HD Camcorders.

Only One Lens Standard: Canon HDgc.

Canon's HDgc lenses are fast becoming the standard for today's affordable HD camcorders. The HDgc line features a complete range of lenses for major brand tapeless and tape-based affordable HD camcorders using 2/3, 1/2, and 1/3-inch image formats. These

HD camcorders, which are being used for news-gathering and economical production, including documentaries and industrial applications, perform at their optical best when outfitted with a Canon HDgc lens. Maximize your affordable HD camcorder with Canon's HDgc lenses.

HDGC

The Lens Creates the Image

Find out more at canonbroadcast.com

1-800-321-HDTV (Canada: 905-795-2012)

Canon

*image*ANYWARE

©2008 Canon U.S.A., Inc. All rights reserved. Canon is a registered trademark of Canon Inc. in the United States and may also be a registered trademark or trademark in other countries. IMAGEANYWARE is a trademark of Canon. All logos trademarked by their respective companies.

SPECIALREPORT

COVERAGE YOU CAN DEPEND ON

Even after four days and miles of walking, it's impossible to see everything on the NAB exhibit floor. There isn't enough time — or shoe leather — to see it all.

Readers tell us that their top reason to attend NAB is to research products for possible purchase. But as the show grows ever larger, it becomes even more difficult to find what you're looking for. And, if you can't attend the exhibition, it's even harder to discover the new ideas and solutions that were introduced at the show.

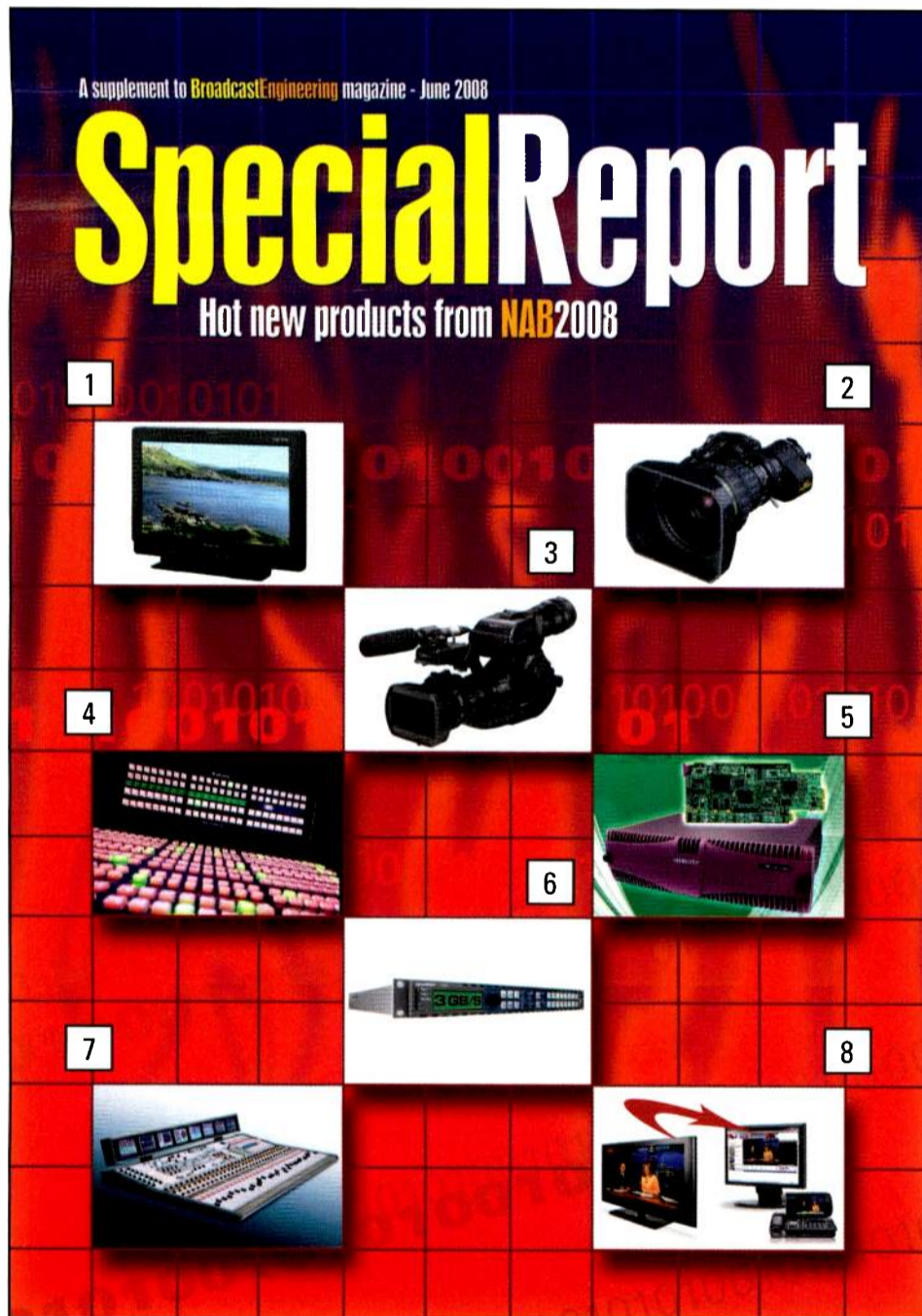
To help you unearth the technology gems that lie in that 3.2-million sq-ft exhibit hall, *Broadcast Engineering* brings our team of more than a dozen editors and consultants to cover the event. Combined, these experts travel to all the booths and see all the products, so you don't have to.

We then pool our knowledge in this special *Broadcast Engineering* product guide. It's full of new products and services you may have missed or simply need more information about.

So, read on, because whether you attended or not, hundreds of new discoveries are just pages away.

Brad Dick

Brad Dick, editorial director



ON THE COVER

1. Panasonic BT-LH1760
2. Fujinon HA23x7.6
3. Sony PME-EX3
4. Snell & Wilcox Kahuna
5. Miranda Densité IRD
6. Harris X85 3G
7. Wheatstone D12
8. Thomson MediaFUSE

Editorial Director:

Brad Dick, brad.dick@penton.com

Editor: World Edition:

David Austerberry, editor@broadcastengineeringworld.com

Managing Editor:

Susan Anderson, susan.anderson@penton.com

Assoc. Editor:

Collin LaJoie, collin.lajoie@penton.com

Assoc. Editor:

Angela Snell, angela.snell@penton.com

Assoc. Editor:

Spring Suptic, spring.suptic@penton.com

Sr. Art Director:

Michael J. Knust, mike.knust@penton.com

Art Director:

Robin Metheny, robin.metheny@penton.com

Technical Consultants:

Computers & Networking – Brad Gilmer
Antennas/Radiation – Don Markley
Digital Video – Aldo Cugini
Transmission Facilities – Donald L. Markley
Legal – Harry C. Martin
New Technology – John Luff
Industry Watcher – Anthony Gargano
New Media – Craig Birkmaier

Division VP/Group Publisher:

Jonathan Chalon, jonathan.chalon@penton.com

Marketing Dir.:

Kirby Asplund, kirby.asplund@penton.com

Dir., Online Product Development:

Dean Muscio, dean.muscio@penton.com

Vice President of Production:

Lisa Parks, lisa.parks@penton.com

Production Manager:

Kathy Daniels, kathy.daniels@penton.com

Classified Ad Coord.:

Sarah Maxey, sarah.maxey@penton.com

Dir., Audience Marketing:

Barbara Kummer, barbara.kummer@penton.com

Group Show Director/LDI:

Sharon Morabito, sharon.morabito@penton.com

Penton Media

Penton Media, Inc., 249 West 17th Street,
New York, NY 10011

Chief Executive Officer:

John French, john.french@penton.com

Chief Revenue Officer:

Darrell Denny, darrell.denny@penton.com

SALES OFFICES

US/CANADA WEST

George Watts III
(360) 546-0379; Fax: (360) 546-0388
georgeww3@aol.com

EAST

Josh Gordon
(718) 802-0488; Fax: (718) 522-4751
jgordon5@bellatlantic.net

MIDWEST

Emily Kalmus
(312) 840-8492; Fax: (913) 514-6301
emily.kalmus@penton.com

MEMBER ORGANIZATIONS

Sustaining Member of:

• Society of Broadcast Engineers

Member, American Business Media; Member, BPA

International,

The Missouri Association of Publications



BE US/Canada SUBSCRIPTION RATES: Free and controlled circulation to qualified subscribers. Non-qualified persons may subscribe at the following rates (Prices subject to change): USA and Canada, 1 year, \$99.00, 2 years, \$171.00, 3 years, \$242.00; Outside USA and Canada, 1 year, \$116, 2 years, \$204.00, 3 years, \$292.00 surface mail (1 year, \$193.00, 2 years, \$347.00, 3 years, \$506.00 airmail delivery).

BE World SUBSCRIPTION RATES: Free and controlled circulation to qualified subscribers. Non-qualified persons may subscribe at the following rates (Prices subject to change): USA, 1 year, \$94.00, 2 years, \$160.00, 3 years, \$226.00; Outside USA, 1 year, \$110, 2 years, \$193.00, 3 years, \$275.00 surface mail (1 year, \$182.00, 2 years, \$336.00, 3 years, \$490.00 airmail delivery).

ARCHIVES AND MICROFORM: This magazine is available for research and retrieval of selected archived articles from leading electronic databases and online search services, including Factiva, LexisNexis and Proquest. For microform availability, contact National Archive Publishing Company at 800-521-0600 or 734-761-4700, or search the Serials in Microform listings at napubco.com.

REPRINTS: Contact Penton Reprints to purchase quality custom reprints or e-prints of articles appearing in this publication at 888-858-8851. Website: www.pentonreprints.com. Email: reprints@pentonreprints.com

PHOTOCOPIES: Authorization to photocopy articles for internal corporate, personal, or instructional use may be obtained from the Copyright Clearance Center (CCC) at 978-750-8400. Obtain further information at copyright.com.

PRIVACY POLICY: Your privacy is a priority to us. For a detailed policy statement about privacy and information dissemination practices related to Penton Media products, please visit our Web site at www.penton.com.

EDITORIAL and BUSINESS OFFICE: Penton Media, 9800 Metcalf, Overland Park, Kansas 66212 • 913-341-1300 • penton.com

Copyright 2008, Penton Media, Inc. All rights reserved.

INTERNATIONAL EUROPE

Richard Woolley
+44-1295-278-407
Fax: +44-1295-278-408
richardwoolley@btclick.com

Israel

Asa Talbar
Talbar Media
+972-3-5629565; Fax: +972-3-5629567
talbar@inter.net.il

JAPAN

Mashy Yoshikawa
Orient Echo, Inc.
+81-3-3235-5961; Fax: +81-3-3235-5852
mashy@fa2.so-net.ne.jp

CLASSIFIED ADVERTISING

Susan Schaefer
(484) 478-0154
Fax: (484) 478-0179
susan.schaefer@penton.com

REPRINTS

Penton Reprints
888-858-8851
www.pentonreprints.com

LIST RENTAL SERVICES

Marie Briganti, Walter Karl
(845) 620-0700
(845) 620-1885
marie.briganti@walterkarl.infousa.com

Customer Service: 913-967-1707 or 800-441-0294

Broadcast Engineering, June 2008, Vol. 49, No. 6 (ISSN 0007-1994) is published monthly and mailed free to qualified persons by Penton Media, Inc. 9800 Metcalf Ave., Overland Park, KS 66212-2216. Periodicals postage paid at Shawnee Mission, KS, and additional mailing offices. Canadian Post Publications Mail Agreement No. 40612608. Canada return address: Bleuchip International, P.O. Box 25542, London, ON N6C 6B2. POSTMASTER: Send address changes to Broadcast Engineering, P.O. Box 2100, Skokie, IL 60076-7800 USA. CORRESPONDENCE: Editorial and Advertising: 9800 Metcalf, Overland Park, KS 66212-2216 Phone: 913-341-1300; Edit. fax: 913-967-1905. Advert. fax: 913-967-1904. © 2008 by Penton Media, Inc. All rights reserved.

You want it all?



No problem.

It's a multiformat world, and the new FS1 brings it all together...at a breakthrough price.

Turn SD into HD, HD into SD, or HD 1080 into 720 (and vice versa), with FS1's hardware-based 10-bit up/down/cross-conversion.

Embed and disembed audio.

Mate analog and digital. Video. Audio. HD captioning. Whatever.

FS1 not only interfaces to all of your equipment, but also with your facility via its LAN-based web-server and SNMP monitoring. Push a button, or talk to it from across the web.

Put FS1 in the middle of your facility, and see how it makes nice with your gear, your multiformat needs, your engineers...and your budget.



FS1 rear panel

Check out our website, or give us a call to find an Authorized AJA Converter Dealer near you.

www.aja.com
800.251.4224

AJA
VIDEO SYSTEMS

MOBILE TRANSMITTER **ELBER WLCT-01**

Ideal in situations where portability and mobility is important; incorporates MPEG-2 and COFDM technologies; features an optional 36MHz IF frequency output and a frequency range from 2.1GHz to 2.5GHz; supports 6MHz, 7MHz or 8MHz bandwidths; features low power consumption.

+39 0185 351 333; www.elber.com

WEB-BASED **AUTOMATION CONTROL** **FLORICAL SYSTEMS** **S.M.A.R.T. CENTRAL**

Gateway into the automation system allows the user to log into the system to monitor all controlled channels in the network, control any individual channel, make edits to schedules, create orders for long-form acquisition, manage the SQL server 2005 database and retrieve valuable reports within the system.

352-372-8326; www.florical.com

LCD PRODUCTION MONITOR **PANASONIC BT-LH1760**



Uses a new In-Plane Switching panel with 1280 x 768-pixel native resolution; features a 120Hz refresh rate, enabling the monitor to handle fast-motion content and minimizing image blur; equipped with a built-in waveform monitor and vectorscope that display all picture lines for signal level monitoring; features an array of input/outputs to support virtually any production task, such as DVI-D input and two auto-switching HD-SDI/SDI inputs.

201-392-412

www.panasonic.com/broadcast

BASE STATION SYSTEM **ADC FLEXWAVE BSS**

Provides converged in-building and outdoor GSM, GPRS and EDGE coverage and capacity; includes the nanoBTS, microBTS, a base station controller and integrated management.

952-917-0279; www.adc.com

INFORMATION **MANAGEMENT TOOL** **VIMSOFT VIMSOFT LIVE**

Provides clients using VimBiz with seamless, live access to a continuously evolving product database; includes product images searchable in thumbnail view, manufacturers, models, types, descriptions, notes and pricing information; imports product information to the user's local VimBiz database with a single click; features drag-and-drop functionality.

506-855-9037; www.vimsoft.ca

HD LENS **FUJINON HA23X7.6BE**



Features 23X magnification and a focal length ranging from 7.6mm at the wide end, zooming out to 175mm for extreme telephoto; at 1X, features a maximum relative aperture of 1:1.8 to 122mm and 1:2.65 at 175mm with a minimum object distance of .8m from the front of the lens.

973-633-5600

www.fujinonbroadcast.com

CAMERA SUPPORT SYSTEM **SACHTLER SOOM**

Designed for Mini DV to HDV camcorders; configures into four distinct support tools; in Soom TriPod mode, the system's 75mm bowl can be mated to a Sachtler FSB or other fluid head and features single-stage legs providing a vertical height range from 0.68m to 1.42m; for more height, the unit becomes HiPod — via its SOOM Tube integrated center column — telescoping vertically to a variable lens height of more than 2.4m; in Monopod configuration, the SOOM Tube removes from the tripod to function as a monopod with a height range of 0.86m to 1.57m; for going low, the TriSpread midlevel spreader removes from the standard tripod to become a single-stage baby tripod with a height range of 20.32cm to 48.26cm.

845-268-0100; www.sachtler.us

LIVE SHOT SETUP **NSI ONE TOUCH**

Automatically sets up ENG live shots via the NSI MC5 remote control at the studio; aligns the transmit and central receive antennas, selects the channel and antenna polarization, sets the transmitter power output and optimizes the LNA level at the touch of a button.

410-964-8400; www.nsystems.com

INTEGRATED RECEIVERS/ **DECODERS** **MIRANDA TECHNOLOGIES** **DENSITÉ IRD**

Designed for feed aggregation, distribution and monitoring; available as IRD-3801 MPEG-2/4 decoder with ASI, GigE inputs and IRD-3811 MPEG-2/4 receiver/decoder with ASI, RF inputs; audio processing capabilities include selectable stereo downmix modes of decoded MPEG-1 and AC-3 audio; features downconversion on the output and baseband and compressed domain probing; decodes metadata including closed-captioning, AFD, V-chip and DVITC time code.

514-333-1772; www.miranda.com

DIGITAL AUDIO **CONTROL SURFACE** **WHEATSTONE D-12**

Features 5.1 surround sound plus three stereo masters, router-based source/destination selection, eight stereo subgroup mixes and sends, eight mix-minus outputs that can be expanded, four DCM faders, delay inputs or outputs in frames or milliseconds, programmable talkback communication, 12 programmable switches, redundant power supply option, switched meters with systemwide access, dedicated LCD display per function and shareable I/O among multiple surfaces.

252-638-7000; www.wheatstone.com

IPTV TRANSPORT SYSTEM **ENENSYS GIGACASTER**

Allows simultaneous MPEG-2 transport stream encapsulation and de-encapsulation, independent FEC schemes, easy NMS integration through native SNMP support and real-time monitoring.

949-226-8056; www.enensys.com



The Ultimate File-Based Audio Processor. Now with New Upmixing Functionality.



Dolby DP600 Program Optimizer

For file-based broadcast and postproduction environments, the Dolby® DP600 Program Optimizer ensures loudness consistency from program to program, between programs and commercials, or between the channels within your service. Postproduction, terrestrial networks, affiliates, and cable, satellite, and IPTV operators can equally benefit from the DP600, which automatically analyzes and normalizes the loudness of programs in standard broadcast file formats.

The DP600-C version adds faster-than-real-time encoding, decoding, and transcoding of Dolby Digital, Dolby Digital Plus, Dolby E, and MPEG-1 LII formats.

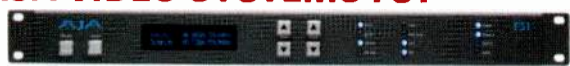
New for both DP600 configurations is an optional software upgrade that adds intelligent file-based upmixing functionality based on a newly developed Dolby algorithm. It automatically creates 5.1-channel programs from stereo or Lt/Rt sources, and easily integrates into a work profile along with loudness correction, encoding, decoding, or transcoding.

The Dolby DP600 Program Optimizer is the complete audio processing answer for file-based work flows that saves time and money. For more information, visit www.dolby.com/dp600.

DP600 and DP600-C Applications

- Broadcast media file QC and loudness correction
- Broadcast media file transcoding
- File-based program upmixing
- VOD file analysis and loudness correction
- Loudness correction for digital program insertion (DPI)

UNIVERSAL SD/HD A/V FRAME SYNC/CONVERTER AJA VIDEO SYSTEMS FS1



Works with both HD/SD video in full 10-bit broadcast-quality video and 24-bit audio; up/downconverts between SD and HD and provides simultaneous HD and SD outputs; supports virtually any input or output (analog or digital), eight-channel AES, balanced analog or embedded audio, closed-captioning and its conversion between SD and HD and Web-based remote control.

530-274-2048; www.aja.com

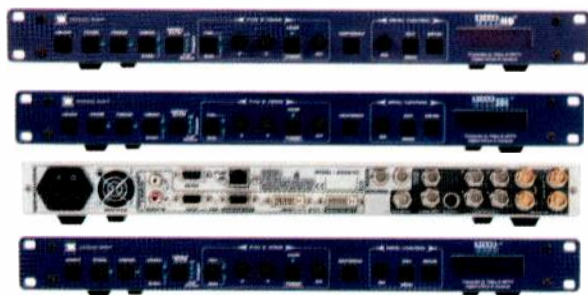
CONTENT REPURPOSING/ MULTIDISTRIBUTION SYSTEM THOMSON GRASS VALLEY MEDIAFUSE

Leverages the Ignite system to support multiple platforms; helps manage content throughout the production chain; enables stations to add more commercial spot avail time to existing content, while enabling the creation of more content; allows the simultaneous production of Web, mobile and IPTV broadcast materials in real time for live and on-demand applications.

800-547-8949

www.thomsongrassvalley.com

SCAN CONVERTERS ANALOG WAY BROAD SCAN RANGE



Computer-to-video and HDTV scan converters fitted with digital DVI and analog RGB inputs; convert workstation, PC or Mac graphic images up to 1600 x 1200 at 60Hz (1920 x 1200 RB) into NTSC/PAL video or HDTV formats; feature genlocks fitted with loop-through outputs allowing for device chaining and real-time conversion with high-performance image processing; include LCD screen and computer input format memory, which stores up to 16 user presets corresponding to 16 different input formats.

212-269-1902; www.analogway.com

LINEAR AUDIO MODULE APT WORLDNET OSLO



Available as a tailored solution or in a variety of preconfigured system packages specifically for IP STL, T1 STL or HD radio applications; can multiplex anywhere from two to 14 stereo pairs through a single chassis and both analog and AES/EBU audio modules; features DSP-based architecture, hot-swappable modules, passive backplane and various failsafe options including redundant PSUs and automatic backup switching.

617-923-2260; www.aptx.com

DTV MONITORING UNIT AUDEMAT GOLDENEAGLE ATSC

Multistation (up to 40 stations) DTV monitoring unit for 8-VSB and MPEG-2 monitoring; monitors 24/7 the quality and continuity of services; automatically notifies out-of-tolerance conditions to the relevant person; enables the technical staff to quickly and remotely identify the point of failure; helps reduce the costs of operation by combining RF and MPEG-2 monitoring as well as transmitter remote control capabilities within the same unit.

305-249-3110; www.audemat.com

VGA SCALER AVOCENT VSS1000P

Provides conversion from composite and S-video formats to computer or HDTV signals as well as bidirectional conversion between computer graphics and HDTV signals.

954-746-9000; www.avocent.com

AUDIO SYSTEM AVT MAGIC E1

Consists of a MAGIC E1 MUX Multiplexer and up to 10 MAGIC AC1 XIP RM audio codecs or MAGIC AD1 XIP RM audio decoders; can transmit up to 10 stereo audio signals via 2Mb/s (E1) interface; can be used for the transmission of audio signals from one studio to several transmitter sites; enables the monitoring of the complete audio network via SNMP.

+49 911 527 10; www.avt-nbg.de

SMALL DUAL-CHANNEL UHF RECEIVER

AZDEN 320PR

Features discrete two-channel UHF receiver with stereo output, 240 user-selectable frequencies for each channel, dual digital LCD displays with multifunction readout and separate power on-off switch for each channel; comes with both dual-plug XLR and stereo mini-plug output cables, flexible high-gain antennas and a dual-function DC jack for charging batteries in-camera or to power from an external source.

800-247-4501; www.azdencorp.com

HD CAMERA LENSES BAND PRO FILM & DIGITAL CARL ZEISS DIGIPRIME



Carl Zeiss DigiPrime 135mm T1.9 and 52mm T1.6 lenses are built for 2/3in 3CCD HD cinematography cameras; feature standard-pitch zoom, focus and iris gears, brightly marked oversized windowed cine scales and highly-accurate, individually calibrated focus scales.

818-841-9655; www.bandpro.com

SOLID-STATE TRANSMITTER AXCERA INNOVATOR HX

Available in UHF, VHF, 8-VSB, COFDM and analog and in internally and externally diplexed configurations for analog VHF operation.

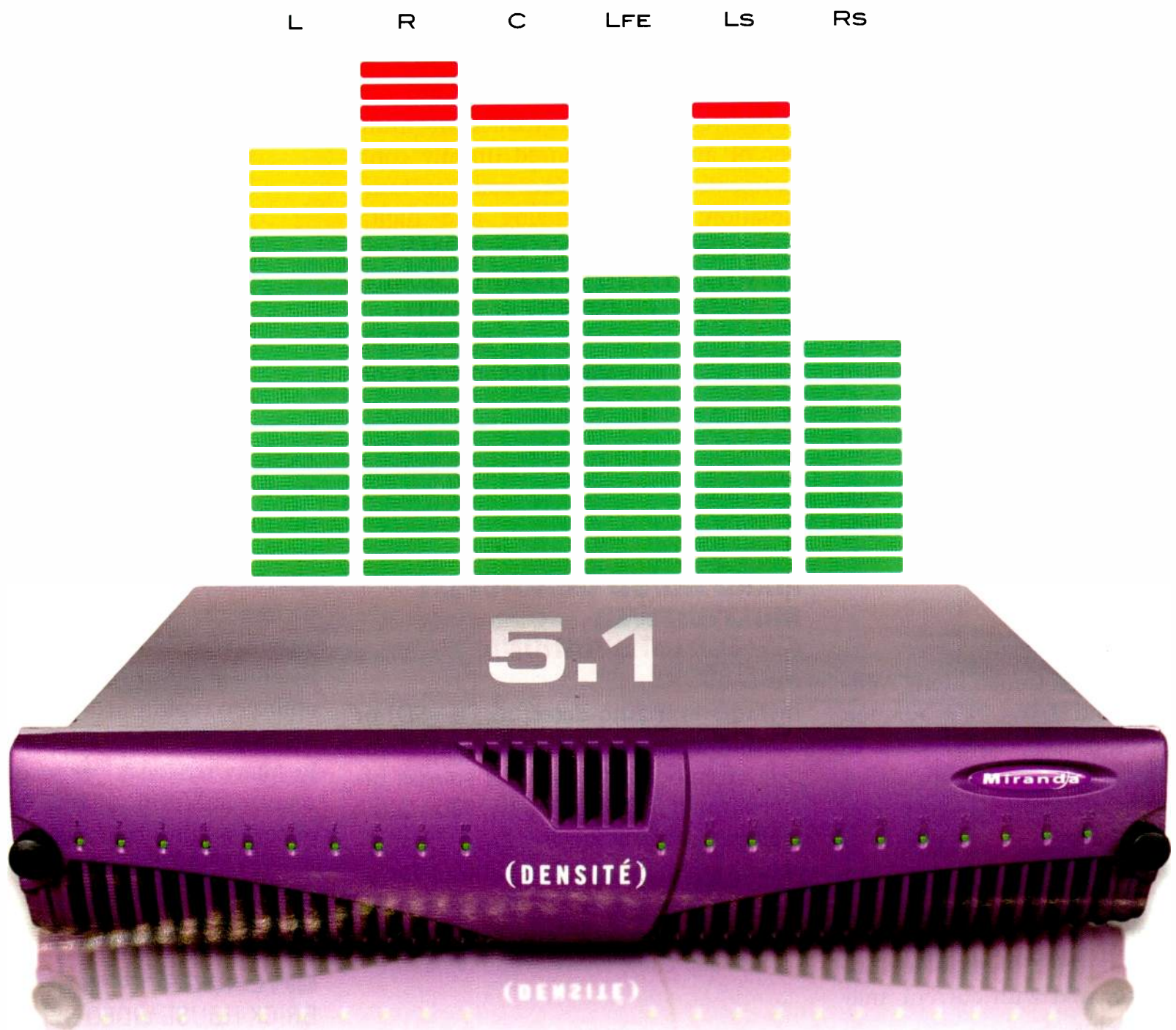
724-873-8100; www.axcera.com

EDITING SYSTEM BLACKMAGIC DESIGN MULTIBRIDGE PRO

Connects to SDI, HDMI, component analog, NTSC/PAL and S-video, with switching among SD, HD and 2K; features eight channels of XLR AES/EBU audio in/out and two channels of XLR analog audio in/out; uses 3Gb/s SDI.

408-954-0500

www.blackmagic-design.com



Rethink 5.1 audio for HD

Audio for HD is full of new challenges. With Miranda, it's now possible to overcome all of them using our feature-packed DAP module. Upmixing stereo to 5.1 with Linear Acoustic UpMAX™ technology, encoding/decoding Dolby™ E/AC-3, downmixing, audio to video delay, even loudness measurement and control, all in one module. It's time to rethink what's possible.



Rethink what's possible

www.miranda.com/dap

SYSTEM CARD OPTION

BARCO NGS105

Part of the Networked Broadcast Monitor System; captures high-resolution computer imagery, encodes them in JPEG-2000 and streams them out over a GigE network; encodes up to eight input signals; supports both single-link and dual-link digital DVI connections with encoding frame rates up to 60fps; allows integration of computer-generated content onto the NBMS displays, providing operators with an integrated view of process and content, leading to higher efficiency and faster response in case of calamities.

678-475-8000

www.barco.com/broadcasting

MICROPHONE

SONY ELECTRONICS C-800G

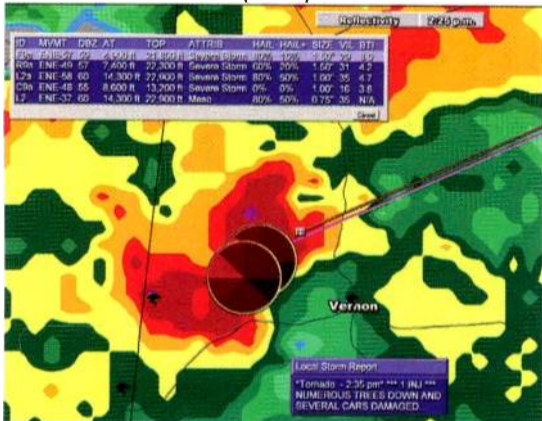
Consists of DWT-B01 transmitter, DWR-S01D receiver and DWA-01D adapter; transmits 24-bit/48KHz digital audio in a specific frequency bandwidth; delivers a wide dynamic range of more than 106dB and a wide frequency response of 20Hz to 20KHz; transmits digitally modulated, encrypted data to minimize the risk of interception; enables a significant increase in the number of simultaneous operations compared with current analog wireless systems.

201-930-7330

www.sony.com/professional

TORNADO DETECTION TECHNOLOGY

BARON SERVICES BARON TORNADO INDEX (BTI)



Provides a ranking on a scale of 0-10 used to gauge the likelihood of a tornado in any given storm; as the BTI increases, the potential for a tornado within that storm goes up; available to existing customers subscribed to the Advanced Data Service Package at no additional charge; included in the VIPIR 5.0 release and will soon be available in FasTrac.

256-881-8811; www.baronservices.com

MULTICHANNEL COMBINER

BIRD TECHNOLOGIES GROUP CONTROL STATION COMBINER

Provides frequency-agile operation across entire frequency range; reduces the number of antennas required on any communications site; ensures radio-to-radio isolation; features analog and digital compatibility; available for 132MHz to 150MHz, 150MHz to 174MHz, 380MHz to 450MHz and 450MHz to 520MHz.

866-695-4569

www.bird-technologies.com

FIXED HD/SD QUAD-SPLIT MULTIVIEWER

AVITECH INTERNATIONAL MCC-8004Q

Includes four auto-detecting HD-SDI or SD-SDI video inputs with eight channels of embedded audio per source; offers output resolutions up to 1920 x 1200; includes borders, labels (up to 32 characters) and tally as well as monitoring of alarms; supports TSL protocol for dynamic labels and tally management.

425-885-3863; www.avitechvideo.com

FILE-BASED NEWSROOM SOLUTION

BITCENTRAL PRÉCIS



Delivers a fully integrated, end-to-end, open-architecture solution that eliminates videotape; enables users to edit stories on location using notebooks and submit them over broadband or microwave; produces, manages and distributes stories across multiple platforms; provides a single interface for national and local stories; integrates with most newsroom systems.

949-417-4126; www.bitcentral.com

STORAGE AND DELIVERY SYSTEMS

BLACKWAVE 8100 SYSTEMS



Designed to meet the unique requirements of SD and HD Internet video distribution; integrates intelligent software with standard industry hardware; eliminates the complexity of proprietary or in-sourced storage and delivery infrastructure and reduces needed rack space by 50 percent to 90 percent; provides the ability to rapidly achieve scale levels necessary for rich media delivery from 5Gb/s to many terabytes per second of performance and from 48TB to many petabytes of content library capacity.

978-215-9998; www.blackwave.tv

UP/CROSS CONVERTER

BRICK HOUSE VIDEO SYNTAX

Offers upconversion and crossconversion with SDI I/O, noise reduction and ARC facilities; compact 1RU unit incorporates comprehensive audio facilities; based on advanced super-resolution bandlet technology; brings the performance advantages of motion-compensated processing without the associated disadvantages of high cost and occasionally severe artifacts.

+44 1962 777733

www.brickhousevideo.com

COLOR CHANGING LIGHTS

BRIGHTLINE CYCSERIES

Energy-efficient color changing light fixtures; dimmable to 3 percent through standard protocols including DMX-512 and DALI; saturate cyclorama walls as wide as 16ft with consistently rich, even color values; durable enough to handle the rigors of studio operations; available in six- or 12-lamp models that use 28W or 54W, red/green/blue, single-phosphor T5 lamps with color sleeves; lamps can last up to 10,000 hours.

412-206-0106; www.brightlines.com

Blackmagicdesign



Finally, converters that auto switch SD and HD and include AES/EBU and analog audio!

Build your studio with the world's most advanced converters. Only Mini Converters include auto SD/HD switching, redundant input, AES/EBU and analog audio on 1/4 inch jack connections, plus advanced 3 Gb/s SDI. There are 4 great models to choose from depending on the conversion you need, plus a sync generator model!



Auto Switching SD and HD

Mini Converters instantly switch between all SD and HD formats, including NTSC, PAL, 1080i/59.94, 1080i/50, 1080PsF/23.98, 1080PsF/24, 720p/59.94, 720p/50. Updates can be loaded via USB.

Redundant SDI Input

Mini Converters feature a redundant input and loop through SDI output. Connect a redundant SDI cable to the second input, and if the main SDI input is lost, Mini Converters will automatically switch over in an instant. That's great for mission critical tasks such as live events.

Pro Analog and AES/EBU Audio

Standard 1/4 inch jacks are built in to each Mini Converter for professional balanced audio that switches between AES/EBU or analog. Unlike other converters you don't need expensive custom audio cables.



New 3 Gb/s SDI Technology

Mini Converters include the latest 3 Gb/s SDI technology, so you're always future proofed! 3 Gb/s SDI is also fully compatible with all your existing standard definition and high definition SDI equipment.

Broadcast Quality

Mini Converters are built to the highest quality standards with low SDI jitter, so you get the longest SDI cable lengths combined with ultra low noise broadcast quality analog video and audio.

Five Exciting Models

Choose either SDI to HDMI, HDMI to SDI, SDI to Analog or Analog to SDI models for only US\$495. Reference all your studio equipment with Sync Generator for US\$295.



Mini Converters
US\$495
Sync Generator
US\$295

Learn more today at www.blackmagic-design.com

DIGITAL/ANALOG ENG/OB VAN TRANSMIT SYSTEM

BROADCAST MICROWAVE SERVICES TRUCK-CODER II

Meets rugged environmental needs of ENG/OB operations; provides 100 presets that can be entered through front-panel controls or downloaded through a front-panel Ethernet port; includes a 2RU controller and antenna-mounted RF unit configured to operate in the 2GHz frequency band; features 6MHz RF bandwidth capability for simultaneous transmission of two signals within a 12MHz channel.

800-669-9667; www.bms-inc.com

WIRING SYSTEM

BTX TECHNOLOGIES PROBLOX



Combines 16 coax and 26 audio/data/control contacts in one multiconnector; allows fast and simple setup and teardown in broadcast and A/V applications; custom configurable; offers 75Ω video contacts for HD signal; reduces the number of individual cables.

914-593-1800; www.btx.com

CAMERA CONNECTOR PANELS

CANARE HYBRID FIBER-OPTIC CAMERA CONNECTOR PANELS HFO camera connectors with integrated splice enclosures; installable in terminal boards or racks; ideal for configuring HD camera-to-broadcast van transmissions; distinct connector units and mounting frames offer the flexibility needed to meet the layout needs of a variety of system configurations; support five-directional wiring: left, right, top, bottom and beneath; connection unit can be detached from main unit for comfortable workability; accommodates male and female HFO receptacles with built-in splice box and tension member support.

973-837-0070; www.canare.com

HDTV STUDIO LENS CANON DIGISUPER 27

Has a focal length of 6.5mm to 180mm; offers optional BWA-271 0.9x wide-angle attachment; features a servo-zoom speed of 0.5 seconds; a new optional remote-controllable macro-focus feature allows the camera operator to perform macro focusing from the pan bar; incorporates the second-generation Digital Servo System, designed to make zoom and focus controls precise and repeatable.

800-321-4388; www.usa.canon.com

KVM EXTENDER OPTICOMM RGB-4000 SERIES

Offers RGB H/V (VGA), stereo audio, keyboard and mouse, as well as RS-232 serial data, all over one fiber; ideal for high-resolution video applications; simplifies cabling infrastructures and provides LED indication for optical link status, signal status and power monitoring; features multi- or single-mode operation; reduces fiber count from five to one.

858-450-0143; www.opticomm.com

COMPLIANCE RECORDER MASSTECH MASSLOGGER D.I.Y.

Logs years of broadcast content accurately; features easy-to-install software; allows logged content to be viewed via standard Web browser, so users can search and retrieve content from any location; features automatic comparison between as-run and traffic logs to display differences and easily identify any missed advertising or programming.

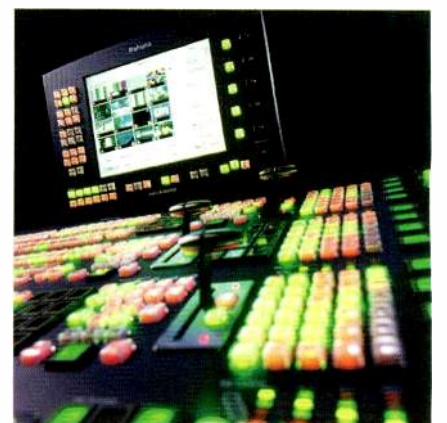
905-886-1833; www.masstech.com

SD/HD MULTIFORMAT PRODUCTION SWITCHER

SNELL & WILCOX KAHUNA

New DVE capabilities include a Fluid Effects capability that allows operators to wrap live video around animated models for a highly sophisticated look in live production; rather than render video and the 3-D model on a separate system, Kahuna operators can select any real-time source and apply it to any 3-D model that has been preloaded onto the switcher.

818-556-2616; www.snellwilcox.com



NTT Electronics *Creator of Real High Definition*

H.264 impact

Contact us to experience **STUNNING compression technology!!**

World's first
4:2:2

Low
Latency



**H.264/AVC & MPEG-2
HD/SD Encoder / Decoder**
HVE9100 / HVD9100 **NEW**

<p>Main Features</p> <ul style="list-style-type: none"> Based on NTT Electronics' state of the art LSI H.264/AVC and MPEG-2 support 4:2:2 and 4:2:0 support Low latency (0.8 sec) Greatly enhanced audio features Zero lipsync error Built-in Ethernet interface (optional) Built-in SNMP functionality and HTTP menu Built-in BISS-I/E functionality (optional) 	<p>Markets and Applications</p> <ul style="list-style-type: none"> Broadcast contribution Satellite, cable, terrestrial distribution Video over IP Storage, and server applications
---	--

**MPEG-2 to H.264/AVC
HD/SD Transcoder** HVT9100 **NEW**

Main Features

- Based on NTT Electronics' state of the art LSI
- Converting MPEG-2 content to H.264/AVC without quality loss
- Cross carriage and re-syncing of audio or metadata services such as closed captions

Markets and Applications

- IPTV headend solution
- DTH satellite service
- Video over IP
- Storage, and server applications

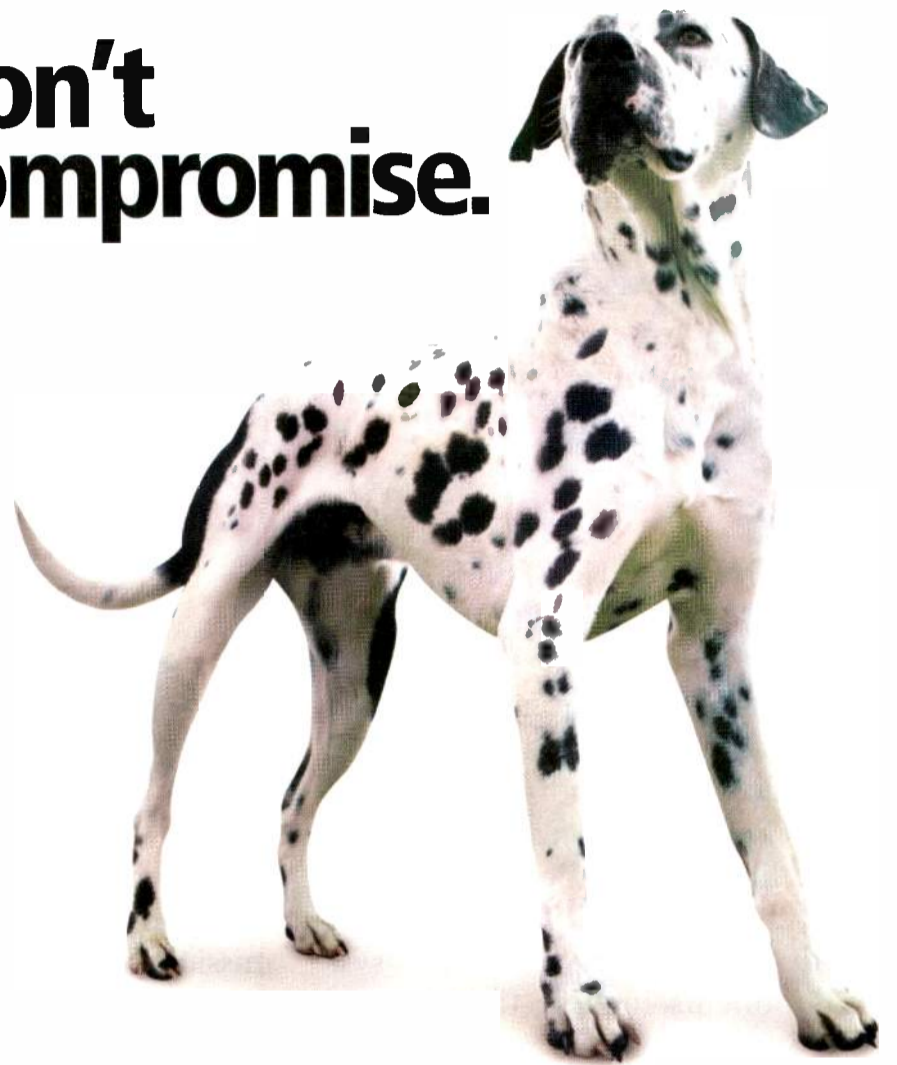
To see NTT Electronics solutions, visit <http://www.nel-world.com/products/video>

<p>NEL America, Inc. E-mail: nel@nel-america.com http://nel-america.com/</p>	<p>NTT Electronics Corporation E-mail: mm_riyoko@nel.co.jp http://www.nel-world.com</p>	
--	--	--

Copper...

Fiber...

**Don't
compromise.**



Trust the experts you already know.



The leader in broadcast connector and patching solutions will ensure your success in data integration. As you evaluate the need for high-performance ethernet patching in your operation, it's critical to have carefully considered products Engineered for Primetime™.

Go to www.adc.com/dontcompromise to download information on:

Unipatch® GigE Data Patching
The Top Ten Things you need to know about Fiber



CONVERTER WITH AUDIO EMBEDDER

COBALT DIGITAL COMPASS 9061

An up/down/crossconverter for installation into the openGear frame; features a high-quality 12-bit analog to 10-bit serial digital converter, an HD/SD-SDI input, analog and digital audio inputs, audio embedding, audio de-embedding, frame sync and user audio/video level controls; new addition offers HD/SD-SDI closed-captioning conversion.

800-669-1691; www.cobaltdigital.com

ROUTERS

CODAN BROADCAST NK SERIES



Supports multidefinition (HD and SD), SD-SDI, analog video, AES/EBU, stereo analog audio and data (RS-422 Machine Control) levels; series components are linked with the RS-485 multidrop T-Bus Control System, using standard Cat 5 cable; additional system components include the Phoenix Control Surface, a broad range of fully programmable control panels, a virtual routing core, a network bridge, a GPI interface, automation interfaces and other protocol converters, plus rack-mount redundant power supplies.

703-334-0396

www.codanbroadcast.com

ROUTER CONTROL PANEL

NVISION NV9640

The X-Y/multidestination control panel provides extensive control and status display capabilities in a 2RU package that is less than 2.5in deep; features next-generation LCD buttons capable of showing three lines of display with up to eight character mnemonics on each line; flexible panel configuration allows the user to choose from many button colors.

530-265-1000; www.nvision.tv

FIBER-OPTIC

TRANSMISSION SYSTEM

COMMUNICATIONS SPECIALTIES

PURE DIGITAL FIBERLINK

7500 SERIES



Now available in both single mode and multimode versions for fiber-optic transmission for DVI and stereo audio over one fiber; supports DVI-I single-link resolutions up to 1920 x 1200 at 165MHz pixel clock and HDTV resolutions of 480p, 1080i and 1080p (DVI format); new addition provides multimode support up to 750m and features a unique triple EDID function, with loop through, internal generation or capture and storage.

631-273-0404; www.commspecial.com

VIDEO CAMERA

ICONIX VIDEO HD-2K CCU

4:4:4 CCU produces 2048 x 1080p images from 23.98Hz to 30Hz; outputs NTSC, PAL, 720p, 1080i, 1080PsF and 1080p from 24fps to 60fps.

805-690-3650; www.iconixvideo.com

UHF ANTENNA

DIELECTRIC COMMUNICATIONS

TU SERIES ANTENNA

A vertically polarized, high-power, broadband UHF panel antenna; offers the same versatile and reliable features as the proven Deltawing design, with the added benefit of vertical polarization.

800-341-9678; www.dielectric.com

TRANSCODER

NTT ELECTRONICS HVT9100



Enables real-time conversion of MPEG-2 video to AVC/H.264 with low latency and maintains outstanding image quality; a perfect match for HDTV transmission by IPTV, CATV and satellite TV services with limited bandwidth; high quality and low latency transcoding is possible with newly developed build-in original LSI (supports 4:2:2 and 4:2:0).

+81 45 4533 685; www.nel-world.com

NEWS CATALOGING SYSTEM

CRISPIN NEWS CAT

Digitally archives stories after airing and provides a method to easily locate material at a later date; archived video clips are linked to a database containing all script information from the newsroom computer system; database functionality includes an extensive search function, allowing producers and editors to search for a story using traditional parameters such as date, slug, script information or key words.

919-845-7744; www.crispincorp.com

PANEL ANTENNA

DIELECTRIC COMMUNICATIONS

TUM ANTENNA

A high-power, broadband UHF elliptically polarized panel antenna with variable polarization ratio from 0 percent to 100 percent; maintains a good axial ratio.

800-341-9678; www.dielectric.com

Don't take a chance with your timing needs. Trust the name broadcasters have counted on for precision master clocks and timing-related products for over 35 years—ESE. Our products accurately synchronize broadcast operations using a choice of GPS, WWV, Modem, Crystal or line frequency for affordable, reliable, perfect time.

Visit www.esweb.com to witness world-class timing systems that are designed for easy installation, set-up and operation.

142 Sierra Street
El Segundo, CA 90245 USA
Tel: (310) 322-2136
Fax: (310) 322-8127
www.esweb.com

Having Lip Sync Trouble?



Help is at hand with the award-winning VALID8

VALID8

HD VIDEO & AUDIO
LINE-UP & IDENTIFICATION
WITH 8 AUDIO CHANNELS

Your HD infrastructure is in reach

VISTEK

PICK HIT
Broadcast Engineering
2007

RTS Innovation Award
'Best Gizmo'

VALID8, from Pro-Bel's Vistek Range, provides foolproof assistance in the battle against the ever-present problem of audio/video synchronization issues.

VALID8 (Video and Audio Line-Up and Identification) is designed for today's HD world and works with any HD standard as well as SD. In addition, there are eight audio channels – four left-right pairs. The Generator provides an almost indestructible signal which the Reader then measures for video/audio delay.

The VALID8 Reader can display video/audio timing errors to the nearest millisecond, it can also indicate whether there has been any channel crossover or phase error between left and right. Any changes in level can be displayed in a variety of metering formats.

Contact Pro-Bel today and wave goodbye to lip sync problems:
www.pro-bel.com.



- Automation ●
- Media Management ●
- Master Control ●
- Control & Monitoring ●
- Routing ●
- Router Control ●
- Modular Infrastructure ●

www.pro-bel.com

Engineering The Broadcast Future

XT[2] SERVER SOFTWARE EVS MULTICAM 9.00



Offers significant improvements in media file transfer with new file architecture and GigE connectivity as well as additional improvements to multiformat media exchange with third-party systems including storage, MAMs and craft editors.

973-575-7811; www.evs.tv

HD/SD CAMERA SYSTEM PANASONIC AW-HE100



Supports 1080i, 720p and 480i formats; can simultaneously output both HD and SD signals; features three progressive 1/3in IT CCDs, a 14-bit A/D converter and a 19-bit digital signal processor to produce clean, high-res images in a wide range of lighting conditions and environments; incorporates an HD 13X auto/manual focus zoom lens with a fast f1.6 maximum aperture and a wide-angle focal length of 4.2mm.

201-392-4127

www.panasonic.com/broadcast

MEDIA ENCODER DIGITAL RAPIDS STREAMZ LIVE



Designed for applications from live IPTV channels to webcasting; available with a choice of encoding format (including H.264/AVC, VC-1/WMV, On2 VP6 for Adobe Flash, 3GPP/Mobile and MPEG-2); available with a choice of analog and digital input connectivity options.

905-946-9666; www.digital-rapids.com

MRD 3187A

Modular Receiver Decoder



THE MRD 3187A PROVIDES YOU WITH:

VERSATILE MODULAR PLATFORM

- Prevents Being Locked in Today's Technology
- Adapts to Your System
- Simultaneous HD & SD Downconverted SD outputs
- AFD Controlled Downconversion
- DVB CI & Biss Decryption Options Available
- Integrated Web-Server for Easy Remote Access
- 8 Configurable I/O Slots

WWW.SENCORE.COM

SENCORE

INNOVATIVE BROADCAST SOLUTIONS
SINCE 1951

1-800-SENCORE

MULTI-DEFINITION TERMINAL EQUIPMENT

NOW
INTRODUCING



- High Density Multi-Format Decoder Solutions
- 10 Channel VSB into Downconverted SD Out
- AFD Controlled Down-Conversion
- Fully Compatible with ALL OpenGear Components
- Multiple I/O MPEG2/4 HD & SD Decoding

Call for your specific application or stop by Sencore booths at NAB (N1122 or SU12108) and discuss your needs.
1.800.736.2673

DIGITAL TRANSPOSER WITH AUTOMATIC ECHO- CANCELLING

SCREEN SERVICE BROADCASTING TECHNOLOGIES

Uses regenerative and nonregenerative techniques; includes latest generation of digital automatic echo-cancelling devices for iso-frequency repeaters (gap-fillers), allowing complete coverage of dark areas in urban and hillside applications.

888-522-0012; www.screen.it

STORAGE SYSTEM

DATADIRECT NETWORKS S2A9900 STORAGE SCALER

Eighth-generation Silicon Storage Architecture (S2A) appliance and storage system; delivers sustained bandwidth of up to 6GB/s per appliance and enables storage systems that will scale beyond 250GB/s in total throughput between host computers and the disk drives; allows for more complex and detailed computer simulations to be run; supports 8Gb/s Fibre Channel as well as 20Gb/s Infiniband DDR host connections; leverages the latest serial attached SCSI (SAS) protocol to communicate to the drives it manages, providing a future-proof roadmap to the latest disk drive technologies, speeds and capacities.

800-837-2298; www.datadirectnet.com

SATELLITE-TO-TERRESTRIAL TRANSCODER

DMT USA NABLA

Can deliver up to 100W RMS with a modular and versatile structure, featuring a built-in satellite receiver and advanced control systems; interface connections, power supply and cooling air circulation have been designed to comply with the operational requirements and constraints typical of telecom stations.

888-912-8326; www.dmtonline.com/usa

CONVERTER AND SYNCHRONIZER

HARRIS X85 3G

The 1RU, all-in-one converter and synchronizer is the latest addition to the Harris 3Gb/s family of products; features optional frame rate conversion or program delay to remove profanity; offers eight AES inputs and outputs with 32 channels of internal audio processing.

513-459-3400

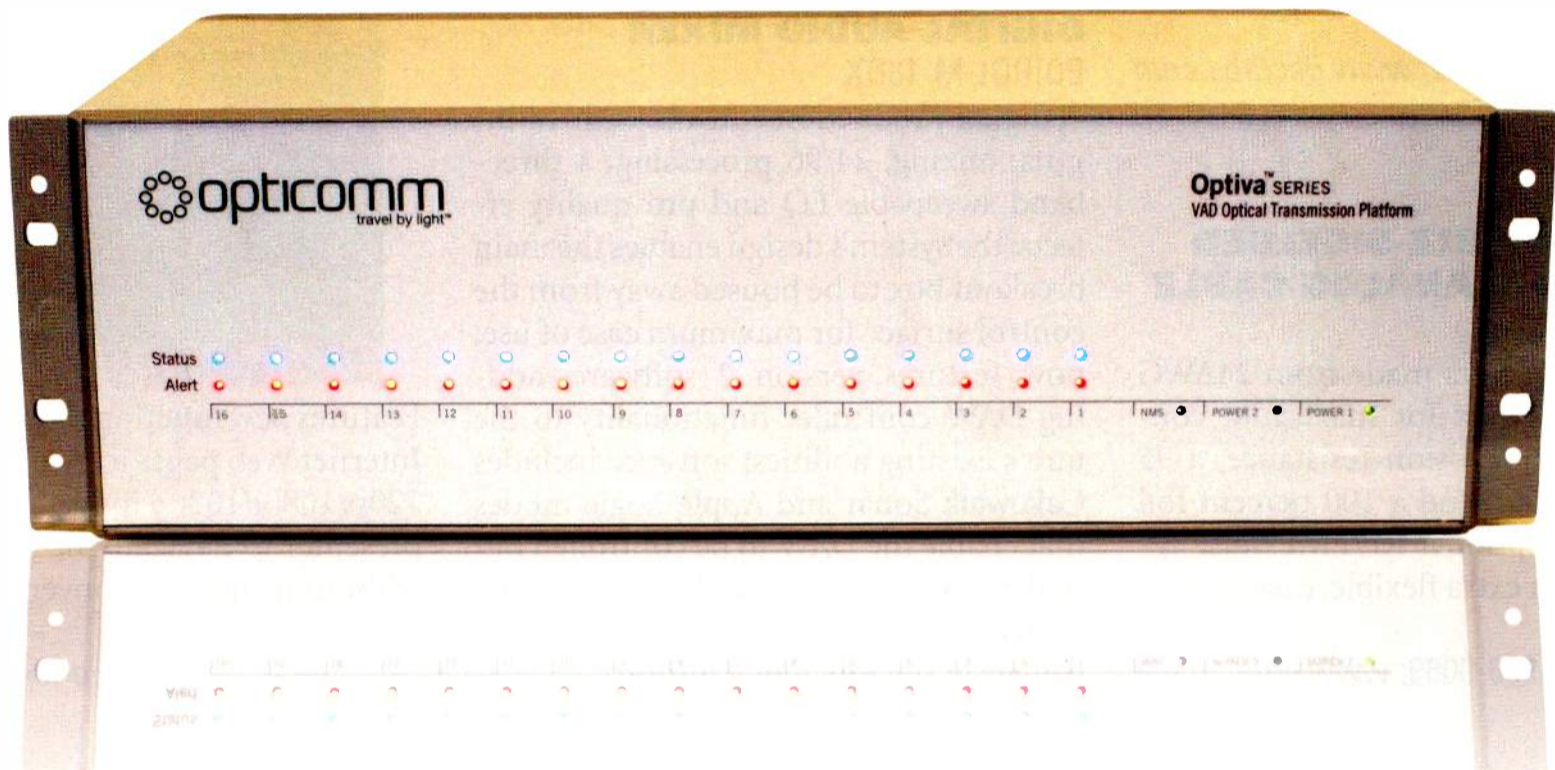
www.harrisbroadcast.com

NTP REFERENCED MASTER CLOCK/TIME CODE GENERATOR

ESE ES-188

Displays nine digits of time as received via user-selected NTP server; generates several types of time code including ESE-TC89, ESE-TC90, USB, RS-232C/ASCII, SMPTE/EBU and IRIG-B; interfaces with new or existing computers, automation systems and third-party clock systems; features rugged construction, automatic correction for daylight saving time and four-hour battery backup.

310-322-2136; www.es-web.com



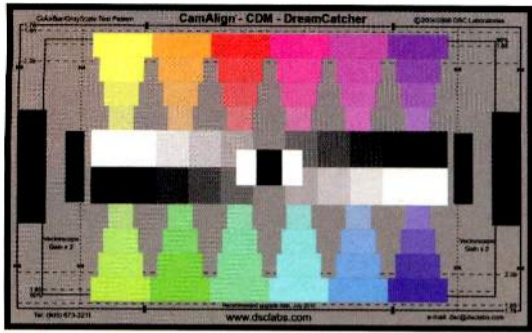
Communicate

The Optiva® Series - Professional Media Transport

Opticomm, an Emcore Company, offers an extensive array of video, audio, data and RF communication solutions utilizing fiber optics or ethernet. Opticomm's advanced technologies serve both analog and digital requirements, providing flexible, cost-effective solutions for short or long distance signal distribution.

CAMERA COLOR CHIP CHART

DSC LABORATORIES
CHROMADUMONDE 48



New addition to the ChromaDuMondes series; 48-color plus crossed grayscale DreamCatcher generates precise hexagonal vectorscope displays in unique spoke patterns with 12 primary and intermediary colors in the boxes; this chart helps purists who want to know what happens to colors of the same hue as they become less saturated.

905-673-3211; www.dsclabs.com

X-BAND DOUBLE-SHIELDED SINGLE-PAIR ANALOG CABLE

GEPCO XB40FB

Features conductors made from 24AWG oxygen-free copper for maximum conductivity and corrosion resistance, a 95 percent TC braid and a 100 percent foil shield for exceptional RF/EMI noise rejection, and an extra flexible, easy to strip outer jacket.

800-966-0069; www.gepco.com

AUDIO ROUTERS

STUDER ROUTE 6000

Stand-alone audio routers based on the Score Live DSP core and D21m I/O system; multiple I/O formats; capable of routing up to 1728 inputs and outputs; can be controlled by Studer Vista or OnAir 3000 consoles, Studer's Route 1000 software or via external third-party systems.

818-920-3285; www.studer.ch

HANDS-FREE INTERCOM

EARTEC TD904-2VS

Full-duplex wireless intercom; provides hands-free, two-way voice communications; includes a Monarch headset fitted with a shell-mounted switch, quick disconnect connector and camera interconnect cable; has a range up to 100m.

800-399-5994; www.eartec.com

CONTROL INTEGRATION SYSTEM

ECHOLAB CONDUCTOR

Touch-screen computer automates complex tasks and program elements to support fast, accurate and creative production of the best programs possible; in preproduction mode, allows the operator to configure the switcher, create complex sequences and assign functions such as M/E presets to soft buttons; in on-air mode, becomes an extension of the control panel—a touch-screen interface with soft buttons that can execute sequences, recall M/E presets and control third-party devices.

978-715-1020; www.echolab.com

DIGITAL AUDIO MIXER

EDIROL M-16DX

A digital production console with 18 inputs, mixing, 24/96 processing, a three-band sweepable EQ and pro-quality effects; the system's design enables the main breakout box to be housed away from the control surface for maximum ease of use; now features version 2 software, adding DAW controller functionality to the unit's existing abilities; software includes Cakewalk Sonar and Apple Logic modes that enable the DAW to be controlled out of the box, with M-16DX knobs being assigned to their equivalent software controllers at the touch of a button.

800-380-2580

www.rolandsystemsgroup.com

CLOSED-CAPTION ENCODER

EEG HD485

The 1RU chassis incorporates Microsoft Windows with the company's HD/SD closed-captioning solution; designed for the demands of post-production encoding; incorporates HD and SD video paths, a time code reader and a network-ready PC with software; specifically designed for the EEG CCPlay software suite; puts an end to cabling and interoperability problems; offers a seamless and intuitive workflow for file-based captioning jobs.

516-293-7472; www.eegent.com

CRAFT EDITOR

THOMSON GRASS VALLEY
AURORA CRAFT

Offers tapeless workgroups complete QoS and bandwidth protection against bottlenecks while giving each user unfettered deterministic access to materials.

800-547-8949; www.grassvalley.com

CONTENT MANAGEMENT SYSTEM

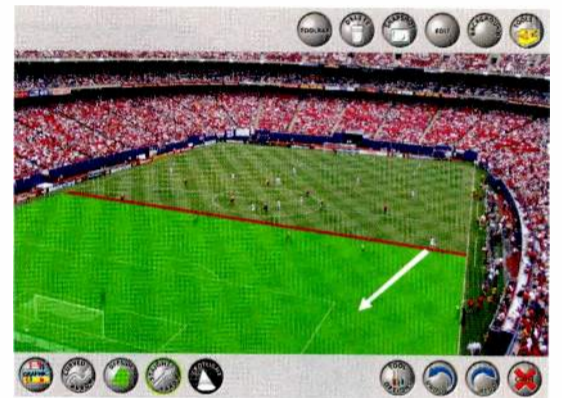
EMC EFDM

Combines content management software, content transport systems, content storage systems and best practices to help manage content securely and safely across an entire business model; facilitates communications between hardware, software and partners; ingests, manages, stores and transforms any type of rich media for distribution to any type of venue, including IPTV, mobile and the Internet.

508-249-6207; www.emc.com

VIDEO GRAPHICS SYSTEM

E-MEDIAVISION.COM POINT-HD
VERSION 4.0



Features new functionality that allows live Internet Web pages to be displayed in HD 720p/1080i/1080p in real time; allows the presenter to navigate the Web live in HD without using scan converters.

+44 20 8755 2014

www.e-mediavision.com

HD UP/DOWN/CROSS CONVERTER ENSEMBLE DESIGNS 7900

For use in broadcast and post; can process SD signals into HD, downconvert HD signals into SD and perform format and aspect ratio conversion on both SD and HD signals; accepts asynchronous signals; automatically adjusts between SD/HD color space and gamma; features edge and motion adaptive noise reduction, picture detail enhancement and anti-alias filter.

530-478-1830

www.ensembledesigns.com

DIGITAL AUDIO MIXER

EUPHONIX SYSTEM 5-B

Comprises a control surface, digital processing core, digital and analog interfaces and a system management software application called eMix; designed for high-quality sound, with full support for 24-bit I/O and internal processing at 40-bit floating point; 96kHz sample rate operation is available.

650-855-0400; www.euphonix.com

When time is critical...



... instant production is key.

The closer your event is to going live, the more you'll value the reliability and speed of the XT[2] server. The greater the volume of your material, the more you'll appreciate the XT[2]'s agility. The more complex your workflow, the more you'll appreciate our dedicated production applications like the IPDirector.

Sport, news, and entertainment programmes all benefit from the power of the unique XT[2]. So when time is critical, choose EVS. Instantly.

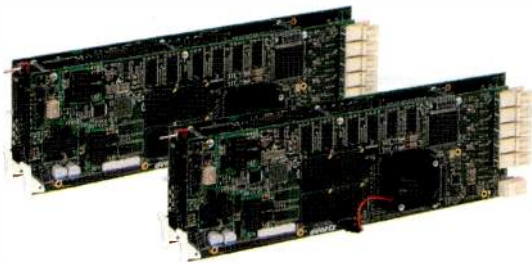
www.evs.tv



Instant tapeless technology

USA | BELGIUM | CHINA | FRANCE | HONG KONG | ITALY | SPAIN | UAE | UNITED KINGDOM
EVS Broadcast Equipment Inc - Tel: +1 973 575 7811 - Fax: +1 973 575 7812 - E-mail: usa@evs.tv

AUDIO MODULE EVERTZ 7720AD8-DD-HD



Autosenses an HD or SD input signal and de-embeds eight AES signals; detects and decodes Dolby E or AC-3; provides handles for video and audio delay then re-embeds the decoded 5.1 audio into the video VANC signal; two-slot module improves workflow efficiency and supports embedded and discrete audio inputs; provides audio mixing options as well as offers a serial metadata output; SNMP-enabled for monitoring and configuration control.

905-335-3700; www.evertz.com

DVR

FAST FORWARD VIDEO RECON DVR

Ultra-compact, board-level DVR; offers the ultimate flexibility to manufacturers of OEM products that can work in stand-alone or portable applications without sacrificing performance or quality; based on the same architecture as the professional DigiDeck DVR; provides outstanding 720 x 486 pixel image resolution and scalable compression with high-quality video inputs and outputs to maximize image quality.

800-755-8463; www.ffv.com

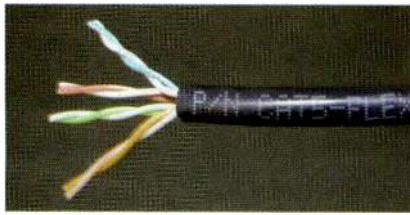
4:4:4 SAFE-AREA GRATICULE GENERATOR EYEHEIGHT SA-2U



Generates safe action graticules, safe title and center markers (short and full screen) for all common TV and film formats; designed for SD, HD-SDI multidefinition and for SD, HD-SDI and 2K ultraDef post-production applications; additional features include three safe-area cursor generators with full user control of cursor color, transparency and type as well as specialized functions for text height and aspect ratio measurement.

866-469-2729; www.eyehight.com

SUPERFLEX CAT 5E CABLE CLARK WIRE & CABLE CAT5-FLEX



Exceeds TIA 568B Cat 5e NEXT & Return Loss specifications; maintains a maximum plug-to-plug channel rating of 70m; features a rugged, sunlight and oil resistant and pressurized jacket.

847-949-9944; www.clarkwire.com

ENG MOBILE TRANSMITTER MICROWAVE RADIO COMMUNICATIONS MRX4000 PLUS



Features of the MRX4000 demodulator and decoder and RF and IF section to meet the demands of the digital era; a seamlessly integrated digital and analog central receiver in a 1RU form factor; offers full remote control via Ethernet or serial interfaces to simplify remote management and troubleshooting; provides a high dynamic range that exceeds the tough demands of digital broadcasting; includes digital and digital/analog configurations for all major broadcast applications.

978-671-5700

www.mrcbroadcast.com

MONITOR WALL

FORECAST CONSOLES SIGHTLINE MONITOR WALL SYSTEM

Offers a cost-effective solution to build a monitor wall of any size and shape that will meet the needs of today and easily be scaled and reconfigured to meet the ever-changing needs of tomorrow; can be free-standing or wall-mounting.

800-735-2070

www.forecast-consoles.com

HD/SD 3-D GRAPHICS SYSTEM HARRIS INSCRIBER G7

Features Inscriber MOS v5 newsroom graphics management system, which allows journalists to create customized, template-based graphics from within any newsroom computer system (NRCS) and automatically insert them into their newsroom rundown; centralized playout allows all changes to the NRCS playlist generated from the G Series graphics systems to be automatically updated across multiple channels.

513-459-3400

www.harrisbroadcast.com

ROUTER

BROADCAST MICROWAVE SERVICES TCII MEDIA ROUTER

When paired with the company's Truck-Coder II, provides high-speed IP communications over a unidirectional microwave radio link from ENG vans; a 3G broadband wireless modem is used as the return channel, which provides a low-speed constant network connection; allows for file transfers using traditional methods such as FTP.

800-669-9667; www.bms-inc.com



TECHNOLOGY LEADER



"The success of any business strategy depends on the ability to quickly deploy the right technology and perform at a strategic level."

ScheduALL's out-of-the-box functionality links unique business processes that create, extend, and reorganize your operational requirements as needs evolve.

ScheduALL

+1.954.334.5406

www.scheduall.com

ENTERPRISE RESOURCE MANAGEMENT
MIAMI | LONDON | LOS ANGELES

Specializing in Automation Intelligence

Are you running a

S.M.A.R.T.

System?

*Florical's new
System Management And Reporting Tool
significantly improves workflow and emails reports
directly to key personnel.*



FanChat™



FLORICAL
TV AUTOMATION
SYSTEMS™

352.372.8326
www.florical.com

Revenue Generating, Social Networking application
Chat agent that Links On-Air to On-Line

LOGGING SOFTWARE UPDATE HORITA PC-LOG

SMPTE time code-based video production logging program; new features include wireless operation using the Bluetooth interface and convenient hands-free logging using voice recognition technology; Bluetooth capability provides a simple and reliable way of performing wireless on-the-set logging using a laptop PC in conjunction with the Hortia TCBTx SMPTE to Bluetooth time code converter/transmitter; voice recognition allows SMPTE time code values to be captured and associated text data entered hands free.

949-489-0240; www.horita.com

TAPE DRIVE

IBM SYSTEM STORAGE TS1129

Designed for applications that need high capacity, fast access to data or long-term data retention; is supported in IBM tape libraries, IBM frames that support stand-alone installation and in an IBM 3592 C20 frame attached to a Sun StorageTek 9310 library; uses IBM 3592 cartridges, which are available in limited capacity (100GB) for fast access to data, and standard capacity (500GB) or extended capacity (700GB) to reduce resources and lower total cost.

919-517-0411; www.ibm.com/media

MULTIPURPOSE COMPACT HDTV CAMERA

IKEGAMI HDL-45

Records in native format using either 1080i CCDs or 720p CCDs; features 14-bit A/D conversion, remotely controllable four-position optical filter, low-noise feedback-type amplifier circuit to eliminate noticeable noise, SDTV BBS signal that can be used as an external sync signal for genlock and full remote control capability.

201-368-9171; www.ikegami.com

SD/HD MASTER CONTROL SYSTEM

PRO-BEL MASTERPIECE

Features up to four DSKs, 16-level audio mixing, AES voice-overs, Dolby E mixing, DVE, bug inserter and frame delay; offers tight integration with Pro-Bel control panels, Morpheus control and monitoring and Morpheus automation; housed in a single 2RU frame.

631-549-5150; www.pro-bel.com

SCALABLE SERVER SOLUTION AVID MEDIASTREAM 8000 V3.31

Comes with native HD/SD storage and playout capabilities as well as built-in up/downconversion; can be configured from a few channels using a stand-alone server to up to 100 simultaneous channels using a SAN; supports interoperation with Avid products as well as a large number of third-party broadcast solutions; new version offers support for XDCAM HD and long GOP MPEG-2 playout.

978-640-6789; www.avid.com

WIRELESS INTERCOM SYSTEM

INTRACOM SYSTEMS VCOM WIRELESS INTERCOM

Supports virtually an unlimited number of channels configurable for point-to-points, group calls or party lines; interfaces with other communication systems, has no frequency constraints and runs on Wi-Fi and/or data cellular-enabled handsets running Windows Mobile 5.0 and higher; offers the power of multichannel ProComm matrix intercoms in a handheld.

424-288-4184

www.intracomsystem.com

NEWS PRODUCTION SYSTEM JUSTEDIT VSNAUTOREC

Ingest system that enables simultaneous manual or automatic recordings from tapes, satellite and/or studio feeds; enables users to program regular recordings into a relict and generate DV25 MPEG2@50Mb/s and MXF files.

+34 93 734 99 70; www.vsn-tv.com

QUALITY ASSURANCE SOLUTION

TRIVENI DIGITAL STREAMSCOPE EM-40



Detects, localizes, analyzes, isolates and remedies faults impacting video services based on predefined rules; generates alarms when a transport stream has fallen outside a specified configuration; features integrated trend analysis enabling engineering staff to analyze past issues.

609-716-3500; www.trivenidigital.com

RGBHV ROUTING SWITCHERS THE ISIS GROUP INNOVATION



Easy to install where long cable runs make the HD15 connectors less desirable; designed specifically for multimedia applications; uses the latest crosspoint technology to extend bandwidth and slow-rate performance, allowing it to work with the most demanding resolutions; features hot-swappable, front-loading modules, a redundant power supply option and a choice of local, remote or GUI controls to ensure professional performance in any venue.

888-622-4747; www.isis-group.com

HDMI VIDEO SCALER AVOCENT VSS1000H

Accepts HDMI signals, DVI signals (via DVI to HDMI cable), PC-generated RGB signals (up to WUXGA), HD component signals (YPbPr/YCbCr, 480i up to 1080i), S-video and composite video signals as valid inputs.

954-746-9000; www.avocent.com

HARDWARE/SOFTWARE SUITE BARCO NETWORKED BROADCAST MONITORING SYSTEM V2.1

Enables operators to monitor the broadcast process more efficiently and visualize real-time video content on rear-screen projection modules or LCD panels; includes stand-alone display controller and three hot-swappable modules that are front-accessible; NGP-001 Display Controller allows users to display as many as 64 video sources on two high-res screens; eight-channel NGS-103 input module captures SDI and composite video signals, encodes them in JPEG2000 and streams them over a GigE network; NGS-104 Communication and Interface Module and NGS-107 General Purpose IO Module provide connectivity to legacy and third-party equipment.

678-475-8000

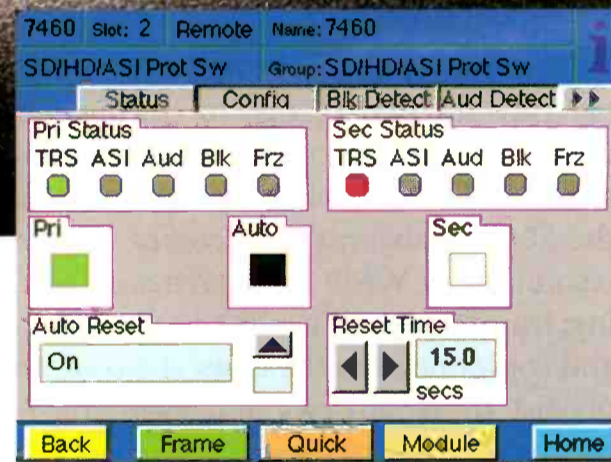
www.barco.com/broadcasting

BROADCAST AND SATELLITE

BYPASS PROTECTION SWITCH



This bypass protection switch guarantees that broadcast and satellite feeds stay on-air.



Menus for setting parameters specific to your facility

How To Spend \$3000 and Save \$300,000 (And Get Peace of Mind)

You can easily protect your on-air feed and be sure to be **on-air all the time** with an Avenue Protection Switch. Simply feed your primary on-air feed and your secondary, back-up signal into the Avenue protection switch. If the primary fails, the secondary signal will take over.

For **today's hybrid station**, a switch that handles all types of video signals – HD, SD, 310M and ASI – is a must.

Superior circuitry detects black levels, TRS, audio presence, and freeze for HD and SD video signals. For SMPTE-310M and ASI signals,

PIDs and PMTs are evaluated. You set the parameters for when a switch occurs. You might decide 10 seconds of signal below 12 IRE or 14 seconds of no embedded audio should cause a switch to the secondary feed. Plus you can set alarms to GPO or to email you.

This is the smartest, **most reliable protection switch** on the market today. And relay bypass makes it even more reliable.

So consider spending \$3000 to save \$300,000. Using the Avenue Protection Switch can save you from unexpectedly going off-air which can

cost thousands. Customers have told us that **this kind of insurance is well worth the investment**. Call us for a list of happy customers and ask for the 5-year warranty that comes with all of our products. And, when you do call, you can be sure you'll get a live person on the phone!

Try the Avenue bypass protection switch **10 days for free**. Satisfaction guaranteed.

ENSEMBLE

D E S I G N S

www.ensembledesigns.com

(530) 478-1830

MPEG VIDEO PROBE

JDSU DTS MVP-200



A video monitoring tool that uses MPEG analysis capabilities; comes in a rack-mount form with an added rapid channel scan capability; allows operators to validate the performance of video across IP, ASI and QAM signals; performs tests for digital program insertion, ad splicing, rate shaping, grooming, MPEG remuxing, encryption and modulation; conducts automated channel scanning to test each MPEG program across an entire RF or GigE input signal.

866-228-3762; www.jdsu.com

CONTENT MANAGER

JUSTEDIT VSNNETSHARER AND VSNMACSHARER

Enable journalist PCs, editors and/or post-production teams to easily and quickly locate materials stored in video servers; allow searches by keywords in the SQL database; create copies in low-resolution in WM9 for searches or editing; from the timeline, the editor registers and copies news in the news video server playlist to vsnairnews and vsnmatic in the master control room.

+34 93 734 99 70; www.vsn-tv.com

HD CAMCORDER

JVC PROFESSIONAL GY-HD200



Supports multiple frame rate recording in 720/24p, 25p, 30p, 50p and 60p; features compact shoulder professional form factor, wide choice of lenses and accessories, optional HZ-CA13U prime lens adapter, built-in image flip recording when using prime lenses, built-in 14.4V battery mount, dual-media (tape +HDD) recording with DTE, MPEG-2 encoding, advanced 14-bit A/D converter and BNC connectors.

973-317-5000; www.jvc.com/pro

CONNECTORS

KINGS-WINCHESTER ELECTRONICS QUICK CONNECT SMA

Push/pull connection system allows for quicker mating; when mated, the connectors can rotate 360 degrees; provides electrical performance up to 6GHz when compared with a standard SMA; compact design uses SMA standard spacing down to 0.500 centers; designs are available for both flexible and semi-rigid cables.

203-741-5400

www.winchesterelectronics.com

DOLBY E ENCODER

DOLBY DP571

Enables the distribution of up to eight channels of high-quality audio plus Dolby Digital metadata via single AES3 pair on two audio tracks of a digital videotape, digital audiotape, video server or two-channel distribution systems; performs Dolby E audio encoding; developed specifically for the production, contribution and distribution of multichannel audio.

415-558-0200; www.dolby.com

DMX LIGHTING

KINO FLO MEGA 4BANK DMX

Can harmonize light levels in a fixture array or switch tubes independently of one another from a DMX control board; the system includes a fixture, mounting plate, extension cable and Mega4Bank DMX Ballast; the Ballast operates 4Bank fixtures, double fixtures, single fixtures and the company's Blanket-Lite; the lighting is designed to run on high-output 8ft and 6ft True Match lamps.

818-767-6528; www.kinoflo.com

8-VSB/QAM TO GIGE CONVERTER

KTECH TELECOM DVM-3300

Performs quad 8-VSB/QAM RF to GigE conversion; takes in the 8-VSB RF input or 64/256QAM RF input (four channel max) and converts the MPEG-2 TS from each of the RF channels into MPTS in GigE output; supports SNMP, FTP, HTTP and multiple MPTS/UPD/SPTS.

818-773-0333

www.ktechtelecom.com

MONITOR EXPOSURE OPTION

LEADER CINELITE

Enables users to determine optimal camera exposure settings by detecting the actual signal levels captured during pre-shoot lineup and to define a dual-link SDI/HD-SDI signal analyzer; allows for upgrades and for simultaneous viewing of four SDI or HD-SDI sources; outputs to any compatible XGA monitor; features twin auto-detecting inputs.

800-645-5104; www.leaderusa.com

KP 32 CLD • The Next Generation



- Two integrated 4.9", full-color LCD displays
- Revolutionary customizable graphic user interface
- Modern, sleekly designed panel fits easily into any control room or truck application
- 32 multi-directional keys: one-touch individual talk & listen activation, listen volume adjustment
- DSP processing for superior metering, mixing, acoustic echo cancellation, equalization, and filtering.
- Front-mounted USB port for future expansion



Bosch Communications Systems

Telex Communications, Inc.
12000 Portland Ave S. | Burnsville, MN 55337, USA
Phone: +1•877•863•4169 | Fax: +1•800•323•0498
intercoms@telex.com | www.rtsintercoms.com

RTS® Digital Matrix Intercom

Designed exclusively for the A/V Professional.

HD/SD-SDI at the Speed of Right.

Transmit SMPTE compliant HD/SD-SDI over one fiber with pristine, broadcast quality results.

Just one of the many features of the all new Pure Digital Fiberlink® 3150 Series of HD/SD-SDI Fiber Optic Extenders.



Affordable
Broadcast Quality
HD/SD-SDI



PURE DIGITAL
FIBERLINK®
Designed and Manufactured
for the A/V Professional by CSI

The Pure Digital Fiberlink® 3150 Series is the professional's choice for broadcast quality HD/SD-SDI signal distribution. That's because the 3150 Series is feature packed: it strictly adheres to SMPTE standards, offers SMPTE 297-2006 interoperability, uses one single mode or multimode fiber, and delivers the signal fidelity you have come to expect from Pure Digital Fiberlink®.

Since the 3150 Series is immune to pathological patterns across the entire link budget and operating temperature range, you can rest assured that the signal you'll receive is just as pure as the source. Best of all, each SDI and fiber optic output is equalized and re-clocked!

And, at \$995*, it's affordable, too! So, call today or visit us online at commspecial.com to learn more about the 3150 Series.

Pure Digital Fiberlink®. Truly. Purely. Amazing.



See it live at InfoComm, Booth N5447

* US MSRP price per unit, not pair. Price is subject to change.
Pure Digital Fiberlink and the starburst logo are registered trademarks of Communications Specialties, Inc. CSI logo and the triangle designs are trademarks of Communications Specialties, Inc. ©2008 Communications Specialties, Inc.

Features:

Signal is equalized and re-clocked prior to fiber optic transmission

Transmitter features a re-clocked SDI loop through and the receiver features two equalized and re-clocked SDI outputs

Designed for interoperability with other SMPTE 297-2006 fiber optic compliant devices

Uses standard LC or ST connectors

Immunity to pathological signals

Compliant with SMPTE 259M-2006, 292-2006, 297-2006

Supports transmission of SMPTE 305M-2005, 310M-2004, 344M-2000, DVB-ASI

Supports both Single Mode and Multimode fiber types

Supports HD/SD-SDI inputs with embedded audio and data

Available in Box or Rack Card versions

and more!

For more information, call 631-273-0404 or click on to commspecial.com today!

SPECIALREPORT

A/V QUALITY MONITORING

K-WILL QUMAX-2000



New additions include field-by-field accuracy for video quality assessment and millisecond measurement of lip-sync errors and enhanced remote monitoring capabilities with AC-3 audio measurement; compression noise detection and an HD component input is also available; now capable of 720p and 1080p/24 monitoring in addition to the already released 1080i format.

818-961-2401

www.kwillcorporation.com

AUDIO ROUTER

LAWO NORTH AMERICA NOVA73 HD

Scalable up to 8192 mono channels; synchronous system has defined latency of few samples; features a variety of interfaces and direct ATM link; 96KHz and Dolby E compatible with integrated signal processing; features STAR2 architecture and redundancy options; operation during servicing or refitting is not interrupted; hot-plugging is no longer restricted.

416-292-0078; www.lawo.ca

HD MONITOR

MARSHALL ELECTRONICS
V-R201P-AFHD



HD monitor features a completely digital TFT-MegaPixel active matrix LCD platform; digital signal processing features 10-bit A/D conversion of all analog signals, with 4X oversampling and five-line, super-

adaptive 2-D comb filtering of composite signals; multiformat compatibility accommodates virtually all video formats; advanced features include aspect ratio settings, a variety of screen markers and H/V delay.

800-800-6608

www.marshall-usa.com

LI-ION V-MOUNT BATTERY SYSTEM

IDX SYSTEM TECHNOLOGY
ENDURA ELITE

Designed for ENG/EFP production; features a 142Wh capacity, a twin-power cartridge design that doubles its shooting capability for operation of up to 3.5 hours using a 40W HD ENG/EFP camera and replaceable cartridges; complies with RoHS and aircraft security regulations; works with existing Endura V-Mount chargers.

310-891-2800; www.idx.tv

TEST AND MEASUREMENT SYSTEM

HARRIS VIDEOTEK
AVM-717-3GB

Provides a complete video and audio monitoring system for broadcast and cable engineers; supports all existing HD formats, including 1080p through 3Gb/s solutions as well as SD-SDI and optionally composite analog; includes all the functionality of the TVM family, a 17in LCD monitor and internal speakers for audio monitoring.

513-459-3400

www.harrisbroadcast.com

ADVERTISERS MARKED IN RED

Connecting
Innovation
to Application™

Broadcast

Featuring...

Fiber Optic HD Camera Connectors
Tri-Loc® Triaxial Camera Connectors
75 Ohm BNC Connectors
RCA Connectors
Audio Patching
Video Patching

www.winchesterelectronics.com

KINGS
by WINCHESTER
ELECTRONICS

62 Barnes Industrial Road North
Wallingford, Connecticut 06492
Phone: 203-741-5400
Fax: 203-741-5500

MPEG OVER IP GENERATOR SENCORE MIP 1664

GigE signal generator can play out hundreds of media streams simultaneously from the system RAM or directly from the system hard drives; features Ethernet or TS input files for use in a variety of IP or MPEG-2 applications; includes completely seamless looping capabilities, easy stream duplication capabilities and network stressing capabilities to ensure system QoS; features timestamp capturing for replay of field conditions in the lab.

800-736-2673; www.sencore.com

BOLT-ON HEIGHT DRIVE VINTEN RADAMEC FBH175

Provides robotic height control of most lightweight Vinten and Sachtler pedestals, without compromising on the manual function of the pedestal; provides the added dimension of pedestal height control to static robotic camera installations; can be adapted to work with a wide range of studio pedestals without any on-site or factory modification; provides smooth, quiet and quick operation around the studio.

845-268-0100; www.vintenradamec.com



ELECTRONICALLY HEIGHT-ADJUSTABLE DESK

MARTIN & ZIEGLER
ERGO MESA



Single-surface, 84in x 33.5in desk provides ample work space for applications requiring multiple monitors; features mounts for up to 12 monitors as well as anti-collision option, which will stop the adjustment of the desk if it senses a collision in upward/downward travel.

503-293-9499

www.mzfurniture.com

10-CHANNEL TV AUDIO PROCESSOR LINEAR ACOUSTIC AEROMAX 5.1-XL



Features built-in Dolby Digital (AC-3) encoding; enables broadcasters to deliver 5.1 channel surround sound; equipped with a loudness controller, upmixer and metadata manager as well as full-time, two-channel downmixing to support legacy analog paths; includes built-in AutoMAX processing that fixes two-channel audio that is broadcast wrongly signaled as 5.1 channels.

717-735-3611

www.linearacoustic.com

ADVERTISERS MARKED IN RED

Imagination to Creation

www.for-a.com

- Head Office (Japan)
Tel: +81 (0)3-3446-3936
- USA Western (CA)
Tel: +1 714-894-3311
- USA Eastern & Midwest (NY)
Tel: +1 212-861-2758
- USA Southern (FL)
Tel: +1 352-371-1505
- Latin America & Caribbean (FL)
Tel: +1 305-931-1700
- Canada (Toronto)
Tel: +1 416-977-0343
- UK (London)
Tel: +44 (0)20-8391-7979
- Italy (Milan)
Tel: +39 02-254-3635/6
- Korea (Seoul)
Tel: +82 (0)2-2637-0761
- China (Beijing)

2M/E - 4M/E Digital Video Switcher
HVS-5000 Series NEW

1M/E Digital Video Switcher
HVS-650HS NEW

2M/E Digital Video Switcher
HVS-3800HS/3800S

1.5M/E Digital Video Switcher
HVS-1500HS

1M/E Digital Video Switcher
HVS-1000HS

Portable Digital Video Switcher
HVS-600HS

Portable Digital Video Switcher
HVS-500HS

Dual-Link Compatible Video Switcher
HVS-DualLink

1.5M/E Video Production Switcher
VPS-715

1M/E Video Production Switcher
VPS-700/700RPS

FOR-A SWITCHER LINE-UP

FOR-A's Video Switcher Line offers innovative features and an operator friendly interface. They anticipate the needs of demanding users and meet them. Our innovations have been designed to provide flexibility during fast live operations, including a portable compact main frame and a range of intelligent options including: quad display output, virtual studio compatibility, color correction, up/down-conversion and polygon-based, true 3D HD DVE among many others.

— Two members join the FOR-A Switcher family for NAB 2008. FOR-A now offers ten switchers and we have one to meet your needs. — Imagination to Creation

2M/E - 4M/E Digital Video Switcher

HVS-5000 Series NEW

- Three models available; the HVS-5200 with 2M/E, the HVS-5300 with 3M/E, and the HVS-5400 with 4M/E
- Mixed HC and SD signal input support
- The 3Gbps next-generation signal support
- Maximum of 96 inputs and 48 outputs
- 8 still stores standard and 16 still stores maximum
- Each M/E has 4 keys, and each key includes DVE and chroma key
- 3D DVE with up to 8 channels
- Available options include color correctors, up/down/cross converters, multi viewers, frame synchronizers, and external video memory
- Touch panel display unit also available

Compact 1M/E Digital Video Switcher

HVS-650HS NEW

- Separate operation type of HVS-600HS
- HD/SD-SDI 4 inputs, 5 outputs standard
- Max. 8 HD/SD-SDI and 4 analog inputs
- Fully customized I/O configurations
- 2 Picture-in-Picture effects standard
- One DSK comes standard and one additional keyer is optional
- Optional analog component/DVI-I (PC)/composite I/O
- Optional up-conversion, frame sync card, and polygon based 3D DVE

SEMI-RIGID CARRIER PETROL MINI CAMERA ACCESSORY BAG



Offers a convenient and comfortable way to transport essential accessories like batteries, chargers and spare connectors; the top lid's dual-directional run-around zippers open quickly for easy access; features inside layers of bright orange padded fabric that safeguard sensitive equipment as well as two removable dividers that can be custom configured to provide extra security and protection; includes a second basement compartment underneath the main chamber for additional cushioned space; constructed of heavy-duty waterproof blue and black Cordura.

845-268-0100; www.petrolbags.com

FREQUENCY CONVERTERS MITEQ 9900 SERIES



Designed for up/downconverters that are offered in extended C- and Ku-band; the C-band models cover 5.725GHz to 6.725GHz and 3.4GHz to 4.2GHz, while the Ku-band models cover 13.75GHz to 14.8GHz and 10.7GHz to 12.75GHz; feature optimized phase noise, amplitude and spurious performance to provide a transparent frequency conversion for all video and data applications.

631-436-7400; www.miteq.com

CHANNEL BRANDING DEVICE PIXEL POWER LOGOVISION

Available with SD/HD support; inserts a wide range of branding and graphical elements including multiple clocks, multi-layer static and animated logos as well as text crawls; supports most graphics formats; designed with flexible interfaces for seamless integration.

818-333-5055; www.pixelpower.com

TRANSPORT SYSTEM MULTIDYNE DVI-5000 SERIES



DVI single and dual-link, single-fiber, transport system with stereo audio and data; provides a long-haul transport solution for high-quality, up to WQXGA 2560 x 1600, DVI single link and dual-link video sources via one fiber; supports stereo audio and bidirectional data for monitor control; doesn't use compression; user adjustments or calibration are not needed; supports fully uncompressed, 100 percent transparent video transport.

800-488-8378; www.multidyne.com

ELECTRICAL/OPTICAL FRAME SYNCHRONIZER NETWORK ELECTRONICS FRS-HD-DMUX



Features SD-SDI and HD-SDI frame synchronization, one optical and one electrical input, four electrical outputs and sync input with unbuffered loop through; options include stereo audio out and AES out as well as stereo out and de-embedding of RS-422.

800-420-5909

www.network-electronics.com

FIBER-OPTIC CONNECTOR SYSTEM NEUTRIK OPTICALCON



Solid, ruggedized-protected fiber-optic connector system extends the outdoor capabilities of the system, sealing the connector against dust and water while retaining its IP65 connection; increases the reliability and maximizes the uptime for fiber-optic connection systems; enables up to four copper wires to run power or data signals through.

732-901-9488; www.neutrik.com

VIDEO RECORDER MODULE NETIA MANREO MODULE



Acquires and digitizes videos from tape; functionality includes start, stop, forward, rewind, etc.; controls the VTR and launches the acquisition and digitization (MPEG-2 with MainConcept) process; enables migration to lossless and more secure digital storage; uses the RS-232 and RS-422 protocols to control external VTRs; allows users to connect a jog/shuttle control via USB port for easy navigation, watch video as the media is being digitized and mark in and out points to create a clip or even a new video, produced automatically from a series of marked segments.

888-207-2480; www.netia.com/us

HD ENG/OB TRANSMITTERS/RECEIVERS NUCOMM 7 SERIES

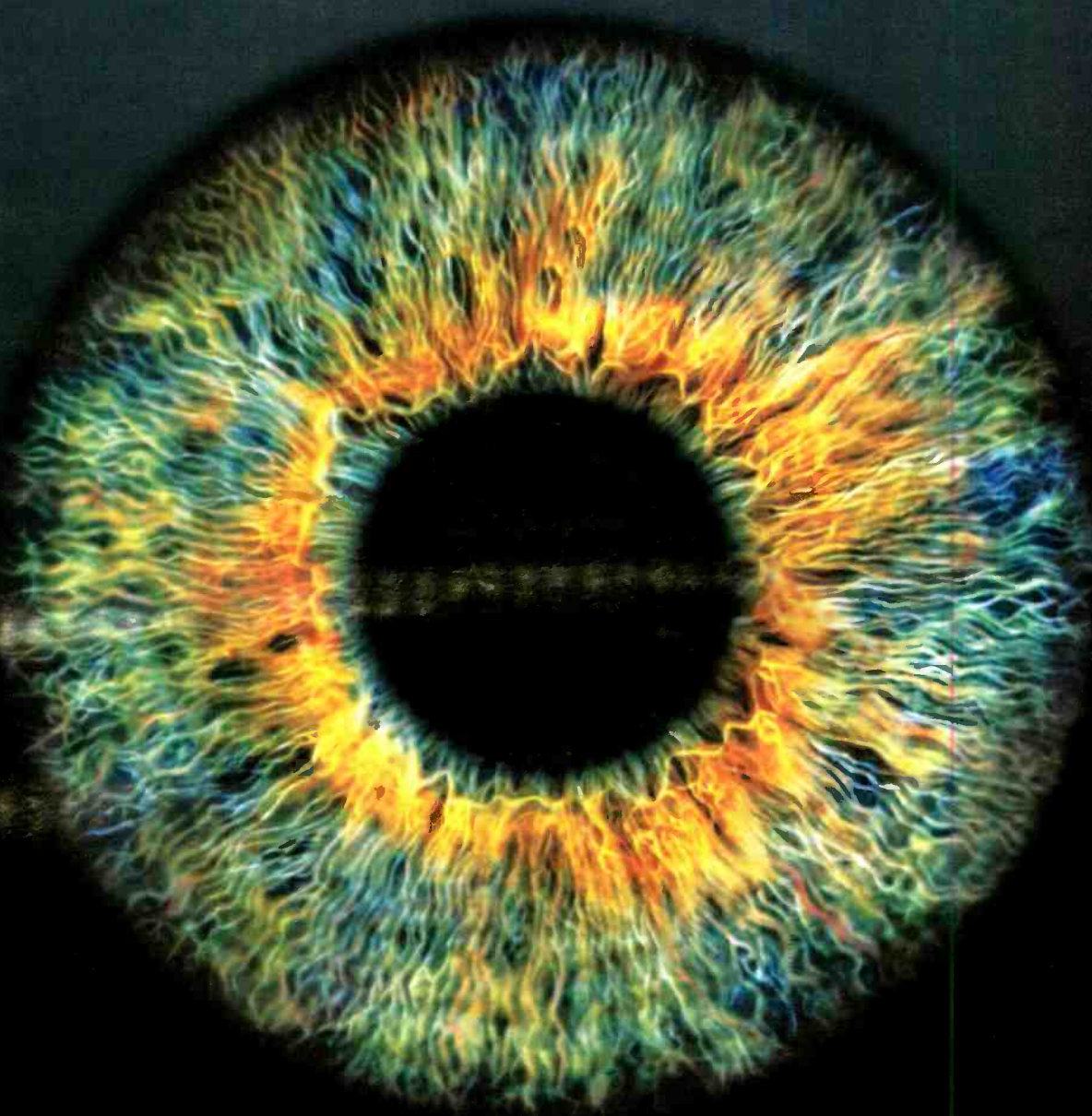


Capable of HD operation using built-in encoding/decoding technology; can be delivered as SD and field upgraded to HD via software key; features multiple modulation modes (VSB, COFDM, DVB-S, FM) and dual/tri-band RF outputs; consists of Channel Master TX7 portable transmitter, Channel Master RX7 portable receiver, Newscaster VT7 ENG/OB van transmitter and Newscaster CR7 central receiver.

908-852-3700; www.nucomm.com

the vision in television™

DTV | HDTV | VOD | IPTV



Whether it's advanced compression, on-demand or content distribution, we deliver the multimedia technology that's moving digital video forward.

TANDBERG television

Part of the Ericsson Group

INTERCOM

CLEAR-COM CELLCOM10 V1.5.7

Brings broad wireless connectivity to the company's Party-line and Digital Matrix intercom systems and allows for belt-pack-to-belt-pack conversations or small group conferences; the new version 1.5.7 wireless belt-pack and headset system offers new features and functionality including vibration alert for incoming calls and a battery remote display on the base station as well as remote microphone kill control from base station.

510-337-6600; www.clearcom.com

ASSET AND WORKFLOW MANAGEMENT

OBOR DIGITAL ZEUS

For physical asset management; tracks equipment using identifiers such as name, description and location; for technical workflow management, provides ticket generation and management, automatic routine ticket generation, interdepartmental communications, shift notes and service scheduling; for workforce management, offers personnel scheduling, assignment of duties, time card management and safety integration; for overall management, offers budgeting tools, key performance indicators, safety reports and training overviews.

407-352-6501; www.obordigital.com

HDTV CONVERTER

HARRIS XHD-3903



Features built-in 3Gb/s 1080p 50/59.94 processing and conversion capabilities, I-WINGS sidebar content fill and eight AES inputs and outputs with 32 channels of internal audio processing; integrated Dolby decoding and encoding handles compressed Dolby streams.

513-459-3400

www.harrisbroadcast.com

HDTV CONNECTORS

FISCHER CONNECTORS 1053 SERIES

Combine the technology of Fischer broadcast triax connectors with the technology of Corning UniCam fiber-optic contacts; simple, convenient and economical for assembling HDTV camera connectors in the field in only 30 minutes.

800-551-0121

www.fischerconnectors.com

FLUID HEAD

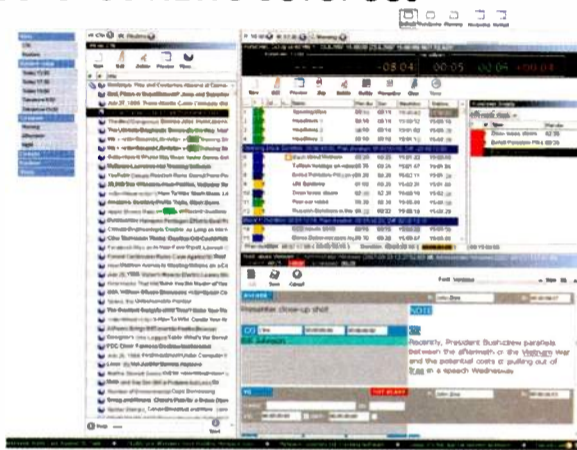
OCONNOR ULTIMATE 2575C

For cameras up to 90lbs; features OConnor's stepless, smooth pan-and-tilt fluid drag specifically designed for film-style shooting as well as its patented sinusoidal counterbalance system for accurate balance at any point in the tilt range; a collapsible counterbalance crank handle and numerical readout are designed to make repeatable counterbalance easy.

818-847-8666; www.ocon.com

NEWSROOM COMPUTER SYSTEM

OCTOPUS NEWS OCTOPUS6



Runs on Windows, Mac and Linux OS; features single-tap search that allows users to search for wires and stories by typing the search phrase directly in the list, double-column scripting with spellchecker, mouse-free approach and live script preview, time markers to divide rundowns into segments for show planning and time stamps to keep directors aware of the footage deficiency/surplus and whether stories need to be cut or added.

+420 221 181 511

www.octopus-news.com

TRANSCODING SYSTEM

OMNEON PROEXCHANGE V.1.1

Now supports Windows Media VC-1 and Flash Video; runs on MediaGrid active storage system; provides a scalable and efficient grid-based transcoding platform; handles a wide variety of audio and video formats including H.264; conversion and rewrapping between wrapper formats supported with preservation and accurate placement of all metadata through all conversion operations.

408-585-5140; www.omneon.com

OPTICAL SWITCHING PLATFORM

OPTICOMM OPTILINX OLX-3000

Switches digital signals up to 4.25Gb/s with any of its 144 ports, all housed in a compact 4RU chassis; also available in a 288-port version in an 8RU chassis; provides high-speed switching between ports with minimal effect on overall network latency.

858-450-0143; www.opticomm.com

DISASTER RECOVERY

OMNIBUS SYSTEMS ITX BUSINESS CONTINUITY PROCESS

Designed for business continuity applications; includes media replication, fully redundant mirroring and remote operation after evacuation; sources content automatically from existing video servers, transferring content as required to a remote location, where an iTX playback engine interprets the transmission schedules to provide a parallel service.

303-237-4868; www.omnibus.tv

MULTIUSER KVM SWITCH

FUJITSU FS-8000

Allows up to eight remote users to access up to 32 servers over Cat 5 UTP cabling between the main unit and the user console unit; enables remote users to access servers up to 300m away while maintaining support for XGA and SXGA monitors and from 200m away for UXGA monitors; supports PS/2, USB, SUN MD8 and SUN USB server interfaces as well as keyboard hot-key switching and on-screen display.

408-746-7000; www.fujitsu.com

SHOULDER-MOUNT CAMCORDER

PANASONIC AG-HMC70

Features a 12X 38.5mm to 462mm Leica Dicomar wide-angle zoom lens, one-push Auto Focus and integrated Optical Image Stabilization, ensuring stable images; users can capture 2.1-megapixel still images with the camcorder, even during video recording; offers three recording modes — 6Mb/s, 9Mb/s or 13Mb/s; can record more than 2.6 hours at 13Mb/s or up to six hours at 6Mb/s on just one 16GB SDHC memory card.

201-392-4127

www.panasonic.com/broadcast



Screen Service

The full digital SDT SERIES product line is
Today enriched by SDT ARK-1

All-in-one Transposer/Transmitter



**HETHERODYNE
TRANSPOSER**



**REGENERATIVE
TRANSMITTER**



TRANSMITTER



All **SDT SERIES** are **SWDT®** Multimode transposers/transmitters for PAL, DVB-T/H, ATSC, NTSC, QPSK, QAM, ISDB-T and FLO modulations

SCREEN SERVICE BROADCASTING TECHNOLOGIES S.p.A.
Via G. Di Vittorio, 17, 25125, BRESCIA, ITALY
tel. +39 030 358 2225 - fax +39 030 358 2226
info@screen.it | www.screen.it

SCREEN SERVICE AMERICA LLC
6095 NW 167th Street, Suite D-10 - Miami, FL 33015
info@screenservice.net | Phone +1 305 826-2212
Fax +1 305 826-2290 | USA Toll Free 1-888-522-0012

SCREEN SERVICE DO BRASIL
Rua Tapajós, 90 | Boa Vista | CEP: 37.540-000
Santa Rita do Sapucaí - MG | BRASIL | Tel: +55 35 3473-3915

Air Cooled
From 0.5W_{rms} to 10 kW_{rms}
from 2W_{ps} to 100 kW_{ps}

- Multimode modulator SWDT* (PAL, DVB-T/H, ATSC, NTSC, QPSK, QAM, ISDB-T and FLO)
- GPS, SAT Receivers
- Integrated TC/IP Protocol, GBE, SNMP



Liquid Cooled
from 0.5W_{rms} to 25 kW_{rms}
from 2W_{ps} to 100 kW_{ps}

- Multimode modulator SWDT* (PAL, DVB-T/H, ATSC, NTSC, QPSK, QAM, ISDB-T and FLO)
- Noiseless
- Compact design (pics: SDT 203UB Liquid cooled, 5kW_{rms})
- GPS, SAT receivers
- Integrated TC/IP Protocol, GBE, SNMP



ANTENNA

PROPAGATION SYSTEMS, INC. (PSI) BROADCAST UHF BROADBAND PANEL



Consists of high gain panels in fully enclosed radomes; each panel has four half-wave spaced dipoles and is approximately two wavelengths in length; the panels may be configured in combinations for a custom horizontal pattern or stacked to achieve power gains; can be side-mounted to an existing structure or configured about an independent support structure for top mounting.

814-472-5540; www.psbroadcast.com

PROMPTERS

QTV STARTER SERIES

Designed to meet the requirements of smaller and nontraditional broadcast segments; range comprises 10in and 17in prompters; bundled with Autocue's new entry-level software, QStart, which is part of the QNxt product suite; uses the same hood, mounting and bracket systems as QTV's Professional and Master series prompters; when customers decide to upgrade, they need only pay for a replacement monitor, rather than a complete new system.

203-406-1400; www.qtv.com

ROUTERS

QUSTREAM CHEETAH

Includes four new video interface modules; the CH-ADSDI-IN, a video input card with composite A/D decoder input; the CH-INPUT-3GB-BNC; the CH-OUTPUT-3GB-BNC; and the CH-HDSDI-OUT-BNC, a video output card with integral HD to SD downconversion.

416-385-2323; www.qustream.com

SURROUND-SOUND CONTROL/ MONITOR/ANALYZER

RTW SURROUNDCONTROL 31900/31960

Uses RTW's Surround Sound Analyzer technology; 31900 designed for studios and fits in 19in 1RU case; 31960 designed for waveform monitors in video studios in half 19in 3RU rack-mountable module with 19in installation racks; feature an HD/SD-capable SDI de-embedder interface and analog/digital audio I/O; can access all 16 (4 x 4) audio channels implemented in SDI streams and use them for visual display and audio monitoring.

+49 221 70913 0; www.rtw.de

RECEIVER

RF CENTRAL RFX-RMR-II



Operates in 2GHz frequency band and receives SD/HD signals, outputting composite video, HD-SDI or DVB-ASI; features analog, digital and fully embedded audio outputs and a fully upgradeable COFDM decoder; demodulation modes include OPSK, 16-QAM and 64-QAM with auto detection.

717-249-4900; www.rfcentral.com

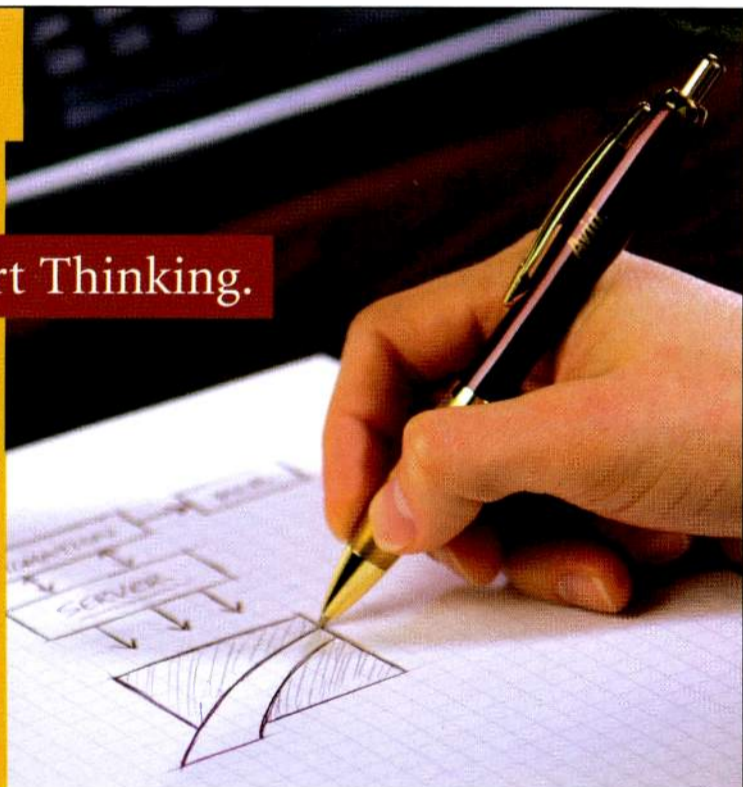
PRODUCTION SWITCHER CONTROL PANELS

ROSS VIDEO VISION 1M, VISION 2M AND VISION 2X

The Vision 1M and Vision 2M panels offer 24 crosspoint buttons, while the Vision 2X offers 32 crosspoint buttons; all of the control panels can control up to four M/Es of video processing and connect to the Ross MD and MD-X live production engine chassis; RGB buttons allow personalization of the control panel; a DualDisplay color touch screen allows the operator to view and control two menus simultaneously.

613-652-4886; www.rossvideo.com

Smart Thinking.



With Sundance Digital, good broadcasting and good business go hand in hand. Using our automation software, you can improve the efficiency, accuracy, productivity and profitability of your broadcast and news operations. By integrating digital television and information technologies, we give you the capability to manage your entire broadcast workflow. As a result, you'll get greater control, more flexibility and unprecedented speed. That's what we mean when we say we'll improve your on-air product — and your bottom line.

How's that for smart thinking?

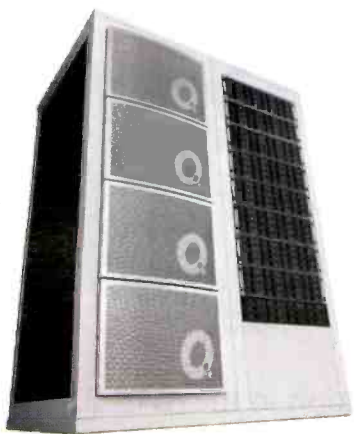
And speaking of great ideas, we've combined everything you expect from Sundance Digital — exceptional service, open technology, reliable products — and added the power of an industry leader. Now, as part of Avid, we have even more resources to serve your business.

Smart. Real smart.

www.sundancedigital.com
972.444.8442

SUNDANCE
DIGITAL
BROADCAST AUTOMATION SOLUTIONS
A part of **Avid**

GROUP WORKFLOW QUANTEL GENETIC ENGINEERING



Allows facilities efficient collaborative teamwork for post and DI; gives eQ, iQ and Pablo systems access to the same media and allows each to work completely independently; allows multiple users to access the same clips at the same time without copying or moving media; allows all resolutions for playout in real time without creating any new media.

703-448-3199; www.quantel.com

LED ON-CAMERA LIGHT SACHTLER REPORTER 8LED LIGHT



Compact light fixture requires the power input of just 8W yet produces a light output of 250 lumens; features an input voltage range of 6V to 24V; designed for work with everything from compact 7.2V HDV camcorders to broadcast cameras and a variety of shooting applications; available in a standard daylight version; optional accessories give the unit a broader application spectrum and allow an operator to change the beam angle.

845-268-0100; www.sachtler.us

HD/SD VIDEO CARDS BLACKMAGIC DESIGN DECKLINK HD



Lets users instantly switch between HD and SD video connections; connects to 270Mb/s SD-SDI and 1.485Gb/s HD-SDI equipment; also connects to SD analog equipment such as Betacam SP decks or HD HDV cameras and component monitors.

408-954-0500

www.blackmagic-design.com

#1 in HD & 3Gig



Moving pictures and sound around, *perfectly.*

Looking for error-free routing and management of digital audio & HD/SD video signals?

With its innovative technology and deep expertise in both digital and HD, NVISION knows how to create a superior and cost-effective configuration for your facility.

- Large-Scale, Mid-Size and Multi-Format Routers
- Router Control
- Compact Routers
- SD and HD Master Control
- Synapse Modular Signal Processing

1-800-860-HDTV (4388)
www.nvision.tv
email: nvsales@nvision.tv

Dolby E
PARTNER

ASSET MANAGER SCHEDUALL MEDIA MANAGER

Provides media, entertainment and broadcast industries an effective way to group, categorize, organize and track media assets; facilitates, streamlines and tracks dynamic workflows; allows a facility to capture asset information and location as it moves through the workflow process; fully integrated with ScheduALL; seamlessly manages work orders, shipping and duplication areas of the system.

954-334-5406; www.scheduall.com

SENCORE NOW
AUTHORIZED DEALER OF **HAMLET**
EXCELLENCE IN VISION

BASEBAND TEST SIGNAL GENERATORS, ANALYZERS, MONITORS



- Generate, Analyze, Measure and Monitor HD/SD SDI and composite video signals
- Waveform, Vector, Audio, and Picture can be simultaneously monitored and measured
- Hand-held, Bench-Top and Rack-Mount Instruments
- PC-based analysis and display software
- Ideal for studios, master control rooms, Head-ends, and remote troubleshooting

WWW.SENCORE.COM

SENCORE

INNOVATIVE BROADCAST SOLUTIONS
SINCE 1951

1-800-SENCORE

HAMLET QUALITY AND MONITORING SOFTWARE



ReelCheck

- Comprehensive real-time quality monitoring tools
- Ideal for Conformance Checking
- Waveform Monitoring
- Highlighted Color Gamut Error Checking
- Vectorscope
- Alarm Triggers and Logging

Call for your specific application or stop by Sencore booths at NAB (N1122 or SU12108) and discuss your needs.
1.800.736.2673

LENS ACCESSORIES SCHNEIDER OPTICS CENTURY PRO SERIES HD LENS



New line of Century HD lens accessories complements Sony's new PMW-EX1 camcorder; provide unprecedented image clarity, while enabling the camera to go wider, reach further and move in closer than the lens alone will allow.

818-766-3715

www.schneideroptics.com

DIGITAL TV TRANSMITTERS SCREEN SERVICE BROADCASTING TECHNOLOGIES MAGNUM SERIES

Designed for SFN and MFN networks; features a built-in SFN adapter and advanced technology, which allows implementation of all modulation patterns for either digital or analog in the same hardware; firmware allows zero error signal processing due to an internal 32-bit architecture.

888-522-0012; www.screen.it

NOISE ERASER FOR-A DNE-2



Uses image processing with motion compensation to remove noise-filled signals without harming the quality of the original video; supports HD-SDI input and output.

714-894-3311; www.for-a.com

MULTIFORMAT CONVERTERS

EDIROL VC-200HD AND VC-300HD

Scale any input to multiple resolutions; support full DVI-I input and output; offer bidirectional conversion and scaling between component SD/HD and HDV/DV, DVI (and SD/HD-SDI with VC-300-HD); embed accompanying audio into the DV/HDV stream.

800-380-2580

www.rolandsystemsgroup.com

HANDHELD HD CAMCORDER PANASONIC AG-HMC150



New addition to the AVCHD product line; features three native 16:9 progressive 1/3in CCD imagers with an optical image stabilization function to ensure stable shooting and a 28mm Leica Dicomar wide-angle zoom lens; offers 1080i and 720p recording at 13Mb/s; additional features include professional XLR audio input connections and a wide range of data and signal interfaces.

201-392-4127

www.panasonic.com/broadcast

PORTABLE MICROWAVE LINK MICROWAVE RADIO COMMUNICATIONS OB5000

Designed to address the need for high-capacity data throughput in portable microwave links that support outside broadcast with split system (two-box) applications; compatible with the company's existing RF heads and supplies the control and baseband feature set expansion necessary to support the next generation of digital and data applications; allows simultaneous distribution of HD and SD high data rate signals for contribution applications from the field.

978-671-5700; www.mrcbroadcast.com

DIRECTIONAL MINI-SHOTGUN CONDENSER MIC SENNHEISER MKE 400



Features directional super-cardioid/lobar pattern, a control key on the permanently polarized condenser mic, a switchable wind filter, foam windshield, battery and microphone shock mount; increases the range of the mini-shotgun mic; permits the recording of low-level sound sources; delivers more than 300 hours of professional sound on a single AAA battery.

860-434-9190; www.sennheiserusa.com

SOOM



sachtler

When was the last time
your tools inspired you?



SOOM
HiPod System



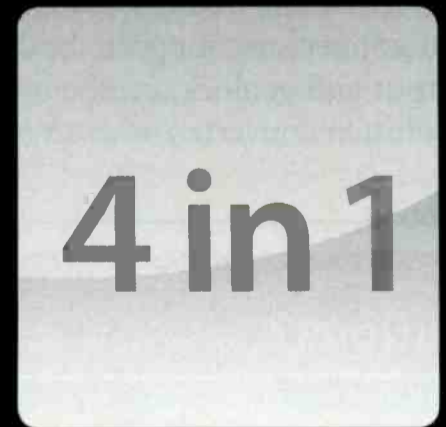
SOOM TriPod



SOOM TriSpread
Baby Tripod / Mid-Level Spreader



SOOM Tube
Monopod / HiPod



4 in 1

Let your imagination soar to new heights with the revolutionary 4-in-1 HiPod System.
Three products, four scopes of application – SOOM ... *infinite possibilities.*

www.sachtler.us

ROBOTIC PEDESTAL SHOTOKU BROADCAST SYSTEMS TRP-100



Allows full X, Y and height camera movement as well as pan and tilt; navigation can be calibrated easily with a target tile placed anywhere on the studio floor; features pneumatically balanced, three-stage height mechanism; supports any camera configuration up to 220lbs while gliding through 2.5ft of elevation at up to 1ft/s.

310-782-8491; www.shotoku.tv

MULTIFORMAT ROUTING SWITCHER

SIERRA VIDEO PONDEROSA

Includes I/O sizes up to 128 x 128, digital-to-analog conversion boards and analog and digital audio options; can pass standard serial digital video signals including SMPTE 310M, 259M, 344M and DVB-ASI along with HD signals conforming to SMPTE 292M.

530-478-1000; www.sierravideo.com

CROSSCONVERTER

DOREMI LABS GHX-10

An HDMI and SDI crossconverter with audio and genlock; features HDMI, DVI and SDI connectors; supports both SD and HD video and features audio support, sync output and genlock; can be used as a computer DVI to HD-SDI converter, a HDMI resolution converter, or as an HD video upconverter or downconverter.

818-562-1101; www.doremilabs.com

MANAGEMENT SYSTEM SINTECMEDIA ONAIR

Manages airtime sales and traffic operations as well as content acquisition, broadcast rights, long-term and detailed schedule planning and promotion planning; features new Addressable Content Tools (ACT), which provide new tools for networks as well as cable, satellite and telecom operators, to compete and generate new revenue streams in the increasing world of interactive and personalized media.

866-746-8321; www.sintecmedia.com

AUTOMATED CONTENT REPURPOSING SYSTEM SNELL & WILCOX ICR V3.0



Designed for producers of film and broadcast content in the mobile, telco, cable and broadband markets; enables ingest of SD and HD content; new universal conversion tools simplify creation of multiple variants of HD and SD programs within the file-based domain; features motion-compensated, software-based Alchemist IP SD standards conversion, advanced MPEG-4 authoring tools, enhanced QC reports and XML-based integration with asset management systems.

818-556-2616; www.snellwilcox.com

THREE-PHASE UPS STACO FIRSTLINE



Available for 10kVA, 15kVA and 20kVA applications; allow users to network this UPS with their manufacturing and management systems; features SNMP capabilities; offers Web browser-based visual readings, alarm notification and a 48-hour system history as well as client shutdown software for operating systems.

866-261-1191; www.staco-news.com

AUDIO NETWORK/ROUTER/ I/O MATRIX

STAGETEC (SALZBRENNER STAGETEC MEDIAGROUP) NEXUS

Offers audio format conversions, A/D and D/A converter systems, audio processing, data forwarding, routing interfaces, multichannel metering, power amplifier control, intercom and logical functions; can route any type of audio input to any type of audio output and can route DSP to wherever signal processing is needed, providing all necessary controls for EQ, delay, dynamics, faders, etc.

888-782-4391; www.stagetec.com

Curious? See you at Infocomm 2008, Booth C4281

RIEDEL
The Communications People

WORLD-CLASS DIGITAL INTERCOM SOLUTIONS

Riedel Communications Inc. • 2521 North Ontario Street • Burbank, CA 91504 • USA • www.riedel.net

DIGITAL CONSOLE

STUDER VISTA 5 SR

Vistonics screen provides a more direct viewing angle when operating in a standing position, particularly in daylight; temperature control system makes the console reliable in the broad temperature ranges of its sound reinforcement applications; features flash memory, redundant power supplies and optional redundant audio and control links.

818-920-3285; www.studer.ch



We've Got You Covered.

Axcera leads the industry with the broadest line of TV transmitters available from any manufacturer. For all of your broadcast television, mobile multimedia and mobile TV transmission requirements, look to Axcera for the highest level of quality, workmanship, and technology.

Axcera is an Industry Leader in Mobile TV.

From the first US deployment of single frequency networks to our state-of-the-art transmitters and low power gap fillers designed specifically for Mobile TV, Axcera's award-winning products are field proven and support all of the US and International Mobile TV standards. All of our Mobile TV solutions are backed by the best support in the business, available twenty four hours a day, seven days a week.



Custom Solutions Are Standard for Us

Visit Us On Our Website to Learn More.

phone 724-873-8100 **toll free** 1-800-215-2614 **email** info@axcera.com **web** www.axcera.com

ENCODER STREAMBOX MOBILE SOFTWARE ENCODER



Designed as software-based solution ported to a variety of mobile devices; transports broadcast video over Wi-Fi and 3G networks for real-time and store-and-forward news coverage; provides mobility without sacrificing performance, reliability or quality; features the ACT-L3, providing video compression and error correction and bandwidth shaping for managing, controlling and recovering lost packets and correcting irregularities common to video delivery over Wi-Fi and 3G networks.

206-956-0544; www.streambox.com

HDTV CAMERA SYSTEM IKEGAMI HDK-727

Provides HD and NTSC video simultaneously for the CCU and in both digital and analog form; incorporates next-generation 0.18 micro ASICs into the CCU; features 14-bit A/D conversion and up to 38-bit internal digital processing circuits as well as 1080/60i, 720/60p, 480/60i and other optional frame conversion configurations.

201-368-9171; www.ikegami.com

EDITING SYSTEM FEATURE **SUNDANCE DIGITAL PUBLISH TO SUNDANCE (P2S)**

New feature available within Avid editing systems enables the seamless migration of finished content directly to the broadcast facility's play-to-air server, complete with its metadata; incorporates the functions of Sundance Digital Titan and Fast-Break NXT, Avid Interplay and its Media Services Engine and Avid ProEncode using the Telestream or Agility Anystream transcode engines.

972-444-8442
www.sundancedigital.com

MEDIA PROCESSING PLATFORM **TANDBERG TELEVISION MPLEX**

Enables ultra-low bandwidth video broadcasting to mobile devices such as cell phones, media players, in-car systems and laptops; supports the required encoding and content scrambling for broadcast DVB-H, 3G MBMS and unicast 3G streaming; sits at the core of an end-to-end system for mobile TV that offers picture quality at bandwidths of 200kb/s to 300kb/s, with up to eight channels per rack unit.

678-812-6300; www.tandbergtv.com

WALL MONITOR SYSTEM TBC CONSOLES TRACWALL

Uses a grid of structural T-slotted aluminum to facilitate many variations of monitor wall arrangements and upgrades; features a variety of fixed, tilt/swivel and articulating mounts for holding displays of 15in to 65in; channels cables directly into base cabinets, which also provide space for equipment and power supplies.

888-266-7653; www.tbconsoles.com

HD NEWS PRODUCTION VIDEO TECHNICS HDX NEWSFLOW

Provides end-to-end news production of HD content; includes a new VT Studio Pro RTX.2 HD nonlinear editor, supporting native HDV 1080i, HDV 1080p, HDV 720p (JVC ProHD), Panasonic P2 MXF 720p and MPEG-2 4:2:2 I-frame HD editing; also includes the new Apella HDX video server.

404-327-8300; www.videotechnics.com

FIBER-OPTIC MODULES TELECAST FIBER OPENGear FIBER-OPTIC MODULES

Support openGear terminal equipment platform from Ross Video; based on an open architecture, 2RU modular frame, designed to accommodate up to 10 cards; allows facilities the freedom and flexibility to choose the best technology for their particular applications; customers are no longer locked into one manufacturer's frame standard and modules for their terminal equipment solutions; provides the platform with a control system that allows quick and easy monitoring and control of frames and modules on the network.

508-754-4858; www.telecast-fiber.com

DUAL QUAD-SPLIT PROCESSOR **MIRANDA TECHNOLOGIES** **KALEIDO-QUAD-DUAL**



Combines two independent, high-quality quad-split processors in an 1RU frame; designed for applications such as mobile truck monitoring, which typically demands high-density monitoring across multiple, high-quality but inexpensive LCD monitors; provides full flexibility with respect to the sizing and positioning of the HD/SD/analog video windows; features 2 x 4 auto-sensing HD-SDI/SDI/analog composite video inputs and two high-quality DVI outputs with up to 1920 x 1200 pixels.

514-333-1772; www.miranda.com

LCD TELEPROMPTER TELESCRIPT FPS200R



A 20in LCD teleprompter combined with a 20in confidence monitor set above the camera lens; delivers professional quality performance and operation; ideal for use with the company's TeleScript line of prompting software; offers a cost-efficient teleprompting solution for the wide range of broadcast and professional applications now being fulfilled with robotic pan-and-tilt systems; features an above-the-lens mounting system for the confidence monitor that enhances weight distribution and spreads load balance.

201-767-6733; www.telescript.com

DVI over Gigabit Ethernet for Editing Environments



The Avocent Emerge® ECMS4000 Extender

The Avocent Emerge ECMS4000 extender provides real-time extension of dual head DVI over Ethernet using a single CAT 5 cable. The ECMS4000 delivers uncompromised digital workstation extension across unlimited distances and supports keyboard, mouse, mass storage, and CD quality audio over the same IP connection.

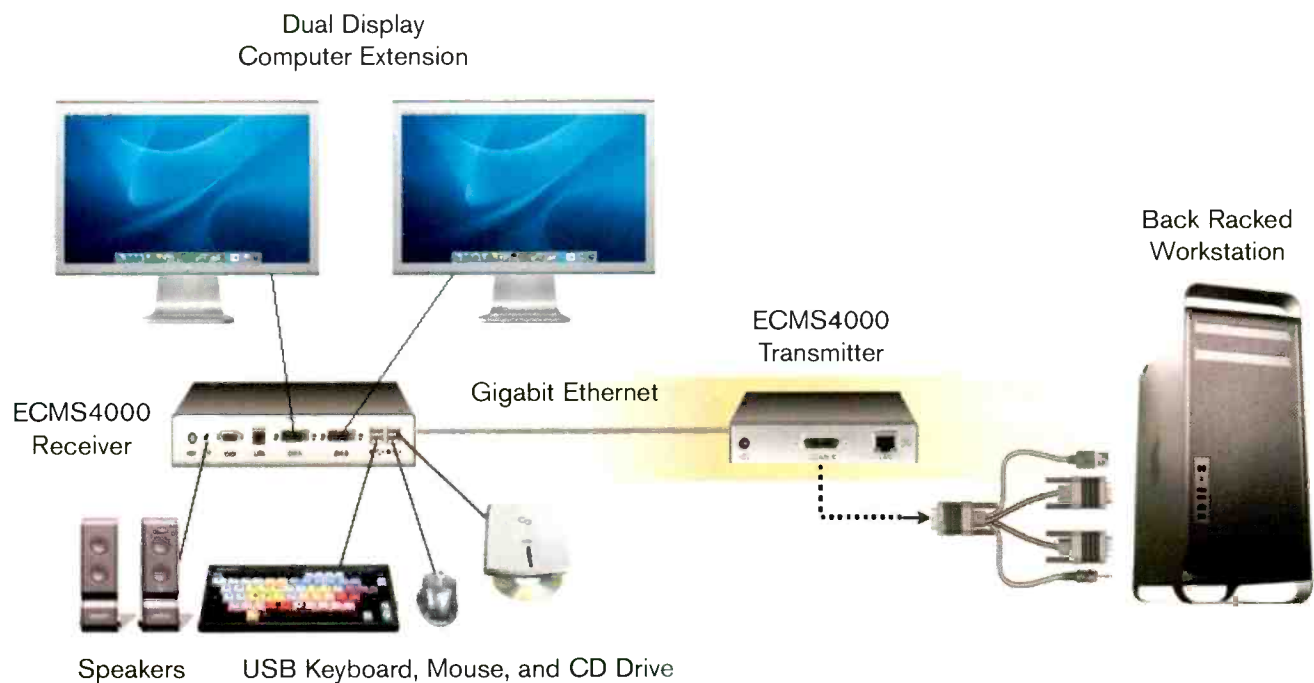
Try the Emerge ECMS4000 Extender for 30-days:

Call Avocent at 800-275-3500 or 954-746-9000, x. 7110.

Visit www.avocent.com/broadcast for details.



ECMS4000 Extender



For Tech Data sales
call 800-237-8931.



SPECIALREPORT

WIRELESS INTERCOM TELEX RADIOCOM

Supports two to 10 users for full duplex operation and an unlimited number of listen-only users; features easy setup and expansion as well as 64-bit audio encryption; option of three audio channels selectable at each TR-24 belt pack; base station automatically scans and selects best RF channel for communication.

952-884-4051

www.telexintercoms.com

EFP/ENG LENSES

THALES ANGENIEUX 19 X 7.3 LENSES



The 19 x 7.3 AIF general purpose ENG/EFP lenses are available in SD, HD and economically priced HD-E versions; features an ergonomic, lightweight design and extended focal range of 7.3mm to 139mm; weighs only 4lbs with 2X extender and 3.7lbs in the HD-E; sturdy construction is resistant to condensation, dust and rain; offer digital features including memorized focus and zoom positions, an anti-backlash system and auto cruise zoom function.

973-812-3858; www.angenieux.com

DUAL-CHANNEL FRAME SYNCHRONIZER

TERANEX VC100

Single-channel unit upgrades to dual channels; features flexible video and audio I/O, AES/analog I/O, FlexView aspect ratio, SD 608 and HD 708 closed-captioning, integrated video and tone test signal generator and redundant power supplies; front-panel LCD serves as video I/O monitor and menu display.

407-858-6000; www.teranex.com

HD/SD DIGITAL CAMERA

THOMSON GRASS VALLEY INFINITY



Captures using three 2/3in CMOS imagers and records to integrated REV PRO and CompactFlash media or external devices; supports DV25, Infinity JPEG2000 and MPEG-2 compression schemes; features USB and FireWire ports to connect standard IT peripherals and a GigE port allowing file transfers into a storage and post-production network while the camera is recording.

800-547-8949

www.thomsongrassvalley.com

CONVERTERS

TV ONE CORIO2 C2-2000 SERIES



The C2-2355A features HD-SDI up/down/crossconversion; the C2-2205A and C2-2255A offer up- and crossconversion; the C2-2105A and C2-2155A provide downconversion; series includes automatic incoming resolution detection and support of multiple worldwide TV standards; can handle a maximum input PC resolution of 2048 x 2048 and HDTV resolutions up to 1080p; feature variable zoom up to 10X, allowing enlargement of any part of the computer screen, while variable shrink can go down to 10 percent.

800-721-4044; www.tvone.com

ACTIVE STORAGE SYSTEM

OMNEON MEDIA GRID V. 2.1

Now includes a smaller, more affordable, entry-level system suitable for a wider range of facilities, such as local broadcast stations, post-production facilities and corporate A/V departments; uses multiple intelligent, interconnected-yet-independent storage servers to combine grid storage and grid computing to retrieve digital media quickly; scalable in capacity, bandwidth and processing power; new features include the ability to create storage reservations so individual users are guaranteed a minimum amount of storage, tail-mode FTP to support active workflows in conjunctions with non-Omneon servers and more robust system monitoring and reporting.

408-585-5140; www.omneon.com

AUDIO DEMUXER

WARD-BECK SYSTEMS M6202A

Accepts an SD or HD digital video signal and extracts up to six AES/EBU signals; available in 75Ω and 110Ω versions with optional integrated Dolby E/AC-3 decoder; housed in openGear frame; controllable using the dashboard remote control and monitoring software application.

416-335-5999; www.ward-beck.com

What Happened in Vegas?

Catch the Video Online

www.vcisolutions.com/nabvideo.html



Providing REAL Traffic and
Automation Solutions
www.vcisolutions.com



vcisolutions

point-of-sale to point-of-air®

GRAPHICS CREATOR

VIDEO DESIGN SOFTWARE TWISTER
PAINTSTATION HD



Combines full-feature graphic design tools with custom browser utilities to address workflow issues that broadcasters face; features a browser that allows the movement of content and files between practically any related broadcast device, regardless whether it is open or proprietary in nature, or if it is local or remote.

631-249-4399

www.videodesignsoftware.com

STUDIO LIGHTING

VIDESSENCE P110-255BX POWER KEY

Provides 110W coverage using two 55W BiAx lamps; features a simple adjustment mechanism that moves the lamp within the fixture for 60-degree, 70-degree or 90-degree spread and an adjustable rotating mounting yoke; available in dim and nondim configurations; UL/CUL/CE approved.

626-579-0943; www.videssence.tv

VIDEO CAPTURE

CARD SOFTWARE

VIEWCAST NIAGARA SCX

Gives users streamlined control and monitoring of multiple encoders from a single interface; offers live streaming encoding abilities for Windows Media and RealVideo formats (Pro version adds encoding for MPEG-4, H.264 and H.263 formats); features data reporting, remote management and optional Live Flash streaming capability.

972-488-7200; www.viewcast.com

HD/SD-SDI EMBEDDER

COBALT DIGITAL COMPASS 9323

Offers sample rate conversion, audio level, channel phase inversion, channel mapping and video level controls; features audio processing at 24 bits with 16 AES inputs, eight analog audio inputs, 16 AES outputs with 16 channels of audio de-embedding and embedding, with 16 channels of SRC, allowing retiming of the audio; designed to be installed in openGear frame.

800-669-1691; www.cobaltdigital.com

CLIP AND STILL STORE

VIZRT VIZ QUATTRO

Allows operator to access and create fully integrated graphics and videos directly from newsroom systems; extends the HD and SD channel branding with an intuitive solution for browsing and adding videos by putting video content on top of the current images and 3-D elements when integrated in a graphics workflow, such as as Viz Content Pilot, with a video asset management solution, such as Viz Video Hub.

212-560-0708; www.vizrt.com

Marshall Multi-Channel Digital Audio Monitors



Four user-configurable slots with a variety of input/output modules to choose from

- High-Quality, Ultra-Nearfield 16-Channel Audio Monitoring Systems for Space Critical Environments
- Ideal for TV facilities, post production, VTR bays, mobile production, and satellite links
- Four different models available in 1RU and 2RU Mainframes
- Dolby® Digital / Dolby® E Decoding (with optional ARDM-D552 module)

Dolby is a registered trademark of Dolby Laboratories

infoComm
booth# N6741

Marshall Electronics

Tel.: 800-800-6608
Fax: 310-333-0688

LCDracks.com

AUTOMATION SYSTEM VCI SOLUTIONS AUTOXE MC

Enables automated content lifecycle management; enables operator to manage one, 15, 50 or more channels with one workstation, in one screen using monitor by exception; houses all metadata in one database allowing multiple users simultaneous access without the need for a dedicated workstation.

413-272-7200; www.vcisolutions.com

CONSOLE WINSTED PRESTIGE

Features include recessed viewing angles, proper monitor distances and adjustable flat-panel screens, which eliminate eye-strain and reduce fatigue; have welded end frames with anti-tip legs and adjustable leg levelers; provides proper air circulation for electronics, cable and wire management troughs with EZ hinge door access and front- and rear-locking spring latch doors with CPU/storage shelves.

952-944-9050; www.winsted.com

VIDEO MONITORING SOLUTION

VOLICON OBSERVER QUALITY ASSURANCE MODULE

Automatically detects a wide variety of audio and video errors including macro-blocking or pixelization of the image due to video stream errors or overcompression; also performs quality checks for such errors as black or frozen screen, low volume or missing audio and missing closed-captioning; the Quality Assurance Module provides an automated method for analyzing a video image to detect macro-blocking, which has traditionally required human intervention to spot the on-screen anomalies.

781-221-7400; www.volicon.com

ALL-DIGITAL FIBER-OPTIC SYSTEM COMMUNICATIONS SPECIALTIES PURE DIGITAL FIBERLINK 3150 SERIES



Provides broadcast-quality transmission for HD/SD-SDI over one single-mode or multimode fiber; allows transmission of HD or SD-SDI as per SMPTE 292 and 259, with or without embedded audio and data, as well as DVB-ASI; equalizes and reclocks signals prior to fiber-optic transmission; features a reclocked and equalized SDI loop through, and the 3151 receiver features two reclocked and equalized SDI outputs.

631-273-0404; www.commspecial.com

HD VIDEO RECORDER WAFIAN HR-2

The 10-bit 4:4:4 dual-link HD-SDI recorder for digital film workflows records into the CineForm 444 format at 360Mb/s; records to both AVI and MOV formats; a built-in touch-screen LCD panel allows users to easily change recording settings and to review their footage immediately after shooting with the speed of nonlinear access; records full-resolution from HD-SDI and HD component feeds from most HD cameras.

858-863-4166; www.wafian.com

CONSOLE WHEATSTONE AIR 1

Ultra-compact console is designed to meet the needs of on-air, production, news applications, remotes and the podcasting markets; the low-profile frame comes equipped with a rugged tabletop mount with direct-access TRS rear connectors.

252-638-7000; www.wheatstone.com

AUDIO PROCESSING WOHLER TECHNOLOGIES WOHLER PLUS



Provides a variety of DSP options so each unit can be configured for the specific functions required by a facility; a modular system that features flexible inputs (16 channels or eight AES pairs) and outputs, alarms, monitoring and metering as well as multichannel synchronizing and shuffling of channels for 5.1 or 7.1 signal confidence; includes optional inputs for AES and multirate serial digital embedded audio with Dolby encoding.

510-870-0810; www.wohler.com

DIGITAL AUDIO MIXER EUPHONIX S5 FUSION



Features DSP SuperCore, which powers the mixer's signal processing and routing, providing full multiformat channels with EQ, filters and dynamics together with mix, aux and group busses with bus processing; EuCon Hybrid, which incorporates the EuCon high-speed Ethernet protocol, extends the control capabilities of the console beyond the DSP SuperCore to bring Mac and PC DAW tracks onto the console surface for mixing.

650-855-0400; www.euphonix.com

Ward-Beck Systems Ltd. | 10-455 Milner Avenue | Toronto, Ontario | M1B 2K4
North America: 800.771.2556 | Phone: 416.335.5999 | www.ward-beck.com

Innovative Solutions For Rapidly Advancing Technology.

Cost effective, high quality, innovative products to address your daily broadcast needs in monitoring, metering, level control, muxing, demuxing, conversion and distribution.

Thank you all for visiting us at

ELBER PRODUCT LINE

To satisfy the needs of the always growing number of clients and to be competitive in different applications, Elber has a wide range of products in continuous evolution. The products can be distinguished: fixed radio links (STL systems), mobile radio links, DENG systems and FM links for radio broadcasters.

The fixed radio links product line have always been Elber's selling force. Superior performance and the simplicity of installation are the main characteristics of these products that bring Elber to the world leadership in this market segment.

However, to respond to the constant evolutions of the market, it is necessary to develop equipment that require fast installation and have small dimensions. Such characteristics are met by the mobile radio links, a sector where Elber has made many investments in the past years.

The latest challenge for Elber is the DENG market. Aware of the ever increasing need of portable and fast set-



up systems, Elber presents a new highly technological range of products, maintaining the Company's idea of offering high performance equipment at competitive prices.

The R&D department offers an innovative and highly performing solution for Radio Broadcasters: apart from the renowned NBFM-01 microwave link, using an innovative digital signal processing of the modulated FM signal, Elber has developed new and alternative solutions for audio transport on digital networks. A new product line, called SRS, has been developed based on the Radio Software technology, obtaining excellent results and flexibility unique on the world market.

Fig. 1 gives a general view of the 4 main product categories offered by Elber for the transport of audio and video signals on large scale.

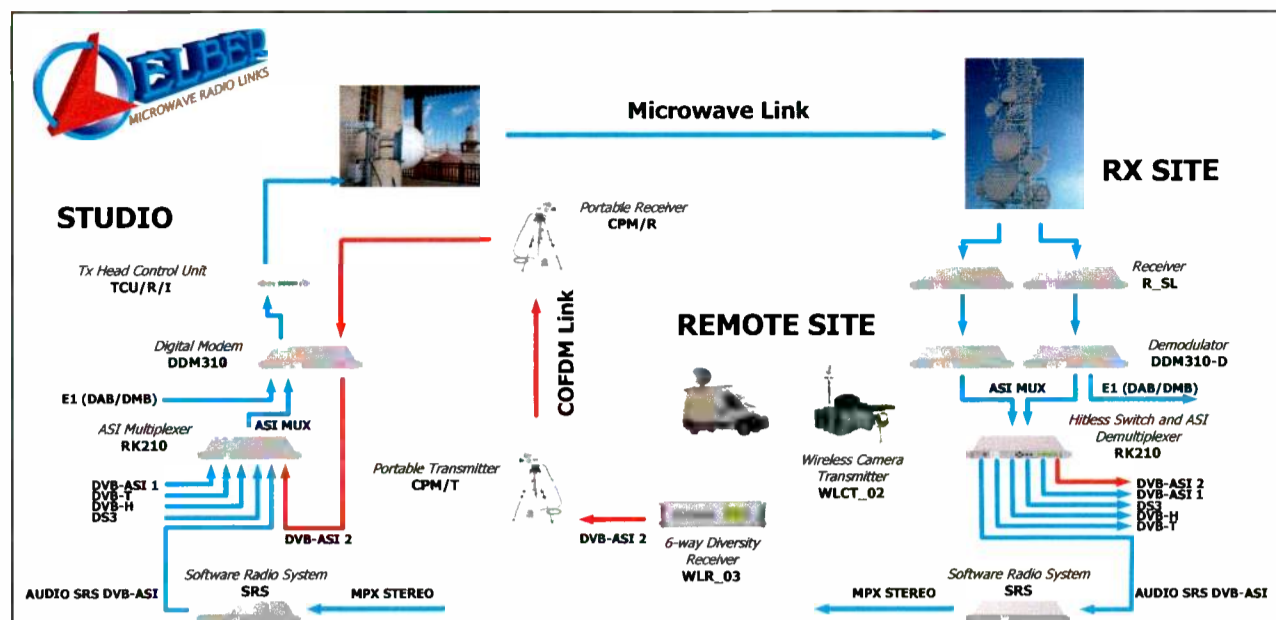


Fig. 1 Elber's Products

For a television broadcaster it is extremely important to have equipment which is quick and easy to install, suited for mobile applications. This is the typical configuration for live transmissions for both news, and entertainment programs, where the use of a wireless camera system (WLCT-02) is ideal to guarantee portability and mobility. The video signal of the wireless camera is transmitted to the mobile site (OB-VAN) where a digital COFDM receiver and decoder (WLR-03) are installed. The DVB-ASI output signal from the receiver is subsequently transferred to the studio through a portable microwave link (CPM).

The studio applications vary from the transport of the DVB-ASI signal coming from a remote site, to the transport of a DVB-ASI signal generated by the Software Radio System (SRS)- able to process digitally and transport audio signals (MUX STEREO) on DVB-ASI streams.

The multiplexed composite signal ASI-MUX is modulated by the highly reconfigurable DDM310 digital modem. The modulated signal is then transmitted (T_SL) on the desired frequency band. The output signal of the transmitter can be divided and sent to two separate antennas placed at different

heights, to protect the system from multipath fading.

The reception of both signals is independent but with the use of a Hitless Switch, the two composite ASI-MUX streams are aligned and packet by packet, the error-free stream is sent to the output. The ASI demultiplexer separates and gives back the original signals.

CPM Digital Portable microwave system

The digital portable multi-channel microwave radio system CPM is Elber's R&D latest product. The working frequency can be any 500 MHz band between 6 GHz and 15 GHz and the modulation can be either analogue (FM), digital (COFDM) or both. An external IF input for back-up signals is also available. These features make the CPM the ideal equipment for fast and reliable mobile links, even in hard weather conditions.

The COFDM section includes an SD 4:2:0/4:2:2 encoder. In addition, an FM modulator and demodulator implemented with Software Radio techniques are also available.

The control unit can be either indoor or outdoor. The latter is housed in a weatherproof box, while the indoor control unit is lodged in a 1U 19" standard rack.

we'll bring the world to you

YOUR BROADCASTING PARTNER

ELBER Srl. Via Selaschi, 42 - 16040 Leivi (GE) Italy • Tel: +39 0185 351333 Fax: +39 0185 351300
www.elber.it - elber@elber.it

NEWS SYSTEM

QUANTEL NEWSBOX HD



Arrives ready to go on-air straight out of the box; available in both HD-now and HD-upgradable configurations, allowing broadcasters to manage their HD investments; works with all the latest HD acquisition formats; comes with all that is needed to ingest material, view rushes, choose shots, edit stories, review finished pieces and play them out to air; features new options that increase flexibility and applications.

703-448-3199; www.quantel.com

VIDEO HEADEND PLATFORM

TANDBERG TELEVISION IPLEX

Includes MPEG-2 SD encoding, MPEG-4 AVC HD and SD encoding, MPEG-2-to-MPEG-4 AVC transcoding, MPEG-2 transrating and picture-in-picture (PIP) service generation; features a high-density, NEBS-certified, telco-designed chassis; offers improved motion estimation process, single-slice video processing architecture and dedicated processing for low-res encoding of PIP services.

678-812-6300; www.tandbergtv.com

IP ROUTER

UTAH SCIENTIFIC UTAH-400 IP



A 24-port IP router; gives broadcasters real-time, on-the-fly control of port priority, security groups and port speed on Ethernet networks; increases workflow efficiency in broadcasting or any situation where large video files or high-bit rate streaming videos are transferred over an Ethernet network; allows IT and traditional broadcast technology to be integrated seamlessly.

801-575-8801; www.utahscientific.com

HD/SD-SDI SWITCHER

KRAMER ELECTRONICS VS-41HD

Switches one to four inputs to two identical outputs; features Active Input Indication reporting function that lights up each input button when an active signal is detected at the input connector; provides signal reclocking and equalization for each input to compensate for long cable runs.

908-735-0018; www.kramerus.com

2.4GHZ WIRELESS INTERCOM

TELEX BTR-24

Incorporates the option of three audio channels, selectable at each TR-24 belt pack; upon startup, the BTR-24 base station automatically scans and selects the best RF channel for communication using a feature called ClearScan; has built-in Li-Ion battery pack to provide up to 10 hours of uninterrupted operation, or the unit can be operated with the included wall-mount AC power supply; includes rack-mount hardware.

952-884-4051; www.telexintercoms.com

10GIGE PCIE CARDS

SMALL TREE COMMUNICATIONS

Designed for Intel-based Apple desktop and server systems running Mac OS X Server version 10.5 Leopard; available in single- and dual-port configurations; connect Power Mac G5 servers with PCIe, Mac Pros and Intel Xserves to Edge-Core and Foundry switches with 10GigE.

866-782-4622; www.small-tree.com

AUDIO MIXING CONSOLE

STAGETEC (SALZBRENNER STAGETEC MEDIAGROUP) AURUS

Features dual encoders, analog user interface, multichannel processing, TFT color displays, sample rates of 44.1KHz, 48KHz and 96KHz, up to 300 audio channels, 128 busses, up to 32 full channels per DSP board, subsystems interconnection with fiber-optic cables, sample rate converters as optional or standard features and a modular structure for simple system expansion.

888-782-4391; www.stagetec.com

WEB-BASED GRAPHICS

CHYRON ONLINE

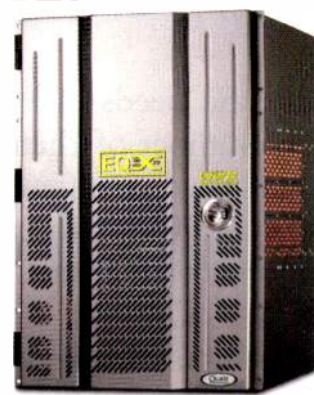


Integrates with Chyron's broadcast products; provides a one-stop, seamless platform to create, composite and distribute graphic content over the Internet for traditional and new media markets; features FastMaps for the creation of maps, FastQuotes for stock market charts, FastCharts for bar graphs and pie charts and FastWX for weather maps.

631-845-2000; www.chyron.com

ROUTER

EVERTZ EQX



Accepts digital signals from 19.4 (SMPTE 310M) through SDI, ASI, HD-SDI and up to 3G/s; sports a fully modular, hot-swappable, redundant design, independent monitoring bus, SNMP interfacing, advanced system control and source-by-source intelligent autoconfiguration; scalable to 576 x 576 in a single 26RU frame; enables input and output expansion in steps of 18.

905-335-3573; www.evertz.com

REMOTE CONTROL INTERFACE

CALREC AUDIO REMOTE AUDIO PROTOCOL

Allows remote control of fader modules on any Calrec console; enables a vision mixer to take control over the serial interface to autofades on the Calrec desk; provides individual control of faders, cuts and PFL of up to 192 faders on the Calrec console directly from the Ross OverDrive Automated Production Control system.

+44 1422 842159; www.calrec.com

BROADCASTING AND PRODUCTION CONSOLE

LAWO NORTH AMERICA MC266

Features a lightweight construction, low-power consumption and compact dimensions; in combination with the routing matrix integrated in the core, it offers maximum flexibility for I/O interfaces and DSP resources; has a matrix capacity of 8192 mono inputs and outputs and 512 DSP channels.

416-292-0078; www.lawo.ca

BNC CONNECTORS

WHITE SANDS ENGINEERING AIR BNC

Features a maximum return loss of -26dB up to 3GHz; exceeds SMPTE requirements; incorporates a fixed pin for a fast and reliable termination; the 75Ω compression connectors are compatible with SDI rated RG-6, RG-59 and mini RG-59 broadcast cables.

800-586-7377

www.whitesandsengineering.com

Demand Engineering Excellence

Demand VimBiz

Imagine rich access to the location, status, service history, and e-documentation of all equipment and software assets. Imagine also having this same access via the Web. Imagine e-mail notification of Service Request status changes. Imagine seamless integration between servicing, parts inventory, purchasing, and receiving processes.

Imagine much more. Accept no less.

Manage equipment, software, stockrooms, projects, servicing, order cycles, and rentals more effectively with VimBiz—the best-of-breed Equipment Asset Management solution for broadcast and media companies of all sizes. Engineering excellence is attainable...demand it.

VimBiz—Driving Broadcast Engineering Excellence



“VimBiz is an indispensable tool for managing our engineering workflows in a broadcast or production environment. It is a powerful EAM solution, and Vimsoft's support is outstanding.”

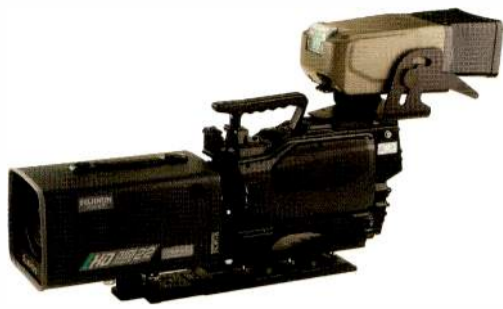
Stephen Jones - Systems Engineer - Harpo Studios, Inc.



Assets | Service | Stockrooms | Purchasing | Project Management | Device Monitoring | Rentals

Download a free 90-day trial today. www.vimsoft.ca

HD STUDIO LENS FUJINON XA22X7BES



Features a focal length ranging from 7mm to 154mm; well suited for shooting in tight locations and smaller studios.

973-633-5600
www.fujinonbroadcast.com

AUTOMATION AND PLAYOUT SYSTEM CINEGY AIR



New slow-motion feature uses motion vector-based image interpolation; offers multichannel active mode, providing users with simultaneous broadcasting of different playlists in various TV formats to multiple channels, with an additional horizontal timeline that provides a clear view of what is playing.

202-742-2736; www.cinegy.com

HD/SD NEWSROOM SYSTEM HARRIS NEWSFORCE



Provides file-based newsroom workflow from field editing to delivery on-air; offers four versions — NewsForce ES (a high-res, high-performance news editor), NewsForce Desktop (a proxy editor that operates on standard desktop PCs), NewsForce XNG (a software-based laptop editor for the field and newsroom) and Velocity NX (a full-featured promotions/craft-style editor).

513-459-3400; www.harrisbroadcast.com

ASSET MANAGEMENT SYSTEM PILAT MEDIA IBMS

Comprehensive multichannel airtime sales, traffic and management system; handles both nonlinear (IPTV and VOD) and linear programming and advertising; new module enables advertising to be automatically inserted according to the household or individual subscriber profile across all platforms — digital TV, IPTV and mobile TV.

877-873-4267; www.pilatmedia.com

MC SWITCHING AND GRAPHICS PROCESSOR MIRANDA TECHNOLOGIES IMAGESTORE 750



New capabilities include Dolby E/AC-3 encoding/decoding; features an integrated audio mixer for advanced audio processing with 16 audio channels, de-embedded from each of four video inputs, together with up to 32 channels of AES; allows audio channels to be mixed, shuffled and modified before being embedded into the video output or being made available as discrete AES.

514-333-1772; www.miranda.com

MULTICHANNEL MASTER CONTROL NVISION NV5128-MC



Combines digital master control and multiformat routing in the same frame; fits in 8RU; features optional built-in Dolby E decoding and a variety of standard features, including A/B mixing with full auto transition control, multilevel video keying, logo store, two-picture squeeze-back and audio over mixer.

530-265-1000; www.nvision.tv

AES/EBU DIGITAL AUDIO CABLES BELDEN BRILLIANCE PART NO. 1353A



Combines ruggedness, flexibility and installation efficiency with superior digital and analog sound performance; ideal for use in permanent installations of balanced-line analog or digital audio.

800-235-3361; www.belden.com

NEW!

DIGITAL MEDIA GATEWAY



DMG 4110

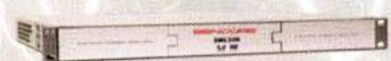
- High Density Gateway/Multiplexer
- Cost Effective Broadcast, Cable, and Telco turn-around
- A GREAT way to add and remove programs to your Transport Stream
- Remotely controlled via Web Interface

WWW.SENCORE.COM

SENCORE
INNOVATIVE BROADCAST SOLUTIONS
SINCE 1951
1-800-SENCORE

NEW!

MODULAR MULTIPLEXERS



DMG 3100 / 2100

- Wide range of input and output modules
- ASI, QPSK, and IP inputs
- ASI and/or IP outputs
- Descrambling/ Scrambling/ Multiplexing Capabilities
- Head-End in-a-box Architecture
- Web-based management control interface

Call for your specific application or stop by Sencore booths at NAB (N1122 or SU12108) and discuss your needs.
1.800.736.2673

... equipped with a Genuine lens with 20X optical provides genlock input for system synchronization.

800-321-4388; www.usa.canon.com

HD CAMERA

SONY ELECTRONICS PMW-EX3

Incorporates three 1/2in Exmor full-HD CMOS sensors, each with 1920 x 1080 pixels for HD images in 1080p, 720p and 1080i; features selectable interlace and progressive frame rates including 50i, 59.94i, 50p, 59.94p, 25p, 29.97p and native 23.98p recording; offers remote-control, multicamera operation; records in MPEG-2 long GOP at a maximum bit rate of 35Mb/s.

201-930-7330

www.sony.com/professional

PRODUCTION CONTROL SYSTEM

ROSS VIDEO OVERDRIVE AUTOMATED PRODUCTION CONTROL SYSTEM VERSION 7.0



Includes applications for news, sports, worship and live event productions; offers MOS integration for graphic and video server systems and an enhanced client/server architecture; features sidecar, a compact remote-control panel; provides multiple user-programmable timers, preview custom controls and the ability to enable or disable remote control of mixers or robotic cameras on the fly.

613-652-4886; www.rossvideo.com

MEDIA MANAGEMENT SOFTWARE

MICROSOFT INTERACTIVE MEDIA MANAGER



Collaborative media management solution extends Microsoft Office SharePoint Server 2007 for media and entertainment companies; builds on existing technology investments; helps companies create an end-to-end content production system accessible by everyone; integrates with Microsoft business intelligence tools.

800-642-7676; www.microsoft.com

MULTIVIEWERS... from AVITECH

MONITORING MADE EASY™



- No Single Point Of Failure Design
- Extremely High Quality Output
- Combine Any Digital, Analog, Video, Audio and Computer Sources On A Single Display
- Intuitive, Configurable On-Screen Display (alarms, borders, labels, tally, clocks etc.)
- Virtually Unlimited Expansion Possibilities
- Affordable, Cost-Effective Solution



AVITECH

www.avitechvideo.com

sales@avitechvideo.com

+1 (425) 885-3863

SPECIALREPORT

BRANDING AND LOGO INSERTION

ENSEMBLE DESIGNS AVENUE 7420

Accepts either an SD or HD video input and key still logos and animations over program material; can supply separate fill and key outputs to a production switcher; the 7490 series submodule options for the 7420 provide up/down/crossconversion as well as aspect ratio conversion; with the 7490 installed, the 7420 will accommodate whatever input is provided — SD-SDI or HD-SDI.

530-478-1830

www.ensembledesigns.com

INTERCOM

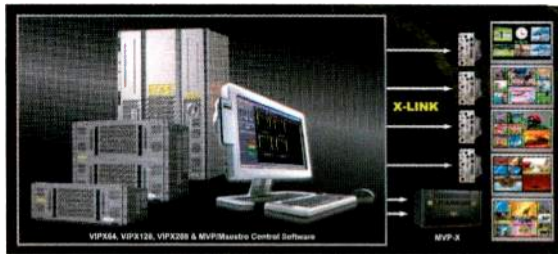
RIEDEL COMMUNICATIONS PERFORMER SERIES DIGITAL PARTYLINE

Provides two- and four-channel master stations, rack-mount, wall-mount and desktop speaker stations, call light indicators and two-channel belt pack headset stations; designed for a stand-alone digital partyline system; an integrated power supply built into the 19in (1RU) device can power up to 32 devices, including belt packs, split-boxes or desktop speaker stations, per line.

914-592-0220; www.riedel.net

ROUTER/MULTI-IMAGE DISPLAY

EVERTZ VIP-X



Combines a functional and highly reliable control room routing platform with a modular multi-image display system in one integrated package; available in several packages, including a 32-input system with up to 32 router outputs and as many as 24 multi-image displays or a larger system that accommodates up to 288 inputs and 288 router outputs and as many as 72 multi-image displays.

905-335-3573; www.evertz.com

HD/SD MPEG-2 ENCODER

LINK RESEARCH L1050

A low-delay encoder for outside broadcast and uplink trucks; measures half the width of a standard 19in rack; supports MPEG-2 SD and HD; software-upgradeable to H.264 encoding; can transmit video across triax, satellite links or fiber-optic networks; features a Web browser interface for remote control.

+44 1923 474060; www.linkres.co.uk

MULTIVIEW HARRIS CENTRIO



Available as a stand-alone platform or as part of a system solution integrated with the Harris Platinum router; combines high-quality graphics, an industry-proven architecture and integrated test and measurement tools; enables unique new capabilities and simplified designs that can reduce the cost and complexity associated with traditional, large-system monitoring implementations.

513-459-3400; www.harrisbroadcast.com

LOGO KEYS

CRYSTAL VISION MULTILOGO



Works with HD/SD; provides storage for three layers of keying from four keyer sources with look-ahead preview; allows three stored still or moving graphics to be independently brought up from a multi-port, nonvolatile solid-state store that can read and write multiple images at once; features drag-and-drop software that will autoconvert images of most common file formats to that required by the logo keyer.

+44 1223 497049; www.crystalvision.tv

TIME CODE READER/VIDEO INSERTER

ESE LX-266U



Decodes SMPTE/EBU time code and superimposes the date and time on video signals looped through the unit; displays date and time with 5 x 7 dot matrix characters; available with one channel up to 12; includes size, position, display mode and mask mode settings.

310-322-2136; www.ese-web.com

Escape the confines of the outdated user license model.



New! Unlimited Users!

Announcing Zeus Unlimited!

Zeus Unlimited is the ONLY 100% web-based equipment asset and service management system made for broadcasters by broadcasters.

Now all three versions of Zeus – Professional, Enterprise and Global – feature unlimited users with the rights you want and need.

Zeus Unlimited eliminates complex and cumbersome user license models:

- * Register as many users as you like
- * Give users as much access as you want
- * Let all users work at the same time

Zeus Unlimited is a fast and robust solution that is affordable for any size installation. And an online hosted service is also available.

Why pay for individual users?
With Zeus Unlimited, you don't have to!



obordigital.com

RECEIVER

SCOPUS VIDEO NETWORKS
INTEGRATED RECEIVER PROCESSOR



New platform for advanced digital turn-around applications; provides rich-content distribution capabilities, including DVB-S/S2 reception, full transport stream descrambling and multiplexing, as well as SD/HD MPEG-2/AVC decoding for broadcasters and content providers; a powerful edge processor and receiver for satellite, terrestrial and IPTV operators; when installed at remote distribution hubs, it receives digital content via satellite or IP and processes it for DTH distribution; with multiple ASI and IP interfaces, it can support local content insertion.

609-987-8090; www.scopus.net

SATELLITE TERMINAL

ADVENT COMMUNICATIONS
FLYDRIVE 120



A compact, lightweight, fully motorized satellite terminal designed for rapid deployment; can be used as either a traditional flyaway or as a semi-permanent vehicle-mounted terminal that can be fitted to most roof racks using standard fittings; will fit into two IATA weight-compliant cases.

978-671-5700; www.adventcomms.com

RACK-MOUNTABLE

SHELF OPTIONS

STANTRON E-RACK/
PRESENTATION RACKS



Feature a range of clamp shelves and cantilevered shelves; clamp shelves support up to 25lb or 50lbs; include adjustable top and bottom clamping hardware, low-compression set foam padding and preinstalled studs; cantilevered shelves are made from steel or aluminum and are available in solid, vented and mini-cantilevered designs.

920-387-3000; www.stantronracks.com

AUDIO CABLING SYSTEM

WIREWOKS DT12

Consists of a sports broadcast breakout box, trunks and tails; welded steel breakout boxes are one-fourth the size of traditional stageboxes; the trunks are manufactured with full-size 22 AWG conductors, providing lower signal loss; all connector XLR contacts are gold-plated to prevent oxidation in outdoor use.

800-642-9473; www.wireworks.com

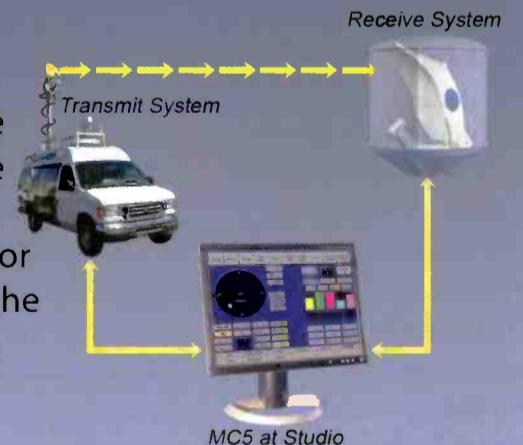


Quick Shot

Smart Antenna ENG Transmit System

Quick Shot is an advanced transmit system for mobile operations that reduces setup time by automatically aligning the transmit antenna with the receive location.

In addition, the NSI MC5 can remotely control the Quick Shot as well as the central receive system, enabling a single operator to control both ends of the microwave link from the studio.



The MC5's *One Touch* function automatically sets up the live shot at the touch of a button, including:

- Transmit and receive antenna alignment
- Channel and polarization selection
- Transmitter settings
- LNA optimization

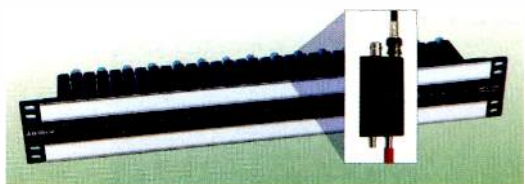


N Systems, Inc. | 1-800-SPEC-NSI | nssystem.com

SPECIALREPORT

DIGITAL AUDIO PATCHING

BITTREE 2 X 32 AES 75Ω
AUDIO PATCHBAY



Combines bantam audio on the front and BNC connectors on the back; designed especially for AES 75Ω unbalanced digital audio; features patent-pending hybrid bantam (TT) jacks with BNC rear connectors; uses the company's hybrid bantam/coaxial AES 75Ω patchcords; ideal for facilities using AES 75Ω unbalanced digital audio for routers and new-generation VTR 2 x 32 jack configurations; available in 1RU, 1.5RU or 2RU.

800-500-8142; www.bittree.com

FINAL CUT PRO PLUG-IN AJA VIDEO SYSTEMS IO HD



Supports Apple's ProRes 422 codec in hardware, enabling 10-bit video editing; offers SD/HD analog and digital I/O (including HD-SDI and HDMI), balanced analog and digital AES audio, RS-422, genlock with loopthrough and LTC time code connections.

530-274-2048; www.aja.com

EXTENDABLE CAMERA MOUNT

TELEMETRICS ECM-BT



Offers immediate camera positioning with quick retraction for unobstructed camera angles; can be mounted above a drop ceiling or lighting grid and also wall mounted to provide vertical positioning to pan/tilt cameras used for studio production.

800-424-9626; www.telemetryinc.com

ADVERTISERS MARKED IN RED

ADVERTISERINDEX

	Page #	Advertiser Hotline	Website Address
ADC Telecommunications Inc.	13	800-366-3891	adc.com/dontcompromise
AJA Video	5	800-251-4224	aja.com
Avitech	47	425-885-3863	avitechvideo.com
Avocent.....	39	800-275-3500	avocent.com/broadcast
Axcera	37	800-215-2614	axcera.com
Blackmagic Design.....	11		blackmagic-design.com
Canon Broadcast.....	3	800-321-4388	canonbroadcast.com
Communications Specialties Inc.	25	631-273-0404	commspecial.com
Dolby Laboratories Inc.	7		dolby.com/dp600
Elber S R L.....	43	+39 0185 351333	elber.it
Ensemble Designs	23	530-478-1830	ensembledesigns.com
ESE.....	14	310-322-2136	ese-web.com
Evertz Microsystems Ltd.	IBC	877-995-3700	evertz.com
EVS Broadcast Equipment.....	19	973-575-7811	evs.tv
Florical Systems Inc.....	21	352-372-8326	florical.com
For. A Corporation of America	27	714-894-3311	for-a.com
Harris	BC	800-231-9673	broadcast.harris.com
Marshall Electronics Inc.	41	800-800-6608	lcdracks.com
Miranda Technologies Inc.....	9	514-333-1772	miranda.com/dap
N Systems Inc.	49	800-SPEC-NSI	nsystems.com
NTT Electronics Corp.....	12		nel-world.com/products/video
NVision Inc.	33	800-860-HDTV	nvision.tv
OBOR Digital	48	407-352-6501	obordigital.com
Opticomm.....	17	858-450-0143	opticomm.com
Pro-Bel	15		pro-bel.com
Riedel Communications	36	914-592-0220	riedel.net
RTS.....	24	877-863-4169	rtsintercomms.com
Sachtler.....	35	845-268-0100	sachtler.us
ScheduAll	20	954-334-5406	scheduall.com
Screen Service Broadcasting Technologies	31	888-522-0012	screenservice.it
Sencore.....	16, 34 46	800-SEN CORE	sencore.com
Sundance Digital.....	32	972-444-8442	sundancedigital.com
Tandberg Television	29		tandbergtv.com
VCI.....	40	512-837-3737	vcisolutions.com
Vimsoft.....	45	506-855-9037	vimsoft.ca
Ward-Beck Systems Ltd.....	42	800-771-2556	ward-beck.com
Wheatstone Corporation.....	IFC	252-638-7000	wheatstone.com/tvconsoles.html
Winchester Electronics.....	26	203-741-5400	winchesterelectronics.com

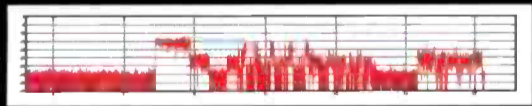
The Complete Solution Provider

Now with Evertz® Award-Winning IntelliGain™ Technology

PICK HIT
BroadcastEngineering
2008



Broadcasters are challenged to provide audio content to their target audience while minimizing complaints about variations in loudness between programs and commercials, and from channel to channel. **Evertz® provides the solution with the award-winning IntelliGain™ Sound Advice product suite.**



IntelliGain™

IntelliGain™ Features

- Consistent audio loudness levels within a channel and/or program
- Auto-detect and level adjust for loud commercials
- Gain control within a program interval preserving audio dynamic range
- VistaLINK® controlled and monitored
- A-tifact-free transitions between program and commercials
- Elimination of drastic volume changes during commercials & interstitials
- Ideal for aggregator applications and multi-channel playout facilities

IntelliGain™ can be applied to a number of Evertz® products including frame synchronizers, protection switches, audio embedders and audio de-embedders

InfoCOMM - Booth #C1940

Cable-Tech - Booth #1501

Processors / Monitoring & Control / Fiber / Master Control & Branding / Time Code / Distribution & Conversion / Multi-Format Routing / Management Software

1-877-995-3700 • www.evertz.com

evertz

US & International Sales
905.335.3700
sales@evertz.com

US West Coast Sales
818.558.3910
LASales@evertz.com

New York Sales
newyorksales@evertz.com

Asia Pacific Sales
asiapacificsales@evertz.com

Washington DC Sales
703.330.8600
dcsales@evertz.com

UK Sales
011 44 118 935 0200
uksales@evertz.com

ONE

Interoperable workflows. Integrated technologies. Innovative solutions.

At Harris, we're investing to validate and certify the interoperability of our products and technologies. Why? Because moving content and information between and within workflows, seamlessly, creates efficiencies you need to stay competitive.

Compatible and complementary technologies provide additional benefits. By integrating technologies into common platforms, we help prevent expensive and time-consuming installation hassles, conserve your valuable rack space, and offer cost efficiencies that other broadcast manufacturers can't match.

Interoperability and integration lead to unmatched innovation. Only from Harris.

For more information visit Harris at www.broadcast.harris.com.

To contact a Harris representative call: North America +1 800 231 9673 • Caribbean and Latin America +1 786 437 1960

ONE Company. ONE Direction. The Future.

Harris is the ONE company delivering interoperable workflow solutions across the entire broadcast delivery chain with a single, integrated approach.

CORE PROCESSING • CHANNEL RELEASE • TRANSMISSION • MEDIA TRANSPORT
BUSINESS OPERATIONS • NEWSROOMS & EDITING • MEDIA MANAGEMENT



assuredcommunications[®]

Broadcast Communications • Defense Communications and Electronics • Government Communications Systems • Harris Stratex Networks

www.harris.com