

MONDAY

M O R N I N G

R E P L A Y

MEDIABASE

ISSUE 21
MAY 30, 1988

Format shift! To reflect a shift from A/C to Hit Radio, **Monday Morning Replay** has recategorized **KYUU**, San Francisco. You'll now find this Emmis station in the **Hit Radio** section.

Tuned In is on the move again this week, taking you to Buffalo, New York; New Orleans, Louisiana and San Diego, California for close-ups on **WPHD**, **WEZB (B-97)** and **KFMB (B-100)**. All the details on these quality Hit, Rock and A/C radio stations can be found in our unique **Tuned In** section!

Springtime brings out some of the biggest and best promotions. Inside **City Tracks** this week, you'll find details on **97 KROY's Superstar Supercruise**, **WMYG's Pink Breakfast**, **WLUP's Live From London Broadcasts** featuring morning star **Jonathan Brandmeier**, **KFOG's "Bob Uecker"** promotion, the **KCFX Australian Night Party with Jacko** and much more!

Captured Live rocks and **Captured Live Bowls!** **MMR** recently returned from the **Rock 'n Bowl** in L.A. with details on **The Smithereens**, live from the **Roxy!**

Foreplay brings you up-to-speed on new releases from **Steve Winwood**, **Corey Hart**, **Scritti Politti**, **Contours**, **Michael Anderson** and **The System**.

MOST PLAYED/HIT RADIO

Three...two...one... **Rick Astley** #3... **Johnny Hates Jazz** #2... **George Michael** #1... for the second consecutive week! Also holding steady at #4 is **The Deele's "Two Occasions,"** while **Pebbles** rockets to #5, the second top five single from her debut album. **Debbie Gibson**, **Belinda Carlisle** and **Michael Jackson** surge into the top ten. Others showing significant gains include **Bruce Hornsby & the Range**, **Al B. Sure!** and **Brenda Russell**. **Terence Trent D'Arby** blows into the top forty at an impressive #25, **Midnight Oil** jumps eight spots #35-27, **Richard Marx** debuts at #32, **The Church** enters at #37, **Eric Carmen** at #39 and **Robert Plant** at #40. **Poison** shows at a strong #18 on the **Hit Radio Daypart Chart**, nighttime.



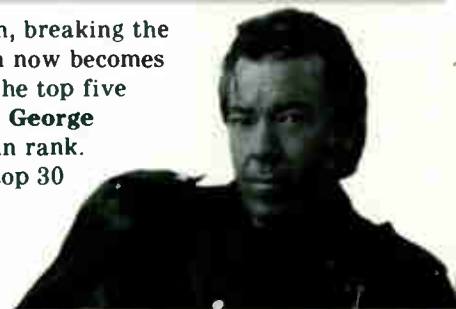
MOST PLAYED/ROCK RADIO



"The Flame" continues to burn as **Cheap Trick** recaptures the top spot. **Bruce Hornsby & the Range** slip to #2 with **"The Valley Road,"** while other **Hornsby** tracks show significant growth, including **"Look Out Any Window"** and **"Defenders of the Flag."** **Van Halen** holds at #3, while **The Smithereens** bounce back to #4. **Rod Stewart** continues to grow in the top ten. **Midnight Oil** jumps ten spots to #22 with **"Dead Heart."** Other new entries this week include **Tracy Chapman**, **Icehouse**, **John Cafferty & the Beaver Brown Band** and the **Moody Blues**, charting highest at #28. **Hurricane**, **Del Lords** and **Guns & Roses** threaten next.

MOST PLAYED/ADULT CONTEMPORARY

Foreigner becomes the first new number one in a month, breaking the hold of **Gloria Estefan/Miami Sound Machine** (which now becomes the #1 hottest recurrent). That gives the other artists in the top five room to move up, as **Johnny Hates Jazz**, **Brenda Russell**, **George Michael** and **Daryl Hall & John Oates** all post increases in rank. Four new songs make their first appearances among our top 30 tracer tracks: **Eric Carmen's "Make Me Lose Control," "Hold On to the Nights"** by **Richard Marx**, **"The Flame"** from **Cheap Trick** and **Billy Ocean's "Colour Of Love."**



MOST PLAYED/CROSSOVERS



This week's Hit/A-C Crossover chart is headed up by **George Michael**, **Johnny Hates Jazz**, **Rick Astley**, **Foreigner** and **Hall & Oates**. **The Jets** jumps four slots to #6, while **Rod Stewart**, **Sade** and **Breathe** debut. Over on the Hit/Rock chart, **Johnny Hates Jazz** continues to hold off **Bruce Hornsby** for the top spot, **Rod Stewart** leaps to #5. **Midnight Oil**, **Van Halen** and **The Church** continue to grow in the top ten, while **Ziggy Marley**, **Depeche Mode** and **Henry Lee Summer** debut.

MOST UPWARD MOVEMENT/NATIONALLY

Hit Radio

| | | |
|----------------------|-----------------------|------------|
| BILLY OCEAN | Colour Of Love | Arista |
| TERENCE TRENT D'ARBY | Sign Your Name | Columbia |
| RICHARD MARX | Hold On To The Nights | EMI-Manhat |
| ERIC CARMEN | Make Me Lose Control | Arista |
| SADE | Paradise | Epic |

Rock Radio

| | | |
|------------------|-----------------------------|------------|
| MOODY BLUES | I Know You're Out There Som | Polygram |
| NEIL YOUNG | This Note's For You | Reprise |
| GEORGE THOROGOOD | Treat Her Right | EMI-Manhat |
| VAN HALEN | Feels So Good | WB |
| ROD STEWART | Dynamite | WB |

Adult Contemporary

| | | |
|-------------|----------------------|----------|
| BILLY OCEAN | Colour Of Love | Arista |
| ERIC CARMEN | Make Me Lose Control | Arista |
| CHER | We All Sleep Alone | Geffen |
| BOZ SCAGGS | Heart Of Mine | Columbia |
| RICK ASTLEY | Together Forever | RCA |

Determined by increase in RANK.

ADVERTISEMENT



WHY SETTLE FOR HOT WHEN YOU CAN GET

WET WET WET

"WISHING I WAS LUCKY"

MAJOR MARKET HIT ACTION!

PRO-FM ADD, WKBQ ADD #33, KROY ADD, WXKS, FM102, KATD, KWSS, KPLZ, KUBE, CKOI, WKZL ADD, KKRD ADD, KIKX ADD, WZYP DEBUT #40, WQUT DEBUT #39, KSAQ DEBUT #40, KF95 DEBUT #36, KIYS 40-33, 95XXX DEBUT #38, KOZE 34-26, AND MUCH MORE!



There's only one label we'll admit to. UNI RECORDS. The kind of commitment artists will kill for.

Manufactured by MCA Records, Inc. 70 Universal City Plaza, Universal City, Calif. 91608



01

71896 32213 6

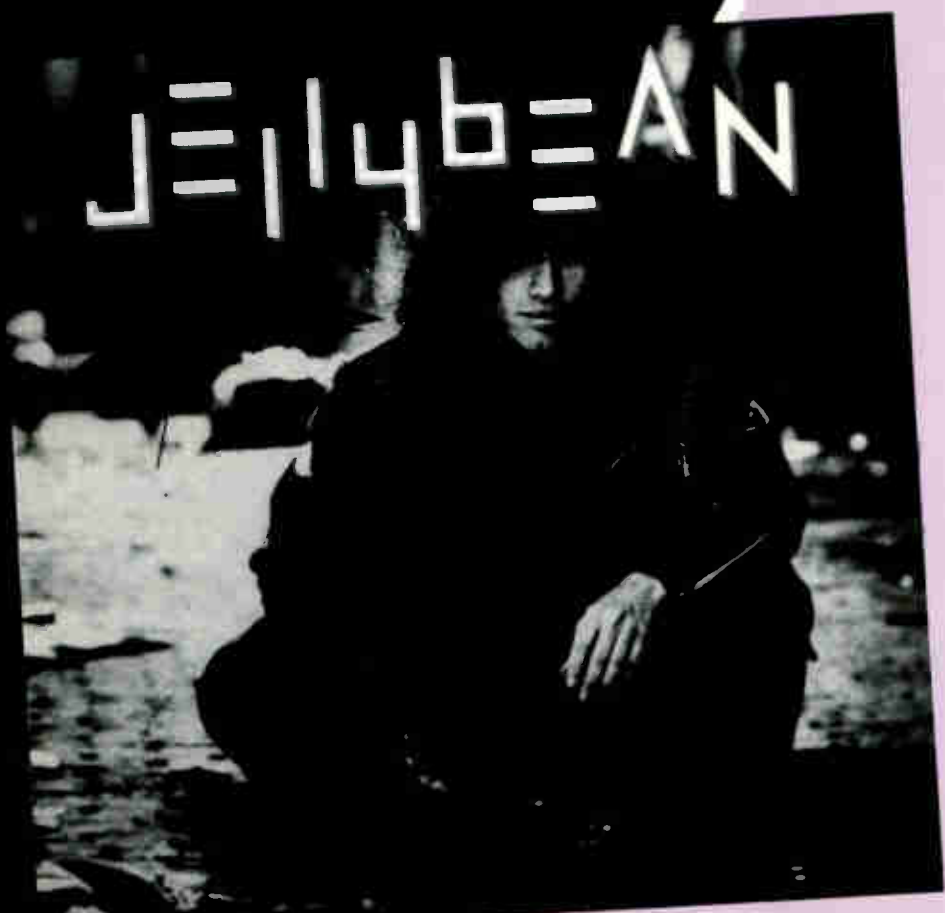
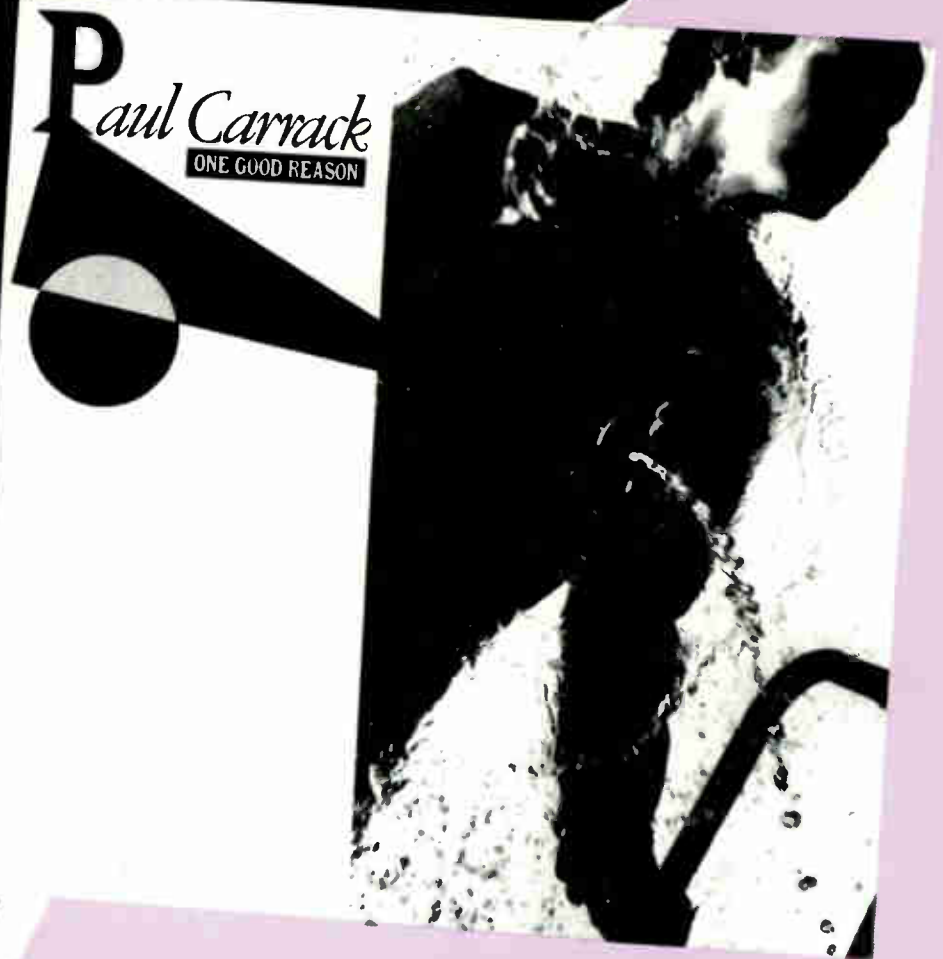
Paul Carrack

"WHEN YOU WALK IN THE ROOM"

BIG LAUNCH WEEK AT HIT RADIO!

FIRST WEEK ADDS INCLUDE: Y108, K104, WLAP, WZOK, KIYS #35, KDON #34, WERZ, Y107, KZZU, KRQ, 95XIL, WJMX, WBNQ, KGOT, WTHT, WPFM, 99KG, WDBR, KFBQ, AND MORE.

THE NEXT HIT FROM THE ALBUM "ONE GOOD REASON"



JINGO

"JINGO"

**ON YOUR DESK NOW AND
READY FOR ADS!**

MONDAY MORNING REPLAY

STAFF

Publisher & Editor
RICH MEYER

Associate Publisher
NANCY G. DEITEMEYER

VP/National Sales
TONY SMITH

Art Director
WILLIAM HATCH

Database Administrator
MARY T. HEARTH

EDITORIAL & RESEARCH STAFF

Cathy Down, Paul Kenedy,
Gregory Kuykendall, David LaPorte,
Stephanie Malfara, Larry Olek,
Robyne Quatrone, Gina Shurts,
Gary Sobczak, Don Tanner,
Cheri Pemberton, Wright Wilson

DESIGN CONSULTANTS

Ceco Publishing Company

Printed in U.S.A.
by Renaissance Printing, Inc.

MEDIABASE

Richard P. Kughn, Chairman
Paul L. Nine, Vice Chairman
Michael P. Solan, CEO
Rich Meyer, President, COO
Nancy G. Deitemeyer, Vice President
Gary A. Kughn, Secretary & Treasurer

Mediabase Corporate Headquarters
and Monday Morning Replay editorial,
research and sales offices are located
at 28530 Orchard Lake Road,
Farmington Hills, MI 48018

MONDAY MORNING REPLAY is
published weekly by Mediabase
Research Corporation, a TransAmerica
Communications company.

Mediabase is a service mark of
TransAmerica Communications Corp.
City Tracks and Tracer Tracks are
service marks of Mediabase Research
Corporation.

Subscription rates: \$295 per yr. (U.S.
funds). Foreign subscriptions add \$100
yearly. Single copy price: \$7. First
Class Mail.

Unsolicited manuscripts, photography
and artwork may be submitted at the
sender's risk. Mediabase and Monday
Morning Replay assume no
responsibility for unsolicited
materials.

Copyright © 1988 Mediabase Research
Corporation. All rights reserved.

No part of this publication may be
reproduced in any form or by any
means (electronic or mechanical),
including, without limitation,
photocopying or recording, or via any
information-storage or retrieval
system, without the express written
consent of the publisher. **MONDAY
MORNING REPLAY** is published
weekly by Mediabase Research
Corporation, 28530 Orchard Lake,
Farmington Hills, Michigan 48018,
(313) 737-0027. A one-year
subscription (50 weekly issues) is
available at a cost of \$295.00. Address
all subscription requests and
correspondence to: Mediabase
Research Corporation, 28530 Orchard
Lake, Farmington Hills, Michigan
48018.

The information, opinion, analysis and
interpretation provided in this
publication are believed to be
accurate. However, all are furnished
AS IS; all warranties, express or
implied, are excluded. Users and
subscribers assume all responsibility
for determining the adequacy and
fitness of the information, opinion,
analysis and interpretation provided
in the publication for any and all uses
or purposes. Mediabase shall not be
responsible for any loss, damage or
injury of any kind resulting from use
of or reliance upon the information,
opinion, analysis or interpretation
furnished in this publication, or for
contingencies beyond Mediabase's
control or its negligence.

Distributed worldwide.

CONTENTS

| | | |
|---|----|---|
| TRACER TRACKS HITRADIO | 5 | The forty most played songs in the HITRADIO format, nationally, along with the week's newcomers. Breakouts provided include the total number of plays, reach index (gross impressions), increase percentages, along with national and regional airplay leaders. Also provided are a list of the hottest recurrent titles. |
| DAYPART CHARTS HIT RADIO | 6 | A whole new way to gauge title saturation in prime dayparts. Breakouts include the 6am-7pm combined dayparts, and the 7pm-midnight, late evening daypart. |
| HEAVIEST SATURATION HITRADIO | 8 | TRACER TRACKS 1-40, and NEWCOMERS, with a song-by-song analysis of those stations reaching the most audience with it's airplay. |
| CITY TRACKS HITRADIO | 11 | An overview of station activity in selected markets. Information includes music posturing, promotional activity, and highlighted positioning information. |
| NATIONAL CROSSOVER INDEX | 13 | Charts that offer an overview of those crossing formats. Charts include HITRADIO/AC, HITRADIO/ROCKRADIO, and HITRADIO/URBAN. |
| CAPTURED LIVE | 14 | A ticket to today's hottest concert tours, focusing on a specific appearance and featuring ticket prices, sales and songs performed. |
| TUNED IN | 15 | WEEKLY TAKE OUT SECTION. Every week, a station from each of the formats is featured. TUNED IN breaks out music, promotional activity, positioning and account information. |
| TRACER TRACKS ROCKRADIO | 27 | The forty most played songs in the ROCKRADIO format, nationally, along with the week's newcomers. Breakouts provided include the total number of plays, reach index (gross impressions), increase percentages, along with national and regional airplay leaders. Also provided are a list of the hottest recurrent titles. |
| DAYPART CHARTS ROCKRADIO | 28 | Charts based upon the combined 6am-7pm dayparts, and the 7pm-midnight daypart. |
| HEAVIEST SATURATION ROCKRADIO | 29 | TRACER TRACKS 1-40, and NEWCOMERS, with a song-by-song analysis of those stations reaching the most audience with it's airplay. |
| CITY TRACKS ROCKRADIO | 32 | An overview of station activity in randomly selected markets. Information includes music posturing, promotional activity, and highlighted positioning information. |
| TRACER TRACKS ADULT CONTEMPORARY | 33 | The thirty most played songs in the ADULT CONTEMPORARY format, nationally, along with the total number of plays, reach index (gross impressions), increase percentages, along with national and regional airplay leaders. Also provided are a list of the hottest recurrent titles. |
| HEAVIEST SATURATION ADULT CONTEMPORARY | 34 | TRACER TRACKS 1-30, with a song-by-song analysis of those stations reaching the most audience with it's airplay. |
| CITY TRACKS ADULT CONTEMPORARY | 35 | An overview of station activity in randomly selected markets. Information includes music posturing, promotional activity and highlighted positioning information. |
| NATIONAL SAMPLE HOURS | 36 | A unique section that provides one hour capsules of actual music mixes from a few of our monitored radio stations, chosen at random, weekly. Sample hours include the HITRADIO, ROCKRADIO, and ADULT CONTEMPORARY formats. |
| MONDAY MORNING FOREPLAY | 38 | What's up 'n coming. Foreplay takes a look at new releases, with fresh, unique and informative profiles. In addition, next week's TUNED IN section is previewed. |
| MARKETS MONITORED | | MMR monitors over 200 radio stations in the following markets: Atlanta, Baltimore, Boston, Buffalo, Chicago, Cincinnati, Cleveland, Columbus, Dallas, Denver, Detroit, Houston, Indianapolis, Kansas City, Long Island, Los Angeles, Miami, Milwaukee, Minneapolis, New Orleans, New York, Norfolk, Philadelphia, Phoenix, Pittsburgh, Portland, Providence, St. Louis, Sacramento, Salt Lake City, San Diego, San Francisco, San Jose, Seattle, Tampa, and Washington D.C. |

GLOSSARY OF TERMS AND INDICATORS:

CHART INDICATORS:

- ▲ Increase from previous week, based on PLAYS or RANKING. NOTE: With the implementation of this methodology, it is possible for a title to rank lower than in previous week, yet retain it's arrow.
- ✓ Signifies a new entry.

CHART TERMINOLOGY:

REACH INDEX should be equated with GROSS IMPRESSIONS, not with an overall body of audience.

HEAVIEST SATURATION indicates the stations delivering the most GROSS IMPRESSIONS with airplay of any given title.

All numbers pertaining to reach index (gross impressions) are listed in millions.

MUSIC

If you read Monday Morning Replay music is obviously important to you. You're looking for information to help you make the right decisions.

MUSIC

It's nice to know what titles are being played in cities all over the country. But, that's not enough. It's not enough because your market is not like any other city. Your market is unique.

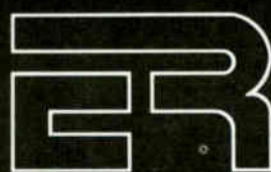
MUSIC

What music is just right for your market? What music is just right for your target audience? What music will hurt your competition? What music will hurt you?

MUSIC

Emmis Research delivers pinpoint answers to pinpoint questions. We narrowly define the appeal of artists and titles by age, sex, race, format preference and psychographic profile. The right music for your market. If music is really important to you, call Emmis Research.

MUSIC



EMMIS RESEARCH

Emmis Research 1099 N. Meridian Suite 250, Indianapolis, IN 46204

ATTN: Jon Horton

Call today 317-630-2828

HIT RADIO

TRACER TRACKS

| 5/9/88 | 5/16/88 | 5/23/88 | 5/30/88 | ARTIST | TITLE | LABEL | # PLAYS | REACH INDEX IN MILLIONS |
|--------------------|---------|---------|---------|----------------------|-------------------------------|------------|---------|-------------------------|
| 1 | 1 | 1 | | GEORGE MICHAEL | One More Try | Columbia | 2478 | 76.32 |
| 3 | 3 | 2 | | JOHNNY HATES JAZZ | Shattered Dreams | Virgin | 2100 | 62.05 |
| 4 | 4 | 3 | | RICK ASTLEY | Together Forever | RCA | 2037 | 64.39 |
| 6 | 5 | 4 | | DEELE | Two Occasions | Solar | 1414 | 44.64 |
| 24 | 19 | 11 | | PEBBLES | Mercedes Boy | MCA | 1316 | 41.77 |
| 14 | 12 | 10 | | DEBBIE GIBSON | Foolish Beat | Atlantic | 1309 | 40.64 |
| 15 | 10 | 7 | | JETS | Make It Real | MCA | 1281 | 36.68 |
| 8 | 8 | 6 | | HALL & OATES | Everything Your Heart Desires | Arista | 1197 | 36.38 |
| 17 | 15 | 13 | | BELINDA CARLISLE | Circle In The Sand | MCA | 1071 | 28.13 |
| 16 | 14 | 12 | | MICHAEL JACKSON | Dirty Diana | Epic | 1064 | 33.04 |
| 22 | 16 | 14 | | BRUCE HORNSBY & RANG | The Valley Road | RCA | 987 | 17.79 |
| 26 | 23 | 15 | | AL B SURE | Nite & Day | WB | 959 | 27.66 |
| 11 | 11 | 9 | | ICEHOUSE | Electric Blue | Chrysalis | 952 | 25.40 |
| 31 | 28 | 23 | | CHEAP TRICK | The Flame | Epic | 889 | 17.77 |
| 23 | 21 | 16 | | PRINCE | Alphabet Street | Paisley/WB | 847 | 23.70 |
| 39 | 30 | 19 | | INXS | New Sensation | Atlantic | 812 | 18.49 |
| 21 | 18 | 22 | | CHER | We All Sleep Alone | Geffen | 686 | 14.76 |
| 27 | 26 | 20 | | BRENOA RUSSELL | Piano In The Dark | A&M | 665 | 20.21 |
| 29 | 25 | 18 | | BRENOA K. STARR | I Still Believe | MCA | 658 | 16.74 |
| 20 | 24 | 25 | | TIMES TWO | Strange But True | Reprise | 602 | 12.99 |
| 38 | 34 | 27 | | LITA FORD | Kiss Me Deadly | Dream/RCA | 595 | 12.94 |
| — | 37 | 28 | | ROD STEWART | Lost In You | WB | 595 | 12.17 |
| 28 | 27 | 24 | | NU SHO0Z | Should I Say Yes | Atlantic | 539 | 11.23 |
| — | — | 29 | | JANE WIEDLIN | Rush Hour | EMI/Manhat | 518 | 15.20 |
| New Entry ✓ | — | — | | TERENCE TRENT D'ARBY | Sign Your Name | Columbia | 490 | 10.67 |
| — | — | 32 | | DEF LEPPARD | Pour Some Sugar On Me | Mercury/PG | 476 | 11.86 |
| — | — | 35 | | MIDNIGHT OIL | Beds Are Burning | Columbia | 448 | 8.90 |
| — | — | 31 | | JODY WATLEY | Most Of All | MCA | 441 | 17.43 |
| — | — | 40 | | BREATHE | Hands To Heaven | A&M | 427 | 8.67 |
| New Entry ✓ | — | — | | SADE | Paradise | Epic | 413 | 13.08 |
| — | — | 33 | | KYLIE MINOGUE | I Should Be So Lucky | Geffen | 399 | 13.08 |
| New Entry ✓ | — | — | | RICHARD MARX | Hold On To The Nights | EMI-Manhat | 378 | 7.31 |
| New Entry ✓ | — | — | | D.J. JAZZY JEFF | Parents Just Don't Understand | Jive/RCA | 364 | 10.49 |
| 32 | 31 | 30 | | SUAVE | My Girl | Capitol | 364 | 8.20 |
| 34 | 35 | 37 | | STEVIE B | Dreamin' Of Love | LMR | 343 | 22.60 |
| 35 | 36 | 34 | | E.U. | Oa Bum | EMI-Manhat | 343 | 9.81 |
| New Entry ✓ | — | — | | CHURCH | Under The Milky Way | Arista | 343 | 6.94 |
| 25 | 29 | 26 | | PRETTY POISON | Nighttime | Virgin | 343 | 6.63 |
| New Entry ✓ | — | — | | ERIC CARMEN | Make Me Lose Control | Arista | 329 | 7.80 |
| New Entry ✓ | — | — | | ROBERT PLANT | Tall Cool One | Es P/Atlan | 308 | 6.67 |

USERS GUIDE: TRACER TRACKS are ranked by actual number of plays. Arrows are maintained by either an increase in plays or an increase in rank over the previous week. For a precise look at market saturation, reach index numbers are provided (gross impressions). Reach index is calculated by each radio station's average quarter hour (SOURCE: ARBITRON) multiplied by the number of plays given the title. Numbers are calculated for average weekly, estimated 6am-midnight impact from base monitor hours.

For a more precise and defined look, MMR WEIGHTS EVERY STATION INDIVIDUALLY, according to quarterly, average quarter hour shares (SOURCE: ARBITRON — used by permission).

Significant downtrending disqualifies a title for further current consideration and reassigns recurrent status (see HOTTEST RECURRENTS).

NEWCOMERS

| Artist | Title | Label | # Plays | Increase Percentage |
|---------------------|---------------------------|------------|---------|---------------------|
| JOHNNY KEMP | Just Got Paid | Columbia | 301 | 10% |
| POISON | Nothin' But A Good Time | Enigma/Cap | 301 | — |
| BARDEUX | When We Kiss | Syn/Enigma | 301 | — |
| DEPECHE MODE | Route 66/Behind The Wheel | Sire/WB | 287 | 07% |
| BOZ SCAGGS | Heart Of Mine | Columbia | 287 | — |
| JJ FAD | Supersonic | Ruth/Atco | 280 | 05% |
| CLIMIE FISHER | Love Changes Everything | Capitol | 273 | 14% |
| ZIGGY MARLEY | Tomorrow People | Virgin | 266 | 26% |
| NIA PEEPLES | Trouble | Mercury/PG | 238 | — |
| NEW ORDER | Blue Monday '88 | Quest/WB | 189 | 07% |
| VAN HALEN | Black And Blue | WB | 175 | 19% |
| ELISA FIORILLO | Forgive Me For Dreaming | Chrysalis | 175 | — |
| ✓ JOHN C MELLENCAMP | Rooty Toot Toot | Mercury/PG | 168 | 41% |
| SWEET SENSATION | Take It While It's Hot | Atco | 154 | — |
| ✓ WILL TO POWER | Say It's Gonna Rain | Epic | 140 | 81% |
| KOOL MOE DEE | Wild Wild West | Jive/RCA | 140 | 05% |
| ✓ TONY! TONI! TONE! | Little Water | Polygram | 140 | 33% |
| ✓ BILLY OCEAN | Colour Of Love | Arista | 140 | — |
| ✓ KEITH SWEAT | How Deep Is Your Love | Elektra | 140 | 11% |

HOTTEST RECURRENTS

| 5/30/88 | ARTIST | TITLE | LABEL |
|---------|----------------------|-------------------------------|-------------|
| 1 | GLORIA ESTEFAN & MIA | Anything For You | Epic |
| 2 | TERENCE TRENT D'ARBY | Wishing Well | Columbia |
| 3 | SAMANTHA FOX | Naughty Girls (Need Love Too) | Jive/RCA |
| 4 | AEROSMITH | Angel | Geffen |
| 5 | WHITNEY HOUSTON | Where Do Broken Hearts Go | Arista |
| 6 | JETS | Rocket 2 U | MCA |
| 7 | BILLY OCEAN | Get Dutta My Dreams, Get into | Jive/Arista |
| 8 | RICHARD MARX | Endless Summer Nights | EMI-Manhat |
| 9 | OMO | Dreaming | A&M |
| 10 | FOREIGNER | I Don't Want To Live W/o You | Atlantic |

MOST UPWARD MOVEMENT

NATIONAL

| Artist | Title | Label |
|-------------|----------------|--------|
| BILLY OCEAN | Colour Of Love | Arista |

EAST

| | | |
|-------------|----------------|--------|
| BILLY OCEAN | Colour Of Love | Arista |
|-------------|----------------|--------|

WEST

| | | |
|----------------------|----------------|----------|
| TERENCE TRENT D'ARBY | Sign Your Name | Columbia |
|----------------------|----------------|----------|

SOUTH

| | | |
|----------------------|----------------|----------|
| TERENCE TRENT D'ARBY | Sign Your Name | Columbia |
|----------------------|----------------|----------|

MIDWEST

| | | |
|---------|------------------------------|---------|
| CHICAGO | I Don't Wanna Live W/out You | Reprise |
|---------|------------------------------|---------|

USERS GUIDE: Calculated and determined by increase in RANK over previous week.

HIT RADIO — DAYPART CHART

6AM-7PM

| 5/23/88 | 5/30/88 | ARTIST | TITLE | LABEL |
|---------|---------|----------------------|-------------------------------|------------|
| 1 | 1 | GEORGE MICHAEL | One More Try | Columbia |
| 3 | 2 | RICK ASTLEY | Together Forever | RCA |
| 2 | 3 | JOHNNY HATES JAZZ | Shattered Dreams | Virgin |
| 4 | 4 | DEELE | Two Occasions | Solar |
| 8 | 5 | JETS | Make It Real | MCA |
| 5 | 6 | HALL & DATES | Everything Your Heart Desires | Arista |
| 9 | 7 | DEBBIE GIBSON | Foolish Beat | Atlantic |
| 11 | 8 | PEBBLES | Mercedes Boy | MCA |
| 10 | 9 | BRUCE HORNSBY & RANG | The Valley Road | RCA |
| 12 | 10 | BELINDA CARLISLE | Circle In The Sand | MCA |
| 7 | 11 | ICEHOUSE | Electric Blue | Chrysalis |
| 14 | 12 | AL B SURE | Nite & Day | WB |
| 15 | 13 | MICHAEL JACKSON | Dirty Diana | Epic |
| 25 | 14 | CHEAP TRICK | The Flame | Epic |
| 16 | 15 | BRENDA RUSSELL | Piano In The Dark | A&M |
| 19 | 16 | CHER | We All Sleep Alone | Geffen |
| 20 | 17 | PRINCE | Alphabet Street | Paisley/WB |
| 24 | 18 | INXS | New Sensation | Atlantic |
| 18 | 19 | BRENDA K. STARR | I Still Believe | MCA |
| 26 | 20 | ROD STEWART | Lost In You | WB |
| 22 | 21 | TIMES TWO | Strange But True | Reprise |
| 21 | 22 | NU SHOOZ | Should I Say Yes | Atlantic |
| 34 | 23 | SADE | Paradise | Epic |
| — | 24 | TERENCE TRENT O'ARBY | Sign Your Name | Columbia |
| 33 | 25 | JANE WIEOLIN | Rush Hour | EMI/Manhat |
| 28 | 26 | SUAVE' | My Girl | Capitol |
| 37 | 27 | BREATHE | Hands To Heaven | A&M |
| 32 | 28 | JODY WATLEY | Most Of All | MCA |
| 31 | 29 | KYLIE MINOGUE | I Should Be So Lucky | Geffen |
| — | 30 | LITA FORD | Kiss Me Deadly | Dream/RCA |
| — | 31 | RICHARD MARX | Hold On To The Nights | EMI-Manhat |
| — | 32 | ERIC CARMEN | Make Me Lose Control | Arista |
| 30 | 33 | BOZ SCAGGS | Heart Of Mine | Columbia |
| 23 | 34 | PRETTY POISON | Nighttime | Virgin |
| 29 | 35 | STEVIE B | Dreamin' Of Love | LMR |
| 38 | 36 | CHURCH | Under The Milky Way | Arista |
| 39 | 37 | BARDEUX | When We Kiss | Syn/Enigma |
| — | 38 | ZIGGY MARLEY | Tomorrow People | Virgin |
| — | 39 | MIDNIGHT OIL | Beds Are Burning | Columbia |
| 40 | 40 | JOHNNY KEMP | Just Got Paid | Columbia |

7PM-MIDNIGHT

| 5/23/88 | 5/30/88 | ARTIST | TITLE | LABEL |
|---------|---------|----------------------|-------------------------------|------------|
| 1 | 1 | GEORGE MICHAEL | One More Try | Columbia |
| 3 | 2 | JOHNNY HATES JAZZ | Shattered Dreams | Virgin |
| 2 | 3 | RICK ASTLEY | Together Forever | RCA |
| 6 | 4 | MICHAEL JACKSON | Dirty Diana | Epic |
| 11 | 5 | PEBBLES | Mercedes Boy | MCA |
| 10 | 6 | DEBBIE GIBSON | Foolish Beat | Atlantic |
| 7 | 7 | DEELE | Two Occasions | Solar |
| 8 | 8 | PRINCE | Alphabet Street | Paisley/WB |
| 14 | 9 | INXS | New Sensation | Atlantic |
| 21 | 10 | BELINDA CARLISLE | Circle In The Sand | MCA |
| 9 | 11 | JETS | Make It Real | MCA |
| 15 | 12 | DEF LEPPARD | Pour Some Sugar On Me | Mercury/PG |
| 18 | 13 | LITA FORD | Kiss Me Deadly | Dream/RCA |
| 19 | 14 | D.J. JAZZY JEFF | Parents Just Don't Understand | Jive/RCA |
| 24 | 15 | CHEAP TRICK | The Flame | Epic |
| 20 | 16 | AL B SURE | Nite & Day | WB |
| 12 | 17 | HALL & DATES | Everything Your Heart Desires | Arista |
| 16 | 18 | ICEHOUSE | Electric Blue | Chrysalis |
| 17 | 19 | POISON | Nothin' But A Good Time | Enigma/Cap |
| 29 | 20 | MIDNIGHT OIL | Beds Are Burning | Columbia |
| 25 | 21 | JJ FAD | Supersonic | Ruth/Atco |
| 23 | 22 | BRENDA K. STARR | I Still Believe | MCA |
| 27 | 23 | BRUCE HORNSBY & RANG | The Valley Road | RCA |
| 26 | 24 | E.U. | Oa Butt | EMI-Manhat |
| 30 | 25 | TIMES TWO | Strange But True | Reprise |
| 28 | 26 | JANE WIEOLIN | Rush Hour | EMI/Manhat |
| 35 | 27 | ROD STEWART | Lost In You | WB |
| 33 | 28 | NU SHOOZ | Should I Say Yes | Atlantic |
| — | 29 | ROBERT PLANT | Tall Cool One | Es P/Atlan |
| — | 30 | TERENCE TRENT O'ARBY | Sign Your Name | Columbia |
| 32 | 31 | DEPECHE MODE | Route 66/Behind The Wheel | Sire/WB |
| 37 | 32 | JODY WATLEY | Most Of All | MCA |
| 34 | 33 | CHER | We All Sleep Alone | Geffen |
| — | 34 | KYLIE MINOGUE | I Should Be So Lucky | Geffen |
| — | 35 | CHURCH | Under The Milky Way | Arista |
| — | 36 | BREATHE | Hands To Heaven | A&M |
| — | 37 | RICHARD MARX | Hold On To The Nights | EMI-Manhat |
| — | 38 | JOHNNY KEMP | Just Got Paid | Columbia |
| — | 39 | STEVIE B | Dreamin' Of Love | LMR |
| — | 40 | VAN HALEN | Black And Blue | WB |

USERS GUIDE: Daypart charts are based on actual number of plays credited to each title.



"IN YOUR SOUL"

COREY IS BACK AND SMOKIN'

FIRST WEEK ADDS: WXKS, PWR99, KPLZ, CKOI, Q100, WKQB, KLIK, KF95, WAEB, WANS, KZIO, KIYS#37, K104, WZYP, CHED, 99GFM, WOKI, KYRK, WPST, K92, WNYZ, 95XIL, KISR, KQCR, KTRS, OK95, AND MUCH MORE!

**"MOODY AND BROODING. COREY HART'S GOT SOUL!"
TOM CUNNINGHAM — PD, WPST; TRENTON FROM THE ALBUM "YOUNG MAN RUNNING"**

COREY HART



"RUSH HOUR"

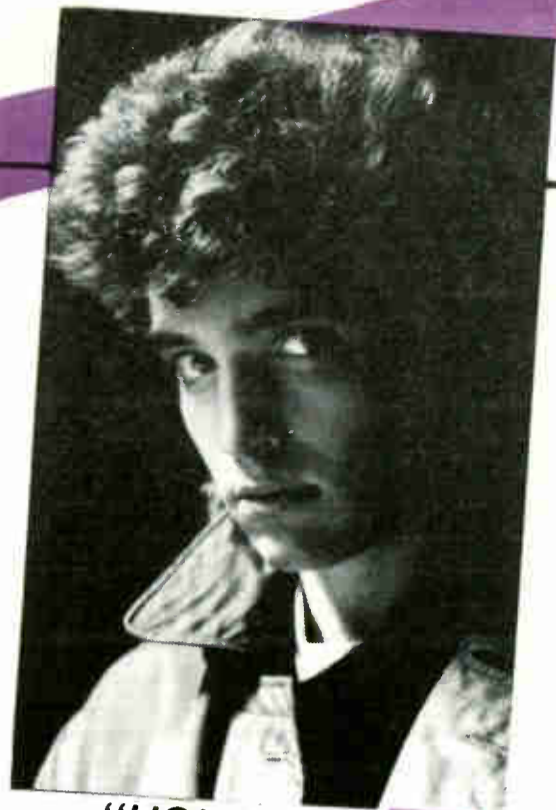
JANE'S RUSHING TO THE TOP!

MMR HIT RADIO TRACER TRACKS ²⁹ ²⁴ REACH INDEX 15.20 MILLION THIS WEEK!

**R&R CHR DEBUT (39)
HOT HIT ACTION:
KIIS ADD, PWR106 ADD, Q107 ADD, KKBQ ADD, B97 ADD, KBEQ ADD, KWSS ADD, PRO-FM ADD, WKBQ 17-13, KITS 17-13, WKTJ 21-14, Y95 25-18, KEGL 26-22, KCPX 29-24, Z94 27-24, WNCI 25-23, B96 28-25, Z95 28-25, HOT103 34-31, WLOL 40-32, 92X 32-29, WEGX 30-27, AND MORE!**

**ALSO ON: PWR99, WGH, KDWB, KUBE, Y108, KKRZ, KXYQ, WZPL, KATD, FM102, KHTR, WCZY, WMMS, AND MUCH MORE!
VIDEO ADDED AT MTV!**

JANE WIEDLIN



"HOLD ON TO THE NIGHTS"

FOUR IN A ROW!

MMR HIT RADIO TRACER TRACKS DEBUT ³²

58% PLAY INCREASE THIS WEEK!

R&R CHR DEBUT (38)

ON OVER 170 STATIONS NOW!

**HIT HIGHLIGHTS:
WGH ADD, WMMS ADD, KROY ADD, KWOD ADD, PWR96 ADD, Y108 ADD, Q102 28-17 (HOT), KCPX 33-16 (HOT), WCZY 32-25, WKBQ 29-24, B96 25-22, KHTR 35-27, 92X 35-32, Z94 32-29, KPLZ 36-33, B94 DEBUT #29, PWR99 DEBUT #29, KEGL DEBUT #27, KDWB DEBUT #29, WLOL DEBUT #37, KRBE DEBUT #36, AND MORE!**

**DON'T MISS RICHARD MARX ON TOUR NOW!
VIDEO ADDED AT MTV!**



RICHARD MARX

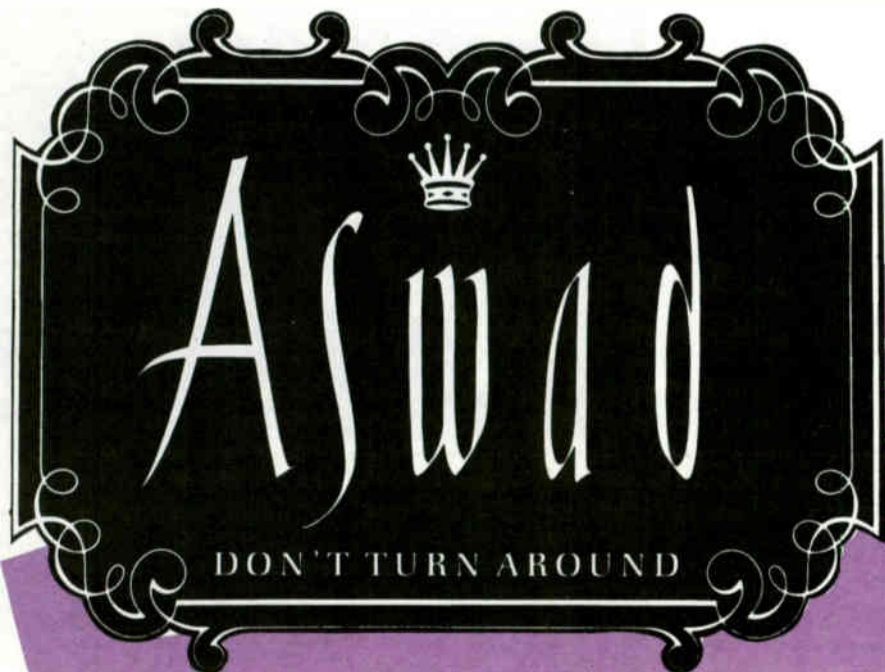
HEAVIEST SATURATION (HIT RADIO)

USERS GUIDE: Those stations delivering the largest number of gross impressions for each title. Number listed is in millions, calculated by each radio station's average quarter hour share, multiplied by the number of plays given the title. Numbers calculated for average, estimated 6am-midnight weekly impact from base monitor hours.

| | | | | | | | | | |
|--|--|---|--|--|--|---|--|--|--|
| GEORGE MICHAEL 1 <i>One More Try</i> Columbia WHTZ-FM 8.08 WWPR-FM 6.37 WOHT-FM 4.85 KJIS-FM 3.57 KPWR-FM 3.00 WYITZ-FM 2.94 WBBM-FM 2.74 WBZZ-FM 2.06 WHYT-FM 1.74 WRBQ-FM 1.71 | | DEBBIE GIBSON 6 <i>Foolish Best</i> Atlantic WHTZ-FM 4.62 WWPR-FM 4.55 KJIS-FM 2.86 WOHT-FM 2.42 KRBE-FM 1.60 WXKS-FM 1.32 WEGX-FM 1.27 KZZP-FM 1.22 WBZZ-FM 1.18 WAVA-FM 1.12 | | BRUCE HORNSBY & RANG 11 <i>The Valley Road</i> RCA WEGX-FM 1.09 WCZY-FM 1.08 KHTR-FM 1.03 WMMS-FM .98 WZOU-FM .92 WBZZ-FM .88 WKBO-FM .67 KEGL-FM .64 WQXI-FM .56 WKRO-FM .52 | | INXS 16 <i>New Sensation</i> Atlantic KJIS-FM 1.43 WBZZ-FM 1.18 WHTZ-FM 1.15 WAVA-FM .90 WCZY-FM .87 KKBO-FM .82 WMMS-FM .73 KHTR-FM .73 WXKS-FM .66 WBSB-FM .63 | | LITA FORD 21 <i>Kiss Me Deadly</i> Dream/ABC WHTZ-FM 2.31 WYITZ-FM 1.18 KHYI-FM .88 KZZP-FM .49 KEGL-FM .48 WAVA-FM .45 WAPW-FM .42 WBSB-FM .42 KPLZ-FM .38 WRDX-FM .35 | |
| JOHNNY HATES JAZZ 2 <i>Shattered Dreams</i> Virgin KPWR-FM 6.01 WHTZ-FM 5.77 WWPR-FM 5.46 KJIS-FM 4.28 WOHT-FM 2.42 WBZZ-FM 2.06 WYITZ-FM 2.08 WRBQ-FM 2.06 WAVA-FM 1.34 KRBE-FM 1.33 | | JETS 7 <i>Make It Real</i> MCA WHTZ-FM 4.62 KJIS-FM 2.86 WBZZ-FM 2.35 WBBM-FM 1.71 WXKS-FM 1.64 WAVA-FM 1.34 KRXY-FM 1.18 KMEL-FM 1.09 WLGL-FM 1.08 WBSB-FM 1.05 | | AL B SURE 12 <i>Nite & Day</i> WB WBBM-FM 2.74 KPWR-FM 2.00 KMEL-FM 1.64 WOHT-FM 1.62 KJIS-FM 1.43 KRXY-FM 1.18 WBZZ-FM 1.18 WHTZ-FM 1.15 WWPR-FM .91 KKBO-FM .82 | | CHER 17 <i>We All Sleep Alone</i> Geffen KKBO-FM .82 KZZP-FM .73 WMMS-FM .73 KHTR-FM .73 KJIS-FM .71 WNCI-FM .71 WZOU-FM .69 WRBQ-FM .69 KRXY-FM .67 KEGL-FM .64 | | ROD STEWART 22 <i>Lost In You</i> WB WBZZ-FM 1.47 WXKS-FM 1.32 WMMS-FM .98 KEGL-FM .80 WZOU-FM .69 WEZB-FM .63 KHYI-FM .58 WKRO-FM .52 WCZY-FM .43 KKRZ-FM .40 | |
| RICK ASTLEY 3 <i>Together Forever</i> RCA WHTZ-FM 8.08 WWPR-FM 6.37 KJIS-FM 4.28 WOHT-FM 4.04 KPWR-FM 3.00 WBBM-FM 2.74 WRBQ-FM 1.71 KZZP-FM 1.47 KKBO-FM 1.36 WBZZ-FM 1.18 | | HALL & OATES 8 <i>Everything Your Heart Desires</i> Arista WWPR-FM 5.46 WOHT-FM 3.23 WBBM-FM 3.09 KPWR-FM 3.00 KJIS-FM 1.43 WXKS-FM 1.32 WMMS-FM 1.22 WHTZ-FM 1.15 WCZY-FM 1.08 KHTR-FM 1.03 | | ICEHOUSE 13 <i>Electric Blue</i> Chrysalis KJIS-FM 2.86 WBZZ-FM 2.06 KKBO-FM 1.91 WWPR-FM 1.82 WZOU-FM 1.39 KZZP-FM 1.22 WHTZ-FM 1.15 WRBQ-FM 1.03 WRDX-FM .87 WAVA-FM .67 | | BRENDA RUSSELL 18 <i>Piano In The Dark</i> A&M WWPR-FM 1.82 WXKS-FM 1.64 KJIS-FM 1.43 WBZZ-FM 1.18 WHTZ-FM 1.15 WHYT-FM 1.08 WOHT-FM .81 KKRZ-FM .80 WEGX-FM .73 WRBQ-FM .69 | | NU SHOOSZ 23 <i>Should I Say Yes</i> Atlantic KRXY-FM 1.18 KPWR-FM 1.00 KMEL-FM .82 KRBE-FM .80 KKRZ-FM .66 KKBO-FM .55 WPOW-FM .55 WEZB-FM .50 KWOD-FM .46 WAVA-FM .45 | |
| DEELE 4 <i>Two Occasions</i> Sals KJIS-FM 5.00 WWPR-FM 4.55 WHTZ-FM 3.46 KPWR-FM 3.00 WOHT-FM 1.62 WYITZ-FM 1.47 WBBM-FM 1.37 WRBQ-FM 1.37 KZZP-FM 1.22 WBZZ-FM 1.18 | | BELINDA CARLISLE 9 <i>Circle In The Sand</i> MCA KPWR-FM 3.00 WWPR-FM 2.73 WYITZ-FM 2.06 WXKS-FM 1.64 KJIS-FM 1.43 WLGL-FM 1.23 WBZZ-FM 1.18 KHTR-FM 1.18 WBBM-FM 1.03 WMMS-FM .98 | | CHEAP TRICK 14 <i>The Flame</i> Epic KJIS-FM 1.43 WBZZ-FM 1.18 KEGL-FM 1.13 KHYI-FM 1.03 WMMS-FM .98 WZOU-FM .92 WRBQ-FM .69 KRXY-FM .67 WCZY-FM .65 KKBO-FM .55 | | BRENDA K. STARR 19 <i>I Still Believe</i> MCA WOHT-FM 1.62 KRXY-FM 1.18 WAVA-FM 1.12 WRDX-FM 1.05 KPWR-FM 1.00 KZZP-FM .98 WBSB-FM .84 KKBO-FM .82 WRBQ-FM .69 WZGC-FM .67 | | JANE WIEDLIN 24 <i>Rush Hour</i> EMI/Marathon KPWR-FM 2.00 WOHT-FM 1.62 KJIS-FM 1.43 KRBE-FM 1.33 KHYI-FM .88 WBBM-FM .69 KPLZ-FM .63 WEZB-FM .50 KEGL-FM .48 WZOU-FM .46 | |
| PEBBLES 5 <i>Mercedes Boy</i> MCA KPWR-FM 6.01 KJIS-FM 4.28 WBBM-FM 3.09 WOHT-FM 2.42 KKBO-FM 1.64 WHYT-FM 1.52 KRBE-FM 1.33 WZGC-FM 1.18 WHTZ-FM 1.15 KMEL-FM 1.09 | | MICHAEL JACKSON 10 <i>Dirty Diana</i> Epic KPWR-FM 3.00 WOHT-FM 2.42 WHTZ-FM 2.31 WBBM-FM 2.06 WWPR-FM 1.82 WHYT-FM 1.74 WXKS-FM 1.32 WBZZ-FM .88 WYITZ-FM .88 WCZY-FM .87 | | PRINCE 15 <i>Alphabet Street</i> Paisley/WB KPWR-FM 3.00 WOHT-FM 2.42 WWPR-FM 1.82 WZGC-FM 1.34 WHTZ-FM 1.15 WHYT-FM 1.08 KRBE-FM 1.06 WCZY-FM .87 KHYI-FM .73 KJIS-FM .71 | | TIMES TWO 20 <i>Strange But True</i> Reggae KPWR-FM 2.00 KRBE-FM 1.06 WZOU-FM .92 KDWB-FM .84 WMMS-FM .73 WAPW-FM .70 KRXY-FM .67 WLGL-FM .62 WBLI-FM .58 WKRO-FM .52 | | TERENCE TRENT D'ARBY 25 <i>Sign Your Name</i> Columbia WHTZ-FM 1.15 KMEL-FM .82 KJIS-FM .73 WZGC-FM .67 WXKS-FM .66 KJFM-FM .64 WAPW-FM .56 WQXI-FM .56 KKLD-FM .50 WMMS-FM .49 | |

HEAVIEST SATURATION (HIT RADIO) — Continued

| | | | | |
|---|--|---|---|--|
| DEF LEPPARD 26 <i>Pour Some Sugar On Me</i> Mercury/PG WHTZ-FM 2.31 KKBO-FM 1.08 KHYI-FM .73 WBZZ-FM .59 WYFZ-FM .58 KRBE-FM .53 KEGF-FM .48 WLGL-FM .48 WAVA-FM .45 WEZB-FM .38 | BREATHE 29 <i>Hands To Heaven</i> A&M KJIS-FM 1.43 KZZP-FM .98 KMEL-FM .55 KPLZ-FM .50 WAVA-FM .45 KRKZ-FM .40 KSFM-FM .36 WRDX-FM .35 KRXY-FM .34 WXKS-FM .33 | RICHARD MARX 32 <i>Hold On To The Night</i> EMI-Mercury WYFZ-FM .88 KHTR-FM .73 KEGF-FM .64 WBZZ-FM .59 WCZY-FM .43 KJBE-FM .42 WKRO-FM .42 KOKS-FM .35 WBBM-FM .34 WKBO-FM .34 | STEVIE B 35 <i>Dreamin' Of Love</i> LMR KPWR-FM 6.01 WHTZ-FM 5.77 WWPR-FM 3.64 WDHT-FM 2.42 KMEL-FM .82 WAPW-FM .70 WAVA-FM .67 WHQT-FM .67 KSFM-FM .55 KZZP-FM .49 | PRETTY POISON 38 <i>Nighttime</i> Virgin KKBO-FM .82 WBBM-FM .69 WHQT-FM .67 KWOD-FM .62 KPLZ-FM .50 WEZB-FM .50 WZDU-FM .46 WPOW-FM .36 KRXY-FM .34 WXGT-FM .29 |
| MIDNIGHT OIL 27 <i>Beds Are Burning</i> Columbia KEGF-FM .80 KJIS-FM .71 KHYI-FM .59 KKBO-FM .56 WEGX-FM .56 KRBE-FM .53 WMMS-FM .49 WLGL-FM .48 WZDU-FM .46 KXYD-FM .42 | SADE 30 <i>Paradise</i> Epic WQHT-FM 3.23 KPWR-FM 3.00 KMEL-FM .82 WEGX-FM .56 WZGC-FM .50 WZDU-FM .48 WCZY-FM .43 KKLO-FM .38 KRXY-FM .34 WXKS-FM .33 | D.J. JAZZY JEFF 33 <i>Parents Just Don't Understand</i> Jive/WCA KJIS-FM 1.43 WHTZ-FM 1.15 KKBO-FM .82 KZZP-FM .73 WRBQ-FM .69 WZGC-FM .87 WBZZ-FM .59 KMEL-FM .56 KWOD-FM .48 WAVA-FM .45 | E.U. 36 <i>Da Butt</i> EMI-Mercury WQHT-FM 1.62 WHTZ-FM 1.15 WHYT-FM .87 WBBM-FM .69 WXGT-FM .69 KKBO-FM .56 KDWB-FM .42 WRDX-FM .35 WXKS-FM .33 WYFZ-FM .29 | ERIC CARMEN 39 <i>Make Me Lose Control</i> Arista WZDU-FM .92 KJIS-FM .71 WBBM-FM .69 WRBQ-FM .69 WCZY-FM .65 WEZB-FM .50 WOXI-FM .42 KJIS-FM .36 KRXY-FM .34 WKRO-FM .31 |
| JODY WATLEY 28 <i>Most Of All</i> MCA KPWR-FM 4.00 KJIS-FM 3.57 WDHT-FM 2.42 KMEL-FM 1.08 WBBM-FM 1.03 WEZB-FM 1.01 KRBE-FM .80 KZZP-FM .73 KSFM-FM .64 KWOD-FM .54 | KYLIE MINOGUE 31 <i>I Should Be So Lucky</i> Capitol KPWR-FM 4.00 WQHT-FM 2.42 WBBM-FM 1.03 KRXY-FM .67 WHQT-FM .67 WAPW-FM .56 KRBE-FM .53 KWOD-FM .46 KBEO-FM .38 KKLO-FM .38 | SUAVE' 34 <i>My Girl</i> Capitol KJIS-FM 2.14 KRBE-FM .80 WZDU-FM .69 WAPW-FM .56 WRDX-FM .52 KWOD-FM .46 WLGL-FM .31 KHTR-FM .29 WBLI-FM .29 KKBO-FM .27 | CHURCH 37 <i>Under The Milky Way</i> Arista KEGF-FM 1.13 KJIS-FM .71 WZDU-FM .69 KRXY-FM .50 WMMS-FM .49 KRKZ-FM .40 KKLO-FM .38 WEGX-FM .36 KHYI-FM .29 WOXI-FM .28 | ROBERT PLANT 40 <i>Tall Cool One</i> Es P/Atco KRBE-FM 1.06 WMMS-FM .98 KEGF-FM .97 WYFZ-FM .59 WXKS-FM .33 KHYI-FM .29 KPLZ-FM .25 WEZB-FM .25 WZDU-FM .23 WBSB-FM .21 |



FORMER U.K. #1 FOR THREE WEEKS!

EARLY HIT ACTION: CKOI ADD, KATD, KITS 25-22, Q107, KQIZ ADD, WPFM, I94, B100, AND A STRONG SECONDARY BASE!

FROM THE ALBUM "DISTANT THUNDER"

MANGO.

HEAVIEST SATURATION (HIT RADIO) NEWCOMERS

JOHNNY KEMP

Just Got Paid
Columbia

| | |
|---------|------|
| WOHT-FM | 4.04 |
| KPWR-FM | 3.00 |
| WHTZ-FM | 2.31 |
| WWPR-FM | 1.82 |
| WBBM-FM | 1.71 |
| KIIS-FM | 1.43 |
| KMEL-FM | .82 |
| WZGC-FM | .67 |
| WAPW-FM | .56 |
| WEGX-FM | .55 |

POISON

Nothin' But A Good Time
Epic/Cap

| | |
|---------|------|
| WHTZ-FM | 2.31 |
| KEGL-FM | .64 |
| WYXZ-FM | .58 |
| KKBO-FM | .55 |
| WRBQ-FM | .34 |
| KDWB-FM | .28 |
| WAPW-FM | .28 |
| KRBE-FM | .27 |
| KPLZ-FM | .25 |
| WMMS-FM | .24 |

BARDEUX

When We Kiss
Spy/Epic

| | |
|---------|------|
| KRXY-FM | 1.18 |
| KHYI-FM | .88 |
| WOHT-FM | .81 |
| KRBE-FM | .80 |
| KSFM-FM | .45 |
| WXGT-FM | .29 |
| KMEL-FM | .27 |
| WHYT-FM | .22 |
| WGH-FM | .19 |
| WPOW-FM | .18 |

DEPECHE MODE

Route 66/Behind The Wheel
Sire/WB

| | |
|---------|------|
| KRBE-FM | 1.06 |
| KIIS-FM | .71 |
| KKBO-FM | .55 |
| KWOD-FM | .38 |
| WPOW-FM | .36 |
| KROY-FM | .34 |
| KHYI-FM | .29 |
| KMEL-FM | .27 |
| KSFM-FM | .27 |
| KKRZ-FM | .27 |

BOZ SCAGGS

Heart Of Mine
Columbia

| | |
|---------|-----|
| WXKS-FM | .89 |
| WCZY-FM | .85 |
| KEGL-FM | .64 |
| WDXI-FM | .42 |
| WEGX-FM | .36 |
| KISN-FM | .36 |
| KWOD-FM | .31 |
| WBLI-FM | .28 |
| KSFM-FM | .27 |
| KRBE-FM | .27 |

JJ FAD

Supersonic
Poly/A&A

| | |
|---------|------|
| WHTZ-FM | 2.31 |
| WOHT-FM | 1.62 |
| KPWR-FM | 1.00 |
| KRBE-FM | .80 |
| WYXZ-FM | .58 |
| KKBO-FM | .55 |
| WHYT-FM | .43 |
| WRBQ-FM | .34 |
| WHOT-FM | .34 |
| KMEL-FM | .27 |

CLIMIE FISHER

Love Changes Everything
Capitol

| | |
|---------|-----|
| KKBO-FM | .82 |
| WZOU-FM | .68 |
| WXKS-FM | .66 |
| WCZY-FM | .65 |
| WLOL-FM | .62 |
| KRXY-FM | .50 |
| WKTJ-FM | .48 |
| WDXI-FM | .28 |
| KRBE-FM | .27 |
| WMMS-FM | .24 |

ZIGGY MARLEY

Tomorrow People
Virgin

| | |
|---------|------|
| KIIS-FM | 1.43 |
| WZGC-FM | .67 |
| WAPW-FM | .56 |
| KMEL-FM | .55 |
| KSFM-FM | .55 |
| WKRO-FM | .42 |
| KKLO-FM | .38 |
| WEZB-FM | .38 |
| WMMS-FM | .24 |
| WBSB-FM | .21 |

NIA PEEPLES

Trouble
Mercury/PG

| | |
|---------|------|
| KPWR-FM | 6.01 |
| KIIS-FM | 2.86 |
| WOHT-FM | 2.42 |
| KMEL-FM | .82 |
| WCZY-FM | .43 |
| WAPW-FM | .42 |
| KKLO-FM | .38 |
| WXKS-FM | .33 |
| KSFM-FM | .27 |
| KRBE-FM | .27 |

NEW ORDER

Blue Monday '88
Dance/WB

| | |
|---------|------|
| KPWR-FM | 2.00 |
| WOHT-FM | 1.62 |
| KRBE-FM | 1.06 |
| KIIS-FM | .71 |
| KZZP-FM | .49 |
| KKBO-FM | .27 |
| KMEL-FM | .27 |
| KSFM-FM | .27 |
| KROY-FM | .17 |
| KWOD-FM | .15 |

VAN HALEN

Black And Blue
WB

| | |
|---------|-----|
| KEGL-FM | .80 |
| WYXZ-FM | .58 |
| KHYI-FM | .29 |
| WBZZ-FM | .29 |
| WKSE-FM | .27 |
| KRBE-FM | .27 |
| KPLZ-FM | .25 |
| WMMS-FM | .24 |
| WZPL-FM | .17 |
| WGH-FM | .13 |

ELISA FIORILLO

Forgive Me For Dreaming
Chrysalis

| | |
|---------|-----|
| WPOW-FM | .73 |
| WKTJ-FM | .58 |
| KWOD-FM | .31 |
| WAPW-FM | .28 |
| KKRZ-FM | .27 |
| KPLZ-FM | .25 |
| WCZY-FM | .22 |
| WRBQ-FM | .17 |
| KSFM-FM | .08 |
| WPRO-FM | .08 |

JOHN C MELLENCAMP

Rooty Toot Toot
Mercury/PG

| | |
|---------|------|
| KRBE-FM | 1.33 |
| KEGL-FM | .80 |
| WZOU-FM | .68 |
| KRXY-FM | .34 |
| KPLZ-FM | .25 |
| WMMS-FM | .24 |
| WGH-FM | .19 |
| WPRO-FM | .18 |
| WRNO-FM | .07 |

SWEET SENSATION

Take It While It's Hot
A&A

| | |
|---------|------|
| WOHT-FM | 1.62 |
| KIIS-FM | 1.43 |
| KPWR-FM | 1.00 |
| KRBE-FM | .80 |
| WPOW-FM | .55 |
| KWOD-FM | .23 |
| WHOT-FM | .22 |
| KWSS-FM | .15 |
| KYUU-FM | .13 |
| WEZB-FM | .13 |

WILL TO POWER

Say It's Gonna Rain
Epic

| | |
|---------|------|
| KPWR-FM | 5.00 |
| WOHT-FM | 4.85 |
| WPOW-FM | .91 |
| WBBM-FM | .34 |
| WHYT-FM | .24 |
| WAPW-FM | .14 |

A Must Listen! NEW KIDS ON THE BLOCK

"Please Don't Go Girl"

"HEARTBREAKINGLY BEAUTIFUL!!
PLAY THIS RECORD."
GENE BAXTER —
Assistant P.D., KZZP; Phoenix

"INSTANT PHONES. WILL BE A
100% CROSSOVER SMASH!
GIVE THE NEW KIDS A
SHOT."
ALBIE DEE —
Music Director, WPGC; Washington
D.C.



CITY TRACKS (HIT RADIO)

USERS GUIDE: City Tracks are a potpourri of music, promotional, positioning, market news, information and 12+ average quarter hours shares supplied by ARBITRON (used by permission).

BOSTON:

Yuppie radio **WXKS** is giving away a brand new black convertible BMW. Listeners win their chance at the trendy car by guessing which letter the key is behind, B, M or W. Everyone who wins a key will get to try to start the car. 'XKS has also just started their "Time Spent Listening" game. They'll ring a buzzer telling listeners when to start counting the minutes and when they stop winners score five dollars per minute along with the chance at \$10,000. Happy Birthday to Vice-President of Creative Services, **JIM BERRY** on May 24. And congratulations to morning man, **MATT SIEGEL** on the birth of his little girl Alexandria on May 23. . . **WZOU** ("Z-94") is welcoming in a new mascot and logo which will be seen all over Boston through bumper stickers, billboards and aerial advertising. Some of the upcoming promotions the new look Z-94 has got going, include sending fathers to the All-star Game, "Two in a Row, Two for the Show" concert ticket giveaways, and "10-in-a-Row Means Cash." Happy Birthday **EMICA FOLARI** on June 5, Promotion Director, **DEBBIE ALPI** on June 19, and midday man, **DAN MCCOY** on June 21.

HARTFORD:

WTIC Program Director, **DAVE SHAKES** has lots of exciting promotions waiting in the wings for the upcoming summer months, but that doesn't mean that he's just sitting around waiting for them to happen. In the mean time, they've got the "Count the Music and Win" promotion which can mean \$10,000 in cash to one TIC listener. "A Taste of Hartford" was recently held and not only did party goers get to taste mass amounts of food from local restaurants, they got to hear the WTIC morning team of **GREG** and **ELLIOTT** perform live with their band. . . **WKCI** ("KC 101") is getting set to kick off the "101 Days of Summer" which will include giveaways in cash and prizes totalling \$101,000. The "KC 101 Instant Money Game" is another way they're dishing out the bucks. Listeners wait for the sound of the cash register for their chance at anywhere from \$101 to \$500.

PORTLAND:

Bruce! Bruce! Bruce! **KKRZ** ("Z100") wants Bruce. The Boss hasn't performed in Portland in eight years so "Z100" has started a petition to get the famed rocker. The station for "More music, more money and more fun" is also sending listeners to the Freedom Fest at Wembley Stadium which will feature artists **GEORGE MICHAEL**, **WHITNEY HOUSTON** and the **EURYTHMICS** along with many others. The envied news director, **BROOK BELSON** will be broadcasting live. . . And they're off, the babies that is, as **KXYQ** ("Q-105") hosts the baby races. The big winner will receive a \$1,500 certificate which will mature when the infant turns 18. Second and third placers don't do too bad either as they get \$500 each and no one is a loser as every participant will receive a pair of children's Nikes.

BUFFALO:

WMJQ ("Magic 102") is the official sponsor of the "Niagara Falls Grand Prix." One of the activities involved with the event is choosing a Miss Grand Prix. They're also sending some lucky winners to the land of the 24-hour party, two 'MJQ listeners will be doing the conga all the way down the Las Vegas strip as they take in a **GLORIA ESTEFAN** and **MIAMI SOUND MACHINE** Concert, while they are there. . . What's the most creative marriage proposal you can think of? Well, head to Buffalo and try it out, because **WKSE** ("Kiss FM") is giving away a wedding complete with the Justice of the Peace and Jamaican honeymoon for the best one. Some of the contenders for the prize include putting the big question inside a fortune cookie and sending the intended one on a treasure hunt. Kiss FM is also holding a "Waterbed Olympics," four teams of four will see who can fill up their waterbed the fastest. Each member of the winning team will win his own waterbed. Congratulations to **PAUL "BOOM BOOM" CANNON** as he's upped to Operations Manager and on his nomination as the best medium market morning man for the Bobby Poe Convention. Also nominated at the station were nighttimer **KID CROCKETT** and **WKSE** as station of the year. Good luck to **CAREN POLAGI** as he exits to program **WRQX** in Washington D.C.

INDIANAPOLIS:

WZPL is making the most of the sneak preview of "Funny Farm" starring Chevy Chase. A live cow will be at the theatre for movie goers to milk for prizes and anyone with a farm related name such as Moo will be invited to the special screening. 'ZPL listeners also have a chance to win major prizes in their "\$200,000 Prize Calendar Summer Sweepstakes." Prizes to be given away this week include a 1988 Ford Taurus, a trip to Cancun, Mexico and a \$1,500 diamond wardrobe. Could this station be having anymore big fun, you ask. Well as a matter of fact a "Strange But True Weekend" is fast approaching. Strange facts and some weird fallacies will be given out over the air, listeners will have to guess which are true for their chance at a big trip. Congratulations to the new guy keeping 7-11 workers company, **BRUCE GORDEN** on overnights.

SACRAMENTO:

Man-o-man was the 97 **KROY** Superstar Super Cruise ever fun. Everyone on board was all smiles as **RICK SPRINGFIELD** kept all his adoring fans happy with pictures, kisses and autographs. **JODY WATLEY**, **JOHNNY KEMP**, **BRENDA RUSSELL** and **VALERIE DAY** of **NU SHOOZ** were also big hits. While we're on the subject of big, let's talk about **KROY'S** latest promotion, "Big Fun and Big Winning." They'll be doing the premiere of Tom Hanks new movie "Big" and will be giving away a big screen TV and a new Mitsubishi Mirage. Congratulations to the new man behind the wheel on the afternoon drive, **DAN "ICEMAN" WALKER**. Happy Birthday Program Director Tom Chase on June 6. . . This past weekend **KFSM** ("FM 102") gave away thousands of gallons of free gas to the first 102 cars. The jocks played station attendants and pumped gas while broadcasting live. For all the Capitol City listeners who have been wondering what morning zoo keepers **COLLINS** and **REYNOLDS** look like, they can be seen on PBS, as they help out with the yearly drive to earn money for the station. Happy Birthday to Promotion Director, **MIKE ROGERS** on May 20. . . The **KWOD** power plane was seen by about 100,000 people at the recently held Sacramento International Airshow. Everyone liked **KWOD'S** plane so much that they decided they wanted to party with the station, so they all got together at Waterworld USA for a major party. Actually, only 300 listeners were invited, there was "free food, free drinks and free waves" for all who attended.

CHICAGO:

RICHARD MARX was hanging out with 40 **WBBM** listeners this past weekend at a "Pre-Concert Party." All party goers also won tickets to the show including front row. 'BBM is also proud to present the Windy City premiere of **Poltergeist III** as well as sponsor the MTV, Museum of Unnatural History. "Chicago's number one hit music station" also features "Carla's Box Lunch" everyday; during which midday personality **CARLA BOX** gives away a dinner to a well-known Chicago restaurant. . . **WYFZ** ("Z-95") is looking forward to major softball action as they get set to play the Surf All-Stars which will include players from the ABC Soap Opera's such as All My Children's **Jeremy Hunter**, **Nico Keller** and **Julie Chandler**. Z-95's air talents **PAUL BARSKY**, **WAYNE MESSMER**, **BRANT MILLER** and **ALLAN KABEL** will battle the soap stars to benefit Cystic Fibrosis.

MINNEAPOLIS:

According to **KDWB's** new Program Director, **BRIAN PHILLIPS**, they're the "Hippest ship in the hit music business." So what's making them so hip? It could be the new members of their staff including **MR. ED** on afternoons, **ANDREA VINCENT** middays, and new Promotion Director **DOUG ANDERSON**, who also celebrates a birthday on June 21. Or could it be because they recently made a move across the river with their new studio's overlooking the Metrodome. Well, whatever the reason they're playing "12-in-a-row all day long, nobody plays more music than 101.3 **KDWB**." . . . 2,400 tickets! That's how many **WLWL** is giving away to Valley Fair Day at Minneapolis' own theme park. For the more reserved listener who would rather golf than ride roller coasters, they've got "Hien's and Berglund's 2nd Annual Fishing Opener" which will be held at Arrowood. Forty winners will get to soak up the atmosphere of the great outdoors.

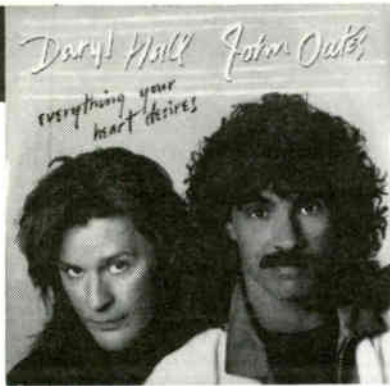
SAN FRANCISCO:

Catch The **SMITHEREENS** on the streets of San Francisco, no they're not co-stars of **Karl Malden's** and **Michael Douglas'**, they're going to be playing a free concert at Justin Herman Plaza. **KITS** ("Live 105"), is airing the top 500 Modern Rock songs of all time. Listeners who sent in postcards to choose their favorite three will be eligible for \$1,000. Congratulations to **BILL REID**, a new part-time announcer. . . Notredomis' earthquake prediction sent **KMEL's** morning zoo to the top of San Francisco's oldest and tallest building. The station invited listeners for breakfast and gave away earthquake survival kits which included hard hats, flashlights and **EARTH, WIND & FIRE'S** 45 "System of Survival." Happy Birthday to **RICK CHASE**, the afternoon driver on June 12. . . Welcome **KYUU** to our hit section. As you've probably heard the station recently made the switch from A/C and they've got some fun promotions to go along with their new "Continuous hits" format. Look for the "3rd Annual Celebrating **KYUU** Dwight Clark Softball Classic," **HUEY LEWIS** and **JOE MONTANA** among others will be on hand to play in the game that will benefit Missing Children. Congratulations to **CRAIG ROBERTS** who moves from overnights to 7 to midnight.

DARYL HALL JOHN OATES

The debut Arista single from Daryl and John is already Top 5 and bulleting up at Top 40, R&B and A/C radio.

OOH YEAH! is their fastest selling album ever, already past gold, on its way to platinum. All all this before a two-year tour, and the second single.



"EVERYTHING YOUR HEART DESIRES"

MMR AC TRACER TRACKS 7 - 5

R&R CHR (5) - (4)

THE CHURCH

The breakthrough story of the year continues as The Church storm up the Top 40, converting more and more believers every day. The album **Starfish**, is now well past 305,000 and going strong. Catch The Church on tour now, they are really special.



"UNDER THE MILKY WAY"

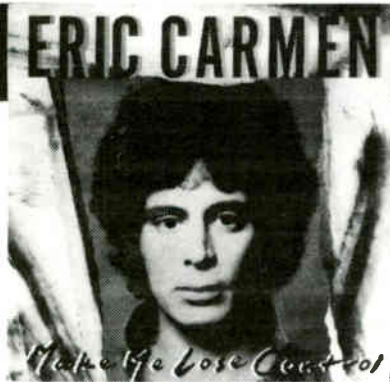
MMR HIT TRACER TRACKS DEBUT 37

R&R CHR (35) - (29)

ACTION: KEGL 3-3 (HOT), WDTX 16-13, WMMS 16-13, WGH 21-17, Y108 27-23, KKRZ 26-23, WMJQ 27-24, KPLZ 33-30, WBCY 21-16, PRO-FM DEBUT #32, KIIS DEBUT #33, KHTR DEBUT #35, AND MORE!

ERIC CARMEN

There's no way to control a runaway smash and this is one. Eric's new single, "**Make Me Lose Control**," is speeding up the charts at a record pace. From his album, **The Best Of Eric Carmen**. How do you spell smash! Don't miss the video featuring special radio personalities.



"MAKE ME LOSE CONTROL"

ACTION: WXKS ADD, PRO-FM ADD, Q107 ADD, WAVA ADD, Q105 ADD, KDWB ADD, WLWL ADD, KWSS ADD, WMMS 34-24, KIVA 21-15 (HOT), Z104 29-17, KHTR DEBUT #24, Y108 DEBUT #27, KKRZ DEBUT #28, B94 DEBUT #30, B97 DEBUT #35, AND MORE!

BILLY OCEAN

Color this another #1 for Billy. The follow-up to his #1 Pop and R&B smash "**Get Outta My Dreams, Get Into My Car**," looks like its headed on the same course as his other classics, "**Suddenly**" and "**Sad Songs**." Every Spring, for the past three years, Billy has had the #1 requested wedding song. . . This is the next big one. From his now platinum album, **Tear Down These Walls**.

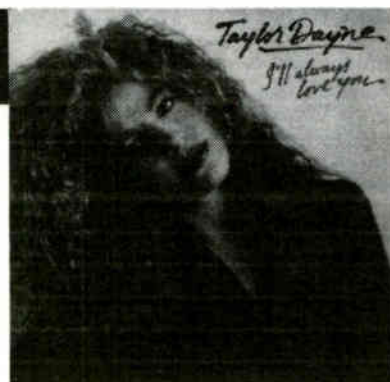


"THE COLOUR OF LOVE"

ACTION: B104 ADD, Z100 ADD, KHTR ADD, KIIS ADD #28, KWOD ADD, KCPX ADD #28, KATD ADD #33, KKRZ ADD, Z93 ADD, WNVZ DEBUT #14 (HOT), AND MORE!

TAYLOR DAYNE

"Tell It To My Heart" introduced Taylor to the public and "Prove Your Love" proved she could have back-to-back Top 10 hits. Her new single "**I'll Always Love You**" introduces another side of Taylor that showcases a dynamic artist. From her gold plus debut album, **Tell It To My Heart!**



"I'LL ALWAYS LOVE YOU"

ACTION: Y95 ADD, KITV ADD, FM102 ADD, B93 ADD #40, KSAQ ADD, WXKS ADD, AND MORE!



NATIONAL CROSSOVER INDEX

USERS GUIDE: A merger of data compiled from combined formats. Ranking based on number of plays. To qualify, title must receive a minimum of 10 plays.

HIT RADIO/ADULT CONTEMPORARY

| 5/23/88 | 5/30/88 | ARTIST | TITLE | LABEL |
|-------------|---------|----------------------|-------------------------------|-----------|
| 1 | | GEORGE MICHAEL | One More Try | Columbia |
| 2 | | JOHNNY HATES JAZZ | Shattered Dreams | Virgin |
| 4 | | RICK ASTLEY | Together Forever | RCA |
| 5 | | FOREIGNER | I Don't Want To Live W/o You | Atlantic |
| 6 | | HALL & DATES | Everything Your Heart Desires | Arista |
| 10 | | JETS | Make It Real | MCA |
| 9 | | BRENDA RUSSELL | Piano In The Dark | A&M |
| 8 | | BRUCE HORNSBY & RANG | The Valley Road | RCA |
| 7 | 9 | DEELE | Two Occasions | Solar |
| 13 | | DEBBIE GIBSON | Foolish Beat | Atlantic |
| 11 | | BELINDA CARLISLE | Circle In The Sand | MCA |
| 12 | | ICEHOUSE | Electric Blue | Chrysalis |
| 15 | | AL B SURE | Nite & Day | WB |
| 20 | | CHEAP TRICK | The Flame | Epic |
| 19 | | BOZ SCAGGS | Heart Of Mine | Columbia |
| 18 | | CHER | We All Sleep Alone | Geffen |
| 16 | 17 | BRENDA K. STARR | I Still Believe | MCA |
| New Entry ✓ | | ROD STEWART | Lost In You | WB |
| New Entry ✓ | | SADE | Paradise | Epic |
| New Entry ✓ | | BREATHE | Hands To Heaven | A&M |

PUBLISHER'S NOTE: ARROWS can be maintained by an increase in RANKING or PLAYS.

HIT RADIO/ROCK RADIO

| 5/23/88 | 5/30/88 | ARTIST | TITLE | LABEL |
|-------------|---------|----------------------|------------------------------|------------|
| 1 | | JOHNNY HATES JAZZ | Shattered Dreams | Virgin |
| 2 | | BRUCE HORNSBY & RANG | The Valley Road | RCA |
| 4 | | CHEAP TRICK | The Flame | Epic |
| 6 | | INXS | New Sensation | Atlantic |
| 8 | | ROD STEWART | Lost In You | WB |
| 5 | 6 | ICEHOUSE | Electric Blue | Chrysalis |
| 9 | | MIDNIGHT OIL | Beds Are Burning | Columbia |
| 10 | | VAN HALEN | Black And Blue | WB |
| 7 | 9 | FOREIGNER | I Don't Want To Live W/o You | Atlantic |
| 11 | | CHURCH | Under The Milky Way | Arista |
| 14 | | ROBERT PLANT | Tail Cool One | Es P/Atlan |
| 15 | | SMITHEREENS | Only A Memory | Eng/Capit |
| New Entry ✓ | | ERIC CLAPTON | After Midnight | Polygram |
| 19 | | LITA FORO | Kiss Me Deadly | Dream/RCA |
| New Entry ✓ | | DEF LEPPARD | Pour Some Sugar On Me | Mercury/PG |
| 20 | | JOHN C MELLENCAMP | Rooty Toot Toot | Mercury/PG |
| 18 | | SCORPIONS | Rhythm Of Love | Mercury/PG |
| 17 | 18 | POISON | Nothin' But A Good Time | Enigma/Cap |
| New Entry ✓ | | ZIGGY MARLEY | Tomorrow People | Virgin |
| New Entry ✓ | | DEPECHE MOODE | Route 66/Behind The Wheel | Sire/WB |

PUBLISHER'S NOTE: ARROWS can be maintained by an increase in RANKING or PLAYS.

NEWCOMERS

| ARTIST | TITLE | LABEL |
|---------------|-----------------------|------------|
| RICHARD MARX | Hold On To The Nights | EMI-Manhat |
| ✓ ERIC CARMEN | Make Me Lose Control | Arista |
| ✓ BILLY OCEAN | Colour Of Love | Arista |

NEWCOMERS

| ARTIST | TITLE | LABEL |
|---------------------|------------------------|------------|
| HENRY LEE SUMMER | Darlin' Danielle Don't | CBS Assoc |
| 10,000 MANIACS | Like The Weather | Elektra |
| ✓ PET SHOP BOYS | Heart | EMI-Manhat |
| JOHN CAFFERTY & BBB | Song & Dance | Epic |
| GUNS 'N ROSES | Welcome To The Jungle | Geffen |
| ✓ MICHAEL BOLTON | Wait On Love | Columbia |
| BIG PIG | Breakaway | A&M |

HIT RADIO/URBAN

| 5/23/88 | 5/30/88 | ARTIST | TITLE | LABEL |
|---------|---------|-----------------|-------------------------------|--------|
| 1 | 1 | DEELE | Two Occasions | Solar |
| 4 | | PEBBLES | Mercedes Boy | MCA |
| 3 | | JETS | Make It Real | MCA |
| 2 | 4 | HALL & DATES | Everything Your Heart Desires | Arista |
| 5 | | MICHAEL JACKSON | Dirty Diana | Epic |

| 5/23/88 | 5/30/88 | ARTIST | TITLE | LABEL |
|---------|---------|----------------------|-------------------|------------|
| 6 | | AL B SURE | Nite & Day | WB |
| 7 | | PRINCE | Alphabet Street | Paisley/WB |
| 8 | | BRENDA RUSSELL | Piano In The Dark | A&M |
| — | | TERENCE TRENT O'ARBY | Sign Your Name | Columbia |
| 10 | | JODY WATLEY | Most Of All | MCA |

Note: See specific format charts for breakdown of stats within that category (# plays/reach index/increase percentage).

CAPTURED LIVE!

USERS GUIDE: MMR travels to various cities to compile song by song accounts and other data.



CONCERT FACTS

Artist: Smithereens
Tour: Green Thoughts Tour
Date: Friday, May 20, 1988
Venue: The Roxy, Los Angeles, CA.
Attendance: 450 (Sold Out, 1 of 4 shows)
Ticket Prices: \$15.00
Total Gross: \$6,750.00 (per night)
Promoter: Avalon Attractions
Agent: Jorge Quevado, Premier
Tour Manager: Wally Versen
Personal Manager: DeMann Entertainment
Record Label: Enigma/Capitol
Lights Off: 9:30PM
Lights On: 11:40PM
Total Length: 2 Hours and 10 Minutes
Upcoming Shows:
 May 31 One Step Beyond — Santa Clara, CA.
 June 1 Satellite College Ballroom — Fresno, CA.
 June 2 Danceteria — Sacramento, CA.
 June 3 Ventura Terrace Theatre — Ventura, CA.

SET

1. *Batman Theme*
2. *Drown In My Own Tears*
3. *Green Thoughts*
4. *Groovy Tuesday*
5. *Alone At Midnight*
6. *World That We Know*
7. *Don't Wanna Lose You*
8. *Something New*
9. *Cigarette*
10. *Deep Black*
11. *Strangers When We Meet*
12. *Behind The Wall Of Sleep*
13. *Hand Of Glory*
14. *Only A Memory*
15. *Time And Time Again*
16. *Blood And Roses*
17. *House We Use To Live In*
18. *Do It In The Road*
19. *Substitute*
20. *White Castle Blues*
21. *Runaway*
22. *Seeker*
23. *In A Lonely Place*
24. *Especially For You*
25. *Crazy Mixed-Up Kid*
26. *Batman Theme*

PERSONNEL

Dennis Diken: Drums, Vocals
Jim Babjak: Guitars, Vocals
Nike Mesaros: Bass, Vocals
Pat DiNizio: Vocals, Guitars

SPECIAL
TAKE OUT
SECTION

TUNED IN

WEZB: NEW ORLEANS

Along the Louisiana Bayou, **WEZB** ("B-97") is a party station in a party town. Whereas one chief rival (**WQUE**) leans heavily towards urban, while the other (**WRNO**) favors rock, B-97 gives its listeners the best of both worlds; giving its hit mix an urban flavoring while also playing the occasional rock cut.

Programming for EZ Communications for the past year has been former Z-100 staffer **Shadow P. Stevens**. His Music Director, **Joey Giovingo** makes sure WEZB "Plays the best new music first", while Stevens' promotions man, Asst. PD **Cadillac Jack**, directs station activity.

Capturing the cajun spirit of the Crescent City is an air staff made-up of: "**Cajun**" **Ken Cooper** (with morning cohorts **Cami McCormick** and psychologist **Dr. Buffington**), **Alan BeeBe**, **Cadillac Jack**, **Hollywood Harrison** and **Bobby Moore** rounds-out "The Power Station."

It's the "voodoo that they do" in a brand new **Tuned In** from New Orleans' WEZB!



WPHD: BUFFALO

Ready for a good, old-fashioned rock education? This week, **Tuned In** is in Buffalo where we've compiled a complete study of **WPHD**.

A Howard Communications facility, the station's rock days date back to 1969; the last thirteen with current GM **Harv Moore**. Moore's voice is also familiar to the Northeast as co-host of the morning show with **Bob Taylor**. **Trevor Joe Lennon** is the midday man, **John Hager** is in afternoons, MD **Bob Richards** does nights, and **Tina McMann** pulls the "all-nighter" to round-out the air personalities. Elsewhere at WPHD, **Ellen Carroll** and **Carol Williams** direct promotions and news, respectively.

Like Indianapolis, "Buffalo's original rock 'n' roll station" celebrated Memorial Day with a "500" of their own. The station counted down their listeners' favorite 500 songs while giving away concert tickets and other prizes. And, next month, more of the WPHD faithful will be enjoying live music when the "Concert Caravan" treks to Toronto to see **John Cougar Mellencamp**.

Your complete look at WPHD is here, this week, in **Tuned In**!



KFMB: SAN DIEGO

When searching for a station "rich" in hot A/C programming, Southern Californians need listen no further than 100.7 FM. That's where they find **KFMB** and the "**Rich Brothers**" of the "B-100 Morning Zoo." This week, MMR found them too.

PD **Bobby Rich** heads the personality-laden "Zoo" with **Frank Anthony**, **Scott Kenyon**, **Pat Gaffey** and **Mike Novak**. The morning show stays topical and high profile with inventive bits (such as the "Beetlejuice" inspired "Day-O San Diego" song), and with regular public appearances. Outside of AM Drive, the Midwest Television Inc. station remains "#1 for music, money, and fun;" bordering on Hit Radio with a current-based forefront approach to the music and a higher listener participation approach to their promotional activity.

With numbers "up" yet again to a 7.8, B-100 resides currently at #1 in the 25-54 demographic and #3 overall. We show you how the airstaff (MD **Gene Knight**, **Gary Kelly**, **Danny Romero**, **Ellen Thomas** and **John Fox**) and the promotions people (**Joan Hiser** and Asst. **Sandy Bannister**) do it, this time, in our Adult Contemporary **Tuned In**!





BOZ SCAGGS

"Heart of Mine"

MMR HIT RADIO NEWCOMER

R&R CHR (39)-(35) 149 STATIONS

GAVIN TOP 40 (35)-(29) 211 STATIONS

KKLQ ADD, WXKS 11-8, WKTI 16-13, KEG_ 27-18, WCZY 25-21, FM102 27-22, KWOD 32-28, KWSS 35-31, WMMS 36-33, K104 11-7, KIYS 13-9, Z104 28-19, KF95 39-34, Y108 DEBUT #24, WMJQ DEBUT #27, WBLI DEBUT #30, PRO-FM DEBUT #30

R&R AC (4)

Taken from the Columbia Lp: "Other Roads" 40463 Produced by Stewart Levine for Olivera Prod., Ltd.



JULIO IGLESIAS

"My Love" featuring STEVIE WONDER

"As you may have read here on more than one occasion, I'm one of those who firmly believe that the song, rather than the singer, is the bottom line when it comes to hit records." **DAVE SHOLIN — GAVIN REPORT**

FM102 ADD, KPLZ ADD, Y100 30-28, PRO-FM DEBUT #33, WXKS, KRBE, KITY, KKRZ, KXYQ, KEZB 23-19, KISR 34-27, Q101 40-36, KBFM 38-34, 100KHI DEBUT #31, KIXY DEBUT #38, WQCM DEBUT #40

*Stevie Wonder appears courtesy of Motown Records Corp.
Taken from the Columbia Lp: "Non Stop" 40995 Produced by Humberto Gatica and Stevie Wonder*



JOHNNY KEMP

"Just Got Paid"

**#1 MMR HIT RADIO NEWCOMER
REACH INDEX 19.12 MILLION THIS WEEK!**

Q107 ADD, WAVA ADD, WNVZ ADD, FM104 ADD, WBBQ ADD, WDJX ADD, WKQB ADD, Z100 9-6, HOT 103 12-6, PWR 95 #10, Z93 22-14, PWR 99 25-17, WXKS 20-18, WPGC 24-19, WHYT 24-22, B96 26-23, WNNK 33-21, B104 DEBUT #29, KITY DEBUT #29, WEGX DEBUT #30, KIIS DEBUT #34, FM102 DEBUT #35, Z94 DEBUT #35, PWR 106 DEBUT #38

Taken from the Columbia Lp: "Secrets of Flying" 40771 Produced and arranged by Teddy Riley and Johnny Kemp



MICHAEL BOLTON

"Wait On Love"

**GAVIN TOP 40 112 STATIONS
R&R CHR 48 STATIONS
ON OVER 100 HIT RADIO STATIONS!**

WMMS 33-29, WL0L DEBUT #38, KZOU DEBUT #40, Z94, KHTR, WDTX DEBUT #25, FM104 DEBUT #30, 100 KHI DEBUT #33, KHTZ DEBUT #34, KIYS 28-22, KISR 33-24

Taken from the Columbia Lp: "The Hunger" 40473 Produced by Jonathan Cain for Cain Street Productions

Always 
It's Nipper Time!



EURYTHMICS

"YOU HAVE PLACED A CHILL IN MY HEART"

MMR HIT RADIO NEWCOMER DEBUT

R&R CHR NEW & ACTIVE 71/28

MAJOR HIT ACTION: WMMS ADD, KWSS ADD, WTIC ADD #39, WERZ ADD #40, WXKS DEBUT #24, KRBE DEBUT #38, HOT 103 #38, PRO-FM, Y95, WGH, KITY, WCZY, WKBQ, KKRZ, KXYQ, KWOD, KCPX, KPLZ, KUBE, WBCY ADD, KZ106 ADD, WANS ADD, WZYP ADD, WIXX ADD, Y97 ADD #34, OK100 ADD, WJAD ADD



LITA FORD

"KISS ME DEADLY"

MMR HIT RADIO TRACER TRACKS  27  21

26% PLAY INCREASE THIS WEEK!

R&R CHR  22 -  17

HOT ACTION: WGH 8-6 (HOT), Z95 8-4 (HOT), WMMS 11-7 (HOT), KXYQ 6-6 (HOT), KATD 7-4 (HOT), KPLZ 8-7, PWR 99 9-8, WZYP 6-5 (HOT), PWR 4-3 (HOT), KZZU 2-1 (HOT), WIXX 12-7 (HOT), WAEB 5-5 (HOT)

ALBUM IS NOW GOLD
THANKS RADIO!


DREAMLAND



DJ JAZZY JEFF & FRESH PRINCE

"PARENTS JUST DON'T UNDERSTAND"

MMR HIT RADIO TRACER TRACKS DEBUT  33

REACH INDEX 10.49 MILLION THIS WEEK!

R&R NEW & ACTIVE 75/17

STRONG HIT ACTION: KPLZ ADD, WTIC ADD, Z93 3-1 (HOT), KZZP 8-3 (HOT), KWOD 4-3 (HOT), WPGC #2, KRBE #11, KKBQ 17-13 (HOT), KATD 33-13 (HOT), Q107 20-17 (HOT), KIIS 27-21, KITY DEBUT #24 (HOT), WRVQ 13-7 (HOT), Z102 5-2 (HOT), KYRK 21-12 (HOT), KLUC 30-11 (HOT)
ALSO ON: KROY, KMEL, Q105, B94, WHYT, B104, B97, KBEQ



PETER MURPHY
"ALL NIGHT LONG"

JUST OUT AND READY FOR ADDS!

HIT RADIO/WEZB-FM

"I DON'T WANNA LIVE WITHOUT YOUR LOVE"

**EXPLOSIVE WEEK AT HIT RADIO!
R&R CHR #1 MOST ADDED 89/89**



**MAJORS
INCLUDE:**

WXKS

B94

PRO-FM

KEGL

Y95

B97

Q105

Y108

WMMS

WNCI #29

WKTI #26

KCPX #38



1988 Reprise Records

THE NEW SINGLE • PRODUCED BY RON NEVISON
• FROM THE FORTHCOMING ALBUM 19

Direction: Howard Kaufman/Front Line Management

POSITIONING STATEMENTS

THE CAJUN MORNING SHOW 9X
"Cajun Ken Cooper will be right back." (5X)
"Waking you up with Cajun Ken. B-97FM." (3X)
"Cajun Ken Cooper in the morning. B-97FM." (1X)
JUST SAY NO 2X
"The best things in life are free... drug free... Just Say No, B-97FM."

PROMOTIONAL ACTIVITY

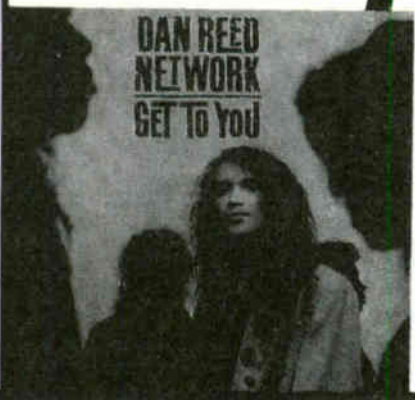
MYSTERY SUPERSTARS 69X
Listeners call in and try to win \$15,000 in silver by correctly identifying the voices of four Mystery Superstars. If the listener fails to do so, they still receive \$97 for being the 21st caller.
ALL REQUEST POWER LUNCH 6X
Alan BeeBe invites listeners to request their favorite songs and grants "Instant Requests" during the noon hour.
WHAT'S HAPPENING 2X
Cadillac Jack fills in listeners with "What's Happening at the B."
B-97FM/PEPSI GIVEAWAY 2X
Entrants can win one of four free trips, a surf board, and other fabulous prizes by entering at a Pepsi retailer or at the Superfair.
B-97FM PRIZE VAN 2X
The B-97FM Prize Van travels around New Orleans and gives away free prizes once a day.
B-97 TREASURE CHEST 2X
The B-97FM Treasure Chest appears at the Superfair where listeners are invited to come and try the combination lock on the chest filled with over \$10,000 in prizes.
MORNING SHOW ACTIVITY
Cajun Ken Cooper's "Juke Box From Hell" plays an appropriate song requested by the listener (i.e.: "Disco Inferno"; "I Fought the Law"). Cami McCormick gives a lucky listener the chance to hear the news headline of their choice on "Pick Your News."
SAMPLING OF WEEKEND ACTIVITY (not promoted during Monday monitoring)
"Rockin' America" (Syndicated show on Saturday mornings).
"Countdown America" (Syndicated show on Sunday mornings).
"Dedication Party" (Hollywood Harrison hosts a listener dedication party Sunday nights from 7P-10P. Songs are chosen from listeners mailed-in suggestions.)
"Hitline U.S.A." (Syndicated show on Sunday nights).

ACCOUNT LIST

| | | |
|---------------------------------|-----|-------------------|
| Astroworld | 1X | Entertainment/Rec |
| Avis Rent a Car | 3X | Car Rental |
| Budweiser | 1X | Beer/Wine |
| Buick Regal | 6X | Auto Dealers |
| Coca-Cola/Sprite | 5X | Beverages |
| Camper's Caravan | 1X | Entertainment/Rec |
| Canal Villiere | 2X | Grocery |
| Chevrolet | 11X | Auto Dealers |
| Coors Extra Gold Draft | 1X | Beer/Wine |
| Cox Cable/The New Movie Channel | 5X | TV/Broadcast |
| Delchamp's | 4X | Grocery |
| Delgado Comm. Col. | 5X | Education |
| Desenex/Cruex | 3X | Health/Beauty |
| Eagle Auto Parts | 2X | Auto Services |
| Eagle Buick/Peugeot/Mitsubishi | 3X | Auto Dealers |
| Eastern Collage | 3X | Vocational |
| Elimwood Medical Center | 5X | Medical |
| Flavor Rich | 2X | Food Products |
| Goodyear Tires | 4X | Auto Services |
| Greyhound Bus Lines | 5X | Transportation |
| Jenny Craig Weight Loss | 4X | Health/Beauty |
| K & B Drugs/American Greetings | 1X | Retail |
| Kool Aid Soft Drink | 4X | Beverage |
| Kudos Granola Snack | 6X | Food Products |
| M & M Candies | 2X | Food Products |
| McDonald's | 1X | Restaurant |
| Meadow's Draughton Collage | 7X | Educational |
| Pepsi Cola | 8X | Beverages |
| Rally's Hamburgers | 1X | Restaurant |
| Rapid Transit District | 1X | Transportation |
| Ruth's Chris Steak House | 1X | Restaurant |
| Schwegmann's Giant Supermarket | 6X | Grocery |
| Service Merchandise | 2X | Retail |
| Soundtrek | 5X | Electronics |
| Superfair | 11X | Entertainment/Rec |
| Tenneco Foodmart | 1X | Grocery |
| Dr. Suzanne Thompson | 1X | Health/Beauty |
| Timesaver | 2X | Restaurant |
| U.S. Agency Insurance | 10X | Insurance |
| Walgreen's | 1X | Retail |
| WDSU/Channel 6 | 5X | TV/Broadcast |
| Wendy's | 2X | Restaurant |
| WGND/Channel 26 | 6X | TV/Broadcast |
| Winn Dixie | 5X | Retail |
| WNDL/Channel 38 | 2X | TV/Broadcast |

ACCOUNTS BY CATEGORY

| | |
|-------------------|-----|
| Auto Dealers | 12% |
| Auto Services | 4% |
| Beer/Wine | 1% |
| Beverage | 10% |
| Car Rental | 2% |
| Education | 7% |
| Electronics | 3% |
| Entertainment/Rec | 7% |
| Food Products | 6% |
| Grocery | 11% |
| Health/Beauty | 5% |
| Insurance | 6% |
| Medical | 3% |
| Restaurant | 4% |
| Retail | 2% |
| Transportation | 3% |
| TV/Broadcast | 11% |
| Vocational | 2% |



MOODY BLUES

"I KNOW YOU'RE OUT THERE SOMEWHERE"

THE MOODY BLUES AT THEIR BEST!

BIG WEEK AT HIT RADIO INCLUDES: WNCI #32, WMMS, PRO-FM, WAEB, WBBQ, KIYS #40, K104, WBCY, PWR 92, WNNK, G98, WPST, WINK, K92, WPRR #36, WTHT #39, KISR, KUUB, KZFN, AND MORE!

BIG WEEK AT AC!

CLOSED AT ROCK (135 FIRST WEEK ADDS!)

DAN REED NETWORK

"GET TO YOU"

STRONG LAUNCH AT HIT RADIO: WGH, KPLZ #36 (HOT), KSAQ, KF95, KIYS, KAKS, KIXY, WBNQ, KUUB, KFBQ, KTMT, KHTZ, KZOZ, OK95, AND MORE!

CURRENTLY TOURING THE NORTHEAST!

SCORPIONS

"RHYTHM OF LOVE"

THIS TRACK IS GOING ALL THE WAY ROCK AND READY TO EXPLODE AT HIT RADIO!

LOOK AT THIS HIT ACTION: Z94 ADD, WZPL ADD, WDTX ADD, KEGL 17-11, Z95 #18, KXYQ, KCPX, KATD DEBUT #28, JET-FM ADD, KPLZ, WZYP ADD, K104 DEBUT #37, WBCY DEBUT #28, WOKI 39-35, KSAQ, KZZU, AND MORE!

ALBUM SELLING TOP 5 COAST TO COAST!

MAJOR STADIUM TOUR THIS SUMMER... DON'T MISS IT!

NIA PEEPLES

"TROUBLE"

TOP 5 DANCE RECORD!

MMR HIT NEWCOMER

REACH INDEX 3.04 MILLION THIS WEEK!

R&R CHR 60 STATIONS!

HIT ACTION: PRO-FM ADD, KKLQ ADD, KWSS ADD, WTIC ADD #37, BJ105 ADD, KQMQ ADD, KITY 26-21, FM102 29-23, KMEL #13, PWR 106 18-14, HOT 103 27-21, PWR 99 DEBUT #28, WPGC 19-17, Z93 15-13, WXKS 19-17, KCPX DEBUT #40, KZZP, KWOD, KUBE, WCZY, KIIS, KROY, KXX 106 38-30, WPXR 24-18 (HOT), KMGX 21-15 (HOT), KCAQ 14-10, KFBQ 24-18 (HOT), AND MUCH MORE!

JOHN COUGAR MELLENCAMP

"ROOTY TOOT TOOT"

STRONG AIRPLAY WEEK AT HIT RADIO!

MMR HIT RADIO NEWCOMER/NEW ENTRY

41% PLAY INCREASE THIS WEEK!

R&R NEW & ACTIVE 86 STATIONS!

HIT HIGHLIGHTS: Z94 28-25, WMMS DEBUT #36, KEGL DEBUT #28, KRBE 34-32, WZPL 35-33, KXYQ #29, PRO-FM, WGH, Y108, KPLZ, WRNO, K104 31-25, WZYP 39-35, WLAP 33-29, WIXX 28-23, KQKQ 30-26, WCGQ 30-24, WAZY 29-25, SLY 96 32-26, KUUB 37-33, AND MUCH MORE!

TONY, TONI, TONE'

"LITTLE WALTER"

READY TO BUST WIDE OPEN AT HIT RADIO!

MAJOR MARKET AIRPLAY: Z93, KMEL, PWR 99, HOT 103, FM102, KATD, KRBE, HOT 105, WAVA, KZZP, B96, WPGC, KMEL, Y100, WQUE, KKFR, AND MUCH MORE!

LISTEN!... A MORE POSITIVE RECORD YOU WILL NOT HEAR!!

R&R URBAN (4)-(3)

DEF LEPPARD

"POUR SOME SUGAR ON ME"

GOING ALL THE WAY!

MMR HIT RADIO TRACER TRACKS (32) - (26)

25% PLAY INCREASE THIS WEEK!

R&R CHR (31) - (25)

SCORPIONS



PolyGram Records

THRESHOLD



PolyGram Records



PolyGram Records



PolyGram Records



PolyGram Records



PolyGram Records



PolyGram Records





*Before they get up out of that chair or zap that remote control,
you have two seconds to get their attention. That's ONE . . . TWO.
And the battle is won or lost.*

*In the world of television commercial production, there are no pastels.
It's a hit. Or it's a miss!*

Future 1 is a smash!



SUPERSPOTS.

(312) 645-9433

ROCK RADIO

TRACER TRACKS

| 5/9/88 | 5/16/88 | 5/23/88 | 5/30/88 | ARTIST | TITLE | LABEL | # PLAYS | REACH INDEX IN MILLIONS |
|-------------|---------|---------|---------|----------------------|----------------------------------|------------|---------|-------------------------|
| 2 | 1 | 2 | ↑ | CHEAP TRICK | The Flame | Epic | 828 | 17.28 |
| 4 | 2 | 1 | 2 | BRUCE HORNSBY & RANG | The Valley Road | RCA | 798 | 16.24 |
| 23 | 7 | 3 | ↑ | VAN HALEN | Black And Blue | WB | 763 | 15.22 |
| 6 | 4 | 5 | ↑ | SMITHEREENS | Only A Memory | Enig/Capit | 665 | 14.22 |
| 3 | 3 | 4 | 5 | ERIC CLAPTON | After Midnight | Polygram | 644 | 13.25 |
| 15 | 13 | 8 | ↑ | ROD STEWART | Lost In You | WB | 602 | 13.74 |
| 5 | 8 | 6 | 7 | MIDNIGHT OIL | Beds Are Burning | Columbia | 574 | 12.32 |
| 7 | 6 | 7 | 8 | CHURCH | Under The Milky Way | Arista | 525 | 10.85 |
| 10 | 10 | 9 | ↑ | NEIL YOUNG | Ten Men Workin' | Reprise | 469 | 10.30 |
| 14 | 16 | 12 | ↑ | ROBERT PLANT | Ship Of Fools | Es P/Atlan | 455 | 9.77 |
| 11 | 12 | 10 | 11 | SCORPIONS | Rhythm Of Love | Mercury/PG | 434 | 8.56 |
| 13 | 14 | 11 | ↑ | HONEYMOON SUITE | Love Changes Everything | WB | 406 | 7.67 |
| 25 | 23 | 14 | ↑ | JOHN C MELLENCAMP | Rooty Toot Toot | Mercury/PG | 371 | 8.36 |
| 22 | 20 | 16 | ↑ | ROBIN TROWER | Tear It Up | Atlantic | 343 | 6.60 |
| 19 | 17 | 17 | ↑ | TREAT HER RIGHT | I Think She Likes Me | RCA | 294 | 7.26 |
| — | 28 | 21 | ↑ | JIMMY BARNES | Too Much Ain't Enough Love | Geffen | 267 | 5.20 |
| 27 | 28 | 19 | ↑ | JOHN KILZER | Red Blue Jeans | Geffen | 217 | 5.14 |
| 28 | 24 | 18 | ↑ | ZIGGY MARLEY | Tomorrow People | Virgin | 210 | 4.65 |
| 20 | 21 | 22 | ↑ | YNGWIE MALMSTEEN | Heaven Tonight | Polydor/PG | 210 | 3.69 |
| 32 | 37 | 20 | ↑ | POISON | Nothin' But A Good Time | Enigma/Cap | 196 | 3.98 |
| — | — | 25 | ↑ | HENRY LEE SUMMER | Darin' Danielle Don't | CBS Assoc | 182 | 3.40 |
| — | — | 32 | ↑ | MIDNIGHT OIL | Deed Heart | Columbia | 161 | 4.03 |
| — | 30 | 23 | ↑ | JOAN JETT & BLACKHEA | I Hate Myself For Loving You | CBS Assoc. | 154 | 3.07 |
| 34 | 27 | 27 | ↑ | PINK FLOYD | The Dogs Of War | Columbia | 140 | 3.06 |
| — | 35 | 26 | ↑ | TALKING HEADS | Blind | Fly/Sire | 133 | 3.86 |
| — | — | 36 | ↑ | BRUCE HORNSBY & RANG | Look Out Any Window | RCA | 133 | 2.99 |
| 24 | 25 | 24 | 27 | KINGDOM COME | Living Out Of Touch | Polygram | 126 | 1.78 |
| New Entry ✓ | — | — | ↑ | MOODY BLUES | I Know You're Out There Somewh | Polygram | 119 | 2.99 |
| — | 38 | 26 | ↑ | GRAHAM PARKER | (Get Started) Start A Fire | RCA | 112 | 2.87 |
| — | — | 30 | ↑ | WHITE LION | Tell Me | Atlantic | 112 | 2.41 |
| — | — | 38 | ↑ | ALARM | Rescue Me | IRS/MCA | 105 | 3.00 |
| New Entry ✓ | — | — | ↑ | TINBUK 3 | Rev. Jack & His Roamin' Cadillac | IRS | 98 | 2.14 |
| New Entry ✓ | — | — | ↑ | THOMAS DOLBY | Airhead | EMI-Manhat | 91 | 3.21 |
| 38 | 33 | 31 | 34 | 10,000 MANIACS | Like The Weather | Elektra | 91 | 2.94 |
| New Entry ✓ | — | — | ↑ | TRACY CHAPMAN | Fast Car | Elektra | 91 | 2.56 |
| New Entry ✓ | — | — | ↑ | ICEHOUSE | Electric Blue | Chrysalis | 91 | 2.01 |
| 36 | 39 | 39 | ↑ | BRIAN SETZER | When The Sky Comes Tumblin' Do | EMI-Manhat | 91 | 1.74 |
| New Entry ✓ | — | — | ↑ | JOHN CAFFERTY & BBB | Song & Dance | Epic | 77 | 1.81 |
| — | — | 33 | 39 | AC/DC | That's The Way I Wanna Rock & | Atlantic | 77 | 1.71 |
| — | — | 37 | 40 | ROBERT PLANT | Way I Feel | Es P/Atlan | 77 | 1.11 |

USERS GUIDE: TRACER TRACKS are ranked by actual number of plays. Arrows are maintained by either an increase in plays or an increase in rank over the previous week. For a precise look at market saturation, reach index numbers are provided (gross impressions). Reach index is calculated by each radio stations average quarter hour (SOURCE: ARBITRON) multiplied by the number of plays given the title. Numbers are calculated for average weekly, estimated 6am-midnight impact from base monitor hours.

For a more precise and defined look, MMR WEIGHTS EVERY STATION INDIVIDUALLY, according to quarterly, average quarter hour shares (SOURCE: ARBITRON — used by permission).

Significant downtrending disqualifies a title for further current consideration and reassigns recurrent status (see HOTTEST RECURRENTS).

NEWCOMERS

| Artist | Title | Label | # Plays | Increase Percentage |
|----------------------|-----------------------|------------|---------|---------------------|
| ✓ ICEHOUSE | Nothing Too Serious | Chrysalis | 77 | 83% |
| MISSION UK | Tower Of Strength | PG | 70 | — |
| GUNS 'N ROSES | Welcome To The Jungle | Geffen | 70 | — |
| HURRICANE | I'm On To You | Enigma | 63 | — |
| DEL LORDS | Judes Kiss | Enigma | 63 | — |
| ✓ NEIL YOUNG | This Note's For You | Reprise | 63 | — |
| ✓ GEORGE THOROGOOD | Treat Her Right | EMI-Manhat | 56 | — |
| ✓ GUNS 'N ROSES | Sweet Child O' Mine | Geffen | 56 | 59% |
| BRUCE HORNSBY & RANG | Defenders Of The Flag | RCA | 56 | 14% |
| ✓ FACE TO FACE | As Forever As You | Mercury | 49 | 75% |
| ✓ VAN HALEN | Feels So Good | WB | 49 | — |
| JOHNNY HATES JAZZ | Shattered Dreams | Virgin | 49 | — |
| ✓ ROD STEWART | Dynamite | WB | 49 | — |
| ROBERT PLANT | Dance On My Own | Es P/Atlan | 49 | — |
| ✓ FOREIGNER | Beat Of My Heart | Atlantic | 49 | 16% |

HOTTEST RECURRENTS

| 5/30/88 | ARTIST | TITLE | LABEL |
|---------|------------------|--------------------------------|------------|
| 1 | INXS | New Sensation | Atlantic |
| 2 | ROBERT PLANT | Tall Cool One | Es P/Atlan |
| 3 | GLASS TIGER | I'm Still Searching | EMI-Manhat |
| 4 | HENRY LEE SUMMER | I Wish I Had A Girl | CBS Assoc |
| 5 | DAVID LEE ROTH | Stand Up | WB |
| 6 | AEROSMITH | Angel | Geffen |
| 7 | TALKING HEADS | (Nothing But) Flowers | Fly/Sire |
| 8 | ROBBIE ROBERTSON | Somewhere Down The Crazy River | Geffen |
| 9 | JERRY HARRISON | Rev It Up | Sire/WB |
| 10 | ROBERT PLANT | Heaven Knows | Es P/Atlan |

MOST UPWARD MOVEMENT

NATIONAL

| Artist | Title | Label |
|-------------|--------------------------------|----------|
| MOODY BLUES | I Know You're Out There Somewh | Polygram |

EAST

| | | |
|------------------|-----------------|------------|
| GEORGE THOROGOOD | Treat Her Right | EMI-Manhat |
|------------------|-----------------|------------|

WEST

| | | |
|-------------|--------------------------------|----------|
| MOODY BLUES | I Know You're Out There Somewh | Polygram |
|-------------|--------------------------------|----------|

SOUTH

| | | |
|-----------|---------------|----|
| VAN HALEN | Feels So Good | WB |
|-----------|---------------|----|

MIDWEST

| | | |
|-------------|--------------------------------|----------|
| MOODY BLUES | I Know You're Out There Somewh | Polygram |
|-------------|--------------------------------|----------|

USERS GUIDE: Calculated and determined by increase in RANK over previous week.

ROCK RADIO — DAYPART CHART

6AM-7PM

| 5/23/88 | 5/30/88 | ARTIST | TITLE | LABEL |
|---------|---------|----------------------|----------------------------------|------------|
| 1 | 1 | BRUCE HORNSBY & RANG | The Valley Road | RCA |
| 2 | 2 | CHEAP TRICK | The Flame | Epic |
| 4 | 3 | VAN HALEN | Black And Blue | WB |
| 6 | 4 | SMITHEREENS | Only A Memory | Enig/Capit |
| 3 | 5 | ERIC CLAPTON | After Midnight | Polygram |
| 9 | 6 | ROD STEWART | Lost In You | WB |
| 5 | 7 | MIDNIGHT OIL | Beds Are Burning | Columbia |
| 7 | 8 | CHURCH | Under The Milky Way | Arista |
| 11 | 9 | ROBERT PLANT | Ship Of Fools | Es P/Atlan |
| 8 | 10 | NEIL YOUNG | Ten Men Workin' | Reprise |
| 12 | 11 | JOHN C MELLENCAMP | Rooty Toot Toot | Mercury/PG |
| 14 | 12 | HONEYMOON SUITE | Love Changes Everything | WB |
| 10 | 13 | SCORPIONS | Rhythm Of Love | Mercury/PG |
| 15 | 14 | ROBIN TROWER | Tear It Up | Atlantic |
| 18 | 15 | JIMMY BARNES | Too Much Ain't Enough Love | Geffen |
| 16 | 16 | TREAT HER RIGHT | I Think She Likes Me | RCA |
| 17 | 17 | ZIGGY MARLEY | Tomorrow People | Virgin |
| 20 | 18 | HENRY LEE SUMMER | Darin' Danielle Don't | CBS Assoc |
| 19 | 19 | JOHN KILZER | Red Blue Jeans | Geffen |
| 28 | 20 | MIDNIGHT OIL | Dead Heart | Columbia |
| 31 | 21 | BRUCE HORNSBY & RANG | Look Out Any Window | RCA |
| 21 | 22 | YNGWIE MALMSTEEN | Heaven Tonight | Polydor/PG |
| 22 | 23 | TALKING HEADS | Blind | Fly/Sire |
| 24 | 24 | 10,000 MANIACS | Like The Weather | Elektra |
| 35 | 25 | TIMBUK 3 | Rev. Jack & His Roamin' Cadillac | IRS |
| 32 | 26 | ALARM | Rescue Me | IRS/MCA |
| 27 | 27 | PINK FLOYD | The Dogs Of War | Columbia |
| — | 28 | MOODY BLUES | I Know You're Out There Somewh | Polygram |
| — | 29 | ICEHOUSE | Electric Blue | Chrysalis |
| 29 | 30 | POISON | Nothin' But A Good Time | Enigma/Cap |
| 26 | 31 | KINGDOM COME | Living Out Of Touch | Polygram |
| 39 | 32 | TRACY CHAPMAN | Fast Car | Elektra |
| 30 | 33 | GRAHAM PARKER | (Get Started) Start A Fire | RCA |
| 23 | 34 | JOAN JETT & BLACKHEA | I Hate Myself For Loving You | CBS Assoc. |
| 40 | 35 | WHITE LION | Tell Me | Atlantic |
| 36 | 36 | BRIAN SETZER | When The Sky Comes Tumblin' Do | EMI-Manhat |
| — | 37 | JOHN CAFFERTY & BBB | Song & Dance | Epic |
| — | 38 | ICEHOUSE | Nothing Too Serious | Chrysalis |
| — | 39 | THOMAS DOLBY | Airhead | EMI-Manhat |
| — | 40 | MISSION UK | Tower Of Strength | PG |

7PM-MIDNIGHT

| 5/23/88 | 5/30/88 | ARTIST | TITLE | LABEL |
|---------|---------|----------------------|--------------------------------|------------|
| 1 | 1 | VAN HALEN | Black And Blue | WB |
| 2 | 2 | CHEAP TRICK | The Flame | Epic |
| 6 | 3 | SCORPIONS | Rhythm Of Love | Mercury/PG |
| 9 | 4 | BRUCE HORNSBY & RANG | The Valley Road | RCA |
| 4 | 5 | SMITHEREENS | Only A Memory | Enig/Capit |
| 8 | 6 | CHURCH | Under The Milky Way | Arista |
| 5 | 7 | ERIC CLAPTON | After Midnight | Polygram |
| 7 | 8 | MIDNIGHT OIL | Beds Are Burning | Columbia |
| 3 | 9 | ROD STEWART | Lost In You | WB |
| 10 | 10 | HONEYMOON SUITE | Love Changes Everything | WB |
| 11 | 11 | NEIL YOUNG | Ten Men Workin' | Reprise |
| 14 | 12 | ROBERT PLANT | Ship Of Fools | Es P/Atlan |
| 12 | 13 | POISON | Nothin' But A Good Time | Enigma/Cap |
| 17 | 14 | ROBIN TROWER | Tear It Up | Atlantic |
| 16 | 15 | JOHN C MELLENCAMP | Rooty Toot Toot | Mercury/PG |
| 15 | 16 | TREAT HER RIGHT | I Think She Likes Me | RCA |
| 19 | 17 | YNGWIE MALMSTEEN | Heaven Tonight | Polydor/PG |
| — | 18 | JIMMY BARNES | Too Much Ain't Enough Love | Geffen |
| 22 | 19 | JOHN KILZER | Red Blue Jeans | Geffen |
| 18 | 20 | JOAN JETT & BLACKHEA | I Hate Myself For Loving You | CBS Assoc. |
| 24 | 21 | AC/DC | That's The Way I Wanna Rock & | Atlantic |
| 25 | 22 | PINK FLOYD | The Dogs Of War | Columbia |
| 20 | 23 | GUNS 'N ROSES | Welcome To The Jungle | Geffen |
| 23 | 24 | WHITE LION | Tell Me | Atlantic |
| 21 | 25 | KINGDOM COME | Living Out Of Touch | Polygram |
| 28 | 26 | TALKING HEADS | Blind | Fly/Sire |
| 29 | 27 | GRAHAM PARKER | (Get Started) Start A Fire | RCA |
| 40 | 28 | MIDNIGHT OIL | Dead Heart | Columbia |
| — | 29 | MOODY BLUES | I Know You're Out There Somewh | Polygram |
| — | 30 | GUNS 'N ROSES | Sweet Child O' Mine | Geffen |
| 33 | 31 | ZIGGY MARLEY | Tomorrow People | Virgin |
| 27 | 32 | IRON MAIDEN | Can I Play With Madness | EMI/Cap |
| — | 33 | LITA FORD | Kiss Me Deadly | Dream/RCA |
| — | 34 | THOMAS DOLBY | Airhead | EMI-Manhat |
| 32 | 35 | HENRY LEE SUMMER | Darin' Danielle Don't | CBS Assoc |
| 30 | 36 | JUDAS PRIEST | I'm A Rocker | Columbia |
| 36 | 37 | HURRICANE | I'm On To You | Enigma |
| — | 38 | ROD STEWART | Dynamite | WB |
| — | 39 | LITA FORD | Close My Eyes Forever | Dream/RCA |
| — | 40 | ROBERT PLANT | Way I Feel | Es P/Atlan |

USERS GUIDE: Daypart charts are based on actual number of plays credited to each title.

HEAVIEST SATURATION (ROCK RADIO)

USERS GUIDE: Those stations delivering the largest number of gross impressions for each title. Number listed is in millions, calculated by each radio stations average quarter hour share, multiplied by the number of plays given the title. Numbers calculated for average, estimated 6am-midnight weekly impact from base monitor hours.

| | | | | |
|--|--|--|---|--|
| CHEAP TRICK 1 <i>The Flame</i> Epic WNEW-FM 1.50 KLOS-FM 1.01 WMMR-FM .88 KSHE-FM .80 WEBN-FM .87 KLLOL-FM .83 WLZ-FM .83 WNOR-FM .82 KBPI-FM .56 WOVE-FM .55 | ROD STEWART 6 <i>Lost In You</i> WB WNEW-FM 1.50 KLOS-FM 1.34 WMMR-FM 1.32 KLLOL-FM .83 WBCN-FM .80 KSHE-FM .53 KYYS-FM .46 WNOR-FM .46 WEBN-FM .45 WLZ-FM .42 | SCORPIONS 11 <i>Rhythm Of Love</i> Mercury/PG KLOS-FM 1.01 WNEW-FM .75 WLZ-FM .42 KDKB-FM .38 WOVE-FM .36 KGB-FM .34 KBPI-FM .34 KAZY-FM .31 KRSP-FM .31 WBCN-FM .30 | JIMMY BARNES 16 <i>Too Much Ain't Enough Love</i> Geffen KSHE-FM .53 WOVE-FM .36 WFBO-FM .36 KLOS-FM .34 KBPI-FM .34 KXRX-FM .29 WYY-FM .27 WGTR-FM .24 WKLS-FM .24 KLLOL-FM .21 | HENRY LEE SUMMER 21 <i>Darin' Danielle Don't</i> CBS Assoc. WEBN-FM .45 KLOS-FM .34 WLUP-FM .30 KYYS-FM .24 WKLS-FM .24 KBPI-FM .22 KISW-FM .21 WRIF-FM .17 KGB-FM .17 WHJY-FM .17 |
| BRUCE HORNSBY & RANG 2 <i>The Valley Road</i> RCA WNEW-FM 1.50 WMMR-FM 1.32 WEBN-FM .87 WBCN-FM .80 WOVE-FM .55 WFBO-FM .55 KSHE-FM .53 WYNF-FM .53 KZEW-FM .48 WNOR-FM .48 | MIDNIGHT OIL 7 <i>Beds Are Burning</i> Columbia WNEW-FM 1.50 KLLOL-FM .84 WEBN-FM .67 WLUP-FM .60 WKLS-FM .48 WNOR-FM .48 WBAB-FM .44 WMMR-FM .44 WLVO-FM .40 KGON-FM .39 | HONEYMOON SUITE 12 <i>Love Changes Everything</i> WB KLOS-FM 1.01 WNEW-FM .75 WOVE-FM .73 WLZ-FM .63 WKLS-FM .48 KBPI-FM .45 WGTR-FM .36 KAZY-FM .31 KDKB-FM .31 WNOR-FM .31 | JOHN KILZER 17 <i>Red Blue Jeans</i> Geffen WNEW-FM 1.50 WOVE-FM .73 KRSP-FM .57 KLLOL-FM .42 WYY-FM .40 KAZY-FM .31 WKLS-FM .24 KBPI-FM .22 WHJY-FM .17 KRQR-FM .12 | MIDNIGHT OIL 22 <i>Dead Heart</i> Columbia KROQ-FM 2.34 WBAB-FM .28 XTRA-FM .25 KXRX-FM .20 KGB-FM .17 KBBC-FM .15 KRXQ-FM .15 WYY-FM .13 KUPD-FM .12 WBRU-FM .10 |
| VAN HALEN 3 <i>Black And Blue</i> WB WBCN-FM 1.50 KLOS-FM 1.01 KLLOL-FM .84 WNEW-FM .75 KGB-FM .87 KRSP-FM .57 KTXQ-FM .56 WOVE-FM .55 WNOR-FM .48 WEBN-FM .45 | CHURCH 8 <i>Under The Milky Way</i> Arista WNEW-FM 1.50 WYY-FM .66 WBCN-FM .80 WLUP-FM .80 KZEW-FM .49 KROQ-FM .47 WNOR-FM .46 KRSP-FM .42 XTRA-FM .38 WFBO-FM .36 | JOHN C MELLENCAMP 13 <i>Rooty Toot Toot</i> Mercury/PG WMMR-FM 1.32 WNEW-FM .75 KLLOL-FM .63 WEBN-FM .45 WLZ-FM .42 WOVE-FM .36 KLOS-FM .34 WBCN-FM .30 KGON-FM .28 KZEW-FM .28 | ZIGGY MARLEY 18 <i>Tomorrow People</i> Virgin KROQ-FM .94 WBCN-FM .60 KLLOL-FM .42 XTRA-FM .38 WLUP-FM .30 KSHE-FM .27 WKLS-FM .24 KZAP-FM .22 KFOG-FM .18 WNOR-FM .15 | JOAN JETT & BLACKHEA 23 <i>I Hate Myself For Loving You</i> CBS Assoc. WNEW-FM .75 KLOS-FM .34 WSHE-FM .27 WYY-FM .27 KBPI-FM .22 KLLOL-FM .21 KGB-FM .17 WHJY-FM .17 WBAB-FM .15 KRQR-FM .12 |
| SMITHEREENS 4 <i>Only A Memory</i> Epic/Capitol KROQ-FM 1.88 WBCN-FM .90 KSHE-FM .80 WNEW-FM .75 KLOS-FM .67 WEBN-FM .67 KLLOL-FM .63 WLZ-FM .63 WYY-FM .53 KGB-FM .50 | NEIL YOUNG 9 <i>Ten Men Workin'</i> Reprise WNEW-FM 1.50 WMMR-FM .88 KLLOL-FM .63 WBCN-FM .60 WLUP-FM .60 KSHE-FM .53 WLZ-FM .42 KYYS-FM .36 KGB-FM .34 KZAP-FM .34 | ROBIN TROWER 14 <i>Tear It Up</i> Atlantic KLOS-FM .67 KRSP-FM .57 KSHE-FM .53 KXRX-FM .49 KISW-FM .42 KLLOL-FM .42 WOVE-FM .36 WRIF-FM .35 KAZY-FM .31 WLUP-FM .30 | YNGWIE MALMSTEEN 19 <i>Heaven Tonight</i> Polygram/PG WOVE-FM .55 KLLOL-FM .42 KUPD-FM .36 KLOS-FM .34 KSHE-FM .27 WYNF-FM .27 KJJD-FM .24 WLZ-FM .21 WRIF-FM .17 KGB-FM .17 | PINK FLOYD 24 <i>The Dogs Of War</i> Columbia KLOS-FM .67 WMMR-FM .44 WBCN-FM .30 KZEW-FM .20 WOVE-FM .18 WHJY-FM .17 KTXQ-FM .14 WLVO-FM .13 KJJD-FM .12 KRQR-FM .12 |
| ERIC CLAPTON 5 <i>After Midnight</i> Polygram WMMR-FM 1.32 KLOS-FM 1.01 KSHE-FM .80 WNEW-FM .75 KRSP-FM .57 KGB-FM .50 WBAB-FM .44 WYY-FM .40 WFBO-FM .36 KRQR-FM .36 | ROBERT PLANT 10 <i>Ship Of Fools</i> Es P/Adm WLZ-FM 1.26 WNEW-FM .75 KLLOL-FM .63 WOVE-FM .55 KSHE-FM .53 KZEW-FM .49 KBPI-FM .45 KXRX-FM .39 KGB-FM .34 KAZY-FM .31 | TREAT HER RIGHT 15 <i>I Think She Likes Me</i> RCA WNEW-FM 1.50 WEBN-FM .90 WLUP-FM .60 WRIF-FM .52 KLLOL-FM .42 WFBO-FM .36 KZAP-FM .34 WNOR-FM .31 WBCN-FM .30 KRQR-FM .24 | POISON 20 <i>Nothin' But A Good Time</i> Epic/Cap KLLOL-FM 1.05 WOVE-FM .36 KJJD-FM .36 WBCN-FM .30 KUPD-FM .24 WKLS-FM .24 WFBO-FM .18 WSHE-FM .18 KGB-FM .17 WHJY-FM .17 | TALKING HEADS 25 <i>Blind</i> Ry/Sire KROQ-FM .94 KLLOL-FM .84 WNEW-FM .75 WBCN-FM .30 WBAB-FM .29 WNOR-FM .15 KBBC-FM .15 WBRU-FM .15 XTRA-FM .13 KYYS-FM .12 |

HEAVIEST SATURATION (ROCK RADIO) — Continued

| | | | | |
|--|--|--|--|--|
| BRUCE HORNSBY & RANG 26 Look Out Any Window RCA WMMR-FM .88 WLUP-FM .30 KYYS-FM .24 KQRS-FM .19 WHJY-FM .17 WNOR-FM .15 WPHD-FM .15 KBBC-FM .15 KTXQ-FM .14 WYYY-FM .13 | GRAHAM PARKER 29 (Get Started) Start A Fire RCA WNEW-FM .75 WBCN-FM .60 KLOL-FM .42 KSHE-FM .27 KUPD-FM .24 WXRT-FM .20 KBBC-FM .15 WBRU-FM .10 KFOG-FM .09 WRCN-FM .06 | TIMBUK 3 32 Rev. Jack & His Roamin' Cadillac IRS WNEW-FM .75 KQRS-FM .38 WKLS-FM .24 KGB-FM .17 KZAP-FM .11 KRXQ-FM .10 KCRX-FM .10 WBRU-FM .10 KFOG-FM .09 WPHD-FM .08 | TRACY CHAPMAN 35 Fast Car Elektra WNEW-FM .75 WNOR-FM .46 WBCN-FM .30 KBBC-FM .29 WYNY-FM .27 KLLO-FM .21 WLLZ-FM .21 WBRU-FM .05 WRCN-FM .02 | JOHN CAFFERTY & BBB 38 Song & Dance Epic WMMR-FM .44 WLLZ-FM .42 WBCN-FM .30 KBPI-FM .22 WHJY-FM .17 WPHD-FM .15 WBRU-FM .10 |
| KINGDOM COME 27 Living Out Of Touch Polygram WYNY-FM .27 KJJO-FM .24 KUPD-FM .24 KBPI-FM .22 KAZY-FM .21 KLLO-FM .21 WNOR-FM .15 KRXQ-FM .15 KDKB-FM .08 WLZR-FM .01 | WHITE LION 30 Tell Me Atlantic WNEW-FM .75 KLLO-FM .42 WKLS-FM .24 KBPI-FM .22 KRXQ-FM .20 KQRS-FM .19 WHJY-FM .17 KAZY-FM .10 KDKB-FM .08 KSJQ-FM .03 | THOMAS DOLBY 33 Airhead EMI-Motown KROQ-FM 2.34 XTRA-FM .50 WXRT-FM .20 KQON-FM .10 KRXQ-FM .05 WRCN-FM .02 | ICEHOUSE 36 Electric Blue Chryslis KLOS-FM .34 WBCN-FM .30 WLUP-FM .30 KSHE-FM .27 KLLO-FM .21 KRSP-FM .21 WLVO-FM .13 KINK-FM .09 KOME-FM .06 KRXQ-FM .05 | AC/DC 39 That's The Way I Wanna Rock & Atlantic WFBC-FM .36 KLOS-FM .34 KLLO-FM .21 WHJY-FM .17 WNOR-FM .15 KTXQ-FM .14 KJJO-FM .12 KBPI-FM .11 WSHE-FM .09 WRCN-FM .02 |
| MOODY BLUES 28 I Know You're Out There Somewh Polygram WMMR-FM 1.32 WLLZ-FM .42 WLVO-FM .27 KROR-FM .24 WPHD-FM .23 KCRX-FM .20 WRIF-FM .17 KFOG-FM .09 WBRU-FM .05 | ALARM 31 Rescue Me IRS/MCA WMMR-FM .88 WNEW-FM .75 WBCN-FM .60 WKLS-FM .24 KBBC-FM .15 KUPD-FM .12 KRXQ-FM .10 WBRU-FM .10 WRCN-FM .06 | 10,000 MANIACS 34 Like The Weather Elektra WNEW-FM .75 WBCN-FM .60 WLUP-FM .60 WBAB-FM .29 KLLO-FM .21 WXRT-FM .20 WHJY-FM .17 WBRU-FM .10 WRCN-FM .02 | BRIAN SETZER 37 When The Sky Comes Tumblin' Do EMI-Motown KLOS-FM .67 WYYY-FM .27 WHJY-FM .17 KYYS-FM .12 KZAP-FM .11 KRXQ-FM .10 KCRX-FM .10 KDKB-FM .08 WPHD-FM .08 WBRU-FM .05 | ROBERT PLANT 40 Way I Feel Es P/Adas KQRS-FM .38 KDKB-FM .31 KBBC-FM .29 KJJO-FM .12 WLZR-FM .01 |



HURRICANE

"I'M ON TO YOU"

THE HOOK THAT'S STORMING THE NATION.

R&R #5 MOST ADDED LAST WEEK!

KBPI — ADD! WLLZ — ADD! WDVE! KLOS! KGB!
 KOME! KUPD! WHJY! WQMF! WCMF!

Already! **MMR ROCK RADIO NEWCOMER**

R&R 43/13 New & Active Album Network 78*-68*

MTV'S "SMASH OR TRASH" — "I'M ON TO YOU" VIDEO EARNS HIGHEST POSITIVE RESPONSE PERCENTAGE EVER!



VELVET ELVIS "OVER AND OUT" MAJOR MIDWEST ADD WEEK!
 WLVQ! WLLZ! WLAV! WZEW!

DEL LORDS "A LOVER'S PRAYER" STARTS THIS WEEK!

HEAVIEST SATURATION (ROCK RADIO) NEWCOMERS

ICEHOUSE

Nothing Too Serious
Chrysalis

| | |
|---------|-----|
| WLVD-FM | .27 |
| XTRA-FM | .25 |
| KLOL-FM | .21 |
| WBRU-FM | .15 |
| KDKB-FM | .08 |
| KRXQ-FM | .05 |
| WRCN-FM | .02 |

MISSION UK

Tower Of Strength
PG

| | |
|---------|-----|
| KRQQ-FM | .94 |
| KLOL-FM | .42 |
| WBCN-FM | .30 |
| XTRA-FM | .25 |
| WVDR-FM | .15 |
| KRXQ-FM | .10 |

GUNS 'N ROSES

Welcome To The Jungle
Geffen

| | |
|---------|-----|
| WBCN-FM | .30 |
| KBPF-FM | .22 |
| WDVE-FM | .18 |
| WYY-FM | .13 |
| KJJO-FM | .12 |
| KUPD-FM | .12 |
| KAZY-FM | .10 |
| KISW-FM | .10 |
| KSJO-FM | .03 |

HURRICANE

I'm On To You
Enigma

| | |
|---------|-----|
| KLDS-FM | .67 |
| KJJO-FM | .36 |
| KUPD-FM | .24 |
| WLLZ-FM | .21 |
| WHJY-FM | .17 |

DEL LORDS

Judas Kiss
Enigma

| | |
|---------|-----|
| WBCN-FM | .90 |
| KBCO-FM | .15 |
| WRCN-FM | .08 |
| WBRU-FM | .05 |

NEIL YOUNG

This Note's For You
Reprise

| | |
|---------|-----|
| WMMR-FM | .44 |
| KCRX-FM | .20 |
| KFOG-FM | .18 |
| KZAP-FM | .11 |
| WSHE-FM | .09 |
| WBRU-FM | .05 |
| WLZR-FM | .01 |

GEORGE THOROGOOD

Treat Her Right
EMI-Manhattan

| | |
|---------|-----|
| WMMR-FM | .44 |
| WDVE-FM | .36 |
| WBCN-FM | .30 |
| WWDC-FM | .15 |
| WBAB-FM | .15 |
| WBRU-FM | .05 |

GUNS 'N ROSES

Sweet Child O' Mine
Geffen

| | |
|---------|-----|
| KLOL-FM | .42 |
| WKLS-FM | .24 |
| WLLZ-FM | .21 |
| KGB-FM | .17 |
| WBAB-FM | .15 |
| KJJO-FM | .12 |
| KOME-FM | .06 |

BRUCE HORNSBY & RANG

Defenders Of The Flag
RCA

| | |
|---------|-----|
| WLLZ-FM | .21 |
| WHJY-FM | .17 |
| KZAP-FM | .11 |
| KGON-FM | .10 |
| KRXQ-FM | .10 |
| KCRX-FM | .10 |
| KFOG-FM | .09 |

FACE TO FACE

As Forever As You
Mercury

| | |
|---------|-----|
| WNEW-FM | .75 |
| WBCN-FM | .60 |
| WHJY-FM | .17 |
| KYYS-FM | .12 |
| WBRU-FM | .10 |

VAN HALEN

Feels So Good
WB

| | |
|---------|-----|
| WRIF-FM | .52 |
| WKLS-FM | .48 |
| WBCN-FM | .30 |
| KTXQ-FM | .14 |

JOHNNY HATES JAZZ

Shattered Dreams
Virgin

| | |
|---------|-----|
| KSHE-FM | .53 |
| WBAB-FM | .29 |
| WFBO-FM | .18 |
| WLVD-FM | .13 |
| WRCN-FM | .02 |

ROD STEWART

Dynamite
WB

| | |
|---------|-----|
| KAZY-FM | .21 |
| WLLZ-FM | .21 |
| KORS-FM | .19 |
| WBAB-FM | .15 |
| KZAP-FM | .11 |
| WWDC-FM | .08 |

ROBERT PLANT

Dance On My Own
Es P/Atco

| | |
|---------|-----|
| WBCN-FM | .60 |
| WBRU-FM | .15 |
| KFOG-FM | .09 |
| KRXQ-FM | .05 |


FOREIGNER

Beat Of My Heart
Atlantic

| | |
|---------|-----|
| KGON-FM | .20 |
| WLZR-FM | .03 |

"FAST CAR"

TRACY CHAPMAN

MMR ROCK TRACER TRACKS DEBUT 


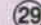
ONE DAY SALES OF 17,590!

146,000 LAST 10 DAYS!

OVER 300,000 LP'S SOLD IN 3 WEEKS!

R&R #2 NEW ARTIST CHART

#5 MOST ADDED LP

R&R AOR TRACK  33
R&R AOR ALBUM  29

ADDS: KOME, KRQR, WLVD, CHOM, WWCT, KKDJ, KILO, WZZQ, KPOI, KFMF, KQPT

ALREADY PLAYING ON: WNEW, WBCN, WHJY, KTXQ, WXRT, KTCZ, KBCO, 91X



CITY TRACKS (ROCK RADIO)

USERS GUIDE: City Tracks are a potpourri of music, promotional, positioning, market news, information and 12+ average quarter hours shares supplied by ARBITRON (used by permission).

BOSTON:

Congratulations are in order for **WBCN's** weekly talk and information program "The Boston Sunday Review." It took top honors recently in the "Public Affairs Programming" category at the Massachusetts Associated Press Broadcasters Awards. The BSR airs Sunday mornings from 7A-noon, and is hosted and produced by **MATT "THE CULTURE VULTURE" SCHAFFER** and News Director **KATY ABEL**. 'BCN hosted a number of concerts recently, including a \$2.04 show with the Del-Lords at T.T. The Bear's, and a "Nocturnal Emissions" show at Axis with the Boston premiere of the Sugarcubes. Look for the live broadcast of "Freedom Fest" June 11.

KANSAS CITY:

In Kansas City, expect "no surpriza... the Energiza. OY!!" **KCFX** ("The Fox") juices up their morning show June 1 with Australian actor and battery pitcher **Jacko**, he'll also join the station for an "Australian Night Party" that evening. It all kicks off, or should we say jump starts, the "Fox Energizer Battery Checks." At each Fox event, anyone with some battery-powered device that has Energizer batteries in it, wins a prize. June 18, the Fox joins Royals ace **Mark Gubicza** for the "Sports Challenge," to benefit Cystic Fibrosis. The Fox is in the middle of their "Liar's Poker" game. Match the set of numbers announced daily to the serial numbers on a dollar bill, and win \$101, one winner Thursdays will win \$1,001. Of course, in order to win you have to prove that your dollar has those numbers! **LAUREN HALLADAY** assumes MD duties and part-timer **RICK TAMBLYN** is upped to Production Director.

PORTLAND:

Preparations for the move continue at **KGON**. June 15 is the target date for evacuation of the Radio Ranch after 15 years, as **KGON** moves to downtown Portland. Meanwhile, they're also preparing for the "Portland Rose Festival" the first two weeks of June, where they'll host the opening fireworks and entertainment stages both Saturdays of the festival. **KGON** has big doings planned for the **Robert Plant** and **Lynyrd Skynyrd** shows later in June. Stay tuned... **KINK's** "Museum After Hours" series wraps up its season June 1 with **Glen Moore's** Museum After Hours All-Stars; they'll resume October 5. **KINK** listeners won't have long to wait, though; because the "Your Zoo and All That Jazz" series starts June 15 at the Washington Park Zoo every Wednesday night throughout the summer. Two new **KINK** staffers: Account Exec **REGAN CARTER** and starting June 20, Retail Sales Manager **LAURIE DICKINSON**.

CHICAGO:

WLUP ("The Loop") prepares to unleash **JONATHAN BRANDMEIER** on an unsuspecting London for live broadcasts from Capitol Radio and Abbey Road Studios the first week of June. Ten Loop listeners and their guests will join **JONATHAN** at the "Prince's Trust Concerts;" the latest in an ongoing series of trips Windy City residents can win from the Loop... **WXRT** is planning to be buried alive in the blues, as they prepare for the annual "Chicago Blues Fest" at Grant Park June 10, 11 and 12. Featured performers include **Koko Taylor**, **Albert King** and **B.B. King**. Grant Park will also be the setting for the "1988 **WXRT/American Cancer Society** Bike-A-Thon" Sunday June 5; over 500 riders are expected.

MINNEAPOLIS:

The "Monsters of Rock" tour is engulfing **KJJO** ("Hot Rockin' 104"). MD **MICHAEL CROSS** led a bus load of listeners to the opening show at Alpine Valley, WI. Then May 24, The Hot Rockin' Screamin' Machine (a Toyota SR-5 pick-up) took hot-off-the-press copies of Van Halen's **OU812** LP to sell in front of Title Wave Records, with PD **SCOTT KLOHN** doing the bulk of his show via carphone from a black Porsche. It's all in preparation for the Twin Cities "Monsters of Rock" date July 13... **KQRS** ended their first 20 years by celebrating with **Pink Floyd** in the Metrodome May 24, and begins their next 20 by breaking ground for a million-dollar expansion of their facilities. Promotions Director **ANNIE MINERS** figures that'll get her out of the trailer she's in, and into a "real office with windows and everything." The phones haven't stopped ringing since the word leaked out that **Alan Hale**, the skipper on "Gilligan's Island," will join **TOM BERNARD** and the **KQ Morning Crew** May 31 for some fun and frolic.

SAN FRANCISCO:

Hey sports fans, **KFOG** loves ya! Fifty "Fogheads" in **Bob Uecker** masks will join **KEVIN "THE RAT" RADICH** June 3 for the Giants-Astros game in the worst seats in Candlestick Park; the so-called **Bob Uecker** seats! Speaking of **KEVIN "THE RAT"**, he's been garnering all kinds of honors: a win at the **B.R. COHN** Golf Tournament, a win in the media division of the Hot Shots Classic and a win in the media division slam dunk contest for the second year in a row... **KRQR** ("The Rocker") publicity is now being handled by **GLODOW & COATS**. Contact **JEFF NEAD** at (415) 864-2333. The big news is that **The Rocker** has gone all-CD, and donated their LPs to a San Francisco area high school radio station. Veteran "Rocker" **LIZ ST. JOHN** joins **LOBSTER** to do morning news and more; MD **JOHN McRAE** is upped to APD; and on June 10, overnigher **MIMI CHEN** will sing the national anthem at Candlestick Park.

DALLAS:

The **KTXQ** ("Q-102") Morning Team of **BO & JIM** are packing their bags for their trek Down Under, where they'll broadcast live June 17. Three listeners and their guests will join them; two of whom will be chosen at the "Bon Voyage" party at **Outback's** June 3. Happy 40th to **Q-102** Newsman **JIM WHITE**. He won't see the big "four-0" in quietly, because **Q-102** is throwing him a "fourtySomething Party" June 25. Listeners 40 or older get a free "fourtySomething" T-shirt, and those with a birthday card for **JIM** get free admission... **KZEW** segued from their "Classic Playboy Scavenger Hunt," where items needed could be found in back issues of **Playboy** magazine, to the "Second Annual Slide-A-Thon" at **Wet & Wild** this past weekend. The winner slid home in a custom **Suzuki Samurai**. June 11, **KZEW** hits the beach in downtown Dallas for the "Fifth Annual Coors Original Downtown Beach Party," complete with sand on the steps to **City Hall** and chlorine in the **City Hall** pool. Proceeds from the \$2 admission benefit **Muscular Dystrophy**.

PITTSBURGH:

Look for "fabulous babes" handing out the new **WDVE** bumper stickers after the **Pink Floyd** show at **Three Rivers Stadium** tonight. 'DVE's been giving away 102 keys — one of which will win a listener a \$25,000 high performance speedboat June 4. 'DVE is also looking forward to **Lynyrd Skynyrd** and the "Monsters Of Rock," coming to **Steel Town** respectively June 8 and 15. New positioning statement: "Rockin' three rivers and four states..." **WMYG** ("Magic 97") geared up for **Pink Floyd** with a "Pink Breakfast" for 200 listeners, including pink grapefruit, pink champagne and a "pink plate special." The **Magic 97** bumper sticker, bus sign and billboard campaign continues; they'll make one monthly car payment on a car spotted with a **Magic 97** bumper sticker. Local musicians joined **Magic 97** in a benefit for the **Persad Center** helping **AIDS** victims; and broadcast it live on their "Rockin' Pittsburgh" show May 22 from 9-10PM.

SAN JOSE:

Official — and belated — congratulations to **KOME** Promotions Director **DAVID WOLMAN** and his wife **ANN MARIE** on the birth of their son **DEREK**. **KOME** is off and running on their Friday night broadcasts from **Santa Cruz Beach & Boardwalk** now through **Labor Day**; giving away a different trip each of the 15 weeks. Listeners can join **KOME** daily for their "Live Lunch Special" with **STEPHEN PAGE** at the **California Cafe**... Eight hundred **KSJO** listeners are being invited to the "92 Days Kickoff Party" at the **Oasis** with **Eddie & the Tide**. "92 Days of Summer" will feature different giveaways all summer. Look for the **KSJO** "Robert Plant/Angus Young Look-Alike Contest" June 6, in preparation for their respective shows June 17 & 18. Listeners wearing "KSJO white" still have a chance to win a **Fender Stratocaster** guitar autographed by members of **Great White** and **Whitesnake**, who will be in town June 25 & 26.

ADULT CONTEMPORARY

TRACER TRACKS

| 5/9/88 | 5/16/88 | 5/23/88 | 5/30/88 | ARTIST | TITLE | LABEL | # PLAYS | REACH INDEX IN MILLIONS |
|--------------------|---------|---------|---------|----------------------|---------------------------------|------------|---------|-------------------------|
| 3 | 2 | 2 | ↑ | FOREIGNER | I Don't Want To Live W/o You | Atlantic | 1407 | 26.15 |
| 4 | 3 | 3 | ↑ | JOHNNY HATES JAZZ | Shattered Dreams | Virgin | 1281 | 24.30 |
| 5 | 4 | 4 | ↑ | BRENDA RUSSELL | Piano In The Dark | ASM | 1120 | 19.60 |
| 7 | 5 | 5 | ↑ | GEORGE MICHAEL | One More Try | Columbia | 1071 | 20.69 |
| 8 | 7 | 7 | ↑ | HALL & OATES | Everything Your Heart Desires | Arista | 875 | 16.37 |
| 19 | 9 | 6 | ↑ | BRUCE HORNSBY & RANG | The Valley Road | RCA | 784 | 14.29 |
| 15 | 10 | 9 | ↑ | JETS | Make It Real | MCA | 665 | 13.80 |
| 20 | 15 | 8 | ↑ | BOZ SCAGGS | Heart Of Mine | Columbia | 637 | 12.03 |
| 23 | 18 | 15 | ↑ | RICK ASTLEY | Together Forever | RCA | 546 | 12.45 |
| 16 | 12 | 12 | ↑ | DAN HILL | Carmaine | Columbia | 420 | 7.83 |
| 22 | 14 | 10 | 11 | BELINDA CARLISLE | Circle In The Sand | MCA | 406 | 7.08 |
| 17 | 16 | 11 | 12 | DEELE | Two Occasions | Solar | 322 | 5.66 |
| 13 | 13 | 13 | ↑ | ART GARFUNKEL | So Much In Love | Columbia | 294 | 4.22 |
| 24 | 19 | 18 | ↑ | BILLY VERA & BEATERS | Between Like And Love | Capitol | 245 | 6.20 |
| 30 | 22 | 19 | ↑ | CHER | We All Sleep Alone | Geffen | 224 | 3.96 |
| 18 | 17 | 17 | ↑ | ICEHOUSE | Electric Blue | Chrysalis | 217 | 3.07 |
| 25 | 24 | 18 | ↑ | BRENDA K. STARR | I Still Believe | MCA | 217 | 3.52 |
| — | 21 | 20 | ↑ | IGLESIAS/WONDER | My Love | Columbia | 189 | 6.05 |
| 28 | 23 | 21 | ↑ | DEBBIE GIBSON | Foolish Best | Atlantic | 168 | 3.18 |
| — | 29 | 22 | ↑ | SADE | Paradise | Epic | 147 | 3.21 |
| — | 27 | 28 | ↑ | BASIA | Time And Tide | Epic | 119 | 1.72 |
| 27 | 26 | 25 | ↑ | BREATHE | Hands To Heaven | A&M | 105 | 2.48 |
| 29 | 25 | 24 | ↑ | VAN MORRISON | Someone Like You | Mercury/PG | 91 | 1.33 |
| New Entry ✓ | — | — | ↑ | ERIC CARMEN | Make Me Lose Control | Arista | 63 | 1.27 |
| — | — | 27 | ↑ | AL B SURE | Nite & Day | WB | 56 | 1.13 |
| New Entry ✓ | — | — | ↑ | RICHARD MARX | Hold On To The Nights | EMI-Manhat | 56 | .72 |
| — | 28 | 26 | 27 | RUSSELL HITCHCOCK | What Becomes Of The Brokenheart | Arista | 42 | .58 |
| — | — | 30 | ↑ | GREGORY ABBOTT | I'll Prove It To You | Columbia | 42 | .55 |
| New Entry ✓ | — | — | ↑ | CHEAP TRICK | The Flame | Epic | 42 | .41 |
| New Entry ✓ | — | — | ↑ | BILLY OCEAN | Colour Of Love | Arista | 35 | .90 |

NEWCOMERS

| Artist | Title | Label | # Plays | Increase Percentage |
|------------------------|-----------------------|------------|---------|---------------------|
| ✓ ROD STEWART | Lost In You | WB | 35 | 150% |
| LOUISE GOFFIN | Bridge Of Sighs | WB | 28 | — |
| TRACY CHAPMAN | Fast Car | Elektra | 28 | — |
| BOBBY MCFERRIN | Don't Worry, Be Happy | EMI-Manhat | 21 | 200% |
| ✓ PET SHOP BOYS | Heart | EMI-Manhat | 14 | — |
| ✓ WALK THIS WAY | In My Room | Mercury/PG | 14 | — |
| NU SHOZ | Should I Say Yes | Atlantic | 14 | — |
| ✓ BARDEUX | When We Kiss | Syr/Enigma | 14 | — |
| ✓ TERENCE TRENT D'ARBY | Sign Your Name | Columbia | 14 | — |
| ✓ MICHAEL JACKSON | Dirty Diane | Epic | 14 | — |
| COVER GIRLS | Promise Me | Fever/Sutr | 14 | — |
| ✓ MICHAEL BOLTON | Wait On Love | Columbia | 14 | — |
| ✓ BASIA | Astrud | Epic | 7 | — |
| ✓ BOBBY MCFERRIN | Drive My Car | EMI-Manhat | 7 | — |

HOTTEST RECURRENTS

| 5/30/88 | ARTIST | TITLE | LABEL |
|---------|----------------------|-------------------------------|-------------|
| 1 | GLORIA ESTEFAN & MIA | Anything For You | Epic |
| 2 | WHITNEY HOUSTON | Where Do Broken Hearts Go | Arista |
| 3 | RICHARD MARX | Endless Summer Nights | EMI-Manhat |
| 4 | BILLY OCEAN | Get Outta My Dreams, Get Into | Jive/Arista |
| 5 | PATRICK SWAYZE | She's Like The Wind | RCA |
| 6 | TOTO | Pamela | Columbia |
| 7 | RICK ASTLEY | Never Gonna Give You Up | RCA |
| 8 | BRUCE SPRINGSTEEN | One Step Up | Columbia |
| 9 | ERIC CARMEN | Hungry Eyes | RCA |
| 10 | JAMES TAYLOR | Never Die Young | Columbia |

MOST UPWARD MOVEMENT

NATIONAL

| Artist | Title | Label |
|-------------|----------------|--------|
| BILLY OCEAN | Colour Of Love | Arista |

EAST

| Artist | Title | Label |
|-------------|----------------------|--------|
| ERIC CARMEN | Make Me Lose Control | Arista |

WEST

| Artist | Title | Label |
|--------|--------------------|--------|
| CHER | We All Sleep Alone | Geffen |

SOUTH

| Artist | Title | Label |
|------------|---------------|----------|
| BOZ SCAGGS | Heart Of Mine | Columbia |

MIDWEST

| Artist | Title | Label |
|-------------|------------------|-------|
| RICK ASTLEY | Together Forever | RCA |

USERS GUIDE: Calculated and determined by increase in RANK over previous week.

USERS GUIDE: TRACER TRACKS are ranked by actual number of plays. Arrows are maintained by either an increase in plays or an increase in rank over the previous week. For a precise look at market saturation, reach index numbers are provided (gross impressions). Reach index is calculated by each radio station's average quarter hour (SOURCE: ARBITRON) multiplied by the number of plays given the title. Numbers are calculated for average weekly, estimated 8am-midnight impact from base monitor hours.

For a more precise and defined look, MMR WEIGHS EVERY STATION INDIVIDUALLY, according to quarterly, average quarter hour shares (SOURCE: ARBITRON — used by permission).

Significant downtrending disqualifies a title for further current consideration and reassigns recurrent status (see HOTTEST RECURRENTS).

HEAVIEST SATURATION (ADULT CONTEMPORARY)

USERS GUIDE: Those stations delivering the largest number of gross impressions for each title. Number listed is in millions, calculated by each radio stations average quarter hour share, multiplied by the number of plays given the title. Numbers calculated for average, estimated 6am-midnight weekly impact from base monitor hours.

FOREIGNER 1

I Don't Want To Live W/o You
Atlantic

| | |
|---------|------|
| WNSR-FM | 3.15 |
| KOST-FM | 1.62 |
| KSTP-FM | .94 |
| WCLR-FM | .92 |
| WMGK-FM | .90 |
| KBIG-FM | .87 |
| WSB-FM | .84 |

JOHNNY HATES JAZZ 2

Shattered Dreams
Virgin

| | |
|---------|------|
| WNSR-FM | 2.62 |
| WKDX-FM | 1.22 |
| KOST-FM | 1.08 |
| KSTP-FM | .94 |
| WCLR-FM | .92 |
| KBIG-FM | .87 |
| KVIL-FM | .86 |

BRENDA RUSSELL 3

Piano In The Dark
A&M

| | |
|---------|------|
| KOST-FM | 1.62 |
| WCLR-FM | 1.15 |
| WKDX-FM | 1.01 |
| KKHT-FM | .98 |
| KSTP-FM | .94 |
| KVIL-FM | .86 |
| WSB-FM | .84 |

GEORGE MICHAEL 4

One More Try
Columbia

| | |
|---------|------|
| WNSR-FM | 2.62 |
| KOST-FM | 1.08 |
| KSTP-FM | .94 |
| WCLR-FM | .92 |
| WMGK-FM | .90 |
| KKHT-FM | .73 |
| WNIC-FM | .70 |

HALL & OATES 5

Everything Your Heart Desires
Arista

| | |
|---------|------|
| WNSR-FM | 2.10 |
| KOST-FM | 1.08 |
| KKHT-FM | .98 |
| KVIL-FM | .86 |
| WSNI-FM | .81 |
| WNIC-FM | .70 |
| WMGK-FM | .67 |

BRUCE HORNSBY & RANG 6

The Valley Road
RCA

| | |
|---------|------|
| WNSR-FM | 1.57 |
| WCLR-FM | 1.15 |
| WKDX-FM | 1.01 |
| KSTP-FM | .94 |
| WSNI-FM | .81 |
| KFMB-FM | .53 |
| WNIC-FM | .52 |

JETS 7

Make It Real
MCA

| | |
|---------|------|
| WNSR-FM | 1.57 |
| KOST-FM | 1.08 |
| KKHT-FM | .98 |
| KSTP-FM | .94 |
| WCLR-FM | .92 |
| KBIG-FM | .87 |
| WSB-FM | .63 |

BOZ SCAGGS 8

Heart Of Mine
Columbia

| | |
|---------|------|
| KBIG-FM | 1.30 |
| KVIL-FM | 1.15 |
| KOST-FM | 1.08 |
| WSB-FM | .63 |
| WLAK-FM | .56 |
| KKCW-FM | .50 |
| KKHT-FM | .48 |

RICK ASTLEY 9

Together Forever
RCA

| | |
|---------|------|
| WNSR-FM | 2.10 |
| KOST-FM | 1.62 |
| WCLR-FM | .92 |
| WAXY-FM | .64 |
| WSB-FM | .63 |
| WSNI-FM | .61 |
| KIOI-FM | .56 |

DAN HILL 10

Carmelia
Columbia

| | |
|---------|------|
| KOST-FM | 1.08 |
| KBIG-FM | .87 |
| KVIL-FM | .86 |
| KKHT-FM | .73 |
| WLTE-FM | .34 |
| WLTF-FM | .28 |
| WHTX-FM | .27 |

BELINDA CARLISLE 11

Circle In The Sand
MCA

| | |
|---------|------|
| KOST-FM | 1.08 |
| KVIL-FM | .86 |
| WLTF-FM | .56 |
| WMLJ-FM | .50 |
| WSNI-FM | .41 |
| KSTP-FM | .38 |
| KYKY-FM | .34 |

DEELE 12

Two Occasions
Sata

| | |
|---------|-----|
| WCLR-FM | .92 |
| KFMB-FM | .66 |
| KOST-FM | .54 |
| KIOI-FM | .42 |
| WKDX-FM | .41 |
| WALK-FM | .38 |
| WNIC-FM | .35 |

ART GARFUNKEL 13

So Much In Love
Columbia

| | |
|---------|-----|
| KOST-FM | .54 |
| KXDA-FM | .42 |
| WLTS-FM | .42 |
| KSTP-FM | .38 |
| KKCW-FM | .25 |
| WLTH-FM | .24 |
| WSNY-FM | .23 |

BILLY VERA & BEATERS 14

Between Like And Love
Capitol

| | |
|---------|------|
| KOST-FM | 1.62 |
| KBIG-FM | .87 |
| KKHT-FM | .73 |
| KSTP-FM | .57 |
| WMGK-FM | .46 |
| WSNI-FM | .41 |
| WHTX-FM | .27 |

CHER 15

We All Sleep Alone
Geffen

| | |
|---------|-----|
| WLTF-FM | .56 |
| KOST-FM | .54 |
| WMLJ-FM | .50 |
| WSNI-FM | .41 |
| KFMB-FM | .40 |
| KMGC-FM | .31 |
| KKHT-FM | .24 |

ICEHOUSE 16

Electric Blue
Chryslis

| | |
|---------|------|
| WKDX-FM | 1.42 |
| KIOI-FM | .56 |
| WMLJ-FM | .50 |
| WLTF-FM | .28 |
| KFMB-FM | .27 |
| KDAD-FM | .23 |
| KESZ-FM | .22 |

BRENDA K. STARR 17

I Still Believe
MCA

| | |
|---------|-----|
| KKHT-FM | .73 |
| KFMB-FM | .40 |
| WALK-FM | .36 |
| WOMC-FM | .35 |
| WHTX-FM | .27 |
| WSNY-FM | .23 |
| WSNI-FM | .20 |

IGLESIAS/WONDER 18

My Love
Columbia

| | |
|---------|------|
| KOST-FM | 1.08 |
| KSTP-FM | .94 |
| KBIG-FM | .87 |
| KVIL-FM | .86 |
| WLTF-FM | .80 |
| KKHT-FM | .24 |
| WMLJ-FM | .24 |

DEBBIE GIBSON 19

Foolish Beat
Atlantic

| | |
|---------|-----|
| KOST-FM | .54 |
| WSNI-FM | .41 |
| WALK-FM | .36 |
| WNLT-FM | .31 |
| KKHT-FM | .24 |
| KMGC-FM | .21 |
| WKDX-FM | .20 |

SADE 20

Paradise
Epic

| | |
|---------|-----|
| KBIG-FM | .87 |
| KOST-FM | .54 |
| WOMC-FM | .52 |
| KKHT-FM | .48 |
| WSNY-FM | .15 |
| KLSY-FM | .13 |
| WLVE-FM | .12 |

BASIA 21

Time And Tide
Epic

| | |
|---------|-----|
| KKHT-FM | .73 |
| WLTF-FM | .34 |
| KLSI-FM | .25 |
| KDAD-FM | .15 |
| WRRM-FM | .11 |
| KLCY-FM | .10 |
| KHYL-FM | .03 |

BREATHE 22

Hands To Heaven
A&M

| | |
|---------|------|
| KOST-FM | 1.08 |
| KFMB-FM | .66 |
| WMGK-FM | .22 |
| WOMC-FM | .17 |
| WMYX-FM | .14 |
| WENS-FM | .08 |
| KEZR-FM | .07 |

VAN MORRISON 23

Someone Like You
Mercury/PG

| | |
|---------|-----|
| WOMC-FM | .35 |
| WLTH-FM | .24 |
| KXDA-FM | .21 |
| WNIC-FM | .17 |
| WRRM-FM | .17 |
| WMYX-FM | .14 |
| KKLT-FM | .05 |

ERIC CARMEN 24

Make Me Lose Control
Arista

| | |
|---------|-----|
| KFMB-FM | .40 |
| WHTX-FM | .27 |
| KKHT-FM | .24 |
| WALK-FM | .18 |
| WOMC-FM | .17 |

AL B SURE 25

Nite & Day
WB

| | |
|---------|-----|
| WKDX-FM | .61 |
| KFMB-FM | .27 |
| WHTX-FM | .18 |
| WNLT-FM | .08 |

RICHARD MARX 26

Hold On to The Nights
EMI-Motown

| | |
|---------|-----|
| WMYX-FM | .28 |
| WOMC-FM | .17 |
| KFMB-FM | .13 |
| WENS-FM | .08 |
| KLCY-FM | .05 |

RUSSELL HITCHCOCK 27

What Becomes Of The Brokenhearted
Arista

| | |
|---------|-----|
| WLTF-FM | .42 |
| WMYX-FM | .07 |
| WLTO-FM | .06 |
| WWNK-FM | .03 |

GREGORY ABBOTT 28

I'll Prove It To You
Columbia

| | |
|---------|-----|
| WHTX-FM | .27 |
| WOMC-FM | .17 |
| KLCY-FM | .10 |

CHEAP TRICK 29

The Flame
Epic

| | |
|---------|-----|
| KFMB-FM | .27 |
| WWNK-FM | .08 |
| KESZ-FM | .06 |

BILLY OCEAN 30

Colour Of Love
Arista

| | |
|---------|-----|
| KKHT-FM | .49 |
| WALK-FM | .18 |
| WOMC-FM | .17 |
| KKLT-FM | .05 |

CITY TRACKS (ADULT CONTEMPORARY)

USERS GUIDE: City Tracks are a potpourri of music, promotional, positioning, market news, information and 12+ average quarter hours shares supplied by ARBITRON (used by permission).

ATLANTA:

There have been some "incredible" prizes given away lately in the Dogwood City, because of **WFOX** ("Fox 97") and their "Incredible Prize Catalog Sweepstakes." Listeners match their sweepstakes number with those announced on the air. . . . **WSB-FM** ("B-98.5 FM") treated their listeners to some singin' and swingin' Sunday, as they sponsored the Beach Boys in concert after the Braves-Phillies baseball game. **DARYL HALL & JOHN OATES** and **BRENDA RUSSELL** post strong play at both stations. . . . **BILLY OCEAN** and **JOHNNY HATES JAZZ** are hot at **Fox 97**. . . . **FOREIGNER** and **BOZ SCAGGS** are doing well at **B-98.5 FM**.

ARBITRON: **WFOX** 4.6 — 4.3
WSB-FM 6.9 — 8.4

INDIANAPOLIS:

The roar of the race cars saturated Indianapolis for the 500. . . . The Fuji Blimp was in town to cover the race, so **JOHN CINNAMON** of **WENS** ("Lite Rock 97") broadcast the morning show from the blimp, and supplied traffic reports. . . . Too bad Rick Mears didn't have a cellular phone in his race car. He could have called "107.9" when he saw an accident, and became a member of the Cellular Traffic Team for **WTPI** ("Most Music 107.9").

Lite Rock 97 is alone on **THE DEELE**, **ROD STEWART** and "Hold on to the Nights" from **RICHARD MARX**. . . . **Most Music 107.9** is first with airplay for **BOZ SCAGGS** and **BRUCE HORNSBY & THE RANGE**.

ARBITRON: **WENS** 6.7 — 8.6
WTPI 4.0 — 4.3

PHILADELPHIA:

They're "set" for a good time at Villanova University on June 16, as **WKSZ** ("Kiss 100") will present the "Men's International Volleyball Challenge". . . . Have you seen the syndicated TV game "Double Dare?" **WMGK** ("Magic 103") morning host **HARVEY** is one of the announcers on the show. . . . **VALERIE LA VIGNA**, outgoing Promotions Director at **WSNI** ("Sunny 104.5"), will transfer to the Sunny sales staff. Her replacement is expected to be named soon.

The most recent add for soft A/C **Kiss 100** is **FOREIGNER**. . . . First with play for **GLORIA LORING/BOBBY CALDWELL** is **Magic 103**. . . . Newer adds on **Sunny 104.5** are **DEBBIE GIBSON**, **CHER** and **BRENDA K. STARR**.

ARBITRON: **WKSZ** 5.8 — 5.4
WMGK 4.7 — 4.5
WSNI 3.3 — 2.8

CLEVELAND:

The "graveyard shift" isn't a radio graveyard on **WLTF** ("Lite Rock 106 1/2"). **JAY HUDSON**'s "After Midnight," a listener-supported request and dedication show, started last week. . . . The total is up to \$170,000 for **WMJI** ("Majic 105.7 FM"). That's the amount of merchandise given away in the "Majic Million-Dollar Prize Catalog Sweepstakes." The most popular prize so far has been the 1988 Mazda 323 GT automobiles.

Heard exclusively on **Light Rock 106 1/2** are **BRENDA RUSSELL**, **DAN HILL** and **RUSSELL HITCHCOCK**. . . . **PAUL CARRACK** is heard only on **Majic 105.7 FM**. . . . **TOTO** is most-heard on both signals.

ARBITRON: **WLTF** 7.4 — 6.3
WMJI 8.0 — 7.1

KANSAS CITY:

How competitive is the K.C. A/C battle? Not only are the ratings tight, the positioning statements used in the market reflect this closeness, as well. . . . **KLSI** plays "more music, more variety, less repetition," and is "number one for music and fun". . . . Meanwhile, **KUDL** ("K-98") plays "the most music in the morning," and means "more music, more fun, and more money."

Between the two stations, **JOHNNY HATES JAZZ** shows a 500% airplay increase over last week. . . . **BASIA** and **CHER** are other upward movers on **KLSI**. . . . **K-98** also shows increased action for **BRUCE HORNSBY & THE RANGE**.

ARBITRON: **KLSI** 3.3 — 4.2
KUDL 3.1 — 4.0

SACRAMENTO:

Here's what's up as Sacramento wakes up: Welcome to **PAUL ROBINS** and **PHIL COWAN**. They've signed on as the new morning team at **KAER** ("Care 92.5") Where is **MARK LENNARTZ** today? That's what Sacramentoans want to know, as Mark continues his series of mystery-location morning shows on **KHYL** ("K-Hill 101") **BRIAN CASEY** is the new Program Director at **KXOA** ("K-108"). He's come from K-98 in Kansas City, where he was PD/morning host.

Care 92.5 leads on **BRUCE HORNSBY & THE RANGE**, **RICK ASTLEY** and **DEBBIE GIBSON**. . . . **BASIA** is exclusive to **K-Hill 101**. . . . Getting exclusive play from **K-108** is **VAN MORRISON**.

ARBITRON: **KAER** 3.0 — 3.7
KHYL 2.2 — 2.7
KXOA 8.0 — 8.1

HOUSTON:

Winning on **KFMK** is as easy as 1-2-3! The station's new game is the "Triple-Play Giveaway," where listeners must identify snippets from three classic hits. The jackpot starts at \$98, and goes up \$100 for each incorrect guess. . . . **KKHT** is set to charge into its "Best Of Houston MasterCard" campaign; the card will be issued in conjunction with AmeriTrust Bank. Cardholders will not be charged a fee for the first six months.

JOHNNY HATES JAZZ and **BILLY OCEAN** are the current leaders at gold-intensive **KFMK**. . . . Showing heaviest airplay at **KKHT** are **The JETS**, **BRENDA RUSSELL** and **DARYL HALL & JOHN OATES**.

ARBITRON: **KFMK** 4.9 — 4.2
KKHT 4.2 — 3.2

NASSAU-SUFFOLK:

Even though **WALK** plays "variety — perfect for the office," the workday can seem pretty long. And after a long day on the job, Long Islanders deserve a night on the town. They'll get that chance on June 7, as **WALK** helps out at a benefit to fight Alzheimer's Disease. Patrons will mingle with the station's **BOB KLEIN** over wine and cheese, and enjoy a national touring company's performance of "Some Enchanted Evening" at the Gateway Playhouse.

Native Long Islander **DEBBIE GIBSON** is doing well on **WALK**'s balanced playlist. The station has also added **BILLY VERA & THE BEATERS**, **BILLY OCEAN**, **ERIC CARMEN** and **DAN HILL**.

ARBITRON: **WALK A/F** 6.1 — 7.0

ST. LOUIS:

Although **GLENISE CLOUDY** just arrived at **KYKY** ("Y-98") to take the Promotions Director job, she was already giving away 15 trips to Hilton Head Island, SC, in cooperation with a cash card company. Each time a cardholder used the plastic, they were automatically entered into the drawing for the trips. The Y-98 morning team, **PHILIPS** and **WALL**, called out names daily at 7:20; if the person phoned back within 15 minutes, they won a trip.

The only add showing for Y-98 this week is **The JETS**. Getting the heaviest airplay from the station are **FOREIGNER**, **GEORGE MICHAEL**, **TOTO** and **JOHNNY HATES JAZZ**.

ARBITRON: **KYKY** 3.9 — 5.0

HIT RADIO SAMPLE HOURS

USERS GUIDE: A random sampling of selected radio stations.

This week, sample hours were extracted between 7pm and midnight.

KCPW-FM

Kansas City
 BILLY OCEAN/Caribbean Queen
 CHEAP TRICK/The Flame
 GEORGE MICHAEL/Father Figure
 GLORIA ESTEFAN & MIA/Anything For You
 BRUCE HORNSBY & RANG/Way It Is
 TONY! TONI! TONE!/Little Walter
 RICHARD MARX/Endless Summer Nights
 TINA TURNER/What's Love Got To Do With It
 WHITNEY HOUSTON/I Wanna Dance With Somebody Wh
 MICHAEL JACKSON/Dirty Diana
 DEELE/Two Occasions

KISN-FM

Salt Lake City
 PET SHOP BOYS/What Have I Done To Deserve
 NATALIE COLE/Pink Cadillac
 SQUEEZE/Hourglass
 JETS/Make It Real
 MICHAEL JACKSON/Dirty Diana
 RICK ASTLEY/Together Forever
 BON JOVI/Never Say Goodbye
 WHITNEY HOUSTON/Love Will Save The Day
 OMD/Dreaming
 FLEETWOOD MAC/Little Lies
 BRUCE HORNSBY & RANG/The Valley Road
 ROD STEWART/Lost In You

KROY-FM

Sacramento
 HENRY LEE SUMMER/I Wish I Had A Girl
 BELINDA CARLISLE/Circle In The Sand
 JOHNNY HATES JAZZ/Shattered Dreams
 PRETTY POISON/Catch Me (I'm Falling)
 PRINCE/Alphabet Street
 TIFFANY/I Think We're Alone Now
 AEROSMITH/Angel
 SAMANTHA FOX/Naughty Girls (Need Love Too)
 WHITNEY HOUSTON/So Emotional
 JETS/Rocket 2 U
 JODY WATLEY/Most Of All
 MADONNA/Causing A Commotion
 GEORGE MICHAEL/Father Figure
 KEITH SWEAT/I Want Her

WCZY-FM

Detroit
 JOHNNY HATES JAZZ/Shattered Dreams
 FOREIGNER/I Don't Want To Live W/o You
 PHIL COLLINS/Against All Odds
 JODY WATLEY/Some Kind Of Lover
 CLIMIE FISHER/Love Changes Everything
 HEART/What About Love
 GLASS TIGER/I'm Still Searching
 GEORGE MICHAEL/One More Try
 DEBBIE GIBSON/Foolish Beat
 SMOKEY ROBINSON/Just To See Her
 BELINDA CARLISLE/Circle In The Sand
 RICHARD MARX/Endless Summer Nights

WMMS-FM

Cleveland
 WAR/Low Rider
 TUBES/She's A Beauty
 CHEAP TRICK/The Flame
 MIDNIGHT OIL/Beds Are Burning
 HEART/Barracuda
 ROD STEWART/Dynamite
 GEORGE MICHAEL/One More Try
 POISON/Nothin' But A Good Time
 FLEETWOOD MAC/Tusk
 WET WET WET/Wishing I Was Lucky

KDWB-FM

Minneapolis
 MIDNIGHT OIL/Beds Are Burning
 GEORGE MICHAEL/One More Try
 STEVE WINWOOD/Valerie
 INXS/New Sensation
 TIMES TWO/Strange But True
 BELINDA CARLISLE/I Got Week
 RICHARD MARX/Hold On To The Nights
 HENRY LEE SUMMER/I Wish I Had A Girl
 TAYLOR DAYNE/Talk It To My Heart
 POISON/Nothin' But A Good Time
 TERENCE TRENT D'ARBY/Wishing Well
 JETS/Make It Real
 BILLY OCEAN/Get Outta My Dreams, Get Into
 HALL & DATES/Everything Your Heart Desires

KKRZ-FM

Portland
 INXS/New Sensation
 ICEHOUSE/Electric Blue
 TAYLOR DAYNE/Talk It To My Heart
 LITA FORD/Kiss Me Deadly
 BILLY OCEAN/When The Going Gets Tough
 PRINCE/Alphabet Street
 GLORIA ESTEFAN & MIA/Anything For You
 TIMES TWO/Strange But True
 JANE WIEDLIN/Rush Hour
 AL B SURE/Nice & Day
 SAMANTHA FOX/Naughty Girls (Need Love Too)
 DEELE/Two Occasions

KUBE-FM

Seattle
 BRENDA K. STARR/I Still Believe
 HALL & DATES/Everything Your Heart Desires
 LEVEL 42/Lessons In Love
 CHEAP TRICK/The Flame
 TERENCE TRENT D'ARBY/Wishing Well
 U2/I Still Haven't Found What I'm D.J. JAZZY JEFF/Parents Just Don't Understand
 GEORGE MICHAEL/One More Try
 BANANARAMA/I Heard A Rumour
 MEDLEY/WARNES/(I've Had) The Time Of My Life
 RICHARD MARX/Hold On To The Nights

WHYI-FM

Miami
 WHITNEY HOUSTON/Where Do Broken Hearts Go
 GENESIS/Land Of Confusion
 SAMANTHA FOX/Naughty Girls (Need Love Too)
 RICHARD MARX/Endless Summer Nights
 PRINCE/U Got The Look
 LITA FORD/Kiss Me Deadly
 MICHAEL JACKSON/Dirty Diana
 JANET JACKSON/Pleasure Principle
 AEROSMITH/Angel
 TIFFANY/I Saw Him Standing There
 WILL TO POWER/Say It's Gonna Rain
 DEELE/Two Occasions

WOXI-FM

Atlanta
 BILLY OCEAN/Get Outta My Dreams, Get Into
 JOHN C MELLENCAMP/Cherry Bomb
 BOZ SCAGGS/Heart Of Mine
 MR MISTER/Kyrie
 STEVE WINWOOD/Talking Back To The Night
 STEVIE WONDER/Part-Time Lover
 SADE/Paradise
 TODD/Rosanna
 JOHNNY HATES JAZZ/Shattered Dreams
 ROD STEWART/You Wear It Well
 RICK ASTLEY/Together Forever
 TERENCE TRENT D'ARBY/Sign Your Name

KEGL-FM

Dallas
 ROD STEWART/Lost In You
 GEORGE MICHAEL/One More Try
 SMITHEREENS/Only A Memory
 JOHN WAITE/These Times Are Hard For Lover
 SAMANTHA FOX/Naughty Girls (Need Love Too)
 GLASS TIGER/I'm Still Searching
 BON JOVI/Livin' On A Prayer
 ROBERT PLANT/Tall Cool One
 SCORPIONS/Rhythm Of Love
 ROBERT PALMER/Addicted To Love
 CHEAP TRICK/The Flame

KPWR-FM

Los Angeles
 BLUE MERCEDES/See What Must Have PEBBLES/Girlfriend
 TERENCE TRENT D'ARBY/Wishing Well
 KEITH SWEAT/Something Just Ain't Right
 LISA-LISA & CULT JAM/Head To Toe
 S-EXPRESS/Theme From S-Express
 JOHNNY HATES JAZZ/Shattered Dreams
 JODY WATLEY/Looking For A New Love
 JOHNNY KEMP/Just Got Paid
 NOCERA/Lai's Go
 RICK ASTLEY/Together Forever
 KYLIE MINOGUE/I Should Be So Lucky
 BANANARAMA/Love In The First Degree

WAVA-FM

Washington DC
 COVER GIRLS/Because Of You
 ERIC CARMEN/Make Me Lose Control
 BRENDA K. STARR/I Still Believe
 JETS/Rocket 2 U
 ICEHOUSE/Electric Blue
 DEBBIE GIBSON/Out Of The Blue
 POISON/Nothin' But A Good Time
 CHICO DEBARGE/Talk To Me
 JOHNNY HATES JAZZ/Shattered Dreams
 AL B SURE/Nice & Day
 AEROSMITH/Angel
 SAMANTHA FOX/Naughty Girls (Need Love Too)
 MADONNA/Crazy For You

WKRO-FM

Cincinnati
 STEVE WINWOOD/Back In The High Life Again
 KEITH SWEAT/I Want Her
 HENRY LEE SUMMER/Darlin' Danielle Don't
 INXS/Need You Tonight
 DEELE/Two Occasions
 PRINCE/I Could Never Take The Place..
 FOREIGNER/I Don't Want To Live W/o You
 JANET JACKSON/When I Think Of You
 MICHAEL BOLTON/Dock Of The Bay
 ROBERT PALMER/I Didn't Mean To Turn You On
 RICK ASTLEY/Together Forever
 GLORIA ESTEFAN & MIA/Anything For You
 RICHARD MARX/Hold On To The Nights

WWPR-FM

New York
 HALL & DATES/Everything Your Heart Desires
 PATRICK SWAYZE/She's Like The Wind
 PET SHOP BOYS/Always On My Mind
 TERENCE TRENT D'ARBY/Wishing Well
 BALTIMORA/Tarzan Boy
 WHITNEY HOUSTON/Where Do Broken Hearts Go
 JODY WATLEY/Some Kind Of Lover
 BELINDA CARLISLE/Circle In The Sand
 OUTFIELD/Your Love
 RICK ASTLEY/Together Forever
 SALT-N-PEPA/Push It
 AEROSMITH/Angel
 JANET JACKSON/When I Think Of You

KHTR-FM

St. Louis
 GLORIA ESTEFAN & MIA/Anything For You
 BILLY OCEAN/Get Outta My Dreams, Get Into
 RICHARD MARX/Hold On To The Nights
 ERIC CARMEN/Make Me Lose Control
 38 SPECIAL/Hold On Loosely
 GEORGE MICHAEL/One More Try
 STING/If You Love Somebody Set Them
 BELINDA CARLISLE/Circle In The Sand
 PHIL COLLINS/Take Me Home
 PEBBLES/Mercedes Boy
 JANET JACKSON/Nasty
 CHER/We All Sleep Alone

KRBE-FM

Houston
 BRUCE SPRINGSTEEN/Tunnel Of Love
 TIMES TWO/Strange But True
 JETS/Rocket 2 U
 DEBBIE GIBSON/Foolish Beat
 STACEY Q/Don't Make A Fool Of Yourself
 PET SHOP BOYS/Always On My Mind
 JANET JACKSON/Control
 BILLY OCEAN/Get Outta My Dreams, Get Into
 NIA PEEPLES/Trouble
 NU SHOQZ/Should I Say Yes
 OMD/Dreaming
 TERENCE TRENT D'ARBY/Wishing Well

WBMM-FM

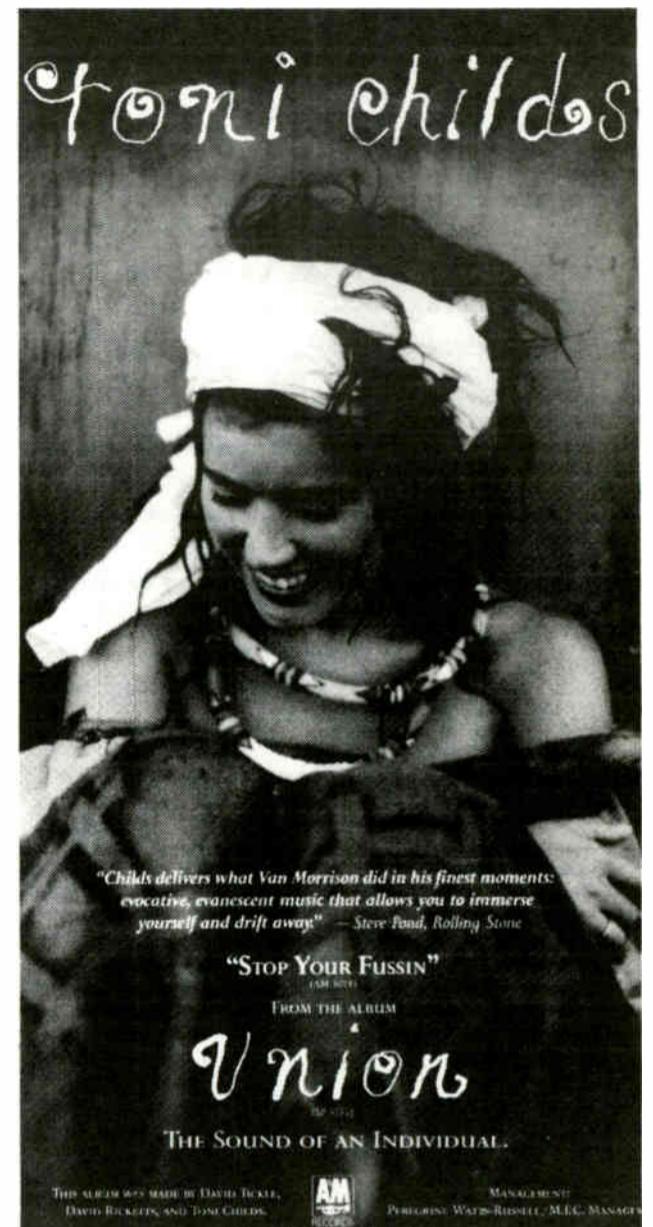
Chicago
 LISA LISA & CULT JAM/Lost In Emotion
 E.U./Da Butt
 AL B SURE/Nice & Day
 PRINCE & REVOLUTION/Raspberry Beret
 JOHNNY KEMP/Just Got Paid
 HALL & DATES/Everything Your Heart Desires
 JETS/Rocket 2 U
 WHITNEY HOUSTON/Where Do Broken Hearts Go
 LEVEL 42/Something About You
 PEBBLES/Mercedes Boy
 DEBBIE GIBSON/Only In My Dreams
 MICHAEL JACKSON/Dirty Diana
 GLORIA ESTEFAN & MIA/Anything For You
 PRETTY POISON/Catch Me (I'm Falling)
 JODY WATLEY/Most Of All

WKSE-FM

Buffalo
 DAN HILL/(Never Thought) That I Could L
 BILLY OCEAN/Get Outta My Dreams, Get Into
 BERLIN/Take My Breath Away
 BELINDA CARLISLE/Circle In The Sand
 RICHARD MARX/Endless Summer Nights
 JODY WATLEY/Some Kind Of Lover
 JOURNEY/I'll Be Alright Without You
 OMD/Dreaming
 TERENCE TRENT D'ARBY/Sign Your Name
 VAN HALEN/Black And Blue
 TERENCE TRENT D'ARBY/Wishing Well
 BANANARAMA/I Heard A Rumour
 PHIL COLLINS/We Said Hello, Goodbye

WXKS-FM

Boston
 NARADO M WALDEN/Divine Emotions
 BANGLES/Hezy Shade Of Winter
 TEENA MARIE/Ooo La La La
 ROLLING STONES/Under My Thumb
 DEBBIE GIBSON/Out Of The Blue
 RICK ASTLEY/My Arms Keep Missing You
 DEVO/Whip It
 JETS/Make It Real
 TERENCE TRENT D'ARBY/Sign Your Name
 CLIMIE FISHER/Love Changes Everything
 DEELE/Two Occasions



"STOP YOUR FUSSIN"
AIRPLAY STARTING AT ALL FORMATS!
HIT ACTION: KIYS, K104, AND WXIL!
ROCK ACTION: WBCN, WXRT, WLLZ, KBCO, WHFS, KPCZ, CHEZ, AND MORE!
AC ACTION: WBMW, KOAI, WNUA, WBRZ, KTWV, KGRX, KNUA, AND MORE!
FROM THE ALBUM "UNION"
THE SOUND OF AN INDIVIDUAL.

ROCK RADIO SAMPLE HOURS

USERS GUIDE: A random sampling of selected radio stations.
This week, sample hours were extracted between 7pm and midnight.

ADULT CONTEMPORARY HOURS

USERS GUIDE: A random sampling of selected radio stations.
This week, sample hours were extracted between 7pm and midnight.

KGB-FM
San Diego
DIRIE STRAITS/So Far Away
FOREIGNER/Can't Wait
POISON/Nothin' But A Good Time
BOSTON/Peace Of Mind
PAUL CARRACK/Don't Shed A Tear
BALAAM & ANGEL/I Love The Things You Do To Me
STING/Fortress Around Your Heart
INKS/Mystify
CHEAP TRICK/Flame
JOHN C MELLENCAMP/Check It Out
TALKING HEADS/And She Was

KRQR-FM
San Francisco
BALAAM & ANGEL/I Love The Things You Do To Me
BOB SEGER/Ramblin' Gambler
JOURNEY/Any Way You Want It
NEIL YOUNG/Ten Men Workin'
VAN HALEN/Dancing In The Street
ZZ TOP/Cheap Sunglasses
CHEAP TRICK/Flame
ROLLING STONES/Start Me Up
JETHRO TULL/Hymn 43
YES/Love Will Find A Way
GREGG ALLMAN/I'm No Angel
PINK FLOYD/The Dogs Of War

KZEW-FM
Dallas
JAMES GANG/Walk Away
RUSH/Time Stand Still
SUPERTRAMP/Give A Little Bit
VAN HALEN/Black And Blue
GUESS WHO/No Time
JOHN C MELLENCAMP/Roody Toot Toot
DON HENLEY/Driving W/ Your Eyes Closed
JETHRO TULL/Budapest
BACHMAN-TURNER OVERD/Let It Ride
GLASS TIGER/I'm Still Searching
ELTON JOHN/Funeral For A Friend/Love Lies

WLUP-FM
Chicago
YES/Love Will Find A Way
LED ZEPPELIN/Ramble On
STEELY DAN/Prezall Logic
GEORGE HARRISON/This Is Love
BYRDS/Turn, Turn, Turn
WHO/Song Is Over
FRIM/Satisfaction Guaranteed
RED SPEEDWAGON/Ridin' The Storm Out
DAVID BOWIE/Rebel Rebel
NEIL YOUNG/Ten Men Workin'
DEREK & DONMOES/Little Wing

KBIG-FM
Los Angeles
SMOKEY ROBINSON/One Heartbeat
AMERICA/Daisy Jane
PAUL ANKA/Hold Me 'Til The Mornin' Comes
RITA COOLIDGE/Higher and Higher
KENNY ROGERS/I Don't Need You
SAMANTHA SANG/Emotion
COMMODORES/Oh No
WHITNEY HOUSTON/Greatest Love Of All
BILLY VERA & BEATERS/Between Like And Love
JOHNNY RIVERS/Swayin' To The Music/Slow Danc
CARLY SIMON/Stuff That Dreams Are Made Of
10CC/I'm Not In Love
RAY PARKER JR/A Woman Needs Love (Just Like)

KLSY-FM
Seattle
BRENDA K. STARR/I Still Believe
EAGLES/Take It Easy
GERRY RAFFERTY/Baker Street
GEORGE MICHAEL/One More Try
PHIL COLLINS/In The Air Tonight
DOOBIE BROTHERS/Captain Of Her Heart
FOREIGNER/Waiting For A Girl Like You
STARSHIP/Nothing's Gonna Stop Us Now
STEELY DAN/May Nineteen
BELINDA CARLISLE/Circle In The Sand
STEVE PERRY/Foolish Heart

WALK-FM
Nassau-Suffolk
BRENDA K. STARR/I Still Believe
BILLY JOEL/Tell Her About It
JIMMY RUFFIN/What Becomes Of The Brokenheart
MIKE POST/Theme From L.A. Law
POINTER SISTERS/Slow Hand
HALL & DATES/Everything Your Heart Desires
STEVE WONDER/Signed, Sealed Delivered I'm Yours
RICK ASTLEY/Together Forever
SUPREMES/Baby Love
AMERICA/Daisy Jane
AIR SUPPLY/Every Woman In The World

WSNI-FM
Philadelphia
CHICAGO/Hard To Say I'm Sorry
HEART/Alone
FOUNDATIONS/Baby, Now That I've Found You
GEORGE MICHAEL/One More Try
RICK ASTLEY/Never Gonna Give You Up
FOUR SEASONS/Working My Way Back To You
STEVE PERRY/Foolish Heart
TINA TURNER/What's Love Got To Do With It
TERENCE TRENT D'ARBY/Wishing Well
PROCOL HARUM/A Whiter Shade Of Pale
BOZ SCAGGS/Heart Of Mine
BILLY JOEL/My Life

KGON-FM
Portland
WHITE LION/Tail Me
SANTANA/Black Magic Woman
CHEAP TRICK/Flame
RAZORBACK/More Love Less Attitude
BEATLES/Twist & Shout
BEATLES/Rocky Raccoon
JAMES GANG/Walk Away
HONEYMOON SUITE/Love Changes Everything
INKS/Devil Inside
PAUL CARRACK/Double It Up
SCORPIONS/You Give Me All I Need
AEROSMITH/Same Old Song & Dance

KRSP-FM
Salt Lake City
ICEHOUSE/Electric Blue
DIRIE STRAITS/So Far Away
LYNYRD SKYNYRD/What's Your Name
SCORPIONS/Rhythm Of Love
ROLLING STONES/Honky Tonk Woman
DEF LEPPARD/Hysteria
UZ/With Or Without You
CROSBY, STILLS, N, Y/Teach Your Children
ROD STEWART/Lost In You
STEFFENWOLF/Burn To Be Wild
GREGG ALLMAN/I'm No Angel
MOODY BLUES/Question

WBCN-FM
Boston
AEROSMITH/Hangman Jury
LITA FORD/Kiss Me Deadly
VAN HALEN/When It's Love
ERIC CLAPTON/Let It Rain
ROD STEWART/Lost In You
GENERAL PUBLIC/Tenderness
DEL LORDS/Judas Kiss
CROSS/Shove It
GEORGE THOROGOOD/Treat Her Right
JOHN CAFFERTY & BBB/Song & Dance

WMMR-FM
Philadelphia
JOHN C MELLENCAMP/Pink Houses
ERIC CLAPTON/After Midnight
GENESIS/Domino
PAUL CARRACK/Don't Shed A Tear
BEATLES/Rock & Roll Music
RUSH/Tom Sawyer
WHITE LION/Wait
JOHN LENNON/Woman
COMMODORES/Still
BELINDA CARLISLE/Circle In The Sand
MICHAEL MCDONALD/I Keep Forgettin'
MIKE & MECHANICS/Silent Running
DOOBIE BROTHERS/What A Fool Believes
JETS/Make It Real

KEZR-FM
San Jose
GEORGE MICHAEL/Father Figure
BILLY JOEL/Longest Time
FLACK/HATHAWAY/Closer I Get To You
HALL & DATES/Everything Your Heart Desires
TINA TURNER/We Don't Need Another Hero
LOGGINS & MESSINA/Danny's Song
JOHN LENNON/Woman
COMMODORES/Still
BELINDA CARLISLE/Circle In The Sand
MICHAEL MCDONALD/I Keep Forgettin'
MIKE & MECHANICS/Silent Running
DOOBIE BROTHERS/What A Fool Believes
JETS/Make It Real

KXOA-FM
Sacramento
PAUL MCCARTNEY/With A Little Luck
RIGHTEOUS BROTHERS/You're My Soul & Inspiration
GLORIA ESTEFAN & MIA/Anything For You
BILLY JOEL/Piano Man
SIMON & GARFUNKEL/Scarborough Fair/Canticle
VAN MORRISON/Someone Like You
10CC/I'm Not In Love
CHAMPAIGN/How 'Bout Us
DIONNE WARWICK/Walk On By
PATRICK SWAYZE/She's Like The Wind
AMBROSIA/Biggest Part Of Me
SUPREMES/Reflections
SMOKEY ROBINSON/One Heartbeat
LOGGINS & MESSINA/Danny's Song

WFLZ-FM
Tampa
PATRICK SWAYZE/She's Like The Wind
TOTO/I'll Be Over You
ABC/Be Near Me
ASSOCIATION/Cherish
BRUCE SPRINGSTEEN/One Step Up
AMERICA/Daisy Jane
FOREIGNER/I Want To Know What Love Is
JIM CROCE/I Got A Name
PAUL SIMON/Still Crazy After All These Ye
BILLY OCEAN/There'll Be Sad Songs
JAMES TAYLOR/How Sweet It Is (To Be Loved B)
GLORIA ESTEFAN & MIA/Anything For You
AL JARREAU/Mornin'
WARWICK & OSBORNE/Love Power
HUMAN LEAGUE/Human

WSSH-FM
Boston
ELVIS PRESLEY/Suspicious Minds
ELTON JOHN/Don't Go Breaking My Heart
ANNE MURRAY/Shadows In The Moonlight
LABELLE & MCDONALD/On My Own
CHICAGO/If You Leave Me Now
QUINCY JONES/Just Once
BOBBY VINTON/There! I've Said It Again
FORTUNES/Here Comes That Rainy Day Fool
TIFFANY/Could've Been
RONNIE MILSAP/Lost In The 50's
ERIC CARMEN/All By Myself
LOUIS ARMSTRONG/What A Wonderful World

KQRS-FM
Minneapolis
GEORGE THOROGOOD/You Talk Too Much
FOCUS/Hocus Pocus
REM/Finest Workin'
WHITESNAKE/Looking For Love
FOREIGNER/Blue Morning, Blue Day
AEROSMITH/I'm Down
AC/DC/It's A Long Way To The Top (If I Can Make It This Time)
DAVID LEE ROTH/Stand Up
KANSAS/Carry On Wayward Son
LED ZEPPELIN/Over The Hills & Far Away

KSJO-FM
San Jose
SMITHEREENS/Only A Memory
SMASHED GLADYS/Lick It Into Shape
EDDIE MONEY/Gimme Some Water
DAVID LEE ROTH/Stand Up
ALLMAN BROTHERS BAND/Savannah Blues
IRON MAIDEN/Can I Play With Madness
BEATLES/Revolution
WHITESNAKE/Give Me All Your Love
POISON/Nothin' But A Good Time
Y & T/Contagious
GLASS TIGER/I'm Still Searching

WEBN-FM
Cincinnati
FOREIGNER/Can't Wait
PHIL COLLINS/In The Air Tonight
REM/The One I Love
DOOBIE BROTHERS/Long Train Runnin'
GLASS TIGER/I'm Still Searching
AEROSMITH/Walk This Way
BOSTON/We're Ready
LITTLE AMERICA/Walk On Fire
BRUCE HORNSBY & RANG/The Valley Road
JOURNEY/Any Way You Want It
NEIL YOUNG/Ten Men Workin'
BACHMAN-TURNER OVERD/Let It Ride

WNOR-FM
Norfolk
AC/DC/That's The Way I Wanna Rock & Roll
LED ZEPPELIN/Ramble On
MISSION UK/Tower Of Strength
DEF LEPPARD/Rock Of Ages
TRACY CHAPMAN/Fast Car
DONOVAN/Season Of The Witch
CHEAP TRICK/Flame
GUADALCANAL DIARY/Litany (Life Goes On)
WHO/I Can See For Miles
GLASS TIGER/I'm Still Searching

KKHT-FM
Houston
STEVE WONDER/Part-Time Lover
MADONNA/True Blue
JETS/Make It Real
JIMMY BUFFETT/Come Monday
SADE/Smooth Operator
HUEY LEWIS & NEWS/Doing It All For My Baby
BASIA/Time And Tide
JIM CROCE/Operator
SIMON & GARFUNKEL/Boxer
HALL & DATES/Everything Your Heart Desires
MIKE & MECHANICS/Silent Running
LIONEL RICHE/All Night Long
RICHARD MARX/Endless Summer Nights

KYKY-FM
St. Louis
BEACH BOYS/Good Vibrations
BEACH BOYS/California Girls
BEACH BOYS/Wouldn't It Be Nice
CROSBY, STILLS, & NASTASIA/Wasted On The Way
CROSBY, STILLS, & NASTASIA/Southern Cross
CROSBY, STILLS, & NASTASIA/Just A Song Before I Go
PHIL COLLINS/Easy Lover
PHIL COLLINS/Take Me Home
GENESIS/Tonight, Tonight, Tonight
BOZ SCAGGS/Heart Of Mine
GEORGE MICHAEL/Faith
GEORGE MICHAEL/Father Figure
GEORGE MICHAEL/One More Try

WFOX-FM
Atlanta
DAN FOGELBERG/Lonely In Love
STEVE WONDER/For Once In My Life
JOE COCKER/You Are So Beautiful
RICHARD MARX/Endless Summer Nights
BOX TOPS/Cry Like A Baby
FOREIGNER/I Want To Know What Love Is
STEALERS WHEEL/Stuck In The Middle Of You
STEVE WINWOOD/Valerie
SUPREMES/I Hear A Symphony
BILLY OCEAN/Get Outta My Dreams, Get Into My Bed
CREDENCE CLEARWATER/Lookin' Out My Back Door
GLASS TIGER/Saturday
ELTON JOHN/Tiny Dancer

WWDE-FM
Norfolk
PATRICK SWAYZE/She's Like The Wind
BILLY OCEAN/Loverboy
MOODY BLUES/Your Wildest Dreams
TERENCE TRENT D'ARBY/Wishing Well
PAUL MCCARTNEY/Uncle Alben, Admiral Halsey
WHISPERS/Rock Steady
BRENDA RUSSELL/Piano In The Dark
FOREIGNER/I Want To Know What Love Is
GEORGE MICHAEL/One More Try
LIONEL RICHE/Penny Lover
RICK ASTLEY/Never Gonna Give You Up
STYX/Babe

KROQ-FM
Los Angeles
MIDNIGHT OIL/Dead Heart
X/Wild Thing
PRIVATE DOMAIN/New Language
CURE/Just Like Heaven
NEW ORDER/Blue Monday '88
MISSION UK/Tower Of Strength
PET SHOP BOYS/West End Girls
INKS/New Sensation

KYYS-FM
Kansas City
ROLLING STONES/Happy
BRUCE HORNSBY & RANG/Look Out Any Window
BRUCE SPRINGSTEEN/I'm A Rocker
SPENCER DAVIS GROUP/Gimme Some Lovin'
NEIL YOUNG/Harvest
WHO/Kids Are Alright
BILLY JOEL/Longest Time
ROBIN TROWER/Tear It Up
ALARM/Rain In The Summertime
LYNYRD SKYNYRD/Gimme Three Steps
SMITHEREENS/Only A Memory
38 SPECIAL/Like No Other Night
POISON/Nothin' But A Good Time
DOOBIE BROTHERS/China Grove

WGTR-FM
Miami
DAVID BOWIE/Rebel Rebel
SMITHEREENS/Only A Memory
BOB DYLAN/Positively 4th Street
BRUCE SPRINGSTEEN/All That Heaven Will Allow
BUFFALO SPRINGFIELD/Rock & Roll Woman
STEVE MILLER/Rock'n Me
VAN HALEN/Black And Blue
ZIGGY MARLEY/Tomorrow People
TOM PETTY & HEARTBREAKER/Don't Come Around Here No More
CHEAP TRICK/Flame
ROBERT PLANT/Big Log

WWDC-FM
Washington DC
LITA FORD/Kiss Me Deadly
POLICE/Driven To Tears
UZ/Sunday Bloody Sunday
GEORGE THOROGOOD/Treat Her Right
WHO/Go To The Mirror Boy
KINGDOM COME/Get It On
PINK FLOYD/Brain Damage/Eclipse
ERIC CLAPTON/After Midnight
CHEAP TRICK/Flame
BRUCE SPRINGSTEEN/Tunnel Of Love
VAN HALEN/Black And Blue

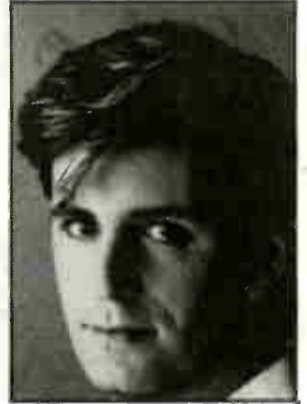
KLCY-FM
Salt Lake City
PAUL MCCARTNEY/My Love
JOURNEY/I'll Be Alright Without You
BILLY VERA & BEATERS/Between Like And Love
BOB SEGER/Night Moves
TOTO/Pamela
ELVIS PRESLEY/Can't Help Falling In Love
JOHNNY HATES JAZZ/Shattered Dreams
DIONNE WARWICK/That's What Friends Are For
RESTLESS HEART/I'll Still Be Loving You
VANGELIS/Chariots Of Fire
BELINDA CARLISLE/Circle In The Sand
GREGORY ABBOTT/I'll Prove It To You
NEIL DIAMOND/I Dreamed A Dream
CHER/We All Sleep Alone

KYXY-FM
San Diego
CHRISTOPHER CROSS/Sailing
LUVIN' SPOONFUL/Dream
BARBARA MANRELL/If Loving You Is Wrong I Don't
BARRY MANILOW/Looks Like We Made It
CHICAGO/Colour My World
SPINNERS/I'll Be Around
TOTO/I Won't Hold You Back
NEIL DIAMOND/Heartlight
LEFT BANKE/Walk Away Renee
ART GARFUNKEL/So Much In Love
CAROLE KING/Been To Cansan
WALKER BROTHERS/Sun Ain't Gonna Shine (Anymore)
JOHN DENVER/My Sweet Lady
SUPREMES/Baby Love
PATRICK SWAYZE/She's Like The Wind

WRRM-FM
Cincinnati
FOREIGNER/I Don't Want To Live W/o You
DON MCLEAN/American Pie
HAROLD FALTERMEYER/Axel F
BELINDA CARLISLE/Circle In The Sand
DOOBIE BROTHERS/Black Water
AMBROSIA/Holdin' On To Yesterday
TRACY CHAPMAN/Fast Car
JOHN LENNON/Watching The Wheels
MIAMI SOUND MACHINE/Words Get In The Way
RICK ASTLEY/Together Forever
YVONNE ELLIMAN/I I Can't Have You
SMOKEY ROBINSON & MI/Tears Of A Clown

WWMX-FM
Baltimore
BILLY OCEAN/When The Going Gets Tough
FLEETWOOD MAC/Go Your Own Way
KENNY LOGGINS/Meet Me Half Way
PAUL SIMON/Kodachrome
LAURA BRANNIGAN/Self Control
GLORIA ESTEFAN & MIA/Anything For You
GERRY RAFFERTY/Right Down The Line
RASCALS/How Can I Be Sure
BRUCE SPRINGSTEEN/Bright Disguise
JOURNEY/Who's Crying Now
JOHNNY HATES JAZZ/Shattered Dreams
TEMPTATIONS/I Wish It Would Rain
CYNDI LAUPER/Time After Time

FOREPLAY



ARTIST: MICHAEL ANDERSON

ARTIST: COREY HART

ARTIST: THE SYSTEM

ARTIST: STEVE WINWOOD

ARTIST: CONTOURS

ARTIST: SCRITTI POLITTI

TITLE: Sound Alarm
RELEASE: 7"/12"/Pro CD
LABEL: A&M

According to Michael Anderson, his new single, "Sound Alarm" is a "solid no-frills rock 'n' roll record, although if you listen to the bottom end, the grooves and chord pattern are very R&B-oriented, with power guitar chords over the top."

If you hear a hint of Robert Johnson, the legendary King of the Delta Blues Singers, well, that's probably no accident. "Terry (producer Terry Manning) wanted to make a modern Robert Johnson record," Anderson says, referring to the slightly raw, haunting quality that made Johnson's few recordings so indelible.

"Terry told me to go at it as if this was the last record I'd ever make, as if every song was the last song I'd ever sing. And that's what I did."

Anderson described his album, also called SOUND ALARM, as a "platform for one man to scream at the world. That's exactly how I see it. I am literally a man on a mission now. I know exactly what I'm doing, and why, and the songs are addressing that. I'm one man standing and screaming at the world."

TITLE: In Your Soul
RELEASE: 7"/12"/Pro CD/
Cassette Single
LABEL: EMI-Manhattan

"She's really fantastic," said Corey Hart, commenting on English vocalist Ruby Turner, who assists him on "In Your Soul." "I'd always done the background vocals myself before and I'd never really concentrated on harmonies until this record. It was great to work with such a versatile singer," Hart said.

Corey also produced five of the eleven tracks on YOUNG MAN RUNNING by himself, enlisting the services of Andy Richards as co-producer on the other six.

"I think it's crucial to be in on the production and I can't see myself not being involved with the production of my future records. But it's also a bit too subjective being the singer, writer and producer. So I think it's important to have a co-producer to bounce ideas off of."

Does the title YOUNG MAN RUNNING suggest Corey is avoiding something? "The title has nothing to do with running away from something. It's more about running toward something, searching for something. It's about being in pursuit of something that's probably unobtainable — but it's the pursuit that makes life stimulating and gives life its vitality."

TITLE: Coming To America
RELEASE: 7"/12"/Pro CD
LABEL: Atco

"Coming To America" by The System is the first single from the movie of the same name. The flick tells the story of an African prince (Eddie Murphy) who travels to New York in search of the perfect bride. It was directed by John Landis.

The single was written by Nile Rodgers and Nancy Huang and produced by Rodgers and The System (Mic Murphy and David Frank).

Murphy, from Queens, NY, met the Dayton, Ohio born Franks in 1980. "There was this keyboard player in the corner," Mic recalls. "He had this total Ivy League look — Izod shirt, penny loafers. But he was playing these incredible things. I said 'Wait a minute, something's happening up there.'"

They soon began to collaborate and their rapport was instantaneous. "We have no hassles," claims David. "We have a lot of different influences, so our music automatically has a lot of possibilities. It's a real blend. It's really strange, because I've always had a hard time composing with other people. For some reason we just click."

TITLE: Roll With It
RELEASE: 7"/12"/Pro CD
LABEL: Virgin

It's been nearly 25 years since Steve Winwood made his debut as the 16-year-old singer with the Spencer Davis Group. In 1988, Winwood finds himself with a new single and lp, "Roll With It" and on a new label, Virgin.

In between that time, Winwood spent seven years with Traffic, a year with Blind Faith, and released four solo albums. Concerning his days with Blind Faith, known then as one of the 'super-groups', Winwood said in retrospect, "I never wanted to be a great star. I only wanted to be a great musician."

His 1986 BACK IN THE HIGH LIFE album surpassed all expectations, even his own. It was nominated for six Grammy Awards and won three, including Best Engineered Recording, an award Tom Lord Alge shared with Jason Corsaro.

Alge and Winwood team up again to produce "Roll With It." It was co-written by Winwood and longtime associate Will Jennings, who collaborated on "While You See A Chance", "Valerie" and "Higher Love" among others. This same duo wrote seven of the eight new songs on the new lp, the only exception being "Hearts On Fire," penned by Winwood and Traffic bandmate Jim Capaldi.

Winwood's "What The Night Can Do" tour opens up July 7 in St. Louis and will sweep through North America until September.

TITLE: Do You Love Me
RELEASE: 7"/12"
LABEL: Motown

As he geared up for the "Dirty Dancing" tour, Sylvester Potts of the Contours still can't believe he's still belting out "Do You Love Me", 26 years after its release.

"Oh man, I never dreamed it would be this big," Potts said from the Catskills, where the "Dirty Dancing" story originated, and where the tour kicks off Memorial Day weekend. "And it's amazing that some 25 years later, the song has come back," Potts said.

"Do You Love Me" struck gold in the summer of 1962, becoming Motown Records fastest climbing release of all time. It was originally produced and written by Berry Gordy.

"Berry came to us while we were rehearsing and pulling our leg said 'I'm gonna give this to the Temptations'. But he really wrote it with the Contours in mind," Potts recalled.

You'll have no problems obtaining a copy of the single, besides being on MORE DIRTY DANCING on RCA, look for BOX OFFICE GOLD released in a week on Motown Records. The new 12" version was remixed by Iris Gordy (Berry's niece), and Brian Tankersley.

TITLE: Boom! There She Was
RELEASE: 7"/12"/Pro CD
LABEL: Warner Brothers

From PROVISION, Scritti Politti's second Warner Brothers album, comes "Boom! There She Was". It features a guest performance by Roger (Troutman) of Zapp on the voicebox.

It's the band's first release since "Best Thing Ever" surfaced on the "Who's That Girl" soundtrack last summer.

Bandleader Green Gartside and keyboardist David Gamson produced the entire album. The single was mixed by John "Tokes" Potoker, and recorded by Ray Bardani. Besides Green and Gamson, percussionist Fred Maher round out the current Scritti Politti lineup.

The video for "Boom! There She Was" was directed by Andy Morahan, who has recently worked with George Michael, A-Ha, and Tina Turner. It was shot May 25th at the Club Fridge in Brixton, England.

COMING NEXT WEEK

HIT RADIO

One week from today, Providence's WPRO will be the focus of our attention. Join us for Tuned In's next hit edition!



ROCK RADIO

In the upcoming Tuned In, we're in Pittsburgh to (dare we say it) "steel" a listen at WDVE. Be here!



ADULT CONTEMPORARY

"Majic 105.7" is WMJI in Cleveland. MMR relocates next week to bring them to you in Tuned In!





S EXPRESS



CLIMIE FISHER

"LOVE CHANGES"

ALREADY ON WELL OVER 100 HIT RADIO STATIONS!

MMR HIT RADIO NEWCOMER/14% PLAY INCREASE THIS WEEK!

ACTION THIS WEEK INCLUDES:

| | | | |
|-----------------|----------------|----------|------------|
| WZPL ADD | WCZY 30-28 | WKEE ADD | WERZ 31-24 |
| KDWB ADD | WLOL 35-30 | WNYZ ADD | KIYS 30-25 |
| WKTJ 22-15 | Y108 DEBUT #2E | WABB ADD | WOKI 31-27 |
| Z94 23-19 (HOT) | Y95 | KZIO ADD | KISR 27-17 |
| WXKS 28-23 | KKBQ WMMS | KKRD ADD | KFBQ 38-29 |
| WKBQ 33-27 | KATD | KKYK ADD | WAZY 38-33 |
| PRO-FM 34-28 | KPLZ | | |

S EXPRESS

"THEME FROM S EXPRESS"

READY TO EXPLODE AT

HIT RADIO!

EARLY ACTION AT:

WXKS ADD
 KKBQ ADD
 WHYT ADD
 KRBE ADD
 WGH ADD
 KITY ADD
 HOT 103
 FM102
 KMEL
 KPWR
 WFLY ADD
 KMGX ADD

TRACIE SPENCER

"SYMPTOMS OF TRUE LOVE"

MAJOR URBAN AND CLUB RECORD!!

HIT RADIO ALREADY ON INCLUDES:

WPGC
 KITY DEBUT #32
 KWOD ADD
 Z93 28-23
 KMGX DEBUT #33
 WTNZ ADD
 WNNK
 KISR ADD
 KFMW 11-8
 WAZY 32-29
 WCGQ

A MUST SEE VIDEO!

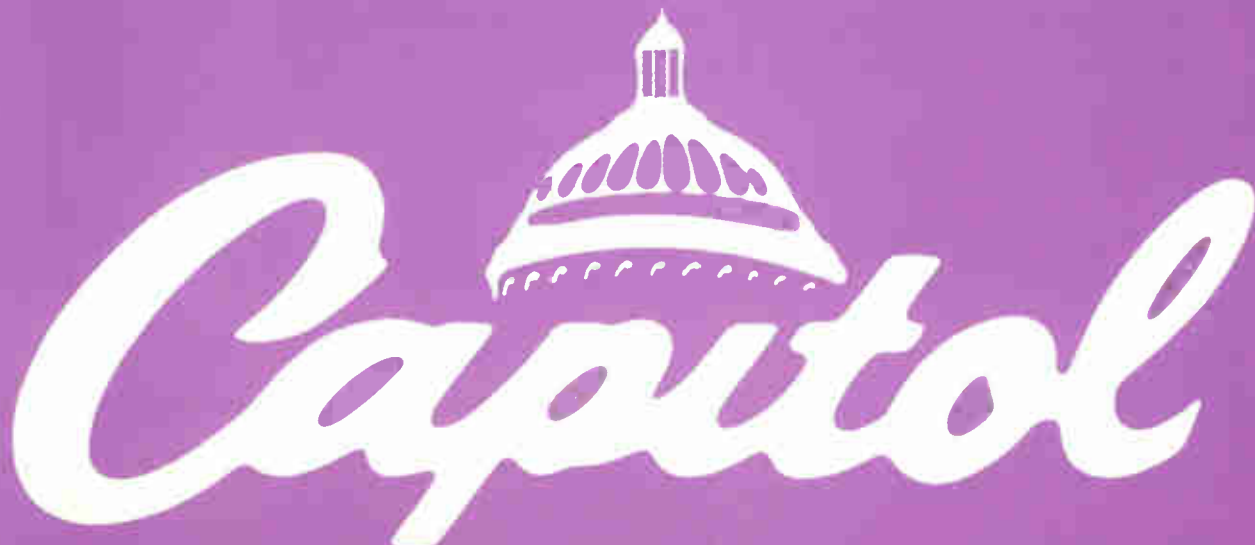
SEQUAL

"I'M OVER YOU"

ADDED AT KMEL #22!!

"NORTHERN CALIFORNIA'S #1 12 INCH SMOKES ON THE AIR!"

KEITH NAFTALY — PROGRAM DIRECTOR, KMEL; SAN FRANCISCO



BOOM!

THERE SHE WAS
SCRITTI POLITTI
FEATURING ROGER
ON VOICE BOX



JUST OUT AND ALREADY ON!

HOT 103 ADD #34, KDWB ADD, FM102 ADD, PWR 106 ADD,
KITS ADD #23, WSSX ADD, KMGX ADD, WYKS ADD,
KPHR ADD, KOZE ADD, **AND MORE!**

THE NEW SINGLE FROM THE ALBUM
P R O V I S I O N

PRODUCED BY GREEN GARTSIDE AND DAVID GAMSON
MANAGEMENT: PARTISAN MANAGEMENT LTD. ©1988 JOUISSANCE (UK) LTD.

