

 PHIL VASSAR "LOVE IS A BEAUTIFUL THING" 23* - 21* +212 ADDS INCLUDE: KSCS / WDSY / KAJA / KKNG / WRBT / WWGR / KXKS	 Joe Nichols "IT AIN'T NO CRIME" In only three weeks 40* - 34* +195 and Most added! Don't miss Joe perform on "Conan" next Monday, 1/28
--	---

INSIDE

- Country Radio And Jewel Taking A Shine To Each Other
- Big Changes In Big D With Sansone Return, Sebastian's Surprise Ending
- R&R Annual Readers Poll, Week Two: This Time, It's Personal
- Think You Had A Busy Week? Check Out 'Radio-Activity'
- CRS Luncheons Offer Recommended Balanced Diet Of Music, Nutrition

All polar bears are left-handed.
Real news needed!
rcurtis@radioandrecords.com
323-954-3444

Here's A Gem Of An Idea....

Though it's already been well-received and currently sits at No. 50 on the R&R Country chart, Feb. 11 is the official add date for "Stronger Woman," Jewel's lead single from her "Perfectly Clear" CD, due June 3. After the breakout success of Big Machine in 2007, it wasn't entirely surprising to see president/CEO Scott Borchetta make a move toward brand extension, launching the Valory Music Group late last year. Signing Jewel as its anchor artist is another thing, however — on the surface, anyway.

The longer you talk with Jewel, the more it makes perfect sense for her to diligently pursue success in the country genre. "I've been writing and yodeling and immersed in country music my whole life," she says. In spite of having what could safely be called beyond-all-expectation success in pop, as evidenced by her debut album, "Pieces of You," selling over 11 million copies, Jewel says, "I've had songs on my records that I wanted to work at country radio — not as a crossover, but just because I felt it fit country radio, which is pretty much what I've listened to my whole career." She got some pushback on that idea from her former record label, something that frustrated her at times. "A lot of my fans buy country records, and a lot of country fans have bought my records over the years. I don't think fans see music separated as much as radio stations do."

Then there's her background, which sounds more typical of something that would steer a young artist toward a career in country than pop superstardom. Raised in rural Alaska, she describes growing up "in a real old-fashioned, old-timey kind of way." She was greatly influenced by listening to the music of Merle Haggard, Loretta Lynn, Brenda Lee and other traditional country artists. As a child, she played and sang music with her parents and siblings, became proficient in the art of yodeling and was later fortunate to attend Michigan's Interlochen Fine Arts Academy. Eventually, she moved to a big city, played small clubs, struggled and was forced to live out of her van for a year. She prides herself on being a singer songwriter and says, "I really believe in country music."

Even if you're moderately aware of pop music in the last 10 years, surely you remember the song "You Were Meant for Me." A massive mainstream hit from 1997, it spent four weeks at No. 1 on the CHR/top 40 chart in addition to ap-

© 2008 Radio & Records. All Rights Reserved. No part of this material may be reproduced in any form or incorporated in any information retrieval system without written permission of the Publisher.



"IF YOU DIDN'T LOVE ME"

THE DEBUT RELEASE FROM

PHIL STACEY

AN ARTIST ALREADY BRANDED WITH YOUR LISTENERS!

CHARTED & READY FOR IMMEDIATE SPINS!





Rissi Palmer

“Hold On To Me”

**ADDED EARLY AND REACTING AT
KHKI (16X), WIRK (8X)
AND WWQM (6X).**

COUNTRY RADIO IS TALKING ABOUT RISSI PALMER

“Amazing singer! Amazing personality! She’s one of the most refreshing young talents out there.” -Kerry Wolfe, OM, WMIL/Milwaukee

“Not many songs hit me on the first listen but ‘Hold On To Me’ knocked me out right away.” -Andy Elliott, PD, KHKI/Des Moines

“‘Hold On To Me’ is going to make Rissi Palmer become ‘Rissi’ in 2008 and your listeners will be calling to hear more of ‘Rissi’. We’re adding ‘Hold On To Me’ out of the box!! What a way to start out 2008!!” -Kevin Christopher, PD, KKNZ Oklahoma City

“Rissi Palmer is the real deal and if ‘Hold On To Me’ doesn’t give you chills, you’re not breathing.” -Scott Donato, PD, WGTN/York

“Rissi Palmer has the ‘IT Factor’ for Nashville that the format has been craving for a long time. This song solidifies her as a superstar in this format, **SO GIVE HER THE CHANCE!**” -Justin Tyler, WWGR/Ft Myers

“She is the genuine thing - honest, real and talented.” -Brad Austin, PD, WWQM/Madison

“This ol’ boy has been around the block a few times and this young lady is the real deal. She sings beautiful, is beautiful AND writes, what’s not to love?” -Dr. Bruce KFTX/Corpus Christi

**THANK YOU COUNTRY RADIO FOR YOUR EARLY SUPPORT.
THE “RISSI REVOLUTION” STARTS MONDAY.**

17-20 JOIN THE REVOLUTION TODAY AND ADD RISSI!

pearing on just about every other contemporary chart as well. According to Jewel, "That is a country song; it's a shuffle. We ended up changing the bass line so it didn't walk the same way a country song walks." She'll also tell you that as long as she's been writing songs, "I've always been writing really hard-core, old-school country songs."

When we spoke to Jewel last week, she was coming off a five-day radio tour where she visited nearly 20 cities. When asked what her expectations for 2008 were, she says her theory has always been to "expect very little and work as hard as you can." Her mindset heading into this all-out assault on country success is, "I've never sold a single record, and I'm starting all over." So far, the reception she's received is very positive, and country already seems like a good fit. "It's a lifestyle I feel I've been involved in just because of how I was raised," she says. "But I understand there are plenty of people in the world who have not followed my life closely, and that doesn't offend me." While she admits there have been a few people that looked at her somewhat skeptically at first, she says, "It's OK. It only takes a little bit for me to visit with them and realize we're all on the same page." For more comments from Jewel, be sure to read this Friday's (Jan. 25) R&R country column.

A Good Year To Be Charlie Daniels

Actually, make that a *great* year. 2008 marks Charlie Daniels' 50th year in the music industry, and if you'll pardon this radio cliché, "The hits just keep on comin'!" The Country Radio Broadcasters this afternoon announced Charlie Daniels as this year's Career Achievement Award recipient. The presentation will take place Tuesday, March 4 during the annual Country DJ and Radio Hall of Fame dinner at the Renaissance Hotel in Nashville. Criteria for the CRB Career Achievement Award include artists who make "a significant contribution to the development and promotion of country music and country radio." We'd say he pretty much qualifies.

The CRB also announced this year's President's Award honoree: Mike Milom, who has served as CRB counsel since the organization was founded in 1969. A partner in

This Week At Callout America

Jason Aldean puts together four consecutive weeks of growth as "Laughed Until We Cried" moves into the No. 1 spot this week, up from No. 4, and ranks as the No. 11 passion song. Females are the strength at No. 2, men are at No. 4.

The No. 1 passion song for the week is "Stay" from **Sugarland**, which repeats at that spot for the fourth week. Core 35-44 listeners are also at No. 1 passion. Females overall are at No. 1 passion, as are females 25-34, 35-44 and 25-44.

Taylor Swift is still strong as "Our Song" ranks at No. 3 overall and at No. 3 passion too. Core 35-44 listeners are at No. 2 passion. Females are also at No. 2 passion, as are core females; men are at No. 3 passion, as are core males.

Chuck Wicks holds his strength with "Stealing Cinderella" at No. 4 overall and No. 5 passion. Females rank this song at No. 1 for the week and at No. 3 passion. Core 35-44 females are at No. 1, females 25-44 at No. 2. Men overall are at No. 8 for the week, core males at No. 5.

Keith Urban storms into the top 10 with "Everybody" at No. 8, up from No. 17, and as the No. 6 passion song, up from No. 10. Females are at No. 5 and No. 5 passion, while men are No. 6 passion. Men 35-44 are at No. 4 passion.

Speaking of strong passion, **Gary Allan** is the No. 7 passion song for the week, up from No. 9. Females 25-34 are at No. 3 overall and No. 8 passion, while men overall are at No. 4 passion, as are males 25-34.

the firm of Milom, Joyce, Horsnell & Crow PLC, Milom was named one of the Best 150 Lawyers in the state of Tennessee by *Business Tennessee* magazine in January 2006.

Forecast For Big D: Different

In the span of two days last week, the complexion of an already — and always — interesting country market took on a new look. First, Victor Sansone was sent back to Citadel's KSCS & KTYS as VP/GM after spend-

©2008 Radio & Records. All Rights Reserved. No part of this material may be reproduced in any form or incorporated in any information retrieval system without written permission of the Publisher.

Hitting Its Stride!

Lee Brice
"Happy Endings"

Adds Include -
WYCD, KAJA, KATM, KIIM, WQDR, KVOO

RR Top 10 Most Added

RR: **36** +418 k MB: **34** to **33** +102

Logos for CUSA, KUSA, and KTVB are visible in the bottom right corner.

ing the last 14 years in a similar role at country sisters WKHX & WYAY/Atlanta. Sansone has serious roots in the Big D, serving as GM at KSCS from 1987-1993. Mitch Dolan, president of Citadel O&O radio station group, said of Sansone, "Without a doubt, Victor is one of the most respected country executives in the nation. Having him re-engage in the competitive Dallas/Fort Worth country music arena will ensure a wider ratings success, an improved revenue footprint and other brand extension opportunities for the Citadel/Dallas station group." There's no word yet on who steps up to replace Sansone in Atlanta.

Hours later, across the street at Cumulus' KPLX (99.5 The Wolf), veteran programmer John Sebastian announced his departure from the station as PD, explaining that he and Cumulus agreed his contract would not be renewed. In a statement, Sebastian cited the famous "philosophical differences" as a factor in his exit, but went on to add,

"I'll cherish the working relationship with all the great Wolf gang here in Dallas." Sebastian told **R&R** his next step is to find "the best possible fit where I can join a great company and do what I do particularly well — create unique and successful radio stations." He can be reached immediately at johnseb23@tx.rr.com or 214-789-5081. No word so far on his replacement at The Wolf, but while the search is on, there have been numerous Jan Jeffries sightings in the building. Jeffries is the SVP of programming for Cumulus and will reportedly be the interim PD until a new programmer is found or perhaps he decides to take on the Wolf permanently — whichever comes first. Interested candidates should send resume material to VP/GM Dan Bennett at dan.bennett@cumulus.com or Jeffries at jan.jeffries@cumulus.com.

Incidentally, in one of those typically ironic radio twists — you know, the kind where the format changes and the station then has its best book ever — the very day Sebastian announced his exit from The Wolf, fall ratings were announced for Dallas, and the numbers showed The Wolf improving 2.9-3.1 12+ to finish in a tie for 10th. Citadel's crosstown KSCS also went up, moving 2.6-2.9, while clustermate KTYS dipped 1.3-0.9.

COUNTRY DATES

Jan. 23-27: Country in the Rockies; Steamboat Springs, Colo.

Feb. 10: 50th annual Grammy Awards; Staples Center, Los Angeles.

March 5-7: CRS-39; Nashville Convention Center.

March 14: Rumble on the Row: Gator Michaels vs. Jimmy Rector in a benefit for the Charley Foundation; the Factory, Franklin, Tenn.

April 22: Leadership Music Digital Summit 2007; Belmont University's Curb Event Center, Nashville.

May 18: 43rd annual ACM Awards; MGM Grand, Las Vegas.

Forget 'Super Tuesday,' Check Out The Reader's Poll

We don't have caucuses or histrionic debates here at **R&R**, but we do have a handsome-looking ballot for the annual **R&R** Readers Poll to select country's finest performers from the past year. We need your vote though, because it really does count, and when you open up the CRS edition of **R&R** dated March 7 and see results published, you may just be inspired to blurt out uncontrollably, "God bless America!" That's right, we live in a country where country music reigns supreme, and every music industry pro makes a difference! Check out www.radioandrecords.com/feedback/country_survey.asp. After voting, just hit send, and your selections will come screaming through cyberspace back to **R&R** ... just make sure you reply by Feb. 1

Radioactivity, Jan, 15-22

One day after changing the call letters, Clear Channel's KTMV (My Country 105.7)/Salt Lake City made another programming adjustment, as PD Jim Mickelson made a surprising exit Friday (Jan. 18)

© 2008 Radio & Records. All Rights Reserved. No part of this material may be reproduced in any form or incorporated in any information retrieval system without written permission of the Publisher.

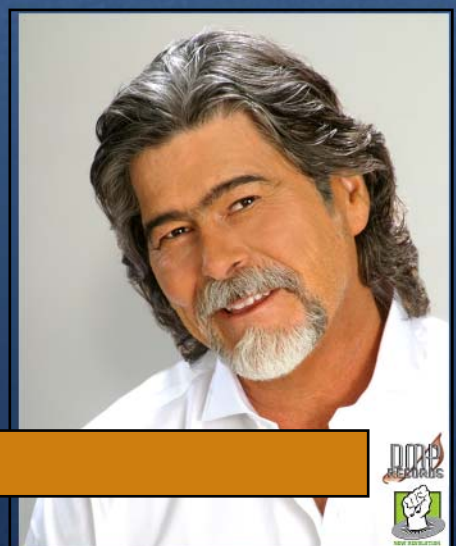
The flood of stories already coming
in over the last two days is absolutely
Mind Blowing!

Check them out at randyowen.com

The Power of a GREAT song is Timeless

RANDY OWEN "BRAID MY HAIR"

The Debut Single - On Your Desk Today



afternoon. Mickelson was just seven weeks into the gig. No word on a replacement, but Mickelson is available immediately and can be reached at 801-446-7997 or mickelsonjim@hotmail.com ... Nothing official in the way of a comment from Citadel's KSCS/Dallas, but syndicated Amy B is no longer listed as the midday show on the station's website ... Steckline Communications rolled out KWLS (US 107.9)/Wichita on Friday (Jan. 18). Formerly an rhythmic station known as KSMJ (107.9 Jamz) and owned by Carter-Sherman Group, the station changed hands Jan. 1. The syndicated Big D & Bubba will do mornings; Bob Allison is the new PD, with Jones Radio's classic hit country format the remainder of the day ... Starting Feb. 11, Ben Walker is the new afternoon guy on American General Media's KAGM (106.3)/Albuquerque, which leaves a gaping hole at his alma mater, Cox Radio's WZZK/Birmingham, so send your best material to 'ZZK PD Justin Case at justin.case@coxradiocom ... After conducting a search for an evening personality, Citadel WKDF PD Bud Ford tells **R&R** he's decided to hire Billy Harper, who was already the interim evening guy. Ford added another body to the Rick Marino morning show, with Josh Talkington handing news/sidekick duties ... More deck-shuffling in Music City at Cumulus's crosstown WSM-FM (The Wolf). Middayer Carrie D — "D," as in "departing" — has decided to relocate to Charleston, S.C. APD/MD Frank Seres will now move from afternoons to middays, while Wolf PD Kevin King is the Wolf's new afternoon alpha dog ... Double O Broadcasting's WWNU/Columbia, S.C. teams APD/afternoon guy Tyler and former WGGY/Wilkes Barre afternoon goddess Kelly Green for mornings. Green changes names to become McKenzie Turner, and the show will be called Tyler & Turner.

FDA Recommends Balanced Diet At CRS

When traveling to Nashville for Country Radio Seminar (CRS), one should strive to find the right combination of music and nutrition. Fortunately, when you attend the luncheons at CRS, you get both at the

BILLBOARD BOXSCORE

ARTIST VENUE/CITY/DATES	ATTENDANCE	GROSS
George Strait, Little Big Town, Sarah Johns Ford Center Oklahoma City Jan. 11	16,953	\$1,085,249
George Strait, Little Big Town, Sarah Johns Frank Erwin Center Austin Jan. 10	16,160	\$1,032,050
George Strait, Little Big Town, Sarah Johns Alltel Arena Little Rock Jan. 12	15,877	\$1,002,550
Brad Paisley, Rodney Atkins, Taylor Swift CenturyTel Center Bossier City, La. Nov. 1	8,163	\$320,132
Trace Adkins Mohegan Sun Arena Uncasville, Conn. Dec. 30	5,792	\$151,410

Billboard Boxscore tracks recent country concert grosses and attendance figures. Copyright 2008, Nielsen Business Media. More concert grosses available at www.billboard.biz.

SHOWPREP 101

Jan. 23: National Measure Your Feet Day.

Jan. 24, 1922: Christian K. Nelson patented the Eskimo Pie.

Jan. 25, 1991: A 13-year-old Piru, Calif., boy was arrested for throwing a Chihuahua at his mother.

Quotable: "Life is too short to stuff a mushroom."
—Storm Jameson



© 2008 Radio & Records. All Rights Reserved. No part of this material may be reproduced in any form or incorporated in any information retrieval system without written permission of the Publisher.

Katie Armiger
"Make Me Believe"

The follow-up to Katie's debut single, "17 In Abilene"

**THE EMPOWERMENT SONG
RADIO ASKED FOR... GIRLS...
GET YOUR STRONG ON!!**

The emotion... the power... and THAT VOICE!!

Appearing at CRS,
Houston Livestock Show and Rodeo
and KHOU-TV.

Look for Katie in the
1/28 issue of Country Weekly.

[CLICK HERE TO LISTEN](#)

same time, ensuring each and every attendee the suggested daily requirements. Ashley Gearing and Rodney Atkins will play the Curb lunch on Wednesday, March 5; Sony BMG's Keith Anderson and Montgomery Gentry play Thursday, March 6. Capitol Nashville hosts Friday, offering up Lady Antebellum and newcomer Emily West. If you register by Feb. 5, you can still get the reduced rate of \$650. Go to www.crb.org for more information.

CRS: The Prequel

In what's becoming an anticipated annual event, Albright & O'Malley will once again host their pre-CRS seminar Tuesday, March 4 at the Ford Theatre in the Country Music Hall of Fame from 2-5:30 p.m. Bill Black, director of U.S. store marketing at Starbucks Coffee, will keynote; Lyric Street artist Phil Stacey will perform; and A&O will offer an update of their "Roadmap '08" national country listener-tracking study. Admission is free by invitation only, but if you contact Albright at jaye@albrightandomalley.com, you can obtain one. Immediately following their seminar, Albright will dash across the street to the Renaissance, where she'll be inducted into the Country Radio Hall of Fame that evening.

— R.J. Curtis/Country Editor 323-954-3444
Email: rcurtis@radioandrecords.com

ON THE CHARTS

Paisley To The 10th Power; Jewel's Fast Start

With the biggest leap to No. 1 by a solo male act in 20 months, **Brad Paisley** snags his 10th No. 1 on the R&R Country chart with "Letter to Me" (Arista Nashville). Paisley's track logs the third-largest increase (up 2.3 million impressions) during the tracking week and

shoots 5-1, the longest jump for a solo male since **Jack Ingram's** "Wherever You Are" jumped 5-1 on the chart dated May 20, 2006. Paisley's hike is the biggest for any artist since **Taylor Swift's** 6-1 surge with "Our Song" in the Dec. 14 issue. Paisley extends his current No. 1 streak to six (excluding holiday titles), as he becomes the first artist to string together that many chart-toppers since **Toby Keith** completed a run of seven No. 1s with "Who's Your Daddy" in December 2002.

Concurrently, pop-turned-country singer **Jewel** takes the Hot Shot Debut at No. 50 with "Stronger Woman" (Valory), her second country chart appearance. In autumn 1999, she spent seven weeks on the chart as the duet partner of **Merle Haggard**, when the pair reprised Haggard's 1984 chart-topper, "That's the Way Love Goes." The duet cover peaked at No. 56 on the chart dated Oct. 1, 1999.

Jewel's bow is also noteworthy among solo females making their first chart debuts. Among those artists, hers is the highest bow since **Kellie Pickler** popped on at No. 48 with "Red High Heels" in September 2006. The Nielsen BDS-era record for maiden voyages among solo females is **Miranda Lambert's** No. 42 arrival with "Me and Charlie Talking" in October 2004.

In this week's Most Added showdown, **Trace Adkins** repeats with "You're Gonna Miss This" (Capitol Nashville) on the R&R Country panel (24 reports), while **Josh Turner** (featuring **Trisha Yearwood**) takes 21 adds with "Another Try" (MCA Nashville) on the R&R Country Indicator panel.

— Wade Jessen/Director of Charts & Operations, Nashville
615-321-4291 Email: wjessen@radioandrecords.com

©2008 Radio & Records. All Rights Reserved. No part of this material may be reproduced in any form or incorporated in any information retrieval system without written permission of the Publisher.

THE ROAD HAMMERS "I DON'T KNOW WHEN TO QUIT"
www.theroadhammers.com

**AIRCHECK 47*
DEBUT**

R&R 51*

THANKS RADIO

"JUMP IN AND HANG ON" BRISCOE DARLIN

Montage Music Group

MUSICNOTES

"Nashville Star" will be returning for a sixth season, but this time it'll be seated at the grownups' table, after NBC-TV announced it will air the show this summer. Additional changes to the show include opening the competition to duos and groups and lowering the age requirement to 16.

Faith Hill is recovering from recent knee surgery to have, among other things, her knee cap re-aligned. It hasn't stopped her from recording a Christmas album, due later this year, and rehearsing for a MusiCares tribute to Aretha Franklin.

Remember the bizarre story where Curb Recording artist **Steve Holy** was held at gunpoint in his home by two off-duty Dallas cops? Dallas police chief David Kunkle fired both officers after reviewing the case.

MCA artist **Josh Turner** will be traveling in good company in early 2008 after receiving an invite to open shows for George Strait and Carrie Underwood.

CMT continues to amaze with another interesting pairing for its "Crossroads" special: On Jan. 29, **Sara Evans** and Maroon 5 will team up for an episode to air later this spring.

VIDEO ADDS

CMT

KID ROCK Amen

ROBERT PLANT & ALISON KRAUSS Gone, Gone, Gone
("CMT Crossroads" excerpt)

CMT PURE COUNTRY

KID ROCK Amen

ROBERT PLANT & ALISON KRAUSS Gone, Gone, Gone
("CMT Crossroads" excerpt)



promosquad
HitPredictor

SONGS WITH HIT POTENTIAL

CHART
RANK

BRAD PAISLEY <i>Letter To Me</i> (Arista Nashville) (82.8)	1
RASCAL FLATTS <i>Winner At A Losing Game</i> (Lyric Street) (83.2)	2
GARY ALLAN <i>Watching Airplanes</i> (MCA Nashville) (80.5)	7
BILLY RAY CYRUS <i>Ready, Set, Don't Go</i> (Lyric Street) (87.2)	8
RODNEY ATKINS <i>Cleaning This Gun</i> (Come On In Boy) (Curb) (78.1)	10
ALAN JACKSON <i>Small Town Southern Man</i> (Arista Nashville) (85.1)	11
CARRIE UNDERWOOD <i>All-American Girl</i> (Arista Nashville) (92.6)	12
TOBY KEITH <i>Get My Drink On</i> (Show Dog Nashville) (75.2)	13
CHUCK WICKS <i>Stealing Cinderella</i> (RCA) (76.0)	14
TIM MCGRAW <i>Suspicious</i> (Curb) (83.6)	16
BROOKS & DUNN <i>God Must Be Busy</i> (Arista Nashville) (93.9)	17
CHRIS CAGLE <i>What Kinda Gone</i> (Capitol Nashville) (88.3)	18
JASON ALDEAN <i>Laughed Until We Cried</i> (Broken Bow) (88.5)	19
BUCKY COVINGTON <i>It's Good To Be Us</i> (Lyric Street) (76.4)	20
PHIL VASSAR <i>Love Is A Beautiful Thing</i> (Universal South) (75.8)	21
TRACE ADKINS <i>You're Gonna Miss This</i> (Capitol Nashville) (90.6)	22
EMERSON DRIVE <i>You Still Own Me</i> (Midas) (86.6)	23
MARK CHESNUTT <i>Rollin' With The Flow</i> (Lofton Creek) (88.5)	26
KELLIE PICKLER <i>Things That Never Cross A Man's Mind</i> (BNA) (85.3)	27
JAMES OTTO <i>Just Got Started Lovin' You</i> (Warner Bros.) (76.1)	28
JACK INGRAM <i>Maybe She'll Get Lonely</i> (Big Machine) (83.2)	31
JOSH GRACIN <i>We Weren't Crazy</i> (Lyric Street) (80.5)	33
MARTINA McBRIDE <i>For These Times</i> (RCA) (82.9)	35
MIRANDA LAMBERT <i>Gunpowder & Lead</i> (Columbia) (81.5)	43

Copyright 2008, Think Fast, LLC. For more information and testing methodology, please visit HitPredictor.com or Promosquad.com.

©2008 Radio & Records. All Rights Reserved. No part of this material may be reproduced in any form or incorporated in any information retrieval system without written permission of the Publisher.

TWO FOR THE MONEY - TWO FOR YOUR STATION

MARK CHESNUTT

"Rollin' With The Flow"

ROARING 20's

New Adds This Week:

KHKI, KIXZ, WBYT, WCAT, WEZL,
WIRK, WITL, WUSY, KGNC, KXDD,
WBYT, WCTY, WFFN, WMUS



DREW DAVIS BAND

"Back There All The Time"

R&R DEBUT AT **60**

Now Playing At:

WYCD, KFRG, KNCI, WWQM,
KIXZ, KBKO, KEAN, KRRV
& #1 on 9 at 9 on KFRG!

DMDS
DOWNLOAD NOW!

LW	TW	ARTIST Title Label(s)	Tot. Aud. (00)	+/- Aud. (00)	Total Plays	+/- Plays	Wks On	Sta On/ Adds TW
5	1	BRAD PAISLEY Letter To Me (Arista Nashville)	302419	+23001	4003	+235	15	110/0
3	2	RASCAL FLATTS Winner At A Losing Game (Lyric Street)	291819	-6582	4052	+20	15	110/0
4	3	MONTGOMERY GENTRY What Do Ya Think About That (Columbia)	284692	-2278	3976	-43	27	110/0
2	4	SUGARLAND Stay (Mercury)	282221	-24959	3934	-374	19	110/0
1	5	TAYLOR SWIFT Our Song (Big Machine)	271870	-38494	3826	-400	23	110/0
6	6	KEITH URBAN Everybody (Capitol Nashville)	261721	-10058	3730	-70	22	110/0
7	7	GARY ALLAN Watching Airplanes (MCA Nashville)	252069	+7011	3585	+306	27	110/0
8	8	BILLY RAY CYRUS WITH... (Walt Disney/Lyric Street)	248491	+23333	3161	+238	26	109/0
9	9	KENNY CHESNEY Shiftwork (BNA)	205081	+8554	2781	+205	14	110/1
10	10	RODNEY ATKINS Cleaning This Gun (Come On In Boy) (Curb)	204404	+17186	2902	+171	18	108/1
11	11	ALAN JACKSON Small Town Southern Man (Arista Nashville)	189182	+13891	2691	+192	11	109/1
12	12	CARRIE UNDERWOOD All-American Girl (Arista/Arista Nashville)	179474	+5532	2489	+197	8	109/3
14	13	TOBY KEITH Get My Drink On (Show Dog Nashville)	177149	+6304	2491	+23	14	109/0
13	14	CHUCK WICKS Stealing Cinderella (RCA)	176452	+4380	2546	+120	22	110/1
16	15	CRAIG MORGAN International Harvester (Broken Bow)	162130	+12165	2462	+194	19	101/7
15	16	TIM MCGRAW Suspicions (Curb)	159684	-838	2372	+59	11	110/1
17	17	BROOKS & DUNN God Must Be Busy (Arista Nashville)	141221	+5953	2116	+109	13	101/1
18	18	CHRIS CAGLE What Kinda Gone (Capitol Nashville)	134662	+6434	2055	+92	27	100/2
20	19	JASON ALDEAN Laughed Until We Cried (Broken Bow)	119485	+10503	1922	+125	24	96/1
21	20	BUCKY COVINGTON It's Good To Be Us (Lyric Street)	103768	+5647	1656	+54	20	102/1
23	21	PHIL VASSAR Love Is A Beautiful Thing (Universal South)	77377	+13072	1346	+212	12	94/5
28	22	TRACE ADKINS You're Gonna Miss This (Capitol Nashville)	76432	+31746	999	+453	7	75/24
22	23	EMERSON DRIVE You Still Own Me (Montage/Midas/New Revolution)	75712	+2955	1393	+174	27	89/4
27	24	LADY ANTEBELLUM Love Don't Live Here (Capitol Nashville)	67759	+12819	1080	+227	16	77/9
26	25	G. BROOKS & H. LEWIS Workin' For A Livin' (Pearl/Big Machine)	65298	+7922	1077	+214	6	74/6
25	26	MARK CHESNUTT Rollin' With The Flow (Lofton Creek)	62028	+4455	851	+60	23	56/3
24	27	KELLIE PICKLER Things That Never Cross A Man's Mind (BNA)	61778	+3230	1136	+73	18	91/4
29	28	JAMES OTTO Just Got Started... (Raybaw/Warner Bros./WRN)	55699	+12828	955	+183	14	63/5
30	29	JAKE OWEN Something About A Woman (RCA)	44875	+4473	832	+59	21	74/4
31	30	ASHTON SHEPHERD Takin' Off This Pain (MCA Nashville)	38283	+2486	784	+15	16	73/3

© 2008 Radio & Records

KELLIE PICKLER
"Things That Never
Cross A Man's Mind"



BNA

GIRLS GONE

Wild

Tempo & Attitude
FOR THE NEW YEAR

TERRI CLARK
"In My Next Life"



23*

38*

© 2008 BNA Music
SONY BNA BNA MUSIC ENTERTAINMENT BNA RECORDS LABEL

LW	TW	ARTIST Title Label(s)	Tot. Aud. (00)	+/- Aud. (00)	Total Plays	+/- Plays	Wks On	Sta On/ Adds TW
32	31	JACK INGRAM Maybe She'll Get Lonely (<i>Big Machine</i>)	34211	+3251	677	+49	11	63/6
41	32	JOSH TURNER FEAT. T. YEARWOOD Another Try (<i>MCA Nashville</i>)	33820	+17886	478	+236	3	52/12
33	33	JOSH GRACIN We Weren't Crazy (<i>Lyric Street</i>)	32221	+1377	726	+32	14	67/4
40	34	JOE NICHOLS It Ain't No Crime (<i>Universal South</i>)	29848	+12761	524	+195	3	53/11
35	35	MARTINA MCBRIDE For These Times (<i>RCA</i>)	27290	+1374	442	+9	12	45/0
36	36	LEE BRICE Happy Endings (<i>Asylum-Curb</i>)	25633	+4181	553	+56	16	59/6
Breaker	37	LUKE BRYAN We Rode In Trucks (<i>Capitol Nashville</i>)	24993	+5661	430	+54	13	48/4
39	38	TERRI CLARK In My Next Life (<i>BNA</i>)	18811	+1700	408	+26	10	46/4
45	39	TRISHA YEARWOOD This Is Me You're Talking To (<i>Big Machine</i>)	16116	+6082	266	+88	3	33/5
43	40	JYPSI I Don't Love You Like That (<i>Arista Nashville</i>)	13421	+1813	256	+32	3	36/2
44	41	WHISKEY FALLS Falling Into You (<i>Midas/New Revolution</i>)	12338	+879	325	+11	9	37/1
42	42	BIG & RICH Loud (<i>Warner Bros./WRN</i>)	10936	-1101	146	+10	8	13/1
47	43	MIRANDA LAMBERT Gunpowder & Lead (<i>Columbia</i>)	10629	+2394	268	+92	3	25/4
48	44	TRACY LAWRENCE Til I Was A Daddy Too (<i>Rocky Comfort/CO5</i>)	10508	+2274	212	+23	6	20/0
46	45	FAITH HILL Red Umbrella (<i>Warner Bros./WRN</i>)	10099	+1229	135	-48	18	12/1
52	46	TAYLOR SWIFT Picture To Burn (<i>Big Machine</i>)	9596	+3115	127	+47	2	10/6
57	47	DIERKS BENTLEY Trying To Stop Your Leaving (<i>Capitol Nashville</i>)	7965	+3673	111	+48	2	12/8
50	48	DOLLY PARTON Better Get To Livin' (<i>Dolly</i>)	7560	+48	84	-1	11	9/1
49	49	ROCKIE LYNNE I Can't Believe It's Me (<i>Robbins Nashville</i>)	7453	-117	64	-7	3	4/0
Debut	50	JEWEL Stronger Woman (<i>Valory</i>)	7037	+4089	78	+47	1	11/9
-	51	ROAD HAMMERS I Don't Know When To Quit (<i>Montage</i>)	6661	+3316	158	+35	2	17/4
51	52	STAR DE AZLAN She's Pretty (<i>Curb</i>)	5931	-1553	141	-8	3	21/2
55	53	GRETCHEN WILSON You Don't Have To Go Home (<i>Columbia</i>)	5440	+951	60	-6	11	5/0
Debut	54	SARA EVANS Some Things Never Change (<i>RCA</i>)	4771	+3122	70	+48	1	16/11
53	55	CROSSIN DIXON Make You Mine (<i>Broken Bow</i>)	4688	-791	145	-9	11	19/0
59	56	CARTER'S CHORD Young Love (<i>Show Dog Nashville</i>)	4354	+631	96	+46	2	21/7
54	57	ELI YOUNG BAND When It Rains (<i>Carnival</i>)	4241	-649	57	+2	10	5/0
Debut	58	R. MCENTIRE & K. CHESNEY Every Other Weekend (<i>MCA Nashville</i>)	4092	+1092	21	+1	1	2/0
Debut	59	CLAY WALKER She Likes It In The Morning (<i>Asylum-Curb</i>)	3827	+1402	52	+26	1	4/2
Debut	60	DREW DAVIS BAND Back There All The Time (<i>Lofton Creek</i>)	3470	+283	40	+9	1	2/0

© 2008 Radio & Records

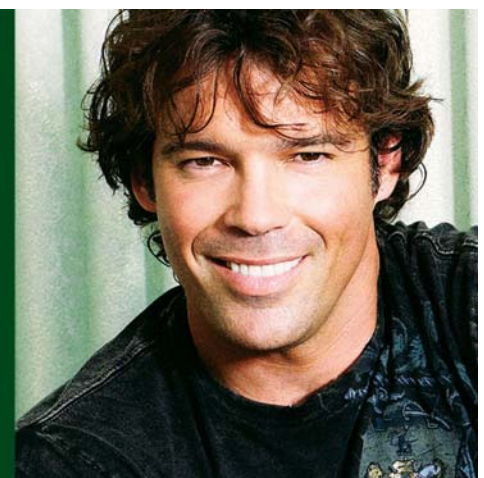
"She Likes It In The Morning" Clay Walker

The Perfect Follow Up to his Top 5 Single "Fall"

Already added: KSCS, WCTK, KATM

RR: Debut **59**

Available for Download Now at PlayMPE!
Impacting this Monday!



"I hate giving quotes.
But, I really like this song!"
Mike Moore, KWJJ



© 2008 Radio & Records

COUNTRY

MOST ADDED

ARTIST Title Label(s)	Adds
TRACE ADKINS You're Gonna Miss This (Capitol Nashville)	24
JOSH TURNER FEAT. T. YEARWOOD Another Try (MCA Nashville)	12
JOE NICHOLS It Ain't No Crime (Universal South)	11
SARA EVANS Some Things Never Change (RCA)	11
LADY ANTEBELLUM Love Don't Live Here (Capitol Nashville)	9
JEWEL Stronger Woman (Valory)	9
DIERKS BENTLEY Trying To Stop Your Leaving (Capitol Nashville)	8
CRAIG MORGAN International Harvester (Broken Bow)	7
CARTER'S CHORD Young Love (Show Dog Nashville)	7

MOST INCREASED AUDIENCE

ARTIST Title Label(s)	Total Aud. Increase
TRACE ADKINS You're Gonna Miss This (Capitol Nashville)	+31746
BILLY RAY CYRUS WITH... Ready, Set... (Walt Disney/Lyric Street)	+23333
BRAD PAISLEY Letter To Me (Arista Nashville)	+23001
JOSH TURNER FEAT. T. YEARWOOD Another Try (MCA Nashville)	+17886
RODNEY ATKINS Cleaning This Gun (Come On In Boy) (Curb)	+17186
ALAN JACKSON Small Town Southern Man (Arista Nashville)	+13891
PHIL VASSAR Love Is A Beautiful Thing (Universal South)	+13072
JAMES OTTO Just Got Started... (Raybaw/Warner Bros./WRN)	+12828
LADY ANTEBELLUM Love Don't Live Here (Capitol Nashville)	+12819
JOE NICHOLS It Ain't No Crime (Universal South)	+12761

MOST INCREASED PLAYS

ARTIST Title Label(s)	Total Play Increase
TRACE ADKINS You're Gonna Miss This (Capitol Nashville)	+453
GARY ALLAN Watching Airplanes (MCA Nashville)	+306
BILLY RAY CYRUS WITH... Ready, Set... (Walt Disney/Lyric Street)	+238
JOSH TURNER FEAT... Another Try (MCA Nashville)	+236
BRAD PAISLEY Letter To Me (Arista Nashville)	+235
LADY ANTEBELLUM Love Don't Live Here (Capitol Nashville)	+227
G. BROOKS & H. LEWIS Workin' For A Livin' (Pearl/Big Machine)	+214
PHIL VASSAR Love Is A Beautiful Thing (Universal South)	+212
KENNY CHESNEY Shiftwork (BNA)	+205
CARRIE UNDERWOOD All-American Girl (Arista/Arista Nashville)	+197

COUNTRY INDICATOR

MOST ADDED

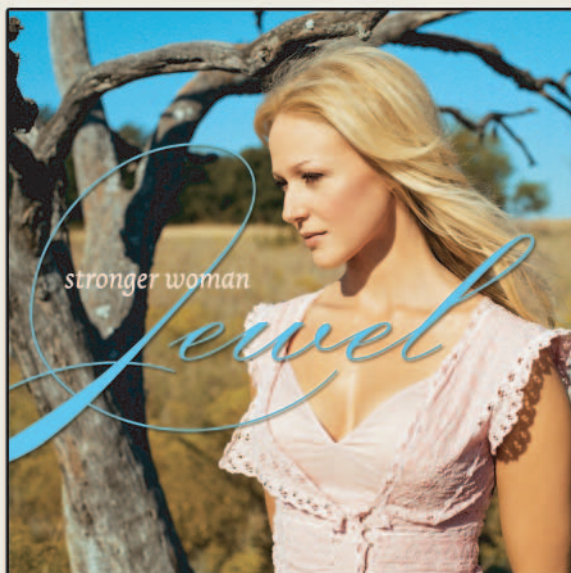
ARTIST Title Label(s)	Adds
JOSH TURNER FEAT. T. YEARWOOD Another Try (MCA Nashville)	21
TRACE ADKINS You're Gonna Miss This (Capitol Nashville)	17
JOE NICHOLS It Ain't No Crime (Universal South)	14
DIERKS BENTLEY Trying To Stop Your Leaving (Capitol Nashville)	13
GARTH BROOKS & H. LEWIS Workin' For A Livin' (Pearl/Big Machine)	11
TRISHA YEARWOOD This Is Me You're Talking To (Big Machine)	11
SARA EVANS Some Things Never Change (RCA)	11
MARK CHESNUTT Rollin' With The Flow (Lofton Creek)	8
CARTER'S CHORD Young Love (Show Dog Nashville)	8
EAGLES Busy Being Fabulous (ERC/Mercury/Lost Highway)	8

MOST INCREASED AUDIENCE

ARTIST Title Label(s)	Total Aud. Increase
KENNY CHESNEY Shiftwork (BNA)	+8699
GARTH BROOKS & H. LEWIS Workin' For A Livin' (Pearl/Big Machine)	+7847
TRACE ADKINS You're Gonna Miss This (Capitol Nashville)	+6739
JOE NICHOLS It Ain't No Crime (Universal South)	+6117
CARRIE UNDERWOOD All-American Girl (Arista/Arista Nashville)	+6018
BILLY RAY CYRUS WITH.. Ready, Set.. (Walt Disney/Lyric Street)	+5793
BRAD PAISLEY Letter To Me (Arista Nashville)	+4963
EMERSON DRIVE You Still Own Me (Montage/Midas/New Revolution)	+4858
JOSH TURNER FEAT. T. YEARWOOD Another Try (MCA Nashville)	+4807
JASON ALDEAN Laughed Until We Cried (Broken Bow)	+4748

MOST INCREASED PLAYS

ARTIST Title Label(s)	Total Play Increase
KENNY CHESNEY Shiftwork (BNA)	+390
G. BROOKS & H. LEWIS Workin' For A Livin' (Pearl/Big Machine)	+371
TRACE ADKINS You're Gonna Miss This (Capitol Nashville)	+350
BILLY RAY CYRUS WITH... Ready, Set... (Walt Disney/Lyric Street)	+288
CARRIE UNDERWOOD All-American Girl (Arista/Arista Nashville)	+277
GARY ALLAN Watching Airplanes (MCA Nashville)	+259
JOE NICHOLS It Ain't No Crime (Universal South)	+250
EMERSON DRIVE You Still Own Me (Montage/Midas/New Revolution)	+246
CRAIG MORGAN International Harvester (Broken Bow)	+245
JOSH TURNER FEAT. T. YEARWOOD Another Try (MCA Nashville)	+234



ADD DATE: 2/11/08

R&R HOT SHOT DEBUT @ 50!

Available Digitally Just 5 Days Ago...

Incredible Early Airplay

KYGO, KASE, KATM, KBEQ, KBWF, KEEY, KHKI, KIZN, KNTY, KSOP, KUBL, KUSS, KWNR, WCOS, WEZL, WGNE, WKDF, WKIS, WKSF, WKXC, WNCB, WWKA, WIRK, KWLI, KFRG, AOL Radio, Dial Global Hot Country, Sirius New Country, XM Nashville! & XM Highway 16



© 2008 Radio & Records

COUNTRY NEW & ACTIVE

- KEITH ANDERSON** I Still Miss You *(Columbia)*
Total Audience: 3149, Total Stations: 7, Adds: 5
- RASCAL FLATTS** Still Feels Good *(Lyric Street)*
Total Audience: 1834, Total Stations: 1, Adds: 0
- JOSH TURNER** Everything Is Fine *(MCA Nashville)*
Total Audience: 1743, Total Stations: 1, Adds: 0
- EAGLES** Busy Being Fabulous *(ERC/Mercury/Lost Highway)*
Total Audience: 1696, Total Stations: 3, Adds: 2
- LOST TRAILERS** Holler Back *(BNA)*
Total Audience: 1650, Total Stations: 1, Adds: 0
- KEITH URBAN** Got It Right This Time (The Celebration) *(Capitol Nashville)*
Total Audience: 1637, Total Stations: 1, Adds: 0

COUNTRY INDICATOR NEW & ACTIVE

- BELLAMY BROTHERS** Drug Problem *(Curb)*
Total Plays: 75, Total Stations: 7, Adds: 2
- KEVIN FOWLER** Best Mistake I Ever Made *(Equity)*
Total Plays: 74, Total Stations: 7, Adds: 2
- JEWEL** Stronger Woman *(Valory)*
Total Plays: 72, Total Stations: 7, Adds: 7
- PHIL STACEY** If You Didn't Love Me *(Lyric Street)*
Total Plays: 71, Total Stations: 9, Adds: 3
- REBA MCENTIRE W/J. TIMBERLAKE** The Only Promise...*(MCA Nashville)*
Total Plays: 69, Total Stations: 4, Adds: 0
- MICA ROBERTS** Things A Mama Don't Know *(Show Dog Nashville)*
Total Plays: 58, Total Stations: 4, Adds: 1
- CROSS CANADIAN RAGWEED** Cry Lonely *(Universal South)*
Total Plays: 45, Total Stations: 3, Adds: 2
- COLBIE CAILLAT** Bubbly *(Universal Republic)*
Total Plays: 44, Total Stations: 1, Adds: 0
- EAGLES** Busy Being Fabulous *(ERC/Mercury/Lost Highway)*
Total Plays: 39, Total Stations: 8, Adds: 8
- RANDY OWEN** Braid My Hair *(DMP/New Revolution)*
Total Plays: 37, Total Stations: 5, Adds: 5

R&R Going For Adds®

- 1/28
CLAY WALKER She Likes It In The Morning *(Asylum-Curb)*
DIERKS BENTLEY Trying To Stop Your Leaving *(Capitol Nashville)*
EAGLES Busy Being Fabulous *(ERC/Mercury/Lost Highway)*
KEITH ANDERSON I Still Miss You *(Columbia)*
PHIL STACEY If You Didn't Love Me *(Lyric Street)*
TRENT WILLMON Broken In *(Compadre/Music World/Quarterback)*
- 2/4
JASON MICHAEL CARROLL I Can Sleep When I'm Dead *(Arista Nashville)*
KATIE ARMIGER Make Me Believe *(Cold River/Nine North)*
- 2/11
JEWEL Stronger Woman *(Valory)*

TOP 10 RECURRENTS

ARTIST Title Label(s)	Total Aud. (00)
KENNY CHESNEY Don't Blink <i>(BNA)</i>	189891
JOSH TURNER Firecracker <i>(MCA Nashville)</i>	150307
GEORGE STRAIT How 'Bout Them Cowgirls <i>(MCA Nashville)</i>	140403
DIERKS BENTLEY Free And Easy (Down The Road I Go) <i>(Capitol Nashville)</i>	115058
CARRIE UNDERWOOD So Small <i>(Arista/Arista Nashville)</i>	112952
GARTH BROOKS More Than A Memory <i>(Pearl/Big Machine)</i>	103727
TRACY LAWRENCE Find Out Who Your Friends Are <i>(Rocky Comfort/CO5)</i>	100700
BRAD PAISLEY Online <i>(Arista Nashville)</i>	98927
JASON MICHAEL CARROLL Livin' Our Love Song <i>(Arista Nashville)</i>	98003
RASCAL FLATTS Take Me There <i>(Lyric Street)</i>	92895



110 Country reporters. Songs ranked by total audience for the airplay week of 1/14-1/20. Bullets appear on songs gaining audience or remaining flat from previous week. A song will also receive a bullet if its percentage loss in audience does not exceed the percentage of monitored station downtime for the format. Country titles that decline in audience but increase in detections will also receive a bullet if the total audience erosion for the week does not exceed 3%. If two songs are tied in total audience, the song with the larger increase in audience is placed first. Descending, non-bulleted titles below No. 10 in either audience or detections are moved to recurrent after 20 weeks. Most Added is the total number of new adds officially reported to R&R by each reporting station or or by automatic add thresholds for stations not allowed to report adds. Songs unreported as adds do not count toward overall total stations playing a song. Most Increased Audience lists the songs with the greatest week-to-week increases in total audience. Audience totals on the chart are derived, in part, using certain Arbitron Inc. copyrighted Persons 12+ audience estimates, under license (© 2008, Arbitron Inc.) © 2008 Radio & Records.

**YOU CAN AFFORD MUSIC TESTING,
YOU CAN'T AFFORD NOT TO**

**You don't have to face the spring
book without a music test.**

Call 908-707-4707



www.edisonresearch.com

January 22, 2008

LW	TW	ARTIST Title Label(s)	Total Plays	+/- Plays	Tot. Aud. (00)	+/- (00)	Wks On	Total Stations
2	①	RASCAL FLATTS Winner At A Losing Game (Lyric Street)	4478	+130	103274	+3618	13	113/0
5	②	BRAD PAISLEY Letter To Me (Arista Nashville)	4301	+172	98594	+4963	12	112/0
1	3	SUGARLAND Stay (Mercury)	4216	-157	90418	-4343	16	105/0
4	4	KEITH URBAN Everybody (Capitol Nashville)	4155	-41	96566	-2447	20	113/0
7	⑤	GARY ALLAN Watching Airplanes (MCA Nashville)	3759	+259	80379	+4122	24	110/1
8	⑥	BILLY RAY CYRUS WITH... Ready, Set... (Walt Disney/Lyric Street)	3693	+288	79895	+5793	12	112/0
6	7	MONTGOMERY GENTRY What Do Ya Think About That (Columbia)	3683	-176	82762	-4760	24	100/0
3	8	TAYLOR SWIFT Our Song (Big Machine)	3654	-611	81421	-13786	18	98/0
10	⑨	KENNY CHESNEY Shiftwork (BNA)	3325	+390	76927	+8699	5	111/0
9	⑩	RODNEY ATKINS Cleaning This Gun (Come On In Boy) (Curb)	3206	+131	73442	+3426	14	111/1
11	⑪	ALAN JACKSON Small Town Southern Man (Arista Nashville)	3110	+193	69387	+4568	8	113/0
12	⑫	TOBY KEITH Get My Drink On (Show Dog Nashville)	3051	+166	69882	+4737	11	112/0
14	⑬	CARRIE UNDERWOOD All-American Girl (Arista/Arista Nashville)	2956	+277	68924	+6018	4	106/1
15	⑭	CRAIG MORGAN International Harvester (Broken Bow)	2867	+245	61792	+3576	15	105/2
13	⑮	CHUCK WICKS Stealing Cinderella (RCA)	2816	+136	66943	+4218	15	106/0
16	⑯	TIM MCGRAW Suspicions (Curb)	2727	+128	58881	+1999	6	110/0
17	⑰	BROOKS & DUNN God Must Be Busy (Arista Nashville)	2649	+133	57196	+2836	9	110/1
18	⑱	CHRIS CAGLE What Kinda Gone (Capitol Nashville)	2489	+95	52515	+3416	22	103/2
19	⑲	JASON ALDEAN Laughed Until We Cried (Broken Bow)	2375	+137	53727	+4748	20	107/2
20	⑳	BUCKY COVINGTON It's Good To Be Us (Lyric Street)	2037	+73	44333	+1943	17	99/1
22	㉑	G. BROOKS & H. LEWIS Workin' For A Livin' (Pearl/Big Machine)	1758	+371	37292	+7847	3	98/11
23	㉒	EMERSON DRIVE You Still Own Me (Montage/Midas/New Revolution)	1593	+246	33569	+4858	19	84/7
21	㉓	PHIL VASSAR Love Is A Beautiful Thing (Universal South)	1586	+189	34441	+3657	7	83/3
24	㉔	MARK CHESNUTT Rollin' With The Flow (Lofton Creek)	1455	+218	29231	+3716	12	87/8
28	㉕	TRACE ADKINS You're Gonna Miss This (Capitol Nashville)	1401	+350	29787	+6739	3	89/17
26	㉖	LADY ANTEBELLUM Love Don't Live Here (Capitol Nashville)	1342	+204	28561	+3323	10	75/6
25	㉗	KELLIE PICKLER Things That Never Cross A Man's Mind (BNA)	1341	+155	30147	+3651	11	83/7
27	㉘	JAMES OTTO Just Got Started... (Raybaw/Warner Bros./WRN)	1267	+159	27527	+2509	6	74/7
29	㉙	JACK INGRAM Maybe She'll Get Lonely (Big Machine)	1023	+48	20981	+1622	7	64/2
31	㉚	JOE NICHOLS It Ain't No Crime (Universal South)	932	+250	21634	+6117	2	67/14

© 2008 Radio & Records

THE INDUSTRY'S #1 NEWS SITE!

FORMAT NEWS
Format News
17 Formats Covered

R&R HEADLINES
Updated: March 20
Headlines
Industry At A Glance

SEARCH R&R NEWS
GO
News Search
Search By Key Phrase/Word

www.radioandrecords.com

ACCURATE • TRUSTWORTHY • COMPREHENSIVE

January 22, 2008

LW	TW	ARTIST Title Label(s)	Total Plays	+/- Plays	Tot. Aud. (00)	+/- (00)	Wks On	Total Stations
30	31	JOSH GRACIN We Weren't Crazy (<i>Lyric Street</i>)	784	+62	15655	+1249	7	57/5
33	32	ASHTON SHEPHERD Takin' Off This Pain (<i>MCA Nashville</i>)	754	+111	15867	+2090	3	48/4
32	33	LUKE BRYAN We Rode In Trucks (<i>Capitol Nashville</i>)	753	+72	15402	+1312	7	47/3
34	34	JAKE OWEN Something About A Woman (<i>RCA</i>)	694	+55	16030	+1313	5	50/4
41	35	JOSH TURNER FEAT. T. YEARWOOD Another Try (<i>MCA Nashville</i>)	634	+234	13859	+4807	2	55/21
37	36	MIRANDA LAMBERT Gunpowder & Lead (<i>Columbia</i>)	557	+91	10916	+1173	2	39/6
35	37	MARTINA MCBRIDE For These Times (<i>RCA</i>)	542	-23	12107	-1097	7	41/1
39	38	TERRI CLARK In My Next Life (<i>BNA</i>)	524	+71	12959	+2089	2	35/2
38	39	WHISKEY FALLS Falling Into You (<i>Midas/New Revolution</i>)	496	+36	8899	+131	2	39/4
40	40	LEE BRICE Happy Endings (<i>Asylum-Curb</i>)	452	+17	8696	+331	2	31/1
42	41	TRISHA YEARWOOD This Is Me You're Talking To (<i>Big Machine</i>)	405	+123	7001	+1800	2	36/11
55	42	SARA EVANS Some Things Never Change (<i>RCA</i>)	313	+206	6304	+4161	2	21/11
43	43	STEPHEN COCHRAN Everything We Knew (<i>Aria/Quarterback</i>)	263	+10	5240	+358	2	21/0
57	44	DIERKS BENTLEY Trying To Stop Your Leaving (<i>Capitol Nashville</i>)	247	+150	5159	+3254	2	16/13
46	45	TRACY LAWRENCE Til I Was A Daddy Too (<i>Rocky Comfort/CO5</i>)	239	+14	5531	-156	2	18/1
51	46	CARTER'S CHORD Young Love (<i>Show Dog Nashville</i>)	207	+70	4136	+1098	2	25/8
48	47	BIG & RICH Loud (<i>Warner Bros./WRN</i>)	195	+29	3945	+437	2	16/1
49	48	EMMA MAE JACOB What If We Fly (<i>Sassy Angel/New Revolution</i>)	151	-10	2049	-130	2	14/1
58	49	TAYLOR SWIFT Picture To Burn (<i>Big Machine</i>)	147	+53	3130	+1013	2	15/6
52	50	ROAD HAMMERS I Don't Know When To Quit (<i>Montage</i>)	146	+12	3750	+272	2	13/0
50	51	BON JOVI FEAT. LEANN RIMES Till We Ain't... (<i>Island/Curb/Mercury</i>)	136	-12	2863	-87	2	8/0
56	52	KEITH ANDERSON I Still Miss You (<i>Columbia</i>)	113	+14	1795	+537	2	9/3
Debut	53	TRENT WILLMON Broken In (<i>Compadre/Music World/Quarterback</i>)	111	+56	2859	+1320	1	10/2
Debut	54	JASON MICHAEL CARROLL I Can Sleep When... (<i>Arista Nashville</i>)	102	+81	990	+540	1	6/2
54	55	LILA MCCANN That's What Angels Do (<i>Broken Bow</i>)	102	-11	2748	-311	2	8/0
Debut	56	JYPSI I Don't Love You Like That (<i>Arista Nashville</i>)	88	+14	1603	+393	1	10/2
Debut	57	ROCKIE LYNNE I Can't Believe It's Me (<i>Robbins Nashville</i>)	85	+24	1608	+123	1	9/0
Debut	58	JEREMY BOZ The Pearl (<i>Spinville</i>)	84	+1	2043	+9	1	11/0
Debut	59	SARAH JOHNS He Hates Me (<i>BNA</i>)	83	+38	2088	+1186	1	7/2
Debut	60	CLAY WALKER She Likes It In The Morning (<i>Asylum-Curb</i>)	83	+37	1074	+694	1	8/3

© 2008 Radio & Records

clear. consistent. quality.

All hooks are not created equal. Some are too short, some are too long, and some are just wrong. You invest big dollars in research - why risk testing with bad hooks? Hooks Unlimited's clear, consistent, quality never leaves you guessing about your listeners' music tastes. Contact Michael Pelaia for your next project.



January 22, 2008

ARTIST Title (Label)	PASSION	TOTAL POSITIVE	INDEX	NEUTRAL	FAMILIARITY	DISLIKE	STRONGLY DISLIKE
JASON ALDEAN Laughed Until We Cried (Broken Bow)	20.5%	67.3%	3.79	23.0%	98.3%	6.0%	2.0%
MONTGOMERY GENTRY What Do Ya Think About That (Columbia)	29.3%	66.8%	3.81	18.0%	98.3%	10.3%	3.3%
TAYLOR SWIFT Our Song (Big Machine)	29.0%	65.5%	3.75	18.8%	99.0%	9.0%	5.8%
CHUCK WICKS Stealing Cinderella (RCA)	25.3%	65.3%	3.80	22.3%	97.3%	7.0%	2.8%
ALAN JACKSON Small Town Southern Man (Arista Nashville)	19.8%	64.8%	3.75	22.8%	96.8%	7.0%	2.3%
BRAD PAISLEY Letter To Me (Arista Nashville)	21.0%	62.5%	3.69	25.3%	98.5%	6.3%	4.5%
SUGARLAND Stay (Mercury)	32.5%	62.5%	3.73	18.8%	98.3%	10.5%	6.5%
KEITH URBAN Everybody (Capitol Nashville)	25.3%	61.5%	3.74	24.3%	98.0%	10.0%	2.3%
CRAIG MORGAN International Harvester (Broken Bow)	29.0%	60.3%	3.63	15.8%	96.5%	12.8%	7.8%
BUCKY COVINGTON It's Good To Be Us (Lyric Street)	17.0%	60.0%	3.70	27.0%	95.8%	7.3%	1.5%
TRACE ADKINS You're Gonna Miss This (Capitol Nashville)	21.5%	58.3%	3.72	27.5%	95.8%	8.8%	1.3%
BROOKS & DUNN God Must Be Busy (Arista Nashville)	20.5%	58.0%	3.67	24.8%	94.8%	9.3%	2.8%
RASCAL FLATTS Winner At A Losing Game (Lyric Street)	18.0%	55.3%	3.58	31.3%	98.5%	8.3%	3.8%
JOSH GRACIN We Weren't Crazy (Lyric Street)	11.5%	55.3%	3.59	26.8%	92.3%	8.3%	2.0%
CARRIE UNDERWOOD All-American Girl (Arista/Arista Nashville)	15.3%	54.8%	3.60	30.8%	95.8%	7.8%	2.5%
CHRIS CAGLE What Kinda Gone (Capitol Nashville)	16.0%	54.8%	3.57	29.5%	97.3%	10.8%	2.3%
GARY ALLAN Watching Airplanes (MCA Nashville)	22.8%	54.8%	3.66	31.0%	96.5%	8.0%	2.8%
TOBY KEITH Get My Drink On (Show Dog Nashville)	15.5%	53.8%	3.52	26.5%	96.0%	12.0%	3.8%
RODNEY ATKINS Cleaning This Gun (Come On In Boy) (Curb)	18.5%	53.0%	3.56	26.5%	94.8%	11.8%	3.5%
EMERSON DRIVE You Still Own Me (Montage/Midas/New Revolution)	14.0%	52.5%	3.55	31.8%	96.0%	9.8%	2.0%
MARK CHESNUTT Rollin' With The Flow (Lofton Creek)	16.5%	50.8%	3.49	27.5%	95.0%	12.5%	4.3%
LITTLE BIG TOWN I'm With The Band (Equity)	11.5%	50.8%	3.50	30.8%	94.8%	11.5%	1.8%
BILLY RAY CYRUS WITH... Ready, Set, Don't Go (Walt Disney/Lyric Street)	16.5%	50.8%	3.53	30.5%	94.8%	10.3%	3.3%
JAKE OWEN Something About A Woman (RCA)	13.8%	49.8%	3.55	36.0%	95.5%	8.3%	1.5%
KENNY CHESNEY Shiftwork (BNA)	16.3%	47.5%	3.46	29.0%	92.3%	10.0%	5.8%
LADY ANTEBELLUM Love Don't Live Here (Capitol Nashville)	9.3%	44.3%	3.48	35.8%	90.0%	9.8%	0.3%
TIM MCGRAW Suspicions (Curb)	11.5%	44.0%	3.31	26.8%	92.5%	16.3%	5.5%
PHIL VASSAR Love Is A Beautiful Thing (Universal South)	10.0%	43.5%	3.42	37.0%	93.3%	11.3%	1.5%
LUKE BRYAN We Rode In Trucks (Capitol Nashville)	10.3%	42.8%	3.37	29.3%	89.0%	14.3%	2.8%
JAMES OTTO Just Got Started Lovin' You (Raybaw/Warner Bros./WRN)	7.0%	42.5%	3.35	26.5%	85.0%	12.5%	3.5%
KELLIE PICKLER Things That Never Cross A Man's Mind (BNA)	12.3%	41.3%	3.26	22.8%	89.5%	20.5%	5.0%
JACK INGRAM Maybe She'll Get Lonely (Big Machine)	6.0%	39.0%	3.27	35.5%	91.3%	13.0%	3.8%
GARTH BROOKS & HUEY LEWIS Workin' For A Livin' (Pearl/Big Machine)	9.3%	36.3%	3.15	31.0%	94.0%	22.5%	4.3%
ASHTON SHEPHERD Takin' Off This Pain (MCA Nashville)	6.3%	27.5%	3.07	36.0%	87.3%	19.8%	4.0%
JOE NICHOLS It Ain't No Crime (Universal South)	4.0%	27.0%	3.18	38.0%	81.0%	15.5%	0.5%

Total sample size is 400 persons weekly with a margin of error of plus or minus 5%. Scoring is done each week using live interviewers conducting an interview with each respondent. Scores are: 5) I like it a lot, in fact it's one of my favorites; 4) I like it; 3) It's OK, just so-so; 2) I don't like it; 1) I strongly dislike it. The index score is an average of all 1-to-5 scores. The total positive score is an aggregate of the 4 and 5 scores. To be included in the weekly callout, songs must have entered the top 40 positions on R&R's Country airplay chart. The sample is composed of 400 25-54-year-olds who identify country as their favorite music and who listen daily to competitive Country radio in the sample markets. The sample is 50% male/female and evenly distributed in the 25-34, 35-44, and 45-54 demos. The sample is balanced by region and markets within that region. Bullseye Callout is conducted in these regions and markets. **SOUTH:** Charleston SC; Charlotte; Baton Rouge; Nashville; Atlanta. **MIDWEST:** Flint, MI; Indianapolis; Madison; Omaha; Cincinnati. **EAST:** Harrisburg; Rochester, NY; Springfield, MA; Providence; Washington, DC. **WEST:** Modesto, CA; Salt Lake City; Colorado Springs, CO; Portland, OR; Houston. © 2008 Radio & Records © 2008 Bullseye Marketing Research Inc..

© 2008 Radio & Records All Rights Reserved No part of this material may be reproduced in any form or incorporated in any information retrieval system without written permission of the Publisher.

**Promote your company, product, or event with
Roll-a-Sign's versatile disposable banners**

Cost-effective and reusable

Many sizes and colors available

Durable enough for indoor or outdoor use

Advertise your message in any color

Call today for more information!
1-800-231-6074 www.rollasign.com