


KEITH BRYANT "RIDIN' WITH THE LEGEND" "Top 5 Requests Three weeks in a row!" Sam Stevens WCTK/Providence
RR Indicator **40** BB 47* MR **37** "Ranked 15 out of 20 & 90% familiar with our first week call out research."
Adam Jeffries KUZZ/Bakersfield 
www.lortoncreekrecords.com

New Wolf Howls In Billings

KGHL-FM/Billing, MT OM/PD **Tom Oakes** has re-launched the venerable Country outlet as "The Wolf." He says "The new 98-5, The Wolf" targets 25-44 adults and is heavy on current and recurrents, with a gold library covering the mid '90s to the present. The Wolf lineup now features Asst. PD /MD **Karen Gallagher**, who moves from mornings to middays; Oakes from 3-6pm; and **Brett Maverick** in 6pm-midnight. Oakes is searching for a new morning anchor to join co-host **Matt Brubaker**. Get your stuff to Oakes at New Northwest Broadcasters, 222 N 32nd St, 10th Floor, Billings, MT 59101 or toakes@newnw.com.

Other changes include KGHL-FM co-host **Ed McIntosh** moving to wakeups at Classic Country KGHL-AM, where he joins PD Jeff Howell. KGHL-AM is also home to *Lonnie Bell's Classic Country*. Bell, who is 80, is celebrating his 54th year in Country radio. KGHL-AM has also picked up Jones Radio Networks' *Classic Hit Country* to supplement its programming.

Bryant Assumes BMI's Top Post

Del R. Bryant yesterday assumed the post of President & CEO of BMI. It was announced in April that he had been selected to succeed BMI's President & CEO of 18 years, **Frances W. Preston**, who is retiring from that position. She now becomes President Emeritus until year's end. At that time she will take on a new role as consultant to BMI, focusing on BMI's international relationships and the company's public policy agenda.

Reed Elevated To Chairman At Gaylord

Gaylord Entertainment has added the Chairman duties and title to President/CEO **Colin V. Reed's** job description. Reed succeeds **Michael D. Rose**, who becomes chairman of the board's executive committee. Employment contracts for Reed and Rose have also been extended through May 2008 and May 2009, respectively. (Country Format Room, www.radioandrecords.com, 8/20)

Meyer Hired As Market Manager For CC/Roanoke

Tex Meyer, most recently Dir./Sales for Mega Communications' WLCC & WMGG/Tampa, has been tapped as Market Manager for Clear Channel's nine-station cluster in Roanoke-Lynchburg, VA, including Country WYYD. Meyer spent 11 years as SVP/GM of WBZZ & WZPT/Pittsburgh. He has also been VP/GM of WWKX/Nashville, National MD for Bartell Broadcasting, Sales Manager of WMAK/Nashville and PD of WGOW/Chattanooga, TN. (Country Format Room, www.radioandrecords.com, 8/17)

Extreme Country Comes To Lafayette

Pittman Broadcasting's Rock KRXE/Lafayette has flipped to Country as "Extreme Country, X 105.9." The music mix will be heavily uptempo, and the station is applying for new calls KXCY. "We felt there was a need for a Country alternative in Lafayette," says Pittman VP **Michael Schutta**. "We kept the X 105.9 name because it described us well, we liked the logo, and we have a ton of roll banner from the

If you experienced transmission problems ... please call our Circulation Department at 310/788-1625.

© 2004 Radio & Records, Inc. All Rights Reserved No part of this material may be reproduced in any form or incorporated in any information retrieval system without written permission of the Publisher.

LeAnn Rimes
"Nothin' 'Bout Love
Makes Sense"

The Debut Country Smash From
her Forthcoming 11/02 Instore CD

Airplay 8/30

This thing is gonna SMOKE!



Healthy Hits That Work!

Trick Pony

"The Bride"

R&R: **34** - **30**

BB: 34* - 31* +100

Blue County

"that's cool"

R&R: **30** - **24**

BB: 30* - 26* +92

old owners, so we'll save some money." (Country Format Room, www.radioandrecords.com, 8/20)

WSM-FM's David Hughes Passes

WSM-FM/Nashville afternoon driver and CMA award-winning personality **David Earl Hughes** passed away Sunday morning. The cause of death is unknown; he was 47.

Hughes joined WSM-FM just over a year ago after almost 12 years with WUSY/Chattanooga, TN. He won the CMA Small Market Personality of the Year Award in 1994 and won again with 10-year partner Bill "Dex" Poindexter in 1999. Hughes was also an integral part of WUSY's eight CMA Station of the Year awards.

Poindexter said of Hughes, "David had the best radio instincts of anyone I've ever met. He just knew what good radio was and knew what he wanted to do. That set him apart from everybody else on the air."

Visitation services for Hughes will be held at the Heritage Funeral Home, 3239 Battlefield Parkway, Oglethorpe, GA 30742 (phone 706-866-5400) on Wednesday from noon-8pm. Funeral services are Thursday at 11am at the Memorial Baptist Tabernacle, 905 Hogan Rd., Rossville, GA, 30741. (Phone 706- 861-1495.)

Hughes is survived by wife Gayle, two sons, two stepdaughters and a 9-month-old grandson. In lieu of flowers, the family asks donations be made to St. Jude.

Our thoughts and prayers also go out to the entire staff at WUSY. This is the third member of the WUSY on-air family to die unexpectedly in the last 13 years. In November 1991 PD/morning personality Big **Jon Anthony** died of a heart attack at 45. Last November, it was afternoon driver **Jack Cole**, who died unexpectedly at age 41.

Got Mornings?

The shock of David Hughes' passing was still settling in on new WSM-FM/Nashville PD **John Sebastian** when

we talked Monday morning about his need for a new Music City morning show. Sebastian says he is looking for the best morning personality or team out there. If you have what it takes to go up against the best, send your T&Rs to John at **10 Music Circle East, Nashville, TN 37203** or john.sebastian@cumulus.com.

Following Hughes death, Production Director **Zack Evans** is holding down PM drive on an interim basis. Already doing mornings under those terms is MD/middayer **Frank Seres**, while **Bama** is doing middays on an, you guessed it, interim basis.

Street Talk: Lots of chatter swirling around WSM-FM as new PD **John Sebastian** begins to put his touch on things, including on-air teases of things to come. However, the most interesting rumor we've heard has WSM-FM adopting "The Wolf" persona. Adding fuel to that fire, we hear the domain name "955thewolf.com" was recently registered. Any guesses as to WSM-FM's frequency?

Pair Found Guilty In Hardison Murder

Ronnie Skipper and Orlando Smith of Lakeland, FL have been found guilty in the death of songwriter **Randy Hardison**. Sentencing is scheduled for Nov. 8 in Davidson County Criminal Court.

CMA Artist, Radio Noms Next Week

As we told you last week, the nominees announcement for the 2004 CMA Awards will air live on CBS and CMT at 7:30am CT on Aug. 30. The broadcast network's *The Early Show* will have **Kris Kistofferson** joining host **Hannah Storm** to read the top nominees, with the cable channel's *CMT Insider: CMA Special Edition* televising the remaining portion of the announcement as read by **Gretchen Wilson** and **Big & Rich**. **Dierks Bentley** will announce the finalists for the 2004 CMA Broadcast Awards.

If you'd like to carry the announcements, or record them for later use, you should know that MJI is

If you experienced transmission problems ... please call our Circulation Department at 310/788-1625.

© 2004 Radio & Records, Inc. All Rights Reserved No part of this material may be reproduced in any form or incorporated in any information retrieval system without written permission of the Publisher.

Steve Holy
Put Your Best
Dress On
The Sexiest Song On The Radio!

Just Added
KASE KWJJ KSSN WQDR KHEY
BREAKER!

RR **33** - **29** BB **33** - **32**

CURB
RECORDS
www.curb.com

Billy Dean
Let Them Be Little
Most/Added!

Adds Include
WUBE KBEQ WSOC WYRK
WCOL KSKS KXKT WIVK KATM
WZZK WIRK KSOP KZSN KIXZ

Is there a Parent ANYWHERE
that can't relate to this song?

offering a live StarGuide audio feed of it all. MJI will provide a clean audio feed as the music nominees are announced live from the CBS *Early Show* studios in New York and from CMT Studios in Nashville. Immediately afterward (9am ET), **Dierks Bentley** will announce this year's CMA Broadcast Award nominees live. MJI's audio feed will also include the ensuing press conference in its entirety. For detailed StarGuide information contact Ross Hamilton at 212-896-5272 or rhamilton@premiereradio.com.

Radio News

Music: KQFC/Boise, ID Asst. PD **Jim Miller** has added MD responsibilities as Cory Mikhals steps down to concentrate on his morning show. Miller has been with KQFC for three years and also handles middays. (Country Format Room, www.radioandrecords.com, 8/18)

Personalities: WFBE/Flint, MI personality **Cindy Austin** will join the WPCCK/Green Bay morning show on Sept. 1. She'll team with **Dave Wooten**, who has been on the air at WPCCK since March. (Country Format Room, www.radioandrecords.com, 8/18)

Artist News

Josh Turner has signed with Modern Management (Ted Greene and Brenner VanMeter).

Music News

Curb National Dir./Promotion & Marketing **April Rider** has asked us to tell you that starting today your listeners can buy **Tim McGraw's** new CD, *Live Like You Were Dying* — all 16 songs of it — for just \$9.95. But that only lasts for *one week*. She says, "It's that price at every music retailer known to man. But, after this week, regular pricing goes into effect." She added that the label shipped 1.5 million units.

Jimmy Buffett's RCA/Nashville album *License to Chill* has been certified platinum by the RIAA. Also, Rolling Stone features Buffett in its Sept. 2 issue. The piece looks at his beginnings in Nashville, the re-

ording sessions at his studio in Key West and the impetus for making *License to Chill*.

Cowtown Records has released **Ricochet's** *The Live Album*, recorded in Las Vegas ... Marco Music Group's *Club Connection* and DreamWorks/Nashville have released **Tracy Lawrence: The Club Disc** to affiliated venues and dance instructors nationwide.

Industry News

Country Weekly is celebrating its 10th anniversary with a new look debuting in the Sept. 14 issue, on newsstands Aug. 31.

Wix Wichman is taking a bit of a break from his duties as the Jim Beam liason for the Montgomery Gentry sponsorship to lend his comedic talents to an upcoming USO tour in Japan. You'll get the chance to check out the former Epic/Nashville record reps' comedy routine when he does a four- or five-minute open for upcoming MG shows.

Charley Aid

Never missing an opportunity to help neighbors in need, no matter what the sacrifice, WKHX/Atlanta teamed with Hooters last Wednesday (Aug. 18) to raise more than \$10,000 through Twelve Hours of Giving, a Hurricane Charley relief drive. WKHX personalities joined Hooters girls at various locations and accepted monetary donations, all of which went to the American Red Cross Disaster Relief Fund. Of course, the ABC Radio-owned station has a Florida connection with the many Disney cast members affected by the storm.

WKXC/Augusta, GA's fundraising efforts for victims of Hurricane Charley grew by \$9,000 last week when morning teamers Mike and Steve auctioned two trips to the November CMA awards show. WKXC parent Beasley Broadcasting owns five stations in Southwest Florida. (Country Format Room, www.radioandrecords.com, 8/18)

If you experienced transmission problems ... please call our Circulation Department at 310/788-1625.

© 2004 Radio & Records, Inc. All Rights Reserved. No part of this material may be reproduced in any form or incorporated in any information retrieval system without written permission of the Publisher.

The Title Cut From The Fastest-Selling Country Debut Artist In Years!



"Here For The Party"

GRETCHEN WILSON

the Epic revolution CONTINUES...

Locked, Coked and Ready to Rock Your Heavy Rotations NOW

6 +207 R&R 10* +218 BB

Early CallOut: BIG 35-39 Male/Female Numbers!

Double-Platinum PLUS and screaming out of the stores!

LOOK FOR GW ON THE ROAD WITH BROOKS & DUNN AND MG!



XM Is Forbes Cover Story

The current *Forbes* magazine piece on XM Radio is a must read. Part satellite radio chronology and part history lesson, **Scott Woolley's** "Broadcast Bullies" provides an overview of the medium's birth and its considerable growing pains — many at the hands of politicians, regulators and other interest groups.

At one point Woolley tries to offer readers an explanation for satellite radio's low profile in the radio consumer's consciousness. He writes, "Digital revolutions have transformed television, recorded music, medicine and more. But radio remains frozen in time, an analog anachronism in a digital world. It drives [XM chief executive] Hugh Panero crazy. 'It's 2004. In what other environment does a consumer listen to music in an analog format? Name me one,' demands Panero, a former Time Warner executive who fought TV broadcasters trying to block new cable systems in the 1980s. 'You have incumbents who are afraid,' he says. 'I've watched the hand-wringing and whining and protectionism that goes on.'

"For decades the radio industry has crushed incipient competitors by wielding raw political muscle and arguments that are at once apocalyptic and apocryphal. Radio station owners, who formed the National Association of Broadcasters in 1923, have won laws and regulations that have banned, crippled or massively delayed every major new competitive technology since the first threat emerged in 1934: FM radio."

Along the way, Woolley also offers an interesting thumbnail history of FM radio, as well as a fascinating insight into the relationship between FM, XM, the NAB and the FCC. The new issue of *Forbes* is on newsstands now.

Benefit News

The seventh annual Buds 'N' Suds Love Boat Tour kicks off Aug. 24 at Bluesboro, on Second Avenue in Nashville. The event benefits the Crohn's and Colitis Foundation and features performances by songwriters **Jason Matthews, Kylie Sackley and Roxie Dean**, as well as a silent auction. The canoe tour is set for Aug. 28 in Columbia, TN. Visit www.budsnsuds.com for details.

Leadership Music Class of 2005

Leadership Music has announced the 41 members selected for the organization's 2005 class. They are: Doug Aitken, Rick Baumgartner, Steve Bishir, Larry Blackwell, Susan Bowman, Scott Brickett, Buddy Cannon, Kay Clary, Peter Cooper, Tiffany Davis, John Dennis, Dan Herrington, Clay Hunnicut, Velvet Rousseau Kelm, Suzanne Kessler, Janet Leese, Hugh Lombardi, Steve Markland, Kathy Mattea, Heather McBee, Steve McClanahan, Lynn Morrow, Darin Murphy, Frank Myers, Mike Neal, Carol Penterman, Jim Pitt, Ellen Porter, Pam Rose, Pam Russell, Rivers Rutherford, Shari Saba, Ralph Schulz Jr., Mike Sistad, Jeff Solima, Judy Stakee, Ron Stuve, Carter Todd, Ben Vaughn, Jon Vezner and Larry Willoughby. (For company affiliation and job title, go to the Country Format Room at www.radioandrecords.com and look for the 8/19 news.)

Life Notes

Best wishes to Vector Management's **John Dennis** and Capitol/Nashville Manager/Finance **Jenny Dennis** on the Aug. 22 birth of their first child, daughter Finley Baird Dennis.

Heartiest congratulations also to Westwood One Country prep writer/producer **Cynthia Frawley** and husband Rich on the Aug. 21 birth of John William.

Chronicle

Condolences to Ricochet lead singer **Heath Wright** and his family on the passing of his father, William Wright,

If you experienced transmission problems ... please call our Circulation Department at 310/788-1625.

© 2004 Radio & Records, Inc. All Rights Reserved No part of this material may be reproduced in any form or incorporated in any information retrieval system without written permission of the Publisher.

It's A Song For Our Times. It's A Song For All Time.

WHAT SAY YOU The New Columbia Single From

Travis Tritt & John Mellencamp

Straight from the desk to the control room at WBBS, WDAF, WFMS, WGGY, WGKX, WKCQ, WKDF, WPCV, WUSN, WXTU, KATM, KDRK, KHKI, KKCS, KNIX, KTOM, KUBL

Official airplay date: **THIS MONDAY**

The new CD **MY HONKY TONK HISTORY**

Listen/look for Travis on After Midnite and the Republican National Convention this week!



on Aug. 17. Mr. Wright had been battling lymphoma. Services were held Aug. 19 in Vian, OK. In lieu of flowers, the family requests donations to the Leukemia and Lymphoma Society.

— **Lon Helton/Country Editor** (615) 244-8822
Email: lhelton@radioandrecords.com

— **Chuck Aly/R&R Asst. Country Editor** (615) 244-8822
Email: caly@radioandrecords.com

MUSICNOTES

Broken Bow's **Craig Morgan** will join Copley and Simba Instruments in presenting \$10,000 worth of musical instruments to the Van Leer Elementary School in Dickson, TN on Aug. 30 at 1pm. Morgan, who endorses Copley and Simba instruments, said of his efforts, "One of the reasons that I chose to work with Copley and Simba, in addition to the fact that they make excellent instruments, was because of their involvement with children. There is no greater contribution to the community than supporting the children. They are the future of our community and country." Morgan's son, Wyatt, attends Van Leer Elementary.

Gretchen Wilson's self-portrait is featured in the September issue of Blender magazine in a feature titled "Who Does Gretchen Wilson Think She Is?" Wilson talks about the last fight she was in, the type of music she hates and her nickname in high school and answers a few intimate questions. As is typical for the piece, she also drew a portrait of herself for the magazine.

Keith Urban launches a CMT-sponsored tour on Oct. 8 in Muncie, IN. Rolling under the moniker CMT

On Tour: Keith Urban *Be Here '04*, the tour's first leg has 20 dates confirmed over five weeks, with Universal South's **Katrina Elam** opening. Urban's next album, *Be Here*, hits stores Sept. 21.

Toby Keith recently recorded two new duets with **Merle Haggard**. One was for Keith's upcoming album, produced by **James Stroud**, and one was for Haggard's next release, which is being produced by **Jimmy Bowen**.

Tim McGraw will be performing in Green Bay, WI on Sept 30 and Oct. 1 under the watchful eye of a video crew taping the concerts for his second NBC primetime special. An airdate has not been set. In other McGraw news, XM Satellite Radio's new weekly series *Highway 16 ShortCuts* launched Aug. 20 by featuring his upcoming album, *Live Like You Were Dying*. The series will focus on new music by playing an entire album in a commercial-free format. McGraw also sat for an extensive interview.

Tim McGraw is donating the profits from his Aug. 22 show in Orlando to hurricane relief efforts. "I have tremendous sympathy for everything the citizens of Florida are going through with this hurricane," McGraw says. "It just felt right to take the profits from this show and put them back into the community. Hopefully we can help make a difference in people's lives."

And, since we needed a little more Tim McGraw news in this space, he and **Jackson Browne** are scheduled to tape an episode of *CMT Crossroads* which will air in November.

Trace Adkins will return to his alma mater, Louisiana Tech University, to sing the national anthem prior to its 2004 football season opener on

If you experienced transmission problems ... please call our Circulation Department at 310/788-1625.

© 2004 Radio & Records, Inc. All Rights Reserved No part of this material may be reproduced in any form or incorporated in any information retrieval system without written permission of the Publisher.

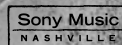
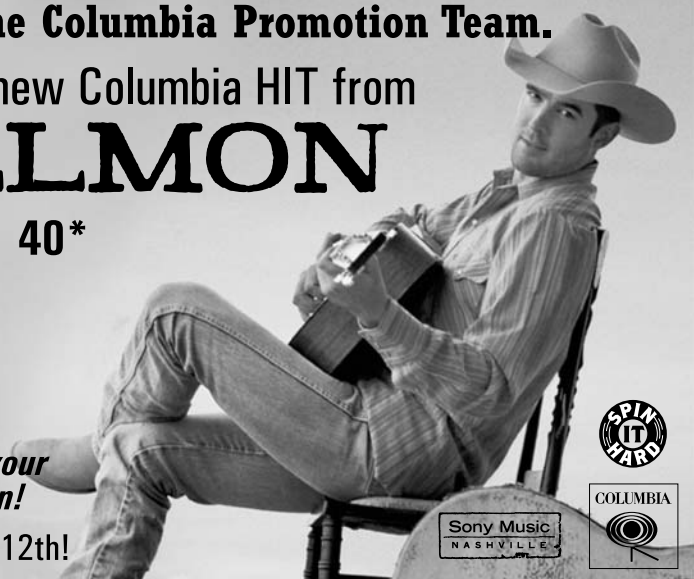
We Will Break This Artist This Fall! - The Columbia Promotion Team.
DIXIE ROSE DELUXE's... the new Columbia HIT from
TRENT WILLMON

R&R **38** BB **40***

Big fat airplay from
KHEY, KNIX, KPLX, KSSN, WCTK,
WKCQ, WSOC, WSTH!

Look for Trent and his Smoking Gun tour coming your way with killer brisket and awesome music soon!

Trent's debut Columbia CD hits stores Tuesday, October 12th!



Sept. 6. Adkins was a linebacker at the school while studying petroleum engineering, before a knee injury ended his hopes for a football career.

↪ **Lonestar** is giving fans a sneak peak at the fully animated video for their single "Mr. Mom" on their website, www.lonestar.mu, this week. The video premiers on CMT Aug. 26.

↪ **Ricky Skaggs, Josh Turner, Collin Raye, Billy Dean, Marty Raybon, The Whites** and others have launched a get-out-the-vote initiative called "Your Country Your Vote." The effort has been organized by the artists appearing on the TimeLife CD *America Will Always Stand*.

↪ **Cledus T. Judd** performed for an estimated 24,000 people at the NASCAR Busch race last weekend, selling out of copies of his new album, *Bipolar and Proud*. Fans reportedly were offering as much as \$75 to those who were able to purchase the disc.

↪ In addition to their Aug. 25 appearance on *Good Morning America*, **Big & Rich** will be featured in an upcoming *60 Minutes* profile of the MuzikMafia, are set to tape for AOL's *Live Sessions*, are recording a live set for Real Networks, and will be showing up on VH1 later this year. They are also featured in this week's *People*.

— Chuck Aly/R&R Asst. Country Editor (615) 244-8822
Email: caly@radioandrecords.com

VIDEO ADDS	
CMT	
LONESTAR	Mr. Mom
TRENT WILLMON	Dixie Rose Deluxe's
GREAT AMERICAN COUNTRY	
RASCAL FLATTS	Feels Like Today

RANDOM FAX®

Tuesday, 8/24

BIRTHDAYS: John Cowan, Clint Daniels, Kristyn Osborn (SheDaisy), Darrin Kirkindoll, Chevy Nash, Wendy Pearl
On TV: CMT: *100 Greatest Love Songs*; CBS: *Travis Tritt, The Late Late Show With Craig Kilborn**; CNN: *Tim McGraw, Larry King Live**; GAC: *Tim McGraw, Travis Tritt, Dierks Bentley*, and more, *Country Music Across America**; *Helen Cornelius, Celebrity Kitchen**

Wednesday, 8/25

BIRTHDAYS: Billy Ray Cyrus, Jo Dee Messina, Henry Paul (Blackhawk), Tim Mensy, Allyson Scott, Karen Tallier
On TV: ABC: *Big & Rich, Good Morning America**; CMT: *40 Greatest Men of Country Music*; GAC: *Cledus T. Judd, CRL**; *Riders In The Sky, GAC Classic**

Thursday, 8/26

BIRTHDAYS: Don Bowman, Jimmy Olander (Diamond Rio)
On TV: CMT: *20 Greatest Myths: Rumors, Legends and Downright Lies*; GAC: *Tracy Lawrence, CRL**; *Mel Tillis, Celebrity Kitchen**

Friday, 8/27

BIRTHDAYS: Jeff Cook (Alabama), Jimmy C. Newman, Jeffrey Steele, Colleen Addair, Mac Daniels, Andrea Dresdale, Beth Kindig, Frances Preston, Cassandra Tynes
On TV: ABC: *Tim McGraw, Good Morning America**; CMT: *20 Greatest Myths: Rumors, Legends and Downright Lies*; FOX: *Montgomery Gentry, On Air With Ryan Seacrest**; GAC: *Lynn Anderson, GAC Classic**; *The Kinleys, Celebrity Kitchen**

Saturday, 8/28

BIRTHDAYS: Sherrie Austin, LeAnn Rimes, Shania Twain, Steve Baker, Mike Chapman, Tina Crawford, Susan Heard, Ken Johnson, Tom Kouchoukos, Jo McFadden, Areeda Schneider
On TV: CMT: *Terri Clark, Gretchen Wilson, Jedd Hughes, CMT Insider**; GAC: *Martina McBride, Billy Ray Cyrus, The Notorious Cherry Bombs, Grand Ole Opry Live**; *Mel Tillis, Celebrity Kitchen*; PBS: *Los Lonely Boys, Austin City Limits**

Sunday, 8/29

BIRTHDAYS: Shawn Camp, Dan Truman (Diamond Rio), Darlene Dixon, James T. Horn, Vicki Russell
On TV: CMT: *Lost Highway: The History of American Country — Beyond Nashville/Sweethearts of Rodeo*; GAC: *The Kinleys, Celebrity Kitchen*

Monday, 8/30

BIRTHDAYS: Kitty Wells, Gerald Whitworth
On TV: CBS: *Kris Kristofferson* joins host *Hannah Storm* for the announcement of 2004 CMA Awards nominees, *The Early Show**; CMT: *Gretchen Wilson, Big & Rich, CMT Insider: CMA Special Edition**; *Wynonna/Heart, CMT Crossroads*

*PREMIERE AIRING

If you experienced transmission problems ... please call our Circulation Department at 310/788-1625.

© 2004 Radio & Records, Inc. All Rights Reserved No part of this material may be reproduced in any form or incorporated in any information retrieval system without written permission of the Publisher.

THANKS TO ALL THE EARLY BELIEVERS!!!

JOHN STONE
"shame on me"

"WORDS EVERY WOMAN WANTS TO HEAR" - *Darlene Dixon, WLWI Montgomery, AL*

"LISTENING TO COUNTRY MUSIC LIKE THAT IS WHAT MAKES ME LOVE THE LOW-PAID, LOST ART OF DJ'ING ALL OVER AGAIN!" - *Gwen Wilson, WZKX Biloxi, MS*

"Hump IT or Dump IT" 76% = 'HUMPED IT' *KMLE, Phoenix AZ*

WPAP, WTCR, WSM-FM (thank you SuAnna), WFMB, WQSG, WPCV, KBUL...

Still Going For Adds.....

After Midnite
with Blair Garner
77% Picked



www.johnwstone.com www.tootsies.net

LW	TW	ARTIST Title Label(s)	Total Points	+/- Points	Total Plays	+/- Plays	Tot. Aud. (00)	+/- Aud. (00)	Wks On	Total Station
1	1	TIM MCGRAW Live Like You Were Dying (<i>Curb</i>)	13760	-794	4913	-319	481110	-21646	14	113/0
3	2	BRAD PAISLEY f/ ALISON KRAUSS Whiskey Lullaby (<i>Arista</i>)	11536	396	4041	+62	374230	15956	21	113/0
4	3	KEITH URBAN Days Go By (<i>Capitol</i>)	11288	622	4004	+197	385046	20499	10	113/1
5	4	TERRI CLARK Girls Lie Too (<i>Mercury</i>)	10493	519	3765	+161	360630	28959	20	112/0
6	5	JOSH GRACIN I Want To Live (<i>Lyric Street</i>)	8767	-904	3151	-296	282489	-44618	25	113/0
9	6	GRETCHEN WILSON Here For The Party (<i>Epic</i>)	8514	457	3053	+207	290161	16742	12	113/0
8	7	ANDY GRIGGS She Thinks She Needs Me (<i>RCA</i>)	8417	191	3073	+78	284282	7206	26	113/0
7	8	BIG & RICH Save A Horse, Ride A Cowboy (<i>Warner Bros.</i>)	8328	-23	2986	+13	258337	-1902	20	110/0
11	9	SARA EVANS Suds In The Bucket (<i>RCA</i>)	8297	514	2896	+192	285135	22555	18	112/2
10	10	ALAN JACKSON Too Much Of A Good Thing Is A Good Thing (<i>Arista</i>)	7956	-21	2959	+83	267110	-4467	11	112/0
13	11	GEORGE STRAIT I Hate Everything (<i>MCA</i>)	7777	199	2719	+79	256291	7011	8	111/0
17	12	TOBY KEITH Stays In Mexico (<i>DreamWorks</i>)	6987	1155	2393	+371	231660	34610	4	111/2
14	13	RASCAL FLATTS Feels Like Today (<i>Lyric Street</i>)	6564	400	2286	+116	213039	21987	11	113/2
16	14	PHIL VASSAR In A Real Love (<i>Arista</i>)	6268	270	2209	+121	207421	11673	17	107/1
18	15	BROOKS & DUNN That's What It's All About (<i>Arista</i>)	6223	943	2222	+329	201578	26720	9	111/0
15	16	JOE NICHOLS If Nobody Believed In You (<i>Universal South</i>)	6001	-108	2232	+51	194841	-1584	22	110/0
20	17	TRACE ADKINS Rough & Ready (<i>Capitol</i>)	4800	186	1862	+65	148290	9751	18	102/1
21	18	JULIE ROBERTS Break Down Here (<i>Mercury</i>)	4678	229	1745	+63	144871	10565	25	100/1
22	19	JIMMY WAYNE You Are (<i>DreamWorks</i>)	4269	148	1594	+66	128103	7031	19	99/4
24	20	DIERKS BENTLEY How Am I Doin' (<i>Capitol</i>)	4081	554	1547	+227	125733	22303	15	100/6
25	21	GARY ALLAN Nothing On But The Radio (<i>MCA</i>)	4073	566	1430	+224	128206	17198	11	99/4
26	22	LONESTAR Mr. Mom (<i>BNA</i>)	3309	741	1174	+264	105621	23653	7	96/16
27	23	SHEDAISY Come Home Soon (<i>Lyric Street</i>)	2749	384	1029	+107	85956	15632	8	87/1
30	24	BLUE COUNTY That's Cool (<i>Asylum/Curb</i>)	2204	168	918	+61	60703	6470	13	86/3
Breaker	25	DARRYL WORLEY Awful, Beautiful Life (<i>DreamWorks</i>)	2188	107	755	+42	61986	3777	8	69/3

© 2004 Radio & Records, Inc.

kenny chesney
"The Woman with You"
**27 ADDS
2 WEEKS
EARLY**
**YOUR TURN
THIS WEEK!!**

© 2004 BMG Music

RACHEL PROCTOR
"Where I Belong"
**THE ALBUM: "8 SOUNDSCAN DEBUT
WITH 19,051 UNITS!**
THE SINGLE: ON YOUR DESK NOW!
8-30 IMPACT DATE
BNA
BNA RECORDS LABEL

Lonestar
**"Mr. Mom"
Huge HIT**
**#3 play increase
this week**
16 new ADDS!
PLAY IT MORE!!

LW	TW	ARTIST Title Label(s)	Total Points	+/- Points	Total Plays	+/- Plays	Tot. Aud. (00)	+/- Aud. (00)	Wks On	Total Station
31	26	CRAIG MORGAN Look At Us (BBR)	2032	11	824	-5	56858	708	18	80/2
32	27	MONTGOMERY GENTRY You Do Your Thing (Columbia)	1921	200	797	+98	58884	9882	6	83/4
28	28	TRAVIS TRITT The Girl's Gone Wild (Columbia)	1721	-485	700	-193	45087	-13760	17	82/0
Breaker	29	STEVE HOLY Put Your Best Dress On (Curb)	1635	5	643	+5	45780	1386	14	71/5
34	30	TRICK PONY The Bride (Asylum/Curb)	1603	88	662	+30	42610	2277	9	67/2
Breaker	31	BLAKE SHELTON Some Beach (Warner Bros.)	1538	345	614	+129	42191	12560	4	70/8
38	32	RESTLESS HEART Feel My Way To You (Koch)	1398	372	513	+135	35795	4415	6	53/7
35	33	CLAY WALKER Jesus Was A Country Boy (RCA)	1322	73	511	+35	34733	6801	7	61/2
39	34	KATRINA ELAM No End In Sight (Universal South)	1122	190	428	+64	27240	3641	6	61/9
40	35	SUGARLAND Baby Girl (Mercury)	1095	211	418	+64	30558	4930	5	52/5
42	36	PAT GREEN Don't Break My Heart Again (Universal/Republic/Mercury)	970	247	248	+99	27602	4412	2	28/21
41	37	MARK CHESNUTT The Lord Loves The Drinkin' Man (Vivaton)	855	106	338	+25	18501	1088	7	40/2
43	38	TRENT WILLMON Dixie Rose Deluxe's... (Columbia)	779	159	364	+29	16429	4172	3	52/6
37	39	TRACY LAWRENCE It's All How You Look At It (DreamWorks)	709	-386	330	-147	18553	-8634	9	38/0
Debut	40	JIMMY BUFFETT f/MARTINA MCBRIDE Trip Around ... (RCA/Mailboat)	671	504	201	+152	18461	13121	1	27/20
46	41	JENKINS Getaway Car (Capitol)	605	133	213	+41	14385	3189	2	41/4
48	42	DIAMOND RIO Can't You Tell (Arista)	560	113	234	+43	13443	1939	2	24/0
45	43	CLINT BLACK My Imagination (Equity Music Group)	514	2	212	+9	11913	288	6	35/1
47	44	LOS LONELY BOYS Heaven (Or/Epic)	490	28	167	+22	15170	-611	2	9/0
Debut	45	REBA MCENTIRE He Gets That From Me (MCA)	489	350	161	+118	11140	8055	1	40/35
Debut	46	CLEDUS T. JUDD I Love NASCAR (Koch)	456	321	178	+120	20564	15170	1	1/0
49	47	TRENT WILLMON The Good Life (Columbia)	436	35	60	+5	15787	1618	4	0/0
44	48	BUDDY JEWELL One Step At A Time (Columbia)	432	-85	168	-51	10272	-1152	10	34/0
Debut	49	CATHERINE BRITT The Upside Of Being Down (RCA)	406	138	169	+66	7751	1456	1	34/6
Debut	50	JOHN MICHAEL MONTGOMERY Goes Good With Beer (Warner Bros.)	354	-3	194	+14	6764	-465	1	31/2

© 2004 Radio & Records, Inc.

The follow-up from the only new male artist in 2004 to debut a top 5 single

"NOTHIN' TO LOSE"

STEPPING OUT 2 WEEKS EARLY
 WKHX/ATLANTA
 KWJJ/PORTLAND
 WYCD/DETROIT
 KSOP/SALT LAKE CITY

LYRIC SYREY
 RECORDS



JOSH GRACIN

© 2004 Radio & Records, Inc.

COUNTRY

MOST ADDED

ARTIST Title Label(s)	Adds
REBA MCENTIRE He Gets That From Me (MCA)	35
KENNY CHESNEY The Woman With You (BNA)	27
PAT GREEN Don't Break My Heart Again (Universal/Republic/Mercury)	21
BILLY DEAN Let Them Be Little (View2/Curb)	21
JIMMY BUFFETT f/MARTINA MCBRIDE Trip Around ... (RCA/Mailboat)	20
TRAVIS TRITT f/JOHN MELLENCAMP What Say You (Columbia)	17
LONESTAR Mr. Mom (BNA)	16
JOE DIFFIE If I Could Only Bring You Back (BBR)	15
JESSI ALEXANDER Make Me Stay Or Make Me Go (Columbia)	14

MOST INCREASED POINTS

ARTIST Title Label(s)	Total Pt. Increase
TOBY KEITH Stays In Mexico (DreamWorks)	+1155
BROOKS & DUNN That's What It's All About (Arista)	+943
LONESTAR Mr. Mom (BNA)	+741
KEITH URBAN Days Go By (Capitol)	+622
GARY ALLAN Nothing On But The Radio (MCA)	+566
DIERKS BENTLEY How Am I Doin' (Capitol)	+554
TERRI CLARK Girls Lie Too (Mercury)	+519
SARA EVANS Suds In The Bucket (RCA)	+514
JIMMY BUFFETT f/MARTINA MCBRIDE Trip Around ... (RCA/Mailboat)	+504
GRETCHEN WILSON Here For The Party (Epic)	+457

MOST INCREASED PLAYS

ARTIST Title Label(s)	Total Play Increase
TOBY KEITH Stays In Mexico (DreamWorks)	+371
BROOKS & DUNN That's What It's All About (Arista)	+329
LONESTAR Mr. Mom (BNA)	+264
DIERKS BENTLEY How Am I Doin' (Capitol)	+227
GARY ALLAN Nothing On But The Radio (MCA)	+224
GRETCHEN WILSON Here For The Party (Epic)	+207
KEITH URBAN Days Go By (Capitol)	+197
SARA EVANS Suds In The Bucket (RCA)	+192
TERRI CLARK Girls Lie Too (Mercury)	+161
JIMMY BUFFETT f/MARTINA MCBRIDE Trip Around ... (RCA/Mailboat)	+152

COUNTRY INDICATOR

MOST ADDED

ARTIST Title Label(s)	Adds
KENNY CHESNEY The Woman With You (BNA)	35
REBA MCENTIRE He Gets That From Me (MCA)	23
JIMMY BUFFETT f/MARTINA MCBRIDE Trip Around ... (RCA/Mailboat)	21
PAT GREEN Don't Break My Heart Again (Universal/Republic/Mercury)	18
BLAKE SHELTON Some Beach (Warner Bros.)	14
EMERSON DRIVE November (DreamWorks)	14
JOE DIFFIE If I Could Only Bring You Back (BBR)	10
SHEDAISY Come Home Soon (Lyric Street)	9
LONESTAR Mr. Mom (BNA)	8

MOST INCREASED POINTS

ARTIST Title Label(s)	Total Pt. Increase
LONESTAR Mr. Mom (BNA)	+398
KENNY CHESNEY The Woman With You (BNA)	+389
BLAKE SHELTON Some Beach (Warner Bros.)	+374
GARY ALLAN Nothing On But The Radio (MCA)	+369
SARA EVANS Suds In The Bucket (RCA)	+314
TRACE ADKINS Rough & Ready (Capitol)	+305
ALAN JACKSON Too Much Of A Good Thing Is A ... (Arista)	+301
REBA MCENTIRE He Gets That From Me (MCA)	+297
ANDY GRIGGS She Thinks She Needs Me (RCA)	+287
GRETCHEN WILSON Here For The Party (Epic)	+286

MOST INCREASED PLAYS

ARTIST Title Label(s)	Total Play Increase
KENNY CHESNEY The Woman With You (BNA)	+313
LONESTAR Mr. Mom (BNA)	+308
GARY ALLAN Nothing On But The Radio (MCA)	+285
BLAKE SHELTON Some Beach (Warner Bros.)	+280
SARA EVANS Suds In The Bucket (RCA)	+275
GRETCHEN WILSON Here For The Party (Epic)	+255
REBA MCENTIRE He Gets That From Me (MCA)	+234
TRACE ADKINS Rough & Ready (Capitol)	+233
ANDY GRIGGS She Thinks She Needs Me (RCA)	+228
ALAN JACKSON Too Much Of A Good Thing Is A ... (Arista)	+220

Dierks Bentley
"How Am I Doin'"

TOP 5 SPIN INCREASER!



RR 20 +227/+554 pts BB 21 +283

COUNTRY INDICATOR NEW & ACTIVE

MEMARIE I Know You By Heart (*Cupit*)
Total Plays: 175, Total Stations: 11, Adds: 0

JOE DIFFIE If I Could Only Bring You Back (*BBR*)
Total Plays: 126, Total Stations: 17, Adds: 10

CLINT BLACK My Imagination (*Equity Music Group*)
Total Plays: 124, Total Stations: 11, Adds: 1

JOHN MICHAEL MONTGOMERY Goes Good With Beer (*Warner Bros.*)
Total Plays: 119, Total Stations: 12, Adds: 1

COUNTRY NEW & ACTIVE

CHRISTY SUTHERLAND Freedom (*Epic*)
Total Plays: 118, Total Stations: 16, Adds: 2

EMERSON DRIVE November (*DreamWorks*)
Total Plays: 102, Total Stations: 23, Adds: 6

KENNY CHESNEY The Woman With You (*BNA*)
Total Plays: 94, Total Stations: 27, Adds: 27

TRAVIS TRITT f/JOHN MELLENCAMP What Say You (*Columbia*)
Total Plays: 75, Total Stations: 18, Adds: 17

BILLY DEAN Let Them Be Little (*View2/Curb*)
Total Plays: 59, Total Stations: 25, Adds: 21

BRAD COTTER Can't Tell Me Nothin' (*Epic*)
Total Plays: 31, Total Stations: 10, Adds: 1

JOE DIFFIE If I Could Only Bring You Back (*BBR*)
Total Plays: 8, Total Stations: 16, Adds: 15

JESSI ALEXANDER Make Me Stay Or Make Me Go (*Columbia*)
Total Plays: 3, Total Stations: 14, Adds: 14

Songs ranked by total plays



8/30

DUSTY DRAKE I Am The Working Man (*Warner Bros.*)

LEANN RIMES Nothin' 'Bout Love Makes Sense (*Asylum/Curb*)

RACHEL PROCTOR Where I Belong (*BNA*)

TRAVIS TRITT f/JOHN MELLENCAMP What Say You (*Columbia*)

9/7

CAROLINA RAIN I Ain't Scared (*Equity*)

JOSH GRACIN Nothin' To Lose (*Lyric Street*)

KENNY CHESNEY The Woman With You (*BNA*)

9/13

JAY TETER Football, Beer And You (*Quarterback*)

JEFFREY STEELE Once A Cowboy (*3 Ring Circus/Lofton Creek*)

MOST PLAYED RECURRENTS

ARTIST Title Label(s)	Total Plays
KENNY CHESNEY I Go Back (<i>BNA</i>)	4468
BILLY CURRINGTON I Got A Feelin' (<i>Mercury</i>)	2320
GRETCHEN WILSON Redneck Woman (<i>Epic</i>)	2109
REBA MCENTIRE Somebody (<i>MCA</i>)	1889
JOHN MICHAEL MONTGOMERY Letters From Home (<i>Warner Bros.</i>)	1887
KENNY CHESNEY f/UNCLE KRACKER When The Sun Goes Down (<i>BNA</i>)	1665
MONTGOMERY GENTRY If You Ever Stop Loving Me (<i>Columbia</i>)	1487
RASCAL FLATTS Mayberry (<i>Lyric Street</i>)	1422
ALAN JACKSON Remember When (<i>Arista</i>)	1254
MARTINA MCBRIDE How Far (<i>RCA</i>)	1165

**POWERED BY
MEDIABASE**

113 Country reporters. Songs ranked by total points for the airplay week of 8/15-8/21. Bullets appear on songs gaining points and/or plays or remaining flat from previous week. If two songs are tied in total points, the song with the larger increase in points is placed first. Songs below No. 1 and down in points and plays for three consecutive weeks are moved to recurrent. Most Added is the total number of new adds officially reported to R&R by each reporting station. Songs unreported as adds do not count toward overall total stations playing a song. Most Increased Points lists the songs with the greatest week-to-week increases in total points. Station Weight = AQH Persons + (Market rank X 10) divided by 4180. Total Audience equals Average Quarter Hour Persons times number of plays (times 100). Each daypart on each station is assigned an AQH number. Average Quarter Hour Persons used herein with permission from the Arbitron Company (© 2004, The Arbitron Company). © 2004, R&R, Inc.

CONGRATULATIONS TIM!

8 Weeks at #1 and Still Going Strong

Live Like You Were Dying

Tim McGraw

RR #1 BB #1

**The Most Anticipated Album of the Year
In Stores TODAY!!!**



August 24, 2004

LW	TW	ARTIST Title Label(s)	Total Points	+/- Points	Total Plays	+/- Plays	Tot. Aud. (00)	+/- Aud. (00)	Wks On	Total Station
1	1	TIM MCGRAW Live Like You Were Dying (<i>Curb</i>)	5714	-134	4362	-138	137092	-3483	14	110/0
3	2	KEITH URBAN Days Go By (<i>Capitol</i>)	5379	141	4136	+118	129233	3291	10	113/0
5	3	TERRI CLARK Girls Lie Too (<i>Mercury</i>)	5264	174	4077	+156	123983	4157	19	112/0
2	4	KENNY CHESNEY I Go Back (<i>BNA</i>)	5109	-423	3871	-379	123755	-8743	17	108/0
4	5	BRAD PAISLEY f/ ALISON KRAUSS Whiskey Lullaby (<i>Arista</i>)	5053	-116	3905	-84	122717	-2327	23	107/0
7	6	ANDY GRIGGS She Thinks She Needs Me (<i>RCA</i>)	4638	287	3619	+228	108891	6210	25	111/2
8	7	ALAN JACKSON Too Much Of A Good Thing Is A Good Thing (<i>Arista</i>)	4627	301	3551	+220	108798	6681	11	113/0
6	8	JOSH GRACIN I Want To Live (<i>Lyric Street</i>)	4372	-669	3268	-610	107457	-12587	24	101/0
9	9	SARA EVANS Suds In The Bucket (<i>RCA</i>)	4290	314	3317	+275	100031	6585	18	112/0
11	10	GRETCHEN WILSON Here For The Party (<i>Epic</i>)	4119	286	3212	+255	96506	6503	11	111/0
10	11	GEORGE STRAIT I Hate Everything (<i>MCA</i>)	4044	191	3132	+156	94328	4149	8	111/1
12	12	BIG & RICH Save A Horse, Ride A Cowboy (<i>Warner Bros.</i>)	3414	83	2693	+45	80966	2625	17	101/1
13	13	RASCAL FLATTS Feels Like Today (<i>Lyric Street</i>)	3353	169	2581	+138	80131	4251	11	112/1
15	14	BROOKS & DUNN That's What It's All About (<i>Arista</i>)	3265	273	2527	+205	78308	6963	9	105/0
16	15	TOBY KEITH Stays In Mexico (<i>DreamWorks</i>)	3224	278	2513	+200	76661	7542	4	111/3
17	16	TRACE ADKINS Rough & Ready (<i>Capitol</i>)	3145	305	2392	+233	74179	7874	21	104/3
14	17	JOE NICHOLS If Nobody Believed In You (<i>Universal South</i>)	3138	44	2488	+49	72815	869	23	99/1
18	18	PHIL VASSAR In A Real Love (<i>Arista</i>)	2958	195	2264	+156	71349	5020	18	105/1
20	19	JULIE ROBERTS Break Down Here (<i>Mercury</i>)	2608	62	2054	+44	61028	1903	26	98/2
22	20	GARY ALLAN Nothing On But The Radio (<i>MCA</i>)	2593	369	2005	+285	59371	9415	11	108/6
21	21	JIMMY WAYNE You Are (<i>DreamWorks</i>)	2484	213	1913	+177	57647	5119	23	96/6
23	22	DIERKS BENTLEY How Am I Doin' (<i>Capitol</i>)	2268	166	1780	+137	52165	4129	16	96/2
24	23	LONESTAR Mr. Mom (<i>BNA</i>)	2080	398	1615	+308	48610	9314	7	106/8
26	24	SHEDAISY Come Home Soon (<i>Lyric Street</i>)	1745	230	1338	+176	40567	5373	8	95/9
28	25	MONTGOMERY GENTRY You Do Your Thing (<i>Columbia</i>)	1378	196	1083	+155	32586	4762	7	81/4

© 2004 Radio & Records, Inc.



SHOW SOME LOVE!

EAGER? ECCENTRIC? ENERGETIC?

Man's best friend might not be able to help you during ratings, but his owner sure can. Reward him with a station decal from Communication Graphics and watch your ratings grow.



Communication Graphics Inc
THE DECAL COMPANY
800.331.4438 - www.cgilink.com

Preferred by
more radio
stations
since 1973.





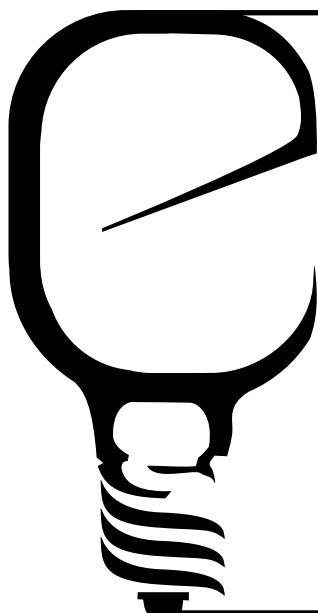


BRIGHT COLORS. LONG-LASTING. DURABLE. WEATHER-RESISTANT.

August 24, 2004

LW	TW	ARTIST Title Label(s)	Total Points	+/- Points	Total Plays	+/- Plays	Tot. Aud. (00)	+/- Aud. (00)	Wks On	Total Station
29	26	DARRYL WORLEY Awful, Beautiful Life (<i>DreamWorks</i>)	1294	188	1025	+151	28819	3991	8	86/7
34	27	BLAKE SHELTON Some Beach (<i>Warner Bros.</i>)	1226	374	950	+280	28122	8463	4	83/14
30	28	BLUE COUNTY That's Cool (<i>Asylum/Curb</i>)	1076	53	876	+45	24002	1261	13	64/3
31	29	CRAIG MORGAN Look At Us (<i>BBR</i>)	1064	43	807	+37	25159	813	19	57/3
27	30	AMY DALLEY Men Don't Change (<i>Curb</i>)	1033	-423	725	-368	25123	-9314	29	60/0
33	31	TRICK PONY The Bride (<i>Asylum/Curb</i>)	944	90	755	+72	21278	1978	9	64/2
35	32	STEVE HOLY Put Your Best Dress On (<i>Curb</i>)	817	50	629	+38	20255	1179	13	51/2
36	33	RESTLESS HEART Feel My Way To You (<i>Koch</i>)	755	119	592	+88	18138	3592	7	47/2
32	34	TRACY LAWRENCE It's All How You Look At It (<i>DreamWorks</i>)	754	-196	542	-142	17269	-3381	11	49/0
37	35	MARK CHESNUTT The Lord Loves The Drinkin' Man (<i>Vivaton</i>)	634	101	518	+71	13749	2550	8	47/5
38	36	SUGARLAND Baby Girl (<i>Mercury</i>)	633	106	513	+82	11635	1973	6	40/2
39	37	CLAY WALKER Jesus Was A Country Boy (<i>RCA</i>)	515	45	418	+33	11006	713	6	38/1
45	38	EMERSON DRIVE November (<i>DreamWorks</i>)	479	227	384	+173	10959	5711	2	40/14
40	39	DIAMOND RIO Can't You Tell (<i>Arista</i>)	473	41	374	+42	10692	802	4	35/3
41	40	KEITH BRYANT Ridin' With The Legend (<i>Lofton Creek</i>)	452	66	385	+54	9016	1342	8	24/2
44	41	KATRINA ELAM No End In Sight (<i>Universal South</i>)	395	97	340	+76	7960	1864	5	36/5
Debut	42	REBA MCENTIRE He Gets That From Me (<i>MCA</i>)	394	297	333	+234	7978	6033	1	35/23
Debut	43	KENNY CHESNEY The Woman With You (<i>BNA</i>)	389	389	313	+313	7854	7854	1	35/35
43	44	NOTORIOUS CHERRY BOMBS It's Hard To Kiss ... (<i>Universal South</i>)	362	21	318	+22	7845	435	6	19/1
Debut	45	JIMMY BUFFETT f/MARTINA MCBRIDE Trip Around ... (<i>RCA/Mailboat</i>)	357	215	273	+173	8103	4851	1	32/21
Debut	46	PAT GREEN Don't Break My Heart Again (<i>Universal/Republic/Mercury</i>)	354	255	296	+208	6855	4735	1	26/18
49	47	JENKINS Getaway Car (<i>Capitol</i>)	307	94	248	+68	6379	1861	2	23/3
47	48	CATHERINE BRITT The Upside Of Being Down (<i>RCA</i>)	302	76	237	+65	6696	1856	2	25/4
48	49	TRENT WILLMON Dixie Rose Deluxe's... (<i>Columbia</i>)	291	76	245	+61	6792	1477	2	24/4
42	50	BUDDY JEWELL One Step At A Time (<i>Columbia</i>)	211	-154	170	-112	4598	-2692	12	13/0

© 2004 Radio & Records, Inc.



What If...

your music test had no bad respondents
and exactly the right sample?

The Edison Media Research Music Test
Superior Methodology, Superior Value

contact: Larry Rosin at LRosin@edisonresearch.com or 908.707.4707



Artist Title (Label)	TW	LW	Fam.	Burn	P 25-54	W 25-54	M 25-54
TIM MCGRAW Live Like You Were Dying (Curb)	4.44	4.44	100%	24%	4.43	4.43	4.44
BRAD PAISLEY f/ALISON KRAUSS Whiskey Lullaby (Arista)	4.33	4.21	99%	23%	4.35	4.23	4.44
KEITH URBAN Days Go By (Capitol)	4.23	4.14	94%	13%	4.23	4.38	4.11
KENNY CHESNEY I Go Back (BNA)	4.20	4.19	99%	23%	4.15	4.26	4.06
ANDY GRIGGS She Thinks She Needs Me (RCA)	4.19	4.18	95%	16%	4.16	4.25	4.08
SARA EVANS Suds In The Bucket (RCA)	4.19	4.22	91%	12%	4.21	4.25	4.17
JOE NICHOLS If Nobody Believed In You (Universal South)	4.19	4.10	91%	16%	4.20	4.26	4.16
GARY ALLAN Nothing On But The Radio (MCA)	4.17	4.18	79%	7%	4.18	4.31	4.08
GEORGE STRAIT I Hate Everything (MCA)	4.14	4.10	88%	12%	4.20	4.23	4.17
BILLY CURRINGTON I Got A Feelin' (Mercury)	4.13	4.12	95%	16%	4.12	4.20	4.06
JOSH GRACIN I Want To Live (Lyric Street)	4.13	4.13	92%	19%	4.09	4.24	3.96
DIERKS BENTLEY How Am I Doin' (Capitol)	4.08	4.10	73%	9%	4.02	4.11	3.96
REBA MCENTIRE Somebody (MCA)	4.06	4.18	99%	32%	4.09	4.19	4.02
MARTINA MCBRIDE How Far (RCA)	4.06	4.04	97%	25%	4.02	4.11	3.95
TERRI CLARK Girls Lie Too (Mercury)	4.05	4.06	99%	27%	4.10	4.08	4.12
TRACE ADKINS Rough & Ready (Capitol)	4.04	4.10	88%	16%	4.06	4.08	4.04
PHIL VASSAR In A Real Love (Arista)	4.01	4.03	86%	14%	4.00	4.15	3.89
BROOKS & DUNN That's What It's All About (Arista)	4.01	4.04	80%	10%	4.00	4.09	3.94
GRETCHEN WILSON Here For The Party (Epic)	3.99	4.02	96%	21%	4.01	4.01	4.01
ALAN JACKSON Too Much Of A Good Thing Is A Good Thing (Arista)	3.97	4.04	92%	18%	4.07	4.15	4.02
AMY DALLEY Men Don't Change (Curb)	3.96	3.94	82%	15%	3.97	4.06	3.90
JIMMY WAYNE You Are (DreamWorks)	3.92	4.01	72%	13%	3.86	4.00	3.77
CRAIG MORGAN Look At Us (BBR)	3.91	3.90	62%	9%	3.87	3.92	3.83
SHEDAISY Come Home Soon (Lyric Street)	3.89	—	59%	9%	3.84	3.76	3.90
TRAVIS TRITT The Girl's Gone Wild (Columbia)	3.86	3.80	85%	16%	3.87	3.85	3.88
RASCAL FLATTS Feels Like Today (Lyric Street)	3.84	3.83	83%	17%	3.80	3.97	3.68
JULIE ROBERTS Break Down Here (Mercury)	3.79	3.85	87%	21%	3.74	3.62	3.83
RACHEL PROCTOR Me And Emily (BNA)	3.74	3.96	94%	29%	3.72	3.76	3.69
TOBY KEITH Stays In Mexico (DreamWorks)	3.68	3.79	72%	16%	3.70	3.81	3.62

Total sample size is 434 respondents. Total average favorability estimates are based on a scale of 1-5. (1=dislike very much, 5 = like very much). Total familiarity represents the percentage of respondents who recognized the song. Total burn represents the number of respondents who said they are tired of hearing the song. Songs must have 40% familiarity to appear on survey. Sample composition is based on persons 12+. Persons are screened via the Internet. Once passed, they can take the music test based on the format/music preference. RateTheMusic.com results are not meant to replace callout research. The results are intended to show opinions of participants on the the Internet only. RateTheMusic is a registered trademark of RateTheMusic.com. The RTM system, is available for local radio stations by calling 818-377-5300. RateTheMusic.com data is provided by Mediabase Research, a division of Premiere Radio Networks.

If you experienced transmission problems ... please call our Circulation Department at 310/788-1625.

© 2004 Radio & Records, Inc. All Rights Reserved No part of this material may be reproduced in any form or incorporated in any information retrieval system without written permission of the Publisher.