

WHAT HAS BROWN DONE FOR YOU?

LYRIC STREET

Demps Rises To CC Sr. VP

Clear Channel Regional VP/Tennessee and Mississippi **Bruce Demps** has been promoted to Sr. VP of CC's newly-formed Delta Region. The new region consists of markets previously part of CC's Mid-South, Southwest Central, Midwest and Southeast regions. Based in Memphis, Demps will oversee 16 markets, including Memphis, St. Louis, Wichita and Little Rock.

Demps started his broadcast career in sales at WIVY/Jacksonville in 1981 and was later named VP/GM of WJBT, WSOL & WZAZ/Jacksonville. He moved to Memphis in November 1995 as VP/GM of WDIA & WHRK, which were acquired by Clear Channel in May 1996. Demps then served as Market Manager of Clear Channel's Memphis cluster and was promoted to Regional VP in 2002.

Befera Joins CC/Duluth, MN As GM

Curb/Asylum Promotion Coordinator **Mary Befera** has been named GM of Clear Channel's four radio stations in the Duluth-Superior, MN-WI market, including Hot AC KBMX, Country KKCB, Oldies KLDJ and News/Talk WEBC-AM. She starts Aug. 1 and reports to Clear Channel Minneapolis-St. Paul Regional VP **Mick Anselmo**. Before moving to the record side of the business, Befera programmed KUSZ/Duluth and WUSZ-FM/Virginia, MN. (Country Format Room, radioandrecords.com, 7/15.)

R&R Reporter Notes

KCYY/San Antonio has been suspended from the R&R Country reporting panel because its current percentage has remained below R&R's 25% current airplay minimum. KCYY will be reinstated when it maintains at least a 25% level of current music for three consecutive weeks. Its airplay information was not used in the compilation of this week's R&R Country chart.

Also, following WCKT/Ft. Myers' recent frequency swap, the station could not be "heard" by Mediabase's monitor in that city. That situation has been rectified. However, because airplay data was unavailable for the entire week, WCKT's airplay data was not used in the compilation of this week's R&R Country chart. WCKT's airplay information will be included in next week's R&R Country chart.

Bill Nielsen New CC/Medford, OR GM

Nielsen is responsible for operations at Country KRWQ as well as KIFS, KLDZ, KMED & KZZE/Medford. He takes over from **Keith Lollis**, who has announced his retirement. Nielsen has more than 20 years of industry experience and has spent the last three years as Director/Sales for CC/Medford. Before joining Clear Channel Nielsen was Manager/Radio Sales for the NFL's Tennessee Titans.

Capitol Promotes Stuve, Adds Weathersby

Capitol/Nashville Manager/Media & Public Relations **Regina Stuve** has been promoted to Director/Media

If you experienced transmission problems ... please call our Circulation Department at 310/788-1625.

© 2003 Radio & Records, Inc. All Rights Reserved No part of this material may be reproduced in any form or incorporated in any information retrieval system without written permission of the Publisher.

Dwight Yoakam

"The Late Great Golden State"

NEW ADDS

WXTU/Philadelphia WFMS/Indianapolis
WGGY/Wilkes-Barre WGKX/Memphis
WUSJ/Jackson, MS KATM/Modesto

North, East, West or South...think this is just a California record? Hush yo' mouth!!!

35,000 POPULATION ME 
copies in just 3 weeks! 

Sammy Kershaw

Written by Dean Dillon & Jim Collins

"I've Never Been Anywhere"

"This guy still has it."

Add Date:
7/28

—Tony Stevens/MD KFKF



& Public Relations. Concurrently, CMT Sr. Publicist **Dixie Weathersby** has joined the label, also holding the title Director/Media & Public Relations. Stuve and Weathersby will share responsibilities in handling media for the artists on the label.

Stuve has been with EMI for the past eight years. She joined Capitol in 1995 as an executive assistant and worked at sister label Virgin/Nashville from 1998 to 2001 as Manager/Publicity & Artist Development. She returned to Capitol in 2001.

Weathersby, who starts July 30, has also worked in the public relations arena for the Country Music Association and Network Ink.

Bobo To Head W/C Music Nashville; Wipperman Exits

Warner/Chappell Music's restructuring of its U.S. operations has resulted in the promotion of Warner/Chappell Music/Nashville VP/A&R **Dale Bobo** to Sr. VP; he will head the Nashville division. Bobo joined Chappell Music in 1983; it was acquired by Warner Bros. Publishing in 1987.

The promotion was announced in a release that also contained news that shocked Music Row: Warner/Chappell Music/Nashville Executive VP/GM **Tim Wipperman** exited July 17 after 29 years with the company. In his statement "Wip" wrote: "There isn't a whole lot to say other than I'm proud of the staff and writers I had a chance to work with, and that I recognize this isn't about me, or music, but about corporate economics. We built a good company and ran it ethically and profitably for the past 28 years. I believe that if you work to the best of your abilities, and trust God with the rest, you'll be OK. It's my turn to take that walk. Love to all, Tim."

The company said in its official release, "The restructuring taking place reflects the ever chang-

ing landscape of the music publishing business and will provide Warner/Chappell Music with the opportunity to refocus and better serve the writers and artists it proudly represents. Tim Wipperman, who successfully led the Nashville operation for 29 years, will be stepping down. Tim's leadership and creative expertise are unparalleled in the country music community. We are truly sorry to see him go."

CRB Humanitarian Award Nominations Deadline Nears

The **Country Radio Broadcasters** is accepting nominations for its **Artist Humanitarian Award**. The CRB recognizes a recording artist or group for their fundraising and charitable efforts as part of the annual Country Radio Seminar each spring. Individuals from the country music community are invited to submit nominee suggestions. All nominations and any supporting documentation of humanitarian activities — such as PSA video copy, letters of recommendation from organizations, etc. — should be mailed (six copies) or faxed to Ed Salamon, Executive Director, Country Radio Broadcasters, 819 18th Ave. South, Nashville, TN 37203. The fax number is 615-329-4492.

Syndication

Westwood One will present to its affiliates "Shania in Chicago" the weekend of Aug. 16 2003. The one-hour special will be recorded backstage and onstage during the taping of Shania Twain's NBC-TV special *Shania Twain UP! Live in Chicago*, which airs on Aug. 19. The special will also feature interviews with fans and Twain about the TV special and her upcoming fall tour.

Ratings Chat

The latest Country spring Arbitrons are listed later

If you experienced transmission problems ... please call our Circulation Department at 310/788-1625.

© 2003 Radio & Records, Inc. All Rights Reserved No part of this material may be reproduced in any form or incorporated in any information retrieval system without written permission of the Publisher.

**A beautiful, selfless way to say goodbye to someone...
If only everyone could react this way. Evan Bridwell / KUZZ**

from the #1 Soundscan Album
"Greatest Hits"

Jo Dee Messina
I Wish

R&R **48** BB **46**

CURB
www.curb.com

**58 FIRST WEEK STATIONS!
R&R Most Added**

Including

**KMPS WUBE WMZQ KZLA KUPL WQYK
WYUU KMLE WSIX KFKF WDAF WKLB WSSL
WYRK WXBQ WUSY KUZZ WGKX WWYZ
KSXS WGAR WGNA WCTK WGGY KXKC
KXKT WYNK WWQM KRST WIOV KTOM WYPY**

in this Country Hotfax. But here's a peek behind the numbers in L.A. and Chicago.

KZLA: The story behind the Los Angeles Country shares was TSL. According to PD **R.J. Curtis**, KZLA's cume was off about 20,000 while the TSL was "way up everywhere." He says 12+ TSL went from 6:30 to 7:45; 25-54 TSL was up *two hours* from 6:15 to 8:15 and the TSL among 25-54 women rocketed from 5:45 to 8:00. Curtis says, "KZLA is now a top 10 English-speaking station 12+ and 14th 25-54. Every daypart is up, especially mornings and middays. We had a great book with females, ranking ninth among English-speaking stations and 12th overall. Middays and afternoons are both in the top 10 with females 25-54."

WUSN: Meanwhile, in the Windy City, OM **Tom Rivers** reports that the numbers aren't as bad as they might initially appear to be. He says, "The third-phase extrapolations show a 4.0 25-54 and mornings were at a 4.5, so there's some light at the end of the tunnel." He says WUSN's numbers were definitely affected by the war, citing News/Talk WBBM-AM's 11.1 share among 25-54 females. And, of course, the Cubs were in first place most of the spring, thus helping flagship WGN-AM.

WUSN's cume in the spring fell from the winter '03 674,300 to 638,600, while TSL was off from 8:15 to 7:00.

Paisley Wets Worms For Charity

Brad Paisley will hold his inaugural Brad Paisley Celebrity Invitational Fishing Tournament on Sep. 9 at the Elm Hill Marina on Nashville's Percy Priest Lake. Sponsored by Arista/Nashville, EMI Music Publishing and ASCAP, the bass tournament (formerly known as the Hook, Line, and Singer Tournament) will benefit the St. Jude Children's Research

Hospital. In part due to his ongoing commitment to the work of St. Jude, Paisley was happy to lend his name to the event this year in order to help the event grow and raise even more funds for St. Jude — a cause very near and dear to his heart. He said, "I have visited the hospital on several occasions and am convinced St. Jude is the finest charity in America. They not only provide medical attention to the children there, they provide hope and love to them and their families. We have a wonderful opportunity here to do something we enjoy while supporting the work done for all of the children of St. Jude."

Boats will launch at first light on Sept. 9 for all tourney contestants, and guided boats will be available for rental for the competition. Following the tournament's conclusion at noon, the fish stories will fly as catches are measured, awards are handed out and lunch is served to all contestants. The deadline for registration for those wanting guided boats is Aug. 19; those providing their own boats can register until the day of the tournament.

Chronicle

Former WWNC/Asheville, NC PD/MD/air personality of 30 years **Wiley C. Carpenter** is recovering following surgery to repair a ruptured aorta. Cards and get-well wishes can be sent to him at 1318-B Patton Avenue, Asheville, NC 28806

R&R/Bullseye: What Do You Want From Mornings?

Here's this week's R&R Country Callout America by Bullseye question posed to 200 Country listeners: "Do you listen to your favorite Country station in the morning, between 6 and 10am? When you listen in the morning, what is the most important thing your favorite station can do?"

If you experienced transmission problems ... please call our Circulation Department at 310/788-1625.

© 2003 Radio & Records, Inc. All Rights Reserved No part of this material may be reproduced in any form or incorporated in any information retrieval system without written permission of the Publisher.

THE BIGGEST START TO A NEW SINGLE IN MONTGOMERY GENTRY'S CAREER!

MONTGOMERY

GENTRY

"HELL YEAH!"

**MOST
ADDED!**

**40%
of the
panel in on
DAY ONE!**



What else is there
to say except...

THANKS, COUNTRY RADIO!



A surprising 39% of the total sample said they *do not* listen to their favorite Country station in morning drive. To be fair, that number may well be skewed by the fact that 54% of P2s don't listen to their favorite Country outlet, versus 32% of the P1s who don't tune in. Country morning shows fare better among women than men. Of the males, 47% aren't around for morning drive, while 31% of females are elsewhere. Across the demos, 54% of 25-34s, 35% of 35-44s and 29% of 45-54s say they don't listen to the morning show of their favorite Country station.

Here's what those who *do* listen consider "the most important thing [their] favorite station can do" (total sample):

- Play more music — 39%
- Cut up, be funny and have fun — 13%
- Give weather and traffic info a lot — 7%
- News updates — 4%
- Play a lot of contests — 1%

For complete breakouts — including men and women, 25-34, 35-44 and 45-54 — check out the **R&R Country Callout America** by Bullseye research page in the June 6 issue of **R&R**.

By the way, the callout page also contains the **R&R Country Callout America** by Bullseye research for the top 35 titles on the **R&R Country** chart. You'll see percentages for "Like a Lot," "Total Positives," "Neutral," "Familiarity," "Dislike" and "Burn" based on a 400-person-per-week sample. Plus, there's a new password allowing you to access regional and demo breakouts of the callout music research at Bullseye's web page, www.bullsi.com. A reminder: When you go to the website, use your station call letters as the user name. Then enter the new password.

In those pages you'll also find results from RateTheMusic.com's online music testing from a very large sample of heavy Country-radio listeners. And if you would like to submit a question, e-mail me at lhelton@radioandrecords.com or Bullseye's **John Hart** at hart@bullsi.com.

— Lon Helton/R&R Country Editor (615) 244-8822
Email: lhelton@radioandrecords.com

MUSICNOTES

↪ The next edition of *CMT Crossroads* will bring together **Kenny Chesney** and **John Mellencamp**. The show will be taped on Wednesday, Aug. 6 in Nashville for an invitation-only crowd. It will debut Friday, Oct. 3 at 9pm ET/PT on CMT.

↪ **Montgomery Gentry** will be singing the national anthem at the Brickyard 400 NASCAR Winston Cup race on Aug. 3. The Brickyard is NASCAR's best attended race and the second-best attended sporting event in the world, behind the Indianapolis 500. This will be Eddie and Troy's first visit to Indy and their second time singing the anthem at a Winston Cup race.

↪ Warner Bros./Nashville is set to release *The Very Best of John Michael Montgomery* on Aug. 26, his first-ever career-spanning compilation. It features two brand-new tracks — "Cool" and "One Day Less" — in addition to 18 other Montgomery hits, including "I Swear," "The Little Girl," "I Love the Way You Love Me" and "Sold (The Grundy County Auction Incident)."

↪ **Trace Adkins' Greatest Hits Collection, Volume I** was last week's top-selling country album, according to SoundScan. Not only was the sale of 56,002 units good for No. 1 on the country sales chart — a first for Adkins — it's also enough to put him in the top 10 of the overall sales chart for the first time in his career.

If you experienced transmission problems ... please call our Circulation Department at 310/788-1625.

© 2003 Radio & Records, Inc. All Rights Reserved No part of this material may be reproduced in any form or incorporated in any information retrieval system without written permission of the Publisher.

Since putting Rodney into our stress category... it's been hotter than black leather seats on a 110 degree Fresno day! Mike Peterson
KSKS

32 Phones Stories

**KMPS KFKF WDAF KUPL KZLA KFRG WIVK
WKIS WZZK WGGY WXBQ WWYZ KIIM WGH
KVOO KTOM WCTK WWGR KXKT KKCS
WIRK KXKC WWQM WQBE WITL KIZN
KJUG WGNE WPUR KFTX WFBE WNCY**

Billboard Most Airplay Adds Again!

R&R 34 - 33 +139 BB 37 - 33 +257

CURB
RECORDS
www.curb.com

Honesty
(Write Me A List)
Rodney Atkins

R&R BREAKER!

just added

**KYGO WMIL WYCD WQYK WYUU
WYRK KUZZ KWRN KKAT WGH
WHOK KMDL WOKQ WQHK WIOV
WKCN WOGI**

☛ The United States Marine Corps Reserve's Middle Tennessee Toys for Tots program will host its annual Kick Off Celebration for the 2003 holiday season on July 24 from 5:30 to 7:30pm at Nashville's Radisson Hotel Airport. In addition to a night of mingling and food, country hitmaker **Doug Stone** will perform an acoustic set. The event will also include a presentation of the All Aboard 2003 campaign, as well as highlights from the 2002 campaign.

VIDEO ADDS

GREAT AMERICAN COUNTRY

TIM MCGRAW Real Good Man
ALAN JACKSON, JIMMY BUFFETT It's Five O'Clock Somewhere
BILLY CURRINGTON Walk A Little Straighter
KEITH URBAN Who Wouldn't Want To Be Me

CMT

No Adds

RANDOM FAX®

Tuesday, 7/22

BIRTHDAYS: Shannon Brown, John Saville, Scott Siman

On TV: ABC: **Brad Paisley**, *The View* ... GAC: *Made in America: Corvette*; **Wayne Warner**, *Country Weekly New Artist Spotlight*; **Glen Campbell**, *Best of Classic with Bill Cody*; **Sammy Kershaw**, *Best of CRL* ... CMT: **Brad Paisley**, *CMT Got Me in With the Band* and *Celebrity*, *Making the Video*; **Kenny Chesney**, *CMT Total Release*

Wednesday, 7/23

BIRTHDAYS: Alison Krauss, Mary Ann Daniel, Debbie Loring, Doris Thompson, Bonnie Williams

On TV: NBC: **Roseanne Cash** *Jay Leno* ... GAC: *Made in America: Louisville Slugger*; **Alan Jackson**, *Best of Classic with Bill Cody*; **Brian McComas** *Best of CRL* ... CMT: **Brooks & Dunn** and **ZZ Top**, *CMT Crossroads*; **Terri Clark**, *Inside Fame*; **Dolly Parton**, *MWL Star*

Thursday, 7/24

BIRTHDAYS: Pam Tillis, Bill Engvall, Matt Galvin, Debbie Schwartz, John Trapani

On TV: **Toby Keith**, *Jay Leno* ... GAC: **Sammy Kershaw**, *Best of Classic with Bill Cody*; **Blake Shelton**, *Best of CRL* ... CMT: *Freebird: The Movie*, *CMT Theater*

Friday, 7/25

BIRTHDAYS: Marty Brown, Candace DeGraff, Joe Ladd

On TV: GAC: **Nitty Gritty Dirt Band**, *Best of Classic with Bill Cody*; **Terri Clark**, *Best of CRL* ... CMT: *40 Greatest Men*; **Dierks Bentley**, *Most Wanted Live*; **Dolly Parton**, *MWL Star*

Saturday, 7/26

BIRTHDAYS: Al Anderson, Scott Hendricks, Fred Foster, Roby Cowlyn, Jim Fogelsong, Tom Mabe

On TV: GAC: **Alan Jackson**, *Best of Classic with Bill Cody* ... CMT: *40 Greatest Men*; **Trick Pony**, (episode premiere) *CMT Got Me in With the Band*; **Terri Clark**, *Inside Fame*; **Wynonna**, *Inside Fame*; *Most Wanted Live*; *Country's Most Shocking*; **Bill Anderson** (host), **Martina McBride**, **Earl Scruggs**, **Rachel Proctor** *Opry Live*

Sunday, 7/27

BIRTHDAYS: Bobbie Gentry, Duncan Cameron, Stacy Dean Campbell, Greg Cole, Donna Edmonds, Mark Guynn, Janet Rickman

On TV: CBS: **Bering Strait** *60 Minutes* ... GAC: *Made In America: Louisville Slugger*; **Vince Gill**, *Best of CRL* ... CMT: **Trick Pony**, *CMT Got Me in With the Band*; **Terri Clark**, *Inside Fame*; *The Thing Called Love*, *CMT Theater*; **Kenny Chesney**, *MWL Stacked*

Monday, 7/28

BIRTHDAYS: Ray Vega, Jonathon Edwards, Theresa Durst, Glen Noblit

On TV: CMT: **Martina McBride**, *CMT Got Me in With the Band*

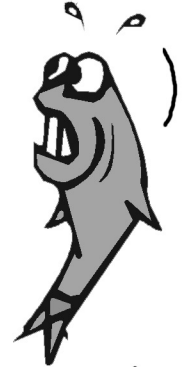
If you experienced transmission problems ... please call our Circulation Department at 310/788-1625.

©2003 Radio & Records, Inc. All Rights Reserved No part of this material may be reproduced in any form or incorporated in any information retrieval system without written permission of the Publisher.

ONE OF THE MOST ADDED!

Randy Travis
"Pray For The Fish"

"Fishing" season is officially here....
 Don't let this big catch get away!



Reelin' in your AIRPLAY NOW!

Spring Arbitrons

Spring 2003 Arbitrons continue to be released daily. If you like to watch 'em as they come in, keep an eye on www.radioandrecords.com. Go to the site and click on "Ratings." As always, each week's R&R Country Hot Fax will feature Country shares and 12+ ranks from around the nation. An "*" indicates a tie in ranking, a "^" indicates co-owned stations within a marketplace, and a "+" indicates a Country Gold format.

Station/City	Previous Arbitron Book	Sp '03 12+	Previous Rank	Sp '03 Rank	Station/City	Previous Arbitron Book	Sp '03 12+	Previous Rank	Sp '03 Rank
WCTO/Allentown	13.4	10.4	1	2	WXCL/Peoria, IL	5.2	5.8	7	5
WQMX/Akron	6.6	5.3	1*	3*	WFYR/Peoria, IL	5.5	4.2	6	8
WWWW/Ann Arbor, MI	4.9	5.4	2	2	WXTU/Philadelphia	3.5	4.0	9*	7*
WPUR/Atlantic City	6.3	5.2	3	4*	WRWD/Poughkeepsie, NY	5.8	9.2	5	1*
KUZZ-A&F/Bakersfield^	10.7	10.2	1	1	KFRG/Riverside	8.6	6.3	1	3
KCWR/Bakersfield^+	1.5	2.2	18*	14*	KZLA/Los Angeles	.7	1.4	29*	22
WBWN/Bloomington, IL	12.5	9.2	2	3	(Riverside-San Bern. ARB)				
WKLB/Boston	3.2	3.4	11	10*	KTDD-AM/Riverside	1.0	.7	26	29*
WWYZ/Hartford	1.9	3.0	13	9*	KNCI/Sacramento	4.4	4.4	5	4*
(Bridgeport, CT ARB)					KSON/San Diego	4.3	3.6	7*	11*
WUSN/Chicago	3.7	2.9	8	12*	XHCR/San Diego	1.4	1.6	23*	19*
WWYZ/Hartford	2.0	2.8	11*	8*	KRTY/San Jose	1.0	.9	27*	25
(Danbury, CT ARB)					(San Francisco Arbitron)				
WYCD/Detroit	4.1	3.9	9*	11	KRTY/San Jose	2.6	3.1	14	9
WFLS/Fredericksburg, VA	17.5	14.8	1	1	KRAZ/Santa Barbara, CA	.9	2.1	19*	16*
WGRX/Fredericksburg, VA	1.5	1.9	15*	13*	KHAY/Oxnard, CA	1.8	1.7	16*	19*
WJMA/Fredericksburg, VA	1.5	1.0	15*	26*	(Santa Barbara, CA ARB)				
WMZQ/Washington	.9	1.0	24*	26*	KRPQ/Santa Rosa, CA	3.7	3.5	7	6*
(Fredericksburg, VA Arbitron)					KFGY/Santa Rosa, CA	2.1	2.7	18	12
WWYZ/Hartford	4.9	5.8	7*	4	WPKX/Springfield, MA	6.7	6.4	5*	3*
KZLA/Los Angeles	2.2	2.5	19*	12*	WCTO/Allentown	.6	1.7	22	15*
KTOM/Monterey	3.0	2.5	10	11	(Sussex, NJ ARB)				
WRWD/Poughkeepsie, NY	2.9	2.9	10*	10*	WXTU/Philadelphia	2.4	2.8	10*	9*
(Newburgh-Middletown, NY ARB)					(Trenton, NJ ARB)				
WCTK/Providence	7.2	6.6	3*	3*	KATJ/Victor Valley, CA	4.9	5.2	5	4
(New Bedford, MA ARB)					KFRG/Riverside	2.8	1.9	8	12*
WCTY/New London, CT	6.7	7.3	3	3	(Victor Valley ARB)				
WWYZ/Hartford	.7	1.4	23	13*	KVFG/Victor Valley, CA	1.6	1.9	15*	12*
(New London ARB)					KDHI/Victor Valley, CA	1.6	1.2	15*	20*
KHAY/Oxnard, CA	4.8	4.4	4	6	WMZQ/Washington	3.0	3.7	13	9*
KPLM/Palm Springs, CA	4.7	3.9	7*	9	WFRE/Frederick, MD	.8	1.1	24	21*
					(Washington DC ARB)				

If you experienced transmission problems ... please call our Circulation Department at 310/788-1625.

© 2002 Radio & Records, Inc. All Rights Reserved No part of this material may be reproduced in any form or incorporated in any information retrieval system without written permission of the Publisher.

Craig Morgan "EVERY FRIDAY AFTERNOON"

"You don't see me in print very often because I rarely find a song that has as big an impact on me as this one did. I knew the first time I heard it that it would be a smash because it speaks to so many people."

Julie Stevens - KRTY/ San Jose

"Great songs ENGAGE The Listener. Every Friday Afternoon is a GREAT SONG from one of Country's Rising Stars."

Steve Guittari - KILT/ Houston

"I just heard the new single, WOW. Craig has another hit. Once again, he has found a way to tug at our emotions with "Every Friday Afternoon".

George King - KCYY/ San Antonio

Early Adds include:

KILT WQYK WYUU WGAR WBCT WIVK
KRST WGNA WCOS KATM WEZL WYYD



LW	TW	ARTIST Title Label(s)	Total Points	+/- Points	Total Plays	+/- Plays	Total Aud. (00)	+/- Aud. (00)	Wks On	Total Station
2	1	BROOKS & DUNN Red Dirt Road (Arista)	17423	814	6184	+284	498337	29230	16	153/0
1	2	LONESTAR My Front Porch Looking In (BNA)	16266	-1056	5869	-443	480702	-25592	21	152/0
6	3	ALAN JACKSON AND JIMMY BUFFETT It's Five... (Arista)	16228	1980	5731	+631	491413	59517	7	153/0
4	4	BRAD PAISLEY Celebrity (Arista)	15738	1080	5784	+327	449474	37186	19	153/0
3	5	TOBY KEITH Beer For My Horses (DreamWorks)	15660	-708	5639	-279	456532	-19412	30	151/0
7	6	KENNY CHESNEY No Shoes, No Shirt, No... (BNA)	14618	1666	5229	+592	415102	39192	8	153/0
5	7	JIMMY WAYNE Stay Gone (DreamWorks)	12727	-1773	4680	-673	349132	-57850	25	152/0
9	8	SHANIA TWAIN Forever And For Always (Mercury)	12719	980	4710	+348	357694	21466	17	152/1
11	9	TIM MCGRAW Real Good Man (Curb)	10883	828	3819	+311	312537	28791	12	151/0
13	10	DIERKS BENTLEY What Was I Thinkin'? (Capitol)	10762	1022	3776	+411	299764	31244	16	151/2
12	11	BRIAN MCCOMAS 99.9% Sure (Never...) (Lyric Street)	10277	514	3863	+243	284847	16307	21	150/0
14	12	TRACE ADKINS Then They Do (Capitol)	9569	212	3564	+90	264667	15951	20	151/0
8	13	MONTGOMERY GENTRY Speed (Columbia)	9414	-2634	3538	-1003	260743	-68996	29	151/0
16	14	WYONNA What The World Needs (Asylum/Curb)	8944	-88	3331	-10	236966	-6848	13	151/0
18	15	BUDDY JEWELL Help Pour Out The Rain (Lacey's Song) (Columbia)	8656	755	3160	+335	244825	24182	11	152/0
19	16	SARA EVANS Backseat Of A Greyhound Bus (RCA)	7870	40	2921	+36	198167	-1147	22	151/0
20	17	CLAY WALKER A Few Questions (RCA)	7596	480	2828	+168	197708	10808	14	152/2
21	18	MARTINA MCBRIDE This One's For The Girls (RCA)	7567	795	2675	+254	213144	30025	7	147/3
17	19	TRACY BYRD The Truth About Men (RCA)	7458	-1182	2838	-414	182843	-38726	20	148/0
23	20	KEITH URBAN Who Wouldn't Wanna Be Me (Capitol)	6913	849	2482	+314	184559	25427	7	147/5
22	21	JOE NICHOLS She Only Smokes When She Drinks (Universal South)	6559	388	2386	+153	176614	14879	13	138/5
26	22	GARY ALLAN Tough Little Boys (MCA)	4613	1482	1840	+615	112229	29783	6	136/11
24	23	PAT GREEN Wave On Wave (Republic/Universal South)	4305	697	1378	+297	118528	18527	10	98/18
27	24	BILLY CURRINGTON Walk A Little Straighter (Mercury)	3547	461	1393	+177	86683	7858	13	113/12
25	25	EMERSON DRIVE Only God (Could Stop Me...) (DreamWorks)	3542	255	1399	+99	89290	10794	17	118/9

(c) 2003 Radio & Records, Inc.

TRACY BYRD

"DRINKIN' BONE"

ON YOUR DESK NOW!

FROM TRACY'S NEW ALBUM *THE TRUTH ABOUT MEN*
AIRPLAY IMMEDIATELY

TRACY BYRD
 THE TRUTH ABOUT MEN



RCA RECORDS LABEL



© 2003 BMG Music

WWW.RCANASHVILLE.COM

July 22, 2003

LW	TW	ARTIST Title Label(s)	Total Points	+/- Points	Total Plays	+/- Plays	Total Aud. (00)	+/- Aud. (00)	Wks On	Total Station
29	26	RACHEL PROCTOR Days Like This (BNA)	3200	264	1252	+106	71270	6192	12	116/2
31	27	PATTY LOVELESS Lovin' All Night (Epic)	3038	680	1197	+285	67256	17132	8	122/10
28	28	FAITH HILL You're Still Here (Warner Bros.)	3019	34	1151	+9	70573	600	13	105/1
32	29	RASCAL FLATTS I Melt (Lyric Street)	2979	1022	1265	+392	78837	34191	4	119/19
30	30	RUSHLOW I Can't Be Your Friend (Lyric Street)	2807	44	1158	+46	68405	5769	12	100/1
35	31	CHRIS CAGLE Chicks Dig It (Capitol)	2341	631	933	+195	58651	16335	5	89/9
33	32	SHERRIE' AUSTIN Streets Of Heaven (C4/BBR)	2267	371	830	+132	58139	8979	7	84/6
34	33	RODNEY ATKINS Honesty (Write Me A List) (Curb)	2200	432	872	+139	51472	11140	6	91/6
37	34	JAMIE O'NEAL Every Little Thing (Mercury)	1788	186	702	+34	41953	6402	9	76/2
39	35	BLAKE SHELTON Playboys Of The Southwestern... (Warner Bros.)	1655	396	686	+159	33359	8048	4	71/6
38	36	JOSH TURNER Long Black Train (MCA)	1490	101	583	+45	32364	5486	7	61/3
40	37	DARRYL WORLEY Tennessee River Run (DreamWorks)	1461	329	609	+96	34882	9422	3	64/9
41	38	ASHLEY GEARING Can You Hear Me When I Talk... (Lyric Street)	1355	277	568	+108	32519	7137	7	54/7
46	39	SCOTTY EMERICK I Can't Take You Anywhere (DreamWorks)	1160	525	341	+147	25549	8299	2	43/10
43	40	RICK TREVINO In My Dreams (Warner Bros.)	1095	241	338	+30	24063	6920	3	47/3
44	41	DERIC RUTTAN When You Come Around (Lyric Street)	1015	165	341	+41	23256	5629	2	45/2
49	42	MONTGOMERY GENTRY Hell Yeah (Columbia)	1003	588	320	+205	23554	8856	2	56/45
45	43	PHIL VASSAR Ultimate Love (Arista)	976	307	425	+119	20085	4256	2	54/7
47	44	MARTY STUART If There Ain't There Ought'a Be (Columbia)	800	209	359	+78	15077	3426	2	60/12
	Debut	45 REBECCA LYNN HOWARD What A Shame (MCA)	764	435	277	+149	15995	8732	1	41/6
	Debut	46 DIAMOND RIO Wrinkles (Arista)	740	641	292	+237	18477	14920	1	56/22
	Debut	47 MARK WILLS And The Crowd Goes Wild (Mercury)	654	416	223	+129	21412	11611	1	6/3
50	48	JO DEE MESSINA I Wish (Curb)	643	337	280	+73	16639	7868	2	56/33
48	49	JEFF CARSON I Can Only Imagine (Asylum/Curb)	619	48	212	+16	14882	3605	4	22/0
	Debut	50 JESSICA ANDREWS Good Time (DreamWorks)	594	333	182	+117	12736	6283	1	31/10

(c) 2003 Radio & Records, Inc.

HANK WILLIAMS JR.

"I'm One Of You"

"After eight plays last week it is already becoming one of our most requested songs. This should be Huge!"

—JD Cannon/WFMS

"A bunch of callers liked it, including several who said they're not usually Hank Jr. fans. We're taking a big look at it."

—Tony Thomas/KMPS

"5 night record war winner."

—Tony Stevens/KFKF

"We not only had a lot of calls for it, the ones that called passionately loved it."

—Grey Frey/KSON

2 weeks early adds

KSON WFMS

WITL WIRK

KSOP WPCV

ADD DATE: 8/4



CURB RECORDS
curb.com

"Hitting The Heart Of America"

(c) 2003 Radio & Records, Inc.

NEW & ACTIVE

DWIGHT YOAKAM The Late Great Golden State (*Audium*)

Total Plays: 212, Total Stations: 31, Adds: 6

JENNIFER HANSON Half A Heart Tattoo (*Capitol*)

Total Plays: 169, Total Stations: 33, Adds: 24

WARREN BROTHERS Break The Record (*BNA*)

Total Plays: 159, Total Stations: 19, Adds: 0

RANDY TRAVIS Pray For The Fish (*Warner Bros.*)

Total Plays: 108, Total Stations: 18, Adds: 12

TRAVIS TRITT Lonesome, On'ry And Mean (*RCA/Columbia*)

Total Plays: 97, Total Stations: 19, Adds: 7

DEAN MILLER The Gun Ain't Loaded (*Universal South*)

Total Plays: 81, Total Stations: 11, Adds: 0

Songs ranked by total plays

MOST INCREASED POINTS

ARTIST Title Label(s)	Total Pt. Increase
ALAN JACKSON AND JIMMY BUFFETT It's Fiv... (<i>Arista</i>)	+1980
KENNY CHESNEY No Shoes, No Shirt, No... (<i>BNA</i>)	+1666
GARY ALLAN Tough Little Boys (<i>MCA</i>)	+1482
BRAD PAISLEY Celebrity (<i>Arista</i>)	+1080
DIERKS BENTLEY What Was I Thinkin'? (<i>Capitol</i>)	+1022
RASCAL FLATTS I Melt (<i>Lyric Street</i>)	+1004
SHANIA TWAIN Forever And For Always (<i>Mercury</i>)	+980
KEITH URBAN Who Wouldn't Wanna Be Me (<i>Capitol</i>)	+849
TIM MCGRAW Real Good Man (<i>Curb</i>)	+828
BROOKS & DUNN Red Dirt Road (<i>Arista</i>)	+814

MOST ADDED

ARTIST Title Label(s)	Adds
MONTGOMERY GENTRY Hell Yeah (<i>Columbia</i>)	45
JO DEE MESSINA I Wish (<i>Curb</i>)	33
JENNIFER HANSON Half A Heart Tattoo (<i>Capitol</i>)	24
DIAMOND RIO Wrinkles (<i>Arista</i>)	22
RASCAL FLATTS I Melt (<i>Lyric Street</i>)	19
PAT GREEN Wave On Wave (<i>Republic/Universal South</i>)	18
BILLY CURRINGTON Walk A Little Straighter (<i>Mercury</i>)	12
MARTY STUART If There Ain't There Ought'a Be (<i>Columbia</i>)	12
RANDY TRAVIS Pray For The Fish (<i>Warner Bros.</i>)	12
GARY ALLAN Tough Little Boys (<i>MCA</i>)	11

MOST INCREASED PLAYS

ARTIST Title Label(s)	Total Play Increase
ALAN JACKSON AND JIMMY BUFFETT It's Five O'Clock Somewhere (<i>Arista</i>)	+631
GARY ALLAN Tough Little Boys (<i>MCA</i>)	+615
KENNY CHESNEY No Shoes, No Shirt, No... (<i>BNA</i>)	+592
DIERKS BENTLEY What Was I Thinkin'? (<i>Capitol</i>)	+411
RASCAL FLATTS I Melt (<i>Lyric Street</i>)	+392
SHANIA TWAIN Forever And For Always (<i>Mercury</i>)	+348
BUDDY JEWELL Help Pour Out The Rain (Lacey's Song) (<i>Columbia</i>)	+335
BRAD PAISLEY Celebrity (<i>Arista</i>)	+327
KEITH URBAN Who Wouldn't Wanna Be Me (<i>Capitol</i>)	+314
TIM MCGRAW Real Good Man (<i>Curb</i>)	+311

EIGHT STRAIGHT WEEKS OF DOUBLE-DIGIT ADDS!

"LOVIN' ALL NIGHT"

the latest Epic/Monument single from

PATTY LOVELESS

New Airplay TODAY from:

**WQIK WSIX KWNR WIL KHEY
WGH KOYT KFDI WRBT KZSN**

R&R: 31 - 27 +285

BB: 32* - 27* +239

**80% of the panel
ON and
SPINNING HARD!**

"Country Countdown USA Here We Come!!!"



(c) 2003 Radio & Records, Inc.

MOST PLAYED RECURRENTS

ARTIST Title Label(s)	Total Plays
GEORGE STRAIT Tell Me Something Bad About Tulsa (MCA)	2699
JEFF BATES The Love Song (RCA)	2685
RANDY TRAVIS Three Wooden Crosses (Word/Curb/Warner Bros.)	2453
DIAMOND RIO I Believe (Arista)	2321
RASCAL FLATTS Love You Out Loud (Lyric Street)	2281
CRAIG MORGAN Almost Home (BBR)	2169
DARRYL WORLEY Have You Forgotten (DreamWorks)	2065
JOE NICHOLS Brokenheartsville (Universal South)	2045
MARK WILLS Nineteen Somethin' (Mercury)	1994
KENNY CHESNEY Big Star (BNA)	1672

GOING FOR ADDS

7/28	BILLY DEAN I'm In Love With You (View2)
	CRAIG MORGAN Every Friday Afternoon (BBR)
	DUSTY DRAKE Smaller Pieces (Warner Bros.)
	MARK WILLS And The Crowd Goes Wild (Mercury)
	RYAN TYLER Run, Run, Run (Arista)
	SAMMY KERSHAW I've Never Been Anywhere (Audium)
8/4	LONESTAR Walking In Memphis (BNA)
	SAWYER BROWN I'll Be Around (Lyric Street)
	HANK WILLIAM JR. I'm One Of You (Asylum/Curb)
8/11	SUSAN ASHTON She Is (Capitol)



153 Country reporters. Songs ranked by total points for the airplay week of 7/13-7/19. Bullets appear on songs gaining points and/or plays or remaining flat from previous week. If two songs are tied in total points, the song with the larger increase in points is placed first. Songs below No. 1 and down in points and plays for three consecutive weeks are moved to recurrent. Most Added is the total number of new adds officially reported to R&R by each reporting station. Songs unreported as adds do not count toward overall total stations playing a song. Most Increased Points lists the songs with the greatest week-to-week increases in total points. Station Weight = AQH Persons + (Market rank X 10) divided by 4180. Total Audience equals Average Quarter Hour Persons times number of plays (times 100). Each daypart on each station is assigned an AQH number. Average Quarter Hour Persons used herein with permission from the Arbitron Company (© 2003, The Arbitron Company). © 2003, R&R, Inc.

Recorded performance.

In-person performance.

Staging.

Public acceptance.

Attitude.

Leadership.

Overall contribution to the country music image.

Tim McGraw.



July 22, 2003

LW	TW	ARTIST Title Label(s)	Total Points	+/- Points	Total Plays	+/- Plays	Total Aud. (00)	+/- Aud. (00)	Wks On	Total Station
2	1	BRAD PAISLEY <i>Celebrity (Arista)</i>	3435	106	2730	+90	61272	2239	20	74/0
4	2	ALAN JACKSON AND JIMMY BUFFETT <i>It's Five O'Clock... (Arista)</i>	3406	149	2719	+121	61134	2636	6	75/0
5	3	KENNY CHESNEY <i>No Shoes, No Shirt, No... (BNA)</i>	3404	158	2687	+127	60969	2299	10	75/0
3	4	BROOKS & DUNN <i>Red Dirt Road (Arista)</i>	3371	46	2674	+48	59964	593	15	74/0
7	5	SHANIA TWAIN <i>Forever And For Always (Mercury)</i>	3081	11	2430	+17	56491	745	16	73/0
10	6	BRIAN MCCOMAS <i>99.9% Sure (Never...) (Lyric Street)</i>	2821	229	2231	+188	51026	4915	21	75/0
6	7	LONESTAR <i>My Front Porch Looking In (BNA)</i>	2746	-401	2152	-294	47837	-8158	22	69/1
14	8	TIM MCGRAW <i>Real Good Man (Curb)</i>	2678	307	2147	+252	47274	5624	9	75/0
1	9	JIMMY WAYNE <i>Stay Gone (DreamWorks)</i>	2659	-744	2081	-580	47332	-13907	25	67/0
15	10	DIERKS BENTLEY <i>What Was I Thinkin'? (Capitol)</i>	2575	257	2045	+201	46526	4816	14	74/2
11	11	TRACE ADKINS <i>Then They Do (Capitol)</i>	2563	99	2019	+89	45389	1899	21	73/0
13	12	WYNONNA <i>What The World Needs (Asylum/Curb)</i>	2406	28	1900	+26	42893	502	11	75/0
16	13	BUDDY JEWELL <i>Help Pour Out The Rain (Lacey's Song) (Columbia)</i>	2375	182	1883	+140	42332	3362	9	73/1
20	14	MARTINA MCBRIDE <i>This One's For The Girls (RCA)</i>	2135	174	1697	+144	37982	2950	6	75/1
21	15	KEITH URBAN <i>Who Wouldn't Wanna Be Me (Capitol)</i>	2084	208	1641	+168	37206	3285	6	75/1
19	16	CLAY WALKER <i>A Few Questions (RCA)</i>	2029	24	1623	+31	35920	740	12	72/1
22	17	JOE NICHOLS <i>She Only Smokes When She Drinks (Universal South)</i>	1927	76	1562	+65	34019	1455	14	69/3
23	18	SARA EVANS <i>Backseat Of A Greyhound Bus (RCA)</i>	1819	76	1471	+58	31134	1662	23	66/0
25	19	GARY ALLAN <i>Tough Little Boys (MCA)</i>	1598	327	1301	+240	28238	5373	5	68/2
24	20	EMERSON DRIVE <i>Only God (Could Stop Me...) (DreamWorks)</i>	1412	87	1121	+76	25269	1433	19	56/2
27	21	RASCAL FLATTS <i>I Melt (Lyric Street)</i>	1292	274	1061	+228	23401	5021	4	63/4
26	22	PAT GREEN <i>Wave On Wave (Republic/Universal South)</i>	1279	154	1045	+140	22463	2153	8	56/7
28	23	PATTY LOVELESS <i>Lovin' All Night (Epic)</i>	1227	292	972	+209	21942	5073	6	60/3
29	24	CHRIS CAGLE <i>Chicks Dig It (Capitol)</i>	1088	244	883	+188	20164	4827	5	55/1
31	25	BILLY CURRINGTON <i>Walk A Little Straighter (Mercury)</i>	947	192	765	+151	18030	3545	12	46/5

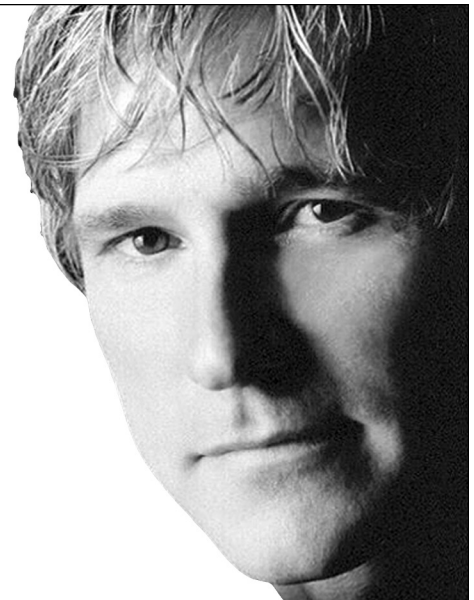
(c) 2003 Radio & Records, Inc.

Billy is Back!

BILLY DEAN
I'm In Love With You



Going for Adds July 28th



July 22, 2003

LW	TW	ARTIST Title Label(s)	Total Points	+/- Points	Total Plays	+/- Plays	Total Aud. (00)	+/- Aud. (00)	Wks On	Total Station
30	26	RUSHLOW I Can't Be Your Friend (<i>Lyric Street</i>)	947	123	756	+91	17517	2504	12	46/3
32	27	DARRYL WORLEY Tennessee River Run (<i>DreamWorks</i>)	906	169	740	+144	16032	2820	5	52/4
33	28	BLAKE SHELTON Playboys Of The Southwestern... (<i>Warner Bros.</i>)	867	137	703	+123	15757	2361	4	48/6
35	29	JAMIE O'NEAL Every Little Thing (<i>Mercury</i>)	733	56	632	+38	12898	918	9	44/1
34	30	FAITH HILL You're Still Here (<i>Warner Bros.</i>)	733	36	574	+37	13324	471	10	33/0
36	31	RACHEL PROCTOR Days Like This (<i>BNA</i>)	715	124	570	+107	13393	2522	7	42/6
42	32	DIAMOND RIO Wrinkles (<i>Arista</i>)	648	349	539	+268	11969	6770	2	49/22
40	33	ASHLEY GEARING Can You Hear Me When I Talk... (<i>Lyric Street</i>)	572	196	471	+158	11117	3756	5	33/6
37	34	PHIL VASSAR Ultimate Love (<i>Arista</i>)	559	111	462	+97	10781	2044	3	35/2
39	35	RODNEY ATKINS Honesty (Write Me A List) (<i>Curb</i>)	499	95	401	+86	9775	1836	4	27/5
41	36	SHERRIE' AUSTIN Streets Of Heaven (<i>C4/BBR</i>)	383	60	340	+54	6707	858	5	24/4
44	37	JOSH TURNER Long Black Train (<i>MCA</i>)	327	79	304	+67	5559	1242	3	26/4
	Debut	38 JO DEE MESSINA I Wish (<i>Curb</i>)	300	180	243	+150	5816	3539	1	24/13
46	39	MARTY STUART If There Ain't There Ought'a Be (<i>Columbia</i>)	282	63	217	+54	5419	1361	2	22/8
49	40	SCOTTY EMERICK I Can't Take You Anywhere (<i>DreamWorks</i>)	278	99	243	+82	5119	1609	2	21/7
48	41	RICK TREVINO In My Dreams (<i>Warner Bros.</i>)	255	70	213	+67	4284	1138	2	18/2
	Debut	42 TRAVIS TRITT Lonesome, On'ry And Mean (<i>RCA/Columbia</i>)	248	133	210	+110	4355	2442	1	15/2
	Debut	43 MONTGOMERY GENTRY Hell Yeah (<i>Columbia</i>)	232	174	177	+122	4376	3244	1	21/11
47	44	DERIC RUTTAN When You Come Around (<i>Lyric Street</i>)	218	11	200	+9	3708	285	3	18/2
	Debut	45 JESSICA ANDREWS Good Time (<i>DreamWorks</i>)	208	118	173	+101	3724	2041	1	17/7
43	46	BILLY RAY CYRUS Back To Memphis (<i>Madacy</i>)	208	-36	159	-28	3783	-407	4	15/0
	Debut	47 REBECCA LYNN HOWARD What A Shame (<i>MCA</i>)	185	51	150	+44	3532	873	1	15/3
	Debut	48 DWIGHT YOAKAM The Late Great Golden State (<i>Audium</i>)	180	159	160	+133	3102	2918	1	14/9
45	49	MARK WILLS When You Think Of Me (<i>Mercury</i>)	163	-72	141	-66	3077	-634	23	10/0
	Debut	50 JENNIFER HANSON Half A Heart Tattoo (<i>Capitol</i>)	159	136	147	+126	2488	2171	1	16/12

(c) 2003 Radio & Records, Inc.

OWN YOUR EVENTS

If no one can see your signs, do they know who staged the event? Make sure you claim ownership at all your events with cost-effective, disposable plastic banners.

- » We print your logo using up to four spot colors.
- » Perfect for concerts, events and giveaways.
- » Packaged on a roll and easy to use.
- » Up to 3' High and 6' Wide
- » Durable
- » Weather-resistant



P.O. Box 750250 Houston,
Texas 77275-0250
713/507-4200 713/507-4295 FAX
1-800-231-6074
ri@reefindustries.com
www.reefindustries.com



(c) 2003 Radio & Records, Inc.

MOST ADDED

ARTIST Title Label(s)	Adds
DIAMOND RIO Wrinkles (Arista)	22
JO DEE MESSINA I Wish (Curb)	13
JENNIFER HANSON Half A Heart Tattoo (Capitol)	12
MONTGOMERY GENTRY Hell Yeah (Columbia)	11
DWIGHT YOAKAM The Late Great Golden State (Audiom)	9
MARTY STUART If There Ain't There Ought'a Be (Columbia)	8
RANDY TRAVIS Pray For The Fish (Warner Bros.)	8
PAT GREEN Wave On Wave (Republic/Universal South)	7
SCOTTY EMERICK I Can't Take You Anywhere (DreamWorks)	7
JESSICA ANDREWS Good Time (DreamWorks)	7

MOST INCREASED POINTS

ARTIST Title Label(s)	Total Pt. Increase
DIAMOND RIO Wrinkles (Arista)	+ 349
GARY ALLAN Tough Little Boys (MCA)	+ 327
TIM MCGRAW Real Good Man (Curb)	+ 307
PATTY LOVELESS Lovin' All Night (Epic)	+ 292
RASCAL FLATTS I Melt (Lyric Street)	+ 274
DIERKS BENTLEY What Was I Thinkin'? (Capitol)	+ 257
CHRIS CAGLE Chicks Dig It (Capitol)	+ 244
BRIAN MCCOMAS 99.9% Sure (Never...) (Lyric Street)	+ 229
KEITH URBAN Who Wouldn't Wanna Be Me (Capitol)	+ 208
ASHLEY GEARING Can You Hear Me When I Talk... (Lyric Street)	+ 196

MOST INCREASED PLAYS

ARTIST Title Label(s)	Total Play Increase
DIAMOND RIO Wrinkles (Arista)	+ 268
TIM MCGRAW Real Good Man (Curb)	+ 252
GARY ALLAN Tough Little Boys (MCA)	+ 240
RASCAL FLATTS I Melt (Lyric Street)	+ 228
PATTY LOVELESS Lovin' All Night (Epic)	+ 209
DIERKS BENTLEY What Was I Thinkin'? (Capitol)	+ 201
BRIAN MCCOMAS 99.9% Sure (Never...) (Lyric Street)	+ 188
CHRIS CAGLE Chicks Dig It (Capitol)	+ 188
KEITH URBAN Who Wouldn't Wanna Be Me (Capitol)	+ 168
ASHLEY GEARING Can You Hear Me When I Talk... (Lyric Street)	+ 158



Artist Title (Label)	TW	LW	Fam.	Burn	P 25-54	W 25-54	M 25-54
LONESTAR My Front Porch Looking In (BNA)	4.28	4.31	100%	27%	4.28	4.29	4.26
DIERKS BENTLEY What Was I Thinkin'? (Capitol)	4.26	4.20	86%	9%	4.35	4.35	4.36
ALAN JACKSON AND JIMMY BUFFETT It's Five O'Clock Somewhere (Arista)	4.21	4.30	95%	13%	4.38	4.39	4.32
BRAD PAISLEY Celebrity (Arista)	4.19	4.26	99%	25%	4.33	4.31	4.40
BROOKS & DUNN Red Dirt Road (Arista)	4.19	4.24	97%	20%	4.19	4.18	4.21
GARY ALLAN Tough Little Boys (MCA)	4.19	—	48%	4%	4.22	4.20	4.25
CLAY WALKER A Few Questions (RCA)	4.18	4.15	77%	9%	4.29	4.39	4.03
TOBY KEITH Beer For My Horses (DreamWorks)	4.15	4.17	99%	35%	4.29	4.32	4.21
KENNY CHESNEY No Shoes, No Shirt, No... (BNA)	4.14	4.15	99%	20%	4.17	4.21	4.02
BUDDY JEWELL Help Pour Out The Rain (Lacey's Song) (Columbia)	4.11	4.22	89%	18%	4.21	4.26	4.05
TIM MCGRAW Real Good Man (Curb)	4.10	4.09	89%	15%	4.22	4.30	3.94
KEITH URBAN Who Wouldn't Wanna Be Me (Capitol)	4.09	4.21	61%	6%	3.91	3.91	3.89
JIMMY WAYNE Stay Gone (DreamWorks)	4.07	4.15	96%	22%	4.00	4.09	3.69
MONTGOMERY GENTRY Speed (Columbia)	4.05	4.06	97%	27%	4.12	4.08	4.23
TRACE ADKINS Then They Do (Capitol)	4.05	4.11	94%	20%	4.24	4.30	4.05
BRIAN MCCOMAS 99.9% Sure (Never...) (Lyric Street)	3.98	4.18	96%	23%	3.80	3.85	3.64
MARTINA MCBRIDE This One's For The Girls (RCA)	3.98	4.03	79%	10%	3.89	3.91	3.83
CRAIG MORGAN Almost Home (BBR)	3.95	3.95	90%	26%	4.05	4.05	4.07
RUSHLOW I Can't Be Your Friend (Lyric Street)	3.95	4.07	41%	4%	3.93	4.02	3.67
BILLY CURRINGTON Walk A Little Straighter (Mercury)	3.94	3.98	58%	10%	3.89	3.96	3.65
TRACY BYRD The Truth About Men (RCA)	3.92	3.96	95%	27%	4.13	4.11	4.16
EMERSON DRIVE Only God (Could Stop Me...) (DreamWorks)	3.87	3.94	76%	17%	3.76	3.89	3.38
JOE NICHOLS She Only Smokes When She Drinks (Universal South)	3.85	3.97	95%	16%	3.85	3.75	4.17
JEFF BATES The Love Song (RCA)	3.77	3.88	89%	29%	3.85	3.88	3.78
PAT GREEN Wave On Wave (Republic/Universal South)	3.72	—	39%	9%	3.69	3.48	4.31
SHANIA TWAIN Forever And For Always (Mercury)	3.63	3.77	98%	37%	3.72	3.74	3.66
SARA EVANS Backseat Of A Greyhound Bus (RCA)	3.62	3.74	92%	27%	3.56	3.50	3.79
WYNONNA What The World Needs (Asylum/Curb)	3.55	3.68	88%	25%	3.56	3.56	3.55
GEORGE STRAIT Tell Me Something Bad About Tulsa (MCA)	3.43	3.57	92%	32%	3.59	3.53	3.76
FAITH HILL You're Still Here (Warner Bros.)	3.35	3.46	71%	23%	3.30	3.35	3.17

Total sample size is 455 respondents. Total average favorability estimates are based on a scale of 1-5. (1=dislike very much, 5 = like very much). Total familiarity represents the percentage of respondents who recognized the song. Total burn represents the number of respondents who said they are tired of hearing the song. Sample composition is based on persons 12+. Persons are screened via the Internet. Once passed, they can take the music test based on the format/music preference. RateTheMusic.com results are not meant to replace callout research. The results are intended to show opinions of participants on the the Internet only. RateTheMusic is a registered trademark of RateTheMusic.com. The RTM system, is available for local radio stations by calling 818-377-5300. RateTheMusic.com data is provided by Mediabase Research, a division of Premiere Radio Networks.

If you experienced transmission problems ... please call our Circulation Department at 310/788-1625.

© 2003 Radio & Records, Inc. All Rights Reserved No part of this material may be reproduced in any form or incorporated in any information retrieval system without written permission of the Publisher.