

TOP 40 AIRPLAY Monitor

• We Listen To Radio •

July 10, 1998 \$4.95 Volume 6 • No. 28

TOP 40 HIGHLIGHTS

MAINSTREAM TOP 40

#1

ALANIS MORISSETTE

Uninvited (WARNER SUNSET/REPRISE)

*** AIRPOWER ***

JENNIFER PAIGE • *Crush* (EDEL AMERICA/HOLLYWOOD)
EDWIN MCCAIN • *I'll Be* (LAVA/ATLANTIC)
SMASH MOUTH • *Can't Get Enough Of You Baby* (ELEKTRA/EEG)

GOING FOR AIRPLAY

THE CORRS • *I Never Loved You Anyway* (143/LAVA/ATLANTIC)
DAKOTA MOON • *Another Day Goes By* (ELEKTRA/EEG)
NATALIE IMBRUGLIA • *Wishing I Was There* (RCA)
KELLY PRICE • *Friend Of Mine* (F-NECK/ISLAND)
RACHID • *Pride* (UNIVERSAL)
STARS ON 54 (ULTRA NATE, AMBER, JOCELYN ENRIQUEZ) • *If You Could Read My Mind* (TOMMY BOY)
THE THREE TENORS • *You'll Never Walk Alone* (ATLANTIC)

RHYTHMIC TOP 40

#1

BRANDY & MONICA

The Boy Is Mine (ATLANTIC)

*** AIRPOWER ***

AALIYAH • *Are You That Somebody?* (BLACKGROUND/ATLANTIC)
NICOLE FEATURING MISSY "MISDEMEANOR" ELLIOTT & MOCHA •
Make It Hot (THE GOLD MIND, INC./EASTWEST/EEG)

CROSSOVER

#1

BRANDY & MONICA

The Boy Is Mine (ATLANTIC)

*** AIRPOWER ***

BRANDY (FEATURING MASE) • *Top Of The World* (ATLANTIC)

GOING FOR AIRPLAY

GINUWINE • *Same Ol' G* (ATLANTIC)
RAY J • *Why I Lie* (ATLANTIC)
MONTELL JORDAN • *I Can Do That* (DEF JAM/MERCURY)
RACHID • *Pride* (UNIVERSAL)
STARS ON 54 (ULTRA NATE, AMBER, JOCELYN ENRIQUEZ) • *If You Could Read My Mind* (TOMMY BOY)

ADULT TOP 40

#1

NATALIE IMBRUGLIA

Torn (RCA)

*** AIRPOWER ***

SMASH MOUTH • *Can't Get Enough Of You Baby* (ELEKTRA/EEG)

ADULT CONTEMPORARY

#1

SHANIA TWAIN

You're Still The One (MERCURY)

*** AIRPOWER ***

NO RECORDS QUALIFIED FOR AIRPOWER THIS WEEK

GOING FOR AIRPLAY

MARK ANTHONY & TINA ARENA • *I Want To Spend My Lifetime Loving You* (SONY CLASSICAL/COLUMBIA)
THE CORRS • *I Never Loved You Anyway* (143/LAVA/ATLANTIC)
DAKOTA MOON • *Another Day Goes By* (ELEKTRA/EEG)
NATALIE IMBRUGLIA • *Wishing I Was There* (RCA)
LIGHTHOUSE FAMILY • *High* (ISLAND)
RACHID • *Pride* (UNIVERSAL)
SOUL ASYLUM • *Close* (COLUMBIA)
THE THREE TENORS • *You'll Never Walk Alone* (ATLANTIC)

PDs Cope With New Challenges Posed By Syndicated Shows

By Dana Hall, Marc Schiffman, and Phyllis Stark

With syndicated shows abounding at all formats, programmers are being forced to discover new and creative ways to make them sound local and blend with the rest of the station.

Among the challenges involved in running a syndicated show are having to write liners and promos and get them cut by the syndicated jock way in advance; dealing with the local press, who might not be as inclined to cover a syndicated show; the unavailability of

some jocks for live appearances; and handling listeners who call in thinking the show is local. But most PDs who air syndicated shows say that after the initial setup time, the "plug in and play" aspect of the programs makes them much easier to deal with than a live local jock, even if it means losing local control of a valuable daypart.

Each of Airplay Monitor's formats has a growing list of available syndicated shows in a variety of dayparts, including mainstream and adult top 40's Scott Shannon and Todd Pettengill;

Continued on page 12

DAKOTA MOON

Another Day Goes By



The soaring new single from their self-titled debut album and the follow-up to the hit "A Promise I Make."

Appearing on the Pepsi-Cola Pop Culture Music Tour in a town near you this summer.

Produced and arranged by Mike Ware and Andrew Logan for Nine Grounds Productions, Inc.
Managed by Aaron Walton for Aaron Walton Entertainment, Inc.

On Elektra compact discs and cassette tapes. www.elektra.com www.dakotamoon.com © 1998 Elektra Entertainment Group, a division of Warner Communications Inc., A Time Warner Company.



The wait is over...
Going for adds this week at
Mainstream Top 40,
Adult Top 40, Modern AC
& Mainstream AC!

27 - 17

★★★Airpower★★★

Mainstream Top 40
Monitor

Already on over
120 stations with
new adds including:

WSTR, WAPE,
WLAN, WRVW,
WVKS, WAMG

PHONES!

WZPL #1 Phones
KIIS Top 10 Phones
KHFI Top 10 Phones
WDBR Top 10 Phones

SPINNING ON:

KIIS	#7	49x
KLLC	#11	33x
KHKS	#17	42x
WXKS	#17	27x
KBKS	#17	38x
KKLQ	#8	47x
KDWB	#13	31x
WFLZ	#12	39x
WZPL	#12	36x
WXXL	#15	36x
KHFI	#1	38x

Jennifer Paige
CRUSH

Produced and Arranged by Andy Goldmark for GMARK Music, Inc. and Jimmy Bralower
Executive Producer: Andy Goldmark

World Radio History



Letters: Convergence And CAMPs

I could not have been more pleased when I saw Sean Ross taking shots at my "product never converges back upon itself" quote [in a July 3 Top 40 Topics column that suggested that top 40, despite Trout and Reis' theory, might again become a single format]. I really enjoy arguing programming with him.

My point was that, according to Trout and Reis, you should never see these bigger format fragments melt back into one again.

Will soft AC, adult top 40, hot AC, and modern AC ever fade away into the AC format of the late '70s? Will classic rock, alternative, active rock, and triple-A all ooze together to become "rock" again? Same principles apply to top 40.

Sure, there are always going to be minor swings back and forth between the formats in individual markets. But . . . if you look at successful stations (and product lines) over a long period of time, you'll see that once a new format (or product category) has split off into its own fragment, it's unusual to see it fold back into itself.

Call me when Victoria's Secret decides to close all its stores and merge with Sears. Or when Top 40 Airplay Monitor becomes a section in Billboard.

Jeff McHugh, PD
WKZL Winston-Salem, N.C.

Airplay Monitor editor Sean Ross replies:

Jeff's got us there. You won't see Monitor merged back into Billboard anytime soon. But . . . since the advent of modern AC, you actually have seen many triple-A stations become either modern AC outlets or classic rock outlets that differ little from their heritage rock competitors. Seventies oldies stations, one of the other new format developments of the last five years, have almost completely dissolved into conventional classic rock outlets or gone away completely. (Meanwhile, many more pop oldies outlets are now acknowledging the '70s in some way.) And mainstream country outlets have effectively thwarted the growth of a gold-based country format by adding enough gold to eliminate the availability of a separate position.

Consumer products are usually supposed to remain the same from week to week, but radio depends on an ever-changing supply of hit music. At this moment, some PDs in top 40 sub-formats don't feel the music is there to offer the product differentiation we've gotten used to. This is not what's supposed to happen, according to most business models; whether that means that top 40 PDs would be better advised to follow those business models closer or whether radio can't apply those principles uniformly in the real world is another debate.

Good story on [CAMPs] (Airplay Monitor, June 12).

Why radio hasn't designed 52-week packages for the motion-picture studios, the record companies/distributors/retailers, and network/cable television is lost on me.

It was sponsors who paid for programming in the early days of radio and television. They bought whole programs.

Soap operas were created to sell soap.

Two years ago, I asked Randy Michaels, ABC, and Dan Mason and the other group heads if anyone was thinking about getting into the record business and music publishing, creating new assets and cash flow. They all thought it was a joke.

Sponsor-identification requirements are founded upon the public's statutory right to know by whom it is being persuaded.

Arthur Godfrey's "Two Fat Polka" on Columbia sold 3 1/2 million copies in the U.S., and he performed it on his CBS Television Network and CBS Radio Network shows, all owned and operated by Paley's CBS.

NBC had RCA Victor Records and "The Perry Como Show." You're old enough to remember ABC Paramount Records.

Unlike television, today's radio has little residual value, no future earnings. If you were head of a group with 200 radio stations, wouldn't you want to create assets for your shareholders that are ongoing revenue producers?

Paul Drew, media/broadcasting consultant
Los Angeles

DJ Reunion At Z100's 15th; KRQQ Caves In

When WHITZ (Z100) New York celebrates its 15th anniversary July 31, it will do so with a weekend of jocks from the station's long top 40 history, including **Jack Da Wack**, **Shadow Steele**, **Ross Brittain**, **Claire Stevens**, **the Jammer**, and **Airplay Monitor's Linda Silver**. PD **Tom Poleman** would like to hear from any ex-ZJs that he hasn't tracked down yet at 212-239-2300.

El Niño just laid the wood to **KRQQ** Tucson, Ariz. At 7:10 a.m. on July 6, the weight of incessant rain collapsed the station's roof during the **Mojo** and **Betsy** morning show. The debris landed right on the studio's console. **Betsy** and morning producer **Jeff "Omelet" Dauler** (who was subbing for the vacationing **Mojo**) played music for 10 minutes until all decided it was too dangerous to go on. The power was turned off; **KRQQ** and AM sister **KNST** went dark for 70 minutes. The **KRQQ** air staff is working out of the production studio, although they will use one of the vacant studios in their building until their own studio is rebuilt.

The Charlotte (N.C.) Observer reports that **WNKS** (Kiss 95.1) Charlotte morning team **Ace** and **T.J.** were responsible for thwarting an apparent listener suicide attempt July 2. The morning team and a suicide-hotline worker eventually helped dispatch police to the listener's house, who has since checked into a mental-health center.

MANAGEMENT: BOB'S BACK

Former **KFMB-FM** (Star 100.7) San Diego GM **Bob Bollinger** resurfaces in the same role

at rival AC/classic rock combo **KYXY/KPLN**, replacing **Jim Donahoe**, now heading Capstar's Pacific Star region.

With Journal Broadcasting closing on seven stations in the Boise, Idaho/Ontario, Ore., area, **Vicki Swain**, GM of newly acquired country **KSRV-AM-FM** Ontario, gets GM duties for the other five stations in the mix, including modern AC **KCID** and its sisters.

When Sinclair closes on its purchase of **WEZB** (B97) New Orleans, longtime GM **Marc Leunissen** won't make the transition. He'll stay with duopartner **WRNO**, which is also being sold. Sinclair's New Orleans GM **Ken Miller** will oversee B97. Meanwhile,

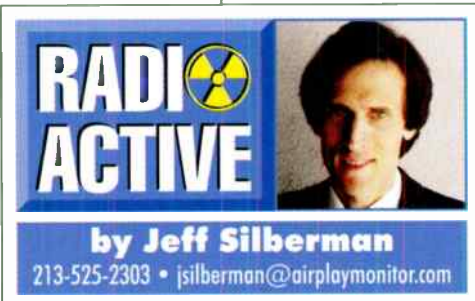
both an on-air B97 reunion and a going-away party for Leunissen will mark the transition. Call 504-581-7002 for more info.

Congratulations to **KDWB/KTCZ/WRQC** Minneapolis VP/GM **Marc Kalman** on his 30th anniversary in Twin Cities radio, which was July 5.

PROGRAMMING: PASHA PLUS

With the ARS/CBS deal closing, **Bill Pasha**, VP of programming for CBS Radio Inc./Baltimore, adds day-to-day PD duties for adult top 40 **WWMX** Baltimore, replacing **Adam Goodman**. Pasha's jurisdiction also includes top 40 **WXYV**.

WKSE (Kiss 98.5) Buffalo, N.Y., PD **Sue O'Neil** is promoted to OM of Kiss and AC sister **WMJQ** (Q102). Also, Kiss APD **Dave Universal** and Q102 APD **Dave Gillen** are upped to PD



at their respective stations.



212-536-5053 • theda@airplaymonitor.com

Station Count Buoys 'Torn' Over 'Iris'

TIE BREAKER: When two songs are tied on the chart with an equal spin count, the song with the most stations wins the tie, regardless of whether a title is gaining or losing spins. Such is the case on the mainstream top 40 chart this week with **Natalie Imbruglia's "Torn"** (RCA) and **Goo Goo Dolls' "Iris"** (Warner Sunset/Reprise), which are Nos. 2 and 3, respectively, on that chart. Both songs are tied with 4,511 spins, but Imbruglia has three more stations than the Goo Goo Dolls, which hasn't closed out the 95-station mainstream panel yet.

On the same chart, there is a second tie at 2,022 spins between **Natalie Merchant's** No. 16 "Kind & Generous" (Elektra/EEG) and **Jennifer Paige's** No. 17 "Crush" (Edel America/Hollywood). Merchant has 87 stations, and Paige has 85. There are also ties on the adult top 40 chart between **Aerosmith's** No. 27 "I Don't Want To Miss A Thing" (Columbia) and **Billie Myers' No. 28 "Tell Me"** (Universal). Both have 616 spins; Aerosmith has seven more stations. In addition, the **Wallflowers' No. 35 "Heroes"** (Epic) and **Rod Stewart's No. 36 "Ooh La La"** (Warner Bros.) both have 447 spins, but "Heroes" has three more stations. On the rhythmic top 40 chart, a tie at 377 spins between **Janet's "I Get Lonely"** (Virgin) and the **Backstreet Boys' "Everybody (Backstreet's Back)"** (Jive) was broken in Janet's favor because she has 10 more stations than the Boys.

In the rare event that two songs are tied with the same spin and station count, the tie would be broken by determining which song gained the most spins. If both songs are losing spins, then the song that lost the least spins would then win out. There are no examples of this occurrence on the charts this week.

In other chart news, due to a detection problem, the mainstream top 40 spin count for **Celine Dion's "To Love You More"** was revised to 1,646 for the week of June 26.

MUSICAL CHAIRS: 550 Music's Los Angeles-based associate national pop promotion person **Chuck Field** has moved to New York and is upped to national director of pop promotion. Los Angeles regional promotion rep **Kevin Kertes** gets the nod to replace Field for associate national pop promotion duties.

Later this year, look for Elektra's **Mark Snider** to join V2 as head of top 40 promotion efforts.

Columbia national crossover promotion staffer **Liz Pokora** has not re-upped and is exploring other opportunities. Pokora can be reached on her cell phone at 310-729-3195 or via E-mail at ahmayzing@aol.com . . . A&M Philadelphia regional **Fred Shade** shifts to the Boston region . . . Former Maverick local **Cat Collins** joins MCA for Atlanta duties, replacing **Jeff Davis**, who recently added national alternative/rock duties to his plate . . . **Patrick Milanese** joins N2K from Curb for Northeast promotion duties, based in Philadelphia . . . Eight-year Columbia vet **Demmette Guidry** is named senior VP of the label's black music division . . . RCA's **Lou Robinson** is elevated to VP of video promotion and marketing.

ARTIST MONITOR: **Mark McGrath** of **Sugar Ray**, who is featured on the cover of Cosmopolitan's current "All About Men" issue, tells readers, among other things, that musicians are lousy boyfriends . . . Haven't seen **RuPaul** out of drag? Check him out wearing a suit in Rockport's print ads. The ad's caption reads, "I'm comfortable being a man" . . . **Usher** will play a football player named "Gabe" in the sci-fi thriller "The Faculty," which was penned by **Kevin Williamson** ("Scream") and is due this fall . . . **Ice-T** has landed the part of a singing judge in the children's movie based on **Mordecai Richler's** "Jacob Two-Two Meets The Hooded Fang," which started shooting this month in Toronto.

at their respective stations.

There's been some tweaking in the air of Bakersfield, Calif., as **KKXX** adopts a new handle, X96.5, to match its new frequency. Now consulted by **Steve Smith** and **Michael Newman**, PD **Chris Squires** describes the station's sound as "more rhythmic" than before. The station is using the "today's hottest music" positioner.

Longtime country **KNAX** Fresno, Calif., flips to R&B oldies as Mega 97.9; its format is similar to Chancellor's **KCMG** (Mega 100) L.A. It's the second new R&B oldies Mega since KCMG's launch; the other is **KYLZ** Albuquerque, N.M.'s sister.

Bill Tanner, consultant to Cox's forthcoming top 40 **WEDA** Birmingham, Ala., adds those duties for its **WBLI** Long Island, N.Y. Also, **WBLI** is engaged in a name war with new rhythmic top 40 rival **WXXP** over the name **Sky Walker**. **WXXP's** PD is named Walker; he previously worked at **WBLI**. Before Walker could return to the market from **WVYB** Daytona Beach, Fla., to take the **WXXP** job, **WBLI** had given the name to one of its P/Ts. Its Walker is one of two P/Ts handling overnights on the station.

Gulfstar Regional PD **Larry Kent** is manning the PD controls at **KISX** Tyler, Texas, in the wake of **Michael Storm's** departure. Kent expects to be there awhile as the station takes its time finding the right programmer.

PEOPLE: PILAT OF THE AIRWAVES

Julie Pilat's ascension to MD was officially endorsed by **KUBE** Seattle, which also names **Leah Jackson** music coordinator.

Lots of action at Capstar's Birmingham stations: AC **WMJJ** (Magic 96) nabs crosstown top

40 **WZJT's Erika Woode** for middays, replacing **Jill Friday**, while ex-**WZYP** Huntsville, Ala., talent **Randi** joins new top 40 convert **WQEN** for nights.

KRBE Houston programming assistant **Shana Sonnier** is promoted to promotion director.

Stu and Rien from **KYRX** Cape Girardeau, Mo., are the new night team at **WZYP** Huntsville, Ala., replacing **Lou and Larry**.

Dan Connolly, assistant promotion director for Entercom's Rochester, N.Y., outlets, including country **WBEE**, is now promotion director at **WWHT** (Hot 107.9) Syracuse, N.Y. Also, new PD **J.J. Rice** is now doing 10 a.m.-noon at **WWHT**.

HURL HEARD ROUND THE WHIRL

KFMB (Star 100.7) San Diego's second go-round (as it were) with its Whirl "Til You Hurl" promo on the Big Dipper roller coaster at Belmont Park enters its second week. After about 1,600 rides, only eight of the original 22 contestants are still gunning for the \$50,000 grand prize. Promotion director **Kim Leeds** notes that Star—which tried blindfolding last year's finalists and feeding them stomach-churning food (to no avail)—will continue the stunt until one person remains (or the survivors are willing the split the loot). Contestants receive just three 10-minute breaks and one 30-minute break every 24 hours; they're forbidden from using blankets or pillows for cushioning. Plus, contestants have to ride non-stop from 8 a.m. to 11 a.m., after which they will ride with regular passengers until midnight—then they sleep on the roller coaster until morning.

RADIO CONCERT MONITOR

DATE	CALL LETTERS	EVENT	SCHEDULED TO APPEAR
July 18	WKRC Cincinnati	One Earth 2	Billie Myers, Jars Of Clay, Edwin McCain, Vonda Shepard, more
July 20	KSLZ St. Louis	Union Station Free Concert	Color Me Badd, more
July 25	WJET Erie, Pa.	Discover Presque Isle	TBA
July 29	KUBE Seattle	Summer Jam '98	Next, Mase, Sylk-E. Fyne, Lord Tariq & Peter Gunz, Public Announcement, Jon B, Missy Elliott & Nicole, Brian McKnight, LL Cool J
July 31	WKSL Memphis	Concert	Color Me Badd, Inoj, No Authority, Inner Circle, Jennifer Page, L.F.O., more
Aug. 1	WBLI Long Island, N.Y.	Concert	TBA
Aug. 20	KSLZ	Concert	Color Me Badd, more
Aug. 22	WKRC	One Earth 3	TBA
Aug. 22	WBBO Monmouth/Ocean, N.J.	Concert	TBA
Aug. 29	KSLZ	Concert	TBA
Sept. 12	WIOQ Philadelphia	Concert	TBA

Let us monitor your event! Call Jeff Silberman at 213-525-2303 or E-mail jsilberman@airplaymonitor.com

The Fifth (Millionth) Beetle



WPXY (98PXY) Rochester, N.Y., listener Shawn Inguagiato sneezes his appreciation at winning a '98 Volkswagen Beetle full of prizes, but it snot funny to morning man Scott Spezzano . . . (tap, tap) Is this page on?

Publisher: Jon Guynn
Editor: Sean Ross
Managing Editor: Jeff Silberman
National Chart Manager: Linda Silver
Director of Charts: Theda Sandiford-Waller
Associate Director of Charts: Steven Graybow
Chart Production Manager: Michael Cusson
Asst. Chart Production Manager: Alex Vitoulis
Editorial Production Managers: Barry Bishin, Marcia Repinski
Editorial Production: Susan Chicola, Marc Giaquinto, Maria Manlicic, Lisa Rathgeb
Copy Editor: Carl Rosen
Advertising Production Manager: Lydia Mikulko
Advertising Production Coordinator: Paul Page
Art Director: Ray Carlson
Advertising Production Artist: Karen Platt

National Advertising Manager: Hank Spann
Account Managers: Jeff Somerstein, Sharon White
Advertising Services Manager: Alyse Zigman
Sales Assistants: Evelyn Aszodi, Erica Bengtson, Candace Gil

Editorial Adviser: Timothy White
Director of Production & Manufacturing: Marie Gombert
Circulation Director: Jeanne Jamin
Marketing Manager: Rob Accatino

Billboard Music Group

President: Howard Lander
Senior VP/General Counsel: Georgina Challis
Vice Presidents: Irwin Kornfeld, Karen Oertley, Adam White
Director of Strategic Development: Ken Schlager
Business Manager: Joellen Sommer

1515 Broadway, New York, NY 10036 212-764-7300
 5055 Wilshire Blvd., 7th floor, Los Angeles, CA 90036 213-525-2300
 For subscriptions call: 800-745-8922

Airplay Monitor reporting panels are based solely on a station's musical content.

©1998 BPI Communications Inc. No part of this publication may be reproduced, stored in any retrieval system, or transmitted, in any form or by any means, electronic, mechanical, photocopying, recording, or otherwise, without the prior written permission of the publisher.

MONITOR PROFILE

Programmer Jim Trapp Moves Houston's Buzz Toward The Mainstream

You can forgive KTBS (the Buzz) Houston PD Jim Trapp for feeling a certain sense of *déjà vu*. After all, he oversaw KZZO (the Zone) Sacramento, Calif.'s transition from triple-A to "pop alternative," something he sees as different from modern adult radio. Now, KTBS has also undergone some much-publicized mainstreaming.

"What we did at the Zone was very similar to what's happening here at the Buzz," Trapp says. "The Zone had a history as a rock alternative that was limited by its very niche. In both situations, the challenge was to build an alternative station that can perform aggressively in the mainstream."

"I turned the Zone into an alternative station that was female-friendly without sacrificing its male core. One key to our success was that we never forgot how important the alternative origin was to the music we played. The modern AC approach takes middle-of-the-road AC acts and gives them a hip new house

Planet as a concept got people in the door, it failed to hook them for any appreciable 'TSL."

"Still, there was just enough juice in the Planet to keep us from going head to head with them," Trapp says. "The Buzz was forced into a more rock-based skew, if only to find a hill to call our own. However, with this new opportunity, we have an almost-unheard-of second chance at the same programming hole that we missed the last time around."

Long before Hefel took KKPN Spanish, Trapp says, "the team here had been sizing up this opportunity for a while. Jeff Pollack along with John Parikhal and Chris Kennedy at Joint Communications have been burning the phones for over a month. We all agreed that we simply couldn't sit on our haunches and let this opportunity go by a second time."

The first thing he worked on was the music mix. "We've been testing certain records that have a history in the market to see where the tolerance for those acts would be among our cume. The challenge is to keep a harmonious balance between our existing core and the new cume we're trying to attract. I need all the information I can get about what the existing core thinks and how the new sampling cume is reacting to our changes."

Here's a sample hour on KTBS: Sublime, "What I Got"; Natalie Imbruglia, "Wishing I Was There"; Oasis, "Wonderwall"; Harvey Danger, "Flagpole Sitta"; Blues Traveler, "Hook"; Everclear, "I Will Buy You A New Life"; Cure, "Friday I'm In Love"; Verve, "Bittersweet Symphony"; Smashing Pumpkins, "1979"; Fastball, "The Way"; Blind Melon, "No Rain"; Pearl Jam, "Better Man"; and Dave Matthews Band, "Stay."

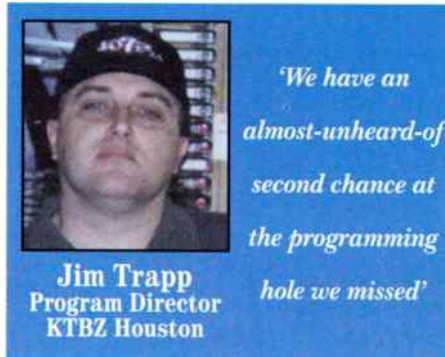
"It's not about putting more women in the game but maximizing their potential as PIs," Trapp says. "It's all about squeezing more AQH by enhancing their passion for the product. A lot of 18-34 women have aged out of a pure alternative background and have little appetite for traditional AC. Also, a lot of 25-34 men haven't given up the classic rock ghost. This pop alternative approach, as opposed to the more overtly female modern AC format, has a very strong male appeal. This approach delivers men in the 25-34 demo rather than relying on a 12-24 base."

The Buzz is now positioned between top 40 KRBE and album KIOL. "The Buzz has always shared more with KRBE than KIOL, but, to be honest, the 470,000 lost souls who used to call the Planet home are my primary target right now," Trapp says. "With 44% shared cume with the Planet, we obviously have a huge opportunity to take the most advantage of that dislocated audience."

Trapp also has a strategic partner in hot AC sister KHM (Mix 96.5). "I see their perceptuals, and they see all of my stuff," he says. "Then we orchestrate the dance. We definitely need to coordinate our efforts more closely, but the two stations are light years apart when it comes to vibe, imaging, and psychographic appeal. However, the potential to build a real synergy between the two stations has never been more possible than it is right now."

Trapp is looking forward to working with new owner Jacor and its aggressive mentality. "One of the great selling points about working for Jacor is their love of the battle and their high regard for product, something a lot of the groups have left behind in the most recent cycle of acquisition and consolidation," he says. "My father was a tough old bastard who used to say, 'An amateur smiles when he puts the knife in; a professional smiles when he pulls it out.' I hope that childhood conditioning will come in handy with Jacor."

JEFF SILBERMAN



'We have an almost-unheard-of second chance at the programming hole we missed'

Jim Trapp
 Program Director
 KTBS Houston

to live in. Pop alternative, on the other hand, was always about taking alternative-compatible acts and breaking them into the mainstream. It makes all the difference in the world if your internal game plan is about trying to make Shania Twain hip and edgy versus making hits out of Semisonic and Fastball.

"Understanding that is what made the Zone work. A lot of backseat drivers told us the future was Donna Lewis and reformed Journey projects. If you're into pop alternative, you'll avoid that stuff like the plague."

"The modern AC blueprint has more to do with AC than with modern," Trapp adds. "That's why those stations perform in a more passive manner when it comes to street stuff like record and concert sales. An exciting pop alternative that doesn't lose its way in the AC blur will retain all the immediacy of its modern progenitors without giving into the background values that typify a lot of modern ACs."

"When I got here, the Buzz was shaking off the effects of a lengthy bout of terminal hipness," he says. "The station was so in love with its iconoclastic anti-radio image that we had to essentially zero ourselves out when it came to a consistent and marketable position. We saw the same pop alternative hole I had just plugged with [KZZO], but hats off to Dave Dillon and Jack Taddleo at SFX in beating us to the punch with [KKPN] the Planet. That changed everything; we were left with no real discernable position to own except rock alternative. Fortunately for us, the Planet took too long to get its game together and only became a real threat just before the sale to Hefel doomed it."

"The Planet effectively built a huge cume base for the concept, which is certainly something we plan to take advantage of. But the Planet failed to build loyalty. Its PI percentages were in the low to mid 20s, compared with the Buzz's ratio at 38%. So while the

ONE GREAT RIDE. ARMAGEDDON

THE ALBUM

FEATURING 4 NEW SONGS FROM



INCLUDING THE HIT SINGLES

I DON'T WANT TO MISS A THING
AND WHAT KIND OF LOVE ARE YOU ON.

PRODUCED BY MATT SERLETIC

PLUS NEW TRACKS IMPACTING RADIO NOW FROM

JOURNEY

REMEMBER ME

SHAWN COLVIN

WHEN THE RAINBOW COMES

WITH NEW MUSIC BY

JON BON JOVI

PATTY SMYTH

TREVOR RABIN

CHANTAL KREVIAZUK

OUR LADY PEACE

THE #1 MOVIE IN AMERICA!

SOUNDTRACK EXECUTIVE PRODUCER: JERRY BRUCKHEIMER

SOUNDTRACK PRODUCERS: GLEN BRUNMAN JOHN KALODNER KATHY NELSON

WWW.AEROSMITH.COM WWW.ARMAGEDDON.COM

WWW.COLUMBIARECORDS.COM WWW.SONYMUSIC.COM

COLUMBIA

SONY MUSIC
SOUNDTRAX



"COLUMBIA" REG. U.S. PAT. & TM. OFF. MARCA REGISTRADA. © 1998 SONY MUSIC ENTERTAINMENT INC./
MOTION PICTURE ARTWORK & ARTWORK TITLE: © 1998 TOUCHSTONE PICTURES. ALL RIGHTS RESERVED.

BIG AIRPLAY



"WAR"

BONE THUGS-N-HARMONY,
WITH FLESH-N-BONE, HENRY ROLLINS,
TOM MORELLO & FLEA



SOUNDTRACK ALBUM AVAILABLE JULY 7TH

FEATURING
PAT BENATAR WITH ADDITIONAL VOCALS
BY QUEEN LATIFAH,
QUEEN WITH ADDITIONAL VOCALS
BY WYCLEF JEAN, FEATURING PRAS AND FREE,
THE PRETENDERS WITH ADDITIONAL VOCALS
BY KOOL KEITH
AND MUCH MORE.



WWW.DREAMWORKSREC.COM
© 1998 DREAMWORKS L.L.C.
© 1998 UNIVERSAL CITY STUDIOS PRODUCTIONS, INC.

NEW THIS WEEK:

KYLD 99X WHHH KBOS
KQMQ KOHT KHTN WLKT
KDGS WXIS WKXJ KKSS

AND MANY MORE!



TOP 40 TOPICS BY SEAN ROSS

212-536-5264 • sross@airplaymonitor.com

Can Top 40 Be Too Extreme?

If you look at a Hot 100 Singles chart or a radio station playlist from 1980-81, an interesting parlor game suggests itself. It's always kind of fun to look at some of the records that became hits during that era and figure out which ones top 40 would have been better off avoiding altogether. In an era when some of the best, most-accessible pop and R&B records couldn't crack top 40 radio (i.e., the Romantics' "What I Like About You," the B-52's' "Rock Lobster," Zapp's "More Bounce To The Ounce," Split Enz's "I Got You," etc.), it's always intriguing to wonder whether the format could've avoided its doldrums if PDs had played those songs instead of "Mr. Sandman" by Emmylou Harris or "Say You'll Be Mine" by Christopher Cross or the other midcharacters that disappeared, unmourned, even from soft AC, once top 40 rebounded a few years later.

The thorniest part of the parlor game is trying to figure out what to do with the AC megahits. Even if it seems pretty safe to say that the world would've gotten along just fine without "Say You'll Be Mine," what would you do with Cross' "Sailing"? Or "Lady" by Kenny Rogers? Or "Steal Away" by Robbie Dupree? Were those songs so big that they couldn't have been denied? Or were they hits only because PDs were searching out the AC stuff and avoiding the obvious hits?

To Jerry Clifton, Jay Stone, Jamie Hyatt, and the other folks behind KXME (Xtreme Radio) Honolulu, and now KPTY Phoenix, that answer must seem pretty obvious. KXME, which, I realize, is now setting a record for most consecutive weeks mentioned in this column, is a mainstream top 40 that mixes modern rock crossovers and hip-hop and R&B hits with almost nothing else in the middle—no teen-idol groups, no "Torn," no AC image acts. And certainly none of the purely passive hits that don't sell or generate requests but that eventually work in call-out after 14 weeks of airplay.

When Keith Clark tried putting modern rock crossovers and hip-hop hits together at WJZM Cleveland and then WHJX (Hot 101.5) Jacksonville, Fla., in the mid-'90s, he called his similar approach "Channel X." I've always thought of it as "MTV Radio," since during top 40's fallow years, it was MTV that played rock and rap and little else. So while the approach isn't new (even Clifton's early-'70s WDRQ Detroit would segue from Grand Funk Railroad to the Isley Brothers), two

things were different five years ago. One is that few PDs were comfortable with a wide variety. The other is that there weren't many legitimate uptempo pop/rock hits at top 40 beyond "Two Princes" and "Little Miss Can't Be Wrong."

Several years later, mainstream top 40 PDs think theirs is a variety-driven format with plenty of legit pop/rock at its core. Yet KXME's Hyatt still believes that "mainstream top 40 has gotten so bland by leaning AC to go after older females." The answer is perhaps somewhere in the middle. Mainstream top 40 is a lot hipper than it was in 1993; it could still move a little further to the left. Many mainstream PDs are still somehow more comfortable with a pop/rock record that doesn't sell or generate requests but does test eventually than they are with even the most accessible R&B or hip-hop crossovers. I'd be happier to see some of those passive records weeded a little more so that a "Too Close" or "Be Careful" could move across the top 40 landscape a little more quickly.

Beyond that, it's hard to decide where to draw the line between hip and unhip; even for a fan of reaction-record-driven top 40, I find it hard to imagine that the line is as far to the left as the KXME folks believe. Eventually, we'll probably see "How Do I Live" the same way we now see "Lady," but it sure seemed legit last fall. For now, it's nearly impossible to imagine a time when we'll see "Torn," which KXME won't play, as a record that wasn't good for top 40 (and didn't have at least some younger-demo/active-audience appeal). Or a time when the teen acts that KXME avoids won't be seen as a key part of top 40's renaissance. But I'm not a 17-year-old skate punk, and the fact that KXME, seemingly alone among top 40s, appears to take that audience into consideration is commendable.

Since currents don't hang around for 15-20 years for us to decide on their ultimate legitimacy (it only feels that way sometimes), the key for top 40 PDs is probably choosing just enough of those seemingly passive records so that they can't redefine the format. Part of what separates, say, "Never Gonna Let You Go" by Sergio Mendes from "Sailing" is that Mendes' hit was played next to "The Safety Dance," whereas "Sailing" was played next to another AC ballad. Top 40's doing a better job of balance these days. But there are still enough top 40 stations that lean toward the adult/passive side that one or two stations leaning toward other "extremes" hardly affects the balance.

Why Is This Man Sweating?



Actor/recording artist Rick Springfield, center, is extremely relieved that KZZP Phoenix marketing director Jennifer Yee, left, and KHMx (Mix 96.5) Houston marketing director Brooke Baume didn't think he married Laura on "General Hospital."

Strongest Increase In Airplay This Week

MAINSTREAM TOP 40

INCREASE
IN PLAYS

JENNIFER PAIGE • Crush (EDEL AMERICA/HOLLYWOOD)	+602
WKRQ +33, KZZJ +32, WFBC +23, WFLZ +22, WKRZ +19, WSTR +17, WRWW +17, WNTQ +16, WSNX +16, WRVQ +16	
BACKSTREET BOYS • I'll Never Break Your Heart (JIVE)	+441
KHKS +20, WKSL +19, WZJM +18, KQKQ +18, WTWR +16, WIOQ +15, WLKT +14, WQSL +14, WZNY +14, WXX +14	
'N SYNC • Tearin' Up My Heart (RCA)	+409
WKSZ +25, WBHT +20, KZHT +20, WNKS +17, WZAT +15, KHFI +15, KSMB +14, WZJM +14, WYOY +12, WSSX +12	
BRANDY & MONICA • The Boy Is Mine (ATLANTIC)	+378
WFLY +25, WZAT +21, WQSL +19, WLAN +19, KBKS +16, WTWR +16, WZPL +16, KCHZ +14, KHFI +14, WXKB +12	
WILL SMITH • Just The Two Of Us (COLUMBIA)	+286
WWHT +35, WXYV +21, WXS +17, KMXV +13, KRQQ +12, KCHZ +11, WKCI +11, WKSL +10, WQZQ +10, WXXX +10	
ACE OF BASE • Cruel Summer (ARISTA)	+280
WYOY +21, WAEB +21, KDWB +19, WQZQ +16, WCIL +16, WNNK +13, KHTO +12, WFLY +12, KSMB +11, WWSR +11	
SMASH MOUTH • Can't Get Enough Of You Baby (ELEKTRA/EEG)	+264
WKSZ +26, WZAT +20, WPXY +17, WZNY +16, WNNK +16, WHOT +13, WZPL +13, WAEB +12, WVKX +12, WLAN +12	
SAVAGE GARDEN • To The Moon And Back (COLUMBIA)	+262
KKLQ +25, WGTZ +19, KCHZ +14, KSMB +13, WNNK +12, WQZQ +11, WKRZ +11, WNCI +11, WVKX +10, KWDB +10	
PRAS MICHEL FEAT. OL' DIRTY BASTARD & MYA • Ghetto Supastar (That Is What You Are) (INTERSCOPE)	+257
WWHT +20, KHKS +17, WHTZ +17, WBL +14, WZJM +13, WGTZ +13, WDJX +11, WQZQ +10, WKRZ +10, WPXY +10	
SWIRL 360 • Hey Now Now (MERCURY)	+256
WXS +35, WYOY +21, KKLQ +21, WWSR +14, WJBQ +12, WDDJ +11, KCHZ +10, WYCR +10, KRUF +9, WLKT +8	

RHYTHMIC TOP 40

INCREASE
IN PLAYS

BRANDY (FEAT. MASE) • Top Of The World (ATLANTIC)	+217
KYLZ +34, KQKS +31, KDGS +21, KPRR +20, XHTZ +14, KISV +11, WHHH +11, KKFV +11, KYLD +10, KOHT +9	
AALIYAH • Are You That Somebody? (BLACKGROUND/ATLANTIC)	+214
KIOX +39, KQKS +36, KDGS +25, KISV +22, KTFM +22, WPOW +19, KIKI +13, KYLZ +12, KLUC +9, KOHT +8	
BACKSTREET BOYS • I'll Never Break Your Heart (JIVE)	+184
WBBM +41, KPRR +31, KHTS +26, KIKI +16, KZFM +13, WDRQ +12, WFHN +11, KDON +10, WPOW +6, WWKX +5	
TATYANA ALI • Daydreamin' (MJJ/550 MUSIC)	+131
KDON +23, WHHH +23, KIOX +22, KKFV +17, KIKI +13, KHTS +10, KBOS +9, XHTZ +9, KGGI +8, WPOW +6	
MONICA • The First Night (ARISTA)	+118
KIOX +39, WWKX +32, WJMN +19, KKSS +16, KDGS +3, WBTT +2, KIKI +2, WJJS +2, KQMQ +1, KCAQ +1	
INOJ • Time After Time (SO SO DEF/COLUMBIA)	+106
KBOS +19, KTFM +19, KIKI +18, KZFM +16, KGGI +14, KDGS +11, KHTS +8, KPRR +8, WPOW +6, KOHT +2	
'N SYNC • Tearin' Up My Heart (RCA)	+99
WDRQ +26, KHTS +19, KQMQ +14, WJJS +12, WBTT +11, KZFM +6, WPOW +3, WBBM +3, WFHN +2, KDGS +1	
JANET • Go Deep (VIRGIN)	+80
KBOS +23, KDGS +18, WNVZ +16, KYLZ +14, KZFM +10, WPOW +10, KLUC +9, WFHN +9, KGGI +8, KUBE +7	
BIG PUNISHER FEAT. JOE • Still Not A Player (LOUD/RCA)	+78
KDGS +23, WFHN +19, XHTZ +16, KQMQ +15, WBTT +12, KDON +8, KSFM +8, KKSS +6, KYLZ +4, KQKS +4	
CAM'RON FEATURING MASE • Horse & Carriage (UNTERENTAINMENT/IEPIC)	+77
KCAQ +20, WWKX +13, WJMN +12, KIOX +11, WPOW +10, XHTZ +5, KYLD +4, KDGS +3, KISV +2, KOHT +2	

CROSSOVER

INCREASE
IN PLAYS

BRANDY (FEAT. MASE) • Top Of The World (ATLANTIC)	+463
WJMH +46, KYLZ +34, KQKS +31, KKDA +27, KBXX +23, KDGS +21, WGZB +20, WCKX +19, WSGF +18, KMEL +16	
MONICA • The First Night (ARISTA)	+379
WWKX +32, KKDA +25, WCHB +24, WUOL +24, WQUE +23, WJLB +21, WJMN +19, WBHJ +16, KBXX +16, KKSS +16	
AALIYAH • Are You That Somebody? (BLACKGROUND/ATLANTIC)	+252
KQKS +36, WTLC +27, KDGS +25, WJMI +24, KISV +22, WGCI +20, WJMH +18, WENN +18, WPHI +14, KIKI +13	
CAM'RON FEATURING MASE • Horse & Carriage (UNTERENTAINMENT/IEPIC)	+238
KCAQ +20, KXHT +18, WYOK +17, WPHI +15, WHTA +15, WENN +15, WPEG +15, WWKX +13, KBXX +12, WJMN +12	
GERALD LEVERT • Thinkin' Bout It (EASTWEST/EEG)	+213
WSGF +21, WJLB +21, WQUE +17, WFXA +15, KBXX +15, WGCI +15, KDKS +14, WHHH +11, KTBT +9, WGZB +9	

MODERN ADULT

INCREASE
IN PLAYS

EVERYTHING • Hooch (BLACKBIRD/SIRE)	+142
KQMB +20, KBBT +13, WBAM +12, KLLC +12, WDRV +12, WWCD +10, WSHE +10, WPTE +9, KZZP +9, KPEK +8	
THE BRIAN SETZER ORCHESTRA • Jump Jive An Wail (INTERSCOPE)	+97
KBBT +20, KOZN +13, KFMB +12, WPLT +11, WPTE +9, KLLC +9, WDRV +8, WBMX +8, KPEK +6, WJBX +6	
SAVAGE GARDEN • To The Moon And Back (COLUMBIA)	+89
WBMX +21, KZZO +19, KMXB +16, WTMX +16, WLNK +16, WTIC +15, KDMX +13, WMBX +8, KVSF +3, WBAM +1	
SMASH MOUTH • Can't Get Enough Of You Baby (ELEKTRA/EEG)	+84
KYIS +19, WTIC +18, WKZL +14, KFMB +10, WVRV +9, KPEK +7, KENZ +7, KZZO +7, KAEP +7, WMBX +6	
BARENAKED LADIES • One Week (REPRISE)	+74
WPTE +21, KPEK +20, KFMB +16, WBAM +14, KLLY +13, WBOS +12, WLNK +12, WXLE +11, KQMB +7, WJBX +7	

ADULT TOP 40

INCREASE
IN PLAYS

NATALIE IMBRUGLIA • Wishing I Was There (RCA)	+153
WQAL +18, KSTZ +18, WBMX +18, WBAM +15, WMMX +15, KPEK +12, KHMV +10, KVSF +9, KMXB +8, WKQI +8	
SMASH MOUTH • Can't Get Enough Of You Baby (ELEKTRA/EEG)	+132
KYIS +19, WTIC +18, WQLH +17, WAEV +15, KEZR +15, WKZL +14, KFMB +10, KPEK +7, KZZO +7, WMBX +6	
SAVAGE GARDEN • To The Moon And Back (COLUMBIA)	+122
WBMX +21, KZZO +19, KMXB +16, WTMX +16, WLNK +16, WTIC +15, KDMX +13, WPLJ +12, WYXR +11, WMBX +8	
AEROSMITH • I Don't Want To Miss A Thing (COLUMBIA)	+114
KQMB +29, WAKS +25, WBIX +25, WMYB +17, WKDD +14, WQAL +11, WQLH +11, KBEE +7, KHMV +7, KPLZ +7	
EVERYTHING • Hooch (BLACKBIRD/SIRE)	+113
KQMB +20, KBBT +13, WBAM +12, KLLC +12, WDRV +12, WSHE +10, WPTE +9, KZZP +9, KPEK +8, KVSF +6	

ADULT CONTEMPORARY

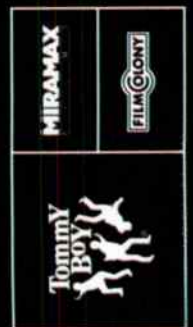
INCREASE
IN PLAYS

ANNE COCHRAN & JIM BRICKMAN • After All These Years (WINDHAM HILL)	+107
KESZ +10, KEFM +9, WPCH +7, WLTO +6, KOSI +5, WSHH +5, WLEV +4, WBBQ +4, KUDL +4, WEZF +4	
LIONEL RICHIE • Time (MERCURY)	+83
WTFM +9, WEZF +9, WMAG +9, WRCH +8, WBEB +7, WGSY +6, KEFM +6, WAHR +5, WDEF +4, WSNY +4	
GARTH BROOKS • To Make You Feel My Love (CAPITOL)	+82
WRVF +15, KMGA +14, WBBQ +12, KGBX +10, WLIF +7, WDEF +6, WRCH +4, WTFM +4, KISC +4, KOSI +4	
NATALIE IMBRUGLIA • Torn (RCA)	+77
WAHR +19, WSNY +17, KEFM +13, WLIF +11, KMZQ +8, WNND +7, WDEF +7, KUDL +6, KBIG +6, WSLQ +6	
ROD STEWART • Ooh La La (WARNER BROS.)	+74
KMGA +18, WJDX +18, KSSK +16, WSNY +13, WLIF +12, WLHT +7, WMGS +5, KTDY +3, WLTW +3, KGBX +3	

STARS ON 54:
ULTRA NATÉ,
AMBER,
JOCELYN ENRIQUEZ
"IF YOU COULD READ MY MIND"
THE LEAD SINGLE FROM THE
MIRAMAX MOTION PICTURE
SOUNDTRACK



IMPACTING RADIO 7/14
ON YOUR DESK NOW!



POWER PLAYLISTS

For Week Ending July 5, 1998

AIRPLAY Monitor

ALMA... THE MUSIC BUSINESS... THE ONLY SOURCE FOR THE LATEST... THE MUSIC BUSINESS...

WHTZ New York PD: Tom Poleman APD: Kid Kelly MD: Paul Bryant. Playlist for WHTZ New York with 40 tracks.

WHTZ New York (continued) Playlist for WHTZ New York with 40 tracks.

KIIS Los Angeles PD: Dan Kiele APD/MD: Tracy Austin MD: Paul Bryant. Playlist for KIIS Los Angeles with 40 tracks.

WXXS Boston PD: John Ivey APD/MD: Kid David Corey AMD: Skip Kelly. Playlist for WXXS Boston with 40 tracks.

KRBE Houston PD: John Peake APD: Scott Sparks MD: Jay Michaels. Playlist for KRBE Houston with 40 tracks.

KRBE Houston (continued) Playlist for KRBE Houston with 40 tracks.

KHKS Dallas OM: John Cook PD: Mr. Ed Lambert MD: John Reynolds. Playlist for KHKS Dallas with 40 tracks.

WIOQ Philadelphia OM: Glenn Kalina APD: Robyn Bentley MD: Jay Towers. Playlist for WIOQ Philadelphia with 40 tracks.

WSTR Atlanta PD: Dan Bowen MD: J.R. Ammons. Playlist forWSTR Atlanta with 40 tracks.

WWWZ Washington, DC PD: Dale O'Brien APD/MD: Ron Ross. Playlist for WWWZ Washington, DC with 40 tracks.

WFLZ Tampa OM: B.J. Harris APD/MD: Domino. Playlist for WFLZ Tampa with 40 tracks.

KDWB Minneapolis PD: Rob Morris APD/MD: Rich Davis. Playlist for KDWB Minneapolis with 40 tracks.

KZQZ San Francisco PD: Mark Adams. Playlist for KZQZ San Francisco with 40 tracks.

WBZZ Pittsburgh OM: Keith Clark PD: David Edgar. Playlist for WBZZ Pittsburgh with 40 tracks.

WHYI Miami PD: Rob Roberts APD: Al Chio MD: Deirdre Poyner. Playlist for WHYI Miami with 40 tracks.

WKSS Hartford PD: Jay Beau Jones MD: Mike McGowan. Playlist for WKSS Hartford with 40 tracks.

KKRZ Portland PD: Tommy Austin MD: Lara. Playlist for KKRZ Portland with 40 tracks.

WPST Trenton Sr. VP/Pgm: Michelle Stevens PD: Dave McKay MD: Chris Puorro. Playlist for WPST Trenton with 40 tracks.

Going for ADDS Now!

**Featured in
Lethal Weapon 4**

Opens July 10, 1998

“PILGRIM”
eric clapton

The title track from his new album: **PILGRIM**

Over 1 Million Scanned!

Early Believers:

WAKS

WNKI

WSKS

WRTS

WXIL

WWWM



Active Rotation



Custom Rotation

Produced by ERIC CLAPTON and SIMON CLIMIE

Remix by MICK GUZAUSKI

Management: ROGER FORRESTER



©1998 Reprise Records www.RepriseRec.com

POWER PLAYLISTS

For Week Ending July 5, 1998



MMM Broadcast Data Systems logo and text: Playlists supplied by Broadcast Data Systems' Radio Track service. Songs ranked by number of plays in monitored week.

WNCI Columbus PD: John Dimick APD/MD: Neal Sharpe

KBKS Seattle PD: Mike Preston APD: L.A. Reid MD: Paul Anthony

WZJM Cleveland PD: Dave Eubanks MD: Action Jackson

KMXV Kansas City PD: Jon Zellner MD: Dylan

WKRC Cincinnati OM: Mike Marino PD: Bill Klapproth MD: Jim Kelly

KALC Denver PD: Gregg Cassidy MD: Kelly Michaels

Table with 2 columns: Rank and Song Title. Songs include Natalie Imbruglia, K-Ci & Jolo, Will Smith, etc.

Table with 2 columns: Rank and Song Title. Songs include Natalie Merchant, Natalie Imbruglia, Fastball, etc.

Table with 2 columns: Rank and Song Title. Songs include K-Ci & Jolo, Next, Too Close, All Saints, etc.

Table with 2 columns: Rank and Song Title. Songs include Fastball, The Way, Goo Goo Dolls, Iris, etc.

Table with 2 columns: Rank and Song Title. Songs include Fastball, The Way, Natalie Imbruglia, etc.

Table with 2 columns: Rank and Song Title. Songs include Grant Lee Buffalo, Dave Matthews Band, Everclear, etc.

WBLI Long Island PD: Ken Medek MD: Al Levine

WXFL Orlando OM/PD: Adam Cook APD/MD: Pete deGraaf

WYVV Baltimore PD: Dave Ferguson APD: Throb MD: Albie Dee

WNKS Charlotte PD: Brian Bridgman MD: Danny Wright

WDCG Raleigh OM: Brian Burns PD: Kip Taylor

WZPL Indianapolis PD: Tom Gjerdrum MD: Dave Decker

Table with 2 columns: Rank and Song Title. Songs include Green Day, Simone Jay, Third Eye Blind, etc.

Table with 2 columns: Rank and Song Title. Songs include Brian McKnight, Shania Twain, K-Ci & Jolo, etc.

Table with 2 columns: Rank and Song Title. Songs include Pras Michel, Will Smith, Brandy, etc.

Table with 2 columns: Rank and Song Title. Songs include K-Ci & Jolo, Natalie Imbruglia, Next, etc.

Table with 2 columns: Rank and Song Title. Songs include Barenaked Ladies, Dag, Our Love Would Be Much Better, etc.

Table with 2 columns: Rank and Song Title. Songs include Fastball, Natalie Imbruglia, Goo Goo Dolls, etc.

WIXX Green Bay PD: Dan Stone MD: David Burns

WRVW Nashville OM: Charlie Quinn PD/MD: Tom Peace

KUMX New Orleans OM: Dave Stewart PD/MD: Kandy Klutch

WPRO Providence PD: Tony Bristol MD: Davey Morris

KYO Oklahoma City PD: Mike McCoy MD: Joe Friday

KHFI Austin VP/Pgm: John Roberts PD: Krash Kelly MD: Leslie Basenberg

Table with 2 columns: Rank and Song Title. Songs include Goo Goo Dolls, Shania Twain, Natalie Imbruglia, etc.

Table with 2 columns: Rank and Song Title. Songs include Matchbox 20, Goo Goo Dolls, Natalie Imbruglia, etc.

Table with 2 columns: Rank and Song Title. Songs include Marcy Playground, Next, Too Close, etc.

Table with 2 columns: Rank and Song Title. Songs include Shania Twain, Natalie Imbruglia, Matchbox 20, etc.

Table with 2 columns: Rank and Song Title. Songs include Goo Goo Dolls, K-Ci & Jolo, Alanis Morissette, etc.

Table with 2 columns: Rank and Song Title. Songs include Brandy & Monica, Next, Too Close, Shania Twain, etc.

POWER PLAYLISTS

AIRPLAY Monitor For Week Ending July 5, 1998

WKSE Buffalo OM: Sue O'Neil APD/MD: Dave Universal

WFLY Albany OM: Mike Morgan PD: Rob Dawes MD: Ron "Sugarbear" Williams

WGTZ Dayton OM: Michael Luczak MD: Dani Luczak

WFBC Greenville, SC MD: J. Love

WDJX Louisville PD: C.C. Matthews APD/MD: Rod Phillips

WKRZ Wilkes-Barre PD: Tony Banks APD/MD: Jerry Padden

KBFM McAllen OM: Billy Santiago PD/MD: Jeff DeWitt

WVKS Toledo VP/Pgm: Mike Wheeler APD/MD: Bill Michaels

WPXY Rochester OM/PD: Clarke Ingram MD: Mike Danger AMD: Norm On The Barstool



alana davis crazy

The new single and video from her acclaimed debut album Blame It On Me, and the follow-up to the hit "32 Flavors"

Top 5 Best Albums Of 1997: "A major new talent." - Time Magazine Most Promising Newcomer 1997 - Entertainment Weekly

produced by ed tulon co-produced by alana davis management/jeffrey evan kwatinez

Debut 38 Mainstream Top 40 Monitor

39 - 34* Mainstream Top 40 R&R

28 - 26 Modern Adult Monitor

23 - 22* Modern Adult R&R

34 - 33 Adult Top 40 Monitor

26 - 23* Hot AC R&R

More Insanity

- WWMX Baltimore WAEV Savannah WSPK Poughkeepsie KPEK Albuquerque KURB Little Rock KMXC Souix Falls

Crazy Spins

- 33x KALC Denver 22x WJBQ Portland 35x WBAM Montgomery 26x WKRZ Wilkes-Barre 23x WSSR Tampa 23x WZNY Augusta 27x KOZN KC 22x WFBC Greenville 37x WPTE Norfolk 38x WXIS Johnson City 17x KLLC SF 26x WXLK Roanoke 27x KBBT Portland 23x KHOT Springfield 38x KQMB Salt Lake City 27x WKSZ Green Bay 27x WMXB Richmond 20x WWCK Flint 21x WPNT Milwaukee 33x KSMB Lafayette

On tour now with the H.O.R.D.E. Festival

on elektra compact discs and cassettes www.elektra.com © 1998 elektra entertainment group, a time warner company.

AIRPLAY
Monitor

BDS IMPACT

DETECTIONS



*** AIRPOWER ***
(Minimum 1500 detections for the first time)

JENNIFER PAIGE 2022/602
Crush (Edel America/Hollywood)
Total Stations: 85/Chart Move: 27-17
Heavy (40+ plays): 4 KHKS, KIIS, KKLQ, KSMB
Medium (20-39): 54 KALC, KBKS, KDWB, KHFI, KHST, KJYO, KKMJ, KKRD, KQKQ, KRUF, KSLZ, KZHT, KZQZ, KZZU, WABB, WAEB, WBHT, WDDJ, WDJX, WFBC, WFLY, WFLZ, WGTZ, WHOT, WHYI, WIXX, WJBO, WKRC, WKSE, WKSL, WKSS, WKSZ, WLKT, WLSS, WNNK, WNOK, WNTQ, WRVQ, WTRW, WWSR, WWSX, WWSZ, WXIS, WXLK, WXLX, WXXX, WYCR, WYOY, WZAT, WZJM, WZNY, WZPL, WZYP
Light (Under 20): 27
New Airplay This Week: 11 KHST, KZZU, WFBC, WKRC, WKRZ, WPXY, WQZQ, WRVW, WSNX, WSTR, WXKB

EDWIN MCCAIN 1628/142
I'll Be (Lava/Antarctic)
Total Stations: 86/Chart Move: 25-26
Heavy (40+): 15 KBKS, KDWB, KHFI, KRBE, KUMX, KZHT, WABB, WAPE, WBZZ, WGTZ, WKRC, WKRZ, WNOK, WXSX, WZPL
Medium (20-39): 22 KMXV, WBHT, WFBC, WJBO, WKCI, WLAN, WLSS, WNOC, WNNK, WNTQ, WPRO, WPST, WQSL, WRHT, WRVW, WSTR, WTVR, WXIS, WYCR, WZAT, WZNY
Light (Under 20): 49

SMASH MOUTH 1511/264
Can't Get Enough Of You Baby (Elektra/EEG)
Total Stations: 87/Chart Move: 30-28
Heavy (40+): 3 KKLQ, KZZU, WXIS
Medium (20-39): 34 KBKS, KIIS, KJYO, KKRD, KRUF, KSLZ, KSMB, KUMX, KZHT, WAPE, WCIL, WDDJ, WHOT, WIXX, WJBO, WKCI, WKSZ, WNNK, WNOK, WQSL, WRVQ, WRVW, WTVR, WVKX, WWSR, WXSX, WXLK, WYCR, WYOY, WZAT, WZJM, WZNY, WZPL
Light (Under 20): 50
New Airplay This Week: 4 WAEB, WLAN, WNTQ, WPXY

MOST NEW STATIONS

No. Of Stations

BACKSTREET BOYS 34
I'll Never Break Your Heart (Jive)
SWIRL 360 19
Hey Now Now (Mercury)
PRAS MICHEL FEAT. OL' DIRTY BASTARD & MYA 13
Ghetto Supastar (That Is What You Are) (Interscope)
'N SYNC 13
Tearin' Up My Heart (RCA)
DAVE MATTHEWS BAND 11
Stay (Wasting Time) (RCA)
JENNIFER PAIGE 11
Crush (Edel America/Hollywood)

AIRPOWER BOUND

Total Plays/Gain

DESTINY'S CHILD 1363/-36
No, No, No (Columbia)
Total Stations: 83/Chart Move: 28-29
Heavy (40+ plays): 13 KDWB, KIIS, KKRZ, KRQK, WFBC, WKSL, WKSS, WRVQ, WWHT, WWZZ, WXIS, WXXB, WXXX
Medium (20-39): 18 KCHZ, KHFI, KKMJ, KRBE, KZHT, WBHT, WBLI, WDJX, WFLZ, WKRZ, WKSE, WLKT, WNNK, WQZQ, WSNX, WVKX, WXXX, WXYV
Light (Under 20): 52

'N SYNC 1258/409
Tearin' Up My Heart (RCA)
Total Stations: 78/Chart Move: 36-38
Heavy (40+): 3 KHKS, WKSZ, WSNX
Medium (20-39): 29 KHFI, KIIS, KJYO, KKRZ, KQKQ, KRBE, KRUF, KSLZ, KSMB, KZHT, KZQZ, WABB, WAEB, WBHT, WDDJ, WDJX, WKSL, WKSS, WLSS, WNNK, WNNK, WQZQ, WWZZ, WXSX, WXLK, WXLX, WXXX, WYCR, WZJM
Light (Under 20): 46
New Airplay This Week: 13 KDWB, KMXV, KZZU, WKRZ, WNOK, WNTQ, WPRO, WRVW, WSSX, WWSR, WYOY, WZAT, WZNY

ACE OF BASE 1207/280
Cruel Summer (Arista)
Total Stations: 74/Chart Move: 35-31
Heavy (40+): 1 WWZZ
Medium (20-39): 35 KBKS, KCHZ, KDWB, KHST, KKLQ, KKRD, KQKQ, KSMB, WABB, WAPE, WCIL, WDDJ, WFBC, WFLY, WIXX, WJBO, WKRZ, WKSS, WLSS, WNNK, WNOK, WQSL, WQZQ, WRVW, WSTR, WTVR, WVKX, WWSR, WXIS, WXLK, WYCR, WYOY, WZAT, WZJM, WZNY
Light (Under 20): 38
New Airplay This Week: 6 KBFM, KDWB, KHST, WBHT, WRHT, WYOY

EVERCLEAR 1104/15
I Will Buy You A New Life (Capitol)
Total Stations: 85/Chart Move: 32-33
Heavy (40+): 7 KALC, KBKS, KKLQ, KSMB, WABB, WKRQ, WXLK
Medium (20-39): 18 KHST, KQKQ, KRUF, KSLZ, WDCG, WDDJ, WFBC, WJBO, WKRZ, WKSZ, WPST, WQSL, WRVW, WSTW, WXIS, WYCR, WZAT, WZNY
Light (Under 20): 60

PRAS MICHEL FEAT. OL' DIRTY BASTARD & MYA 996/257
Ghetto Supastar (That Is What You Are) (Interscope)
Total Stations: 47/Chart Move: 38-35
Heavy (40+): 4 KXME, WSNX, WWHT, WXYV
Medium (20-39): 15 KHKS, KIIS, KKRZ, KRBE, KRQK, KZQZ, KZZU, WBLI, WFLY, WHTZ, WKSE, WKSZ, WRVQ, WWZZ, WXXB
Light (Under 20): 28
New Airplay This Week: 13 KCHZ, KHKS, KRUF, WBHT, WDJX, WGTZ, WKRZ, WLKT, WNOK, WPXY, WQZQ, WXLX, WZJM

BILLIE MYERS 994/-26
Tell Me (Universal)
Total Stations: 84/Chart Move: 34-36
Heavy (40+): 1 WXIS

Medium (20-39): 15 KBKS, KRUF, KSMB, KUMX, WBZZ, WCIL, WDDJ, WJBO, WLKT, WNTQ, WQSL, WXLK, WYCR, WZAT, WZNY
Light (Under 20): 68
New Airplay This Week: 1 WQZQ

ALANA DAVIS 663/75
Crazy (Elektra/EEG)
Total Stations: 79/Chart Move: Debut 38
Heavy (40+): 0
Medium (20-39): 10 KALC, KHST, KSMB, WFBC, WJBO, WKRZ, WKSZ, WXIS, WXLK, WZNY
Light (Under 20): 69

BACKSTREET BOYS 580/441
I'll Never Break Your Heart (Jive)
Total Stations: 59/Chart Move: Debut 40
Heavy (40+): 0
Medium (20-39): 7 KHKS, WDDJ, WIXX, WKSL, WSNX, WTVR, WYCR
Light (Under 20): 52
New Airplay This Week: 34 KHKS, KIIS, KKRD, KMXV, KQKQ, KSLZ, KSMB, WBHT, WBLI, WFLY, WFLZ, WHYI, WIOQ, WJBO, WKRZ, WKSS, WLAN, WLKT, WLSS, WNNK, WNTQ, WPST, WQSL, WRVQ, WTVR, WWSR, WWHT, WWZZ, WXSX, WXLK, WZAT, WZJM, WZNY, WZYP

CHART BOUND

USHER 562/93
My Way (LaFace/Arista)
Total Stations: 34
Heavy (40+): 1 WSNX
Medium (20-39): 9 KHFI, KHST, KKRD, KUMX, KZZU, WDDJ, WWHT, WXIS, WXYV
Light (Under 20): 24
New Airplay This Week: 3 WFLY, WFLZ, WXLK

VOICES OF THEORY 555/87
Say It (H.O.L.A./Red Ant)
Total Stations: 29
Heavy (40+): 4 KXME, KZQZ, WKSL, WSNX
Medium (20-39): 6 KBFM, KHFI, KRQK, KRUF, WHYI, WXYV
Light (Under 20): 19
New Airplay This Week: 4 KHKS, KHST, WNNK, WXIS

ROD STEWART 496/34
Ooh La La (Warner Bros.)
Total Stations: 46
Heavy (40+): 0
Medium (20-39): 5 KALC, WBHT, WKRZ, WQSL, WXLK
Light (Under 20): 41
New Airplay This Week: 4 KRBE, WDDJ, WNNK, WNNK

DAVE MATTHEWS BAND 486/143
Stay (Wasting Time) (RCA)
Total Stations: 40
Heavy (40+): 1 KALC
Medium (20-39): 8 WAPE, WDCG, WFBC, WKRZ, WNOK, WSSX, WSTR, WYOY
Light (Under 20): 31
New Airplay This Week: 11 KRUF, KZHT, WAPE, WBZZ, WFLY, WJBO, WNTQ, WTVR, WXLK, WZYP

PUFF DADDY FEAT. JIMMY PAGE 423/70
Come With Me (Epic)
Total Stations: 52
Heavy (40+): 1 WXYV
Medium (20-39): 3 KSMB, WDDJ, WYCR
Light (Under 20): 48
New Airplay This Week: 2 WDJX, WKSS

SWIRL 360 414/256
Hey Now Now (Mercury)
Total Stations: 39
Heavy (40+): 0
Medium (20-39): 6 KBKS, KKLQ, KMXV, WHYI, WXIS, WYOY
Light (Under 20): 33
New Airplay This Week: 19 KCHZ, KHST, KKLQ, KKRD, KRUF, WBHT, WJBO, WKSZ, WLAN, WLKT, WNTQ, WPST, WRVW, WSSX, WSTW, WWSR, WXIS, WYCR, WYOY

THE BRIAN SETZER ORCHESTRA 412/139
Jump Jive An' Wall (Interscope)
Total Stations: 41
Heavy (40+): 0
Medium (20-39): 9 KALC, KBKS, KKRD, KQKQ, KXME, KZHT, WFLY, WRVW, WXLK
Light (Under 20): 32
New Airplay This Week: 8 KKLQ, WCIL, WDDJ, WNTQ, WWSR, WXSX, WXLK, WXXX

INNER CIRCLE 408/57
Not About Romance (Soundbwoy/Republic/Universal)
Total Stations: 39
Heavy (40+): 0
Medium (20-39): 4 KQKQ, WDDJ, WLSS, WXIS
Light (Under 20): 35
New Airplay This Week: 4 KDWB, KQKQ, WSSX, WXXX

SPARKLE 386/42
Be Careful (Rock Land/Interscope)
Total Stations: 29
Heavy (40+): 1 WXLK
Medium (20-39): 4 KHFI, KUMX, WKSE, WXIS
Light (Under 20): 24
New Airplay This Week: 3 KKRZ, KSLZ, WLKT

ATHENAEUM 370/113
What I Didn't Know (Atlantic)
Total Stations: 44
Heavy (40+): 0
Medium (20-39): 4 KJYO, WABB, WXIS, WXLK
Light (Under 20): 40
New Airplay This Week: 7 WDDJ, WFBC, WKCI, WKRZ, WLSS, WNNK, WQSL

COLOR ME BADD 369/4
Remember When (Epic)
Total Stations: 35
Heavy (40+): 0
Medium (20-39): 1 WNCI
Light (Under 20): 34
New Airplay This Week: 5 KIIS, WIOQ, WKSL, WLAN, WSSX

NATALIE IMBRUGLIA 330/64
Wishing I Was There (RCA)
Total Stations: 39
Heavy (40+): 0

Medium (20-39): 6 KBKS, KIIS, KKLQ, WNNK, WPXY, WYOY
Light (Under 20): 33
New Airplay This Week: 2 KZHT, WABB

4 THE CAUSE 323/97
Stand By Me (RCA)
Total Stations: 30
Heavy (40+): 0
Medium (20-39): 4 KRQK, KSLZ, WRVQ, WXIS
Light (Under 20): 26
New Airplay This Week: 4 KHKS, KRQK, WKSL, WVKX

JANET 284/90
Go Deep (Virgin)
Total Stations: 38
Heavy (40+): 0
Medium (20-39): 5 KHST, KRBE, KRQK, WDDJ, WSNX
Light (Under 20): 33
New Airplay This Week: 9 KCHZ, KHST, KIIS, KJYO, KKRZ, KZHT, WKSS, WWCK, WXLK

DREAMHOUSE 277/43
Stay (Trauma)
Total Stations: 27
Heavy (40+): 0
Medium (20-39): 3 WBHT, WKSS, WLSS
Light (Under 20): 24
New Airplay This Week: 3 WCIL, WFLY, WXXX

HARVEY DANGER 276/133
Flagpole Sitta (Slash/London/Island)
Total Stations: 26
Heavy (40+): 1 KXME
Medium (20-39): 2 KBKS, WLSS
Light (Under 20): 23
New Airplay This Week: 5 KHST, KRUF, KZHT, WXLK, WYCR

BIG PUNISHER FEAT. JOE 267/92
Still Not A Player (Loud/RCA)
Total Stations: 16
Heavy (40+): 2 KXME, WXYV
Medium (20-39): 2 KHFI, WSNX
Light (Under 20): 12
New Airplay This Week: 3 KCHZ, KHFI, WKSE

FAITH HILL 170/30
This Kiss (Warner Bros.)
Total Stations: 14
Heavy (40+): 0
Medium (20-39): 2 WKRZ, WKSE
Light (Under 20): 12
New Airplay This Week: 1 WJBO

★ INOJ 164/119
Time After Time (So So Def/Columbia)
Total Stations: 20
Heavy (40+): 0
Medium (20-39): 3 KSLZ, WSNX, WWHT
Light (Under 20): 17
New Airplay This Week: 8 KRUF, KSLZ, WKSE, WKSL, WPXY, WSNX, WVKX, WXYV

★ MISTER JONES 159/105
Destiny (A&M)
Total Stations: 24
Heavy (40+): 0

Medium (20-39): 1 WFLZ
Light (Under 20): 23
New Airplay This Week: 7 KKRD, KSLZ, WLSS, WRHT, WSSX, WTVR, WYCR

CLEOPATRA 156/-7
Cleopatra's Theme (Maverick/Warner Bros.)
Total Stations: 17
Heavy (40+): 0
Medium (20-39): 1 WXIS
Light (Under 20): 16
New Airplay This Week: 1 WDDJ

★ EVERYTHING 153/62
Hooch (Blackbird/Sire)
Total Stations: 18
Heavy (40+): 0
Medium (20-39): 3 KALC, WYOY, WZAT
Light (Under 20): 15
New Airplay This Week: 2 WDCG, WZAT

BARENAKED LADIES 150/9
One Week (Reprise)
Total Stations: 18
Heavy (40+): 0
Medium (20-39): 4 WDCG, WKSE, WSTR, WZNY
Light (Under 20): 14
New Airplay This Week: 2 WDDJ, WSSX

BEASTIE BOYS 122/21
Intergalactic (Grand Royal/Capitol)
Total Stations: 6
Heavy (40+): 1 KXME
Medium (20-39): 1 WXYV
Light (Under 20): 4

MASE (FEATURING TOTAL) 120/4
What You Want (Bad Boy/Arista)
Total Stations: 10
Heavy (40+): 0
Medium (20-39): 4 KHFI, WDJX, WKSE, WSNX
Light (Under 20): 6
New Airplay This Week: 1 WXYV

★ LAURYN HILL 117/27
Can't Take My Eyes Off Of You (Ruffhouse/Columbia)
Total Stations: 4
Heavy (40+): 1 KXME
Medium (20-39): 0
Light (Under 20): 3
New Airplay This Week: 1 WXYV

★ GARTH BROOKS 105/22
To Make You Feel My Love (Capitol)
Total Stations: 21
Heavy (40+): 0
Medium (20-39): 1 WAPE
Light (Under 20): 20
New Airplay This Week: 2 WNNK, WNTQ

ROCKELL 101/1
In A Dream (Robbins)
Total Stations: 7
Heavy (40+): 0
Medium (20-39): 2 WBLI, WHTZ
Light (Under 20): 5

Airpower awarded to those records which attain 1500 detections for the first time. New airplay lists those stations registering six or more detections per week on a record for the first time. ★ Initial impact: records appearing on this page for the first time.

MAINSTREAM TOP 40

AIRPLAY MONITOR SONG ACTIVITY REPORTS

For Week Ending July 5, 1998

EDWIN MCCAIN 1628/142

Table with columns: Station, Song, Weeks on Chart, Peak Position, and Airplay Index. Includes stations like New York, L.A., San Fran, etc.

PRAS MICHEL FEAT. OL' DIRTY BASTARD & MYA 996/257

Table with columns: Station, Song, Weeks on Chart, Peak Position, and Airplay Index. Includes stations like New York, L.A., San Fran, etc.

'N SYNC 1258/409

Table with columns: Station, Song, Weeks on Chart, Peak Position, and Airplay Index. Includes stations like New York, L.A., San Fran, etc.

NEXT 3265/154

Table with columns: Station, Song, Weeks on Chart, Peak Position, and Airplay Index. Includes stations like New York, L.A., San Fran, etc.

JENNIFER PAIGE 2022/602

Table with columns: Station, Song, Weeks on Chart, Peak Position, and Airplay Index. Includes stations like New York, L.A., San Fran, etc.

SAVAGE GARDEN 1732/262

Table with columns: Station, Song, Weeks on Chart, Peak Position, and Airplay Index. Includes stations like New York, L.A., San Fran, etc.

SEMISONIC 1991/110

Table with columns: Station, Song, Weeks on Chart, Peak Position, and Airplay Index. Includes stations like New York, L.A., San Fran, etc.

THE BRIAN SETZER ORCHESTRA 412/139

Table with columns: Station, Song, Weeks on Chart, Peak Position, and Airplay Index. Includes stations like New York, L.A., San Fran, etc.

SMASH MOUTH 1511/264

Table with columns: Station, Song, Weeks on Chart, Peak Position, and Airplay Index. Includes stations like New York, L.A., San Fran, etc.

WILL SMITH 2341/286

Table with columns: Station, Song, Weeks on Chart, Peak Position, and Airplay Index. Includes stations like New York, L.A., San Fran, etc.

SPARKLE 386/42

Table with columns: Station, Song, Weeks on Chart, Peak Position, and Airplay Index. Includes stations like New York, L.A., San Fran, etc.

ROD STEWART 496/34

Table with columns: Station, Song, Weeks on Chart, Peak Position, and Airplay Index. Includes stations like New York, L.A., San Fran, etc.

SWIRL 360 414/256

Table with columns: Station, Song, Weeks on Chart, Peak Position, and Airplay Index. Includes stations like New York, L.A., San Fran, etc.

USHER 562/93

Table with columns: Station, Song, Weeks on Chart, Peak Position, and Airplay Index. Includes stations like New York, L.A., San Fran, etc.

VOICES OF THE THEORY 555/87

Table with columns: Station, Song, Weeks on Chart, Peak Position, and Airplay Index. Includes stations like New York, L.A., San Fran, etc.

POWER PLAYLISTS

For Week Ending July 5, 1998



Playlists supplied by Broadcast Data Systems Radio Track service. Songs ranked by number of plays in monitored week. Playlists are listed in order of TBA weekly chart, beginning with the highest-ranking station. Cumees are updated twice yearly following the release of the Spring and Fall Arbitron surveys. The number of stations shown each week varies depending upon space.

WTKY New York PD: Frankie Blue APD/MD: Andy Shane. Playlist with 40 items including 'Brian McKnight, Anytime' and 'Shania Twain, You're Still The One'.

WBWB Chicago PD: Todd Cavanah MD: Eric Bradley. Playlist with 40 items including 'Pras Michel F/O' Dirty Bastard, Ghetto S' and 'Next, Too Close'.

WJMN Boston PD: Cadillac Jack APD/MD: Danny Ocean. Playlist with 40 items including 'Pras Michel F/O' Dirty Bastard, Ghetto S' and 'Next, Too Close'.

KYLD San Francisco PD: Michael Martin MD: "Jazzy" Jim Archer. Playlist with 40 items including 'Big Punisher, Still Not A Player' and 'Next, Too Close'.

WPOW Miami PD: Kid Curry MD: Phil Jones. Playlist with 40 items including 'Pras Michel F/O' Dirty Bastard, Ghetto S' and 'Next, Too Close'.

KUBE Seattle PD: Eric Powers Acting APD: Bobby O. Acting MD: Leah Jackson. Playlist with 40 items including 'Pras Michel F/O' Dirty Bastard, Ghetto S' and 'Next, Too Close'.

WDRQ Detroit PD: Alex Tear MD: Jimi Jamm. Playlist with 40 items including 'Brandy & Monica, The Boy Is Mine' and 'Next, Too Close'.

KSFM Sacramento PD: Bob West MD: John E. Kage. Playlist with 40 items including 'Brandy & Monica, The Boy Is Mine' and 'Next, Too Close'.

KGGI Riverside PD: Diana Laird APD: Jesse Duran MC: Ricky Fuentes. Playlist with 40 items including 'Brandy & Monica, The Boy Is Mine' and 'Next, Too Close'.

KTFM San Antonio PD: Cliff Tredway MD: Steve Chavez. Playlist with 40 items including 'Brandy & Monica, The Boy Is Mine' and 'Next, Too Close'.

KHTS San Diego PD: Todd Shannon APD: Ron Geronimo MD: Hitman Haze. Playlist with 40 items including 'Next, Too Close' and 'Brandy & Monica, The Boy Is Mine'.

KKFR Phoenix PD/MD: Bruce St. James APD: Krazy Kid Stenzel MD: Mark Medina. Playlist with 40 items including 'Big Punisher, Still Not A Player' and 'Next, Too Close'.

XHTZ San Diego OM/MD: Lisa Vazquez MD: Dale Soliven. Playlist with 40 items including 'Tatyana Ali, Daydreamin'' and 'Next, Too Close'.

KQKS Denver PD: Cat Collins MD: Jennifer Wilde. Playlist with 40 items including 'Big Punisher, Still Not A Player' and 'Next, Too Close'.

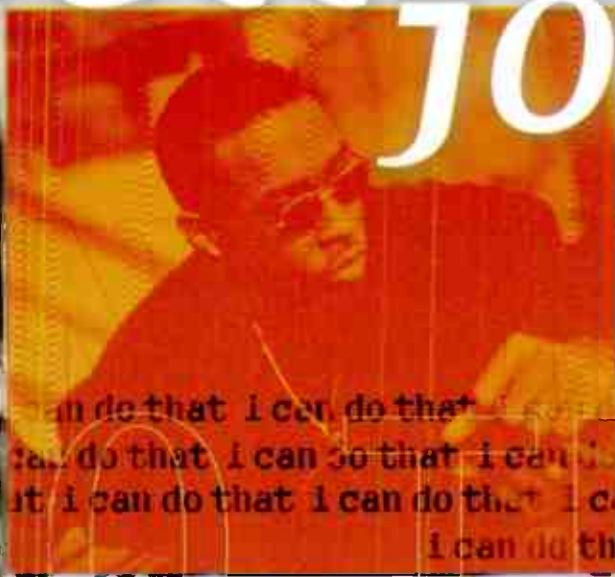
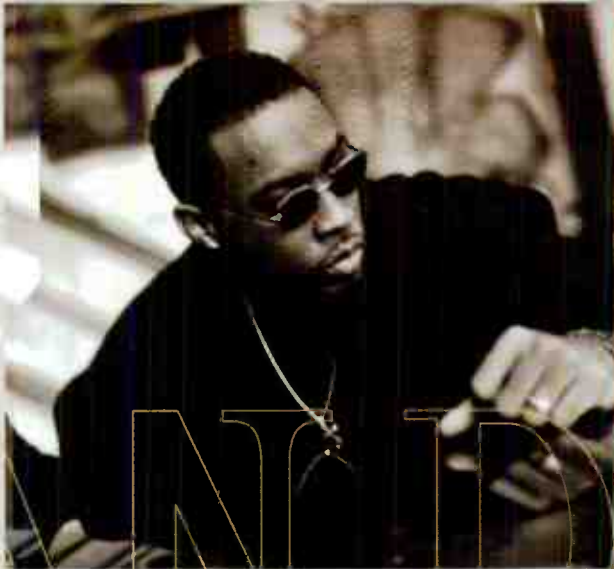
KBOS Fresno PD: Steve Wall. Playlist with 40 items including 'Mya & Sisqo, It's All About Me' and 'Next, Too Close'.

KPRR El Paso PD/MD: John Candelaria. Playlist with 40 items including 'Brandy & Monica, The Boy Is Mine' and 'Next, Too Close'.

KLUC Las Vegas PD: Cat Thomas MD: Melissa Stetas. Playlist with 40 items including 'Brandy & Monica, The Boy Is Mine' and 'Next, Too Close'.

WNVZ Norfolk PD: Don London APD/MD: Jay West. Playlist with 40 items including 'Next, Too Close' and 'Public Announcement, Body Bumpin''.

montell jordan



i can do that i can do that i can do that i can do that i can do that
 i can do that i can do that i can do that i can do that i can do that
 i can do that i can do that i can do that i can do that i can do that
 i can do that i can do that i can do that i can do that i can do that
 i can do that i can do that i can do that i can do that i can do that
 i can do that i can do that i can do that i can do that i can do that
 i can do that i can do that i can do that i can do that i can do that
 i can do that i can do that i can do that i can do that i can do that
 i can do that i can do that i can do that i can do that i can do that
i can do that
 i can do that i can do that i can do that i can do that i can do that

The follow up to the platinum single & album
“Let’s Ride”

“i can do that”

IMPACT DATE: July 13th



album in stores now!



a PolyGram company



©1998 Def Jam Music Group, Inc.

★ ★ ★ **AIRPOWER** ★ ★ ★
(Minimum 500 detections for the first time)

<p>AALIYAH 674/214 <i>Are You That Somebody? (Blackground/Atlantic)</i> Total Stations: 25/Chart Move: 26-15 Heavy (40+ plays): 8 KCAQ, KDGS, KIOX, KSFM, KUBE, KYLZ, WHHH, WWKX Medium (20-39): 8 KIKI, KISV, KOHT, KQKS, KTFM, KYLD, WJJS, XHTZ Light (Under 20): 9 New Airplay This Week: 6 KBOS, KISV, KLUC, KQKS, KTFM, WPOW</p>	<p>NICOLE (FEAT. MISSY ELLIOTT & MOCHA) 506/15 <i>Make It Hot (The Gold Mind Inc./EastWest/EEG)</i> Total Stations: 27/Chart Move: 25-22 Heavy (40+): 2 KQKS, WJJS Medium (20-39): 9 KBOS, KCAQ, KDGS, KISV, KKFR, KLUC, WHHH, WJMN, WWKX Light (Under 20): 16 New Airplay This Week: 2 KIOX, KTFM</p>
-----------------------------------------------------------------------------------------------------------------------------------------------------------------------------------------------------------------------------------------------------------------------------------------------------------------------------------------------------------------------------	--------------------------------------------------------------------------------------------------------------------------------------------------------------------------------------------------------------------------------------------------------------------------------------------------------------------------------------------------

AIRPOWER BOUND

Total Plays/Gain

BRANDY (FEAT. MASE) **478/217**
Top Of The World (Atlantic)
Total Stations: 27/Chart Move: 40-23
Heavy (40+ plays): 2 KIOX, KUBE
Medium (20-39): 10 KDGS, KHHS, KKSS, KPRR, KQKS, KTFM, KYLD, KYLZ, WHHH, XHTZ
Light (Under 20): 15
New Airplay This Week: 9 KCAQ, KISV, KKFR, KLUC, KPRR, KQKS, KYLZ, WFHN, WJJS

TATYANA ALI **402/131**
Daydreamin' (MJJ/WORK)
Total Stations: 21/Chart Move: 39-27
Heavy (40+): 2 KSFM, XHTZ
Medium (20-39): 9 KCAQ, KDON, KIKI, KKFR, KIOX, KOHT, KYLD, WHHH, WPOW
Light (Under 20): 10
New Airplay This Week: 5 KDON, KGGI, KHHS, KIOX, WHHH

ALL SAINTS **382/-12**
Never Ever (London/Island)
Total Stations: 16/Chart Move: 31-28
Heavy (40+): 2 KBOS, WDRQ
Medium (20-39): 8 KDGS, KDON, KQMQ, KZFM, WFHN, WKTU, WKXJ, WNVZ
Light (Under 20): 6

MO THUGS FAMILY FEAT. FELECIA & KRATZIE BONE **346/14**
All Good (Mo Thugs/Relativity)
Total Stations: 15/Chart Move: 34-32
Heavy (40+): 2 KIKI, KQMQ
Medium (20-39): 4 KDGS, KIOX, KOHT, KYLD
Light (Under 20): 9
New Airplay This Week: 1 KIOX

MASTER P FEAT. SONS OF FUNK **345/12**
I Got The Hook Up! (No Limit/Priority)
Total Stations: 21/Chart Move: 33-33
Heavy (40+): 1 KLUC
Medium (20-39): 6 KCAQ, KDGS, KQMQ, KYLZ, WHHH, WKXJ
Light (Under 20): 14
New Airplay This Week: 1 KUBE

INOJ **338/106**
Time After Time (So So Def/Columbia)
Total Stations: 14/Chart Move: Debut 34
Heavy (40+): 4 KHHS, KIKI, KTFM, KYLD
Medium (20-39): 3 KBOS, KGGI, WPOW
Light (Under 20): 7
New Airplay This Week: 3 KDGS, KPRR, KZFM

DESTINY'S CHILD (FEAT. JD) **337/27**
With Me Part 1 (Columbia)
Total Stations: 19/Chart Move: 35-35
Heavy (40+): 1 KQKS
Medium (20-39): 7 KDGS, KKFR, KOHT, WBBM, WHHH, WJJS, WJMN
Light (Under 20): 11
New Airplay This Week: 1 KZFM

FIVE **306/21**
When The Lights Go Out (Arista)
Total Stations: 18/Chart Move: 38-38
Heavy (40+): 1 KQMQ

Medium (20-39): 6 KHHS, KZFM, WBTT, WDRQ, WJJS, WNVZ
Light (Under 20): 11
New Airplay This Week: 1 WDRQ

CHART BOUND

Total Plays/Gain

ACE OF BASE **258/6**
Cruel Summer (Arista)
Total Stations: 11
Heavy (40+): 2 KBOS, KLUC
Medium (20-39): 4 KTFM, KZFM, WDRQ, WFHN
Light (Under 20): 5

NATE DOGG FEAT. WARREN G **247/23**
Nobody Does It Better (Dogg Foundation/Epic/Breakaway)
Total Stations: 18
Heavy (40+): 0
Medium (20-39): 5 KDGS, KKFR, KIOX, KYLZ, XHTZ
Light (Under 20): 13
New Airplay This Week: 2 KIKI, KIOX

★ **BACKSTREET BOYS** **231/184**
I'll Never Break Your Heart (Jive)
Total Stations: 16
Heavy (40+): 1 WBBM
Medium (20-39): 2 KHHS, KPRR
Light (Under 20): 13
New Airplay This Week: 8 KDON, KHHS, KIKI, KPRR, KZFM, WDRQ, WFHN, WPOW

KELLY PRICE **230/19**
Friend Of Mine (T-Neck/Island)
Total Stations: 16
Heavy (40+): 2 KDGS, KQKS
Medium (20-39): 2 KLUC, WHHH
Light (Under 20): 12
New Airplay This Week: 1 KYLZ

'N SYNC **226/99**
Tearin' Up My Heart (RCA)
Total Stations: 15
Heavy (40+): 0
Medium (20-39): 4 KHHS, KQMQ, WBBM, WDRQ
Light (Under 20): 11
New Airplay This Week: 4 KZFM, WBTT, WDRQ, WJJS

ALANIS MORISSETTE **215/17**
Uninvited (Warner Sunset/Reprise)
Total Stations: 8
Heavy (40+): 3 KHHS, WFHN, WKXJ
Medium (20-39): 1 WBTT
Light (Under 20): 4

MASE (FEAT. PUFF DADDY) **205/-7**
Lookin' At Me (Bad Boy/Arista)
Total Stations: 16
Heavy (40+): 0
Medium (20-39): 2 KCAQ, KYLZ
Light (Under 20): 14
New Airplay This Week: 4 KDGS, KKFR, WBTT, WHHH

MOST NEW STATIONS

	No. Of Stations
BRANDY (FEAT. MASE) <i>Top Of The World (Atlantic)</i>	9
BACKSTREET BOYS <i>I'll Never Break Your Heart (Jive)</i>	8
AALIYAH <i>Are You That Somebody? (Blackground/Atlantic)</i>	6
TATYANA ALI <i>Daydreamin' (MJJ/WORK)</i>	5
CAM'RON FEAT. MASE <i>Horse & Carriage (Untertainment/Epic)</i>	5

JD FEAT. JAY-Z **184/55**
Money Ain't A Thang (So So Def/Columbia)
Total Stations: 18
Heavy (40+): 0
Medium (20-39): 3 KDON, KKFR, WWKX
Light (Under 20): 15
New Airplay This Week: 4 KDGS, KIOX, KQKS, WBTT

JAYO FELONY (FEAT. METHOD MAN & DMX) **182/13**
Whatcha Gonna Do (550 Music)
Total Stations: 10
Heavy (40+): 2 KCAQ, KKFR
Medium (20-39): 2 KIOX, XHTZ
Light (Under 20): 6
New Airplay This Week: 2 KIOX, WBTT

PUFF DADDY FEAT. JIMMY PAGE **156/19**
Come With Me (Epic)
Total Stations: 15
Heavy (40+): 0
Medium (20-39): 3 KLUC, WHHH, WPOW
Light (Under 20): 12
New Airplay This Week: 3 KTFM, KUBE, WBBM

WC **155/9**
Cheddar (Red Ant/London/Island)
Total Stations: 16
Heavy (40+): 1 KKFR
Medium (20-39): 2 KIOX, KYLD
Light (Under 20): 13
New Airplay This Week: 1 KIOX

COLOR ME BADD **155/29**
Remember When (Epic)
Total Stations: 8
Heavy (40+): 1 KIKI
Medium (20-39): 2 KZFM, WJJS
Light (Under 20): 5
New Airplay This Week: 1 KTFM

NEXT **152/19**
I Still Love You (Arista)
Total Stations: 11
Heavy (40+): 1 WJMN
Medium (20-39): 2 KKSS, KSFM
Light (Under 20): 8
New Airplay This Week: 1 WHHH

CAM'RON FEATURING MASE **147/77**
Horse & Carriage (Untertainment/Epic)
Total Stations: 16
Heavy (40+): 0
Medium (20-39): 1 KCAQ
Light (Under 20): 15
New Airplay This Week: 5 KKFR, KIOX, WJMN, WPOW, WWKX

JENNIFER PAIGE **134/41**
Crush (Ede! America/Hollywood)
Total Stations: 8
Heavy (40+): 1 KBOS
Medium (20-39): 1 KDON
Light (Under 20): 6
New Airplay This Week: 2 KHHS, WNVZ

★ **MONICA** **132/118**
The First Night (Arista)
Total Stations: 14
Heavy (40+): 0
Medium (20-39): 3 KIOX, WJMN, WWKX
Light (Under 20): 11
New Airplay This Week: 3 KKSS, KIOX, WWKX

JAZZY JEFF & FRESH PRINCE **115/8**
Summertime '98 (Jive)
Total Stations: 28
Heavy (40+): 0
Medium (20-39): 0
Light (Under 20): 28

M:G **107/-35**
Sweet Honesty (Classified)
Total Stations: 6
Heavy (40+): 0
Medium (20-39): 4 KBOS, KDON, KTFM, KYLD
Light (Under 20): 2

GOO GOO DOLLS **105/46**
Iris (Warner Sunset/Reprise)
Total Stations: 7
Heavy (40+): 1 KHHS
Medium (20-39): 1 WBTT
Light (Under 20): 5

SAVAGE GARDEN **101/27**
To The Moon And Back (Columbia)
Total Stations: 4
Heavy (40+): 0
Medium (20-39): 3 WBBM, WDRQ, WFHN
Light (Under 20): 1

BABYFACE & DES'REE **100/9**
Fire (550 Music)
Total Stations: 4
Heavy (40+): 0
Medium (20-39): 3 KTFM, KZFM, WJJS
Light (Under 20): 1

INNER CIRCLE **92/3**
Not About Romance (Soundbwoy/Republic/Universal)
Total Stations: 8
Heavy (40+): 0
Medium (20-39): 0
Light (Under 20): 8

FASTBALL **91/23**
The Way (Hollywood)
Total Stations: 8
Heavy (40+): 1 WFHN
Medium (20-39): 1 KHHS
Light (Under 20): 6

PUFF DADDY & THE FAMILY **81/15**
It's All About The Benjamins (Bad Boy/Arista)
Total Stations: 14
Heavy (40+): 1 WJMN
Medium (20-39): 0
Light (Under 20): 13

JOHN FORTE **77/26**
Ninety Nine (Flash The Message) (Ruffhouse/Columbia)
Total Stations: 12
Heavy (40+): 0
Medium (20-39): 1 KOHT
Light (Under 20): 11
New Airplay This Week: 1 KIKI

★ **SYLK-E. FYNE** **76/20**
Keep It Real (Grand Jury/RCA)
Total Stations: 9
Heavy (40+): 0
Medium (20-39): 0
Light (Under 20): 9
New Airplay This Week: 2 KOHT, KZFM

CELINE DION **72/3**
To Love You More (550 Music)
Total Stations: 9
Heavy (40+): 0
Medium (20-39): 2 WFHN, WJJS
Light (Under 20): 7

SCARFACE FEAT. TOO SHORT, TELA & DEVIN **66/7**
Sex Faces (Rap-A-Lot/Virgin)
Total Stations: 4
Heavy (40+): 0
Medium (20-39): 2 KCAQ, KOHT
Light (Under 20): 2

★ **MAXWELL** **60/5**
Luxury: Cococure (Columbia)
Total Stations: 4
Heavy (40+): 0
Medium (20-39): 1 KDGS
Light (Under 20): 3
New Airplay This Week: 1 WHHH

DREAMHOUSE **59/2**
Stay (Trauma)
Total Stations: 8
Heavy (40+): 0
Medium (20-39): 1 KHHS
Light (Under 20): 7

SOMETHIN' FOR THE PEOPLE **57/2**
All I Do (Warner Bros.)
Total Stations: 3
Heavy (40+): 1 KQKS
Medium (20-39): 0
Light (Under 20): 2

★ **LORD TARIQ & PETER GUNZ** **55/20**
We Will Bail (Codeine/Columbia)
Total Stations: 12
Heavy (40+): 0
Medium (20-39): 0
Light (Under 20): 12
New Airplay This Week: 1 WBTT

★ **AMARI** **55/45**
Callin' (Tommy Boy)
Total Stations: 7
Heavy (40+): 0
Medium (20-39): 0
Light (Under 20): 7
New Airplay This Week: 3 KGGI, KKSS, WHHH

★ **SHIRO FEAT. SONJA BLADE** **55/6**
I Like (Virgin)
Total Stations: 7
Heavy (40+): 0
Medium (20-39): 1 XHTZ
Light (Under 20): 6
New Airplay This Week: 1 WBTT

Airpower awarded to those records which attain 500 detections for the first time. New airplay lists those stations registering six or more detections per week on a record for the first time. ★ Initial impact: records appearing on this page for the first time.

Monitor AIRPLAY

SONG ACTIVITY REPORTS

For Week Ending July 5, 1998

Table for AALIYAH: Are You That Somebody? (Blackground/Atlantic). Total Stations: 25. Chart Move: 26-15.

Table for ACE OF BASE: Cruel Summer (Arista). Total Stations: 11.

Table for TATYANA ALI: Daydreamin' (MJJ/WORK). Total Stations: 21. Chart Move: 39-27.

Table for BACKSTREET BOYS: I'll Never Break Your Heart (Jive). Total Stations: 16.

Table for BIG PUNISHER FEAT. JOE: Still Not A Player (Loud/RCA). Total Stations: 31. Chart Move: 6-6.

Table for BRANDY FEAT. MASE: Top Of The World (Atlantic). Total Stations: 27. Chart Move: 40-23.

Table for COLOR ME BADD: Remember When (Epic). Total Stations: 8.

Table for PUFF DADDY FEAT. JIMMY PAGE: Come With Me (Epic). Total Stations: 15.

Table for DESTINY'S CHILD (FEAT. JD): With Me Part 1 (Columbia). Total Stations: 19. Chart Move: 35-35.

Table for JD FEAT. JAY-Z: Money Ain't A Thang (So So Def/Columbia). Total Stations: 18.

Table for FIVE: When The Lights Go Out (Arista). Total Stations: 18. Chart Move: 38-38.

Table for LAURYN HILL: Can't Take My Eyes Off Of You (Ruthouse/Columbia). Total Stations: 20. Chart Move: 19-17.

Table for INOJ: Time After Time (So So Def/Columbia). Total Stations: 14. Chart Move: Debut 34.

Table for JANET: Go Deep (Virgin). Total Stations: 35. Chart Move: 12-10.

Table for JAYO FELONY (FEAT. METHOD MAN & DMX): Whatcha Gonna Do (Yab Yum/550 Music). Total Stations: 10.

Table for JON B.: They Don't Know (Yab Yum/550 Music). Total Stations: 27. Chart Move: 15-16.

Table for LINK: Whatcha Gone Do? (Relativity). Total Stations: 25. Chart Move: 20-19.

Table for MASTER P FEAT. SONS OF FUNK: I Got The Hook Up (No Limit/Priority). Total Stations: 21. Chart Move: 33-33.

Table for BRIAN MCKNIGHT: The Only One For Me (Motown). Total Stations: 27. Chart Move: 14-14.

Table for PRAS MICHEL FEAT. OL' DIRTY BASTARD & MYA: Ghetto Supastar (That Is What You Are) (Interscope). Total Stations: 35. Chart Move: 3-2.

Table for MO THUGS FAMILY FEAT. FELECIA & KRAYZY BONE: All Good (Mo Thugs/Relativity). Total Stations: 15. Chart Move: 34-32.

Table for ALANIS MORISSETTE: Uninvited (Warner Sunset/Reprise). Total Stations: 8.

Table for 'N SYNC: Tearin' Up My Heart (RCA). Total Stations: 15.

Table for NATE DOGG FEAT. WARREN G: Nobody Does It Better (Dogg Foundation/Epic/Breakaway). Total Stations: 18.

Table for NICOLE FEAT. MISSY ELLIOTT & MOCHA: Make It Hot (The Gold Mint, Inc./EastWest/EEG). Total Stations: 27. Chart Move: 25-22.

Table for KELLY PRICE: Friend Of Mine (T-Neck/Island). Total Stations: 16. Chart Move: 1-1.

Table for WILL SMITH: Just The Two Of Us (Columbia). Total Stations: 35. Chart Move: 4-4.

Table for SHANIA TWAIN: You're Still The One (Mercury). Total Stations: 18. Chart Move: 21-20.

Table for USHER: My Way (LaFace/Arista). Total Stations: 33. Chart Move: 5-5.

Table for WC: Cheddar (Island). Total Stations: 16. Chart Move: 1-1.

POWER PLAYLISTS

For Week Ending July 5, 1998



Playlists supplied by Broadcast Data Systems Radio Track service. Songs ranked by number of plays in monitored week. Playlists are listed in order of TBA weekly case, beginning with the highest-ranking station. Cumes are updated twice yearly following the release of the Spring and Fall Arbitron surveys. The number of stations shown each week varies depending upon space.

WQHT New York
PD: Tracy Cloherty
MC: Deneen Womack



Table with 2 columns: Rank and Song/Artist. Top songs include Brandy & Monica, The Boy Is Mine and Big Punisher, Still Not A Player.

KPWR Los Angeles
MD: Damon Young



Table with 2 columns: Rank and Song/Artist. Top songs include Next, Too Close and Brandy & Monica, The Boy Is Mine.

KKBT Los Angeles
PD: Michelle Santosuosso
MC: Dorsey Fuller
AMD: Tawala Sharp



Table with 2 columns: Rank and Song/Artist. Top songs include Brandy & Monica, The Boy Is Mine and Next, Too Close.

WGCI Chicago
PD: Elroy R.C. Smith
MC: Dorsey Fuller
APD/MD: Jay Alan



Table with 2 columns: Rank and Song/Artist. Top songs include Brandy & Monica, The Boy Is Mine and Next, Too Close.

WUSL Philadelphia
OM: Helen Little
MD: Glenn Cooper



Table with 2 columns: Rank and Song/Artist. Top songs include Brandy & Monica, The Boy Is Mine and Next, Too Close.

WPGC Washington, DC
PD: Jay Stevens
CO-APD/MD: Maurice Devoe
CO-APD: Bob Holmcrons



Table with 2 columns: Rank and Song/Artist. Top songs include Brandy & Monica, The Boy Is Mine and Next, Too Close.

WJLB Detroit
PD: Michael Saunders
MD: Janet Gee



Table with 2 columns: Rank and Song/Artist. Top songs include 7 Mile, Do Your Thing and Brandy & Monica, The Boy Is Mine.

WVEE Atlanta
PD: Tony Brown
MD: Rajeev Shabazz



Table with 2 columns: Rank and Song/Artist. Top songs include Next, Too Close and Jagged Edge, Gotta Be.

KBXX Houston
PD: Robert Scorpio
MD: Kashon Powell



Table with 2 columns: Rank and Song/Artist. Top songs include Brandy & Monica, The Boy Is Mine and Next, Too Close.

WKYS Washington, DC
VP/Pgm: Steve Hegwood
APD: Daryl Huckaby
MD: Lisa Lisa



Table with 2 columns: Rank and Song/Artist. Top songs include Brandy & Monica, The Boy Is Mine and Next, Too Close.

KMEL San Francisco
PD: Joey Arbage
MD: Glen Aure
MC: Larry Jackson



Table with 2 columns: Rank and Song/Artist. Top songs include Brandy & Monica, The Boy Is Mine and Next, Too Close.

KKDA Dallas
PD: Skip Cheatham



Table with 2 columns: Rank and Song/Artist. Top songs include Aaliyah, Are You That Somebody? and Brandy & Monica, The Boy Is Mine.

WPHI Philadelphia
PD: Mic Fox
APD: Lamonda Williams
MC: Egypt



Table with 2 columns: Rank and Song/Artist. Top songs include Big Punisher, Still Not A Player and Jon B., They Don't Know.

WERQ Baltimore
OM: Tom Calococci
APD: Frank Ski
MD: Buttahman



Table with 2 columns: Rank and Song/Artist. Top songs include Brandy & Monica, The Boy Is Mine and Next, Too Close.

WCHB Detroit
PD: James Alexander
APD/MD: Vicki Preston



Table with 2 columns: Rank and Song/Artist. Top songs include Aaliyah, Are You That Somebody? and Nicole, Make It Hot.

WHTA Atlanta
VP/Pgm: Steve Hegwood
OM: Don Alias
PD: Sean Taylor



Table with 2 columns: Rank and Song/Artist. Top songs include Me Thugs Family, All Good and Big Punisher, Still Not A Player.

WPEG Charlotte
PD: Andre Carson
MD: Nate Quick



Table with 2 columns: Rank and Song/Artist. Top songs include Aaliyah, Are You That Somebody? and Mya & Sisqo, It's All About Me.

WQOE New Orleans
OM: Gerod Stevens
MD: Angela Harrison



Table with 2 columns: Rank and Song/Artist. Top songs include Usher, My Way and Janet, Go Deep.

WJHM Orlando
OM: Adam Cook
PD: Russ Allen
MD: Al Fiala



Table with 2 columns: Rank and Song/Artist. Top songs include Voices Of Theory, Say It and Kelly Price, Friend Of Mine.

WQOK Raleigh
PD: Hozie Mack
MD: Jodi Berry



Table with 2 columns: Rank and Song/Artist. Top songs include Jon B., They Don't Know and Big Punisher, Still Not A Player.

WJMH Greensboro
PD: Brian Douglas
MD: Mary K.



Table with 2 columns: Rank and Song/Artist. Top songs include Lauryn Hill, Lost Ones and Big Punisher, Still Not A Player.

WKKV Milwaukee
PD: Nate Bell
MD: Dallas Scott



Table with 2 columns: Rank and Song/Artist. Top songs include Brandy & Monica, The Boy Is Mine and Next, Too Close.

WJMI Jackson
OM: Stan Branson
APD: Alice Marie Dixon



Table with 2 columns: Rank and Song/Artist. Top songs include Big Punisher, Still Not A Player and Aaliyah, Are You That Somebody?

WIZF Cincinnati
VP/Pgm: Tony Fields
APD: Mark Gunn
MD: Lauri Jones



Table with 2 columns: Rank and Song/Artist. Top songs include Jon B., They Don't Know and Brandy & Monica, The Boy Is Mine.

POWER PLAYLISTS

Broadcast Data Systems

AIRPLAY Monitor

For Week Ending July 5, 1998

Playlists supplied by Broadcast Data Systems' Radio Track service...

WJMV Greenville PD: Marv Hankston MD: Kelly Berry



Table with 2 columns: Song/Artist, and two columns of chart positions (TW, LW).

WBHJ Birmingham PD: Mickey Johnson APD/MD: Daysha Parker



Table with 2 columns: Song/Artist, and two columns of chart positions (TW, LW).

WBLX Mobile OM: Niecey Davis



Table with 2 columns: Song/Artist, and two columns of chart positions (TW, LW).

WENN Birmingham PD: Jeff Tysen APD/MD: Chris Talley



Table with 2 columns: Song/Artist, and two columns of chart positions (TW, LW).

WTLC Indianapolis PD: Brian Wallace MD: Vycki Buchannon



Table with 2 columns: Song/Artist, and two columns of chart positions (TW, LW).

KXHT Memphis PD: Michelle Price



Table with 2 columns: Song/Artist, and two columns of chart positions (TW, LW).

WGZB Louisville VP/Pgm: Tony Fields PD/MD: Tim Jherard



Table with 2 columns: Song/Artist, and two columns of chart positions (TW, LW).

KTBT Baton Rouge PD: Chris Clay APD/MD: Lou Bennett



Table with 2 columns: Song/Artist, and two columns of chart positions (TW, LW).

WJBT Jacksonville PD: Doc Wynter MD: Tiffany Green



Table with 2 columns: Song/Artist, and two columns of chart positions (TW, LW).

WCXK Columbus, OH VP/Pgm: Tony Fields PD: Paul Strong APD: Warren Stevens



Table with 2 columns: Song/Artist, and two columns of chart positions (TW, LW).

WEAS Savannah Interim PD/MD: Jewel Carter



Table with 2 columns: Song/Artist, and two columns of chart positions (TW, LW).

WFXA Augusta PD: Tim Snel MD: Robert Taylor



Table with 2 columns: Song/Artist, and two columns of chart positions (TW, LW).

KELLY PRICE Soul of a Woman



“FRIEND OF MINE”

THE FIRST SINGLE FROM THE ASTONISHING DEBUT ALBUM SOUL OF A WOMAN

12 CROSSOVER

5 MAINSTREAM R&B

HOT SHOT DEBUT 11

BILLBOARD HOT R&B SINGLES

OVER 1,700 DETECTIONS WITH AN AUDIENCE REACH OF OVER 34 MILLION

KDGS 57X (TOP 10 PHONES)

KQKS 48X

WJHM 43X (TOP 10 PHONES)

WBHJ 31X

WHHH 30X (TOP 10 PHONES)

KLUC 29X

WPGC 25X (TOP 5 PHONES)

92Q 24X (#2 PHONES, TOP 5 CALLOUT)

WJBT 23X

HOT97 13X

WBTT 14X

WJJS 11X



EXECUTIVE PRODUCERS: HIRIAM HICKS AND RON ISLEY www.islandblackmusic.com



UNITY IN THE COMMUNITY

MO THUGS FAMILY

"ALL GOOD"

FEAT. FELECIA AND KRAYZIE BONE



THE FIRST SINGLE FROM
MO THUGS FAMILY SCRIPTURES
CHAPTER II: FAMILY REUNION

34 - **32**

**RHYTHMIC
TOP 40
MONITOR**

25 - **24**

**CROSSOVER
MONITOR**



www.relativityrecords.com

WATCHA GONE DO?

LINK



20 - **19**

**RHYTHMIC TOP 40
MONITOR**

23 - **22**

CROSSOVER MONITOR



© 1998 RELATIVITY RECORDS



SOFT ACTIVITY REPORTS

For Week Ending July 5, 1998

7 MILE Do Your Thing (Crave) Total Stations: 30 Chart Move: 33-34

AALIYAH Are You That Somebody? (Background/Atlantic) Total Stations: 60 Chart Move: 8-5

TATYANA ALI Daydreamin' (MJJ/WORK/Epic) Total Stations: 40 Chart Move: Debut 39

BRANDY (FEAT. MASE) Top Of The World (Atlantic) Total Stations: 55 Chart Move: 27-15

CAM'RON FEAT. MASE Horse & Carriage (Entertainment/Epic) Total Stations: 47 Chart Move: Debut 33

DESTINY'S CHILD (FEAT. JD) With Me Part I (Columbia) Total Stations: 43 Chart Move: 28-30

JD FEAT. JAY-Z Money Ain't A Thing (So So Def/Columbia) Total Stations: 52 Chart Move: 34-32

LAURYN HILL Can't Take My Eyes Off Of You (Ruffhouse/Columbia) Total Stations: 27 Chart Move: 24-23

JANET Go Deep (Virgin) Total Stations: 58 Chart Move: 14-14

K-Ci & JOJO Don't Rush (Take Love Slowly) (MCA) Total Stations: 47 Chart Move: 32-28

GERALD LEVERT Thinkin' Bout It (EastWest/EEG) Total Stations: 37 Chart Move: Debut 36

LINK Watcha Gone Do? (Relativity) Total Stations: 45 Chart Move: 23-22

MAXWELL Luxury: Cocoree (Columbia) Total Stations: 39 Chart Move: 31-31

PRAS MICHEL FEAT. OL' DIRTY BASTARD & MYA Ghetto Supastar (That Is What You Are) (Interscope) Total Stations: 62 Chart Move: 3-3

MO THUGS FAMILY FEAT. FELECIA & KRAYZIE BONE All Good (Mo Thugs/Relativity) Total Stations: 40 Chart Move: 25-24

MONICA The First Night (Arista) Total Stations: 43 Chart Move: Debut 37

NICOLE FEAT. MISSY ELLIOTT & MOCHA Make It Hot (The Gold Mind, Inc./EastWest/EEG) Total Stations: 58 Chart Move: 12-11

KELLY PRICE Friend Of Mine (T-Neck/Island) Total Stations: 54 Chart Move: 13-12

SILKK THE SHOCKER It Ain't My Fault (No Limit/Priority) Total Stations: 44 Chart Move: 29-27

USHER My Way (LaFace/Arista) Total Stations: 61 Chart Move: 6-7

AIRPLAY Monitor

POWER PLAYLISTS

For Week Ending July 5, 1998



WPLJ New York PD: Tom Cuddy DP: Scott Shannon. 1 Shania Twain, You're Still The One 35 33

95.5 WPLJ NEW YORK. 1 Natalie Imbruglia, Torn 34 51 2 Fastball, The Way 32 52

WBIX New York PD: Jeff Scott APD: Andy West. 1 Natalie Imbruglia, Torn 43 42 2 Shania Twain, You're Still The One 42 41

WKQI Detroit PD: Rick Gillette. 1 Goo Goo Dolls, Ins 61 56 2 Natalie Imbruglia, Torn 58 58

WYXR Philadelphia PD: Kurt Johnson APD/MD: Kim Ashley. 1 Savage Garden, Truly Madly Deeply 34 34 2 Shania Twain, You're Still The One 33 39

WRQX Washington, DC PD: Steve Kosbau MD: Carol Parker. 1 Natalie Imbruglia, Torn 34 36 2 Matchbox 20, 3 AM 32 33

KSTP Minneapolis PD: Todd Fisher MD: Leighton Peek. 1 Goo Goo Dolls, Ins 28 40 2 Natalie Imbruglia, Torn 27 42

KHMX Houston PD: Lorin Palagi APD/MD: Rich Anhorn. 1 Fastball, The Way 49 48 2 Verve, Bitter Sweet Symphony 47 48

WQAL Cleveland PD: Mary Ellen Kachinske MD: Steve Brown. 1 Matchbox 20, 3 AM 52 43 2 Natalie Imbruglia, Torn 51 52

KPLZ Seattle CM: Rob Dunlop PD: Kent Phillips. 1 Fastball, The Way 51 48 2 Goo Goo Dolls, Ins 46 46

WPLL Miami PD: Reb Roberts APD: Robert Archer. 1 Matchbox 20, 3 AM 24 23 2 Eric Clapton, My Father's Eyes 23 23

WMMX Baltimore MD: Greg Carpenter. 1 Backstreet Boys, As Long As You Love Me 46 43 2 Vonda Shepard, Searchin' My Soul 41 28

WRAL Raleigh PD: Steve Reynolds. 1 Natalie Imbruglia, Torn 46 48 2 Savage Garden, Truly Madly Deeply 46 48

KYKY St. Louis PD: Smokey Rivers MD: Greg Hewitt. 1 Natalie Imbruglia, Torn 33 35 2 Savage Garden, Truly Madly Deeply 30 33

WOMX Orlando PD: David Isreal MD: Tim Baldwin. 1 Fastball, The Way 31 31 2 Rod Stewart, Oh La La 31 30

WMVX Cleveland PD: Randy James MD: Jay Hudson. 1 Green Day, Time Of Your Life 14 17 2 Fastball, The Way 12 21

WKTI Milwaukee PD: Danny Clayton APD/MD: Leonard Peace. 1 Fastball, The Way 47 35 2 Matchbox 20, 3 AM 45 43

WMMX Milwaukee PD/MD: Brian Kelly APD: Jim Morales. 1 Savage Garden, Truly Madly Deeply 47 46 2 Matchbox 20, 3 AM 45 44

WENS Indianapolis PD: Greg Dunkin MD: Jim Cerone. 1 Natalie Imbruglia, Torn 30 42 2 Matchbox 20, 3 AM 29 42

WAKS Tampa PD: Mason Dixon MD: Rico Blanco. 1 Fastball, The Way 54 51 2 Shania Twain, You're Still The One 45 42

KSMG San Antonio PD: Andy Holt. 1 Savage Garden, Truly Madly Deeply 41 41 2 Goo Goo Dolls, Ins 41 42

WKDD Akron PD/MD: Chuck Collins. 1 Sister Seven, Know What You Mean 44 37 2 Goo Goo Dolls, Ins 41 40

WMMX Cincinnati PD: Brad Ellis MD: Haynes Johns. 1 Natalie Imbruglia, Torn 44 37 2 Goo Goo Dolls, Ins 25 34

KISN Salt Lake City PD: Sam Elliott MD: Brian deGeus. 1 Blessid Union Of Souls, Light In Your Eye 49 51 2 Shania Twain, You're Still The One 46 47

ADULT TOP 40

ADULT CONTEMPORARY

AEROSMITH 616/114 I Don't Want To Miss A Thing (Columbia) Total Stations: 46 Chart Move: 31-27

ANGGUN 399/16 Snow On The Sahara (Epic) Total Stations: 23 Chart Move: 40-37

BARENAKED LADIES 525/68 One Week (Reprise) Total Stations: 23 Chart Move: 33-31

GARTH BROOKS 272/82 To Make You Feel My Love (Capitol) Total Stations: 28 Chart Move: 30-23

CHICAGO 342/17 All Roads Lead To You (Reprise) Total Stations: 40 Chart Move: 23-21

ALANA DAVIS 498/54 Crazy (Elektra/EEG) Total Stations: 40 Chart Move: 34-33

EVERYTHING 220/113 Hooch (Blackbird/Sire) Total Stations: 17

NATALIE IMBRUGLIA 540/153 Wishing I Was There (RCA) Total Stations: 33 Chart Move: 39-30

GLORIA ESTEFAN 734/12 Heaven's What I Feel (Epic) Total Stations: 52 Chart Move: 10-10

NATALIE IMBRUGLIA 896/77 Torn (RCA) Total Stations: 47 Chart Move: 9-8

MADONNA 315/41 Ray Of Light (Maverick/Warner Bros.) Total Stations: 26

DAVE MATTHEWS BAND 647/82 Stay (Wasting Time) (RCA) Total Stations: 39 Chart Move: 28-26

BILLIE MYERS 616/67 Tell Me (Universal) Total Stations: 39 Chart Move: 30-28

SARAH McLACHLAN 1000/19 Adia (Arista) Total Stations: 56 Chart Move: 5-5

OLIVIA NEWTON-JOHN 437/4 I Honestly Love You (MCA Nashville) Total Stations: 48 Chart Move: 19-18

HEATHER NOVA 240/53 London Rain (Nothing Heals Me Like You Do) (Big Cat/WORX) Total Stations: 16

SEMISONIC 1239/27 Closing Time (MCA) Total Stations: 63 Chart Move: 14-13

SMASH MOUTH 765/132 Can't Get Enough Of You Baby (Elektra/EEG) Total Stations: 36 Chart Move: 25-21

LIONEL RICHIE 562/83 Time (Mercury) Total Stations: 51 Chart Move: 16-14

LEANN RIMES 968/44 Looking Through Your Eyes (Curb/Atlantic) Total Stations: 57 Chart Move: 6-6

BDS IMPACT

AIRPOWER

NO RECORDS QUALIFIED FOR AIRPOWER THIS WEEK

AIRPOWER BOUND

BRIAN WILSON 342/72 Your Imagination (Giant/Warner Bros.)

CHICAGO 342/17 All Roads Lead To You (Reprise)

GARTH BROOKS 272/82 To Make You Feel My Love (Capitol)

BOB SEGER & MARTINA MCBRIDE 231/-8 Chances Are (Capitol)

K-CI & JOJO 226/16 All My Life (MCA)

ANNE COCHRAN & JIM BRICKMAN 219/107 After All These Years (Windham Hill)

CHART BOUND

EDWIN MCCAIN 159/12 I'll Be (Lava/Atlantic)

CHRISTINA AGUILERA 125/40 Reflection (Walt Disney)

NATALIE MERCHANT 118/5 Kind & Generous (Elektra/EEG)

RINGO STARR 114/16 La De Da (Mercury)

Table with 2 columns: Station Name, No. of Stations. Includes Garth Brooks (5), Ringo Starr (5), Brian Wilson (5), Faith Hill (4), Backstreet Boys (3), Anne Cochran & Jim Brickman (3).

MARILYN SCOTT 112/25 Starting To Fall (Warner Bros.)

DARYL HALL JOHN OATES 95/7 Throw The Roses Away (Push)

★ FAITH HILL 81/42 This Kiss (Warner Bros.)

GOO GOO DOLLS 70/2 Iris (Warner Sunset/Reprise)

Main chart table with columns: This Week, Last Week, Weeks On, Title/Imprint/Promotion Label, Artist, TW, LW. Includes records like 'YOU'RE STILL THE ONE' by Shania Twain, 'TO LOVE YOU MORE' by Celine Dion, etc.

Records showing an increase in detections over the previous week, regardless of chart movement. A record which has been on the chart for more than 20 weeks will not receive a bullet, even if it registers an increase in detections.

ADULT CONTEMPORARY POWER PLAYLISTS

WLTW New York 106.7 Litefm PD/MD: Jim Ryan. Playlist with 20 tracks including Shania Twain, Elton John, Celine Dion, etc.

KOST Los Angeles 103.5FM PD/MD: Johnny Chiang. Playlist with 20 tracks including Gloria Estefan, Savage Garden, Madonna, etc.

KBIG Los Angeles 104 PD/MD: Steve Streit. Playlist with 20 tracks including Natalie Imbruglia, Elton John, Backstreet Boys, etc.

WLIT Chicago 93.9 PD/MD: Mark Edwards. Playlist with 20 tracks including Lionel Richie, Sarah McLachlan, Celine Dion, etc.

WBEB Philadelphia 101.1 PD: Chris Conley. Playlist with 20 tracks including Savage Garden, Backstreet Boys, Elton John, etc.

KVIL Dallas 103.7fm PD: Bill Curtis. Playlist with 20 tracks including Simply Red, Kenny G, John Tesh, etc.

WNND Chicago Windy 100FM PD: Mark Hamlin. Playlist with 20 tracks including Paula Cole, LeAnn Rimes, Savage Garden, etc.

KIOI San Francisco 101.3FM PD: Bob Hamilton. Playlist with 20 tracks including Backstreet Boys, Savage Garden, Elton John, etc.

WASH Washington, DC 97.1 PD: Darren Davis. Playlist with 20 tracks including Shania Twain, Elton John, Jim Brickman, etc.

WPCH Atlanta 94.9 PD: Vance Dillard. Playlist with 20 tracks including LeAnn Rimes, Shania Twain, Sarah McLachlan, etc.

WFLC Miami 97.3 FM PD: Tip Landay. Playlist with 20 tracks including Madonna, Elton John, Faith Hill, etc.

WLTE Minneapolis PD/MD: Gary Nolan. Playlist with 20 tracks including Olivia Newton-John, Richard Marx, Backstreet Boys, etc.

POWER PLAYLISTS

AIRPLAY Monitor For Week Ending July 5, 1998

KYSR Los Angeles PD: Angela Perelli APD: Chris Ebbott

Table with 2 columns: Rank and Song/Artist. Songs include Natalie Imbruglia, Green Day, Fastball, etc.

WTMX Chicago VP/Pgm: Barry James APD/MD: Jame Kartak

Table with 2 columns: Rank and Song/Artist. Songs include Goo Goo Dolls, Everclear, Semisonic, etc.

WBMX Boston PD: Greg Strassell MD: Michele Buczynski

Table with 2 columns: Rank and Song/Artist. Songs include Goo Goo Dolls, Fastball, Semisonic, etc.

KLLC San Francisco PD: Louis Kaplan APD/MD: Julie Stoetkel

Table with 2 columns: Rank and Song/Artist. Songs include Goo Goo Dolls, Train, Dave Matthews Band, etc.

KDMX Dallas PD: Jimmy Steal APD: Race Taylor

Table with 2 columns: Rank and Song/Artist. Songs include Goo Goo Dolls, Alanis Morissette, Stania Twain, etc.

KFMB San Diego GM/OM/PD: Tracy Johnson MD: Greg Simms

Table with 2 columns: Rank and Song/Artist. Songs include Matchbox 20, Goo Goo Dolls, Alanis Morissette, etc.

WTIC Hartford OM: Steve Sahnany MD: David Simpson

Table with 2 columns: Rank and Song/Artist. Songs include Natalie Imbruglia, Matchbox 20, Everclear, etc.

KZZP Phoenix PD: Dan Persigehl MD: Dave Cooper

Table with 2 columns: Rank and Song/Artist. Songs include Natalie Imbruglia, Fastball, Goo Goo Dolls, etc.

KZZO Sacramento PD: Carny Ferreri

Table with 2 columns: Rank and Song/Artist. Songs include Natalie Merchant, Natalie Imbruglia, Alanis Morissette, etc.

WXXM Philadelphia PD: Chuck Tisa MD: Ali Castellini

Table with 2 columns: Rank and Song/Artist. Songs include Fastball, Natalie Merchant, Edwyn McCain, etc.

WDRV Pittsburgh PD: Chris Shebel MD: Scott Alexander

Table with 2 columns: Rank and Song/Artist. Songs include Matchbox 20, Alanis Morissette, Fastball, etc.

WSSR Tampa PD: Chuck Morgan MD: Frank Brinsley

Table with 2 columns: Rank and Song/Artist. Songs include Green Day, Goo Goo Dolls, Natalie Imbruglia, etc.

HARVEY DANGER

#3 MODERN ROCK

Table showing radio station detections: KNDD Total Detections 784, KROQ Total Detections 592, etc.



on tour with Semisonic

The debut album Where have all the merry makers gone?

Featuring "Flagpole Sitta"

KFMB 29x, KZON 29x, WPNT 20x, WSSR 14x, KPLZ 17x, KLLC, KALC, KLLY, KOZN, WDCG

Produced by John Goodmanson and Harvey Danger

the arena rock recording company email: takinride@aol.com

STRESS ROTATION logo and London Records USA

TOP 40 AIRPLAY
Monitor

PROMOTION '98 PAINTING A NEW LANDSCAPE

Top 40 radio is the strongest it's been in a decade, but promoting to it is more complicated than ever. In Airplay Monitor's July 17th issue we explore the format's new challenges:

- Multiple-format game plans for new artists
- Group ownership and its implications
- The rise of CAMP's
- The specter of pay-for-play
- The research buzz saw

ISSUE DATE: JULY 17TH

For details call
Jeff Somerstein at 212-536-5272
or **Sharon White at 323-525-2331**

Bonus distribution at Midwest Conclave

MODERN ADULT AIRPLAY

AIRPLAY
Monitor

For Week Ending
July 5, 1998



THIS WEEK	LAST WEEK	WKS. ON CHART	TITLE/IMPRINT/PROMOTION LABEL	ARTIST	DETECTIONS		
					TW	LW	
			★ ★ ★ No. 1 ★ ★ ★				
1	1	13	IRIS WARNER SUNSET/REPRISE 5 weeks at No. 1	GOO GOO DOLLS	1935	1990	
2	2	20	THE WAY HOLLYWOOD	FASTBALL	1753	1897	
3	3	23	TORN RCA	NATALIE IMBRUGLIA	1650	1732	
4	5	10	KIND & GENEROUS ELEKTRA/VEEG	NATALIE MERCHANT	1601	1636	
5	4	16	UNINVITED WARNER SUNSET/REPRISE	ALANIS MORISSETTE	1506	1673	
6	6	15	REAL WORLD LAVA/ATLANTIC	MATCHBOX 20	1447	1576	
7	7	17	ADIA ARISTA	SARAH MCLACHLAN	1360	1346	
8	8	12	CLOSING TIME MCA	SEMISONIC	1275	1265	
9	11	31	TIME OF YOUR LIFE (GOOD RIDDANCE) REPRISE	GREEN DAY	1087	1093	
10	9	26	SEX AND CANDY CAPITOL	MARCY PLAYGROUND	1086	1227	
11	10	25	I'LL BE LAVA/ATLANTIC	EDWIN MCCAIN	1047	1211	
12	13	11	I WILL BUY YOU A NEW LIFE CAPITOL	EVERCLEAR	940	968	
13	12	39	3 AM LAVA/ATLANTIC	MATCHBOX 20	865	1039	
14	15	5	STAY (WASTING TIME) RCA	DAVE MATTHEWS BAND	821	777	
15	17	5	ONE WEEK REPRISE	BARENAKED LADIES	786	712	
16	14	11	ZOOT SUIT RIOT MOJO/UNIVERSAL	CHERRY POPPIN' DADDIES	748	813	
17	16	36	HOW'S IT GOING TO BE ELEKTRA/VEEG	THIRD EYE BLIND	689	702	
18	21	3	CAN'T GET ENOUGH OF YOU BABY ELEKTRA/VEEG	SMASH MOUTH	686	602	
19	18	16	KNOW WHAT YOU MEAN ARISTA AUSTIN/ARISTA	SISTER 7	639	700	
20	20	46	WALKIN' ON THE SUN INTERSCOPE	SMASH MOUTH	605	666	
21	23	6	YOU'RE STILL THE ONE MERCURY	SHANIA TWAIN	591	530	
22	19	11	SEARCHIN' MY SOUL 550 MUSIC	VONDA SHEPARD	555	710	
23	27	3	TELL ME UNIVERSAL	BILLIE MYERS	498	441	
24	29	2	WISHING I WAS THERE RCA	NATALIE IMBRUGLIA	495	428	
25	NEW		HOOCH BLACKBIRD/SIRE	EVERYTHING	431	289	
26	28	5	CRAZY ELEKTRA/VEEG	ALANA DAVIS	414	432	
27	24	23	ME IMAGO/WARNER BROS.	PAULA COLE	401	485	
28	22	11	HEROES EPIC	THE WALLFLOWERS	369	522	
29	25	9	SPARK ATLANTIC	TORI AMOS	352	478	
30	30	2	SNOW ON THE SAHARA EPIC	ANGGUN	344	335	

Records showing an increase in detections over the previous week, regardless of chart movement. A record which has been on the chart for more than 20 weeks will not receive a bullet, even if it registers an increase in detections. Airpower is awarded to those records which attain 500 detections for the first time. If two records are tied in number of plays, the record being played on more stations is placed first. ©1998, Billboard/BPI Communications.

POWER PLAYLISTS™

KOZN Kansas City PD: Paul Krieglger		102.1 fm zone CLASSIC MUSIC & ENTERTAINMENT		WLNK Charlotte PD: Mike Edwards		WSHE Orlando PD: Katherine Brown MD: Shark		SHE 100.3FM			
	TW LW		TW LW		TW LW		TW LW		TW LW		
1	Alanis Morissette, Uninvited	43	43	1	Natalie Merchant, Kind & Generous	50	48	1	Goo Goo Dolls, Ins	52	48
2	Sarah McLachlan, Adia	41	46	2	Natalie Imbruglia, Torn	49	48	2	Natalie Merchant, Kind & Generous	51	38
3	Matchbox 20, Real World	40	51	3	Fastball, The Way	48	48	3	Natalie Imbruglia, Torn	50	44
4	Natalie Imbruglia, Kind & Generous	39	46	4	Sarah McLachlan, Adia	48	46	4	Alanis Morissette, Uninvited	49	47
5	Fastball, The Way	39	46	5	Alanis Morissette, Uninvited	48	45	5	Fastball, The Way	49	47
6	Goo Goo Dolls, Ins	38	48	6	Goo Goo Dolls, Ins	48	29	6	Cherry Poppin' Daddies, Zoot Suit Riot	48	41
7	Semisonic, Closing Time	29	37	7	Semisonic, Closing Time	30	29	7	Barenaked Ladies, The Old Apartment	43	45
8	Everclear, I Will Buy You A New Life	29	37	8	Eric Clapton, My Father's Eyes	30	30	8	Barenaked Ladies, One Week	35	38
9	Natalie Imbruglia, Wishing I Was There	29	23	9	Sister Hazel, Happy	29	29	9	Paula Cole, Feelin' Love	32	20
10	Dave Matthews Band, Stay	29	27	10	Shania Twain, You're Still The One	29	29	10	Matchbox 20, Real World	31	30
11	Toxic, Open Up Your Eyes	25	33	11	Matchbox 20, 3 AM	28	47	11	Semisonic, Closing Time	31	31
12	Natalie Imbruglia, Torn	25	42	12	Vonda Shepard, Searchin' My Soul	28	32	12	Naked, Raining On The Sky	29	32
13	Edwin McCain, I'll Be	24	37	13	Edwin McCain, I'll Be	28	32	13	Dave Matthews Band, Stay	28	27
14	Smash Mouth, Can't Get Enough Of You Bab	24	21	14	Aerosmith, I Don't Want To Miss A Thing	27	23	14	Vonda Shepard, Searchin' My Soul	27	27
15	Creed, My Own Prison	23	35	15	Paula Cole, Me	27	5	15	Tori Amos, Spark	27	29
16	Sister Seven, Know What You Mean	22	33	16	Fleetwood Mac, Landslide	27	31	16	Sister Seven, Know What You Mean	26	33
17	Marcy Playground, Sex & Candy	22	32	17	Matchbox 20, Real World	27	28	17	Sarah McLachlan, Adia	26	37
18	Barenaked Ladies, One Week	22	29	18	Green Day, Time Of Your Life	26	0	18	The Wallflowers, Heroes	25	27
19	The Wallflowers, Heroes	19	36	19	Third Eye Blind, How's It Going To Be	26	18	19	Everclear, I Will Buy You A New Life	22	23
20	Cherry Poppin' Daddies, Zoot Suit Riot	20	37	20	Natalie Imbruglia, Wishing I Was There	20	19	20	Sister Hazel, Concede	22	23
21	Smash Mouth, Walkin' On The Sun	19	24	21	Smash Mouth, Can't Get Enough Of You Bab	20	24	21	Everything, Hooch	22	12
22	Brian Setzer Orchestra, Jump Live An' Wai	19	6	22	Everclear, I Will Buy You A New Life	20	24	22	The Mighty Mighty Bosstones, The Impression	21	20
23	Anggun, Snow On The Sahara	19	19	23	Dave Matthews Band, Stay	20	22	23	Loreena McKennitt, The Mummers' Dance	21	19
24	Tonic, If You Could Only See	19	18	24	Savage Garden, To The Moon And Back	16	0	24	Billie Myers, Tell Me	21	20
25	Everclear, Santa Monica	19	12	25	Loreena McKennitt, The Mummers' Dance	15	27	25	Smash Mouth, Can't Get Enough Of You Bab	21	20
26	Sister Hazel, All For You	18	16	26	Sister Hazel, All For You	14	28	26	Tonic, If You Could Only See	20	18
27	Third Eye Blind, How's It Going To Be	18	20	27	Chumbawamba, Tubthumping	14	4	27	Chumbawamba, Tubthumping	20	18
28	Sheryl Crow, If It Makes You Happy	17	13	28	Marcy Playground, Sex & Candy	13	31	28	Green Day, Time Of Your Life	20	21
29	Pearl Jam, Wishlist	17	7	29	Savage Garden, Truly Madly Deeply	12	29	29	Edwin McCain, I'll Be	20	36
30	Green Day, Time Of Your Life	17	20	30	Tonic, If You Could Only See	12	13	30	The Smashing Pumpkins, -1979-	20	15

**U.S. TOUR
STARTING THIS WEEK!**

Janet **godeep**

the new single
from the double-platinum album
The Velvet Rope

Executive Producers: Janet Jackson
and René Elizondo, Jr.

Produced by Jimmy Jam & Terry Lewis
(for Flyte Tyme Productions, Inc.)
and Janet Jackson

RD Worldwide Management, B.V.

<http://www.janet-jackson.com>

©1998 Black Doll, Inc



**MONITOR:
RHYTHMIC TOP 40**

(12) - (10)

MAJOR AIRPLAY:

WKTU	KQKS
KIIS	KGGI
KPWR	KCAQ
KUBE	WPOW
KMEL	WPGC
KYLD	KRQQ
WJMN	KRBE
WBBM	WHHH
WXYV	KWNZ
WJHM	KBOS
KHTS	KDGS
WSNX	KYLZ
XHTZ	WWKX
WDRQ	KKXX
WFHN	WBTT
KKFR	KSFM
KDON	KZFM
KKSS	WXLK
KSLZ	WJPZ
KLUC	KZHT

AND MANY MORE!

"We like this a lot. Since we first got the album, we've spiked this on and off. After just 60 spins it was testing huge in the 18-24 cell. This is going to be a huge record!"

-Jay Michaels -MD KRBE/Houston

THIS WEEK	LAST WEEK	WKS. ON CHART	MAINSTREAM TOP 40		DETECTIONS		
			TITLE/IMPRINT/PROMOTION LABEL	ARTIST	TW	LW	
			★★★ No. 1 ★★★				
1	1	13	UNINVITED WARNER SUNSET/REPRISE 2 weeks at No. 1	ALANIS MORISSETTE	4561	4652	
2	2	21	TORN RCA	NATALIE IMBRUGLIA	4511	4636	
3	3	12	IRIS WARNER SUNSET/REPRISE	GOO GOO DOLLS	4511	4384	
4	4	17	YOU'RE STILL THE ONE MERCURY	SHANIA TWAIN	4194	4334	
5	5	12	THE WAY HOLLYWOOD	FASTBALL	4029	4066	
6	6	24	ALL MY LIFE MCA	K-CI & JOJO	3641	3900	
7	8	7	THE BOY IS MINE ATLANTIC	BRANDY & MONICA	3574	3196	
8	7	8	REAL WORLD LAVA/ATLANTIC	MATCHBOX 20	3345	3216	
9	10	10	TOO CLOSE ARISTA	NEXT	3265	3111	
10	12	7	I DON'T WANT TO MISS A THING COLUMBIA	AEROSMITH	3026	2819	
11	9	21	SEX AND CANDY CAPITOL	MARCY PLAYGROUND	2882	3121	
12	11	15	ANYTIME MOTOWN	BRIAN MCKNIGHT	2773	3058	
13	18	5	JUST THE TWO OF US COLUMBIA	WILL SMITH	2341	2055	
14	13	9	RAY OF LIGHT MAVERICK/WARNER BROS.	MADONNA	2205	2387	
15	14	29	GETTIN' JIGGY WIT IT COLUMBIA	WILL SMITH	2028	2291	
16	19	9	KIND & GENEROUS ELEKTRA/VEEG	NATALIE MERCHANT	2022	2029	
			★★★ AirPOWER ★★★				
17	27	3	CRUSH EDEL AMERICA/HOLLYWOOD	JENNIFER PAIGE	2022	1420	
18	20	6	CLOSING TIME MCA	SEMISONIC	1991	1881	
19	15	34	3 AM LAVA/ATLANTIC	MATCHBOX 20	1905	2177	
20	21	11	ADIA ARISTA	SARAH MCLACHLAN	1829	1854	
21	16	25	I WANT YOU BACK RCA	'N SYNC	1787	2086	
22	17	17	EVERYBODY [BACKSTREET'S BACK] JIVE	BACKSTREET BOYS	1743	2062	
23	26	15	TO THE MOON AND BACK COLUMBIA	SAVAGE GARDEN	1732	1470	
24	23	6	NEVER EVER LONDON/ISLAND	ALL SAINTS	1720	1590	
25	24	5	WHEN THE LIGHTS GO OUT ARISTA	FIVE	1666	1535	
			★★★ AirPOWER ★★★				
26	25	18	I'LL BE LAVA/ATLANTIC	EDWIN MCCAIN	1628	1486	
27	22	7	TO LOVE YOU MORE 550 MUSIC	CELINE DION	1573	1647	
			★★★ AirPOWER ★★★				
28	30	3	CAN'T GET ENOUGH OF YOU BABY ELEKTRA/VEEG	SMASH MOUTH	1511	1247	
29	28	15	NO, NO, NO COLUMBIA	DESTINY'S CHILD	1363	1399	
30	36	2	TEARIN' UP MY HEART RCA	'N SYNC	1258	849	
31	35	2	CRUEL SUMMER ARISTA	ACE OF BASE	1207	927	
32	33	23	TIME OF YOUR LIFE (GOOD RIDDANCE) REPRISE	GREEN DAY	1158	1078	
33	32	5	I WILL BUY YOU A NEW LIFE CAPITOL	EVERCLEAR	1104	1089	
34	29	13	MY ALL COLUMBIA	MARIAH CAREY	996	1256	
35	38	2	GHETTO SUPASTAR (THAT IS WHAT YOU ARE) INTERSCOPE PRAS MICHEL FEAT. OL' DIRTY BASTARD & INTRODUCING MYA		996	739	
36	34	4	TELL ME UNIVERSAL	BILLIE MYERS	994	1020	
37	31	13	SEARCHIN' MY SOUL 550 MUSIC	VONDA SHEPARD	806	1233	
38	NEW▶		CRAZY ELEKTRA/VEEG	ALANA DAVIS	663	588	
39	37	11	I GET LONELY VIRGIN	JANET	625	784	
40	NEW▶		I'LL NEVER BREAK YOUR HEART JIVE	BACKSTREET BOYS	580	139	

THIS WEEK	LAST WEEK	WKS. ON CHART	RHYTHMIC TOP 40		DETECTIONS		
			TITLE/IMPRINT/PROMOTION LABEL	ARTIST	TW	LW	
			★★★ No. 1 ★★★				
1	1	10	THE BOY IS MINE ATLANTIC 5 weeks at No. 1	BRANDY & MONICA	2042	2184	
2	3	10	GHETTO SUPASTAR (THAT IS WHAT YOU ARE) INTERSCOPE PRAS MICHEL FEAT. OL' DIRTY BASTARD & INTRODUCING MYA		1784	1761	
3	2	24	TOO CLOSE ARISTA	NEXT	1736	1915	
4	4	8	JUST THE TWO OF US COLUMBIA	WILL SMITH	1528	1507	
5	5	11	MY WAY LAFACE/ARISTA	USHER	1354	1343	
6	6	9	STILL NOT A PLAYER LOUD/RCA	BIG PUNISHER FEATURING JOE	1310	1232	
7	7	16	SAY IT H.O.L.A./RED ANT	VOICES OF THEORY	1111	1199	
8	8	11	BE CAREFUL ROCK LAND/INTERSCOPE	SPARKLE	1003	1144	
9	10	12	IT'S ALL ABOUT ME UNIVERSITY/INTERSCOPE	MYA & SISQO	956	1013	
10	12	4	GO DEEP VIRGIN	JANET	953	873	
11	9	13	MY ALL COLUMBIA	MARIAH CAREY	930	1073	
12	11	33	ALL MY LIFE MCA	K-CI & JOJO	813	934	
13	13	24	ANYTIME MOTOWN	BRIAN MCKNIGHT	773	841	
14	14	11	THE ONLY ONE FOR ME MOTOWN	BRIAN MCKNIGHT	702	673	
			★★★ AirPOWER ★★★				
15	26	3	ARE YOU THAT SOMEBODY? BLACKGROUND/ATLANTIC	AALIYAH	674	460	
16	15	8	THEY DON'T KNOW YAB YUM/550 MUSIC	JON B.	657	643	
17	19	6	CAN'T TAKE MY EYES OFF OF YOU RUFFHOUSE/COLUMBIA	LAURYN HILL	625	550	
18	16	25	WHAT YOU WANT BAD BOY/ARISTA	MASE (FEATURING TOTAL)	618	627	
19	20	10	WHATCHA GONE DO? RELATIVITY	LINK	617	543	
20	21	7	YOU'RE STILL THE ONE MERCURY	SHANIA TWAIN	572	535	
21	18	10	TORN RCA	NATALIE IMBRUGLIA	526	582	
			★★★ AirPOWER ★★★				
22	25	5	MAKE IT HOT THE GOLD MIND, INC./EASTWEST/VEEG NICOLE FEAT. MISSY 'MISDEMEANOR' ELLIOTT & MOCHA		506	491	
23	40	2	TOP OF THE WORLD ATLANTIC	BRANDY (FEATURING MASE)	478	261	
24	24	3	DON'T RUSH (TAKE LOVE SLOWLY) MCA	K-CI & JOJO	466	492	
25	17	17	BODY BUMPIN' YIPPIE-YI-YO A&M	PUBLIC ANNOUNCEMENT	437	590	
26	27	19	LET'S RIDE DEF JAM/MERCURY	MONTELL JORDAN FEAT. MASTER P & SILKK THE SHOCKER	424	459	
27	39	2	DAYDREAMIN' MJJ/WORK	TATYANA ALI	402	271	
28	31	6	NEVER EVER LONDON/ISLAND	ALL SAINTS	382	394	
29	22	19	I GET LONELY VIRGIN	JANET	377	534	
30	23	16	EVERYBODY [BACKSTREET'S BACK] JIVE	BACKSTREET BOYS	377	515	
31	30	24	TRULY MADLY DEEPLY COLUMBIA	SAVAGE GARDEN	371	394	
32	34	2	ALL GOOD MO THUGS/RELATIVITY	MO THUGS FAMILY FEAT. FELECIA & KRAYZIE BONE	346	332	
33	33	4	I GOT THE HOOK UP! NO LIMIT/PRIORITY	MASTER P FEATURING SONS OF FUNK	345	333	
34	NEW▶		TIME AFTER TIME SO SO DEF/COLUMBIA	INOJ	338	232	
35	35	3	WITH ME PART 1 COLUMBIA	DESTINY'S CHILD (FEATURING JD)	337	310	
36	29	22	ROMEO AND JULIET GRAND JURY/RCA	SYLK-E. FYNE FEATURING CHILL	327	397	
37	32	8	RAY OF LIGHT MAVERICK/WARNER BROS.	MADONNA	323	374	
38	38	3	WHEN THE LIGHTS GO OUT ARISTA	FIVE	306	285	
39	37	18	I WANT YOU BACK RCA	'N SYNC	281	286	
40	36	9	SHORTY (YOU KEEP PLAYIN' WITH MY MIND) JIVE	IMAJIN FEAT. KEITH MURRAY	268	290	

Records showing an increase in detections over the previous week, regardless of chart movement. A record which has been on either chart for more than 20 weeks will not receive a bullet, even if it registers an increase in detections. Airpower awarded to those records which attain 1500 detections (mainstream) or 500 detections (rhythm) for the first time. If two records are tied in number of plays, the record being played on more stations is placed first. Records below the top 20 are removed from the chart after 26 weeks.



Faith. we all need some.

"John and I tested "This Kiss" in middays and afternoons and loved the way it sounded on the air. Now we're at 100 spins and seeing very promising potential in callout, plus good phones. We believe in this record." - David Corey, WXKS, Boston

"Faith Hill's 'This Kiss' is an awesome record. The positive response from our listeners was immediate. Callout and phones are both Top 5 and we're just getting started." - Kent Phillips, KPLZ, Seattle

"'This Kiss' beat every song for two weeks solid in our nightly 'New Music Challenge'. We had to retire it as our champ, opting for an early add. Now, based on early reasearch potential, we're moving 'This Kiss' into Power Rotation!" - Lorrin Palagi, KHMV, Houston



Produced by Byron Gallimore and Faith Hill. Management: Borman Entertainment. ©1998 Warner Bros. Records Inc. www.wbr.com

Foo Fighters WALKING AFTER YOU

ALREADY ON:
WTMX CHICAGO
WSSR TAMPA
KYIS OKLAHOMA CITY
WPNT MILWAUKEE
WLCE BUFFALO

**IMPACTING
MODERN AC
&
ADULT TOP 40
NOW!**



from the Elektra/Fox release

THE X-FILES: THE ALBUM

THE #5 MOVIE IN AMERICA



PRODUCED BY JERRY HARRISON
ENGINEERED BY KARL DERFUER
MIXED BY TOM LORD ALGE

Motion Picture Artwork, Photos, TM and © 1998 Twentieth Century-Fox Film Corporation. All Rights Reserved. Unauthorized duplication is a violation of applicable laws. Printed in U.S.A. 62200-2

original version available on The Foo Fighters' album
THE COLOUR AND THE SHAPE



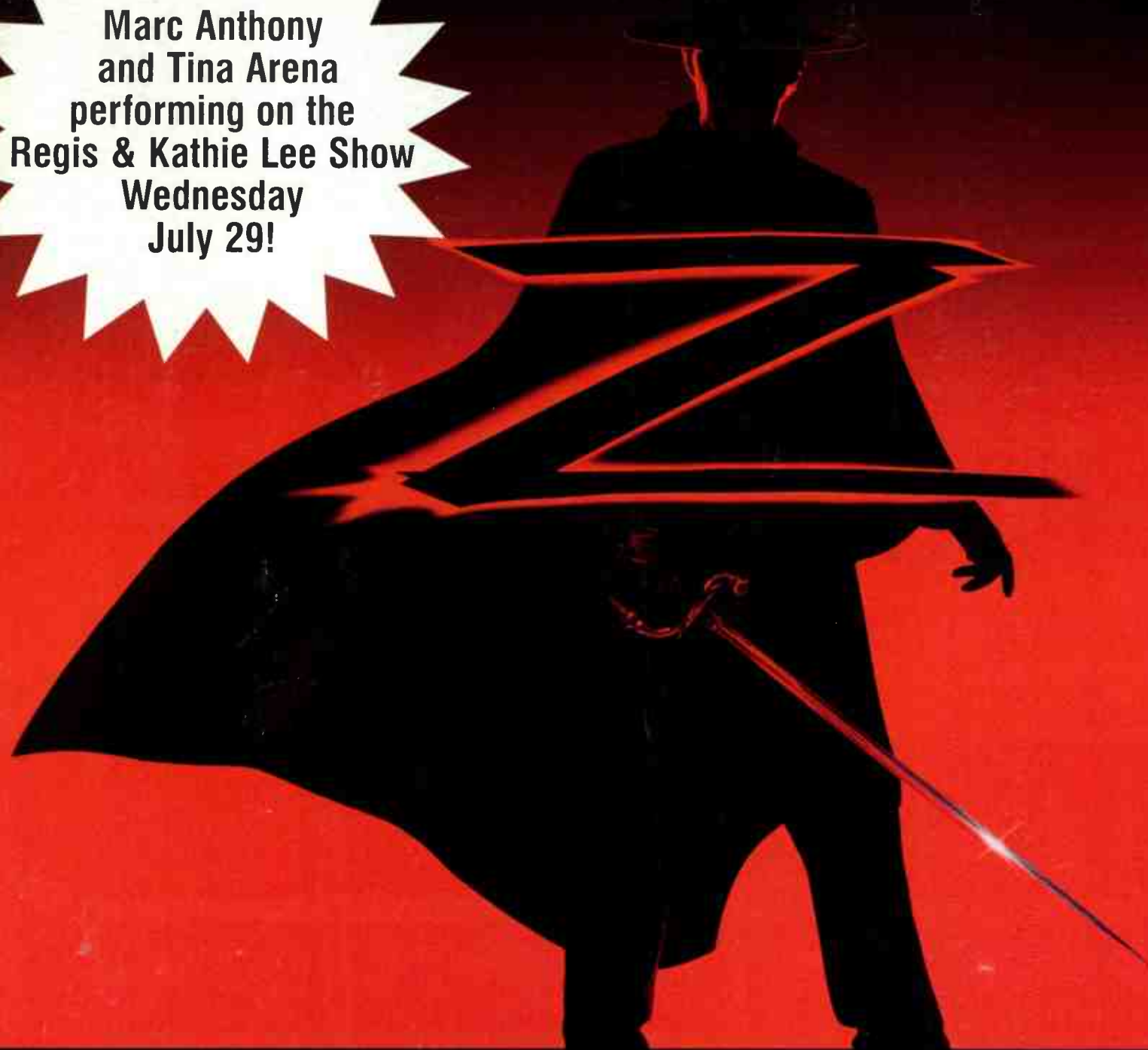
PRODUCED BY GIL MORTON - RECORDED BY JEFF TURNER - MIXED BY CHRIS SHELOON AND GIL MORTON
MANAGEMENT: JOHN SILVA AT GOLD MOUNTAIN ENTERTAINMENT
<http://www.foofighters.com/foof> • hollywoodandvine.com/foofighters

© 1998 Roswell Records, Inc. Manufactured and Distributed by Capitol Records, Inc.

World Radio History

The Song Of The Summer...Unmasked!

Marc Anthony
and Tina Arena
performing on the
Regis & Kathie Lee Show
Wednesday
July 29!



I Want To Spend My Lifetime Loving You

The new single from "Titanic" composer James Horner and lyricist Will Jennings.
Performed by Marc Anthony and Tina Arena.

Produced by Jim Steinman

Impacting Monday July 13.

From the album **The Mask Of Zorro** Music From The Motion Picture
Composed And Conducted By James Horner
Album Produced by Simon Rhodes, Tony Hinnigan and James Horner.

Film Opens Friday July 17.

Contact Elaine Locatelli VP Adult Formats at Columbia Records:212-833-4680
Album in stores now

Tina Arena appears courtesy of Sony Music (Australia) Entertainment Ltd.

© Sony Classical are trademarks of Sony Corporation /©1998 Sony Music Entertainment Inc /Motion Picture Artwork and Photography ©1998 TriStar Pictures, Inc. All Rights Reserved



COLUMBIA



www.sonyclassical.com

World Radio History