

TOP 40 ■ AIRPLAY Monitor

• We Listen To Radio •

February 27, 1998 \$4.95 Volume 6 • No. 9

TOP 40 HIGHLIGHTS

MAINSTREAM TOP 40

#1

CELINE DION

My Heart Will Go On (550 MUSIC)

★★★ AIRPOWER ★★★

MADONNA • *Frozen* (MAVERICK/WARNER BROS.)
NATALIE IMBRUGLIA • *Torn* (RCA)
BEN FOLDS FIVE • *Brick* (550 MUSIC)

GOING FOR AIRPLAY

JIM BRICKMAN WITH MARTINA MCBRIDE • *Valentine* (WINDHAM HILL)
CHRIS CORNELL • *Sunshower* (ATLANTIC)
GARRISON STARR • *Superhero* (Geffen)
BRIAN MCKNIGHT • *Anytime* (MERCURY)
SARAH MCLACHLAN • *Adia* (ARISTA)
U2 • *If God Will Send His Angels* (ISLAND)

RHYTHMIC TOP 40

#1

K-CI & JOJO

All My Life (MCA)

★★★ AIRPOWER ★★★

SWV • *Rain* (RCA)
SYLK-E. FYNE FEATURING CHILL • *Romeo and Juliet* (RCA)
SPICE GIRLS • *Too Much* (VIRGIN)

CROSSOVER

#1

USHER

Nice & Slow (LAFACE/ARISTA)

★★★ AIRPOWER ★★★

SYLK-E. FYNE FEATURING CHILL • *Romeo and Juliet* (RCA)
LSG FEAT. LL COOL J, BUSTA RHYMES & MC LYTE • *Curious* (EASTWEST/EEG)
MONTELL JORDAN FEAT. MASTER P & SILKK • *Let's Ride* (DEF JAM/MERCURY)
LORD TARIQ & PETER GUNZ • *Deja Vu [Uptown Baby]* (CODEINE/COLUMBIA)

GOING FOR AIRPLAY

MARK MORRISON • *Moan And Groan* (ATLANTIC)

ADULT TOP 40

#1

MATCHBOX 20

3 AM (LAVA/ATLANTIC)

★★★ AIRPOWER ★★★

ERIC CLAPTON • *My Father's Eyes* (REPRISE)
MARCY PLAYGROUND • *Sex And Candy* (CAPITOL)
EDWIN MCCAIN • *I'll Be* (LAVA/ATLANTIC)

ADULT CONTEMPORARY

#1

CELINE DION

My Heart Will Go On (550 MUSIC)

★★★ AIRPOWER ★★★

ERIC CLAPTON • *My Father's Eyes* (REPRISE)
FLEETWOOD MAC • *Landslide* (REPRISE)
SHANIA TWAIN • *You're Still The One* (MERCURY)
BLESSID UNION OF SOULS • *Light In Your Eyes* (CAPITOL)

GOING FOR AIRPLAY

THE BACON BROTHERS • *Boys In Bars* (BLUXO)
MICHAEL BOLTON • *Safe Place From The Storm* (COLUMBIA)
CHRIS CORNELL • *Sunshower* (ATLANTIC)
GARRISON STARR • *Superhero* (Geffen)
SARAH MCLACHLAN • *Adia* (ARISTA)
REBEKAH • *Sin So Well* (ELEKTRA/EEG)
THE TUESDAYS • *It's Up To You* (ARISTA)
U2 • *If God Will Send His Angels* (ISLAND)

Despite Song-Driven Trend, BDS Shows Warm Reception For 'Frozen'

by Kevin Carter

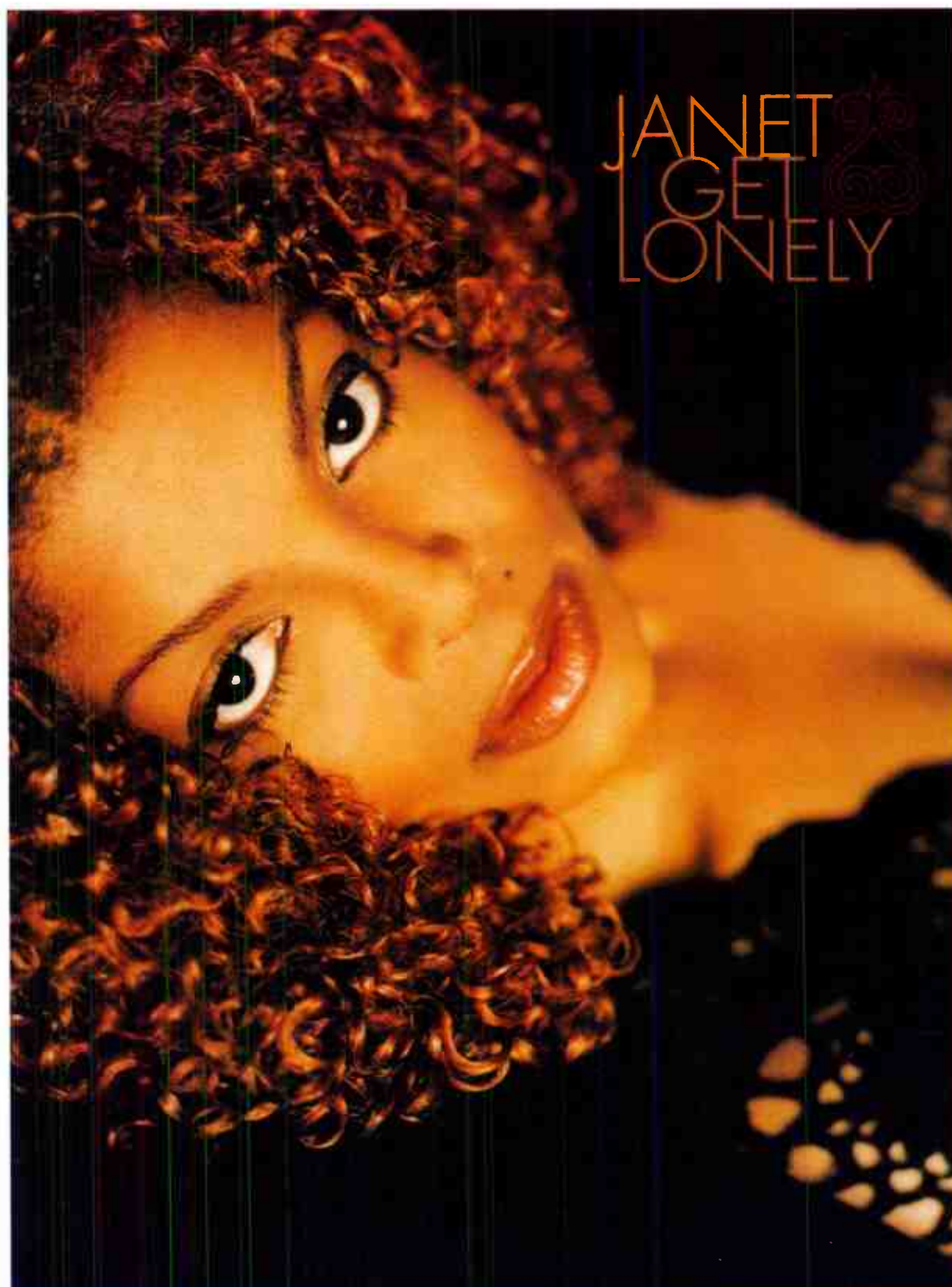
Does top 40 radio still get excited about a long-awaited release from a major artist? There aren't many opportunities to find out anymore, as the format becomes more song- and less artist-driven and the return of any artist with a career spanning longer than a year becomes increasingly rare.

But on Feb. 13, the new Madonna single, "Frozen," hit the desks of PDs

and MDs across the country. Did that single, the beneficiary of considerable advance publicity, stir those long-dormant competitive urges that would cause a programmer to rip open the package, run down the hall, and, Selector be damned, slap a new superstar release right on the air?

Top 40 Airplay Monitor looked at the Broadcast Data Systems figures for Feb. 9-15, the first week in which the

Continued on page 6



JANET
GET
LONELY

THE FOLLOW-UP TO THE #1 SMASH "TOGETHER AGAIN"
FROM THE DOUBLE-PLATINUM ALBUM THE VELVET ROPE

CONTAINS REMIXES BY
TEDDY RILEY (FEATURING BLACKSTREET)
JIMMY JAM & TERRY LEWIS
AND JASON NEVINS

Executive Producers: Janet Jackson
and Beni Elizondo, Jr.
Produced by Jimmy Jam & Terry Lewis
(for Flyte Tyme Productions, Inc.)
and Janet Jackson
RD Worldwide Management, B.V.
<http://www.janet-jackson.com>
© 1998 Block Doll, Inc.

Impacting at Crossover &
R&B NOW!!

Impacting at Mainstream 3/10

Early Believers:

WKU	WJJS
WJMN	KKSS
WERQ	KBOS
WPGC	KIKI
WHHH	KWIN
KPTY	KWNZ
WWKX	KDGS
WFHN	

destiny's child

no, no, no

80,000
SINGLES SOLD
THIS WEEK - #5



TOP 10
ON BILLBOARD'S
HOT 100



SINGLE
APPROACHING
PLATINUM



the irresistible
first single from
their forthcoming
self-titled,
debut album.



no, no, no (part II)
features wyckleF jean of the fugees.

AIRPLAY	SALES
HOT 97	#1
KIIS	#8
Z95.7	#6
WKSE	#1
WPGC	#9

AIRPLAY	SALES
B96	#6
WKSS	#5
WFLZ	#15
WXYV	#3
KRQ	#5

management:
music world management

www.destinyschild.com



COLUMBIA
Singles by label are a registered trademark of Sony Music Entertainment Inc. © 1997 Sony Music Entertainment Inc. All Rights Reserved.

World Radio History

Capstar, Chancellor To Split SFX Pie

Capstar announced this week that it had reached an agreement with Chancellor in which the two will divide the assets of the SFX Broadcasting chain, which Capstar is acquiring. Chancellor gets the SFX stations, including ACs **WVTY** Pittsburgh (see below), **KODA** Houston, **KBFB** Dallas, and **KYXY** San Diego. Capstar will get several smaller-market stations to be named later. AC **KKPN** Houston and sports **WTAE** Pittsburgh will be spun off to comply with federal regulations.

FORMATS: ROCHESTER FLUX

More changes at Jacor Rochester, N.Y., just days after **WVOR-FM** became hot AC "Mix 100.5." Smooth jazz **WRCD** flips to rhythmic top 40 as "Jam'n 107.3." **Erick Anderson**, PD of modern sister **WNVE** (the Nerve), is overseeing the operation, which will sign on with 15,107 songs before the jocks debut. Meanwhile, triple-A simulcast **WMAX/WMHX** is currently stunting with soft AC.

Ocean City, Md., gets its first mainstream top 40 in several years, as **WRXS** drops a sports simulcast under an LMA with Atlantic Radio. **Ron Gillenardo**, formerly VP with former owner HVS Partners, is GM. **Michelle Michaels** is MD. Reach the station at 410-742-5333.

Look for AC outlet **WLTS** New Orleans to start leaning hotter in the near future.

Hot AC outlet **WGXL** Hanover, N.H., morphs into modern adult XL92 under PD/morning guy **Chris Garrett**, who hires **Al Poneleit** for afternoons from **WJLK** Monmouth-Ocean, N.J., replacing **Louise Clark**, who crosses the hall to fill the vacant p.m. drive shift at sister country **WXXX**.

Former Minneapolis pirate **Allen Freed** (who prefers the term "unlicensed low-power broadcaster") is now brokering 12 hours nightly for his rhythmic top 40 format, **Beat Radio**, on 10 of the former Children's Broadcasting-owned Radio Aahs AM affiliates, including **WJDM** New York, **WWTC** Minneapolis, **WCAR** Detroit, **KCAZ** Kansas City, **WAUR** Chicago, **KPLS** Los Angeles, **KIDR** Phoenix, **KKYD** Denver, **WPWA** Philadelphia, and **KAHZ** Dallas.

Top 40 **KCCQ** Ames, Iowa, completes its move-in to Des Moines, Iowa, where it currently has a 1-share already, by moving from 107.1 to 105.1 FM as **Hot 105**. PD **Mark Pitts** moves himself from mornings to mid-days, switching with **Matt McNeil**. Also, p.m. driver **K.C. Allen** exits. Elsewhere in Des Moines, pending Jacor acquisition **KMXD**, currently an easy listening outlet, puts in for the calls **KYSY**.

MANAGEMENT: FETCH RETIRES

Longtime GM of **WSNY/WVKO** Columbus, Ohio, **Al Fetch**, resigns from the AC/gospel combo after 12 years with the stations.

PROGRAMMING: KALINA UPPED

WIOQ (Q102) Philadelphia PD **Glenn Kalina** is upped to OM and is seeking a day-to-day PD. Kalina, who will continue to do mornings with sidekick **Kim Douglas**, news-woman **Jennifer Ryan**, and **Diego the Stunt Guy**, needs another on-air player with comedy-writing and improv experience.

Phil LoCascio, longtime PD of AC **WSB-FM** Atlanta, heads north to helm classic rock **WARW** Washington, D.C.

Modern adult **WVTY** (the River) Pittsburgh applies for new call letters **WDRV**; P/T

Shawn Isreal will cover the vacant afternoon shift. Meanwhile, ex-**WVTY** morning jock **Barry Beck** is filling in on mornings at **ARS** crosstown classic hits **WZPT** (the Point), while ex-**WVTY** night jock **Randy Brooks** is permanent at the Point in nights. Former **WBBO** (B98.5) Monmouth, N.J., morning guy **Dr. Michael Lynn** inks a deal as APD with a shift to be determined at **ARS'** crosstown country **WDSY** (Y108).

KUMX (Mix 104.1) New Orleans morning man **M.C. Scrappy** is named PD at American General Media's new rhythmic top 40, **KWWV** (Kiss 99.7) San Luis Obispo, Calif., consulted by **Mark Feather**, PD of sister **KISV** (Kiss 94.1) Bakersfield, Calif.

Citadel's Spokane, Wash., OM, **Scott Souhrada**, transfers to the GM seat at hot AC **KEYW**, album **KXRX**, country **KORD**, classic hits **KTHK**, and sports **KFLD** Tri-Cities, Wash. Back in Spokane, modern adult **KAEP** midday jock **Haley Jones** is upped to PD; country sister **KDRK** PD **Ray Edwards** is named OM of **KDRK** and **KAEP**.

In other Citadel news, **Rich Summers** returns to Boise, Idaho, as the market OM, overseeing top 40 **KZMG**, among others. Summers was most recently in P/T at **KNIX** Phoenix. He replaces **Tom Jordan**, who becomes Citadel's Reno, Nev., market manager. In related news, **WKRQ** (Q102) Cincinnati needs a creative services director to replace **T.R. Fox**, who is on his way to APD/MD/afternoons at **KZMG**.

Nearly 20 minutes after arriving to do nights at **KZZU** Spokane, Wash., from APD/afternoon host at country **KIOK** Tri-Cities, **Jeff Jacobs** has been named PD at top 40 **KUJ-FM** Walla Walla, Wash. The station, currently satellite, plans to go live. Packages to **KZZU** PD **Ken Hopkins**.

K.J. Allen, PD of AC **WGMG** Athens, Ga., adds PD duties at album sister **WPUP**, replacing **Chris Williams**, now at modern **WNNX** (99X) Atlanta.

PEOPLE: HOWARD STERN JAMS?

New PD **Jerry McKenna** isn't even in town yet, but that hasn't stopped rhythmic top 40 **WWKX/WAKX** (Hot 106) Providence, R.I., from making big changes, venturing outside the box to pick up **Howard Stern** for mornings. Interestingly, Stern's syndicated show, which already penetrates Providence from **WBCN** Boston, is currently No. 3 in Providence, despite being heard strongly in only one county, says GM **John McGuire**. To make way for Stern, morning co-host **Rona Ahern** moves to middays, replacing **Linda Harris**, available now at 401-274-0967. The other morning co-host, **Bobby Z.**, remains aboard for swing and will integrate his large mobile DJ business into the station's existing club business. Night jock **Real Deal Mike Deal** moves up to fill ex-PD **Joe Dawson's** vacant afternoon shift.

Top 40 veterans **Dick Biondi**, now night host at oldies **WJMK** Chicago, **Walt "Baby" Love**, and the recently retired **Robert W. Morgan** are among the 16 broadcasters nominated for the Radio Hall of Fame. Others include syndicated oldies maven **Dick Bartley**, **Howard Stern**, and NPR's "Car Talk" hosts **Tom** and **Ray Magliozzi**.

KSTP-FM (KS95) Minneapolis picks up new morning co-hosts **Van Patrick** from **WRVW** (the River) Nashville and **Cheryl Kaye** from **KBBT** (the Beat) Portland, Ore. They replace **Mark Otto**, who may stay on in another capacity, and **Rob Carson**. Also, **Jym Geraci** joins from SFX's Richmond, Va., cluster, replacing **Jim Ballella**, now with clas-



TOP 40 TOPICS BY SEAN ROSS

212-536-5264 • sross@billboard.com

More Graphic Displays Of TV's Power

Despite its credentials at modern rock and at home in the U.K., the **Verve's** "Bitter Sweet Symphony" was living week to week at mainstream top 40 before it was featured in a Microsoft commercial. At the beginning of the year, it was increasing by 20 to 30 plays per week on Airplay Monitor's mainstream top 40 Impact Page. Within a week of the spots, the weekly spin count was increasing by more than 70 plays. By the time it charted two weeks ago, the gain was twice that. For the last two weeks, it's been registering more than 200 plays. "Bitter Sweet Symphony" shouldn't have needed TV to rise to the top of PDs' agendas, but TV clearly helped.

Paula Cole's "I Don't Want To Wait" was already a top five hit long before its use in the WB-TV series "Dawson's Creek" and that show's seemingly ubiquitous radio spots. But TV changed the way PDs viewed that record, too. Even as recently as a month ago, "Wait" was a call-out-driven, upper-demo record for most PDs: an unusually contemplative lyric that somehow became a top 40 hit anyway due to an exceptional amount of persistence by the Warner Bros. folks.

After a few weeks of "Dawson's" exposure, however, "Wait" became something for many PDs that it had never been in its eight-month journey: a young-end reaction record. Stations that had resisted the record—particularly rhythmic-leaning outlets—got on board, even though it wasn't being worked to them anymore. Some of that activity might have occurred with any massive ballad. Some of it might have stemmed from a musical transition that several prominent rhythmic outlets were going through at the time. But clearly, "Dawson's" helped reel in the hold-outs and even helped redefine the audience's perception of the song's meaning. It's no longer about women developing identities beyond their husbands and families. Now it's a song about randy kids who, well, don't want to wait, which is probably not how Cole intended it.

And those aren't the only examples of TV flexing its muscles in recent months. Before "Ally McBeal," **Vonda Shepard** was the most obscure of cult artists and "Hooked On A Feeling" was one of the guiltiest of pleasures for children of the '70s. Now Shepard is on her way to a major-label deal, and even **Blue Swede's** hit has shown up on a few particularly brave stations recently.

We aforementioned '70s kids can already vouch for the power of TV, having lived with the themes from "Happy Days," "S.W.A.T.," "Welcome Back Kotter," and "Laverne &

Shirley" (as well as the singing debut of **John Travolta**) in a four-month span. But the use of advertising for an unrelated product to break a record was usually a British phenomenon. Oldies as unlikely as **Jackie Wilson's** "Reet Petite" or **Etta James'** version of "I Just Wanna Make Love To You" (the one that '70s kids associate with **Foghat**) have become top 40 hits over the last decade because of TV spots. But we've already followed the U.K.'s lead on songs that become hits because they were played at resorts ("Macarena"). And labels have, for the past three years, made a point of manipulating singles' release dates until well after airplay begins for the purpose of debuting higher on the charts (in Britain, virtually every record debuts at its peak chart position for that reason, then drops). So it was inevitable that a song would break through an ad campaign in the U.S. as well.

I heard "I Don't Want To Wait" for the first time last June as a "Make It Or Break It" record on **WZST** Chattanooga, Tenn. **WZST** hasn't been top 40 for a while now, which should give you an idea of just how long it took to bring that song home, even as the follow-up to a major hit. It must be ironic (although hardly unwelcome) for label folks who can spend four to six months, or longer, breaking any hit song to see how much faster the process is when there's TV involved (and that's nothing compared to the power of movies to sell albums, especially those involving either a doomed ocean liner or an elderly woman rapping).

This fact is probably a little disconcerting for PDs, too, knowing that even the Fox or WB networks can put a record on listeners' agendas when you're still wondering whether to expect call-out results after 125 spins. But TV is still a common-currency cultural experience for much of the audience in a way that radio hasn't sought to be for years, save an occasional **Stern**, **Limbaugh**, or **Dr. Laura**.

At least it's nice to know that a "lowest common denominator" medium like TV can still accommodate a Cole or Shepard. And radio can find some encouragement in the knowledge that ad campaigns sell records. Seeing how the "Dawson's Creek" radio spots helped boost even an already-established hit is ammunition for PDs who are still trying to get labels to shell out for a return to conventional record advertising (as opposed to full-length paid plays) on the radio. If it's somewhat disconcerting to know that radio can't spread a song as fast as TV or the movies, it should be encouraging to know that it can break one a lot faster than a print ad.

sic rock **WNEW-FM**.

Meanwhile, **WRVW** makes **Marc Murphee** (ex-**WZYP** Huntsville, Ala.) official morning sidekick to **Mary Lassiter**.

WNKS (Kiss 95.1) Charlotte, N.C., morning host **Luke Allen** resurfaces in mornings at modern adult **KLAL** (Alice 107.7) Little Rock, Ark.

WDJX Louisville, Ky., APD/MD/midday talent **Karen Rite** nails down the same duties at modern adult **WMXB** (B103.7) Richmond, Va. She replaces **Kat Simons**, who left late last year.

WDBR Springfield, Ill., night jock **Bobcat** downgrades himself to swing while carrying a full college courseload. He's replaced by **Jojo Collins** (ex-**KKRD** Wichita, Kan.).

KBKS (Kiss 106.1) Seattle midday personality **Lori Bradley** is returning to Houston in

order to get married. PD **Mike Preston** needs a replacement.

Here's the new lineup at **KCHZ** (Z95.7) Kansas City: mornings, **Just Plain Dave** and **MacKenzie**; middays, **J.K.** (upped from P/T); afternoons/MD, **Mike Austin** (ex-**WCOL** Columbus); and nights, **Howie Dee**.

KCAQ (Q104.7) Oxnard, Calif., moves some folks around, splitting up the "Cafe Con Leche" afternoon team of **Jay Scratch** and **Skoolboy**, adding **Scratch** to PD **Dan Garite's** morning show, along with **Erica**, who hosted the late-night "Love Pad" dedication show. She's replaced by **Larz**, upped from P/T work. Overnight jock **Mambo** moves to afternoons, while **Skoolboy** takes overnights.

Country **WZST** (Star 98) Chattanooga, Tenn., p.m. driver **Big Zak Evans** moves over for the same duties at AC sister **WLMX**.

RADIO ACTIVE
by Kevin Carter
213-525-2303 • kcarter@billboard.com



WHAT'S NEWS

by Theda Sandiford-Waller

212-536-5053 • theda@billboard.com

Appleton, Harley Exit Island Posts

MUSICAL CHAIRS: Island VP of promotion **Jeff Appleton** and head of rock promotion **Jessica Harley** exit. Polydor's **Barry Lyons** joins Island as VP of rock promotion, along with **David Barbis** as associate director of rock promotion and **Jeff Davis** as associate director of promotion, Midwest. . . **Jeremy Hammond** joins MCA as VP/marketing director from Unity Entertainment. . . Epic promotes **Jacqueline Saturn** to VP of alternative promotion. . . A&M Boston-based regional **Ken Luchek** adds the Washington, D.C., market, while former MCA, EMI, and Interscope promotion man **Freddy Zaehler** joins A&M for Northwest promotion duties. . . Virgin's **Diane Lockner**, who relocated to Dallas last week, heads back to Washington, D.C., as Northeast regional instead, following **Casey Silcock's** exit.

ARTIST MONITOR: **Jody Watley** is featured in the March issue of *Playboy*. . . If you haven't seen the **Rolling Stones'** *Bridges to Babylon* tour yet, don't fret. Next month, you'll be able to see the Stones' "Babylon Pledge-Break Special" on your local PBS station. About 300 stations will air the show at least twice. . . **The Wallflowers'** **Rami Jafee** plays organ on **Everclear's** "I Will Buy You A New Life". . . We hear that **Mike Tyson** is starting a label named after his daughter, **Rayna**. No word yet on staff or distribution. . . Although she may never live it down, **Dionne Warwick** is no longer affiliated with the **Psychic Friends Network**. . . **Dakota Moon's** vocalist/guitarist, **Ty Taylor**, was in the Broadway cast of "Five Guys Named Moe". . . **Busta Rhymes'** '80s roots show on his remix of "Turn It Up/Fire It Up," which samples "The Knight Rider Main Theme." In an interesting twist of fate, **Timbaland & Magoo** use the same sample for "The Clock Strikes."

SILVER SCREEN: If you're wondering about all the hoopla surrounding **Nick Broomfield's** controversial documentary "Kurt And Courtney," the film will have its national premiere Feb. 27 at the Roxie Theater in San Francisco. . . It looks like **Spice Girls** are already working on a sequel to "Spiceworld". . . **OMC's Paula Fuemana** will star in the New Zealand film "What Becomes Of The Broken Hearted," the sequel to "Once Were Warriors." To prepare for the role, Fuemana took drama lessons at **Harvey Keitel's** New Zealand acting studios. . . We hear that **No Doubt's Gwen Stefani** will portray the character Buddha in the film "Belly," currently being shot in New York.

FOR THE RECORD: This week's Power Playlists reflect our semi-annual re-ranking of stations based on their TSA come in the fall Arbitron book. You won't see **WKSS** Hartford, Conn., this week, however, because of a Broadcast Data Systems data-processing problem.

Smells Like Sex, Candy, and Really Old Coffee



Capitol recording act **Marcy Playground** stopped by the luxurious lunchroom at **WSTR (Star 94)** Atlanta to sample the many international vending delicacies available, such as **Goo Goo Clusters**. Pictured, from left, are **APD/MD J.R. Ammons**, the band's **Dylan Keefe** and **John Wozniak**, **PD Dan Bowen**, and **Marcy Playground** drummer **Dan Rieser**.

PUBLISHER: JON GUINN
EDITOR: SEAN ROSS
MANAGING EDITOR: KEVIN CARTER
DIRECTOR OF CHARTS: THEDA SANDIFORD-WALLER
ASSOCIATE DIRECTOR OF CHARTS: STEVEN GRAYBOW
WRITER/REPORTER: DANA HALL
CHART PRODUCTION MANAGER: MICHAEL CUSSON
ASST. CHART PRODUCTION MANAGER: ALEX VITOULIS
EDITORIAL PRODUCTION MANAGERS: BARRY BISHIN, MARCIA REPINSKI
EDITORIAL PRODUCTION: SUSAN CHICOLA, MARC GIAQUINTO
SARAH JOHNSON, MARIA MANLICIC
COPY EDITOR: CARL ROSEN
ADVERTISING PRODUCTION MANAGER: LYDIA MIKULKO
ART DIRECTOR: RAY CARLSON
ADVERTISING PRODUCTION ARTIST: SHIRA HALFON

NATIONAL ADVERTISING MANAGER: HANK SPANN
ACCOUNT MANAGERS: JEFF SOMERSTEIN, SHARON WHITE
ADVERTISING SERVICES MANAGER: ALYSE ZIGMAN
SALES ASSISTANTS: EVELYN ASZODI,
ERICA BENGSTON, CANDACE GIL
EDITORIAL ADVISER: TIMOTHY WHITE
PRODUCTION DIRECTOR: MARIE GOMBERT
CIRCULATION DIRECTOR: JEANNE JAMIN



PRESIDENT: HOWARD LANDER
SENIOR VP/GENERAL COUNSEL: GEORGINA CHALLIS
VICE PRESIDENTS: KAREN OERTLEY, ADAM WHITE
DIRECTOR OF STRATEGIC DEVELOPMENT: KEN SCHLAGER
BUSINESS MANAGER: JOELLEN SOMMER

©1998 BPI Communications
1515 Broadway, New York, NY 10036 212-764-7300
5055 Wilshire Blvd., 7th floor, Los Angeles, CA 90036 213-525-2300
For subscriptions call: 800-722-2346

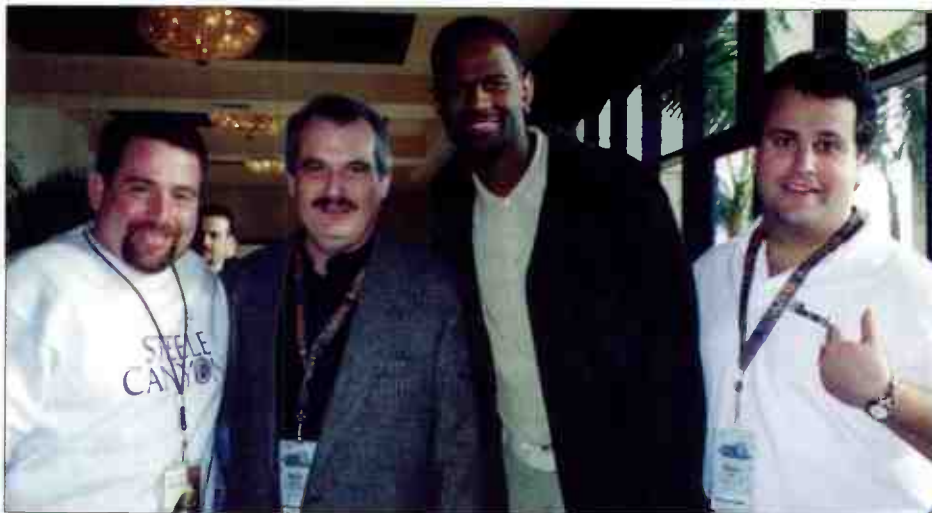
Airplay Monitor reporting panels are based solely on a station's musical content.

RADIO CONCERT MONITOR

DATE	CALL LETTERS	EVENT	SCHEDULED TO APPEAR
Mar. 8	KBXX (the Box) Houston	Concert	Master P, No Limit Family
Mar. 20	WKCI New Haven, Conn	Benefit Concert	TBA
April 4	KRBE Houston	Earth Day Fest	TBA
April 4	WQSL Wilmington, N.C.	Azalea Festival	Lutricia McNeal, She Moves
April 5	WQSL	Azalea Festival	Craven Melon
April 11	WZJM Cleveland	Spring Break Jam	Dru Hill, No Authority, 'N Sync, more
April 17	KBXX (the Box) Houston	Eighth Birthday Bash	TBA
May 2	KKFR (Power 92) Phoenix	Cinco de Mayo Jam	TBA
May 3	WKCI New Haven, Conn.	Spring Fling Kite Fly	TBA
May 5	WLCE Buffalo, N.Y.	First Birthday	TBA
May 16	KZHT Salt Lake City	First Birthday	Dakota Moon, more
May 24	WAEB Allentown, Pa.	Mayfair	TBA
May 24	WSPK Poughkeepsie, N.Y.	K104 Fest	She Moves, more
May 25	WKSE Buffalo	Summer Concert	TBA
May 30	WXKS Boston	Kiss Concert 19	TBA
May 31	WHTZ New York	Concert	TBA
May 31	WKCI	Beach Bash	Dakota Moon, more
June 1	WPST Trenton, N.J.	Concert	TBA
June 12-14	WNTQ Syracuse, N.Y.	Balloon Fest	Jana, more
June 13	KIIS Los Angeles	KIIS & Unite 6	TBA

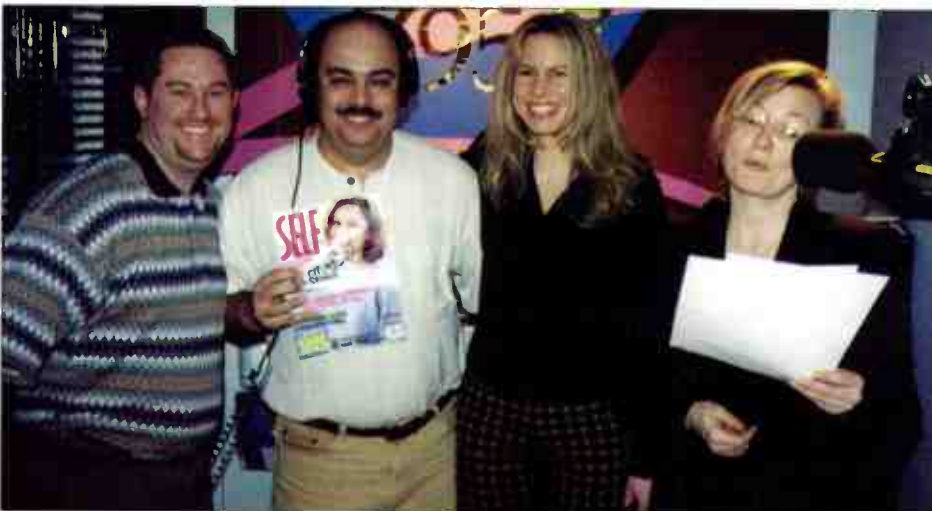
Let us monitor your event! Kevin Carter: 213-525-2303 or E-mail KCarter@billboard.com

McKnight Hangs With McWeasels



Mercury recording artist **Brian McKnight** (the tall guy) is shown knee-deep in industry guys at a recent radio event, somewhere in or near San Diego. Pictured, from left, are Mercury's **Tony Smith**, **Airplay Monitor's Kevin Carter**, **McKnight**, and Mercury's **Steve Ellis** (pointing to what appears to be his left breast).

Bay Area Listeners Kinda Fonda Vonda



KZQZ (Z95.7) San Francisco welcomes recording artist/budding actress **Vonda Shepard**, now a semi-regular on Fox TV's "Ally McBeal." Pictured, from left, are producer **John August**, morning guy **Human Numan**, **Shepard**, and newswoman **Crystal McKenzie**.



Sarah McLachlan Adia

The remarkable new single and video from her acclaimed album
Surfacing - now past Double Platinum

1
VH
ARTIST
MUSIC FIRST
OF THE
MONTH
FOR MARCH

Nominated for 3 Grammy Awards including
BEST POP ALBUM
and
BEST FEMALE POP VOCAL PERFORMANCE
"Building A Mystery"

produced, recorded
and mixed by
Pierre Marchand

management:
Terry Mullins/Dave Traister for Network Management

ARISTA 
© 1999 Arista Records, Inc. a division of Sony Music Entertainment
www.aristarec.com www.network.com

ON TOUR:

- 3/5 Spokane, WA
- 3/6 Eugene, OR
- 3/7 Sacramento, CA
- 3/9 San Jose, CA
- 3/10 Fresno, CA
- 3/11 Irvine, CA
- 3/13 Albuquerque, NM
- 3/15 - 16 Austin, TX
- 3/17 Oklahoma City, OK
- 3/18 Ames, IA
- 3/20 Louisville, KY
- 3/24 Asheville, NC
- 3/25 Charlotte, NC
- 3/27 Richmond, VA
- 3/28 Baltimore, MD
- 3/29 Providence, RI
- 3/31 Wallingford, CT
- 4/1 Portland, ME
- 4/2 Montreal, QUE
- 4/4 Buffalo, NY
- 4/5 Rochester, NY
- 4/7 E. Lansing, MI
- 4/8 Toledo, OH
- 4/9 St. Louis, MO
- 4/11 Omaha, NE
- 4/12 Madison, WI
- 4/14 Kansas City, MO
- 4/15 Vail, CO

Lilith Fair
begins 6/19

SAVE THESE DATES

Billboard

AIRPLAY

Monitor

RADIO

Seminar & Awards

September
17-19, 1998

Pointe Hilton at Tapatio Cliffs

PHOENIX, AZ

Despite Song-Driven Trend, BDS Shows Warm Reception For 'Frozen'

Continued from page 1

song was officially released to radio, to get a snapshot of how programmers react to a potential event record. The stats show that 83 of Monitor's mainstream top 40 reporters gave "Frozen" some play, for a total of 761 spins, in a week in which the song was available for only three days. ("Frozen," which was released in some other territories before the U.S., received 32 spins from stations that managed to get hold of it the week before.) Only seven mainstream reporters hadn't given it at least a premiere spin by Feb. 15.

Some mainstream top 40s spun "Frozen" as many as 50 times, with most major-market outlets accounting for higher spin counts than smaller-market compatriots. This issue, the single debuts at No. 16 on the mainstream top 40 chart.

Despite the advance buzz, "Frozen's" official launch to radio came with less than 24 hours' notice. "We called everybody on Thursday and told them [it] was coming Friday," says Warner Bros. VP of promotion Barney Kilpatrick. The label reached back for some old-school, larger-than-life promo tricks, delivering the single in some markets frozen in a block of ice; in others, a promo rep showed up with a Styrofoam ice chest with the CD inside an insulated bag of dry ice. "Just before [the rep] would enter the station, [he] would sprinkle water over the ice, causing smoke to pour out of the ice chest," says Kilpatrick proudly.

And how did PDs respond? "I feel that any new Madonna release is still an event in our format," says WHIZ (Z100) New York PD Tom Poleman, who played "Frozen" 32 times in the first week. "I'm just excited that top 40 has new music from another core artist to generate excitement for this format, just like Celine Dion's No. 1 record continues to do." He adds that after less than a week, "Frozen" was Z100's No. 7 request. "A big part of top 40 is knowing which songs to be early on and which ones to wait on. The decision for Z100 to pound a much-anticipated new single from one of top 40's premier artists is a no-brainer."

New York has long been known as a Madonna stronghold, leading Z100's Chancellor rhythmic sister, WKTU, to spin the record 15 times in the week ending Feb. 15, but Chancellor's nearby WBLI Long Island, N.Y., didn't initially join the big-city frenzy. "We got the record after Z100 and 'KTU,'" says PD Ken Medek. "And even though our signals overlap, we didn't get many calls from their airplay. We spiked it last Thursday and Friday nights, but, obviously, that younger demo is not the core Madonna audience. But since the song hit daylight, it's gotten response; as a matter of fact, I played the song 25 minutes ago, and I've gotten about five or six calls."

KIIS Los Angeles APD/MD Tracy Austin is no stranger to Madonna sneak previews. Her past experience includes lifting the audio track for "Vogue" off of MTV 24 hours ahead of the single's arrival at the station. "We considered this an event," she says. After a "world premiere" on Rick Dees' morning show, by the end of the chart week, it had received 19 plays. Because of Madonna's large Internet fan base, Austin says KIIS got calls on its business line ahead of the debut from fans wanting know when KIIS was going to play it.

"It's hard to remember the last time we had an artist event like this, other than a new Janet Jackson or Mariah Carey release," says Austin, who plans a "win it before you can buy it" weekend to augment the excitement level.

Fan pre-excitement was a factor at rhythmic WBBM-FM (B96) Chicago. "I had been hearing about it for about six months, plus many listeners seemed to know about it; maybe they saw it on the Net," says MD Erik Bradley, who spun "Frozen" 17 times in its first official week. "We're making a big deal about it on the air," adds Bradley, noting the Material Girl's penchant for working the media for maximum benefit. "She's going to be everywhere soon, from magazine covers to TV, to an upcoming movie version of [the musical] 'Chicago.'"

In a deserted warehouse on the outskirts of Kansas City, at relatively new top 40 outlet KCHZ (Z95.7), PD Rod Staats attempted to raise his station's profile by spinning "Frozen" a subtle 50 times in its first week. "We expected the song Friday but somehow got it on Thursday, which

caught us off guard," he says. "I scribbled down 'a Channel 7 exclusive' on a piece of paper, physically ran it into the studio, and debuted it during the morning show." After playing at the top of every hour Thursday and Friday, "Frozen" is now spinning a tasteful six or seven times a day.

Crosstown KMXV (Mix 93.3) played "Frozen" only four times during its first week; PD Jon Zellner is now playing it four or five times a day. "Top 40 today desperately needs core artists," he says. "During the '80s, top 40 was artist-driven, with Michael Jackson, Duran Duran, Culture Club, and Madonna, each of whom had their own instantly identifiable persona and image. Looking at the mainstream top 40 chart today, only two of the top 10 artists have been around longer than a year—Janet Jackson and Celine Dion... Someone like a Madonna is incredibly important to this format. We should be turning any new release from her into an event, especially when other formats can't play it."

Not everyone had the same initial response to "Frozen." Upon the single's arrival last Friday at WNTQ (93Q) Syracuse, N.Y., PD Tom Mitchell played it during his midday show and waited for the phones to ring. "I gave it a big setup, front-and-back-sold it, and got nothing," he says. "If I had received some quantifiable phone response, I would have put it right into rotation, but there was obviously no pent-up demand that needed to be filled that weekend."

93Q's rival WWHI didn't play the song that first weekend at all. The following Monday, Mitchell decided not to base any musical decisions on a single spin. He did, however, edit the song, cutting some 50 seconds out. "I just felt it was too long, so we edited out some of the instrumental bridge and faded it early."

Of the other mainstream top 40s that didn't play "Frozen" in its first weekend, two were owned by the same group, Sinclair's WKRZ Wilkes-Barre, Pa., and WFBC-FM Greenville, S.C. (Another Sinclair outlet, WKSE Buffalo, N.Y., played the song only once. WKSE and WKRZ have since upped their rotation.) Another was modern-leaning WDCG (G105) Raleigh, N.C.

As in Kansas City, San Diego contemporary outlets had different initial reactions, even within the same building. "There was a high anticipation factor for this record, which was a natural for Q106," says Todd Shannon, PD of Jacor mainstream KKLQ (Q106) and rhythmic KHTS (Channel 93-3). Since the track's debut, Q106 has spun it 36 times, undayparted, 15 of those spins during the first chart week. "We debuted 'Frozen' on the morning show but didn't feel the need to overhype it; [it] speaks for itself. It's a new Madonna record, Q106 is a mainstream station, it's Southern California—what else do you need to say?"

But, he adds, because of the rhythmic nature of KHTS, "Frozen" hasn't seen the light of day—yet. "This station is built on tempo, and, with no remixes currently available, I can't play it yet on 93-3," says Shannon, who adds that despite doing in-house remixes for Sugar Ray's "Fly" and Smashmouth's "Walkin' On The Sun," attempts at a similar remix of "Frozen" have proved unsuccessful.

Unlike Austin and Bradley, crosstown KFMB-FM (Star 100.7) OM/PD Tracy Johnson did not feel any pre-existing anticipation for the new single. "Usually with Madonna there's an advance buzz, but in this case, it was almost a surprise, and, in this case, I think it worked in her favor," he says. Once Star knew the single was coming on Friday, the jocks began to pre-promote the event. "After playing it, we didn't take a stance on the record; instead, we asked for listener feedback, which has been overwhelmingly positive. We didn't ram it down the listeners' throats." Star is now spinning "Frozen" five or six times a day, undayparted.

Besides showcasing "Frozen" as an event track, Johnson admits to editing his version to 3:05. "Although I'm convinced it's a hit, I believe it's going to be one of those records that will take forever to call out because of the lack of a definable hook; it's not a sing-along song," he says. "It needs to penetrate their consciousness. [But] I can't think of anything else our target audience would be more interested in, other than 'Titanic' music, than hearing a new Madonna record."

MONITOR PROFILE

Geffen's Bob Catania Presides Over The Changing Face Of Promotion

Bob Catania, the Los Angeles-based head of promotion for Geffen Records, has certainly seen his share of industry changes during a 20-plus-year promotional career but none more unpredictable, or unsettling, as the cost of doing business in 1998, operating in a post-consolidation world, where rules seem to be written, torn up, and rewritten on an hourly basis.

"In the old days, it was extremely important to know who consulted who—and while that's still important, today we have to know who owns who," he says. "With the largest radio operators controlling 100-plus stations each, you gotta know who the Jacor guys are, who the Chancellor people are, and use those common threads in promotion.

"Consolidation hasn't changed our basic promotional philosophy, because our goal is to get as much airplay [as we can] on the appropriate stations, but what has changed is market awareness," he adds. "Our staff had to learn to be more aware of the competitive situation with regard to ownership. In the old days, we would blitz a market and grab as many stations as we could." Today, with consolidation and the re-

that, mentally. "If we tried to micro-manage every subformat, we'd make ourselves crazy. We have no separate AC department, so the pop staff covers top 40 as well as all of the AC offshoots," he says. "We don't have a different game plan for dealing with those stations. For example, in Houston, we look at [top 40] KRBE, [adult top 40] KHMX, and [modern adult] KKPX only as three stations that can potentially play Lisa Loeb. After that's accomplished, we then have to worry about keeping them all happy."

Geffen does have separate active and modern rock departments, with triple-A as a wild card "for use primarily as an artist-development format," says Catania, who acknowledges that the line between active and modern rock is increasingly blurred. "It's dangerous to assume those formats are all that separate. Some modern rock stations are active-leaning. In the same way, we can't become too set in our ways and pigeonhole records by format.

The same philosophy applies when it comes to crossing records from rock to pop radio. While Geffen is known as the quintessential rock and modern rock label, "it's been a great top 40 label, in that we've been able to take those rock records and successfully put them on top 40," he says. "The old formula was modern rock play plus MTV Buzz Bin plus top 10 sales equaled top 40 smash, like in the cases of Nirvana and Beck, but that doesn't automatically work anymore. That was a moment in time when modern rock and MTV were different than they are today."

One of Catania's biggest surprise success stories of the past year was Days Of The New, whose "Touch, Peel And Stand" is currently top 10 at active and modern rock. In what Catania calls a "brilliant move" by the rock department, Geffen initially shipped the album to radio with no single and no add date and let that organic approach translate into power rotation. "The game plan was to start it at active and mainstream rock and then cross it over to modern rock, where, at the time, there was a sense that modern was more pop-oriented and leaning into the ska sound," he says. "We figured this could be a track that helped put the rock back in modern rock."

On the horizon, Geffen anticipates a new Peter Gabriel album preceded by a new Gabriel song from an upcoming movie soundtrack. Needless to say, Gabriel is finishing the project at his own pace and on his own artistic terms. "No one here is calling Peter and ordering him to produce a smash single because the quarter ends tomorrow," says Catania, who also comments on the emerging electronic music: "There still seems to be some reticence from radio about making electronica a part of their daily music mix, with the exception of the occasional track like Fatboy Slim or Death In Vegas. There's an amazing marketplace for this music, even though it hasn't hit the mainstream yet. All I can say is, my 15-year-old son and his friends have finally found the music to piss off Mom and Dad."

In a nod to the changing landscape, Geffen recently began to broaden its pop base with the acquisition of Kai and dance/pop act She Moves, signed by Craig Coburn, who recently made the transition from promotion to A&R. "We realized that we can't continue to operate as a niche company; we needed some balance and diversity," says Catania. "It's important for us to prove that Geffen can be as competitive in that area as anyone else . . . we had become so good and successful doing that niche that it was difficult to initially think about going outside that realm."

But, he adds, "our foundation will never change. We'll never become the 'dance/pop' label and sign everything out there. We're going to apply the same artist-development philosophy that Geffen is famous for." **KEVIN CARTER**



'We now have to think outside formatic boundaries'

Bob Catania
Head of Promotion
Geffen Records

sulting decrease in format duplication within a given market, labels faces fewer opportunities for securing initial airplay. "It now takes longer for a record to develop in an individual market," he says. "Moving those records around has become more time-consuming." Like his peers, Catania observes the weekly dance of PDs within the same company, in the same market—often a top 40 and a modern adult—vying for ownership of certain records.

The Geffen field staff, always the label's front line, has now become more important. "As in the old days, a local takes their priorities from the national staff, but they should know their individual markets well enough to be able to speak up to the national staff if they feel a specific record belongs on a certain outside-the-box station," he says. For example, while Geffen was working Whiskeytown at rock radio, the Boston local played it for PD John Ivey at top 40 WXKS-FM (Kiss 108), who immediately called Catania to ask what the label's plans were for the record. "In that case, the local, using his instincts, created something new that wasn't there before," says Catania. "We now have to think outside formatic boundaries."

Because of that layered approach, with songs being exposed through a network of subformats, records are now being built more intelligently and consequently are becoming more valuable and lasting longer. "No longer can we just throw a record out there and hope to reel in eight stations in a market. We now have to be more methodical. At the same time, it's imperative that the sales, marketing, and press game plan be in sync with the changing face of radio."

In fact, given the myriad of subformats available today, Catania and staff try to remain above

JIM BRICKMAN

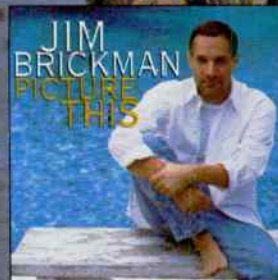
"Valentine"

featuring Martina McBride

- #1 Adult Pop Hit!
- Don't miss Jim's **PRESIDENTIAL GALA PERFORMANCE** airing nationally on ABC-1st week of March
- **Picture This** Top 30 **Billboard** POP album!
- **3 GOLD** records in 8 months!

ADD DATE: MARCH 3

FROM THE ALBUM
PICTURE THIS



MANAGEMENT: David Pringle, Edge Management
Phone (818) 783-1720 Fax (818) 783-1724



©1997 Windham Hill Records

Strongest Increase In Airplay This Week

MAINSTREAM TOP 40

	INCREASE IN PLAYS
MADONNA • Frozen (MAVERICK/WARNER BROS.)	+1417
<small>WTWR +32, WXXL +32, KALC +31, WLSS +30, WKSS +30, WGTZ +28, KQKQ +27, KRBE +27, WKSZ +25, KMXV +25</small>	
NATALIE IMBRUGLIA • Torn (RCA)	+600
<small>KUMX +32, WPST +30, WSTW +23, KRUF +21, WKRZ +21, WBZZ +21, WHTZ +19, WAEB +18, WKCI +18, WCIL +17</small>	
K-CI & JOJO • All My Life (MCA)	+347
<small>WXYV +34, WLKT +23, KBFM +21, WBHT +16, KIIS +16, WHTZ +15, WKSZ +14, WBLI +14, KRQQ +13, WFBC +13</small>	
THE TUESDAYS • It's Up To You (ARISTA)	+335
<small>WKSZ +27, WXLK +18, KSLZ +14, WABB +14, WZNY +13, WKRZ +13, WYCR +13, WHOT +12, KQKQ +12, WNNK +12</small>	
ROBYN • Do You Really Want Me (RCA)	+246
<small>KHTT +23, WQSL +22, WXXL +22, WDJX +21, KKLQ +20, WABB +18, KHKS +14, WSSX +13, WXIS +12, WHYI +11</small>	
MARCY PLAYGROUND • Sex And Candy (CAPITOL)	+234
<small>KSLZ +24, WFLZ +23, WKRQ +17, WFBC +16, WWHT +14, WQZQ +14, WZPL +12, KJYO +11, WIXX +10, WAPE +10</small>	
ERIC CLAPTON • My Father's Eyes (REPRISE)	+221
<small>WLSS +15, WBZZ +14, WKRQ +11, WBHT +10, WZNY +10, WZPL +10, WNTQ +9, WXLK +9, KKMGM +8, WSSX +8</small>	
AQUA • Turn Back Time (MCA)	+216
<small>KSMB +21, KIIS +14, WHOT +13, KZZU +13, KQKQ +12, WLKT +11, KRUF +10, WAEB +9, WNCI +9, WKSZ +8</small>	
THE VERVE • Bitter Sweet Symphony (VC/HUT/VIRGIN)	+202
<small>PSTW +17, KRUF +15, WNTQ +15, WHTZ +13, WKCI +11, KIIS +11, WTWR +10, WZNY +9, WWCK +9, KKRD +9</small>	
MATCHBOX 20 • 3 AM (LAVA/ATLANTIC)	+189
<small>WWHT +31, WZPL +23, KSLZ +11, KHTT +11, KHTO +9, KBFM +9, WKRZ +9, WAEB +8, WFLZ +8, WKRQ +8</small>	

RHYTHMIC TOP 40

	INCREASE IN PLAYS
MADONNA • Frozen (MAVERICK/WARNER BROS.)	+232
<small>KIOX +44, WBBM +26, KPRR +21, KZFM +20, WFHN +20, WNVZ +18, KDGS +15, WDRQ +15, KQMQ +12, WKTU +12</small>	
MONTELL JORDAN FEAT. MASTER P & SILKK • Let's Ride (DEF JAM/MERCURY)	+145
<small>KKSS +23, WHHH +22, KQKS +21, KDGS +20, KYLZ +12, KOHT +12, KTFM +11, WKXJ +10, WWKX +7, WJMN +5</small>	
JANET • I Get Lonely (VIRGIN)	+123
<small>KKSS +28, KBOS +26, KIKI +15, WJJS +14, WFHN +12, WJMN +12, WWKX +11, WHHH +5, KPRR +1, KUBE +1</small>	
BRIAN MCKNIGHT • Anytime (MERCURY)	+123
<small>KIKI +21, KIOX +14, KKSS +14, KBOS +13, WNVZ +13, KDON +12, KQKS +11, WJMN +10, XHTZ +9, KGGI +8</small>	
CELINE DION • My Heart Will Go On (550 MUSIC)	+121
<small>KYLZ +34, KISV +22, WWKX +16, WKXJ +14, KCAQ +11, KGGI +8, KDGS +6, KBOS +5, KOHT +4, WJJS +4</small>	
LSG FEAT. LL COOL J, BUSTA RHYMES & MC LYTE • Curious (EASTWEST/EEG)	+119
<small>WWKX +19, KLUC +17, WHHH +14, KBOS +14, XHTZ +14, WJJS +12, WNVZ +12, WFHN +11, KYLZ +7, KOHT +6</small>	
MASE (FEAT. TOTAL) • What You Want (BAD BOY/ARISTA)	+119
<small>KQKS +39, KSFM +34, KCAQ +26, WNVZ +13, WJMN +11, KIKI +10, KPRR +9, KYLD +5, WKXJ +4, KTFM +4</small>	
SYLK-E. FYNE FEATURING CHILL • Romeo And Juliet (RCA)	+117
<small>KSFM +34, KYLD +16, KPRR +16, XHTZ +14, WHHH +8, WWKX +8, KDGS +7, KOHT +6, KBOS +4, KQKS +4</small>	
TIMBALAND AND MAGOO • Luv 2 Luv U (BLACKGROUND/ATLANTIC)	+111
<small>KISV +31, KYLZ +16, KIKI +15, KOHT +12, KKFR +12, WWKX +9, KKSS +8, KDON +7, KSFM +6, WHHH +5</small>	
K.P. & ENYVI • Swing My Way (EASTWEST/EEG)	+96
<small>KDON +19, WNVZ +19, KUBE +18, WPOW +17, WWKX +16, WBBM +15, WJMN +13, KZFM +12, KISV +7, KLUC +6</small>	

CROSSOVER

	INCREASE IN PLAYS
MONTELL JORDAN FEAT. MASTER P & SILKK • Let's Ride (DEF JAM/MERCURY)	+225
<small>WHHH +22, KKDA +22, KQKS +21, KDGS +20, KRRO +16, WYOK +14, WROU +14, WJHM +14, KYLZ +12, WKKV +11</small>	
K.P. & ENYVI • Swing My Way (EASTWEST/EEG)	+205
<small>KPWR +25, KDON +19, KUBE +18, WPOW +17, WWKX +16, WBTT +14, WJBT +14, WJMH +13, WJMN +13, WJMI +12</small>	
SYLK-E. FYNE FEATURING CHILL • Romeo And Juliet (RCA)	+189
<small>WUSL +26, WJMI +24, WJBT +18, KYLD +16, XHTZ +14, WJHM +10, KKDA +10, WHHH +8, WWKX +8, WPEG +8</small>	
JANET • I Get Lonely (VIRGIN)	+185
<small>KBOS +26, WFXA +22, WQUE +20, KIKI +15, WCKX +14, WJJS +14, WJMN +12, WWKX +11, WHTA +10, WERQ +9</small>	
THE LOX • Money, Power & Respect (BAD BOY/ARISTA)	+159
<small>WQHT +29, WHTA +20, WUSL +18, WKYS +16, PUSL +15, WPHI +9, KBXX +9, WPEG +7, WPGC +7, PPHI +6</small>	

MODERN ADULT

	INCREASE IN PLAYS
MADONNA • Frozen (MAVERICK/WARNER BROS.)	+218
<small>KYSR +32, KALC +31, KAMX +29, KFMB +26, KBBT +24, WLNK +18, WKRQ +15, KZZP +12, KLLC +8, WBMX +8</small>	
MARCY PLAYGROUND • Sex And Candy (CAPITOL)	+142
<small>KDMX +23, KMXB +20, KZZP +18, WSHE +17, WKRQ +17, WVRV +16, WXLE +10, KAMX +9, KVSX +8, KFMB +8</small>	
NATALIE IMBRUGLIA • Torn (RCA)	+126
<small>WALC +23, KPEK +16, WKRQ +14, KMXB +12, WVTY +12, WBMX +10, WKZL +9, KENZ +7, WBAM +5, KZZO +5</small>	
THE VERVE • Bitter Sweet Symphony (VC/HUT/VIRGIN)	+120
<small>KZZO +24, WBMX +20, KMXB +16, WSHE +15, WPLL +11, KKPN +9, KOZN +8, WXLE +5, WALC +5, KPEK +4</small>	
FASTBALL • The Way (HOLLYWOOD)	+114
<small>KOZN +25, KBBT +24, KZZP +19, WVTY +14, KVSX +11, KAMX +10, KTNP +9, WXLE +6, WPLT +6, KXPK +3</small>	

ADULT TOP 40

	INCREASE IN PLAYS
MADONNA • Frozen (MAVERICK/WARNER BROS.)	+437
<small>KYSR +32, KAMX +29, KFMB +26, KBBT +24, WQAL +24, WEZB +22, WAEB +22, WAKS +22, WLNK +18, WRQX +17</small>	
ERIC CLAPTON • My Father's Eyes (REPRISE)	+239
<small>WENS +27, WIOG +21, KEZR +16, WMC +16, WMBX +15, KSII +14, WKDD +14, WMTX +12, KBEE +11, WBAM +10</small>	
NATALIE IMBRUGLIA • Torn (RCA)	+216
<small>WALC +23, WENS +17, KPEK +16, KMXB +12, WVTY +12, WQAL +10, WBMX +10, KHTQ +9, WKZL +9, KKOB +8</small>	
LOREENA MCKENNITT • The Mummers' Dance (QUINLAN ROAD/WARNER BROS.)	+195
<small>WRAL +32, WMMX +28, WALC +17, WMMX +16, WTMX +12, KZZO +12, KEZR +12, WKQI +12, KPEK +9, WMYX +8</small>	
THE VERVE • Bitter Sweet Symphony (VC/HUT/VIRGIN)	+154
<small>KZZO +24, WBMX +20, KMXB +16, WSHE +15, KEZR +13, WPLL +11, KKPN +9, WIOG +8, KOZN +8, KHTQ +5</small>	

ADULT CONTEMPORARY

	INCREASE IN PLAYS
SAVAGE GARDEN • Truly Madly Deeply (COLUMBIA)	+203
<small>KIOI +24, KSFI +14, WBBQ +14, WNND +14, KSSK +13, KVIL +12, KOST +10, WRCH +9, KMZQ +9, WARM +9</small>	
ERIC CLAPTON • My Father's Eyes (REPRISE)	+164
<small>WJDX +20, WINK +16, KESZ +11, KKCW +11, KLSY +9, KOSI +9, WLTS +8, KIMN +7, KSSK +7, KISC +7</small>	
ELTON JOHN • Recover Your Soul (ROCKET/ISLAND)	+135
<small>WMJQ +14, WBBQ +13, WSLQ +12, WTFM +11, WJDX +9, KSSK +8, KTDY +8, WMGS +8, WASH +6, WTCB +5</small>	
MADONNA • Frozen (MAVERICK/WARNER BROS.)	+111
<small>WJDX +21, WMSX +16, WTFM +12, KSSK +11, KKCW +11, KESZ +10, WLHT +6, WTCB +5, KISC +3, WRMF +3</small>	
KENNY G • My Heart Will Go On (ARISTA)	+77
<small>WARM +16, WTCB +15, WBBQ +11, KSSK +10, WDOK +7, WLTW +6, WMSX +5, WBEB +4, PBEB +3, WRCH +3</small>	



*The Monitor is like a well-focused air personality—
all of the essential information with no wasted space
or excess talk.*

Tom Poleman, PD
WHTZ (Z100), New York



Radio listens to us.

TOP 40 MAINSTREAM
DEBUT (16) ★★★AIRPOWER★★★
2178 DETECTIONS (+1417)
#1 GREATEST GAINER
#1 MOST NEW STATIONS

RHYTHMIC TOP 40
DEBUT (29)
434 DETECTIONS (+232)
#1 GREATEST GAINER

TOP 40 ADULT
DEBUT (30)
611 DETECTIONS (+437)
#1 GREATEST GAINER



WORLD PREMIERE

MADONNA *frozen*



the new single
produced by Madonna, William Orbit and Patrick Leonard
from the album Ray of Light
management: Norman West, Q-Prime, Inc.



POWER PLAYLISTS

For Week Ending February 22, 1998



Table for station Z100, PD: Tom Poleman, APD: Kid Kelly, MD: Paul Bryant. Lists top 40 songs with TW and LW columns.

Table for station KIIS, PD: Dan Kielew, APD/MD: Tracy Austin. Lists top 40 songs with TW and LW columns.

Table for station KISS 108, PD: John Ivey, APD/MD: Kid David Corey, AMD: Skip Kelly. Lists top 40 songs with TW and LW columns.

Table for station KRBE, PD: John Peake, APD: Scott Sparks, MD: Jay Michaels. Lists top 40 songs with TW and LW columns.

Table for station KISS 106.1, OM: John Cook, PD: Mr. Ed Lambert, MD: John Reynolds. Lists top 40 songs with TW and LW columns.

Table for station STAR 94, PD: Dan Bowen, MD: J.R. Ammons. Lists top 40 songs with TW and LW columns.

Table for station Z104, PD: Dale O'Brian, APD/MD: Ron Ross. Lists top 40 songs with TW and LW columns.

Table for station WFLZ, OM: B.J. Harris, APD/MD: Domino. Lists top 40 songs with TW and LW columns.

Table for station KDWB, PD: Rob Morris, APD/MD: Rich Davis. Lists top 40 songs with TW and LW columns.

Table for station Z95.7, KQZQ, PD: Mike Edwards, APD/MD: Danny Ocean. Lists top 40 songs with TW and LW columns.

Table for station B94, OM: Keith Clark, PD: David Edgar, MD: Laura Lilley. Lists top 40 songs with TW and LW columns.

Table for station Y100, PD: Rob Roberts, APD: Al Chio, MD: Deirdre Poyner. Lists top 40 songs with TW and LW columns.

Table for station Z100, PD: Tommy Austin. Lists top 40 songs with TW and LW columns.

Table for station WPST, Sr. VP/Pgm: Michelle Stevens, PD: Dave McKay, MD: Andy West. Lists top 40 songs with TW and LW columns.

Table for station WNCI, PD: John Dimick, APD/MD: Neal Sharpe. Lists top 40 songs with TW and LW columns.

Table for station KISS 106, PD: Mike Preston, APD/MD: Chet Buchanan. Lists top 40 songs with TW and LW columns.

Table for station B94, PD: Rob Roberts, APD: Al Chio, MD: Deirdre Poyner. Lists top 40 songs with TW and LW columns.

Table for station Y100, PD: Rob Roberts, APD: Al Chio, MD: Deirdre Poyner. Lists top 40 songs with TW and LW columns.

brian mcknight

the new single...
anytime

**Crossing to
Mainstream
Now!**

- 4 MONITOR RHYTHMIC TOP 40
- 3 MONITOR CROSSOVER

10 EARLY POP ADDS Include:
WZJM 28x

Already #6 in Callout

New: Y100 WKTU

TOP RESEARCH AND REQUESTS

KUBE	65x	FM102	60x
WPGC	50x	POWER 96	50x
92Q	50x	KMEL	40x
WJMN	65x	And More!	

#14 Album
\$9,493 scanned last week

ON TOUR NOW



From the Mercury CD & Cassette *anytime* 314 536 215-2/4

Produced by Brian McKnight
Management: Herb Trawick/The Trawick Company

© 1997 Mercury Records <http://www.mercuryrecords.com/mercury>



POWER PLAYLISTS

For Week Ending February 22, 1998



Playlists supplied by Broadcast Data Systems Radio Track service. Songs ranked by number of plays in monitored week. Playlists are listed in order of TSM weekly count, beginning with the highest-counting station. Cumes are updated twice yearly following the release of the Spring and Fall Arbitron surveys. The number of stations shown each week varies depending upon space.

JAMMIN' 92 WZJM Cleveland PD: Dave Eubanks MD: Action Jackson

MIX 93.3 KMXV Kansas City PD: Jon Zellner MD: Dylan

Q102 WKRO Cincinnati PD: Bill Klapproth Interim MD: Jim Kelly

ALICE 106 KALC Denver PD: Gregg Cassidy MD: Maria Chavez

WBLI WBLI Long Island PD: Ken Medek MD: Al Levine

XL106.7 WXXL Orlando OM/PD: Adam Cook APD/MD: Pete deGraaf

WXYZ WXYZ Baltimore PD: Dave Ferguson APD: Throb MD: Albie Dee

KISS 95.1 WNKS Charlotte PD: Brian Bridgman MD: Danny Wright

G105 WDCG Raleigh OM: Brian Burns PD: Kip Taylor

WZPL WZPL Indianapolis PD: Tom Gjerdrum MD: Dave Decker

WIXX WIXX Green Bay PD: Dan Stone MD: David Burns

THE RIVER WRWW Nashville OM: Charlie Quinn PD/MD: Tom Peace

MIX 104.1 KUMX New Orleans OM: Dave Stewart PD: Kandy Klutch MD: Tom Taylor

PRO-FM WPRO Providence PD: Tony Bristol MD: Davey Morris

KJ103 KYJO Oklahoma City PD: Mike McCoy MD: Joe Friday

KHFI KHFI Austin VP/Pgm: John Roberts PD: Krash Kelly MD: Leslie Basenberg

KISS 98.5 WKSE Buffalo PD: Sue O'Neil APD/MD: Dave Universal

FLY 92 WFLY Albany OM: Mike Morgan PD: Rob Dawes MD: Ron "Sugarbear" Williams



POWER PLAYLISTS

For Week Ending February 22, 1998



Playlists supplied by Broadcast Data Systems' Radio Track service. Songs ranked by number of plays in monitored week. Playlists are listed in order of TBA weekly count, beginning with the highest-counting station. Current data updated twice weekly following the release of the Spring and Fall Arbitron surveys. The number of stations shown each week varies, depending upon space.

Table for station Z93, Dayton, listing songs and counts.

Table for station B93.7, Greenville, SC, listing songs and counts.

Table for station WDJX, Louisville, listing songs and counts.

Table for station WKRZ, Wilkes-Barre, listing songs and counts.

Table for station B104, McAllen, listing songs and counts.

Table for station WVK5, Toledo, listing songs and counts.

Table for station 98PXY, Rochester, listing songs and counts.

Table for station KHTT, Tulsa, listing songs and counts.

Table for station 94.9 ZHT, Salt Lake City, listing songs and counts.

Table for station WAPE, Jacksonville, listing songs and counts.

Table for station B104, Allentown, listing songs and counts.

Table for station WSNX, Grand Rapids, listing songs and counts.

Table for station Q106, San Diego, listing songs and counts.

Table for station KRQ, Tucson, listing songs and counts.

Table for station K92, Roanoke, listing songs and counts.

Table for station SWEET 98, Omaha, listing songs and counts.

Table for station Q94, Richmond, listing songs and counts.

Table for station WABB, Mobile, listing songs and counts.



POWER PLAYLISTS

For Week Ending February 22, 1998

Radio Broadcast Data Systems logo and text: Playlist supplied by Broadcast Data Systems' Radio Track service...

WZYP PD: Bill West MD: Chris Callaway. Playlist table with columns for rank, song title, and TW/LW values.

WHOT PD: Tom Pappas MD: Mike Thomas. Playlist table with columns for rank, song title, and TW/LW values.

THE CAT PD: Jill Meyer. Playlist table with columns for rank, song title, and TW/LW values.

WINK 104 PD: John O'Dea MD: Scott Shaw. Playlist table with columns for rank, song title, and TW/LW values.

93Q PD: Tom Mitchell MD: Jimmy Olsen. Playlist table with columns for rank, song title, and TW/LW values.

KC101 PD/MD: Kelly Nash. Playlist table with columns for rank, song title, and TW/LW values.

THE PARTY WQZQ Consultant: Bryan Krysz APD: Mike Gibson. Playlist table with columns for rank, song title, and TW/LW values.

WNOK PD: Jonathan Rush MD: T.J. McKay. Playlist table with columns for rank, song title, and TW/LW values.

WRHT PD: J.T. Bosch MD: Gena Gray. Playlist table with columns for rank, song title, and TW/LW values.

STAR 93.1 PD: Rich Bailey MD: Jake Edwards. Playlist table with columns for rank, song title, and TW/LW values.

KKMG PD: Michael Stuart. Playlist table with columns for rank, song title, and TW/LW values.

FM97 PD: Jordan Walsh MD: Vince D'Ambrosio. Playlist table with columns for rank, song title, and TW/LW values.

B103.9 WXKB PD: Chris Cue MD: Randy Sherwin. Playlist table with columns for rank, song title, and TW/LW values.

HOT 107.9 WWHT PD/MD: Ed LaCombe AMD: Beth Hall. Playlist table with columns for rank, song title, and TW/LW values.

KSMB PD: Bobby Novosad. Playlist table with columns for rank, song title, and TW/LW values.

KZZU PD: Ken Hopkins MD: John Conner. Playlist table with columns for rank, song title, and TW/LW values.

KRUF PD: Gary Robinson MD: Erin Dewerff. Playlist table with columns for rank, song title, and TW/LW values.

98YCR WYCR OM: Rick McCauslin PD: Davy Crockett. Playlist table with columns for rank, song title, and TW/LW values.

SONG ACTIVITY REPORTS

For Week Ending February 22, 1998



Detailed song tracking information for the past 3 weeks for all songs achieving increased play this week. Total plays and gain do not include video play. Markets listed in order of population.

Table with 12 columns: Artist, Song, Total Plays/Gain, and 12 market columns (MTV, WBHT, WKRR, etc.). Rows include AQUA (Turn Back Time), BACKSTREET BOYS (Everybody), BEN FOLDS FIVE (Brick), BOYZ II MEN (A Song For Mama), and CHUMBAWAMBA (Amnesia).

Table with 12 columns: Artist, Song, Total Plays/Gain, and 12 market columns. Rows include ERIC CLAPTON (My Father's Eyes), PAULA COLE (Me), DAKOTA MOON (A Promise I Make), FLEETWOOD MAC (Landslide), and HANSON (Weird).

Table with 12 columns: Artist, Song, Total Plays/Gain, and 12 market columns. Rows include JAMES HORNER (Southampton), NATALIE IMBRUGLIA (Torn), JANET (Together Again), JANA (Near Me), and K-CI & JOJO (All My Life).

MAINSTREAM TOP 40

SONG ACTIVITY REPORTS

For Week Ending February 22, 1998

Broadcast Data Systems
Detailed song tracking information for the last 3 weeks for all songs showing increased play this week. Total plays and gain do not include video play. Markets listed in order of population.

MADONNA 2178/1417										MARCY PLAYGROUND 1147/234										MATCHBOX 20 4573/185										EDWIN MCCAIN 621/10										LORENA MCKENITT 2176/86																																							
Frozen (Maverick/Warner Bros.)										Sex And Candy (Capitol)										3 AM (Lava/Atlantic)										I'll Be (Lava/Atlantic)										The Mummies' Dance (Quinlan Road/Warner Bros.)																																							
Total Stations: 89										Chart Move: Debut 16										Total Stations: 66										Chart Move: 37-31										Total Stations: 91										Chart Move: 3-3										Total Stations: 38										Chart Move: 14-17									
MTV	WHTZ	WVBT	WVBT	WVBT	WVBT	WVBT	WVBT	WVBT	WVBT	MTV	WHTZ	WVBT	WVBT	WVBT	WVBT	WVBT	WVBT	WVBT	WVBT	MTV	WHTZ	WVBT	WVBT	WVBT	WVBT	WVBT	WVBT	WVBT	WVBT	MTV	WHTZ	WVBT	WVBT	WVBT	WVBT	WVBT	WVBT	WVBT	WVBT	MTV	WHTZ	WVBT	WVBT	WVBT	WVBT	WVBT	WVBT	WVBT	WVBT																														
New York	11	-	-	-	-	-	-	-	-	New York	11	-	-	-	-	-	-	-	-	-	New York	11	-	-	-	-	-	-	-	-	New York	11	-	-	-	-	-	-	-	-	New York	11	-	-	-	-	-	-	-	-																													

'N SYNC 2414/90										ROBYN 671/246										WILL SMITH 2210/146										THIRD EYE BLIND 2253/166										TONIC 486/10																			
I Want You Back (RCA)										Do You Really Want Me (RCA)										Gettin' Jiggy Wit It (Columbia)										How's It Going To Be (Elektra/EEG)										Open Up Your Eyes (Polydor/A&M)																			
Total Stations: 86										Chart Move: 13-11										Total Stations: 46										Chart Move: 16-15										Total Stations: 87										Chart Move: 15-14									
MTV	WHTZ	WVBT	WVBT	WVBT	WVBT	WVBT	WVBT	WVBT	WVBT	MTV	WHTZ	WVBT	WVBT	WVBT	WVBT	WVBT	WVBT	WVBT	WVBT	MTV	WHTZ	WVBT	WVBT	WVBT	WVBT	WVBT	WVBT	WVBT	WVBT	MTV	WHTZ	WVBT	WVBT	WVBT	WVBT	WVBT	WVBT	WVBT	WVBT	MTV	WHTZ	WVBT	WVBT	WVBT	WVBT	WVBT	WVBT	WVBT	WVBT										
New York	11	-	-	-	-	-	-	-	-	New York	11	-	-	-	-	-	-	-	-	-	New York	11	-	-	-	-	-	-	-	-	New York	11	-	-	-	-	-	-	-	-	New York	11	-	-	-	-	-	-	-	-									

THE TUESDAYS 779/335										SHANIA TWAIN 540/20										UNCLE SAM 1219/76										USHER 647/143										THE VERVE 1241/202																			
It's Up To You (Arista)										You're Still The One (Mercury)										I Don't Ever Want To See You Again (Stonescreek/Epic)										Nice & Slow (LaFace/Arista)										Bitter Sweet Symphony (VC/Hut/Virgin)																			
Total Stations: 51										Chart Move: Debut 38										Total Stations: 83										Chart Move: 31-29										Total Stations: 47										Chart Move: 7-6									
MTV	WHTZ	WVBT	WVBT	WVBT	WVBT	WVBT	WVBT	WVBT	WVBT	MTV	WHTZ	WVBT	WVBT	WVBT	WVBT	WVBT	WVBT	WVBT	WVBT	MTV	WHTZ	WVBT	WVBT	WVBT	WVBT	WVBT	WVBT	WVBT	WVBT	MTV	WHTZ	WVBT	WVBT	WVBT	WVBT	WVBT	WVBT	WVBT	WVBT	MTV	WHTZ	WVBT	WVBT	WVBT	WVBT	WVBT	WVBT	WVBT	WVBT										
New York	11	-	-	-	-	-	-	-	-	New York	11	-	-	-	-	-	-	-	-	-	New York	11	-	-	-	-	-	-	-	-	New York	11	-	-	-	-	-	-	-	-	New York	11	-	-	-	-	-	-	-	-									

POWER PLAYLISTS

For Week Ending February 22, 1998



Playlists supplied by Broadcast Data Systems. Radio tracks only. Songs ranked by number of plays in monitored week. Playlists are based in order of 130 weekly counts. Beginning with the highest-counting station. Counts are updated twice weekly following the release of the Spring and Fall Arbitron surveys. The number of stations shown each week varies depending upon space.



Table for KGGI station, Riverside, PD: Diana Laird, APD: Jesse Duran, MC: Ricky Fuentes. Top 40 playlist including songs like 'Celine Dion, My Heart Will Go On' and 'Savin' Garden, Truly Madly Deeply'.

Table for KTFM station, San Antonio, PD: Cliff Tredway. Top 40 playlist including songs like 'Baian McKnight, Anytime' and 'Usher, Nice & Slow'.

Table for POWER 92 station, Phoenix, PD: Bruce St. James, MD: Mikey Freeman. Top 40 playlist including songs like 'K-Ci & JoJo, All My Life' and 'Tambaland And Magoo, Luv 2 Luv U'.

Table for Z90 station, San Diego, OM/MD: Lisa Vazquez, MD: Dale Soliven. Top 40 playlist including songs like 'Tania, Imaginaton' and 'Next, Too Close'.

Table for KS107.5 station, Denver, PD: Rick Stacy, MD: Jennifer Wilde. Top 40 playlist including songs like 'Total, What About Us' and 'Usher, Nice & Slow'.

Table for B95 station, Fresno, PD: Steve Wall, Acting MD: Dennis Martinez. Top 40 playlist including songs like 'K-Ci & JoJo, All My Life' and 'Usher, Nice & Slow'.

Table for POWER 102 station, El Paso, PD: John Candelaria. Top 40 playlist including songs like 'Celine Dion, My Heart Will Go On' and 'Savin' Garden, Truly Madly Deeply'.

Table for KLUC station, Las Vegas, PD: Cat Thomas, MD: Melissa Stefan. Top 40 playlist including songs like 'Celine Dion, My Heart Will Go On' and 'Brian McKnight, Anytime'.

Table for Z104 station, Norfolk, PD: Don London, APD/MD: Jay West. Top 40 playlist including songs like 'Will Smith, Gettin' Jiggy Wit It' and 'K-Ci & JoJo, All My Life'.

Table for I94 station, Honolulu, PD: Alan Oda, MD: Richie Aquino. Top 40 playlist including songs like 'Mariah Carey, Breakdown' and 'Usher, Nice & Slow'.

Table for HOT 106 station, Providence, PD: Jerry McKenna, MD: Sandy B. Top 40 playlist including songs like 'Celine Dion, My Heart Will Go On' and 'Brian McKnight, Anytime'.

Table for HOOSIER 96.3 station, Indianapolis, PD: Scott Wheeler, MD: Carl Frye. Top 40 playlist including songs like 'Missy 'Misdemeanor' Elliott, Sock It 2 M' and 'Usher, Nice & Slow'.

Table for KQMQ station, Honolulu, PD: Kimo Akane, MD: Kathy Nakagawa, MC: Eric "Kool E." Bunda. Top 40 playlist including songs like 'LaSean Rimes, How Do I Live' and 'Wyclef Jean, Gone Till November'.

Table for KKSS station, Albuquerque, PD: Tony Manera, APD: John E. Cage, MD: Jackie James. Top 40 playlist including songs like 'Brian McKnight, Anytime' and 'Usher, Nice & Slow'.

Table for Z95 station, Corpus Christi, PD: Ed Ocanas. Top 40 playlist including songs like 'Usher, Nice & Slow' and 'Celine Dion, My Heart Will Go On'.

Table for KDON station, Monterey, PD: Scooter Stevens, MD: Picasso. Top 40 playlist including songs like 'Celine Dion, My Heart Will Go On' and 'K-Ci & JoJo, All My Life'.

Table for Q104.7 station, Oxnard, PD/MD: Dan Garite. Top 40 playlist including songs like 'Tambaland And Magoo, Luv 2 Luv U' and 'K-Ci & JoJo, All My Life'.

Table for KISS 94.1 station, Bakersfield, PD: Mark Feather. Top 40 playlist including songs like 'K-Ci & JoJo, All My Life' and 'Usher, Nice & Slow'.

AIRPLAY
Monitor**BDS IMPACT****DETECTIONS**

★ ★ ★ **AIRPOWER** ★ ★ ★

(Minimum 500 detections for the first time)

SWV	560/75	SYLK-E. FYNE FEAT. CHILL	541/117	SPICE GIRLS	534/73
<i>Rain (RCA)</i>	Total Plays/Gain	<i>Romeo And Juliet (RCA)</i>	Total Plays/Gain	<i>Too Much (Virgin)</i>	Total Plays/Gain
Total Stations: 25/Chart Move: 26-21 Heavy (40+ plays): 4 KQKS, KSFM, KUBE, WWXX Medium (20-39): 9 KBOS, KDGS, KDON, KIKI, KKFR, KOHT, KTFM, WFFF, XHTZ Light (Under 20): 12 New Airplay This Week: 1 KISV		Total Stations: 15/Chart Move: 29-22 Heavy (40+): 6 KKSS, KOHT, KPRR, KQKS, KYLZ, WFFF Medium (20-39): 6 KDGS, KISV, KSFM, KYLD, WWXX, XHTZ Light (Under 20): 3 New Airplay This Week: 1 KSFM		Total Stations: 17/Chart Move: 27-23 Heavy (40+): 4 KQKS, KQMQ, KZFM, WJXX Medium (20-39): 7 KIKI, KPRR, WFHN, WFFF, WJJS, WNVZ, WPOW Light (Under 20): 6	

AIRPOWER BOUND**Total Plays/Gain**

LSG **450/119**
Curious (EastWest/EEG)
Total Stations: 22/Chart Move: 33-27
Heavy (40+ plays): 4 KQKS, KYLZ, WWXX, XHTZ
Medium (20-39): 4 KDGS, KKSS, KOHT, WFFF
Light (Under 20): 14
New Airplay This Week: 6 KBOS, KGGI, KLUC, WFHN, WJXX, WNVZ

MADONNA **434/232**
Frozen (Maverick/Warner Bros.)
Total Stations: 20/Chart Move: Debut 29
Heavy (40+): 3 KQKS, KUBE, WBBM
Medium (20-39): 9 KDGS, KPRR, KQMQ, KZFM, WDRQ, WFHN, WIOQ, WKTU, WWXX
Light (Under 20): 8
New Airplay This Week: 5 KBOS, KPRR, WFHN, WJJS, WNVZ

WYCLEF JEAN **427/48**
Gone With November (Ruffhouse/Columbia)
Total Stations: 24/Chart Move: 30-30
Heavy (40+): 3 KQKS, KQMQ, XHTZ
Medium (20-39): 7 KCAQ, KKFR, KKSS, KOHT, KYLD, WFFF, WJJS
Light (Under 20): 14

2PAC FEAT. ERIC WILLIAMS **385/91**
Do For Love (Amaru/Jive)
Total Stations: 19/Chart Move: 37-32
Heavy (40+): 2 KQKS, KYLZ
Medium (20-39): 8 KCAQ, KDGS, KISV, KKFR, KQMQ, WFFF, WWXX, XHTZ
Light (Under 20): 9
New Airplay This Week: 3 KBOS, KOHT, KQMQ

ALLURE **334/59**
Last Chance (Track Masters/Crave)
Total Stations: 18/Chart Move: 40-33
Heavy (40+): 1 KIKI
Medium (20-39): 6 KGGI, KOHT, KQMQ, KSFM, KZFM, XHTZ
Light (Under 20): 11

ALL SAINTS **320/1**
I Know Where It's At (London/Island)
Total Stations: 20/Chart Move: 34-36
Heavy (40+): 2 KDON, WWXX
Medium (20-39): 6 KBOS, KDGS, KOHT, KZFM, WFHN, WJJS
Light (Under 20): 12
New Airplay This Week: 0

CHART BOUND**Total Plays/Gain**

'N SYNC **264/26**
I Want You Back (RCA)
Total Stations: 15
Heavy (40+): 0
Medium (20-39): 6 KDON, KTFM, KZFM, WDRQ, WFHN, WNVZ
Light (Under 20): 9

MILITIA **263/37**
Burn (Red Ant)
Total Stations: 16
Heavy (40+): 2 KYLD, XHTZ

Medium (20-39): 3 KCAQ, KOHT, WJXX
Light (Under 20): 11
New Airplay This Week: 1 KIKI

MARY J. BLIGE **238/-2**
Seven Days (MCA)
Total Stations: 15
Heavy (40+): 2 KDGS, WWXX
Medium (20-39): 4 KIKI, KLUC, WFFF, WJJS
Light (Under 20): 9
New Airplay This Week: 1 KGGI

KINSU **237/67**
The Hop (Blunt/TVT)
Total Stations: 13
Heavy (40+): 2 KIKI, KQMQ
Medium (20-39): 2 KPRR, KSFM
Light (Under 20): 9
New Airplay This Week: 1 KQMQ

SOMETHIN' FOR THE PEOPLE **227/74**
All I Do (Warner Bros.)
Total Stations: 10
Heavy (40+): 1 KIKI
Medium (20-39): 6 KDGS, KOHT, KQKS, KQMQ, KTFM, KYLZ
Light (Under 20): 3
New Airplay This Week: 1 KQKS

MONTELL JORDAN FEAT. MASTER P & SILKK **219/145**
Let's Ride (Def Jam/Mercury)
Total Stations: 17
Heavy (40+): 1 KYLZ
Medium (20-39): 4 KDGS, KKSS, KQKS, WFFF
Light (Under 20): 12
New Airplay This Week: 7 KKSS, KOHT, KQKS, KTFM, WFFF, WJXX, WWXX

BORN JAMERICANS **212/8**
Send My Love/Send One Your Love (Delicious Vinyl)
Total Stations: 10
Heavy (40+): 2 KIKI, KQMQ
Medium (20-39): 3 KCAQ, KYLD, XHTZ
Light (Under 20): 5

ANGELINA **206/41**
Mambo (Upstairs)
Total Stations: 12
Heavy (40+): 1 KTFM
Medium (20-39): 3 KYLD, KZFM, WPOW
Light (Under 20): 8
New Airplay This Week: 3 KBOS, KIKI, WWXX

MACK 10 FEAT. ICE CUBE & SNOOP DOGGY DOGG **194/42**
Only In California (Priority)
Total Stations: 19
Heavy (40+): 0
Medium (20-39): 3 KKFR, KOHT, XHTZ
Light (Under 20): 16
New Airplay This Week: 2 KISV, KTFM

PRINCE BE, KY-MANI & JOHN F **182/29**
Gotta Be...Movin' On Up (Gee Street/V2)
Total Stations: 16
Heavy (40+): 1 KQKS
Medium (20-39): 3 WFFF, WPOW, XHTZ
Light (Under 20): 12
New Airplay This Week: 1 KBOS

OL' SKOOL (FEAT. KEITH SWEAT & XSCAPE) **181/37**
Am I Dreaming (Keia/Universal)
Total Stations: 13
Heavy (40+): 1 WJXX
Medium (20-39): 2 KDGS, WFFF
Light (Under 20): 10
New Airplay This Week: 2 KISV, KSFM

WC FROM WESTSIDE CONNECTION **181/-3**
Just Clownin' (Payday/FFRR/Island)
Total Stations: 11
Heavy (40+): 1 KQKS
Medium (20-39): 2 KKFR, XHTZ
Light (Under 20): 8

SMASH MOUTH **172/-4**
Walkin' On The Sun (Interscope)
Total Stations: 10
Heavy (40+): 2 KDON, WFHN
Medium (20-39): 2 WDRQ, WIOQ
Light (Under 20): 6

★ **JANET** **169/123**
I Get Lonely (Virgin)
Total Stations: 11
Heavy (40+): 0
Medium (20-39): 5 KBOS, KIKI, KKSS, WJJS, WJMN
Light (Under 20): 6
New Airplay This Week: 3 KKSS, WFHN, WWXX

LORD TARIQ & PETER GUNZ **163/30**
Deja Vu (Uptown Baby) (Codeine/Columbia)
Total Stations: 17
Heavy (40+): 1 XHTZ
Medium (20-39): 0
Light (Under 20): 16
New Airplay This Week: 1 WPOW

98 DEGREES **161/48**
Was It Something I Didn't Say (Motown)
Total Stations: 11
Heavy (40+): 0
Medium (20-39): 3 KQMQ, KYLZ, KZFM
Light (Under 20): 8
New Airplay This Week: 2 KOHT, WFFF

ARETHA FRANKLIN **156/67**
A Rose Is Still A Rose (Arista)
Total Stations: 17
Heavy (40+): 0
Medium (20-39): 3 WFFF, WJJS, XHTZ
Light (Under 20): 14
New Airplay This Week: 4 KOHT, KYLZ, WJXX, XHTZ

JODY WATLEY **152/17**
Off The Hook (Atlantic)
Total Stations: 11
Heavy (40+): 1 XHTZ
Medium (20-39): 3 KDGS, WFFF, WJJS
Light (Under 20): 7
New Airplay This Week: 1 KDON

PAULA COLE **147/19**
I Don't Want To Wait (Imago/Warner Bros.)
Total Stations: 10
Heavy (40+): 1 WIOQ
Medium (20-39): 2 WBBM, WDRQ
Light (Under 20): 7

ICE CUBE **144/30**
We Be Clubbin' (A&M)
Total Stations: 17
Heavy (40+): 0
Medium (20-39): 3 KCAQ, KYLD, KYLZ
Light (Under 20): 14
New Airplay This Week: 1 WJXX

★ **ROBYN** **139/93**
Do You Really Want Me (RCA)
Total Stations: 9
Heavy (40+): 0
Medium (20-39): 2 WJJS, WWXX
Light (Under 20): 7
New Airplay This Week: 5 KDON, WBBM, WDRQ, WFHN, WNVZ

MOST NEW STATIONS**No. Of Stations**

MONTELL JORDAN FEAT. MASTER P & SILKK 7	<i>Let's Ride (Def Jam/Mercury)</i>
LSG FEAT. LL COOL J, BUSTA RHYMES & MC LYTE 6	<i>Curious (EastWest/EEG)</i>
MADONNA 5	<i>Frozen (Maverick/Warner Bros.)</i>
ROBYN 5	<i>Do You Really Want Me (RCA)</i>
ARETHA FRANKLIN 4	<i>A Rose Is Still A Rose (Arista)</i>

JAY-Z FEAT. BLACKSTREET **130/6**
The City Is Mine (Roc-A-Fella/Def Jam/Mercury)
Total Stations: 15
Heavy (40+): 0
Medium (20-39): 1 XHTZ
Light (Under 20): 14
New Airplay This Week: 1 KKSS

SALT-N-PEPA **130/20**
Gitty Up (London/Red Ant/Island)
Total Stations: 14
Heavy (40+): 0
Medium (20-39): 3 WFFF, WJJS, WPOW
Light (Under 20): 11
New Airplay This Week: 3 KOHT, KTFM, KYLZ

ROCKELL **115/36**
In A Dream (Robbins)
Total Stations: 5
Heavy (40+): 0
Medium (20-39): 2 WIOQ, WPOW
Light (Under 20): 3

JD FEAT. DA BRAT **111/18**
The Party Continues (So So Def/Columbia)
Total Stations: 9
Heavy (40+): 1 XHTZ
Medium (20-39): 1 KYLZ
Light (Under 20): 7

MATCHBOX 20 **87/-3**
3 AM (Lava/Atlantic)
Total Stations: 9
Heavy (40+): 0
Medium (20-39): 2 WFHN, WIOQ
Light (Under 20): 7

BACKSTREET BOYS **79/-2**
Everybody (Backstreet's Back) (Jive)
Total Stations: 8
Heavy (40+): 0
Medium (20-39): 0
Light (Under 20): 8
New Airplay This Week: 2 KBOS, WNVZ

TAMIA **78/10**
Imagination (Qwest/Warner Bros.)
Total Stations: 7
Heavy (40+): 1 XHTZ
Medium (20-39): 0
Light (Under 20): 6

BIG PUNISHER **74/10**
I'm Not A Player (Loud/RCA)
Total Stations: 8
Heavy (40+): 1 XHTZ
Medium (20-39): 0
Light (Under 20): 7
New Airplay This Week: 1 KBOS

ULTRA NATE **71/5**
Free (Strictly Rhythm)
Total Stations: 5
Heavy (40+): 0
Medium (20-39): 2 WKTU, WWXX
Light (Under 20): 3

★ **BROOKLYN BOUNCE** **68/19**
Get Ready To Bounce (Edel America)
Total Stations: 4
Heavy (40+): 0
Medium (20-39): 2 KPRR, WPOW
Light (Under 20): 2

VOICES OF THEORY **67/15**
Say It (H.O.L.A.)
Total Stations: 5
Heavy (40+): 0
Medium (20-39): 1 KTFM
Light (Under 20): 4
New Airplay This Week: 1 WIOQ

7 MILE **66/15**
Just A Memory (Crave)
Total Stations: 4
Heavy (40+): 1 XHTZ
Medium (20-39): 1 KDGS
Light (Under 20): 2

★ **PUBLIC ANNOUNCEMENT** **64/32**
Body Bumpin' Yippie-Yi-Yo (A&M)
Total Stations: 5
Heavy (40+): 0
Medium (20-39): 1 KDGS
Light (Under 20): 4
New Airplay This Week: 2 KCAQ, WJXX

★ **THIRD EYE BLIND** **64/19**
Semi-Charmed Life (Elektra/EEG)
Total Stations: 3
Heavy (40+): 0
Medium (20-39): 2 WDRQ, WFHN
Light (Under 20): 1

MASTER P **60/17**
Make Em' Say Uhh! (No Limit/Priority)
Total Stations: 11
Heavy (40+): 0
Medium (20-39): 1 WJXX
Light (Under 20): 10

★ **SNOOP DOGGY DOGG & KURUPT** **59/27**
Ride On (Caught Up!) (Noo Trybe/Virgin)
Total Stations: 9
Heavy (40+): 0
Medium (20-39): 0
Light (Under 20): 9
New Airplay This Week: 1 KKSS

RICKY MARTIN **57/10**
Marla (Sony Latin)
Total Stations: 7
Heavy (40+): 0
Medium (20-39): 1 WKTU
Light (Under 20): 6

TO KOOL CHRIS **55/4**
It's Time To Party (Scotti Bros.)
Total Stations: 11
Heavy (40+): 0
Medium (20-39): 0
Light (Under 20): 11

★ **BILLIE MYERS** **55/9**
Kiss The Rain (Universal)
Total Stations: 7
Heavy (40+): 0
Medium (20-39): 1 WFHN
Light (Under 20): 6
New Airplay This Week: 1 WDRQ

SONG ACTIVITY REPORTS

For Week Ending February 22, 1998



Detailed song tracking information for the last 3 weeks for all songs showing increased play this week. Total plays and gain do not include video play. Markets listed in order of population.

Grid of 40 song activity reports, each containing song title, artist, chart position, and station data for various markets.

POWER PLAYLISTS



AIRPLAY Monitor

For Week Ending February 22, 1998

Playlists supplied by Broadcast Data Systems' Radio Track service. Songs ranked by number of plays in monitored week. Playlists are listed in order of...

92Q WERQ Baltimore PD: Tom Calococci APD: Frank Ski MD: Buttahman

HOT 97.5 WHTA Atlanta VP/Pgrm: Steve Hegwood PD: Sean Taylor

POWER 98 WPEG Charlotte PD: Andre Carson MD: Nate Quick

Q93 WQUE New Orleans OM: Gerod Stevens MD: Angela Harrison

102 JAMZ WJHM Orlando OM: Adam Cook PD: Russ Allen

K97.5 WQOK Raleigh PD: Hozie Mack MD: Jodi Berry

102 JAMZ WJMH Greensboro PD: Brian Douglas MD: Mary K.

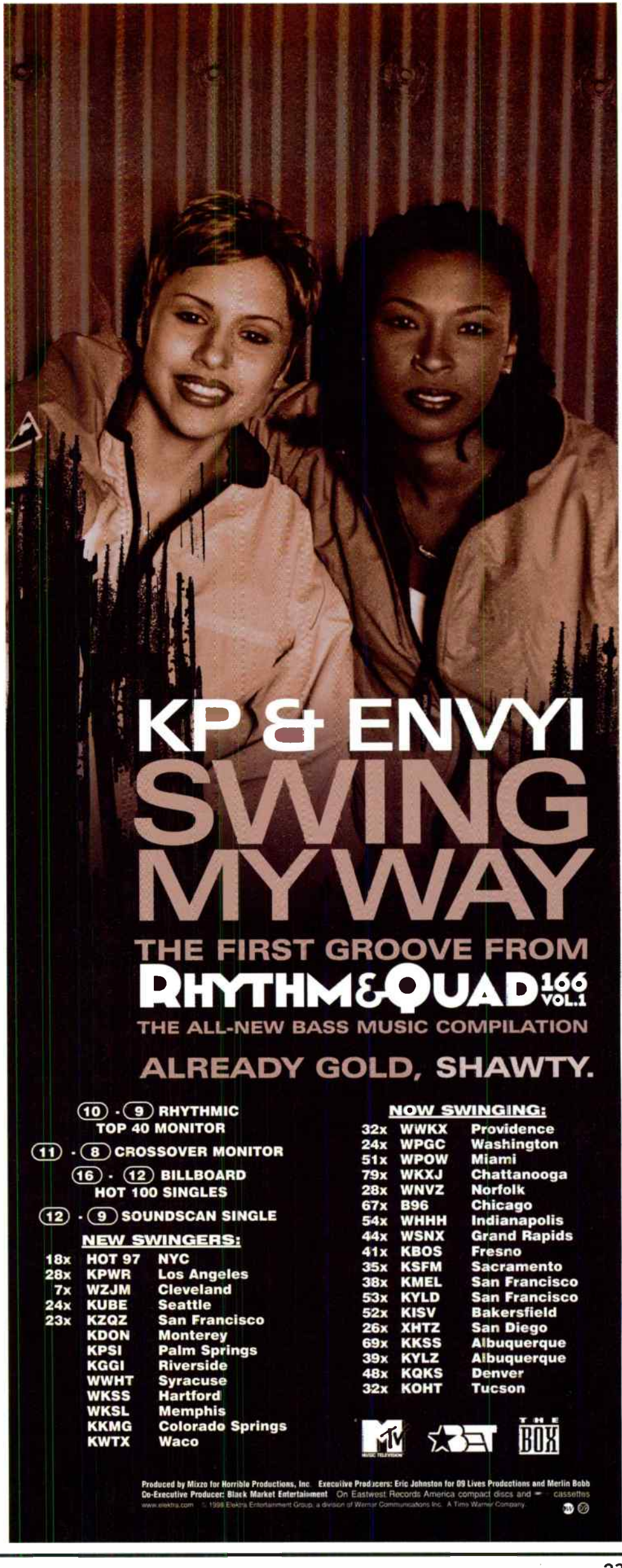
V100 WKKV Milwaukee PD: Nate Bell MD: Daryn D.

99 JAMZ WJMI Jackson OM: Stan Branson APD: Alice Marie Dixon

THE WIZ WIZF Cincinnati VP/Pgrm: Tony Fields APD: Mark Gunn MD: Lauri Jones

107.3 JAMZ WJMJ Greenville PD: Marv Hankston MD: Kelly Berry

95.7 JAMZ WBHJ Birmingham PD: Mickey Johnson APD/MD: Daysha Parker



KP & ENVY SWING MY WAY

THE FIRST GROOVE FROM RHYTHM & QUAD 166 Vol. 1 THE ALL-NEW BASS MUSIC COMPILATION ALREADY GOLD, SHAWTY.

MONITOR and BILLBOARD charts for Rhythmic, Crossover, and Billboard Hot 100 Singles. Includes station call letters and city names for various markets.



SONG ACTIVITY REPORTS

Radio Broadcast Data Systems
Detailed song tracking information for the last 3 weeks for all songs showing increased play this week. Total plays and gain do not include video play. Markets listed in order of population.

For Week Ending February 22, 1998

Grid of song activity reports for artists including 2Pac feat. Eric Williams, Mary J. Blige, Mariah Carey, Destiny's Child, and Celine Dion. Each entry includes station codes, chart positions, and total plays.

Grid of song activity reports for artists including Dru Hill, Wyclef Jean, Montell Jordan, K-Ci & JoJo, and LSG. Each entry includes station codes, chart positions, and total plays.

Grid of song activity reports for artists including Lord Tariq & Peter Gunz, Mase (Feat. Total), Brian McKnight, K.P. & Envy, and Next. Each entry includes station codes, chart positions, and total plays.

Grid of song activity reports for artists including Ol' Skool (Feat. Keith Sweat & Xscape), Queen Pen, SWV, Sylk-E. Fyne, and Timbaland and Magoo. Each entry includes station codes, chart positions, and total plays.

POWER PLAYLISTS

For Week Ending February 22, 1998



POWER PLAYLISTS... (Small text box with details about the chart)

WPLJ New York PD: Tom Cuddy MD: Scott Shannon. Top 30 list including Celine Dion, Janet, Savage Garden, Matchbox 20, etc.

BIG 105 New York PD: Adam Goodman MD: Russ Egan. Top 30 list including Paula Cole, Celine Dion, Savage Garden, etc.

Q95.5 Detroit PD: Rick Gillette MD: Fred Buchalter. Top 30 list including Celine Dion, Savage Garden, Matchbox 20, etc.

STAR 104.5 Philadelphia PD: Kurt Johnson APD/MD: Kim Ashley. Top 30 list including Celine Dion, Savage Garden, Matchbox 20, etc.

MIX 107.3 Washington, DC PD: Steve Kosbau MD: Carol Parker. Top 30 list including Elton John, Sugar Ray, Savage Garden, etc.

KS95 Minneapolis PD: Todd Fisher MD: Leighton Peck. Top 30 list including Celine Dion, Matchbox 20, Indigo Girls, etc.

MIX 96.5 Houston PD: Lorrin Palagi APD/MD: Rich Anhorn. Top 30 list including Celine Dion, Savage Garden, Matchbox 20, etc.

Q104 Cleveland PD: Mary Ellen Kachinske MD: Steve Brown. Top 30 list including Savage Garden, Matchbox 20, Celine Dion, etc.

STAR 101.5 Seattle PD: Rob Dunlop MD: Kent Phillips. Top 30 list including Celine Dion, Savage Garden, Matchbox 20, etc.

MIX 106.5 Baltimore PD: Greg Carpenter. Top 30 list including Celine Dion, Savage Garden, Matchbox 20, etc.

MIX 101.5 Raleigh PD/MD: Steve Reynolds. Top 30 list including Matchbox 20, Savage Garden, Celine Dion, etc.

KYKY St. Louis PD: Smokey Rivers MD: Greg Hewitt. Top 30 list including Celine Dion, Backstreet Boys, Robyn, etc.

MIX 105.1 Orlando PD: David Isreal MD: Tim Baldwin. Top 30 list including Chumbawamba, Sister Hazel, Celine Dion, etc.

MIX 106.5 Cleveland PD: Randy James MD: Jay Hudson. Top 30 list including Matchbox 20, The Wallflowers, Savage Garden, etc.

94WKTI Milwaukee PD: Danny Clayton APD/MD: Leonard Peace. Top 30 list including Matchbox 20, The Wallflowers, Savage Garden, etc.

MIX 99.1 Milwaukee PD/MD: Brian Kelly APD: Jim Morales. Top 30 list including Celine Dion, Savage Garden, Matchbox 20, etc.

WENS Indianapolis PD: Greg Dunkin MD: Jim Cerone. Top 30 list including Celine Dion, Savage Garden, Matchbox 20, etc.

KISS FM Tampa PD: Mason Dixon MD: Rico Blanco. Top 30 list including Celine Dion, Savage Garden, Matchbox 20, etc.

MAGIC 105 San Antonio PD: Andy Holt MD: Darla Thomas. Top 30 list including Celine Dion, Savage Garden, Matchbox 20, etc.

WKDD Akron PD/MD: Chuck Collins. Top 30 list including Loreena McKennitt, Celine Dion, Savage Garden, etc.

MIX 94.1 Cincinnati PD: Haynes John. Top 30 list including Celine Dion, Savage Garden, Matchbox 20, etc.

KISN 97 Salt Lake City PD: Brian deGeus. Top 30 list including Chumbawamba, Paula Cole, Savage Garden, etc.

FM100 Memphis PD: Russ Morley MD: Bruce Wayne. Top 30 list including Savage Garden, Celine Dion, Elton John, etc.

ADULT TOP 40

ADULT CONTEMPORARY

BEN FOLDS FIVE 1253/35

Table with columns for station, song title, and play count for Ben Folds Five's 'Brick (550 Music)'. Includes stations like VH1, WBXL, and WYXR.

ERIC CLAPTON 929/239

Table with columns for station, song title, and play count for Eric Clapton's 'My Father's Eyes (Reprise)'. Includes stations like VH1, WBXL, and WYXR.

CELINE DION 2067/42

Table with columns for station, song title, and play count for Celine Dion's 'My Heart Will Go On (550 Music)'. Includes stations like VH1, WBXL, and WYXR.

BACKSTREET BOYS 772/37

Table with columns for station, song title, and play count for Backstreet Boys' 'As Long As You Love Me (Jive)'. Includes stations like VH1, WBXL, and WYXR.

BLESSID UNION OF SOULS 432/33

Table with columns for station, song title, and play count for Blessid Union of Souls' 'Light In Your Eyes (Capitol)'. Includes stations like VH1, WBXL, and WYXR.

GREEN DAY 1384/20

Table with columns for station, song title, and play count for Green Day's 'Time of Your Life (Good Riddance) (Reprise)'. Includes stations like VH1, WBXL, and WYXR.

NATALIE IMBRUGLIA 1215/216

Table with columns for station, song title, and play count for Natalie Imbruglia's 'Torn (RCA)'. Includes stations like VH1, WBXL, and WYXR.

MARCY PLAYGROUND 739/141

Table with columns for station, song title, and play count for Marcy Playground's 'Sex And Candy (Capitol)'. Includes stations like VH1, WBXL, and WYXR.

ERIC CLAPTON 561/164

Table with columns for station, song title, and play count for Eric Clapton's 'My Father's Eyes (Reprise)'. Includes stations like VH1, WBXL, and WYXR.

CELINE DION 1477/22

Table with columns for station, song title, and play count for Celine Dion's 'My Heart Will Go On (550 Music)'. Includes stations like VH1, WBXL, and WYXR.

MATCHBOX 20 2655/99

Table with columns for station, song title, and play count for Matchbox 20's '3 AM (Lava/Atlantic)'. Includes stations like VH1, WBXL, and WYXR.

LOREENA MCKENITT 2200/196

Table with columns for station, song title, and play count for Loreena McKennitt's 'The Mummers' Dance (Quinlan Road/Warner Bros.)'. Includes stations like VH1, WBXL, and WYXR.

BILLIE MYERS 1545/26

Table with columns for station, song title, and play count for Billie Myers' 'Kiss The Rain (Universal)'. Includes stations like VH1, WBXL, and WYXR.

FLEETWOOD MAC 451/52

Table with columns for station, song title, and play count for Fleetwood Mac's 'Landslide (Reprise)'. Includes stations like VH1, WBXL, and WYXR.

ELTON JOHN 317/135

Table with columns for station, song title, and play count for Elton John's 'Recover Your Soul (Rocket/Island)'. Includes stations like VH1, WBXL, and WYXR.

SAVAGE GARDEN 2322/112

Table with columns for station, song title, and play count for Savage Garden's 'Truly Madly Deeply (Columbia)'. Includes stations like VH1, WBXL, and WYXR.

THIRD EYE BLIND 1435/48

Table with columns for station, song title, and play count for Third Eye Blind's 'How It's Going To Be (Elektra/EEG)'. Includes stations like VH1, WBXL, and WYXR.

THE VERVE 1357/154

Table with columns for station, song title, and play count for The Verve's 'Bitter Sweet Symphony (VC/Hut/Virgin)'. Includes stations like VH1, WBXL, and WYXR.

SHANIA TWAIN 439/74

Table with columns for station, song title, and play count for Shania Twain's 'You're Still The One (Mercury)'. Includes stations like VH1, WBXL, and WYXR.

JOHN TESH FEAT. JAMES INGRAM 631/64

Table with columns for station, song title, and play count for John Tesh feat. James Ingram's 'Give Me Forever (I Do) (GTSP/Mercury)'. Includes stations like VH1, WBXL, and WYXR.

SAVAGE GARDEN 2322/112

Table with columns for station, song title, and play count for Savage Garden's 'Truly Madly Deeply (Columbia)'. Includes stations like VH1, WBXL, and WYXR.

THIRD EYE BLIND 1435/48

Table with columns for station, song title, and play count for Third Eye Blind's 'How It's Going To Be (Elektra/EEG)'. Includes stations like VH1, WBXL, and WYXR.

THE VERVE 1357/154

Table with columns for station, song title, and play count for The Verve's 'Bitter Sweet Symphony (VC/Hut/Virgin)'. Includes stations like VH1, WBXL, and WYXR.

SHANIA TWAIN 439/74

Table with columns for station, song title, and play count for Shania Twain's 'You're Still The One (Mercury)'. Includes stations like VH1, WBXL, and WYXR.

VANESSA WILLIAMS 797/54

Table with columns for station, song title, and play count for Vanessa Williams' 'Oh How The Years Go By (Mercury)'. Includes stations like VH1, WBXL, and WYXR.

BDS IMPACT

AIRPOWER

(Minimum 1,100 detections for the first time)

Table with 4 columns: Artist, Total Plays/Gain, Station info, and Airplay info. Includes entries for Eric Clapton, Fleetwood Mac, Shania Twain, and Blessed Union of Souls.

AIRPOWER BOUND

Table listing artists like Elton John, Lisa Loeb, and Gary Barlow with their total plays and gain.

CHART BOUND

Table listing artists like Madonna, Janet, and Loreena McKennitt with their total stations and chart movement.

MOST NEW STATIONS

Table listing artists like Eric Clapton, Madonna, and Kenny G with their station counts.

CHART BOUND

Table listing artists like James Horner, Billie Myers, and Boyz II Men with their total stations and chart movement.

MOST NEW STATIONS

Table listing artists like Eric Clapton, Madonna, and Kenny G with their station counts.

CHART BOUND

Table listing artists like James Horner, Billie Myers, and Boyz II Men with their total stations and chart movement.

Main chart table with columns: THIS WEEK, LAST WEEK, WEEKS ON, TITLE/IMPRINT/PROMOTION LABEL, ARTIST, TW, LW. Lists top 30 songs including 'My Heart Will Go On' and 'Truly Madly Deeply'.

Records showing an increase in detections over the previous week, regardless of chart movement. A record which has been on the chart for more than 20 weeks will not receive a bullet, even if it registers an increase in detections.

ADULT CONTEMPORARY POWER PLAYLISTS grid showing station-specific top 20 lists for various stations like 106.7 LITE FM, KOST, KBIG, 93.9 LITE FM, B101, KVL, WINDY 100, K101, WASH-FM, COAST 97.3, WLTE, and WDOK.

Airpower awarded to those records which attain 400 detections for the first time. New airplay lists those stations registering six or more detections per week on a record for the first time.

POWER PLAYLISTS™

WXRK New York PD: Steve Kingston MD: Mike Peer; KROQ Los Angeles VP/Pgm: Kevin Weatherly APD: Gene Sandbloom; WKQX Chicago PD: Alex Luke MD: Mary Shuminas

WBCN Boston VP/Pgm: Oedipus MD: Carter Alan; WPLY Philadelphia PD: Jim McGuinn APD: Doug Kubinski; KLYY Los Angeles VP/Pgm: Steve Blatter MD: Mike Savage

WHF'S Washington, DC PD: Robert Benjamin APD: Bob Waugh; WNNX Atlanta OM: Brian Philips PD: Leslie Fram; KDGE Dallas PD: Duane Doherty

KTBB Houston PD: Jim Trapp MD: David Sadoff; CIMX Detroit PD: Murray Brookshaw APD/MD: Vince Cannova; KPNT St. Louis OM: Allan Fee APD: Marty Linc

Main chart table with columns: THIS WEEK, LAST WEEK, WKS. ON CHART, TITLE/IMPRINT/PROMOTION LABEL, ARTIST, TW, LW. Includes No. 1 record: SEX AND CANDY by MARCY PLAYGROUND.

Records showing an increase in detections over the previous week, regardless of chart movement. A record which has been on the chart for more than 20 weeks will not receive a bullet, even if it registers an increase in detections.

KITS San Francisco VP/Pgm: Richard Sands APD: Roland West; KNDD Seattle PD: Phil Manning MD: Kim Monroe; KOMA San Jose OM: Ron Nenni PD: Jay Taylor

WXDX Pittsburgh PD: John Moschitta MD: Lenny Diana; KEDJ Phoenix PD: Shellie Hart APD/MD: Chris Patyk; XTRA San Diego PD: Bryan Schock MD: Chris Muckley

Compiled from a national sample of radio stations by Broadcast Data Systems. Radio Stations by Top 40 Airplay: Stations with 40 or more detections and 24 or more stations. Top 40 stations are selected based on the number of stations. Stations are ranked by number of detections. For more information, contact Broadcast Data Systems.

THIS WEEK	LAST WEEK	WKS. ON CHART	MAINSTREAM TOP 40		DETECTIONS		
			TITLE/IMPRINT/PROMOTION LABEL	ARTIST	TW	LW	
			★ ★ ★ No. 1 ★ ★ ★				
1	1	10	MY HEART WILL GO ON 550 MUSIC	CELINE DION	5313	5319	
2	2	18	TRULY MADLY DEEPLY COLUMBIA	SAVAGE GARDEN	4859	4955	
3	3	15	3 AM LAVA/ATLANTIC	MATCHBOX 20	4573	4388	
4	4	18	AS LONG AS YOU LOVE ME JIVE	BACKSTREET BOYS	3955	3999	
5	5	23	WALKIN' ON THE SUN INTERSCOPE	SMASH MOUTH	3386	3497	
6	7	17	TOGETHER AGAIN VIRGIN	JANET	3367	3189	
7	8	20	YOU MAKE ME WANNA... LAFACE/ARISTA	USHER	3001	3060	
8	6	24	SHOW ME LOVE RCA	ROBYN	2985	3194	
9	9	10	KISS THE RAIN UNIVERSAL	BILLIE MYERS	2923	2934	
10	11	6	ARE YOU JIMMY RAY? EPIC	JIMMY RAY	2633	2676	
11	13	6	I WANT YOU BACK RCA	'N SYNC	2414	2324	
12	12	28	FLY LAVA/ATLANTIC	SUGAR RAY	2347	2333	
13	10	22	TUBTHUMPING REPUBLIC/UNIVERSAL	CHUMBAWAMBA	2266	2683	
14	15	14	HOW'S IT GOING TO BE ELEKTRA/EEG	THIRD EYE BLIND	2253	2087	
15	16	10	GETTIN' JIGGY WIT IT COLUMBIA	WILL SMITH	2210	2064	
			★ ★ ★ AirPOWER ★ ★ ★				
16	NEW		FROZEN MAVERICK/WARNER BROS.	MADONNA	2178	761	
17	14	10	THE MUMMERS' DANCE QUINLAN ROAD/WARNER BROS.	LOREENA MCKENITT	2176	2090	
18	20	5	ALL MY LIFE MCA	K-CI & JOJO	2169	1822	
			★ ★ ★ AirPOWER ★ ★ ★				
19	26	2	TORN RCA	NATALIE IMBRUGLIA	1985	1384	
20	17	11	TIME OF YOUR LIFE (GOOD RIDDANCE) REPRISÉ	GREEN DAY	1938	2059	
21	21	5	TOO MUCH VIRGIN	SPICE GIRLS	1791	1793	
22	22	6	I KNOW WHERE IT'S AT LONDON/ISLAND	ALL SAINTS	1644	1751	
23	23	12	PINK COLUMBIA	AEROSMITH	1597	1608	
			★ ★ ★ AirPOWER ★ ★ ★				
24	25	4	BRICK 550 MUSIC	BEN FOLDS FIVE	1591	1408	
25	18	18	I DO GEFFEN	LISA LOEB	1588	1989	
26	24	22	LOVE YOU DOWN SO SO OEF/COLUMBIA	INOJ	1466	1602	
27	30	3	TURN BACK TIME MCA	AQUA	1361	1145	
28	33	3	BITTER SWEET SYMPHONY VO/HUT/VIRGIN	THE VERVE	1241	1039	
29	31	4	I DON'T EVER WANT TO SEE YOU AGAIN STONECREEK/EPIC	UNCLE SAM	1219	1143	
30	29	23	NO MONEY NO PROBLEMS BAD BOY/ARISTA	THE NOTORIOUS B.I.G. (FEAT. PUFF DADDY & MASE)	1174	1200	
31	37	2	SEX AND CANDY CAPITOL	MARCY PLAYGROUND	1147	913	
32	36	4	A SONG FOR MAMA MOTOWN	BOYZ II MEN	999	995	
33	40	2	MY FATHER'S EYES REPRISÉ	ERIC CLAPTON	998	777	
34	28	16	WHAT WOULD HAPPEN CAPITOL	MEREDITH BROOKS	940	1249	
35	34	14	HEAVEN REPRISÉ	NU FLAVOR	897	1025	
36	35	14	LIGHT IN YOUR EYES CAPITOL	BLESSID UNION OF SOULS	888	1003	
37	39	8	FEEL SO GOOD BAD BOY/ARISTA	MASE	805	834	
38	NEW		IT'S UP TO YOU ARISTA	THE TUESDAYS	779	444	
39	38	15	MY LOVE IS THE SHHH! WARNER BROS.	SOMETHIN' FOR THE PEOPLE FEATURING TRINA & TAMARA	766	884	
40	32	11	SWEET SURRENDER ARISTA	SARAH MCLACHLAN	733	1071	

THIS WEEK	LAST WEEK	WKS. ON CHART	RHYTHMIC TOP 40		DETECTIONS		
			TITLE/IMPRINT/PROMOTION LABEL	ARTIST	TW	LW	
			★ ★ ★ No. 1 ★ ★ ★				
1	1	14	ALL MY LIFE MCA	K-CI & JOJO	1751	1752	
2	2	11	NICE & SLOW LAFACE/ARISTA	USHER	1716	1659	
3	3	7	MY HEART WILL GO ON 550 MUSIC	CELINE DION	1531	1410	
4	4	5	ANYTIME MERCURY	BRIAN MCKNIGHT	1387	1264	
5	5	17	I DON'T EVER WANT TO SEE YOU AGAIN STONECREEK/EPIC	UNCLE SAM	1135	1156	
6	7	15	GETTIN' JIGGY WIT IT COLUMBIA	WILL SMITH	1010	1010	
7	6	27	YOU MAKE ME WANNA... LAFACE/ARISTA	USHER	1003	1131	
8	8	16	A SONG FOR MAMA MOTOWN	BOYZ II MEN	982	1008	
9	10	9	SWING MY WAY EASTWEST/EEG	K.P. & ENVYI	956	860	
10	12	9	LUV 2 LUV U BLACKGROUND/ATLANTIC	TIMBALAND AND MAGOO	881	770	
11	11	11	NO, NO, NO COLUMBIA	DESTINY'S CHILD	855	818	
12	15	5	TRULY MADLY DEEPLY COLUMBIA	SAVAGE GARDEN	796	747	
13	18	6	WHAT YOU WANT BAD BOY/ARISTA	MASE (FEATURING TOTAL)	784	665	
14	14	12	ALL MY LOVE LIL' MAN/INTERSCOPE	QUEEN PEN FEATURING ERIC WILLIAMS	779	752	
15	9	20	TOGETHER AGAIN VIRGIN	JANET	773	882	
16	16	5	TOO CLOSE ARISTA	NEXT	758	717	
17	13	19	MY BODY EASTWEST/EEG	LSG	680	754	
18	17	24	MY LOVE IS THE SHHH! WARNER BROS.	SOMETHIN' FOR THE PEOPLE FEATURING TRINA & TAMARA	584	680	
19	19	18	AS LONG AS YOU LOVE ME JIVE	BACKSTREET BOYS	580	665	
20	21	8	BREAKDOWN COLUMBIA	MARIAH CAREY (FEATURING BONE THUGS-N-HARMONY)	576	561	
			★ ★ ★ AirPOWER ★ ★ ★				
21	26	4	RAIN RCA	SWV	560	485	
			★ ★ ★ AirPOWER ★ ★ ★				
22	29	3	ROMEO AND JULIET RCA	SYLK-E FYNE FEATURING CHILL	541	424	
			★ ★ ★ AirPOWER ★ ★ ★				
23	27	4	TOO MUCH VIRGIN	SPICE GIRLS	534	461	
24	20	24	FEEL SO GOOD BAD BOY/ARISTA	MASE	533	637	
25	24	17	HOW DO I LIVE CURB	LEANN RIMES	492	525	
26	22	11	BEEN AROUND THE WORLD BAD BOY/ARISTA	PUFF DADDY & THE FAMILY (FEAT. THE NOTORIOUS B.I.G. & MASE)	489	533	
27	33	2	CURIOUS EASTWEST/EEG	LSG FEAT. LL COOL J, BUSTA RHYMES & MC LYTE	450	331	
28	25	19	SOCK IT 2 ME EASTWEST/EEG	MISSY "MISDEMEANOR" ELLIOTT FEATURING DA BRAT	438	518	
29	NEW		FROZEN MAVERICK/WARNER BROS.	MADONNA	434	202	
30	30	8	GONE TILL NOVEMBER RUFFHOUSE/COLUMBIA	WYCLEF JEAN	427	379	
31	23	14	RAPPER'S DELIGHT PRIORITY	ERICK SERMON, KEITH MURRAY & REDMAN	426	530	
32	37	2	DO FOR LOVE AMARU/JIVE	2PAC FEATURING ERIC WILLIAMS	385	294	
33	40	2	LAST CHANCE TRACK MASTERS/CRAVE	ALLURE	334	275	
34	35	23	FLY LAVA/ATLANTIC	SUGAR RAY	329	318	
35	28	24	SHOW ME LOVE RCA	ROBYN	324	447	
36	34	6	I KNOW WHERE IT'S AT LONDON/ISLAND	ALL SAINTS	320	319	
37	31	7	AIN'T THAT JUST THE WAY CRAVE	LUTRICIA MCNEAL	298	349	
38	32	21	NO TENGO DINERO FLEX/EM/VIRGIN	LOS UMBRELLOS	297	334	
39	36	12	TUBTHUMPING REPUBLIC/UNIVERSAL	CHUMBAWAMBA	285	305	
40	38	17	WHAT ABOUT US ARISTA	TOTAL	276	283	

Records showing an increase in detections over the previous week, regardless of chart movement. A record which has been on either chart for more than 20 weeks will not receive a bullet, even if it registers an increase in detections. Airpower awarded to those records which attain 1500 detections (mainstream) or 500 detections (rhythm) for the first time. If two records are tied in number of plays, the record being played on more stations is placed first. Records below the top 20 are removed from the chart after 26 weeks.

THE IMPORT SINGLE THAT RADIO DEMANDED!

backstreet boys "EVERYBODY [BACKSTREET'S BACK]" IS COMING!

★ NOW AVAILABLE ON THEIR 3X PLATINUM DEBUT ALBUM

ALREADY PLAYING ON:

WFLY	WXVY	WKTU	KZQZ
WKSE	WIOQ	B96	WZJM
WKSS	WWZZ	WZNY	KBOS

IMPACTING: MARCH 9TH & 10TH!





Sex and Candy

the first single from the self-titled album

marcy playground

Over 4500 Hot 100 Spins With An Audience Reach Of Over 32 Million!

(37) - (31) Mainstream Top 40 Monitor

(13) - (11) Modern Adult Monitor

#1 For 11 Weeks On Modern Rock Monitor

Debut #4 Call Out America!



HEAVY



CUSTOM

CLOSING OUT THIS WEEK:

WNKS	KMXB	WTMX
KPLZ	WJET	KAMX
KDMX	WKRQ	WYCR
WXXL	WIXX	KKLQ
	WAPE	

MAJOR AIRPLAY AT:

WDCG	51x	KBKS	44x
KYSR	43x	KFMB	50x
KLLC	23x	WFLZ	40x
WSTR	24x	WZNY	33x

"I'll take requests and sales over 'Sex And Candy' anytime, but with Marcy Playground I get both. Life is good." - Rob Roberts, PD, WPLL & WHYI

"All indications say that this will be a hit for STAR 94." - JR Ammons, MD,WSTR

"After 3 weeks of airplay, Marcy Playground is Top 10 phones, #7 this week. I think this song will be big!" - David Corey, MD, WXKS

29* Top 40
Mainstream Monitor
#5 Rhythmic Monitor
#4 Crossover Monitor
7 Billboard HOT 100

i don't
ever want
to see
you again

Major Mainstream Airplay!

KIIS	25x	KHKS	42x	WFHN	30x	WNCI	21x	WFLY	30x
KKRD	30x	KRQQ	20x	WTWR	32x	WKSE	23x	WZJM	30x
KHFI	34x	KZZU	54x	KDWB	24x	KKRZ	30x	WJJS	27x

2500 Spins • 25 Million in Audience

Top 5 Phones: KZZU KZFM KKMGM WDDJ
Great Callout: KKRZ KHFI KHKS WKSE WFBC

Uncle Sam

#6 Soundscan Singles

New York	#6	Houston	#5	Denver	#5
Los Angeles	#10	Portland	#2	Seattle	#4
Philadelphia	#6	San Diego	#7	Cleveland	#4
Dallas	#1	Kansas City	#4		



taken from the
stonecreek/epic release
uncle sam

Executive Producers: Nathan Morris, Michael McCary,
Shawn Stockman, Wanya Morris and Charlucci Finney
Produced and Arranged by Nathan Morris.
Management: Sharon Meyers



www.epiccenter.com • www.sony.com "Epic" and Reg. U.S. Pat. & Tm. Off. Marca Registrada. © 1998 Sony Music Entertainment Inc.

67731

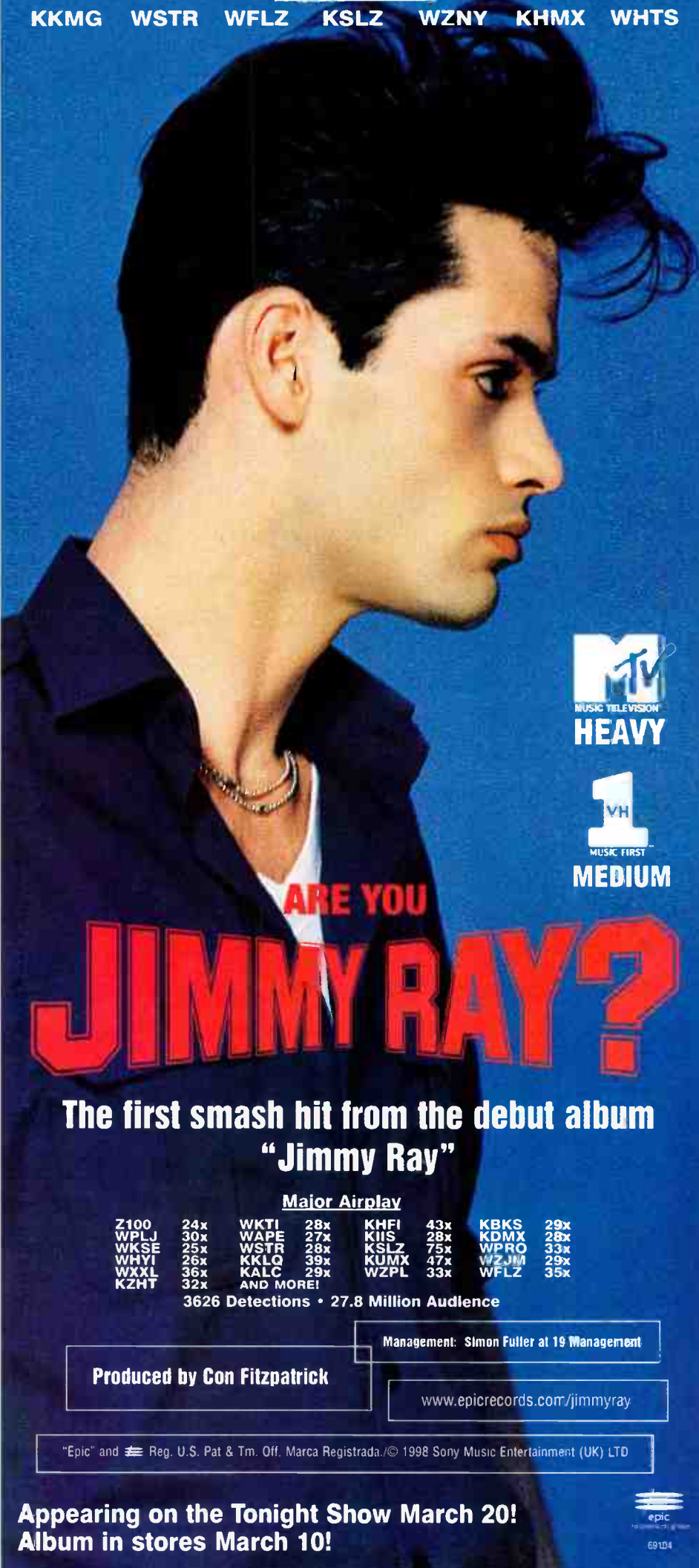
HOT 100 20

(29,000 Pieces sold this week)

10 Top 40 Mainstream Monitor
28 Adult Top 40 Monitor
32 BDS Modern Adult

Top 5 Phones

KKMG WSTR WFLZ KSLZ WZNY KHMV WHTS



ARE YOU

JIMMY RAY?

The first smash hit from the debut album
"Jimmy Ray"

Major Airplay

Z100	24x	WKTI	28x	KHFI	43x	KBKS	29x
WPLJ	30x	WAPE	27x	KIIS	28x	KDMX	28x
WKSE	25x	WSTR	28x	KSLZ	75x	WPRO	33x
WHYI	26x	KKLQ	39x	KUMX	47x	WZJM	29x
WXXL	36x	KALC	29x	WZPL	33x	WFLZ	35x
KZHT	32x	AND MORE!					

3626 Detections • 27.8 Million Audience

Management: Simon Fuller at 19 Management

Produced by Con Fitzpatrick

www.epicrecords.com/jimmyray

"Epic" and Reg. U.S. Pat & Tm. Off. Marca Registrada. © 1998 Sony Music Entertainment (UK) LTD

Appearing on the Tonight Show March 20!
Album in stores March 10!

