

TOP 40 AIRPLAY Monitor

• We Listen To Radio •

October 10, 1997 \$4.95 Volume 5 • No. 41

TOP 40 HIGHLIGHTS

MAINSTREAM

#1

JEWEL

Foolish Games (ATLANTIC)

★★★ AIRPOWER ★★★

CHUMBAWAMBA • Tubthumping (REPUBLIC/UNIVERSAL)
SMASH MOUTH • Walkin' On The Sun (INTERSCOPE)

GOING FOR AIRPLAY

BACKSTREET BOYS • As Long As You Love Me (JIVE)
TONI BRAXTON • How Could An Angel Break My Heart (LAFACE/ARISTA)
SHERYL CROW • Home (A&M)
DAFT PUNK • Around The World (SOMAVIRGIN)
DIANA KING • L-L-Lies (WORK)
LISA LOEB • I Do (Geffen)
SOMETHIN' FOR THE PEOPLE FEAT. TRINA & TAMARA • My Love Is The Shhh! (WARNER BROS.)
BARBRA STREISAND • CELINE DION • Tell Him (550 MUSIC/EPIC/COLUMBIA)
TONI TONY TONE • Boys And Girls (MERCURY)

RHYTHMIC TOP 40

#1

USHER

You Make Me Wanna ... (LAFACE/ARISTA)

★★★ AIRPOWER ★★★

AALIYAH • The One I Gave My Heart To (BLACKGROUND/ATLANTIC)

CROSSOVER

#1

USHER

You Make Me Wanna ... (LAFACE/ARISTA)

★★★ AIRPOWER ★★★

AALIYAH • The One I Gave My Heart To (BLACKGROUND/ATLANTIC)
BONE THUGS-N-HARMONY • If I Could Teach The World (RUTHLESS/RELATIVITY)

GOING FOR AIRPLAY

BACKSTREET BOYS • As Long As You Love Me (JIVE)
TONI BRAXTON • How Could An Angel Break My Heart (LAFACE/ARISTA)
CHANGING FACES • All Of My Days (BIG BEAT/ATLANTIC)
DAFT PUNK • Around The World (SOMAVIRGIN)
DRU HILL • 5 Steps (ISLAND BLACK MUSIC/ISLAND)
JAY-Z FEAT. BABYFACE & FOXY BROWN • Sunshine (ROC-A-FELLA/DEF JAM/MERCURY)
DIANA KING • L-L-Lies (WORK)
BILLY LAWRENCE • Up And Down (EASTWEST/EEG)
TONI TONY TONE • Boys And Girls (MERCURY)

ADULT TOP 40

#1

JEWEL

Foolish Games (ATLANTIC)

★★★ AIRPOWER ★★★

CHUMBAWAMBA • Tubthumping (REPUBLIC/UNIVERSAL)

ADULT CONTEMPORARY

#1

LEANN RIMES

How Do I Live (CURB)

★★★ AIRPOWER ★★★

NO RECORDS QUALIFIED FOR AIRPOWER THIS WEEK

GOING FOR AIRPLAY

TONI BRAXTON • How Could An Angel Break My Heart (LAFACE/ARISTA)
SHERYL CROW • Home (A&M)
LISA LOEB • I Do (Geffen)
BARBRA STREISAND • CELINE DION • Tell Him (550 MUSIC/EPIC/COLUMBIA)

Modern Supplying More Top 40 Hits, But Modern Adult Is The Gatekeeper

by Sean Ross

Six months ago, we reported that mainstream top 40, having declared its eagerness to play records that it could own, was making good on its promise. Airplay Monitor looked at where mainstream top 40's hits were charting first and found that the largest number were starting at mainstream top 40, followed closely by rhythmic top 40. Modern rock, however, was starting far fewer mainstream

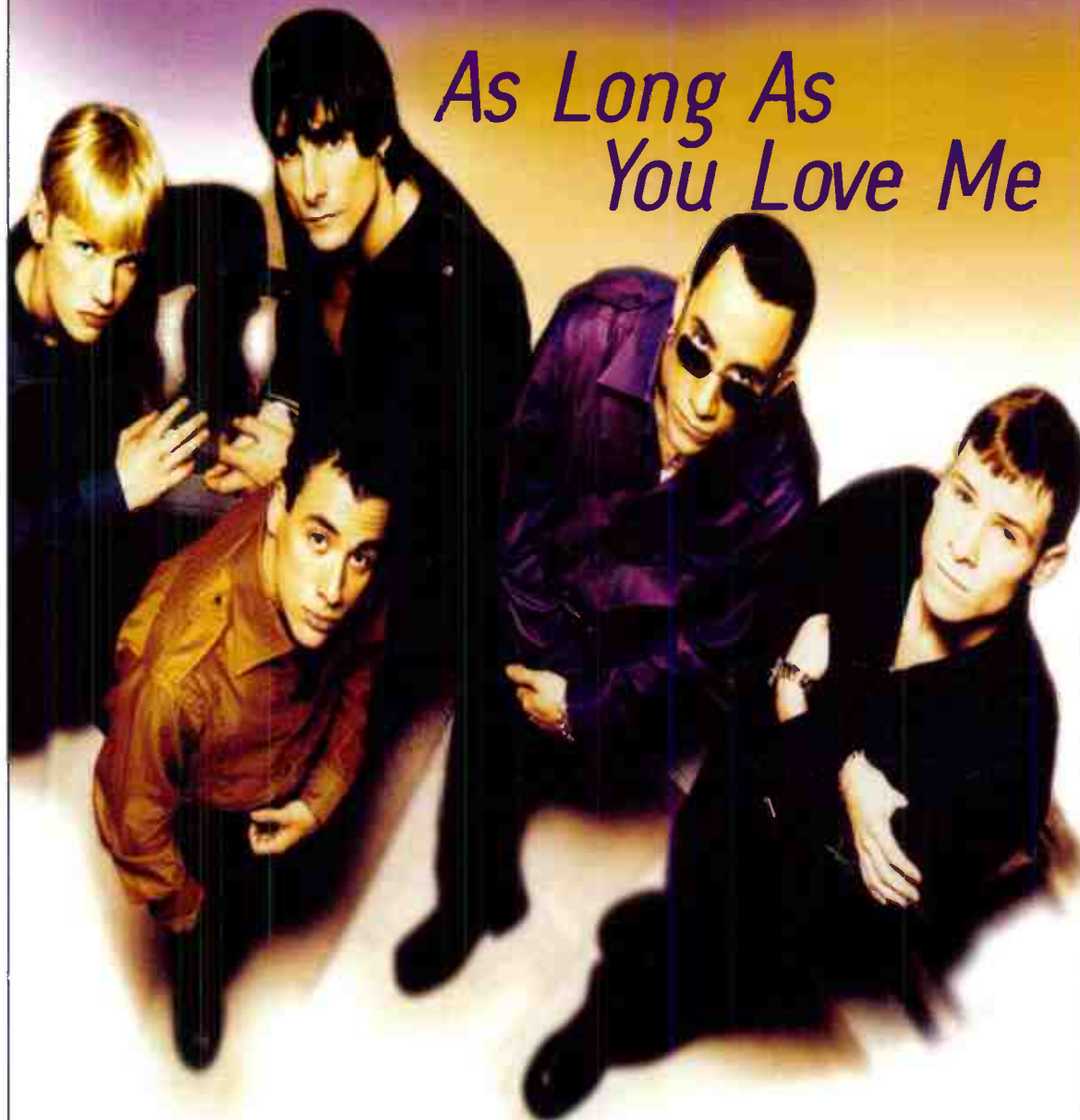
**EXCLUSIVE
BDS
ANALYSIS**

top 40 hits than a year prior.

A look at last week's Mainstream Top 40 Airplay chart shows that mainstream and rhythmic top 40 are still the leading source of the format's hits, even though both are off slightly. Modern rock, however, is again contributing hits to top 40 at roughly the same pace that it did 18 months ago; the catch seems to be that those songs had to pass muster at the new modern AC format, which started al-

Continued on page 5

backstreet boys



As Long As
You Love Me

The follow up to their
#2 Platinum, Pop single,
"Quit Playing Games (With My Heart)"

#2 most requested pop video on **THE BOX** after 3 days!

"The perfect pop sound that Top 40 needs. Sounds like a SOLID HIT!"
-Tracy Austin, APD/MD KIIS-FM, Los Angeles

"The standout track from my favorite new artist of the year! Already TOP 5 REQUESTS on B-96! I expect 'As Long As You Love Me' to be as big as 'Quit Playing Games'! HUGE!!"

-Erik Bradley, MD B-96, Chicago

IMPACTING TOP 40 RADIO: October 13th!



© 1997 Zomba Recording Corporation

SOMETHIN' FOR THE PEOPLE

SFP



**MY
LOVE
IS
THE
Shhh!**

featuring **Trina & Tamara**



14 - 8 Rhythmic Top 40 Monitor
941 Spins (+226) #2 Greatest Gainer
4 - 2 Top 40/Crossover Monitor
2,003 Spins (+329) #1 Greatest Gainer
21 - 16 Billboard Hot 100
13* - 10* SoundScan Singles

The debut single from the new album This Time It's Personal

Management: Anthill Mob Entertainment
Produced by SFP for Nothin' Personal Productions

© 1997 Warner Bros. Records Inc. Visit the Warner Bros. Web Site <http://www.wbr.com/blackmusic>

KYLD	57x	#3 Phones	#6 Sales	#1 Callout
KUBE	72x	Top 5 Phones	#5 Sales	#5 Callout
KBXX	49x	Top 5 Phones	#23 Sales	Top 5 Callout
KMEL	58x	#5 Phones	#6 Sales	
KYLZ	85x	#3 Phones	#23 Sales	
WPGC	38x	Top 5 Phones	#16 Sales	
KSFM	40x	#5 Phones	#10 Sales	
WHHH	50x	Top 5 Phones	#10 Sales	
KQKS	54x	Top 5 Phones	#16 Sales	
KDGS	47x	#3 Phones	#12 Sales	
KZFM	36x	#4 Phones	#10 Sales	
WBHJ	60x	#5 Phones	#7 Sales	

World Radio History

NEW AIRPLAY AT: HOT 97, B96, WNVZ

Seminar Sessions Packed With Talent

Here are some of the sessions and confirmed participants in the 1997 Billboard/Airplay Monitor Radio Seminar and Awards: Top 40: WHTZ (Z100) New York PD Tom Poleman; KIIS Los Angeles PD Dan Kieley; KKRZ (Z100) Portland, Ore., PD Ken Benson; WWZZ (Z104) Washington, D.C., PD Dale O'Brian; consultant Bill Richards; and WXXL (XL106.7) Orlando, Fla., PD Adam Cook.

"Modern Times For AC": KYSR (Star 98.7) L.A. PD Angela Perelli; WPLT (Planet 96.3) Detroit PD Garrett Michaels; KZZO (the Zone) Sacramento, Calif., PD Carmy Ferreri; WALC St. Louis (Alice @ 104) PD Bob Davis; WWMX (Mix 106.5) Baltimore PD Adam Goodman; consultants Randy Lane and Dave Beasing; and veteran record promoter Jerry Lembo.

Chancellor Media VP/marketing Bev Tilden, WKTU New York promotion director Jim

Ferguson, and KIIS L.A. marketing director Von Freeman will show how your station can succeed in the concert business in the "Track Date From Hell" session.

Oct. 18's personal-improvement session, "Back To School: Building The Perfect Manager," features MCA senior VP Nancy Levin; consultants Dave Shakes and Guy Zapoleon; SFX Raleigh, N.C., OM Brian Burns; and personal coach Jaye Myrick of Pyramid Resources.

Share the drama and hear the solutions to living under the same roof as your competition in "Sleeping With The Enemy," featuring KMEL San Francisco PD Michelle Santosuosso, appearing with her dream date, KYLD San Francisco PD Michael Martin. Jacor Tampa, Fla., top 40 programming honcho B.J. Harris will also appear with his new neighbor, Mason Dixon of WAKS.

Billboard & Monitor
Radio Seminar & Awards

Bob Vila On Line Two, Sounds Upset



WHYI (Y100) Miami PD Rob Roberts, left, proudly displays his basement rec room, which he personally paneled with the finest wood-veneer-like particle board that \$8 could buy. Pictured, from left, are Roberts, Jon Bon Jovi, and Mercury VP of promotion Steve Ellis.

WKTU's Saturday Night Fever Relapse

The perfect marriage: The 20th anniversary of the release of "Saturday Night Fever" and dance music poster child WKTU New York. Mark your calendar for Nov. 1, as WKTU throws a Brooklyn-style block party featuring the artists from the soundtrack, including the **Bee Gees**, the **Trammps**, **Tavares**, **Kool & the Gang**, and **KC & the Sunshine Band**, performing at the 2001 Odyssey disco, the club where "Fever" was filmed.

Also, stripes all around at WKTU, as MD **Andy Shane** adds APD duties, swing jock/programming assistant **Geronimo** is upped to music coordinator, and M.C. **Jeff Z.** is promoted to programming coordinator.

EVERYONE KNOWS IT'S WINDY

Bonneville hot AC **WPNT** (FM100) Chicago completes its transition to mainstream AC as "Windy 100." Now available: morning host **Fred Winston** and co-hosts **Abby Polonsky** and **Shawn Dion**, MD/middays **Lynne Murray**, and afternoon jock **Ken Cocker**.

BUSINESS: CITADEL + THREE

Citadel beefs up its presence in Wilkes-Barre, Pa., with S&P Broadcasting's oldies **WDLS/WSGD** and country **WCDL-AM**. GM **Bill Betts** says look for Citadel's four AMs, including **WCDL**, **WEMR**, **WAZL** and **WKQV**, to soon simulcast programming "complementary to the N/T on **WARM-AM**."

Dave Martin, most recently president of the Radio Consultants, returns to the station ranks as GM of CBS' jazz/adult R&B/gospel combo **KOAI/KRBB/KHVN** Dallas. Martin's top 40 résumé includes VP of programming for Double-d and GM of **WZEE** (Z104) Madison, Wis.

PROGRAMMING: COOK TO DALLAS?

At press time, there was no official word on the return of **John Cook** to **KHKS** Dallas in an operations capacity, but he has already resigned the PD job at modern adult **KKPN** (the Planet) Houston. **Mr. Ed** would remain PD of **KHKS**.

Veteran PD **Bob Lewis**, last seen programming **KGGI** San Bernardino, Calif., is named format director for Spanish broadcaster **EXCL** Communications' Radio Romantica Network, which has outlets in California's San Francisco, Sacramento, and Salinas markets and Denver and Albuquerque, N.M. Lewis, who will be based in San Jose, Calif., is already soliciting for bilingual T&Rs.

The waiting game continues in St. Louis, as Jacor's newly acquired **WCBW**, widely expected to go top 40, drops religion and is now simulcasting

R&B sister **KMJM** (Magic 108).

WHYI (Y100) Miami PD **Rob Roberts** adds PD duties at Clear Channel modern AC sister **WPLL** (Planet 103.5), replacing **Dave Stewart**. The move follows **WPLL** owner Paxson's absorption into Clear Channel. Paxson's **Alan Mason** and **John Frost** will exit at the year's end to form a consultancy. Also at the former Paxson stations, night host **Dick Danger** is now handling mornings at modern AC **WSHE** Orlando, Fla., replacing **Just Plain Mark** and **Zippy**. Paxson director of Orlando programming **Chris Kampmeier** adds PD stripes for N/T FM **WTKS**.

After briefly simulcasting country **KGHL**, **KRSQ** (Hot 101.7) Billings, Mont., debuts as that market's first top 40 in several years. **Nick Tyler**, PD of **KGHL**, and country sister **KIDX**, is handling programming. Rhythmic **WWXQ/WXQW** Huntsville, Ala., flips to oldies. **Mack Bramlett**, GM of co-owned **WDRM**, replaces **Larry Crim**.

WJLK Asbury Park, N.J., APD **Steve McVie** is the new PD of AC **WCIB** (Cool 102) Cape Cod, Mass., replacing **Cliff Brennan**. McVie previously programmed top 40 sister **WRZE** (the Rose).

WCIL Carbondale, Ill., PD **Chad Elliot** picks up additional stripes at Zimmer's newly LMA'd mainstream AC **WUEZ**. New calls are pending.

PEOPLE: SCRAPPY CAME K-HOME

Several weeks after he replaced **Nastyman** in mornings, night jock **M.C. Scrappy** is now official in that shift at **KHOM** (Mix 104.1) New Orleans.

KZHT Salt Lake City adds **Frank Corrigan** to mornings, teaming with co-hosts **Heidi** and **D.B. Corrigan** (aka **Frankie C.**), formerly a sidekick at **WAPE** Jacksonville, Fla., replaces producer/co-host **Shoe**. **C.C. Williams** joins for middays from crosstown **KBEE** (B98.7), replacing **Dani Curtis**.

WBBO (B98.5) Ocean County, N.J., hires **Porsche Foxx**, most recently of AC **WYXR** (Star 104.5) Philadelphia, for the midday slot recently vacated by **Liz Jordan**.

KBXX (the Box) Houston night jock **Kid Fresh** exits . . . **WWKX** (Kix 106) Providence, R.I., MD **Becky Iannone** exits after the elimination of her off-air position. Call her at 401-294-7598 . . . **KZMG** Boise, Idaho, night jock **Mr. Ed** segues to mornings on sister country **KLZN**.

Modern AC **WLCE** Buffalo, N.Y., ups P/T **Dan Page** to nights . . . **KKFR** (Power 92) Phoenix APD **Brian Douglas** is now P/T at **KYSR** (Star 98.7) L.A. . . . **KZZU** Spokane, Wash., overnighter **Harrison Wood** becomes APD/afternoons at **KFFM** Yakima, Wash., where he once did nights.

TOP 40 TOPICS BY SEAN ROSS
212-536-5264 • sross@billboard.com

Imports, Bringbacks & A Better Milkshake

It's a truism that a radio station reflects the personality of its PD. So it's no surprise that the most idiosyncratic top 40 stations change pretty radically when a new PD comes in. After all, what was the likelihood of finding two PDs in a row who both understood why **John Lander's** mid-'80s **KKBQ** Houston should have played "Seasons In The Sun" several times a day? Or why the 1995-96 **WQSL** Wilmington, N.C., under GM **Bill Hennes**, should have played **Busta Rimes** and **Presidents Of The United States Of America**? If new PDs can do nothing else, they can clean out all that junk their predecessors were playing, right?

So, unless they promote from inside, I doubt they'll find a new PD for **KHOM** (Mix 104.1) New Orleans who has any idea what the previous PD, **Bill Thorman**, was thinking, or cares to. How do you explain a station that was almost invariably the first mainstream top 40 to cross over any R&B hit, but also played both **LeAnn Rimes** and **Tim McGraw** (with **Faith Hill**)? A station that played imports from **911** and Britain's *next* major girl group, **All Saints**? A station that played indie-label singles by **Kai**, which eventually spread to a few other stations, and **DJ Jubilee**, a local rapper whose type of "bounce" music doesn't usually work even on R&B stations outside New Orleans?

KHOM played not only the usual secret-weapon oldies ("Turn Out The Lights," "Moments In Love," etc.), but had, just in recent weeks, experimented with bringbacks from **L'Trimm**, **Morrissey**, and **Depeche Mode**, as well as a **Partners In Kryme** record other than "Turtle Power." (You probably didn't know that there was a **Partners In Kryme** record other than "Turtle Power.")

And, oh yeah, it played "Mickey" by **Toni Basil** as an oldie. Not four times a year on the "Flashback Lunch" but in what might have been power recurrent rotation for a lot of other stations. Even as NYU's honorary dean of **Toni Basil** studies, I wasn't sure about that choice, based on my recent belief that many listeners can handle a wide variety of current music but few can understand a mix of both genres and eras. I also didn't always agree on some of the records that **KHOM** decided were *not* hits in New Orleans, since they included

"Semi-Charmed Life" when Thorman left.

But I did consider **KHOM** the most fascinating top 40 in America. And having been to New Orleans twice in the last five weeks, I was pleasantly surprised by how well **Mix 104.1's** mix held together. At its core, what Thorman was doing wasn't so radical—New Orleans has a long history of salt-and-pepper top 40s that went heavy on the reaction records. If it's unusual to find a station programmed like that today, it's also hard to find milkshakes made with real ice cream, which doesn't mean that consumers prefer milkshake base, just that they rarely have a choice.

Thorman wasn't the only PD in America who programmed this way. And he wasn't the only person in the mix at **KHOM** who understood reaction records—both **Mix's** acting PD **Kandy Klutch** and MD **Tom Naylor** have long histories at musically proactive stations. So I'm not expecting **KHOM** to become a completely different station by the time you read this. It's just that the likelihood of any one other person understanding *everything* that made the station interesting—the bringbacks, the imports, the R&B crossovers, the country crossovers, and the lack of most passive records—is slim.

You also have to wonder if a new PD will see the value in preserving **KHOM** as we know it. The spring Arbitron survey found it in nearly a dead heat with adult top 40 **WEZB** (B97), a station whose current programming philosophy is 180 degrees different. Only when you consider that **KHOM** started in 1995 with virtually no ratings (having been off the air for an extended stretch), made one of the few successful recent attempts to fill a market's top 40 hole with a suburban signal (albeit a serviceable one), and did it, until the last nine or so months, with a skeletal air staff and a non-group owner do you have any sense of how well the station worked. The mere fact that **KHOM** didn't cave altogether when **B97** returned to top 40 after several years away speaks volumes.

The good news is that even if **KHOM** doesn't sound like **KHOM** in six months, there'll probably be somebody new for me to be fascinated by—Thorman will probably be somewhere else, and besides, there's usually one station as stylized as **KHOM** *somewhere* at any given time. But there's rarely two.



WHAT'S NEWS

by Theda Sandiford-Waller

212-536-5053 • theda@billboard.com

Sire Names Pinlac VP; Szulinski To RCA

MUSICAL CHAIRS: Former EMI national director of promotion **Barry Pinlac** lands at Sire as VP of promotion. A.I.R.'s **Andy Szulinski** jumps to RCA as senior director of promotion, based in the Baltimore/D.C. area... Epic's **Steve Barnett** is named to the newly created post of senior VP of worldwide marketing... The Hollywood Reporter reports that **Tom Ennis**, Arista's VP of product management, will leave to head the U.S. arm of **Spice Girls'** management company, 19 Management... Maverick Recordings VP of promotion **Terry Anzaldo** is building a solid staff: former EMI rep **Chad Brueske** will be based in Detroit; **Cat Collins** will handle Southeast regional duties, based in Atlanta; and Boston-based **Steve Goldstein** will also handle New York. Also on staff: national promotion guy **Tommy Nappi**, **Tom Schmall** in Chicago, and **Wendy Goodman** in Dallas.

MUSIC BOOKS: **Todd Rundgren** is writing his autobiography for Avon Books... The "official" **Aerosmith** biography, "Walk This Way," is now in bookstores... **David Lee Roth's** autobiography, "Crazy From The Heat," hits book stores Oct. 23... Next spring, look for **R.E.M.'s Michael Stipe** to publish a book of photography, "Two Times Intro: On The Road With Patti Smith." The book culls photos Stipe took while traveling with **Smith** on her 1995 tour.

ARTIST MONITOR: **Az Yet** has replaced **Marc Nelson**, who recently left the group to pursue a solo career, with **Tony Grant**. Az Yet has recorded an a cappella version of "Fame" for the TV show's revival, "Fame L.A." Subsequent episodes includes performances by the **Brand New Heavies** and **Taj Mahal**... **Sinead O'Connor** has composed original music for the play "Remembrance," currently playing at the Odyssey Theatre in Los Angeles... **David Bowie** will be the featured performer at **GQ's Man of the Year Awards** Oct. 15 at Radio City Music Hall. **Ice Cube** and **Nine Inch Nails** have collaborated on a cover of Bowie's "I'm Afraid Of Americans" to appear on the next **Nine Inch Nails** album.

Remix king **Puff Daddy** sent us a copy of his reinterpretation of the **Police's** "Roxanne." The mix pitches down **Sting's** vocal, layers elements of **UTFO's** "Roxanne Roxanne" chorus, and features a rap.

BABYFACE recently taped his first "MTV Unplugged" performance at New York's Manhattan Center. What's News spied **Donald Trump**, **Puff Daddy**, and **Andre Harrell** in the audience. **Babyface**, along with an all-star band that included **Eric Clapton**, **Stevie Wonder**, **Sheila E.**, **K-Ci & JoJo**, **Shanice Wilson**, and **Mark Nelson** (an early member of **Boyz II Men**) performed his hits and a medley of songs he's written for others. Clapton sat in on "Change The World" and "Talk To Me." Face's brothers **Kevon** and **Melvin Edmonds** lent their harmonies to "I'll Make Love To You" and "End Of The Road." Wonder and Face gave a soul-stirring performance of **Michael Jackson's** "Gone Too Soon" in honor of the late **Diana, Princess of Wales**. The show airs Nov. 21.

An Hour Later, Another Craving



The staff of **Mariah Carey's Crave Records** was recently released from double-secret probation and posed for their first group shot. Pictured, from left, VP/pop promotion **Lisa Wolfe**, VP/black music/A&R **Cory Rooney**, Crave president **Rick Bisceglia**, VP/marketing and development **Julia Eisenthal**, senior director/national promotion **Dawn Fox**, VP/R&B promotion **Morace Landy**, VP/A&R **Michael Ellis**, and VP/business and operations **Michael Kushner**.

EDITOR IN CHIEF: HESTON HOSTEN
 EDITOR: SEAN ROSS
 MANAGING EDITOR: KEVIN CARTER
 DIRECTOR OF CHARTS: THEDA SANDIFORD-WALLER
 ASSOCIATE DIRECTOR OF CHARTS: STEVEN GRAYBOW
 WRITER/REPORTER: DANA HALL
 CHART PRODUCTION MANAGER: MICHAEL CUSSON
 ASST. CHART PRODUCTION MANAGER: ALEX VITOLUIS
 EDITORIAL PRODUCTION MANAGERS: BARRY BISHIN, MARCIA REPINSKI
 EDITORIAL PRODUCTION: SUSAN CHICOLA, MARC GIAQUINTO
 SARAH JOHNSON, MARIA MANLICIC
 COPY EDITOR: CARL ROSEN
 ADVERTISING PRODUCTION MANAGER: LYDIA MIKULKO
 ASSOC. ADVERTISING PRODUCTION MANAGER: CINDEE WEISS
 ADVERTISING ART DIRECTOR: RAY CARLSON
 ADVERTISING PRODUCTION ARTIST: SHIRA HALFON

GENERAL MANAGER: JON GUYNN
 ACCOUNT MANAGERS: GARY NUJELL, JEFF SOMERSTEIN
 ADVERTISING SERVICES MANAGER: ALYSE ZIGMAN
 SALES ASSISTANTS: EVELYN ASZODI, ERICA BENGTON,
 TODD MAYCHER

EDITORIAL ADVISER: TIMOTHY WHITE
 PRODUCTION DIRECTOR: MARIE GOMBERT
 DIRECTOR OF MARKETING: ELISSA TOMASETTI
 CIRCULATION DIRECTOR: JEANNE JAMIN



PRESIDENT: HOWARD LANDER
 SENIOR VP/GENERAL COUNSEL: GEORGINA CHALLIS
 VICE PRESIDENTS: KAREN OERTLEY, ADAM WHITE
 DIRECTOR OF STRATEGIC DEVELOPMENT: KEN SCHLAGER
 BUSINESS MANAGER: JOELLEN SOMMER

©1997 BPI Communications
 1515 Broadway, New York, NY 10036 212-764-7300
 5055 Wilshire Blvd., 7th floor, Los Angeles, CA 90036 213-525-2300
 For subscriptions call: 800-722-2346

Airplay Monitor reporting panels are based solely on a station's musical content.

RADIO CONCERT MONITOR

DATE	CALL LETTERS	EVENT	SCHEDULED TO APPEAR
Oct. 11-12	WBMX (Mix 98.5) Boston	Fall Fest	10,000 Maniacs, Barenaked Ladies, Big Head Todd & the Monsters, Paula Cole, Lisa Loeb, Monkees, Sarah McLachlan, Duncan Sheik, Sister Hazel, more
Oct. 17	WXXL Orlando, Fla.	Seminar Kick-Off	Sister Hazel
Oct. 18	WABB Mobile, Ala.	Gulf State Fair	Meredith Brooks, Smash mouth
Oct. 19	KBXX (the Box) Houston	Car Show	Little Ke Ke, Run-D.M.C., Timbaland & Magoo, more
Oct. 25	KRUZ Santa Barbara, Calif.	KRUZ Concert No. 1	Paula Cole, more
Oct. 27	KPWR (Power 106) L.A.	Powerhouse	Mack 10, more
Oct. 31	WZPL Indianapolis	Boo Bash	Blessid Union of Souls
Nov. 1	WKTU New York	Saturday Night Fever 20th Anniversary	Bee Gees, KC & The Sunshine Band, Kool & The Gang, Tavares, Trampmps
Nov. 17	WWMX Baltimore	Jojo & Kenny's B-day	Duncan Sheik, Sister Hazel
Dec. 9	WHTZ (Z100) New York	Jingle Ball	TBA
Dec. 10	WXKS (Kiss 108) Boston	Acoustic Kiss-mas	TBA
Dec. 18	WNKS Charlotte, N.C.	X-Mas Show	Sister Hazel, more

Let us monitor your event! Kevin Carter: 213-525-2303 or E-mail KCarter@billboard.com

1977 Ringling Bros. Class Reunion



Actually, on closer examination, it's a photo of **WWZZ (Z104) Washington, D.C.**, jock **Jojo Morales**, who got himself hitched recently in front of a bunch of industry pals. Pictured in the back row, from left, are **Spyder Harrison** of **WFLZ Tampa, Fla.**; **Human Numan**, formerly of **WHTZ (Z100) New York**; the stunned bride, **Lisa Jacobs**; a heavily medicated **Morales**; **Z100 APD Kid Kelly**; **Z104 jock L.A. Reid**; and **Brian Whitman** of **WABC New York**. In front is **Don Kelly** of **WPST Trenton, N.J.**

Quit Your Bitchin' And Take The Picture



Capitol recording artist **Meredith Brooks** basks in the antiseptic splendor that is the lobby of **WSTR (Star 94) Atlanta**. Pictured, from left, are Capitol's **Aimee Saiger, MD J.R. Ammons**, **Brooks** (in special lobby-coordinated outfit), and **PD Dan Bowen**.

Modern Supplying More Top 40 Hits, But Modern Adult Is The Gatekeeper

Continued from page 1

most no records of its own but seemed to serve as mainstream top 40's gatekeeper.

Mainstream top 40 was either the first format or tied for first to chart 11 of its own hits. It was the first format outright to chart eight of those. That's down from 13 songs, including ties, and five outright last April. It was tied with rhythmic top 40, down slightly from 12 altogether/seven outright six months ago to 11 and seven this time. Modern rock was first/tied for first on 10 mainstream top 40 hits this time and first outright on eight songs; those figures are twice what they were in April.

Triple-A was first to chart five songs, including ties, and two outright; it was down from eight songs, seven of them exclusives in the spring. Adult top 40, which a year ago was first on the largest number of songs, has slipped from 13 to seven in the spring to two this time; both of those charted first exclusively at adult top 40. AC was first on two songs, as it has been since we first did this sort of analysis a year ago. Mainstream rock was first on one title.

Mainstream and adult R&B, which have seen their already slight influence erode over the last year, were first on one song apiece, tying them each with country—a format that almost never sends records to mainstream top 40.

MAINSTREAM TOP 40 ON ITS OWN

The eight records on last week's chart that started exclusively at mainstream top 40 were by Spice Girls, OMC, Hanson, Aqua, Mr. President, Blessid Union, Imani Coppola, and Peach Union. The three ties were Backstreet Boys, Mariah Carey, and Robyn's "Do You Know (What It Takes)" (all with rhythmic top 40). While not all 11 of those titles were ultimately records that sold both albums and singles, the inclusion of hits like "Honey," "Quit Playing Games (With My Heart)," and "2 Become 1" is further evidence that a record that charts first at mainstream top 40 is no longer doomed for turntable hit status.

One reason that mainstream top 40 now seems to have some records that it can chart first is the ongoing teen-idol revival. Those acts didn't stop existing after New Kids On The Block, but they were almost always R&B or rhythmic top 40 acts in the New Edition/Boyz II Men/Color Me Badd/All-4-One mode. Those acts are still heavily represented among the 11 songs that rhythmic top 40 charted first. Its seven exclusives include 98 Degrees, Az Yet, and Allure, as well as Will Smith, Puff Daddy, En Vogue, and INOJ. Besides the three ties it shares with mainstream top 40, rhythmic top 40 tied with adult R&B as the first format to chart Boyz II Men's "4 Seasons Of Loneliness."

MORE FUN IN THE MODERN WORLD

As recently as six to nine months ago, it was common to hear from record reps that having a success story at modern rock hurt a record, as PDs overcompensated for their mid-'90s modern binge. Now, the number of top 40 hits that charted first at modern is back to about where it was 18 months ago. Modern rock was first to chart 10 songs, eight of them outright, vs. 12 songs, 10 of them outright, in spring '96.

The eight exclusives were Chumbawamba, Smash mouth, Verve Pipe, Sugar Ray, Third Eye Blind, Tonic, Meredith Brooks, and Mighty Mighty Bosstones. The two hits that first charted simultaneously at modern rock and triple-A were by Sarah McLachlan and the Dave Matthews Band. The difference between now and 18 months ago is that modern crossovers have modern AC as a way station, which seems to legitimize them for some mainstream top 40 PDs. Of those 10 songs, nine charted first at modern adult before debuting at mainstream top 40. The only exception was "The Freshmen," which charted at mainstream top 40 before a separate modern adult chart was published.

In other words, just as few R&B hits can get to mainstream top 40 without first being vetted by rhythmic or crossover radio, it now appears that modern adult has become the acid test for whether a modern rock song will make it to mainstream top 40. (Then again, few R&B hits get to

mainstream top 40 altogether. The only one of last week's hits that charted first at R&B was the Notorious B.I.G.'s "Mo Money Mo Problems.")

Although it seems to serve as the clearinghouse for modern rock product, modern adult starts almost no records of its own, as one might expect from the hybrid nature of the format. Only Sheryl Crow's "A Change Would Do You Good" charted first at modern adult, and in that case it was tied with triple-A.

ADULT TOP 40 LESS AGGRESSIVE?

Compared with a year ago, when it was first on a surprising number of records, adult top 40 didn't start much itself this time. It was first on only two songs, the ironically titled "I Don't Want To Wait" and "Foolish Games," both of which could as easily have broken at modern adult. Once dismissed as a format that took its orders primarily from top 40, adult top 40 now seems to be taking its cues mostly from modern AC (by way of modern). Since it resists all but the biggest rhythmic records, and since many traditional AC artists have now been exiled to the AC chart and rarely move beyond it, that leaves adult top 40 with very little of its own. Then again, it's also the case that a year ago modern PDs were only warming up to poppier titles like Brooks or Chumbawamba, meaning that adult top 40 would have been more likely to get there first.

Triple-A, besides its three shared titles, was first outright on Sister Hazel and "The Difference" by the Wallflowers. Rock, which wasn't first to chart anything last time, was first on Matchbox 20's "Push."

Mainstream AC was first to chart Amy Grant's and Elton John's "Candle In The Wind" (the latter because so many AC PDs got a jump on their competition by throwing an earlier version back into current rotation until the recut version was available).

Country's rare contribution to the mainstream top 40 chart was LeAnn Rimes' "How Do I Live." Ironically, while country did chart that record first, most stations ultimately opted instead for the rival Trisha Yearwood version. If you were to count only formats where Rimes ultimately had a hit, the song should be credited to AC, which charted it a month before mainstream top 40.

Butterfly Visits



Columbia artist Mariah Carey, left, visits the 40th-floor offices of WLTW (Lite-FM) New York to promote her new single, "Butterfly." She's pictured with VP/GM Rona Landy.

MONITOR PROFILE

It Takes A Goodman To Program The Right Brand Of Hot AC For A Modern Baltimore

Mix is a hot AC station with a modern lean—we are not a modern AC station," says Adam Goodman, PD of American Radio Systems' WWMX (Mix 106.5) Baltimore.

"I don't think that there has yet to be a clear definition of modern AC as a format," Goodman adds. "In many markets, what passes for modern AC is actually a hot AC with a modern lean; there are also modern rock stations with an adult feel, but they're still modern rock at their core."

Goodman has some room to maneuver. When the recent CBS/ARS deal is finally consummated, "our stations in this market will have every demo from 12 to 60 covered, with very little overlap," he says. Those properties also include classic rock WOCT, oldies WQSR, soft AC WLIF, modern WHFS, and recent R&B-to-top 40 convert WXYV.

WXYV, so far, has leaned dance, similar to nearby WWZZ (Z104) Washington, D.C. While Z104's debut had an impact on adult top 40 rival WRQX (Mix 107.3), Goodman says that in Baltimore, "there was no

I in that demo but us," he contends.

Goodman's entry into radio was at his college station in Ithaca, N.Y., where the PD was a senior named Tom Poleman, now PD of WHTZ (Z100) New York. Prior to transferring to Baltimore, Goodman programmed ARS classic hits outlet WZMX Hartford, Conn. Before that, he spent several years as research director, working for Scott Shannon, at WPLJ New York and KQLZ (Pirate Radio) Los Angeles. Prior to that, he served as AMD at WHTZ, where he had the rare thrill of working for both Shannon and Steve Kingston, whom he calls "the two best teachers I've had in my career. To them, backing down was an unacceptable way of doing business." Another mentor he cites is his former Hartford GM, Suzanne McDonald, whom he credits for his people-management skills.

Although Mix is not heavily dayparted, Goodman has yet to expose such artists as Smash mouth, Mighty Mighty Bosstones, or Chumbawamba to the in-office crowd. "Although those songs fit this format, I feel we have to ease the midday audience into it. Right now, I feel they're a bit too attention-grabbing for an office environment. It's important we stay familiar from 9 to 5, and since we're No. 1 with in-office listening by a mile, we need to protect that."

With that in mind, here's a 4 p.m. hour of extra-familiar Mix 106.5: Sarah McLachlan, "Building A Mystery"; Tubes, "She's A Beauty"; Counting Crows, "A Long December"; Des'ree, "You Gotta Be"; Modern English, "I Melt With You"; OMC, "How Bizarre"; Tracy Chapman, "Give Me One Reason"; Men At Work, "Who Can It Be Now"; Sister Hazel, "All For You"; Wang Chung, "Dance Hall Days"; Fleetwood Mac, "Silver Springs"; Live, "Lightning Crashes"; and Dionne Farris, "I Know."

The Mix morning show, celebrating its third birthday next month, features Jojo Girard and Kenny Campbell, along with 10-year station vet Tamara Nelson, who recently moved from middays. "I can point to five people right here who are future PDs," says Goodman, quickly reeling off the names of night jock Mac Watson, overnight jock Scott Davies, midday jock Maria Dennis, production director Steve Monz, and MD/p.m. driver Greg Carpenter, who handles the label calls and networks with other trusted radio people, including Dave Simpson and Steve Salhany at sister WTIC-FM Hartford and Greg Strassell at WBMX Boston. "I've worked with some damn good MDs like Mike Preston and Frankie Blue, who taught me to gather as much information on records as you possibly can," Goodman says. "And don't ever think that you're smarter than your audience."

In a nod to one of Baltimore's local delicacies, Mix promotion coordinator Dave Burgess (ex-WPLY Philadelphia) recently unveiled the "Cash Crab" character as a vehicle to give away money. According to Goodman, the costume is on order, which means it won't be long before some poor bastard will be walking the streets of Baltimore dressed like a giant mutant crustacean. "Of course, everyone wants me to wear it, since I'm already the voice of the crab," says Goodman. "I think it's time for me to exert some executive privilege and finally delegate something."

KEVIN CARTER



Adam Goodman
Program Director
WWMX Baltimore

I'm amazed that many radio people still feel their success must come at somebody else's expense'

change in our strategy when 'XYV hit the air. Although there was no question that they were looking at us rather than at [crosstown R&B WERQ] 92Q. I hope their dance image clearly defines itself quickly. It helps them because they're filling a hole, and it helps us, because that's not us.

"I'm constantly amazed that many radio people still feel that their success must come at the expense of somebody else. In reality, your success is simply generated by your own audience's passion for your own radio station. I've believed that for years, even in New York with 50 signals. The success of any radio station is most directly influenced by itself; the stations that compete against you come in a distant second," he says. "Regardless of other formats around you, success is simply getting the most time from your audience with your product."

Unlike many programmers who dread the thought of bunking in with their competitors, Goodman relishes the thought. "We have to get used to conducting business in this new environment," he says. "It's just not a mature attitude to keep the old-school perception of having your competition in the building. I don't see any advantage in keeping us apart," he adds. "This gives us a chance to strategize together, and besides," he adds, "you know what they say about keeping your enemies close..."

Mix was off 6.6-5.9 12-plus in the spring book but posted an 11.6 share with 25-44 women. In the previous winter book, Mix ranked No. 1 in 25-54, a feat Goodman is particularly proud of. "In your entire hot AC panel at the time, nobody ranked No.

Strongest Increase In Airplay This Week

MAINSTREAM

**INCREASE
IN PLAYS**

CHUMBAWAMBA • Tubthumping (REPUBLIC/UNIVERSAL)	+741
WXXX +29, WHOT +24, WXYV +24, WRHT +21, WDDJ +21, WVSR +21, KKLQ +18, WWHT +17, WWZZ +17, KBKS +17	
MARIAH CAREY • Butterfly (COLUMBIA)	+602
WKSZ +34, KHFI +26, KRUF +24, WHYI +21, WBZZ +19, KKRD +18, KKLQ +18, KMXV +17, WNKS +17, KZHT +17	
SUGAR RAY • Fly (LAVA/ATLANTIC)	+465
WQZQ +25, KZHT +24, WYOY +18, WXIS +17, KMXV +17, WGTZ +17, WZST +16, KKRZ +16, KSMB +15, WDJX +15	
HANSON • I Will Come To You (MERCURY)	+458
WZNY +23, WDDJ +23, WKSZ +22, KSMB +22, KHHT +22, WAPE +21, WVSR +17, WQSL +15, WIXX +15, WQZQ +12	
ROBYN • Show Me Love (RCA)	+446
WTWR +20, KZZU +19, WQZQ +18, KRQQ +17, WKCI +16, WGTZ +16, WYCR +15, WDJX +15, WZST +14, WXXX +14	
SMASH MOUTH • Walkin' On The Sun (INTERSCOPE)	+352
WDDJ +25, WVKX +19, KZZU +19, WRVQ +19, WNNK +17, KRUF +15, WZYP +15, WAPE +14, KSMB +11, WXXX +11	
SHE MOVES • Breaking All The Rules (Geffen)	+316
WKSE +23, WPXY +22, WAEB +19, KESR +16, WNNK +16, WDDJ +15, KBFM +14, WPRO +14, KQKQ +13, WZJM +12	
BOYZ II MEN • 4 Seasons Of Loneliness (MOTOWN)	+296
WXIS +43, WWHT +33, WLKT +24, KRUF +24, WHYI +22, WVKX +16, WQZQ +14, WBLI +11, WVSR +10, WYCR +10	
SPICE GIRLS • Spice Up Your Life (VIRGIN)	+268
WQSL +29, WRVQ +22, KRBE +19, KKRD +15, WXYV +15, WPST +13, KKRZ +13, WFLY +12, WKSZ +11, WWZZ +11	
LEANN RIMES • How Do I Live (CURB)	+228
KZZU +40, WXIS +27, WJBJ +21, WHTZ +21, KHKS +18, WKSE +17, WXKB +16, WRVQ +15, WYOY +14, KDWB +14	

RHYTHMIC TOP 40

**INCREASE
IN PLAYS**

USHER • You Make Me Wanna... (LAFACE/ARISTA)	+232
KOHT +31, WBBM +25, WNVZ +23, KCAQ +22, WKTU +20, WIOQ +15, KBOS +14, KQMQ +12, KZFM +12, XHTZ +12	
SOMETHIN' FOR THE PEOPLE FEAT. TRINA & TAMARA • My Love Is The Shhh! (WARNER BROS.)	+226
WKXJ +21, KUBE +21, KKFR +19, KIKI +16, WNVZ +16, WWKX +15, KDON +14, WJJS +14, KTFM +12, KQKS +12	
LL COOL J • Phenomenon (DEF JAM/MERCURY)	+179
KQKS +43, KOHT +23, WKXJ +17, XHTZ +15, KCAQ +14, KUBE +13, WHHH +9, KTFM +9, KDGS +8, KBOS +8	
JANET JACKSON • Together Again (VIRGIN)	+166
KUBE +33, KSFM +28, KDON +23, WBBM +17, WWKX +16, KBOS +15, WPOW +14, KDGS +7, WDRQ +6, WJJS +3	
BOYZ II MEN • 4 Seasons Of Loneliness (MOTOWN)	+145
WKXJ +31, KUBE +31, WBBM +21, XHTZ +20, KSFM +12, WJJS +11, WKTU +10, KPRR +9, WHHH +8, KTFM +7	
MARIAH CAREY • Butterfly (COLUMBIA)	+133
KQKS +33, WFHN +21, KIBB +20, WWKX +18, XHTZ +12, WNVZ +12, KDGS +11, KLUC +9, KPRR +9, KQMQ +8	
SUGAR RAY • Fly (LAVA/ATLANTIC)	+116
WIOQ +37, WJJS +20, WNVZ +18, WDRQ +9, KLUC +8, WFHN +6, KIKI +5, KDGS +4, KZFM +2, KYLD +2	
BUSTA RHYMES • Put Your Hands Where My Eyes Could See (ELEKTRA/EEG)	+111
KYLZ +28, WKXJ +14, KCAQ +10, WJJS +10, KKFR +8, KUBE +7, WWKX +6, XHTZ +5, KYLD +4, KPRR +4	
AALIYAH • The One I Gave My Heart To (BLACKGROUND/ATLANTIC)	+101
WWKX +35, KYLZ +22, WKTU +19, KIKI +14, KZFM +13, WHHH +8, KBOS +8, XHTZ +6, KKSS +5, WFHN +5	
LSG • My Body (EASTWEST/EEG)	+101
KYLZ +23, KGGI +16, KLUC +14, KDGS +12, KSFM +11, WHHH +8, KKFR +8, WWKX +7, WJMN +3, XHTZ +1	

CROSSOVER

**INCREASE
IN PLAYS**

SOMETHIN' FOR THE PEOPLE FEAT. TRINA & TAMARA • My Love Is The Shhh! (WARNER BROS.)	+329
WHTA +26, WKXJ +21, KUBE +21, WJBT +20, KKFR +19, WPGC +19, KIKI +16, WPHI +16, WWKX +15, KDON +14	
LL COOL J • Phenomenon (DEF JAM/MERCURY)	+242
KQKS +43, WKXJ +17, KKDA +16, XHTZ +15, WHTA +14, KCAQ +14, KKB +13, KUBE +13, WROU +12, WCKX +10	
PUFF DADDY • Been Around The World (BAD BOY/ARISTA)	+236
WWKX +20, XHTZ +18, WJMI +15, WHTA +14, WUSL +14, WWVZ +12, WJBT +12, WJMN +11, KIKI +10, WYOK +10	
LSG • My Body (EASTWEST/EEG)	+216
KYLZ +23, WYOK +19, WQOK +18, KLUC +14, WJMJ +13, WERQ +13, KDGS +12, KBXX +12, WPEG +12, WJMI +9	
ALLURE FEATURING 112 • All Cried Out (TRACK MASTERS/CRAVE)	+205
WJMH +44, KQKS +24, KKDA +24, WROU +18, KYLZ +17, XHTZ +11, WPEG +9, KBOS +8, WIZF +8, KIKI +7	

MODERN ADULT

**INCREASE
IN PLAYS**

CHUMBAWAMBA • Tubthumping (REPUBLIC/UNIVERSAL)	+250
WLNK +24, KBBT +19, WBMX +19, KENZ +16, KLLC +15, WMXB +15, KAEP +13, KFMB +13, WXLE +12, KYSR +12	
THE WALLFLOWERS • Three Marlenas (INTERSCOPE)	+175
WKZL +29, KMXB +26, WLNK +19, WNSR +18, KZON +17, KYSR +15, KBBT +12, KTNP +12, WLIR +9, WJBX +8	
SMASH MOUTH • Walkin' On The Sun (INTERSCOPE)	+145
WWRV +22, WBMX +17, WHPT +13, WLNK +13, KZZO +11, KYSR +9, KLLC +8, KDMX +8, WALC +8, KMXB +7	
OASIS • Don't Go Away (EPIC)	+123
WKZL +29, WSHE +17, WBAM +16, KYSR +14, WLIR +13, WALC +13, KALC +11, WBOS +9, KBBT +7, WPLT +6	
SISTER HAZEL • All For You (UNIVERSAL)	+77
KDMX +14, WDCG +14, KLLC +11, WPLT +11, WNSR +7, WPLL +7, KZZO +6, KFMB +6, WSHE +6, WTMX +4	

ADULT TOP 40

**INCREASE
IN PLAYS**

CHUMBAWAMBA • Tubthumping (REPUBLIC/UNIVERSAL)	+274
WLNK +24, KBBT +19, WBMX +19, WPLJ +17, KLLC +15, WMXB +15, KSTZ +15, KFMB +13, KYSR +12, WBAM +11	
MARIAH CAREY • Butterfly (COLUMBIA)	+168
KSII +22, WPLJ +20, KYKY +19, WEZB +18, WMYX +18, WMXL +16, KURB +13, WSNE +10, WMC +10, WVAF +6	
SMASH MOUTH • Walkin' On The Sun (INTERSCOPE)	+157
KVUU +20, WBMX +17, WLNK +13, KZZO +11, KYSR +9, KLLC +8, KDMX +8, WQAL +8, WALC +8, KMXB +7	
THE WALLFLOWERS • Three Marlenas (INTERSCOPE)	+136
WKZL +29, KMXB +26, WLNK +19, WNSR +18, KYSR +15, KBBT +12, KTNP +12, KZZP +4, WAEV +1, KURB +1	
LEANN RIMES • How Do I Live (CURB)	+115
WWMX +25, WKDD +18, WOMX +15, WMXB +14, KPLZ +11, WMMX +10, WENS +10, KDMX +8, WVAF +5, KURB +4	

ADULT CONTEMPORARY

**INCREASE
IN PLAYS**

MARIAH CAREY • Butterfly (COLUMBIA)	+219
WASH +23, WMJQ +22, WMXS +18, WGSY +17, KMGA +13, WDOK +11, KLYF +11, KUDL +10, WLTE +10, KEZK +8	
GARY BARLOW • So Help Me Girl (ARISTA)	+128
WRVF +21, KSFI +17, WSLQ +16, WLTS +12, KTDY +9, WASH +8, KGBY +7, WLTW +6, WBEB +4, WDEF +4	
DONNA LEWIS & RICHARD MARX • At The Beginning (ATLANTIC)	+120
WMJQ +22, WINK +13, KTDY +10, WLIT +9, WDEF +9, WGSY +8, KKCW +8, WARM +7, WRCH +6, KGBY +6	
JIM BRICKMAN • The Gift (WINDHAM HILL)	+99
KUDL +18, WMGS +15, KESZ +11, WLAC +9, KKCW +7, WGSY +6, KOSI +6, WDEF +5, WLHT +5, KISC +4	
BACKSTREET BOYS • Quit Playing Games (With My Heart) (JIVE)	+75
KGBY +16, WRRM +15, WMYI +14, WBEB +11, KGBX +9, WGSY +7, WRVF +7, WTFM +6, KHTH +5, WMAG +5	

Where Did The Feeling Go?

THE NEWEST SINGLE FROM THE ORIGINAL
MOTION PICTURE SOUNDTRACK

Already On:
WXIS KIXY KBFM WZST
WKXJ KKSS KQIZ

Selena



POWER PLAYLISTS

For Week Ending October 5, 1997



Main content table with 12 columns of radio stations and their respective power playlists. Each column includes station name, PD, MD, and a list of songs with their chart positions (TW, LW).

POWER PLAYLISTS

For Week Ending October 5, 1997



Playlists compiled by Broadcast Data Systems Radio Track service. Songs ranked by number of plays in monitored week. Playlists are listed in order of TSB weekly rank, beginning with the highest-ranking station. Times are updated twice weekly following the release of the Spring and Fall Arbitron surveys. The number of stations shown each week varies depending upon season.

MIX 93.3 PD/MD: Jon Zeller Kansas City. Table with 40 rows of song titles and ratings.

JAMMIN' 92 PD: Dave Eubanks MD: Action Jackson Cleveland. Table with 40 rows of song titles and ratings.

XL106.7 OM/MD: Adam Cook APD/MD: Pete deGraaf Orlando. Table with 40 rows of song titles and ratings.

ALICE 106 PD: Gregg Cassidy MD: Maria Chavez Denver. Table with 40 rows of song titles and ratings.

PRO-FM PD: Chris Shebel MD: Davey Morris Providence. Table with 40 rows of song titles and ratings.

G105 OM: Brian Burns PD: Kip Taylor Raleigh. Table with 40 rows of song titles and ratings.

KISS 95.1 PD: Brian Bridgman MD: Marcie Crescente Charlotte. Table with 40 rows of song titles and ratings.

WZPL PD: Tom Gjerdrum MD: Dave Decker Indianapolis. Table with 40 rows of song titles and ratings.

MIX 104.1 Acting PD: Kandy Klutch MD: Tom Naylor New Orleans. Table with 40 rows of song titles and ratings.

KISS 106 PD: Mike Preston APD/MD: Chet Buchanan Seattle. Table with 40 rows of song titles and ratings.

WBLI PD: Ken Medek MD: Al Levine Long Island. Table with 40 rows of song titles and ratings.

KJYO PD: Mike McCoy MD: Joe Friday Oklahoma City. Table with 40 rows of song titles and ratings.

THE RIVER PD: Charlie Quinn MD: Scooter Nashville. Table with 40 rows of song titles and ratings.

WXYV PD: Dave Ferguson APD: Throb MD: Albie Dee Baltimore. Table with 40 rows of song titles and ratings.

WIXX PD: Dan Stone MD: David Burns Green Bay. Table with 40 rows of song titles and ratings.

KISS 98.5 PD: Sue O'Neil APD/MD: Dave Universal Buffalo. Table with 40 rows of song titles and ratings.

KHFI PD: John Roberts APD/MD: Krash Kelly Austin. Table with 40 rows of song titles and ratings.

WKRZ PD: Tony Banks APD/MD: Jerry Padden Wilkes-Barre. Table with 40 rows of song titles and ratings.

OCTOBER 10, 1997

MAINSTREAM

THIS WEEK	LAST WEEK	WKS. ON CHART	TITLE/LABEL/PROMOTION LABEL	ARTIST	DETECTIONS	
					TW	LW
			★ ★ ★ No. 1 ★ ★ ★			
①	1	12	FOOLISH GAMES ATLANTIC	JEWEL	4841	4714
②	2	8	FLY ATLANTIC/LAVA	SUGAR RAY	4822	4357
③	3	14	PUSH ATLANTIC/LAVA	MATCHBOX 20	4161	4054

again!
Thank You Radio For

①

②

③

From Your Friends At Atlantic

Next Up:

AALIYAH "The One I Gave My Heart To"

DONNA LEWIS/RICHARD MARX "At The Beginning" From The ANASTASIA Soundtrack



MONITOR TOP 40 & CROSSOVER PANELS

MAINSTREAM TOP 40 (92)

Albany, N.Y.	WFLY	McAllen, Texas	KBFM
Allentown, Pa.	WAEB	Miami	WHYI
Atlanta	WSTR	Minneapolis	KDWB
Augusta, Ga.	WZNY	Mobile, Ala.	WABB
Austin, Texas	KHFI	Nashville	WQZQ
Baltimore	WXYV		WRVW
Baton Rouge, La.	WLSS	New Bern, N.C.	WQSL
Boston	WXKS		WRHT
Buffalo, N.Y.	WKSE	New Haven, Conn.	WKCI
Burlington, Vt.	WXXX	New Orleans	KHOM
Carbondale, Ill.	WCIL	New York, N.Y.	WHTZ
Charleston, S.C.	WSSX	Oklahoma City	KYVO
Charleston, W.Va.	WVSR	Omaha, Neb.	KQKQ
Charlotte, N.C.	WNKS	Orlando, Fla.	WXXL
Chattanooga, Tenn.	WZST	Paducah, Ky.	WDDJ
Cincinnati	WKRQ	Pittsburgh	WBZZ
Cleveland	WZJM	Portland, Maine	WJBQ
Colorado Springs, Colo.	KKMG	Portland, Ore.	KKRZ
Columbia, S.C.	WNOK	Providence, R.I.	WPRO
Columbus, Ohio	WNCI	Raleigh, N.C.	WDCG
Dallas, Texas	KHKS	Richmond, Va.	WRVQ
Dayton, Ohio	WGTV	Roanoke, Va.	WXLK
Denver	KALC	Rochester, N.Y.	WPXY
Flint, Mich.	WWCK	Salt Lake City	KZHT
Ft. Myers, Fla.	WXKB	San Diego	KKLQ
Grand Rapids, Mich.	WSNX	San Francisco	KZQZ
Green Bay, Wis.	WIXX	Seattle	KBKS
	WKSZ	Shreveport, La.	KRUF
Greenville, S.C.	WFBC	Spokane, Wash.	KHTQ
Harrisburg, Pa.	WNNK		KZZU
Hartford, Conn.	WKSS	Springfield, Mo.	KHTO
Houston	KRBE	Syracuse, N.Y.	WNTQ
Huntsville, Ala.	WZYP		WWHT
Indianapolis	WZPL	Tampa, Fla.	WFLZ
Jackson, Miss.	WYOY	Toledo, Ohio	WTWR
Jacksonville, Fla.	WAPE		WVKS
Johnson City, Tenn.	WXIS	Trenton, N.J.	WPST
Kansas City	KMXV	Tucson, Ariz.	KRQK
Knoxville, Tenn.	WWST	Tulsa, Okla.	KHTT
Lafayette, La.	KSMB	Washington, D.C.	WWZZ
Lancaster, Pa.	WLAN	Wichita, Kan.	KKRD
Lexington, Ky.	WLKT	Wilkes-Barre, Pa.	WBHT
Little Rock, Ark.	KESR		WKRZ
Long Island, N.Y.	WBLI	Wilmington, Del.	WSTW
Los Angeles	KIIS	York, Pa.	WYCR
Louisville, Ky.	WDJX	Youngstown, Ohio	WHOT

RHYTHMIC TOP 40 (34)

Albuquerque, N.M.	KKSS	Monterey, Calif.	KDON
Bakersfield, Calif.	KYLZ	New Bedford, Mass.	WFHN
Boston	KKXX	New York	WKTU
Chattanooga, Tenn.	WJMN	Norfolk, Va.	WNVZ
Chicago	WKXJ	Oxnard, Calif.	KCAQ
Corpus Christi, Texas	WBMM	Philadelphia	WIOQ
Denver	KZFM	Phoenix	KKFR
Detroit	KQKS	Providence, R.I.	WWKX
El Paso, Texas	WDRQ	Riverside, Calif.	KGCI
Fresno, Calif.	KPRR	Roanoke, Va.	WJJS
Honolulu	KBOS	Sacramento, Calif.	KSFM
	KIKI	San Antonio, Texas	KTFM
Indianapolis	WHHH	San Diego	XHTZ
Las Vegas	KLUC	San Francisco	KYLD
Los Angeles	KIBB	Seattle	KUBE
Miami	WPOW	Tucson, Ariz.	KOHT
		Wichita, Kan.	KDGS

CROSSOVER (52)

Albuquerque, N.M.	KYLZ	Lafayette, La.	KRRQ
Atlanta	WHTA	Las Vegas	KLUC
Augusta, Ga.	WFXA	Los Angeles	KKBT
Baltimore	WERQ		KPWR
Birmingham, Ala.	WBHJ	Louisville, Ky.	WGZB
Boston	WJMN	Miami	WPOW
Charlotte, N.C.	WPEG	Milwaukee	WKKV
Charleston, S.C.	WWWZ	Mobile, Ala.	WYOK
Chattanooga, Tenn.	WKXJ	Monterey, Calif.	KDON
Chicago	WGCI	New Orleans	WQUE
Cincinnati	WIZF	New York	WQHT
Columbus, Ohio	WKCK	Orlando, Fla.	WJHM
Dallas	KKDA	Oxnard, Calif.	KCAQ
Dayton, Ohio	WBTT	Philadelphia	WPHI
	WROU		WUSL
Denver	KQKS	Phoenix	KKFR
Detroit	WJLB	Providence, R.I.	WWKX
Fresno, Calif.	KBOS	Raleigh, N.C.	WQOK
Greenville, S.C.	WJMZ	Roanoke, Va.	WJJS
Greensboro, N.C.	WJMH	San Diego	XHTZ
Honolulu	KIKI	San Francisco	KMEL
	KQMQ		KYLD
Houston	KBXX	Seattle	KUBE
Indianapolis	WHHH	Washington, D.C.	WKYS
Jackson, Miss.	WJMI		WPGC
Jacksonville, Fla.	WJBT	Wichita, Kan.	KDGS

MAINSTREAM

POWER PLAYLISTS



Monitor For Week Ending
October 5, 1997

Playlists supplied by Broadcast Data Systems. Radio Task service. Songs ranked by number of plays in monitored week. Playlists are listed in order of TSA weekly chart, beginning with the highest-charting station. Current are updated twice yearly following the releases of the Spring and Fall Arbitron surveys. The number of stations shown each week varies depending upon spot.

FLY 92		Z93		WDJX	
WFLY	PD: Mike Morgan	WGTZ	OM: Michael Luczak	WDJX	PD: C.C. Matthews
Albany	MD: Ron "Sugarbear" Williams	Dayton	MD: Dani Steele	Louisville	APD/MD: Karen Rite
	TW LW		TW LW		TW LW
1	1	1	1	1	1
2	2	2	2	2	2
3	3	3	3	3	3
4	4	4	4	4	4
5	5	5	5	5	5
6	6	6	6	6	6
7	7	7	7	7	7
8	8	8	8	8	8
9	9	9	9	9	9
10	10	10	10	10	10
11	11	11	11	11	11
12	12	12	12	12	12
13	13	13	13	13	13
14	14	14	14	14	14
15	15	15	15	15	15
16	16	16	16	16	16
17	17	17	17	17	17
18	18	18	18	18	18
19	19	19	19	19	19
20	20	20	20	20	20
21	21	21	21	21	21
22	22	22	22	22	22
23	23	23	23	23	23
24	24	24	24	24	24
25	25	25	25	25	25
26	26	26	26	26	26
27	27	27	27	27	27
28	28	28	28	28	28
29	29	29	29	29	29
30	30	30	30	30	30
31	31	31	31	31	31
32	32	32	32	32	32
33	33	33	33	33	33
34	34	34	34	34	34
35	35	35	35	35	35
36	36	36	36	36	36
37	37	37	37	37	37
38	38	38	38	38	38
39	39	39	39	39	39
40	40	40	40	40	40



★ ★ ★ **AIRPOWER** ★ ★ ★
(Minimum 1500 detections for the first time)

Total Plays/Gain	Total Plays/Gain
CHUMBAWAMBA 1921/741 <i>Tubthumping (Republic/Universal)</i> Total Stations: 89/Chart Move: 30-22 Heavy (40+ plays): 5 KKLQ, KSMB, WFLZ, WKSZ, WPRO Medium (20-39): 44 KBKS, KDWB, KESR, KHFI, KIIS, KJYO, KKRZ, KQKQ, KRBE, KZHT, WABB, WBHT, WDDJ, WGTZ, WHOT, WHTZ, WHYI, WJBO, WKRO, WKSE, WKSS, WLKT, WLSS, WNCI, WNKS, WPST, WQSL, WRHT, WRVQ, WRVW, WSNX, WWSR, WWHT, WWZZ, WXKS, WXXL, WXXX, WXYV, WYCR, WZNY, WZPL, WZYP Light (Under 20): 40 New Airplay This Week: 27 KBFM, KHKS, KHHT, KMMG, KKRZ, KMXV, KRUF, KZQZ, WAPE, WBZZ, WCIL, WDDJ, WFLY, WHOT, WLAN, WNNK, WNTQ, WPXY, WQZQ, WRHT, WSSX, WSTR, WTVR, WWCK, WXLK, WXYV, WZST	SMASH MOUTH 1637/352 <i>Walkin' On The Sun (Interscope)</i> Total Stations: 88/Chart Move: 28-26 Heavy (40+): 4 KKLQ, KZZU, WABB, WIXX Medium (20-39): 40 KALC, KBKS, KDWB, KESR, KHFI, KJYO, KKRZ, KMXV, KQKQ, KRUF, KSMB, WBHT, WCIL, WDCG, WDDJ, WFBC, WFLZ, WGTZ, WHTZ, WJBO, WKRO, WLKT, WNKS, WNNK, WNOK, WPRO, WQSL, WRHT, WRVQ, WRVW, WSNX, WSSX, WVKX, WWCK, WXXS, WXLK, WXXX, WYCR, WZNY, WZPL

AIRPOWER BOUND

Total Plays/Gain

EN VOGUE 1380/-27
Too Gone, Too Long (EastWest/EEG)
Total Stations: 83/Chart Move: 27-28
Heavy (40+ plays): 3 KZZU, WGTZ, WQZQ
Medium (20-39): 29 KBFM, KESR, KHOT, KQKQ, KRUF, KSMB, WAPE, WBHT, WDDJ, WDJX, WFBC, WFLY, WFLZ, WIXX, WKSZ, WLKT, WNNK, WPRO, WQSL, WSNX, WSSX, WTVR, WVKX, WWSR, WWHT, WYCR, WZJM, WZNY, WZST
Light (Under 20): 51
New Airplay This Week: 2 WAEB, WZPL

THE NOTORIOUS B.I.G. (FEAT. PUFF DADDY & MASE) 1232/109
Mo Money Mo Problems (Bad Boy/Arista)
Total Stations: 80/Chart Move: 35-29
Heavy (40+): 5 KDWB, KIIS, KZZU, WHTZ, WWHT
Medium (20-39): 21 KHFI, KKRZ, KRBE, KRQO, KZHT, KZQZ, WDDJ, WDJX, WFLZ, WGTZ, WKSE, WKSS, WLAN, WLKT, WQSL, WRVQ, WSNX, WWSR, WWZZ, WXXB, WXYV
Light (Under 20): 54
New Airplay This Week: 3 KHKS, WBHT, WXXL

ELTON JOHN 1131/-44
Candle In The Wind 1997 (Rocket/A&M)
Total Stations: 74/Chart Move: 32-32
Heavy (40+): 5 KBFM, KHFI, KHOM, WKSE, WRVQ
Medium (20-39): 20 KDWB, KHKS, KHOT, KKRZ, KMXV, WAEB, WHTZ, WHYI, WKRZ, WKSS, WLAN, WNTQ, WSTR, WSTW, WWZZ, WXXB, WXXS, WXXX, WYCR, WZPL
Light (Under 20): 49
New Airplay This Week: 1 WHOT

MARIAH CAREY 986/602
Butterfly (Columbia)
Total Stations: 68/Chart Move: Debut 34
Heavy (40+): 1 KHFI
Medium (20-39): 19 KBKS, KKRZ, KRUF, KZHT, WABB, WBZZ, WFLY, WFLZ, WHTZ, WHYI, WKCI, WKSZ, WNKS, WNOK, WPRO, WPXY, WSTR, WXXS, WXXL
Light (Under 20): 48
New Airplay This Week: 37 KBFM, KHOM, KKLQ, KKRZ, KMXV, KQKQ, KRBE, KRQO, KRUF, KSMB, WAEB, WBHT, WBZZ, WDDJ, WFBC, WGTZ, WHTZ, WHYI, WKCI, WKRZ, WKSZ, WLAN, WLKT, WLSS, WNCI, WQSL, WRHT, WSTW, WTVR, WWCK, WWHT, WXXB, WXXX, WYCR, WYOV, WZJM, WZNY

FIONA APPLE 928/197
Criminal (Clean Slate/WORK)
Total Stations: 56/Chart Move: Debut 36
Heavy (40+): 2 KSMB, WKSZ
Medium (20-39): 15 KBKS, KESR, KHOT, WABB, WBHT, WDCG, WDDJ, WKRO, WQSL, WSSX, WSTR, WXXS, WXXL, WXYV, WZNY
Light (Under 20): 39
New Airplay This Week: 10 KHOM, KZHT, WDDJ, WFLZ, WHTZ, WJBO, WLSS, WXLK, WYOV, WZYP

INOJ 905/142
Love You Down (So So Def/Columbia)
Total Stations: 38/Chart Move: 40-37
Heavy (40+): 9 KBFM, KHKS, KHOM, KRUF, KSMB, KZQZ, WDJX, WWZZ, WXXB
Medium (20-39): 12 KHHT, KIIS, KRQO, WKSE, WKSS, WLKT, WQSL, WSNX, WWHT, WXXL, WXYV, WZJM
Light (Under 20): 17
New Airplay This Week: 2 KDWB, WBHT

DURAN DURAN 904/165
Electric Barbarella (Capitol)
Total Stations: 69/Chart Move: Debut 38
Heavy (40+): 0
Medium (20-39): 17 KBKS, KESR, KIIS, KKLQ, KQKQ, WABB, WAEB, WAPE, WCIL, WJBO, WNNK, WPRO, WTVR, WVKX, WXLK, WYCR, WZNY
Light (Under 20): 52
New Airplay This Week: 9 KDWB, KHFI, WBHT, WFLZ, WHOT, WIXX, WLSS, WPRO, WYOV

HANSON 904/458
I Will Come To You (Mercury)
Total Stations: 64/Chart Move: Debut 39
Heavy (40+): 1 KHOM
Medium (20-39): 18 KESR, KHHT, KQKQ, KSMB, WAPE, WCIL, WDDJ, WIXX, WJBO, WKSZ, WNOK, WNTQ, WPRO, WQSL, WRVQ, WWZZ, WYCR, WZNY
Light (Under 20): 45
New Airplay This Week: 24 KHOT, KHHT, KJYO, KMMG, KRUF, KSMB, KZQZ, WAPE, WDDJ, WDJX, WHOT, WKSE, WKSS, WKSZ, WLAN, WQZQ, WRHT, WSTW, WWSR, WXXS, WXXL, WZJM, WZNY

FLEETWOOD MAC 746/84
Silver Springs (Reprise)
Total Stations: 79
Heavy (40+): 1 KALC
Medium (20-39): 11 KESR, WAEB, WDDJ, WKCI, WLAN, WNNK, WQSL, WTVR, WWSR, WXXS, WXLK
Light (Under 20): 67

FOREST FOR THE TREES 735/68
Dream (DreamWorks/Geffen)
Total Stations: 70
Heavy (40+): 1 KSMB
Medium (20-39): 12 KALC, KESR, KQKQ, WABB, WDCG, WJBO, WKRO, WLSS, WPRO, WQSL, WVKX, WZPL
Light (Under 20): 57
New Airplay This Week: 1 WFLY

ELTON JOHN 603/99
Something About The Way You Look Tonight (Rocket/A&M)
Total Stations: 66
Heavy (40+): 0

MOST NEW STATIONS

	No. Of Stations
MARIAH CAREY <i>Butterfly (Columbia)</i>	37
CHUMBAWAMBA <i>Tubthumping (Republic/Universal)</i>	27
HANSON <i>I Will Come To You (Mercury)</i>	24
SHE MOVES <i>Breaking All The Rules (Geffen)</i>	22
SPICE GIRLS <i>Spice Up Your Life (Virgin)</i>	17

3RD PARTY 364/67
My Love Is Alive (DVB/A&M)
Total Stations: 34
Heavy (40+): 0
Medium (20-39): 6 KBFM, WBLI, WNNK, WWSR, WWZZ, WXYV
Light (Under 20): 28
New Airplay This Week: 4 KDWB, KHOM, WFLY, WNTQ

OASIS 601/183
Don't Go Away (Epic)
Total Stations: 52
Heavy (40+): 1 WKRO
Medium (20-39): 6 KBKS, KESR, KKLQ, KSMB, WQSL, WYCR
Light (Under 20): 45
New Airplay This Week: 12 KALC, KHOT, KKLQ, KRUF, WABB, WAEB, WCIL, WNKS, WNTQ, WPST, WXXS, WZST

USHER 591/191
You Make Me Wanna... (LaFace/Arista)
Total Stations: 46
Heavy (40+): 2 KHOM, WWSR
Medium (20-39): 10 KHFI, KMMG, KZQZ, KZZU, WDDJ, WKSE, WQSL, WSNX, WTVR, WZJM
Light (Under 20): 34
New Airplay This Week: 7 KBKS, KKRZ, KRUF, KZQZ, WPRO, WQZQ, WZJM

SHAWN COLVIN 543/51
You And The Mona Lisa (Columbia)
Total Stations: 49
Heavy (40+): 0
Medium (20-39): 8 KSMB, WDDJ, WFBC, WJBO, WKRO, WKRZ, WNNK, WPRO
Light (Under 20): 41
New Airplay This Week: 4 KZHT, WCIL, WWSR, WZNY

THE ROLLING STONES 486/85
Anybody Seen My Baby (Virgin)
Total Stations: 45
Heavy (40+): 0
Medium (20-39): 10 KESR, KSMB, WAEB, WDDJ, WKRZ, WNNK, WQSL, WTVR, WXLK, WYCR
Light (Under 20): 35
New Airplay This Week: 6 KKRZ, KSMB, WABB, WDJX, WRHT, WRVW

TEXAS 408/72
Say What You Want (Mercury)
Total Stations: 35
Heavy (40+): 0
Medium (20-39): 5 KALC, KESR, WABB, WLKT, WSSX
Light (Under 20): 30
New Airplay This Week: 7 KQKQ, WBLI, WCIL, WHOT, WLAN, WLSS, WZST

SHE MOVES 385/316
Breaking All The Rules (Geffen)
Total Stations: 41
Heavy (40+): 0
Medium (20-39): 4 KBFM, WKRZ, WKSE, WPXY
Light (Under 20): 37
New Airplay This Week: 22 KESR, KHFI, KHOT, KHHT, KKRZ, KQKQ, KRUF, KSMB, WAEB, WDDJ, WDJX, WFLY, WFLZ, WIXX, WKSE, WNNK, WPRO, WPXY, WQSL, WWCK, WYCR, WZJM

LE CLICK FEAT. KAYO 384/7
Don't Go (Logic/RCA)
Total Stations: 35
Heavy (40+): 1 KBFM
Medium (20-39): 8 KHHT, KIIS, KRQO, WKSZ, WPRO, WWZZ, WXLK, WXYV
Light (Under 20): 26
New Airplay This Week: 1 WXXB

GARY BARLOW 304/77
So Help Me Girl (Arista)
Total Stations: 31
Heavy (40+): 8
Medium (20-39): 3 KQKQ, KSMB, WJBO
Light (Under 20): 28
New Airplay This Week: 5 WNNK, WPRO, WRVW, WXXS, WXLK

AALIYAH 269/38
The One I Gave My Heart To (Blackground/Atlantic)
Total Stations: 28
Heavy (40+): 0
Medium (20-39): 3 KBFM, KHOM, KQKQ
Light (Under 20): 25
New Airplay This Week: 3 KHOT, WFBC, WRHT

★ SPICE GIRLS 268/268
Spice Up Your Life (Virgin)
Total Stations: 46
Heavy (40+): 0
Medium (20-39): 2 WQSL, WRVQ
Light (Under 20): 44
New Airplay This Week: 17 KIIS, KKRZ, KKRZ, KRBE, WABB, WBHT, WCIL, WFLY, WHTZ, WKSZ, WNOK, WPST, WQSL, WRVQ, WWZZ, WXYV, WZNY

911 248/16
Love Sensation (SABAN/Virgin)
Total Stations: 29
Heavy (40+): 1 KSMB
Medium (20-39): 5 KBFM, WGTZ, WNNK, WRVQ, WXLK
Light (Under 20): 23
New Airplay This Week: 2 WRVQ, WZJM

SALT-N-PEPA 235/97
R U Ready (Red Ant/London/Island)
Total Stations: 39
Heavy (40+): 0
Medium (20-39): 0
Light (Under 20): 39
New Airplay This Week: 10 KDWB, KHOM, KHHT, KQKQ, KRBE, KSMB, WQSL, WSNX, WTVR, WXLK

INDIGO GIRLS 219/18
Shame On You (Epic)
Total Stations: 14
Heavy (40+): 1 WSTR
Medium (20-39): 4 WDCG, WNOK, WSSX, WXXS
Light (Under 20): 9

THE SUNDAYS 214/10
Summertime (DGC/Geffen)
Total Stations: 21
Heavy (40+): 0
Medium (20-39): 1 WDCG
Light (Under 20): 20
New Airplay This Week: 1 WZYP

LOS UMBRELLOS 183/-6
No Tengo Dinero (Flex/EMI/Virgin)
Total Stations: 13
Heavy (40+): 1 KHFI
Medium (20-39): 2 KHKS, KRUF
Light (Under 20): 10
New Airplay This Week: 1 WWHT

COOLIO FEAT. 40 THEVZ 177/-34
C U When U Get There (Tommy Boy)
Total Stations: 18
Heavy (40+): 0
Medium (20-39): 3 KKRZ, WRVQ, WWHT
Light (Under 20): 15

★ DJ COMPANY 162/89
Forever Young (Crave)
Total Stations: 25
Heavy (40+): 0
Medium (20-39): 1 WPXY
Light (Under 20): 24
New Airplay This Week: 8 KHOM, KKRZ, KSMB, WNTQ, WTVR, WWCK, WXXS, WXLK

JAMIROQUAI 141/3
Airight (WORK)
Total Stations: 17
Heavy (40+): 0
Medium (20-39): 2 KESR, KMMG
Light (Under 20): 15
New Airplay This Week: 1 KHOM

BILLIE MYERS 137/21
Kiss The Rain (Universal)
Total Stations: 16
Heavy (40+): 0
Medium (20-39): 1 WXXS
Light (Under 20): 15
New Airplay This Week: 3 KHOM, KHOT, WPXY

NU FLAVOR 135/27
Heaven (Reprise)
Total Stations: 20
Heavy (40+): 0
Medium (20-39): 3 KBFM, KHOM, WSNX
Light (Under 20): 17

LIVIN' JOY 112/-4
Dreamer (Undiscovered/MCA)
Total Stations: 13
Heavy (40+): 0
Medium (20-39): 2 KZQZ, WXYV
Light (Under 20): 11

★ JANET JACKSON 103/91
Together Again (Virgin)
Total Stations: 12
Heavy (40+): 0
Medium (20-39): 2 KKRZ, WHYI
Light (Under 20): 10
New Airplay This Week: 5 KHKS, KKRZ, WFLZ, WHYI, WXYV

★ THE WALLFLOWERS 102/78
Three Marlenas (Interscope)
Total Stations: 32
Heavy (40+): 0
Medium (20-39): 1 KKLQ
Light (Under 20): 31
New Airplay This Week: 3 WXXS, WKRZ, WZYP

★ BARENAKED LADIES 102/46
Brian Wilson (Reprise)
Total Stations: 17
Heavy (40+): 0
Medium (20-39): 1 WKSE
Light (Under 20): 16
New Airplay This Week: 3 WCIL, WTVR, WXLK

★ MARY J. BLIGE 102/47
Everything (MCA)
Total Stations: 14
Heavy (40+): 0
Medium (20-39): 0
Light (Under 20): 14
New Airplay This Week: 6 KRUF, WFLY, WKSZ, WNNK, WQSL, WYCR

Airpower awarded to those records which attain 1500 detections for the first time. New airplay lists those stations registering six or more detections per week on a record for the first time. ★ Initial impact: records appearing on this page for the first time.

MONITOR AIRPLAY SONG ACTIVITY REPORTS For Week Ending October 5, 1997

Broadcast Data Systems... Detailed song tracking information for the last 3 weeks for all songs showing increased play this week...

98 DEGREES 2457/16 Invisibile Man (Motown) Total Stations: 89 Chart Move: 12-13

ALLURE FEATURING 112 1746/151 All Cried Out (Track Masters/Crave) Total Stations: 85 Chart Move: 23-24

FIONA APPLE 928/197 Criminal (Clean Slate/Work) Total Stations: 56 Chart Move: Debut 36

BOYZ II MEN 2540/296 4 Seasons Of Loneliness (Motown) Total Stations: 88 Chart Move: 15-11

MARIAH CAREY 986/602 Butterfly (Columbia) Total Stations: 68 Chart Move: Debut 34

CHUBBAWAMBA 1921/741 Thubumping (Republic/Universal) Total Stations: 89 Chart Move: 30-22

PAULA COLE 2451/114 I Don't Want To Wait (Imago/Warner Bros.) Total Stations: 90 Chart Move: 13-14

SHAWN COLVIN 543/51 You And The Mona Lisa (Columbia) Total Stations: 49 Chart Move: 13-14

IMANI COPPOLA 1685/185 Legend Of A Cowgirl (Columbia) Total Stations: 90 Chart Move: 26-25

DURAN DURAN 904/165 Electric Barbarella (Capitol) Total Stations: 69 Chart Move: Debut 39

FLEETWOOD MAC 746/84 Silver Springs (Reprise) Total Stations: 79 Chart Move: 12-13

FOREST FOR THE TREES 735/68 Dream (DreamWorks/Geffen) Total Stations: 70 Chart Move: 12-13

HANSON 904/458 I Will Come To You (Mercury) Total Stations: 64 Chart Move: Debut 39

INOJ 905/142 Love You Down (So So Def/Columbia) Total Stations: 38 Chart Move: 40-37

JEWEL 4841/127 Foolish Games (Atlantic) Total Stations: 92 Chart Move: 1-1

SONG ACTIVITY REPORT

For Week Ending October 5, 1997



ELTON JOHN 603/99

Something About The Way You Look Tonight (Rock/A&M)

Table with columns: Station, TP, and chart positions for Elton John's 'Something About The Way You Look Tonight' across various markets.

MATCHBOX 20 4161/107

Push (Lava/Atlantic)

Table with columns: Station, TP, and chart positions for Matchbox 20's 'Push' across various markets.

SARAH MCLACHLAN 2131/110

Building A Mystery (Nettwerk/Arista)

Table with columns: Station, TP, and chart positions for Sarah McLachlan's 'Building A Mystery' across various markets.

THE MIGHTY MIGHTY BOSSONES 1946/144

The Impression That I Get (Big Rig/Mercury)

Table with columns: Station, TP, and chart positions for The Mighty Mighty Bossones' 'The Impression That I Get' across various markets.

THE NOTORIOUS B.I.G. (FEAT PUFF DADDY & MASE) 1232/109

Mo Money Mo Problems (Bad Boy/Arista)

Table with columns: Station, TP, and chart positions for The Notorious B.I.G.'s 'Mo Money Mo Problems' across various markets.

OASIS 601/183

Don't Go Away (Epic)

Table with columns: Station, TP, and chart positions for Oasis' 'Don't Go Away' across various markets.

PEACH UNION 1945/13

On My Own (Mute/Epic)

Table with columns: Station, TP, and chart positions for Peach Union's 'On My Own' across various markets.

LEANN RIMES 3514/228

How Do I Live (Curb)

Table with columns: Station, TP, and chart positions for Leann Rimes' 'How Do I Live' across various markets.

ROBYN 2538/446

Show Me Love (RCA)

Table with columns: Station, TP, and chart positions for Robyn's 'Show Me Love' across various markets.

THE ROLLING STONES 486/85

Anybody Seen My Baby (Globe)

Table with columns: Station, TP, and chart positions for The Rolling Stones' 'Anybody Seen My Baby' across various markets.

SMASH MOUTH 1637/352

Walkin' On The Sun (Interscope)

Table with columns: Station, TP, and chart positions for Smash Mouth's 'Walkin' On The Sun' across various markets.

SUGAR RAY 4822/465

Fly (Lava/Atlantic)

Table with columns: Station, TP, and chart positions for Sugar Ray's 'Fly' across various markets.

TEXAS 408/72

Say What You Want (Mercury)

Table with columns: Station, TP, and chart positions for Texas' 'Say What You Want' across various markets.

TONIC 2328/122

If You Could Only See (Polydor/A&M)

Table with columns: Station, TP, and chart positions for Tonic's 'If You Could Only See' across various markets.

USHER 591/191

You Make Me Wanna... (LaFace/Arista)

Table with columns: Station, TP, and chart positions for Usher's 'You Make Me Wanna...' across various markets.



POWER PLAYLISTS

For Week Ending October 5, 1997

Broadcast Data Systems logo and text: Playlist supplied by Broadcast Data Systems' Radio Track service...

WKTU PD: Frankie Blue MD: Andy Shane. Playlist table with columns for station, PD, MD, and song titles.

B96 PD: Todd Cavanah MD: Erik Bradley. Playlist table with columns for station, PD, MD, and song titles.

B100 PD: Tony Coles MC: Leigh Ann Adam. Playlist table with columns for station, PD, MC, and song titles.

Q102 PD: Glenn Kalina MD: Jay Towers. Playlist table with columns for station, PD, MD, and song titles.

JAM'N 94.5 PD: Cadillac Jack APD/MD: Cat Collins. Playlist table with columns for station, PD, APD/MD, and song titles.

WILD 94.9 PD: Michael Martin MD: "Jazzy" Jim Archer. Playlist table with columns for station, PD, MD, and song titles.

POWER 96 PD: Kid Curry MD: Phil Jones. Playlist table with columns for station, PD, MD, and song titles.

WDRQ PD: Lisa Rodman MD: Jimi Jamn. Playlist table with columns for station, PD, MD, and song titles.

KUBE PD: Mike Tierney MD: Bobby O. Playlist table with columns for station, PD, MD, and song titles.

KGGI PD: Diana Laird APD: Jesse Duran MC: Ricky Fuentes. Playlist table with columns for station, PD, APD, MC, and song titles.

FM102 PD: Bob West APD/MD: Trejo. Playlist table with columns for station, PD, APD/MD, and song titles.

KTFM PD: Cliff Tredway MD: Steve Chavez. Playlist table with columns for station, PD, MD, and song titles.

POWER 92 PD: Don Parker MD: Mikey Freeman. Playlist table with columns for station, PD, MD, and song titles.

Z90 OM/PD: Lisa Vazquez MD: Dale Soliven. Playlist table with columns for station, OM/PD, MD, and song titles.

KS107.5 PD: Rick Stacy MD: Lee Cagle. Playlist table with columns for station, PD, MD, and song titles.

B95 PD: Mark Adams MD: Marcus D. Playlist table with columns for station, PD, MD, and song titles.

POWER 102 PD: John Candelaria. Playlist table with columns for station, PD, and song titles.

Z104 PD: Don London APD/MD: Jay West. Playlist table with columns for station, PD, APD/MD, and song titles.



★ ★ ★ **AIRPOWER** ★ ★ ★

(Minimum 3200 detections for the first time)

Total Plays/Gain

AALIYAH 594/101

The One I Gave My Heart To (Blackground/Atlantic)

Total Stations: 26/Chart Move: 21-16

Heavy (40+ plays): 3 KKI, WJJS, WWKX

Medium (20-39): 10 KBOS, KDON, KQKS, KYLZ, WFHN, WHHH, WJMN, WKU, WNVZ, XHTZ

Light (Under 20): 13

New Airplay This Week: 1 KZFM

AIRPOWER BOUND

Total Plays/Gain

SUGAR RAY 481/116

Fly (Lava/Atlantic)

Total Stations: 17/Chart Move: 30-22

Heavy (40+ plays): 7 KDON, KIKI, KLUC, WBBM, WIOQ, WJJS, WNVZ

Medium (20-39): 3 KYLD, KZFM, WFHN

Light (Under 20): 7

New Airplay This Week: 1 WDRQ

MARIAH CAREY 478/133

Butterfly (Columbia)

Total Stations: 25/Chart Move: 33-23

Heavy (40+): 1 WWKX

Medium (20-39): 13 KBOS, KIBB, KKSS, KLUC, KPRR, KQKS, KSFM, KTFM, KUBE, KYLZ, KZFM, WBBM, WFHN

Light (Under 20): 11

New Airplay This Week: 7 KDGS, KIBB, KQKS, KQMQ, WDRQ, WFHN, WNVZ

LL COOL J 475/179

Phenomenon (Def Jam/Mercury)

Total Stations: 25/Chart Move: 38-24

Heavy (40+): 2 KQKS, WWKX

Medium (20-39): 8 KCAQ, KKFR, KLUC, KOHT, KTFM, KUBE, WHHH, WJMN

Light (Under 20): 15

New Airplay This Week: 6 KBOS, KOHT, KPRR, KQKS, WKXJ, XHTZ

MASE 470/12

Feel So Good (Bad Boy/Arista)

Total Stations: 23/Chart Move: 22-25

Heavy (40+): 3 KCAQ, KQKS, WJMN

Medium (20-39): 8 KDGS, KDON, KKFR, KSFM, KUBE, KYLD, WPOW, XHTZ

Light (Under 20): 12

New Airplay This Week: 1 KIKI

ROBYN 452/47

Show Me Love (RCA)

Total Stations: 23/Chart Move: 25-26

Heavy (40+): 2 KDON, WBBM

Medium (20-39): 9 KBOS, KDGS, KGGI, KQMQ, KTFM, KZFM, WFHN, WHHH, WNVZ

Light (Under 20): 12

New Airplay This Week: 2 KIBB, KPRR

BUSTA RHYMES 443/111

Put Your Hands Where My Eyes Could See (Elektra/EEG)

Total Stations: 24/Chart Move: 36-27

Heavy (40+): 2 KYLZ, WWKX

Medium (20-39): 7 KCAQ, KDGS, KKFR, KQKS, WHHH, WPOW, XHTZ

Light (Under 20): 15

New Airplay This Week: 2 WJJS, WKXJ

SALT-N-PEPA 434/94

R U Ready (Red Ant/London/Island)

Total Stations: 25/Chart Move: 35-28

Heavy (40+): 2 KQKS, KUBE

Medium (20-39): 6 KDGS, KKFR, KYLZ, WHHH, WPOW, XHTZ

Light (Under 20): 17

New Airplay This Week: 6 KBOS, KKSS, WFHN, WJMN, WKXJ, WNVZ

BRIAN MCKNIGHT FEAT. MASE 354/-2

You Should Be Mine (Don't Waste Your Time) (Mercury)

Total Stations: 16/Chart Move: 32-33

Heavy (40+): 3 KDGS, WJJS, WWKX

Medium (20-39): 5 KKFR, KQKS, WFHN, WHHH, XHTZ

Light (Under 20): 8

New Airplay This Week: 3 KKSS, KTFM, WKXJ

JEWEL 305/17

Foolish Games (Atlantic)

Total Stations: 12/Chart Move: Debut 37

Heavy (40+): 3 KLUC, KPRR, KZFM

Medium (20-39): 4 KTFM, WBBM, WIOQ, WPOW

Light (Under 20): 5

New Airplay This Week: 1 WIOQ

BONE THUGS-N-HARMONY 302/62

If I Could Teach The World (Ruthless/Relativity)

Total Stations: 15/Chart Move: Debut 38

Heavy (40+): 1 KIKI

Medium (20-39): 6 KKFR, KQMQ, KYLZ, WHHH, WKXJ, XHTZ

Light (Under 20): 8

New Airplay This Week: 1 WWKX

LOS UMBRELLOS 292/64

No Tengo Dinero (Flex/EMI/Virgin)

Total Stations: 13/Chart Move: Debut 40

Heavy (40+): 3 KIOX, KPRR, KZFM

Medium (20-39): 3 KIBB, KOHT, WKU

Light (Under 20): 7

New Airplay This Week: 2 KBOS, KDON

CHART BOUND

Total Plays/Gain

MACK 10 281/59

Backyard Boogie (Priority)

Total Stations: 16

Heavy (40+): 2 KCAQ, WKXJ

Medium (20-39): 4 KKFR, KYLD, WHHH, XHTZ

Light (Under 20): 10

LE CLICK FEAT. KAYO 260/48

Don't Go (Logic/RCA)

Total Stations: 16

Heavy (40+): 1 KIKI

Medium (20-39): 5 KQMQ, KTFM, WFHN, WIOQ, XHTZ

Light (Under 20): 10

New Airplay This Week: 1 KZFM

DIANA KING 246/12

I Say A Little Prayer (WORK)

Total Stations: 10

Heavy (40+): 2 KIBB, WKU

Medium (20-39): 4 KDON, KQMQ, WDRQ, WIOQ

Light (Under 20): 4

LSG 236/101

My Body (EastWest/EEG)

Total Stations: 11

Heavy (40+): 1 WJMN

Medium (20-39): 4 KDGS, KLUC, KSFM, KYLZ

Light (Under 20): 6

New Airplay This Week: 4 KGGI, KKFR, WHHH, WWKX

MOST NEW STATIONS

No. Of Stations

JANET JACKSON 8

Together Again (Virgin)

MARIAH CAREY 7

Butterfly (Columbia)

LL COOL J 6

Phenomenon (Def Jam/Mercury)

SALT-N-PEPA 6

R U Ready (Red Ant/London/Island)

JON B. 227/12

Don't Say (Yab Yum/550 Music)

Total Stations: 11

Heavy (40+): 3 KBOS, KIKI, KQMQ

Medium (20-39): 2 KKSS, WJJS

Light (Under 20): 6

TOTAL 224/68

What About Us (LaFace/Arista)

Total Stations: 13

Heavy (40+): 2 KDGS, WKXJ

Medium (20-39): 4 KIKI, KKFR, KYLD, WHHH

Light (Under 20): 7

NAS, FOXY BROWN, AZ FEAT. DAWN ROBINSON 207/10

Firm Biz (Aftermath/Interscope)

Total Stations: 16

Heavy (40+): 0

Medium (20-39): 5 KIKI, KKFR, WHHH, WWKX, XHTZ

Light (Under 20): 11

New Airplay This Week: 1 KKSS

DAMAGE 193/20

Wonderful Tonight (Big Life/Critique)

Total Stations: 11

Heavy (40+): 2 KIKI, KQMQ

Medium (20-39): 1 WWKX

Light (Under 20): 8

New Airplay This Week: 1 WKU

MILESTONE 190/22

I Care 'Bout You (LaFace/Arista)

Total Stations: 12

Heavy (40+): 2 KIKI, KQMQ

Medium (20-39): 1 WWKX

Light (Under 20): 9

LEANN RIMES 184/50

How Do I Live (Curb)

Total Stations: 11

Heavy (40+): 2 KPRR, KZFM

Medium (20-39): 3 KTFM, WDRQ, WFHN

Light (Under 20): 6

★ JANET JACKSON 177/166

Together Again (Virgin)

Total Stations: 13

Heavy (40+): 0

Medium (20-39): 4 KDON, KSFM, KUBE, WBBM

Light (Under 20): 9

New Airplay This Week: 8 KBOS, KDGS, KDON, KSFM, KUBE, WDRQ, WPOW, WWKX

3RD PARTY 164/18

My Love Is Alive (DVB&M)

Total Stations: 13

Heavy (40+): 0

Medium (20-39): 3 WFHN, WJJS, WNVZ

Light (Under 20): 10

New Airplay This Week: 2 KKSS, WWKX

MISSY "MISDEMEANOR" ELLIOTT (FEAT. DA BRAT) 152/46

Sock It 2 Me (EastWest/EEG)

Total Stations: 14

Heavy (40+): 0

Medium (20-39): 2 KDGS, KLUC

Light (Under 20): 12

New Airplay This Week: 4 KGGI, KKSS, WHHH, WKXJ

MASTER P FEAT. PIMP C AND THE SHOCKER 147/1

I Miss My Homies (No Limit/Priority)

Total Stations: 15

Heavy (40+): 1 WKXJ

Medium (20-39): 1 WHHH

Light (Under 20): 13

ULTRA NATE 143/14

Free (Strictly Rhythm)

Total Stations: 7

Heavy (40+): 1 WWKX

Medium (20-39): 3 WFHN, WKU, WPOW

Light (Under 20): 3

New Airplay This Week: 1 WJJS

MAGOO & TIMBALAND 140/3

Up Jumps Da Boogie (Blackground/Atlantic)

Total Stations: 11

Heavy (40+): 1 WKXJ

Medium (20-39): 1 WWKX

Light (Under 20): 9

LL COOL J 139/-7

Candy Girl (Def Jam/Mercury)

Total Stations: 8

Heavy (40+): 2 KIKI, KQMQ

Medium (20-39): 1 KKFR

Light (Under 20): 6

MONA Q 135/18

Stay In Love (Matrix)

Total Stations: 3

Heavy (40+): 2 KTFM, WPOW

Medium (20-39): 1 KPRR

Light (Under 20): 0

SNOOP DOGGY DOGG FEAT. JD 130/30

We Just Wanna Party With You (Columbia)

Total Stations: 6

Heavy (40+): 1 KKFR

Medium (20-39): 1 KYLD

Light (Under 20): 4

NEXT 121/30

Butta Love (Arista)

Total Stations: 8

Heavy (40+): 1 WKXJ

Medium (20-39): 1 KDGS

Light (Under 20): 6

New Airplay This Week: 2 WJJS, WWKX

★ JANET JACKSON 120/69

Every Time (Virgin)

Total Stations: 8

Heavy (40+): 1 WJMN

Medium (20-39): 2 KBOS, KLUC

Light (Under 20): 5

New Airplay This Week: 2 KBOS, KQKS

JON B. 104/22

Are U Still Down (Yab Yum/550 Music)

Total Stations: 4

SONG ACTIVITY REPORTS

For Week Ending October 5, 1997



Detailed song tracking information for the last 3 weeks for all songs showing increased play this week. Total plays and gain do not include video play. Markets listed in order of population.

3RD PARTY 164/18 My Love Is Alive (DVB/A&M) Total Stations: 13

BOYZ II MEN 1204/145 4 Seasons Of Loneliness (Motown) Total Stations: 33

JANET JACKSON 177/166 Together Again (Virgin) Total Stations: 13

LE CLICK FEAT. KAYO 260/48 Don't Go (Logic/RCA) Total Stations: 16

MASTER P FEAT. PIMP C & THE SHOCKER 147/1 I Miss My Homies (No Limit/Priority) Total Stations: 15

SALT-N-PEPA 434/94 R U Ready (Red Ant/London/Island) Total Stations: 25

POWER PLAYLISTS

For Week Ending October 5, 1997

Playlists compiled by Broadcast Data Systems... Radio Track service. Songs ranked by number of plays in monitored week.

HOT 97
Station: WQHT New York
PD: Steve Smith
APD/MD: Tracy Cloherty
MC: Deneen Womack
List of 30 songs with TW and LW columns.

POWER 106
Station: KPWR Los Angeles
PD: Michelle Mercer
MD: Damion Young
List of 30 songs with TW and LW columns.

THE BEAT
Station: KKBT Los Angeles
OM: Harold Austin
APD: Maurice De Voe
MD: Mariama Snider
List of 30 songs with TW and LW columns.

WGCI
Station: WGCI Chicago
PD: Elroy R.C. Smith
APD/MD: Don E. Cologne
List of 30 songs with TW and LW columns.

POWER 99
Station: WUSL Philadelphia
OM: Helen Little
MD: Glenn Cooper
List of 30 songs with TW and LW columns.

WPGC
Station: WPGC Washington, DC
PD: Jay Stevens
APD: Bob Holmcrans
List of 30 songs with TW and LW columns.

WJLB
Station: WJLB Detroit
PD: Michael Saunders
MD: Janet Gee
List of 30 songs with TW and LW columns.

KMEL
Station: KMEL San Francisco
PD: Michelle Santosuosso
APD/MD: Joey Arbagoy
List of 30 songs with TW and LW columns.

WKYS
Station: WKYS Washington, DC
VP/Pgm: Steve Hegwood
PD: Damon Williams
MC: Lisa Lisa
List of 30 songs with TW and LW columns.

THE BOX
Station: KBXX Houston
PD: Robert Scorpio
MD: Kasha Powell
List of 30 songs with TW and LW columns.

K104
Station: KKDA Dallas
PD: Skip Cheatham
List of 30 songs with TW and LW columns.

PHILLY 103.9
Station: WPHI Philadelphia
PD/MD: Mic Fox
List of 30 songs with TW and LW columns.

92Q
Station: WERO Baltimore
PD: Tom Calococci
Acting MD: Buttahman
List of 30 songs with TW and LW columns.

HOT 97.5
Station: WHTA Atlanta
VP/Pgm: Steve Hegwood
PD: Sean Taylor
MD: Chaka Zulu
List of 30 songs with TW and LW columns.

Q93
Station: WQVE New Orleans
OM: Gerd Stevens
MD: Angela Harrison
List of 30 songs with TW and LW columns.

102 JAMZ
Station: WJHM Orlando
OM: Adam Cook
PD: Russ Allen
MD: Cedric Hollywood
List of 30 songs with TW and LW columns.

POWER 98
Station: WPEG Charlotte
PD: Andre Carson
MD: Nate Quick
List of 30 songs with TW and LW columns.

K97.5
Station: WOOK Raleigh
PD/MD: Hozie Mack
List of 30 songs with TW and LW columns.

102 JAMZ
Station: WJMH Greensboro
PD: Brian Douglas
MD: Mary K.
List of 30 songs with TW and LW columns.

99 JAMZ
Station: WJMI Jackson
OM: Stan Branson
APD: Alice Marie Dixon
List of 30 songs with TW and LW columns.

V100
Station: WKVK Milwaukee
PD: Nate Bell
MD: Daryn D.
List of 30 songs with TW and LW columns.

THE WIZ
Station: WIZ Cincinnati
VP/Pgm: Tony Fields
APD: Mark Gunn
MD: Lauri Jones
List of 30 songs with TW and LW columns.

95.7 JAMZ
Station: WBH Birmingham
PD: Mickey Johnson
APD/MD: Daysa Parker
List of 30 songs with TW and LW columns.

107.3 JAMZ
Station: WJMW Greenville
PD: Marv Hankston
MD: Kelly Berry
List of 30 songs with TW and LW columns.



BOBBY BROWN FEELIN' INSIDE

**Most Added At
Crossover Radio**

Including These Stations:

KUBE	WWKX	KWIN
KBXX	KKSS	WJJS
KGGI	KDON	KWNZ

And Many More!

From The Forthcoming Album FOREVER

Produced by Derrick Garrett for Utopia Entertainment, Inc. & Jeff Reid for Tru-Da-Life Music, Inc.

Management: B. Brown Management

Get AMPed at MCA Records Online: www.mcarecords.com

MCA

© 1997 MCA Records, Inc.

World Radio History

SONG ACTIVITY REPORTS

For Week Ending October 5, 1997

Grid of song activity reports for artists: AALIYAH, ALLURE FEATURING 112, MARY J BLIGE, BONE THUGS-N-HARMONY, BOYZ II MEN. Includes columns for Total Plays/Gain, Chart Move, and station data.

Grid of song activity reports for artists: BUSTA RHYMES, MISSY 'MISDEMEANOR' ELLIOTT FEAT. DA BRAT, LSG, LL COOL J, MACK 10. Includes columns for Total Plays/Gain, Chart Move, and station data.

Grid of song activity reports for artists: MASE, MASTER P FEAT. PIMP C & THE SHOCKER, BRIAN MCKNIGHT FEAT. MASE, MILESTONE, NAS, FOXY BROWN, AZ (FEAT. DAWN ROBINSON). Includes columns for Total Plays/Gain, Chart Move, and station data.

Grid of song activity reports for artists: NEXT, SALT-N-PEPA, SOMETHIN' FOR THE PEOPLE FEAT. TRINA & TAMARA, TOTAL, USHER. Includes columns for Total Plays/Gain, Chart Move, and station data.

POWER PLAYLISTS

For Week Ending October 5, 1997



WPLJ New York PD: Tom Cuddy VP/Pgm: Tom Cuddy PD: Scott Shannon. Playlist with 30 items including Rolling Stones, Jewel, Sarah McLachlan, etc.

STAR 104.5 Philadelphia PD: Kurt Johnson APD/MD: Rich Davis. Playlist with 30 items including Jewel, LeAnn Rimes, etc.

Q95.5 Detroit PD: Tom O'Brien MD: Fred Buchalter. Playlist with 30 items including OMC, Jewel, etc.

WINDY 100 Chicago PD: Mark Hamlin. Playlist with 30 items including Elton John, LeAnn Rimes, etc.

MIX 107.3 Washington, DC MD: Carol Parker. Playlist with 30 items including OMC, Jewel, etc.

MIX 96.5 Houston PD: Lorrin Palagi APD/MD: Rick Anhorn. Playlist with 30 items including The Wallflowers, Jewel, etc.

KS95 Minneapolis PD: Todd Fisher MD: Leighton Peck. Playlist with 30 items including Jewel, LeAnn Rimes, etc.

MIX 106.5 Baltimore PD: Adam Goodman MD: Greg Carpenter. Playlist with 30 items including Dave Matthews Band, Jewel, etc.

Q104 Cleveland PD: Mary Ellen Kachinsky MD: Steve Brown. Playlist with 30 items including Sister Hazel, Jewel, etc.

STAR 101.5 Seattle PD: Rob Dunlop PD: Kent Phillips. Playlist with 30 items including Jewel, LeAnn Rimes, etc.

KYKY St. Louis PD: Smokey Rivers MD: Greg Hewitt. Playlist with 30 items including Sister Hazel, Jewel, etc.

MIX 105.1 Orlando PD: David Isreal MD: Tim Baldwin. Playlist with 30 items including Sister Hazel, Jewel, etc.

94WKTI Milwaukee PD: Danny Clayton APD/MD: Leonard Peace. Playlist with 30 items including OMC, Jewel, etc.

MIX 101.5 Raleigh PD/MD: Steve Reynolds. Playlist with 30 items including Third Eye Blind, Jewel, etc.

KISS 97 Salt Lake City PD/MD: Burke Allen. Playlist with 30 items including The Wallflowers, Jewel, etc.

MIX 99.1 Milwaukee PD/MD: Brian Kelly APD: Jim Morales. Playlist with 30 items including OMC, Jewel, etc.

VARIETY 96 Pittsburgh MD: Scott Alexander. Playlist with 30 items including Sister Hazel, Jewel, etc.

STAR 95.7 Tampa PD: Chuck Morgan MD: Frank Brinsley. Playlist with 30 items including Tonic, Jewel, etc.

WENS Indianapolis PD: Greg Dunkin MD: Jim Cerone. Playlist with 30 items including Shawn Colvin, Jewel, etc.

KISS FM Tampa PD: Mason Dixon MD: Rico Blanco. Playlist with 30 items including Amy Grant, Jewel, etc.

MAGIC 105 San Antonio PD: Andy Hoyt MD: Daria Thomas. Playlist with 30 items including LeAnn Rimes, Jewel, etc.

FM100 Memphis PD: Russ Morley MD: Bruce Wayne. Playlist with 30 items including LeAnn Rimes, Jewel, etc.

WSNE Providence PD: Bill Weston APD/MD: Jack Casey. Playlist with 30 items including Jewel, LeAnn Rimes, etc.

STAR 95.7 Tampa PD: Chuck Morgan MD: Frank Brinsley. Playlist with 30 items including Tonic, Jewel, etc.

BDS IMPACT

★ ★ ★ **AIRPOWER** ★ ★ ★
(Minimum 700 detections for the first time)

Total Plays/Gain

CHUMBAWAMBA 741/274

Tubthumping (Republic/Universal)

Total Stations: 36/Chart Move: 29-23

Heavy (30+ plays): 7 KBBT, KFMB, KLLC, KYSR, WALC, WPLL, WSHE

Medium (15-29): 17 KMXB, KPEK, KPLZ, KSTZ, KTNP, KYSR, KZZO, KZZP, WBAM, WBMX, WLNK, WMTX, WMXB, WNSR, WPLJ, WPTE, WTMX

Light (Under 15): 12

New Airplay This Week: 11 KDMX, KKOB, KSTZ, WBMX, WKQI, WLNK, WMC, WMMX, WMBX, WPLJ, WQLH

AIRPOWER BOUND

Total Plays/Gain

PEACH UNION 516/-3

On My Own (Mute/Epic)

Total Stations: 39/Chart Move: 26-27

Heavy (30+ plays): 2 KYSR, WQLH

Medium (15-29): 17 KHMV, KKOB, KPLZ, KURB, KZZP, WBAM, WEZB, WKDD, WKTI, WMC, WMTX, WMBX, WNSR, WPLJ, WSHE, WVIC, WTMX

Light (Under 15): 20

New Airplay This Week: 1 WPTE

IMANI COPPOLA 507/58

Legend Of A Cowgirl (Columbia)

Total Stations: 26/Chart Move: 32-28

Heavy (30+): 7 KFMB, KMXB, KYSR, KYSR, KZZP, WBAM, WPLL

Medium (15-29): 8 KLLC, KPLZ, KVVU, WKZL, WMBX, WPTE, WQLH, WSHE

Light (Under 15): 11

New Airplay This Week: 1 WSHE

SPICE GIRLS 504/-6

2 Become 1 (Virgin)

Total Stations: 34/Chart Move: 27-29

Heavy (30+): 5 KSII, WEZB, WKQI, WMYX, WQLH

Medium (15-29): 11 KSMG, KVVU, WKTI, WMC, WMMX, WMLX, WPNT, WQAL, WSNE, WYAF, WYXR

Light (Under 15): 18

ELTON JOHN 486/74

Something About The Way You Look Tonight (Rocket/A&M)

Total Stations: 28/Chart Move: 33-30

Heavy (30+): 3 KHMV, KYKY, WPNT

Medium (15-29): 11 KSMG, KSTZ, KURB, WAEV, WEZB, WKTI, WMLX, WQAL, WVIC, WYAF, WYXR

Light (Under 15): 14

New Airplay This Week: 1 WYXR

OASIS 426/113

Don't Go Away (Epic)

Total Stations: 20/Chart Move: 38-33

Heavy (30+): 3 KYSR, KZZO, WALC

Medium (15-29): 13 KBBT, KDMX, KLLC, KTNP, WBAM, WBMX, WKDD, WKZL, WMTX, WNSR, WPTE, WQLH, WSHE

Light (Under 15): 4

New Airplay This Week: 4 WBAM, WKDD, WKZL, WSHE

BLUES TRAVELER 405/14

Most Precarious (A&M)

Total Stations: 27/Chart Move: 35-34

Heavy (30+): 5 KBBT, KPEK, KYSR, WKZL, WTMX

Medium (15-29): 8 KDMX, KHMV, KLLC, KTNP, WAEV, WEZB, WMC, WSHE

Light (Under 15): 14

New Airplay This Week: 1 WPTE

TEXAS 380/39

Say What You Want (Mercury)

Total Stations: 20/Chart Move: 37-36

Heavy (30+): 0

Medium (15-29): 14 KHMV, KLLC, KPLZ, KTNP, KURB, KZZP, WAEV, WEZB, WKDD, WKTI, WLNK, WNSR, WPTE, WTMX

Light (Under 15): 6

New Airplay This Week: 2 KPLZ, WMBX

SHAWN COLVIN 360/74

You And The Mona Lisa (Columbia)

Total Stations: 28/Chart Move: 39-37

Heavy (30+): 0

Medium (15-29): 9 KBBT, KDMX, KHMV, WEZB, WLNK, WNSR, WPLJ, WQLH, WMMX

Light (Under 15): 19

New Airplay This Week: 6 KBEE, KKOB, KLLC, WBMX, WKDD, WVIC

THE SUNDAYS 282/53

Summertime (DGC/Geffen)

Total Stations: 10/Chart Move: Debut 40

Heavy (30+): 5 KBBT, KZZO, WALC, WMTX, WPTE

Medium (15-29): 3 KLLC, KPEK, WPLL

Light (Under 15): 2

New Airplay This Week: 1 KPEK

CHART BOUND

Total Plays/Gain

BLESSID UNION OF SOULS 253/1

I Wanna Be There (EMI/Capitol)

Total Stations: 14

Heavy (30+): 3 WKQI, WQAL, WVIC

Medium (15-29): 3 KDMX, KVVU, WENS

Light (Under 15): 8

THE WALLFLOWERS 206/136

Three Marlenas (Interscope)

Total Stations: 15

Heavy (30+): 3 KMXB, KYSR, WKZL

Medium (15-29): 3 KZZO, WLNK, WNSR

Light (Under 15): 9

New Airplay This Week: 4 KBBT, KTNP, WLNK, WNSR

DURAN DURAN 196/29

Electric Barbarella (Capitol)

Total Stations: 20

Heavy (30+): 2 KLLC, WPLL

Medium (15-29): 3 KBBT, KYSR, WQLH

Light (Under 15): 15

New Airplay This Week: 2 WEZB, WPTE

★ **MARIAH CAREY 185/168**

Butterfly (Columbia)

Total Stations: 14

Heavy (30+): 0

Medium (15-29): 6 KSII, KYKY, WEZB, WMLX, WMYX, WPLJ

Light (Under 15): 8

New Airplay This Week: 10 KSII, KURB, KYKY, WEZB, WMC, WMYX, WPLJ, WSNE, WYAF, WWDE

FOREST FOR THE TREES 182/5

Dream (DreamWorks/Geffen)

Total Stations: 15

Heavy (30+): 2 KYSR, WALC

Medium (15-29): 3 KFMB, KLLC, KPLZ

Light (Under 15): 10

CHANTAL KREVIAZUK 170/45

Surrounded (Columbia)

Total Stations: 8

Heavy (30+): 3 KMXB, KZZO, KZZP

Medium (15-29): 2 KPEK, WBAM

Light (Under 15): 3

New Airplay This Week: 1 WMBX

TOAD THE WET SPROCKET 170/18

Crazy Life (Columbia)

Total Stations: 7

Heavy (30+): 2 KFMB, WPTE

Medium (15-29): 3 KDMX, KZZP, WNSR

Light (Under 15): 2

New Airplay This Week: 1 WKZL

MOST NEW STATIONS No. Of Stations

CHUMBAWAMBA 11

Tubthumping (Republic/Universal)

MARIAH CAREY 10

Butterfly (Columbia)

JAI 7

I Believe (RCA)

SHAWN COLVIN 6

You And The Mona Lisa (Columbia)

BILLIE MYERS 5

Kiss The Rain (Universal)

98 DEGREES 163/19

Invisible Man (Motown)

Total Stations: 20

Heavy (30+): 2 KSII, WQLH

Medium (15-29): 3 KURB, WMC, WYAF

Light (Under 15): 15

JAI 144/78

I Believe (RCA)

Total Stations: 12

Heavy (30+): 1 WPLL

Medium (15-29): 2 KLLC, WBAM

Light (Under 15): 9

New Airplay This Week: 7 WBAM, WMMX, WMTX, WMBX, WPTE, WQAL, WSHE

THE ROLLING STONES 138/14

Anybody Seen My Baby (Virgin)

Total Stations: 10

Heavy (30+): 3 KFMB, KPEK, WTMX

Medium (15-29): 1 WKDD

Light (Under 15): 6

ROBYN 138/48

Show Me Love (RCA)

Total Stations: 22

Heavy (30+): 0

Medium (15-29): 4 WALC, WEZB, WKTI, WQLH

Light (Under 15): 18

New Airplay This Week: 1 WALC

BILLIE MYERS 138/56

Kiss The Rain (Universal)

Total Stations: 12

Heavy (30+): 0

Medium (15-29): 4 KSTZ, WBAM, WMMX, WMBX

Light (Under 15): 8

New Airplay This Week: 5 KLLC, WBAM, WKQI, WQAL, WMMX

BIG HEAD TODD & THE MONSTERS 133/3

Please Don't Tell Her (Revolution)

Total Stations: 5

Heavy (30+): 2 WKZL, WTMX

Medium (15-29): 2 WBMX, WMBX

Light (Under 15): 1

BOYZ II MEN 108/21

4 Seasons Of Loneliness (Motown)

Total Stations: 10

Heavy (30+): 1 WQLH

Medium (15-29): 2 KSII, WEZB

Light (Under 15): 7

BARENAKED LADIES 86/6

The Old Apartment (Reprise)

Total Stations: 5

Heavy (30+): 1 WBMX

Medium (15-29): 1 KTNP

Light (Under 15): 3

New Airplay This Week: 1 WKZL

DARYL HALL JOHN OATES 79/16

Promise Ain't Enough (Push)

Total Stations: 7

Heavy (30+): 0

Medium (15-29): 3 WAKS, WSNE, WYAF

Light (Under 15): 4

New Airplay This Week: 1 WMC

★ **MATCHBOX 20 72/25**

3 AM (Lava/Atlantic)

Total Stations: 4

Heavy (30+): 1 KFMB

Medium (15-29): 0

Light (Under 15): 3

New Airplay This Week: 2 WSHE, WTMX

THIS WEEK	LAST WEEK	WEEKS ON	TITLE/LABEL/PROMOTION LABEL	ARTIST	TW	LW
★ ★ ★ No. 1 ★ ★ ★						
1	1	14	FOOLISH GAMES ATLANTIC 3 weeks at No. 1	JEWEL	2376	2360
2	2	25	ALL FOR YOU UNIVERSAL	SISTER HAZEL	2278	2220
3	4	13	I DON'T WANT TO WAIT IMAGO/WARNER BROS.	PAULA COLE	1979	1912
4	5	15	BUILDING A MYSTERY NETTWERK/ARISTA	SARAH MCLACHLAN	1908	1837
5	3	24	SEMI-CHARMED LIFE ELEKTRA/EEG	THIRD EYE BLIND	1874	1976
6	7	15	PUSH LAVA/ATLANTIC	MATCHBOX 20	1718	1675
7	6	23	HOW BIZARRE HUH/MERCURY	OMC	1639	1737
8	9	9	FLY LAVA/ATLANTIC	SUGAR RAY	1501	1401
9	10	16	IF YOU COULD ONLY SEE POLYDOR/A&M	TONIC	1386	1350
10	8	34	SUNNY CAME HOME COLUMBIA	SHAWN COLVIN	1321	1418
11	12	51	BARELY BREATHING ATLANTIC	DUNCAN SHEIK	1309	1282
12	11	35	ONE HEADLIGHT INTERSCOPE	THE WALLFLOWERS	1238	1310
13	14	7	HOW DO I LIVE CURB	LEANN RIMES	1173	1058
14	13	25	THE FRESHMEN RCA	THE VERVE PIPE	1118	1175
15	19	6	WALKIN' ON THE SUN INTERSCOPE	SMASH MOUTH	1027	870
16	16	34	CRASH INTO ME RCA	DAVE MATTHEWS BAND	972	997
17	15	22	A CHANGE WOULD DO YOU GOOD A&M	SHERYL CROW	939	1003
18	17	14	THE DIFFERENCE INTERSCOPE	THE WALLFLOWERS	894	948
19	18	12	THE IMPRESSION THAT I GET BIG RIG/MERCURY	THE MIGHTY MIGHTY BOSSTONES	890	885
20	20	8	TAKES A LITTLE TIME A&M	AMY GRANT	830	830
21	21	8	CRIMINAL CLEAN SLATE/WORK	FIONA APPLE	815	793
22	22	13	QUIT PLAYING GAMES (WITH MY HEART) JIVE	BACKSTREET BOYS	806	764
★ ★ ★ AIRPOWER						

What Better Three Ways To Break A Record!!!!

VH-1 Out Of The Box - "VH-1 is very excited about Kami. She's a unique new voice that punches through the landscape of so many talented female artists."

Lee Chesnut - VP/Music Programming

Star 100 - San Diego - Early Add - "I've seen Kami perform live on stage and live on the air. I've seen the requests for 'Polka Dots'. I've seen enough... I'm convinced that Kami Lyle is an artist with a future. If you don't believe MCA, call me!!!"

Tracy Johnson - Star 100, San Diego

KLLC - San Francisco - Early Add - "'Polka Dots' grabs you and pulls you right in. Everybody can relate to this song. Immediate listener response and curiosity calls. See her live and you'll be blown away!!!"

Julie Stoeckel - KLLC, San Francisco



KAMILYLE

"POLKA DOTS"

The First Song From Her New Album **Blue Cinderella**

Produced by Hugh Padgham

BDS IMPACT

★ ★ ★ **AIRPOWER** ★ ★ ★
(Minimum 400 detections for the first time)

NO RECORDS QUALIFIED FOR AIRPOWER THIS WEEK

AIRPOWER BOUND

Total Plays/Gain

PAULA COLE 329/43
I Don't Want To Wait (Imago/Warner Bros.)
Total Stations: 19/Chart Move: 23-22
Heavy (21+ plays): 9 KGBY, KLYF, KTDY, WBBQ, WGSY, WJDX, WLAC, WMJQ, WRMF
Medium (14-20): 4 WMXS, WTCB, WTFM, WVMX
Light (Under 14): 6

MARIAH CAREY 311/219
Butterfly (Columbia)
Total Stations: 31/Chart Move: Debut 23
Heavy (21+): 2 WASH, WMJQ
Medium (14-20): 4 WGSY, WLIT, WMGS, WMXS
Light (Under 14): 25
New Airplay This Week: 15 KESZ, KEZK, KLYF, KMG, KUDL, WASH, WBEB, WDOK, WGSY, WLAC, WLTE, WMJQ, WMXS, WRMF, WTCB

CHICAGO 269/45
The Only One (Reprise)
Total Stations: 27/Chart Move: 25-24
Heavy (21+): 1 KTDY
Medium (14-20): 7 KESZ, KUDL, WGSY, WINK, WMXS, WRFV, WTCB
Light (Under 14): 19
New Airplay This Week: 5 KISC, WAHR, WLIT, WMGS, WRCH

AMBROSIA 225/48
I Just Can't Let Go (Warner Bros.)
Total Stations: 28/Chart Move: 28-26
Heavy (21+): 3 WAHR, WINK, WTCB
Medium (14-20): 3 KTDY, WGSY, WMXS
Light (Under 14): 22
New Airplay This Week: 3 KKCW, WARM, WLTE

98 DEGREES 219/11
Invisible Man (Motown)
Total Stations: 19/Chart Move: 26-27
Heavy (21+): 3 WLAC, WMJQ, WRMF
Medium (14-20): 3 WGSY, WRRM, WTCB
Light (Under 14): 13
New Airplay This Week: 3 KLYF, WDEF, WLTE

JIM BRICKMAN 197/99
The Gift (Windham Hill)
Total Stations: 30/Chart Move: Debut 28
Heavy (21+): 0

Medium (14-20): 4 KUDL, WGSY, WLAC, WMGS
Light (Under 14): 26
New Airplay This Week: 6 KESZ, KISC, KKCW, KUDL, WLHT, WMGS

SARAH MCLACHLAN 195/19
Building A Mystery (Nettwerk/Arista)
Total Stations: 14/Chart Move: 29-29
Heavy (21+): 5 KEZR, KGBY, WJDX, WMJQ, WVMX
Medium (14-20): 2 WLAC, WTFM
Light (Under 14): 7
New Airplay This Week: 2 WINK, WTCB

CHART BOUND

Total Plays/Gain

BARRY MANILOW 152/14
I Go Crazy (Arista)
Total Stations: 26
Heavy (21+): 0
Medium (14-20): 2 WMXS, WRRM
Light (Under 14): 24
New Airplay This Week: 2 WAHR, WMXS

★ **DONNA LEWIS & RICHARD MARX** 151/120
At The Beginning (Atlantic)
Total Stations: 19
Heavy (21+): 1 WMJQ
Medium (14-20): 2 KGBY, KTDY
Light (Under 14): 16
New Airplay This Week: 8 KKCW, WARM, WDEF, WGSY, WINK, WLIT, WMJQ, WRCH

PAUL MCCARTNEY 111/0
Young Boy (MPL/Capitol)
Total Stations: 14
Heavy (21+): 0
Medium (14-20): 2 WLIF, WMXS
Light (Under 14): 12
New Airplay This Week: 2 KISC, WDOK

SAVAGE GARDEN 109/24
I Want You (Columbia)
Total Stations: 7
Heavy (21+): 2 WFLC, WVMX

MOST NEW STATIONS No. Of Stations

MARIAH CAREY 15
Butterfly (Columbia)
DONNA LEWIS & RICHARD MARX 8
At The Beginning (Atlantic)
JIM BRICKMAN 6
The Gift (Windham Hill)
CHICAGO 5
The Only One (Reprise)

Medium (14-20): 1 WLAC
Light (Under 14): 4
New Airplay This Week: 1 WFLC

BOYZ II MEN 95/20
4 Seasons Of Loneliness (Motown)
Total Stations: 13
Heavy (21+): 1 WRMF
Medium (14-20): 0
Light (Under 14): 12
New Airplay This Week: 2 KGBY, KVIL

AARON NEVILLE 72/11
Say What's In My Heart (A&M)
Total Stations: 11
Heavy (21+): 1 KTDY
Medium (14-20): 0
Light (Under 14): 10
New Airplay This Week: 1 KISC

★ **PETER CETERA FEAT. AZ YET** 66/13
You're The Inspiration (River North)
Total Stations: 10
Heavy (21+): 1 WINK
Medium (14-20): 0
Light (Under 14): 9

BLESSID UNION OF SOULS 63/5
I Wanna Be There (EMI/Capitol)
Total Stations: 5
Heavy (21+): 1 WVMX
Medium (14-20): 1 WRMF
Light (Under 14): 3

CARLY SIMON 58/3
Ev'ry Time We Say Goodbye (Arista)
Total Stations: 9
Heavy (21+): 0
Medium (14-20): 0
Light (Under 14): 9

★ **BEE GEES** 54/8
Still Waters Run Deep (Polydor/A&M)
Total Stations: 9
Heavy (21+): 0
Medium (14-20): 1 WMXS
Light (Under 14): 8

THIS WEEK	LAST WEEK	WEEKS ON	TITLE/LABEL/PROMOTION LABEL	ARTIST	TW	LW
			★ ★ ★ NO. 1 ★ ★ ★			
1	1	14	HOW DO I LIVE (Columbia) 7 weeks at No. 1	LE'ANN RIMES	1299	1303
(2)	3	12	QUIT PLAYING GAMES (WITH MY HEART) JIVE	BACKSTREET BOYS	1100	1025
(3)	2	7	SOMETHING ABOUT THE WAY YOU LOOK TONIGHT ROCKET/A&M	ELTON JOHN	1075	1055
(4)	4	10	FOOLISH GAMES ATLANTIC	JEWEL	901	873
(5)	7	10	TAKES A LITTLE TIME A&M	AMY GRANT	830	783
6	5	10	SILVER SPRINGS REPRISE	FLEETWOOD MAC	816	835
7	6	5	CANDLE IN THE WIND 1997 ROCKET/A&M	ELTON JOHN	753	793
(8)	9	7	PROMISE AIN'T ENOUGH PUSH	DARYL HALL JOHN OATES	698	632
9	8	26	SUNNY CAME HOME COLUMBIA	SHAWN COLVIN	682	756
(10)	10	7	2 BECOME 1 VIRGIN	SPICE GIRLS	639	604
(11)	15	4	SO HELP ME GIRL ARISTA	GARY BARLOW	581	453
12	11	17	FOR ONCE IN OUR LIVES ARK 21	PAUL CARRACK	510	589
13	12	24	FOR YOU I WILL ROWDY/WARNER SUNSET/ATLANTIC	MONICA	493	537
14	14	36	YOU WERE MEANT FOR ME ATLANTIC	JEWEL	483	518
15	16	53	UN-BREAK MY HEART LAFACE/ARISTA	TONI BRAXTON	458	452
(16)	17	10	ALL FOR YOU UNIVERSAL	SISTER HAZEL	445	443
17	19	22	GO THE DISTANCE COLUMBIA	MICHAEL BOLTON	398	420
18	18	70	CHANGE THE WORLD REPRISE	ERIC CLAPTON	392	431
19	13	15	A SMILE LIKE YOURS ELEKTRAE/EG	NATALIE COLE	392	524
20	21	22	DO YOU LOVE ME THAT MUCH RIVER NORTH	PETER CETERA	361	401
21	20	19	LITTLE MORE TIME WITH YOU COLUMBIA	JAMES TAYLOR	355	406
(22)	23	3	I DON'T WANT TO WAIT IMAGO/WARNER BROS.	PAULA COLE	329	286
(23)	NEW		BUTTERFLY COLUMBIA	MARIAH CAREY	311	92
(24)	25	2	THE ONLY ONE REPRISE	CHICAGO	269	224
25	24	24	BUTTERFLY KISSES DIADEM/JIVE	BOB CARLISLE	236	229
(26)	28	2	I JUST CAN'T LET GO WARNER BROS.	AMBROSIA	225	177
(27)	26	4	INVISIBLE MAN MOTOWN	98 DEGREES	219	208
(28)	NEW		THE GIFT WINDHAM HILL	JIM BRICKMAN	197	98
(29)	29	2	BUILDING A MYSTERY NETTWERK/ARISTA	SARAH MCLACHLAN	195	176
30	30	25	ALONE POLYDOR/A&M	BEE GEES	161	164

Records showing an increase in detections over the previous week, regardless of chart movement. A record which has been on the chart for more than 20 weeks will not receive a bullet, even if it registers an increase in detections. Airpower awarded to those records which attain 400 detections for the first time. If two records are tied in number of plays, the record being played on more stations is placed first. Records below the top 20 are removed from the chart after 26 weeks. © 1997, Billboard/BPI Communications.

ADULT CONTEMPORARY POWER PLAYLISTS

106.7 LITE FM		KOST		KBIG		93.9 LITE FM		B101		K101	
WLTW	PD/MD: Jim Ryan	KOST	PD: Jhani Kaye	KBIG	MD: Dave Verdery	WLT	PD/MD: Mark Edwards	WBEB	PD: Chris Conley	K101	PD: Bob Hamilton
New York	Los Angeles	Los Angeles	MD: Johnny Chiang	Los Angeles	Chicago	Philadelphia	San Francisco	Philadelphia	San Francisco	San Francisco	San Francisco
1 LeAnn Rimes, How Do I Live	17 15	1 LeAnn Rimes, How Do I Live	20 18	1 LeAnn Rimes, How Do I Live	30 24	1 Backstreet Boys, Quit Playing Games	19 17	1 LeAnn Rimes, How Do I Live	26 26	1 Kenny Loggins, For The First Time	39 40
2 Monica, For You I Will	14 11	2 Gary Barlow, So Help Me Girl	20 18	2 Backstreet Boys, Quit Playing Games	26 26	2 Spice Girls, 2 Become 1	18 17	2 Backstreet Boys, Quit Playing Games	25 14	2 Backstreet Boys, Quit Playing Games	39 41
3 Elton John, Something About The Way You	13 11	3 Elton John, Something About The Way You	20 18	3 Babyface, Every Time I Close My Eyes	26 25	3 LeAnn Rimes, How Do I Live	18 18	3 R. Kelly, I Believe I Can Fly	32 32	3 R. Kelly, I Believe I Can Fly	31 32
4 Fleetwood Mac, Silver Springs	13 10	4 Babyface, Every Time I Close My Eyes	19 18	4 Toni Braxton, I Don't Want To	26 24	4 Natalie Cole, A Smile Like Yours	23 20	4 Michael Bolton, Go The Distance	23 20	4 Spice Girls, 2 Become 1	32 33
5 Toni Braxton, Un-Break My Heart	12 12	5 Michael Bolton, Go The Distance	16 13	5 Rod Stewart, I've Fallen In Love Tonight	25 21	5 Monica, For You I Will	18 17	5 Elton John, Candle In The Wind	23 18	5 Elton John, Something About The Way You	29 36
6 Bryan Adams, I'll Always Be Right There	12 12	6 Shawn Colvin, Sunny Came Home	15 14	6 Elton John, Something About The Way You	23 23	6 Fleetwood Mac, Silver Springs	18 18	6 Bryan Adams, Promise Aint'E	22 27	6 Bryan Adams, I'll Always Be Right There	29 25
7 R. Kelly, I Believe I Can Fly	12 12	7 Jim Brickman, Valentine	13 13	7 Jewel, You Were Meant For Me	23 17	7 Elton John, Something About The Way You	17 19	7 Elton John, Something About The Way You	20 9	7 Shawn Colvin, Sunny Came Home	28 28
8 Backstreet Boys, Quit Playing Games	12 13	8 Selena, Dreaming Of You	12 10	8 Monica, For You I Will	23 22	8 Journey, When You Love A Woman	13 14	8 Peter Cetera, Let's Make A Night To Remem	13 9	8 Peter Cetera, Let's Make A Night To Remem	28 28
9 Kenny Loggins, For The First Time	11 14	9 Toni Braxton, Un-Break My Heart	10 10	9 Toni Braxton, Un-Break My Heart	20 19	9 Paul Carrack, For Once In Our Lives	17 19	9 No Doubt, Don't Speak	13 9	9 No Doubt, Don't Speak	24 24
10 Chicago, He's In My Heart	11 11	10 Journey, When You Love A Woman	11 11	10 Journey, When You Love A Woman	19 19	10 Chris De Burgh, The Lady In Red	11 7	10 Shawn Colvin, Sunny Came Home	13 22	10 Jewel, Foolish Games	23 31
11 Gary Barlow, So Help Me Girl	11 5	11 Toni Braxton, Un-Break My Heart	11 10	11 Jewel, Foolish Games	18 20	11 Amy Grant, Takes A Little Time	11 8	11 Spice Girls, 2 Become 1	12 11	11 Amy Grant, Takes A Little Time	20 21
12 Amy Grant, Takes A Little Time	11 11	12 Spice Girls, 2 Become 1	11 12	12 Whitney Houston, I Believe In You And Me	17 11	12 Ambrosia, I Just Can't Let Go	11 9	12 R. Kelly, I Believe I Can Fly	12 11	12 Backstreet Boys, Quit Playing Games	20 23
13 Elton John, Candle In The Wind	10 14	13 Sophie B. Hawkins, As I Lay Me Down	11 12	13 Amy Grant, Takes A Little Time	16 12	13 Eagles, Best Of My Love	10 6	13 Celine Dion, Because You Loved Me	12 13	13 Jewel, You Were Meant For Me	18 34
14 Donna Lewis, Richard Marx, At The Beginn	10 6	14 Jewel, You Were Meant For Me	11 12	14 Fleetwood Mac, Silver Springs	16 15	14 Bunny Jones Feat. James Ingra, Just Onc	10 6	14 Rod Stewart, I've Fallen In Love Tonight	12 11	14 Selena, I Could Fall In Love	16 8
15 Mariah Carey, Butterfly	10 10	15 Celine Dion, All By Myself	11 7	15 Shawn Colvin, Sunny Came Home	16 16	15 Gary Barlow, So Help Me Girl	10 9	15 Jim Brickman, Valentine	12 11	15 Take That, Back For Good	15 10
16 Spice Girls, 2 Become 1	10 11	16 Madonna, You'll See	10 9	16 Elton John, Candle In The Wind	15 13	16 Bee Gees, Still Waters Run Deep	10 10	16 Toni Braxton, Un-Break My Heart	12 9	16 Whitney Houston, I Believe In You And Me	13 7
17 Paul Carrack, For Once In Our Lives	9 12	17 The Tony Rich Project, Nobody Knows	10 8	17 R. Kelly, I Believe I Can Fly	14 11	17 Hot Scaggs, Look What You've Done To Me	9 7	17 Kenny Loggins, For The First Time	12 13	17 Jim Brickman, Valentine	12 13
18 Celine Dion, Because You Loved Me	8 7	18 Tracy Chapman, Give Me One Reason	10 11	18 The Tony Rich Project, Nobody Knows	13 13	18 Kim Carnes, More Love	10 10	18 Amy Grant, Takes A Little Time	12 8	18 Aaron Neville, Can't Stop My Heart From	11 6
19 Peter Cetera & Crystal Bernard, Forever	8 7	19 Elton John, You Can Make History	10 9	19 Eric Clapton, Change The World	13 11	19 Jon Secada, Too Late, Too Soon	9 6	19 Whitney Houston, I Believe In You And Me	11 12	19 Eric Clapton, Change The World	11 10
20 Celine Dion, The Power Of Love	8 5	20 Journey, Open Arms	19 7	20 Journey, Open Arms	13 13	20 Jim Croce, I'll Have To Say I Love You I	9 7	20 Mariah Carey, Hero	11 7	20 Vanessa Williams & Brian McKnight, Love Is	11 3

Airpower awarded to those records which attain 400 detections for the first time. New airplay lists those stations registering six or more detections per week on a record for the first time. ★ Initial impact: records appearing on this page for the first time.



POWER PLAYLISTS™

STAR 98.7

THE BUZZ

MIX 101.9

KYSR Los Angeles PD: Angela Perelli APD/MD: Chris Ebbott

TW	LW	1	2	3	4	5	6	7	8	9	10	11	12	13	14	15	16	17	18	19	20	21	22	23	24	25	26	27	28	29	30
		1	2	3	4	5	6	7	8	9	10	11	12	13	14	15	16	17	18	19	20	21	22	23	24	25	26	27	28	29	30
		1	2	3	4	5	6	7	8	9	10	11	12	13	14	15	16	17	18	19	20	21	22	23	24	25	26	27	28	29	30

WNSR New York PD: Steve Weed APD/MD: Linda Silver

TW	LW	1	2	3	4	5	6	7	8	9	10	11	12	13	14	15	16	17	18	19	20	21	22	23	24	25	26	27	28	29	30
		1	2	3	4	5	6	7	8	9	10	11	12	13	14	15	16	17	18	19	20	21	22	23	24	25	26	27	28	29	30
		1	2	3	4	5	6	7	8	9	10	11	12	13	14	15	16	17	18	19	20	21	22	23	24	25	26	27	28	29	30

WTMX Chicago VP/Pgm: Barry James APD/MD: Jaime Kartak

TW	LW	1	2	3	4	5	6	7	8	9	10	11	12	13	14	15	16	17	18	19	20	21	22	23	24	25	26	27	28	29	30
		1	2	3	4	5	6	7	8	9	10	11	12	13	14	15	16	17	18	19	20	21	22	23	24	25	26	27	28	29	30
		1	2	3	4	5	6	7	8	9	10	11	12	13	14	15	16	17	18	19	20	21	22	23	24	25	26	27	28	29	30

MIX 98.5

ALICE 97.3

MIX 102.9

WBMX Boston PD: Greg Strassell MD: Michelle Buczynski

TW	LW	1	2	3	4	5	6	7	8	9	10	11	12	13	14	15	16	17	18	19	20	21	22	23	24	25	26	27	28	29	30
		1	2	3	4	5	6	7	8	9	10	11	12	13	14	15	16	17	18	19	20	21	22	23	24	25	26	27	28	29	30
		1	2	3	4	5	6	7	8	9	10	11	12	13	14	15	16	17	18	19	20	21	22	23	24	25	26	27	28	29	30

KLLC San Francisco PD: Louis Kaplan MD: Julie Stoecel

TW	LW	1	2	3	4	5	6	7	8	9	10	11	12	13	14	15	16	17	18	19	20	21	22	23	24	25	26	27	28	29	30
		1	2	3	4	5	6	7	8	9	10	11	12	13	14	15	16	17	18	19	20	21	22	23	24	25	26	27	28	29	30
		1	2	3	4	5	6	7	8	9	10	11	12	13	14	15	16	17	18	19	20	21	22	23	24	25	26	27	28	29	30

KDMX Dallas PD: Jimmy Steal MD: Lisa Thomas

TW	LW	1	2	3	4	5	6	7	8	9	10	11	12	13	14	15	16	17	18	19	20	21	22	23	24	25	26	27	28	29	30
		1	2	3	4	5	6	7	8	9	10	11	12	13	14	15	16	17	18	19	20	21	22	23	24	25	26	27	28	29	30
		1	2	3	4	5	6	7	8	9	10	11	12	13	14	15	16	17	18	19	20	21	22	23	24	25	26	27	28	29	30

PLANET 96.3

WBOS

ALICE 104

WPLT Detroit PD: Garrett Michaels MD: Alex Tear

TW	LW	1	2	3	4	5	6	7	8	9	10	11	12	13	14	15	16	17	18	19	20	21	22	23	24	25	26	27	28	29	30
		1	2	3	4	5	6	7	8	9	10	11	12	13	14	15	16	17	18	19	20	21	22	23	24	25	26	27	28	29	30
		1	2	3	4	5	6	7	8	9	10	11	12	13	14	15	16	17	18	19	20	21	22	23	24	25	26	27	28	29	30

WBOS Boston PD: Jim Herron MD: Cliff Nash

TW	LW	1	2	3	4	5	6	7	8	9	10	11	12	13	14	15	16	17	18	19	20	21	22	23	24	25	26	27	28	29	30
		1	2	3	4	5	6	7	8	9	10	11	12	13	14	15	16	17	18	19	20	21	22	23	24	25	26	27	28	29	30
		1	2	3	4	5	6	7	8	9	10	11	12	13	14	15	16	17	18	19	20	21	22	23	24	25	26	27	28	29	30

WALC St. Louis PD: Bob Davis APD/MD: Tommy Mattern

TW	LW	1	2	3	4	5	6	7	8	9	10	11	12	13	14	15	16	17	18	19	20	21	22	23	24	25	26	27	28	29	30
		1	2	3	4	5	6	7	8	9	10	11	12	13	14	15	16	17	18	19	20	21	22	23	24	25	26	27	28	29	30
		1	2	3	4	5	6	7	8	9	10	11	12	13	14	15	16	17	18	19	20	21	22	23	24	25	26	27	28	29	30

STAR 100.7

96.5 TIC

THE ZONE

KZZP

PLANET 103.5

WLIR

KFMB San Diego OM/PD: Tracy Johnson MD: Greg Simms

TW	LW	1	2	3	4	5	6	7	8	9	10	11	12	13	14	15	16	17	18	19	20	21	22	23	24	25	26	27	28	29	30
		1	2	3	4	5	6	7	8	9	10	11	12	13	14	15	16	17	18	19	20	21	22	23	24	25	26	27	28	29	30
		1	2	3	4	5	6	7	8	9	10	11	12	13	14	15	16	17	18	19	20	21	22	23	24	25	26	27	28	29	30

WTIC Hartford OM: Steve Sahany MD: David Simpson

TW	LW	1	2	3	4	5	6	7	8	9	10	11	12	13	14	15	16	17	18	19	20	21	22	23	24	25	26	27	28	29	30
		1	2	3	4	5	6	7	8	9	10	11	12	13	14	15	16	17	18	19	20	21	22	23	24	25	26	27	28	29	30
		1	2	3	4	5	6	7	8	9	10	11	12	13	14	15	16	17	18	19	20	21	22	23	24	25	26	27	28	29	30

KZZO Sacramento PD: Carmy Ferreri MD: Dave Daniels

TW	LW	1	2	3	4	5	6	7	8	9	10	11	12	13	14	15	16	17	18	19	20	21	22	23	24	25	26	27	28	29	30
		1	2	3	4	5	6	7	8	9	10	11	12	13	14	15	16	17	18	19	20	21	22	23	24	25	26	27	28	29	30
		1	2	3	4	5	6	7	8	9	10	11	12	13	14	15	16	17	18	19	20	21	22	23	24	25	26	27	28	29	30

KZZP Phoenix PD: Dan Persigehl MD: Dave Cooper

TW	LW	1	2	3	4	5	6	7	8	9	10	11	12	13	14	15	16	17	18	19	20	21	22	23	24	25	26	27	28	29	30
		1	2	3	4	5	6	7	8	9	10	11	12	13	14	15	16	17	18	19	20	21	22	23	24	25	26	27	28	29	30
		1	2	3	4	5	6	7	8	9	10	11	12	13	14	15	16	17	18	19	20	21	22	23	24	25	26	27	28	29	30

WPLL Miami PD/MD: Dave Stewart

TW	LW	1	2	3	4	5	6	7	8	9	10	11	12	13	14	15	16	17	18	19	20	21	22	23	24	25	26	27	28	29	30
		1	2	3	4	5	6	7	8	9	10	11	12	13	14	15	16	17	18	19	20	21	22	23	24	25	26	27	28	29	30
		1	2	3	4	5	6	7	8	9	10	11	12	13	14	15	16	17	18	19	20	21									

POWER PLAYLISTS™

WXRK New York PD: Steve Kingston. Top 30 list including Foo Fighters, Everlong, Sublime, Don't Time, Tool, Anemna, Sneaker Pimps, 6 Undergroun...

KROQ Los Angeles VP Prgrm.: Kevin Weatherly APD: Gere Sandblom. Top 30 list including Foo Fighters, Everlong, Chumbawamba, Tubthumping, Sublime, Wrong Way...

WKQX Chicago PD: Alex Luke MD: Mary Shuminas. Top 30 list including Goldfinger, This Lonely Place, Chumbawamba, Tubthumping, Foo Fighters, Everlong...

WBCN Boston VP/Prgrm: Oedipus MD: Carter Alan. Top 30 list including Smash Mouth, Walkin' On The Sun, Foo Fighters, Everlong, Our Lady Peace, Superman's Dead...

WPLY Philadelphia PD: Jim McGuinn APD: Doug Kubinski. Top 30 list including Sugar Ray, Fly, Sister Hazel, All For You, Chumbawamba, Tubthumping...

KLYY Los Angeles VP Prgrm: Steve Blatter APD: Sandy Horowitz. Top 30 list including Chumbawamba, Tubthumping, Oasis, D'You Know What I Mean?, Sundays, Summertime...

Main chart table with columns: THIS WEEK, LAST WEEK, WKS. ON CHART, TITLE/LABEL/PROMOTION LABEL, ARTIST, TW, LW, DETECTIONS. Includes No. 1 record: WALKIN' ON THE SUN by SMASH MOUTH.

Records showing an increase in detections over the previous week, regardless of chart movement. A record which has been on the chart for more than 20 weeks will not receive a bullet, even if it registers an increase in detections.

WHFS Washington, DC PD: Robert Benjamin APD: Bob Waugh. Top 30 list including Chumbawamba, Tubthumping, Foo Fighters, Everlong, Fiona Apple, Criminal...

WNNX Atlanta OM: Brian Philips PD: Leslie Fram. Top 30 list including Verve, Bitter Sweet Symphony, Goldfinger, This Lonely Place, Foo Fighters, Everlong...

KDGE Dallas PD: Joel Folger MD: Mike Peer. Top 30 list including Sugar Ray, Fly, Prodigy, Breathe, Foo Fighters, Everlong...

KITS San Francisco VP/Prgrm.: Richard Sands APD: Roland West. Top 30 list including Chumbawamba, Tubthumping, Smash Mouth, Why Can't We Be Friends...

KEGE Minneapolis PD: Wade Linder APD/MD: Bill Jones. Top 30 list including Goo Goo Dolls, Lazy Eye, Tool, Anemna, Foo Fighters, Everlong...

KNDD Seattle PD: Phil Manning MD: Kim Monroe. Top 30 list including Verve, Bitter Sweet Symphony, Chumbawamba, Tubthumping, Foo Fighters, Everlong...

KOME San Jose OM: Ron Nenni PD/MD: Jay Taylor. Top 30 list including Chumbawamba, Tubthumping, Everclear, Everything To Everyone, Sublime, Wrong Way...

KTBZ Houston PD: Jim Trapp MD: David Sadoff. Top 30 list including Smash Mouth, Walkin' On The Sun, Sublime, Wrong Way, Save Ferris, Come On Eileen...

CIMX Detroit Prgrm. Mng.: Murray Brookshaw PD/MD: Vince Cannova. Top 30 list including Verve, Bitter Sweet Symphony, Chumbawamba, Tubthumping, Oasis, D'You Know What I Mean?

KPNT St. Louis PD: Allan Fee MD: Adam Potts. Top 30 list including Chumbawamba, Tubthumping, Our Lady Peace, Superman's Dead, Fiona Apple, Criminal...

WXDX Pittsburgh PD: Ali Castellini MD: Lenny Diana. Top 30 list including Artificial Joy Club, Sick & Beautiful, Sugar Ray, Fly, Seven Mary Three, Lucky...

KEDJ Phoenix PD: Shellie Hart APD/MD: Chris Patyk. Top 30 list including Blur, Song 2, Smash Mouth, Walkin' On The Sun, Filter & The Crystal Method...

COMBINED TOP 40 AUDIENCE										AIRPLAY BY FORMAT																
TW	LW	WKS	TITLE (LABEL/PROMOTION LABEL)	ARTIST	THIS WEEK			LAST WEEK			MAINSTREAM			RHYTHMIC TOP 40			ADULT TOP 40			AC			MODERN			
					Audience (millions)	Detections No.	Rank	Audience (millions)	Detections No.	Rank	Audience (millions)	Detections No.	Rank	Audience (millions)	Detections No.	Rank	Audience (millions)	Detections No.	Rank	Audience (millions)	Detections No.	Rank	Audience (millions)	Detections No.	Rank	
1	2	12	FLY (LAVA/ATLANTIC)	SUGAR RAY	84.7316	9269	1	79.8612	8707	1	43.9925	4822	2	6.1918	481	22	17.7981	1501	8	0.0045	1	—	16.7447	2464	2	
2	1	11	FOOLISH GAMES (ATLANTIC)	JEWEL	82.2629	8579	2	81.9466	8395	2	44.0214	4841	1	4.5444	305	37	26.0770	2376	1	6.6657	901	4	0.9544	156	—	
3	3	24	SEMI-CHARMED LIFE (ELEKTRA/EEG)	THIRD EYE BLIND	64.3587	7089	4	67.6841	7220	3	34.6623	4019	4	0.5578	62	—	21.0888	1874	5	0.4639	72	—	7.5859	1062	20	
4	4	20	QUIT PLAYING GAMES (WITH MY HEART) (JIVE)	BACKSTREET BOYS	63.5682	6390	5	64.6783	6453	5	30.3919	3736	5	12.1768	747	14	8.8612	806	22	12.1339	1100	2	0.0044	1	—	
5	5	16	PUSH (LAVA/ATLANTIC)	MATCHBOX 20	61.7483	7123	3	62.1661	7125	4	33.3078	4161	3	0.0560	6	—	19.4387	1718	6	0.0611	26	—	8.8847	1212	16	
6	6	8	HOW DO I LIVE (CURB)	LEANN RIMES	60.9190	6170	6	55.6340	5781	7	32.1769	3514	6	1.7715	184	—	12.8419	1173	13	14.1287	1299	1	—	—	—	
7	8	21	ALL FOR YOU (UNIVERSAL)	SISTER HAZEL	54.2177	6112	7	52.3389	6130	6	23.4068	2852	7	0.0742	9	—	25.2488	2278	2	2.3174	445	16	3.1705	528	—	
8	7	13	2 BECOME 1 (VIRGIN)	SPICE GIRLS	49.9793	4755	14	53.1859	5257	10	24.7332	2755	9	13.5336	856	11	4.6359	504	29	7.0729	639	10	0.0037	1	—	
9	9	22	HOW BIZARRE (HUH!/MERCURY)	OMC	47.7301	4957	12	52.0626	5318	9	23.5235	2592	10	4.1685	407	29	17.7515	1639	7	0.3367	82	—	1.9499	237	—	
10	11	13	BUILDING A MYSTERY (NETTWERK/ARISTA)	SARAH MCLACHLAN	46.7789	5691	8	45.0703	5624	8	14.2763	2131	18	0.4364	29	—	21.1343	1908	4	1.0463	195	29	9.8856	1428	12	
11	14	9	I DON'T WANT TO WAIT (IMAGO/WARNER BROS.)	PAULA COLE	42.5360	5029	11	40.0175	4753	12	17.7265	2451	14	0.0779	8	—	21.6763	1979	3	1.4514	329	22	1.6039	262	—	
12	10	16	MEN IN BLACK (COLUMBIA)	WILL SMITH	42.0637	3962	15	47.7974	4403	14	25.1285	2846	8	16.7298	1051	6	0.2054	65	—	—	—	—	—	—	—	—
13	20	3	TUBTHUMPING (REPUBLIC/UNIVERSAL)	CHUMBAWAMBA	41.2785	5056	10	30.4952	3680	18	15.2073	1921	22	0.0680	9	—	8.1613	741	23	0.0411	1	—	17.8008	2384	4	
14	15	17	IF YOU COULD ONLY SEE (POLYDOR/A&M)	TONIC	39.5057	4801	13	37.2538	4650	13	17.7473	2328	15	0.0399	5	—	13.9234	1386	9	0.1648	23	—	7.6303	1059	—	
15	13	29	SUNNY CAME HOME (COLUMBIA)	SHAWN COLVIN	39.1480	3593	20	42.2260	4020	16	15.6073	1445	—	0.2855	6	—	14.1027	1321	10	7.9311	682	9	1.2214	139	—	
16	12	19	I'LL BE MISSING YOU (BAD BOY/ARISTA)	PUFF DADDY & FAITH EVANS (FEAT. 112)	38.8972	3117	25	43.4208	3268	23	22.8157	2139	17	16.0617	972	7	0.0198	6	—	—	—	—	—	—	—	
17	16	8	WALKIN' ON THE SUN (INTERSCOPE)	SMASH MOUTH	38.8271	5500	9	34.9592	4984	11	9.2089	1637	26	0.0344	8	—	10.6161	1027	15	0.0411	1	—	18.9266	2827	1	
18	23	5	4 SEASONS OF LONELINESS (MOTOWN)	BOYZ II MEN	35.3206	3952	16	29.9038	3465	20	19.4386	2540	11	14.9662	1204	4	0.4676	108	—	0.4095	95	—	0.0387	5	—	
19	25	4	ALL CRIED OUT (TRACK MASTERS/CRAVE)	ALLURE FEATURING 112	32.0037	2899	27	28.0230	2637	32	17.4277	1746	24	13.9884	1051	5	0.2066	68	—	0.3509	31	—	0.0301	3	—	
20	24	14	NO MONEY NO PROBLEMS (BAD BOY/ARISTA)	THE NOTORIOUS B.I.G. (FEAT. PUFF DADDY & MASE)	31.6390	2458	35	29.3118	2379	36	13.5814	1232	29	18.0475	1225	3	—	—	—	—	—	—	0.0101	1	—	
21	17	4	CANDLE IN THE WIND 1997 (ROCKET/A&M)	ELTON JOHN	30.3131	2561	34	32.5316	2726	30	13.2750	1131	32	1.8923	64	—	6.6144	611	25	8.5176	753	7	0.0138	2	—	
22	22	36	ONE HEADLIGHT (INTERSCOPE)	THE WALLFLOWERS	29.5426	3160	23	30.0107	3259	24	10.4247	1262	—	—	—	—	14.2597	1238	12	1.1322	153	—	3.7260	507	—	
23	21	38	BARELY BREATHING (ATLANTIC)	DUNCAN SHEIK	29.3735	2959	26	30.0343	2961	26	10.7220	1108	—	—	—	—	14.4356	1309	11	2.8538	354	—	1.3621	188	—	
24	18	10	HONEY (COLUMBIA)	MARIAH CAREY	29.2549	3688	19	30.9814	4209	15	13.8049	1987	19	14.8326	1516	2	0.5431	155	—	0.0505	26	—	0.0238	4	—	
25	27	20	THE IMPRESSION THAT I GET (BIG RIG/MERCURY)	THE MIGHTY MIGHTY BOSSTONES	29.1204	3874	17	27.4748	3741	17	12.4015	1946	20	0.0504	9	—	8.0073	890	19	0.0199	11	—	8.6413	1018	—	
26	19	29	THE FRESHMEN (RCA)	THE VERVE PIPE	29.0787	3195	22	30.8389	3348	22	11.3465	1401	27	0.0352	6	—	13.5554	1118	14	0.2274	41	—	3.9142	629	—	
27	29	11	INVISIBLE MAN (MOTOWN)	98 DEGREES	27.8688	3447	21	26.7640	3478	19	20.7850	2457	13	5.3186	608	15	0.5829	163	—	1.1823	219	27	—	—	—	
28	32	2	SHOW ME LOVE (RCA)	ROBYN	26.9045	3134	24	24.6208	2592	33	21.3314	2538	12	4.8613	452	26	0.6911	138	—	0.0207	6	—	—	—	—	
29	31	6	CRIMINAL (CLEAN SLATE/WORIO)	FIONA APPLE	25.8896	3728	18	24.7265	3462	21	5.5126	928	36	—	—	—	6.9895	815	21	0.0452	1	—	13.3423	1984	7	
30	28	30	CRASH INTO ME (RCA)	DAVE MATTHEWS BAND	25.5914	2821	28	27.0458	2950	28	10.9237	1175	30	0.0215	4	—	9.7418	972	16	0.3293	52	—	4.5751	618	—	
31	26	22	DO YOU KNOW (WHAT IT TAKES) (RCA)	ROBYN	24.8059	2679	32	27.9500	2960	27	19.8435	2158	16	3.7352	341	35	1.1851	160	—	0.0421	20	—	—	—	—	
32	NEW		YOU MAKE ME WANNA... (LAFACE/ARISTA)	USHER	24.5914	2272	40	18.5448	1848	53	3.2027	591	—	21.3501	1677	1	—	—	—	—	—	—	0.0386	4	—	
33	35	4	TAKES A LITTLE TIME (A&M)	AMY GRANT	23.5654	2712	31	23.0272	2748	29	7.7896	1047	33	0.0287	5	—	7.4573	830	20	8.2898	830	5	—	—	—	
34	30	25	BITCH (CAPITOL)	MEREDITH BROOKS	22.8936	2729	30	26.2460	3028	25	15.0011	1778	23	0.2841	62	—	5.5694	544	26	0.0009	1	—	2.0381	344	—	
35	34	43	YOU WERE MEANT FOR ME (ATLANTIC)	JEWEL	22.4968	2142	44	23.1786	2203	41	7.5086	666	—	0.4281	41	—	8.5660	812	—	5.2080	483	14	0.7861	140	—	
36	39	5	LOVE YOU DOWN (SO SO DEF/COLUMBIA)	INOJ	21.1633	1839	55	18.8976	1763	55	9.1815	905	37	11.9743	930	9	—	—	—	0.0075	4	—	—	—	—	
37	NEW		BUTTERFLY (COLUMBIA)	MARIAH CAREY	20.6418	1960	50	12.2044	838	105	8.8901	986	34	5.4595	478	23	1.9210	185	—	4.3712	311	23	—	—	—	
38	33	30	RETURN OF THE MACK (ATLANTIC)	MARK MORRISON	20.5250	2153	43	23.3972	2397	35	14.0542	1460	—	6.1201	592	17	0.3507	101	—	—	—	—	—	—	—	
39	NEW		SOMETHING ABOUT THE WAY YOU LOOK TONIGHT (ROCKET/A&M)	ELTON JOHN	20.3080	2166	42	17.5111	1971	48	3.4545	603	—	0.0054	1	—	4.7495	486	30	12.0982	1075	3	0.0004	1	—	
40	NEW		DON'T GO AWAY (EPIC)	OASIS	19.7297	2813	29	18.4607	2335	37	2.5283	601	—	—	—	—	3.8048	426	33	—	—	—	13.3966	1786	9	

Records showing an increase in audience over the previous week, regardless of chart movement. Rankings by format (on right side of this page) correspond to 40-position charts printed in this week's Monitor (30 positions for adult contemporary); therefore rankings do not exist for recurrences and records below No. 40 (No. 30 for adult contemporary). Audience computed by cross-referencing exact times of airplay with Arbitron listener data. ©1997, Billboard/BPI Communications.

Billboard Monitor

Radio Seminar & Awards

October 16 - 18, 1997 • The Renaissance Orlando Resort

Join Us For The

OPENING NIGHT

KICK-OFF Party

SISTER HAZEL

DANCE HALL CRASHERS

KIM FOX

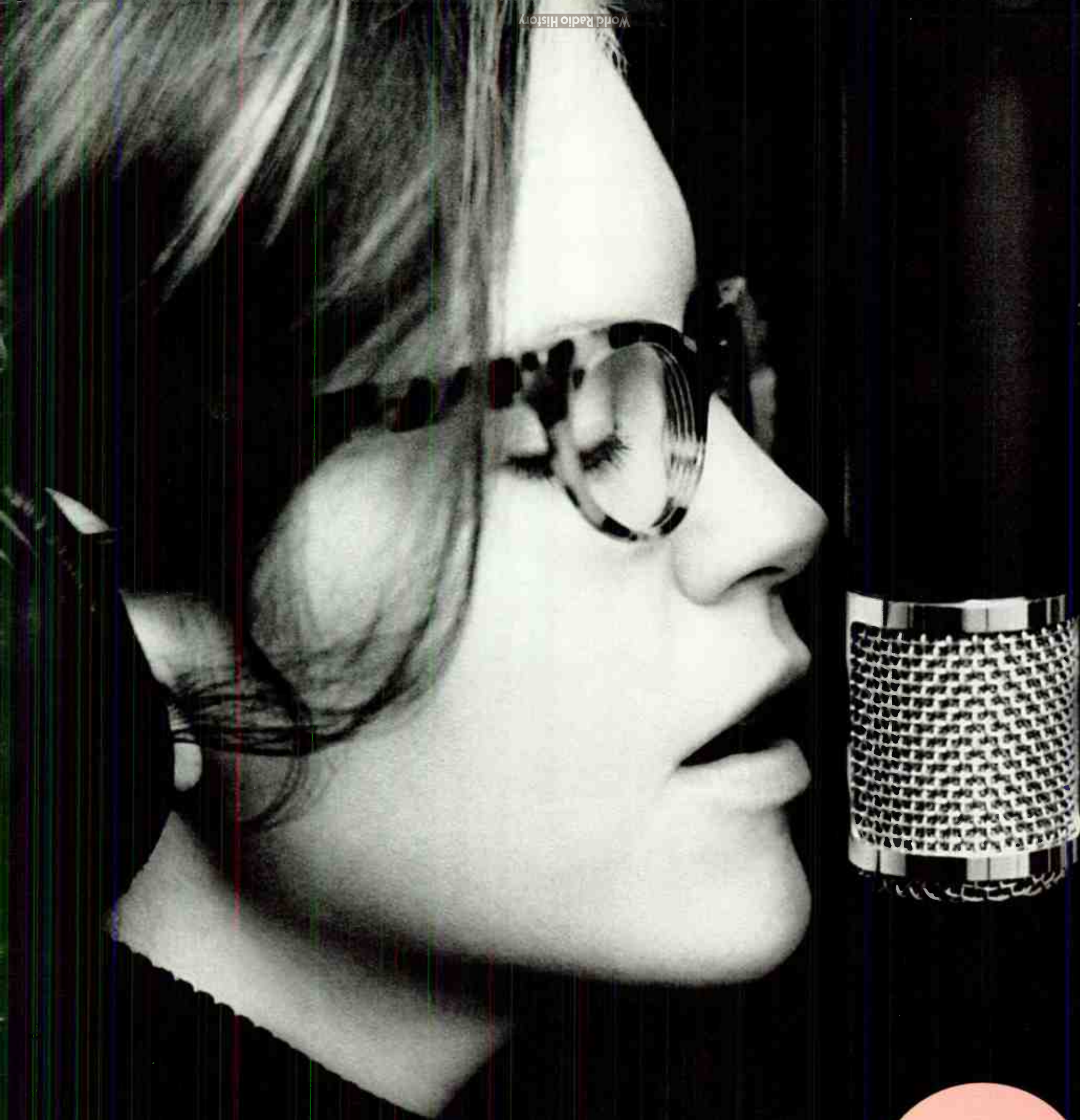
SHE MOVES

at Universal Studios Florida® Mainstage

sponsored by
Universal, MCA, Geffen,
Dreamworks
Universal Music Group

Private VIP Reception for conference attendees with plenty of food, drinks and live entertainment... what more could you want?

For more info regarding registering for the seminar, please call Maureen Ryan at: 212.536.5002



Lisa Loeb



The First Single & Video
From The New Album *Firecracker*
The follow-up to her Gold Debut *Tails*



GEFFEN
Produced by Juan Pablo and Lisa Loeb
Engineered by Juan Pablo
Mixed by Bob Clearmountain
Management: Janet Berry Manage This
www.geffen.com © 1997 Geffen Records, Inc.
Lisa Loeb and her c/o WMN P.O. Box 3873, Red Bank, NJ 07701

THIS WEEK	LAST WEEK	WKS. ON CHART	MAINSTREAM		DETECTIONS		
			TITLE/LABEL/PROMOTION LABEL	ARTIST	TW	LW	
			★★★ NO. 1 ★★★				
1	1	12	FOOLISH GAMES ATLANTIC 3 weeks at No. 1	JEWEL	4841	4714	
2	2	8	FLY LAVA/ATLANTIC	SUGAR RAY	4822	4357	
3	3	14	PUSH LAVA/ATLANTIC	MATCHBOX 20	4161	4054	
4	4	22	SEMI-CHARMED LIFE ELEKTRA/VEEG	THIRD EYE BLIND	4019	3980	
5	5	20	QUIT PLAYING GAMES (WITH MY HEART) JIVE	BACKSTREET BOYS	3736	3798	
6	6	10	HOW DO I LIVE CURB	LEANN RIMES	3514	3286	
7	9	24	ALL FOR YOU UNIVERSAL	SISTER HAZEL	2852	2929	
8	8	17	MEN IN BLACK COLUMBIA	WILL SMITH	2846	3118	
9	7	15	2 BECOME 1 VIRGIN	SPICE GIRLS	2755	3191	
10	10	28	HOW BIZARRE HUH/MERCURY	OMC	2592	2791	
11	15	6	4 SEASONS OF LONELINESS MOTOWN	BOYZ II MEN	2540	2244	
12	18	4	SHOW ME LOVE RCA	ROBYN	2538	2092	
13	12	13	INVISIBLE MAN MOTOWN	98 DEGREES	2457	2441	
14	13	11	I DON'T WANT TO WAIT IMAGO/WARNER BROS.	PAULA COLE	2451	2337	
15	17	12	IF YOU COULD ONLY SEE POLYGRAM/A&M	TONIC	2328	2206	
16	11	23	DO YOU KNOW (WHAT IT TAKES) RCA	ROBYN	2158	2446	
17	16	16	I'LL BE MISSING YOU BAD BOY/ARISTA PUFF DADDY & FAITH EVANS (FEATURING 112)		2139	2226	
18	19	9	BUILDING A MYSTERY NETTWERK/ARISTA	SARAH MCLACHLAN	2131	2021	
19	14	10	HONEY COLUMBIA	MARIAH CAREY	1987	2334	
20	22	10	THE IMPRESSION THAT I GET BIG RIG/MERCURY THE MIGHTY MIGHTY BOSSTONES		1946	1802	
21	21	7	ON MY OWN MUTE/EPIC	PEACH UNION	1945	1932	
			★★★ AIRPOWER ★★★				
22	30	2	TUBTHUMPING REFUBLIC/UNIVERSAL	CHUMBAWAMBA	1921	1180	
23	20	23	BITCH CAPITOL	MEREDITH BROOKS	1778	1996	
24	23	7	ALL CRIED OUT TRACK MASTERS/CRAVE	ALLURE FEATURING 112	1746	1595	
25	26	5	LEGEND OF A COWGIRL COLUMBIA	IMANI COPPOLA	1685	1500	
			★★★ AIRPOWER ★★★				
26	28	3	WALKIN' ON THE SUN INTERSCOPE	SMASH MOUTH	1637	1285	
27	24	25	THE FRESHMEN RCA	THE VERVE PIPE	1401	1515	
28	27	6	TOO GONE, TOO LONG EASTWEST/VEEG	EN VOGUE	1380	1407	
29	35	3	MO MONEY MO PROBLEMS BAD BOY/ARISTA THE NOTORIOUS B.I.G. (FEAT. PUFF DADDY & MASE)		1232	1123	
30	29	17	CRASH INTO ME RCA	DAVE MATTHEWS BAND	1175	1270	
31	25	9	BARBIE GIRL MCA	AQUA	1141	1504	
32	32	4	CANDLE IN THE WIND 1997 ROCKET/A&M	ELTON JOHN	1131	1175	
33	34	7	TAKES A LITTLE TIME A&M	AMY GRANT	1047	1129	
34	NEW		BUTTERFLY COLUMBIA	MARIAH CAREY	986	384	
35	31	13	THE DIFFERENCE INTERSCOPE	THE WALLFLOWERS	965	1179	
36	NEW		CRIMINAL CLEAN SLATE/WORK	FIONA APPLE	928	731	
37	40	2	LOVE YOU DOWN SO SO DEF/COLUMBIA	INOJ	905	763	
38	NEW		ELECTRIC BARBARELLA CAPITOL	DURAN DURAN	904	739	
39	NEW		I WILL COME TO YOU MERCURY	HANSON	904	446	
40	37	14	COCO JAMBOO WARNER BROS.	MR. PRESIDENT	843	985	

THIS WEEK	LAST WEEK	WKS. ON CHART	RHYTHMIC TOP 40		DETECTIONS		
			TITLE/LABEL/PROMOTION LABEL	ARTIST	TW	LW	
			★★★ NO. 1 ★★★				
1	2	7	YOU MAKE ME WANNA... LAFACE/ARISTA 1 week at No. 1	USHER	1677	1445	
2	1	10	HONEY COLUMBIA	MARIAH CAREY	1516	1616	
3	3	22	MO MONEY MO PROBLEMS BAD BOY/ARISTA THE NOTORIOUS B.I.G. (FEAT. PUFF DADDY & MASE)		1225	1255	
4	5	7	4 SEASONS OF LONELINESS MOTOWN	BOYZ II MEN	1204	1059	
5	8	8	ALL CRIED OUT TRACK MASTERS/CRAVE	ALLURE FEATURING 112	1051	968	
6	4	18	MEN IN BLACK COLUMBIA	WILL SMITH	1051	1222	
7	6	21	I'LL BE MISSING YOU BAD BOY/ARISTA PUFF DADDY & FAITH EVANS (FEATURING 112)		972	1037	
8	14	4	MY LOVE IS THE SHHH! WARNER BROS. SOMETHIN' FOR THE PEOPLE FEATURING TRINA & TAMARA		941	715	
9	7	13	LOVE YOU DOWN SO SO DEF/COLUMBIA	INOJ	930	996	
10	10	10	HEAVEN REPRISE	NU FLAVOR	859	884	
11	9	13	2 BECOME 1 VIRGIN	SPICE GIRLS	856	951	
12	13	11	EVERYTHING MCA	MARY J. BLIGE	818	764	
13	12	6	GOT 'TIL IT'S GONE VIRGIN JANET JACKSON (FEATURING Q-TIP AND JONI MITCHELL)		751	853	
14	11	20	QUIT PLAYING GAMES (WITH MY HEART) JIVE	BACKSTREET BOYS	747	865	
15	15	15	INVISIBLE MAN MOTOWN	98 DEGREES	608	684	
			★★★ AIRPOWER ★★★				
16	21	5	THE ONE I GAVE MY HEART TO BLACKGROUND/ATLANTIC	AALIYAH	594	493	
17	16	37	RETURN OF THE MACK ATLANTIC	MARK MORRISON	592	658	
18	18	15	NOT TONIGHT UNDEASATLANTIC/TOMMY BOY LIL' KIM FEAT. DA BRAT, LEFT EYE, MISSY ELLIOTT & ANGIE MARTINEZ		573	627	
19	19	25	I BELONG TO YOU (EVERY TIME I SEE YOUR FACE) GRAND JURY/RCA	ROME	563	601	
20	17	8	BARBIE GIRL MCA	AQUA	541	635	
21	20	21	G.H.E.T.T.O.U.T. BIG BEAT/ATLANTIC	CHANGING FACES	537	580	
22	30	3	FLY LAVA/ATLANTIC	SUGAR RAY	481	365	
23	33	3	BUTTERFLY COLUMBIA	MARIAH CAREY	478	345	
24	38	2	PHENOMENON DEF JAM/MERCURY	LL COOL J	475	296	
25	22	4	FEEL SO GOOD BAD BOY/ARISTA	MASE	470	458	
26	25	4	SHOW ME LOVE RCA	ROBYN	452	405	
27	36	3	PUT YOUR HANDS WHERE MY EYES COULD SEE ELEKTRA/VEEG	BUSTA RHYMES	443	332	
28	35	2	R U READY RED ANT/LONDON/ISLAND	SALT-N-PEPA	434	340	
29	23	9	HOW BIZARRE HUH/MERCURY	OMC	407	453	
30	24	12	BIG BAD MAMMA VIOLATOR/DEF JAM/MERCURY FOXY BROWN FEATURING DRU HILL		400	431	
31	27	7	TOO GONE, TOO LONG EASTWEST/VEEG	EN VOGUE	368	389	
32	29	4	GUANTANAMERA RUFFHOUSE/COLUMBIA WYCLEF JEAN FEATURING REFUGEE ALLSTARS		355	379	
33	32	4	YOU SHOULD BE MINE (DON'T WASTE MY TIME) MERCURY BRIAN MCKNIGHT FEATURING MASE		354	356	
34	26	7	NEVER MAKE A PROMISE ISLAND	DRU HILL	344	398	
35	31	23	DO YOU KNOW (WHAT IT TAKES) RCA	ROBYN	341	361	
36	34	10	DOWN FOR YOURS NASTYBOY/GLASSNOTE/MERCURY NASTYBOY KLICK FEATURING ROGER TROUTMAN		324	343	
37	NEW		FOOLISH GAMES ATLANTIC	JEWEL	305	288	
38	NEW		IF I COULD TEACH THE WORLD RUTHLESS/RELATIVITY BONE THUGS-N-HARMONY		302	240	
39	28	17	STOMP B-RITE/INTERSCOPE	GOD'S PROPERTY	301	380	
40	NEW		NO TENGO DINERO FLEX/EMI/VIRGIN	LOS UMBRELLOS	292	228	

Records showing an increase in detections over the previous week, regardless of chart movement. A record which has been on either chart for more than 20 weeks will not receive a bullet, even if it registers an increase in detections. Airpower awarded to those records which attain 1500 detections (mainstream) or 500 detections (rhythm) for the first time. If two records are tied in number of plays, the record being played on more stations is placed first. Records below the top 20 are removed from the chart after 26 weeks.

draft punk

"An across the board... all demos smash!" Michael Martin PD/KTLB San Francisco (31x)
"A record that came from the streets, exploded in the clubs. Making riffs of noise in the Bay. Girls love it!" - Jazz Jim Archer MD/KTLB San Francisco
"Instant Reaction!! Teasing very well!" Mike Edwards PD, Danny Ocean MD Z95.7/San Francisco (46x)

AROUND THE WORLD

the wicked cool new song and video from the debut album **Homework**

ONE OF THE BIGGEST MIX SHOW RECORDS OF THE YEAR!
 THE #1 CLUB RECORD!
 NOW CROSSING TO POP!

http://www.virginrecords.com
 AOL Keyword: "Virgin Records"
 1-800-848-8484

BARBRA STREISAND • CELINE DION

Tell Him


WORLD PREMIERE BROADCAST VIA SATELLITE
TUESDAY, OCTOBER 7TH, 1997, 9PM EASTERN



SATCOM C5; TRANSPONDER 19; DATS CHANNELS 10 & 11

TAKEN FROM EACH OF THE FORTHCOMING ALBUMS
FROM BARBRA STREISAND AND CELINE DION

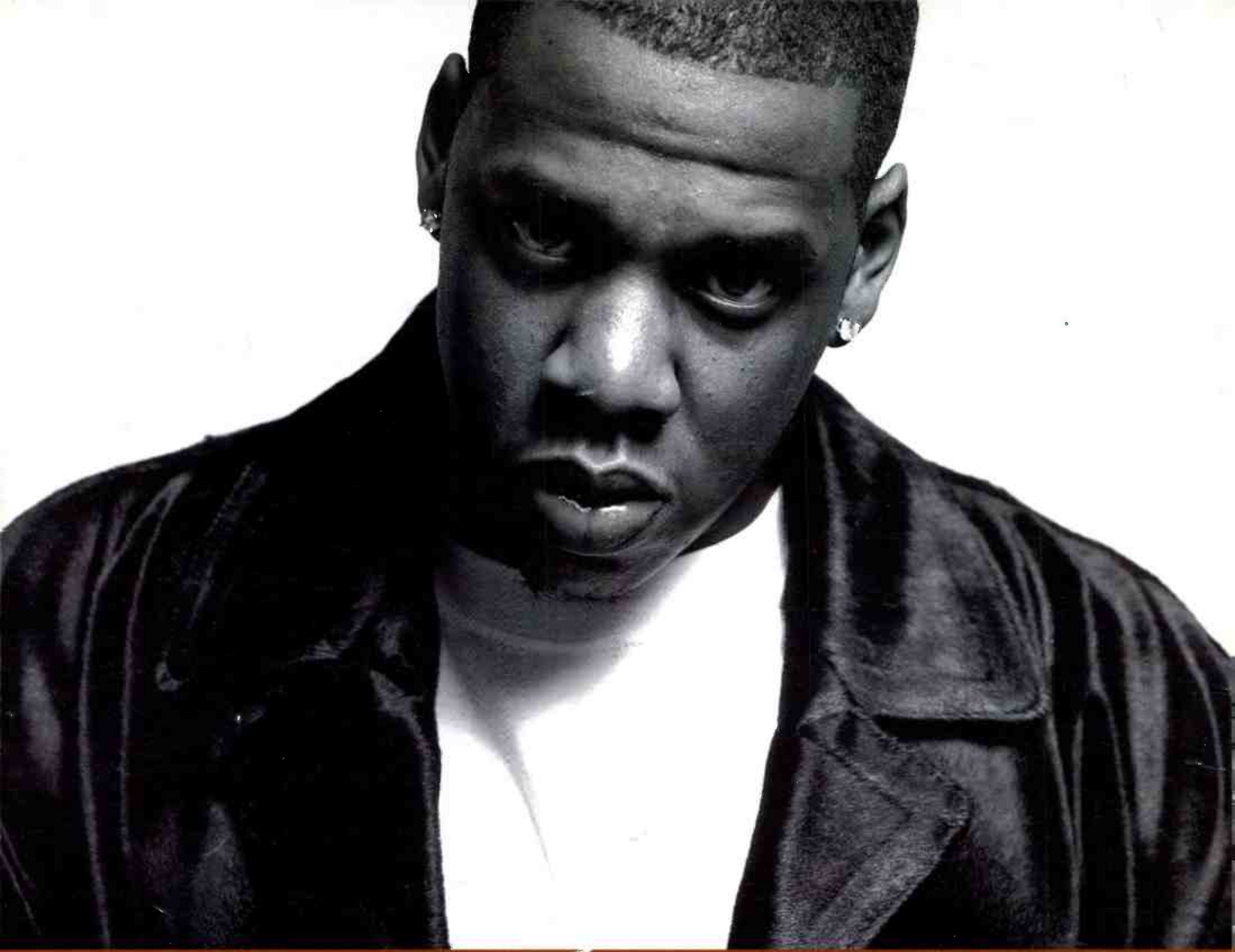
PRODUCED BY DAVID FOSTER AND WALTER AFANASIEFF

WWW.550MUSIC.COM WWW.SONY.COM

"Columbia" "550 Music" and design, "SONY," "Lpic" and  Reg. U.S. Pat. & Tm. Off. Marca Registrada. © 1997 Sony Music Entertainment Inc.

  COLUMBIA

World Radio History



Jay-Z

The first single from his highly anticipated sophomore album
"In My Lifetime Vol.1"

(Always Be My) "Sunshine"

Featuring **Babyface** and **Foxy Brown**

IMPACT DATE: OCTOBER 13TH



a PolyGram company

©1997 Def Jam Music Group, Inc.