

# TOP 40 AIRPLAY Monitor

• We Listen To Radio •

May 24, 1996 \$ 4.95 Volume 4 • No. 22

## TOP 40 HIGHLIGHTS

### MAINSSTREAM

#1

**CELINE DION**

*Because You Loved Me* (550 MUSIC)

★★★ AIRPOWER ★★★

ADAM CLAYTON & LARRY MULLEN • *Theme From Mission Impossible* (MOTHER/ISLAND)

### NEW RELEASES

DEF LEPPARD • *Work It Out* (MERCURY)

ALANIS MORISSETTE • *You Learn* (MAVERICK/REPRISE)

JOAN OSBORNE • *St. Teresa* (BLUE GORILLA/MERCURY)

### RHYTHM CROSSOVER

#1

**FUGEES**

*Killing Me Softly* (RUFFHOUSE/COLUMBIA)

★★★ AIRPOWER ★★★

ALANIS MORISSETTE • *Ironic* (MAVERICK/REPRISE)

### NEW RELEASES

BUSTA RHYMES • *It's A Party* (FLAVOR UNIT/ELEKTRA/EEG)

JORDAN HILL • *For The Love Of You* (ATLANTIC)

MONTELL JORDAN FEAT. SLICK RICK • *I Like* (DEF JAM/MERCURY)

NO MERCY • *Where Do You Go* (ARISTA)

### ADULT TOP 40

#1

**CELINE DION**

*Because You Loved Me* (550 MUSIC)

★★★ AIRPOWER ★★★

GEORGE MICHAEL • *Fastlove* (DREAMWORKS/GEFFEN)

### ADULT CONTEMPORARY

#1

**CELINE DION**

*Because You Loved Me* (550 MUSIC)

★★★ AIRPOWER ★★★

HOOTIE & THE BLOWFISH • *Old Man And Me (When I Get To Heaven)* (ATLANTIC)

### NEW RELEASES

CELINDA PINK • *I've Changed Since I've Been Unchained* (STEP ONE)

## Naked Launch: Should Your Station Debut Jockless? And For How Long?

by Kevin Carter, John Loscalzo, and Marc Schiffman

It's becoming increasingly common these days to debut a new format without jocks. But do long periods of jocklessness build cum and let the music do the talking? Or do they rob a new station of its chance to bond with the audience? And how long can a station go jockless before lulling the audience into a somnambulant state, in which the first sound of a voice is perceived as clutter?

Sometimes stations launch without jocks as a way of making sure listeners know a change has taken place. WSHE Miami dropped a quarter-century of rock heritage May 1, flipping to modern AC. PD Dave Stewart emphasizes the jockless launch as crucial in presenting a new station to the market. He cites the past year of the station's history, in which WSHE tried SBR's Rock Alternative approach. A year later, Stewart says, "perception in the market [was] still that [WSHE is] a Lynyrd Skynyrd station."

For now, Stewart's mission is "trying to get rid of 25 years of heritage. It takes people a while to realize that things aren't the way they knew them to be,

and this helps get that message across."

Similarly, when Dave Rossi took the PD seat at modern WRAX Birmingham, Ala., management had already decided on a jockless launch. Rossi believes that changing album WWBR to modern WRAX without jocks gave the station a way of cleansing the listener's palate. "The station was pretty pathetic prior to the switch," Rossi says. "We wanted to emphasize [that] there was a change, and it was totally different, and take nothing away from the music."

Rossi says the absence of an air staff helped differentiate WRAX from its predecessor, which played a lot of the same music. "But they were playing stuff they shouldn't have been. [like] White Zombie into Melissa Etheridge. We still play them, but not back to back, followed by the Scorpions," says Rossi. Going jockless for an extended period, however, can become a liability, holding back street presence. "You're limited, because you can't do promotions," said Rossi, who adds that not having air talent means the listener might perceive that "the hot new thing is here, but it's not out meeting you and giving away things. That was a drawback." Rossi says

Continued on page 6

# GOLDFINGER

"Here  
In Your  
Bedroom"

Modern Rock: 1,523 Spins

Total Audience: 12.3 Million

SoundScan: TW: 7,878 LW: 6,536 (+20%)

Billboard's Heatseekers Album Chart: (7) - (4)

Modern Rock Chart: (10) - (9)

### Major Market Airplay:

KROQ/Los Angeles	77 spins
Z100/New York	14 spins
99X/Atlanta	19 spins
G105/Raleigh	11 spins
WSSX/Charleston	NEW
WPST/Trenton	27 spins
Q99/Salt Lake City	NEW
KLRZ/New Orleans	20 spins
WXTB/Tampa	NEW
Q101/Chicago	30 spins
KOME/San Jose	25 spins
WHFS/Washington, DC	30 spins
KJ103/Oklahoma City	NEW
LIVE 105/San Francisco	19 spins
K-HOCK/New York	24 spins
KTBS/Houston	39 spins
KDGE/Dallas	26 spins
WHYT/Detroit	10 spins
WFNX/Boston	35 spins
WBCN/Boston	25 spins
WPLV/Philadelphia	11 spins
WMMS/Cleveland	26 spins
XHRM/San Diego	NEW
91X/San Diego	11 spins
95XXX/Burlington	NEW



© 1997 MOJO RECORDS

MOJO



STRESS  
13 spins



<http://www.mojorecords.com>



# dog's eye view

everything falls apart  
From the album "happy nowhere"  
#1 Heatseekers

ON TOUR NOW AND FOREVER



STAR 94 top 5 call out 25-34, #1 most played, 60x  
WZPL #9 call out, 5x day  
KWMX top 5 phones, all demos,  
top 10 call out females, 6x day  
KKRZ 4x day  
Z100 4x day, all daypart

WPLY top 10 call out, power rotation  
KDWB #7 testing overall, #9 most played, 38x  
KZZP top 10 call out, 4x day  
Q106 top 10 callout, 40x  
KDGE #7 overall call out, 3x day  
WXKS top 15 call out, #10 most played



10 - 9 top 40/mainstream monitor



Produced by James "Jimbo" Barton and Peter Stuart.  
<http://www.music.com.com/music/ArtistInfo/DogsEyeView/index.html>

"Columbia" Reg. U.S. Pat. & Tm. Off. © 1996 Sony Music Entertainment Inc. COLUMBIA

photo: Chris Strothe

World Radio History





## RADI ACTIVE BY KEVIN CARTER

### Q95.5 Nears Top 40; Two Garys Are Back

**W**KQI (Q95.5) Detroit pulls more of its gold and adds some more mainstream product as part of its evolution from AC toward top 40. Meanwhile, rhythmic AC sister WYXR (Star 104.5) Philadelphia adds some uptempo dance music back into its mix, after softening for a minute.

Former KUTQ/KZHT Salt Lake City father/son manager/PD team **Gary Waldron** and **Gary Michaels** are back in action at crosstown adult standards/country hybrid KRGO, which they've LMA'ed with an option to buy. Michaels will be PD. Waldron will be GM after the sale closing.

Little Rock, Ark., gets its first top 40 in several years, as simulcast sports outlet KLPQ flips to KLST (Star 102) under its new duopoly partner, R&B rival KIPR (Power 102). **Tom Gallagher**, whose previous stops include WFMF Baton Rouge, La., WWSR Charleston, W.Va., and crosstown N/Ts KARN and KSYG, is the new PD/morning man. **Don Kelly** is consulting. **Gordon Heiges** of KIPR will be the new GM once the sale closes.

It's official that the new WJGG (the Cat) Lexington, Ky., will be a rhythmic top 40 when it signs on—although expect it to be more along the lines of WDJX Louisville several years ago than a pure dance or R&B station. **Beth Bradley** and **Shane Collins** from WHKW-FM Louisville join for mornings and afternoons, respectively. PD **Jill Meyer** will do middays. Meanwhile, Louisville is home of a four-way format swap this week that sees WHKW's country format replace rival WKJK's gold-based country format (which moves to WHKW-AM), while WHKW goes classic hits and the current WQLL goes to smooth jazz.

Rumblings out of Tampa, Fla.: Clear Channel WMTX (Mix 96) PD/morning guy **Mason Dixon**—whose contract reportedly expired several weeks ago—and co-host **Bill Connelly** are off the air, pending the resolution of "a firm offer in the market." **Marvelous Marvin** is filling the shift. Meanwhile, Gannett's crosstown AC WUSA morning team of **Bob, Judd**, and **Nancy** are, coincidentally, in a contract window.

Last week's two lead candidates for the PD post at KHKS Dallas are both out of the running. **Tom Watson** is reportedly taking another VP of programming job at a station within a major group. **Steve Davis** will stay with Zapoleon Media Strategies.

Triple-A WNEW New York PD **Ted Edwards** exits.

WBNQ Bloomington, Ill., PD **Scott Robbins** and his morning team are heading for album outlet WWCT (Rock 106) Peoria, Ill.

WXXL (XL106.7) Orlando, Fla., and WAPE Jacksonville, Fla., are part of the \$178 million purchase of OmniAmerica by Chancellor Broadcasting. Elsewhere in that part of Florida, Infinity swaps its WHOO/WHTQ/ WMMO combo with Cox, picking up WYSY/WCKG Chicago.

WKNE Keene, N.H., station manager **Gary James** is the new PD/morning man at AC WHYN-FM Springfield, Mass., replacing **Bill Hess**.

Former WRQX (Mix 107.5) Washington, D.C., morning sidekick **Bert!** arrives in Dallas as the new co-host with KHKS morning personality **Kidd Kraddick**.

Several months ago, WFBC-FM (B93.7) Greenville, S.C., morning co-host **Marty McFly** had announced plans to leave for family reasons. Now, he'll stay with the station.

Rhythmic AC KBKS (Kiss 106) Seattle is now live in afternoon drive: That's **Phil Grant** from sister KZOK driving you home from work.

Modern AC WSHE Miami adds its first human after weeks of running jockless. **Julie Guy**, night jock under the old format, is live again.

KBZR (the New 103.9) Phoenix hires **Rob Flanick** from crosstown KEDJ as production director. The FCC has approved a city-of-license change from Coolidge to nearby Gilbert, Ariz., with an increase of tower height and the equivalent of 50,000 watts of music power. The sale to **Jerry Clifton's** New Planet Radio should close this summer.

**Gary Craig** exits mornings at WEGQ (the Eagle) Boston and is reported to be headed back to WTIC Hartford, Conn.

WBBM-FM (B96) Chicago late-nighter **Coco Cortez** has left the building. Utility infielder **Brian Middleton** moves up to cover the shift.

WDCG (G105) Raleigh N.C., night guy **J.J.** retires to enter the bagel business; he's replaced by **Cosmo** from sister classic rock WZZU.

WEDJ (the Edge) Charlotte, N.C., hires **KRQQ** Tucson, Ariz., production director **Danny Wright** for afternoons, replacing **Doug Miller**, who left several weeks ago.

KPSI Palm Springs, Calif., late-nighter **Jeff Allan** moves up to replace night jock **Dwain Thomas**, now at KKSS Albuquerque, N.M. **Mike Medina** from KFMB-FM (Star 100.7) San Diego joins for late nights.

WERQ (92Q) Baltimore P/T **Darren Brin** is upped to overnights, as **Babyface Nelson** moves to P/T. APD **Konan** is now hosting a new, issue-oriented talk show, "What's Goin' On," Monday nights from 9-10 p.m.

At WJHM (102 Jamz) Orlando, **Brandy Shannon** from WSOL-FM Jacksonville is the new morning co-host, joining **Welch** and **Woody**, as **Monica May** moves to middays.

New PD **Tony Waitokus** is now doing an early midday shift at WHTS Davenport, Iowa.

Liberty Media has signed a letter of intent to acquire a controlling interest in Miami-based Video Jukebox Network, operators of the Box music video channel. Liberty Media, which has held a 5% minority interest in VJN, can grab 60% of the outstanding shares.

Does this perhaps sound like some place you've worked? The New York Times reports that the residents of the Boarda Psychiatric Hospital in Buenos Aires have begun a nationally syndicated show called "Loony Radio," which, the story says, comes millions of listeners on 12 radio stations. Besides allowing the mental patients to discuss political issues of the day, "Loony Radio" features reports from a man claiming to be the show's correspondent on Mars.

Congratulations to WHTZ (Z100) New York PD **Tom Poleman** and wife **Ginny Kelly**, May 17 in Houston. Also to **KJMN** (Jammin' 92) Denver PD **Mark Feather** and wife **Robin** on their first child, **Justin Alexander**, born the same day.

### KZZP Shows Insensitive Side



KZZP Phoenix welcomed A&M recording artist Jann Arden for a free show in the courtyard of the Arizona Center Mall. Catering was provided by Hot Dog on a Stick.



## TOP 40 TOPICS BY SEAN ROSS

### Who's Winning? Bankers? Or Radio People?

**O**NE OF broadcasting's truisms of the last few years has been that deregulation, duopoly, and, now, megapoly is good for folks on the programming side, because it separates the "real broadcasters" from the "investment bankers." The logic behind this held that the heavily leveraged radio speculators who had bought in for too much money in the go-go years of the late '80s had sulked off to lick their wounds, leaving radio to the owners who really loved broadcasting.

Anybody still believe that?

The last nine months have been like watching the Berlin Wall fall not once but about six times: Chancellor buying OmniAmerica; Chancellor closing on Shamrock; SFX buying Multi-Market; SFX buying Prism; ARS buying Bay-Com; Colfax buying Sundance; Cox buying NewCity; Clear Channel buying Radio Equity Partners; Clear Channel buying U.S. Radio; Infinity buying Granum; Keymarket being sold to River City; River City being sold to Sinclair; Jacor buying Noble; Jacor buying Citicasters; Evergreen closing on Pyramid; the EZ/Viacom swap; the CBS/SFX swap; the CBS/Group W merger. And those are just a few of the headlines.

For the past few years, most of the trades have done articles on how to survive the sale of your station. Now, it's time for the story on what happens when your station is sold twice within the space of a few months. The Key-market folks are dealing with that. So is the staff of R&B WJHM (102 Jamz) Orlando, Fla., and WMYK (Kiss 92) Norfolk, Va. "Trafficking" is no longer the term for what takes place. "Traffic jams" might be more descriptive.

So are the broadcasters benefiting? Or the corporate barons? Well, few ma-

nor buyers or sellers fall neatly into either category these days. Granum had Herb McCord, a well-respected veteran radio man at its helm. It also had the backing of Kohlberg Kravis Roberts. That KKR's investment was no longer enough seed money to continue buying radio stations says something about just how far we've gone in recent months.

And smaller owners can bleed a station dry, too. One of the smaller groups sold in recent months was particularly aggressive in the use of hard-drive technology to run many stations with not so many employees. The company buying them has a better "people company" reputation. So there's no sense in romanticizing the past too much.

That said, however, it is the case that many of the "big money" folks who typified the go-go years are still very active. One Robert Sillerman company (SFX) has just acquired another (Multi-Market). His third, Triathalon Broadcasting—the folks who bring you Spokane, Wash.—has just gotten a credit-line increase from \$9 million to \$40 million. Capstar, the folks behind the first well-known LMAs in the late '80s, has just been relaunched with the help of Hicks-Muse, the folks who own 50% of Chancellor. This isn't to suggest that these aren't good operators. Just that the nature of the game has not changed.

It's also true that NewCity—which helped fuel the consolidation of the industry when it began simulcasting WYAY/WYAI Atlanta—was one of the best-respected groups in the industry, and a lot of folks, including myself, are sorry to see it sold, regardless of who the buyer is. And that's a reaction I expect to have at least a few times in the next few months. Or, at this rate, in the next few weeks.



## Naked Launch: Should Your Station Debut Jockless?

Continued from page 1

that debuting an air staff and the new format simultaneously would have been great, but word might have leaked out about the station's format change, giving someone in the market the opportunity to beat them to the punch.

Modern WPBZ (the Buzz) West Palm Beach, Fla., spent six weeks without full-time announcers, then went live in nights, because, says PD Amy Doyle, that was the active daypart. Doyle also cites the element of surprise. "It's hard to hire people and not tell them where the station is or what the format will be. We didn't want any leaks."

Mike Stern, who staged a jockless sign-on as PD of WXEG (the Edge) Dayton, Ohio, is doing the same thing as KFBI Las Vegas becomes "Extreme Radio." "A lot of it is setup time. You can't set up a station and not start some rumors if you hire an entire air staff." In Dayton, Stern says, "I ended up keeping everyone from the country station on the air. But I had no way of knowing day one that I would be able to do that." Going jockless is a way to give the previous staff "a way of reapplying for their jobs," Stern says. And it gives a PD time "to teach them a little bit about the [new] format."

"In Dayton, people didn't miss the jocks, because they didn't know what to expect. They've never had a modern rock station, [so] they didn't think about it twice. [In Las Vegas] I've felt a response that they want to hear jocks, because they're used to having a station in town that does this. It's going to be a different radio station, and they want to hear the jocks talk about it."

In most other cases, stations that debut jockless hear from at least a few listeners who like the novelty of not hearing DJs. Consultant Jack Taddio is the owner of top 40 WQQB (Q96) Champaign, Ill., which is live only during mornings and evenings. He admits the move was made to emphasize the station's musical elements. It also made sense economically, but, he adds, "after the station was on for a while, we started to like it." He says the station has received many unsolicited listener comments that are positive. "Make no mistake," Taddio cautions. "We don't want to position the station away from personality." However, he says, when using the station at work, the music is all many listeners seem to need.

Then there was Evergreen Media's launch of WKTU New York. Programming honcho Steve Rivers says the goal there was to "let the listeners be the jocks and let them establish an immediate bond with the station." WKTU used "real New York people as jocks," Rivers says. The station set up listening posts around the city and used ordinary citizens for everything: One listener would solicit for contests, and the winners would congratulate themselves when they won. "It gave people a chance to sample the station and it created talk, and like the saying goes, anything you can do to create street talk is good," says Rivers.

### HOW LONG?

One potential problem with a naked launch is that, as with debuting commercial-free, it has to end someday, and the resulting change runs the risk of being perceived as clutter. Especially if being jockless is promoted as a benefit, Taddio says.

When stunting jockless during a launch, says Taddio, "don't wait too long. I've seen stations sign on jockless and then wait three months before putting the jocks back on. Better to get them on sooner rather than later. Otherwise you run the risk of becoming a jukebox forever."

Consultant Guy Zapoleon says going jockless

and for how long depends a lot on the format. "Some music just has to be accompanied by human beings," he says. "For example, modern rock is a very personal format and demands a closer bond with the listener." In Zapoleon's opinion, when Houston's KRQT (the Rocket) (now KTBBZ [the Buzz]) debuted for two months without jocks, it ended up hurting the station.

"One of the two or three key benefits of radio is that it's a totally personal human companion," says Zapoleon. He cites a Coleman Research study on the need for a human element in radio. "It's there to provide mood service, information, and companionship," he adds. "You certainly don't fall in love with the jukebox at the diner, and you don't hug and kiss it when they cart it off to the junkyard, but people do that with radio personalities."

Zapoleon says he's never agreed with the "jock-in-the-box" hard-drive concept, either. "I'm convinced there's some intangible X factor at work that a human being presents that a tape just can't provide," he says. "It's that element of human spontaneity and the feeling that anything could possibly happen."

"From a consulting standpoint, I would rather see a station go live ASAP," says Taddio. "I'm not sure if going jockless in certain cases even stands out that much. With many stations spotlighting long music sweeps and elaborate production, the average person may not realize which station is jockless and which is live."

It isn't a sign-on, but since Jan. 1, top 40 WBBM-FM (B96) Chicago has been experimenting with a jockless midday show that MD Erik Bradley calls "a work in progress." Taddio praises the way the B96 jockless hours sound. "B96 is a very listenable radio station, and you really don't miss hearing a jock, because they're playing uptempo music for their target, and they're still servicing their audience," he says. "It's obvious they're committed to it, and they really sell it."

### NOT A GREAT IDEA

Country consultant Joel Raab is not a fan of going jockless. It's only an option, he says, "if you have to get it on the air to surprise the marketplace." His fear is that a jockless period will not clear the listener's palate so much as alienate people from the station. "A lot of people are going to get a poor first impression [as they start to sample your new signal]." During one jockless sign-on, Raab noted, after only three days, people on the street were asking where the DJs had gone. And if the music is unfamiliar to the market, the lack of DJs makes the feel of the station even more unfamiliar.

If a station is faced with no air staff and a new format, Raab says to "just try to make yourself sound like the best-sounding jukebox that you can." However, he says, the "best-case scenario, when you have the time to do it, is to actually do dry runs off the air with air talent. That way, they've taken batting practice and are ready when the game begins."

And what of the risk of leaks with such lead time? "There's always a risk of leaking," says Raab, "but nobody really knows what you're going to do until you've done it. The benefits of signing on jockless to avoid a leak do not outweigh the impact of signing on with a full staff on a fully functional radio station. If you have good security, you can sign on with a full air staff and still surprise people. Ideally, you're better off to come out of the starting gate with your guns blazing."

## MONITOR PROFILE

### Q102's Kalina And Allen Pilot Return Of Dance Music To A Dance Town

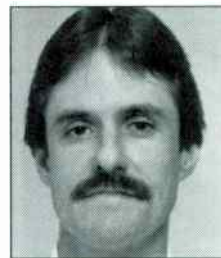
The success of WKTU New York has brought talk of a third dance music boom at radio to a ("Saturday Night") fever pitch, but the return to rhythmic top 40 has been taking place at a number of outlets for the last year. They include KKFR (Power 92) Phoenix, K11S Los Angeles and sister KHKS (Kiss 106) Dallas, and WIOQ (Q102) Philadelphia, which has rebounded 3-4-4-1-4-3-4-8 12-plus over the last three Arbitrons.

WIOQ, like KKFR, was a longtime top 40/rhythm outlet that had experimented with a modern rock lean and the accompanying MTV-inspired "police radio" beeps-and-boops production. Unlike KKFR, Q102 went top 40 after several years as an R&B outlet at the behest of its new duopoly partner, heritage R&B WUSL (Power 99). WUSL wanted Q102 as far away from it musically as possible. That worked well for Power 99, which returned to market dominance, but not so well for Q102.

"Top 40 at that time meant a great deal of alternative music. It wasn't working, and [Q102 PD] Glenn [Kalina] was always uncomfortable with it," recalls WUSL/WIOQ OM Dave Allen. "Glenn brought everything to a head and said,



Glenn Kalina  
Program Director  
WIOQ Philadelphia



Dave Allen  
Operations Manager  
WIOQ Philadelphia

"Look guys, this isn't working. This is a dance town' . . . The cume was still there. They just weren't staying there, because we weren't delivering what they expected, which was dance-flavored top 40. The problem for us was deciding whether there was going to be enough people who wanted [a dance] station, and whether there was going to be enough music to play for them."

Kalina says, "We were never worried about the format working in Philly. We were worried about not having enough music to play for the format." Allen adds, "There was a time when no dance was coming out on any kind of labels, including the bootleg labels." Eventually, Allen says, Kalina convinced him that "we'll find the music, and if it works, the record companies will support it more, and we'll get more music."

Q102 made its transition back to dance at a time when crosstown AC WYXR (Star 104.5) had seen some initial success with a rhythmic AC format featuring a lot of '70s and '80s dance gold. That format had been targeted at some of the older listeners disenfranchised by Q102's changes. But Allen says WYXR's debut did not figure into Q102's decision. "It was pretty obvious at the time that they were more focused on [rival AC] WBEB . . . It didn't appear they had any intention of going any more current."

Kalina went on vacation the week of July 4. When he came back, Q102 began its segue back to rhythmic top 40, keeping a few rock records at any given time, but adding more secondary dance product and more dance gold, including titles such as "Dirty Cash" by the Adventures Of Stevie V, that hadn't been played in the market for years. Q102 got a lot of mileage out of club hits that hadn't been played on the radio yet—

"Missing," "Your Lovin' Arms," and "Dreamer." "We knew these songs would work on the radio, and we were right, because they've all either come back as hits or are on the way," Kalina says.

Even now, it's possible to find hits on Q102 that aren't widely played everywhere else. Dreamland's "Movin' Up" comes from the same RCA club compilation as "Macarena." MFS' "I'll Be Alright" is an indie label single of the sort that Kalina says he spends a lot of time sorting through. And despite Q102's initial attempts to distance itself from WUSL, there's still some hip-hop on the station, although Kalina describes those records as "fun stuff that we consider mass-appeal. Q102 is playing Coolio; Power 99 is not. There are few songs that Q102 has played when Power was still playing them in any kind of significant rotation."

And even now, Kalina says, a few pop/rock titles remain on Q102, as "those records serve more as a relief . . . to help make [Q102] less fatiguing; 90% of the time, the [rock] songs we do choose have already been played here and tested well and are legitimate hits. Those songs are always hip and cool artists and female-friendly."

Here's an 11 a.m. sample of Q102: Planet Soul, "Set U Free"; La Bouche, "Be My Lover"; Smashing Pumpkins, "1979"; Boyz II Men, "I'll Make Love To You"; Robert Miles, "Children"; Mariah Carey, "Always"; Everything But The Girl, "Wrong"; TLC, "Creep"; and the Tony Rich Project, "Nobody Knows."

Just as Q102's music changed gradually, many of the presentational changes in the station have been gradual. Q102 added liners referring to dance—"close-captioned for the rhythm impaired," "now drop your pants and dance," and "now dance 'til you drop"—but, as those liners would suggest, Q102 kept the MTV-style "attitude" production that it had added during its flirtation with modern. "As long as we found our niche, we knew the music would make it more palatable. Now it fits right in," Kalina says. Allen adds, "It was meant to be more of a fun attitude as opposed to a sarcastic attitude or an angry attitude or a demeaning attitude."

Kalina has been handling mornings since Joe Bohannon left in the winter. (Bohannon's partner, Ed Volkman, had left earlier.) Kalina says he and Allen made that decision "after looking at some deals that didn't work out. We started to see some erosion in the morning, and it made us uncomfortable that we still hadn't found what we were looking for: I was up for doing it, and Dave and I were right, because the erosion stopped. We were up 5.4-6.7 [in 18-34] in mornings." Although there's a lot of listener interaction in mornings, Kalina emphasizes that he's "playing a lot of music" and not doing "the full-throttle big-time morning show." He'll stay in mornings "until we find what we're looking for—if we do."

Promotionally, Q102 concentrated on trips to warm-weather locales during the winter, when the station's "phrase that pays" was "I listen to Q102; now, get me the hell outta here!" "Fortunately, it was the shittiest winter on record, and that was to our benefit," Kalina says. For its cash promo, the "Q102 Money MAC Attack" (MAC is the name of Delaware Valley ATMs), callers picked a Q102 DJ and won whatever was in that DJ's "account." "We heard from the MAC people, and they weren't too thrilled," Kalina says.

Allen notes that consultant Dan Vallie, GM Gil Rozzo, and group PD Doug McGuire are all "proud of the fact that the station is leading the new wave of dance top 40 in America. We said many times that if it worked, it'd be the new cycle of top 40, and it certainly seems like it is . . . [Rhythmic top 40] is going to work better in some markets than others. The good thing for us is, the more people that do it, the more music comes out to support the format." **SEAN ROSS**

## ON THE AIR

### NEW STATIONS AND OTHER REPORTER CHANGES FROM BDS & AIRPLAY MONITOR

Effective this week, KBKS (Kiss 106) Seattle (PD/MD John Stewart, 206-649-0106) and WWDE (2WD) Norfolk, Va. (PD Don London, MD Jeff Moreau, 804-497-2000), are added to the adult top 40 panel, and WLTS New Orleans (PD Steve Suter, MD/APD Jim Hanzo, 504-834-9587) is added to the adult contemporary panel. The adult top 40 and adult contemporary panels now number 45 and 38 stations, respectively.

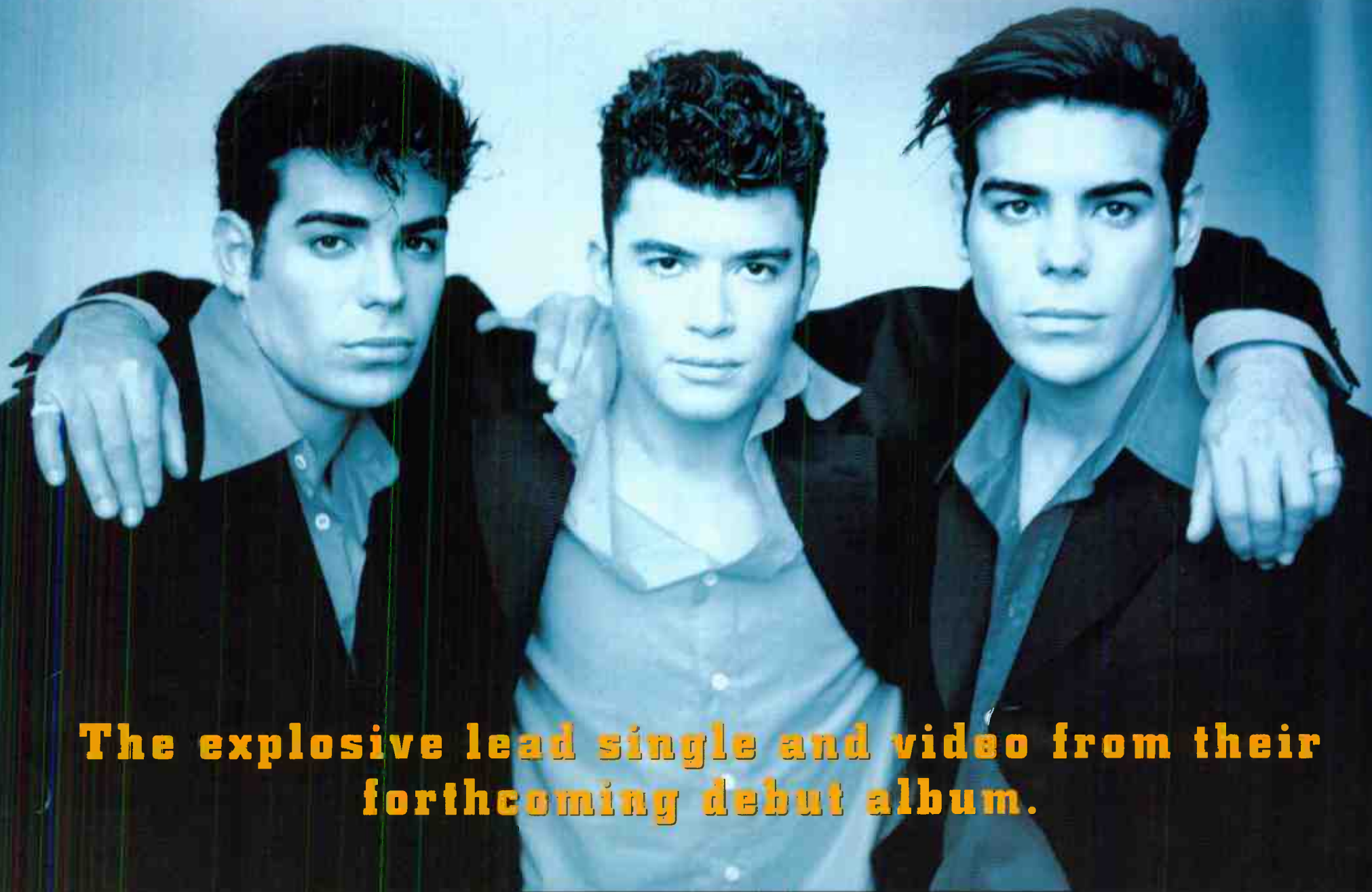
Also, KLRZ New Orleans is deleted from the top 40/mainstream panel. There are now 82 stations on that panel. **STEVE GRAYBOW**



**A NO QUESTION, NO CONTEST,  
NO DOUBT ABOUT IT  
HIT**

**NO MERCY**

**where do you go**



**The explosive lead single and video from their  
forthcoming debut album.**

**ARISTA**


E-mail us at [arista98@aol.com](mailto:arista98@aol.com)  
Visit us at <http://www.aristarec.com>



## SERVICES

### VOICEOVERS

When Excellence Matters


  
 KISS-FM 8-96 FtY 92  
 The Point KEEPI 2-104  
 Jammin' 92 KPM-102

### BILL A. QUINN ...

voice of The Montel Williams Show, Showtime At The Apollo, ABC Radio Networks ... Introduces The 'Q' Factor - Dry Voice Imaging for your radio station!!

Your format + The 'Q' Factor = The Winning Combination  
 'For over 15 years I've depended on this voice to give my radio stations, personality, warmth, humor, and most of importantly distinction.'  
 Quincy McCoy, Urban Editor Gavin Magazine (former P.D. Majic 108 St. Louis; WBSL New York)  
 To request your demo call toll free: 1-888-92-VOICE or e-mail ComVoice@AOL.com

### SWEEPERS, ID's, LINERS

### JOYART MUSIC

PRODUCERS OF  
 STATION & CELEBRITY ID PACKAGES FOR

#### ABC RADIO NETWORKS

Tom Joyner Morning Show  
 Tom Joyner's Movin' On  
 The Doug Banks Show  
 The Touch - 24 Hour Format  
 Urban Gold - 24 Hour Format  
**ESPN's**

"Fabulous Sports Babe"

(great music will make the difference)

CALL MIKE: (847) 733-4040

## HELP WANTED

### ASSISTANT PRODUCTION DIRECTOR

Five-station operation in the Carolina's fastest growing market needs a talented production specialist with a focus on station imaging for CHR, Lite AC, Oldies, and News talk. Candidates should have 2-3 years' experience in copywriting and radio production using a digital audio workstation. Send production/writing samples and resume to:

Craig Debolt,  
 Production Director,  
 WFBC/WSPA/WORD/WXWX,  
 501 Rutherford Street,  
 Greenville, SC 29609. EEO/EOE

## HELP WANTED

# 98ROCK.

*True Rock & Roll*

**98ROCK**, sunny Tampa Bay's rock station, has an immediate opening for a Producer for our Morning Show. Duties include voice work for bits, production, scheduling guests, researching topics and gathering information for both news and live conversation and occasional on-air presence. If you're up for the challenge of getting up early and working **HARD** at the coolest radio station in the nation, please send 250 words or less with **YOUR THOUGHTS** on what makes a morning show great and how you would contribute, along with a tape of your voice work and a resume with references to: "Morning Show Producer Search", WXTB, 13577 Feather Sound Drive, Suite 550, Clearwater, FL 34622. **IF YOU CALL, WE WILL THROW AWAY YOUR STUFF!** WXTB and Citicasters are Equal Opportunity Employers.

**Americom Broadcasting**, w/Country, Oldies, Rock and Sports Radio in Reno, Nevada, needs killer morning show! Join a winning team! Most immediate focus is Country. T&R's for all NOW to: Harry Reynolds, Operations Manager, 255 W. Moana, Suite 208, Reno, NV 89509. EOE

### JOB OPPORTUNITY

The Lincoln Group, L.P. has an immediate opening for a Production Director at 98 PXY in Rochester, New York. Applicants must have a pleasant but forceful voice and delivery, be extremely proficient in 8-track analog production, versatile in production styles (especially in producing similar clients in different ways), and have good organizational and interpersonal skills. The ability to produce hip, creative, MTV-style image promos for the radio station is absolutely essential. Experience required. Digital experience is helpful, but not required. Tapes and resumes should be sent to:

OPERATIONS MANAGER, 98 PXY,  
 P.O. Box 39400  
 ROCHESTER, NY 14604

All applications must be received by May 29, 1996. No calls please. Female and minority candidates encouraged to apply. The Lincoln Group, is an Equal Opportunity Employer.

WSHE-Miami is taking T&R's for all air-shifts-Minimum 5 years radio experience. Send A.S.A.P. to:  
 WSHE ATT; Dave Stewart,  
 3000 S.W. 60th Avenue, Fort Lauderdale, FL 33314

### ADVERTISING ACCOUNT MANAGER

Airplay Monitor, a publication of the Billboard Music Group, is looking for an Advertising Account Manager in NYC. Music knowledge is a must; Top 40 radio and/or record industry experience is a plus. Please send resume and salary requirements to:

Airplay Monitor  
 5055 Wilshire Boulevard  
 6th Floor  
 Los Angeles, CA 90036  
 Attn: Advertising Position  
 EOE  
 No Calls Please!

Oldies 92.9 — Colorado Springs has 2 openings. Midday & Afternoon Drive. Adult relatable and able to work phones. All-digital! T&R to: Randy Hill, KSPZ, 2864 S. Circle #150, Colorado Springs, CO 80906. EOE

### Afternoon radio personality. Full-time. Minimum 3 years experience.

Must have ability to entertain large audience consistently and with unflagging enthusiasm.

Daily duties include two hours show preparation, one hour commercial production. Occasional weekend shift and promotional appearances.

Salary commensurate with ability and experience.

Send 5 minute audition tape/ aircheck on cassette plus resume/ work experience to:

WHJY AFTERNOON SHOW  
 115 Eastern Avenue  
 E. Providence, RI 02914

Females and minorities are encouraged to apply. Liberty Broadcasting is an equal opportunity employer.

WDRK/Panama City, FL is looking for morning show sidekick, 2 years' experience, heavy phones, production a must. Send tape to: Bubba, 6906 W. Hwy. 98, Panama City Beach, FL 32407

## HELP WANTED

# MAJIC 95.1fm

**WAJI, MAJIC 95.1/Fort Wayne**, has an opening for morning co-host/news-person. If you have a positive outlook, are energetic, witty, a team player, able to interact and can write and deliver lifestyle news, this job's for you! Minimum two years' on-air experience. Females and minorities encouraged to apply. News background not necessary! T&R:

Barb Richards, PD, WAJI  
 347 W. Berry St., Suite 600  
 Ft. Wayne, IN 46802

No phone calls.  
 EOE

**PD/On-air opening at San Antonio's Tejano giant, KRIO-FM.** If you've got the drive and supervisory skills, rush your package to John Barger, GM, KRIO-FM, 7800 N.W. 1-10, Suite 330, San Antonio, TX 78230.

**Adult CHR Mornings... WJYY** needs motivated, energetic, self-starter, able to mix humor, entertainment, and music. Be friendly, positive and active in the community. T&R to: Box 1923, Concord, NH 03302 M/F EOE.

### THE FEW, THE PROUD ... PROMOTION PEOPLE

LABEL SEEKING RADIO PROMOTION REGIONALS TO BE BASED IN LOS ANGELES, CHICAGO, NEW YORK, ATLANTA, AND DALLAS. NATIONAL RHYTHM/CROSSOVER ALSO AVAILABLE. LOOKING FOR HARD WORKERS WITH DESIRE AND PASSION. IF YOU CAN WORK AS A TEAM PLAYER WITH POSITIVE ATTITUDE, A KILLER INSTINCT AND MINIMUM YEAR EXPERIENCE, SEND RESUME AND SALARY HISTORY FOR CONFIDENTIAL CONSIDERATION TO:

MARCO NAVARRA  
 ROADRUNNER RECORDS  
 536 BROADWAY  
 NYC, NY 10012

### WONDERFUL OPPORTUNITY

FOR THE RIGHT PERSON WITH MOTIVATION AND THE RIGHT SKILLS!!! POPULAR FM RADIO STATION WITH GROWING AUDIENCE NEEDS A GENERAL SALES MANAGER, SALARY \$36,000.00 TO \$48,000.00 PLUS. ALSO NEEDED FIVE (5) ACCOUNT EXECUTIVES. SALARY NEGOTIABLE. PREVIOUS RADIO SALES EXPERIENCE ... A MUST!!! PLEASE SEND YOUR RESUME AND REFERENCES TO:

DR. E. ALFRED BIBBINS  
 P.O. BOX 91416  
 CHATTANOOGA, TN 37412

### MORNINGS IN NEW ENGLAND COASTAL MARKET

CHR in highly competitive New Bedford/Fall River wants an entertainer to join our female co-host. If you have a strong desire to win, are creative, and love show prep - apply now! T&R to:

Jim Reitz, WFHN,  
 22 Sconticut Neck Road,  
 Fairhaven, MA 02719. EOE

## CLASSIFIED ADVERTISING RATES

### HELP WANTED:

1 WEEK \$75.00 per inch  
 2 WEEKS \$65.00 per inch

### POSITION WANTED AND BULLETIN BOARD:

\$45.00 per inch

BOX NUMBER: Add \$20.00

### SERVICES:

1 WEEK \$75.00 per inch  
 6 WEEKS \$65.00 per inch  
 13 WEEKS \$60.00 per inch  
 26 WEEKS \$55.00 per inch  
 51 WEEKS \$50.00 per inch

### DEADLINE (ALL CLASSIFIED):

Each Wednesday 3pm EST, 9 day leadtime.

• Classified ads are non-commissionable •

### SUBMIT ALL AD COPY TO:

Laura Rivchun  
 Airplay Monitor Classified  
 1515 Broadway  
 New York, NY 10036

Phone: 212-536-5058  
 Fax: 212-536-5055



# AIRPLAY Monitor® GREATEST GAINERS

Broadcast Data Systems

Strongest Increase In Airplay This Week

## MAINSTREAM

INCREASE  
IN PLAYS

<b>FUGEES • Killing Me Softly (RUFFHOUSE/COLUMBIA)</b>	<b>+456</b>
WZST +21, WPRO +21, WBHT +19, WRVQ +19, WEDJ +18, WFBC +17, WAPE +17, WZNY +16, KMXV +16, WIXX +16	
<b>ALANIS MORISSETTE • You Learn (MAVERICK/REPRISE)</b>	<b>+379</b>
WBHT +35, WNTQ +19, WWSR +17, KDWB +16, WYCR +15, WZJM +14, KKRD +14, WXKB +13, WHOT +12, WKRZ +12	
<b>ADAM CLAYTON &amp; LARRY MULLEN • Theme From Mission: Impossible (MOTHER/ISLAND)</b>	<b>+353</b>
WAPE +28, WDCG +25, WVKX +16, WKXJ +16, WYCR +16, WKCI +15, WKBQ +15, KKDM +14, WFMF +14, KDWB +13	
<b>BRYAN ADAMS • The Only Thing That Looks Good On Me Is You (A&amp;M)</b>	<b>+331</b>
KUTQ +22, WABB +17, KHOT +16, WKXJ +16, WNCI +15, WKBQ +15, WZYP +14, WDCG +14, WXLK +13, WNNK +13	
<b>TONI BRAXTON • You're Makin' Me High (LAFACE/ARISTA)</b>	<b>+322</b>
KZZU +34, WFHN +24, WZPL +23, WTWR +18, KQKQ +16, WFLY +16, WZST +15, WNNK +15, WIOQ +15, WXLK +13	
<b>OASIS • Champagne Supernova (EPIC)</b>	<b>+282</b>
KHOM +25, KKRD +22, KHFI +17, WBZZ +16, KKMG +15, WKXJ +15, KWMX +14, WZJM +11, WKRQ +11, WXKB +9	
<b>ROBERT MILES • Children (ARISTA)</b>	<b>+202</b>
KJYO +22, KKMG +19, KBFM +17, WPXY +13, WZJM +8, WYCR +8, WXIS +7, WEDJ +6, KRQK +6, WTIC +6	
<b>THE PHILOSOPHER KINGS • Charms (COLUMBIA)</b>	<b>+199</b>
KHOT +19, WPRO +16, WKXJ +14, WSTR +14, WYCR +14, WMXQ +13, KRBE +11, KQKQ +9, WXLK +8, KWMX +8	
<b>JARS OF CLAY • Flood (ESSENTIAL/SILVERTONE/JIVE)</b>	<b>+161</b>
WABB +20, WFBC +19, WWCK +15, KUFQ +15, WWSR +14, WLAN +12, WNNK +10, WPRO +10, KJYO +9, WXXX +7	
<b>EVERYTHING BUT THE GIRL • Wrong (ATLANTIC)</b>	<b>+155</b>
KHOT +20, WKSE +17, WKXJ +16, WRVQ +13, KIIS +12, WHYI +11, WWCK +10, WWSR +10, WZST +8, KBFM +7	

## RHYTHM-CROSSOVER

INCREASE  
IN PLAYS

<b>TONI BRAXTON • You're Makin' Me High (LAFACE/ARISTA)</b>	<b>+311</b>
KDON +39, KZHT +35, KQKS +32, KLUC +23, KUBE +21, KPRR +20, KBOS +19, KZFM +17, WHHH +15, WQHT +15	
<b>TEVIN CAMPBELL • Back To The World (QWEST/WARNER BROS.)</b>	<b>+121</b>
KBXX +19, KUBE +19, WJMN +19, KZHT +18, WERQ +14, WJMH +11, KCAQ +7, KGGI +5, WPOW +4, KLUC +3	
<b>R. KELLY • I Can't Sleep Baby (If I) (JIVE)</b>	<b>+113</b>
KBXX +37, WERQ +18, WHHH +18, KUBE +11, WJJS +10, XHTZ +9, WPGC +7, WJMH +5, KZFM +3, WWKX +1	
<b>MC LYTE FEAT. XSCAPE • Keep On, Keepin' On (FLAVOR UNIT/EASTWEST/EEG)</b>	<b>+109</b>
WWKX +18, KPWR +17, KYLD +11, WPGC +11, KCAQ +9, KMEL +9, KQKS +8, WQHT +7, KKSS +5, KZFM +3	
<b>BONE THUGS-N-HARMONY • Tha Crossroads (RUTHLESS/RELATIVITY)</b>	<b>+104</b>
WERQ +29, KYLD +19, KDON +15, KCAQ +10, WPGC +10, WPOW +9, KBOS +8, KZHT +7, KBXX +6, WBBM +6	
<b>BUSTA RHYMES FEAT. ZHANE • It's A Party (FLAVOR UNIT/ELEKTRA/EEG)</b>	<b>+89</b>
WQHT +26, WPGC +19, KMEL +12, WJMH +10, KBXX +9, KUBE +3, WJMN +3, KPWR +3, KCAQ +2, XHTZ +1	
<b>KEITH SWEAT • Twisted (ELEKTRA/EEG)</b>	<b>+84</b>
KTFM +28, KLUC +27, KMEL +7, WJJS +6, KCAQ +5, WERQ +5, WJMH +3, KZFM +1, KBXX +1, KUBE +1	
<b>SWV • You're The One (RCA)</b>	<b>+80</b>
KYLD +28, KKXX +16, KBXX +13, KDON +12, KZFM +8, WERQ +8, WPGC +7, KGGI +6, WJMH +4, KKFR +4	
<b>THE BARRIO BOYZ • I Wish (SBK/EMI)</b>	<b>+67</b>
XHTZ +34, KZFM +13, KTFM +7, KBOS +6, KPRR +6, WJJS +1, KKSS +1, KPWR +1	
<b>MICHAEL JACKSON • They Don't Care About Us (EPIC)</b>	<b>+64</b>
WJMH +17, KZHT +14, WWKX +14, WJJS +8, WERQ +8, XHTZ +4, WPGC +3, KCAQ +2, WHHH +2, KKSS +1	

# VIDEO PLAYLISTS



	TW	LW		TW	LW
1	38	36	1	LL Cool J, Doin It	37
2	37	36	2	Fugees, Killing Me Softly	33
3	35	35	3	Stone Temple Pilots, Big Bang Baby	30
4	32	35	4	Hootie & The Blowfish, Old Man & Me	28
5	29	27	5	Oasis, Champagne Supernova	26
6	23	25	6	The Cranberries, Salvation	25
7	22	27	7	Coolio, 1, 2, 3, 4 (Sumpin' New)	23
8	21	15	8	Dave Matthews Band, Too Much	23
9	20	22	9	Marilyn Manson, Sweet Dreams	23
10	18	18	10	Bush, Machinehead	22
11	18	20	11	Rage Against The Machine, Bulls On Parade	21
12	18	25	12	Bone Thugs-N-Harmony, Tha Crossroads	19
13	17	17	13	Tracy Bonham, Mother Mother	19
14	16	19	14	R. Kelly, Down Low	18
15	15	19	15	Jewel, Who Will Save Your Soul	18
16	13	10	16	Delinquent Habits, Tres Delinquentes	16
17	12	8	17	Soundgarden, Pretty Noose	16
18	11	12	18	Busta Rhymes, Woo-Hah!! Got You All In Check	16
19	11	11	19	Alanis Morissette, Ironic	16
20	11	10	20	Toni Braxton, You're Makin' Me High	15
21	11	9	21	Green Day, Walking Contradiction	15
22	11	9	22	George Michael, Fastlove	14
23	10	11	23	Jim Carrey, Somebody To Love	14
24	9	7	24	Van Halen, Humans Being	13
25	9	8	25	Alice In Chains, Again	13
26	9	8	26	Tracy Chapman, Give Me One Reason	13
27	9	8	27	The Dixons, Sister	13
28	9	8	28	Celine Dion, Because You Loved Me	12
29	9	8	29	Whitney Houston & Cece Winans, Count On Me	12
30	9	8	30	SWV, You're The One	12
31	9	8	31	Mariah Carey, Always Be My Baby	11
32	9	8	32	Goldfinger, Here In Your Bedroom	10
33	9	8	33	2Pac, 2 Of Amerikaz Most Wanted	10
34	9	8	34	Bryan Adams, The Only Thing That Looks Good...	9
35	9	8	35	MC Lyte, Keep On Keepin' On	9
			36	No Doubt, Spiderwebs	9
			37	Smashing Pumpkins, Zero	9
			38	Everclear, Heartspark Dollarsign	8
			39	Adam Clayton & Larry Mullen, Mission Impossible	8
			40	Coolio, It's All The Way Live	8
			41	Gravity Kills, Guilty	8
			42	Dishwalla, Counting Blue Cars	8
			43	Weird Al Yankovic, Gump	7
			44	Verve Pipe, Photograph	7
			45	Cowboy Junkies, A Common Disaster	7
			46	Alanis Morissette, You Learn	6
			47	Refreshments, Banditos	5
			48	Red Hot Chili Peppers, Under The Bridge	5
			49	Goo Goo Dolls, Long Way Down	5
			50	Paul Westerberg, Love Untold	4

## ADULT CONTEMPORARY

INCREASE  
IN PLAYS

<b>GEORGE MICHAEL • Fastlove (DREAMWORKS/GEFFEN)</b>	<b>+99</b>
WASH +20, WDEF +17, WAHR +11, KGBX +10, WMGS +9, WALK +8, WTFM +5, KISC +5, WEBR +5, WLHT +4	
<b>TRACY CHAPMAN • Give Me One Reason (ELEKTRA/EEG)</b>	<b>+92</b>
WJDX +17, KGBY +16, WLHT +16, WLTS +11, WTFM +9, WMJQ +7, WSLQ +6, WLAC +6, KISC +4, KBIG +3	
<b>MICHAEL ENGLISH • Your Love Amazes Me (CURB)</b>	<b>+80</b>
KESZ +16, WDEF +10, WLTF +9, WMJQ +8, WLIT +7, WAHR +6, WLAC +6, WSHH +6, WTFM +4, WGSY +4	
<b>GIN BLOSSOMS • Follow You Down (A&amp;M)</b>	<b>+45</b>
WALK +15, KVUU +15, WJDX +13, WTFM +5, KISC +1, KESZ +1	
<b>SORAYA • Suddenly (ISLAND)</b>	<b>+38</b>
WMJQ +12, KLYF +10, KGBY +8, KUDL +7, WAHR +4, WJDX +2, KKCW +2, WLTE +2, WLIT +1	

## ADULT TOP 40

INCREASE  
IN PLAYS

<b>TRACY CHAPMAN • Give Me One Reason (ELEKTRA/EEG)</b>	<b>+196</b>
KBKS +36, WAEV +23, KISN +19, WMXV +15, WTMX +13, WMYI +13, WWDE +12, WMXL +11, WZPK +10, WWMX +10	
<b>BRYAN ADAMS • The Only Thing That Looks Good On Me Is You (A&amp;M)</b>	<b>+108</b>
WQLH +17, KPLZ +16, WWSN +14, WPLJ +14, KHMV +11, WMXB +10, WAEV +9, WZPK +9, KSTZ +7, WMXV +5	
<b>STING • You Still Touch Me (A&amp;M)</b>	<b>+103</b>
KSTP +19, KKOB +18, WMYI +18, WRMF +12, WMXV +9, WYYY +7, WWDE +6, WKZL +5, WVAF +4, WRQX +4	
<b>ADAM CLAYTON &amp; LARRY MULLEN • Theme From Mission: Impossible (MOTHER/ISLAND)</b>	<b>+92</b>
KHMV +22, WKDD +17, WBMX +16, WMXB +14, KDMX +10, WVAF +5, WKTI +5, WRQX +5, WBLI +5, KSTZ +4	
<b>FUGEES • Killing Me Softly (RUFFHOUSE/COLUMBIA)</b>	<b>+90</b>
WYXR +37, KKLQ +23, KSII +13, WBLI +9, WQLH +5, KKOB +4, WKTI +1	

Following up the chart topper  
"Can't Be Wasting My Time"  
Bringing vocal control and  
maturity far beyond her years



Monalisa "you said"

The hypnotic jam from her  
outstanding debut album

"11-20-79"

Most Added & Already Impacting at Rhythm & Urban Radio

HOT 97  
WWKX

WPGC  
KHTN

Including:  
WYXV  
WQMG

WJJS  
WOWI

KCAQ  
WILD

Executive Producers:  
Tim "Dawg" Patterson and Hiram Hicks



© 1996 Island Records, Inc. A PolyGram Company



POWER PLAYLISTS

For Week Ending May 19, 1996



Playlists supplied by Broadcast Data Systems. Radio Track service. Stations selected from panel of leading broadcasters in 125 radio markets, electronically monitored 24 hours a day, 7 days a week. Songs ranked by number of plays in monitored week.

Grid of 24 radio station playlists including Z100, KIIS, Q102, KISS 108, KISS 106.1, KRBE, KDWB, STAR 94, B94, WFLZ, WPST, Y100, WTKF, WNCI, WTIC, Q102, PRO-FM, and WKQB. Each station listing includes song titles, artists, and play counts.





**IMPACTING  
RHYTHM - CROSSOVER  
NOW!!!!**

# Sweat **keith** **at** twisted

The premiere single and video from his self-titled new album

**IMMEDIATE  
ACTION**

**IT'S TIME TO GET TWISTED!**

**ALREADY SPINNING!**

- |             |                      |             |                    |             |                       |
|-------------|----------------------|-------------|--------------------|-------------|-----------------------|
| <b>WERQ</b> | <b>BALTIMORE</b>     | <b>KTFM</b> | <b>SAN ANTONIO</b> | <b>WJJS</b> | <b>ROANOKE</b>        |
| <b>KLUC</b> | <b>LAS VEGAS</b>     | <b>KWIN</b> | <b>STOCKTON</b>    | <b>KHTN</b> | <b>MODESTO</b>        |
| <b>KCAQ</b> | <b>OXNARD</b>        | <b>Z-90</b> | <b>SAN DIEGO</b>   | <b>KDON</b> | <b>MONTEREY</b>       |
| <b>WJMH</b> | <b>GREENSBORO</b>    | <b>KGGI</b> | <b>RIVERSIDE</b>   | <b>KYLD</b> | <b>SAN FRANCISCO</b>  |
| <b>KMEL</b> | <b>SAN FRANCISCO</b> | <b>WFLZ</b> | <b>TAMPA</b>       | <b>KZHT</b> | <b>SALT LAKE CITY</b> |

**AND MANY MORE!**

**ALBUM IN STORES JUNE 25.**

PRODUCED BY KEITH SWEAT AND ERIC MCCAINE  
Management: Marvelous Enterprises



POWER PLAYLISTS

For Week Ending May 19, 1996



Playlists supplied by Broadcast Data Systems' Radio Track service. Stations selected from panel of leading broadcasters in 125 radio markets, electronically monitored 24 hours a day, 7 days a week. Songs ranked by number of plays in monitored week.

Table for G105 station WDCG Raleigh, PD: Brian Burns, MD: Kip Taylor. Top 40 playlist including Tracy Chapman, Alanis Morissette, and George Michael.

Table for Z100 station KRKR Portland, PD: Ken Benson. Top 40 playlist including Fugees, Celine Dion, and Whitney Houston.

Table for ALICE 106 station KALC Denver, PD: Gregg Cassidy, MD: Jim Lawson. Top 40 playlist including Jann Arden, Alanis Morissette, and George Michael.

Table for THE RIVER station WRWV Nashville, PD: Charlie Quinn, APD: Tom Peace, MD: Jim McDonald. Top 40 playlist including Celine Dion, Alanis Morissette, and Jann Arden.

Table for JAMMIN' 92 station WZJM Cleveland, PD: Lisa Rodman, MD: Dave Eubanks. Top 40 playlist including Celine Dion, Alanis Morissette, and Jann Arden.

Table for XL106.7 station WXLL Orlando, PD/MD: Adam Cook, APD: Pete deGraaf. Top 40 playlist including Fugees, Alanis Morissette, and Jann Arden.

Table for KJ103 station KYO Oklahoma City, PD: Mike McCoy, MD: Joe Friday. Top 40 playlist including Tracy Chapman, Alanis Morissette, and George Michael.

Table for KISS 98.5 station WKSE Buffalo, PD: Sue O'Neil, MD: Dave Universal. Top 40 playlist including Alanis Morissette, Celine Dion, and Jann Arden.

Table for WZPL station WZPL Indianapolis, PD: Tom Gjerdrum, MD: Rob Blair. Top 40 playlist including Alanis Morissette, Celine Dion, and Jann Arden.

Table for THE EDGE station WEDJ Charlotte, PD: Brian Bridgman, MC: Marcie Crescente. Top 40 playlist including Alanis Morissette, Celine Dion, and Jann Arden.

Table for Z93 station WGTZ Dayton, PD: Louis Kaplan, MD: Gretchen Corbett. Top 40 playlist including Mariah Carey, Alanis Morissette, and George Michael.

Table for FLY 92 station WFLY Albany, PD: Mike Morgan, MD: Ron 'Sugarbear' Williams. Top 40 playlist including Fugees, Alanis Morissette, and Jann Arden.

Table for Z104 station WNWZ Norfolk, PD: Don London, MD: Sean Sellers. Top 40 playlist including Fugees, Alanis Morissette, and George Michael.

Table for MIX 93.3 station KMXV Kansas City, PD/MD: Jon Zellner. Top 40 playlist including Alanis Morissette, Celine Dion, and Jann Arden.

Table for MIX 107.5 station KWMX Denver, MD: Lee Cagle, APD: Steve Douglas. Top 40 playlist including Alanis Morissette, Celine Dion, and Jann Arden.

Table for WIXX station WIXX Green Bay, PD: Dan Stone, MD: David Burns. Top 40 playlist including Robert Miles, Celine Dion, and Jann Arden.

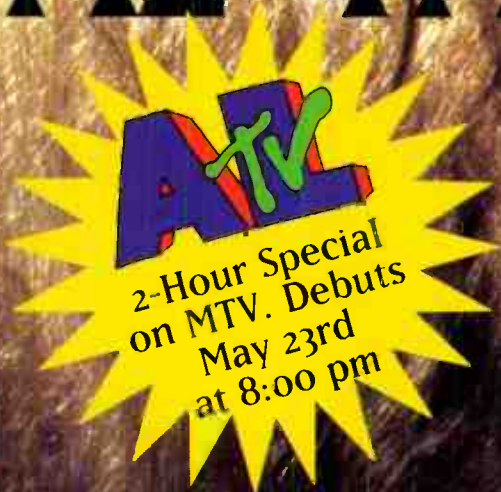
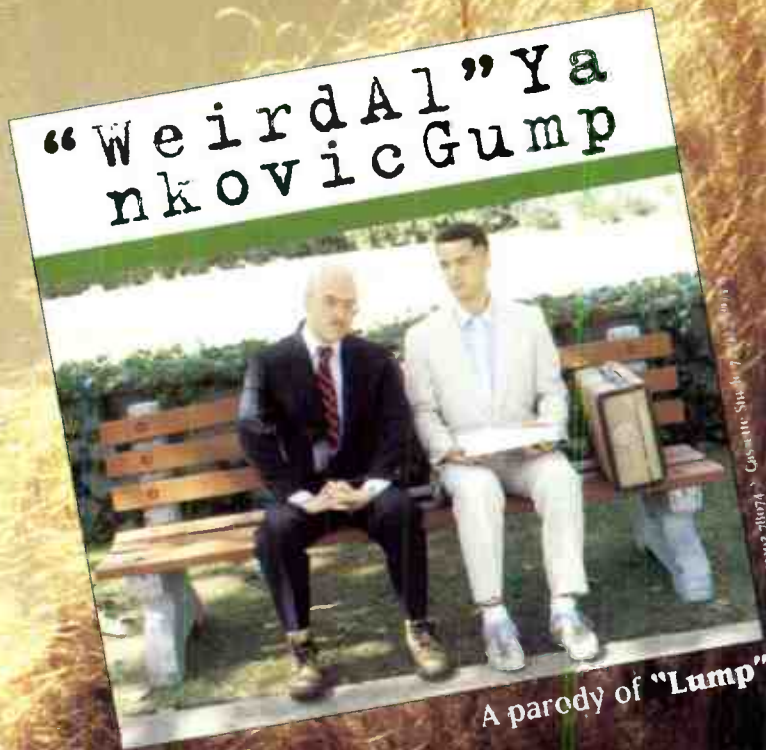
Table for WKRZ station WKRZ Wilkes-Barre, PD: Ken Medek, MD: Jerry Padden. Top 40 playlist including Mariah Carey, Alanis Morissette, and George Michael.

Table for WVKs station WVKs Toledo, PD: Mike Wheeler, MD: Curt Wuerse. Top 40 playlist including Hootie & The Blowfish, George Michael, and Jann Arden.



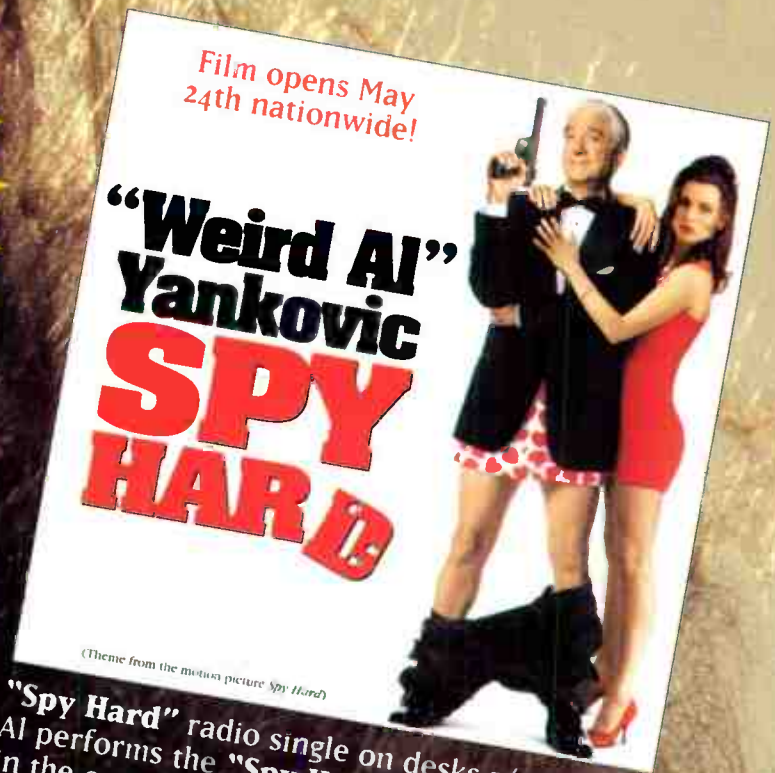
# THE MAN WITH THE GOLDEN GUMP!

# "WEIRD AL" YANKOVIC



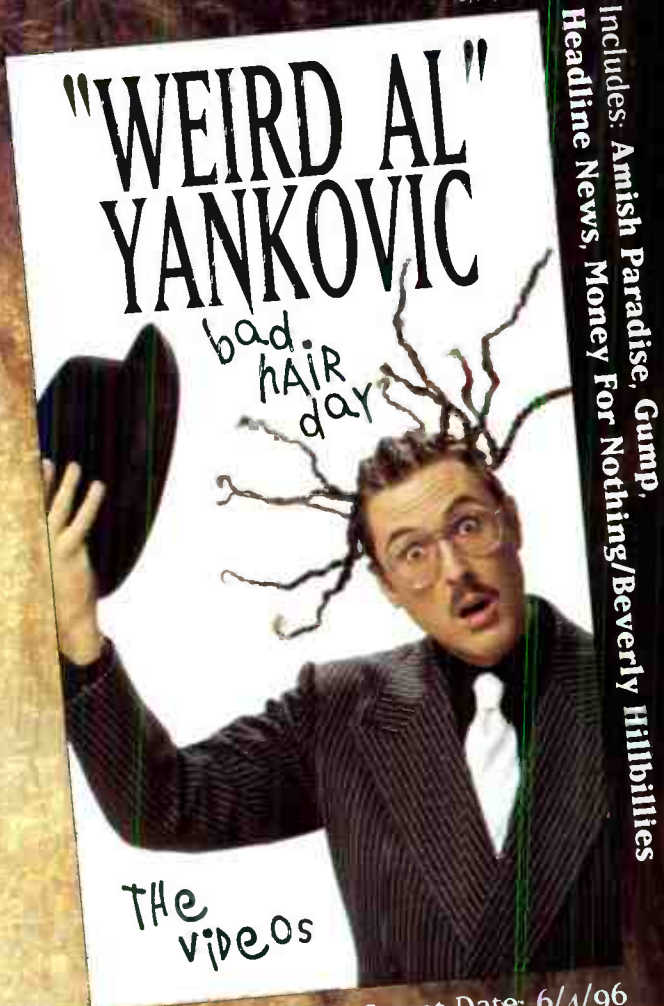
Al's 10th studio album, "BAD HAIR DAY" is platinum.

Featuring: Amish Paradise, Gump, Phony Calls, The Alternative Polka and more!



"Spy Hard" radio single on desks 5/20. Al performs the "Spy Hard" theme in the opening credits

It's a platinum hair day!



Home Video Street Date: 6/4/96



### bad HAIR TOUR

5/24 Wilkes Barre, PA	6/17 Calgary, AB
5/25 Red Bank, NJ	6/18 Kamloops, BC
5/26 Hershey, PA	6/19 Vancouver, BC
5/28 New Haven, CT	6/20 Victoria, BC
5/29 Devon, PA	6/21 Seattle, WA
5/30 Westbury, NY	6/23 Boise, ID
5/31 Tonowanda, NY	7/17 Perris, CA
6/1 Toronto, ON	7/20 Waukesha, WI
6/3 Ottawa, ON	7/26 San Jose, CA
6/4 London, ON	8/3 Kearney, NE
6/5 Sudbury, ON	8/24 Salem, OR
6/7 Thunder Bay, ON	8/25 Kelseyville, CA
6/9 Winnipeg, MB	8/26 Sacramento, CA
6/10 Brandon, MB	9/10 Spokane, WA
6/11 Saskatoon, SK	9/26 Yakima, WA
6/12 Regina, SK	10/2 Bakersfield, CA
6/14 Red Deer, AB	
6/15 Edmonton, AB	

Watch for additional dates in your area.



See your WEA representative for details.



POWER PLAYLISTS

For Week Ending May 19, 1996



Playlists supplied by Broadcast Data Systems. Radio Track service. Stations selected from panel of leading broadcasters in 175 radio markets, electronically monitored 24 hours a day, 7 days a week. Songs ranked by number of plays in monitored week.

Grid of 8 radio station playlists including 98PXY, WDJX, WAPE, KHFI, 93Q, and B104. Each station's list includes song titles, artists, and play counts.

Grid of 8 radio station playlists including SUNNY 104.5, WINK 104, Q94, WHOT, B93.7, and WZYP. Each station's list includes song titles, artists, and play counts.

Grid of 8 radio station playlists including SWEET 98, MIX 104.1, Q99, MIX 94.5, KRQ, and KC101. Each station's list includes song titles, artists, and play counts.



# joan osborne st.teresa

the new single from the now double-platinum *relish*  
*just listen*

"'St. Teresa' worked at KRBE and is working at Z100... It's clearly one of the strongest cuts on the album!!"

-Tom Poleman, Z100/New York

"This is the track we've been waiting for... 'St. Teresa' will go all the way!!"

-John Ivey, WXKS/Boston

"After witnessing her live performance after the Grammys in L.A., we're convinced that Joan Osborne is a 'Rock Star Goddess...' 'St. Teresa' is the song that will prove it!!"

- Garrett Michaels & Alex Tear, WHYT/Detroit

**BDS spins up 150%**

already spinning at:

Z100	NYC	12x
KRBE	Houston	34x
WXKS	Boston	15x
KALC	Denver	24x
KLRZ	New Orleans	28x



Produced by Rick Chertoff

Mgmt: David Sonenberg for DAS Communications

<http://www.mercuryrecords.com/mercury>

©1998 Mercury Records



World Radio History





★ ★ ★ **AIRPOWER** ★ ★ ★  
(Minimum 1500 detections for the first time)

**ADAM CLAYTON & LARRY MULLEN 1596/353**

*Theme From Mission: Impossible (Mother/Island)*  
Total Stations: 77/Chart Move: 25-21  
Heavy (40+ plays): 4 KHTO, WDCG, WKBO, WRVQ  
Medium (20-39): 36 KBFM, KHOM, KJYO, KKDM, KKM, KKRD, KQKQ, KRBE, WAPE, WBHT, WBZZ, WFBC, WFHN, WFLY, WFMF, WHOT, WHTZ, WHYI, WIOQ, WKRZ, WKSE, WKSS, WKXJ, WNOK, WNTQ, WSNX, WSSX, WSTW, WWSR, WWCK, WXIS, WXXL, WYCR, WZNY, WZPL, WZST  
Light (Under 20): 37

Total Plays/Gain

**AIRPOWER BOUND**

Total Plays/Gain

**LOS DEL RIO 1325/99**

*Macarena (Bayside Boys Mix) (RCA)*  
Total Stations: 67/Chart Move: 26-23  
Heavy (40+ plays): 7 KALC, KHOM, WFLZ, WKRQ, WRVQ, WSSX, WZPL  
Medium (20-39): 21 KHTO, KKDM, KKRD, KQKQ, KZZU, WABB, WAPE, WBHT, WEDJ, WFHN, WHOT, WKRZ, WMXQ, WNNK, WPRO, WSNX, WTW, WTKB, WXXX, WZJM, WZST  
Light (Under 20): 39  
New Airplay This Week: 7 WLAN, WNCI, WNTQ, WNVZ, WWST, WXLK, WXXX

**OASIS 1322/282**

*Champagne Supernova (Epic)*  
Total Stations: 72/Chart Move: 27-24  
Heavy (40+): 5 KHOM, KUTQ, WHTZ, WKXJ, WPST  
Medium (20-39): 22 KHTY, KKRD, KRBE, WABB, WBHT, WDDJ, WEDJ, WFBC, WFLZ, WKBO, WKRQ, WKSE, WMXQ, WPRO, WPXY, WWSR, WXIS, WXXB, WXXL, WXXX, WZNY, WZST  
Light (Under 20): 45  
New Airplay This Week: 10 KDWB, KHFI, KKM, KKRD, KVMX, WBZZ, WKSS, WNNK, WWST, WZJM

**ALANIS MORISSETTE 1087/379**

*You Learn (Maverick/Reprise)*  
Total Stations: 59/Chart Move: 40-27  
Heavy (40+): 3 WBHT, WHTZ, WPST  
Medium (20-39): 19 KALC, KDWB, KHTY, KKDM, KKM, KKRD, KQKQ, WAPE, WDCG, WEDJ, WFLZ, WKRQ, WNTQ, WPRO, WPXY, WSNX, WSTR, WWSR, WXXL  
Light (Under 20): 37  
New Airplay This Week: 14 KBFM, KHOM, KKRD, WGTZ, WIXX, WKRZ, WNCI, WSSX, WXIS, WXXB, WXXX, WYCR, WZJM, WZNY

**JARS OF CLAY 1053/161**

*Flood (Essential/Silvertone/Jive)*  
Total Stations: 73/Chart Move: 29-28  
Heavy (40+): 3 KUTQ, WVK, WWCK  
Medium (20-39): 20 KHFI, KJYO, KRBE, WABB, WDCG, WDDJ, WFBC, WKRQ, WKXJ, WNNK, WPRO, WPST, WSSX, WTIC, WXIS, WXXS, WXXL, WYCR, WZNY, WZST  
Light (Under 20): 50  
New Airplay This Week: 4 WFBC, WIXX, WLAN, WWSR

**ROBERT MILES 1030/202**

*Children (Arista)*  
Total Stations: 65/Chart Move: 33-29  
Heavy (40+): 4 KBFM, WIXX, WPRO, WWSR  
Medium (20-39): 19 KHOM, KHTO, KJYO, KKM, KRBE, KROQ, WFLY, WHYI, WIOQ, WKXJ, WNNK, WNOK, WPXY, WSSX, WWCK, WXIS, WXXL, WYCR, WZJM  
Light (Under 20): 42  
New Airplay This Week: 7 KDWB, KKM, WDUX, WEDJ, WMXQ, WTIC, WZPL

**COOLIO 1008/22**

*1,2,3,4 (Sumpin' New) (Tommy Boy)*  
Total Stations: 69/Chart Move: 28-30  
Heavy (40+): 4 KZZU, WBHT, WGTZ, WNVZ  
Medium (20-39): 16 KBFM, KHFI, KHKS, KIIS, KKRZ, KQKQ, WFHN, WFLZ, WIOQ, WKSE, WRVQ, WSSX, WXIS, WTKB, WZJM, WZPL  
Light (Under 20): 49

**BILLIE RAY MARTIN 960/138**

*Your Loving Arms (Sire/EEG)*  
Total Stations: 67/Chart Move: 34-31  
Heavy (40+): 3 KHFI, KIIS, KZZU  
Medium (20-39): 20 KBFM, KDWB, KKRD, KKRZ, KQKQ, WFHN, WFLY, WIOQ, WKSE, WKSS, WKXJ, WNNK, WPRO, WPXY, WTW, WWSR, WXIS, WXXL, WXXX, WZJM  
Light (Under 20): 44  
New Airplay This Week: 7 KKM, KKRD, WDDJ, WKRZ, WRVQ, WWSR, WZYP

**VOICE OF THE BEEHIVE 885/56**

*Scary Kisses (Discovery)*  
Total Stations: 74/Chart Move: 32-33  
Heavy (40+): 2 KHFI, KKRZ  
Medium (20-39): 14 KHTO, KKDM, KRBE, KUTQ, WFHN, WFLY, WFLZ, WKXJ, WSTW, WXIS, WXXL, WYCR, WZPL, WZST  
Light (Under 20): 58  
New Airplay This Week: 3 WFBC, WKRZ, WNNK

**EVERCLEAR 827/45**

*Santa Monica (Watch The World Die) (Tim Keri/Capitol)*  
Total Stations: 64/Chart Move: 36-35  
Heavy (40+): 6 KRBE, KUTQ, WBHT, WDCG, WKRQ, WPST  
Medium (20-39): 7 KHTY, WDDJ, WHTZ, WKRZ, WSSX, WTW, WXIS  
Light (Under 20): 51

**THE CRANBERRIES 757/49**

*Salvation (Island)*  
Total Stations: 65/Chart Move: 39-37  
Heavy (40+): 1 WPST  
Medium (20-39): 12 KHTY, KJYO, KKDM, KRBE, WBHT, WDCG, WDDJ, WFLZ, WHTZ, WSSX, WXIS, WYCR  
Light (Under 20): 52  
New Airplay This Week: 2 KMXV, WBZZ

**NATALIE MERCHANT 708/84**

*Jealousy (Elektra/EEG)*  
Total Stations: 47/Chart Move: Debut 38  
Heavy (40+): 0  
Medium (20-39): 15 KRBE, WABB, WAPE, WBHT, WFLZ, WKRZ, WKXJ, WNOK, WRVQ, WSSX, WSTR, WWSR, WWCK, WYCR, WZST  
Light (Under 20): 32  
New Airplay This Week: 2 WHOT, WPRO

**JEWEL 681/154**

*Who Will Save Your Soul (Atlantic)*  
Total Stations: 44/Chart Move: Debut 40  
Heavy (40+): 0  
Medium (20-39): 15 KALC, KMXV, KRBE, KVMX, WDCG, WFLY, WHTZ, WKBO, WKXJ, WNOK, WPST, WSSX, WSTR, WTIC, WWCK  
Light (Under 20): 29  
New Airplay This Week: 4 KKDM, KKRD, WKRZ, WRVQ

**MOST NEW AIRPLAY THIS WEEK**

	No. Of Stations
<b>TONI BRAXTON</b> <i>You're Makin' Me High (LaFace/Arista)</i>	20
<b>BRYAN ADAMS</b> <i>The Only Thing That Looks Good On Me Is You (A&amp;M)</i>	16
<b>PHILOSOPHER KINGS</b> <i>Charms (Columbia)</i>	16
<b>ALANIS MORISSETTE</b> <i>You Learn (Maverick/Reprise)</i>	14
<b>OASIS</b> <i>Champagne Supernova (Epic)</i>	10
<b>STING</b> <i>You Still Touch Me (A&amp;M)</i>	10

**CHART BOUND**

Total Plays/Gain

**BRYAN ADAMS 645/331**

*The Only Thing That Looks Good To Me Is You (A&M)*  
Total Stations: 52  
Heavy (40+): 0  
Medium (20-39): 11 KMXV, KUTQ, WFBC, WIXX, WKRZ, WSSX, WSTW, WWSR, WXXS, WYCR, WZST  
Light (Under 20): 41  
New Airplay This Week: 16 KDWB, KHTO, KKRD, KUTQ, WABB, WDCG, WFLY, WKBO, WKXJ, WLAN, WMXQ, WNCI, WNNK, WRVQ, WXLK, WZYP

**LENNY KRAVITZ 543/17**

*Can't Get You Off My Mind (Virgin)*  
Total Stations: 37  
Heavy (40+): 0  
Medium (20-39): 13 KHOM, KHTO, KUTQ, WBHT, WFBC, WKRZ, WKXJ, WNNK, WWSR, WXIS, WXLK, WZJM, WZNY  
Light (Under 20): 24  
New Airplay This Week: 1 WKRQ

**DAVE MATTHEWS BAND 530/26**

*Too Much (RCA)*  
Total Stations: 40  
Heavy (40+): 0  
Medium (20-39): 11 KHTY, KKDM, KUTQ, WBHT, WDCG, WDDJ, WKXJ, WPST, WSSX, WWCK, WXIS  
Light (Under 20): 29  
New Airplay This Week: 3 WNVZ, WWSR, WXXX

**SWV 522/58**

*You're The One (RCA)*  
Total Stations: 59  
Heavy (40+): 0  
Medium (20-39): 9 KHFI, KHTO, KKM, KZZU, WFHN, WFLY, WNVZ, WVK, WZPL  
Light (Under 20): 50  
New Airplay This Week: 1 KHFI

**STING 507/128**

*You Still Touch Me (A&M)*  
Total Stations: 44  
Heavy (40+): 0  
Medium (20-39): 4 KALC, WIXX, WNCI, WYCR  
Light (Under 20): 40  
New Airplay This Week: 10 KJYO, KKRD, WDDJ, WGTZ, WKRZ, WNOK, WSNX, WXXX, WZNY, WZPL

**THE PHILOSOPHER KINGS 432/199**

*Charms (Columbia)*  
Total Stations: 49  
Heavy (40+): 0

Medium (20-39): 2 KVMX, WMXQ  
Light (Under 20): 47  
New Airplay This Week: 16 KHTO, KHTT, KJYO, KQKQ, KRBE, WABB, WGTZ, WKXJ, WPRO, WSTR, WVK, WXXS, WXLK, WXXX, WYCR, WZNY

**BONE THUGS-N-HARMONY 396/152**

*Tha Crossroads (Ruthless)*  
Total Stations: 44  
Heavy (40+): 2 KHOM, KZZU  
Medium (20-39): 5 KQKQ, WGTZ, WWSR, WXIS, WZPL  
Light (Under 20): 37  
New Airplay This Week: 8 KBFM, KDWB, KQKQ, KRQ, WKSE, WRVQ, WXIS, WZPL

**EVERYTHING BUT THE GIRL 396/155**

*Wrong (Atlantic)*  
Total Stations: 43  
Heavy (40+): 0  
Medium (20-39): 8 KBFM, KHTO, KRBE, WFHN, WIOQ, WRVQ, WTW, WWCK  
Light (Under 20): 35  
New Airplay This Week: 8 KHOM, KHTO, KIIS, WHYI, WKSE, WKXJ, WWSR, WZST

**★ TONI BRAXTON 394/322**

*You're Makin' Me High (LaFace/Arista)*  
Total Stations: 43  
Heavy (40+): 1 KZZU  
Medium (20-39): 3 WFHN, WTW, WZPL  
Light (Under 20): 39  
New Airplay This Week: 20 KJYO, KKRD, KMXV, KQKQ, WFHN, WFLY, WFLZ, WHOT, WIOQ, WKXJ, WNNK, WNVZ, WPXY, WSSX, WSTW, WTW, WXLK, WYCR, WZPL, WZST

**NIXONS 361/36**

*Sister (MCA)*  
Total Stations: 29  
Heavy (40+): 1 WPST  
Medium (20-39): 6 KHTY, KRBE, WDDJ, WHTZ, WKXJ, WXIS  
Light (Under 20): 22  
New Airplay This Week: 2 WGTZ, WZST

**PUFF JOHNSON 334/33**

*Forever More (Work)*  
Total Stations: 24  
Heavy (40+): 0  
Medium (20-39): 5 KHTO, WFLY, WMXQ, WWCK, WXIS  
Light (Under 20): 19  
New Airplay This Week: 1 WXXL

**BUSH 305/30**

*Machinehead (Trauma/Interscope)*  
Total Stations: 19  
Heavy (40+): 1 KUTQ  
Medium (20-39): 4 KHTY, KKDM, WHTZ, WPST  
Light (Under 20): 14  
New Airplay This Week: 1 WABB

**MTS 280/25**

*I'll Be Alright (Summit)*  
Total Stations: 11  
Heavy (40+): 2 WKRO, WKSE  
Medium (20-39): 5 WFLZ, WIOQ, WPXY, WXXL, WZJM  
Light (Under 20): 4  
New Airplay This Week: 1 WGTZ

**★ JOAN OSBORNE 219/119**

*St. Teresa (Blue Gorilla/Mercury)*  
Total Stations: 33  
Heavy (40+): 0  
Medium (20-39): 4 KALC, KRBE, WDCG, WXIS  
Light (Under 20): 29  
New Airplay This Week: 6 WDCG, WKRZ, WSSX, WTW, WWCK, WWST

**R. KELLY 211/29**

*Down Low (Nobody Has To Know) (Jive)*  
Total Stations: 42  
Heavy (40+): 2 KHOM, KZZU  
Medium (20-39): 1 WWSR  
Light (Under 20): 39

**DONNA LEWIS 198/39**

*I Love You Always Forever (Atlantic)*  
Total Stations: 14  
Heavy (40+): 0  
Medium (20-39): 4 KRQ, WFLZ, WHYI, WVK  
Light (Under 20): 10  
New Airplay This Week: 2 WWCK, WXXL

**★ KRISTINE W 177/87**

*One More Try (RCA)*  
Total Stations: 31  
Heavy (40+): 0  
Medium (20-39): 4 WFHN, WHYI, WKSE, WRVQ  
Light (Under 20): 27  
New Airplay This Week: 3 WHYI, WKSS, WPXY

**GOLDFINGER 177/46**

*Here In Your Bedroom (Mojo/Universal)*  
Total Stations: 17  
Heavy (40+): 0  
Medium (20-39): 2 KKDM, WPST  
Light (Under 20): 15  
New Airplay This Week: 3 KUTQ, WSSX, WTW

**QUAD CITY DJ'S 172/28**

*C'mon 'N Ride It (The Train) (Quadrasound/Big Beat/Atlantic)*  
Total Stations: 24  
Heavy (40+): 1 KZZU  
Medium (20-39): 1 KHOM  
Light (Under 20): 22  
New Airplay This Week: 2 KHOM, WHYI

**★ SPIN DOCTORS 172/64**

*She Used To Be Mine (Epic)*  
Total Stations: 21  
Heavy (40+): 0  
Medium (20-39): 2 WKBO, WXIS  
Light (Under 20): 19  
New Airplay This Week: 4 KMXV, WKRQ, WWCK, WXXX

**THE VERVE PIPE 167/52**

*Photograph (RCA)*  
Total Stations: 21  
Heavy (40+): 0  
Medium (20-39): 1 WSSX  
Light (Under 20): 20  
New Airplay This Week: 3 WSSX, WYCR, WZST

**TRACY BONHAM 143/2**

*Mother Mother (Island)*  
Total Stations: 21  
Heavy (40+): 0  
Medium (20-39): 0  
Light (Under 20): 21  
New Airplay This Week: 3 KJYO, WDCG, WKBO

Airpower awarded to those records which attain 1500 detections for the first time. New airplay lists those stations registering six or more detections per week on a record for the first time. ★ Initial impact: records appearing on this page for the first time.







SONG ACTIVITY REPORTS

For Week Ending May 19, 1996



Detailed song tracking information for the last 5 weeks for all songs showing increased play this week. Total plays are in parentheses. Markets listed in order of population.

Grid of song activity reports for artists: JEWEL (681/154), LENNY KRAVITZ (543/17), LA BOUCHE (203/84), LOS DEL RIO (1325/99), BILLIE RAY MARTIN (960/138). Each entry includes station codes, song titles, and activity metrics.

Grid of song activity reports for artists: DAVE MATTHEWS BAND (530/26), NATALIE MERCHANT (708/84), GEORGE MICHAEL (1868/63), ROBERT MILES (1030/202), ALANIS MORISSETTE (1087/379). Each entry includes station codes, song titles, and activity metrics.

Grid of song activity reports for artists: OASIS (1322/282), THE PHILOSOPHER KINGS (432/199), STING (507/128), SWV (522/58), VOICE OF THE BEEHIVE (885/56). Each entry includes station codes, song titles, and activity metrics.



POWER PLAYLISTS

AIRPLAY Monitor

For Week Ending May 19, 1996

Playlists supplied by Broadcast Data Systems' Radio Track service. Stations selected from panel of leading broadcast stations in 125 radio markets, electronically monitored 24 hours a day, 7 days a week. Songs ranked by number of plays in monitored week.

**HOT 97**  
 WQHT PD: Steve Smith  
 New York APD/MD: Tracy Cloutier  
 MD: Deneen Womack

	TW	LW
1 Junior M.A.F.I.A., Get Money	43	36
2 SWV, You're the One	41	45
3 Jayz, Ain't No Niggas	39	41
4 Fugees, Killing Me Softly	38	41
5 MC Lyte, Keep On Keepin' On	38	31
6 -112-, Only You	37	38
7 Fugees, Ready Or Not	37	36
8 Montell Jordan/Slick Rick, I Like It	36	32
9 Cassi, Touch Me, Tease Me	36	35
10 Busta Rhymes, It's A Party	35	9
11 R. Kelly, Down Low	35	33
12 Total, Kussin' You	32	37
13 Total, Do You Know	31	33
14 Last Boyz, Renee	29	29
15 Monifah, You	29	23
16 Jive, All The Things	28	26
17 Gaius W/Gza, Shadow Box	26	33
18 Horace Brown, One For The Money	25	28
19 R. Kelly, I Can't Sleep Baby	25	31
20 Mecca Lisa, Can't Be Kissing My Time	24	18
21 Jodeci, Get On Up	23	8
22 Toni Braxton, You're Makin' Me High	23	8
23 Aaliyah, Are You Ready	20	24
24 Dr. Lo Soul, The Business	19	11
25 Monica, Why I Love You So Much	19	10
26 Busta Rhymes, Woo-Hah!! Got You All In C	18	33
27 LL Cool J, Loungin'	16	0
28 Wubb Deep, Back At You	15	13
29 Fat Joe, Easy	13	9
30 Invi, Fakin' Jay	12	10
31 Busta Rhymes, Everything Remains Raw	11	11
32 D'Angelo, Lady	10	24
33 Faith Evans, Ain't Nobody	10	12
34 Capone -N- Noriega, I.A., L.A.	9	10
35 Blahzay Blahzay, Pam I Feel	8	1
36 Groove Theory, Tell Me	8	1
37 Groove Theory, Keep It Flyin'	8	1
38 Mecca Lisa, Can't Be Kissing My Time	7	11
39 Monica, Before You Walk Out Of My Life	7	6
40 Frankie Cutlass, You And You And You	7	10

**POWER 106**  
 KPWR PD: Michelle Mercer  
 Los Angeles APD/MD: Bruce St. James  
 AMD: Pete Manriquez

	TW	LW
1 Angelina, Release Me	68	63
2 Bone Thugs-N-Harmony, The Crossroads	67	66
3 Fugees, Killing Me Softly	63	66
4 Arto The 1 Man Party, Esa Nena Linda	61	59
5 Delinquente Habits, Tres Delinquentes	56	46
6 2Pac, 2 Of Amerikaz Most Wanted	45	35
7 Planet Soul, Feel The Music	45	65
8 Wc & The Maad Circle, The On-	42	29
9 Eurythmics, Sweet Dreams	42	42
10 DJ Traje, Pants Are Saggin	33	51
11 Mack 10, Hoe Banga	30	25
12 R. Kelly, Down Low	30	27
13 Mary J. Blige, Not Gon' Cry	29	40
14 El Presidente, Cafe Con Leche	24	27
15 Too Short, Gattin' It	24	5
16 Coolio, I, 2, 3, 4	22	46
17 Xzibit, Paparaza	17	0
18 MC Lyte, Keep On Keepin' On	17	0
19 Lina Santiago, Feel So Good	16	9
20 L.A.D., Rodin' Low	16	9
21 Frost, La Familia	14	12
22 2Pac, California Love	13	18
23 LL Cool J, Hey Lover	12	13
24 L.B.C. Crew, B-ware O' My Crew	11	19
25 Junior M.A.F.I.A., Get Money	9	26
26 DJ D-Man & Billy Boy, Dooky Body	8	10
27 Rick James, Many Jan-	8	5
28 Rob Base & DJ, E-Z Rock, It Takes Two	8	6
29 M.C. Breed & Dc, Ain't No Future In Yo'	8	6
30 Zapp & Roger, More Founce To The Ounce	8	8
31 M.C. Sky-B, Shake It	7	5
32 Warren G, This D.J.	7	6
33 Ice Cube, What Can I Do?	7	5
34 Cypress Hill, How I Could Just Kill A Ma	7	7
35 Groove Theory, Tell Me	7	6
36 Lunitz, I Got 5 Or It	7	7
37 Dr. Dre, Let Me Ride	7	7
38 The Notorious B.I.G., One More Chance	7	7
39 Rodney O. & Joe Cooley, Everlasting Bass	7	8
40 Gap Band, Outstanding	7	6

**B96**  
 WBBM PD: Todd Cavanah  
 Chicago MD: Erik Bradley

	TW	LW
1 Coolio, I, 2, 3, 4	65	68
2 Fugees, Killing Me Softly	64	64
3 The Tony Rich Project, Nobody Knows	56	40
4 Brandy, Sittin' Up In My Room	54	48
5 Mariah Carey, Always Be My Baby	51	68
6 La Bouche, Sweet Dreams	47	35
7 Monica, Before You Walk Out Of My Life	43	24
8 Alanis Morissette, Ironic	39	50
9 Culture Beat, Inside Out	34	22
10 Amber, This Is The Night	33	27
11 Collina Dion, Because You Loved Me	30	25
12 Buffy, Gve Me	31	25
13 Big Sister, round Me Go	30	59
14 Robert Miles, Children	25	23
15 Everything But The Girl, Missing	24	32
16 Groove Theory, Tell Me	24	18
17 Quad City D.J.'s, C'mon 'n Ride It	23	11
18 Everything But The Girl, Wrong	22	12
19 La Bouche, Be My Lover	21	39
20 LL Cool J, Don't	18	17
21 Mariah Carey, Fantasy	18	25
22 Bone Thugs-N-Harmony, The Crossroads	14	8
23 Cowlio Feat. L.V., Gangsta's Paradise	14	19
24 Ace Of Base, Lucky Love	13	12
25 Lil Suzy, When I Fall In Love	13	11
26 Real McCoy, Another Night	13	14
27 R. Kelly, Down Low	12	7
28 Fugees, Fu-Gee-La	12	15
29 2 Unlimited, Get Ready For The	12	8
30 Le Click, Tonight's The Night	11	10
31 Real McCoy, Automatic Lover	11	11
32 Fun Factory, Close To You	10	13
33 Ricky Martin, Mana	10	12
34 SWV, You're the One	9	9
35 Corona, The Rhythm Of The Night	8	6
36 2Pac, California Love	8	6
37 No Good Chris, The Roof Is On Fire	8	14
38 Beastie Boys, Bossy Mamma	8	4
39 Billie Ray Martin, Your Loving Arm	7	9
40 Ruffneck Feat. Yavahn, Everybody Be Some	7	6

**WKTU**  
 WKTU PD: Frankie Blue  
 New York MD: Andy Shane

	TW	LW
1 Fugees, Killing Me Softly	56	59
2 La Bouche, Be My Lover	55	57
3 Billie Ray Martin, Four Loving Arms	52	55
4 Collage, I'll Be Loving You	50	41
5 Mariah Carey, Always Be My Baby	50	37
6 La Bouche, Sweet Dreams	32	24
7 Caline Dion, Because You Loved Me	29	35
8 Adam Clayton & Larry Muller, Theme From	28	12
9 Los Del Rio, Macarena Bayside Boys Mix	27	37
10 Lina Santiago, Feel So Good	26	32
11 Everything But The Girl, Missing	25	44
12 The Tony Rich Project, Nobody Knows	23	18
13 Mariah Carey, Fantasy	22	14
14 Robert Miles, Children	21	25
15 Kristine W, One More Try	21	26
16 Ace Of Base, Beautiful Life	21	21
17 Outthere Brothers, Boom Boom Boom	19	14
18 Livin' Joy, Dreamer	17	32
19 Real McCoy, Run Away	16	11
20 Angelina, Release Me	16	12
21 Color Me Badd, The Earth, The Sun, The R	15	33
22 Real McCoy, Archer Night	15	12
23 Groove Theory, Tell Me	12	22
24 Fun Factory, I Wanna B With U	11	15
25 Real McCoy, Oak Boy	11	16
26 Crystal Waters, 100% Pure Love	11	12
27 Culture Beat, Mr. Van	11	9
28 Lil Suzy, When I Fall In Love	11	13
29 Des'ree, You Gotta Be	10	10
30 Seal, Kiss From A Rose	10	10
31 Black Box, Everybody Everybody	10	5
32 Mariah Carey & Boyz II Men, One Sweet Day	9	3
33 TLC, Waterfalls	9	11
34 K.W.S., Please Don't Go	9	4
35 Coolio Feat. L.V., Gangsta's Paradise	9	10
36 Ace Of Base, Don't Turn Around	8	5
37 Ce Ce Peniston, Finally	8	6
38 Corona, The Rhythm Of The Night	8	2
39 Stevie B, I Wanna Be The One	8	3
40 Robin S., Love For Love	8	10

**JAM'N 94.5**  
 WJMN PD: Caecilac Jack  
 Boston MD: Cat Collins

	TW	LW
1 Fugees, Killing Me Softly	69	69
2 Deborah Cox, Who Do U Love	64	56
3 Cedric Belfrage, Because You Loved Me	61	65
4 Collage, I'll Be Loving You	60	41
5 Mariah Carey, Always Be My Baby	60	62
6 2Pac, California Love	59	62
7 Mary J. Blige, Not Gon' Cry	51	85
8 Groove Theory, Tell Me	51	46
9 Fugees, No Woman In No Cry	51	29
10 -112-, Only You	46	35
11 Color Me Badd, The Earth, The Sun, The R	41	40
12 SWV, You're the One	41	43
13 Coolio, I, 2, 3, 4	39	42
14 Joe, All The Things	36	35
15 Monica, Before You Walk Out Of My Life	36	42
16 R. Kelly, Down Low	36	34
17 Toni Braxton, You're Makin' Me High	35	27
18 Jodeci, Get On Up	35	20
19 LL Cool J, Don't	33	19
20 The Tony Rich Project, Nobody Knows	30	41
21 J'son, Take A Look	29	29
22 Immature, We Got It	28	44
23 Everything But The Girl, Missing	28	32
24 Los Del Rio, Macarena Bayside Boys Mix	23	9
25 Mariah Carey, Fantasy	20	18
26 Coolio Feat. L.V., Gangsta's Paradise	20	21
27 LL Cool J, Hey Lover	20	36
28 Twista, Back To The World	19	0
29 Soul For Real, Every Little Thing I Do	17	23
30 Monica, Don't Take U Personal	15	20
31 Shaggy, Boom Boom	15	18
32 Montell Jordan, Slick Rick, I Like	14	11
33 TLC, Daddy's On You	14	13
34 Mariah Carey & Boyz II Men, One Sweet Day	12	16
35 SWV, Right Here/Human Nature	12	10
36 Brandy, I Wanna Be Down	12	11
37 Terror Fabulous, A ton	11	11
38 Bob Marley, One Love	11	11
39 H-Town, KucKucKin' Da Boots	11	9
40 Alber 7, Jil'ho Do Me Right	11	19

**KMEL**  
 KMEL PD: Michelle Santosuosso  
 San Francisco MD: Joey Arbogay

	TW	LW
1 2Pac, 2 Of Amerikaz Most Wanted	60	59
2 MC Lyte, Keep On Keepin' On	55	46
3 Mack 10, Hoe-Banga	54	40
4 Total, Kussin' You	50	41
5 Quad City D.J.'s, C'mon 'n Ride It	49	34
6 D'Angelo, Lady	42	15
7 Junior M.A.F.I.A., Get Money	38	50
8 Bone Thugs-N-Harmony, The Crossroads	36	45
9 Fugees, Killing Me Softly	34	53
10 SWV, You're the One	34	36
11 Passion, Where I'm From	32	26
12 R. Kelly, Down Low	31	55
13 Fugees, Fu-Gee-La	30	57
14 2Pac, All Bout U	29	32
15 Shak, I Can't Wanna Be Alone	24	29
16 Cypress Hill, Boom Biddy Bye Bye	23	3
17 Faith Evans, Soon As I Get Home	23	23
18 Bad Yard Club Feat. Crystal Wa, In The Ch	22	17
19 Jonny Z, Latin Swing	22	34
20 Angelina, Release Me	21	21
21 Max-A-Million, Fat Boy	19	18
22 Art Of Soul, Ever Since You Went Away	18	20
23 Jodeci, Get On Up	17	17
24 Jocelyne Enriquez, Do You Miss Me	16	0
25 Puff Johnson, Forever More	16	18
26 Toni Braxton, You're Makin' Me High	16	8
27 Busta Rhymes, It's A Party	14	2
28 Coolio, I, 2, 3, 4	13	26
29 The Dogg Pound, New York, New York	12	34
30 Mariah Carey, Always Be My Baby	11	18
31 Mac Meil, Get Right	11	16
32 L Line Crew, Hoochie Mama	11	11
33 2Pac, California Love	10	4
34 Total, Be One Else	10	16
35 Immature, Please Don't Go	9	9
36 Brandy, I Wanna Be Down	9	15
37 Jodeci, Love U 4 Life	9	10
38 Marvin Gaye, Sexual Healing	9	5
39 Cassi, Touch Me, Tease Me	9	3
40 Bob Marley & The Wailers, Jammin'	8	7

**WILD 107**  
 KYLD PD: Michael Martin  
 San Francisco AMD: Jose Mein

	TW	LW
1 Mack 10, Hoe-Banga	71	68
2 Too Short, Gettin' It	68	64
3 Bone Thugs-N-Harmony, The Crossroads	66	47
4 Junior M.A.F.I.A., Get Money	66	69
5 MC Lyte, Keep On Keepin' On	64	53
6 Arto The 1 Man Party, Esa Nena Linda	63	66
7 Delinquente Habits, Tres Delinquentes	60	69
8 Quad City D.J.'s, C'mon 'n Ride It	59	52
9 Afro-Rican, All Of Puerto Rico	50	44
10 Angelina, Release Me	45	34
11 Energy, Take Me Higher	44	65
12 Passion, Where I'm From	44	44
13 Jonny Z, Latin Swing	41	45
14 The Dogg Pound, New York, New York	40	46
15 Bad Yard Club Feat. Crystal Wa, In De Ch	40	56
16 R. Kelly, Down Low	37	38
17 Planet Soul, Feel The Music	37	35
18 Cypress Hill, Boom Biddy Bye Bye	37	29
19 Fugees, Killing Me Softly	35	54
20 2 Live Crew, Hoochie Mama	33	38
21 SWV, You're the One	28	0
22 Fugees, Fu-Gee-La	28	23
23 Everything But The Girl, Missing	25	25
24 Total, No One Else	22	29
25 Everything But The Girl, Wrong	17	39
26 2Pac, California Love	14	30
27 Ricky Martin, M-na	13	20
28 LL Cool J, Hey Lover	12	3
29 Buffy, Gve Me	11	14
30 2Pac, 2 Of Amerikaz Most Wanted	10	2
31 Total, Kussin' You	9	3
32 Puff Johnson, Forever More	8	3
33 Ladae, Party 2 Nite	7	0
34 Mac Meil, Get Right	7	0
35 M.C. Breed & Dc, Ain't No Future In Yo'	7	5
36 Eurythmics, Sweet Dreams	7	0
37 Slick Rick, Children's Story	6	5
38 Planet Soul, Set U Fr-e	6	1
39 The Notorious B.I.G., Big Poppa	6	2
40 Total, Can't You See	6	4

**WPGC**  
 WPGC PD: Jay Stevens  
 Washington, DC APD: Bob Holmccans  
 MD: G. Sharp

	TW	LW
1 Bone Thugs-N-Harmony, The Crossroads	60	50
2 Michael Jackson, They Don't Care About U	55	52
3 Monica, Why I Love You So Much	55	52
4 SWV, You're the One	51	44
5 Fugees, Killing Me Softly	49	52
6 Immature, Please Don't Go	47	49
7 Jive, All The Things	40	41
8 Outlawz, It's Your That's On My Mind	38	22
9 Junior M.A.F.I.A., Get Money	38	37
10 Cassi, Touch Me, Tease Me	37	22
11 Inevitable, 5 O'clock	32	35
12 MC Lyte, Keep On Keepin' On	30	19
13 R. Kelly, I Can't Sleep Baby	30	23
14 Busta Rhymes, Woo-Hah!! Got You All In C	24	40
15 D'Angelo, Lady	23	22
16 SWV, You're the One	23	0
17 Crucial Conflict, Hey	22	1
18 DJ Kool, Let Me Clear My Throat	21	26
19 Lost Boyz, Renee	21	20
20 Toni Braxton, You're Makin' Me High	21	17
21 Busta Rhymes, It's A Party	21	2
22 Total, Kussin' You	19	1
23 -112-, Only You	18	17
24 Jayz, Ain't No Niggas	17	3
25 Ruffie Feat. Taska Hopkins, Don't You Wor	17	21
26 Montell Jordan/Slick Rick, I Like	16	11
27 Twista, Look What You've Done	15	14
28 LL Cool J, Don't	14	16
29 H-Town, A Thin Line Between Love & Hat	14	9
30 R. Kelly, Down Low	14	10
31 Xscape, Can't Hang	13	12
32 Lost Boyz, Jeeps, Lex Coups, Brmaz & Ben	12	12
33 Chewbacca, I Will Survive	11	7
34 Fugees, Ready Or Not	10	30
35 The Notorious B.I.G., One More Chance	10	7
36 Total, No One Else	10	11
37 2Pac, California Love	9	12
38 Mariah Carey, Always Be My Baby	9	8
39 Brandy, Sittin' Up In My Room	9	11
40 Method Man Feat. Mary J. Blige, I'll Be	9	10

**THE BOX**  
 KBXX PD: Rob Scorpio  
 Houston MD: Greg Head

	TW	LW
1 Bone Thugs-N-Harmony, The Crossroads	73	67
2 SWV, You're the One	72	59
3 Fugees, Killing Me Softly	63	54
4 MC Lyte, Keep On Keepin' On	63	62
5 Chantay Savage, I Will Survive	54	59
6 R. Kelly, I Can't Sleep Baby	53	16
7 Cassi, Touch Me, Tease Me	52	53
8 Ugh, One Day	51	46
9 Total, Kussin' You	50	56
1		





POWER PLAYLISTS

For Week Ending May 19, 1996



Playlists supplied by Broadcast Data Systems. Radio Track service. Stations selected from panel of leading broadcasters in 126 radio markets, electronically monitored 24 hours a day, 7 days a week. Songs ranked by number of plays in monitored week.

POWER 96 WPOW Miami Interim PD: Kid Curry Interim MD: Phil Jones. List of 40 songs with TW and LW columns.

KUBE KUBE Seattle PD: Mike Tierney MD: Lindsey Cipic. List of 40 songs with TW and LW columns.

POWER 92 KKFR Phoenix PD: Don Parker MD: Brian Douglas. List of 40 songs with TW and LW columns.

FM102 KSFM Sacramento PD: Bob West MD: Trejo. List of 40 songs with TW and LW columns.

KGGI KGGI Riverside APD/MD: Michael Steele PD: Bob Lewis. List of 40 songs with TW and LW columns.

Z90 XHTZ San Diego OM/PD: Lisa Vazquez APD/MD: Jeff Nelson. List of 40 songs with TW and LW columns.

KTFM KTFM San Antonio PD: Cliff Tredway MD: Charlie Huero. List of 40 songs with TW and LW columns.

92Q WERQ Baltimore PD: Tom Calocacci APD: Konan MD: Camille Cashwell. List of 40 songs with TW and LW columns.

KS104 KOKS Denver PD: Cindy Rose APD: Alex Jordann. List of 40 songs with TW and LW columns.

B95 KBOS Fresno PD: Mark Adams MD: Mikey Freeman. List of 40 songs with TW and LW columns.

102 JAMZ WJMH Greensboro PD: Brian Douglas MD: Mary K. List of 40 songs with TW and LW columns.

KDON KDON Monterey/Salinas PD: Michael Newman MD: Jennifer Wilde. List of 40 songs with TW and LW columns.

POWER 102 KPRR El Paso PD: John Candelaria. List of 40 songs with TW and LW columns.

KLUC KLUC Las Vegas PD: Jerry Dean MD: Cat Thomas. List of 40 songs with TW and LW columns.

KIX 106 WVKX Providence PD: Joe Dawson MD: B.B. Good. List of 40 songs with TW and LW columns.

HOOSIER 96.3 WHHH Indianapolis PD: Scott Wheeler MD: Carl Frye. List of 40 songs with TW and LW columns.

HOT 94.9 KZHT Salt Lake City PD: Chet Buchanan MD: Dr. Doug Dodd. List of 40 songs with TW and LW columns.

KKSS KKSS Albuquerque PD: Roy Jaynes MD: Jackie James. List of 40 songs with TW and LW columns.



# Monifah

first, there was "I miss You",

then, it was outdone by the remix

now, the spotlight is on

# "YOU"

#### Major Market

#### Airplay:

HOT 97/NEW YORK  
KKBT/LOS ANGELES  
WJBT/JACKSONVILLE  
WERQ/BALTIMORE  
WOCQ/OCEAN CITY  
KCAQ/OXNARD  
KPRR/EL PASO  
WWKX/PROVIDENCE  
KDNR/ALBUQUERQUE  
KHTN/MODESTO

#### New Airplay:

KIKI/HONOLULU  
KSFM/SACRAMENTO  
XHTZ/SAN DIEGO  
WQMG/GREENSBORO  
WTLC/INDIANAPOLIS

#### Local Sales:

NEW YORK #7  
HARTFORD #8  
WASHINGTON #4  
BALTIMORE #10  
RICHMOND #3  
ROANOKE #9  
NORFOLK #3  
GREENSBORO #7

over 29,000 singles sold again this week!

from the forthcoming album *moods... moments*  
In Stores Now!

World Radio History



THE  
BOX #26





★ ★ ★ **AIRPOWER** ★ ★ ★

(Minimum 600 detections for the first time)

Total Plays/Gain

**ALANIS MORISSETTE 612/18**

*Ironic (Maverick/Reprise)*

Total Stations: 15/Chart Move: 15-12  
Heavy (40+ plays): 9 KBOS, KKFR, KKSS, KLUC, KSFM, KTFM, KUBE, KZFM, WPOW  
Medium (20-39): 3 KPRR, KQKS, WBBM  
Light (Under 20): 3  
New Airplay This Week: 1 KQKS

**AIRPOWER BOUND**

Total Plays/Gain

**MC LYTE FEATURING XSCAPE 588/109**

*Keep On, Keepin' On (Flavor Unit/EastWest/EEG)*

Total Stations: 23/Chart Move: 18-14  
Heavy (40+ plays): 5 KBXX, KMEL, KYLD, WERQ, WWKX  
Medium (20-39): 6 KKSS, KQKS, WHHH, WPGC, WQHT, XHTZ  
Light (Under 20): 12  
New Airplay This Week: 1 KPWR

**TONI BRAXTON 586/311**

*You're Makin' Me High (LaFace/Arista)*

Total Stations: 24/Chart Move: 37-15  
Heavy (40+): 2 KDON, KQKS  
Medium (20-39): 14 KBXX, KCAQ, KGGI, KKFR, KLUC, KPRR, KUBE, KZHT, WERQ, WHHH, WJMH, WJMN, WPGC, WQHT  
Light (Under 20): 8  
New Airplay This Week: 7 KBOS, KDON, KPRR, KZFM, KZHT, WJJS, XHTZ

**COLOR ME BADD 491/17**

*The Earth, The Sun, The Rain (Giant)*

Total Stations: 20/Chart Move: 19-20  
Heavy (40+): 6 KLUC, KQKS, KZFM, KZHT, WJMN, WWKX  
Medium (20-39): 6 KCAQ, KDON, KKFR, KTFM, WHHH, WJJS  
Light (Under 20): 8

**MONICA 434/61**

*Why I Love You So Much (Rowdy/Arista)*

Total Stations: 19/Chart Move: 28-21  
Heavy (40+): 4 KBXX, KLUC, WERQ, WPGC  
Medium (20-39): 5 KDON, KSFM, KZFM, WHHH, WJMH  
Light (Under 20): 10  
New Airplay This Week: 2 KZFM, KZHT

**DELINQUENT HABITS 429/39**

*Tres Delinquentes (PMP/Loud/RCA)*

Total Stations: 17/Chart Move: 25-22  
Heavy (40+): 4 KDON, KKSS, KPWR, KYLD  
Medium (20-39): 4 KLUC, KPRR, KQKS, XHTZ  
Light (Under 20): 9

**QUAD CITY DJ'S 417/32**

*C'mon 'N Ride It (The Train) (Quadrasound/Big Beat/Atlantic)*

Total Stations: 19/Chart Move: 27-23  
Heavy (40+): 5 KLUC, KMEL, KYLD, WJJS, WPOW  
Medium (20-39): 3 KPRR, WBBM, WWKX  
Light (Under 20): 11

**GEORGE MICHAEL 407/22**

*Fastlove (DreamWorks/Geffen)*

Total Stations: 18/Chart Move: 26-24  
Heavy (40+): 2 KDON, KUBE  
Medium (20-39): 8 KGGI, KKFR, KKXX, KZFM, KZHT, WHHH, WJJS, WWKX  
Light (Under 20): 8  
New Airplay This Week: 1 KBOS

**PUFF JOHNSON 406/7**

*Forever More (Work)*

Total Stations: 22/Chart Move: 23-25  
Heavy (40+): 1 KDON  
Medium (20-39): 8 KBOS, KKFR, KLUC, KSFM, KZFM, WJJS, WPOW, XHTZ  
Light (Under 20): 13

**MOST NEW AIRPLAY THIS WEEK**

No. Of Stations

**TONI BRAXTON**

*You're Makin' Me High (LaFace/Arista)*

7

**TEVIN CAMPBELL**

*Back To The World (Qwest/Warner Bros.)*

7

**ARTIE THE 1 MAN PARTY 275/10**

*Esa Nena Linda (Groove Nation/Scotti Bros./All American)*

Total Stations: 15/Chart Move: 40-39  
Heavy (40+): 2 KPWR, KYLD  
Medium (20-39): 2 KTFM, WPOW  
Light (Under 20): 11

**COOLIO 153/54**

*All The Way Live (Tommy Boy/Island)*

Total Stations: 19  
Heavy (40+): 0  
Medium (20-39): 3 KUBE, KZHT, WHHH  
Light (Under 20): 16  
New Airplay This Week: 2 KLUC, WWKX

**CHART BOUND**

Total Plays/Gain

**R. KELLY 260/113**

*I Can't Sleep Baby (If I) (Jive)*

Total Stations: 11  
Heavy (40+): 3 KBXX, WERQ, WJMH  
Medium (20-39): 2 WPGC, WQHT  
Light (Under 20): 6  
New Airplay This Week: 3 KUBE, WHHH, WJJS

**J'SON 245/37**

*I'll Never Stop Loving You (Hollywood)*

Total Stations: 16  
Heavy (40+): 1 XHTZ  
Medium (20-39): 4 KDON, KLUC, KSFM, KZFM  
Light (Under 20): 11  
New Airplay This Week: 3 KDON, KKFR, WHHH

**MONTELL JORDAN FEAT. SLICK RICK 218/43**

*I Like (Def Jam/Mercury)*

Total Stations: 13  
Heavy (40+): 1 WJMH  
Medium (20-39): 2 KBXX, WQHT  
Light (Under 20): 10  
New Airplay This Week: 2 WHHH, WJJS

**MACK 10 FEAT. ICE CUBE 196/19**

*Hoo-Bangin' (Priority)*

Total Stations: 11  
Heavy (40+): 2 KMEL, KYLD  
Medium (20-39): 1 KPWR  
Light (Under 20): 8

**PLANET SOUL 192/4**

*Feel The Music (Strictly Rhythm)*

Total Stations: 18  
Heavy (40+): 1 KPWR  
Medium (20-39): 3 KCAQ, KTFM, KYLD  
Light (Under 20): 14  
New Airplay This Week: 1 WWKX

**BARRIO BOYZZ 177/67**

*I Wish (SBK/EMI)*

Total Stations: 10  
Heavy (40+): 2 KZFM, XHTZ  
Medium (20-39): 1 KTFM  
Light (Under 20): 7  
New Airplay This Week: 2 KBOS, KPRR

**FUGEES 167/8**

*Ready Or Not (Ruffhouse/Columbia)*

Total Stations: 7  
Heavy (40+): 2 WERQ, WJMH  
Medium (20-39): 1 WQHT  
Light (Under 20): 4

**ADAM CLAYTON & LARRY MULLEN 154/49**

*Theme From Mission: Impossible (Mother/Island)*

Total Stations: 21  
Heavy (40+): 1 KZHT  
Medium (20-39): 1 WKTU  
Light (Under 20): 19

**RHYTHMCENTRIC 142/6**

*You Don't Have To Worry (Tazmania/Metropolitan)*

Total Stations: 17  
Heavy (40+): 1 KTFM  
Medium (20-39): 2 KKFR, KPRR  
Light (Under 20): 14

**TOO SHORT FEAT. PARLIAMENT FUNKADELIC 142/47**

*Gettin' It (Jive)*

Total Stations: 6  
Heavy (40+): 1 KYLD  
Medium (20-39): 2 KDON, KPWR  
Light (Under 20): 3  
New Airplay This Week: 2 KDON, KPWR

**3T 131/39**

*Tease Me (MJJ/550 Music)*

Total Stations: 17  
Heavy (40+): 0  
Medium (20-39): 1 WJJS  
Light (Under 20): 16  
New Airplay This Week: 3 KBOS, KGGI, KZHT

**112 130/22**

*Only You (Bad Boy/Arista)*

Total Stations: 12  
Heavy (40+): 1 WJMN  
Medium (20-39): 1 WQHT  
Light (Under 20): 10  
New Airplay This Week: 2 KCAQ, WWKX

**AMBER 128/36**

*This Is Your Night (Tommy Boy)*

Total Stations: 17  
Heavy (40+): 0  
Medium (20-39): 3 KTFM, WBBM, WPOW  
Light (Under 20): 14  
New Airplay This Week: 1 WJJS

**★ TEVIN CAMPBELL 128/121**

*Back To The World (Qwest/Warner Bros.)*

Total Stations: 18  
Heavy (40+): 0  
Medium (20-39): 0  
Light (Under 20): 18  
New Airplay This Week: 7 KBXX, KCAQ, KUBE, KZHT, WERQ, WJMH, WJMN

**FUGEES 122/9**

*No Woman, No Cry (Ruffhouse/Columbia)*

Total Stations: 5  
Heavy (40+): 1 WJMN  
Medium (20-39): 2 KUBE, WJMH  
Light (Under 20): 2

**KE 115/42**

*Strange World (RCA)*

Total Stations: 11  
Heavy (40+): 0  
Medium (20-39): 3 KKFR, KTFM, WPOW  
Light (Under 20): 8

**★ BUSTA RHYMES FEAT. ZHANE 106/89**

*It's A Party (Elektra/EEG)*

Total Stations: 11  
Heavy (40+): 0  
Medium (20-39): 2 WPGC, WQHT  
Light (Under 20): 9  
New Airplay This Week: 3 KBXX, KMEL, WJMH

**JAYZ FEAT. FOXXY BROWN 104/28**

*Ain't No Nigga (Priority)*

Total Stations: 6  
Heavy (40+): 0  
Medium (20-39): 2 WERQ, WQHT  
Light (Under 20): 4  
New Airplay This Week: 2 KBXX, WPGC

**ALL-4-ONE 97/10**

*These Arms (Blitz/Antarctic)*

Total Stations: 4  
Heavy (40+): 1 WJJS  
Medium (20-39): 2 KZFM, WWKX  
Light (Under 20): 1

**★ MONIFAH 95/26**

*You (Universal)*

Total Stations: 6  
Heavy (40+): 0  
Medium (20-39): 2 WQHT, WWKX  
Light (Under 20): 4

**★ KEITH SWEAT 95/84**

*Twisted (Elektra/EEG)*

Total Stations: 11  
Heavy (40+): 0  
Medium (20-39): 2 KLUC, KTFM  
Light (Under 20): 9  
New Airplay This Week: 3 KMEL, KTFM, WJJS

**AFRO-RICAN 90/11**

*All Of Puerto Rico (Priority)*

Total Stations: 8  
Heavy (40+): 1 KYLD  
Medium (20-39): 0  
Light (Under 20): 7

**★ MARIAH CAREY 89/54**

*Slipping Away (Columbia)*

Total Stations: 2  
Heavy (40+): 1 WJMH  
Medium (20-39): 1 KUBE  
Light (Under 20): 0

**★ CYPRESS HILL 79/37**

*Boom Biddy Bye Bye (Ruffhouse/Columbia)*

Total Stations: 10  
Heavy (40+): 0  
Medium (20-39): 2 KMEL, KYLD  
Light (Under 20): 8  
New Airplay This Week: 2 KMEL, WPOW

**★ PASSION 77/6**

*Where I'm From (MCA)*

Total Stations: 3  
Heavy (40+): 1 KYLD  
Medium (20-39): 1 KMEL  
Light (Under 20): 1

**GLORIA ESTEFAN 77/8**

*Reach (Epic)*

Total Stations: 12  
Heavy (40+): 0  
Medium (20-39): 0  
Light (Under 20): 12  
New Airplay This Week: 1 KSFM

**★ MONA LISA 75/4**

*You Said (Island)*

Total Stations: 6  
Heavy (40+): 0  
Medium (20-39): 2 WJJS, WQHT  
Light (Under 20): 4

**FAITH EVANS 74/4**

*Ain't Nobody (Bad Boy/Arista)*

Total Stations: 6  
Heavy (40+): 0  
Medium (20-39): 2 KCAQ, WERQ  
Light (Under 20): 4

**★ 2PAC 74/57**

*How Do U Want It (Death Row/Interscope)*

Total Stations: 6  
Heavy (40+): 0  
Medium (20-39): 1 XHTZ  
Light (Under 20): 5  
New Airplay This Week: 3 KLUC, WJMH, WWKX





**WE'VE GOT CASH TO BURN!**

**IT'S THE 8TH ANNUAL ROAST TO SUPPORT THE**

# **T.J. MARTELL FOUNDATION**

**FOR LEUKEMIA, CANCER & AIDS RESEARCH**

FOUNDED BY THE MUSIC INDUSTRY

**THIS YEAR'S HONOREE:**

CEO, AIR **JONAS CASH**

**CHAIRMAN:**

KID LEO, COLUMBIA

**VICE CHAIRMEN:**

ALAN SMITH, AIR  
BRUCE TYLER, AIR

**EXECUTIVE COUNCIL:**

TERRY ANZALDO, MAVERICK  
BURT BAUMGARTNER, WORK  
MIKE BECCE, TOMMY BOY  
JERRY BLAIR, COLUMBIA  
RICH BLOOM, QWEST  
STU COHEN, WARNER BROTHERS  
PHIL COSTELLO, CAPITOL  
VALERIE DE LONG, LAVA  
JOHN FAGOT, HOLLYWOOD  
RICH FITZGERALD, REPRISE  
ANDREA GANIS, ATLANTIC  
RON GESLIN, TAG  
MARK GORLICK, MCA  
DAVID LEACH, MERCURY  
STEVE LEAVITT, GEFEN  
STEVE LEEDS, UNIVERSAL  
PETER NAPOLIello, EMI  
MICHAEL PLEN, VIRGIN  
JOE RICCITELLI, ISLAND  
BRENDA ROMANO, INTERSCOPE  
JACK SATTER, JIVE  
HILARY SHAEV, 550 MUSIC  
RICK STONE, A&M  
GREG THOMPSON, ELEKTRA  
BUTCH WAUGH, RCA

**ROASTERS:**

POLLY ANTHONY, PRESIDENT, 550 MUSIC  
RICK BISCEGLIA, BMG ENTERTAINMENT  
FRANKIE BLUE, PD, WKTU  
DON IENNER, CHAIRMAN & PRESIDENT, COLUMBIA  
CRAIG LAMBERT, SR. VP, EPIC  
RICHARD PALMESE, SR. VP, ARISTA  
PHIL QUARTARARO, PRESIDENT, VIRGIN  
KEVIN WEATHERLY, PD, KROQ  
**PLUS SURPRISES**

**SPECIAL THANKS TO**

**EVENT SPONSORS:**

HARD ROCK CAFE  
SCHIEFFELIN & SOMERSET CO.  
SONY STUDIOS



**WEDNESDAY, JUNE 12TH**

**HARD ROCK CAFE**

**221 WEST 57TH (BETWEEN 7TH AVE & BWAY)**

**COCKTAILS: 7:00PM DINNER: 7:30PM ROAST: 8:30PM**

**TICKETS: \$400 ADVANCE DONATION \$500 AT THE DOOR**

MAKE CHECKS PAYABLE TO: T.J. MARTELL FOUNDATION

SEND CHECKS TO: ALAN SMITH, AIR

9861 BROKEN LAND PARKWAY, SUITE 200-A

COLUMBIA, MD 21046

World Radio History

THIS EVENT IS DEDICATED TO THE MEMORY OF  
EDWARD J. KEATING







SONG ACTIVITY REPORTS



For Week Ending May 19, 1996

Detailed song tracking information for the last 3 weeks for all songs showing increased play this week. Total plays and gain do not include video play. Markets listed in order of population.

Grid of 48 song activity report boxes. Each box contains song title, artist, total plays, chart move, and a table of station plays across various markets.





POWER PLAYLISTS

For Week Ending May 19, 1996

Playlists supplied by Broadcast Data Systems... Radio-Track service...

Grid of 40 radio station playlists including WPLJ, MIX 105, STAR 98.7, STAR 104.5, MIX 101.9, WPNT, MIX 107.3, Q95.5, MIX 98.5, MIX 96.5, KS95, Q104, MIX 102.9, KYKY, STAR 101.5, MIX 105.1, Q106, MIX 96, VARIETY 96, WBLI, WKTI, SUNNY 107.9, and WRMF.



**BDS IMPACT**

★ ★ ★ **AIRPOWER** ★ ★ ★  
(Minimum 600 detections for the first time)

Total Plays/Gain

**GEORGE MICHAEL 605/62**

*Fastlove (Geffen)*

Total Stations: 31/Chart Move: 21-18  
Heavy (30+ plays): 4 KBKS, WBLI, WQLH, WZPK  
Medium (15-29): 20 KHMV, KKLO, KKO, KPLZ, KSII, KSTP, KYKY, WAEV, WKDD, WKTI, WMC, WMBX, WMXL, WMXV, WRMF, WRQX, WVAE, WWDE, WWSN, WYYY  
Light (Under 15): 7  
New Airplay This Week: 1 WQAL

**AIRPOWER BOUND**

Total Plays/Gain

**COLLECTIVE SOUL 562/22**

*The World I Know (Atlantic)*

Total Stations: 31/Chart Move: 20-20  
Heavy (30+ plays): 6 KFMB, KHMV, KYSR, WMXV, WRQX, WZPK  
Medium (15-29): 14 KDMX, KKLO, KSTP, KSTZ, WKDD, WKQI, WKZL, WOMX, WPNT, WQAL, WQLH, WTMX, WVTY, WWMX  
Light (Under 15): 11

**DOG'S EYE VIEW 497/31**

*Everything Falls Apart (Columbia)*

Total Stations: 32/Chart Move: 22-21  
Heavy (30+): 5 KKLQ, KSTP, WQLH, WRQX, WZPK  
Medium (15-29): 9 KFMB, KHMV, KKO, KSTZ, KYKY, WKDD, WOMX, WPLJ, WVTY  
Light (Under 15): 18  
New Airplay This Week: 1 KYKY

**STING 448/103**

*You Still Touch Me (A&M)*

Total Stations: 29/Chart Move: 28-22  
Heavy (30+): 2 KKLQ, WQLH  
Medium (15-29): 15 KFMB, KHMV, KKO, KPLZ, KSTP, KYSR, WKDD, WKTI, WMXL, WMXV, WMYI, WOMX, WQAL, WWDE, WYYY  
Light (Under 15): 12  
New Airplay This Week: 4 KKO, KSTP, WMYI, WRMF

**FOO FIGHTERS 413/48**

*Big Me (Roswell/Capitol)*

Total Stations: 31/Chart Move: 26-23  
Heavy (30+): 5 KFMB, KHMV, KKLO, WTMX, WZPK  
Medium (15-29): 7 KSTP, KYSR, WBLI, WBMX, WKDD, WMXV, WWMX  
Light (Under 15): 19  
New Airplay This Week: 1 WWMX

**ADAM CLAYTON & LARRY MULLEN 321/92**

*Theme From Mission: Impossible (Mother/Island)*

Total Stations: 27/Chart Move: 30-28  
Heavy (30+): 1 KYSR  
Medium (15-29): 9 KDMX, KHMV, KKLO, WBMX, WKDD, WMXL, WMXV, WPNT, WVAE  
Light (Under 15): 17  
New Airplay This Week: 6 KHMV, WBLI, WBMX, WKDD, WKTI, WMBX

**JARS OF CLAY 253/44**

*Flood (Essential/Silvertone/Jive)*

Total Stations: 19/Chart Move: 32-29  
Heavy (30+): 2 KFMB, KYSR  
Medium (15-29): 5 KSTZ, WBMX, WKTI, WPLJ, WZPK  
Light (Under 15): 12  
New Airplay This Week: 2 WCSO, WMXV

**GLORIA ESTEFAN 232/10**

*Reach (Epic)*

Total Stations: 19/Chart Move: 33-31  
Heavy (30+): 0  
Medium (15-29): 9 KPLZ, KSII, WKDD, WMTX, WMXL, WMYI, WRMF, WVAE, WWDE  
Light (Under 15): 10  
New Airplay This Week: 1 KPLZ

**NATALIE MERCHANT 217/83**

*Jealousy (Elektra/EEG)*

Total Stations: 22/Chart Move: Debut 32  
Heavy (30+): 2 KKLQ, KYSR  
Medium (15-29): 2 KHMV, WMXV  
Light (Under 15): 18  
New Airplay This Week: 6 KFMB, KPLZ, WBLI, WCSO, WMXV, WYYY

**BRYAN ADAMS 216/108**

*The Only Thing That Looks Good On Me is You (A&M)*

Total Stations: 16/Chart Move: Debut 33  
Heavy (30+): 0  
Medium (15-29): 7 KHMV, KPLZ, KSTZ, WKTI, WMBX, WMXV, WQLH  
Light (Under 15): 9  
New Airplay This Week: 6 KPLZ, WAEV, WPLJ, WQLH, WWSN, WZPK

**ALANIS MORISSETTE 201/46**

*You Learn (Maverick/Reprise)*

Total Stations: 14/Chart Move: 39-34  
Heavy (30+): 1 KFMB  
Medium (15-29): 7 KHMV, KKLO, KYSR, WBLI, WBMX, WOMX, WPLJ  
Light (Under 15): 6  
New Airplay This Week: 3 WBMX, WRQX, WTMX

**ROBERT MILES 190/27**

*Children (Arista)*

Total Stations: 16/Chart Move: 35-36  
Heavy (30+): 2 KSII, WKTI  
Medium (15-29): 3 WBLI, WMTX, WWSN  
Light (Under 15): 11

**JEWEL 175/52**

*Who Will Save Your Soul (Atlantic)*

Total Stations: 9/Chart Move: Debut 37  
Heavy (30+): 2 KKLQ, KYSR  
Medium (15-29): 4 KFMB, KHMV, WPLJ, WTMX  
Light (Under 15): 3  
New Airplay This Week: 2 WKDD, WPLJ

**LENNY KRAVITZ 171/9**

*Can't Get You Off My Mind (Virgin)*

Total Stations: 18/Chart Move: 36-38  
Heavy (30+): 1 KYSR  
Medium (15-29): 4 WBMX, WKDD, WMXV, WZPK  
Light (Under 15): 13

**LA BOUCHE 168/18**

*Be My Lover (RCA)*

Total Stations: 13/Chart Move: Re-Entry 39  
Heavy (30+): 1 KBKS  
Medium (15-29): 5 KSII, WKQI, WQLH, WYXR, WZPK  
Light (Under 15): 7  
New Airplay This Week: 2 WBLI, WKQI

**CHART BOUND**

Total Plays/Gain

**FUGEES 164/90**

*Killing Me Softly (Ruffhouse/Columbia)*

Total Stations: 12  
Heavy (30+): 2 WYXR, WZPK  
Medium (15-29): 3 KKLQ, KSII, WBLI  
Light (Under 15): 7  
New Airplay This Week: 4 KKLQ, WKTI, WQLH, WYXR

**MOST NEW AIRPLAY THIS WEEK**

No. Of Stations

**BRYAN ADAMS 6**

*The Only Thing That Looks Good... (A&M)*

**ADAM CLAYTON & LARRY MULLEN 6**

*Theme From Mission: Impossible (Mother/Island)*

**NATALIE MERCHANT 6**

*Jealousy (Elektra/EEG)*

**FUGEES 4**

*Killing Me Softly (Ruffhouse/Columbia)*

**LOS DEL RIO 4**

*Macarena (Bayside Boys Mix) (RCA)*

**STING 4**

*You Still Touch Me (A&M)*

**LOS DEL RIO 135/34**

*Macarena (Bayside Boys Mix) (RCA)*

Total Stations: 14  
Heavy (30+): 1 WKTI  
Medium (15-29): 2 KFMB, WZPK  
Light (Under 15): 11  
New Airplay This Week: 4 KFMB, KKLO, WBLI, WKDD

**COLOR ME BADD 132/35**

*The Earth, The Sun, The Rain (Giant)*

Total Stations: 11  
Heavy (30+): 2 KSII, WQLH  
Medium (15-29): 1 WZPK  
Light (Under 15): 8  
New Airplay This Week: 3 KKO, WVAE, WWSN

**FUN FACTORY 124/16**

*I Wanna B With U (Curb-edel)*

Total Stations: 9  
Heavy (30+): 2 KBKS, WYXR  
Medium (15-29): 1 WBLI  
Light (Under 15): 6

**GROOVE THEORY 111/13**

*Tell Me (Epic)*

Total Stations: 6  
Heavy (30+): 1 KBKS  
Medium (15-29): 2 KSII, WYXR  
Light (Under 15): 3  
New Airplay This Week: 1 WYXR

**LA BOUCHE 83/19**

*Sweet Dreams (RCA)*

Total Stations: 6  
Heavy (30+): 0  
Medium (15-29): 3 WKDD, WQLH, WZPK  
Light (Under 15): 3  
New Airplay This Week: 1 WKTI

**★ THE PHILOSOPHER KINGS 80/33**

*Charms (Columbia)*

Total Stations: 8  
Heavy (30+): 0  
Medium (15-29): 2 WQLH, WWDE  
Light (Under 15): 6  
New Airplay This Week: 2 KKLQ, WZPK

**MADONNA 74/0**

*Love Don't Live Here Anymore (Maverick/Warner Bros.)*

Total Stations: 11  
Heavy (30+): 1 WMXV  
Medium (15-29): 1 WMXL  
Light (Under 15): 9

**BILLIE RAY MARTIN 73/6**

*Your Loving Arms (Sire/EEG)*

Total Stations: 4  
Heavy (30+): 1 KBKS  
Medium (15-29): 2 WQLH, WZPK  
Light (Under 15): 1

**DONNA LEWIS 73/16**

*I Love You Always Forever (Atlantic)*

Total Stations: 4  
Heavy (30+): 1 KFMB  
Medium (15-29): 1 WKTI  
Light (Under 15): 2  
New Airplay This Week: 1 KKLQ

THIS WEEK	LAST WEEK	WEEKS ON	TITLE/LABEL	ARTIST	TW	LW
			★ ★ ★ <b>NO. 1</b> ★ ★ ★			
1	1	14	<b>BECAUSE YOU LOVED ME</b> 550 MUSIC	CELINE DION	1600	1651
(2)	4	9	<b>GIVE ME ONE REASON</b> ELEKTRA/EEG	TRACY CHAPMAN	1308	1112
3	2	12	<b>ALWAYS BE MY BABY</b> COLUMBIA	MARIAH CAREY	1247	1279
4	3	24	<b>WONDER</b> ELEKTRA/EEG	NATALIE MERCHANT	1124	1167
(5)	5	7	<b>OLD MAN &amp; ME (WHEN I GET TO HEAVEN)</b> ATLANTIC	HOOTIE & THE BLOWFISH	1089	1082
(6)	8	13	<b>FOLLOW YOU DOWN</b> A&M	GIN BLOSSOMS	1066	1028
(7)	9	18	<b>NOBODY KNOWS</b> LAFACE/ARISTA	THE TONY RICH PROJECT	1050	990
8	7	16	<b>CLOSER TO FREE</b> SLASH/REPRISE	BODEANS	1033	1053
9	6	13	<b>IRONIC</b> MAVERICK/REPRISE	ALANIS MORISSETTE	1013	1042
10	10	27	<b>MISSING</b> ATLANTIC	EVERYTHING BUT THE GIRL	848	862
(11)	12	20	<b>INSENSITIVE</b> A&M	JANN ARDEN	799	778
12	13	26	<b>DON'T CRY</b> ZTT/WARNER BROS.	SEAL	738	790
13	11	34	<b>NAME</b> METAL BLADE/WARNER BROS.	GOO GOO DOLLS	715	839
14	16	42	<b>ROLL TO ME</b> A&M	DEL AMITRI	703	706
15	14	22	<b>I WANT TO COME OVER</b> ISLAND	MELISSA ETHERIDGE	684	738
16	17	31	<b>TIME</b> ATLANTIC	HOOTIE & THE BLOWFISH	664	700
17	15	52	<b>RUN AROUND</b> A&M	BLUES TRAVELER	638	708
			★ ★ ★ <b>AIRPOWER</b> ★ ★ ★			
(18)	21	5	<b>FASTLOVE</b> DREAMWORKS/GEFFEN	GEORGE MICHAEL	605	543
19	18	33	<b>BREAKFAST AT TIFFANY'S</b> RAINMAKER/INTERSCOPE	DEEP BLUE SOMETHING	582	614
(20)	20	17	<b>THE WORLD I KNOW</b> ATLANTIC	COLLECTIVE SOUL	562	540
(21)	22	11	<b>EVERYTHING FALLS APART</b> COLUMBIA	DOG'S EYE VIEW	497	466
(22)	28	4	<b>YOU STILL TOUCH ME</b> A&M	STING	448	345
(23)	26	8	<b>BIG ME</b> ROSWELL/CAPITOL	FOO FIGHTERS	413	365
24	24	17	<b>HOOK</b> A&M	BLUES TRAVELER	413	416
25	25	12	<b>COUNT ON ME</b> ARISTA	WHITNEY HOUSTON & CECE WINANS	390	415
26	23	10	<b>CHAINS</b> EPIC	TINA ARENA	342	485
27	27	26	<b>ONE OF US</b> BLUE GORILLA/MERCURY	JOAN OSBORNE	338	358
(28)	30	3	<b>THEME FROM MISSION: IMPOSSIBLE</b> MOTHERISLAND	ADAM CLAYTON & LARRY MULLEN	321	229
(29)	32	4	<b>FLOOD</b> ESSENTIAL/SILVERTONE/JIVE	JARS OF CLAY	253	209
30	29	19	<b>SO FAR AWAY</b> LAVA/ATLANTIC	ROD STEWART	251	328
(31)	33	6	<b>REACH</b> EPIC	GLORIA ESTEFAN	232	222
(32)	<b>NEW</b>		<b>JEALOUSY</b> ELEKTRA/EEG	NATALIE MERCHANT	217	134
(33)	<b>NEW</b>		<b>THE ONLY THING THAT LOOKS GOOD ON ME IS YOU</b> A&M	BRYAN ADAMS	216	108
(34)	39	2	<b>YOU LEARN</b> MAVERICK/REPRISE	ALANIS MORISSETTE	201	155
35	31	14	<b>1979</b> VIRGIN	THE SMASHING PUMPKINS	200	215
(36)	35	2	<b>CHILDREN</b> ARISTA	ROBERT MILES	190	163
(37)	<b>NEW</b>		<b>WHO WILL SAVE YOUR SOUL</b> ATLANTIC	JEWEL	175	123
(38)	36	6	<b>CAN'T GET YOU OFF MY MIND</b> VIRGIN	LENNY KRAVITZ	171	162
(39)	<b>RE-ENTRY</b>		<b>BE MY LOVER</b> RCA	LA BOUCHE	168	150
40	40	8	<b>DON'T WANNA LOSE YOU</b> MERCURY	LIONEL RICHIE	167	168

Records showing an increase in detections over the previous week, regardless of chart movement. A record which has been on the chart for more than 20 weeks will not receive a bullet, even if it registers an increase in detections. Airpower awarded to those records which attain 600 detections for the first time. If two records are tied in number of plays, the record being played on more stations is placed first. Records below the top 20 are removed from the chart after 26 weeks. © 1996, Billboard/BPI Communications.

**★ OASIS 67/39**

*Champagne Supernova (Epic)*

Total Stations: 7  
Heavy (30+): 0  
Medium (15-29): 3 KYSR, WRQX, WZPK  
Light (Under 15): 4  
New Airplay This Week: 2 KFMB, WZPK

**★ TONI BRAXTON 55/55**

*You're Makin' Me High (LaFace/Arista)*

Total Stations: 4  
Heavy (30+): 1 KBKS  
Medium (15-29): 0  
Light (Under 15): 3  
New Airplay This Week: 3 KBKS, KKLO, WZPK

**★ THE SPECIALS 53/28**

*A Little Bit Me, A Little Bit You (Virgin)*

Total Stations: 2  
Heavy (30+): 0

Medium (15-29): 2 KFMB, WQLH  
Light (Under 15): 0

**SELENA 51/1**

*I'm Getting Used To You (EMI Latin/EMI)*

Total Stations: 3  
Heavy (30+): 0  
Medium (15-29): 2 KSII, WVAE  
Light (Under 15): 1

**★ TONI BRAXTON 51/5**

*Let It Flow (Arista)*

Total Stations: 5  
Heavy (30+): 0  
Medium (15-29): 1 WQLH  
Light (Under 15): 4  
New Airplay This Week: 2 KSII, WVAE



# Monitor AIRPLAY SONG ACTIVITY REPORTS

For Week Ending May 19, 1996

## ADULT TOP 40

## ADULT CONTEMPORARY

BRYAN ADAMS 216/108			
The Only Thing That Looks Good On Me Is You (A&M)			
Total Stations: 16 Chart Move: Debut 33			
City	Station	W/L	TP
New York	VH1	29 27 7	68
New York	WMXV	15 10 6	31
Wash. DC	WPLJ	14 1 15	1
L.A.	KYSR	-	-
Chicago	WPNT	-	-
Phila.	WTMX	-	-
Detroit	WYXR	-	-
Dallas	WKDI	-	-
Wash. DC	WRQX	10 6 1	17
Boston	WBXX	-	-
Houston	KHMX	26 15 7	48
Seattle	KBKS	-	-
Long Isl.	KPLZ	16	-
San Diego	KFMB	-	-
Minn.	KSTP	-	-
St. Louis	KYKY	-	-
Balt.	WMMX	-	-
Pitts.	WVTV	-	-
Tampa	WMTX	-	-
Cleveland	WOAL	-	-

JANN ARDEN 799/21			
Insensitive (A&M)			
Total Stations: 39 Chart Move: 12-11			
City	Station	W/L	TP
New York	VH1	9 7 50	50
New York	WMXV	25 23 23	209
Wash. DC	WPLJ	24 25 23	186
L.A.	KYSR	42 40 41	441
Chicago	WPNT	2 2 2	13
Phila.	WTMX	1 1	-
Detroit	WYXR	-	-
Dallas	WKDI	18 22 16	615
Wash. DC	WRQX	9 10 11	123
Boston	WBXX	35 36 36	569
Houston	KHMX	24 23 17	757
Seattle	KBKS	-	-
Long Isl.	KPLZ	21 26 26	33
San Diego	KFMB	16 21	-
Minn.	KSTP	-	-
St. Louis	KYKY	-	-
Balt.	WMMX	-	-
Pitts.	WVTV	-	-
Tampa	WMTX	-	-
Cleveland	WOAL	-	-

TRACY CHAPMAN 1308/196			
Give Me One Reason (Elektra/EEG)			
Total Stations: 43 Chart Move: 4-2			
City	Station	W/L	TP
New York	VH1	23 25 18	170
New York	WMXV	40 25 24	208
Wash. DC	WPLJ	35 37 37	197
L.A.	KYSR	35 31 35	328
Chicago	WPNT	27 23 20	202
Phila.	WTMX	23 10 49	49
Detroit	WYXR	-	-
Dallas	WKDI	24 20 19	167
Wash. DC	WRQX	28 29 19	199
Boston	WBXX	31 29 26	339
Houston	KHMX	35 35 32	294
Seattle	KBKS	-	-
Long Isl.	KPLZ	29 21 10	145
San Diego	KFMB	47 42 33	322
Minn.	KSTP	-	-
St. Louis	KYKY	-	-
Balt.	WMMX	-	-
Pitts.	WVTV	-	-
Tampa	WMTX	-	-
Cleveland	WOAL	-	-

JANN ARDEN 517/15			
Insensitive (A&M)			
Total Stations: 34 Chart Move: 10-8			
City	Station	W/L	TP
New York	VH1	11 1 13	13
New York	WMXV	19 18 18	168
Wash. DC	WPLJ	23 22 23	134
L.A.	KYSR	25 23 20	134
Chicago	WPNT	17 14 14	172
Phila.	WTMX	17 14 18	163
Detroit	WYXR	-	-
Dallas	WKDI	16 17 13	113
Wash. DC	WRQX	14 15 12	306
Boston	WBXX	29 29 25	228
Houston	KHMX	20 19 17	183
Seattle	KBKS	-	-
Long Isl.	KPLZ	16 12 13	52
San Diego	KFMB	10 5 1	13
Minn.	KSTP	-	-
St. Louis	KYKY	-	-
Balt.	WMMX	-	-
Pitts.	WVTV	-	-
Tampa	WMTX	-	-
Cleveland	WOAL	-	-

TINA ARENA 294/3			
Chains (Epic)			
Total Stations: 30 Chart Move: 20-19			
City	Station	W/L	TP
New York	VH1	11 12 11	59
New York	WMXV	18 23 21	228
Wash. DC	WPLJ	18 17 17	39
L.A.	KYSR	1 1 1	3
Chicago	WPNT	10 15 17	52
Phila.	WTMX	9 9 8	49
Detroit	WYXR	3 4 4	47
Dallas	WKDI	3 3 3	27
Wash. DC	WRQX	10 7 7	78
Boston	WBXX	12 14 12	71
Houston	KHMX	12 14 12	71
Seattle	KBKS	-	-
Long Isl.	KPLZ	10 5 1	13
San Diego	KFMB	7 10 7	69
Minn.	KSTP	-	-
St. Louis	KYKY	-	-
Balt.	WMMX	-	-
Pitts.	WVTV	-	-
Tampa	WMTX	-	-
Cleveland	WOAL	-	-

ADAM CLAYTON & LARRY MULLEN 321/92			
Theme From Mission: Impossible (Mother/Island)			
Total Stations: 27 Chart Move: 30-28			
City	Station	W/L	TP
New York	VH1	13 10 4	45
New York	WMXV	20 20 12	61
Wash. DC	WPLJ	30 34 16	80
L.A.	KYSR	30 31 16	80
Chicago	WPNT	22 27 27	106
Phila.	WTMX	-	-
Detroit	WYXR	-	-
Dallas	WKDI	14 13 10	43
Wash. DC	WRQX	5	-
Boston	WBXX	20 4 4	28
Houston	KHMX	25 3 28	84
Seattle	KBKS	-	-
Long Isl.	KPLZ	7 2 2	11
San Diego	KFMB	-	-
Minn.	KSTP	-	-
St. Louis	KYKY	-	-
Balt.	WMMX	-	-
Pitts.	WVTV	-	-
Tampa	WMTX	-	-
Cleveland	WOAL	-	-

COLLECTIVE SOUL 562/22			
The World I Know (Atlantic)			
Total Stations: 31 Chart Move: 20-20			
City	Station	W/L	TP
New York	VH1	18 25 16	374
New York	WMXV	40 22 22	368
Wash. DC	WPLJ	1 14 24	245
L.A.	KYSR	35 31 34	636
Chicago	WPNT	19 12 1	42
Phila.	WTMX	-	-
Detroit	WYXR	-	-
Dallas	WKDI	20 12 2	32
Wash. DC	WRQX	41 38 39	467
Boston	WBXX	11 8 5	24
Houston	KHMX	41 34 30	858
Seattle	KBKS	-	-
Long Isl.	KPLZ	2 2 2	22
San Diego	KFMB	19 24 21	272
Minn.	KSTP	-	-
St. Louis	KYKY	-	-
Balt.	WMMX	-	-
Pitts.	WVTV	-	-
Tampa	WMTX	-	-
Cleveland	WOAL	-	-

DOG'S EYE VIEW 497/31			
Everything Falls Apart (Columbia)			
Total Stations: 32 Chart Move: 22-21			
City	Station	W/L	TP
New York	VH1	11 9 12	67
New York	WMXV	21 15 24	238
Wash. DC	WPLJ	25 15 13	95
L.A.	KYSR	-	-
Chicago	WPNT	2 2 2	11
Phila.	WTMX	-	-
Detroit	WYXR	-	-
Dallas	WKDI	10 8 10	54
Wash. DC	WRQX	33 26 23	141
Boston	WBXX	12 9 8	42
Houston	KHMX	28 22 23	333
Seattle	KBKS	-	-
Long Isl.	KPLZ	10 18 20	88
San Diego	KFMB	19 24 21	272
Minn.	KSTP	-	-
St. Louis	KYKY	-	-
Balt.	WMMX	-	-
Pitts.	WVTV	-	-
Tampa	WMTX	-	-
Cleveland	WOAL	-	-

TONI BRAXTON 268/21			
Let It Flow (Arista)			
Total Stations: 26 Chart Move: 21-21			
City	Station	W/L	TP
New York	VH1	1 1 1	1
New York	WMXV	6 6 8	37
Wash. DC	WPLJ	14 17 14	45
L.A.	KYSR	14 14 14	45
Chicago	WPNT	22 28 11	51
Phila.	WTMX	-	-
Detroit	WYXR	-	-
Dallas	WKDI	10 11 11	60
Wash. DC	WRQX	13 14 8	39
Boston	WBXX	11 11 11	35
Houston	KHMX	15 14 8	26
Seattle	KBKS	-	-
Long Isl.	KPLZ	18 20 17	58
San Diego	KFMB	10 11 11	60
Minn.	KSTP	-	-
St. Louis	KYKY	-	-
Balt.	WMMX	-	-
Pitts.	WVTV	-	-
Tampa	WMTX	-	-
Cleveland	WOAL	-	-

MARIAH CAREY 859/18			
Always Be My Baby (Columbia)			
Total Stations: 37 Chart Move: 3-3			
City	Station	W/L	TP
New York	VH1	38 36 31	375
New York	WMXV	22 21 2	45
Wash. DC	WPLJ	19 18 18	185
L.A.	KYSR	30 27 25	207
Chicago	WPNT	31 24 19	162
Phila.	WTMX	-	-
Detroit	WYXR	-	-
Dallas	WKDI	26 21 24	133
Wash. DC	WRQX	26 28 28	268
Boston	WBXX	15 12 14	147
Houston	KHMX	5 11 11	47
Seattle	KBKS	-	-
Long Isl.	KPLZ	14 14 15	76
San Diego	KFMB	26 21 24	133
Minn.	KSTP	-	-
St. Louis	KYKY	-	-
Balt.	WMMX	-	-
Pitts.	WVTV	-	-
Tampa	WMTX	-	-
Cleveland	WOAL	-	-

GLORIA ESTEFAN 232/10			
Reach (Epic)			
Total Stations: 19 Chart Move: 33-31			
City	Station	W/L	TP
New York	VH1	18 18 19	102
New York	WMXV	-	-
Wash. DC	WPLJ	-	-
L.A.	KYSR	-	-
Chicago	WPNT	-	-
Phila.	WTMX	-	-
Detroit	WYXR	-	-
Dallas	WKDI	-	-
Wash. DC	WRQX	-	-
Boston	WBXX	-	-
Houston	KHMX	-	-
Seattle	KBKS	-	-
Long Isl.	KPLZ	-	-
San Diego	KFMB	-	-
Minn.	KSTP	-	-
St. Louis	KYKY	-	-
Balt.	WMMX	-	-
Pitts.	WVTV	-	-
Tampa	WMTX	-	-
Cleveland	WOAL	-	-

FOO FIGHTERS 413/48			
Big Me (Roswell/Capitol)			
Total Stations: 31 Chart Move: 26-23			
City	Station	W/L	TP
New York	VH1	2 2 2	2
New York	WMXV	25 21 22	174
Wash. DC	WPLJ	16 18 14	124
L.A.	KYSR	16 22 17	228
Chicago	WPNT	2 2 2	7
Phila.	WTMX	-	-
Detroit	WYXR	-	-
Dallas	WKDI	-	-
Wash. DC	WRQX	-	-
Boston	WBXX	-	-
Houston	KHMX	-	-
Seattle	KBKS	-	-
Long Isl.	KPLZ	-	-
San Diego	KFMB	-	-
Minn.	KSTP	-	-
St. Louis	KYKY	-	-
Balt.	WMMX	-	-
Pitts.	WVTV	-	-
Tampa	WMTX	-	-
Cleveland	WOAL	-	-

GIN BLOSSOMS 1066/38			
Follow You Down (A&M)			
Total Stations: 40 Chart Move: 8-6			
City	Station	W/L	TP
New York	VH1	16 19 18	213
New York	WMXV	42 37 40	507
Wash. DC	WPLJ	9 11 15	455
L.A.	KYSR	19 15 15	455
Chicago	WPNT	2 2 2	7
Phila.	WTMX	-	-
Detroit	WYXR	-	-
Dallas	WKDI	-	-
Wash. DC	WRQX	-	-
Boston	WBXX	-	-
Houston	KHMX	-	-
Seattle	KBKS	-	-
Long Isl.	KPLZ	-	-
San Diego	KFMB	-	-
Minn.	KSTP	-	-
St. Louis	KYKY	-	-
Balt.	WMMX	-	-
Pitts.	WVTV	-	-
Tampa	WMTX	-	-
Cleveland	WOAL	-	-

TRACY CHAPMAN 409/92			
Give Me One Reason (Elektra/EEG)			
Total Stations: 26 Chart Move: 17-15			
City	Station	W/L	TP
New York	VH1	23 25 18	170
New York	WMXV	40 25 24	208
Wash. DC	WPLJ	35 37 37	197
L.A.	KYSR	35 31 35	328
Chicago	WPNT	27 23 20	202
Phila.	WTMX	-	-
Detroit	WYXR	-	-
Dallas	WKDI	-	-
Wash. DC	WRQX	-	-
Boston	WBXX	-	-
Houston	KHMX	-	-
Seattle	KBKS	-	-
Long Isl.	KPLZ	-	-
San Diego	KFMB	-	-
Minn.	KSTP	-	-
St. Louis	KYKY	-	-
Balt.	WMMX	-	-
Pitts.	WVTV	-	-
Tampa	WMTX	-	-
Cleveland	WOAL	-	-

MICHAEL ENGLISH 138/80			
Your Love Amazes Me (Curb)			
Total Stations: 12 Chart Move: Debut 30			
City	Station	W/L	TP
New York	VH1	-	-
New York	WMXV	-	-
Wash. DC	WPLJ	-	-
L.A.	KYSR	-	-
Chicago	WPNT	-	-
Phila.	WTMX	-	-
Detroit	WYXR	-	-
Dallas	WKDI	-	-
Wash. DC	WRQX	-	-
Boston	WBXX	-	-
Houston	KHMX	-	-
Seattle	KBKS	-	-
Long Isl.	KPLZ	-	-
San Diego	KFMB	-	-
Minn.	KSTP	-	-
St. Louis	KYKY	-	-
Balt.	WMMX	-	-
Pitts.	WVTV	-	-
Tampa	WMTX	-	-
Cleveland	WOAL	-	-

HOOTIE & THE BLOWFISH 1089/7			
Old Man & Me (When I Get To Heaven) (Atlantic)			
Total Stations: 41 Chart Move: 5-5			
City	Station	W/L	TP
New York	VH1	35 35 36	191
New York	WMXV	26 26 23	169
Wash. DC	WPLJ	30 31 36	211
L.A.	KYSR	22 16 11	49
Chicago	WPNT	22 16 11	49
Phila.	WTMX	-	-
Detroit	WYXR	-	-
Dallas	WKDI	-	-
Wash. DC	WRQX	-	-
Boston	WBXX	-	-
Houston	KHMX		



**BDS IMPACT**

**AIRPOWER**  
(Minimum 300 detections for the first time)

**HOOTIE & THE BLOWFISH 309/16**

*Old Man & Me (When I Get To Heaven)* (Atlantic)  
Total Stations: 20/Chart Move: 18-18  
Heavy (21+ plays): 9 KEZR, KURB, KVUU, WASH, WEBR, WGSY, WJDX, WLAC, WMJQ  
Medium (14-20): 2 WAHR, WTFM  
Light (Under 14): 9

**AIRPOWER BOUND**

Total Plays/Gain

**TINA ARENA 294/3**

*Chains* (Epic)  
Total Stations: 30/Chart Move: 20-19  
Heavy (21+ plays): 4 KURB, WDEF, WGSY, WMJQ  
Medium (14-20): 6 KIOI, KISC, KLYF, WARM, WJDX, WRVF  
Light (Under 14): 20  
New Airplay This Week: 3 WLIT, WLTS, WSHH

**TONI BRAXTON 268/21**

*Let It Flow* (Arista)  
Total Stations: 26/Chart Move: 21-21  
Heavy (21+): 3 WDEF, WMJQ, WRVF  
Medium (14-20): 7 KESZ, KISC, WARM, WJDX, WLHT, WLIT, WSLQ  
Light (Under 14): 16  
New Airplay This Week: 1 WLTS

**SELENA 179/10**

*I'm Getting Used To You* (EMI Latin/EMI)  
Total Stations: 18/Chart Move: 27-25  
Heavy (21+): 2 WAHR, WMJQ  
Medium (14-20): 5 KESZ, KLYF, WARM, WJDX, WSLQ  
Light (Under 14): 11  
New Airplay This Week: 2 KISC, WLTS

**SORAYA 165/38**

*Suddenly* (Island)  
Total Stations: 19/Chart Move: 30-27  
Heavy (21+): 2 KUDL, WMJQ  
Medium (14-20): 3 KGBY, WLIT, WRVF  
Light (Under 14): 14  
New Airplay This Week: 1 KLYF

**MICHAEL ENGLISH 138/80**

*Your Love Amazes Me* (Curb)  
Total Stations: 12/Chart Move: Debut 30  
Heavy (21+): 1 WLAC  
Medium (14-20): 3 KESZ, WDEF, WRVF  
Light (Under 14): 8  
New Airplay This Week: 5 KESZ, WAHR, WLIT, WLTF, WMJQ

**CHART BOUND**

Total Plays/Gain

**GIN BLOSSOMS 123/45**

*Follow You Down* (A&M)  
Total Stations: 15  
Heavy (21+): 2 KBIG, WALK  
Medium (14-20): 3 KVUU, WJDX, WLAC  
Light (Under 14): 10  
New Airplay This Week: 2 KVUU, WJDX

**TRISHA YEARWOOD 120/20**

*On A Bus To St. Cloud* (MCA)  
Total Stations: 19  
Heavy (21+): 0  
Medium (14-20): 3 KKCW, WLIF, WMGS  
Light (Under 14): 16  
New Airplay This Week: 1 KUDL

**MOST NEW AIRPLAY THIS WEEK**

**MICHAEL ENGLISH 5**

*Your Love Amazes Me* (Curb)

**TINA ARENA 3**

*Chains* (Epic)

**STING 113/31**

*You Still Touch Me* (A&M)  
Total Stations: 15  
Heavy (21+): 1 KURB  
Medium (14-20): 4 KLYF, WEBR, WSLQ, WTFM  
Light (Under 14): 10  
New Airplay This Week: 2 KLYF, WBEB

**ALL-4-ONE 104/12**

*These Arms* (Blitz/Antastic)  
Total Stations: 12  
Heavy (21+): 1 WAHR  
Medium (14-20): 1 WJDX  
Light (Under 14): 10  
New Airplay This Week: 2 KISC, WSHH

**WYONNA 98/11**

*To Be Loved By You* (Curb/MCA)  
Total Stations: 10  
Heavy (21+): 0  
Medium (14-20): 3 WDEF, WLTE, WLTF  
Light (Under 14): 7  
New Airplay This Week: 1 WSHH

**ALANIS MORISSETTE 78/5**

*Ironic* (Maverick/Sire)  
Total Stations: 12  
Heavy (21+): 2 KVUU, WJDX  
Medium (14-20): 0  
Light (Under 14): 10

**BODEANS 69/18**

*Closer To Free* (Slash/Reprise)  
Total Stations: 13  
Heavy (21+): 1 KVUU  
Medium (14-20): 0  
Light (Under 14): 12  
New Airplay This Week: 1 WJDX

THIS WEEK	LAST WEEK	WEEKS ON	TITLE/LABEL	ARTIST	TW	LW	
			★ ★ ★ No. 1 ★ ★ ★				
1	1	14	BECAUSE YOU LOVED ME	CELINE DION	1049	1084	
2	2	18	NOBODY KNOWS	THE TONY RICH PROJECT	876	846	
3	3	11	ALWAYS BE MY BABY	MARIAH CAREY	859	841	
4	4	12	COUNT ON ME	WHITNEY HOUSTON & CECE WINANS	627	728	
5	6	26	DON'T CRY	SEAL	621	575	
6	5	10	DON'T WANNA LOSE YOU	LIONEL RICHIE	590	646	
7	7	8	REACH	GLORIA ESTEFAN	564	550	
8	10	20	INSENSITIVE	IANN ARDEN	517	502	
9	8	29	ONE SWEET DAY	MARIAH CAREY & BOYZ II MEN	513	539	
10	12	33	BLESSED	ELTON JOHN	488	466	
11	11	27	MISSING	EVERYTHING BUT THE GIRL	472	493	
12	9	19	SO FAR AWAY	ROD STEWART	460	506	
13	13	43	BACK FOR GOOD	TAKE THAT	454	461	
14	15	4	FASTLOVE	GEORGE MICHAEL	446	347	
15	17	5	GIVE ME ONE REASON	TRACY CHAPMAN	409	317	
16	14	49	KISS FROM A ROSE	SEAL	349	380	
17	16	54	AS I LAY ME DOWN	SOPHIE B. HAWKINS	314	336	
			★ ★ ★ AIRPOWER ★ ★ ★				
18	18	5	OLD MAN & ME (WHEN I GET TO HEAVEN)	HOOTIE & THE BLOWFISH	309	293	
19	20	9	CHAINS	TINA ARENA	294	291	
20	19	46	ONLY WANNA BE WITH YOU	HOOTIE & THE BLOWFISH	283	293	
21	21	4	LET IT FLOW	TONI BRAXTON	268	247	
22	25	24	WONDER	NATALIE MERCHANT	207	200	
23	22	13	BY HEART	JIM BRICKMAN	195	237	
24	23	13	GROW OLD WITH ME	MARY CHAPIN CARPENTER	190	222	
25	27	4	I'M GETTING USED TO YOU	SELENA	179	169	
26	24	13	FAITHFULLY	PETER CETERA	170	199	
27	30	2	SUDDENLY	SORAYA	165	127	
28	26	23	DREAMING OF YOU	SELENA	149	167	
29	28	4	VOICE OF THE HEART	DIANA ROSS	142	162	
30	NEW		YOUR LOVE AMAZES ME	MICHAEL ENGLISH	138	58	

Records showing an increase in detections over the previous week, regardless of chart movement. A record which has been on the chart for more than 20 weeks will not receive a bullet, even if it registers an increase in detections. Airpower awarded to those records which attain 300 detections for the first time. If two records are tied in number of plays, the record being played on more stations is placed first. Records below the top 20 are removed from the chart after 26 weeks. © 1996, Billboard/BPI Communications.

**ADULT CONTEMPORARY POWER PLAYLISTS**

STATION	PD/MD	TW	LW	TW	LW	TW	LW	TW	LW	TW	LW	TW	LW
<b>KBIG</b> Los Angeles	PD: Dave Ervin MD: Dave Verdery	1	Blues Traveler, Run Around	28	28	1	Mariah Carey, Always Be My Baby	19	18	1	Rod Stewart, So Far Away	32	26
<b>WLIT</b> Chicago	PD/MD: Mark Edwards	2	Go Go Dolls, Name	28	28	2	Jann Arden, Inevitable	19	18	2	Celine Dion, Because You Loved Me	32	33
<b>B101</b> Philadelphia	PD: Jim Ryan	3	Celine Dion, Because You Loved Me	28	28	3	Everything But The Girl, Missing	19	18	3	Celine Dion, Because You Loved Me	32	33
<b>K101</b> San Francisco	PD: Casey Keating MD: Connie Lindell	4	Mariah Carey, Always Be My Baby	28	28	4	Soraya, Suddenly	19	18	4	Corrs, Runaway	38	36
<b>SOFT ROCK 97.1</b> Washington, DC	PD: Steve Streit MD: Randi Martin	5	Del Amitri, Roll To Me	28	28	5	The Tony Rich Project, Nobody Knows	19	18	5	Mariah Carey & Cece Winans, Count On	30	29
<b>WLTE</b> Minneapolis	PD/MD: Gary Nolan	6	Seal, Kiss From A Rose	27	29	6	Gloria Estefan, Reach	18	18	6	Mariah Carey & Cece Winans, Count On	30	29
<b>WALK</b> Long Island	PD: Gene Michaels MD: Charlie Lombardo	7	Seal, Don't Cry	27	29	7	Hootie & The Blowfish, Old Man & Me	18	18	7	Elton John, Blessed	30	28
<b>BRIGHT 99.5</b> Washington, DC	PD: Jeff Silvers	8	Sophie B. Hawkins, As I Lay Me Down	27	26	8	Whitney Houston & Cece Winans, Count On	16	16	8	Mariah Carey, Always Be My Baby	27	30
<b>LITE ROCK 106-1/2</b> Cleveland	PD: Steve LaBeau MD: Jay Hudson	9	GIN Blossoms, Follow You Down	26	28	9	Lionel Richie, Don't Wanna Lose You	17	17	9	Elton John, Blessed	30	28
<b>LITE 102</b> Baltimore	PD: Gary Balaban MD: Mark Thoner	10	Mariah Carey, Always Be My Baby	25	26	10	Tina Arena, Chains	16	16	10	Del Amitri, Roll To Me	24	21
<b>WISH 99.7</b> Pittsburgh	Acting PD: Dom Piazza	11	Jon B. feat. Babyface, Someone To Love	24	24	11	Martin Page, In The House Of Stone And L	18	19	11	Whitney Houston & Cece Winans, Count On	23	29
<b>KEZ 99.9</b> Phoenix	PD/MD: Mike Del Rosso	12	Michael Bolton, When A Man Loves A Woman	24	24	12	Peabo Bryson & Regina Belle, A Whole New	11	10	12	Peter Cetera & Crystal Bernard, Forever	20	6
		13	Del Amitri, Roll To Me	23	23	13	All-4-One, I Can Love You Like That	10	10	13	Boyz II Men, Water Runs Dry	20	18
		14	George Michael, Fastlove	22	22	14	Seal, Kiss From A Rose	15	15	14	Tracy Chapman, Give Me One Reason	19	18
		15	Cher, If I Could Tell You	21	21	15	Madonna, You'll See	19	19	15	Melissa Etheridge, I Want To Come Over	19	23
		16	George Michael, Fastlove	21	21	16	Janet Jackson, Control	18	18	16	Tina Arena, Chains	18	15
		17	George Michael, Fastlove	21	21	17	Janet Jackson, Control	18	18	17	Martin Page, In The House Of Stone And L	18	14
		18	George Michael, Fastlove	21	21	18	Janet Jackson, Control	18	18	18	Seal, Don't Cry	18	0
		19	George Michael, Fastlove	21	21	19	Janet Jackson, Control	18	18	19	Madonna, Take A Bow	16	15
		20	George Michael, Fastlove	21	21	20	Janet Jackson, Control	18	18	20			

Airpower awarded to those records which attain 300 detections for the first time. New airplay lists those stations registering six or more detections per week on a record for the first time. ★ Initial impact: records appearing on this page for the first time.



## POWER PLAYLISTS™

WXRK New York OM: Sam Minkman PD: Andre Gardner			KROQ Los Angeles PD: Kewin Weatherly APD: Gene Sandbloom			WKQX Chicago PD: Bill Gamble APD: MD: Mary Shuminas		
TW	LW		TW	LW		TW	LW	
1	42	33	1	39	27	1	54	58
2	41	40	2	38	27	2	41	31
3	39	41	3	37	27	3	38	25
4	39	39	4	36	27	4	36	38
5	39	40	5	35	27	5	34	36
6	35	36	6	34	27	6	33	17
7	35	32	7	33	27	7	32	29
8	35	41	8	32	27	8	31	34
9	26	28	9	31	27	9	29	29
10	26	32	10	30	27	10	28	32
11	26	24	11	29	27	11	26	11
12	25	23	12	28	27	12	25	33
13	25	23	13	27	27	13	24	18
14	24	21	14	26	27	14	23	36
15	24	24	15	25	27	15	22	6
16	22	21	16	24	27	16	21	6
17	22	15	17	23	27	17	20	22
18	22	22	18	22	27	18	19	29
19	22	20	19	21	27	19	18	14
20	21	20	20	20	27	20	17	9
21	21	20	21	19	27	21	16	18
22	21	15	22	18	27	22	15	18
23	21	17	23	17	27	23	14	11
24	21	15	24	16	27	24	13	7
25	21	16	25	15	27	25	12	7
26	19	16	26	14	27	26	11	7
27	18	17	27	13	27	27	10	7
28	18	17	28	12	27	28	9	7
29	18	17	29	11	27	29	8	7
30	17	19	30	10	27	30	7	7

WPLY Philadelphia PD: John Knapp APD/MD: Chuck Tisa			WBCN Boston VP/Prgm: Oedipus MD: Carter Alan			WHFS Washington, DC PD: Robert Benjamin APD: Bob Waugh		
TW	LW		TW	LW		TW	LW	
1	43	44	1	39	38	1	37	33
2	43	43	2	38	38	2	36	39
3	42	36	3	37	41	3	35	27
4	41	27	4	36	36	4	34	30
5	41	28	5	35	37	5	33	34
6	38	23	6	34	37	6	32	30
7	32	29	7	33	37	7	31	30
8	32	29	8	32	37	8	30	27
9	32	28	9	31	37	9	29	29
10	32	44	10	30	37	10	28	26
11	32	42	11	29	37	11	27	25
12	29	25	12	28	37	12	26	23
13	29	15	13	27	37	13	25	22
14	29	15	14	26	37	14	24	24
15	29	16	15	25	37	15	23	23
16	29	16	16	24	37	16	22	21
17	27	23	17	23	37	17	21	9
18	27	27	18	22	37	18	20	22
19	26	27	19	21	37	19	19	16
20	26	23	20	20	37	20	18	16
21	26	23	21	19	37	21	17	16
22	26	23	22	18	37	22	16	13
23	26	23	23	17	37	23	15	13
24	26	23	24	16	37	24	14	13
25	26	23	25	15	37	25	13	13
26	26	23	26	14	37	26	12	13
27	26	23	27	13	37	27	11	13
28	26	23	28	12	37	28	10	13
29	26	23	29	11	37	29	9	13
30	26	23	30	10	37	30	8	13

The chart and Power Playlists, reprinted from Rock Airplay Monitor, are based on a national sample of data compiled by Broadcast Data Systems' Radio Track service. 76 Modern Rock stations are electronically monitored 24 hours a day, 7 days a week. Songs, ranked by number of detections in monitored week.

THIS WEEK	LAST WEEK	WKS. ON CHART	TITLE/LABEL/DISTRIBUTING LABEL	ARTIST	TW	LW	DETECTIONS
1	1	8	<b>SALVATION</b> <small>4 weeks at No. 1</small>	THE CRANBERRIES	2213	2352	
2	2	9	MOTHER MOTHER ISLAND	TRACY BONHAM	2174	2140	
3	3	4	PRETTY NOOSE A&M	SOUNDGARDEN	2013	1928	
4	4	9	COUNTING BLUE CARS A&M	DISHWALLA	1969	1914	
5	5	15	MACHINEHEAD TRAUMA/INTERSCOPE	BUSH	1809	1920	
6	7	8	TOO MUCH RCA	DAVE MATTHEWS BAND	1745	1852	
7	8	10	PHOTOGRAPH RCA	THE VERVE PIPE	1730	1685	
8	6	15	CHAMPAGNE SUPERNOVA EPIC	CASIS	1580	1887	
9	10	8	HERE IN YOUR BEDROOM MOJO/UNIVERSAL	GOLDFINGER	1529	1485	
10	13	3	YOU LEARN MAVERICK/REPRISE	ALANIS MORISSETTE	1343	1214	
11	12	7	BULLS ON PARADE EPIC	RAGE AGAINST THE MACHINE	1306	1259	
12	9	11	BIG BANG BABY ATLANTIC	STONE TEMPLE PILOTS	1305	1594	
13	11	12	SISTER MCA	THE NIXONS	1280	1384	
14	14	3	PEPPER <small>AIRPOWER</small>	BUTTHOLE SURFERS	1278	1078	
15	21	2	TAHITIAN MOON <small>AIRPOWER</small>	POURING HOT FUDGE	1247	1056	
16	15	5	HEARTSPARK DOLLARSIGN <small>AIRPOWER</small>	EVERCLEAR	1238	1183	
17	14	6	SPIDERWEBS <small>AIRPOWER</small>	NO DOUBT	1224	1189	
18	16	6	BANDITOS MERCURY	THE REFRESHMENTS	1174	1168	
19	29	3	TRIPPIN' ON A HOLE IN A PAPER HEART <small>AIRPOWER</small>	MUSIC TRAINS PRIDE	1160	898	
20	22	5	WHO WILL SAVE YOUR SOUL <small>AIRPOWER</small>	PEARL JAM	1110	1039	

Records showing an increase in detections over the previous week, regardless of chart movement. A record which has been on the chart for more than 20 weeks will not receive a bullet, even if it registers an increase in detections. Airpower awarded to those records which attain 1,100 detections for the first time. If two records are tied in number of plays, the record being played on more stations is placed first. © 1996, Billboard/BPI Communications.

KITS San Francisco VP/Prgm: Richard Sands MD: Roland West			KDGE Dallas PD: Joel Folger MD: Jay Michaels			WNNX Atlanta PD: Brian Phillips APD: Leslie Fram			WMMS Cleveland VP/Ops: John Gorman APD/MD: Doug Kubinski			WHYT Detroit PD: Garrett Michaels MD: Alex Tear			KEGE Minneapolis PD: John Lassman MD: Wade Linder		
TW	LW		TW	LW		TW	LW		TW	LW		TW	LW		TW	LW	
1	29	25	1	40	29	1	42	41	1	44	42	1	44	42	1	44	42
2	28	22	2	38	41	2	41	40	2	44	41	2	44	41	2	44	41
3	27	22	3	36	36	3	41	43	3	39	39	3	39	39	3	39	39
4	27	27	4	35	29	4	41	42	4	39	32	4	39	32	4	39	32
5	27	27	5	34	29	5	40	42	5	38	32	5	38	32	5	38	32
6	27	27	6	33	29	6	38	38	6	37	33	6	37	33	6	37	33
7	27	27	7	32	26	7	35	11	7	36	28	7	36	28	7	36	28
8	27	27	8	31	26	8	35	39	8	35	32	8	35	32	8	35	32
9	27	27	9	30	26	9	34	33	9	34	33	9	34	33	9	34	33
10	27	27	10	29	26	10	34	34	10	34	34	10	34	34	10	34	34
11	27	27	11	28	26	11	32	29	11	32	29	11	32	29	11	32	29
12	27	27	12	27	26	12	31	30	12	31	30	12	31	30	12	31	30
13	27	27	13	26	26	13	30	32	13	30	32	13	30	32	13	30	32
14	27	27	14	25	26	14	29	33	14	29	33	14	29	33	14	29	33
15	27	27	15	24	26	15	28	32	15	28	32	15	28	32	15	28	32
16	27	27	16	23	26	16	27	31	16	27	31	16	27	31	16	27	31
17	27	27	17	22	26	17	26	30	17	26	30	17	26	30	17	26	30
18	27	27	18	21	26	18	25	29	18	25	29	18	25	29	18	25	29
19	27	27	19	20	26	19	24	28	19	24	28	19	24	28	19	24	28
20	27	27	20	19	26	20	23	27	20	23	27	20	23	27	20	23	27
21	27	27	21	18	26	21	22	26	21	22	26	21	22	26	21	22	26
22	27	27	22	17	26	22	21	25	22	21	25	22	21	25	22	21	25
23	27	27	23	16	26	23	20	24	23	20	24	23	20	24	23	20	24
24	27	27	24	15	26	24	19	23	24	19	23	24	19	23	24	19	23
25	27	27	25	14	26	25	18	22	25	18	22	25	18	22	25	18	22
26	27	27	26	13	26	26	17	21	26	17	21	26	17	21	26	17	21
27	27	27	27	12	26	27	16	20	27	16	20	27	16	20	27	16	20
28	27	27	28	11	26	28	15	19	28	15	19	28	15	19	28	15	19
29	27	27	29	10	26	29	14	18	29	14	18	29	14	18	29	14	18
30	27	27	30	9	26	30	13	17	30	13	17	30	13	17	30	13	17

## We're giving you more for less!

- Panels on key industry issues
- Special guest speakers
- Live artist showcases
- Great parties
- And, our finale Annual Radio Awards Show

# Radio Seminar & Awards...

September 5 - 7, 1996  
The New York Sheraton Hotel, New York City

Call our Radio Seminar & Awards hotline for registration information: 212-536-6450.  
You can't afford to miss this opportunity!



COMBINED TOP 40 AIRPLAY										AIRPLAY THIS WEEK BY FORMAT															
TW	LW	WKS	TITLE (LABEL)	ARTIST	THIS WEEK			LAST WEEK			MAINSTREAM			RHYTHM			ADULT TOP 40			AC			MODERN		
					Audience (millions)	Detections No.	Rank	Audience (millions)	Detections No.	Rank	Audience (millions)	Detections No.	Rank	Audience (millions)	Detections No.	Rank	Audience (millions)	Detections No.	Rank	Audience (millions)	Detections No.	Rank	Audience (millions)	Detections No.	Rank
1	1	11	BECAUSE YOU LOVED ME (550 MUSIC)	CELINE DION	75.3715	7481	1	78.3890	7705	1	31.6786	3873	1	13.1595	959	5	20.4252	1600	1	10.1082	1049	1	—	—	—
2	2	15	ALWAYS BE MY BABY (COLUMBIA)	MARIAH CAREY	70.4048	6995	2	73.7118	7207	2	29.5270	3591	3	17.0014	1298	3	15.0471	1247	3	8.8293	859	3	—	—	—
3	3	18	IRONIC (MAVERICK/REPRISE)	ALANIS MORISSETTE	60.7355	5970	3	62.0300	6169	3	31.1838	3766	2	8.5406	612	12	15.8958	1013	9	0.2294	78	—	4.8859	501	—
4	4	11	KILLING ME SOFTLY (RUFFHOUSE/COLUMBIA)	FUGEES	59.0501	4966	6	57.0104	4433	7	24.6671	3118	5	32.9349	1679	1	1.4200	164	—	0.0281	5	—	—	—	—
5	5	19	NOBODY KNOWS (LAFACE/ARISTA)	THE TONY RICH PROJECT	54.3734	5230	5	51.9113	5250	4	23.2368	2603	7	10.8364	701	9	12.6499	1050	7	7.6503	876	2	—	—	—
6	6	7	GIVE ME ONE REASON (ELEKTRA/IEEG)	TRACY CHAPMAN	48.1947	5273	4	44.4617	4846	5	25.3829	3270	4	0.1152	15	—	17.9852	1308	2	2.8385	409	15	1.8729	271	—
7	8	7	OLD MAN & ME (WHEN I GET TO HEAVEN) (ATLANTIC)	HOOTIE & THE BLOWFISH	39.5669	4602	7	38.7193	4571	6	21.1061	2846	6	0.1188	15	—	14.1847	1089	5	2.0355	309	18	2.1218	343	—
8	7	29	MISSING (ATLANTIC)	EVERYTHING BUT THE GIRL	37.3608	3813	8	41.1327	4140	8	15.2762	1858	15	7.4195	566	16	10.3754	848	10	3.8384	472	11	0.4513	69	—
9	9	16	FOLLOW YOU DOWN (A&M)	GIN BLOSSOMS	33.7226	3662	9	36.1365	3877	9	14.6220	2192	8	0.1053	13	—	15.4342	1066	6	1.8696	123	—	1.6915	268	—
10	10	23	WONDER (ELEKTRA/IEEG)	NATALIE MERCHANT	31.8917	3041	14	34.8288	3282	12	12.1439	1466	22	0.0171	3	—	16.0236	1124	4	2.0188	207	22	1.6883	241	—
11	12	14	CLOSER TO FREE (SLASH/REPRISE)	BODEANS	31.1418	3411	10	30.7429	3574	10	14.7530	2157	10	0.1193	14	—	14.5480	1033	8	0.3978	69	—	1.3237	138	—
12	11	18	SITTIN' UP IN MY ROOM (ARISTA)	BRANDY	30.1566	2628	22	31.5135	2809	21	17.0701	1635	19	12.0253	833	8	1.0612	160	—	—	—	—	—	—	—
13	17	6	INSENSITIVE (A&M)	JANN ARDEN	26.5490	2986	16	24.6672	2898	19	9.8394	1630	20	0.3199	34	—	10.9976	799	11	5.3734	517	8	0.0187	6	—
14	16	8	EVERYTHING FALLS APART (COLUMBIA)	DOG'S EYE VIEW	26.5475	3231	12	24.6909	3157	13	16.8668	2179	9	0.0948	11	—	5.8508	497	21	0.1991	25	—	3.5360	519	—
15	24	4	THA CROSSROADS (RUTHLESS/RELATIVITY)	BONE THUGS-N-HARMONY	25.2188	1764	41	21.3102	1508	55	2.2726	396	—	22.9462	1368	2	—	—	—	—	—	—	—	—	—
16	13	38	NAME (METAL BLADE/WARNER BROS.)	GOO GOO DOLLS	24.9966	2553	23	28.7269	2903	18	11.0097	1345	—	0.0617	9	—	9.6997	715	13	1.4894	102	—	2.7361	382	—
17	15	25	THE WORLD I KNOW (ATLANTIC)	COLLECTIVE SOUL	24.9653	2742	18	24.8115	2933	17	12.9840	1710	17	0.0773	9	—	8.7481	562	20	0.1416	29	—	3.0143	432	—
18	23	3	YOU LEARN (MAVERICK/REPRISE)	ALANIS MORISSETTE	24.0481	2631	21	21.4698	2078	31	10.3459	1087	27	—	—	—	3.7262	201	34	—	—	—	9.9760	1343	10
19	14	10	BIG ME (ROSWELL/CAPITOL)	FOO FIGHTERS	23.7804	3140	13	28.0646	3388	11	12.2659	1900	13	0.0920	11	—	6.1149	413	23	0.1754	23	—	5.1322	793	28
20	21	3	FAST LOVE (DREAMWORKS/GEFFEN)	GEORGE MICHAEL	23.2949	3326	11	22.2415	3080	14	11.1130	1868	14	3.4812	407	24	5.4044	605	18	3.2963	446	14	—	—	—
21	19	23	BE MY LOVER (RCA)	LA BOUCHE	22.8758	2215	29	24.1863	2254	28	15.1577	1671	18	6.2445	374	—	1.4585	168	39	0.0018	1	—	0.0133	1	—
22	22	4	SWEET DREAMS (RCA)	LA BOUCHE	22.2060	2727	19	21.5791	2659	22	14.9141	2037	11	7.1437	605	13	0.1457	83	—	0.0025	2	—	—	—	—
23	35	2	WHO WILL SAVE YOUR SOUL (ATLANTIC)	JEWEL	21.8371	1967	36	17.8969	1689	45	6.4538	681	40	—	—	—	3.9168	175	37	0.0004	1	—	11.4661	1110	20
24	20	27	1979 (VIRGIN)	THE SMASHING PUMPKINS	21.5937	2643	20	23.0232	2887	20	13.4208	1729	16	0.2424	46	—	2.2934	200	35	0.0175	3	—	5.6196	665	—
25	NEW		THEME FROM MISSION: IMPOSSIBLE (MOTHERISLAND)	ADAM CLAYTON & LARRY MULLEN	21.5021	2508	25	16.7429	2065	33	12.4549	1596	21	2.3632	154	—	4.8664	321	28	0.0215	5	—	1.7961	432	—
26	25	9	CHAMPAGNE SUPERNOVA (EPIC)	OASIS	21.2907	2969	17	21.1005	2956	16	10.2099	1322	24	—	—	—	0.7347	67	—	—	—	—	10.3461	1580	8
27	28	3	YOU'RE THE ONE (RCA)	SWV	21.1978	1558	50	19.3473	1420	58	2.7529	522	—	18.4449	1036	4	—	—	—	—	—	—	—	—	—
28	18	9	1,2,3,4 (SUMPIN' NEW) (TOMMY BOY)	COOLIO	20.8897	1939	37	23.8219	1983	35	7.6263	1008	30	13.2634	931	6	—	—	—	—	—	—	—	—	—
29	26	6	SALVATION (ISLAND)	THE CRANBERRIES	20.7914	2990	15	20.7381	3063	15	5.3165	757	37	—	—	—	0.2912	20	—	—	—	—	15.1837	2213	1
30	32	2	THE EARTH, THE SUN, THE RAIN (GIANT)	COLOR ME BADD	19.7704	2548	24	18.2382	2365	24	13.9254	1913	12	5.1890	491	20	0.5545	132	—	0.1015	12	—	—	—	—
31	27	5	MACHINEHEAD (TRAUMA/INTERSCOPE)	BUSH	18.9542	2114	30	20.4330	2195	29	3.0130	305	—	—	—	—	—	—	—	—	—	—	15.9412	1809	5
32	33	42	ROLL TO ME (A&M)	DEL AMITRI	18.7180	1670	47	18.3376	1683	46	5.0278	664	—	—	—	—	10.0165	703	14	3.2257	248	—	0.4480	55	—
33	31	32	ONE SWEET DAY (COLUMBIA)	MARIAH CAREY & BOYZ II MEN	18.4706	1682	46	18.6765	1788	42	5.5383	564	—	3.2755	214	—	4.3151	391	—	5.3417	513	9	—	—	—
34	29	21	HOOK (A&M)	BLUES TRAVELER	18.1888	1993	34	19.2974	2066	32	10.6127	1285	25	0.0570	10	—	5.6714	413	24	0.2659	41	—	1.5818	244	—
35	30	53	RUN-AROUND (A&M)	BLUES TRAVELER	17.8521	1703	44	18.6792	1791	41	5.6694	700	—	—	—	—	8.2515	638	17	2.8540	178	—	1.0772	187	—
36	NEW		FLOOD (ESSENTIAL/SILVERTONE/LIVE)	JARS OF CLAY	17.8352	2036	33	16.2816	1963	36	7.2169	1053	28	0.0198	4	—	4.2014	253	29	0.0257	9	—	6.3714	717	34
37	RE-ENTRY		DOWN LOW (NOBODY HAS TO KNOW) (JIVE)	R KELLY FEATURING RONALD ISLEY	17.5560	1045	82	16.6115	1048	85	0.8121	211	—	16.7439	834	7	—	—	—	—	—	—	—	—	—
38	38	2	MOTHER MOTHER (ISLAND)	TRACY BONHAM	17.5110	2317	28	17.6379	2281	26	1.4911	143	—	—	—	—	—	—	—	—	—	—	16.0199	2174	2
39	39	18	DON'T CRY (ZTT/WARNER BROS.)	SEAL	17.4788	1729	42	17.5114	1825	39	2.8188	363	—	—	—	—	8.9489	738	12	5.6916	621	5	0.0195	7	—
40	37	48	KISS FROM A ROSE (ZTT/SIRE/WARNER BROS.)	SEAL	16.9746	1523	53	18.0431	1583	51	5.4455	615	—	1.0510	69	—	8.145	472	—	4.4977	349	160.1659	18	—	

Records showing an increase in audience over the previous week, regardless of chart movement. Rankings by format (on right side of this page) correspond to 40-position charts printed in this week's Monitor (30 positions for adult contemporary); therefore rankings do not exist for recurrences and records below No. 40 (No. 30 for adult contemporary). Audience computed by cross-referencing exact times of airplay with Arbitron listener data. © 1996, Billboard/BPI Communications.



## PLANET SOUL

**"FEEL THE MUSIC"**

The new single and video from the album  
**energy & harmony**

**Added & Played at: KPWR - Top 5 callout! • XHTZ  
KYLD • KQMG • KPSI • KCAQ • WFLZ • WZJM**

**Ready to explode at: WBBM • WWKX • WIOQ**

**Soundscanned 40,000 singles in only 5 weeks**

**"And these stations are feeling the music"**

**www.strictly.com E-Mail: info@strictly.com Tel. (212) 254-2400 Contact: Ellen Hanken**



# TEVIN **Campbell**

**#1 Most Added!**



**Spinning On:**

**WJMN**

**WXKS**

**WNVZ**

**KHOM**

**WHHH**

**KBXX**

**WGTZ**

**WWKX**

**KKRZ**

**KUBE**

**Z90**

**KJMN**

**B94**

**KS104**

**KZHT**

**WKSS**

**WMXQ**

**& too many more!**

## **“Back To The World”**

**The first single from the new album: Back To The World**



Produced by Jarney Jaz for OPOPP Productions. Management: Rhonda Campbell [www.wbr.com/tevin](http://www.wbr.com/tevin)

**World Radio History**

©1996 Qwest Recor



THIS WEEK	LAST WEEK	WKS. ON CHART	MAINSTREAM		DETECTIONS	
			TITLE/LABEL/DISTRIBUTING LABEL	ARTIST	TW	LW
			★★★ No. 1 ★★★			
1	1	13	BECAUSE YOU LOVED ME 550 MUSIC	CELINE DION	3873	3956
2	2	16	IRONIC MAVERICK/REPRISE	ALANIS MORISSETTE	3766	3866
3	3	14	ALWAYS BE MY BABY COLUMBIA	MARIAH CAREY	3591	3731
4	4	10	GIVE ME ONE REASON ELEKTRA/EEG	TRACY CHAPMAN	3270	3119
5	7	5	KILLING ME SOFTLY RUFFHOUSE/COLUMBIA	FUGEES	3118	2662
6	5	7	OLD MAN & ME (WHEN I GET TO HEAVEN) ATLANTIC	HOOTIE & THE BLOWFISH	2846	2767
7	6	22	NOBODY KNOWS LAFACE/ARISTA	THE TONY RICH PROJECT	2603	2760
8	8	16	FOLLOW YOU DOWN A&M	GIN BLOSSOMS	2192	2441
9	10	12	EVERYTHING FALLS APART COLUMBIA	DOG'S EYE VIEW	2179	2086
10	9	18	CLOSER TO FREE SLASH/REPRISE	BODEANS	2157	2338
11	13	7	SWEET DREAMS RCA	LA BOUCHE	2037	1953
12	17	7	THE EARTH, THE SUN, THE RAIN GIANT	COLOR ME BADD	1913	1794
13	11	8	BIG ME ROSWELL/CAPITOL	FOO FIGHTERS	1900	1979
14	16	5	FASTLOVE DREAMWORKS/GEFFEN	GEORGE MICHAEL	1868	1805
15	12	27	MISSING ATLANTIC	EVERYTHING BUT THE GIRL	1858	1971
16	15	18	1979 VIRGIN	THE SMASHING PUMPKINS	1729	1871
17	14	24	THE WORLD I KNOW ATLANTIC	COLLECTIVE SOUL	1710	1881
18	19	25	BE MY LOVER RCA	LA BOUCHE	1671	1715
19	18	16	SITTIN' UP IN MY ROOM ARISTA	BRANDY	1635	1759
20	21	11	INSENSITIVE A&M	JANN ARDEN	1630	1573
			★★★ AIRPOWER ★★★			
21	25	3	THEME FROM MISSION IMPOSSIBLE MCA	ADAM CLAYTON & LAFFY MULLEN	1596	1243
22	20	24	WONDER ELEKTRA/EEG	NATALIE MERCHANT	1466	1655
23	26	4	MACARENA (BAYSIDE BOYS MIX) RCA	LOS DEL RIO	1325	1226
24	27	3	CHAMPAGNE SUPERNOVA EPIC	OASIS	1322	1040
25	22	25	HOOK A&M	BLUES TRAVELER	1285	1339
26	24	11	JUST A GIRL TRAUMA/INTERSCOPE	NO DOUBT	1212	1237
27	40	2	YOU LEARN MAVERICK/REPRISE	ALANIS MORISSETTE	1087	708
28	29	4	FLOOD ESSENTIAL/SILVERTONE/JIVE	JARS OF CLAY	1053	892
29	33	2	CHILDREN ARISTA	ROBERT MILES	1030	828
30	28	5	1, 2, 3, 4 (SUMPIN' NEW) TOMMY BOY	COOLIO	1008	986
31	34	2	YOUR LOVING ARMS SIRE/EEG	BILLIE RAY MARTIN	960	822
32	23	10	CHAINS EPIC	TINA ARENA	959	1309
33	32	5	SCARY KISSES DISCOVERY	VOICE OF THE BEEHIVE	885	829
34	30	5	AEROPLANE WARNER BROS.	RED HOT CHILI PEPPERS	862	865
35	36	3	SANTA MONICA (WATCH THE WORLD DIE) TIM KERR/CAPITOL	EVERCLEAR	827	782
36	31	19	ANYTHING MJJ/550 MUSIC	3T	767	870
37	39	4	SALVATION ISLAND	THE CRANBERRIES	757	708
38	<b>NEW</b>		JEALOUSY ELEKTRA/EEG	NATALIE MERCHANT	708	624
39	38	6	COUNT ON ME ARISTA	WHITNEY HOUSTON & CECE WINANS	689	762
40	<b>NEW</b>		WHO WILL SAVE YOUR SOUL ATLANTIC	JEWEL	681	527

THIS WEEK	LAST WEEK	WKS. ON CHART	RHYTHM-CROSSOVER		DETECTIONS	
			TITLE/LABEL/DISTRIBUTING LABEL	ARTIST	TW	LW
			★★★ No. 1 ★★★			
1	1	13	KILLING ME SOFTLY RUFFHOUSE/COLUMBIA	FUGEES	1679	1692
2	3	8	THA CROSSROADS RUTHLESS/RELATIVITY	BONE THUGS-N-HARMONY	1368	1264
3	2	18	ALWAYS BE MY BABY COLUMBIA	MARIAH CAREY	1298	1355
4	6	10	YOU'RE THE ONE RCA	SWV	1036	956
5	4	10	BECAUSE YOU LOVED ME 550 MUSIC	CELINE DION	959	1014
6	5	12	1, 2, 3, 4 (SUMPIN' NEW) TOMMY BOY	COOLIO	931	997
7	8	17	DOWN LOW (NOBODY HAS TO KNOW) JIVE	R. KELLY FEATURING RONALD ISLEY	834	866
8	7	25	SITTIN' UP IN MY ROOM ARISTA	BRANDY	833	889
9	12	25	NOBODY KNOWS LAFACE/ARISTA	THE TONY RICH PROJECT	701	654
10	11	11	RELEASE ME UPSTAIRS	ANGELINA	697	706
11	9	23	NOT GON' CRY ARISTA	MARY J. BLIGE	691	751
			★★★ AIRPOWER ★★★			
12	15	6	IRONIC MAVERICK/REPRISE	ALANIS MORISSETTE	612	594
13	13	10	SWEET DREAMS RCA	LA BOUCHE	605	640
14	18	4	KEEP ON, KEEPIN' ON FLAVOR UNIT/EASTWEST/EEG	MC LYTE FEATURING XSCAPE	588	479
15	37	2	YOU'RE MAKIN' ME HIGH LAFACE/ARISTA	TONI BRAXTON	586	275
16	10	29	MISSING ATLANTIC	EVERYTHING BUT THE GIRL	566	733
17	16	20	CALIFORNIA LOVE DEATH ROW/INTERSCOPE	2PAC (FEAT. DR. DRE AND ROGER TROUTMAN)	556	581
18	14	15	ALL THE THINGS (YOUR MAN WON'T DO) ISLAND	JOE	531	619
19	17	40	TELL ME EPIC	GROOVE THEORY	521	515
20	19	8	THE EARTH, THE SUN, THE RAIN GIANT	COLOR ME BADD	491	474
21	28	5	WHY I LOVE YOU SO MUCH ROWDY/ARISTA	MONICA	434	373
22	25	6	TRES DELINQUENTES PMP/LOUD/RCA	DELINQUENT HABITS	429	390
23	27	7	C'MON N' RIDE IT (THE TRAIN) QUADRASOUND/BIG BEAT/ATLANTIC	QUAD CITY DJ'S	417	385
24	26	4	FASTLOVE DREAMWORKS/GEFFEN	GEORGE MICHAEL	407	385
25	23	5	FOREVER MORE WORK	PUFF JOHNSON	406	399
26	20	20	DOIN IT DEF JAM/MERCURY	LL COOL J	392	429
27	33	3	TOUCH ME, TEASE ME SPOILED ROTTEN/DEF JAM/MERCURY	CASE FEATURING FOXXY BROWN	363	307
28	29	3	GET ON UP UPTOWN/MCA	JODECI	360	329
29	30	4	KISSIN' YOU BAD BOY/ARISTA	TOTAL	343	321
30	31	5	YOUR LOVING ARMS SIRE/EEG	BILLIE RAY MARTIN	340	315
31	21	8	COUNT ON ME ARISTA	WHITNEY HOUSTON & CECE WINANS	338	428
32	22	19	WHO DO U LOVE ARISTA	DEBORAH COX	327	406
33	24	17	LADY EMI	D'ANGELO	320	399
34	34	4	A THIN LINE BETWEEN LOVE & HATE JAC-MAC/WARNER BROS.	H-TOWN	319	285
35	32	7	GET MONEY UNDEAS/BIG BEAT/ATLANTIC	JUNIOR M.A.F.I.A. FEAT. THE NOTORIOUS B.I.G.	318	310
36	38	16	MACARENA (BAYSIDE BOYS MIX) RCA	LOS DEL RIO	301	274
37	39	2	CHILDREN ARISTA	ROBERT MILES	295	266
38	<b>NEW</b>		THEY DON'T CARE ABOUT US EPIC	MICHAEL JACKSON	288	224
39	40	7	ESA NENA LINDA GROOVE NATION/SCOTTI BROS./ALL AMERICAN	ARTIE THE 1 MAN PARTY	275	265
40	36	2	I DON'T WANNA BE ALONE GASOLINE ALLEY/MCA	SHAI	264	279

Records showing an increase in detections over the previous week, regardless of chart movement. A record which has been on either chart for more than 20 weeks will not receive a bullet, even if it registers an increase in detections. Airpower awarded to those records which attain 1500 detections (mainstream) or 600 detections (rhythm) for the first time. If two records are tied in number of plays, the record being played on more stations is placed first. Records below the top 20 are removed from the chart after 26 weeks.

**SOUNDTRACK IN STORES JUNE 4TH**

The **CASE** is closed. **33 MILLION LISTENERS**

the phat first single from  
THE NUTTY PROFESSOR SOUNDTRACK  
"touch me, tease me"  
2,100 spins and increasing!







INSPIRED BY THE MOTION PICTURE MOTION PICTURE ARTWORK © 1996 UNIVERSAL CITY STUDIOS, INC. © 1996 DEF JAM RECORDS, INC.