

SPECIAL YEAR-END ISSUE

TOP 40 ■ AIRPLAY Monitor

• We Listen To Radio •

December 15, 1995 \$ 4.95 Volume 3 • No. 51

TOP 40 HIGHLIGHTS

MAINSTREAM

#1

MARIAH CAREY & BOYZ II MEN
One Sweet Day (COLUMBIA)

★★★★ AIRPOWER ★★★★★

JOAN OSBORNE • *One Of Us* (BLUE GORILLA/MERCURY)

NEW RELEASES

NO NEW RELEASES THIS WEEK

RHYTHM-CROSSOVER

#1

MARIAH CAREY & BOYZ II MEN
One Sweet Day (COLUMBIA)

★★★★ AIRPOWER ★★★★★

THE TONY RICH PROJECT • *Nobody Knows* (LAFACE/ARISTA)

NEW RELEASES

NO NEW RELEASES THIS WEEK

ADULT

#1

SOPHIE B. HAWKINS
As I Lay Me Down (COLUMBIA)

★★★★ AIRPOWER ★★★★★

HOOTIE & THE BLOWFISH • *Time* (ATLANTIC)

TOAD THE WET SPROCKET • *Good Intentions* (COLUMBIA/REPRISE)

NEW RELEASES

♣ Gold (NPG WARNER BROS.)

CARLY SIMON • *The Night Before Christmas* (ARISTA)

MICHAEL W. SMITH • *Straight To The Heart* (REUNION/ARISTA)

KATHY TROCCOLI • *Go Light Your World* (REUNION/ARISTA)

Future Of Evergreen's WYNY Sparks Format Debate

by Kevin Carter

Unless you've been living under a rock for the past few weeks, you've no doubt heard the speculation about the future of Evergreen Media's country WYNY New York. Evergreen says only that a format search is under way, which has sparked an immediate debate by various Internet geeks, armchair quarterback, industry observers, and other assorted parasites, hangers-on, and wannabes.

This week, Top 40 Airplay Monitor wades hip-deep into the muddy East River waters with a musical question: What format would you choose for WYNY? We found that the answers often reflected the biases of the person asked, with many voting for their own format. We also found a lot of support for the top 40/dance format, which has

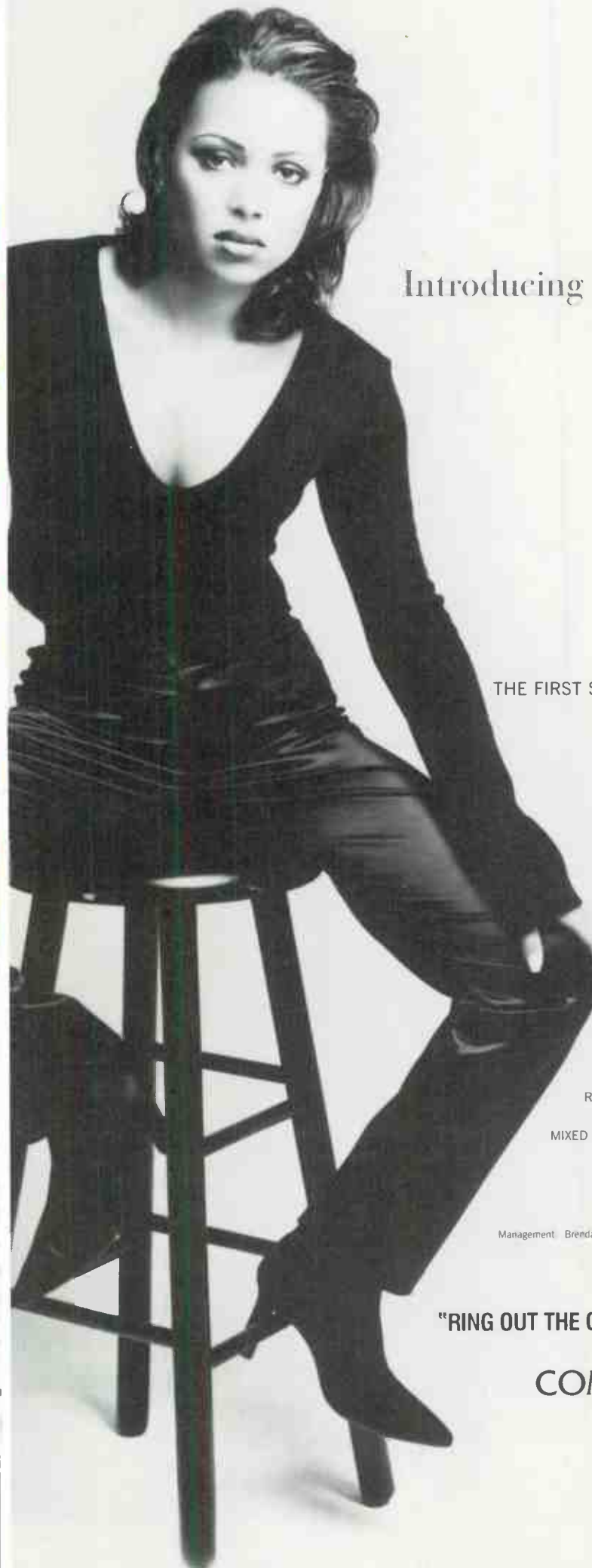
long been rumored to be the leading contender for the station. And, perhaps because we talked only to "contemporary radio people," we didn't encounter anybody in favor of keeping the station country.

The most out-of-the-box suggestion came from Dave Robbins, GM of WNCI Columbus, Ohio, who moved completely away from any conventional radio wisdom with his long-awaited dream format, "Top 10 USA." Dave would play only the top 10 songs in America, according to the Monitor chart, over and over again.

"I would change the songs every Thursday, Arbitron day, for maximum benefit," he says. "It would be 'Hot Hits' to the nth degree, the 'CNN Headline News' of current music, generating monster come from every race and every demo-

Continued on page 6

QUINCY JONES
"YOU PUT A MOVE ON MY HEART"



Introducing **TAMIA**

THE FIRST SINGLE FROM: **Q's JOOK JOINT**

PRODUCED BY QUINCY JONES

MUSIC AND LYRICS BY ROD TEMPERTON

RECORDED BY FRANCIS BUCKLEY

MIXED BY BRUCE SWEDIEN

Management: Brenda Richie Management

"RING OUT THE OLD AND BRING IN THE NEW!"

COMING 1996



©1995 Qwest Records

"Let's Play House"

(Featuring MITCHELLE)

DR DOGG POWNED

*Executive Producers
Suge Knight and DR. Dre
Produced by Dat Niggaz Daz*

DEATH ROW
RECORDS



GAINING SPINS AT:

POWER 106 / Los Angeles
KMEL / San Francisco
WILD 107 / San Francisco
92Q / Baltimore
KJMZ / Las Vegas
Z90 / San Diego
POWER 96 / Miami
WHHH / Indianapolis
FLAVA / Washington DC
KCAQ / Santa Barbara
WWKX / Providence
KWIN / Stockton
WJMH / Greensboro
KHTN / Modesto
WJJS / Roanoke
KQMQ / Honolulu
WJBT / Jacksonville
KTFM / San Antonio
KZHT / Salt Lake City
WFME / Baton Rouge
WOCQ / Ocean City
KPRR / El Paso
KIKI / Hawaii
and many more...

#1 PHONES AT POWER 106!!

R&R RHYTHMIC: 50 - 40*

BILLBOARD R&B MONITOR: 38



TOP 10
MOST PLAYED!!!



TOP 10
MOST REQUESTED!!!

**SINGLE SHIPS TO RETAIL
DECEMBER 12TH**

**FROM THE #1 DEBUTING RECORD
DOGG FOOD**

Arbitron Targets Low-Response Group, Markets

Arbitron is targeting a "new frontier" of 25- to 34-year-old men and low-response-rate markets as potential areas for improvement in 1996. That announcement came from Arbitron VP/research Jim Peacock at the annual consultant fly-in, held in Arbitron's Columbia, Md., offices Dec. 7-8.

The male 25-34 group "has the distinction of being the lowest-response-rate [group]," measuring 17% below that of the general population, according to Arbitron's David Lapovsky.

Among the initiatives recently tested to improve response rates among both 25-34 men and in low-response markets is the box mailer. That mailer, previously tested only in larger households, may be extended to one to three person households. The brightly colored boxes, about the size of those bank checks come in, were found to increase the likelihood of the diary package being opened and not discarded as "junk mail." A recent test resulted in a three-

point gain in return rates, even among smaller households, Peacock said. It worked equally well for ethnic households and those with young males. Therefore, it's on the list of possible enhancements for 1996.

Also at the fly-in, a sample of the redesigned market report was unveiled. The new book is tentatively scheduled for the winter 1996 survey. Among the changes are the addition of station information, such as format, address, phone, and fax number in the front of the book. Also, the time-spent-listening section is trended for five books and includes a four-book average.

Hour-by-hour estimates have been cut from the new book, apparently on word of the Arbitron Advisory Council, and Arbitron is considering replacing it with a reach and frequency table, which Andy Bloom of Coleman Research endorsed, as it would "demystify reach and frequency."

PHYLIS STARK



TOP 40 TOPICS

by Sean Ross

Here's To Radio Worth Reading About

It eventually came true that everybody got to be famous for 15 minutes, and in that spirit, we've seen every major station in any given format get to be influential at some point over the last few years. Was it modern-leaning **WHTZ** (Z100) New York that set the pace for top 40 radio or its hip-hop rival **WQHT** (Hot 97)? The answer is yes. In a nation of manic-depressive broadcasters, we've managed to cycle through the formats so quickly that there's not only a station to fill every niche, but frequently it's the same station.

Yet, at the end of 1995, it is possible to cite stations that had a sustained impact on the radio-programming landscape. The following aren't just the stations that I respected the most during 1995, but the stations that I think were most influential in their respective formats. Any perceived sins of omission here are probably due to an inability to hear everything. If you think your station should have been listed, unscoped tape (or a listen-line number) is welcome.

Here now the **Ross** award winners for 1995:

- **Top 40:** Six years ago, during its "Power Pig" days, I had a mostly grudging respect for **WFLZ** Tampa, Fla. You couldn't deny its success, but in the hands of lesser stations, an overabundance of swine flu turned out to be a pretty awful thing for top 40. (So did the cure, which in most cases, was a neutering of the format.) Now, **WFLZ** is the station that proves young-end, personality-driven top 40 works in the mid-'90s. And if it doesn't surprise anybody that I'd find a mainstream station to gush over, I should note that if this really is the niche era, as detractors claim, then **WFLZ** is a case of "man bites dog" and therefore impressive. Special mention goes to all the new stations willing to take a chance on top 40 this year and particularly all the hot ACs that came back to the format.

- **AC:** The seismic changes this format has gone through this year haven't gotten as much attention as they would have in other formats, which is just a reflection of the industry's failure to give AC its props overall. AC was polarized this year. The leaders of the modern rock/adult top 40 movement (**KALC** Denver, **KFMB-FM** San Diego, **KYSR** Los Angeles) were on one side, drawing hot ACs and adult top 40s further into the rock arena than their predecessors (**WPLJ** New York and **WMTX** Tampa, Fla.), despite the fact that none of them are ratings home runs yet. The soft ACs that led the "back to wimpy" movement—and I use that term affectionately—were on the other side. **WLTW** New York sounded like itself this year for the first time in a while. After a couple of years in which the '70s revival had made AC relatively homogeneous, this year's clustering of so many diverse stations in the AC area seemed like an accident of semantics.

- **Modern rock:** There's no denying that **KROQ** Los Angeles remains the role model for much of the format, but regardless of individual merit, it may not have been the best station for everybody to copy. Few moderns could get away with rocking as hard as **KROQ** or having a jock named **Boogerman**. Many tried, and it turned out to be not such a great model for the heartland, as indicated by the format's problems this summer. So who would I have chosen as role models? **WMRQ** Hartford, Conn., and **KEGE** Minneapolis. They showed that modern could play the hits without taking on the negative aspects of top 40. They proved that triple-A crossovers and hard rock could co-exist. They were hip, mass-appeal stations for markets in which modern

rock, if its growth is to be sustained, needs to be both hip and mass-appeal.

On the adult modern side, **KXPK** (the Peak) Denver was the station that launched a score of clones, but **WKOC** (the Coast) Norfolk, Va., was the one which, for my money, showed that a station could successfully adopt the **KXPK** model.

- **Album rock:** The summer Arbitrons will go down as "The Empire Strikes Back" book, but regardless of whether the album/classic rock resurgence holds up over time, **WRCX** (Rock 103.5) Chicago deserves props for showing that you can build a mainstream rock station in the mid-'90s and for brazenly attempting to out-hip a modern rock station, something that I didn't think was possible. **Mancow**, of course, deserves a lot of the credit. But so does PD **Dave Richards**.

- **R&B:** At year's end, there are questions about whether **WRKS** New York can sustain its initial impact as an R&B adult powerhouse, but during 1995 it was the station that gave that long-incoming format its final shove into prominence. **WRKS**, in tandem with **WQHT**, suddenly made the durability of mainstream R&B as legitimate a question within the industry as the durability of mainstream top 40, even if, as I suspect, both end up doing just fine. Also deserving a mention: **WHTA** (Hot 97.5) Atlanta for giving rival **WVEE** (V103) its first real competition in 15 years and **WKKV** (V100) Milwaukee for being No. 1 in a market that didn't think it could sustain an R&B FM five years ago.

- **Country:** I still love **KKBQ** (93Q) Houston's energy and musical aggressiveness (same goes for the new **KUBL** Salt Lake City under PD **John O'Rourke**), but with "hot country" at a crossroads this year, it was such neoconservatives as **KSCS** Dallas, with its two currents an hour, that defined the format and helped touch off a massive playlist-cutting spree in early fall. Special mention to **KOLT-FM** Albuquerque, N.M., **WOOJ** Fort Myers, Fla., and the other folks who moved country gold to legitimate FM franchises for the first time.

- **Oldies:** I've enjoyed Emmis' **WNAP** Indianapolis over the past 15 months. It was the first '70s oldies station with attitude. Unfortunately, though, it was actually an Arrow station masquerading as a '70s oldies station. That made a lot of sense for Indianapolis. It made less sense for the PDs who took **WNAP**'s example to other markets that needed a '70s oldies station, not another classic rocker. I admire **KCLX** San Diego and **WIXI** Fort Myers for trying to adopt the "good-time oldies" model of '60s-based oldies to the '70s format, instead of bringing us a broken Arrow. Special mention to **Bob Harlow's KLDE** Houston and **Bob Mitchell's WTKL** New Orleans for proving that a successful '60s station can be unique to its market.

- **Jazz/AC:** The entire "smooth jazz" movement deserved mention in 1995, but, in particular, **WJCD** (CD105) Norfolk, Va., and **KOAI** (the Oasis) Dallas proved that jazz/AC could simultaneously serve as jazz, R&B adult, soft AC, and easy listening in markets where one or all of those formats had been written off. Jazz/AC's success was probably responsible for the decision by so many soft ACs to be soft again.

Here's to the stations that altered the terrain this year. Here's to every radio person reading this for their tremendous support of *Airplay Monitor* in '95. And here's to another year of radio stations that are worth writing about in '96.



RADIOACTIVE

by Kevin Carter

CMI To Buy 3 Outlets; KMXV PD Wall Exits

Resource Media Inc. and Century Management Inc. (**Michael O'Shea**, **George Kriste**, and **Lance Anderson**) have formed a new entity, New Century Arizona, to purchase three Phoenix-based properties: modern rock **KEDJ-FM**, **KHOT-FM**, and sports/talk **KGME-AM** (the Game). A management agreement has been struck allowing Century Management Inc. to assume day-to-day control immediately. CMI was formed two years ago as the general partner of New Century Media, which owns **KUBE-FM/KJR-AM-FM** Seattle. Former **KSLX** Phoenix GM **Reid Reker** takes over the vacant GM spot for all three properties. O'Shea says to expect **KUBE/KJR** VP/programming **Bob Case** to become involved in CMI's new venture.

KMXV Kansas City PD **Steve Wall** exits after 18 months. OM **Tom Land** and new GM **Mike Payne** are running the show for now. Call Wall at 913-432-6935. Meanwhile, crosstown **KISF** late night jock **Jason Justice** nabs MD stripes.

WPNT Chicago morning guy **Steve Cochran** has left the station and ponders his next move. **WPNT** p.m. driver **Ken Cocker** is filling in on mornings, along with regulars **Abby Polonsky** and news anchor **Susan Wiencek**. Rotating part-timers will fill afternoons. The morning-show production staff of **Cameron Sullivan**, **Todd Manley**, and **Ron Klett** remains intact.

Vote now in the great **WHTZ** (Z100) New York morning hunt. Here are some random names and alleged availability: 1. **The Jerky Boys** (Jan. 1996) 2. **Steve Cochran** (Feb. 1996) 3. **Mancow** (summer of 1996).

WDCG (G105) Raleigh, N.C., PD **Brian Burns** loses his second night guy in less than a

year to **WAPE** Jacksonville, Fla., as **Dino** is headed south to replace **Brad Stone**, now doing mornings at **WEDJ** Charlotte, N.C.

Production whiz **Sean Caldwell** is leaving **WPLY** (Y100) Philadelphia Dec. 22 and relocating to Florida to devote full attention to his voice-over business. Sean Caldwell Productions. Y100 PD **Garett Michaels** needs a replacement.

KHOM New Orleans inks **Tom Naylor** from **WEDJ** Charlotte for afternoons, replacing **John Walton**, who rejoins **Steve Johnson** at crosstown album rock **WCKW**. **Skid Marx** joins from **KQID** Alexandria, Va., for nights, replacing **Bill Dutrey**, who moves to middays, replacing **Bumper Morgan's** voicetracks.

Robin Breedon returns to radio in mornings Jan. 15 on **WPGC-AM** (Flava 1580) Washington, D.C. Breedon did mornings for years on **WPGC-FM** before moving to **KBXX** (the Box) Houston, where she exited earlier this year.

KSFM Sacramento, Calif., PD **Rick Thomas** quiets the rumors by signing a two-year deal.

KHMX (Mix 96.5) Houston names **Yvonne Shimiek** research director.

Hot AC **WKQI** Detroit needs a marketing/promo director. Package to PD **Tom O'Brien**.

Hot AC **WLET-FM** Gainesville, Ga., PD **Polly Feagen** exits. T&Rs to GM **Tim Johnston**.

WTWR Toledo hires **Jim Schaeffer** from **WSDS** Ypsilanti, Mich., for afternoons, replacing **Steve Marshall**, now on mornings at **WSNX** Grand Rapids, Mich.

Great Scott Broadcasting, owners of **WSSR/WZBH** Georgetown, Md., have acquired **WZSK** in nearby Bethany Beach, set to sign on in early 1996. The new PD is **Jack Da Wack**, formerly of **WKHI** Ocean City, Md.

You Can Keep Your Hat On



Captain & Tennille visit WPLJ New York to celebrate the 20th anniversary of "Love Will Keep Us Together." Shown, from left, are WPLJ's Naomi DiClemente, "Captain" Daryl Dragon, Toni Tennille, and WPLJ's Todd Pettengill and PD Scott Shannon.

ONE... the same in
any language

#1 POP LABEL

#1 ALBUM LABEL

#1 SINGLES LABEL

#1 ALBUM ROCK
TRACKSTOP ALBUM ARTISTS #1
HOOTIE & THE BLOWFISHTOP ARTISTS
DUO/GROUP #1
HOOTIE & THE BLOWFISHTOP ALBUM #1
CRACKED REAR VIEWTOP ROCK TRACK #1
COLLECTIVE SOUL,
"DECEMBER"TOP NEW R&B ARTIST #1
BRANDYTOP R&B FEMALE
ARTIST #1
BRANDY

#1 COUNTRY LABEL

TOP CLASSICAL ALBUM
"THREE TENORS"

THANKS RADIO!

FROM THE ATLANTIC PROMOTION DEPARTMENT

En

Jeden

Um

Unu

Vienas

Ett

Bir

OANH

JeAah

Enorett

Jedna

Een

Yksi

Un

Eins

Egy

Uno

Jedan

PROMOTIONS

Xmas Wish Lists To Inspire Laughter & Joy

Sure, they're overworked and underpaid. They're bitter, tired, and suffer violent mood swings triggered by greasy fast food. They're always giving, never taking, and damn good at what they do. They're your promotions staffers, Mr. and Ms. PD. So in honor of their unselfish attitudes, and mindful of the consequences if these people ever decided to use their talents for evil instead of good, we asked promotion directors, instead of listeners, to make Christmas wishes.

VANESSA THILL AND SIDRA DURAN KLUC LAS VEGAS

"Top five wish list:

5. A storage room unlike the one we have now; our office.

4. An amazingly creative, hot, powerfully visible station vehicle that runs well.

3. A grunt boy who requires no sleep and has virtually no family, or at least a family that doesn't care about him around the holidays.

2. An automatic ego deflator:

1. A peace agreement between sales and programming that would make them almost as tolerable as the feuding groups in the Middle East."

ROB RIDDLEMOSER KSFM SACRAMENTO, CALIF.

"I wish for Johnny Cochran's legal services free for a year to protect us from falling pumpkins, dropping turkeys, and Santa falling off a roof during one of our promotions."

DAN BOWEN WNCI COLUMBUS, OHIO

"I wish for a jock staff that doesn't always ask, 'Don't we have promotion geeks for that?'"

JULIA ATHERTON KHKS (KISS 106) DALLAS

"I wish for an aerosol added-value repellent that doesn't harm the ozone layer."

HEIDI DAGNESE WPLJ NEW YORK

"A voice-mail system that explains to winners, 'This is the prize you've won. It's not exchangeable. And, yes, they are good seats!' A look-alike for me, so I can slip out unnoticed for a few hours. Our own T-shirt factory with an unlimited supply."

ROSS PROUT KQKS (KS104) DENVER

"Free TV time, free billboards, grateful winners, a separate promotions director for our sister station KNRX (92X), at least one day off during the summer, half of the account executives' commissions, and a Hummer (the vehicle, that is)."

DAVE DEMER WXXL (XL106.7) ORLANDO, FLA.

"Thinner winners (preferably with teeth), an automated sales force (because computers follow directions without question), an actual couch to replace the back seat from a '75 Ford Bronco that I'm currently using."

BOBBY Z.

KBXX (THE BOX) HOUSTON

"I second that thinner-winner mentality, a van with 50,000 volts in the door handle to cut down on break-ins, an endless supply of deodorant to keep in the van (those Houston summers are brutal), winners who keep the same phone number for longer for longer (pay your bills, deadbeats!)."

MONCHAI PUGNAEW XHTZ (Z90) SAN DIEGO

"I wish for this department to get more respect; a big prize that's exclusively promotionally driven, not sales-driven; and trade-out hair transplants for myself."

CHRIS WILSON WNVZ (Z104) NORFOLK, VA.

"Second only to world peace, I wish for an unlimited promotions budget, complete autonomy, and the winning lottery number."

KAREN MENKE KMXV (MIX 93.3) KANSAS CITY

"4. The ability to send subliminal messages about my radio station through the scoreboard at Arrowhead Stadium.

3. Our station logo on every beverage consumed during a Chiefs' game on Sunday.

2. A dollar for every person who approaches me and asks, 'Whaddaya got for free?' All that money would be distributed to people who really don't have anything.

1. I wish to meet this person they call 'ASAP' and have a little chat."

BROOKE BAUMER

KHMX (MIX 96.5) HOUSTON

"I wish for an additional 15 hours in my day; 10,000 unpaid interns who will gladly wear our station mascot outfit in 100-degree weather; clients who adhere to our deadlines (they always hold us to theirs); to never receive another call from a promotional-items company; an eternal supply of vitamin B to handle the stress; a McDonald's Gold Card that allows discounts for the thousands of Big Macs we order on the road; I also wish to lose my pager, my cellular phone, and my home phone number. Seriously, I wish to keep up our fantastic ratings and to make '96 even more promotionally successful than '95."

LORI CAMPBELL WBZZ (B94) PITTSBURGH

"The gaping hole in our van dashboard is still empty—it needs to be filled with a radio; a super-intern who always shows up on time, coils up all the cords neatly after remotes, never breaks anything, does everything I ask without question, and never says anything stupid in front of a client. I also want Brad Pitt for New Year's Eve, but that's another wish list entirely."

VON FREEMAN

WKRQ (Q102) CINCINNATI

"More 'Naked Twister' promotions with Pamela Lee Anderson and/or Farrah Fawcett. On a more serious and topical note, more 'Naked Twister' promotions with Newt, Bob, and Bill. Finally, in 1996 I'd like to see more quality control over station giveaways. There are far too many times we just assume a certain giveaway is fine, without taking the time to check it out. For example, I've been driving this 1995 Lamborghini since July, and I'm just now beginning to believe it might make a good giveaway."

PUBLISHER: MICHAEL ELLIS
EDITOR: SEAN ROSS
MANAGING EDITOR: KEVIN CARTER
DIRECTOR OF CHARTS: JERRY MCKENNA
TOP 40/ADULT CHART MANAGER: STEVEN GRAYBOW
CHART PRODUCTION MANAGER: MICHAEL CUSSON
ASST. CHART PRODUCTION MANAGER: PAUL PAGE
EDITORIAL PRODUCTION MANAGER: BARRY BISHIN
ASSOC. EDITORIAL PRODUCTION MANAGER: MARCIA REPINSKI
EDITORIAL PRODUCTION: MARC GIAGUINTO, MORRIS KLIEGMAN
COPY EDITOR: CARL ROSEN
ADVERTISING PRODUCTION MANAGER: LYDIA MIKULKO
ADVERTISING PRODUCTION ASST.: CINDIE WEISS
ADVERTISING ART DIRECTOR: RAY CARLSON

NATIONAL ADVERTISING MANAGER: JON GUYNN
ADVERTISING SALES: ART PHILLIPS, ANDREA THOMPSON
CLASSIFIED ADVERTISING: LAURA RIVCHUN
ADVERTISING SERVICES MGR.: MICHELE JACANGELO
SALES ASSISTANTS: EVELYN ASZODI, ERICA BENGISON,
ALEX VITOULOS, ALYSE ZIGMAN

EDITORIAL ADVISOR: TIMOTHY WHITE
PRODUCTION DIRECTOR: MARIE GOMBERT
DIRECTOR OF MARKETING: ELISSA TOMASETTI
CIRCULATION MANAGER: JEANNE JAMIN



Billboard Music Group
PRESIDENT: HOWARD LANDER

©1995 BPI Communications, 1515 Broadway, New York, NY 10036
212-536-5039 For subscriptions call: 800-722-2346



WHEN LOVE & HATE COLLIDE

MOVING

32 - 29

TOP 40

MAINSTREAM CHART

BREAKING THROUGH ON:

WFLZ 23x	KC101 33x	WXXL 19x	WZPL 20x	Q102 23x	WPRO 33x
WDDJ 40x	WXXX 53x	WYCR 39x	WKRZ 34x	WABB 32x	WIXX 32x
WWCK 28x	WKXJ 27x	WFBC 26x	WFHN 25x	WZYP 25x	WWST 24x
WTWR 24x	KQKQ 23x	WVSR 23x	WSSX 22x	WXIS 21x	

PRODUCED BY PETE WOODROFFE & DEF LEPPARD
MANAGEMENT: Q PRIME INC.
© 1993 POLYGRAM RECORDS INC.

Joan Osborne

"One Of Us"

from her debut album

relish

MOVING

23 - 19

TOP 40

MAINSTREAM CHART

CONNECTING AT:

WHTZ 50x	WXKS 23x	WFLZ 35x	B94 34x
WZPL 33x	KMXV 31x	Q102 28x	WEDJ 30x
Y107 31x	KUTQ 37x	WFLY 46x	KROQ 45x
WXXX 42x	WYCR 38x	WHOT 37x	WDDJ 35x

★ ★ ★ AIRPOWER ★ ★ ★



Future Of Evergreen's WYNY Sparks Format Debate

Continued from page 1

graphic. That came would be so enormous that you would automatically generate enough time spent listening to be more than competitive."

The key to the success of Robbins' format, which would not, after all, be that different from WABC New York's 16-song playlist during its heyday, would be resisting all temptation to add any song outside the top 10 for at least three years, he says.

RHYTHM IS THE ANSWER?

Jay Beau Jones, PD of WKSS Hartford, Conn., holds a more prevalent opinion when he says, "I believe there's a need in New York for a good, old-fashioned rhythm-leaning top 40." Like many observers, he says many nationally charted, rhythmic hit records are not currently played in New York. "I would aim right down the middle," says Jones, "using the umbrella of those great call letters, WYNY. I could hear a great theater-of-the-mind promo: 'Now there's a station in New York that plays the songs you really want to hear,' using hooks of some of the fringe records from every other contemporary music station. 'Do you really want to sit through these songs for the hits you really want to hear?'"

Clarke Ingram, PD of WPXY Rochester, N.Y., concurs. "I would absolutely go with a rhythmic-leaning pop top 40. Back in 1983, WHIZ (Z100) was put on the air to serve the audience who was missing that big top 40 sound of the old WABC. Z100 is still an excellent radio station, but it's not the same station that filled that particular void.

"In essence, Z100 is a modern rock station with a few extra records. I feel the New York audience is still looking for that larger-than-life radio station that plays current popular music and has strong air personalities. Z100, WPLJ, and WQHT (Hot 97) are all filling a certain portion of that void, but not completely."

Ingram says, "It's like the sound of one hand clapping at each of those stations. It's hard to believe that there are a lot of pop-rhythmic records that are not being played in the No. 1 market in the country. Who's playing Real McCoy or Ace Of Base? The Denine/Collage record on Metropolitan is our No. 1 testing record with young women. Who's playing it in New York?"

Ingram continues, "When WSKQ and Hot 97 have a 12 share between them, it's fair to assume that at least some of the rhythmic audience has become disenfranchised."

Other votes for rhythmic top 40: Joe Dawson, PD of similarly formatted WWKX (Kix 106) Providence, R.I., and John McFadden, PD of top 40/adult WWSN (Sunny 107.9) Charlotte, N.C., who notes, "I would kick off the new format by running an all-Beatles weekend as a smoke screen."

John Roberts, PD of KHFI Austin, Texas, offers several options. "My initial urge would be a pop top 40 with a rhythmic-dance slant, not a churban station." He says that since top 40 is a cume-based format, it would be easier to sell it, even with a lower initial share. Speaking from his own background, Roberts notes that his station has a musical content of "about 50% dance product, 25% pop product, and 25% modern rock crossover."

One of the biggest questions facing potential rhythmic listeners in New York, according to Roberts, is, "Would a white, suburban, 22-year-old female readily acknowledge she listens to Hot 97, or does she consider them too ethnic, both in music and in presentation?" By the same token, Roberts says, "would a potential P-1 male modern rocker user actually acknowledge they listen to their favorite music on a top 40 station? If I did a research project and saw that Z100's image in the marketplace was still as a top 40, I would try to force their hand to either eliminate all vestiges of nonmodern music, or cause them to return to the base image of what Z100 used to be."

ARROW THROUGH THE APPLE?

Another Roberts suggestion would be a '70s-based gold station. "There could conceivably be a 2.5 to a 3 share opportunity for a format that would play to the cume bases of WCBS-FM, classic rocker WXRK [which, between Howard Stern and the Greaseman, can run up to eight hours a day with no music], WNEW-FM, and, less significantly, [gold-based R&B adult outlet] WRKS," he notes. "It would have to do better than a country station with a 1 share." On the other hand, says Roberts, "I would love to see a hot talk format that would put Mancow head-to-head with Howard Stern in mornings."

WDCG (G105) Raleigh, N.C., PD Brian Burns says, "It appears that gold-based WCBS-FM has the least direct format competition and the most to lose. [WCBS is No. 3 12-plus in the latest Arbitrations, with a 4.9 share.] Given the current corporate disarray with the Westinghouse/CBS merger, I feel a direct frontal assault on WCBS-FM with a high-profile, '70s-based gold station could be the best opportunity to make a quick impact. What WABC was in the '70s, WYNY should be in the '90s."

Casey Keating, PD of WHYI (Y100) Miami, sees two possible scenarios. "With the tremendous ratings success of Spanish soft AC, both at KIVE Los Angeles and here in Miami with WRMA, I could see that format working well with the Hispanic audience in New York." Keating's second scenario is hot talk. "Evergreen has the opportunity to use their own resources at WLUP-FM and WRCX Chicago. . . They have the talents of Kevin Matthews, Danny Bonaduce, Steve Dahl, Mancow, and Jonathan Brandmeier ready to simulcast." KFMB-AM-FM San Diego OM Tracy Johnson also votes for talk on FM, unless, of course, he can simulcast his own station.

TRUE MODERN ROCK?

Garrett Michaels, PD of modern rock WPLY Philadelphia, says his choice "would be to put on a real modern rock station for New York, targeted 18-34. WDRE is located in Long Island and is not a true New York City radio station. While Z100 does play modern rock music, they also continue to play some pop product and still identify themselves as a top 40 radio station. WNEW-FM under Scott Muni just doesn't fit the 18-34 mentality or lifestyle, and while WAXQ (Q104) is playing some modern rock, their listeners have to live through a lot of the traditional hard-edged rock artists, like Ozzy Osbourne and AC/DC. I feel there is a hole for a pure modern rock station."

On the other hand, Cruze, PD of Z100's sister station, KTBZ Houston, says, "As much fun as it would be to go modern rock, it would be very difficult to beat Z100 at that game if they decided to jettison their remaining pop records and fully commit to the format. Z100 has been hip for long enough that they would be difficult to beat at the modern rock game, and I would hate to take on [Z100 PD] Steve Kingston in a same-format battle, regardless of what that format would be."

Cruze says Z100 might not be as quick to defend the pop-dance side. "If you got lucky and Z100 decided to let you play at that end of the field, you could share listeners with Z100, WPLJ, as well as Hot 97, but still have a formidable core of your own." Cruze adds, "The last time I checked, nobody was defending the Lithuanian folk music position, so that's wide open. You'd be No. 1 with cab drivers all over Manhattan."

Then there's Tom Cuddy, VP of programming for WYNY's potential new rival, WPLJ, who announces, "I'd go 24-hour classical music, automated, of course, to keep those costs down and help Evergreen save some money." Cuddy would also allow a generous annual promotion budget of \$999, "more than enough to buy a few bumper stickers and a couple of T-shirts."

PROGRAMMER PROFILE

Q105 PD Rhodes Rules The Roost In The Shadow Of Los Angeles

Rooster Rhodes has spent most of the past 10 years as one of the best-kept secrets in show business. PD of top 40/rhythm KCAQ (Q105) Oxnard, Calif., Rhodes is winning his own shadow-market radio battle less than 60 miles—or one inch on the map—from downtown Los Angeles. In the spring '95 Arbitrations, Q105 was No. 3 in the market and up 5.7-6.7 12-plus, following only Spanish-language KXLM and country KHAY.

This is Rhodes' second tour of duty at Q105. In the early '80s, Rhodes worked for PD Brian Thomas, who later sent him to Nationwide's WBJW (BJ105) Orlando, Fla., for mornings. Rhodes returned to Q105 as PD in 1986. By that time, Rhodes had programmed country WGNA Albany, N.Y., oldies WIBM Lansing, Mich., and AC WZZR (Z96) Grand Rapids, Mich. Rhodes strongly believes that a PD should be able to handle any format. "When I stepped into this for-



Rooster Rhodes
Program Director
KCAQ Oxnard, Calif.

[Majors] can run their van through your town, but they won't spend time there. . . A good local station will always beat a good distant station'

mat, I didn't know the first thing about urban radio or the Hispanic audience," he says.

Oxnard/Ventura is a fairly conservative market, but Rhodes quickly found that working in West Coast radio was more exciting than his Midwestern experience. "[KPWR Los Angeles] Power 106 had just come on the air," says Rhodes. "Midwest radio at that time had been more old-line, rock-influenced top 40. Coming out here was like going to Disneyland."

Q105 always had a rhythmic bent, even when it debuted as a mainstream outlet in 1983. "Sure, we played 'Come On Eileen,'" says Rhodes. "But the way we differentiated between us and the L.A. signals was to do our own edits of the strongest 12-inch dance mixes and factor in other active music that was happening back at the beginning of what is now known as old school."

"From 1984-87, we had good competition with [R&B] KMYX (K-Mix 106). They would warm up records for us, and we would cherry-pick the bigger tracks. We'd also find obscure import versions and other off-the-wall 12-inch stuff that would cause KMYX to call the labels all pissed off, asking where we got that stuff."

With the '90s came the influx of rap. Q105 continues to play pop-sounding rap, "as long as it appeals to 18-34 females," says Rhodes. "If we have any questions about a record's appeal. . . we favor the 25-34s first. We'll carefully daypart any strictly 18-24 product until it's been warmed up."

Here's a recent 6 p.m. hour: Planet Soul, "Set U Free"; L.A.D., "Ridin' Low"; Zapp, "Computer Love"; Pure Soul, "I Want You Back"; Mighty Dub Kats, "Magic Carpet Ride"; Salt-N-Pepa, "Push It"; Xscape, "Who Can I Run To"; L.V., "Throw Your Hands Up"; Tony Thompson, "I Wanna Love Like That"; Jodeci, "Love U 4 Life"; Groove Theory, "Tell Me"; Tha Dogg Pound, "Let's Play House"; Monica, "Before You Walk Out Of My Life"; and Total, "Can't You See."

Like most top 40s in the early '90s, KCAQ fell prey to "25-54-itis," for which ad agencies de-

manded upper demos. "Many sales and management teams," Rhodes says, "don't know how to sell this format. Whether its rap music or Elvis, top 40 has always been a hard sell. There's always going to be a generation gap."

"The powers that be told me to play more white music and play more slow music for the upper demos. I told them what they were describing was not top 40 for this market. Rather than fight a battle with a GM I love dearly and sales people who claimed they couldn't sell the format, I just gave the radio station to them. After two hours of wimpy music, he told me they don't want to be a hot AC station." Adds Rhodes, "I told them to let me program a top 40 and for them to figure out how to train a sales staff to sell it. Just because you're playing older music doesn't necessarily mean you're going to get older people to listen."

"We don't have a lot of money for research, but we [did] weekly hook testing and a couple of perceptual studies and. . . saw our numbers jump two points in one book and [more than] two more the following book." Now, Rhodes says, national sales have gone "through the roof."

Q105's morning team is Woody and Jacque. The latter, former MD of KKSS Albuquerque, N.M., works part-time at AC KOST Los Angeles. The duo recently parked the morning show back in double digits (10.3) for the first time since Rhodes did it himself. Middays are handled by APD Kelli McKay. In afternoons, it's Ravin' Dave, who has worked with Rhodes for seven years. From 7 p.m. to midnight, it's four-year station vet Dr. Don, followed by Juanita, formerly with KGGI Riverside. MD Lucy Barragan has been with Rhodes for seven years and "has a natural ear for hit music," says Rhodes. "I don't know what I'd do without her."

One challenge for Q105 is staying focused while the majors strafe its listeners at will. "It's easy to have a knee-jerk reaction to the big guys instead of playing to your market," says Rhodes. "Sure, they can run their van through your town, but they won't spend any time there; there's no money in it for them. A good local station will always beat a good distant station."

Rhodes watches Power 106, which beams onto his turf, but says, "We have a 9.8 share here, and they have about a 3 share. I won't run my station based on them. I don't run Q105 like a small-market facility. I train [staffers] as if they're working at a major. We don't do lost-dog reports. This is a well-polished staff that believes in this station and makes it sound like a million bucks."

Rhodes' name and likeness aren't plastered all over the trades each week. "It's not my style," he says. "I don't like to play that game. I just love radio. If I can't get a job based on my merits instead of who I know, what good is that?" Rhodes claims his greatest reward is the acknowledgment of his peers. "When guys like Steve Smith call to tell me how much they enjoy my station, that means more to me than seeing my picture in a trade magazine." What else keeps him motivated? "I enjoy a turnaround situation. I feel it's tougher to come into a No. 1 or No. 2 station and maintain high numbers. While you're busy trying to learn the market, your competition finds your Achilles' heel and beats you. When your numbers are lower, they pay less attention to you, so it's easier to sneak up on them."

"I want to make this a better station before I leave. After nine years, I've grabbed several brass rings here, and I feel it's time for a new challenge." Rhodes has a patient wife and a 5-year-old son, Jason, who always laughs at his jokes. "He thinks 'Waterfalls' by TLC is about him," says Rhodes. "He runs around the house singing, 'Don't go Jason Waterfalls.' I don't have the heart to tell him the truth." **KEVIN CARTER**

R. KELLY "You Remind Me Of Something"

- Now **Top 10** on Rhythmic Airplay Chart!
- Over 14 million in audience and growing!
- Single already **platinum!**
- R. Kelly LP now approaching **double platinum**



VIDEO ACTION:

- **#1** on **THE BOX** (For 3 weeks!)
- In stress rotation on **MUSIC TELEVISION**
- Heavy rotation on **BET**



Happy Holidays



*To All Our Friends At Radio From
Your friends At Jive!*

Contrast Marks Year That Was In Music

by Jerry McKenna

The year in music at top 40 radio was one of contrasting elements within and among the three subformats. The top 40/mainstream, top 40/rhythm-crossover, and top 40/adult formats all had their share of out-of-the-box smashes that flew up the charts and sleeper hits that took forever to develop. All sides witnessed familiar faces in the upper regions of the charts alongside major new acts that became familiar faces by year's end. As usual, there were hits exclusive to each format, but many of the biggest airplay singles transcended established industry boundaries and could be heard on all formats. It was the year that top 40 mainstream fully embraced modern rock, top 40/rhythm-crossover helped bridge the gap between R&B and dance, and top 40/adult redefined itself.

As one would expect, top 40/mainstream radio did quite a bit of sharing this year with the modern rock, crossover, and adult formats. **Hootie & the Blowfish**—which found airplay on all three—topped the artist list with four chart singles, three of them landing in the top 20. Also in the top five are **Boyz II Men**, **Real McCoy**, and **TLC**, three acts that appear in the top five on the crossover list. On the singles chart, **Dionne Farris** captured the top airplay position by spending 10 weeks at No. 1 with her debut single "I Know." She was closely followed at No. 2 by Real McCoy with its multi-format smash "Another Night" and by **Blues Traveler** at No. 3, with one of the sleeper hits of the year, "Run-Around." That, along with "As I Lay Me Down" by **Sophie B. Hawkins**, was the format's slowest-building and longest-lasting hits of the year.

The top 40/rhythm-crossover format splintered noticeably in 1995. There were stations that played primarily R&B and hip-hop, others that played R&B and dance, and a third set that played R&B and a few pop crossover hits. The common thread throughout was R&B; therefore, it was the artists and titles within this genre that performed best. **TLC** was the obvious winner, landing at No. 1 on the artist list and at No. 1 and No. 2 on the song list with "Creep" and "Waterfalls." This was also the year that tempo returned to top 40/rhythm-crossover radio. Only two ballads, "On Bended Knee" and "Water Runs Dry" by **Boyz II Men**, made it into the year-end top 10. It is worth noting that half the titles in the top 10 are by acts new to the chart.

With even some crossover outlets wary of rap this year, there were a number of singles that scored highly on Billboard's year-end chart that did not fare as well on Airplay Monitor's year-end airplay charts, primarily hip-hop tracks that sold extremely well but had a hard time garnering airplay. Among those titles: "Gangsta's Paradise" by **Coolio Featuring L.V.**, "Boombastic" by **Shaggy**, "One More Chance" by **the Notorious B.I.G.**, and "I Got 5 On It" by **Luniz**.

Year-end rankings represent the total number of plays received by each title, artist, and label for the 1995 Airplay Monitor year. This covers the issues dated Nov. 25, 1994, through Nov. 17, 1995.



Hootie & The Blowfish

Top 40/Mainstream Top Titles

Pos.	TITLE—Artist—Label
1	I KNOW—Dionne Farris—Columbia
2	ANOTHER NIGHT—Real McCoy—A&M
3	RUN-AROUND—Blues Traveler—A&M
4	KISS FROM A ROSE—Seal—ZTT/Sire
5	I'LL BE THERE FOR YOU—The Rembrandts—EastWest
6	WHEN I COME AROUND—Green Day—Reprise
7	WATERFALLS—TLC—LaFace
8	ON BENDED KNEE—Boyz II Men—Motown
9	HOLD MY HAND—Hootie & The Blowfish—Atlantic
10	WATER RUNS DRY—Boyz II Men—Motown
11	TAKE A BOW—Madonna—Maverick/Sire
12	I CAN LOVE YOU LIKE THAT—All-4-One—Blitz
13	LET HER CRY—Hootie & The Blowfish—Atlantic
14	I BELIEVE—Blessid Union Of Souls—EMI
15	ONLY WANNA BE WITH YOU—Hootie & The Blowfish—Atlantic
16	TOTAL ECLIPSE OF THE HEART—Nicki French—Critique
17	ALWAYS—Bon Jovi—Mercury
18	STRONG ENOUGH—Sheryl Crow—A&M
19	YOU GOTTA BE—Des'ree—550 Music
20	HOLD ON—Jamie Walters—Atlantic
21	DECEMBER—Collective Soul—Atlantic
22	LIGHTNING CRASHES—Live—Radioactive
23	RUN AWAY—Real McCoy—Arista
24	SUKIYAKI—4 P.M.—Next Plateau/London
25	CREEP—TLC—LaFace
26	ROLL TO ME—Del Amitri—A&M
27	THE RHYTHM OF THE NIGHT—Corona—EastWest
28	AS I LAY ME DOWN—Sophie B. Hawkins—Columbia
29	HAVE YOU EVER REALLY LOVED A WOMAN?—Bryan Adams—A&M
30	HERE COMES THE HOTSTEPPER—Ini Kamoze—Columbia
31	EVERY DAY OF THE WEEK—Jade—Giant
32	IN THE HOUSE OF STONE AND LIGHT—Martin Page—Mercury
33	RUNAWAY—Janet Jackson—A&M
34	FANTASY—Mariah Carey—Columbia
35	TIL I HEAR IT FROM YOU—Gin Blossoms—A&M
36	WHAT WOULD YOU SAY—Dave Matthews Band—RCA
37	YOU DON'T KNOW HOW IT FEELS—Tom Petty—Warner Bros.
38	I'M THE ONLY ONE—Melissa Etheridge—Island
39	BETTER MAN—Pearl Jam—Epic
40	YOU OUGHTA KNOW—Alanis Morissette—Maverick

Top 40/Mainstream Top Artists

Pos.	ARTIST (No. Of Charted Singles) Label
1	HOOTIE & THE BLOWFISH (4) Atlantic
2	BOYZ II MEN (1) Columbia (4) Motown
3	REAL MCCOY (4) Arista
4	TLC (4) LaFace
5	MADONNA (1) Maverick (4) Maverick/Sire
6	SHERYL CROW (3) A&M (1) Atlantic
7	BLESSID UNION OF SOULS (2) EMI
8	GREEN DAY (2) Reprise
9	DIONNE FARRIS (1) Columbia
10	BON JOVI (3) Mercury
11	BLUES TRAVELER (1) A&M
12	THE REMBRANDTS (2) EastWest
13	SEAL (1) ZTT/Sire
14	JANET JACKSON (1) A&M (1) Epic (1) Virgin
15	MELISSA ETHERIDGE (3) Island
16	GIN BLOSSOMS (3) A&M
17	ALL-4-ONE (1) Blitz
18	DAVE MATTHEWS BAND (2) RCA
19	NICKI FRENCH (1) Critique
20	DES'REE (2) 550 Music

Top 40/Mainstream Top Labels

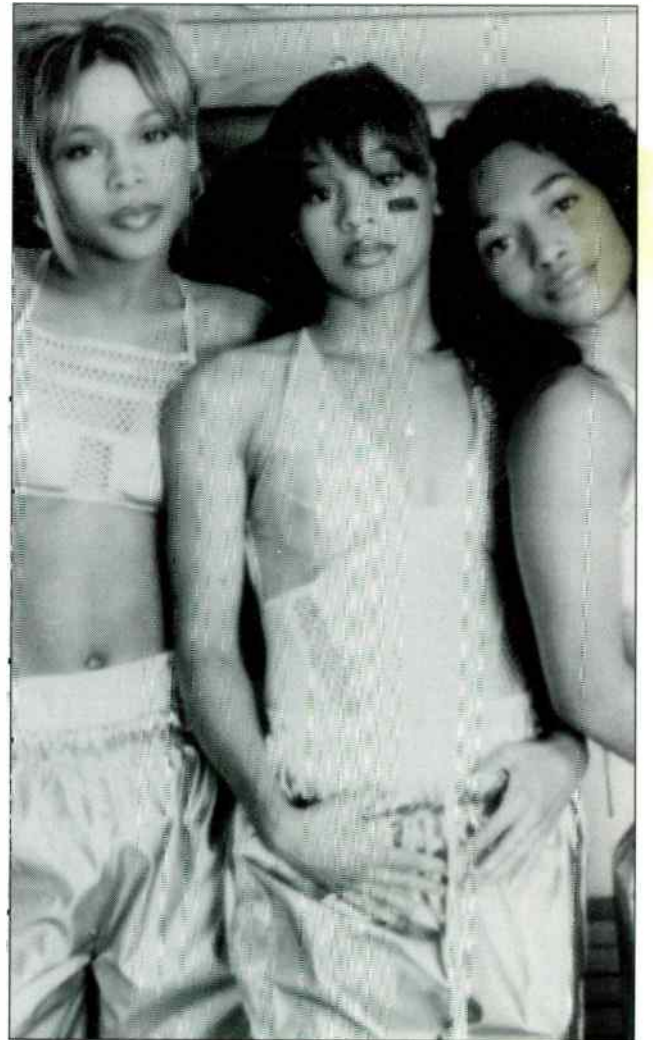
Pos.	LABEL (No. Of Charted Singles)
1	A&M (10)
2	ATLANTIC (10)
3	COLUMBIA (12)
4	ARISTA (10)
5	MOTOWN (4)
6	LAFACE (5)
7	EASTWEST (6)
8	MERCURY (7)
9	EPIC (7)
10	WARNER BROS. (8)

Top 40/Mainstream Top Distributing Labels

Pos.	DISTRIBUTING LABEL (No. Of Charted Singles)
1	ARISTA (16)
2	ATLANTIC (13)
3	A&M (11)
4	WARNER BROS. (17)
5	COLUMBIA (11)



Boyz II Men



TLC

Top 40/Rhythm-Crossover Top Titles

- Pos. TITLE—Artist—Label
- 1 CREEP—TLC—LaFace
 - 2 WATERFALLS—TLC—LaFace
 - 3 THIS IS HOW WE DO IT—Montell Jordan—PMP/RAL
 - 4 FREAK LIKE ME—Adina Howard—Mecca Don/EastWest
 - 5 ON BENDED KNEE—Boyz II Men—Motown
 - 6 DON'T TAKE IT PERSONAL (JUST ONE OF DEM DAYS)—Monica—Rowdy
 - 7 WATER RUNS DRY—Boyz II Men—Motown
 - 8 CANDY RAIN—Soul For Real—Uptown
 - 9 RED LIGHT SPECIAL—TLC—LaFace
 - 10 I WANNA BE DOWN—Brandy—Atlantic
 - 11 BEFORE I LET YOU GO—Blackstreet—Interscope
 - 12 HE'S MINE—MoKenStef—Outburst/RAL
 - 13 IF YOU LOVE ME—Brownstone—MJJ
 - 14 EVERY LITTLE THING I DO—Soul For Real—Uptown
 - 15 HERE COMES THE HOTSTEPPER—Ini Kamoze—Columbia
 - 16 YOU ARE NOT ALONE—Michael Jackson—Epic
 - 17 SOMEONE TO LOVE—Jan B. Featuring Babyface—Yab Yum
 - 18 FANTASY—Mariah Carey—Columbia
 - 19 ANOTHER NIGHT—Real McCoy—Arista
 - 20 TAKE A BOW—Madonna—Maverick/Sire
 - 21 BABY—Brandy—Atlantic
 - 22 THIS LIL' GAME WE PLAY—Subway (Featuring 702)—Biv 10
 - 23 GANGSTA'S PARADISE—Coolio Featuring L.V.—MCA Soundtracks
 - 24 I CAN LOVE YOU LIKE THAT—All-4-One—Blitz
 - 25 RUN AWAY—Real McCoy—Arista
 - 26 YOU WANT THIS—Janet Jackson—Virgin
 - 27 SHY GUY—Diano King—Work
 - 28 BOOMBASTIC—Shaggy—Virgin
 - 29 I'M GOIN' DOWN—Mary J. Blige—Uptown
 - 30 RUNAWAY—Janet Jackson—A&M
 - 31 I COULD FALL IN LOVE—Selena—EMI Latin
 - 32 IF YOU THINK YOU'RE LONELY NOW—K.C. Hailey Of Jodeci—Mercury
 - 33 I MISS YOU—N II U—Arista
 - 34 KISS FROM A ROSE—Seal—ZTT/Sire
 - 35 MOVE IT LIKE THIS—K7—Tommy Boy
 - 36 PRETTY GIRL—Jon B.—Yab Yum
 - 37 TELL ME—Groove Theory—Epic
 - 38 THE RHYTHM OF THE NIGHT—Corona—EastWest
 - 39 ASK OF YOU—Raphael Saadiq—Epic Soundtrax
 - 40 BIG POPPA—The Notorious B.I.G.—Bad Boy

Top 40/Rhythm-Crossover Top Artists

- Pos. ARTIST (No. Of Charted Singles) Label
- 1 TLC (5) LaFace
 - 2 BOYZ II MEN (1) Columbia (4) Motown
 - 3 BRANDY (4) Atlantic
 - 4 SOUL FOR REAL (2) Uptown
 - 5 REAL MCCOY (4) Arista
 - 6 MONTELL JORDAN (2) PMP/RAL
 - 7 JANET JACKSON (1) A&M (1) Epic (1) Virgin
 - 8 MONICA (2) Rowdy
 - 9 MADONNA (1) Maverick (4) Maverick/Sire
 - 10 ADINA HOWARD (2) Mecca Don/EastWest
 - 11 THE NOTORIOUS B.I.G. (2) Bad Boy (1) Tommy Boy
 - 12 BLACKSTREET (2) Interscope
 - 13 SELENA (3) EMI Latin
 - 14 MARY J. BLIGE (1) Def Jam/RAL (3) Uptown
 - 15 MICHAEL JACKSON (2) Epic
 - 16 MARIAH CAREY (3) Columbia
 - 17 JON B. (2) Yab Yum
 - 18 MOKENSTEF (1) Outburst/RAL
 - 19 BROWNSTONE (1) MJJ
 - 20 INI KAMOZE (1) Columbia

Top 40/Rhythm-Crossover Top Labels

- Pos. LABEL (No. Of Charted Singles)
- 1 LAFACE (7)
 - 2 UPTOWN (6)
 - 3 MOTOWN (4)
 - 4 ATLANTIC (5)
 - 5 ARISTA (9)
 - 6 COLUMBIA (7)
 - 7 EPIC (4)
 - 8 VIRGIN (3)
 - 9 RAL (8)
 - 10 INTERSCOPE (3)

Top 40/Rhythm-Crossover Top Distributing Labels

- Pos. DISTRIBUTING LABEL (No. Of Charted Singles)
- 1 ARISTA (22)
 - 2 MCA (13)
 - 3 ATLANTIC (11)
 - 4 MOTOWN (5)
 - 5 ISLAND (12)

Year Of Transition
For Top 40/Adult Chart

by Steve Graybow

This was a year of transition on the top 40/adult chart, one in which our notion of what constitutes an adult artist was constantly challenged. Many format mainstays had a tough year on the charts, their turf now occupied by new artists with a harder modern rock edge. A year ago, the name **Hootie & the Blowfish** would have elicited quizzical stares; today, the Atlantic act is firmly entrenched as Airplay Monitor's No. 1 top 40/adult artist of the year. Likewise, the **Goo Goo Dolls**, **Blues Traveler**, the **Dave Matthews Band**, and **Collective Soul** all exerted a strong presence on the adult chart.

However, putting the success of the modern-leaning artists into perspective, remember that just a few years ago, a number of hard rock bands had considerable AC success with acoustic ballads. Much like the Goo Goo Dolls' "Name," these songs were the exception, not the rule, on these bands' albums. Whether 1995's modern-leaning newcomers become core artists remains to be seen. And don't discount the "traditional" AC mainstays. Much like **Elton John**, who gained new career momentum last year with the "Leon King" soundtrack, a traditional AC artist need only find the perfect song or vehicle to revitalize a career. As much as we love to trounce a "has-been," we love a comeback even more.

Special mention to both **Sophie B. Hawkins** and **Martin Page**. Mercury artist Page's "In The House Of Stone And Light" debuted modestly at No. 40 early in the chart year; took five months to reach No. 1, and spent the rest of the year in the top half of the chart, making it the No. 1 top 40/adult single of the year. "As I Lay Me Down," from Hawkins' sophomore Columbia album, was released a full nine months before it reached No. 1 status. Those well-earned victories helped establish Hawkins and Page as new core artists for this format.

Lastly, congratulations to A&M for charting 16 top 40/adult singles, netting it honors as top 40/adult label of the year.



Martin Page

Top 40/Adult Top 40 Titles

- Pos. TITLE—Artist—Label
- 1 IN THE HOUSE OF STONE AND LIGHT—Martin Page—Mercury
 - 2 I KNOW—Dionne Farris—Columbia
 - 3 YOU GOTTA BE—Des'ree—550 Music
 - 4 TAKE A BOW—Madonna—Maverick/Sire
 - 5 I'LL BE THERE FOR YOU—The Rembrandts—EastWest
 - 6 HAVE YOU EVER REALLY LOVED A WOMAN?—Bryan Adams—A&M
 - 7 KISS FROM A ROSE—Seal—ZTT/Sire
 - 8 HOUSE OF LOVE—Amy Grant With Vince Gill—A&M
 - 9 HOLD MY HAND—Hootie & The Blowfish—Atlantic
 - 10 LOVE WILL KEEP US ALIVE—Eagles—Geffen
 - 11 BELIEVE—Elton John—Rocket
 - 12 I CAN LOVE YOU LIKE THAT—All-4-One—Blitz
 - 13 AS I LAY ME DOWN—Sophie B. Hawkins—Columbia
 - 14 COLORS OF THE WIND—Vanessa Williams—Hollywood
 - 15 I BELIEVE—Blessid Union Of Souls—EMI
 - 16 I'M THE ONLY ONE—Melissa Etheridge—Island
 - 17 WATER RUNS DRY—Boyz II Men—Motown
 - 18 RUN-AROUND—Blues Traveler—A&M
 - 19 LET HER CRY—Hootie & The Blowfish—Atlantic
 - 20 ONLY WANNA BE WITH YOU—Hootie & The Blowfish—Atlantic
 - 21 THE SWEETEST DAYS—Vanessa Williams—Wing
 - 22 HOLD ON—Jamie Walters—Atlantic
 - 23 ON BENDED KNEE—Boyz II Men—Motown
 - 24 ALWAYS—Bon Jovi—Mercury
 - 25 EVERLASTING LOVE—Gloria Estefan—Epic
 - 26 NO MORE "I LOVE YOU'S"—Annie Lennox—Arista
 - 27 BACK FOR GOOD—Take That—Arista
 - 28 UNTIL THE END OF TIME—Foreigner—Generama/Rhythm Safari
 - 29 MENTAL PICTURE—Jon Secada—SBK
 - 30 I'LL MAKE LOVE TO YOU—Boyz II Men—Motown
 - 31 YOU GOT IT—Bonnie Raitt—Arista
 - 32 IF YOU GO—Jon Secada—SBK
 - 33 WALK IN THE SUN—Bruce Hornsby—RCA
 - 34 ROLL TO ME—Del Amitri—A&M
 - 35 YOU ARE NOT ALONE—Michael Jackson—Epic
 - 36 WILD NIGHT—John Mellencamp/Me'shell Ndegeocello—Mercury
 - 37 NOTHING LEFT BEHIND US—Richard Marx—Capitol
 - 38 BIG YELLOW TAXI—Amy Grant—A&M
 - 39 I COULD FALL IN LOVE—Selena—EMI Latin
 - 40 STRONG ENOUGH—Sheryl Crow—A&M

Top 40/Adult Top Artists

- Pos. ARTIST (No. Of Charted Singles) Label
- 1 HOOTIE & THE BLOWFISH (4) Atlantic
 - 2 MARTIN PAGE (2) Mercury
 - 3 BOYZ II MEN (1) Columbia (3) Motown
 - 4 ELTON JOHN (1) Hollywood (3) Rocket
 - 5 MADONNA (1) Maverick (2) Maverick/Sire
 - 6 VANESSA WILLIAMS (1) Hollywood (1) Wing
 - 7 MELISSA ETHERIDGE (3) Island
 - 8 EAGLES (3) Geffen
 - 9 DIONNE FARRIS (1) Columbia
 - 10 DES'REE (1) 550 Music
 - 11 SEAL (2) ZTT/Sire
 - 12 THE REMBRANDTS (1) EastWest
 - 13 BRYAN ADAMS (1) A&M (1) Capitol
 - 14 AMY GRANT (3) A&M
 - 15 JON SECADA (3) SBK
 - 16 BLESSID UNION OF SOULS (2) EMI
 - 17 GLORIA ESTEFAN (1) Crescent Moon/Epic Soundtrax (2) Epic
 - 18 ALL-4-ONE (1) Blitz
 - 19 SOPHIE B. HAWKINS (1) Columbia
 - 20 SHERYL CROW (3) A&M

Top 40/Adult Top Labels

- Pos. LABEL (No. Of Charted Singles)
- 1 A&M (16)
 - 2 COLUMBIA (13)
 - 3 ATLANTIC (7)
 - 4 MERCURY (6)
 - 5 MOTOWN (4)
 - 6 ARISTA (10)
 - 7 SIRE (5)
 - 8 ISLAND (4)
 - 9 GEPFEN (4)
 - 10 EPIC (6)

Top 40/Adult Top Distributing Labels

- Pos. DISTRIBUTING LABEL (No. Of Charted Singles)
- 1 A&M (16)
 - 2 ATLANTIC (9)
 - 3 MERCURY (7)
 - 4 WARNER BROS. (10)
 - 5 COLUMBIA (12)

SERVICES

VOICEOVERS

CHOOSE THE VOICE FOR TODAY AND TOMORROW CHOOSE
JJ McKay PRODUCTIONS, INC.
(214) 539-2620
COUNTRY-KEEY, KRAK
CHR WMTX, WSTW
NEWSTALK-KSDO, WFBC

JEFF DAVIS
IMAGE VOICE
ALL FORMATS • ISDN
310-288-7944

When Excellence Matters

↑
Sean Caldwell
PRODUCTIONS

Y100 Young Country • Country CHR Rock Hot AC
896 The Point Y107 • voice-over • production effects
New Country KISS-FM • (941) 383-2828

DANNY JENSEN
The Man, The Pipes!
ABSOLUTE "IMAGE VOICE"
SWEEPERS/ID'S (208) 384-9278
AC, COUNTRY, CHR, ROCK, NEWS/TALK

SOFTWARE


Radio station database prints mailing labels, searches on 25 formats, calls, addresses, markets, and lists phones/faxes/web sites! Only \$129.95 w/quarterly updates: 1-800-277-8224 or <http://www.aceinfo.com/bbh/info>
BBH SOFTWARE

STATION I.D.

ID Jingles
CHR & Rhythmic
"They are FAT." - Jay Stevens P.D. WPGC
"You HAVE to hear these!" - Mike Tierney P.D. KUBE 93
ReelWorld Productions
Call for demo (206) 713-3044

COMEDY

ENERGIZE YOUR SHOW WITH THE HIPPEST
GRANNY
IN THE COUNTRY
Burbank's Creations 513-528-3375



KYNG/WDAF/WYCD Earl Pitts
WNOE/WHOK/KFRG
WDRM/KRPQ/KNFM
KYCW/KAJA/KYCY
WBOB/WKHK/KCKI
WQIK/WBBS/KRYS Uhmerikun

These stations, along with more than 100 others, have found being **Politically Incorrect** has never been funnier...or more popular!

Burbank's Creations To check availability in your market, call Steve Harper at
431 OHIO PIKE, STE 311 CINCINNATI, OH 45255 **513-528-3375**

AIRCHECKS

URBAN AIR-CHECK

- Full-Service Aircheck company!
- Personalized airchecks & radio resumes!
- National Airchecks: Major to small markets
- Free Aircheck evaluation!

Volume 1 Now Available! features WPEG, WHTA, WGCI, WJLB, WVEE, WRKS, WQQK & WFXA! Send \$12 to: P.O. Box 7808, N. Augusta, SC 29841
Call for FREE DEMO & brochure 706-481-1821

HELP WANTED

San Jose radio station looking for experienced announcer to take over midday shift. We're consistently in Top 4 (25-54) and we're planning to continue winning. Must have some Country experience. T&R to:
Julle Stevens
KRTY, P.O. Box 995
San Jose, CA 95108
(EOE)

HELP WANTED

HOGGIN the Airwaves!!
Primetime openings on the **SUPER-PIG, KSUX 105.7FM!** Are you a self-motivated, seasoned pro who can work the guidelines of a cutting-edge Hot Country format, and still be a personality? Competitive Salary, but take your vitamins, because you'll be stepping in to a 20+ Share! Let's hear what you've got!! Send tape and resume ASAP to Tom Spies, KSUX, 2000 Indian Hills Dr., Sioux City, IA 51104. EOE

ADVERTISING ASSISTANT BILLBOARD/AIRPLAY MONITOR
HEAVY CLERICAL/ADMINISTRATIVE, ENTRY LEVEL SALARY. COMPUTER SKILLS A MUST. NO CALLS. SEND RESUME TO:

BILLBOARD
49 MUSIC SQ. WEST
STE. 402
NASHVILLE, TN 37203
ATTN: DEPT LP

POSITION WANTED

"FREE AS A BIRD"
Looking for MD, and or On-Air position for Oldies/AC/Sports-talk format. Willing to put in a hard days night, eight days a week. Exp. Vet. Call
Gerard Elliott (305) 458-8113

Team player/award winner. One of Michigan's top radio reporters seeks new medium/large market challenges.
GARY: (517) 782-3732

6-year pro ... with multiformat experience as AT/MD and promotions, seeks new challenges. Prefer ALT/Rock.
OTTO: (810) 220-8534

POSITION WANTED

Hardworking professional willing to relocate. Complete production skills. Excellent control room operator.
REX LEE: (417) 883-4060 or (417) 865-9829

CHR/New Rock: Seeking a station in need of a fun, energetic morning or evening show. Major market experience.
RICH: (708) 469-7155

Recent broadcasting graduate seeks opportunity for career progression. Hardworking, dependable, and ready to relocate.
KELLY: (405) 677-0923

Experienced AT seeks work in Indiana or Illinois. All formats considered. Serious inquiries only.
DAN: (517) 422-6205

Living in Florida, 15-year veteran, middays-afternoon drive. CHR/AC, 70's/Oldies. Good pipes. Competitive markets.
JJ. SHANNON: (407) 997-2131

WE RUN PEOPLE OUT OF TOWN. BOUNTY HUNTERS AVAILABLE JAN 96. AOR, CLASSIC ROCK, OR ALTERNATIVE. LEGEND KILLERS. BIG RESULTS IN 3 BOOKS.
BRENT & THE OUTLAW (800-268-0196)

AWARD WINNING NEWSMAN SEEKS WARMER CLIMATE, AND MORE AFFORDABLE LIVING THAN NYC.
CALL PAT @ 914-895-5141

BULLETIN BOARD

MONIFAH - I MISS YOU. Come back home. Call (212) 373-0600.

PS - Ring around the rosey?!

Hey R&B Reps - New Macon R&B/Adult station needs service. Big George 912-946-3445

Stevie Lee ...remember Nashville? Me neither but I do remember playing on the internet and seeing you in your slippers last night ... VERY CUTE! Luv Ya ... #2009

CLASSIFIED ADVERTISING RATES

HELP WANTED:
1 WEEK \$75.00 per inch
2 WEEKS \$65.00 per inch

POSITION WANTED AND BULLETIN BOARD:
\$45.00 per inch

BOX NUMBER: Add \$20.00

SERVICES:
1 WEEK \$75.00 per inch
6 WEEKS \$65.00 per inch
13 WEEKS \$60.00 per inch
26 WEEKS \$55.00 per inch
51 WEEKS \$50.00 per inch

DEADLINE (ALL CLASSIFIED):
Each Wednesday 3pm EST, 9 day leadtime.
• Classified ads are non-commissionable •

SUBMIT ALL AD COPY TO:
Laura Rivchun
Airplay Monitor Classified
1515 Broadway
New York, NY 10036
Phone: 212-536-5058
Fax: 212-536-5055

AIRPLAY **Monitor**® GREATEST GAINERS

STRONGEST INCREASE IN AIRPLAY

MAINSTREAM

INCREASE
IN PLAYS

EVERYTHING BUT THE GIRL • Missing (ATLANTIC)	+369
WFLY +28, WYCR +24, WHOT +19, WSSX +19, KLRZ +17, WFHN +17, WBHT +16, WTWR +16, KHKS +13, WSTR +13	
JOAN OSBORNE • One Of Us (BLUE GORILLA/MERCURY)	+298
WHOT +26, WXLK +20, WYHY +20, WLAN +18, WNOK +18, WWSR +15, WZNY +12, WDDJ +11, WFBC +11, KJYO -11	
BIG MOUNTAIN • Get Together (GIANT)	+273
KZZU +26, WVKS +20, WPXY +14, WBHT +12, KLRZ +11, WKSE +9, KRQQ +8, WFHN +8, WSTW +7, WIXX +7	
HOOTIE & THE BLOWFISH • Time (ATLANTIC)	+243
WNCI +23, WRVQ +18, WEDJ +16, WHTZ +15, WGTZ +14, WSSX +12, WPRO +12, KDWB +12, WWCK +11, KLRZ +10	
THE TONY RICH PROJECT • Nobody Knows (LAFACE/ARISTA)	+205
KLRZ +20, WNVZ +20, WTWR +18, WFHN +15, WWCK +13, WFLY +13, WFLZ +13, KBFM +11, WZJM +11, WXIS +10	
MARIAH CAREY • All I Want For Christmas Is You (COLUMBIA)	+196
WFLY +30, WWSR +13, KJYO -12, WPRO +11, WFHN +9, KMXV +8, KBFM +7, KKMG +7, WTWR +7, WDCG -6	
SOUL ASYLUM • Promises Broken (COLUMBIA)	+192
WWCK +17, KHTY +15, WDDJ +15, KLRZ +14, WXIS +12, WSSX +12, WFLZ +12, WZNY +11, WKRC +10, WTIC +10	
JANET JACKSON • Twenty Foreplay (A&M)	+183
WWSR +26, KQKQ +23, KRQQ +16, WTWR +15, WWCK +12, WNNK +11, WXKL +11, KMXV +10, WSSX +9, WVKS +8	
NATALIE MERCHANT • Wonder (ELEKTRA/EEG)	+176
KLRZ +16, WNNK +12, WAPE +12, WNCI +12, WIXX +11, WABB +11, WFHN +11, WNOK +9, KRBE +9, WBHT +8	
WHITNEY HOUSTON • Exhale (Shoop Shoop) (ARISTA)	+172
WKSE +22, KHFI +19, WNVZ +13, KKRZ +13, WSSX +12, WGTZ +11, WHYI +9, KDWB +9, WXKB +8, WFHN +8	

RHYTHM-CROSSOVER

INCREASE
IN PLAYS

THE TONY RICH PROJECT • Nobody Knows (LAFACE/ARISTA)	+277
WJMN +36, KYLD +30, XHTZ +28, KJMZ +22, WJJS +20, KPRR +18, KSFM +17, KDON +15, KLUC +14, KGGI +13	
MARIAH CAREY & BOYZ II MEN • One Sweet Day (COLUMBIA)	+128
KKSS +40, KKFR +14, WERQ +13, WJMH +13, WHHH +9, KZHT +9, KPWR +9, KLUC +7, KGGI +7, KQKS +7	
MONICA • Before You Walk Out Of My Life (ROWDY/ARISTA)	+108
KUBE +37, KBOS +16, KSFM +13, WQHT +13, KDON +11, WJMN +11, WJMH +9, KZFM +8, KGGI +8, WERQ +7	
N-TRANCE • Stayin' Alive (CRITIQUE)	+95
KUBE +67, WBBM +14, KTFM +12, KBOS +1, WJMN +1	
LL COOL J • Doin It (DEF JAM/RAL/ISLAND)	+95
KYLD +42, WJMH +39, KMEL +11, WQHT +2, XHTZ +1, KSFM +1	
MICHAEL JACKSON • This Time Around (EPIC)	+92
KDON +21, WJJS +14, KZHT +14, KTFM +11, KZFM -9, KCAQ +8, WERQ +7, WHHH +5, KPRR +1, KKSS +1	
LL COOL J • Hey Lover (DEF JAM/RAL/ISLAND)	+91
KGGI +15, KUBE +15, KBOS +14, WERQ +9, KCAQ +8, XHTZ +8, KSFM +8, KTFM +8, KZHT +6, KQKS +6	
DEVONE • Energy (AQUA BOOGIE)	+86
KPWR +42, KPRR +14, KMEL +12, KTFM +3, WBBM +3, KZFM +2, KQKS +2, KJMZ +1, KCAQ +1, WJJS +1	
QUINCY JONES FEAT. BRANDY & HEAVY D • Rock With You (QWEST/WARNER BROS.)	+83
KLUC +39, WHHH +28, WWKX +17, WJJS +15, WJMH +11, KZHT +10, KCAQ +6, KZFM +6, KQKS +3, KGGI +1	
R. KELLY • You Remind Me Of Something (JIVE)	+72
KYLD +37, KKSS +28, KDON +16, KLUC +16, KZFM +12, WPOW +12, KXXX +9, KGGI +9, KCAQ +5, KSFM +5	

VIDEO PLAYLISTS



	TW	LW
1 Coolio, Too Hot	32	27
2 Smashing Pumpkins, Bullet With Butterfly	31	26
3 Mariah Carey & Boyz II Men, One Sweet Day	30	24
4 Bush, Glycerine	25	19
5 Goo Goo Dolls, Name	25	22
6 Red Hot Chili Peppers, My Friends	24	22
7 Michael Jackson, Earth Song	24	18
8 TLC, Diggin' On You	23	22
9 Rancid, Ruby Soho	21	13
10 LL Cool J, Hey Lover	21	16
11 Collective Soul, The World I Know	20	20
12 Whitney Houston, Exhale	20	15
13 Alanis Morissette, Hand In My Pocket	16	15
14 Oasis, Wonderwall	16	12
15 Tha Dogg Pound, Let's Play House	16	19
16 Groove Theory, Tell Me	16	12
17 Joan Osborne, One Of Us	15	13
18 Alice In Chains, Grind	14	11
19 Hootie & The Blowfish, Time	13	9
20 Beatles, Free As A Bird	12	0
21 Candlebox, Understanding	12	6
22 Don Henley, The Garden Of Allah	12	0
23 Madonna, You'll See	11	8
24 Folk Implosion, Natural One	10	10
25 R. Kelly, You Remind Me Of Something	10	8
26 Passengers, Miss Sarajevo	10	9
27 Bone Thugs-N-Harmony, 1st Of Tha Month	9	13
28 Silverchair, Pure Massacre	9	5
29 Natalie Merchant, Wonder	9	10
30 Presidents Of The United State, Lump	9	21
31 Jodeci, Love U 4 Life	9	3
32 Seal, Don't Cry	9	3
33 Blues Traveler, Hook	8	4
34 Coolio Feat. L.V., Gangsta's Paradise	8	5
35 Rentals, Friends Of P.	8	7
36 Ace Of Base, Beautiful Life	8	5
37 Cypress Hill, Throw Your Set In The Air	7	4
38 L.V., Throw Your Hands Up	7	3
39 Toadies, Possum Kingdom	6	10
40 Seven Mary Three, Cumbersome	6	7

41 Ozzy Osbourne, Perry Mason	6	7
42 Heather Nova, Walk This World	6	9
43 Dave Matthews Band, Satellite	6	2
44 Stone Temple Pilots, Interstate Love Song	5	2
45 Weezer, Buddy Holly	5	3
46 TLC, Creep	5	2
47 Nirvana, Smells Like Teen Spirit!	4	1
48 Bush, Come Down	4	4
49 Alanis Morissette, You Oughta Know	4	2
50 Deep Blue Something, Breakfast At Tiffany's	4	7




	TW	LW
1 Mariah Carey & Boyz II Men, One Sweet Day	35	20
2 Whitney Houston, Exhale	33	20
3 Beatles, Free As A Bird	31	18
4 Michael Jackson, Earth Song	30	22
5 Madonna, You'll See	30	25
6 Joan Osborne, One Of Us	20	20
7 Elton John, Blessed	20	16
8 Janet Jackson, Runaway	19	14
9 Natalie Merchant, Carnival	17	15
10 Peter Dinklage, Sledgehammer	16	3
11 Melissa Etheridge, Your Little Secret	16	15
12 Prateriders, Sense Of Purpose	16	11
13 Sophie B. Hawkins, As I Lay Me Down	15	14
14 Bonnie Raitt W/Bryan Adams, Rock Steady	15	10
15 Hootie & The Blowfish, Time	14	12
16 Meat Loaf, I'd Lie For You	14	15
17 Don Henley, The Garden Of Allah	14	0
18 -F-, Gold	13	9
19 Steve Winwood, Higher Love	12	2
20 Tina Turner, Golden Eye	12	9
21 TLC, Waterfalls	11	7
22 Alanis Morissette, Hand In My Pocket	11	9
23 k.d. lang, If I Were You	11	13
24 Hootie & The Blowfish, Only Wanna Be With	10	8
25 Seal, Kiss From A Rose	9	9
26 Blues Traveler, Run Around	9	10
27 Blues Traveler, Hook	8	6
28 Ace Of Base, Beautiful Life	8	5
29 Belinda Carlisle, Heaven Is A Place On Earth	8	2
30 George Michael, Faith	6	1

ADULT

INCREASE
IN PLAYS


SEAL • Don't Cry (ZTT/WARNER BROS.)	+152
WEZF +18, WBXM +17, WMXV +16, WKZL +14, WKTI +14, KDMX +13, WYYY +12, KALC +10, WRQX +7, KYKY +5	
DEEP BLUE SOMETHING • Breakfast At Tiffany's (RAINMAKER/INTERSCOPE)	+124
WQAL +24, WTFM +12, KDMX +12, WMTX +12, WIOG +11, WKTI +10, WCSD +9, KHMV +7, KPLZ +7, WAEV +6	
MARIAH CAREY • All I Want For Christmas Is You (COLUMBIA)	+119
KFMB +19, WAHR +9, WEEB +7, WDEF +7, WGSY +6, WQAL +6, WLHT +5, WKDD +5, WJDX +4, KEZR +4	
MARIAH CAREY & BOYZ II MEN • One Sweet Day (COLUMBIA)	+115
KSTP +26, WPNT +25, WKTI +15, WMYI +13, WBEB +9, KPLZ +8, WPLJ +8, WMXL +6, WVAF +6, WZPK +6	
GOO GOO DOLLS • Name (METAL BLADE/WARNER BROS.)	+110
KSTP +28, WBXM +23, KYKY +17, WWSN +17, KPLZ +16, WAEV +10, WKZL +7, WZPK +6, WMXV +6, WMXB +5	
NATALIE MERCHANT • Wonder (ELEKTRA/EEG)	+106
KFMB +24, KALC +15, KPLZ +14, WPLJ +14, KWMX +9, WRQX +8, WKDD +6, WAHR +5, KYSR +5, KHMV +5	
EAGLES • Please Come Home For Christmas (COLUMBIA)	+99
WAHR +11, WDEF +8, WMYI +7, WPNT +6, WTFM +6, WMJQ +5, KWMX +5, WBEB +4, WGSY +4, WMXB +4	
HOOTIE & THE BLOWFISH • Time (ATLANTIC)	+98
WVTV +20, WIOG +8, KHMV +8, WJDX +7, KWMX +7, WBLI +7, KYKY +6, WRMF +5, WYYY +4, WAEV +3	
HOOTIE & THE BLOWFISH • Only Wanna Be With You (ATLANTIC)	+80
KSTP +24, WKZL +23, KYKY +18, WMJQ +12, WBEB +9, KHMV +9, WPNT +8, WVAF +5, KISN +5, WKTI +5	
EVERYTHING BUT THE GIRL • Missing (ATLANTIC)	+75
KFMB +18, WEZF +10, WKTI +10, KHMV +9, KALC +8, WQAL +7, KIOI +6, WKDD +5, WMXB +4, WBLI +4	



melissa etheridge

i want to come over

airplay impact date: january 8th



from the album, your little secret • produced by hugh padgham and melissa etheridge • management: wf leopold • © 1995 island records, inc. a polygram company • i know you're home. you left you're light on.

POWER PLAYLISTS

For Week Ending December 10, 1995



Playlists supplied by Broadcast Data Systems' Radio Track service. Stations selected from panel of leading broadcasters in 125 radio markets, electronically monitored 24 hours a day, 7 days a week. Songs ranked by number of plays in monitored week.



Z100 WHZT New York PD: Steve Kingston MD: Andy Shane. Top 40 playlist including 'Goo Goo Dolls, Name' and 'Deep Blue Something, Breakfast At Tiffan'.

KIIS Los Angeles PD: Steve Perun APD/MD: Tracy Austin. Top 40 playlist including 'Mariah Carey & Boyz II Men, One Sweet Day' and 'Natalie Merchant, Carnival'.

KISS 108 WXKS Boston PD: John Ivey MD: Tad Bonvie. Top 40 playlist including 'Sophie B. Hawkins, As I Lay Me Down' and 'Everything But The Girl, Missing'.

Q102 Philadelphia OM: Dave Allan PD: Glenn Kalina MD: DeDe McGuire. Top 40 playlist including 'Lo Click, Tonight Is The Night' and 'Everything But The Girl, Missing'.

KISS 106.1 KHKS Dallas PD: John Cook APD/MD: Mr. Ed Lambert. Top 40 playlist including 'Mariah Carey & Boyz II Men, One Sweet Day' and 'Natalie Merchant, Carnival'.

KRBE Houston PD: Tom Poles APD: Scott Sparks MD: Paul "Cubby" Bryant. Top 40 playlist including 'Goo Goo Dolls, Name' and 'Smashing Pumpkins, 1979'.

KDWB Minneapolis PD: Dan Kieley APD/MD: Rob Morris AMD: Rick Thomas. Top 40 playlist including 'Blessed Union Of Souls, Let Me Be The On' and 'Goo Goo Dolls, Name'.

STAR 94 WSTR Atlanta OM/PD: Don Benson APD/MD: Kevin Peterson. Top 40 playlist including 'Teod The Wet Sprocket, Good Intentions' and 'Natalie Merchant, Carnival'.

B94 Pittsburgh PD: Keith Clark APD: David Edgar MD: John Cline. Top 40 playlist including 'Mariah Carey & Boyz II Men, One Sweet Day' and 'Collective Soul, December'.

WFLZ Tampa PD: B.J. Harris APD: Jeff Kapugi MD: Tom Steele. Top 40 playlist including 'Janet Jackson, Runaway' and 'Goo Goo Dolls, Name'.

WPST Trenton PD: Michelle Stevens APD: Dave McKay. Top 40 playlist including 'Goo Goo Dolls, Name' and 'Natalie Merchant, Carnival'.

Y100 Miami PD: Casey Keating MD: Al Chio. Top 40 playlist including 'Gin Blossoms, Tell I Hear It From You' and 'Natalie Merchant, Carnival'.

KISS 95.7 WKSS Hartford PD: Jay Beau Jones Acting MD: Dave Vadya. Top 40 playlist including 'Deep Blue Something, Breakfast At Tiffan' and 'Mariah Carey & Boyz II Men, One Sweet Day'.

WTIC Hartford PD: Paul Cannon MD: Tony Bristol. Top 40 playlist including 'Mariah Carey, Fantasy' and 'Selena, I Could Fall In Love'.

WNCI Columbus PD: Dave Robbins APD/MD: Dan Bowen. Top 40 playlist including 'Blessed Union Of Souls, Let Me Be The On' and 'Take That, Back For Good'.

Q106 San Diego OM: Al Peterson PD: Greg Stevens APD: Ray Kalusa. Top 40 playlist including 'TLC, Duggin' On You' and 'Mariah Carey & Boyz II Men, One Sweet Day'.

92PRO FM Providence PD: Chris Shebal MD: Tony Mascaro. Top 40 playlist including 'Gin Blossoms, Tell I Hear It From You' and 'Goo Goo Dolls, Name'.

Q104 St. Louis PD: Michael St. John MD: Kenny Knight. Top 40 playlist including 'Deep Blue Something, Breakfast At Tiffan' and 'Janet Jackson, Runaway'.

POWER PLAYLISTS

For Week Ending December 10, 1995



Playlists supplied by Broadcast Data Systems' Radio Track service. Stations selected from panel of leading broadcasters in 125 radio markets, electronically monitored 24 hours a day, 7 days a week. Songs ranked by number of plays in monitored week.

Table with 8 columns representing radio markets: Q102, G105, THE EDGE, Z100, XL106.7, Z93, Y107, JAMMIN' 92, KISS 98.5, WZPL, Z104, KJ103, MIX 93.3, 98PXY, WKRZ, WFLY, FLY 92, WIXX, KHFI. Each column contains a list of songs and their corresponding radio station and rank.

AIRPLAY
Monitor

BDS IMPACT

DETECTIONS



★ ★ ★ **AIRPOWER** ★ ★ ★
(Minimum 1500 detections for the first time)

Total Plays/Gain

JOAN OSBORNE 1610/298

One Of Us (Blue Gorilla/Mercury)

Total Stations: 78/Chart Move: 23-19

Heavy (40+ plays): 4 KRQQ, WFLY, WHTZ, WXXX

Medium (20-39): 39 KHTY, KJYO, KKRZ, KLRZ, KMXV, KUTQ, WABB, WAPE, WBZZ, WDCG, WDDJ, WEDJ, WFBC, WFLZ, WHOT, WIXX, WKBO, WKRQ, WKZJ, WKXJ, WLAN, WMXQ, WNOK, WNTQ, WPST, WRVQ, WSSX, WSTR, WTVR, WVSR, WWCK, WXIS, WXXS, WXLK, WXXL, WYCR, WYHY, WZNY, WZPL

Light (Under 20): 35

New Airplay This Week: 4 KKMG, WDJX, WSNX, WXLK

BLUES TRAVELER 866/139
Hook (A&M)
Total Stations: 65/Chart Move: 38-33
Heavy (40+): 2 KUTQ, WNCI
Medium (20-39): 16 KHTY, WBHT, WDDJ, WHTZ, WKBO, WKRZ, WNOK, WPST, WSSX, WTVR, WFSR, WWCK, WXIS, WXXX, WZPL, WZYP
Light (Under 20): 47
New Airplay This Week: 2 WFLY, WFLZ

NATALIE MERCHANT 763/176
Wonder (Elektra/EEG)
Total Stations: 55/Chart Move: Debut 35
Heavy (40+): 0
Medium (20-39): 12 KHTY, KLRZ, KRBE, WDCG, WDDJ, WIXX, WKRZ, WNOK, WSSX, WTVR, WWCK, WXIS
Light (Under 20): 43
New Airplay This Week: 7 WABB, WAPE, WFHN, WKCI, WNCI, WNNK, WZYP

SEAL 735/166
Don't Cry (ZTT/Warner Bros.)
Total Stations: 59/Chart Move: Debut 37
Heavy (40+): 0
Medium (20-39): 14 KHFI, KQKQ, KRQQ, KZZU, WBZZ, WHYH, WKRZ, WMXQ, WNTQ, WSSX, WWCK, WWST, WZNY, WZPL
Light (Under 20): 45
New Airplay This Week: 10 KKMG, WBHT, WFLZ, WIXX, WKCI, WLAN, WNCI, WSTW, WTTIC, WYCR

COLLECTIVE SOUL 734/95
The World I Know (Atlantic)
Total Stations: 62/Chart Move: Debut 38
Heavy (40+): 0
Medium (20-39): 15 KHTY, KUTQ, WBHT, WBZZ, WDDJ, WEDJ, WFBC, WHTZ, WKRZ, WNOK, WPST, WTVR, WWST, WXIS, WYCR
Light (Under 20): 47

THE BEATLES 685/57
Free As A Bird (Apple/Capitol)
Total Stations: 54/Chart Move: Debut 40
Heavy (40+): 1 WVKW
Medium (20-39): 13 KJYO, KKRZ, KLRZ, KRBE, WABB, WDDJ, WHYI, WKBO, WNOK, WPRO, WTVR, WWCK, WYHY
Light (Under 20): 40
New Airplay This Week: 2 WSTW, WXXX

JANET JACKSON 376/183
Twenty Foreplay (A&M)
Total Stations: 37
Heavy (40+): 0
Medium (20-39): 4 KMXV, KQKQ, KZZU, WVSR
Light (Under 20): 33
New Airplay This Week: 12 KJYO, KKLO, KQKQ, KRQQ, WNNK, WNOK, WSSX, WTVR, WVSR, WWCK, WXXL, WYCR

PAULA ABDUL 374/32
Ain't Never Gonna Give You Up (Captive/Virgin)
Total Stations: 25
Heavy (40+): 1 KMXV
Medium (20-39): 6 KHTO, KKRZ, KLRZ, WFHN, WTVR, WZPL
Light (Under 20): 18

BETTER THAN EZRA 643/74
Rosealia (Elektra/EEG)
Total Stations: 45
Heavy (40+): 1 WPST
Medium (20-39): 10 KHTY, KLRZ, WBHT, WDCG, WDDJ, WFBC, WKXJ, WNNK, WPRO, WZYP
Light (Under 20): 34
New Airplay This Week: 1 KMXV

P.M. DAWN 498/61
Sometimes I Miss You So Much (Gee Street/Island)
Total Stations: 41
Heavy (40+): 0

MOST NEW AIRPLAY THIS WEEK

No. Of Stations

THE TONY RICH PROJECT <i>Nobody Knows (LaFace/Arista)</i>	15
SOUL ASYLUM <i>Promises Broken (Columbia)</i>	14
JANET JACKSON <i>Twenty Foreplay (A&M)</i>	12
BODEANS <i>Closer To Free (Slash/Reprise)</i>	10
SEAL <i>Don't Cry (ZTT/Warner Bros.)</i>	10

ELTON JOHN 362/15
Blessed (Rocket/Island)
Total Stations: 36
Heavy (40+): 0
Medium (20-39): 2 KLRZ, WIXX
Light (Under 20): 34
New Airplay This Week: 1 WZYP

XSCAPE 489/60
Who Can I Run To (So So Def/Columbia)
Total Stations: 54
Heavy (40+): 2 WFMF, WNVZ
Medium (20-39): 6 KHTO, KKRZ, KLRZ, WFHN, WWCK, WZJM
Light (Under 20): 46
New Airplay This Week: 1 WSNX

OASIS 489/77
Wonderwall (Epic)
Total Stations: 41
Heavy (40+): 0
Medium (20-39): 6 KHTY, KLRZ, KRBE, KUTQ, WPST, WTVR
Light (Under 20): 35
New Airplay This Week: 4 WABB, WDCG, WMXQ, WZPL

3T 401/101
Anything (MJJ/550 Music)
Total Stations: 57
Heavy (40+): 1 KHTO
Medium (20-39): 5 KBFM, KLRZ, KQKQ, WFHN, WNVZ
Light (Under 20): 51
New Airplay This Week: 3 KKLO, WFBC, WZPL

HOOTIE & THE BLOWFISH 392/25
I Go Blind (Atlantic/Reprise)
Total Stations: 15
Heavy (40+): 4 WEDJ, WPST, WSNX, WWST
Medium (20-39): 4 KKMG, WABB, WFBC, WKRQ
Light (Under 20): 7
New Airplay This Week: 1 KMXV

JANET JACKSON 376/183
Twenty Foreplay (A&M)
Total Stations: 37
Heavy (40+): 0
Medium (20-39): 4 KMXV, KQKQ, KZZU, WVSR
Light (Under 20): 33
New Airplay This Week: 12 KJYO, KKLO, KQKQ, KRQQ, WNNK, WNOK, WSSX, WTVR, WVSR, WWCK, WXXL, WYCR

PAULA ABDUL 374/32
Ain't Never Gonna Give You Up (Captive/Virgin)
Total Stations: 25
Heavy (40+): 1 KMXV
Medium (20-39): 6 KHTO, KKRZ, KLRZ, WFHN, WTVR, WZPL
Light (Under 20): 18

FOLK IMPLOSION 366/32
Natural One (London/Island)
Total Stations: 30
Heavy (40+): 1 KUTQ
Medium (20-39): 6 KHTY, KRBE, WDDJ, WEDJ, WPST, WXIS
Light (Under 20): 23
New Airplay This Week: 1 WABB

ELTON JOHN 362/15
Blessed (Rocket/Island)
Total Stations: 36
Heavy (40+): 0
Medium (20-39): 2 KLRZ, WIXX
Light (Under 20): 34
New Airplay This Week: 1 WZYP

SIMPLY RED 349/22
Fairground (EastWest/EEG)
Total Stations: 37
Heavy (40+): 1 WNVZ
Medium (20-39): 8 KMXV, KRBE, WDDJ, WFLY, WNNK, WSSX, WWCK, WXIS
Light (Under 20): 28
New Airplay This Week: 3 KKRZ, WZJM, WZYP

DAVE MATTHEWS BAND 327/22
Satellite (RCA)
Total Stations: 29
Heavy (40+): 0
Medium (20-39): 6 KHTY, KUTQ, WMXQ, WPST, WWCK, WXIS
Light (Under 20): 23

GARBAGE 307/23
Queer (Almo Sounds/Geffen)
Total Stations: 25
Heavy (40+): 0
Medium (20-39): 5 KHTY, KLRZ, KRBE, KUTQ, WWCK
Light (Under 20): 20

MONICA 304/7
Before You Walk Out Of My Life (Rowdy/Arista)
Total Stations: 24
Heavy (40+): 1 WNVZ
Medium (20-39): 3 KHTO, WFHN, WTVR
Light (Under 20): 20
New Airplay This Week: 2 WGTZ, WZJM

SMASHING PUMPKINS 291/6
Bullet With Butterfly Wings (Virgin)
Total Stations: 25
Heavy (40+): 2 KUTQ, WHTZ
Medium (20-39): 4 KHTY, WBHT, WDCG, WPST
Light (Under 20): 19

THE RENTALS 278/15
Friends Of P. (Maverick/Reprise)
Total Stations: 27
Heavy (40+): 0
Medium (20-39): 4 KHTY, KMXV, WFMF, WPST
Light (Under 20): 23
New Airplay This Week: 1 WXXX

PLANET SOUL 258/11
Set U Free (Strictly Rhythm)
Total Stations: 18
Heavy (40+): 2 KHFI, KIIS
Medium (20-39): 4 KBFM, KHKS, WIOQ, WXXL
Light (Under 20): 12

LL COOL J 246/46
Hey Lover (Def Jam/RAL/Island)
Total Stations: 22
Heavy (40+): 0
Medium (20-39): 5 KIIS, WFLY, WNVZ, WXIS, WZJM
Light (Under 20): 17
New Airplay This Week: 2 KZZU, WIOQ

MARIAH CAREY 246/196
All I Want For Christmas Is You (Columbia)
Total Stations: 56
Heavy (40+): 0
Medium (20-39): 1 WFLY
Light (Under 20): 55

★ **THE TONY RICH PROJECT 245/205**
Nobody Knows (LaFace/Arista)
Total Stations: 25
Heavy (40+): 0
Medium (20-39): 4 KLRZ, WFLZ, WNVZ, WSSX
Light (Under 20): 21
New Airplay This Week: 15 KBFM, KLRZ, WFHN, WFLY, WHYH, WLAN, WNNK, WNVZ, WSTR, WTVR, WWCK, WWST, WXIS, WXXS, WZJM

SMASHING PUMPKINS 220/50
1979 (Virgin)
Total Stations: 15
Heavy (40+): 1 KRBE
Medium (20-39): 5 KHTY, KUTQ, WEDJ, WHTZ, WPST
Light (Under 20): 9
New Airplay This Week: 2 WBHT, WSTW

★ **BODEANS 219/139**
Closer To Free (Slash/Reprise)
Total Stations: 29
Heavy (40+): 0
Medium (20-39): 3 WPRO, WPST, WTVR
Light (Under 20): 26
New Airplay This Week: 10 KHTY, KLRZ, WABB, WDDJ, WKCI, WPRO, WSSX, WXXX, WZNY, WZYP

★ **SOUL ASYLUM 211/192**
Promises Broken (Columbia)
Total Stations: 34
Heavy (40+): 0
Medium (20-39): 0
Light (Under 20): 34
New Airplay This Week: 14 KHTY, KKLO, KLRZ, KUTQ, WDDJ, WFLZ, WHTZ, WKRZ, WSSX, WTTIC, WWCK, WXIS, WYCR, WZNY

MIGHTY DUB KATS 187/17
Magic Carpet Ride (Sm:)e/Profile)
Total Stations: 22
Heavy (40+): 1 KBFM
Medium (20-39): 3 KHFI, KHKS, WZJM
Light (Under 20): 18
New Airplay This Week: 1 KRQQ

DENINE 185/52
All Cried Out (Metropolitan)
Total Stations: 9
Heavy (40+): 1 WPKY
Medium (20-39): 4 WFHN, WFLY, WIOQ, WKSE
Light (Under 20): 4
New Airplay This Week: 1 KIIS

★ **MICHAEL JACKSON 180/90**
Earth Song (Epic)
Total Stations: 31
Heavy (40+): 0
Medium (20-39): 1 WFMF
Light (Under 20): 30
New Airplay This Week: 6 KJYO, KLRZ, WKXJ, WNNK, WSNX, WZYP

R. KELLY 164/15
You Remind Me Of Something (Jive)
Total Stations: 16
Heavy (40+): 0
Medium (20-39): 1 WNVZ
Light (Under 20): 15
New Airplay This Week: 2 KBFM, WVSR

LE CLICK 156/23
Tonight Is The Night (Logic)
Total Stations: 14
Heavy (40+): 1 WIOQ
Medium (20-39): 2 WPKY, WRVQ
Light (Under 20): 11

AIRPOWER BOUND

Total Plays/Gain

BIG MOUNTAIN 1450/273

Get Together (Giant)

Total Stations: 76/Chart Move: 26-22

Heavy (40+ plays): 2 KRQQ, WFLY

Medium (20-39): 40 KHTO, KJYO, KKLO, KKMG, KKRZ, KLRZ, KZZU, WBZZ, WDDJ, WFBC, WFHN, WFLZ, WGTZ, WHYI, WIOQ, WIXX, WKRQ, WKRZ, WKSE, WKSS, WKXJ, WLAN, WMXQ, WNNK, WNOK, WNVZ, WPRO, WSSX, WSTW, WTTIC, WVKW, WVSR, WWCK, WXLK, WXXL, WXXX, WYCR, WZNY, WZYP

Light (Under 20): 34/3 Swiss721BT-Medium->

New Airplay This Week: 8 KIIS, KZZU, WBHT, WFMF, WPKY, WVKW, WYHY, WZJM

GROOVE THEORY 1185/36

Tell Me (Epic)

Total Stations: 71/Chart Move: 28-25

Heavy (40+): 9 KHFI, KIIS, KZZU, WFBC, WFLY, WFMF, WNUZ, WUSR, WZPL

Medium (20-39): 15 KDWB, KHTO, KKRZ, KQKQ, WFHN, WNNK, WPRO, WRVQ, WSSX, WTVR, WVKW, WXIS, WXXS, WXXL, WZJM

Light (Under 20): 47

New Airplay This Week: 1 KKMG

DEF LEPPARD 972/46

When Love & Hate Collide (Mercury)

Total Stations: 62/Chart Move: 32-29

Heavy (40+): 2 WDDJ, WXXX

Medium (20-39): 20 KQKQ, WABB, WFBC, WFHN, WFLZ, WIXX, WKCI, WKRQ, WKRZ, WKXJ, WPRO, WSSX, WTVR, WVSR, WWCK, WWST, WXIS, WYCR, WZPL, WZYP

Light (Under 20): 40

New Airplay This Week: 2 KJYO, WFLY

EDWIN MCCAIN 961/25

Solitude (Lava/Atlantic)

Total Stations: 72/Chart Move: 31-30

Heavy (40+): 7 KLRZ, WDCG, WEDJ, WNOK, WVKW, WZNY, WZYP

Medium (20-39): 12 KRBE, WABB, WBHT, WFBC, WKRQ, WKRZ, WKXJ, WNNK, WPST, WXLK, WYCR, WYHY

Light (Under 20): 53

New Airplay This Week: 1 WNTQ

LA BOUCHE 958/150

Be My Lover (RCA)

Total Stations: 60/Chart Move: 36-31

Heavy (40+): 3 KZZU, WKSE, WNVZ

Medium (20-39): 14 KBFM, KDWB, KHFI, KHTO, KLRZ, WFHN, WFLY, WIOQ, WKXJ, WPKY, WVSR, WXXL, WZJM, WZPL

Light (Under 20): 43

New Airplay This Week: 5 KIIS, KKRZ, WHOT, WPKY, WSNX

SELENA 954/51

Dreaming Of You (EMI Latin/EMI)

Total Stations: 70/Chart Move: 34-32

Heavy (40+): 3 KIIS, KRQQ, WZJM

Medium (20-39): 22 KBFM, KHFI, KHKS, KJYO, KKLO, KKRZ, KLRZ, KMXV, WFHN, WFLZ, WHOT, WHYI, WKXJ, WPRO, WPKY, WRVQ, WSSX, WTVR, WWCK, WWST, WXXL, WYCR

Light (Under 20): 45

New Airplay This Week: 2 WNCI, WSNX

CHART BOUND

Total Plays/Gain

Airpower awarded to those records which attain 1500 detections for the first time. New airplay lists those stations registering six or more detections per week on a record for the first time. ★ Initial impact: records appearing on this page for the first time.

AIRPLAY
Monitor
Broadcast Data Systems

SONG ACTIVITY REPORTS

For Week Ending December 10, 1995

Detailed song tracking information for the last 3 weeks for all songs showing increased play this week. Total plays and gain are not included. Video plays are not included in order of population.

3T				401/101				685/57				643/74				1450/273				1501/22							
Anything (MJJ/550 Music)				THE BEATLES				BETTER THAN EZRA				BIG MOUNTAIN				BLESSID UNION OF SOULS											
Total Stations: 57				Total Stations: 54				Total Stations: 45				Total Stations: 76				Total Stations: 69											
Chart Move: Debut 40				Chart Move: Debut 40				Chart Move: Debut 38-33				Chart Move: 26-22				Chart Move: 21-20											
MTV	WBTV	WHTZ	WFLA	MTV	WBTV	WHTZ	WFLA	MTV	WBTV	WHTZ	WFLA	MTV	WBTV	WHTZ	WFLA	MTV	WBTV	WHTZ	WFLA	MTV	WBTV	WHTZ	WFLA				
2	2	2	2	1	1	1	1	3	2	2	2	2	2	2	2	4	4	4	4	1	1	1	1	2	2	2	2
2	2	2	2	1	1	1	1	2	2	2	2	2	2	2	2	4	4	4	4	1	1	1	1	2	2	2	2
2	2	2	2	1	1	1	1	2	2	2	2	2	2	2	2	4	4	4	4	1	1	1	1	2	2	2	2
2	2	2	2	1	1	1	1	2	2	2	2	2	2	2	2	4	4	4	4	1	1	1	1	2	2	2	2

BLUES TRAVELER				866/139				3550/167				734/95				2518/61				972/46			
Hook (A&M)				MARIAH CAREY & BOYZ II MEN				COLLECTIVE SOUL				DEEP BLUE SOMETHING				DEF LEPPARD							
Total Stations: 65				Total Stations: 75				Total Stations: 62				Total Stations: 79				Total Stations: 62							
Chart Move: 38-33				Chart Move: 1-1				Chart Move: Debut 38				Chart Move: 5-3				Chart Move: 32-29							
MTV	WBTV	WHTZ	WFLA	MTV	WBTV	WHTZ	WFLA	MTV	WBTV	WHTZ	WFLA	MTV	WBTV	WHTZ	WFLA	MTV	WBTV	WHTZ	WFLA				
8	4	5	5	3	3	3	3	2	2	2	2	4	4	4	4	4	4	4	4	4	4	4	4
4	4	5	5	3	3	3	3	2	2	2	2	4	4	4	4	4	4	4	4	4	4	4	4
4	4	5	5	3	3	3	3	2	2	2	2	4	4	4	4	4	4	4	4	4	4	4	4
4	4	5	5	3	3	3	3	2	2	2	2	4	4	4	4	4	4	4	4	4	4	4	4

EVERYTHING BUT THE GIRL				2092/369				3198/134				1185/36				1895/243				392/25			
Missing (Atlantic)				GOO GOO DOLLS				GROOVE THEORY				HOOTIE & THE BLOWFISH				HOOTIE & THE BLOWFISH							
Total Stations: 78				Total Stations: 80				Total Stations: 71				Total Stations: 78				Total Stations: 15							
Chart Move: 16-10				Chart Move: 2-2				Chart Move: 28-25				Chart Move: 18-15				Chart Move: 15							
MTV	WBTV	WHTZ	WFLA	MTV	WBTV	WHTZ	WFLA	MTV	WBTV	WHTZ	WFLA	MTV	WBTV	WHTZ	WFLA	MTV	WBTV	WHTZ	WFLA				
4	4	5	5	2	2	2	2	16	12	10	10	13	12	10	10	1	1	1	1	1	1	1	1
4	4	5	5	2	2	2	2	16	12	10	10	13	12	10	10	1	1	1	1	1	1	1	1
4	4	5	5	2	2	2	2	16	12	10	10	13	12	10	10	1	1	1	1	1	1	1	1
4	4	5	5	2	2	2	2	16	12	10	10	13	12	10	10	1	1	1	1	1	1	1	1

SONG ACTIVITY REPORTS



For Week Ending December 10, 1995

Detailed song tracking information for the last 3 weeks for all songs showing increased play this week. Total plays and gain do not include video play. Markets listed in order of population.

Main content table with columns for artist, song title, label, total stations, and chart movement. Includes artists like Whitney Houston, Janet Jackson, Madonna, Edwyn McCain, Seal, Selena, TLC, Toad the Wet Sprocket, and Xscape.



POWER PLAYLISTS

For Week Ending December 10, 1995

Radio Trax service, Stations selected from panel of leading broadcasters in 125 radio markets...

HOT 97 PD: Steve Smith APD/MD: Tracy Cloherty. List of 40 songs with radio stations and airplay data.

POWER 106 PD: Michelle Mercer MD: Bruce St. James. List of 40 songs with radio stations and airplay data.

B96 PD: Todd Cavanah MD: Erik Bradley. List of 40 songs with radio stations and airplay data.

KMEL PD: Michelle Santosuosso MD: Joey Arbagey. List of 40 songs with radio stations and airplay data.

WPGC PD: Jay Stevens APD: Bob Holcmans MD: Albie Dee. List of 40 songs with radio stations and airplay data.

WILD 107 PD: Michael Martin. List of 40 songs with radio stations and airplay data.

JAM'N 94.5 PD: Cadillac Jack MD: Cat Collins. List of 40 songs with radio stations and airplay data.

THE BOX PD: Rob Scorpio MD: Greg Head. List of 40 songs with radio stations and airplay data.

POWER 96 PD: Frank Welsh APD: Lao Vela MD: John Rogers. List of 40 songs with radio stations and airplay data.

KUBE PD: Mike Tierney MD: Shellie Hart. List of 40 songs with radio stations and airplay data.

POWER 92 PD: Don Parker MD: Brian Douglas. List of 40 songs with radio stations and airplay data.

KGGI Acting PD/MD: Sonia Jimenez. List of 40 songs with radio stations and airplay data.

FM 102 PD: Rick Thomas MD: Trejo. List of 40 songs with radio stations and airplay data.

KTFM PD: Cliff Tredway APD/MD: Charles Chavez. List of 40 songs with radio stations and airplay data.

92Q PD: Russ Allen MD: Camille Cashwell. List of 40 songs with radio stations and airplay data.

KS104 PD: Mark Feather APD: Michael Hayes MD: John Dickenson. List of 40 songs with radio stations and airplay data.

Z90 OM/PD: Lisa Vazquez APD/MD: Jeff Nelson. List of 40 songs with radio stations and airplay data.

B95 PD: Mark Adams MD: Mikey Freeman. List of 40 songs with radio stations and airplay data.

AIRPLAY Monitor

BDS IMPACT

DETECTIONS



AIRPOWER (Minimum 600 detections for the first time)
Total Plays/Gain
THE TONY RICH PROJECT 698/277
Nobody Knows (LaFace/Arista)
Total Stations: 25/Chart Move: 23-12
Heavy (40+ plays): 7 KPRR, KSFM, KTFM, KUBE, KZFM, WJMN, XHTZ
Medium (20-39): 8 KBOS, KJMZ, KQKS, KYLD, KZHT, WERQ, WJJS, WJMH
Light (Under 20): 10
New Airplay This Week: 7 KCAQ, KDON, KGGI, KJMZ, KKFR, KLUC, KMEL

AIRPOWER BOUND
Total Plays/Gain
L.A.D. FEAT. DARVY TRAYLOR 497/27
Ridin' Low (Hollywood)
Total Stations: 19/Chart Move: 19-19
Heavy (40+ plays): 3 KPRR, KYLD, WHHH
Medium (20-39): 8 KCAQ, KGGI, KKSS, KLUC, KMEL, KPWR, WWKX, XHTZ
Light (Under 20): 8
New Airplay This Week: 2 KQKS, KZHT
MADONNA 467/24
You'll See (Maverick/Warner Bros.)
Total Stations: 18/Chart Move: 21-22
Heavy (40+): 3 KKOX, WWKX, XHTZ
Medium (20-39): 6 KKSS, KLUC, KPRR, KZHT, WBBM, WPOW
Light (Under 20): 9
New Airplay This Week: 1 KKSS

COOLIO 467/46
Too Hot (Tommy Boy)
Total Stations: 24/Chart Move: 22-21
Heavy (40+): 2 KKSS, WJMH
Medium (20-39): 10 KJMZ, KPWR, KUBE, KZFM, KZHT, WHHH, WJJS, WJMN, WWKX, XHTZ
Light (Under 20): 12
New Airplay This Week: 1 KKSS

EVERYTHING BUT THE GIRL 401/38
Missing (Atlantic)
Total Stations: 17/Chart Move: 28-24
Heavy (40+): 5 KKFR, KPRR, KUBE, WBBM, WJJS
Medium (20-39): 3 KGGI, KJMZ, KKOX
Light (Under 20): 9
New Airplay This Week: 1 KBOS

QUINCY JONES FEAT. BRANDY & HEAVY D 389/83
Rock With You (Qwest/Warner Bros.)
Total Stations: 19/Chart Move: 31-25
Heavy (40+): 2 KLUC, WJMH
Medium (20-39): 8 KBXX, KJMZ, KPRR, KQKS, KTFM, WERQ, WHHH, WJJS
Light (Under 20): 9
New Airplay This Week: 4 KCAQ, KLUC, KZHT, WWKX

SHAI 384/11
Come With Me (Gasoline Alley/MCA)
Total Stations: 23/Chart Move: 27-26
Heavy (40+): 2 KDON, WWKX
Medium (20-39): 6 KGGI, KLUC, KMEL, KZFM, KZHT, XHTZ
Light (Under 20): 15
New Airplay This Week: 2 KSFM, KYLD

JODECI 287/18
Love U 4 Life (Uptown/MCA)
Total Stations: 17/Chart Move: 34-32
Heavy (40+): 1 WERQ
Medium (20-39): 5 KMEL, KZFM, WHHH, WJMN, WPGC
Light (Under 20): 11
New Airplay This Week: 1 KZHT

BRANDY 251/30
Sittin' Up In My Room (Arista)
Total Stations: 15/Chart Move: 38-35
Heavy (40+): 0

MICHAEL JACKSON 243/92
This Time Around (Epic)
Total Stations: 15/Chart Move: Debut 36
Heavy (40+): 1 KDON
Medium (20-39): 3 KTFM, KZHT, WJJS
Light (Under 20): 11
New Airplay This Week: 2 KZFM, WERQ

FAITH EVANS 243/12
Soon As I Get Home (Bad Boy/Arista)
Total Stations: 12/Chart Move: 37-37
Heavy (40+): 2 KBXX, WQHT
Medium (20-39): 4 WERQ, WHHH, WJMH, WPGC
Light (Under 20): 6
New Airplay This Week: 1 KMEL

L.V. 241/71
Throw Your Hands Up (Tommy Boy)
Total Stations: 16/Chart Move: Debut 38
Heavy (40+): 3 KKSS, KPWR, KYLD
Medium (20-39): 1 KMEL
Light (Under 20): 12

IMMATURE 210/12
We Got It (MCA)
Total Stations: 16
Heavy (40+): 0
Medium (20-39): 6 KCAQ, KDON, WERQ, WHHH, WJJS, WPGC
Light (Under 20): 10
New Airplay This Week: 2 KLUC, KZHT

MARY J. BLIGE 207/62
Not Gon' Cry (Arista)
Total Stations: 9
Heavy (40+): 3 WERQ, WJMH, WPGC
Medium (20-39): 1 KBXX
Light (Under 20): 5

REAL MCCOY 205/46
Automatic Lover (Call For Love) (Arista)
Total Stations: 15
Heavy (40+): 2 KUBE, KZFM
Medium (20-39): 2 KKOX, KPRR
Light (Under 20): 11

KRIS KROSS 205/64
Tonight's Tha Night (Ruffhouse/Columbia)
Total Stations: 15
Heavy (40+): 1 KBXX
Medium (20-39): 2 WHHH, WJMH
Light (Under 20): 12
New Airplay This Week: 5 KJMZ, KKSS, KMEL, KTFM, WPGC

R. KELLY 177/25
Down Low (Nobody Has To Know) (Jive)
Total Stations: 6
Heavy (40+): 3 KBXX, WJMH, WPGC
Medium (20-39): 0
Light (Under 20): 3

MOST NEW AIRPLAY THIS WEEK
No. Of Stations
THE TONY RICH PROJECT 7
Nobody Knows (LaFace/Arista)
KRIS KROSS 5
Tonight's Tha Night (Ruffhouse/Columbia)
QUINCY JONES FEAT. BRANDY & HEAVY D 4
Rock With You (Qwest/Warner Bros.)
THE CLICK 3
Hurricane (Sick Wid' It/Jive)
DEVONE 3
Energy (Aqua Boogie)
JANET JACKSON 3
Twenty Foreplay (A&M)
R. KELLY 3
You Remind Me Of Something (Jive)
YVETTE MICHELLE 3
Everyday & Everynight (Loud/RCA)
N-TRANCE 3
Stayin' Alive (Critique)

BIG MOUNTAIN 172/33
Get Together (Giant)
Total Stations: 15
Heavy (40+): 0
Medium (20-39): 4 KKFR, KZFM, KZHT, WJJS
Light (Under 20): 11

THA DOGG POUND 171/10
Let's Play House (Death Row/Interscope/Priority)
Total Stations: 16
Heavy (40+): 0
Medium (20-39): 2 KMEL, KPWR
Light (Under 20): 14

TOTAL 169/21
No One Else (Bad Boy/Arista)
Total Stations: 19
Heavy (40+): 0
Medium (20-39): 3 WERQ, WPGC, WQHT
Light (Under 20): 16
New Airplay This Week: 1 WWKX

XSCAPE 156/21
Do You Want To (So So Def/Columbia)
Total Stations: 7
Heavy (40+): 2 KBXX, WJMH
Medium (20-39): 2 WERQ, WPGC
Light (Under 20): 3

JANET JACKSON 149/46
Twenty Foreplay (A&M)
Total Stations: 22
Heavy (40+): 0
Medium (20-39): 2 KDON, WWKX
Light (Under 20): 20
New Airplay This Week: 3 KDON, KLUC, KZFM

KOOL G RAP 144/2
Fast Life (Cold Chillin'/Epic Street/Epic)
Total Stations: 13
Heavy (40+): 0
Medium (20-39): 3 KPWR, WQHT, WWKX
Light (Under 20): 10

MARIAH CAREY 140/34
Open Arms (Columbia)
Total Stations: 6
Heavy (40+): 1 KJMZ
Medium (20-39): 2 KTFM, KUBE
Light (Under 20): 3

GOODIE MOB 131/10
Cell Therapy (LaFace/Arista)
Total Stations: 10
Heavy (40+): 1 WJMH
Medium (20-39): 2 WERQ, WPGC
Light (Under 20): 7

BOYZ II MEN 115/41
I Remember (Motown)
Total Stations: 9
Heavy (40+): 0

Medium (20-39): 3 KKFR, KIOX, KUBE
Light (Under 20): 6

BARRIO BOYZZ 113/39
How We Roll (SBK/EMI)
Total Stations: 10
Heavy (40+): 0
Medium (20-39): 2 KTFM, WWKX
Light (Under 20): 8
New Airplay This Week: 2 KZFM, WHHH

LL COOL J 113/95
Doin' It (Def Jam/RAL/Island)
Total Stations: 6
Heavy (40+): 1 KYLD
Medium (20-39): 2 KMEL, WJMH
Light (Under 20): 3
New Airplay This Week: 2 KYLD, WJMH

PURE SOUL 110/12
I Want You Back (Step Sun/Interscope)
Total Stations: 4
Heavy (40+): 1 WPGC
Medium (20-39): 2 WERQ, WJJS
Light (Under 20): 1

DENINE 107/40
All Cried Out (Metropolitan)
Total Stations: 5
Heavy (40+): 1 KTFM
Medium (20-39): 2 WWKX, XHTZ
Light (Under 20): 2
New Airplay This Week: 1 KPRR

AFTER 7 103/29
Damn Thing Called Love (Virgin)
Total Stations: 9
Heavy (40+): 0
Medium (20-39): 2 WERQ, WPGC
Light (Under 20): 7
New Airplay This Week: 1 KMEL

N-TRANCE 95/95
Stayin' Alive (Critique)
Total Stations: 5
Heavy (40+): 1 KUBE
Medium (20-39): 0
Light (Under 20): 4
New Airplay This Week: 3 KTFM, KUBE, WBBM

SHAWN STOCKMAN 88/45
Visions Of A Sunset (Polydor)
Total Stations: 12
Heavy (40+): 0
Medium (20-39): 2 WERQ, WPGC
Light (Under 20): 10
New Airplay This Week: 1 WERQ

YVETTE MICHELLE 87/31
Everyday & Everynight (Loud/RCA)
Total Stations: 10
Heavy (40+): 0

Medium (20-39): 1 WQHT
Light (Under 20): 9
New Airplay This Week: 3 KBXX, WHHH, WWKX

DEVONE 86/86
Energy (Aqua Boogie)
Total Stations: 15
Heavy (40+): 1 KPWR
Medium (20-39): 0
Light (Under 20): 14
New Airplay This Week: 3 KMEL, KPRR, KPWR

LOST BOYZ 82/1
Jeeps, Lex Coups, Bimaz & Benz (Uptown/MCA)
Total Stations: 5
Heavy (40+): 1 WJMH
Medium (20-39): 1 WPGC
Light (Under 20): 3

JUNIOR M.A.F.I.A. 76/16
Get Money (Undeas/Big Beat/Atlantic)
Total Stations: 10
Heavy (40+): 0
Medium (20-39): 2 WJMH, WQHT
Light (Under 20): 8

CHANGING FACES 75/34
We Got It Goin' On (Spoiled Rotten/TAG/Atlantic)
Total Stations: 4
Heavy (40+): 0
Medium (20-39): 3 WERQ, WJMH, WPGC
Light (Under 20): 1
New Airplay This Week: 1 WERQ

BRIAN MCKNIGHT 69/22
Still In Love (Mercury)
Total Stations: 8
Heavy (40+): 0
Medium (20-39): 1 WJMN
Light (Under 20): 7

SEAL 66/24
Don't Cry (ZTT/Warner Bros.)
Total Stations: 7
Heavy (40+): 0
Medium (20-39): 1 KUBE
Light (Under 20): 6

R. KELLY 64/26
You To Be Be Happy (Jive)
Total Stations: 3
Heavy (40+): 1 WQHT
Medium (20-39): 0
Light (Under 20): 2
New Airplay This Week: 1 WJMH

FUGEES 59/20
Fu-Gee-La (Ruffhouse/Columbia)
Total Stations: 5
Heavy (40+): 0
Medium (20-39): 1 WQHT
Light (Under 20): 4

EASY-E 58/4
Just Tah Let U Know (Ruthless/Relativity)
Total Stations: 7
Heavy (40+): 0
Medium (20-39): 0
Light (Under 20): 7
New Airplay This Week: 2 KYLD, XHTZ

ALEX PARTY 54/3
Don't Give Me Your Life (Ffrr/London)
Total Stations: 4
Heavy (40+): 0
Medium (20-39): 1 KKFR
Light (Under 20): 3

INTRO 51/2
Funny How Time Files (Atlantic)
Total Stations: 4
Heavy (40+): 0
Medium (20-39): 1 WQHT
Light (Under 20): 3

MARIAH CAREY 50/42
All I Want For Christmas Is You (Columbia)
Total Stations: 12
Heavy (40+): 0
Medium (20-39): 0
Light (Under 20): 12

Airpower awarded to those records which attain 600 detections for the first time. New airplay lists those stations registering six or more detections per week on a record for the first time. * Initial impact: records appearing on this page for the first time.

UPTOWN TO MOTOWN...



ANDRE HARRELL

CEO/President Motown

IT'S ON!



Monitor AIRPLAY SONG ACTIVITY REPORTS For Week Ending December 10, 1995

MMM Broadcast Data Systems Detailed song tracking information for the last 3 weeks for all songs showing increased play this week. Total plays and gain do not include video play. Markets listed in order of population.

Total Plays/Gain

BIG MOUNTAIN 172/33 Get Together (Giant) Total Stations: 15

MARY J. BLIGE 207/62 Not Gon' Cry (Arista) Total Stations: 9

BRANDY 251/30 Sittin' Up In My Room (Arista) Total Stations: 15

MARIAH CAREY 140/34 Open Arms (Columbia) Total Stations: 6

MARIAH CAREY & BOYZ II MEN 1759/127 One Sweet Day (Columbia) Total Stations: 31

COOLIO 467/46 Too Hot (Tommy Boy) Total Stations: 24

THA DOGG POUND 171/10 Let's Play House (Death Row/Interscope) Total Stations: 16

FAITH EVANS 243/12 Soon As I Get Home (Bad Boy/Arista) Total Stations: 12

EVERYTHING BUT THE GIRL 401/38 Missing (Atlantic) Total Stations: 17

IMMATURE 210/12 We Got It (MCA) Total Stations: 16

JANET JACKSON 149/46 Twenty Foreplay (A&M) Total Stations: 22

MICHAEL JACKSON 243/92 This Time Around (Epic) Total Stations: 15

JODECI 287/18 Love U 4 Life (Uptown/MCA) Total Stations: 17

QUINCY JONES FEAT. BRANDY & HEAVY D 389/83 Rock With You (Qwest/Warner Bros.) Total Stations: 19

R. KELLY 797/72 You Remind Me Of Something (Jive) Total Stations: 30

R. KELLY 177/25 Down Low (Nobody Has To Know) (Jive) Total Stations: 8

KOOL & RAP 144/2 Fast Life (Cold Chillin'/Epic Street/Epic) Total Stations: 13

KRIS KROSS 205/64 Tonite's Tha Night (Ruffhouse/Columbia) Total Stations: 15

L.A.D. FEAT. DARVY TRAYLOR 497/27 Ridin' Low (Hollywood) Total Stations: 19

L.V. 241/71 Throw Your Hands Up (Tommy Boy) Total Stations: 16

LA BOUCHE 661/45 Be My Lover (RCA) Total Stations: 22

LL COOL J 1217/91 Hey Lover (Def Jam/RAL/Island) Total Stations: 31

MADONNA 467/24 You'll See (Maverick/Warner Bros.) Total Stations: 16

MONICA 870/108 Before You Walk Out Of My Life (Rowdy/Arista) Total Stations: 29

PLANET SOUL 672/3 Set U Free (Strictly Rhythm) Total Stations: 24

REAL MCCOY 205/46 Automatic Lover (Call For Love) (Arista) Total Stations: 15

THE TONY RICH PROJECT 698/277 Nobody Knows (LaFace/Arista) Total Stations: 25

SHAI 384/11 Come With Me (Gasoline Alley/MCA) Total Stations: 23

TOTAL 169/21 No One Else (Bad Boy/Arista) Total Stations: 19

XSCAPE 156/21 Do You Want To (So So Def/Columbia) Total Stations: 7

POWER PLAYLISTS



For Week Ending December 10, 1995

Playlists supplied by Broadcast Data Systems Radio Track service. Stations selected from panel of leading broadcast stations in 120 radio markets, electronically monitored 24 hours a day, 7 days a week. Songs ranked by number of plays in monitored week.

WPLJ

Table with 3 columns: Rank, Song Title, and Plays. Station: WPLJ New York. PD: Scott Shannon, APD/MD: Mike Preston.

MIX 105

Table with 3 columns: Rank, Song Title, and Plays. Station: WVMX New York. PD: Steve Weed, MD: Linda Silver.

STAR 98.7

Table with 3 columns: Rank, Song Title, and Plays. Station: KYSR Los Angeles. PD: Dave Beasing, MD: Angela Perrelli.

STAR 104.5

Table with 3 columns: Rank, Song Title, and Plays. Station: WYXR Philadelphia. PD: Chuck Knight, MD: Joe Proke.

B101

Table with 3 columns: Rank, Song Title, and Plays. Station: WBEB Philadelphia. PD: Jim Ryan.

WPNT

Table with 3 columns: Rank, Song Title, and Plays. Station: WPNT Chicago. PD: Lorrin Palagi, MD: Lynne Murray.

MIX 101.9

Table with 3 columns: Rank, Song Title, and Plays. Station: WTMX Chicago. PD: Barry James, APD/MD: Jaime Kartak.

Q95

Table with 3 columns: Rank, Song Title, and Plays. Station: WKQI Detroit. PD: Tom O'Brien, MD: Fred Buchalter.

MIX 107.3

Table with 3 columns: Rank, Song Title, and Plays. Station: WRQX Washington, DC. PD: Randy James, MD: Carol Parker.

MIX 98.5

Table with 3 columns: Rank, Song Title, and Plays. Station: WBMX Boston. PD: Greg Strassel, MD: Tim Richards.

K101

Table with 3 columns: Rank, Song Title, and Plays. Station: K101 San Francisco. PD: Dave Shakes, MD: Connie Lindell.

KS95

Table with 3 columns: Rank, Song Title, and Plays. Station: KSTP Minneapolis. PD: Bob Davis, MD: Leighton Peck.

NATALIE MERCHANT



WONDER

The new single and video from her platinum solo debut TIGERLILY and the follow-up to the #1 AAA & Top 10 Pop, Alternative & AC hit "Carnival."

NOW OVER 3.3 MILLION AC LISTENERS & OVER 235 PLAYS!

PLAYING ON: KFMB, KALC, KYSR, KVMX, KHMJ, WBLI, WOMX, WTMX, WPLJ, KPLZ, WZPK, WRQX, KDMX & MORE!!

DEBUT (35) TOP 40/ADULT & DEBUT (35) TOP 40/MAINSTREAM

Management: Jon Landau and Barbara Carr / Jon Landau Management

On Elektra compact discs and cassette.

http://www.elektra.com

© 1995 Elektra Entertainment Group, a division of Warner Communications Inc. A Time Warner Company.

BDS IMPACT

★ ★ ★ AIRPOWER ★ ★ ★
(Minimum 600 detections for the first time)

<p>HOOTIE & THE BLOWFISH 615/98 <i>Time (Atlantic)</i> Total Stations: 47/Chart Move: 22-18 Heavy (30+ plays): 5 KWMX, KYSR, WMTX, WQLH, WWSN Medium (15-29): 15 KDMX, KFMB, KHM, KSTZ, KYKY, WBLI, WCO, WKZL, WML, WMLV, WPLJ, WQAL, WRQX, WVTY, WYYY Light (Under 15): 27 New Airplay This Week: 3 WIOG, WJD, WVTY</p>	<p>TOAD THE WET SPROCKET 605/33 <i>Good Intentions (Columbia/Reprise)</i> Total Stations: 39/Chart Move: 21-19 Heavy (30+): 7 KALC, KHM, KSTP, KWM, KYSR, WQLH, WZPK Medium (15-29): 14 KDMX, KFMB, KPLZ, WAHR, WBLI, WEZF, WKDD, WMLV, WMLV, WPLJ, WRMF, WRQX, WTMX, WVAF Light (Under 15): 18 New Airplay This Week: 5 WJD, WMTX, WMLV, WRMF, WTMX</p>
--	--

AIRPOWER BOUND
Total Plays/Gain

EVERYTHING BUT THE GIRL **458/75**
Missing (Atlantic)
Total Stations: 31/Chart Move: 28-24
Heavy (30+ plays): 5 KALC, KHM, KPLZ, KSTP, WQLH
Medium (15-29): 8 KDMX, KFMB, WBLI, WBM, WEZF, WKTI, WPLJ, WYXR
Light (Under 15): 18
New Airplay This Week: 2 KIOI, WQAL

SEAL **402/152**
Don't Cry (ZTT/Warner Bros.)
Total Stations: 28/Chart Move: 36-25
Heavy (30+): 1 KYSR
Medium (15-29): 14 KALC, KDMX, KHM, KPLZ, KTHT, KWMX, KYKY, WBM, WEZF, WKTI, WKZL, WMLV, WWSN, WYYY
Light (Under 15): 13
New Airplay This Week: 8 KDMX, WBM, WEZF, WKZL, WMLV, WMLV, WRQX, WYYY

ALANIS MORISSETTE **281/50**
Hand In My Pocket (Maverick/Reprise)
Total Stations: 18/Chart Move: 38-31
Heavy (30+): 4 KALC, KFMB, KWM, KYSR
Medium (15-29): 5 WAEV, WKTI, WPLJ, WTMX, WZPK
Light (Under 15): 9

NATALIE MERCHANT **233/106**
Wonder (Elektra/EEG)
Total Stations: 17/Chart Move: Debut 35
Heavy (30+): 2 KALC, KFMB
Medium (15-29): 4 KHM, KWM, KYSR, WTM
Light (Under 15): 11
New Airplay This Week: 4 KPLZ, WKDD, WPLJ, WRQX

JOAN OSBORNE **231/28**
One Of Us (Blue Gorilla/Mercury)
Total Stations: 16/Chart Move: 39-36
Heavy (30+): 5 KALC, KFMB, KWM, KYSR, WZPK
Medium (15-29): 1 WVTY
Light (Under 15): 10

BIG MOUNTAIN **218/62**
Get Together (Giant)
Total Stations: 21/Chart Move: Debut 37
Heavy (30+): 2 KTHT, WEZF
Medium (15-29): 4 KWM, WMYI, WWSN, WYXR
Light (Under 15): 15
New Airplay This Week: 3 WKTI, WQAL, WYXR

CHART BOUND
Total Plays/Gain

CELINE DION **182/5**
(You Make Me Feel Like) A Natural Woman (Lava/Anti)
Total Stations: 16
Heavy (30+): 0

Medium (15-29): 6 KGBX, WAHR, WDEF, WGSY, WLHT, WMJQ
Light (Under 15): 10
New Airplay This Week: 1 KMZQ

SELENA **165/32**
Dreaming Of You (EMI Latin/EMI)
Total Stations: 17
Heavy (30+): 1 KTHT
Medium (15-29): 3 KIOI, WDEF, WJD
Light (Under 15): 13
New Airplay This Week: 3 KGBY, WDEF, WTFM

JANN ARDEN **160/42**
Insensitive (A&M)
Total Stations: 12
Heavy (30+): 1 WEZF
Medium (15-29): 3 KDMX, KHM, WKTI
Light (Under 15): 8
New Airplay This Week: 4 WAHR, WMLV, WMLV, WVAF

EAGLES **153/99**
Please Come Home For Christmas (Columbia)
Total Stations: 41
Heavy (30+): 0
Medium (15-29): 0
Light (Under 15): 41
New Airplay This Week: 8 WAHR, WALK, WBEB, WDEF, WGSY, WMJQ, WMYI, WPNT

DEF LEPPARD **150/20**
When Love & Hate Collide (Mercury)
Total Stations: 11
Heavy (30+): 1 WZPK
Medium (15-29): 3 KHM, WMLV, WPLJ
Light (Under 15): 7

MARIAH CAREY **150/119**
All I Want For Christmas Is You (Columbia)
Total Stations: 36
Heavy (30+): 0
Medium (15-29): 1 KFMB
Light (Under 15): 35
New Airplay This Week: 2 WBEB, WQAL

MICHAEL BOLTON **149/28**
A Love So Beautiful (Columbia)
Total Stations: 16
Heavy (30+): 0
Medium (15-29): 4 WAHR, WDEF, WLHT, WMJQ
Light (Under 15): 12
New Airplay This Week: 1 WBEB

MELISSA ETHERIDGE **135/54**
I Want To Come Over (Island)
Total Stations: 8
Heavy (30+): 0
Medium (15-29): 6 KHM, KPLZ, WML, WMLV, WPLJ, WQAL
Light (Under 15): 2
New Airplay This Week: 3 KPLZ, WKTI, WML

EDWIN MCCAIN **120/25**
Solitude (Lava/Anti)
Total Stations: 14
Heavy (30+): 0
Medium (15-29): 3 KALC, KWM, WWSN
Light (Under 15): 11
New Airplay This Week: 1 WQLH

MOST NEW AIRPLAY THIS WEEK No. Of Stations

DEEP BLUE SOMETHING 8 <i>Breakfast At Tiffany's (RainMaker/Interscope)</i>
EAGLES 8 <i>Please Come Home For Christmas (Columbia)</i>
SEAL 8 <i>Don't Cry (ZTT/Warner Bros.)</i>
GOO GOO DOLLS 5 <i>Name (Metal Blade/Warner Bros.)</i>
PAUL MCCARTNEY 5 <i>Wonderful Christmas Time (Capitol)</i>
TOAD THE WET SPROCKET 5 <i>Good Intentions (Columbia/Reprise)</i>

JOHN LENNON **114/51**
Happy X-Mas (War Is Over) (Capitol)
Total Stations: 39
Heavy (30+): 0
Medium (15-29): 0
Light (Under 15): 39
New Airplay This Week: 4 WALK, WMJQ, WPNT, WTFM

PAUL MCCARTNEY **104/55**
Wonderful Christmas Time (Capitol)
Total Stations: 34
Heavy (30+): 0
Medium (15-29): 0
Light (Under 15): 34
New Airplay This Week: 5 WALK, WBEB, WGSY, WMJQ, WTFM

★ SOUL ASYLUM **92/47**
Promises Broken (Columbia)
Total Stations: 7
Heavy (30+): 1 WTMX
Medium (15-29): 2 KHM, WVTY
Light (Under 15): 4
New Airplay This Week: 2 WKTI, WVTY

BLUES TRAVELER **88/26**
Hook (A&M)
Total Stations: 12
Heavy (30+): 2 KALC, KYSR
Medium (15-29): 0
Light (Under 15): 10

MICHAEL JACKSON **78/9**
Earth Song (Epic)
Total Stations: 8
Heavy (30+): 2 WEZF, WYXR
Medium (15-29): 0
Light (Under 15): 6

BETTER THAN EZRA **74/5**
Good (Elektra/EEG)
Total Stations: 5
Heavy (30+): 0
Medium (15-29): 2 KALC, KFMB
Light (Under 15): 3

BEACH BOYS **71/27**
Little Saint Nick (Capitol)
Total Stations: 19
Heavy (30+): 0
Medium (15-29): 0
Light (Under 15): 19
New Airplay This Week: 3 WALK, WPNT, WTFM

BETTER THAN EZRA **68/14**
Rosealia (Elektra/EEG)
Total Stations: 4
Heavy (30+): 1 KYSR
Medium (15-29): 1 WTMX
Light (Under 15): 2
New Airplay This Week: 1 WTMX

THIS WEEK	LAST WEEK	WEEKS ON	TITLE/LABEL	ARTIST	TW	LW
			★ ★ ★ No. 1 ★ ★ ★			
1	1	31	AS I LAY ME DOWN COLUMBIA	6 wks at No. 1 SOPHIE B. HAWKINS	1591	1632
2	2	20	BACK FOR GOOD ARISTA	TAKE THAT	1539	1550
3	5	23	ONLY WANNA BE WITH YOU ATLANTIC	HOOTIE & THE BLOWFISH	1428	1348
(4)	6	6	ONE SWEET DAY COLUMBIA	MARIAH CAREY & BOYZ II MEN	1394	1279
(5)	4	19	ROLL TO ME A&M	DEL AMITRI	1369	1359
6	3	26	KISS FROM A ROSE ZTT/SIRE/WARNER BROS.	SEAL	1360	1364
7	7	29	RUN-AROUND A&M	BLUES TRAVELER	1216	1177
(8)	8	10	BLESSED ROCKET/ISLAND	ELTON JOHN	1186	1161
(9)	9	19	TIL I HEAR IT FROM YOU A&M	GIN BLOSSOMS	1180	1144
(10)	10	7	YOU'LL SEE MAVERICK/WARNER BROS.	MADONNA	1144	1111
11	12	16	CARNIVAL ELEKTRA/EEG	NATALIE MERCHANT	1066	1087
(12)	13	8	EXHALE (SHOOP SHOOP) ARISTA	WHITNEY HOUSTON	1059	1023
13	11	17	RUNAWAY A&M	JANET JACKSON	1032	1110
(14)	15	11	NAME METAL BLADE/WARNER BROS.	GOO GOO DOLLS	824	714
15	14	29	I CAN LOVE YOU LIKE THAT BLITZZ/ATLANTIC	ALL-4-ONE	790	890
(16)	18	10	BREAKFAST AT TIFFANY'S RAINMAKER/INTERSCOPE	DEEP BLUE SOMETHING	748	624
17	16	31	I'LL BE THERE FOR YOU EASTWEST/EEG	THE REMBRANDTS	704	635
(18)	22	8	★ ★ ★ AIRPOWER ★ ★ ★			
			TIME ATLANTIC	HOOTIE & THE BLOWFISH	615	517
(19)	21	11	★ ★ ★ AIRPOWER ★ ★ ★			
			GOOD INTENTIONS COLUMBIA/REPRISE	TOAD THE WET SPROCKET	605	572
20	17	19	DECEMBER ATLANTIC	COLLECTIVE SOUL	596	635
21	19	16	FANTASY COLUMBIA	MARIAH CAREY	536	607
(22)	24	3	FREE AS A BIRD APPLE/CAPITOL	THE BEATLES	484	463
23	23	22	I COULD FALL IN LOVE EMI LATIN/EMI	SELENA	481	505
(24)	28	4	MISSING ATLANTIC	EVERYTHING BUT THE GIRL	458	383
(25)	36	3	DON'T CRY ZTT/WARNER BROS.	SEAL	402	250
26	27	10	I WILL REMEMBER YOU ARISTA	SARAH MCLACHLAN	386	405
27	26	12	RUNAWAY 143/LAVA/ATLANTIC	THE CORRS	351	420
28	25	11	I'D LIE FOR YOU (AND THAT'S THE TRUTH) MCA	MEAT LOAF	350	433
29	35	21	WATERFALLS LAFACE/ARISTA	TLC	315	266
30	32	17	FOREVER TONIGHT RIVER NORTH	PETER CETERA & CRYSTAL BERNARD	296	314
(31)	38	4	HAND IN MY POCKET MAVERICK/REPRISE	ALANIS MORISSETTE	281	231
32	31	6	ROCK STEADY CAPITOL	BONNIE RAITT WITH BRYAN ADAMS	280	334
33	30	16	LET ME BE THE ONE EMI	BLESSID UNION OF SOULS	269	344
34	34	20	YOU ARE NOT ALONE EPIC	MICHAEL JACKSON	237	282
(35) NEW▶			WONDER ELEKTRA/EEG	NATALIE MERCHANT	233	127
(36)	39	4	ONE OF US BLUE GORILLA/MERCURY	JOAN OSBORNE	231	203
(37) NEW▶			GET TOGETHER GIANT	BIG MOUNTAIN	218	156
38	33	12	ANTS MARCHING RCA	DAVE MATTHEWS BAND	211	288
39	37	10	DO YOU SLEEP? GEFLEN	LISA LOEB & NINE STORIES	200	233
40 RE-ENTRY			TOTAL ECLIPSE OF THE HEART CRITIQUE	NICKI FRENCH	192	164

○ Records showing an increase in detections over the previous week, regardless of chart movement. A record which has been on the chart for more than 20 weeks will not receive a bullet, even if it registers an increase in detections. Airpower awarded to those records which attain 600 detections for the first time. If two records are tied in number of plays, the record being played on more stations is placed first. Records below the top 20 are removed from the chart after 26 weeks. © 1995, Billboard/BPI Communications.

JIM BRICKMAN **66/14**
If You Believe (Windham Hill)
Total Stations: 10
Heavy (30+): 0
Medium (15-29): 2 WAHR, WDEF
Light (Under 15): 8
New Airplay This Week: 1 WLHT

Medium (15-29): 0
Light (Under 15): 17
New Airplay This Week: 2 KISN, WTFM

THE PRESIDENTS OF THE UNITED STATES **56/6**
Lump (Columbia)
Total Stations: 11
Heavy (30+): 0
Medium (15-29): 2 KFMB, KYSR
Light (Under 15): 9

★ PAULA ABDUL **61/23**
Ain't Never Gonna Give You Up (Capitol/Virgin)
Total Stations: 4
Heavy (30+): 1 WQLH
Medium (15-29): 0
Light (Under 15): 3

★ MANNHEIM STEAMROLLER **59/53**
Joy To The World (American Gramophone)
Total Stations: 17
Heavy (30+): 0

★ ROD STEWART **53/32**
So Far Away (Lava/Anti)
Total Stations: 5
Heavy (30+): 0
Medium (15-29): 2 WKZL, WMJQ
Light (Under 15): 3
New Airplay This Week: 1 WMJQ



SONG ACTIVITY REPORTS



For Week Ending December 10, 1995

Detailed song tracking information for the last 3 weeks for all songs showing increased play this week. Total plays and gain do not include video play. Markets listed in order of population.

Grid of song activity reports for artists: JANN ARDEN, THE BEATLES, BIG MOUNTAIN, MARIAH CAREY & BOYZ II MEN, DEEP BLUE SOMETHING. Includes columns for Total Plays/Gain, Total Stations, and city-specific data.

Grid of song activity reports for artists: DEL AMITRI, CELINE DION, EVERYTHING BUT THE GIRL, GIN BLOSSOMS, GOO GOO DOLLS. Includes columns for Total Plays/Gain, Total Stations, and city-specific data.

Grid of song activity reports for artists: HOOTIE & THE BLOWFISH, WHITNEY HOUSTON, ELTON JOHN, MADONNA, NATALIE MERCHANT. Includes columns for Total Plays/Gain, Total Stations, and city-specific data.

Grid of song activity reports for artists: ALANIS MORISSETTE, JOAN OSBORNE, SEAL, SELENA, TOAD THE WET SPROCKET. Includes columns for Total Plays/Gain, Total Stations, and city-specific data.

POWER PLAYLISTS

KROQ Los Angeles PD: Kevin Weatherly APD: Gene Sandbloom

WKQX Chicago PD: Bill Gamble APD/MD: Mary Shumins

WPLY Philadelphia PD: Garret Michaels APD/MD: Chuck Tisa

WBCN Boston VP/Programming: Oedipus MD: Carter Alan

WHYT Detroit PD: Rick Gillette MD: Alex Lear

KDGE Dallas PD: Joel Folger MD: Jay Michaels

WHFS Washington, DC PD: Robert Benjamin APD: Bob Waugh

KITS San Francisco VP/Prgm.: Richard Sands MD: Roland West

WNNX Atlanta PD: Brian Philips APD: Leslie Fram

Main chart with columns: THIS WEEK, LAST WEEK, WKS. ON CHART, TITLE/LABEL/DISTRIBUTING LABEL, ARTIST, TW, LW, DETECTIONS

Records showing an increase in detections over the previous week, regardless of chart movement. A record which has been on the chart for more than 20 weeks will not receive a bullet, even if it registers an increase in detections.

SAVE BILLBOARD THESE AIRPLAY RADIO MONITOR AWARDS & STAY TUNED FOR DETAILS SEMINAR & AWARDS LOCATION TO BE ANNOUNCED SEPTEMBER 5-7 1996

We **scan**
Stations **play**
People **listen**



SoundScan

*SoundScan tracks the hottest selling hits in your market.
Now with Piece Counts and 100 titles deep!*

- Market Specific
- Format Specific
- Invaluable Consumer Music Research

*Something For Every Music-Intensive Station:
Pop, Rock, Country, and Urban Charts.*

- Providing top-selling Singles and Albums for your market plus additional format-specific sales charts for the music you play.
- Fed via ABC DATA, arriving weekly in plenty of time to compile your following week's playlist.
- Delivering accurate charts because local sales data is compiled strictly at point-of-sale through computerized bar coding.
- Offering time and money savings by eliminating call-out to local record stores.

Available to ABC affiliates in SoundScan markets.

West Affiliation:
214-991-9200

people
are listening
abc ABC RADIO NETWORKS

East Affiliation:
212-456-1777

EXPLODING AT:

KUBE WFLZ
WZPL WBMX
KKRZ KZHT
Z90 Y107
Q106 WGTZ
Q102 WERZ
KLRZ KJ103
WNCI WFMF

Paula Abdul!

Ain't Never Gonna Give You Up

Produced by Elliot Wolff

from the new album *Head Over Heels*

Management: Bob Cavallo for Atlas/Third Rail; Larry Tollin for Tollin Entertainment

©1995 Virgin Records America, Inc.



captive

#1 Requests at KMXV/Kansas City 5 weeks in a row!

#1 Requests at WSTW!

THIS WEEK	LAST WEEK	WKS. ON CHART	MAINSTREAM		DETECTIONS		
			TITLE/LABEL/DISTRIBUTING LABEL	ARTIST	TW	LW	
			*** No. 1 ***				
1		7	ONE SWEET DAY COLUMBIA 3 weeks at No. 1	MARIAH CAREY & BOYZ II MEN	3550	3383	
2	2	12	NAME METAL BLADE/WARNER BROS.	GOO GOO DOLLS	3198	3064	
3	5	19	BREAKFAST AT TIFFANY'S RAINMAKER/INTERSCOPE	DEEP BLUE SOMETHING	2518	2457	
4	3	16	FANTASY COLUMBIA	MARIAH CAREY	2487	2687	
5	6	9	DIGGIN' ON YOU LAFACE/ARISTA	TLC	2460	2431	
6	8	10	HAND IN MY POCKET MAVERICK/REPRISE	ALANIS MORISSETTE	2436	2307	
7	7	7	YOU'LL SEE MAVERICK/WARNER BROS.	MADONNA	2371	2310	
8	4	17	RUNAWAY A&M	JANET JACKSON	2303	2566	
9	9	23	AS I LAY ME DOWN COLUMBIA	SOPHIE B. HAWKINS	2162	2305	
10	16	4	MISSING ATLANTIC	EVERYTHING BUT THE GIRL	2092	1723	
11	10	20	TIL I HEAR IT FROM YOU A&M	GIN BLOSSOMS	2040	2188	
12	11	8	BEAUTIFUL LIFE ARISTA	ACE OF BASE	1955	2131	
13	14	6	EXHALE (SHOOP SHOOP) ARISTA	WHITNEY HOUSTON	1945	1773	
14	12	20	CARNIVAL ELEKTRA/EEG	NATALIE MERCHANT	1942	2115	
15	18	7	TIME ATLANTIC	HOOTIE & THE BLOWFISH	1895	1652	
16	13	24	ONLY WANNA BE WITH YOU ATLANTIC	HOOTIE & THE BLOWFISH	1750	1889	
17	17	11	GOOD INTENTIONS COLUMBIA/REPRISE	TOAD THE WET SPROCKET	1709	1688	
18	15	21	BACK FOR GOOD ARISTA	TAKE THAT	1634	1765	
			*** AIRPOWER ***				
19	23	4	ONE OF US BLUE GORILLA/MERCURY	JOAN OSBORNE	1610	1312	
20	21	20	LET ME BE THE ONE EMI	BLESSID UNION OF SOULS	1501	1479	
21	20	24	ROLL TO ME A&M	DEL AMITRI	1479	1539	
22	26	3	GET TOGETHER GIANT	BIG MOUNTAIN	1450	1177	
23	19	26	KISS FROM A ROSE ZTT/SIRE/WARNER BROS.	SEAL	1421	1555	
24	24	14	GANGSTA'S PARADISE MCA SOUNDTRACKS/MCA	COOLIO FEATURING L.V.	1234	1295	
25	28	5	TELL ME EPIC	GROOVE THEORY	1185	1149	
26	22	20	YOU OUGHTA KNOW MAVERICK/REPRISE	ALANIS MORISSETTE	1182	1341	
27	27	8	LUMP COLUMBIA	THE PRESIDENTS OF THE UNITED STATES OF AMERICA	1170	1176	
28	25	22	I WANNA B WITH U CURB EDEL	FUN FACTORY	1151	1184	
29	32	4	WHEN LOVE & HATE COLLIDE MERCURY	DEF LEPPARD	972	926	
30	31	10	SOLITUDE LAVA/ATLANTIC	EDWIN MCCAINE	961	936	
31	36	2	BE MY LOVER RCA	LA BOUCHE	958	808	
32	34	4	DREAMING OF YOU EMI LATIN/EMI	SELENA	954	903	
33	38	2	HOOK A&M	BLUES TRAVELER	866	727	
34	33	10	PRETTY GIRL Y&B YUM/550 MUSIC	JON B.	777	923	
35	NEW		WONDER ELEKTRA/EEG	NATALIE MERCHANT	763	587	
36	30	11	I'D LIE FOR YOU (AND THAT'S THE TRUTH) MCA	MEAT LOAF	747	953	
37	NEW		DON'T CRY ZTT/WARNER BROS.	SEAL	735	569	
38	NEW		THE WORLD I KNOW ATLANTIC	COLLECTIVE SOUL	734	639	
39	35	15	DO YOU SLEEP? GEFEN	LISA LOEB & NINE STORIES	695	835	
40	NEW		FREE AS A BIRD APPLE/CAPITOL	THE BEATLES	685	628	

THIS WEEK	LAST WEEK	WKS. ON CHART	RHYTHM-CROSSOVER		DETECTIONS		
			TITLE/LABEL/DISTRIBUTING LABEL	ARTIST	TW	LW	
			*** No. 1 ***				
1		10	ONE SWEET DAY COLUMBIA 2 weeks at No. 1	MARIAH CAREY & BOYZ II MEN	1759	1632	
2	2	16	FANTASY COLUMBIA	MARIAH CAREY	1263	1427	
3	3	17	TELL ME EPIC	GROOVE THEORY	1250	1297	
4	4	7	HEY LOVER DEF JAM/RAL/ISLAND	LL COOL J	1217	1130	
5	5	8	EXHALE (SHOOP SHOOP) ARISTA	WHITNEY HOUSTON	1093	1115	
6	6	12	DIGGIN' ON YOU LAFACE/ARISTA	TLC	960	1029	
7	7	12	ANYTHING MJJ/550 MUSIC	3T	908	940	
8	9	10	BEFORE YOU WALK OUT OF MY LIFE ROWDY/ARISTA	MONICA	870	762	
9	8	14	WHO CAN I RUN TO SO SO DEF/COLUMBIA	XSCAPE	856	923	
10	12	9	YOU REMIND ME OF SOMETHING JIVE	R. KELLY	797	725	
11	10	17	RUNAWAY A&M	JANET JACKSON	706	759	
			*** AIRPOWER ***				
12	23	2	NOBODY KNOWS LAFACE/ARISTA	THE TONY RICH PROJECT	698	421	
13	11	18	GANGSTA'S PARADISE MCA SOUNDTRACKS/MCA	COOLIO FEATURING L.V.	682	725	
14	14	11	SET U FREE STRICTLY RHYTHM	PLANET SOUL	672	669	
15	16	7	BE MY LOVER RCA	LA BOUCHE	661	616	
16	13	17	DREAMING OF YOU EMI LATIN/EMI	SELENA	626	674	
17	15	24	PRETTY GIRL Y&B YUM/550 MUSIC	JON B.	618	628	
18	17	11	SEXUAL HEALING S.O.S./ZOO	MAX-A-MILLION	548	616	
19	19	7	RIDIN' LOW HOLLYWOOD	L.A.D. FEATURING DARVY TRAYLOR	497	470	
20	18	6	BEAUTIFUL LIFE ARISTA	ACE OF BASE	478	516	
21	22	5	TOO HOT TOMMY BOY	COOLIO	467	421	
22	21	7	YOU'LL SEE MAVERICK/WARNER BROS.	MADONNA	467	443	
23	20	7	CRUISIN' EMI	D'ANGELO	401	464	
24	28	6	MISSING ATLANTIC	EVERYTHING BUT THE GIRL	401	363	
25	31	2	ROCK WITH YOU QWEST/WARNER BROS.	QUINCY JONES FEATURING BRANDY & HEAVY D	389	306	
26	27	7	COME WITH ME GASOLINE ALLEY/MCA	SHAI	384	373	
27	24	11	MAGIC CARPET RIDE SM-J/E/PROFILE	THE MIGHTY DUB KATS	359	395	
28	25	8	HOOKED ON YOU ELEKTRA/EEG	SILK	345	390	
29	26	21	'TIL YOU DO ME RIGHT VIRGIN	AFTER 7	341	380	
30	29	17	BROKENHEARTED ATLANTIC	BRANDY	316	325	
31	30	11	BOOM BOOM BOOM AUREUS	THE OUTHERE BROTHERS	309	315	
32	34	3	LOVE U 4 LIFE UPTOWN/MCA	JODECI	287	269	
33	33	5	DANGER FADER/MERCURY	BLAHZAY BLAHZAY	266	298	
34	32	26	HE'S MINE OUTBURST/RAL/ISLAND	MOKENSTEF	261	299	
35	38	2	SITTIN' UP IN MY ROOM ARISTA	BRANDY	251	221	
36	NEW		THIS TIME AROUND EPIC	MICHAEL JACKSON	243	151	
37	37	3	SOON AS I GET HOME BAD BOY/ARISTA	FAITH EVANS	243	231	
38	NEW		THROW YOUR HANDS UP TOMMY BOY	L.V.	241	170	
39	35	13	A MOVER LA COLITA GROOVE NATION/SCOTTI BROS	ARTIE THE 1 MAN PARTY	222	263	
40	36	9	EAST SIDE RENDEZVOUS RUTHLESS/RELATIVITY	FROST	221	255	

Records showing an increase in detections over the previous week, regardless of chart movement. A record which has been on either chart for more than 20 weeks will not receive a bullet, even if it registers an increase in detections. Airpower awarded to those records which attain 1500 detections (mainstream) or 600 detections (rhythm) for the first time. If two records are tied in number of plays, the record being played on more stations is placed first. Records below the top 20 are removed from the chart after 26 weeks.

BETTER THAN EZRA

Rosealia

A Certified Platinum Plus Record!

Management: Jeffrey Levinson/Themz Twoz

120 MINUTES

MODERN ROCK MONITOR #29

BREAKING ON OVER 80 TOP 40'S INCLUDING:

KDWB	WKBQ	WPRO
WFLZ	KUTQ	KHOM
KRBE	WZJM	WFLY
WZEE	KJYO	WDCG
WDJX	WYHY	KHTY

