

TOP 40 AIRPLAY Monitor

• We Listen To Radio •

December 1, 1995 \$ 4.95 Volume 3 • No. 49

TOP 40 HIGHLIGHTS

MAINSTREAM

#1

MARIAH CAREY & BOYZ II MEN
One Sweet Day (COLUMBIA)

★★★ AIRPOWER ★★★

WHITNEY HOUSTON • *Exhale (Shoop Shoop)* (ARISTA)

NEW RELEASES

DON HENLEY • *The Garden Of Allah* (Geffen)

SOUL ASYLUM • *Promises Broken* (COLUMBIA)

ROD STEWART • *So Far Away* (LAVA/ATLANTIC)

RHYTHM-CROSSOVER

#1

MARIAH CAREY
Fantasy (COLUMBIA)

★★★ AIRPOWER ★★★

MONICA • *Before You Walk Out Of My Life* (ROWDY/ARISTA)

NEW RELEASES

JANET JACKSON • *Twenty Foreplay* (A&M)

KRIS KROSS • *Tonite's Tha Night* (RUFFHOUSE/COLUMBIA)

ADULT

#1

SOPHIE B. HAWKINS
As I Lay Me Down (COLUMBIA)

★★★ AIRPOWER ★★★

GOO GOO DOLLS • *Name* (METAL BLADE/WARNER BROS.)

THE BEATLES • *Free As A Bird* (APPLE/CAPITOL)

NEW RELEASES

BODEANS • *Closer To Free* (SLASH/REPRISE)

ENYA • *Anywhere Is* (REPRISE)

ALANIS MORISSETTE • *Hand In My Pocket* (MAVERICK/REPRISE)

SOUL ASYLUM • *Promises Broken* (COLUMBIA)

ROD STEWART • *So Far Away* (LAVA/ATLANTIC)

Listener Demand For Old-School Hits Shows No Sign Of Burnout

by Sean Ross

Maybe there's no such thing as too much "Sexual Healing." Perhaps listeners will never be able to resist a "Cutie Pie." And there's no sign that anyone is ready to put the "Atomic Dog" out for the night before heading "Between The Sheets." But despite the fact that listeners of R&B and crossover radio show no signs of burning out on old-school hits, some programmers believe that—after more than two years of saturation airplay—old school isn't the magic bullet it once was.

After years of relative neglect, R&B music made between the mid-'70s and early '80s exploded back onto radio in 1992-93, beginning in the West and Southwest, then spreading rapidly across the country. Besides having been virtually unplayed for 12-15 years, many old-

school titles had the advantage of being uptempo, nonrap records that were acceptable to younger demos (often because of their use in hip-hop samples) at a time when only rap and ballads were generating much reaction.

Old-school frenzy reached its peak in the fall of '93, when such stations as R&B KKBT (the Beat) Los Angeles and crossover rival KPWR (Power 106) went to the mat over the old-school image. At the time, virtually every weekend was dedicated to old-school music on both stations. In other markets, old-school titles, such as Zapp's "Computer Love" and Tom Tom Club's "Genius Of Love," ended up in current or power recurrent rotation on R&B or crossover radio, sometimes in markets where those songs hadn't been played on the radio as cur-

Continued on page 6

BETTER THAN EZRA

Rosealia

The new single and video
from the gold-certified album *Golden*



OVER ONE
MILLION SOLD!

CERTIFIED
PLATINUM!

500+ TOP 40 PLAYS!

(28) MONITOR
MODERN ROCK
CHART!

NOW MUSHROOMING ON
OVER 70 TOP 40'S INCLUDING:

KDWB MINNEAPOLIS
WZJM CLEVELAND
WKSS HARTFORD
WYHY NASHVILLE
WFLZ TAMPA
KRBE HOUSTON
KJYO OKLAHOMA CITY
WFLY ALBANY
KHOM NEW ORLEANS
KUTQ SALT LAKE CITY
WERZ PORTSMOUTH
WGTZ DAYTON
AND MANY MORE!

Dan Rotchild produced it.
Shalom Aberle mixed it.

Management: Jeffrey Levinson/Theriz Two



On Elektra compact discs and cassettes.

http://www.rosealia.com ©1995 Elektra Entertainment Group, a division of Warner Communications Inc. A Time Warner Company

*The people gave their blessing to crimes of passion
It was a dark, dark night of the collective soul*

(-THE GARDEN OF ALLAH)

DON HENLEY

“The Garden
of
ALLAH”

THE ALL-NEW TRACK
FROM THE FORTHCOMING ALBUM ACTUAL MILES - HENLEY'S GREATEST HITS

FEATURING TEN CLASSICS:

“DIRTY LAUNDRY”
“THE BOYS OF SUMMER”
“ALL SHE WANTS TO DO IS DANCE”
“NOT ENOUGH LOVE IN THE WORLD”
“SUNSET GRILL”
“THE END OF THE INNOCENCE”
“THE LAST WORTHLESS EVENING”
“NEW YORK MINUTE”
“I WILL NOT GO QUIETLY”
“THE HEART OF THE MATTER”

TWO ALL-NEW TRACKS:

“THE GARDEN OF ALLAH”
“YOU DON'T KNOW ME AT ALL”

AND ONE SPECIAL BONUS TRACK

PRODUCED BY DON HENLEY, STAN LYNCH AND JOHN COREY
PERSONAL MANAGEMENT: IRVING AZOFF

A bold, new musical work from one of America's premier artists.



GEFFEN

Honolulu Is Top 40's Outlet Paradise

by Sean Ross

Which typical U.S. market has the most top 40 radio?

According an M Street Journal study of the available top 40 signals in each market, Honolulu is gangsta's paradise in more ways than one. Between KIKI (194), KQMQ-FM and its simulcast AM, and suburban KLEO, which simulcasts KKBG Hilo, Hawaii, residents of that market have their choice of four top 40s—more than any other Arbitron-rated market in the country. And if KRTR flips from AC to top 40 as widely expected, that would give the market five signals.

The fact that Honolulu is the top 40 capital is particularly incredible when you consider the number of markets that had four top 40 stations of one stripe or another during top 40's mid-'80s heyday. Now, there are only a handful of markets that have three available signals, including Los Angeles (assuming you count KYSR [Star 98.7] as top 40 and not hot AC), San Diego (ditto for KFMB-FM), and Denver (same for KALC). Other markets with three audible top 40s include Harrisburg, Pa., Providence,

R.I./New Bedford, Mass., and Philadelphia (which, again, requires you to accept either WSTW Wilmington, Del., as part of the market or WYXR Philadelphia as top 40 and not hot AC.)

Chicago has four top 40s—sort of. Besides WBBM-FM (B96), there are three suburban top 40s, WXLG-FM, WDEK-FM, and WBUS. The problem is that those three stations are at opposite ends of the market, making it unlikely that any one listener can hear more than two at a time.

By contrast, a similar M Street study of country radio shows at least three markets—Nashville, Seattle, and Knoxville, Tenn.—with 11 country stations, followed by Joplin, Mo., with 10, and four other markets—Myrtle Beach, S.C., Mobile, Ala., Jackson, Miss., and Sioux Falls, S.D.—with eight country stations. Let you think those are markets where every hole is filled, Jackson and Joplin are both without full-fledged top 40 outlets at this writing.

The format data is taken from the forthcoming 1996 edition of the "M Street Radio Directory," published in New York by the M Street Journal newsletter.



TOP 40 TOPICS

by Sean Ross

For Position, Add Some Spice To The 'T-word'

FRIENDS OF "T": What do the following New York stations have in common: modern rock/top 40 hybrid **WHTZ** (Z100), soft AC **WPAT-FM**, and jazz/AC **WQCD** (CD101.9)? It's not that they're all in the process of being sold—WQCD isn't. At least at this writing.

It isn't that they're all in New Jersey. WQCD isn't. At least at this writing.

It's the "T-word": *Today*.

Z100 has been using the positioner "today's best music" for several years, although that slogan is now restricted mostly to contesting. WPAT-FM is billing itself as "Today's 93.1" and doing '80s/'90s-based soft AC, at least until its new Spanish-language broadcasters take over. WQCD is using the liner "today's smooth jazz."

We've heard a lot of the T-word for several years. It first became noticeable in 1992-93, when top 40 was one of the few widely available formats playing any sort of current music—R&B and country were the others. (Now, any top 40 station that isn't "the No. 1 hit music station" seems to be using the positioner "today's best music" or some variant thereof. And as New York shows, it may not be the only station in the market using the T-word.)

Widespread use of the T-word in 1992-93 wasn't always a good thing. It tended to be used a lot by oldies or AC crossover stations. When a station segued from "Open Arms" by **Journey** to "I Will Remember You" by **Amy Grant** and billed itself as "today's best music," that told me the music wasn't likely to get any better, and maybe it *was* time to try country. But at least it showed that top 40 had identified one of its potential strengths: It was one of the few formats that wasn't all oldies.

Three years later, it may be time to look beyond the T-word, as top 40 is not the only current-intensive format. R&B, despite being flanked by gold-based urban AC, is current-based. Modern rock, not available in every market in 1992-93, is less gold-based than it was a few years ago, simply because so many of its previous core artists have fallen out of favor. Album rock is no longer indis-

tinguishable from classic rock. And AC stations are undergoing such a radical change that a soft AC built around the T-word is no longer a contradiction in terms. "Today's best music" is no longer exclusively the property of top 40, but it's still the format's prevalent positioner.

Another problem with the T-word is that we've had a few years to realize that it isn't the magic bullet. It doesn't keep stations from leaving the format or radically improve the ratings of those that stay. Unlike, say, the late '80s country positioner, "the most music allowed by law," this positioner doesn't give the station that uses it any perceptual advantage over other stations.

Unlike, say, "today's great music," the "today's best music" slogan doesn't make any claims for the music beyond the fact that it is current and that there isn't anything better elsewhere. But merely not being an oldie isn't enough to make a song (or station) compelling. And as for the claim that there isn't anything better elsewhere, it not only doesn't make you feel great about listening to so-so music, but two years ago, during the country boom, listeners didn't believe it.

There are other things that top 40, executed properly, does well that stations don't always tell people about. For example, top 40s make listeners feel good. They play as wide a variety of music as most people buy for themselves. Oddly enough, top 40s have been willing to let hot AC stations exploit both of those positions without trying to claim them for themselves.

So maybe it's time for "today's best music and _____" as part of a realization that the T-word isn't enough to position the format or to empower it. Filling in that blank, of course, requires stations to have something else to talk about. It requires having enough tempo to really pick listeners up and make them feel good, instead of just talking about it. It requires jocks with the ability to entertain. It requires playing a variety of music at one given time and knowing how to make that work, instead of switching genres every 12-15 months. And until that happens, it hardly matters what stations call themselves.



RADIOACTIVE

by Kevin Carter

Viacom Moves Beasing; ARS COOs' New Duties

Viacom's top 40/adult **KYSR** (Star 98.7) Los Angeles moves **Dave Beasing**, PD of soft AC duopoly partner **KXEZ** (Easy 100.3), across the hall to replace **Randy Lane** as PD. Beasing will continue to oversee KXEZ until a replacement is found. Viacom VP/programming **Bob Kaake** will assist. Beasing also programmed Viacom's **WLTI** Detroit from 1990-93 before transferring to L.A.

At press time, there was little official info available, but GM **Steve Candullo** is reportedly out at country **WYNY**, with other staff changes rumored. **WYNY** has long been the target of format-change rumors.

With **American Radio Systems** continuing to grow, co-COOs **David Pearlman** and **John Gehron** have realigned their duties. Pearlman will oversee ARS properties in Boston (including top 40/adult **WBMX**), Baltimore, West Palm Beach, Fla., and Hartford, Conn., (including the forthcoming **WTIC-FM**). Gehron will oversee ARS stations in Buffalo and Rochester, N.Y., Dayton, Ohio, and Austin, Texas.

WOVV (Star 95.5) West Palm Beach flips to country in the wake of a recent sales marketing agreement with Fairbanks AC/easy combo **WRMF/WRLX**. Only one casualty in the format flip: morning guy **Joe Mama** exits. PD **Neil Sullivan** and the rest of the staff are still in place.

Speaking of top 40-to-country moves, **WNTQ** (93Q) Syracuse, N.Y., GM **Bill McMartin**, displaced when owner Osborn Communications sold that station, has resurfaced as GM of Osborne's country combo **WWNC/WKSF** Asheville, N.C. Also, former **WWMX** Baltimore, Md., PD **David Wood** leaves the hot AC format for the PD job at country **WFMS** Indianapolis.

With **WHTZ** (Z100) GM **Clancy Woods** headed back to Nationwide, is PD **Steve Kingston** pondering a **Dave Robbins**-type move up? Kingston allows that conversations have taken place. In the meantime, Z100 is looking for two strong producers who are out-of-the-box thinkers, one for the nationally syndicated "Lovephones," and the other to help reinvent the morning show.

While you were eating, the Group W/CBS merger closed. Group W's new structure will be announced by the time you read this. In other FCC news, the commission has finally approved Jacor's purchase of **KHTS** San Diego, current-

ly simulcasting easy listening **WDUV** Tampa, Fla. Closing should take place this week.

KKRZ (Z100) Portland, Ore., brings back **Dan Clark**, most recently at **KFRC-FM** San Francisco, as executive producer of the morning show. APD/MD **Chet Buchanan** moves from afternoons to morning anchor, replacing **Scott Throver**. Buchanan teams up with **Valerie Ring**, **Nelson the Intern**, and **Tony Martinez**. Twenty-year market vet **Steve Naganuma** handles afternoons temporarily, as the full-time search begins.

Is the "Open House Branch" coming? When **SupeRadio** lost its "Matty In The Morning" syndicated show, "Open House Party" host **John Carabedian** began handling mornings via satellite for the show's sole remaining affiliate, **WWFX** Bangor, Maine. Nothing is permanent.

Williamsport, Pa., gets a new hot AC outlet, as oldies **WWWD** becomes **WVRT** (Variety 97.7). **Jack Michaels**, PD of co-owned **WKYE** Johnstown, Pa., will oversee the new station.

WMGI Terre Haute, Ind., night guy **Tony Manero** picks up MD stripes.

WKSS Hartford, Conn. MD/midday talent **Tina "Christine" Simonet** has taken a three-month leave of absence for health reasons. PD **Jay Beau Jones** is looking for her replacement while building a new morning show. **Ross Brittain** is filling in for now, and Mr. Jones is looking for "the next Todd Pettengill" to round out the show. Also, get-well wishes to **WBMX** (Mix 98.5) Boston morning host **Joe Martell**, who is out for an indefinite period following lung surgery.

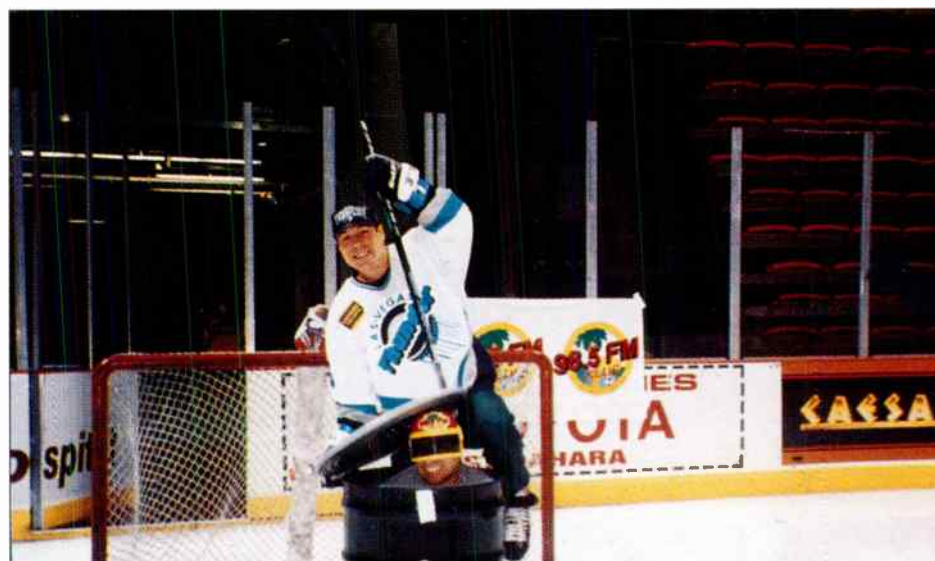
With the departure of **KLYV** Dubuque, Iowa, PD **Allan Fee** and his wife, midday jock Susan St. John, the station has started voice-tracking middays using **Jolene Kilcoyne** from sister station **WDBQ**.

Following the exit of night host **Ruben Garcia**, top 40/adult **KSMG** San Antonio, Texas, is looking for a night jock, an overnigher, and several part-timers. Send T&Rs to PD **Pat Evans**.

KISF Kansas City MD **Booker Madison** headed to nights at **WNRQ** Pittsburgh as scheduled, despite rumblings that he might stay in PD **Chuck Geiger's** absence. APD **Ed Parreira** is handling PD chores, while music coordinator **Jason Justice** is doing the MD stuff.

Modern rock **WLUM** Milwaukee is looking for a production director to replace **Mark Allen**, who crossed the street to AC **WMYX**. Packages to PD **Ron Bunce**.

Sasha Deal!



KLUC Las Vegas morning co-host **Danger Boy** went above and beyond the call of duty recently by allowing Las Vegas Thunder hockey player **Sasha Lakovic** to take penalty shots at him while he was sealed in the "Danger Boy Drum Of Doom."

PROMOTIONS

Care And Feeding Of Your Xmas Show

A guest column by Theresa Beyer, promotions director, WHTZ (Z100) New York.

Forget shopping days 'til Christmas! My only concern is "how many working hours until the Jingle Ball?" I'm making my list and checking it 69 times until the big event.

Holiday shows allow your listeners to rub up against the station. They solidify your music position. They create that great holiday "warm and fuzzy" feeling through donations to a local charity. They act as a divining rod for new revenue, if used properly. And they're a blast.

Here are a few hard-earned suggestions on how to plan your own holiday concert and live to enjoy Christmas dinner with your family.

WELL IN ADVANCE

- Approach the labels early and often—before they set artist itineraries in stone. The sooner you start, the better your choice of artists, dates, and venues. Six months is a good lead time.

- Hire a public relations firm. An event of this magnitude deserves ink before and after the event takes place. Our events regularly receive coverage in such national outlets as Rolling Stone, People, Us, Spin, and on "MTV News," in addition to local and regional media. The PR firm can also handle the day-of-event press logistics, including setting up a press holding area, which photographers can shoot. The PR firm can also process interviews and, most important, make sure the station doesn't get lost in the story.

- Immediately create a "to do" list and a timeline: When are press deadlines? When is the artwork due to the printer? Know when to order laminates, VIP party passes, sniping posters, as well as ad and engineering and technical deadlines. This list will become your working bible. Update it early and often.

- If it can't be a free event, price it below what concerts are going for in your market. Our Jingle Ball tickets are priced at \$50, \$35, and \$25. That averages out to \$5 per band for good seats.

- To creatively use the time between acts, create a video loop featuring your TV spots, music videos of the featured artists, in-studio footage of the bands, video messages from artists unable to attend, PSA's for the charity, etc.

- Set up an accessible, highly visible spot from which to broadcast live. We set up a living-room-type set. It's comfy, warm, and inviting; looks cool; and has easy access to the stage and the audience.

- Create your sales package at least four months in advance. Work closely with sales on a proposal that generates new dollars, while not compromising your event. As made clear most recently by R.E.M. and Pearl Jam, overt commercialization is the quickest way to lose artist support.

- Be creative in finding additional revenue opportunities, i.e., a Lollapalooza-type village area for vendors, a free fanzine for distribution to listeners, and other merchandising. Always start by asking what's in it for the listener, so you don't completely bow down to the money gods.

- Create an event shirt, but make certain it's approved by the artists ahead of time, and price it the same or above artist shirts. Otherwise, you'll have problems the day of the show.

- Connect with a media partner, such as MTV, VH1, Fox, or ABC Concerts, to max out your visibility in the market.

- See if other stations want to simulcast your event. Put it on the bird. Act locally, think globally!
- Go beyond banners. For a few extra bucks, you can order brass plates that fit over your stage lights, customized with your logo, allowing you to move your logo everywhere in colored light.

- Invite local celebs to act as hosts or dressing.
- Work with a local promoter. This will extend your life greatly.

- Obviously, you'll need to give free tickets to the artists, managers, venue, listeners, etc, but

keep a tight rein on it. This is the bottom line. Sometimes it pays to be anal.

- Hire several professional photographers and a video person. After it's over, you won't be mourning the lost opportunities for sales and press photos.

- Ask the labels to provide stuff for your listeners—CDs, posters, etc.—to hand out at the exits.
- Sit on more tickets than you'll ever need.

They can always go back on sale and can work to freshen up your on-air promotional push. For example, "We've decided to take out the VIP area so we can get more of you into the show."

- Give VIPs their tickets, laminates, post-party passes, and directions in advance and not at the door.

- Don't let your passes get out too early. It's amazing how quickly counterfeits are on the street.

- Make arrangements in advance for a high-quality audiotape of the show. You'll definitely want it for archival purposes, and it could make a great station CD sold to benefit charity.

- Do a project purchase order and update it weekly. It's the only way to keep a handle on the bottom line.

- A day or two out, work with your PD and do a run-through with the staff and on-air talent. Give everyone a detailed itinerary of the show, highlighting responsibilities, when they're expected to be onstage, etc.

DAY OF THE SHOW

- If there's room, and it's appropriate for your audience, set up a "quiet room" for parents dropping off kids. This will eliminate those morning-after calls: "I can't believe your show went past midnight! Do you expect me to wait all night for my kid?"

- Provide signers for the hearing-impaired. It's just the right thing to do. (You'd be surprised how much the media picks up on this.) Also make sure you have a wheelchair-accessible area.

- Take note of where your banners are for photo opportunities. Set aside an area backstage with easy access for artist photo ops. Make sure the dressing rooms have banners in case any photos are taken there.

- Equip your staff with hand-held radios.
- Put a staff member in the box office to assist the venue staff with the VIPs.

- Throw a VIP bash. Hey, it's your big event of the year. What better way to show off your station's strengths to potential clients?

- Properly thank everyone involved. Have the jocks sign blow-up thank-you cards for the dressing rooms. Leave the acts an event shirt, hat, etc.

- Always go through a security run-through. When in doubt, add security. (Your promoter will be of help here.)

- Make sure you've got ambulances and an EMS staff on hand. If it's a show where there's maximum moshing, set up a mini-M.A.S.H. unit. Take responsibility for your listeners. If you don't, you'll hear about it later—maybe in court.

AFTER THE EVENT

- The day after the show, send each band, their label, and management a letter of thanks with an estimate of how much was raised for what important cause. Leave the artists thinking it was a really cool event that they would want to do again.

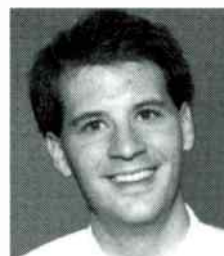
PROGRAMMER PROFILE

Will Tracy Johnson's Modern Top 40/Adult Format Keep Star 100.7 Out Of Loser Hell?

Six months ago, KFMB-FM (Star 100.7) San Diego only dented the walls of what was considered the top 40/adult format. Now it plays the Presidents Of The United States' "Lump." And KFMB-AM-FM OM Tracy Johnson doesn't consider it a format change.

"We're still going after the same target, we're just approaching it from a different angle," Johnson says. "We are targeting anybody who listens to pop music and lives a contemporary lifestyle. The demos are irrelevant—don't care if they're 18 or 48, male or female. If they're into pop culture, we want them listening. Our most likely listeners are females from 23 to 36."

Star 100.7 was a fairly traditional adult top 40 three years ago, when Johnson, GM Bob Bolinger, and then-MD Tom Gjerdrum crossed the street from top 40 KKLQ (Q106). "We carried over some assumptions from Q106, when the market was responding favorably to Phil



Tracy Johnson
OM, KFMB
San Diego

"The demos are irrelevant. [We] don't care if they're 18 or 48, male or female"

Collins, Michael Bolton, Mariah Carey, Whitney Houston, Jon Secada, Billy Joel, Elton John, Rod Stewart, etc.," says Johnson. The wake-up call came, as it has for many adult top 40s, when he discovered that listeners' musical tastes had changed with little or no advance warning.

That revelation came to light only after Star installed a new screener on its call-out research, which had previously offered respondents three music clusters: top 40/rhythmic, soft AC, and mainstream, which included Collins, Houston, and Joel. When asked which cluster was respondents' favorite, the mainstream dominated. What Johnson didn't realize was that respondents, given their limited choices, were selecting the cluster they disliked least.

Earlier this year, with Star's research showing the resurgence of '80s oldies and such early pop/alternative breakthroughs as Sheryl Crow and Melissa Etheridge, Johnson finally added a pop/alternative cluster. "The response was overwhelming," he says. "We slowly started integrating more of those respondents [who chose the pop/alternative cluster] into our research and began evolving the music accordingly." Despite the changes, Johnson says the street perception of Star 100.7 hasn't changed that much. "We're still targeted to the same psychographic and lifestyle. Star is a very pop-sounding station, with no grunge or extremes. We just have a different texture than before."

"A 29-year-old was forming their music tastes when they were 12-16 years old. That puts them in 1982, about when MTV debuted. That means the middle segment of our demos grew up with Duran Duran, Men At Work, etc." Star 100.7, much like KYSR (Star 98.7) Los Angeles, has found that '80s product is very compatible with R.E.M. and Hootie & the Blowfish. "They are similar in texture, appealing to a 23-year-old as much as a 35-year-old, so there's almost a seamless link in generations," says Johnson. "We used to showcase the '80s stuff with sound

effects and staggers. It was almost like 'Excuse us for playing a weird-sounding record.' It did sound weird against Billy Joel, but it sounds great... mixing Tom Tom Club's 'Genius Of Love' into Mariah Carey's 'Fantasy.'"

Here's the 4 p.m.: Counting Crows, "Mr. Jones"; Mariah Carey, "Fantasy"; Modern English, "I Melt With You"; Cranberries, "Dreams"; Gin Blossoms, "Til I Hear It From You"; Naked Eyes, "Always Something There To Remind Me"; Melissa Etheridge, "Come To My Window"; Goo Goo Dolls, "Name"; Duran Duran, "The Reflex"; Alanis Morissette, "Hand In My Pocket"; Bonnie Raitt, "Something To Talk About"; and Blues Traveler, "Run-Around."

Along with its musical transformation, Star 100.7 has been rebuilt on the top 40 cornerstones of high-profile personalities and fun. Recently, morning host Shawn Ireland left and p.m. driver Dave Smiley moved to mornings. Kim Morrison does 10 a.m.-3 p.m. MD Greg Simms is doing afternoons on an interim basis. From 8 to midnight it's "Chris the Bagel Boy," a member of the old morning show. Sunday through Thursday from 9-11 p.m., Chris' show incorporates "The Love Doctor," a local psychotherapist who discusses sex and relationships. "It's been a huge show since it debuted in July," says Johnson.

"Smiley in the morning has become our signature personality," he adds. "We found that the station revolved around afternoons when he did that shift. We simply shifted that dynamic to mornings, and we're now... building around it."

Thanks to Smiley and his legion of "Smiley-heads," when you play a Star contest and lose, you don't just get a lovely parting gift; you get sent to "Loser Hell." The concept has proved so popular that it has spawned its own line of T-shirts. The list of losers is even posted on the station's Internet World Wide Web site (complete with flames). "All losers will be let out at the end of the year," says Johnson. The station even broadcast live on Halloween from Loser Hell.

In Star's quest to be different, it's possible to occasionally tune in and hear Smiley on the air with Simms all afternoon. "We have found that people who listen to pop music in 1995 want to have fun, hear more uptempo music, and don't mind us breaking the old radio rules. We don't have too many rules here. Yes, we program the music ahead of time, but it doesn't always get played that way. We'll gauge the mood of our listeners and manipulate accordingly." The station throws the log out the window and plays nothing but requests from 9 a.m.-5 p.m. every weekday. "It gets really busy in the studio during that time," says Johnson.

As for production, Johnson says, "We prefer to use listener-driven stuff on-air and not just in contests." A listener's voice saying "It's so cool!" became part of the legal ID. Another's effeminate sounding "Hi, Star!" was immediately adopted both on and off the air. Even the term "on the air" has become "on the set" because of a listener asking "Am I on the set?" "We're now speaking a whole other language," says Johnson. "If you come in from out of town, you would think this is a strange little radio station."

"We don't hesitate to put listeners on air who tell us we suck," says Johnson. "That always helps to drive the good calls." When the station recently ran its "All You Need To Put On" outdoor campaign, it aired calls about "the naked people on your billboard."

Eight weeks after its music mix finally took shape, Johnson cites AccuRatings that show Star's 18-34 numbers up 3.4-6.9. "In just the last four weeks, we went 3.0-3.6 12-plus, and our cume is up 50,000 in the last six weeks." This, he notes, is without any marketing since July, although the station did launch a new TV campaign two weeks ago.

KEVIN CARTER

Old-School Hits
Continued from page 1

rents. Two years later, old school is a prominent part of most R&B and crossover outlets in some form. "At a minimum, most of the clients I work with are doing either an old-school lunch hour or an old-school mix in afternoon drive. Some are doing 'old-school classic jams' that are staged during middays," says Hilton Head Island, S.C.-based consultant Don Kelly.

Old-school features range from KMJM (Magic 108) St. Louis' "Wayback Wednesdays," which are all oldies, to KQXL (Q106) Baton Rouge, La.'s "Mo' Funk Saturday Nights." WGCI-FM Chicago, which added "Old-School Sunday" to its lineup in 1983, recently launched a second program, the "Old-School Sunday Quiet Storm," to follow it. WROU (U92) Dayton, Ohio, has gone as far as making "Dayton's choice for the jams and the old school" its primary positioner.

In the two years since old school exploded, the radio marketplace has changed dramatically. More R&B mainstream outlets have R&B adult competition, and those stations are playing a lot fewer currents and a lot more gold than they did in 1993. The R&B oldies

emerge. And once old school is no longer the only music with that old sound, its franchise will diminish.

In L.A., both KKBT OM Harold Austin and KPWR MD Bruce St. James admit that it was impossible for old school to maintain the frenzy of fall '93. Both now concentrate their old-school weekends around the holidays. "It got to the point where it got to be the same old thing," Austin says. And while St. James says old school "is still valuable, its priority for us may have changed a little bit. When we sell our musical images, it's now the third image [out of three] that we sell after hip-hop and deep house."

JOCKS BURN OUT; LISTENERS DON'T

That said, both Austin and St. James have old-school titles that receive enough plays each week to rank among their top 40 most-played songs. And while Austin says, "I'm always wondering if our audience is going to get tired of 'Between The Sheets' [and other old-school titles]," there's no sign of it happening yet.

"We're going into another auditorium test, and I'll bet that one of my top two records is going to be 'Sexual Healing' or 'Let's Get It On,' which test as No. 1 or 2 at any given time," says St. James. "The burn on these records is nonexistent. The burn on currents

everything from Isley/Jasper/Isley's "Caravan Of Love" and Freddie Jackson's "Rock Me Tonight" to Kool & the Gang's "Fresh" and Loose Ends' "Hangin' On A String."

R&B ADULT NOT A HINDRANCE?

Boston has the advantage of not having an R&B adult outlet in his market, which gives him room to go as far back as Gladys Knight & the Pips' "If I Was Your Woman." Baton Rouge's KQXL, which can play anything from Aretha Franklin's "Chain Of Fools" to the Timex Social Club's "Rumors" in its old school category, has no R&B adult competition either. KQXL PD Clay says that if he did have competition, he might downplay some of the softer ballads but still play the uptempo funk titles.

In fact, while Kelly warns that a lot of the impact of old school is diminished if there's an R&B adult outlet in the market, that hasn't stopped a lot of mainstream R&B stations with direct competition from jumping in. WGCI-FM had been competing with one of the earliest R&B adult FMs, WVAZ (V103), for five years when it added "Old-School Sunday." KMJM plays old school even though St. Louis has two R&B adult stations, one of which is KATZ-FM (Z100), KMJM's sister station.

PROPS TO THE PAST

WQHT (Hot 97) New York plays its share of old school too, even though sister WRKS is the gold-based R&B adult format's most prominent success story. Steve Smith, PD for both stations, says that "because Hot 97 is really the only 100% hip-hop station in the country, we have an obligation to always give props to the past... So we'll always have old school as a secondary theme."

Heritage seems to be an issue for many PDs when discussing old school. KPWR's St. James notes that "for a Latino-targeted radio station, so much of this is geared to tradition and respect for the past that these records are institutions—not just songs, but representative of a more positive era for many people."

And Lyles, who, as PD of WVKO (KO16) Columbus, Ohio, in the early '80s leaned heavily on oldies when many programmers believed that R&B listeners cared only about the latest thing, notes, "Urban radio had no business ever [abandoning] its heritage... These records were pieces of candy that some urban PDs didn't know existed. It's terrible. This is our format. We're supposed to know all that stuff."

Old School: A User's Manual

AIRPLAY Monitor

CLASSIFIED ADVERTISING

HELP WANTED

The music matters most, but it's what happens in-between that makes the difference. Nation's top two Rock/ACs seeking talent for future openings and acquisitions. If you understand preparation, concentration and moderation, rush your T&R to: Tom Benson, Dame Media, WRVV/WRVE, P.O. Box 6477, Harrisburg, PA 17112. EOE

San Jose radio station looking for experienced announcer to take over midday shift. We're consistently in Top 4 (25-54) and we're planning to continue winning. Must have some Country experience. T&R to:

Julie Stevens
KRTY, P.O. Box 995
San Jose, CA 95108
(EOE)

**ADVERTISING ASSISTANT
BILLBOARD/
AIRPLAY MONITOR**
**HEAVY CLERICAL/
ADMINISTRATIVE,
ENTRY LEVEL
SALARY.
COMPUTER SKILLS
A MUST.
NO CALLS.
SEND RESUME TO:**

**BILLBOARD
49 MUSIC SQ. WEST
STE. 402
NASHVILLE, TN 37203
ATTN: DEPT LP**

SERVICES

VOICEOVERS

You get what you pay for

▲
Sean Caldwell
PRODUCTIONS
Y100 Young Country
B-96 K188-FM Z100
New Country K188106
Country CHR Rock Hot AC
voice-over • production effects
(610) 640-5899 FAX 892-7890

SERVICES

STATION I.D.

ID Jingles
CHR & Rhythmic
New Holiday Packages
available now
"You HAVE to hear these!"
Mike Tierney P.D. KUBE 93
ReelWorld Productions
Call for demo (206) 713.3044

POSITION WANTED

**MORNINGS THAT GRAB YOU
AND DON'T LET GO!!**
Award winning, major market
funnyman seeks "The Gig!" Call
now for definitive demo, you
procrastinating ...
JOE (210) 824-6554

Rockin' female AT
... available now. Experience
includes: APD/MD/promotions;
public appearance pro. Prefer
west. CJ:
(602) 842-1465

TO WIN YOU need the best.
20 year Country PD/AT,
ready to relocate and
motivate. Prefer mid-west.
BOB (605) 343-4416

**DON'T MISS OUT!
SPECIAL
END-OF-YEAR
CLASSIFIED OFFER**
**PICK UP THE PHONE
AND CALL ME ...
NOW!**

**LAURA RIVCHUN
(212) 536-5058 (PH)
(212) 536-5055 (FAX)**

POSITION WANTED

SUDDENLY AVAILABLE.
SEEKING to Rock your
mornings for fun and profit.
PETE McRAE & CARA SABIN:
(317) 447-2477 or
(317) 477-5975

GOT RADIO IN ...
my blood, seeking fulltime
Classic RockAORAT
promotions gig. Ready to
relocate.
BRIAN (616) 538-9039

Seeking a 40 share? I've
got your numbers, 43, now
you have mine. 15 years'
PD/MD/production director.
GARY:
(915) 676-2558

PRODUCTION WHIZ HERE!
8 years exp. Have own studio. Digital
editing exp. CHR/Rock/Country - 2 years in
mornings w/good numbers. Looking to
relocate. I live for production. I can FAX
you my references and script samples.
Call Ken Stone (304) 727-4446/
103162.3555@CompuServe.com

3-YEAR PRO...
with AC music experience on
the loose and ready to go. Well
versed in Powerplay Music
System.
ALLEN:
(512) 573-6438

DAVE WINSTON
16 years' experience. Degree.
Seeks midday/afternoon drive,
Oldies/Hot AC/CHR. Call after 2 pm.
DAVE:
(517) 790-0605

The shark is ready to chew
your market share. If you're
ready to make a big splash
call.
MICHAEL:
(407) 636-9918

**E-Mail us your FREE
Bulletin Board listing!**
Send to
guynn@aol.com or
guynn@msn.com

BULLETIN BOARD

WHAT'S the real deal at
XL106.7??

HEY J- Great book, but look
beyond the numbers... Is
everything OK down the hall??
Call me. S.

STEVE ELLIS, There's a
birthday Pineapple with your
name on it waiting at Benihana
Love, Rocky Aoki

WZPL'S TOM GJERDRUM-
Please call me with your
Grandma's old beer-brewing
recipe. I suddenly have a lot of
time on my hands. Monte

BILL- Nashville in 96? "Sundae"
sounds good to me too! I'll bring
the whip cream, you bring the ...
chocolate syrup! Luv ya!

HEY PHIL MANNING. You've
been in Pittsburgh for a month
now. Any chance in learning how
to use the local phone system?
We miss you

JG- I'm sorry I got you hooked on
them and now you can't stop. It's
an awful habit I know. You might
consider AAA Altoid Abusers
Anonymous PM

DAVID C- If I had only one friend left,
I'd want it to be you... remember
yesterday? Your Queen

"She acts like Madonna, but
listens to Merle..." Looks like
Wynonna-I wish!!? Tired of dating
non-industry people-they just
don't get it! If you do, call 214-
248-6474

**Fax us your
FREE
Bulletin Board
listing!
Attention
Monitor
Classified
212-536-5055
or
213-525-2395**

GARRISON 88, The Internet
awaits. Let's go surfing.
Love, Your No. 1 fan

TOBY KEITH- We miss you in
'The Big D'. "Ain't nothing" but a
G-thang" Red

CLASSIFIED ADVERTISING RATES

HELP WANTED:
1 WEEK \$75.00 per inch
2 WEEKS \$65.00 per inch
POSITION WANTED AND BULLETIN BOARD:
\$45.00 per inch
BOX NUMBER: Add \$20.00
SERVICES:
1 WEEK \$75.00 per inch
6 WEEKS \$65.00 per inch
13 WEEKS \$60.00 per inch
26 WEEKS \$55.00 per inch
51 WEEKS \$50.00 per inch

DEADLINE (ALL CLASSIFIED):
Each Wednesday 3pm EST, 9 day leadtime.
• Classified ads are non-commissionable •

SUBMIT ALL AD COPY TO:
Laura Rivchun
Airplay Monitor Classified
1515 Broadway
New York, NY 10036
Phone: 212-536-5058
Fax: 212-536-5055



"As TAPESTRY is a near-perfect collection, it would've been a real pleasure to try my band at any of the songs. 'So Far Away' is beautiful and I can only hope that I did Ms. King justice."

- ROD STEWART

Sales over 10,000 per week!!!
Early action at Top 40 and A/C radio!!!
Impacting December 4th

SO FAR AWAY Rod Stewart

from
TAPESTRY REVISITED
A TRIBUTE TO CAROLE KING

PRODUCED & ARRANGED BY DAVID FOSTER FOR CHARTMAKER, INC.

STIEFEL-PHILLIPS
ENTERTAINMENT

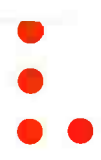


Contact your LAVA/Atlantic Representative
for more details.

LAVA AS Atlantic <http://www.atlantic-records.com>

THE ATLANTIC GROUP ©1995 ATLANTIC RECORDING CORP. A TIME WARNER COMPANY

Call 1-900-ATLANTIC FOR A QUICK MUSIC TUNE-UP.
ONLY \$1 PER CALL. UNDER 18 GET PARENT'S PERMISSION. TOUCHTONE PHONE REQUIRED.
ATLANTIC RECORDS, NY, NY (212)399-4433



"The best album since 'Love Hangover'... ever" Sherry Burns- Sam Goody
"It's the best album in years, the lyrics and production are great and her voice is always there" Harry Patterson- Blockbuster Music
"Expecting great things. Customers are commenting on how good this record is." Royce Fortune-Fortune Records

"Gone" - the new single

- Going for AC Adds November 27th.
- #1 Most Added at Urban AC first Week!
- ON YOUR DESK NOW!



AIRPLAY Monitor GREATEST GAINERS

STRONGEST INCREASE IN AIRPLAY

MAINSTREAM

INCREASE
IN PLAYS

THE BEATLES • Free As A Bird (APPLE/CAPITOL)	+704
KJYO +46, WYHY +33, WABB +30, WVKS +29, WWCK +29, WTWR +27, WKBQ +25, KLRZ +24, WAPE +23, WDJX +23	
MARIAH CAREY & BOYZ II MEN • One Sweet Day (COLUMBIA)	+504
WPRO +32, KHFI +29, KMXV +24, WHHY +23, KBFM +19, WSTR +17, WSSX +17, WKSS +17, WXSL +17, WBHT +16	
EVERYTHING BUT THE GIRL • Missing (ATLANTIC)	+477
KZZU +45, WDCG +22, KKRD +20, WTIC +20, WHHY +19, WZNY +19, WRVQ +19, WNVZ +19, WZPL +16, WDJX +15	
BIG MOUNTAIN • Get Together (GIANT)	+419
WFLY +35, WIOQ +23, WKRZ +22, WFHN +18, KBFM +17, KRQQ +17, WPRO +17, WHHY +15, WFLZ +14, WKSS +14	
WHITNEY HOUSTON • Exhale (Shoop Shoop) (ARISTA)	+225
WFMF +48, WYHY +16, KLRZ +15, KKRZ +15, WXXX +12, WTIC +12, WHOT +11, WTWR +10, WSNX +10, WXSL +10	
NATALIE MERCHANT • Wonder (ELEKTRA/EEG)	+206
WXIS +24, WKRZ +20, WTWR +18, WWCK +16, WZJM +14, WFLZ +13, KKLQ +12, WSSX +11, WSTR +10, WWSR +10	
TLC • Diggin' On You (LAFACE/ARISTA)	+170
KHFI +23, WKXJ +17, WWST +17, WSSX +12, WYHY +12, WKSS +12, KIIS +8, WXIS +7, KBFM +7, WSTR +7	
SEAL • Don't Cry (ZTT/WARNER BROS.)	+166
WNTQ +22, WKRZ +20, KRQQ +18, WWCK +15, KLRZ +13, WHHY +10, WSSX +10, KKRD +9, WSTR +6, WNMK +6	
MADONNA • You'll See (MAVERICK/WARNER BROS.)	+153
WZJM +18, WHHY +17, WNVZ +17, KHFI +15, WSSX +13, WYHY +13, WYCR +11, WBHT +10, KLRZ +10, KHOT +9	
GOO GOO DOLLS • Name (METAL BLADE/WARNER BROS.)	+153
WNCI +25, WHOT +20, WFLZ +19, KZZU +17, KHFI +16, WSNX +15, WHHY +13, KKLQ +13, KDWB +12, KBFM +11	

RHYTHM-CROSSOVER

INCREASE
IN PLAYS

LL COOL J • Hey Lover (DEF JAM/RAL/ISLAND)	+170
KKSS +64, KPWR +17, WHHH +14, KBXX +12, WWKX +11, KGGI +11, WPGC +11, KBOS +10, KCAQ +8, WERQ +8	
MONICA • Before You Walk Out Of My Life (ROWDY/ARISTA)	+159
KYLD +30, KLUC +26, KDON +25, KMEL +19, WJMN +18, KZHT +17, KQKS +11, KCAQ +9, KPRR +9, XHTZ +9	
QUINCY JONES FEAT. BRANDY & HEAVY D • Rock With You (QWEST/WARNER BROS.)	+122
KPRR +33, WERQ +31, KJMZ +28, KTFM +10, KQKS +9, KBXX +5, KZFM +4, WPGC +4, WJJS +2, KSFM +2	
WHITNEY HOUSTON • Exhale (Shoop Shoop) (ARISTA)	+87
KTFM +27, WWKX +25, KBOS +17, KSFM +15, WHHH +14, KPRR +9, KKFR +8, WERQ +7, KQXX +7, KLUC +6	
R. KELLY • You Remind Me Of Something (JIVE)	+72
KXSS +31, KKFR +14, KLUC +13, KBOS +13, KPRR +11, KMEL +11, KJMZ +9, KUBE +6, WPGC +6, WWKX +2	
MARIAH CAREY & BOYZ II MEN • One Sweet Day (COLUMBIA)	+72
KKSS +25, WWKX +15, KJMZ +13, KDON +13, KCAQ +9, KZFM +8, WERQ +6, KBXX +6, KLUC +5, WOVV +4	
MICHAEL JACKSON • This Time Around (EPIC)	+71
KDON +40, KZHT +11, WOVV +8, WPOW +7, WBBM +4, WERQ +1, KKSS +1	
R. KELLY • Down Low (JIVE)	+70
KBXX +25, WJMH +25, WERQ +10, WPGC +8, WJMN +4, XHTZ +1, KQKS +1	
THA DOGG POUND • Let's Play House (DEATH ROW/INTERSCOPE/PRIORITY)	+70
WJMH +20, WERQ +9, WHHH +9, WWKX +8, XHTZ +6, KPWR +6, WJJS +3, KMEL +3, KTFM +2, KBXX +1	
BRANDY • Sittin' Up In My Room (ARISTA)	+70
KMEL +19, WJMN +16, WPGC +12, WERQ +8, WQHT +7, KTFM +4, KCAQ +3, KDON +2, KZFM +1, KLUC +1	

VIDEO PLAYLISTS

Broadcast Data Systems
Media Technology Division



	TW	LW
1 Coelco, Too Hot	36	29
2 Smashing Pumpkins, Bullet With Butterfly	29	30
3 Mariah Carey & Boyz II Men, One Sweet Day	26	31
4 Red Hot Chili Peppers, My Friends	25	28
5 Tha Dogg Pound, Let's Play House	25	33
6 TLC, Diggin' On You	24	28
7 Presidents Of The United State, Lump	23	30
8 Goo Goo Dolls, Name	21	24
9 Collective Soul, The World I Know	18	16
10 Alanis Morissette, Hand In My Pocket	15	19
11 Whitney Houston, Exhale	15	17
12 Bone Thugs-N-Harmony, 1st Of Tha Month	13	16
13 Bush, Glycerine	12	0
14 Joan Osborne, One Of Us	12	16
15 Groove Theory, Tell Me	12	9
16 Alice In Chains, Grind	12	12
17 Michael Jackson, Earth Song	12	8
18 Foo Fighters, I'll Stick Around	11	12
19 Rancid, Ruby Soho	11	15
20 Garbage, Queer	11	16
21 LL Cool J, Hey Lover	11	10
22 Passengers, Miss Sarajevo	11	15
23 Hootie & The Blowfish, Time	10	15
24 Toadies, Possum Kingdom	9	16
25 Rentals, Friends Of P.	9	12
26 Ozzy Osbourne, Perry Mason	9	9
27 Sophie B. Hawkins, As I Lay Me Down	8	10
28 Madonna, You'll See	8	12
29 Brandy, Brokenhearted	7	15
30 Bush, Come Down	7	17
31 Natalie Merchant, Wonder	7	1
32 Lisa Loeb & Nine Stories, Do You Sleep?	7	15
33 Green Day, Geek Stink Breath	7	10
34 Oasis, Wonderwall	7	2
35 Seven Mary Three, Cumbersome	6	6
36 Xscape, Who Can I Run To	6	8
37 Folk Implosion, Natural One	6	0
38 Blues Traveler, Hook	5	7
39 R.E.M., Tongue	5	8
40 Deep Blue Something, Breakfast At Tiffan	5	10

41 Jodeci, Love U 4 Life	5	6
42 Janet Jackson, Runaway	5	6
43 Ruth Ruth, Uninvited	5	6
44 Mariah Carey, Fantasy	5	7
45 AC/DC, Hard As A Rock	5	10
46 Nirvana, Smells Like Teen Spirit!	4	3
47 Skee-Lo, Top Of The Stairs	4	1
48 Meat Loaf, I'd Lie For You	4	5
49 Melissa Etheridge, Your Little Secret	4	14
50 L.V., Throw Your Hands Up	4	3



	TW	LW
1 Mariah Carey & Boyz II Men, One Sweet Day	34	32
2 Janet Jackson, Runaway	31	36
3 Whitney Houston, Exhale	29	31
4 Madonna, You'll See	25	32
5 Melissa Etheridge, Your Little Secret	24	30
6 Natalie Merchant, Carnival	24	19
7 Elton John, Blessed	21	24
8 Joan Osborne, One Of Us	18	21
9 Hootie & The Blowfish, Time	16	16
10 Michael Jackson, Earth Song	16	5
11 Meat Loaf, I'd Lie For You	15	20
12 Bonnie Raitt W/Bryan Adams, Rock Steady	15	17
13 Hootie & The Blowfish, Only Wanna Be Wit	14	16
14 k.d. lang, If I Were You	14	18
15 Sophie B. Hawkins, As I Lay Me Down	13	21
16 Blues Traveler, Run Around	12	20
17 Mariah Carey, Fantasy	12	11
18 TLC, Waterfalls	10	13
19 Alanis Morissette, Hand In My Pocket	10	11
20 Take That, Back For Good	10	16
21 Seal, Kiss From A Rose	9	8
22 Pretenders, Sense Of Purpose	9	6
23 Rolling Stones, Like A Rolling Stone	8	5
24 Heart, Alone	8	11
25 Gin Blossoms, Til I Hear It From You	7	23
26 Hootie & The Blowfish, Let Her Cry	7	6
27 Ace Of Base, Beautiful Life	7	0
28 Police, Every Breath You Take	6	1
29 Tina Turner, Golden Eye	6	9
30 Fine Young Cannibals, She Drives Me Crazy	5	4

ADULT

INCREASE
IN PLAYS

THE BEATLES • Free As A Bird (APPLE/CAPITOL)	+602
WKTI +33, KPLZ +31, WRQX +28, KGBX +26, WYYY +26, WWSN +26, WPNT +25, WMJQ +24, WMXL +22, WAHR +22	
MADONNA • You'll See (MAVERICK/WARNER BROS.)	+155
WAEV +20, KFMB +17, WGSY +15, WJDX +14, WEZF +13, WQLH +12, WVAF +11, WZPK +11, WRMF +10, KHMV +9	
MARIAH CAREY & BOYZ II MEN • One Sweet Day (COLUMBIA)	+130
KPLZ +20, WVTY +19, WYXR +18, WQAL +13, WAHR +11, KEZR +11, WRQX +11, WEZF +10, KWMX +10, WRMF +9	
GOO GOO DOLLS • Name (METAL BLADE/WARNER BROS.)	+117
WQLH +30, WKDD +16, WVAF +13, KSTZ +11, KWMX +9, WEZF +8, WTMX +7, WCSO +6, WMTX +6, WKZL +5	
ELTON JOHN • Blessed (ROCKET/ISLAND)	+99
KISN +19, KVUU +16, WBMX +12, WIVY +11, WVMX +10, WLHT +9, KHMV +9, WPNT +8, KYKY +8, KGBY +6	
HOOTIE & THE BLOWFISH • Time (ATLANTIC)	+98
WMXV +21, WQAL +19, WWSN +14, KWMX +13, WQLH +10, WRQX +10, KFMB +9, WMBX +7, WYYY +5, WMTX +5	
SEAL • Don't Cry (ZTT/WARNER BROS.)	+84
KYKY +18, KALC +12, WKTI +11, WWSN +8, WKDD +7, WZPK +6, WAHR +4, KHMV +4, KWMX +4, WJDX +3	
WHITNEY HOUSTON • Exhale (Shoop Shoop) (ARISTA)	+63
WYYY +13, WKDD +13, KPLZ +13, WQLH +11, WAHR +9, KMZQ +8, KIOI +8, WMYI +8, WGSY +6, WMTX +5	
BRUCE HORNSBY • Swing Street (RCA)	+61
WJDX +13, WLHT +11, WKDD +9, WAHR +8, WMJQ +6, WZPK +4, WDEF +3, KDMX +2, WBMX +2, WEZF +1	
EVERYTHING BUT THE GIRL • Missing (ATLANTIC)	+61
KSTP +26, WTMX +12, KALC +12, WZPK +10, WMC +10, WQLH +7, WKTI +5, WMTX +4, KPLZ +4, WYXR +2	

"RADIO IS OUR DANCEFLOOR"

PLANET SOUL

"SET U FREE"

OVER 150,000 SINGLES SOLD!!!

(35) - (30)

BILLBOARD HOT 100

(12) - (11) AIRPLAY

MONITOR RHYTHM CROSSOVER

NEW ADDS: Q102, KLUC, KFFM, KRRG, KWTX

"INSTANT CALLS!" - GLENN KALINA, WIOQ

AIRPLAY LEADERS:

KPWR, KIIS, KYLD, KTFM, KUBE, WPOW, KXTZ, KZFM, WBBM, KSFM



CONTACT: ELLEN (212) 254-2400

POWER PLAYLISTS

For Week Ending November 26, 1995



Playlists supplied by Broadcast Data Systems' Radio Track service. Stations selected from panel of leading broadcasters in 125 radio markets, electronically monitored 24 hours a day, 7 days a week. Songs ranked by number of plays in monitored week.



Z100 PD: Steve Kingston MD: Andy Shane. Table with 40 rows of song titles and ratings.

KIIS PD: Steve Perun APD/MD: Tracy Austin. Table with 40 rows of song titles and ratings.

KISS 108 PD: John Ivey MD: Tad Bonvie. Table with 40 rows of song titles and ratings.

Q102 OM: Dave Allan PD: Glenn Kalina MD: DeDe McGuire. Table with 40 rows of song titles and ratings.

KISS 106.1 PD: John Cook APD/MD: Mr. Ed Lambert. Table with 40 rows of song titles and ratings.

KRBE PD: Tom Poleman APD: Scott Sparks MD: Paul "Cubby" Bryant. Table with 40 rows of song titles and ratings.

KDWB PD: Dan Kieley APD/MD: Rob Morris AMD: Rick Thomas. Table with 40 rows of song titles and ratings.

STAR 94 OM/MD: Don Benson APD/MD: Kevin Peterson. Table with 40 rows of song titles and ratings.

B94 PD: Keith Clark APD: David Edgar MD: John Cline. Table with 40 rows of song titles and ratings.

WFLZ PD: B.J. Harris APD: Jeff Kapugi MD: Tom Steele. Table with 40 rows of song titles and ratings.

WPST PD: Michelle Stevens APD: Dave McKay. Table with 40 rows of song titles and ratings.

Y100 PD: Casey Keating MD: Al Chio. Table with 40 rows of song titles and ratings.

KISS 95.7 PD: Jay Beau Jones. Table with 40 rows of song titles and ratings.

WTIC PD: Paul Cannon MD: Tony Bristol. Table with 40 rows of song titles and ratings.

WNCI PD: Dave Robbins APD/MD: Dan Bowen. Table with 40 rows of song titles and ratings.

Q106 OM: Al Peterson PD: Greg Stevens APD: Ray Kalusa. Table with 40 rows of song titles and ratings.

92PRO FM PD: Chris Shebel MD: Tony Mascaro. Table with 40 rows of song titles and ratings.

Q104 PD: Michael St. John MD: Kenny Knight. Table with 40 rows of song titles and ratings.

MAINSTREAM

POWER PLAYLISTS

For Week Ending November 26, 1995



Playlists supplied by Broadcast Data Systems Radio Track service. Stations selected from panel of leading broadcasters in 25 radio markets...

Main content table with 12 columns representing different radio stations (e.g., Q102, G105, THE EDGE, Z100, XL106.7, Z93, Y107, JAMMIN' 92, KISS 98.5, WZPL, Z104, KJ103, MIX 93.3, 98PXY, WKRZ, FLY 92, WIXX, KHFI) and rows of song titles and their corresponding TW and LW values.



★ ★ ★ **AIRPOWER** ★ ★ ★
(Minimum 1500 detections for the first time)

Total Plays/Gain

WHITNEY HOUSTON 1602/225
Exhale (Shoop Shoop) (Arista)
Total Stations: 74/Chart Move: 24-17
Heavy (40+ plays): 5 KKRZ, KLRZ, WFME, WNVZ, WZJM
Medium (20-39): 33 KHKS, KHTO, KIIS, KJYO, KKLO, KKRZ, KMXV, KQKQ, KRQQ, KZZU, WDJX, WFHN, WFLY, WFLZ, WHOT, WMXQ, WNOK, WNTQ, WPRO, WRVQ, WSSX, WSTW, WTIC, WTVR, WVKX, WWSR, WWCK, WWST, WXXL, WXXX, WYCR, WYHY, WZNY
Light (Under 20): 36

AIRPOWER BOUND

Total Plays/Gain

HOOTIE & THE BLOWFISH 1488/74
Time (Atlantic)
Total Stations: 75/Chart Move: 23-20
Heavy (40+ plays): 9 KRQQ, WBHT, WFBC, WHHY, WNOK, WSTR, WTVR, WZNY, WZYP
Medium (20-39): 26 KKRZ, KQKQ, WBZZ, WDCG, WDDJ, WFLY, WHTZ, WKQB, WKRZ, WKSE, WKXJ, WLAN, WMXQ, WPRO, WPST, WRVQ, WSSX, WVKX, WWSR, WWST, WXIS, WXLK, WXXX, WYCR, WZJM, WZPL
Light (Under 20): 40
New Airplay This Week: 1 WEDJ

EVERYTHING BUT THE GIRL 1431/477
Missing (Atlantic)
Total Stations: 76/Chart Move: 36-22
Heavy (40+): 7 KHFI, KHKS, KIIS, KKRZ, KZZU, WIOQ, WXXL
Medium (20-39): 29 KBFM, KDWB, KKRZ, KQKQ, KRBE, KRQQ, WAPE, WDCG, WFBC, WFHN, WFLZ, WGTZ, WHTZ, WHYI, WKRQ, WKSS, WPRO, WPTY, WRVQ, WSSX, WSTW, WTIC, WWCK, WWST, WTKB, WXXX, WZJM, WZNY, WZPL
Light (Under 20): 40
New Airplay This Week: 15 KKMZ, KKRZ, KZZU, WDCG, WDJX, WHHY, WIXX, WKRZ, WLAN, WNOK, WNTQ, WNVZ, WTIC, WXXS, WZPL

THE PRESIDENTS OF THE UNITED STATES OF AMERICA 1262/45
Lump (Columbia)
Total Stations: 75/Chart Move: 27-26
Heavy (40+): 3 WBHT, WEDJ, WHTZ
Medium (20-39): 25 KHFI, KJYO, KKMZ, KKRZ, KLRZ, KQKQ, KRBE, KUTQ, WAPE, WBZZ, WFLY, WFLZ, WFME, WGTZ, WHYI, WKRQ, WKSS, WPRO, WPST, WSNX, WWSR, WWCK, WXIS, WXXL, WZPL
Light (Under 20): 47
New Airplay This Week: 1 WXXS

GROOVE THEORY 1115/111
Tell Me (Epic)
Total Stations: 65/Chart Move: 33-29
Heavy (40+): 7 KHFI, KIIS, KKRZ, KZZU, WFLY, WFME, WNVZ
Medium (20-39): 17 KDWB, KHTO, KMXV, KQKQ, KRQQ, WFBC, WFHN, WFLZ, WKXJ, WNNK, WPRO, WRVQ, WTVR, WVKX, WXIS, WZJM, WZPL
Light (Under 20): 41
New Airplay This Week: 1 WXXL

JOAN OSBORNE 1092/113
One Of Us (Blue Gorilla/Mercury)
Total Stations: 65/Chart Move: 34-30
Heavy (40+): 2 WHTZ, WXXX
Medium (20-39): 22 KHFI, KKRZ, KLRZ, KMXV, KRBE, KRQQ, KUTQ, WBHT, WBZZ, WDCG, WDDJ, WEDJ, WFLY, WFLZ, WLAN, WNTQ, WPST, WRVQ, WSSX, WTVR, WXXL, WYCR
Light (Under 20): 41
New Airplay This Week: 4 WFLY, WIXX, WKRQ, WYHY

BIG MOUNTAIN 977/419
Get Together (Giant)
Total Stations: 60/Chart Move: Debut 32
Heavy (40+): 2 KRQQ, WPRO

Medium (20-39): 21 KHTO, KJYO, KKLO, KKRZ, KKRZ, KLRZ, WBZZ, WFLY, WFLZ, WHYI, WHYI, WIOQ, WKRZ, WMXQ, WNNK, WNOK, WNVZ, WSTW, WXLK, WYCR, WZNY
Light (Under 20): 37
New Airplay This Week: 16 KBFM, KHHT, WDJX, WFBC, WFHN, WFLY, WHOT, WIOQ, WKRZ, WKSS, WNCI, WTIC, WWCK, WWST, WXXL, WXXX

SELENA 946/111
Dreaming Of You (EMI Latin/EMI)
Total Stations: 66/Chart Move: 39-36
Heavy (40+): 4 KHKS, KIIS, KRQQ, WZJM
Medium (20-39): 15 KHFI, KJYO, KKLO, KLRZ, KMXV, WFLZ, WHYI, WKXJ, WNVZ, WPRO, WPTY, WTVR, WWCK, WWST, WYCR
Light (Under 20): 47
New Airplay This Week: 3 KKRZ, WDJX, WWST

DEF LEPPARD 859/95
When Love & Hate Collide (Mercury)
Total Stations: 56/Chart Move: 40-38
Heavy (40+): 1 WDDJ
Medium (20-39): 20 KQKQ, WABB, WFHN, WFLZ, WGTZ, WIXX, WKCI, WKRQ, WKRZ, WKXJ, WNOK, WPRO, WWSR, WWCK, WWST, WXLK, WXXX, WYCR, WZNY, WZYP
Light (Under 20): 35
New Airplay This Week: 6 KKLQ, WDJX, WFBC, WSTW, WTKB, WYHY

CHART BOUND

★ **THE BEATLES 705/704**
Free As A Bird (Apple/Capitol)
Total Stations: 62
Heavy (40+): 1 KJYO
Medium (20-39): 11 KLRZ, WABB, WAPE, WDJX, WKQB, WNOK, WPRO, WTVR, WVKX, WWCK, WYHY
Light (Under 20): 50
New Airplay This Week: 35 KHHT, KJYO, KKLO, KLRZ, KRBE, KZZU, WABB, WAPE, WDDJ, WDJX, WFLY, WFME, WGTZ, WHOT, WIXX, WKRQ, WKCI, WKRQ, WLAN, WMXQ, WNNK, WNOK, WPRO, WPTY, WSSX, WTVR, WVKX, WWCK, WXIS, WXXS, WYCR, WYHY, WZNY, WZYP

♀ **684/70**
Gold (NPG/Warner Bros.)
Total Stations: 39
Heavy (40+): 0
Medium (20-39): 16 KDWB, KMXV, WAPE, WFHN, WHYI, WKRQ, WNOK, WPRO, WSTR, WSTW, WVKX, WWCK, WXLK, WYCR, WZJM, WZNY
Light (Under 20): 23
New Airplay This Week: 1 KHTO

LA BOUCHE 638/94
Be My Lover (RCA)
Total Stations: 49
Heavy (40+): 1 KZZU
Medium (20-39): 10 KBFM, KHFI, KHTO, KLRZ, WFHN, WIOQ, WKSE, WNVZ, WXXL, WZJM
Light (Under 20): 38
New Airplay This Week: 5 KHKS, KRQQ, WNOK, WNVZ, WSSX

RED HOT CHILI PEPPERS 605/35
My Friends (Warner Bros.)
Total Stations: 53
Heavy (40+): 2 KHTO, WHTZ

MOST NEW AIRPLAY THIS WEEK

	No. Of Stations
THE BEATLES <i>Free As A Bird (Apple/Capitol)</i>	35
BIG MOUNTAIN <i>Get Together (Giant)</i>	16
EVERYTHING BUT THE GIRL <i>Missing (Atlantic)</i>	15
NATALIE MERCHANT <i>Wonder (Elektra/EEG)</i>	15
DAVE MATTHEWS BAND <i>Satellite (RCA)</i>	9
OASIS <i>Wonderwall (Epic)</i>	9
P.M. DAWN <i>Sometimes I Miss You So Much (Gee Street/Island)</i>	9
SEAL <i>Don't Cry (ZTT/Sire/Warner Bros.)</i>	9

Medium (20-39): 8 KHHT, KKRZ, KQKQ, KUTQ, WDCG, WKXJ, WPST, WWSR
Light (Under 20): 43

BLUES TRAVELER 587/7
Hook (A&M)
Total Stations: 41
Heavy (40+): 2 WDDJ, WXXX
Medium (20-39): 9 KHHT, KUTQ, WEDJ, WNOK, WWSR, WWCK, WXIS, WZNY, WZYP
Light (Under 20): 30
New Airplay This Week: 1 WNCI

BETTER THAN EZRA 520/16
Rosealia (Elektra/EEG)
Total Stations: 40
Heavy (40+): 2 KLRZ, WPST
Medium (20-39): 4 KHHT, WDCG, WFBC, WKXJ
Light (Under 20): 34
New Airplay This Week: 1 WSNX

COLLECTIVE SOUL 516/67
The World I Know (Atlantic)
Total Stations: 40
Heavy (40+): 0
Medium (20-39): 9 KHHT, KUTQ, WBHT, WDDJ, WFBC, WHTZ, WKRZ, WPST, WWST
Light (Under 20): 31
New Airplay This Week: 4 WDCG, WEDJ, WFLZ, WNOK

XSCAPE 478/62
Who Can I Run To (So So Def/Columbia)
Total Stations: 55
Heavy (40+): 1 WFME
Medium (20-39): 7 KHHT, KKRZ, KLRZ, WFHN, WNVZ, WWCK, WZJM
Light (Under 20): 47
New Airplay This Week: 3 KDWB, WHOT, WZPL

SEAL 443/166
Don't Cry (ZTT/Sire/Warner Bros.)
Total Stations: 45
Heavy (40+): 0
Medium (20-39): 6 KRQQ, WBZZ, WKRZ, WNTQ, WSTR, WZNY
Light (Under 20): 39
New Airplay This Week: 9 KJYO, KKRZ, KLRZ, KRQQ, WKRZ, WNTQ, WSSX, WWCK, WZPL

NATALIE MERCHANT 367/206
Wonder (Elektra/EEG)
Total Stations: 35
Heavy (40+): 1 WXIS
Medium (20-39): 4 KHHT, KRBE, KUTQ, WKRZ
Light (Under 20): 30
New Airplay This Week: 15 KKLQ, KKRZ, WDDJ, WFLZ, WFME, WHTZ, WKRZ, WSSX, WSTR, WTVR, WWSR, WWCK, WXXX, WYCR, WZJM

P.M. DAWN 350/134
Sometimes I Miss You So Much (Gee Street/Island)
Total Stations: 30
Heavy (40+): 0

Medium (20-39): 7 KLRZ, KMXV, KRQQ, KZZU, WFHN, WKSS, WXIS
Light (Under 20): 23
New Airplay This Week: 9 KQKQ, WFHN, WFLZ, WGTZ, WHYI, WKSS, WSSX, WWSR, WZJM

MAX-A-MILLION 342/140
Sexual Healing (S.O.S./Zoo)
Total Stations: 39
Heavy (40+): 2 KBFM, KZZU
Medium (20-39): 5 KHHT, KQKQ, WNVZ, WWSR, WZJM
Light (Under 20): 32
New Airplay This Week: 4 KHFI, KHTO, KQKQ, WNVZ

HOOTIE & THE BLOWFISH 328/49
I Go Blind (Atlantic/Reprise)
Total Stations: 12
Heavy (40+): 3 WEDJ, WPST, WWST
Medium (20-39): 4 KKMZ, WABB, WKRQ, WSNX
Light (Under 20): 5
New Airplay This Week: 1 WFBC

OASIS 316/86
Wonderwall (Epic)
Total Stations: 37
Heavy (40+): 0
Medium (20-39): 3 KLRZ, KUTQ, WWCK
Light (Under 20): 34
New Airplay This Week: 9 KJYO, WBHT, WFLZ, WFME, WKXJ, WSNX, WSSX, WSTW, WZNY

ELTON JOHN 314/39
Blessed (Rocket/Island)
Total Stations: 35
Heavy (40+): 0
Medium (20-39): 0
Light (Under 20): 35
New Airplay This Week: 3 KKRZ, WFLY, WLAN

PAULA ABDUL 291/88
Ain't Never Gonna Give You Up (Captive/Virgin)
Total Stations: 22
Heavy (40+): 1 KMXV
Medium (20-39): 4 KHHT, KLRZ, WFHN, WKRQ
Light (Under 20): 17
New Airplay This Week: 7 KKRZ, KKRZ, WFLZ, WHOT, WKXJ, WNNK, WZYP

FOLK IMPLOSION 289/49
Natural One (London/Island)
Total Stations: 27
Heavy (40+): 1 KUTQ
Medium (20-39): 5 KHHT, KRBE, WEDJ, WHTZ, WPST
Light (Under 20): 21
New Airplay This Week: 3 WDCG, WSSX, WTVR

3T 288/64
Anything (MJJ/550 Music)
Total Stations: 28
Heavy (40+): 1 WNVZ

Medium (20-39): 4 KBFM, KLRZ, KQKQ, WFHN
Light (Under 20): 23
New Airplay This Week: 3 KHHT, KHHT, KMXV

SMASHING PUMPKINS 262/31
Bullet With Butterfly Wings (Virgin)
Total Stations: 23
Heavy (40+): 2 KUTQ, WHTZ
Medium (20-39): 3 WBHT, WDCG, WDDJ
Light (Under 20): 18
New Airplay This Week: 1 WPST

MONICA 253/37
Before You Walk Out Of My Life (Rowdy/Arista)
Total Stations: 21
Heavy (40+): 1 WNVZ
Medium (20-39): 3 KHHT, WFHN, WTVR
Light (Under 20): 17
New Airplay This Week: 5 KQKQ, WFLY, WFME, WVKX, WYCR

THE RENTALS 210/41
Friends Of P. (Maverick/Reprise)
Total Stations: 31
Heavy (40+): 0
Medium (20-39): 4 KHHT, KRBE, KUTQ, WPST
Light (Under 20): 27
New Airplay This Week: 2 KLRZ, WFME

BON JOVI 201/31
Lie To Me (Mercury)
Total Stations: 21
Heavy (40+): 0
Medium (20-39): 1 WYCR
Light (Under 20): 20
New Airplay This Week: 1 WZYP

PLANET SOUL 200/46
Set U Free (Strictly Rhythm)
Total Stations: 19
Heavy (40+): 1 KIIS
Medium (20-39): 3 KBFM, KHFI, KHKS
Light (Under 20): 15
New Airplay This Week: 1 KHKS

AFTER 7 192/13
Til You Do Me Right (Virgin)
Total Stations: 11
Heavy (40+): 2 KMXV, WZPL
Medium (20-39): 1 KHHT
Light (Under 20): 8

★ **DAVE MATTHEWS BAND 175/112**
Satellite (RCA)
Total Stations: 32
Heavy (40+): 0
Medium (20-39): 1 WXIS
Light (Under 20): 31
New Airplay This Week: 9 KJYO, KLRZ, WBHT, WDDJ, WHTZ, WSSX, WTVR, WWST, WZNY

SMASHING PUMPKINS 168/26
1979 (Virgin)
Total Stations: 10
Heavy (40+): 0
Medium (20-39): 4 KRBE, KUTQ, WHTZ, WPST
Light (Under 20): 6
New Airplay This Week: 2 WDCG, WZNY

THE MIGHTY DUB KATS 163/19
Magic Carpet Ride (Sm:)e/Profile)
Total Stations: 24
Heavy (40+): 1 KBFM
Medium (20-39): 2 KHKS, KIIS
Light (Under 20): 21

★ **LL COOL J 151/33**
Hey Lover (Def Jam/RAL/Island)
Total Stations: 19
Heavy (40+): 0
Medium (20-39): 2 KIIS, WFHN
Light (Under 20): 17
New Airplay This Week: 2 WKSE, WSNX

★ **SHAI 125/4**
Come With Me (Gasoline Alley/MCA)
Total Stations: 7
Heavy (40+): 2 WNVZ, WZJM
Medium (20-39): 0
Light (Under 20): 5
New Airplay This Week: 1 WFME

Airpower awarded to those records which attain 1500 detections for the first time. New airplay lists those stations registering six or more detections per week on a record for the first time. ★ Initial Impact: records appearing on this page for the first time.

SONG ACTIVITY REPORTS

For Week Ending November 26, 1995



684/70

ACE OF BASE Beautiful Life (Arista)

Table with columns for station, song title, and chart position for ACE OF BASE.

2233/77

THE BEATLES Free As A Bird (Apple/Capitol)

Table with columns for station, song title, and chart position for THE BEATLES.

705/704

BETTER THAN EZRA Rosealita (Elektra/EEG)

Table with columns for station, song title, and chart position for BETTER THAN EZRA.

520/16

BIG MOUNTAIN Get Together (Giant)

Table with columns for station, song title, and chart position for BIG MOUNTAIN.

977/419

BLUES TRAVELER Hook (A&M)

Table with columns for station, song title, and chart position for BLUES TRAVELER.

587/7

MARIAH CAREY & BOYZ II MEN One Sweet Day (Columbia)

Table with columns for station, song title, and chart position for MARIAH CAREY & BOYZ II MEN.

2991/504

COLLECTIVE SOUL The World I Know (Atlantic)

Table with columns for station, song title, and chart position for COLLECTIVE SOUL.

516/67

DEEP BLUE SOMETHING Breakfast At Tiffany's (RainMaker/Interscope)

Table with columns for station, song title, and chart position for DEEP BLUE SOMETHING.

2245/23

DEF LEPPARD When Love & Hate Collide (Mercury)

Table with columns for station, song title, and chart position for DEF LEPPARD.

859/95

EVERYTHING BUT THE GIRL Missing (Atlantic)

Table with columns for station, song title, and chart position for EVERYTHING BUT THE GIRL.

1431/477

GOO GOO DOLLS Name (Metal Blade/Warner Bros.)

Table with columns for station, song title, and chart position for GOO GOO DOLLS.

2875/153

GROOVE THEORY Tell Me (Epic)

Table with columns for station, song title, and chart position for GROOVE THEORY.

1115/111

HOOTIE & THE BLOWFISH Time (Atlantic)

Table with columns for station, song title, and chart position for HOOTIE & THE BLOWFISH.

1488/74

HOOTIE & THE BLOWFISH I Go Blind (Atlantic/Reprise)

Table with columns for station, song title, and chart position for HOOTIE & THE BLOWFISH I Go Blind.

328/49

Table with columns for station, song title, and chart position.

Table with columns for station, song title, and chart position.

Grid of song activity reports for artists including Whitney Houston, La Bouche, Madonna, Max A Million, and Natalie Merchant. Each entry includes station codes, chart positions, and gain information.

Grid of song activity reports for artists including Oasis, Joan Osborne, P.M. Dawn, The Presidents of the United States of America, and Red Hot Chili Peppers. Each entry includes station codes, chart positions, and gain information.

Grid of song activity reports for artists including Seal, Selena, TLC, Toad the Wet Sprocket, and Xscape. Each entry includes station codes, chart positions, and gain information.

POWER PLAYLISTS

For Week Ending November 26, 1995



Playlists supplied by Broadcast Data Systems. Radio Track service. Stations selected from panel of leading broadcasters in 125 radio markets, electronically monitored 24 hours a day, 7 days a week. Songs ranked by number of plays in monitored week.

HOT 97 WQHT New York PD: Steve Smith APD/MD: Tracy Cloherty. Playlist of 40 songs including Blahzay Blahzay, Mariah Carey, and Total.

POWER 106 KPWR Los Angeles PD: Michelle Mercer MD: Bruce St. James. Playlist of 40 songs including Groove Theory, Mariah Carey, and Planet Soul.

B96 WBBM Chicago PD: Todd Cavanah MD: Erik Bradley. Playlist of 40 songs including Everything But The Girl, Mariah Carey, and Le Click.

KMEL San Francisco PD: Michelle Santosuosso MD: Joey Arbagey. Playlist of 40 songs including Mariah Carey & Boyz II Men, Whitney Houston, and LL Cool J.

WPGC Washington, DC PD: Jay Stevens APD: Bob Holmcrans MD: Albie Dee. Playlist of 40 songs including Monica, LL Cool J, and Mary J. Blige.

WILD 107 KYLD San Francisco OM: Bob Hamilton PD: Michael Martin. Playlist of 40 songs including Click, Hurricane, and We & The Mass Circle.

JAM'N 94.5 WJMN Boston PD: Cadillac Jack MD: Cat Collins. Playlist of 40 songs including Mariah Carey & Boyz II Men, Coolio, and Monica.

THE BOX KBXX Houston PD: Rob Scorpio MD: Greg Head. Playlist of 40 songs including Mariah Carey, Fantasy, and LL Cool J.

POWER 96 WPOW Miami PD: Frank Walsh APD: Leo Vela MD: John Rogers. Playlist of 40 songs including La Bouche, Real McCoy, and Mariah Carey.

KUBE Seattle PD: Mike Tierney MD: Shellie Hart. Playlist of 40 songs including Mariah Carey, Fantasy, and Whitney Houston.

POWER 92 KXFR Phoenix PD: Don Parker MD: Brian Douglas. Playlist of 40 songs including Janet Jackson, Runaway, and Mariah Carey.

KGGI Riverside Acting PD/MD: Sonia Jimenez. Playlist of 40 songs including Groove Theory, Tell Me, and Mariah Carey.

FM 102 KSFM Sacramento PD: Rick Thomas MD: Trejo. Playlist of 40 songs including Shaggy, Boomabac, and Mariah Carey.

KTFM San Antonio PD: Cliff Tredway APD/MD: Charles Chavez. Playlist of 40 songs including Planet Soul, Set U Free, and S.F. Sankofa.

92Q WERO Baltimore PD: Russ Allen MD: Camille Cashwell. Playlist of 40 songs including Faith Evans, Soon As I Get Home, and Whitney Houston.

KS104 KOKS Denver PD: Mark Feather APD: Michael Hayes MD: John Dickenson. Playlist of 40 songs including Mariah Carey, Fantasy, and Janet Jackson.

Z90 XHTZ San Diego QM/PD: Lisa Vazquez APD/MD: Jeff Nelson. Playlist of 40 songs including LL Cool J, Hey Lover, and Mariah Carey.

B95 KBOS Fresno PD: Mark Adams MD: Mikey Freeman. Playlist of 40 songs including Mariah Carey, Fantasy, and Mariah Carey & Boyz II Men.

AIRPLAY
Monitor

BDS IMPACT™ **DETECTIONS**



★ ★ ★ **AIRPOWER** ★ ★ ★
(Minimum 600 detections for the first time)

MONICA **732/159**

Before You Walk Out Of My Life (Rowdy/Arista)
Total Stations: 23/Chart Move: 17-12
Heavy (40+ plays): 8 KBXX, KDON, KMEL, KYLD, WERQ, WJJS, WJMN, WPGC
Medium (20-39): 9 KBOS, KCAQ, KLUC, KPRR, KZFM, KZHT, WHHH, WWKX, XHTZ
Light (Under 20): 6

Total Plays/Gain

AIRPOWER BOUND

Total Plays/Gain

ACE OF BASE **507/17**

Beautiful Life (Arista)
Total Stations: 22/Chart Move: 20-18
Heavy (40+ plays): 7 KKFR, KKXX, KUBE, KZFM, KZHT, WBBM, WOJV
Medium (20-39): 5 KBOS, KPRR, KQKS, WJJS, WWKX
Light (Under 20): 10

D'ANGELO **498/11**

Cruisin' (EMI)
Total Stations: 24/Chart Move: 21-20
Heavy (40+): 3 KCAQ, WHHH, XHTZ
Medium (20-39): 7 KGGI, KKSS, KLUC, KTFM, KZHT, WERQ, WJJS
Light (Under 20): 14

MADONNA **427/35**

You'll See (Maverick/Warner Bros.)
Total Stations: 18/Chart Move: 26-25
Heavy (40+): 2 KKXX, XHTZ
Medium (20-39): 11 KKFR, KLUC, KPRR, KQKS, KTFM, KUBE, KZFM, KZHT, WBBM, WOJV, WPOW
Light (Under 20): 5
New Airplay This Week: 1 WJJS

SILK **421/41**

Hooked On You (Elektra/EEG)
Total Stations: 21/Chart Move: 27-26
Heavy (40+): 2 KDON, KZFM
Medium (20-39): 9 KBOS, KCAQ, KKFR, KLUC, KQKS, KZHT, WHHH, WJJS, WOJV
Light (Under 20): 10
New Airplay This Week: 1 KBOS

COOLIO **389/48**

Too Hot (Tommy Boy)
Total Stations: 26/Chart Move: 33-27
Heavy (40+): 0
Medium (20-39): 9 KBXX, KJMJ, KPRR, KPWR, KUBE, KZFM, KZHT, WHHH, WJMN
Light (Under 20): 17
New Airplay This Week: 2 WJMN, XHTZ

EVERYTHING BUT THE GIRL **348/27**

Missing (Atlantic)
Total Stations: 17/Chart Move: 36-28
Heavy (40+): 4 KKFR, KPRR, KUBE, WBBM
Medium (20-39): 3 KKXX, KTFM, WOJV
Light (Under 20): 10

JODECI **296/46**

Love U 4 Life (Uptown/MCA)
Total Stations: 14/Chart Move: Debut 36
Heavy (40+): 3 WERQ, WJMN, WPGC
Medium (20-39): 4 KMEL, KZFM, WHHH, WQHT
Light (Under 20): 7
New Airplay This Week: 1 KZFM

FAITH EVANS **251/9**

Soon As I Get Home (Bad Boy/Arista)
Total Stations: 9/Chart Move: Debut 40
Heavy (40+): 2 KBXX, WERQ

Medium (20-39): 3 WJMN, WPGC, WQHT
Light (Under 20): 4

CHART BOUND

Total Plays/Gain

BRANDY **222/70**

Sittin' Up In My Room (Arista)
Total Stations: 11
Heavy (40+): 1 WERQ
Medium (20-39): 4 KMEL, KTFM, WJMN, WPGC
Light (Under 20): 6
New Airplay This Week: 1 WQHT

QUINCY JONES FEAT. BRANDY & HEAVY D **221/122**

Rock With You (Qwest/Warner Bros.)
Total Stations: 11
Heavy (40+): 0
Medium (20-39): 6 KBXX, KJMJ, KPRR, KQKS, WERQ, WPGC
Light (Under 20): 5
New Airplay This Week: 4 KJMJ, KPRR, KTFM, WERQ

THA DOGG POUND **172/70**

Let's Play House (Death Row/Interscope/Priority)
Total Stations: 17
Heavy (40+): 1 WJMN
Medium (20-39): 1 KPWR
Light (Under 20): 15
New Airplay This Week: 3 WERQ, WHHH, XHTZ

Gold **162/7**

Gold (NPG/Warner Bros.)
Total Stations: 9
Heavy (40+): 1 KLUC
Medium (20-39): 3 KZHT, WJJS, WOJV
Light (Under 20): 5
New Airplay This Week: 2 KKFR, WWKX

IMMATURE **162/28**

We Got It (MCA)
Total Stations: 10
Heavy (40+): 0
Medium (20-39): 5 KMEL, WERQ, WHHH, WJJS, WPGC
Light (Under 20): 5
New Airplay This Week: 1 WWKX

BACKSTREET BOYS **156/12**

We've Got It Goin' On (Jive)
Total Stations: 16
Heavy (40+): 1 KLUC
Medium (20-39): 3 KZHT, WJJS, WOJV
Light (Under 20): 12
New Airplay This Week: 1 KQKS

KRIS KROSS **153/43**

Tonite's Tha Night (RuffHouse/Columbia)
Total Stations: 17
Heavy (40+): 1 WJMN
Medium (20-39): 1 KBXX
Light (Under 20): 15
New Airplay This Week: 1 WWKX

MOST NEW AIRPLAY THIS WEEK

No. Of Stations

MICHAEL JACKSON **4**

This Time Around (Epic)

QUINCY JONES FEAT. BRANDY & HEAVY D **4**

Rock With You (Qwest/Warner Bros.)

J'SON **4**

Take A Look (Hollywood)

R. KELLY **4**

You Remind Me Of Something (Jive)

JANET JACKSON **3**

Twenty Foreplay (A&M)

KOOL G RAP **3**

Fast Life (Cold Chillin'/Epic Street/Epic)

P.M. DAWN **3**

Sometimes I Miss You So Much (Gee Street/Island)

THA DOGG POUND **3**

Let's Play House (Death Row/Interscope/Priority)

R. KELLY **152/70**

Down Low (Jive)

Total Stations: 8
Heavy (40+): 2 KBXX, WJMN
Medium (20-39): 1 WPGC
Light (Under 20): 5

Medium (20-39): 3 WERQ, WJMN, WJMN
Light (Under 20): 8
New Airplay This Week: 1 WPGC

XSCAPE **151/52**

Do You Want To (So So Def/Columbia)

Total Stations: 5
Heavy (40+): 1 WJMN
Medium (20-39): 3 KBXX, WERQ, WPGC
Light (Under 20): 1

BIG MOUNTAIN **151/64**

Get Together (Giant)

Total Stations: 8
Heavy (40+): 1 KDON
Medium (20-39): 3 KKFR, KZHT, WJJS
Light (Under 20): 4
New Airplay This Week: 1 WOJV

LV. **147/9**

Throw Your Hands Up (Tommy Boy)

Total Stations: 15
Heavy (40+): 1 KPWR
Medium (20-39): 1 KMEL
Light (Under 20): 13

TOTAL **147/21**

No One Else (Bad Boy/Arista)

Total Stations: 16
Heavy (40+): 1 WERQ
Medium (20-39): 1 WQHT
Light (Under 20): 14

KOOL G RAP **147/68**

Fast Life (Cold Chillin'/Epic Street/Epic)

Total Stations: 16
Heavy (40+): 0
Medium (20-39): 4 KPWR, WERQ, WJMN, WQHT
Light (Under 20): 12
New Airplay This Week: 3 KPWR, KYLD, KZHT

GOODIE MOB **123/5**

Cell Therapy (LaFace/Arista)

Total Stations: 10
Heavy (40+): 1 WJMN
Medium (20-39): 2 KBXX, WPGC
Light (Under 20): 7
New Airplay This Week: 2 KYLD, WQHT

TONI BRAXTON **117/41**

Let It Flow (Arista)

Total Stations: 11
Heavy (40+): 0

MARY J. BLIGE **115/56**

Not Gon' Cry (Arista)

Total Stations: 4
Heavy (40+): 1 WPGC
Medium (20-39): 2 WERQ, WJMN
Light (Under 20): 1
New Airplay This Week: 1 WJMN

CYPRESS HILL **106/13**

Throw Your Set In The Air (Ruffhouse/Columbia)

Total Stations: 19
Heavy (40+): 0
Medium (20-39): 1 KPWR
Light (Under 20): 18

J'SON **103/51**

Take A Look (Hollywood)

Total Stations: 10
Heavy (40+): 0
Medium (20-39): 0
Light (Under 20): 10
New Airplay This Week: 4 KCAQ, KLUC, KZHT, WHHH

L.B.C. CREW **100/20**

Beware Of My Crew (Jac-Mac/Warner Bros.)

Total Stations: 8
Heavy (40+): 1 KPWR
Medium (20-39): 0
Light (Under 20): 7

LE CLICK **97/16**

Tonight Is The Night (Logic)

Total Stations: 13
Heavy (40+): 1 WBBM
Medium (20-39): 0
Light (Under 20): 12

JANET JACKSON **84/56**

Twenty Foreplay (A&M)

Total Stations: 8
Heavy (40+): 0
Medium (20-39): 1 KUBE
Light (Under 20): 7
New Airplay This Week: 3 WERQ, WPOW, WQHT

MICHAEL JACKSON **82/71**

This Time Around (Epic)

Total Stations: 7
Heavy (40+): 1 KDON
Medium (20-39): 0
Light (Under 20): 6
New Airplay This Week: 4 KDON, KZHT, WOJV, WPOW

KAUSION **80/11**

What You Wanna Do? (Lench Mob/Priority)

Total Stations: 3
Heavy (40+): 1 KYLD
Medium (20-39): 1 KMEL
Light (Under 20): 1

LOST BOYZ **77/2**

Jeeps, Lex Coups, Bimaz & Benz (Uptown/MCA)

Total Stations: 5
Heavy (40+): 1 WJMN
Medium (20-39): 0
Light (Under 20): 4

TWINZ **69/31**

Eastside LB (G Funk/RAL/Island)

Total Stations: 3
Heavy (40+): 1 KYLD
Medium (20-39): 1 KPWR
Light (Under 20): 1
New Airplay This Week: 1 KYLD

TLC **62/8**

This Is How It Works (Arista)

Total Stations: 3
Heavy (40+): 0
Medium (20-39): 2 KUBE, WPGC
Light (Under 20): 1

SERGIO **61/15**

In & Out Of Love (Critique)

Total Stations: 4
Heavy (40+): 0
Medium (20-39): 2 WOJV, WWKX
Light (Under 20): 2

YVETTE MICHELLE **58/21**

Everyday & Everynight (Loud/RCA)

Total Stations: 4
Heavy (40+): 0
Medium (20-39): 2 WJMN, WQHT
Light (Under 20): 2
New Airplay This Week: 2 KCAQ, WJMN

JUNIOR M.A.F.I.A. **58/25**

Get Money (Undeas/Big Beat/Atlantic)

Total Stations: 10
Heavy (40+): 0
Medium (20-39): 1 WJMN
Light (Under 20): 9
New Airplay This Week: 1 WPGC

ALEX PARTY **56/1**

Don't Give Me Your Life (Frrr/London)

Total Stations: 7
Heavy (40+): 0
Medium (20-39): 1 KKFR
Light (Under 20): 6

CAMILLE **56/18**

All The Love You Need (Fortune-Five)

Total Stations: 4
Heavy (40+): 0
Medium (20-39): 1 WBBM
Light (Under 20): 3
New Airplay This Week: 2 KPRR, WWKX

TEMPLE OF THE GROOVE **55/37**

Treat Me Right (One Planet)

Total Stations: 20
Heavy (40+): 0
Medium (20-39): 0
Light (Under 20): 20
New Airplay This Week: 1 WPOW

DENINE **52/27**

All Cried Out (Metropolitan)

Total Stations: 4
Heavy (40+): 0
Medium (20-39): 1 KTFM
Light (Under 20): 3
New Airplay This Week: 2 WWKX, XHTZ

RHYTHM-CROSSOVER



SONG ACTIVITY REPORTS



For Week Ending November 26, 1995

Detailed song tracking information for the last 3 weeks for all songs showing increased play this week. Total plays and gain do not include video plays. Markets listed in order of population.

Grid of 20 song activity report boxes. Each box contains song title, artist, album, chart position, and station data for various markets. Examples include Gold (NPG/Warner Bros.), ACE OF BASE, BACKSTREET BOYS, BRANDY, MARIAH CAREY & BOYZ II MEN, COOLIO, THA DOGG POUND, FAITH EVANS, EVERYTHING BUT THE GIRL, GOODIE MOB, WHITNEY HOUSTON, IMMATURE, JODECI, QUINCY JONES FEAT. BRANDY & HEAVY D, R. KELLY, R. KELLY, KOOL G RAP, KRIS KROSS, L.V., LA BOUCHE, LL COOL J, MADONNA, MONICA, PLANET SOUL, SILK, TLC, TOTAL, and XSCAPE.

NATALIE MERCHANT



WONDER

The new single and video from her platinum solo debut **TIGERLILY** and the follow-up to the #1 AAA & Top 10 Pop, Alternative & AC hit

"Carnival."

#1 MOST ADDED AT TOP 40 ALREADY ON:

**KHMX WOMX KMGQ
WTMX KYSR KALC**

Management: Jon Landau and Barbara Carr / Jon Landau Management

On Elektra compact discs and cassettes.

<http://www.elektra.com>

1-800

© 1995 Elektra Entertainment Group, a division of Warner Communications Inc., A Time Warner Company.

ADULT

POWER PLAYLISTS

AIRPLAY Monitor

For Week Ending
November 26, 1995

Playlists supplied by Broadcast Data Systems. Radio Track service. Stations selected from panel of leading broadcasters in 135 radio markets, electronically monitored 24 hours a day, 7 days a week. Songs ranked by number of plays in monitored week.

WPLJ		MIX 105		STAR 98.7	
PD: Scott Shannon APD/MD: Mike Preston		PD: Steve Weed MD: Linda Silver		PD: Dave Beasing MD: Angela Perrelli	
New York		New York		Los Angeles	
TW	LW	TW	LW	TW	LW
1	Del Amitri, Roll To Me	1	Sophie B. Hawkins, As I Lay Me Down	1	Gin Blossoms, Till I Hear It From You
2	Gin Blossoms, Till I Hear It From You	2	Blues Traveler, Run Around	2	Blues Traveler, Run Around
3	Blues Traveler, Run Around	3	Elton John, Blessed	3	Take That, Back For Good
4	Hootie & The Blowfish, Only Wanna Be With You	4	Take That, Back For Good	4	Better Than Ezra, Rosalita
5	Deep Blue Something, Breakfast At Tiffan	5	Mariah Carey & Boyz II Men, One Sweet Day	5	Deep Blue Something, Breakfast At Tiffan
6	Sophie B. Hawkins, As I Lay Me Down	6	Madonna, You'll See	6	Go Go Dolls, Name
7	Beatles, Free As A Bird	7	Natalie Merchant, Carnival	7	Melissa Etheridge, Your Little Secret
8	Seal, Kiss From A Rose	8	Gin Blossoms, Till I Hear It From You	8	Joan Osborne, One Of Us
9	Del Lppard, When Love & Hate Collide	9	Seal, Kiss From A Rose	9	Edwyn Collins, A Girl Like You
10	Take That, Back For Good	10	Deep Blue Something, Breakfast At Tiffan	10	Bonnie Raitt W/Bryan Adams, Rock Steady
11	Everything But The Girl, Missing	11	Del Amitri, Roll To Me	11	Del Amitri, Roll To Me
12	Alanis Morissette, Hand In My Pocket	12	Meat Loaf, I'd Lie For You	12	Seal, Don't Cry
13	Natalie Merchant, Carnival	13	All-4-One, I Can Love You Like That	13	Toad The Wet Sprocket, Good Intentions
14	Madonna, You'll See	14	Hootie & The Blowfish, Time	14	Pretenders, I'll Stand By You
15	Go Go Dolls, Name	15	Corrs, Runaway	15	Sophie B. Hawkins, As I Lay Me Down
16	The Rembrandts, I'll Be There For You	16	Bon Jovi, Lie To Me	16	Hootie & The Blowfish, Time
17	Elton John, Blessed	17	Ace Of Base, Beautiful Life	17	Blues Traveler, Hook
18	Sarah McLachlan, I Will Remember You	18	Go Go Dolls, Name	18	Seal, Kiss From A Rose
19	Hootie & The Blowfish, Time	19	Slave Winwood, Reach For The Light	19	Presidents Of The United States, Lump
20	Melissa Etheridge, I Want To Come Over	20	Melissa Etheridge, I Want To Come Over	20	Spin Doctors, Two Princes
21	Romanticos, What I Like About You	21	Hootie & The Blowfish, Only Wanna Be With You	21	Green Day, When I Come Around
22	Meat Loaf, I'd Lie For You	22	Dave Matthews Band, Ants Marching	22	The Cranberries, Dreams
23	J. Geils Band, Centerfold	23	The Rembrandts, I'll Be There For You	23	Collective Soul, December
24	U2, Pride Lov	24	Amy Grant/Vince Gill, House Of Love	24	Soul Asylum, Runaway Train
25	Bruce Springsteen, Hungry Heart	25	Sarah McLachlan, I Will Remember You	25	Red Hot Chili Peppers, My Friends
26	Tom Cochrane, I Wish You Well	26	Gloria Estefan, Everlasting Love	26	Hootie & The Blowfish, Let Her Cry
27	Bonnie Raitt W/Bryan Adams, Rock Steady	27	Del Lppard, When Love & Hate Collide	27	Natalie Merchant, Carnival
28	R.E.M., The One I Love	28	Bryan Adams, Have You Ever Really Loved	28	Chris Isaak, Somebody's Crying
29	Survivor, High On You	29	Gin Blossoms, Found Out About You	29	Counting Crows, Mr. Jones
30	Huey Lewis & The News, Do You Believe In	30	Melissa Etheridge, I'm The Only One	30	UB40, Here I Am

STAR 104.5		B101		WPNT	
PD: Chuck Knight MD: Joe Proke		PD: Jim Ryan		PD: Lorrin Palagi MD: Lynne Murray	
Philadelphia		Philadelphia		Chicago	
TW	LW	TW	LW	TW	LW
1	Jon B. Feet, Babyface, Someone To Love	1	All-4-One, I Can Love You Like That	1	Blues Traveler, Run Around
2	TLC, Waterfalls	2	Vanessa Williams, Colors Of The Wind	2	Seal, Kiss From A Rose
3	Janet Jackson, Runaway	3	Sophie B. Hawkins, As I Lay Me Down	3	Martin Page, In The House Of Stone And L
4	After 7, 'Til You Do Me Right	4	Seal, Kiss From A Rose	4	Hootie & The Blowfish, Only Wanna Be With You
5	Mariah Carey & Boyz II Men, One Sweet Day	5	Hootie & The Blowfish, Only Wanna Be With You	5	Del Amitri, Roll To Me
6	Seal, Kiss From A Rose	6	Take That, Back For Good	6	All-4-One, I Can Love You Like That
7	Real McCoy, Come And Get Your Love	7	Michael Jackson, You Are Not Alone	7	Sophie B. Hawkins, As I Lay Me Down
8	Fun Factory, I Wanna Be With U	8	Mariah Carey & Boyz II Men, One Sweet Day	8	Gin Blossoms, Till I Hear It From You
9	Frangie Belle, I Could Be 'Im Falling	9	Selena, I Could Fall In Love	9	Dionne Farris, I Know
10	Madonna, Don't Stop	10	Blessid Union Of Souls, I Believe	10	Collective Soul, December
11	Mariah Carey, Fantasy	11	Sarah McLachlan, I Will Remember You	11	Nicki French, Total Eclipse Of The Sun
12	Michael Jackson, Earth Song	12	Whitney Houston, Exhale	12	Madonna, Take A Bow
13	Whitney Houston, Exhale	13	Jim Brickman, Angel Eyes	13	The Rembrandts, I'll Be There For You
14	Everything But The Girl, Missing	14	Madonna, You'll See	14	Pretenders, I'll Stand By You
15	Diana Ross, Take Me Higher	15	Beatles, Free As A Bird	15	Janet Jackson, Runaway
16	Ace Of Base, Beautiful Life	16	Tina Turner, Golden Eye	16	Beatles, Free As A Bird
17	Garland Lamer, I'd Give Anything	17	Boyz II Men, Water Runs Dry	17	Selena, I Could Fall In Love
18	All-4-One, I Can Love You Like That	18	Des'ree, You Gotta Be	18	Vanessa Williams, Colors Of The Wind
19	Vanessa Williams, Colors Of The Wind	19	Elton John, Blessed	19	Go West, King Of Wishful Thinking
20	4 P.M., Sukiyaki	20	Elton John, Blessed	20	Natalie Merchant, Carnival
21	Michael Jackson, You Are Not Alone	21	Mariah Carey, Fantasy	21	Whitney Houston, Exhale
22	The Whispers, Rock Steady	22	Del Amitri, Roll To Me	22	Melissa Etheridge, Come To My Window
23	Madonna, Secret	23	Vanessa Williams, The Sweetest Days	23	Bonnie Raitt W/Bryan Adams, Rock Steady
24	Jon Secada, If You Go	24	Peter Cetera & Crystal Bernard, Forever	24	Amy Grant, Every Heartbeat
25	Phil Collins, You Can't Hurry Love	25	The Rembrandts, I'll Be There For You	25	Michael Jackson, You Are Not Alone
26	James Ingram, I Don't Believe In Us	26	Janet Jackson, Runaway	26	R.E.M., Lose My Religion
27	Jon Secada, Do You Believe In Us	27	Bryan Adams, Have You Ever Really Loved	27	Spin Doctors, Two Princes
28	Maxi Priest, Close To You	28	Pretenders, I'll Stand By You	28	Hootie & The Blowfish, Let Her Cry
29	Luther Vandross, Stop To Love	29	Elton John, Circle Of Life	29	Mariah Carey, Fantasy
30	Toni Braxton, Love Shoulda Brought You H	30	Everything But The Girl, Missing		

MIX 101.9		Q95		MIX 107.3	
PD: Barry James APD/MD: Jaime Kartak		PD: Tom O'Brien MD: Fred Buchalter		OM/PD: Randy James MD: Carol Parker	
Chicago		Detroit		Washington, DC	
TW	LW	TW	LW	TW	LW
1	Gin Blossoms, Till I Hear It From You	1	Sophie B. Hawkins, As I Lay Me Down	1	Gin Blossoms, Till I Hear It From You
2	k.d. lang, If I Were You	2	Blues Traveler, Run Around	2	Natalie Merchant, Carnival
3	Collective Soul, December	3	Hootie & The Blowfish, Only Wanna Be With You	3	Take That, Back For Good
4	Bruce Hornsby, Walk In The Sun	4	Seal, Kiss From A Rose	4	Blues Traveler, Run Around
5	Lisa Loeb & Nine Stories, Do You Sleep?	5	Meat Loaf, I'd Lie For You	5	Beatles, Free As A Bird
6	Go Go Dolls, Name	6	Whitney Houston, Exhale	6	Hootie & The Blowfish, Time
7	Meat Loaf, I'd Lie For You	7	Elton John, Blessed	7	Sophie B. Hawkins, As I Lay Me Down
8	Deep Blue Something, Breakfast At Tiffan	8	Take That, Back For Good	8	Del Amitri, Roll To Me
9	Blues Traveler, Run Around	9	Janet Jackson, Runaway	9	Hootie & The Blowfish, Only Wanna Be With You
10	Seal, Kiss From A Rose	10	Natalie Merchant, Carnival	10	Mariah Carey & Boyz II Men, One Sweet Day
11	Alanis Morissette, Hand In My Pocket	11	Del Amitri, Roll To Me	11	Seal, Kiss From A Rose
12	Dave Matthews Band, Ants Marching	12	Madonna, You'll See	12	TLC, Waterfalls
13	Jude Cole, Believe In Me	13	Mariah Carey & Boyz II Men, One Sweet Day	13	Janet Jackson, Runaway
14	Bonnie Raitt W/Bryan Adams, Rock Steady	14	Gin Blossoms, Till I Hear It From You	14	Toad The Wet Sprocket, Good Intentions
15	Del Amitri, Roll To Me	15	Blessid Union Of Souls, Let Me Be The On	15	Mariah Carey, Fantasy
16	Martin Page, In The House Of Stone And L	16	All-4-One, I Can Love You Like That	16	Go Go Dolls, Name
17	Hootie & The Blowfish, Only Wanna Be With You	17	Seal, Prayer For The Dying	17	Madonna, You'll See
18	Natalie Merchant, Wonder	18	Martin Page, In The House Of Stone And L	18	Elton John, Blessed
19	Natalie Merchant, Carnival	19	Corrs, Runaway	19	All-4-One, I Can Love You Like That
20	Seal, Prayer For The Dying	20	Des'ree, You Gotta Be	20	Collective Soul, December
21	John Mellencamp, Wild Night	21	Jude Cole, Believe In Me	21	Martin Page, In The House Of Stone And L
22	Melissa Etheridge, Come To My Window	22	The Rembrandts, I'll Be There For You	22	The Rembrandts, I'll Be There For You
23	Mr. Big, To Be With You	23	Dionne Farris, I Know	23	Amie Lomax, Walking On Broken Glass
24	Hootie & The Blowfish, Let Her Cry	24	Melissa Etheridge, I'm The Only One	24	Melissa Etheridge, Come To My Window
25	Joan Osborne, One Of Us	25	Hootie & The Blowfish, Let Her Cry	25	Amy Grant, Big Yellow Taxi
26	The Cranberries, Linger	26	All-4-One, I Sweet/Jurane	26	Melissa Etheridge, I'm The Only One
27	Melissa Etheridge, I'm The Only One	27	Boyz II Men, I'll Make Love To You	27	Pretenders, I'll Stand By You
28	Blind Melon, No Rain	28	Spin Doctors, Two Princes	28	Meat Loaf, I'd Lie For You
29	Red Hot Chili Peppers, Under The Bridge	29	Billy Joel, The River Of Dreams	29	Counting Crows, Mr. Jones
30	U2, One	30	Joshua Kadison, Jesse	30	Gin Blossoms, Found Out About You

MIX 98.5		K101		KS95	
PD: Greg Strassell MD: Tim Richards		PD: Dave Shakes MD: Connie Lindell		PD: Bob Davis MD: Leighton Peck	
Boston		San Francisco		Minneapolis	
TW	LW	TW	LW	TW	LW
1	Janet Jackson, Runaway	1	Pretenders, I'll Stand By You	1	Blues Traveler, Run Around
2	Take That, Back For Good	2	Seal, Kiss From A Rose	2	TLC, Waterfalls
3	All-4-One, I Can Love You Like That	3	Take That, Back For Good	3	Hootie & The Blowfish, Only Wanna Be With You
4	Hootie & The Blowfish, Only Wanna Be With You	4	Selena, I Could Fall In Love	4	Del Amitri, Roll To Me
5	Sophie B. Hawkins, As I Lay Me Down	5	Sophie B. Hawkins, As I Lay Me Down	5	Sophie B. Hawkins, As I Lay Me Down
6	Blues Traveler, Run Around	6	Jon B. Feet, Babyface, Someone To Love	6	Collective Soul, December
7	Seal, Kiss From A Rose	7	Madonna, You'll See	7	Janet Jackson, Runaway
8	Annie Lennox, No More "I Love You's"	8	Corrs, Runaway	8	Go Go Dolls, Name
9	Madonna, You'll See	9	Hootie & The Blowfish, Only Wanna Be With You	9	Seal, Kiss From A Rose
10	Blessid Union Of Souls, Let Me Be The On	10	All-4-One, I Can Love You Like That	10	Deep Blue Something, Breakfast At Tiffan
11	Del Amitri, Roll To Me	11	Chris Isaak, Somebody's Crying	11	Hootie & The Blowfish, Hold My Hand
12	Mariah Carey & Boyz II Men, One Sweet Day	12	Janet Jackson, Runaway	12	Blessid Union Of Souls, I Believe
13	Everything But The Girl, Missing	13	Mariah Carey, Fantasy	13	Gin Blossoms, Till I Hear It From You
14	Selena, I Could Fall In Love	14	Mariah Carey & Boyz II Men, One Sweet Day	14	The Rembrandts, I'll Be There For You
15	Whitney Houston, Exhale	15	Whitney Houston, Exhale	15	Everything But The Girl, Missing
16	Pretenders, I'll Stand By You	16	Selena, Dreaming Of You	16	All-4-One, I Can Love You Like That
17	Des'ree, You Gotta Be	17	Vanessa Williams, Colors Of The Wind	17	Real McCoy, Another Night
18	Jon Secada, If You Go	18	Meat Loaf, I'd Lie For You	18	Mariah Carey, Fantasy
19	Boyz II Men, I'll Make Love To You	19	Beatles, Free As A Bird	19	Spin Doctors, Two Princes
20	The Rembrandts, I'll Be There For You	20	Huey Lewis & The News, It's Alright	20	Toad The Wet Sprocket, All I Want
21	Elton John, Blessed	21	4 P.M., Sukiyaki	21	Selena, I Could Fall In Love
22	Sheryl Crow, All I Wanna Do	22	Aaron Neville, Can't Stop My Heart	22	Toad The Wet Sprocket, Good Intentions
23	Madonna, Take A Bow	23	Dan Hartman, I Can Dream About You	23	Soul Asylum, Runaway Train
24	Harry Connick, Jr., (I Could Only) Whisp	24	D.M.D., If You Leave	24	Melissa Etheridge, I'm The Only One
25	Corrs, Runaway	25	Ace Of Base, Lie	25	Dionne Farris, I Know
26	Nicki French, Total Eclipse Of The Sun	26	Ace Of Base, Lie	26	Counting Crows, Mr. Jones
27	Tina Turner, I Don't Wanna Fight	27	Melissa Etheridge, Come To My Window	27	Sheryl Crow, All I Wanna Do
28	Gin Blossoms, Till I Hear It From You	28	Jon Secada, If You Go	28	Melissa Etheridge, Come To My Window
29	Jon Secada, Do You Believe In Us	29	Bryan Adams, Have You Ever Really Loved	29	Mr. Big, To Be With You
30	Melissa Etheridge, Come To My Window	30	Martin Page, In The House Of Stone And L	30	Martin Page, In The House Of Stone And L

BDS IMPACT

AIRPOWER
(Minimum 500 detections for the first time)

GOO GOO DOLLS 622/117
Name (Metal Blade/Warner Bros.)
Total Stations: 36/Chart Move: 21-18
Heavy (30+ plays): 10 KALC, KSTP, KWMX, KYSR, WEZF, WKDD, WQAL, WQLH, WTMX, WZPK
Medium (15-29): 8 KDMX, KFMB, KSTZ, WKTI, WMTX, WMXV, WRQX, WVTY
Light (Under 15): 18
New Airplay This Week: 1 WVAF

★ THE BEATLES 604/602
Free As A Bird (Apple/Capitol)
Total Stations: 53/Chart Move: Debut 19
Heavy (30+): 2 KPLZ, WKTI
Medium (15-29): 15 KGBX, KIOI, WAHR, WJDX, WKZL, WMC, WMJQ, WMTX, WMXL, WPNT, WRMF, WRQX, WVAF, WWSN, WYYY
Light (Under 15): 36
New Airplay This Week: 35 KGBX, KIOI, KISN, KPLZ, KSTZ, KYKY, WAEV, WAHR, WALK, WBEB, WBLI, WBMX, WCSO, WGSY, WIOG, WJDX, WKDD, WKTI, WKZL, WLJT, WMC, WMJQ, WMTX, WMXB, WMXL, WPLJ, WPNT, WQAL, WRMF, WRQX, WTFM, WVAF, WWSN, WYYY, WZPK

AIRPOWER BOUND

Total Plays/Gain

TOAD THE WET SPROCKET 509/30
Good Intentions (Columbia/Reprise)
Total Stations: 35/Chart Move: 23-23
Heavy (30+ plays): 6 KALC, KFMB, KWMX, KYSR, WQLH, WZPK
Medium (15-29): 10 KDMX, KHMV, KPLZ, KSTP, WAHR, WEZF, WKDD, WMXL, WQAL, WRQX
Light (Under 15): 19
New Airplay This Week: 1 WKTI

HOOTIE & THE BLOWFISH 506/98
Time (Atlantic)
Total Stations: 35/Chart Move: 26-24
Heavy (30+): 5 KFMB, KWMX, WMTX, WQLH, WWSN
Medium (15-29): 10 KDMX, KHMV, KSTZ, KYSR, WKDD, WKZL, WMXL, WMXV, WQAL, WRQX
Light (Under 15): 20
New Airplay This Week: 1 WMXB

DEEP BLUE SOMETHING 466/55
Breakfast At Tiffany's (RainMaker/Interscope)
Total Stations: 24/Chart Move: 25-26
Heavy (30+): 5 KALC, KFMB, KWMX, KYSR, WZPK
Medium (15-29): 11 KHMV, KPLZ, KSTP, WKDD, WKTI, WMTX, WMXL, WMXV, WTMX, WVTY, WYYY
Light (Under 15): 8
New Airplay This Week: 2 KPLZ, WRQX

BONNIE RAITT WITH BRYAN ADAMS 362/0
Rock Steady (Capitol)
Total Stations: 27/Chart Move: 31-30
Heavy (30+): 1 KYSR
Medium (15-29): 9 KGBY, KSTZ, KYKY, WAEV, WKTI, WMXB, WPNT, WTMX, WWSN
Light (Under 15): 17
New Airplay This Week: 2 KISN, WMC

EVERYTHING BUT THE GIRL 306/61
Missing (Atlantic)
Total Stations: 20/Chart Move: 35-34
Heavy (30+): 3 KHMV, KPLZ, WQLH
Medium (15-29): 4 KDMX, KSTP, WBMX, WYXR
Light (Under 15): 13
New Airplay This Week: 5 KALC, KSTP, WKTI, WMC, WTMX

SEAL 216/84
Don't Cry (ZTT/Sire/Warner Bros.)
Total Stations: 17/Chart Move: Debut 36
Heavy (30+): 1 KYSR
Medium (15-29): 7 KHMV, KPLZ, KWMX, KYKY, WJDX, WWSN, WZPK
Light (Under 15): 9
New Airplay This Week: 4 KALC, KYKY, WKDD, WKTI

JOAN OSBORNE 201/22
One Of Us (Blue Gorilla/Mercury)
Total Stations: 13/Chart Move: 38-38
Heavy (30+): 3 KALC, KWMX, KYSR
Medium (15-29): 4 KFMB, WTMX, WVTY, WZPK
Light (Under 15): 6

CELINE DION 183/16
(You Make Me Feel Like) A Natural Woman (Lava/Atlantic)
Total Stations: 14/Chart Move: Debut 40
Heavy (30+): 0
Medium (15-29): 6 KGBX, WGSY, WJDX, WLHT, WMJQ, WMYI
Light (Under 15): 8
New Airplay This Week: 1 KTHT

MELISSA ETHERIDGE 138/4
Your Little Secret (Island)
Total Stations: 12
Heavy (30+): 1 KYSR
Medium (15-29): 4 KSTZ, KWMX, WKTI, WZPK
Light (Under 15): 7

SELENA 116/9
Dreaming Of You (EMI Latin/EMI)
Total Stations: 15
Heavy (30+): 1 KTHT
Medium (15-29): 2 KIOI, WJDX
Light (Under 15): 12

JANN ARDEN 112/25
Insensitive (A&M)
Total Stations: 8
Heavy (30+): 0
Medium (15-29): 4 KDMX, KHMV, WEZF, WKTI
Light (Under 15): 4
New Airplay This Week: 2 KALC, WBMX

MOST NEW AIRPLAY THIS WEEK

THE BEATLES 35
Free As A Bird (Apple/Capitol)
BRUCE HORNSBY 7
Swing Street (RCA)
EVERYTHING BUT THE GIRL 5
Missing (Atlantic)
SEAL 4
Don't Cry (ZTT/Sire/Warner Bros.)
NATALIE MERCHANT 3
Wonder (Elektra/EEG)

★ BRUCE HORNSBY 108/61
Swing Street (RCA)
Total Stations: 12
Heavy (30+): 0
Medium (15-29): 1 WMJQ
Light (Under 15): 11
New Airplay This Week: 7 KDMX, WAHR, WDEF, WJDX, WKDD, WLHT, WZPK

STEVE WINWOOD 88/8
Reach For The Light (MCA)
Total Stations: 8
Heavy (30+): 0
Medium (15-29): 2 WMJQ, WMXV
Light (Under 15): 6
New Airplay This Week: 1 WLHT

★ BIG MOUNTAIN 82/39
Get Together (Giant)
Total Stations: 13
Heavy (30+): 1 WEZF
Medium (15-29): 1 WZPK
Light (Under 15): 11
New Airplay This Week: 2 KTHT, WMYI

BETTER THAN EZRA 80/2
Good (Elektra/EEG)
Total Stations: 5
Heavy (30+): 1 KFMB
Medium (15-29): 1 KALC
Light (Under 15): 3

EDWIN MCCAIN 76/2
Solitude (Lava/Atlantic)
Total Stations: 8
Heavy (30+): 0
Medium (15-29): 3 KALC, KWMX, WWSN
Light (Under 15): 5

★ TLC 73/39
Diggin' On You (LaFace/Arista)
Total Stations: 5
Heavy (30+): 1 WQLH
Medium (15-29): 0
Light (Under 15): 4
New Airplay This Week: 1 KWMX

★ MICHAEL BOLTON 63/34
A Love So Beautiful (Columbia)
Total Stations: 8
Heavy (30+): 8

THIS WEEK	LAST WEEK	WEEKS ON	TITLE/LABEL	ARTIST	TW	LW	DETECTIONS
			★ ★ ★ No. 1 ★ ★ ★				
1	1	29	AS I LAY ME DOWN COLUMBIA	4 wks at No. 1 SOPHIE B. HAWKINS	1568	1718	
2	4	18	BACK FOR GOOD ARISTA	TAKE THAT	1521	1544	
3	2	24	KISS FROM A ROSE ZTT/SIRE/WARNER BROS.	SEAL	1460	1615	
4	3	21	ONLY WANNA BE WITH YOU ATLANTIC	HOOTIE & THE BLOWFISH	1419	1557	
5	5	17	ROLL TO ME A&M	DEL AMITRI	1411	1438	
6	6	27	RUN-AROUND A&M	BLUES TRAVELER	1223	1256	
7	7	15	RUNAWAY A&M	JANET JACKSON	1149	1218	
8	9	17	TIL I HEAR IT FROM YOU A&M	GIN BLOSSOMS	1119	1115	
9	8	14	CARNIVAL ELEKTRA/EEG	NATALIE MERCHANT	1116	1152	
10	12	4	ONE SWEET DAY COLUMBIA	MARIAH CAREY & BOYZ II MEN	1093	963	
11	14	5	YOU'LL SEE MAVERICK/WARNER BROS.	MADONNA	1069	914	
12	11	8	BLESSED ROCKET/ISLAND	ELTON JOHN	1069	970	
13	13	6	EXHALE (SHOOP SHOOP) ARISTA	WHITNEY HOUSTON	990	927	
14	10	27	I CAN LOVE YOU LIKE THAT BLITZZ/ATLANTIC	ALL-4-ONE	964	1074	
15	16	29	I'LL BE THERE FOR YOU EASTWEST/EEG	THE REMBRANDTS	690	762	
16	15	14	FANTASY COLUMBIA	MARIAH CAREY	660	781	
17	17	17	DECEMBER ATLANTIC	COLLECTIVE SOUL	643	741	
18	21	9	★ ★ ★ AIRPOWER ★ ★ ★				
			NAME METAL BLADE/WARNER BROS.	GOO GOO DOLLS	622	505	
19	NEW		★ ★ ★ AIRPOWER ★ ★ ★				
			FREE AS A BIRD APPLE/CAPITOL	THE BEATLES	604	2	
20	18	54	IN THE HOUSE OF STONE AND LIGHT MERCURY	MARTIN PAGE	588	643	
21	19	20	I COULD FALL IN LOVE EMI LATIN/EMI	SELENA	527	605	
22	20	10	RUNAWAY 143/LAVA/ATLANTIC	THE CORRS	519	582	
23	23	9	GOOD INTENTIONS COLUMBIA/REPRISE	TOAD THE WET SPROCKET	509	479	
24	26	6	TIME ATLANTIC	HOOTIE & THE BLOWFISH	506	408	
25	22	9	I'D LIE FOR YOU (AND THAT'S THE TRUTH) MCA	MEAT LOAF	467	480	
26	25	8	BREAKFAST AT TIFFANY'S RAINMAKER/INTERSCOPE	DEEP BLUE SOMETHING	466	411	
27	32	14	LET ME BE THE ONE EMI	BLESSID UNION OF SOULS	373	361	
28	28	15	FOREVER TONIGHT RIVER NORTH	PETER CETERA & CRYSTAL BERNARD	369	395	
29	30	8	I WILL REMEMBER YOU ARISTA	SARAH MCLACHLAN	369	380	
30	31	4	ROCK STEADY CAPITOL	BONNIE RAITT WITH BRYAN ADAMS	362	362	
31	24	25	COLORS OF THE WIND HOLLYWOOD	VANESSA WILLIAMS	347	457	
32	27	10	ANTS MARCHING RCA	DAVE MATTHEWS BAND	331	395	
33	33	19	WATERFALLS LAFACE/ARISTA	TLC	311	347	
34	35	2	MISSING ATLANTIC	EVERYTHING BUT THE GIRL	306	245	
35	29	18	YOU ARE NOT ALONE EPIC	MICHAEL JACKSON	297	390	
36	NEW		DON'T CRY ZTT/WARNER BROS.	SEAL	216	132	
37	34	8	DO YOU SLEEP? GEFEN	LISA LOEB & NINE STORIES	202	274	
38	38	2	ONE OF US BLUE GORILLA/MERCURY	JOAN OSBORNE	201	179	
39	37	4	BEAUTIFUL LIFE ARISTA	ACE OF BASE	192	206	
40	40	2	(YOU MAKE ME FEEL LIKE) A NATURAL WOMAN LAVA/ATLANTIC	CELINE DION	183	167	

Records showing an increase in detections over the previous week, regardless of chart movement. A record which has been on the chart for more than 20 weeks will not receive a bullet, even if it registers an increase in detections. Airpower awarded to those records which attain 600 detections for the first time. If two records are tied in number of plays, the record being played on more stations is placed first. Records below the top 20 are removed from the chart after 26 weeks. © 1995, Billboard/BPI Communications.

Medium (15-29): 1 WDEF
Light (Under 15): 7
New Airplay This Week: 2 WLHT, WTFM

★ MICHAEL JACKSON 53/21
Earth Song (Epic)
Total Stations: 3
Heavy (30+): 1 WYXR
Medium (15-29): 1 WEZF
Light (Under 15): 1
New Airplay This Week: 1 WEZF

★ BON JOVI 56/8
Lie To Me (Mercury)
Total Stations: 7
Heavy (30+): 0
Medium (15-29): 1 WMXV
Light (Under 15): 6
New Airplay This Week: 2 WMC, WMXB

★ BETTER THAN EZRA 51/48
Rosealia (Elektra/EEG)
Total Stations: 2
Heavy (30+): 1 KYSR
Medium (15-29): 0
Light (Under 15): 1
New Airplay This Week: 2 KYSR, WZPK

For Week Ending November 26, 1995

Detailed song tracking information for the last 3 weeks for all songs showing increased play this week. Total plays and gain do not include video play. Markets listed in order of population.

JANN ARDEN 112/25 Inesentive (A&M) Total Stations: 8

THE BEATLES 604/602 Free As A Bird (Apple/Capitol) Total Stations: 53 Chart Move: Debut 19

MARIAH CAREY & BOYZ II MEN 1093/130 One Sweet Day (Columbia) Total Stations: 50 Chart Move: 12-10

DEEP BLUE SOMETHING 466/55 Breakfast At Tiffany's (RainMaker/Interscope) Total Stations: 24 Chart Move: 25-26

CELINE DION 183/16 (You Make Me Feel Like A Natural Woman (Lava/Atlantic) Total Stations: 14 Chart Move: 40-40

MELISSA ETHERIDGE 138/4 Your Little Secret (Island) Total Stations: 12

EVERYTHING BUT THE GIRL 306/61 Missing (Atlantic) Total Stations: 20 Chart Move: 35-34

GIN BLOSSOMS 1119/4 I'll Hear It From You (A&M) Total Stations: 46 Chart Move: 9-8

GOO GOO DOLLS 622/117 Name (Metal Blade/Warner Bros.) Total Stations: 36 Chart Move: 21-18

HOOTIE & THE BLOWFISH 506/98 Time (Atlantic) Total Stations: 35 Chart Move: 26-24

BRUCE HORNSBY 108/61 Swing Street (RCA) Total Stations: 12

WHITNEY HOUSTON 990/63 Exhale (Shoop Shoop) (Arista) Total Stations: 49 Chart Move: 13-13

ELTON JOHN 1069/99 Blessed (Rocket/Island) Total Stations: 50 Chart Move: 11-12

MADONNA 1069/155 You'll See (Maverick/Warner Bros.) Total Stations: 53 Chart Move: 14-11

JOAN OSBORNE 201/22 One Of Us (Blue Gorilla/Mercury) Total Stations: 13 Chart Move: 38-38

BONNIE RAITT WITH BRYAN ADAMS 362/0 Rock Steady (Capitol) Total Stations: 27 Chart Move: 31-30

SEAL 216/84 Don't Cry (ZTT/Sire/Warner Bros.) Total Stations: 17 Chart Move: Debut 36

SELENA 116/9 Dreaming Of You (EMI Latin/EMI) Total Stations: 15

TOAD THE WET SPROCKET 509/30 Good Intentions (Columbia/Reprise) Total Stations: 35 Chart Move: 23-23

STEVE WINWOOD 88/8 Reach For The Light (MCA) Total Stations: 8

POWER PLAYLISTS

Grid of power playlists for stations KROQ, WKQX, WPLY, WBCN, WHYT, KDGE, WHFS, KITS, WNNX, KEGE, WMMS, and KOME. Each station list includes song titles, artist names, and detection counts.

The chart and Power Playlists, reprinted from Rock Airplay Monitor, are based on a national sample of data compiled by Broadcast Data Systems' Radio Track service...

Main chart table with columns: THIS WEEK, LAST WEEK, WAS ON CHART, TITLE/LABEL/DISTRIBUTING LABEL, ARTIST, DETECTIONS TW, LW. Includes entry for MY FRIENDS at No. 1.

Records showing an increase in detections over the previous week, regardless of chart movement. A record which has been on the chart for more than 20 weeks will not receive a bullet, even if it registers an increase in detections...

Lenny Kravitz advertisement for the album 'Circus'. Features a black and white photo of the artist and promotional text: 'BREAKING AT: WFNX, XHRM, WZZR, WHTG, WAQZ, WNFZ, WNEW, WCCC, WGIR, KHOP, KCAL AND MANY MORE! ON TOUR IN DECEMBER'.

For Week Ending November 26, 1995

COMBINED TOP 40 MONITOR AIRPLAY										AIRPLAY THIS WEEK BY FORMAT												
TW	LW	WKS	TITLE (LABEL)	ARTIST	THIS WEEK			LAST WEEK			MAINSTREAM			RHYTHM		ADULT		MODERN				
					Audience (millions)	Detections No.	Rank	Audience (millions)	Detections No.	Rank	Audience (millions)	Detections No.	Rank	Audience (millions)	Detections No.	Rank	Audience (millions)	Detections No.	Rank	Audience (millions)	Detections No.	Rank
1	2	7	ONE SWEET DAY (COLUMBIA)	MARIAH CAREY & BOYZ II MEN	63.0030	5605	1	57.0293	4899	4	26.9542	2991	1	25.1067	1520	2	10.9352	1093	10	0.0069	1	—
2	1	14	FANTASY (COLUMBIA)	MARIAH CAREY	61.8102	5192	2	66.1403	5683	1	28.0222	2954	2	27.8169	1571	1	5.9308	660	16	0.0403	7	—
3	3	13	NAME (METAL BLADE/WARNER BROS.)	GOO GOO DOLLS	45.5601	5031	3	44.5574	4924	3	24.1298	2875	3	0.1415	13	—	7.3084	622	18	13.9804	1521	6
4	7	19	AS I LAY ME DOWN (COLUMBIA)	SOPHIE B. HAWKINS	43.1974	4145	5	43.0391	4361	5	23.3981	2448	5	1.4597	104	—	18.2603	1568	1	0.0793	25	—
5	4	15	RUNAWAY (A&M)	JANET JACKSON	41.3378	4677	4	44.4342	5047	2	22.0105	2690	4	8.1581	836	10	11.1434	1149	7	0.0258	2	—
6	5	23	KISS FROM A ROSE (ZTT/SIRE/WARNER BROS.)	SEAL	38.8393	3567	11	43.1441	3967	7	17.7250	1750	15	3.1144	299	35	17.6612	1460	3	0.3387	58	—
7	6	21	ONLY WANNA BE WITH YOU (ATLANTIC)	HOOTIE & THE BLOWFISH	38.0461	3752	8	43.0863	4043	6	19.9504	2077	13	1.2037	88	—	15.6485	1419	4	1.2435	168	—
8	9	18	TIL I HEAR IT FROM YOU (A&M)	GIN BLOSSOMS	35.5086	3657	9	38.0648	3873	9	20.4292	2231	11	0.1581	18	—	13.2835	1119	8	1.6378	289	—
9	13	5	EXHALE (SHOOP SHOOP) (ARISTA)	WHITNEY HOUSTON	35.0533	3644	10	32.2125	3270	14	12.6238	1602	17	13.8491	1050	4	8.5618	990	13	0.0186	2	—
10	11	11	TELL ME (EPIC)	GROOVE THEORY	34.9336	2620	21	33.6234	2541	23	9.0017	1115	29	25.8243	1462	3	0.0893	41	—	0.0183	2	—
11	10	18	CARNIVAL (ELEKTRA/EEG)	NATALIE MERCHANT	34.9053	3767	7	34.1547	3883	8	18.8737	2182	12	0.1610	18	—	11.3808	1116	9	4.4898	451	—
12	8	17	ROLL TO ME (A&M)	DEL AMITRI	34.1645	3343	14	38.1649	3504	11	17.3062	1708	16	0.1324	14	—	15.1197	1411	5	1.6062	210	—
13	15	5	YOU'LL SEE (MAVERICK/WARNER BROS.)	MADONNA	33.4824	3771	6	31.7891	3428	13	17.3059	2274	7	5.1039	427	25	11.0654	1069	11	0.0072	1	—
14	18	7	DIGGIN' ON YOU (LAFACE/ARISTA)	TLC	32.2941	3515	13	30.2442	3240	15	18.2925	2439	6	13.7490	1001	6	0.2243	73	—	0.0283	2	—
15	12	28	RUN-AROUND (A&M)	BLUES TRAVELER	31.6203	3060	17	33.4116	3148	17	13.2005	1516	19	0.1326	14	—	16.1861	1223	6	2.1011	307	—
16	14	15	BACK FOR GOOD (ARISTA)	TAKE THAT	31.5382	3561	12	31.8053	3675	10	13.8089	1984	14	0.4842	54	—	17.2163	1521	2	0.0288	2	—
17	16	8	BREAKFAST AT TIFFANY'S (RAINMAKER/INTERSCOPE)	DEEP BLUE SOMETHING	31.4779	3252	16	30.6141	3194	16	20.1278	2245	9	0.1300	12	—	7.3968	466	26	3.8233	529	—
18	21	4	MISSING (ATLANTIC)	EVERYTHING BUT THE GIRL	29.4482	2132	28	23.7039	1550	46	17.6515	1431	22	6.0571	348	28	5.1527	306	34	0.5869	47	—
19	17	15	GANGSTA'S PARADISE (MCA SOUNDTRACKS/MCA)	COOLIO FEATURING L.V.	26.2268	2289	25	30.5030	2575	22	13.0442	1395	25	13.1657	893	8	—	—	—	0.0169	1	—
20	19	13	HAND IN MY POCKET (MAVERICK/REPRISE)	ALANIS MORISSETTE	25.3191	3296	15	27.4385	3480	12	16.1841	2256	8	0.5137	26	—	2.1871	175	—	6.4342	839	24
21	23	5	BEAUTIFUL LIFE (ARISTA)	ACE OF BASE	23.9358	2950	18	22.6728	2868	19	15.9154	2233	10	5.9553	507	18	2.0272	192	39	0.0379	18	—
22	20	28	DECEMBER (ATLANTIC)	COLLECTIVE SOUL	22.9680	2457	24	25.4549	2605	21	13.2424	1439	21	0.1027	13	—	6.8576	643	17	2.7653	362	—
23	24	26	WATERFALLS (LAFACE/ARISTA)	TLC	22.1219	1866	32	22.4172	2075	28	12.1194	1168	27	6.1174	386	—	3.8848	311	33	0.0003	1	—
24	22	27	I CAN LOVE YOU LIKE THAT (BLITZZ/ATLANTIC)	ALL-4-ONE	22.0463	2136	27	23.3522	2257	26	8.4010	892	—	3.3679	279	—	10.2706	964	14	0.0068	1	—
25	26	3	ONE OF US (BLUE GORILLA/MERCURY)	JOAN OSBORNE	21.8180	2706	20	19.8836	2467	24	9.7408	1092	30	0.0381	5	—	2.2180	201	38	9.8211	1408	7
26	30	9	MY FRIENDS (WARNER BROS.)	RED HOT CHILI PEPPERS	21.0069	2557	22	18.5439	2463	25	6.5453	605	—	—	—	—	0.5024	17	—	13.9592	1935	1
27	33	3	HEY LOVER (DEF JAM/RAL/ISLAND)	LL COOL J	20.5471	1176	63	17.7575	971	77	1.6739	151	—	18.8522	1023	5	—	—	—	0.0210	2	—
28	28	7	BULLET WITH BUTTERFLY WINGS (VIRGIN)	SMASHING PUMPKINS	20.4761	2157	26	19.4505	2104	27	4.3858	262	—	—	—	—	—	—	—	16.0903	1895	2
29	29	4	DREAMING OF YOU (EMI LATIN/EMI)	SELENA	19.4157	1790	35	19.0917	1690	40	11.6690	946	36	6.9567	727	13	0.7831	116	—	0.0069	1	—
30	35	2	TIME (ATLANTIC)	HOOTIE & THE BLOWFISH	19.3954	2121	29	16.5228	1944	29	11.6425	1488	20	0.0748	11	—	6.6131	506	24	1.0650	116	—
31	36	2	SET U FREE (STRICTLY RHYTHM)	PLANET SOUL	18.8583	943	83	16.4483	871	87	5.6252	200	—	13.2331	743	11	—	—	—	—	—	—
32	25	12	LUMP (COLUMBIA)	THE PRESIDENTS OF THE UNITED STATES OF AMERICA	18.8242	2470	23	20.5161	2623	20	10.1152	1262	26	0.0955	14	—	0.3100	48	—	8.3035	1146	15
33	31	5	GOOD INTENTIONS (COLUMBIA/REPRISE)	TOAD THE WET SPROCKET	18.7371	2885	19	18.3789	2872	18	8.6374	1535	18	0.1170	13	—	4.5611	509	23	5.4216	828	25
34	27	23	YOU OUGHTA KNOW (MAVERICK/REPRISE)	ALANIS MORISSETTE	18.4278	1892	30	19.8153	1944	30	14.9679	1430	23	0.2302	17	—	0.2042	52	—	3.0255	393	—
35	37	—	1979 (VIRGIN)	SMASHING PUMPKINS	17.9484	1512	44	15.5459	1280	54	3.2102	168	—	—	—	—	—	—	—	14.7382	1344	8
36	NEW	—	GLYCERINE (TRAUMA/INTERSCOPE)	BUSH	17.6631	1871	31	14.6996	1607	42	2.1857	107	—	—	—	—	—	—	—	15.4774	1764	3
37	32	6	WHO CAN I RUN TO (SO SO DEF/COLUMBIA)	XSCAPE	17.2341	1468	46	18.1896	1447	48	2.1280	478	—	15.0843	987	7	—	—	—	0.0218	3	—
38	38	3	NATURAL ONE (LONDON/ISLAND)	FOLK IMPLOSION	16.3949	1828	33	15.5185	1741	37	3.2893	284	—	—	—	—	—	—	—	13.1056	1539	4
39	NEW	—	FREE AS A BIRD (APPLE/CAPITOL)	THE BEATLES	16.0784	1412	49	0.0000	0	—	6.1520	705	—	0.3211	17	—	8.8296	604	19	0.7757	86	—
40	34	28	I'LL BE THERE FOR YOU (ELEKTRA/EEG)	THE REMBRANDTS	15.4107	1448	47	17.4308	1555	45	6.8897	720	—	0.2932	12	—	8.0371	690	15	0.1907	17	—

Records showing an increase in audience over the previous week, regardless of chart movement. Rankings broken down by format (on right side of this page) correspond to 40-position charts printed in this week's Monitor and therefore rankings do not exist for recurrences and records below No. 40. Audience computed by cross-referencing exact times of airplay with Arbitron listener data. ©1995, Billboard/BPI Communications.

20,000 READERS STRONG

CLASSIFIED

AIRPLAY

Monitor

157 Plays
5.4 Million Listeners

Sales & Requests
LA & Bay Area!

KPWR #6	45 Plays
KMEL #10	32 Plays
KCAQ #13	38 Plays
KYLD #25	14 Plays
WWKX	14 Plays
Z90	6 Plays
HOT97	4 Plays
KZFM	4 Plays
WHHH	3 Plays
KQKS	3 Plays
KTFM	3 Plays
KBOS	3 Plays



Throw Your **L.V. Hands Up**

Featuring Treach

Written by L.V., Bokie Loc & Barr 9

Produced by Barr 9

*The debut single from the
singer and songwriter of the
#1 platinum hit*

“Gangsta’s Paradise”

On your desk now!



THIS WEEK	LAST WEEK	WKS. ON CHART	MAINSTREAM		DETECTIONS		
			TITLE/LABEL/DISTRIBUTING LABEL	ARTIST	TW	LW	
			*** No. 1 ***				
1	5	5	ONE SWEET DAY COLUMBIA	MARIAH CAREY & BOYZ II MEN	2991	2487	
2	1	14	FANTASY COLUMBIA	MARIAH CAREY	2954	3183	
3	3	10	NAME METAL BLADE/WARNER BROS.	GOO GOO DOLLS	2875	2722	
4	2	15	RUNAWAY A&M	JANET JACKSON	2690	2857	
5	4	21	AS I LAY ME DOWN COLUMBIA	SOPHIE B. HAWKINS	2448	2502	
6	8	7	DIGGIN' ON YOU LAFACE/ARISTA	TLC	2439	2269	
7	13	5	YOU'LL SEE MAVERICK/WARNER BROS.	MADONNA	2274	2121	
8	9	8	HAND IN MY POCKET MAVERICK/REPRISE	ALANIS MORISSETTE	2256	2268	
9	10	17	BREAKFAST AT TIFFANY'S RAINMAKER/INTERSCOPE	DEEP BLUE SOMETHING	2245	2222	
10	12	6	BEAUTIFUL LIFE ARISTA	ACE OF BASE	2233	2156	
11	6	18	TIL I HEAR IT FROM YOU A&M	GIN BLOSSOMS	2231	2411	
12	7	18	CARNIVAL ELEKTRA/VEEG	NATALIE MERCHANT	2182	2276	
13	11	22	ONLY WANNA BE WITH YOU ATLANTIC	HOOTIE & THE BLOWFISH	2077	2190	
14	14	19	BACK FOR GOOD ARISTA	TAKE THAT	1984	2074	
15	15	24	KISS FROM A ROSE ZTT/SIRE/WARNER BROS.	SEAL	1750	1902	
16	16	22	ROLL TO ME A&M	DEL AMITRI	1708	1814	
			*** AIRPOWER ***				
17	24	4	EXHALE (SHOOP SHOOP) ARISTA	WHITNEY HOUSTON	1602	1377	
18	21	9	GOOD INTENTIONS COLUMBIA/REPRISE	TOAD THE WET SPROCKET	1535	1504	
19	18	36	RUN-AROUND A&M	BLUES TRAVELER	1516	1579	
20	23	5	TIME ATLANTIC	HOOTIE & THE BLOWFISH	1488	1414	
21	22	26	DECEMBER ATLANTIC	COLLECTIVE SOUL	1439	1478	
22	36	2	MISSING ATLANTIC	EVERYTHING BUT THE GIRL	1431	954	
23	20	18	YOU OUGHTA KNOW MAVERICK/REPRISE	ALANIS MORISSETTE	1430	1516	
24	19	18	LET ME BE THE ONE EMI	BLESSID UNION OF SOULS	1422	1530	
25	17	12	GANGSTA'S PARADISE MCA SOUNDTRACKS/MCA	COOLIO FEATURING L.V.	1395	1611	
26	27	6	LUMP COLUMBIA	THE PRESIDENTS OF THE UNITED STATES OF AMERICA	1262	1217	
27	25	25	WATERFALLS LAFACE/ARISTA	TLC	1168	1272	
28	28	20	I WANNA B WITH U CURB EDEL	FUN FACTORY	1161	1192	
29	33	3	TELL ME EPIC	GROOVE THEORY	1115	1004	
30	34	2	ONE OF US BLUE GDRILLA/MERCURY	JOAN OSBORNE	1092	979	
31	26	9	I'D LIE FOR YOU (AND THAT'S THE TRUTH) MCA	MEAT LOAF	1072	1225	
32	NEW		GET TOGETHER GIANT	BIG MOUNTAIN	977	558	
33	29	8	SOLITUDE LAVA/ATLANTIC	EDWIN MCCAIN	972	1081	
34	31	8	PRETTY GIRL YAB YUM/550 MUSIC	JON B.	955	1071	
35	30	13	DO YOU SLEEP? GEFEN	LISA LOEB & NINE STORIES	954	1074	
36	39	2	DREAMING OF YOU EMI LATIN/EMI	SELENA	946	835	
37	32	7	YOUR LITTLE SECRET ISLAND	MELISSA ETHERIDGE	892	1052	
38	40	2	WHEN LOVE & HATE COLLIDE MERCURY	DEF LEPPARD	859	764	
39	38	5	WE'VE GOT IT GOIN' ON JIVE	BACKSTREET BOYS	801	858	
40	37	25	SHY GUY WORK	DIANA KING	797	870	

THIS WEEK	LAST WEEK	WKS. ON CHART	RHYTHM-CROSSOVER		DETECTIONS		
			TITLE/LABEL/DISTRIBUTING LABEL	ARTIST	TW	LW	
			*** No. 1 ***				
1	1	14	FANTASY COLUMBIA	MARIAH CAREY	1571	1713	
2	3	8	ONE SWEET DAY COLUMBIA	MARIAH CAREY & BOYZ II MEN	1520	1448	
3	2	15	TELL ME EPIC	GROOVE THEORY	1462	1481	
4	7	6	EXHALE (SHOOP SHOOP) ARISTA	WHITNEY HOUSTON	1050	963	
5	9	5	HEY LOVER DEF JAM/RAL/ISLAND	LL COOL J	1023	853	
6	8	10	DIGGIN' ON YOU LAFACE/ARISTA	TLC	1001	936	
7	4	12	WHO CAN I RUN TO SO SO DEF/COLUMBIA	XSCAPE	987	1028	
8	6	16	GANGSTA'S PARADISE MCA SOUNDTRACKS/MCA	COOLIO FEATURING L.V.	893	963	
9	10	10	ANYTHING MJJ/550 MUSIC	3T	888	849	
10	5	15	RUNAWAY A&M	JANET JACKSON	836	970	
11	12	9	SET U FREE STRICTLY RHYTHM	PLANET SOUL	743	717	
			*** AIRPOWER ***				
12	17	8	BEFORE YOU WALK OUT OF MY LIFE BENEVOLENT	MONICA	732	573	
13	11	15	DREAMING OF YOU EMI LATIN/EMI	SELENA	727	747	
14	14	22	PRETTY GIRL YAB YUM/550 MUSIC	JON B.	678	676	
15	16	7	YOU REMIND ME OF SOMETHING JIVE	R. KELLY	673	601	
16	15	5	BE MY LOVER RCA	LA BOUCHE	663	630	
17	13	9	SEXUAL HEALING S.O.S./ZOO	MAX-A-MILLION	632	687	
18	20	4	BEAUTIFUL LIFE ARISTA	ACE OF BASE	507	490	
19	18	19	'TIL YOU DO ME RIGHT VIRGIN	AFTER 7	500	547	
20	21	5	CRUISIN' EMI	D'ANGELO	498	487	
21	22	9	MAGIC CARPET RIDE S.M.J. E/PROFILE	THE MIGHTY DUB KATS	472	486	
22	23	5	RIDIN' LOW HOLLYWOOD	L.A.D. FEATURING DARVY TRAYLOR	448	461	
23	24	26	BOOMBASTIC VIRGIN	SHAGGY	445	456	
24	19	15	BROKENHEARTED ATLANTIC	BRANDY	428	511	
25	26	5	YOU'LL SEE MAVERICK/WARNER BROS.	MADONNA	427	392	
26	27	6	HOOKED ON YOU ELEKTRA/VEEG	SILK	421	380	
27	33	3	TOO HOT TOMMY BOY	COOLIO	389	341	
28	36	4	MISSING ATLANTIC	EVERYTHING BUT THE GIRL	348	321	
29	28	24	HE'S MINE OUTBURST/RAL/ISLAND	MOKENSTEF	333	375	
30	32	3	DANGER FADER/MERCURY	BLAHZAY BLAHZAY	331	348	
31	30	9	BOOM BOOM BOOM AUREUS	THE OUTHERE BROTHERS	324	361	
32	34	11	A MOVER LA COLITA GROOVE NATION/SCOTTI BROS.	ARTIE THE 1 MAN PARTY	315	341	
33	29	8	AUTOMATIC LOVER (CALL FOR LOVE) ARISTA	REAL MCCOY	310	370	
34	31	5	COME WITH ME GASOLINE ALLEY/MCA	SHAI	309	352	
35	25	19	KISS FROM A ROSE ZTT/SIRE/WARNER BROS.	SEAL	299	397	
36	NEW		LOVE U 4 LIFE UPTOWN/MCA	JODECI	296	250	
37	35	7	EAST SIDE RENDEZVOUS RUTHLESS/RELATIVITY	FROST	285	336	
38	37	22	YOU ARE NOT ALONE EPIC	MICHAEL JACKSON	260	316	
39	38	22	I COULD FALL IN LOVE EMI LATIN/EMI	SELENA	259	307	
40	NEW		SOON AS I GET HOME BAD BOY/ARISTA	FAITH EVANS	251	242	

Records showing an increase in detections over the previous week, regardless of chart movement. A record which has been on either chart for more than 20 weeks will not receive a bullet, even if it registers an increase in detections. Airpower awarded to those records which attain 1500 detections (mainstream) or 600 detections (rhythm) for the first time. If two records are tied in number of plays, the record being played on more stations is placed first. Records below the top 20 are removed from the chart after 26 weeks.

BIG MOUNTAIN "GET TOGETHER"

The debut single from their new album RESISTANCE

MAINSTREAM
Debut **(32)**!
977 Spins, Up 419

RHYTHM
151 Spins, Up 64

ADULT
82 Spins, Up 39

