

# TOP 40 ■ AIRPLAY Monitor

• We Listen To Radio •

November 17, 1995 \$ 4.95 Volume 3 • No. 47

## TOP 40 HIGHLIGHTS

### MAINSTREAM

#1

**MARIAH CAREY**  
*Fantasy* (COLUMBIA)

★★★ AIRPOWER ★★★

MARIAH CAREY & BOYZ II MEN • *One Sweet Day* (COLUMBIA)

### NEW RELEASES

BEATLES • *Free As A Bird* (CAPITOL)  
ERASURE • *Fingers And Thumbs* (MUTE/ELEKTRA/EEG)  
MICHAEL JACKSON • *Earth Song* (EPIC)  
K.D. LANG • *If I Were You* (WARNER BROS.)  
NATALIE MERCHANT • *Wonder* (ELEKTRA/EEG)  
SF SPANISH FLY • *Believe In Me* (WARNER BROS.)

### RHYTHM-CROSSOVER

#1

**MARIAH CAREY**  
*Fantasy* (COLUMBIA)

★★★ AIRPOWER ★★★

PLANET SOUL • *Set U Free* (STRICTLY RHYTHM)

### NEW RELEASES

EAZY E • *Just Tah Let U Know* (RUTHLESS/RELATIVITY)  
IMMATURE • *We Got It* (MCA)  
MICHAEL JACKSON • *This Time Around* (EPIC)  
K.D. LANG • *If I Were You* (WARNER BROS.)  
SF SPANISH FLY • *Believe In Me* (WARNER BROS.)

### ADULT

#1

**SOPHIE B. HAWKINS**  
*As I Lay Me Down* (COLUMBIA)

★★★ AIRPOWER ★★★

MADONNA • *You'll See* (MAVERICK/WARNER BROS.)  
MARIAH CAREY & BOYZ II MEN • *One Sweet Day* (COLUMBIA)

### NEW RELEASES

THE ARCHIES • *Sugar Sugar* (COLUMBIA)  
BEATLES • *Free As A Bird* (CAPITOL)  
BIG MOUNTAIN • *Get Together* (GIANT)  
MICHAEL BOLTON • *A Love So Beautiful* (COLUMBIA)  
EXPOSE • *I'll Say Goodbye For The Two Of Us* (ARISTA)  
MICHAEL JACKSON • *Earth Song* (EPIC)  
ANNIE LENNOX • *Waiting In Vain* (ARISTA)  
TONY RICH • *Nobody Knows* (LAFACE/ARISTA)

## Does New Fab Four Cut Have A Place At Top 40 Radio In '95?

by Sean Ross

They changed the face of rock-'n'-roll forever. But what is the Beatles' place on radio in 1995?

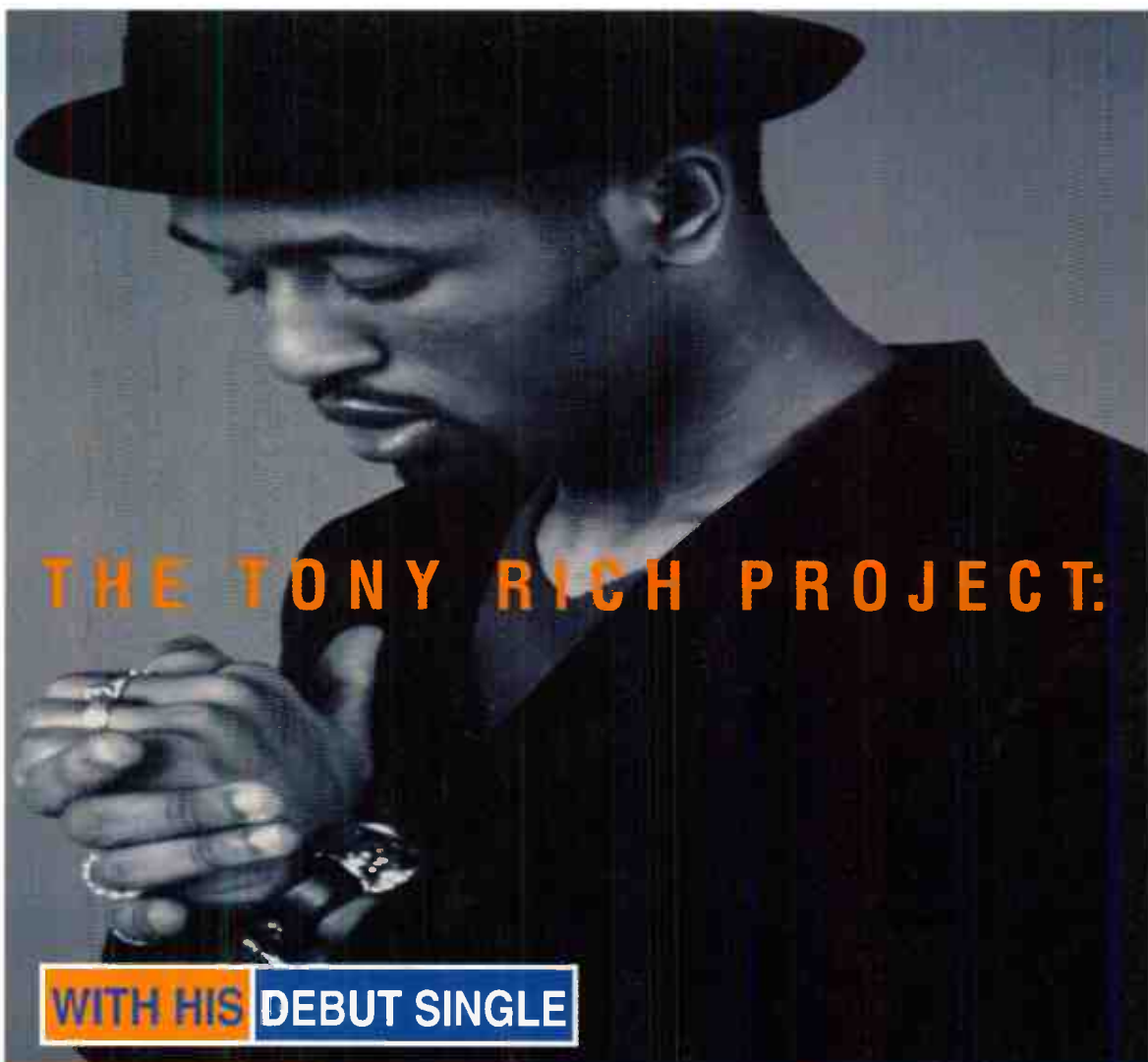
That will be the multimillion-dollar question for Capitol Records next week when it releases "Free As A Bird," the first new Beatles single in more than 25 years.

"Free As A Bird," a much-publicized unreleased John Lennon track to which the surviving three Beatles added vocals, is the lead single of the 60-track double CD "The Beatles Anthology Volume 1." It'll be delivered to stations via satellite at 10:45 p.m., Sunday (19), after airing on ABC-TV as part of a three-night special. On Monday (20), Capitol will hand-serve the CD to select stations. There'll be a complete servicing by Tuesday (21).

On Tuesday, Capitol senior director of national promotion Jeffrey Blalock says, Capitol will actively work the new Beatles track to "AC, album rock, triple-A, pop, classic rock, and oldies stations." A massive media blitz, which includes a radio campaign for the ABC special, extensive news coverage (including a Newsweek cover story), label-sponsored viewing parties, and other promotions precede the release. A commercial single will be released Dec. 12.

Even with all that groundwork in place, Blalock says that working the single is "an uncharted situation. There are a lot of variables." Not the least of which is the extent to which top 40 radio will be willing to break format, as it did when "Twist And Shout" became a hit again in 1986. While most of today's alternative

Continued on page 6



## THE TONY RICH PROJECT:

WITH HIS DEBUT SINGLE

## "NOBODY KNOWS"

FROM THE ALBUM... "WORDS"

-OFTEN TIMES ARTIST ARE FORCED TO CREATE MUSIC FOR A PARTICULAR GENRE, BUT THE TONY RICH PROJECT SIMPLY MAKES GREAT SOUNDING MUSIC THAT DEFIES CATAGORIZATION -"L.A. REID"

### ALREADY IN STRONG ROTATION AT:

KBXX	24x/WEEK
KTFM	30x/WEEK
KUBE	39x/WEEK
KYLD	14x/WEEK
KMEL	20x/WEEK

ON YOUR DESK NOW!  
GOING FOR CROSSOVER ADDS 11/20  
GOING FOR MAINSTREAM ADDS 12/4

*Laface*  
RECORDS

© 1995 Laface Records. Manufactured and Distributed by Arista Records, Inc. a unit of BMG Entertainment.





NOW MORE THAN EVER.

# GET TOGETHER



# BIG MOUNTAIN

The debut single from their new album RESISTANCE

**FIRST WEEK MOST ADDED! ALREADY ON:**

Y-100 (23)	KKLQ(18)	B94(7)	WFLZ	KKRZ(20)	KKFR(9)	WNVZ
WNCI	WEDJ	KMXV	KLRZ	WGTZ	WAPE	Z90
KDON	WKRZ	WTWR	WXIS	WLAN	WZNY	WJJS
WWXM	WZOK	KIKI	KQMQ	KISR	KFRX	WAYV
KKRD	WABB	WMGI	KWNZ	WHHY	WMXQ	WSSX

**WATCH THIS SPACE!**





## TOP 40 TOPICS

by Sean Ross

### How The 'Damn' Broke For Reaction Records

**S**ophie B. Hawkins' first single, "Damn I Wish I Was Your Lover," spent 21 weeks on the Billboard Hot 100 Singles chart. Hawkins' current single, "As I Lay Me Down," took longer than that just to chart and another 19 weeks to reach No. 3 on the top-40/mainstream chart.

Hawkins' first single was broken by KRBE Houston, a cutting-edge top 40 station that obtained a prerelease cassette and made it a hit before its release date. Hawkins' current single was broken by WKTI Milwaukee and WTMX Chicago, which held onto it well after a lot of stations had forgotten it was even out there.

Hawkins' first single was an immediate reaction record. Hawkins' current single could have died, because of the fact that it didn't react immediately and that the single before it, "Right Beside You," had not reacted right away either.

Goes to show how much things change in three years. This year will go down as the year of songs that took a year to break, from "As I Lay Me Down" to **Everything But The Girl's** "Missing" to **Hootie & the Blowfish's** "Hold My Hand" (which, to be fair, only took six months). From "Carnival" to "Roll To Me" to "December," the mainstream chart is full of records that not everybody heard right away—records so durable that they make the Energizer bunny look like an Epstein-Barr victim.

There aren't a lot of current hits that break right away—the two **Alanis Morissette** hits; first singles from established artists, such as **Ace Of Base**, **Mariah Carey**, and **Janet Jackson**; and perhaps "Name" by the **Goo Goo Dolls**, if you don't count the fact that it sat on an album for a while. Only a few other current songs have generated immediate reaction; "Gangsta's Paradise" (again, if you don't count the several weeks it moved slowly before "Dangerous Minds" was released) and "Lump" are the only ones that come to mind.

What has changed the most over three years are PDs' expectations. Once top 40/mainstream stations decided to play some pop/rock records again, they've been willing to wait longer for those songs to develop. Three years ago, it was inconceivable that anybody would have given a **Del Amitri** record the better part of four months to kick in. Now, one wonders if "Always The Last To Know" would have been just as big as "Roll To Me" if radio had been willing to invest the same time and energy in it three years ago.

PDs no longer want love at first sight. In fact, they are wary of it. Since the term "reac-

tion record" has become nearly synonymous with rap or R&B crossovers, which PDs believe are entirely responsible for the format's decline (conveniently overlooking other factors that may be involved), PDs, perversely, feel a little safer around anything that doesn't do too well right away.

The resurgence of call-out has protected most records for six to eight weeks, even if they don't get immediate sales or phones, because PDs know not to expect call-out in a shorter period of time. In many cases, the lag is even longer, because the smaller-market stations most likely to break a pop/rock record often aren't the ones who can afford call-out. So "Hold My Hand," for example, had to work its way up through the ranks, then come home in the majors, to be proved legit. And that process took a while.

Another factor is the advent of monitored airplay. Because of call-out, records not only stay on the radio longer, they stay on the charts and in a PD's consciousness longer. Now that records aren't expected to implode immediately, they aren't expected to explode immediately either.

Then there is the decline of the PD or MD as superstar. In the brat-pack days of the early '90s, then KRBE PD **Steve Wyrostok's** support gave Hawkins, for example, immediate credibility, especially since he'd already done the same for **Jane Child** as MD of **WAPW** (Power 99) Atlanta. Later, Wyrostok's Power 99 successor, **Lee Chesnut**, was busy breaking **Chris Isaak**. Now there are few top 40 PDs whose support immediately guarantees a record credibility. **KROQ** Los Angeles' **Kevin Weatherly** is an exception, but he's still one format removed from top 40.

The irony here is that there are folks who could have told you about today's hits nine months ago. **WPOW** (Power 96) Miami found "Missing" the first time. In any given week, it finds at least one or two records that aren't yet hits anywhere else. That should have made more PDs curious enough to search out "Missing." Instead, most wrote it off as just another Miami aberration. **WKTI** finds a lot of records, too, but these days it reports to the top 40/adult side, so it's off the radar for many PDs.

It's nice to see Hawkins and **Everything But The Girl** with hit records. It's nice to know that **Columbia** and **Atlantic** have been willing to stick with them for so long. Top 40 needs its balance records, but it needs its sleeper hits, too. It also needs some reaction records to make the subtle ones stick out, and one hopes that playing records that people like right away hasn't somehow become a bad thing.

### Arbitron Gives Credit Where Credit Is Due

by Kevin Carter

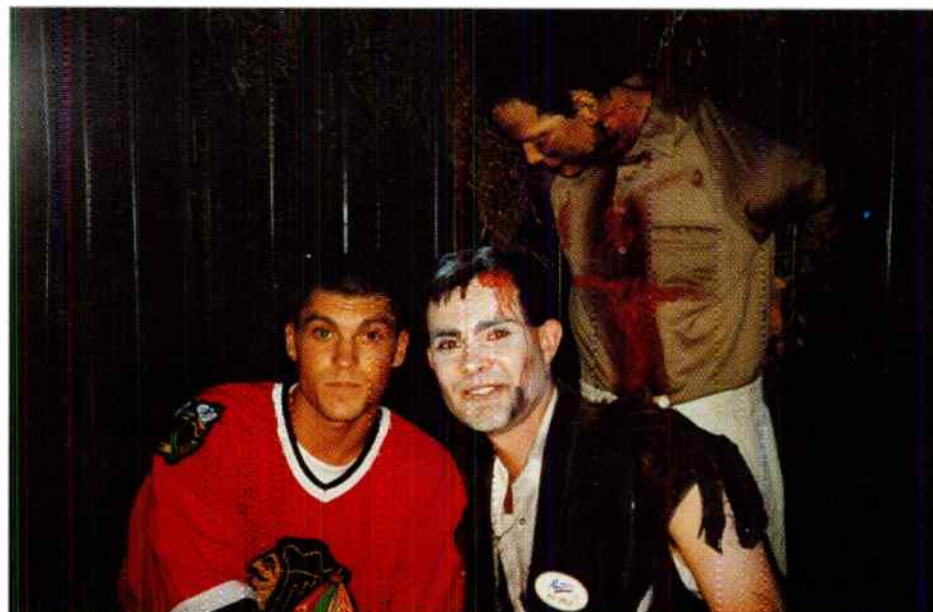
As its problems with the fall book continue, Arbitron has agreed to credit client stations in four markets where diaries were mistargeted. The company will refund to clients in Buffalo, N.Y., Milwaukee, Dallas, and Albuquerque, N.M., the amount they would have spent for October, November, and December Arbitrends. Those credits will not include the fall book itself, according to Arbitron VP/communications Thom Mocarisky.

This action follows problems in seven markets, including Fresno, Calif., where 40% of the metro was not sampled in Phase I, causing the deletion of that phase from the fall book. In its place, Arbitron is allocating a sample covering the last eight weeks of the survey, so that the

Phase 2 release, covering November and December, will contain the full Fresno sample target (1470 diaries). In six other markets, sample targets in high-density ethnic areas and the rest of the counties were transposed.

Despite the decision to rebate unhappy clients, Mocarisky says, the difference between the intended and the actual in-tab was small. In Buffalo, the first trend's return was 15.5% African-American and 84% other, compared with a market composition of 10.1% African-American and 89.9% other, well within the range that can be handled by sample balancing. In Dallas, Mocarisky says, the trend was 15% Hispanic, 12.8% African-American, and 72.2% other, compared to a market composition of 14.1% Hispanic, 13.5% African-American, and 72.4% other.

### A Haunting We Will Go



WXXL (XL 106.7) Orlando, Fla., night guy **Kid Cruz** nurses a gaping head wound, while another satisfied XL contest pig "hangs out" with **Brian Austin Green** of "Beverly Hills, 90120" during XL's recent Halloween festivities at Universal Studios Florida.



## RADIOACTIVE

by Kevin Carter

### Rahe & Larry D. Exit WXXL; Violets Settle

**T**his week's big surprise was the sudden departure of **WXXL** (XL106.7) Orlando, Fla., GM **Randy Rahe** and MD/account executive **Larry D.** amid a ton of rumors. No replacements were named. No explanation was offered by the station.

At **KDLE** (Power 93.9) Wichita, Kan., owners **Gary** and **Viola Violet** reassumed control of the station after settling a dispute with former lessee **David Brace**; the format returns to R&B from top 40/rhythm. Assistant GM **Bruce Adamek** is upped to GM. **A.J. Jones** reclaims MD duties. At press time, **Greg Williams** was still in place but was, according to the **Violets**, asking to be let out of his contract. **KDLE** has applied for the calls **KDGS** (the Dog).

**WMXQ/WAPI** Birmingham, Ala., VP/GM **Bernie Barker** is leaving after 14 years (and three owners). **Davis Hawkins** will assume GM duties for those stations, as well as LMA partners **WZRR/WJOX**. Barker will exit prior to the end of the year.

Cleveland radio veteran **Gary Dee**, often considered the first shock jock, died Friday (10) of heart failure. He was 60.

**KLYV** (K-Live 105) Dubuque, Iowa, PD **Allan Fee** is the new PD at modern rocker **WGRD** Grand Rapids, Mich., replacing **Alex Tear**... Oldies **WODL** Birmingham, Ala., loses **Brad Ellis** to Critical Mass Media.

**WWSN** (Sunny 107.9) Charlotte, N.C., midday host **Diane Tracy** exits for morning co-host duties at **WKCI** (KC101) New Haven, Conn.

**WSNY** (Sunny 95) Columbus, Ohio, morning host **Bob Simpson** exits.

**WKSS** (Kiss 95.7) Hartford, Conn., morning talent **Gary Craig** has decided not to renew his contract after three years with the station. Former **WHTZ** (Z100) New York morning talent **Ross Britain** is handling the gig until further notice.

**KHOM** New Orleans morning man **Famous Amos** exits. PD **Bill Thorman** covers mornings and middays for now. Also in New Orleans, as **WEZB** (B97) finishes its transition from top 40 to news/talk, **Bourbon Street** stripper **Gio** joins the station for the nightly "Pas-

sion Show." With her addition, the station has music overnights and weekends only.

**KQHT** Grand Forks, N.D., discharges long-time PD **Jay Murphy** and the entire air staff, as a format search is undertaken. The station is running jockless top 40, but GM **Jeff Hoberg** says the format will change. The interim PD is **Brian Rivers** from LMA partner classic rocker **KJKJ** (KJ108). Hoberg is looking for all shifts.

**WAPE** (Power 95) Jacksonville, Fla., loses night jock **Brad Stone** to the morning show at **WEDJ** (the Edge) Charlotte, N.C., replacing syndicated show "Matty In The Morning." **WAPE** PD **Cat Thomas** needs T&Rs from potential night rockers... MD/night jock **Wild Bill Cherry** exits **KKXX** Bakersfield, Calif.

**WFHN** (Fun 107) New Bedford, Mass., loses midday guy **Neil White** to production/swing at **AC WBMX** (Mix 98.5) Boston... P.m. driver the **Real Deal Mike Neal** exits after five months at top 40/adult **KALC** (Alice 106) Denver; he can be reached at 303-892-8893... **KJYO** (KJ103) Oklahoma City has nights open. **Dylan** has left the building.

**WQSL** Wilmington, N.C., GM **Bill Hennes** is reunited with former **WBXX** (B95) Battle Creek, Mich., MD/night jock **Eric "the Fly" Davis**, who runs a mobile DJ business in Long Island, N.Y. Davis has been named APD/nights.

**WJET** Erie, Pa., overnight jock **Jim Bean** is leaving for med school. Weekender **Dave Leroy** fills the shift... Former **KHHH** Denver PD **Jaime Kartak** is the new APD at top 40/adult **WTMX** Chicago, replacing **Brian Kelly**... **KQKS** (KS104) Denver weekender **Brandon Scott** segues to **KFTZ** Idaho Falls, Idaho, as nights/production director.

Former **WZEE** (Z104) Madison, Wis., morning guy **Johnny Danger** passed the first of his former employer's legal attempts to hold him to his contract and has started at **KQKQ** Omaha, Neb.

With the Cleveland Browns having angered a few people in their hometown recently, **WZJM** (Jammin' 92) staged a party for which listeners were asked to bring used Browns paraphernalia. The items will be donated to the homeless in Baltimore, the Browns' next hometown.



## WMGI Shows Off New Lobby Paneling



WMGI (100.7 Mix FM) Terre Haute, Ind., welcomed S.O.S./Zoo recording artist Max-A-Million, along with Eddie Money, Tag Team, Giovanni, and Benny Mardones for a recent station concert. Shown in front, from left, are Max-A-Million's Tommye and Maxi. In the back row are WMGI assistant PD/morning co-host Mike Echols, Max-A-Million's Alisa B., WMGI night jock Tony Manero, afternoon jock James Gregory, overnight jock Todd Swan, PD/mornings Beau Richards, and midday talent Kelly Green.

## Giant Spider Attacks WPLJ Morning Show



WPLJ New York welcomed actor Billy Baldwin and wife Chynna Phillips, both in town to flog their respective projects: Baldwin's movie "Fair Game," co-starring alleged actress Cindy Crawford, and Phillips' new single, "Naked & Sacred." Pictured just moments before a mutant insect became ensnared in news anchor Naomi DiClemente's hair, from left, are WPLJ PD Scott Shannon, Baldwin, Phillips, WPLJ jock Todd Pettengill, and DiClemente.

## Don't Take This Photo To The Barber



KIIS Los Angeles PD Steve Perun, left, and assistant PD/MD Tracy Austin, right, flank haircut model Coolio, who headlined two KIIS school-spirit concerts, which featured Brandy and Immature. KIIS received 2.3 million postcards in a 3 1/2-week period from schools competing for the concerts.

## PROGRAMMER PROFILE

### PD Dawson Kix It Into Gear, And WWKX Has Providence Dancing Again

**W**e're playing what sells and what rings the phones."

That's how Joe Dawson describes his mission as PD of WWKX (Kix 106) Providence, R.I. It's a job that Dawson carries out with 1,100 watts of music power or, as he notes, "the equivalent of one large hair dryer," but Kix reaches more people than the average household appliance. In the summer Arbitrons, Kix was up 3.9-4.3 12-plus, while heritage top 40 rival WPRO-FM was off 7.2-6.3.

Dawson arrived in Providence from KLYV Dubuque, Iowa, in February. His KLYV stint followed a string of notable station stops, including two at WBBM-FM (B96) Chicago, where he was initially hired by Mike Joseph for 1982's "Hot Hits" launch. Dawson worked there for Buddy Scott and Dave Shakes and then broke into programming with oldies KVOX Fargo, N.D., and the late WBXX (B95) Battle Creek, Mich., under GM Bill Hennes.



**Joe Dawson**  
Program Director  
WWKX Providence, R.I.

*A lot of PDs are afraid to program their stations. They just take raw research data right off the paper and translate that into rotations. You have to use all the info available'*

After taking KLYV back to No. 1 with a 14 share, Dawson spoke to Dan O'Toole, whom he knew from the days when O'Toole programmed WKQX (Q101) Chicago, about WWKX, the dance station in suburban Providence that O'Toole and partner Garry Mitchell consulted.

"[WWKX] was suffering from a severe identity crisis and had gone through PDs like Kleenex," says Dawson. "I knew dance/pop product would work in this market, but the station at that time was perceived as being too rap. When I flew in for my initial interview, the first song I heard Kix play was 'Cop Killer' by Ice-T at 9 a.m. Saturday morning."

For his market research on Providence, Dawson made liberal use of an underutilized resource, the public library. He discovered the market was 96% white and 4% black, with large segments of Portuguese and Italian descent. While dance music was indeed popular, Dawson found that the club atmosphere was a throwback to 1978. "People here still refer to nightclubs as discos. You still see guys with gold chains, the whole nine yards."

Despite rumors that Dawson would take WWKX modern rock, "I decided to walk the path of least resistance and capitalize on the station's heritage. Dance and pop-driven rap sells in this market. The latest SoundScan shows Mariah, Coolio, Janet, Groove Theory, and Deborah Cox selling top 10. Only three out of the top 10 sellers are from the modern rock genre."

Here's a sample 5 p.m. hour: Take That, "Back For Good"; Notorious B.I.G., "One More Chance"; Whitney Houston, "Exhale (Shoop Shoop)"; Cypress Hill, "I Throw Your Set In The Air"; 4 P.M., "Sukiyaki"; Max-A-Million, "Sexual Healing"; the artist formerly known as Prince, "I Hate U"; Salt-N-Pepa, "Ain't Nuthin' But A She Thing"; Earthtones, "Sally"; D'Angelo, "Cruisin'"; Coolio, "Too Hot"; Mariah Carey,

"Fantasy"; Seal, "Kiss From A Rose"; and Da Brat, "Fa All Y'All."

KIX plays its power records 90 times a week, Dawson says. "We look specifically for reaction records. It's the kiss of death when a record guy says, 'Play this for five weeks, and it'll test.' I should live so long. If I had a big-ass AC signal, then maybe I'd look at it."

Dawson uses Conquest, a research system marketed, coincidentally, by Garry Mitchell. "It helps us identify our P1 listeners and hot zips, and we can conduct music surveys via touch-tone phone," says Dawson. "We can drive 150-200 connects in one night using only three people. It's like having 12 people doing research."

As for how much emphasis Dawson, who is particularly aggressive on new music, puts on research, he says, "You still have to use your head. You have to decide who's programming this radio station, me or some lady working at Luscious Lane Candies in Cranston, R.I.?"

"I see a lot of PDs who are afraid to program their stations. They just take raw research data right off the paper and translate that into rotations. You have to use all the information available to you from the phones, the clubs, retail sales, and call-out."

"We actually use our ears," he says. "If a record sounds good, and we like it, we'll give it 30 spins a week to see if the public likes it."

As for just who that public is, the WWKX sales office is located in Pawtucket, R.I., its tower is in the city of license, Woonsocket, R.I., the studios are just over the state line in Attleboro, Mass., and the Kix stationary proudly bears a Providence P.O. box. To keep the air staff focused on the target market, Dawson has posted a sign outside the control room that says, "You're walking into downtown Providence."

To better serve the ever-expanding Kix neighborhood, the station uses a large, boxy-looking vehicle, the Kix Meat Truck, for constant remotes. Besides the usual station star parties, Kix is as likely to show up at a Dunkin' Donuts to hand out stickers and doughnuts, while broadcasting live through the shop's drive-through mike.

Dawson recently hired Bill Keeler for mornings, along with sidekick B.B. Good, replacing the no-longer-syndicated "Matty In The Morning" show. "It's a very proactive morning show, followed by a personality-driven radio station," he says. Morning producer Anthony Pepe (aka "Danger Boy") earned his nickname recently when he donned a police flak jacket and let a cop shoot him with a .45 caliber revolver.

Dawson has taken on some additional administrative duties lately, as a result of GM Gene Lombardi's position being eliminated. GSM Joe Lembo and Dawson are currently dividing GM duties and report directly to Back Bay Broadcasting's Peter Crawford. They do so as new WPRO-FM PD Chris Shebel joins to rescue that station from an uncharacteristic low.

Dawson and Shebel worked together in 1979-82 at the late WXGT (92X) Columbus, Ohio. Shebel also worked at WLS Chicago when Dawson was across the street at B96. "Chris and I have similar backgrounds," says Dawson, who consulted WLXR La Crosse, Wis., for about a year when Shebel was PD. They have similar tastes in music, too. Shebel, who is coming into a station that leans adult, has long been an advocate of dance music, while Dawson will always be known as the PD who brought dance records like "Yolanda" to Dubuque.

"Chris is a friend," says Dawson. "Hopefully, he'll continue to chase his demos, I'll chase mine, and we'll both enjoy mutual success."

KEVIN CARTER



**EXPLODING AT:**

**KMXV KZHT**

**Z90 WZJM**

**KLRZ Y107**

**Q106 WFHN**

**Paula Abdul!**

**Ain't Never Gonna Give You Up**

Produced by **Robert Wall**

from the new album **Head Over Heels**

Management: **Bob Cavallo** for Atlas, **Third Rail**; **Larry Tollin** for Tollin Entertainment

©1995 **Virgin Records America, Inc.**



**captive**

**#1 Requests at KMXV/Kansas City 2 weeks in a row!**

**#3 Researching Record/ Female 25-34 (3.8 out of 4.0)**

**#6 Researching Record/ Female 18-24 (3.6 out of 4.0)**

**1% Dislike**



## New Fab Four Cut To Hit Airwaves

Continued from page 1

crossover acts owe some debt to the Beatles. "Free As A Bird" is less likely to sound like "Fantasy," "Gangsta's Paradise," or "Beautiful Life" than, well, a Beatles record.

So how are mainstream and adult top 40 responding? With nobody having heard the single yet, reaction runs the gamut, with some PDs willing to find a place for the record—if only as a morning-show novelty—because of its historic significance and the magnitude of the pre-release publicity, and others feeling that a new Beatles single is more appropriate for oldies and classic rock stations.

WAPE (Power 95) Jacksonville, Fla., PD Cat Thomas had the most elaborate plans of any PD contacted by Top 40 Airplay Monitor. Because the original WAPE-AM sponsored the Beatles when they first arrived in Jacksonville in 1964, "there's obviously a lot of tradition with the Beatles and WAPE," Thomas says. The local ABC affiliate is planning a documentary about the 1964 show and will actually broadcast WAPE's debut of the song live on Sunday night.

Asked if today's WAPE audience is conscious

*'Our target listener probably isn't a big Beatles fan, but even without having heard it, I still think it's going to be a viable top 40 song, because it's [part of] such a media event'*

—Jim Reitz

of the current Beatles blitz, Thomas says, "If they're not conscious of the Beatles, they must be unconscious. With all the hoopla that's surrounding [the single], it transcends the format to me."

### "IT'S A MEDIA EVENT"

Here's a sampling of reaction from other top 40 programmers:

- Jim Reitz, PD of rhythmic-leaning WFHN (Fun 107) New Bedford, Mass.: "It's a media event, so it's something you can't ignore. Our target listener probably isn't a big Beatles fan, but even without having heard it, I still think it's going to be a viable top 40 song, because it's [part of] such a media event. So I don't know exactly what capacity we'll use it in, but I'm sure we will."

- Tom Poleman, PD, KRBE Houston: "It's hard to say if the Beatles are still going to [have an impact on] our listeners. But whenever you have a major network involved, the curiosity is probably there. Since KRBE is a pop-culture radio station, we'll probably want to have some talk about it on the morning show the next day. Beyond that, it's up to the listeners."

- Andy Shane, MD, WHTZ (Z100) New York, asked what the Beatles mean to an alternative-leaning station's audience: "Right now, they mean more to PDs and MDs. I think [PD Steve Kingston] and I are looking forward to hearing it more than our listeners are. There is going to be a segment of the audience that will be dying to hear it, but for our target, it's going to be limited. . . . If anything, we'd showcase it on the morning show."

- Charlie Quinn, PD, WYHY (Y107) Nashville: "For my radio station, an oldie is 1985. That's reaching really deep, so the '60s? Forget it. . . . I probably will give it to the morning guys and have them do a single bit in which they play a few select Beatles cuts one morning, and that will be the extent of my promoting it."

- Bill Thorman, PD, KHOM (Mix 104.1)

New Orleans: "I'll really have to see if it has a younger appeal. We were oldies for so long. I hate to do anything that relates to oldies. I'm not even sure if our listeners know that the Beatles were Paul McCartney's first band. Personally, I'm glad to see it. . . . but I'm not sure how it can benefit me greatly."

### THE OLDIES CONNECTION

Even some of the PDs who still deal with oldies directly, either through oldies duopoly partners or as a larger-than-usual part of their format, are cautious. WKRZ Wilkes-Barre, Pa., PD Ken Medek does a Saturday night oldies show that goes back to the '50s, but he says that he doesn't get many calls for the Beatles. "Even on our oldies show, we've gotten away from that," he says. "We just rammed it down people's throats for so long."

Scott Hamilton, OM for WHYY (Live 101.9) Montgomery, Ala., notes that WAFX, the duopoly partner he oversees, just segued from classic to mainstream rock and "no longer plays as much in the Beatles/CCR category" outside special programming. But, he adds, "if this causes a resurgence in the Beatles, we'll have to support them."

Neil Sharpe, PD at WJET Erie, Pa., which has an oldies duopoly partner, WFGO (Froggy 94), is planning on concentrating the bulk of his efforts there. "One nice thing is that we have an ABC-TV affiliate in our building, so we're doing a lot of cross-promotions between TV and our oldies station. We're also tying the oldies station in with the Rock and Roll Hall of Fame and have Beatles T-shirts with our logos. As far as the new stuff, we may dabble with it a little as a morning-show-type thing on WJET."

### TOP 40/ADULT SAYS YES

At top 40/adult stations, a keystone of Capitol's strategy for the record, reaction was almost uniformly favorable, even given the format's increasingly hard edge.

ABC flagship WPLJ New York—the successor to AM top 40 WABC—which, during Beatlemania, billed itself as "W-A-Beatle-C"—was planning a preview party at the Harley Davidson Cafe with a Beatles tribute band for the Wednesday (15) before the broadcast. WPLJ assistant PD/MD Mike Preston says, "We'll certainly play it, although it's kind of hard to know what kind of commitment we'll have."

"If you're a station that targets 25-34 adults, there's certainly some relevance. If stations don't have a problem playing a new record from Elton John or the Rolling Stones or somebody else who's been around forever, what's the difference? So many stations in this format are song-driven now that if the song is good, it speaks for itself."

WKDD Akron, Ohio, PD Chuck Collins is in a market with two different ABC affiliates. He notes that "they're promoting this thing like crazy." Collins believes that "most of the buzz I'm getting is industry" and that "there's been so many other remakes and reissues in the last year, I don't know if people realize there's a new Beatles song." But he adds, "We certainly are going to be there, because it's a huge event."

At KALC (Alice 106) Denver, another cutting-edge top 40/adult station, MD Jim Lawson plans to play one Beatles cut an hour next Monday and give away anthology CDs. KALC's duopoly partner, '70s oldies outlet KIMN will also pump up the '70s solo material from the various Beatles and plans to break format to add some '60s Beatles classics to its library.

One dissenter on the top 40/adult side is KHMX (Mix 96.5) Houston PD Pat Paxton, who says, "I'm not planning on doing much with the new single. . . . I don't see our crowd breaking down the door to get at it."

Even in England, radio reaction to the forthcoming single is mixed. One programmer, contacted for a similar story, told Top 40 Airplay Monitor's British sister publication, Music Monitor, "We'll probably look upon it in the same way as the Beach Boys' 'Kokomo' . . . That was also a 'new' release but was still, essentially, a '60s record."

## PROMOTIONS

by Kevin Carter

### K.C. "Drive To Revive" Restores Drug House

October was National Drug Awareness Month. So KMXV (Mix 93.3) Kansas City decided to take a stand against the proliferation of crack houses by teaming with neighborhood residents—utilizing COMBAT (a community-backed antidrug tax)—for the Drive to Revive, a citywide campaign to take back the neighborhoods.

The first goal of the campaign was to acquire a condemned drug house, restore it using listener donations, and donate the house back to the community. KMXV promotions director Karen Menke says that the parties looked long and hard before settling on a house. They wanted a house in a good area with an active neighborhood association that would help in the renovation process and oversee the final disposition of the house. The house chosen, in Menke's words, was located in a "proud area of town, full of longtime residents and old-world charm. Basically, it was a bad apple on a good tree." The former drug house was located on the same corner as a school-bus stop, across the street from two churches, and on the same block as a museum.

With the financial support of listeners, the house was purchased for \$18,000 and is being renovated to its original, historic state. Upon completion of the project, the house will be donated to the neighborhood association, which will sell it and use the funds to further improve the area or to acquire another project house.

On Oct. 25, KMXV's morning show jocks Danny and the Barber and midday jock Kelly Urich fielded phone calls detailing real-life stories of drug-house problems in Kansas City. For two days, the station solicited donations from the public to kick off the campaign. Special phone banks were set up and manned by station personnel. Credit-card donations and pledges were accepted, and a bank account was set up to accommodate the funds.

Two days later, Mix broadcast all its jock shifts live from the selected house and invited listen-

ers to stop by for a tour of the once-beautiful home that had fallen victim to disrepair and the ravages of the drug trade. Police officers, who had shut down the house, guided the morning show on a walk-through. Local contractors, suppliers, and other businesses were invited to join the project on a volunteer basis. To date, KMXV has collected more than \$15,000 cash and more than \$50,000 in donated supplies and labor to cover landscaping, floor replacement, paint, carpentry, home security, etc.

The station continues to run Drive to Revive promos and updates to maintain listener interest in the project. Menke adds that this promotion will continue until the house is fully restored and given back to the community.

The association hopes to have the principal renovation work done by Christmas, when it plans to throw a huge block party to celebrate the completion of this project and, they hope, the birth of more community projects like it.

For complete details on Mix's project, call Karen Menke at 816-753-0933.



KMXV (Mix 93.3) Kansas City OM Tim Land at the front door of the condemned drug house revitalized by his radio station.



The Mix 93.3 van in front of the condemned house.

PUBLISHER: MICHAEL ELLIS  
 EDITOR: SEAN ROSS  
 MANAGING EDITOR: KEVIN CARTER  
 DIRECTOR OF CHARTS: JERRY MCKENNA  
 TOP 40/ADULT CHART MANAGER: STEVEN GRAYBOW  
 CHART PRODUCTION MANAGER: MICHAEL CUSSON  
 ASST. CHART PRODUCTION MANAGER: PAUL PAGE  
 EDITORIAL PRODUCTION MANAGER: BARRY BISHIN  
 ASSOC. EDITORIAL PRODUCTION MANAGER: MARCIA REPINSKI  
 EDITORIAL PRODUCTION: MARC GIACQUINTO, MORRIS KLEGMAN  
 COPY EDITOR: CARL ROSEN  
 ADVERTISING PRODUCTION MANAGER: LYDIA MIKULKO  
 ADVERTISING PRODUCTION ASST.: CINDEE WEISS  
 ADVERTISING ART DIRECTOR: RAY CARLSON

©1995 BPI Communications, 1515 Broadway, New York, NY 10036  
 212-536-5039 For subscriptions call: 800-722-2346

NATIONAL ADVERTISING MANAGER: JON GUYNN  
 ADVERTISING SALES: ART PHILLIPS, ANDREA THOMPSON  
 CLASSIFIED ADVERTISING: LAURA RIVCHUN  
 ADVERTISING SERVICES MGR.: MICHELE JACANGELLO  
 SALES ASSISTANTS: EVELYN ASZODI, ERICA BENGTON,  
 JEFF LESTINGI, ALYSE ZIGMAN

EDITORIAL ADVISOR: TIMOTHY WHITE  
 PRODUCTION DIRECTOR: MARIE GOMBERT  
 DIRECTOR OF MARKETING: ELISSA TOMASETTI  
 CIRCULATION MANAGER: JEANNE JAMIN



Billboard Music Group  
 PRESIDENT: HOWARD LANDER



# R. KELLY "You Remind Me Of Something"

Title Report: A D I Report

Page 1 of 3  
Week Ending 11/05/95  
11/07/95 18:10:12

YOU REMIND ME OF SOMETHING # Weeks Top 200: Curr 2  
KELLY\*R. Rank 1 9 9 1 t o D A T E  
JIV Rel: 10/31/95 |---- 1 9 9 1 Rank 2  
Cds 12" Cas MxC CdX Total 95 YTD  
21008 0 68665 0 0 89673 89673

Rpt Type: ALL  
Format: ALL  
Configuration: SINGLE  
Cat: 42344

	This R	Last R	2 Weeks R	3 Weeks R	92 TD
	Week A	Week A	Ago A	Ago A	Total
	---- N	---- N	---- N	---- N	-----
Total	88839 K	842 K	0 K	0 K	89681
New York, NY	3789-7	0	0	0	3789
Los Angeles, CA	2367-6	0	0	0	2367
Chicago, IL	3213-1	0	0	0	3213
Philadelphia, PA	1694-2	0	0	0	1694
SF-Oakland-San Jose	831-16	0	0	0	831
Boston, MA	1105-6	0	0	0	1105
Dallas-Ft. Worth, TX	1319-1	93-68	0	0	1412
Detroit, MI	1507-1	146-56	0	0	1653
Washington, DC	1191-5	6	0	0	1197
Houston, TX	1493-1	75-57	0	0	1568
Cleveland, OH	2138-1	3	0	0	2141
Atlanta, GA	3405-1	21	0	0	3426
Minneapolis-St. Paul, MN	444-5	0	0	0	444
Tampa-St. Petersburg, FL	891-2	0	0	0	891
Seattle-Tacoma, WA	239-10	0	0	0	239
Miami, FL	898-4	0	0	0	898
Pittsburgh, PA	523-4	0	0	0	523
St. Louis, MO	1518-1	0	0	0	1518
Denver, CO	203-6	0	0	0	203
Phoenix, AZ	266-5	0	0	0	266
Sacramento-Stockton, CA	610-6	0	0	0	610
Baltimore, MD	596-4	0	0	0	596
Hartford-New Haven, CT	325-12	0	0	0	325
San Diego, CA	266-10	0	0	0	266
Orlando-Daytona Bch-Mlbrne	913-1	0	0	0	913
Indianapolis, IN	1348-1	44-84	0	0	1392
Portland, OR	422-2	0	0	0	422
Milwaukee, WI	1405-1	0	0	0	1405
Kansas City, KS-MO	1177-1	0	0	0	1177
Cincinnati, OH	1229-1	88-35	0	0	1317
Charlotte, NC	2080-1	44	0	0	2124
Nashville, TN	747-2	0	0	0	747
Raleigh-Durham, NC	3218-1	8	0	0	3226
Columbus, OH	721-1	17	0	0	738
Greenville-Sprtnbrg-Ashvll	2149-1	21	0	0	2170
New Orleans, LA	1386-1	40-73	0	0	1426
Grnd Rpds-Klmzo-Bttle Crk	170-6	0	0	0	170
Buffalo, NY	721-1	0	0	0	721
Memphis, TN	986-1	0	0	0	986
Oklahoma City, OK	560-2	0	0	0	560

Copyright (c) 1995 by SoundScan, Inc. All rights reserved.

**#2** on Soundscan's  
Top Singles  
Chart (debut) with  
89,000 singles sold  
- first week out!

**#4** on Billboard's  
Hot 100 Singles  
Chart (debut)

**#1** on Soundscan's  
R&B Singles  
Chart (debut)  
and Billboard's  
R&B Singles  
Chart (debut)

• *New video now playing on:*



• *Album in stores November 14th  
and shipped **platinum!***





## HELP WANTED

### WUSY (US-101)

ACCEPTING T/R'S FOR MORNING SHOW AIR TALENT AT "R&R" #5 RATED AM-DRIVE DRIVETIME DOMINATOR. WE WANT A PERSON WHO KNOWS MORNING SHOW HOT BUTTONS AND HOW TO PUSH THEM. IF YOU KNOW HOW TO ENTERTAIN MORNING SHOW AUDIENCES, ACT IMMEDIATELY!!! THIS IS NOT AN ENTRY LEVEL POSITION. WE WANT THE BEST TO WORK AT THE CMA MEDIUM MARKET STATION OF THE YEAR. PREVIOUS COUNTRY EXPERIENCE IS A NECESSITY! **NO CALLS!!!**

TAPES & RESUMES TO:  
US-101, BOB STERLING  
P.O. BOX 8799  
CHATTANOOGA, TN 37414  
COLONIAL BROADCASTING/WUSY (US-101)  
IS AN EQUAL OPPORTUNITY EMPLOYER.

### The music matters most, but it's what happens in-between that makes the difference.

Nation's top two Rock/ACs seeking talent for future openings and acquisitions. If you understand preparation, concentration and moderation, rush your T&R to: Tom Benson, Dame Media, WRVW/WRVE, P.O. Box 6477, Harrisburg, PA 17112.  
EOE

WIBW-FM Topeka, KS 97 COUNTRY is looking for 7-Midnight personality. Heavy use of phones and lots of public appearances. Send Tape & Resume to: Personnel Dept. WIBW-FM, Box 1818 Topeka, KS 66601  
Deadline 12/1/95  
EOE

## SERVICES

### STATION I.D.

### ID Jingles CHR & Rhythmic

"They are FAT."- Jay Stevens P.D. WPGC  
"You HAVE to hear these!"- Mike Tierney P.D. KUBE 93

ReelWorld Productions  
Call for demo (206) 713.3044

### VOICEOVERS

You get what you pay for

▲  
.....  
Sean Caldwell  
PRODUCTIONS

Y100 Young Country ● Country CHR Rock Hot AC  
B-96 KISS-FM Z100 ● voice-over • production effects  
New Country KISS106 ● (610) 640-5899 FAX 892-7880

### Tune in to Britain's music. Music Monitor

Incisive editorial coverage of the U.K. music scene addressing the key issues in music, marketing, programming and promotion • Unique charts based on BDS airplay and Gallup retail data • Radio station playlists • Summaries of each record's performance • Top 20 greatest airplay gainers • The latest music news from around the globe.

Call Sue Dowman at  
(0171) 323-6686 to subscribe.  
(In the U.S. call (212) 536-5261.)

Part of the Billboard Music Group.

## TOP 40 AIRPLAY MONITOR COUNTRY AIRPLAY MONITOR R&B AIRPLAY MONITOR ROCK AIRPLAY MONITOR

The only radio publications based exclusively on electronically monitored airplay from Broadcast Data Systems.

- Airplay Charts • Power Playlists • Biggest Gainers
- New Releases • Song Activity Reports • Impact Pages
- Monitored Video Playlists • Plus all the latest radio and music industry news every week.

Call 1-800-722-2346 to subscribe.

Part of the Billboard Music Group.

## WE JUST WANT TO FIND OUT WHAT READERS WANT & GIVE IT TO THEM

Rock Airplay Monitor becomes a full-service trade publication in January. If you have a working knowledge of album rock, modern rock, and triple-A programming, can write anything more complicated than promo copy, and know enough to discard clichés like the one in the headline, we'd like to hear from you. Send resume, writing samples (promo copy, okay), and your suggestions for this publication to:

Sean Ross  
Rock Airplay Monitor  
1515 Broadway  
New York, NY 10036  
EOE

ROCK AIRPLAY  
**Monitor**

## CLASSIFIED ADVERTISING RATES

### HELP WANTED:

1 WEEK \$75.00 per inch  
2 WEEKS \$65.00 per inch

**POSITION WANTED  
AND BULLETIN BOARD:**  
\$45.00 per inch

**BOX NUMBER:** Add \$20.00

### SERVICES:

1 WEEK \$75.00 per inch  
6 WEEKS \$65.00 per inch  
13 WEEKS \$60.00 per inch  
26 WEEKS \$55.00 per inch  
51 WEEKS \$50.00 per inch

**DEADLINE  
(ALL CLASSIFIED):**  
Each Wednesday 3pm EST,  
9 day leadtime.

• Classified ads are  
non-commissionable •

**SUBMIT ALL AD COPY TO:**  
Laura Rivchun  
Airplay Monitor Classified  
1515 Broadway  
New York, NY 10036

Phone: 212-536-5058  
Fax: 212-536-5055

Name \_\_\_\_\_  
Address \_\_\_\_\_  
City \_\_\_\_\_ State \_\_\_\_\_ Zip \_\_\_\_\_  
Company Name \_\_\_\_\_  
Phone \_\_\_\_\_

**PAYMENT MUST ACCOMPANY ORDER**

Payment of \$ \_\_\_\_\_ enclosed for \_\_\_\_\_ Insertion(s)  
Charge to  American Express  Visa  Mastercard  
Account Number \_\_\_\_\_  
Expiration Date \_\_\_\_\_  
Signature \_\_\_\_\_

UPDATED  
FOR THE FALL!

## Experience The Power!

Brought to you by Billboard and Monitor, the most comprehensive guide to radio and record promotion -- *THE POWER BOOK - The New Fall Edition!*

**JAMPACKED WITH LISTINGS:** • Radio Stations -- Country, Rock, R&B, Top 40 • Record Company Promotion Personnel • Radio Syndicators • Top 100 Arbitron Markets  
The most important tool for music, radio and promotion executives to use every day!

Order your copy now for just \$75 (plus \$5 shipping and handling, \$12 for international orders).

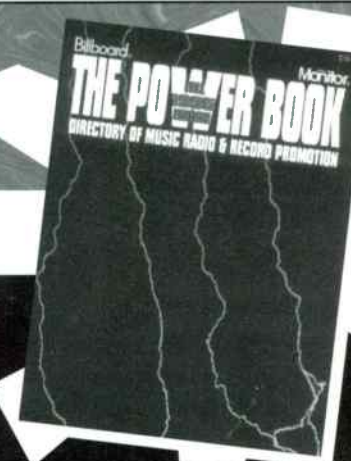
**2 DIRECTORY PACKAGE:** The Power Book Fall 1995 Edition AND the Power Book Spring 1996 Edition for \$119 -

Order NOW & SAVE more than 40% on the Spring edition! (Spring Directory will automatically mail in March 1996).

Please add appropriate sales tax in NY, NJ, PA, CA, TN, MA, IL & DC. Orders payable in U.S. funds only. All sales are final.

To order, or for more information call (800) 344-7119 or (800) 223-7524. In NY call (212) 536-5174. In NJ call (908) 363-4156.

Or mail this ad with your payment to: Billboard Directories, P.O. Box 2016, Lakewood, NJ 08701.



BDPB3095



# AIRPLAY Monitor GREATEST GAINERS

## STRONGEST INCREASE IN AIRPLAY

### MAINSTREAM

INCREASE  
IN PLAYS

<b>MARIAH CAREY &amp; BOYZ II MEN • One Sweet Day (COLUMBIA)</b>	<b>+566</b>
KHKS +54, KJYO +24, KHTO +23, WFLZ +23, WYCR +21, WNTQ +20, WABB +20, KIIS +19, KKMG +17, WWSR +16	
<b>MADONNA • You'll See (MAVERICK/WARNER BROS.)</b>	<b>+298</b>
WPRO +18, WFLY +17, WFMF +15, WEDJ +13, KKRD +13, WFHN +13, WKRQ +12, KIIS +12, WKXJ -11, KKLQ +11	
<b>ALANIS MORISSETTE • Hand In My Pocket (MAVERICK/REPRISE)</b>	<b>+292</b>
KZZU +41, WZPL +25, WKSE +24, WNTQ +19, WWSR +17, WFMF +15, WKSS +15, WFLY +12, WIOQ +12, WSSX +11	
<b>GOO GOO DOLLS • Name (METAL BLADE/WARNER BROS.)</b>	<b>+232</b>
WFHN +21, KMXV +17, KHFI +17, WZJM +16, KHTT +16, WFMF +15, WKSS +13, KRBE +13, WKXJ +12, WYCR +11	
<b>HOOTIE &amp; THE BLOWFISH • Time (ATLANTIC)</b>	<b>+230</b>
WDDJ +17, WKSE +17, WZYP +16, WWCK +16, WHHY +15, WRVQ +14, WSTR +13, WKRZ +13, WBHT +11, WSTW +11	
<b>♀ • Gold (NPG/WARNER BROS.)</b>	<b>+227</b>
WNOK +20, WTWR +18, WKXJ +17, WXLK +17, WYCR +17, KMXV +15, KDWB +15, WWSR +13, WFBC +11, WXIS +10	
<b>TLC • Diggin' On You (LAFACE/ARISTA)</b>	<b>+220</b>
WPRO +21, WNTQ +19, WZJM +16, WFLY +14, WABB +13, WLAN +12, WWCK +11, KMXV +10, KKRD +10, KRQQ +10	
<b>ACE OF BASE • Beautiful Life (ARISTA)</b>	<b>+219</b>
WIOQ +24, WABB +18, WSNX +18, WFHN +16, KMXV +14, WZNY +11, WPRO +11, WFMF +10, WDJX +10, KHFI +10	
<b>WHITNEY HOUSTON • Exhale (Shoop Shoop) (ARISTA)</b>	<b>+202</b>
WZJM +20, KHTO +19, WNNK +14, WWCK +11, WRVQ +11, WKXJ +9, WYCR +9, KMXV +8, WNVZ +8, WZYP +7	
<b>JOAN OSBORNE • One Of Us (BLUE GORILLA/MERCURY)</b>	<b>+194</b>
WNTQ +22, KRQQ +14, WNNK +14, WFBC +13, WZNY +12, WKCI +12, WKRZ +11, KKRD +11, WAFE +11, WHTZ +11	

### RHYTHM-CROSSOVER

INCREASE  
IN PLAYS

<b>MARIAH CAREY &amp; BOYZ II MEN • One Sweet Day (COLUMBIA)</b>	<b>+132</b>
KKXX +34, KUBE +29, WJMN +22, KBOS +20, WWKX +14, KJMJ +9, XHTZ +9, KSFM +9, WJJS +8, KLUC +8	
<b>COOLIO • Too Hot (TOMMY BOY)</b>	<b>+130</b>
WHHH +24, KPWR +17, WPOW +13, KUBE +12, WERQ +10, KZHT +10, KJMJ +9, KPRR +9, KZFM +7, WJJS +6	
<b>WHITNEY HOUSTON • Exhale (Shoop Shoop) (ARISTA)</b>	<b>+120</b>
KUBE +34, WJMH +30, KKFR +14, KBXX +11, KJMJ +10, WOVV -9, KLUC +9, KKXX +9, XHTZ +9, KDLE +7	
<b>L.L. COOL J • Hey Lover (DEF JAM/RAL/ISLAND)</b>	<b>+102</b>
KYLD +15, WPOW +14, KJMJ +13, WJMN +13, KDON +11, KKSS +9, WQHT +9, WOVV +7, KLUC +7, KCAQ +6	
<b>IMMATURE • We Got It (MCA)</b>	<b>+83</b>
WJMH +22, KDLE +20, KMEL +15, WERQ +13, KQKS +8, WJJS +5, WHHH +2, KSFM +2, KJMJ +1, KUBE +1	
<b>JODECI • Love U 4 Life (UPTOWN/MCA)</b>	<b>+83</b>
WGHT +20, WPGC +18, KDLE +17, WJMH +16, WHHH +14, KCAQ +8, KZFM +5, XHTZ +1, WWKX +1	
<b>D'ANGELO • Cruisin' (EMI)</b>	<b>+83</b>
KDLE +30, WERQ +17, KKSS +17, KGGI +12, KCAQ +7, KZFM +7, KPRR +7, XHTZ +4, KBOS +3, KTFM +3	
<b>THE MIGHTY DUB KATS • Magic Carpet Ride (SM:)E/PROFILE)</b>	<b>+83</b>
KZFM +30, KTFM +17, KUBE +16, KGGI +11, KCAQ +9, KPWR +4, WPOW +3, WJJS +2, KYLD +2, WBBM +2	
<b>SELENA • Dreaming Of You (EMI LATIN/EMI)</b>	<b>+72</b>
WWKX +16, WBBM +16, KMEL +14, KBOS +13, WJMN +13, KKFR +8, KJMJ +7, KLUC +5, KGGI +5, KDON +4	
<b>3T • Anything (MJJ550 MUSIC)</b>	<b>+68</b>
KJMJ +23, KDLE +19, KYLD +14, KBOS +13, KTFM +7, KDON +6, KCAQ +5, KZHT +5, XHTZ +5, KQKS +4	

# VIDEO PLAYLISTS



	TW	LW
1 Coolio, Too Hot	32	0
2 TLC, Diggin' On You	31	19
3 Presidents Of The United State, Lump	28	23
4 Tha Dogg Pound, Let's Play House	27	2
5 Bush, Come Down	26	19
6 Goo Goo Dolls, Name	26	21
7 Red Hot Chili Peppers, My Friends	26	23
8 Mariah Carey & Boyz II Men, One Sweet Day	24	11
9 Smashing Pumpkins, Bullet With Butterfly	22	19
10 Alanis Morissette, Hand In My Pocket	21	17
11 Whitney Houston, Exhale	20	16
12 Brandy, Brokenhearted	17	14
13 Coolio Feat. L.V., Gangsta's Paradise	17	23
14 Melissa Etheridge, Your Little Secret	17	13
15 Hootie & The Blowfish, Time	16	14
16 Lisa Loeb & Nine Stories, Do You Sleep?	16	9
17 Green Day, Geek Stink Breath	16	15
18 Joan Osborne, One Of Us	15	10
19 Collective Soul, The World I Know	15	8
20 Groove Theory, Tell Me	14	6
21 Garbage, Queer	13	13
22 Janet Jackson, Runaway	13	14
23 Rentals, Friends Of P	13	11
24 Toadies, Possum Kingdom	12	11
25 R.E.M., Tongue	12	11
26 Bone Thugs-N-Harmony, 1st Of Tha Month	12	1
27 Foo Fighters, I'll Stick Around	11	15
28 AC/DC, Hard As A Rock	11	11
29 LL Cool J, Hey Lover	11	6
30 Heather Nova, Walk This World	11	11
31 Meat Loaf, I'd Lie For You	10	8
32 Salt-N-Pepa, Ain't Nuthin' But A She Thing	10	12
33 Rancid, Ruby Soho	10	0
34 Sophie B. Hawkins, As I Lay Me Down	9	5
35 Take That, Back For Good	9	10
36 Xscape, Who Can I Runt To	9	5
37 Madonna, You'll See	9	7
38 Mariah Carey, Fantasy	8	14
39 Silverchair, Tomorrow	7	2
40 Deep Blue Something, Breakfast At Tiffan	7	10

41 Ozzy Osbourne, Perry Mason	7	7
42 Alice In Chains, Grind	7	0
43 Blues Traveler, Hook	6	4
44 Edwin McCain, Solitude	6	6
45 L.V., Throw Your Hands Up	6	10
46 Alanis Morissette, You Oughta Know	5	3
47 Seven Mary Three, Cumberstone	5	4
48 311, Don't Stay Home	5	4
49 Jodeci, Love U 4 Life	5	6
50 Edwyn Collins, A Girl Like You	5	7



	TW	LW
1 Janet Jackson, Runaway	39	41
2 Mariah Carey & Boyz II Men, One Sweet Day	39	23
3 Whitney Houston, Exhale	33	31
4 Gin Blossoms, Til I Hear It From You	32	37
5 Melissa Etheridge, Your Little Secret	30	36
6 Madonna, You'll See	25	0
7 Blues Traveler, Run Around	23	28
8 Natalie Merchant, Carnival	23	25
9 Sophie B. Hawkins, As I Lay Me Down	20	31
10 Joan Osborne, One Of Us	20	19
11 Hootie & The Blowfish, Time	20	17
12 Elton John, Blessed	20	21
13 Seal, Kiss From A Rose	19	21
14 k.d. lang, If I Were You	19	18
15 Meat Loaf, I'd Lie For You	18	23
16 TLC, Waterfalls	15	17
17 Hootie & The Blowfish, Only Wanna Be With You	14	15
18 Bonnie Raitt W/Bryan Adams, Rock Steady	14	8
19 Alanis Morissette, Hand In My Pocket	12	13
20 Edwin McCain, Solitude	11	11
21 Take That, Back For Good	11	7
22 Goo Goo Dolls, Name	10	4
23 Mariah Carey, Fantasy	10	28
24 Heart, Alone	10	0
25 Dionne Farris, I Know	9	5
26 Blues Traveler, Hook	7	4
27 Deep Blue Something, Breakfast At Tiffan	7	6
28 Lisa Loeb & Nine Stories, Do You Sleep?	7	7
29 Tina Turner, Golden Eye	7	1
30 Whitney Houston, How Will I Know	6	1

### ADULT

INCREASE  
IN PLAYS

<b>MARIAH CAREY &amp; BOYZ II MEN • One Sweet Day (COLUMBIA)</b>	<b>+233</b>
WDEF +16, WIVY +16, WMXV +14, KALC +14, KWMX +13, KYKY +11, WMYI +11, WKZL +10, KVVU +9, WMTX +9	
<b>MADONNA • You'll See (WARNER BROS.)</b>	<b>+199</b>
WVTY -36, WQAL +27, WTFM +24, KEZR +23, WLHT +13, WAEV +12, KMZQ +12, WIOG +11, WMJQ +11, WYYY +8	
<b>BONNIE RAITT WITH BRYAN ADAMS • Rock Steady (CAPITOL)</b>	<b>+77</b>
KYKY +26, WIVY +23, KYSR +16, WZPK +6, WWSN +5, WAEV +4, WTMX +2, KDMX +2, WMXV +2, WMXL +1	
<b>WHITNEY HOUSTON • Exhale (Shoop Shoop) (ARISTA)</b>	<b>+73</b>
WWSN +16, WLHT +14, WKQI +13, WRMF +11, WIOG +10, WMXV +8, WBLL +7, WALK +6, WMXB +6, WMYI +5	
<b>GIN BLOSSOMS • Til I Hear It From You (A&amp;M)</b>	<b>+66</b>
KSTP +31, WTMX +15, WAHR +14, WLHT +13, WKTI +12, KWMX +10, KYSR +8, KVVU +7, WAEV +6, WJDX +5	
<b>HOOTIE &amp; THE BLOWFISH • Time (ATLANTIC)</b>	<b>+63</b>
WKDD +15, WPLJ +12, KDMX +10, KYKY +7, KFMB +7, WQAL +6, WZPK +6, WKZL +5, WAHR +3, KHMV +3	
<b>DEEP BLUE SOMETHING • Breakfast At Tiffany's (RAINMAKER/INTERSCOPE)</b>	<b>+48</b>
WMXL +17, WMXV +16, KWMX +11, WMTX +9, KALC +9, KSTP +3, KGBY +2, KPLZ +2, WDEF +1, KVVU +1	
<b>TAKE THAT • Back For Good (ARISTA)</b>	<b>+45</b>
WWSN +16, WKTI +11, WQAL +10, WBEB +9, WMXB +8, WMXL +6, KPLZ +6, KIOI +5, KGBY +5, WZPK +4	
<b>ALANIS MORISSETTE • Hand In My Pocket (MAVERICK/REPRISE)</b>	<b>+38</b>
WTMX +18, KWMX +7, WPLJ +5, WZPK +4, WKTI +4, WBLL +4, KFMB +2, WMTX +1	
<b>DEL AMITRI • Roll To Me (A&amp;M)</b>	<b>+35</b>
WMXB +13, WYYY +13, WWSN +12, WBMX +10, WVAF +8, WMC +8, WTFM +7, KDMX +7, WMXV +6, WCSO +5	

## RADIO IS OUR DANCEFLOOR

# PLANET SOUL "SET U FREE"

"#1 Across The Board at Power 106-LA"

Bruce St. James AKA: Mr. Wizard



- NEW ADDS: KKFR, WJJS, KSIQ, KPSI, KZII
- CROSSING OVER TO MAINSTREAM: KIIS, WXXL, KOMQ
- SOUNSCAN: #1 MIAMI, #4 LA
- TOP 10 SOUNSCAN: BAY AREA, SAN DIEGO, SAN ANTONIO, WEST PALM, FRESNO, LAS VEGAS



CONTACT: ELLEN (212) 254-2400



POWER PLAYLIST

For Week Ending November 12, 1995



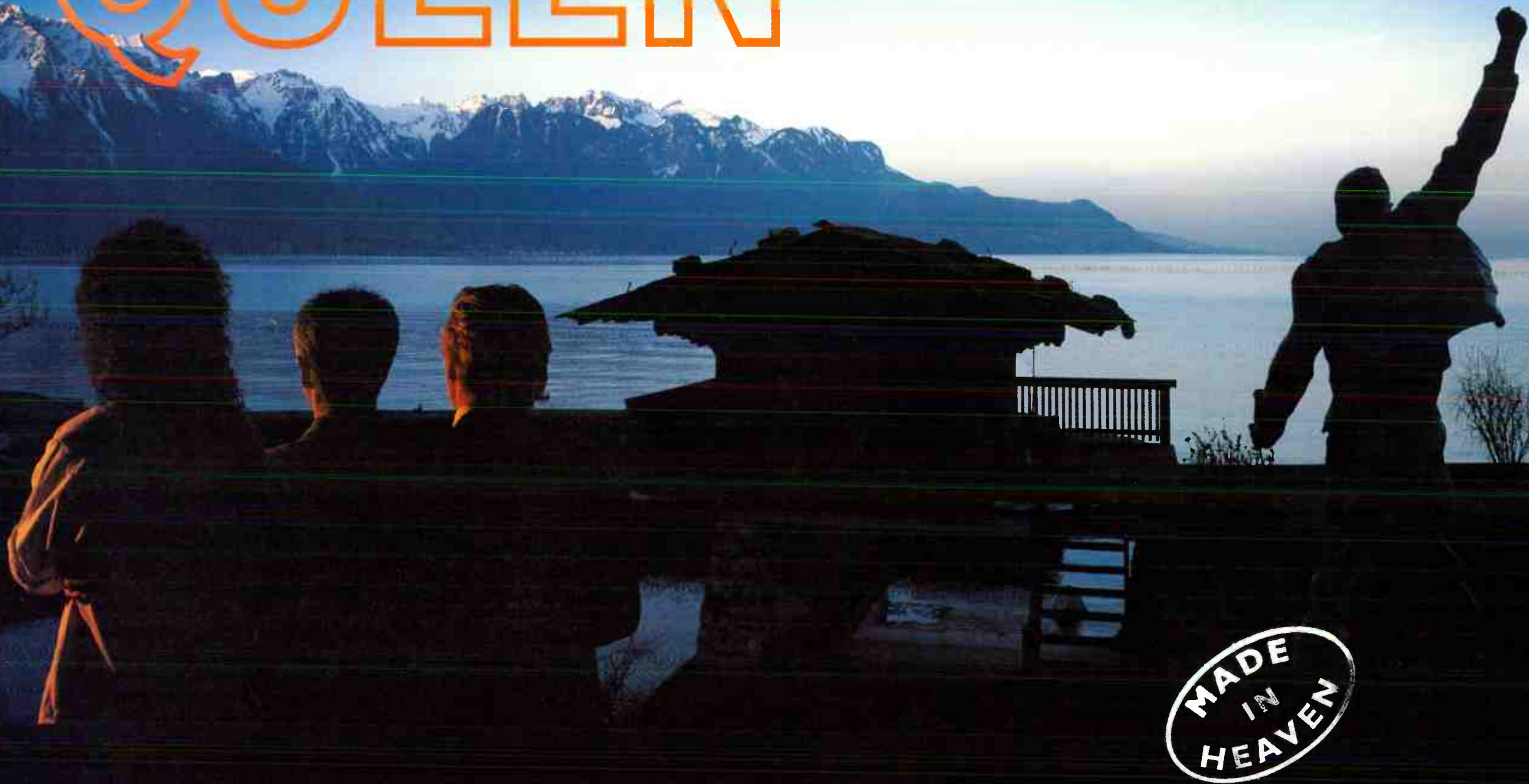
Playlists supplied by Broadcast Data Systems' Radio Track service. Stations selected from panel of leading broadcasters in 125 radio markets, electronically monitored 24 hours a day, 7 days a week. Songs ranked by number of plays in monitored week.

Main content table with 12 columns of radio station playlists (Z100, KIIS, KISS 108, Q102, KISS 106.1, KRBE, KDWB, STAR 94, B94, WFLZ, WPST, Y100, KISS 95.7, WTIC, WNCI, Q106, 92PRO FM, Q104) and their respective top 40 songs.



# QUEEN

eleven new tracks  
Freddie Mercury's final recordings



featuring the single **“Too Much Love Will Kill You”** add dates - november 20/21

Hollywood  
RECORDS

<http://www.hollywoodrec.com> © 1995 Hollywood Records



POWER PLAYLISTS

For Week Ending November 12, 1995



Playlists supplied by Broadcast Data Systems' Radio Track service. Stations selected from panel of leading broadcasters in 125 radio markets, electronically monitored 24 hours a day, 7 days a week. Songs ranked by number of plays in monitored week.

Q102 WKRQ Cincinnati PD: Jimmy Steal APD/MD: Brian Douglas. Top 40 list including Gin Blossoms, Del Amitri, and Seal.

G105 WDCG Raleigh PD: Brian Burns MD: Kip Taylor. Top 40 list including Alanis Morissette, Goo Goo Dolls, and Mariah Carey.

THE EDGE WEDJ Charlotte PD: Brian Bridgman MD: Tom Naylor. Top 40 list including Del Amitri, Seal, and Edwin McCain.

Z100 KKRZ Portland PD: Ken Benson APD/MD: Chet Buchanan. Top 40 list including Blues Traveler, Mariah Carey, and Gin Blossoms.

XL106.7 WXLL Orlando PD: Adam Cook. Top 40 list including Janet Jackson, Alanis Morissette, and Mariah Carey.

Z93 WGTZ Dayton PD: Louis Kaplan MD: Gretchen Corbett. Top 40 list including Janet Jackson, Mariah Carey, and Seal.

Y107 WYHY Nashville PD: Charlie Quinn MD: Gator Harrison. Top 40 list including TLC, Blues Traveler, and Mariah Carey.

JAMMIN' 92 WZJM Cleveland PD: Lisa Rodman MD: Dave Eubanks. Top 40 list including Selena, Mariah Carey, and Janet Jackson.

KISS 98.5 WKSE Buffalo PD: Sue O'Neil MD: Dave Universal. Top 40 list including Deep Blue Something, Mariah Carey, and Goo Goo Dolls.

WZPL Indianapolis PD: Tom Gjerdrum MD: Ron Blair. Top 40 list including Mariah Carey, Fantasy, and TLC.

Z104 WNVZ Norfolk PD: Don London MD: Sean Sellers. Top 40 list including Coolio, Mariah Carey, and Hootie & The Blowfish.

KJ103 KJYO Oklahoma City PD: Mike McCoy MD: Billy The Kid. Top 40 list including Take That, Mariah Carey, and Alanis Morissette.

MIX 93.3 KMKV Kansas City PD/MD: Steve Wall. Top 40 list including Janet, Mariah Carey, and Seal.

B97 WEZB New Orleans PD: Harry Valentine MD: Joey Giovinco. Top 40 list including Del Amitri, Deep Blue Something, and Goo Goo Dolls.

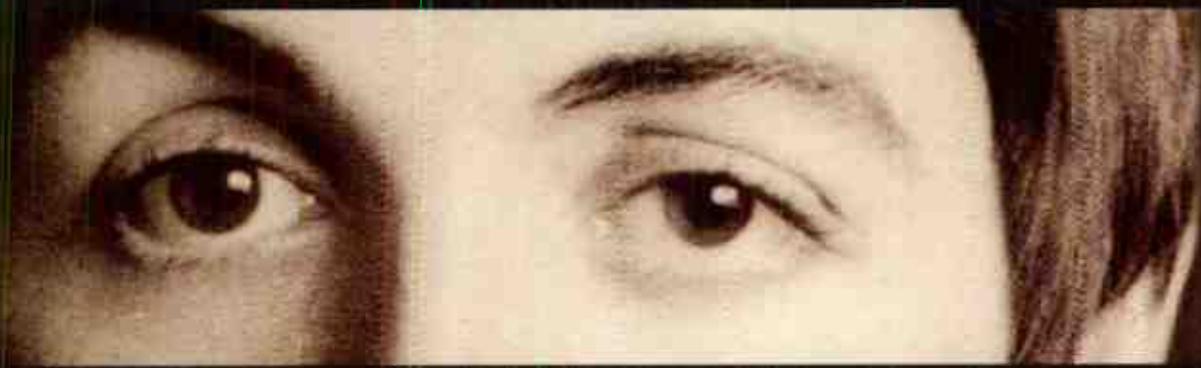
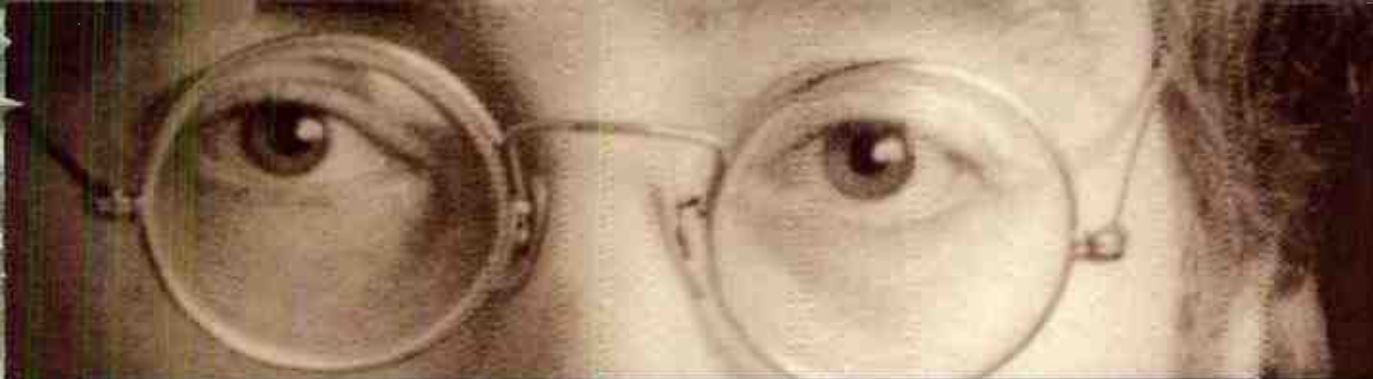
98PXY WPXY Rochester PD: Clarke Ingram MD: J.J. Rice. Top 40 list including Mariah Carey, Fantasy, and Janet Jackson.

WKRZ Wilkes-Barre PD: Ken Medek MD: Jerry Padden. Top 40 list including Deep Blue Something, Natalie Merchant, and Mariah Carey.

FLY 92 WFLY Albany PD: Mike Morgan MD: Shawn Scott. Top 40 list including Janet Jackson, Natalie Merchant, and Mariah Carey.

WIXX Green Bay PD: Dan Stone. Top 40 list including Goo Goo Dolls, Fun Factory, and Seal.





# “Free As A Bird”

**The first new Beatles song  
in 25 years.**

THE  
BEATLES

ANTHOLOGY

1







**AIRPOWER** ★★★★★  
(Minimum 1500 detections for the first time)

Total Plays/Gain

**MARIAH CAREY & BOYZ II MEN 1974/566**  
*One Sweet Day (Columbia)*  
Total Stations: 73/Chart Move: 24-15  
Heavy (40+ plays): 9 KHKS, KIIS, KKRZ, KZZU, WFLZ, WHOT, WPXY, WRVQ, WZPL  
Medium (20-39): 46 KDWB, KHFI, KHTO, KJYO, KKLO, KKMJ, KKRD, KMXV, KQKQ, KRQQ, WABB, WAPE, WBZZ, WFHN, WFLY, WHHY, WHYI, WIOQ, WJXX, WKBO, WKRQ, WKSE, WKSS, WNOC, WNNK, WNOK, WNTQ, WNVZ, WPRO, WSNX, WSSX, WSTR, WSTW, WTVR, WWSR, WWCK, WWST, WXXB, WXLK, WXXL, WXXX, WYCR, WYHY, WZJM, WZYP  
Light (Under 20): 18  
New Airplay This Week: 7 KHTO, WABB, WBHT, WDJX, WFMF, WMXQ, WNTQ

**AIRPOWER BOUND**

Total Plays/Gain

**FUN FACTORY 1414/56**  
*I Wanna B With U (Curb-edel)*  
Total Stations: 71/Chart Move: 26-23  
Heavy (40+ plays): 15 KDWB, KKRD, KKRZ, KRQQ, KZZU, WAPE, WHYI, WKSE, WNOC, WPRO, WPXY, WSNX, WXLK, WXXL, WZJM  
Medium (20-39): 17 KHTO, KKMJ, KQKQ, WBZZ, WFBC, WFLY, WHHY, WJXX, WKCI, WKRZ, WKSE, WKXJ, WLAN, WNNK, WNOC, WPRO, WPST, WRVQ, WSNX, WSTR, WSTW, WWCK, WXLK, WXXX, WYCR, WZNY, WZYP  
Light (Under 20): 39

**TOAD THE WET SPROCKET 1381/5**  
*Good Intentions (Columbia/Reprise)*  
Total Stations: 78/Chart Move: 25-24  
Heavy (40+): 3 KLRZ, WSSX, WWSR  
Medium (20-39): 34 KHTO, KHTY, KKLO, KMXV, KRQQ, KUTO, WABB, WBHT, WDDJ, WDJX, WEZB, WFBC, WFLY, WHHY, WJXX, WKCI, WKRZ, WKSE, WKXJ, WLAN, WNNK, WNOC, WPRO, WPST, WRVQ, WSNX, WSTR, WSTW, WWCK, WXLK, WXXX, WYCR, WZNY, WZYP  
Light (Under 20): 41  
New Airplay This Week: 1 WXKB

**HOOTIE & THE BLOWFISH 1237/230**  
*Time (Atlantic)*  
Total Stations: 71/Chart Move: 34-28  
Heavy (40+): 6 WDDJ, WFBC, WNOC, WSSX, WXXX, WZNY  
Medium (20-39): 21 KQKQ, KRBE, KRQQ, WBHT, WFLY, WHHY, WHOT, WHTZ, WKRZ, WKXJ, WMXQ, WPST, WSTR, WTVR, WYKS, WWSR, WXIS, WXLK, WYCR, WZPL, WZYP  
Light (Under 20): 44  
New Airplay This Week: 6 WBZZ, WKSE, WNOC, WRVQ, WSTW, WWCK

**JON B. 1193/55**  
*Pretty Girl (Yab Yum/550 Music)*  
Total Stations: 71/Chart Move: 31-29  
Heavy (40+): 6 KHFI, KHTO, KZZU, WFLY, WNVZ, WSSX  
Medium (20-39): 21 KBFM, KLRZ, KMXV, KRQQ, WFBC, WFHN, WFLZ, WKXJ, WMXQ, WNNK, WPRO, WTVR, WYKS, WWCK, WWST, WXLK, WXXL, WYCR, WYHY, WZNY, WZPL  
Light (Under 20): 44  
New Airplay This Week: 2 KIIS, WNOC

**THE PRESIDENTS OF THE UNITED STATES OF AMERICA 1190/149**  
*Lump (Columbia)*  
Total Stations: 76/Chart Move: 33-31  
Heavy (40+): 2 KUTQ, WHTZ  
Medium (20-39): 25 KHFI, KJYO, KKRD, KLRZ, KQKQ, KRBE, WBHT, WDCG, WEDJ, WFBC, WFMF, WGTZ, WHHY, WHOT, WKBO, WKRO, WPST, WSNX, WWSR, WWCK, WXIS, WXXL, WXXX, WZPL, WZYP  
Light (Under 20): 49  
New Airplay This Week: 2 WDJX, WKSE

Medium (20-39): 26 KHKS, KIIS, KJYO, KKLO, KKRD, KLRZ, KMXV, KQKQ, KRQQ, WDJX, WFHN, WFLZ, WHOT, WKXJ, WMXQ, WNOC, WNTQ, WPRO, WPXY, WSSX, WVIC, WWSR, WWST, WYCR, WZJM, WZNY  
Light (Under 20): 46  
New Airplay This Week: 8 KHTO, KHTT, WIOQ, WKSS, WNNK, WNVZ, WRVQ, WWCK

**EDWIN MCCAIN 1067/19**  
*Solitude (Lava/Atlantic)*  
Total Stations: 74/Chart Move: 32-34  
Heavy (40+): 7 WDCG, WEDJ, WFBC, WNOC, WPST, WSSX, WZNY  
Medium (20-39): 16 KHTO, KHTY, KLRZ, KRBE, WBHT, WDDJ, WFLY, WKRQ, WKRZ, WKXJ, WLAN, WNVZ, WSTW, WYKS, WYCR, WZYP  
Light (Under 20): 51

**BACKSTREET BOYS 965/11**  
*We've Got It Goin' On (Jive)*  
Total Stations: 62/Chart Move: 39-35  
Heavy (40+): 3 KBFM, WNOC, WNVZ  
Medium (20-39): 19 KDWB, KHTO, KJYO, KKMJ, KLRZ, KQKQ, WFHN, WFLY, WJXX, WKBO, WKSE, WNNK, WPRO, WPXY, WTVR, WWCK, WWST, WXXL, WZPL  
Light (Under 20): 40

**GROOVE THEORY 927/158**  
*Tell Me (Epic)*  
Total Stations: 65/Chart Move: Debut 37  
Heavy (40+): 4 KHFI, KIIS, WFMF, WNVZ  
Medium (20-39): 12 KDWB, KHTO, KKRZ, WFHN, WFLY, WKXJ, WPRO, WRVQ, WYKS, WWSR, WZJM, WZPL  
Light (Under 20): 49  
New Airplay This Week: 5 KKRD, KQKQ, WHOT, WNNK, WNTQ

**CHART BOUND**

**JOAN OSBORNE 808/194**  
*One Of Us (Blue Gorilla/Mercury)*  
Total Stations: 61  
Heavy (40+): 0  
Medium (20-39): 17 KHTY, KKRD, KLRZ, KRBE, KRQQ, KUTO, WDDJ, WEDJ, WFLZ, WHTZ, WKCI, WKRZ, WLAN, WNTQ, WPST, WSTR, WYCR  
Light (Under 20): 44  
New Airplay This Week: 11 KHTT, WAPE, WFBC, WHOT, WKXJ, WMXQ, WNOC, WNNK, WNTQ, WWSR, WZNY

**SELENA 758/91**  
*Dreaming Of You (EMI Latin/EMI)*  
Total Stations: 43  
Heavy (40+): 5 KHFI, KHKS, KIIS, KRQQ, WZJM  
Medium (20-39): 12 KBFM, KKLO, KKRZ, KLRZ, KMXV, WFLZ, WHYI, WKXJ, WPXY, WTVR, WWCK, WYCR  
Light (Under 20): 26  
New Airplay This Week: 3 KHTT, KJYO, WSSX

**MOST NEW AIRPLAY THIS WEEK**

	No. Of Stations
<b>Gold (NPG/Warner Bros.)</b>	17
<b>JOAN OSBORNE</b> <i>One Of Us (Blue Gorilla/Mercury)</i>	11
<b>WHITNEY HOUSTON</b> <i>Exhale (Shoop Shoop) (Arista)</i>	8
<b>ELTON JOHN</b> <i>Blessed (Rocket/Island)</i>	8
<b>MARIAH CAREY &amp; BOYZ II MEN</b> <i>One Sweet Day (Columbia)</i>	7
<b>EVERYTHING BUT THE GIRL</b> <i>Missing (Atlantic)</i>	7
<b>LA BOUCHE</b> <i>Be My Lover (RCA)</i>	7

**DEF LEPPARD 664/106**  
*When Love & Hate Collide (Mercury)*  
Total Stations: 45  
Heavy (40+): 0  
Medium (20-39): 17 KQKQ, WABB, WDDJ, WFHN, WFLZ, WJXX, WKCI, WKRO, WKRZ, WKXJ, WNOC, WWCK, WWST, WXLK, WXXX, WYCR, WZNY  
Light (Under 20): 28  
New Airplay This Week: 4 WHHY, WKBO, WSNX, WSSX

**EVERYTHING BUT THE GIRL 664/153**  
*Missing (Atlantic)*  
Total Stations: 46  
Heavy (40+): 3 KHFI, KHKS, WXXL  
Medium (20-39): 14 KBFM, KDWB, KIIS, KKRZ, KRBE, WHYI, WIOQ, WKSS, WSTW, WWCK, WWST, WXXB, WXXX, WZJM  
Light (Under 20): 29  
New Airplay This Week: 7 WAPE, WEDJ, WFHN, WKRO, WRVQ, WWST, WXIS

**BLUES TRAVELER 597/32**  
*Hook (A&M)*  
Total Stations: 33  
Heavy (40+): 2 WDDJ, WXXX  
Medium (20-39): 7 KHTY, KUTQ, WNOC, WPST, WWCK, WZNY, WZYP  
Light (Under 20): 24  
New Airplay This Week: 3 WFMF, WHOT, WNTQ

**RED HOT CHILI PEPPERS 533/46**  
*My Friends (Warner Bros.)*  
Total Stations: 49  
Heavy (40+): 1 KHTO  
Medium (20-39): 7 KHTY, KUTQ, WBHT, WHTZ, WKXJ, WPST, WZNY  
Light (Under 20): 41  
New Airplay This Week: 4 KQKQ, WFLY, WSNX, WZYP

**BONNIE RAITT WITH BRYAN ADAMS 533/67**  
*Rock Steady (Capitol)*  
Total Stations: 49  
Heavy (40+): 0  
Medium (20-39): 8 WABB, WDDJ, WKXJ, WNNK, WPRO, WVIC, WWCK, WXLK  
Light (Under 20): 41  
New Airplay This Week: 1 KDWB

**HEATHER NOVA 466/8**  
*Walk This World (Big Cat/Work)*  
Total Stations: 35  
Heavy (40+): 1 KLRZ  
Medium (20-39): 6 KHTY, KRBE, KUTQ, WDCG, WWCK, WXIS  
Light (Under 20): 28  
New Airplay This Week: 1 KMXV

**BETTER THAN EZRA 416/35**  
*Rosealia (Elektra/EEG)*  
Total Stations: 46  
Heavy (40+): 0

Medium (20-39): 4 KUTQ, WDCG, WFBC, WPST  
Light (Under 20): 42  
New Airplay This Week: 1 WNNK

**LA BOUCHE 398/51**  
*Be My Lover (RCA)*  
Total Stations: 46  
Heavy (40+): 0  
Medium (20-39): 9 KBFM, KHTO, KMXV, WFHN, WFLY, WIOQ, WKSE, WWSR, WZJM  
Light (Under 20): 37  
New Airplay This Week: 7 KHFI, KKMJ, WFLZ, WHYI, WXXL, WYCR, WZNY

**COLLECTIVE SOUL 387/72**  
*The World I Know (Atlantic)*  
Total Stations: 35  
Heavy (40+): 0  
Medium (20-39): 8 KHTY, KRBE, KUTQ, WDDJ, WHTZ, WKRZ, WKXJ, WPST  
Light (Under 20): 27  
New Airplay This Week: 6 WFBC, WFMF, WKRZ, WYCR, WZNY, WZPL

**Gold (NPG/Warner Bros.) 376/227**  
Total Stations: 36  
Heavy (40+): 1 WZJM  
Medium (20-39): 5 WKRO, WNOC, WSTR, WXXL, WZNY  
Light (Under 20): 30  
New Airplay This Week: 17 KDWB, KJYO, KKRD, KMXV, WAPE, WFBC, WGTZ, WHHY, WKXJ, WNOC, WSSX, WTVR, WWSR, WWST, WXIS, WXLK, WYCR

**SIMPLY RED 323/28**  
*Fairground (EastWest/EEG)*  
Total Stations: 30  
Heavy (40+): 0  
Medium (20-39): 6 KLRZ, WFLY, WMXQ, WNNK, WWCK, WXIS  
Light (Under 20): 24  
New Airplay This Week: 2 WKBO, WNVZ

**HOOTIE & THE BLOWFISH 317/8**  
*I Go Blind (Atlantic/Reprise)*  
Total Stations: 12  
Heavy (40+): 3 WEDJ, WPST, WWST  
Medium (20-39): 5 WABB, WJXX, WKRO, WPRO, WSNX  
Light (Under 20): 4  
New Airplay This Week: 1 WYKS

**GARBAGE 311/67**  
*Queer (Almo Sounds/Geffen)*  
Total Stations: 36  
Heavy (40+): 1 KHTY  
Medium (20-39): 3 KRBE, KUTQ, WPST  
Light (Under 20): 32  
New Airplay This Week: 4 KJYO, WABB, WDCG, WGTZ

**ELTON JOHN 274/76**  
*Blessed (Rocket/Island)*  
Total Stations: 31  
Heavy (40+): 0

Medium (20-39): 1 WDDJ  
Light (Under 20): 30  
New Airplay This Week: 8 KBFM, KHTY, WDJX, WFMF, WHYI, WTVR, WYKS, WYHY

**XSCAPE 272/151**  
*Who Can I Run To (So So Def/Columbia)*  
Total Stations: 52  
Heavy (40+): 2 WFMF, WNVZ  
Medium (20-39): 2 WFHN, WWSR  
Light (Under 20): 48  
New Airplay This Week: 5 KLRZ, WFMF, WKBO, WKSS, WWST

**SMASHING PUMPKINS 217/36**  
*Bullet With Butterfly Wings (Virgin)*  
Total Stations: 20  
Heavy (40+): 1 KUTQ  
Medium (20-39): 3 KJYO, WDCG, WHTZ  
Light (Under 20): 16  
New Airplay This Week: 2 WABB, WKBO

**MAX-A-MILLION 181/51**  
*Sexual Healing (S.O.S./Zoo)*  
Total Stations: 26  
Heavy (40+): 1 KZZU  
Medium (20-39): 1 KBFM  
Light (Under 20): 24  
New Airplay This Week: 2 WKSS, WPXY

**AFTER 7 179/7**  
*'Til You Do Me Right (Virgin)*  
Total Stations: 10  
Heavy (40+): 1 KZZU, WZPL  
Medium (20-39): 1 KMXV  
Light (Under 20): 7

**FOLK IMPLOSION 165/52**  
*Natural One (London/Island)*  
Total Stations: 17  
Heavy (40+): 0  
Medium (20-39): 3 KRBE, KUTQ, WHTZ  
Light (Under 20): 14  
New Airplay This Week: 3 WDDJ, WPST, WXIS

**THE RENTALS 161/30**  
*Friends Of P. (Maverick/Reprise)*  
Total Stations: 18  
Heavy (40+): 0  
Medium (20-39): 4 KHTY, KRBE, KUTQ, WHTZ  
Light (Under 20): 14  
New Airplay This Week: 1 WDCG

**3T 152/69**  
*Anything (MJJ/550 Music)*  
Total Stations: 16  
Heavy (40+): 0  
Medium (20-39): 1 KQKQ  
Light (Under 20): 15  
New Airplay This Week: 6 KLRZ, WFHN, WFMF, WMXQ, WNVZ, WWST

**LE CLICK 141/5**  
*Tonight Is The Night (Logic)*  
Total Stations: 8  
Heavy (40+): 0  
Medium (20-39): 4 KHFI, WIOQ, WPXY, WRVQ  
Light (Under 20): 4

**TOADIES 141/10**  
*Possum Kingdom (Interscope)*  
Total Stations: 16  
Heavy (40+): 1 KUTQ  
Medium (20-39): 2 KHTY, WPST  
Light (Under 20): 13  
New Airplay This Week: 1 KJYO

**SOLO 129/25**  
*Heaven (Perspective/A&M)*  
Total Stations: 14  
Heavy (40+): 1 WNVZ  
Medium (20-39): 1 WYKS  
Light (Under 20): 12  
New Airplay This Week: 1 WFLZ

Airpower awarded to those records which attain 1500 detections for the first time. New airplay lists those stations registering six or more detections per week on a record for the first time. ★ Initial impact: records appearing on this page for the first time.





# WHEN LOVE & HATE COLLIDE

2.5 MILLION LISTENERS  
672 BDS SPINS  
46 TOTAL STATIONS  
DEBUT **(15)** SOUNDCAN

PLAYING ON:  
WFLZ • WPOW • KC101 • WTIC • WXXL  
WZPL • Q102 • KLRZ • WPRO

PRODUCED BY PETE WOODROFFE & DEF LEPPARD  
MANAGEMENT: Q PRIME, INC.  
© 1994 POLYGRAM RECORDS, INC.

# Joan Osborne

## “One Of Us”

NEXT TO CHART!!

from her debut album

*relish*

6.9 MILLION LISTENERS  
808 BDS SPINS  
61 TOTAL STATIONS

PLAYING ON:

WHTZ • KISS108 • KRBE  
WSTR • WFLZ • B94  
WKBQ • KC101 • WKSS  
WTIC • Q106 • KMXV  
WEDJ • G105 • WNCI  
KUTQ • KJYO • WPST





# satellite

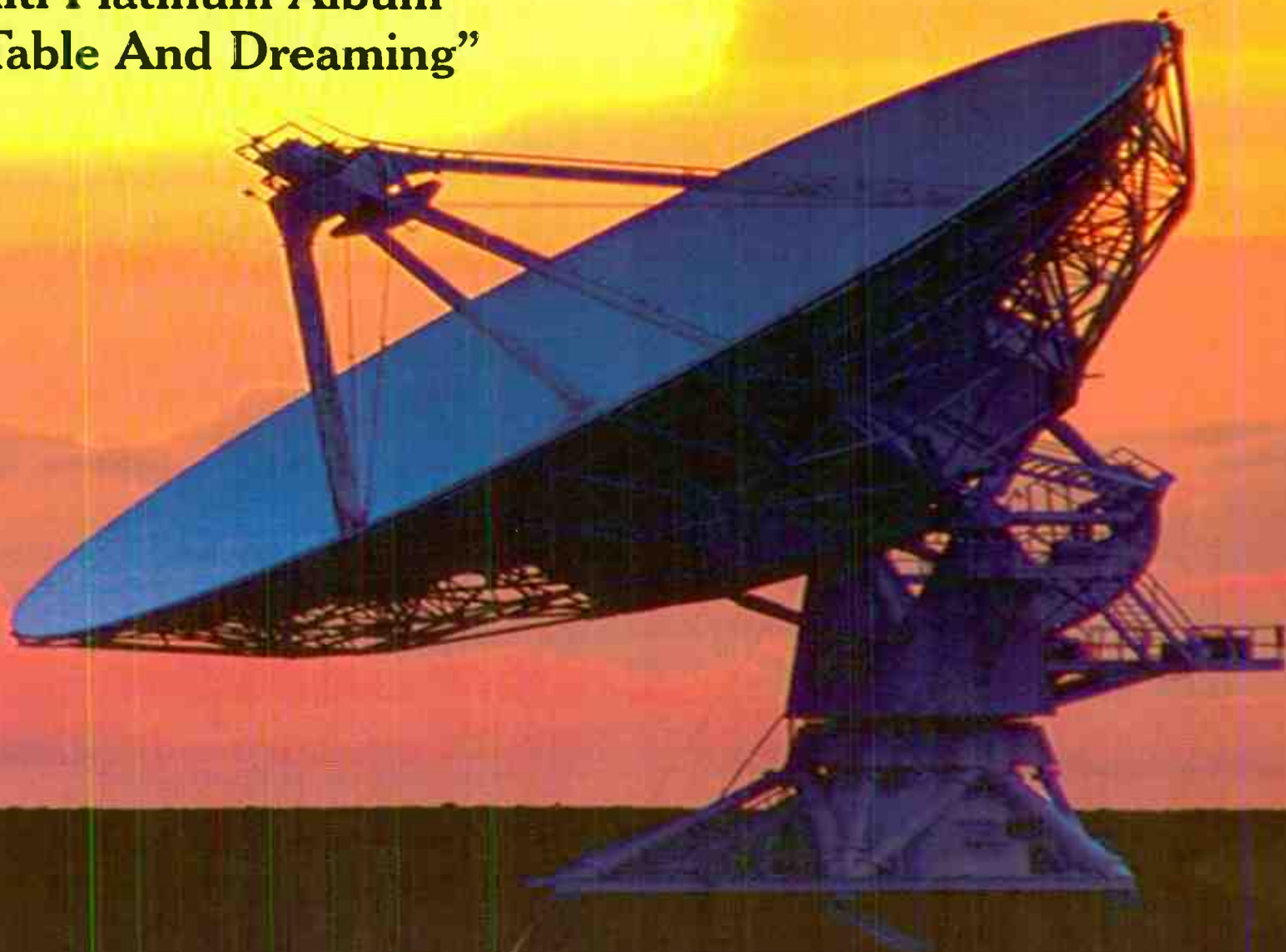
dave matthews band



<http://www.dmband.com>

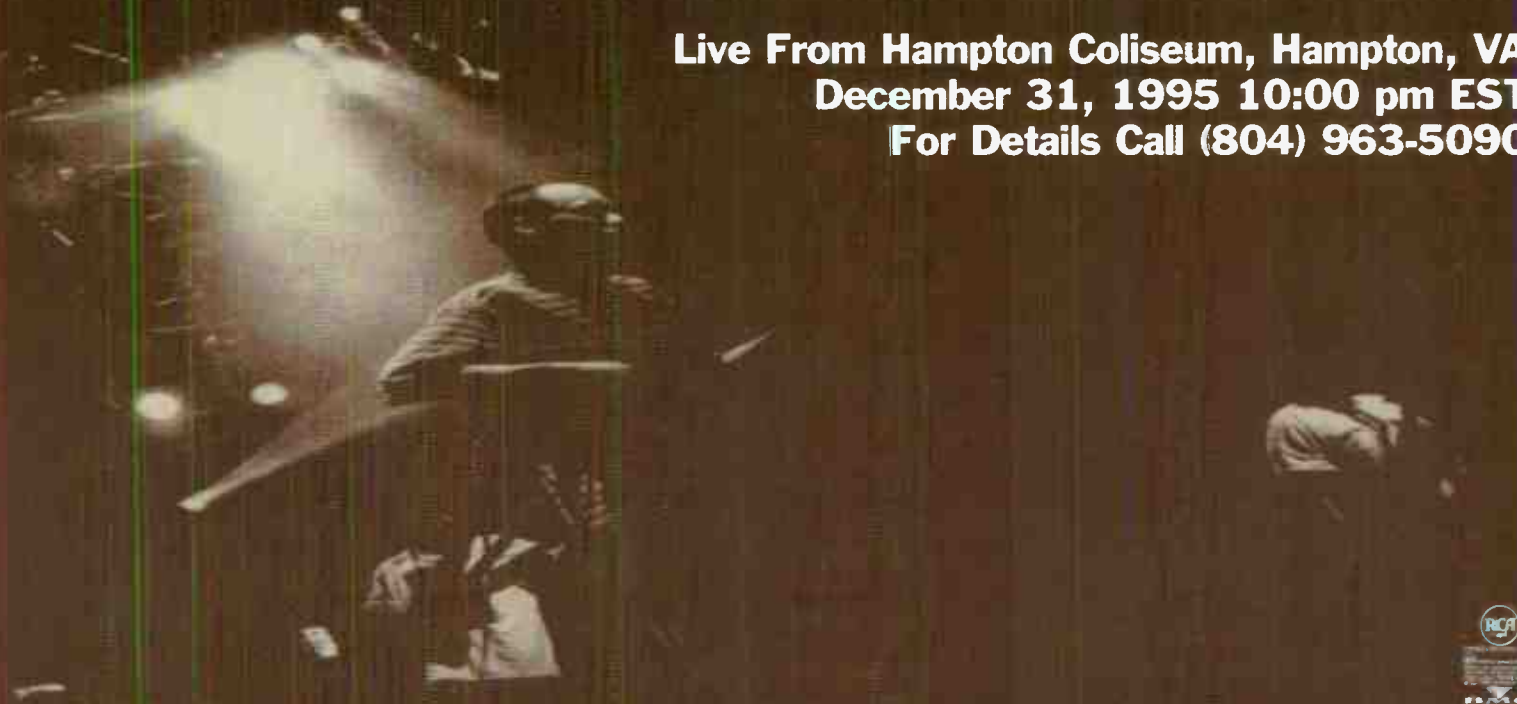


**The Compelling New Single  
From The Multi-Platinum Album  
“Under The Table And Dreaming”**



**Live National Radio Broadcast  
New Year's Eve 1995**

**Live From Hampton Coliseum, Hampton, VA  
December 31, 1995 10:00 pm EST  
For Details Call (804) 963-5090**





SONG ACTIVITY REPORTS

For Week Ending November 12, 1995

AMN Broadcast Data Systems... Detailed song tracking information for the last 3 weeks for all songs showing increased play this week...



Table for ACE OF BASE: Beautiful Life (Arista). Total Stations: 77. Chart Move: 13-12. Includes station codes and play counts.

Table for JON B.: Pretty Girl (Yab Yum/550 Music). Total Stations: 71. Chart Move: 31-29. Includes station codes and play counts.

Table for BACKSTREET BOYS: We've Got It Goin' On (Jive). Total Stations: 62. Chart Move: 39-35. Includes station codes and play counts.

Table for BETTER THAN EZRA: Rosealia (Elektra/EEG). Total Stations: 46. Includes station codes and play counts.

Table for BLUES TRAVELER: Hook (A&M). Total Stations: 33. Includes station codes and play counts.

Table for MARIAH CAREY & BOYZ II MEN: One Sweet Day (Columbia). Total Stations: 73. Chart Move: 24-15. Includes station codes and play counts.

Table for COLLECTIVE SOUL: The World I Know (Atlantic). Total Stations: 35. Includes station codes and play counts.

Table for COOLIO FEAT. LV.: Gangsta's Paradise (MCA Soundtracks/MCA). Total Stations: 68. Chart Move: 19-19. Includes station codes and play counts.

Table for DEEP BLUE SOMETHING: Breakfast At Tiffany's (RainMaker/InterScope). Total Stations: 81. Chart Move: 11-8. Includes station codes and play counts.

Table for DEF LEPPARD: When Love & Hate Collide (Mercury). Total Stations: 45. Includes station codes and play counts.

Table for EVERYTHING BUT THE GIRL: Missing (Atlantic). Total Stations: 46. Includes station codes and play counts.

Table for FUN FACTORY: I Wanna Be With U (Curb-edel). Total Stations: 71. Chart Move: 26-23. Includes station codes and play counts.

Table for GOO GOO DOLLS: Name (Metal Blade/Warner Bros.). Total Stations: 81. Chart Move: 7-4. Includes station codes and play counts.

Table for GROOVE THEORY: Tell Me (Epic). Total Stations: 65. Chart Move: Debut. Includes station codes and play counts.



SONG ACTIVITY REPORTS

For Week Ending November 12, 1995

AMM Broadcast Data Systems

HOTIE & THE BLOWFISH 1237/230

Table with columns: Total Stations: 71, Chart Move: 34-28, and station data for various markets.

WHITNEY HOUSTON 1169/202

Table with columns: Total Stations: 74, Chart Move: 37-32, and station data for various markets.

LA BOUCHE 398/51

Table with columns: Total Stations: 46, Chart Move: 1-1, and station data for various markets.

MADONNA 1910/298

Table with columns: Total Stations: 77, Chart Move: 20-16, and station data for various markets.

EDWIN MCCAIN 1067/19

Table with columns: Total Stations: 74, Chart Move: 32-34, and station data for various markets.

ALANIS MORISSETTE 2132/292

Table with columns: Total Stations: 81, Chart Move: 14-10, and station data for various markets.

HEATHER NOVA 466/8

Table with columns: Total Stations: 35, Chart Move: 1-1, and station data for various markets.

JOAN OSBORNE 808/194

Table with columns: Total Stations: 61, Chart Move: 1-1, and station data for various markets.

THE PRESIDENTS OF THE UNITED STATES 1190/149

Table with columns: Total Stations: 76, Chart Move: 33-31, and station data for various markets.

BONNIE RAITT WITH BRYAN ADAMS 533/67

Table with columns: Total Stations: 49, Chart Move: 1-1, and station data for various markets.

RED HOT CHILI PEPPERS 533/46

Table with columns: Total Stations: 49, Chart Move: 1-1, and station data for various markets.

SELENA 758/91

Table with columns: Total Stations: 43, Chart Move: 1-1, and station data for various markets.

TAKE THAT 2192/48

Table with columns: Total Stations: 76, Chart Move: 10-9, and station data for various markets.

TLC 2044/220

Table with columns: Total Stations: 74, Chart Move: 15-14, and station data for various markets.

TOAD THE WET SPROCKET 1381/5

Table with columns: Total Stations: 78, Chart Move: 25-24, and station data for various markets.



# MONITOR TOP 40 PANELS

## TOP 40 MAINSTREAM STATIONS (81)

Albany, NY	WFLY	Mabile, AL	WABB
Atlanta, GA	WSTR	Montgomery, AL	WHYY
Augusta, GA	WZNY	Nashville, TN	WYHY
Austin, TX	KHFI	New Bedford, MA	WFHN
Baton Rouge, LA	WFMM	New Haven, CT	WKCI
Birmingham, AL	WMMQ	New Orleans, LA	KLRZ
Boston, MA	WXKS		WEZB
Buffalo, NY	WKSE	New York, NY	WHTZ
Burlington, VT	WXXX	Norfolk, VA	WNVZ
Charleston, SC	WSSX	Oklahoma City, OK	KJYO
Charleston, WV	WWSR	Omaha, NE	KKQK
Charlotte, NC	WEDJ	Orlando, FL	WXXL
Chattanooga, TN	WKXJ	Paducah, KY	WDDJ
Cincinnati, OH	WKRQ	Philadelphia, PA	WIOQ
Cleveland, OH	WZJM	Pittsburgh, PA	WBZZ
Colorado Springs, CO	KKMG	Portland, OR	KKRZ
Columbia, SC	WNOK	Providence, RI	WPRO
Columbus, OH	WNCI	Raleigh, NC	WDCC
Dallas, TX	KHKS	Richmond, VA	WRVQ
Dayton, OH	WGTZ	Roanoke, VA	WXLK
Flint, MI	WWCX	Rochester, NY	WPXY
Fort Myers, FL	WKXB	St. Louis, MO	WKBB
Grand Rapids, MI	WSNX	Salt Lake City, UT	KUTQ
Green Bay, WI	WXXX	San Diego, CA	KKLQ
Greenville, SC	WFBC	Santa Barbara, CA	KHTY
Harrisburg, PA	WNNK	Spokane, WA	KZZU
Hartford, CT	WKSS	Springfield, MO	KHTO
	WTIC	Syracuse, NY	WNTQ
Houston, TX	KRBE	Tampa, FL	WFLZ
Huntsville, AL	WZYP	Toledo, OH	WTWR
Indianapolis, IN	WZPL		WKXS
Jacksonville, FL	WAPE	Trenton, NJ	WPST
Johnson City, TN	WXIS	Tucson, AZ	KRQQ
Kansas City, MO	KMXV	Tulsa, OK	KHTT
Knoxville, TN	WWST	Wichita, KS	KKRD
Lancaster, PA	WLAN	Wilkes-Barre, PA	WBHT
Las Angeles, CA	KIIS		WKRZ
Louisville, KY	WDJX	Wilmington, DE	WSTW
McAllen/Brownsville, TX	KBFM	York, PA	WYCR
Miami, FL	WHYI	Youngstown, OH	WHOT
Minneapolis, MN	KDWB		

## TOP 40/RHYTHM-CROSSOVER STATIONS (33)

Albuquerque, NM	KKSS	New York, NY	WQHT
Bakersfield, CA	KKXX	Oxnard, CA	KCAQ
Baltimore, MD	WERQ	Phoenix, AZ	KKFR
Boston, MA	WJMN	Providence, RI	WWKX
Chicago, IL	WBBM	Riverside, CA	KGCI
Corpus Christi, TX	KZFM	Roanoke, VA	WJXX
Denver, CO	KQKS	Sacramento, CA	KSFM
El Paso, TX	KPRR	Salt Lake City, UT	KZHT
Fresno, CA	KBOS	San Antonio, TX	KTFM
Greensboro, NC	WJMH	San Diego, CA	XHTZ
Houston, TX	KBXX	San Francisco, CA	KMEL
Indianapolis, IN	WHHH		KYLD
Las Vegas, NV	KLUC	Seattle, WA	KUBE
	KXTZ	Washington, DC	WPGC
Los Angeles, CA	KPWR	West Palm Beach, FL	WOVW
Miami, FL	WPOW	Wichita, KS	KDLE
Manterey, CA	KDON		

## TOP 40/ADULT STATIONS (57)

Akron, OH	WKDD	Long Island, NY	WALK
Boston, MA	WBMM		WBLI
Buffalo, NY	WMJQ	Los Angeles, CA	KYSR
Burlington, VT	WEZF	Memphis, TN	WMC
Charleston, WV	WVAF	Milwaukee, WI	WKTI
Charlotte, NC	WWSN	Minneapolis, MN	KSTP
Chattanooga, TN	WDEF	New York, NY	WMMX
Chicago, IL	WPNT		WPLJ
	WTMX	Philadelphia, PA	WBEB
Cleveland, OH	WQAL		WYXR
Colorado Springs, CO	KVUU	Pittsburgh, PA	WVTV
Columbus, GA	WGSY	Portland, ME	WCSO
Dallas, TX	KDMX		WZPK
Denver, CO	KALC	Richmond, VA	WMMX
	KWXX	Sacramento, CA	KGBY
Des Moines, IA	KSTZ	Saginaw, MI	WIOG
Detroit, MI	WKQI	St. Louis, MO	KYKY
Fresno, CA	KTHH	Salt Lake City, UT	KISN
Grand Rapids, MI	WLHT	San Diego, CA	KFMB-FM
Green Bay, WI	WQLH	San Francisco, CA	KIOI
Greensboro, NC	WKZL	San Jose, CA	KEZR
Greenville, SC	WMYI	Savannah, GA	WAEV
Houston, TX	KHMX	Seattle, WA	KPLZ
Huntsville, AL	WAHR	Springfield, MO	KGBX
Jackson, MS	WJDX	Syracuse, NY	WYYY
Jacksonville, FL	WIVY	Tampa, FL	WMTX
Johnson City, TN	WTFM	Washington, DC	WRQX
Las Vegas, NV	KMZQ	West Palm Beach, FL	WRMF
Lexington, KY	WMLX		

# RHYTHM-CROSSOVER

## POWER PLAYLISTS

For Week Ending  
**November 12, 1995**

Playlists supplied by Broadcast Data Systems. Radio-Track service. Stations selected from panel of leading broadcasters in 126 radio markets, electronically monitored 24 hours a day, 7 days a week. Songs ranked by number of plays in monitored week.

HOT 97			POWER 106			B96		
WQHT New York		PD: Steve Smith APD/MD: Tracy Cloherty	KPWR Los Angeles		PD: Michelle Mercer MD: Bruce St. James	WBBM Chicago		PD: Todd Cavanah MD: Erik Bradley
	TW	LW		TW	LW		TW	LW
1	43	45	1	72	68	1	75	75
2	42	40	2	70	73	2	74	66
3	41	41	3	68	69	3	72	58
4	41	40	4	65	69	4	71	39
5	41	37	5	63	60	5	66	47
6	40	47	6	47	48	6	43	63
7	39	39	7	44	47	7	40	24
8	39	35	8	44	44	8	40	50
9	39	36	9	44	44	9	40	51
10	39	39	10	43	3	10	40	50
11	37	39	11	34	28	11	38	33
12	37	38	12	34	37	12	35	31
13	34	24	13	31	27	13	32	37
14	33	33	14	30	35	14	31	23
15	32	21	15	29	32	15	30	18
16	31	35	16	26	46	16	27	17
17	30	28	17	26	3	17	25	40
18	29	27	18	25	3	18	24	29
19	29	27	19	24	16	19	24	17
20	26	24	20	23	18	20	23	25
21	26	24	21	22	18	21	22	50
22	25	24	22	22	17	22	21	10
23	25	21	23	21	15	23	20	16
24	24	21	24	20	10	24	19	10
25	24	27	25	20	5	25	18	14
26	23	12	26	19	11	26	17	2
27	23	12	27	18	6	27	16	34
28	23	12	28	17	9	28	15	12
29	23	12	29	16	7	29	14	13
30	22	10	30	15	3	30	13	18
31	21	10	31	14	7	31	12	13
32	21	13	32	13	7	32	11	13
33	20	9	33	12	3	33	10	11
34	20	9	34	11	4	34	9	11
35	20	6	35	10	2	35	8	10
36	19	6	36	9	5	36	7	10
37	19	6	37	8	3	37	6	10
38	18	6	38	7	6	38	5	10
39	18	6	39	6	9	39	4	9
40	18	7	40	5	5	40	3	9

KMEL			WPGC			WILD 107		
KMEL San Francisco		PD: Michelle Santosuosso MD: Joey Arbagey	WPGC Washington, DC		PD: Jay Stevens APD: Bob Holmcrans MD: Albie Dee	WILD 107 San Francisco		OM: Bob Hamilton PD: Michael Martin
	TW	LW		TW	LW		TW	LW
1	61	61	1	53	58	1	68	72
2	59	59	2	50	58	2	68	53
3	56	52	3	50	52	3	66	66
4	56	48	4	48	43	4	66	43
5	53	60	5	47	47	5	63	73
6	46	25	6	45	50	6	61	45
7	45	59	7	43	33	7	57	41
8	44	53	8	40	50	8	56	42
9	41	50	9	38	39	9	51	68
10	39	30	10	38	39	10	49	45
11	39	24	11	38	37	11	45	65
12	38	24	12	35	32	12	41	40
13	37	20	13	35	24	13	40	3
14	37	25	14	32	24	14	38	38
15	35	15	15	30	33	15	38	31
16	34	23	16	26	22	16	37	33
17	22	22	17	26	21	17	35	53
18	20	15	18	26	22	18	34	28
19	19	16	19	25	27	19	33	25
20	18	14	20	25	27	20	32	18
21	17	5	21	24	19	21	31	16
22	17	28	22	23	16	22	30	13
23	16	15	23	23	13	23	29	15
24	15	15	24	22	15	24	28	14
25	15	18	25	21	6	25	27	19
26	15	10	26	20	11	26	26	15
27	13	9	27	19	10	27	25	13
28	12	20	28	18	7	28	24	12
29	11	11	29	17	9	29	23	11
30	11	11	30	16	9	30	22	10
31	11	14	31	15	9	31	21	9
32	9	8	32	14	7	32	20	9
33	9	11	33	13	0	33	19	9
34	9	7	34	12	1	34	18	9
35	9	4	35	11	0	35	17	9
36	9	10	36	10	8	36	16	8
37	8	0	37	9	4	37	15	8
38	8	12	38	8	7	38	14	8
39	8	15	39	7	8	39	13	8
40	8	11	40	6	8	40	12	8

JAM'N 94.5			THE BOX			POWER 96		
WJMN Boston		PD: Cadillac Jack MD: Cat Collins	KBXX Houston		PD: Rob Scorpio MD: Greg Heald	WPOW Miami		PD: Frank Walsh APD: Leo Vela MD: John Rogers
	TW	LW		TW	LW		TW	LW
1	66	44	1	67	71	1	39	48
2	63	70	2	65	65	2	38	50
3	60	60	3	60	49	3	37	35
4	63	63	4	57	57	4	36	44
5	63	63	5	56	56	5	36	44
6	55	59	6	53	57	6	36	24
7	54	40	7	51	50	7	34	38
8	46	40	8	49	46	8	34	23
9	45	35	9	44	44	9	33	25
10	41	40	10	42	46	10	32	23
11	39	44	11	42	42	11	31	21
12	38	39	12	39	52	12	30	29
13	38	49	13	38	41	13	29	20
14	37	24	14	35	51	14	29	19
15	36	23	15	30	30	15	28	19
16	33							





POWER PLAYLISTS

For Week Ending November 12, 1995



Playlists supplied by Broadcast Data Systems. Radio Track service. Stations selected from panel of leading broadcasters in 125 radio markets. Electronically monitored 24 hours a day, 7 days a week. Songs ranked by number of plays in monitored week.

Grid of 20 radio station playlists including KUBE, POWER 92, KGGI, FM 102, KTFM, 92Q, KS104, Z90, B95, 102 JAMZ, POWER 102, KIX 106, KLUC, STAR 95.5, KDON, KISS 97.3, HOOSIER 96.3, and 94.1 JAMZ. Each station listing includes song titles, artists, and chart positions.





★ ★ ★ AIRPOWER ★ ★ ★

(Minimum 600 detections for the first time)

Total Plays/Gain

**PLANET SOUL 657/64**

*Set U Free (Strictly Rhythm)*

Total Stations: 23/Chart Move: 17-15  
Heavy (40+ plays): 6 KJMZ, KPRR, KPWR, KTFM, KYLD, WOVV  
Medium (20-39): 7 KBOS, KSFM, KUBE, KZFM, WBBM, WPOW, XHTZ  
Light (Under 20): 10  
New Airplay This Week: 2 KKFR, KLUC

**AIRPOWER BOUND**

Total Plays/Gain

**MONICA 589/53**

*Before You Walk Out Of My Life (Rowdy/Arista)*

Total Stations: 26/Chart Move: 21-17  
Heavy (40+ plays): 5 KBXX, WERQ, WJJS, WJMN, WPGC  
Medium (20-39): 8 KBOS, KDLE, KKFR, KMEL, KYLD, WHHH, WOVV, WWKX  
Light (Under 20): 13  
New Airplay This Week: 1 KQKS

**LA BOUCHE 584/42**

*Be My Lover (RCA)*

Total Stations: 21/Chart Move: 19-18  
Heavy (40+): 5 KPRR, KUBE, KYLD, WBBM, WOVV  
Medium (20-39): 7 KKFR, KKSS, KZFM, KZHT, WJJS, WPOW, XHTZ  
Light (Under 20): 9  
New Airplay This Week: 1 KBOS

**R. KELLY 583/13**

*You Remind Me Of Something (Jive)*

Total Stations: 25/Chart Move: 18-19  
Heavy (40+): 5 KBXX, KDLE, KZFM, WHHH, WJMH  
Medium (20-39): 8 KLUC, KQKS, KZHT, WJJS, WJMN, WPGC, WQHT, WWKX  
Light (Under 20): 12  
New Airplay This Week: 3 KLUC, KSFM, WBBM

**THE MIGHTY DUB KATS 516/83**

*Magic Carpet Ride (Sm:)e/Profile)*

Total Stations: 21/Chart Move: 26-20  
Heavy (40+): 5 KCAQ, KKSS, KPWR, KTFM, KZFM  
Medium (20-39): 5 KBOS, KGGI, KKFR, KPRR, KUBE  
Light (Under 20): 11

**D'ANGELO 489/83**

*Cruisin' (EMI)*

Total Stations: 24/Chart Move: 28-22  
Heavy (40+): 5 KCAQ, KDLE, KKSS, WHHH, XHTZ  
Medium (20-39): 7 KPRR, KTFM, KZFM, KZHT, WJJS, WJMH, WWKX  
Light (Under 20): 12  
New Airplay This Week: 4 KBOS, KGGI, KUBE, WERQ

**ACE OF BASE 469/26**

*Beautiful Life (Arista)*

Total Stations: 20/Chart Move: 25-25  
Heavy (40+): 3 KUBE, KZFM, KZHT  
Medium (20-39): 8 KBOS, KKFR, KJXX, KQKS, KTFM, WBBM, WJJS, WOVV  
Light (Under 20): 9

**SILK 432/48**

*Hooked On You (Elektra/EEG)*

Total Stations: 24/Chart Move: 29-26  
Heavy (40+): 1 KDON  
Medium (20-39): 9 KCAQ, KDLE, KKFR, KQKS, KZFM, WERQ, WHHH, WJJS, WJMH  
Light (Under 20): 14  
New Airplay This Week: 1 WJMH

**L.A.D. 426/55**

*Ridin' Low (Hollywood)*

Total Stations: 15/Chart Move: 33-27  
Heavy (40+): 3 KKSS, KPRR, KYLD  
Medium (20-39): 6 KCAQ, KLUC, KPWR, KZFM, WHHH, WWKX  
Light (Under 20): 6  
New Airplay This Week: 2 KGGI, WJJS

**MADONNA 416/2**

*You'll See (Maverick/Warner Bros.)*

Total Stations: 18/Chart Move: 27-28  
Heavy (40+): 1 KPRR  
Medium (20-39): 11 KKFR, KJXX, KLUC, KQKS, KTFM, KUBE, KZFM, KZHT, WOVV, WPOW, XHTZ  
Light (Under 20): 6

**ARTIE THE 1 MAN PARTY 387/36**

*A Mover La Colita (Groove Nation/Scotti Bros.)*

Total Stations: 21/Chart Move: 36-29  
Heavy (40+): 3 KKSS, KPRR, KPWR  
Medium (20-39): 5 KCAQ, KTFM, KYLD, KZFM, XHTZ  
Light (Under 20): 13

**SHAI 361/10**

*Come With Me (Gasoline Alley/MCA)*

Total Stations: 22/Chart Move: 37-32  
Heavy (40+): 1 KDON  
Medium (20-39): 8 KCAQ, KDLE, KGGI, KZFM, KZHT, WERQ, WJMH, WWKX  
Light (Under 20): 13

**THE OUTHERE BROTHERS 354/4**

*Boom Boom Boom (Aureus)*

Total Stations: 22/Chart Move: 38-33  
Heavy (40+): 2 KPRR, KPWR  
Medium (20-39): 3 KCAQ, KGGI, WPOW  
Light (Under 20): 17

**BLAHZAY BLAHZAY 326/45**

*Danger (Fader/Mercury)*

Total Stations: 20/Chart Move: Debut 36  
Heavy (40+): 3 KYLD, WERQ, WPGC  
Medium (20-39): 4 KKSS, KPWR, WJMH, WQHT  
Light (Under 20): 13  
New Airplay This Week: 1 KYLD

**COOLIO 325/130**

*Too Hot (Tommy Boy)*

Total Stations: 21/Chart Move: Debut 38  
Heavy (40+): 1 KBXX  
Medium (20-39): 5 KPWR, KYLD, WERQ, WHHH, WWKX  
Light (Under 20): 15  
New Airplay This Week: 7 KJMZ, KLUC, KUBE, KZFM, KZHT, WJJS, WPOW

**EVERYTHING BUT THE GIRL 302/11**

*Missing (Atlantic)*

Total Stations: 12/Chart Move: 40-40  
Heavy (40+): 3 KPRR, KUBE, WBBM  
Medium (20-39): 2 KKFR, WOVV  
Light (Under 20): 7

**CHART BOUND**

Total Plays/Gain

**JODECI 246/83**

*Love U 4 Life (Uptown/MCA)*

Total Stations: 14  
Heavy (40+): 2 WERQ, WPGC

**MOST NEW AIRPLAY THIS WEEK**

No. Of Stations

<b>COOLIO</b> <i>Too Hot (Tommy Boy)</i>	7
<b>D'ANGELO</b> <i>Cruisin' (EMI)</i>	4
<b>IMMATURE</b> <i>We Got It (MCA)</i>	4
<b>L.L. COOL J</b> <i>Hey Lover (Def Jam/RAL/Island)</i>	4
<b>R. KELLY</b> <i>You Remind Me Of Something (Jive)</i>	3
<b>JODECI</b> <i>Love U 4 Life (Uptown/MCA)</i>	3
<b>P.M. DAWN</b> <i>Sometimes I Miss You So Much (Gee Street/Island)</i>	3

Medium (20-39): 2 WJMN, WQHT  
Light (Under 20): 10  
New Airplay This Week: 3 KDLE, WHHH, WJMH

**THE PHARCYDE 234/55**

*Runnin' (Delicious Vinyl/Capitol)*

Total Stations: 18  
Heavy (40+): 1 WJMH  
Medium (20-39): 3 KKSS, WPGC, XHTZ  
Light (Under 20): 14  
New Airplay This Week: 1 WQHT

**PURE SOUL 202/42**

*I Want You Back (Step Sun/Interscope)*

Total Stations: 9  
Heavy (40+): 2 KDLE, WJMH  
Medium (20-39): 4 KCAQ, WERQ, WJJS, WPGC  
Light (Under 20): 3

**FAITH EVANS 197/32**

*Soon As I Get Home (Bad Boy/Arista)*

Total Stations: 10  
Heavy (40+): 2 WERQ, WPGC  
Medium (20-39): 2 KBXX, WQHT  
Light (Under 20): 6  
New Airplay This Week: 2 KCAQ, WHHH

**P.M. DAWN 161/59**

*Sometimes I Miss You So Much (Gee Street/Island)*

Total Stations: 9  
Heavy (40+): 1 KUBE  
Medium (20-39): 2 KKFR, KZFM  
Light (Under 20): 6  
New Airplay This Week: 3 KCAQ, KZFM, KZHT

**IMMATURE 161/83**

*We Got It (MCA)*

Total Stations: 11  
Heavy (40+): 1 WJMH  
Medium (20-39): 3 KDLE, WERQ, WPGC  
Light (Under 20): 7  
New Airplay This Week: 4 KDLE, KMEL, KQKS, WJJS

**BACKSTREET BOYS 135/4**

*We've Got It Goin' On (Jive)*

Total Stations: 15  
Heavy (40+): 1 KLUC  
Medium (20-39): 1 KZHT  
Light (Under 20): 13

**Gold (NPG/Warner Bros.) 135/42**

Total Stations: 8  
Heavy (40+): 0  
Medium (20-39): 3 KLUC, KZHT, XHTZ  
Light (Under 20): 5  
New Airplay This Week: 1 WOVV

**SOUL FOR REAL 124/14**

*If You Want It (Uptown/MCA)*

Total Stations: 4  
Heavy (40+): 1 KDON

Medium (20-39): 1 WQHT  
Light (Under 20): 2  
New Airplay This Week: 1 KDLE

**L.V. 105/35**

*Throw Your Hands Up (Tommy Boy)*

Total Stations: 15  
Heavy (40+): 0  
Medium (20-39): 2 KMEL, KPWR  
Light (Under 20): 13  
New Airplay This Week: 1 WPGC

**GOODIE MOB 102/11**

*Cell Therapy (LaFace/Arista)*

Total Stations: 8  
Heavy (40+): 0  
Medium (20-39): 2 KBXX, WJMH  
Light (Under 20): 6

**QUINCY JONES INTRODUCING TAMIA 78/12**

*You Put A Move On My (Qwest/Warner Bros.)*

Total Stations: 13  
Heavy (40+): 0  
Medium (20-39): 0  
Light (Under 20): 13  
New Airplay This Week: 1 WPGC

**XSCAPE 76/32**

*Do You Want To (So So Def/Columbia)*

Total Stations: 3  
Heavy (40+): 0  
Medium (20-39): 3 WERQ, WJMH, WPGC  
Light (Under 20): 0  
New Airplay This Week: 1 WJMH

**LOST BOYZ 68/5**

*Jeeps, Lex Coups, Bimaz & Benz (Uptown/MCA)*

Total Stations: 5  
Heavy (40+): 1 WJMH  
Medium (20-39): 0  
Light (Under 20): 4

**KAUSION 68/11**

*What You Wanna Do? (Lench Mob/Priority)*

Total Stations: 4  
Heavy (40+): 0  
Medium (20-39): 2 KMEL, KYLD  
Light (Under 20): 2

**SKEE-LO 64/13**

*Top Of The Stairs (Sunshine/Scotti Bros.)*

Total Stations: 11  
Heavy (40+): 0  
Medium (20-39): 1 WJMH  
Light (Under 20): 10

**NICKI FRENCH 63/4**

*Did You Ever Really Love Me? (Critique)*

Total Stations: 5  
Heavy (40+): 0  
Medium (20-39): 1 WJJS  
Light (Under 20): 4

**FUN FACTORY 61/9**

*Take Your Chance (Curb-edel)*

Total Stations: 7  
Heavy (40+): 0  
Medium (20-39): 0  
Light (Under 20): 7  
New Airplay This Week: 1 WWKX

**★ MIISA 60/13**

*All Or Nothing (Ichiban)*

Total Stations: 6  
Heavy (40+): 0  
Medium (20-39): 2 KZHT, WJJS  
Light (Under 20): 4  
New Airplay This Week: 1 KKSS

**★ J'SON 60/13**

*Take A Look (Hollywood)*

Total Stations: 8  
Heavy (40+): 0  
Medium (20-39): 0  
Light (Under 20): 8  
New Airplay This Week: 1 KDLE

**★ MOKENSTEF 60/24**

*Sex In The Rain (Outburst/RAL/Island)*

Total Stations: 7  
Heavy (40+): 0  
Medium (20-39): 2 WHHH, WJJS  
Light (Under 20): 5  
New Airplay This Week: 1 WJMN

**ISAAC 2 ISAAC 59/6**

*Ol' Skool (Mercury)*

Total Stations: 5  
Heavy (40+): 0  
Medium (20-39): 2 KCAQ, KLUC  
Light (Under 20): 3

**CAPLETON 59/8**

*Wings Of The Morning (African Star/RAL/Island)*

Total Stations: 6  
Heavy (40+): 0  
Medium (20-39): 1 WQHT  
Light (Under 20): 5  
New Airplay This Week: 1 WJMH

**★ BONE THUGS-N-HARMONY 58/10**

*East 1999 (Ruthless/Relativity)*

Total Stations: 7  
Heavy (40+): 0  
Medium (20-39): 0  
Light (Under 20): 7

**★ INTRO 58/21**

*Funny How Time Flies (Atlantic)*

Total Stations: 5  
Heavy (40+): 0  
Medium (20-39): 1 WQHT  
Light (Under 20): 4

**★ RAW STYLUS 54/6**

*Believe In Me (Geffen)*

Total Stations: 13  
Heavy (40+): 0  
Medium (20-39): 1 KCAQ  
Light (Under 20): 12

**★ BARRIO BOYZZ 53/12**

*You're My Everything (SBK/EMI)*

Total Stations: 4  
Heavy (40+): 1 KZFM  
Medium (20-39): 0  
Light (Under 20): 3

**★ ALEX PARTY 51/7**

*Don't Give Me Your Life (Frr/Payday/Island)*

Total Stations: 5  
Heavy (40+): 0  
Medium (20-39): 2 KBOS, KKFR  
Light (Under 20): 3

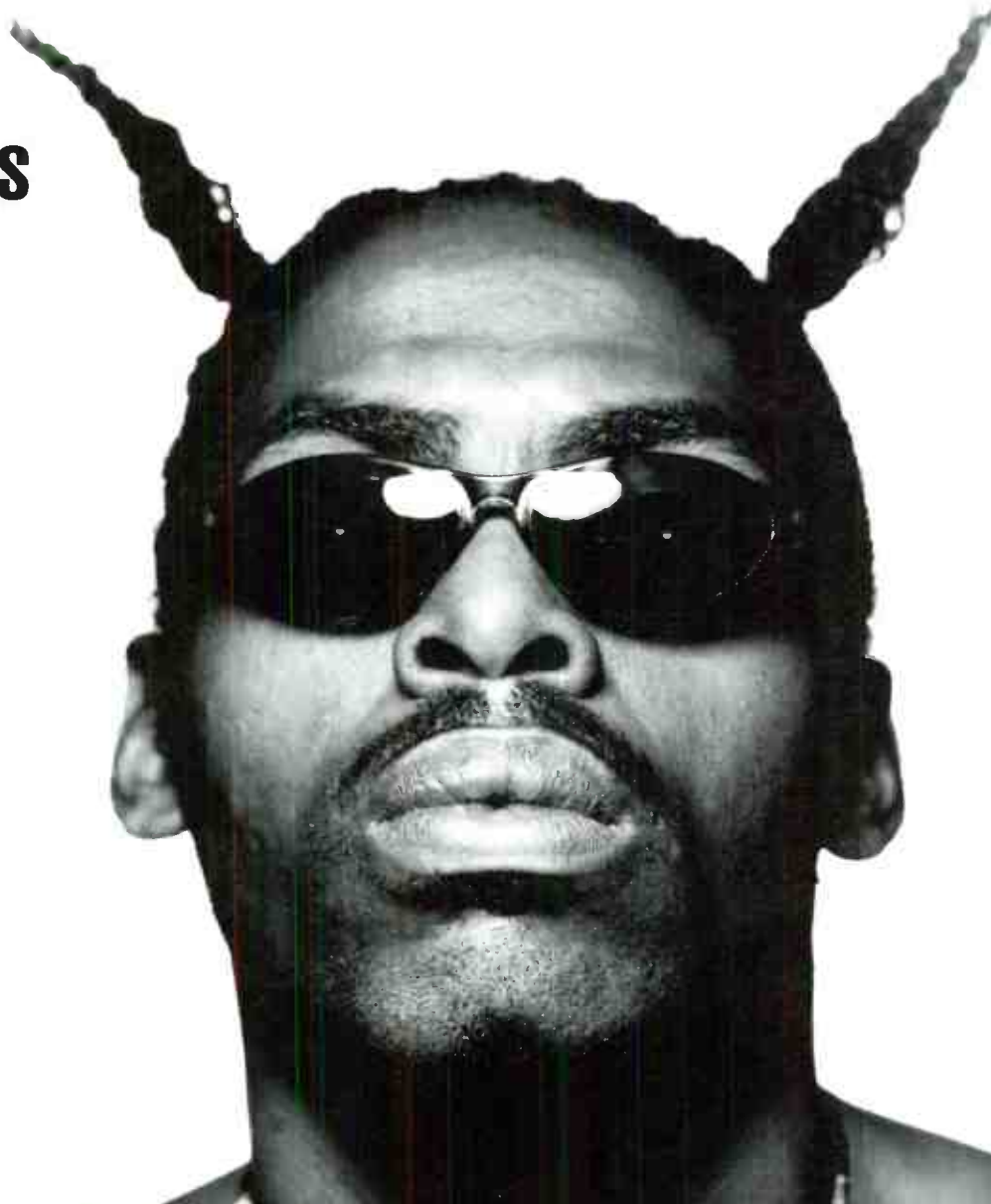


# TOO HOT

THE NEW SINGLE FROM

## "HOT" ROTATIONS

KPWR	B96
KYLD	WERQ
KUBE	WZJM
KBXX	WPOW
KQKS	WJMN
KMEL	WPXY
KZHT	WHHH
KTFM	WFLZ
KLUC	WZPL
KPRR	WWKX
KJMZ	WJJS
KZFM	WOVV
WGTZ	KCAQ



DEBUTS **(38)**  
 MONITOR TOP 40  
 RHYTHM-CROSSOVER  
 CHART

2ND BIGGEST GAINER

6.5 MILLION  
 LISTENERS  
 WITH 384 SPINS



RANKED #3  
 30 SPINS



# COOLIO

FROM THE ALBUM

"GANGSTA'S PARADISE"

IN STORES NOW





# WORLD RHYTHM - CROSSOVER

# SONG ACTIVITY REPORTS

For Week Ending November 12, 1995

**AAA**  
Broadcast Data Systems  
Detailed song tracking information for the last 3 weeks for all songs showing increased play this week. Total plays and gain do not include video play. Markets listed in order of population.

**Gold (NPG/Warner Bros.)**  
Total Stations: 8  
Chart Move: 135/42

Station	TW	LW	2W	IP	Prov.	WWXX	TW	LW	2W	IP
BET	-	-	-	-	Provid.	WWXX	3	2	-	5
MTV	-	-	-	-	San Anton.	KTFM	-	-	-	24
WQHT	-	-	-	-	Salt Lake	KZHT	36	24	27	08
New York L.A.	-	-	-	-	Indian.	WHHH	-	-	-	-
Chicago	-	-	-	-	GreenSB.	WJMH	-	-	-	-
San Fran.	-	-	-	-	W.P.Beach	WQVV	15	-	-	15
Wash., DC	-	-	-	-	Las Vegas	KJMJ	6	11	37	93
Boston	-	-	-	-	Fresno	KLUC	37	16	12	65
Houston	-	-	-	-	Albuq.	KKSS	-	-	-	-
Miami	-	-	-	-	El Paso	KPRR	-	-	-	-
Phoenix	-	-	-	-	Monterey	KDON	-	-	-	-
Denver	-	-	-	-	Bakersf.	KKXX	-	-	-	-
Rivers.	-	-	-	-	Wichita	KOLE	-	-	-	-
Sacram.	-	-	-	-	Roanoke	WJJS	16	15	13	46
	-	-	-	-	Onard	KCAQ	-	-	-	-
	-	-	-	-	C.Christi	KZFM	-	-	-	-
	-	-	-	-	C.Christi	KZFM	-	-	-	-

**3T**  
*Anything (MJJ/550 Music)*  
Total Stations: 27  
Chart Move: 810/68

Station	TW	LW	2W	IP	Prov.	WWXX	TW	LW	2W	IP
BET	3	4	6	28	Provid.	WWXX	11	23	18	40
MTV	-	-	-	-	San Anton.	KTFM	42	33	43	22
WQHT	-	-	-	-	Salt Lake	KZHT	31	26	16	138
New York L.A.	-	-	-	-	Indian.	WHHH	27	25	24	208
Chicago	-	-	-	-	GreenSB.	WJMH	6	13	8	127
San Fran.	-	-	-	-	W.P.Beach	WQVV	41	36	17	171
Wash., DC	-	-	-	-	Las Vegas	KJMJ	56	42	65	431
Boston	-	-	-	-	Fresno	KLUC	57	56	53	242
Houston	-	-	-	-	Albuq.	KKSS	-	-	-	-
Miami	-	-	-	-	El Paso	KPRR	27	26	26	212
Phoenix	-	-	-	-	Monterey	KDON	50	44	53	263
Denver	-	-	-	-	Bakersf.	KKXX	-	-	-	-
Rivers.	-	-	-	-	Wichita	KOLE	22	3	4	104
Sacram.	-	-	-	-	Roanoke	WJJS	44	41	42	267
	-	-	-	-	Onard	KCAQ	16	11	3	35
	-	-	-	-	C.Christi	KZFM	28	31	25	163
	-	-	-	-	C.Christi	KZFM	34	36	39	344

**ACE OF BASE**  
*Beautiful Life (Arista)*  
Total Stations: 20  
Chart Move: 469/26

Station	TW	LW	2W	IP	Prov.	WWXX	TW	LW	2W	IP
BET	-	-	-	-	Provid.	WWXX	18	16	6	40
MTV	-	-	-	-	San Anton.	KTFM	34	25	23	99
WQHT	-	-	-	-	Salt Lake	KZHT	41	37	35	124
New York L.A.	-	-	-	-	Indian.	WHHH	1	1	2	-
Chicago	-	-	-	-	GreenSB.	WJMH	-	-	-	-
San Fran.	-	-	-	-	W.P.Beach	WQVV	26	30	29	99
Wash., DC	-	-	-	-	Las Vegas	KJMJ	9	27	39	81
Boston	-	-	-	-	Fresno	KLUC	1	1	2	-
Houston	-	-	-	-	Albuq.	KKSS	-	-	-	-
Miami	-	-	-	-	El Paso	KPRR	13	23	3	45
Phoenix	-	-	-	-	Monterey	KDON	-	-	-	-
Denver	-	-	-	-	Bakersf.	KKXX	39	36	36	140
Rivers.	-	-	-	-	Wichita	KOLE	20	21	18	63
Sacram.	-	-	-	-	Roanoke	WJJS	20	21	18	63
	-	-	-	-	Onard	KCAQ	38	32	30	152
	-	-	-	-	C.Christi	KZFM	50	35	-	85
	-	-	-	-	C.Christi	KZFM	50	35	-	85

**ARTIE THE 1 MAN PARTY**  
*A Mover La Collita (Groove Nation/Scotti Bros.)*  
Total Stations: 21  
Chart Move: 36/29

Station	TW	LW	2W	IP	Prov.	WWXX	TW	LW	2W	IP
BET	-	-	-	-	Provid.	WWXX	26	2	8	140
MTV	-	-	-	-	San Anton.	KTFM	-	-	-	-
WQHT	-	-	-	-	Salt Lake	KZHT	1	1	2	9
New York L.A.	-	-	-	-	Indian.	WHHH	1	1	2	4
Chicago	-	-	-	-	GreenSB.	WJMH	-	-	-	-
San Fran.	-	-	-	-	W.P.Beach	WQVV	1	1	1	13
Wash., DC	-	-	-	-	Las Vegas	KJMJ	3	4	4	118
Boston	-	-	-	-	Fresno	KLUC	-	-	-	-
Houston	-	-	-	-	Albuq.	KKSS	3	2	9	9
Miami	-	-	-	-	El Paso	KPRR	59	57	62	503
Phoenix	-	-	-	-	Monterey	KDON	-	-	-	-
Denver	-	-	-	-	Bakersf.	KKXX	-	-	-	-
Rivers.	-	-	-	-	Wichita	KOLE	-	-	-	-
Sacram.	-	-	-	-	Roanoke	WJJS	4	4	4	17
	-	-	-	-	Onard	KCAQ	38	31	29	196
	-	-	-	-	C.Christi	KZFM	23	27	26	81
	-	-	-	-	C.Christi	KZFM	23	27	26	81

**BACKSTREET BOYS**  
*We've Got It Goin' On (Jive)*  
Total Stations: 15  
Chart Move: 135/42

Station	TW	LW	2W	IP	Prov.	WWXX	TW	LW	2W	IP
BET	-	-	-	-	Provid.	WWXX	8	16	25	103
MTV	-	-	-	-	San Anton.	KTFM	-	-	-	-
WQHT	-	-	-	-	Salt Lake	KZHT	30	27	27	130
New York L.A.	-	-	-	-	Indian.	WHHH	2	1	1	7
Chicago	-	-	-	-	GreenSB.	WJMH	-	-	-	-
San Fran.	-	-	-	-	W.P.Beach	WQVV	19	16	5	121
Wash., DC	-	-	-	-	Las Vegas	KJMJ	8	16	25	103
Boston	-	-	-	-	Fresno	KLUC	43	36	22	117
Houston	-	-	-	-	Albuq.	KKSS	3	1	4	4
Miami	-	-	-	-	El Paso	KPRR	1	-	-	-
Phoenix	-	-	-	-	Monterey	KDON	-	-	-	-
Denver	-	-	-	-	Bakersf.	KKXX	2	3	2	7
Rivers.	-	-	-	-	Wichita	KOLE	-	-	-	-
Sacram.	-	-	-	-	Roanoke	WJJS	17	18	24	108
	-	-	-	-	Onard	KCAQ	-	-	-	-
	-	-	-	-	C.Christi	KZFM	2	2	2	14
	-	-	-	-	C.Christi	KZFM	2	2	2	14

**BLAHZAY BLAHZAY**  
*Danger (Fader/Mercury)*  
Total Stations: 20  
Chart Move: Debut 36

Station	TW	LW	2W	IP	Prov.	WWXX	TW	LW	2W	IP
BET	5	-	-	-	Provid.	WWXX	13	12	12	36
MTV	-	-	-	-	San Anton.	KTFM	-	-	-	-
WQHT	39	35	19	265	Salt Lake	KZHT	-	-	-	-
New York L.A.	-	-	-	-	Indian.	WHHH	11	10	6	32
Chicago	-	-	-	-	GreenSB.	WJMH	27	22	24	217
San Fran.	-	-	-	-	W.P.Beach	WQVV	-	-	-	-
Wash., DC	-	-	-	-	Las Vegas	KJMJ	1	-	-	-
Boston	-	-	-	-	Fresno	KLUC	-	-	-	-
Houston	-	-	-	-	Albuq.	KKSS	33	15	-	48
Miami	-	-	-	-	El Paso	KPRR	-	-	-	-
Phoenix	-	-	-	-	Monterey	KDON	-	-	-	-
Denver	-	-	-	-	Bakersf.	KKXX	-	-	-	-
Rivers.	-	-	-	-	Wichita	KOLE	2	-	-	-
Sacram.	-	-	-	-	Roanoke	WJJS	3	2	-	-
	-	-	-	-	Onard	KCAQ	12	7	-	21
	-	-	-	-	C.Christi	KZFM	-	-	-	-
	-	-	-	-	C.Christi	KZFM	-	-	-	-

**MARIAH CAREY & BOYZ II MEN**  
*One Sweet Day (Columbia)*  
Total Stations: 32  
Chart Move: 3-3

Station	TW	LW	2W	IP	Prov.	WWXX	TW	LW	2W	IP
BET	8	3	-	-	Provid.	WWXX	42	28	1	71
MTV	24	11	6	48	San Anton.	KTFM	56	48	55	259
WQHT	21	47	37	171	Salt Lake	KZHT	42	36	10	88
New York L.A.	-	-	-	-	Indian.	WHHH	36	36	17	147
Chicago	-	-	-	-	GreenSB.	WJMH	45	39	33	159
San Fran.	-	-	-	-	W.P.Beach	WQVV	40	38	19	198
Wash., DC	-	-	-	-	Las Vegas	KJMJ	25	27	31	175
Boston	-	-	-	-	Fresno	KLUC	42	34	28	106
Houston	-	-	-	-	Albuq.	KKSS	63	43	26	222
Miami	-	-	-	-	El Paso	KPRR	51	54	47	245
Phoenix	-	-	-	-	Monterey	KDON	45	38	17	100
Denver	-	-	-	-	Bakersf.	KKXX	34	-	-	34
Rivers.	-	-	-	-	Wichita	KOLE	28	24	18	87
Sacram.	-	-	-	-	Roanoke	WJJS	35	27	24	118
	-	-	-	-	Onard	KCAQ	17	27	17	64
	-	-	-	-	C.Christi	KZFM	32	35	31	139
	-	-	-	-	C.Christi	KZFM	44	35	40	181

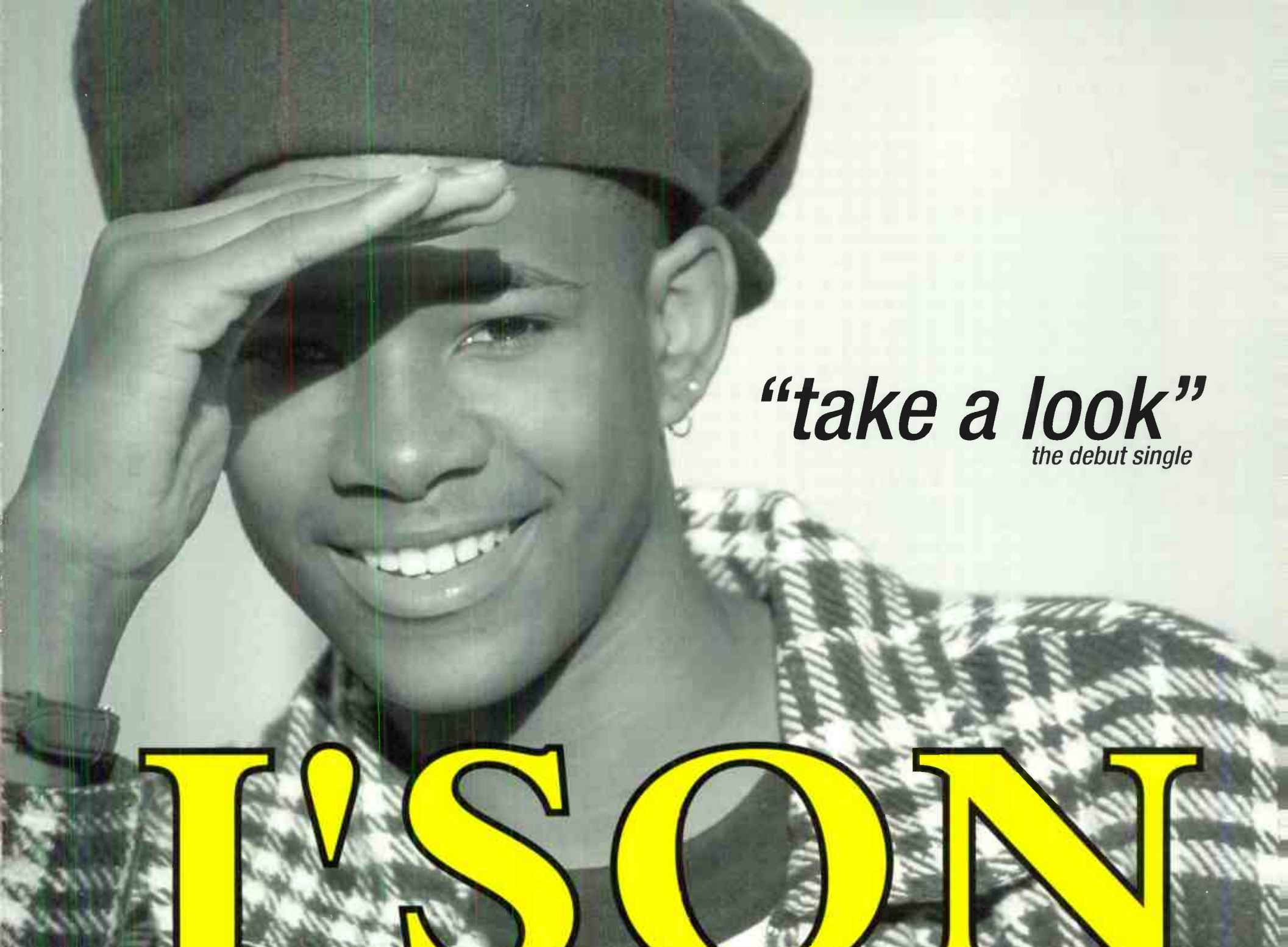
**COOLIO**  
*Too Hot (Tommy Boy)*  
Total Stations: 21  
Chart Move: Debut 38

Station	TW	LW	2W	IP	Prov.	WWXX	TW	LW	2W	IP
BET	10	-	-	-	Provid.	WWXX	30	27	8	65
MTV	32	-	-	-	San Anton.	KTFM	14	16	3	33
WQHT	2	-	-	-	Salt Lake	KZHT	11	1	-	12
New York L.A.	-	-	-	-	Indian.	WHHH	32	8	1	41
Chicago	-	-	-	-	GreenSB.	WJMH	-	-	-	-
San Fran.	-	-	-	-	W.P.Beach	WQVV	5	-	-	5
Wash., DC	-	-	-	-	Las Vegas	KJMJ	27	33	16	76
Boston	-	-	-	-	Fresno	KLUC	11	5	-	16
Houston	-	-	-	-	Albuq.	KKSS	-	-	-	-
Miami	-	-	-	-	El Paso	KPRR	15	6	-	21
Phoenix	-	-	-	-	Monterey	KDON	-	-	-	-
Denver	-	-	-	-	Bakersf.	KKXX	-	-	-	-
Rivers.	-	-	-	-	Wichita	KOLE	-	-	-	-
Sacram.	-	-	-	-	Roanoke	WJJS	6	-	-	6
	-	-	-	-	Onard	KCAQ	5	-	-	5
	-	-	-	-	C.Christi	KZFM	7	-	-	7
	-	-	-	-	C.Christi	KZFM	7	-	-	7

**D'ANGELO**  
*Cruisin' (EMI)*  
Total Stations: 24  
Chart Move: 28-22

Station	TW	LW	2W	IP	Prov.	WWXX	TW	LW	2W	IP
BET	3	-	-	-	Provid.	WWXX	20	21	25	78
MTV	-	-	-	-	San Anton.	KTFM	21	18	28	88
WQHT	2	1	3	3	Salt Lake	KZHT	27	28	23	95
New York L.A.	-	-	-	-	Indian.	WHHH	48	49	31	168
Chicago	-	-	-	-	GreenSB.	WJMH	21	25	-	104
San Fran.	-	-	-	-	W.P.Beach	WQVV	-	-	-	-
Wash., DC	-	-	-	-	Las Vegas	KJMJ	3	10	12	32
Boston	-	-	-	-	Fresno	KLUC	7	6	14	14
Houston	-	-	-	-	Albuq.	KKSS	43	26	23	118
Miami	-	-	-	-	El Paso	KPRR	20	13	22	69
Phoenix	-	-	-	-	Monterey	KDON	-	-	-	-
Denver	-	-	-	-	Bakersf.	KKXX	-	-		





***“take a look”***  
*the debut single*

# J'SON

*Programmers all over the country know who J'son is,  
soon so will your listeners*

*Early Believers:*

**KBXX 25X**

**XHTZ 14X**

**WERQ 13X**

**KDLE 9X**

**KZFM 4X**

**268 (+35) R&B SPINS!**

**Hollywood**  
RECORDS





# LEVERT

**"ALREADY MISSING YOU"**

**IMPACTING AC & HOT AC NOW!**

*2 weeks in a row #1 R&R Urban AC!*



# ADULT POWER PLAYLISTS

For Week Ending November 12, 1995

WPLJ		MIX 105		STAR 98.7			
WPLJ New York	PD: Scott Shannon APD/MD: Mike Preston	WMXV New York	PD: Steve Weed MD: Linda Silver	KYSR Los Angeles	Acting PD: Dave Beasing MD: Angela Perrelli		
TW LW		TW LW		TW LW			
1	Sophie B. Hawkins, As I Lay Me Down	35	34	1	Del Amitri, Roll To Me	43	40
2	Blues Traveler, Run Around	35	33	2	Gin Blossoms, Till I Hear It From You	41	33
3	Del Amitri, Roll To Me	34	37	3	Hootie & The Blowfish, Let Her Cry	40	39
4	Gin Blossoms, Till I Hear It From You	33	33	4	Sophie B. Hawkins, As I Lay Me Down	39	41
5	Seal, Kiss From A Rose	33	34	5	Goo Goo Dolls, Name	38	37
6	Hootie & The Blowfish, Only Wanna Be Wit	31	35	6	Joan Osborne, One Of Us	38	36
7	Natalie Merchant, Carnival	31	26	7	Take That, Back For Good	36	37
8	Deep Blue Something, Breakfast At Tiffan	28	27	8	Deep Blue Something, Breakfast At Tiffan	36	37
9	Goo Goo Dolls, Name	27	20	9	Protenders, I'll Stand By You	35	20
10	Take That, Back For Good	25	24	10	Blues Traveler, Run Around	35	34
11	Collective Soul, December	25	25	11	Collective Soul, December	34	24
12	Sarah McLachlan, I Will Remember You	24	24	12	Toad The Wet Sprocket, Good Intentions	34	25
13	Alanis Morissette, Hand In My Pocket	24	19	13	Hootie & The Blowfish, Time	32	30
14	Del Leppard, When Love & Hate Collide	22	11	14	Melissa Etheridge, Your Little Secret	32	34
15	Everything But The Girl, Missing	22	24	15	Dave Matthews Band, Ants Marching	31	32
16	Madonna, You'll See	21	16	16	Edwyn Collins, A Girl Like You	31	35
17	Meat Loaf, I'd Lie For You	17	15	17	Natalie Merchant, Carnival	30	37
18	Elton John, Blessed	17	7	18	Seal, Kiss From A Rose	24	17
19	Bonnie Raitt W/Bryan Adams, Rock Steady	16	17	19	Adam Ant, Wonderful	17	16
20	The Rembrandts, I'll Be There For You	15	17	20	Blind Melon, No Rain	17	15
21	Tom Cochrane, I Wish You Well	15	16	21	The Cranberries, Dreams	17	17
22	Hootie & The Blowfish, Time	12	0	22	Soul Asylum, Runaway Train	17	18
23	Dave Matthews Band, Ants Marching	12	21	23	Bonnie Raitt W/Bryan Adams, Rock Steady	17	1
24	R.E.M., Everybody Hurts	11	9	24	Spin Doctors, Two Princes	16	15
25	Dionne Farris, I Know	11	14	25	UB40, Here I Am	16	12
26	Gin Blossoms, Found Out About You	11	9	26	Dave Matthews Band, What Would You Say	15	20
27	John Mellencamp, Wild Night	10	10	27	Counting Crows, Mr. Jones	15	15
28	Looking Glass, Brandy	9	6	28	The Rembrandts, I'll Be There For You	15	17
29	U2, Pride Low	8	5	29	Chris Isaak, Somebody's Crying	15	15
30	Spin Doctors, Two Princes	8	7	30	UB40, Can't Help Falling In L	15	12

STAR 104.5		B101		WPNT			
WYXR Philadelphia	PD: Chuck Knight MD: Joe Proke	WBEB Philadelphia	PD: Jim Ryan	WPNT Chicago	PD: Lorrin Palagi MD: Lynne Murray		
TW LW		TW LW		TW LW			
1	TLC, Waterfalls	56	55	1	Seal, Kiss From A Rose	43	44
2	Seal, Kiss From A Rose	55	55	2	Hootie & The Blowfish, Only Wanna Be Wit	43	43
3	Janet Jackson, Runaway	47	32	3	Sophie B. Hawkins, As I Lay Me Down	40	41
4	Vanessa Williams, Colors Of The Wind	40	40	4	The Rembrandts, I'll Be There For You	39	25
5	All-4-One, I Can Love You Like That	40	55	5	All-4-One, I Can Love You Like That	39	41
6	Selena, I Could Fall In Love	40	39	6	Selena, I Could Fall In Love	35	25
7	Jon B. Feat. Babyface, Someone To Love	39	41	7	Nicki French, Total Eclipse Of The	34	42
8	Real McCoy, Come And Get Your Love	32	21	8	Madonna, Take A Bow	29	21
9	Madonna, Don't Stop	33	24	9	Collective Soul, December	32	26
10	Regina Belle, Could It Be I'm Falling	32	33	10	Whitney Houston, Exhale	30	28
11	Whitney Houston, Exhale	30	29	11	Mariah Carey, Fantasy	29	28
12	After 7, 'Til You Do Me Right	29	30	12	Protenders, I'll Stand By You	29	29
13	Diana Ross, Take Me Higher	24	23	13	Take That, Back For Good	29	29
14	Ace Of Base, Beautiful Life	23	23	14	Del Amitri, Roll To Me	28	30
15	Fun Factory, I Wanna B With U	23	0	15	Gin Blossoms, Till I Hear It From You	27	28
16	Mariah Carey & Boyz II Men, One Sweet Day	23	21	16	Janet Jackson, Runaway	27	24
17	Gerard Levert, I'd Give Anything	18	16	17	Martin Page, In The House Of Stone And L	25	25
18	Mariah Carey, Fantasy	15	17	18	Hootie & The Blowfish, Let Her Cry	26	21
19	Michael Jackson, You Are Not Alone	15	39	19	Blues Traveler, Run Around	26	42
20	Boyz II Men, Water Runs Dry	14	14	20	Dionne Farris, I Know	24	27
21	James Ingram, I Don't Have The Heart	14	8	21	Bryan Adams, Have You Ever Really Loved	22	25
22	Jon Secada, If You Go	13	9	22	Annie Lennox, No More 'I Love You's"	22	22
23	Madonna, Secret	13	11	23	Phil Collins, Something Happened On The	19	17
24	Toni Braxton, Breathe Again	13	14	24	Michael Jackson, You Are Not Alone	19	26
25	Quincy Jones Feat. James Ingra, Just One	13	12	25	Spin Doctors, Two Princes	19	20
26	Freddie Jackson, You Are My Lady	13	12	26	R.E.M., Losing My Religion	18	2
27	Luther Vandross, Don't Want To Be A Fool	12	8	27	Vanessa Williams, Colors Of The Wind	18	21
28	Huey Lewis & The News, It's Alright	11	12	28	Go West, King Of Wishful Thinking	17	6
29	Boyz II Men, On Bended Knee	11	6	29	Amy Grant, Lucky One	17	0
30	4 P.M., Sukiyaki	10	12	30	Mariah Carey, Someday	13	14

MIX 101.9		Q95		MIX 107.3			
WTMX Chicago	PD: Barry James APD/MD: Jaime Kartak	WKQI Detroit	PD: Tom O'Brien MD: Fred Buchalter	WRQX Washington, DC	OM/PD: Randy James MD: Carol Parker		
TW LW		TW LW		TW LW			
1	Collective Soul, December	37	38	1	Natalie Merchant, Carnival	41	30
2	Hootie & The Blowfish, Only Wanna Be Wit	37	40	2	Sophie B. Hawkins, As I Lay Me Down	39	41
3	Bruce Hornsby, Walk In The Sun	37	36	3	Blues Traveler, Run Around	39	38
4	Seal, Kiss From A Rose	36	38	4	Hootie & The Blowfish, Only Wanna Be Wit	37	38
5	Gin Blossoms, Till I Hear It From You	36	21	5	Gin Blossoms, Till I Hear It From You	36	38
6	K.d. Lang, If I Were You	35	22	6	Take That, Back For Good	36	32
7	Lisa Loeb & Nine Stories, Do You Sleep?	33	38	7	Del Amitri, Roll To Me	35	31
8	Goo Goo Dolls, Name	25	22	8	Seal, Kiss From A Rose	30	39
9	Martin Page, In The House Of Stone And L	24	20	9	Mariah Carey, Fantasy	27	33
10	Meat Loaf, I'd Lie For You	24	23	10	TLC, Waterfalls	26	23
11	Jude Cole, Believe In You	24	19	11	Janet Jackson, Runaway	26	14
12	Deep Blue Something, Breakfast At Tiffan	23	32	12	Madonna, You'll See	25	25
13	Blues Traveler, Run Around	23	21	13	Collective Soul, December	24	4
14	Del Amitri, Roll To Me	21	19	14	Elton John, Blessed	24	22
15	Bonnie Raitt W/Bryan Adams, Rock Steady	20	18	15	Hootie & The Blowfish, Time	23	21
16	Protenders, I'll Stand By You	20	37	16	All-4-One, I Can Love You Like That	22	22
17	Dave Matthews Band, Ants Marching	19	8	17	Dionne Farris, I Know	20	17
18	Melissa Etheridge, Come To My Window	18	11	18	Spin Doctors, Two Princes	16	17
19	John Mellencamp, Wild Night	18	18	19	Meat Loaf, I'd Lie For You	15	11
20	Alanis Morissette, Hand In My Pocket	18	0	20	Lisa Loeb & Nine Stories, Do You Sleep?	15	21
21	Sheryl Crow, Strong Enough	17	15	21	Annie Lennox, Walking On Broken Glass	14	8
22	Natalie Merchant, Carnival	16	21	22	The Rembrandts, I'll Be There For You	14	20
23	Blind Melon, No Rain	16	15	23	Martin Page, In The House Of Stone And L	14	13
24	The Rembrandts, I'll Be There For You	16	15	24	Amy Grant, Big Yellow Taxi	14	16
25	Dionne Farris, I Know	16	18	25	Seal, Prayer For The Dying	13	14
26	Meat Loaf, I'd Do Anything For Love	15	12	26	John Mellencamp, Wild Night	13	14
27	Huey Lewis & The News, It's Alright	15	10	27	Protenders, I'll Stand By You	13	13
28	Gin Blossoms, Found Out About You	14	13	28	Goo Goo Dolls, Name	13	5
29	Heights, How Do You Talk To An Angel	14	15	29	Madonna, Take A Bow	12	15
30	R.E.M., Losing My Religion	14	9	30	Gin Blossoms, Until I Fall Away	11	12

MIX 98.5		K101		KS95			
WBXM Boston	PD: Greg Strassell MD: Tim Richards	KIOI San Francisco	PD: Dave Shakes MD: Connie Lindell	KSTP Minneapolis	PD: Bob Davis MD: Leighton Peck		
TW LW		TW LW		TW LW			
1	Blues Traveler, Run Around	38	39	1	Sophie B. Hawkins, As I Lay Me Down	64	47
2	Take That, Back For Good	38	32	2	Seal, Kiss From A Rose	62	46
3	All-4-One, I Can Love You Like That	35	35	3	Take That, Back For Good	60	29
4	Sophie B. Hawkins, As I Lay Me Down	34	37	4	Blues Traveler, Run Around	59	47
5	Hootie & The Blowfish, Only Wanna Be Wit	34	34	5	Hootie & The Blowfish, Only Wanna Be Wit	37	48
6	Seal, Kiss From A Rose	32	37	6	Hootie & The Blowfish, Let Her Cry	32	22
7	Selena, I Could Fall In Love	31	38	7	Del Amitri, Roll To Me	29	47
8	Janet Jackson, Runaway	31	24	8	The Rembrandts, I'll Be There For You	29	44
9	Nicki French, Total Eclipse Of The	28	25	9	Janet Jackson, Runaway	27	31
10	Annie Lennox, No More 'I Love You's"	27	20	10	Lisa Loeb & Nine Stories, Do You Sleep?	26	18
11	The Rembrandts, I'll Be There For You	22	19	11	Goo Goo Dolls, Name	26	27
12	Madonna, You'll See	22	22	12	Natalie Merchant, Carnival	26	25
13	Boyz II Men, I'll Make Love To You	21	21	13	All-4-One, I Can Love You Like That	25	43
14	Del Amitri, Roll To Me	21	11	14	Blessid Union Of Souls, I Believe	25	20
15	Whitney Houston, Exhale	21	26	15	Edwyn Collins, A Girl Like You	25	17
16	Mariah Carey & Boyz II Men, One Sweet Day	21	20	16	Collective Soul, December	24	26
17	Melissa Etheridge, I'm The Only One	20	20	17	Real McCoy, Another Night	24	26
18	Des'ree, You Gotta Be	20	19	18	Bryan Adams, Have You Ever Really Loved	24	25
19	Corrs, Runaway	20	19	19	Melissa Etheridge, I'm The Only One	24	18
20	Melissa Etheridge, Come To My Window	19	20	20	R.E.M., Losing My Religion	22	17
21	Everything But The Girl, Missing	18	0	21	Counting Crows, Mr. Jones	22	23
22	Blessid Union Of Souls, Let Me Be The On	17	9	22	Selena, I Could Fall In Love	22	21
23	Protenders, I'll Stand By You	15	14	23	Madonna, Take A Bow	21	24
24	Vanessa Williams, Colors Of The Wind	14	10	24	Toad The Wet Sprocket, All I Want	20	22
25	Hootie & The Blowfish, Hold My Hand	14	20	25	Mr. Big, To Be With You	20	27
26	Jon Secada, Mental Picture	13	11	26	Soul Asylum, Runaway Train	20	23
27	Toni Braxton, You Mean The World To Me	13	14	27	Bryan Adams, Have You Ever Really Loved	19	26
28	Jon Secada, If You Go	13	12	28	Melissa Etheridge, I'm The Only One	19	19
29	Big Mountain, Baby I Love Your Way	12	9	29	Sheryl Crow, All I Wanna Do	19	23
30	Madonna, Take A Bow	12	13	30	Spin Doctors, Two Princes	18	21
					Haddaway, What Is Love	17	20



**BDS IMPACT**

★ ★ ★ **AIRPOWER** ★ ★ ★  
(Minimum 600 detections for the first time)

**MADONNA 779/199**  
*You'll See (Maverick/Warner Bros.)*  
Total Stations: 47/Chart Move: 22-15  
Heavy (30+ plays): 1 WVTY  
Medium (15-29): 27 KDMX, KEZR, KGBY, KHMV, KIOI, KISN, KPLZ, KTHT, KUUU, KWMX, KYKY, WAEV, WBMX, WIVY, WJDX, WKDD, WKQI, WLHT, WMC, WMJQ, WMXV, WPLJ, WQAL, WRQX, WTFM, WWSN, WYYY  
Light (Under 15): 19  
New Airplay This Week: 7 KEZR, KMZO, WIOG, WLHT, WQAL, WTFM, WVTY

**MARIAH CAREY & BOYZ II MEN 679/233**  
*One Sweet Day (Columbia)*  
Total Stations: 39/Chart Move: 26-17  
Heavy (30+): 2 KGBY, KTHT  
Medium (15-29): 21 KALC, KGBX, KIOI, KISN, KUUU, KYKY, WBEB, WBMX, WDEF, WGSY, WIVY, WJDX, WKQI, WKZL, WLHT, WMJQ, WMXV, WMYI, WTFM, WWSN, WYXR  
Light (Under 15): 16  
New Airplay This Week: 7 KWMX, WALK, WDEF, WIVY, WKDD, WMTX, WMYI

**AIRPOWER BOUND**

**THE CORRS 590/5**  
*Runaway (143/Lava/Atlantic)*

Total Stations: 43/Chart Move: 21-20  
Heavy (30+ plays): 4 KUUU, WEZF, WIVY, WKTI  
Medium (15-29): 17 KHMV, KIOI, KISN, KPLZ, WAHR, WBMX, WCSO, WGSY, WJDX, WKDD, WKQI, WKZL, WMC, WMJQ, WMXV, WVAF, WYYY  
Light (Under 15): 22  
New Airplay This Week: 3 WAHR, WGSY, WMXV

**GOO GOO DOLLS 460/29**  
*Name (Metal Blade/Warner Bros.)*

Total Stations: 25/Chart Move: 27-25  
Heavy (30+): 4 KALC, KWMX, KYSR, WZPK  
Medium (15-29): 11 KDMX, KFMB, KSTP, WEZF, WKDD, WKTI, WMXV, WPLJ, WQAL, WTMX, WVTY  
Light (Under 15): 10  
New Airplay This Week: 1 WQAL

**DAVE MATTHEWS BAND 430/9**  
*Ants Marching (RCA)*

Total Stations: 31/Chart Move: 28-27  
Heavy (30+): 3 KALC, KUUU, KYSR  
Medium (15-29): 11 KFMB, KISN, KPLZ, KWMX, WBLI, WKDD, WMXV, WTMX, WVTY, WYYY, WZPK  
Light (Under 15): 17

**SARAH MCLACHLAN 355/31**  
*I Will Remember You (Arista)*

Total Stations: 26/Chart Move: 33-30  
Heavy (30+): 0  
Medium (15-29): 11 KDMX, KHMV, KPLZ, WAHR, WEZF, WJDX, WKTI, WLHT, WMJQ, WPLJ, WWSN  
Light (Under 15): 15

**DEEP BLUE SOMETHING 351/48**  
*Breakfast At Tiffany's (RainMaker/Interscope)*

Total Stations: 28/Chart Move: 34-31  
Heavy (30+): 4 KALC, KFMB, KYSR, WZPK  
Medium (15-29): 7 KHMV, WKDD, WKTI, WMXL, WMXV, WPLJ, WTMX  
Light (Under 15): 17  
New Airplay This Week: 4 KWMX, WMTX, WMXL, WMXV

**HOOTIE & THE BLOWFISH 343/63**  
*Time (Atlantic)*

Total Stations: 33/Chart Move: 35-32  
Heavy (30+): 2 KYSR, WMTX  
Medium (15-29): 9 KALC, KDMX, KHMV, KSTZ, KWMX, WKDD, WKZL, WRQX, WWSN  
Light (Under 15): 22  
New Airplay This Week: 5 KFMB, KYKY, WKDD, WPLJ, WZPK

**BONNIE RAITT WITH BRYAN ADAMS 302/77**  
*Rock Steady (Capitol)*

Total Stations: 26/Chart Move: 37-35  
Heavy (30+): 0  
Medium (15-29): 10 KSTZ, KYKY, KYSR, WAEV, WIVY, WKTI, WMXV, WPLJ, WTMX, WWSN  
Light (Under 15): 16  
New Airplay This Week: 4 KYKY, KYSR, WIVY, WZPK

**ACE OF BASE 202/11**  
*Beautiful Life (Arista)*

Total Stations: 18/Chart Move: 40-36  
Heavy (30+): 0  
Medium (15-29): 6 KTHT, KWMX, WEZF, WIVY, WMXV, WYXR  
Light (Under 15): 12  
New Airplay This Week: 1 WKDD

**ALANIS MORISSETTE 179/38**  
*Hand In My Pocket (Maverick/Reprise)*

Total Stations: 16/Chart Move: Debut 38  
Heavy (30+): 1 KFMB  
Medium (15-29): 4 KWMX, WPLJ, WTMX, WZPK  
Light (Under 15): 11  
New Airplay This Week: 1 WTMX

**CHART BOUND**

**CELINE DION 154/27**  
*(You Make Me Feel Like) A Natural Woman (Lava/Atlantic)*

Total Stations: 13  
Heavy (30+): 0  
Medium (15-29): 6 KGBX, WDEF, WGSY, WJDX, WMJQ, WMYI  
Light (Under 15): 7  
New Airplay This Week: 3 WGSY, WLHT, WTFM

**MOST NEW AIRPLAY THIS WEEK**

**WHITNEY HOUSTON 8**  
*Exhale (Shoop Shoop) (Arista)*

**MARIAH CAREY & BOYZ II MEN 7**  
*One Sweet Day (Columbia)*

**MADONNA 7**  
*You'll See (Maverick/Warner Bros.)*

**HOOTIE & THE BLOWFISH 5**  
*Time (Atlantic)*

**DEEP BLUE SOMETHING 4**  
*Breakfast At Tiffany's (RainMaker/Interscope)*

**BONNIE RAITT WITH BRYAN ADAMS 4**  
*Rock Steady (Capitol)*

**JOAN OSBORNE 143/10**  
*One Of Us (Blue Gorilla/Mercury)*

Total Stations: 6  
Heavy (30+): 2 KALC, KYSR  
Medium (15-29): 3 KFMB, KWMX, WZPK  
Light (Under 15): 1  
New Airplay This Week: 1 WTMX

**K.D. LANG 131/19**  
*If I Were You (Warner Bros.)*

Total Stations: 21  
Heavy (30+): 1 WTMX  
Medium (15-29): 2 KHMV, KPLZ  
Light (Under 15): 18  
New Airplay This Week: 1 WAHR

**EDWYN COLLINS 128/17**  
*A Girl Like You (Bar None/A&M)*

Total Stations: 13  
Heavy (30+): 1 KYSR  
Medium (15-29): 3 KALC, KFMB, KSTP  
Light (Under 15): 9

**EVERYTHING BUT THE GIRL 118/26**  
*Missing (Atlantic)*

Total Stations: 8  
Heavy (30+): 1 KHMV  
Medium (15-29): 4 KDMX, KPLZ, WBMX, WPLJ  
Light (Under 15): 3  
New Airplay This Week: 2 KDMX, WBMX

**P.M. DAWN 104/12**  
*Downtown Venus (Gee Street/Island)*

Total Stations: 3  
Heavy (30+): 2 KALC, WQLH  
Medium (15-29): 1 WZPK  
Light (Under 15): 0

**SELENA 83/29**  
*Dreaming Of You (EMI Latin/EMI)*

Total Stations: 10  
Heavy (30+): 0  
Medium (15-29): 1 KTHT  
Light (Under 15): 9  
New Airplay This Week: 3 WGSY, WJDX, WMJQ

THIS WEEK	LAST WEEK	WEEKS ON	TITLE/LABEL	ARTIST	TW	LW
			★ ★ ★ <b>No. 1</b> ★ ★ ★			
1	1	27	AS I LAY ME DOWN COLUMBIA 2 wks at No. 1	SOPHIE B. HAWKINS	1804	1821
2	2	22	KISS FROM A ROSE ZTT/SIRE/WARNER BROS.	SEAL	1714	1795
3	4	16	BACK FOR GOOD ARISTA	TAKE THAT	1637	1592
4	3	19	ONLY WANNA BE WITH YOU ATLANTIC	HOOTIE & THE BLOWFISH	1620	1670
5	5	15	ROLL TO ME A&M	DEL AMITRI	1433	1398
6	6	25	RUN-AROUND A&M	BLUES TRAVELER	1286	1350
7	7	13	RUNAWAY A&M	JANET JACKSON	1252	1236
8	10	15	TIL I HEAR IT FROM YOU A&M	GIN BLOSSOMS	1132	1066
9	9	12	CARNIVAL ELEKTRA/EEG	NATALIE MERCHANT	1110	1082
10	8	25	I CAN LOVE YOU LIKE THAT BLITZZ/ATLANTIC	ALL-4-ONE	1065	1115
11	11	6	BLESSED ROCKET/ISLAND	ELTON JOHN	948	914
12	12	12	FANTASY COLUMBIA	MARIAH CAREY	885	899
13	15	4	EXHALE (SHOOP SHOOP) ARISTA	WHITNEY HOUSTON	791	718
14	13	27	I'LL BE THERE FOR YOU EASTWEST/EEG	THE REMBRANDTS	784	834
			★ ★ ★ <b>AIRPOWER</b> ★ ★ ★			
15	22	3	YOU'LL SEE MAVERICK/WARNER BROS.	MADONNA	779	580
16	14	15	DECEMBER ATLANTIC	COLLECTIVE SOUL	741	755
			★ ★ ★ <b>AIRPOWER</b> ★ ★ ★			
17	26	2	ONE SWEET DAY COLUMBIA	MARIAH CAREY & BOYZ II MEN	679	446
18	16	18	I COULD FALL IN LOVE EMI LATIN/EMI	SELENA	672	712
19	17	52	IN THE HOUSE OF STONE AND LIGHT MERCURY	MARTIN PAGE	664	679
20	21	8	RUNAWAY 143/LAVA/ATLANTIC	THE CORRS	590	585
21	20	23	COLORS OF THE WIND HOLLYWOOD	VANESSA WILLIAMS	524	585
22	19	16	YOU ARE NOT ALONE EPIC	MICHAEL JACKSON	495	641
23	23	7	I'D LIE FOR YOU (AND THAT'S THE TRUTH) MCA	MEAT LOAF	472	499
24	24	7	GOOD INTENTIONS COLUMBIA/REPRISE	TOAD THE WET SPROCKET	470	486
25	27	7	NAME METAL BLADE/WARNER BROS.	GOO GOO DOLLS	460	431
26	25	13	FOREVER TONIGHT RIVER NORTH	PETER CETERA & CRYSTAL BERNARD	441	469
27	28	8	ANTS MARCHING RCA	DAVE MATTHEWS BAND	430	421
28	29	36	I'LL STAND BY YOU SIRE/WARNER BROS.	PRETENDERS	420	418
29	30	12	LET ME BE THE ONE EMI	BLESSID UNION OF SOULS	381	414
30	33	6	I WILL REMEMBER YOU ARISTA	SARAH MCLACHLAN	355	324
31	34	6	BREAKFAST AT TIFFANY'S RAINMAKER/INTERSCOPE	DEEP BLUE SOMETHING	351	303
32	35	4	TIME ATLANTIC	HOOTIE & THE BLOWFISH	343	280
33	31	6	DO YOU SLEEP? GEFEN	LISA LOEB & NINE STORIES	334	350
34	32	17	WATERFALLS LAFACE/ARISTA	TLC	325	343
35	37	2	ROCK STEADY CAPITOL	BONNIE RAITT WITH BRYAN ADAMS	302	225
36	40	2	BEAUTIFUL LIFE ARISTA	ACE OF BASE	202	191
37	38	5	BELIEVE IN YOU ISLAND	JUDE COLE	195	213
38	<b>NEW</b>		HAND IN MY POCKET MAVERICK/REPRISE	ALANIS MORISSETTE	179	141
39	39	20	WALK IN THE SUN RCA	BRUCE HORNSBY	169	207
40	36	14	CAN I TOUCH YOU...THERE? COLUMBIA	MICHAEL BOLTON	167	251

Records showing an increase in detections over the previous week, regardless of chart movement. A record which has been on the chart for more than 20 weeks will not receive a bullet, even if it registers an increase in detections. Airpower awarded to those records which attain 600 detections for the first time. If two records are tied in number of plays, the record being played on more stations is placed first. Records below the top 20 are removed from the chart after 26 weeks. © 1995, Billboard/BPI Communications.

Airpower awarded to those records which attain 600 detections for the first time. New airplay lists those stations registering six or more detections per week on a record for the first time. ★ Initial impact: records appearing on this page for the first time.

**THE ONLY THING THAT BURNS BRIGHTER THAN THE MEMORIES IS THE MUSIC**

*Sarah McLachlan*

**I WILL REMEMBER YOU**

The theme from the most acclaimed romantic comedy of the year, *The Brothers McMullen*.

**33 - 30 HOT AC MONITOR**

**HOT 100 SINGLE SALES THIS WEEK 94 - 84!**

**EARLY BELIEVERS INCLUDE:**

WMJQ Buffalo	WWSN Charlotte	WKTI Milwaukee
WPLJ New York	KDMX Dallas	KPLZ Seattle
WBEB Philly	KHMV Houston	KISN Salt Lake City

ARISTA  
© 1995 Arista Records, Inc.



SONG ACTIVITY REPORTS

For Week Ending November 12, 1995



Detailed song tracking information for the last 3 weeks for all songs showing increased play this week. Total plays and gain do not include video play. Markets listed in order of population.

Table with 12 columns: Artist, Song, Total Plays/Gain, Chart Move, and station codes. Includes ACE OF BASE (Beautiful Life), MARIAH CAREY & BOYZ II MEN (One Sweet Day), THE CORRS (Runaway), DEEP BLUE SOMETHING (Breakfast at Tiffany's), and DEL AMITRI (Roll To Me).

Table with 12 columns: Artist, Song, Total Plays/Gain, Chart Move, and station codes. Includes CELINE DION (You Make Me Feel Like A Natural Woman), GIN BLOSSOMS (I Hear It From You), GOO GOO DOLLS (Name), HOOTIE & THE BLOWFISH (Time), and WHITNEY HOUSTON (Exhale).

Table with 12 columns: Artist, Song, Total Plays/Gain, Chart Move, and station codes. Includes JANET JACKSON (Runaway), ELTON JOHN (Blessed), MADONNA (You'll See), DAVE MATTHEWS BAND (Dave Marching), and SARAH MCLACHLAN (I Will Remember You).

Table with 12 columns: Artist, Song, Total Plays/Gain, Chart Move, and station codes. Includes NATALIE MERCHANT (Carnival), ALANIS MORISSETTE (Hand In My Pocket), JOAN OSBORNE (One Of Us), BONNIE RAITT WITH BRYAN ADAMS (Rock Steady), and TAKE THAT (Back For Good).



## POWER PLAYLISTS™

KROQ Los Angeles PD: Kevin Weathery APD: Gene Sandbloem			WKQX Chicago PD: Bill Gambia APD/MD: Mary Shuminas			WPLY Philadelphia PD: Garrett Michaels APD/MD: Chuck Tisa		
TW	LW		TW	LW		TW	LW	
1	40	30	1	45	47	1	48	45
2	39	29	2	46	43	2	46	43
3	37	33	3	41	45	3	44	46
4	34	31	4	45	45	4	46	46
5	32	20	5	37	32	5	42	42
6	29	12	6	32	32	6	42	45
7	28	19	7	29	29	7	32	31
8	27	19	8	29	28	8	31	31
9	26	10	9	28	28	9	30	29
10	25	10	10	28	28	10	30	31
11	24	11	11	28	28	11	30	15
12	23	13	12	25	27	12	30	29
13	22	13	13	25	17	13	30	15
14	21	13	14	24	24	14	29	19
15	20	14	15	23	31	15	29	30
16	19	10	16	23	16	16	28	28
17	18	17	17	23	19	17	28	27
18	17	15	18	22	17	18	27	27
19	16	15	19	21	17	19	27	30
20	15	19	20	21	16	20	27	31
21	14	9	21	20	16	21	27	29
22	13	9	22	19	16	22	27	29
23	12	9	23	18	15	23	25	25
24	11	10	24	18	15	24	24	14
25	10	13	25	18	15	25	24	14
26	9	16	26	17	15	26	23	17
27	8	12	27	17	14	27	22	14
28	7	12	28	16	14	28	21	16
29	6	10	29	15	14	29	20	16
30	5	12	30	14	13	30	19	11

WDRE Long Island OM: Jim McGuinn PD: Ted Taylor			WBCN Boston VP/Programming: Dedipus MD: Carter Alan			WHYT Detroit PD: Rick Gillette MD: Alex Tear		
TW	LW		TW	LW		TW	LW	
1	37	36	1	38	40	1	56	49
2	34	35	2	33	32	2	53	51
3	33	35	3	32	30	3	52	51
4	33	36	4	32	25	4	47	47
5	33	36	5	32	32	5	46	55
6	33	36	6	31	36	6	46	46
7	33	36	7	31	36	7	35	28
8	33	36	8	31	36	8	35	39
9	33	36	9	31	36	9	34	26
10	33	36	10	31	36	10	34	32
11	33	36	11	31	36	11	33	23
12	33	36	12	31	36	12	32	27
13	33	36	13	31	36	13	32	27
14	33	36	14	31	36	14	32	27
15	33	36	15	31	36	15	32	27
16	33	36	16	31	36	16	32	27
17	33	36	17	31	36	17	32	27
18	33	36	18	31	36	18	32	27
19	33	36	19	31	36	19	32	27
20	33	36	20	31	36	20	32	27
21	33	36	21	31	36	21	32	27
22	33	36	22	31	36	22	32	27
23	33	36	23	31	36	23	32	27
24	33	36	24	31	36	24	32	27
25	33	36	25	31	36	25	32	27
26	33	36	26	31	36	26	32	27
27	33	36	27	31	36	27	32	27
28	33	36	28	31	36	28	32	27
29	33	36	29	31	36	29	32	27
30	33	36	30	31	36	30	32	27

KDGE Dallas PD: Joel Folger MD: Jay Michaels			WHFS Washington, DC PD: Robert Benjamin APD: Bob Waugh			KITS San Francisco VP/Prgm.: Richard Sands MD Roland West		
TW	LW		TW	LW		TW	LW	
1	53	42	1	39	38	1	30	27
2	46	38	2	38	40	2	29	23
3	45	45	3	38	35	3	29	24
4	42	42	4	35	25	4	26	17
5	40	30	5	34	24	5	23	6
6	37	28	6	34	24	6	22	22
7	33	30	7	33	35	7	21	7
8	32	41	8	32	28	8	21	19
9	32	14	9	32	25	9	21	18
10	32	14	10	32	25	10	21	18
11	32	14	11	32	25	11	21	18
12	32	14	12	32	25	12	21	18
13	32	14	13	32	25	13	21	18
14	32	14	14	32	25	14	21	18
15	32	14	15	32	25	15	21	18
16	32	14	16	32	25	16	21	18
17	32	14	17	32	25	17	21	18
18	32	14	18	32	25	18	21	18
19	32	14	19	32	25	19	21	18
20	32	14	20	32	25	20	21	18
21	32	14	21	32	25	21	21	18
22	32	14	22	32	25	22	21	18
23	32	14	23	32	25	23	21	18
24	32	14	24	32	25	24	21	18
25	32	14	25	32	25	25	21	18
26	32	14	26	32	25	26	21	18
27	32	14	27	32	25	27	21	18
28	32	14	28	32	25	28	21	18
29	32	14	29	32	25	29	21	18
30	32	14	30	32	25	30	21	18

THIS WEEK	LAST WEEK	WKS. ON CHART	TITLE/LABEL/DISTRIBUTING LABEL	ARTIST	TW	LW	DETECTIONS
1	1	9	MY FRIENDS WARNER BROS. 2 WEEKS AT NO. 1	RED HOT CHILI PEPPERS	1913	1921	
2	2	6	BULLET WITH BUTTERFLY WINGS VERGIN	SMASHING PUMPKINS	1883	1905	
3	3	16	NAME METAL BLADE/WARNER BROS.	GOO GOO DOLLS	1817	1880	
4	5	13	POSSUM KINGDOM INTERSCOPE	TOADIES	1676	1665	
5	4	8	GEEK STINK BREATH REPRISE	GREEN DAY	1597	1726	
6	6	15	LUMP COLUMBIA THE PRESIDENTS OF THE UNITED STATES OF AMERICA		1460	1586	
7	10	6	NATURAL ONE LONDON/ISLAND	FOLK IMPLISION	1438	1306	
8	8	6	FRIENDS OF P. MAVERICK/REPRISE	THE RENTALS	1426	1360	
9	9	10	I'LL STICK AROUND ROSWELL/CAPITOL	FOO FIGHTERS	1268	1319	
10	15	3	GLYCERINE TRAUMA/INTERSCOPE	BUSH	1244	970	
11	14	9	ONE OF US BLUE GORILLA/MERCURY	JOAN OSBORNE	1205	1049	
12	7	14	HAND IN MY POCKET MAVERICK/REPRISE	ALANIS MORISSETTE	1166	1391	
13	13	8	HOOK A&M	BLUES TRAVELER	1094	1074	
14	12	10	QUEER ALMO SOUNDS/GEFFEN	GARBAGE	1055	1098	
15	17	5	ALL I REALLY WANT MAVERICK/REPRISE	ALANIS MORISSETTE	1045	914	
16	19	5	CUMBERSOME MAMMOTH/ATLANTIC	SEVEN MARY THREE	1011	912	
★ ★ ★ AIRPOWER ★ ★ ★							
17	24	3	PURE MASSACRE EPIC	SILVERCHAIR	993	856	
18	11	19	COMEDOWN TRAUMA/INTERSCOPE	BUSH	992	1128	
★ ★ ★ AIRPOWER ★ ★ ★							
19	23	6	WONDER SLEAZEBAGS	NATALIE MERCHANT	967	857	
★ ★ ★ AIRPOWER ★ ★ ★							
20	26	3	SANTA MONICA (WATCH THE WORLD DIE) CAPITOL	EVERCLEAR	903	747	

Records showing an increase in detections over the previous week, regardless of chart movement. A record which has been on the chart for more than 20 weeks will not receive a bullet, even if it registers an increase in detections. Airpower awarded to those records which attain 900 detections for the first time. If two records are tied in number of plays, the record being played on more stations is placed first. © 1995, Billboard/BPI Communications.

WNNX Atlanta PD: Brian Philips APD: Leslie Fram			KEGE Minneapolis PD: John Lassman MD: Wade Under			WMMS Cleveland DM/PD: John Gorman APD/MD: Doug Kubinski		
TW	LW		TW	LW		TW	LW	
1	30	29	1	50	50	1	43	40
2	27	25	2	46	45	2	40	37
3	27	29	3	45	43	3	39	35
4	27	24	4	45	29	4	39	42
5	25	29	5	39	25	5	38	30
6	25	29	6	35	39	6	37	40
7	24	23	7	35	42	7	37	34
8	24	23	8	35	38	8	37	34
9	24	23	9	35	38	9	37	34
10	24	23	10	35	38	10	37	34
11	24	23	11	35	38	11	37	34
12	24	23	12	35	38	12	37	34
13	24	23	13	35	38	13	37	34
14	24	23	14	35	38	14	37	34
15	24	23	15	35	38	15	37	34
16	24	23	16	35	38	16	37	34
17	24	23	17	35	38	17	37	34
18	24	23	18	35	38	18	37	34
19	24	23	19	35	38	19	37	34
20	24	23	20	35	38	20	37	34
21	24	23	21	35	38	21	37	34
22	24	23	22	35	38	22	37	34
23	24	23	23	35	38	23	37	34
24	24	23	24	35	38	24	37	34
25	24	23	25	35	38	25	37	34
26	24	23	26	35	38	26	37	34
27	24	23	27	35	38	27	37	34
28	24	23	28	35	38	28	37	34
29	24	23	29	35	38	29	37	34
30	24	23	30	35	38	30	37	34

30,000 HEADS STRONG

# CLASSIFIED

# AIRPLAY

# Monitor



COMBINED TOP 40 MONITOR AIRPLAY										AIRPLAY THIS WEEK BY FORMAT												
TW	LW	WKS	TITLE (LABEL)	ARTIST	THIS WEEK			LAST WEEK			MAINSTREAM		RHYTHM		ADULT		MODERN					
					Audience (millions)	Detections No.	Rank	Audience (millions)	Detections No.	Rank	Audience (millions)	Detections No.	Rank	Audience (millions)	Detections No.	Rank	Audience (millions)	Detections No.	Rank			
1	1	12	FANTASY (COLUMBIA)	MARIAH CAREY	70.1177	6303	1	72.5009	6441	1	30.6191	3495	1	32.4901	1917	1	6.9625	885	12	0.0460	6	—
2	6	5	ONE SWEET DAY (COLUMBIA)	MARIAH CAREY & BOYZ II MEN	49.4164	3971	9	41.7848	3040	13	19.5597	1974	15	22.7689	1318	3	7.0878	679	17	—	—	—
3	2	21	KISS FROM A ROSE (ZTT/SIRE/WARNER BROS.)	SEAL	48.3539	4381	6	55.5608	4768	3	21.3998	2120	11	5.6108	471	24	20.6575	1714	2	0.6858	76	—
4	3	19	ONLY WANNA BE WITH YOU (ATLANTIC)	HOOTIE & THE BLOWFISH	47.1419	4475	5	49.3612	4720	4	25.0029	2523	5	1.6205	138	—	19.2522	1620	4	1.2663	194	—
5	4	13	RUNAWAY (A&M)	JANET JACKSON	46.6899	5494	2	47.6875	5589	2	25.6771	3188	2	9.8484	1052	5	11.1376	1252	7	0.0268	2	—
6	5	17	AS I LAY ME DOWN (COLUMBIA)	SOPHIE B. HAWKINS	46.3908	4629	4	47.0412	4685	6	22.5819	2671	3	1.8532	141	—	21.7438	1804	1	0.2119	13	—
7	7	11	NAME (METAL BLADE/WARNER BROS.)	GOO GOO DOLLS	44.0918	4885	3	40.6374	4687	5	20.3782	2595	4	0.1157	13	—	7.9304	460	25	15.6675	1817	3
8	10	16	TIL I HEAR IT FROM YOU (A&M)	GIN BLOSSOMS	39.5930	4000	8	38.9338	4032	8	22.0549	2491	6	0.1511	18	—	15.3353	1132	8	2.0517	359	—
9	8	15	ROLL TO ME (A&M)	DEL AMITRI	39.2923	3769	11	40.3649	3850	10	20.0068	2051	13	0.1115	19	—	16.6669	1433	5	2.5071	266	—
10	9	16	CARNIVAL (ELEKTRA/EEG)	NATALIE MERCHANT	36.7908	4045	7	39.4213	4190	7	18.9261	2408	7	0.1359	16	—	12.8114	1110	9	4.9174	511	—
11	12	13	BACK FOR GOOD (ARISTA)	TAKE THAT	34.7149	3917	10	34.3997	3912	9	14.6947	2192	9	1.4571	87	—	18.5562	1637	3	0.0069	1	—
12	11	26	RUN-AROUND (A&M)	BLUES TRAVELER	34.6282	3339	13	35.8451	3434	11	14.9100	1744	18	0.1156	17	—	17.1768	1286	6	2.4258	292	—
13	13	13	GANGSTA'S PARADISE (MCA SOUNDTRACKS/MCA)	COOLIO FEATURING L.V.	32.4679	2753	19	33.6357	2771	16	17.1130	1703	19	15.3356	1048	6	—	—	—	0.0193	2	—
14	14	9	TELL ME (EPIC)	GROOVE THEORY	32.0992	2485	24	31.9725	2333	30	7.2324	927	37	24.7555	1511	2	0.1041	46	—	0.0072	1	—
15	17	11	HAND IN MY POCKET (MAVERICK/REPRISE)	ALANIS MORISSETTE	29.7852	3491	12	27.9658	3384	12	18.2024	2132	10	0.0850	14	—	2.6252	179	38	8.8726	1166	12
16	19	3	EXHALE (SHOO SHOO) (ARISTA)	WHITNEY HOUSTON	29.3413	2891	17	27.2736	2494	26	8.7995	1169	32	13.3273	926	7	7.1900	791	13	0.0245	5	—
17	20	3	YOU'LL SEE (MAVERICK/WARNER BROS.)	MADONNA	29.2981	3105	15	25.7818	2606	21	15.7419	1910	16	4.4808	416	28	9.0754	779	15	—	—	—
18	22	6	BREAKFAST AT TIFFANY'S (MAINMAKER/INTERSCOPE)	DEEP BLUE SOMETHING	27.7764	3133	14	23.9736	3000	14	17.0460	2204	8	0.0980	10	—	6.4953	351	31	4.1371	568	—
19	18	5	DIGGIN' ON YOU (LAFACE/ARISTA)	TLC	27.3660	2943	16	27.5160	2737	19	14.2919	2044	14	13.0585	890	8	0.0087	8	—	0.0069	1	—
20	16	26	DECEMBER (ATLANTIC)	COLLECTIVE SOUL	26.6279	2751	20	29.6537	2978	15	13.6984	1588	20	0.0897	13	—	9.6631	741	16	3.1767	409	—
21	15	25	I CAN LOVE YOU LIKE THAT (BLITZZ/ATLANTIC)	ALL-4-ONE	26.0115	2491	23	29.6591	2767	17	10.0830	1101	33	4.0571	324	39	11.8645	1065	10	0.0069	—	—
22	21	24	WATERFALLS (LAFACE/ARISTA)	TLC	23.6134	2307	26	25.1822	2566	22	13.3285	1516	22	6.7834	464	—	3.5008	325	34	0.0007	1	—
23	25	3	BEAUTIFUL LIFE (ARISTA)	ACE OF BASE	22.9207	2774	18	20.5500	2515	23	14.6205	2098	12	5.7926	469	25	2.4822	202	36	0.0254	5	—
24	26	10	LUMP (COLUMBIA)	THE PRESIDENTS OF THE UNITED STATES OF AMERICA	22.7599	2719	22	20.4886	2667	20	10.2422	1190	31	0.0373	10	—	0.4542	59	—	12.0262	1460	6
25	28	5	BULLET WITH BUTTERFLY WINGS (VIRGIN)	SMASHING PUMPKINS	19.4408	2100	31	19.7052	2086	31	3.6769	217	—	—	—	—	—	—	—	15.7639	1883	2
26	23	21	YOU OUGHTA KNOW (MAVERICK/REPRISE)	ALANIS MORISSETTE	19.3607	2246	28	22.6251	2515	24	15.9278	1799	17	0.2306	16	—	0.2194	53	—	2.9829	378	—
27	35	2	DREAMING OF YOU (EMI LATIN/EMI)	SELENA	19.3017	1647	43	17.0650	1455	46	9.9607	758	—	9.1650	806	10	0.1760	83	—	—	—	—
28	29	7	MY FRIENDS (WARNER BROS.)	RED HOT CHILI PEPPERS	19.2418	2446	25	19.6303	2408	28	3.9993	533	—	—	—	—	—	—	—	15.2425	1913	1
29	30	4	WHO CAN I RUN TO? (ISO SO DEF/COLUMBIA)	XSCAPE	19.0804	1354	49	19.1235	1249	58	1.2119	272	—	17.8473	1079	4	—	—	—	0.0212	3	—
30	24	9	ANTS MARCHING (RCA)	DAVE MATTHEWS BAND	18.6403	2241	29	20.8671	2457	27	10.7347	1300	26	0.0842	13	—	4.2330	430	27	3.5884	498	—
31	40	2	MISSING (ATLANTIC)	EVERYTHING BUT THE GIRL	17.6621	1113	65	15.7243	926	82	8.1062	664	—	5.5199	302	40	3.1418	118	—	0.8942	29	—
32	NEW		ONE OF US (BLUE GORILLA/MERCURY)	JOAN OSBORNE	17.6138	2156	30	14.1640	1796	40	6.8917	808	—	—	—	—	1.6253	143	—	9.0968	1205	11
33	27	20	I COULD FALL IN LOVE (EMI LATIN/EMI)	SELENA	17.2763	1573	46	19.7625	1893	37	5.3897	602	—	4.0726	299	—	7.8140	672	18	—	—	—
34	31	26	I'LL BE THERE FOR YOU (ELEKTRA/EEG)	THE REMBRANDTS	17.1164	1659	42	19.1181	1814	39	7.5171	845	—	0.2970	15	—	9.1976	784	14	0.1047	15	—
35	37	3	GOOD INTENTIONS (COLUMBIA/REPRISE)	TOAD THE WET SPROCKET	16.2438	2727	21	16.5492	2744	18	6.8484	1381	24	0.0869	14	—	3.6969	470	24	5.6116	862	23
36	NEW		NATURAL ONE (LONDON/ISLAND)	FOLK IMPLOSION	16.2240	1603	44	14.1092	1419	48	2.6944	165	—	—	—	—	—	—	—	13.5296	1438	7
37	33	9	DO YOU SLEEP? (Geffen)	LISA LOEB & NINE STORIES	16.1609	2278	27	17.9421	2508	25	8.4965	1303	25	0.1109	13	—	2.8789	334	33	4.6746	628	34
38	36	12	COMEDOWN (TRAUMA/INTERSCOPE)	BUSH	15.8033	1327	51	16.5569	1473	45	6.0154	335	—	—	—	—	—	—	—	9.7879	992	18
39	38	8	LET ME BE THE ONE (EMI)	BLESSID UNION OF SOULS	15.6255	1975	32	16.5144	2064	33	11.7444	1565	21	0.3254	28	—	3.5488	381	29	0.0069	1	—
40	NEW		HEY LOVER (DEF JUVENILE/ISLAND)	L.L. COOL J	15.4718	780	100	13.5951	655	112	0.7184	62	—	14.7424	717	13	—	—	—	0.0110	1	—

Records showing an increase in audience over the previous week, regardless of chart movement. Rankings broken down by format (on right side of this page) correspond to 40-position charts printed in this week's Monitor and therefore rankings do not exist for recurrences and records below No. 40. Audience computed by cross-referencing exact times of airplay with Arbitron listener data. © 1995, Billboard/BPI Communications.

**P.M. DAWN**

*Sometimes I miss you so much*

[dedicated to the christ-consciousness]

**PLAYING AT:**  
WZJM KMEL  
KKFR KMXV  
KUBE WHHH  
KS104

The new single from the album **JESUS WEPT**

Management: LIPPMAN ENTERTAINMENT

ON YOUR DESK NOW  
Written, Arranged and Produced by P.M. Dawn

Bless me cursed with colorful emotions



# NATALIE MERCHANT

THESE STATIONS  
COULDN'T WAIT!

Z100 NEW YORK  
WPST PHILADELPHIA  
G105 RALEIGH  
KRBE HOUSTON  
KUTQ SALT LAKE CITY  
KHTY SANTA BARBARA

ALREADY:

A #1 ON THE BDS  
AAA CHART!

(19) ★★★★★AIRPOWER★★★★★  
MODERN CHART!

# WONDER

The new single and video from her platinum solo debut **TIGERLILY**  
and the follow-up to the #1 AAA & Top 10 Pop, Alternative & AC hit  
"Carnival."

On tour now.

Management: Jon Landau and Barbara Carr / Jon Landau Management

On Elektra compact discs and **digital** cassettes.

<http://www.elektra.com>

1 800

© 1993 Elektra Entertainment Group, a division of Warner Communications Inc. A Time Warner Company

World Radio History

ALBUM SALES  
EXCEEDING 1.2 MILLION!  
SOUNDCAN ALBUM SALES  
CHART TOP 20 FOR  
20 WEEKS!

DEBUTING AT  
TOP 40 RADIO  
THIS WEEK!



Compiled from a national sample of airplay stations by Broadcast Data Systems. This chart is based on the Top 40 Airplay Monitor. Records are ranked by total detections. Records with the same number of detections are ranked by weeks on chart. Records are listed by station of origin. © 1995 Broadcast Data Systems.

THIS WEEK	LAST WEEK	WKS. ON CHART	MAINSTREAM		DETECTIONS		
			TITLE/LABEL/DISTRIBUTING LABEL	ARTIST	TW	LW	
			<b>*** No. 1 ***</b>				
1	1	12	FANTASY COLUMBIA	MARIAH CAREY	3495	3582	
2	2	13	RUNAWAY A&M	JANET JACKSON	3188	3199	
3	3	19	AS I LAY ME DOWN COLUMBIA	SOPHIE B. HAWKINS	2671	2691	
(4)	7	8	NAME METAL BLADE/WARNER BROS.	GOO GOO DOLLS	2595	2363	
5	4	20	ONLY WANNA BE WITH YOU ATLANTIC	HOOTIE & THE BLOWFISH	2523	2687	
6	5	16	TIL I HEAR IT FROM YOU A&M	GIN BLOSSOMS	2491	2586	
7	6	16	CARNIVAL ELEKTRA/EEG	NATALIE MERCHANT	2408	2523	
(8)	11	15	BREAKFAST AT TIFFANY'S RAINMAKER/INTERSCOPE	DEEP BLUE SOMETHING	2204	2068	
(9)	10	17	BACK FOR GOOD ARISTA	TAKE THAT	2192	2144	
(10)	14	6	HAND IN MY POCKET MAVERICK/REPRISE	ALANIS MORISSETTE	2132	1840	
11	8	22	KISS FROM A ROSE ZTT/SIRE/WARNER BROS.	SEAL	2120	2281	
(12)	13	4	BEAUTIFUL LIFE ARISTA	ACE OF BASE	2098	1879	
13	9	20	ROLL TO ME A&M	DEL AMITRI	2051	2149	
(14)	15	5	DIGGIN' ON YOU LAFACE/ARISTA	TLC	2044	1824	
(15)	24	3	ONE SWEET DAY COLUMBIA	MARIAH CAREY & BOYZ II MEN	1974	1408	
(16)	20	3	YOU'LL SEE MAVERICK/WARNER BROS.	MADONNA	1910	1612	
17	12	16	YOU OUGHTA KNOW MAVERICK/REPRISE	ALANIS MORISSETTE	1799	2046	
18	17	34	RUN-AROUND A&M	BLUES TRAVELER	1744	1748	
(19)	19	10	GANGSTA'S PARADISE MCA SOUNDTRACKS/MCA	COOLIO FEATURING L.V.	1703	1625	
20	16	24	DECEMBER ATLANTIC	COLLECTIVE SOUL	1588	1768	
21	21	16	LET ME BE THE ONE EMI	BLESSID UNION OF SOULS	1565	1576	
22	18	23	WATERFALLS LAFACE/ARISTA	TLC	1516	1704	
(23)	26	18	I WANNA B WITH U CURB EDEL	FUN FACTORY	1414	1358	
(24)	25	7	GOOD INTENTIONS COLUMBIA/REPRISE	TOAD THE WET SPROCKET	1381	1376	
25	23	11	DO YOU SLEEP? GEFLEN	LISA LOEB & NINE STORIES	1303	1438	
26	22	15	ANTS MARCHING RCA	DAVE MATTHEWS BAND	1300	1526	
27	27	7	I'D LIE FOR YOU (AND THAT'S THE TRUTH) MCA	MEAT LOAF	1292	1334	
(28)	34	3	TIME ATLANTIC	HOOTIE & THE BLOWFISH	1237	1007	
(29)	31	6	PRETTY GIRL Y&B YUM/550 MUSIC	JON B.	1193	1138	
30	29	5	YOUR LITTLE SECRET ISLAND	MELISSA ETHERIDGE	1191	1194	
(31)	33	4	LUMP COLUMBIA	THE PRESIDENTS OF THE UNITED STATES OF AMERICA	1190	1041	
(32)	37	2	EXHALE (SHOOP SHOOP) ARISTA	WHITNEY HOUSTON	1169	967	
33	28	26	I CAN LOVE YOU LIKE THAT BLITZZ/ATLANTIC	ALL-4-ONE	1101	1279	
(34)	32	6	SOLITUDE LAVA/ATLANTIC	EDWIN MCCAIN	1067	1048	
(35)	39	3	WE'VE GOT IT GOIN' ON JIVE	BACKSTREET BOYS	965	954	
36	35	23	SHY GUY WORK	DIANA KING	962	1004	
(37)	<b>NEW</b>		TELL ME EPIC	GROOVE THEORY	927	769	
38	36	6	A GIRL LIKE YOU BAR NONE/A&M	EDWYN COLLINS	893	980	
39	30	15	YOU ARE NOT ALONE EPIC	MICHAEL JACKSON	878	1186	
40	38	5	AUTOMATIC LOVER (CALL FOR LOVE) ARISTA	REAL MCCOY	871	963	

THIS WEEK	LAST WEEK	WKS. ON CHART	RHYTHM-CROSSOVER		DETECTIONS		
			TITLE/LABEL/DISTRIBUTING LABEL	ARTIST	TW	LW	
			<b>*** No. 1 ***</b>				
1	1	12	FANTASY COLUMBIA	MARIAH CAREY	1917	1951	
2	2	13	TELL ME EPIC	GROOVE THEORY	1511	1516	
(3)	3	6	ONE SWEET DAY COLUMBIA	MARIAH CAREY & BOYZ II MEN	1318	1186	
4	6	10	WHO CAN I RUN TO SO SO DEF/COLUMBIA	XSCAPE	1079	1126	
5	4	13	RUNAWAY A&M	JANET JACKSON	1052	1153	
6	5	14	GANGSTA'S PARADISE MCA SOUNDTRACKS/MCA	COOLIO FEATURING L.V.	1048	1142	
(7)	9	4	EXHALE (SHOOP SHOOP) ARISTA	WHITNEY HOUSTON	926	806	
8	7	8	DIGGIN' ON YOU LAFACE/ARISTA	TLC	890	903	
(9)	11	8	ANYTHING MJJ/550 MUSIC	3T	810	742	
(10)	12	13	DREAMING OF YOU EMI LATIN/EMI	SELENA	806	734	
(11)	13	7	SEXUAL HEALING S.O.S./ZOO	MAX-A-MILLION	748	688	
12	8	13	BROKENHEARTED ATLANTIC	BRANDY	740	821	
(13)	16	3	HEY LOVER DEF JAM/RAL/ISLAND	L.L. COOL J	717	615	
14	10	20	PRETTY GIRL Y&B YUM/550 MUSIC	JON B.	675	782	
(15)	17	7	SET U FREE STRICTLY RHYTHM	PLANET SOUL	657	593	
16	14	17	'TIL YOU DO ME RIGHT VIRGIN	AFTER 7	616	655	
(17)	21	6	BEFORE YOU WALK OUT OF MY LIFE ROWDY/ARISTA	MONICA	589	536	
(18)	19	3	BE MY LOVER RCA	LA BOUCHE	584	542	
(19)	18	5	YOU REMIND ME OF SOMETHING JIVE	R. KELLY	583	570	
(20)	26	7	MAGIC CARPET RIDE SM./E/PROFILE	THE MIGHTY DUB KATS	516	433	
21	20	24	BOOMBASTIC VIRGIN	SHAGGY	497	541	
(22)	28	3	CRUISIN EMI	D'ANGELO	489	406	
23	22	22	HE'S MINE OUTBURST/RAL/ISLAND	MOKENSTEF	485	534	
24	15	17	KISS FROM A ROSE ZTT/SIRE/WARNER BROS.	SEAL	471	623	
(25)	25	2	BEAUTIFUL LIFE ARISTA	ACE OF BASE	469	443	
(26)	29	4	HOOKED ON YOU ELEKTRA/EEG	SILK	432	384	
(27)	33	3	RIDIN' LOW HOLLYWOOD	L.A.D.	426	371	
(28)	27	3	YOU'LL SEE MAVERICK/WARNER BROS.	MADONNA	416	414	
(29)	36	9	A MOVER LA COLITA GROOVE NATION/SCOTTI BROS.	ARTIE THE 1 MAN PARTY	387	351	
30	23	20	YOU ARE NOT ALONE EPIC	MICHAEL JACKSON	375	504	
31	31	5	EAST SIDE RENDEZVOUS RUTHLESS/RELATIVITY	FROST	369	381	
(32)	37	3	COME WITH ME GASOLINE ALLEY/MCA	SHAI	361	351	
(33)	38	7	BOOM BOOM BOOM AUREUS	THE OUTHERE BROTHERS	354	350	
34	35	14	MACARENA (BAYSIDE BOYS MIX) RCA	LOS DEL RIO	328	360	
35	24	6	AUTOMATIC LOVER (CALL FOR LOVE) ARISTA	REAL MCCOY	328	469	
(36)	<b>NEW</b>		DANGER FADER/MERCURY	BLAHZAY BLAHZAY	326	281	
37	34	8	AIN'T NUTHIN' BUT SHE A THING LONDON/ISLAND	SALT-N-PEPA	325	361	
(38)	<b>NEW</b>		TOO HOT TOMMY BOY	COOLIO	325	195	
39	32	26	I CAN LOVE YOU LIKE THAT BLITZZ/ATLANTIC	ALL-4-ONE	324	372	
(40)	40	2	MISSING ATLANTIC	EVERYTHING BUT THE GIRL	302	291	

Records showing an increase in detections over the previous week, regardless of chart movement. A record which has been on either chart for more than 20 weeks will not receive a bullet, even if it registers an increase in detections. Airpower awarded to those records which attain 1500 detections (mainstream) or 600 detections (rhythm) for the first time. If two records are tied in number of plays, the record being played on more stations is placed first. Records below the top 20 are removed from the chart after 26 weeks.

**garbage "Queer"**

The New Single  
From The Self-Titled Debut Album



**BUZZ CLIP!**

**18 NEW COMMITMENTS!**

**EARLY TOP 40 PLAY:**

- Z100/NEW YORK 19x (Top 15 phones!)
- KRBE/HOUSTON 25x
- WEDJ/CHARLOTTE 10x
- Q99/SALT LAKE CITY 32x
- WPST/TRENTON-PHILLY 33x (Top 10 phones!)
- WXIS/JOHNSON CITY 14x
- Y97/SANTA BARBARA 35x
- WBHT/WILKES-BARRE 15x (Top 5 phones!)
- WTWR/TOLEDO 10x
- G105/RALEIGH-DURHAM 10x
- WWCK - ADD
- WJET - ADD
- WSSX - ADD
- WABB - ADD
- WTWR - ADD
- and more!

**SOUNSCAN NEW ARTIST: #5!**

Recorded by Garbage at Smart Studios, Madison, Wisconsin • Management: SOB Management Ltd. • © 1995 Almo Sounds Inc. • Internet: <http://www.geffen.com/almo>

