

ROCK ■ AIRPLAY Monitor

• We Listen To Radio •

July 10, 1998 \$4.95 Volume 5 • No. 28

ROCK HIGHLIGHTS

MAINSTREAM

#1

DAYS OF THE NEW

The Down Town (OUTPOST/GEFFEN)

★★★ AIRPOWER ★★★

NO RECORDS QUALIFIED FOR AIRPOWER THIS WEEK

GOING FOR AIRPLAY

AEROSMITH • *What Kind Of Love Are You On* (COLUMBIA)
THE CLAY PEOPLE • *Awake* (SLIPDISC/MERCURY)
DISHWALLA • *Once In A While* (A&M)
THE FLYS • *Got You (Where I Want You)* (TRAUMA)
GRANT LEE BUFFALO • *Truly, Truly* (SLASH/WARNER BROS.)
METALLICA • *Better Than You* (ELEKTRA/EEG)
ORGY • *Stiches* (ELEMENTREE/REPRISE)
PEARL JAM • *In Hiding* (EPIC)
PULP • *The Fear* (ISLAND)
SOUL ASYLUM • *Close* (COLUMBIA)
UNWRITTEN LAW • *Holiday* (INTERSCOPE)

MODERN

#1

GOO GOO DOLLS

Iris (WARNER SUNSET/REPRISE)

★★★ AIRPOWER ★★★

NO RECORDS QUALIFIED FOR AIRPOWER THIS WEEK

GOING FOR AIRPLAY

CHERRY POPPIN' DADDIES • *Brown Derby Jump* (UNIVERSAL)
THE CURE • *World In My Eyes* (1500/A&M)
DISHWALLA • *Once In A While* (A&M)
THE FLYS • *Got You (Where I Want You)* (TRAUMA)
GAUNT • *97th Tear* (WARNER BROS.)
METALLICA • *Better Than You* (ELEKTRA/EEG)
ORGY • *Stiches* (ELEMENTREE/REPRISE)
PEARL JAM • *In Hiding* (EPIC)
SISTER SOLEIL • *Torch* (UNIVERSAL)
SQUIRREL NUT ZIPPERS • *The Suits Are Picking Up The Bill* (MAMMOTH)
SUGGS • *I Am* (ATLANTIC)

TRIPLE-A

#1

NATALIE MERCHANT

Kind & Generous (ELEKTRA/EEG)

★★★ AIRPOWER ★★★

BARENAKED LADIES • *One Week* (REPRISE)
GRANT LEE BUFFALO • *Truly, Truly* (SLASH/WARNER BROS.)
COWBOY JUNKIES • *Miles From Our Home* (GEFFEN)

PDs Cope With New Challenges Posed By Syndicated Shows

By Dana Hall, Marc Schiffman, and Phyllis Stark

With syndicated shows abounding at all formats, programmers are being forced to discover new and creative ways to make them sound local and blend with the rest of the station.

Among the challenges involved in running a syndicated show are having to write liners and promos and get them cut by the syndicated jock way in advance; dealing with the local press, who might not be as inclined to cover a syndicated show; the unavailability of some jocks for live appearances; and handling callers who think the show is local. But most PDs who air syndicated shows say after the initial setup time, the "plug in and play" aspect of the programs makes them much easier to deal with than a live local jock, even if it means losing local control of a valuable daypart.

Each of Airplay Monitor's formats

has a growing list of available syndicated shows in a variety of dayparts, including mainstream and adult top 40's Scott Shannon and Todd Pettengill; R&B's Doug Banks and Tom Joyner; country's Blair Garner, John Crenshaw, and Scott Evans; AC's Delilah; and rock's John Boy and Billy, Howard Stern, Mark and Brian, and Bob and Tom, to name just a few.

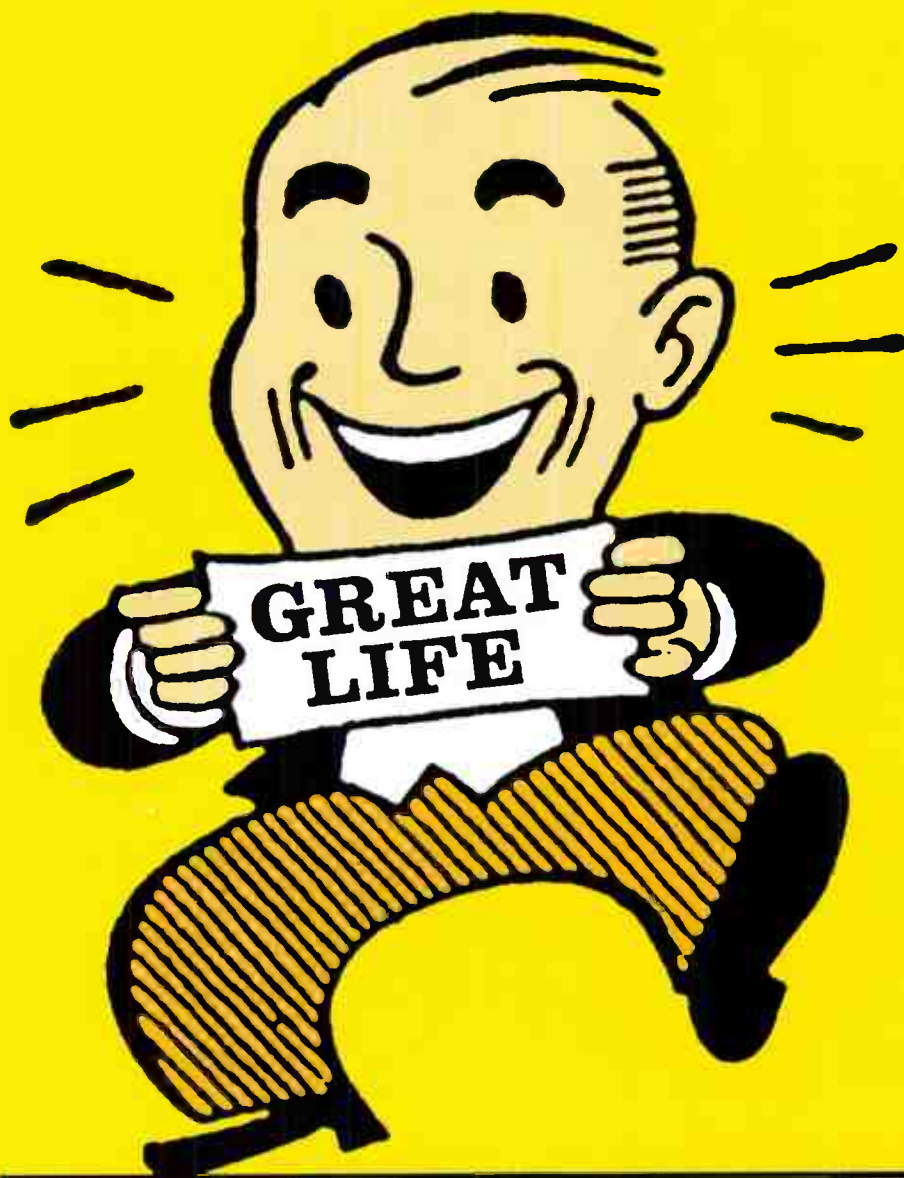
Country KEKB Grand Junction, Colo., PD Glenn Nobel, who runs Evans' "Neon Nights," says, "A lot of people don't even know it's coming out of Seattle," thanks to five availabilities an hour for local liners and promos, which Evans voices. When the four-day Country Fest was recently held in Grand Junction, Evans broadcast his show live from there. Nobel notes that he has some input on the show's content and that he has talked to Evans about things like spending too much time interviewing a new artist on-air and how

Continued on page 6

IMPACTING JULY 13

goat

START HAVING A...



THE FIRST TRACK FROM GOAT'S
DEBUT ALBUM GREAT LIFE

IN STORES IN AUGUST

PRODUCED BY GOAT AND ROGER GREENAWALT. Management: Steve Farber.

RUFFHOUSE www.ruffhouse.com www.columbiarecords.com COLUMBIA
"Columbia," and "Ruffhouse" Reg. U.S. Pat. & Tm. Off. Marca Registrada. © 1998 Ruffhouse Records LP

BEFORE THE BOX: KTBZ KLZR KFMZ

★ **7** **M** **3** ★
A
R
Y

**“OVER YOUR SHOULDER”
& OVER THE HUMPH!**

ACTIVE ROCK (36) - (20)

MAINSTREAM (32) - (23)

MODERN ROCK DEBUT (34)

IN STORES 7/14

HEADLINE TOUR NOW



Opie Vows Return To Boston In Syndication

In his first public interview since the team was fired from active WAAF Boston, WNEW-FM New York p.m. driver **Opie** vows to The Boston Herald that he and partner **Anthony** will be syndicated to the market by the end of the year and that, contractually, they'll have to be on a CBS-owned station. The pair was fired for an April Fools' Day stunt in which they claimed that Boston Mayor **Thomas Menino** had died in a plane crash. While calling the hoax "a stupid bit" and "not our best work," Opie also says that Menino "owes us dinner . . . for all the publicity and sympathy he got because of us. You can't buy that kind of exposure." Menino's spokesman told the Herald that the mayor "wouldn't even dignify a comment like that with a response."

MANAGEMENT: BOB IS BACK

KFMB-FM (Star 100.7) San Diego GM **Bob Bollinger** resurfaces as GM of rival AC/classic rock combo **KYXY/KPLN**, replacing **Jim Donahoe**, now heading Capstar's Pacific Star region.

With Journal Broadcasting closing on seven stations in the Boise, Idaho/Ontario, Ore., area, **Vicki Swain**, GM of newly acquired country **KSRV-AM-FM** Ontario, gets GM duties for the other five stations in the mix, including modern **KQXR**, modern AC **KCID**, and album **KJOT** and its sisters. She replaces **Ken Koch**. Meanwhile, Journal director of rock programming **Doug Sorenson** moves himself from the PD slot at album **KEZO** (Z92) to the same job at classic rock sister **KKCD**, replacing **Bruce McGregor**, now PD of **WHTQ** Orlando, Fla. Sorenson remains OM of **KEZO** and Journal's other Omaha outlets.

Congrats to **KTCZ/WRQC/KDWB** Minneapolis VP/GM **Mark Kalman**, who celebrated his 30th anniversary in Twin Cities radio July 5.

PROGRAMMING: LLOYD LEAVES

Active **WQXA** Harrisburg, Pa., PD **Chris Lloyd** exits. MD **Claudine Delorenzo** is handling interim PD duties.

Album **WRQK** Canton, Ohio, PD/morning man **Rick Church** exits. **Chuck Stevens**, OM of co-owned country **WQXK** and adult standard **WSOM**, now oversees **WRQK**. APD/promotion assistant **Todd Downerd** is named assistant OM, while middayer **Matt Spatz** goes to mornings and overnighter **Keith Hamilton** moves to middays.

Active **WMFS** Memphis PD **Charlie Waters** exits after a brief stay. **Mike Healey**, producer for the **Howard Stern** show, is handling things.

Triple-A **KFMU** Steamboat Springs, Colo., production director/afternoon host **Erica Swisler** gets the PD seat; P/T **Steve Jones** takes production director duties.

Album **KSQY** Rapid City, S.D., PD/morning man **Kevin Mee** and co-host/wife **Brenda Mee** (aka **Nikki Lace**) exit. Middayer **Corey Ward** is named interim PD.

Justin Case, former PD of modern adult **KTNP** (the Point) Omaha, Neb., is the new PD at similarly formatted **WPNT** (the Point) Milwaukee, replacing **Mark Adams**, now at top 40 **KZQZ** (Z95.7) San Francisco.

FORMATS: WGRD ADJUSTS

Amid rumors of a format flip from modern to modern adult, **WGRD** Grand Rapids, Mich., PD **Margot Smith** confirms that her station has switched musical focus but denies a full-on flip to modern adult. Smith says **WGRD**'s music will reflect its 47% female audience composition. That means sitting out the **Beastie Boys**, but being more aggressive on the new **Cowboy Junkies** song. **Barenaked Ladies**, **Everclear**, and **Third Eye Blind** are all cited as core acts, although Smith says the station is now more song-driven.

WXXK Parkersburg, W.Va., flips from country to active rock as **WHBR** (the Bear) under consultant **Alan Sneed** and PD **Larry Hughes**. **WXXK**'s calls have moved onto country duopoly partner **WHCM**.

Modern **WJSE** Atlantic City, N.J., changes its handle to **Digital 102.7**. The station is now more heavily dayparted, rocking harder at night and leaning more female during the day. **WJSE** has also added a reggae show on weekends with Kingston, Jamaica, police officer **Michael Thomas**, as well as a Sunday-morning Christian modern rock show.

PEOPLE: NEW WLUM LINEUP

Recent album rock convert **WLUM** Milwaukee sets its new lineup. **Dave Justis** remains in mornings from the previous modern format. **PD Chuck Summers** is now working early mid-days, and **APD/MD Terry Havel** is now handling late middays. **Bryan Erwin** returns to the station after a stint in concert promotion for afternoons. **Billy Berghammer** remains for nights from the modern format. Overnighter **Ken Neuman** joins from oldies rival **WZTR**. The station has renamed its "Sunday Night Music Revolution" specialty show; it's now known as "Radio Chaos."

Congrats to modern **WHFS** Washington, D.C., promotion director **Mary Kay LeMay**, who joins **Tori Amos**' Rape, Abuse & Incest National Network (RAINN) as director of marketing and special projects.

Three former staffers exit recent active rock convert **WALC** (Extreme 104.1) St. Louis. They are middayer **Jay C.** (who may stay on in another capacity), p.m. driver **Todd Myers** (314-631-0188), and night jock **Courtney Landrum** (314-725-3536).

At modern **KZON** Phoenix, morning producer **John Holmberg** and **Stephanie Duran** from album rival **KUPD** team up for mornings. They replace **Jim Sharp**.

PD **Tim Sheeman** announces the new lineup for classic rock **WOKI** (the Eagle) Knoxville, Tenn. Mornings are handled by **Randy Reed**, last in nights at classic rock **WGFX** Nashville; Sheeman covers middays; afternoon host **Jon Landers** stays on from the previous country format; and nights sees the return of market vet **J.J. Randle**, last in P/T at crosstown top 40 **WWST**.

Modern **KNRK** Portland, Ore., morning man **Mike Chase** exits; co-hosts **Bill Prescott** and **Daria O'Neil** will cover those duties as a duo. Also, promotion director **Patty Pastor** now oversees promotions at co-owned classic rock **KGON**, replacing **Gary Greth**.

Scott Papek joins modern **KTEG** Albuquerque, N.M., for nights/creative imaging from the late **KGDE** Omaha, Neb.

Album **WIQB** (Rock 103) Ann Arbor, Mich., taps **Dave White**, most recently with classic rock **KCBS** Los Angeles, for mornings, replacing that half of former PD **John Vance**'s duties. White worked at classic rock **WMMQ** Lansing, Mich., which he will now try to explain to rabid University of Michigan Wolverines fans as best he can.

MI/morning co-host **Jacent Jackson** is upped to APD at modern **WWDX** Lansing, while promotion director **Janna Watson** is named MD and a.m. co-host **Stacie Hyde** adds promotion duties.

Rock radio veteran **Dan Carlisle** joins album **WYBB** Charleston, S.C., for middays, reuniting with PD **Charlie Kendall**. The two first crossed paths at L.A.'s **KWST** (now **KPWR**) in the '70s.

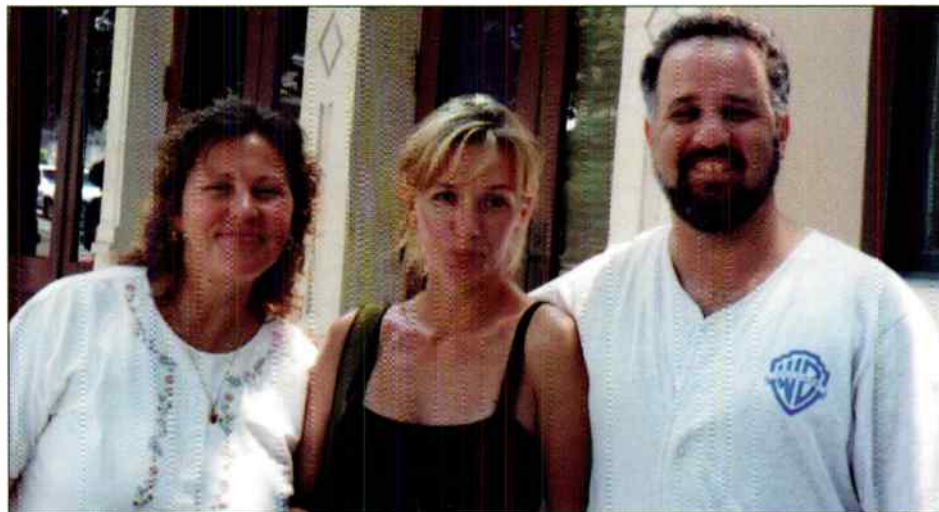
Album **KFMW** Waterloo, Iowa taps overnighter **Craig Laue** from top 40 **KFMC** Fairmont, Minn., for similar duties.

Production director **Hobie Stevens** exits modern **WROX** Norfolk, Va.

HURL HEARD ROUND THE WHIRL

Modern adult **KFMB-FM**'s second go-round (as it were) with its Whirl 'Til You Hurl promo on the Big Dipper roller coaster at Belmont Park enters its second week. After about 1,600 rides, only eight of the original 22 contestants are still gunning for the \$50,000 grand prize. Contestants receive just three 10-minute breaks and one 30-minute break every 24 hours; they're forbidden from using blankets or pillows.

Forsberg Found In Austin



Ebba Forsberg, center, was in town in Austin, Texas, where she took some time to meet up with supporters at triple-A **KGSR**—MD **Susan Castle**, left, and PD **Jody Denberg**.



212-536-5361 • sgraybow@airplaymonitor.com

Creed Sets Active Rock Longevity Record

Creed's "My Own Prison" (Wind-Up) sets a longevity record on the active rock chart this issue, as it spends its 48th week on that chart, the last 46 in the top 20. **Days Of The New**'s "Touch, Peel And Stand" had spent 47 weeks on the chart until dropping off six weeks ago. Chart watchers will note that "Prison" spent four weeks at No. 1, 24 weeks in the top five, and 29 weeks in the top 10 on the active chart, while "Stand" spent 16 weeks at No. 1, 24 weeks in the top five, and 31 weeks in the top 10.

"Hooch" (Blackbird/Sire), the first radio track from the Washington, D.C.-based band **Everything**, debuts at modern adult this issue at No. 25, with 431 detections on a total of 27 stations. The band formed six years ago while its members were attending James Madison University.

Sevendust's "Black" (TVT) re-enters the active rock chart at No. 38 this issue with a 17% increase. The track originally debuted in the Nov. 21 issue of *Rock Airplay Monitor* and spent 21 weeks on the active rock chart, peaking at No. 20 in the Jan. 31 issue. *Monitor* generally does not award a bullet to a record that has been on the chart for more than 20 weeks but, as in this case, will occasionally waive that rule if a track is being actively worked by the label and has been consistently gaining in spins.

Lenny Kravitz enters the mainstream chart with his 10th chart hit and his first since "Rock And Roll Is Dead" peaked at No. 4 in September '95, as "Fly Away" (Virgin) pops in at No. 37. It also debuts at No. 33 at active rock. Kravitz spent two weeks at No. 1 with "Are You Gonna Go My Way" in June '93.

The two strongest showings at triple-A this week are also two of the chart's three Airpowers, as **Grant Lee Buffalo**'s "Truly, Truly" (Slash/Warner Bros.) vaults 13-5 with a 34% spin increase and **Barenaked Ladies**' "One Week" (Reprise) jumps 9-4 with a 24% airplay gain.

ON THE MOVE: Universal VP of promotion **Monte Lipman** is upped to senior VP, retaining his promotion responsibilities . . . 550 Music's Los Angeles-based associate national pop promotion man **Chuck Field** shifts to New York as national director of pop promotion.

Flip Records inks a deal with Elektra to promote debut releases from **Staind**, **SX10**, and **Fine**, according to *Billboard* Bulletin. The label utilized similar arrangements for **Limp Bizkit** and **Jane Jensen** (Interscope) and **Cold** and **Big Hate** (A&M).

Gone Def In Shreveport



Album **KTUX** Shreveport, La., played host to the **Deftones** on their swing through town. Shown, from left, are the **Deftones**' **Chi**, **Maverick's Wendy Goodman**, PD **Paul Cannell**, **KTUX's Julia Austin**, **Deftones Chino** and **Abe**, **KTUX's Rick Keller**, and the **Deftones' Frank**.

A Bunch Of Weenies

KROQ Los Angeles held its sixth annual KROQ Weenie Roast and Fiesta June 20, with proceeds from the show going to AIDS Project Los Angeles, the Surfrider Foundation, Heal the Bay, and AIDS Walk Orange County. Performers included Blink 182, Cherry Poppin' Daddies, Everclear, Fastball, Green Day, Billy Idol, Marcy Playground, Ozomatli, Prodigy, Save Ferris, and Third Eye Blind.



At this backstage fiesta with Third Eye Blind, from left, are MD Lisa Worden, the band's Kevin Cadagan, KROQ's Jed the Fish, the band's Avion Salazar and Stephan Jenkins, KROQ's Tami Heide, and the band's Brad Hargraves.



Jed the Fish takes a break from his Marcy Playground interview for this photo, which includes, from left, Worden, Capitol's Greg Seese, the band's Dylan Kerfe and John Woznaik, and KROQ's Jed and APD Gene Sandbloom.



The KROQ Krew meets Capitol and Everclear. Shown, from left, are Capitol's Justin Fontaine and Amy Stevens; KROQ's Sandbloom, Rodney Bingenheimer, and Worden; Everclear's Art Alexakis; PD Kevin Weatherly; and Capitol's Phil Costello.



Team KROQ fields a Fastball. Heide and morning men Kevin and Bean join Fastball's Joey Sheffield and Miles Zuniga. Shown, from left, are Kevin, Heide, Sheffield, Bean, and Zuniga.

MONITOR PROFILE

Programmer Jim Trapp Moves Houston's Buzz Toward The Mainstream

You can forgive KTBZ (the Buzz) Houston PD Jim Trapp for feeling a certain sense of *déjà vu*. After all, he oversaw KZZO (the Zone) Sacramento, Calif.'s transition from triple-A to "pop alternative," something he sees as different from modern adult radio. Now, KTBZ has also undergone some much-publicized mainstreaming.

"What we did at the Zone was very similar to what's happening here at the Buzz," Trapp says. "The Zone had a history as a rock alternative that was limited by its very niche. In both situations, the challenge was to build an alternative station that can perform aggressively in the mainstream.

"I turned the Zone into an alternative station that was female-friendly without sacrificing its male core. One key to our success was that we never forgot how important the alternative origin was to the music we played. The modern AC approach takes middle-of-the-road AC acts and gives them a hip new house

Planet as a concept got people in the door, it failed to hook them for any appreciable TSL.

"Still, there was just enough juice in the Planet to keep us from going head to head with them," Trapp says. "The Buzz was forced into a more rock-based skew, if only to find a hill to call our own. However, with this new opportunity, we have an almost-unheard-of second chance at the same programming hole that we missed the last time around."

Long before Hefel took KKPN Spanish, Trapp says, "the team here had been sizing up this opportunity for a while. Jeff Pollack along with John Parikh and Chris Kennedy at Joint Communications have been burning the phones for over a month. We all agreed that we simply couldn't sit on our haunches and let this opportunity go by a second time."

The first thing he worked on was the music mix. "We've been testing certain records that have a history in the market to see where the tolerance for those acts would be among our cume. The challenge is to keep a harmonious balance between our existing core and the new cume we're trying to attract. I need all the information I can get about what the existing core thinks and how the new sampling cume is reacting to our changes."

Here's a sample hour on KTBZ: Sublime, "What I Got"; Natalie Imbruglia, "Wishing I Was There"; Oasis, "Wonderwall"; Harvey Danger, "Flagpole Sitta"; Blues Traveler, "Hook"; Everclear, "I Will Buy You A New Life"; Cure, "Friday I'm In Love"; Verve, "Bittersweet Symphony"; Smashing Pumpkins, "1979"; Fastball, "The Way"; Blind Melon, "No Rain"; Pearl Jam, "Better Man"; and Dave Matthews Band, "Stay."

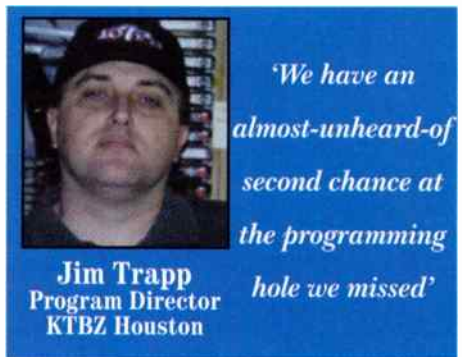
"It's not about putting more women in the game but maximizing their potential as P1s," Trapp says. "It's all about squeezing more AQH by enhancing their passion for the product. A lot of 18-34 women have aged out of a pure alternative background and have little appetite for traditional AC. Also, a lot of 25-34 men haven't given up the classic rock ghost. This pop alternative approach, as opposed to the more overtly female modern AC format, has a very strong male appeal. This approach delivers men in the 25-34 demo rather than relying on a 12-24 base."

The Buzz is now positioned between top 40 KRBE and album KLOL. "The Buzz has always shared more with KRBE than KLOL, but, to be honest, the 470,000 lost souls who used to call the Planet home are my primary target right now," Trapp says. "With 44% shared cume with the Planet, we obviously have a huge opportunity to take the most advantage of that dislocated audience."

Trapp also has a strategic partner in hot AC sister KHMx (Mix 96.5). "I see their perceptions, and they see all of my stuff," he says. "Then we orchestrate the dance. We definitely need to coordinate our efforts more closely, but the two stations are light years apart when it comes to vibe, imaging, and psychographic appeal. However, the potential to build a real synergy between the two stations has never been more possible than it is right now."

Trapp is looking forward to working with new owner Jacor and its aggressive mentality. "One of the great selling points about working for Jacor is their love of the battle and their high regard for product, something a lot of the groups have left behind in the most recent cycle of acquisition and consolidation," he says. "My father was a tough old bastard who used to say, 'An amateur smiles when he puts the knife in; a professional smiles when he pulls it out.' I hope that childhood conditioning will come in handy with Jacor."

JEFF SILBERMAN



to live in. Pop alternative, on the other hand, was always about taking alternative-compatible acts and breaking them into the mainstream. It makes all the difference in the world if your internal game plan is about trying to make Shania Twain hip and edgy versus making hits out of Semisonic and Fastball.

"Understanding that is what made the Zone work. A lot of backseat drivers told us the future was Donna Lewis and reformed Journey projects. If you're into pop alternative, you'll avoid that stuff like the plague.

"The modern AC blueprint has more to do with AC than with modern," Trapp adds. "That's why those stations perform in a more passive manner when it comes to street stuff like record and concert sales. An exciting pop alternative that doesn't lose its way in the AC blur will retain all the immediacy of its modern progenitors without giving into the background values that typify a lot of modern ACs.

"When I got here, the Buzz was shaking off the effects of a lengthy bout of terminal hipness," he says. "The station was so in love with its iconoclastic anti-radio image that we had to essentially zero ourselves out when it came to a consistent and marketable position. We saw the same pop alternative hole I had just plugged with [KZZO], but hats off to Dave Dillon and Jack Taddeo at SFX in beating us to the punch with [KKPN] the Planet. That changed everything; we were left with no real discernable position to own except rock alternative. Fortunately for us, the Planet took too long to get its game together and only became a real threat just before the sale to Hefel doomed it.

"The Planet effectively built a huge cume base for the concept, which is certainly something we plan to take advantage of. But the Planet failed to build loyalty. Its P1 percentages were in the low to mid 20s, compared with the Buzz's ratio at 38%. So while the



for the **MASSES**

an album of

depeche mode

songs as performed by

apollo four forty

the cure

deftones

dishwalla

failure

god lives underwater

gus gus

hooverphonic

locust

meat beat manifesto

monster magnet

rabbit in the moon

rammstein

self

the smashing pumpkins

veruca salt

impacting radio july 14th



<http://www.1500records.com>

© 1998 1500 Records. Manufactured and Marketed by A&M Records, Inc., a PolyGram company. All Rights Reserved.



PDs Cope With New Challenges Posed By Syndicated Shows

Continued from page 1

much to talk in the middle of a music sweep.

"We try to take advantage of the big cue that the show brings the radio station and recycle it into other dayparts," says Bob Harlow, PD at classic rock KGON Portland, Ore., which has been airing Mark and Brian for five years. "Whenever they go to break we come back with promos that promote the rest of the station. We've also been able to have listeners involved in Mark and Brian events. We have contests where we send listeners to these events in Los Angeles. We have Mark and Brian voice all those promos and liners to promote the contests. They also come into the market usually for an event during the spring and one during the fall."

WCCC Hartford, Conn., PD Michael Picozzi runs Stern and, despite his initial fear that syndication meant "losing the personality of the station," he says, "I've got the luxury of having the best." Picozzi also got over concerns about Stern not playing music, noting that "everybody has a CD player and a cassette player. You're not going to win a battle with music."

When album rock WOUR Utica, N.Y., PD J.P. Hastings lost his 20-year morning-show veteran last fall and replaced him with Bob and Tom, "the challenge was to make sure it was a positive spin," he says. "Not only were

'You have your jocks plug [syndicated jocks] like they are coming into the studio to do their show'—Eric Chaney

we the first station to bring Bob and Tom to the state of New York, but the first to [use] syndication [so prominently]. Holding the heritage position, we had to really toe the line with how it was going to be perceived. We had to make sure we tied into the local shows. Our morning-show producer [is a] very well-known name in the marketplace. [We don't say,] 'Join us Monday morning for Bob and Tom.' All the liners are 'It's Bob and Tom with Allison in the morning.' We feel we've very successfully put her into the morning show." But while Hastings doesn't want to point out that the show is Indianapolis-based, he also "didn't want to say these guys are in the studio. We stay in the gray area." As a result, "we have people come up to us in the street asking, 'Are you Bob?'"

THE 'BIZARRE' STUFF

One downside is not having control over the content of the show. Hastings says, "I can't have a sitdown aircheck meeting with them every day. So, sometimes when a racy topic comes up, it's like, 'Here we go.' I can't run into the studio and say, 'Stop, change the subject.' But we do have control over what Allison does and how she does the local spin on things. When we first signed them on, we got the calls, 'Where's the music? How can you talk about orgasms on the air?' It has since dropped off. They were talking about some bizarre stuff this week, and we didn't get any calls."

One Stern affiliate, modern rock KXTE Las Vegas, has dealt with the localism issue by bringing in "everybody from the cast that we can get," says PD Mike Stern. "Crackhead Bob and Gary [Dell'Abate] hosted our show last year. Jackie [Martling] does regular dates. Certainly Howard also gives us a lot to work with when he's releasing a movie or book. A big part of his appeal is his national appeal."

The key to making a syndicated show sound local is "good liners that mention your local programming and personalities and promotions, [and] you work hand in hand with the syndicator to get as much of that person's voice onto other things that mention local events that you mix in throughout the day so it sounds like they are a part of it," says Eric Chaney, acting PD at country WXFG West Palm Beach, Fla., which runs Garner's "After

MidNite" and previously ran Crenshaw's "Country Heartlines" and was Stern's only country affiliate. "You have your jocks plug them like they are coming into the studio to do their show."

When adult R&B WHQT (Hot 105) Miami OM Tony Kidd gets traffic liners from ABC's Joyner, "We don't use just 'Here's the traffic'; we get specific pre-recorded drops that will say, 'Looks like there is a big tie-up between I-95 and I-75,' and then [Joyner] throws it to the traffic person. The hardest thing about that is looking at your market and predicting what could happen." Kidd read three weeks' worth of traffic reports, analyzed the patterns, and wrote liners pertaining to the most frequent problems, giving him the flexibility of using generic drops for specific situations. The station now has 1,300 drops and rewrites them almost daily, not just anticipating new situations but to keep the standard local inserts fresh.

THE PRODUCER'S ROLE

PDs also cite the importance of a strong jock or producer in your own studio. Picozzi believes that having only a board operator on hand during the Stern show would be a mistake. "More people listen to [local morning host Don Steele] than listen to me in the afternoons. The worst thing I can do is put a dumb board op on there."

"You have to have someone who is on top of the situation, someone who is aggressive and organized," says Daisy Davis, APD of WDAS-FM Philadelphia, a Joyner affiliate. "The morning producer's job is not so much being a sidekick or co-host, it is keeping the flow of the show consistent and making it sound good."

Stephanie Williams, executive producer of the Joyner show at WALR Atlanta, says her job is "more than just a regular morning-show producer job. It's much more complex. I usually read several newspapers, watch morning news shows, as well as go over all the news stories that our news people report on-air, so that I know what to give Tom in terms of current drops and liners. I also work with [sister station] WQQK Nashville, which runs Tom." When a tornado hit Nashville earlier this year, "I was able to get hold of Tom early in the morning and have him cut a few special weather intros. Usually, we have to wait until

'Initially here, the press was not open to the idea of having a syndicated show come to town'—Daisy Davis

after the show for him to do those [for the next day], but in special cases like this, he tries to accommodate us, and that's the type of thing you need to think of when you are the morning producer of a syndicated show."

MESHING THE MUSIC

One danger of a syndicated show is that its music won't mesh with a station's own playlist. Kidd says in those rare instances when Joyner plays something not on the WHQT playlist, he will either research the record himself or complain to Joyner's network. But, Kidd says, "the entertainment quotient is much more the focus" than the music on syndicated shows. WDAS' Davis says Joyner and ABC host a weekly conference with some major-market affiliates to talk about music.

"At first when we began airing the program, musically we were miles apart, and it was a problem," says PD Michael Hayes, whose WKSI Greensboro, N.C., runs the syndicated Bob and Sheri show from WLNK Charlotte, N.C. "Now, the programming they have is much more consistent with our modern AC format." Hayes also appreciates the fact that "they can get artists such as a Sarah McLachlan, who might not be able to come to Greensboro, but if she is in Charlotte, we can still get

RADIO CONCERT MONITOR

DATE	CALL LETTERS	EVENT	SCHEDULED TO APPEAR
July 10-12	WXPB Philadelphia	Singer-Songwriter Weekend	Béla Fleck & the Flecktones (July 10); Olu Dara, Huffamoose, Marah, Southern Culture On The Skids, Lucinda Williams (July 11); Mary Arden Collins, Francis Dunnery, Patty Griffin, James McMurry, Moxy Fruvous (July 12)
July 11	KTOZ Springfield, Mo.	SummerFest	2 Skinnee J's, Mummies, Sprung Monkey, Urge
July 12	WKRL/WKLL/WKRH Syracuse/Utica, N.Y.	K-Rockathon	Big Wreck, Blink 182, Eve 6, God Lives Underwater, Our Lady Peace, Semisonic, Smash mouth, Spacehog, Stabbing Westward, Third Eye Blind
July 17	KILO Colorado Springs, Colo.	Summer Rock Fest '98	Candlebox, Creed, Drain S.T.H., Fuel, Gandharvas
July 31	KNRK Portland, Ore.	Third Annual Big Stink	Big Bad Voodoo Daddy, Blink 182, Crystal Method, Gravity Kills, Green Day, Harvey Danger, Semisonic, Stabbing Westward
Aug. 1	KAZR Des Moines, Iowa	Mancow's Lazer Luau	Anthrax, Candlebox, Drain S.T.H., Hunger, Local H
Aug. 1	KNDD Seattle	EndFest '98	6 Degrees, Big Bad Voodoo Daddy, Blink 182, Bran Van 3000, Crystal Method, Alex Gifford (of Propellerheads), Grant Lee Buffalo, Green Day, Harvey Danger, Hi Fi Killers, Marcy Playground, Modest Mouse, Semisonic, Stabbing Westward, Urge, Josh Wink
Aug. 15	WRZX Indianapolis	X-Fest '98	Athenaeum, Black Lab, Creed, Eve 6, Limp Bizkit, Marcy Playground, Our Lady Peace, Sprung Monkey, Stabbing Westward, Third Eye Blind
Sept. 11	KUPD Phoenix	U-Fest	Jerry Cantrell, Days Of The New, Metallica

To include your station's concert information in Rock Concert Monitor, call Marc Schiffman at 212-536-5065, fax 212-536-5286, or E-mail mschiffman@airplaymonitor.com

Publisher: Jon Guynn
Editor: Sean Ross
Managing Editor: Marc Schiffman
National Chart Manager: Linda Silver
Mainstream Rock/Triple-A Chart Manager: Anthony Colombo
Modern Rock Chart Manager: Mark Marone
Associate Director of Charts: Steven Graybow
Chart Production Manager: Michael Cusson
Asst. Chart Production Manager: Alex Vitoullis
Editorial Production Managers: Barry Bishin, Marcia Repinski
Editorial Production: Susan Chicola, Marc Giaquinto, Maria Manilic, Lisa Rathgeb
Copy Editor: Carl Rosen
Advertising Production Manager: Lydia Mikulko
Advertising Production Coordinator: Paul Page
Art Director: Ray Carlson
Advertising Production Artist: Karen Platt

1515 Broadway, New York, NY 10036 212-764-7300
 5055 Wilshire Blvd., 7th floor, Los Angeles, CA 90036 213-525-2300
 For subscriptions call: 800-745-8922

Airplay Monitor reporting panels are based solely on a station's musical content.

©1998 BPI Communications Inc. No part of this publication may be reproduced, stored in any retrieval system, or transmitted, in any form or by any means, electronic, mechanical, photocopying, recording, or otherwise, without the prior written permission of the publisher.

National Advertising Manager: Hank Spann
Account Managers: Jeff Somerstein, Sharon White
Advertising Services Manager: Alyse Zigman
Sales Assistants: Evelyn Aszodi, Erica Bengtson, Candace Gil

Editorial Adviser: Timothy White
Director of Production & Manufacturing: Marie Gombert
Circulation Director: Jeanne Jamn
Marketing Manager: Rob Accatino



President: Howard Lander
Senior VP/General Counsel: Georgina Challis
Vice Presidents: Irwin Kornfeld, Karen Oertley, Adam White
Director of Strategic Development: Ken Schlager
Business Manager: Joellen Sommer

the interview."

Because "After MidNite" tends to be more musically aggressive than some of its affiliates, Chaney says, "it does limit our control over our own playlist for blocks of time in the broadcast day. [But] you've just got to deal with it. If you have a real issue with a specific [song], you have to let them know your complaint."

PRESSING THE FLESH

Dealing with the press, who know your show is not local, and listeners, who think it is, is also a challenge. Kidd says the local press has been kind to Joyner. "Whenever Tom comes to town, we deluge the press with info, and anytime he does something unique, we do the same. I suspect if we had approached the press early, we might have gotten some negative press regarding it not being local, but we waited, and after it was doing well, they couldn't fault the station."

"Initially here, the press was not open to the idea of having a syndicated show come to town," says WDAS' Davis. "The jocks here are like celebrities. Listeners really get into the personalities, and that was a concern. Now when Tom comes to town, he is just as popular

as anyone else in the city, if not more."

WXFG's Chaney says the key to dealing with local press is to "talk about the fact that you're bringing a higher level of programming quality to the market." As for listeners, he says, it's important to have a board operator who is "fully versed on all the [contact] numbers. Make sure they are friendly, treat them like they're calling in locally, and refer them to the toll-free number. Just say, 'They're at their other studio.' You try to downplay [the lack of localism], but most listeners are smart enough to pick up on that." One of his concerns about "After MidNite," Chaney says, is that they "trumpet the fact that they're worldwide" and put callers on the air identifying where they're calling from.

"Usually it is the other stations in town and sometimes the press that makes the big deal about a show not being local and not the listeners," says Harlow. "People listening might know they are not here, but it doesn't seem to matter. The majority of people listening don't know they are not right here in the studios. One of the things we utilize is an 800 number to call Mark and Brian, for talking to them or contests. So it's still sounds the same to the listeners."

GREATEST GAINERS

Strongest Increase In Airplay This Week

MAINSTREAM ROCK

INCREASE
IN PLAYS

KENNY WAYNE SHEPHERD BAND • <i>Somehow, Somewhere, Someway</i> (REVOLUTION/REPRISE)	+267
WNCD +15, KRZR +15, WSTZ +14, KXUS +14, WAPL +14, WXRC +14, KTUX +13, WZZR +13, WBUZ +11, KZRR +11	
SEVEN MARY THREE • <i>Over Your Shoulder</i> (MAMMOTH/ATLANTIC)	+192
WTIX +14, WXRC +14, KCAL +12, WDVE +12, WZTA +9, KTUX +9, WAPL +9, KBPI +8, KMBY +7, WIXV +7	
CANDLEBOX • <i>It's Alright</i> (MAVERICK/WARNER BROS.)	+100
KNJY +8, KMBY +7, KRAD +6, KQRC +6, KIOZ +6, WKLC +6, WKLQ +6, WIXV +5, KTUX +5, WFVY +5	
RAMMSTEIN • <i>Du Hast</i> (SLASH/LONDON/ISLAND)	+98
WBUZ +11, KRZR +9, WKLQ +9, WKRK +8, KBER +6, KATT +5, KTXQ +5, KRAD +4, KCAL +4, KISS +4	
BROTHER CANE • <i>Machete</i> (VIRGIN)	+97
WAAF +15, WXRC +14, KRZR +13, KDKB +13, WNOR +10, WLZR +10, KAZR +8, KUFO +7, KLBV +6, KRXQ +4	
DAYS OF THE NEW • <i>The Down Town</i> (OUTPOST/GEFFEN)	+90
KEGL +16, WKRK +12, KRZR +12, KMBY +11, KRZZ +8, KNJY +7, KNCN +7, WXRC +7, KSJO +7, WCCC +6	
THE TRAGICALLY HIP • <i>Poets</i> (SIRE)	+75
WKLQ +17, WXRC +15, KLBV +12, WAQX +7, WCMF +7, WMMS +6, WPYX +5, WIOT +4, WROQ +3, WDHA +2	
THE MAYFIELD FOUR • <i>Always</i> (EPIC)	+73
WTPT +11, WQXA +11, WYSP +8, KRZR +8, WZMT +5, WTFX +4, WNCD +4, KTUX +4, WNOR +4, WAAF +4	
EVE 6 • <i>Inside Out</i> (RCA)	+72
WTIX +11, WTPT +10, KBER +10, WSTZ +9, KTUX +9, KNJY +8, WVRK +7, WZMT +5, KFRQ +5, KRAD +3	
THE WHY STORE • <i>When You're High</i> (WAY COOL MUSIC/MCA)	+72
KLBV +13, WIOT +6, WKQQ +6, WDVE +6, WROQ +5, WZZO +4, WROV +4, WAPL +4, KQRS +4, KFRQ +4	

MODERN ROCK

INCREASE
IN PLAYS

DAVE MATTHEWS BAND • <i>Stay (Wasting Time)</i> (RCA)	+353
WXDX +23, WRAX +21, KHTY +19, KPNT +19, KFTE +16, WEND +16, KFMA +15, KKND +14, KJEE +14, KKDM +14	
GARBAGE • <i>I Think I'm Paranoid</i> (ALMO SOUNDS/INTERSCOPE)	+216
KWOD +28, WZAZ +24, CIMX +24, WXRA +21, WXDX +15, KNKR +15, WBCN +15, KFMA +12, WFNX +11, KITS +11	
THE BRIAN SETZER ORCHESTRA • <i>Jump Jive An' Wail</i> (INTERSCOPE)	+192
KITS +17, XTRA +16, KJEE +15, WBZU +15, KTOZ +15, WRXR +13, WRAX +12, WHFS +12, KNRX +11, WPLT +11	
THIRD EYE BLIND • <i>Jumper</i> (ELEKTRA/EEG)	+184
KNDD +24, WKDF +19, KCXX +15, KJEE +13, KTCL +13, WRXR +10, WKRL +9, KHTY +9, KFMA +8, WXRK +7	
EVERYTHING • <i>Hooch</i> (BLACKBIRD/SIRE)	+170
WZAZ +22, KJEE +21, KFRF +17, KPOI +10, WWCN +10, WRZX +9, WEND +9, WBRU +9, WPLY +8, WKRO +7	
SEVEN MARY THREE • <i>Over Your Shoulder</i> (MAMMOTH/ATLANTIC)	+164
WKDF +20, WJBY +11, CFNY +11, WEQX +11, KICT +11, WRXQ +10, KTOZ +10, WPLA +9, WEDG +9, WRAX +7	
POSSUM DIXON • <i>Holding (Lenny's Song)</i> (SURF DETECTIVE/INTERSCOPE)	+140
WKRL +21, WXRA +20, KKDM +16, KFMA +13, WEDG +13, WQBK +12, KICT +12, WRXQ +9, KLZR +8, WBCN +7	
NATALIE IMBRUGLIA • <i>Wishing I Was There</i> (RCA)	+127
KPOI +27, KWOD +22, WZAZ +17, KTBZ +17, CIMX +17, WPLY +13, KJEE +12, WRAX +9, WNNX +9, WCYY +7	
BARENAKED LADIES • <i>One Week</i> (REPRISE)	+123
XTRA +18, KNDD +16, WRZX +15, KTCL +13, KPOI +11, WBZU +11, KKDM +11, WNVE +10, KNRX +10, WKRL +9	
EAGLE EYE CHERRY • <i>Save Tonight</i> (WORK)	+120
WBZU +17, KROX +15, KFMA +15, WHFS +12, KJEE +11, KKDM +10, KWOD +9, WRXQ +8, WEQX +8, WMRQ +7	

VIDEO PLAYLISTS

MOST PLAYED ROCK TRACKS



	TW	LW		TW	LW		
1	Natalie Imbruglia, Torn	33	34	1	Goo Goo Dolls, Iris	21	26
2	Marcy Playground, Sex And Candy	28	31	2	Aerosmith, I Don't Want To Miss A Thing	19	22
3	Goo Goo Dolls, Iris	25	19	3	Beastie Boys, Intergalactic	18	4
4	Matchbox 20, Real World	22	24	4	Semisonic, Closing Time	16	19
5	Sarah McLachlan, Adia	22	21	5	Metallica, Fuel	16	19
6	Fastball, The Way	22	21	6	Fastball, The Way	15	19
7	Natalie Merchant, Kind & Generous	20	22	7	Puff Daddy Feat. Jimmy Page, Come With Me	15	31
8	Sugar Ray, Fly	18	15	8	Harvey Danger, Flagpole Sitta	14	13
9	Bonnie Raitt, One Belief Away	16	13	9	Matchbox 20, Real World	12	19
10	Third Eye Blind, Semi-Charmed Life	15	11	10	Eve 6, Inside Out	12	17
11	Smash Mouth, Walkin' On The Sun	14	14	11	Natalie Imbruglia, Torn	11	12
12	Third Eye Blind, How's It Going To Be	13	13	12	Rammstein, Du Hast	11	19
13	Semisonic, Closing Time	13	11	13	The Smashing Pumpkins, Ava Adore	11	19
14	Matchbox 20, 3 AM	12	11	14	Green Day, Time Of Your Life (Good Riddance)	9	5
15	Aerosmith, I Don't Want To Miss A Thing	11	0	15	Sarah McLachlan, Adia	8	4
16	Fleetwood Mac, Landslide	10	12	16	Barenaked Ladies, One Week	8	0
17	The Wallflowers, One Headlight	10	12	17	Marcy Playground, Sex And Candy	6	5
18	Green Day, Time Of Your Life (Good Riddance)	10	9	18	Cherry Poppin' Daddies, Zoot Suit Riot	6	15
19	Vonda Shepard, Searchin' My Soul	10	14	19	Matchbox 20, 3 AM	4	6
20	Rod Stewart, Ooh La La	10	13	20	Fuel, Shimmer	4	8
21	Paula Cole, I Don't Want To Wait	9	9	21	Red Hot Chili Peppers, Love Rollercoaster	4	1
22	Cherry Poppin' Daddies, Zoot Suit Riot	9	8	22	Dave Matthews Band, Don't Drink The Water	3	4
23	Edwin McCain, I'll Be	9	15	23	The Wallflowers, Heroes	3	12
24	Billie Myers, Tell Me	8	7	24	Natalie Merchant, Kind & Generous	3	5
25	The B-52's, Debbie	8	6	25	A-Ha, Take On Me	3	0
26	Matchbox 20, Push	6	6	26	Peter Dinklage, Sledgehammer	3	0
27	Sister Hazel, All For You	6	9	27	Tom Petty, Runnin' Down A Dream	3	0
28	Jewel, Who Will Save Your Soul	5	3	28	Dire Straits, Money For Nothing	3	0
29	Barenaked Ladies, One Week	5	0	29	Tool, Sober	3	0
30	Jewel, You Were Meant For Me	4	4	30	Alice In Chains, I Stay Away	3	0
				31	Radiohead, Paranoid Android	3	0
				32	Oasis, All Around The World	3	0
				33	No Doubt, Just A Girl	2	0
				34	Metallica, The Unforgiven II	2	0
				35	Eric Clapton, Pilgrim	2	0
				36	Foo Fighters, Walking After You	2	2
				37	Jewel, You Were Meant For Me	2	0
				38	Sublime, Wrong Way	2	0
				39	The Wallflowers, One Headlight	2	1
				40	Beastie Boys, (You Gotta) Fight For Your Right (To Party!)	1	0

TRIPLE-A

INCREASE
IN PLAYS

GRANT LEE BUFFALO • <i>Truly, Truly</i> (SLASH/WARNER BROS.)	+72
WKOC +16, WDOD +10, WXRT +9, WNCS +7, CIDR +6, KBCO +6, WBOS +5, WXLE +4, WHPT +3, KINK +2	
BARENAKED LADIES • <i>One Week</i> (REPRISE)	+57
CIDR +14, WBOS +12, WXLE +11, WKOC +7, WNCS +6, WXRT +5, KKZN +4, KBCO +4, WDOD +3	
EAGLE EYE CHERRY • <i>Save Tonight</i> (WORK)	+46
WBOS +11, WTTT +9, WRLT +7, WXLE +7, WNCS +6, KMTT +4, WXRT +2, KXPK +1, WVRV +1, WXRV +1	
SHAWN COLVIN • <i>When The Rainbow Comes</i> (COLUMBIA)	+36
KINK +16, KGSR +7, WXLE +6, KMTT +2, KTCZ +2, WXRT +2, KPIG +1, WHPT +1, WXRV +1	
GOO GOO DOLLS • <i>Iris</i> (WARNER SUNSET/REPRISE)	+34
WVRV +6, KBCO +6, KKZN +4, CIDR +4, WRLT +4, WKOC +3, WXLE +2, KXPK +2, WHPT +2, WXRV +2	
FOO FIGHTERS • <i>Walking After You</i> (CAPITOL/ELEKTRA/EEG)	+32
WDOD +13, KXPK +10, CIDR +9, KBCO +3, KFOG +2, KMTT +1, WTTT +1, WXRV +1, WXRT +1	
HEATHER NOVA • <i>London Rain (Nothing Heals Me Like You Do)</i> (BIG CAT/WORK)	+28
WXLE +10, KKZN +8, CIDR +7, WNCS +3, WXRV +2, WRLT +1, KTCZ +1	
LUCINDA WILLIAMS • <i>Right In Time</i> (MERCURY)	+25
WXLE +9, KKZN +5, CIDR +5, KPIG +3, WKOC +2, WHPT +2, KINK +1, WRLT +1, WXRT +1	
PATTY GRIFFIN • <i>One Big Love</i> (A&M)	+23
WKOC +18, KXPK +7, WXRV +7, WBOS +5, KINK +2, CIDR +2, WRLT +2, WXRT +2	
NATALIE IMBRUGLIA • <i>Torn</i> (RCA)	+20
WHPT +22, WVRV +11, KXPK +2, KKZN +1, WKOC +1, WNCS +1, KBCO +1	
THE BRIAN SETZER ORCHESTRA • <i>Jump Jive An' Wail</i> (INTERSCOPE)	+20
CIDR +17, WXRT +5, WXRV +4, KGSR +4, WDOD +2, WNCS +2, KBCO +2, KFOG +2, KINK +1, WVRV +1	
KENNY WAYNE SHEPHERD BAND • <i>Somehow, Somewhere, Someway</i> (REVOLUTION/REPRISE)	+20
WDOD +14, WBOS +6, KMTT +2	

Watch for the . . .



Billboard & Monitor
RADIO
awards

Official Voting Ballot

in your: 8/1 issue of Billboard
7/24 issue of Airplay Monitor

Ballots must be returned by
August 14th

Winners will be announced at the
**1998 Billboard/Airplay Monitor
Radio Awards Show**
Saturday, September 19th,
Pointe Hilton Resort at Tapatio Cliffs,
Phoenix
for Seminar & Awards Info Call:
Michele Quigley 212.536.5002



POWER PLAYLISTS

For Week Ending July 5, 1998



Playlists supplied by Broadcast Data Systems' Radio Track service. Songs ranked by number of plays in monitored week.

KLOS Los Angeles PD: John Duncan MD: Rita Wilde. Playlist table with columns for rank, song title, and airplay count.

WYSP Philadelphia OM: Tim Sabean PD: Neal Mirsky. Playlist table with columns for rank, song title, and airplay count.

WRCX Chicago SM: Dave Richards APD/MD: Jo Robinson. Playlist table with columns for rank, song title, and airplay count.

KQRS Minneapolis PD: Dave Hamilton APD/MD: Reed Endersbe. Playlist table with columns for rank, song title, and airplay count.

WMMR Philadelphia PD: Joe Bonadonna MD: Ken Zipeto. Playlist table with columns for rank, song title, and airplay count.

WWDC Washington, DC MD: Buddy Rizer. Playlist table with columns for rank, song title, and airplay count.

WFBQ Indianapolis OM: Marty Bender MD: Ace Cosby. Playlist table with columns for rank, song title, and airplay count.

WRIF Detroit OM: Doug Padell APD: Dave Wellington. Playlist table with columns for rank, song title, and airplay count.

WAAF Boston PD: Dave Douglas MD: John Osterlind. Playlist table with columns for rank, song title, and airplay count.

WDVE Pittsburgh PD: Garrett Hart MD: Kris Winter. Playlist table with columns for rank, song title, and airplay count.

KLOL Houston Dir Of Ops: Michael Hughes APD/MD: Max Dugan. Playlist table with columns for rank, song title, and airplay count.

WNCX Cleveland PD: Bill Louis MD: David Jockers. Playlist table with columns for rank, song title, and airplay count.

WKLS Atlanta PD: Pat Ervin MD: Lisa Sturgis. Playlist table with columns for rank, song title, and airplay count.

KTXQ Dallas OM: Andy Lockridge MD: Redbeard. Playlist table with columns for rank, song title, and airplay count.

KEGL Dallas PD: Greg Stevens MD: Cindy Scull. Playlist table with columns for rank, song title, and airplay count.

WMMS Cleveland PD: Bob Neumann APD: "Spaceman" Scott Hughes. Playlist table with columns for rank, song title, and airplay count.

WZTA Miami VP/Pgm: Gregg Steele. Playlist table with columns for rank, song title, and airplay count.

KSHE St. Louis PD: Rick Balis MD: Al Hofer. Playlist table with columns for rank, song title, and airplay count.

WEBN Cincinnati OM: Jim Richards MD: Rick Jamie. Playlist table with columns for rank, song title, and airplay count.

KSJO San Jose PD: Dana Jang MD: Laurie Free. Playlist table with columns for rank, song title, and airplay count.

WIYY Baltimore PD: Rick Strauss APD/MD: Rob Heckman. Playlist table with columns for rank, song title, and airplay count.

WRQC Minneapolis OM: Andy Bloom PD: Lauren MacLeash APD/MD: Jay Philpott. Playlist table with columns for rank, song title, and airplay count.

WKRC Detroit Interim PD: Mark Thompson MD: Erin Carman. Playlist table with columns for rank, song title, and airplay count.

KXXR Minneapolis PD: Wade Linder APD/MD: Bill Jones. Playlist table with columns for rank, song title, and airplay count.



Playlists compiled by Broadcast Data Systems' Radio Track service. Songs ranked by number of plays in monitored week. Playlists are listed in order of TGA weekly curve, beginning with the highest-cumulative station. Curves are updated twice yearly following the release of the Spring and Fall Arbitron surveys. The number of stations shown each week varies depending upon space.

WXTB Tampa PD: Brad Hardin MD: Brian Medlin. Playlist table with columns for rank, song title, and TW/LW.

WLZR Milwaukee PD: Keith Hastings MD: Marjorie Mee. Playlist table with columns for rank, song title, and TW/LW.

KISW Seattle SM/DP: Clark Ryan MD: Cathy Faulkner. Playlist table with columns for rank, song title, and TW/LW.

WBAB Long Island VP Pgm: Bob Buchman OM: Eric Wellman. Playlist table with columns for rank, song title, and TW/LW.

WHY Providence PD: Joe Bevilacqua MD: Sharon Schifino. Playlist table with columns for rank, song title, and TW/LW.

WBZX Columbus, OH PD: Hal Fissi APD/MD: Ronni Hunter. Playlist table with columns for rank, song title, and TW/LW.

WIRR Orlando PD: Dick Sheetz MD: Pat Lynch. Playlist table with columns for rank, song title, and TW/LW.

KQRC Kansas City PD: Vince Richards MD: Valorie Knight. Playlist table with columns for rank, song title, and TW/LW.

KUPD Phoenix PD: Tim Maranville MD: JJ Jeffries. Playlist table with columns for rank, song title, and TW/LW.

WONE Akron PD: J.D. APD: Tim Daugherty. Playlist table with columns for rank, song title, and TW/LW.

WRDU Raleigh PD: Bob Edwards MD: Mark Arsen. Playlist table with columns for rank, song title, and TW/LW.

KBPI Denver PD: Bob Richards MD: Willie B. Playlist table with columns for rank, song title, and TW/LW.

WIMZ Knoxville PD: Jim Pemberton MD: Bill Kidd. Playlist table with columns for rank, song title, and TW/LW.

KUFO Portland OM: Dave Numme APD: Al Scott. Playlist table with columns for rank, song title, and TW/LW.

KISS San Antonio OM: Virgil Thompson PD: Kevin Vargas MD: C.J. Cruz. Playlist table with columns for rank, song title, and TW/LW.

WCCO Hartford PD: Michael Piccozzi APD/MD: Mike Karolyi. Playlist table with columns for rank, song title, and TW/LW.

KIOZ San Diego PD: Tim Dukas MD: Sharon Leder. Playlist table with columns for rank, song title, and TW/LW.

WQXA Harrisburg PD: Chris Lloyd MD: Claudine DeLorenzo. Playlist table with columns for rank, song title, and TW/LW.

WROQ Greenville, S.C. PD: Ken Carson APD/MD: K.C. Carson. Playlist table with columns for rank, song title, and TW/LW.

KDKB Phoenix OM: Tim Maranville MD: Tracy Lea. Playlist table with columns for rank, song title, and TW/LW.

WCKW New Orleans GM: Sid Levett. Playlist table with columns for rank, song title, and TW/LW.

KATT Oklahoma City PD: Chris Baker MD: Jake Daniels. Playlist table with columns for rank, song title, and TW/LW.

WLWQ Columbus PD: Greg Ausham. Playlist table with columns for rank, song title, and TW/LW.

WDHA Morristown PD: Lenny Bloch MD: Terrie Carr. Playlist table with columns for rank, song title, and TW/LW.



★ ★ ★ **AIRPOWER** ★ ★ ★

(Minimum 800 detections for the first time)

NO RECORDS QUALIFIED FOR AIRPOWER THIS WEEK

AIRPOWER BOUND

Total Plays/Gain

JOHN FOGERTY 663/-27
Premonition (Reprise)

Total Stations: 48/Chart Move: 20-19
Heavy (21+ plays): 6 KMOD, KRZZ, WNCD, WONE, WPLR, WRDU
Medium (14-20): 16 KEZO, KLAQ, KMJX, KSHE, KTYD, WBLM, WCKW, WIXV, WKLC, WMMS, WNCX, WROQ, WVRK, WAFX, WZZO, WZZR
Light (Under 14): 26

SEVEN MARY THREE 611/192
Over Your Shoulder (Mammoth/Atlantic)

Total Stations: 58/Chart Move: 32-23
Heavy (21+): 6 KEGL, KTUX, WAPL, WKLS, WXTB, WZTA
Medium (14-20): 13 KATT, KLB, KMBY, KQRC, KRAD, WEBN, WJRR, WKQQ, WTKX, WTPT, WTUE, WXRC, WZMT
Light (Under 14): 39
New Airplay This Week: 18 KBPI, KCAL, KIOZ, KISS, KRZZ, WBZ, WDV, WIXV, WIZN, WLZR, WPHY, WRIF, WROQ, WTFX, WTKX, WXRC, WZZO, WZZR

ADDICT 557/0
Monsterside (Big Cat/V2)

Total Stations: 45/Chart Move: 26-24
Heavy (21+): 7 KAZR, KRAD, KTUX, KUPD, WLZR, WXRC, WXTB
Medium (14-20): 10 KMBY, KRZR, WCCC, WJRR, WNOR, WQXA, WTKX, WTPT, WWDC, WZTA
Light (Under 14): 28
New Airplay This Week: 1 WMMS

KENNY WAYNE SHEPHERD BAND 532/267
Somehow, Somewhere, Someway (Revolution/Reprise)

Total Stations: 58/Chart Move: Debut 25
Heavy (21+): 1 KTUX
Medium (14-20): 15 KDKB, KLAQ, KLB, KMOD, KRZR, KXUS, WAPL, WDV, WKLC, WMMR, WNCD, WRDU, WSTZ, WXRC, WZZO
Light (Under 14): 42
New Airplay This Week: 22 KISW, KLPX, KNCN, KRZR, KRZZ, KTUX, KXUS, KZRR, WAPL, WBUZ, WCKW, WIYY, WIZN, WKLO, WLZR, WNCD, WPLR, WTUE, WVRK, WXRC, WZMT, WZZR

RAMMSTEIN 521/98
Du Hast (Slash/London/Island)

Total Stations: 52/Chart Move: 31-26
Heavy (21+): 4 KISS, KNJY, KRAD, WBUZ
Medium (14-20): 9 KBER, KEGL, KNCN, KTUX, KUPD, WAAF, WKLO, WMFS, WMMS
Light (Under 14): 39
New Airplay This Week: 3 KRZR, WKRK, WRIF

RAGE AGAINST THE MACHINE 439/21
No Shelter (Epic)

Total Stations: 47/Chart Move: 33-30
Heavy (21+): 2 KNJY, WAAF
Medium (14-20): 5 KRAD, WMFS, WTKX, WXEX, WXRC
Light (Under 14): 40
New Airplay This Week: 4 KIOZ, KQRC, KUFO, WKRK

MARCY PLAYGROUND 434/10
Saint Joe On The School Bus (Capitol)

Total Stations: 35/Chart Move: 30-31
Heavy (21+): 6 KRAB, KRAD, KTUX, KTXQ, WTFX, WXEX
Medium (14-20): 10 KILO, KISS, KLB, KRZR, KSJO, WEBN, WJRR, WQXA, WTKX, WZMT
Light (Under 14): 19
New Airplay This Week: 1 WTKX

MEGADETH 428/36
A Secret Place (Capitol)

Total Stations: 51/Chart Move: 34-32
Heavy (21+): 1 KNJY
Medium (14-20): 7 KILO, KRXQ, KRZR, WAAF, WBUZ, WCCC, WJRR
Light (Under 14): 43
New Airplay This Week: 7 KEZO, KISW, WBZ, WFYV, WIYY, WSTZ, WTUE

DRAIN S.T.H. 371/10
Crack The Liars Smile (The Enclave/Mercury)

Total Stations: 41/Chart Move: 39-35
Heavy (21+): 2 WAAF, WTPT
Medium (14-20): 6 KAZR, KNJY, KRZR, WJRR, WLZR, WNOR
Light (Under 14): 33
New Airplay This Week: 1 WTFX

GRAVITY KILLS 367/-1
Falling (TVT)

Total Stations: 45/Chart Move: 37-36
Heavy (21+): 3 KNJY, KRAD, KUPD
Medium (14-20): 4 KRZR, KUFO, WJRR, WTKX
Light (Under 14): 38

LENNY KRAVITZ 365/56
Fly Away (Virgin)

Total Stations: 32/Chart Move: Debut 37
Heavy (21+): 4 KTUX, KTXQ, WTKX, WXTB
Medium (14-20): 10 KBPI, KDKB, KIOZ, KLB, KRAD, WBUZ, WJRR, WMMR, WSTZ, WZTA
Light (Under 14): 18
New Airplay This Week: 4 KDKB, WKQQ, WMMS, WXRC

STORYVILLE 353/20
Born Without You (Atlantic)

Total Stations: 32/Chart Move: Debut 38
Heavy (21+): 2 KDKB, WAPL
Medium (14-20): 7 KATT, KLB, KMJX, KAL, WCKW, WRDU, WSTZ
Light (Under 14): 23
New Airplay This Week: 2 KLOL, WVRK

FEEDER 341/31
High (Echo/Elektra/EEG)

Total Stations: 28/Chart Move: Debut 40
Heavy (21+): 5 KRAD, KTUX, WAAF, WXRC, WZTA
Medium (14-20): 8 KDKB, KLB, KMBY, KNJY, WJRR, WMMS, WQXA, WXEX
Light (Under 14): 15
New Airplay This Week: 1 WEBN

MOST NEW STATIONS

No. Of Stations

KENNY WAYNE SHEPHERD BAND <i>Somehow, Somewhere, Someway (Revolution/Reprise)</i>	22
SEVEN MARY THREE <i>Over Your Shoulder (Mammoth/Atlantic)</i>	18
BROTHER CANE <i>Machete (Virgin)</i>	8
MEGADETH <i>A Secret Place (Capitol)</i>	7
THE WHY STORE <i>When You're High (Way Cool Music/MCA)</i>	7

CHART BOUND

Total Plays/Gain

OUR LADY PEACE 336/3
4 AM (Columbia)

Total Stations: 37
Heavy (21+): 3 KLB, KRAD, KTUX
Medium (14-20): 5 KBPI, WJRR, WTKX, WXRC, WZTA
Light (Under 14): 29
New Airplay This Week: 4 KBER, KQRC, WROQ, WTFX

THE GANDHARVAS 314/-5
Downtime (MCA)

Total Stations: 30
Heavy (21+): 3 KNJY, KTUX, WTKX
Medium (14-20): 7 KRAD, KRXQ, KRZR, KUPD, WCCC, WJRR, WKLO
Light (Under 14): 20

THE HUNGER 308/13
Free (Universal)

Total Stations: 31
Heavy (21+): 2 KNCN, KUPD
Medium (14-20): 5 KIOZ, KNJY, KRAD, WJRR, WKRK
Light (Under 14): 24
New Airplay This Week: 1 WKRK

EVE 6 307/72
Inside Out (RCA)

Total Stations: 25
Heavy (21+): 4 KBER, KRAB, WTKX, WXEX
Medium (14-20): 8 KILO, KNJY, KRAD, KRXQ, KTUX, WJRR, WTPT, WWDC
Light (Under 14): 13
New Airplay This Week: 3 KFRQ, WVRK, WZMT

FOO FIGHTERS 242/27
Walking After You (Capitol/Elektra/EEG)

Total Stations: 26
Heavy (21+): 2 KTUX, WTKX
Medium (14-20): 6 KDKB, KRAD, KRZR, WJRR, WWDC, WZTA
Light (Under 14): 18
New Airplay This Week: 1 WCCC

HARVEY DANGER 216/15
Flagpole Sitta (Slash/London/Island)

Total Stations: 16
Heavy (21+): 4 KRAB, KRAD, WJRR, WXEX
Medium (14-20): 1 WQXA
Light (Under 14): 11
New Airplay This Week: 1 KMBY

PEARL JAM 214/48
In Hiding (Epic)

Total Stations: 26
Heavy (21+): 1 WZTA
Medium (14-20): 6 KBPI, KISW, KNCN, KRZR, WRIF, WYSP
Light (Under 14): 19
New Airplay This Week: 1 WDV

GLORITONE 210/2
Halfway (Kneeling Elephant/RCA)

Total Stations: 36
Heavy (21+): 1 WKLO
Medium (14-20): 4 KDKB, KNJY, KRAD, WAAF
Light (Under 14): 31
New Airplay This Week: 1 KRZR

THE ROLLING STONES 194/37
Out Of Control (Virgin)

Total Stations: 18
Heavy (21+): 2 KMOD, WONE
Medium (14-20): 3 KSHE, WKLC, WZZR
Light (Under 14): 13
New Airplay This Week: 1 WROQ

THE MAYFIELD FOUR 179/73
Always (Epic)

Total Stations: 30
Heavy (21+): 0
Medium (14-20): 5 KNJY, KRXQ, KRZR, KTUX, WLZR
Light (Under 14): 25
New Airplay This Week: 4 WQXA, WTPT, WXTB, WYSP

THE WHY STORE 172/72
When You're High (Way Cool Music/MCA)

Total Stations: 38
Heavy (21+): 0
Medium (14-20): 2 KLPX, KTUX
Light (Under 14): 36
New Airplay This Week: 7 KLB, KQRS, WDV, WIOT, WKQQ, WNCD, WROV

TOMMY SHAW 168/18
Ocean (CMC International)

Total Stations: 18
Heavy (21+): 0
Medium (14-20): 7 KEZO, KMJX, KMOD, WIMZ, WNCX, WZZO, WZZR
Light (Under 14): 11
New Airplay This Week: 1 WIOT

AEROSMITH 163/69
What Kind Of Love Are You On (Columbia)

Total Stations: 26
Heavy (21+): 2 WKRK, WLZR
Medium (14-20): 2 KAZR, WYSP
Light (Under 14): 22
New Airplay This Week: 3 KAZR, KOMP, WTFX

VAN ZANT 149/-5
That Was Yesterday (CMC International)

Total Stations: 12
Heavy (21+): 2 WAPL, WRDU
Medium (14-20): 2 KMOD, WNCD
Light (Under 14): 8

BROTHER CANE 146/97
Machete (Virgin)

Total Stations: 16
Heavy (21+): 0
Medium (14-20): 4 KRXQ, WAAF, WNOR, WXRC
Light (Under 14): 12
New Airplay This Week: 8 KAZR, KDKB, KLB, KRZR, KUFO, WAAF, WLZR, WXRC

SNOT 138/13
The Box (Geffen)

Total Stations: 20
Heavy (21+): 0

Medium (14-20): 2 KNJY, KUPD
Light (Under 14): 18
New Airplay This Week: 3 WKLO, WTFX, WXRC

JIMMIE'S CHICKEN SHACK 132/11
Blood (Rocket/Island)

Total Stations: 18
Heavy (21+): 1 KNJY
Medium (14-20): 0
Light (Under 14): 17
New Airplay This Week: 2 KRZR, WLZR

ANTHRAX 129/29
Inside Out (Ignition)

Total Stations: 23
Heavy (21+): 0
Medium (14-20): 2 KAZR, WAAF
Light (Under 14): 21
New Airplay This Week: 3 KFRQ, WJRR, WLZR

★ THE TRAGICALLY HIP 121/75
Poets (Sire)

Total Stations: 36
Heavy (21+): 0
Medium (14-20): 4 KLPX, WIZN, WKLO, WXRC
Light (Under 14): 12
New Airplay This Week: 6 KLB, WAQX, WCMF, WKLO, WMMS, WXRC

GUSTER 118/-5
Airport Song (Hybrid/Sire)

Total Stations: 14
Heavy (21+): 1 WXEX
Medium (14-20): 2 KDKB, KTUX
Light (Under 14): 11

COAL CHAMBER 116/10
Sway (The Roof Is On Fire) (Roadrunner)

Total Stations: 18
Heavy (21+): 0
Medium (14-20): 1 KNJY
Light (Under 14): 17
New Airplay This Week: 1 WTFX

BEASTIE BOYS 106/12
Intergalactic (Grand Royal/Capitol)

Total Stations: 13
Heavy (21+): 1 WAAF
Medium (14-20): 1 WXEX
Light (Under 14): 11
New Airplay This Week: 1 WSTZ

CLUTCH 102/3
The Elephant Riders (Columbia)

Total Stations: 16
Heavy (21+): 1 KNJY
Medium (14-20): 1 WAAF
Light (Under 14): 14

BARENAKED LADIES 102/14
One Week (Reprise)

Total Stations: 11
Heavy (21+): 2 KRAB, WXEX
Medium (14-20): 2 WWDC, WXRC
Light (Under 14): 7

★ DAVE MATTHEWS BAND 97/66
Stay (Wasting Time) (RCA)

Total Stations: 15
Heavy (21+): 0
Medium (14-20): 3 KLAQ, WXEX, WXRC
Light (Under 14): 12
New Airplay This Week: 2 KLAQ, WXEX

★ GRANT LEE BUFFALO 85/18
Truly, Truly (Slash/Warner Bros.)

Total Stations: 15
Heavy (21+): 0
Medium (14-20): 3 KDKB, WMMS, WXRC
Light (Under 14): 12

COLD 81/-3
Go Away (Flip/A&M)

Total Stations: 14
Heavy (21+): 0
Medium (14-20): 1 KNJY
Light (Under 14): 13
New Airplay This Week: 1 WQXA

SONG ACTIVITY REPORTS

For Week Ending July 5, 1998



Detailed song tracking information for the last 3 weeks for all songs showing increased play this week. Total plays and gain do not include video play. Markets listed in order of population.

Table with 12 columns: Song Title, Artist, Total Plays/Gain, and 11 market columns (L.A., Chicago, Phila., Detroit, Dallas, Wash., DC, Houston, Boston, Miami, Atlanta, Seattle, Long Isl., San Diego, Minn., St. Louis, Balt., Pitts., Phoenix, Tampa, Cleveland, Denver, Port., DR, Cincinn., Kan. City, Rivers, Milwaukee, Sacram., San Jose, Provid., Colum., OH, Norfolk, San Anton., Salt Lake, Indian., Char., NC, New Or., Orlando, Hartford, Memphis, Rochester, W.P. Beach, Las Vegas, Louisv., Ral./Dur.).

Table with 12 columns: Song Title, Artist, Total Plays/Gain, and 11 market columns (L.A., Chicago, Phila., Detroit, Dallas, Wash., DC, Houston, Boston, Miami, Atlanta, Seattle, Long Isl., San Diego, Minn., St. Louis, Balt., Pitts., Phoenix, Tampa, Cleveland, Denver, Port., DR, Cincinn., Kan. City, Rivers, Milwaukee, Sacram., San Jose, Provid., Colum., OH, Norfolk, San Anton., Salt Lake, Indian., Char., NC, New Or., Orlando, Hartford, Memphis, Rochester, W.P. Beach, Las Vegas, Louisv., Ral./Dur.).

SONG ACTIVITY REPORTS

For Week Ending July 5, 1998



Detailed song tracking information for the last 3 weeks for all songs showing increased play this week. Total plays and gain do not include video play. Markets listed in order of population.

Table with 12 columns: Artist, Title, Total Stations, Chart Move, and city/station codes. Includes MARCY PLAYGROUND, MEGADETH, METALLICA, MONSTER MAGNET, and OUR LADY PEACE.

Table with 12 columns: Artist, Title, Total Stations, Chart Move, and city/station codes. Includes RAGE AGAINST THE MACHINE, RAMMSTEIN, SEVEN MARY THREE, KENNY WAYNE SHEPHERD BAND, and STORYVILLE.

Compiled from a national sample of airplay reported by Broadcast Data Systems. Radio tracks eligible for Rock Airplay Monitor: 25 minutes long and 45 seconds. Rock airplay is electronically monitored 24 hours a day, 7 days a week. Songs are ranked by number of detections. © 1998, Broadcast Data Systems.

THIS WEEK	LAST WEEK	WKS. ON CHART	HERITAGE ROCK		DETECTIONS	
			TITLE/IMPRINT/PROMOTION LABEL	ARTIST	TW	LW
★★★★ NO. 1 ★★★★★						
1	1	8	I DON'T WANT TO MISS A THING COLUMBIA 3 weeks at No. 1	AEROSMITH	977	983
2	2	9	CIGARETTES AND ALCOHOL WARNER BROS.	ROD STEWART	826	913
(3)	4	12	SHINING IN THE LIGHT ATLANTIC	JIMMY PAGE & ROBERT PLANT	805	801
4	3	26	BLUE ON BLACK REVOLUTION/REPRISE	KENNY WAYNE SHEPHERD BAND	702	845
5	6	7	PREMONITION REPRISE	JOHN FOGERTY	624	657
6	5	12	HEROES EPIC	THE WALLFLOWERS	536	699
7	7	17	I LIE IN THE BED I MAKE VIRGIN	BROTHER CANE	512	626
(8)	11	3	IT'S ALRIGHT MAVERICK/WARNER BROS.	CANDLEBOX	509	439
9	8	13	IRIS WARNER SUNSET/REPRISE	GOO GOO DOLLS	499	508
(10)	10	6	THE DOWN TOWN OUTPOST/GEFFEN	DAYS OF THE NEW	489	482
11	9	14	WISHLIST EPIC	PEARL JAM	455	502
★★★★ AIRPOWER ★★★★★						
(12)	28	2	SOMEHOW, SOMEWHERE, SOMEWAY REVOLUTION/REPRISE	KENNY WAYNE SHEPHERD BAND	348	196
13	14	15	REAL WORLD LAVA/ATLANTIC	MATCHBOX 20	334	380
14	12	15	SLAM DUNK WAWAZATI!	DLR BAND	318	427
★★★★ AIRPOWER ★★★★★						
(15)	18	4	BORN WITHOUT YOU ATLANTIC	STORYVILLE	316	297
(16)	19	6	SPACE LORD A&M	MONSTER MAGNET	293	292
17	13	13	FIRE IN THE HOLE WARNER BROS.	VAN HALEN	286	408
18	15	17	SHE'S GONE REPRISE	ERIC CLAPTON	286	362
19	17	11	THE WAY HOLLYWOOD	FASTBALL	275	311
20	16	18	CLOSING TIME MCA	SEMISONIC	268	319
(21)	21	4	WHAT'S THIS LIFE FOR WIND-UP	CREED	264	246
(22)	34	2	OVER YOUR SHOULDER MAMMOTH/ATLANTIC	SEVEN MARY THREE	239	162
23	22	14	FUEL ELEKTRA/VEEG	METALLICA	222	231
24	24	11	SHIMMER 550 MUSIC	FUEL	213	219
25	26	18	TORN WIND-UP	CREED	203	209
(26)	35	4	OUT OF CONTROL VIRGIN	THE ROLLING STONES	194	157
27	25	7	MY SONG COLUMBIA	JERRY CANTRELL	187	215
28	20	14	MOST HIGH ATLANTIC	JIMMY PAGE & ROBERT PLANT	186	257
29	29	8	AVA ADORE VIRGIN	THE SMASHING PUMPKINS	177	196
30	31	6	ANY FULE KNO THAT CMC INTERNATIONAL	DEEP PURPLE	171	191
(31)	37	3	OCEAN CMC INTERNATIONAL	TOMMY SHAW	160	149
32	32	9	HARVEST MOON CMC INTERNATIONAL	BLUE OYSTER CULT	156	176
33	33	4	MIDNIGHT TRAIN SILVERTONE	BUDDY GUY FEATURING JONNY LANG	148	168
34	36	5	THAT WAS YESTERDAY CMC INTERNATIONAL	VAN ZANT	148	152
35	30	8	BLACK VALENTINE ELEKTRA/VEEG	SCOTT THOMAS BAND	131	192
36	40	10	THAT SONG ATLANTIC	BIG WRECK	124	136
(37)	NEW ▶		WHEN YOU'RE HIGH WAY COOL MUSIC/MCA	THE WHY STORE	123	79
38	RE-ENTRY		BOOM BOOM REVOLUTION	BIG HEAD TODD & THE MONSTERS WITH JOHN LEE HOOKER	122	135
39	39	2	REMEMBER ME COLUMBIA	JOURNEY	122	139
(40)	RE-ENTRY		SAVE YOURSELF COLUMBIA	STABBING WESTWARD	115	112

Records showing an increase in detections over the previous week, regardless of chart movement. A record which has been on the chart for more than 20 weeks will not receive a bullet, even if it registers an increase in detections. Airpower awarded to those records which attain 300 detections for the first time. If two records are tied in number of plays, the record being played on more stations is placed first. Records below the top 20 are removed from the chart after 26 weeks.

GREATEST GAINERS

INCREASE IN PLAYS

KENNY WAYNE SHEPHERD BAND • Somehow, Somewhere, Someway (REVOLUTION/REPRISE)	+152
WNCO +15, WSTZ +14, KXUS +14, WAPL +14, WZZR +13, KZRR +11, WPLR +10, WROQ +9, WVRK +8, WKLC +8	
SEVEN MARY THREE • Over Your Shoulder (MAMMOTH/ATLANTIC)	+77
KCAL +12, WDVE +12, WAPL +9, KMBY +7, WIXV +7, WZZR +7, WPYX +6, WROQ +5, KOMP +5, KRZZ +4	
CANDLEBOX • It's Alright (MAVERICK/WARNER BROS.)	+70
KMBY +7, WKLC +6, WIXV +5, WFYV +5, WCMF +5, KRZZ +4, WSTZ +4, KXUS +4, WKQQ +4, WROQ +4	
MOLLY HATCHET • Miss Saturday Night (CMC INTERNATIONAL)	+44
WROQ +11, KMOD +9, WIMZ +7, WNCX +6, WFYV +6, WFBQ +6, WCMF +1	
THE WHY STORE • When You're High (WAY COOL MUSIC/MCA)	+44
WKQQ +6, WDVE +6, WROQ +5, WZZO +4, WROV +4, WAPL +4, KQRS +4, KFRQ +3, KXUS +3, WVRK +3	

THIS WEEK	LAST WEEK	WKS. ON CHART	ACTIVE ROCK		DETECTIONS	
			TITLE/IMPRINT/PROMOTION LABEL	ARTIST	TW	LW
★★★★ NO. 1 ★★★★★						
1	1	18	SAVE YOURSELF COLUMBIA 3 weeks at No. 1	STABBING WESTWARD	1138	1143
(2)	2	7	THE DOWN TOWN OUTPOST/GEFFEN	DAYS OF THE NEW	1115	1032
(3)	4	9	SPACE LORD A&M	MONSTER MAGNET	1024	958
(4)	7	4	IT'S ALRIGHT MAVERICK/WARNER BROS.	CANDLEBOX	906	876
5	3	9	AVA ADORE VIRGIN	THE SMASHING PUMPKINS	898	1000
6	6	29	FUEL ELEKTRA/VEEG	METALLICA	895	876
7	5	23	TORN WIND-UP	CREED	891	955
(8)	10	6	WHAT'S THIS LIFE FOR WIND-UP	CREED	736	707
(9)	8	9	MY SONG COLUMBIA	JERRY CANTRELL	734	726
(10)	12	17	SHIMMER 550 MUSIC	FUEL	642	609
11	11	25	BLUE ON BLACK REVOLUTION/REPRISE	KENNY WAYNE SHEPHERD BAND	598	650
12	9	17	I LIE IN THE BED I MAKE VIRGIN	BROTHER CANE	575	712
13	13	26	MY HERO ROSWELL/CAPITOL	FOO FIGHTERS	539	525
14	14	11	MONSTERSIDE BIG CAT/V2	ADDICT	484	492
★★★★ AIRPOWER ★★★★★						
(15)	21	7	DU HAST SLASH/LONDON/ISLAND	RAMMSTEIN	475	385
16	17	48	MY OWN PRISON WIND-UP	CREED	444	433
17	16	10	IRIS WARNER SUNSET/REPRISE	GOO GOO DOLLS	435	439
(18)	22	5	NO SHELTER EPIC	RAGE AGAINST THE MACHINE	398	385
19	15	21	CUT YOU IN COLUMBIA	JERRY CANTRELL	387	454
(20)	36	2	OVER YOUR SHOULDER MAMMOTH/ATLANTIC	SEVEN MARY THREE	372	257
21	23	18	CLOSING TIME MCA	SEMISONIC	350	370
(22)	29	2	A SECRET PLACE CAPITOL	MEGADETH	346	321
23	24	3	SHINING IN THE LIGHT ATLANTIC	JIMMY PAGE & ROBERT PLANT	345	354
(24)	26	5	SAINT JOE ON THE SCHOOL BUS CAPITOL	MARCY PLAYGROUND	345	338
(25)	27	6	FALLING TVT	GRAVITY KILLS	340	336
26	28	8	PARK AVENUE DGC/GEFFEN	GIRLS AGAINST BOYS	330	333
27	19	13	WISHLIST EPIC	PEARL JAM	321	413
28	25	6	I DON'T WANT TO MISS A THING COLUMBIA	AEROSMITH	321	348
(29)	31	4	CRACK THE LIARS SMILE THE ENCLAVE/MERCURY	DRAIN S.T.H.	318	314
30	20	12	SLAM DUNK WAWAZATI!	DLR BAND	312	410
31	32	22	USE THE MAN CAPITOL	MEGADETH	299	303
(32)	34	3	HIGH ECHO/ELEKTRA/VEEG	FEEDER	286	273
(33)	NEW ▶		FLY AWAY VIRGIN	LENNY KRAVITZ	279	240
34	35	5	DOWNTIME MCA	THE GANDHARVAS	273	273
(35)	NEW ▶		INSIDE OUT RCA	EVE 6	268	216
(36)	37	3	FREE UNIVERSAL	THE HUNGER	267	250
(37)	RE-ENTRY		4 AM COLUMBIA	OUR LADY PEACE	254	238
(38)	RE-ENTRY		BLACK TVT	SEVENDUST	245	209
39	40	10	THAT SONG ATLANTIC	BIG WRECK	225	243
40	30	11	HEROES EPIC	THE WALLFLOWERS	222	316

Records showing an increase in detections over the previous week, regardless of chart movement. A record which has been on the chart for more than 20 weeks will not receive a bullet, even if it registers an increase in detections. Airpower awarded to those records which attain 400 detections for the first time. If two records are tied in number of plays, the record being played on more stations is placed first. Records below the top 20 are removed from the chart after 26 weeks.

GREATEST GAINERS

INCREASE IN PLAYS

SEVEN MARY THREE • Over Your Shoulder (MAMMOTH/ATLANTIC)	+115
WTGX +14, WXRC +14, WZTA +9, KTUX +9, KBPI +8, KISS +7, WRIF +7, WZMT +6, KQRC +6, KIOZ +6	
KENNY WAYNE SHEPHERD BAND • Somehow, Somewhere, Someway (REVOLUTION/REPRISE)	+115
KRZR +15, WXRC +14, KTUX +13, WBUZ +11, WTUE +10, WKLQ +10, KTXQ +10, WIYY +9, KLBJ +8, WZMT +6	
RAMMSTEIN • Du Hast (SLASH/LONDON/ISLAND)	+90
WBUZ +11, KRZR +9, WKLQ +9, WKRC +8, KBER +6, KATT +5, KTXQ +5, KRAD +4, KISS +4, WRCX +3	
DAYS OF THE NEW • The Down Town (OUTPOST/GEFFEN)	+83
KEGL +16, WKRC +12, KRZR +12, KNJY +7, KNCN +7, WXRC +7, KSJO +7, WCCC +6, WZMT +5, WQXA +5	
BROTHER CANE • Machete (VIRGIN)	+82
WAAF +15, WXRC +14, KRZR +13, WNOR +10, WLZR +10, KAZR +8, KUFO +7, KLBJ +6, KRXQ +4, WJRR +1	



Playlists compiled by Broadcast Data Systems... Ratings are based on order of TBA weekly...

WXRK New York PD: Steve Kingston MD: Mike Peer Music Coor: Booker

KROQ Los Angeles VP/Pgm: Kevin Weatherly APD: Gene Sandbloom MD: Lisa Worden

WKQX Chicago PD: Alex Luke MD: Mary Shuminas

WBCN Boston VP/Pgm: Oedipus MD: Steve Strick AMD: Mike Green

KLYY Los Angeles VP/Pgm: Steve Blatter MD: Mike Savage

WPLY Philadelphia PD: Jim McGuinn APD: Doug Kubinski MD: Preston Elliot

WHFS Washington, DC PD: Robert Benjamin APD: Bob Waugh MD: Pat Ferrise

WPLT Detroit PD: Garrett Michaels MD: Ann Delisi

KDGE Dallas PD: Duane Doherty APD/MD: Alan E. Smith

WNNX Atlanta OM: Brian Phillips PD: Leslie Fram MD: Sean Demery

KITS San Francisco OM: Ron Nenni PD: Jay Taylor MD: Aaron Axelson

KNDD Seattle PD: Phil Manning MD: Kim Monroe

KTBB Houston PD: Jim Trapp APD: Steve Robison MD: David Sadoff

WXDX Pittsburgh PD: John Moschitta MD: Lenny Diana

KPNT St. Louis OM: Allan Fee APD: Marty Linck MD: Traci Wilde

CIMX Detroit PD: Murray Brookshaw APD/MD: Vince Cannova

KEDJ Phoenix PD: Shellie Hart APD/MD: Chris Patyk

WMRQ Hartford PD: Jay Beau Jones MD: Dave Hill

KWOD Sacramento PD: Ron Bunc MD: Carla "Raz" Raswyck

WENZ Cleveland PD: Dan Binder APD: Ric Bennett MD: No. 1 Son

WKDF Nashville PD: Kidd Redd MD: Sheri Sexton

WRX Indianapolis PD: Scott Jameson MD: Michael Young

KZON Phoenix PD: Paul Pateron APD: Laura Smith MD: Kevin Mannion

XTRA San Diego PD: Bryan Schock MD: Chris Muckley

POWER PLAYLISTS

AIRPLAY
Monitor

For Week Ending
July 5, 1998

WGRD Grand Rapids
PD/MD: Margot Smith
AMD: Tim Bronson

WGRD 97.9

	TW	LW
1 Fastball, The Way	44	35
2 Harvey Danger, Flagpole Sitta	43	34
3 Goo Goo Dolls, Ins	40	37
4 Fuel, Shimmer	40	44
5 Semisonic, Closing Time	40	38
6 Alanis Morissette, Uninvited	39	36
7 Eve 6, Inside Out	30	43
8 Barenaked Ladies, One Week	29	25
9 Grant Lee Buffalo, Truly, Truly	25	22
10 The Urge, Jump Right In	25	23
11 Athenaeum, What I Didn't Know	24	22
12 Ben Folds Five, Song For The Dumped	23	20
13 Feeder, High	23	24
14 Marcy Playground, Saint Joe On The School	23	24
15 The Verve, Lucky Man	22	20
16 Garbage, Push It	20	25
17 Our Lady Peace, 4 AM	19	17
18 The Smashing Pumpkins, Perfect	18	15
19 Cowboy Junkies, Miles From Our Home	18	15
20 Foo Fighters, Walking After You	18	15
21 Jerry Cantrell, My Song	17	16
22 The Why Store, When You're High	17	9
23 Dave Matthews Band, Stay	17	12
24 Natalie Imbruglia, Wishing I Was There	17	5
25 The Offspring, Come Out And Play	13	12
26 Swirl 360, Hey Now How	11	7
27 311, All Mixed Up	11	7
28 Dave Matthews Band, Don't Drink The Water	10	23
29 The Mighty Mighty Bosstones, The Impression	9	5
30 Matchbox 20, Long Day	9	9

KNZV Minneapolis/St. Paul
PD: John Lassman
APD: Marc Allen

ZONE 105
ALTERNATIVE RADIO

	TW	LW
1 Green Day, Time Of Your Life	32	16
2 Semisonic, Closing Time	32	33
3 Fuel, Shimmer	31	17
4 Brian Setzer Orchestra, Jump Live An'	31	26
5 Goo Goo Dolls, Ins	30	27
6 Sister Hazel, Concede	27	15
7 Dave Matthews Band, Stay	26	20
8 Foo Fighters, Walking After You	26	20
9 Eagle Eye Cherry, Save Tonight	20	15
10 Pearl Jam, Wishlist	20	14
11 Soul Asylum, I Will Still Be Laughing	21	26
12 Smash Mouth, Can't Get Enough Of You	20	21
13 Natalie Merchant, Kind & Generous	19	30
14 Everything, Hooch	20	28
15 Eve 6, Inside Out	20	19
16 Fuel, Shimmer	19	21
17 Natalie Imbruglia, Wishing I Was There	18	16
18 Garbage, Push It	18	16
19 Fastball, The Way	18	18
20 The Smashing Pumpkins, Perfect	18	21
21 The Wallflowers, Heroes	17	27
22 Matchbox 20, Real World	17	19
23 Patty Griffin, One Big Lean	15	12
24 Sarah McLachlan, Adia	11	27
25 Grant Lee Buffalo, Truly, Truly	11	15
26 Cowboy Junkies, Miles From Our Home	11	12
27 Harvey Danger, Flagpole Sitta	10	10
28 Swirl 360, Hey Now How	10	7
29 The Cranberries, Zombie	9	6
30 Sponge, Mully	9	3

WQBK Albany
PD/MD: Kelli McNamara
AMD: Jeff Callan

THE EDGE
103.5/103.9 FM

	TW	LW
1 Semisonic, Closing Time	37	43
2 Harvey Danger, Flagpole Sitta	36	42
3 Fuel, Shimmer	35	41
4 Goo Goo Dolls, Ins	35	39
5 The Smashing Pumpkins, Ava Adore	31	38
6 Pearl Jam, Wishlist	31	34
7 Barenaked Ladies, One Week	29	24
8 Sprung Monkey, Get 'Em Outta Here	17	25
9 Athenaeum, What I Didn't Know	16	25
10 Fastball, The Way	15	18
11 The Verve, Bitter Sweet Symphony	15	20
12 Foo Fighters, Everlong	15	13
13 Everclear, Everything To Everyone	13	15
14 Creed, What's This Life For	13	18
15 Grant Lee Buffalo, Truly, Truly	13	19
16 The Urge, Jump Right In	13	28
17 God Lives Underwater, From Your Mouth	13	22
18 Feeder, High	12	19
19 Days Of The New, Touch, Peel And Stand	12	12
20 Possum Dixon, Holding	12	0
21 Everclear, I Will Buy You A New Life	12	10
22 Green Day, Time Of Your Life	12	10
23 Dave Matthews Band, Stay	11	16
24 Green Day, Redundant	11	20
25 Monster Magnet, Space Lord	11	21
26 The Wallflowers, Heroes	11	17
27 Metallica, The Memory Remains	10	7
28 Sugar Ray, Fly	10	8
29 Foo Fighters, My Hero	10	14
30 Blur, Song 2	10	7

WBUR Providence
PD: Tim Schiavelli

95.5 WBUR

	TW	LW
1 Fuel, Shimmer	26	34
2 Harvey Danger, Flagpole Sitta	26	33
3 Beastie Boys, Intergalactic	25	33
4 Dave Matthews Band, Stay	24	32
5 Semisonic, Closing Time	24	35
6 Fastball, The Way	24	33
7 Barenaked Ladies, One Week	24	25
8 Goo Goo Dolls, Ins	22	35
9 The Smashing Pumpkins, Perfect	22	23
10 Foo Fighters, Walking After You	17	15
11 Eve 6, Inside Out	17	23
12 Creed, What's This Life For	17	17
13 Seven Mary Three, Over Your Shoulder	15	18
14 Days Of The New, The Down Town	14	18
15 Big Bad Voodoo Daddy, You And Me And The	14	21
16 Marcy Playground, Saint Joe On The School	14	19
17 Creed, My Own Prison	13	21
18 Athenaeum, What I Didn't Know	13	22
19 Rage Against The Machine, No Shelter	13	9
20 Big Wreck, That Song	12	10
21 Garbage, I Think I'm Paranoid	12	10
22 Teri Amos, Spark	11	19
23 Natalie Imbruglia, Wishing I Was There	11	16
24 The Wallflowers, Heroes	11	17
25 The Smashing Pumpkins, Ava Adore	10	15
26 Everclear, Father Of Mine	10	6
27 Third Eye Blind, How's It Going To Be	10	15
28 Marcy Playground, Sex And Candy	9	17
29 Dave Matthews Band, Don't Drink The Water	9	18
30 Amazing Royal Crowns, Do The Devil	9	13

WNEV Rochester
PD/MD: Erick Anderson

the NerVe
MODERN ROCK
95.5/96.5

	TW	LW
1 Fuel, Shimmer	45	30
2 Cherry Poppin' Daddies, Zoot Suit Riot	44	29
3 Garbage, Push It	40	19
4 The Smashing Pumpkins, Ava Adore	40	30
5 Harvey Danger, Flagpole Sitta	38	25
6 Semisonic, Closing Time	37	37
7 Pearl Jam, Wishlist	36	29
8 Barenaked Ladies, One Week	36	28
9 Creed, My Own Prison	35	28
10 Metallica, The Unforgivable	33	25
11 Foo Fighters, My Hero	32	28
12 Everclear, Everything To Everyone	32	17
13 Goo Goo Dolls, Ins	31	24
14 Snarky Pimps, 6 Underground	18	23
15 Blur, Song 2	27	20
16 Tonic, Open Up Your Eyes	27	25
17 Days Of The New, Touch, Peel And Stand	26	20
18 Third Eye Blind, How's It Going To Be	25	21
19 Everclear, I Will Buy You A New Life	24	29
20 Green Day, Brain Stew	24	22
21 The Smashing Pumpkins, Perfect	23	26
22 Beastie Boys, Intergalactic	22	19
23 Foo Fighters, Everlong	21	18
24 The Urge, Jump Right In	21	17
25 Blink 182, Dammit	21	16
26 Eve 6, Inside Out	20	10
27 Jerry Cantrell, Cut You In	17	10
28 Green Day, Time Of Your Life	16	4
29 Our Lady Peace, Superman's Dead	16	4
30 Alanis Morissette, Uninvited	15	10

KNRK Portland, OR
PD/MD: Mark Hamilton

94.7 NKRK

	TW	LW
1 Harvey Danger, Flagpole Sitta	45	43
2 Stabbing Westward, Save Yourself	43	33
3 Fuel, Shimmer	43	40
4 Eve 6, Inside Out	43	35
5 Goo Goo Dolls, Ins	41	42
6 Semisonic, Closing Time	41	41
7 Beastie Boys, Intergalactic	40	36
8 Jane's Addiction, Jane Says	24	22
9 Third Eye Blind, How's It Going To Be	24	24
10 Blur, Song 2	24	24
11 Big Bad Voodoo Daddy, You And Me And The	24	25
12 Natalie Imbruglia, Wishing I Was There	23	13
13 Cherry Poppin' Daddies, Zoot Suit Riot	23	27
14 Foo Fighters, Everlong	23	21
15 Sublime, Santana	23	19
16 Everclear, Everything To Everyone	23	24
17 Marcy Playground, Saint Joe On The School	23	22
18 Everything, Hooch	23	22
19 Creed, My Own Prison	22	22
20 Green Day, Time Of Your Life	22	19
21 Cherry Poppin' Daddies, Brown Derby Jump	22	15
22 Feeder, High	22	22
23 Sprung Monkey, Get 'Em Outta Here	22	21
24 Toadies, Possum Kingdom	21	20
25 Garbage, I Think I'm Paranoid	21	6
26 The Smashing Pumpkins, 1979	20	14
27 Everclear, Father Of Mine	20	21
28 Barenaked Ladies, One Week	20	22
29 Candlebox, It's Alright	20	18
30 Green Day, Redundant	19	21

WEND Charlotte
PD: Jack Daniel
MD: Rick Brewer

106.5

	TW	LW
1 Fuel, Shimmer	46	42
2 Goo Goo Dolls, Ins	45	46
3 The Smashing Pumpkins, Ava Adore	45	41
4 Pearl Jam, Wishlist	44	43
5 Creed, My Own Prison	38	10
6 Foo Fighters, My Hero	37	17
7 Everything, Hooch	31	22
8 Feeder, High	29	19
9 Beastie Boys, Intergalactic	28	17
10 Eve 6, Inside Out	25	20
11 Seven Mary Three, Over Your Shoulder	21	10
12 Big Bad Voodoo Daddy, You And Me And The	21	10
13 Grant Lee Buffalo, Truly, Truly	20	17
14 Barenaked Ladies, One Week	19	20
15 Teri Amos, Spark	19	20
16 Marcy Playground, Saint Joe On The School	19	17
17 The Verve, Lucky Man	18	17
18 Alanis Morissette, Uninvited	18	7
19 Creed, What's This Life For	17	23
20 Ben Folds Five, Song For The Dumped	17	12
21 Dave Matthews Band, Don't Drink The Water	17	45
22 Dave Matthews Band, Stay	16	0
23 311, Beautiful Disaster	15	44
24 Stabbing Westward, Save Yourself	15	13
25 Harvey Danger, Flagpole Sitta	14	15
26 Gravity Kills, Falling	14	14
27 Sprung Monkey, Get 'Em Outta Here	14	5
28 Violent Femmes, Blister In The Sun	13	9
29 It's Choice, Everything For Free	13	18
30 Our Lady Peace, 4 AM	13	15

WFNX Boston
PD: Cruze
MD: Laurie Gail

MARK 107.1

	TW	LW
1 Beastie Boys, Intergalactic	34	37
2 The Smashing Pumpkins, Perfect	30	19
3 Feeder, High	30	26
4 Ben Folds Five, Song For The Dumped	29	28
5 Garbage, I Think I'm Paranoid	28	17
6 Big Bad Voodoo Daddy, You And Me And The	28	29
7 Eve 6, Inside Out	27	28
8 Litany, By Myself	27	27
9 Stabbing Westward, Save Yourself	20	29
10 Eagle Eye Cherry, Save Tonight	20	20
11 The Smashing Pumpkins, Flagpole Sitta	21	14
12 Fuel, Shimmer	19	16
13 Goo Goo Dolls, Ins	18	18
14 Semisonic, Closing Time	18	19
15 Rancid, Bloodclot	18	22
16 Propellerheads, History Repeating	18	16
17 Swirl 360, Hey Now How	17	8
18 Girls Against Boys, Park Avenue	17	5
19 The Crystal Method, Buy U One	17	14
20 Green Day, Redundant	16	16
21 David Garza, Discoball World	16	5
22 Lenny Kravitz, Fly Away	15	5
23 Drugstore, El Presidente	15	12
24 Grant Lee Buffalo, Truly, Truly	15	17
25 The Smashing Pumpkins, Ava Adore	15	18
26 Marcy Playground, Saint Joe On The School	15	16
27 Radiohead, Karma Police	14	14
28 The Bogen, Failing Systems	14	11
29 Blink 182, Dammit	13	17
30 Teri Amos, Spark	13	17

KXRR Salt Lake City
PD: Mike Summers
MD: Sean Ziebarth

X96.3

	TW	LW
1 The Urge, Jump Right In	36	32
2 Dave Matthews Band, Don't Drink The Water	35	32
3 Eve 6, Inside Out	30	26
4 Fuel, Shimmer	33	33
5 Possum Dixon, Holding	32	30
6 The Smashing Pumpkins, Ava Adore	32	34
7 Teri Amos, Spark	32	29
8 Harvey Danger, Flagpole Sitta	30	24
9 Natalie Imbruglia, Wishing I Was There	29	27
10 Goo Goo Dolls, Ins	29	19
11 Harvey Danger, The Down Town	28	27
12 Barenaked Ladies, One Week	28	20
13 Heather Nova, London Rain	27	26
14 Feeder, High	27	10
15 Beastie Boys, Intergalactic	26	24
16 Garbage, I Think I'm Paranoid	26	25
17 Alanis Morissette, Uninvited	25	9
18 Marcy Playground, Saint Joe On The School	24	27
19 Grant Lee Buffalo, Truly, Truly	24	27
20 Big Bad Voodoo Daddy, You And Me And The	19	28
21 Athenaeum, What I Didn't Know	18	23
22 Everclear, Father Of Mine	17	8
23 The Wallflowers, Heroes	16	17
24 Garbage, Push It	16	15
25 Semisonic, Closing Time	15	13
26 It's Choice, Everything For Free	15	18
27 Agents Of Good Roots, Smiling Up The	15	10
28 Fastball, The Way	14	25
29 Sublime, What I Got	13	5
30 Cherry Poppin' Daddies, Zoot Suit Riot	13	14

KCXX Riverside/San Bernardino
OM/PD: Dwight Arnold
MD: Bruce Pulley

103.9

	TW	LW
1 Fuel, Shimmer	40	35
2 Fastball, The Way	40	31
3 Semisonic, Closing Time	39	32
4 The Urge, Jump Right In	38	32
5 Matchbox 20, Real World	38	27
6 Guster, Airport Song	36	26
7 Athenaeum, What I Didn't Know	32	19
8 Eve 6, Inside Out	28	11
9 Third Eye Blind, Jumpin'	28	18
10 Jerry Cantrell, My Song	26	11
11 Candlebox, It's Alright	26	11
12 Feeder, High	20	27
13 Creed, What's This Life For	19	21
14 Our Lady Peace, 4 AM	17	26
15 Pearl Jam, Wishlist	17	20
16 Jane's Addiction, Jane Says	17	18
17 Green Day, Time Of Your Life	17	7
18 Presidents Of The United State, Mach 5	16	0
19 X, 4th Of July	16	7
20 Sprung Monkey, Get 'Em Outta Here	16	8
21 The Smashing Pumpkins, Ava Adore	16	26
22 Grant Lee Buffalo, Truly, Truly	15	1
23 The Verve, Lucky Man	15	29
24 Red Hot Chili Peppers, Give It Away	14	6
25 Everclear, Everything To Everyone	14	7
26 Pearl Jam, In Hiding	13	18
27 Foo Fighters, Big Me	13	5
28 Stone Temple Pilots, Big Empty	12	12
29 Smash Mouth, Walkin' On The Sun	12	7
30 Goo Goo Dolls, Ins	12	11

KENZ Salt Lake City
PD: Bruce Jones
MD: Dom Casual

107.5 the end.

	TW	LW
1 Barenaked Ladies, One Week	33	36
2 Goo Goo Dolls, Ins	32	35
3 Alana Davis, Crazy	29	32
4 Everything, Hooch	28	33
5 The Wallflowers, Heroes	28	33
6 Mono, Life In Mono	22	21
7 Lenny Kravitz, Fly Away	19	24
8 Matchbox 20, Real World	18	24
9 Natalie Imbruglia, Wishing I Was There	15	14
10 The Smashing Pumpkins, Perfect	14	18
11 Green Day, Time Of Your Life	14	14
12 Sarah McLachlan, Adia	14	21
13 Eve 6, Inside Out	14	16
14 Seven Mary Three, Over Your Shoulder	12	16
15 The Mighty Mighty Bosstones, The Impression	12	15
16 Ben Folds Five, Song For The Dumped	11	8
17 Sarah McLachlan, Sweet Surrender	11	9
18 Fastball, The Way	11	15
19 The Verve, Bitter Sweet Symphony	11	12
20 Semisonic, Closing Time	11	15
21 Grant Lee Buffalo, Truly, Truly	11	16
22 Matchbox 20, 3 AM	10	7
23 Lisa Loeb, I Do	10	16
24 The Verve, Lucky Man	10	14
25 Dave Matthews Band, Crash Into Me	10	10
26 Marcy Playground, Sex And Candy	9	13
27 Natalie Imbruglia, Wishing I Was There	9	12
28 Sister 7, Know What You Mean	9	13
29 Anggun, Snow On The Sahara	9	15
30 Dave Matthews Band, Stay	8	16

KKND New Orleans
OM: Dave Stewart
APD/MD

POWER PLAYLISTS

For Week Ending July 5, 1998



Playlists supplied by Broadcast Data Systems' Radio Track service. Songs ranked by number of plays in monitored week. Playlists are listed in order of TSS weekly curve, beginning with the highest-cumulative station. Cumulative are updated twice weekly following the release of the Spring and Fall Arbitron surveys. The number of stations shown each week varies depending upon space.

XHRM San Diego PD: Mike Halloran MD: Chaz Kelly 92.5

Table with 2 columns: Rank and Song Title. Songs include 'Everything, Hooch', 'Eagle Eye Cherry, Save Tonight', 'Sprung Monkey, Get 'Em Outta Here'.

WEDG Buffalo PD: John Hager MD: Rich Wall 103.3 EDGE

Table with 2 columns: Rank and Song Title. Songs include 'Goo Goo Dolls, Iris', 'Fuel, Shimmer', 'Garbage, Push It'.

WZAZ Columbus PD: Greg Ausham MD: Mark Pennington 103.3 EDGE

Table with 2 columns: Rank and Song Title. Songs include 'Matchbox 20, Real World', 'Fuel, Shimmer', 'Natalie Imbruglia, Torn'.

WPBZ West Palm Beach PD: John O'Connell MD: Dan O'Brien BUZZ 103.1

Table with 2 columns: Rank and Song Title. Songs include 'Pearl Jam, Wishist', 'Goo Goo Dolls, Iris', 'Fuel, Shimmer'.

WAQZ Cincinnati PD/MD: Matt Harris APD: Sterling Schiessler The New Music Revolution

Table with 2 columns: Rank and Song Title. Songs include 'Alanis Morissette, Uninvited', 'Edwin McCain, I'll Be', 'Goo Goo Dolls, Iris'.

KNRK Kansas City APD: Dave Horn MD: Jason Justice the X 107.9

Table with 2 columns: Rank and Song Title. Songs include 'The Smashing Pumpkins, Ava Adore', 'Fuel, Shimmer', 'Creed, Tom'.

KMYZ Tulsa PD: Lynn Barstow MD: Ray Dog EDGE 103.3

Table with 2 columns: Rank and Song Title. Songs include 'Stabbing Westward, Save Yourself', 'Athenaeum, What I Didn't Know', 'Goo Goo Dolls, Iris'.

KROX Austin PD: Sara Trexler APD/MD: Lloyd "LA" Hocutt 101X

Table with 2 columns: Rank and Song Title. Songs include 'Goo Goo Dolls, Iris', 'Fuel, Shimmer', 'Athenaeum, What I Didn't Know'.

KTCL Denver PD: Mike O'Connor 93.3 KTCL

Table with 2 columns: Rank and Song Title. Songs include 'Eve 6, Inside Out', 'God Lives Underwater, From Your Mouth', 'Goo Goo Dolls, Iris'.

KOTE Las Vegas PD: Mike Stern MD: Chris Ripley X 107.5

Table with 2 columns: Rank and Song Title. Songs include 'Everclear, Father Of Mine', 'Blink 182, Josie', 'Creed, Tom'.

WXRA Greensboro PD: Tim Satterfield APD: Marcia Gan the rock 94.5 alternative.

Table with 2 columns: Rank and Song Title. Songs include 'Marcy Playground, Saint Joe On The School', 'Athenaeum, What I Didn't Know', 'Fuel, Shimmer'.

WROX Norfolk PD/MD: Al Mitchell 96X

Table with 2 columns: Rank and Song Title. Songs include 'Harvey Danger, Flagpole Sitta', 'Barenaked Ladies, One Week', 'Goo Goo Dolls, Iris'.

WRAX Birmingham PD: Dave Rossi APD: Hurricane Shane MD: Suzy Boe 101X

Table with 2 columns: Rank and Song Title. Songs include 'Natalie Imbruglia, Wishing I Was There', 'Alanis Morissette, Uninvited', 'Harvey Danger, Flagpole Sitta'.

WXEG Dayton PD: Jeff Stevens MD: Alan Rantz 101X

Table with 2 columns: Rank and Song Title. Songs include 'Eve 6, Inside Out', 'Goo Goo Dolls, Iris', 'Barenaked Ladies, One Week'.

WBZU Richmond PD: Jeff Cochran MD: Jay Smack 106.5 BUZZ

Table with 2 columns: Rank and Song Title. Songs include 'Harvey Danger, Flagpole Sitta', 'Fuel, Shimmer', 'Goo Goo Dolls, Iris'.

WPLA Jacksonville PD: Rick Schmidt Plan 93.3

Table with 2 columns: Rank and Song Title. Songs include 'Eve 6, Inside Out', 'Goo Goo Dolls, Iris', 'The Smashing Pumpkins, Ava Adore'.

KFRR Fresno PD: Bruce Wayne New Rock 104.1 THIS IS NOT FOR YOU

Table with 2 columns: Rank and Song Title. Songs include 'The Wallflowers, Heroes', 'Semisonic, Closing Time', 'Eve 6, Inside Out'.

KLZR Kansas City PD: Roger The Dodger MD: Bob Osborn AMD: Jeff Petterson THE LAZER

Table with 2 columns: Rank and Song Title. Songs include 'The Smashing Pumpkins, Ava Adore', 'Garbage, Push It', 'Eve 6, Inside Out'.

WCY Portland, ME PD: Herb Ivy MD: Brian James WCY

Table with 2 columns: Rank and Song Title. Songs include 'Goo Goo Dolls, Iris', 'Garbage, Push It', 'Semisonic, Closing Time'.

WLRS Louisville PD: Dennis Dillon MD: Gina Juliano NEW ROCK

Table with 2 columns: Rank and Song Title. Songs include 'Creed, Tom', 'Barenaked Ladies, One Week', 'Creed, What's This Life For'.

KTEG Albuquerque PD: Skip Isley THE edge 107.9

Table with 2 columns: Rank and Song Title. Songs include 'Fuel, Shimmer', 'Barenaked Ladies, One Week', 'Eve 6, Inside Out'.

WWCD Columbus PD/MD: Andy Davis 101.1

Table with 2 columns: Rank and Song Title. Songs include 'The Smashing Pumpkins, Ava Adore', 'Barenaked Ladies, One Week', 'Goo Goo Dolls, Iris'.

KPOI Honolulu PD: Brock Whaley MD: Nikki Basque 106.5 THE BUZZ

Table with 2 columns: Rank and Song Title. Songs include 'Cherry Poppin' Daddies, Zoot Suit Riot', 'Semisonic, Closing Time', 'Goo Goo Dolls, Iris'.

WRXQ Memphis PD: Tony Williams MD: John Michael 96X

Table with 2 columns: Rank and Song Title. Songs include 'Creed, What's This Life For', 'Barenaked Ladies, One Week', 'Goo Goo Dolls, Iris'.



★ ★ ★ **AIRPOWER** ★ ★ ★
(Minimum 1,100 detections for the first time)

NO RECORDS QUALIFIED FOR AIRPOWER THIS WEEK

AIRPOWER BOUND

Total Plays/Gain

SPRUNG MONKEY 1057/-33
Get 'Em Outta Here (Surfdog/Hollywood)

Total Stations: 63/Chart Move: 19-18
Heavy (30+ plays): 9 KFRR, KHTY, KITS, KJEE, KTCL, WAQZ, WPBZ, XHRM, XTRA
Medium (15-29): 29 CFNY, KCXX, KDGE, KFMA, KFTE, KKND, KLZR, KNRK, KNRX, KPNT, KTEG, KTOZ, KWOD, KXTE, WARQ, WBCN, WBZU, WCY, WEQX, WHFS, WKRO, WLRS, WQBK, WROX, WRXQ, WRXZ, WWCN, WXDX, WXRA
Light (Under 15): 25
New Airplay This Week: 2 KMYZ, WXNR

THE SMASHING PUMPKINS 982/110
Perfect (Virgin)

Total Stations: 58/Chart Move: 26-19
Heavy (30+): 5 CIMX, KITS, KKDM, WFNX, WRXR
Medium (15-29): 30 KAEP, KEDJ, KHTY, KICT, KJEE, KLYY, KLZR, KNDD, KNRK, KPNT, KROQ, KWOD, KZNY, WBCN, WBRU, WBZU, WGRD, WHFS, WKRO, WMRQ, WNNX, WNV, WPLT, WPLY, WRAX, WROX, WXDX, WXRK, XHRM, XTRA
Light (Under 15): 23
New Airplay This Week: 8 KFMA, KFRR, KNRK, KNRX, KXTE, WARQ, WCY, WXZZ

DAVE MATTHEWS BAND 951/353
Stay (Wasting Time) (RCA)

Total Stations: 55/Chart Move: 35-21
Heavy (30+): 4 KTCL, WAQZ, WEQX
Medium (15-29): 29 KAEP, KFMA, KFTE, KHTY, KKDM, KKND, KLZR, KPNT, KROX, KTEG, KTOZ, KZNY, WARQ, WBCN, WBRU, WBZU, WEND, WGRD, WHFS, WNNX, WPLT, WPLY, WRAX, WROX, WRXR, WXDX, WXEG, XHRM
Light (Under 15): 22
New Airplay This Week: 23 KCXX, KFMA, KFTE, KHTY, KJEE, KKDM, KKND, KLZR, KNDD, KNRX, KPNT, KWOD, KZON, WBTZ, WCY, WEDG, WEND, WNV, WRAX, WRXQ, WRXZ, WWCN, WXDX

EVERYTHING 937/170
Hooch (Blackbird/Sire)

Total Stations: 51/Chart Move: 27-23
Heavy (30+): 7 KAEP, KHTY, KZON, WEND, WNNX, WRAX, XHRM
Medium (15-29): 26 KDGE, KENZ, KFMA, KFRR, KFTE, KJEE, KKDM, KKND, KLZR, KNRK, KROX, KZNY, WAVF, WBZU, WCY, WEQX, WHFS, WJXB, WKRO, WPLT, WPLY, WROX, WRXR, WXRA, WXZZ, WZAZ
Light (Under 15): 18
New Airplay This Week: 6 KJEE, KPOI, WBRU, WRXZ, WWCN, WZAZ

CREED 848/88
What's This Life For (Wind-up)

Total Stations: 47/Chart Move: 28-26
Heavy (30+): 3 WARQ, WLRS, WRXQ
Medium (15-29): 30 CFNY, KCXX, KFMA, KFTE, KICT, KITS, KKND, KLZR, KMYZ, KPNT, KROX, KTEG, KTOZ, KWOD, WBCN, WBRU, WBZU, WCY, WEND, WJXB, WKQX, WKRL, WKRO, WMRQ, WNNX, WPLA, WRXZ, WXDX, WXRA, WXZZ
Light (Under 15): 14
New Airplay This Week: 4 KITS, KXTE, WNNX, WNV

FEEDER 763/52
High (Echo/Elektra/EEG)

Total Stations: 48/Chart Move: 30-27
Heavy (30+): 2 KTCL, WFNX
Medium (15-29): 24 CFNY, KCXX, KFMA, KFTE, KLZR, KNRK, KNRX, KXRX, KZON, WARQ, WBTZ, WCY, WEND, WEQX, WGRD, WJXB, WMRQ, WRXQ, WRXR, WRXZ, WXRA, WXRK, WXZZ, XTRA
Light (Under 15): 22

NATALIE IMBRUGLIA 716/127
Wishing I Was There (RCA)

Total Stations: 48/Chart Move: 38-29
Heavy (30+): 4 KPOI, KWOD, WNNX, WRAX

Medium (15-29): 19 CIMX, KFTE, KHTY, KJEE, KKDM, KROX, KTCL, KTEG, KXRX, KZNY, WAQZ, WARQ, WHFS, WKDF, WRXR, WXNR, WXZZ, WZAZ
Light (Under 15): 25
New Airplay This Week: 6 CFNY, CIMX, WCY, WKQX, WPLY, WZAZ

GARBAGE 676/216
I Think I'm Paranoid (Almo Sounds/Interscope)

Total Stations: 47/Chart Move: Debut 30
Heavy (30+): 5 CIMX, KITS, KNDD, KWOD, WNNX
Medium (15-29): 17 KEDJ, KHTY, KJEE, KNRK, KROQ, KROX, KTEG, KXRX, KXTE, WBCN, WBTZ, WFNX, WHFS, WXDX, WXRA, WZAZ, XHRM
Light (Under 15): 25
New Airplay This Week: 9 KFMA, KKDM, KTOZ, WBCN, WKRO, WRXQ, WXDX, WXRA, WZAZ

BIG BAD VOODOO DADDY 675/-24
You And Me And The Bottle Makes Three Tonight (Baby) (Columbia/EMI-Capitol)

Total Stations: 40/Chart Move: 31-31
Heavy (30+): 3 KFRR, KHTY, KTCL
Medium (15-29): 17 CIMX, KITS, KJEE, KLZR, KNDD, KNRK, KTEG, KTOZ, KXRX, WEND, WEQX, WFNX, WHFS, WMRQ, WNNX, WROX, WXZZ
Light (Under 15): 20
New Airplay This Week: 1 WRXR

OUR LADY PEACE 650/-12
4 AM (Columbia)

Total Stations: 47/Chart Move: 32-32
Heavy (30+): 1 CIMX
Medium (15-29): 19 KCXX, KDGE, KFMA, KFTE, KKND, KLZR, KTEG, KTOZ, WAVF, WBTZ, WCY, WEDG, WGRD, WJXB, WKRL, WRXZ, WXDX, WXRA, WXZZ
Light (Under 15): 27
New Airplay This Week: 3 WARQ, WFNX, WKQX

DAYS OF THE NEW 643/100
The Down Town (Outpost/Geffen)

Total Stations: 41/Chart Move: Debut 33
Heavy (30+): 1 WRXQ
Medium (15-29): 18 CFNY, KFTE, KICT, KKND, KLZR, KNDD, KNRX, KTOZ, KXRX, WARQ, WEDG, WKRO, WLRS, WMRQ, WNNX, WRXZ, WXRA, WXZZ
Light (Under 15): 22
New Airplay This Week: 7 KFMA, WJXB, WNNX, WPLY, WRAX, WXDX, WXRA

SEVEN MARY THREE 622/164
Over Your Shoulder (Mammoth/Atlantic)

Total Stations: 45/Chart Move: Debut 34
Heavy (30+): 1 WLRS
Medium (15-29): 20 KFTE, KICT, KKDM, KKND, KROX, KTOZ, KWOD, KZON, WBRU, WBZU, WEDG, WEND, WEQX, WKDF, WNNX, WRAX, WRXQ, WXDX, WXRA, WXZZ
Light (Under 15): 24
New Airplay This Week: 8 CFNY, KLYY, KTOZ, WJXB, WKDF, WKRL, WPLA, WRXZ

RAGE AGAINST THE MACHINE 603/-24
No Shelter (Epic)

Total Stations: 50/Chart Move: 34-36
Heavy (30+): 1 KXTE
Medium (15-29): 13 KDGE, KEDJ, KITS, KLZR, KNDD, KNRX, KTEG, WBCN, WBTZ, WCY, WERS, WXRA, WXRK
Light (Under 15): 36
New Airplay This Week: 3 KCXX, WJXB, WNV

GUSTER 564/-26
Airport Song (Hybrid/Sire)

Total Stations: 46/Chart Move: 37-39
Heavy (30+): 2 KCXX, WAVF
Medium (15-29): 14 KFTE, KKDM, KPOI, KROX, WBCN, WBTZ, WBZU, WPBZ, WPLA, WRAX, WRXQ, WRXR, WXNR, WXRA
Light (Under 15): 30
New Airplay This Week: 1 WROX

MOST NEW STATIONS

No. Of Stations

DAVE MATTHEWS BAND <i>Stay (Wasting Time) (RCA)</i>	23
POSSUM DIXON <i>Holding (Lenny's Song) (Surf Detective/Interscope)</i>	12
THIRD EYE BLIND <i>Jumper (Elektra/EEG)</i>	10
GARBAGE <i>I Think I'm Paranoid (Almo Sounds/Interscope)</i>	9
SEVEN MARY THREE <i>Over Your Shoulder (Mammoth/Atlantic)</i>	8
THE SMASHING PUMPKINS <i>Perfect (Virgin)</i>	8

CHART BOUND

Total Plays/Gain

THIRD EYE BLIND 486/184
Jumper (Elektra/EEG)

Total Stations: 35
Heavy (30+): 3 KCXX, KNDD, WHFS
Medium (15-29): 11 KFTE, KHTY, KITS, KROQ, KTCL, KTEG, KWOD, WKDF, WMRQ, WRXR, WXEG
Light (Under 15): 21
New Airplay This Week: 10 KFMA, KJEE, KKND, KTCL, WARQ, WBCN, WKDF, WKRL, WNNX, WRXZ

K'S CHOICE 450/24
Everything For Free (550 Music)

Total Stations: 34
Heavy (30+): 0
Medium (15-29): 13 KFTE, KKND, KTEG, KXRX, WARQ, WJXB, WKDF, WNNX, WPBZ, WPLA, WRXR, WXNR, WXZZ
Light (Under 15): 21
New Airplay This Week: 3 KZON, WBZU, WXNR

THE BRIAN SETZER ORCHESTRA 441/192
Jump Jive An' Wail (Interscope)

Total Stations: 43
Heavy (30+): 3 KHTY, KJEE, KZNY
Medium (15-29): 12 KFTE, KITS, KTCL, KTOZ, WAVF, WBCN, WBZU, WHFS, WPLT, WRAX, WXZZ, XTRA
Light (Under 15): 28
New Airplay This Week: 7 KITS, KNRX, KTOZ, WARQ, WJXB, WRXR, XTRA

MONSTER MAGNET 434/26
Space Lord (A&M)

Total Stations: 33
Heavy (30+): 1 WBCN
Medium (15-29): 11 CFNY, KFMA, KICT, KKND, KPNT, KROX, KXTE, WEDG, WKRO, WPBZ, WXRA
Light (Under 15): 21
New Airplay This Week: 2 WFNX, WRAX

CANDLEBOX 434/95
It's Alright (Maverick/Warner Bros.)

Total Stations: 32
Heavy (30+): 1 WRXQ
Medium (15-29): 14 KCXX, KFTE, KICT, KKND, KMYZ, KNRK, KTOZ, WARQ, WBCN, WJXB, WPLA, WXNR, WXRA, WXZZ
Light (Under 15): 17
New Airplay This Week: 4 KMYZ, KPOI, WRAX, WXEG

EAGLE EYE CHERRY 434/120
Save Tonight (WORK)

Total Stations: 40
Heavy (30+): 2 KHTY, XHRM
Medium (15-29): 12 KFMA, KITS, KJEE, KKDM, KLYY, KROX, KWOD, KZNY, WBZU, WFNX, WHFS, WRXQ
Light (Under 15): 26
New Airplay This Week: 6 KFMA, KROX, WBZU, WEQX, WMRQ, WXZZ

RANCID 418/10
Bloodclot (Epitaph)

Total Stations: 52
Heavy (30+): 0
Medium (15-29): 8 KJEE, KLZR, KNRX, KXTE, WBTZ, WCY, WFNX, WXDX
Light (Under 15): 44
New Airplay This Week: 1 WKRL

SMASH MOUTH 398/47
Can't Get Enough Of You Baby (Elektra/EEG)

Total Stations: 29
Heavy (30+): 2 KJEE, WAQZ

Medium (15-29): 11 KAEP, KHTY, KITS, KPOI, KROQ, KTEG, KZNY, WHFS, WKQX, WPLT, WPLY
Light (Under 15): 16
New Airplay This Week: 1 KENZ

JERRY CANTRELL 322/32
My Song (Columbia)

Total Stations: 22
Heavy (30+): 2 KXTE, WRXQ
Medium (15-29): 8 KCXX, KICT, KKND, KMYZ, WBCN, WGRD, WRXZ, WXRA
Light (Under 15): 12
New Airplay This Week: 1 CFNY

SWIRL 360 292/39
Hey Now Now (Mercury)

Total Stations: 31
Heavy (30+): 0
Medium (15-29): 7 KFTE, KROX, KWOD, WAVF, WBTZ, WEDG, WFNX
Light (Under 15): 24
New Airplay This Week: 3 WMRQ, WRXQ, WZAZ

PEARL JAM 276/45
In Hiding (Epic)

Total Stations: 26
Heavy (30+): 0
Medium (15-29): 8 CFNY, CIMX, KEDJ, KNDD, KTEG, KWOD, WROX, XHRM
Light (Under 15): 19
New Airplay This Week: 2 KTEG, WFNX

FAR TOO JONES 236/34
As Good As You (Mammoth)

Total Stations: 21
Heavy (30+): 0
Medium (15-29): 6 KROX, WAVF, WRAX, WRXZ, WXRA, WXZZ
Light (Under 15): 15
New Airplay This Week: 1 WJXB

POSSUM DIXON 226/140
Holding (Lenny's Song) (Interscope)

Total Stations: 32
Heavy (30+): 1 KXRX
Medium (15-29): 4 KKDM, KNDD, WKRL, WXRA
Light (Under 15): 27
New Airplay This Week: 12 KFMA, KICT, KKDM, KLZR, WBCN, WEDG, WENZ, WKRL, WPBZ, WQBK, WRXQ, WXRA

FATBOY SLIM 201/40
The Rockafeller Skank (Astralwerks)

Total Stations: 32
Heavy (30+): 1 KITS
Medium (15-29): 3 KROQ, WBCN, XHRM
Light (Under 15): 28
New Airplay This Week: 1 KFMA

LENNY KRAVITZ 198/37
Fly Away (Virgin)

Total Stations: 25
Heavy (30+): 1 KKND
Medium (15-29): 6 KEDJ, KENZ, KXTE, WBCN, WFNX, XTRA
Light (Under 15): 18
New Airplay This Week: 3 WFNX, WMRQ, XTRA

GLORITONE 191/6
Halfway (Kneeling Elephant/RCA)

Total Stations: 31
Heavy (30+): 0
Medium (15-29): 4 KFTE, KKND, KNRX, WBZU
Light (Under 15): 27

EDWIN MCCAIN 160/8
I'll Be (Lava/Atlantic)

Total Stations: 6
Heavy (30+): 3 WAQZ, WPLT, WRAX
Medium (15-29): 1 KZON
Light (Under 15): 2

MXPX 151/7

I'm OK, You're OK (A&M)
Total Stations: 15
Heavy (30+): 1 KNDD
Medium (15-29): 3 KROQ, WBTZ, XHRM
Light (Under 15): 11
New Airplay This Week: 1 WHFS

THE MURMURS 136/38
La Di Da (MCA)

Total Stations: 19
Heavy (30+): 0
Medium (15-29): 2 KJEE, KROX
Light (Under 15): 17
New Airplay This Week: 3 WEQX, WRAX, WXZZ

HOME GROWN 122/9
Surfer Girl (Outpost/Geffen)

Total Stations: 11
Heavy (30+): 1 KPOI
Medium (15-29): 2 KHTY, XHRM
Light (Under 15): 8

THE CRYSTAL METHOD 119/-1
Comin' Back (Outpost/Geffen)

Total Stations: 23
Heavy (30+): 0
Medium (15-29): 1 KJEE
Light (Under 15): 22
New Airplay This Week: 1 WRAX

SISTER HAZEL 113/19
Concede (Universal)

Total Stations: 6
Heavy (30+): 0
Medium (15-29): 5 KAEP, KTOZ, KZNY, WARQ, WNNX
Light (Under 15): 1

★ MASSIVE ATTACK 112/54
Teardrop (Virgin)

Total Stations: 22
Heavy (30+): 0
Medium (15-29): 3 WBTZ, XHRM, XTRA
Light (Under 15): 19
New Airplay This Week: 2 WPLT, XTRA

COWBOY JUNKIES 111/1
Miles From Our Home (Geffen)

Total Stations: 11
Heavy (30+): 0
Medium (15-29): 3 WEQX, WGRD, WXZZ
Light (Under 15): 8

BIG WRECK 97/1
That Song (Atlantic)

Total Stations: 8
Heavy (30+): 0
Medium (15-29): 2 WBCN, WCY
Light (Under 15): 6

PHUNK JUNKEEZ 97/11
Haze (Trauma)

Total Stations: 12
Heavy (30+): 0
Medium (15-29): 2 KFMA, KTEG
Light (Under 15): 10
New Airplay This Week: 1 KTCL

MONEY MARK 93/12
Hand In Your Head (Mo Wax/frrr/London)

Total Stations: 12
Heavy (30+): 0
Medium (15-29): 2 KJEE, WBTZ
Light (Under 15): 10

THE TRAGICALLY HIP 83/3
Poets (Sire)

Total Stations: 9
Heavy (30+): 0
Medium (15-29): 3 CFNY, CIMX, WEDG
Light (Under 15): 6
New Airplay This Week: 1 WRXQ

★ REEL BIG FISH 80/25
Take On Me (Mojo/Universal)

Total Stations: 14
Heavy (30+): 0
Medium (15-29): 2 KLZR, WEDG
Light (Under 15): 12
New Airplay This Week: 3 KTCL, WEDG, WXEG

★ DRUGSTORE 80/29
El President (Roadrunner)

Total Stations: 12
Heavy (30+): 0
Medium (15-29): 3 WBTZ, WFNX, XHRM
Light (Under 15): 9
New Airplay This Week: 1 WRAX

★ PATTY GRIFFIN 77/14
One Big Love (A&M)

Total Stations: 9
Heavy (30+): 0
Medium (15-29): 3 KZNY, WEQX, WPLT
Light (Under 15): 6

Airpower awarded to those records which attain 1,100 detections for the first time. New airplay lists those stations registering six or more detections per week on a record for the first time. ★ Initial impact: records appearing on this page for the first time.



SONG ACTIVITY REPORTS

For Week Ending July 5, 1998

Table for BARENAKED LADIES 1953/123. Columns: Total Stations: 73, Chart Move: 7-6. Lists stations and song activity.

Table for BEASTIE BOYS 1500/37. Columns: Total Stations: 69, Chart Move: 10-8. Lists stations and song activity.

Table for CANDLEBOX 434/95. Columns: Total Stations: 32. Lists stations and song activity.

Table for JERRY CANTRELL 322/32. Columns: Total Stations: 22. Lists stations and song activity.

Table for CREED 848/88. Columns: Total Stations: 47, Chart Move: 28-26. Lists stations and song activity.

Table for DAYS OF THE NEW 643/100. Columns: Total Stations: 41, Chart Move: Debut 33. Lists stations and song activity.

Table for EAGLE EYE CHERY 434/120. Columns: Total Stations: 40. Lists stations and song activity.

Table for EVE 6 2062/73. Columns: Total Stations: 77, Chart Move: 6-5. Lists stations and song activity.

Table for EVERYTHING 937/170. Columns: Total Stations: 51, Chart Move: 27-23. Lists stations and song activity.

Table for FAR TOO JONES 236/34. Columns: Total Stations: 21. Lists stations and song activity.

Table for FATBOY SLIM 201/40. Columns: Total Stations: 32. Lists stations and song activity.

Table for FEEDER 763/52. Columns: Total Stations: 48, Chart Move: 30-27. Lists stations and song activity.

Table for FOO FIGHTERS 1250/37. Columns: Total Stations: 70, Chart Move: 17-13. Lists stations and song activity.

Table for GARBAGE 676/216. Columns: Total Stations: 48, Chart Move: Debut 30. Lists stations and song activity.

Table for GRANT LEE BUFFALO 1236/106. Columns: Total Stations: 70, Chart Move: 18-14. Lists stations and song activity.



SONG ACTIVITY REPORTS



Detailed song tracking information for the last 3 weeks for all songs showing increased play this week. Total plays and gain do not include video play. Markets listed in order of population.

For Week Ending July 5, 1998

NATALIE IMBRUGLIA 716/127
Wishing I Was There (RCA)

Table with columns for station, city, and play count for Natalie Imbruglia's 'Wishing I Was There'.

K'S CHOICE 450/24
Everything For Free (550 Music)

Table with columns for station, city, and play count for K's Choice's 'Everything For Free'.

LENNY KRAVITZ 198/37
Fly Away (Virgin)

Table with columns for station, city, and play count for Lenny Kravitz's 'Fly Away'.

MARCY PLAYGROUND 1412/20
Saint Joe On The School Bus (Capitol)

Table with columns for station, city, and play count for Marcy Playground's 'Saint Joe On The School Bus'.

DAVE MATTHEWS BAND 951/353
Stay (Wasting Time) (RCA)

Table with columns for station, city, and play count for Dave Matthews Band's 'Stay'.

MONSTER MAGNET 434/26
Space Lord (A&M)

Table with columns for station, city, and play count for Monster Magnet's 'Space Lord'.

PEARL JAM 276/45
In Hiding (Epic)

Table with columns for station, city, and play count for Pearl Jam's 'In Hiding'.

POSSUM DIXON 226/140
Holding (Lenny's Song) (Surf Detective/Interscope)

Table with columns for station, city, and play count for Possum Dixon's 'Holding'.

BLOODCLOT 418/10
Bloodclot (Epitaph)

Table with columns for station, city, and play count for Bloodclot's 'Bloodclot'.

THE BRIAN SETZER ORCHESTRA 441/192
Jump Jive An' Wall (Interscope)

Table with columns for station, city, and play count for The Brian Setzer Orchestra's 'Jump Jive An' Wall'.

SEVEN MARY THREE 622/164
Over Your Shoulder (Mammoth/Antic)

Table with columns for station, city, and play count for Seven Mary Three's 'Over Your Shoulder'.

SMASH MOUTH 398/47
Can't Get Enough Of You Baby (Elektra/EEG)

Table with columns for station, city, and play count for Smash Mouth's 'Can't Get Enough Of You Baby'.

THE SMASHING PUMPKINS 982/110
Perfect (Virgin)

Table with columns for station, city, and play count for The Smashing Pumpkins' 'Perfect'.

SWIRL 360 292/39
Hey Now Now (Mercury)

Table with columns for station, city, and play count for Swirl 360's 'Hey Now Now'.

THIRD EYE BLIND 486/184
Jumper (Elektra/EEG)

Table with columns for station, city, and play count for Third Eye Blind's 'Jumper'.

POWER PLAYLISTS

KFOG San Francisco
PD: Paul Marszalek
APD/MD: Bill Evans

KFOG
104.5 97.7

	TW	LW
1 Cowboy Junkies, Miles From Our Home	21	13
2 Eric Clapton, She's Gone	21	17
3 Dave Matthews Band, Stay	20	17
4 The B-52's, Debbie	19	22
5 Buddy Guy Feat. Jonny Lang, Midnight	19	17
6 The Wallflowers, Heroes	17	16
7 Natalie Merchant, Kind & Generous	15	18
8 Bonnie Raitt, Spot Of Love	14	10
9 Pearl Jam, Wishlist	13	7
10 Neil Finn, She Will Have Her Way	11	7
11 Grant Lee Buffalo, Truly, Truly	11	9
12 Brian Setzer Orchestra, Jump Jive An'	10	8
13 Rolling Stones, Anybody Seen My Baby	10	9
14 Jimmy Page & Robert Plant, Shining In The	10	9
15 Jimmy Page & Robert Plant, Most High	9	9
16 Kenny Wayne Shepherd, Blue On Black	9	7
17 Matchbox 20, 3 AM	9	7
18 Heather Nova, London Rain	9	9
19 Sheryl Crow, A Change Would Do You Good	9	8
20 Marc Cohn, Already Home	9	11
21 Foo Fighters, Walking After You	9	7
22 The Boneshakers, Cold Sweat	8	5
23 Black Lab, Time Ago	8	20
24 Scott Thomas Band, Black Valentine	8	5
25 Bonnie Raitt, One Belief Away	8	15
26 Agents Of Good Roots, Smiling Up The	7	6
27 Sister Hazel, All For You	6	6
28 Pete Dinklage, Spacy And Shakin'	5	5
29 John Fogerty, Who'll Stop The Rain	5	4
30 Sarah McLachlan, Building A Mystery	4	5

WBOS Boston
PD: George Taylor Morris
MD: Cliff Nash

WBOS
92.9 FM

	TW	LW
1 Cowboy Junkies, Miles From Our Home	27	24
2 Semisonic, Closing Time	27	25
3 Patty Griffin, One Big Love	26	21
4 Pearl Jam, Wishlist	26	26
5 Goo Goo Dolls, Ins	25	24
6 Natalie Merchant, Kind & Generous	25	25
7 Dave Matthews Band, Stay	25	26
8 John Fogerty, Premonition	25	22
9 Barenaked Ladies, One Week	25	13
10 Brian Setzer Orchestra, Jump Jive An'	24	25
11 Kenny Wayne Shepherd, Blue On Black	23	24
12 Eric Clapton, She's Gone	23	24
13 Neil Finn, Sinner	22	21
14 Natalie Imbruglia, Wishing I Was There	21	19
15 Bonnie Raitt, Spot Of Love	21	19
16 Pearl Jam, Wishlist	21	19
17 Grant Lee Buffalo, Truly, Truly	21	16
18 The Smashing Pumpkins, Perfect	20	22
19 Buddy Guy Feat. Jonny Lang, Midnight	19	17
20 Fastball, The Way	19	20
21 The Verve, Lucky Man	18	23
22 Matchbox 20, Real World	18	24
23 Goo Goo Dolls, Ins	18	20
24 Third Eye Blind, How's It Going To Be	17	16
25 Marcy Playground, Sex And Candy	15	16
26 Bonnie Raitt, One Belief Away	15	8
27 Sarah McLachlan, Adia	15	9
28 Athenaeum, What I Didn't Know	15	9
29 The B-52's, Debbie	14	12
30 Kenny Wayne Shepherd, Somehow, Somewhere	13	7

WXRT Chicago
VP/Pgm: Norm Winer
MD: Patty Martin

93
RADIO CHICAGO

	TW	LW
1 Fastball, The Way	15	16
2 Poi Dog Pondering, That's The Way Love	14	9
3 Goo Goo Dolls, Ins	13	11
4 Barenaked Ladies, One Week	13	8
5 Natalie Merchant, Break Your Heart	12	8
6 Natalie Merchant, Kind & Generous	12	10
7 The B-52's, Debbie	12	14
8 The Smashing Pumpkins, Ava Adore	12	13
9 Grant Lee Buffalo, Truly, Truly	12	3
10 Dave Matthews Band, Stay	11	9
11 The Wallflowers, Heroes	11	14
12 The Smashing Pumpkins, Perfect	11	5
13 Foo Fighters, Walking After You	10	9
14 Steve Politz, Silver Lining	10	8
15 Jimmy Page & Robert Plant, Shining In The	10	9
16 Pearl Jam, Wishlist	10	10
17 Semisonic, Closing Time	10	10
18 Buddy Guy Feat. Jonny Lang, Midnight	9	12
19 Sonia Dada, Zachary	9	10
20 Marcy Playground, Sex And Candy	9	7
21 Kenny Wayne Shepherd, Blue On Black	9	6
22 Buddy Guy, Heavy Love	8	8
23 Ugly Americans, Dancing At The Feet Of	7	8
24 Pearl Jam, In Hiding	8	10
25 Agents Of Good Roots, Smiling Up The	8	6
26 Cowboy Junkies, Miles From Our Home	8	7
27 Sarah McLachlan, Adia	8	13
28 Dave Matthews Band, Crush	8	5
29 Jeff Buckley, Everybody Here Wants You	8	7
30 Patty Griffin, One Big Love	8	6

KTCZ Minneapolis
PD: Lauren MacLeash
MD: Mike Wolf

Cities97

	TW	LW
1 Everything, Hooch	21	22
2 Sister 7, Know What You Mean	19	21
3 Dave Matthews Band, Stay	19	26
4 Natalie Merchant, Kind & Generous	18	24
5 Edwin McCain, I'll Be	17	20
6 Natalie Imbruglia, Torn	17	20
7 Rod Stewart, Oh La La	15	14
8 Grant Lee Buffalo, Truly, Truly	12	12
9 John Fogerty, Premonition	12	11
10 The Wallflowers, Heroes	12	12
11 The Connells, Crown	12	12
12 Foo Fighters, Walking After You	11	11
13 Goo Goo Dolls, Ins	11	13
14 Scott Thomas Band, Black Valentine	10	11
15 Marc Cohn, Lost You In The Canyon	10	17
16 Sister Hazel, Concede	10	17
17 Storyville, Born Without You	10	12
18 Eric Clapton, She's Gone	9	23
19 Patty Griffin, One Big Love	9	11
20 Heather Nova, London Rain	9	8
21 Cowboy Junkies, Miles From Our Home	8	7
22 Fastball, The Way	7	11
23 Matchbox 20, Real World	7	14
24 Indigo Girls, Shame On You	6	4
25 Brian Setzer Orchestra, Jump Jive An'	6	8
26 Buddy Guy Feat. Jonny Lang, Midnight	6	8
27 Barenaked Ladies, One Week	6	7
28 From Good Horizons, Kick It On	6	7
29 John Cougar Mellencamp, Pink Houses	5	5
30 Tom Petty & The Heartbreakers, Free Fallin'	5	4

KBCO Denver
PD: Dave Benson
MD: Scott Arbough

KBCO
97.3 fm

	TW	LW
1 Natalie Merchant, Kind & Generous	26	25
2 Sister 7, Know What You Mean	26	25
3 Bonnie Raitt, One Belief Away	25	23
4 Dave Matthews Band, Stay	24	27
5 Barenaked Ladies, One Week	21	17
6 Goo Goo Dolls, Ins	20	15
7 Kenny Wayne Shepherd, Blue On Black	17	12
8 Foo Fighters, Walking After You	17	14
9 Everything, Hooch	15	15
10 William Topley, The Ring	14	11
11 Rod Stewart, Oh La La	14	20
12 Abra Moore, Four Leaf Clover	13	12
13 Eagle Eye Cherry, Save Tonight	13	16
14 Scott Thomas Band, Black Valentine	13	14
15 The Verve, Bitter Sweet Symphony	13	11
16 Fastball, The Way	12	12
17 Agents Of Good Roots, Smiling Up The	12	15
18 Brad, The Day Brings	12	12
19 Ziggy Marley & The Melody Makers, People	11	12
20 Marc Cohn, Already Home	11	12
21 Bonnie Raitt, Spot Of Love	11	8
22 Sister 7, Know What You Mean	11	14
23 Blues Traveler, Most Precious	10	6
24 Grant Lee Buffalo, Truly, Truly	10	4
25 Tori Amos, Spark	10	3
26 Marc Cohn, Lost You In The Canyon	9	9
27 William Topley, Wake Up	9	15
28 John Fogerty, Blueberry	8	3
29 Cherry Poppin' Daddies, Zoot Suit Riot	8	10
30 Pearl Jam, Wishlist	8	26

WHPT Tampa
PD: Chuck Beck
MD: Kurt Schreiner

102.5
The Point

	TW	LW
1 Goo Goo Dolls, Ins	33	31
2 Edwin McCain, I'll Be	33	31
3 Natalie Merchant, Kind & Generous	32	32
4 Matchbox 20, Real World	31	33
5 Natalie Imbruglia, Torn	27	5
6 Goo Goo Dolls, Ins	27	5
7 Five Easy Pieces, Lovers	15	3
8 Fastball, The Way	13	32
9 Grant Lee Buffalo, Truly, Truly	11	8
10 Kenny Wayne Shepherd, Blue On Black	10	11
11 Everything, Hooch	10	5
12 Marc Cohn, Walking In Memphis	9	5
13 Sarah McLachlan, Adia	8	15
14 The Doctors, Two Princes	8	5
15 Rod Stewart, Every Picture Tells A Story	8	4
16 Tracy Chapman, Give Me One Reason	7	7
17 Eric Clapton, She's Gone	7	10
18 Sister Hazel, Concede	7	7
19 Red Hot Chili Peppers, Under The Bridge	7	4
20 Marc Cohn, Already Home	7	10
21 Seal, Kiss From A Rose	7	15
22 Collective Soul, The World I Know	7	6
23 Simple Minds, Don't You	7	3
24 John Fogerty, Premonition	7	11
25 Blues Traveler, Run Around	7	5
26 Huey Lewis & The News, The Heart Of Rock	7	5
27 Dave Matthews Band, Stay	7	6
28 The Outfield, Your Love	6	3
29 Dishwalla, Counting Blue Cars	6	7
30 Bonnie Raitt, I Can't Make You Love Me	6	2

KMTT Seattle
SM: Chris Mays
APD: Jason Parker
MD: Dean Carlson

The Mountain
103.3 FM

	TW	LW
1 Everything, Hooch	19	20
2 Bonnie Raitt, The Fundamental Things	18	10
3 Cowboy Junkies, Miles From Our Home	18	10
4 Natalie Merchant, Kind & Generous	18	18
5 Eric Clapton, She's Gone	17	17
6 Brian Setzer Orchestra, Jump Jive An'	17	20
7 Dave Matthews Band, Stay	17	18
8 Train, Meet Virginia	12	12
9 Scott Thomas Band, Black Valentine	9	7
10 Jimmy Krawley, If You Can't Say No	8	9
11 Tori Amos, Spark	8	9
12 Sarah McLachlan, Black & White	8	19
13 Hub, Evil Twin	8	6
14 Sonia Dada, Zachary	8	4
15 Agents Of Good Roots, Upspin	8	4
16 Buddy Guy Feat. Jonny Lang, Midnight	8	11
17 Grant Lee Buffalo, Truly, Truly	7	5
18 Robbie Robertson, In The Blood	7	7
19 Natalie Merchant, Break Your Heart	6	7
20 Patty Griffin, One Big Love	6	9
21 Rod Stewart, Oh La La	6	11
22 John Fogerty, Premonition	6	9
23 Pearl Jam, Wishlist	6	8
24 The Tragically Hip, Poets	6	2
25 Marc Cohn, Lost You In The Canyon	6	2
26 Eagle Eye Cherry, Save Tonight	6	2
27 Jimmy Page & Robert Plant, Shining In The	5	9
28 Jonny Lang, Lie To Me	5	4
29 Pete Dinklage, Spacy And Shakin'	5	5
30 Jeff Buckley, Everybody Here Wants You	5	5

WVRV St. Louis
PD: Mike Richter
APD: Chuck Jeffries

FM RIVER
101.1

	TW	LW
1 Natalie Imbruglia, Torn	45	34
2 Fastball, The Way	41	34
3 Alanis Morissette, Uninvited	40	35
4 Alanis Morissette, Uninvited	40	35
5 Semisonic, Closing Time	39	41
6 Edwin McCain, I'll Be	36	37
7 Green Day, Time Of Your Life	23	35
8 Barenaked Ladies, One Week	20	24
9 The Wallflowers, One Headlight	17	18
10 Sarah McLachlan, Adia	17	7
11 Dave Matthews Band, Stay	17	23
12 The Mighty Mighty Bosstones, The Impression	16	12
13 Smash Mouth, Can't Get Enough Of You	16	7
14 Bonnie Raitt, One Belief Away	16	11
15 Patty Griffin, One Big Love	15	22
16 Billie Myers, Kiss The Rain	15	10
17 Sister 7, Know What You Mean	15	23
18 The Verve, Bitter Sweet Symphony	15	13
19 Dishwalla, Counting Blue Cars	15	13
20 Fiona Apple, Criminal	15	12
21 Natalie Merchant, Kind & Generous	14	22
22 Leah Androuse, It's Alright It's Ok	14	11
23 Collective Soul, December	14	9
24 Sublime, What I Got	14	9
25 Third Eye Blind, How's It Going To Be	14	9
26 Imani Coppola, Legend Of A Cowgirl	14	12
27 Tonic, If You Could Only See	13	12
28 Smash Mouth, Walkin' On The Sun	13	11
29 The Smashing Pumpkins, 1979	13	10
30 Sheryl Crow, A Change Would Do You Good	13	11

KXPK Denver
APD/MD: Eric Schmidt

The Peak
96.1

	TW	LW
1 Dave Matthews Band, Stay	33	28
2 Natalie Merchant, Kind & Generous	32	29
3 Goo Goo Dolls, Ins	30	34
4 Agents Of Good Roots, Smiling Up The	30	29
5 Barenaked Ladies, One Week	21	22
6 Brian Setzer Orchestra, Jump Jive An'	20	21
7 The Urge, Jump Right In	19	8
8 Grant Lee Buffalo, Truly, Truly	17	15
9 Eagle Eye Cherry, Save Tonight	17	16
10 Athenaeum, What I Didn't Know	16	15
11 Eye & Inside Out	16	1
12 The Verve, Lucky Man	15	13
13 The Wallflowers, Heroes	15	30
14 The Smashing Pumpkins, Perfect	15	16
15 Fastball, The Way	14	11
16 Alana Davis, Crazy	14	19
17 Smash Mouth, Can't Get Enough Of You	14	16
18 Cherry Poppin' Daddies, Zoot Suit Riot	14	10
19 Natalie Imbruglia, Torn	12	10
20 William Topley, Wake Up	12	1
21 Matchbox 20, Real World	12	14
22 Everclear, I Will Buy You A New Life	12	17
23 Brad, The Day Brings	11	9
24 Kenny Wayne Shepherd, Blue On Black	11	12
25 Semisonic, Closing Time	11	10
26 Third Eye Blind, Semi-Charmed Life	11	6
27 Tonic, If You Could Only See	11	8
28 Foo Fighters, Walking After You	10	0
29 Everclear, Everything To Everyone	10	7
30 Tori Amos, Spark	10	13

CIDR Detroit
PD: Wendy Duff
MD: Jerry Mason

The River
93.9 FM

	TW	LW
1 Goo Goo Dolls, Ins	37	33
2 Natalie Merchant, Kind & Generous	35	34
3 Grant Lee Buffalo, Truly, Truly	34	28
4 Matchbox 20, Real World	33	32
5 Dave Matthews Band, Stay	33	35
6 Brian Setzer Orchestra, Jump Jive An'	33	16
7 Tori Amos, Spark	32	33
8 Cowboy Junkies, Miles From Our Home	31	36
9 Barenaked Ladies, One Week	31	6
10 The Wallflowers, Heroes	23	32
11 Semisonic, Closing Time	21	33
12 Patty Griffin, One Big Love	19	17
13 Bonnie Raitt, One Belief Away	16	20
14 Agents Of Good Roots, Upspin	15	14
15 Scott Thomas Band, Black Valentine	14	14
16 Steve Politz, Silver Lining	14	9
17 Billy Mann, Beat Myself Up	13	6
18 Foo Fighters, Walking After You	15	6
19 John Fogerty, Premonition	15	14
20 Natalie Imbruglia, Wishing I Was There	15	7
21 Everything, Hooch	14	18
22 Eric Clapton, She's Gone	14	11
23 Edwin McCain, I'll Be	14	13
24 Heather Nova, London Rain	13	6
25 Sarah McLachlan, Adia	11	17
26 Sister Hazel, All For You	10	8
27 The Tragically Hip, Poets	10	8
28 Fiona Apple, Criminal	10	6
29 Sarah McLachlan, Sweet Surrender	9	9
30 Ben Folds Five, Brink	9	10

KKZN Dallas
PD: Joel Folger
Interim MD: Abbey Goldstein

Zone
93.7

	TW	LW
1 Fastball, The Way	31	29
2 Eric Clapton, She's Gone	30	29
3 Matchbox 20, Real World	30	29
4 Goo Goo Dolls, Ins	29	25
5 Natalie Merchant, Kind & Generous	28	29
6 The Wallflowers, Heroes	27	28
7 Semisonic, Closing Time	21	10
8 Everything, Hooch	16	28
9 The Verve, Bitter Sweet Symphony	16	28
10 Heather Nova, London Rain	14	6
11 Marc Cohn, Lost You In The Canyon	13	14
12 Storyville, Born Without You	13	12
13 Cowboy Junkies, Miles From Our Home	13	14
14 The Verve, Lucky Man	13	11
15 Edwin McCain, I'll Be	12	14
16 Dave Matthews Band, Stay	12	13
17 Grant Lee Buffalo, Truly, Truly	12	14
18 Barenaked Ladies, One Week	12	8
19 Patty Griffin, One Big Love	12	12
20 Alana Davis, Crazy	12	12
21 Marcy Playground, Sex And Candy	11	10
22 Bonnie Raitt, One Belief Away	11	10
23 Third Eye Blind, Semi-Charmed Life	11	8
24 Sister Hazel, Concede	11	11
25 The Smashing Pumpkins, Perfect	11	12
26 Lucinda Williams, Right In Time	11	6
27 Whiskeytown, 16 Days	10	9
28 Tonic, If You Could Only See	10	6
29 Sister Hazel, Happy	9	8
30 Sister Hazel, All For You	9	6

WXRV Boston
PD: Joanne Doody
MD: Mike Mullaney

Never 93.5

COMBINED ROCK AUDIENCE

AIRPLAY BY FORMAT

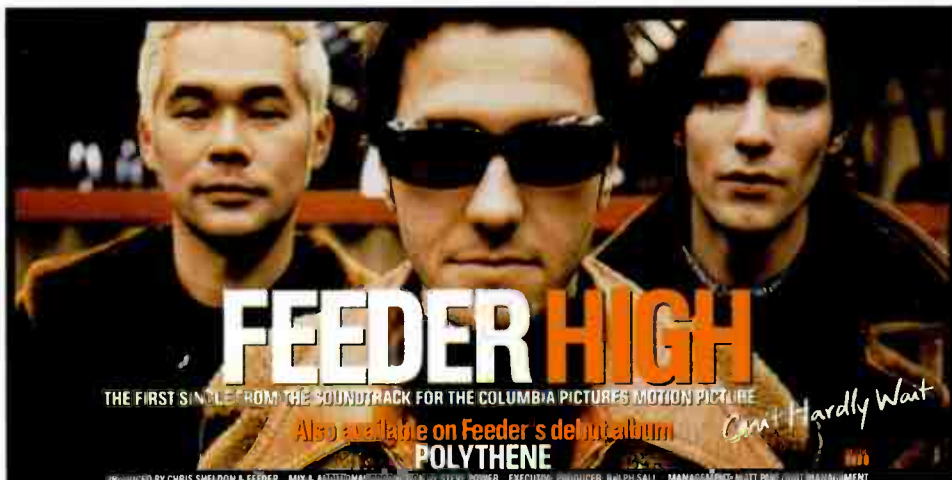
TW	LW	WKS	TITLE (IMPRINT/PROMOTION LABEL)	ARTIST	THIS WEEK			LAST WEEK			MAINSTREAM			MODERN			TRIPLE-A		
					Audience (millions)	Detections No.	Rank	Audience (millions)	Detections No.	Rank	Audience (millions)	Detections No.	Rank	Audience (millions)	Detections No.	Rank	Audience (millions)	Detections No.	Rank
1	1	15	IRIS (WARNER SUNSET/REPRISE)	GOO GOO DOLLS	23.4277	3907	1	24.5268	3944	1	5.5886	934	13	15.2333	2534	1	2.6058	439	2
2	2	19	CLOSING TIME (MCA)	SEMISONIC	18.9138	3068	3	21.0268	3339	2	3.7724	618	22	13.7620	2192	4	1.3794	258	8
3	3	9	AVA ADORE (VIRGIN)	THE SMASHING PUMPKINS	17.1492	2957	4	20.4868	3310	3	6.2476	1075	11	10.5765	1805	7	0.3251	77	—
4	4	18	SHIMMER (550 MUSIC)	FUEL	16.5062	3085	2	17.1117	3125	4	4.1603	855	16	12.3276	2223	2	0.0183	7	—
5	8	15	FLAGPOLE SITTA (SLASH/LONDON/ISLAND)	HARVEY DANGER	14.1543	2431	5	14.9307	2440	7	0.7250	216	—	13.4293	2215	3	—	—	—
6	5	21	THE WAY (HOLLYWOOD)	FASTBALL	13.3394	2215	10	16.0817	2531	6	2.8158	485	29	8.6646	1449	9	1.8590	281	6
7	12	5	THE DOWN TOWN (OUTPOST/GEFFEN)	DAYS OF THE NEW	13.1868	2247	8	12.2182	2057	12	9.5785	1604	1	3.6083	643	33	—	—	—
8	9	8	INSIDE OUT (RCA)	EVE 6	13.0414	2417	6	12.8957	2254	10	1.2187	307	—	11.6083	2062	5	0.2144	48	—
9	10	14	SAVE YOURSELF (COLUMBIA)	STABBING WESTWARD	12.5139	2228	9	12.8662	2285	9	7.5809	1253	6	4.9330	975	20	—	—	—
10	11	4	ONE WEEK (REPRISE)	BARENAKED LADIES	12.4491	2353	7	12.4894	2159	11	0.4446	102	—	10.3604	1953	6	1.6841	298	4
11	7	20	WISHLIST (EPIC)	PEARL JAM	12.4568	2043	11	15.0014	2417	8	3.8815	776	17	7.4552	1097	17	1.1201	170	19
12	13	23	BLUE ON BLACK (REVOLUTION/REPRISE)	KENNY WAYNE SHEPHERD BAND	10.4625	1458	24	11.1034	1668	17	9.1771	1300	4	0.0195	17	—	1.2659	141	—
13	14	42	MY OWN PRISON (WIND-UP)	CREED	10.3593	1498	21	11.1192	1542	24	4.4895	708	—	5.8548	784	—	0.0150	6	—
14	17	5	INTERGALACTIC (GRAND ROYAL/CAPITOL)	BEASTIE BOYS	10.3074	1606	18	10.7840	1557	22	0.6415	106	—	9.6659	1500	8	—	—	—
15	21	3	WHAT'S THIS LIFE FOR (WIND-UP)	CREED	10.1819	1848	14	10.1753	1713	15	5.2317	1000	12	4.9502	848	26	—	—	—
16	16	37	SEX AND CANDY (CAPITOL)	MARCY PLAYGROUND	9.9041	1495	22	11.0128	1640	20	3.2467	514	—	5.8157	851	—	0.8417	130	—
17	23	3	IT'S ALRIGHT (MAVERICK/WARNER BROS.)	CANDLEBOX	9.6763	1849	13	9.2478	1654	19	7.9567	1415	2	1.7196	434	—	—	—	—
18	15	24	I WILL BUY YOU A NEW LIFE (CAPITOL)	EVERCLEAR	9.6648	1415	25	11.0427	1626	21	0.7785	152	—	8.6033	1176	16	0.2830	87	—
19	18	15	REAL WORLD (LAVA/ATLANTIC)	MATCHBOX 20	9.6156	1523	20	10.6120	1728	14	2.4941	414	33	5.8208	849	25	1.3007	260	7
20	6	12	HEROES (EPIC)	THE WALLFLOWERS	9.5589	1890	12	15.0851	2554	5	4.1463	758	18	4.2597	945	22	1.1529	187	16
21	20	34	TIME OF YOUR LIFE (GOOD RIDDANCE) (REPRISE)	GREEN DAY	9.2288	1344	27	10.2480	1383	29	1.6886	287	—	7.1538	963	—	0.3864	94	—
22	26	3	SPACE LORD (A&M)	MONSTER MAGNET	9.1713	1751	16	8.3342	1658	18	6.9108	1317	3	2.2605	434	—	—	—	—
23	25	14	TORN (WIND-UP)	CREED	9.0865	1281	31	8.8037	1357	31	8.4326	1094	9	0.6539	187	—	—	—	—
24	38	2	STAY (WASTING TIME) (RCA)	DAVE MATTHEWS BAND	8.9842	1464	23	6.9049	1048	41	0.4197	97	—	5.7878	951	21	2.7767	416	3
25	19	15	PUSH IT (ALMO SOUNDS/INTERSCOPE)	GARBAGE	8.7057	1392	26	10.3723	1704	16	0.5938	124	—	8.0359	1254	12	0.0760	14	—
26	29	4	WALKING AFTER YOU (CAPITOL/ELEKTRA/EEG)	FOO FIGHTERS	8.6535	1647	17	8.0878	1551	23	1.0593	242	—	6.5192	1250	13	1.0750	155	—
27	22	26	MY HERO (ROSWELL/CAPITOL)	FOO FIGHTERS	8.4785	1221	35	9.6056	1269	34	4.5402	649	20	3.9383	572	—	—	—	—
28	24	4	PERFECT (VIRGIN)	THE SMASHING PUMPKINS	8.4170	1092	41	9.1073	982	50	0.0018; 1	—	7.7408	982	19	0.6744	109	—	—
29	40	2	TRULY, TRULY (SLASH/WARNER BROS.)	GRANT LEE BUFFALO	8.3307	1606	19	6.7183	1410	28	0.3122	85	—	6.3643	1236	14	1.6542	285	5
30	31	3	SHINING IN THE LIGHT (ATLANTIC)	JIMMY PAGE & ROBERT PLANT	8.0267	1221	34	7.6345	1218	36	7.4059	1150	7	0.0006	1	—	0.6202	70	—
31	28	7	SAINT JOE ON THE SCHOOL BUS (CAPITOL)	MARCY PLAYGROUND	7.8296	1846	15	8.1667	1817	13	1.6508	434	31	6.1788	1412	10	—	—	—
32	27	11	FUEL (ELEKTRA/EEG)	METALLICA	7.7751	1215	36	8.2635	1215	37	7.3285	1117	8	0.4466	98	—	—	—	—
33	36	4	I DON'T WANT TO MISS A THING (COLUMBIA)	AEROSMITH	7.2999	1333	29	7.0915	1362	30	7.1989	1298	5	0.0011	2	—	0.0999	33	—
34	35	3	MY SONG (COLUMBIA)	JERRY CANTRELL	7.2581	1243	32	7.2912	1231	35	5.3283	921	14	1.9298	322	—	—	—	—
35	34	52	EVERLONG (ROSWELL/CAPITOL)	FOO FIGHTERS	7.1131	984	47	7.3380	1011	46	2.6136	364	—	4.4932	619	—	0.0063	1	—
36	33	48	TOUCH, PEEL AND STAND (OUTPOST/GEFFEN)	DAYS OF THE NEW	7.0454	1088	42	7.3999	1115	39	3.5260	528	—	3.5194	560	—	—	—	—
37	30	16	I LIE IN THE BED I MAKE (VIRGIN)	BROTHER CANE	6.7827	1143	38	7.7810	1415	27	6.4693	1087	10	0.3134	56	—	—	—	—
38	39	5	WHAT I DIDN'T KNOW (ATLANTIC)	ATHENAEUM	6.7044	1283	30	6.8040	1323	32	0.0181	19	—	6.4213	1208	15	0.2650	56	—
39	32	13	SPARK (ATLANTIC)	TORI AMOS	6.6341	1105	39	7.5057	1276	33	0.0025	2	—	5.7121	918	24	0.9195	185	17
40	NEW ENTRY		EVERYTHING TO EVERYONE (CAPITOL)	EVERCLEAR	6.4270	858	52	6.3444	898	52	0.7326	102	—	5.6091	736	—	0.0853	20	—

Records showing an increase in audience over the previous week, regardless of chart movement. Rankings broken down by mainstream, modern and triple-A formats (on right side of this page) correspond to charts printed in this week's Monitor and therefore rankings do not exist for recurrences and records below No. 40 (No. 20 for triple-A). Audience computed by cross-referencing exact times of airplay with Arbitron listener data. ©1998, Billboard/BPI Communications.

THIS WEEK	LAST WEEK	WKS. ON CHART	MAINSTREAM		DETECTIONS		
			TITLE/IMPRINT/PROMOTION LABEL	ARTIST	TW	LW	
			★★★★ NO. 1 ★★★★★				
①	1	7	THE DOWN TOWN	OUTPOST/GEFFEN	2 weeks at No. 1	DAYS OF THE NEW	1604 1514
②	5	4	IT'S ALRIGHT	MAVERICK/WARNER BROS.		CANDLEBOX	1415 1315
③	7	8	SPACE LORD	A&M		MONSTER MAGNET	1317 1250
4	2	26	BLUE ON BLACK	REVOLUTION/REPRISE		KENNY WAYNE SHEPHERD BAND	1300 1495
5	4	8	I DON'T WANT TO MISS A THING	COLUMBIA		AEROSMITH	1298 1331
6	6	18	SAVE YOURSELF	COLUMBIA		STABBING WESTWARD	1253 1255
7	10	8	SHINING IN THE LIGHT	ATLANTIC		JIMMY PAGE & ROBERT PLANT	1150 1155
8	11	22	FUEL	ELEKTRA/VEEG		METALLICA	1117 1107
9	9	22	TORN	WIND-UP		CREED	1094 1164
10	3	17	I LIE IN THE BED I MAKE	VIRGIN		BROTHER CANE	1087 1338
11	8	9	AVA ADORE	VIRGIN		THE SMASHING PUMPKINS	1075 1196
⑫	14	5	WHAT'S THIS LIFE FOR	WIND-UP		CREED	1000 953
13	15	12	IRIS	WARNER SUNSET/REPRISE		GOO GOO DOLLS	934 947
14	16	8	MY SONG	COLUMBIA		JERRY CANTRELL	921 941
15	13	9	CIGARETTES AND ALCOHOL	WARNER BROS.		ROD STEWART	886 978
⑬	19	15	SHIMMER	550 MUSIC		FUEL	855 828
17	17	13	WISHLIST	EPIC		PEARL JAM	776 915
18	12	11	HEROES	EPIC		THE WALLFLOWERS	758 1015
19	20	7	PREMONITION	REPRISE		JOHN FOGERTY	663 690
20	23	25	MY HERO	ROSWELL/CAPITOL		FOO FIGHTERS	649 671
21	18	13	SLAM DUNK	WAWAZAT!!		DLR BAND	630 837
22	22	18	CLOSING TIME	MCA		SEMISONIC	618 689
⑳	32	2	OVER YOUR SHOULDER	MAMMOTH/ATLANTIC		SEVEN MARY THREE	611 419
24	26	9	MONSTERSIDE	BIG CAT/V2		ADDICT	557 557
⑳	NEW ▶		SOMEHOW, SOMEWHERE, SOMEWAY	REVOLUTION/REPRISE		KENNY WAYNE SHEPHERD BAND	532 265
⑳	31	4	DU HAST	SLASH/LONDON/ISLAND		RAMMSTEIN	521 423
27	24	21	CUT YOU IN	COLUMBIA		JERRY CANTRELL	501 586
28	21	12	FIRE IN THE HOLE	WARNER BROS.		VAN HALEN	490 689
29	25	11	THE WAY	HOLLYWOOD		FASTBALL	485 560
⑳	33	4	NO SHELTER	EPIC		RAGE AGAINST THE MACHINE	439 418
⑳	30	4	SAINT JOE ON THE SCHOOL BUS	CAPITOL		MARCY PLAYGROUND	434 424
⑳	34	2	A SECRET PLACE	CAPITOL		MEGADETH	428 392
33	27	15	REAL WORLD	LAVA/ATLANTIC		MATCHBOX 20	414 475
34	35	5	PARK AVENUE	DGC/GEFFEN		GIRLS AGAINST BOYS	381 383
⑳	39	2	CRACK THE LIARS SMILE	THE ENCLAVE/MERCURY		DRAIN S.T.H.	371 361
36	37	4	FALLING	TVT		GRAVITY KILLS	367 368
⑳	NEW ▶		FLY AWAY	VIRGIN		LENNY KRAVITZ	365 309
⑳	NEW ▶		BORN WITHOUT YOU	ATLANTIC		STORYVILLE	353 333
39	36	9	THAT SONG	ATLANTIC		BIG WRECK	349 379
⑳	NEW ▶		HIGH	ECHO/ELEKTRA/VEEG		FEEDER	341 310

THIS WEEK	LAST WEEK	WKS. ON CHART	MODERN		DETECTIONS		
			TITLE/IMPRINT/PROMOTION LABEL	ARTIST	TW	LW	
			★★★★ NO. 1 ★★★★★				
1	1	15	IRIS	WARNER SUNSET/REPRISE	3 weeks at No. 1	GOO GOO DOLLS	2534 2592
2	3	19	SHIMMER	550 MUSIC		FUEL	2223 2290
3	4	15	FLAGPOLE SITTA	SLASH/LONDON/ISLAND		HARVEY DANGER	2215 2239
4	2	19	CLOSING TIME	MCA		SEMISONIC	2192 2394
⑤	6	12	INSIDE OUT	RCA		EVE 6	2062 1989
⑥	7	5	ONE WEEK	REPRISE		BARENAKED LADIES	1953 1830
7	5	9	AVA ADORE	VIRGIN		THE SMASHING PUMPKINS	1805 2038
⑧	10	6	INTERGALACTIC	GRAND ROYAL/CAPITOL		BEASTIE BOYS	1500 1463
9	8	22	THE WAY	HOLLYWOOD		FASTBALL	1449 1669
⑩	12	11	SAINT JOE ON THE SCHOOL BUS	CAPITOL		MARCY PLAYGROUND	1412 1392
11	11	15	JUMP RIGHT IN	IMMORTAL/EPIC		THE URGE	1297 1413
12	9	15	PUSH IT	ALMO SOUNDS/INTERSCOPE		GARBAGE	1254 1573
⑬	17	7	WALKING AFTER YOU	CAPITOL/ELEKTRA/VEEG		FOO FIGHTERS	1250 1213
⑬	18	6	TRULY, TRULY	SLASH/WARNER BROS.		GRANT LEE BUFFALO	1236 1130
15	16	13	WHAT I DIDN'T KNOW	ATLANTIC		ATHENAEUM	1208 1256
16	13	24	I WILL BUY YOU A NEW LIFE	CAPITOL		EVERCLEAR	1176 1366
17	14	21	WISHLIST	EPIC		PEARL JAM	1097 1309
18	19	8	GET 'EM OUTTA HERE	SURFDOG/HOLLYWOOD		SPRUNG MONKEY	1057 1090
⑬	26	4	PERFECT	VIRGIN		THE SMASHING PUMPKINS	982 872
20	21	17	SAVE YOURSELF	COLUMBIA		STABBING WESTWARD	975 1029
⑬	35	2	STAY (WASTING TIME)	RCA		DAVE MATTHEWS BAND	951 598
22	15	11	HEROES	EPIC		THE WALLFLOWERS	945 1288
⑬	27	3	HOOCH	BLACKBIRD/SIRE		EVERYTHING	937 767
24	20	13	SPARK	ATLANTIC		TORI AMOS	918 1069
25	23	16	REAL WORLD	LAVA/ATLANTIC		MATCHBOX 20	849 945
⑬	28	4	WHAT'S THIS LIFE FOR	WIND-UP		CREED	848 760
⑬	30	4	HIGH	ECHO/ELEKTRA/VEEG		FEEDER	763 711
28	22	15	DON'T DRINK THE WATER	RCA		DAVE MATTHEWS BAND	739 1020
⑬	38	3	WISHING I WAS THERE	RCA		NATALIE IMBRUGLIA	716 589
⑬	NEW ▶		I THINK I'M PARANOID	ALMO SOUNDS/INTERSCOPE		GARBAGE	676 460
31	31	4	YOU AND ME AND THE BOTTLE MAKES THREE TONIGHT (BABY)	COOLVILLE/FEM-CAPITOL		BIG BAD VODOO DADDY	675 699
32	32	9	4 AM	COLUMBIA		OUR LADY PEACE	650 662
⑬	NEW ▶		THE DOWN TOWN	OUTPOST/GEFFEN		DAYS OF THE NEW	643 543
⑬	NEW ▶		OVER YOUR SHOULDER	MAMMOTH/ATLANTIC		SEVEN MARY THREE	622 458
35	29	20	ZOOT SUIT RIOT	MOJO/UNIVERSAL		CHERRY POPPIN' DADDIES	620 708
36	34	4	NO SHELTER	EPIC		RAGE AGAINST THE MACHINE	603 627
37	24	13	REDUNDANT	REPRISE		GREEN DAY	592 918
38	39	16	UNINVITED	WARNER SUNSET/REPRISE		ALANIS MORISSETTE	574 578
39	37	5	AIRPORT SONG	HYBRID/SIRE		GUSTER	564 590
40	25	12	LUCKY MAN	VCHUT/VIRGIN		THE VERVE	563 907

Records showing an increase in detections over the previous week, regardless of chart movement. A record which has been on either chart for more than 20 weeks will not receive a bullet, even if it registers an increase in detections. Airpower awarded to those records which attain 800 detections (mainstream) or 1,100 (modern) for the first time. If two records are tied in number of plays, the record being played on more stations is placed first. Records below the top 20 are removed from the chart after 26 weeks.



DEBUT ④0 MAINSTREAM ROCK

③2 ACTIVE ROCK

ROCK RADIO:

- KUFO WYSP KBPI
- WAAF DC101 WKRK
- KEGL WMMS WJRR
- KDKB WRIF WZTA
- WXTB WXRC WLZR

and many, many more!

30 - ⑳ MODERN ROCK

(WITH OVER 800 SPINS!)

REACTION: TOP 5 PHONES AT KPNT

RESEARCH:

- TOP 10 CALLOUT AT KNDD
- 7th AMONGST P1's & 74% FAMILIAR AT WEND

SPINS:

KNDD 16x	WXRK 17x	91X 20x
99X 12x	WEND 32x	KWOD 13x
WHFS 14x	WRZX 20x	KTCL 30x
WFNX 30x	KNRK 21x	KCXX 20x

NEW: Q1D1



THE SECRET IS OUT!

MY SECRET LIFE

THE NEW ALBUM FROM

SONIA DADA

FEATURING 15 NEW SONGS

SLICES OF MY SECRET LIFE sampler ON YOUR DESKS NOW

"ZACHARY"

THE NEW SINGLE FROM SONIA DADA

ALREADY IN:

NEW THIS WEEK:

KINK
KXL
WNCW
WVOD
WRNR

WBOS	WMMM	KROK
WXRV	KBAC	KFMU
WXRT	WXPN	KMMS
KMTT	WRLT	KMTN
KXPX	WMVY	KEGR
KTCZ	WEBK	KRXS
KXST	WKZE	KSPN
KRSH	WMWV	KTAO
KFJX	KLRQ	KHUM
KTHX	KFAN	KOZT
WTTS	and many more!	

Gov't Mule

She Said, She Said

NEW THIS WEEK:

WMFS
WQBZ
KMOD
KMBY
KMJX
WNCB
WIXV
KAFX
WKIT
KDEZ
KZRQ

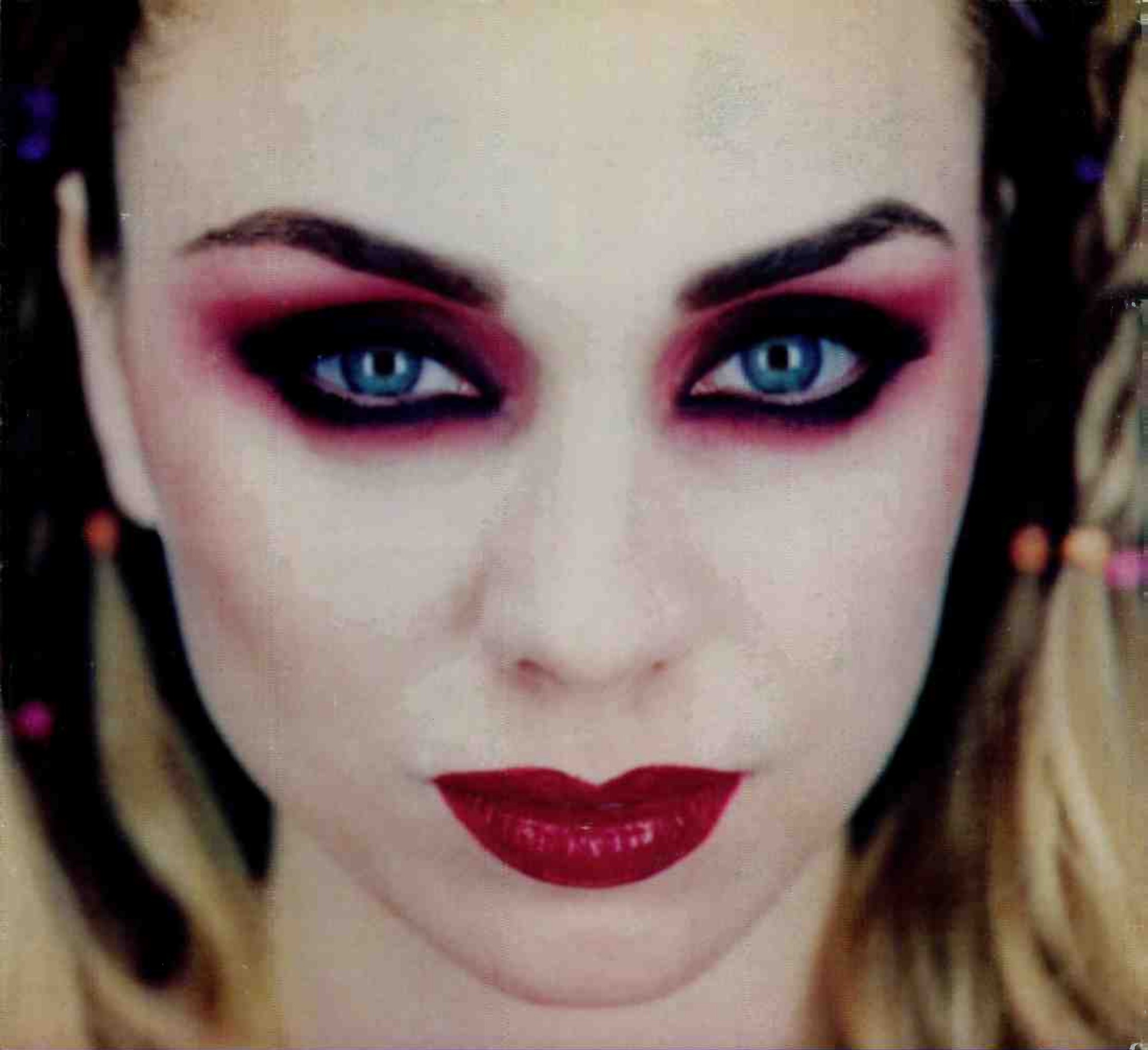
From the Capricorn
CD & Cassette "Dose"
314 536 504-2/4



ALREADY IN:

KTUX	WHMH	WSTZ	KYYS	KFMX	KRAR	KFDB	KZZK
KRQC	KQDS	WROQ	WROQ	WQWK	WKGB	KZCD	WTBK
KEYJ	WRBR	KCMQ	WBAB	WWCT	WIZN	KUGR	KOZE
WJXQ	WKHY	KXUS	WDHA	KKEG	WIIL	KFFX	

AND MANY MORE!



<TORCH>

ADD DATE: 7/14

Already on Q101, KKDM, WMAD, WKRL, KWOD & WEJE

SISTER SOLEIL

from the Universal Records release SOULARIUM



© 1998 Universal Records Inc.

Management: Michael D. Ryan / 21st Century Management (e merald@interaccess.com)