

ROCK ■ AIRPLAY Monitor

• We Listen To Radio •

April 3, 1998 \$4.95 Volume 5 • No. 14

ROCK HIGHLIGHTS

MAINSTREAM

#1

VAN HALEN

Without You (WARNER BROS.)

★ ★ ★ AIRPOWER ★ ★ ★

MEGADETH • *Use The Man* (CAPITOL)

GOING FOR AIRPLAY

DEFTONES • *Be Quiet And Drive (Far Away)* (MAVERICK/WARNER BROS.)

FACE TO FACE • *Blind* (A&M)

GOO GOO DOLLS • *Iris* (REPRISE)

REVEREND HORTON HEAT • *Lie Detector* (INTERSCOPE)

DAVE MATTHEWS BAND • *Don't Drink The Water* (RCA)

JIMMY PAGE/ROBERT PLANT • *Most High* (ATLANTIC)

PEARL JAM • *Wishlist* (EPIC)

SOUL ASYLUM • *I Will Still Be Laughing* (COLUMBIA)

MODERN

#1

FASTBALL

The Way (HOLLYWOOD)

★ ★ ★ AIRPOWER ★ ★ ★

THIRD EYE BLIND • *Losing A Whole Year* (ELEKTRA/EEG)

CHERRY POPPIN' DADDIES • *Zoot Suit Riot* (MOJO/UNIVERSAL)

GOING FOR AIRPLAY

ADDICT • *Monsterside* (V2)

TORI AMOS • *Spark* (ATLANTIC)

BEN FOLDS FIVE • *Song For The Dumped* (550 MUSIC)

ALANA DAVIS • *Crazy* (ELEKTRA/EEG)

DEFTONES • *Be Quiet And Drive (Far Away)* (MAVERICK/WARNER BROS.)

GOLDFINGER • *Seems Like Yesterday* (MERCURY)

BEN HARPER • *Mama's Trippin'* (VIRGIN)

DAVE MATTHEWS BAND • *Don't Drink The Water* (RCA)

ABRA MOORE • *All I Want* (ARISTA AUSTIN/ARISTA)

SOUL ASYLUM • *I Will Still Be Laughing* (COLUMBIA)

TRUNK FEDERATION • *Truck Lover* (ALIAS)

THE VERVE • *Lucky Man* (V2/HUT/VIRGIN)

TRIPLE-A

#1

ERIC CLAPTON

My Father's Eyes (REPRISE)

★ ★ ★ AIRPOWER ★ ★ ★

KENNY WAYNE SHEPHERD BAND • *Blue On Black* (REVOLUTION)

'Wedding Singer' Leads Some Modern Rockers Back To The '80s Altar

by Marc Schiffman

"The Wedding Singer" and "Grosse Pointe Blank" were movies steeped in '80s music. This summer, the Pretenders, B-52's, Culture Club, and Madness will each hit the road in a move sure to make Lollapalooza reach for its own way-back machine. So how has Big '80s revivalism influenced PDs, especially when so many exiled anything pre-Nirvana to their retro lunch program several years ago?

PDs remain as polarized over the '80s as ever, but—at a time when many modern rockers are broadening noticeably again—some programmers are indeed finding great test scores with this music and feel the time is right to embrace it, despite the growing list of modern AC outlets seemingly co-opting the music and threatening to dilute its impact.

WPLY (Y100) Philadelphia PD Jim McGuinn says of the '80s revival, "It certainly is amazing when the highest-selling record that we play anything off of is 'The Wedding Singer' soundtrack. The retro music ebbs and flows with this format. It gets fried, and then it comes back, gets fried and comes back.

Right now, it's a good time to shuffle in and out some of those titles if you can make it mix with your current product. For me, it does, because we're on the pop side of the format."

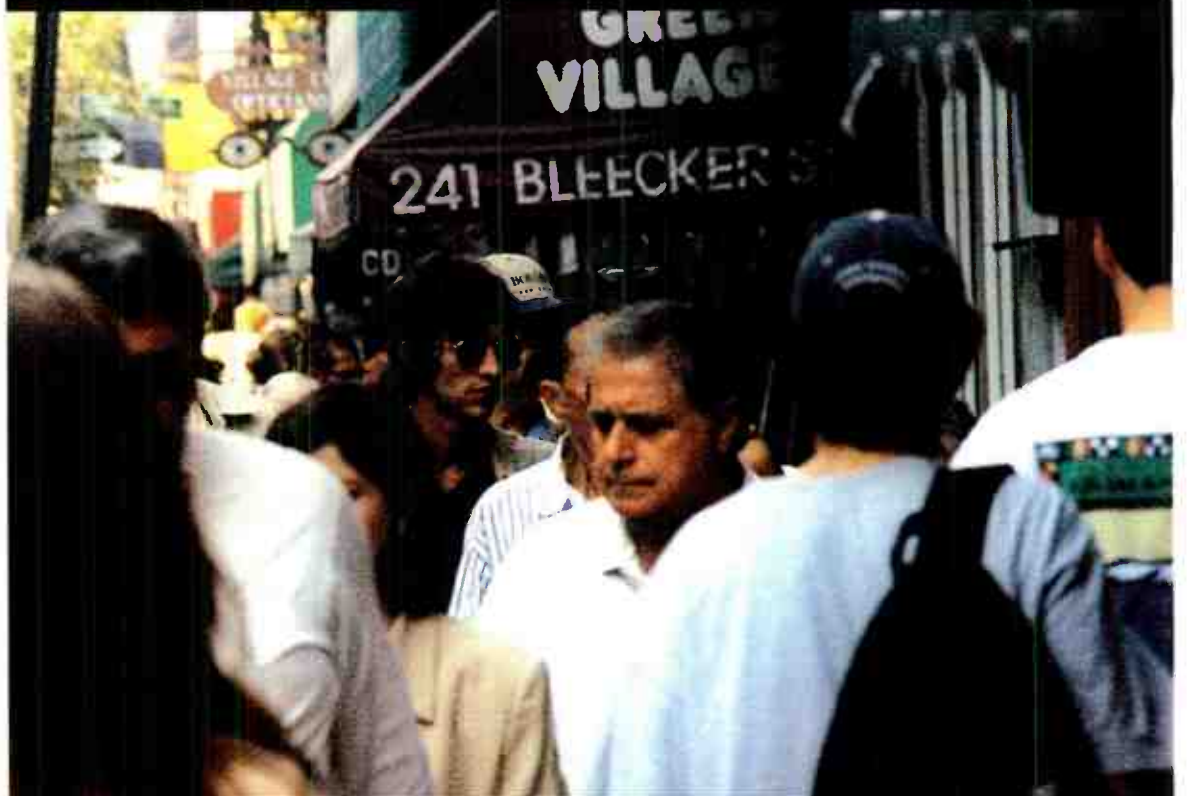
Over in L.A., KLYY (Y107) VP of programming Steve Blatter says the station "started playing more '80s music than it ever had probably around six or seven months ago. That's when we started picking up on it. One thing that I've been saying for years now is that modern rock stations that have been around for some time are all faced with the same decision—do you remain an 18-24 station or do you grow with that audience and become a 25-34 station?"

That being the case, Blatter says, more '80s music was logical for Y107, especially in a market "where this music has a heritage" because of veteran modern rival KROQ. Blatter notes that L.A. is the No. 1 market for "The Wedding Singer" sales, significantly in front of other markets around the country.

Y107's quotient of '80s fare has risen from about 15% of the mix to more than 35%, and Blatter says that

Continued on page 6

the verve



LUCKY MAN

the new song from the platinum album
URBAN HYMNS

GOING FOR ADDS APRIL 7th

ALREADY ON:

WXRK	X96	KFMA
KROQ	KTXQ	CFNY
WHFS	WHTG	WXZZ
KNDD	WFBZ	KTEG
KMTT	WRAX	WDST
WWCD	WEQX	WBTZ
WXRV	WOXY	WMVY
		WZEW



www.virginrecords.com
AOL Keyword: Virgin Records

©1998 VC Records Ltd/Va Hut Recordings.
Issued under exclusive license in the United States to Virgin Records America, Inc.

GRIN AND BLARE IT.

**ON
YOUR
DESK
NOW!**

*I will still be
laughing*

SOULASYLUM

THE FIRST SINGLE FROM THE EAGERLY ANTICIPATED
"CANDY FROM A STRANGER"



COLUMBIA

IN STORES TUESDAY, MAY 12.

PRODUCED BY CHRIS KIMSEY MIXED BY BOB CLEARMOUNTAIN WWW.SOULASYLUM.COM MANAGEMENT: CHRIS SCOTT AND JEFF KRAMER FOR OK MANAGEMENT CO. "COLUMBIA" REG. U.S. PAT. & TM. OFF. MARCA REGISTRADA. © 1998 SONY MUSIC ENTERTAINMENT INC.

World Radio History

Jonesboro Outlets To Stage Benefit

In light of the recent tragedy in Jonesboro, Ark., local rocker **KDEZ**, AC sister **KJBX** (Mix 106.7), and country **KDXY** are planning a benefit concert and silent auction for the families of the five people killed. The stations need artists to participate in the concert, donate merchandise, or come by to sign autographs. In response to those murders, and similar incidents in Paducah, Ky., and Pearl, Miss., Memphis rockers **WRXQ** (96X) and **WEGR** (Rock 103) are turning over four nights of programming to allow local kids time to talk.

BUSINESS: CBS/ARS OK

The Justice Department and CBS have reached an agreement allowing CBS to close on its \$1.6 billion buy of American Radio Systems. CBS will divest itself of seven stations, including album **WAAF** Boston and classic rockers **WEGQ** Boston, **KSD** St. Louis, and **WOCT** Baltimore.

Capstar, which filed to go public this week, taps SFX's **Geoff Armstrong** as its new COO and cuts a bunch of real estate loose to satisfy federal ownership rules in conjunction with its pending buy of SFX Broadcasting: Hefel pays \$54 million for Capstar's modern adult **KKPN** (the Planet) Houston, which is expected to flip to Spanish. Cox Radio buys four SFX Long Island, N.Y., properties, including album **WBAB/WHFM**, for \$48 million. Clear Channel picks up album **WTPT** and two others in Greenville, S.C., as well as country **WGNE** Daytona Beach, Fla., for \$46.5 million. And a new company controlled by Sacramento, Calif.-based **Frank Washington** nabs four Capstar stations in Danbury, Conn., including longtime rocker **WRKI**, for a reported \$15 million.

In a related story, **GM Lee Leicinger** exits Capstar's six-station Madison, Wis., cluster, which includes modern **WMAD**. Market manager **Jeff Tyler** will inherit some GM duties while a replacement is sought. In other Madison news, **Jonathan Little**, GM of triple-A **WMMM** and its sister stations, exits.

Clay McCauley, GM for the Cumulus cluster in Wilmington, N.C., exits. He oversaw five stations, including classic rock **WXQR** (Star 105).

PROGRAMMING: ECLECTIC SLIDE

Modern **WDST** Woodstock, N.Y., PD/morning host **Nic Harcourt** becomes creative music director at noncommercial triple-A **KCRW** Santa Monica, Calif., replacing **Chris Douridas** as host of "Morning Becomes Eclectic." Harcourt will consult **WDST**, where OM/afternoons **Jimmy Buff** segues to PD/mornings. Middayer **Ellen Z** takes afternoons; P/T **Ron Van Warmer** goes to middays; and production/promotion coordinator **Anita Koski** is now production director.

Radio veteran **Bob Kranes** exits Album Network for the marketing/promotion director post at classic rock **WNEW** New York. The station has been evolving its format, shifting its library from a '60s-'70s focus to late '70s-'80s, while starting to slowly add currents.

Album **WMFS** Memphis OM/PD **Jim Fox** exits.

Former album **KCMQ** Columbia, Mo., PD/MD/afternoons **Debbie Wylde** joins album **WAMX** Huntington, W.Va., as PD/MD/middays, replacing **Rich DeSisto**.

Classic rock **WJZE** Toledo, Ohio, PD/mornings **Chuck Sebastian** exits. Afternoons/production **Rick Wilder** is named PD/MD. New jock **Kid Mitchell** takes mornings; night host **Laurie "The Cruiser" Cruse** gets middays, replacing **Steven J.**, who exits; overnights **Jason Thompson** takes nights; and new talent **Jay** gets overnights.

Modern trimulcast **KLYY** (Y107) L.A. has been granted FCC approval for the second half of its power upgrade, which should give the stations 90% coverage of the market.

Album **WEZX** Scranton, Pa., flips classic rock. OM **Rob Lipshutz** says 'EZ' will still play currents, just fewer of them.

Dick Broadcasting unexpectedly flipped **WOKI** (Outlaw Country) Knoxville, Tenn., to classic rock as the Eagle March 27.

Former country **WFMB** Springfield, Ill., MD **Joe Bob Cameron** crosses to classic rock **WFXF** (the Fox) Peoria, Ill., as OM/afternoons

PEOPLE: STERN'S BIG WEEK

Howard Stern's Canadian affiliate **CILQ** (Q107) Toronto continues to cross swords with the Canadian Broadcast Standards Council. The council took issue with the content of four broadcasts, three in December and one in January. In response, Q107 has showed logs of new digital editing equipment with which it excised 77 segments ranging from a few words to a 20-minute spiel. **CILQ** will broadcast a statement regarding the violations most recently cited. Meanwhile, album **WIZN** Burlington, Vt., picks Stern this week. So does classic rock **WFXF** Peoria, Ill., and album **WIHN** (197) Bloomington, Ill. And Stern is expected to officially announce his forthcoming CBS TV show, set to air Saturday nights in major markets. If it's a success, CBS will add more affiliates.

Barsky, morning host at modern **WPLY** (Y100) Philadelphia, exits. Afternoon host **Preston Elliot** pairs with **Marilyn Russell** for mornings. **Russell**, most recently across the street at triple-A **WXPB**, previously worked with much of the Y100 staff when it was at former modern rival **WDRE**. **Matt Cord** trades afternoons at album **WMMR** for afternoons at **WPLY**. **WMMR** PD **Joe Bonadonna** seeks T&Rs for afternoons.

Modern **WJBX** Fort Myers, Fla., APD/afternoons **Lee Daniels** picks up MD duties, replacing MD/nights **Kurt Schreiner**. Former overnights **Lance** (who went P/T when that shift became automated) gets nights.

Album **WBBB** Raleigh, N.C., staffing up, adds OM **Andy Myer** from production at country sister **WKIX**. Country sister **WQDR** night jock **B.C.** nabs afternoons; rival album **WRDU** night jock **Danger** takes nights.

Active **WRCX** (Rock 103.5) Chicago overnights **Ned Spindle** drops his shift to concentrate on production and creative direction. P/T **Scott Struber** takes overnights. Also in Chicago, classic rock **WCKG** adds **Tom Stevens** (last with crosstown classic rock **WYSY**) for overnights, moving **Mark Zander** to weekend work.

Album **WHEB** Portsmouth, N.H., night jock **Jonathan Smith** crosses to classic rock **WXBB** as morning co-host... Top 40 **KYKY** St. Louis jock **Leslie O'Brian** joins rival triple-A **WVRV** (the River) for nights... Modern **KNRX** Kansas City late-nighter **Shawn Roach** takes nights.

Top 40 **WBHT** Scranton, Pa., P/T **D.C. Taylor** is now overnights/music coordinator at album sister **WZMT** as **D. Taylor**. Classic rock **WEMR** morning woman **Nikki Walton** joins **WZMT** for nights, moving **Unseen John** from nights to board op for the **Howard Stern** morning feed.

Album **WVRK** Columbus, Ga., taps crosstown AC **WCGQ** night jock **Jon Bishop** for AM/MD nights, replacing **Kendall Knight**.

Classic rock **KZOK** Seattle middayer **Connie Cole** crosses the hall to country sister **KMPS**.

With p.m. driver **Michael Shannon** in place at classic rock **KARX** Amarillo, Texas (Rock Airplay Monitor, March 27), **Mike Hill** goes to middays; middayer **Dennis Allen** rolls into evenings.

Album **KFMW** Waterloo, Iowa, APD/middays **Dave Schofield** exits. Night 1) **Libby Wilde** takes middays; overnights **Scott Brannon** gets nights. PD **Jave Patterson** seeks T&Rs for overnights.

Classic rock **WNGZ** Elmira, N.Y., PD **Eric Moon**, who is MD/nights at top 40 sister **WNKI** (Wink 106), shifts into afternoons at Wink.

Chuck Mo drops his specialty-show duties at **KTOZ** Springfield to join rival active **KZRQ** for P/T. **KZRQ** just completed its move to 322 East Walnut, Springfield, Mo. 65806; the programming line is 417-873-2030; fax 417-873-2015.

Letters: A Modest Proposal; Or, What If?

Why shouldn't record labels be entitled to share in the advertising revenue generated by the free programming provided? Building and developing an act to the level that the artist can attract radio play is a costly venture. If broadcasters demand live custody of acts they deem worthy of airplay (Rock Airplay Monitor, March 27), then the relationship should continue to share ad-sales revenue.



The landscape has changed from the days gone by when records were picked through and programmed based upon the merits of the song. Labels sold records, radio sold time, and everyone was happy. It was a win/win for all parties. That was the extent of the relationship.

Today things are different... A sense of en-

titlement lurks about, whereas if a station elects to expose a song, a sense of obligation is sought. Usually this obligation is in the form of a commitment to a live-music situation. What traditionally had been a byproduct has now become the arbiter of determining airplay worthiness.

If we are truly partners—radio and records—in breaking new music, then why shouldn't record labels share in the results of our joint efforts? Record companies continue to provide the free programming that airs between the banter and spots. Why not share in the profits?

Let's create a pool from the net profits and divide it up by percent of airplay to each participating label. Then we'll really determine who deserves "custody."

Steve Leeds
Universal Records



The SPIN BY STEVE GRAYBOW

212-536-5361 • sgraybow@billboard.com

3EB Still Building, Bulleted In Month Six

ONCE A RECORD has been on a Monitor chart for more than 20 weeks, it generally is ineligible to receive a bullet, even if it increases in spins. However, **Third Eye Blind's** "How's It Going To Be" (Elektra/EEG), currently at No. 5 on the modern adult chart, has been steadily increasing in spins for the past two weeks and is awarded a bullet to reflect the song's continued upward momentum, despite having logged 22 weeks on the chart.

Hollywood Records lands its first No. 1 on the modern rock chart with **Fastball's** "The Way."

The Dave Matthews Band's "Don't Drink The Water" was supposed to have been satellite-delivered to radio April 1; however, due to excessive leaks, the track was rush-released via satellite at 4 a.m. March 27. With less than a full week of official airplay, "Water" debuts this week at No. 36 on the modern rock chart with 683 spins and at No. 16 on the triple-A chart with 175 spins.

At mainstream rock, "Almost Honest" by **Megadeth** goes to recurrent after 26 weeks on the chart.

PERSONNEL FILE: Hollywood Records names former Elektra national director of rock promotion **Joey "Vendetta" Scoleri** national director of promotion.

Restless Records names former Mercury senior director of rock promotion **Drew Murray** VP of rock promotion and former Polydor alternative director of promotion **Bruce McDonald** VP of alternative promotion. Polydor Northeast regional **John Souchack** joins Restless for similar duties.

Mute Records ups promotion manager **Mattie White** to director of promotion and names **Steve Brezenoff**, formerly of Seattle's Band Together Records, national manager of media relations.

Cheap Trick will play song-for-song re-creations of its late-'70s Budokan concert to coincide with the original show's 20th anniversary and complete release on CD. Planned dates include New York's Central Park, Los Angeles' Roxy, and San Francisco's Fillmore.

Holiday In Cambodia?



During their Ladies Night in Cambodia tour, the members of Sevendust stopped by modern **WXRK** (K-Rock) New York. Pictured, from left, are TVT Records' **Gary Jay** and **John Perrone**; Sevendust's **Lajon**, **John Conelly**, and **Clint Lowery**; APD **Mike Peer**; and air talents **Alter Boy** and **Cain**.

M Street Format Monitor**Modern, Classic Rock Strong
In March Format Count**

RANK		The M Street FORMAT MONITOR <small>Copyright M Street Corp. 1998</small>	STATION COUNT		
THIS MONTH	LAST MONTH		MARCH '98	FEB. '98	NET GAIN OR LOSS
1	1	Country	2,439	2,438	1
2	2	News/Talk	1,116	1,113	3
3	3	Adult Contemporary	878	879	-1
4	4	Oldies	775	770	5
5	5	Religion (Music)	711	707	4
6	6	Adult Standards	561	556	5
7	7	Spanish	481	480	1
8	8	Classic Rock/Hits	436	428	8
9	9	Soft AC/Easy Listening	401	404	-3
10	10	Top-40/Mainstream/Rhythm	368	359	9
11	11	Religion (Talk)	354	353	1
12	13	Top-40/Adult	265	263	2
13	12	Mainstream Rock	261	264	-3
14	14	Sports	248	245	3
15	15	R&B Adult/Oldies	183	187	-4
16	16	R&B	164	165	-1
17	17	Miscellaneous	144	146	-2
18	18	Modern Rock	144	136	8
19	19	Triple-A	94	95	-1
20	20	Jazz	88	88	0
21	21	Modern AC	75	75	0
22	22	Classical	43	44	-1
Total commercial operating stations			10,229	10,195	
Stations off the air			102	115	

M Street Corp., is a Nashville-based provider of radio station information to the radio and music industries. Call 615-865-1525 for more information.

RADIO CONCERT MONITOR

DATE	CALL LETTERS	EVENT	SCHEDULED TO APPEAR
April 4	KRXQ Sacramento, Calif.	El Niño Snowboard and Music Festival	TBA
April 18	WJRR Orlando, Fla.	Earthday Birthday 5	Black Lab, Brother Cane, Creed, Fat, the Hunger, Our Lady Peace
April 25	KNRK Portland, Ore.	Snowjob	Absinthe, Fastball, God Lives Underwater, Pennywise, the Specials
April 25	KTBS Houston	BuzzFestival '98	Big Wreck, Black Lab, Cool For August, Creed, Foo Fighters, Mighty Joe Plum, Our Lady Peace, more
May 2	WYNF Sarasota, Fla.	Birthday Bash	TBA
May 9	KMYZ Tulsa, Okla.	Edge of Summer Bash	TBA
May 17	WBZU Richmond, Va.	Buzzfest	TBA
May 23-24	KXXR/KZMZ Minneapolis	Edge-Fest	TBA
May 30	WXRK New York	Revenge of the Dysfunctional Family Picnic	Jerry Cantrell, Ben Folds Five, Fuel, Green Day, Scott Weiland, Third Eye Blind
May 31	WBCN Boston	River Rave	TBA
June 27	KRXQ Sacramento, Calif.	Second 98 Rock Real Rock Jamboree	TBA
June 28	WDHA Dover, N.J.	Rock the Park	Blue Oyster Cult, Gov't Mule

To include your station's concert information in Rock Concert Monitor, call Marc Schiffman at 212-536-5065, fax 212-536-5286, or E-mail mschiffman@billboard.com

PUBLISHER: JON GUYNN
 EDITOR: SEAN ROSS
 MANAGING EDITOR: MARC SCHIFFMAN
 MAINSTREAM ROCK/TRIPLE A CHART MANAGER: ANTHONY COLOMBO
 MODERN ROCK CHART MANAGER: MARK MARONE
 MODERN ADULT CHART MANAGER: STEVE GRAYBOW
 WRITER/REPORTER: DANA HALL
 CHART PRODUCTION MANAGER: MICHAEL CUSSON
 ASST. CHART PRODUCTION MANAGER: ALEX VITOULIS
 EDITORIAL PRODUCTION MANAGERS: BARRY BISHIN, MARCIA REPINSKI
 EDITORIAL PRODUCTION: MADELINE CARROLL, SUSAN CHICOLA, MARC GIAQUINTO, SARAH JOHNSON, MARIA MANLICIC
 COPY EDITOR: CARL ROSEN
 ADVERTISING PRODUCTION MANAGER: LYDIA MIKULKO
 ADVERTISING PRODUCTION COORDINATOR: PAUL PAGE
 ART DIRECTOR: RAY CARLSON
 ADVERTISING PRODUCTION ARTIST: SHIRA HALFON

1515 Broadway, New York, NY 10036 212-764-7300
 For subscriptions call: 800-722-2346

Airplay Monitor reporting panels are based solely on a station's musical content.

©1998 BPI Communications Inc. No part of this publication may be reproduced, stored in any retrieval system, or transmitted, in any form or by any means, electronic, mechanical, photocopying, recording, or otherwise, without the prior written permission of the publisher.

NATIONAL ADVERTISING MANAGER: HANK SPANN
 ACCOUNT MANAGERS: JEFF SOMERSTEIN, SHARON WHITE
 ADVERTISING SERVICES MANAGER: ALYSE ZIGMAN
 SALES ASSISTANTS: EVELYN ASZODI, ERICA BENGTON, CANDACE GIL
 EDITORIAL ADVISER: TIMOTHY WHITE
 PRODUCTION DIRECTOR: MARIE GOMBERT
 CIRCULATION DIRECTOR: JEANNE JAMIN



PRESIDENT: HOWARD LANDER
 SENIOR VP/GENERAL COUNSEL: GEORGINA CHALLIS
 VICE PRESIDENTS: IRWIN KORNFELD, KAREN OERTLEY, ADAM WHITE
 DIRECTOR OF STRATEGIC DEVELOPMENT: KEN SCHLAGER
 BUSINESS MANAGER: JOELLEN SOMMER

**CHEET SHEET** BY MARK MARONE

212-536-5051 • mmarone@billboard.com

Harvey Danger Gets Close To The Goal

Remember the kid in your gym class or on the ball field who seemed to possess natural gifts beyond all others? Timmy Harvey was that kid, and he played soccer as if he were playing a different game than the others around him, which is how bass player Jeff Lin and singer/lyricist Sean Nelson of Harvey Danger recall him. Before meeting at the University of Washington some years later, the two boys attended separate six-week soccer programs one summer with the namesake of their band. Nelson recalls Harvey as "this amazing, amazing forward. And one of the things people would say was 'Harvey Danger' when he got close to the goal. Jeff knew about it and named the band after that."

As of late, Harvey Danger has been doing a little bit of its own scoring, after being passed around a bit. For a group of college friends with no prior band experience who formed a Velvet Underground-esque experimental noise group in 1993 for kicks, the circuitous path to having their major-label debut, "Where Have All The Merry Makers Gone?," released this week by Slash/London is like being cut from the team only to come back and score the game-winning goal.



From left, Jeff Lin, Evan Sult, Aaron Huffman, Sean Nelson

Flush with the excitement of the indie-rock scene while in college, the four novice musicians of Harvey Danger began by writing some songs that reflected a shared love of everything from Pavement, Sebadoh, and Guided By Voices to Nirvana, R.E.M., and the Smiths. More for themselves than anyone else, they wound up recording a demo that happened to find itself on the desk of a London Records A&R rep, who wasn't overwhelmed by the band after seeing it play. But another A&R rep, Greg Glover, who worked at sister label Slash, liked what he heard enough to inquire about putting a couple of singles out on his own indie label, Arenarock.

His enthusiasm for the band increased to the point of asking the members of Harvey Danger to record a full album, which they did in three weekend sessions spread out over a year, beginning in March 1996. When the set was finished, Nelson handed a copy to his friend Jason Hughes, who was working the local music show for modern KNDD Seattle, and he began playing it late last year. But it was Marco Collins' support for Harvey Danger and the top 10 requests that "Flagpole Sitta" began generating during his show that led to the record entering regular rotation and ultimately to the band's official signing just one month ago with Slash/London.

"It's kind of wild," says Nelson of the group's breakout success. "It was great the way it happened in Seattle, which came after a good 4 1/2 years of having no attention paid to us at all. We just kind of kept our heads down and made music, and all of a sudden everybody started caring."

While nobody was caring, Nelson was employed as a journalist at Seattle lifestyle magazine The Stranger, writing about music and films, the perfect job for one whose artistic inclinations include writing fiction and screenplays, acting in and making films, and, of course, playing music. "I've kind of been doing all those things for the last five years, just doing it when I could do it and as it was satisfying to me while still keeping this great day job that I really respected."

Nelson says that all of Harvey Danger's songs are collaborative efforts that generally began with one member's seedling of an idea worked out by the rest until it was developed into a song. The singer, however, is the sole lyric writer, and his affinity for indie rock is apparent in his ability to balance cynicism with sensitivity and charm. "I always thought it was interesting to put not cynical but sort of caustic lyrics against a cheerful background," explains Nelson about the idea for "Flagpole." "But then again, it isn't exactly cheerful, because it's got that crazy noise stuff in the third chorus. There's a real tension in there. I think the song is about the culture in general, it's about the media-worshipping culture."

And despite modern society's obsession with image, Nelson believes it's the goal scorers and not the guys with cool uniforms who will prevail. "I think anybody can present an attractive, marketable package in the '90s. That's something people are well aware of how to do," he says. "It becomes a question of if you're willing to do it and we weren't, because I think the ultimate test of a band is, 'Do the songs captivate listeners?'"

The Union Of The Freak

Album WRCX (Rock 103.5) Chicago metal master Freak, center, hosted Union's Bruce Kulick, left, and Jon Corabi on his recent installment of "Radio Anarchy."



debut **(25)**
modern rock monitor
934 spins
#1 greatest gainer
#1 most new stations

“push it”
the first single from
garbage

Version 2.0

Management: Borman/Moir Entertainment
www.garbage.com ©1998 Almo Sounds, Inc.



MONITOR ROCK PANELS

MAINSTREAM ROCK (110)

Akron, Ohio	WONE	Milwaukee	WLZR
Albany, N.Y.	WPYX	Minneapolis	KQRS
Albuquerque, N.M.	KZRR		KXXR
Allentown, Pa.	WZZO		WRQC
Atlanta	WKLS	Monterey, Calif.	KMBY
Austin, Texas	KLBJ	Montgomery, Ala.	WXFX
Bakersfield, Calif.	KRAB	Morristown, N.J.	WDHA
Baltimore	WYYY	New Bern, N.C.	WSFL
Boston	WAAF	New Haven, Conn.	WPLR
Burlington, Vt.	WIZN	New Orleans	WCKW
Charleston, W.Va.	WKLC	Norfolk, Va.	WNOR
Charlotte, N.C.	WXRC	Oklahoma City	KATT
Chicago	WRGX	Omaha, Neb.	KEZO
Cincinnati	WEBN	Orlando, Fla.	WJRR
Cleveland	WMMS	Pensacola, Fla.	WTKX
	WNCX	Philadelphia	WMMR
Colorado Springs, Colo.	KILO		WYSP
Columbus, Ga.	WVRK	Phoenix	KDKB
Columbus, Ohio	WBZX		KUPD
	WLWQ	Pittsburgh	WDVE
Corpus Christi, Texas	KNCN	Portland, Maine	WBLM
	KRAD	Portland, Ore.	KJFO
Dallas, Texas	KEGL	Providence, R.I.	WHJY
	KTXQ	Raleigh, N.C.	WRDU
Dayton, Ohio	WTUE	Richmond, Va.	WRXL
Denver	KBPI	Roanoke, Va.	WROV
Des Moines, Iowa	KAZR	Rochester, N.Y.	WCMF
	KGGO	Sacramento, Calif.	KRXQ
Detroit	WKRK*	St. Louis	KSD
	WRIF		KSHE
El Paso, Texas	KLAQ	Salt Lake City	KBER
Ft. Myers, Fla.	WRXK	San Antonio, Texas	KISS
Fresno, Calif.	KRZR	San Bernardino, Calif.	KCAL
Grand Rapids, Mich.	WKLQ	San Diego	KIOZ
Green Bay, Wis.	WAPL	San Jose, Calif.	KSJO
Greenville, S.C.	WROQ	Santa Barbara, Calif.	KTYD
	WTPT	Savannah, Ga.	WIXV
Harrisburg, Pa.	WQXA		WZAT
	WTPA	Seattle	KISW
Hartford, Conn.	WCCC	Shreveport, La.	KTAL
Indianapolis	WFBQ		KTUX
Jackson, Miss.	WSTZ	Spokane, Wash.	KNJY
Jacksonville, Fla.	WFVY	Springfield, Mo.	KXUS
Kansas City	KQRC	Syracuse, N.Y.	WAQX
Knoxville, Tenn.	WIMZ	Tampa, Fla.	WXTB
Las Vegas	KOMP	Toledo, Ohio	WBUZ*
Lexington, Ky.	WKQQ		WIOT
Little Rock, Ark.	KMJX	Tucson, Ariz.	KLPX
Long Island, N.Y.	WBAB	Tulsa, Okla.	KMOD
Los Angeles, Calif.	KLOS	Washington, D.C.	WWDC
Louisville, Ky.	WTFX	West Palm Beach, Fla.	WZZR
McAllen, Texas	KFRQ	Wichita, Kan.	KRZZ
Memphis	WEGR	Wilkes-Barre, Pa.	WEZK
	WMFS		WZMT
Miami	WZTA	Youngstown, Ohio	WNCD

MODERN ROCK (83)

Albany, N.Y.	WEQX	Los Angeles	KLYY
Albuquerque, N.M.	WQBK		KROQ
Atlanta	KTEG	Memphis	WRXQ
Augusta, Ga.	WNNX	Milwaukee	WLUM
Austin, Texas	WRXR	Minneapolis	KZNX
Birmingham	KROX	Nashville	WKDF
Boston	WRAX	New Bern, N.C.	WXNR
	WBCN	New Orleans	KKND
Buffalo, N.Y.	WFNX	New York	WXRK
Burlington, Vt.	WEDG	Norfolk, Va.	WROX
Charleston, S.C.	WBTZ	Omaha, Neb.	KGDE*
Charlotte, N.C.	WAVF	Philadelphia	WPLY
Chicago	WEND	Phoenix	KEDJ
Cincinnati	WKQX		KZON
Cleveland	WAQZ	Pittsburgh	WXDX
Columbia, S.C.	WENZ	Portland, Ore.	KNRK
Columbus, Ohio	WARQ	Portland, Maine	WCYV
Dallas	WWCD	Providence, R.I.	WBRU
Dayton, Ohio	KDGE		WDGE
Daytona Beach	WXEG	Richmond, Va.	WBZU
Denver	WKRO	Riverside, Calif.	KCXX
	KTCL	Rochester, N.Y.	WNVE
Des Moines, Iowa	KXPK	Sacramento, Calif.	KWOD
Detroit	KKDM	St. Louis	KPNT
	CIMX	Salt Lake City	KENZ
Fresno, Calif.	WPLT		KXRR
Ft. Myers, Fla.	KFRR	San Diego	XHRM
Grand Rapids, Mich.	WJBX*		XTRA
Greensboro, N.C.	WGRD	San Francisco	KITS
Hartford, Conn.	WXRA	San Jose, Calif.	KOME
Honolulu	WMRQ	Santa Barbara, Calif.	KHTY
Houston	KPOI		KJEE
Indianapolis	KTZB	Seattle	KNDD
Jacksonville, Fla.	WRZX	Spokane, Wash.	KAEP
Kansas City	WPLA	Springfield, Mo.	KTOZ
	KCCX	Syracuse, N.Y.	WKRL
Lafayette, La.	KLZR	Toronto	CFNY
Las Vegas	KFTE	Tucson, Ariz.	KFMA
	KEDG	Tulsa, Okla.	KMYZ
Lexington, Ky.	KXTE	Washington, D.C.	WHFS
	WXZZ	West Palm Beach, Fla.	WPBZ
		Wichita, Kan.	KICT

TRIPLE-A (20)

Albany, N.Y.	WXLE	Indianapolis	WTTS
Austin, Texas	KGSR	Minneapolis	KTCZ
Boston	WBOS	Monterey, Calif.	KPIG
	WXRV	Nashville	WRLT
Burlington, Vt.	WNCS	Norfolk, Va.	WKOC
Chattanooga, Tenn.	WDOD	Portland, Ore.	KINK
Chicago	WXRT	St. Louis	WVRV
Dallas	KKZN	San Francisco	KFOG
Denver	KBCO	Seattle	KMTT
Detroit	CIDR	Tampa, Fla.	WHPT

*Added to panel

'Wedding Singer' Leads Some Modern Rockers Back To The '80s Altar

Continued from page 1

is partially due to the wide latitude given him by the market. While modern AC KYSR (Star 98.7) signed on several years ago with a hefty dose of '80s, that music is barely evident, according to Blatter. (Modern adult outlets have gone through their own debate about '80s titles; many stations expected it to be their calling card, instead becoming better known for today's female singer/songwriters.) And Blatter believes that KROQ can't dive too deep in that pool without damaging its new-music position.

KMYZ Tulsa, Okla., PD Lynn Barstow is bringing the '80s back on his station. "I had selected titles come back pretty strong in our recent auditorium test that were something of a surprise," he says, citing "Roxanne," "I Melt With You," "Don't You Forget About Me," and some Billy Idol tracks.

He credits his modern adult rival with prompting the test. "We wanted to see if some of these songs were coming back," Barstow says. The aforementioned tracks "tested head and shoulders above the rest." Previously, KMYZ had played only one or two '80s tracks from the Cult and Talking Heads.

SAME AS IT EVER WAS

The only reason that modern WNNX (99X) Atlanta hasn't upped its '80s quotient recently is because "the '80s never died at 99X," according to PD Leslie Fram, but have been an important part of the station since its sign-on. "We thought people would eventually get tired of it, but I think because you couldn't hear this stuff [elsewhere] on the radio," they never did, says Fram.

And she is finding strong test scores. "It's coming back stronger than ever, which goes along with all the trends saying the '80s are coming back. It's Members Only jackets and the release of all these '80s movies," Fram says. "Maybe we're in a happier time now, and the early MTV stuff was all positive."

WNNX plays four hours of retro on its "Resurrection Sunday" show and a daily lunch-time serving in "The House Of Retro Pleasure." Fram notes that part of the appeal of '80s music on 99X is that it's "all request-based . . . It's not the same 50 best-testing records," an apparent reference to top 40 rival WSTR (Star 94), which she says is doing its own Friday-night retro show "based on our success." (Fram is quick to note that Star's version includes such modern stalwarts as Olivia Newton-John.)

There's also '80s material in regular rotation at 99X. "We mix it in throughout the day. It would not be odd to hear one or two songs an hour in middays," says Fram. While 99X "has a larger composition of 25- to 44-year-olds," to make the '80s appeal work, "I think movies like 'The Wedding Singer' educate a whole new audience on that music. Plus MTV and VH1 are constantly doing '80s weekends and '80s weeks."

Likewise, at KXPK (the Peak) Denver, a station that helped pioneer the modern adult format, PD Gary Schoenwetter says, "The Peak was built upon a heritage of '80s music, from the time we signed on, when the R.E.M.s, U2s, and Gabriels were largely ignored in Denver."

Today, "the market has shifted, and that library has become a part of more station playlists," Schoenwetter says. But that doesn't keep him from his mission. "For us, it's still our bread and butter, and we've expanded that world to include Mellencamps and Pettys and Howard Joneses and Stray Cats of the world."

Those later elements were added over the last year, and while Schoenwetter doesn't credit "The Wedding Singer" with the expanded '80s library on the Peak, he does feel that the success of that movie is driving fresh cume to his station. That's why he was about to launch his biannual " '80s Vault Weekend." It's traditionally used at the station, he says, "to balance a huge wave of new music, or it's timed to whatever is going on in pop culture."

With the heavy '80s competition in the market, the Peak puts its '80s tracks in features throughout the day "to make sure we get cred-

it for bringing this music back to the market," Schoenwetter says. And he keeps looking around for more fresh sounds. "We can all play 'Red Rain,' but if we can find a forgotten Haircut 100 song that for some reason researches in this market, let's jump on it until someone else picks it up."

Schoenwetter is among those who believe this is cyclical. "Certain songs have their day in the sun, disappear, and come back," he says. "I don't know that I could reasonably say that the library is doing better or worse; it's [judged on] a song-by-song basis, just like everything else."

JUST SAY NO TO YAZ

In New York, WXRK (K-Rock) PD Steve Kingston thinks the '80s are old hat. He rode that horse when he was programming top 40 rival WHTZ (Z100). Now that he's at K-Rock, "we found there really isn't an appetite for that style of music on a station that targets men. On the other hand, when I was at Z100, for a station that targets women it was appropriate and we either reactivated those songs or found songs that never got exposed because there wasn't a full-signal modern rocker in the market during the '80s. Z100 exposed them and programmed them almost as new product; for that reason you don't see a successful modern AC in this market, because Z100 was the de facto modern adult. We're having more success with Van Halen, Ozzy, and AC/DC than a-ha, Erasure, and Yaz."

So, what about the '80s metal bands? "We've investigated that, and so far there seems to be a lot of intrigue and curiosity," says Kingston. But he's not going to use that music for anything more than occasional spice, because "it was disposable then and more disposable now."

Says Kingston, "The biggest challenge is keeping these titles consistent with what's currently available. The selection is not deep. We do want to be credible." While there's not a specialty show per se, when these cuts air, they're billboarded as "K-Rock retro rock." "We've found a little goes a long way."

The players in Dallas have been shifting musical roles, with former modern KDGE PD Joel Folger now across the street at triple-A KKZN and former album KEGE PD Duane Doherty programming KDGE. Doherty says he's cut back slightly on '80s music since it wasn't testing compatible with his currents. While he still has a morning " '80s At 8" feature, retro lunches and such have been dropped within the past month or so. "A lot of it has to do with the fact that it went from an 'oh wow' factor to an 'oh no' factor."

Doherty is one programmer who hears his market as overcrowded with '80s music. "The modern AC [KDMX] is doing retro lunches. The triple-A is doing a flashback lunch. How often do you want to hear a-ha's "Take On Me"? It loses its novelty. It's not the hippest bunch of music."

And echoing Blatter's comments about KROQ, Doherty says of his station, "We're supposed to be the new rock alternative," and that point won't be driven home by playing A Flock Of Seagulls.

Modern KGDE Omaha, Neb., PD Sean Smyth has also felt the market, which now includes two modern AC stations, crowd the '80s out of his mix. Coming from a modern adult background, Smyth notes, "In a modern AC context, that's where you have to build your stationality," but the downside of the music is twofold in that it casts the station in a pop mold and then the music quickly burns out from under you.

"At alternative, you live and die by the new bands out there," Smyth says. "Right now, there's a lot of great new bands coming out. When it seems that product is down or not working, you always have that option and try and go back [to the '80s to] regain legitimacy." But even if that time comes back to Omaha, he'd rather opt for U2 depth cuts than resurrecting Kajagoogoo, Smyth adds.

MONITOR PROFILE

After Working Both Sides, Lee Helps Bring WQMF And WTFX Into Harmony

Michael Lee first worked in Louisville, Ky., in the late '80s at album WQMF. Six years and several programming stints later, he was helming rival rocker WTFX. Then consolidation swept through the market, and Clear Channel went shopping, first picking up WTFX and then, within a year of his arrival, WQMF, placing Lee as OM over both properties.

Historically, "it was very much a head-on battle between WQMF and WTFX" until Clear Channel came in, Lee says. "We were basically trying to out-Metallica each other [in a] classic 18-34 head-on battle."

Research showed that WQMF's 16 years in the market made it a great candidate to target the upper demos and give WTFX the young end. So Lee drove WQMF straight into classic rock land. "We didn't play currents for the first six months," Lee says. "Then the currents that we did start out playing were Fleetwood Mac, the Stones, and very much classic artists doing new music." Now WQMF plays all of the above with classic-compatible acts such as the Kenny Wayne Shepherd Band and Jonny Lang.

Here's a sample hour on WQMF: BTO, "Let It Ride"; Molly Hatchet, "Dreams I'll Never See"; Rolling Stones, "Brown Sugar"; John Mellencamp, "Just Another Day"; Deep Purple, "Hush"; Eagles, "Hotel California"; Beatles, "I Am The Walrus"; Edgar Winter Group, "Free Ride"; Bob Seger, "Against The Wind"; Eric Clapton, "She's Gone"; Fleetwood Mac, "Dreams"; and Led Zeppelin, "Heartbreaker"/"Livin' Lovin' Maid."

Here's one on WTFX: Nirvana, "Smells Like Teen Spirit"; Ted Nugent, "Stranglehold"; Candlebox, "Far Behind"; Van Halen, "Unchained"; Metallica, "The Unforgiven II"; Led Zeppelin, "Hey, Hey, What Can I Do"; White Zombie, "Thunder Kiss '65"; AC/DC, "T.N.T."; Stone Temple Pilots, "Vaseline"; Aerosmith, "Sweet Emotion"; and Bush, "Mouth."

Lee had a lot on his hands coming into the newly adapted sister stations. "It was a very intense rivalry," Lee says. "There were actual fistfights and sabotaging of each other. It was a very intense guerrilla activity-type war . . . At first, it was a very strange situation, especially since I was the guy from the other side coming into WQMF, the guy who in their minds had instigated most of the stuff against them. They were wary, and they had a right to be wary, but I think that they knew that we were winners, and they knew that now that we're all one team that we were all going to win together. It took some time, but I think that weirdness in the first two or three months wore off. We got them together with staff parties between the two. We did that several times in the first six months. When one station had a major event, we incorporated the other as a support system.

"We're in separate buildings, so that helps a lot," says Lee. "It wasn't a forced situation that one day you're cussing the guy across the street and the next day he's in the next cubicle . . . There was definitely a gradual easing of tensions. There's still some conflicts from past things that have happened, but most of these people are professionals [who] realized that each station was doing what they thought was best for their station to win

at the time. And now we're doing it to the competition, which is even more fun."

As part of WQMF's refocus on upper demos, longtime WQMF jock Duke returned to the station from WTFX, "because he was WQMF to some degree. He'd been here 13 years. Things like that helped get the stations back where they needed to be. The perceptuals showed listeners considered WQMF the heritage station, the classic rock station, the station they grew up with. They expected it, and I think that helped to ease the transition."

Now the two stations use their energies to show a united front. "We have weekly promotion meetings," says Lee. Together they decide how best to tackle a given event. "It depends on the event now. If it's something that's going to be exclusive to WTFX, then WTFX will take it. If it's an Aerosmith concert coming to town, then . . . we're going to have different promotions. We'll get together as a group and decide how we want to own the show for our listeners. Because there's different target audiences and there's going to be different angles to hit those target audiences."

Marketing is primarily done on the street. Prior to the merger, "one of the big advantages we had on WQMF . . . was they weren't street visible." Now, Lee says, "we're out doing van runs. We're out some place every day. And I know in some situations, in some markets, it's impossible to do that, but in a market this size, in a midmarket, you should be out."

While WTFX and WQMF have kissed and made up, Louisville remains a crowded market, with "five or six stations in the market playing some kind of rock," Lee says. The station's competitors, including modern WLRS and classic hits WSFR, "play everything we play and no commercials. And we're at points sold out."

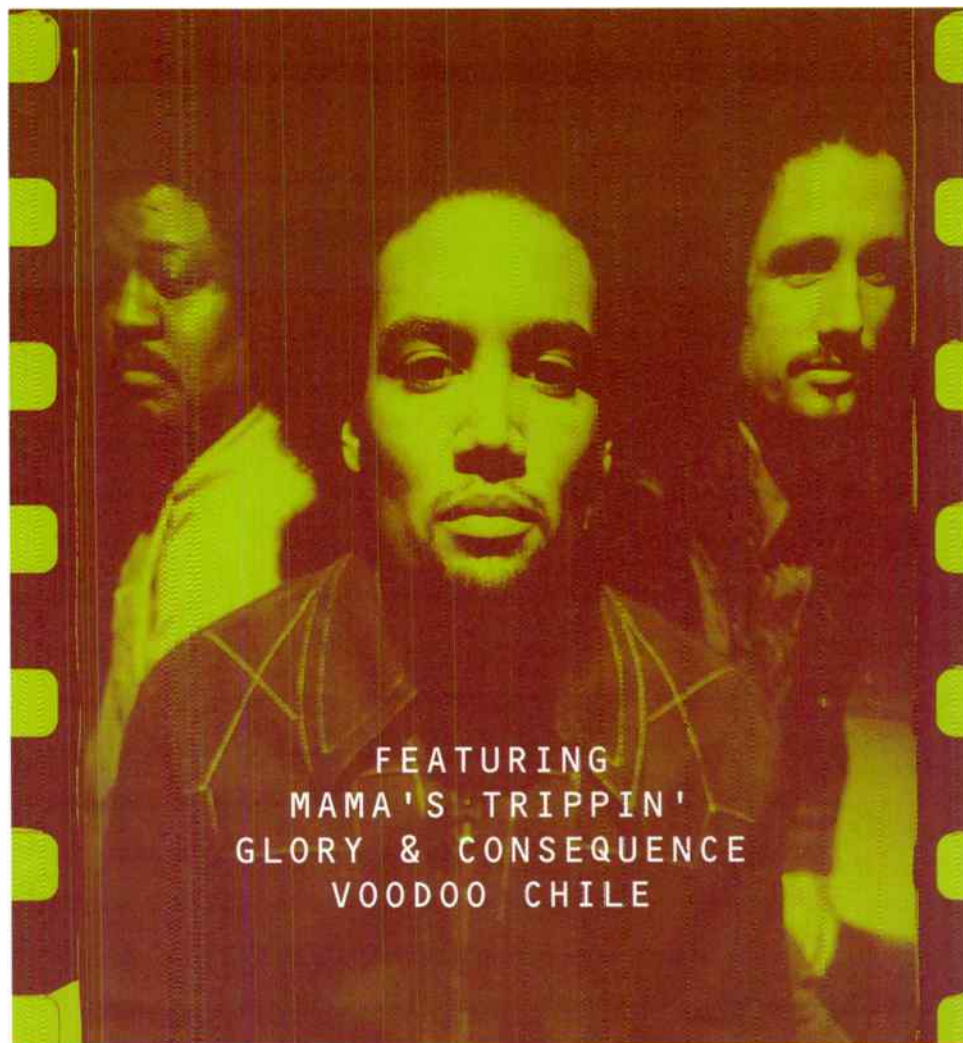
Part of WTFX's retooling entailed dropping two-year morning team Bob and Tom for Howard Stern. "When he started out in October he was sixth, in November he was second, and in December he hit No. 1 in the target demo of 18-34, so we see growth there, but as everybody knows it takes Howard a year to really catch his stride in any market . . . We bounced back in the last couple of months, and we're turning back up very strong, and I think with Howard in the morning and the quality lineup that we have the rest of the day, we're back on track to getting back to where we need to be."

At WQMF, heritage is reflected in longtime local morning team Rocky and Troy. "If you were to fly in and listen to them, you might not get half of it, because it's so local. Most of the marketplace's rock stations have syndicated morning shows. We feel that's a big plus for us, because in a lot of markets, a quality local show can beat a syndicated morning show every time. We have the best of both worlds."

With companies scrambling for new revenue and the pay-for-play bogeyman wandering through so many halls, Lee says there's not yet been groupwide discussion of the issue. But, he says, "let's face it. The record companies are going to spend that money somewhere. They might even spend it in your market at another radio station. They might spend it on print in your market. My whole goal is to do whatever it takes to help my station win, and winning means ratings and revenue. And if a [label] can help me in either of those areas, then I have no problem dealing with them." **MARC SCHIFFMAN**



**100.5
THE FOX
Rocks**



FEATURING
MAMA'S TRIPPIN'
GLORY & CONSEQUENCE
VOODOO CHILE

BEN HARPER THE WILL TO LIVE

NOW AVAILABLE: LIMITED-EDITION
5-SONG LIVE EP PACKAGED WITH
THE WILL TO LIVE.

ON TOUR

March	April
21 Sold Out Chicago IL	1 Tempe AZ
23 Sold Out Indianapolis IN	2 San Diego CA
24 Sold Out St. Louis MO	3 Los Angeles CA
25 Sold Out Columbia MO	4 Berkeley CA
27 Sold Out Dallas TX	7 Seattle WA
28 Sold Out Austin TX	8 Portland OR
29 Sold Out Houston TX	9 Boulder CO

Look for Ben on the H*O*R*D*E
tour this summer.

Produced by J.P. Plunier
Management: J.P. Plunier

AOL Keyword: Virgin Records www.virginrecords.com © 1998 Virgin Records America, Inc.

GREATEST GAINERS

Strongest Increase In Airplay This Week

MAINSTREAM ROCK

INCREASE
IN PLAYS

BROTHER CANE • I Lie In The Bed I Make (VIRGIN)	+321
WKLO +16, WCCC +14, WROV +13, WXRC +13, WMMS +11, WAPL +10, KDKB +10, WRQC +9, WZMT +9, WAQX +9	
MATCHBOX 20 • Real World (LAVA/ATLANTIC)	+219
WJRR +17, KATT +17, WKLC +14, KTUX +12, WAPL +12, WZZR +12, KSHE +12, KLBK +11, WDVE +11, WZZO +10	
DAVID LEE ROTH • Slam Dunk (WAWAZAT)	+188
KCAL +22, WRIF +21, KEGL +19, WNCX +15, WBUZ +14, WDHA +14, KMBY +11, WCKW +9, KDKB +9, KXXR +8	
BLACK LAB • Time Ago (DGC/GEFFEN)	+134
WBUZ +14, WZTA +10, KTUX +10, WYSP +9, WTPA +9, WROV +8, WKLO +8, WMMR +8, WZZO +7, KXUS +7	
DAVE MATTHEWS BAND • Don't Drink The Water (RCA)	+128
WROV +22, WCCC +12, KLOS +12, KATT +10, WWDC +9, WIXV +8, WBAB +8, KTXQ +7, WHJY +6, WDVE +5	
SEMISONIC • Closing Time (MCA)	+120
WZMT +11, WHJY +11, WAQX +8, WPYX +8, WXRC +7, KBER +7, KATT +7, KNJY +6, WBZX +6, KXUS +6	
SPACEHOG • Mungo City (HIFI/SIRE/WARNER BROS.)	+98
KNJY +11, WKLC +10, KZRR +9, WCCC +9, WZMT +8, KXUS +8, WXRC +8, WZAT +7, WTPT +6, KTAL +6	
THIRD EYE BLIND • Losing A Whole Year (ELEKTRA/EEG)	+97
KLBK +15, WZMT +14, KATT +10, WSTZ +7, WZAT +7, WBZX +6, WQXA +5, WVRK +4, KTUX +4, WHJY +4	
DAYS OF THE NEW • Shelf In The Room (OUTPOST/GEFFEN)	+89
WHJY +11, WZTA +10, KCAL +9, WBZX +8, WRQC +7, WRCX +7, WONE +7, WTKX +6, WROV +6, KEGL +6	
STEGOSAURUS • At The Water (REPRISE)	+86
WZMT +8, KRAD +8, WZTA +8, KRZR +8, WCCC +8, WSTZ +7, KZRR +7, KRXQ +7, WDHA +5, WNOR +5	

MODERN ROCK

INCREASE
IN PLAYS

GARBAGE • Push It (ALMO SOUNDS/INTERSCOPE)	+893
CIMX +36, WXRA +32, WHFS +28, WROX +26, WBCN +25, KROQ +25, KEDG +24, KOME +24, WNNX +23, KXTE +22	
DAVE MATTHEWS BAND • Don't Drink The Water (RCA)	+664
WKQX +32, WROX +27, WENZ +25, KKND +23, KKDM +21, WXRK +19, WPLY +19, WMRQ +19, WXNR +18, WBCN +18	
GOO GOO DOLLS • Iris (REPRISE)	+378
WXNR +26, WNNX +22, WKRL +19, WXRA +19, WRXQ +18, WBTZ +16, WCYY +16, KHTY +16, WPBZ +15, WROX +15	
MATCHBOX 20 • Real World (LAVA/ATLANTIC)	+296
KTEG +21, KZMZ +16, KKDM +16, WEND +16, KHTY +16, KKND +15, WXEX +15, KENZ +14, WXDX +14, WNVE +12	
THE URGE • Jump Right In (IMMORTAL/EPIC)	+251
WBTZ +16, WPLY +16, KNDD +16, KOME +14, KKND +13, WQBK +13, KICT +12, WBRU +12, KLZR +11, WHFS +11	
HARVEY DANGER • Flagpole Sitta (SLASH/LONDON/ISLAND)	+227
WKQX +19, WMRQ +18, KXRK +16, KEDG +14, KKND +13, KTEG +12, KEDJ +12, KNRK +11, KLZR +10, KROQ +10	
FASTBALL • The Way (HOLLYWOOD)	+222
KCXX +21, KFRR +20, WLUM +17, WXDX +16, KNRX +14, KMYZ +14, KPOI +10, WAVF +10, WKDF +10, WGRD +9	
SEMISONIC • Closing Time (MCA)	+180
KKDM +21, XTRA +19, KPOI +14, KNRK +13, WRXR +13, KTBZ +11, KJEE +10, KTEG +10, WLUM +9, KFTE +7	
PEARL JAM • Wishlist (EPIC)	+173
WRXQ +20, WCYY +17, KEDJ +17, KNRK +15, WBRU +15, WKQX +14, WBCN +14, CFNY +11, WWCD +10, WFNX +10	
TORI AMOS • Spark (ATLANTIC)	+167
KROQ +29, KITS +16, KZMZ +15, KTCL +14, WEQX +13, WBCN +12, KNDD +10, KOME +10, KNRK +8, CIMX +8	

VIDEO PLAYLISTS

MOST PLAYED ROCK TRACKS



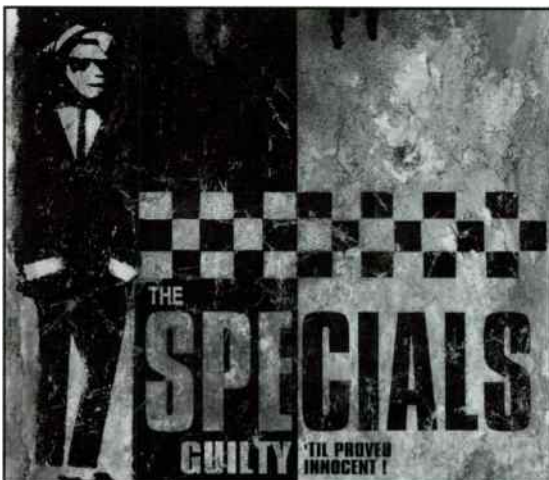
	TW	LW
1 Matchbox 20, 3 AM	24	24
2 Madonna, Frozen	24	28
3 Eric Clapton, My Father's Eyes	19	19
4 Natalie Imbruglia, Torn	19	15
5 Ben Folds Five, Brick	17	16
6 Chumbawamba, Tubthumping	15	14
7 Paula Cole, Me	14	14
8 The Verve, Bitter Sweet Symphony	14	9
9 Sarah McLachlan, Adia	14	15
10 Billie Myers, Kiss The Rain	14	16
11 Fleetwood Mac, Landslide	13	12
12 Paula Cole, I Don't Want To Wait	13	11
13 Smash Mouth, Walkin On The Sun	13	14
14 The Wallflowers, One Headlight	11	10
15 Sugar Ray, Fly	11	12
16 Third Eye Blind, Semi-Charmed Life	10	9
17 Van Halen, Without You	10	3
18 Jewel, Foolish Games	9	8
19 Elton John, Recover Your Soul	9	7
20 Third Eye Blind, How's It Going To Be	8	16
21 Matchbox 20, Push	7	10
22 Billy Idol, White Wedding	6	2
23 Marcy Playground, Sex And Candy	6	6
24 Eric Clapton, Layla	5	0
25 U2, If God Will Send His Angels	5	3
26 Rolling Stones, Saint Of Me	5	12
27 No Doubt, Don't Speak	4	1
28 Hanson, Where's The Love	4	1
29 Robert Palmer, Addicted To Love	3	0
30 Rick Springfield, Jessie's Girl	3	5

	TW	LW
1 Marcy Playground, Sex And Candy	14	23
2 Ben Folds Five, Brick	13	16
3 Creed, My Own Prison	13	7
4 Metallica, The Unforgiven II	13	15
5 Natalie Imbruglia, Torn	13	18
6 Van Halen, Without You	12	18
7 Madonna, Frozen	12	15
8 Billie Myers, Kiss The Rain	10	5
9 Everclear, I Will Buy You A New Life	9	9
10 Fastball, The Way	8	0
11 Scott Weiland, Barbarella	8	1
12 Tonic, Open Up Your Eyes	7	8
13 Paula Cole, Me	7	9
14 Green Day, Time Of Your Life (Good Riddance)	7	4
15 Eric Clapton, My Father's Eyes	6	8
16 Radiohead, No Surprises	6	0
17 U2, If God Will Send His Angels	5	15
18 Finley Quaye, Sunday Shining	5	8
19 Mono, Life In Mono	5	6
20 Spacehog, Mungo City	5	6
21 The Tuesdays, It's Up To You	5	5
22 Jerry Cantrell, Cut You In	5	4
23 Third Eye Blind, How's It Going To Be	4	15
24 Foo Fighters, My Hero	4	8
25 The Verve, Bitter Sweet Symphony	4	17
26 Sarah McLachlan, Adia	4	6
27 Guns N' Roses, November Rain	3	1
28 Nirvana, Smells Like Teen Spirit!	3	1
29 Red Hot Chili Peppers, Under The Bridge	3	1
30 Matchbox 20, 3 AM	3	19
31 The Wallflowers, The Difference	3	2
32 Alanis Morissette, You Oughta Know	3	4
33 Metallica, Enter Sandman	2	1
34 Pearl Jam, Jeremy	2	1
35 Meat Loaf, I'd Do Anything For Love	2	0
36 The Smashing Pumpkins, Tonight, Tonight	2	1
37 Prodigy, Firestarter	2	1
38 Matchbox 20, Push	2	2
39 The Mighty Mighty Bosstones, The Impression	2	3
40 Third Eye Blind, Semi-Charmed Life	2	2

TRIPLE-A

INCREASE
IN PLAYS

DAVE MATTHEWS BAND • Don't Drink The Water (RCA)	+175
WVRV +21, KKZN +18, WXRT +18, KMTT +17, KBCO +17, WBOS +13, CIDR +12, WXRV +11, WRLT +10, WKOC +9	
NATALIE IMBRUGLIA • Torn (RCA)	+49
WVRV +15, WTTT +10, WBOS +9, WRLT +8, KKZN +5, CIDR +1, KGSR +1	
EDWIN MCCAIN • I'll Be (LAVA/ATLANTIC)	+48
CIDR +14, KKZN +11, WBOS +9, WVRV +7, WKOC +5, KBCO +5	
MATCHBOX 20 • Real World (LAVA/ATLANTIC)	+46
WBOS +14, WXLE +13, WDOD +10, KBCO +6, WXRT +3, KPIG +1	
ALANA DAVIS • Crazy (ELEKTRA/EEG)	+44
WVRV +14, CIDR +9, WXLE +8, KGSR +8, WXRV +7	
KENNY WAYNE SHEPHERD BAND • Blue On Black (REVOLUTION)	+29
CIDR +6, KTCZ +5, KBCO +5, KFOG +5, KMTT +3, KKZN +2, KPIG +2, WXRV +1, KGSR +1, WXRT +1	
PETER CASE • Let Me Fall (VANGUARD)	+28
WKOC +7, KGSR +6, WRLT +5, WNCS +4, WXRV +4, KPIG +1, KFOG +1	
BONNIE RAITT • One Belief Away (CAPITOL)	+25
WDOD +10, WXLE +8, WKOC +7, WXRT +7, CIDR +4, WBOS +2, KGSR +2, KPIG +1, WNCS +1, KTCZ +1	
SARAH MCLACHLAN • Adia (ARISTA)	+24
WTTT +10, WKOC +8, WVRV +7, WXLE +5, CIDR +4, KGSR +4, WDOD +2, WXRV +2	
MARC COHN • Already Home (ATLANTIC)	+23
WTTT +9, WBOS +6, KTCZ +6, CIDR +4, WRLT +3, WXRV +3, WDOD +1	
FASTBALL • The Way (HOLLYWOOD)	+23
KINK +8, WXRT +6, WNCS +4, WDOD +3, CIDR +3, KBCO +3, KKZN +2, KTCZ +1	



THE SPECIALS "IT'S YOU"

33 MODERN ROCK MONITOR OVER 700 DETECTIONS!

NEW THIS WEEK: KNRQ WRAX KKDM WFSM KRZQ

ALREADY ON:

Q101	WPLT	99X	KZMZ	89X	KLZR	WBRU	KEDG	KJEE
LIVE 105	WBCN	KNDD	KEDJ	KTCL	KWOD	WWCD	WEQX	KCXX
WPLY	WFNX	XHRM	KZON	KNRK	WLUM	WMRQ	WKRL	KFMA
WARQ	WRZX	WRXR	WROX	Y107	KGDE	KPOI	KHTY	KAEP
			91X	AND MANY MORE				

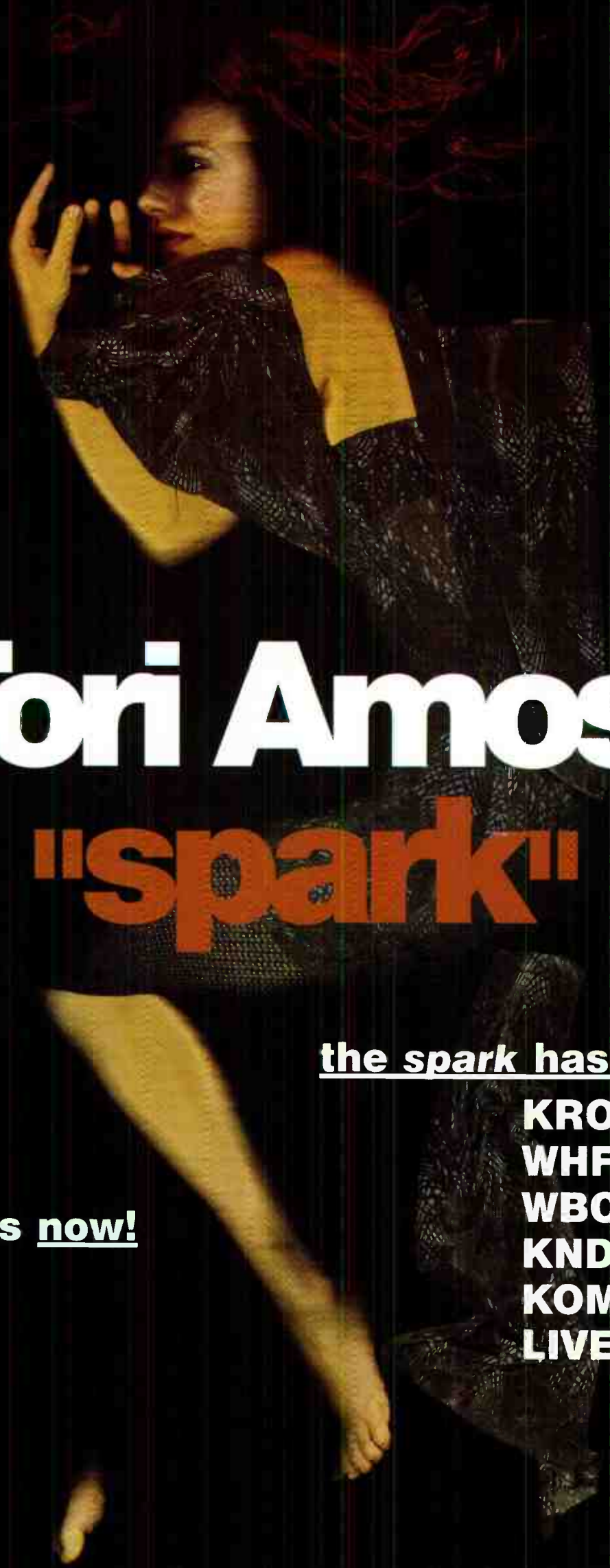
EARLY SALES ACTION: BOSTON LOS ANGELES SEATTLE

WARPED TOUR '98

FROM THEIR NEW ALBUM GUILTY 'TIL PROVED INNOCENT

WAYCOOLMUSIC.COM

©1998 MCA RECORDS, INC.



Tori Amos

"spark"

the spark has ignited early!

going for adds now!

KROQ #1 Phones
WHFS
WBCN
KNDD
KOME
LIVE 105

the new album **from the choirgirl hotel**

PRODUCED BY TORI AMOS
MANAGEMENT: ARTHUR SPIVAK/SPIVAK ENTERTAINMENT

www.toriamos.com © 1998 AT&T INTELLECTUAL PROPERTY CORP. A TIME WARNER COMPANY

For Week Ending March 29, 1998

Radio Data Systems logo and text: Playlists supplied by Broadcast Data Systems... Songs ranked by number of plays in monitored week...

KLOS Los Angeles PD: John Duncan MD: Rita Wilde. Top 30 playlist with columns for rank, song title, and airplay count.

WYSP Philadelphia OM: Tim Sabean PD: Neal Mirsky. Top 30 playlist with columns for rank, song title, and airplay count.

WRCC Chicago SM: Dave Richards APD/MD: Jo Robinson. Top 30 playlist with columns for rank, song title, and airplay count.

KQRS Minneapolis PD: Dave Hamilton APD/MD: Reed Endersbe. Top 30 playlist with columns for rank, song title, and airplay count.

WMMR Philadelphia PD: Joe Bonadonna MD: Ken Zepeto. Top 30 playlist with columns for rank, song title, and airplay count.

WWDC Washington, DC VP/Pgm: Dave Brown MD: Buddy Rizer. Top 30 playlist with columns for rank, song title, and airplay count.

WFBQ Indianapolis OM: Marty Bender MD: Ace Cosby. Top 30 playlist with columns for rank, song title, and airplay count.

WRIF Detroit OM: Doug Podell APD: Dave Wellington. Top 30 playlist with columns for rank, song title, and airplay count.

WAAF Boston PD: Dave Douglas MD: John Osterlind. Top 30 playlist with columns for rank, song title, and airplay count.

WDVE Pittsburgh PD: Garrett Hart MD: Chris Winter. Top 30 playlist with columns for rank, song title, and airplay count.

WNXC Cleveland PD: Bill Louis MD: David Jockers. Top 30 playlist with columns for rank, song title, and airplay count.

WKLS Atlanta PD: Pat Ervin MD: Lisa Sturgis. Top 30 playlist with columns for rank, song title, and airplay count.

KTXQ Dallas OM: Andy Lockridge MD: Redbeard. Top 30 playlist with columns for rank, song title, and airplay count.

KEGL Dallas PD: Greg Stevens MD: Cindy Scull. Top 30 playlist with columns for rank, song title, and airplay count.

WMMS Cleveland PD: Bob Neumann APD: "Spaceman" Scott Hughes. Top 30 playlist with columns for rank, song title, and airplay count.

WZTA Miami VP/Pgm: Gregg Steele. Top 30 playlist with columns for rank, song title, and airplay count.

KSHE St. Louis PD: Rick Ballis MD: Al Hofer. Top 30 playlist with columns for rank, song title, and airplay count.

WEBN Cincinnati OM: Jim Richards MD: Rick Jamie. Top 30 playlist with columns for rank, song title, and airplay count.

KSJO San Jose PD: Dana Jang MD: Laurie Free. Top 30 playlist with columns for rank, song title, and airplay count.

WYIY Baltimore PD: Rick Strauss APD/MD: Rob Heckman. Top 30 playlist with columns for rank, song title, and airplay count.

WRQC Minneapolis OM: Andy Bloom PD: Lauren MacLeash APD/MD: Jay Philpott. Top 30 playlist with columns for rank, song title, and airplay count.

WKRC Detroit PD: John Gorman MD: Erin Carman. Top 30 playlist with columns for rank, song title, and airplay count.

KOOR Minneapolis PD: Wade Linder APD/MD: Bill Jones. Top 30 playlist with columns for rank, song title, and airplay count.

WXTB Tampa OM: Brad Hardin MD: Brian Medlin. Top 30 playlist with columns for rank, song title, and airplay count.

MAINSTREAM ROCK

POWER PLAYLISTS

For Week Ending March 29, 1998



Playlists supplied by Broadcast Data Systems' Radio Track service. Songs ranked by number of plays in monitored week. Playlists are listed in order of TSA weekly cume, beginning with the highest-cumulative station. Cumes are updated twice weekly following the release of the Spring and Fall Arbitron surveys. The number of stations shown each week varies depending upon space.



WLZR Milwaukee PD: Keith Hastings MD: Marilyn Mee PURE ROCK LAZER 103.5

KISW Seattle SM/MD: Clark Ryan MD: Cathy Faulkner KISW 99.9 FM

WBAB Long Island OM: Eric Wellman WBAB 102.3 94 HJY

WHJY Providence MD: Sharon Schifino 94 HJY

KSD St. Louis PD: Steve Brill Interim MD: Smasher 93.7KSD

WBZX Columbus, OH PD: Hal Fish APD/MD: Ronni Hunter

WJRR Orlando PD: Dick Sheetz MD: Pat Lynch WJRR 101.1

KQRC Kansas City PD: Vince Richards MD: Valerie Knight The Rock! 98.1

KUPD Phoenix OM: Tim Maranville PD: JJ Jeffries 98KUPD

WONE Akron PD: J.D. APD: Tim Daugherty WONE 105.5

WRDU Raleigh PD: Bob Edwards 106.1 WRL

KBPI Denver PD: Bob Richards MD: Willie B. BPI 105.5

WIMZ Knoxville PD: Jim Pemberton MD: Bill Kidd Classic Rock 103.5

KUFO Portland OM: Dave Numme MD: Al Scott 101KUFO

KISS San Antonio PD: Kevin Vargas MD: C.J. Cruz 99.5 KISS

WCCO Hartford PD: Ron Dresner APD/MD: Mike Karolyi Today's Best Rock! 106.7 WCCO

KIOZ San Diego PD: Tim Dukes MD: Shannon Leder 105.3

WQXA Harrisburg PD: Chris Lloyd MD: Claudine DeLorenzo 105.5

WROQ Greenville, S.C. PD: Ken Carson APD/MD: K.C. Carson 105.5

KDKB Phoenix OM: Tim Maranville MD: Tracy Lea 93.3 KDKB

WCKV New Orleans GM: Sid Levett Louisiana's Rock 92.3

KATT Oklahoma City PD: Chris Baker MD: Jake Daniels 105.5

WLWV Columbus PD: Greg Ausham 105.5

WDHA Morristown PD: Lenny Bloch MD: Terrie Carr 105.5

Playlists supplied by Broadcast Data Systems Radio Track service. Songs ranked by number of plays in monitored week.

WEGR Memphis PD: Drake Hall MD: Zeke Logan



Table with 2 columns: Rank and Song/Artist. Top songs include Eric Clapton, My Father's Eyes and Kenny Wayne Shepherd, Blue On Black.

WIOT Toledo OM/PD: Darrin Arriens APD: Don Davis



Table with 2 columns: Rank and Song/Artist. Top songs include George Thorogood & The Destroyers, The Usual and Van Halen, Without You.

KLAQ El Paso PD/MD: "Magic" Mike Ramsey



Table with 2 columns: Rank and Song/Artist. Top songs include Creed, My Own Prison and The Verve, Bitter Sweet Symphony.

WAPL Green Bay PD: Randy Hawke



Table with 2 columns: Rank and Song/Artist. Top songs include Van Zant, Rage and Van Halen, Without You.

WFVY Jacksonville PD: David Moore MD: "Woodman"



Table with 2 columns: Rank and Song/Artist. Top songs include Van Halen, Without You and Kenny Wayne Shepherd, Blue On Black.

KBER Salt Lake City OM: Bruce Jones



Table with 2 columns: Rank and Song/Artist. Top songs include Marcy Playground, Sex And Candy and Metallica, The Unforgiven II.

KLBJ Austin OM: Jeff Carrol MD: Loris Lowe



Table with 2 columns: Rank and Song/Artist. Top songs include Days Of The New, Shelf In The Room and Van Halen, Without You.

WTUE Dayton PD: Chris Geisen MD: John Beaulieu



Table with 2 columns: Rank and Song/Artist. Top songs include Creed, My Own Prison and Rolling Stones, Saint Of Me.

WNOR Norfolk PD: Harvey Kojan APD/MD: Tim Parker



Table with 2 columns: Rank and Song/Artist. Top songs include Creed, Tom and Tool, Anthem.

KRXQ Sacramento SM: Curtiss Johnson APD: Pat Martin MD: Kylee Brooks



Table with 2 columns: Rank and Song/Artist. Top songs include Metallica, Fuel and Tool, Forty Six & 2.

WPYX Albany PD/MD: John Cooper



Table with 2 columns: Rank and Song/Artist. Top songs include Kenny Wayne Shepherd, Blue On Black and Rolling Stones, Saint Of Me.

WBLM Portland, ME PD: Herb Ivy MD: Brian James



Table with 2 columns: Rank and Song/Artist. Top songs include Van Halen, Without You and Rolling Stones, Saint Of Me.

WZZO Allentown PD: Robin Lee MD: Keith Moyer



Table with 2 columns: Rank and Song/Artist. Top songs include The Verve, Bitter Sweet Symphony and Sister Hazel, Happy.

WTFX Louisville OM: Michael Lee PD: Future Bob



Table with 2 columns: Rank and Song/Artist. Top songs include Chris Cornell, Sunshower and Marcy Playground, Sex And Candy.

WPLR New Haven PD: John Griffin MD: Pam Landry



Table with 2 columns: Rank and Song/Artist. Top songs include Pearl Jam, Given To Fly and Kenny Wayne Shepherd, Blue On Black.

KEZO Omaha OM: Doug Sorenson MD: Allison Steele



Table with 2 columns: Rank and Song/Artist. Top songs include Days Of The New, Shelf In The Room and Marcy Playground, Sex And Candy.

WCMF Rochester OM: Harry Jacobs MD: Dave Kane



Table with 2 columns: Rank and Song/Artist. Top songs include Big Wreck, The Oaf and Chris Cornell, Sunshower.

WTPT Greenville, S.C. PD: Zakk Tyler MD: Rob Hamilton



Table with 2 columns: Rank and Song/Artist. Top songs include Kenny Wayne Shepherd, Blue On Black and Marcy Playground, Sex And Candy.

KCAL San Bernardino OM: Rick Shaw MD: MJ Matthews



Table with 2 columns: Rank and Song/Artist. Top songs include Kenny Wayne Shepherd, Blue On Black and Sammy Hagar, Salvation On Sand Hill.

WKQJ Lexington PD: Tony Tiford MD: Cousin Deke



Table with 2 columns: Rank and Song/Artist. Top songs include Days Of The New, Touch, Peel And Stand and Creed, My Own Prison.

WKLQ Grand Rapids OM: Tony Gato MD: Mark Feurie



Table with 2 columns: Rank and Song/Artist. Top songs include Econoline Crush, Home and Creed, My Own Prison.

WROV Roanoke PD: Buzz Casey MD: Bryan Shaw



Table with 2 columns: Rank and Song/Artist. Top songs include Kenny Wayne Shepherd, Blue On Black and Pearl Jam, Given To Fly.

KMIX Little Rock PD: Tom Wood MD: Jimmy Edwards



Table with 2 columns: Rank and Song/Artist. Top songs include Van Zant, Rage and Rolling Stones, Saint Of Me.

KMOD Tulsa PD: Phil Stone MD: Rob Hurt



Table with 2 columns: Rank and Song/Artist. Top songs include Kenny Wayne Shepherd, Blue On Black and Rolling Stones, Flip The Switch.



★ ★ ★ **AIRPOWER** ★ ★ ★
(Minimum 800 detections for the first time)

Total Plays/Gain

MEGADETH 813/54
Use The Man (Capitol)
Total Stations: 70/Chart Move: 18-15
Heavy (21+ plays): 6 KNJY, KUPD, WCCC, WNOR, WRXZ, WYSP
Medium (14-20): 17 KBER, KEGL, KFRQ, KLBK, KMBY, KNCN, KRXQ, KRZR, KSJO, KTUX, KTXQ, WJRR, WMFS, WTKX, WXTB, WZAT, WZMT
Light (Under 14): 47
New Airplay This Week: 4 WKRK, WRQC, WTXF, WXRC

AIRPOWER BOUND

Total Plays/Gain

METALLICA 738/51
Fuel (Elektra/EEG)
Total Stations: 67/Chart Move: 19-18
Heavy (21+ plays): 8 KAZR, KEGL, KNJY, KRXQ, KTXQ, WAAF, WKRK, WLZR
Medium (14-20): 12 KNCN, KRAB, KRZR, KSJO, KUFO, KZRR, WJRR, WNOR, WTKX, WTPT, WXTB, WYSP
Light (Under 14): 47
New Airplay This Week: 3 KATT, WAPL, WCMF

SPACEHOG 722/98
Mungo City (HIFI/Sire/Warner Bros.)
Total Stations: 71/Chart Move: 24-19
Heavy (21+): 5 KNJY, KRAD, KTUX, WTKX, WZAT
Medium (14-20): 13 KILO, KLBK, KLPX, KMBY, KSJO, KTAL, KZRR, WBUZ, WCCC, WQXA, WZMT, WZZO, WZZR
Light (Under 14): 53
New Airplay This Week: 4 KXUS, WKLC, WKQQ, WMMS

SEMISONIC 714/120
Closing Time (MCA)
Total Stations: 63/Chart Move: 26-20
Heavy (21+): 6 KBER, KTUX, WJRR, WTKX, WXRZ, WZTA
Medium (14-20): 17 KATT, KDKB, KEZO, KLBK, KLPX, KMBY, KNJY, KRAD, KRZR, WCCC, WEBN, WQXA, WTPA, WYRK, WYRC, WZAT, WZMT
Light (Under 14): 40
New Airplay This Week: 4 KRAB, KXUS, WAQX, WHJY

VAN ZANT 666/38
Rage (CMC International)
Total Stations: 50/Chart Move: 23-22
Heavy (21+): 9 KMLX, KMOD, KSHB, WAPL, WKLC, WONE, WRDU, WRXL, WVRK
Medium (14-20): 14 KEZO, KLPX, WBAB, WBLM, WIMZ, WIXV, WNCN, WNCX, WROQ, WSTZ, WTUE, WYRK, WZZO, WZZR
Light (Under 14): 27
New Airplay This Week: 3 WBLM, WDHA, WTPA

EVERCLEAR 666/7
I Will Buy You A New Life (Capitol)
Total Stations: 47/Chart Move: 20-23
Heavy (21+): 9 KRAD, KTUX, KUFO, WJRR, WKLO, WTKX, WWDC, WZAT, WZTA
Medium (14-20): 15 KATT, KBER, KBPI, KILO, KISW, KLBK, KSJO, WBUZ, WCCC, WHJY, WQXA, WROV, WRXL, WTPT, WXRC
Light (Under 14): 23
New Airplay This Week: 1 KRAB

STABBING WESTWARD 663/65
Save Yourself (Columbia)
Total Stations: 58/Chart Move: 25-24
Heavy (21+): 5 KNJY, KRXQ, KTUX, WKLO, WMFS
Medium (14-20): 18 KATT, KAZR, KILO, KISS, KRAD, KUFO, KUPD, KXRR, WAAF, WBUZ, WCCC, WJRR, WKRK, WNOR, WTKX, WWDC, WZMT, WZTA
Light (Under 14): 35
New Airplay This Week: 2 KNCN, WXRC

TWO 610/-23
I Am A Pig (Nothing/Interscope)
Total Stations: 54/Chart Move: 22-25
Heavy (21+): 2 KNJY, WKLO
Medium (14-20): 12 KEGL, KRXQ, KUPD, KXRR, WCCC, WJRR, WKRK, WMFS, WNOR, WTKX, WYSP, WZMT
Light (Under 14): 40

PEARL JAM 548/23
In Hiding (Epic)
Total Stations: 44/Chart Move: 28-27
Heavy (21+): 6 KAZR, WAAF, WDHA, WJRR, WLZR, WMMR
Medium (14-20): 16 KISS, KNJY, KRXQ, KSJO, KTXQ, KUFO, WAQX, WKQQ, WRCX, WRIF, WTFX, WTKX, WTPT, WXTB, WYSP, WZMT
Light (Under 14): 22

ERIC CLAPTON 525/67
She's Gone (Reprise)
Total Stations: 41/Chart Move: 30-28
Heavy (21+): 3 KLPX, WHJY, WRDU
Medium (14-20): 15 KGGO, KLAQ, KMJX, KRZZ, WBLM, WKLC, WKQQ, WLVO, WNCX, WONE, WPLR, WROQ, WTUE, WZZO, WZZR
Light (Under 14): 23
New Airplay This Week: 3 WDHA, WIOT, WIXV

JOE SATRIANI 479/23
Ceremony (Epic)
Total Stations: 41/Chart Move: 32-31
Heavy (21+): 2 KCAL, WRCX
Medium (14-20): 14 KDKB, KLPX, KMBY, KOMP, KRXQ, KXUS, WDHA, WIOT, WMMS, WPLR, WRDU, WTKX, WZZO, WZZR
Light (Under 14): 25
New Airplay This Week: 2 KLBK, WROV

FEEDER 462/13
Cement (Echo/Elektra/EEG)
Total Stations: 51/Chart Move: 33-32
Heavy (21+): 1 KRAD
Medium (14-20): 9 KNCN, KNJY, KOMP, KTUX, KUFO, KUPD, WJRR, WQXA, WTPT
Light (Under 14): 41

JIMMIE'S CHICKEN SHACK 415/53
Dropping Anchor (Rocket/Island)
Total Stations: 39/Chart Move: 38-33
Heavy (21+): 2 KNJY, WZAT
Medium (14-20): 10 KRZR, KUPD, WCCC, WJRR, WKLO, WMFS, WMMS, WQXA, WRXL, WTPT
Light (Under 14): 27
New Airplay This Week: 1 KQRC

MATCHBOX 20 380/219
Real World (Lava/Atlantic)
Total Stations: 37/Chart Move: Debut 36
Heavy (21+): 0
Medium (14-20): 12 KATT, KLAQ, KRXQ, WAPL, WJRR, WKLC, WNCN, WTKX, WTPA, WWDC, WZTA, WZZO
Light (Under 14): 25
New Airplay This Week: 17 KATT, KEZO, KLBK, KLPX, KRAD, KRZR, KSHE, KTUX, WAPL, WDVE, WEGR, WJRR, WKLC, WMMS, WYRK, WZZO, WZZR

FUEL 376/54
Shimmer (550 Music)
Total Stations: 35/Chart Move: Debut 37
Heavy (21+): 4 KTUX, WAAF, WXRC, WZAT
Medium (14-20): 7 KNJY, KRXQ, WQXA, WTPA, WTPT, WZMT, WZZO
Light (Under 14): 24
New Airplay This Week: 5 KMBY, KUFO, WMMS, WTKX, WVRK

MOST NEW STATIONS	No. Of Stations
MATCHBOX 20 <i>Real World (Lava/Atlantic)</i>	17
BLACK LAB <i>Time Ago (DGC/Geffen)</i>	14
DAVID LEE ROTH <i>Slam Dunk (Wawazat)</i>	10
STEGOSAURUS <i>At The Water (Reprise)</i>	10
ADDICT <i>Monsterside (V2)</i>	9
DAVE MATTHEWS BAND <i>Don't Drink The Water (RCA)</i>	9

LIFE OF AGONY 370/35
Tangerine (Roadrunner)
Total Stations: 39/Chart Move: Debut 39
Heavy (21+): 2 WNOR, WZAT
Medium (14-20): 7 KLBK, KNCN, KNJY, KRXQ, KUPD, WMFS, WTKX
Light (Under 14): 30
New Airplay This Week: 4 KZRR, WJRR, WMMS, WRIF

BIG HEAD TODD & THE MONSTERS WITH JOHN LEE HOOKER 360/37
Boom Boom (Revolution)
Total Stations: 31/Chart Move: Debut 40
Heavy (21+): 2 WYVY, WROQ
Medium (14-20): 13 KMJX, KMOD, KRZZ, KXUS, KZRR, WAQX, WCKW, WDHA, WKLS, WPLR, WYRK, WYRK, WZST
Light (Under 14): 16
New Airplay This Week: 2 KGGO, KLOS

CHART BOUND

RICHIE SAMBORA 352/14
Hard Times Come Easy (Mercury)
Total Stations: 34
Heavy (21+): 1 WONE
Medium (14-20): 10 KDKB, KTAL, KXUS, WBAB, WDHA, WEGR, WIXV, WSTZ, WZZO, WZZR
Light (Under 14): 23

THE DIN PEDALS 326/38
Ashtray (Epic)
Total Stations: 50
Heavy (21+): 2 KTUX, WZTA
Medium (14-20): 2 KRAD, WRXL
Light (Under 14): 46
New Airplay This Week: 3 KBPI, KISS, WROQ

THIRD EYE BLIND 323/97
Losing A Whole Year (Elektra/EEG)
Total Stations: 32
Heavy (21+): 4 KRAD, KTUX, WTKX, WZAT
Medium (14-20): 8 KATT, KLBK, KMBY, WQXA, WTPT, WWDC, WXTB, WZMT
Light (Under 14): 20
New Airplay This Week: 4 KLBK, WBZX, WSTZ, WZMT

FOO FIGHTERS 311/48
Baker Street (EMI-Capitol Import)
Total Stations: 22
Heavy (21+): 4 KAZR, KEGL, KEZO, WLZR
Medium (14-20): 9 KILO, KNJY, KQRC, KRXQ, KSJO, WMMS, WNOR, WRIF, WYSP
Light (Under 14): 9
New Airplay This Week: 3 KATT, WKRK, WYSP

TOOL 299/3
Forty Six & 2 (Freeworld)
Total Stations: 29
Heavy (21+): 5 KBPI, KEGL, KRXQ, KUFO, WAAF
Medium (14-20): 4 KNJY, KUPD, WMFS, WNOR
Light (Under 14): 28

VAN HALEN 294/7
Fire In The Hole (Warner Bros.)
Total Stations: 45
Heavy (21+): 1 KIOZ
Medium (14-20): 4 KSJO, KTAL, KTXQ, WRIF
Light (Under 14): 40
New Airplay This Week: 3 KGGO, KLPX, WRCX

ECONOLINE CRUSH 272/39
Home (Restless)
Total Stations: 34
Heavy (21+): 1 WKLO
Medium (14-20): 3 WJRR, WXRC, WZAT
Light (Under 14): 30
New Airplay This Week: 1 KEGL

THE HUNGER 235/24
Moderation (Universal)
Total Stations: 29
Heavy (21+): 0
Medium (14-20): 5 KAZR, KIOZ, WAAF, WJRR, WNOR
Light (Under 14): 24
New Airplay This Week: 4 WBAB, WBZX, WKQQ, WXRC

PEARL JAM 230/13
Wishlist (Epic)
Total Stations: 29
Heavy (21+): 2 KEGL, WZTA
Medium (14-20): 3 KILO, KISW, KLBK
Light (Under 14): 24
New Airplay This Week: 1 WBAB

★ DAVID LEE ROTH 229/188
Slam Dunk (Wawazat)
Total Stations: 27
Heavy (21+): 3 KCAL, KEGL, WRIF
Medium (14-20): 5 KOMP, KZRR, WBUZ, WDHA, WNCX
Light (Under 14): 19
New Airplay This Week: 10 KCAL, KDKB, KMBY, KUPD, KXRR, WCKW, WDHA, WNCX, WRIF, WRXK

★ BLACK LAB 200/134
Time Ago (DGC/Geffen)
Total Stations: 34
Heavy (21+): 0
Medium (14-20): 3 KDKB, KMBY, WBUZ
Light (Under 14): 31
New Airplay This Week: 14 KTUX, KXUS, WBUZ, WHJY, WKLO, WMMR, WRCX, WROV, WTPA, WWDC, WYSP, WZMT, WZTA, WZZO

SAMIAM 164/58
She Found You (Ignition)
Total Stations: 25
Heavy (21+): 0
Medium (14-20): 3 KBPI, KRXQ, WCCC
Light (Under 14): 22
New Airplay This Week: 5 KBPI, KILO, WCCC, WLZR, WVRK

★ SEVENDUST 146/73
Too Close To Hate (TVT)
Total Stations: 28
Heavy (21+): 0
Medium (14-20): 1 KNJY
Light (Under 14): 27
New Airplay This Week: 8 KILO, KSJO, WAAF, WKLO, WLZR, WMFS, WSTZ, WXRC

AGENTS OF GOOD ROOTS 142/16
Come On (Let Your Blood Come Alive) (RCA)
Total Stations: 18
Heavy (21+): 0
Medium (14-20): 2 KTUX, WRXL
Light (Under 14): 16

★ DAVE MATTHEWS BAND 128/128
Don't Drink The Water (RCA)
Total Stations: 23
Heavy (21+): 1 WROV
Medium (14-20): 0
Light (Under 14): 22
New Airplay This Week: 9 KATT, KLOS, KTXQ, WBAB, WCCC, WHJY, WIXV, WROV, WWDC

DEFTONES 126/12
My Own Summer (Shove It) (Maverick/Warner Bros.)
Total Stations: 49
Heavy (21+): 0
Medium (14-20): 3 KNJY, KRAD, WXRC
Light (Under 14): 46

★ ADDICT 123/74
Monsterside (V2)
Total Stations: 18
Heavy (21+): 0
Medium (14-20): 2 KILO, WJRR
Light (Under 14): 16
New Airplay This Week: 9 KAZR, KILO, KRAD, KTUX, WJRR, WLZR, WNOR, WSTZ, WTPT

★ FASTBALL 117/58
The Way (Hollywood)
Total Stations: 15
Heavy (21+): 1 KRAB
Medium (14-20): 1 KLBK
Light (Under 14): 13
New Airplay This Week: 4 KBPI, KRAD, WDVE, WSTZ

★ STEGOSAURUS 103/86
At The Water (Reprise)
Total Stations: 21
Heavy (21+): 0
Medium (14-20): 0
Light (Under 14): 21
New Airplay This Week: 10 KRAD, KRXQ, KRZR, KTUX, KZRR, WCCC, WNOR, WSTZ, WZMT, WZTA

★ JIMMY PAGE/ROBERT PLANT 85/64
Most High (Atlantic)
Total Stations: 14
Heavy (21+): 0
Medium (14-20): 1 WNCX
Light (Under 14): 13
New Airplay This Week: 5 WBAB, WDHA, WDVE, WIYY, WNCX

★ DEFTONES 80/42
Be Quiet And Drive (Far Away) (Maverick/Warner Bros.)
Total Stations: 33
Heavy (21+): 0
Medium (14-20): 0
Light (Under 14): 33
New Airplay This Week: 2 KAZR, WCCC

ERIC CLAPTON 79/12
Sick And Tired (Reprise)
Total Stations: 9
Heavy (21+): 1 WIMZ
Medium (14-20): 1 WCMF
Light (Under 14): 7

★ PISTON 78/18
Turbulent (Mayhem/Lava/Atlantic)
Total Stations: 11
Heavy (21+): 0
Medium (14-20): 1 WMFS
Light (Under 14): 10
New Airplay This Week: 3 KTUX, WAPL, WCCC

Airpower awarded to those records which attain 800 detections for the first time. New airplay lists those stations registering six or more detections per week on a record for the first time. ★ Initial impact: records appearing on this page for the first time.



SONG ACTIVITY REPORTS

For Week Ending March 29, 1998



Detailed song tracking information for the last 3 weeks for all songs showing increased play this week. Total plays and gain do not include video play. Markets listed in order of population.

Table with 12 columns: Artist, Song, Total Stations, Chart Move, and 12 city-specific columns (L.A., Chicago, Phila., Detroit, Dallas, Wash., DC, Boston, Miami, Atlanta, Seattle, Long Isl., San Diego, Minn., St. Louis, Balt., Pitts., Phoenix, Tampa, Clevel., Denver, Port., OR, Cincin., Kan. City, Rivers, Milwauk., Sacram., San Jose, Provid., Colum., OH, Norfolk, San Anton., Salt Lake, Indian., Char., NC, New Dr., Orlando, Hartford, Memphis, Rochest., W.P. Beach, Las Vegas, Louisv., Ral./Dur., Okla. City) for BROTHER CANE, JERRY CANTRELL, ERIC CLAPTON, CREED, and DAYS OF THE NEW.

Table with 12 columns: Artist, Song, Total Stations, Chart Move, and 12 city-specific columns for EVERCLEAR, FEEDER, FOO FIGHTERS, JIMMIE'S CHICKEN SHACK, and MARCY PLAYGROUND.



SONG ACTIVITY REPORTS

For Week Ending March 29, 1998



Detailed song tracking information for the last 3 weeks for all songs showing increased play this week. Total plays and gain do not include video play. Markets listed in order of population.

Grid of song activity reports for MATCHBOX 20, MEGADETH, METALLICA, PEARL JAM, and JOE SATRIANI. Each section includes album name, chart move, and station data across various markets.

Grid of song activity reports for SEMISONIC, KENNY WAYNE SHEPHERD BAND, SPACEHOG, STABBING WESTWARD, and VAN ZANT. Each section includes album name, chart move, and station data across various markets.



THIS WEEK	LAST WEEK	WKS. ON CHART	HERITAGE ROCK		DETECTIONS		
			TITLE/IMPRINT/PROMOTION LABEL	ARTIST	TW	LW	
			★★★ NO. 1 ★★★				
1	1	12	BLUE ON BLACK REVOLUTION 6 weeks at No. 1	KENNY WAYNE SHEPHERD BAND	1107	1069	
2	2	6	WITHOUT YOU WARNER BROS.	VAN HALEN	855	879	
3	3	26	SAINT OF ME VIRGIN	THE ROLLING STONES	676	737	
4	5	8	RAGE CMC INTERNATIONAL	VAN ZANT	610	584	
5	13	3	I LIE IN THE BED I MAKE VIRGIN	BROTHER CANE	606	430	
6	4	15	GIVEN TO FLY EPIC	PEARL JAM	591	639	
7	6	24	3 AM LAVA/ATLANTIC	MATCHBOX 20	549	564	
8	10	14	SEX AND CANDY CAPITOL	MARCY PLAYGROUND	524	463	
9	7	19	THE UNFORGIVEN II ELEKTRA/VEEG	METALLICA	518	531	
10	11	13	SHELF IN THE ROOM OUTPOST/GEFFEN	DAYS OF THE NEW	504	440	
11	12	3	SHE'S GONE REPRISE	ERIC CLAPTON	486	433	
12	9	29	MY OWN PRISON WIND-UP	CREED	476	480	
13	8	11	SUNSHOWER ATLANTIC	CHRIS CORNELL	472	484	
14	16	6	CUT YOU IN COLUMBIA	JERRY CANTRELL	415	370	
15	15	35	TOUCH, PEEL AND STAND OUTPOST/GEFFEN	DAYS OF THE NEW	376	372	
16	17	10	WALK AWAY WARNER BROS.	COOL FOR AUGUST	364	364	
17	19	4	BOOM BOOM REVOLUTION BIG HEAD TODD & THE MONSTERS WITH JOHN LEE HOOKER		348	300	
18	18	6	HARD TIMES COME EASY MERCURY	RICHIE SAMBORA	336	318	
19	14	19	TASTE OF INDIA COLUMBIA	AEROSMITH	334	380	
			★★★ AIRPOWER ★★★				
20	20	6	CEREMONY EPIC	JOE SATRIANI	332	298	
21	27	4	MUNGO CITY HIFI/SIRE/WARNER BROS.	SPACEHOG	270	203	
22	28	4	TORN WIND-UP	CREED	240	196	
23	21	8	MY FATHER'S EYES REPRISE	ERIC CLAPTON	232	291	
24	29	4	CLOSING TIME MCA	SEMISONIC	231	188	
25	25	26	BOTH SIDES NOW THE TRACK FACTORY/MCA	SAMMY HAGAR	219	212	
26	22	22	THE GIRL I LOVE ATLANTIC	LED ZEPPELIN	215	254	
27	NEW ▶		REAL WORLD LAVA/ATLANTIC	MATCHBOX 20	212	81	
28	24	17	TIME OF YOUR LIFE (GOOD RIDDANCE) REPRISE	GREEN DAY	211	242	
29	32	8	MY HERO ROSWELL/CAPITOL	FOO FIGHTERS	195	179	
30	23	16	CLUMSY COLUMBIA	OUR LADY PEACE	191	249	
31	30	5	USE THE MAN CAPITOL	MEGADETH	191	187	
32	34	24	BACK ON EARTH EPIC	OZZY OSBOURNE	189	163	
33	36	8	IN HIDING EPIC	PEARL JAM	175	154	
34	31	20	THE OAF (MY LUCK IS WASTED) ATLANTIC	BIG WRECK	157	185	
35	26	8	NEW STATE OF MIND BEYOND MUSIC	YES	146	205	
36	RE-ENTRY		BITTER SWEET SYMPHONY VCHUT/VIRGIN	THE VERVE	141	123	
37	33	3	BLIND MAN IN THE DARK CAPRICORN/MERCURY	GOV'T MULE	139	165	
38	NEW ▶		SLAM DUNK WAWAZAT	DAVID LEE ROTH	138	24	
39	35	7	YESTERDAY'S NEWS OUTPOST/GEFFEN	WHISKEYTOWN	133	163	
40	38	2	I WILL BUY YOU A NEW LIFE CAPITOL	EVERCLEAR	133	130	

Records showing an increase in detections over the previous week, regardless of chart movement. A record which has been on the chart for more than 20 weeks will not receive a bullet, even if it registers an increase in detections. Airpower awarded to those records which attain 300 detections for the first time. If two records are tied in number of plays, the record being played on more stations is placed first. Records below the top 20 are removed from the chart after 26 weeks.

GREATEST GAINERS	INCREASE IN PLAYS
BROTHER CANE • I Lie In The Bed I Make (VIRGIN)	+176
WROV +13, WAPL +10, KDKB +10, WRQC +9, WAQX +9, WIMZ +9, WONE +8, WHJY +8, WVRK +7, KGGO +7	
MATCHBOX 20 • Real World (LAVA/ATLANTIC)	+131
WKLC +14, WAPL +12, WZZR +12, KSHE +12, WDVE +11, WZZO +10, WAFX +10, KLPX +10, KEZO +10, WEGR +10	
DAVID LEE ROTH • Slam Dunk (WAWAZAT)	+114
KCAL +22, WNCX +15, WDHA +14, KMBY +11, WCKW +9, KDKB +9, KRZR +8, WRXK +7, KOMP +6, WKLC +3	
DAVE MATTHEWS BAND • Don't Drink The Water (RCA)	+85
WROV +22, KLOS +12, WIXV +8, WBAB +8, WHJY +6, WDVE +5, KMBY +4, WKLC +4, KLPX +4, KDKB +4	
SPACEHOG • Mungo City (HIFI/SIRE/WARNER BROS.)	+67
WKLC +10, KRZR +9, KXUS +8, KTAL +6, WFBQ +5, WNCN +4, WPYX +4, KDKB +4, WSTZ +3, WFYV +3	

THIS WEEK	LAST WEEK	WKS. ON CHART	ACTIVE ROCK		DETECTIONS		
			TITLE/IMPRINT/PROMOTION LABEL	ARTIST	TW	LW	
			★★★ NO. 1 ★★★				
1	1	16	SHELF IN THE ROOM OUTPOST/GEFFEN 2 weeks at No. 1	DAYS OF THE NEW	1192	1167	
2	2	17	SEX AND CANDY CAPITOL	MARCY PLAYGROUND	1090	1103	
3	6	12	MY HERO ROSWELL/CAPITOL	FOO FIGHTERS	1047	987	
4	3	6	WITHOUT YOU WARNER BROS.	VAN HALEN	1033	1056	
5	4	19	THE UNFORGIVEN II ELEKTRA/VEEG	METALLICA	1011	1049	
6	5	7	CUT YOU IN COLUMBIA	JERRY CANTRELL	991	989	
7	7	9	TORN WIND-UP	CREED	901	873	
8	8	34	MY OWN PRISON WIND-UP	CREED	816	815	
9	11	11	BLUE ON BLACK REVOLUTION	KENNY WAYNE SHEPHERD BAND	779	741	
10	13	3	I LIE IN THE BED I MAKE VIRGIN	BROTHER CANE	758	613	
11	10	13	SUNSHOWER ATLANTIC	CHRIS CORNELL	704	785	
12	9	15	GIVEN TO FLY EPIC	PEARL JAM	702	788	
13	16	8	USE THE MAN CAPITOL	MEGADETH	622	572	
14	14	15	FUEL ELEKTRA/VEEG	METALLICA	622	599	
15	18	4	SAVE YOURSELF COLUMBIA	STABBING WESTWARD	607	555	
16	12	39	TOUCH, PEEL AND STAND OUTPOST/GEFFEN	DAYS OF THE NEW	589	649	
17	15	8	I AM A PIG NOTHING/INTERSCOPE	TWO	570	593	
18	19	9	I WILL BUY YOU A NEW LIFE CAPITOL	EVERCLEAR	533	529	
19	17	19	CLUMSY COLUMBIA	OUR LADY PEACE	505	569	
20	23	4	CLOSING TIME MCA	SEMISONIC	483	406	
21	21	5	MUNGO CITY HIFI/SIRE/WARNER BROS.	SPACEHOG	452	421	
22	20	10	WALK AWAY WARNER BROS.	COOL FOR AUGUST	417	431	
23	25	7	CEMENT ECHO/ELEKTRA/VEEG	FEEDER	377	367	
24	24	8	IN HIDING EPIC	PEARL JAM	373	371	
25	29	6	DROPPING ANCHOR ROCKET/ISLAND	JIMMIE'S CHICKEN SHACK	361	307	
26	22	18	TIME OF YOUR LIFE (GOOD RIDDANCE) REPRISE	GREEN DAY	354	412	
27	30	4	TANGERINE ROADRUNNER	LIFE OF AGONY	334	302	
28	33	3	SHIMMER 550 MUSIC	FUEL	304	265	
29	31	23	FORTY SIX & 2 FREEWORLD	TOOL	297	290	
30	28	24	BACK ON EARTH EPIC	OZZY OSBOURNE	295	323	
31	32	21	THE MEMORY REMAINS ELEKTRA/VEEG	METALLICA	287	289	
32	40	2	LOSING A WHOLE YEAR ELEKTRA/VEEG	THIRD EYE BLIND	278	201	
33	36	4	BAKER STREET EMI-CAPITOL IMPORT	FOO FIGHTERS	278	234	
34	27	24	3 AM LAVA/ATLANTIC	MATCHBOX 20	277	333	
35	26	12	BITTER SWEET SYMPHONY VCHUT/VIRGIN	THE VERVE	263	335	
36	35	20	BLACK TVT	SEVENDUST	247	242	
37	37	2	ASHTRAY EPIC	THE DIN PEDALS	230	211	
38	NEW ▶		HOME RESTLESS	ECONOLINE CRUSH	224	195	
39	NEW ▶		MODERATION UNIVERSAL	THE HUNGER	201	183	
40	34	15	DAMMIT (GROWING UP) CARGO/MCA	BLINK 182	185	249	

Records showing an increase in detections over the previous week, regardless of chart movement. A record which has been on the chart for more than 20 weeks will not receive a bullet, even if it registers an increase in detections. Airpower awarded to those records which attain 400 detections for the first time. If two records are tied in number of plays, the record being played on more stations is placed first. Records below the top 20 are removed from the chart after 26 weeks.

GREATEST GAINERS	INCREASE IN PLAYS
BROTHER CANE • I Lie In The Bed I Make (VIRGIN)	+145
WKLC +16, WCCC +14, WXRC +13, WMMS +11, WZMT +9, KTXQ +8, KEGL +8, WRXC +7, WLZR +7, WQXA +6	
MATCHBOX 20 • Real World (LAVA/ATLANTIC)	+88
WJRR +17, KATT +17, KTUX +12, KLBK +11, KRXQ +10, KRAD +9, WMMS +9, KRZR +7, WTPA +2, WIOT +1	
BLACK LAB • Time Ago (DGC/GEFFEN)	+84
WBUC +14, WZTA +10, KTUX +10, WYSP +9, WTPA +9, WKLC +8, WRXC +7, WZMT +5, WWDC +5, WCCC +4	
SEMISONIC • Closing Time (MCA)	+77
WZMT +11, WXRC +7, KBER +7, KATT +7, KNJY +6, WBZK +6, KRAB +6, WZTA +5, WTUE +5, WMMS +4	
THIRD EYE BLIND • Losing A Whole Year (ELEKTRA/VEEG)	+77
KLBK +15, WZMT +14, KATT +10, WZAT +7, WBZK +6, WQXA +5, KTUX +4, WTPA +3, WWDC +3, KILQ +2	

POWER PLAYLISTS

AIRPLAY Monitor For Week Ending March 29, 1998

Playlists supplied by Broadcast Data Systems' Radio Track service. Songs ranked by number of plays in monitored week.

WXRK New York PD: Steve Kingston MD: Mike Peer Music Coor: Booker



Table with 2 columns: Rank and Song/Artist. Includes Radiohead, Jane's Addiction, Tool, Green Day, etc.

KROQ Los Angeles VP/Pgm: Kevin Weatherly APD: Gene Sandbloom MD: Lisa Worden



Table with 2 columns: Rank and Song/Artist. Includes Cherry Poppin' Daddies, Garbage, Fastball, etc.

WKQX Chicago PD: Alex Luke MD: Mary Shuminas



Table with 2 columns: Rank and Song/Artist. Includes Creed, Barrenaked Ladies, Fastball, etc.

WBCN Boston VP/Pgm: Oedipus MD: Steve Strick



Table with 2 columns: Rank and Song/Artist. Includes Blink 182, Marcy Playground, Foo Fighters, etc.

KLYY Los Angeles VP/Pgm: Steve Blatter MD: Mike Savage



Table with 2 columns: Rank and Song/Artist. Includes Pearl Jam, Marcy Playground, Goo Goo Dolls, etc.

WPLY Philadelphia PD: Jim McGuinn APD: Doug Kubinski MD: Preston Elliot



Table with 2 columns: Rank and Song/Artist. Includes The Verve, Ben Folds Five, Green Day, etc.

WHFS Washington, DC PD: Robert Benjamin APD: Bob Waugh MD: Pat Ferrise



Table with 2 columns: Rank and Song/Artist. Includes Blink 182, Everclear, Barrenaked Ladies, etc.

WPLT Detroit PD: Garrett Michaels APD/MD: Alex Tear



Table with 2 columns: Rank and Song/Artist. Includes Loretta McNamitt, Marcy Playground, Green Day, etc.

KDGE Dallas PD: Duane Doherty MD: Alan E. Smith



Table with 2 columns: Rank and Song/Artist. Includes The Verve, Creed, Green Day, etc.

WNNX Atlanta OM: Brian Phillips PD: Leslie Fram MD: Sean Demery



Table with 2 columns: Rank and Song/Artist. Includes Creed, Natalie Imbruglia, Semisonic, etc.

KITS San Francisco VP/Pgm: Richard Sands APD: Roland West MD: Aaron Axelton



Table with 2 columns: Rank and Song/Artist. Includes Radiohead, Cherry Poppin' Daddies, Blink 182, etc.

KNDD Seattle PD: Phil Manning MD: Kim Monroe



Table with 2 columns: Rank and Song/Artist. Includes Fastball, Blink 182, Our Lady Peace, etc.

Large advertisement for Green Day featuring the band members and promotional text: 'New Video on May 13th!', 'Live From The Ten Spot W/Green Day May 17th!', 'David Letterman May 8th!', 'Catch Green Day on Tour in May!'.

Large advertisement for Goo Goo Dolls featuring the band's silhouette and promotional text: 'THE NEW SINGLE FROM nimrod.', 'Goo Goo Dolls "IRIS"', 'MUSIC FROM THE MOTION PICTURE "CITY OF ANGELS"', 'Monitor: Debut @ 27, \$63x, +378', 'On The Air at ...'.

ROCK AIRPLAY MONITOR

From Your Mouth
the single from the new lp
Life in the So-Called Space Age

SALES
Billboard Top 200
Debut (137)
Billboard Heatseekers
Debut (6)

RADIO
Monitor (28) - (24)
5.6 Million Audience
New This Week: KTBZ, WNFZ,
WZAZ, KPKX, WWSK, KORB

VIDEO
Active Rotation
M2 - 18 Spins

THE STORY: BOSTON
WBCN - 23 Spins
WFXN - 33 Spins

NEWBURY COMICS
TOP 5 SALES!
Outstanding Early
Research At WBCN

**Top 10 Phones: WHFS, WBCN,
WFXN, 99X, KPNT, X96,
KGDE, WROX, KEDG, KMYZ,
WOXY, KTOZ, WMAD**

www.1500records.com
Produced by God Lives Underwater and Gary Dobbins
Executive Producer: Gary Richards
Management: Nitrus Management
© 1998 1500 Records. Manufactured and Marketed by A&M Records, Inc.,
a PolyGram company. All rights reserved.

1500 RECORDS

MODERN ROCK

POWER PLAYLISTS™
Broadcast Data Systems
Available Throughout the Country

Playlists supplied by Broadcast Data Systems' Radio Track service. Songs ranked by number of plays in monitored week. Playlists are listed in order of TSA weekly curve, beginning with the highest-ranking station. Curves are updated twice yearly following the release of the Spring and Fall Arbitron surveys. The number of stations shown each week varies depending upon space.

KTBZ Houston
PD: Jim Trapp
APD: Steve Robison
MD: David Sadoff

FM LW

- 1 Foo Fighters, My Hero 42:38
- 2 Creed, My Own Prison 40:38
- 3 Our Lady Peace, Clumsy 38:38
- 4 Pearl Jam, Given To Fly 37:40
- 5 Marcy Playground, Sex And Candy 35:39
- 6 Radiohead, Karma Police 34:27
- 7 Everclear, I Will Buy You A New Life 34:26
- 8 Matchbox 20, Real World 34:22
- 9 Third Eye Blind, Losing A Whole Year 33:29
- 10 Jerry Cantrell, Cut You In 32:33
- 11 Fretblinker, Into The Ocean 31:19
- 12 Chris Cornell, Sunshower 29:25
- 13 Days Of The New, Shell In The Room 28:31
- 14 Big Wreck, The Out 28:27
- 15 Semisonic, Closing Time 27:16
- 16 Pearl Jam, Wishlist 24:18
- 17 Black Lab, Wash It Away 22:5
- 18 Fuel, Shimmer 18:7
- 19 Black Lab, Wash It Away 17:41
- 20 The Hunger, Moderation 17:16
- 21 Mighty Joe Plim, Irish 17:15
- 22 Two, I Am A Pig 16:12
- 23 Death In Vegas, Dirt 16:12
- 24 Cool For August, Walk Away 15:18
- 25 U2, Last Night On Earth 14:11
- 26 Collective Soul, Listen 14:12
- 27 Collective Soul, Precious Declaration 14:11
- 28 Fastball, The Way 14:7
- 29 Mighty Joe Plim, Live Through This 12:15
- 30 Tonic, Open Up Your Eyes 12:14

KOME San Jose
OM: Ron Nenni
PD: Jay Taylor
MD: Jeanette Grgurevic

FM LW

- 1 Marcy Playground, Sex And Candy 40:34
- 2 Fastball, The Way 40:35
- 3 Everclear, I Will Buy You A New Life 38:36
- 4 Blink 182, Dammit 37:34
- 5 Third Eye Blind, Losing A Whole Year 36:36
- 6 Cherry Poppin' Daddies, Zoot Suit Riot 35:35
- 7 Semisonic, Closing Time 32:29
- 8 Death Pink, De Funk 30:25
- 9 The Urge, Jump Right In 29:15
- 10 Creed, My Own Prison 29:13
- 11 Radiohead, Karma Police 28:29
- 12 Foo Fighters, My Hero 28:27
- 13 The Verve, Bitter Sweet Symphony 27:23
- 14 Wank, Forgiven 26:17
- 15 Harvey Danger, Flagpole Sitta 26:24
- 16 Sublime, Caress Me Down 26:10
- 17 Garbage, Push It 24:0
- 18 Beck, Deadweight 24:23
- 19 Pearl Jam, Wishlist 24:31
- 20 Green Day, Time Of Your Life 23:28
- 21 Pearl Jam, Given To Fly 21:23
- 22 Foo Fighters, Everlong 19:13
- 23 Jane's Addiction, Jane Says 18:18
- 24 Fuel, Shimmer 18:18
- 25 Marcy Playground, Saint Joe On The School 19:26
- 26 Bler, Song 2 18:15
- 27 311, All Mixed Up 18:14
- 28 Mono, Life In Mono 18:15
- 29 Natalie Imbruglia, Torn 17:1
- 30 Smash Mouth, Walkin' On The Sun 17:15

WXDX Pittsburgh
PD: John Moschitta
MD: Lenny Diana

FM LW

- 1 Jerry Cantrell, Cut You In 42:33
- 2 Creed, My Own Prison 41:38
- 3 The Verve, Bitter Sweet Symphony 40:36
- 4 Our Lady Peace, Clumsy 39:39
- 5 Days Of The New, Touch, Peel And Stand 37:35
- 6 Fastball, The Way 37:21
- 7 Marcy Playground, Sex And Candy 37:35
- 8 Pearl Jam, Given To Fly 33:35
- 9 Fuel, Shimmer 25:18
- 10 Semisonic, Closing Time 22:21
- 11 Go Go Dolls, Iris 22:16
- 12 Brownie Mary, Naked 22:19
- 13 Chris Cornell, Sunshower 21:22
- 14 Agents Of Good Roots, Come On 21:18
- 15 Fat, Hump 21:17
- 16 Ani DiFranco, Little Plastic Castle 19:19
- 17 Finley Quayle, Sunday Shining 18:17
- 18 Foo Fighters, My Hero 17:18
- 19 Smash Mouth, Walkin' On The Sun 16:15
- 20 Blink 182, Dammit 15:13
- 21 Everclear, Everything To Everyone 15:13
- 22 Green Day, Redundant 15:0
- 23 Third Eye Blind, How's It Going To Be 14:20
- 24 Tonic, If You Could Only See 14:15
- 25 Alice In Chains, Again 14:8
- 26 Green Day, Time Of Your Life 14:32
- 27 Matchbox 20, Real World 14:0
- 28 Blur, Song 2 14:13
- 29 Jane's Addiction, Jane Says 13:13
- 30 God Lives Underwater, From Your Mouth 13:13

KPNT St. Louis
OM: Allan Fee
APD: Marty Linck
MD: Traci Wilde

FM LW

- 1 Our Lady Peace, Clumsy 34:33
- 2 Green Day, Time Of Your Life 34:31
- 3 Creed, My Own Prison 34:29
- 4 Pearl Jam, Given To Fly 30:26
- 5 Marcy Playground, Sex And Candy 30:26
- 6 Foo Fighters, My Hero 30:33
- 7 Everclear, Everything To Everyone 28:26
- 8 Days Of The New, Touch, Peel And Stand 28:31
- 9 Fuel, Shimmer 24:21
- 10 The Urge, Jump Right In 23:25
- 11 Jerry Cantrell, Cut You In 23:21
- 12 Semisonic, Closing Time 23:24
- 13 Fastball, The Way 22:21
- 14 Blink 182, Dammit 22:22
- 15 Everclear, I Will Buy You A New Life 22:22
- 16 Days Of The New, Shell In The Room 20:16
- 17 311, Beautiful Disaster 19:22
- 18 Cherry Poppin' Daddies, Zoot Suit Riot 19:19
- 19 Agents Of Good Roots, Come On 18:28
- 20 Foo Fighters, Everlong 17:18
- 21 Sneaker Pimps, 6 Underground 17:13
- 22 Spacohog, Mungo City 16:16
- 23 Third Eye Blind, How's It Going To Be 15:18
- 24 Real Big Fish, Sell Out 15:10
- 25 Tonic, Open Up Your Eyes 15:23
- 26 The Verve, Bitter Sweet Symphony 15:21
- 27 Adolescence, What I Didn't Know 14:16
- 28 Finley Quayle, Sunday Shining 14:16
- 29 Blur, Song 2 14:12
- 30 Pearl Jam, Wishlist 14:16

CIMX Detroit
PD: Murray Brookshaw
APD/MD: Vince Cannova

FM LW

- 1 Blink 182, Dammit 53:33
- 2 Semisonic, Closing Time 51:47
- 3 Our Lady Peace, Clumsy 50:50
- 4 Fastball, The Way 50:50
- 5 Matchbox 20, 3 AM 43:38
- 6 Everclear, Everything To Everyone 41:34
- 7 Loroena McKeenitt, The Mummies' Dance 37:42
- 8 Marcy Playground, Sex And Candy 37:40
- 9 The Mighty Mighty Bosstones, Wrong Thing 37:36
- 10 Natalie Imbruglia, Torn 36:0
- 11 The Verve, Bitter Sweet Symphony 33:28
- 12 Natalie Imbruglia, Torn 31:30
- 13 Smash Mouth, Walkin' On The Sun 30:17
- 14 Brian Van 3000, Drinking In L.A. 30:10
- 15 Sarah McLachlan, Building A Mystery 30:30
- 16 Jane's Addiction, Jane Says 28:26
- 17 Foo Fighters, Everlong 28:27
- 18 Third Eye Blind, How's It Going To Be 27:46
- 19 Radiohead, Karma Police 25:21
- 20 Our Lady Peace, Superman's Dead 24:41
- 21 Everclear, I Will Buy You A New Life 24:21
- 22 Ben Folds Five, Brick 24:21
- 23 Foo Fighters, My Hero 24:25
- 24 Pearl Jam, Given To Fly 24:25
- 25 Alanis Morissette, Uninvited 23:27
- 26 Alanis Morissette, Uninvited 23:27
- 27 Sarah McLachlan, Possession 23:10
- 28 Moe Moore, Bohemia 23:27
- 30 Bush, Mouth 23:26

KEDJ Phoenix
PD: Shellie Hart
APD/MD: Chris Patyk

FM LW

- 1 Marcy Playground, Sex And Candy 34:27
- 2 Jammie's Chicken Shack, High 32:20
- 3 Semisonic, Closing Time 31:26
- 4 Pearl Jam, Given To Fly 30:38
- 5 Blink 182, Dammit 29:55
- 6 Stabbing Westward, Save Yourself 28:18
- 7 Fastball, The Way 26:27
- 8 The Urge, Jump Right In 25:24
- 9 Fuel, Shimmer 23:23
- 10 Tool, Sober 22:21
- 11 Days Of The New, Touch, Peel And Stand 21:23
- 12 Addicted, Monochrome 21:28
- 13 Foo Fighters, My Hero 20:21
- 14 Radiohead, Karma Police 20:6
- 15 Green Day, Time Of Your Life 19:26
- 16 Tool, Stinkface 19:18
- 17 Sublime, Caress Me Down 19:21
- 18 Jammie's Chicken Shack, Dropping Anchor 19:11
- 19 Pearl Jam, Wishlist 18:18
- 20 The Din Pedals, Ashtray 18:16
- 21 Rage Against The Machine, The Ghost Of 17:15
- 22 Garbage, Push It 17:0
- 23 Harvey Danger, Flagpole Sitta 17:5
- 24 Finley Quayle, Sunday Shining 17:18
- 25 Wank, Forgiven 16:9
- 26 2 Skinnee J's, Riot Hrrrd 15:18
- 27 Go Go Dolls, Iris 14:9
- 28 Daft Punk, Around The World 13:14
- 29 Creed, My Own Prison 13:20
- 30 God Lives Underwater, From Your Mouth 13:8

WMRQ Hartford
PD: Jay Beau Jones
MD: Dave Hill

FM LW

- 1 Black Lab, Wash It Away 46:32
- 2 Foo Fighters, My Hero 43:29
- 3 Third Eye Blind, How's It Going To Be 42:42
- 4 Pearl Jam, Given To Fly 42:42
- 5 Marcy Playground, Sex And Candy 41:45
- 6 Tonic, Open Up Your Eyes 35:41
- 7 Radiohead, Karma Police 31:26
- 8 Our Lady Peace, Clumsy 30:23
- 9 God Lives Underwater, From Your Mouth 27:27
- 10 Fastball, The Way 27:27
- 11 Everclear, I Will Buy You A New Life 26:25
- 12 Fuel, Shimmer 26:39
- 13 Harvey Danger, Flagpole Sitta 25:7
- 14 Semisonic, Closing Time 24:25
- 15 Matchbox 20, Real World 24:21
- 16 Creed, My Own Prison 24:23
- 17 The Verve, Bitter Sweet Symphony 23:40
- 18 Go Go Dolls, Iris 22:24
- 19 Pearl Jam, Wishlist 22:16
- 20 Third Eye Blind, Losing A Whole Year 20:18
- 21 Dave Matthews Band, Don't Drink The Water 19:0
- 22 Blink 182, Dammit 18:26
- 23 Ben Folds Five, Brick 16:14
- 24 Green Day, Time Of Your Life 16:18
- 25 The Specialists, It's You 16:18
- 26 Jane's Addiction, Jane Says 13:25
- 27 The Mighty Mighty Bosstones, The Impression 13:14
- 28 Days Of The New, Touch, Peel And Stand 12:9
- 29 Garbage, Push It 12:0
- 30 Cherry Poppin' Daddies, Zoot Suit Riot 12:13

KWOD Sacramento
PD: Ron Buncce
MD: Carla "Raz" Raswyck

FM LW

- 1 Natalie Imbruglia, Torn 55:54
- 2 Days Of The New, Touch, Peel And Stand 51:53
- 3 Marcy Playground, Sex And Candy 51:36
- 4 Creed, My Own Prison 48:28
- 5 Sublime, Caress Me Down 48:28
- 6 Everclear, I Will Buy You A New Life 46:28
- 7 Semisonic, Closing Time 39:51
- 8 Matchbox 20, Real World 38:49
- 9 Blink 182, Dammit 38:49
- 10 Cherry Poppin' Daddies, Zoot Suit Riot 33:26
- 11 Fuel, Shimmer 32:32
- 12 Go Go Dolls, Iris 30:21
- 13 Green Day, Time Of Your Life 29:35
- 14 Alanis Morissette, Uninvited 28:28
- 15 Marcy Playground, Saint Joe On The School 26:27
- 16 Adolescence, What I Didn't Know 25:17
- 17 The Verve, Bitter Sweet Symphony 25:11
- 18 Pearl Jam, Wishlist 25:47
- 19 Eve 6, Inside Out 25:0
- 20 Wank, Forgiven 24:23
- 21 Fastball, The Way 24:21
- 22 Foo Fighters, Everlong 22:24
- 23 Third Eye Blind, How's It Going To Be 22:23
- 24 Green Day, Time Ago 22:11
- 25 Dave Matthews Band, Crash Into Me 21:25
- 26 Garbage, Only Happy When It Rains 20:22
- 27 Matchbox 20, 3 AM 20:20
- 28 Everclear, Everything To Everyone 20:23
- 29 Bush, Mouth 19:22
- 30 Third Eye Blind, Semi-Charmed Life 19:26

WENZ Cleveland
PD: Dan Binder
APD: Ric Bennett

FM LW

- 1 Blink 182, Dammit 47:53
- 2 Green Day, Time Of Your Life 47:54
- 3 Our Lady Peace, Clumsy 47:54
- 4 Marcy Playground, Sex And Candy 46:50
- 5 Foo Fighters, My Hero 43:49
- 6 Pearl Jam, Given To Fly 43:47
- 7 Go Go Dolls, Iris 28:27
- 8 Alanis Morissette, Uninvited 27:24
- 9 Dave Matthews Band, Don't Drink The Water 27:14
- 10 The Verve, Bitter Sweet Symphony 25:29
- 11 Fastball, The Way 21:21
- 12 Garbage, Push It 19:0
- 13 The Mighty Mighty Bosstones, Wrong Thing 19:14
- 14 Barrensked Ladies, Shoe Box 18:1
- 15 Fat, Hump 18:18
- 16 Sublime, What I Got 18:14
- 17 God Lives Underwater, From Your Mouth 18:16
- 18 Everclear, Everything To Everyone 17:15
- 19 Days Of The New, Touch, Peel And Stand 17:16
- 20 Finley Quayle, Sunday Shining 17:19
- 21 Fuel, Shimmer 17:19
- 22 Black Lab, Wash It Away 17:18
- 23 Chris Cornell, Sunshower 16:14
- 24 Adolescence, What I Didn't Know 16:18
- 25 Third Eye Blind, How's It Going To Be 15:18
- 26 Radiohead, Karma Police 15:18
- 27 Third Eye Blind, Semi-Charmed Life 15:18
- 28 Brownie Mary, Naked 15:15
- 29 Jerry Cantrell, Cut You In 15:15
- 30 Agents Of Good Roots, Come On 15:18

WKDF Nashville
PD: Kidd Redd
MD: Sheri Sexton

FM LW

- 1 Collective Soul, She Said 35:33
- 2 Semisonic, Closing Time 35:32
- 3 The Verve, Bitter Sweet Symphony 34:37
- 4 Matchbox 20, Real World 33:29
- 5 Green Day, Time Of Your Life 33:33
- 6 Everclear, I Will Buy You A New Life 33:35
- 7 Oasis, All Around The World 29:29
- 8 Marcy Playground, Sex And Candy 29:11
- 9 Fastball, The Way 26:16
- 10 Third Eye Blind, How's It Going To Be 22:34
- 11 Black Lab, Wash It Away 22:22
- 12 Sarah McLachlan, Sweet Surrender 22:19
- 13 Natalie Imbruglia, Torn 16:18
- 14 Tonic, If You Could Only See 18:16
- 15 Sister Hazel, All For You 17:9
- 16 Pearl Jam, Given To Fly 17:18
- 17 Ben Folds Five, Brick 17:20
- 18 The Honeyrods, Soap Opera 17:18
- 19 Chris Cornell, Sunshower 17:21
- 20 Fiona Apple, Criminal 16:16
- 21 Matchbox 20, 3 AM 16:15
- 22 Cherry Poppin' Daddies, Zoot Suit Riot 16:0
- 23 Harttmoose, Wart 16:21
- 24 Pearl Jam, Wishlist 15:14
- 25 The Verve Pipe, The Freshmen 15:15
- 26 Our Lady Peace, Clumsy 15:13
- 27 Jerry Cantrell, Cut You In 13:19
- 28 Barrensked Ladies, Brian Wilson 13:19
- 29 Third Eye Blind, Losing A Whole Year 12:0
- 30 Counting Crows, Mr. Jones 11:6

WRZX Indianapolis
PD: Scott Jameson
MD: Michael Young

FM LW

- 1 Our Lady Peace, Clumsy 36:34
- 2 Everclear, I Will Buy You A New Life 35:30
- 3 Marcy Playground, Sex And Candy 34:35
- 4 Radiohead, Karma Police 34:36
- 5 Creed, My Own Prison 33:33
- 6 Fastball, The Way 31:24
- 7 Jerry Cantrell, Cut You In 30:21
- 8 Agents Of Good Roots, Come On 24:22
- 9 Green Day, Time Of Your Life 24:32
- 10 Fuel, Shimmer 24:14
- 11 Pearl Jam, Given To Fly 23:19
- 12 Semisonic, Closing Time 23:21
- 13 Black Lab, Wash It Away 23:17
- 14 Blink 182, Dammit 22:32
- 15 Spacohog, Mungo City 21:21
- 16 The Specialists, It's You 20:21
- 17 Chris Cornell, Sunshower 19:24
- 18 Smash Mouth, Walkin' On The Sun 18:21
- 19 Third Eye Blind, How's It Going To Be 18:17
- 20 Ben Folds Five, Brick 17:17
- 21 Third Eye Blind, Losing A Whole Year 16:19
- 22 Big Wreck, The Out 15:22
- 23 The Offspring, Gone Away 15:11
- 24 Days Of The New, Touch, Peel And Stand 15:17
- 25 God Lives Underwater, From Your Mouth 14:1
- 26 Pearl Jam, Wishlist 14:14
- 27 Foo Fighters, Breathe Street 14:13
- 28 Go Go Dolls, Iris 13:1
- 29 Beck, The New Pollution 13:12
- 30 Sugar Ray, Fly 13:14

KPKX Denver
PD: Gary Schoenwetter
APD/MD: Eric Schmidt

FM LW

- 1 Agents Of Good Roots, Smiling Up The Frown 22:32
- 2 Fastball, The Way 21:29
- 3 Green Day, Time Of Your Life 20:31
- 4 Third Eye Blind, How's It Going To Be 18:30
- 5 Pearl Jam, Wishlist 18:20
- 6 Sister Hazel, Happy 18:24
- 7 Kenny Wayne Shepherd, Blue On Black 14:25
- 8 Bonnie Raitt, One Belief Away 10:13
- 9 Alana Davis, 32 Flavors 10:15
- 10 Everclear, I Will Buy You A New Life 9:12
- 11 Paula Cole, Me 9:9
- 12 Marcy Playground, Sex And Candy 8:13
- 13 William Tell, The Ring 8:13
- 14 Natalie Imbruglia, Torn 8:11
- 15 Semisonic, Closing Time 8:15
- 16 Finn Brothers, Only Talking Sense 7:13
- 17 Tonic, If You Could Only See 7:9
- 18 Eric Johnson, S.R.V. 7:6
- 19 Brad, The Day Brings 7:20
- 20 Cherry Poppin' Daddies, Zoot Suit Riot 7:10
- 21 Freddy Jones, Band, Wonder 6:8
- 22 Sugar Ray, Fly 6:7
- 23 Loroena McKeenitt, The Mummies' Dance 6:8
- 24 Dave Matthews Band, Don't Drink The Water 6:0
- 25 Ben Folds Five, Brick 6:8
- 26 The Verve, Bitter Sweet Symphony 6:10
- 27 Big Head Todd & The Motherships, Resignation 6:1
- 28 The Alarm, Rain In The Summertime 6:1
- 29 Modern English, I Met With You 6:7
- 30 Robbie Robertson, Unbound 6:10

POWER PLAYLISTS

For Week Ending March 29, 1998



Playlists supplied by Broadcast Data Systems... Radio Track service. Songs ranked by number of plays in monitored week.



KZON Phoenix PD: Paul Peterson MD: Kevin Mannion. Playlist table with columns for rank, song title, and TW/LW.

XTRA San Diego PD: Bryan Schock APD: Malcolm Ryker MD: Chris Muckley. Playlist table with columns for rank, song title, and TW/LW.

WGRD Grand Rapids PD/MD: Margot Smith AMD: Tim Bronson. Playlist table with columns for rank, song title, and TW/LW.

KZMZ Minneapolis/St. Paul OM: Dave Hamilton PD: John Lassman APD: Matt Brooke. Playlist table with columns for rank, song title, and TW/LW.

WQBK Albany PD/MD: Kelli McVamara. Playlist table with columns for rank, song title, and TW/LW.

WLUM Milwaukee OM: Alex Cosper PD: Chuck Summers. Playlist table with columns for rank, song title, and TW/LW.

WBRU Providence PD: Tim Schiavelli MD: Mike Green. Playlist table with columns for rank, song title, and TW/LW.

WNVE Rochester PD/MD: Erick Anderson. Playlist table with columns for rank, song title, and TW/LW.

KNRR Portland, OR PD/MD: Mark Hamilton APD: Jayn. Playlist table with columns for rank, song title, and TW/LW.

WEND Charlotte PD: Jack Daniel MD: Rick Brewer. Playlist table with columns for rank, song title, and TW/LW.

WFX Boston PB: Cruze MD: Laurie Gail. Playlist table with columns for rank, song title, and TW/LW.

KXKR Salt Lake City PD: Mike Summers MD: Sean Ziebarth. Playlist table with columns for rank, song title, and TW/LW.

KCXX Riverside/San Bernardino OM/PD: Dwight Arnold APD: John DeSantis MD: Lisa Axe. Playlist table with columns for rank, song title, and TW/LW.

KENZ Salt Lake City PD: Bruce Jones MD: Dom Casual. Playlist table with columns for rank, song title, and TW/LW.

KKND New Orleans OM: Dave Stewart APD/MD: Rod Ryan. Playlist table with columns for rank, song title, and TW/LW.

KGDE Omaha PD: Sean Smyth MD: Scott Papek. Playlist table with columns for rank, song title, and TW/LW.

XHRM San Diego PD: Mike Halloran MD: Chaz Kelly. Playlist table with columns for rank, song title, and TW/LW.

WEDG Buffalo PD: John Hager MD: Rich Wall. Playlist table with columns for rank, song title, and TW/LW.

WPBZ West Palm Beach PD: John O'Connell MD: Dan O'Brien. Playlist table with columns for rank, song title, and TW/LW.

WAQZ Cincinnati PD: Matt Harris APD: Sterling Schiessler MD: Rick Jamie. Playlist table with columns for rank, song title, and TW/LW.

KNRX Kansas City PD: John Lenac APD: Dave Horn MD: Jason Justice. Playlist table with columns for rank, song title, and TW/LW.

KMYZ Tulsa PD: Lynn Barstow MD: Ray Dog. Playlist table with columns for rank, song title, and TW/LW.

KROX Austin PD: Sara Trexler APD/MD: Lloyd "LA" Hucutt. Playlist table with columns for rank, song title, and TW/LW.

KTCL Denver PD: Mike O'Conner Acting MD: Sabrina Saunders. Playlist table with columns for rank, song title, and TW/LW.

POWER PLAYLISTS

For Week Ending March 29, 1998



Playlists supplied by Broadcast Data Systems Radio Track service. Songs ranked by number of plays in monitored week. Playlists are listed in order of TSA weekly count, beginning with the highest-counting station. Counts are updated twice weekly following the release of the Spring and Fall Arbitron surveys. The number of stations shown each week varies depending upon space.



KXTE Las Vegas PD: Mike Stern MD: Chris Ripley

Table with 2 columns: Song Title, LW. Top songs include 'Stabbing Westward, Save Yourself', 'Everclear, Father Of Mine', 'Marcy Playground, Sex And Candy'.

WXRA Greensboro PD: Tim Satterfield APD: Marcia Gan

Table with 2 columns: Song Title, LW. Top songs include 'Creed, My Own Prison', 'Third Eye Blind, How's It Going To Be', 'Fastball, The Way'.

WROX Norfolk PD/MD: Al Mitchell

Table with 2 columns: Song Title, LW. Top songs include 'Marcy Playground, Sex And Candy', 'Semisonic, Closing Time', 'Fastball, The Way'.

WRAX Birmingham PD: Dave Rossi APD: Hurricane Shane MD: Suzy Boe

Table with 2 columns: Song Title, LW. Top songs include 'Semisonic, Closing Time', 'Fastball, The Way', 'Outrigger, Clumsy'.

WXEX Providence PD: Brent Petersen MD: John Allers

Table with 2 columns: Song Title, LW. Top songs include 'Marcy Playground, Sex And Candy', 'Creed, Torn', 'Semisonic, Closing Time'.

WXEG Dayton PD: Jeff Stevens MD: Alan Rantz

Table with 2 columns: Song Title, LW. Top songs include 'The Verve, Bitter Sweet Symphony', 'Marcy Playground, Sex And Candy', 'Fastball, The Way'.

WBZU Richmond PD: JJ Quest MD: Jay Smack

Table with 2 columns: Song Title, LW. Top songs include 'Creed, My Own Prison', 'Baroness, Ladies, Brian Wilson', 'Our Lady Peace, Clumsy'.

WPLA Jacksonville PD: Jim Randall MD: Greg Brady

Table with 2 columns: Song Title, LW. Top songs include 'Sneaker Pimps, 6 Underground', 'Marcy Playground, Sex And Candy', 'Days Of The New, Shelf In The Room'.

KFRF Fresno PD: Bruce Wayne

Table with 2 columns: Song Title, LW. Top songs include 'Fastball, The Way', 'Pearl Jam, Given To Fly', 'Marcy Playground, Sex And Candy'.

KEDG Las Vegas PD: Fitz MD: April Lee

Table with 2 columns: Song Title, LW. Top songs include 'Fastball, The Way', 'Semisonic, Closing Time', 'Moo, Life In Mono'.

KLZR Kansas City PD: Roger The Dodger MD: Bob Osborn AMD: Jeff Petterson

Table with 2 columns: Song Title, LW. Top songs include 'Fastball, The Way', 'Foo Fighters, My Hero', 'Semisonic, Closing Time'.

WCY Portland, ME PD: Herb Ivy MD: Brian James

Table with 2 columns: Song Title, LW. Top songs include 'Fastball, The Way', 'Creed, My Own Prison', 'Semisonic, Closing Time'.

KTEG Albuquerque PD: Skip Isley APD/MD: Julie Hoyt

Table with 2 columns: Song Title, LW. Top songs include 'Fastball, The Way', 'Our Lady Peace, Clumsy', 'Everclear, I Will Buy You A New Life'.

WWCD Columbus PD/MD: Andy Davis

Table with 2 columns: Song Title, LW. Top songs include 'Fastball, The Way', 'Everclear, I Will Buy You A New Life', 'Days Of The New, Shelf In The Room'.

KPOI Honolulu PD: Brock Whaley MD: Nikki Basque

Table with 2 columns: Song Title, LW. Top songs include 'Loreena McKennitt, The Mummers' Dance', 'Green Day, Time Of Your Life', 'Marcy Playground, Sex And Candy'.

WRMQ Memphis PD: Tony Williams MD: John Michael

Table with 2 columns: Song Title, LW. Top songs include 'Matchbox 20, Real World', 'Our Lady Peace, Clumsy', 'Days Of The New, Shelf In The Room'.

KAEP Spokane PD: Haley Jones MD: Larry Pearson

Table with 2 columns: Song Title, LW. Top songs include 'Green Day, Time Of Your Life', 'Ben Folds Five, Brick', 'Natalie Imbruglia, Torn'.

WKRO Orlando PD: Taft Moore MD: Rosie Acevedo

Table with 2 columns: Song Title, LW. Top songs include 'The Verve, Bitter Sweet Symphony', 'Marcy Playground, Sex And Candy', 'Days Of The New, Shelf In The Room'.

KICT Wichita PD: Ron Eric Taylor MD: Sherry McKinnon

Table with 2 columns: Song Title, LW. Top songs include 'Our Lady Peace, Clumsy', 'Everclear, I Will Buy You A New Life', 'Days Of The New, Shelf In The Room'.

KFMA Tucson PD: Chuck Roast

Table with 2 columns: Song Title, LW. Top songs include 'Our Lady Peace, Clumsy', 'Foo Fighters, My Hero', 'The Verve, Bitter Sweet Symphony'.

WAVF Charleston, SC PD: Rob Cressman MD: Janda Baldwin

Table with 2 columns: Song Title, LW. Top songs include 'Finley Quaye, Sunday Shining', 'Chris Cornell, Sunshower', 'Black Lab, Wash It Away'.

KDMD Des Moines PD: Lee Konst MD: Sophia John

Table with 2 columns: Song Title, LW. Top songs include 'Marcy Playground, Sex And Candy', 'Alanis Morissette, Uninvited', 'Semisonic, Closing Time'.

WEQX Albany PD: Ian Harrison MD: Stephen Bottomley

Table with 2 columns: Song Title, LW. Top songs include 'Finley Quaye, Sunday Shining', 'Alanis Morissette, Uninvited', 'Smalltown Big Science, I'll Be Right There'.

WBTV Burlington PD: Stephanie Hindley MD: Steve Picard

Table with 2 columns: Song Title, LW. Top songs include 'Semisonic, Closing Time', 'Cherry Poppin' Daddies, Zoot Suit Riot', 'Everclear, I Will Buy You A New Life'.

AIRPOWER
(Minimum 1,100 detections for the first time)

Artist	Title	Total Plays/Gain
THIRD EYE BLIND	1185/118	
Losing A Whole Year (Elektra/EEG)		
Total Stations: 66/Chart Move: 22-19		
Heavy (30+): 6 KCXX, KEDG, KHTY, KOME, KTBZ, XTRA		
Medium (15-29): 41 CFNY, CIMX, KDGE, KFMA, KFTE, KGDE, KICT, KITS, KJEE, KKND, KLZR, KNDD, KNRK, KROQ, KROX, KTCL, KTEG, KTOZ, KXTE, WARQ, WBCN, WEND, WEQX, WGRD, WKQX, WKRO, WLUM, WMRQ, WNNX, WPLT, WPLY, WROX, WRXQ, WRXR, WRZX, WWCD, WXEX, WXNR, WXRA, WXZ		
Light (Under 15): 19		
New Airplay This Week: 2 KMYZ, WKDF		
CHERRY POPPIN' DADDIES	1127/109	
Zoot Suit Riot (Mojo/Universal)		
Total Stations: 67/Chart Move: 24-20		
Heavy (30+): 10 KHTY, KITS, KNRK, KOME, KROQ, KWOD, WBTZ, WFNX, WPLY, WXNR		
Medium (15-29): 29 KCXX, KEDG, KFMA, KFRR, KFTE, KJEE, KLZR, KNDD, KPNT, KROX, KTCL, KTOZ, KXKX, WARQ, WBCN, WCYY, WEND, WHFS, WKDF, WKQX, WNNX, WPBZ, WPLA, WQBK, WRAX, WROX, WRXR, WWCD, WXEG		
Light (Under 15): 28		
New Airplay This Week: 6 KFRR, KPOI, WGRD, WJXB, WKDF, WXZZ		

AIRPOWER BOUND

SPACEHOG 1098/67
Mungo City (HiFi/Sire/Warner Bros.)
Total Stations: 72/Chart Move: 23-21
Heavy (30+ plays): 4 KEDG, KFTE, KROX, WCYY

Medium (15-29): 40 CFNY, CIMX, KDGE, KFMA, KFRR, KHTY, KICT, KJEE, KKND, KLZR, KMYZ, KNRK, KNRX, KPNT, KTCL, KTEG, KTOZ, KWOD, WARQ, WAVF, WBCN, WBTZ, WEDG, WEND, WEQX, WJXB, WKQX, WKRL, WKRO, WPBZ, WQBK, WRXQ, WRXR, WRZX, WWCD, WXEG, WXEX, WXNR, WXRA, WXZZ

Light (Under 15): 28

New Airplay This Week: 3 KFRR, WNVE, XHRM

DAYS OF THE NEW 1041/78
Shelf In The Room (Outpost/Geffen)
Total Stations: 58/Chart Move: 25-22
Heavy (30+): 9 KCXX, KGDE, KICT, KNRX, WKRO, WLUM, WRXQ, WXEX, WXRA

Medium (15-29): 27 CFNY, KFMA, KFRR, KFTE, KHTY, KKND, KLZR, KPNT, KPOI, KTBZ, KTEG, KTOZ, KXKX, WARQ, WBCN, WBRU, WBZU, WEND, WGRD, WKQX, WKRL, WNNX, WQBK, WRAX, WROX, WRXR, WXZZ

Light (Under 15): 22

New Airplay This Week: 1 WAVF

GOD LIVES UNDERWATER 967/107
From Your Mouth (1500/A&M)
Total Stations: 66/Chart Move: 28-24
Heavy (30+): 2 KXKX, WFNX

Medium (15-29): 27 KCXX, KDGE, KEDG, KFMA, KFTE, KHTY, KJEE, KKDM, KKND, KLZR, KNDD, KNRK, KOME, KTCL, KTEG, WBCN, WCYY, WENZ, WHFS, WJXB, WMRQ, WNNX, WPBZ, WPLA, WROX, WXEX, XHRM

Light (Under 15): 37

New Airplay This Week: 3 KPOI, WRZX, WXEG

GARBAGE 934/893
Push It (Almo Sounds/Interscope)
Total Stations: 70/Chart Move: Debut 25
Heavy (30+): 3 CIMX, KROQ, WXRA

Medium (15-29): 27 KEDG, KEDJ, KGDE, KHTY, KITS, KKDM, KLZR, KMYZ, KNDD, KNRK, KOME, KWOD, KXKX, KXTE, WAQZ, WBCN, WBRU, WBTZ, WEND, WENZ, WEQX, WFNX, WHFS, WLUM, WNNX, WROX, XHRM

Light (Under 15): 40

New Airplay This Week: 52 CFNY, CIMX, KDGE, KEDG, KEDJ, KFMA, KGDE, KHTY, KICT, KITS, KJEE, KKDM, KNDD, KLYY, KLZR, KNDD, KNRK, KNRX, KOME, KPNT, KPOI, KROX, KTOZ, KWOD, KXKX, KXTE, KZON, WAQZ, WBCN, WBRU, WBTZ, WEND, WENZ, WEQX, WGRD, WHFS, WKRL, WKRO, WMRQ, WNNX, WPBZ, WPLT, WRAX, WROX, WRXQ, WRXR, WXXD, WXEX, WXNR, WXRA

GOO GOO DOLLS 863/378
Iris (Reprise)
Total Stations: 53/Chart Move: Debut 27
Heavy (30+): 3 KLYY, KWOD, WARQ

Medium (15-29): 30 KDGE, KENZ, KGDE, KHTY, KTEG, KTOZ, KZLN, KZON, WAQZ, WBTZ, WCYY, WEDG, WENZ, WEQX, WGRD, WHFS, WKRL, WKRO, WMRQ, WNNX, WPBZ, WPLT, WRAX, WROX, WRXQ, WRXR, WXXD, WXEX, WXNR, WXRA

Light (Under 15): 20

New Airplay This Week: 16 KHTY, KICT, KKND, KROQ, WBTZ, WGRD, WKRL, WNNX, WNVE, WPLY, WROX, WRXQ, WRZX, WXNR, WXRA, WXZZ

MATCHBOX 20 807/296
Real World (Lava/Atlantic)
Total Stations: 47/Chart Move: 38-30
Heavy (30+): 6 KTBZ, KWOD, WKDF, WLUM, WNNX, WRXQ

Medium (15-29): 21 CIMX, KAEP, KENZ, KGDE, KHTY, KKDM, KKND, KROX, KTEG, KZLN, WBCN, WEND, WGRD, WMRQ, WNVE, WPLA, WPLT, WXEG, WXEX, WXRA, WXZZ

Light (Under 15): 20

New Airplay This Week: 17 KCXX, KHTY, KKDM, KKND, KPNT, KTCL, KTEG, KTOZ, KXKX, WARQ, WEDG, WEND, WENZ, WRXR, WXXD, WXEX, WXNR

STABBING WESTWARD 753/74
Save Yourself (Columbia)
Total Stations: 60/Chart Move: 33-32
Heavy (30+): 2 KXTE, WXEX

Medium (15-29): 19 CFNY, KDGE, KEDJ, KICT, KLZR, KNDD, KNRX, KPOI, KROX, KTOZ, WBTZ, WBZU, WFNX, WKRL, WKRO, WPBZ, WPLA, WQBK, WXRA

Light (Under 15): 39

New Airplay This Week: 6 KJEE, KROX, WCYY, WHFS, WRXQ, WRXR

THE SPECIALS 708/64
It's You (Way Cool Music/MCA)
Total Stations: 58/Chart Move: 34-33
Heavy (30+): 3 KEDG, KHTY, WFNX

Medium (15-29): 19 KAEP, KCXX, KENZ, KFMA, KJEE, KNDD, KNRK, KTCL, KXKX, WBCN, WEQX, WKQX, WMRQ, WNNX, WPLT, WROX, WRXR, WRZX, XHRM

Light (Under 15): 36

New Airplay This Week: 5 KEDJ, KGDE, KWOD, KZON, WBRU

HARVEY DANGER 705/227
Flagpole Sitta (Slash/London/Island)
Total Stations: 49/Chart Move: Debut 34
Heavy (30+): 7 KITS, KNDD, KNRK, KTEG, KXKX, WHFS, WNNX

Medium (15-29): 14 CFNY, KEDJ, KJEE, KOME, KROQ, WBCN, WBRU, WBTZ, WFNX, WJXB, WKQX, WMRQ, WQBK, XHRM

Light (Under 15): 28

New Airplay This Week: 12 CIMX, KEDG, KEDJ, KFMA, KHTY, KKND, KLZR, WARQ, WCYY, WKQX, WRXQ, WWCD

DAVE MATTHEWS BAND 683/664
Don't Drink The Water (RCA)
Total Stations: 68/Chart Move: Debut 36
Heavy (30+): 1 WKQX

Medium (15-29): 12 KGDE, KKDM, KNND, WAQZ, WBCN, WENZ, WHFS, WMRQ, WPLY, WROX, WXNR, WRXR

Light (Under 15): 55

New Airplay This Week: 50 CFNY, CIMX, KAEP, KDGE, KFMA, KGDE, KKDM, KNND, KLYY, KLZR, KMYZ, KNRK, KOME, KPNT, KTEG, KXPK, KXKX, KZON, WAQZ, WARQ, WBCN, WBRU, WBTZ, WBZU, WEDG, WEND, WENZ, WEQX, WGRD, WKDF, WKQX, WKRO, WLUM, WMRQ, WNNX, WNVE, WPLA, WPLT, WPLY, WROX, WRXQ, WRXR, WRZX, WWCD, WXXD, WXEG, WXEX, WXNR, WRXK, WXZZ

ALANIS MORISSETTE 675/54
Uninvited (Reprise)
Total Stations: 46/Chart Move: 35-37
Heavy (30+): 3 KEDG, KKDM, WAQZ

Medium (15-29): 19 CIMX, KAEP, KDGE, KFMA, KFTE, KLYY, KTOZ, KWOD, WBRU, WCYY, WENZ, WEQX, WNNX, WPLA, WPLT, WRXR, WXEG, WXNR, WXZZ

Light (Under 15): 24

New Airplay This Week: 3 KROX, WGRD, WXNR

THE URGE 665/251
Jump Right In (Immortal/Epic)
Total Stations: 54/Chart Move: Debut 38
Heavy (30+): 2 KLZR, KXKX

Medium (15-29): 19 KDGE, KEDJ, KENZ, KITS, KKDM, KNDD, KNRX, KOME, KPNT, KROQ, KTOZ, KWOD, WBTZ, WEDG, WEND, WNNX, WPLY, WQBK, WWCD

Light (Under 15): 33

New Airplay This Week: 19 KFTE, KICT, KKND, KNDD, KPOI, KTCL, KXPK, KZLN, WARQ, WBRU, WBTZ, WFNX, WHFS, WKRL, WPLA, WPLY, WQBK, WRAX, WXZZ

MOST NEW STATIONS

Artist	Title	No. Of Stations
GARBAGE	<i>Push It (Almo Sounds/Interscope)</i>	52
DAVE MATTHEWS BAND	<i>Don't Drink The Water (RCA)</i>	50
THE URGE	<i>Jump Right In (Immortal/Epic)</i>	19
MATCHBOX 20	<i>Real World (Lava/Atlantic)</i>	17
GOO GOO DOLLS	<i>Iris (Reprise)</i>	16

JANE'S ADDICTION 606/8
Jane Says (Warner Bros.)
Total Stations: 79/Chart Move: 37-39
Heavy (30+): 2 KXND, WRXR

Medium (15-29): 8 CIMX, KITS, KOME, KROQ, WHFS, WPBZ, WPLY, XTRA

Light (Under 15): 69

CHART BOUND

SCOTT WEILAND 573/-28
Barbarella (Atlantic)
Total Stations: 55
Heavy (30+): 0

Medium (15-29): 12 KFMA, KFTE, KLZR, KROX, WBTZ, WBZU, WCYY, WKRO, WQBK, WROX, WWCD, WXEX

Light (Under 15): 43

New Airplay This Week: 2 WAVF, WNNX

AGENTS OF GOOD ROOTS 515/29
Come On (Let Your Blood Come Alive) (RCA)
Total Stations: 39
Heavy (30+): 0

Medium (15-29): 16 KFTE, KLZR, KMYZ, KPNT, WBTZ, WBZU, WENZ, WEQX, WPBZ, WQBK, WROX, WRXQ, WRZX, WXXD, WXNR, WXRA

Light (Under 15): 23

New Airplay This Week: 3 KNND, WAVF, XHRM

WANK 424/102
Forgiven (Maverick/Reprise)
Total Stations: 44
Heavy (30+): 0

Medium (15-29): 10 KEDJ, KHTY, KITS, KJEE, KOME, KROQ, KTCL, KWOD, WARQ, WHFS

Light (Under 15): 34

New Airplay This Week: 6 KEDG, KFTE, KTCL, KTOZ, WEQX, WGRD

THE MIGHTY MIGHTY BOSSTONES 413/21
Wrong Thing Right Then (Mercury)
Total Stations: 43
Heavy (30+): 1 CIMX

Medium (15-29): 12 KHTY, KJEE, KLYY, KXKX, WBZU, WEDG, WENZ, WEQX, WFNX, WJXB, WPBZ, WWCD

Light (Under 15): 30

New Airplay This Week: 2 WAVF, WMRQ

ATHENAEUM 384/135
What I Didn't Know (Atlantic)
Total Stations: 39
Heavy (30+): 0

Medium (15-29): 10 KAEP, KENZ, KNRK, KPOI, KWOD, KZLN, WARQ, WEND, WENZ, WRAX

Light (Under 15): 29

New Airplay This Week: 10 KMYZ, KNRK, WCYY, WENZ, WEQX, WJXB, WMRQ, WPBZ, WPLY, WRZX

EVE 6 380/153
Inside Out (RCA)
Total Stations: 37
Heavy (30+): 0

Medium (15-29): 11 KCXX, KNND, KNRX, KTCL, KWOD, KXKX, WARQ, WKQX, WNNX, WRAX, WXNR

Light (Under 15): 26

New Airplay This Week: 10 KKDM, KTOZ, KWOD, WEQX, WGRD, WKRL, WRXQ, WRXR, WXNR, WXZZ

FRETBLANKET 376/13
Into The Ocean (Polydor/A&M)
Total Stations: 29
Heavy (30+): 1 KTBZ

Medium (15-29): 9 KFTE, KJEE, KKND, KLZR, KNRX, WBTZ, WPLA, WXRA, XHRM

Light (Under 15): 19

New Airplay This Week: 3 WBZU, WKRO, WPBZ

BRAN VAN 3000 348/36
Drinking In L.A. (Audiogram/Capitol)
Total Stations: 25
Heavy (30+): 2 CIMX, KKDM

Medium (15-29): 8 KFMA, KTCL, WBTZ, WFNX, WNNX, WPLA, WRAX, XHRM

Light (Under 15): 15

New Airplay This Week: 1 KEDG

JIMME'S CHICKEN SHACK 331/44
Dropping Anchor (Rocket/Island)
Total Stations: 31
Heavy (30+): 0

Medium (15-29): 9 KEDJ, KFTE, KKND, KNRX, KPOI, WBZU, WKRO, WQBK, WXEX

Light (Under 15): 22

New Airplay This Week: 3 KGDE, KICT, WXXD

SARAH MCLACHLAN 310/39
Adia (Arista)
Total Stations: 29
Heavy (30+): 0

Medium (15-29): 6 KKDM, WNNX, WPLT, WWCD, WXZZ, XHRM

Light (Under 15): 23

New Airplay This Week: 4 WAQZ, WCYY, WKDF, WLUM

THE VERVE 240/26
Lucky Man (VC/Hut/Virgin)
Total Stations: 22
Heavy (30+): 1 KXKX

Medium (15-29): 6 KHTY, KTEG, WBTZ, WRAX, WWCD, WXZZ

Light (Under 15): 15

New Airplay This Week: 2 KTEG, WRXR

MARCY PLAYGROUND 226/7
Saint Joe On The School Bus (Capitol)
Total Stations: 32
Heavy (30+): 1 KNDD

Medium (15-29): 5 KKND, KOME, KWOD, WBTZ, WXRA

Light (Under 15): 26

New Airplay This Week: 3 KNND, KTEG, WXZZ

TORI AMOS 219/167
Spark (Atlantic)
Total Stations: 26
Heavy (30+): 1 KROQ

Medium (15-29): 4 KITS, KZLN, WHFS, WPLY

Light (Under 15): 21

New Airplay This Week: 9 CIMX, KNDD, KNRK, KOME, KTCL, KZLN, WBCN, WEQX, WPLT

GREEN DAY 187/121
Redundant (Reprise)
Total Stations: 25
Heavy (30+): 0

Medium (15-29): 6 KOME, KROQ, KWOD, WBTZ, WRAX, WXXD

Light (Under 15): 19

New Airplay This Week: 10 KOME, KROQ, KTEG, WHFS, WKRC, WMRQ, WPBZ, WRZX, WXXD, WXRK

ECONOLINE CRUSH 184/5
Home (Restless)
Total Stations: 24
Heavy (30+): 0

Medium (15-29): 4 KDGE, KNND, WBZU, WXRA

Light (Under 15): 20

TWO 180/-3
I Am A Pig (Nothing/Interscope)
Total Stations: 24
Heavy (30+): 0

Medium (15-29): 3 KTBZ, KXTE, WBTZ

Light (Under 15): 21

ULTRAHORSE 180/29
Telecom (911)
Total Stations: 23
Heavy (30+): 0

Medium (15-29): 3 KFTE, KTCL, WLUM

Light (Under 15): 20

BLACK LAB 170/120
Time Ago (DGC/Geffen)
Total Stations: 22
Heavy (30+): 0

Medium (15-29): 3 KTBZ, WRZX, WXEX

Light (Under 15): 19

New Airplay This Week: 12 KAEP, KFMA, KKND, KLZR, KNDD, KTBZ, WARQ, WEQX, WHFS, WPLY, WQBK, WXEX

SUPERDRAG 162/41
Do The Vampire (Elektra/EEG)
Total Stations: 27
Heavy (30+): 0

Medium (15-29): 3 KNDD, WBTZ, WXRA

Light (Under 15): 24

New Airplay This Week: 4 KCXX, KHTY, WKRL, WXRA

SOUL ASYLUM 158/125
I Will Still Be Laughing (Columbia)
Total Stations: 25
Heavy (30+): 0

Medium (15-29): 5 CIMX, KLZR, KXKX, KZLN, WGRD

Light (Under 15): 20

New Airplay This Week: 8 CIMX, KGDE, KLZR, KXKX, WENZ, WGRD, WPLT, WRXR

WYCLEF JEAN 149/26
Goat Hill November (Ruffhouse/Columbia)
Total Stations: 16
Heavy (30+): 2 KKDM, WBTZ

Medium (15-29): 2 CIMX, WEQX

Light (Under 15): 12

New Airplay This Week: 1 CIMX

CREED 139/9
Torn (Wind-up)
Total Stations: 22
Heavy (30+): 1 WXEX

Medium (15-29): 1 KXTE

Light (Under 15): 20

New Airplay This Week: 1 WAVF

2 SKINNEE J'S 134/30
Riot Nrdd (Capricorn/Mercury)
Total Stations: 23
Heavy (30+): 0

Medium (15-29): 2 KEDJ, WARQ

Light (Under 15): 21

New Airplay This Week: 2 WENZ, WNNX

THE DIN PEDALS 118/24
Ashtray (Epic)
Total Stations: 11
Heavy (30+): 0

Medium (15-29): 3 KEDJ, KJEE, KROQ

Light (Under 15): 8

JOLENE 113/4
Pensacola (Sire)
Total Stations: 7
Heavy (30+): 0

Medium (15-29): 5 KROX, WARQ, WEND, WRAX, WRXQ

Light (Under 15): 2

New Airplay This Week: 1 WRXR

DRILL TEAM 112/2
Hold You Down (Reprise)
Total Stations: 16
Heavy (30+): 0

Medium (15-29): 2 KFTE, KJEE

Light (Under 15): 14

BROWNIE MARY 107/6
Naked (Blackbird/Sire)
Total Stations: 9
Heavy (30+): 0

Medium (15-29): 4 KXTE, WENZ, WWCD, WXXD

Light (Under 15): 5

SAMIAM 101/20
She Found You (Ignition)
Total Stations: 18
Heavy (30+): 0

Medium (15-29): 1 WAVF

Light (Under 15): 17

New Airplay This Week: 1 WRXR

SONG ACTIVITY REPORTS

For Week Ending March 29, 1998

Broadcast Data Systems logo and detailed song tracking information for the last 3 weeks.

AGENTS OF GOOD ROOTS 515/29

Come On (Let Your Blood Come Alive) (RCA)

Table with columns for station, city, and song activity for Agents of Good Roots.

ATHENAUM 384/135

What I Didn't Know (Atlantic)

Table with columns for station, city, and song activity for Athenaum.

BRAN VAN 3000 348/36

Drinking in L.A. (Audiogram/Capitol)

Table with columns for station, city, and song activity for Bran Van 3000.

JERRY CANTRELL 1297/28

Cut You In (Columbia)

Table with columns for station, city, and song activity for Jerry Cantrell.

CHERRY POPPIN' DADDIES 1127/109

Zoot Suit Riot (Mojo/Universal)

Table with columns for station, city, and song activity for Cherry Poppin' Daddies.

CREED 1773/39

My Own Prison (Wind-up)

Table with columns for station, city, and song activity for Creed.

DAYS OF THE NEW 1041/78

Shelf In The Room (Outpost/Geffen)

Table with columns for station, city, and song activity for Days of the New.

EVE 6 380/153

Inside Out (RCA)

Table with columns for station, city, and song activity for Eve 6.

EVERCLEAR 2175/25

I Will Buy You A New Life (Capitol)

Table with columns for station, city, and song activity for Everclear.

FASTBALL 2586/222

The Way (Hollywood)

Table with columns for station, city, and song activity for Fastball.

FRETBLANKET 376/13

Into The Ocean (Polydor/A&M)

Table with columns for station, city, and song activity for Fretblanket.

FUEL 1359/125

Shimmer (550 Music)

Table with columns for station, city, and song activity for Fuel.

GARBAGE 934/893

Push It (Almo Sounds/Interscope)

Table with columns for station, city, and song activity for Garbage.

GOD LIVES UNDERWATER 967/107

From Your Mouth (1500/A&M)

Table with columns for station, city, and song activity for God Lives Underwater.

GOO GOO DOLLS 863/378

Iris (Reprise)

Table with columns for station, city, and song activity for Goo Goo Dolls.

SONG ACTIVITY REPORTS For Week Ending March 29, 1998



Detailed song tracking information for the last 3 weeks for all songs showing increased play this week. Total plays and gain do not include video play. Markets listed in order of population.

Table for HARVEY DANGER 705/227. Includes columns for station, week, and plays. Top stations include New York, L.A., Chicago, San Fran., Phila., Detroit, Dallas, Wash., DC, Houston, Boston, Atlanta, Seattle, San Diego, Minn., St. Louis, Pitts., Phoenix, Cleveland, Denver, Port., OR, Cincinnati, and Indian.

Table for NATALIE IMBRUGLIA 1405/56. Includes columns for station, week, and plays. Top stations include New York, L.A., Chicago, San Fran., Phila., Detroit, Dallas, Wash., DC, Houston, Boston, Atlanta, Seattle, San Diego, Minn., St. Louis, Pitts., Phoenix, Cleveland, Denver, Port., OR, Cincinnati, and Indian.

Table for JANE'S ADDICTION 606/8. Includes columns for station, week, and plays. Top stations include New York, L.A., Chicago, San Fran., Phila., Detroit, Dallas, Wash., DC, Houston, Boston, Atlanta, Seattle, San Diego, Minn., St. Louis, Pitts., Phoenix, Cleveland, Denver, Port., OR, Cincinnati, and Indian.

Table for MATCHBOX 20 807/296. Includes columns for station, week, and plays. Top stations include New York, L.A., Chicago, San Fran., Phila., Detroit, Dallas, Wash., DC, Houston, Boston, Atlanta, Seattle, San Diego, Minn., St. Louis, Pitts., Phoenix, Cleveland, Denver, Port., OR, Cincinnati, and Indian.

Table for DAVE MATTHEWS BAND 683/664. Includes columns for station, week, and plays. Top stations include New York, L.A., Chicago, San Fran., Phila., Detroit, Dallas, Wash., DC, Houston, Boston, Atlanta, Seattle, San Diego, Minn., St. Louis, Pitts., Phoenix, Cleveland, Denver, Port., OR, Cincinnati, and Indian.

Table for THE MIGHTY MIGHTY BOSSTONES 413/21. Includes columns for station, week, and plays. Top stations include New York, L.A., Chicago, San Fran., Phila., Detroit, Dallas, Wash., DC, Houston, Boston, Atlanta, Seattle, San Diego, Minn., St. Louis, Pitts., Phoenix, Cleveland, Denver, Port., OR, Cincinnati, and Indian.

Table for ALANIS MORISSETTE 675/54. Includes columns for station, week, and plays. Top stations include New York, L.A., Chicago, San Fran., Phila., Detroit, Dallas, Wash., DC, Houston, Boston, Atlanta, Seattle, San Diego, Minn., St. Louis, Pitts., Phoenix, Cleveland, Denver, Port., OR, Cincinnati, and Indian.

Table for PEARL JAM 1317/173. Includes columns for station, week, and plays. Top stations include New York, L.A., Chicago, San Fran., Phila., Detroit, Dallas, Wash., DC, Houston, Boston, Atlanta, Seattle, San Diego, Minn., St. Louis, Pitts., Phoenix, Cleveland, Denver, Port., OR, Cincinnati, and Indian.

Table for SEMISONIC 2269/180. Includes columns for station, week, and plays. Top stations include New York, L.A., Chicago, San Fran., Phila., Detroit, Dallas, Wash., DC, Houston, Boston, Atlanta, Seattle, San Diego, Minn., St. Louis, Pitts., Phoenix, Cleveland, Denver, Port., OR, Cincinnati, and Indian.

Table for SPACEHOG 1098/67. Includes columns for station, week, and plays. Top stations include New York, L.A., Chicago, San Fran., Phila., Detroit, Dallas, Wash., DC, Houston, Boston, Atlanta, Seattle, San Diego, Minn., St. Louis, Pitts., Phoenix, Cleveland, Denver, Port., OR, Cincinnati, and Indian.

Table for THE SPECIALS 708/64. Includes columns for station, week, and plays. Top stations include New York, L.A., Chicago, San Fran., Phila., Detroit, Dallas, Wash., DC, Houston, Boston, Atlanta, Seattle, San Diego, Minn., St. Louis, Pitts., Phoenix, Cleveland, Denver, Port., OR, Cincinnati, and Indian.

Table for STABBING WESTWARD 753/74. Includes columns for station, week, and plays. Top stations include New York, L.A., Chicago, San Fran., Phila., Detroit, Dallas, Wash., DC, Houston, Boston, Atlanta, Seattle, San Diego, Minn., St. Louis, Pitts., Phoenix, Cleveland, Denver, Port., OR, Cincinnati, and Indian.

Table for THIRD EYE BLIND 1185/118. Includes columns for station, week, and plays. Top stations include New York, L.A., Chicago, San Fran., Phila., Detroit, Dallas, Wash., DC, Houston, Boston, Atlanta, Seattle, San Diego, Minn., St. Louis, Pitts., Phoenix, Cleveland, Denver, Port., OR, Cincinnati, and Indian.

Table for THE URGE 665/251. Includes columns for station, week, and plays. Top stations include New York, L.A., Chicago, San Fran., Phila., Detroit, Dallas, Wash., DC, Houston, Boston, Atlanta, Seattle, San Diego, Minn., St. Louis, Pitts., Phoenix, Cleveland, Denver, Port., OR, Cincinnati, and Indian.

Table for WANK 424/102. Includes columns for station, week, and plays. Top stations include New York, L.A., Chicago, San Fran., Phila., Detroit, Dallas, Wash., DC, Houston, Boston, Atlanta, Seattle, San Diego, Minn., St. Louis, Pitts., Phoenix, Cleveland, Denver, Port., OR, Cincinnati, and Indian.

POWER PLAYLISTS

KFOG San Francisco PD: Paul Marszalek APD/MD: Bill Evans

WBOS Boston PD: Jim Herron MD: Cliff Nash

WXRT Chicago VP/Pgm: Norm Winer MD: Patty Martin

KTCZ Minneapolis PD: Lauren MacLeash MD: Mike Wolf

KBCO Denver PD: Dave Benson MD: Scott Arbaugh

WHPT Tampa PD: Chuck Beck MD: Kurt Schreiner

KMTT Seattle SM: Chris Mays APD: Jason Parker MD: Dean Carlson

WVRV St. Louis PD: Mike Richter APD: Chuck Jeffries

CIDR Detroit PD: Wendy Duff MD: Ann Delisi

KKZN Dallas PD: Joel Folger Interim MD: Abbey Goldstein

WXRV Boston PD: Joanne Doody MD: Mike Mullaney

KINK Portland, OR PD: Dennis Constantine APD: Anita Garlock

Main chart table with columns: THIS WEEK, LAST WEEK, WKS. ON CHART, TITLE/IMPRINT/PROMOTION LABEL, ARTIST, TW, LW. Includes 'NO. 1' and 'AIRPOWER' highlights.

MODERN ADULT

MODERN ADULT chart table with columns: THIS WEEK, LAST WEEK, WKS. ON CHART, TITLE/IMPRINT/PROMOTION LABEL, ARTIST, TW, LW. Includes 'NO. 1' highlight.

Records showing an increase in detections over the previous week, regardless of chart movement. A record which has been on the chart for more than 20 weeks will not receive a bullet, even if it registers an increase in detections.

COMBINED ROCK AUDIENCE										AIRPLAY BY FORMAT									
TW	LW	WKS	TITLE (IMPRINT/PROMOTION LABEL)	ARTIST	THIS WEEK			LAST WEEK			MAINSTREAM			MODERN			TRIPLE-A		
					Audience (millions)	Detections No.	Rank	Audience (millions)	Detections No.	Rank	Audience (millions)	Detections No.	Rank	Audience (millions)	Detections No.	Rank	Audience (millions)	Detections No.	Rank
1	1	23	SEX AND CANDY (CAPITOL)	MARCY PLAYGROUND	29.2048	4411	1	28.4109	4431	1	10.4117	1614	4	17.0113	2524	2	1.7818	273	6
2	4	28	MY OWN PRISON (WIND-UP)	CREED	20.2886	3079	4	20.3768	3035	4	8.9199	1292	9	11.3342	1773	9	0.0345	14	—
3	7	7	THE WAY (HOLLYWOOD)	FASTBALL	18.8575	2976	5	16.5428	2673	10	0.6058	117	—	16.7438	2586	1	1.5079	273	5
4	2	20	TIME OF YOUR LIFE (GOOD RIDDANCE) (REPRISE)	GREEN DAY	18.8137	2760	8	21.0596	3136	3	3.8919	565	26	14.2105	2039	5	0.7113	156	17
5	3	15	GIVEN TO FLY (EPIC)	PEARL JAM	18.7634	3207	2	20.7115	3527	2	7.1977	1293	8	11.3439	1857	6	0.2218	57	—
6	6	12	MY HERO (ROSWELL/CAPITOL)	FOO FIGHTERS	18.4096	2949	6	17.7298	2935	5	7.9378	1242	10	10.4718	1707	10	—	—	—
7	9	5	CLOSING TIME (MCA)	SEMISONIC	17.8783	3108	3	16.1239	2791	7	3.6463	714	20	13.9254	2269	3	0.3066	125	—
8	5	26	BITTER SWEET SYMPHONY (VCI/VIRGIN)	THE VERVE	17.3722	2479	13	18.9795	2724	9	2.7370	404	34	12.8074	1822	7	1.8278	253	10
9	8	10	I WILL BUY YOU A NEW LIFE (CAPITOL)	EVERCLEAR	16.2648	2868	7	15.4785	2836	6	3.2710	666	23	12.9535	2175	4	0.0403	27	—
10	11	10	SHELF IN THE ROOM (OUTPOST/GEFFEN)	DAYS OF THE NEW	15.8667	2737	9	14.7839	2570	13	10.2291	1696	3	5.6376	1041	22	—	—	—
11	12	7	CUT YOU IN (COLUMBIA)	JERRY CANTRELL	14.6624	2703	10	14.2179	2628	12	8.2851	1406	6	6.3773	1297	16	—	—	—
12	15	9	BLUE ON BLACK (REVOLUTION)	KENNY WAYNE SHEPHERD BAND	13.9191	2207	14	13.2460	2110	15	11.4946	1886	2	0.5130	67	—	1.9115	254	9
13	10	34	TOUCH, PEEL AND STAND (OUTPOST/GEFFEN)	DAYS OF THE NEW	13.4401	2015	15	14.9083	2146	14	6.5594	965	13	6.8807	1050	—	—	—	—
14	13	25	3 AM (LAVA/ATLANTIC)	MATCHBOX 20	12.6008	1879	17	13.6081	2067	16	5.0048	826	14	5.5593	799	31	2.0367	254	8
15	21	6	WISHLIST (EPIC)	PEARL JAM	12.3057	1642	22	10.6217	1448	25	1.9920	238	—	9.7513	1317	14	0.5624	95	—
16	14	18	CLUMSY (COLUMBIA)	OUR LADY PEACE	12.2945	2497	11	13.3483	2775	8	2.7261	696	21	9.5654	1801	8	—	—	—
17	17	6	WITHOUT YOU (WARNER BROS.)	VAN HALEN	11.1878	1924	16	11.9533	1971	17	10.8583	1888	1	0.3192	31	—	0.0103	5	—
18	16	11	SUNSHOWER (ATLANTIC)	CHRIS CORNELL	11.0899	2493	12	12.4975	2633	11	5.8121	1176	11	5.2778	1317	15	—	—	—
19	20	19	DAMMIT (GROWING UP) (CARGO/MCA)	BLINK 182	10.9345	1619	23	10.6787	1693	19	1.0601	198	—	9.8744	1421	11	—	—	—
20	26	8	TORN (RCA)	NATALIE IMBRUGLIA	10.7483	1729	20	9.2310	1623	21	0.1430	22	—	9.0388	1405	12	1.5665	302	3
21	19	38	EVERLONG (ROSWELL/CAPITOL)	FOO FIGHTERS	10.6946	1342	28	11.1730	1420	26	3.6350	469	—	7.0596	873	—	—	—	—
22	23	31	EVERYTHING TO EVERYONE (CAPITOL)	EVERCLEAR	10.6880	1275	32	9.9410	1300	31	0.9546	147	—	9.6356	1096	—	0.0978	32	—
23	18	14	THE UNFORGIVEN II (ELEKTRA/EEG)	METALLICA	10.6352	1703	21	11.2805	1787	18	9.3104	1529	5	1.3248	174	—	—	—	—
24	27	4	SHIMMER (550 MUSIC)	FUEL	10.4804	1735	19	9.1675	1556	23	1.3497	376	37	9.1307	1359	13	—	—	—
25	22	22	HOW'S IT GOING TO BE (ELEKTRA/EEG)	THIRD EYE BLIND	10.4764	1509	25	10.0959	1572	22	0.4607	46	—	8.8457	1257	17	1.1700	296	12
26	29	3	LOSING A WHOLE YEAR (ELEKTRA/EEG)	THIRD EYE BLIND	9.6053	1518	24	8.3929	1304	30	1.3013	323	—	8.2828	1185	19	0.0212	10	—
27	25	10	KARMA POLICE (CAPITOL)	RADIOHEAD	9.5820	1332	29	9.3342	1389	28	0.1282	22	—	8.9390	1203	18	0.5148	107	—
28	28	38	WALKIN' ON THE SUN (INTERSCOPE)	SMASH MOUTH	9.0192	1305	30	9.1214	1369	29	1.8973	290	—	6.3565	890	—	0.7654	125	—
29	NEW		DON'T DRINK THE WATER (RCA)	DAVE MATTHEWS BAND	8.8948	986	39	0.0000	0	—	1.0420	128	—	6.1625	683	36	1.6903	175	16
30	NEW		PUSH IT (ALMO SOUNDS/INTERSCOPE)	GARBAGE	8.4161	977	41	0.7065	41	495	0.3391	43	—	8.0770	934	25	—	—	—
31	31	4	ZOOT SUIT RIOT (MOJO/UNIVERSAL)	CHERRY POPPIN' DADDIES	8.2680	1166	35	7.1057	1053	37	0.0079	6	—	8.2009	1127	20	0.0592	33	—
32	NEW		REAL WORLD (LAVA/ATLANTIC)	MATCHBOX 20	7.9584	1256	33	5.1871	695	64	2.4958	380	36	5.0861	807	30	0.3765	69	—
33	24	19	BRICK (550 MUSIC)	BEN FOLDS FIVE	7.8903	1187	34	9.3889	1419	27	0.2177	33	—	6.7837	1008	23	0.8889	146	18
34	37	2	I LIE IN THE BED I MAKE (VIRGIN)	BROTHER CANE	7.5929	1438	26	6.1575	1092	35	7.0439	1364	7	0.5490	74	—	—	—	—
35	30	53	IF YOU COULD ONLY SEE (POLYGRAM/A&M)	TONIC	7.3174	1127	36	7.1669	1135	34	2.9150	446	—	3.7922	585	—	0.6102	96	—
36	35	17	JANE SAYS (WARNER BROS.)	JANE'S ADDICTION	6.9255	776	57	6.6244	773	52	1.1275	162	—	5.7750	606	39	0.0230	8	—
37	34	3	MUNGO CITY (HIFI/SIRE/WARNER BROS.)	SPACEHOG	6.7155	1847	18	6.6904	1679	20	2.3543	722	19	4.3003	1098	21	0.0609	27	—
38	32	7	LIFE IN MONO (ECHO/MERCURY)	MONO	6.5971	818	47	7.0129	841	45	—	—	—	6.5690	813	29	0.0281	5	—
39	NEW		FLAGPOLE SITTA (SLASH/LONDON/ISLAND)	HARVEY DANGER	6.3947	726	63	4.5161	486	96	0.1877	21	—	6.2070	705	34	—	—	—
40	NEW		IRIS (REPRISE)	GOO GOO DOLLS	6.1824	947	42	3.6410	521	88	0.6752	54	—	5.3741	863	27	0.1331	30	—

Records showing an increase in audience over the previous week, regardless of chart movement. Rankings broken down by mainstream, modern and triple-A formats (on right side of this page) correspond to charts printed in this week's Monitor and therefore rankings do not exist for re-entries and records below No. 40 (No. 20 for triple-A). Audience computed by cross-referencing exact times of airplay with Arbitron listener data. ©1998, Billboard/BPI Communications.



Blind Man in the Dark

The featured single from

Gov't Mule



©1998 Capricorn Records. Manufactured and Marketed by Mercury Records, a PolyGram company.
<http://www.capri.com>

DID YOU KNOW?

- THAT GOV'T MULE HAS SOLD OUT SHOWS IN ATLANTA, BALTIMORE, WASHINGTON DC, NEW YORK CITY, PHILADELPHIA, BOSTON, TORONTO, MONTREAL, SEATTLE, EUGENE... THEY ARE SELLING OUT VIRTUALLY EVERY VENUE THEY PLAY.
- THAT WARREN HAYNES AND ALLEN WOODY FROM GOV'T MULE PLAYED WITH THE ALLMAN BROTHERS FOR NINE YEARS?
- THAT WARREN HAYNES WAS NAMED "BEST SLIDE GUITARIST" BY GUITAR PLAYER MAGAZINE IN 1995 AND 1996?
- THAT GOV'T MULE WILL BE ON THE H.O.R.D.E. TOUR THIS SUMMER

THIS WEEK	LAST WEEK	WKS. ON CHART	MAINSTREAM		DETECTIONS		
			TITLE/IMPRINT/PROMOTION LABEL	ARTIST	TW	LW	
			*** NO. 1 ***				
1	1	6	WITHOUT YOU WARNER BROS.	VAN HALEN	1888	1935	
2	2	12	BLUE ON BLACK REVOLUTION	KENNY WAYNE SHEPHERD BAND	1886	1810	
3	3	15	SHELF IN THE ROOM OUTPOST/GEFFEN	DAYS OF THE NEW	1696	1607	
4	5	17	SEX AND CANDY CAPITOL	MARCY PLAYGROUND	1614	1566	
5	4	19	THE UNFORGIVEN II ELEKTRA/EEG	METALLICA	1529	1580	
6	7	7	CUT YOU IN COLUMBIA	JERRY CANTRELL	1406	1359	
7	12	3	I LIE IN THE BED I MAKE VIRGIN	BROTHER CANE	1364	1043	
8	6	15	GIVEN TO FLY EPIC	PEARL JAM	1293	1427	
9	8	33	MY OWN PRISON WINO-UP	CREED	1292	1295	
10	10	11	MY HERO ROSWELL/CAPITOL	FOO FIGHTERS	1242	1166	
11	9	12	SUNSHOWER ATLANTIC	CHRIS CORNELL	1176	1269	
12	11	8	TORN WINO-UP	CREED	1141	1069	
13	13	38	TOUCH, PEEL AND STAND OUTPOST/GEFFEN	DAYS OF THE NEW	965	1021	
14	14	24	3 AM LAVA/ATLANTIC	MATCHBOX 20	826	897	
			*** AIRPOWER ***				
15	18	8	USE THE MAN CAPITOL	MEGADETH	813	759	
16	15	14	SAINT OF ME VIRGIN	THE ROLLING STONES	796	882	
17	17	10	WALK AWAY WARNER BROS.	COOL FOR AUGUST	781	795	
18	19	8	FUEL ELEKTRA/EEG	METALLICA	738	687	
19	24	5	MUNGO CITY HIFI/SIRE/WARNER BROS.	SPACEHOG	722	624	
20	26	4	CLOSING TIME MCA	SEMISONIC	714	594	
21	16	18	CLUMSY COLUMBIA	OUR LADY PEACE	696	818	
22	23	7	RAGE CMC INTERNATIONAL	VAN ZANT	666	628	
23	20	9	I WILL BUY YOU A NEW LIFE CAPITOL	EVERCLEAR	666	659	
24	25	4	SAVE YOURSELF COLUMBIA	STABBING WESTWARD	663	598	
25	22	8	I AM A PIG NOTHING/INTERSCOPE	TWO	610	633	
26	21	18	TIME OF YOUR LIFE (GOOD RIDDANCE) REPRISE	GREEN DAY	565	654	
27	28	8	IN HIDING EPIC	PEARL JAM	548	525	
28	30	2	SHE'S GONE REPRISE	ERIC CLAPTON	525	458	
29	27	18	TASTE OF INDIA COLUMBIA	AEROSMITH	497	585	
30	29	24	BACK ON EARTH EPIC	OZZY OSBOURNE	484	486	
31	32	5	CEREMONY EPIC	JOE SATRIANI	479	456	
32	33	4	CEMENT ECHO/ELEKTRA/EEG	FEEDER	462	449	
33	38	3	DROPPING ANCHOR ROCKET/ISLAND	JIMMIE'S CHICKEN SHACK	415	362	
34	31	10	BITTER SWEET SYMPHONY VC/HUT/VIRGIN	THE VERVE	404	458	
35	34	22	THE GIRL I LOVE ATLANTIC	LED ZEPPELIN	390	439	
36	NEW		REAL WORLD LAVA/ATLANTIC	MATCHBOX 20	380	161	
37	NEW		SHIMMER 550 MUSIC	FUEL	376	322	
38	37	21	THE MEMORY REMAINS ELEKTRA/EEG	METALLICA	370	364	
39	NEW		TANGERINE ROADRUNNER	LIFE OF AGONY	370	335	
40	NEW		BOOM BOOM REVOLUTION	BIG HEAD TODD & THE MONSTERS WITH JOHN LEE HOOKER	360	323	

THIS WEEK	LAST WEEK	WKS. ON CHART	MODERN		DETECTIONS		
			TITLE/IMPRINT/PROMOTION LABEL	ARTIST	TW	LW	
			*** NO. 1 ***				
1	2	8	THE WAY HOLLYWOOD	FASTBALL	2586	2364	
2	1	24	SEX AND CANDY CAPITOL	MARCY PLAYGROUND	2524	2614	
3	5	5	CLOSING TIME MCA	SEMISONIC	2269	2089	
4	4	10	I WILL BUY YOU A NEW LIFE CAPITOL	EVERCLEAR	2175	2150	
5	3	20	TIME OF YOUR LIFE (GOOD RIDDANCE) REPRISE	GREEN DAY	2039	2293	
6	6	15	GIVEN TO FLY EPIC	PEARL JAM	1857	2048	
7	7	27	BITTER SWEET SYMPHONY VC/HUT/VIRGIN	THE VERVE	1822	1980	
8	8	19	CLUMSY COLUMBIA	OUR LADY PEACE	1801	1957	
9	10	20	MY OWN PRISON WINO-UP	CREED	1773	1734	
10	9	13	MY HERO ROSWELL/CAPITOL	FOO FIGHTERS	1707	1769	
11	11	27	DAMMIT (GROWING UP) CARGO/MCA	BLINK 182	1421	1433	
12	13	9	TORN RCA	NATALIE IMBRUGLIA	1405	1349	
13	17	5	SHIMMER 550 MUSIC	FUEL	1359	1234	
14	19	7	WISHLIST EPIC	PEARL JAM	1317	1144	
15	12	11	SUNSHOWER ATLANTIC	CHRIS CORNELL	1317	1363	
16	15	6	CUT YOU IN COLUMBIA	JERRY CANTRELL	1297	1269	
17	14	23	HOW'S IT GOING TO BE ELEKTRA/EEG	THIRD EYE BLIND	1257	1293	
18	16	22	KARMA POLICE CAPITOL	RADIOHEAD	1203	1266	
			*** AIRPOWER ***				
19	22	4	LOSING A WHOLE YEAR ELEKTRA/EEG	THIRD EYE BLIND	1185	1067	
			*** AIRPOWER ***				
20	24	6	ZOOT SUIT RIOT MOJO/UNIVERSAL	CHERRY POPPIN' DADDIES	1127	1018	
21	23	6	MUNGO CITY HIFI/SIRE/WARNER BROS.	SPACEHOG	1098	1031	
22	25	7	SHELF IN THE ROOM OUTPOST/GEFFEN	DAYS OF THE NEW	1041	963	
23	18	21	BRICK 550 MUSIC	BEN FOLDS FIVE	1008	1225	
24	28	5	FROM YOUR MOUTH 1500/A&M	GOD LIVES UNDERWATER	967	860	
25	NEW		PUSH IT ALMO SOUNDS/INTERSCOPE	GARBAGE	934	41	
26	26	10	SUNDAY SHINING 550 MUSIC	FINLEY QUAYE	881	891	
27	NEW		IRIS REPRISE	GOO GOO DOLLS	863	485	
28	21	16	WASH IT AWAY OGG/GEFFEN	BLACK LAB	837	1105	
29	30	7	LIFE IN MONO ECHO/MERCURY	MONO	813	841	
30	38	2	REAL WORLD LAVA/ATLANTIC	MATCHBOX 20	807	511	
31	27	26	3 AM LAVA/ATLANTIC	MATCHBOX 20	799	879	
32	33	3	SAVE YOURSELF COLUMBIA	STABBING WESTWARD	753	679	
33	34	3	IT'S YOU WAY COOL MUSIC/MCA	THE SPECIALS	708	644	
34	NEW		FLAGPOLE SITTA SLASH/LONOON/ISLAND	HARVEY DANGER	705	478	
35	29	12	BRIAN WILSON REPRISE	BARENAKED LADIES	702	841	
36	NEW		DON'T DRINK THE WATER RCA	DAVE MATTHEWS BAND	683	19	
37	35	2	UNINVITED REPRISE	ALANIS MORISSETTE	675	621	
38	NEW		JUMP RIGHT IN IMMORTAL/EPIC	THE URGE	665	414	
39	37	18	JANE SAYS WARNER BROS.	JANE'S ADDICTION	606	598	
40	32	18	BEAUTIFUL DISASTER CAPRICORN/MERCURY		311	603	

Records showing an increase in detections over the previous week, regardless of chart movement. A record which has been on either chart for more than 20 weeks will not receive a bullet, even if it registers an increase in detections. Airpower awarded to those records which attain 800 detections (mainstream) or 1,100 (modern) for the first time. If two records are tied in number of plays, the record being played on more stations is placed first. Records below the top 20 are removed from the chart after 26 weeks.

addict

MONSTERSIDE THE FIRST SINGLE FROM THEIR DEBUT ALBUM STONES

ON OVER 40 ACTIVE ROCKS INCLUDING:
WRIF, WLZR, WXTB, WNOR, KUPD, WJRR, WBZX, WAZU

IMPACTING MODERN NOW. COULDN'T WAIT! KOME 20x KEDJ 22x

MANAGEMENT: LIQUID MANAGEMENT LTD, SANDRINGHAM HOUSE, 10 MAYNARD CLOSE, LONDON SW6 2JH. TEL: 0171 736 8755/4000 0171 731 7266

IMPACTING NOW!

COULDN'T WAIT:

KUPD
WRCX
WAAF
WLZR
KAZR
WMFS
WCCC
KRZR
WJJO

ALREADY SPINNING:

KEDJ
KMYZ
KOME
WRRV
KXTE
KHTY
KJEE
KGDE
WNVE
KIOZ
KBPI
WJRR
WZTA
WTPT
KEGL
KRAD
DC101
KRXQ
WROV

CLUB TOUR
STARTS 4/1

HEADLINE WARP
TOUR STARTS 7/1

deftones
be quiet and drive (far away)

The new single from *around the fur*



produced by terry date and deftones. career direction: warren entner and john vassiliou for w.e.m. www.deftones.com

©1998 Maverick Recording Company

PEARL JAM

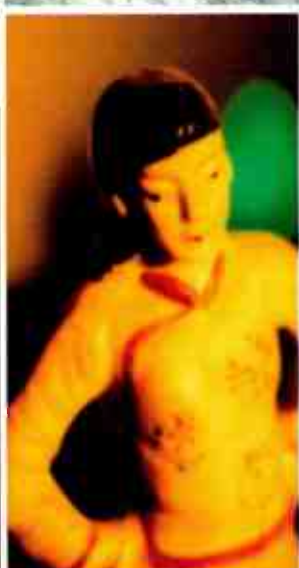
Wishlist



14
Modern
Rock
Monitor
with
over
1300
spins

Rotating
heavily
at:

- KNDD 39x
- WBCN 30x
- Y100 31x
- 89X 47x
- Q101 25x
- 99X 22x
- KDGE 23x
- KTBZ 23x
- KWOD 20x
- KOME 23x
- KEDJ 21x
- XHRM 25x
- KTEG 22x



**AT ROCK
RADIO:**
236+
spins and
building...

**Couldn't
Wait:**

- WZTA 21x
- KEGL 23x
- KISW 16x
- KLOS 12x
- WAAF 11x
- WDVE 11x
- WFBQ 11x



The new single from the Epic release **Yield**

Produced by Brendan O'Brien and Pearl Jam

IMPACTING RADIO ON APRIL 7TH ON TOUR ALL SUMMER