

# ROCK ■ AIRPLAY Monitor

• We Listen To Radio •

September 5, 1997 \$4.95 Volume 4 • No. 36

## ROCK HIGHLIGHTS

### MAINSTREAM

#1

**AEROSMITH**

*Pink* (COLUMBIA)

★★★ AIRPOWER ★★★

NO RECORDS QUALIFIED FOR AIRPOWER THIS WEEK

### GOING FOR AIRPLAY

THE CUNNINGHAMS • *Wannabe* (REVOLUTION)  
DOGMA • *Cancer* (KING/DEF JAM/MERCURY)  
INSANE CLOWN POSSE • *Halls Of Illusion* (ISLAND)  
INXS • *Searching* (MERCURY)  
KULA SHAKER • *Hush* (COLUMBIA)  
LIFE OF AGONY • *Weeds* (ROADRUNNER)  
PISTON • *Grey Flap* (FIERCE/LAVA/ATLANTIC)  
ROLLING STONES • *Anybody Seen My Baby* (VIRGIN)  
MATTHEW RYAN • *Guilty* (A&M)

### MODERN

#1

**SUGAR RAY**

*Fly* (LAVA/ATLANTIC)

★★★ AIRPOWER ★★★

NO RECORDS QUALIFIED FOR AIRPOWER THIS WEEK

### GOING FOR AIRPLAY

BARENAKED LADIES • *Brian Wilson* (REPRISE)  
CHUMBAWAMBA • *Tubthumping* (REPUBLIC/UNIVERSAL)  
MARK EITZEL WITH PETER BUCK • *Free Of Harm* (WARNER BROS.)  
THE HONEYDOGS • *Rumor Has It* (DEBRIS/MERCURY)  
KULA SHAKER • *Hush* (COLUMBIA)  
LETTERS TO CLEO • *Anchor* (REVOLUTION)  
LIFE OF AGONY • *Weeds* (ROADRUNNER)  
MARCY PLAYGROUND • *Sex & Candy* (MAMMOTH)  
MATTHEW RYAN • *Guilty* (A&M)  
THE VERVE • *Bittersweet Symphony* (VIRGIN)

### TRIPLE A

#1

**SARAH MCLACHLAN**

*Building A Mystery* (NETTWERK/ARISTA)

★★★ AIRPOWER ★★★

TOAD THE WET SPROCKET • *Whatever I Fear* (COLUMBIA)

## Do PD Gripes About Arbitron Sampling Apply To Callout Too?

by Marc Schiffman  
with Kevin Carter

PDs have long complained about their frustrations with Arbitron sampling. Record reps have long complained about what they see as radio's over-reliance on callout research. But RCA's Dave Loncao raised an interesting question during a recent discussion with Airplay Monitor: Why do PDs complain about Arbitron but then quote religiously from their callout, which is also subject to the vagaries of sampling?

"I sympathize with them," says Loncao of PDs. "They have to use as archaic a form of research as Arbitron... about which radio always complains. It's no different on the radio side."

Loncao, who says he's been on the receiving end of research calls and was "floored" by the amount of feedback he was supposed to give, as well as by the researcher voicing his own bias, feels auditorium testing gives a more accurate read on music. Since most PDs aren't likely to find weekly auditorium tests practical, Loncao says, "I understand that [callout is] the cheapest and best ongoing way

for radio stations to get a read on the gut calls they've made in their current categories. I hope someday that they have something that has less flaws."

So Airplay Monitor took Loncao's "Yeah, but what about callout?" question to several researchers experienced with both Arbitron and music testing. While most were quick to note no exact comparison could be made, they agreed that both forms of research were best viewed over a length of time, and that the biggest problems existed when any one cell had to be examined too closely. (We did, however, find one researcher who felt that the consequences of a potential Arbitron mistake are much higher than a corresponding problem with callout.)

And while many of us have heard, at some point, an angry PD contend that his weekly callout has a larger sample size than some contested Arbitron cell, many respondents were relatively sanguine about both methodologies. As John Sebastian, PD of country KZLA Los Angeles and a longtime callout proponent, notes, "The Arbitron methodology

Continued on page 5

# Kenny Wayne Shepherd Band

## "slow ride"

IMPACTING ROCK RADIO  
SEPTEMBER 16TH!

EARLY ADDS INCLUDE:

WRIF KDKB  
KISW WZMT  
WHJY WLVO  
KATT KCAL

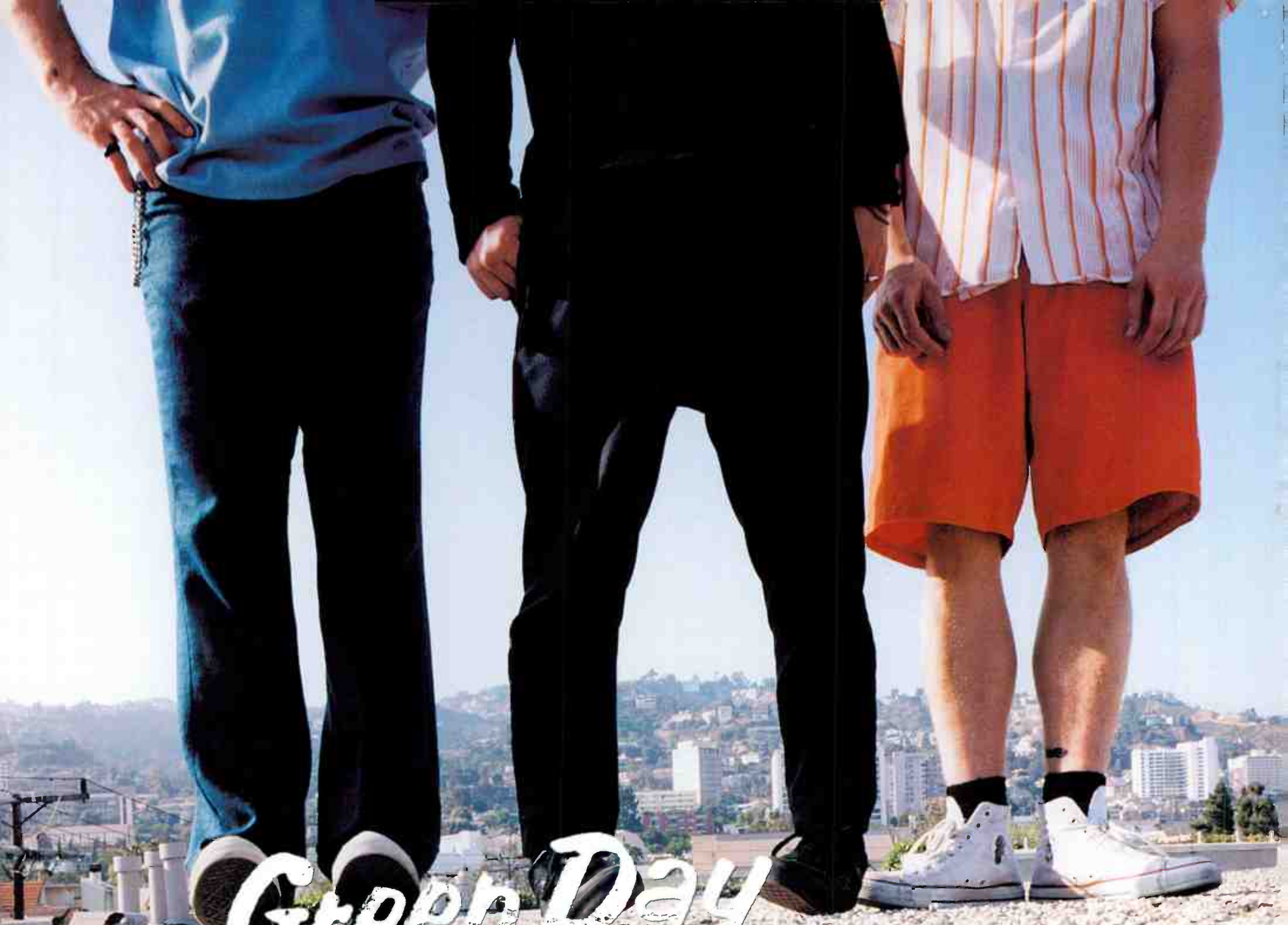
AND A SLEW OF OTHERS!

PRODUCED BY JERRY HARRISON  
ENGINEERED BY KARL DERFLER  
MIXED BY TOM LORD-ALGE

PERSONAL MANAGEMENT BY KEN SHEPHERD

"Trouble Is" IN STORES 10.7.97

WWW.REVOLUTION-ONLINE.COM



*Green Day*

# Hitchin' A Ride

The first single from Nimrod

Produced by Bob Cavallo and Green Day  
management Atlas/Inrd Rock Bob Cavallo and Pierre Magnarella

© 1997 Reprise Records www.RepriseRec.com

**#1 MOST ADDED!**

**DEBUT @ (20) ROCK BIG PICTURE!**

**#1 NEW AIRPLAY @ MODERN, ACTIVE & MAINSTREAM ROCK!**

**DEBUT @ (26) MODERN ROCK MONITOR, 871 PLAYS!**

**DEBUT @ (30) ACTIVE ROCK, 275 PLAYS!**

**THE NEW ALBUM NIMROD IN STORES 10/14** World Radio History

**MAJOR MARKET ACTION @...**

WXRK	KROQ	KNDD	KITS	Q101	91X
WRCX	DC101	WAAF	KISW	WIYY	WLZR
WBCN	WHFS	99X	KOME	KEGE	KDGE
WYSP	WNOR	KTXQ	WRIF	WHJY	WMMS
KPNT	KNRK	XHRM	CIMX	KXRK	WRZX
WBAB	WLZR	KBER	WZTA	KSJO	KQRC
WPLY	WLUM	KXTE	KTCL	KTEG	KTBS
KIOZ	KISS	KRXQ	KNCN	KUFO	KEGL

## What We Did For Our Summer Vacation



High atop a peak in Boulder, Colo., a number of triple-A movers and shakers experienced their own summit. Pictured, from left, are WXRV Boston MD Mike Mullaney; KFXD Boise, Idaho, PD Kevin Welch; Hybrid Recordings promotion director Kalun Lee; Outsource Music's Michael Ehrenberg; and CIDR Detroit MD Ann Delisi.

## WRLG Nashville Exits Modern Rock

**W**RLG (Thunder 94) Nashville dropped its modern rock format Aug. 29. WRLG programming had been simulcast on WDBL and WYYB. All three frequencies are currently simulcasting sister triple-A WRLT (Lightning 100). Come October, WYYB will go progressive country as the Phoenix. WDBL and WRLG will continue to simulcast WRLT. WRLG station manager **John Lenac** and PD/middayer **Julie Forman** have exited. You can reach Lenac at 615-366-6408 and Forman at 615-327-9434. Meanwhile, back at WRLT, evening jock **Kerry D. Massey** takes mornings, as **Dan McGrath** and **Tammi Price** exit.

### BUSINESS: CLEAR PROMOTIONS

Clear Channel has announced a new management structure, dividing its stations into four regions, each under a senior VP. **George Sosson** will oversee Clear Channel's east region, and **Stan Webb** runs its central stations, between Tennessee and Texas. **Jim Smith** will oversee western stations as well as networks and international holdings. **Peter Ferrara**, former COO of Granum, now oversees the Florida stations that Clear Channel is buying from Paxson.

Jacor picks up a Charleston, S.C., quartet of properties, including classic hits **WRFQ**. In other Jacor news, the company has informed the FCC that it will neither respond to nor pay a \$4,000 Notice of Apparent Liability for allegedly indecent material broadcast on its **Bubba The Love Sponge** show. Should Jacor hold the line on this issue, the FCC can opt to bring the case to the Department of Justice. Lastly, Jacor's classic rock **WTBT** Tampa, Fla., flips on a new transmitter giving it full-market coverage.

Former album **KLOL** Houston GM **Kathy Stinehour** becomes VP/GM for classic rock **WAXQ** (Q104.3) New York. **KBGG** San Francisco's **Darian O'Toole** will be the station's new morning host. Evergreen confirms that **Kurt Johnson** will no longer be PD of Q104.3 but may be transferred within the company.

Classic rock **WOCT** (the Colt) Baltimore PD **Bill Pasha** expands his PD title at sister oldies **WQSR** to station manager, while **WQSR** GM **Bob Philips** is named station manager of WOCT.

Capstar picks up modern adult **KOSO** (B93) Modesto, Calif. That station unveils the last pieces of its new lineup this week, as night host **Paul Browning** adds APD stripes and moves to after-

noons. **Jack Paper** joins for nights from modern **KSLY** San Luis Obispo, Calif.

### PROGRAMMING: CONSTANTINE GETS KINK-Y

Triple-A **KINK** Portland, Ore., PD and 20-year station veteran **Carl Widing** exits, replaced by **Dennis Constantine**. APD **Anita Garlock** remains. Constantine will continue to consult a stable of triple-A stations while programming **KINK**.

Classic rock **KSD-FM** St. Louis marketing director **Jack Lawson** joins album **WKQZ** Saginaw, Mich., as PD.

PD **Chris Kerr** exits Saga's modern adult **WXPT** (the Point) Milwaukee after three months. Packages to GM **Tom Joerres** or consultant **Dave Beasing**. Call Kerr at 414-466-4890.

**KUCD** Honolulu flips from jazz to modern adult as **Star 101.9**. **Mahlon Moore** remains PD, and the station is running jockless for now.

Triple-A **KMBY** Monterey, Calif., flips to an active-leaning album format under recently arrived PD **Chris White**. PD **Rich Berlin** remains at the station as MD.

Album **KZRK** Amarillo, Texas, PD/MD/morning man **Eric Slayter** joins album **KNCN** Corpus Christi, Texas, for MD/morning co-host duties. **Lee Abrams** is now consulting **KNCN**. Meanwhile, back at **KZRK**, afternoon drive host **Mike Shannon** becomes PD/MD. Middayer **Amy Maddox** moves to mornings, and P/T **Jay Currie** is in middays.

Amid rumors of an imminent flip at **WFLN** Philadelphia, The Philadelphia Inquirer is reporting that the station will indeed be dropping classical and is planning on donating its entire library to Temple University jazz station **WRTI**.

**WZRW** Meridian, Miss., flipped from classic hits to country as **WYYW** (Y95) Sept. 2.

Top 40 **WKZW** (KZ94.3) Peoria, Ill., flips to classic rock as **WFXF**.

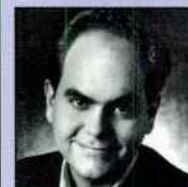
### PEOPLE: INDUSTRY MOURNS GRAFMAN

Sorry to report the death of **Sheldon Grafman**. The former executive VP and national director of programming for Century Broadcasting oversaw the company's album outlets **KWST** L.A., **KMEL** San Francisco, **WABX** Detroit, and **KSHE** St. Louis, the station where he started in sales in 1967. He served **KSHE** as GM from 1967 through his appointment to executive VP of the Century parent in 1975, where he remained until the sale of **KSHE** in

## MTV's Schuon To Give Keynote Speech At Billboard/Airplay Monitor Radio Seminar

MTV Executive VP Programming **Andy Schuon** has been confirmed as the keynote speaker at the 1997 Billboard/Airplay Monitor Radio Seminar & Awards, to be held Oct. 16-18 at the Orlando Renaissance Resort in Orlando, Fla.

Schuon's appearance, scheduled for 10:15 a.m. on Friday, Oct. 17, will be the kickoff session for the Seminar. As one of the minds that drives MTV,



SCHUON

Schuon is expected to address the issues of programming a product that has been a consistent American cultural pacesetter. Before joining MTV, Schuon programmed modern **KROQ** Los Angeles, another important fixture in the music industry.

**Billboard & Airplay Monitor**  
Radio Seminar & Awards

For registration info, please call Maureen Ryan at 212-536-5002. For hotel and airline info, call Pepp Travel at 800-877-9770.

## PERSONNEL FILE BY STEVE GRAYBOW

### Gmeiner Gets Virgin VP/Promotion Post

**R**ay Gmeiner, veteran of the Volcano and Elektra promotion departments, ascends to VP of promotion at Virgin. Meanwhile, Virgin's **Scott Douglas** exits his post as senior director of promotion . . . Red Ant ups director of national rock promotion **Joanne Grand** to senior director of national rock promotion . . . 550 Music ups **Desiree Schuon** from VP of pop promotion to VP of promotion . . . Sony Music appoints **Jack Isomura** executive VP . . . N2K Encoded Music names **Laurie Jacobsen** director of publicity . . . **Joann Kaeding** is named senior director, international, for Jive, Silverstone, and Verity Records.

Interscope Records will pay Trauma Records between \$3 million and \$5 million to end its joint venture two years early, according to Billboard Bulletin. Both labels will initially retain interest in **No Doubt** and **Bush**.

Roadrunner Records and Next Plateau Entertainment have dissolved their joint venture.

**Oasis'** new album, "Be Here Now," debuts at No. 1 on the U.K. charts, as well as in France, Ireland, Sweden, Norway, Finland, and Australia . . . The Lilith Fair, one of the most successful events of the summer concert season, will have a live album released on founder **Sarah McLachlan's** own Temple Records. Expect the release to include at least one track by each of the festival's participants, including **McLachlan**, **Jewel**, **Fiona Apple**, and **Sheryl Crow**.

### Work Brings Bob In For Apple



**Fiona Apple's** visit to the Washington, D.C., area brought out fans at modern **WHFS**. Shown here, from left, are the Work Group's **Michele Block**, APD **Bob Waugh**, **Apple**, and **WHFS** promotion director **Mary Kay LeMay**.

1984. **Grafman** died Aug. 29, days before his 68th birthday. Contemporary Group of St. Louis is setting up a scholarship in his name at the University of Missouri, St. Louis. Contact Contemporary's **Steven Schankman** at 314-962-4000.

Modern **WHMP** Springfield, Mass., night jock **Dem Jones** joins modern **WNVE** Rochester, N.Y., for the same. **WNVE** P/T **Justin** gets late nights. PD **Erick Anderson** is still searching for a middayer. He's close to a decision, so get your tapes in immediately.

Album **WMFS** Memphis MD/afternoon host **Bob Bitchin** is bumped up to APD.

Album **KAZR** Des Moines, Iowa, MD/night jock **Leigh Taylor** exits for Album Network.

Modern adult **WTMX** Chicago midday guy **Dave Hilton** exits after 15 years. P.M. driver **Brian Peck** moves to middays. **Dave Fogel**, from rock sister **WLUP**, joins for afternoons.

Triple-A **CIDR** Detroit MD/middayer **Ann Delisi** swaps shifts with p.m. driver **Thom Kikot** . . . Modern **WBZU** Richmond, Va., APD/MD/afternoon **Mike Scott** exits.

**Ellen Angelo** joins album **KCAL** San Bernardino, Calif., as morning co-host from country **KSON** San Diego.

Album **WAQX** Syracuse, N.Y., evening jock **Alexis** picks up promotion director duties. Station and market veteran **Roger McCue** returns to radio and the station for nights. His last stint with the station was as production director.

Modern **KMYZ** Tulsa, Okla., P/T **Paul "Tony" Hicks** picks up the night spot held by **Hondo** until the latter's exit in July . . . Album **WGBF** Evansville, Ind., overnighther **Max Jaxon** adds promotion/programming assistant duties for the Evansville Radio Center complex. P/T **Fat Boy** replaces him in overnights. Night jock **Turner Watson** adds MD stripes.

## M Street Format Monitor


### In 3rd Year, Modern Adult Has 59 Outlets

Depending on how you count, the modern AC format is somewhere between 2 and 3 years old. And there are already more modern adult outlets around the country than there are classical stations, according to the M Street Format Monitor's total for August.

M Street's national format tally had previously counted most modern adult stations as part of either the adult top 40 or triple-A formats. This month, it breaks them out separately and finds that there are 59 modern adult stations. M Street also moves many for-

mer '70s outlets from the oldies category to classic hits, giving that format a corresponding bump from the 10th to the ninth most-programmed format nationwide.

In other news this month, country continued to decline but maintained its firm hold on the No. 1 slot. Top 40 and modern rock remained flat, while mainstream R&B, AC, and mainstream rock declined. The combined R&B adult and R&B oldies formats continued to move forward, further opening their lead on mainstream R&B.

RANK		The M Street  <b>FORMAT MONITOR</b>	STATION COUNT		
THIS MONTH	LAST MONTH		AUGUST '97	JULY '97	NET GAIN OR LOSS
		FORMATS	Copyright M Street Corp. 1997		
1	1	Country	2,504	2,507	-3
2	2	News/Talk	1,106	1,106	0
3	3	Adult Contemporary	920	922	-2
4	4	Oldies	740	752	-12
5	5	Religion (Music)	640	632	8
6	6	Adult Standards	547	536	11
7	7	Spanish	476	479	-3
8	8	Religion (Talk)	421	420	1
9	10	Classic Rock/Hits	397	379	18
10	9	Soft AC/Easy Listening	393	390	3
11	11	Top-40/Mainstream/Rhythm	357	357	0
12	12	Mainstream Rock	262	265	-3
13	13	Top-40/Adult	253	255	-2
14	14	Sports	211	206	5
15	15	R&B Adult/Oldies	181	179	2
16	16	R&B	170	172	-2
17	17	Miscellaneous	157	159	-2
18	18	Modern Rock	148	150	-2
19	20	Jazz	93	88	5
20	19	Triple-A	91	149	-58
21	—	Modern AC	59	—	59
22	21	Classical	45	47	-2
<b>Total commercial operating stations</b>			<b>10,171</b>	<b>10,150</b>	
<b>Stations off the air</b>			<b>160</b>	<b>167</b>	

M Street Corp., is a Nashville-based provider of radio station information to the radio and music industries. Call 615-865-1525 for more information.

## RADIO CONCERT MONITOR

DATE	CALL LETTERS	EVENT	SCHEDULED TO APPEAR
Sept. 6	WRCX Chicago	RockStock	Brother Cane, Cool For August, Cracker, Days Of The New, Faith No More, Fat, Gravity Kills, Helmet, Joan Jett, Jimmie's Chicken Shack, Local H, Megadeth, Nixons, Seven Mary Three, Silverchair, Soak, Tenderloin, Veruca Salt
Sept. 7	KMYZ Tulsa, Okla.	Edgefest	Artificial Joy Club, Caroline's Spine, Faith No More, Groove Pilots, Helmet, Honeyrods, Limp Bizkit, Naked, Our Lady Peace, Outhouse, Reel Big Fish, Smash Mouth, Sugar Ray
Sept. 11	KFRR Fresno, Calif.	Birthday Bash II	Fiona Apple, Artificial Joy Club, Buck-O-Nine, Smash Mouth, Social Distortion, Sugar Ray, Summercamp
Sept. 13	KOME San Jose, Calif.	Kamp KOME 2	Fiona Apple, Blink 182, Buck-O-Nine, Cake, Local H, Matchbox 20, Reel Big Fish, Smash Mouth, Social Distortion, Sugar Ray, Third Eye Blind, Violent Femmes

To include your station's concert information in Rock Concert Monitor, call Marc Schiffman at 212-536-5065, fax 212-536-5286, or E-mail mschiffman@billboard.com

EDITOR IN CHIEF: HESTON HOSTEN  
 EDITOR: SEAN ROSS  
 MANAGING EDITOR: MARC SCHIFFMAN  
 MAINSTREAM ROCK/TRIPLE A CHART MANAGER: ANTHONY COLOMBO  
 MODERN ROCK CHART MANAGER: MARK MARONE  
 MODERN ADULT CHART MANAGER: STEVE GRAYBOW  
 WRITER/REPORTER: DANA HALL  
 CHART PRODUCTION MANAGER: MICHAEL CUSSON  
 ASST. CHART PRODUCTION MANAGER: ALEX VITOULOS  
 EDITORIAL PRODUCTION MANAGERS: BARRY BISHIN, MARCIA REPINSKI  
 EDITORIAL PRODUCTION: MADELINE CARROLL, SUSAN CHICOLA,  
 MARC GIAQUINTO, SARAH JOHNSON, MARIA MANLICIC  
 COPY EDITOR: CARL ROSEN  
 ADVERTISING PRODUCTION MANAGER: LYDIA MIKULKO  
 ASSOC. ADVERTISING PRODUCTION MANAGER: CINDEE WEISS  
 ADVERTISING ART DIRECTOR: RAY CARLSON  
 ADVERTISING PRODUCTION ARTIST: SHIRA HALFON

©1997 BPI Communications  
 1515 Broadway, New York, NY 10036 212-764-7300  
 For subscriptions call: 800-722-2346

Airplay Monitor reporting panels are based solely on a station's musical content.

GENERAL MANAGER: JON GUYNN  
 ACCOUNT MANAGERS: GARY NUEL, JEFF SOMERSTEIN  
 ADVERTISING SERVICES MANAGER: ALYSE ZIGMAN  
 SALES ASSISTANTS: EVELYN ASZODI,  
 ERICA BENGTSOIN, TODD MAYERCHER  
 EDITORIAL ADVISER: TIMOTHY WHITE  
 PRODUCTION DIRECTOR: MARIE GOMBERT  
 DIRECTOR OF MARKETING: ELISSA TOMASETTI  
 CIRCULATION DIRECTOR: JEANNE JAMIN



PRESIDENT: HOWARD LANDER  
 SENIOR VP/GENERAL COUNSEL: GEORGINA CHALLIS  
 VICE PRESIDENTS: KAREN OERTLEY, ADAM WHITE  
 DIRECTOR OF STRATEGIC DEVELOPMENT: KEN SCHLAGER  
 BUSINESS MANAGER: JOELLEN SOMMER



## CHEET SHEET BY MARK MARONE

212-536-5051 • mmarone@billboard.com

### Whiskeytown Brews Stiff Rootsy Rock

While the members of **Whiskeytown** wear their gritty country roots on their sleeve, they seem well aware of the C-word's connotation in the rock world. "We have a lot of conversations about 'alternative country' within the band, and we've sort of come to the fact that we sort of resent the term," says violinist/backup singer **Caitlin Cary**. "We like to say, 'Why isn't **Neil Young** alternative country?'"

It's a dilemma Whiskeytown has been dealing with since releasing its first EP three years ago. Though the band's steel guitar and violin complement its confessional prose about lost love, hard living, and disappointments, the Raleigh, N.C., quintet insists they are a traditional rock'n'roll band. Although there's been a desire in the past few years to bunch country-flavored rock—like that of **Wilco**, **the Jayhawks**, and **Son Volt**—under the banner of alternative country, Americana, or roots rock, few could argue that its practitioners haven't always been a big part of the rock mainstream. After all, some of the biggest acts to blend country elements into their music—including **the Byrds**, **the Rolling Stones**, **Creedence Clearwater Revival**, **Bob Dylan**, **Young**, and **the Eagles**—have never been referred to as anything but rock bands.



From left, Jeff Rice, Caitlin Cary, Ryan Adams, Phil Wandscher, Steve Terry

It's ironic, then, that **Ryan Adams**, Whiskeytown's 22-year-old protagonist and songwriter, grew up a rebellious skateboard kid listening to punk rockers like **the Minutemen**, **Black Flag**, and **the Replacements**. When he quit high school to move to Raleigh—an hour and a half away from his rural hometown of Jacksonville, N.C.—he began playing in his own punk outfit named **Patty Duke Syndrome**. But when his punk band dissolved in 1994, he shifted gears and began acknowledging all those **Johnny Cash**, **Willie Nelson**, and **Hank Williams** records his grandparents had played. To Adams, there is little

difference in the sentiment one would feel from listening to **Loretta Lynn** or **Bad Brains**. "She was writing songs about her husband fucking around on her. It's the same as **Black Flag** or the **Minutemen** singing about getting beat up because they didn't fit in. Both are so intense—purposeful and timeless."

A bar called **Sadlacks** on the "strip" across from North Carolina State University in Raleigh is where Whiskeytown started. But at **Sadlacks**, there was nary an Izod shirt or baggy shorts to be found. "It was kind of like **Loserville**," says guitarist **Phil Wandscher**, who was working there when he decided to join forces with Adams after a night of drinking. "It's a bunch of depressing, alcoholic, nowhere people hanging out—a really weird place with weird people and a weird vibe." Wandscher had met Adams before at parties and remembers thinking of the young, wide-eyed guitar player as "the little kid on the scene, kind of too cool for his britches and not cool enough to hang, but he was all right." It's the tug of war between Adams' gritty country slant and Wandscher's decidedly bluesy angle that gives Whiskeytown its rootsy sound. "We could be sitting around practicing and come up with an album. We just kind of work good together like that," draws Wandscher.

Adams got more than he bargained for when he mentioned to a friend his interest in obtaining a fiddle player for Whiskeytown. Cary, who grew up in a family of six older brothers who were all musicians, was a year from finishing her English degree in graduate school when she agreed to play in Adams' band. Cary thought at the time that "this will be something fun to do on the weekends." The playing was fine enough, but as soon as the two discovered they could sing harmony together, they were almost inseparable. "When I started singing with Ryan, it was compelling to me," she says, adding that prior to then, she had only been able to do so as effortlessly with her family. "I can sing harmony easily to anyone, but it's just not as graceful," she says with a laugh. Though it didn't quite lead to romance, "we started going back to his hometown and singing and playing together 'til all hours of the night out in the barn and other places where he'd played with bands when he was 14 or 15, drinking gallons of whiskey and writing a lot of songs right at the beginning together." Adams also came to share Cary's fondness for folk music, Irish music, and bluegrass, to which he had not previously been exposed.

After the band recorded some EPs and singles for independent labels **Mood Food** and **Bloodshot**, **Chris Stamey** of the **dB's** suggested that **Mark Williams** of **Outpost** hear the act. However, right around the time Williams began expressing interest in Whiskeytown, the group was going through some personnel changes, and Adams almost gave up, leaving town for a couple of weeks amid the departure of the bass player and drummer. After some phone conversations between the singer and Wandscher, they reconvened, with Wandscher recruiting friend **Steve Terry** on drums. **Jeff Rice**, an old friend of Adams' who shares his affinity for playing sad songs, joined as well.

Outpost signed the band to a long-term deal last fall, and Whiskeytown headed to Nashville in February for two months to pair up with producer **Jim Scott**, who had worked on **Tom Petty's** "Wildflowers" and **Johnny Cash's** self-titled album on **American Recordings**. "Strangers Almanac" was released the last week of July.

The starkness of Adams' emotional outpouring gives listeners the feeling they've been leafing through the singer's diary. "Well, if you knew him, you'd realize that he definitely likes to make himself suffer about everything," sighs Wandscher. "I guess that's the root of any good songwriter. He's overly sensitive." Adds Cary, "He's one of those people who is 7 and 40 at the same time. He's quite an old soul in a lot of ways."

## Do PD Gripes About Arbitron Sampling Apply To Callout Too?

Continued from page 1

is not flawless, and neither is callout research, but they're both a hell of a lot better than what's second."

With both Arbitron and callout, the sample-size issue is often key to most complaints. And both researcher John Parikhal and Sebastian say more is better only up to a point. As Parikhal explains, "The standard error for 100 is fairly high in statistics. For each 100 you increase the sample size, you get more accuracy, until 500." After 500, every increase of 100 people only slightly improves accuracy; therefore, "a sample of 100,000 is only slightly more accurate than one of 1,000, but as you increase from 100 to 500, accuracy increases 30%-40%."

That's why Sebastian believes that while a typical callout research sample is much smaller than what Arbitron uses, statistically, if the right demographic cells are covered and the information is interpreted correctly, the results should be extremely accurate.

But, as many researchers note, the proper sample sizes aren't always there. While consultant Liz Janik believes that the correct number of respondents is never less than 50, and should really be 80-100, she thinks stations—driven by a "lowest price" mentality and an over-reliance on interns as researchers—often miss that mark. "I see examples of 12-30 people representing the entire market," she says.

Janik also bemoans stations calling a set list of listeners who eventually lose their impartiality and become "professional respondents." Saga VP and Arbitron Advisory Council member Steve Goldstein also believes that "radio station databases by and large are composed of contest winners. That's a very small segment and skewed view of the average listener."

### ALL THINGS IN TIME

Across the board, the people we spoke with believe that both research tools are more likely to be accurate over a longer period of time. And both are most vulnerable to the vagaries of sample size in the individual cells.

"It says right on the front cover [of the Arbitron book] that those are estimates, and that's always important to keep in mind," says Goldstein. "What they're doing is reporting a snapshot, and they don't always get it right," but over time, the picture becomes clearer.

"It's the same with callout," Goldstein continues. "We have weeks when the callout looks unusual. We trend them over several weeks, and we do the same thing with ratings books. Then you're adding in more sample, and more sample means more stability."

"Looking at something over four to six weeks with well-done callout is effective in showing what they like, familiarity, and what they dislike," says Parikhal. "When you get in trouble is when you want to look at, say, females 25-54, then the sample is back down to 20 people," and then you start to seriously erode accuracy.

Likewise, he says, "Arbitron is pretty darn good with the [overall] cume of radio stations. When you subdivide that, though, you run into problems. If you're talking about a radio station and you're talking about their 25- to 34-year-old female, there may only be 18-19% of them representing the entire market."

### WHAT'S BETWEEN THE LINES?

With all research proponents having long claimed that research must be used only as one weapon in a quiver, there are still differing views of how much a user can read into either Arbitron or callout. Goldstein says that "there are a lot of new tools that Arbitron has that makes it a lot easier to diagnose what happened in the book. We used to look at rankers. Now we can get in farther and look month to month, compare P1s to P2s, do geographic tracking. We can really start pulling [the book] apart, and we do a great deal of that, because if we had a great book, I want to know what's driving it."

But with music testing, Goldstein says, "you're asking people to quantify something entertainment-oriented. It's akin to a movie. How do you rate a movie on a 1-5 scale?" For

that reason, he says, callout is best trusted to show the five best or worst titles.

Similarly, Bolton Research's Ted Bolton adds, "If I'm doing callout and I find people very much dislike a record I'm playing, it's at the bottom of the list, I have very much certainty that the record should not be on my radio station. If it kicks ass week after week, that is something that I have fair certainty about. The problem is in the middle."

Then again, Janik believes that you can take callout at face value. "If you have a large enough sample randomly screened and you're playing familiar song hooks for them, you should be able to have a high degree of confidence to identify the songs that your audience prefers," she says. By contrast, "Arbitron for a programmer is not a tool for developing programming strategy. It only tells you the scores."

### DIFFERING CONSEQUENCES

While Loncao would probably differ, Parikhal also believes the consequences of a callout wobble are less than they are with Arbitron. "The consequences of making a mistake if you're a PD and you get off a record too soon are not that high. The consequences of not adding a great record are really quite low. [You] can add it and usually catch the wave . . . The consequences of making mistakes on callout are not extreme, usually. They are extreme if you play the wrong record too many times."

But with ratings, "the consequences can be more extreme. A couple of bad books as a result of sampling error can really hurt a radio station," Parikhal says. He remembers a West Coast client that was consistently hitting 4 shares. "All of a sudden, we had a 0.7 month, followed by a 0.9 month. By the end of the second month, heads were getting ready to roll," he remembers. Management was having daily meetings on what they should do. Parikhal suggested that they do nothing. "We got a 4.5 the next month, and the PD said to me, 'I suddenly got so smart in 30 days.'"

While both methodologies can wobble from time to time, Sebastian says, "With Arbitron, you're usually at their mercy. You always like to think that if your ratings take a bad bounce this time, you'll get a good bounce next time."

### BOUVARD'S PERSPECTIVE

Arbitron GM Pierre Bouvard's two stints with the ratings research firm were separated by a stretch at Coleman Research, so he sees a lot of parallels. Just as a PD may use callout as an excuse to deal with a crush of record folks, media buyers are also facing too many pitches for too few availabilities. He's also seen interest in both ratings and callout proliferate. "Ten to 15 years ago, weekly callout was the exception rather than the norm. Now, you open up any trade, and there's an ad saying 'testing real well in callout.' It's part of the nomenclature," he says. Similarly, as more PDs attend Arbitron's training seminars, Bouvard says, there's a greater recognition by PDs that they need both creativity and science on their side.

Bouvard, who has been on a campaign to get the industry to pay for larger samples, acknowledges the inherent difficulty of mixing art and science. But he also says that PDs can strike a balance. "One thing I learned at Coleman Research is the difference between perceptual and behavioral research," he says. Perceptual is six months out in front of behavioral. If a station has been down on its luck and a new PD comes in and freshens things up, the perceptual will say you've turned this thing around, but the behavior will take six to nine months to catch up."

He recommends using perceptual to aid in decision-making and then watching the ratings for listener reaction. "Say you do a perceptual study and find the [traditional] sound for AC is eroding badly and the modern AC thing is happening," he says. "I'm going to make the decision to evolve away from traditional stuff toward modern AC. And then I'm going to sit back for the next year and see from a ratings perspective how I'm going to do."

## MONITOR PROFILE

### Dave Shakes Up Conventional Wisdom; Teaches Success In New World Order

"I wanted to become a teacher," Dave Shakes says simply of his January 1996 decision to leave the day-to-day programming ranks and join consulting firm Alan Burns & Associates.

Shakes was originally propelled to national recognition as PD of WBBM-FM (B96) Chicago from 1990-93, where, at its height, the station reached a 6.9 12-plus. He later segued to KMEL San Francisco, during its transition from Century Broadcasting to Evergreen, and, later, moved over to sister AC KIOI (K101).

To smooth the initial transition from on-site PD to the big-picture world of consulting, Shakes took some sales courses. "I needed to be able to sell my business in a world where I would now have many different bosses," he says. Just like an actual salesperson, Shakes felt his delivery needed



Dave Shakes  
Alan Burns &  
Associates

*'Many stations make the mistake of chasing a demo instead of a target listener'*

some fine-tuning. "I needed to be able to change my message style, depending on who I was addressing," he adds.

Fast-forward 18 months, and life on the other side has solidified nicely for Mr. Shakes, now firmly ensconced in Alan Burns' San Francisco office, for now conveniently located near Shakes' kitchen. When not airborne, he's tending to a client list that now contains mainstream top 40s, soft ACs, Spanish-language stations, and the most outwardly visible signs of his success: modern adult outlets KZZO (the Zone) Sacramento, Calif.; KMXB (Mix 94.1) Las Vegas; and WMBX Richmond, Va.

Although modern adult is still making up its own rules, Shakes believes he enjoys an advantage in this fledgling format by applying lessons learned from his rhythm-crossover days. "We realize how important it is to be on the street, reacting to our listeners," he says. Another advantage crossover PDs had was understanding a market's unique personality. "They didn't get crazy from peer pressure when they saw a record on some chart that they weren't playing," he says. "Many mainstream top 40 PDs haven't had that type of experience, and, along with today's modern adult programmers, are now learning a whole new set of skills." Shakes then wonders aloud if it's just a coincidence that the PDs of successful modern adult outlets KMXB (Mike Marino) and KZZO (Carmy Ferreri) both cut their teeth in rhythmic radio.

Part of Shakes' role as a teacher/coach is showing PDs how to read those signals in their own markets. "Many stations make the mistake of chasing a demo instead of a target listener," he says. The longstanding radio joke that "25-54 isn't a demo, it's a family reunion" is now "becoming less and

less funny, because nobody seems to get it," he says. "The more narrow you define your target, the more passion you can evoke for your product." Targeting, say, "a 29-year-old female from the suburbs . . . actually makes your job as a programmer very easy. Every decision about music and promotions is then filtered through that screener. You should have a finite idea of who you want to turn on to your station, and that must be communicated to not only the airstaff but the entire chain of command."

Shakes also encourages clients to steer all aspects of their presentation, including copy, toward a benefit, rather than a feature, point of view. Example of a feature: You're giving away tickets to see "Men In Black." Benefit: "You'll be among the first 100 people in this city to see 'Men In Black.'" "Often when something is stated as a feature, it just lays there unless you can sell it as a benefit," says Shakes, who feeds all liners and promos through his "bullshit detector." "After reading it, I ask the question, 'What's in it for me?' If the copy answers that question, you've just written a benefit-oriented liner."

It seems like for the past decade or so, everyone we know can quote marketing and warfare principles from Trout and Ries. Shakes now quotes freely from a new book he's been touting called "The 500 Year Delta," by Jim Taylor and Watts Wacker. "As it relates to our business, it says that consumers rule the roost, not the producer," he says. The book goes on to suggest that in the new, post-consolidation economic climate, two clearly defined types of workers will emerge—owners and temps. "There are two courses of action you can take: freak out, stick your head in the sand, and hope it goes away, or you can deal with it, end up thriving, and become happier than you've ever been in your career," Shakes says. For anyone experiencing nervousness and apprehension about this new world order, Shakes has a New Year's resolution for you to chant in your car: "I will take charge of myself." "I talk to owners and GMs every day who are actively looking for people with that very attitude," he says.

Sure, it seems like the job market is shrinking and consolidating right now, but many industry observers see an uptrend coming. "It's like what the computer industry went through," he says. "The first wave is the hardware phase, followed by the expansive software phase."

"Throughout history, each time a new form of entertainment came out, it affected the way people used the existing media. The advent of movies changed vaudeville, TV changed radio, and now so has the Internet, especially with the short-attention-span 12-34 demo, who now expect to be able to hit a button and receive instant gratification," he says.

Even within these new broadcasting conglomerates, Shakes observes a level playing field. "With all of the research and other tools available today, everybody knows where the hits are," he says. "The way to truly win today is by employing a unique, distinctive point of view. We're coming back to an era of programmers who have a vision, a flair. Just like a great chef who has a signature dish, the advantage will ultimately go to whichever of these new broadcast companies can best support these chefs."

KEVIN CARTER

# AIRPLAY Monitor GREATEST GAINERS

Broadcast Data Systems

## Strongest Increase In Airplay This Week

### MAINSTREAM ROCK

INCREASE  
IN PLAYS

<b>GREEN DAY • Hitchin' A Ride (REPRISE)</b>	<b>+303</b>
WAAF +23, WWDC +20, WXRA +19, WRIF +19, KILO +18, WYSP +15, KRXQ +15, KISS +15, WNOR +13, KUFO +12	
<b>AEROSMITH • Pink (COLUMBIA)</b>	<b>+264</b>
WVRK +23, KTUX +18, WAAF +18, WZAT +16, KISW +14, KTXQ +14, KEGL +14, WTAK +13, KILO +12, KLBj +12	
<b>TALK SHOW • Hello Hello (ATLANTIC)</b>	<b>+214</b>
WZAT +17, WZMT +15, KRAB +14, WZTA +12, KATT +12, WKLC +11, WARQ +10, KTYD +9, WXRA +9, WKQQ +9	
<b>EVERCLEAR • Everything To Everyone (CAPITOL)</b>	<b>+163</b>
KUFO +28, WXRA +20, KISS +18, WAAF +14, KTXQ +14, KAZR +11, WXTB +10, WWDC +10, KILO +7, KSJO +7	
<b>KENNY WAYNE SHEPHERD • Slow Ride (REVOLUTION)</b>	<b>+156</b>
KTUX +20, WDHA +15, WROQ +14, KTAL +13, WIXV +12, KISW +10, KILO +8, WKQQ +8, KCAL +7, KRZZ +6	
<b>DAYS OF THE NEW • Touch, Peel And Stand (OUTPOST/GEFFEN)</b>	<b>+151</b>
WKLQ +17, KOMP +12, KZRR +11, KBER +11, KISS +11, WXTB +10, WONE +9, WCCC +9, WVRK +8, WMMR +8	
<b>THE NIXONS • The Fall (MCA)</b>	<b>+126</b>
WXRA +17, KEGL +13, WZAT +12, KTUX +9, KZRR +9, WTUE +8, KRAD +7, WCCC +7, WTAK +6, WSTZ +5	
<b>SMASH MOUTH • Walkin' On The Sun (INTERSCOPE)</b>	<b>+126</b>
KRAB +22, WARQ +14, WTFX +12, KILO +11, WZAT +7, KEGL +7, WHJY +6, WBAB +6, WVRK +5, WJRR +5	
<b>CREED • My Own Prison (WIND-UP)</b>	<b>+89</b>
WVRK +13, WYSP +10, KAZR +10, KTUX +8, WCCC +7, WIYY +6, KUPD +6, WTAK +5, WZTA +5, WNOR +5	
<b>CHRIS DUARTE GROUP • Cleopatra (SILVERTONE)</b>	<b>+61</b>
KLPX +12, KBER +12, WPLR +10, KGGO +8, WCKW +7, WHJY +6, KTUX +4, WFBQ +3, WZZO +2, KNCN +2	

### MODERN ROCK

INCREASE  
IN PLAYS

<b>GREEN DAY • Hitchin' A Ride (REPRISE)</b>	<b>+871</b>
CIMX +35, KKDM +30, WBCN +27, KITS +24, KEGE +23, KOME +23, KMYZ +22, KXTE +21, KEDJ +21, KXRK +20	
<b>EVERCLEAR • Everything To Everyone (CAPITOL)</b>	<b>+537</b>
KLZR +40, CIMX +40, KITS +32, KNKX +25, WBZU +24, KEGE +22, KXRK +21, KOME +21, WBTZ +17, WBRU +17	
<b>CHUMBAWAMBA • Tubthumping (REPUBLIC/UNIVERSAL)</b>	<b>+336</b>
KITS +28, WHFS +24, KJEE +23, WBRU +22, KDGE +21, KOME +21, WLIR +19, WKQX +15, WPLY +14, KWOD +14	
<b>GOLDFINGER • This Lonely Place (MOJO/UNIVERSAL)</b>	<b>+260</b>
WRXR +28, CIMX +21, KTEG +20, WPLY +19, KLZR +18, KPNT +17, WQXA +17, WEND +16, WBTZ +15, KXRK +13	
<b>TALK SHOW • Hello Hello (ATLANTIC)</b>	<b>+190</b>
KJEE +15, KEDG +15, KFRR +13, KNKX +12, KKDM +12, WRZX +11, WCYY +11, WXDX +10, KTbz +10, KFTE +9	
<b>THE SUNDAYS • Summertime (DGC/GEFFEN)</b>	<b>+166</b>
KNDD +17, KWOD +16, WBCN +14, WRXQ +12, WXEG +11, KFTE +10, WNVE +10, KXPK +10, WKQX +10, KCHZ +9	
<b>OASIS • Don't Go Away (EPIC)</b>	<b>+133</b>
KEGE +15, WEQX +14, KKDM +13, KTbz +12, KITS +12, KKND +9, KOME +8, KENZ +7, KCXX +7, WPLT +7	
<b>FOO FIGHTERS • Everlong (ROSWELL/CAPITOL)</b>	<b>+132</b>
WXZZ +19, KCXX +13, KTEG +13, WBZU +12, WXDX +12, KTbz +10, KCCX +10, KNKX +9, KPOI +9, WQXA +9	
<b>DANCE HALL CRASHERS • Lost Again (510/MCA)</b>	<b>+118</b>
WBZU +19, KITS +17, KROX +10, WPBZ +10, KJEE +9, XHRM +9, KCXX +7, WAQZ +7, KGDE +6, KEDJ +6	
<b>FIONA APPLE • Criminal (CLEAN SLATE/WORK)</b>	<b>+109</b>
WNVE +23, KEGE +19, WBRU +14, KCHZ +13, WXDX +12, KTOZ +12, KJEE +10, KXPK +10, WGRD +8, KENZ +7	

# VIDEO PLAYLISTS

## MOST PLAYED ROCK TRACKS

# 1

MUSIC FIRST

	TW	LW
1 Third Eye Blind, Semi-Charmed Life	27	13
2 Jewel, Foolish Games	24	14
3 Dave Matthews Band, Crash Into Me	21	13
4 Sarah McLachlan, Building A Mystery	21	8
5 OMC, How Bizarre	18	12
6 The Wallflowers, The Difference	18	5
7 Sister Hazel, All For You	15	5
8 Shawn Colvin, Sunny Came Home	13	16
9 Fiona Apple, Criminal	10	5
10 Sheryl Crow, Everyday Is A Winding Road	10	2
11 Jon Bon Jovi, Janie, Don't Take Your Love To Town	10	5
12 Fleetwood Mac, Silver Springs	9	4
13 Matchbox 20, Push	9	4
14 Meredith Brooks, Bitch	9	8
15 No Doubt, Don't Speak	8	1
16 Paula Cole, I Don't Want To Wait	8	4
17 John Cougar, Jack & Diane	7	7
18 The Verve Pipe, The Freshmen	7	11
19 Duncan Sheik, She Runs Away	7	4
20 The Wallflowers, One Headlight	7	11
21 The Cardigans, Lovefool	7	1
22 Savage Garden, I Want You	7	3
23 Meredith Brooks, I Need	7	0
24 Texas, Say What You Want	7	3
25 A-Ha, Take On Me	7	6
26 Paul McCartney & Michael Jackson, Say Say Say	7	12
27 Duncan Sheik, Barely Breathing	7	4
28 Pat Benatar, Love Is A Battlefield	7	8
29 Cyndi Lauper, Girls Just Want To Have Fun	6	6
30 J. Geils Band, Centerfold	6	10
1 Matchbox 20, Push	40	36
2 Sublime, Wrong Way	38	37
3 Sugar Ray, Fly	38	35
4 Fiona Apple, Criminal	29	25
5 Live, Turn My Head	24	20
6 Smash Mouth, Walkin' On The Sun	24	15
7 Jewel, Foolish Games	22	18
8 Sarah McLachlan, Building A Mystery	21	21
9 Forest For The Trees, Dream	18	9
10 Foo Fighters, Everlong	16	15
11 The Verve Pipe, Villains	15	11
12 The Dandy Warhols, Not If You Were The Last Junkie On Earth	14	10
12 Reel Big Fish, Sell Out	13	11
14 Tool, Aenema	13	13
15 The Mighty Mighty Bosstones, The Rascal King	13	14
16 Fleetwood Mac, Silver Springs	12	14
17 Sneaker Pimps, 6 Underground	12	12
18 Oasis, D' You Know What I Mean?	12	18
19 Beck, Jack-Ass	11	10
20 OMC, How Bizarre	9	11
21 Sister Hazel, All For You	8	8
22 Lauren Christy, Breed	8	7
23 Talk Show, Hello Hello	8	1
24 The Offspring, The Meaning Of Life	7	1
25 Jimmie's Chicken Shack, High	7	6
26 Filter And The Crystal Method, (Can't You) Trip Like I Do	7	8
27 Jamiroquai, Alright	6	5
28 Our Lady Peace, Superman's Dead	5	5
29 U2, Last Night On Earth	5	3
30 Jon Bon Jovi, Janie, Don't Take Your Love To Town	5	0
31 Bush, Machinehead	5	2
32 No Doubt, Spiderwebs	4	2
33 Third Eye Blind, Semi-Charmed Life	4	3
34 No Doubt, Just A Girl	3	1
35 The Smashing Pumpkins, Tonight, Tonight	3	1
36 The Smashing Pumpkins, 1979	3	2
37 Squirrel Nut Zippers, Put A Lid On It	3	4
38 Sublime, What I Got	3	1
39 The Mighty Mighty Bosstones, The Impression That I Got	3	2
40 Jamiroquai, Virtual Insanity	3	2

### TRIPLE-A

INCREASE  
IN PLAYS

<b>ROLLING STONES • Anybody Seen My Baby (VIRGIN)</b>	<b>+71</b>
WMAX +50, KKZN +11, KXPT +8, WXRC +2	
<b>JARS OF CLAY • Crazy Times (ESSENTIAL/SILVERTONE)</b>	<b>+48</b>
WXLE +15, WTTS +13, WDOD +10, KTCZ +5, WXRv +4, WBOS +3, WMAX +2, WJbX +1, KMTT +1, KFOG +1	
<b>SUGAR RAY • Fly (LAVA/ATLANTIC)</b>	<b>+37</b>
WVRV +25, WXRv +5, WJbX +4, KMTT +3, WTTS +2, KKZN +1, WHPT +1, KGSR +1, WXRT +1	
<b>PATTY LARKIN • The Book I'm Not Reading (HIGH STREET/WINDHAM HILL)</b>	<b>+27</b>
WNCS +10, WXRv +10, WRLT +5, KINK +1, WMAX +1	
<b>FIONA APPLE • Criminal (CLEAN SLATE/WORK)</b>	<b>+26</b>
WKOC +10, WBOS +10, KMTT +7, WHPT +6, WJbX +3, WVRV +3, KGSR +2, WMAX +1, CIDR +1, WXRv +1	
<b>BEHAN JOHNSON • World Keeps Spinning (RCA)</b>	<b>+26</b>
WVRV +20, WXLE +3, WJbX +2, WBOS +2	
<b>SHAWN COLVIN • You And The Mona Lisa (COLUMBIA)</b>	<b>+25</b>
KBCO +11, CIDR +7, KMTT +3, KGSR +2, KINK +1, WNCS +1, WXRT +1	
<b>THIRD EYE BLIND • Semi-Charmed Life (ELEKTRA/EEG)</b>	<b>+25</b>
KMBY +12, WHPT +7, WBOS +5, WTTS +4, WXLE +3, CIDR +2, KBCO +2, KXPT +1, WKOC +1, WVRV +1	
<b>BLUES TRAVELER • Most Precarious (A&amp;M)</b>	<b>+24</b>
WKOC +11, KGSR +9, WDOD +5, WXRC +4, WXRT +3, WMAX +2, WRLT +2, WTTS +2, KTCZ +2, KPIG +1	
<b>TOAD THE WET SPROCKET • Whatever I Fear (COLUMBIA)</b>	<b>+23</b>
WJbX +9, WBOS +9, CIDR +5, WXRT +5, WDOD +4, WMAX +4, WXRC +2, KMBY +1, WRLT +1, WXRv +1	

# THIRD EYE BLIND

## "GRADUATE"

The new single from their self-titled debut album and the follow-up to the multiformat #1 smash "SEMI-CHARMED LIFE."

### NOW ON TOUR



ROCK:  
POWER CUTS 53 - 48  
R&R ACTIVE 42\* - 36\*  
SOUNDCAN OVER 28,000 UNITS

NEW ADDS		SPINNING AT:			
AT ROCK:					
KBPI	WHEB	KBPI	20x	KUFO	11x
KATT	KITI	KILO	17x	WARQ	17x
KTUX	KQDS	WWDC	18x	WKLQ	23x
KBAT	WIQB	WXRA	17x	KRAD	13x
			39x	KRZR	11x

ALTERNATIVE:  
MODERN ROCK MONITOR 19  
SPINNING AT:  
KROQ 22x  
WHFS 23x  
Q101 21x  
WBCN 18x  
KOME 20x  
KDGE 25x  
KEGE 33x  
KPNT 24x  
KWOD 17x  
KNDD 16x  
WAQZ 20x  
KEDJ 38x

POWER PLAYLISTS

For Week Ending August 31, 1997



Playlists supplied by Broadcast Data Systems... Station names shown each week...



KLOS Los Angeles PD: John Duncan MD: Rita Wilde. Top 30 playlist including Matchbox 20, Push and Faith No More.

WYSP Philadelphia PD: Tim Sabeau APD/MD: Neal Mirsky. Top 30 playlist including Collective Soul, Listen and Megadeth.

WRCX Chicago SM: Dave Richards APD/MD: Jo Robinson. Top 30 playlist including Faith No More, Last Cup Of Sorrow and Days Of The New.

WMMR Philadelphia PD: Joe Bonadonna MD: Ken Zepeto. Top 30 playlist including Dave Matthews Band, Tripping Billies and Collective Soul.

KQRS Minneapolis PD: Dave Hamilton APD/MD: Reed Endersbe. Top 30 playlist including Blues Traveler, Most Precarious and Sister Hazel.

WWDC Washington, DC VP Prog.: Dave Brown MD: Buddy Rizer. Top 30 playlist including Matchbox 20, Push and Foo Fighters.

WRIF Detroit PD: Doug Podell APD: Dave Wellington. Top 30 playlist including Megadeth, Trust and Tool.

WFBQ Indianapolis OM: Marty Bender MD: Ace Cosby. Top 30 playlist including Aerosmith, Pink and Baronesak Ladies.

WAAF Boston PD: Dave Douglas MD: John Osterlind. Top 30 playlist including Our Lady Peace, Superman's Dead and Filter.

KEGL Dallas MD: Cindy Scull. Top 30 playlist including Piston, Grey Flap and Our Lady Peace.

WKLS Atlanta PD: Pat Ervin MD: Beth Kepple. Top 30 playlist including The Offspring, Gone Away and Jimmy Fallon.

KTXQ Dallas OM: Andy Lockridge MD: Redbeard. Top 30 playlist including Live, Turn My Head and Oasis.

WMMS Cleveland PD: Bob Neumann APD: "Spaceman" Scott Hughes. Top 30 playlist including Tonic, If You Could Only See and Sammy Hagar.

WRQC Minneapolis OM: Andy Bloom PD: Lauren MacLearsh. Top 30 playlist including Faith No More, Last Cup Of Sorrow and Tonic.

KSHE St. Louis PD: Rick Balis MD: Al Hofer. Top 30 playlist including Sammy Hagar, Marching To Mars and Genesis.

WZTA Miami VP Prog.: Gregg Steele PD: Duane Doherty. Top 30 playlist including The Wallflowers, The Difference and Tonic.

KSJO San Jose PD: Dana Jang MD: Laurie Free. Top 30 playlist including Queensryche, You and Faith No More.

WIYY Baltimore PD: Rick Strauss APD/MD: Rob Heckman. Top 30 playlist including Tonic, If You Could Only See and Go Go Dolls.

WEBN Cincinnati OM: Jim Richards MD: Rick Jamie. Top 30 playlist including Veruca Salt, Volcano Girls and Alice In Chains.

KISW Seattle SM/MD: Clark Ryan MD: Cathy Faulkner. Top 30 playlist including The Nizans, Baton Rouge and Megadeth.

WHJY Providence PD: Bill Weston MD: Sharon Schifino. Top 30 playlist including Mighty Mighty Bosstones, The Impression and The Wallflowers.

WXTB Tampa OM: Brad Hardin MD: Brian Medlin. Top 30 playlist including Creed, My Own Prison and Alice In Chains.

WONE Akron PD: J.D. APD: Tim Daugherty. Top 30 playlist including Matchbox 20, Push and The Wallflowers.

KBPI Denver PD: Bob Richards MD: Willie B. Top 30 playlist including Jimmie's Chicken Shack, High and Sublime.

POWER PLAYLISTS

For Week Ending August 31, 1997



Playlists supplied by Broadcast Data Systems' Radio Track service. Songs ranked by number of plays in monitored week. Playlists are listed in order of TSA weekly cumes, beginning with the highest-cuming station. Cumes are updated twice yearly following the release of the Spring and Fall Arbitron surveys. The number of stations shown each week varies depending upon space.

Grid of 48 radio station playlists (e.g., WLZR, WBZX, WJRR, WRDU, KQRC, WBAB, KISS, KUPD, WIMZ, WPYX, KIOZ, WCCC, KUFO, WDHA, KRXQ, WROQ, KATT, KXXP, KDKB, WLVQ, WNOR, WCKW, WTFX, WTUE) with columns for station name, PD, and song/album/artist with a TW/LW column.



**Seriously funny. Enormously huge.**

**"The Lonesome Kicker" Video**

**ON TOUR  
SOON!**



**STRESS**

**2.5 million albums. Here's the new one.**

**ADAM SANDLER**

**WHAT'S YOUR NAME?**

**SEPTEMBER 16**

Featuring the first single

**"THE LONESOME KICKER"**



POWER PLAYLISTS

For Week Ending August 31, 1997



Playlists supplied by Broadcast Data Systems. Radio Track service. Songs ranked by number of plays in monitored week. Playlists are listed in order of TSA weekly curve, beginning with the highest-ranking station. Curves are updated twice yearly following the release of the Spring and Fall Arbitron surveys. The number of stations shown each week varies depending upon space.

Grid of 48 radio station playlists (e.g., KYYS, WEGR, WCMF, WIOT, WFYV, KLAQ, WKLQ, WPLR, WXRA, WBLM, KMJX, KEZO, WZZO, WAPL, KCAL, WROV, KMOD, KLBJ, WKQQ, KBER, WTPA, WAQX, KLPX, WZMT) with columns for station name, PD, MD, and song/album/track number.

AIRPLAY  
**Monitor**

**BDS IMPACT**

DETECTIONS



★ ★ ★ **AIRPOWER** ★ ★ ★  
(Minimum 800 detections for the first time)

NO RECORDS QUALIFIED FOR AIRPLAY THIS WEEK

**AIRPOWER BOUND**

Total Plays/Gain

**TALK SHOW** 766/214  
*Hello Hello (Atlantic)*

Total Stations: 63/Chart Move: 27-19  
Heavy (21+ plays): 8 KAZR, KRAB, KUFO, WAAF, WXRA, WZAT, WZMT, WZTA  
Medium (14-20): 20 KATT, KBER, KEGL, KIOZ, KOMP, KQRC, KRXQ, KRZR, KTUX, WARQ, WAVF, WCCC, WIYY, WLZR, WMFS, WNOR, WRIF, WTFX, WWDC, WYSP  
Light (Under 14): 35  
New Airplay This Week: 16 KATT, KEZO, KRAD, KSJO, KTXQ, KTYD, KYYS, WARQ, WBAB, WBZX, WCKW, WKLC, WKQQ, WNCD, WSTZ, WTKA

**FOO FIGHTERS** 761/17  
*Everlong (Roswell/Capitol)*

Total Stations: 58/Chart Move: 21-20  
Heavy (21+): 13 KATT, KILO, KIOZ, KISW, KLBJ, KTUX, KUFO, KUPD, WKLC, WMFS, WWDC, WXRA, WZAT  
Medium (14-20): 15 KAZR, KEGL, KISS, KQRC, KRAD, KRZR, KTXQ, WARQ, WAVF, WBZX, WCCC, WIYY, WJRR, WZMT, WZTA  
Light (Under 14): 30  
New Airplay This Week: 3 KZRR, WIOT, WTKA

**CRY OF LOVE** 654/-17  
*Sugarcane (Columbia)*

Total Stations: 63/Chart Move: 22-22  
Heavy (21+): 4 KNCN, KTUX, WRDU, WZAT  
Medium (14-20): 13 KEGL, KILO, KLPX, KOMP, KRZR, WDHA, WIOT, WIXV, WKLC, WMMS, WRXL, WVRK, WZZR  
Light (Under 14): 46  
New Airplay This Week: 5 KZRR, WEBN, WFBQ, WMMR, WSTZ

**CREED** 586/89  
*My Own Prison (Wind-Up)*

Total Stations: 45/Chart Move: 28-23  
Heavy (21+): 9 KAZR, KILO, KTUX, WJRR, WLZR, WNOR, WXTB, WZAT, WZTA  
Medium (14-20): 11 KEGL, KIOZ, KLBJ, KQRC, KRXQ, WAAF, WCCC, WMFS, WTFX, WVRK, WYSP  
Light (Under 14): 25  
New Airplay This Week: 3 KUPD, WIOT, WTKA

**JONNY LANG** 513/36  
*Hit The Ground Running (A&M)*

Total Stations: 49/Chart Move: 31-28  
Heavy (21+): 2 KRZZ, WDHA  
Medium (14-20): 12 KLPX, KMOD, KOMP, KQRS, KTUX, WAPL, WIXV, WKLC, WPLR, WROV, WRXL, WZZR  
Light (Under 14): 35  
New Airplay This Week: 3 KEZO, WONE, WVRK

**SUGAR RAY** 512/32  
*Fly (Lava/Atlantic)*

Total Stations: 32/Chart Move: 30-29  
Heavy (21+): 10 KEGL, KILO, KRAB, KRAD, KTUX, KTXQ, WARQ, WKLO, WXRA, WZTA  
Medium (14-20): 9 KBER, KBPI, KLAQ, KRXQ, WAVF, WHJY, WJRR, WWDC, WXTB  
Light (Under 14): 13  
New Airplay This Week: 1 WZAT

**JIMMIE'S CHICKEN SHACK** 498/52  
*High (Rocket/A&M)*

Total Stations: 50/Chart Move: 32-30  
Heavy (21+): 3 KBPI, WWDC, WXRA  
Medium (14-20): 12 KAZR, KBER, KEGL, KILO, KTUX, KUPD, KZRR, WAAF, WMFS, WNOR, WRXL, WZAT  
Light (Under 14): 35  
New Airplay This Week: 2 KLBJ, WRXL

**STIR** 495/0  
*One Angel (Aware/Capitol)*

Total Stations: 49/Chart Move: 29-31  
Heavy (21+): 5 KTUX, KYYS, WAPL, WXRA, WZAT  
Medium (14-20): 3 KEZO, KQRC, KRZR  
Light (Under 14): 41  
New Airplay This Week: 5 KEGL, KISS, KLOS, WKLC, WMMR

**SMASH MOUTH** 409/126  
*Walkin' On The Sun (Interscope)*

Total Stations: 34/Chart Move: Debut 33  
Heavy (21+): 9 KILO, KRAB, KRAD, KTUX, WARQ, WAVF, WKLO, WWDC, WXRA  
Medium (14-20): 4 KEGL, KRXQ, WTFX, WZTA  
Light (Under 14): 21  
New Airplay This Week: 7 KRAB, KYYS, WBAB, WHJY, WNCD, WTFX, WZAT

**COUNTING CROWS** 404/9  
*Have You Seen Me Lately? (DGC/Geffen)*

Total Stations: 39/Chart Move: 38-34  
Heavy (21+): 3 WMMR, WONE, WXRA  
Medium (14-20): 8 KEZO, KTUX, WARQ, WBAB, WCCC, WMMS, WYSP, WZZR  
Light (Under 14): 28  
New Airplay This Week: 3 KCAL, WAPL, WONE

**VERUCA SALT** 347/-13  
*Shutterbug (Minty Fresh/Outpost/Geffen)*

Total Stations: 31/Chart Move: 40-39  
Heavy (21+): 4 KTUX, WAAF, WARQ, WXRA  
Medium (14-20): 6 KATT, KISS, KRXQ, KRZR, WKLO, WZAT  
Light (Under 14): 21  
New Airplay This Week: 1 WKLO

**MOTLEY CRUE** 326/11  
*Beauty (Elektra/EEG)*

Total Stations: 39  
Heavy (21+): 1 KUPD  
Medium (14-20): 5 KOMP, KQRC, KRZR, KTUX, WZAT  
Light (Under 14): 33  
New Airplay This Week: 6 KZRR, WLVO, WRCX, WTKA, WYSP, WZZO

**THE MIGHTY MIGHTY BOSSTONES** 312/16  
*The Impression That I Get (Big Rig/Mercury)*

Total Stations: 27  
Heavy (21+): 3 KILO, KRAB, WHJY  
Medium (14-20): 6 KTUX, WAAF, WBAB, WWDC, WXRA, WZTA  
Light (Under 14): 18  
New Airplay This Week: 3 WAPL, WKLS, WVRK

★ **GREEN DAY** 303/303  
*Hitchin' A Ride (Reprise)*

Total Stations: 41  
Heavy (21+): 1 WAAF  
Medium (14-20): 7 KILO, KISS, KRXQ, WRIF, WWDC, WXRA, WYSP  
Light (Under 14): 33  
New Airplay This Week: 22 KAZR, KBER, KILO, KISS, KNCN, KQRC, KRXQ, KSJO, KTXQ, KUFO, WAAF, WBZX, WCCC, WIYY, WNOR, WRCX, WRIF, WTFX, WWDC, WXRA, WYSP, WZTA

**FILTER AND THE CRYSTAL METHOD** 286/17  
*(Can't You) Trip Like I Do (Immortal/Epic)*

Total Stations: 33  
Heavy (21+): 4 KRAD, WAAF, WMFS, WXRA  
Medium (14-20): 1 WKLO  
Light (Under 14): 28  
New Airplay This Week: 2 KATT, KSJO

**COOL FOR AUGUST** 276/35  
*Trials (Warner Bros.)*

Total Stations: 34  
Heavy (21+): 2 KTUX, WAAF  
Medium (14-20): 3 KLBJ, KUPD, WZTA  
Light (Under 14): 29  
New Airplay This Week: 4 KMOD, WVRK, WFX, WZAT

**BLUES TRAVELER** 247/40  
*Most Precarious (A&M)*

Total Stations: 22  
Heavy (21+): 1 KTYD  
Medium (14-20): 6 KDKB, KQRS, KZRR, WARQ, WCCC, WDHA  
Light (Under 14): 15  
New Airplay This Week: 6 KLBJ, KLOS, KYYS, WKLO, WKQQ, WPYX

**CHRIS DUARTE GROUP** 246/61  
*Cleopatra (Silvertone)*

Total Stations: 25  
Heavy (21+): 1 WIXV  
Medium (14-20): 4 KEZO, KLBJ, KMOD, KTUX  
Light (Under 14): 20  
New Airplay This Week: 8 KBER, KGGG, KLPX, KQRS, WCKW, WHJY, WKLS, WPLR

**SEVEN MARY THREE** 242/54  
*Lucky (Mammoth/Atlantic)*

Total Stations: 31  
Heavy (21+): 1 WZAT  
Medium (14-20): 4 KRAD, KTUX, KTYD, WNOR  
Light (Under 14): 26  
New Airplay This Week: 7 WAAF, WARQ, WAVF, WJRR, WKQQ, WROQ, WZTA

**COREY STEVENS** 240/35  
*My Neighborhood (Eureka/Discovery)*

Total Stations: 24  
Heavy (21+): 2 KYYS, WIOT  
Medium (14-20): 4 KLPX, KQRS, WROQ, WRXK  
Light (Under 14): 18  
New Airplay This Week: 2 WROV, WZZR

**CELLOPHANE** 235/38  
*Down (Virgin)*

Total Stations: 36  
Heavy (21+): 0  
Medium (14-20): 1 WAAF  
Light (Under 14): 35  
New Airplay This Week: 5 KQRC, WNOR, WRIF, WZMT, WZTA

**THIRD EYE BLIND** 210/13  
*Graduate (Elektra/EEG)*

Total Stations: 20  
Heavy (21+): 3 WKLO, WXRA  
Medium (14-20): 5 KBPI, KILO, KRXQ, WARQ, WWDC  
Light (Under 14): 13  
New Airplay This Week: 1 WLZR

★ **THE NIXONS** 189/126  
*The Fall (MCA)*

Total Stations: 25  
Heavy (21+): 0  
Medium (14-20): 2 WJRR, WXRA  
Light (Under 14): 23  
New Airplay This Week: 12 KAZR, KEGL, KILO, KRAD, KTUX, KZRR, WCCC, WLZR, WTKA, WTUE, WXRA, WZAT

**HOARSE** 187/-13  
*Diamond (RCA)*

Total Stations: 25  
Heavy (21+): 0  
Medium (14-20): 2 WCCC, WZAT  
Light (Under 14): 23  
New Airplay This Week: 1 KLBJ

**MOST NEW STATIONS**

No. Of Stations

<b>GREEN DAY</b> <i>Hitchin' A Ride (Reprise)</i>	22
<b>TALK SHOW</b> <i>Hello Hello (Atlantic)</i>	16
<b>THE NIXONS</b> <i>The Fall (MCA)</i>	12
<b>KENNY WAYNE SHEPHERD</b> <i>Slow Ride (Revolution)</i>	11
<b>EVERCLEAR</b> <i>Everything To Everyone (Capitol)</i>	10

★ **EVERCLEAR** 186/163  
*Everything To Everyone (Capitol)*

Total Stations: 24  
Heavy (21+): 3 KISS, KUFO, WAAF  
Medium (14-20): 2 KTXQ, WXRA  
Light (Under 14): 19  
New Airplay This Week: 10 KAZR, KILO, KSJO, KTXQ, KUFO, WBZX, WWDC, WXRA, WXTB, WZTA

**MEGADETH** 183/9  
*Almost Honest (Capitol)*

Total Stations: 19  
Heavy (21+): 2 KUPD, WNOR  
Medium (14-20): 3 KRXQ, KXXP, WMFS  
Light (Under 14): 14  
New Airplay This Week: 2 KRXQ, WTUE

**SUBLIME** 161/7  
*Wrong Way (Gasoline Alley/MCA)*

Total Stations: 17  
Heavy (21+): 3 KBPI, KRAD, WARQ  
Medium (14-20): 2 KRXQ, WWDC  
Light (Under 14): 12

★ **KENNY WAYNE SHEPHERD** 156/156  
*Slow Ride (Revolution)*

Total Stations: 31  
Heavy (21+): 0  
Medium (14-20): 3 KTUX, WDHA, WROQ  
Light (Under 14): 28  
New Airplay This Week: 11 KCAL, KILO, KISW, KRZZ, KTAL, KTUX, WDHA, WIXV, WKQQ, WROQ, WFX

**SARAH MCLACHLAN** 155/7  
*Building A Mystery (Nettwerk/Arista)*

Total Stations: 8  
Heavy (21+): 5 KTYD, WARQ, WAVF, WBAB, WXRA  
Medium (14-20): 0  
Light (Under 14): 3

**JOHN FOGERTY** 131/51  
*Blueboy (Warner Bros.)*

Total Stations: 20  
Heavy (21+): 1 KTAL  
Medium (14-20): 3 KQRS, WIZN, WPLR  
Light (Under 14): 16  
New Airplay This Week: 3 WBAB, WFBQ, WPLR

**PAUL MCCARTNEY** 115/26  
*Young Boy (MPL/Capitol)*

Total Stations: 14  
Heavy (21+): 1 WAPL  
Medium (14-20): 1 KMOD  
Light (Under 14): 12  
New Airplay This Week: 3 KTYD, WROQ, WSTZ

**THE TEA PARTY** 112/-2  
*Temptation (Atlantic)*

Total Stations: 16  
Heavy (21+): 0  
Medium (14-20): 1 KISS  
Light (Under 14): 15  
New Airplay This Week: 1 WNOR

**VALLEJO** 112/3  
*Shining Sun (I.M.I./TVT)*

Total Stations: 12  
Heavy (21+): 0

Medium (14-20): 3 KNCN, WKLO, WXRA  
Light (Under 14): 9  
New Airplay This Week: 1 WKLO

**RULE 62** 111/5  
*Drown (Maverick/Warner Bros.)*

Total Stations: 16  
Heavy (21+): 0  
Medium (14-20): 1 WKLO  
Light (Under 14): 15  
New Airplay This Week: 1 WLZR

**VIBROLUSH** 108/11  
*No Regrets (Iguana/Interscope)*

Total Stations: 15  
Heavy (21+): 1 WKLO  
Medium (14-20): 2 KQRC, WJRR  
Light (Under 14): 12  
New Airplay This Week: 1 WZMT

**THE HONEYRODS** 107/2  
*Love Bee (Capricorn/Mercury)*

Total Stations: 16  
Heavy (21+): 0  
Medium (14-20): 3 KBPI, WAVF, WJRR  
Light (Under 14): 13  
New Airplay This Week: 1 WAAF

**SOAK** 88/8  
*Shutter Gut (RainMaker/Interscope)*

Total Stations: 7  
Heavy (21+): 1 KRXQ  
Medium (14-20): 1 KEGL  
Light (Under 14): 5

**FREDDY JONES BAND** 88/6  
*Wonder (Capricorn/Mercury)*

Total Stations: 7  
Heavy (21+): 0  
Medium (14-20): 4 KLOS, KLPX, KQRS, KTYD  
Light (Under 14): 3

★ **DOG'S EYE VIEW** 81/11  
*Homecoming Parade (Columbia)*

Total Stations: 13  
Heavy (21+): 0  
Medium (14-20): 1 WEBN  
Light (Under 14): 12  
New Airplay This Week: 3 KTUX, WCCC, WLVO

**TENDERLOIN** 80/4  
*Pawnshop (Time Bomb)*

Total Stations: 13  
Heavy (21+): 0  
Medium (14-20): 2 KLBJ, KNCN  
Light (Under 14): 11

★ **HEADSWIM** 79/26  
*Hype (550 Music)*

Total Stations: 15  
Heavy (21+): 0  
Medium (14-20): 0  
Light (Under 14): 15  
New Airplay This Week: 2 KYYS, WSTZ

Airpower awarded to those records which attain 800 detections for the first time. New airplay lists those stations registering six or more detections per week on a record for the first time. ★ Initial impact: records appearing on this page for the first time.



SONG ACTIVITY REPORTS

For Week Ending August 31, 1997



Table with 4 columns: Artist, Title, Total Plays/Gain, and Chart Move. Rows include Aerosmith (Pink), Blues Traveler (Most Precarious), Chris Duarte Group (Cleopatra), Cool For August (Trials), and Counting Crows (Have You Seen Me Lately?).

Table with 4 columns: Artist, Title, Total Plays/Gain, and Chart Move. Rows include Creed (My Own Prison), Days of the New (Touch, Peel And Stand), Filter and The Crystal Method (Can't You Trip Like I Do), Foo Fighters (Everlong), and Green Day (Hitchin' A Ride).



SONG ACTIVITY REPORTS



For Week Ending August 31, 1997

Detailed song tracking information for the past 3 weeks for all songs showing increased play this week. Total plays and gain do not include video play. Markets listed in order of population.

Table with 12 columns: Artist, Song, Total Plays/Gain, and station codes (MTV, KLOS, WRXC, etc.) for artists like Sammy Hagar, Jimmie's Chicken Shack, Jonny Lang, Mighty Joe Plum, and The Mighty Mighty Bosstones.

Table with 12 columns: Artist, Song, Total Plays/Gain, and station codes (MTV, KLOS, WRXC, etc.) for artists like Motley Crue, The Offspring, Smash Mouth, Sugar Ray, and Talk Show.

# the verve

**BITTER**

# SWEET SYMPHONY



<http://www.virginrecords.com>  
AOL Keyword: Virgin Records

©1997 VC Records Ltd. (a Hit Recordings)  
issued under exclusive license in the United States  
to Virgin Records America, Inc.

# MONITOR ROCK PANELS

## MAINSTREAM ROCK (104)

Akron, Ohio Albany, N.Y. Albuquerque, N.M. Allentown, Pa. Atlanta Austin, Texas Bakersfield, Calif. Baltimore Boston Burlington, Vt. Charleston, S.C. Charleston, W.Va. Chicago Cincinnati Cleveland Colorado Springs, Colo. Columbia, S.C. Columbus, Ga. Columbus, Ohio	WONE WPYX KZRR WZZO WKLS KLBJ KRAB WIYY WAAF WIZN WAVF WKLC WRCX WEBN WMMS KILO WARQ WVRK WBZX WLVQ KNCN KRAD KEGL KTXQ WTUE KBPI KAZR KGGO WRIF KLAQ WRXK KRZR WKLQ WAPL WXRA WROQ WTPA WCCC WTAK WFBQ WSTZ WFYV KQRC KYYS WIMZ KOMP WKQQ KMJX WBAB KLOS WTFX KFRQ	Memphis  Miami Milwaukee Minneapolis  Montgomery, Ala. Morristown, N.J. New Bern, N.C. New Haven, Conn. New Orleans Norfolk, Va. Oklahoma City Omaha, Neb. Orlando, Fla. Philadelphia  Phoenix  Portland, Maine Portland, Ore. Providence, R.I. Raleigh, N.C. Richmond, Va. Roanoke, Va. Rochester, N.Y. Sacramento, Calif. St. Louis Salt Lake City San Antonio, Texas San Bernardino, Calif. San Diego San Jose, Calif. Santa Barbara, Calif. Savannah, Ga.  Seattle Shreveport, La.  Springfield, Mo. Syracuse, N.Y. Tampa, Fla. Toledo, Ohio Tucson, Ariz. Tulsa, Okla. Washington, D.C. West Palm Beach, Fla. Wichita, Kan. Wilkes-Barre, Pa.  Youngstown, Ohio	WEGR WMFS WZTA WLZR KQRS KXPP WRQC WXFX WDHA WSFL WPLR WCKW WNOR KATT KEZO WJRR WMMR WYSP KDKB KUPD WBLM KUFO WHJY WRDU WRXL WROV WCMF KRXQ KSHE KBER KISS KCAL KIOZ KSJO KTYD WIXY WZAT KISW KTAL KTUX KXUS WAQX WXTB WIOT KLPX KMOD WWDC WZZR KRZZ WEZX WZMT WNCD
--	--	--	--

## MODERN ROCK (81)

Albany, N.Y.  Albuquerque, N.M. Atlanta Augusta, Ga. Austin, Texas Boston Buffalo, N.Y. Burlington, Vt. Charlotte, N.C. Chicago Cincinnati Cleveland Columbus, Ohio Dallas Dayton, Ohio Denver  Des Moines, Iowa Detroit  Fresno, Calif. Grand Rapids, Mich. Harrisburg, Pa. Hartford, Conn. Honolulu Houston Indianapolis Jacksonville, Fla. Kansas City  Lafayette, La. Las Vegas  Lexington, Ky. Long Island, N.Y. Los Angeles  Memphis Milwaukee	WEQX WQBK KTEG WNNX WRXR KROX WBCN WEDG WBTZ WEND WKQX WAQZ WENZ WWCD KDGE WXEG KTCL KXPK KKDM CIMX WPLT KFRR WGRD WQXA WMRQ KPOI KTBZ WRZX WPLA KCHZ KCCX KLZR KFTE KEDG KXTE WXZZ WLIR KLYY KROQ WRXQ WLUM	Minneapolis Nashville  New Bern, N.C. New Orleans New York Norfolk, Va. Oklahoma City Omaha, Neb. Philadelphia Phoenix  Pittsburgh Portland, Maine Portland, Ore. Providence, R.I.  Richmond, Va. Riverside, Calif. Rochester, N.Y. Sacramento, Calif. St. Louis Salt Lake City  San Diego  San Francisco San Jose, Calif. Santa Barbara, Calif.  Seattle Spokane, Wash. Springfield, Mo. Syracuse, N.Y. Toronto Tucson, Ariz. Tulsa, Okla. Washington, D.C. West Palm Beach, Fla. Wichita, Kan.	KEGE WKDF WRLG WXNR KKND WXRK WROX KNRX KGDE WPLY KEDJ KZON WXDX WCYY KNRK WBRU WDGE WBZU KCXX WNVE KWOD KPNT KENZ KXRK XHRM XTRA KITS KOME KHXY KJEE KNDD KAEP KTOZ WKRL CFNY KFMA KMYZ WHFS WPBZ KICT
---	--	---	--

## TRIPLE-A (25)

Albany, N.Y. Austin, Texas Boston  Burlington, Vt. Charlotte, N.C. Chattanooga, Tenn. Chicago Dallas Denver Detroit Ft. Myers, Fla. Indianapolis	WXLE KGSR WBOS WXRV WNCS WXRK WDOD WXRT KKZN KBCO CIDR WJBX WTTS	Las Vegas Minneapolis Monterey, Calif.  Nashville Norfolk, Va. Portland, Ore. Rochester, N.Y. St. Louis San Francisco Seattle Tampa, Fla.	KXPT KTCZ KMBO KPIG WRLT WKOC KINK WMAX WVRV KFOG KMAT WHPT
--	--	--	--

# ACTIVE ROCK AIRPLAY

Monitor®

For Week Ending  
August 31, 1997



Compiled from a national sample of airplay supplied by Broadcast Data Systems' Radio Track service to Rock Airplay Monitor. 47 active rock stations are electronically monitored 24 hours a day, 7 days a week. Songs are ranked by number of detections. © 1997, Billboard/BPI Communications.

THIS WEEK	LAST WEEK	WKS. ON CHART	TITLE/LABEL/PROMOTION LABEL	ARTIST	DETECTIONS	
					TW	LW
			<b>★ ★ ★ No. 1 ★ ★ ★</b>			
1	1	9	<b>TOUCH, PEEL AND STAND</b> OUTPOST/GEFFEN 2 weeks at No. 1	<b>DAYS OF THE NEW</b>	1013	933
2	2	16	<b>TRUST</b> CAPITOL	MEGADETH	879	913
3	4	10	<b>TURN MY HEAD</b> RADIOACTIVE/MCA	LIVE	793	787
4	14	9	<b>PINK</b> COLUMBIA	AEROSMITH	754	600
5	8	8	<b>I CHOOSE</b> COLUMBIA	THE OFFSPRING	732	736
6	9	8	<b>LAZY EYE</b> WARNER SUNSET/WARNER BROS.	GOO GOO DOLLS	703	719
7	3	15	<b>BLEEDING ME</b> ELEKTRA/EEG	METALLICA	702	815
8	5	16	<b>LAST CUP OF SORROW</b> SLASH/REPRISE	FAITH NO MORE	689	755
9	11	5	<b>EVERLONG</b> ROSWELL/CAPITOL	FOO FIGHTERS	660	657
10	7	23	<b>IF YOU COULD ONLY SEE</b> POLYDOR/A&M	TONIC	652	737
11	6	17	<b>LISTEN</b> ATLANTIC	COLLECTIVE SOUL	634	753
12	12	15	<b>SUPERMAN'S DEAD</b> COLUMBIA	OUR LADY PEACE	623	645
13	13	6	<b>MARCHING TO MARS</b> THE TRACK FACTORY/MCA	SAMMY HAGAR	618	617
14	19	2	<b>HELLO HELLO</b> ATLANTIC	TALK SHOW	589	436
15	16	9	<b>LIVE THROUGH THIS (FIFTEEN STORIES)</b> ATLANTIC	MIGHTY JOE PLUM	563	546
16	15	29	<b>GONE AWAY</b> COLUMBIA	THE OFFSPRING	531	591
17	10	15	<b>BATON ROUGE</b> MCA	THE NIXONS	484	673
18	20	4	<b>MY OWN PRISON</b> WIND-UP	CREED	483	426
19	17	11	<b>AENEMA</b> ZOO/VOLCANO	TOOL	473	508
20	18	27	<b>PUSH</b> LAVA/ATLANTIC	MATCHBOX 20	454	460
21	21	5	<b>FLY</b> LAVA/ATLANTIC	SUGAR RAY	436	418
			<b>★ ★ ★ AIRPOWER ★ ★ ★</b>			
22	25	7	<b>HIGH</b> ROCKET/A&M	<b>JIMMIE'S CHICKEN SHACK</b>	411	397
23	23	19	<b>MONKEY WRENCH</b> ROSWELL/CAPITOL	FOO FIGHTERS	365	405
24	24	10	<b>VILLAINS</b> RCA	THE VERVE PIPE	347	400
25	34	3	<b>WALKIN' ON THE SUN</b> INTERSCOPE	SMASH MOUTH	340	250
26	26	18	<b>THE DIFFERENCE</b> INTERSCOPE	THE WALLFLOWERS	338	379
27	22	8	<b>LOCKED &amp; LOADED</b> EPIC	JACKYL	325	417
28	27	6	<b>SHUTTERBUG</b> MINTY FRESH/OUTPOST/GEFFEN	VERUCA SALT	324	332
29	29	7	<b>D' YOU KNOW WHAT I MEAN?</b> EPIC	OASIS	285	324
30	<b>NEW▶</b>		<b>HITCHIN' A RIDE</b> REPRISE	GREEN DAY	275	0
31	35	4	<b>(CAN'T YOU) TRIP LIKE I DO</b> IMMORTAL/EPIC	FILTER AND THE CRYSTAL METHOD	260	246
32	33	3	<b>CEMETERY GATES</b> EASTWEST/EEG	PANTERA	235	255
33	36	2	<b>BEAUTY</b> ELEKTRA/EEG	MOTLEY CRUE	230	232
34	30	8	<b>PLACE YOUR HANDS</b> EPIC	REEF	224	289
35	37	5	<b>THE IMPRESSION THAT I GET</b> BIG RIG/MERCURY	THE MIGHTY MIGHTY BOSSTONES	215	230
36	39	3	<b>SUGARCANE</b> COLUMBIA	CRY OF LOVE	210	212
37	40	2	<b>TRIALS</b> WARNER BROS.	COOL FOR AUGUST	209	198
38	<b>NEW▶</b>		<b>GRADUATE</b> ELEKTRA/EEG	THIRD EYE BLIND	204	184
39	31	13	<b>CAROLINA BLUES</b> A&M	BLUES TRAVELER	202	284
40	38	4	<b>ONE ANGEL</b> AWARE/CAPITOL	STIR	201	218

Records showing an increase in detections over the previous week, regardless of chart movement. A record which has been on the chart for more than 20 weeks will not receive a bullet, even if it registers an increase in detections. Airpower awarded to those records which attain 400 detections for the first time. If two records are tied in number of plays, the record being played on more stations is placed first. Records below the top 20 are removed from the chart after 26 weeks.

## GREATEST GAINERS

INCREASE  
IN PLAYS

<b>GREEN DAY • Hitchin' A Ride (REPRISE)</b>	<b>+275</b>
WAAF +23, WWDC +20, WXRA +19, WRIF +19, KILO +18, WYSP +15, KRXX +15, KISS +15, WNOR +13, KUFO +12	
<b>EVERCLEAR • Everything To Everyone (CAPITOL)</b>	<b>+161</b>
KUFO +28, WXRA +20, KISS +18, WAAF +14, KTXQ +14, KAZR +11, WXTB +10, WWDC +10, KILO +7, KSJO +7	
<b>AEROSMITH • Pink (COLUMBIA)</b>	<b>+154</b>
KTUX +18, WAAF +18, WZAT +16, KISW +14, KTXQ +14, KEGL +14, KILO +12, KLBK +12, WIYY +10, KBER +9	
<b>TALK SHOW • Hello Hello (ATLANTIC)</b>	<b>+153</b>
WZAT +17, WZMT +15, KRAB +14, WZTA +12, KATT +12, WARQ +10, KTYD +9, WXRA +9, WMFS +8, KRAD +8	
<b>THE NIXONS • The Fall (MCA)</b>	<b>+101</b>
WXRA +17, KEGL +13, WZAT +12, KTUX +9, WTUE +8, KRAD +7, WJRR +5, WTPA +5, KAZR +5, WRCX +4	



# HERITAGE ROCK AIRPLAY

## Monitor

For Week Ending  
August 31, 1997



Compiled from a national sample of airplay supplied by Broadcast Data Systems' Radio Track service to Rock Airplay Monitor. 57 heritage rock stations are electronically monitored 24 hours a day, 7 days a week. Songs are ranked by number of detections. © 1997, Billboard/BPI Communications.

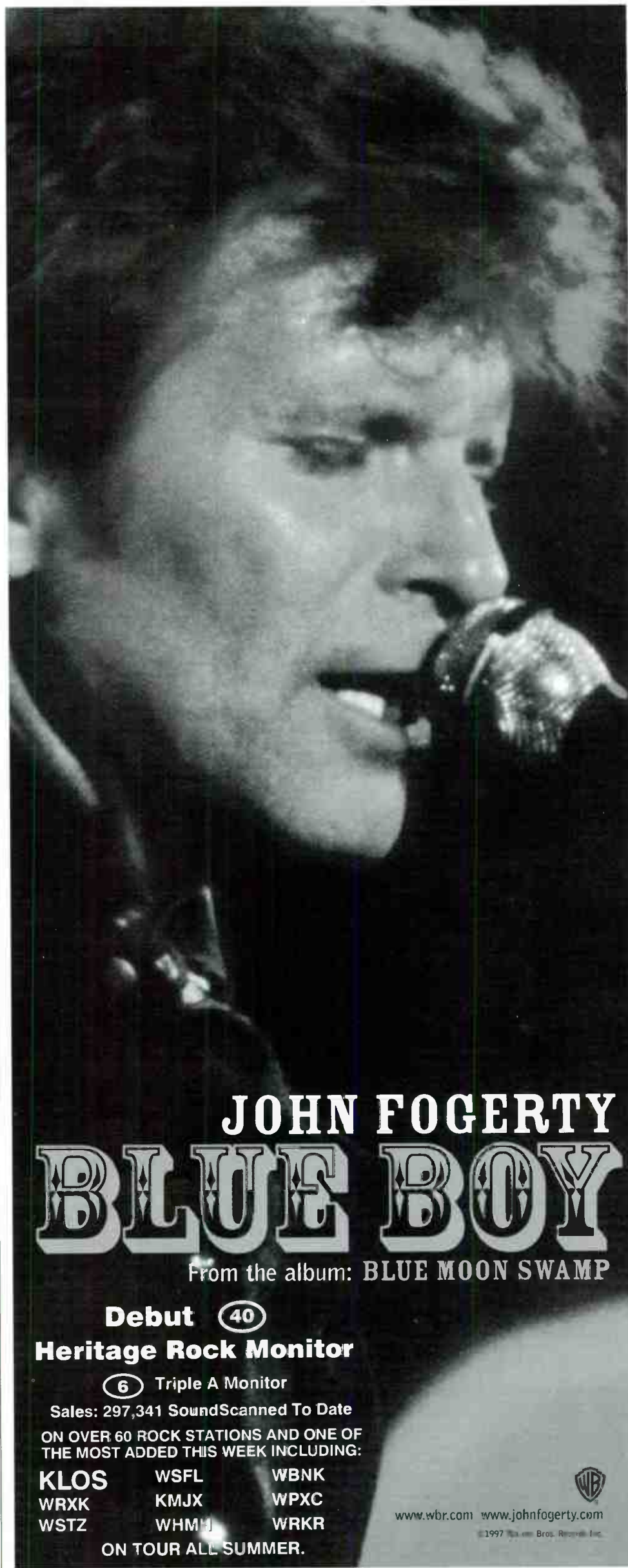
THIS WEEK	LAST WEEK	WKS. ON CHART	TITLE/LABEL/PROMOTION LABEL	ARTIST	DETECTIONS	
					TW	LW
★★★ No. 1 ★★★						
①	1	18	PINK COLUMBIA 2 Weeks at No. 1	AEROSMITH	956	846
②	4	7	MARCHING TO MARS THE TRACK FACTORY/MCA	SAMMY HAGAR	757	699
3	2	11	SOUL OF LOVE VELVEL	PAUL RODGERS	748	804
4	5	23	IF YOU COULD ONLY SEE POLYDOR/A&M	TONIC	673	692
5	8	27	PUSH LAVA/ATLANTIC	MATCHBOX 20	620	632
6	3	18	THE DIFFERENCE INTERSCOPE	THE WALLFLOWERS	619	713
7	9	10	TURN MY HEAD RADIOACTIVE/MCA	LIVE	609	620
8	6	14	CAROLINA BLUES A&M	BLUES TRAVELER	582	662
9	7	17	LISTEN ATLANTIC	COLLECTIVE SOUL	545	635
10	10	5	CONGO ATLANTIC	GENESIS	500	529
⑪	14	6	HIT THE GROUND RUNNING A&M	JONNY LANG	445	395
12	11	7	SUGARCANE COLUMBIA	CRY OF LOVE	444	459
⑬	18	5	TOUCH, PEEL AND STAND OUTPOST/GEFFEN	DAYS OF THE NEW	406	335
14	15	7	LIVE THROUGH THIS (FIFTEEN STORIES) ATLANTIC	MIGHTY JOE PLUM	391	393
15	13	9	BRING IT ON CMC INTERNATIONAL	LYNYRD SKYNYRD	374	419
16	17	9	LOCKED & LOADED EPIC	JACKYL	331	360
⑰	19	8	LAZY EYE WARNER SUNSET/WARNER BROS.	GOO GOO DOLLS	330	328
18	16	13	FADE TO BLUE RAZOR & TIE	38 SPECIAL	326	385
19	20	15	TRUST CAPITOL	MEGADETH	314	320
20	12	16	WALKING IN A HURRICANE WARNER BROS.	JOHN FOGERTY	295	420
⑳	23	6	ONE ANGEL AWARE/CAPITOL	STIR	294	277
㉑	25	4	HAVE YOU SEEN ME LATELY? DGC/GEFFEN	COUNTING CROWS	270	250
23	24	5	SILVER SPRINGS REPRISE	FLEETWOOD MAC	247	252
24	21	11	YOU EMI/VIRGIN	QUEENSRYCHE	236	316
25	22	13	BLEEDING ME ELEKTRA/EEG	METALLICA	235	296
⑳	32	3	MY NEIGHBORHOOD EUREKA/DISCOVERY	COREY STEVENS	205	178
㉑	31	5	VILLAINS RCA	THE VERVE PIPE	205	184
28	26	16	ONE MORE TIME EUREKA/DISCOVERY	COREY STEVENS	199	235
㉑	30	19	LITTLE WHITE LIE THE TRACK FACTORY/MCA	SAMMY HAGAR	197	192
30	29	7	SUPERMAN'S DEAD COLUMBIA	OUR LADY PEACE	184	204
31	28	19	HOLE IN MY SOUL COLUMBIA	AEROSMITH	178	205
⑳	39	2	HELLO HELLO ATLANTIC	TALK SHOW	177	116
⑳	36	3	MOST PRECARIOUS A&M	BLUES TRAVELER	174	148
34	27	16	THE WORLD TONIGHT MPL/CAPITOL	PAUL MCCARTNEY	165	209
⑳	NEW ▶		CLEOPATRA SILVERTONE	CHRIS DUARTE GROUP	155	109
36	34	11	SEMI-CHARMED LIFE ELEKTRA/EEG	THIRD-EYE BLIND	153	154
37	33	2	ALL FOR YOU UNIVERSAL	SISTER HAZEL	137	163
⑳	NEW ▶		PLACE YOUR HANDS EPIC	REEF	129	97
39	38	26	SIGN OF THE TIMES EMI/VIRGIN	QUEENSRYCHE	129	125
⑳	NEW ▶		BLUEBOY WARNER BROS.	JOHN FOGERTY	129	30

Records showing an increase in detections over the previous week, regardless of chart movement. A record which has been on the chart for more than 20 weeks will not receive a bullet, even if it registers an increase in detections. Airpower awarded to those records which attain 300 detections for the first time. If two records are tied in number of plays, the record being played on more stations is placed first. Records below the top 20 are removed from the chart after 26 weeks.

### GREATEST GAINERS

INCREASE  
IN PLAYS

<b>AEROSMITH • Pink (COLUMBIA)</b>	<b>+110</b>
WVRK +23, WTAK +13, KLAQ +11, WRXK +9, KZRR +9, KMOD +8, WBLM +7, WCMF +7, WZZR +7, WSTZ +6	
<b>KENNY WAYNE SHEPHERD • Slow Ride (REVOLUTION)</b>	<b>+107</b>
WDHA +15, WROQ +14, KTAL +13, WIXV +12, WKQQ +8, KCAL +7, KRZZ +6, WFXB +6, KFRQ +5, WHJY +5	
<b>DAYS OF THE NEW • Touch, Peel And Stand (OUTPOST/GEFFEN)</b>	<b>+71</b>
KOMP +12, KZRR +11, WONE +9, WCCC +9, WVRK +8, WMMR +8, KFRQ +6, WTAK +6, KLPX +6, KLAQ +6	
<b>TALK SHOW • Hello Hello (ATLANTIC)</b>	<b>+61</b>
WKLC +11, WKQQ +9, WTAK +7, WSTZ +7, WCCC +7, WBAB +6, WVRK +5, KEZO -5, KOMP +5, WPLR +4	
<b>SAMMY HAGAR • Marching To Mars (THE TRACK FACTORY/MCA)</b>	<b>+58</b>
WFYV +14, WAQX +11, KFRQ +8, KZRR +8, WONE +8, WCCC +8, KGGG +7, KOMP +7, WEGR +6, KEZO +5	



# JOHN FOGERTY

# BLUE BOY

From the album: BLUE MOON SWAMP

Debut ④①

Heritage Rock Monitor

⑥ Triple A Monitor

Sales: 297,341 SoundScanned To Date

ON OVER 60 ROCK STATIONS AND ONE OF THE MOST ADDED THIS WEEK INCLUDING:

KLOS WSFL WBNK  
WRXK KMJX WPXC  
WSTZ WHMJ WRKR

ON TOUR ALL SUMMER.

www.wbr.com www.johnfogerty.com

© 1997 Warner Bros. Records Inc.

# BLUES TRAVELER

## (32) MODERN ROCK MONITOR

### 773 SPINS

**ON OVER 60 STATIONS INCLUDING:**

WXRK	99X	WBCN
WHFS	WPLT	XHRM
WPLY	KDGE	KPNT

**TOURING WITH THE ROLLING STONES**  
**SEPTEMBER 23rd - OCTOBER 14th**

<http://www.amrecords.com> ©1997 A&M Records, Inc., a PolyGram company. All rights reserved.

# Chick Magnet

the single

ADDED TO TV ACTIVE ROTATION

ON TOUR WITH REEL BIG FISH BEGINNING SEPT. 14TH AND DANCE HALL CRASHERS OCT. 10TH

Intercepted by

ADDED THIS WEEK TO KRZQ, KNRQ

ALSO PLAYING ON:

WHFS	WOXY	KOME	WBZF
KTCL	KJEE	WWDX	WPBZ
KEDJ	KFMA	WJSE	and more

<http://www.amrecords.com>  
 ©1997 Tooth & Nail Records. All rights reserved.

# MODERN ROCK

## POWER PLAYLISTS™

Broadcast Data Systems

**AIRPLAY Monitor** For Week Ending August 31, 1997

Playlists supplied by Broadcast Data Systems' RadioTrack service. Spins ranked by number of plays in mentioned week. Playlists are listed in order of USA weekly chart, beginning with the highest charting station. Charts are updated twice weekly following the release of the Spring and Fall Arbitron surveys. The number of stations shown each week varies depending upon space.

### WXRK

New York PD: Steve Kingston

	TW	LW
1	Foo Fighters, Everlong	32 35
2	Sugar Ray, Fly	30 35
3	Mighty Mighty Bosstones, The Impression	27 35
4	Reel Big Fish, Sell Out	24 17
5	Sublime, Don't Time	22 15
6	Matchbox 20, Push	22 14
7	Sublime, Wrong Way	20 37
8	Oasis, D'You Know What I Mean?	20 34
9	Our Lady Peace, Superman's Dead	19 24
10	Days Of The New, Touch, Peel And Stand	18 24
11	Sneaker Pimps, 6 Underground	18 17
12	The Offspring, Breath	17 26
13	Beck, Jack-Ass	17 16
14	Smash Mouth, Walkin' On The Sun	17 23
15	Foo Fighters, Monkey Wrench	16 24
16	Everclear, Everything To Everyone	15 4
17	Talk Show, Hello Hello	15 25
18	Soundgarden, Rhinoceros	14 34
19	Toot, Anemna	14 23
20	Dave Matthews Band, Crash Into Me	13 8
21	Back-O-Nine, My Town	13 17
22	The Chemical Brothers, Block Rockin' Beats	13 17
23	Blur, Song 2	12 12
24	Blues Traveler, Most Precarious	12 9
25	Green Day, Hitchin' A Ride	12 0
26	Sarah McLachlan, Building A Mystery	12 11
27	Fiona Apple, Criminal	12 13
28	Sublime, Santa	12 10
29	Prodigy, Breathe	12 10
30	Bush, Machinehead	11 11

### KROQ

Los Angeles VP Prgm.: Kevin Weatherly APD: Gene Sandbloom

	TW	LW
1	Foo Fighters, Everlong	36 35
2	Oasis, Don't Go Away	27 25
3	Beck, Jack-Ass	27 28
4	Smash Mouth, Walkin' On The Sun	26 29
5	Third Eye Blind, Graduate	26 20
6	Sugar Ray, Fly	24 36
7	The Sundays, Summerme	22 22
8	Chumbawamba, Tubthumping	20 10
9	Third Eye Blind, How's It Going To Be	17 30
10	Sublime, Smoke Two Joints	16 14
11	Sneaker Pimps, 6 Underground	15 20
12	Prodigy, Breathe	15 16
13	Green Day, Hitchin' A Ride	14 0
14	Mighty Mighty Bosstones, The Impression	14 20
15	Fiona Apple, Criminal	14 21
16	The Smashing Pumpkins, Eye	13 17
17	Third Eye Blind, Semi-Charmed Life	13 14
18	Sublime, Wrong Way	13 12
19	Blink 182, Garmat	13 12
20	Daft Punk, Da Funk	13 15
21	Beck, The New Pollution	12 12
22	Sublime, Don't Time	11 19
23	Blur, Song 2	11 17
24	Sarah McLachlan, Building A Mystery	11 14
25	Our Lady Peace, Superman's Dead	11 6
26	The Smashing Pumpkins, 1979	10 5
27	Oasis, D'You Know What I Mean?	10 16
28	Back-O-Nine, My Town	9 16
29	The Offspring, Gone Away	8 6
30	Depeche Mode, It's No Good	9 17

### WKQX

Chicago PD: Alex Loke MD: Mary Shumias

	TW	LW
1	Matchbox 20, Push	42 43
2	Fiona Apple, Criminal	42 41
3	Sublime, Wrong Way	41 28
4	Tonic, If You Could Only See	40 40
5	Smash Mouth, Walkin' On The Sun	40 35
6	Sugar Ray, Fly	39 40
7	OMC, How Bizarre	29 42
8	Forest For The Trees, Dream	24 16
9	Reel Big Fish, Sell Out	24 27
10	Foo Fighters, Everlong	24 29
11	Blur, M.O.R.	24 26
12	Third Eye Blind, Graduate	23 18
13	311, Down	21 12
14	Sneaker Pimps, 6 Underground	20 21
15	K's Choice, Not An Addict	20 18
16	Everclear, Everything To Everyone	20 8
17	Mighty Mighty Bosstones, The Impression	20 20
18	Prodigy, Breathe	20 12
19	Sarah McLachlan, Building A Mystery	19 10
20	Green Day, Hitchin' A Ride	19 0
21	Third Eye Blind, Semi-Charmed Life	19 29
22	Blur, Song 2	18 20
23	Sublime, What I Got	18 19
24	The Offspring, I Choose	18 13
25	The Wallflowers, One Headlight	18 19
26	311, All Mused Up	17 15
27	Sublime, Santa	17 15
28	Trio, Da, Da, Da	16 26
29	Beck, Jack-Ass	16 14
30	Dandy Warhols, Not If You Were The Last	16 22

### WBCN

Boston VP/Prgm: Oedipus MD: Carter Alan

	TW	LW
1	Prodigy, Breathe	38 36
2	Sugar Ray, Fly	37 37
3	Sublime, Wrong Way	34 33
4	Our Lady Peace, Superman's Dead	34 27
5	Mighty Mighty Bosstones, The Rascal King	33 30
6	Fiona Apple, Criminal	32 30
7	Talk Show, Hello Hello	26 26
8	Green Day, Hitchin' A Ride	27 0
9	Tonic, If You Could Only See	25 13
10	Everclear, Everything To Everyone	25 10
11	The Sundays, Summerme	24 10
12	Smash Mouth, Walkin' On The Sun	23 25
13	Sneaker Pimps, 6 Underground	23 30
14	Foo Fighters, Everlong	22 20
15	Blues Traveler, Most Precarious	20 19
16	K's Choice, Not An Addict	19 35
17	Oasis, D'You Know What I Mean?	19 17
18	Dandy Warhols, Not If You Were The Last	19 19
19	Ben Folds Five, One Angry Dwarf And 200	18 15
20	The Verve Pipe, Viliams	18 22
21	The Dambuilders, Burn This Bridge	18 22
22	Third Eye Blind, Graduate	17 11
23	Filter & The Crystal Method, (Can't You)	16 13
24	Beck, Jack-Ass	15 20
25	311, Prisoner	15 14
26	Letters To Cleo, Anchor	15 11
27	Chumbawamba, Tubthumping	14 4
28	Tanya Donelly, Pretty Deep	14 8
29	Radiohead, Let Down	14 18
30	Matchbox 20, Push	14 15

### WPLY

Philadelphia PD: Jim McGuinn APD: Doug Kubinski

	TW	LW
1	Mighty Mighty Bosstones, The Impression	39 37
2	Sugar Ray, Fly	37 39
3	Third Eye Blind, Semi-Charmed Life	34 38
4	Sublime, Wrong Way	34 26
5	Live, Turn My Head	33 36
6	Matchbox 20, Push	32 36
7	Sarah McLachlan, Building A Mystery	30 15
8	Smash Mouth, Walkin' On The Sun	30 30
9	Shawn Colvin, Sunny Came Home	26 33
10	Fiona Apple, Criminal	26 32
11	Blues Traveler, Most Precarious	26 27
12	Counting Crows, Have You Seen Me Lately?	25 25
13	Reel Big Fish, Sell Out	25 30
14	Marcy River, Wannabe	25 20
15	Reel, Place Your Hands	25 22
16	OMC, How Bizarre	24 31
17	Tonic, If You Could Only See	23 37
18	Dave Matthews Band, Tripang Babies	23 23
19	The Sundays, Summerme	22 24
20	Sister Hazel, All For You	22 18
21	Oasis, D'You Know What I Mean?	22 19
22	Goldfinger, This Lonely Place	21 2
23	Collective Soul, Listen	20 22
24	311, All Mused Up	20 22
25	Sneaker Pimps, 6 Underground	20 28
26	Radiohead, Let Down	20 20
27	Forest For The Trees, Dream	19 18
28	Green Day, Hitchin' A Ride	18 0
29	Everclear, Everything To Everyone	16 4
30	Sublime, Santa	15 20

### KLYY

Los Angeles VP Prgm: Steve Blatter APD: Sandy Horowitz

	TW	LW
1	Tonic, If You Could Only See	41 33
2	Sublime, Don't Time	40 43
3	Fiona Apple, Criminal	33 39
4	Smash Mouth, Walkin' On The Sun	31 26
5	Savo Ferris, Come On Even	30 31
6	Sneaker Pimps, 6 Underground	29 34
7	Third Eye Blind, Semi-Charmed Life	25 24
8	Duncan Sheik, Barely Breathing	25 21
9	Oasis, Don't Go Away	25 23
10	The Sundays, Summerme	24 22
11	Matchbox 20, Push	22 24
12	Sarah McLachlan, Building A Mystery	22 75
13	Mighty Mighty Bosstones, The Impression	22 16
14	Sugar Ray, Fly	22 23
15	Foo Fighters, Everlong	21 23
16	Third Eye Blind, How's It Going To Be	21 22
17	Garbage, #1 Crush	21 21
18	U2, Staring At The Sun	21 22
19	Chumbawamba, Tubthumping	20 22
20	OMC, How Bizarre	20 18
21	Blues Traveler, Most Precarious	20 16
22	Morrissey, Alma Matters	18 18
23	Back-O-Nine, My Town	18 14
24	White Town, Your Woman	18 20
25	Dubstar, Stars	17 10
26	Reel, Place Your Hands	16 18
27	Shawn Colvin, Sunny Came Home	15 13
28	Luscious Jacksons, Naked Eye	15 15
29	Mighty Mighty Bosstones, The Rascal King	15 21
30	Tanya Donelly, Pretty Deep	15 16

### WHFS

Washington, DC PD: Robert Benjamin APD: Bob Waugh

	TW	LW
1	Smash Mouth, Walkin' On The Sun	42 39
2	Sugar Ray, Fly	40 38
3	Foo Fighters, Everlong	34 24
4	Tonic, If You Could Only See	28 24
5	Mighty Mighty Bosstones, The Rascal King	27 15
6	Chumbawamba, Tubthumping	27 3
7	Sublime, Wrong Way	27 26
8	Sarah McLachlan, Building A Mystery	26 21
9	Sublime, Don't Time	26 28
10	Dance Hall Crashers, Lost Again	25 22
11	Oasis, D'You Know What I Mean?	24 34
12	The Sundays, Summerme	23 23
13	Fiona Apple, Criminal	23 17
14	Third Eye Blind, Graduate	22 26
15	311, Prisoner	22 22
16	Matchbox 20, Push	22 26
17	Prodigy, Breathe	21 16
18	Third Eye Blind, How's It Going To Be	20 18
19	Forest For The Trees, Dream	20 26
20	Sneaker Pimps, 6 Underground	20 16
21	Green Day, Hitchin' A Ride	0
22	Our Lady Peace, Superman's Dead	20 11
23	Ben Harper, Faded	18 23
24	Luscious Jackson, Naked Eye	16 15
25	Blur, Song 2	16 22
26	Talk Show, Hello Hello	15 15
27	Mighty Mighty Bosstones, The Impression	15 26
28	Hosierophonic 2, Wacky	12 3
29	Third Eye Blind, Semi-Charmed Life	14 9
30	Lionrock, Fire Up The Shoesaw	14 14

### WNNX

Atlanta OM: Brian Philips PD: Leslie Fram

	TW	LW
1	Chumbawamba, Tubthumping	36 31
2	Talk Show, Hello Hello	35 29
3	The Sundays, Summerme	35 33
4	Smash Mouth, Walkin' On The Sun	34 35
5	Fiona Apple, Criminal	33 30
6	Oasis, D'You Know What I Mean?	32 28
7	Foo Fighters, Everlong	32 31
8	Sugar Ray, Fly	32 33
9	Matchbox 20, 3 AM	31 19
10	Sarah McLachlan, Building A Mystery	30 29
11	Mighty Mighty Bosstones, The Impression	29 29
12	Memory Dean, So Complicated	26 18
13	311, Prisoner	24 21
14	Cowboy Mouth, Love Of My Life	21 20
15	Our Lady Peace, Superman's Dead	21 19
16	Mighty Mighty Bosstones, The Rascal King	21 18
17	Ben Harper, Faded	21 18
18	Counting Crows, Have You Seen Me Lately?	21 22
19	Blues Traveler, Most Precarious	21 23
20	Tonic, Open Up Your Eyes	21 12
21	Sneaker Pimps, 6 Underground	19 29
22	Sublime, Wrong Way	18 15
23	INXS, Elegantly Wasted	18 11
24	Blur, Song 2	18 17
25	Beck, Jack-Ass	18 15
26	Prodigy, Breathe	18 17
27	Sublime, Don't Time	18 11
28	Monaco, What Do You Want From Me?	17 18
29	Tonic, If You Could Only See	17 17
30	The Wallflowers, Three Marlenas	17 9

### WPLT

Detroit PD: Garrett Michaels APD/MD: Alex Tear

	TW	LW
1	OMC, How Bizarre	33 33
2	Sister Hazel, All For You	31 31
3	Sarah McLachlan, Building A Mystery	31 47
4	Third Eye Blind, Semi-Charmed Life	29 47
5	Tonic, If You Could Only See	29 49
6	Shawn Colvin, Sunny Came Home	26 40
7	Matchbox 20, Push	26 41
8	Barenaked Ladies, Brian Wilson	26 44
9	Mighty Mighty Bosstones, The Impression	22 29
10	Paula Cole, I Don't Want To Wait	21 23
11	Cowboy Mouth, Jenny Says	21 24
12	The Verve Pipe, The Freshmen	20 24
13	Sugar Ray, Fly	19 27
14	Live, Turn My Head	19 29
15	Squirrel Nut Zippers, Hell	19 24
16	Duncan Sheik, Barely Breathing	18 28
17	Indigo Girls, Shame On You	18 28
18	Toad The Wet Sprocket, Crazy Life	18 24
19	Sheryl Crow, A Change Would Do You Good	18 20
20	Fiona Apple, Criminal	16 20
21	The Wallflowers, The Difference	17 27
22	Better Than Ezra, Normal Two	16 35
23	Mercedes Brooks, Bitch	15 35
24	Dave Matthews Band, Crash Into Me	15 27
25	Barenaked Ladies, The Old Apartment	15 21
26	Jewel, Foolish Games	14 9
27	Jen Trynn, Getaway	13 15
28	Blues Traveler, Most Precarious	13 17
29	Monaco, What Do You Want From Me?	13 18
30	The Sundays, Summerme	13 16

### KDGE

Dallas PD: Joel Folger MD: Mike Peer

	TW	LW
1	Sugar Ray, Fly	45 45
2	Smash Mouth, Walkin' On The Sun	33 41
3	Live, Turn My Head	32 20
4	Sarah McLachlan, Building A Mystery	32 35
5	Seven Mary Three, Lucky	30 18
6	Forest For The Trees, Dream	27 28
7	Sublime, Wrong Way	26 25
8	Fiona Apple, Criminal	24 35
9	Beck, Jack-Ass	23 19
10	Matchbox 20, 3 AM	23 23
11	Prodigy, Breathe	23 21
12	Third Eye Blind, Graduate	23 26
13	Our Lady Peace, Superman's Dead	23 15
14	Oasis, D'You Know What I Mean?	22 20
15	Chumbawamba, Tubthumping	22 1
16	Matchbox 20, Push	19 14
17	Third Eye Blind, Semi-Charmed Life	18 18
18	Tonic, If You Could Only See	18 20
19	Radiohead, Let Down	18 22
20	Mighty Mighty Bosstones, The Impression	16 23
21	Save Ferris, Come On Eileen	16 10
22	Foo Fighters, Everlong	16 18
23	Sister Hazel, All For You	16 13
24	The Smashing Pumpkins, Bullet With Butterfly	16 7
25	The Wallflowers, One Headlight	15 14
26	Beck, The New Pollution	15 25
27	Mighty Mighty Bosstones, The Rascal King	14 21
28	The Wallflowers, The Difference	14 15
29	Coke, The Distance	14 18
30	Shawn Colvin, Sunny Came Home	14 18

### KITS

San Francisco VP/Prgm.: Richard Sands APD: Roland West

	TW	LW
1	Sugar Ray, Fly	43 39
2	Foo Fighters, Everlong	41 34
3	Everclear, Everything To Everyone	38 6
4	Sublime, Wrong Way	37 36
5	Smash Mouth, Walkin' On The Sun	37 36
6	Third Eye Blind, How's It Going To Be	31 26
7	Oasis, Don't Go Away	31 39
8	Chumbawamba, Tubthumping	28 0
9	Beck, Jack-Ass	26 31
10	Olive, You're Not Alone	25 40
11	Green Day, Hitchin' A Ride	24 0
12	Mighty Mighty Bosstones, The Rascal King</	

POWER PLAYLISTS

AIRPLAY Monitor

For Week Ending August 31, 1997

Playlists supplied by Broadcast Data Systems. Radio-Track service. Songs ranked by number of plays in monitored week. Playlists are listed in order of...

KNDD Seattle PD: Phil Manning MD: Kim Monroe. Top 30 playlist for KNDD.

KOME San Jose OM: Ron Nenni PD/MD: Jay Taylor. Top 30 playlist for KOME.

KTBB Houston PD: Jim Trapp MD: David Sadoff. Top 30 playlist for KTBB.

CIMX Detroit Prgrn. Mngn: Murray Brooks PD/MD: Vince Cannova. Top 30 playlist for CIMX.

KPNT St. Louis PD: Allan Fee MD: Adam Potts. Top 30 playlist for KPNT.

WXDX Pittsburgh PD: Ali Castellani MD: Lenny Diana. Top 30 playlist for WXDX.

KEDJ Phoenix PD: Shellie Hart APD/MD: Chris Patyk. Top 30 playlist for KEDJ.

WLIR Long Island PD: Jeff Levine Mus. Coor.: Lynda Lopez. Top 30 playlist for WLIR.

XTRA San Diego PD: Bryan Schreck MD: Chris Muckley. Top 30 playlist for XTRA.

WMRQ Hartford PD: Jay Beau Jones MD: Dave Hill. Top 30 playlist for WMRQ.

WENZ Cleveland PD/MD: Sean Robertson. Top 30 playlist for WENZ.

WKDF Nashville PD: Kidd Redd MD: Sheri Sexton. Top 30 playlist for WKDF.



LOVE SPIT LOVE

LONG LONG TIME

THE NEW SINGLE AND VIDEO FROM THE FORTHCOMING ALBUM TRYSOME EATONE

ON OVER 70 STATIONS INCLUDING:

- WPLY, WBCN, KEGE, KNDD, WFNX, KDGE, 91X, XHRM, WHFS, KTBB, WLMU, KROX, WENZ, WXRT, KWOD and more

DEBUT 40 MODERN ROCK MONITOR



NATIONAL HEADLINE TOUR BEGINS IN OCTOBER

PRODUCED BY BEN GROSSE WITH RICHARD BUTLER AND RICHARD FORTUS. MIXED BY BEN GROSSE. MANAGEMENT: 3 A.M. © 1997 MAVERICK RECORDING COMPANY www.maverickrc.com

POWER PLAYLISTS

For Week Ending August 31, 1997



Playlists supplied by Broadcast Data Systems. Radio Track service. Songs ranked by number of plays in monitored week. Playlists are listed in order of TBA weekly count, beginning with the highest-counting station. Counts are updated twice yearly following the release of the Spring and Fall Arbitron surveys. The number of stations shown each week varies depending upon space.



Table with 12 columns representing radio stations: KXPX, WRZX, KWOD, KZON, XHRM, WQBK, WEND, WQXA, WLUM, WNVE, WBRU, WEDG, KCCX, WGRD, KNRK, KENZ, KXRK, WPBZ, WAQZ, WROX, KTCL, KXTE, KNRX, WDGE. Each column contains a list of songs and their corresponding radio track counts.

Virtually Alternative **31**

Modern Rock Chart **33**

R&R Alternative: **31\***

Already On:

ALTERNATIVE:

KROQ  
WXRK  
KITS  
WPLY  
WHFS  
WBCN  
99X  
KNDD  
KPNT  
KEDJ  
KTGL

91X  
KCCX  
KLZR  
WLUM  
KOME  
WBRU  
WROX  
XHRM  
KXRK  
KKND

KMYZ  
KZON  
KNRK  
WAQZ  
KROX  
WXEG  
WDGE  
CIMX  
WXZZ  
WQXA  
KKDM  
WXSR  
WAVF...

and many  
many more

ROCK:

WKPE  
WQWK  
WCPR  
WRCQ  
WSFM  
WIQB  
KWBR  
KZRK  
WHMH  
KRBR



# PRISONER

The Second Track From "TRANSISTOR"



### CATCH THE TRANSISTOUR:

9/9	Memphis, TN	9/17	New Orleans, LA
9/11	Nashville, TN	9/18	Memphis, TN
9/12	Knoxville, TN	9/19	St. Louis, MO
9/13	Atlanta, GA	9/20	Kansas City, KS
9/16	Birmingham, AL	9/25	Los Angeles, CA



**STRESS  
ROTATION**



©1997 Capricorn Records. Manufactured and Marketed by Mercury Records, a PolyGram company. <http://www.capricorn.com>



## ☆☆☆ AIRPOWER ☆☆☆

(Minimum 1,100 detections for the first time)

**NO RECORDS QUALIFIED FOR AIRPOWER THIS WEEK**

### AIRPOWER BOUND

Total Plays/Gain

#### PRODIGY 1074/-18

*Breathe (XL Mute/Maverick/Warner Bros.)*

Total Stations: 68/Chart Move: 19-18  
Heavy (30+ plays): 3 KEDJ, KLZR, WBCN  
Medium (15-29): 32 KDGE, KEDG, KEFE, KFMA, KFTE, KJEE, KKDM, KMYZ, KNDD, KNRK, KNRX, KOME, KPNT, KROQ, KTCL, KWOD, KXRK, KXTE, WAQZ, WBCN, WBZU, WCYZ, WEDG, WENZ, WEQX, WLUM, WMRQ, WPBZ, WPLA, WPLY, WRXQ, WWCOD, WXEG, XHRM  
Light (Under 15): 33  
New Airplay This Week: 1 WPLA

#### THIRD EYE BLIND 1047/2

*Graduate (Elektra/EEG)*

Total Stations: 64/Chart Move: 28-19  
Heavy (30+): 4 KEDJ, KEFE, KMYZ, KTOZ  
Medium (15-29): 34 KCXX, KDGE, KFMA, KFTE, KGDE, KICT, KJEE, KLZR, KNDD, KNRK, KNRX, KOME, KPNT, KROQ, KTCL, KWOD, KXRK, KXTE, WAQZ, WBCN, WBZU, WCYZ, WEDG, WENZ, WEQX, WLUM, WMRQ, WPBZ, WPLA, WPLY, WRXQ, WWCOD, WXEG, XHRM  
Light (Under 15): 26  
New Airplay This Week: 1 WPLA

#### TALK SHOW 1003/190

*Hello Hello (Atlantic)*

Total Stations: 62/Chart Move: 28-20  
Heavy (30+): 1 WNNX  
Medium (15-29): 41 CFNY, KCCX, KEDG, KEFE, KFMA, KFRR, KGDE, KICT, KITS, KJEE, KKND, KLZR, KMYZ, KNDD, KNRK, KOME, KPNT, KPOI, KTBZ, KTEG, KXRX, KXTE, WBCN, WBZU, WEDG, WENZ, WEQX, WLUM, WMRQ, WPBZ, WPLA, WPLY, WRXQ, WWCOD, WXEG, XHRM  
Light (Under 15): 20  
New Airplay This Week: 10 KFTE, KKDM, KNRX, KROQ, KTOZ, WCYZ, WLUM, WXEG, XTRA

#### THE VERVE PIPE 936/59

*Villains (RCA)*

Total Stations: 68/Chart Move: 25-22  
Heavy (30+): 1 KPOI  
Medium (15-29): 27 CIMX, KCXX, KFMA, KFRR, KFTE, KICT, KJEE, KNDD, KLZR, KNDD, KNRX, KROX, WBCN, WBZU, WCYZ, WEDG, WENZ, WEQX, WLUM, WMRQ, WPBZ, WPLA, WPLY, WRXQ, WWCOD, WXEG, XHRM  
Light (Under 15): 40  
New Airplay This Week: 3 KEDG, KKDM, KROQ

#### FOREST FOR THE TREES 922/73

*Dream (DreamWorks/Geffen)*

Total Stations: 60/Chart Move: 27-23  
Heavy (30+): 8 KEFE, KENZ, KJEE, KTCL, KWOD, KXRK, WBZU, XHRM  
Medium (15-29): 23 KDGE, KEDG, KFTE, KHTY, KNRX, KNRK, KOME, KTOZ, WAQZ, WBZU, WEDG, WENZ, WEQX, WLUM, WMRQ, WPBZ, WPLA, WPLY, WRXQ, WWCOD, WXEG  
Light (Under 15): 29  
New Airplay This Week: 7 CIMX, KFMA, KNDD, KPOI, WKRL, WRXQ, WRXR

#### ★ GREEN DAY 871/871

*Hitchin' A Ride (Reprise)*

Total Stations: 73/Chart Move: Debut 26  
Heavy (30+): 2 CIMX, KKDM  
Medium (15-29): 23 CFNY, KEDJ, KEFE, KGDE, KICT, KITS, KJEE, KKND, KLRZ, KMYZ, KPNT, KPOI, KROQ, KROX, KTEG, KWOD, KXRK, KXTE, WAQZ, WBCN, WBZU, WCYZ, WEDG, WENZ, WEQX, WLUM, WMRQ, WPBZ, WPLA, WPLY, WRXQ, WWCOD, WXEG, XHRM  
Light (Under 15): 48  
New Airplay This Week: 56 CFNY, CIMX, KCCX, KCXX, KEDG, KEDJ, KEFE, KFMA, KFRR, KGDE, KICT, KITS, KJEE, KKND, KLRZ, KMYZ, KPNT, KPOI, KROQ, KROX, KTEG, KWOD, KXRK, KXTE, WAQZ, WBCN, WBZU, WCYZ, WEDG, WENZ, WEQX, WLUM, WMRQ, WPBZ, WPLA, WPLY, WRXQ, WWCOD, WXEG, XHRM, XTRA

#### THE SUNDAYS 838/166

*Summertime (DGC/Geffen)*

Total Stations: 62/Chart Move: 37-27  
Heavy (30+): 3 KNDD, KWOD, WNNX  
Medium (15-29): 23 CIMX, KFMA, KITS, KLYY, KNRX, KROQ, KROX, KTEG, KXRK, WBCN, WBZU, WBZU, WENZ, WHFS, WKDF, WKQX, WNVE, WPLY, WQBK, WQXA, WRLG, XHRM  
Light (Under 15): 36  
New Airplay This Week: 11 CFNY, KCHZ, KDGE, KFTE, KHTY, KJEE, KNRX, KPNT, KXPK, WRXQ, WXEG

#### RADIOHEAD 811/23

*Let Down (Capitol)*

Total Stations: 67/Chart Move: 30-29  
Heavy (30+): 0  
Medium (15-29): 28 CFNY, CIMX, KCCX, KDGE, KFMA, KICT, KJEE, KLZR, KNDD, KNRX, KTOZ, KXRK, WBRU, WBZU, WCYZ, WEDG, WENZ, WEQX, WLUM, WMRQ, WPBZ, WPLA, WPLY, WRXQ, WWCOD, WXEG, XHRM  
Light (Under 15): 39  
New Airplay This Week: 2 WQBK, WXR

#### FILTER AND THE CRYSTAL METHOD 803/2

*(Can't You) Trip Like I Do (Immortal/Epic)*

Total Stations: 67/Chart Move: 29-30  
Heavy (30+): 1 KEDG  
Medium (15-29): 16 KEDJ, KEFE, KFTE, KJEE, KLZR, KTOZ, KXTE, WBCN, WBZU, WCYZ, WENZ, WKRL, WRXQ, WXCX, WRXR  
Light (Under 15): 50

#### BLUES TRAVELER 788/75

*Most Precarious (A&M)*

Total Stations: 46/Chart Move: 33-32  
Heavy (30+): 4 KAEP, KXPK, WEQX, WQBK  
Medium (15-29): 25 KENZ, KKDM, KLYY, KNRX, KPOI, KTEG, KTOZ, KZON, WAQZ, WBCN, WBZU, WEDG, WENZ, WEQX, WLUM, WMRQ, WPBZ, WPLA, WPLY, WRXQ, WWCOD, WXEG, XHRM  
Light (Under 15): 17  
New Airplay This Week: 3 WKDF, WLUM, XHRM

#### 311 731/31

*Prisoner (Capricorn/Mercury)*

Total Stations: 57/Chart Move: 34-33  
Heavy (30+): 2 KLZR, KXRK  
Medium (15-29): 20 KCXX, KXRX, KEDJ, KENZ, KFMA, KFTE, KHTY, KITS, KJEE, KKDM, KNDD, KOME, KTCL, KTOZ, WBCN, WHFS, WNNX, WRLG, WRXQ, XTRA  
Light (Under 15): 35  
New Airplay This Week: 4 KAEP, KNRX, KWOD, WKQX

#### COUNTING CROWS 694/16

*Have You Seen Me Lately? (DGC/Geffen)*

Total Stations: 43/Chart Move: 36-34  
Heavy (30+): 2 KZON, WXDX  
Medium (15-29): 20 KCXX, KENZ, KFMA, KFTE, KICT, KTBZ, KTEG, KTOZ, KXRK, WBZU, WEQX, WKDF, WNNX, WPLY, WQBK, WQXA, WRXQ, WRXR, WXEG, WXR  
Light (Under 15): 21  
New Airplay This Week: 4 KDGE, KLZR, KPOI, WEND

#### BUCK-O-NINE 680/-9

*My TOWN (TVT)*

Total Stations: 54/Chart Move: 35-35  
Heavy (30+): 3 KJEE, KPOI, WCYZ  
Medium (15-29): 16 KCXX, KEDJ, KFRR, KFTE, KGDE, KHTY, KLYY, KLZR, KNRX, KOME, KTBZ, KTCL, KTEG, KWOD, WPBZ, WXEG  
Light (Under 15): 35

#### EVERCLEAR 618/537

*Everything To Everyone (Capitol)*

Total Stations: 56/Chart Move: Debut 37  
Heavy (30+): 5 CIMX, KITS, KLZR, KNRX, KOME  
Medium (15-29): 12 KEDJ, KEFE, KNDD, KTEG, KXRX, WBCN, WBRU, WBZU, WBZU, WKQX, WPLY, WXR  
Light (Under 15): 39  
New Airplay This Week: 24 CIMX, KCCX, KEDJ, KEFE, KGDE, KICT, KKND, KLZR, KMYZ, KPNT, KPOI, KTEG, KWOD, KXRK, KXTE, WBCN, WBZU, WEDG, WENZ, WHFS, WMRQ, WPLY, WRXQ, XTRA

#### LOVE SPIT LOVE 549/33

*Long Long Time (Maverick/Warner Bros.)*

Total Stations: 51/Chart Move: Debut 40  
Heavy (30+): 0  
Medium (15-29): 13 KEDG, KEFE, KFTE, KNRX, KTCL, KTEG, KTOZ, WBZU, WENZ, WKRL, WRXR, WWCOD, XHRM  
Light (Under 15): 38  
New Airplay This Week: 5 KFMA, KTBZ, KWOD, WGRD, WPLY

### CHART BOUND

Total Plays/Gain

#### SEVEN MARY THREE 477/88

*Lucky (Mammoth/Antalantic)*

Total Stations: 29  
Heavy (30+): 2 KDGE, WQXA

Medium (15-29): 14 KFTE, KKND, KMYZ, KNRX, KROX, KTBZ, WDGE, WEND, WENZ, WEQX, WLUM, WPBZ, WRXQ, WXCX  
Light (Under 15): 13  
New Airplay This Week: 4 KXRX, WDGE, WKRL, WRXZ

#### CHUMBAWAMBA 473/336

*Tubthumping (Republic/Universal)*

Total Stations: 45  
Heavy (30+): 3 KOME, WNNX, XHRM  
Medium (15-29): 12 KDGE, KGDE, KITS, KJEE, KLYY, KROQ, WBCN, WBRU, WHFS, WKQX, WLIR, WLUM  
Light (Under 15): 30  
New Airplay This Week: 16 KDGE, KGDE, KITS, KJEE, KTCL, KWOD, KZON, WAQZ, WBCN, WBRU, WHFS, WKQX, WLIR, WPLY, WXR, XTRA

#### DEPECHE MODE 466/26

*Useless (Mute/Reprise)*

Total Stations: 47  
Heavy (30+): 0  
Medium (15-29): 11 KENZ, KFTE, KJEE, KLZR, KTCL, KTEG, KWOD, WBRU, WBZU, WCYZ, WEDG, WPBZ, WQBK, WXEG  
Light (Under 15): 33  
New Airplay This Week: 2 KNRX, WPBZ

#### GOLDFINGER 458/260

*This Lonely Place (Mojo/Universal)*

Total Stations: 48  
Heavy (30+): 1 CIMX  
Medium (15-29): 15 KCXX, KEDJ, KGDE, KLZR, KPNT, KTEG, KWOD, WBRU, WBZU, WEND, WPBZ, WPLY, WQXA, WRLG, WRXR  
Light (Under 15): 32  
New Airplay This Week: 16 CFNY, KLZR, KPNT, KTCL, KTEG, KTOZ, KXRX, WBZU, WEDG, WEND, WNNX, WPLY, WQXA, WRLG, WRXR, XHRM

#### SUBLIME 434/40

*Doit' Time (Gasoline Alley/MCA)*

Total Stations: 30  
Heavy (30+): 4 KJEE, KLYY, KOME, XHRM  
Medium (15-29): 11 CIMX, KCXX, KEDJ, KHTY, KITS, KXRX, KXTE, WHFS, WNNX, WXR, XTRA  
Light (Under 15): 15  
New Airplay This Week: 2 CIMX, KNDD

#### BEN HARPER 431/-13

*Faded (Virgin)*

Total Stations: 33  
Heavy (30+): 1 WBZU  
Medium (15-29): 11 KCXX, KEFE, KFTE, KJEE, KNRX, KTCL, KXPK, WHFS, WNNX, WWCOD, XHRM  
Light (Under 15): 21

#### JARS OF CLAY 349/73

*Crazy Times (Essential/Silvertone)*

Total Stations: 29  
Heavy (30+): 2 KENZ, KXRX  
Medium (15-29): 7 KAEP, KICT, KTOZ, KXPK, WMRQ, WRLG, WXEG  
Light (Under 15): 20  
New Airplay This Week: 2 WLUM, WQXA

#### LIONROCK 345/26

*Fire Up The Shoesaw (Time Bomb)*

Total Stations: 48  
Heavy (30+): 0  
Medium (15-29): 6 KJEE, KLZR, KTCL, WBZU, WENZ, XHRM  
Light (Under 15): 42  
New Airplay This Week: 3 WDGE, WEQX, WMRQ

#### OASIS 326/133

*Don't Go Away (Epic)*

Total Stations: 39  
Heavy (30+): 1 KITS  
Medium (15-29): 6 KEFE, KKDM, KLYY, KNDD, KOME, KROQ  
Light (Under 15): 32  
New Airplay This Week: 10 CIMX, KCHZ, KCXX, KEFE, KENZ, KKND, KTBZ, WEQX, WHFS, WPLT

#### DAYS OF THE NEW 291/43

*Touch, Peel And Stand (Outpost/Geffen)*

Total Stations: 19  
Heavy (30+): 3 KEFE, KNRX, KXTE  
Medium (15-29): 7 KICT, KKND, KMYZ, WBZU, WPBZ, WQXA, WXR  
Light (Under 15): 9  
New Airplay This Week: 2 KTBZ, WENZ

#### BLUR 257/21

*M.O.R. (Food/Parlophone/Virgin)*

Total Stations: 29  
Heavy (30+): 0  
Medium (15-29): 7 KFTE, KLZR, KNRX, KXRX, WBZU, WBZU, WKQX  
Light (Under 15): 22  
New Airplay This Week: 2 WAQZ, WRXQ

#### JAMIROQUAI 248/-4

*Alright (Work)*

Total Stations: 24  
Heavy (30+): 0

### MOST NEW STATIONS

No. Of Stations

<b>GREEN DAY</b> <i>Hitchin' A Ride (Reprise)</i>	56
<b>EVERCLEAR</b> <i>Everything To Everyone (Capitol)</i>	24
<b>CHUMBAWAMBA</b> <i>Tubthumping (Republic/Universal)</i>	16
<b>GOLDFINGER</b> <i>This Lonely Place (Mojo/Universal)</i>	16
<b>THE SUNDAYS</b> <i>Summertime (DGC/Geffen)</i>	11

Medium (15-29): 9 KFMA, KJEE, KNDD, KTOZ, KWOD, KXRX, WBRU, WBZU, XHRM  
Light (Under 15): 15  
New Airplay This Week: 1 WEQX

#### SAVE FERRIS 242/49

*Come On Eileen (Starpool/Epic)*

Total Stations: 21  
Heavy (30+): 2 KLYY, XHRM  
Medium (15-29): 5 KDGE, KEDG, KENZ, KPOI, KROX  
Light (Under 15): 14  
New Airplay This Week: 1 WXDX

#### TANYA DONELLY 226/29

*Pretty Deep (Reprise)*

Total Stations: 30  
Heavy (30+): 0  
Medium (15-29): 7 KCCX, KLYY, KTBZ, WBRU, WBZU, WEDG, WEQX  
Light (Under 15): 23  
New Airplay This Week: 2 KJEE, WPBZ

#### MATCHBOX 20 210/59

*3 AM (Lava/Antalantic)*

Total Stations: 13  
Heavy (30+): 1 WNNX  
Medium (15-29): 8 KAEP, KDGE, KKND, KTBZ, KWOD, WGRD, WLUM, WWCOD  
Light (Under 15): 4  
New Airplay This Week: 2 KAEP, KGDE

#### BLINK 182 198/30

*Dammit (Cargo/MCA)*

Total Stations: 26  
Heavy (30+): 0  
Medium (15-29): 2 KFMA, KXTE  
Light (Under 15): 24  
New Airplay This Week: 4 KFTE, KHTY, KKND, WAQZ

#### TOAD THE WET SPROCKET 194/0

*Whatever I Fear (Columbia)*

Total Stations: 17  
Heavy (30+): 1 KENZ  
Medium (15-29): 5 KAEP, KTBZ, KXPK, WENZ, WWCOD  
Light (Under 15): 11  
New Airplay This Week: 1 WRLG

#### TRIO 193/0

*Da, Da, Da... (Mercury)*

Total Stations: 37  
Heavy (30+): 0  
Medium (15-29): 4 KENZ, KROX, KWOD, WKQX  
Light (Under 15): 33  
New Airplay This Week: 1 KTOZ

#### ★ DANCE HALL CRASHERS 191/118

*Lost Again (510/MCA)*

Total Stations: 32  
Heavy (30+): 0  
Medium (15-29): 5 KCXX, KITS, KOME, WBZU, WHFS  
Light (Under 15): 27  
New Airplay This Week: 9 KEDJ, KGDE, KITS, KJEE, KROX, WAQZ, WBZU, WPBZ, XHRM

#### THE HONEYRODS 189/17

*Love Bee (Capricorn/Mercury)*

Total Stations: 23  
Heavy (30+): 0  
Medium (15-29): 6 KFTE, KMYZ, WGRD, WROX, WRXR, WXR  
Light (Under 15): 17  
New Airplay This Week: 2 KLZR, WKRL

#### JEWEL 188/11

*Foolish Games (Atlantic)*

Total Stations: 14  
Heavy (30+): 2 KAEP, WAQZ

Medium (15-29): 2 KFRR, KKDM  
Light (Under 15): 10  
New Airplay This Week: 2 CIMX, KXPK

#### ★ LESS THAN JAKE 181/49

*Dopeman (Capitol)*

Total Stations: 28  
Heavy (30+): 0  
Medium (15-29): 4 KOME, KWOD, WPBZ, XTRA  
Light (Under 15): 24  
New Airplay This Week: 2 KNDD, WPBZ

#### THE OFFSPRING 168/10

*I Choose (Columbia)*

Total Stations: 13  
Heavy (30+): 0  
Medium (15-29): 5 KEFE, KICT, KKND, KXRX, WKQX  
Light (Under 15): 8

#### HOOVERPHONIC 151/13

*2 Wicky (Epic)*

Total Stations: 16  
Heavy (30+): 1 XHRM  
Medium (15-29): 3 KFMA, KJEE, WHFS  
Light (Under 15): 12  
New Airplay This Week: 2 KHTY, WKQX

#### THIRD EYE BLIND 148/3

*How's It Going To Be (Elektra/EEG)*

Total Stations: 9  
Heavy (30+): 2 KITS, KOME  
Medium (15-29): 4 KLYY, KROQ, KWOD, WHFS  
Light (Under 15): 3

#### ★ THE REFRESHMENTS 142/65

*Good Year (Mercury)*

Total Stations: 19  
Heavy (30+): 0  
Medium (15-29): 1 KNRX  
Light (Under 15): 18  
New Airplay This Week: 4 KROX, KTOZ, WMRQ, WXR

#### ★ MOLOKO 116/22

*Fun For Me (Echo/Warner Bros.)*

Total Stations: 17  
Heavy (30+): 0  
Medium (15-29): 3 KHTY, KROX, XHRM  
Light (Under 15): 14

#### ★ MIGHTY JOE PLUM 113/1

*Live Through This (Fifteen Stories) (Atlantic)*

Total Stations: 9  
Heavy (30+): 2 WKDF, WPLA  
Medium (15-29): 1 WBZU  
Light (Under 15): 6  
New Airplay This Week: 1 KCXX

#### ★ THE TEA PARTY 100/12

*Temptation (Atlantic)*

Total Stations: 10  
Heavy (30+): 0  
Medium (15-29): 1 CFNY  
Light (Under 15): 9  
New Airplay This Week: 2 KEDJ, WQBK

#### ★ BETTER THAN EZRA 100/3

*Normal Town (Swell/Elektra/EEG)*

Total Stations: 5  
Heavy (30+): 1 KKND  
Medium (15-29): 2 KXPK, WPLT  
Light (Under 15): 2

Monitor AIRPLAY SONG ACTIVITY REPORTS

For Week Ending August 31, 1997

311 Prisoner (Capricorn/Mercury) Total Plays/Gain: 731/31. Chart Move: 34-33. Stations: 57. Includes data for New York, Chicago, San Fran, Phila, Detroit, Dallas, Wash, DC, Houston, Boston, Atlanta, Seattle, Long Isl, San Diego, Minn, St. Louis, Pitts, Phoenix, Cleveland, Denver, Port, OR, Cincinnati, Kan City, Rivers, Milwaukee, Sacram, San Jose, Provid, Colum, OH, Norfolk, Salt Lake, KXKR.

FIONA APPLE 1772/109 Criminal (Clean Slate) (WorK) Total Plays/Gain: 1772/109. Chart Move: 9-9. Stations: 73. Includes data for New York, Chicago, San Fran, Phila, Detroit, Dallas, Wash, DC, Houston, Boston, Atlanta, Seattle, Long Isl, San Diego, Minn, St. Louis, Pitts, Phoenix, Cleveland, Denver, Port, OR, Cincinnati, Kan City, Rivers, Milwaukee, Sacram, San Jose, Provid, Colum, OH, Norfolk, Salt Lake, KXKR.

BLUES TRAVELER 788/75 Most Precarious (A&M) Total Plays/Gain: 788/75. Chart Move: 33-32. Stations: 46. Includes data for New York, Chicago, San Fran, Phila, Detroit, Dallas, Wash, DC, Houston, Boston, Atlanta, Seattle, Long Isl, San Diego, Minn, St. Louis, Pitts, Phoenix, Cleveland, Denver, Port, OR, Cincinnati, Kan City, Rivers, Milwaukee, Sacram, San Jose, Provid, Colum, OH, Norfolk, Salt Lake, KXKR.

BLUR 257/21 M.O.R. (Parlophone/Virgin) Total Plays/Gain: 257/21. Chart Move: 1-1. Stations: 29. Includes data for New York, Chicago, San Fran, Phila, Detroit, Dallas, Wash, DC, Houston, Boston, Atlanta, Seattle, Long Isl, San Diego, Minn, St. Louis, Pitts, Phoenix, Cleveland, Denver, Port, OR, Cincinnati, Kan City, Rivers, Milwaukee, Sacram, San Jose, Provid, Colum, OH, Norfolk, Salt Lake, KXKR.

CHUMBAWAMBA 473/336 Tubthumping (Republic/Universal) Total Plays/Gain: 473/336. Chart Move: 1-1. Stations: 45. Includes data for New York, Chicago, San Fran, Phila, Detroit, Dallas, Wash, DC, Houston, Boston, Atlanta, Seattle, Long Isl, San Diego, Minn, St. Louis, Pitts, Phoenix, Cleveland, Denver, Port, OR, Cincinnati, Kan City, Rivers, Milwaukee, Sacram, San Jose, Provid, Colum, OH, Norfolk, Salt Lake, KXKR.

COUNTING CROWS 694/16 Have You Seen Me Lately? (DGC/Geffen) Total Plays/Gain: 694/16. Chart Move: 36-34. Stations: 43. Includes data for New York, Chicago, San Fran, Phila, Detroit, Dallas, Wash, DC, Houston, Boston, Atlanta, Seattle, Long Isl, San Diego, Minn, St. Louis, Pitts, Phoenix, Cleveland, Denver, Port, OR, Cincinnati, Kan City, Rivers, Milwaukee, Sacram, San Jose, Provid, Colum, OH, Norfolk, Salt Lake, KXKR.

DAYS OF THE NEW 291/43 Touch, Peel And Stand (Outpost/Geffen) Total Plays/Gain: 291/43. Chart Move: 19. Stations: 19. Includes data for New York, Chicago, San Fran, Phila, Detroit, Dallas, Wash, DC, Houston, Boston, Atlanta, Seattle, Long Isl, San Diego, Minn, St. Louis, Pitts, Phoenix, Cleveland, Denver, Port, OR, Cincinnati, Kan City, Rivers, Milwaukee, Sacram, San Jose, Provid, Colum, OH, Norfolk, Salt Lake, KXKR.

DEPECHE MODE 466/26 Useless (Mute/Reprise) Total Plays/Gain: 466/26. Chart Move: 47. Stations: 47. Includes data for New York, Chicago, San Fran, Phila, Detroit, Dallas, Wash, DC, Houston, Boston, Atlanta, Seattle, Long Isl, San Diego, Minn, St. Louis, Pitts, Phoenix, Cleveland, Denver, Port, OR, Cincinnati, Kan City, Rivers, Milwaukee, Sacram, San Jose, Provid, Colum, OH, Norfolk, Salt Lake, KXKR.

EVERCLEAR 618/537 Everything To Everyone (Capitol) Total Plays/Gain: 618/537. Chart Move: Debut 37. Stations: 56. Includes data for New York, Chicago, San Fran, Phila, Detroit, Dallas, Wash, DC, Houston, Boston, Atlanta, Seattle, Long Isl, San Diego, Minn, St. Louis, Pitts, Phoenix, Cleveland, Denver, Port, OR, Cincinnati, Kan City, Rivers, Milwaukee, Sacram, San Jose, Provid, Colum, OH, Norfolk, Salt Lake, KXKR.

FILTER AND THE CRYSTAL 803/2 (Can't You) Trip Like I Do (Immortal/Epic) Total Plays/Gain: 803/2. Chart Move: Debut 29-30. Stations: 67. Includes data for New York, Chicago, San Fran, Phila, Detroit, Dallas, Wash, DC, Houston, Boston, Atlanta, Seattle, Long Isl, San Diego, Minn, St. Louis, Pitts, Phoenix, Cleveland, Denver, Port, OR, Cincinnati, Kan City, Rivers, Milwaukee, Sacram, San Jose, Provid, Colum, OH, Norfolk, Salt Lake, KXKR.

FOO FIGHTERS 1808/132 Everlong (Roswell/Capitol) Total Plays/Gain: 1808/132. Chart Move: 8-8. Stations: 74. Includes data for New York, Chicago, San Fran, Phila, Detroit, Dallas, Wash, DC, Houston, Boston, Atlanta, Seattle, Long Isl, San Diego, Minn, St. Louis, Pitts, Phoenix, Cleveland, Denver, Port, OR, Cincinnati, Kan City, Rivers, Milwaukee, Sacram, San Jose, Provid, Colum, OH, Norfolk, Salt Lake, KXKR.

FOREST FOR THE TREES 922/73 Dream (DreamWorks/Geffen) Total Plays/Gain: 922/73. Chart Move: 27-23. Stations: 60. Includes data for New York, Chicago, San Fran, Phila, Detroit, Dallas, Wash, DC, Houston, Boston, Atlanta, Seattle, Long Isl, San Diego, Minn, St. Louis, Pitts, Phoenix, Cleveland, Denver, Port, OR, Cincinnati, Kan City, Rivers, Milwaukee, Sacram, San Jose, Provid, Colum, OH, Norfolk, Salt Lake, KXKR.

GOLDFINGER 458/260 This Lonely Place (Mojo/Universal) Total Plays/Gain: 458/260. Chart Move: 48. Stations: 48. Includes data for New York, Chicago, San Fran, Phila, Detroit, Dallas, Wash, DC, Houston, Boston, Atlanta, Seattle, Long Isl, San Diego, Minn, St. Louis, Pitts, Phoenix, Cleveland, Denver, Port, OR, Cincinnati, Kan City, Rivers, Milwaukee, Sacram, San Jose, Provid, Colum, OH, Norfolk, Salt Lake, KXKR.

GREEN DAY 871/871 Hitchin' A Ride (Reprise) Total Plays/Gain: 871/871. Chart Move: Debut 26. Stations: 73. Includes data for New York, Chicago, San Fran, Phila, Detroit, Dallas, Wash, DC, Houston, Boston, Atlanta, Seattle, Long Isl, San Diego, Minn, St. Louis, Pitts, Phoenix, Cleveland, Denver, Port, OR, Cincinnati, Kan City, Rivers, Milwaukee, Sacram, San Jose, Provid, Colum, OH, Norfolk, Salt Lake, KXKR.

JARS OF CLAY 349/73 Crazy Times (Essential/Silvertone) Total Plays/Gain: 349/73. Chart Move: Debut 29. Stations: 29. Includes data for New York, Chicago, San Fran, Phila, Detroit, Dallas, Wash, DC, Houston, Boston, Atlanta, Seattle, Long Isl, San Diego, Minn, St. Louis, Pitts, Phoenix, Cleveland, Denver, Port, OR, Cincinnati, Kan City, Rivers, Milwaukee, Sacram, San Jose, Provid, Colum, OH, Norfolk, Salt Lake, KXKR.

SONG ACTIVITY REPORTS

For Week Ending August 31, 1997

Detailed song tracking information for the last 3 weeks for all songs showing increased play this week. Total plays and gain do not include video play. Markets listed in order of population.

Grid of song activity reports for LIONROCK, LOVE SPIT LOVE, THE MIGHTY MIGHTY BOSSTONES, OASIS, and OUR LADY PEACE. Each section includes song title, chart move, and station data across various markets.

Grid of song activity reports for RADIOHEAD, REEL BIG FISH, SEVEN MARY THREE, SMASH MOUTH, and SUBLIME. Each section includes song title, chart move, and station data across various markets.

Grid of song activity reports for SUBLIME, THE SUNDAYS, TALK SHOW, THIRD EYE BLIND, and THE VERVE PIPE. Each section includes song title, chart move, and station data across various markets.



POWER PLAYLISTS™

WXRT Chicago, VP/Programming: Norm Winer, MD: Patty Martin. Top songs include Sarah McLachlan's 'Building A Mystery' (14) and John Fogerty's 'Blueboy' (23).

KFOG San Francisco, PD: Paul Marszalek, MD: Bill Evans. Top songs include Pretenders' 'Goodbye' (14) and Blues Traveler's 'Most Precarious' (14).

WBOS Boston, PD: Jim Herron, MD: Cliff Nash. Top songs include Fiona Apple's 'Criminal' (14) and Third Eye Blind's 'Semi-Charmed Life' (14).

KTCZ Minneapolis, PD: Lauren MacLeash, MD: Jane Fredrickson. Top songs include John Fogerty's 'Blueboy' (23) and Jonny Lang's 'Hit The Ground Running' (23).

WHPT Tampa, PD: Chuck Beck, APD/MD: Chrs Taylor. Top songs include Mighty Mighty Bosstones' 'The Impression' (32) and Sarah McLachlan's 'Building A Mystery' (32).

WVRV St. Louis, PD: Scott Strong, MD: Mike Richter. Top songs include Tonic's 'If You Could Only See' (41) and Sarah McLachlan's 'Building A Mystery' (39).

KBCO Denver, PD: Dave Benson, MD: Scott Arbough. Top songs include Sister Hazel's 'All For You' (26) and Abra Moore's 'Four Leaf Clover' (26).

KMTT Seattle, SM: Chris Mays, MD: Dean Carlson. Top songs include Blues Traveler's 'Carolina Blues' (12) and Sarah McLachlan's 'Building A Mystery' (12).

CIDR Detroit, PD: Murray Brookshaw, MD: Ann Delisi. Top songs include The Wallflowers' 'Three Marienas' (31) and Sarah McLachlan's 'Building A Mystery' (31).

KKZN Dallas, PD: Amy Doyle, APD: Spike. Top songs include Sarah McLachlan's 'Building A Mystery' (26) and Counting Crows' 'Daylight Fading' (26).

KINK Portland, OR, PD: Dennis Constantine, APD: Anita Garlock. Top songs include Elton John's 'Something About The Way You' (8) and Indigo Girls' 'Get Out The Map' (7).

WXRV Boston, PD: Joanne Dwyer, MD: Mike Mullaney. Top songs include Sugar Ray's 'Fly' (23) and Jars Of Clay's 'Crazy Times' (23).

Main chart table with columns for This Week, Last Week, Weeks on Chart, Title/Label/Promotion Label, Artist, TW, LW. Features No. 1 spot for Sarah McLachlan's 'Building A Mystery'.

MODERN ADULT

Modern Adult chart table with columns for This Week, Last Week, Weeks on Chart, Title/Label/Promotion Label, Artist, TW, LW. Features No. 1 spot for Sister Hazel's 'All For You'.

Records showing an increase in detections over the previous week, regardless of chart movement. A record which has been on the chart for more than 20 weeks will not receive a bullet, even if it registers an increase in detections.

For Week Ending August 31, 1997

COMBINED ROCK MONITOR AIRPLAY										AIRPLAY THIS WEEK BY FORMAT									
TW	LW	WKS	TITLE (LABEL/PROMOTION LABEL)	ARTIST	THIS WEEK			LAST WEEK			MAINSTREAM			MODERN			TRIPLE-A		
					Audience (millions)	Detections No.	Rank	Audience (millions)	Detections No.	Rank	Audience (millions)	Detections No.	Rank	Audience (millions)	Detections No.	Rank	Audience (millions)	Detections No.	Rank
1	1	12	FLY (LAVA/ATLANTIC)	SUGAR RAY	22.6345	3501	1	23.8928	3613	3	3.2987	512	29	18.5800	2814	1	0.7558	175	19
2	2	23	PUSH (LAVA/ATLANTIC)	MATCHBOX 20	21.8537	3396	3	23.3395	3700	2	6.9981	1074	8	12.3229	1903	6	2.5327	419	3
3	3	23	IF YOU COULD ONLY SEE (POLYDOR/A&M)	TONIC	20.5269	2922	5	21.5306	3110	4	9.2662	1325	5	9.7006	1349	13	1.5601	248	15
4	5	8	WALKIN' ON THE SUN (INTERSCOPE)	SMASH MOUTH	19.7719	3190	4	18.9333	2961	5	1.8069	409	33	17.6353	2679	2	0.3297	102	—
5	4	15	TURN MY HEAD (RADIOACTIVE/MCA)	LIVE	18.6749	3477	2	21.0939	3748	1	8.4880	1402	3	8.8444	1814	7	1.3425	261	13
6	6	8	EVERLONG (ROSWELL/CAPITOL)	FOO FIGHTERS	18.3461	2580	7	17.8942	2433	9	4.6919	761	20	13.6402	1808	8	0.0140	11	—
7	7	11	BUILDING A MYSTERY (NETTWERK/ARISTA)	SARAH MCLACHLAN	16.8172	2691	6	16.2197	2729	6	0.6056	155	—	12.5189	1963	4	3.6927	573	1
8	9	14	WRONG WAY (GASOLINE ALLEY/MCA)	SUBLIME	14.4555	2144	10	14.8743	2121	13	0.9205	161	—	13.5001	1968	3	0.0349	15	—
9	12	7	CRIMINAL (CLEAN SLATE/WORO)	FIONA APPLE	13.7472	2278	9	13.0823	2128	12	0.2027	70	—	11.2254	1772	9	2.3191	436	2
10	8	9	D' YOU KNOW WHAT I MEAN? (EPIC)	OASIS	13.6259	2340	8	15.4511	2526	7	2.0642	358	37	11.4608	1922	5	0.1009	60	—
11	10	24	SEMI-CHARMED LIFE (ELEKTRA/EEG)	THIRD EYE BLIND	13.1657	1915	14	14.6191	2032	14	2.4079	315	—	8.9332	1299	14	1.8246	301	9
12	18	7	SUPERMAN'S DEAD (COLUMBIA)	OUR LADY PEACE	12.4621	2019	12	10.9995	1967	15	4.4562	807	15	8.0059	1212	16	—	—	—
13	16	4	TOUCH, PEEL AND STAND (OUTPOST/GEFFEN)	DAYS OF THE NEW	12.3697	1710	17	11.0936	1517	18	9.6065	1419	2	2.7632	291	—	—	—	—
14	14	24	THE IMPRESSION THAT I GET (BIG RIG/MERCURY)	THE MIGHTY MIGHTY BOSSTONES	12.0643	1592	20	12.8191	1697	17	1.9354	312	—	9.4110	1135	17	0.7179	145	—
15	11	19	THE DIFFERENCE (INTERSCOPE)	THE WALLFLOWERS	11.9680	2120	11	13.7102	2515	8	6.3314	957	10	3.7937	827	28	1.8429	336	4
16	15	17	6 UNDERGROUND (CLEAN UP/VIRGIN)	SNEAKER PIMPS	11.1156	1636	19	12.5353	1800	16	0.2389	43	—	9.7744	1466	10	1.1023	127	—
17	21	2	HELLO HELLO (ATLANTIC)	TALK SHOW	11.0418	1769	16	9.4750	1366	24	4.5276	766	19	6.5142	1003	20	—	—	—
18	13	17	LISTEN (ATLANTIC)	COLLECTIVE SOUL	10.9835	1880	15	12.9249	2255	10	7.3030	1179	7	3.0462	591	38	0.6343	110	—
19	23	3	PINK (COLUMBIA)	AEROSMITH	10.8524	1710	18	9.0119	1447	21	10.8524	1710	1	—	—	—	—	—	—
20	NEW		HITCHIN' A RIDE (REPRISE)	GREEN DAY	10.2743	1174	31	0.0000	0	—	3.0581	303	—	7.2162	871	26	—	—	—
21	19	7	LAZY EYE (WARNER SUNSET/WARNER BROS.)	GOO GOO DOLLS	9.8963	1927	13	10.9731	2130	11	5.8799	1033	9	3.9711	872	25	0.0453	22	—
22	17	29	GONE AWAY (COLUMBIA)	THE OFFSPRING	9.7496	1247	28	11.0152	1375	23	5.4711	766	18	4.2737	474	—	0.0048	7	—
23	20	8	SELL OUT (MOJO/UNIVERSAL)	REEL BIG FISH	9.2952	1502	22	9.5160	1499	19	0.2137	34	—	9.0148	1432	12	0.0667	36	—
24	25	4	THE RASCAL KING (BIG RIG/MERCURY)	THE MIGHTY MIGHTY BOSSTONES	8.8562	1513	21	8.4740	1446	22	0.2449	46	—	8.5716	1432	11	0.0397	35	—
25	27	5	JACK-ASS (DGC/GEFFEN)	BECK	8.6728	1283	26	8.3605	1295	26	—	—	—	8.6675	1278	15	0.0053	5	—
26	31	3	MOST PRECARIOUS (A&M)	BLUES TRAVELER	8.5737	1368	25	7.8050	1229	31	1.5967	247	—	4.7063	788	32	2.2707	333	5
27	24	9	TRUST (CAPITOL)	MEGADETH	8.3228	1193	30	8.7913	1233	30	8.3228	1193	6	—	—	—	—	—	—
28	22	42	ONE HEADLIGHT (INTERSCOPE)	THE WALLFLOWERS	8.2589	1136	33	9.0592	1191	32	3.0050	423	—	4.0213	561	—	1.2326	152	—
29	30	5	GRADUATE (ELEKTRA/EEG)	THIRD EYE BLIND	8.2175	1258	27	7.9663	1244	28	0.9922	210	—	7.2247	1047	19	0.0006	1	—
30	32	5	MARCHING TO MARS (THE TRACK FACTORY/MCA)	SAMMY HAGAR	8.0280	1379	24	7.6756	1316	25	8.0221	1375	4	—	—	—	0.0059	4	—
31	29	5	VILLAINS (RCA)	THE VERVE PIPE	7.9904	1491	23	8.0145	1470	20	3.1697	552	24	4.8123	936	22	0.0084	3	—
32	NEW		SUMMERTIME (DGC/GEFFEN)	THE SUNDAYS	7.8546	999	41	6.4441	833	55	—	—	—	6.9790	838	27	0.8756	161	—
33	26	10	BLEEDING ME (ELEKTRA/EEG)	METALLICA	7.1679	1003	40	8.3644	1184	33	6.9325	937	12	0.2354	66	—	—	—	—
34	33	3	I CHOOSE (COLUMBIA)	THE OFFSPRING	7.0613	1009	39	7.4680	990	42	5.4613	836	13	1.5925	168	—	0.0075	5	—
35	28	21	SONG 2 (FOOD/PARLOPHONE/VIRGIN)	BLUR	6.9223	1077	35	8.0235	1144	35	1.0204	197	—	5.9019	880	24	—	—	—
36	34	31	THE FRESHMEN (RCA)	THE VERVE PIPE	6.8049	1030	38	7.3872	1128	37	2.1358	305	—	3.8489	575	—	0.8202	150	—
37	39	4	BREATHE (XL MUTE/MAVERICK/WARNER BROS.)	PRODIGY	6.4998	1198	29	6.4603	1237	29	0.2501	119	—	6.2459	1074	18	0.0038	5	—
38	35	20	MONKEY WRENCH (ROSWELL/CAPITOL)	FOO FIGHTERS	6.4516	791	54	7.0051	859	51	2.9101	377	36	3.5322	404	—	0.0093	10	—
39	NEW		EVERYTHING TO EVERYONE (CAPITOL)	EVERCLEAR	6.4512	805	51	1.2336	103	432	1.4447	186	—	5.0050	618	37	0.0015	1	—
40	38	32	VOLCANO GIRLS (MINTY FRESH/OUTPOST/GEFFEN)	VERUCA SALT	6.4058	879	47	6.6682	919	46	3.0932	335	—	3.3052	540	—	0.0074	4	—

Records showing an increase in audience over the previous week, regardless of chart movement. Rankings broken down by mainstream, modern and triple-A formats (on right side of this page) correspond to charts printed in this week's Monitor and therefore rankings do not exist for recurrences and records below No. 40 (No. 20 for triple-A). Audience computed by cross-referencing exact times of airplay with Arbitron listener data. ©1997, Billboard/BPI Communications.



# Dance Hall Crashers



## Lost Again

The First Single From The Upcoming Album Honey, I'm Homely

On Tour Across America Starting in September

Airplay  
Includes:

- WLIR
- LIVE 105
- KDGE
- WHFS
- XHRM
- 91X
- KEDJ
- KNRK
- WAQZ
- KCXX
- KWOD
- KOME
- WBZU
- KPOI
- WOXY
- WXEG
- WHTG
- WBZF
- WXSR
- WWSK

And Many  
More

Produced by Stoker and Dance Hall Crashers Except "Mr. Blue" Produced by Tim Palmer for World's End America, Inc. Additional Production on "Lost Again" and "All Mine" by Tim Palmer for World's End America, Inc.

Management: Elyse Rogers for Goldenvoice Management

Get AMP'd: MCA Records Online: [www.mcarecords.com](http://www.mcarecords.com) • © 1997 MCA Records, Inc.

World Radio History

MCA 510

THIS WEEK	LAST WEEK	WKS. ON CHART	MAINSTREAM		DETECTIONS		
			TITLE/LABEL/PROMOTION LABEL	ARTIST	TW	LW	
			<b>★★★ No. 1 ★★★</b>				
1	1	18	<b>PINK</b> COLUMBIA	AEROSMITH	1710	1446	
2	6	8	TOUCH, PEEL AND STAND OUTPOST/GEFFEN	DAYS OF THE NEW	1419	1268	
3	3	10	TURN MY HEAD RADIOACTIVE/MCA	LIVE	1402	1407	
4	5	6	MARCHING TO MARS THE TRACK FACTORY/MCA	SAMMY HAGAR	1375	1316	
5	2	23	IF YOU COULD ONLY SEE POLYDOR/A&M	TONIC	1325	1429	
6	7	16	TRUST CAPITOL	MEGADETH	1193	1233	
7	4	17	LISTEN ATLANTIC	COLLECTIVE SOUL	1179	1388	
8	9	27	PUSH LAVA/ATLANTIC	MATCHBOX 20	1074	1092	
9	11	8	LAZY EYE WARNER SUNSET/WARNER BROS.	GOO GOO DOLLS	1033	1047	
10	10	18	THE DIFFERENCE INTERSCOPE	THE WALLFLOWERS	957	1092	
11	13	8	LIVE THROUGH THIS (FIFTEEN STORIES) ATLANTIC	MIGHTY JOE PLUM	954	939	
12	8	14	BLEEDING ME ELEKTRA/VEEG	METALLICA	937	1111	
13	18	7	I CHOOSE COLUMBIA	THE OFFSPRING	836	831	
14	14	13	LAST CUP OF SORROW SLASH/REPRISE	FAITH NO MORE	814	904	
15	16	12	SUPERMAN'S DEAD COLUMBIA	OUR LADY PEACE	807	849	
16	15	9	SOUL OF LOVE VELVEL	PAUL RODGERS	795	860	
17	12	14	CAROLINA BLUES A&M	BLUES TRAVELER	784	946	
18	17	29	GONE AWAY COLUMBIA	THE OFFSPRING	766	847	
19	27	2	HELLO HELLO ATLANTIC	TALK SHOW	766	552	
20	21	4	EVERLONG ROSWELL/CAPITOL	FOO FIGHTERS	761	744	
21	20	9	LOCKED & LOADED EPIC	JACKYL	656	777	
22	22	5	SUGARCANE COLUMBIA	CRY OF LOVE	654	671	
23	28	3	MY OWN PRISON WINO-UP	CREED	586	497	
24	24	8	VILLAINS RCA	THE VERVE PIPE	552	584	
25	19	15	BATON ROUGE MCA	THE NIXONS	545	780	
26	25	4	CONGO ATLANTIC	GENESIS	539	581	
27	26	7	AENEMA ZOO/VOLCANO	TOOL	534	566	
28	31	3	HIT THE GROUND RUNNING A&M	JONNY LANG	513	477	
29	30	3	FLY LAVA/ATLANTIC	SUGAR RAY	512	480	
30	32	4	HIGH ROCKET/A&M	JIMMIE'S CHICKEN SHACK	498	446	
31	29	4	ONE ANGEL AWARE/CAPITOL	STIR	495	495	
32	23	11	YOU EMI/VIRGIN	QUEENSRYCHE	429	643	
33	<b>NEW</b>		WALKIN' ON THE SUN INTERSCOPE	SMASH MOUTH	409	283	
34	38	2	HAVE YOU SEEN ME LATELY? OGC/GEFFEN	COUNTING CROWS	404	395	
35	34	5	BRING IT ON CMC INTERNATIONAL	LYNYRD SKYNYRD	384	427	
36	35	19	MONKEY WRENCH ROSWELL/CAPITOL	FOO FIGHTERS	377	425	
37	36	5	D' YOU KNOW WHAT I MEAN? EPIC	OASIS	358	408	
38	39	6	PLACE YOUR HANDS EPIC	REEF	353	386	
39	40	2	SHUTTERBUG MINTY FRESH/OUTPOST/GEFFEN	VERUCA SALT	347	360	
40	37	5	FADE TO BLUE RAZOR & TIE	38 SPECIAL	344	403	

THIS WEEK	LAST WEEK	WKS. ON CHART	MODERN		DETECTIONS		
			TITLE/LABEL/PROMOTION LABEL	ARTIST	TW	LW	
			<b>★★★ No. 1 ★★★</b>				
1	1	12	<b>FLY</b> LAVA/ATLANTIC	SUGAR RAY	2814	2995	
2	2	9	WALKIN' ON THE SUN INTERSCOPE	SMASH MOUTH	2679	2576	
3	7	14	WRONG WAY GASOLINE ALLEY/MCA	SUBLIME	1968	1961	
4	6	11	BUILDING A MYSTERY NETTWERK/ARISTA	SARAH MCLACHLAN	1963	1996	
5	5	9	D' YOU KNOW WHAT I MEAN? EPIC	OASIS	1922	2055	
6	3	20	PUSH LAVA/ATLANTIC	MATCHBOX 20	1903	2162	
7	4	14	TURN MY HEAD RADIOACTIVE/MCA	LIVE	1814	2082	
8	8	7	EVERLONG ROSWELL/CAPITOL	FOO FIGHTERS	1808	1676	
9	9	8	CRIMINAL CLEAN SLATE/WORK	FIONA APPLE	1772	1663	
10	10	21	6 UNDERGROUND CLEAN UP/VIRGIN	SNEAKER PIMPS	1466	1649	
11	14	6	THE RASCAL KING BIG RIG/MERCURY	THE MIGHTY MIGHTY BOSSTONES	1432	1363	
12	13	17	SELL OUT MOJO/UNIVERSAL	REEL BIG FISH	1432	1413	
13	11	25	IF YOU COULD ONLY SEE POLYDOR/A&M	TONIC	1349	1450	
14	12	25	SEMI-CHARMED LIFE ELEKTRA/VEEG	THIRD EYE BLIND	1294	1420	
15	15	7	JACK-ASS OGC/GEFFEN	BECK	1278	1286	
16	18	7	SUPERMAN'S DEAD COLUMBIA	OUR LADY PEACE	1212	1118	
17	16	28	THE IMPRESSION THAT I GET BIG RIG/MERCURY	THE MIGHTY MIGHTY BOSSTONES	1135	1263	
18	19	10	BREATHE XL MUTE/MAVERICK/WARNER BROS.	PRODIGY	1074	1092	
19	22	6	GRADUATE ELEKTRA/VEEG	THIRD EYE BLIND	1047	1045	
20	28	2	HELLO HELLO ATLANTIC	TALK SHOW	1003	813	
21	17	12	SICK & BEAUTIFUL CRUNCHY/INTERSCOPE	ARTIFICIAL JOY CLUB	939	1132	
22	25	6	VILLAINS RCA	THE VERVE PIPE	936	877	
23	27	3	DREAM DREAMWORKS/GEFFEN	FOREST FOR THE TREES	922	849	
24	23	23	SONG 2 FOOO/PARLOPHONE/VIRGIN	BLUR	880	940	
25	20	8	LAZY EYE WARNER SUNSET/WARNER BROS.	GOO GOO DOLLS	872	1067	
26	<b>NEW</b>		HITCHIN' A RIDE REPRISE	GREEN DAY	871	0	
27	37	2	SUMMERTIME DGC/GEFFEN	THE SUNDAYS	838	672	
28	21	18	THE DIFFERENCE INTERSCOPE	THE WALLFLOWERS	827	1066	
29	30	5	LET DOWN CAPITOL	RADIOHEAD	811	788	
30	29	5	(CAN'T YOU) TRIP LIKE I DO IMMORTAL/EPIC	FILTER AND THE CRYSTAL METHOD	803	801	
31	24	25	NOT AN ADDICT 550 MUSIC	K'S CHOICE	803	892	
32	33	3	MOST PRECARIOUS A&M	BLUES TRAVELER	788	713	
33	34	2	PRISONER CAPRICORN/MERCURY	311	731	700	
34	36	3	HAVE YOU SEEN ME LATELY? OGC/GEFFEN	COUNTING CROWS	694	678	
35	35	6	MY TOWN TVT	BUCK-O-NINE	680	689	
36	31	5	NOT IF YOU WERE THE LAST JUNKIE ON EARTH TIM KERR/CAPITOL	THE DANDY WARHOLS	653	728	
37	<b>NEW</b>		EVERYTHING TO EVERYONE CAPITOL	EVERCLEAR	618	80	
38	32	16	LISTEN ATLANTIC	COLLECTIVE SOUL	591	728	
39	26	10	WHAT DO YOU WANT FROM ME? POLYDOR/A&M	MONACO	573	856	
40	<b>NEW</b>		LONG LONG TIME MAVERICK/WARNER BROS.	LOVE SPIT LOVE	549	516	

Records showing an increase in detections over the previous week, regardless of chart movement. A record which has been on either chart for more than 20 weeks will not receive a bullet, even if it registers an increase in detections. Airpower awarded to those records which attain 800 detections (mainstream) or 1,100 (modern) for the first time. If two records are tied in number of plays, the record being played on more stations is placed first. Records below the top 20 are removed from the chart after 26 weeks.



**JONNY LANG**  
**HIT THE GROUND**  
**RUNNING**

**31 - 28**  
**MAINSTREAM ROCK**

**14 - 11**  
**HERITAGE ROCK**

On tour with Aerosmith and Blues Traveler starting in October

★★★★★ THE NEW SINGLE ★★★★★★  
<http://www.amrecords.com>

©1997 A&M RECORDS, INC., A POLYGRAM COMPANY. ALL RIGHTS RESERVED.

