

# ROCK ■ AIRPLAY Monitor

• We Listen To Radio •

November 22, 1996 \$4.95 Volume 3 • No. 48

## ROCK HIGHLIGHTS

### MAINSTREAM

#1

**VAN HALEN**  
*Me Wise Magic* (WARNER BROS.)

★ ★ ★ AIRPOWER ★ ★ ★

NO RECORDS QUALIFIED FOR AIRPOWER THIS WEEK

### NEW RELEASES

IMPERIAL TEEN • *Balloon* (LONDON/ISLAND)  
JARS OF CLAY • *Little Drummer Boy* (ESSENTIAL/SILVERTONE/JIVE)  
KULA SHAKER • *Tattva* (COLUMBIA)  
RAGE AGAINST THE MACHINE • *Down Rodeo* (EPIC)  
RUSTED ROOT • *Faith I Do Believe* (MERCURY)  
VAN HALEN • *Can't Get This Stuff No More* (WARNER BROS.)

### MODERN

#1

**BUSH**  
*Swallowed* (TRAUMA/INTERSCOPE)

★ ★ ★ AIRPOWER ★ ★ ★

GARBAGE • #1 *Crush* (CAPITOL)  
RED HOT CHILI PEPPERS • *Love Rollercoaster* (Geffen)

### NEW RELEASES

JARS OF CLAY • *Little Drummer Boy* (ESSENTIAL/SILVERTONE/JIVE)  
NIRVANA • *Drain You* (DGC/Geffen)  
RAGE AGAINST THE MACHINE • *Down Rodeo* (EPIC)

### TRIPLE A

#1

**R.E.M.**  
*Bittersweet Me* (WARNER BROS.)

★ ★ ★ AIRPOWER ★ ★ ★

BODEANS • *Hurt By Love* (SLASH/REPRISE)  
CHALK FARM • *Lie On Lie* (COLUMBIA)

## Return Of FCC Indecency Fines Keeps Morning Teams, PDs On Their Toes

by Marc Schiffman

Until recently, it seemed that the FCC had long moved out of its indecency-fines phase and had turned its attention to other matters. Most of the storied Howard Stern fines had been settled and indecency looked like it was on the back burner, if not wholly off the radar screen, for radio stations.

That ended when Jaz McKay, newly reinstalled in mornings in Lansing, Mich., via album WVIC, aired a phone conversation containing the "M-F" phrase. By early October, the FCC had slapped WVIC with a fine. Two weeks later, the old WVGO Richmond, Va., was fined by the FCC for two incidents on the Stern program, even though the show itself was no longer on the frequency. Recently, top 40 KTFM San Antonio, Texas, was fined for playing Prince's "Erotic City," a record that had already netted KLUC Las Vegas a fine several years ago.

With the FCC back on its watch, are rock PDs who deal with potentially controversial morning talent re-evaluating the terrain? While they deny any knee-jerk reaction to the latest round of FCC fines, they say that working closely and on a pro-active basis with their morning shows is the key to avoiding trouble with the FCC—and advertisers.

### IF I ONLY HAD DELAY

"I wasn't real surprised when the FCC got in touch with us about this,"

says WVIC PD Todd Thomas. McKay had a track record in the market, and Thomas says, "I know that my competition is frightened that we've got Jaz McKay. They tape every one of his shows. I do know that for a fact."

McKay had been on the air only a week. While WVIC was working on getting a delay system installed when McKay went to the phones July 3 and got the foul-mouthed caller, there was nothing he could do but dump out of the call. "In hindsight," Thomas says, "we should have just had Jaz do his show without going to the phones" until the delay was up and running.

"I don't see how a radio station in 1996 who puts callers on the air or has other guests in the studio can't find room in the budget for a delay," says Marty Bender, OM of album WFBI Indianapolis, home to the syndicated Bob and Tom show. "There's no excuse for that. [given] the amount of money you'll save in the long run. Say a delay costs a couple thousand, and you get fined a couple thousand, it's a wash. If you didn't have the delay, you're going to pay the fine. You've got to have it, and we've had it in there a long time."

### SETTING BOUNDARIES

Bender says that at his first meeting with Bob and Tom, he said, "These are the restrictions that you'll have on

*Continued on page 5*



## IT'S NOT "ENOUGH" THE NEW SINGLE

MODERN ROCK:  
NEW AT: Q101

MAINSTREAM ROCK:  
NEW AT: KUFO & KHOP  
#40 R&A ACTIVE ROCK

ALREADY ON:  
WBCN KXRK  
91X KPNT  
KOME KMYZ  
KQGE KGDE  
XHRM WORE  
KTBZ WQGE  
KEGE WXEG  
KNAK KROX  
WLUM KNNC  
WENZ WQXA

WPBZ  
WNVE  
REVI05  
WZRH  
KKND  
WXZZ  
KTCL  
WXPS  
KNRX  
AND MORE...

ALREADY ON:  
KEGL KRXQ  
KTUX KZRR  
KSJO KUPD  
WSTZ WIYY  
WRAF KNCN  
WRCX WNOR  
KILO WZAT  
KBPI WAXR  
KISS KAAD  
AND MORE...

OVER 400 BDS MODERN ROCK/  
OVER 250 BDS MAINSTREAM ROCK  
OVER 265,000 UNITS TOTAL SOUNDSCANNED  
SOLD OUT TOUR HITTING WEST COAST NOW



CATHERINE

The Single Four Leaf Clover featuring D'ARCY  
ALREADY ON:  
KTEG REVI05 WZTA  
WROX WOXY KWBR  
KNNC WSTZ

TOP 10 COLLEGE

"There are many songs on *Hot Saki & Bedtime Stories* that are radio ready. In my humble opinion, the songwriting is absolutely first rate. This is an album of depth."  
- Max Tolkoff, *Q101*

KMFDM

LOOK FOR  
TOUR IN THE  
NEW YEAR

'SON OF A GUN' VIDEO ADDED TO  
FROM THE NEW ALBUM XTORT

OVER 60,000 SOUNDSCAN  
#1 CVC VIDEO #1 MOST ADDED METAL

RAIO CONTACTS AT TVT RECORDS  
JOHN PEARONE JOHN@TVTRECORDS.COM  
GARY JAY GARY@TVTRECORDS.COM  
SUZI GARSCHÉ SUZI@TVTRECORDS.COM  
ZACK LANIER ZACK@TVTRECORDS.COM  
MARK JACKSON (WEST COAST)

TVT RECORDS, 23 EAST 4TH STREET, NEW YORK, NY 10003 TEL 212.979.6410 FAX 212.979.6409 WWW.TVTRECORDS.COM  
MANAGEMENT: GLORIA BUTLER MANAGEMENT (GRAVITY KILLS), JERRY JAFFE (CATHERINE), CHARLIE HEWITT (KMFDM)



All Mixed Up



from the platinum album **311**

Produced by Ron Saint Germain and 311 • Recorded and Mixed by Ron Saint Germain  
©1996 Capricorn Records. Manufactured and Marketed by Mercury Records. <http://www.capri.com>

New video "Enlarged To Show Detail"  
Debuts at #1 on  
Billboard's Music Video Chart

Modern Rock Monitor (17) - (12)

Airplay on Alternative, Active Rock  
Triple A and CHR!



# CAKE

THE DISTANCE



FROM THE ALBUM



PRODUCED BY CAKE

MANAGEMENT - BONNIE SIMMONS, OAKLAND, CA.

©1996 CAPRICORN RECORDS. MANUFACTURED AND MARKETED BY MERCURY RECORDS.

MODERN ROCK MONITOR (4)

#1 MOST REQUESTED  
AT VIRTUALLY ALTERNATIVE  
FOR 6 WEEKS IN A ROW!

#6 MOST REQUESTED AT POWERCUTS

AIRPLAY ON ALTERNATIVE,  
ACTIVE ROCK, TRIPLE A AND CHR!

APPROACHING GOLD!





# RADIOACTIVE

## Mix 105 Goes Modern AC As The Buzz

**A**fter much speculation, WMXV (Mix 105) New York, which experimented with rock AC last fall before backing off, went modern AC Nov. 14 as the Buzz. Exiting are staffers **Jeff Spurgeon**, **Liz White**, **Dan Taylor**, **Jim Douglas**, and **Alain Ross**. WMXV taps WTIC-FM Hartford, Conn., morning guys **Bill Kelly** and **Al Kline**, along with **Dick Puritan's** daughter **Jackie** on traffic and **Debbie Foster** from Shadow Traffic for news. **Judy Franco** from oldies WZVU Long Branch, N.J., joins for middays. The station has applied for the calls **WDBZ** but is still ID'ing as "WMXV New York—for now."



Here's a sample midday hour from the Buzz: **John Mellencamp**, "Pink Houses"; **Sophie B. Hawkins**, "As I Lay Me Down To Sleep"; **U2**, "I Will Follow"; **Tears For Fears**, "Head Over Heels"; **Alanis Morissette**, "Head Over Heels"; **Crowded House**, "Something So Strong"; **Eleanor McEvoy**, "Precious Little"; **Romantics**, "What I Like About You"; **Nik Kershaw**, "Wouldn't It Be Good"; **Berlin**, "No More Words"; **Dishwalla**, "Counting Blue Cars"; and **10,000 Maniacs**, "What's The Matter Here?"

With **Brad Hardin** heading for warmer climes, classic rock **WOFX** Cincinnati OM **Jim Richards** expands his duties to include album **WEBN**.

**Jeff Levine** exits the PD seat at album **WBAB** Long Island, N.Y.

**Dennis Lamme**, most recently GSM of top 40 **KGGI** Riverside, Calif., is named GM for SFX's **WKSS/WHCN/WMRQ/WPOP** Hartford, replacing **Tim Montgomery**. **WKSS** middayer **Hollywood Joe** (the DJ formerly known as **Fredy Vetter** at **WHTZ** [Z100] New York) picks up weekends at modern **WXRK** New York as **Logan**, reuniting him with PD **Steve Kingston**.

Classic rock **KXOA-AM-FM**/triple-A **KQPT** Sacramento, Calif., VP/GM **John Geary** will become VP/GM of album **KRXQ**/classic rock **KSEG**, replacing **Tom Schurr**, when Entercom LMA's those local stations. Geary retains his role at **KXOA**.

As **WDZR** Detroit prepares its new **Ted Nugent**-anchored format, look for it to emerge under new calls **WWBR** and the handle "the Bear." PD **Joe Bevilacqua** says the change will be accompanied by a more mainstream album approach, pulling back the current-to-classic ratio from 70-30 to 50-50 and going for a guitar-driven uptempo sound, paying "a lot less homage to heavy metal bands."

Katz Radio Northeast divisional VP **Rob Williams** becomes GM of album **WPLR** New Haven, Conn., and crosstown adult R&B **WYBC**.

Westinghouse has split off its industrial division, now named **Welco**, and the broadcasting division, which will include CBS radio/TV; the soon-to-be acquired **Infinity** stations; and **Group W** Satellite Communications.

As part of the ongoing Spanish-language measurement controversy, Arbitron will try checking for language preference via a diary question, rather than during a placement call. Arbitron says that asking the question once—as opposed to during placement and in the diary—won't affect reported listening. As for what is a truly representative percentage of Spanish-preference Hispanics, Arbitron VP **David Lapovsky** says that issue is still being looked at.

**KQRS-AM** Minneapolis drops its album rock simulcast to become one of the pilot stations for ABC's Radio Disney "children's top 40" format.

Former ABC Z-Rock affiliate **WHZT** Champaign, Ill., flips to classic rock as **WGKC**. **Tamara McDaniel**, morning co-host at top 40 duopoly partner **WQOB**, is the OM. The change means that **WHZT's** sister station, **WZNF** (Rock 95.1), will ditch the last of its classic rock library material and move further in the "active" rock direction.

**KAXT** (Cat Country) Monterey, Calif., has

flipped to an adult modern format as **KCDU**.

Top 40 **WIRX** St. Joseph, Mich., completes its segue to mainstream rock. PD **Mike Thomas** becomes PD of album **WYMG** Springfield, Ill.

**WOLX** Madison, Wis., GM **Jonathan Little** adds GM duties for triple-A/country duop partners **WMMM/WYZM**, replacing **Ralph Cohen**.

Modern **KXPX** (the Peak) Denver MD **Gary Schoenwetter** adds APD stripes, while **Greg Pratt** is upped from interim to permanent promotions director. The Peak inks new P/T talent **Mike Wilson**, formerly of crosstown **KNRX** (now **KJMN**), and **Lalaine** from **WOWW** Pensacola, Fla.

Veteran programmer (and current AOL president) **Bob Pittman** teams with **Bob Sherman** to buy four stations in the Four Corners, N.M., area as **Roberts Radio**, including classic rock **KRWN**.

Modern **KPNT** St. Louis MD/nights **Tim Virgin** joins modern AC **WLUP** Chicago for nights.

Modern **KJEE** Santa Barbara, Calif., MD **Deanne Saffren** joins rival **KHTY** as APD.

**Scorch**, afternoon driver at modern simulcast **WKRL** Syracuse, N.Y., and **WKLL** Utica, N.Y., adds APD stripes.

The Chicago Sun-Times reports that triple-A **WXRT** Chicago morning man **Lin Brehmer** has inked a multivear deal to remain with the station.

Look for AIM Marketing's **Barry Jeckell** to join SW Networks as rock reporter.

Modern AC **WPTE** Norfolk, Va., moves MD **Donna McCoy** from afternoons to morning co-host. PD **Mark Bradley** will do afternoons.

The departure of production director **Mark McLure** from album **WRXR** Augusta, Ga., lets **Jay Sisson** trade MD stripes for production. Night jock **Jordan Zeh** becomes MD.

Modern **WNTX** Kalamazoo, Mich., taps **Mike & the Beagle** for mornings from the same post at modern **WWDX** Lansing, Mich. **Tommie Lee** exits middays at album **WIRX** St. Joseph, Mich., for the same with **WNTX**. The additions move morning man **Casey** to nights, as **Tad Sinic** exits the station. Middayer **John Staley** takes overnights.

Country **WKHK** Richmond, Va., morning co-host **Mike Wheless** returns to his hometown, joining classic rock **WZZU** Raleigh, N.C., as morning co-host, paired with **Kevin Silva**.

Top 40 **WTCT** Saginaw, Mich.'s **Jean Marie Pavol** is now morning co-host at album **WHEB** Portsmouth, N.H.

Album **WMFS** Memphis production director **Greg Murray** joins album **WLVQ** Columbus, Ohio, for same. **WLVQ** research director **Mark Pennington** moves to programming assistant.

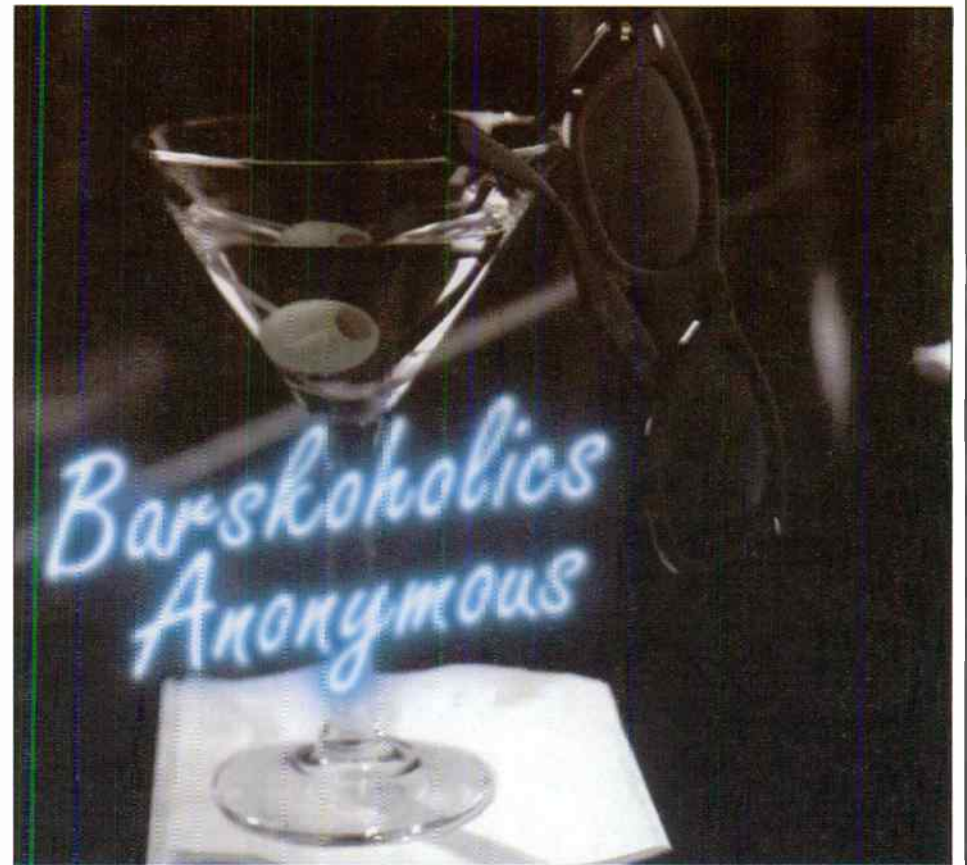
Modern **WPLA** (the Planet) Jacksonville, Fla., PD **J.R. Randall** passes his morning shift to night jock **Dick Dale**... AC **WARM** York, Pa., promo guy **Ron Bleacher** crosses to modern **WQXA** as promotion director.

**Rusty Keller**, production director with the late **KKYK** Little Rock, Ark., joins album **WWVW** Charlottesville, Va., for nights and production.

Top 40 **KDWB** Minneapolis promo assistant **Joe Birchhill** crosses the hall to triple-A **KTCZ** as promotion director... Classic rock **WZGC** Atlanta P/T **Brian Howard** takes overnights.

Tense moments Tuesday (19) for classic rock **WAXQ** (Q104.3) New York. Two armed fugitives from a nearby botched robbery attempt rushed into the office building housing the station. Within moments, a SWAT team, helicopters, and news vehicles surrounded the building and shut it down. Several Q104.3 employees who left the building for a cup of coffee found that they were unable to return. Midday host **Maria Milito**, trapped on the street, phoned in reports to morning man **Matt Devoti**, whose air shift was extended during the three-hour "siege." MD **Corey Natko** called it surreal when the elevator doors opened and police in riot gear with shields and Uzis came to search the floor. They also asked, "Where's that jock who thinks the New York firefighters are so cute? What about us? We're cute," referring to Milito's frequent on-air comments.

## Y100's 12-Step Fund-raiser



Fighting for CD shelf space at Philadelphia retailers this Christmas will be **Barskoholics Anonymous**, the third highlight CD culled from modern **WPLY** (Y100) morning show "Barsky In The Morning." Proceeds from the sale of the CD benefit **From All Walks of Life**, a local charity that funds more than 60 AIDS organizations in Philadelphia.

## PERSONNEL FILE BY ANTHONY COLOMBO

### Sigler Goes West; Geffen Moves Expected

**I**sland senior director of rock promotion **John Sigler** moves to the West Coast as MCA's new VP of rock promotion. He is expected to move in December.

Although not a done deal at press time, expect Geffen head of rock promotion **Alan Orem** to slide to **Almo Sounds** as head of promotion for the Geffen-distributed label. **Warren Christensen** would then take Orem's former slot. Also, it looks as if former Lava VP of rock promotion **Steve Kline** will become Geffen's head of East Coast promotion. That post was vacated by **Bob Catania**, who became the label's head of promotion.

Elektra ups director of college promotion **Pete Rosenblum** to national director of alternative promotion, replacing **Joel Klaiman**, who goes to 550 Music as VP of alternative promotion.

Red Ant names **Joanne Grand** national rock promotion manager as part of **Castle Records'** consolidation into **Red Ant**.

**Amy Birch** surfaces as Atlantic's San Francisco-based regional promotion manager: Birch, who started Monday (18), was last at **I.R.S.**

### Point Programmers Save Papparazzi



The Pointfest concert, held by triple-A **WHPT** Tampa, Fla., was on the brink of riot, as normally smooth **Chris Isaak**, center, lost his cool on a passing photographer. Luckily, **WHPT** APD **Chris Taylor**, left, and PD **Chuck Beck**, right, were there to hold him back.





## BARNESTORMING BY KEN BARNES

### Major Food Groups Cause Healthy Charts

**W**hen I asked the honchos at Airplay Monitor how they liked my first column, I got this kind of guarded reaction: "Uh, it was fine . . . for a first column. A career recap, a reintroduction, a few laughs. But you used to have a reputation as a scientific musical-trend analyst. We'd certainly like to see something along those lines."

Well, that was a broad enough hint, I guess. It was clearly time to get analytical, identify an influential trend in contemporary music, and bring in the heavy-research artillery. I checked out the charts and immediately was struck by today's overwhelming musical trend: food groups.

To be more specific, I mean groups or artists named wholly or partially after comestibles or potables. They're all over The Billboard 200. On the Nov. 2 chart you can find Korn, Phish, Smashing Pumpkins, Cranberries, Cake—and that's just the first serving. You'd certainly want to include Fiona Apple, John Berry, the Jerky Boys, Mint Condition, eels, and Lemonheads (a brand of candy, originally).

Roots would count; a lot of them are edible. Same for Hootie & the Blowfish—the dangerous Japanese delicacy known as *fugu* is a poisonous blowfish. If you choose to interpret Pearl Jam as an item of nourishment, that adds another, and a bit more broadly interpreted, Ginuwine and Sublime bulk up the numbers. That's 16 acts, without even counting the quartet of Crows (Sheryl, Counting, Black, and The). How do they qualify? C'mon—you never heard of eating crow? And if you really want to stretch it, you could include Garbage (if you've been to a fast-food joint, you've probably eaten garbage) and even Jimmy Buffett, whose surname is frequently misspelled as "Buffet." Coincidence? I think not.

#### MORE ARTISTS ABOUT FOOD & DRINK

If you added artists from Billboard's Hot 100 not currently on The Billboard 200, Brandy and the Gin Blossoms would join the dinner party (as opposed to the Donner Party, which opens up a whole new cannibalistic category, into which new Island signings the Longpigs would fit neatly). [Also the briefly reactivated Fine Young Cannibals—Ed.] Monitor's rock charts would add Cracker, Tonic, and, as an appropriate appetite, Hunger. If you delve deeper, into the college-radio rankings of the same week's CMJ Top 200, you'd be able to add the likes of Archers Of Loaf, Butter 08, Les Claypool & the Holy Mackerel, Pig, Buffalo Daughter, Citizen Fish, Reel Big Fish, Rusted Root, Frogpond, Tobin Sprout, Orange 9MM, Neil Hamburger, Firewater, Meat Beat Manifesto, and the Candy Butchers. (Not to mention God-flesh, if you have catholic tastes and are inclined to count Communion wafers; or an extremely apt name, considering the primary components of what we ingest: the Chemical Brothers.)

But for analytical purposes, let's stick with the strict 16 culled from the album chart. It seemed to me that this must be some kind of a record, at least compared with past eras. So I picked three entire years of the album chart: 1965, 1975, and 1985. Obviously, that's a lot more than 200 albums, so I'd say these three years are more than adequate control data (no Arbitron jokes, thanks).

#### HISTORICAL FOOD GROUPS

And, thrillingly, the hypothesis turns out to be correct. There are more food groups around now than before. In 1985, there were 16 food groups in the album charts for the whole year, as opposed to just this one week in '96. For those keeping score, the 1985 acts were Herb Alpert (s-t-r-e-t-c-h), April Wine, Bananarama, the Beat Farmers, Cock Robin (in the *coq au vin* sense), Marshall Crenshaw (as in melon), Michael Franks, Corey Hart, the Honeydrippers, Lisa Lisa & Cult Jam, Maze (archaic term for Korn), Meat Loaf, Menudo, Prefab Sprout, and Willie & the Poor Boys. (I decided using John Cougar Mellencamp was carrying the idea one step too far.)

In 1975 there were just 14: Herb Alpert again, Ambrosia, the Beatles (in some cultures), the Blackbyrds (four-and-20 in a pie mix), Blue Oyster Cult, Bread, Captain Beefheart, Chocolate Milk, the Flying Burrito Brothers, Hot Chocolate, Hot Tuna, Humble Pie, Sugarloaf, and Wings. Close qualifiers included Larry Graham, the Strawbs, Sweet, Cat Stevens, and Three Dog Night (the last two as an example of attempted multiculturalism again).

Just 10 turned up for '65: the generation-spanning Herb Alpert, the Beatles, Chuck Berry, the Paul Butterfield Blues Band, the Byrds, Ronnie Dove (this seems a little questionable), the Honeycombs, the Larks, Soupy Sales, and the Turtles.

We can safely conclude that there are more major food groups nowadays than ever before. The question is why. Part of the answer may lie in the old rock'n'roll adage "imitation is the sincerest form of bandwagon-jumping." If the Smashing Pumpkins or Cranberries or Red Hot Chili Peppers are scoring hits, then why not pick a nutritionally correct name for your band? (It's an old tradition—the Orioles and Ravens spawned legions of "bird" groups in the '50s—not to mention "cat" groups such as the Cadillac and El Dorados. And when the Byrds hit big in 1965, every group in L.A. adopted floral or faunal nomenclature—the Turtles, the Leaves, the Grass Roots, the Seeds, the Bees, etc.)

More profound explanations may require an exploration deep into the psyche of the modern rock generation. But I'm afraid, having uncovered this significant and potentially disturbing trend, that I'll have to leave the psychoanalysis to others. For now, I'm Billy Preston ("Outa-Space," that is).



## CHEET SHEET BY MARK MARONE

### Rave Comes Alive With Orbital

With radio opening up to the possibilities of all-instrumental electronic music and the genre's acts slowly shedding their image of a clandestine rave community with more accessible shows, it may not be long before electronic/techno music finds a secure place within the modern format. In fact, if the sold-out multi-artist electronic/techno bill that took place a few weeks ago at the Oakland (Calif.) Coliseum Plaza is any indication, it may be sooner than you think. **Orbital**, one of England's leading electronic bands, is one of the acts at the forefront of a changing sentiment.

Perhaps one of the reasons electronic music seems to be making inroads in the U.S. is the emergence of "proper" gigs, **Orbital's Paul Hartnoll** believes. On a recent stateside tour with **Meat Beat Manifesto**, **Orbital** declined requests to turn its shows into "pseudo raves," especially when venues forced the shows to end at the very unraveling hour of midnight or earlier and have insisted that the act play standard concerts instead. By pruning concert appearances to fit the parameters of standard rock gigs, Hartnoll feels **Orbital** has "had more success this time than we ever had done before."



Paul Hartnoll Phil Hartnoll

Because its songs have a cinematic feel, **Orbital** has always been intent on becoming a live band. Using multiscreen video presentations and performing at major concerts, including Woodstock 2 and London's Royal Albert Hall, **Orbital** has become a formidable concert attraction, even while some claim that electronic musicians "playing live" is an anomaly. "It's like being a composer rather than a musician for me," responds Hartnoll. "When we play live, we're sort of doing sequence improvisations and deciding what goes where at what time. We're not sitting there playing keyboards; we are improvising the sequences. In accordance to doing that, you can play with the crowd and give them what you think they want." He says that explaining the difference between an **Orbital** show and a rock show is like comparing apples and oranges. "The same way you wouldn't compare **Pearl Jam** to a string quartet, it's a different kind of performance," he says.

Since the Kent-based brothers **Paul and Phil Hartnoll** released their first record in 1989, they've evolved from a club-based rave style to a more textured sound. In fact, their highly developed all-instrumental electronic/ambient pieces occasionally recall the majesty of **Yes** and **Pink Floyd**. "Well, I think it's because of not restricting yourself to certain rules within music of verse-chorus, verse-chorus for 3½ minutes. I think that's where I have a similarity with that sort of music where people just played it as long or as short as they wanted it, according to each track," says Hartnoll of the latest album, "In Sides," which contains six pieces (two of which are broken down into two parts) that run a total of 72 minutes.

Besides the immeasurable influence of **Kraftwerk** on electronic music in general, **Orbital** says it is most influenced by the work of soundtrack composers **John Barry** and **Ennio Morricone**. "I don't think we angle ourselves at the dancefloor particularly. But we obviously have that influence still within everything we do," says Hartnoll. "We do like good, strong, sort of heavy rhythms, but for me, it's more about melody and harmony."

Though unmistakably club music, their layered "soundscapes" are composed with a particular scene or story idea in mind. The challenge for the electronic musician is doing so without the aid of conventional instrumentation and without vocals and lyrics. For example, Hartnoll says the song "Dwr Budr" (which means "dirty water" in Welsh) from the recent set was conceived from a sad chord he played that reminded him of "the dirty water when I [looked] into the sea at Brighton" after a recent oil spill. The band samples everything from multimicrophone DAT recordings of drips of water revolving in stereo to trail-off snippets of string chords to easy listening records, for which it has an affinity. For this particular track, **Orbital** created dull, throbbing metallic noises to convey the sound of oil tankers scraping against rocks and spilling their contents into the water. Hartnoll was trying to evoke "being a 2-month-old fish and watching this huge black cloud coming toward you and not knowing if it's friendly or nasty."

### Releases And Notes

Spin-offs, off-shoots, one-offs. Call them what you will, but side projects seem to be the trend of the moment. The latest one, **the Last Hard Men**, features an unlikely pairing of talents, **Jimmy Chamberlin**, formerly of **Smashing Pumpkins**; **Kelley Deal** of **the Breeders**; **Jimmy Flemion** of **Scratchie Records** act **the Frogs**; and **Skid Row's Sebastian Bach** have recently recorded four songs, including a version of **Alice Cooper** "School's Out," for an upcoming film, "Scream." Apparently, Deal had called Bach some time ago and expressed an interest in working together. No word on a full album at this time. **Skid Row** is currently writing songs for a new album.

Meanwhile, **Screaming Trees' Barrett Martin** and **Pearl Jam's Mike McCready**, who had put together **Mad Season** with **Layne Staley** of **Alice In Chains** last year, have rounded up some friends to form **Tuatara**, which will release an album on Epic Records March 18. Playing on the album are **Justin Hardwood** from **Luna**, **Skerik** from **Critters Buggin**, **Peter Buck** from **R.E.M.**, and **Steve Berlin** from **Los Lobos**. Expect a **Tuatara** tour, which will probably include half of the recording lineup, at the time of the set's release.

What do '70s stalwarts **Rush** and **Kiss** have in common? More than you think. Not only did both band's debut albums chart in 1974 on PolyGram-affiliated labels (Mercury and Casablanca, respectively), but the two acts, which shared concert bills in their developing years, share the No. 3 spot on the list of bands with the most gold albums with 21. Recent certification by the Recording Industry Assn. of America for their latest outings, "Unplugged" by **Kiss** and "Test For Echo" by **Rush**, earned them the honor that places them behind only the **Rolling Stones** (with 36) and **the Beatles** (with 28).

PUBLISHER: MICHAEL ELLIS  
 EDITOR: SEAN ROSS  
 MANAGING EDITOR: MARC SCHIFFMAN  
 MAINSTREAM ROCK/TRIPLE A CHART MANAGER: ANTHONY COLOMBO  
 MODERN ROCK CHART MANAGER: MARK MARONE  
 WRITER/REPORTER: DANA HALL  
 CONTRIBUTORS: KEN BARNES, HESTON HOSTEN  
 CHART PRODUCTION MANAGER: MICHAEL CUSON  
 ASST. CHART PRODUCTION MANAGER: ALEX VITOLIS  
 EDITORIAL PRODUCTION MANAGER: BARRY BISHIN  
 ASSOC. EDITORIAL PRODUCTION MANAGER: MARCIA REPINSKI  
 EDITORIAL PRODUCTION: MARTIN BROOMFIELD, MADELINE CARROLL,  
 SUSAN CHICOLA, MARC GIAQUINTO, MARIA MANJLIC  
 COPY EDITOR: CARL ROSEN  
 ADVERTISING PRODUCTION MANAGER: LYDIA MIKULKO  
 ADVERTISING PRODUCTION ASST.: CINDEE WEISS  
 ADVERTISING ART DIRECTOR: RAY CARLSON

NATIONAL ADVERTISING MANAGER: JON GLYNN  
 ADVERTISING SALES: JACK FULMER, GARY NUJELL  
 CLASSIFIED ADVERTISING: LAURA RIVCHUN  
 SALES ASSISTANTS: EVELYN ASZODI, ERICA BENGTON,  
 FRED DAHLQVIST, ALYSE ZIGMAN

EDITORIAL ADVISER: TIMOTHY WHITE  
 PRODUCTION DIRECTOR: MARIE GOMBERT  
 DIRECTOR OF MARKETING: ELISSA TOMASETTI  
 CIRCULATION MANAGER: JEANNE JAMIN



PRESIDENT: HOWARD LANDER  
 SENIOR VP/GENERAL COUNSEL: GEORGINA CHALLIS  
 VICE PRESIDENTS: MICHAEL ELLIS,  
 KAREN OERTLEY, ADAM WHITE  
 DIRECTOR OF STRATEGIC DEVELOPMENT: KEN SCHLAGER  
 BUSINESS MANAGER: JOELLEN SOMMER

©1996 BPI Communications  
 1515 Broadway, New York, NY 10036 212-764-7300  
 For subscriptions call: 800-722-2346



## Return Of FCC Indecency Fines Keeps Morning Teams, PDs On Their Toes

Continued from page 1

you. Always remember that there are extremes and limits to where you can go.' I held out my hands and had them spread apart about a foot. And then I go, 'Now, here are your restrictions,' and I extended them about another six inches. I emphasized that there were still extremes that you couldn't break."

As a programmer, Bender says, "you really have to read. You can't just sit there one day and interpret the vague restrictions that we have. You have to read and know each case that's been acted upon and apply it to whatever you're doing or are about to do. Knowledge is essential, and I am the person who takes in the most amount of knowledge at the radio station."

He may be the repository of such information, but Bender makes a point to "discuss the laws that are definite. Those are the ones under the umbrella of libel, slander, and all that kind of stuff that's been getting broadcast and all media in trouble for a long time. These laws are on the books, and there's no way you can misinterpret libel or slander. That restriction is up there, and they stay away from that. Then we occasionally have to address the current definition of obscenity and indecency."

Bender is sure that his show will keep within the boundaries, because "I'm here at 6 in the morning," he says. "If they're about to do something they think is rough, they'll check with me. I'm also a participant in the show. I'm on the air with them. I help write."

Bender says that by internalizing all the legal intricacies and potential danger areas, "you almost have to be a professional paranoid, but not show it."

For Bender, internalizing boundaries stretches beyond indecency and FCC issues to include a different kind of community standard. If, for instance, some juicy story involving local people gets national exposure, Bender says, "you have to let these guys know that there's real people involved and families that got hurt." If his show goes off on the story, Bender says, "that's just going to really hurt somebody even more."

### WATCHING THE MEDIA

Album K101. Houston morning team Stevens and Pruett have run afoul of the FCC over indecency before. PD Andy Beaubien didn't need the recent round of fines to change anything at his station. "It's very much in our best interest to stay out of trouble with the FCC and at the same time maintain the integrity of our programming," says Beaubien. "It's something we've been dealing with for years. [Stevens and Pruett] don't want to get in trouble with the FCC, and they come to management to help them stay within those bounds."

Beaubien, like Bender, takes an active interest in the program. "It's not a matter of having one meeting or issuing one memo," says Beaubien. "It's an ongoing, almost daily process of examining and analyzing what we do and making judgments almost on a case-by-case basis as to whether this is acceptable or not."

Not a day goes by that Beaubien doesn't meet with his morning men to recap the day's show and discuss what's planned for the next day. "Sometimes the talks are specific, sometimes they're general," says Beaubien.

Given the FCC's lack of a specific indecency guideline, Beaubien says, "One is required to constantly re-evaluate where we are . . . One of the things that we'll do is constantly monitor what's going on throughout the media—not just radio, but all of the media—trying to get a sense of what is acceptable on a nationwide basis and on a local basis."

Beaubien sees a distinction in how something is presented. "Some topics," he says, "are controversial, but not necessarily offensive. It all depends on the treatment. I can't think of a particular topic that is completely out of bounds, because I can think of a possible treatment that would be acceptable. On the other hand, some fairly mundane topics, if treated in a crude and callous way, could potentially be offensive."

### LIMITS SPAWN SUCCESS

When John Hager, PD of Buffalo, N.Y., outlets album WGRF and modern WEDG, looked at the nebulous regions of FCC indecency rules, he and his Mercury Radio parent issued guidelines for their morning shows that "are even tighter than FCC rules," he says. The belief was, while the FCC may have grey areas, "if we create our own standards and our own rules, we can at least make them clear to [the talent so] they have a better, clearer idea of what they can do."

At first, says Hager, "it took a lot of almost daily meetings and reviews to get them where we needed them to be . . . I have daily contact with WGRF's and WEDG's morning show. Right now, as far as dealing with issues of what you can and cannot do and where they get us into trouble, I'm spending a lot less time in that area."

And the result, Hager claims, is that "all three have never been rated higher, so it hasn't hurt us to be more sensitive to what we perceive are the community standards . . . In the case of WGRF, it certainly helped, because the station has become more mass-appeal, and as a result, the numbers have never been better. The morning show is No. 1 25-54 in the last two books for the first time in its history. I think it's helped."

### FORGET FCC, THINK 'ADVERTISERS'

On the day-to-day level, threats of advertisers pulling their money eclipses any threat of FCC problems. "We have some clients who tell us, 'We want to buy your station, because it's successful, but we want to buy it after 10 a.m.'," says WVIC's Thomas. "My response is, one of the reasons we're successful is because of that 6-10 a.m. slot. That's an anchor for us. I call it ignorance. If the clients listened to Jaz's show instead of listening to people talk about Jaz's show, they would say, 'You know what? It's very entertaining. It's not just vulgarity. It's not just him telling locker-room jokes.'"

Beaubien, too, says that, overall, "Stevens and Pruett have a fabulous relationship with advertisers," although there are still some holdouts. "The people who don't want to advertise on the Stevens and Pruett show don't. And the people who do, find it very successful."

### STERN, INTERNET ARE HEAT SHIELD

Bolton Research's Ted Bolton thinks that Stern's presence takes the heat off smaller morning shows in two ways. "Howard gets the attention he does, because through one single source, he goes out to so many individual stations."

And Stern's content, Bolton says, "set the bar at the FCC for others to say, 'We're under that bar and therefore we're OK.' He changed the way people think about content of morning shows. Pre-Howard, you had difficulty saying words like 'ass.' Now you practically hear them on AC stations."

While WVIC's Thomas agrees that Stern's stature draws FCC attention away from other stations, he counters Bolton on one point, saying, "I've heard a lot of morning radio shows around the country, and a lot of them are much more offensive than anything I've ever heard on Howard Stern. But they can get away with it, because they're not in the spotlight."

Perhaps as Burkhart/Douglas' Dwight Douglas points out, the Internet has taken the governmental heat off radio. On the World Wide Web, indecency is "there if you want it, no matter how old you are," says Douglas. "I think Al Gore feels that this is the government's great challenge right now."

Douglas goes so far as to surmise that the FCC October surprises had a lot to do with proximity to the election. "One of the issues in the election was about character and morality and legalities . . . There were two slams that came down before the elections." That was "your government at work," says Douglas. "Now that the election is over, people may be less inclined and less worried about what the impact of that might be."

Bender agrees. He says, "I wonder how much more we'll see now that the elections are over."

# ROCK GODZ

## Total Quality Management Helps Bill Weston Run A Tight Ship At WHJY Providence

**I**n the past seven years, WHJY Providence, R.I., has had three owners and a complete turnover in air talent, but it enjoys three constants: market-leading 12-plus numbers, PD Bill Weston, and GM Jim Corwin.

Weston credits Corwin with revolutionizing the workplace at WHJY and sisters AC WSNE (which Weston programs) and N/T WHJJ. Before Corwin joined WHJY as an AE, Weston says, "he was a professional rock musician. That's why I think [he understands] when we want to send 75 listeners to Amsterdam for the Cannabis Cup . . . He understands that rock-'n-roll is irreverent, in your face. It pisses some people off, but it's a lot of fun, and you need to be that way to stand out."

One of Corwin's most important developments took place a few years ago, when he introduced WHJY to the concept of total quality management, "something that a lot of manu-

facturing companies have gone to," Weston says, and "is unheard of in broadcasting." Weston explains: "Like a lot of stations, we had a suggestion box in the lobby. If a light bulb was burnt out in the hallway and the jock was pissed off that he didn't have the right amount of light for his creative environment, he'd put a nasty note in the box saying 'Fix the goddamn light bulb, please. I could work a lot better.'"



**Bill Weston**  
Program Director  
WHJY Providence, R.I.

*'Now we do live reads, [and] we're making a lot more money because of it'*

facturing companies have gone to," Weston says, and "is unheard of in broadcasting."

Weston explains: "Like a lot of stations, we had a suggestion box in the lobby. If a light bulb was burnt out in the hallway and the jock was pissed off that he didn't have the right amount of light for his creative environment, he'd put a nasty note in the box saying 'Fix the goddamn light bulb, please. I could work a lot better.'"

But WHJY has trashed the suggestion box, instead forming a Quality Council comprising representatives from every department: sales, management, and programming from each station, support staff, accounting, etc. The nine-member panel meets every other week and looks at problems that crop up in the stations.

For example, says Weston, if "we missed a spot this morning because the overnight jock didn't do his production," the council will conclude that "somehow, the process allowed the jock not to do his production. Maybe the [problem with the] process was in training, and he wasn't properly trained to check his box every night. It's a way of looking . . . at the process by which these problems occur. You can be stamping out fires all day, or you go find the guy who's got the match and the gasoline can . . . You find what's wrong with the process [and make it] such that it's impossible for people to fail."

That's fine in the abstract. Getting down to specifics, Weston says that at one point the station was missing out on a \$50,000 account from a client who would only buy time if the spots had live reads. "I, as the PD, like many, said, 'No way are we going to do live reads at this rock station' . . . Live reads suck, because jocks usually just read a script on the air; it sounds like shit."

A salesperson brought up the issue, and a committee was formed representing air talent, programming, billing, and sales. Together, "we came up with a way that I would be OK with

The implementation of total quality management now includes job descriptions. Weston says, "I know a lot of this sounds like a big corporate environment. In order for employees to grow and to be satisfied and to make more money and to do more for the company, they have to be told how they're doing. And they have to be told compared against job descriptions . . . If we truly care about the people that work here, we don't want them just to come in, punch in, do their job, and get the hell out of here. We want them to be satisfied, and if they're really good, they should advance or take on new responsibilities." Weston quotes the stations' total quality management consultant, who says, "Yeah, it's radio. It's a creative, entertainment medium, [but] this is a business."

While that business has been a ratings leader in the market, WHJY's 12-plus shares were off during the past year, recovering in the summer book: 8.5-7.7-6.6-6.5-8.2. Weston says, "When we hit a 6.6 in the winter of '96, that really pissed me off, because we generally average between 7 and 9."

While pointing out that rival moderns WDGE and WRBU had down books in the summer, he does admit that the newer of the two, WDGE, "has taken three shares out of the market. When they signed on at 0 and went to 2 [and then] 3, we said, 'When's the upturn going to end?' It seems to have flattened out."

WDGE, for its part, has tried to take some of the wind out of WHJY's sails. "They've actually tried to do some muckraking on the air," says Weston. "They've tried to bait us with [promos] like, 'Hey, dinosaur 94. You can't play Soundgarden next to Van Halen.' Well, excuse me, we do, and we do rather well at it, thank you. And thank you for the plugs. I think they have to look at WRBU as their competition, because WRBU's beating them in a lot of the ratings."

Here's a sample hour on WHJY, with some of the variety alluded to in WDGE's promos: Van Halen, "And The Cradle Will Rock"; dog's eye view, "Everything Falls Apart"; Who, "Love, Reign O'er Me"; Bush, "Machinehead"; Aerosmith, "Love In An Elevator"; Bush, "Swallowed"; Live, "Lightning Crashes"; Pink Floyd, "Wish You Were Here"; John Mellencamp, "Key West Intermezzo (I Saw You First)"; Led Zeppelin, "Good Times, Bad Times"; and Spacehog, "In The Meantime."

Promotionally, Weston says, WDGE has helped his station become more aggressive. "As far as street presence and street marketing, it's good that they came in. They bought a couple of hummers, and they've got an aggressive bumper-sticker campaign on the air that's made our bumper stickers get better. And our new station vehicle: We really wracked our brains for a new motif for our station street vehicle. I think there are benefits that come from it." **MARC SCHIFFMAN**



**SERVICES**

**VOICEOVERS**

**The voice of God's not dead. She's a woman.**

**roberta SOLOMON**  
the voice for radio and tv  
**(913) 341-8475**  
promos • id's • sweepers  
ISDN or overnight

**DREW DIMMEL**

18 years & 300+ clients says a lot ...  
... so does DREW!  
Instant access via  
ISDN / SW56 + E-MAIL  
**DIMMEL COMMUNICATIONS**  
10425 Nieman Rd.  
Overland Park, KS 66214  
(913) 888-9211, (913) 888-4241  
FAX: (913) 888-7212  
E-MAIL: dimmel-.com@worldnet.att.net  
*Drew Dimmel, President*  
VO, C, SU

**JINGLES**

**KEN R**

**FINALLY ...**  
**I.D. JINGLES YOU CAN AFFORD!**  
Call today for your free demo CD ...  
**ALL NEW FOR '96!**  
You'll hear how great inexpensive  
jingles can sound!  
**KEN R. INCORPORATED**  
TOLL-FREE 1-800-451-KENR(5367)

**SWEEPERS, ID's,  
LINERS**

**SAMPLE YOUR NEW SOUND!**

**FREE!**  
Get customized production ...  
Liner- Sweeper- Drop-ID  
FAX COPY (318) 797-1191  
**DIAMOND PRODUCTIONS, LLC**  
CALL TOLL FREE 1-888-200-9351

Top 40 Airplay Monitor  
Country Airplay Monitor  
R&B Airplay Monitor  
Rock Airplay Monitor

The only radio publications based exclusively on electronically monitored airplay from Broadcast Data Systems.

**SUBSCRIBE TODAY: 1-800-722-2346**

FOR GROUP SUBSCRIPTIONS CALL  
(212) 536-5261

Part of the Billboard Music Group.

**HELP WANTED**

**KTOM**  
100.7 FM/1380 AM

**ON-AIR PROGRAM DIRECTOR**

Come live and play in the Monterey Bay Area

Heritage country leader needs motivated leader to guide a great staff to number one. 3-5 years programming in small/medium markets a plus. Tape & resume to: Doug Grimm, KTOM AM/FM, 933 N. Main St., Sallinas, CA 93906 EEO

**K-DUCK 100**  
KDDK

**AFTERNOONS/COUNTRY**

Little Rock's K-DUCK 100 is seeking professional air talent for afternoons, personal appearances, sharp production. Must be dedicated and energetic with at least 2 years' country experience. We require someone with a positive personality and a strong commitment to winning! We want a personality who can relate to our audience! If you fit the criteria, I'd love to hear from you. Tapes/resumes to: Kevin King, Program Manager K-DUCK 100 314 Main N. Little Rock, AR 72114 An Affirmative Action/Equal Opportunity Employer. PLEASE, NO CALLS.

**EMPLOYMENT OPPORTUNITY**

KDMX in Dallas is seeking qualified applicants for the position of parttime air personality. Applicant must have at least 3 years of on-air experience in medium or large markets. They must possess a desire to win, ability to get along and work well with others, be a good "self editor" and willing to work holidays, nights, and weekends.

Please send aircheck and resume to: Lisa Thomas KDMX Radio 14001 N. Dallas Parkway, #1210 Dallas, TX 75240

KDMX/NATIONWIDE COMMUNICATIONS INC. IS AN EQUAL OPPORTUNITY EMPLOYER. WOMEN AND MINORITIES ARE STRONGLY ENCOURAGED TO APPLY.

**HELP WANTED**

**K95 MORNING SHOW PRODUCER**

Richmond's top rated morning show is looking for the country's most creative producer. On-air experience and outstanding digital production skills required. Must have great organizational and people skills and ability to produce on-air imaging, schedule guests, write bits, create and participate in stunts, and appearances. Send T&R by 12/15/96 to Mark Richards, PD, WKHK-FM, 300 Arboretum Place, Suite 590, Richmond, VA 23236 NO CALLS! EOE

**Z104**  
THE MORNING OPPORTUNITY!

If you really relate to your audience, care about them and know how to let it show—you're exactly what Z-104 is looking for. Washington D.C.'s only CHR is ready to give you the tools to make it happen. We'll pay you well and give you great benefits. If you're passionate about winning, know that show prep is a 24 hour process, and have the "magic" that keeps your audience coming back tomorrow morning—lets talk! Rush your tape, resume, and philosophies to:

Dale O'brian  
Program Director  
WWZZ  
5210 Auth Road  
Marlow Heights, MD 20746  
EOE

**WJZA**

**Air Talent**

WJZA is conducting a nationwide talent search for air personalities. Send T&Rs to: 4380 East Livingston Columbus, Ohio 43227 Attn: Mr. Phil Davis WOMEN ARE ENCOURAGED TO APPLY. NO PHONE CALLS. EOE

**HELP WANTED**

**WBAB**  
102.3

Chancellor Broadcasting under its L.I. LMA (Market #14) has rare opening at Long Island's perennial rock leader. **PM DRIVE CO-HOST** Strong sports knowledge, great sense of humor and timing. Females strongly encouraged. Rush tape and resume to: JEFF LEVINE • BOX 1240 LONG ISLAND • NY 11704 EOE

Be a part of the 1996 re-cap that only AIRPLAY MONITOR can deliver.

**The Airplay '96 Special Year-End Combined Issue**

- \* Most complete chart wrap-up of 1996 includes:
    - Top artist for combined formats
    - Record of the year
    - Each format's song with most weeks at #1
    - Each format's artist with most weeks at #1
  - \* Special features include an interview with a big hitmaker in each format.
  - \* This issue promises to enjoy a long shelf life.
- A CLASSIFIED AD IN THIS EXCITING, COMPREHENSIVE ISSUE WILL REACH RADIO'S TOP PROFESSIONALS.**
- For more information contact:  
Laura Rivchun @ (212) 536-5058 (PH) or (212) 536-5055 (FAX)  
ISSUE DATE: December 20, 1996  
AD DEADLINE: December 9, 1996

**106.1 WJJS**  
101.7 The Best of The City

Virginia's premier rhythm chr is seeking air talent. Personality required, able to develop relationship with listeners, strong production skills a must! This position is not for the timid! Must desire to have fun and win! RUSH, T&R with photo to:

David Lee Michaels, PD  
1105 Main Street  
Madison Heights, VA 24572  
CAVALIER COMMUNICATIONS IS AN EQUAL OPPORTUNITY EMPLOYER.

**Soft Rock 94.5 AC MIDDAY**

Immediate opening for midday, professional, experienced, smooth communicator, and possibly other full and parttime on-air positions at WMXQ-FM/Soft Rock 94.5, Birmingham. Send tapes and resumes to Jeff Tyson, WMXQ, 244 Goodwin Crest Drive, Suite 300, Birmingham, AL 35209. NO CALLS. EOE

**CLASSIFIED ADVERTISING RATES**

<b>HELP WANTED:</b>	
1 WEEK	\$75.00 per inch
2 WEEKS	\$65.00 per inch
<b>POSITION WANTED AND BULLETIN BOARD:</b>	
	\$45.00 per inch
<b>BOX NUMBER: Add \$20.00</b>	
<b>SERVICES:</b>	
1 WEEK	\$75.00 per inch
6 WEEKS	\$65.00 per inch
13 WEEKS	\$60.00 per inch
26 WEEKS	\$55.00 per inch
51 WEEKS	\$50.00 per inch
<b>DEADLINE (ALL CLASSIFIED):</b>	
Each Wednesday 3pm EST, 9 day leadtime.	
• Classified ads are non-commissionable •	

**SUBMIT ALL AD COPY TO:**

Laura Rivchun  
Airplay Monitor Classified  
1515 Broadway  
New York, NY 10036  
Phone: 212-536-5058  
Fax: 212-536-5055



# GREATEST GAINERS

Strongest Increase In Airplay This Week

## MAINSTREAM ROCK

INCREASE  
IN PLAYS

- ZZ TOP • Bang Bang (RCA)** +259  
KTUX +18, WKLC +16, WROV +13, KGGG +13, WCMF +13, KLPX +12, KMOD +12, WZZR +12, KRAD +11, WIXV +11
- BETTER THAN EZRA • Desperately Wanting (SWELL/ELEKTRA/EEG)** +180  
WJRR +15, WTPA +14, WARQ +12, KTUX +12, WWDC +12, KEGL +10, WCKW +9, WZZO +8, KILO +8, WVRK +6
- JOHN MELLENCAMP • Just Another Day (MERCURY)** +145  
WRDU +22, KMOD +13, WEGR +13, WCMF +13, WPYX +12, WNEW +12, KRZZ +11, WCKW +11, WKLC +10, WTPA +10
- RUSH • Half The World (ANTHEM/ATLANTIC)** +145  
WONE +13, KSHE +12, WBLM +11, WSTZ +9, KXUS +8, KTAL +8, KEZO +8, KLPX +7, WNOR +7, KRZZ +6
- SOUNDGARDEN • Blow Up The Outside World (A&M)** +116  
WBZX +18, KTXQ +16, WJRR +11, KOMP +10, KSHE +10, WBLM +9, WKLC +9, WKLS +8, KUFO +6, KLBJ +6
- OZZY OSBOURNE • Walk On Water (Geffen)** +90  
KEZO +9, WLVQ +9, WRDU +8, WZAT +7, KTUX +7, KXUS +6, KCAL +6, WLZR +6, WXTB +5, KISW +5
- THE WALLFLOWERS • One Headlight (INTERSCOPE)** +88  
WONE +20, WCKW +11, WDMA +9, KZRR +9, KTYD +8, WZTA +8, WIYY +7, WTAK +6, KXUS +6, WNCD +5
- 311 • All Mixed Up (CAPRICORN/MERCURY)** +84  
WRXR +26, WJRR +15, KBER +13, WAAF +11, WZAT +7, KRAB +7, KRZR +5, WVRK +3, WXTB +3, WXRA +2
- LOCAL H • Bound For The Floor (ISLAND)** +80  
KTXQ +18, WKLQ +14, KRXQ +10, WIYY +9, WXRA +8, WNOR +7, WBZX +5, WARQ +5, WVRK +4, KEZO +4
- METALLICA • Hero Of The Day (ELEKTRA/EEG)** +78  
WWDC +15, KRXQ +12, WDMA +7, KNCN +7, KCAL +7, KSHE +7, WFVY +6, KRZZ +5, WIOT +5, KAZR +5

## MODERN ROCK

INCREASE  
IN PLAYS

- GARBAGE • #1 Crush (CAPITOL)** +629  
CIMX +37, KTOZ +27, KDGE +27, KROX +23, KTEG +23, KNNC +23, KLZR +22, WAQZ +20, WCHZ +19, WXZZ +18
- THE SMASHING PUMPKINS • Thirty-Three (VIRGIN)** +227  
KROQ +21, CIMX +20, KEDJ +17, KEDG +13, WZRH +13, WBCN +13, KICT +12, KMYZ +12, WQBK +10, WEOX +10
- POE • Hello (MODERN/ATLANTIC)** +212  
KLZR +20, KEGE +20, KOME +16, KMYZ +14, WQXA +11, WBCN +11, WNVE +10, KWOD +10, KJEE +9, WZRH +9
- THE WALLFLOWERS • One Headlight (INTERSCOPE)** +192  
WXNR +20, KLZR +20, WQXA +16, WLIR +15, WXEG +14, KICT +14, KZON +12, WEDG +12, WWCD +11, KAEP +11
- BETTER THAN EZRA • Desperately Wanting (SWELL/ELEKTRA/EEG)** +192  
WCHZ +19, WQXA +19, WDRE +15, WDXD +14, KISF +12, KTOZ +10, KDGE +10, KROX +9, KAEP +8, KITS +7
- 311 • All Mixed Up (CAPRICORN/MERCURY)** +181  
WPBZ +25, WRZX +18, WLUM +15, WMRQ +14, WAQZ +14, KPPI +13, WCYY +12, WENZ +12, KFMA +9, KNRK +9
- FAILURE • Stuck On You (SLASH/WARNER BROS.)** +146  
WEND +28, WMRQ +13, WPBZ +12, KXRK +10, KTOZ +8, WZRH +8, KICT +8, KNRX +7, WRLG +7, WCHZ +7
- ASHLEY MACISAAC WITH MARY JANE LAMOND • Sleepy Maggie (A&M)** +142  
KTCL +9, WEQX +8, WEND +7, KNNC +7, WAQZ +7, WFNK +7, WNVE +6, WQXA +6, WDRE +5, WQBK +5
- LOCAL H • Bound For The Floor (ISLAND)** +139  
WKQX +29, WRLG +20, WBCN +16, WQBK +15, KDGE +15, KTOZ +14, WAQZ +13, KISF +12, KPPI +10, WPBZ +9
- STONE TEMPLE PILOTS • Lady Picture Show (ATLANTIC)** +137  
CIMX +43, WQBK +19, WDGE +17, WQXA +13, WGRD +12, WXZZ +11, WWCD +11, KLYY +7, WCYY +7, WROX +7

# VIDEO PLAYLISTS

MOST PLAYED ROCK TRACKS



	TW	LW		TW	LW
1	30	30	1	24	21
2	29	33	2	22	27
3	25	23	3	22	23
4	25	22	4	18	17
5	20	7	5	18	22
6	17	15	6	18	19
7	16	17	7	17	20
8	16	15	8	16	17
9	15	15	9	15	22
10	15	14	10	15	11
11	13	14	11	13	13
12	11	7	12	13	15
13	11	13	13	12	15
14	9	9	14	11	16
15	9	6	15	11	13
16	9	5	16	11	14
17	8	12	17	10	10
18	7	5	18	9	0
19	6	0	19	8	9
20	5	6	20	8	20
21	5	6	21	7	3
22	5	2	22	6	5
23	5	0	23	6	5
24	5	2	24	6	0
25	4	4	25	5	5
26	4	3	26	5	3
27	4	0	27	5	0
28	4	3	28	4	4
29	4	6	29	4	6
30	4	5	30	4	4
			31	4	3
			32	4	3
			33	4	0
			34	4	3
			35	4	0
			36	3	2
			37	3	1
			38	3	9
			39	3	3
			40	2	1

## TRIPLE A

INCREASE  
IN PLAYS

- JOHN MELLENCAMP • Just Another Day (MERCURY)** +75  
KUMT +20, WXLE +9, KSCA +9, KMTT +7, WJXB +6, KBCO +5, WVRV +4, WBOS +4, KFOG +3, WMAX +2
- THE WALLFLOWERS • One Headlight (INTERSCOPE)** +75  
KUMT +13, WTTS +13, KBCO +12, CIDR +9, WXLE +9, KXPT +8, WKOC +7, WJXB +6, WRLT +4, WBOS +3
- DAVE MATTHEWS BAND • Crash Into Me (RCA)** +64  
WJXB +12, KXPT +9, KUMT +8, CIDR +8, KTMN +6, WXLE +6, WXRV +6, KBCO +5, WXRT +5, KSCA +3
- COUNTING CROWS • A Long December (DGC/Geffen)** +57  
KUMT +21, KTMN +12, KSCA +9, KGSR +4, WNCS +3, WXLE +2, KMTT +2, WTTS +2, WBOS +2, WKOC +1
- BODEANS • Hurt By Love (SLASH/REPRISE)** +51  
KUMT +12, WJXB +10, KXPT +7, KAPT +7, WXRC +3, CIDR +2, WBOS +2, KGSR +2, KBCO +2, KTMN +1
- SHERYL CROW • Everyday Is A Winding Road (A&M)** +50  
KUMT +18, WTTS +17, KBCO +11, WHPT +3, WXLE +2, KXPT +2, KMTT +2
- CHALK FARM • Lie On Lie (COLUMBIA)** +50  
WHPT +20, KBCO +16, KUMT +5, WXLE +3, WTTS +3, WXRV +3, KTMN +2, WVRV +2, WNCS +2, WRLT +1
- SEAL • Fly Like An Eagle (WARNER SUNSET/ATLANTIC)** +48  
WHPT +17, KUMT +14, WJXB +11, WVRV +8, WXRT +3, KXPT +2, KSCA +2, WBOS +2, WRLT +1, WTTS +1
- PAULA COLE • Where Have All The Cowboys Gone? (IMAGO/WARNER BROS.)** +41  
KUMT +17, WTTS +11, WJXB +10, KQPT +6, WXLE +5, KBCO +5, WXRV +3, WNCS +2, WKOC +1, WHPT +1
- THE WHY STORE • Father (WAY COOL MUSIC/MCA)** +36  
KBCO +16, KUMT +13, WKOC +10, CIDR +9, WXLE +8, KFOG +4, KXPT +3, KSCA +3, WRLT +2, WXRC +1

Announcing **Airplay 1996**  
AIRPLAY MONITOR'S Combined 4-in-1 Year-End Issue

Special Features will include:  
TOP RECORDS, ARTISTS, AND LABELS OF THE YEAR  
IN ALL MUSIC FORMATS, TOGETHER IN ONE MAGAZINE.

**DECEMBER 27, 1996!!!**  
Distributed week of December 16

**Monitor**

Lee Ann Photoglo: 615-321-4294 • Gary Nuell: 213-525-2331 • Robert Massey: 213-525-2325 • Jack Fulmer: 212-536-5272



POWER PLAYLISTS

For Week Ending November 17, 1996



Playlists compiled by Broadcast Data Systems. Radio Track service. Songs ranked by number of plays in monitored week. Playlists are based on order of TRB weekly survey with the highest-ranking stations in order. Cumulative song ranking is based on the release of the Spring and Fall Arbitron surveys. The number of stations shown each week varies depending upon space.



KLOS Los Angeles PD: Carey Curelop MD: Rita Wilde. Playlist table with columns for song title, artist, and rank.

WNEW New York OM: Steve Young MD: Amy Winslow. Playlist table with columns for song title, artist, and rank.

WRCX Chicago PD: Dave Richards APD/MD: Jo Robinson. Playlist table with columns for song title, artist, and rank.

WYSP Philadelphia PD: Tim Sabean APD/MD: Mark Thompson. Playlist table with columns for song title, artist, and rank.

WMMR Philadelphia PD: Joe Bonadonna. Playlist table with columns for song title, artist, and rank.

KQRS Minneapolis PD: Dave Hamilton APD/MD: Reed Endersbe. Playlist table with columns for song title, artist, and rank.

WRIF Detroit PD: Doug Podell MD: Dave Wellington. Playlist table with columns for song title, artist, and rank.

WWDC Washington, DC VP/Programming: Dave Brown MD: Buddy Rizer. Playlist table with columns for song title, artist, and rank.

WDVE Pittsburgh PD: Gene Romano MD: Cris Winter. Playlist table with columns for song title, artist, and rank.

WFBQ Indianapolis PD: Marty Bender MD: Ace Cosby. Playlist table with columns for song title, artist, and rank.

WAAF Boston PD: Dave Douglas MD: John Osterlind. Playlist table with columns for song title, artist, and rank.

KEGL Dallas PD: Duane Doherty MD: Cindy Scull. Playlist table with columns for song title, artist, and rank.

WKLS Atlanta PD: Michael Hughes MD: Beth Kepple. Playlist table with columns for song title, artist, and rank.

KLOL Houston PD: Andy Beaubien MD: Max Dugan. Playlist table with columns for song title, artist, and rank.

KSHE St. Louis PD: Rick Balis MD: Al Hofer. Playlist table with columns for song title, artist, and rank.

KTXQ Dallas OM: Andy Lockridge MD: Redbeard. Playlist table with columns for song title, artist, and rank.

WZTA Miami PD: Gregg Steele MD: Heidi Hess. Playlist table with columns for song title, artist, and rank.

WEBN Cincinnati DM: Jim Richards MD: Scott Reinhart. Playlist table with columns for song title, artist, and rank.

KSJO San Jose PD: Dana Jiang MD: Laurie Free. Playlist table with columns for song title, artist, and rank.

WJRR Orlando PD: Dick Sheetz MD: Pat Lynch. Playlist table with columns for song title, artist, and rank.

WIYY Baltimore PD: Rick Strauss MD: Rob Heckman. Playlist table with columns for song title, artist, and rank.

WBZZ Columbus, OH PD: Hal Fish APD/MD: Ronni Hunter. Playlist table with columns for song title, artist, and rank.

WXTB Tampa DM: Brad Hardin MD: Brian Medlin. Playlist table with columns for song title, artist, and rank.

WHJY Providence PD: Bill Weston MD: Sharon Schifino. Playlist table with columns for song title, artist, and rank.



# MAINSTREAM ROCK



# POWER PLAYLISTS

For Week Ending November 17, 1996



Playlists supplied by Broadcast Data Systems' Radio Track service. Songs ranked by number of plays in monitored week. Playlists are listed in order of TSA weekly count, beginning with the highest-counting station. Counts are updated twice yearly following the release of the Spring and Fall Arbitron surveys. The number of stations shown each week varies depending upon space.

WONE		WLZR		WKDF		KISS		KBPI		WBAB	
Akron	PD: J.D.	Milwaukee	PD: Keith Hastings	Nashville	PD: Kidd Redd MD: Sheri Sexton	San Antonio	OM: Virgil Thompson APD: Kevin Vargas	Denver	PD: Bob Richards	Long Island	PD: Jeff Levine Acting MD: Eric Willman
TW	LW	TW	LW	TW	LW	TW	LW	TW	LW	TW	LW
1	Van Halen, Me Wise Magic	1	Alice In Chains, Would	1	Bush, Swallowed	1	Bush, Swallowed	1	Sublime, What I Got	1	Van Halen, Me Wise Magic
2	Tom Petty & The Heartbreakers, Climb That	2	Van Halen, Me Wise Magic	2	Alice In Chains, Over Now	2	Counting Crows, Angels Of The Silences	2	Toot, Stinkfist	2	The Wallflowers, 6th Avenue Heartache
3	Journey, Message Of Love	3	Metallica, Hero Of The Day	3	311, Down	3	The Smashing Pumpkins, Muzzle	3	Stabbing Westward, Shame	3	R.E.M., Betterswt Me
4	Rush, Half The World	4	Soundgarden, Burden In My Hand	4	Stone Temple Pilots, Trippin' On A Hole	4	Metallica, Hero Of The Day	4	Cake, The Distance	4	Storyline, Good Day For The Blues
5	ZZ Top, What's Up With That	5	The Gufs, Smile	5	Tom Petty & The Heartbreakers, Climb That	5	Pearl Jam, Hall Hall	5	No Doubt, Don't Speak	5	John Mellencamp, Key West Intermzzo
6	Tonic, Open Up Your Eyes	6	Stabbing Westward, Shame	6	Metallica, An' I My E Ich	6	Sublime, What I Got	6	The Who, Stargazer	6	Chalk Farm, Lie On La
7	John Mellencamp, Just Another Day	7	The Smashing Pumpkins, Muzzle	7	Stone Temple Pilots, Lady Picture Show	7	Soundgarden, Blow Up The Outside World	7	Rush, Half The World	7	John Mellencamp, Key West Intermzzo
8	The Wallflowers, One Headlight	8	Tonic, Open Up Your Eyes	8	The Smashing Pumpkins, Muzzle	8	R.E.M., Betterswt Me	8	Bush, Swallowed	8	Tom Petty & The Heartbreakers, Walls
9	R.E.M., Betterswt Me	9	Soundgarden, Blow Up The Outside World	9	Sublime, What I Got	9	Sublime, What I Got	9	The Smashing Pumpkins, Muzzle	9	ZZ Top, What's Up With That
10	The Black Crowes, Blackberry	10	Local H, Bound For The Floor	10	Toot, Stinkfist	10	Matchbox 20, Long Day	10	Counting Crows, Angels Of The Silences	10	Rush, Half The World
11	Metallica, Hero Of The Day	11	Van Halen, Can't Get This Stuff No More	11	Social Distortion, I Was Wrong	11	Local H, Bound For The Floor	11	Recharge, Big Mean	11	Counting Crows, Angels Of The Silences
12	Hootie & The Blowfish, Sad Capers	12	Tonic, Open Up Your Eyes	12	Counting Crows, Angels Of The Silences	12	Counting Crows, Angels Of The Silences	12	Roe Hot Chili Peppers, Love Roller-coaster	12	Tom Petty & The Heartbreakers, Climb That
13	Van Halen, Can't Get This Stuff No More	13	Bush, Swallowed	13	Local H, Bound For The Floor	13	Cake, The Distance	13	Matchbox 20, Long Day	13	Bruce Springsteen, High Hopes
14	Bush, Swallowed	14	Toot, Stinkfist	14	The Hunger, Undone	14	Van Halen, Me Wise Magic	14	Dishwalla, Charlie Brown's Parents	14	Dishwalla, Charlie Brown's Parents
15	Pearl Jam, Hall Hall	15	Stone Temple Pilots, Lady Picture Show	15	Expanding Man, Download	15	Van Halen, Me Wise Magic	15	Stic, Looking For	15	Foreigner, Cold As Ice
16	Bad Company, One On One	16	Marilyn Manson, The Beautiful People	16	Butt Hole Surfers, Pepper	16	Toot, Stinkfist	16	The Hazies, Top Free Life	16	Lod Zeppelin, Dancing Days
17	Pearl Jam, Red Msquirt	17	Corrosion Of Conformity, Drowning In A	17	Better Than Ezra, Desperately Wanting	17	Cracker, Sweet Thistle Pie	17	Govts Thumb, 29	17	Bad Company, Can't Get Enough
18	Counting Crows, Angels Of The Silences	18	Dishwalla, Charlie Brown's Parents	18	Dishwalla, Charlie Brown's Parents	18	Dishwalla, Charlie Brown's Parents	18	Stone Temple Pilots, Lady Picture Show	18	Bad Company, Rock 'n' Roll Fantasy
19	The Why Store, Father	19	The Hunger, Undone	19	Tonic, Open Up Your Eyes	19	Tonic, Open Up Your Eyes	19	The Heads, Damage I've Done	19	Thin Lizzy, The Boys Are Back In Town
20	Stone Temple Pilots, Lady Picture Show	20	Social Distortion, I Was Wrong	20	Presidents Of The United States, Mach 5	20	Gravity Kills, Enough	20	Tonic, Open Up Your Eyes	20	Blues Traveler, Run Around
21	Chalk Farm, Lie On La	21	Nirvana, Smells Like Teen Spirit	21	R.E.M., Betterswt Me	21	Typical D, Love You To Death	21	Butt Hole Surfers, Pepper	21	Alison Krauss, Run Around
22	Hootie & The Blowfish, Tucker's Town	22	Van Halen, Me Wise Magic	22	R.E.M., Betterswt Me	22	Presidents Of The United States, Mach 5	22	Soundgarden, Burden In My Hand	22	The Doobie Brothers, Ramblin' Man
23	The Doors, Hello, Love You	23	Bush, Came Down	23	Fittar, Jurassic	23	Darhaood, Grow Your Own	23	Jerry Cantrell, Leave Me Alone	23	Phish, Free
24	Lynyrd Skynyrd, Saturday Night Special	24	Stone Temple Pilots, Interstate Love Song	24	Nirvana, Aneurysm	24	Chalk Farm, Lie On La	24	I Mother Earth, One More Astronaut	24	Lynyrd Skynyrd, What's Your Name
25	Aerosmith, Live In An Elevator	25	Metallica, Unt' I Sleeps	25	Dishwalla, Counting Blue Cars	25	The Hazies, Top Free Life	25	Stone Temple Pilots, Trippin' On A Hole	25	Boston, Rock & Roll Band
26	John Cougar Mellencamp, Lonely Of Night	26	Lilith, Hey Man Ne a Shot	26	Sponge, Have You Seen Mary	26	Marilyn Manson, The Beautiful People	26	Screaming Trees, All I Know	26	George Thorogood & The Destroyers, Move It
27	Aerosmith, The Other Side	27	Stone Temple Pilots, Flush	27	Stabbing Westward, Shame	27	Tom Petty & The Heartbreakers, Climb That	27	White Zombie, I'm Your Boogerman	27	Live, Selling The Drama
28	Tom Petty & The Heartbreakers, Free Fallin'	28	Stone Temple Pilots, Vasoline	28	Toot, Sober	28	Seven Mary Three, Water's Edge	28	White Zombie, I'm Your Boogerman	28	Bolton, Shattered
29	Pink Floyd, On The Turning Away	29	The Hunger, Vanishing Cream	29	Local H, Bound For The Floor	29	Local H, Bound For The Floor	29	White Zombie, I'm Your Boogerman	29	Pink Floyd, Hey You
30	John Mellencamp, Key West Intermzzo	30	The Hunger, Vanishing Cream	30	Barbaod, Grow Your Own	30	Barbaod, Grow Your Own	30	White Zombie, I'm Your Boogerman	30	The Ramones, I Wanna Be Sedated



POWER PLAYLISTS

For Week Ending November 17, 1996



Playlists supplied by Broadcast Data Systems' Radio Track service. Songs ranked by number of plays in monitored week. Playlists are listed in order of TSA weekly output, beginning with the highest-ranking station. Curries are updated twice weekly following the release of the Spring and Fall Arbitron surveys. The number of stations shown each week varies depending upon space.

Grid of 48 radio station playlists (e.g., KRXQ, WRDU, WPLR, WNOR, KLAQ, WXRA, WCCC, WKLQ, WKQQ, KBER, WIOT, WZZO, WFYV, WAPL, WBLM, KEZO, WTPA, KLBK, KMJX, KGGG, KCAL, KMOD, WRXL, WROV) with columns for station name, PD, APD/MD, and a list of songs with their current and previous week's positions.





AIRPOWER (Minimum 300 detections for the first time)

NO RECORDS QUALIFIED FOR AIRPOWER THIS WEEK

AIRPOWER BOUND

Total Plays/Gain

STIR 794/32

Looking For (Aware/Capitol)
Total Stations: 73/Chart Move: 21-19
Heavy (21+ plays): 5 KILO, KTUX, WIOT, WZAT, WZTA
Medium (14-20): 16 KBPI, KEGL, KISS, KRXQ, KRZR, KYD, KUPD, WAPL, WARG, WEBN, WBYV, WIYY, WJRR, WKLO, WNRQ, WZZO
Light (Under 14): 52
New Airplay This Week: 3 WPLR, WZMT, WZZR

RUSH 765/145

Half The World (Anthem/Atlantic)
Total Stations: 64/Chart Move: 29-20
Heavy (21+): 5 XKUS, WDHA, WONE, WPLR, WRDU
Medium (14-20): 17 KEGL, KFRQ, KGGG, KIOZ, KMJX, KMOD, KOMP, KRAD, KRZZ, KSJO, KTUX, WCCC, WCKW, WFBQ, WKLC, WROV, WXTB
Light (Under 14): 42
New Airplay This Week: 9 KEZO, KSHE, KTAL, WBLM, WNCD, WNOR, WSFL, WSTZ, WTFX

DARLAHOOD 761/20

Grow Your Own (Reprise)
Total Stations: 72/Chart Move: 23-21
Heavy (21+): 10 KEGL, KEZO, KILQ, KTUX, KUPD, WAAF, WIOT, WXRA, WXTB, WZAT
Medium (14-20): 8 KIOZ, KLPX, KOMP, KQRC, KRZR, WJRR, WKLO, WTUE
Light (Under 14): 54
New Airplay This Week: 5 KBPI, KCAL, KLOS, WVRK, WZMT

ALICE IN CHAINS 745/52

Would? (Columbia)
Total Stations: 71/Chart Move: 25-23
Heavy (21+): 12 KAZR, KISW, KRXQ, KTUX, KUPD, WLZR, WRXQ, WRIF, WYSP, WZAT, WZMT, WZTA
Medium (14-20): 8 KILO, KZRR, WARQ, WIOT, WIXV, WKLS, WTPA, WZZO
Light (Under 14): 51
New Airplay This Week: 1 KLBJ

SUBLIME 736/71

What I Got (Gasoline Alley/MCA)
Total Stations: 48/Chart Move: 26-24
Heavy (21+): 18 KBER, KBPI, KILO, KISS, KLOS, KNCN, KRAB, KRAD, KRXQ, KYD, WARG, WIYY, WJRR, WKDF, WWDC, WXRA, WZAT, WZTA
Medium (14-20): 5 KTUX, WAVF, WKLO, WRXR, WZZO
Light (Under 14): 25
New Airplay This Week: 2 KQRC, KTXQ

THE WALLFLOWERS 615/88

One Headlight (Interscope)
Total Stations: 53/Chart Move: 36-28
Heavy (21+): 7 KDKB, KTAL, KYD, WAVF, WRXR, WXTB, WZAT
Medium (14-20): 9 KLAQ, KQRS, KKUS, WIYY, WNCD, WNEW, WONE, WROQ, WWDC
Light (Under 14): 37
New Airplay This Week: 8 KRZZ, KZRR, WCKW, WDHA, WONE, WTAK, WXF, WZTA

MARILYN MANSON 603/-9

The Beautiful People (Nothing/Interscope)
Total Stations: 51/Chart Move: 30-29
Heavy (21+): 6 KRAD, KTUX, KUFO, WAAF, WKLO, WZAT
Medium (14-20): 7 KEGL, KILO, WJRR, WLZR, WRXQ, WRIF, WZTA
Light (Under 14): 38
New Airplay This Week: 1 KRAB

SPONGE 601/68

Have You Seen Mary (Columbia)
Total Stations: 54/Chart Move: 35-30
Heavy (21+): 6 KTUX, WARQ, WIOT, WXRA, WZAT, WZTA
Medium (14-20): 11 KBER, KEZO, KILO, KMJX, WEBN, WKLO, WKQ, WNEW, WTPA, WTUE, WZZR
Light (Under 14): 37
New Airplay This Week: 6 KISS, KLBJ, KQRS, WAPL, WDHA, WTFX

OZZY OSBOURNE 594/90

Walk On Water (Geffen)
Total Stations: 58/Chart Move: 38-31
Heavy (21+): 3 KRZZ, WXTB, WZZR
Medium (14-20): 13 KATT, KAZR, KIOZ, KOMP, KQRC, KRAD, KSJO, KTUX, WIOT, WKLC, WNOR, WZAT, WZZO
Light (Under 14): 42
New Airplay This Week: 12 KCAL, KEZO, KISS, KNCN, KXUS, WAPL, WDHA, WKLS, WLVQ, WLZR, WPLR, WRDU

BETTER THAN EZRA 593/180

Desperately Wanting (Swell/Elektra/EEG)
Total Stations: 70/Chart Move: Debut 32
Heavy (21+): 6 KILO, KYD, WARQ, WAVF, WCKW, WZAT
Medium (14-20): 14 KLOS, KLPX, KRAD, KRZR, WCCC, WIXV, WJRR, WKDF, WKLO, WSTZ, WTPA, WTUE, WWDC, WZZR
Light (Under 14): 50
New Airplay This Week: 10 KEGL, KTUX, WIOT, WJRR, WLZR, WRXQ, WTPA, WVRK, WWDC, WZZO

CORROSION OF CONFORMITY 560/49

Drowning in A Daydream (Columbia)
Total Stations: 53/Chart Move: 37-34
Heavy (21+): 5 KILO, KTUX, WAAF, WXRA, WZAT
Medium (14-20): 10 KAZR, KIOZ, KISW, KQRC, KRAD, KUPD, WKLO, WLZR, WRIF, WXTB
Light (Under 14): 38
New Airplay This Week: 3 KTXQ, WJRR, WXTB

THE PRESIDENTS OF THE UNITED STATES OF AMERICA 540/-4

Mach 5 (Columbia)
Total Stations: 51/Chart Move: 34-35
Heavy (21+): 4 KEGL, WARQ, WXRA, WZAT
Medium (14-20): 12 KILO, KISW, KLOS, KRAD, KRXQ, KTUX, KYD, KUPD, WKDF, WWDC, WZTA, WZZO
Light (Under 14): 35
New Airplay This Week: 4 KBPI, WRXL, WVRK, WZMT

ZZ TOP 477/259

Bang Bang (RCA)
Total Stations: 41/Chart Move: Debut 37
Heavy (21+): 3 KEZO, KRZZ, KXUS

MOST NEW AIRPLAY THIS WEEK

Table with 2 columns: Artist/Track Name and No. Of Stations. Includes ZZ Top, John Mellencamp, Ozzy Osbourne, Better Than Ezra, and Rush.

Table with 2 columns: Artist/Track Name and No. Of Stations. Includes Failure, John Mellencamp, and Gravity Kills.

Table with 2 columns: Artist/Track Name and No. Of Stations. Includes Gravity Kills, 311, and Dave Matthews Band.

CHART BOUND

Total Plays/Gain

Table with 2 columns: Artist/Track Name and No. Of Stations. Includes The Why Store, Van Halen, and The Hazies.

Table with 2 columns: Artist/Track Name and No. Of Stations. Includes Dave Matthews Band, Zakk Wylde, and Type O Negative.

Table with 2 columns: Artist/Track Name and No. Of Stations. Includes Type O Negative, Zakk Wylde, and The Frames DC.

Table with 2 columns: Artist/Track Name and No. Of Stations. Includes Zakk Wylde, The Frames DC, and Korn.

Table with 2 columns: Artist/Track Name and No. Of Stations. Includes Korn and ZZ Top.

SEMISONIC 150/32
F.N.T. (MCA Soundtracks/MCA)
Total Stations: 16
Heavy (21+): 2 WARQ, WZAT
Medium (14-20): 1 KLBJ
Light (Under 14): 13
New Airplay This Week: 3 KDKB, KTXQ, WSTZ

REPUBLICA 132/7
Ready To Go (deConstruction/RCA)
Total Stations: 14
Heavy (21+): 3 KBPI, WARQ, WRXR
Medium (14-20): 1 WXRA
Light (Under 14): 10

BECK 130/29
Devil's Haircut (DGC/Geffen)
Total Stations: 25
Heavy (21+): 0
Medium (14-20): 3 KRXQ, WAVF, WZAT
Light (Under 14): 22
New Airplay This Week: 3 KATT, KEGL, WSTZ

JOHNNY CASH 101/26
Rusty Cage (American/Reprise)
Total Stations: 17
Heavy (21+): 2 KATT, WAVF
Medium (14-20): 0
Light (Under 14): 15

PEARL JAM 94/12
Smile (Epic)
Total Stations: 9
Heavy (21+): 2 KIOZ, KLOS
Medium (14-20): 0
Light (Under 14): 7
New Airplay This Week: 2 KCAL, KIOZ

UGLY AMERICANS 93/3
You Turn Me On (Capricorn/Mercury)
Total Stations: 14
Heavy (21+): 1 WAVF
Medium (14-20): 0
Light (Under 14): 13

BETH HART BAND 93/20
Immortal (143/Lava/Atlantic)
Total Stations: 13
Heavy (21+): 0
Medium (14-20): 3 KTUX, WCCC, WTPA
Light (Under 14): 10

GARY HOEY 87/-3
Desire (Surfdog)
Total Stations: 15
Heavy (21+): 0
Medium (14-20): 0
Light (Under 14): 15
New Airplay This Week: 1 WRXQ

HOOTIE & THE BLOWFISH 87/14
Sad Capers (Atlantic)
Total Stations: 6
Heavy (21+): 1 WARQ
Medium (14-20): 3 WKLC, WMMR, WONE
Light (Under 14): 2

RED HOT CHILI PEPPERS 83/4
Love Rollercoaster (Geffen)
Total Stations: 16
Heavy (21+): 1 WARQ
Medium (14-20): 2 KBPI, WZAT
Light (Under 14): 13

NO DOUBT 80/14
Don't Speak (Trauma/Interscope)
Total Stations: 12
Heavy (21+): 2 KBPI, WWDC
Medium (14-20): 1 WRXR
Light (Under 14): 9
New Airplay This Week: 1 WRXR

Airpower awarded to those records which attain 800 detections for the first time. New airplay lists those stations registering six or more detections per week on a record for the first time. \* Initial impact: records appearing on this page for the first time.



SONG ACTIVITY REPORTS

For Week Ending November 17, 1996

Disclaimer: Station rankings information for the week ending 11/17/96... Station rankings are based on airplay data...

ALICE IN CHAINS 745/52
Would? (Columbia)
Total Stations: 71 Chart Move: 25-23

BETTER THAN EZRA 593/180
Desperately Wanting (Swell/Elektra/EEG)
Total Stations: 70 Chart Move: Debut 32

BUSH 1572/30
Swallowed (Trauma/Interscope)
Total Stations: 86 Chart Move: 5-4

CORROSION OF CONFORMITY 560/49
Drowning In A Daydream (Columbia)
Total Stations: 53 Chart Move: 37-34

DARLAHOOD 761/20
Grow Your Own (Reprise)
Total Stations: 72 Chart Move: 23-21

LOCAL H 885/80
Bound For The Floor (Island)
Total Stations: 58 Chart Move: 20-15

MATCHBOX 20 948/76
Long Day (Lava/Atlantic)
Total Stations: 68 Chart Move: 17-13

JOHN MELLENCAMP 450/145
Just Another Day (Mercury)
Total Stations: 39 Chart Move: Debut 39

METALLICA 1935/78
Hero Of The Day (Elektra/EEG)
Total Stations: 90 Chart Move: 2-2

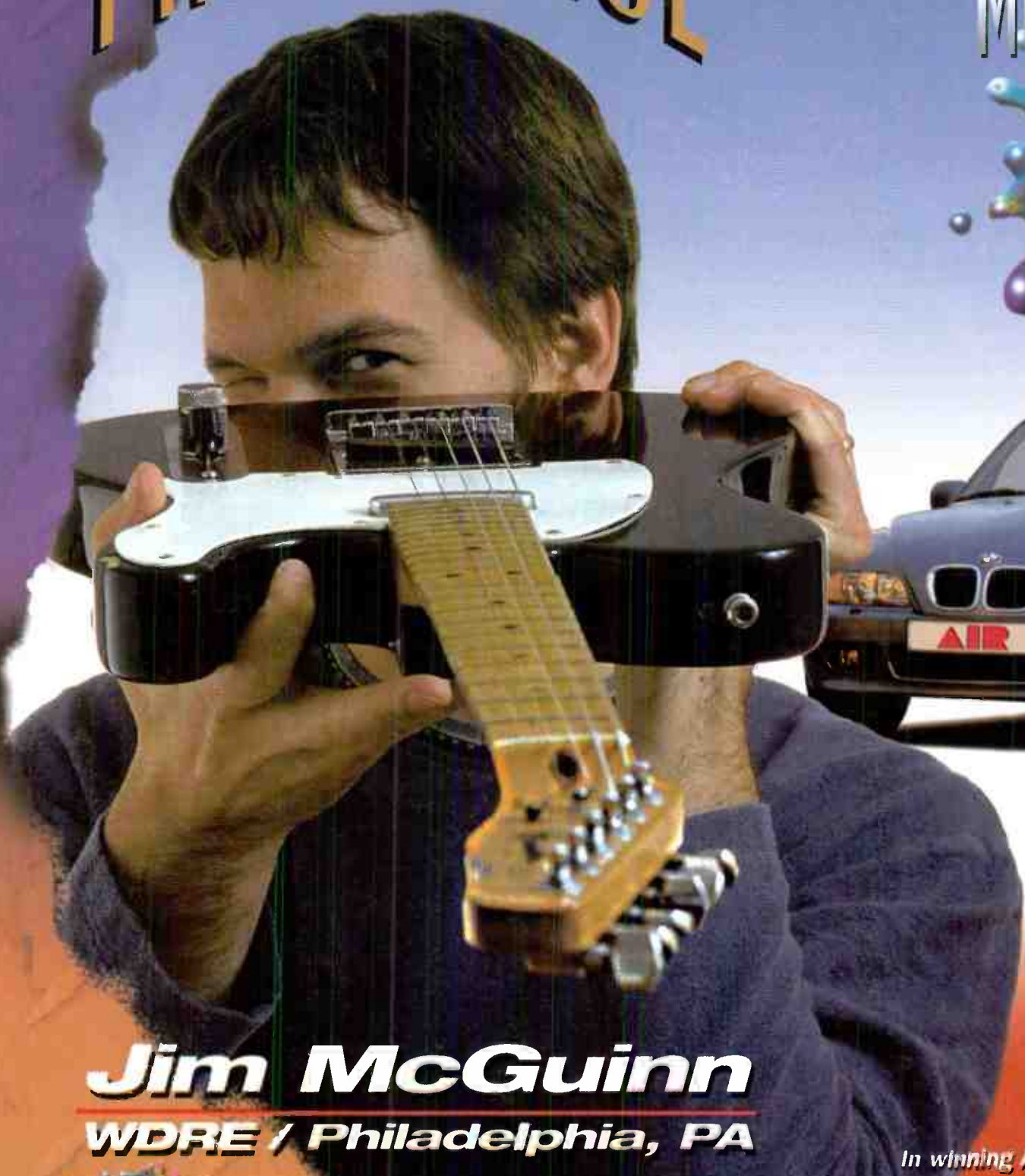
OZZY OSBOURNE 594/90
Walk On Water (Geffen)
Total Stations: 58 Chart Move: 38-31



# FIRST PLACE

# AIR MODERN ROCK

# 4 COMPETITION



**GRAND PRIZE**  
BMW Z3 ROADSTER

## **Jim McGuinn** **WDRE / Philadelphia, PA**

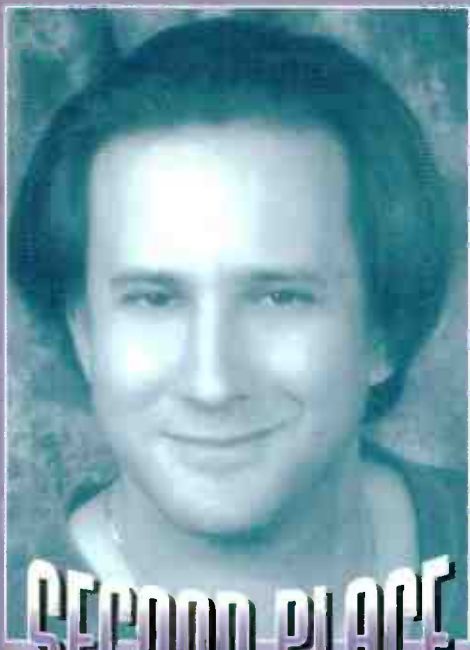
**W**hat can I say! I've enjoyed being a part of the AIR Modern Rock Competition from the beginning, but I never thought I would win the whole thing! I've been a participant in the competition mostly because of the people. Kevin, Dave and everyone at AIR really know their stuff. They are honest, straight-forward and always have the best information. Thanks again to everyone and now I'm off to Vermont!

*In winning AIR Modern Rock Competition 4, Jim once again used his ears and ability for picking the hits to cap off a stretch of four consecutive Top 10 finishes. AIR would like to congratulate Jim, Lynn and all of our Competition 4 winners on a successful campaign. Thanks to all who participate and everyone in the record industry for making the AIR Modern Rock Competition a success.*



# AIR MODERN ROCK

## 4 COMPETITION



### SECOND PLACE

## Lynn Barstow KGDE / OMAHA, NE

*"AIR is the Top source of information out there for me. It gets me the facts and figures I need quickly and accurately and of course forces me to spend time with the music. Thanks to Kevin, Dave and everyone at AIR for the information in the weekly conversations. Now who beat me this time?"*

His & Her SEA-DOO Watercrafts  
(or \$10,000)



### BRYAN JONES

Formerly  
XHRM / San Diego, CA

3RD PLACE \$5,000



### DEDIPUS

WBCN  
BOSTON, MA

4TH PLACE \$3,000



### JAY MICHAELS

KRBE / Houston, TX  
Formerly KDGE / Dallas

5TH PLACE \$2,500



### LISA WORDEN

KROQ  
LOS ANGELES, CA

6TH PLACE \$2,000



### STERLING SCHIESSLER

WAQZ  
CINCINNATI, OH

7TH PLACE \$1,750



### DON O'NEAL

KFRR  
FRESNO, CA

8TH PLACE \$1,500



### MATT PINFIELD

MTV  
NEW YORK, NY

9TH PLACE \$1,250



### VINCE RICHARDS

KKND  
NEW ORLEANS, LA

10TH PLACE \$1,000

**AIR MODERN ROCK Competition 5 is now underway.  
CALL DAVE or KEVIN at AIR (410) 381-6800**



**WINNERS 11 THRU 30 SHARE IN A \$10,000 CASH POOL**



11

**BOOKER MADISON**  
WXRK • NEW YORK, NY



12

**CRUZE**  
KTBZ • HOUSTON, TX



13

**BRYNN CAPELLA**  
XHRM • SAN DIEGO, CA



14

**ALLISON STRONG**  
KUPR • SAN DIEGO, CA



15

**PAUL KRIEGLER**  
KMYZ • TULSA, OK



16

**KURT STEFFEK**  
MTV • NEW YORK, NY



17

**KEVIN WEATHERLY**  
KROQ • LOS ANGELES, CA



18

**MIKE PEER**  
KDGE • DALLAS, TX



19

**DENNIS DILLON**  
WXZZ • LEXINGTON, KY



20

**TIM DAVIS**  
CONSULTANT • DETROIT, MI



21

**ALEX COSPER**  
*Formerly*  
KWOD • SACRAMENTO, CA



22

**LESLIE FRAM**  
99X • ATLANTA, GA



23

**SEAN DEMERY**  
99X • ATLANTA, GA



24

**ERIC SCHMIDT**  
KPNT • ST. LOUIS, MO



25

**L.A. LLOYD HOCUTT**  
KROX • AUSTIN, TX



26

**GREG BRADY**  
WPLA • JACKSONVILLE, FL



27

**ALEX LUKE**  
KPNT • ST. LOUIS, MO



28

**GENE SANDBLOOM**  
KROQ • LOS ANGELES, CA



29

**JAY TAYLOR**  
KOME • SAN JOSE, CA



30

**VINCE CANNOVA**  
CIMX • DETROIT, MI

**AIR  
SECOND HALF**

**W I N N E R S**



**1ST PLACE \$1,500**

**ERICK ANDERSON**  
WNVE • ROCHESTER, NY



**2ND PLACE \$1,000**

**STERLING SCHIESSLER**  
WAQZ • CINCINNATI, OH



**3RD PLACE \$500**

**LISA WORDEN**  
KROQ • LOS ANGELES, CA



For Week Ending November 17, 1996

Detailed song tracking information for the last 3 weeks for all songs showing increased play this week. Total plays and gain do not include video play. Markets listed in order of population.

Grid of song activity reports for R.E.M., RUSH, SOUNDGARDEN, SPONGE, and STIR. Each section includes song title, chart position, and station data across various markets.

Grid of song activity reports for STONE TEMPLE PILOTS, SUBLIME, THE WALLFLOWERS, THE WHY STORE, and ZZ TOP. Each section includes song title, chart position, and station data across various markets.



POWER PLAYLISTS

Monitor For Week Ending November 17, 1996

WXRK New York PD: Steve Kingston APD/MD: Alexa Tobin

KROQ Los Angeles PD: Kevin Weatherly APD: Gene Sandbloom

WKQX Chicago PD: Bill Gamble APD/MD: Mary Shuminas

WPLY Philadelphia PD: Chuck Tisa MD: Doug Kubinski

WBCN Boston VP/Prgm: Oedipus MD: Carter Alan

WHFS Washington, DC PD: Robert Benjamin APD: Bob Waugh

WHYT Detroit PD: Garrett Michaels MD: Alex Tear

WNNX Atlanta PD: Brian Phillips APD: Leslie Fram

KITS San Francisco VP/Prgm: Richard Sands MD: Roland West

KDGE Dallas PD: Joel Folger MD: Mike Peer

KEGE Minneapolis PD: John Lassman MD: Wade Linder

WMMS Cleveland PD: Bob Neumann APD: "Spaceman" Scott Hughes

bt "Blue Skies" featuring Tori Amos BDS: 207 plays SoundScan: 1006 units Debut @ 39 SoundScan Alternative New Albums... Includes promotional text and logos for radio stations.



POWER PLAYLISTS

For Week Ending November 17, 1996



Playlists supplied by Broadcast Data Systems' Radio Track service. Songs ranked by number of plays in monitored week. Playlists are listed in order of TSA weekly count, beginning with the highest-counting station. Counts are updated twice yearly following the release of the Spring and Fall Arbitron surveys. The number of stations shown each week varies depending upon space.



CIMX Detroit Prgm. Mgr.: Murray Brookshaw PD/MD: Vince Cannova. Playlist with 30 items including Bush, Swallowed and Alice In Chains, Would.

WDRE Philadelphia OM/PD: Jim McGuinn MD: Elliot/Russell. Playlist with 30 items including Sublime, What I Got and R.E.M., Bittersweet Me.

KOME San Jose OM: Ron Nenri PD/MD: Jay Taylor. Playlist with 30 items including Republica, Ready To Go and Pearl Jam, Hail Hail.

KPNT St. Louis PD: Alex Luke APD: Eric Schmidt. Playlist with 30 items including Bush, Swallowed and Tonic, Open Up Your Eyes.

KLYY Los Angeles VP Prog: Steve Blatter PD: Phil Manning. Playlist with 30 items including No Doubt, Don't Speak and Sublime, What I Got.

KNDD Seattle PD: Rick Lambert MD: Marco Collins. Playlist with 30 items including Bush, Swallowed and No Doubt, Don't Speak.

KTBB Houston PD: Cruze MD: David Sadoff. Playlist with 30 items including Cake, The Distance and Bush, Swallowed.

WMRQ Hartford PD: Jay Beau Jones MD: Dave Hill. Playlist with 30 items including Sublime, What I Got and Bush, Swallowed.

XTRA San Diego OM: Tim Dukes APD: Malcolm Ryker. Playlist with 30 items including Social Distortion, I Was Wrong and Sublime, What I Got.

WENZ Cleveland PD/MD: Sean Robertson. Playlist with 30 items including Sublime, What I Got and 311, All Mixed Up.

WXDX Pittsburgh PD: Ali Castellini MD: Lenny Diana. Playlist with 30 items including Counting Crows, Angels Of The Silences and Eels, Novocaine For The Soul.

WRZZ Indianapolis PD: Scott Jameson MD: Michael Young. Playlist with 30 items including Eels, Novocaine For The Soul and Counting Crows, Angels Of The Silences.

WLIR Long Island PD: Ted Taylor MD: Shelley Miller. Playlist with 30 items including Counting Crows, A Long December and No Doubt, Don't Speak.

KXPK Denver PD: Doug Clifton APD/MD: Gary Schoenwetter. Playlist with 30 items including No Doubt, Don't Speak and R.E.M., Bittersweet Me.

WLUM Milwaukee PD: Tommy Wild APD: Chuck Summers. Playlist with 30 items including Chalk Farm, Le On Le and Bush, Swallowed.

WEDG Buffalo PD: John Hager MD: Rich Wall. Playlist with 30 items including Bush, Swallowed and Sublime, What I Got.

KWOD Sacramento PD/MD: Alex Cosper. Playlist with 30 items including Presidents Of The United States, Mach 5 and Bush, Swallowed.

XHRM San Diego MD: Brynn Capella. Playlist with 30 items including No Doubt, Don't Speak and Social Distortion, I Was Wrong.

KNRK Portland, OR PD: Mark Hamilton MD: Matt Souther. Playlist with 30 items including Bloodhound Gang, Fire Water Burn and Soundgarden, Blow Up The Outside World.

WFNX Boston PD: Bill Glasser. Playlist with 30 items including Cake, The Distance and Red Hot Chili Peppers, Love Rollercoaster.

KZON Phoenix PD: Bill Pugh MD: Erika Smith. Playlist with 30 items including Lemonheads, If I Could Talk I'd Tell You and Sublime, What I Got.

KISF Kansas City PD: Jon Anthony MD: Jason Justice. Playlist with 30 items including Tonic, Open Up Your Eyes and Cake, The Distance.

WNVE Rochester PD/MD: Erick Anderson. Playlist with 30 items including Sublime, What I Got and Stone Temple Pilots, Trappin' On A Hole.

WEND Charlotte PD: Jack Daniel MD: Kim Monroe. Playlist with 30 items including Eels, Novocaine For The Soul and Fun Lovin' Criminals, Scooby Snacks.



# POWER PLAYLISTS™



**AIRPLAY**  
**Monitor**®

For Week Ending  
November 17, 1996

Playlists supplied by Broadcast Data Systems' Radio Track service. Songs ranked by number of plays in monitored week. Playlists are listed in order of TSA weekly curve, beginning with the highest-cumulative station. Curves are updated twice yearly (following the release of the Spring and Fall Arbitron surveys). The number of stations shown each week varies depending upon space.

### KEDJ

Phoenix PD: Shelli Hart  
APD/MD: Chris Patyk

TW	LW	1	2	3	4	5	6	7	8	9	10	11	12	13	14	15	16	17	18	19	20	21	22	23	24	25	26	27	28	29	30
		1	2	3	4	5	6	7	8	9	10	11	12	13	14	15	16	17	18	19	20	21	22	23	24	25	26	27	28	29	30

### KNRX

Oklahoma City PD: Mike McCoy  
MD: Geno Pearson

TW	LW	1	2	3	4	5	6	7	8	9	10	11	12	13	14	15	16	17	18	19	20	21	22	23	24	25	26	27	28	29	30
		1	2	3	4	5	6	7	8	9	10	11	12	13	14	15	16	17	18	19	20	21	22	23	24	25	26	27	28	29	30

### WQXA

Harrisburg PD: John Moschitta  
MD: Scott McFadden

TW	LW	1	2	3	4	5	6	7	8	9	10	11	12	13	14	15	16	17	18	19	20	21	22	23	24	25	26	27	28	29	30
		1	2	3	4	5	6	7	8	9	10	11	12	13	14	15	16	17	18	19	20	21	22	23	24	25	26	27	28	29	30

### WGRD

Grand Rapids PD: Allan Fee

TW	LW	1	2	3	4	5	6	7	8	9	10	11	12	13	14	15	16	17	18	19	20	21	22	23	24	25	26	27	28	29	30
		1	2	3	4	5	6	7	8	9	10	11	12	13	14	15	16	17	18	19	20	21	22	23	24	25	26	27	28	29	30

### KMYZ

Tulsa PD: Paul Kreiger  
MD: Greg Kocsak

TW	LW	1	2	3	4	5	6	7	8	9	10	11	12	13	14	15	16	17	18	19	20	21	22	23	24	25	26	27	28	29	30
		1	2	3	4	5	6	7	8	9	10	11	12	13	14	15	16	17	18	19	20	21	22	23	24	25	26	27	28	29	30

### WBRU

Providence PD: Tim Schiavelli  
MD: Matt Maloney

TW	LW	1	2	3	4	5	6	7	8	9	10	11	12	13	14	15	16	17	18	19	20	21	22	23	24	25	26	27	28	29	30
		1	2	3	4	5	6	7	8	9	10	11	12	13	14	15	16	17	18	19	20	21	22	23	24	25	26	27	28	29	30

### WROX

Norfolk PD: Perry Stone  
MD: Al Mitchell

TW	LW	1	2	3	4	5	6	7	8	9	10	11	12	13	14	15	16	17	18	19	20	21	22	23	24	25	26	27	28	29	30
		1	2	3	4	5	6	7	8	9	10	11	12	13	14	15	16	17	18	19	20	21	22	23	24	25	26	27	28	29	30

### WPBZ

West Palm Beach PD: Amy Doyle  
MD: Robert English

TW	LW	1	2	3	4	5	6	7	8	9	10	11	12	13	14	15	16	17	18	19	20	21	22	23	24	25	26	27	28	29	30
		1	2	3	4	5	6	7	8	9	10	11	12	13	14	15	16	17	18	19	20	21	22	23	24	25	26	27	28	29	30

### WDGE

Providence PD: Brent Petersen  
MD: John Allers

TW	LW	1	2	3	4	5	6	7	8	9	10	11	12	13	14	15	16	17	18	19	20	21	22	23	24	25	26	27	28	29	30
		1	2	3	4	5	6	7	8	9	10	11	12	13	14	15	16	17	18	19	20	21	22	23	24	25	26	27	28	29	30

### KCXX

Riverside/San Bernardino ON/PD: Dwight Arnold  
MD: Bruce Pulley

TW	LW	1	2	3	4	5	6	7	8	9	10	11	12	13	14	15	16	17	18	19	20	21	22	23	24	25	26	27	28	29	30
		1	2	3	4	5	6	7	8	9	10	11	12	13	14	15	16	17	18	19	20	21	22	23	24	25	26	27	28	29	30

### KGDE

Omaha PD: Lynn Barstow

TW	LW	1	2	3	4	5	6	7	8	9	10	11	12	13	14	15	16	17	18	19	20	21	22	23	24	25	26	27	28	29	30
		1	2	3	4	5	6	7	8	9	10	11	12	13	14	15	16	17	18	19	20	21	22	23	24	25	26	27	28	29	30

### KEDG

Las Vegas PD: John Griffin  
MD: Freddy Snakeskin

TW	LW	1	2	3	4	5	6	7	8	9	10	11	12	13	14	15	16	17	18	19	20	21	22	23	24	25	26	27	28	29	30
		1	2	3	4	5	6	7	8	9	10	11	12	13	14	15	16	17	18	19	20	21	22	23	24	25	26	27	28	29	30



# "Damage I've Done"

The First Track From **NO TALKING JUST HEAD**

## THE HEADS

Chris Frantz, Jerry Harrison and Tina Weymouth  
with Johnette Napolitano

### AIRPLAY ON OVER 60 STATIONS INCLUDING:

**WBCN WAQZ KCXX KWOD XHRM**  
**KTBZ KTCL WDRE KITS WPLA**  
**WOXY XTRA WRXQ WEND**

ON TOUR

 active rotation
 

Get AMPed: <http://www.mcarecords.com>  
Produced by The Heads • Management: Gary Kurtis and Ira Lipny / Overland Productions

# "F.N.T."

the first single from the soundtrack  
**The Long Kiss Goodnight**

ON OVER 30 STATIONS INCLUDING:

**WBCN WFNX**  
**KREV KTBZ**  
**WAQZ KZON**  
**KTCL WXEG**  
**KISF KLZR**  
**WOXY KMYZ**  
**WGRD WRXQ**  
**XTRA KJEE**

**Semisonic**  
produced by paul fox mixed by tom-lord alge

on tour:  
 11/19 Milwaukee, WI  
 11/20 Madison, WI  
 11/21 Minneapolis, MN  
 11/23 Ames, IA  
 12/2 Woodstock, NY  
 12/3 Boston, MA  
 12/5 Albany, NY

management: jim grant for jgm

**NEW LINE CINEMA**  
**MCA SOUNDTRACKS**





POWER PLAYLISTS

For Week Ending November 17, 1996



Playlists supplied by Broadcast Data Systems' Radio Track service. Songs ranked by number of plays in monitored week. Playlists are listed in order of TBA weekly, beginning with the highest-cumulative station. Cumulative are updated twice yearly following the release of the Spring and Fall Arbitron surveys. The number of stations shown each week varies depending upon space.

Grid of 48 radio station playlists (WAQZ, WXEG, KTCL, KREV, KXXRK, WWCD, WQBK, WBZU, WRXQ, KROX, KFRR, KTEG, WPLA, KICT, WEQX, KLZR, WZRH, WXZZ, WCYY, KHTY, KAEP, KFMA, KPOI, WKRL) with columns for station name, PD, MD, and song lists with TW and LW ratings.



AIRPOWER section with stars and 'Total Plays/Gain' for GARBAGE and RED HOT CHILI PEPPERS.

AIRPOWER BOUND section with 'Total Plays/Gain' for TOOL, TONIC, MARILYN MANSON, PHISH, BETTER THAN EZRA, LUSCIOUS JACKSON, and KORN.

MOST NEW AIRPLAY THIS WEEK section listing GARBAGE, THE WALLFLOWERS, BETTER THAN EZRA, FAILURE, and THE SMASHING PUMPKINS.

FAILURE, THE HEADS, THE SMASHING PUMPKINS, GRAVITY KILLS, THE WALLFLOWERS, GARBAGE, BLOODHOUND GANG, METALLICA, SOUL COUGHING, ORBITAL, DANZIG, SEMISONIC, PATTI ROTHBERG, and THE CARDIGANS sections.

B.T. FEAT. TORI AMOS, SEBADOH, THE CHEMICAL BROTHERS, MATCHBOX 20, DEFTONES, ASH, SUPERDRAG, COUNTING CROWS, WILCO, THE REFRESHMENTS, GOLDFINGER, MORCHEEBA, NERF HERDER, and BLUE SKIES sections.

CHART BOUND

CHART BOUND section with 'Total Plays/Gain' for LEAH ANDREONE, ALICE IN CHAINS, and KORN.





SONG ACTIVITY REPORTS

WWW Broadcast Data Systems logo and detailed song tracking information for the last 3 weeks for all songs showing increased play this week.

For Week Ending November 17, 1996

311 All Mixed Up (Capricorn/Mercury) Total Stations: 74 Chart Move: 17-12. Table with columns for station, song title, and activity.

ALICE IN CHAINS Would? (Columbia) Total Stations: 58. Table with columns for station, song title, and activity.

FIONA APPLE Shadowboxer (Clean Slate/Work) Total Stations: 43 Chart Move: Debut 34. Table with columns for station, song title, and activity.

BETTER THAN EZRA Desperately Wanting (Swell/Elektra/EEG) Total Stations: 61 Chart Move: 36-30. Table with columns for station, song title, and activity.

BLOODHOUND GANG Fire Water Burn (Republic/Geffen) Total Stations: 38. Table with columns for station, song title, and activity.

BUSH Swallowed (Trauma/Interscope) Total Stations: 74 Chart Move: 1-1. Table with columns for station, song title, and activity.

CAKE The Distance (Capricorn/Mercury) Total Stations: 73 Chart Move: 4-4. Table with columns for station, song title, and activity.

DISHWALLA Charlie Brown's Parents (A&M) Total Stations: 36. Table with columns for station, song title, and activity.

FAILURE Stuck On You (Slash/Warner Bros.) Total Stations: 50. Table with columns for station, song title, and activity.

FOUNTAINS OF WAYNE Radiation Vibe (TAG/Atlantic) Total Stations: 50 Chart Move: Debut 35. Table with columns for station, song title, and activity.

GARBAGE Supervixen (Almo Sounds/Geffen) Total Stations: 31. Table with columns for station, song title, and activity.

GARBAGE #1 Crush (Capitol) Total Stations: 64 Chart Move: Debut 17. Table with columns for station, song title, and activity.

GRAVITY KILLS Enough (TVT) Total Stations: 41. Table with columns for station, song title, and activity.

KORN No Place To Hide (Immortal/Epic) Total Stations: 54. Table with columns for station, song title, and activity.

KULA SHAKER Tattva (Columbia) Total Stations: 74 Chart Move: 13-13. Table with columns for station, song title, and activity.





SONG ACTIVITY REPORTS

For Week Ending November 17, 1996



Obtained song tracking information for the last 3 weeks for all songs showing increased play this week. Total plays and gain do not include video play. Markets listed in order of population.

LOCAL H 1682/139
Found For The Floor (Island)
Total Stations: 70 Chart Move: 9-8

MARILYN MANSON 909/3
The Beautiful People (Nothing/Interscope)
Total Stations: 63 Chart Move: 27-27

DAVE MATTHEWS BAND 594/46
Crash Into Me (RCA)
Total Stations: 55 Chart Move: Debut 37

METALLICA 386/27
Hero Of The Day (Elektra/EEG)
Total Stations: 22 Chart Move: Debut 27

NO DOUBT 2411/127
Don't Speak (Trauma/Interscope)
Total Stations: 74 Chart Move: 3-2

PEARL JAM 1345/20
Hail Hall (Epic)
Total Stations: 68 Chart Move: 14-15

PHISH 835/12
Free (Elektra/EEG)
Total Stations: 50 Chart Move: 29-29

POE 583/212
Hello (Modern/Atlantic)
Total Stations: 54 Chart Move: Debut 40

THE PRESIDENTS OF THE UNITED STATES 1373/13
Mach 5 (Columbia)
Total Stations: 72 Chart Move: 12-14

RED HOT CHILI PEPPERS 1132/117
Rode Rollercoaster (Geffen)
Total Stations: 71 Chart Move: 21-19

THE SMASHING PUMPKINS 389/227
Thirty-Three (Virgin)
Total Stations: 33 Chart Move: 11-11

SOUNDGARDEN 1463/75
Blow Up The Outside World (A&M)
Total Stations: 66 Chart Move: 11-11

STONE TEMPLE PILOTS 1618/137
Lady Picture Show (Atlantic)
Total Stations: 79 Chart Move: 10-9

TOOL 1017/25
Stinkface (Koo)
Total Stations: 65 Chart Move: 23-22

THE WALLFLOWERS 359/192
One Headlight (Interscope)
Total Stations: 34 Chart Move: 11-11



POWER PLAYLISTS™

Power Playlists for KFOG, WXRT, and WBOS. Includes station names, PD/MD, and song lists with TW/LW ratings.

Power Playlists for KSCA, KTCZ, and WHPT. Includes station names, PD/MD, and song lists with TW/LW ratings.

Power Playlists for CIDR, KBCO, and KMTT. Includes station names, PD/MD, and song lists with TW/LW ratings.

Main chart table with columns: THIS WEEK, LAST WEEK, WKS. ON CHART, TITLE/LABEL/PROMOTION LABEL, ARTIST, TW, LW, and DETECTIONS.

Records showing an increase in detections over the previous week, regardless of chart movement. A record which has been on the chart for more than 20 weeks will not receive a bullet, even if it registers an increase in detections.

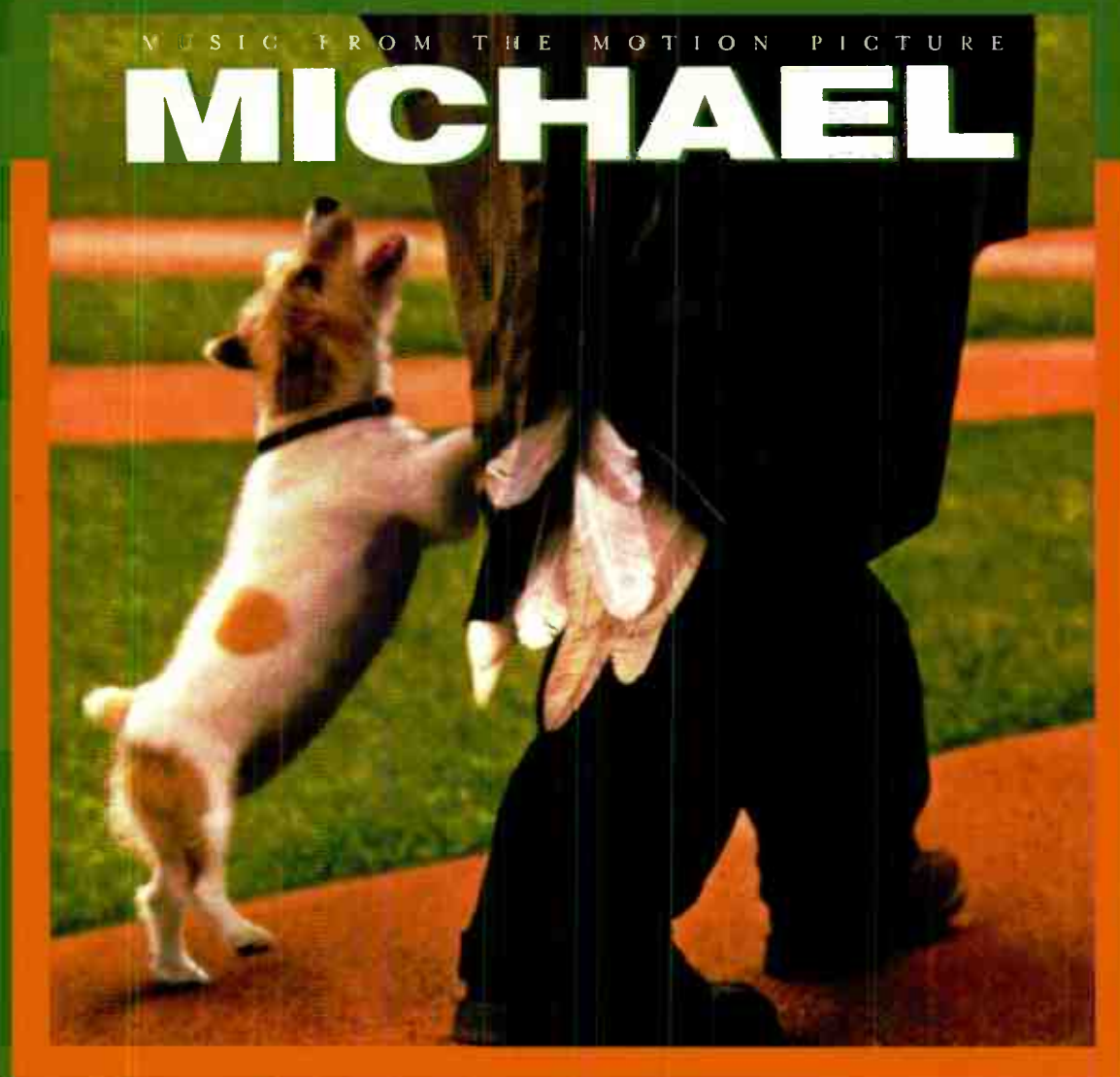
Power Playlists for WVRV, KINK, and WKOC. Includes station names, PD/MD, and song lists with TW/LW ratings.

Advertisement for 'The Borrowers' album. Features the text 'but a dog won't listen once she's tasted blood' and 'BEAUTIFUL STRUGGLE' new this week. Includes station logos and the Guardian Records logo.



# Don Henley

**"Through  
Your Hands"**



First single from the Turner Pictures  
upcoming motion picture

# MICHAEL

Impacting Adult Radio November 25

Written By John Hiatt • Produced by Don Henley • Mixed by Rob Jacobs

Album In Stores December 17

PERSONAL MANAGEMENT IRVING AZOFF





For Week Ending November 17, 1996

COMBINED ROCK MONITOR AIRPLAY										AIRPLAY THIS WEEK BY FORMAT								
TW	LW	WKS	TITLE (LABEL/PROMOTION LABEL)	ARTIST	THIS WEEK			LAST WEEK			MAINSTREAM			MODERN			TRIPLE A	
					Audience (millions)	Detections No.	Rank	Audience (millions)	Detections No.	Rank	Audience (millions)	Detections No.	Rank	Audience (millions)	Detections No.	Rank	Audience (millions)	Detections No.
1	1	5	SWALLOWED (TRAUMA/INTERSCOPE)	BUSH	32.3673	4134	1	32.5904	4059	1	11.0149	1572	4	21.3524	2562	1	—	—
2	2	8	ANGELS OF THE SILENCES (DGC/GEFFEN)	COUNTING CROWS	23.8104	3450	2	24.9952	3580	2	10.4474	1556	5	12.9770	1835	5	0.3860	59
3	3	13	WHAT I GOT (GASOLINE ALLEY/MCA)	SUBLIME	23.6098	3252	4	24.0365	3215	4	4.9400	736	24	17.9260	2401	3	0.7438	115
4	5	7	BLOW UP THE OUTSIDE WORLD (A&M)	SOUNDGARDEN	23.4865	2847	6	22.0614	2656	7	11.3305	1384	7	12.1560	1463	11	—	—
5	4	9	BITTERSWEET ME (WARNER BROS.)	R.E.M.	22.0907	3447	3	23.2271	3572	3	9.1217	1319	9	10.0708	1691	7	2.8982	437
6	6	6	LADY PICTURE SHOW (ATLANTIC)	STONE TEMPLE PILOTS	21.0425	3061	5	20.4822	2863	5	9.9316	1405	6	10.9973	1618	9	0.1136	38
7	7	7	DON'T SPEAK (TRAUMA/INTERSCOPE)	NO DOUBT	20.9336	2608	8	20.2990	2433	10	0.8526	80	—	19.6820	2411	2	0.3990	117
8	13	10	BOUND FOR THE FLOOR (ISLAND)	LOCAL H	18.4718	2567	9	16.2944	2348	11	6.3304	885	15	12.1414	1682	8	—	—
9	8	12	I WAS WRONG (SSO MUSIC)	SOCIAL DISTORTION	18.1432	2636	7	19.6190	2811	6	6.6350	876	17	11.5080	1759	6	0.0002	1
10	10	9	HERO OF THE DAY (ELEKTRA/EEG)	METALLICA	18.1227	2321	13	17.8798	2216	14	15.0480	1935	2	3.0747	386	—	—	—
11	11	6	THE DISTANCE (CAPRICORN/MERCURY)	CAKE	18.1103	2448	11	17.5494	2295	13	2.1211	374	—	15.9732	2056	4	0.0160	18
12	9	11	MUZZLE (VIRGIN)	THE SMASHING PUMPKINS	16.1418	2074	15	17.9619	2322	12	8.4196	1028	10	7.6889	1044	20	0.0333	2
13	14	7	ME WISE MAGIC (WARNER BROS.)	VAN HALEN	15.4641	2062	16	16.2700	2213	15	15.4606	2061	1	—	—	—	0.0035	1
14	16	12	HAIL HAIL (EPIC)	PEARL JAM	15.2958	2332	12	16.0430	2437	9	6.2013	987	11	9.0945	1345	15	—	—
15	15	15	OPEN UP YOUR EYES (POLYDOR/A&M)	TONIC	15.1405	2533	10	16.0863	2620	8	9.9349	1577	3	5.2056	956	24	—	—
16	12	23	BURDEN IN MY HAND (A&M)	SOUNDGARDEN	15.1123	1835	20	17.4779	1983	18	6.9658	900	14	8.1465	935	25	—	—
17	19	7	FREE (ELEKTRA/EEG)	PHISH	13.6929	2079	14	13.8161	2046	17	6.2405	968	12	5.7801	835	29	1.6723	276
18	21	4	ALL MIXED UP (CAPRICORN/MERCURY)	311	13.6073	1666	22	12.8521	1391	32	1.3166	227	—	12.1983	1425	12	0.0924	14
19	18	14	NOVOCAINE FOR THE SOUL (DREAMWORKS/GEFFEN)	EELS	13.5383	1863	18	14.7789	2140	16	0.9411	180	—	11.5013	1533	10	1.0959	150
20	17	14	IF IT MAKES YOU HAPPY (A&M)	SHERYL CROW	13.3401	1639	23	14.9495	1873	20	2.0891	325	—	8.9583	1012	23	2.2927	302
21	23	30	TRIPPIN' ON A HOLE IN A PAPER HEART (ATLANTIC)	STONE TEMPLE PILOTS	12.9571	1504	27	12.5961	1503	26	6.2214	715	—	6.7357	789	—	—	—
22	22	4	MACH 5 (COLUMBIA)	THE PRESIDENTS OF THE UNITED STATES OF AMERICA	12.7224	1913	17	12.8494	1904	19	3.3096	540	35	9.4128	1373	14	—	—
23	39	2	#1 CRUSH (CAPITOL)	GARBAGE	12.4273	1245	36	7.6086	600	90	0.0769	24	—	12.3471	1220	17	0.0033	1
24	20	20	DOWN (CAPRICORN/MERCURY)	311	11.8151	1378	31	13.5027	1609	24	2.3330	340	—	9.4819	1037	21	0.0002	1
25	27	4	TATTVVA (COLUMBIA)	KULA SHAKER	11.0847	1534	25	10.9580	1433	29	0.6922	58	—	10.2404	1422	13	0.1521	54
26	28	5	WOULD? (COLUMBIA)	ALICE IN CHAINS	11.0791	1288	35	10.9268	1226	37	6.2461	745	23	4.8315	540	—	0.0015	3
27	25	4	CLIMB THAT HILL (WARNER BROS.)	TOM PETTY AND THE HEARTBREAKERS	10.9924	1597	24	11.4195	1618	23	9.0686	1345	8	0.3427	23	—	1.5811	229
28	26	16	SHAME (COLUMBIA)	STABBING WESTWARD	10.7097	1294	34	11.1275	1356	34	6.3513	730	25	4.3584	564	—	—	—
29	32	6	STINKFIST (ZOO)	TOOL	10.1067	1853	19	9.8951	1852	21	4.7081	836	18	5.3986	1017	22	—	—
30	30	35	COUNTING BLUE CARS (A&M)	DISHWALLA	9.8928	1401	30	10.5396	1430	30	4.5765	616	—	4.6389	646	—	0.6774	139
31	29	17	OVER NOW (COLUMBIA)	ALICE IN CHAINS	9.7013	1364	32	10.8531	1499	27	5.6378	760	22	3.7967	588	39	0.2668	16
32	<b>NEW</b>		ONE HEADLIGHT (INTERSCOPE)	THE WALLFLOWERS	9.4891	1353	33	7.5017	998	46	4.3942	615	28	2.6713	359	—	2.4236	379
33	31	21	6TH AVENUE HEARTACHE (INTERSCOPE)	THE WALLFLOWERS	9.4078	1224	37	10.3735	1417	31	3.6136	430	—	4.8244	620	36	0.9698	174
34	24	10	ANEURYSM (DGC/GEFFEN)	NIRVANA	9.3231	1150	42	11.8898	1383	33	2.2530	294	—	7.0701	856	28	—	—
35	<b>NEW</b>		DESPERATELY WANTING (SWELL/ELEKTRA/EEG)	BETTER THAN EZRA	9.0543	1453	29	6.8141	1075	44	2.9692	593	32	5.7640	822	30	0.3211	38
36	33	8	LIE ON LIE (COLUMBIA)	CHALK FARM	9.0196	1682	21	9.3304	1799	22	5.0221	884	16	2.7517	538	—	1.2458	260
37	37	3	IF I COULD TALK I'D TELL YOU (TAG/ATLANTIC)	THE LEMONHEADS	8.3667	1484	28	8.3489	1484	28	0.5203	67	—	6.9015	1255	16	0.9449	162
38	36	2	LOVE ROLLERCOASTER (GEFFEN)	RED HOT CHILI PEPPERS	8.3099	1215	38	8.3759	1094	39	0.3626	83	—	7.9473	1132	19	—	—
39	34	53	SANTA MONICA (WATCH THE WORLD DIE) (TIM KERR/CAPITOL)	EVERCLEAR	8.1154	1037	44	8.8640	1132	38	3.5526	480	—	4.5628	557	—	—	—
40	<b>NEW</b>		LONG DAY (LAVA/ATLANTIC)	MATCHBOX 20	8.1070	1167	41	7.3646	1088	42	6.7136	948	13	1.3344	188	—	0.0590	31

Records showing an increase in audience over the previous week, regardless of chart movement. Rankings broken down by mainstream, modern and triple A formats (on right side of this page) correspond to charts printed in this week's Monitor and therefore rankings do not exist for recurrences and records below No. 40 (No. 20 for triple A). Audience computed by cross-referencing exact times of airplay with Airotron listener data. © 1996, Billboard/BPI Communications.

## Monitor & Radio A LOVE STORY

**93.6% of radio rates  
ROCK AIRPLAY MONITOR  
as Important/Very Important to their work**

Results of the 1996 Airplay Monitor Radio Readership Survey

**NY: 212.536.5004 • LA: 213.525.2307**



# better than ezra desperately wanting

The new single and video from friction, baby.

"Take back your life and let me inside,



we'll find a door if you care to anymore"



Produced by Don Gehman for  
Rhapsody Production  
Management  
Jeffrey Levinson/Themz Two

Modern Rock Monitor (36) - (30) 822 Spins + 192

Monitor Big Picture Chart Debut! (35)

Mainstream Rock Monitor Debut! (32) 593 Spins + 180

Added





Compiled from national reports of airplay supplied by Broadcast Data Systems. Radio Track service to Rock Airplay Monitor. All mainstream rock and 77 modern rock stations are electronically monitored 24 hours a day, 7 days a week. Songs are ranked by number of detections. © 1996, 1995-1997 BPI Communications.

THIS WEEK	LAST WEEK	WKS. ON CHART	MAINSTREAM		DETECTIONS		
			TITLE/LABEL/PROMOTION LABEL	ARTIST	TW	LW	
			<b>★★★ NO. 1 ★★★</b>				
1	1	7	ME WISE MAGIC <small>WAMPLER/DEER</small>	VAN HALEN	2061	2213	
2	2	11	HERO OF THE DAY <small>ELEKTRA/EEG</small>	METALLICA	1935	1857	
3	3	21	OPEN UP YOUR EYES <small>POLYDOR/A&amp;M</small>	TONIC	1577	1646	
4	5	5	SWALLOWED <small>TRAUMA/INTERSCOPE</small>	BUSH	1572	1542	
5	4	8	ANGELS OF THE SILENCES <small>DGC/GEFFEN</small>	COUNTING CROWS	1556	1584	
6	7	6	LADY PICTURE SHOW <small>ATLANTIC</small>	STONE TEMPLE PILOTS	1405	1349	
7	9	7	BLOW UP THE OUTSIDE WORLD <small>A&amp;M</small>	SOUNDGARDEN	1384	1268	
8	6	8	CLIMB THAT HILL <small>WARNER BROS.</small>	TOM PETTY AND THE HEARTBREAKERS	1345	1391	
9	8	8	BITTERSWEET ME <small>WARNER BROS.</small>	R.E.M.	1319	1313	
10	11	9	MUZZLE <small>VIRGIN</small>	THE SMASHING PUMPKINS	1028	1099	
11	10	12	HAIL HAIL <small>EPIC</small>	PEARL JAM	987	1112	
12	14	7	FREE <small>ELEKTRA/EEG</small>	PHISH	968	968	
13	17	7	LONG DAY <small>LAVA/ATLANTIC</small>	MATCHBOX 20	948	872	
14	13	25	BURDEN IN MY HAND <small>A&amp;M</small>	SOUNDGARDEN	900	981	
15	20	10	BOUND FOR THE FLOOR <small>ISLAND</small>	LOCAL H	885	805	
16	15	11	LIE ON LIE <small>COLUMBIA</small>	CHALK FARM	884	967	
17	12	11	I WAS WRONG <small>550 MUSIC</small>	SOCIAL DISTORTION	876	984	
18	19	10	STINKFIST <small>ZOO</small>	TOOL	836	860	
19	21	4	LOOKING FOR <small>AWARE/CAPITOL</small>	STIR	794	762	
20	29	3	HALF THE WORLD <small>ANTHEM/ATLANTIC</small>	RUSH	765	620	
21	23	6	GROW YOUR OWN <small>REPRISE</small>	DARLAHOOD	761	741	
22	18	18	OVER NOW <small>COLUMBIA</small>	ALICE IN CHAINS	760	862	
23	25	13	WOULD? <small>COLUMBIA</small>	ALICE IN CHAINS	745	693	
24	26	6	WHAT I GOT <small>GASOLINE ALLEY/MCA</small>	SUBLIME	736	665	
25	22	20	SHAME <small>COLUMBIA</small>	STABBING WESTWARD	730	751	
26	24	8	CHARLIE BROWN'S PARENTS <small>A&amp;M</small>	DISHWALLA	666	730	
27	16	10	BLACKBERRY <small>AMERICAN/REPRISE</small>	THE BLACK CROWES	655	915	
28	36	2	ONE HEADLIGHT <small>INTERSCOPE</small>	THE WALLFLOWERS	615	527	
29	30	8	THE BEAUTIFUL PEOPLE <small>NOTHING/INTERSCOPE</small>	MARILYN MANSON	603	612	
30	35	4	HAVE YOU SEEN MARY <small>COLUMBIA</small>	SPONGE	601	533	
31	38	2	WALK ON WATER <small>GEFFEN</small>	OZZY OSBOURNE	594	504	
32	<b>NEW</b>		DESPERATELY WANTING <small>SWELL/ELEKTRA/EEG</small>	BETTER THAN EZRA	593	413	
33	27	9	MESSAGE OF LOVE <small>COLUMBIA</small>	JOURNEY	592	664	
34	37	3	DROWNING IN A DAYDREAM <small>COLUMBIA</small>	CORROSION OF CONFORMITY	560	511	
35	34	2	MACH 5 <small>COLUMBIA</small>	THE PRESIDENTS OF THE UNITED STATES OF AMERICA	540	544	
36	28	13	TEST FOR ECHO <small>ANTHEM/ATLANTIC</small>	RUSH	499	662	
37	<b>NEW</b>		BANG BANG <small>RCA</small>	ZZ TOP	477	218	
38	33	6	SWEET THISTLE PIE <small>VIRGIN</small>	CRACKER	472	546	
39	<b>NEW</b>		JUST ANOTHER DAY <small>MERCURY</small>	JOHN MELLENCAMP	450	305	
40	32	12	WHAT'S UP WITH THAT <small>RCA</small>	ZZ TOP	448	576	

THIS WEEK	LAST WEEK	WKS. ON CHART	MODERN		DETECTIONS		
			TITLE/LABEL/PROMOTION LABEL	ARTIST	TW	LW	
			<b>★★★ NO. 1 ★★★</b>				
1	1	5	SWALLOWED <small>TRAUMA/INTERSCOPE</small>	BUSH	2562	2517	
2	3	7	DON'T SPEAK <small>TRAUMA/INTERSCOPE</small>	NO DOUBT	2411	2284	
3	2	15	WHAT I GOT <small>GASOLINE ALLEY/MCA</small>	SUBLIME	2401	2441	
4	4	9	THE DISTANCE <small>CAPRICORN/MERCURY</small>	CAKE	2056	1968	
5	5	8	ANGELS OF THE SILENCES <small>DGC/GEFFEN</small>	COUNTING CROWS	1835	1923	
6	6	12	I WAS WRONG <small>550 MUSIC</small>	SOCIAL DISTORTION	1759	1826	
7	7	8	BITTERSWEET ME <small>WARNER BROS.</small>	R.E.M.	1691	1814	
8	9	10	BOUND FOR THE FLOOR <small>ISLAND</small>	LOCAL H	1682	1543	
9	10	6	LADY PICTURE SHOW <small>ATLANTIC</small>	STONE TEMPLE PILOTS	1618	1481	
10	8	16	NOVOCAINE FOR THE SOUL <small>DREAMWORKS/GEFFEN</small>	EELS	1533	1804	
11	11	6	BLOW UP THE OUTSIDE WORLD <small>A&amp;M</small>	SOUNDGARDEN	1463	1388	
12	17	6	ALL MIXED UP <small>CAPRICORN/MERCURY</small>	311	1425	1244	
13	13	5	TATVA <small>COLUMBIA</small>	KULA SHAKER	1422	1338	
14	12	4	MACH 5 <small>COLUMBIA</small>	THE PRESIDENTS OF THE UNITED STATES OF AMERICA	1373	1360	
15	14	9	HAIL HAIL <small>EPIC</small>	PEARL JAM	1345	1325	
16	15	8	IF I COULD TALK I'D TELL YOU <small>TAG/ATLANTIC</small>	THE LEMONHEADS	1255	1266	
17	<b>NEW</b>		<b>★★★ AIRPOWER ★★★</b>				
			#1 CRUSH <small>CAPITOL</small>	GARBAGE	1220	591	
18	16	13	SCOOBY SNACKS <small>EMI</small>	FUN LOVIN' CRIMINALS	1137	1260	
19	21	3	<b>★★★ AIRPOWER ★★★</b>				
			LOVE ROLLERCOASTER <small>GEFFEN</small>	RED HOT CHILI PEPPERS	1132	1015	
20	18	12	MUZZLE <small>VIRGIN</small>	THE SMASHING PUMPKINS	1044	1217	
21	19	22	DOWN <small>CAPRICORN/MERCURY</small>	311	1037	1205	
22	23	9	STINKFIST <small>ZOO</small>	TOOL	1017	992	
23	20	14	IF IT MAKES YOU HAPPY <small>A&amp;M</small>	SHERYL CROW	1012	1203	
24	25	7	OPEN UP YOUR EYES <small>POLYDOR/A&amp;M</small>	TONIC	956	974	
25	22	23	BURDEN IN MY HAND <small>A&amp;M</small>	SOUNDGARDEN	935	1001	
26	24	10	DEVIL'S HAIRCUT <small>DGC/GEFFEN</small>	BECK	914	976	
27	27	9	THE BEAUTIFUL PEOPLE <small>NOTHING/INTERSCOPE</small>	MARILYN MANSON	909	906	
28	26	10	ANEURYSM <small>DGC/GEFFEN</small>	NIRVANA	856	947	
29	29	5	FREE <small>ELEKTRA/EEG</small>	PHISH	835	823	
30	36	2	DESPERATELY WANTING <small>SWELL/ELEKTRA/EEG</small>	BETTER THAN EZRA	822	630	
31	28	19	READY TO GO <small>DECONSTRUCTION/RCA</small>	REPUBLICA	766	843	
32	32	5	NAKED EYE <small>GRAND ROYAL/CAPITOL</small>	LUSCIOUS JACKSON	721	738	
33	31	10	HEAD OVER FEET <small>MAVERICK/REPRISE</small>	ALANIS MORISSETTE	655	764	
34	<b>NEW</b>		SHADOWBOXER <small>CLEAN SLATE/WORK</small>	FIONA APPLE	646	588	
35	<b>NEW</b>		RADIATION VIBE <small>TAG/ATLANTIC</small>	FOUNTAINS OF WAYNE	623	549	
36	30	18	6TH AVENUE HEARTACHE <small>INTERSCOPE</small>	THE WALLFLOWERS	620	772	
37	<b>NEW</b>		CRASH INTO ME <small>RCA</small>	DAVE MATTHEWS BAND	594	548	
38	34	14	WHOEVER YOU ARE <small>LUAKA BOP/WARNER BROS.</small>	GEGGY TAH	593	709	
39	40	14	OVER NOW <small>COLUMBIA</small>	ALICE IN CHAINS	588	611	
40	<b>NEW</b>		HELLO <small>MODERN/ATLANTIC</small>	POE	583	371	

Records showing an increase in detections over the previous week, regardless of chart movement. A record which has been on either chart for more than 20 weeks will not receive a bullet, even if it registers an increase in detections. Airpower awarded to those records which attain 800 detections (mainstream) or 1,100 (modern) for the first time. If two records are tied in number of plays, the record being played on more stations is placed first. Records below the top 20 are removed from the chart after 26 weeks.



# DARLAHOOD

## "GROW YOUR OWN"

From the album *Big Fine Thing*

Produced by Clive Langer, Alan Winstanley & Darla Hood

e-mail: [Darlahood@aol.com](mailto:Darlahood@aol.com)  
<http://www.nelectric.com/dhodcd.html>  
<http://www.RepriseRec.com>

© 1996 Reprise Records

**23 - 21 Mainstream Rock Monitor**  
 New adds include: WZTA, WEGR, WJXQ, KLFX

Spins include:

KEGL	22x	WAAF	24x
KILO	28x	WXTB	22x
KQRC	14x	KIOZ	16x
WKDF	13x	WXRA	25x
WJRR	16x	WIOT	23x
WKLQ	13x	KUPD	19x
WTUE	17x	WRGX	9x