

ROCK AIRPLAY Monitor

• We Listen To Radio •

June 28, 1996 \$ 4.95 Volume 3 • No. 27

ROCK HIGHLIGHTS

MAINSTREAM

#1

METALLICA

Until It Sleeps (ELEKTRA/EEG)

★★★ AIRPOWER ★★★

THE SMASHING PUMPKINS • Tonight, Tonight (VIRGIN)

GOO GOO DOLLS • Long Way Down (METAL BLADE/WARNER BROS.)

NEW RELEASES

BARSTOOL PROPHETS • Paranoia (MERCURY)

BIOHAZARD • A Lot To Learn (WARNER BROS.)

THE BLACK CROWES • Good Friday (AMERICAN/REPRISE)

BOSTON • Higher Power (EPIC)

CIV • Boring Summer (LAVA/ATLANTIC)

FOREIGNER • Woman (ATLANTIC)

MARK KNOPFLER • Darling Pretty (WARNER BROS.)

STORYVILLE • Good Day For The Blues (ATLANTIC)

THERMADORE • Three Days (ATLANTIC)

TRIPPING DAISY • Trip Along (ISLAND)

NEIL YOUNG WITH CRAZY HORSE • Big Time (REPRISE)

MODERN

#1

BUTTHOLE SURFERS

Pepper (CAPITOL)

★★★ AIRPOWER ★★★

SCREAMING TREES • All I Know (EPIC)

NEW RELEASES

BARSTOOL PROPHETS • Paranoia (MERCURY)

BIOHAZARD • A Lot To Learn (WARNER BROS.)

THE BLUE NILE • Sentimental Man (WARNER BROS.)

THE BLACK CROWES • Good Friday (AMERICAN/REPRISE)

DOWN BY LAW • Radio Ragga (EPITAPH)

FLEMING & JOHN • Love Songs (UNIVERSAL)

FRENTE • Sit On My Hands (MAMMOTH/ATLANTIC)

GEGGY TAH • Wherever You Are (LUJAKA BOP/WARNER BROS.)

GOLDFINGER • Mable (MOJO/UNIVERSAL)

JAMES HALL • Illingness (Geffen)

REPUBLICA • Ready To Go (RCA)

SKUNK ANASIE • Weak As I Am (ONE LITTLE INDIAN/EPIC)

SLEEPER • Sale Of The Century (ARISTA)

THERMADORE • Three Days (ATLANTIC)

TUSCADERO • Hollywood Handsome (ELEKTRA/EEG)

TRIPLE A

#1

JEWEL

Who Will Save Your Soul (RCA)

★★★ AIRPOWER ★★★

BLUES TRAVELER • But Anyway (A&M)

DAVE MATTHEWS BAND • So Much To Say (RCA)

THE BADLEES • Angeline Is Coming Home (POLYDOR/A&M)

Cutting Out Stations On The Cutting Edge: Are Demos Limiting Modern's Growth?

by John Loscalzo and Marc Schiffman

A year ago, you could count on one or two modern rock stations signing on each week. Now, it seems as if a modern is signing off weekly or flipping to the emerging modern AC format.

At least seven moderns have signed off in recent months. While the deaths of WNRQ Pittsburgh and WKOC Norfolk, Va. (and the expected change at WVGQ Richmond, Va.), at the hands of competitors turned duopoly partners can be written off as industry consolidation, modern is also losing stations that don't have direct competition in markets from Miami and Greenville, S.C., to Lincoln, Neb. The WDIZ/WJKR Orlando, Fla., merger ended with the mainstream rock format intact (albeit on a new frequency).

but the modern format was dropped in favor of modern AC.

There are rumors that WMMS Cleveland will return to mainstream rock and that WPLY (Y100) Philadelphia will again begin dabbling in non-modern top 40 product; other modern-leaning top 40s, from KRBE Houston to WHITZ (Z100) New York, have made similar moves.

So what's happening to the modern rock revolution? Has every market that's going to get on the alternative bus already bought a ticket? Or has the modern/mainstream battle ended with the distinctions among modern, mainstream, and modern AC so blurred that it doesn't matter which option a station chooses? And why is this happening when the most recent Airplay Monitor Arbitron national format rat-

Continued on page 5

FILTER

jurassitol

music from the motion picture

The Crow

city of angels

add date july 2

soundtrack album includes new performances from:

Hole • White Zombie • PJ Harvey • Bush • Tricky vs. The Gravediggaz
Seven Mary Three • Linda Perry featuring Grace Slick • Toadies • NY Loose
Korn • Deftones • Iggy Pop • Above The Law featuring Frost

MIRAMAX
Polygram
Records

Filter appears courtesy of Radio Record - Massachusetts, U.S.A.
© 1996 Miramax Records/Universal Records
A Division of Polygram Records
CD: www.polygram.com

THE BLACK CROWES
GOOD FRIDAY



*Produced by Jack Joseph Puig and The Black Crowes · Management: Pete Angelus · From the American Recordings album Three Snakes And One Charm.
The Black Crowes <http://tallest.com>. email: american@american.recordings.com. ©1996 American Recordings.*

Westinghouse/Infinity In Megabucks Merger

In a deal that shocked the industry, Westinghouse and Infinity announced June 20 that they would merge. The deal involves \$3.9 billion in stock and Westinghouse's assumption of roughly \$1 billion in Infinity debt. The combined entity will hold 83 stations in 16 markets.

Infinity CEO Mel Karmazin will be chairman/CEO of the expanded radio group. Westinghouse chairman/CEO Michael H. Jordan has recommended to the Westinghouse board members that they make Karmazin a board member. Karmazin retains his title of president/CEO of Westwood One, which, along with Shadow Broadcast Services, is managed by Karmazin in a separate deal.

The group's combined radio holdings include: WCBS-FM-AM/WNEW/WINS/WXRK/WFAN/WZRC New York; KCBS/KTWV/KFVB/KNX/KRTH/KROQ Los Angeles; WBBM-AM-FM/WXRT/WMAQ/WSCR/WUSN/WJMK/WJJD/WCKG/WYSY Chicago; KPIX-AM-FM/KRQR/KCBS/KOME/KYCY/KFRC-AM-FM San Francisco; WMMR/WOGL/KYW/

WGMP/WYSP/WIP Philadelphia; WYST/WLLZ/WVJ/WOMC/WYCD/WXYT Detroit; KRRW/KTXQ/KLUV/KVIL/KYNG/KEWS/KDMM/KOAI/KRBV/KHVN Dallas; WARW/WPGC-AM-FM/WJFK-FM Washington, D.C.; KKRW/KIKK-AM-FM/KILT-AM-FM/KXYZ Houston; WODS/WBZ/WZLX/WBCN/WBOS/WOAZ Boston; WVEE/WZGC/WAOK Atlanta; WLTE/WCCO Minneapolis; KLOU/KMOX St. Louis; WLIF/WJFK-AM/WCAO/WXYV Baltimore; KDKA Pittsburgh; and WQYV-AM-FM Tampa, Fla.

The new company's holdings exceed FCC limits in Chicago, where it has one too many FMs and two too many stations altogether. In Dallas, where it has 10 properties (eight FMs and two AMs), it must lose three signals.

As they head down the road to merger, Westinghouse and Infinity have already encountered a common landmark. Three groups of Infinity shareholders have filed suit alleging Karmazin breached his fiduciary responsibility by accepting too low a price from Westinghouse in the deal. **MARC SCHIFFMAN**

RADIOACTIVE

New Salt Lake Rocker; WMMS Loses Two

Salt Lake City gets a new mainstream rock outlet as adult standards **KRGO** becomes **KRKR** (K-Rock) under new GM **Gary Waldron** and PD/p.m. driver **Gary Michaels**. Waldron and Michaels were previously the GM/PD team at crosstown top 40 combo **KUTQ/KZHT**. Michaels says the new station will be along the lines of crosstown **KBER** in the early '90s: lots of **Def Leppard**, **Ozzy Osbourne**, etc., without the modern rock crossovers. The station is using the old **KBER** trademark slogan, "the best of rock," as one of its liners.

Modern **WMMS** Cleveland VP/OM **John Gorman** and promotion director **Mark "Munch" Bishop** exit as Nationwide assumes control of the station effective July 1. Bishop moves to news/talk **WTVN** Columbus, Ohio, where he'll host a sports/talk show.

The principals behind Los Angeles' much-loved dance/modern hybrid "Mars FM" in 1992-93 are back together as that station again switches format. Hot AC **KACD/KBCD** (CD103.1), which has also been jazz and an unusual gold-based AC that played sets of music from various decades, becomes dance outlet "Groove Radio 103" under owner **Ken Roberts** and PD "**Swedish**" **Egil Aalvik**. **Kevin Stapleford** consults. **Steve Tsepelis** from Record Reaction is named MD.

After 12 years with the stations' owners, OM/PD **Peter Delloro** exits modern/R&B combo **WXZZ** (Z103)/**WTKT** (the Beat). Delloro will stay on for special projects through August; he can be reached at 606-272-8332. **Dennis Dillon**, MD of album duopoly partner **WKQQ**, is the new PD of Z103. **Brad Hart** from **WXEG** Dayton, Ohio, is the new **WKQQ** MD.

WEZB (B97)/**WRNO** New Orleans GM **Marc Leunissen** is upped to president/GM of Heritage Media's New Orleans properties, including classic hits outlet **WRNO**... **WVKS/WVVE/WSPD** Toledo, Ohio, OM **Mike Wheeler** is named director of programming operations for Jacor's Toledo properties and picks up those duties for album **WIOT** and its sister station, **WCWA**.

Children of the Revolution: Former **WNRQ** (the Revolution) Pittsburgh late-nighter **Mr. Blank** is auditioning in nights at crosstown top 40 **WBZZ** (B94). The tryout is serious enough that B94's night jock has moved to overnights for now. Meanwhile, PD **Jay Silver** is out at B94's classic hits sister station, **WZPT** (the Point). **Ed Wenck**, former morning host of the Revolutionary "Planet Wenck" morning show, has resurfaced in mornings at modern **WRZX** Indianapolis. PD **Scott**

Jameson wants T&Rs for a "wacky, nutty female co-host with a taste for the bizarre."

New modern sign-on **WWGT** (the Pulse) Burlington, Vt., names **WHCN** Hartford, Conn., marketing/promotion director **Chris Fleming** PD. He'll be on-site July 8. The Pulse has been broadcasting intermittently during its equipment tests and is expected to sign on full-time June 26. New calls **WXPS** have been applied for. Pollack Media Group will consult. Fleming wants T&Rs as he begins to build his air staff.

WMTD-FM Beckley, W.Va., becomes the first country affiliate of the syndicated "John Boy & Billy" show. **WMID** airs the show's classic rock music in the morning and has shifted to a "rockin' country" presentation in other dayparts, with the addition of such acts as **Marshall Tucker**. PD **Curt Thomas** moves from mornings to middays.

Triple-A **KFMU** Steamboat Springs, Colo., gives the PD assignment to afternoon-drive talent/salesperson **D.K. Landers**. She replaces **Dennis Kitterman**, who exited in late May.

The annual changing of the guard came to modern **WPGU** Champaign, Ill., with **Ben Ponzio** and **Jacnet Jackson** taking the PD and MD seats from exiting **Jay Schulman** and **Kim Haskell**. Ponzio had been in production, sales, and air work and will still do occasional shifts. Jacnet is morning host and retains that position.

Album **KBPI** Denver morning team **Dean and Rog** have a new home at classic rock **KSLX** Phoenix, also in mornings.

Look for triple-A **KBCO** Denver P/T **Jennifer Sweeney** to take the night post left open when **Caroline Corley** departed the station.

Ranger Bob departs the production director seat at country **WMUS** Muskegon, Mich., for production director/midday duties at classic rock **WOFX** Cincinnati.

Miki Hunter trades overnights at classic rock **WAFX** Norfolk, Va., for nights at classic rock **WLFX** Ocean City, Md. **WAFX** PD **Mike Beck** is accepting résumés for Hunter's replacement.

Modern **WPBZ** West Palm Beach, Fla., parent **ARS** buys news/talk/AC **WEAT-AM/FM** and oldies **WOLL** from Chancellor.

Matt Talluto leaves mornings at modern **WVIC** Lansing, Mich., for afternoons at album **WBYS** Fort Wayne, Ind., reuniting him with former **WVIC** PD **Darrin Arriens**, now **WBYS** PD.

Album **KTYD** Santa Barbara, Calif., names station vet **Dana Birkley** MD.

Modern **KMYZ** Tulsa, Okla., names modern **KNNC** Austin, Texas, staffer **Ray Dog** promotions director, replacing **D.C. Roberts**, who exits.



WHATEVER BY LOSCALZO

Is This The Next Great Rock'n'Roll Swindle?

The reunion tour thing, while not a new phenomenon, has extended its reach to include what we now call modern rock. Everyone is waiting with great anticipation for the Kiss tour, but the Sex Pistols?

The way I see it is Gene Simmons and company can slap on the makeup and sort of recreate a classic Kiss show without constantly reminding us of the fact that it's a bunch of old guys cashing in on their former glory. Those shows will work on several levels of Dante's Rock Inferno, particularly camp and nostalgia. Imagine the fun watching the audience as well as the show.

The Sex Pistols reunion tour just brings up one question: Why? They're not going to wear makeup, and we will be reminded of it being a bunch of old guys cashing in on their youth. The punk ethic has changed, too. It's no longer rooted in urban adolescent angst brought on by a bleak economic outlook. The average punk fan today harbors suburban angst brought on by the high cost of Sega Saturn and MTV showing too many longform shows and not enough videos.

When Simmons comes out and spits fire, that'll be entertainment. Showbiz. When Johnny "my name is Lydon, and I've really tried to get people to remember that, but for the purpose of this exercise in greed, please call me" Rotten spits on the crowd, it will look like somebody's dad kicking it old school. Yeah, the Pistols are doing the tongue-in-cheek, "we're doing it for the money, ha-ha" angle on this tour, but I'm not chuckling. That whole "we're making

fun of what we're doing as we pick your pocket" attitude has gotten very tired. In fact, it's downright jive. It reminds me of that line from "The Simpson's" "Homerpalooza" episode. "Are you being sarcastic?" Bart asked Lisa. "I don't even know anymore," she replied. And face it, it's no Chuck Berry duckwalk. But the crowd will "mosh" and do what it thinks is "punk." Does this sound like fun?

And isn't a Sex Pistols reunion tour more contrived than one from Kiss? The Pistols were as much about showbiz as Kiss, but weren't they allegedly part of a "movement"? Punk was supposed to be spontaneous and rebellious, right?

Explosions! Blood! That's fun. I've got my lighter all ready for "Beth." After "Anarchy In The U.K.," where is the Sex Pistols show going to go? "No Feelings" is not "I Was Made For Loving You" or "Shout It Out Loud." After all, the Sex Pistols were about attitude, not brilliant songwriting. In a song-for-song belly-bucking contest, Kiss is the winner (I don't count any post-makeup Kiss in this contest; we'll pretend that didn't happen).

Then I start to think about all the new bands being overshadowed by reunion tours. Are we saying that all new bands suck so bad that we need to station an A&R guy in every retirement home? Sure, some new bands will have the "honor" of opening for the Pistols and Kiss, but that's like Jimi Hendrix opening for the Monkees.

Got any big ideas? My E-mail address is loscalzo@pipeline.com, and my phone number is 212-536-6430.

PERSONNEL FILE BY ANTHONY COLOMBO

Atlantic Ups Two; Phillips/Korff Co-Venture

Atlantic Records announces the promotions of **Kris Metzdorf** and **Lynn Oakes**. Metzdorf rises from West Coast associate director of alternative promotion to West Coast director of alternative promotion, and Oakes moves from the New York local promotion manager spot to associate director of alternative promotion. Metzdorf will be based in Los Angeles, and Oakes in New York. Both will report to senior director of alternative promotion **Tod Elmore**.

A stalwart of McGathy Promotions, **Binky Phillips**, exits to form Bink Inc., a joint venture with former McGathy employee **Steve Korff**. Bink Inc., which is based in New York, is an independent radio promotion company for mainstream rock and modern rock. It is associated with **Pete Spasoff** at Tri-State Promotions for modern rock promotion, and it will offer artist development, marketing, and independent A&R services in the future. Bink Inc. can be reached at

212-754-1410 or 888-BINK-INC.

Elektra Records boosts **Pete Rosenblum** to national director of college/alternative promotion. He had been manager of college/alternative promotion.

Warner Bros. Records brings in **Danny Bramson** as senior VP of soundtrack development. Bramson founded Backstreet Records in 1979.

Congratulations to the winners of the first Big Bear Awards, which were given in memory of the late **John Hey**, who died of cancer in April. **Drew Murray** took home best promotion person honors, while Interscope Records was given the nod as best rock label. The John Hey Foundation raised \$150,000 at its June 14 breakfast at the Hard Rock Cafe in New York.

If you have any industry news to report, the Personnel File would like to hear from you. You can call at 212-536-5064 or fax 212-536-5286.

Monthly Column On BDS Debuts

Beginning this week, Airplay Monitor debuts a column written by Heston Hosten of Broadcast Data Systems. Watching the Deceptions will appear monthly and is designed to answer readers' questions about BDS, this publication's supplier of monitored-airplay data, from the basic to the

most intricate workings.

Hosten, whose BDS duties include its expansion to new markets and the monitoring of new stations, can be reached at 212-789-1261 with questions for future columns. This month's column appears on page 4.



WATCHING THE DETECTIONS

BY HESTON HOSTEN



Answers From BDS' Radio/Charts Manager

Welcome to the first in a series of monthly columns dedicated to informing the radio and record community about Broadcast Data Systems. The column, which will run in all four Airplay Monitors, is designed to answer your questions and explain how BDS works.

As radio/charts manager, I work with the BDS radio panel of more than 900 stations, including rock (modern, mainstream, and triple-A), country, AC, top 40, R&B, and Latin. I spend most of my time fielding calls from monitored and unmonitored stations, working with editors and chart managers at Airplay Monitor to update panels, and handling chart-related issues pertaining to Airplay Monitor and Billboard.

In the past few years, there has been much discussion about BDS. Some industry people are intimately familiar with how it works. Others still ask basic questions about it. Using a patented computer technology, BDS monitors radio and TV broadcasts, identifying songs and TV commercials as they are aired. BDS monitors 24 hours a day, seven days a week, using computers that "listen" to monitored stations electronically.

Each BDS monitor stores thousands of unique electronic "fingerprints," the pattern created by BDS computers for each song in the system. As a station plays a song, the digitized broadcast signal is compared with the pattern

library. Once a song pattern has been recognized by computer, the system identifies the time, date, and station for that play; it can even tell how many people listened to that play by cross-referencing Arbitron data.

At midnight, the pattern library is updated, and the day's detection history is transmitted from the monitors in individual markets to BDS' central-operations facility in Kansas City. By early morning, BDS processes detection data collected from all of its field monitors and electronically redistributes the information to customer computers, on which it appears in report form.

For songs to be detected by BDS, it's important that BDS has copies of the music so it can be "fingerprinted." If you're playing local music, special mixes, or other titles unlikely to have been serviced to us, send tapes, DAT, CD, reels, cassettes, or 12-inch vinyl to BDS, 8100 NW 101 Terrace, Kansas City, Mo. 64153, attn.: Lana Goodman.

In future columns, I'll answer your questions about how BDS works, length of patterns used, the speeding up of records, carting records, edits, mix-shows, spot buys, and more. We'll also deal with the most common questions: How can my station be monitored? What are the criteria for becoming a monitored station? If you have any questions about BDS, please call me at 212-789-1261 or fax 212-789-1270. I will answer as many questions as space allows.



CHEET SHEET

BY MARK MARONE

Johnny Bravo More Than A Brady Bunch

Few things sound better to the elementary school student than the recess bell. But for those who are last to be picked for a team, laughed at for the clothes they wear, or made fun of on the bus, those less-supervised moments are often met with dread. **Ansley and Bran Lancourt** of Arista trio **Johnny Bravo** recall those days as if they were yesterday. "My brother and I were extremely tormented. It's not a cliché either. We went that route of being picked on forever. [Even now], it's like a stigma from when we grew up," says lead singer/guitarist Ansley.

Growing up meant leaving their native Paris, where their French mathematician father and student folksinger mother had met, and moving to New York during the U.S. bicentennial revelry. Their new home became Piermont, N.Y., a suburban sprawl a half-hour outside of Manhattan. Instead of retaliating against the classmates who made them outcasts, the Lancourt brothers found refuge in the family record collection, devouring **the Beatles, Bob Dylan, Tom Waits**, and the like.

The Lancourts sealed their identity as misunderstood by starting a punk band. "There was one or two clubs that we'd play, but they looked at us like we were aliens. The bands that played there were hair bands, ridiculous heavy metal. They would put us on a 'new wave' night when they played **the Cure** and **the Smiths** though we were nothing like that. They didn't have a category [for us]."



Speaking of categorization, the band is unabashed about the **Nirvana** comparisons with their debut set, "Then Again, Maybe I Won't." "I take it as a compliment. We love Nirvana," says Ansley. "They were just the first music in a long time that actually meant something to a lot of people." He cites the Beatles as their single biggest influence but notes that he always liked cranked-up guitars and hard, driving drums. Not unlike a similarly disenfranchised Aberdeen, Wash., youth. "I'm not going to say, 'Who's Nirvana?'" because how can you not be influenced by the most influential band to come down

the pike in 10 years?"

Noting the glut of new artists sporting goatees and other obligatory alterna-mall fashions, Ansley is quick to denounce the format's transparency. "In a way, it's a lot worse now, because there's a lot of bands wrapping themselves in an alternative flag [when] they're just as bad as **Poison** or **Warrant**, [who at least] knew what they were about."

Though the band claims no political agenda, the album begins with a sarcastic jibe about Piermont's conservative, **Reagan-era** self-righteousness. Ansley describes "Grew Up In The 80's" as his reaction to "a definite bleak period. The country was culturally bereft. Everybody was wrapping themselves in the flag and trying to go back to some kind of '50s mentality, which was totally pathetic. There was so much corruption, so much greed. The whole thing was ridiculous."

Attempts at college proved futile for the underachievers, and menial jobs added to their detachment. But they were productive writing songs, collaborating on hundreds of them. "I mean, there was nothing to do except write songs. I guess we have the proclivity to do so. That's what we do. It was like that since we were little." Zealously analyzing songbooks, the two educated themselves to the songwriting process. Bassist/singer Bran nonchalantly sums up a day in the life of Johnny Bravo: "Get up, write a song, have breakfast, write a song, go to the bathroom, take the guitar in with you, write a song."

What's The 'F' Stand For?



Modern KITS (Live 105) San Francisco staged its BFD 3 concert June 14 with a lineup that included **Stabbing Westward** and **Dishwalla**. Shown are MD/midday host **Roland West**, right, and **Joan Jett**, who also performed at the show.

Here In Your Dressing Room



After performing on "Late Night" and piledriving host **Conan O'Brien**, center, the members of **Goldfinger** met with the host in his dressing room to share a little love. Shown, from left, are band members **John Feldman**, **Charlie Paulson**, **Darrin Pfeiffer**, and **Simon Williams**.

ON THE AIR

NEW STATIONS AND OTHER REPORTER CHANGES FROM BDS & AIRPLAY MONITOR

Effective with this week's issue, **WJRR** Orlando, Fla. (PD Dick Sheetz, MD Pat Lynch, 407-660-0664), is added to the mainstream rock panel; it exits the modern rock panel due to a format change, as does **KRRK** Omaha, Neb.

Deleted from the mainstream rock panel is **WDIZ** Orlando, Fla., due to a format change. There are now 76 modern and 103 mainstream rock reporters. **ANTHONY COLOMBO**

PUBLISHER: MICHAEL ELLIS
 EDITOR: SEAN ROSS
 MANAGING EDITOR: JOHN LOSCALZO
 DIRECTOR OF CHARTS: JERRY MCKENNA
 MAINSTREAM ROCK/TRIPLE A CHART MANAGER: ANTHONY COLOMBO
 MODERN ROCK CHART MANAGER: MARK MARONE
 REPORTER: MARC SCHIFFMAN
 CHART PRODUCTION MANAGER: MICHAEL CUSSON
 ASST. CHART PRODUCTION MANAGER: PAUL PAGE
 EDITORIAL PRODUCTION MANAGER: BARRY BISHIN
 ASSOC. EDITORIAL PRODUCTION MANAGER: MARCIA REPINSKI
 EDITORIAL PRODUCTION: MARTIN BROOMFIELD, MADELINE CARROLL, SUSAN CHICOLA, MARC GIAGUINTO, MARIA MANUJLIC
 COPY EDITOR: CARL ROSEN
 ADVERTISING PRODUCTION MANAGER: LYDIA MIKILKO
 ADVERTISING PRODUCTION ASST.: CINDIE WEISS
 ADVERTISING ART DIRECTOR: RAY CARLSON

NATIONAL ADVERTISING MANAGER: JON GUYNIN
 ADVERTISING SALES: GARY NUEL
 CLASSIFIED ADVERTISING: LAURA RIVCHUN
 ADVERTISING SERVICES MGR.: MICHELE JACANGELO
 SALES ASSISTANTS: EVELYN ASZODI, ERICA BENGTON, ALEX VITOLUIS, ALYSE ZIGMAN
 EDITORIAL ADVISER: TIMOTHY WHITE
 PRODUCTION DIRECTOR: MARIE GOMBERT
 DIRECTOR OF MARKETING: ELISSA TOMASETTI
 CIRCULATION MANAGER: JEANNE JAMIN

Billboard Music Group
 PRESIDENT: HOWARD LANDER

©1996 BPI Communications, 1515 Broadway, New York, NY 10036
 212-536-5039 For subscriptions call: 800-722-2346

Cutting Out Stations On The Cutting Edge

Continued from page 1

ings showed modern growing at its fastest clip in a while during the winter book?

ECONOMIC EXPLANATION

One explanation may be that few operators can really bring themselves to turn away from the 25-54 demo or wait until today's 12-34 audience grows into a 25-54 audience.

Benchmark's Joe Mathias, whose company recently sold moderns WVGO and WKOC, says, "There's a lot of operators that have gone in on the low end, and they're trying to expand and be a more inclusive radio station. They may not be unhappy with the money [they get with an 18-34 target]. I think they see larger opportunities to attract more people through targeting upper and broader demos. Instead of going after the males, they start to track more females. Expanding the cume is what people are trying to do."

While Mathias believes that "you can't compete [in the 25-54 demo] with core formats, like country, AOR, and AC," he still believes modern is "a good partner for a company that has other rock stations in the market. It fulfills the need there."

Triathlon's Donn Seidholz, whose KKNB Lincoln and KRRK Omaha, Neb., flipped from modern to modern AC last week, says, "Modern rock is not the most appealing demo. If it's all in the 12-24 male arena, you're going to have a hard time trying to tell a buyer from an upscale department store that this is a format that they need. We had body-piercing places, tattoo parlors, and a lot of beer and soft-drink money. But when you look at the incentive we have to [get a return on the investment,] give me a 25-plus demo any day."

"When you look at this modern rock format, as much as it [has] its niche, the financial expectations are such that it drives those with higher debt service out of the format. It's partly market-driven and partly the multiples we're paying for stations. If we were the only modern in town, could I turn the type of profit I need to see? The answer is no. It's one of the things we have to consider."

Universal's Steve Leeds says, "The format has grown to the point where it has subformats." The attraction of modern AC could be "a level of comfort for station owners and GMs. It's probably driven by the advertising community in some of the smaller markets who are saying, 'We want to be associated with this ultra-hip new music, but do you have to play this grunge stuff?' It's a function of sales. Radio always will be a sales-driven medium. We've convinced Madison Avenue to buy this format and . . . that it delivers an active audience. Now [it's asking,] 'How can we get more women?' or 'Do we have to have the loud part?'"

MOODS FOR MODERNS

Enter the modern AC gambit.

"There's a whole group of [listeners] out there who were getting OK radio. They weren't totally dissatisfied, but [modern AC] gives a whole group a format they can sink their teeth into and become real PI TSI animals," says Seidholz, who adds that he was motivated "partly [by] research. We saw very clearly there was a whole group of people not being served. They wanted Hootie but not next to a classic Led Zeppelin cut."

Dave Stewart, PD of recent modern AC-convert WSHE (the New 103.5) Miami, cites the broadness of the 25-54 demo as a problem for modern. "It's the same thing everyone said for years with that broad demo. How many 54-year-olds like the same things as a 25-year-old. It's hard and a little odd to make Green Day sit with some of the library tracks that you wanted to play . . . like Dexy's Midnight Runners or Nena."

"With modern AC, when you come to the realization that you're going to take the younger end out, it's easier to define your station's goal. It takes out some of the gray areas. You don't want to sound totally homogenized, but you get to the point where you ask, 'Can I play Goldfinger on the same station that plays Hootie?' Can you make a big deal out of Soundgarden at the same time [as] Primitive Radio Gods?"

Not everybody sees the rise of adult modern formats as merely a demo issue. Jarad Broadcasting's Jed Morey, whose WLIR Long Island, N.Y., recently redefined itself as an adult modern

outlet, says, "Long Island is a funny market, given its proximity to New York. We have . . . competition from Connecticut, Long Island, and New York." While Morey says that going adult modern, among other things, allowed WLIR to get out of the modern fray with New York's many modern-leaning rockers and concentrate on its home market, the decision "was more dictated by the population landscape as opposed to the competitive landscape, but the competition probably brought about that change sooner."

AC ISSUE, NOT A MODERN ISSUE

Robert Unmacht, publisher of the industry newsletter The M Street Journal, believes the growth of modern AC may be as related to changes within the AC format as anything happening on the modern side. "This is more of a problem for AC to deal with and trying to find out where it should be going. Keep in mind [the number of] ACs has dropped in half in just eight years to about 900 stations. It desperately needs to figure out what to do with women 25-45."

"Modern AC is an attempt at something that looks great on paper but hasn't been proven in real life. Which is to say, How are we going to continue to attract a 25- to 45-year-old female who's interested in current music? We know that they listen to a lot of [modern] but find it too hard. Why? Because it's rock'n'roll [and that's] men . . . Consequently, we're trying to create something new to keep [someone who] formerly was a Michael Bolton AC listener listening to AC radio."

Unmacht doesn't see modern AC replacing modern, because modern still attracts "a lot of men. They're two distinctly different formats: one rock, one AC taking on a new face for the '90s. We already know the rock version works. We have yet to see a success with modern AC. It just looks so good on paper that people can't resist. Remember Arrow? It was everywhere. As it turned out, it didn't work. What did work was a more poppier sound or a classic sound. Now, they've developed one way or another."

As for the idea that modern has peaked, Unmacht says it's a moot point. AC has begun to "play more rock product, and the album rock stations have gotten more current-based. In smaller markets, the rock station has just broadened its appeal. In effect, it is modern, because that's what the current music is, but they still call themselves rock . . . From that standpoint, it's slowing down, because five other stations are playing the same music but we don't call them modern."

"The problem is not that there isn't interest; it's that there's interest in so many places. You could hear the Gin Blossoms on five formats."

MORE MORE MORE

Despite the fact that modern has become ubiquitous, consultant Paul Jacobs thinks there's room for more. "There are several markets that don't really have an alternative station. Tampa, Fla., Oklahoma City, some would say Columbus, Ohio. Clearly, the map is full of pushpins, but there still are a few more markets where somebody will possibly go in and fill the hole."

He says modern has gone from flavor of the month to "center of the universe. Look at the advent of [current-intensive] rock, the movement of AC and some top 40s. They're all arrows pointing to the middle, and that middle is alternative. That's why well-put-together, programmed, and marketed alternative stations have moved from the 2-3 shares to into the 4-5 and even 8 shares."

When asked about such markets as Orlando, Lincoln, and Greenville, where the only modern station has flipped, or in markets where a second alternative has gone away, such as Omaha, Jacobs says, "The long-term prospects of two long-term alternative stations in a market is questionable, but a lot of these moves have to do with consolidation as opposed to failure. I think you have to take a broader view that no market can hold two of them."

Mathias says modern is "a good 18-34 format, but you have to be in a big-enough market to make that work. It's not impossible that new modern rockers come on the air. I just don't think they'll be big players."

ROCK GODZ

Doyle Uses Hot AC Tactics To Get West Palm Beach Buzzing About Modern Rock

Modern rock and AC are just now merging into a new format, but Amy Doyle had already melded the two movements in her head last year, when she applied her experience from top 40/adult WBMX (Mix 98.5) Boston to West Palm Beach, Fla.'s first modern outlet, WPBZ (the Buzz), which she signed on as its first PD.

WBMX leaned rhythmic during her tenure, but Doyle found the hot AC approach to rotations and research an asset in educating the market to modern. Doyle says keeping a tight list "was important, because there was no history for the music in Florida. So, we signed on with the best of the best alternative music. We stayed pretty conservative, which is what a lot of hot ACs do."

Production was as important to Doyle as her initial list of 250 songs, which she formulated with consultant Tom Calderone. WPBZ had



Amy Doyle
Program Director, WPBZ
West Palm Beach, Fla.

There's so many types of alternative now, we needed to figure out as we went along how broad we could be'

been a satellite-fed Z-Rock affiliate, with no in-house talent from which to draw, so, Doyle says, her "first hire was a production director . . . to sell in-between the music what we were and how we were going to be different from Z-Rock."

The next stage was to hire an air staff. While Doyle "had in mind what I wanted," her biggest challenge was finding jocks who "were in the demo, knew the music, could relate to the audience, and weren't in your face, but could get the message of the station across to the listener in an inoffensive way."

Just as many hot ACs sign on by using listener "feedback" on-air, WPBZ's audience was included in the sign-on. Candidates would try out on the weekend, and "as cruel as this may sound," says Doyle, they dropped in "promos saying, 'Hey, if you don't like this guy, give us a call.' We had people calling all weekend, and we turned their comments into promos." It generated more feedback, and "right off the bat, that put the station in the hands of the listeners."

About air staff, Doyle says, "I hired more [on] potential than experience," looking for jocks with drive, passion, and a willingness to work toward becoming great. That, she says, gave her a staff ready "to prove to ourselves, the market, and the company that a bunch of twentysomethings could run a station and make it sound like a major-market station."

In the past year, Doyle believes the staff has met her expectations. "[They] really get behind the music," she says. Their passion helps convey the quality in "anything that we put our name to. We tell people the first reason they're here is to hear new and different types of music. The personalities do a lot of selling. They get into who the band is, where they came from, and what makes them different from anything else they might hear."

WPBZ's air staff plays a role in music meetings. Each Friday, Doyle sends each jock a cassette with some of the music being considered.

Jocks listen to the tape over the weekend and rate songs, which are presented without titles or artist names. Those ratings are considered in the Monday music meeting by Doyle, MD Robert English, and Calderone.

Doyle's early musical conservatism allowed her to slowly broaden her audience's mind while educating herself to its tastes. She says, "There's so many types of alternative now, we needed to figure out as we went along how broad we could be."

Since West Palm Beach has "less choices than other markets that have an alternative top 40 or a hot AC that plays pop alternative or an [album rocker] that plays alternative," Doyle says, "we've got a little bit more room to play around. We can take a lot more chances with new music."

The musical epicenter of WPBZ lies in what Doyle calls "grunge-leaning alternative," such as Smashing Pumpkins, Bush, and Sponge. She stretches the boundaries to include Filter and Nine Inch Nails on the heavier end and Deep Blue Something on the lighter side.

Here's a sample 2 p.m. hour on WPBZ: Smashing Pumpkins, "Tonight, Tonight"; the Clash, "Train In Vain"; Superdrag, "Sucked Out"; Pearl Jam, "Elderly Woman . . ."; Blues Traveler, "But Anyway"; Rancid, "Time Bomb"; L7, "Pretend We're Dead"; Butthole Surfers, "Pepper"; Bush, "Everything Zen"; Alanis Morissette, "You Learn"; Stone Temple Pilots, "Trippin' On A Hole In A Paper Heart"; Meat Puppets, "Backwater"; and Natalie Merchant, "Wonder."

In addition to musical growth, production remains a priority, although now for different reasons. "We are constantly updating and changing the production to keep it interesting," Doyle says, "because there are now stations in Miami that are playing alternative. The more choices you have, the harder it is to keep people. Through creative production, we can stay compelling in-between the music."

Doyle uses the Internet's World Wide Web to expand WPBZ's image. To her, it's "another way to reach your listeners. The Net is stealing more people from TV than from radio, and if there's a way that you can reach those people, do it. Especially in modern, these people know computers. They're not as scared as the upper demo." With its Web site, says Doyle, WPBZ has "a great way to reinforce what the station is."

Lollapalooza's West Palm Beach stop (the only scheduled date for all of Florida) gave WPBZ another opportunity to reach its audience through the Web. Doyle says, "Tickets [went] on sale on the Net three days before anybody else [could] get them. We already had a link to Lollapalooza on our Web site, so it's another way to prove that you're one step ahead."

Working with Calderone as a Jacobs Media Edge client, Doyle rejects the charge by some industry observers that hers is a cookie-cutter format. "That couldn't be further from the truth," she says. "Especially when it comes to music. You can't program by looking at other Edge stations, because every market has a different battle going on. Everybody's going to have a different focus. And if you start clouding your focus by looking at what other Jacobs stations are doing, or any radio station across the country for that matter, you're in trouble."

What she draws from the relationship is insight into strategies that have worked in other markets. Doyle says, "A lot of our conversations are about strategizing and making the station compelling in the market [by] focusing on what's happening [here] and how we can capitalize on that [and] be a great station in-between the music."

MARC SCHIFFMAN

SERVICES

VOICEOVERS

When Excellence Matters

KIIS-FM, Los Angeles
B-96, Chicago
WKIS, Miami
KISS-FM, Dallas
Bob 100, Minneapolis
City-FM, Liverpool

Sean Caldwell
PRODUCTIONS
Country CHR Rock HotAC
voice-over and imaging **1SDN**
(813)926-1250 **READY**

BILL A. QUINN ...

voice of The Montel Williams Show, Showtime At The Apollo, ABC Radio Networks ... Introduces The 'Q' Factor - Dry Voice Imaging for your radio station!!

Your format + The 'Q' Factor = The Winning Combination
'For over 15 years I've depended on this voice to give my radio stations, personality, warmth, humor, and most of importantly distinction.'
Quincy McCoy, Urban Editor Gavin Magazine (former P.D. Majic 108 St. Louis; WBLS New York)
To request your demo call toll free: 1-888-92-VOICE or e-mail ComVoice@AOL.com

HELP WANTED



Y-107, SOUTHERN CALIFORNIA'S NEW MODERN ROCK STATION, SEEKS MIDDAY AND NIGHT TIME AIR PERSONALITIES.

If You:

- Can relate to a 27 year old
- Are extremely passionate about alternative music
- Have a strong handle of basic radio formatics

Then rush your tape and resume to:
Steve Blatter, Y-107
3350 Electronic Drive, Suite 130
Pasadena, CA 91107

FEMALES AND MINORITIES ARE STRONGLY ENCOURAGED.
EOE

"AMERICAN RADIO SYSTEMS' NEW MIX 94.1 LAS VEGAS HAS PRIME 'SLOTS'. CREATIVE POSITIONS FOR CREATIVE TALENT WHO CAN ENTERTAIN AND RELATE TO THE NEW HOT AC LIFESTYLE. FULL AND PART-TIME INCLUDING MORNINGS AND AFTERNOONS, PLUS PRODUCTION AND PROMOTIONS. MINIMUM 2 YEARS EXPERIENCE AND KNOWLEDGE OF BASICS REQUIRED. SEND T&R:
MIX 94.1-PROGRAM DIRECTOR
6655 W. SAHARA C-216
LAS VEGAS, NEVADA 89102
NO CALLS. A.R.S. IS AN EQUAL OPPORTUNITY EMPLOYER."

HELP WANTED



JEFF McCLUSKY & ASSOCIATES, INC.
marketing and promotion services

Do you have what it takes to be with the best promotion team in our industry? Do you want the opportunity to learn, grow and achieve in Chicago? Jeff McClusky & Associates, America's premier music promotion and marketing company, has two rare positions in our promotion department. We are seeking ambitious, enthusiastic individuals with the aptitude to succeed. One position is major-market focused and requires 3-5 years national promotion experience. The other involves secondary market concentration for that passionate music person who wants to learn the fundamentals of music promotion. Send resume in confidence to:

JMA • 719 West Willow • Chicago, IL 60614
NO CALLS PLEASE.



94.5/KDGE THE EDGE
DALLAS seeks Music Director and part time On-Air Talent. Minimum three years in New Rock Alternative Format required. Please call for application.

Mary Young
Director/Human Resources,
KDGE Radio
214/770-7777
AN EQUAL OPPORTUNITY EMPLOYER.

PROMOTION DIRECTOR

GRAND RAPIDS' TOP RATED ADULT ROCK STATION. WLAV-FM HAS TWO OPENINGS. PROMOTIONS DIRECTOR AND AN ON AIR MUSIC DIRECTOR. BOTH SHOULD POSSESS BASIC COMPUTER KNOWLEDGE AND HAVE TREMENDOUS ORGANIZATIONAL SKILLS AND ALSO BE CREATIVE THINKERS. RUSH YOUR RESUME W/TAPE TO:
TONY GATES PD
c/o WLAV-FM
60 MONROE CENTER, N.W.
GRAND RAPIDS, MI 49503
NO PHONE CALLS PLEASE.
WLAV IS AN EQUAL EMPLOYMENT OPPORTUNITY EMPLOYER.



KYQQ-FM, WICHITA SEEKS HOT COUNTRY MORNINGS, PHONES A MUST. SEND T&R TO:
DANE DANIEL, KYQQ
1632 S. MAIZE RD
WICHITA, KS 67212
EOE

FM 97 WLAN radio in Lancaster, PA. has an immediate full-time radio mid-day/production director position open. Applicant must have at least three years of radio experience. Tapes and resumes to:

JORDAN WALSH, WLAN-FM, PD
252 NORTH QUEEN STREET
LANCASTER, PA 17603
MINORITIES AND FEMALES ENCOURAGED.
EOE



WIN 98.5 SEEKS AIR TALENT WITH STRONG PHONES AND PRODUCTION TO HEAT UP EVENINGS. RUSH TAPE AND RESUME TO:
PAMELA LACEY,
WIN 98.5
6021 S. WESTNEDGE
KALAMAZOO, MI 49002
WOMEN AND MINORITIES ENCOURAGED.
EOE



Great market, great station, great facility! WMTX, one of the nation's most successful ACs has immediate opening for the following ... Morning show announcer ... the best in the business. T&R to:
Mike Reeves, c/o WMTX
18167 U.S. Hwy. 19 N, #500
Clearwater, FL 34624
CLEAR CHANNEL COMMUNICATIONS IS AN EOE/MF.

HELP WANTED

ADVERTISING ACCOUNT MANAGER

Airplay Monitor, a publication of the Billboard Music Group, is looking for an Advertising Account Manager in NYC. Music knowledge is a must; Top 40 radio and/or record industry experience is a plus. Please send resume and salary requirements to:

Airplay Monitor
5055 Wilshire Boulevard
6th Floor
Los Angeles, CA 90036
Attn: Advertising Position
EOE
No Calls Please!



NEEDED ... Exp midday air talent ... with production skills ... for growing Gulf Coast area Urban AC ...

Females strongly encouraged ... T&Rs to:
DYLAN
2402 WOLF RIDGE RD
MOBILE, AL 36618
EOE



#1 Hot AC seeks regional talent for rare PM drive opening ... good phones, production, and remotes. No card readers. T&R:
Bill Trotta, Program Director, 98Q
198 Main Street
Danbury, CT 06810
No phone calls please
EOE

DAME MEDIA needs air personalities and news anchors. Our formats include Rock/AC/CHR/New Country. If you are topical, can relate and sound good, you have a future with one of the fastest-growing broadcast groups in the northeast. Send materials ASAP:

Tom Benson
Group PD Dame Media
P.O. Box 6477
Harrisburg, PA 17112
EOE



Party radio B-96 is looking for (2) on-air personalities.
#1 - Late-night, fulltime
#2 - Weekends/Vacation fill-in
If you like to party, submit your tape and resume immediately to:
Todd Cavanah, Program Director
630 N. McClurg Court
Chicago, IL 60611
EOE

CLASSIFIED ADVERTISING RATES

HELP WANTED:

1 WEEK \$75.00 per inch
2 WEEKS \$65.00 per inch

POSITION WANTED AND BULLETIN BOARD:
\$45.00 per inch

BOX NUMBER: Add \$20.00

SERVICES:

1 WEEK \$75.00 per inch
6 WEEKS \$65.00 per inch
13 WEEKS \$60.00 per inch
26 WEEKS \$55.00 per inch
51 WEEKS \$50.00 per inch

DEADLINE (ALL CLASSIFIED):
Each Wednesday 3pm EST, 9 day leadtime.

• Classified ads are non-commissionable •

SUBMIT ALL AD COPY TO:

Laura Rivchun
Airplay Monitor Classified
1515 Broadway
New York, NY 10036

Phone: 212-536-5058
Fax: 212-536-5055

GREATEST GAINERS

Strongest Increase In Airplay This Week

MAINSTREAM ROCK

INCREASE
IN PLAYS

- THE SMASHING PUMPKINS • Tonight, Tonight (VIRGIN)** +242
WZAT +16, WCKW +15, WJRR +13, WTUE +13, WBXZ +12, WZTA -12, KISW +12, KTYD +10, WARQ +9, KFRQ +9
- TONIC • Open Up Your Eyes (POLYDOR/A&M)** +204
WZAT +16, KISS +16, KZRR +14, KTUX -12, KLBK +11, KRZR +10, KBPI +9, WZZR +8, WXTB +7, KATT +7
- SCREAMING TREES • All I Know (EPIC)** +200
WKDF +25, WZAT +22, KTUX +14, WRXL +12, KQRC +11, KNCH +10, WXRK +10, WRXR +10, KRXQ +9, KTYD +8
- HOOTIE & THE BLOWFISH • Tucker's Town (ATLANTIC)** +162
WAVF +20, WKLC +17, WIXV +12, KEZO +11, KTYD +10, WSTZ +10, WVRK +10, WCKW +10, WPYX +9, WONE +9
- METALLICA • Ain't My Bitch (ELEKTRA/EEG)** +124
KRZR +12, WKDF +12, WRIF +11, WTFX +9, KIOZ +9, WLZR +9, WKOC +8, WZTA +8, WAXQ +7, WJRR +6
- GOO GOO DOLLS • Long Way Down (METAL BLADE/WARNER BROS.)** +113
WZTA +18, KBER +14, KIOZ +11, KTAL +10, WKDF +8, KTUX +7, WWDC +7, WIXV +6, WVRK +6, KILO +6
- STABBING WESTWARD • Shame (COLUMBIA)** +98
WJRR +19, KUFO +10, KILO +8, WIXV +7, WTPA +6, WBXZ +5, WRCX +5, WJST +4, WROV +4, KTUX +4
- THE NIXONS • Wire (MCA)** +89
WJRR +16, KRAD +13, KATT +8, WZAT +7, KRXQ +7, KIOZ +6, KSJO +6, KTUX +5, WJST +4, KILO +4
- BLUES TRAVELER • But Anyway (A&M)** +84
KZRR +17, WROQ +12, WRXR +10, WIXV +8, WBAB +8, KDKB +7, WSTZ +5, KISS +5, WEZK +4, WIMZ +3
- JERRY CANTRELL • Leave Me Alone (WORK)** +83
WAXQ +13, WTPA +11, KISW +9, WBXZ +7, KTUX -6, WKLS +6, WZTA +5, KZRR +5, WCKW +5, WRXR +4

MODERN ROCK

INCREASE
IN PLAYS

- THE CRANBERRIES • Free To Decide (ISLAND)** +594
KTOZ +28, WCHZ +23, WXEG +22, WCYY +22, WPBZ +20, WHYT +20, WXNU +19, KBBT +19, WBCN +19, WDGE +18
- PRIMITIVE RADIO GODS • Standing Outside A Broken Phone Booth... (COLUMBIA)** +387
WRZX +21, WQXA +21, WENZ +20, WDGE +18, KTOZ +18, WEQX -18, WPBZ +17, WQBK +16, WEND +15, WPLY +15
- SCREAMING TREES • All I Know (EPIC)** +290
WPBZ +20, WNNX +18, WFNX +17, KTCL +16, WEND +15, KLZR +15, KFRR +12, WMMS +12, KICT +11, KOME +11
- NADA SURF • Popular (ELEKTRA/EEG)** +263
KEDJ +27, WEND +25, KROX +15, WIBF +15, WPLY +14, KTEG +13, KFRR +11, KFMA +10, WKRL +8, WNVN +8
- THE SMASHING PUMPKINS • Tonight, Tonight (VIRGIN)** +228
WXNU +36, WLIR +18, WQBK +17, KTEG +15, WBRU +13, WAQZ -12, WKQX +12, KFMA +10, KTBZ +9, WGRD +9
- GARBAGE • Stupid Girl (ALMO SOUNDS/GEFFEN)** +223
KROX +18, WPLY +13, KAEP +12, WXEG +11, WPBZ +11, KFRR +11, WWCD +11, WKRL +10, WIBF +10, WPLA +10
- BLUES TRAVELER • But Anyway (A&M)** +195
WXNU +38, WQXA +23, WMMS +17, KAEP +16, KWOD +15, KBBT +13, WOWW +12, KISF +12, KICT +9, WHFS +8
- DAVE MATTHEWS BAND • So Much To Say (RCA)** +185
WXNU +38, KTOZ +19, WEQX +16, WOWW +15, KWOD +15, WGRD +12, KCXX +11, WLUM +11, KFMA +10, WCHZ +9
- BECK • Where It's At (DGC/GEFFEN)** +150
WDGE +14, CIMX +14, WHFS +13, WXNU +12, KFRR +11, WZRH +11, WBZU +8, WRXQ +8, WBCN +8, KROX +7
- STONE TEMPLE PILOTS • Trippin' On A Hole In A Paper Heart (ATLANTIC)** +143
KTEG +20, KTBZ +15, WPLA +14, WKRL +13, KISF +13, WROX +11, WMMS +11, WHFS +11, WBCN +11, KFMA +10

VIDEO PLAYLISTS

MOST PLAYED ROCK TRACKS



		TW	LW		TW	LW	
1	Alanis Morissette, You Learn	35	30	1	Rage Against The Machine, Bulls On Parade	29	25
2	Tracy Chapman, Give Me One Reason	32	34	2	Alanis Morissette, You Learn	28	24
3	Jewel, Who Will Save Your Soul	31	24	3	Smashing Pumpkins, Tonight, Tonight	28	27
4	Gin Blossoms, Follow You Down	23	23	4	Metallica, Until It Sleeps	25	23
5	Hootie & The Blowfish, Tucker's Town	20	0	5	Nada Surf, Popular	23	14
6	Bryan Adams, The Only Thing That Looks G	19	23	6	Soundgarden, Pretty Noose	22	20
7	Collective Soul, The World I Know	19	19	7	Garbage, Stupid Girl	20	18
8	Adam Clayton & Larry Mullen, Theme From	18	35	8	Green Day, Walking Contradiction	20	24
9	Natalie Merchant, Jealousy	17	19	9	Stone Temple Pilots, Trippin' On A Hole	19	14
10	Eric Clapton, Change The World	15	15	10	No Doubt, Spiderwebs	17	18
11	Hootie & The Blowfish, Old Man & Me	14	34	11	Hootie & The Blowfish, Tucker's Town	17	0
12	Wallflowers, 6th Avenue Heartache	12	11	12	Superdrag, Sucked Out	16	15
13	Joan Osborne, St. Teresa	12	0	13	Beck, Where It's At	16	3
14	Dog's Eye View, Everything Falls Apart	11	11	14	Alice In Chains, Again	14	13
15	Sting, You Still Touch Me	10	18	15	Primitive Radio Gods, Standing Outside A	14	10
16	Dave Matthews Band, Too Much	8	6	16	The Cranberries, Free To Decide	14	17
17	Alanis Morissette, Ironic	8	8	17	Gravity Kills, Guilty	13	13
18	Pete Townshend, Let My Love Open The Doo	8	9	18	Ozzy Osbourne, I Just Want You	12	14
19	Blues Traveler, Run Around	8	7	19	Butt Hole Surfers, Pepper	11	6
20	Hootie & The Blowfish, Let Her Cry	7	5	20	Refreshments, Banditos	10	7
21	Jars Of Clay, Flood	6	3	21	311, Down	10	9
22	Melissa Etheridge, I Want To Come Over	6	3	22	Go Go Dolls, Long Way Down	10	13
23	Hootie & The Blowfish, Only Wanna Be Wit	6	4	23	Dishwalla, Counting Blue Cars	9	9
24	Bryan Adams, Have You Ever Really Loved	5	1	24	Blind Melon, 3 Is A Magic Number	9	5
25	Queen, Bohemian Rhapsody	5	3	25	Red Hot Chili Peppers, Coffee Shop	8	12
26	Bob Seger, Turn The	5	0	26	Everclear, Heartspark Dollarsign	8	9
27	Melissa Etheridge, I'm The Only One	5	3	27	Stabbing Westward, Shame	7	3
28	John Mellencamp, Wild Night	5	4	28	Patti Rothberg, Inside	7	7
29	Seal, Kiss From A Rose	5	8	29	Porno For Pyros, Tahitian Moon	7	5
30	Hootie & The Blowfish, Hold My Hand	5	1	30	Jewel, Who Will Save Your Soul	6	11
				31	Tracy Bonham, Mother Mother	6	15
				32	Bush, Come Down	5	2
				33	Dave Matthews Band, Too Much	5	13
				34	Nine Inch Nails, Closer	4	4
				35	Alanis Morissette, Ironic	4	2
				36	Presidents Of The United State, Lump	4	4
				37	Tracy Chapman, Give Me One Reason	4	9
				38	Goldfinger, Here In Your Bedroom	4	5
				39	Van Halen, Right Now	4	2
				40	Stone Temple Pilots, Interstate Love Song	3	4

TRIPLE A

INCREASE
IN PLAYS

- ERIC CLAPTON • Change The World (REPRISE)** +51
WMAX +13, KBCO +12, WRLT +7, WTTS +7, WVRV +5, KFVG +4, CIDR +3, KTCZ +3, KXPT +2, WHPT +2
- PRIMITIVE RADIO GODS • Standing Outside A Broken Phone Booth... (COLUMBIA)** +49
KBCO +12, WMAX +5, WXLE +5, WHPT +5, KGSR +5, WXRK +4, WBOS +3, KMTT +2, WVRV +2, KSCA +2
- BLUES TRAVELER • But Anyway (A&M)** +47
WBOS +9, KSCA +7, KXPT +5, KBCO +5, WVRV +4, KFOG +4, WHPT +3, WRLT +2, KQPT +2, KFVG +2
- DUNCAN SHEIK • Barely Breathing (ATLANTIC)** +40
KBCO +7, KQPT +6, KMTT +5, WTTS +5, KTMN +4, WNCS +4, KFVG +3, WHPT +2, WXRK +2, WRLT +1
- JEWEL • Who Will Save Your Soul (ATLANTIC)** +39
WXRK +17, WMAX +14, WRLT +10, KFVG +8, WXRK +7, KTMN +4, KXPT +4, WXLE +2, KMTT +1, KQPT +1
- KEB' MO' • That's Not Love (OKEHI/EPIC)** +36
CIDR +13, WXRK +8, KGSR +4, KTMN +3, WRNR +3, KTCZ +3, KINK +2, WRLT +2, WMAX +1, WXLE +1
- HOOTIE & THE BLOWFISH • Tucker's Town (ATLANTIC)** +36
WBOS +10, WNEW +7, KXPT +5, WXRK +5, WRLT +3, KQPT +3, KTCZ +3, WHPT +2, KINK +1, WMAX +1
- PETE DROGE & THE SINNERS • Mr. Jade (AMERICAN/WARNER BROS.)** +31
CIDR +10, WXRK +8, WRLT +4, KFVG +4, WMAX +2, KPIG +2, WXLE +1, WTTS +1
- DAVE MATTHEWS BAND • So Much To Say (RCA)** +30
KPIG +10, KTMN +9, WMAX +7, WRLT +6, KGSR +6, KTCZ +5, KXPT +4, WRNR +3, WXRT +2, WVRV +1
- JACKOPIERCE • Trials (A&M)** +28
KBCO +11, WNCS +8, WXRK +7, WRLT +4, WMAX +2, KXPT +1, WRNR +1, WBOS +1

KENNY WAYNE SHEPHERD

"Aberdeen"

"Damn Good!" - David Letterman

On: &

NEW THIS WEEK:

KILO WBLM WNCD WXRK WZAT





POWER PLAYLISTS

For Week Ending June 23, 1996



Playlists supplied by Broadcast Data Systems... Radio Track service...

KLOS Los Angeles PD: Carey Curelop MD: Rita Wilde. Playlist table with columns for rank, song, and time.

WAXQ New York PD: Ron Valeri APD/MD: Vinny Marino. Playlist table with columns for rank, song, and time.

WRCX Chicago PD: Dave Richards MD: Jo Robinson. Playlist table with columns for rank, song, and time.

WMMR Philadelphia PD: Joe Bonadonna. Playlist table with columns for rank, song, and time.

KQRS Minneapolis PD: Dave Hamilton APD/MD: Reed Endersbe. Playlist table with columns for rank, song, and time.

WWDC Washington, DC PD: Dave Brown MD: Buddy Rizer. Playlist table with columns for rank, song, and time.

WFBQ Indianapolis PD: Marty Bender MD: Ace Cosby. Playlist table with columns for rank, song, and time.

WRIF Detroit PD: Doug Podell MD: Dave Wellington. Playlist table with columns for rank, song, and time.

WAAF Boston PD: Dave Douglas MD: John Osterling. Playlist table with columns for rank, song, and time.

WDVE Pittsburgh PD: Gene Romano MD: Kris Winter. Playlist table with columns for rank, song, and time.

WKLS Atlanta PD: Michael Hughes MD: Beth Kepple. Playlist table with columns for rank, song, and time.

KEGL Dallas PD: Duane Doherty MD: Cindy Scull. Playlist table with columns for rank, song, and time.

KLOL Houston PD: Andy Beaubien APD: Dayna Steele. Playlist table with columns for rank, song, and time.

KTXQ Dallas OM: Andy Lockridge MD: Redbeard. Playlist table with columns for rank, song, and time.

KSHE St. Louis PD: Rick Balis MD: Al Hofer. Playlist table with columns for rank, song, and time.

KSJO San Jose PD: Dana Jang MD: Laurie Free. Playlist table with columns for rank, song, and time.

WEBN Cincinnati OM: Mark Chase PD: Brad Hardin. Playlist table with columns for rank, song, and time.

WZTA Miami PD: Gregg Steele MD: Heidi Hess. Playlist table with columns for rank, song, and time.

WHJY Providence PD: Bill Weston MD: Sharon Schifino. Playlist table with columns for rank, song, and time.

WJRR Orlando PD: Dick Sheetz MD: Pat Lynch. Playlist table with columns for rank, song, and time.

WXTB Tampa OM: Greg Mull MD: Brian Medlin. Playlist table with columns for rank, song, and time.

WIYY Baltimore PD: Rick Strauss MD: Rob Heckman. Playlist table with columns for rank, song, and time.

WLZR Milwaukee PD: Keith Hastings MD: Neil Robbins. Playlist table with columns for rank, song, and time.

WBZX Columbus, OH PD: Hal Fish APD/MD: Ronni Hunter. Playlist table with columns for rank, song, and time.

MAINSTREAM ROCK

POWER PLAYLISTS



For Week Ending June 23, 1996

Playlists supplied by Broadcast Data Systems' Radio Track service. Stations selected from panel of leading broadcasters in 125 radio markets, electronically monitored 24 hours a day, 7 days a week. Songs ranked by number of plays in monitor week.

WBAB Long Island PD: Jeff Levine MD: Ralph Tortora. Top 30 playlist table with columns TW, LW, and song titles.

KUFO Portland PD: Dave Numme APD: Al Scott. Top 30 playlist table with columns TW, LW, and song titles.

KISW Seattle MD: Cathy Faulkner. Top 30 playlist table with columns TW, LW, and song titles.

WKDF Nashville PD: Kidd Redd MD: Sheri Sexton. Top 30 playlist table with columns TW, LW, and song titles.

WONE Akron PD: J.D. MD: Erin Carmen. Top 30 playlist table with columns TW, LW, and song titles.

KBPI Denver PD: Bob Richards. Top 30 playlist table with columns TW, LW, and song titles.

KATT Oklahoma City PD: Chris Baker MD: Kelley Davis. Top 30 playlist table with columns TW, LW, and song titles.

KQRC Kansas City PD: Doug Sorenson MD: Valerie Knight. Top 30 playlist table with columns TW, LW, and song titles.

KUPD Phoenix OM: Tim Maranville APD/MD: J.J. Jeffries. Top 30 playlist table with columns TW, LW, and song titles.

KDKB Phoenix OM: Tim Maranville MD: Paul Peterson. Top 30 playlist table with columns TW, LW, and song titles.

KISS San Antonio OM: Virgi Thompson APD: Kevin Vargas. Top 30 playlist table with columns TW, LW, and song titles.

WLVQ Columbus PD: Greg Ausham MD: Joe Pasternak. Top 30 playlist table with columns TW, LW, and song titles.

Large advertisement for 'What a Deal!' featuring the Billboard & Monitor Radio Seminar & Awards... with a '\$999 Only' graphic and event details for September 5-7, 1996 at the New York Sheraton Hotel.

POWER PLAYLISTS

For Week Ending June 23, 1996



Playlists supplied by Broadcast Data Systems Radio Track service. Stations selected from panel of leading broadcasters in 125 radio markets, electronically monitored 24 hours a day, 7 days a week. Songs ranked by number of plays in the monitored week.

WRDU Raleigh PD: Tom Guild MD: Jimmy Lloyd. Playlist with 30 items including Dave Matthews Band, Dishwalla, and Collective Soul.

WIMZ Knoxville PD: Jim Pemberton MD: Bill Kidd. Playlist with 30 items including Peter Wolf, Long Line, and Dishwalla.

KYYS Kansas City PD: John Duncan MD: Slacker. Playlist with 30 items including Goo Goo Dolls, Name, and Dishwalla.

WHCN Hartford PD: Bryan Krysz. Playlist with 30 items including Collective Soul, Where The River Flows, and Metallica.

WROQ Greenville PD: Ken Carson APD/MD: K.C. Carson. Playlist with 30 items including Edwin McCain, Alve, and Kenny Wayne Shepherd.

WPYX Albany PD: Fred Horton MD: John Cooper. Playlist with 30 items including Alanis Morissette, You Learn, and Tracy Chapman.

WNOR Norfolk PD: Harvey Kojan APD/MD: Tim Parker. Playlist with 30 items including Bush, Machinehead, and Soundgarden.

WCMF Rochester PD: Harry Jacobs MD: Dave Kane. Playlist with 30 items including Collective Soul, Where The River Flows, and Everclear.

WEGR Memphis PD: Drake Hall MD: Zeke Logan. Playlist with 30 items including Def Leppard, Work It Out, and Dave Matthews Band.

WXRA Greensboro PD: Tim Satterfield MD: Marcia Gan. Playlist with 30 items including Butthole Surfers, Pepper, and Metallica.

WFYV Jacksonville PD: Lex Staley APD/MD: Charlie Waters. Playlist with 30 items including Bush, Machinehead, and Metallica.

WTUE Dayton OM: Tom Carroll PD: Chris Geissen. Playlist with 30 items including Metallica, Until It Sleeps, and Dishwalla.

WAPL Green Bay OM: Garrett Hart MD: Bob Barn. Playlist with 30 items including Def Leppard, Work It Out, and Dishwalla.

WPLR New Haven PD: John Griffin MD: Pam Landry. Playlist with 30 items including Stone Temple Pilots, Trignon' On A Hole, and Def Leppard.

WTFX Louisville PD: Michael Lee APD: Future Bob. Playlist with 30 items including Soundgarden, Burden In My Hand, and The Refreshments.

WKQQ Lexington PD: Tony Tilford MD: Dennis Dillon. Playlist with 30 items including Metallica, Until It Sleeps, and Bush.

WCKW New Orleans GM: Sid Levett. Playlist with 30 items including Dishwalla, Counting Blue Cars, and Oasis.

KLAK El Paso PD/MD: "Magic" Mike Ramsey. Playlist with 30 items including Collective Soul, Where The River Flows, and Oasis.

KBER Salt Lake City PD: Randy Rose MD: Chris Haggin. Playlist with 30 items including Collective Soul, Where The River Flows, and Soundgarden.

KRXQ Sacramento PD: Curtiss Johnson APD: Pat Martin. Playlist with 30 items including Metallica, Until It Sleeps, and Soundgarden.

KIOZ San Diego PD: Greg Stevens MD: Shannon Leder. Playlist with 30 items including Van Halen, Humans Being, and Soundgarden.

KLBJ Austin OM: Jeff Carroll MD: Loris Love. Playlist with 30 items including Soundgarden, Pretty Noose, and Metallica.

WCCC Hartford PD: Ron Dresner MD: Lich. Playlist with 30 items including Dave Matthews Band, Too Much, and Def Leppard.

KCAL San Bernardino OM: Rick Shaw MD: MJ Matthews. Playlist with 30 items including Dishwalla, Counting Blue Cars, and Scorpions.



☆☆☆ AIRPOWER ☆☆☆
(Minimum 900 detections for the first time)

- | | |
|--|--|
| <p>THE SMASHING PUMPKINS 1076/242
<i>Tonight, Tonight (Virgin)</i>
Total Stations: 82/Chart Move: 15-10
Heavy (21+ plays): 19 KILQ, KRAB, KRZR, KTUX, KTXQ, KTYD, KZRR, WAAF, WARQ, WBZX, WCKW, WHJY, WJRR, WKLO, WRXC, WTPA, WTUE, WZAT, WZTA
Medium (14-20): 16 KBER, KBPI, KEGL, KLBJ, KLOS, KRAD, KRXQ, KSJO, KTAL, KUFO, WAXQ, WHCN, WIYY, WWDC, WXRA, WZZR
Light (Under 14): 47
New Airplay This Week: 7 KFRQ, KISW, KRZZ, KXUS, WCCC, WIXV, WPYX</p> | <p>GOO GOO DOLLS 1001/113
<i>Long Way Down (Metal Blade/Warner Bros.)</i>
Total Stations: 70/Chart Move: 13-11
Heavy (21+): 13 KBPI, KDKB, KILO, KLOS, KRXQ, KSJO, KTUX, KTYD, KUPD, WIYY, WWDC, WZAT, WZZR
Medium (14-20): 21 KATT, KBER, KEZO, KFRQ, KGGO, KIOZ, KISS, KISW, KLBJ, KLQ, KZRR, WARQ, WBZX, WEGR, WIXV, WKDF, WKLO, WTFX, WTPA, WTUE, WZTA
Light (Under 14): 36
New Airplay This Week: 3 KTAL, WVRK, WZTA</p> |
|--|--|

MOST NEW AIRPLAY THIS WEEK

- | No. Of Stations | |
|-----------------|---|
| 15 | SCREAMING TREES
<i>All I Know (Epic)</i> |
| 15 | TONIC
<i>Open Up Your Eyes (Polydor/A&M)</i> |
| 13 | HOOTIE & THE BLOWFISH
<i>Tucker's Town (Atlantic)</i> |
| 10 | METALLICA
<i>Ain't My Bitch (Elektra/EEG)</i> |
| 8 | PANTERA
<i>Suicide Note Pt. I (EastWest/EEG)</i> |
| 8 | SOUNDGARDEN
<i>Burden In My Hand (A&M)</i> |

METALLICA 208/16

Hero Of The Day (Elektra/EEG)
Total Stations: 34
Heavy (21+): 2 KTXQ, WIYY
Medium (14-20): 3 KUFO, WNOR, WRXC
Light (Under 14): 29
New Airplay This Week: 3 WJRR, WTFX, WZZR

TRACY CHAPMAN 181/3

Give Me One Reason (Elektra/EEG)
Total Stations: 18
Heavy (21+): 2 KTAL, WPYX
Medium (14-20): 1 WBAB
Light (Under 14): 15

\$10,000 GOLD CHAIN 160/19

Oh! Sweet Nuthin' (Work)
Total Stations: 13
Heavy (21+): 1 WZAT
Medium (14-20): 5 KOMP, KRXQ, KSJO, KTUX, WIYY
Light (Under 14): 7
New Airplay This Week: 1 WIYY

★ DAVE MATTHEWS BAND 160/55

So Much To Say (RCA)
Total Stations: 23
Heavy (21+): 0
Medium (14-20): 4 KTXQ, WKQQ, WPLR, WWDC
Light (Under 14): 19
New Airplay This Week: 5 KTAL, WARQ, WEZX, WROQ, WXFZ

★ GARBAGE 144/55

Stupid Girl (Almo Sounds/Geffen)
Total Stations: 23
Heavy (21+): 1 KTXQ
Medium (14-20): 5 WARQ, WWDC, WXRA, WXTB, WZAT
Light (Under 14): 17
New Airplay This Week: 3 WARQ, WWDC, WXTB

TOADIES 143/17

Tyler (Interscope)
Total Stations: 19
Heavy (21+): 1 KEGL
Medium (14-20): 2 KRAD, KTUX
Light (Under 14): 16
New Airplay This Week: 1 KISS

JEWEL 131/6

Who Will Save Your Soul (Atlantic)
Total Stations: 12
Heavy (21+): 2 WARQ, WXRA
Medium (14-20): 0
Light (Under 14): 10

★ FOO FIGHTERS 126/2

Alone + Easy Target (Roswell/Capitol)
Total Stations: 13
Heavy (21+): 1 KISW
Medium (14-20): 4 KIOZ, KTYD, KUPD, WARQ
Light (Under 14): 8

★ KICKING HAROLD 116/7

Kill You (MCA)
Total Stations: 16
Heavy (21+): 1 KEGL
Medium (14-20): 1 KUPD
Light (Under 14): 14

★ HOLE 108/15

Gold Dust Woman (Hollywood)
Total Stations: 13
Heavy (21+): 1 WJST
Medium (14-20): 3 KTXQ, WARQ, WZAT
Light (Under 14): 9
New Airplay This Week: 1 KTUX

★ OASIS 107/34

Don't Look Back In Anger (Epic)
Total Stations: 19
Heavy (21+): 2 WIYY, WWDC
Medium (14-20): 0
Light (Under 14): 17
New Airplay This Week: 4 KEGL, WCKW, WKLO, WTPA

AIRPOWER BOUND

JERRY CANTRELL 870/83

Leave Me Alone (Work)
Total Stations: 63/Chart Move: 19-14
Heavy (21+ plays): 12 KBER, KEGL, KRZR, KTUX, KTYD, WAAF, WAXQ, WIYY, WLZR, WRXR, WZAT, WZTA
Medium (14-20): 19 KATT, KBPI, KISW, KLQ, KQRC, KRXQ, KSJO, KTXQ, KZRR, WARQ, WBZX, WJRR, WKDF, WKLO, WKOC, WNOR, WRXC, WTPA, WZZR
Light (Under 14): 32
New Airplay This Week: 2 WIOT, WKLS

SOUNDGARDEN 820/54

Burden In My Hand (A&M)
Total Stations: 68/Chart Move: 20-17
Heavy (21+): 11 KILQ, KLOS, KTXQ, WAAF, WLVO, WLZR, WNOR, WRXC, WRIF, WTFX, WZTA
Medium (14-20): 18 KBPI, KIOZ, KRXQ, KRZR, KSJO, KUFO, KUPD, KZRR, WAXQ, WIYY, WJRR, WJST, WKDF, WKLO, WRXR, WTPA, WXTB, WZZR
Light (Under 14): 39
New Airplay This Week: 8 KFRQ, KISW, KLBJ, KTUX, WCMF, WIZN, WNCD, WWDC

THE HUNGER 812/79

Vanishing Cream (Universal)
Total Stations: 56/Chart Move: 21-19
Heavy (21+): 15 KEGL, KILO, KISS, KSJO, KTUX, KTYD, KUPD, WAAF, WIYY, WKDF, WKLO, WLZR, WRXC, WRIF, WRXR
Medium (14-20): 15 KBPI, KLBJ, KLOS, KLPX, KNCN, KQRC, KRAD, KRXQ, KTXQ, WJRR, WJST, WKOC, WNOR, WTPA, WTUE
Light (Under 14): 26
New Airplay This Week: 5 KFRQ, KIOZ, WAXQ, WZTA, WZZR

SPONGE 683/79

Wax Ecstatic (To Sell Angelina) (Columbia)
Total Stations: 60/Chart Move: 27-21
Heavy (21+): 9 KILO, WAXQ, WIYY, WJRR, WJST, WLZR, WRIF, WZAT, WZTA
Medium (14-20): 12 KEGL, KISW, KRXQ, KRZR, KUPD, WARQ, WKDF, WNOR, WRXC, WRXR, WWDC, WXRA
Light (Under 14): 39
New Airplay This Week: 6 KTYD, WAAF, WIOT, WIXV, WJRR, WRXL

THE WALLFLOWERS 679/51

6th Avenue Heartache (Interscope)
Total Stations: 54/Chart Move: 26-22
Heavy (21+): 8 KLPX, KTUX, KTYD, KXUS, WAFV, WMMR, WPYX, WZAT
Medium (14-20): 13 KORS, KTAL, WAPL, WBAB, WCMF, WDVE, WEGR, WEZX, WIXV, WKLC, WKLS, WROQ, WSTZ
Light (Under 14): 33
New Airplay This Week: 3 KLBJ, KLOS, WRXR

THE HAZIES 645/58

Skin & Bones (EMI)
Total Stations: 54/Chart Move: 28-24
Heavy (21+): 6 KISS, KRAD, WARQ, WKLO, WZAT, WZZR
Medium (14-20): 15 KEGL, KEZO, KIOZ, KLBJ, KQRC, KRXQ, KTUX, KTYD, WJRR, WJST, WKLS, WKOC, WTUE, WXTB, WZMT
Light (Under 14): 33
New Airplay This Week: 4 KEZO, WBLM, WEZX, WYFY

KENNY WAYNE SHEPHERD 578/81

Aberdeen (Glant)
Total Stations: 47/Chart Move: 34-28
Heavy (21+): 5 KISS, KMJX, KTUX, KXUS, WZZR
Medium (14-20): 14 KDKB, KEZO, KLOS, KOMP, KRXQ, WAPL, WCKW, WEGR, WIXV, WKOC, WROQ, WROV, WSTZ, WTUE
Light (Under 14): 28
New Airplay This Week: 5 KEGL, KLPX, WEZX, WIZN, WKOC

BUTTHOLE SURFERS 573/56

Pepper (Capitol)
Total Stations: 40/Chart Move: 33-30
Heavy (21+): 12 KBPI, KEGL, KRAD, KTUX, KTXQ, KZRR, WAAF, WARQ, WAXQ, WIYY, WXRA, WXTB
Medium (14-20): 5 WAVF, WJST, WKDF, WWDC, WZTA
Light (Under 14): 23
New Airplay This Week: 2 KTYD, WKDF

GIN BLOSSOMS 562/7

Day Job (A&M)
Total Stations: 43/Chart Move: 31-32
Heavy (21+): 7 KLOS, KTYD, WEGR, WIYY, WRXR, WVRK, WZZR
Medium (14-20): 12 KDKB, KFRQ, KLPX, KNCN, KZRR, WAPL, WHJY, WIXV, WKLC, WRXL, WTFX, WTPA
Light (Under 14): 24
New Airplay This Week: 2 WKLC, WTAK

GREEN DAY 529/30

Walking Contradiction (Reprise)
Total Stations: 47/Chart Move: 35-34
Heavy (21+): 3 KSJO, WIYY, WJST
Medium (14-20): 18 KBPI, KIOZ, KLBJ, KQRC, KRAD, KUFO, KUPD, WARQ, WJRR, WKLO, WRXC, WRXL, WRXR, WWDC, WXRA, WXTB, WZAT, WZZR
Light (Under 14): 26
New Airplay This Week: 3 KRXQ, WCKW, WJRR

SCREAMING TREES 511/200

All I Know (Epic)
Total Stations: 46/Chart Move: Debut 35
Heavy (21+): 7 WAAF, WAVF, WAXQ, WIYY, WKDF, WZAT, WZTA
Medium (14-20): 6 KILO, KISW, KRZR, KTUX, KTXQ, WWDC
Light (Under 14): 33
New Airplay This Week: 15 KIOZ, KNCN, KQRC, KRAB, KRXQ, KTUX, KTYD, WAPL, WCKW, WYFY, WKDF, WROV, WRXL, WRXR, WXRA

SPACEHOG 508/62

Cruel To Be Kind (Hifi/Sire/EEG)
Total Stations: 51/Chart Move: Debut 36
Heavy (21+): 3 KBER, WIYY, WZAT
Medium (14-20): 7 KEZO, KRXQ, KRZR, KTYD, WARQ, WKLO, WLZR
Light (Under 14): 41
New Airplay This Week: 7 KBPI, KUFO, WAPL, WJST, WKLS, WROQ, WVRK

METALLICA 453/124

Ain't My Bitch (Elektra/EEG)
Total Stations: 55/Chart Move: Debut 38
Heavy (21+): 4 WAXQ, WJST, WKDF, WXTB
Medium (14-20): 6 KLOS, KQRC, KRZR, KUPD, WBZX, WRIF
Light (Under 14): 45
New Airplay This Week: 10 KIOZ, KMJX, KOMP, KRZR, WKOC, WLZR, WRIF, WTFX, WZTA, WZZR

ALANIS MORISSETTE 441/34

You Learn (Maverick/Reprise)
Total Stations: 30/Chart Move: Debut 40
Heavy (21+): 7 KDKB, KTAL, KTYD, WARQ, WPYX, WTAK, WXRA
Medium (14-20): 10 KATT, KFRQ, KRAB, WAPL, WBAB, WHJY, WIXV, WVRK, WWDC, WZZR
Light (Under 14): 13
New Airplay This Week: 1 WZZR

STABBING WESTWARD 429/98

Shame (Columbia)
Total Stations: 43
Heavy (21+): 4 KILO, KTUX, KZRR, WJRR
Medium (14-20): 9 KEGL, WJST, WKDF, WLZR, WRXC, WRXR, WXRA, WZAT, WZTA
Light (Under 14): 30
New Airplay This Week: 6 KUFO, WIXV, WJRR, WKLO, WSTZ, WTPA

THE WHY STORE 423/52

Lack Of Water (Way Cool Music/MCA)
Total Stations: 45
Heavy (21+): 2 KTYD, WZAT
Medium (14-20): 9 KLPX, WAPL, WCMF, WDVE, WIXV, WKQQ, WROV, WTUE, WZMT
Light (Under 14): 34
New Airplay This Week: 7 WBAB, WCMF, WYFY, WIZN, WKLC, WMMR, WXFZ

ERIC CLAPTON 386/32

Change The World (Reprise)
Total Stations: 32
Heavy (21+): 5 KMOD, WBLM, WMMR, WPYX, WTAK
Medium (14-20): 9 KMJX, KRZZ, KTAL, KXUS, WBAB, WEZX, WKLC, WONE, WRXK
Light (Under 14): 18
New Airplay This Week: 2 WCCC, WPLR

ZACK WYLDE 381/65

Between Heaven And Hell (Geffen)
Total Stations: 43
Heavy (21+): 1 KTUX
Medium (14-20): 6 KTAL, WIXV, WROQ, WRXK, WTPA, WZAT
Light (Under 14): 36
New Airplay This Week: 7 KLBJ, WEGR, WLVO, WPLR, WSTZ, WTUE, WXFZ

PRIMITIVE RADIO GODS 363/82

Standing Outside A Broken Phone Booth... (Columbia)
Total Stations: 36
Heavy (21+): 7 KTYD, KZRR, WARQ, WAVF, WAXQ, WIYY, WXTB
Medium (14-20): 6 KTUX, KTXQ, WJST, WWDC, WXRA, WZZR
Light (Under 14): 23
New Airplay This Week: 2 KNCN, WZTA

CRACKER 323/34

Nothing To Believe In (Virgin)
Total Stations: 33
Heavy (21+): 2 WXTB, WZTA
Medium (14-20): 5 KUPD, WAXQ, WNOR, WVRK, WXRA
Light (Under 14): 26
New Airplay This Week: 6 KRXQ, KTYD, WEBN, WYFY, WIZN, WROQ

BLUES TRAVELER 305/84

But Anyway (A&M)
Total Stations: 31
Heavy (21+): 1 KZRR
Medium (14-20): 8 KTAL, KTXQ, WEZX, WIMZ, WIXV, WRXR, WSTZ, WZZR
Light (Under 14): 22
New Airplay This Week: 3 WBAB, WKQQ, WROQ

GOLDFINGER 295/8

Here In Your Bedroom (Mojo/Universal)
Total Stations: 31
Heavy (21+): 3 WAAF, WARQ, WXRA
Medium (14-20): 6 KBPI, KTUX, KTXQ, WKOC, WWDC, WXTB
Light (Under 14): 22

★ HOOTIE & THE BLOWFISH 279/162

Tucker's Town (Atlantic)
Total Stations: 30
Heavy (21+): 0
Medium (14-20): 5 WAPL, WAVF, WBLM, WKLC, WROQ
Light (Under 14): 25
New Airplay This Week: 13 KEZO, KTYD, WARQ, WAVF, WCKW, WEZX, WHCN, WKLC, WONE, WPYX, WSTZ, WVRK, WXRA

★ TONIC 273/204

Open Up Your Eyes (Polydor/A&M)
Total Stations: 38
Heavy (21+): 1 WXTB
Medium (14-20): 5 KILO, KISS, KRXQ, KZRR, WZAT
Light (Under 14): 32
New Airplay This Week: 15 KATT, KBPI, KIOZ, KISS, KLBJ, KMOD, KNCN, KRZR, KTUX, KZRR, WCCC, WIYY, WSTZ, WZAT, WZZR

PANTERA 232/74

Suicide Note Pt. I (EastWest/EEG)
Total Stations: 30
Heavy (21+): 1 WZAT
Medium (14-20): 3 KILO, KTUX, KUPD
Light (Under 14): 26
New Airplay This Week: 8 KATT, KBER, KISS, KLBJ, KQRC, KRAD, KSJO, WEBN

THE NIXONS 228/89

Wire (MCA)
Total Stations: 29
Heavy (21+): 1 WZAT
Medium (14-20): 7 KRAD, KRXQ, KTUX, KUPD, WAAF, WARQ, WJRR
Light (Under 14): 22
New Airplay This Week: 7 KATT, KIOZ, KRAD, KSJO, WJRR, WKLO, WTUE

PETER WOLF 211/16

Long Line (Reprise)
Total Stations: 21
Heavy (21+): 2 WEZX, WIMZ
Medium (14-20): 3 KCAL, WBLM, WLVO
Light (Under 14): 16
New Airplay This Week: 1 WRXK

311 210/33

Down (Capricorn/Mercury)
Total Stations: 20
Heavy (21+): 1 KBPI
Medium (14-20): 2 KEGL, WZAT
Light (Under 14): 17
New Airplay This Week: 4 KTUX, WIYY, WJST, WSTZ



SONG ACTIVITY REPORTS



For Week Ending June 23, 1996

Detailed song tracking information for the last 3 weeks for all songs showing increased play this week. Total plays and gain do not include video play. Markets listed in order of population.

Table with 12 columns: Artist, Title, Station, and various activity metrics (Total Plays/Gain, Chart Move, etc.) for albums like BUTTHOLE SURFERS, JERRY CANTRELL, GIN BLOSSOMS, GOO GOO DOLLS, GREEN DAY, THE HAZIES, THE HUNGER, METALLICA, and ALANIS MORISSETTE.



SONG ACTIVITY REPORTS

MMI Broadcast Data Systems... Detailed song tracking information for the last 3 weeks for all songs showing increased play this week...

For Week Ending June 23, 1996

Grid of song activity reports for artists like Screaming Trees, Kenny Wayne Shepherd, The Smashing Pumpkins, Soundgarden, and Spacehog. Each entry includes station, chart move, and play data.

Grid of song activity reports for artists like Sponge, Stabbing Westward, Stone Temple Pilots, The Wallflowers, and The Why Store. Each entry includes station, chart move, and play data.

For Week Ending June 23, 1996

Playlists supplied by Broadcast Data Systems' Radio Track service. Stations selected from panel of leading broadcasters in 125 radio markets, electronically monitored 24 hours a day, 7 days a week. Songs ranked by number of plays in monitored week.

WXRK New York OM: Sam Milkman PD: Andre Gardner. Playlist of 30 songs including Stone Temple Pilots, Porno For Pyros, and The Cranberries.

KROQ Los Angeles PD: Kevin Weatherly APD: Gene Sandblom. Playlist of 30 songs including Porno For Pyros, The Cranberries, and Green Day.

WKQX Chicago PD: Bill Gamble APD/MD: Mary Shumins. Playlist of 30 songs including No Doubt, Soundgarden, and The Nixons.

WPLY Philadelphia PD: Chuck Tisa. Playlist of 30 songs including Bush, Macnehead, and Soundgarden.

WBCN Boston VP/Prgrm: Oedipus MD: Carter Alan. Playlist of 30 songs including Butthole Surfers, Porno For Pyros, and Stone Temple Pilots.

WHFS Washington, DC PD: Robert Benjamin APD: Bob Wauw. Playlist of 30 songs including No Doubt, Porno For Pyros, and The Cranberries.

KITS San Francisco VP/Prgrm: Richard Sands MD: Roland West. Playlist of 30 songs including Butthole Surfers, Beck, and Tracy Bonham.

KDGE Dallas PD: Joel Folger. Playlist of 30 songs including Primitive Radio Gods, Fugees, and Bush.

WNNX Atlanta PD: Brian Phillips APD: Leslie Fram. Playlist of 30 songs including Beck, Soundgarden, and Butthole Surfers.

WMMS Cleveland VP/Ops: John Gorman APD/MD: Doug Kubinski. Playlist of 30 songs including Dishwalla, Soundgarden, and Butthole Surfers.

WHYT Detroit PD: Garrett Michaels MD: Alex Tear. Playlist of 30 songs including Bush, Macnehead, and Soundgarden.

KEGE Minneapolis PD: John Lassman MD: Wade Linder. Playlist of 30 songs including Primitive Radio Gods, Butthole Surfers, and Jewel.

KOME San Jose OM: Ron Nenni PD/MD: Jay Taylor. Playlist of 30 songs including Primitive Radio Gods, Butthole Surfers, and Stone Temple Pilots.

KNDD Seattle PD: Rick Lambert MD: Marco Collins. Playlist of 30 songs including Butthole Surfers, Screaming Trees, and Beck.

KTBB Houston PD: Cruze MD: David Sadoff. Playlist of 30 songs including Dishwalla, Counting Blue Cars, and Bush.

CIMX Detroit Prgrm. Mngnr: Murray Brookshaw PD/MD: Vince Cannova. Playlist of 30 songs including Sponge, Wax Ecstatic, and Rage Against The Machine.

KPNT St. Louis PD: Alex Luke APD: Eric Schmidt. Playlist of 30 songs including Soundgarden, Porno For Pyros, and Alanis Morissette.

XTRA San Diego OM: Tim Duker APD: Malcolm Ryker. Playlist of 30 songs including Tracy Bonham, Mother Mother, and Smashing Pumpkins.

WMRQ Hartford Interim PD: Brian Krysz. Playlist of 30 songs including Dishwalla, Counting Blue Cars, and Butthole Surfers.

WIBF Philadelphia OM/PD: Jim McGuinn MD: Preston Elliott. Playlist of 30 songs including No Doubt, Alanis Morissette, and Smashing Pumpkins.

WLIR Long Island PD: Ted Taylor MD: Shelley Miller. Playlist of 30 songs including Dishwalla, Counting Blue Cars, and Alanis Morissette.

WENZ Cleveland PD: Bob Neumann MD: Sean Robertson. Playlist of 30 songs including Dishwalla, Counting Blue Cars, and Primitive Radio Gods.

KXPK Denver PD: Doug Clifton MD: Gary Schoenwetter. Playlist of 30 songs including The Verve, Lack Of Water, and Blues Traveler.

KWOD Sacramento PD/MD: Alex Cosper. Playlist of 30 songs including Jewel, Who Will Save Your Soul, and Soundgarden.

WRZX Indianapolis PD: Scott Jameson MD: Michael Young. Top 30 list including Stone Temple Pilots, The Verve Pipe, and Soundgarden.

WFNX Boston Interim PD: Todd Wilkinson MD: Laurie Gail. Top 30 list including Stone Temple Pilots, The Verve Pipe, and Soundgarden.

XHRM San Diego OM: Bryan Jones MD: Brynn Capella. Top 30 list including Stone Temple Pilots, The Verve Pipe, and Soundgarden.

WLUM Milwaukee PD: Vince Richards APD: Temmy Wild. Top 30 list including Stone Temple Pilots, The Verve Pipe, and Soundgarden.

WXDX Pittsburgh PD: Chris Winter MD: Ali Castellini. Top 30 list including Stone Temple Pilots, The Verve Pipe, and Soundgarden.

KNRK Portland, OR PD: Mark Hamilton MD: Matt Southern. Top 30 list including Stone Temple Pilots, The Verve Pipe, and Soundgarden.

KISF Kansas City PD: Jon Anthony MD: Jason Justice. Top 30 list including Stone Temple Pilots, The Verve Pipe, and Soundgarden.

WEDG Buffalo PD: John Hager MD: Rich Wall. Top 30 list including Stone Temple Pilots, The Verve Pipe, and Soundgarden.

KEDJ Phoenix PD: Shelli Hart APD/MD: Chris Patyk. Top 30 list including Stone Temple Pilots, The Verve Pipe, and Soundgarden.

WNVE Rochester PD/MD: Erick Anderson. Top 30 list including Stone Temple Pilots, The Verve Pipe, and Soundgarden.

WGRD Grand Rapids PD: Allan Fee MD: Leann Curtis. Top 30 list including Stone Temple Pilots, The Verve Pipe, and Soundgarden.

WQBK Albany PD: Dan Binder MD: Kelli McNamara. Top 30 list including Stone Temple Pilots, The Verve Pipe, and Soundgarden.

3 albums: 375,000 copies sold
3 U.S. tours: 300,000 tickets sold
Isn't it time you boarded the Pirate Ship?

It's not just Canadians anymore...
Over 50,000 albums scanned for
'Born On A Pirate Ship'
Over 88,000 tickets sold in '96

Table listing tour dates and venues for 'Born On A Pirate Ship' across various cities including Rochester, NY, New York, NY, Buffalo, NY, Boston, MA, Chicago, IL, Cincinnati, OH, Cleveland, OH, Columbus, OH, Seattle, WA, Washington D.C., Los Angeles, CA, San Francisco, CA, St. Paul, MN, Madison, WI, St. Louis, MO, and Tempe, AZ.

New adds...
WHYT/Detroit 16 plays
WENZ/Cleveland 14 plays
On at...
KXPK/Denver
WOXY/Cincinnati
WCYY/Portland
CFNY/Toronto
KDEO/Honolulu
WBXR/Rochester
and
KBCO/Boulder
KSCA/Los Angeles
WXRV/Boston
WMMO/Orlando
WRLT/Nashville
WMAX/Rochester

Barenaked Ladies
"The Old Apartment"
The new single off their lp Born On A Pirate Ship
Video directed by Jason Priestley.
Produced by Michael Phillip Wojewoda and Barenaked Ladies
Management: Netzwerk Management Terry McBride and Dan Fraser
© 1996 Reprise Records
http://www.RepriseRec.com/BarenakedLadies



POWER PLAYLISTS

For Week Ending June 23, 1996



Playlists supplied by Broadcast Data Systems' Radio Track service...

WROX Norfolk PD: Perry Stone MD: Al Mitchell. Playlist table with 30 items.

WDGE Providence PD: Brent Petersen MD: John Allers. Playlist table with 30 items.

WBRU Providence Interim PD: Stephanie Hindley MD: Matt Maloney. Playlist table with 30 items.

WEND Charlotte PD: Jack Daniel MD: Kim Monroe. Playlist table with 30 items.

KMYZ Tulsa PD: Paul Kreiger MD: Greg Kocsack. Playlist table with 30 items.

KXKR Salt Lake City PD: Mike Summers MD: Sean Ziebart. Playlist table with 30 items.

KZON Phoenix PD: Chris Ebbott MD: Erika Smith. Playlist table with 30 items.

KEDG Las Vegas PD: John Griffin MD: Freddy Snakeskin. Playlist table with 30 items.

WAQZ Cincinnati PD/MD: Matt Harris APD: Sterling Schiessler. Playlist table with 30 items.

WPBZ West Palm Beach PD: Amy Doyle MD: Robert English. Playlist table with 30 items.

WWCD Columbus PD: Jane Purcell MD: Andy Davis. Playlist table with 30 items.

WQXA Harrisburg PD: John Moschitta MD: Scott McFadden. Playlist table with 30 items.

KGDE Omaha PD: Lynn Barstow. Playlist table with 30 items.

KREV Minneapolis PD: Kevin Cole MD: Shawn Stewart. Playlist table with 30 items.

KCXX Riverside/San Bernardino PD: Chuck Summers MD: Dwight Arnold. Playlist table with 30 items.

WXEG Dayton PD: Jeff Stevens. Playlist table with 30 items.

KTCL Denver PD: John Hayes. Playlist table with 30 items.

WBZU Richmond PD: JJ Quest MD: Mike Scott. Playlist table with 30 items.

WPLA Jacksonville PD: Jim Randall MD: Greg Brady. Playlist table with 30 items.

WVGO Richmond PD: JJ Quest. Playlist table with 30 items.

WRXQ Memphis PD: Tony Williams MD: Dianna Gee. Playlist table with 30 items.

KTEG Albuquerque PD: Sandy Horowitz MD: Julie Hoyt. Playlist table with 30 items.

KROX Austin PD: Sara Trexler APD/MD: Lloyd "LA" Houtt. Playlist table with 30 items.

KLZR Kansas City PD: Roger The Dodger MD: Bob Osborn. Playlist table with 30 items.

MMM Broadcast Data Systems Detailed song tracking information for the last 3 weeks for all songs showing increased play this week. Total plays and gain do not include video play. Markets listed in order of population.

Table for 311 Down (Capricorn/Mercury) with columns for Total Stations, Chart Move, and station data.

Table for ALICE IN CHAINS Again (Columbia) with columns for Total Stations, Chart Move, and station data.

Table for BECK Where It's At (DGC/Geffen) with columns for Total Stations, Chart Move, and station data.

Table for BLUES TRAVELER But Anyway (A&M) with columns for Total Stations, Chart Move, and station data.

Table for BUTTHOLE SURFERS Pepper (Capitol) with columns for Total Stations, Chart Move, and station data.

Table for CRACKER Nothing To Believe In (Virgin) with columns for Total Stations, Chart Move, and station data.

Table for THE CRANBERRIES Free To Decide (Island) with columns for Total Stations, Chart Move, and station data.

Table for GARBAGE Stupid Girl (Almo Sounds/Geffen) with columns for Total Stations, Chart Move, and station data.

Table for GOO GOO DOLLS Long Way Down (Metal Blade/Warner Bros.) with columns for Total Stations, Chart Move, and station data.

Table for GREEN DAY Walking Contradiction (Reprise) with columns for Total Stations, Chart Move, and station data.

Table for HOLE Gold Dust Woman (Hollywood) with columns for Total Stations, Chart Move, and station data.

Table for JEWEL Who Will Save Your Soul (Atlantic) with columns for Total Stations, Chart Move, and station data.

Table for MAGNAPOP Open The Door (Priority) with columns for Total Stations, Chart Move, and station data.

Table for DAVE MATTHEWS BAND So Much To Say (RCA) with columns for Total Stations, Chart Move, and station data.

Table for NADA SURF Popular (Elektra/EEG) with columns for Total Stations, Chart Move, and station data.

Impacting 7/1

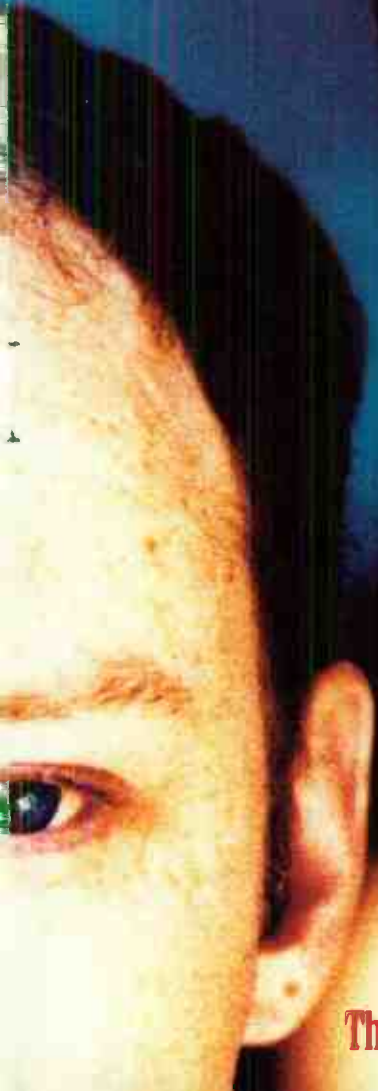
REPUBLICA



"Ready To Go" ...Are You?

Wouldn't Wait!

- 91X
- WROX
- KTBZ
- XHRM
- KTCL
- KFMA
- KNNC
- WDST
- KROX
- WFNX
- and more.



The debut single from their forthcoming album "REPUBLICA" On deconstruction/RCA Records

World Radio History

MANAGEMENT: DIANE KING AND DAVID JAYMES

PHOTOGRAPHY: JAMES HARRISON



SONG ACTIVITY REPORTS

For Week Ending June 23, 1996

Radio Broadcast Data System logo and detailed song tracking information for the last 3 weeks for all songs showing increased play this week.

Table for NO DOUBT 1863/132 Spiderwebs (Trauma/Interscope). Columns include station, week, and play count.

Table for OASIS 1251/121 Don't Look Back In Anger (Epic). Columns include station, week, and play count.

Table for POE 505/67 Angry Johnny (Modern/Atlantic). Columns include station, week, and play count.

Table for PORNO FOR PYROS 1641/115 Tahitian Moon (Warner Bros.). Columns include station, week, and play count.

Table for PRIMITIVE RADIO GODS 1915/387 Standing Outside A Broken Phone Booth... (Columbia). Columns include station, week, and play count.

Table for PATTI ROTHBERG 768/61 Inside (EMI). Columns include station, week, and play count.

Table for SCREAMING TREES 1100/290 All I Know (Epic). Columns include station, week, and play count.

Table for SELF 571/5 So Low (Spongebath/Zoo). Columns include station, week, and play count.

Table for THE SMASHING PUMPKINS 1757/228 Tonight, Tonight (Virgin). Columns include station, week, and play count.

Table for SOUNDGARDEN 701/93 Burden In My Hand (A&M). Columns include station, week, and play count.

Table for SPONGE 1040/133 Wax Ecstatic (To Sell Angelina) (Columbia). Columns include station, week, and play count.

Table for STONE TEMPLE PILOTS 1864/143 Trippin' On A Hole In A Paper Heart (Atlantic). Columns include station, week, and play count.

Table for SUPER 8 441/20 King Of The World (Hollywood). Columns include station, week, and play count.

Table for SUPERDRAG 686/87 Sucked Out (Elektra/EEG). Columns include station, week, and play count.

Table for THE WHY STORE 394/36 Lack Of Water (Way Cool Music/MCA). Columns include station, week, and play count.

POWER PLAYLISTS

WNEW New York MD: Amy Winslow

WXRT Chicago VP/Programming: Norm Winer MD: Patty Martin

KFOG San Francisco PD: Paul Marszalek MD: Bill Evans

KSCA Los Angeles PD: Mike Morrison MD: Merilee Kelly

WBOS Boston PD: Jim Herron

WHPT Tampa PD: Chuck Beck APD/MD: Chris Taylor

KBCO Denver PD: Mike O'Connor MD: Scott Arbough

KTCZ Minneapolis PD: Lauren MacLeash MD: Jane Fredrickson

CIDR Detroit PD: Murray Brookshaw MD: Ann Delisi

Main chart with columns: THIS WEEK, LAST WEEK, WKS ON CHART, TITLE/LABEL/DISTRIBUTING LABEL, ARTIST, TW, LW, DETECTIONS

Records showing an increase in detections over the previous week, regardless of chart movement. A record which has been on the chart for more than 20 weeks will not receive a bullet, even if it registers an increase in detections.

KMTT Seattle PD: Chris Mays MD: Dean Carlson

KINK Portland, OR PD/MD: Carl Widing

KQPT Sacramento PD: Jim Trapp MD: Carrie Owens

Thank you Catic Curtis

My mother tells me we are a family But I dont want to be, I have a plan Yes I'm waiting for the day when I'm stronger And I will step in the way I'll make him sorry

For Week Ending June 23, 1996

COMBINED ROCK MONITOR AIRPLAY							AIRPLAY THIS WEEK BY FORMAT												
TW	LW	WKS	TITLE (LABEL)	ARTIST	THIS WEEK			LAST WEEK			MAINSTREAM			MODERN			TRIPLE A		
					Audience (millions)	Detections No.	Rank	Audience (millions)	Detections No.	Rank	Audience (millions)	Detections No.	Rank	Audience (millions)	Detections No.	Rank	Audience (millions)	Detections No.	Rank
1	1	14	COUNTING BLUE CARS (A&M)	DISHWALLA	28.7559	4071	1	28.7475	4159	1	13.0336	1913	2	14.3540	1976	2	1.3683	182	20
2	2	9	TRIPPIN' ON A HOLE IN A PAPER HEART (ATLANTIC)	STONE TEMPLE PILOTS	28.6796	3646	2	26.4716	3427	3	13.6465	1782	3	15.0331	1864	4	—	—	—
3	3	10	PRETTY NOOSE (A&M)	SOUNDGARDEN	25.6098	3319	3	25.9472	3492	2	12.3461	1551	5	13.2605	1763	6	0.0032	5	—
4	4	6	UNTIL IT SLEEPS (ELEKTRA/EEG)	METALLICA	22.3508	2959	4	22.1586	2912	4	16.2710	2204	1	6.0798	755	31	—	—	—
5	6	6	TONIGHT, TONIGHT (VIRGIN)	THE SMASHING PUMPKINS	21.7112	2880	5	19.7427	2421	8	8.1819	1076	10	13.2724	1757	7	0.2569	47	—
6	7	6	PEPPER (CAPITOL)	BUTTHOLE SURFERS	20.7887	2569	6	19.5961	2379	10	4.7318	573	30	16.0563	1995	1	0.0006	1	—
7	10	5	STANDING OUTSIDE A BROKEN PHONE... (COLUMBIA)	PRIMITIVE RADIO GODS	20.4215	2464	7	17.5174	1946	13	2.8700	363	—	16.3553	1915	3	1.1962	186	19
8	5	21	MACHINEHEAD (TRAUMA/INTERSCOPE)	BUSH	19.3205	2401	8	20.0528	2518	7	8.7218	1090	9	10.5967	1307	15	0.0020	4	—
9	8	12	MOTHER MOTHER (ISLAND)	TRACY BONHAM	16.8415	2290	9	18.5356	2655	6	3.9271	573	29	12.9081	1710	8	0.0063	7	—
10	12	7	TAHITIAN MOON (WARNER BROS.)	PORNO FOR PYROS	16.1826	1969	13	15.0598	1881	14	2.9377	324	—	13.2421	1641	10	0.0028	4	—
11	11	32	SANTA MONICA (WATCH THE WORLD DIE) (TIM KERR/CAPITOL)	EVERCLEAR	14.0695	1696	21	15.1786	1812	16	7.3366	873	13	6.7316	820	—	0.0013	3	—
12	15	10	WHO WILL SAVE YOUR SOUL (ATLANTIC)	JEWEL	14.0076	1901	15	14.2243	1823	15	0.9190	131	—	11.0279	1396	14	2.0607	374	1
13	20	7	SPIDERWEBS (TRAUMA/INTERSCOPE)	NO DOUBT	13.9226	1943	14	12.4777	1807	18	0.6503	71	—	13.2690	1863	5	0.0033	9	—
14	9	13	TOO MUCH (RCA)	DAVE MATTHEWS BAND	13.8866	2087	12	17.6609	2690	5	5.7207	836	16	5.4961	934	25	2.6698	317	3
15	16	8	YOU LEARN (MAVERICK/REPRISE)	ALANIS MORISSETTE	13.8785	2232	11	14.1572	2320	11	2.3598	441	40	9.7343	1477	13	1.7844	314	4
16	22	3	STUPID GIRL (ALMO SOUNDS/GEFFEN)	GARBAGE	13.7609	1815	16	12.3530	1532	28	1.1065	144	—	12.5628	1648	9	0.0916	23	—
17	13	30	IN THE MEANTIME (HIFI/SIRE/EEG)	SPACEHOG	13.3821	1662	24	14.4034	1756	20	6.7246	849	15	6.5009	787	—	0.1566	26	—
18	17	7	AGAIN (COLUMBIA)	ALICE IN CHAINS	13.3357	1727	19	12.9702	1708	21	8.8113	1102	8	4.5227	621	40	0.0017	4	—
19	18	3	WAX ECSTATIC (TO SELL ANGELINA) (COLUMBIA)	SPONGE	13.2260	1723	20	12.7034	1511	30	4.9226	683	21	8.3034	1040	22	—	—	—
20	24	3	WHERE IT'S AT (DGC/GEFFEN)	BECK	13.0772	1682	22	12.0422	1500	31	0.8983	80	—	12.1685	1598	11	0.0104	4	—
21	23	2	BURDEN IN MY HAND (A&M)	SOUNDGARDEN	12.8014	1521	27	12.1385	1374	35	6.9010	820	17	5.9004	701	37	—	—	—
22	27	13	HERE IN YOUR BEDROOM (MOJO/UNIVERSAL)	GOLDFINGER	12.0294	1807	17	11.8471	1808	17	1.7720	295	—	10.2561	1509	12	0.0013	3	—
23	19	8	BANDITOS (MERCURY)	THE REFRESHMENTS	11.9081	2258	10	12.5708	2383	9	4.3954	923	12	7.1089	1276	16	0.4038	59	—
24	14	12	PHOTOGRAPH (RCA)	THE VERVE PIPE	11.8951	1797	18	14.3020	2256	12	4.3600	564	31	7.3922	1211	19	0.1429	22	—
25	NEW		ALL I KNOW (EPIC)	SCREAMING TREES	11.8942	1624	25	8.8160	1133	44	3.4539	511	35	8.3822	1100	20	0.0581	13	—
26	29	20	SISTER (MCA)	THE NIXONS	11.5759	1428	32	11.3189	1471	32	5.3015	594	26	6.0920	794	29	0.1824	40	—
27	NEW		WALKING CONTRADICTION (REPRISE)	GREEN DAY	11.4879	1516	28	8.8901	1377	34	3.1435	529	34	8.3434	985	23	0.0010	2	—
28	28	10	HUMANS BEING (WARNER SUNSET/WARNER BROS.)	VAN HALEN	10.9273	1619	26	11.4428	1783	19	10.9273	1619	4	—	—	—	—	—	—
29	32	4	MINT CAR (FICTION/ELEKTRA/EEG)	THE CURE	10.8871	1414	34	10.3302	1402	33	0.1659	30	—	10.0331	1265	17	0.6881	119	—
30	21	9	BULLS ON PARADE (EPIC)	RAGE AGAINST THE MACHINE	10.6128	1480	29	12.3287	1609	26	2.8737	397	—	7.7387	1082	21	0.0004	1	—
31	36	2	DON'T LOOK BACK IN ANGER (EPIC)	OASIS	10.6049	1414	33	9.7773	1266	39	0.8994	107	—	9.3932	1251	18	0.3123	56	—
32	26	8	GUILTY (TVT)	GRAVITY KILLS	10.4634	1249	38	11.8828	1339	37	4.0536	451	39	6.4098	798	28	—	—	—
33	30	13	WHERE THE RIVER FLOWS (ATLANTIC)	COLLECTIVE SOUL	10.3784	1466	31	11.2114	1574	27	8.5673	1223	6	1.7575	232	—	0.0536	11	—
34	NEW		LONG WAY DOWN (METAL BLADE/WARNER BROS.)	GOO GOO DOLLS	9.8433	1666	23	8.8157	1520	29	6.0558	1001	11	3.7856	663	39	0.0019	2	—
35	25	17	FLOOD (ESSENTIAL/SILVERTONE/JIVE)	JARS OF CLAY	9.8300	1466	30	11.8795	1616	25	5.9349	814	18	2.8114	472	—	1.0837	180	—
36	NEW		FREE TO DECIDE (ISLAND)	THE CRANBERRIES	9.7238	1267	37	5.3311	614	94	0.4363	53	—	7.6438	974	24	1.6437	240	11
37	31	16	BIG BANG BABY (ATLANTIC)	STONE TEMPLE PILOTS	9.3673	1084	49	10.6592	1249	42	3.9149	464	37	5.3741	601	—	0.0783	19	—
38	38	39	CUMBERSOME (MAMMOTH/ATLANTIC)	SEVEN MARY THREE	9.3589	1208	39	9.4113	1257	40	5.9557	682	—	3.2981	505	—	0.1051	21	—
39	37	35	1979 (VIRGIN)	THE SMASHING PUMPKINS	9.0542	1166	41	9.4964	1190	43	3.2648	484	—	4.7341	573	—	1.0553	109	—
40	35	22	ZERO (VIRGIN)	THE SMASHING PUMPKINS	9.0374	1000	52	9.8945	1032	50	3.7844	419	—	5.2512	577	—	0.0018	4	—

Records showing an increase in audience over the previous week, regardless of chart movement. Rankings broken down by mainstream, modern and triple A formats (on right side of this page) correspond to charts printed in this week's Monitor and therefore rankings do not exist for recurrences and records below No. 40 (No. 20 for triple A). Audience computed by cross-referencing exact times of airplay with Arbitron listener data. ©1996, Billboard/BPI Communications.

ROCKET FROM THE CRYPT

"ON A ROPE"

New adds: KLZR, WUNX, WNTX
ALREADY on: 91X, KNNC, KMYZ, KGDE,
WHMP, WOXY, WHTG & more!

On WARPED TOUR!!

Heading NME Tent at the Reading Festival on August 23!



Modern Rock Monitor 760 Spins (+110)

New!

- WXDX
- KNRK
- WJRR
- WEND
- WAVF
- 99X
- KROX
- KTBZ
- WLUM
- KISF

On Over 50 Modern Rock Stations Including:

- WXRK 15x
- WHFS 15x
- KPNT 15x
- WBCN 33x
- WMMS 32x
- LIVE 105 18x
- XHRM 17x
- WXNU 43x
- WOWW 29x
- WMRQ 26x
- WIBF 26x
- WPBZ 24x
- KMYZ 23x
- WQXA 21x
- WDGE 21x
- WEQX 20x
- KLZR 20x
- KICT 18x
- WQBK 17x
- WFXN 16x
- WEDG 16x
- KBBT 15x
- WAQZ 10x
- WOXY 10x

On Over 38 Rock Stations With 359 Spins Including:

- WZTA 30x
- WXTB 23x
- WXRA 18x
- KUPD 16x
- WNOR 16x
- WVRK 15x
- KRXQ 12x
- KTYD 12x
- WARQ 11x
- WRDU 11x
- KRAD 11x
- WWDC 10x
- KISS 10x
- WLZR 10x
- WIXV 10x
- KLBJ 9x



CRACKER

Nothing To Believe In

from the new album "The Golden Age"

Produced by Dennis Herring and David Lowery
Mixed by Rndy Wallace
Jackson Haring / Bill Graham Management



ON TOUR THIS SUMMER WITH THE CRANBERRIES



THIS WEEK	LAST WEEK	WKS. ON CHART	MAINSTREAM		DETECTIONS		
			TITLE/LABEL/DISTRIBUTING LABEL	ARTIST	TW	LW	
			*** No. 1 ***				
1	1	6	UNTIL IT SLEEPS ELEKTRA/EEG	METALLICA	2204	2149	
2	2	16	COUNTING BLUE CARS A&M	DISHWALLA	1913	1935	
3	4	9	TRIPPIN' ON A HOLE IN A PAPER HEART ATLANTIC	STONE TEMPLE PILOTS	1782	1704	
4	3	10	HUMANS BEING WARNER SUNSET/WARNER BROS.	VAN HALEN	1619	1783	
5	5	10	PRETTY NOOSE A&M	SOUNDGARDEN	1551	1627	
6	6	16	WHERE THE RIVER FLOWS ATLANTIC	COLLECTIVE SOUL	1223	1305	
7	7	9	WORK IT OUT MERCURY	DEF LEPPARD	1144	1257	
8	9	9	AGAIN COLUMBIA	ALICE IN CHAINS	1102	1110	
9	8	20	MACHINEHEAD TRAUMA/INTERSCOPE	BUSH	1090	1122	
10	15	4	TONIGHT, TONIGHT VIRGIN	THE SMASHING PUMPKINS	1076	834	
11	13	6	LONG WAY DOWN METAL BLADE/WARNER BROS.	GOO GOO DOLLS	1001	888	
12	11	9	BANDITOS MERCURY	THE REFRESHMENTS	923	927	
13	12	29	SANTA MONICA (WATCH THE WORLD DIE) TIM KERR/CAPITOL	EVERCLEAR	873	930	
14	19	7	LEAVE ME ALONE WORK	JERRY CANTRELL	870	787	
15	14	30	IN THE MEANTIME HIFI/SIRE/EEG	SPACEHOG	849	870	
16	10	13	TOO MUCH RCA	DAVE MATTHEWS BAND	836	977	
17	20	4	BURDEN IN MY HAND A&M	SOUNDGARDEN	820	766	
18	16	9	FLOOD ESSENTIAL/SILVERTONE/JIVE	JARS OF CLAY	814	826	
19	21	8	VANISHING CREAM UNIVERSAL	THE HUNGER	812	733	
20	18	19	WATER'S EDGE MAMMOTH/ATLANTIC	SEVEN MARY THREE	703	794	
21	27	2	WAX ECSTATIC (TO SELL ANGELINA) COLUMBIA	SPONGE	683	604	
22	26	3	6TH AVENUE HEARTACHE INTERSCOPE	THE WALLFLOWERS	679	628	
23	17	13	CHAMPAGNE SUPERNOVA EPIC	OASIS	672	807	
24	28	5	SKIN & BONES EMI	THE HAZIES	645	587	
25	25	8	HELLO FROM VENUS ATLANTIC	THE SCREAMIN' CHEETAH WHEELIES	635	642	
26	30	25	SISTER MCA	THE NIXONS	594	581	
27	23	7	WILD CHILD ATLANTIC	SCORPIONS	579	690	
28	34	2	ABERDEEN GIANT	KENNY WAYNE SHEPHERD	578	497	
29	24	11	MOTHER MOTHER ISLAND	TRACY BONHAM	573	653	
30	33	2	PEPPER CAPITOL	BUTTHOLE SURFERS	573	517	
31	22	11	PHOTOGRAPH RCA	THE VERVE PIPE	564	721	
32	31	6	DAY JOB A&M	GIN BLOSSOMS	562	555	
33	29	7	HEARTSPARK DOLLARSIGN TIM KERR/CAPITOL	EVERCLEAR	542	586	
34	35	3	WALKING CONTRADICTION REPRISE	GREEN DAY	529	499	
35	NEW		ALL I KNOW EPIC	SCREAMING TREES	511	311	
36	NEW		CRUEL TO BE KIND HIFI/SIRE/EEG	SPACEHOG	508	446	
37	36	16	BIG BANG BABY ATLANTIC	STONE TEMPLE PILOTS	464	495	
38	NEW		AIN'T MY BITCH ELEKTRA/EEG	METALLICA	453	329	
39	39	3	GUILTY TVT	GRAVITY KILLS	451	459	
40	NEW		YOU LEARN MAVERICK/REPRISE	ALANIS MORISSETTE	441	407	

THIS WEEK	LAST WEEK	WKS. ON CHART	MODERN		DETECTIONS		
			TITLE/LABEL/DISTRIBUTING LABEL	ARTIST	TW	LW	
			*** No. 1 ***				
1	4	8	PEPPER CAPITOL	BUTTHOLE SURFERS	1995	1841	
2	1	14	COUNTING BLUE CARS A&M	DISHWALLA	1976	2053	
3	12	5	STANDING OUTSIDE A BROKEN PHONE BOOTH WITH MONEY IN MY HAND COLUMBIA	PRIMITIVE RADIO GODS	1915	1528	
4	5	8	TRIPPIN' ON A HOLE IN A PAPER HEART ATLANTIC	STONE TEMPLE PILOTS	1864	1721	
5	6	11	SPIDERWEBS TRAUMA/INTERSCOPE	NO DOUBT	1863	1731	
6	3	9	PRETTY NOOSE A&M	SOUNDGARDEN	1763	1861	
7	9	6	TONIGHT, TONIGHT VIRGIN	THE SMASHING PUMPKINS	1757	1529	
8	2	14	MOTHER MOTHER ISLAND	TRACY BONHAM	1710	1995	
9	15	5	STUPID GIRL ALMO SOUNDS/GEFFEN	GARBAGE	1648	1425	
10	8	7	TAHITIAN MOON WARNER BROS.	PORNO FOR PYROS	1641	1526	
11	13	4	WHERE IT'S AT OSG/GEFFEN	BECK	1598	1448	
12	11	13	HERE IN YOUR BEDROOM MOJO/UNIVERSAL	GOLDFINGER	1509	1518	
13	7	8	YOU LEARN MAVERICK/REPRISE	ALANIS MORISSETTE	1477	1618	
14	18	10	WHO WILL SAVE YOUR SOUL ATLANTIC	JEWEL	1396	1363	
15	16	20	MACHINEHEAD TRAUMA/INTERSCOPE	BUSH	1307	1393	
16	14	11	BANDITOS MERCURY	THE REFRESHMENTS	1276	1391	
17	20	6	MINT CAR FICTION/ELEKTRA/EEG	THE CURE	1265	1266	
18	22	3	DON'T LOOK BACK IN ANGER EPIC	OASIS	1251	1130	
19	10	15	PHOTOGRAPH RCA	THE VERVE PIPE	1211	1514	
20	29	2	ALL I KNOW EPIC	SCREAMING TREES	1100	810	
21	21	12	BULLS ON PARADE EPIC	RAGE AGAINST THE MACHINE	1082	1146	
22	24	3	WAX ECSTATIC (TO SELL ANGELINA) COLUMBIA	SPONGE	1040	907	
23	26	4	WALKING CONTRADICTION REPRISE	GREEN DAY	985	877	
24	NEW		FREE TO DECIDE ISLAND	THE CRANBERRIES	974	380	
25	17	13	TOO MUCH RCA	DAVE MATTHEWS BAND	934	1365	
26	NEW		POPULAR ELEKTRA/EEG	NADA SURF	889	626	
27	19	13	SALVATION ISLAND	THE CRANBERRIES	880	1276	
28	25	19	GUILTY TVT	GRAVITY KILLS	798	879	
29	27	17	SISTER MCA	THE NIXONS	794	857	
30	34	7	INSIDE EMI	PATTI ROTHBERG	768	707	
31	28	5	UNTIL IT SLEEPS ELEKTRA/EEG	METALLICA	755	762	
32	38	2	NOTHING TO BELIEVE IN VIRGIN	CRACKER	748	642	
33	23	10	HEARTSPARK DOLLARSIGN TIM KERR/CAPITOL	EVERCLEAR	727	1032	
34	NEW		DOWN CAPRICORN/MERCURY	311	723	596	
35	33	5	FEARLESS TAG/ATLANTIC	SOLUTION A.D.	712	733	
36	35	3	OPEN THE DOOR PRIORITY	MAGNAPOP	711	699	
37	37	2	BURDEN IN MY HAND A&M	SOUNDGARDEN	701	608	
38	NEW		SUCKED OUT ELEKTRA/EEG	SUPERDRAG	686	599	
39	39	2	LONG WAY DOWN METAL BLADE/WARNER BROS.	GOO GOO DOLLS	663	631	
40	RE-ENTRY		AGAIN COLUMBIA	ALICE IN CHAINS	621	593	

Records showing an increase in detections over the previous week, regardless of chart movement. A record which has been on either chart for more than 20 weeks will not receive a bullet, even if it registers an increase in detections. Airpower awarded to those records which attain 900 detections (mainstream) or 1,100 (modern) for the first time. If two records are tied in number of plays, the record being played on more stations is placed first. Records below the top 20 are removed from the chart after 26 weeks.



whose side you on?

from the forthcoming album DEFENDERS OF THE UNIVERSE

Already on:

91X WENZ KPOI WRLG WXNU WZRH WBZU
WCYY KMYZ WEJE WFNZ WPLA WWDX
WDZR WHMH WKLQ KATS KRAD WXRX WIYY

Produced by Scott Hackwith • Management: Gold Mountain Entertainment • Radioactive On-Line: <http://radioactive.net>