

COUNTRY AIRPLAY Monitor

• We Listen To Radio •

January 13, 1995 \$ 4.95 Volume 3 • No. 3

COUNTRY HIGHLIGHTS

#1

★★★★ NO. 1 ★★★★★

TIM MCGRAW

Not A Moment Too Soon (CURB)

★★★★ AIRPOWER ★★★★★

MARY CHAPIN CARPENTER • *Tender When I Want To Be (COLUMBIA)*

WADE HAYES • *Old Enough To Know Better (COLUMBIA)*

MARTINA MCBRIDE • *Heart Trouble (RCA)*

JOHN ANDERSON • *Bend It Until It Breaks (BNA)*

NEW RELEASES

LARI WHITE • *That's How You Know (RCA)*

Fall Ratings Reflect Rough Market: WYNY, KZLA, WUSN All Slip In Survey

by Steve Wonsiewicz

It's getting tough out there, as the latest Arbitron survey shows. Country stations in the top three markets saw their ratings remain virtually unchanged from the summer.

WYNY-FM New York turned in a 1.9-1.8 summer-fall book, tied with one other station for 15th place in the market. Of the 19 stations ranking higher than WYNY, 11 saw ratings declines, while another seven turned in increases and one remained unchanged. Oldies WCBS-FM grabbed the No. 1 spot in New York, rising 4.3-4.9. Coming in second was R&B WQHT-FM (4.5-4.8), and news/talk WABC-AM took third place (3.9-4.7).

On the West Coast, KZLA-FM Los Angeles's share slipped two-tenths of a point to 2.3, also good enough for a 15th-place finish. In that market, eight stations' shares were up, while another eight were down, with one unchanged. Spanish-formatted KLAX-FM continued to hold onto first place, rising 5.4-5.6. The other leaders

were top 40 KPWR-FM (5.4-5.5) and news/talk KFI-AM (4.7-5.6).

In the heartland, WUSN-FM Chicago eased 4.2-4.1, good enough for a fifth-place tie. At the top was news/talk WGN-AM, which rose 6.4-6.9, followed by R&B WGCI-FM (7.4-6.3) and top 40 WBBM-FM (unchanged at 4.3). Comprehensive Arbitron figures for the market were unavailable at press time.

Audience shares at all three major-market stations, however, are lower than one year earlier. WUSN is down the most (5.4-4.1), followed by WYNY (2.3-1.8). KZLA only slipped two-tenths of a point (2.5-2.3) during the year.

How The Three Top Markets Fared

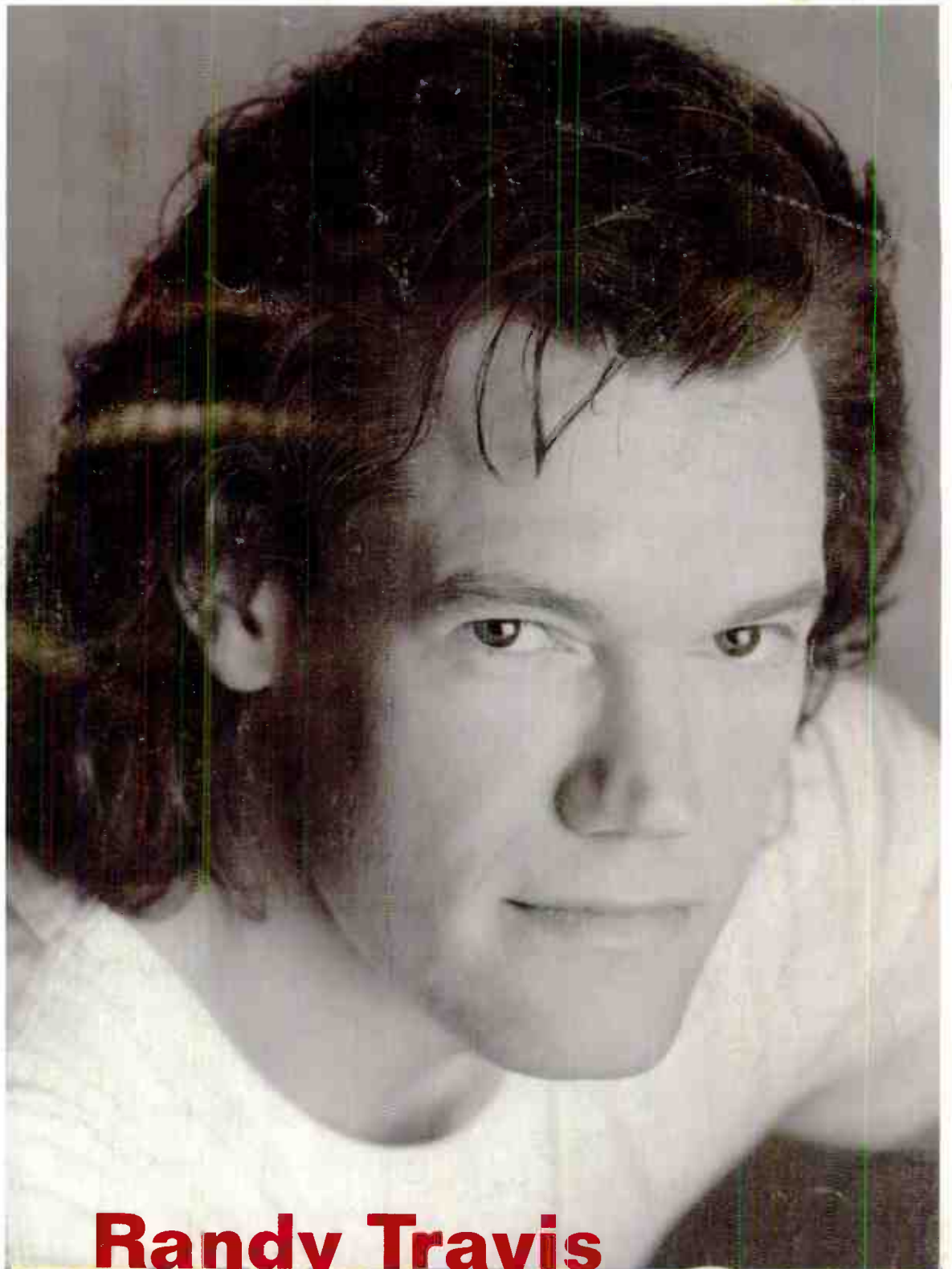
Station	Market	F '93	Su '94	F '94
WYNY	New York	2.3	1.9	1.8
KZLA	Los Angeles	2.5	2.5	2.3
WUSN	Chicago	5.4	4.2	4.1

Source: Arbitron

Continued on page 4

THIS WEEK In Country Airplay Monitor

- 3 Benchmark Flips WFNQ To '90s Country
- 3 KYCY San Francisco Names Larry Pareigis PD
- 4 Country Profile: BNA Records' Dale Turner



Randy Travis

THE BOX

The fourth hit single
from the GOLD album

This Is Me

Going for airplay
January 30

On tour in 1995!

CAA

© 1995 Warner Bros. Records Inc.



Produced by Joe Scialle & Jim Lottion

700,000 and counting



AIRPLAY
JANUARY 23RD

"Deja Blue"

BILLY RAY CYRUS

Benchmark Flips WFNQ Greenville To '90s Country

OM Garrison Copies Much Of KKBQ Houston's Programming Tactics

If imitation is the sincerest form of flattery, then WFNQ-FM Greenville, S.C., OM Jeff Garrison has paid his former boss, KKBQ Houston PD Dene Hallam, one heck of a compliment.

Garrison, who doubles as OM of WESC-AM-FM Greenville, and new group owner Benchmark Communications Inc. flipped WFNQ

(the former WBBO) from top 40 to contemporary country on New Year's Day, virtually copying KKBQ's programming. The unique selling point is WFNQ will only play music from the '90s.

Says Garrison, "There are 30 shares of country in this market. There are a lot of country markets out there, like Dallas and Houston, that have three stations. [Greenville] is one of the biggest come-ing country markets, but we only have two stations. WESC-FM is the heritage station, and WSSL has really come on in the last four years, so we're trying to take share away from them.

"We really want to super-serve the country audience that has just come to the format and who like the new generation of country stars. It's like 'Houston Moves East.' We're doing exactly what I was doing with Dene at KKBQ. We're playing album cuts, for example, from Alan Jackson, Tracy Lawrence, and the Lynyrd Skynyrd tribute album. We're even using the same jingles, and I also have many artists doing promos for us."

WFNQ, bought by Benchmark in November, is currently in the middle of airing 19,095 songs; when that sequence is complete, sometime within the next month, the station will roll out its new programming lineup.

In the spring-summer Arbitron survey, WESC-FM rose 9.3-10, but is off 11.0-10.0 from this time last year. Market leader WSSL rose 17.5-18.5 spring-summer, but slipped from a 19.2 share in summer '93.

KYCY San Francisco Appoints Pareigis Program Director

Alliance Broadcasting Inc.'s KYCY-FM San Francisco has tapped Larry Pareigis, OM at EZ Communications-owned KNCI/KRAK/KHTK Sacramento, Calif., as its new PD.

Pareigis succeeds Lee Douglas, who left the station in November '94. The hiring of Pareigis comes on the heels of other country PD changes in San Francisco. KSAN-FM's PD Lee Logan left that station in December '94.

KYCY rose 1.1-1.7 in the spring-summer Arbitron survey, while its crosstown rival, Shanrock Broadcasting's KSAN, was unchanged at 2.4. KYCY debuted in March '93, flipping from oldies KYA.

PEOPLE IN MOTION

RADIO. KSJJ-FM Bend, Ore., has promoted MD/APD **Andy Kahn** to PD. He will continue to handle music duties as well.

WGH Norfolk, Va., has named former WDRM Huntsville, Ala., MD **Dan McClain** as its new morning personality. Taking over for McClain at WDRM is **Susan Etheridge**.

KFXI Lawton, Okla., has hired former KDDK Little Rock, Ark., overnight personality **Matt Allbritton** as its new PD/MD.

The Arbitron Co. has reshuffled the duties of two executives, naming former radio-product manager **Brad Feldhaus** as director of information processing and **Jim Peacock**, former director of research, as VP of research.

Jones Satellite Network has promoted **Debbie Gurney-Stark** to manager of marketing and promotions.

RECORD COMPANIES. Los Angeles-based AVI Entertainment has named former ASCAP associate director **Merlin Littlefield** as the new GM of its Nashville operations. Littlefield had been with ASCAP for 19 years.

Step One Records has promoted former director of marketing **Arnie Thies** to VP of sales and marketing. Also, **Carl Brhyn** has been upped to national sales rep.

MCG/Curb has named former indie promoter **Gaylen Adams** as its new director of country promotion. Adams spent 16 years with RCA Records Nashville as Southeast regional rep. He will continue to be based in Atlanta.

OTHERS. Our deepest sympathy and condolences to consultant **Rusty Walker** and family, whose 9-year-old son **Jay Darwin** was killed in a hunting accident. Cards can be sent to P.O. Box 191, Pleasant Hill Road, Iuka, Miss., 38852. Donations, in lieu of flowers, can be sent to the Jay Darwin Scholarship Fund, Account No. 01-19009810, Iuka Guaranty Bank, P.O. Box 377, Iuka, Miss., 38852.

Nashville Makes Grammy Nomination Inroads

Country music more than held its own this year in the Grammy nominations, highlighted by Mary Chapin Carpenter's "He Thinks He'll Keep Her," for record of the year; "I Swear," which was performed by both John Michael Montgomery and R&B group All-4-One, for song of the year; and Lyle Lovett's "I Love Everybody," for best pop album.

Even Willie Nelson joined the crowd, earning a nomination for best traditional pop vocal performance for "Moonlight Becomes You."

But it was Carpenter's star that shined brightest among country artists. She was one of seven artists to receive four nominations. Carpenter has had nine previous nominations and has three Grammys to her credit. Last year, she won for best female country vocal performance for "Passionate Kisses."

Country artists who racked up three nominations included Vince Gill, Alison Krauss, and Lyle Lovett. Here's a rundown of the nominations:

BEST FEMALE VOCAL PERFORMANCE: "Shut Up And Kiss Me"—Mary Chapin Carpenter, Columbia; "Is It Over Yet"—Wynonna, Curb/MCA; "How Can I Help You Say Goodbye"—Patty Loveless, Epic; "Independence Day"—Martina McBride, RCA; "She Thinks His Name Was John"—Reba McEntire, MCA.

BEST MALE VOCAL PERFORMANCE: "Thinkin' Problem"—David Ball, Warner Bros.; "Your Love Amazes Me"—John Berry, Liberty; "When Love Finds You"—Vince Gill, MCA; "I Swear"—John Michael Montgomery, Atlantic; "Pocket Of A Clown"—Dwight Yoakam, Reprise.

BEST COUNTRY PERFORMANCE BY A DUO OR GROUP WITH VOCAL: "Blues For Dixie" (track

from "Tribute To The Music Of Bob Wills And The Texas Playboys")—Asleep At The Wheel with Lyle Lovett, Liberty; "Love A Little Stronger"—Diamond Rio, Arista; "When You Say Nothing At All" (track from "Keith Whitley—A Tribute Album")—Alison Krauss and Union Station, BNA Records; "What A Crying Shame"—the Mavericks, MCA; "Baby Likes To Rock It"—the Tractors, Arista.

BEST COUNTRY VOCAL COLLABORATION: "Teach Your Children" (track from "Red Hot + Country")—Suzy Bogguss, Alison Krauss & Kathy Mattea with Crosby, Stills & Nash, Mercury; "The Devil Comes Back To Georgia"—Johnny Cash, Marty Stuart & Travis Tritt, Warner Bros.; "Patches" (track from "Rhythm, Country & Blues")—George Jones & B.B. King, MCA; "I Fall To Pieces" (track from "Rhythm, Country & Blues")—Aaron Neville & Trisha Yearwood, MCA; "Silver Threads And Golden Needles"—Dolly Parton, Loretta Lynn & Tammy Wynette, Columbia.

BEST COUNTRY SONG: "How Can I Help You Say Goodbye"—Burton Banks Collins & Karen Taylor Good, Arista; "I Swear"—Gary Baker & Frank J. Myers, Atlantic; "Independence Day"—Gretchen Peters, RCA; "Shut Up And Kiss Me"—Mary Chapin Carpenter, Columbia; "When Love Finds You"—Vince Gill & Michael Omartian, MCA.

BEST COUNTRY ALBUM: "Tribute To The Music Of Bob Wills And The Texas Playboys"—Asleep At The Wheel, Liberty; "Stones In The Road"—Mary Chapin Carpenter, Columbia; "When Love Finds You"—Vince Gill, MCA; "Read My Mind"—Reba McEntire, MCA; "The Song Remembers When"—Trisha Yearwood, MCA.

Arista Adds Three Promotion Mgrs.: Conlon, Reid Go To New Imprint; Waggoner To Flagship Label

Arista Records Nashville has signed three new regional promotion managers—two for its new, unnamed label and one for the flagship imprint.

Coming to the new label are former WGKX Memphis MD Jon Conlon, who will be based in Chicago. Also joining the company is Arista marketing specialist Rob Reid, who will remain in Nashville.

Former KXXY Oklahoma City APD Lynn Waggoner takes over at the main label as Mid-South regional promotion manager based in Nashville.

CRB Extends Humanitarian, Promotion Award Deadlines

The Country Radio Broadcasters Inc. has extended the application deadline to Jan. 20 for both its humanitarian and promotion awards. The eligibility period for both awards is November '93-'94 and will be handed out to small-, medium-, and large-market entries.

The CRB will announce the fourth annual humanitarian awards on March 1-4 at the Country Radio Seminar, and the eight annual promotion-awards winners will be notified Feb. 4 and given the opportunity to present their promotions March 4 at the CRS.

It's A Crazy Life



Arista Records Nashville artist Pam Tillis traveled to Santa Fe, N.M., to film the video to her single "Mi Vida Loca (My Crazy Life)," which is currently at No. 6 on the Country Airplay Monitor chart. The man behind the camera is Studio Productions' director Roger Pistole.

RADIOACTIVE

Country dominated the awards in the National Assn. of Broadcasters' Best of the Best Radio Promotion Contest. Country stations won five out of the eight categories, including the grand prize, which went to WUSY-FM (U.S. 101) Chattanooga, Tenn.

Here's a rundown of the country winners and how they won:

- Grand prize: WUSY-FM for "One Hot Country Night!" Sponsor for many years of the CBS-television Country Music Assn. Awards, U.S. 101, in conjunction with TV station WDEF, hosted an hourlong live show from Nashville prior to the telecast. The show resulted in over \$20,000 in additional promotion revenue and a 20.0 rating for WDEF.

- Large-market sales award: WHKO-FM/WHIO-AM Dayton, Ohio, for "Baby Fair." The combo's annual exhibition of merchandise and services targeted to young children, parents, and growing families attracted 20,000 people, twice the '93 total, and posted a 29% revenue increase over last year's promotion.

- Medium-market sales award: KSSN-FM Little Rock, Ark., for "Waves, Wings & Wheels." The station added \$72,000 in new business and enhanced relations with existing clients by giving away three prizes: a waverunner and a trip to Hawaii; a trip to Los Angeles to see a taping of the TV program "Wings"; and a '94 Toyota Celica.

- Small-market station-enhancement award: KLAU-FM Lawton, Okla., for "Frank 'N' Friends In The Morning." To increase a.m. audience involvement for its new morning show, the station held daily contests; the grand prize was trip for two to Hollywood. The promo was so successful that KLAU continued to give away daily prizes after the original eight-week run.

- Community-service award: WWKI-FM Kokomo, Ind., for "We Care." The promo, marking its 21st year, raised \$378,000 for the benefit of three charities. The station held a trim-a-tree festival; created a "We Care" store to sell merchandise; and held a 47-hour radiothon, which was also telecast on a local cable-TV station.

KKBQ Houston Taps AM Producer Trapane As New APD; Names Long Music Coordinator

KKBQ Houston has promoted morning show producer John Trapane to APD and named Stacy Long as music coordinator. They take over the duties formerly held by Jeff Garrison, who joined WESC-AM-FM/WFNQ-FM Greenville, S.C., as OM in November.

Says PD Dene Hallam, "With John being

the morning show producer, we didn't think he could do both jobs that Jeff did. He's doing such a great job now that we didn't want to take him off there, but he still deserves the promotion. He's also here at 5 a.m., and I need someone here in the afternoon as well, so Stacy will do that and maybe some things that Jeff didn't have the time to do."

ON THE ROW

Adding a twist of irony to the term "cybergeek," redneck comedian Jeff Foxworthy was the featured guest on the Jan. 9 edition of the Warner Bros. Records weekly interactive talk show, "Cyber-Talk." The one-hour program airs on America Online Mondays 9:30 p.m. EST.

Marty Stuart will kick off "The Marty Party," his limited series of one-hour specials on TNN, with performances by Merle Haggard, Pam Tillis, and David Ball. The show will air Feb. 1 at 8 p.m. EST (repeats at 12:00 a.m.). Also, TNN will profile Clint Black in a one-hour special Feb. 15 at 8 p.m. (repeats at 12:00 a.m.) and Tillis Feb. 22 in the same time slot.

RCA Records Nashville artist Aaron Tippin has proposed to his girlfriend and business partner, Thea Corontzos. The couple has set the wedding date for July 15, 1995.

Members of Restless Heart are taking a year off from the road and each other. According to the band's manager, George Dassinger, band members Greg Jennings, John Dittrich, and Paul Gregg will start working on other projects. The group and RCA Records Nashville ended their relationship in November, and Dassinger is reportedly evaluating other label deals.

Country-themed restaurant chain Country Start Hollywood, in conjunction with the William Morris Agency Nashville, debuted its acoustic singer/songwriter performance series, "Words & Music," Jan. 9 at 9 p.m. at the restaurant's Los Angeles outlet. The first to appear were Kostas and Randy Sharp. The show provides a forum for both local and national songwriters to perform their material in the round.

FALL '94 ARBITRONS

12-plus overall average quarter hour shares (#) indicates Arbitron market rank. Copyright 1994, Arbitron Ratings Co. May not be quoted or reproduced without the prior written permission of Arbitron

Call	Format	Fa '93	W '94	Sp '94	Su '94	Fa '94	Call	Format	Fa '93	W '94	Sp '94	Su '94	Fa '94
NEW YORK (1)													
WCBS-FM	oldies	4.5	4.6	4.5	4.3	4.9	WBMM-FM	top 40/rhythm	4.7	5.4	4.9	4.3	4.3
WQHT	top 40/rhythm	3.8	4.1	4.4	4.5	4.8	WVAZ	R&B adult	3.5	3.3	3.4	3.5	4.3
WABC	N/T	4.6	4.2	3.7	3.9	4.7	WLIT	AC	4.1	4.0	3.7	4.2	4.1
WLTW	AC	4.8	4.7	5.0	4.9	4.4	WUSN	country	5.4	4.4	4.4	4.2	4.1
WHTZ	top 40	4.5	4.0	4.1	4.6	4.2	WBMM-AM	N/T	3.8	4.2	4.2	4.1	3.9
WSKQ-FM	Spanish	3.0	3.1	3.1	3.4	4.2	WKQX	modern	3.4	3.5	3.8	4.3	3.6
WQCD	adult alt	3.6	3.6	3.6	3.5	3.9	WLS-AM	N/T	2.6	2.9	3.5	3.2	3.5
WBLS	R&B	4.0	4.2	3.8	4.1	3.8	WNUA	adult alt	3.3	3.1	2.5	3.6	3.5
WPLJ	top 40	3.9	3.4	4.0	4.5	3.8	WLUP	N/T	4.0	3.9	3.1	3.2	3.3
WRKS	R&B	5.8	4.3	4.1	4.2	3.8	WJMK	oldies	2.9	2.6	3.5	2.6	3.1
WINS	N/T	3.9	4.3	4.0	3.7	3.6	WRCX	album	3.0	2.3	2.7	2.8	3.1
WCBS-AM	N/T	2.9	3.6	3.1	3.1	3.5	WUOJ	Spanish	2.2	1.9	2.8	2.8	2.7
WMXV	AC	2.8	3.6	3.5	3.4	3.3	WXRT	album	2.1	2.7	2.6	2.7	2.7
WOR	N/T	3.6	3.1	3.4	3.1	3.3	WTMX	AC	2.5	2.4	2.6	2.2	2.4
WXRK	cls rock	3.6	4.0	3.5	3.7	3.3	WCKG	cls rock	2.9	2.5	2.6	2.6	2.3
WFAN	sports	3.1	2.7	3.1	2.8	2.8	WJJD	talk	2.5	2.9	2.6	2.6	2.3
WQXR	classical	1.8	2.2	2.3	2.5	2.7	WJPC-FM	R&B	1.0	.9	.8	1.5	2.3
WPAT-FM	easy	3.3	2.6	3.0	2.5	2.4	WMAQ	N/T	3.1	2.6	1.9	2.0	2.2
WNEW	album	3.0	2.2	2.3	2.5	2.3	WPNT	AC	2.5	2.5	1.8	2.6	2.2
WAXQ	album	1.5	1.6	2.0	1.9	1.8	WNIB	classical	1.8	1.8	1.1	1.1	1.9
WYNY	country	2.3	2.1	2.0	1.9	1.8	WSCR	sports	2.0	1.9	1.6	1.4	1.8
WADO	Spanish	1.4	1.7	1.8	2.1	1.7	WYSY	oldies	.9	1.7	2.6	2.4	1.8
WQEW	adult std	1.6	1.6	1.7	2.1	1.3	WIND	Spanish	1.1	1.2	.7	.9	1.3
WLIB	N/T	1.0	1.3	1.1	1.1	1.2	WMVP	sports	1.1	1.0	1.0	.9	1.3
WALK-AM-FM	AC	.8	1.0	1.1	.9	1.0	WAI1	adult std	.7	1.6	1.8	1.1	1.1
							WFMT	classical	.9	1.1	1.1	1.4	1.1
							WGCI-AM	oldies	1.2	1.5	1.2	1.3	1.1
							WLS-FM	N/T	1.5	1.7	1.3	.8	1.0
LOS ANGELES (2)													
KLAX	Spanish	7.0	5.6	6.1	5.4	5.6	NASSAU-SUFFOLK, N.Y. (14)						
KPWR	top 40/rhythm	4.8	4.7	5.1	5.4	5.5	WALK-AM-FM	AC	5.1	6.5	6.6	5.3	5.8
KFI	N/T	4.3	4.5	3.8	4.7	4.6	WABC	N/T	4.3	4.4	4.1	4.3	5.7
KROQ	modern	4.2	3.8	4.7	4.6	4.5	WHTZ	top 40	5.0	4.4	5.4	5.5	4.6
KIIS-AM-FM	top 40	4.2	3.8	3.9	4.0	4.1	WBBS-AM	N/T	3.8	4.2	3.9	3.7	4.3
KOST	AC	4.4	4.7	4.2	3.8	4.0	WCBS-FM	oldies	3.9	4.5	4.8	4.5	4.1
KKBT	R&B	3.4	3.3	3.6	3.2	3.8	WBLI	AC	3.9	3.5	3.8	4.0	3.9
KRTH	oldies	3.4	3.5	3.2	3.9	3.8	WOR	N/T	3.0	3.5	3.2	2.5	3.9
KBIG	AC	3.2	3.4	2.9	3.6	3.6	WXRK	cls rock	4.8	4.3	3.9	4.1	3.9
KABC	N/T	3.0	3.8	3.5	3.7	3.2	WFAN	sports	3.7	3.5	4.1	3.4	3.7
KLVE	Spanish	2.5	3.2	3.7	2.5	3.0	WKYJ	AC	3.9	3.7	3.0	3.0	3.7
KLOS	album	2.8	2.7	2.8	2.5	2.7	WPLJ	top 40	3.4	3.4	3.1	5.4	3.7
KYSR	AC	2.3	2.5	2.8	2.7	2.6	WBAB	album	5.1	4.1	3.5	3.8	3.6
KFWB	N/T	2.7	3.0	2.8	2.3	2.5	WHLI	adult std	4.0	2.9	3.2	3.9	3.2
KTWV	adult alt	1.9	1.8	2.0	2.6	2.5	WYNY	country	2.9	3.1	2.1	3.0	2.7
KCBS-FM	oldies	2.8	3.2	3.0	2.9	2.4	WBZO	oldies	1.4	1.6	2.6	2.4	2.6
KLSX	cls rock	3.5	2.9	2.8	2.7	2.4	WLTW	AC	2.6	3.2	2.7	2.5	2.6
KZLA	country	2.5	2.3	2.9	2.5	2.3	WQCD	adult alt	1.8	2.1	2.5	3.0	2.5
KNX	N/T	2.6	2.6	2.6	2.6	2.2	WINS	N/T	1.9	2.8	2.5	2.4	2.3
KXED	Spanish	1.4	1.4	1.3	1.0	2.2	WQHT	top 40/rhythm	2.6	1.5	2.6	2.3	2.3
KXEZ	AC	2.2	1.8	1.8	2.1	1.9	WMXV	AC	1.4	2.2	2.7	1.9	2.2
KTNQ	Spanish	2.9	2.9	2.2	2.1	1.8	WQXR	classical	1.5	1.5	1.7	2.4	2.2
KKJH	Spanish	1.7	2.0	1.7	1.3	1.7	WNEW	album	2.2	2.1	1.6	1.9	2.0
KLAC	adult std	.7	1.0	1.7	1.6	1.7	WDRE	modern	2.1	1.7	2.3	1.9	1.9
KRLA	oldies	.8	1.1	1.2	1.5	1.5	WAXQ	album	1.2	2.1	1.9	2.1	1.8
KWKW	Spanish	1.3	1.1	1.1	1.0	1.5	WMJC/WRCN	album	1.2	.9	1.1	1.8	1.7
KKGO-AM-FM	classical	2.1	1.9	1.7	1.9	1.3	WPAT-FM	easy	2.7	1.4	1.5	1.8	1.6
KACE	R&B adult	.5	.6	.4	.6	1.0	WSKQ-FM	Spanish	.7	.9	.9	.8	1.4
KMPC	N/T	.7	.5	.7	.8	1.0	WRKS	R&B	2.5	1.3	1.7	1.7	1.3
							WBLI	R&B	1.7	1.2	1.2	1.9	1.2
							WQEW	adult std	1.1	.8	.9	1.2	1.2
							WEZN	AC	1.1	1.0	.8	.8	1.0
CHICAGO (3)													
WGN	N/T	7.7	6.2	6.9	6.4	6.9							
WGCI-FM	R&B	7.3	7.1	7.0	7.4	6.3							

COUNTRY PROFILE

BNA's New Operations VP Turner Sets Goals

Label Identity, Orderly Release Flow Priorities For '95

Dale Turner is on a mission, and he's pretty psyched about it. You can tell by the excitement in his eyes as he describes the huge challenge facing him as the new VP of operations for BNA Records Nashville. His task is building the label into a top contender and convincing radio and retail that BNA is an entity separate from its owner, RCA. He's also staring straight at another challenge of the same magnitude: the multidimensional responsibilities of operations.

Turner recognizes that people think RCA Records Label Group Nashville chairman Joe Galante is pulling all the strings. In some respects that's true, but Turner, who's logged 14 years in radio and another 11 in label promotion, is in full control when it comes to developing and promoting an artist. BNA is an autonomous unit with its own promotion and artist-development department. Centra-

were already out, at the same time. Doug would lose, and then we'd start sending mixed signals to radio. We put it off to January so we could focus on Anderson and Hunter.

"It's all about better product flow and trying to understand radio a little better so we cannot shoot ourselves in the foot. We've developed a system called the 'Critical Path,' which will allow us, working back from a street date, to work out the appropriate time to set up an artist, whether it's an established or developing act. It will better allow us to coordinate activities and show we're committed to that act so people don't think, 'What flavor are they throwing out this month?'"

Turner and company have already set their '95 priorities. With a single scheduled for March and an album in June, Kenny Chesney is their main focus. Turner hopes to begin working with Supernaw again, and a greatest-hits package from Lorrie Morgan is slated for later this year. New to the label is the band Lone Star, but product isn't expected from it until later in the year.

Given the virtual rebirth of BNA Records, Turner is opting for a less risky business plan than in the past. Don't expect any left-of-center artist releases. "Call me a traditionalist, but I want our artists to succeed with traditional country music," he says. "I'm more into commerce. I let the guys in A&R decide which direction the music will go. A lot has been written about the music sounding the same, that there's too many hat acts, that there's too many young hunks, but you cannot force the marketplace. You can stretch it somewhat ... but if you want to sell big numbers all you have to do is look at the top 15 on the album chart, and by and large you'll find mainstream, straight-ahead traditional country musicians recording and performing great songs. That's the direction we're taking."

"It's not a mystery that Joe [Galante] brought me over here because of my promotional background," says Turner. "We're definitely going to be a promotional and artist-development-driven company. I want everyone to know at radio and in the music community that if they don't remember anything else, remember that BNA Records is a separate entity. The way it's structured now, BNA can draw upon all this great experience at RLG. BNA Records is a totally funded label and totally equal in terms of manpower and resources."

A huge task awaiting Turner is getting BNA back on course in regard to scheduling releases for radio and retail, which will send the markets a clear signal about the label's current priorities. One of Turner's first moves at BNA was his and VP of promotion Ken Van Durand's decision to stop the Doug Supernaw single back in early November. "We did it," says Turner, "because we knew we couldn't also concentrate on the John Anderson and Jesse Hunter singles, which



Dale Turner
VP of Operations
BNA Records

It's all about better product flow and trying to understand radio a little better so we cannot shoot ourselves in the foot.

lized at the RLG level is A&R, sales and marketing, creative services, media and publicity, and production and scheduling. But the buck stops with Turner, as he has veto power if he disagrees with RLG.

"It's not a mystery that Joe [Galante] brought me over here because of my promotional background," says Turner. "We're definitely going to be a promotional and artist-development-driven company. I want everyone to know at radio and in the music community that if they don't remember anything else, remember that BNA Records is a separate entity. The way it's structured now, BNA can draw upon all this great experience at RLG. BNA Records is a totally funded label and totally equal in terms of manpower and resources."

A huge task awaiting Turner is getting BNA back on course in regard to scheduling releases for radio and retail, which will send the markets a clear signal about the label's current priorities. One of Turner's first moves at BNA was his and VP of promotion Ken Van Durand's decision to stop the Doug Supernaw single back in early November. "We did it," says Turner, "because we knew we couldn't also concentrate on the John Anderson and Jesse Hunter singles, which

PUBLISHER: MICHAEL ELLIS
MANAGING EDITOR: STEVE WONSIEWICZ
DIRECTOR OF CHARTS: WADE JESSEN
CHART PRODUCTION MANAGER: MICHAEL CUSSON
ASST. CHART PRODUCTION MANAGER: PAUL PAGE
EDITORIAL PRODUCTION MANAGER: BARRY BISHIN
ASSOC. EDITORIAL PRODUCTION MANAGER: MARCIA REPINSKI
EDITORIAL PRODUCTION: MARC GIAQUINTO, MORRIS KLEGMAN,
ANTHONY T. STALLINGS
ADVERTISING PRODUCTION MANAGER: LEN DURHAM
ADVERTISING ART DIRECTOR: RAY CARLSON
CIRCULATION MANAGER: JEANNE JAMIN
NATIONAL ADVERTISING MANAGER: JON GUYNN
ADVERTISING SALES: LEE ANN PHOTOGLO
ADVERTISING SERVICES MGR.: MICHELE JACANGELO
SALES ASSISTANT: MARY DECROCE
PROMOTION DIRECTOR: ELISSA TOMASETTI
EDITORIAL ADVISER: TIMOTHY WHITE
PRODUCTION DIRECTOR: MARIE GOMBERT
DIRECTOR OF RESEARCH: JANE RANZMAN
BILLBOARD MUSIC GROUP
PRESIDENT: HOWARD LANDER

©1995 BPI Communications, 49 Music Square W., Nashville, TN 37203
615-321-4290 fax: 615-320-0454
For subscriptions call: 800-722-2346

Monitor **BIGGEST GAINERS**



Strongest Increase In Airplay This Week

INCREASE
IN PLAYS

PAM TILLIS • <i>Mi Vida Loca (My Crazy Life)</i> (ARISTA)	+811
KOUL +19, KHEY +19, WRBQ +18, KIKK +18, WSM +17, KJJY +16, KSON +16, WCTK +15, WGGY +14, KRKY +14	
CLAY WALKER • <i>This Woman And This Man</i> (GIANT)	+687
WIRK +18, WPOC +18, KHEY +17, WKXK +17, KOUL +15, WXBQ +14, WDRM +14, KVET +14, WTQR +14, WUBE +14	
TRISHA YEARWOOD • <i>Thinkin' About You</i> (MCA)	+672
KTTS +24, WGAR +23, KKCS +19, KBEQ +19, WPOC +18, WCMS +16, KAJA +16, KHEY +15, KUZZ +14, KRKY +14	
DIAMOND RIO • <i>Night Is Fallin' In My Heart</i> (ARISTA)	+650
WGGY +23, KNAX +21, KAJA +19, WNOE +17, KPLX +17, KTEX +15, KJJY +15, KNCL +15, WKCQ +14, KZSN +14	
GEORGE STRAIT • <i>You Can't Make A Heart Love Somebody</i> (MCA)	+636
KHEY +21, KPLX +21, WCMS +17, WSM +16, KIKK +16, WTQR +15, KSON +15, KMPS +15, WYRK +14, WMSI +13	
JOHN ANDERSON • <i>Bend It Until It Breaks</i> (BNA)	+613
KPLX +17, KRYS +13, WKCQ +13, KOUL +12, KMLE +12, WKIS +12, KIKK +12, WCLB +11, WDRM +11, WRBQ +11	
SAWYER BROWN • <i>This Time</i> (CURB)	+570
WFMS +14, WRKZ +13, KUZZ +13, WKHK +13, WCFB +12, WSSL +12, KNCL +12, WMSI +11, KRAK +11, WBBS +10	
DOUG STONE • <i>Little Houses</i> (EPIC)	+567
WGGY +23, KNCL +17, WRBQ +16, KIKK +16, WRKZ +15, KAJA +15, KOUL +14, WKHK +13, KPLX +13, KNAX +12	
CLINT BLACK • <i>Wherever You Go</i> (RCA)	+553
KHEY +15, WCUZ +15, WKCN +13, WCFB +12, KRPM +12, WKKO +11, KDRK +11, WQDR +11, KBEQ +11, WSM +11	
MARY CHAPIN CARPENTER • <i>Tender When I Want To Be</i> (COLUMBIA)	+539
WKCQ +14, KTOM +13, KWNR +13, KIKK +13, WESC +12, WSM +12, KTEX +11, WHYL +11, KMLE +11, KWJJ +11	
JOHN BERRY • <i>You And Only You</i> (LIBERTY)	+538
WNOE +18, KSON +15, KFMS +14, WQIK +14, KRYS +12, KMLE +12, KIKK +12, WSTH +11, WKXC +11, KRKY +11	
BROOKS & DUNN • <i>I'll Never Forgive My Heart</i> (ARISTA)	+510
WYCD +22, KIKK +17, KHEY +16, KXXY +16, WIL +15, WKCQ +14, WMSI +13, WYRK +13, KPLX +13, WSOC +12	
WADE HAYES • <i>Old Enough To Know Better</i> (COLUMBIA)	+495
WNOE +16, WKJN +14, WIL +13, WCLB +11, KWNR +11, KEKY +11, KKBQ +11, KOLT +10, KSSN +10, KILT +10	
REBA MCENTIRE • <i>Till You Love Me</i> (MCA)	+489
WRBQ +23, KIKK +20, WCFB +19, WIRK +14, WSM +13, KYNG +11, KNAX +11, KXXY +11, KRPM +11, WCLB +10	
TRACY LAWRENCE • <i>As Any Fool Can See</i> (ATLANTIC)	+467
WCFB +26, KOUL +18, KFRG +15, KRKY +15, WQDR +14, WKCN +12, WKKO +12, WYYD +12, WGH +12, KOLT +10	
PATTY LOVELESS • <i>Here I Am</i> (EPIC)	+463
WGGY +17, WYCD +16, KIKK +16, WCFB +12, WBBS +11, KOUL +11, KZSN +10, WCLB +9, WKHK +9, WGKX +9	
TRACY BYRD • <i>The First Step</i> (MCA)	+461
WRBQ +21, KIKK +16, WWKA +14, WBEE +11, WYRK +11, KPLX +11, KFRG +10, WRKZ +10, WTQR +10, WCKT +9	
RICK TREVINO • <i>Doctor Time</i> (COLUMBIA)	+453
KFRG +17, KIKK +15, WSOC +14, KPLX +14, WYCD +12, WSM +12, KRKY +11, KEBC +11, KSON +11, WYNY +11	
COLLIN RAYE • <i>My Kind Of Girl</i> (EPIC)	+441
WKJN +19, WRBQ +19, KIKK +13, KVET +12, KWJJ +12, WWKA +11, WCFB +9, KJJY +9, WKCQ +9, KFRG +9	
TRAVIS TRITT • <i>Between An Old Memory And Me</i> (WARNER BROS.)	+438
WXBQ +17, WRKZ +14, WDRM +13, WHYL +12, WQBE +11, KRKY +11, KPLX +11, WGGY +10, WKIS +10, KRMD +9	

MOST NEW AIRPLAY THIS WEEK

No. Of
Stations

TRISHA YEARWOOD <i>Thinkin' About You (MCA)</i>	57
CLAY WALKER <i>This Woman And This Man (Giant)</i>	44
CLINT BLACK <i>Wherever You Go (RCA)</i>	34
TRACY LAWRENCE <i>As Any Fool Can See (Atlantic)</i>	23
DOUG SUPERNAW <i>What'll You Do About Me (BNA)</i>	20
DAVID BALL <i>Look What Followed Me Home (Warner Bros.)</i>	16
RHETT AKINS <i>I Brake For Brunettes (Decca)</i>	15
GEORGE DUCAS <i>Lipstick Promises (Liberty)</i>	14
LARRY STEWART <i>Losing Your Love (Columbia)</i>	14
THE TRACTORS <i>Tryin' To Get To New Orleans (Arista)</i>	13

VIDEO PLAYLISTS

CMT

		TW	LW
1	Joe Diffie, Pickup Man	28	25
2	Sawyer Brown, This Time	28	32
3	David Ball, Look What Followed Me Home	27	37
4	Lari White, How I Know	25	39
5	Alan Jackson, Gone Country	24	27
6	The Mavericks, There Goes My Heart	24	26
7	Reba McEntire, Till You Love Me	24	25
8	Pam Tillis, Mi Vida Loca	24	27
9	Mary Chapin Carpenter, Tender When I Wan	24	22
10	Tim McGraw, Not A Moment Too Soon	23	26
11	Rick Trevino, Doctor Time	23	28
12	Patty Loveless, Here I Am	23	27
13	Mark Collie, Hard Lovin' Woman	22	26
14	Bryan White, Look At Me Now	22	20
15	Garth Brooks, The Red Stripes	21	23
16	John Berry, You And Only You	21	26
17	Neal McCoy, For A Change	20	19
18	Randy Travis, This Is Me	19	26
19	Jed Zeppelin, Workin' Man Blues	19	20
20	James House, Little By Little	19	20
21	Little Texas, Amy's Back In Austin	19	21
22	Suzy Bogguss & Chet Atkins, One More For	19	18
23	Collin Raye, My Kind Of Girl	18	21
24	George DuCas, Lipstick Promises	18	21
25	Marty Stuart, Don't Be Cruel	18	17
26	Garth Brooks, Ain't Going Down	17	20
27	Wynonna & Michael English, Healing	17	16
28	Alabama, Angels Among Us	16	18
29	Aaron Tippin, I Got It Honest	16	14
30	Kathy Mattea, Maybe She's Humar	16	19
31	Russ Taff, Love Is Not A Th ng	16	14
32	Ken Mellons, I Can Bring Her Back	16	15
33	Hank Williams, Jr., I Ain't Goin' Pexcef	16	17
34	Clay Walker, This Woman And This Man	16	0
35	Doug Stone, Little Houses	15	15
36	Wade Hayes, Old Enough To Know Better	15	16

37	Larry Stewart, Losing Your Love	15	14
38	Archer/Park, We Got A Lot In Common	15	16
39	Sammy Kershaw, Southbound	15	13
40	Shenandoah/Alison Krauss, Somewhere...	5	17
41	Billy Ray Cyrus, Storm In The Heartland	14	15
42	Lisa Brokop, Take That	14	15
43	John & Audrey Wiggins, She's In The Beds	14	14
44	Boy Howdy, True To His Word	14	14
45	Pirates Of The Mississippi, You Could Do	14	16
46	Radney Foster, The Running Kind	13	17
47	Trisha Yearwood, It Wasn't His Child	13	16
48	George Jones & Alan Jackson, A Good Year	13	14
49	Toby Keith, Upstairs Downtown	13	15
50	Davis Daniel, Tyler	13	15

TNN

		TW	LW
1	Garth Brooks, The Red Stripes	6	4
2	Alan Jackson, Gone Country	6	4
3	Faith Hill, Take Me As I Am	6	4
4	Aaron Tippin, I Got It Honest	6	5
5	Wade Hayes, Old Enough To Know Better	6	4
6	Pam Tillis, Mi Vida Loca	6	6
7	David Ball, Thinkin' Problem	5	2
8	Tim McGraw, Not A Moment Too Soon	5	4
9	Rick Trevino, Doctor Time	5	5
10	Vince Gill, When Love Finds You	5	5
11	Joe Diffie, Pickup Man	5	3
12	Billy Ray Cyrus, Storm In The Heartland	5	5
13	Randy Travis, This Is Me	5	4
14	Doug Stone, Little Houses	5	4
15	Reba McEntire, Till You Love Me	5	4
16	Patty Loveless, Here I Am	5	5
17	Jed Zeppelin, Workin' Man Blues	5	4
18	George Jones & Alan Jackson, A Good Year	5	4
19	Sawyer Brown, This Time	5	3
20	Shenandoah/Alison Krauss, Somewhere...	5	1

COMING NEXT WEEK!

SONG ACTIVITY REPORTS WILL BE EVEN BETTER...

INCLUDING TOTAL PLAYS TO DATE
FOR EVERY SONG ON EVERY STATION!



COUNTRY AIRPLAY MONITOR POWER PLAYISTS

Playlists supplied by Broadcast Data Systems' Radio Track service. Stations selected from panel of leading broadcasters in 125 radio markets, electronically monitored 24 hours a day, 7 days a week. Songs ranked by number of plays in monitored week.

FOR WEEK ENDING
JANUARY 8, 1995

WYNY		WUSN		KZLA		WXTU		KSCS		WKHX	
New York PD: Chris Kampmeier MD: Theda Sandiford		Chicago PD: Dean McNeill MD: Tricia Biondo		Los Angeles PD: R.J. Curtis MD: Cary Rolfe		Philadelphia PD: John Hart MD: Mike Brophy		Ft. Worth PD: Dean James MD: Bill Kinder		Atlanta PD: Neil McGinley MD: Johnny Gray	
TW	LW	TW	LW	TW	LW	TW	LW	TW	LW	TW	LW
1 Rick Trevino, Doctor Time	31	20	1 Mark Chesnut, Goin' Through The Big D	39	29	1 Reba McEntire, Till You Love Me	34	31	1 Randy Travis, This Is Me	34	25
2 Mark Chesnut, Goin' Through The Big D	30	43	2 Joe Diffie, Pickup Man	34	31	2 Rick Trevino, Doctor Time	34	30	2 Brooks & Dunn, I'll Never Forgive My Heart	32	27
3 Alan Jackson, Gone Country	30	23	3 Tim McGraw, Not A Moment Too Soon	32	26	3 Joe Diffie, Pickup Man	34	35	3 Diamond Rio, Night Is Fallin' In My Heart	32	25
4 Reba McEntire, Till You Love Me	29	36	4 Alan Jackson, Gone Country	32	24	4 Tim McGraw, Not A Moment Too Soon	31	27	4 Alan Jackson, Gone Country	32	32
5 Vince Gill, When Love Finds You	28	35	5 Rick Trevino, Doctor Time	31	23	5 Randy Travis, This Is Me	30	29	5 Reba McEntire, Till You Love Me	31	32
6 Pam Tillis, Mi Vida Loca	28	22	6 Brooks & Dunn, I'll Never Forgive My Heart	28	16	6 Rick Trevino, Doctor Time	28	18	6 Rick Trevino, Doctor Time	30	24
7 George Strait, The Big One	26	35	7 John Berry, You And Only You	25	17	7 Pam Tillis, Mi Vida Loca	28	21	7 Pam Tillis, Mi Vida Loca	27	18
8 Tim McGraw, Not A Moment Too Soon	19	14	8 Aaron Tippin, I Got It Honest	25	17	8 Saverly Brown, This Time	29	20	8 John Berry, You And Only You	24	31
9 Joe Diffie, Pickup Man	19	23	9 Pam Tillis, Mi Vida Loca	25	21	9 Pam Tillis, Mi Vida Loca	28	28	9 John Berry, You And Only You	23	16
10 Mark Collie, Hard Lovin' Woman	17	11	10 Diamond Rio, Night Is Fallin' In My Heart	23	23	10 Collin Raye, My Kind Of Girl	28	23	10 Lari White, Now I Know	22	18
11 Diamond Rio, Night Is Fallin' In My Heart	17	6	11 Tracy Byrd, The First Step	23	15	11 Lari White, Now I Know	24	33	11 Doug Stone, Little Houses	22	18
12 Brooks & Dunn, I'll Never Forgive My Heart	16	18	12 Randy Travis, This Is Me	23	20	12 Martina McBride, Heart Trouble	23	21	12 Tim McGraw, Not A Moment Too Soon	20	33
13 Faith Hill, Take Me As I Am	16	39	13 Mary Chapin Carpenter, Tender When I Wan	22	17	13 Blackhawk, Down In Flames	22	19	13 Saverly Brown, This Time	19	17
14 Randy Travis, This Is Me	16	20	14 Collin Raye, My Kind Of Girl	22	17	14 Faith Hill, Take Me As I Am	22	15	14 John Anderson, Bend It Until It Breaks	19	15
15 Clay Walker, If I Could Make A Living	16	11	15 Wade Hayes, Old Enough To Know Better	22	13	15 Faith Hill, Take Me As I Am	22	15	15 Tracy Byrd, The First Step	19	15
16 Alan Jackson, Lvin' On Love	13	11	16 Mark Collie, Hard Lovin' Woman	21	14	16 Martina McBride, Heart Trouble	21	18	16 Collin Raye, My Kind Of Girl	14	12
17 Trisha Yearwood, Xos's And Oos's	12	13	17 Alan Jackson, Lvin' On Love	19	14	17 Alan Jackson, Lvin' On Love	19	14	17 George Strait, You Can't Make A Heart Lo	16	16
18 Neal McCoy, The City Put The Country Bac	12	17	18 Reba McEntire, Till You Love Me	19	14	18 Faith Hill, Take Me As I Am	19	23	18 Aaron Tippin, I Got It Honest	15	14
19 Clay Walker, Dreaming With My Eyes Open	12	7	19 Faith Hill, Take Me As I Am	19	23	19 Clay Walker, If I Could Make A Living	12	18	19 John Anderson, Bend It Until It Breaks	14	11
20 Mary Chapin Carpenter, Tender When I Wan	12	22	20 Clay Walker, If I Could Make A Living	12	7	20 Martina McBride, Heart Trouble	18	9	20 Reba McEntire, Till You Love Me	32	20
21 The Mavericks, There Goes My Heart	11	29	21 Martina McBride, Heart Trouble	18	9	21 Alabama, We Can't Love Like This Anymor	18	14	21 John Berry, You And Only You	32	20
22 Mary Chapin Carpenter, Shut Up And Kiss	11	22	22 Alabama, Angels Among Us	18	14	22 John Anderson, Bend It Until It Breaks	18	14	22 Reba McEntire, Till You Love Me	32	20
23 Lari White, Now I Know	11	31	23 Neal McCoy, For A Change	16	14	23 Travis Tritt, Between An Old Memory And	18	20	23 John Berry, You And Only You	32	20
24 Tracy Lawrence, I See It Now	11	13	24 Alan Jackson, Lvin' On Love	15	14	24 Doug Stone, Little Houses	18	19	24 George Strait, You Can't Make A Heart Lo	32	34
25 John Michael Montgomery, If You've Got L	11	8	25 Sammy Kershaw, Southbound	15	13	25 Little Texas, Kick A Little	17	11	25 Vince Gill, When Love Finds You	28	24
26 John Michael Montgomery, Be My Baby Ton	10	14	26 Sammy Kershaw, Southbound	15	13	26 David Ball, When The Thought Of You Catc	16	13	26 Reba McEntire, Till You Love Me	32	20
27 Tim McGraw, Devo On The Farm	10	13	27 Trisha Yearwood, Xos's And Oos's	15	13	27 George Strait, The Big One	16	13	27 George Strait, The Big One	28	29
28 Little Texas, Kick A Little	10	13	28 Blackhawk, Down In Flames	15	8	28 Tracy Lawrence, I See It Now	15	17	28 Little Texas, Kick A Little	15	13
29 Saverly Brown, This Time	10	7	29 David Ball, When The Thought Of You Catc	14	9	29 The Tractors, Baby Likes To Rock It	15	14	29 Saverly Brown, This Time	11	8
30 Billy Ray Cyrus, Storm In The Heartland	9	13							30 Neal McCoy, Wink	11	8

Monitor POWERPLAYISTS

Playlists supplied by Broadcast Data Systems' Radio Track service. Stations selected from panel of leading broadcasters in 125 radio markets, electronically monitored 24 hours a day, 7 days a week. Songs ranked by number of plays in monitored week.

FOR WEEK ENDING
JANUARY 8, 1995

WSOC		PD: Paul Johnson MD: Rick McCracken	
TW	LW		
1	Randy Travis, This Is Me	40	31
2	Joe Diffie, Pickup Man	40	32
3	Reba McEntire, Till You Love Me	39	33
4	Tim McGraw, Not A Moment Too Soon	38	31
5	John Michael Montgomery, If You've Got L	36	33
6	Mark Chesnut, Gon' Through The Big D	36	32
7	Rick Trevino, Doctor Time	34	20
8	Alan Jackson, Gone Country	33	27
9	Brooks & Dunn, I'll Never Forget My Hea	32	20
10	Mark Collie, Hard Lovin' Woman	32	21
11	Sawyer Brown, This Time	27	22
12	Aaron Tippin, I Got It Honest	27	20
13	Mary Chapin Carpenter, Tender When I Wan	26	21
14	Doug Stone, Little Houses	26	20
15	John Berry, You And Only You	25	20
16	Wade Hayes, Old Enough To Know Better	25	20
17	Shenandoah, Somewhere In The Vicinity Of	24	20
18	Lari White, Now I Know	23	20
19	Kathy Mattea, Maybe She's Human	22	19
20	Pam Tillis, Mi Vida Loca	22	19
21	John Anderson, Bend It Until It Breaks	21	16
22	Tracy Lawrence, As Any Fool Can See	21	13
23	Patty Loveless, Here I Am	19	11
24	Diamond Rio, Night Is Fallin' In My Hear	19	11
25	Alan Jackson, Livin' On Love	17	15
26	Neal McCoy, For A Change	17	13
27	Alabama, We Can't Love Like This Anymor	16	16
28	Clay Walker, If I Could Make A Living	16	16
29	Blackhawk, Every One In A While	15	17
30	John Michael Montgomery, Be My Baby Ton	15	17

KYGO		PD: John St. John MD: Jennifer Page	
TW	LW		
1	Tim McGraw, Not A Moment Too Soon	31	28
2	Joe Diffie, Pickup Man	30	25
3	Vince Gill, When Love Finds You	29	20
4	Reba McEntire, Till You Love Me	28	26
5	Pam Tillis, Mi Vida Loca	28	32
6	Lari White, Now I Know	28	28
7	Rick Trevino, Doctor Time	27	27
8	Alan Jackson, Gone Country	26	22
9	Mark Chesnut, Gon' Through The Big D	25	28
10	Alabama, We Can't Love Like This Anymor	22	20
11	Garth Brooks, The Red Stripes	22	20
12	Mark Collie, Hard Lovin' Woman	22	21
13	Randy Travis, This Is Me	21	20
14	Toby Keith, Upstairs Downtown	21	19
15	Sawyer Brown, This Time	21	19
16	Diamond Rio, Night Is Fallin' In My Hear	21	21
17	Aaron Tippin, I Got It Honest	21	21
18	Patty Loveless, Here I Am	20	20
19	Kathy Mattea, Maybe She's Human	20	18
20	Shenandoah, Somewhere In The Vicinity Of	19	19
21	Mary Chapin Carpenter, Tender When I Wan	19	19
22	Clay Walker, If I Could Make A Living	19	23
23	Brooks & Dunn, I'll Never Forget My Hea	18	14
24	Sawyer Brown, This Time	18	14
25	Tracy Byrd, The First Step	16	14
26	George Strait, You Can't Make A Heart Lo	16	11
27	John Michael Montgomery, I Swear	15	18
28	Little Texas, Amy's Back In Austin	14	9
29	The Tractors, Tryn' To Get To New Orleans	14	17
30	James House, Little By Little	13	9

WPOC		PD: Bob Moody MD: Greg Cole	
TW	LW		
1	Randy Travis, This Is Me	41	38
2	Alan Jackson, Gone Country	40	34
3	Pam Tillis, Mi Vida Loca	37	28
4	Rick Trevino, Doctor Time	36	38
5	Pam Tillis, Mi Vida Loca	36	37
6	Reba McEntire, Till You Love Me	35	35
7	Joe Diffie, Pickup Man	35	37
8	Mark Chesnut, Gon' Through The Big D	34	39
9	Doug Stone, Little Houses	34	28
10	John Berry, You And Only You	34	28
11	Collin Raye, My Kind Of Girl	29	28
12	Brooks & Dunn, I'll Never Forget My Hea	29	28
13	Mary Chapin Carpenter, Tender When I Wan	29	25
14	George Strait, You Can't Make A Heart Lo	29	26
15	The Tractors, Tryn' To Get To New Orleans	28	24
16	Jed Zepplin, Workin' Man Blues	28	25
17	John Berry, You And Only You	28	27
18	Lisa Brokop, Take That	27	26
19	Neal McCoy, For A Change	27	19
20	Tracy Byrd, The First Step	27	24
21	Martina McBride, Heart Trouble	27	28
22	Sawyer Brown, This Time	27	27
23	James House, Little By Little	27	25
24	Wade Hayes, Old Enough To Know Better	27	28
25	Diamond Rio, Night Is Fallin' In My Hear	25	20
26	Russ Taff, Love Is Not A Thing	25	21
27	John Anderson, Bend It Until It Breaks	25	27
28	Patty Loveless, Here I Am	25	27
29	Doug Supernaw, What'll I Do About Me	23	27
30	Tracy Lawrence, As Any Fool Can See	22	21

KEYE		PD: Greg Swedberg MD: Mark Bauer	
TW	LW		
1	Tim McGraw, Not A Moment Too Soon	41	30
2	Mark Chesnut, Gon' Through The Big D	39	36
3	Joe Diffie, Pickup Man	38	34
4	Faith Hill, Take Me As I Am	38	34
5	Alan Jackson, Gone Country	38	30
6	Mark Collie, Hard Lovin' Woman	35	34
7	Wade Hayes, Old Enough To Know Better	32	21
8	Garth Brooks, The Red Stripes	31	23
9	John Berry, You And Only You	31	32
10	Doug Stone, Little Houses	30	28
11	Little Texas, Amy's Back In Austin	30	22
12	Pam Tillis, Mi Vida Loca	29	23
13	Rick Trevino, Doctor Time	29	24
14	Rhett Akins, What They're Talking About	28	28
15	Sawyer Brown, This Time	28	25
16	Mary Chapin Carpenter, Tender When I Wan	28	24
17	Aaron Tippin, I Got It Honest	27	26
18	Reba McEntire, Till You Love Me	27	23
19	Patty Loveless, Here I Am	27	20
20	Diamond Rio, Night Is Fallin' In My Hear	27	23
21	Shenandoah, Somewhere In The Vicinity Of	24	16
22	Blackhawk, Down In Flames	24	21
23	Clay Walker, If I Could Make A Living	24	15
24	Alan Jackson, Gone Country	24	15
25	Tracy Byrd, The First Step	23	16
26	Russ Taff, Love Is Not A Thing	23	16
27	Boy Howdy, Toss To His Word	22	19
28	Collin Raye, My Kind Of Girl	21	17
29	Travis Tritt, Between An Old Memory And	21	17
30	John Anderson, Bend It Until It Breaks	20	14

WFMS		PD: Kevin Mason MD: J.D. Cannon	
TW	LW		
1	Rick Trevino, Doctor Time	37	32
2	Mark Chesnut, Gon' Through The Big D	37	29
3	Alan Jackson, Gone Country	36	29
4	Diamond Rio, Night Is Fallin' In My Hear	36	31
5	Brooks & Dunn, I'll Never Forget My Hea	36	30
6	Reba McEntire, Till You Love Me	35	30
7	Sawyer Brown, This Time	31	37
8	Pam Tillis, Mi Vida Loca	29	20
9	Collin Raye, My Kind Of Girl	29	21
10	Randy Travis, This Is Me	28	24
11	Tim McGraw, Not A Moment Too Soon	28	31
12	Joe Diffie, Pickup Man	27	30
13	Tracy Byrd, The First Step	27	22
14	John Berry, You And Only You	26	20
15	Patty Loveless, Here I Am	26	19
16	Travis Tritt, Between An Old Memory And	26	19
17	Aaron Tippin, I Got It Honest	25	20
18	Martina McBride, Heart Trouble	24	20
19	Kathy Mattea, Maybe She's Human	24	19
20	Doug Stone, Little Houses	23	21
21	John Anderson, Bend It Until It Breaks	23	13
22	Shenandoah, Somewhere In The Vicinity Of	22	19
23	Mary Chapin Carpenter, Tender When I Wan	19	13
24	Neal McCoy, For A Change	19	17
25	Wade Hayes, Old Enough To Know Better	18	13
26	Tracy Lawrence, As Any Fool Can See	17	15
27	George Strait, You Can't Make A Heart Lo	16	11
28	Mark Collie, Hard Lovin' Woman	16	17
29	Sammy Kershaw, Southbound	16	13
30	Toby Keith, Upstairs Downtown	15	12

WAMZ		PD: Coyote Calhoun MD: Ron Hazard	
TW	LW		
1	Tim McGraw, Not A Moment Too Soon	33	32
2	Sawyer Brown, This Time	33	31
3	Mark Chesnut, Gon' Through The Big D	33	35
4	Alan Jackson, Gone Country	33	36
5	Brooks & Dunn, I'll Never Forget My Hea	32	30
6	Pam Tillis, Mi Vida Loca	32	27
7	Reba McEntire, Till You Love Me	32	30
8	Shenandoah, Somewhere In The Vicinity Of	28	41
9	Joe Diffie, Pickup Man	27	27
10	Patty Loveless, Here I Am	24	21
11	Tracy Lawrence, As Any Fool Can See	24	22
12	Bryan White, Look At Me Now	23	25
13	John Anderson, Bend It Until It Breaks	23	24
14	Little Texas, Amy's Back In Austin	23	22
15	John Berry, You And Only You	22	21
16	Diamond Rio, Night Is Fallin' In My Hear	22	24
17	Blackhawk, Down In Flames	22	25
18	Vince Gill, When Love Finds You	22	19
19	Clay Walker, If I Could Make A Living	21	22
20	George Strait, You Can't Make A Heart Lo	21	20
21	Neal McCoy, For A Change	21	20
22	Garth Brooks, The Red Stripes	21	20
23	Clint Black, Wherever You Go	20	18
24	Sammy Kershaw, Southbound	19	17
25	The Tractors, Tryn' To Get To New Orleans	19	23
26	Rhett Akins, I Brake For Brunettes	18	17
27	Trisha Yearwood, Thinkin' About You	17	8
28	Mary Chapin Carpenter, Tender When I Wan	17	20
29	Martina McBride, Heart Trouble	17	19
30	Toby Keith, Upstairs Downtown	17	14

WZZK		PD: Jim Tice MD: Todd Berry	
TW	LW		
1	Tim McGraw, Not A Moment Too Soon	47	38
2	John Berry, You And Only You	45	35
3	Reba McEntire, Till You Love Me	42	34
4	Rick Trevino, Doctor Time	38	34
5	Aaron Tippin, I Got It Honest	34	33
6	Travis Tritt, Between An Old Memory And	34	30
7	Alan Jackson, Gone Country	34	31
8	Joe Diffie, Pickup Man	33	31
9	Tracy Byrd, The First Step	29	23
10	Pam Tillis, Mi Vida Loca	28	20
11	Randy Travis, This Is Me	26	30
12	Brooks & Dunn, I'll Never Forget My Hea	26	16
13	Mary Chapin Carpenter, Tender When I Wan	24	20
14	Collin Raye, My Kind Of Girl	22	19
15	Diamond Rio, Night Is Fallin' In My Hear	22	18
16	Patty Loveless, Here I Am	22	18
17	George Strait, You Can't Make A Heart Lo	22	15
18	George Ducas, Lipstick Promises	22	17
19	Wade Hayes, Old Enough To Know Better	21	20
20	Sawyer Brown, This Time	21	18
21	Tracy Lawrence, As Any Fool Can See	21	18
22	Martina McBride, Heart Trouble	21	18
23	John Anderson, Bend It Until It Breaks	20	19
24	Doug Stone, Little Houses	20	22
25	James House, Little By Little	20	16
26	Garth Brooks, The Red Stripes	18	19
27	Sammy Kershaw, Southbound	17	20
28	Blackhawk, Down In Flames	17	20
29	Neal McCoy, For A Change	16	17
30	Kathy Mattea, Maybe She's Human	15	18

WSSL		PD: Loyd Ford	
TW	LW		
1	Mark Chesnut, Gon' Through The Big D	38	32
2	Rick Trevino, Doctor Time	37	34
3	Pam Tillis, Mi Vida Loca	35	34
4	John Berry, You And Only You	35	34
5	Reba McEntire, Till You Love Me	35	36
6	Tim McGraw, Not A Moment Too Soon	35	35
7	Alan Jackson, Gone Country	34	34
8	Sawyer Brown, This Time	32	22
9	Randy Travis, This Is Me	32	25
10	Aaron Tippin, I Got It Honest	24	19
11	Mary Chapin Carpenter, Tender When I Wan	24	17
12	Tracy Byrd, The First Step	23	19
13	Wade Hayes, Old Enough To Know Better	23	22
14	George Strait, You Can't Make A Heart Lo	23	17
15	John Anderson, Bend It Until It Breaks	22	22
16	Patty Loveless, Here I Am	22	20
17	Martina McBride, Heart Trouble	22	22
18	Clay Walker, This Woman And This Man	22	23
19	Brooks & Dunn, I'll Never Forget My Hea	21	23
20	Doug Stone, Little Houses	21	20
21	Travis Tritt, Between An Old Memory And	21	18
22	Diamond Rio, Night Is Fallin' In My Hear	20	23
23	Joe Diffie, Pickup Man	20	26
24	Little Texas, Amy's Back In Austin	19	12
25	Collin Raye, My Kind Of Girl	19	22
26	Patty Loveless, Here I Am	17	16
27	Little Texas, Amy's Back In Austin	16	17
28	Vince Gill, When Love Finds You	16	18
29	Tim McGraw, Not A Moment Too Soon	15	13
30	Sammy Kershaw, Third Rate Romance	15	14

WSIX		PD/MD: Doug Baker	
TW	LW		
1	Diamond Rio, Night Is Fallin' In My Hear	38	26
2	Reba McEntire, Till You Love Me	37	32
3	Mark Chesnut, Gon' Through The Big D	36	34
4	Rick Trevino, Doctor Time	36	39
5	Doug Stone, Little Houses	36	31
6	Tim McGraw, Not A Moment Too Soon	35	35
7	Randy Travis, This Is Me	35	35
8	John Berry, You And Only You	35	32
9	Alan Jackson, Gone Country	34	31
10	Pam Tillis, Mi Vida Loca	33	21
11	Brooks & Dunn, I'll Never Forget My Hea	31	34
12	Patty Loveless, Here I Am	30	21
13	Joe Diffie, Pickup Man	27	34
14	Collin Raye, My Kind Of Girl	26	27
15	Mary Chapin Carpenter, Tender When I Wan	26	21
16	Sawyer Brown, This Time	26	21
17	Kathy Mattea, Maybe She's Human	25	21
18	Clay Walker, This Woman And This Man	25	19
19	Wade Hayes, Old Enough To Know Better	25	22
20	Doug Stone, Little Houses	24	11
21	Tracy Lawrence, As Any Fool Can See	24	18
22	Diamond Rio, Night Is Fallin' In My Hear	23	18
23	Blackhawk, Down In Flames	23	18
24	Toby Keith, Upstairs Downtown	23	21
25	John Anderson, Bend It Until It Breaks	23	24
26	Martina McBride, Heart Trouble	22	24
27	Tracy Byrd, The First Step	22	25
28	Shenandoah, Somewhere In The Vicinity Of	21	23
29	Sammy Kershaw, Southbound	20	22
30	Neal McCoy, For A Change	20	26

WKIS		PD: Bob McKay MD: Darlene Evans	
TW	LW		
1	Brooks & Dunn, I'll Never Forget My Hea	35	30
2	John Berry, You And Only You	33	27
3	Rick Trevino, Doctor Time	33	31
4	Tim McGraw, Not A Moment Too Soon	33	31
5	Mark Chesnut, Gon' Through The Big D	33	30
6	Reba McEntire, Till You Love Me	32	33
7	Pam Tillis, Mi Vida Loca	32	30
8	Alan Jackson, Gone Country	32	33
9	Doug Stone, Little Houses	32	30
10	Martina McBride, Heart Trouble	21	17
11	Collin Raye, My Kind Of Girl	19	18
12	Wade Hayes, Old Enough To Know Better	18	

MONITOR SONG ACTIVITY REPORTS

For Week Ending January 8, 1995

Radio Data Systems
Detailed song tracking information for the last 3 weeks for all songs showing increased play this week. Total plays and gain do not include video play. Markets listed in order of population.

COUNTRY

Total Plays/Gain		Total Plays/Gain		Total Plays/Gain		Total Plays/Gain		Total Plays/Gain		Total Plays/Gain	
JOHN ANDERSON 2649/613		JOHN BERRY 3597/538		BROOKS & DUNN 3914/510		TRACY BYRD 2982/461		MARY CHAPIN CARPENTER 3036/539		MARK CHESNUTT 4694/360	
Bend It Until It Breaks (BNA)		You And Only You (Liberty)		I'll Never Forgive My Heart (Arista)		The First Step (MCA)		Tender When I Want To Be (Columbia)		Goin' Through The Big D (Decca)	
Total Stations: 139 Position On Chart: 22		Total Stations: 138 Position On Chart: 11		Total Stations: 139 Position On Chart: 9		Total Stations: 139 Position On Chart: 15		Total Stations: 139 Position On Chart: 14		Total Stations: 139 Position On Chart: 2	
TW	LW	TW	LW	TW	LW	TW	LW	TW	LW	TW	LW
CMT	22	22	22	CMT	22	22	22	CMT	22	22	22
TNN	4	3	3	TNN	1	1	1	TNN	4	4	4
WYNY	15	9	9	WYNY	16	16	16	WYNY	12	12	12
KZLA	19	16	16	KZLA	19	19	19	KZLA	23	23	23
KXII	15	10	10	KXII	15	15	15	KXII	15	15	15
WUSN	18	10	10	WUSN	18	18	18	WUSN	18	18	18
KSAN	20	16	16	KSAN	20	20	20	KSAN	20	20	20
WXTU	1	1	1	WXTU	1	1	1	WXTU	1	1	1
WVWW	11	11	11	WVWW	11	11	11	WVWW	11	11	11
WYCD	1	1	1	WYCD	1	1	1	WYCD	1	1	1
WFLS	14	13	13	WFLS	14	14	14	WFLS	14	14	14
KSCS	14	12	12	KSCS	14	14	14	KSCS	14	14	14
KYNG	31	21	21	KYNG	31	31	31	KYNG	31	31	31
WZLQ	12	12	12	WZLQ	12	12	12	WZLQ	12	12	12
WCLB	14	3	3	WCLB	14	14	14	WCLB	14	14	14
KIKL	31	23	23	KIKL	31	31	31	KIKL	31	31	31
KBQJ	16	15	15	KBQJ	16	16	16	KBQJ	16	16	16
WKIS	12	12	12	WKIS	12	12	12	WKIS	12	12	12
WXHX	20	17	17	WXHX	20	20	20	WXHX	20	20	20
WYAY	22	15	15	WYAY	22	22	22	WYAY	22	22	22
KMPS	20	15	15	KMPS	20	20	20	KMPS	20	20	20
KRPM	20	15	15	KRPM	20	20	20	KRPM	20	20	20
KSAN	20	15	15	KSAN	20	20	20	KSAN	20	20	20
KEEY	20	15	15	KEEY	20	20	20	KEEY	20	20	20
WIL	7	4	4	WIL	7	7	7	WIL	7	7	7
WVXX	31	27	27	WVXX	31	31	31	WVXX	31	31	31
WPOC	25	20	20	WPOC	25	25	25	WPOC	25	25	25
WDSY	21	17	17	WDSY	21	21	21	WDSY	21	21	21
KMLE	23	19	19	KMLE	23	23	23	KMLE	23	23	23
KNIX	16	12	12	KNIX	16	16	16	KNIX	16	16	16
WQVY	16	15	15	WQVY	16	16	16	WQVY	16	16	16
WRBQ	23	12	12	WRBQ	23	23	23	WRBQ	23	23	23
WGAR	26	25	25	WGAR	26	26	26	WGAR	26	26	26
KYGO	12	10	10	KYGO	12	12	12	KYGO	12	12	12
WUBE	6	2	2	WUBE	6	6	6	WUBE	6	6	6
KUPL	9	2	2	KUPL	9	9	9	KUPL	9	9	9
KWJJ	20	13	13	KWJJ	20	20	20	KWJJ	20	20	20
KFRG	18	13	13	KFRG	18	18	18	KFRG	18	18	18
WMIL	20	14	14	WMIL	20	20	20	WMIL	20	20	20
KNCI	16	15	15	KNCI	16	16	16	KNCI	16	16	16
KRAK	2	1	1	KRAK	2	2	2	KRAK	2	2	2
KBQJ	30	23	23	KBQJ	30	30	30	KBQJ	30	30	30
KFKF	19	16	16	KFKF	19	19	19	KFKF	19	19	19
WDAF	13	9	9	WDAF	13	13	13	WDAF	13	13	13
KRTY	25	19	19	KRTY	25	25	25	KRTY	25	25	25
WCTK	20	16	16	WCTK	20	20	20	WCTK	20	20	20
WGH	21	17	17	WGH	21	21	21	WGH	21	21	21
WHD	31	29	29	WHD	31	31	31	WHD	31	31	31
WJIN	20	15	15	WJIN	20	20	20	WJIN	20	20	20
WVXX	31	27	27	WVXX	31	31	31	WVXX	31	31	31
KYGO	12	10	10	KYGO	12	12	12	KYGO	12	12	12
WUBE	6	2	2	WUBE	6	6	6	WUBE	6	6	6
KUPL	9	2	2	KUPL	9	9	9	KUPL	9	9	9
KWJJ	20	13	13	KWJJ	20	20	20	KWJJ	20	20	20
KFRG	18	13	13	KFRG	18	18	18	KFRG	18	18	18
WMIL	20	14	14	WMIL	20	20	20	WMIL	20	20	20
KNCI	16	15	15	KNCI	16	16	16	KNCI	16	16	16
KRAK	2	1	1	KRAK	2	2	2	KRAK	2	2	2
KBQJ	30	23	23	KBQJ	30	30	30	KBQJ	30	30	30
KFKF	19	16	16	KFKF	19	19	19	KFKF	19	19	19
WDAF	13	9	9	WDAF	13	13	13	WDAF	13	13	13
KRTY	25	19	19	KRTY	25	25	25	KRTY	25	25	25
WCTK	20	16	16	WCTK	20	20	20	WCTK	20	20	20
WGH	21	17	17	WGH	21	21	21	WGH	21	21	21
WHD	31	29	29	WHD	31	31	31	WHD	31	31	31
WJIN	20	15	15	WJIN	20	20	20	WJIN	20	20	20
WVXX	31	27	27	WVXX	31	31	31	WVXX	31	31	31
KYGO	12	10	10	KYGO	12	12	12	KYGO	12	12	12
WUBE	6	2	2	WUBE	6	6	6	WUBE	6	6	6
KUPL	9	2	2	KUPL	9	9	9	KUPL	9	9	9
KWJJ	20	13	13	KWJJ	20	20	20	KWJJ	20	20	20
KFRG	18	13	13	KFRG	18	18	18	KFRG	18	18	18
WMIL	20	14	14	WMIL	20	20	20	WMIL	20	20	20
KNCI	16	15	15	KNCI	16	16	16	KNCI	16	16	16
KRAK	2	1	1	KRAK	2	2	2	KRAK	2	2	2
KBQJ	30	23	23	KBQJ	30	30	30	KBQJ	30	30	30
KFKF	19	16	16	KFKF	19	19	19	KFKF	19	19	19
WDAF	13	9	9	WDAF	13	13	13	WDAF	13	13	13
KRTY	25	19	19	KRTY	25	25	25	KRTY	25	25	25
WCTK	20	16	16	WCTK	20	20	20	WCTK	20	20	20
WGH	21	17	17	WGH	21	21	21	WGH	21	21	21
WHD	31	29	29	WHD	31	31	31	WHD	31	31	31
WJIN	20	15	15	WJIN	20	20	20	WJIN	20	20	20
WVXX	31	27	27	WVXX	31	31	31	WVXX	31	31	31
KYGO	12	10	10	KYGO	12	12	12	KYGO	12	12	12
WUBE	6	2	2	WUBE	6	6	6	WUBE	6	6	6
KUPL	9	2	2	KUPL	9	9	9	KUPL	9	9	9
KWJJ	20	13	13	KWJJ	20	20	20	KWJJ	20	20	20
KFRG	18	13	13	KFRG	18	18	18	KFRG	18	18	18
WMIL	20	14	14	WMIL	20	20	20	WMIL	20	20	20
KNCI	16	15	15	KNCI	16	16	16	KNCI	16	16	16
KRAK	2	1	1	KRAK	2	2	2	KRAK	2	2	2
KBQJ	30	23	23	KBQJ	30	30	30	KBQJ	30	30	30
KFKF	19	16	16	KFKF	19	19	19	KFKF	19	19	19
WDAF	13	9	9	WDAF	13	13	13	WDAF	13	13	13
KRTY	25	19	19	KRTY	25	25	25	KRTY	25	25	25
WCTK	20	16	16	WCTK	20	20	20	WCTK	20	20	20
WGH	21	17	17	WGH	21	21	21	WGH	21	21	21
WHD	31	29	29	WHD	31	31	31	WHD	31	31	31
WJIN	20	15	15	WJIN	20	20	20	WJIN	20	20	20
WVXX	31	27	27	WVXX	31	31	31	WVXX	31	31	31
KYGO	12	10	10	KYGO	12	12	12	KYGO	12	12	12
WUBE	6	2	2	WUBE	6	6	6	WUBE	6	6	6
KUPL	9	2	2	KUPL	9	9	9	KUPL	9	9	9
KWJJ	20	13	13	KWJJ	20	20	20	KWJJ	20	20	20
KFRG	18	13	13	KFRG	18	18	18	KFRG	18	18	18
WMIL	20	14	14	WMIL	20	20	20	WMIL	20	20	20
KNCI	16	15	15	KNCI	16	16	16	KNCI	16	16	16
KRAK	2	1	1	KRAK	2	2	2	KRAK	2	2	2
KBQJ	30	23	23	KBQJ	30	30	30	KBQJ	30	30	30
KFKF	19	16	16	KFKF	19	19	19	KFKF	19	19	19
WDAF	13	9	9	WDAF	13	13	13	WDAF	13	13	13
KRTY	25	19	19	KRTY	25	25	25	KRTY	25	25	25
WCTK	20	16	16	WCTK	20	20	20	WCTK	20	20	20
WGH	21	17	17	WGH	21	21	21	WGH	21	21	21
WHD	31	29	29	WHD	31	31	31	WHD	31	31	31
WJIN	20	15	15	WJIN	20	20	20	WJIN	20	20	20
WVXX	31	27	27	WVXX	31	31	31	WVXX	31	31	31
KYGO	12	10	10	KYGO	12	12	12	KYGO	12	12	12
WUBE	6	2	2	WUBE	6	6	6	WUBE	6	6	6
KUPL	9	2	2	KUPL	9	9	9	KUPL	9	9	9
KWJJ	20	13	13	KWJJ	20	20	20	KWJJ	20	20	20
KFRG	18	13	13	KFRG	18	18	18	KFRG	18	18	18
WMIL	20	14	14	WMIL	20	20	20	WMIL	20	20	20
KNCI	16	15	15	KNCI	16	16	16	KNCI	16	16	16
KRAK	2	1	1	KRAK	2	2	2	KRAK	2	2	2
KBQJ	30	23	23	KBQJ	30	30	30	KBQJ	30	30	

MONITOR COUNTRY ACTIVITY REPORTS

For Week Ending January 8, 1995

RadioCast Data Systems
Detailed song tracking information for the past 4 weeks for all songs showing increased play this week. Total plays and gain do not include radio play. Markets listed in order of population.

COUNTRY

REBA MCENTIRE 4693/489

Till You Love Me (MCA)

Total Stations: 139 Position On Chart: 3

Market	TW	LW	2W	Station	WK	1W	2W
New York	25	25	29	Jacksonv.	WQIK	21	19
L.A.	29	29	31	Olda.City	KEBC	31	27
Chicago	19	14	13	Louisv.	WMZM	32	32
San Fran.	19	14	13	Ral./Dur.	WDDR	36	29
Phila.	19	14	13	Birming.	WZZK	42	36
Detroit	19	14	13	Austin	KASE	32	31
Dallas	19	14	13	Richmond	WKHK	16	14
Wash., DC	19	14	13	Las Vegas	KFMS	36	34
Boston	19	14	13	Greenv.	WSSC	36	30
Houston	19	14	13	Scranton	WGGY	24	17
Miami	19	14	13	Tulsa	KVET	16	11
Atlanta	19	14	13	Tucson	KIHM	37	28
Seattle	19	14	13	Fresno	KNAX	40	29
San Diego	19	14	13	Gr.Rap.	WBCT	40	32
Minn.	19	14	13	Albuc.	KOLT	31	28
St. Louis	19	14	13	Syracuse	WBBS	30	27
Balt.	19	14	13	McAllen	KTEX	29	28
Pitts.	19	14	13	KRST	36	30	
Phoenix	19	14	13	KRST	36	30	
Tampa	19	14	13	KRST	36	30	
Cleveland	19	14	13	KRST	36	30	
Denver	19	14	13	KRST	36	30	
Cincinnati	19	14	13	KRST	36	30	
Port., OR	19	14	13	KRST	36	30	
Rivers.	19	14	13	KRST	36	30	
Milwaukee	19	14	13	KRST	36	30	
Sacram.	19	14	13	KRST	36	30	
Kan.City	19	14	13	KRST	36	30	
San Jose	19	14	13	KRST	36	30	
Provid.	19	14	13	KRST	36	30	
Norfolk	19	14	13	KRST	36	30	
Colum., OH	19	14	13	KRST	36	30	
San Antonio	19	14	13	KRST	36	30	
Salt Lake	19	14	13	KRST	36	30	
Indian.	19	14	13	KRST	36	30	
Charl., NC	19	14	13	KRST	36	30	
New Or.	19	14	13	KRST	36	30	
Buffalo	19	14	13	KRST	36	30	
Orlando	19	14	13	KRST	36	30	
Hartford	19	14	13	KRST	36	30	
Greensb.	19	14	13	KRST	36	30	
Memphis	19	14	13	KRST	36	30	
Rochest.	19	14	13	KRST	36	30	
Nashv.	19	14	13	KRST	36	30	
Dayton	19	14	13	KRST	36	30	
W.P.Beach	19	14	13	KRST	36	30	

TIM MCGRAW 4732/346

Not A Moment Too Soon (Curb)

Total Stations: 139 Position On Chart: 1

Market	TW	LW	2W	Station	WK	1W	2W
New York	19	14	13	Olda.City	KEBC	34	34
L.A.	19	14	13	Louisv.	WMZM	32	32
Chicago	19	14	13	Ral./Dur.	WDDR	36	29
San Fran.	19	14	13	Birming.	WZZK	42	36
Phila.	19	14	13	Austin	KASE	32	31
Detroit	19	14	13	Richmond	WKHK	16	14
Dallas	19	14	13	Las Vegas	KFMS	36	34
Wash., DC	19	14	13	Greenv.	WSSC	36	30
Boston	19	14	13	Scranton	WGGY	24	17
Houston	19	14	13	Tulsa	KVET	16	11
Miami	19	14	13	Tucson	KIHM	37	28
Atlanta	19	14	13	Fresno	KNAX	40	29
Seattle	19	14	13	Gr.Rap.	WBCT	40	32
San Diego	19	14	13	Albuc.	KOLT	31	28
Minn.	19	14	13	Syracuse	WBBS	30	27
St. Louis	19	14	13	McAllen	KTEX	29	28
Balt.	19	14	13	KRST	36	30	
Pitts.	19	14	13	KRST	36	30	
Phoenix	19	14	13	KRST	36	30	
Tampa	19	14	13	KRST	36	30	
Cleveland	19	14	13	KRST	36	30	
Denver	19	14	13	KRST	36	30	
Cincinnati	19	14	13	KRST	36	30	
Port., OR	19	14	13	KRST	36	30	
Rivers.	19	14	13	KRST	36	30	
Milwaukee	19	14	13	KRST	36	30	
Sacram.	19	14	13	KRST	36	30	
Kan.City	19	14	13	KRST	36	30	
San Jose	19	14	13	KRST	36	30	
Provid.	19	14	13	KRST	36	30	
Norfolk	19	14	13	KRST	36	30	
Colum., OH	19	14	13	KRST	36	30	
San Antonio	19	14	13	KRST	36	30	
Salt Lake	19	14	13	KRST	36	30	
Indian.	19	14	13	KRST	36	30	
Charl., NC	19	14	13	KRST	36	30	
New Or.	19	14	13	KRST	36	30	
Buffalo	19	14	13	KRST	36	30	
Orlando	19	14	13	KRST	36	30	
Hartford	19	14	13	KRST	36	30	
Greensb.	19	14	13	KRST	36	30	
Memphis	19	14	13	KRST	36	30	
Rochest.	19	14	13	KRST	36	30	
Nashv.	19	14	13	KRST	36	30	
Dayton	19	14	13	KRST	36	30	
W.P.Beach	19	14	13	KRST	36	30	

COLLIN RAYE 2975/441

My Kind Of Girl (Epic)

Total Stations: 138 Position On Chart: 16

Market	TW	LW	2W	Station	WK	1W	2W
New York	19	14	13	Olda.City	KEBC	34	34
L.A.	19	14	13	Louisv.	WMZM	32	32
Chicago	19	14	13	Ral./Dur.	WDDR	36	29
San Fran.	19	14	13	Birming.	WZZK	42	36
Phila.	19	14	13	Austin	KASE	32	31
Detroit	19	14	13	Richmond	WKHK	16	14
Dallas	19	14	13	Las Vegas	KFMS	36	34
Wash., DC	19	14	13	Greenv.	WSSC	36	30
Boston	19	14	13	Scranton	WGGY	24	17
Houston	19	14	13	Tulsa	KVET	16	11
Miami	19	14	13	Tucson	KIHM	37	28
Atlanta	19	14	13	Fresno	KNAX	40	29
Seattle	19	14	13	Gr.Rap.	WBCT	40	32
San Diego	19	14	13	Albuc.	KOLT	31	28
Minn.	19	14	13	Syracuse	WBBS	30	27
St. Louis	19	14	13	McAllen	KTEX	29	28
Balt.	19	14	13	KRST	36	30	
Pitts.	19	14	13	KRST	36	30	
Phoenix	19	14	13	KRST	36	30	
Tampa	19	14	13	KRST	36	30	
Cleveland	19	14	13	KRST	36	30	
Denver	19	14	13	KRST	36	30	
Cincinnati	19	14	13	KRST	36	30	
Port., OR	19	14	13	KRST	36	30	
Rivers.	19	14	13	KRST	36	30	
Milwaukee	19	14	13	KRST	36	30	
Sacram.	19	14	13	KRST	36	30	
Kan.City	19	14	13	KRST	36	30	
San Jose	19	14	13	KRST	36	30	
Provid.	19	14	13	KRST	36	30	
Norfolk	19	14	13	KRST	36	30	
Colum., OH	19	14	13	KRST	36	30	
San Antonio	19	14	13	KRST	36	30	
Salt Lake	19	14	13	KRST	36	30	
Indian.	19	14	13	KRST	36	30	
Charl., NC	19	14	13	KRST	36	30	
New Or.	19	14	13	KRST	36	30	
Buffalo	19	14	13	KRST	36	30	
Orlando	19	14	13	KRST	36	30	
Hartford	19	14	13	KRST	36	30	
Greensb.	19	14	13	KRST	36	30	
Memphis	19	14	13	KRST	36	30	
Rochest.	19	14	13	KRST	36	30	
Nashv.	19	14	13	KRST	36	30	
Dayton	19	14	13	KRST	36	30	
W.P.Beach	19	14	13	KRST	36	30	

SAWYER BROWN 3338/570

This Time (Curb)

Total Stations: 139 Position On Chart: 13

Market	TW	LW	2W	Station	WK	1W	2W
New York	19	14	13	Olda.City	KEBC	34	34
L.A.	19	14	13	Louisv.	WMZM	32	32
Chicago	19	14	13	Ral./Dur.	WDDR	36	29
San Fran.	19	14	13	Birming.	WZZK	42	36
Phila.	19	14	13	Austin	KASE	32	31
Detroit	19	14	13	Richmond	WKHK	16	14
Dallas	19	14	13	Las Vegas	KFMS	36	34
Wash., DC	19	14	13	Greenv.	WSSC	36	30
Boston	19	14	13	Scranton	WGGY	24	17
Houston	19	14	13	Tulsa	KVET	16	11
Miami	19	14	13	Tucson	KIHM	37	28
Atlanta	19	14	13	Fresno	KNAX	40	29
Seattle	19	14	13	Gr.Rap.	WBCT	40	32
San Diego	19	14	13	Albuc.	KOLT	31	28
Minn.	19	14	13	Syracuse	WBBS	30	27
St. Louis	19	14	13	McAllen	KTEX	29	28
Balt.	19	14	13	KRST	36	30	
Pitts.	19	14	13	KRST	36	30	
Phoenix	19	14	13	KRST	36	30	
Tampa	19	14	13	KRST	36	30	
Cleveland	19	14	13	KRST	36	30	
Denver	19	14	13	KRST	36	30	
Cincinnati	19	14	13	KRST	36	30	
Port., OR	19	14	13	KRST	36	30	
Rivers.	19	14	13	KRST	36	30	
Milwaukee	19	14	13	KRST	36	30	
Sacram.	19	14	13	KRST	36	30	
Kan.City	19	14	13	KRST	36	30	
San Jose	19	14	13	KRST	36	30	
Provid.	19	14	13	KRST	36	30	
Norfolk	19	14	13	KRST	36	30	
Colum., OH	19	14	13	KRST	36	30	
San Antonio	19	14	13	KRST	36	30	
Salt Lake	19	14	13	KRST	36	30	
Indian.	19	14	13	KRST	36	30	
Charl., NC	19	14	13	KRST	36	30	
New Or.	19	14	13	KRST	36	30	
Buffalo	19	14	13	KRST	36	30	
Orlando	19	14	13	KRST	36	30	
Hartford	19	14	13	KRST	36	30	
Greensb.	19	14	13	KRST	36	30	
Memphis	19	14	13	KRST	36	30	
Rochest.	19	14	13	KRST	36	30	
Nashv.	19	14	13	KRST	36	30	
Dayton	19	14	13	KRST	36	30	
W.P.Beach	19	14	13	KRST	36	30	

SHENANDOAH 2114/388

Somewhere In The Vicinity Of The Heart (Liberty)

Total Stations: 132 Position On Chart: 28

Market	TW	LW	2W	Station	WK	1W	2W
New York	19	14	13	Olda.City	KEBC	34	34
L.A.	19	14	13	Louisv.	WMZM	32	32
Chicago	19	14	13	Ral./Dur.	WDDR	36	29
San Fran.	19	14	13	Birming.	WZZK	42	36
Phila.	19	14	13	Austin	KASE	32	31
Detroit	19	14	13	Richmond	WKHK	16	14
Dallas	19	14	13	Las Vegas	KFMS	36	34
Wash., DC	19	14	13	Greenv.	WSSC	36	30
Boston	19	14	13	Scranton	WGGY	24	17
Houston	19	14	13	Tulsa	KVET	16	11
Miami	19	14	13	Tucson	KIHM	37	28
Atlanta	19	14	13	Fresno	KNAX	40	29
Seattle	19	14	13	Gr.Rap.	WBCT	40	32
San Diego	19	14	13	Albuc.	KOLT	31	28
Minn.	19	14	13	Syracuse	WBBS	30	27
St. Louis	19	14	13	McAllen	KTEX	29	28
Balt.	19	14	13	KRST	36	30	
Pitts.	19	14	13	KRST	36	30	
Phoenix	19	14	13	KRST	36	30	
Tampa	19	14	13	KRST	36	30	
Cleveland	19	14	13	KRST	36	30	
Denver	19	14	13	KRST			



COUNTRY AIRPLAY

AIRPOWER (Minimum 2500 detections for the first time)

MARY CHAPIN CARPENTER 3036/539 Tender When I Want To Be (Columbia) Total Stations: 139/Position On Chart: 14

WADE HAYES 2689/495 Old Enough To Know Better (Columbia) Total Stations: 138/Position On Chart: 20

MARTINA MCBRIDE 2662/402 Heart Trouble (RCA) Total Stations: 138/Position On Chart: 21

JOHN ANDERSON 2649/613 Bend It Until It Breaks (BNA) Total Stations: 139/Position On Chart: 22

GARTH BROOKS 612/114 The Red Strokes (Liberty) Total Stations: 66/Position On Chart: 57

THE TRACTORS 582/37 Tryin' To Get To New Orleans (Arista) Total Stations: 77/Position On Chart: 58

DOUG SUPERNAW 574/256 What'll You Do About Me (BNA) Total Stations: 65/Position On Chart: 59

2499 - 1000 DETECTIONS

TRAVIS TRITT 2494/438 Between An Old Memory And Me (Warner Bros.) Total Stations: 138/Position On Chart: 23

Medium (20-29): 45 KBEQ, KCYY, KDRK, KEBC, KEEY, KFMS, KKCS, KNIX, KOLT, KPLX, KRMD, KRPM, KRYS, KTOM, KUZZ, KWJ, KWN, KXXY, KYGO, KYNG, KZSN, WCKT, WCUZ, WDDO, WDSY, WESC, WEZL, WGEE, WGGY, WGXK, WHKO, WKCN, WKQ, WKHK, WKJN, WKSJ, WKXK, WMSI, WNOE, WOKO, WOW, WPOC, WSIX, WSTH, WTQR

TRACY LAWRENCE 1829/467 As Any Fool Can See (Atlantic) Total Stations: 134/Position On Chart: 32

SAMMY KERSHAW 1453/191 Southbound (Mercury) Total Stations: 119/Position On Chart: 40

KEN MELLONS 921/150 I Can Bring Her Back (Epic) Total Stations: 86/Position On Chart: 49

499 - 150 DETECTIONS

JOHN & AUDREY WIGGINS 392/18 She's In The Bedroom Crying (Mercury) Total Stations: 57/Position On Chart: 62

GEORGE STRAIT 2415/636 You Can't Make A Heart Love Somebody (MCA) Total Stations: 135/Position On Chart: 24

LITTLE TEXAS 1826/367 Amy's Back In Austin (Warner Bros.) Total Stations: 128/Position On Chart: 33

CLAY WALKER 1376/687 This Woman And This Man (Giant) Total Stations: 118/Position On Chart: 41

BRYAN WHITE 898/160 Look At Me Now (Asylum) Total Stations: 93/Position On Chart: 50

RUSS TAFF 373/76 Love Is Not A Thing (Reprise) Total Stations: 63/Position On Chart: 63

NEAL MCCOY 2203/357 For A Change (Atlantic) Total Stations: 134/Position On Chart: 27

KATHY MATTEA 1757/291 Maybe She's Human (Mercury) Total Stations: 131/Position On Chart: 34

JAMES HOUSE 1100/158 Little By Little (Epic) Total Stations: 102/Position On Chart: 45

JED ZEPPELIN 841/93 Workin' Man Blues (Arista) Total Stations: 92/Position On Chart: 51

SHANIA TWAIN 257/87 Whose Bed Have Your Boots Been Under (Mercury) Total Stations: 37/Position On Chart: 64

SHENANDOAH/A. KRAUSS 2114/388 Somewhere In The Vicinity Of The Heart (Liberty) Total Stations: 132/Position On Chart: 28

BLACKHAWK 1665/347 Down In Flames (Arista) Total Stations: 126/Position On Chart: 35

BOY HOWDY 1067/188 True To His Word (Curb) Total Stations: 105/Position On Chart: 46

ALABAMA 779/155 Angels Among Us (RCA) Total Stations: 93/Position On Chart: 52

HANK WILLIAMS, JR. 237/31 I Ain't Goin' Peacefully (MCG/Curb) Total Stations: 41/Position On Chart: 65

TOBY KEITH 2060/369 Upstairs Downtown (Polydor) Total Stations: 135/Position On Chart: 29

CLINT BLACK 1604/553 Wherever You Go (RCA) Total Stations: 132/Position On Chart: 37

999 - 500 DETECTIONS

GEORGE DUCAS 957/233 Lipstick Promises (Liberty) Total Stations: 90/Position On Chart: 47

LARRY STEWART 733/115 Losing Your Love (Columbia) Total Stations: 78/Position On Chart: 53

RHETT AKINS 208/93 I Brake For Brunettes (Decca) Total Stations: 45/Position On Chart: 66

TRISHA YEARWOOD 929/672 Thinkin' About You (MCA) Total Stations: 100/Position On Chart: 48

LISA BROKOP 646/66 Take That (Patriot) Total Stations: 54/Position On Chart: 54

NOAH GORDON 172/56 The Blue Pages (Patriot) Total Stations: 39/Position On Chart: 68

DAVID BALL 635/326 Look What Followed Me Home (Warner Bros.) Total Stations: 77/Position On Chart: 56

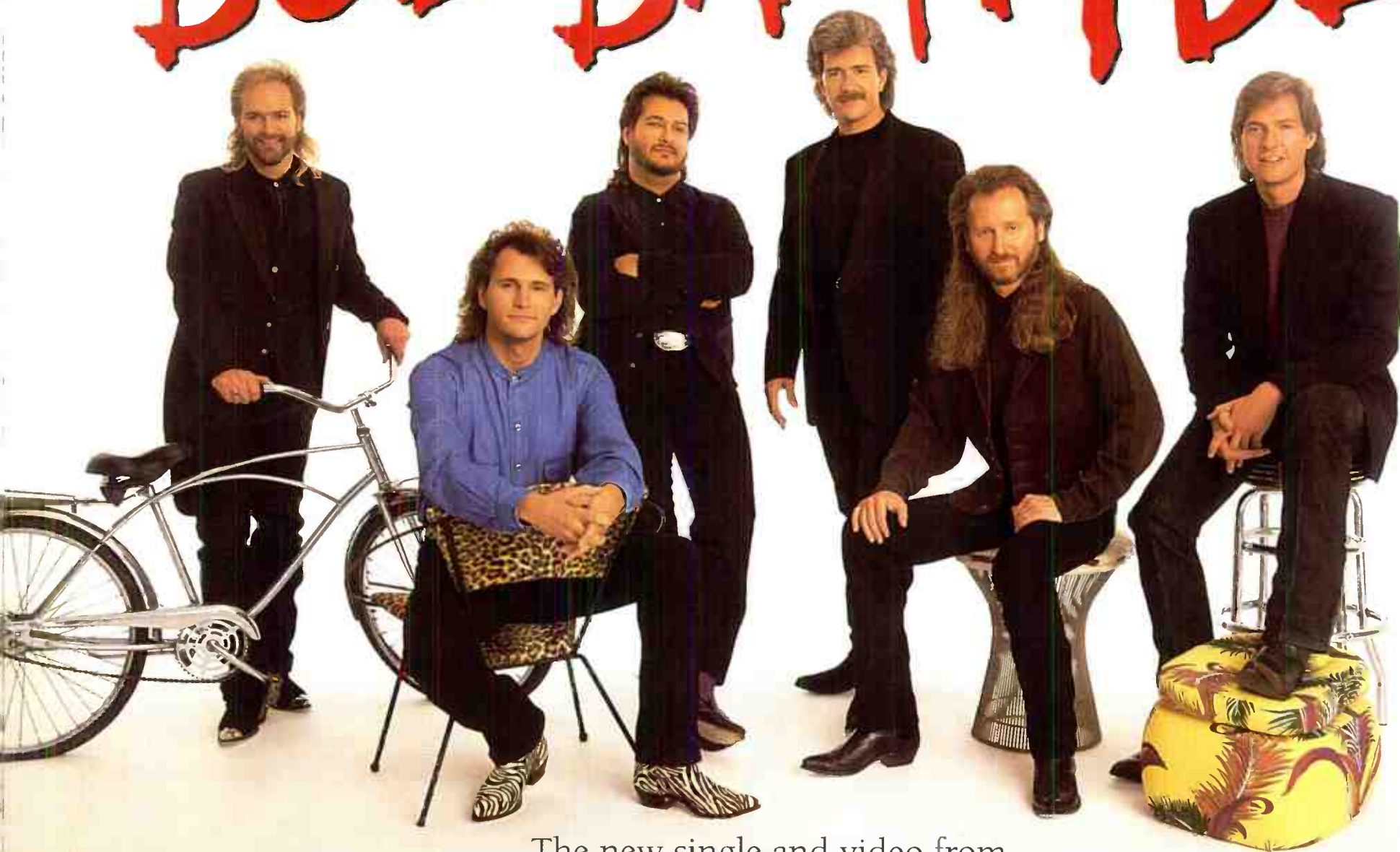
AMIE COMEAUX 164/34 Who's She To You (Polydor) Total Stations: 22/Position On Chart: 69

Airpower awarded to those records which attain 2500 detections for the first time. New airplay lists those stations registering six or more detections per week on a record for the first time.

THE 1994 CMA VOCAL GROUP OF THE YEAR

IS ABOUT TO UNLEASH A **MONSTER**

DIAMOND RIO **BUBBA HYDE**



The new single and video from
LOVE A LITTLE STRONGER

OFFICIAL AIRPLAY DATE: JANUARY 23RD

ARISTA
NASHVILLE

© 1995 Arista Records, Inc., a Bertelsmann Music Group Company



Management: Ted Hacker, International Artist Management, Nashville, TN

Compiled from a national sample of airplay supplied by Broadcast Data Systems' Radio Track service to Country Airplay Monitor. 139 country stations are electronically monitored 24 hours a day, 7 days a week. Songs ranked by number of detections. ©1994, Billboard/BPI Communications.

THIS WEEK	LAST WEEK	WKS. ON CHART	TITLE/LABEL/DISTRIBUTING LABEL	ARTIST	DETECTIONS	
					TW	LW
*** NO. 1 ***						
1	1	13	NOT A MOMENT TOO SOON CURB 2 weeks at No. 1	TIM MCGRAW	4732	4386
2	2	13	GOIN' THROUGH THE BIG D DECCA	MARK CHESNUTT	4694	4334
3	4	12	TILL YOU LOVE ME MCA	REBA MCENTIRE	4693	4204
4	5	22	GONE COUNTRY ARISTA	ALAN JACKSON	4617	4190
5	6	16	DOCTOR TIME COLUMBIA	RICK TREVINO	4388	3935
6	8	10	MI VIDA LOCA (MY CRAZY LIFE) ARISTA	PAM TILLIS	4362	3551
7	3	14	PICKUP MAN EPIC	JOE DIFFIE	4200	4258
8	7	14	THIS IS ME WARNER BROS.	RANDY TRAVIS	4052	3927
9	9	11	I'LL NEVER FORGIVE MY HEART ARISTA	BROOKS & DUNN	3914	3404
10	11	14	NIGHT IS FALLIN' IN MY HEART ARISTA	DIAMOND RIO	3841	3191
11	12	15	YOU AND ONLY YOU LIBERTY	JOHN BERRY	3597	3059
12	13	13	LITTLE HOUSES EPIC	DOUG STONE	3397	2830
13	14	10	THIS TIME CURB	SAWYER BROWN	3338	2768
*** AIRPOWER ***						
14	19	7	TENDER WHEN I WANT TO BE COLUMBIA	MARY CHAPIN CARPENTER	3036	2497
15	17	10	THE FIRST STEP MCA	TRACY BYRD	2982	2521
16	16	8	MY KIND OF GIRL EPIC	COLLIN RAYE	2975	2534
17	18	11	HERE I AM EPIC	PATTY LOVELESS	2972	2509
18	10	18	TAKE ME AS I AM WARNER BROS.	FAITH HILL	2954	3336
19	15	16	I GOT IT HONEST RCA	AARON TIPPIN	2930	2552
*** AIRPOWER ***						
20	25	10	OLD ENOUGH TO KNOW BETTER COLUMBIA	WADE HAYES	2689	2194
*** AIRPOWER ***						
21	24	14	HEART TROUBLE RCA	MARTINA MCBRIDE	2662	2260
*** AIRPOWER ***						
22	27	7	BEND IT UNTIL IT BREAKS BNA	JOHN ANDERSON	2649	2036
23	26	9	BETWEEN AN OLD MEMORY AND ME WARNER BROS.	TRAVIS TRITT	2494	2056
24	31	5	YOU CAN'T MAKE A HEART LOVE SOMEBODY MCA	GEORGE STRAIT	2415	1779
25	21	15	WHEN LOVE FINDS YOU MCA	VINCE GILL	2337	2403
26	22	20	HARD LOVIN' WOMAN MCA	MARK COLLIE	2221	2341
27	30	6	FOR A CHANGE ATLANTIC	NEAL MCCOY	2203	1846
28	33	8	SOMEWHERE IN THE VICINITY OF THE HEART LIBERTY/NANDOA/HALISON KRAUSS	LIBERTY/NANDOA/HALISON KRAUSS	2114	1726
29	35	8	UPSTAIRS DOWNTOWN POLYDOR	TOBY KEITH	2060	1691
30	23	18	IF YOU'VE GOT LOVE ATLANTIC	JOHN MICHAEL MONTGOMERY	2028	2295
31	28	18	IF I COULD MAKE A LIVING GIANT	CLAY WALKER	1858	1964
32	41	4	AS ANY FOOL CAN SEE ATLANTIC	TRACY LAWRENCE	1829	1362
33	38	5	AMY'S BACK IN AUSTIN WARNER BROS.	LITTLE TEXAS	1826	1459
34	37	11	MAYBE SHE'S HUMAN MERCURY	KATHY MATTEA	1757	1466
35	43	6	DOWN IN FLAMES ARISTA	BLACKHAWK	1665	1318
36	29	16	THE BIG ONE MCA	GEORGE STRAIT	1634	1870
37	45	4	WHEREVER YOU GO RCA	CLINT BLACK	1604	1051

THIS WEEK	LAST WEEK	WKS. ON CHART	TITLE/LABEL/DISTRIBUTING LABEL	ARTIST	DETECTIONS	
					TW	LW
38	32	20	I SEE IT NOW ATLANTIC	TRACY LAWRENCE	1589	1755
39	36	20	WHEN THE THOUGHT OF YOU CATCHES UP WITH ME WARNER BROS.	DAVID BALL	1522	1575
40	44	8	SOUTHBOUND MERCURY	SAMMY KERSHAW	1453	1262
41	53	2	THIS WOMAN AND THIS MAN GIANT	CLAY WALKER	1376	689
42	40	18	UNTANGLIN' MY MIND RCA	CLINT BLACK	1217	1362
43	42	20	WE CAN'T LOVE LIKE THIS ANYMORE RCA	ALABAMA	1217	1318
44	39	20	SHUT UP AND KISS ME COLUMBIA	MARY CHAPIN CARPENTER	1187	1374
45	46	9	LITTLE BY LITTLE EPIC	JAMES HOUSE	1100	942
46	47	7	TRUE TO HIS WORD CURB	BOY HOWDY	1067	879
47	52	7	LIPSTICK PROMISES LIBERTY	GEORGE DUCAS	957	724
48	66	2	THINKIN' ABOUT YOU MCA	TRISHA YEARWOOD	929	257
49	48	6	I CAN BRING HER BACK EPIC	KEN MELLONS	921	771
50	50	5	LOOK AT ME NOW ASYLUM	BRYAN WHITE	898	738
51	49	7	WORKIN' MAN BLUES ARISTA	JED ZEPPELIN	841	748
52	55	10	ANGELS AMONG US RCA	ALABAMA	779	624
53	56	8	LOSING YOUR LOVE COLUMBIA	LARRY STEWART	733	618
54	57	9	TAKE THAT PATRIOT	LISA BROKOP	646	580
55	51	17	THERE GOES MY HEART MCA	THE MAVERICKS	637	724
56	63	2	LOOK WHAT FOLLOWED ME HOME WARNER BROS.	DAVID BALL	635	309
57	60	9	THE RED STROKES LIBERTY	GARTH BROOKS	612	498
58	58	4	TRYIN' TO GET TO NEW ORLEANS ARISTA	THE TRACTORS	582	545
59	62	2	WHAT'LL YOU DO ABOUT ME BNA	DOUG SUPERNOW	574	318
60	54	14	STORM IN THE HEARTLAND MERCURY	BILLY RAY CYRUS	554	678
61	59	17	WHAT THEY'RE TALKING ABOUT DECCA	RHETT AKINS	418	517
62	61	8	SHE'S IN THE BEDROOM CRYING MERCURY	JOHN & AUDREY WIGGINS	392	374
63	64	2	LOVE IS NOT A THING REPRISE	RUSS TAFF	373	297
64	71	2	WHOSE BED HAVE YOUR BOOTS BEEN UNDER MERCURY	SHANIA TWAIN	257	170
65	68	3	I AIN'T GOIN' PEACEFULLY MCG/CURB	HANK WILLIAMS, JR.	237	206
*** HOT SHOT DEBUT ***						
66	NEW		I BRAKE FOR BRUNETTES DECCA	RHETT AKINS	208	115
67	65	14	LONG LEGGED HANNAH (FROM BUTTE, MONTANA) BNA	JESSE HUNTER	198	278
68	75	2	THE BLUE PAGES PATRIOT	NOAH GORDON	172	116
69	74	2	WHO'S SHE TO YOU POLYDOR	AMIE COMEAUX	164	130
70	70	13	TILL I WAS LOVED BY YOU POLYDOR	CHELY WRIGHT	162	182
71	73	17	THAT'S WHAT I GET (FOR LOSIN' YOU) CURB	HAL KETCHUM	159	152
72	72	17	YOU JUST WATCH ME LIBERTY	TANYA TUCKER	152	157
73	NEW		THAT'S HOW YOU KNOW (WHEN YOU'RE IN LOVE) RCA	LARI WHITE	141	17
74	NEW		THE KEEPER OF THE STARS MCA	TRACY BYRD	137	101
75	NEW		TOUGHER THAN THE REST LIBERTY	CHRIS LEDOUX	122	83

Records showing an increase in detections over the previous week, regardless of chart movement. Airpower awarded to those records which attain 2500 detections for the first time. If two records are tied in number of plays, the record being played on more stations is placed first. Records below the top 20 that are decreasing in plays are removed from the chart after 20 weeks.

Daron Norwood





