

AIRPLAY **Monitor**

GPS Technology

Could this device be a challenge to Arbitron? Its makers say it knows where drivers are, what they're listening to and for how long.

p. 3



AUGUST 27, 2004

• We Listen To Radio •

VOLUME 12 • NO. 35 \$6.99

Rock Analysis

EXCLUSIVE
Monitor
CHART ANALYSIS

An inside look at the top 10 positions of the modern rock

chart. Comparisons of this year and last deliver a handful of surprises. **p. 38**

24/7 Todd

It's all Todd Pettengill, all the time. The WPLJ morning man has found a new project that steals away a little more of his sleep. **p. 4**

The Art Of War

Being the one and only R&B/hip-hop station in Baltimore isn't enough for WERQ's Victor Starr. He's preparing for war, and Sun Tzu is helping him. Really. **p. 22**



Spin Strategy

As *Monitor* probes the paid spins controversy, this week we hear from the record labels.

p. 33

TRENT WILLMON

“DIXIE ROSE DELUXE’S...”

BB (42) - (40) R&R 43 - 38*

IN STORES OCTOBER 12TH

Trent's the real deal.
Great music from a down to earth genuine guy!

-TIM CLOSSON, WUBE FM

→ **COUNTRY MUSIC THE WAY IT'S SUPPOSED TO BE** ←

WWW.TRENTWILLMON.COM
© 2004 SONY BMG MUSIC ENTERTAINMENT

WALK TALL



DEBUT **11**
Monitor
Adult Alternative
AIRPOWER!!!

D-15*
R&R
Adult Alternative

Hot AC Adds include: **KIOI** San Francisco **WZPL** Indianapolis
AC Adds include: **WMTX** Tampa **WTPI** Indianapolis

THE NEW SINGLE FROM
"WORDS & MUSIC: JOHN MELLENCAMP'S GREATEST HITS"
2-CD SET AVAILABLE OCTOBER 19TH

WRITTEN BY JOHN MELLENCAMP PRODUCED BY KENNETH "BABYFACE" EDMONDS
AND JOHN MELLENCAMP MANAGEMENT: HOFFMAN ENTERTAINMENT INC.

WWW.UNIVERSALCHRONICLES.COM WWW.MELLENCAMP.COM WWW.ISLANDRECORDS.COM

THE ISLAND DEF JAM MUSIC GROUP A UNIVERSAL MUSIC COMPANY UNIVERSAL MUSIC ENTERPRISES

Arbitron Challenger Targets In-Car Listening

As it ramps up for electronic measurement, Arbitron will soon be staring down a new ratings competitor. Atlanta-based researcher Navigauge is now generating radio listening estimates in its hometown, with plans to add four or more markets early next year and an eye on the top 10 before the end of 2005. But the 3-year-old company isn't going after the entire ratings market, just in-car listening—which accounts for about 33% of total listening.

Employing a videotape-sized device installed in the trunk or under the dash, and incorporating GPS data, Navigauge is tracking a representative panel of drivers aged 16-plus across the 20-county Atlanta region. It will collect such data as where they are, what they're listening to and for how long. Ratings are broken out by age, gender, income and household size—all of which are recorded during an "enumeration" process during recruitment. With GPS time-stamping every 30 seconds, subscribers are able to see when a driver stops at a specific store location, allowing them to assess the effectiveness of an ad campaign.

Arbitron has been under fire for long relying on what many consider an antiquated system that involves survey-takers jotting down their listening habits in a paper diary. But the company has invested \$20 million in its Portable People Meter, a pager-sized device that panelists carry with them that

records exposure to all encoded electronic media. With overwhelming support from the ad community and most of the radio industry, Arbitron has been putting the PPM through a battery of rigorous tests before eventually using it to replace diaries in some markets.

Unlike the PPM, Navigauge does not require broadcasters to encode. In addition to radio signals, the device captures CD, cassette and satellite radio listening—all of which are identified as "local source."

Navigauge CEO **Tim Cobb** tells *Airplay Monitor* that the new service has been greeted with enthusiasm by Atlanta advertisers, with McDonald's and Coca-Cola inking contracts. Recognizing that stations are already shelling out a lot of cash for ratings, the company is offering its service to radio on a spot barter system.

What about capturing all of that listening that occurs outside the car? "Advertisers will tell you that they buy radio to [reach] people in the car," Cobb says. "If they're trying to get people at home, there are other vehicles that they use for that. Advertisers don't think of radio as the go-to medium to get people at home or at work."

BUSINESS & MANAGEMENT

Gaylord Entertainment president/CEO **Colin Reed** has received a contract extension through May 2008 and will add the title of chairman in

May 2005. He will succeed current chairman **Michael Rose**, who will remain a member of the board of directors and serve as chairman of the board's executive committee. Rose received an extension through May 2009. The Nashville-based company owns WSM-AM, the Grand Ole Opry, Ryman Auditorium and a number of resorts and hotels.

XM joins the kickoff of the college football season by broadcasting the Aug. 28 game between the University of Southern California and Virginia Tech. XM will carry more than 120 college games, while rival Sirius will have coverage of the National Football League.

The just-released Interop spring 2004 Radio Format Share Analysis reveals that an all-time high in news/talk listening has boosted the news/talk/sports category, which remains the No. 1 radio format. The remaining top 10 most-listened-to formats are Spanish, top 40, R&B, AC, country, classic rock, modern rock, oldies and active rock.

FORMATS: OLDIES GOES TO BOB

Oldies **KEYI** Austin becomes the latest station to convert to the "Bob" format. Operating with the slogan "We play anything," the station's playlist features a mix of classic hits and '80s. R&B sister **KDHT** (Hot 93.3) PD **Bob Lewis** will program the new station, which is looking for an airstaff.

Modern rock **KRXX** (X105.9) Lafayette, La., flips to country as "Extreme Country" and is currently running jockless. The station, which will keep the X105.9 identifier, will only play uptempo songs. Look for new calls soon.

Internet radio station 24country.com, which says it will marry old and new country music, will debut Sept. 23. The site plans to sell advertising rather than charge a subscription rate for access.

PROGRAMMING: SCHELL A CLASSIC

Radio vet **Russ Schell**, who has programmed country **WIL** and **WKKX** St. Louis, among others, joins classic hits **WTYX** (Arrow) Jackson, Miss., as PD.

Country **KGHL-FM** Billings, Mont., which had billed itself as "the Country Giant," becomes "the Wolf" with a more current/recurrent slant. **OM Tom Oakes** adds PD duties for the station, while continuing in afternoons. Former PD/morning co-host **Karen Gallagher** moves to middays and picks up APD/MD stripes for **KGHL** and adult top 40 sister **KZRV**. Oakes is looking for a morning co-host to pair with incumbent **Matt Brubaker**.

Write A Letter

As we expand the magazine in the coming weeks, we'll be giving you a place to have your say. Send us your thoughts, opinions and concerns to Letters to the Editor, Billboard Radio Monitor, 770 Broadway, 6th floor, New York, N.Y. 10003 or to radioletters@billboard.com.

Soldier Support



WGCI Chicago and its market director of engineering **Bob Fukuda** were honored for their contributions to U.S. soldiers stationed in Iraq. Fukuda arranged for a live broadcast of WGCI from Iraq that allowed troops to send greetings to their families. Pictured, from left, are Sgt. 1st Class **Jeff Kilburn**, WLIT Chicago MD **Erick Richeke**, Fukuda, WGCI OM **Elroy Smith** and Sgt. 1st Class **Donald Ayers**. (Photo: WGCI)

Clear Channel Radio has added Air America to two of its stations—**WHNE-AM** Ann Arbor, Mich., and **KPOP-AM** San Diego. The two signals also change their calls to **WLBY** and **KLSD**, respectively. The company says it expects to introduce similar "progressive talk" programming on at least two stations in top 25 markets within the next two months. CCR stations adopting the format air a combination of local hosts and syndicated content including shows from **Ed Schultz**, **Lionel**, **Phil Hendrie** and Air America Radio's **Randi Rhodes** and **Al Franken**. Air America is on 21 stations as well as satcasters Sirius and XM.

In a related development, Clear Channel's "Keep Hope Alive With the Rev. Jesse Jackson" has doubled its number of stations, adding affiliates in Houston; St. Louis; Miami; Wheeling, W.Va.; San Antonio; and Albany, Ga.

XM Satellite Radio launches new weekly series "Highway 16 ShortCuts" on its Highway 16 country channel. The show highlights the retail arrival of new music by playing the entire album and an interview with the artist about the project. The first installment of the show featured **Tim McGraw**. Upcoming programs include **Travis Tritt**, **Alan Jackson** and **Jimmy Buffett**.

PEOPLE: MORE CHANGE AT WNEW

A month after hiring **Frankie Blue** as its new PD, **WNEW** (Mix 102.7) New York makes additional changes. **Rick Stacy** moves from afternoons to mornings alongside sidekick **RuPaul**, **Efren Sifuentes** joins for mid-mornings and **Paco Lopez** begins in drive time. Sifuentes and Lopez have worked at crosstown rivals **WKTU** and **WQHT** (Hot 97), respectively. The new shifts round out a lineup that includes **Carol Ford** in afternoons and **Yvonne Velasquez** in nights. Also contributing are **Kim Ashley**, **Geronimo**, **Hollywood** and **Josh Bennett**.

Modern **WNNX** (99X) Atlanta PD/Susquehanna director of programming **Leslie Fram** exits the **Don Miller** morning show but will host a new daily morning specialty program, "90s at 9." She had been co-hosting the morning show.

Veteran morning man **Dan Tooker** joins country **KFDI** Wichita, Kan., for wakeups, where he replaces **Cornbread & Pat James**, who exited for country **WIL** St. Louis in July. Tooker was most recently at **KMLE** (Camel Country) Phoenix and **WYCT** (Cat Country) Pensacola, Fla.

Cindy Austin joins the morning show at country **WPCK** (Kicks 104.9) Green Bay, Wis., from nights at similarly formatted **WFBE** (B95) Flint, Mich. Austin will be paired with current morning host **Dave Wooten**.

Country **WCOL** Columbus, Ohio, morning news anchor/producer **Sara Nichols** exits the station. PD **John Crenshaw** is looking for her replacement.

Country **KQFC** Boise, Idaho, APD/midday jock **Jim Miller** adds MD stripes, replacing

Cory Mikhals, who steps down to focus on the morning show.

Country **KRYS** Corpus Christi, Texas, morning co-host **Deena Blake** takes over music call duties in the wake of MD "Cactus Lou" **Ramirez's** recent departure for Clear Channel country sister **KAJA** San Antonio. A permanent replacement has not been named.

Longtime country **WUSY** (US101) Chattanooga, Tenn., air personality and two-time Country Music Assn. broadcast personality award winner **David Earl Hughes** died Aug. 22 at his home. He was found dead after telling his wife he was going to lie down and rest. Hughes, 48, most recently handled afternoons at **WSM-FM** Nashville.

Clear Channel/Chicago stations **WGCI**, **WGRB-AM** (Gospel Radio 1390) and **WVAZ** (V103) took part in the Chicago Defender Charities Scholarship and Community Awards Gala. Station manager **Angela Fleming** presented 18-year-old **Mechelle Jackson** with \$5,000 toward her college studies. Jackson plans to attend Northwestern University to study journalism.

THE MOVE

Former DRT director of promotion **Jeff Gillis** adds national rock promotion duties at Reprise. Reprise director of promotion **Kurt Steffek** and Los Angeles local **Leah Kiyonaga** exit. Steffek can be reached at ksteffek@optonline.net or 516-236-4180.

Busted, Baby!



Universal trio **Busted** made a recent stop at the Sirius Satellite Radio studios in New York in support of first U.S. single "What I Go to School For." Pictured, from left, are **Busted's James Bourne** and **Matt Jay**; Sirius' **Kid Kelly**; Universal's **Dave Reynolds**; and the band's **Charlie Simpson**. (Photo: Universal)

The Billboard Buzz

DATA PROVIDED BY **promosquad**

Ages 13-29 Only

July	June	Artist	Label
1	1	Usher	Arista
2	3	Maroon5	J Records
3	5	Linkin Park	WB
4	10	Blink-182	MCA
5	2	Hoobastank	IDJMG
6	4	OutKast	Arista
7	8	Evanescence	Wind-up
8	17	Black Eyed Peas	A&M
9	23	Switchfoot	Columbia
10	7	Eminem	Interscope
11	24	Avril Lavigne	RMG
12	6	Christina Aguilera	RCA
13	20	No Doubt	Interscope
14	9	Jessica Simpson	Columbia
15	19	Matchbox Twenty	Atlantic
16	18	Yellowcard	Capitol
17	13	Alicia Keys	J Records
18	26	Good Charlotte	Epic
19	33	Ludacris	IDJMG
20	16	Simple Plan	Lava
21	32	Kanye West	Roc-a-Fella
22	22	Nickelback	Roadrunner
23	43	Beyoncé	Columbia
24	14	Justin Timberlake	Jive
25	11	3 Doors Down	Universal

The Billboard Buzz Chart is a gauge of artist popularity through an Internet poll of music fans. Scores are affected by every aspect of an artist's career. Marketing, airplay, retail, print media, touring, TV appearances and rumor all have an impact on Buzz Chart performance. Data is collected with the same strict attention to detail as all other PromoSquad research. A list of 250 artists is compiled based on airplay and sales. The artists are rated by thousands of carefully screened music fans. Results are compiled weekly and monthly. The top 25 chart is based on a weighted positive calculation that takes into account each artist's popularity and buzz among the entire music-listening population. PromoSquad also maintains detailed format-specific charts (e.g., mainstream top 40, R&B/hip-hop, country, etc.). For more information, contact buzz@promosquad.com.



Pettengill Finds Time For 'Night' Job

Todd Pettengill starts each day at 3 a.m., when he wakes up, reads the overnight headlines and heads to adult top 40 WPLJ New York, where he shares morning duties with Scott Shannon on "The Big Show."

By 11 a.m., with the shift done, he hits the road to work in his home studio, where he writes commercials, commandeers voice-overs, does another check-in with current events and starts planning for the next day on the air.

He also works on projects for his company, Pettengill Productions, which has produced a number of short- and longform infomercials for international broadcast.

Then there's Pettengill Publishing, the company behind the three CDs he has out as the lead singer of Todd; and his comedy album, "Scambo: First Ring."

Oh, and he plays husband to Carrie, his wife of 16 years, and is father to two daughters and a dog.

Finally, around 9 or 10 p.m., he heads to bed. Six hours later, Pettengill starts all over again.

It's said that if you want a task done well, give it to the busiest person—so why not throw in one more gig?

Starting Sept. 25, Pettengill will muster a little more energy to host the weekly "Saturday Night at the 80s," a five-hour, high-energy throwdown that brings new life to a decade of music that seemingly won't wear out.



PETTENGILL

THREE TOP 10 MARKETS

WPLJ serves as the anchor station for the music- and comedy-driven show, with distribution handled by its owner, ABC Radio Networks. As rollout just begins, outlets have signed up in Washington, D.C., and Detroit.

"The music of the '80s gave us real rock 'n' roll legends and it was very hook-driven—a time when you could sing along easily. The production was great and the vocals weren't messed with a whole lot," Pettengill says. "Those records still hold up today."

It was also an era when music and pop trends more easily reached critical mass, because there were fewer media competing with each other, he adds. "Movies and music were all mass appeal; when you had a fad like leg warmers and a side ponytail, it wasn't cliquy—they were all-encompassing."

"Music now is so niched on the radio. In the '80s, when you turned on the radio, stations were pretty much all playing the same records."

Of course, the youngsters of that era are now grown-up and have money to burn on more than Pop Rocks and Rubik's Cubes—and they are an ideal target for adult top 40 stations like WPLJ, making "Saturday Night at the 80s" a perfect fit for the format.

Pettengill says, "Right now, that sort of music is so appealing with the money demographic. A lot of the '70s music has pretty much played out and the '80s music is researching better and better. It seemed obvious to us that now is the time."

But the show isn't meant to only be a nostalgia trip. It starts with the pop culture fads of the day (Valley girls, "Miami Vice," mullets, the Jane Fonda workout and "Fame"), adds the music that mattered (Duran Duran, Cyndi Lauper, Bananarama, the Pointer Sisters, Go-Go's, INXS, Berlin, Bryan Adams) and then consciously weaves in talk of current cultural trends, updates

on the many '80s artists that are still active, concert dates, and movie and TV news. There are also comedy bits, song parodies and a healthy dose of Pettengill's own brand of satire.

"Just because we're doing a show on the '80s doesn't mean we have to get lost in them," he says. "If you spend too much time on nostalgia, it makes you feel old. As long as we take everything and relate it to what's happening today, you can hang on without it sounding like it was so long ago."

Pettengill stresses that the show is not just for the 30-plus audience: "So many of those songs from then have been remade by current artists.

We can show kids what 'Every Breath You Take' sounded like before P. Diddy covered it."

Pettengill isn't just talking the talk. His radio career began in 1980, so he witnessed all of the trends and the music firsthand (including the mullet). Even before he was out of high school, he worked at all three local radio stations in his hometown of Amsterdam, N.Y.

He then spent six years at WPTR/WFLY Albany, N.Y., where he worked his way up to PD, OM and VP of programming and corporate affairs.

Next, he landed at WIOQ (Q102) Philadelphia before finding his place at WPLJ in August 1991. Since Pettengill joined the morning team with Shannon, Billboard has named him air personality of the year five times.

For six years during the last decade, Pettengill also hosted two internationally syndicated TV shows for World Wrestling Entertainment, seen in 150 countries by 12 million people each week.

There's more. Pettengill acts, and has appeared on "Another World" and "As the World Turns."

Still, he says, "there's nothing that equals doing live radio. I love the immediacy and the impact you can have. When the mic goes on, you better have something to say or they'll find someone who does."

In fact, Pettengill tracks "Saturday Night at the 80s" as if it were a live show. "I have bullet points about what I want to cover in a break and I may rehearse it, but when we decide to do it, whatever happens, happens. That's a feeling you can't fake; it's a much more natural sound on the radio."

BE YOURSELF

He does not concern, however, that some of the ability to be yourself on the air is being compromised by the FCC.

"They have really gone way overboard," he says. "Anybody on the radio should understand their level of responsibility, and you should be able to talk to your audience without being filthy—but it seems like the FCC is trying to micro-manage an industry that has done pretty damn well without that. People are intelligent enough to decide for themselves what they want to hear on the radio."

With all that he has accomplished, Pettengill still has a few ambitions waiting in the wings. "Well, it wouldn't be bad to be on 200 radio stations with 'Saturday Night.' And I haven't done a concert yet at Madison Square Garden," he says.

"I'd also like to hear from a listener one day that something I've done on the radio has really had an impact on them. If that can happen, then you've been a success in what you've done."

Radio Disney Plays Dress Up

Folks have always felt passionate about their preferred radio station. Now, a new Radio Disney initiative gives consumers the chance to display favorite stations on their sleeve—literally.

Radio Disney and Disney Consumer Prod-

ucts have launched a line of Radio Disney apparel, which the network calls "a music-inspired clothing line" designed for 7- to 16-year-old girls.

With the tag line "My music, my look, my way," the tween clothing, available at Kohl's department stores, offers "chic, unique designs and stylish cuts," according to Disney.

The line will include black and indigo denim, novelty tops and separates, all with satin ties, rhinestones and/or lace trim. Special holiday and spring styles are planned for later this year and early 2005.

Promotion for the Radio Disney apparel line kicks off with a Kohl's shopping spree with 14-year-old top 40 artist JoJo. The network will also support the clothing with a six-month on-air campaign and interactive presence on radiodisney.com.

Sarah Stone, VP of marketing for Radio Disney, says that music and fashion "have always gone hand in hand. We feel we have brought the fun, positive spirit of Radio Disney and the music we play to life."

CHUCK TAYLOR



Kiss Concert On The Charles



Mainstream top 40 powerhouse WXKS (Kiss 108) Boston held its summer Kiss Concert on the Charles on the Esplanade in Boston, featuring acts Ryan Cabrera, Kimberley Locke and Mis-teeq. Pictured above are the three British ladies of Mis-teeq, hanging backstage. Below, from left, are Atlantic Records' Lou Rizzo, Cabrera and Kiss 108 on-air personality Chris Shine. (Photos: WXKS)



RADIO CONCERT MONITOR

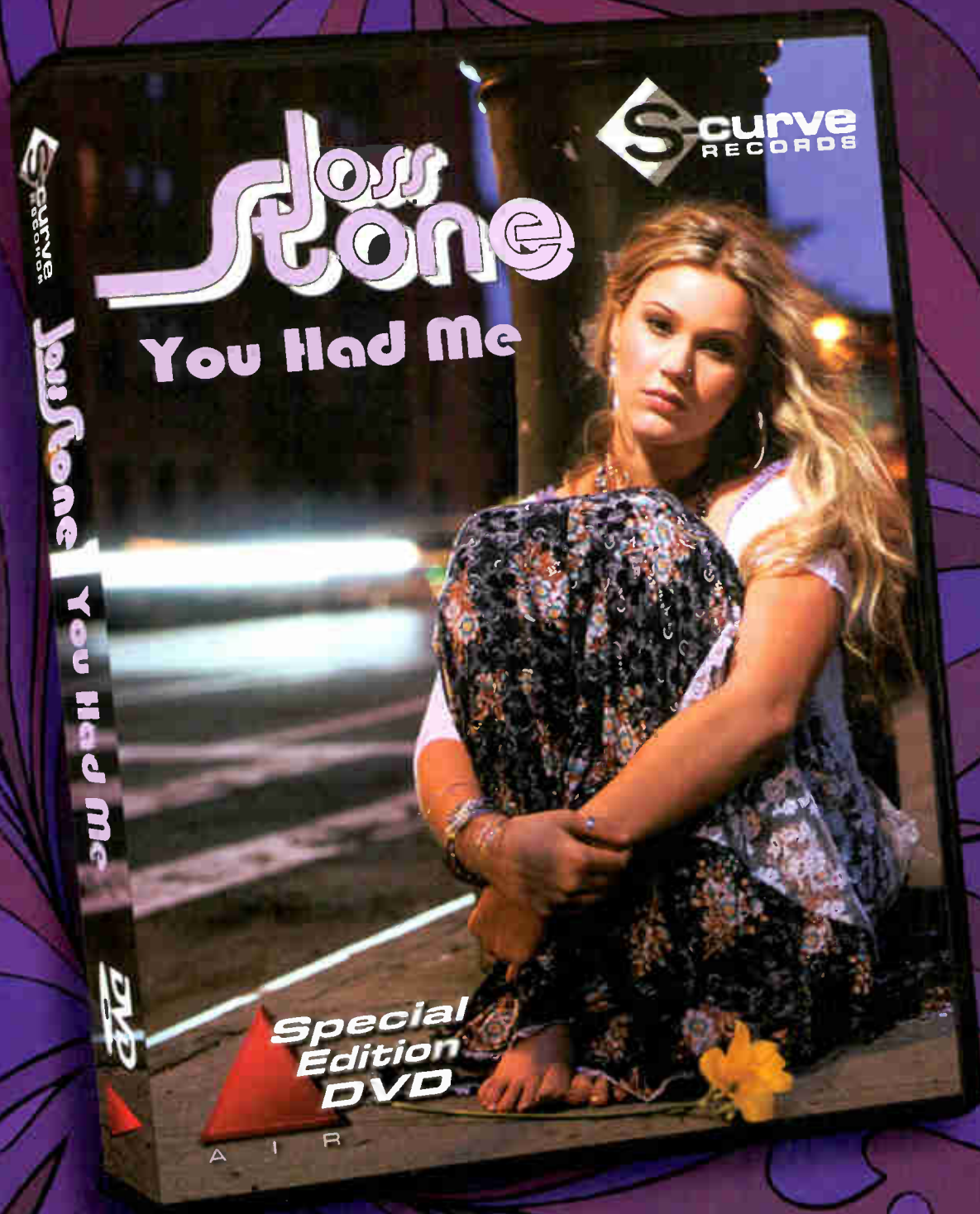
DATE	STATION	EVENT	PROMOTIONS DIRECTOR
Aug. 25	KIIS Los Angeles	JoJo Jam	Von Freeman
APPEARING: Ashlee Simpson, Ryan Cabrera, Lil' Flip, Houston			
Let us monitor your event! Call Chuck Taylor at 646-654-4729 or e-mail ctaylor@airplaymonitor.com			

S-curve
RECORDS
PRESENTS:

You Had Me

Loss Stone

DVD
VIDEO

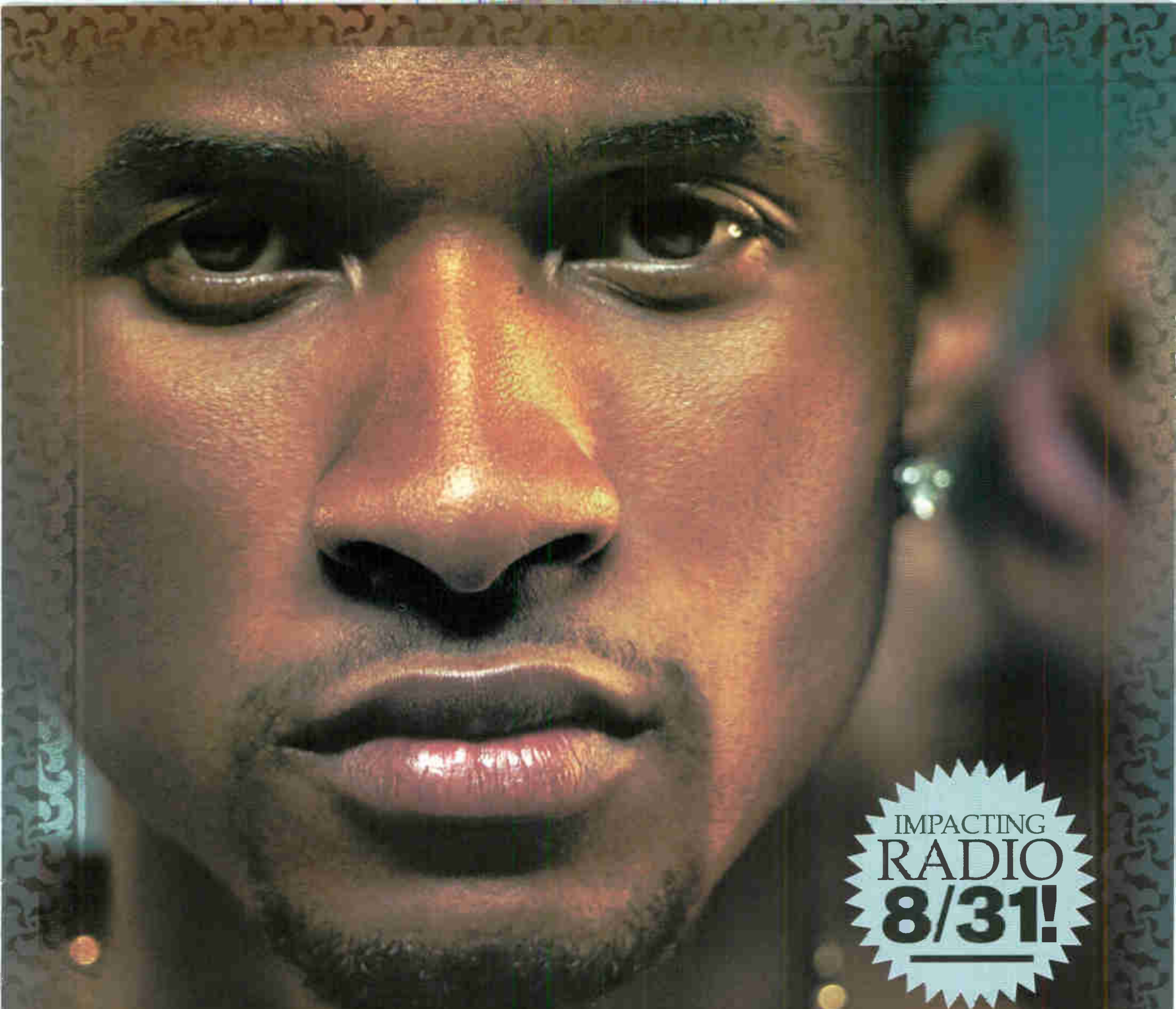


**Special
Edition
DVD**

ON YOUR DESK RIGHT NOW!

A I R

East - 9861 Broken Land Parkway, Ste. 200A Columbia, MD 21046 Tel: 410.381.6800 Fax: 410.381.4942
West - 1353 N. Sycamore Ave., Los Angeles, CA 90028 Tel: 323.769.1212 Fax: 323.769.8027
WWW.AIRCOMPETITION.COM



IMPACTING
RADIO
8/31!

USHER & ALICIA KEYS MY BOO

R&B Superstars Usher and Alicia Deliver This Year's Hottest Duet!!!

MOST ADDED! Over 20 Stations Couldn't Wait!
MAJORS INCLUDE: **WAKS KCHZ Y100**
WNVZ WKST KBKS KWID

HitPredictor Top 10 Callout Potential at Top 40 Mainstream, Rhythmic Top 40 & R&B/Hip-Hop!

MAINSTREAM TOP 40

FOR WEEK ENDING AUGUST 22, 2004



Nielsen Broadcast Data Systems

Songs ranked by number of detections. Playlists are listed in order of TSA weekly came, beginning with the highest-cumming station. Comes are updated twice weekly following the release of the spring and fall Arbitron surveys. The number of stations shown each week varies depending upon space.

MAINSTREAM TOP 40

WHZZ New York PD: VP/Pgm: Tom Poleman APD: Sharon Dastur MD: Paul Bryant Clear Channel 201-209-6200



Table with 2 columns: Rank (1-40) and Song/Artist. Top songs include Ashlee Simpson Peces Of Me, Maroon 5 She Will Be Loved, etc.

KIIS Los Angeles PD: John Ivey APD/MD: Julie Pilat Clear Channel 818-559-2252



Table with 2 columns: Rank (1-40) and Song/Artist. Top songs include Christina Milian Dip It Low, Nina Sky Featuring Jabba Move Ya Body, etc.

WKQS Chicago PD: Rod Phillips MD: Jeff "Smash" Murray Clear Channel 312-255-5100



Table with 2 columns: Rank (1-40) and Song/Artist. Top songs include Kevin Lyttle Featuring Sprag Turn Me On, Maroon 5 She Will Be Loved, etc.

WIOQ Philadelphia OM/PD: Todd Shannon APD/MD: Marian Newsmo Clear Channel 610-667-8100



Table with 2 columns: Rank (1-40) and Song/Artist. Top songs include Kevin Lyttle Featuring Sprag Turn Me On, Ashlee Simpson Peces Of Me, etc.

WXKS Boston VP/Pgm: Jack McCartney APD/MD: Kid David Corey Clear Channel 781-396-1430



Table with 2 columns: Rank (1-40) and Song/Artist. Top songs include Ashlee Simpson Peces Of Me, Maroon 5 She Will Be Loved, etc.

KRBE Houston PD: Tracy Austin APD/MD: Leslie Basenberg-Whittle Susquehanna 713-266-1000



Table with 2 columns: Rank (1-40) and Song/Artist. Top songs include Ashlee Simpson Peces Of Me, Maroon 5 She Will Be Loved, etc.

WKQI Detroit OM: Dom "Domino" Theodore APD/MD: Beau Clear Channel 248-324-5800



Table with 2 columns: Rank (1-40) and Song/Artist. Top songs include Ciara Featuring Pety Pablo Goodies, Nina Sky Featuring Jabba Move Ya Body, etc.

WDRQ Detroit PD: Alex Tear APD: Jay Towers MD: Keith Curry ABC/Disney 313-871-9300



Table with 2 columns: Rank (1-40) and Song/Artist. Top songs include Nina Sky Featuring Jabba Move Ya Body, Maroon 5 She Will Be Loved, etc.

KHKS Dallas PD: Patrick Davis APD/MD: Fernando Ventura Clear Channel 214-866-8000



Table with 2 columns: Rank (1-40) and Song/Artist. Top songs include Jolo Leave (Get Out), Nina Sky Featuring Jabba Move Ya Body, etc.

WHT Washington, DC VP/Ops: Jeff Wyatt MD: Albie Dee Clear Channel 301-468-9429



Table with 2 columns: Rank (1-40) and Song/Artist. Top songs include Ashlee Simpson Peces Of Me, Kevin Lyttle Featuring Sprag Turn Me On, etc.

WFLZ Tampa OM/PD: Jeff Kapugi APD: Toby Knapp MD: Stan "The Man" Priest Clear Channel 813-839-9393



Table with 2 columns: Rank (1-40) and Song/Artist. Top songs include Christina Milian Dip It Low, Ashlee Simpson Peces Of Me, etc.

WSTR Atlanta PD: Dan Bowen APD/MD: Michael Chase Jefferson Pilot 404-261-2970



Table with 2 columns: Rank (1-40) and Song/Artist. Top songs include Ashlee Simpson Peces Of Me, Hoobastank The Reason, etc.

KDWB Minneapolis PD: Rob Morris MD: Derek Moran Clear Channel 952-417-3000



Table with 2 columns: Rank (1-40) and Song/Artist. Top songs include Ashlee Simpson Peces Of Me, Maroon 5 She Will Be Loved, etc.

KBKS Seattle PD: Mike Seaton APD/MD: Marcus D. Infinity 206-805-1061



Table with 2 columns: Rank (1-40) and Song/Artist. Top songs include Maroon 5 She Will Be Loved, Ashlee Simpson Peces Of Me, etc.

WHYI Miami PD: Rob Roberts APD: Donnie Michaels MD: Michael Yo Clear Channel 954-862-2000



Table with 2 columns: Rank (1-40) and Song/Artist. Top songs include Switchfoot Meant To Live, Ashlee Simpson Peces Of Me, etc.

WNK Charlotte OM/PD: Rob Reynolds MD: Keil Reynolds Infinity 704-331-9510



Table with 2 columns: Rank (1-40) and Song/Artist. Top songs include Hoobastank The Reason, Alicia Keys If I Ain't Got You, etc.

WAKS Cleveland PD: Dan Mason APD/MD: Kasper Clear Channel 216-520-2600



Table with 2 columns: Rank (1-40) and Song/Artist. Top songs include Juvenile Featuring Souja Si Slow Moto, Houston Featuring Chingy, Na I Like Tha, etc.

WPST Trenton Sr. VP/Pgm: Michelle Stevens Assoc. Dir./Pgm: Dave McKay APD/MD: Chris Puroo Nassau 609-419-0300



Table with 2 columns: Rank (1-40) and Song/Artist. Top songs include Switchfoot Meant To Live, Ashlee Simpson Peces Of Me, etc.

TOP 10 BOUND

NELLY FEATURING JAEHEIM 4426/338 My Place (Derrty/Fo' Reel/UMRG)

Total Stations: 112 Chart Move: 13-11 H (13), M (79), L (20) Airplay Adds: 3

Table with columns: Rank, Station, Song, and Airplay Adds. Lists top 100 songs and their performance across various stations.

Table with columns: Rank, Station, Song, and Airplay Adds. Lists songs in the 11-20 range.

RYAN CABRERA 3615/491 On The Way Down (E.V.L.A./Atlantic)

Total Stations: 112 Chart Move: 19-16 H (9), M (66), L (37) Airplay Adds: 8

Table with columns: Rank, Station, Song, and Airplay Adds. Lists songs in the 21-30 range.

LINKIN PARK 2811/450 Breaking The Habit (Warner Bros.)

AIRPLAY LEADER (FIRST STATION TO 150 PLAYS)

WKZL - Greensboro, NC PD: Jeff McHugh MD: Marcia Gan Date: 01/04/04

Total Stations: 110 Chart Move: 26-20 H (6), M (49), L (55) Airplay Adds: 7

Table with columns: Rank, Station, Song, and Airplay Adds. Lists songs in the 31-40 range.

TERROR SQUAD 2010/482 Lean Back (SRC/Universal/UMRG)

Total Stations: 100 Chart Move: 33-27 H (8), M (31), L (61) Airplay Adds: 9

Table with columns: Rank, Station, Song, and Airplay Adds. Lists songs in the 41-50 range.

MODEST MOUSE 1517/151 Float On (Epic)

Total Stations: 101 Chart Move: 38-35 H (2), M (15), L (84) Airplay Adds: 4

Table with columns: Rank, Station, Song, and Airplay Adds. Lists songs in the 51-60 range.

HOUSTON FEAT. CHINGY, NATE DOGG & I-20 4066/439 I Like That (Capitol)

Total Stations: 112 Chart Move: 15-13 H (20), M (46), L (46) Airplay Adds: 5

Table with columns: Rank, Station, Song, and Airplay Adds. Lists songs in the 61-70 range.

AIRPOWER

Total Detections/Gain

FINGER ELEVEN 3153/194 One Thing (Wind-up)

AIRPLAY LEADER (FIRST STATION TO 150 PLAYS)

WBBO - Monmouth/Ocean, NJ PD: Greg Thomas MD: Kid Knight Date: 03/11/04

Total Stations: 112 Chart Move: 22-19 H (11), M (52), L (49) Airplay Adds: 2

Table with columns: Rank, Station, Song, and Airplay Adds. Lists songs in the 71-80 range.

AIRPOWER

Total Detections/Gain

BOWLING FOR SOUP 2031/355 1985 (Silvertone/Jive/Zomba)

Total Stations: 108 Chart Move: 32-25 H (2), M (29), L (77) Airplay Adds: 11

Table with columns: Rank, Station, Song, and Airplay Adds. Lists songs in the 81-90 range.

CIARA FEATURING PETEY PABLO 1946/598 Goodies (Sho'nuff/LaFace/Zomba)

Total Stations: 104 Chart Move: 39-28 H (7), M (24), L (73) Airplay Adds: 14

Table with columns: Rank, Station, Song, and Airplay Adds. Lists songs in the 91-100 range.

SEETHER FEATURING AMY LEE 1371/457 Broken (Wind-up)

Total Stations: 69 Chart Move: Debut 38 H (4), M (17), L (48) Airplay Adds: 18

Table with columns: Rank, Station, Song, and Airplay Adds. Lists songs in the 101-110 range.

LIL' FLIP FEATURING LEA 3683/534 Sunshine (Sucka Free/Columbia)

Total Stations: 109 Chart Move: 18-15 H (18), M (46), L (45) Airplay Adds: 6

Table with columns: Rank, Station, Song, and Airplay Adds. Lists songs in the 111-120 range.

KELLY CLARKSON 2028/320 Breakaway (Walt Disney/Hollywood)

Total Stations: 107 Chart Move: 31-26 H (1), M (36), L (70) Airplay Adds: 5

Table with columns: Rank, Station, Song, and Airplay Adds. Lists songs in the 121-130 range.

SWITCHFOOT 1626/350 Dare You To Move (Columbia)

Total Stations: 82 Chart Move: Debut 34 H (1), M (20), L (61) Airplay Adds: 11

Table with columns: Rank, Station, Song, and Airplay Adds. Lists songs in the 131-140 range.

KIMBERLEY LOCKE 1313/32 Wrong (Curb/Reprise)

Total Stations: 105 Chart Move: Debut 39 H (0), M (17), L (88) Airplay Adds: 4

Table with columns: Rank, Station, Song, and Airplay Adds. Lists songs in the 141-150 range.

H=Heavy (55+ Detections), M=Medium (25-54), L=Light (Under 25). Airpower awarded to songs appearing in the top 20 on both the Airplay and Audience charts for the first time with increases in both detections and audience. Initial impact: songs appearing on this page for the first time in summary form. Airplay adds are songs with 6 or more detections at new stations this week. The Airplay Leaderboard ranks taste-maker stations that have been the most successful in identifying future hit songs as measured by the amount of AIRPOWER they have for Airplay Leaders. Refer to each format's Power Playlists page to see this week's Airplay Leaders. ☆ indicates title earned Hi!Predictor status in research data provided by Promosquad.

Compiled from a national sample of data supplied by Broadcast Data Systems to Top 40 Airplay Monitor. 44 markets AC stations are electronically monitored 28 hours a day, 7 days a week. © 2004 ViLU Business Media, Inc. All rights reserved.

ADULT TOP 40

AIRPLAY MONITOR denotes songs with 6 or more detections at station for first time this week.

POWERPLAYISTS

WPLJ New York*
VP/Pgm: Tom Cuddy
PD: Scott Shannon
MD: Tony Mascaro
ABC/Disney 212-613-8900
1 Gavin DeGraw I Don't Want To Be 47 44

KYSR Los Angeles*
OM: John Ivey
PD: Angela Perelli
APD/MD: Chris Patyk
Clear Channel 818-559-2252
1 Counting Crows Accidentally In Love 37 25

WTMX Chicago*
OM/PD: Mary Ellen Kachinski
Bonnevill 312-946-1019
101.9fm THE MIX
1 Maroon 5 She Will Be Loved 53 50

WBMX Boston*
OM/PD: Jon Zellner
APD/MD: Mike Mulloney
Infinity 617-779-2000
1 Los Lonely Boys Heaven 63 60

WRQX Washington, DC
OM/PD: Kenny King
MD: Carol Parker
ABC/Disney 202-686-3100
1 Hoobastank The Reason 47 41

KIOI San Francisco
OM/PD: Michael Martin
APD/MD: James Baker
Clear Channel 415-538-1013
1 Dido White Flag 40 42

KLLC San Francisco*
PD: John Peake
APD/MD: Jayn
Infinity 415-765-4000
1 Jettie You Gonna Be My Girl 42 34

WWZZ Washington, DC*
PD: Sammy Simpson
APD/MD: Sean Sellers
Bonnevill 202-895-5000
1 Finger Eleven One Thing 56 56

KHMX Houston
PD: Buddy Scott
APD/MD: Rick O'Bryan
Clear Channel 713-830-8000
1 Hoobastank The Reason 50 50

KSTP Minneapolis
PD: Leighton Peck
APD/MD: Jill Roan
Hubbard 651-642-4141
1 Hoobastank The Reason 48 48

KDMX Dallas*
PD: Pat McMahon
APD/MD: Lisa Thomas
Clear Channel 972-991-1029
1 Hoobastank The Reason 45 48

WDVD Detroit*
PD: Greg Ausham
MD: Ann Delisi
ABC/Disney 313-871-3030
1 311 Love Song 47 43

Table with columns: THIS WEEK, LAST WEEK, WKS. ON CHART, TITLE/IMPRINT/PROMOTION LABEL, ARTIST, DETECTIONS, TW, LW, MILLIONS, RANK. Includes songs like 'THE REASON', 'HEAVEN', 'ACCIDENTALLY IN LOVE', etc.

Songs ranked by number of detections. Songs showing an increase in detections over the previous week, regardless of chart movement. A song will also receive a bullet if its percentage loss in detections does not exceed the percentage of monitored station downtime for the format.

GREATEST MODERN AC

Table with columns: SONG, DETECTIONS, STATIONS. Includes 'ASHLEE SIMPSON • Pieces Of Me', 'JOHN MAYER • Daughters', etc.

MODERN AC

ADULT CONTEMPORARY

FOR WEEK ENDING AUGUST 22, 2004



Nielsen Broadcast Data Systems

Songs ranked by number of detections. Playlists are listed in order of TSA weekly cumes, beginning with the highest-cuming station. Cumes are updated twice yearly following the release of the spring and fall Arbitron surveys. The number of stations shown each week varies depending upon space.

denotes songs with 6 or more detections at station for first time this week.

WTW New York 106.7 Life fm. Dir/Pgm: Jim Ryan. APD: Bridget Sullivan. MC: Morgan Prue. Clear Channel 212-603-4600. Playlist includes Martina McBride, Five For Fighting, Seal Love's Divine, etc.

KOST Los Angeles 103.5 FM. Dir/Pgm: Jhani Kaye. PD/MD: Stella Schwartz. Clear Channel 818-546-1043. Playlist includes Lionel Richie, Josh Groban, Seal Love's Divine, etc.

KBIG Los Angeles 102.3 FM. Dir/Pgm: Jhani Kaye. OM/PD: Dave Denes. APD/MD: Robert Archer. Clear Channel 818-546-1043. Playlist includes Counting Crows, Seal Love's Divine, etc.

WBEP Philadelphia PD/MD: Chris Conley. WEAZ Radio 610-667-8400. Playlist includes 3 Doors Down, Seal Love's Divine, etc.

WLIT Chicago RVP/Pgm: Bob Kaake. Clear Channel 312-329-9002. Playlist includes Five For Fighting, Seal Love's Divine, etc.

WMJX Boston MAGIC 106.7. VP/Pgm: Don Kelley. APD: Candy O'Terry. MD: Mark Laurence. Greater Media 617-822-9600. Playlist includes Dido White Flag, Seal Love's Divine, etc.

WNIC Detroit RVP/Pgm: Darren Davis. Clear Channel 248-324-5800. Playlist includes Uncle Kracker, Dido White Flag, etc.

WASH Washington, DC PD: Bill Hess. Clear Channel 301-984-9710. Playlist includes Michael McDonald, Uncle Kracker, etc.

WLTM Atlanta OM: Louis Kaplan. APD: Steve Goss. Clear Channel 404-367-0640. Playlist includes Five For Fighting, Seal Love's Divine, etc.

KVIL Dallas PD: Smokey Rivers. Infinity 214-691-1037. Playlist includes MercyMe, Seal Love's Divine, etc.

KEZK St. Louis PD: Mark Edwards. APD: Bob London. Infinity 314-531-0000. Playlist includes Dido White Flag, Seal Love's Divine, etc.

WMGC Detroit PD: Jim Harper. MD: Jon Ray. Greater Media 248-414-5600. Playlist includes Evanesence, Seal Love's Divine, etc.

WMGF Orlando PD: Ken Payne. APD: Brenda Matthews. MD: Miles Chrisinger. Clear Channel 407-916-7790. Playlist includes Five For Fighting, Seal Love's Divine, etc.

WALK Long Island PD: Rob Miller. Clear Channel 631-475-5200. Playlist includes Los Lonely Boys, Seal Love's Divine, etc.

KESZ Phoenix PD: Shaun Holly. APD/MD: Craig Jackson. Clear Channel 480-966-6236. Playlist includes Seal Love's Divine, Seal Love's Divine, etc.

WLTE Minneapolis PD: Phil Wilson. Infinity 612-339-1029. Playlist includes Dido White Flag, Seal Love's Divine, etc.

WDOK Cleveland PD: Scott Miller. MD: Ted Kowalski. Infinity 216-696-0123. Playlist includes Shania Twain, Seal Love's Divine, etc.

KRWM Seattle PD: Gary Nolan. MD: Laura Dane. Sandusky 425-373-5545. Playlist includes Five For Fighting, Seal Love's Divine, etc.

KOSI Denver PD: Dave Dillon. APD: Steve Hamilton. Entercom 303-967-2700. Playlist includes Kimberley Locke, Seal Love's Divine, etc.

KSFI Salt Lake City OM: Alan Hague. PD: Dain Craig. APD: Bob Nelson. Bonneville 801-575-7601. Playlist includes Michael McDonald, Seal Love's Divine, etc.

WRAL Raleigh OM: Joe Wade Formicola. MD: Jim Kelly. WRAL, Inc 919-890-6101. Playlist includes Sheryl Crow, Seal Love's Divine, etc.

WRCH Hartford PD: Allan Camp. MD: Joe Hann. Infinity 860-677-6700. Playlist includes Sheryl Crow, Seal Love's Divine, etc.

WHUD Poughkeepsie PD: Steve Petrone. MD: Tom Furci. Pamal 845-838-6000. Playlist includes Kimberley Locke, Seal Love's Divine, etc.

WSHH Pittsburgh PD: Ron Antill. Renda 412-875-9500. Playlist includes Dido White Flag, Seal Love's Divine, etc.

WEAT West Palm Beach PD: Rick Shockey. MD: Chad Perry. Infinity 561-686-9505. Playlist includes Train Calling All Angels, Seal Love's Divine, etc.

WSNY Columbus PD: Chuck Knight. Saga 614-451-2191. Playlist includes Michael McDonald, Seal Love's Divine, etc.

WMTX Tampa OM: Jeff Kapug. MD: Kristy Knight. Clear Channel 813-839-9393. Playlist includes Five For Fighting, Seal Love's Divine, etc.

WRRM Cincinnati OM: T.J. Holland. APD: Ted Morro. Susquehanna 513-241-9898. Playlist includes Five For Fighting, Seal Love's Divine, etc.

KUDL Kansas City OM: Thom McGinty. PD: Dan Hurst. Entercom 913-677-8998. Playlist includes Kimberley Locke, Seal Love's Divine, etc.

WTVR Richmond OM: Bill Cahill. APD: Adam Stubbs. MD: Kat Simons. Clear Channel 804-355-3217. Playlist includes Lionel Richie, Seal Love's Divine, etc.

ADULT CONTEMPORARY

FOR WEEK ENDING AUGUST 22, 2004

IMPACT!



Nielsen Broadcast Data Systems

Songs posting gains in detections or with a percentage loss in detections equal to or better than the monitored stations percentage in the format.

*Indicates station experienced between 24 and 36 hours of monitored downtime during the chart week.

TOP 10 BOUND

Total Detections/Gain

MERCYME Here With Me (INO/Curb) 844/-1

Table with columns: Rank, Station, Title, Detections, Gain. Lists top stations and their respective chart moves.

AIRPOWER

Total Detections/Gain

KEITH URBAN You'll Think Of Me (Capitol) 638/40

AIRPLAY LEADER

WHUD - Poughkeepsie, NY PD: Steve Petrone MD: Tom Furci Date: 06/27/04



Total Stations: 70 Chart Move: 18-18

Table with columns: Rank, Station, Title, Detections, Gain. Lists top stations and their respective chart moves for Airplay Leader.

EVANESCENCE My Immortal (Wind-up) 481/23

AIRPLAY LEADER

WMOG - Madison, WI PD: Pat O'Neil MD: Mark Van Allen Date: 01/25/04



Total Stations: 41 Chart Move: 19-20

Table with columns: Rank, Station, Title, Detections, Gain. Lists top stations and their respective chart moves for Airplay Leader.

H=Heavy (21+ Detections), M=Medium (14-20), L=Light (Under 14). Airpower awarded to songs appearing in the top 20 on both the Airplay and Audience charts...

AIRPLAY 1 Monitor DANCE

FOR WEEK ENDING AUGUST 22, 2004

Compiled from a national sample of data supplied by Broadcast Data Systems to Top 50 Airplay Monitor, 9 dance stations are electronically monitored 24 hours a day, 7 days a week.

Main Dance chart table with columns: This Week, Last Week, Wks. On Chart, Title/Imprint/Promotion Label, Artist, TW, LW. Includes songs like 'MOVE YA BODY', 'TURN ME ON', etc.

Songs ranked by number of detections. Songs showing an increase in detections over the previous week, regardless of chart movement.

DANCE Monitor POWER PLAYLISTS

Power Playlists table with columns: Station, PD/MD, Title, Rank, Detections, Gain. Lists top tracks for stations like WKU New York, WYPM Miami, WQX Boston, etc.

*Indicates station reports to both Dance and Rhythmic Top 40.



Nielsen Broadcast Data Systems

Songs ranked by number of detections. Playlists are listed in order of TSA weekly cumes, beginning with the highest-cuming station. Cumes are updated twice weekly following the release of the spring and fall Arbitron surveys. The number of stations shown each week varies depending upon space.

denotes songs with 6 or more detections at station for first time this week.

RHYTHMIC TOP 40

WBBM Chicago PD: Todd Cavanah MD: Erik Bradley Infinity 312-944-6000

WJMN Boston PD: Jack McCartney APD: Dennis O'Heron MD: Chris Tyler Clear Channel 781-663-2500

KYLD San Francisco OM: Michael Martin MD: "Jazzy" Jim Archer Clear Channel 415-356-0949

WPOW Miami PD: Kid Curry APD: Tony The Tiger MD: Eddie Mix Beasley 305-653-6796

WBTS Atlanta PD: Cagle APD/MD: Maverick Cox 404-897-7500

KPTY Houston PD/MD: Marco Arias Univision 713-407-1415

Table with 2 columns: Rank and Song/Artist. Top songs include Terror Squad Lean Back, Houston Featuring Leona Lewis, Nelly Featuring Jaheim My Place.

Table with 2 columns: Rank and Song/Artist. Top songs include Juvenile Featuring Souja Si Slow Moto, Lil' Flip Featuring Leona Lewis, Terror Squad Lean Back.

Table with 2 columns: Rank and Song/Artist. Top songs include Terror Squad Lean Back, Ciara Featuring Pety Pablo Goodies, Lil' Flip Featuring Leona Lewis.

Table with 2 columns: Rank and Song/Artist. Top songs include Terror Squad Lean Back, Ciara Featuring Pety Pablo Goodies, Lil' Flip Featuring Leona Lewis.

Table with 2 columns: Rank and Song/Artist. Top songs include Pety Pablo Freek-A-Leek, Ying Yang Twins Featuring Tr Whats Happ, Houston Featuring Leona Lewis.

Table with 2 columns: Rank and Song/Artist. Top songs include Lil' Flip Featuring Leona Lewis, Ciara Featuring Pety Pablo Goodies, Terror Squad Lean Back.

AA Xzibit Muthafucka 22 1 F.O.D. Keep It Ghetto 14 0 Pitbull Back Up 8 3

AA Trick Daddy Featuring Lil Jon & Lu Yaeh! 20 1 Usher Featuring Alicia Keys My Boo 12 0 Nelly Flap Your Wings 8 1

AA Trick Daddy Featuring Lil Jon & Lu Yaeh! 20 1 Usher Featuring Alicia Keys My Boo 12 0 Nelly Flap Your Wings 8 1

AA Kevin Lyttle Drive Me Crazy 54 0 Lil' Flip Featuring Leona Lewis 7 1 Nelly Flap Your Wings 6 1

AA I-20 Featuring Ludacris & Bo Break Brea 7 3

AA Paul Wall They Don't Know 41 0

KGCI Riverside PD: Jesse Duran MD: Robert "O.D.M." Gutierrez Clear Channel 909-684-1991

KUBE Seattle OM: Shellie Hart PD: Eric Powers MD: Karen Wild Clear Channel 206-285-2295

KSFM Sacramento PD: Byron Kennedy MD: Tony Tecate Infinity 916-920-1025

KQKS Denver PD: Cat Collins APD/MD: John E. Kage Jefferson-Pilot 303-321-0950

WLTD Tampa PD: Orlando APD: Scantman MD: Beata Infinity 727-568-9870

KZZP Phoenix PD: Mark Medina APD/MD: Corina MD: Chino Clear Channel 602-279-5577

Table with 2 columns: Rank and Song/Artist. Top songs include Ciara Featuring Pety Pablo Goodies, Lil' Flip Featuring Leona Lewis, Alicia Keys I Should've Known Better.

Table with 2 columns: Rank and Song/Artist. Top songs include Juvenile Featuring Souja Si Slow Moto, Christina Milian Dip It Low, Lil' Flip Featuring Leona Lewis.

Table with 2 columns: Rank and Song/Artist. Top songs include Juvenile Featuring Souja Si Slow Moto, Ciara Featuring Pety Pablo Goodies, Lil' Flip Featuring Leona Lewis.

Table with 2 columns: Rank and Song/Artist. Top songs include Ciara Featuring Pety Pablo Goodies, Lil' Flip Featuring Leona Lewis, Alicia Keys I Should've Known Better.

Table with 2 columns: Rank and Song/Artist. Top songs include Terror Squad Lean Back, Ciara Featuring Pety Pablo Goodies, Lil' Flip Featuring Leona Lewis.

Table with 2 columns: Rank and Song/Artist. Top songs include Ciara Featuring Pety Pablo Goodies, Lil' Flip Featuring Leona Lewis, Alicia Keys I Should've Known Better.

AA Ashlee Simpson Pieces Of Me 9 0 Pitbull Featuring Pico Damm Dammit Man 6 0

AA No Airplay Adds This Week

AA Shawna Featuring Ludacris Shake That S 10 3 Alicia Keys Featuring Tony! Diary 9 0 Lil' Flip Flap Your Wings 7 0

AA Trick Daddy Featuring Lil Jon & Lu Yaeh! 37 4 Shyne Featuring Ashanti Jimmy Choo 24 0 N.O.R.E., GemStar, Big Mato, Oye Mi Can 20 0

AA Yvonne In Da Club 11 0

AA Lil' Flip Flap Your Wings 14 3

WRDQ Philadelphia PD: Chuck Tisa APD/MD: Angel Garcia Beasley 610-667-9000

XHTZ San Diego PD: Diana Laird APD: Sonny Loco Clear Channel 858-292-2000

KTMB Minneapolis PD: Sam Elliott APD/MD: Zennie K Radio One 952-842-7200

KBPD San Antonio OM/PD: Rick Thomas MD: Romeo Univision 210-829-1075

WNVZ Norfolk PD: Don London MD: Mike Klein Entercom 757-497-2000

KXJM Portland, OR VP/Pgm: Mark Adams MD: Alexa Rose City 503-243-7595

Table with 2 columns: Rank and Song/Artist. Top songs include Lil' Flip Featuring Leona Lewis, Ciara Featuring Pety Pablo Goodies, Terror Squad Lean Back.

Table with 2 columns: Rank and Song/Artist. Top songs include Ciara Featuring Pety Pablo Goodies, Lil' Flip Featuring Leona Lewis, Terror Squad Lean Back.

Table with 2 columns: Rank and Song/Artist. Top songs include Houston Featuring Chingy, Na I Like Tha, Terror Squad Lean Back, Lil' Flip Featuring Leona Lewis.

Table with 2 columns: Rank and Song/Artist. Top songs include Ciara Featuring Pety Pablo Goodies, Lil' Flip Featuring Leona Lewis, Houston Featuring Chingy, Na I Like Tha.

Table with 2 columns: Rank and Song/Artist. Top songs include Christina Milian Dip It Low, Terror Squad Lean Back, Ciara Featuring Pety Pablo Goodies.

Table with 2 columns: Rank and Song/Artist. Top songs include Terror Squad Lean Back, 213 Groupie Luv, Nelly Featuring Jaheim My Place.

AA Mase My Harlem Lady 52 0 Silkki The Shocker Featuring We Like Th 7 4

AA Lil' Flip Flap Your Wings 20 1 N.O.R.E., GemStar, Big Mato, Oye Mi Can 20 0 Nelly Flap Your Wings 20 1

AA Nelly Flap Your Wings 13 4 Lil' Flip Flap Your Wings 9 0 Nas You Know My Style 7 4

AA Shawna Featuring Ludacris Shake That S 18 4 Lil' Flip Flap Your Wings 9 5 Alicia Keys Featuring Tony! Diary 6 5

AA Akon Featuring Styles P. Locked Up 21 0 Guerilla Black Featuring Bee Compton 10 0 Lil' Flip Flap Your Wings 7 0

AA Juvenile, Wacko & Skip Nolia Clap 15 0 Aja Rule Featuring R. Kelly Wonder 15 0 Lil' Flip Flap Your Wings 9 4

IMPACT



Nielsen Broadcast Data Systems

Songs posting gains in detections or with a percentage loss in detections equal to or better than the monitored downtime percentage in the format. Songs listed in order of detections.

*Indicates station experienced between 24 and 36 hours of monitored downtime during the chart week.

TOP 10 BOUND

Total Detections/Gain

AKON FEATURING STYLES P. 1602/315 Locked Up (SRC/Universal/UMRG)

Total Stations: 47 Chart Move: 18-13 H (8), M (16), L (23) Airplay Adds: 7

Table with columns: STATION, LW, LM, ZM, ID, and song details for Akon's 'Locked Up'.

J-KWON FEATURING SADIYYAH 1224/148 You & Me (So So Def/Zomba)

Total Stations: 51 Chart Move: 27-19 H (1), M (21), L (29) Airplay Adds: 3

Table with columns: STATION, LW, LM, ZM, ID, and song details for J-Kwon's 'You & Me'.

213 758/101 Groupe Luv (Doggystyle/TVT)

Total Stations: 44 Chart Move: 34-30 H (0), M (11), L (33) Airplay Adds: 0

Table with columns: STATION, LW, LM, ZM, ID, and song details for Groupe Luv's 'Groupe Luv'.

ALICIA KEYS FEAT. TONY! TONI! TONE! 493/228 Diary (J/RMG) ☆

Total Stations: 38 Chart Move: 1-1 H (0), M (16), L (23) Airplay Adds: 9

Table with columns: STATION, LW, LM, ZM, ID, and song details for Alicia Keys' 'Diary'.

NB RIDAZ 182/36 Pretty Girl (NastyBoy/Upstairs)

Total Stations: 3 Chart Move: 1-1 H (0), M (16), L (23) Airplay Adds: 1

Table with columns: STATION, LW, LM, ZM, ID, and song details for NB RIDAZ's 'Pretty Girl'.

AIRPOWER

Total Detections/Gain

LL COOL J 1950/344 Headsprung (Def Jam/IDJMG)

AIRPLAY LEADER (FIRST STATION TO 100 PLAYS)

XHTO • El Paso, TX PD: Francisco Aguirre Date: 07/18/04

Total Stations: 56 Chart Move: 13-12 H (7), M (32), L (17) Airplay Adds: 2

Table with columns: STATION, LW, LM, ZM, ID, and song details for LL Cool J's 'Headsprung'.

MONICA 1189/43 U Should've Known Better (J/RMG) ☆

Total Stations: 51 Chart Move: 25-21 H (4), M (16), L (31) Airplay Adds: 3

Table with columns: STATION, LW, LM, ZM, ID, and song details for Monica's 'U Should've Known Better'.

AMANDA PEREZ 751/105 Dedicate (Powerhouse/Virgin)

Total Stations: 39 Chart Move: 36-31 H (1), M (11), L (27) Airplay Adds: 2

Table with columns: STATION, LW, LM, ZM, ID, and song details for Amanda Perez's 'Dedicate'.

N.O.R.E., GEMSTAR, BIG MATO, 414/211 NINA SKY & TEGO CALDERON Oye Mi Can (Thuged Out Militainment/Townz Soundz)

Total Stations: 23 Chart Move: 1-1 H (0), M (16), L (23) Airplay Adds: 1

Table with columns: STATION, LW, LM, ZM, ID, and song details for N.O.R.E.'s 'Oye Mi Can'.

ASHLEE SIMPSON 173/54 Pieces Of Me (Geffen/Interscope)

Total Stations: 4 Chart Move: 1-1 H (0), M (16), L (23) Airplay Adds: 2

Table with columns: STATION, LW, LM, ZM, ID, and song details for Ashlee Simpson's 'Pieces Of Me'.

AIRPOWER BOUND

Total Detections/Gain

YOUNG BUCK 1466/57 Let Me In (G-Unit/Interscope)

Total Stations: 55 Chart Move: 16-14 H (3), M (26), L (26) Airplay Adds: 0

Table with columns: STATION, LW, LM, ZM, ID, and song details for Young Buck's 'Let Me In'.

T.I. 1189/43 Let's Get Away (Grand Hustle/Affinity)

Total Stations: 49 Chart Move: 24-22 H (1), M (23), L (25) Airplay Adds: 0

Table with columns: STATION, LW, LM, ZM, ID, and song details for T.I.'s 'Let's Get Away'.

PETEY PABLO & RASHEEDA 749/32 Vibrate (Jive/Zomba)

Total Stations: 46 Chart Move: 32-32 H (1), M (9), L (36) Airplay Adds: 0

Table with columns: STATION, LW, LM, ZM, ID, and song details for Petey Pablo & Rasheeda's 'Vibrate'.

USHER FEATURING ALICIA KEYS 322/152 My Boo (LaFace/Zomba) ☆

Total Stations: 27 Chart Move: 1-1 H (0), M (16), L (23) Airplay Adds: 5

Table with columns: STATION, LW, LM, ZM, ID, and song details for Usher's 'My Boo'.

SHYNE FEATURING ASHANTI 168/73 Jimmy Choo (Gangland/Def Jam/IDJMG)

Total Stations: 27 Chart Move: 1-1 H (0), M (16), L (23) Airplay Adds: 3

Table with columns: STATION, LW, LM, ZM, ID, and song details for Shyne's 'Jimmy Choo'.

JADAKISS FEAT. ANTHONY HAMILTON 1236/185 Why? (Ruff Ryders/Interscope) ☆

Total Stations: 53 Chart Move: 28-18 H (3), M (23), L (27) Airplay Adds: 2

Table with columns: STATION, LW, LM, ZM, ID, and song details for Jadakiss's 'Why?'.

PITBULL 1153/86 Back Up (TVT)

Total Stations: 50 Chart Move: 26-24 H (2), M (20), L (28) Airplay Adds: 1

Table with columns: STATION, LW, LM, ZM, ID, and song details for Pitbull's 'Back Up'.

SHAWNNA FEATURING LUDCRIS 669/85 Shake That Sh** (Disturbing The Peace/Def Jam South/IDJMG) ☆

Total Stations: 43 Chart Move: 39-36 H (0), M (11), L (32) Airplay Adds: 4

Table with columns: STATION, LW, LM, ZM, ID, and song details for Shawnna's 'Shake That Sh**'.

YONNIE 280/57 In Da Club (Merc/Blackground/UMRG)

Total Stations: 15 Chart Move: 1-1 H (0), M (16), L (23) Airplay Adds: 2

Table with columns: STATION, LW, LM, ZM, ID, and song details for Yonnie's 'In Da Club'.

RUPEE 212/83 Tempted To Touch (Atlantic)

Total Stations: 23 Chart Move: 1-1 H (0), M (16), L (23) Airplay Adds: 2

Table with columns: STATION, LW, LM, ZM, ID, and song details for Rupee's 'Tempted To Touch'.

MASE FEATURING P. DIDDY 861/159 Breathe, Stretch, Shake (Bad Boy/Fo' Reel/UMRG)

Total Stations: 47 Chart Move: 31-29 H (0), M (14), L (33) Airplay Adds: 3

Table with columns: STATION, LW, LM, ZM, ID, and song details for Mase's 'Breathe, Stretch, Shake'.

CHART BOUND

Total Detections/Gain

FRANKIE J FEATURING PAUL WALL 506/33 On The Floor (Columbia/SUM)

Total Stations: 23 Chart Move: 1-1 H (0), M (16), L (23) Airplay Adds: 1

Table with columns: STATION, LW, LM, ZM, ID, and song details for Frankie J's 'On The Floor'.

TRICK DADDY FEAT. LIL JON & TWISTA 208/170 Let's Go (2004) (Slip-N-Slide/Atlantic)

Total Stations: 20 Chart Move: 1-1 H (0), M (16), L (23) Airplay Adds: 6

Table with columns: STATION, LW, LM, ZM, ID, and song details for Trick Daddy's 'Let's Go'.

BRIAN HARVEY FEAT. WYCLEF JEAN 90/13 Ole Ole Ole (Loving You) (Empire Musicwerks)

Total Stations: 12 Chart Move: 1-1 H (0), M (16), L (23) Airplay Adds: 3

Table with columns: STATION, LW, LM, ZM, ID, and song details for Brian Harvey's 'Ole Ole Ole'.

H=Heavy (55+ Detections), M=Medium (25-54), L=Light (Under 25). Airpower awarded to songs appearing in the top 20 on both the Airplay and Audience charts for the first time with increases in both detections and audience. ☆ Initial impact: songs appearing on this page for the first time in summary form. Airplay Adds are songs with 6 or more detections at new stations this week. The Airplay Leaderboard ranks taste-maker stations that have been the most successful in identifying future hit songs as measured by the amount of AIRPOWER titles for which they were Airplay Leaders. Refer to each format's Power Playlists page to see this week's Airplay Leaders. ☆ indicates title earned HitPredictor status in research data provided by Promosquad.



Starr's Tweaks Lead WERQ To Ratings Peak

When you're the only R&B/hip-hop station in your market, competition doesn't necessarily seem like an issue. Not so if you work for WERQ (92 Q Jams) Baltimore, where PD Victor Starr takes an aggressive approach to programming his station with a Zen-like mentality.

Starr says he often refers to a quote from Chinese military strategist Sun Tzu when programming his station: "It is a doctrine of war not to assume the enemy will not come, but rather to rely on one's readiness to meet him; not to presume that he will not attack, but rather to make one's self invincible."

The quote seems to have had quite an effect on the programmer—who has worked at WZMX (Hot 93.7) Hartford, Conn., and rhythmic top 40 KPRR (Power 102) El Paso, Texas—and the station.

The Radio One station rose 9.2-9.5 12-plus in the most recent Arbitron book—making it the top-rated station in the market. WERQ has maintained a 9 share or better in the last three Arbitron books.

"It comes down to being in touch with Baltimore," Starr says. "We are willing to let the listeners lead us as opposed to leading them. That's the formula we have in place. If there is something that is important to our listeners, we are there."

Starr, who entered the station as PD in July 2003, says he soon realized his first order of business would be to focus the station.

"When I got here the station was too broad," he says. "We were doing too much—trying to please listeners [ages] 8 to 80."

"I looked at everything we were doing, and just tweaked it," he says. "I didn't make many changes—just little tweaks. We needed to focus on the 18-34 demographic. So we tightened the music and we shortened the current playlist to only play the best of the best. I also reduced the number of golds and re-entrants in the rotation."

Starr also made a point of refashioning the look of the station.

"We redesigned all the imaging, including the logo," the PD says. "We wanted to change our presentation from 'cookie cutter' to a more aggressive hip-hop-leaning station without losing the older audience that we had. We took a gamble and it paid off. That's how you keep a station relevant."

BALTIMORE'S BREEDING GROUND

Another key to the station's success has been its commitment to playing local artists.

"We're jumping out with a lot of local records," says Starr, who programs the station with APD/MD Neke Howse. "We want people in Baltimore to blow up. They have the talent; sometimes they just need the right team of people working with them."

That said, Starr isn't willing to just play any artist from Baltimore.

"When I started in the market, I met with 20 or 30 local labels, artists and promoters and I told them that if they wanted to get into the rotation that they would have to step their game up," he says. "They had to understand that they were competing with the Beyoncé's, Jay-Z's and Nellys for a spot on our playlist."

Among the local artists currently in rotation are Paula Campbell ("You Make Me...") and Bossman ("Oh [B-More Anthem]" and "I Did It").

The station's commitment to Baltimore goes beyond the city's artists. Through its promotions department, headed by Letoya Dixon, WERQ often attends community events and concerts.

Recently, the station even sent one of its vehicles to the Preakness Stakes in the Baltimore suburb of Pimlico—an event normally dominated by the area's rock and top 40 stations.

In addition to events, WERQ is committed to supporting the city on many of the social issues it faces.

"We're really getting behind the city on the issues that are important to its residents," Starr says. "Baltimore is the No. 2 city for murders and No. 3 in HIV infections. We often work with the mayor's office and outreach organizations to help combat these problems. We see ourselves as the people's station."

According to Starr, Baltimore Mayor Martin O'Malley has used the station's morning show to address his constituents.

GOING BEYOND THE HARBOR

WERQ doesn't just focus on the city of Baltimore. "It's about growing beyond Baltimore itself," Starr says. "We know the importance of reaching out to the outlying counties. We do appearances and drops in all the communities we reach. We spend time in more than just Baltimore city proper."

While Starr knows there isn't any competition in the marketplace, he says he and his station are ready should a competitor appear.

"We play the game as if we have competition in the marketplace already," Starr says. "We know that at some point some station is not going to have a good book, they'll see the marketing value in our format and will want to flip [to this format]."

"We just want them to think twice about what they're doing," he adds. "We don't want to be vulnerable at all. So to that end, we concentrate on local acts, being early on hip-hop, getting involved in the community and driving all of that home."

92 Q JAMS

3 P.M.

Bossman, "Oh (B-More Anthem)"
Monica, "U Should've Known Better"
Lil Scrappy, "No Problem"
Jadakiss Featuring Anthony Hamilton, "Why?"
Twista Featuring Kanye West & Jamie Foxx, "Slow Jamz"
Ludacris, "Diamond in the Back"
Lil' Flip Featuring Lea, "Sunshine"
Lloyd Banks, "I'm So Fly"
Twista Featuring R. Kelly, "So Sexy"

Brandy's New Beat



Brandy stopped by WPHI (103.9 the Beat) Philadelphia to tape a special, "Brandy Behind the Beat," for the station. Pictured with Brandy is PD Colby Colb. (Photo: Atlantic Records)

IN THE MIX

Suicide Alive And Well In Miami

For WEDR (99 Jamz) Miami's DJ Suicide, the adage "There's no place like home" could not ring more true.

Suicide, who began his mixing career on the underground radio and in the Miami club scene, joined WEDR in the mid-'90s when PD Cedric Hollywood came aboard.

"He brought in 'The Luke Show' to WEDR," Suicide says. "The show had a host of guest DJs, and I was one of them."

According to Suicide, Hollywood was already familiar with his reputation—he had served as tour DJ for JT Money and Trick Daddy—and approached him about joining the station because "he knew I was hungry."

Suicide's first slots on WEDR were the 30-minute "The Thunderstorm," which ran Monday to Friday at 8 p.m., and the hourlong "Heat to the Beat," which ran on the same days at noon. His current shows are "Ultimate Midday Mix" (Wednesday to Saturday from

noon to 1 p.m.) and "Old School Hip-Hop Sessions" (Sundays from 7 p.m. to 9 p.m.).

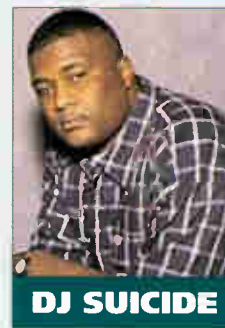
In addition to his on-air duties, Suicide is quickly making a name for himself on the small screen, thanks to cable network Mun2's "The Roof," where he serves as one of the show's resident DJ/hosts.

"The show has opened up a lot of doors for me," Suicide says. "It's nationwide, so everyone sees you and knows who you are."

Suicide also owns a pair of Miami-based promotions companies. Phat Man Promotions and Early in the Game.

With all his success, the Miami native has no intentions of leaving its sandy shores anytime soon.

"I love my city," Suicide says. "There is a lot of talent here, and I want to be able to help put these cats on. The industry shouldn't just look at Miami as a vacation spot. There is a lot of talent here, and that's why I'm still here."



DJ SUICIDE

Kane & Curtis



J artist Shawn Kane, left, performed his current single, "Girl I Wonder," at the Coca-Cola Jamfest in Columbia, S.C. The singer is slated to open for labelmate Angie Stone when her tour begins in September. Pictured with Kane is WWDM Columbia afternoon personality/WLTX-TV anchorman Curtis Wilson. (Photo: J/RCA Records)

Satellite Bite



TVT artist Pitbull stopped by Sirius Satellite Radio to promote his debut album, "M.I.A.M.I." The set, released Aug. 24, features lead single "Culo." Pictured, from left, are TVT mix-show director Theo Brown, Pitbull and Sirius program manager of rhythmic formats Geronimo. (Photo: Sirius)



k-os

the LOVE SONG

(SOURCE MAGAZINE'S 2003 INTERNATIONAL ALBUM AWARD WINNER)

IMPACTING
URBAN ADULT, RHYTHM AND CROSSOVER

8/30 & 8/31



JOYFUL REBELLION AVAILABLE EVERYWHERE

9 • 21 • 04



IF YOU SPEAK ABOUT IT, BE ABOUT IT.

FABOLOUS BREATHE

IMPACT DATE:
8/30

THE HIT SINGLE FROM
THE FORTHCOMING ALBUM

REAL TALK

WWW.FABOLOUS.COM WWW.ATLANTIC-STREET.COM



© 2004 Atlantic Recording Corporation, A Warner Music Group Company.



Songs ranked by number of detections. Playlists are listed in order of TSA weekly cume, beginning with the highest-cuming station. Cumes are updated twice yearly following the release of the spring and fall Arbitron surveys. The number of stations shown each week varies depending upon space.

Nielsen Broadcast Data Systems

denotes songs with 6 or more detections at station for first time this week.

WQHT New York VP/Pgm: Tracy Cloherty APD/MD: E-man Emmis 212-229-9797

KPWR Los Angeles Dir/Pgm: Damon Young APD/MD: E-man Emmis 818-953-4200

WWPR New York PD: Michael Saunders MD: Mara Melendez Clear Channel 212-704-1051

KKBT Los Angeles PD: Robert Scorpio MD: Tawala Sharp Radio One 323-634-1800

WBLS New York PD: Vinny Brown MD: Deneen Womack Inner City 212-447-1000

WGCI Chicago OM: Elroy R.C. Smith APD/MD: Tiffany Green Clear Channel 312-540-2000

Table with 2 columns: Rank and Song Title. Includes songs like 'Terror Squad Lean Back', 'Kanye West Jesus Walks', 'Akon Featuring Styles P. Locked Up'.

Table with 2 columns: Rank and Song Title. Includes songs like 'Lil' Flip Featuring Lea Sunshine', 'Ciara Featuring Petey Pablo Goodies', 'Kanye West Jesus Walks'.

Table with 2 columns: Rank and Song Title. Includes songs like 'Christina Milian Dip It Low', 'Terror Squad Lean Back', 'Alicia Keys Featuring Tony! Diary'.

Table with 2 columns: Rank and Song Title. Includes songs like 'Ciara Featuring Petey Pablo Goodies', 'Terror Squad Lean Back', 'Lil' Flip Featuring Lea Sunshine'.

Table with 2 columns: Rank and Song Title. Includes songs like 'R. Kelly Happy People', 'R. Kelly U Saved Me', 'Kevin Lyttle Featuring Sprag Turn Me On'.

Table with 2 columns: Rank and Song Title. Includes songs like 'Kindred The Family Soul Stars', 'Amel Larrieux For Real', 'Jadakiss Featuring Anthony H Why?'.

WPGC Washington, DC VP/Pgm: Jay Stevens DM: Reggie Rowe MD: Sarah D'Connor Infinity 301-918-0955

WUSL Philadelphia Dir/Pgm: Thea Mitchem MD: Coka-Lani Clear Channel 215-483-8900

WVEE Atlanta PD: Tony Brown APD/MD: Tosha Love Infinity 404-898-8900

KBXX Houston OM: Tom Calabocci MD: Carmen Contreras Radio One 713-623-2108

WKYS Washington, DC PD: Darryl Huckaby MD: DJ Iran Radio One 301-306-1111

WPWC Chicago PD: Jay Alan MD: Barbara McDowell Crawford 773-734-4455

Table with 2 columns: Rank and Song Title. Includes songs like 'LL Cool J Headzprung', 'Terror Squad Lean Back', 'Jadakiss Featuring Anthony H Why?'.

Table with 2 columns: Rank and Song Title. Includes songs like 'Jadakiss Featuring Anthony H Why?', 'Alicia Keys Featuring Tony! Diary', 'Nelly Flap Your Wings'.

Table with 2 columns: Rank and Song Title. Includes songs like 'Ciara Featuring Petey Pablo Goodies', 'Terror Squad Lean Back', 'Usher Confessions Part I'.

Table with 2 columns: Rank and Song Title. Includes songs like 'Ciara Featuring Petey Pablo Goodies', 'Juvie Wacko & Skip Nola Clap', 'Alicia Keys Featuring Tony! Diary'.

Table with 2 columns: Rank and Song Title. Includes songs like 'Terror Squad Lean Back', 'Kanye West Jesus Walks', 'LL Cool J Headzprung'.

Table with 2 columns: Rank and Song Title. Includes songs like 'Terror Squad Lean Back', 'Lil' Flip Featuring Lea Sunshine', 'Jadakiss Featuring Anthony H Why?'.

KMEL San Francisco DM: Michael Martin APD: "Jazzy" Jim Archer MD: Big Von Johnson Clear Channel 415-538-1061

WJLB Detroit Dir. Pgm: K.J. Holiday APD/MD: Kris Kelly Clear Channel 313-965-2000

KKDA Dallas PD: Skip Cheatham Service 972-263-9911

WEDR Miami PD/MD: Cedric Hollywood AMD: Shelby Rushin Cox 305-623-7711

WDT Detroit PD: Charles "Spud" Spence Radio One 313-259-2000

WMJ Miami PD: Dion Summers MD: Darnella Dunham Clear Channel 954-862-2000

Table with 2 columns: Rank and Song Title. Includes songs like 'Terror Squad Lean Back', 'Alicia Keys Featuring Tony! Diary', 'Ciara Featuring Petey Pablo Goodies'.

Table with 2 columns: Rank and Song Title. Includes songs like 'Alicia Keys Featuring Tony! Diary', 'Ciara Featuring Petey Pablo Goodies', 'Terror Squad Lean Back'.

Table with 2 columns: Rank and Song Title. Includes songs like 'Terror Squad Lean Back', 'Ciara Featuring Petey Pablo Goodies', 'Usher Confessions Part I'.

Table with 2 columns: Rank and Song Title. Includes songs like 'Terror Squad Lean Back', 'Lil' Flip Featuring Lea Sunshine', 'Usher Confessions Part I'.

Table with 2 columns: Rank and Song Title. Includes songs like 'Terror Squad Lean Back', 'LL Cool J Headzprung', 'T.I. Let's Get Away'.

Table with 2 columns: Rank and Song Title. Includes songs like 'Ciara Featuring Petey Pablo Goodies', 'Akon Featuring Styles P. Locked Up', 'Terror Squad Lean Back'.

AIRPLAY MONITOR denotes songs with 6 or more detections at station for first time this week.

POWERPLAYLISTS

WPHI Philadelphia PD: Colby Colb Radio One 215-884-9400

Table with 2 columns: Rank and Song Title. Includes songs like 'Terror Squad Lean Back', 'Alicia Keys Featuring Tony! Diary', etc.

WHTA Atlanta PD: Jerry Smokin' B APD: Dimitris Stevens MD: Ramona DeBreaux Radio One 404-765-9750

Table with 2 columns: Rank and Song Title. Includes songs like 'Terror Squad Lean Back', 'Ciara Featuring Pety Pablo Goodies', etc.

WERQ Baltimore PD: Victor Starr MD: Neke Howse Radio One 410-332-8200

Table with 2 columns: Rank and Song Title. Includes songs like 'Terror Squad Lean Back', 'Alicia Keys Featuring Tony! Diary', etc.

WZMX Hartford PD: DJ Buck MD: David Simpson Infinity 860-677-6700

Table with 2 columns: Rank and Song Title. Includes songs like 'Ciara Featuring Pety Pablo Goodies', 'Terror Squad Lean Back', etc.

KKFR Phoenix PD: Bruce St. James MD: Joey Boy MD: J Philla Emmis 602-274-6200

Table with 2 columns: Rank and Song Title. Includes songs like 'Ciara Featuring Pety Pablo Goodies', 'Terror Squad Lean Back', etc.

WJMH Greensboro OM/PD: Brian Douglas MD: Tap Money Entercom 336-605-5200

Table with 2 columns: Rank and Song Title. Includes songs like 'Ciara Featuring Pety Pablo Goodies', 'Terror Squad Lean Back', etc.

WQUE New Orleans OM: Carla Boatner PD/MD: Upton Angela Clear Channel 504-679-7300

Table with 2 columns: Rank and Song Title. Includes songs like 'Terror Squad Lean Back', 'Magic Featuring YoungBloodZ I Smoke', etc.

WQOK Raleigh OM: Cy Young MD: Shawn Alexander Radio One 919-848-9736

Table with 2 columns: Rank and Song Title. Includes songs like 'Terror Squad Lean Back', 'Usher Confessions Part II', etc.

WPEG Charlotte OM: Terry Avey MD: Deon Cole Infinity 704-333-0131

Table with 2 columns: Rank and Song Title. Includes songs like 'Terror Squad Lean Back', 'Lil' Flip Featuring Lea Sunshine', etc.

FOR WEEK ENDING AUGUST 22, 2004

Main chart table with columns: THIS WEEK, LAST WEEK, WKS. ON CHART, TITLE/IMPRINT/PROMOTION LABEL, ARTIST, DELECTIONS, TW, LW, MILLIONS, RANK. Includes songs like 'LEAN BACK', 'SUNSHINE', 'MY PLACE', etc.

Songs ranked by number of detections. () Songs showing an increase in detections over the previous week, regardless of chart movement. A song will also receive a bullet if its percentage loss in detections does not exceed the percentage of monitored station downtime for the format.

GREATEST GAINERS RAP INCREASE IN DETECTIONS. NELLY FEATURING JAHEIM • My Place (Derrty/Fo' Reel/UMRG) +887. NELLY • Flap Your Wings (Derrty/Fo' Reel/UMRG) +749. LL COOL J • Headsprung (Def Jam/IDJMG) +542. LLOYD BANKS • I'm So Fly (G-Unit/Interscope) +527. JADAKISS FEATURING ANTHONY HAMILTON • Why? (Ruff Ryders/Interscope) +438.

MONITOR AIRPLAY Monitor Nielsen Broadcast Data Systems

Songs posting gains in detections or with a percentage loss in detections equal to or better than the monitored downline percentage in the format. Songs listed in order of detections.

*Indicates station experienced between 24 and 48 hours of monitored downtime during the chart week.

TOP 10 BOUND

Total Detections/Gain

YOUNG BUCK 2877/20

Let Me In (G-Unit/Interscope)
Total Stations: 90 Chart Move: 12-11
H (16), M (41), L (33) Airplay Adds: 0

Table listing stations for Young Buck's 'Let Me In' with columns for station, ID, and counts.

Table listing stations for Young Buck's 'Let Me In' (continued).

Table listing stations for Young Buck's 'Let Me In' (continued).

MAGIC 1161/180

I Smoke, I Rank (Body Heat)

Total Stations: 39 Chart Move: 35-26
H (12), M (7), L (20) Airplay Adds: 2

Table listing stations for Magic's 'I Smoke, I Rank' with columns for station, ID, and counts.

LLOYD BANKS 1071/260

I'm So Fly (G-Unit/Interscope) ☆

Total Stations: 84 Chart Move: 40-30
H (1), M (11), L (72) Airplay Adds: 17

Table listing stations for Lloyd Banks' 'I'm So Fly' with columns for station, ID, and counts.

AIRPOWER NO SONGS QUALIFIED FOR AIRPOWER THIS WEEK

AIRPOWER BOUND

T.I. 2782/143

Let's Get Away (Grand Hustle/Atlantic)

Total Stations: 86 Chart Move: 14-12
H (21), M (34), L (31) Airplay Adds: 1

Table listing stations for T.I.'s 'Let's Get Away' with columns for station, ID, and counts.

CHRISTINA MILIAN 1709/40

Dip It Low (Island/IDJMG)

Total Stations: 73 Chart Move: 21-17
H (8), M (28), L (37) Airplay Adds: 0

Table listing stations for Christina Milian's 'Dip It Low' with columns for station, ID, and counts.

JUVENILE, WACKO & SKIP 1446/131

Nolia Clap (UTP/Atlantic)

Total Stations: 84 Chart Move: 23-23
H (6), M (21), L (57) Airplay Adds: 2

Table listing stations for Juvenile, Wacko & Skip's 'Nolia Clap' with columns for station, ID, and counts.

NELLY 1156/546

Flap Your Wings (Derry/Reel/UMRG) ☆

Total Stations: 83 Chart Move: Debut 27
H (2), M (8), L (73) Airplay Adds: 31

Table listing stations for Nelly's 'Flap Your Wings' with columns for station, ID, and counts.

GUERILLA BLACK FEAT. BEENIE MAN 1281/198

Compton (Virgin)

Total Stations: 79 Chart Move: 31-24
H (2), M (15), L (62) Airplay Adds: 4

Table listing stations for Guerilla Black feat. Beenie Man's 'Compton' with columns for station, ID, and counts.

SHAWNNA FEATURING LUDACRIS 1146/36

Shake That Sh** (Disturbing The Peace/Def Jam South/IDJMG) ☆

Total Stations: 68 Chart Move: 30-28
H (0), M (17), L (51) Airplay Adds: 1

Table listing stations for Shawnna featuring Ludacris' 'Shake That Sh**' with columns for station, ID, and counts.

LIL SCRAPPY 2671/200

No Problem (BME/Reprise/Warner Bros.)

Total Stations: 91 Chart Move: 15-13
H (19), M (34), L (38) Airplay Adds: 2

Table listing stations for Lil Scrappy's 'No Problem' with columns for station, ID, and counts.

ANTHONY HAMILTON 1533/165

Charlene (So So Def/Zomba) ☆

Total Stations: 68 Chart Move: 22-21
H (8), M (17), L (43) Airplay Adds: 2

Table listing stations for Anthony Hamilton's 'Charlene' with columns for station, ID, and counts.

CRIME MOB FEAT. LIL SCRAPPY 1192/90

Kruck If You Fuck (BME/Reprise/Warner Bros.)

Total Stations: 65 Chart Move: 28-25
H (4), M (18), L (43) Airplay Adds: 0

Table listing stations for Crime Mob feat. Lil Scrappy's 'Kruk If You Fuck' with columns for station, ID, and counts.

BRANDY 1118/54

Who Is She 2 U (Atlantic) ☆

Total Stations: 71 Chart Move: 32-29
H (1), M (12), L (58) Airplay Adds: 2

Table listing stations for Brandy's 'Who Is She 2 U' with columns for station, ID, and counts.

DEM FRANCHIZE BOYZ 956/96

White Tee's (Tight 2 Def/Universal/UMRG)

Total Stations: 59 Chart Move: 38-35
H (3), M (12), L (44) Airplay Adds: 4

Table listing stations for Dem Franchise Boyz' 'White Tee's' with columns for station, ID, and counts.

D.O.D. & KANYE WEST 770/58

Higher (Legion) ☆

Total Stations: 54 Chart Move: Debut 40
H (1), M (6), L (47) Airplay Adds: 3

Table listing stations for D.O.D. & Kanye West's 'Higher' with columns for station, ID, and counts.

AKON FEATURING STYLES P. 2543/303

Locked Up (SRC/Universal/UMRG)

Total Stations: 87 Chart Move: 16-14
H (16), M (34), L (37) Airplay Adds: 2

Table listing stations for Akon featuring Styles P's 'Locked Up' with columns for station, ID, and counts.

MASE FEATURING P. DIDDY 1518/237

Breathin', Stretch, Shake (Bad Boy/Reel/UMRG) ☆

Total Stations: 81 Chart Move: 24-22
H (3), M (18), L (60) Airplay Adds: 5

Table listing stations for Mase featuring P. Diddy's 'Breathin', Stretch, Shake' with columns for station, ID, and counts.

H-Hey (45+ Detections), M=Medium (25-44), L=Light (Under 25). Airpower awarded to songs appearing in the top 20 on both the Airplay and Audience charts for the first time with increases in both detections and audience. ☆ Initial impact: songs appearing on this page for the first time in summary form. Airplay Adds are songs with 6 or more detections at new stations this week. The Airplay Leaderboard ranks taste-making stations that have been the most successful in identifying future hit songs as measured by the amount of AIRPOWER titles for which they were Airplay Leaders. Refer to each format's Power Playcharts page to see this week's Airplay Leaders. ☆ indicates title earned HiPredictor status in research data provided by Promosquad.



MANNIE FRESH REAL BIG

WHEN HE DOES IT! HE DOES IT REAL BIG!!

REAL BIG ADD DATE AT URBAN & CROSSOVER 8/31

**EARLY
AIRPLAY
AT:**

**WVEE/ATLANTA
WQUE/NEW ORLEANS
WPEG/CHARLOTTE
WEMX/BATON ROUGE
WJBT/JACKSONVILLE
WWWZ/CHARLESTON
WFXR/AUGUSTA
WHXT/COLUMBIA
KIPR/LITTLE ROCK
WBLX/MOBILE
KXHT/MEMPHIS
KPTY/HOUSTON
WHHH/INDIANAPOLIS
WPOW/MIAMI**

**KKDA/DALLAS
KNOU/NEW ORLEANS
WIZF/CINCINATI
WBTF/LEXINGTON
WNPL/NASHVILLE
WJTT/CHATTANOOGA
WRJH/JACKSON
WZHT/MONTGOMERY
WFXE/COLUMBUS
WAJZ/ALBANY
KBXX/HOUSTON
WBHJ/BIRMINGHAM
KBFB/DALLAS**

**FROM THE ALBUM SUPA FLY
IN STORES THIS FALL**



**UNIVERSAL
RECORDS**

ADULT R&B

ADULT R&B

ADULT R&B



WRKS New York
OM: John Mullen
PD: Toya Beasley
MD: Julie Gustines
Emmis 212-242-9870

KHHT Los Angeles
PD: Mike Marino
APD/MD: Ron Shapiro
Clear Channel 818-559-2252

WVAZ Chicago
OM: Elroy Smith
APD/MD: Armando Rivera
Clear Channel 312-360-9000

WDAS Philadelphia
VP/GM/MD: Joe Tamburro
Dir/Pgm: Thea Mitchell
APD/MD: Jo Ann Gamble
Clear Channel 610-617-8500

WHUR Washington, DC
PD: David A. Dickinson
MD: Traci LaTrelle
Howard Univ. 202-806-3500

WMMJ Washington, DC
PD: Kathy Brown
MD: Mike Chase
Radio One 301-306-1111

KMJQ Houston
OM: Tom Calococi
PD: Sam Choice
Radio One 713-623-2108

WHQT Miami
PD: Derrick Brown
APD/MD: Karen Vaughn
Cox 954-584-7117

WMXD Detroit
PD: Jamillah Muhammad
Clear Channel 313-965-2000

KJLH Los Angeles
PD/MD: Andrae Russell
TAXI 310-330-2200

KBLX San Francisco
PD: Kevin Brown
Inner City 415-284-1029

WZAK Cleveland
OM: Kim Johnson
MD: Bobby Rush
Radio One 216-579-1111

WFXX Raleigh
OM: Cy Young
APD/MD: Jodi Berry
Radio One 919-848-9736

WYLD New Orleans
OM: Carla Boatner
PD/MD: AJ Appleberry
Clear Channel 504-827-6000

WQMG Greensboro
PD: Alvin Stone
Entercom 336-605-5200

KRWP Houston
PD/MD: Maurice Devo
Cumulus 713-300-3500

WWIN Baltimore
PD: Tim Watts
MD: Keith Fisher
Radio One 410-332-8200

WBVA Charlotte
PD: Terry Avery
Infinity 704-333-0131

TOP 10 BOUND

R. KELLY U Saved Me (Jive/Zomba)

Table with columns: Station, Airplay, Audience, etc. for R. Kelly's 'U Saved Me'.

BOYZ II MEN What You Won't Do For Love (MSM/Koch)

Table with columns: Station, Airplay, Audience, etc. for Boyz II Men's 'What You Won't Do For Love'.

BONEY JAMES FEATURING BILAL Better With Time (Warner Bros.)

Table with columns: Station, Airplay, Audience, etc. for Boney James featuring Bilal's 'Better With Time'.

TAMYRA GRAY Raindrops Will Fall (19)

Table with columns: Station, Airplay, Audience, etc. for Tamyra Gray's 'Raindrops Will Fall'.

PATTI LABELLE FEATURING RON ISLEY Gotta Go Solo (Def Soul Classics/IDJMG)

Table with columns: Station, Airplay, Audience, etc. for Patti LaBelle featuring Ron Isley's 'Gotta Go Solo'.

WVAZ Chicago PD: Elroy Smith MD: Armando Rivera Date: 08/08/04

Table with columns: Station, Airplay, Audience, etc. for WVAZ Chicago.

AIRPOWER BOUND

FANTASIA I Believe (J/RMG)

Table with columns: Station, Airplay, Audience, etc. for Fantasia's 'I Believe'.

ANGIE STONE U-Haul (J/RMG)

Table with columns: Station, Airplay, Audience, etc. for Angie Stone's 'U-Haul'.

USHER Confessions Part II (LaFace/Zomba)

Table with columns: Station, Airplay, Audience, etc. for Usher's 'Confessions Part II'.

TAMIA Still (Elektra/Atlantic)

Table with columns: Station, Airplay, Audience, etc. for Tamia's 'Still'.

LALAH HATHAWAY Forever, For Always, For Love (GRP/Verve)

Table with columns: Station, Airplay, Audience, etc. for Lalah Hathaway's 'Forever, For Always, For Love'.

NELLY FEATURING JAHEIM My Place (Derry/Fo' Reel/UMRG)

Table with columns: Station, Airplay, Audience, etc. for Nelly featuring Jaheim's 'My Place'.



The Label Side Of Buying Spins

In last week's issue, country programmers were given the chance to air their views on the controversial topic of paid spins.

In this issue, the plan was to give labels a chance to respond. The heads of promotion for every Nashville label were asked to participate. Most declined.

In fact, just five would even agree to talk, and four of those did so only on the condition of anonymity. The rest either ignored an interview request or declined it with comments like "I wouldn't touch that topic with a 10-foot pole." One sent an e-mail calling the subject "dangerous territory."

While some have concerns about the business ethics of utilizing the legal paid-spin programs offered by some radio groups and syndicators, most seem more concerned with giving away trade secrets.

As one VP of promotion puts it, the attention this subject has received in recent weeks "shines a light on the underbelly of our business, and that's a little scary."

"If we keep drawing attention to this thing, someone's going to take the initiative to do it again," he says. "I hope that doesn't happen."

But syndication and paid spin programs are already a strategic part of plans to get a record to the top of the charts and hold it there. Despite concerns expressed by label executives and radio, many heads of promotion feel they already live in a world where they have to buy spins in order to compete.

"You almost have to do it," says the head of promotion for one of Nashville's smaller, independent labels. "To really run it smartly you have to do it to a degree to protect your record at certain benchmarks on the chart. You have to make sure you don't go into a [nationally syndicated] countdown and then fall out, because then you lose all those spins and your bullet. You build [spin] programs that kind of protect you and pad you in case those things happen."

"It's not like this is a big game of poker," Lyric Street Records VP of national promotion Kevin Herring says. "We all know where most of the bodies are buried to dig up spins, where the syndicated shows are. It's just [a matter of] whether you want to spend the money."

One VP of promotion says he has never purchased a paid spin, and that puts him at a disadvantage to his competitors.

"I'm certainly not faulting anyone, but I can see now I'm getting hurt. If I don't start buying those things, it's going to affect me at some point, and that's not right," he says. "We should try to take as many ways to manipulate the charts away as we can and just let records be what they are."

He is among those who fear the practice will escalate and have repercussion on the charts.

"Why would we bother to find good [music] if we're just going to buy our way on?" one promotion exec asks. "Where does it go from here? If you look down the road six months or a year from now, what's the validity of the charts at that point?"

Herring shares those concerns. "If we all make a mockery of the chart that's supposed to be a tool, what use are they going to be?"

WHATEVER IT TAKES?

"Promotion staffs in this town get put in an awkward position in that our artists and their managers want No. 1 records," Herring says. "A lot of people have 'whatever it takes' mentalities and attitudes."

Another head of promotion at an independent label agrees.

"This is a smoke-and-mirrors business, and a lot of people are measured by what they can achieve on the chart."

While Herring admires MCA Nashville's recent strategic use of paid spin programs to help propel a Reba McEntire track to No. 1, he also hopes "it doesn't open a Pandora's box on what the new benchmark is to get No. 1 records."

But Herring points out that record promotion has always had its "gray areas." For example, he says, "When I was at Mercury we did a promotion for Sammy Kershaw's 'National Working Woman's Holiday' [in 1994]. We were mired at No. 3, so we came up with an idea to have female disc jockeys barricade themselves in the studio and play the song over and over."

Herring says he got 10 stations on board for the stunt and with the 60 extra spins it generated, "We went to No. 1 like we were shot out of a cannon."

Still, Herring says there has to be a payoff beyond a chart position to make these programs worthwhile. "If the money you spend is directly responsible for you selling more records, I don't think there's anything wrong with that. That's what we do. We sell records. If it's done just to pound your chest, as a corporate steward, I don't know if that makes sense."

Another head of promotion agrees. "The only advantage [of spin programs] is that you accomplish something on the chart," he says. "The disadvantage is you're buying in an overnight hour where nobody's going to hear it and you're not going to get anything out of it other than a chart position."

While paid spin programs are a hot topic right now, one head of promotion thinks they are just a small symptom of the escalating cost of doing business for promotion departments in recent years.

"It's all a part of this business that is not about the music anymore," he says. "It's about radio's bottom line and affecting chart position and keeping a record alive long enough to find out if you even have [a hit]."

"I hate what our industry has come to," he adds. "I don't know how we're going to overcome it and get back to doing business for the right reasons."



HERRING

Here For The Party



WPOC Baltimore midday personality Bob Delmont, right, met Gretchen Wilson when she played to a packed house at Parrot Island in downtown Baltimore. Tickets to the free show were given away by the station and the venue. (Photo: WPOC)

ON THE ROW

McGraw A Multimedia Man

With an NBC TV special slated for this fall, a hot-selling tour and roles in the upcoming films "Friday Night Lights" and "Black Cloud," it will be hard to miss **Tim McGraw** during the next few months as he promotes his ninth Curb Records release, "Live Like You Were Dying."

As a result, Curb executives are anticipating strong sales right out of the gate. The initial shipment of the new album is slated to be 1.6 million.

The set dropped Aug. 24. McGraw's NBC special will be filmed Sept. 30-Oct. 1 in Green Bay, Wis.

On Oct. 8, "Friday Night Lights" hits theaters nationwide. McGraw, who plays

an alcoholic, abusive father in the film, shares the screen with **Billy Bob Thornton**. Universal Pictures/Imagine Entertainment will distribute the picture.

In "Black Cloud," a film written and directed by **Rick Schroeder**, McGraw portrays a sheriff. It opens next month in limited release.

In other news, Music Row publisher/manager **Leigh Brannon** and country artist **Ty Her-**

don are joining forces to launch Over the Stars, a management and production firm. They will be equal partners in the new venture. Brannon will exit her position as creative director of Right Bank Music Publishing to launch the new firm Oct. 1. Her initial clients are Herndon and Right Bank's rock singer/songwriter **Laurianne Cates**.

Retired producer/label executive **Jimmy Bowen** is taking one more turn behind the board to produce some tracks for an upcoming **Merle Haggard** record. Bowen is co-producing the project with TV composer **Mike Post** at Post's studio in Burbank, Calif. The album will be a joint venture between Haggard's Hag Records and Capitol Records, his former longtime label home.

The album will include a duet with **Toby Keith**. Haggard also cut a second duet with Keith—this one produced by **James Stroud**—for an upcoming Keith project.

A group of artists featured on Time-Life Music's recent "America Will Always Stand" album has launched an initiative, Your Country Your Vote, aimed at getting people to vote. The group, which includes **Ricky Skaggs**, **Josh Turner**, **Marty Raybon**, **Billy Dean**, **Darryl Worley** and **Collin Raye**, has launched the Web site yourcountryyourvote.org.

Trace Adkins will host a two-hour Labor Day weekend special for Westwood One's syndicated show "America's Grand Ole Opry Weekend."



McGRAW

RADIO CONCERT MONITOR

DATE	STATION	EVENT	PROMOTIONS DIRECTOR
Sept. 2	WGKX Memphis	Beale Street Concert Series	Katherine Doughtie
	APPEARING: Craig Morgan		
Sept. 4-5	WWQM Madison, Wis.	Taste of Madison	Brent Allen
	APPEARING: Blue County (9/4), Katrina Elam (9/4), Jamie O'Neal (9/4), Lila McCann (9/5), Sugarland (9/5), Trent Willmon (9/5)		
Sept. 11	WGAR Cleveland	Country Jam	Lisa Sands
	APPEARING: Roxie Dean, Joe Diffie, Lonestar, Patty Loveless, Trent Willmon		
Oct. 9	KZLA Los Angeles	Seventh Annual Country Bash	Bonnie Marquez
	APPEARING: TBA		

Let us monitor your event! Call Phyllis Stark at 615-321-4284 or e-mail pstark@airplaymonitor.com

Pet Peeves



KZSN (Kissin' Country) Wichita, Kan., recently hosted a "what would you do for Tim McGraw tickets" contest. One contestant, who ultimately became the winner, said she would "show her ass" on a busy street corner. She and her friends turned up with this adorable donkey. (Photo: KZSN)

Compiled from a national sample of data supplied by Nielsen Broadcast Data Systems to Airplay Monitor. 122 country stations are electronically monitored 24 hours a day, 7 days a week. © 2004 NIELSEN BUSINESS MEDIA, INC. All rights reserved.

Main chart table with columns: THIS WEEK, LAST WEEK, WKS. ON CHART, TITLE/IMPRINT/PROMOTION LABEL, ARTIST, DETECTIONS (TW, LW), AUDIENCE (MILLIONS, RANK). Includes songs like 'LIVE LIKE YOU WERE DYING' and 'SOME BEACH'.

most airplay adds section with NEW STATIONS 18. Includes Blake Shelton 'Some Beach', Restless Heart 'Feel My Way To You', Lonestar 'Mr. Mom', Clay Walker 'Jesus Was A Country Boy', and Jimmy Buffett with Martina McBride 'Trip Around The Sun'.

GREATEST GAINERS COUNTRY section with INCREASE IN DETECTIONS. Includes Brooks & Dunn 'That's What It's All About', Lonestar 'Mr. Mom', Dierks Bentley 'How Am I Doin'', Gary Allan 'Nothing On But The Radio', and Blake Shelton 'Some Beach'.

HitPredictor section with SONGS WITH TOP 10 CALLOUT POTENTIAL. THIS WEEK'S NEW RELEASES IN RED. Lists songs like 'Notin' Bout Love Makes Sense' by Leann Rimes and 'My Imagination' by Clint Black.

Chart continuation table with columns: THIS WEEK, LAST WEEK, WKS. ON CHART, TITLE/IMPRINT/PROMOTION LABEL, ARTIST, DETECTIONS (TW, LW), AUDIENCE (MILLIONS, RANK). Includes songs like 'AIN'T DRINKIN' ANYMORE' and 'IT'S HARD TO KISS THE LIPS AT NIGHT'.

Songs ranked by number of detections. Songs showing an increase in detections over the previous week, regardless of chart movement. A song will also receive a bullet if its percentage loss in detections does not exceed the percentage of monitored station downtime for the format.

Monitor COUNTRY PANEL 122 STATIONS. Grid of station names and locations across the United States, including Albany, N.Y., Albuquerque, N.M., Atlanta, Augusta, Ga., etc.



Songs posting gains in detections or with a percentage loss in detections equal to or better than the monitored downtime percentage in the format. Songs listed in order of detections. *Indicates station experienced between 24 and 36 hours of monitored downtime during the chart week.

TOP 10 BOUND

Total Detections/Gain BIG & RICH 3008/43 Save A Horse (Ride A Cowboy) (Warner Bros./WRN)

Total Stations: 118 Chart Move: 12-11 H (23), M (75), L (20) Airplay Adds: 1

Table with columns: Station, Song, Detections, Gain, Loss, and Airplay Adds. Lists top 10 songs and their performance across various stations.

GEORGE STRAIT 2975/78

I Hate Everything (MCA Nashville) Chart Move: 13-12

Total Stations: 119 H (14), M (100), L (5) Airplay Adds: 0

Table with columns: Station, Song, Detections, Gain, Loss, and Airplay Adds. Lists performance for George Strait's 'I Hate Everything'.

TOBY KEITH 2621/258

Stays In Mexico (DreamWorks) Chart Move: 16-13

Total Stations: 119 H (5), M (98), L (16) Airplay Adds: 5

Table with columns: Station, Song, Detections, Gain, Loss, and Airplay Adds. Lists performance for Toby Keith's 'Stays In Mexico'.

RASCAL FLATTS 2532/143

Feels Like Today (Lyric Street) Chart Move: 14-14

Total Stations: 116 H (3), M (103), L (13) Airplay Adds: 0

Table with columns: Station, Song, Detections, Gain, Loss, and Airplay Adds. Lists performance for Rascal Flatts' 'Feels Like Today'.

BROOKS & DUNN 2512/355

That's What It's All About (Arista Nashville) Chart Move: 17-15

Total Stations: 119 H (3), M (98), L (18) Airplay Adds: 2

Table with columns: Station, Song, Detections, Gain, Loss, and Airplay Adds. Lists performance for Brooks & Dunn's 'That's What It's All About'.

JOE NICHOLS 2365/8

If Nobody Believed In You (Universal South) Chart Move: 15-16

Total Stations: 118 H (11), M (76), L (31) Airplay Adds: 1

Table with columns: Station, Song, Detections, Gain, Loss, and Airplay Adds. Lists performance for Joe Nichols' 'If Nobody Believed In You'.

PHIL VASSAR 2342/195

In A Real Love (Arista Nashville) Chart Move: 18-17

Total Stations: 116 H (6), M (85), L (25) Airplay Adds: 3

Table with columns: Station, Song, Detections, Gain, Loss, and Airplay Adds. Lists performance for Phil Vassar's 'In A Real Love'.

TRACE ADKINS 2156/70

Rough & Ready (Capitol) Chart Move: 19-18

Total Stations: 118 H (6), M (71), L (41) Airplay Adds: 0

Table with columns: Station, Song, Detections, Gain, Loss, and Airplay Adds. Lists performance for Trace Adkins' 'Rough & Ready'.

AIRPOWER

Total Detections/Gain JULIE ROBERTS 1887/61

Break Down Here (Mercury) Chart Move: 23-21

Total Stations: 118 H (3), M (49), L (66) Airplay Adds: 7

Table with columns: Station, Song, Detections, Gain, Loss, and Airplay Adds. Lists performance for Julie Roberts' 'Break Down Here'.

JIMMY WAYNE 1731/101

You Are (DreamWorks) Chart Move: 22-20

Total Stations: 118 H (1), M (50), L (65) Airplay Adds: 4

Table with columns: Station, Song, Detections, Gain, Loss, and Airplay Adds. Lists performance for Jimmy Wayne's 'You Are'.

DERKS BENTLEY 1721/283

How Am I Doin' (Capitol) Chart Move: 23-21

Total Stations: 118 H (3), M (49), L (66) Airplay Adds: 7

Table with columns: Station, Song, Detections, Gain, Loss, and Airplay Adds. Lists performance for Dierks Bentley's 'How Am I Doin''.

WGGY - Wilkes-Barre, PA

MD: Mike Krinik Date: 02/27/04

Total Stations: 116 H (2), M (65), L (49) Airplay Adds: 1

Table with columns: Station, Song, Detections, Gain, Loss, and Airplay Adds. Lists performance for WGGY.

GARY ALLAN 1691/277

Nothing On But The Radio (MCA Nashville) Chart Move: 24-22

Total Stations: 118 H (3), M (49), L (66) Airplay Adds: 9

Table with columns: Station, Song, Detections, Gain, Loss, and Airplay Adds. Lists performance for Gary Allan's 'Nothing On But The Radio'.

LONESTAR 1441/284

Mr. Mom (BNA) Chart Move: 26-23

Total Stations: 112 H (1), M (46), L (65) Airplay Adds: 11

Table with columns: Station, Song, Detections, Gain, Loss, and Airplay Adds. Lists performance for Lonestar's 'Mr. Mom'.

SHEDAISSY 1219/173

Come Home Soon (Lyric Street) Chart Move: 27-24

Total Stations: 116 H (0), M (32), L (84) Airplay Adds: 7

Table with columns: Station, Song, Detections, Gain, Loss, and Airplay Adds. Lists performance for Shedaissy's 'Come Home Soon'.

IMPACT! AIRPLAY Monitor Nielsen Broadcast Data Systems

Songs posting gains in detections or with a percentage loss in detections equal to or better than the monitored downtime percentage in the format. Songs listed in order of detections. *Indicates station experienced between 24 and 58 hours of monitored downtime during the chart week.

BLUE COUNTY 936/92 That's Cool (Asylum-Curb) Total Stations: 103 Chart Move: 30-26 H (0), M (20), L (83) Airplay Adds: 3

Table with columns for station, rank, and airplay add status for Blue County.

MONTGOMERY GENTRY 898/101 You Do Your Thing (Columbia) Total Stations: 110 Chart Move: 31-27 H (0), M (19), L (91) Airplay Adds: 8

Table with columns for station, rank, and airplay add status for Montgomery Gentry.

CRAIG MORGAN 870/19 Look At Us (Broken Bow) Total Stations: 111 Chart Move: 29-28 H (0), M (18), L (93) Airplay Adds: 3

Table with columns for station, rank, and airplay add status for Craig Morgan.

DARRYL WORLEY 870/71 Awful, Beautiful Life (DreamWorks) Total Stations: 104 Chart Move: 32-29 H (0), M (19), L (85) Airplay Adds: 10

Table with columns for station, rank, and airplay add status for Darryl Worley.

BLAKE SHELTON 857/275 Some Beach (Warner Bros./WRN) Total Stations: 104 Chart Move: 35-30 H (0), M (17), L (87) Airplay Adds: 18

Table with columns for station, rank, and airplay add status for Blake Shelton.

CLAY WALKER 604/150 Jesus Was A Country Boy (RCA) Total Stations: 95 Chart Move: 37-35 Heavy (0) Airplay Adds: 11 KFDI, KMLE, KRST, KSON, KWJ, WCAT, WCOS, WGGY, WNCY, WNKT, WSIX

Table with columns for station, rank, and airplay add status for Clay Walker.

PAT GREEN 278/100 Don't Break My Heart Again (Republic/Universal/Mercury) Total Stations: 63 Chart Move: 49-41 Heavy (0) Airplay Adds: 9 KEEY, KIIM, KRST, WKDF, WKXC, WSTH, WUSY, WXTU, WYNK

Table with columns for station, rank, and airplay add status for Pat Green.

LOS LONELY BOYS 171/6 Heaven (Or/Epic/EMN) Total Stations: 23 Chart Move: 51-49 Heavy (0) Airplay Adds: 1 KSON

Table with columns for station, rank, and airplay add status for Los Lonely Boys.

EMERSON DRIVE 145/39 November (DreamWorks) Total Stations: 30 Chart Move: 58-52 Heavy (0) Airplay Adds: 10 KFKF, KHKI, KZBR, WKCN, WKQC, WNCY, WNKT, WSOC, WYGY, WYPY

Table with columns for station, rank, and airplay add status for Emerson Drive.

TIM MCGRAW 48/48 How Bad Do You Want It (Curb) Total Stations: 23 Heavy (0) Medium (0) Light (23) Airplay Adds: 1 KSCS

Table with columns for station, rank, and airplay add status for Tim McGraw.

TIM MCGRAW 35/35 My Old Friend (Curb) Total Stations: 26 Heavy (0) Medium (0) Light (26) Airplay Adds: 1 KSCS

Table with columns for station, rank, and airplay add status for Tim McGraw.

TOP 30 BOUND Total Detections/Gain

Table listing top 30 bound songs and their stations.

CHART BOUND Total Detections/Gain

Table listing chart bound songs and their stations.

CHART BOUND Total Detections/Gain

Table listing chart bound songs and their stations.

CHART BOUND Total Detections/Gain

Table listing chart bound songs and their stations.

H=Heavy (35+ Detections), M=Medium (15-34), L=Light (Under 15). Airpower awarded to songs appearing in the top 20 on both the Airplay and Audience charts for the first time with increases in both detections and audience. Initial impact: songs appearing on this page for the first time in summary form. Airplay Adds are songs with 6 or more detections at new stations this week. The Airplay Leaderboard ranks taste-maker stations that have been the most successful in identifying future hit songs as measured by the amount of AIRPOWER titles for which they were Airplay Leaders. Refer to each format's Power Playlists page to see this week's Airplay Leaders. * indicates title earned HRPredictor status in research data provided by Promosquad.



Top 10 Exclusives Open Lane For Modern

While it's no surprise that bands like Modest Mouse and Franz Ferdinand are giving modern rock some distance from active rock this year, what's interesting is the number of exclusive songs that are making it to the upper reaches of the chart.

Airplay Monitor examined the top 10 positions of the modern and active charts from the first week in June to this past week (the Aug. 20 issue), and compared them with the corresponding period for 2003. Every week since June, modern has had at least three and as many as five exclusive songs in its top 10. By contrast, the format only had more than two exclusive songs in its top 10 for one week last summer, and it didn't have any in all of June.

Last summer, songs like Trapt's "Headstrong," Evanescence's "Bring Me to Life" and just about anything Dave Grohl played on were mass appeal hits for both formats. It wasn't until the beginning of this year that the "classic modern" movement found programmers playing more gold and selectively picking the currents they chose

to play to differentiate themselves from active rock stations. Not so coincidentally, a lot of the modern exclusives this year, from Franz Ferdinand's "Take Me Out" to the Killers' "Somebody Told Me," have a retro-leaning sound that fits the latest permutation of the format.

"I was on the road for most of July, and every city I went into, the modern stations sounded more like modern stations, and the active songs were playing great active rock," Virgin national director of modern promotion Howard Petruziello says. "There's just a difference again. And the active records that modern stations are playing are totally the right records. You would expect to hear bands like Velvet Revolver on both active and modern. But luckily there are a lot of hit records that are palatable to people that still like rock. Kids can like Modest Mouse and Velvet Revolver."

"During my tenure at Live 105, we have been purposely looking for music and artists that are exclusive to what we consider modern," KITS (Live 105) San Francisco PD Sean Demery says. "This doesn't mean that we turn our backs on rock product. It simply means that we play the best two or three from the rock genre instead of six or seven. The fact is that for us there were never six or seven real hits at one time from the rock world to begin with."

TASTEMAKER FORMAT ONCE AGAIN?

From its beginnings almost two years ago, modern KBZT (FM 94/9) San Diego chose to play music that it could own, which PD Garrett Michaels says "might have created a little bit of a ripple" in the modern community. Brushing off the "classic modern" handle, Michaels positions KBZT as a diverse station that is concerned with the heritage of modern. "[APD/MD Mike] Halloran and I have always said that this station, when it comes to new music, is about quality vs. quantity," he says. "When you're in that kind of situation where you're not playing as many songs, we are more selective about what we play."

"If you went back and looked at what we were doing a year ago, you would notice that we were playing very few of those active rock records. I do think that this station might have helped start a little bit of a movement where people in

the format started trying to be 'alternative' again instead of the junior varsity version of active rock. A year ago we were playing Hot Hot Heat and Interpol and not worrying about playing Chevelle and Trapt."

Warner Bros. senior national director of modern promotion Rob Goldklang has noticed more exclusive music at the format, and welcomes the change.

"It had gotten to the point where there were so many radio stations playing big, mass appeal records in the top 10 that there was no exclusivity," he says. "There was nothing to call your own. Now there are bands like Muse, Modest Mouse and the Killers that are really good for the format. They're meaningful bands that sell records

that the format can call its own. When modern first started, bands like the Cure and Depeche Mode were huge, and they were able to own these huge bands."

"When we first started [working] the Killers to radio, most of radio said, 'We can only play so many of "these" types of songs,'" Island Def Jam VP of

modern promotion Christine Chiappetta says. "It took awhile for the East Coast and Midwest to catch up. Now it's working everywhere. Everyone likes the mainstream, middle-of-the-road records like Three Days Grace and Hoobastank, but the fact that modern rock has exclusive hits is great for the format."

"When it comes to current music, isn't radio supposed to reflect current tastes?" Michaels asks. "Maybe what's happening with modern rock is that we're helping to determine the tastes by turning people on to cool new things. I always thought that's part of what this format is about. When we started, we wanted to be the radio station in San Diego that respected what the artists of the past did to get us here, and we went deeper than just playing the hit singles."

QUALITY IMPROVEMENT

The fact that so many modern-exclusive songs are making it to the upper reaches of the charts speaks to the quality of the music.

"You can take any record and chart it, but to be able to get it in the top 10 isn't an easy feat," says Goldklang, who got there with Muse's "Time Is Running Out."

"A record really needs to be something to get to the top 10," he adds. "Me and my staff are as relentless as anyone, but at the end of the day, we had radio stations that loved it and got the band and went all the way with it."

"A lot of this music has been out there, but all of a sudden a lot more attention has been paid to it," Michaels says. "But let's not gloss over the fact that Modest Mouse went out and made the best record they've ever done. I've been hip to this band for a while, and I wasn't a fan of them until this record... But they made an incredible record that's really deep."

Some say that it's a cumulative effect that helped set the stage for modern-exclusive songs. "Any hit record that can be a little different sets a precedent," Petruziello says. "We did it with the Gorillaz, which probably helped other people the next time. To me, the Modest Mouse is a very encouraging record, because they were a really eclectic indie rock bands for years, and they made a masterpiece."

"The more modern-exclusive records hit the

WEBN Throws Drowning Pool Party



In a stroke of genius, active WEBN Cincinnati hosted a pool party for Drowning Pool at a listener's house (and pool). Pictured, from left, are Drowning Pool's Jason "Gong" Jones and Steve Benton; the winner (note station mascot placement); and the band's C.J. Pierce and Mike Luce. (Photo: WEBN)

RADIO CONCERT MONITOR

DATE	STATION	EVENT	PROMOTIONS DIRECTOR
Aug. 29	WNOR Norfolk, Va.	Lunatic Luau VIII	Dave Johnson
		APPEARING: Breaking Benjamin, Crossfade, Drowning Pool, God Forbid, Hatebreed, Kittie, Monster Magnet, Otep, Pillar, Revery, Saliva, Shinedown, Slipknot, Soil, Superjoint Ritual	
Sept. 12	WNNX Atlanta	Upstart Fest Part 2	Mike Kee
		APPEARING: Delays, Franz Ferdinand, Futurehead, the Killers, Scissor Sisters	
Sept. 18	KCRW Santa Monica, Calif.	Next Up	Debbie Adler
		APPEARING: AM, Blue-Eyed Son, Jesca Hoop, Quincy	
Sept. 18	KROQ Los Angeles	Inland Invasion 4	Mike Salas
		APPEARING: Ian Brown, Death Cab for Cutie, Devo, A Flock of Seagulls, Franz Ferdinand, Billy Idol, the Killers, Missing Persons, Morrissey, Muse, Siouxsie, Tears for Fears, the Walkmen	
Sept. 18	WDHA Morristown, N.J.	Rock the Park	Ed Roth
		APPEARING: Lynyrd Skynyrd, Monster Magnet, Sonicult, Tantric	
Sept. 19	KBZT San Diego	Independents Jam	Owen Salerno
		APPEARING: Death Cab for Cutie, Franz Ferdinand, Muse, Secret Machines, Yeah Yeah Yeahs	
Nov. 20	KCRW Santa Monica, Calif.	A Sounds Eclectic Evening	Debbie Adler
		APPEARING: Coldplay's Chris Martin and Jonny Buckland, Fila Kiley, Nellie McKay	

Let us monitor your event! Call Bram Teitelman at 646-654-4727 or e-mail bram@airplaymonitor.com

top 10, the more of a comfort level there is," Goldklang says. "There was a time where there wouldn't have been a comfort level for people to jump out more. It's a great sign for our format, because it's not just background music. Anyone that buys the Muse or Franz Ferdinand record is buying a record that has a number of songs that are unique and challenging. If more records like those end up doing well, it's the 'tell a friend' philosophy."

Chiappetta has noticed a definite change at the format. "I remember working the band Paloalto a few years ago, and radio told me that if they were going to play anything that sounded like that, it would be Coldplay and Radiohead," she says. "Everything else was rap/rock. If the Killers record came out three years ago, radio would have thought I was out of my mind."

Just because modern owns more music does not mean it doesn't need active-leaning songs, as evidenced by bands like Velvet Revolver.

KITS' Demery says, "[What we're playing is]

predicated on the sound that [APD/MD Aaron Axelson] and I feel matches the Bay Area more so than actively avoiding rock product. Hit rock songs are still important components for Live 105. [And labels] are still pushing as much rock product as before."

Petruziello says some stations still resist songs that are anything less than mass appeal. "There's still a segment of the modern world that [is] basically rock stations and [isn't] going to be open to some of the modern-exclusive songs. There's a handful of modern stations that didn't play some of the records we're talking about. But for the stations that are receptive to that, it completely opens up more opportunities for more diverse bands to get airplay."

"I love the fact that bands like Linkin Park, Muse, Franz Ferdinand and Chevelle can co-exist on a radio station," Goldklang says. "They're different sounds, but at the same time, it's creating a good mix and sounding different than an active rock station."

MODERN ROCK PLAYLISTS



Songs ranked by number of detections. Playlists are listed in order of TSA weekly cume, beginning with the highest-cuming station. Cumes are updated twice yearly following the release of the spring and fall Arbitron surveys. The number of stations shown each week varies depending upon space.

KROQ Los Angeles
Sr. VP/Pgm: Kevin Weatherly
APD: Gene Sandblom
MD: Matt Smith
Infinity 323-930-1067

WXRK New York
OM: Robert Cross
MD: Mike Peer
Infinity 212-314-9230

WKQX Chicago
PD: Mike Stern
APD/MD: Jacent Jackson
Emmis 312-527-8348

WBCN Boston
PD: Dave Wellington
APD/MD: Steven Strick
AM: Josh Aarons
Infinity 617-266-1111

WWDC Washington, DC
OM: Joe Bevilacqua
MD: Donielle Flynn
AM: Greg Roche
Clear Channel 301-587-7100

WHFS Washington, DC
PD: Lisa Worden
APD: Libby Carstensen
MD: Pat Ferrise
Infinity 301-306-0991

KITS San Francisco
PD: Sean Demery
APD/MD: Aaron Axelsen
Infinity 415-402-6700

KTBB Houston
PD: Vince Richards
MD: Don Jantzen
Clear Channel 713-212-8000

WPLY Philadelphia
PD: Jim McGuinn
MD: Dan Fein
AM: Electra
Radio One 610-276-1100

CIMX Detroit
PD: Murray Brookshaw
APD: Vince Cannova
MD: "Phat" Matt Franklin
CHUM Group 519-258-8888

WNNX Atlanta
Dir/Pgm: Leslie Fram
MD: Jay Harren
Susquehanna 404-266-0997

KDGE Dallas
PD: Duane Doherty
APD/MD: Alan Ayo
Clear Channel 972-770-7777

KZON Phoenix
PD: Kevin Mannion
MD: Mitzie Lewis
Infinity 602-258-8181

KNDD Seattle
PD: Phil Manning
APD: Jim Keller
Entercom 206-622-3251

KPNT St. Louis
PD: Tommy Mattern
MD: Frizz
Emmis 314-231-1057

KTCL Denver
Dir/Pgm: Mike O'Connor
APD: Rubin
MD: Hill Jordan
Clear Channel 303-713-8000

WXDX Pittsburgh
OM: John Moschitta
MD: Vinnie Ferguson
Clear Channel 412-937-1441

WOCL Orlando
PD: Bobby Smith
Infinity 407-919-1000

XTRA San Diego
Dir/FM Pgm: Jim Richards
MD: "Smiling Marty" Whitney
Clear Channel 858-292-2000

KWOD Sacramento
SM: Curtiss Johnson
PD: Ron Bunce
MD: Marco Collins
Entercom 916-334-7777

WRZX Indianapolis
Dir. FM Pgm: Scott Jameson
MD: Michael Young
Clear Channel 317-257-7565

WXTM Cleveland
PD: Kim Monroe
APD: Dom Nardella
Infinity 216-861-0100

WBRV Providence
PD: Seth Resler
MD: Chris Novello
Brown 401-712-9550

KBZT San Diego
OM: John Dimick
PD: Garrett Michaels
APD/MD: Mike Halloran
Jefferson Pilot 619-297-9595

IMPACT! AIRPLAY Monitor

Songs posting gains in detections or with a percentage loss in detections equal to or better than the monitored downtime percentage in the format. Songs listed in order of detections.

TOP 10 BOUND

Total Detections/Gain BEASTIE BOYS 1430/64 Triple Trouble (Brooklyn Dust/Capitol)

Total Stations: 78 Chart Move: 16-12 H (7), M (44), L (27)

Table with 10 columns: Station, LW, ZM, ID, and song/artist details for various stations like New York, Chicago, San Fran, etc.

HOOBASTANK 1251/105 Same Direction (Island/IDJMG)

Total Stations: 71 Chart Move: 22-18 H (8), M (35), L (28)

Table with 10 columns: Station, LW, ZM, ID, and song/artist details for various stations like New York, Chicago, San Fran, etc.

TAKING BACK SUNDAY 987/181 A Decade Under The Influence (Victory)

Total Stations: 57 Chart Move: 28-25 H (3), M (29), L (25)

Table with 10 columns: Station, LW, ZM, ID, and song/artist details for various stations like New York, Chicago, San Fran, etc.

KORN 573/234 Word Up (Immortal/Epic)

Total Stations: 55 Chart Move: Debut 31 H (0), M (19), L (36)

Table with 10 columns: Station, LW, ZM, ID, and song/artist details for various stations like New York, Chicago, San Fran, etc.

CHART BOUND

Total Detections/Gain NEW FOUND GLORY 302/45 Failure's Not Flaming (What's Your Problem) (Drive-thru/Geffen)

Total Stations: 29 Chart Move: Debut 11 H (0), M (22), L (36)

Table with 10 columns: Station, LW, ZM, ID, and song/artist details for various stations like New York, Chicago, San Fran, etc.

AIRPOWER

Total Detections/Gain PAPA ROACH 1447/136 Getting Away With Murder (E1 Tonal/Geffen)

Total Stations: 69 Chart Move: 23-21 H (5), M (31), L (33)

Table with 10 columns: Station, LW, ZM, ID, and song/artist details for various stations like New York, Chicago, San Fran, etc.

YELLOWCARD 1110/64 Only One (Capitol)

Total Stations: 69 Chart Move: 23-21 H (5), M (31), L (33)

Table with 10 columns: Station, LW, ZM, ID, and song/artist details for various stations like New York, Chicago, San Fran, etc.

ALTER YOUR EYES 873/43 Open Your Eyes (Wind-up)

Total Stations: 49 Chart Move: 26-27 H (5), M (29), L (15)

Table with 10 columns: Station, LW, ZM, ID, and song/artist details for various stations like New York, Chicago, San Fran, etc.

FUTURE LEADERS OF THE WORLD 495/54 Let Me Out (Epic)

Total Stations: 33 Chart Move: 36-32 H (2), M (13), L (18)

Table with 10 columns: Station, LW, ZM, ID, and song/artist details for various stations like New York, Chicago, San Fran, etc.

INTERPOL 265/116 Slow Hands (Matador/Beggars Group)

Total Stations: 45 Chart Move: Debut 11 H (0), M (22), L (36)

Table with 10 columns: Station, LW, ZM, ID, and song/artist details for various stations like New York, Chicago, San Fran, etc.

Total Stations: 70 Chart Move: 17-11 H (13), M (37), L (20)

Table with 10 columns: Station, LW, ZM, ID, and song/artist details for various stations like New York, Chicago, San Fran, etc.

COHEED AND CAMBRIA 1087/109 A Favor House Atlantic (Equal Vision/Columbia)

Total Stations: 69 Chart Move: 24-22 H (4), M (35), L (30)

Table with 10 columns: Station, LW, ZM, ID, and song/artist details for various stations like New York, Chicago, San Fran, etc.

A PERFECT CIRCLE 815/81 Blue (Virgin)

Total Stations: 54 Chart Move: 29-28 H (1), M (29), L (24)

Table with 10 columns: Station, LW, ZM, ID, and song/artist details for various stations like New York, Chicago, San Fran, etc.

GODSMACK FEATURING DROPBOX 486/20 Touche (Republic/Universal/UMRG)

Total Stations: 35 Chart Move: 33-33 H (0), M (15), L (20)

Table with 10 columns: Station, LW, ZM, ID, and song/artist details for various stations like New York, Chicago, San Fran, etc.

★ CAKE 209/169 No Phone (Columbia)

Total Stations: 42 Chart Move: Debut 11 H (0), M (22), L (36)

Table with 10 columns: Station, LW, ZM, ID, and song/artist details for various stations like New York, Chicago, San Fran, etc.

AIRPOWER BOUND

Total Detections/Gain VELVET REVOLVER 1253/79 Fall To Pieces (RCA/RMG)

Total Stations: 70 Chart Move: 21-17 H (8), M (33), L (29)

Table with 10 columns: Station, LW, ZM, ID, and song/artist details for various stations like New York, Chicago, San Fran, etc.

CROSSFADE 1009/65 Cold (FG/Columbia)

Total Stations: 48 Chart Move: 25-24 H (11), M (21), L (16)

Table with 10 columns: Station, LW, ZM, ID, and song/artist details for various stations like New York, Chicago, San Fran, etc.

SNOW PATROL 724/149 Run (Fiction/A&M/Interscope)

Total Stations: 45 Chart Move: 30-30 H (4), M (19), L (22)

Table with 10 columns: Station, LW, ZM, ID, and song/artist details for various stations like New York, Chicago, San Fran, etc.

SKINDRED 450/48 Nobody (Lava)

Total Stations: 40 Chart Move: 38-34 H (1), M (11), L (28)

Table with 10 columns: Station, LW, ZM, ID, and song/artist details for various stations like New York, Chicago, San Fran, etc.

SECRET MACHINES 191/17 Nowhere Again (Reprise)

Total Stations: 23 Chart Move: Debut 11 H (0), M (22), L (36)

Table with 10 columns: Station, LW, ZM, ID, and song/artist details for various stations like New York, Chicago, San Fran, etc.

H=Heavy (30+ Detections), M=Medium (15-29), L=Light (Under 15). Airpower awarded to songs appearing in the top 20 on both the Airplay and Audience charts for the first time with increases in both detections and audience.

ACTIVE ROCK

Compiled from a national sample of data supplied by Nielsen Broadcast Data Systems to Airplay Monitor. All active rock stations are electronically monitored 24 hours a day, 7 days a week, 51 weeks a year.

Main chart table with columns: THIS WEEK, LAST WEEK, WKS. ON CHART, TITLE/IMPRINT/PROMOTION LABEL, ARTIST, DETECTIONS (TW, LW), AUDIENCE (MILLIONS, RANK). Includes entries like 'NO. 1/GREATEST GAINER' and 'SO COLD'.

Songs ranked by number of detections. Songs showing an increase in detections over the previous week, regardless of chart movement. A song will also receive a bullet if its percentage loss in detections does not exceed the percentage of monitored station downtime for the format.

most airplay adds ACTIVE ROCK NEW STATIONS. DROWNING POOL Love And War (Wind-up) 15. HELMET See You Dead (Interscope) 11. KENNY WAYNE SHEPHERD Alive (Reprise) 11. KORN Word Up (Immortal/Epic) 10. SILVERTIDE Ain't Coming Home (J/RMG) 9.

GREATEST GAINERS ACTIVE ROCK INCREASE IN DETECTIONS. BREAKING BENJAMIN • So Cold (Hollywood) +205. VELVET REVOLVER • Fall To Pieces (RCA/RMG) +172. LINKIN PARK • Breaking The Habit (Warner Bros.) +168. KORN • Word Up (Immortal/Epic) +166. SILVERTIDE • Ain't Coming Home (J/RMG) +161.

Monitor RECURRENTS ACTIVE ROCK. Table with columns: RANK, TITLE, ARTIST, IMPRINT/PROMOTION LABEL, DETECTIONS (TW, LW). Includes 'LYING FROM YOU' by Linkin Park.

Table with columns: RANK, TITLE, ARTIST, IMPRINT/PROMOTION LABEL, DETECTIONS (TW, LW). Includes 'HEADSTRONG' by Trapt.

Recurrents are titles that have appeared on the Active Rock Airplay chart for 26 weeks and have dropped below the top 20.

Monitor ROCK PANELS ACTIVE (61) HERITAGE (39). Lists radio stations in various cities like Albany, N.Y., Albuquerque, N.M., Bakersfield, Calif., etc.

POWERPLAYS



Songs ranked by number of detections. Playlists are listed in order of TSA weekly cume, beginning with the highest-cuming station. Cumes are updated twice yearly following the release of the spring and fall Arbitron surveys. The number of stations shown each week varies depending upon space.

WYSP Philadelphia
VP/Pgm: Tim Sabean
APD: Gil Edwards
MD: Spike
Infinity 215-625-9460

WZZM Chicago
PD: Bill Gamble
APD: Steve Levy
MD: James VanOsdol
ABC 312-984-9923

WRIF Detroit
OM: Doug Podell
APD/MD: Mark Pennington
Greater Media 248-547-0101

WMMS Cleveland
PD: Bo Matthews
Clear Channel 216-520-2600

KXXR Minneapolis
PD: Wade Linder
APD/MD: Pablo
ABC/Disney 612-617-4000

WAAF Boston
PD: Keith Hastings
MD: Mistress Carrie
Entercom 617-779-5800

WZTA Miami
OM: Rob Roberts
Dir/Pgm: Troy Hanson
MD: Mike Killabrew
Clear Channel 954-862-2000

WEBN Cincinnati
OM/PD: Scott Reinhart
MD: Rick "The Dude" Vaske
Clear Channel 513-686-8300

KUPD Phoenix
PD: J.J. Jeffries
MD: Larry McFeele
Sandusky 480-838-0400

KQRC Kansas City
PD: Bob Edwards
APD/MD: Brian Medlin
Entercom 913-677-8998

WXTB Tampa
Dir/FM Pgm: Brad Hardin
APD/MD: Brian Medlin
Clear Channel 813-832-1000

KISS San Antonio
OM: Virgil Thompson
PD: Kevin Vargas
MD: CJ Cruz
Cox 210-646-0105

WIYY Baltimore
PD: Dave Hill
APD/MD: Rob Heckman
Hearst 410-889-0098

KBPI Denver
Dir/Pgm: Mike O'Connor
PD: Bob Richards
APD/MD: Willie B.
Clear Channel 303-713-8000

KISW Seattle
PD: Dave Richards
APD/MD: Ryan Castle
Entercom 206-285-7625

KSRX San Antonio
OM: John Cook
MD: Mark Landis
Infinity 210-528-5500

KIOZ San Diego
Dir. FM Pgm: Jim Richards
PD/MD: Shauna Moran
Clear Channel 858-292-2000

WCCC Hartford
OM/PD: Michael Picozzi
APD/MD: Mike Karolyi
Marin 860-525-1069

WLZR Milwaukee
PD: Sean Elliott
MD: Marilyn Mee
Saga 414-978-9000

KUFO Portland
OM: Dave Numme
APD/MD: Dan Bozyk
Infinity 503-222-1011

WNOR Norfolk
PD: Harvey Kojan
APD/MD: Tim Parker
Saga 757-366-9900

WBZX Columbus
PD: Hal Fish
APD/MD: Ronni Hunter
North America 614-481-7800

WQXA Harrisburg
PD: Claudine DeLorenzo
MD: Nixon
Citadel 717-367-7700

WGIR Manchester
APD: Crozby
MD: Jason Russell
Clear Channel 603-625-6915

TOP 10 BOUND Total Detections/Gain

Table listing Top 10 Bound songs including Velvet Revolver's 'Fall To Pieces' and Lostprophets' 'Wake Up (Make A Move)'.

CHEVELLE 976/130 Vitamin R (Leading Us Along) (Epic)

Table for CHEVELLE's 'Vitamin R' showing station data across various markets.

FUTURE LEADERS OF THE WORLD 949/41 Let Me Out (Epic)

Table for FUTURE LEADERS OF THE WORLD's 'Let Me Out' showing station data.

GODSMACK FEATURING DROPBOX 893/43 Touche (Republic/Universal/UMRG)

Table for GODSMACK's 'Touche' featuring Dropbox, showing station data.

GREEN DAY 802/127 American Idiot (Reprise)

Table for GREEN DAY's 'American Idiot' showing station data.

LOSTPROPHETS 759/23 Wake Up (Make A Move) (Columbia)

Table for LOSTPROPHETS' 'Wake Up (Make A Move)' showing station data.

JET 749/0 Rollover D.J. (Elektra/Atlantic)

Table for JET's 'Rollover D.J.' showing station data.

A PERFECT CIRCLE 622/71 Blue (Virgin)

Table for A PERFECT CIRCLE's 'Blue' showing station data.

NONPOINT 604/11 The Truth (Lava)

Table for NONPOINT's 'The Truth' showing station data.

MEGADETH 311/42 Die Dead Enough (Sanctuary)

Table for MEGADETH's 'Die Dead Enough' showing station data.

SILVERTIDE 421/161 Ain't Coming Home (JRMG)

Table for SILVERTIDE's 'Ain't Coming Home' showing station data.

PILLAR 410/37 Bring Me Down (Flicker/Virgin)

Table for PILLAR's 'Bring Me Down' showing station data.

KORN 398/166 Word Up (Immortal/Epic)

Table for KORN's 'Word Up' showing station data.

SKINDRED 365/50 Nobody (Lava)

Table for SKINDRED's 'Nobody' showing station data.

MEGADETH 311/42 Die Dead Enough (Sanctuary)

Table for MEGADETH's 'Die Dead Enough' showing station data.

THORNLEY 308/42 Easy Comes (604/Roadrunner/IDJMG)

Table for THORNLEY's 'Easy Comes' showing station data.

HELMET 269/110 See You Dead (Interscope)

Table for HELMET's 'See You Dead' showing station data.

DAMAGEPLAN 255/32 Pride (Elektra/Atlantic)

Table for DAMAGEPLAN's 'Pride' showing station data.

SWITCHFOOT 243/14 Meant To Live (Red Ink/Columbia)

Table for SWITCHFOOT's 'Meant To Live' showing station data.

COHEED AND CAMBRIA 220/0 A Hero House Atlantic (Equal Vision/Columbia)

Table for COHEED AND CAMBRIA's 'A Hero House' showing station data.

KILLSWITCH ENGAGE 217/67 The End of Heartache (Roadrunner/IDJMG)

Table for KILLSWITCH ENGAGE's 'The End of Heartache' showing station data.

DROWNING POOL 216/161 Love And War (Wind-up)

Table for DROWNING POOL's 'Love And War' showing station data.

KENNY WAYNE SHEPHERD 201/153 Alive (Reprise)

Table for KENNY WAYNE SHEPHERD's 'Alive' showing station data.

12 STONES 153/24 Far Away (Wind-up)

Table for 12 STONES' 'Far Away' showing station data.

VAN HALEN 132/60 Up For Breakfast (Warner Bros.)

Table for VAN HALEN's 'Up For Breakfast' showing station data.

AIRPOWER logo with text: NO SONGS QUALIFIED FOR AIRPOWER THIS WEEK

AIRPOWER BOUND logo with text: Total Detections/Gain

CHART BOUND logo with text: Total Detections/Gain

MAINSTREAM TOP 40

Table with 2 columns: Station and Song. Includes entries like WFLY Albany, N.Y., WABE Allentown, Pa., WSTR Atlanta, etc.

Table with 2 columns: Station and Song. Includes entries like KFMD Denver, KKDM Des Moines, Iowa, WDRQ Detroit, etc.

Table with 2 columns: Station and Song. Includes entries like WHYI Miami, WXSS Milwaukee, WABB Mobile, Ala., etc.

Table with 2 columns: Station and Song. Includes entries like WPCY Rochester, N.Y., WYCR York, Pa., WHOT Youngstown, etc.

Table with 2 columns: Station and Song. Includes entries like WYCR York, Pa., WHOT Youngstown, NO AIRPLAY ADDS THIS WEEK, etc.

Table with 2 columns: Station and Song. Includes entries like KYSR Los Angeles, AC, WYJB Albany, N.Y., etc.

Table with 2 columns: Station and Song. Includes entries like WLEV Allentown, Pa., WMC Memphis, WKTI Milwaukee, etc.

Table with 2 columns: Station and Song. Includes entries like KXLY Spokane, Wash., KEZK St. Louis, WMTX Tampa, Fla., etc.

AIRPLAY MONITOR



WYGY Cincinnati Blake Shelton Some Beach 15 Montgomery Gentry You Do Your Thing 11 Emerson Drive November 9 Lonestar Mr. Mom 8	KMDL Lafayette, La. Trick Pony The Bride 7 Restless Heart Feel My Way To You 7	KKGC Colorado Springs Restless Heart Feel My Way To You 7	WCOS Columbia, S.C. Clay Walker Jesus Was A Country Boy 6	WKCN Columbus, Ga. Sunday Pete & Margie Lan Lonely On 42 Emerson Drive November 9	WSTH Columbus, Ga. Reba McEntire He Gets That From Me 8 Blake Shelton Some Beach 8 Trent Willmon Dixie Rose Deluxe's 6	WCOL Columbus, Ohio SheDaisy Come Home Soon 14 Blue County That's Cool 7 Dierks Bentley How Am I Doin' 6	KFTX Corpus Christi LeAnn Rimes Notin' Bout Love Makes 10 George Canyon I'll Never Do Better 8 John Conlee From Your Knees 8 Rachel Proctor Where I Belong 6 Reba McEntire He Gets That From Me 6	KRYS Corpus Christi Zona Jones Whiskey Kind Of Way 6	KPLX Dallas Tim McGraw Back When 10 Tim McGraw We Carry On 8 Tim McGraw Just Be Your Tear 8	KSCS Dallas LeAnn Rimes Notin' Bout Love Makes 10 Tim McGraw Blank Sheet Of Paper 6 Tim McGraw My Old Friend 6 Tim McGraw How Bad Do You Want It 6	KYGO Denver Blake Shelton Some Beach 9 Pat Green Don't Break My Heart Agai 9	KHKI Des Moines, Iowa Emerson Drive November 9 Brad Cotter Can't Tell Me Nothin' 7	KHEY El Paso, Texas Gary Allan Nothing On But The Radio 16 Restless Heart Feel My Way To You 7	WWGR Fort Myers, Fla. Blake Shelton Some Beach 19	WFRE Frederick, Md. Blake Shelton Some Beach 11	WFLS Fredericksburg, Va. Kenny Chesney The Woman With You 7	KSKS Fresno, Calif. Dierks Bentley How Am I Doin' 10 Cledus T. Judd I Love Nascar 10 Restless Heart Feel My Way To You 9 Gary Allan Nothing On But The Radio 8	WOGK Gainesville, Fla. Tracy Lawrence It's All How You Look 7	WBCT Grand Rapids Billy Dean Let Them Be Little 9 SheDaisy Come Home Soon 8 Kenny Chesney The Woman With You 6	WNCY Green Bay, Wis. Emerson Drive November 12 Clay Walker Jesus Was A Country Boy 6	WESC Greenville, S.C. Phil Vassar In A Real Love 6 Gary Allan Nothing On But The Radio 6	WSSL Greenville, S.C. SheDaisy Come Home Soon 11	WCAT Harrisburg, Pa. Clay Walker Jesus Was A Country Boy 6	WRBT Harrisburg, Pa. Dierks Bentley How Am I Doin' 10	WVYZ Hartford, Conn. Blake Shelton Some Beach 8	KILT Houston Sugarland Baby Girl 8	WFMS Indianapolis Mark Chesnut The Lord Loves The Dr 12 Lonestar Mr. Mom 11 Sugarland Baby Girl 6	WUSJ Jackson, Miss. SheDaisy Come Home Soon 10 The Jenkins Getaway Car 9 Darryl Worley Awful, Beautiful Life 9 Craig Morgan Look At Us 6 Trick Pony The Bride 8	WXBQ Johnson City Darryl Worley Awful, Beautiful Life 18 Lonestar Mr. Mom 17 Brad Paisley Mud On The Tires 14	KBEQ Kansas City The Jenkins Getaway Car 16 Clint Black My Imagination 15	KFKF Kansas City Jimmy Buffett With Martin Trip Arou 8 Reba McEntire He Gets That From Me 7 Emerson Drive November 6 Slurpee I Can't Help How I Feel 6	WIVK Knoxville, Tenn. Montgomery Gentry You Do Your Thing 9 LeAnn Rimes Notin' Bout Love Makes 9 Blake Shelton Some Beach 6
---	---	---	---	--	--	--	---	--	---	---	---	---	---	---	---	---	---	---	--	---	---	--	--	---	---	--	---	---	---	--	---	---

KNXX Baton Rouge, La. Crosfaded Cold 16 A Perfect Circle Blue 15 Muse Hysteria (I Want It Now) 7	WVNF Knoxville, Tenn. Beastie Boys Triple Trouble 9 The High Holy Days The Getaway 7 Instruction Breakdown 7	KBZT San Diego Interpol Slow Hands 15 R.E.M. Leaving New York 10 Death Cab For Cutie The Sound Of Se 8	XTRA San Diego The Used Take It Away 25 Interpol Slow Hands 19 Talking Back Sunday A Decade Under T 13	KCNL San Francisco Good Charlotte Predictable 15 Hoobastank Same Direction 9	KITS San Francisco Sum 41 We're All To Blame 12	KJEE Santa Barbara Cake No Phone 7 Pearl Jam 25 Minutes To Go 6	WFXH Savannah, Ga. Shinedown Simple Man 19 Godsmack Featuring Dropbe Touche 14 A Perfect Circle Blue 11 The Strokes The End Has No End 7	KNDD Seattle Cake No Phone 13 Dogs On In Hot Cars I Love You Cau 12 Snow Patrol Run 9	KQRA Springfield, Mo. Korn Word Up 15 Blink-182 Always 14	KPNT St. Louis Alter Bridge Open Your Eyes 8 Muse Hysteria (I Want It Now) 12 Snow Patrol Run 6	WKRL Syracuse, N.Y. Netwerks Further Than My Eyes 13 12 Stones Far Away 10 New Found Glory Failure's Not Flat 8	WRWK Toledo, Ohio Korn Word Up 14	KFMA Tucson, Ariz. A Perfect Circle Blue 13 Jimmy Eat World Pain 11 Good Charlotte Predictable 8 My Chemical Romance I'm Not Ok (I P 7	KMYZ Tulsa, Okla. Hoobastank Same Direction 7 Snow Patrol Run 6	WHFS Washington, D.C. Good Charlotte Predictable 23 Jimmy Eat World Pain 13 Sum 41 We're All To Blame 11 The Strokes The End Has No End 7	WWDG Washington, D.C. Cake No Phone 11	WPBZ West Palm Beach Muse Hysteria (I Want It Now) 9 Kottonmouth Kings Bad Habits 9 Jimmy Eat World Pain 10	NO AIRPLAY ADDS THIS WEEK: WEND Charlotte, N.C. • WKQX Chicago • KFRR Fresno, Calif. • WLRS Louisville, Ky. • WKXR New Bern, N.C. • WOCL Orlando, Fla. • WSUN Tampa, Fla.	ACTIVE ROCK
--	--	--	--	---	---	--	---	---	--	---	---	---	---	--	--	--	---	---	--------------------

KNXX Baton Rouge, La. Crosfaded Cold 16 A Perfect Circle Blue 15 Muse Hysteria (I Want It Now) 7	WANZ Birmingham, Ala. Linkin Park Breaking The Habit 13 Papa Roach Getting Away With Murder 8 Blink-182 Always 7	WRAX Birmingham, Ala. Silveride Ain't Coming Home 12 Coke No Phone 10 Papa Roach Getting Away With Murder 7 Spiderbait Black Betty 6	WBON Boston Slipknot Duality 10 Chevelle Vitamin R (Leading Us Along 10 Lostprophets Wake Up (Make A Move) 8	WFXN Boston Yellowcard Only One 13 Coke No Phone 10 Morrissey First Of The Gang To Die 9 Jimmy Eat World Pain 8 Franz Ferdinand The Dark Of The Mat 8 Killradio Do You Know (Knife In You 7 Papa Roach Getting Away With Murder 6 Spiderbait Black Betty 6	WBON Boston Slipknot Duality 10 Chevelle Vitamin R (Leading Us Along 10 Lostprophets Wake Up (Make A Move) 8	WVNF Knoxville, Tenn. Beastie Boys Triple Trouble 9 The High Holy Days The Getaway 7 Instruction Breakdown 7	KBZT San Diego Interpol Slow Hands 15 R.E.M. Leaving New York 10 Death Cab For Cutie The Sound Of Se 8	XTRA San Diego The Used Take It Away 25 Interpol Slow Hands 19 Talking Back Sunday A Decade Under T 13	KCNL San Francisco Good Charlotte Predictable 15 Hoobastank Same Direction 9	KITS San Francisco Sum 41 We're All To Blame 12	KJEE Santa Barbara Cake No Phone 7 Pearl Jam 25 Minutes To Go 6	WFXH Savannah, Ga. Shinedown Simple Man 19 Godsmack Featuring Dropbe Touche 14 A Perfect Circle Blue 11 The Strokes The End Has No End 7	KNDD Seattle Cake No Phone 13 Dogs On In Hot Cars I Love You Cau 12 Snow Patrol Run 9	KQRA Springfield, Mo. Korn Word Up 15 Blink-182 Always 14	KPNT St. Louis Alter Bridge Open Your Eyes 8 Muse Hysteria (I Want It Now) 12 Snow Patrol Run 6	WKRL Syracuse, N.Y. Netwerks Further Than My Eyes 13 12 Stones Far Away 10 New Found Glory Failure's Not Flat 8	WRWK Toledo, Ohio Korn Word Up 14	KFMA Tucson, Ariz. A Perfect Circle Blue 13 Jimmy Eat World Pain 11 Good Charlotte Predictable 8 My Chemical Romance I'm Not Ok (I P 7	KMYZ Tulsa, Okla. Hoobastank Same Direction 7 Snow Patrol Run 6	WHFS Washington, D.C. Good Charlotte Predictable 23 Jimmy Eat World Pain 13 Sum 41 We're All To Blame 11 The Strokes The End Has No End 7	WWDG Washington, D.C. Cake No Phone 11	WPBZ West Palm Beach Muse Hysteria (I Want It Now) 9 Kottonmouth Kings Bad Habits 9 Jimmy Eat World Pain 10	NO AIRPLAY ADDS THIS WEEK: WEND Charlotte, N.C. • WKQX Chicago • KFRR Fresno, Calif. • WLRS Louisville, Ky. • WKXR New Bern, N.C. • WOCL Orlando, Fla. • WSUN Tampa, Fla.	ACTIVE ROCK
--	--	---	--	---	--	--	--	--	---	---	--	---	---	--	---	---	---	---	--	--	--	---	---	--------------------

KZRK Salt Lake City Secret Machines Nowhere Again 8	KBZT San Diego Interpol Slow Hands 15 R.E.M. Leaving New York 10 Death Cab For Cutie The Sound Of Se 8	XTRA San Diego The Used Take It Away 25 Interpol Slow Hands 19 Talking Back Sunday A Decade Under T 13	KCNL San Francisco Good Charlotte Predictable 15 Hoobastank Same Direction 9	KITS San Francisco Sum 41 We're All To Blame 12	KJEE Santa Barbara Cake No Phone 7 Pearl Jam 25 Minutes To Go 6	WFXH Savannah, Ga. Shinedown Simple Man 19 Godsmack Featuring Dropbe Touche 14 A Perfect Circle Blue 11 The Strokes The End Has No End 7	KNDD Seattle Cake No Phone 13 Dogs On In Hot Cars I Love You Cau 12 Snow Patrol Run 9	KQRA Springfield, Mo. Korn Word Up 15 Blink-182 Always 14	KPNT St. Louis Alter Bridge Open Your Eyes 8 Muse Hysteria (I Want It Now) 12 Snow Patrol Run 6	WKRL Syracuse, N.Y. Netwerks Further Than My Eyes 13 12 Stones Far Away 10 New Found Glory Failure's Not Flat 8	WRWK Toledo, Ohio Korn Word Up 14	KFMA Tucson, Ariz. A Perfect Circle Blue 13 Jimmy Eat World Pain 11 Good Charlotte Predictable 8 My Chemical Romance I'm Not Ok (I P 7	KMYZ Tulsa, Okla. Hoobastank Same Direction 7 Snow Patrol Run 6	WHFS Washington, D.C. Good Charlotte Predictable 23 Jimmy Eat World Pain 13 Sum 41 We're All To Blame 11 The Strokes The End Has No End 7	WWDG Washington, D.C. Cake No Phone 11	WPBZ West Palm Beach Muse Hysteria (I Want It Now) 9 Kottonmouth Kings Bad Habits 9 Jimmy Eat World Pain 10	NO AIRPLAY ADDS THIS WEEK: WEND Charlotte, N.C. • WKQX Chicago • KFRR Fresno, Calif. • WLRS Louisville, Ky. • WKXR New Bern, N.C. • WOCL Orlando, Fla. • WSUN Tampa, Fla.	ACTIVE ROCK
---	--	--	---	---	--	---	---	--	---	---	---	---	--	--	--	---	---	--------------------



BY ANTHONY COLOMBO, WADE JESSEN, PATRICK MCGOWAN & MINAL PATEL

FORMAT	SONGS WITH TOP 10 CALLOUT POTENTIAL THIS WEEK'S NEW RELEASES IN RED	
MAINSTREAM TOP 40	1 LINKIN PARK Breaking The Habit WARNER BROS. 81.9	9 USHER FEAT. ALICIA KEYS My Boo ZOMBA 68.3
	2 SWITCHFOOT Dare You To Move COLUMBIA 77.1	10 DASHBOARD CONFSSIONAL Vindicated INTERSCOPE 68.2
	3 THE KILLERS Somebody Told Me IDJMG 74.7	11 SEETHER Broken WIND-UP 67.6
	4 STORY OF THE YEAR Anthem Of Our Dying Day MAVERICK 74.6	12 SKYE SWEETNAM Tangled Up In Me CAPITOL 66.8
	5 RYAN CABRERA On The Way Down ATLANTIC 71.5	13 GOOD CHARLOTTE Predictable EPIC 66.2
	6 BOWLING FOR SOUP 1985 ZOMBA 71.4	14 FRANZ FERDINAND Take Me Out EPIC 65.9
	7 ASHLEE SIMPSON Shadow GEFFEN 70.7	15 NELLY FEAT. JAHEIM My Place UMRG 65.2
	8 KELLY CLARKSON Breakaway HOLLYWOOD 69.9	
RHYTHMIC TOP 40	1 O'RYAN Take It Slow UMRG 77.5	5 MONICA U Should've Known Better RMG 75.3
	2 USHER FEAT. ALICIA KEYS My Boo ZOMBA 76.9	6 KANYE WEST New Workout Plan IDJMG 70.9
	3 SHAWNNA Shake That Sh** IDJMG 76.6	7 BRANDY Who Is She 2 U ATLANTIC 68.3
	4 ALICIA KEYS Diary RMG 75.6	8 JADAKISS Why? INTERSCOPE 67.7
R&B/HIP-HOP	1 I-20 Break Bread CAPITOL 91.0	6 MASE Breathe, Stretch, Shake UMRG 77.1
	2 SHAWNNA Shake That Sh** IDJMG 89.9	7 JOHN LEGEND Used To Love You COLUMBIA 74.7
	3 O'RYAN Take It Slow UMRG 86.9	8 LLOYD BANKS I'm So Fly INTERSCOPE 67.7
	4 BRANDY Who Is She 2 U ATLANTIC 84.5	9 D.O.D./KANYE WEST Higher LEGION 66.8
	5 USHER FEAT. ALICIA KEYS My Boo ZOMBA 79.6	10 LENNY KRAVITZ Storm VIRGIN 66.4
ADULT TOP 40	1 SARAH MCLACHLAN World On Fire RMG 88.7	9 AVRIL LAVIGNE My Happy Ending RMG 69.1
	2 AVION Seven Days Without You CONSOLE 78.1	10 KELLY CLARKSON Breakaway HOLLYWOOD 67.3
	3 JEREMY CAMP Right Here EMC 77.2	11 KENNY CHESNEY & UNCLE KRACKER When The Sun Goes Down BNA 66.9
	4 LINKIN PARK Breaking The Habit WARNER BROS. 76.0	12 RICHARD MARX When You're Gone EMC 66.6
	5 BOWLING FOR SOUP 1985 ZOMBA 73.9	13 ASHLEE SIMPSON Pieces Of Me GEFFEN 66.5
	6 SEETHER Broken WIND-UP 73.8	14 BEN ARTHUR Tonight RASCAL 66.3
	7 SWITCHFOOT Dare You To Move COLUMBIA 72.5	15 RYAN CABRERA On The Way Down ATLANTIC 65.4
	8 JOHN MAYER Daughters COLUMBIA 71.0	
MODERN ROCK	1 CROSSFADE Cold COLUMBIA 76.6	8 GODSMACK Touche URMG 66.4
	2 BLINK 182 Always GEFFEN 76.1	9 THE STROKES The End Has No End RMG 66.3
	3 HOOBASTANK Same Direction IDJMG 72.2	10 BOWLING FOR SOUP 1985 ZOMBA 65.7
	4 NEW FOUND GLORY Fallure Is Not Flattering GEFFEN 70.2	11 12 STONES Far Away WIND-UP 65.7
	5 SHINEDOWN Simple Man ATLANTIC 69.8	12 PAPA ROACH Getting Away With Murder DREAMWORKS 65.7
	6 THE EXPLOSION Here I Am VIRGIN 69.6	13 ALTER BRIDGE Open Your Eyes WIND-UP 65.2
	7 MODEST MOUSE Ocean Breathes Salty EPIC 67.9	

Songs are blind tested online by Promosquad using multiple listens and a nationwide sample of carefully profiled music consumers. Songs are rated on a 1-5 scale; final results are based on weighted positives. Songs with a score of 65 or more are judged to have top 10 callout potential, although that benchmark number can fluctuate based on the strength of available music. New Releases are songs that have been recently serviced to or impacted at their respective formats; Recently Tested Songs are the songs tested during the past month with the highest score. For a complete list of current songs with Top 10 Callout Potential, see HitPredictor.com. © 2003, Promosquad is a trademark of Think Fast LLC.

McGraw Sets Career No. 1 Mark

Tim McGraw scores the biggest chart hit of his career, as "Live Like You Were Dying" (Curb) logs a seventh week at No. 1 on the country chart.

Of McGraw's 19 prior No. 1 hits, two have spent more than a handful of weeks at No. 1. "It's Your Love" (his duet with Faith Hill) and "Just to See You Smile" spent six weeks at No. 1 in 1997 and 1998, respectively.

McGraw's "Dying" equals the longest run at No. 1 so far in 2004, which was set in January by Kenny Chesney's "There Goes My Life."

REVOLVING RHYTHMIC NO. 1s

"Goodies" (Zomba) by Ciara Featuring Petey Pablo takes over the top spot at rhythmic top 40. It ends the one-week run by Terror Squad's "Lean Back" (UMRG), which was preceded by the single week Lil' Flip's "Sunshine" (SUM) spent at the top.

Counting the final week at No. 1 spent by Juvenile's "Slow Motion" (UMRG) in the Aug. 6 issue, the top of the rhythmic top 40 chart has seen four different No. 1s in the past four weeks. The last time the chart saw such a turnover was in May 2003 when R. Kelly's "Ignition" gave way, in order, to Sean Paul's "Get Busy," Fabolous' "Can't Let You Go" and 50 Cent's "21 Questions." Prior to May 1993, the feat had last occurred in November 1992.

Elsewhere on the rhythmic list, long chart runs have been cropping up lately, with 11 titles surpassing the 20-week mark. The leaders of the pack are Petey Pablo's "Freak a Leek" (Zomba) with 36 weeks and Usher's "Yeah!" (Zomba) at 35 weeks.

In 2003, only Baby Bash Featuring Frankie J's "Suga Suga" stayed on the chart for more than 35 weeks. You would have to go back to 1999 to find a year with two or more songs with such lengthy stays, when four tracks posted 35-plus-week runs on the chart.

AC TOP 10 CLIMBS COME IN VARIOUS SIZES

Two acts take their debut single into the top 10 at AC this week, with varying chart speeds.

After 21 weeks on the chart, Kimberley Locke's "8th World Wonder" (Curb) inches up 12-10 with of the longest climbs into the top 10 in the history of the chart. Only Norah Jones' "Don't Know Why" and Train's "Drops of Jupiter (Tell Me)," with jaunts of 32 and 49 weeks, respectively, took longer to make their way to the top 10.

In contrast, "Heaven" (Or/Epic) by Los Lonely Boys moves 14-9 in its 11th chart week, which is quick by AC chart standards. The last act to quickly take its debut single into the top 10 was Kelly Clarkson, who needed only four weeks to reach the top 10 with "A Moment Like This" in November 2002.

Locke and Los Lonely Boys become the first new acts to reach AC's top 10 in 2004. The last new group to make the top 10 was MercyMe with "I Can Only Imagine" in September 2003, while the last debut female artist was Locke's fellow "American Idol" alumna Clarkson.



LOS LONELY BOYS

HOLLYWOOD FINDS 'COLD' IS THE PERFECT CLIMATE

Breaking Benjamin's "So Cold" takes over the No. 1 spot at active rock, becoming the first act on Hollywood Records to hit the top of the chart. The label's only other No. 1 on the list came from an act on loan to the label. In summer 2000 Metallica hit No. 1 for seven weeks with "I Disappear" from the "Mission: Impossible 2" soundtrack.

Further down the active chart, a couple of acts return after a long hiatus. Helmet makes its first chart appearance in seven years as "See You Dead" (Interscope) enters at No. 32.

Kenny Wayne Shepherd is back after a four-year break with "Alive" (Reprise) at No. 39. Shepherd last appeared with "Last Goodbye," which peaked at No. 38 in September 2000.

LABELLE AND LALAH FEEL LOVE AT ADULT R&B

Patti LaBelle's "Gotta Go Solo" (IDJMG), which features Ron Isley, soars 26-18 on the adult R&B chart and earns the Greatest Gainer, Most Airplay Adds and Airpower triple crown. Though not featured on LaBelle's latest release, "Timeless Journey," the track will be stripped onto subsequent pressings.

Elsewhere at adult R&B, Lalah Hathaway climbs 40-31 with "Forever, for Always, for Love," her first single as a solo/lead artist and her first overall in 10 years. Her last appearance on the chart came as a featured artist on Joe Sample's "When Your Life Was Low" in 1999.



CHECK YOUR INBOX EVERY MONDAY!

AIRPLAY MONITOR HitPredictor WEEKLY ALERT

Sign up FREE at <http://www.airplaymonitor.com/hitpredictor>

ELTON JOHN

CONTINUES HIS MONUMENTAL CAREER AS
AN INTERNATIONAL SINGER/SONGWRITER
AND PERFORMER THAT SPANS MORE
THAN THREE DECADES.

THE NEW SINGLE
"ANSWER IN THE SKY"

IMPACTING ON 8/30

FROM HIS NEW ALBUM
'PEACHTREE ROAD'

IN STORES NOVEMBER 9TH

Management: Twenty-First Artists Ltd.

rocket UNIVERSAL eltonjohn.com
RECORDS

© 2004 Mercury Records, Limited. All rights reserved. Universal Records is a Division of UMG Entertainment, Inc.