

# Radio Guide

[www.radio-guide.com](http://www.radio-guide.com)

Digital Issue Now On-Line

September-October 2009 – Vol. 17, No. 5

## The ARC-8 Console – Newest Member of the Arrakis Family



### Inside Radio Guide

This issue on-line at: [www.radio-guide.com](http://www.radio-guide.com)

- 6 - **Cover Story:** Arrakis Consoles – It's All in the Family
- 10 - **FCC Focus:** Are Your Stations in Compliance?
- 12 - **Studio Site:** "Light Speed" Recording – A Digital Recorder Checklist
- 14 - **Xtreme Engineering:** No Project is Impossible
- 16 - **Safety and Security:** Physical Levels and Detection Technology
- 22 - **Practical Engineering:** Successful Troubleshooting
- 26 - **Chief Engineer:** It's Time For a Balanced Playing Field
- 30 - **Transmitter Site:** To Insulate or Not to Insulate

**ACCESS**  
SUCCESS STORIES  
FROM THE FIELD.  
SEE PAGE 5

**COMREX**



# MATCHBOX IS A SONG, A TOY CAR AND A PIZZA CHAIN. BUT THIS ONE HAS A USB PORT.



## THE NEW BLUE BOX THAT DOES IT ALL!

The USB Matchbox II is the premier USB audio interface for broadcast station and professional audio installations. Used instead of a common PC "sound card", the USB Matchbox II eliminates common PC interface problems of buzz, noise, insufficient headroom and incorrect levels.

The USB Matchbox II provides both analog and digital interface with stereo analog I/O on XLRs at pro levels as well as an AES/EBU digital output. Plus, there's a headphone output for critical monitoring.

We've utilized Burr-Brown's new-generation phase coherent ADC/DAC, in addition to advanced audio

circuitry, to yield exceptional sonic performance. The unit supports 32, 44.1, and 48 kHz sample rates and is plug-and-play compatible with Windows, Mac, and Linux operating systems. The USB Matchbox II also features a built-in AC power supply to ensure operation at true professional audio levels with exceptional headroom.

So, dust off that die-cast car, grab a tasty slice, and punch up Carl Perkins

on your computer with the USB Matchbox II to hear him like you've never heard him before!



## WE BUILD SOLUTIONS.

**DIGITAL SOLUTIONS. ANALOG SOLUTIONS. FUNCTIONAL. RELIABLE. AFFORDABLE.**

Visit [www.henryeng.com](http://www.henryeng.com) for all of Henry's solutions!



Henry Engineering • 503 Key Vista Drive, • Sierra Madre, CA 91024 USA • T: 626.355.3656 • F: 626.355.0077 • email: [Info@henryeng.com](mailto:Info@henryeng.com)  
*Pizza, toy cars or 50's song writers are not meant to be inferred as endorsers of any Henry product.*



# FINALLY... FAILSAFE NETWORKED AODIP.

## WHEATSTONE E-SERIES & WHEATNET-IP ARE YOUR BEST CHOICE BY A LONG SHOT.



When it comes to networking your facilities, there's only one best choice. Wheatstone. For years, we've been the network/control surface choice of top broadcasters. And with good reason – we care.

Wheatstone's Audio-Over-IP product is the best in the business. Here's why:

**1. WheatNet-IP is easiest for a station to implement and configure.** It is, hands down, the easiest in the industry. No need for Wheatstone to provide factory on-site assistance unless you really WANT us there. The manual and app notes will have you up, running and stable in less time than any other system.

**2. WheatNet-IP is a natural for large facility multi-station networking (and for smaller facilities too!).** It uses the IGMP features of Ethernet Layer 3 switches to identify a multicast packet, see which ports are requesting that packet, and send it only to those ports. Traffic control is maintained and system bandwidth is optimized.

**3. Redundancy is critical.** A typical WheatNet-IP installation has multiple levels of redundancy. Each BLADE holds the complete map of the entire system within its onboard memory – we call it distributed

intelligence – a system with 50 BLADEs has 49 backups with failover in the event of a failure. Cisco Stackwise technology provides redundancy in the central core TOC switch. A WheatNet-IP/E-Series console studio complex can stand alone, even if the TOC goes down, with backup analog or digital program audio feeding a back end router independent of the core Gigabit infrastructure.

**4. Modular is better.** Why would you want to combine your switch, mix engine and I/O into one box? Beats us. With WheatNet-IP, you install only what you need, where you need it. We believe in not overselling.

**5. Manufacturing quality is very important.** Wheatstone is proud to have the best track record in the business for build-quality, reliability and intelligent functionality. With far more up-and-running installations than anyone else, this is where we really shine. An investment in WheatNet-IP and E-Series control surfaces today will reward you with a future-proof, failsafe networking/control environment that's infinitely updatable and in for the long run.

**6. WheatNet-IP has an advantage.** Take a look at your entire environment. Wheatstone is a perfect partner because we are always there, always innovating. Built into every WheatNet-IP BLADE are features others just didn't think of – handy utility mixers, silence detection, crosspoint routing control, headphone monitoring of any source, lots of logic GPIO, and comprehensive metering of audio I/O, not just signal-presence indicators. And, in the hugely unlikely event that a BLADE needs to be replaced you just plug in a new one and enter the BLADE number. That's it.

**7. Wheatstone is local.** WheatNet-IP and the E-Series, just like ALL Wheatstone products, are designed, engineered and built from start to finish in our New Bern NC USA facility. Everyone who works on our products is 100% knowledgeable and immediately available. You can relax – as with the famous insurance company, you ARE in good hands.

With WheatNet-IP, we think we've done our homework. In fact, we know we have. And we're happy to say that we've got the best product on the market. To learn more, and there's a LOT more, get us on the phone or visit us on the web. We'll be happy to meet with you and get you everything you need.



WHEATNET  
WY



Audio Networking – Simply Evolved

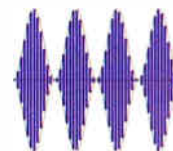
World Radio History | 1.252.638-7000 | www.wheatstone.com | sales@wheatstone.com



# Radio Guide

## Contents

**Radio Waves**  
by Ray Topp – Publisher



September-October 2009

<b>Cover Story</b> .....	6
Arrakis Consoles - <i>It's All in the Family</i>	
<b>FCC Focus</b> .....	10
<i>Are Your Stations in Compliance?</i>	
<b>Studio Site</b> .....	12
<i>"Light Speed" Recording – A Digital Recorder Checklist</i>	
<b>Xtreme Engineering</b> .....	14
<i>No Project is Impossible</i>	
<b>Safety &amp; Security</b> .....	16
<i>Physical Levels and Detection Technology</i>	
<b>Station Ops</b> .....	18
<i>Stand Out on the Internet</i>	
<b>Practical Engineering</b> .....	22
<i>Successful Troubleshooting</i>	
<b>Chief Engineer</b> .....	26
<i>It's Time For a Balanced Playing Field</i>	
<b>Transmitter Site</b> .....	30
<i>To Insulate or Not to Insulate</i>	
<b>Field Guide - BSI</b> .....	34
<i>BSI's Op-X Automation</i>	
<b>Field Guide - Nautel</b> .....	36
<i>The Nautel J1000</i>	

<b>Tech Tips</b> .....	38
<i>An Inexpensive Temporary Dehydrator</i>	
<b>Tech Tips</b> .....	40
<i>Using the Right Fence</i>	
<b>Service Guide</b> .....	42 & 44
<i>Radio Equipment, Products, and Services</i>	
<b>Radio Pipeline</b> .....	43 & 45
<i>New Equipment, Equipment Mods and Updates, Industry Info</i>	
<b>Final Stage</b> .....	47
<i>Convention, and Event Register – Advertiser Information</i>	

### Cover Photo:

#### Four generations of the Palmer family.

Left to Right: Melissa Freeman (daughter of Michael Palmer), Benjamin Palmer (son of Michael Palmer), Aaron Palmer (son of Michael Palmer), Michael Palmer (founder, president and CEO), Clarence Palmer (father of Michael Palmer), Gloria Palmer (wife of Michael Palmer). In Front: Evelyn Freeman (daughter of Melissa Freeman).

## Radio Guide

Volume 17 – Issue 5

PO Box 20975, Sedona, AZ 86341

Phone: 928-284-3700 • Fax: 866-728-5764

Ray Topp (Publisher) – radio@rconnect.com

Ernie Belanger (Editor) – editor@radio-guide.com

Radio Guide, ISSN 1061-7027, is published bi-monthly, six times a year, by Media Magazines Inc., PO Box 20975, Sedona, AZ 86341. Radio Guide is copyright 2009, Media Magazines Inc., and may not be copied, reproduced, or stored in any format, without the written permission of the publisher.

### A Welcome

As of this issue, Ernie Balanger has officially joined *Radio Guide* as our editor. Ernie began working in radio at age 14, and during his career he has designed multiple RF facilities and radio stations under contract.

He has trained sales staff, programmed, and engineered – it seems that the only position Ernie hasn't held is that of radio station owner. Throughout his career, Ernie has also physically constructed stations – becoming involved in most aspects of broadcast operation and engineering.

And, as some of you may know, Ernie has been the Sales and Marketing Manager or VP for three different transmitter manufacturers.

### Adding to What Works

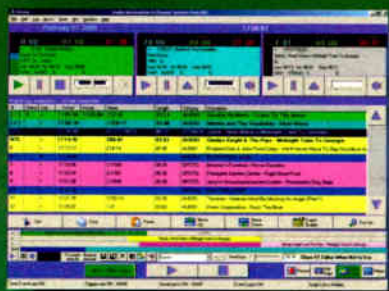
Under Ernie's direction, much of the *Radio Guide* content will remain the same, since it is what you have requested over the years. But in areas where we can improve, we will be adding useful and interesting topics.

As always, it will be up to you to help us determine the direction of your publication. Let us know what you like – and what needs tweaking.

If you would you like to write an article, or even a column of your own, please contact Ernie. It's easy and we will help you make it happen.

In this issue we have launched our *Xtreme Engineering* column on page 14. Many of you have accomplished some pretty outrageous engineering feats in your time. Let us know what you've done and how you survived. –R.T.–

## Simian



Fully automated or live assist play out software.

Advanced features for radio stations including easy satellite network integration.

## SkimmerPlus

Advanced 24/7 audio logging and skimming.

Single or multiple channel recordings triggered by time or external triggers.

Archive capability satisfies or exceeds logging requirements in many countries.

Password protected remote web playback or FTP transfer of audio archive.



## Complete PC Broadcast Systems



Fully configured and broadcast ready play out systems and networks.

Optional music, advert & promo scheduling software and remote control hardware.

Music library available.



KEKB Thursday, April 13, 2006		
Time	Length	
06:00:00	00:01:49	
06:01:49	00:01:49	
06:03:20	00:01:49	
06:04:48	00:01:49	
06:06:20	00:01:49	
06:07:49	00:01:49	
06:09:20	00:01:49	
06:10:49	00:01:49	
06:12:20	00:01:49	
06:13:49	00:01:49	
06:15:20	00:01:49	
06:16:49	00:01:49	
06:18:20	00:01:49	
06:19:49	00:01:49	
06:21:20	00:01:49	
06:22:49	00:01:49	
06:24:20	00:01:49	
06:25:49	00:01:49	
06:27:20	00:01:49	
06:28:49	00:01:49	
06:30:20	00:01:49	
06:31:49	00:01:49	
06:33:20	00:01:49	
06:34:49	00:01:49	
06:36:20	00:01:49	
06:37:49	00:01:49	
06:39:20	00:01:49	
06:40:49	00:01:49	
06:42:20	00:01:49	
06:43:49	00:01:49	
06:45:20	00:01:49	
06:46:49	00:01:49	
06:48:20	00:01:49	
06:49:49	00:01:49	
06:51:20	00:01:49	
06:52:49	00:01:49	
06:54:20	00:01:49	
06:55:49	00:01:49	
06:57:20	00:01:49	
06:58:49	00:01:49	
07:00:20	00:01:49	
07:01:49	00:01:49	
07:03:20	00:01:49	
07:04:49	00:01:49	
07:06:20	00:01:49	
07:07:49	00:01:49	
07:09:20	00:01:49	
07:10:49	00:01:49	
07:12:20	00:01:49	
07:13:49	00:01:49	

**Broadcast Software International**  
503 E. 11th Avenue, Eugene, OR 97401 USA  
Direct: 541-338-8588 Fax: 541-338-8656  
www.bsiusa.com sales@bsiusa.com



# LIVE & LOCAL

## Your Audience Is Out There Grab Them LIVE with ACCESS!

The air is fresh and outside there's SO much going on! Street Fairs. Music Festivals. Sporting events. And everywhere there are people just dying to talk to you, ready to BE your audience!

Whether it's breaking news or a party breaking out, there's your story. And you don't need a full crew to grab it. As fast as you can get there, you can be live on the air, creating pinpoint, relevant programming that keeps an ever-growing number of listeners glued to their radios.

ACCESS PORTABLE lets you send studio-quality live audio, real time to an ACCESS RACK at your studio over POTS, DSL, Cable, Wi-Fi, 3G cellular (EVDO/UMTS), 4G WiMax, satellite and more to make any remote broadcast really stand out.

There's nothing more immediate than local— connect with your audience from anywhere with the easy to use, handheld ACCESS PORTABLE!

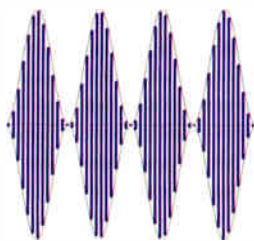


Put Comrex On The Line.

### COMREX

19 Pine Road, Devens, MA 01434 USA Tel: 978-784-1776 Fax: 978-784-1717 • Toll Free: 800-237-1776 • [www.comrex.com](http://www.comrex.com) • [info@comrex.com](mailto:info@comrex.com)





# Arrakis Consoles

*It's All in the Family*

by Ernie Belanger

In this day and age of corporate takeovers and competitors gobbling up their competition just to shut them down, it's refreshing to come across a company that is still owned by the founder and his family, some 30 plus years after it first opened its doors.

That company is Arrakis, who appropriately is our cover story this issue as they introduce their newest console the ARC-8.

Even more impressive than the company still being owned by its founder Mike Palmer and his family, is that Arrakis has three generations of Palmer family members actively involved in the business on a daily basis. So when Mike or his dad decide it's time to "go fishing" (i.e. retire) the succession team for the company is already trained and in place. Now that is something that immediately raises your comfort level.

## Innovative From the Beginning

One of the things that first motivated Mike to start Arrakis was the quest to provide affordable, quality consoles. The company's longevity and bright future proves they hit their mark and continue to do so.

Over the years, Mike has kept the company focused on manufacturing audio consoles and furniture. It branched out into computer hard drive automation systems, to compliment their main product line, as technology evolved. Now remember, back when Arrakis first started the automation systems were those three rack or more monsters with tape players that played 14-inch reels of music and the infamous carousel cart decks.

## The Success Formula

Usually there is at least one thing that will keep a company around this long: quality products that meet a market niche, excellent customer support or reasonable prices. In the case of Arrakis it's a hat trick. (For you non-hockey fans, that means it's all three.) Add to those, the ability to see an emerging market and create a product to meet the niche – even before the marketplace realizes it has the need. All make a formula for success.

Arrakis has had great success over the years with their consoles; in fact there are over five thousand in use worldwide, as you read this. Company success continues with the ARC-15, ARC-10 and MARC-15 consoles.

But, Arrakis is not known for sitting on its laurels. So now the introduction of the ARC-8 will round out the ARC family.

## Just What is This?

I must admit that I raised an eyebrow when I first saw pictures of Arrakis' new baby, the ARC-8. It looked a little too "disposable" to me. Sort of a souped up DJ console on steroids. I thought the price point pretty much proved out my theory.

The further I looked, the more I convinced myself that was exactly what it was, and I guessed it was probably made in some remote Asian village, somewhere.

Yeah, that's just what we needed in our industry another one of "those" products.



The ARC-8

## Not So Fast

Boy, was I wrong! And I should have known better. Mike and his team have done it once again. They've designed a quality console, with features needed in all size markets – and it's priced so even I can afford it for my home studio.

Plus, it turns out, its American made! 100% organically grown at the Arrakis factory in Fort Collins, Colorado. (OK, not grown, built.)

Let me tell you, this baby is cooking and it's a perfect compliment to the Arrakis line up of consoles. They've taken the best features of those "mixers" that have found their way into radio stations and combined them with the most wanted features in a radio console.

## Quick Installation

The ARC-8 is designed for quick plug-and-play installation. In addition to the 10 inputs, feeding 8 channels, it has both balanced and unbalanced stereo program outputs and unbalanced mono program outputs. And the ARC-8 has even more unique features that put it at a level far above any console costing even twice as much.

## Built to Last

The ARC-8 is built in the Arrakis tradition, with a rugged chassis and all front panel markings printed on the reverse side of a Polycarbonate overlay for durability. It's sleek, compact design is just 2 inches high and 12 inches deep. To gain a size perspective, just check out the cover photo. Internally, the ARC-8 is far from disposable. It's designed for field repair and field serviceability, with all IC chips socketed for easy field replacement. This makes the ARC-8 an excellent investment for any size operation.

They didn't scrimp on the components either – the switches, for example, in the ARC 8 are the same ones

they have used for 30 years without any problems and the faders are the same as you'll find in current Arc series of Consoles.

## Well Designed

Unique features include a USB input for computer in and out audio interface and a stereo mix-minus bus for hook up to an external telephone hybrid. In addition, there is an external monitor input to allow monitoring of the "on air" signal.

The two mic inputs have XLR connectors and phantom power is an option. -10 dBu unbalanced inputs are RCA connectors to interface with consumer grade electronics and the balanced inputs are on industry standard RJ45 connectors. Arrakis even provides the ten foot CAT-5 cables for you, so the console comes partially prewired.

For quick hook up of audio the ARC-8 uses IP/ethernet audio, via "AARC-NET," a "CobraNet" ethernet audio distribution system designed to link its ARC and MARC consoles and Xtreme automation products with audio and logic.

In addition to all these features, the console also includes LED indicator lamps, monitor, headphone output, cue system with muting and an auto sensing power supply module to detect voltages from 90 to 240 volts.

In short, Arrakis has taken the best features contained in recording type mixers that have found their way into radio stations and the most wanted features of a broadcast studio console.

Did I mention that the ARC-8 comes with the Digi-Link Xtreme Software? The software is designed for live on air play, basic automation and radio production. This makes the pricing of the ARC 8 unit even more unbelievable.



Plug and Play – the ARC-8 Back Panel

## Kudos to the Arrakis Team

As I said the ARC-8 is a perfect compliment to the entire Arrakis line. Like its big brothers the ARC-10 and ARC-15, and its cousin in the MARC family, this is one feature-rich console that is designed to give years of trouble free, reliable service.

Mike and his team certainly deserve hardy congratulations for their latest console: the perfect hybrid at an excellent price point for today's struggling economy.

## But There Are Other Great Arrakis Products Too

The balance of the Arrakis console family includes the ARC-10 and ARC-15 consoles which feature the same plug-and-play technology as the ARC-8, including the USB computer interface and AARC-NET digital audio network capability. (Continued on Page 8)

# Tieline IP Audio Codec Solutions

## Low Cost, IP STL and Audio Distribution

Tieline Commander Studio rack mount IP codecs are the ideal solution for STL and distribution links.

- A range of high quality compression algorithms delivering STL quality audio at amazingly low bit rates saving you thousands of dollars per year
- Uncompressed 22kHz audio with ultra low latency.
- Automatic QoS Performance Engine manages IP network jitter and maximizes low delay. Most STL competitors do not offer this.
- Automatic fail detection and switching to optional backup POTS, ISDN or wireless networks (using optional cards).
- Professional high quality audio connectors with relay and RS232 control.
- Control of remotely located units via the Internet.
- Multi unicast to more than 1 destination.



**Broadcast Quality IP STL from just**

**\$2,350**  
Per Codec

## Low cost remote broadcast, mobile reporting and temporary links.



**Broadcast quality IP remotes from just**

**\$2,350**  
Per Codec

Thousands of radio and TV stations use Tieline remote codecs everyday to deliver studio quality remotes from anywhere. See Tieline.com for pictures and stories.

- Simple to use and feature one-touch dialing to the studio.
- Great for desktop multi talent or mobile single reporter remotes
- Plug into a LAN and broadcast over the Internet live or add an optional wireless 3G module and battery kit to go completely wireless (20 kHz mono or stereo).
- You can even add optional 15kHz POTS or 20kHz stereo ISDN modules.
- Remote control of talent's input audio level from the studio so you don't have to rely on announcers setting levels, or send a technician out into the field.
- Mono, Dual Mono, Stereo, Joint Stereo and Dual Program standard profiles
- Compatible with Comrex over POTS and all other brands over IP and ISDN.

## Sports and talkshow mixer/codec

Tieline i-Mix combines multiple products into a single simple box saving you thousands of dollars.

- 6-input digital mixing with incredibly flexible cross point audio routing.
- IP and POTS codecs already on-board.
- Bi-directional audio & simultaneous communications circuits
- 4 headphone outputs and send/return mix monitoring
- An on-board PA control with telephone hybrid to take live callers in the field
- A wireless-compatible IP, 3G/3.5G, POTS, ISDN, GSM & BGAN Satellite card (optional)
- On-board relay and RS-232 with full studio remote control.
- Compatible with Comrex over POTS and all other brands over IP and ISDN.



**A complete sports and talkshow commentary solution from**

**\$4,590**

**Tieline**  
www.tieline.com

Get a live video demo right now at  
[www.tieline.com/videos](http://www.tieline.com/videos)

**800-780-4750**  
**INDIANAPOLIS**



# Arrakis Consoles

by Ernie Belanger

– Continued From Page 6 –



The ARC 10

The MARC-15 a feature-laden, professional analog console for on air radio, production, and news applications. The modular design allows the console to be configured exactly to the studio's needs and to be easily serviced.

The 15 channels with up to 30 source inputs meet even the largest studio's needs. Three output buses easily handle on air, background production, and a third mix for the most complex shows. The mainframe supports up to two phone modules for two simultaneous callers. The console even features a PC-USB input module so that the console can play from, and record to, a Windows PC in digital.

The optional Studio Monitor module facilitates control room/talk studio applications. Installation is fast and easy with the attractive low profile tabletop design and the RJ45 terminated cables that come included with the console. The engineer only need terminate the other end of the cable for the specific source device. The MARC console is even plug-in compatible with Arrakis AARC-NET digital audio networking so that your studios can be connected with only a single CAT-5 network cable.

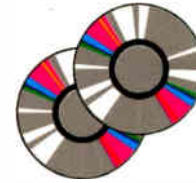


The MARC 15

Rounding out the Arrakis product line is the Digilink-Xtreme, a unique blend of an off the shelf Windows PC computer and Arrakis 'Bridge' hardware, creating a powerful and reliable automation system in Radio and Arrakis' line of studio furniture.

For more information on Arrakis products go to [www.arrakis-systems.com](http://www.arrakis-systems.com), contact Ben at 970-461-0730 or Email [sales@arrakis-systems.com](mailto:sales@arrakis-systems.com)

**Missing a Radio Guide?  
Get Them All on CD-ROM**



**Radio Guide Vol. 1  
Jan-04 thru Dec-08**

Sometimes that magazine you lent out does not come back. Or maybe you left it at the studio, and need it at the transmitter. Not to worry. The new *Radio Guide* CD Archive set now includes every issue of *Radio Guide* from January 2004 to December 2008.

An complete browser-compatible index for all issues is included, for easier article location. Archive issues are formatted in standard PDF's for easy viewing, searching, and printing.

A table of contents for the *Radio Guide* archive may be found at:  
[www.radio-guide.com/rgarchive.htm](http://www.radio-guide.com/rgarchive.htm)

**Discount Orders Now Accepted**  
[www.radio-guide.com/products.htm](http://www.radio-guide.com/products.htm)  
Normal Price: \$49.00  
Advance Order Price: \$25.00

**News • Talk • Sports • Music • Audio Logging  
• Voice Tracking • Traffic & Billing**

## SUMMIT TRAFFIC & BILLING

- 25 years of experience
- Real time avail reports
- Optimized scheduling (yield management)
- Scalable (small to enterprise)
- Fast and accurate billing
- Open item A/R
- Single-multi-remote user access
- EDI invoicing
- Radio, Television & Cable
- Compatible with all major automation systems

## BLACKBOX AUDIO LOGGER

- Record up to 16 channels
- Off air & dear air alerts
- Compliance & verification
- Web browser access
- Talent & market monitor
- Podcast recorder
- Available in Spanish
- Extended support for AM/FM/TV tuner boards
- Mic & time skimming

## CDS<sup>32</sup> RADIO AUTOMATION

Live Assist, Satellite, and Music-on-Hard Drive

- "Smart Promo" produces professional sounding "Coming up next" style promos
- Watch windows for each commercial break
- Clock synchronization for perfect joins!
- Powerful features allow for complete control
- Interfaces with all major traffic & billing software
- Buffered liners play correctly each time
- Control CDS<sup>32</sup> SAT remotely by phone or Internet
- Automate syndicated and local sports
- 24/7 product support available from the company made famous for fast & friendly support



**Pristine Systems**  
over 25 years of  
Broadcast Automation

WWW.PRISTINESYS.COM • WWW.SUMMITTRAFFIC.COM

800.795.7234



**FT. MYERS BDCST. CO. UTILIZES KINTRONIC HD COMPATIBLE EQUIPMENT  
TO INVEST IN THE FUTURE OF SOUTHWEST FLORIDA RADIO WITH ...**

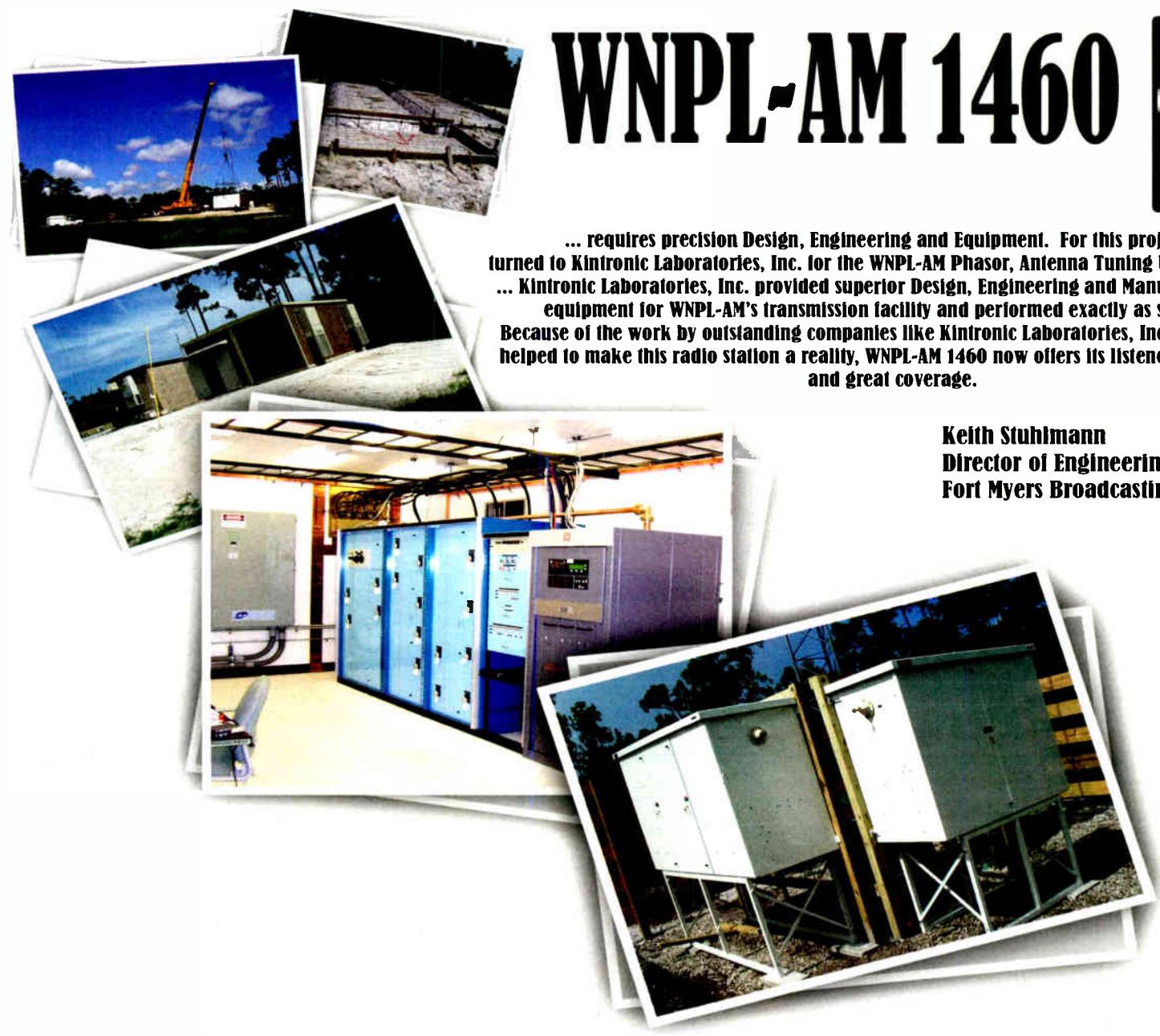
**WNPL-AM 1460**



... requires precision Design, Engineering and Equipment. For this project we turned to Kintronic Laboratories, Inc. for the WNPL-AM Phasor, Antenna Tuning Units and Filters. ... Kintronic Laboratories, Inc. provided superior Design, Engineering and Manufacturing of its equipment for WNPL-AM's transmission facility and performed exactly as specified. Because of the work by outstanding companies like Kintronic Laboratories, Inc. whose effort helped to make this radio station a reality, WNPL-AM 1460 now offers its listeners great sound and great coverage.

**Keith Stuhlmann  
Director of Engineering  
Fort Myers Broadcasting Co.**

**K  
I  
N  
T  
R  
O  
N  
I  
C  
L  
A  
B  
O  
R  
A  
T  
O  
R  
I  
E  
S**



**KinStar Antenna**



**CAN YOU FIND THE KinStar?**

- \* LOW COST
- \* SHORT INSTALLATION TIME
- \* WIDE BAND FOR HD RADIO
- \* HIGH RADIATING EFFICIENCY
- \* LOW VULNERABILITY TO LIGHTNING
- \* MEETS LOCAL ZONING HEIGHT RESTRICTIONS



**www.kintronic.com**

**FIELD SERVICES**

- Troubleshooting AM antenna systems
- Installation supervision of KTL supplied equipment
- Assessment of existing stations for upgrades to digital
- Support services for Broadcast Consulting Engineers
  - Site surveys and associated measurements
- On-Site training of Kintronic supplied systems and accessories
- On-Site repairs and refurbishments available

**OFFICIAL DEALER OF:**



**PowerAIM 120**





## Are Your Stations in Compliance?

*Editor's note: Rather than have Cary write on a single subject this issue I asked him to provide us some pertinent updates on several issues that effect radio stations.*

### Is Your EAS Handbook in Your Studio

A copy of your EAS Handbook must be located at the normal operator duty position or where the EAS equipment is installed. The handbook must be available to all staff responsible for authenticating messages and initiating actions.

If your Handbook is missing in action be sure to get a new one as soon as possible and place it in the proper location for your station's operation.

### AM Stations Should Perform Annual Equipment Performance Measurements

Section 73.1590 of the FCC Rules requires that equipment performance measurements be conducted on all AM stations annually, at intervals not exceeding 14 months, to document that the station complies with the NRSC-2 emission limits and the spurious and harmonic radiation requirements outlined in Section 73.44 of the FCC Rules.

Also, a written report detailing the results of these measurements and the equipment and procedures utilized to make these measurements must be kept on file at the transmitter site or remote control point for at least two years, and made available to the FCC upon request.

In several instances, the FCC has assessed fines of as much as \$15,000 against AM broadcasters that failed to conduct their annual performance measurements.

Be sure to check your station maintenance logs to verify if and when these annual tests took place.

### The Do Not Call List and Broadcasters

The "Do Not Call List" prevents commercial broadcasters from placing random telephone calls to residents to invite them to listen to the radio station and possibly win some prizes.

These type of calls to a commercial business. Under the rules of the Do Not Call List, "telemarketing" is defined as promoting a product or service, or soliciting money. Asking people to listen to your commercial radio station, and possibly win prizes, relates to a commercial enterprise and a related broadcast service.

The safe approach here would be to invite listeners and potential listeners to call in or send you an email to be placed on a "call list." You could promote the "call list" on-air, on your web site, or in any print or electronic advertisement in any medium of communications.

For noncommercial broadcast stations, owned and operated by a tax-exempt, non-profit entity, such telephone calls are permissible, but the content cannot relate to anything commercial in nature.

### Are You Complying With The FCC's Political Rules?

The political season is now upon us for many state-wide and local general elections. Do you know what special rules apply to broadcasters? Is your Political File up-to-date?

Noncommercial broadcast stations should be reminded that they are prohibited from broadcasting political advertising, but must provide limited free on-air time and reasonable access to all legally qualified federal candidates

### Revised AM & FM Self-Inspection Checklists

The FCC released revised Broadcast Inspection Checklist booklets for AM & FM broadcasters.

The new self-inspection booklets contain new information about modulation metering, FAA contact information and retention periods certain Public File documents

With the release of the new self-inspection booklets came an apparent FCC policy shift on the Public File. For the very first time, the FCC stated that co-owned and co-located broadcast stations must maintain a separate

Public File for each station. If you own and operate more than one broadcast station that are located in the same studio building, please make sure you divide up your station documents and maintain a separate Public File for each station.

### Broadcasters Not Liable for Defamatory Statements in Political Ads

Section 315 of the Communications Act not only requires broadcasters to sell time, and equal time, to political candidates, but that statute prohibits broadcasters from censoring such material. Accordingly, broadcasters have a *Section 315(a) Privilege* against defamation lawsuits with respect to such material.

### What to Do if Your EAS Equipment Fails

If your EAS encoder or decoder fails, you may continue your broadcast operations without the defective EAS equipment for up to 60 days without FCC authority, so long as you have ordered the repair or replacement of that equipment.

Section 11.35 of the FCC's Rules requires you to make entries into your station logs to show the date and time that the EAS equipment was removed, and when EAS service was restored. If you cannot repair or replace the EAS equipment within 60 days, the FCC must be notified in writing of the situation.

### Was FM Broadcast Auction 79 a Failure?

On September 15, 2009, the FCC concluded FM Broadcast Auction No. 79 after 50 rounds of bidding over the course of 10 days. A total of 85 FM Construction Permits were auctioned off, resulting in net income to the U.S. Treasury of \$5,253,025.

What is likely a sign of these tough economic times, no one placed a bid on 37 of the available opportunities. These 37 no bid opportunities include a Class C3 at Cheboygan, Michigan; a Class C3 at Daisy, Arkansas; a Class C2 at Buffalo, Oklahoma; a Class C3 at Snyder, Texas; and a Class A at Albany, Vermont. At some uncertain time in the future, the FCC will include these 37 FM Construction Permits in another auction.

*Cary S. Tepper is a principal of the law firm Booth, Freret, Imlay & Tepper, PC in Bethesda, Maryland. Contact him at [tepperlaw@aol.com](mailto:tepperlaw@aol.com)*

Meet your **NEW** Best Friend!

The Davicom  
**MAC Remote Control System**

Intelligence & Innovation

t. 1.418.682.3380 f. 1.418.682.8996  
[www.davicom.com](http://www.davicom.com)



# Introducing the NV Series

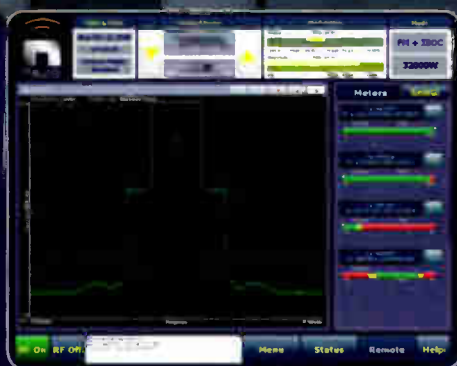
3.5kW – 44kW FM

more **POWER**  
more **CONTROL**  
more **OPTIONS**

Following the extremely successful launch of the NV40 FM transmitter, broadcasters asked when they could get the advanced features of an NV40 in a midrange power transmitter? The answer is now. Introducing the NV Series of FM transmitters with power outputs of 3.5kW to 44kW.

All NV transmitters come complete with an integral advanced digital exciter, Nautel's Advanced User Interface, built-in instrumentation and all of the redundancy, hot-swap serviceability and reliable rugged design that you have come to expect from Nautel.

Learn more at [nautel.com/expectmore](http://nautel.com/expectmore)  
902.823.5131



Advanced User Interface



**HD Radio**  
Pure Digital. Clear Radio.

Making Digital Radio Work.



Its Nautel's 40th anniversary, all NV and NX Series transmitters purchased in 2009 will receive a 5 year warranty

World Radio History



## “Light Speed” Recording A Digital Recorder Checklist

by George Zahn

Last time around, we examined a wide variety of portable digital audio recorders which are revolutionizing the way that radio stations are recording in the field. In this issue, let's go through a checklist of pros and cons of these units from first-hand experience. Whether you're using one of these units for stereo, and in some cases four channel microphone recording, or if the option is to mix with outboard microphones and mixing console and use the “line in” feature to take advantage of the solid state, no-moving parts digital recording capability, these units offer convenience and a fairly decent recording.

### George's Personal Portable

First of all, let's discuss some of the aspects of a unit I own, the Zoom H2 digital recorder. Please do not take this as a direct endorsement of a single product, but from discussions with some other professionals, what I learned from my H2 may be a good starting point for the questions you may want to ask before buying or trying a portable digital recorder.

The two major things that influenced my decision were discussions with others using the unit and, in this economy, an attractive price point. To be honest, I wasn't yet planning to do a wealth of significant field recording with it when I bought it. As with any good technical idea, I have found new and varying uses, and I've ended up using it more than I originally planned. Here are some things to consider from one person's experience:

### Two Mics or Not Two Mics?

I knew going in that I wanted at least a stereo recorder. Think about it: even a basic, but decent, quality stereo recorder might allow you to capture a community orchestra or a chorus with just the unit itself – two mics and the digital recorder rolled into one.

For more exacting recording, I could plug a monaural microphone (you need to do some simple soldering to make the mono-to-stereo cable) or even a stereo microphone into the mic input. Anything more complex, and I would simply use the “line in” as mentioned above and actually do the mix on a larger mixer. It still beats lugging out the old reel or DAT recorders from the old days.

Just connect this unit to a photo tripod (the smaller thread on the bottom of my unit actually has a camera tripod 3/8" thread as opposed to a mic stand 5/8" thread), find your critical recording distance, and away you go!

### An Important Question

One major question to ask is just how quiet are the microphone pre-amps. One of the few complaints I have with my H2 (and I use it a lot) is that it does tend to record at a fairly low level overall, even though the record level is adjustable from the menu controls. At times, if you record someone speaking very softly, you will get some mic pre-amp noise as a result when you try to bring the level of that file into your computer to edit. As with any device, learning the individual quirks of a recorder can make its operation more efficient.

While I was planning to do some basic field voice recording – gauging natural sound for news stories and doing interviews – I have to say that I was intrigued by the H2's four microphone set-up. It also allows the four mics

to be sent to four channels on the SDHC card when recording. This does chew up twice the memory, but it gives you the option of placing the unit in the middle of a musical group and capturing four channels which can be re-mixed to stereo later.

The bottom line on the microphones is that you're not likely going to find highly accurate frequency response figures. At least on the H2, the mics err toward being a bit bright, but I've been able to capture enough bass to “fix it in the mix.”

Pickup patterns on the H2 and on many other units are adjustable between options such as 90-degree stereo, 120-degree stereo, and in the H2 with four elements, the four-channel 360-degree pickup. Again, because you're buying the mics and recorder together, at a fraction of the cost of a professional stereo mic, you might want to temper your expectations a bit. The units will give you very good stereo separation for the most part, and will definitely jump start your ability to do some quick and simple remote recording.



George's Zoom H2 with handle.

### Getting a Grip

While we're on microphone performance, don't forget handling noise. Does holding and shifting the recorder while you're recording result in any unwanted vibrational anomalies? It definitely can be an issue, but unlike microphones such as an ElectroVoice E16, with clearly evident ports, these units are not quite as bad when handled. On the H2, there is a small external handle that screws into the 3/8" thread, allowing you to handle and move the recorder for interviews without directly touching the unit itself.

There is an area that I believe is a problem for these mini-marvels. I know that the H2 is very susceptible to plosives; those are the popping “P” sounds and other rushes of wind or air pressure. Before planning to use one for critical recording outdoors, make sure you test it first to see how it handles wind noise. On my H2, I am using a supplied windscreen – a high ball microphone type screen will fit this model too. Even with that, I still find myself at times, equalizing out a stray plosive or two in post production.

### Chomping at the Bit-Rate

Most all of the portable digital recorders obviously allow you to connect the device to your computer's USB port as a storage device. This allows you to directly down-

load the digital files to your PC or Mac for editing without making a real-time transfer. Some even allow you to connect to the USB port and use the recording unit as a USB mic – using the mics on the recorder to input audio directly into the computer in real time.

Given the convenience of the USB transfer of files, it may seem like it's not a big deal what the transfer rate is. I can tell you that while I do appreciate the USB transfer of my audio files, the H2 seems a little slow. If I use the recorder to capture an event that lasts an hour or more, it does seem to take a few extra minutes to transfer those large files. My, how we've been spoiled in the digital age! Still, it does bear checking the transfer speed. Some may still be transferring at USB 1.0 speed, and good quality audio files can be rather large.

### WAV vs. MP3

Most recorders will give you a wide variety of file types it can record, from a basic CD-quality WAV file to highly compressed MP3 files. When I'm recording critically in the field, I almost always use the best quality available. A 4 GB SDHC card in the Zoom H2 will record almost 4 hours of 24-bit, 48 kHz audio in stereo mode. In the 4-track mode it will do just under 2 hours.

As I said, there's always a new way to use good technology. To earn extra money for our station, we do a quarterly recording of an 8-hour business seminar, the copies of which are distributed to the presenting company's clients. The recording is voice only, and good MP3 quality will suffice; I can switch the file to MP3 at 320 kB/sec which is very good quality, and I can get more than 1600 minutes on my 4GB SDHC card – that's more than 26 hours!

### Applying a “Compress”

For broadcasters, there are some other features which may or may not be handy. Some have auto record functions which allow the unit to start recording once a level threshold is passed. Some have a variety of compressors which prevent digital distortion, and some even have the old-fashioned Automatic Level Control similar to what we had on those old Marantz field cassette recorders.

Some come with built-in instrument tuners and even metronomes since many are also used by musicians for recording. For flexibility I would definitely be looking for a stereo mic input and a stereo line input – usually each are mini-plug size, although some slightly larger recorders may have full XLR mic jacks.

### Now It's Your Turn

Just as I've shared some of my experiences, we can all learn from what's happening in the field right now. I hope you'll share some experiences of these digital field recorders. What works for you, and what would you like to see improved? Let me know the model you're using, and how you use it – the pros and cons – and your story might just be in a future article.

One thing's for sure, the new devices are changing the way we look at recording in the field, and as I was writing this article, Zoom just announced a new Q3 recorder that records up to 16 hours of WAV audio and video onto a 32GB SDHC with a built-in stereo mic and a built-in camera 640-x480/30 frames per second. Bob Dylan was right – “The times, they are a-changing!”

*George Zahn is the Station Director/General Manager for WMKV Radio in Cincinnati, Ohio and a Peabody Award-winning producer. He has countless hours of recording experience, which also entails more than 500 hours of field production and recording, most notably as recording engineer for Riders Radio Theatre heard on many NPR stations. Share your “feedback” with George and your story may end up in a future article. Contact George at [g Zahn@mkcommunities.org](mailto:g Zahn@mkcommunities.org).*





# Your Studio – Wherever YOU Are

## Take BluePack On The Road – Keep BlueKeeper At Your Desk



**BluePack**

**Bluetooth**

Conducting interviews from your desktop or in the field is now easier than ever. With JK Audio's new BlueKeeper and BluePack, it's as simple as making a phone call. Using your Bluetooth™-equipped cell phone, you just pair and go (or stay). Effortlessly capture your voice and the caller on separate channels of your flash recorder or computer. Perfect for broadcast production.

The versatile BluePack (with a convenient beltclip) gives you a balanced mic input with a high-performance microphone preamp, stereo line-out, and an aux send. Together with your Bluetooth-equipped cell phone and a compact portable recorder or computer, it provides an incredibly compact production solution for interviews from wherever you happen to be. OR use it to send live man-on-the-street interviews back to your facility FROM your cell phone.

BlueKeeper gives you the power to mix mic and line level signals with calls from your wireless right at your desktop. It gives you a balanced XLR input with a professional mic preamp for superior sound quality and an XLR output. Mini jacks provide stereo lines in and out, a mono mic-out and a stereo headphone out. As with BluePack, use it to capture an interview or call in a story from Your Studio, wherever that might be.

Whether your interviews are in the field or at your desk, JK Audio's BlueKeeper and BluePack are an integral part of your studio.



**BlueKeeper**

**Bluetooth**

**JK Audio**  
TOOLS FOR SUCCESSFUL RADIO

[www.jkaudio.com](http://www.jkaudio.com)

JK Audio, Inc. Sandwich, IL 60548 USA • Tel: +1-815-786-2929 • Fax: +1-815-786-8502 • [www.jkaudio.com](http://www.jkaudio.com) • [info@jkaudio.com](mailto:info@jkaudio.com)

WorldRadioHistory



# Xtreme Engineering

By Rick Fulkerson

## No Project is Impossible

*Editor's note: This column is designed to highlight those engineers who thrive on the challenges presented by projects that most consider extreme. I hope we all can learn from those who work these projects on a regular basis. The creative ideas they use can serve as an excellent knowledge base for all. If you are someone who takes on Extreme Builds email me and let RG tell your story.*

What is extreme engineering? As engineers we are asked to do a multitude of tasks far above what most would be considered our "normal" work description. These include: keeping our stations on the air regardless of what Mother Nature may throw at us, vandals and thieves, equipment failure during critical remotes, and even covering for air talent that fails to appear.

We all have our war stories and can spend hours comparing notes when we have the opportunity to get together. I was asked to share one particular story of a job I just completed. I was contracted for this job specifically because of the challenge of the transmitter site.

### KJJJ Build – From the Inside

This was an upgrade for KJJJ-FM which included a major power upgrade and city of license change which consequently meant a transmitter site change. The new site is a BLM lease officially known as Gold Road Crest – otherwise known to locals as Oatman just outside of a small tourist town of the same name in northwest Arizona. The area is known for its harsh climate and terrain.

This was a total build with only the tower and building already in place. Sounds simple until you realize the tower base is 1,000 feet above the building on a mountain, with the only access being on foot straight up the side. The site was a minimum 45 minute drive (using 4X4), from any civilization. Most of my help drove 90 minutes each way, every day. Construction was to happen in July (non-negotiable) when daytime temperatures would reach 120 degrees. All work was to be performed between sunrise and noon – any later would have raised the risk of heat exhaustion.



Looking down at the transmitter building, one thousand feet below.

The items to go to the tower were a Shively 10-bay directional FM, two 4-foot microwave dishes with radomes, 1,100' of 1-5/8" coax to feed the main antenna, 1100' of CAT3 cable for a T-1 line, an equipment enclosure, two microwave radios and associated coax, hangers, electrical supplies, etc.

### How We Moved the Equipment

The first thought, for those inexperienced at this type of installation, is to use a helicopter. At this mountain top site, however there is no place to set the equipment, let alone the helicopter and due to the extreme heat and elevation, lift becomes a real issue. Quotes were obtained anyway and were astronomical, with no guarantee of availability. All helicopters that time of year are usually on brush and forest fire duty.

This brought us down to manual labor for the task of physically carrying about twenty-two hundred pounds (not including the coax) up the mountain – this isn't the first time my crew and I have turned mountain goat and pack animal for a project. A quick calculation showed manual labor would cost less than half that of a helicopter.



Interbay feed lines being carried up the slope, that in places was up to a 75 degree angle.

### The Tower Crew

I also contacted two different tower crews for hanging the antennae. Only one agreed to take on the challenge at this time of year, and in such a hostile environment. The owner of Com-Plus only agreed to do the job if everything, except their own tools and supplies, was already staged on top of the mountain and then, only after sending his crew members photos of the site to validate their willingness. The response was an overwhelming yes, they wanted the challenge.

So now I had the responsibility of getting everything on top ready for the tower crew. I have worked this particular site for several years. Over time I've found the best way to carry equipment and parts up is to secure them to military metal frame backpacks.

### A Killer of a Climb

The steep slope of the mountain, about a sixty degree average pitch, is covered in loose rock, requiring the use of both hands. Much of the climb utilizes an old tram cable laying on the ground. The cable is used to help pull yourself up and to help keep your balance. Also, the extreme dry summer heat requires a huge supply of water and Gatorade for everyone, as well as close vigilance of each other to spot possible heat exhaustion.

I considered the microwave dishes were too vulnerable to being dented or deformed, so I carried these items myself. The dish on its mount and the mount tied to the pack is the safest method of transporting the dishes. The total weight is around seventy pounds plus the large volume of water and Gatorade. While seventy pounds doesn't sound like a lot of weight, remember the factor of terrain and heat.

One note about using manual labor. Do not use day laborers like you find at Home Depot parking lots or standing by the side of the road, who work on the cheap for cash. All liability and workman's compensation insur-

ance falls on you. To protect yourself, use only established labor force companies that carry full liability and workman's compensation insurance on all their people!

### The Long Haul

It took approximately two weeks to haul all of the materials and supplies to the top, leaving only the coax cable pull. The cable is allowed to sit directly on the ground since it will not be bothered by anyone else. It is pressurized, so it is preferred to do this in a single unbroken length of 1,100 feet. To accomplish this kind of pull, I established pull stations every two hundred feet up the mountain. Each pull station had a heavy block secured to the nearest large boulder anchored into the mountain, and a two hundred fifty foot piece of heavy rope, the same as tower riggers use.

Each pull team pulls downhill against the block hoisting the cable up – it's much easier with gravity dragging your body downhill. On the day of the pull, I had thirty people on the mountain at one time. I had five "team leaders" whom I had trained on earlier projects. Each was responsible for a pull station and each had a radio for communications. Four other workers were assigned to each station: two were assigned the point to keep the connector, which was wrapped for protection, off the rocks and out of the trees and brush, and two more were assigned attaching hoisting grips every two hundred of the cable.

The first pull station pulls the cable the first two hundred feet. The first station then reattaches their rope to the second hoisting grip back at the bottom of the hill and the second station ties to the point or "lead" grip. They pull in unison for the next two hundred feet.

This process is repeated, adding the next pull station up the hill to the point until the last pull, which has all five pull stations work in unison so the cable is not distorted. The total time for the 1,100 foot pull was just over two hours.

### Climbing to Climb

The tower crew arrived and did a banner job of installing the antenna and dishes, connecting all coaxes and hardware. This was done in three days with the crew having to climb the mountain each day, before climbing the tower.

The entire project was completed within the estimated 30 day schedule despite the terrain and extreme heat without any injuries or incidents.

### Words of Advice

If you choose to take on a project as extreme as this one be sure to do your homework. Double check everything twice. If you are lucky, you won't hit any snags for which you haven't already developed a solution. And if you do, hey, extreme engineering wouldn't be any fun if one didn't crop up every now and again just to keep you on your toes.

But Rule #1 is always SAFETY FIRST!



**About the Author:**  
Rick Fulkerson owns a Las Vegas based engineer firm appropriately named Mountain Goat Broadcast, LLC. He can be reached at 702-374-4405. Oh, for those who don't know him he just turned 59 – that's him with the microwave dish on his backpack just completing the climb.



# The new **M Class** Audio Console from SAS.

Upscale Performance.

Downscale Price.



**M Class opens the doors of SAS console ownership to everyone.**

Engineered from the ground up to be affordable, yet still worthy of the SAS name, the M Class sets new standards in console design, engineering and price. Stand-alone or networked, a typical M Class console is around \$13,000, so it's a perfect replacement for aging analog mixers. Equip an M Class console with a Flex<sup>2</sup> module and enjoy direct connectivity to SAS 32KD, RIOLink and even 64000 series routers. M Class - it's everything you've been waiting for in an SAS console. Give us a call to see how we can help with your next project.



**SIERRA  
AUTOMATED  
SYSTEMS**

20 years of listening. 20 years of innovation.

**See more at [sasaudio.com](http://sasaudio.com)**

818.840.6749 • [www.sasaudio.com](http://www.sasaudio.com)



## Physical Levels and Detection Technology

by Jeff Johnson

*We have come down from the tower; climb safety having been last issue's subject. This column will now address physical site and studio security. When examining such an important subject, it is always best, first to consult an expert.*

Entry into a secured area can be of two types: authorized or unauthorized – legal or breaking and entering.

### Detecting Unauthorized Intrusion

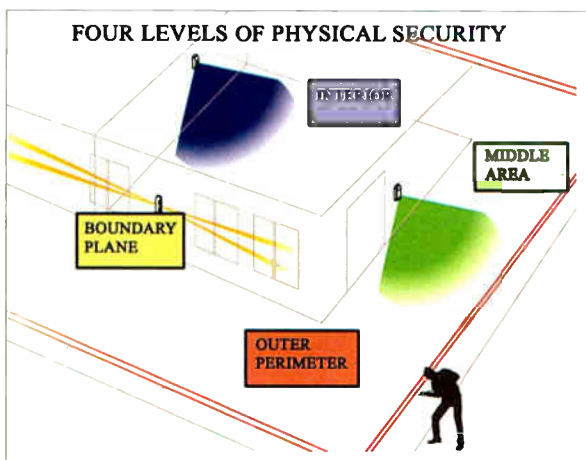
For advice on direct physical intrusion protection, *Radio Guide* spoke to Tim Bake of Cin/Data Protection Corporation, Cincinnati. Tim is the second generation of the company founded in 1968 by his father Don Bake, who is still active in the business.

Cin/Data specializes in high-value property protection. When asked how he would protect a broadcast tower site, Tim responded with a three-pronged approach – light beam perimeter detectors, infrared motion detectors, and Closed Circuit TV (CCTV) recorded as time-stamped video and/or sent to a monitoring location via the Internet.

As the science has advanced, these technologies have become more sophisticated, but they remain dedicated to detecting and alerting the physical presence of an intruder. CCTV can help identify the individual, who may be just the engineer having forgotten to disarm the system. Of course, false alarms are to be avoided in order to render rapid response to actual intrusions.

### Four Levels of Security

OPTEX, vendor of optical intrusion detection systems, outlines four levels of security: perimeter, middle, boundary (immediate building perimeter or outer wall plane), and interior.



Four levels of physical security.

The first level, perimeter, detects intrusion at the fence or outer perimeter. Should the intruder penetrate the fence, he is detected crossing a middle area to the protected building. Attempting to enter a window or jimmy a door, the intruder is detected by a boundary plane of light beams skimming the outer walls. Once inside, should the intruder reach this far, interior motion detectors send a final alert. It can be seen that perimeter and middle area protection will be most useful against the onslaught of copper ground-plane thieves.

### Many Technologies

Among detecting technologies are Passive InfraRed (PIR) and Infrared Photo beam. PIR detects changes in the baseline infrared level of the detector's field of view. Warm bodies disturb that baseline with their heat.

An interesting recommendation for photo beam detectors is to use dual beams; dual Beam detectors eliminate false alarms due to birds. Even more sophisticated systems use up to 16 beams, to differentiate types of intrusions – raccoons or copper thieves. Photo beams detect intrusion by sensing interruption of the focused beams.

How can differentiation be made among the different creatures – human and otherwise – or other phenomena such as blowing leaves or trash? If two or more beams at different levels and directions are combined in AND/OR logic combinations based on speed of successive interruption, they are able to differentiate between a blowing leaf, a small animal, a human or an elephant. By these methods, high security can be achieved.

### Monitoring the System

According to Tim Bake, surveillance systems can be monitored by several methods as follows: on site by staff at the location via a phone call, via the Internet thru a high speed router (DSL Service), using a disk burner to transfer history of recorded information to law enforcement agencies, recordings forwarded as email designating the time frames of the recordings

### Authorized Access Identification

Keyless entry technology is generally known as Radio Frequency Identification (RFID). A form of it was invented more than 60 years ago by Leon Theremin, a Soviet, for use in espionage. Theremin's invention was to utilize "backscatter" – the reader's energy field being modulated by the target's information and reflected back to the reader. This is somewhat similar to radar.

We have all seen or used cards or key fobs ('tags') that, when waved in front of a magic panel, cause doors to open and gates to rise. This is contact less technology. As technical people, I am sure we have all wondered, "How does that work?"

A common type is the "passive tag" without an internal power source. The tag contains a coil of wire acting as an antenna. The RFID reader – the box on the wall – radiates an RF field, commonly at 125 kHz. The antenna in the tag, an inductor excited by the RF field, is in resonance with a capacitor at 125 kHz. An IC, presumably incorporating a diode, is powered by this energy.

The IC contains a binary code that is received back at the reader via Theremin's backscatter. That data is sent to a controller that determines the access status of the tag holder. If there is a match, the card holder allowed entry.

### The Wiegand Effect

Of the data types sent to the controller, the oldest is the Wiegand Protocol. The inventor John R. Wiegand discovered a magnetic property known as the Wiegand effect – a rapid switching of magnetic polarity in a specially annealed and hardened iron alloy wire. The

non-linear switching occurs when the wire is introduced to a permanent magnetic field produced – in our example – by a card reader.

The great rapidity of the switch produces a strong pulse in a sensing coil – also in the reader. A number of concentric coils of Wiegand wire is embedded in a flat card. As the card is waved over the reader, a code of pulses is sensed.



A 125 kHz proximity card dissected.

The Wiegand wire technology has been largely superseded by contemporary RFID technologies – such as the 125 kHz technology discussed, but the original 26-bit data protocol is still called the Wiegand protocol.

### New Technology – Even Smaller RFID Tags

A newer contactless technology operates at 13.56 MHz. A card, also known as a "credential" can incorporate 13.56 MHz, 125 kHz Proximity, and magnetic stripe – three-in-one. An advantage of higher frequency technology is that the antenna can be printed with conductive ink on a paper-like substrate. An EEPROM is added to complete the light, small and inexpensive tag. A typical application is library book tracking.

Cheaper yet is the 915 MHz tag. At this frequency, the antenna is very inexpensive to print in quantity. With the associated IC chip, the goal is a ten cent tag. These are intended for use in supply chain tracking of merchandise cartons or applications such as baggage tracking – temporary single-use.

A downside is the inability to use this technology for applications such as tags worn on a person. The technology is now into the microwave frequencies, and the water in the person's body attenuates the RF significantly. The preferred technology for tagging living creatures, such as ranch animals, is 125 kHz.

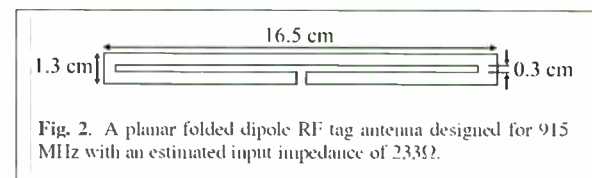


Fig. 2. A planar folded dipole RF tag antenna designed for 915 MHz with an estimated input impedance of 233Ω.

### Schematic of a printed 915 mHz antenna.

Cartons to cows, volumes or VIPs, RFID technology is at the core of modern security and commerce.

Next issue we will explore fire safety and suppression in electronic environments.

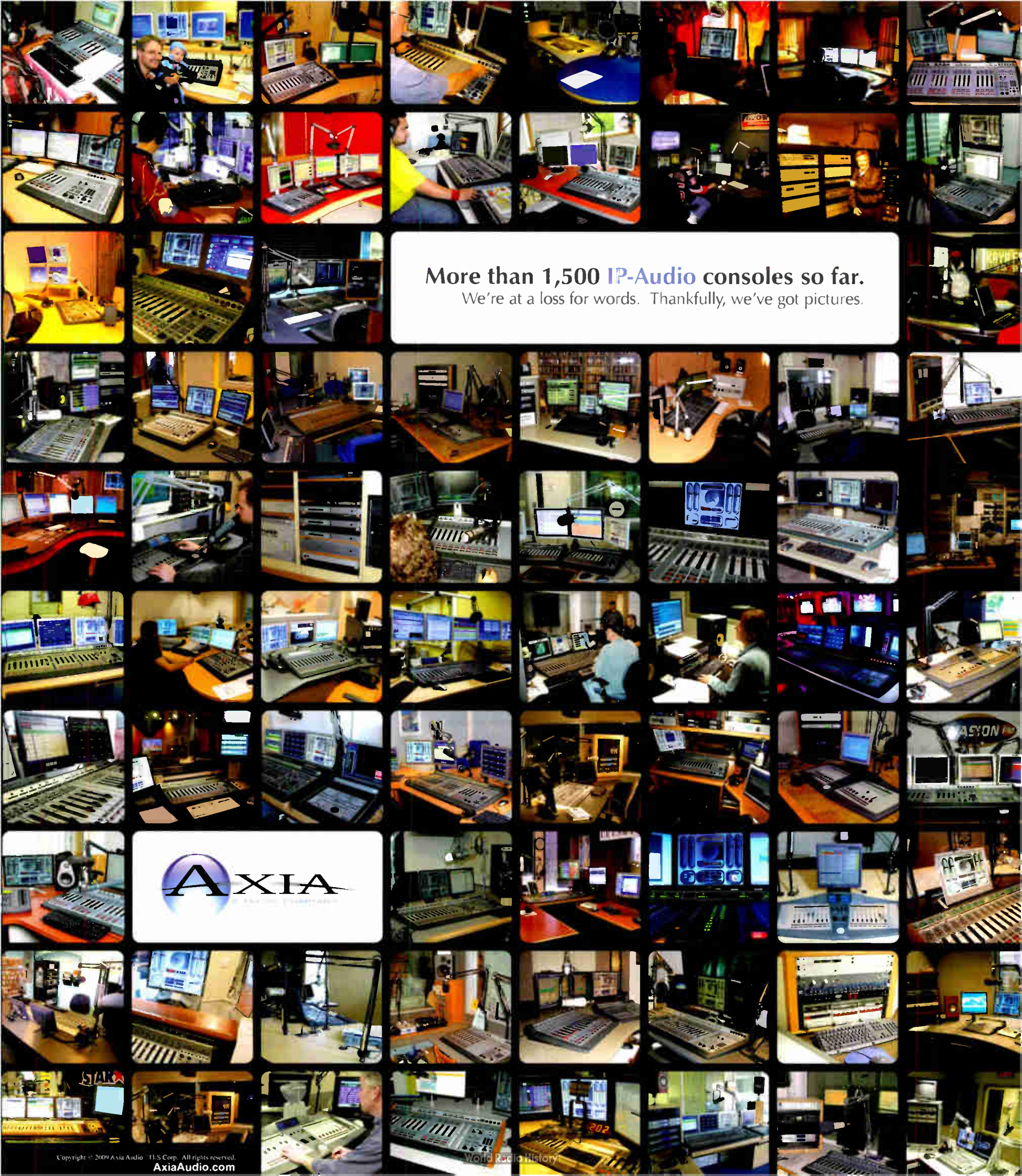
Jeff Johnson can be reached at: [jeff@rfproof.com](mailto:jeff@rfproof.com)

### Write for Radio Guide

\* Contact us for topic suggestions \*

Email: [radioguide@earthlink.net](mailto:radioguide@earthlink.net)





More than 1,500 IP-Audio consoles so far.  
We're at a loss for words. Thankfully, we've got pictures.





27,832 products in stock at press time!

## BSW: Your Audio Processor Source!



### Vorsis VP-8 Multi-Mode Processor

- 6 built-in processing modes FM, AM, MPEG3, HE-AAC, HDC, and VoIP
- 4-band parametric EQ
- Precision 8-band multiband limiter
- 4-band linear phase crossover with adjustable crossover points
- Exclusive Vorsis Multiband Dynamics Processing
- Separate audio input gains for analog and digital inputs

VP-8 List \$2,995.00

Call BSW For Lowest Price: 800-426-8434



### Orban Optimod-FM 2300 Audio Processor

- Digital audio processor with stereo encoder
- Easy, one-knob Less/More adjustment lets you customize any factory preset
- Full Control gives you the versatility to customize your audio further to fit any format
- Superb stereo encoder and composite limiter help deliver a transmitted signal that's always clean and perfectly peak limited
- Optimized technology ensures unusually high average modulation and coverage
- Comprehensive remote control

2300 List \$4,450.00

orban

Call BSW For Lowest Price: 800-426-8434



### Omnia ONE FM Digital On-Air Processor

- Powerful hardware, firmware and processing algorithms handle the demands of both traditional and digital broadcasting
- Wideband gain rider, four-band AGC and 4-band limiter
- Integrated digital stereo generator with advanced peak control, two composite MPX outputs, SCA input and 19kHz output
- Fully distortion-controlled final limiter/clipper
- Livewire™ interface
- Ethernet, RS-232 Modem and GPIO remote control ports

OMNIA1FM List \$2,995.00

Omnia

Call BSW For Lowest Price: 800-426-8434



#### Knowledgeable Sales Staff

BSW's sales professionals have decades of real-world broadcast and recording experience to offer expert help with your purchase.

# Station Ops

by Christopher "Doc" Tarr

## Stand Out on the Internet

These days, an email address is more than just a simple address. It's your on-line identity, and lifeblood of your business, whether you work for a large company, or are a contract engineer.

It is also your calling card, so having something easy to remember will also be beneficial in the long run.

### The Way it Was

In the early days of the Internet, most people used the email address given to them by their Internet Service Provider (ISP). Often this was an AOL address or an address ending in "@yourisp.com". The problem with those is that, depending on the size of the provider, most of the easy to remember names were already snapped up, resulting in a user having to pick odd spellings of names or adding numbers or nicknames. Instead of "yourname@yourisp.com" you would end up with "yourname4355@yourisp.com", which is not so easy to remember.

Another problem early on was the service. The service providers were in the business of getting you on the Internet. Email was a secondary service, most of the time just thrown together. Mailbox size limits were small, and forget about special features. You'd be lucky if you had webmail! Another

I mentioned earlier how the Hotmails and Yahoos of the world were providing free email, but the service was fairly limited. They only allowed for a small amount of email to be stored on their servers.

Google saw the email storage problem as a potential opportunity for them. What if they could launch a full-featured webmail service that would provide ample space for a person's email – enough so that they'd never have to delete anything? In exchange, the user would agree to let us serve them ads based on the contents of their email. Google could sell targeted ads, and users could get an excellent webmail service. With that, Gmail was born.

### Welcome to Today's World

Fast-forward to today, and webmail is everywhere. People often have several free webmail accounts, which takes us all the way back to the beginning of this column. All the good names are taken!

There's no argument that web-based email is convenient. Being able to check your mail from anywhere is very handy. Until recently though, that meant using a free email service. Now, however, setting up a personalized email address is simpler and

broadcast gear from people you trust



Lowest Prices and Largest Inventory on EVERYTHING For Broadcast

BSWUSA.COM

800-426-8434

major downside was that the service provider owned your address, meaning that if you chose to move to a different service your address would change, and you'd have to let everyone know about it.

### Improvement With Time

In 1996, Sabeer Bhatia and Jack Smith came up with a novel idea. They created a company whose product was email. The email would have a web interface, and wouldn't be tied to any service provider. That service was called Hotmail, now owned by Microsoft. With the launch of Hotmail, a person could create an "email address for life" that could be accessed anywhere. The service was free, supported by advertising.

Yahoo and others quickly followed with the webmail model – free lifetime email in exchange for advertising. Just as with your ISP provided email, there were very few bells and whistles, but everyone figured that the limitations were acceptable for the free service. That is, until the 500 pound gorilla stepped in.

### The Goggle Factor

Google was getting itself established as a search engine leader, but they knew that the future was "smart" advertising; in other words, advertising that was relevant to what the user was doing at that very moment. That platform was working very well for their search engine, but they set their sights on something bigger.

cheaper to do than you might think. In fact, you can often do it for \$50 a year or less!



The GeekJeti.Com custom email look.

### Registering Your Domain

The first step is to register a domain name. The domain name is the "xxxxx.com" part of your address. This will take some thought, since there are millions of registered names. Remember – this will become your on-line "identity" so look for something easy to say, remember, and most of all, type. If the .com version of a name is taken, check for .net or .org versions, you may find what you want. Registering a domain name can often cost as low as \$9.95 a year.

(Continued on Page 20)



**Sale**

# ARC console family



**\$1,599**  
ARC-10U

**\$3,495**  
ARC-15BP

**\$5,495**  
MARC-15-12

**Sale**

Whether stand-alone or networked, the Arrakis ARC and MARC series consoles are feature laden, high performance, and professionally reliable. Ideal for On Air, production, or Internet Radio !!!

## Stand-alone ..or.. Networked !

**NEW**

# ARC-8

**Intro Sale**

**\$799**



8 channels  
Stereo Program output  
2 mic, 4 stereo line, PC, Phone in  
USB interface for play & record from a PC  
Mix-minus in-out for an external Telephone Hybrid  
BOTH balanced and unbalanced inputs and outputs for flexibility

## What more need be said ?

# Innovative & cost effective Radio products from Arrakis Systems

## Read what our users say...

**KJDL, Lubbock, TX**

" I like (Xtreme) a lot! Once we got things together we never have any problems. (Xtreme) is a 9 out of 10 for usability. It didn't take me long to figure out, I picked up most of the major (features) in the first day. (The Xtreme) is user-friendly for all involved."

Jessie Walker, Program Director

**DMS Broadcasting, San Francisco, CA**

" When we started, we were jumping into something we knew nothing about! We called your tech support & within a day they had a solution. It was miraculous. They helped us get wired up & set up. (Tech Support) had a positive & upbeat attitude. They went above & beyond!"

David Trudrung, General Manager & Co-owner

**KSMZ, Alexander, AR**

" Xtreme has more flexibility, sounds better & has fewer problems then our stations running (other automation systems). It's easier to program & a 9 compared to other programs out there."

Scott Gray

### Join the hundreds...

... of others on air with Digilink-Xtreme, the best automation system in Radio. Full featured, it is easy to install, use, and maintain. Best of all, it is easy to buy. Choose from either the no contract \$100 per month 'Solutions Program' from Arrakis Systems or buy 'Xtreme-Complete' outright for only \$6,500 from Broadcast Supply Worldwide (BSW)

## WHY PAY A FORTUNE FOR AUTOMATION ?



# Digilink-Xtreme

only \$100 per month  
support, training, upgrades  
the best automation in Radio, period !

[www.arrakis-systems.com](http://www.arrakis-systems.com)

970-461-0730

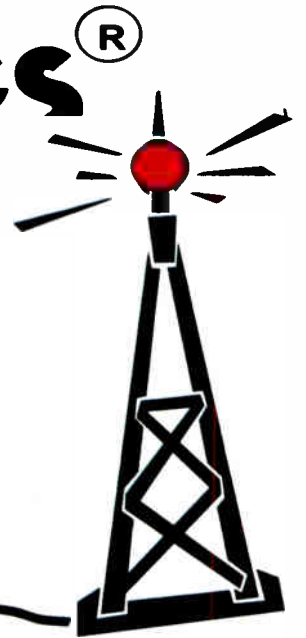








# RF Specialties® Group



**RF Specialties**  
has everything from the  
microphone to the antenna.

**Transmitters  
Antennas  
Audio Processing  
Consoles & Racks  
STL / RPU Systems  
Microphones  
Audio Cable  
Combiners and Phasors**

**Transmission Line  
Towers and Lighting  
T-1 and IP Audio CODECS  
HD Monitoring  
RF Analyzers  
Remote Control Systems  
Telephone Hybrids  
And MUCH more...**

## **“RF” IS GOOD FOR YOU!**

[www.rfspecialties.com](http://www.rfspecialties.com)

**Call your nearest RF Specialties Office:**

RFSCA San Diego CA Steve	619-501-3936
RFSCA Las Vegas NV Bill	888-737-7321
RFSWA Mukilteo WA Walt	425-210-9196
RFSWA Vancouver WA Bob	800-735-7051
RFSTX Amarillo TX Don & Mo	800-537-1801
RFSTX Dallas TX Wray	888-839-7373
RFSMO Kansas City MO Chris	800-467-7373

RFSMO Raymore MO John	877-331-4930
RFSMO Richmond IN Rick	888-966-1990
RFSPA Ebensburg PA Dave	866-736-3736
RFSPA Pittsburgh PA Ed	866-412-7373
RFSPA Philadelphia PA Phil	888-737-4452
RFSGA Thomasville GA Chris	800-476-8943
RFSGA Crestview FL Bill	850-621-3680
RFSGA Murray KY Dave	270-767-7644

Over **400** years of combined broadcast experience, ready and willing to help you !



# Practical Engineering

## Successful Troubleshooting

by Dave Dunsmoor

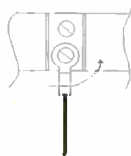
It seems troubleshooting is oftentimes a bit of a backwards process. You often can spend a lot of time checking all the things that *could* be the problem – but are not – just to finally locate the one thing that is the problem. It sure would be nicer to find the thing that *is* the problem *first*, then check all the other things if they seemed like they ought to be looked over, just for caution's sake.

Well, short of my developing some extrasensory powers, I know that finding every problem in the first place I look is not likely to happen anytime soon. So how about eliminating many of the possible problems at the source – at installation time? Poor installation technique has to be the most common source of problems I have encountered, anywhere. And I am not limiting this to the initial installation; I am talking about every time I go into a piece of equipment, whether to repair or just to look. Actually, anything I do (or fail to do) can be considered part of the installation.

We all know that electrical connections have to be tight in order for the equipment to function correctly. But is "tight" all there is to it? And, what really is "tight?" (I am not talking about just-short-of-breaking-it tight, I am talking about tight enough to make good electrical bond, and to stay that way.) Here are a few things I have learned over the years that have greatly lessened the number of times I have had to track down intermittent problems that were traceable to poor mechanical connections. I would like to be able to tell you that I was so clever that I thought these things all by myself, but that is not usually the case.

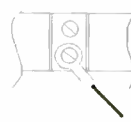
### Solid Connections

First, many rack mount processors, distribution amps, transmitters, etc., use the basic screw terminal strip for I/O connectivity. Most times they will stay tight forever, but I have had on occasion found them to have loosened up. Temperature changes and vibration are the primary causes here. To prevent this, firmly press the terminal clear to the right barrier as you are tightening the screw/nut and that ring/spade terminal will stay there forever. At least that is the theory as presented to me by Boeing Aerospace QC engineers many years ago.



#### Incorrect Terminal Lug Installation

The problem here is that movement of the terminal lug is possible, either by fingers, tools, etc. bumping the lug or even by vibration. Then the problems start, intermittent at first, followed by an outage.



#### Correct Terminal Lug Installation

Here the terminal is held firmly against the barrier strip's insulating fence as the screw is tightened, and cannot work loose, nor can it be wiggled loose by accidental bumping. A small issue, but it has saved the day.

Another variation on this is the stud through the insulator type connection. Usually this will be in a high current or RF connection. Either way, we do not want the electrical connections coming loose. One most important thing to remember when making this type of connection is to be sure the electrical connection integrity is not relying on mechanical connections where a compressible material is partially responsible for the tightness of the connection.

In the following example, notice how the terminal is tightened by a jamb nut up against the nut holding the stud in place. The jamb nut is torqued to the holding nut on both sides of the insulation material. Properly done, this kind of connection does not rely upon the holding nuts being tight in order for the electrical connections to be firm.

The insulating material (fiberglass in this example) may give over the years, but as the jamb nuts are tight against the holding nuts and are tensioned by locknuts, the electrical connection integrity is maintained. If the terminal were placed directly against the fiberglass and a single nut tightening the entire assembly, it would eventually work loose and become a problem.

### Rechecking Connections

It is always my preference to go through a new installation and recheck all connections, whether using nuts or terminal strips, and generally, if they are checked again after a season of heating and cooling (about a year later), I feel they will be good for many years. Nevertheless, it is always a good idea to check the various connections every year or so.

This goes for *all* the connections from the service panel through the entire path to the equipment – terminal strips, outlets, circuit breaker screws, everything. Loose connections can mean heat buildup, and more heat means looser connections – the cycle continues until there is a failure.

(Continued on Page 24)

**LARCAN**  
We hear you. Loud and clear.

## LOOK TO LARCAN FOR INNOVATIVE IBOC FM SOLUTIONS - ENCORE SERIES

Designed with a difference to ensure the highest quality audio performance - LARCAN's new Encore Series offers a superior range of IBOC FM translators. Customer driven and purpose designed for optimum performance - we bring you the best in IBOC FM broadcast technology. Encore, Applaud innovation.

We hear you. Loud and clear.



IBOC FM Translator  
(Model: DRT-01)

### Encore Series Features:

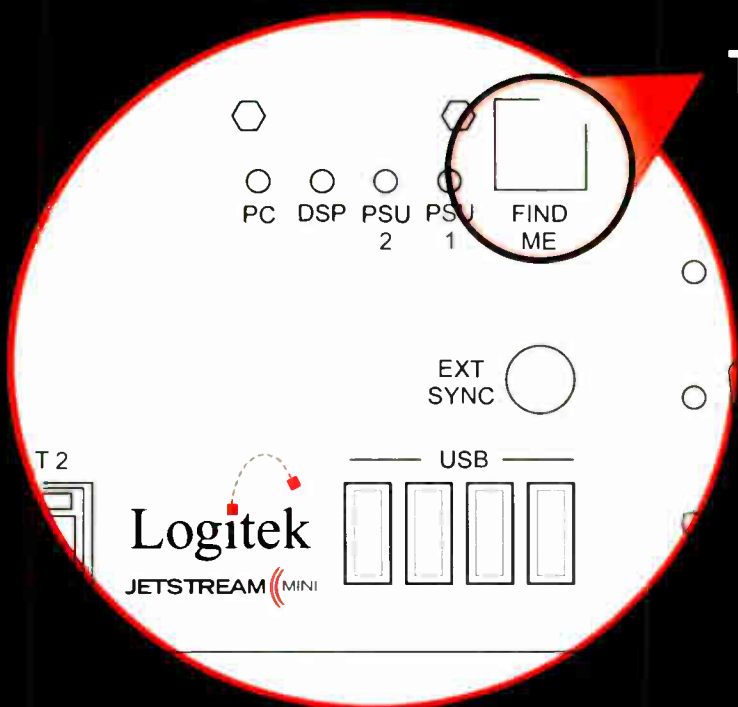
- Superior IBOC FM Performance & Coverage
- Extensive Power Range from 25W to 250W
- Broadband Design
- Frequency Agile
- Integrated Features & Adaptable
- Complete Solutions for Analog FM & IBOC Digital Radio
- Innovative Design



U.S. Tel: 1-303-665-8000 • Fax: 1-303-673-9900 Canada Tel: 1-905-564-9222 • Fax: 1-905-564-9244  
[www.larcan.com](http://www.larcan.com) Email: [sales@larcan.com](mailto:sales@larcan.com)



Is setting up IP Audio networking tables a bit frustrating?



Try the One-Second JetStream approach.

Press one button to find other JetStream units on your network and automatically configure your system.

You'll save time, money and rack space, while enjoying the convenience of Logitek's next generation IP audio routing solution.

Call today **800.231.5870** for more information or to schedule a demonstration.

**JETSTREAM** MINI

©2009 Logitek Electronic Systems, Inc.

Next Generation IP Audio  
**logitekaudio.com**

World Radio History

**Logitek**  
Console Router Systems



# Practical Engineering

– Continued from Page 22 –

Phenolic, Teflon, bakelite, insulation material.



## Wrong Assembly Method

The "weakest link" in the tightness of this electrical connection is the insulating material itself. Notice that the nuts (and therefore the terminal lug) are tight only as long as the insulating material is under compression tension. As this assembly ages, the insulating material (and especially if it is Nylon, Teflon or similar) will compress, or "cold flow" allowing the electrical connection to loosen. If it is a high current circuit, it will heat and aggravate the condition. If it is a high voltage circuit, it will arc. If it is a low voltage circuit, it will get noisy. All conditions are detrimental to the operation of the circuit.

Phenolic, Teflon, bakelite, insulation material.



## Correct Assembly Method

Notice here two nuts (tightened to each other) on each side of the insulation material are making the mechanical connection. This connection method is independent of the tightness of the nuts to the insulator, and will maintain its integrity forever. A third nut is then used to secure the electrical terminals.

And do not forget that matching the proper wire type and size for a given terminal type and size makes for a more permanent connection. For example, most terminal ends are not

designed to be used with solid wire. They will work, but will probably develop an intermittent connection after a while. On the other hand, you can buy terminals designed for solid wire – they are identified by the ribs inside the ferrule where the wire fits. These terminals will also work fine on stranded wire.

Of course, once you have the right type terminal ends, the right size wire also is important. However, when you just do not have a small enough terminal for the wire at hand, one workaround is to use some "filler," more pieces of the same gage wire layered in with the actual wire, enough to make the whole bunch approximately the same size as would normally be used for the terminal being used.

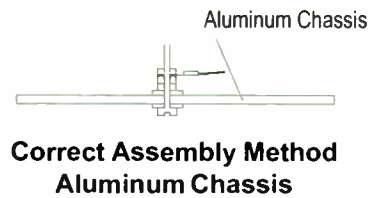
There are some actual charts designating how many of which gage wires are needed to properly fill the terminal ferrule. Again, this is an aerospace specification and has to do with gas-tight connections, not over stretching the brazed seam in the ferrule and so on, but for our purposes, close works just fine.

## Clean Grounds

We have been talking about tight connections, but there is another major factor that makes up the "second half" of a good connection: clean wire and terminals. Sure, new terminal ends and new wire are usually clean, but how many times do you have to make a connection to an aluminum chassis? This will (almost) always be a ground connection, and a solid ground connection is necessary for stable operation of any equipment.

There are several ways to make connections to aluminum, the most common being a machine screw and washers and the holding nut, with the terminal being held by the pressure exerted by the nut, and the assembly process outlined above for stud connections applies here as well.

One thing to note is that for aluminum to be considered "clean" enough for a good low loss connection, it takes a little work with a stainless brush to clean the oxide around the connection point. And where does one find such a brush? At the local welder's supply – they are used for cleaning aluminum of all oxides prior to TIG welding.



## Correct Assembly Method Aluminum Chassis

When the aluminum is cleaned, it helps keep the connection very low loss when the connecting hardware is properly torqued. Ground connections can then be added, or removed and replaced without disturbing the actual ground integrity thereafter. The stainless brush treatment is also valid for the areas where various aluminum chassis parts are connected to each other. Any thing done to improve the ground connection likely to result in less trouble in the future.

This applies primarily to intermittent problems type of trouble, but is also very applicable to lightning-induced current type of trouble. If all the grounds are at the same potential when a great deal of current is flowing through them, all else being equal, this particular equipment will experience less damage than one with poor ground connections throughout. Generally .001 Ohms is considered to be a good connection resistance.

This low a resistance value can be difficult to obtain, and even more difficult to accurately measure. I have used milliohm meters to determine the resistance of connections as well as Fluke Low-Ohms Ohmmeters. The milliohm meters use dual point probes with very high current on one set of points, and measurement detection on the other set to determine resistance values.  $R=E/I$ , and with lots of  $I$ ,  $R$  is easier to accurately determine.

You can do the same by running a lot of current through a connection, and measuring the voltage across the connection, but that is usually too much trouble for the benefit gained. Just remember to brush the connection points with a stainless brush and it will be fine. – Radio Guide –

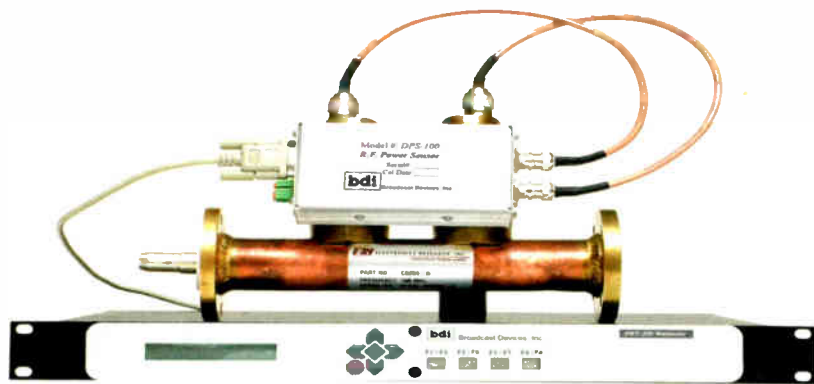
# Digital R.F. And Audio Management Solutions

**New!** The SWP-200 Calibrated RF Power Meter & RF Switch Controller is suitable for digital & analog forward and reflected power measurements. Provides complete control of one to up to four RF switches. The SWP-200 can be interfaced to your existing four port switches, can (optionally) be supplied with interface cables for most four port switches made.



The ATB-300 is an analog and digital audio switcher/router with outstanding features not found in other single box solutions

**Powerful DSP Architecture** provides state of the art control, and allows for future expansion and feature upgrades. Simple front panel menu programming of silence sense delay, priority channel, revert timeout - program up to 8 channels for secondary, tertiary, etc. sources, input mode selection, input/output gain and input phase inversion. Revert feature returns to primary channel when signal integrity is restored automatically. Programmable silence threshold, proprietary "Silent Switch" feature for seamless switching between sources and synchronous AES switching eliminates artifacts. Frame Rate Conversion on all digital inputs, and programmable alarm contacts. Fully Remote Control Ready - Parallel standard, serial interface optional Power Fail Memory - Returns to last channel selected upon power up. Great as a studio switcher or, transmitter site STL switcher. Available in 8 different analog and digital configurations. Visit our web site or contact the factory for complete details.



The SWP-200 can operate in Hands Off (Pre-programmed) or manually controlled modes. One-button control of four port switches, manages interlock closures, and transmitter control in a single rack unit chassis. Additional features include RF failure and RF safety sensing to protect a switch from damage if RF is present, and a switch command is called for. The SWP-200 can also be used in AM radio applications to control multiple open frame contactors. This is a reliable, versatile RF support product that provides around the clock peace of mind.

[www.Broadcast-Devices.com](http://www.Broadcast-Devices.com)

Broadcast Devices, Inc.  
Tel. (914) 737-5032 Fax. (914) 736-6916





# Sicon-8 Internet & Voice Remote Control



## The CircuitWerkes Sicon-8 Voice Remote Control

- Uses Dial-up, Internet Web server or free Siconcontroller Software!
- 8 channels of metering, status and control (expandable to 32) and up to 5 alarms per channel.
- No accessories necessary to control your site right out of the box.
- Auto-ranging, auto-calibrating meters make setup a snap.
- Includes: Function scheduler, auto-logging & alarm reporting.



Internal Web Server



Free Siconcontroller Software

The Sicon-8 lets you control your site via Internet with its internal Web server, via telephone, auto-answering cell phone or with our free software. Setup is a breeze using the Siconcontroller software that also includes scripting, e-mail alerts, multi-site management, virtual metering & much more!

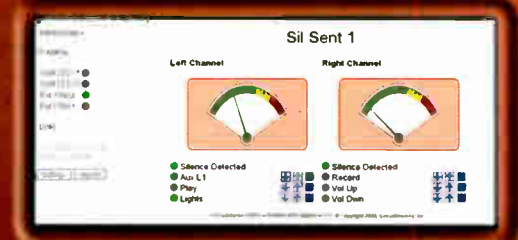
## NEW!! Web-Based Silence Sensor



Introducing the Silence Sentinel

Discover more online at [www.circuitwerkes.com](http://www.circuitwerkes.com)

- Detects Stereo or Dual Mono Silence (independantly adjustable channels).
- User-programmed relays (DPDT) close automatically or via Web control
- Balanced or unbalanced audio inputs.
- External trigger inputs activate user-defined actions.
- Optional Multi-Site monitoring software coming soon!



## Remote Broadcasting Solutions



### MicTel Mic/Line to Telephone Interface

- Outputs & Inputs for telephone handset, cellular phone or balanced line level at up to +10dBm.
- Operates up to 36+ hours on two 9V alkaline batteries.
- High quality user-switchable, internal limiter prevents clipping.
- External power input with silent, auto-switching battery backup.
- Individual gain controls for send, receive & headphones levels.



### Unattended Dial-Up Broadcasts with the DR-10

- The DR-10 is a Dial-Up remote control with balanced, telephone audio input & output that can control many automation systems or your audio console for unattended remote broadcasts.
- Our Silencer™ option removes control tones from the audio path.
- Use the DPDT relays to insert the phone audio directly into the program path when necessary, especially for emergencies.



### TelTap Pocket-Sized Manual Telephone Coupler

- Can be used as a phone tap or a passive manual telephone coupler.
- Send or receive telephone audio.
- Compact size & low cost makes the TelTap a great addition to your remote kit for main or backup capabilities.

## Lots More CircuitWerkes Problem Solvers

- Transcon-16 - Move up to 16 contact closures from room to room over an audio cable
- DT-232 - Turns DTMF sequences into user-programmed serial outputs & action steps.
- FSK Encoders, decoders, transceivers and contact-to-FSK encoders, decoders.
- SUB-03 Subaudible tone decoder and SEN-6 Subaudible encoder.
- TC-3 telephone autocoupler and AC-12 rack of autocouplers
- DTMF-16 and DS-8 DTMF tone decoders.

Find Full product info & downloadable manuals online at [www.circuitwerkes.com](http://www.circuitwerkes.com). 352-335-6555



# Chief Engineer by "Tweaker"

## It's Time For a Balanced Playing Field

One of the big responsibilities we have as engineers is equipment selection and budgeting.

It is difficult for us not to fall into several traps we've created over the years. For those who are new to the industry, and who have not yet developed our bad habits, hopefully they can avoid developing them by using the unbiased process I outline later in this column.

### Trap 1: The Comfort Zone

One trap is to stay within our comfort zone. We've all developed our comfort zones filled with gear that we are comfortable with – kind of like that old pair of comfortable shoes. Rarely do most of us step out to explore the possibility of purchasing a piece of gear from a different manufacturer – and we are sometimes limited by the "bean counters" who always want to save a buck, at our expense.

Even with that, some of us close our eyes to some wonderful equipment.

### Trap 2: Living In The Past

We often let our past rule our future, or at least close our minds. We may let a negative experience from years ago – be it our own or one we heard about from a fellow engineer – bias an equipment decision made today.

By letting our past experience close our minds, we prevent ourselves from give credit to a manufacturer whose equipment may have had issues early on, but who has made improvements in quality. In the auto industry

Toyota and Hyundai are perfect examples of companies whose first entries into the market were less than stellar. But, the quality of their products today have come a long way since then, to the point that they have surpassed other manufacturers. Many broadcast equipment manufacturers have done the same.

### Trap 3: The Infamous Double Standard

Another trap that we struggle with is the double standard that seems to have developed over the years. We hold American manufacturers to a different set of rules than we do foreign manufacturers.

We have lowered our expectations of support and quality of documentation based upon the lower prices we pay for foreign made goods. We demand U.S. manufacturers have top-of-the-line support and documentation, but we quickly purchase foreign goods at lower prices, accepting their shortcomings. A bit of a Catch 22, wouldn't you say?

Some of us have even become angry with U.S. manufacturers who have higher prices in order to maintain the level of support we demand of them. Our attitude: we want the better quality and support of the U.S. made product, but we don't want to pay more than we would for equipment with inferior support and documentation.

So how do we get past our self-built traps? Go back to the basics. Open our minds and use a process that helps us stay balanced in our judgment.

### The Process

First, make a list of the features you need as a minimum – this is your base line. Now add some bells and whistles that are nice to have, but that aren't deal breakers and that aren't proprietary to a single vendor.

Don't factor any one manufacturer or product line into your list; you want to be as unbiased as humanly possible. With your list in hand, take a serious look at all the vendors who manufacture the product you need. Eliminate those who do not have the basics you require.

Once you have narrowed down your list of vendors and you are ready to make a final decision on what equipment to purchase, this guide may help you avoid some pitfalls in the process.

Request a copy of the manual or go on line to download one if it is available. Look over the documentation.

If it is weak or incomplete, you or your engineer potentially will be spending a lot of time with the customer support line when you have an equipment problem – this is the last thing you want to do in an emergency.



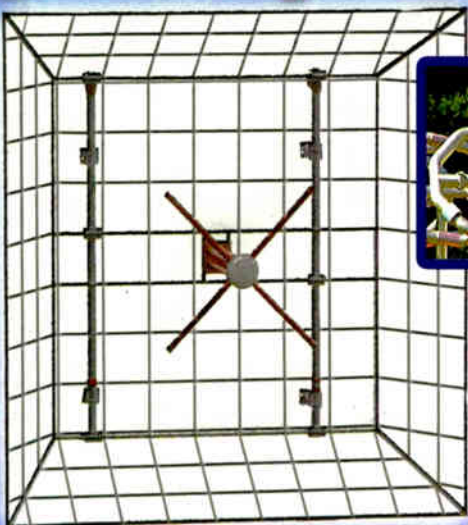

Remember, the stronger the documentation, the less down-time you will experience because more information will be immediately available so troubleshooting and repairs can be made quickly.

Ask for a user's list. Be sure you get one with both customers who have had problems, and those that didn't. A manufacturer that offers good customer support won't

*(Continued on Page 28)*



# Quality FM & TV Antenna Systems



PSI is dedicated to designing and manufacturing the highest quality product. Working diligently with station engineers, consultants and outside vendors ensures that each project is completed to the customer's satisfaction.

Wide range of antenna models are available at all power levels, directional and non-directional, multi-station and more.

Additional products include..

- Transmission Line
- Combiners
- Filters
- Turnkey Systems

## PSI $\psi$

# Propagation Systems, Inc.

Phone: (814) 472 - 5540      Fax: (814) 472 - 5676  
Email: [sales@psibroadcast.com](mailto:sales@psibroadcast.com)      [www.psibroadcast.com](http://www.psibroadcast.com)



**IN STOCK!**



**\$845.**

DEVA Band Scanner Pro is the tool to evaluate FM broadcast band congestion and to log station identification parameters. Can measure RF level, MPX deviation, Left & Right Audio levels, RDS and Pilot injection levels. System is powered by the USB port of any Windows PC. Free Windows software sweeps the receiver across the FM band, logging every carrier and generating a spectrum display of carrier level vs. frequency. It then analyzes each carrier and creates a station list. Stations with an RDS presence are further refined to show all the radio data groups being transmitted. **And much more!**

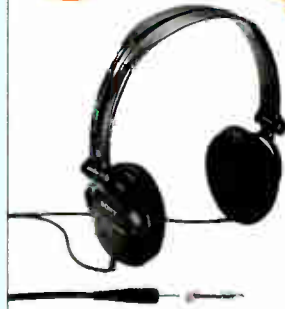


**IN STOCK!**

## headphones

The MDR-V150 Studio Monitor Series headphones are built for your ears. They feature supra-aural design for excellent listening comfort. Also included are the 30mm diameter drivers for deep bass, high-energy ferrite magnets, reversible earcups for single-sided monitoring, a wide molded headband for long-lasting comfort, and a stereo UniMatch® plug. Indulge yourself in amazing sound. **And much more!**

**6 For \$99.**



**IN STOCK!**



**\$3385.**

BW Broadcast's TX600 is a lightweight and efficient rack-mountable FM Transmitter. Designed for low-power FM Broadcasters, it has a graphical LCD controller on the front panel for easy control of power and monitoring of system variables including indicate frequency, forward and reverse power, power amplifier temperature, power amplifier voltage, PLL board voltage, modulation levels as well as the amount of gain reduction of the internal audio limiter module. Frequency is adjustable from 87.5 to 108 MHz via internal direct reading switches or from the front panel graphics display control system. The RS232 control and monitor system is a dual mode system which allows the TX600 to be controlled and monitored from a standard terminal program or our custom windows application. **And much more!**



# YOU KNOW WE KNOW RADIO!

**IN STOCK!**



**call for \$**

AUDIOARTS R-SSE HAS THE FEATURES ENGINEERS WANT! 2 stereo program busses and 2 mono busses—1 pre and 1 post fader (perfect for backfeeds or on-the-fly mix-minus), phone caller support utilizes Wheatstone's exclusive Bus-Minus® circuitry, which generates mix-minus caller feeds with the simple push of the phone module's bus assignment switch. Control room and studio monitoring with talkback are provided, including pre and post studio and headphone level pot monitor feeds. It can accommodate up to 24 input & accessory modules in any combination. **And much more!**



www.scmsinc.com  
**1-800-438-6040**  
sales@scmsinc.com

Mid-South: 1-877-391-2650  
South-Atlantic: 1-770-632-1295  
North-East: 1-315-623-7655  
Central: 1-731-695-1714  
North Central: 1-513-376-8600  
South-West: 1-210-775-2725  
Mid-West: 1-513-899-3036  
West Coast: 1-866-673-9267  
Pro Audio: 1-877-640-8205  
Latin America: 1-760-650-1427  
Bradley Div.: 1-800-732-7665

**NEW • RENTALS  
• USED • DEMOS**

**IN STOCK!**



**\$180. each**

The QSC AcousticDesign AD-582 is a full range, surface mount loudspeaker with sleek, contemporary styling that fits perfectly into multiple environments and applications. It's a 2-way system incorporating an 8" weatherproof, LF transducer and 1" pure titanium dome tweeter. Dynamic, full range power protection circuitry activated by signal overload conditions. **And much more!**





# Chief Engineer

— Continued From Page 26 —

## It's Time For a Balanced Playing Field

be afraid to let you speak with customers who have had problems with their equipment and needed to use their customer service and their technical support line.

Keep in mind that while no manufacturer builds perfection, a manufacturer proves itself as a reliable supplier based on how well it has dealt with problems that have occurred.

It is also important to remember that one customer support SNAFU is different than a consistent pattern of poor customer support. You can pretty much be assured that how a customer or tech support department has dealt with problems in the past is how they will handle your problem, should one occur.

Should you find disturbing information about a situation, always be sure to get both sides of the story. Sometimes, even though the manufacturer did everything humanly possible to remedy a situation, the customer is never satisfied and will bad mouth a supplier rather than admit they, the customer, may have had unreasonable demands or expectations.

### Tech Support

While all manufacturers have some level of tech support, there is a standard you should look for if you are buying a mission-critical piece of equipment, regardless if you have a back up system available.

That standard is the availability of tech support 24 hours a day, 7 days a week, 365 days a year (24/7/365). Anything less opens you up to potential long periods of down time, with no support.

If you call after hours and the company doesn't have "live support" at the factory, the answering machine or answering service should provide you with a cell phone number to contact the engineer or support person who has after-hour support responsibility.

If you are wondering why this is important, think about this: the last thing you need is to have a critical system go down on a Friday night and have to wait until Monday morning for tech support. If it's a holiday weekend you may not get support until Tuesday morning. Be sure tech support is indeed available, even when the factory is closed, for a holiday break or summer vacation break.

Finally be sure you are getting real tech support by someone who you can clearly understand, and who understands you. Also be sure it is a technical support staff member and not someone in administration, sales or marketing who is not a factory tech or engineer.

While it's always a prudent business practice to have a backup system for mission-critical equipment, some stations simply can't afford it. Others foolishly don't want to invest in it, even though it would help keep their revenue stream secure.

### Warranty - Basic and Extended

While the claim of an extended warranty may get your attention, there are a couple of things to remember.

With today's electronics, if a product is going to have a problem that doesn't show up during factory testing it will normally show up within 30 days of installation, the time it takes a piece of electronics to really burn in and settle down.

That said, those extended warranties are tempting, but don't forget to look at the details of how a warranty works because each is different.

Don't assume you know. Be sure you know.

### The Devil is in the Details

There is a power generator manufacturer, for example, who has a basic 90 day warranty on it's products. This is mentioned on it's literature and in its specifications. What isn't mentioned is that it begins the day the generator is manufactured, *not* the day it is sold or installed. This manufacturer also has a "free" extended warranty *but* there is a catch ... and it's huge!

First, you have to fill out and send in the warranty card that comes with the generator. Secondly, the installation must be performed by a factory trained technician. If not, then the generator must have "start up" service performed by a factory trained technician, within a specific time, after the installation date. In either case the cost is about a thousand dollars. Oh and that warranty card has to be signed by the factory trained tech.

In our industry there are some manufacturers who won't send warranty parts from a simple phone call requesting them; they have a process that requires on-line return authorization forms to be filled out - and some want the bad parts sent back before they send replacement parts, etc.

Take the time to look at the logistics of how a warranty problem is handled, and factor that into your purchase decision.

The bottom line: it is important that you hold all manufacturer's to the same set of standards, regardless of equipment cost. To do anything less unfair and just wrong. — Radio Guide —

## Integration

[in-ti-grey'-shuhn] – noun 1. an act or instance of combining into an integral whole.

It should have been our middle name,  
but it wouldn't tell the whole story.

Customized Automation Systems

Studio Design and Project Management

Broadcast Equipment with Exceptional Pricing

Complete Turnkey Installation

Broadcast Equipment Repair

On-site Troubleshooting and Maintenance

For broadcast integration, sales and service  
there is only one name you need to remember:

## Lightner Electronics Inc.



Your Ultimate Solution.

Toll Free: 866-239-3888

Fax: 814-239-8402

[www.LightnerElectronics.com](http://www.LightnerElectronics.com)

At Lightner Electronics, we don't just install broadcast facilities. We guarantee, service and repair all of the equipment we sell as well as existing broadcast gear of any type. No matter what electronics you have or plan to have, we are your Ultimate Solution.





**EASY**  
So easy to set up, anyone can do it in just a few minutes

**AGILE**  
Built to withstand the rigors of onsite obstacles with unmatched stability

**ANYWHERE**  
Broadcast anywhere with the intuitively designed Zephyr/IP Mixer

## Locks In Your IP Connection Where Others Fail

Engineered to use public IP networks and mobile phone data services, the Z/IP Mixer combines the excellent performance of the original Zephyr/IP with the convenience of a digital four-channel stereo mixer. Designed to deliver high-quality audio transmission with low delay, even over less than perfect networks. Enclosed in a road-ready portable chassis, built to go wherever the action is.

**Z/IP MIXER:** Lock it in.

*Telos*  
AUDIO | NETWORKS

Telos-Systems.com

Telos and Zephyr are registered trademarks of TLS Corp. ©2009 All Rights Reserved.



Radio Never Sleeps. Neither do we. We're here for you, anytime, with free round-the-clock, 24/7 technical support. Call +1-216-622-0247.



# Transmitter Site

## To Insulate or Not to Insulate

by Ernie Belanger

As the seasons change, those of us in snow country are beginning to prepare our transmitter sites for the onslaught of Old Man Winter.

For some of us, this year's winterization may take on a new twist.

### Insulation and Heat or Air Conditioning

Many transmitter buildings are nothing more than wooden or concrete block shacks on mountain tops or in empty fields. Over the years, we may have depended on the heat generated by our tube transmitters to provide "heating" of the shack. This was usually adequate for us to get out of the frigid temperatures while performing preventative maintenance, but in most cases it was never as warm as it should be, to work in complete comfort. Nonetheless, we worked through the chills to get the job done.

Some of us have relied on portable electric heaters when the "box" was off the air and we were called in for the off-air emergency – transmitter off the air equaled no heat in the shack. What heat may have been left after the shut down quickly escaped through the unblocked nooks and crannies in the walls, or was replaced by the bitter cold that quickly found its way in.

### It's Time to Rethink Our Shacks

Today, one thing most often overlooked, when new solid state transmitters are installed, is transmitter building insulation and a source of adequate heat or air conditioning (AC) to

keep the building at a temperature comfortable not only for our new transmitter but for us, when we arrive on site for maintenance or that emergency call.

In warmer climates the installation of a solid-state transmitter may trigger the need for AC to be installed. Our old tube monsters were more heat tolerant than their solid-state cousins. If you are in a warmer climate the same procedures for insulation hold true, only in your case we talking cooling not heating.

### Shop for the Right Unit

For convenience and expediency, some sort of electric heat should be installed. There are several types available at home centers or industrial supply houses. A unit designed to keep rooms at constant temperatures would be the preferred method vs. the smaller, exposed coil type, portable electric or flash heaters designed to quickly warm a small space. Luckily, for those who just need AC, even the most economical window units are designed for continuous duty.

### Management May Think You're Crazy

More than likely, when you bring up the subject of insulation and heat or AC at the transmitter shack you will meet resistance from management because they don't have a clear understanding as to why it is needed now, when it wasn't needed in the past.

So, it is important that you have all your ducks in a row before meeting to discuss the need.

### Meeting Prep

Go to the shack and make measurements of the walls and ceiling. Rather than estimating the project cost, take your measurements to a building supply store or home center. Discuss the project with the personnel at the contractor desk or customer service. They will be glad to create an estimate for you. I would do this even if I were going to have the project done by a contractor or handy man. This way you know what the materials cost so you can be sure you're not being overcharged.

If you choose to do the project yourself you still may want to get an estimate or two from local contractors so you can show management how much you will save the station. Another option to consider would be to enlist the aid of the local high school or community college shop instructor. The instructor may take on the project as a teaching tool for the class. So you get free labor for the project and you can "supervise" vs. doing the labor yourself.

There may also be a tax credit the station can take advantage of for becoming more energy efficient by insulating the building. Check with an accountant on this.

When you meet with management you will have to help them understand how this project is now a vital necessity before the arrival of winter, if you're in cold country.

### Half Empty or Half Full

In your research it is important to remember projects like this are a trade off. The more you insulate, the lower any heating or cooling bill would be, but the higher the cost of the project. The less you insulate the higher the cost of heating/cooling bill, but the lower your project cost will be. The key here, however, is to get some insulation in place. Some is better than none at all, and more is better than less.

On one hand you need to keep the heat or cool in the building, on the other hand you're not insulating a living space so you probably won't need to use 2x6 construction and six inches of insulation rated at R-19. *(Continued on Page 32)*

## Introducing Broadcast Electronics' Economic Stimulus Package Affordable Transmitter to Studio Solutions!



### STX<sub>LP</sub>

- Scalable 1kW to 5kW FM Solid State
- IP Connectivity • Compact Design
  - Redundant Controller
  - Integrated Exciter



- Configurations for Smaller, Price Sensitive Stations
- Widgets can be Purchased Ala Carte
  - Shares 4th Generation AudioVAULT FLeX Architecture
- Intuitive, Easy-To-Use Graphics



For more information, visit our website at  
[www.bdcast.com/stimulus](http://www.bdcast.com/stimulus)



Tomorrow's Radio Today  
Broadcast Electronics, Inc.  
(217) 224-9600  
[bdcast@bdcast.com](mailto:bdcast@bdcast.com)



# AM Antenna Solutions



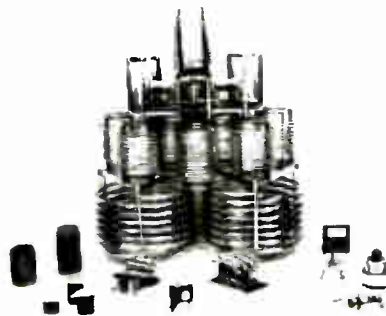
Directional Antenna Systems



Diplexer/Triplexer Systems



High-Power Antenna  
Tuning Units



RF Components

**LBA Technology** - your trusted supplier of digital engineered AM antenna systems. LBA customized products include:

- **Directional Antenna Systems**
- **ATU's**
- **Multiplexers**
- **Combiners**
- **Cellular/PCS Colocation**
- **Isolators**
- **RF Components**

We offer complete RF project design, management, procurement and installation services.

LBA enables thousands of broadcasters in the US and worldwide to:

Factory Dealer For:



**Reach Farther,  
Sound Better!**

**LBA TECHNOLOGY, INC.**

3400 Tupper Drive, Greenville, NC 27834  
800-522-4464 / 252-757-0279 Fax: 252-752-9155  
LBATech@LBAGroup.com

[www.LBAGroup.com](http://www.LBAGroup.com)



SINCE 1963



# Transmitter Site

– Continued From Page 30 –

## Before You Start

Now that you have the green light, inspect your building. During the daytime, go inside, shut off any lights and allow your eyes to adjust to the darkness. You want to find any “light leaks” that may exist. Make note of where they are.



**A crack found during a lights out inspection. This is an easy entrance for a field mouse and blowing cold air. The fix? A new door sweep cost \$5.**

If you see light, you know that cold or hot air will enter here and depending upon the leak's location and size, mice, snakes, rats or other critters will use the same place to come in from the weather. Remember, an adult Norwegian Rat, the most common here in the States, can squeeze its body through a hole the size of a quarter. You can imagine what size crack a field mouse can squeeze through.

## Plug the Holes

You should start your insulation process by plugging these leaks. To keep out critters you could use a heavy metal mesh immediately against the wall and then use expanding foam insulation to plug them up, from both the inside and outside. If your leaks are around cables, steel wool will help protect from critters and expanding spray foam insulation will stop drafts.

With this step complete, you are now ready to begin the rest of the project.

## Studs and Insulation

If you have a wooden building with open studs you're in luck because you only have to insulate in the existing wall cavities. With a concrete or block building, insulating walls can easily be constructed out of 2x4's. If you are doing it yourself, a quick visit to a home center or a web site like DIY.com will get you the information needed to properly construct a “stud wall.”

Remember too, you'll need the proper anchors to attach the base plates, the headers, and the 2x4's across the top of your wall, to the floor and ceiling. Since your wall isn't a weight bearing or support wall you won't have to double either the header or the plate.

Most likely you will want to place your studs 16-inches on center (16 inches from the center of one stud to the center of the next stud) – standard width insulation is made to fit. In addition to the normal construction tools – power saw, hammer, level, square, and measuring tape – don't forget a good staple gun and lots of staples, to secure the insulation to your studs.



Here again, if you aren't sure, discuss the project with someone more knowledgeable.

## Insulating is fun ... NOT!

From experience I suggest you wear a long sleeve shirt, gloves, goggles, a hat and a paper mask when you insulate. The last thing you need is to breathe in fiberglass fibers, which can cause damage to your lungs, sinuses and throat – or get a case of the itchy skin irritation because of exposure. A set of Tyvek coveralls would be great to keep fiberglass off your clothes as well.

Other safety and installation tips are available at your local home center, or you could go to an insulation manufacturer's web site for handy tips as well.

## Sealing the Deal

Once the insulation is up, you'll need to finish the walls to help seal the cold out and to prevent insulation sag. Remember to insulate the ceiling as well, to prevent heat or cold loss there. All your other efforts will be a waste if you leave the ceiling untouched. – Radio Guide –

# THE STUDIO HAWK

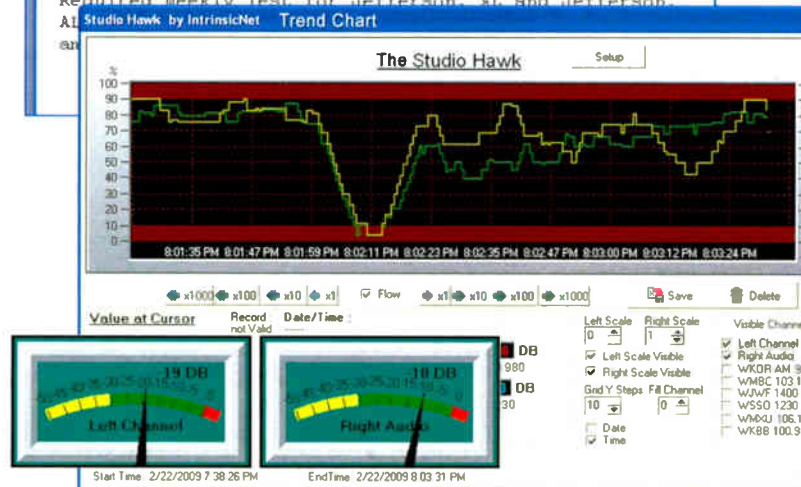
EAS Received: 2/19/2009 7:26:12 AM

[Studio Hawk]public@TheStudioHawk.com

To: my\_address@mystation.com

A Broadcast station or cable system has issued a Required Weekly Test for Jefferson, AL and Jefferson

AL Studio Hawk by IntrinsicNet Trend Chart



**FREE demo at**  
**www.TheStudioHawk.com**

## Your Low Cost Solution for Monitoring Audio and EAS Receivers

# \$650

- + Monitors 8 status channels, 8 analog channels and 8 relays
- + **Expandable** to 24 channels
- + **Emails or text messages** of alarms
- + **Multiple contacts** for each alarm with delays between text messages
- + Receive a **daily dead air report pdf** by email
- + Receive a **Monday morning EAS verification report**
- + Trigger **audible alarms** via signaling devices
- + Records EAS data (transmitted and received)
- + Filters EAS alerts that can be emailed or sent via text message

by **intrinsicNet**



# OMB

## MT-MR Platinum STL System



### Why the MT-MR Platinum?

- For its **excellent quality-price** value.
- For its **adjustable transmission power** output from 0 to 20W for any selected operational frequency.
- For its **double conversion receiver** that makes it apt for **digital codification** (Up to 4 audio channels).
- For being **digitally synthesized** in 20 MHz operational band for frequencies from 150 MHz to 960 MHz.
- For the fact that **both the transmitter and receiver can measure the modulation percentage and pilot signal level** (19 KHz stereo without disconnecting the audio from the transmitter).
- For its **remote control**.
- For its **analog telemetry**.
- For being made for **mono or stereo (MPX) signal**.
- For its **capability to work with AC power voltage from 90 to 250 V, 50/60 Hz**, and also with external battery if needed.

OMB, the **F**uture of **C**ommunication

# OMB

3MOT S1500 YAV 3DIR SGP 2 R COM LIM3 MMS 412 MIX ONE100

DIPLOMA

**OMB AMERICA**  
phone. (305) 477-0973  
(305) 477-0974  
fax. (305) 477-0611

**3100 NW 72nd. Ave. Unit 112**  
**MIAMI, Florida 33122 USA**  
<http://www.omb.com>  
[usa@omb.com](mailto:usa@omb.com)



## BSI's Op-X Automation

by Dave Supplee

In June of this year we had the opportunity to replace the automation for our five-station cluster in Harrisburg, PA. The system needed to be designed to complement each of our varied formats. We needed ease of operation, maintenance and backup capabilities on a platform that was not going to be obsolete in a few years. Most of all we needed it to be reliable.

After researching the automation systems available, we decided on Op-X from Broadcast Software International (BSI). It has proven to be a good match for us.

### Maximum Flexibility

The Op-X system consists of three major modules: the File Server, Audio Server and Studio On-Air Interface. Each of these can work independently, allowing configuration flexibility and redundancy. This means you can configure Op-X to run a single station or the largest of station clusters, depending on your need.

### Ease of Operation

The On-Air Interface is simple and easy to learn; our air talent became completely comfortable with it after only a few minutes of practice. The interface also offers very powerful controls including the ability to assign commands to the hot key buttons and change the appearance and colors of the screens.

In addition to the three main modules, other modules add to the system functionality.



Op-X Sreen Shot

### Simplified Voice Tracking

Voice Tracking with Op-X is done easily from any work station, or even remotely using any high-speed Internet connection for remote voice tracking. The remote voice tracker has the exact same look and feel of the in-studio screen so your talent immediately feels comfortable with it.

### Easy Satellite Operation

The Clock Builder module uses a common sense approach to set up satellite show clocks. There's no need to spend hours writing complicated playlists to perform simple repetitive functions.

Long-form time-shifted programs are recorded an hour at a time, complete with all closures and special routines to handle automated sports programming. The stretch/squeeze and auto fill functions ensure spot breaks time out perfectly. Complete visual indicators and logging of all closures have proven invaluable when troubleshooting programming network problems.



The author at his Op-X monitoring station.

### Straight Forward Audio

Op-X uses uncompressed .wav files and the Cart Chunk standard for header information, so there's no proprietary file and/or database structure to backup.

### Even More Features

The Op-X Merge/Playlist editor converts our traffic and music schedule files from external sources with speed and accuracy. The Serial Server shares serial devices like audio switchers and GPIO devices among all stations reducing the number of audio switchers and associated hardware.

### Redundancy

The Audio Server module will operate even if the network fails. If hardware fails on one machine, a module can be launched from any other machine on the network.

Dave is the Chief Engineer at WNNK in Harrisburg, PA. To find out more about OP-X contact Broadcaster's General Store at 352-622-7700 or BSI at 541-338-8588 or email: sales@bsiusa.com

# Shively Labs®

**Radio is our main line, not just a side-line.**

**State-of-the-art design**

**Proven reliability**

**Cool and blue – no boring black or gray here!**

P. O. Box 389, 188 Harrison Rd., Bridgton, Maine USA 04009  
(207) 647-3327 (888) SHIVELY FAX (207) 647-8273  
sales@shively.com www.shively.com

- An Employee-Owned Company -  
ISO-9001:2000 Certified





# The Preferred Choice

for Automation and Switching Solutions



**ACS 8.2 Plus** Audio Control Switcher



**SS 4.4** Stereo Matrix Switcher



**16x1** Stereo Switcher/Router



**SS 2.1 III**  
Switcher/Router



**SS 8.1 II**  
Switcher/Router



**SS 16.4** Stereo Switcher



**SS 4.1 Plus**  
Switcher/Router

**BROADCAST**  
*t o o l s*

[www.broadcasttools.com](http://www.broadcasttools.com)



Manufactured with  
Pride in the USA

INNOVATIVE PROBLEM SOLVING TOOLS FOR BROADCAST



WITH **DIELECTRIC**

## Why are so many FM stations choosing Dielectric?

Our new interleaved antennas provide best-in-industry isolation without the added cost of a circulator. So you can increase your digital transmitter power without affecting analog transmission.

Dielectric antennas:

- Yield a minimum -40 dB isolation for single-frequency antennas and a minimum -30 dB isolation in dual-frequency applications, regardless of antenna style.
- Provide two completely separate antennas, both of which can support either analog or digital signals for redundancy, helping ensure maximum on-air staying power.
- Dramatically increase power efficiency compared to 10 dB couplers.

*The world of communications is changing fast. Partner with Dielectric, and get the staying power to adapt to new innovations – and to a potential FM IBOC power increase – just around the corner.*

Call us today at (800) 341-9678  
Or visit us at: [www.dielectric.com](http://www.dielectric.com)

**Dielectric**<sup>®</sup>  
AN SPX DIVISION

**NEVER UNDERESTIMATE THE POWER OF RADIO™**



# Field Guide

## Transmitters

### The Nautel J1000

by Scott Cason

As the contract engineer for a particular client, I had been maintaining their aging Harris SX 2.5 main transmitter (with a CCA 1000D for a backup). When Harris stopped support of the SX line, the company's Director of Engineering realized that it was time to replace our aging rig.

#### Ready to Install

The Nautel transmitter arrived on a Tuesday afternoon. Fully crated, including the rack, the total weight was 320 lbs. While that is maneuverable with just one person, I highly recommend getting a second pair of hands.

Delivery, setup and installation were the easiest of any installation I can remember. The transmitter was ordered already mounted and wired up in the matching rack option.

#### Hooking Up Power

The Nautel guide recommends using 10-gauge wire for the incoming power. However, once the shells are placed around the wire and screwed together on the connectors for the exciter and power amplifier assemblies the connectors that Nautel supplies are hardly able to contain the 10-gauge wire. I would recommend the connectors be made slightly larger to accommodate the larger wire.

Nautel has, as an option, a surge suppressor for the incoming AC, outgoing RF and remote lines. I highly

urge this surge suppressor be ordered as part of the transmitter package.

#### The Start Up

Once the AC lines were in place, the RF output was hooked up and the all important smoke test was next. Power was applied to the box and it jumped to life with no errors on the front display (and no sparks from the AC connectors). Finally it was time to turn on the RF.

After pressing the RF ON button on front of the exciter, the fans on the power amplifiers spun up and B+ voltage came up – but there was no current or power output. At first, I started to panic, thinking something was wrong. But it was I that was wrong; until you tell the transmitter what power you want, it just waits for you.

Once I programmed one preset with our daytime power of 1,000 Watts, and another with our night time power of 500 Watts, everything was fine.



The J1000 from Nautel

#### Audio and Control

Remote control hook-ups, along with interlock and audio, for the Nautel are very easy to access since they are on a screw terminal block on the back of the exciter assembly. Practically everything can be monitored on the remote control outputs.

The audio was a simple 600 Ohm connection from our processor output to the audio input on the back of the exciter.

#### On the Air

With everything hooked, the transmitter was fed into the antenna controller and turned back on, putting it on the air.

The total time from uncrating until on the air was two days but this only was because I was not in a hurry and could take time. I had a J-1000 *on the air in six hours* at a previous client when their 40-year-old main transmitter failed and parts would have taken too long to arrive.

After three installs, I can report being very happy with the results. Nautel has built a solid, reliable transmitter with the J-1000. This is a transmitter I would not hesitate to recommend to other station owners wanting to replace older, less efficient transmitters, or simply wanting to keep up with the latest in transmission technology.

*Scott Cason is a contract engineer based in Louisville, KY. You can contact him at [scott@lagrange-com.com](mailto:scott@lagrange-com.com) You can contact Nautel at 902-823-5131 or [www.nautel.com](http://www.nautel.com)*



# ALTRONIC RESEARCH INC.

## Performance By Design

### RF DUMMY LOADS for ALL YOUR APPLICATIONS

- AIR-COOLED
- HD
- HDTV
- WATER-COOLED



## ALTRONIC RESEARCH INC.

P.O. Box 249 Yellville, Arkansas 72687 870-449-4093 Fax: 870-449-6000

E-mail: [info@altronic.com](mailto:info@altronic.com) Web Site: <http://www.altronic.com>



# When You Want More Than Just An Antenna



**Full line of  
HD Radio Accessories:  
Circulators, Mask Filters,  
Reject Tuners, and  
Rigid Components.**



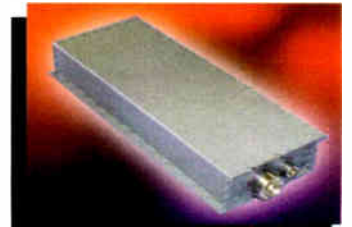
Made in USA since 1954



**MASTER FM  
DUAL INPUT  
HD ANTENNA**



**JSHD DUAL INPUT  
HD SIDEMOUNT  
ANTENNA**



**RCHA 10dB  
HIGH LEVEL  
HD INJECTOR**

JAMPRO ANTENNAS/RF SYSTEMS, INC. • P.O. Box 292880 • Sacramento, CA 92829 USA • Phone (916) 383-1177 • Fax (916) 383-1182 • www.jampro.com Your Partner for HD Radio Solutions



## COMMERCIAL RADIO COMPANY

Original Parts – New and Used:

RCA • Harris/Gates • Energy-Onix • Continental/Collins  
CCA/CSI • ITA/Wilkinson • Sparta/Bauer • Ratheon

Capacitors:

Mica Capacitors • Ceramic Capacitors  
Fixed and Variable Vacuum Capacitors  
Non-PCB Oil-Filled Capacitor Transmitter Replacement Kits



Misc. Components:

Resistors • Rheostats • Weschler AC, DC and RF Meters  
Custom Calibration of AC, DC, and RF Meters  
Rebuild, repair and calibration of General Radio Co. Instruments



**OVERNIGHT SHIPPING – MANY STOCK ITEMS**  
**PHONE: 802-226-7582 • FAX: 802-226-7738**

[www.commercialradiocompany.us](http://www.commercialradiocompany.us)

DISCOVER, VISA, MASTERCARD, AMEX, C.O.D.'s  
and pre-approved P.O.'s accepted.

**Includes PS3L power supply / controller • ALL LED** - never replace another lamp • steady or flashing • **FREE** station LOGO • side view light • warm white (like incandescent) • all aluminum with non glare **GLASS** cover • black or beige color • 120/230v • green - draws just 8 watts

[enbergelec.com](http://enbergelec.com) **LED logolight**



# Tech Tips

By Jeremy Storm

## An Inexpensive Temporary Dehydrator

Many times dehydrators are installed at transmitter sites, and never checked again until there is some major problem. If you find yourself with problems at an odd time, here is a solution that works in a pinch.

If one of your transmission systems uses a dehydrator, you might find this useful.

Hilo, Hawaii has two distinctions. We have the highest rate of interracial marriages, and the most annual rainfall of any U.S. city. I am not sure if the two are related, but here "where the rain reigns" would be a good place to test my idea.

### Trouble Call Call

One day the low pressure alarm status indicator at one of our FM sites lit up at the studio. I arrived at the site and found the dehydrator compressor making a terrible grinding noise. It seems it threw its needle bearings along with other metal bits, and by the time I arrived, it was well on its way to a meltdown.

The transmission line at this site is a bit leaky so setting up nitrogen gas would be impractical. Until parts arrive (or the bean counters let you replace the compressor – at a cost of something like \$1,400), what can an engineer do to keep things operating?

### A Low Volume Compressor

All we really need is a low volume moderate pressure compressor, something like an aquarium pump. These are capable of making a peak pressure of 4 psi, and will pump up to one liter per minute at no pressure. It would be perfect for our needs.

I know dampness in a home closet can be controlled with DAMP-RID. This is an inexpensive chemical (calcium chloride) dryer. This, along with the aquarium air pump, seemed like a natural.

To construct my emergency dehydrator, the following items were bought locally for a total of \$23.

- (1) Aquarium air pump.
- (1) Aquarium tee with valves.
- (1) Plastic box with snap-on lid size: one cubic foot.
- (1) Container of DAMP-RID (and an extra box of chemical).
- (1) Length of plastic hose for aquarium pump, enough to run to the RF feed line gas barb.

### Putting it All Together

Set it up like this:

Cut a three (3) inch section from the hose to connect air pump out to the input on the tee.

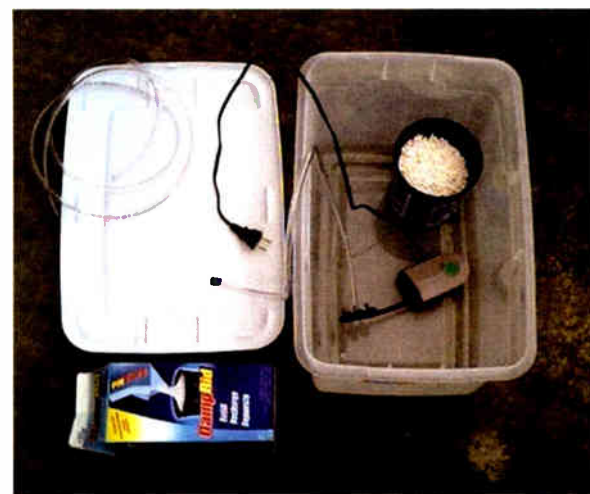
Connect the remaining hose to one output on the tee and open its valve. (This will connect to the feed line later.)

Close the other valve.

Cut a 1/2 inch hole in the lip of the box lid just large enough for the output hose and compressor power cord.

Activate the DAMP-RID container by pouring in the pellets.

Put the DAMP-RID container, air pump and tee valves into the box and close the lid.



Connect the output hose to your feed line gas barb. Wait a few minutes for the air to dry then plug in the air pump.

After a few more minutes the pressure will reach 4 psi. Finally, lift the lid and open the closed bypass valve slightly so the pressure drops off to 1 or 2 psi.

This will make sure air is flowing through the pump and the small draft will help circulate the air in the box. Replace the lid and sit back to enjoy your handiwork.

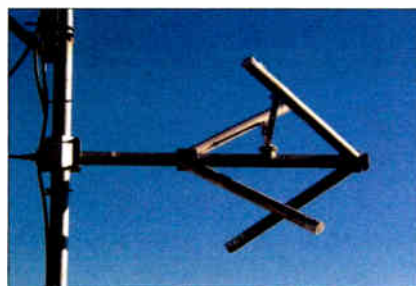
### Minor Task

This dehydrator is not automatic so be sure to check the DAMP-RID container monthly and add or change the chemical before it turns into a liquid.

The aquarium pumps are very reliable and should not be a source of trouble during the time it takes to repair your very expensive automatic dehydrator. – Radio Guide –



## Micro Communications, Inc. Full Line of FM Products



- ### FM Antennas
- Horizontal Polarization
  - Vertical Polarization
  - Circular Polarization
  - Top Mount
  - Side Mount
  - Leg Mount
  - Custom Patterns

### Coaxial Components

- Coax Switches
- Filters
- Power Combiners
- Channel Combiners
- Transmission Line Components



## Micro Communications, Inc.

PO Box 4365, Manchester, NH 03108  
Phone: 800-545-0608 • Fax: 603-624-4822  
www.mcibroadcast.com • sales@mcibroadcast.com

## TRANSCOM CORPORATION

Serving the Broadcast Industry Since 1978

Visit Our Website – [www.fmamtv.com](http://www.fmamtv.com)  
Send your e-mail requests to: [transcom@fmamtv.com](mailto:transcom@fmamtv.com)

### Fine Used AM & FM Transmitters & New Equipment

AM	5 kW	1982	Harris MW5A
	5 kW	1987	Harris MW5B
	5 kW	1987	Harris SX5A Solid State
	5 kW	2002	Nautel ND5 Solid State
	10 kW	1985	Continental 316F
	50 kW	1989	Nautel Ampfet 50
FM	1.0 kW	2009	Crown FM 1000E (demo) Solid State
	2.0 kW	2004	Crown FM2000E
	5.0 kW	1989	Harris FM5K1
	5.0 kW	1997	Harris HT5
	14+5 kW	2005	BE Fmi1405 Solid State
	20.0 kW	2005	BE FM20S Solid State
	20.0 kW	1983	Harris FM20K
	27.5 kW	1984	Continental 816R-4B
30 kW	1994	Harris HT30CD	
	50 kW	1982	Harris Combiner (w/auto exciter-transmitter switcher)

### USED MISC. EQUIPMENT:

Bird RF Thru-line Watt Meter, 50S

### EXCITERS:

\*New\* 30W Synthesized Exciters  
Used Harris Digit 2<sup>nd</sup> Generation  
Used Nautel NE-50 Exciter



Please go to our website for updated listings.  
Retuning and testing available – call for quote!  
OMB STL systems for radio, complete  
with antenna and cable for under \$5,000!

2655 Philmont Ave, Ste 200, Huntingdon Valley, PA 19006  
800-441-8454 • 215-938-7304 • Fax: 215-938-7361





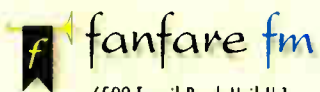
# FP-TRO



## The Ultimate IBOC Receiver/Translator

Designed to accommodate "full envelope" baseband signals (IBOC and analog), Fanfare's new age receiver/translator, the TRO, is fully self-contained and does not require an IBOC exciter. In fact it arrives in a 2 module configuration ready for deployment under all existing FM modulation forms. The "TRO" offers considerable versatility requiring only connection to the receiving antenna and a linearized PA. If necessary, the receiver and translator modules can be separated by up to 200' of coax, or by STL. The latter would be of value for some repeater applications, as well.

At the heart of the TRO design is our patented, Omega NTP-based technology which enables the TRO to establish a noise floor that is often below normal measure. This significant noise reduction manifests itself in significantly increased sensitivity and adjacent noise rejection which is essential to assure reception of low-level IBOC signals.



6509 Transit Road, Unit H-1  
Bowmansville NY 14026  
Email "prinfo@fanfarefm.com"

1-800-268-8637(U.S. & Canada)

Voice - 716-683-5451  
Fax - 716-683-5421  
Website: "www.fanfarefm.com"

*Designing receivers that broadcasters can rely on!*

# NEW ECONCO New Power Tubes



*Newly manufactured tubes  
are now produced by Econco  
in Woodland California*



Phone: 530-662-7553 • Fax: 530-666-7760  
Toll Free: 800-532-6626

[www.econco.com](http://www.econco.com)

1318 Commerce Ave, Woodland, CA 95776

## The STATI-CAT is Back!

Now Manufactured by *nott ltd*

### GILASTAT

Tower/Structures Up to 100'  
80 Stainless Steel Points

### STATI-CAT

Tower/Structures up to 200'  
120 1/8" Stainless Steel Points

### EAGLES NEST

Tower/Structures Over 200'  
792 1/8" Stainless Steel Points

Call Today for a  
Free Consultation  
on Your Application

**Reduce Lightning Damage by  
Lowering the Incidence of a  
Direct Lightning Strike to:**

- Buildings
- Industrial Facilities
- Communications Towers
- Electric Utility Substations

# 505-327-5646 *nott ltd*

[www.nottltd.com](http://www.nottltd.com) • [info@nottltd.com](mailto:info@nottltd.com)

## Bay Country Broadcast Equipment

*Buy • Sell • Trade*

**Your #1 Source for Quality  
Used Radio Broadcast Equipment**

View our latest list of equipment on-line at:

[www.baycountry.com](http://www.baycountry.com)

Or call and we will fax it to you.

*All equipment sold with a 15 day return guarantee.*

**Turn Your Excess Gear Into Cash**

Fax or email your list to us and we will respond with our offer promptly.  
We only buy good working equipment with traceable serial numbers.

**Fax Your List Today – 443-596-0212**



<http://www.baycountry.com>

*(Website Updated Daily)*

E-mail: [sales@baycountry.com](mailto:sales@baycountry.com)

877-722-1031 (Toll Free) 443-596-0212 (Fax)

7117 Olivia Rd, Baltimore, MD 21220



# Tech Tips

by Stanley Swanson

## Using the Right Fence

The FCC says that antenna towers having radio frequency potential at the base must be enclosed with an effective locked fence.

### What it Takes to be Secure

The FCC does not define what is meant by an effective locked fence. They will probably accept any type of fence three feet high with a locked gate. Although a three foot high fence will keep out chickens and small children, it really cannot do much against thieves and vandals.

A lot has been said recently regarding security, and this usually includes the subject of fences. While I was at KBNL(FM) in Laredo, Texas, we had the opportunity to construct a new antenna site. The previous site had had one break-in and one attempted break-in (a hole in the plywood roof). The site had a concrete block wall partially around the tower base, with the concrete block building serving as the remainder of the wall.

This time we built a transmitter building with poured reinforced concrete walls and roof, and a single metal door. From previous experience I had learned that the door should swing out, not in, so that it could not be forced. We also needed a fence to enclose the building and the tower.

### An Effective Fence

If you are not thinking of a concrete block wall, you are probably considering a chain link fence. Chain link fence comes in heights of between three feet and twelve feet. Residential chain link fence is commonly 11 or 11-1/2 gauge wire, with about a two inch mesh. (Mesh is the distance between parallel wires; some refer to it as a diamond.)



Typical 11-1/2 gauge wire.

This type of fence can easily be cut or climbed, and is of little value for real security. Barbed wire at the top does little to discourage unwanted visitors, and can be successfully climbed over. Razor ribbon is more effective, but I would not be surprised if someone takes you to court for damages after he tries to climb it!



This nine gauge fence provides more security.

The best approach is to start with a fence that is difficult to either cut or climb. I suspect that many people do not know that there are various varieties of chain link fence. Chain link fence for

security purposes should be of at least nine gauge wire (smaller numbers indicate heavier wire). Mesh sizes such as 1-1/4 inches, 1 inch, 5/8 inch, 1/2 inch and 3/8 inch are available. A good fence should have a mesh size of 1 inch or less.

The larger gauge and smaller mesh make it very difficult to cut the wire, as well as being more difficult to climb. Look for samples at your fence dealer before deciding on the fence material. If you choose a good fence material with a height of six feet or more, you may decide that barbed wire or razor ribbon are not needed.

### Use the Right Posts and Gates Too

Your fence dealer will also be able to tell you what diameter posts and top rails are suitable for the fence material you choose. An important note: since the posts will probably be set in concrete, they may not make a good ground connection; one or more ground rods can be used for safety from lightning or other causes.

The easiest point of entry will be the gate. Make sure you have a kind of closer that cannot be forced. You will probably want to use a heavy chain to secure the gate. I once had to cut a chain with a hacksaw because someone had left our lock out of the loop. I can tell you that it was not easy! - Radio Guide -

**\$25 REWARD** for Tech-Tips

Have you solved a technical problem?

Send it to: [radioguide@earthlink.net](mailto:radioguide@earthlink.net)

**MAKE WAVES**

**EXPECT MORE FROM YOUR AM TRANSMITTER**

**Presenting the Armstrong Transmitter X-1000B**

Bring major market sound to your radio station with the dual, hot-swappable 600 Watt RF modules capable of 150% modulation in Armstrong Transmitter's X-1000B, (1KW HD & DRM ready AM transmitter).

Engineered with the latest technology advances, X-1000B offers high reliability and built-in redundancy. Get ready to save money while improving your sound and reliability. Call us today!

**ARMSTRONG**  
TRANSMITTER CORPORATION

Tel 315-673-1269 ▲ [sales@armstrongtx.com](mailto:sales@armstrongtx.com) ▲ [www.armstrongtx.com](http://www.armstrongtx.com)

\* Gibraltar IV Series  
\* Horizon to Horizon  
\* Standard AZ-EL  
\* Heavy Duty Polar

**ANTENNAS**  
ANTENNAS  
ANTENNAS  
ANTENNAS  
ANTENNAS  
ANTENNAS

**COMMERCIAL QUALITY**  
(.6m .9m 1.0m 1.2m 1.5m 1.8m 2.4m 2.7m 3.0m 3.3m 3.7m 3.9m 4.2m 4.5m 5.0m)

Call For Info  
**800-627-9443 608-326-8406**  
[www.dhsatellite.com](http://www.dhsatellite.com)

Offering:  
\* Feed Horns  
\* LNB's  
\* Multi-Cable  
\* Receivers  
\* Controllers  
\* Antenna Covers  
\* Custom Fabrications

OVER 600,000 Manufactured  
\* High Efficiency \* Custom Fabrications  
\* Fast Direct Delivery \* 5 Year Warranty

Fax: 608-326-4233  
Email: [dhsat@mhtc.net](mailto:dhsat@mhtc.net)

Buy Factory Direct & Save!



# BEXT

## FROM THE TALL TO THE SMALL

**FM & TV  
Transmitters  
Solid State or Tube  
Antennas & Combiners**

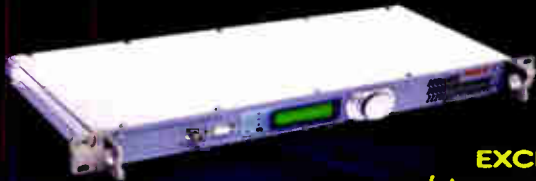
**20 Years of Service  
Asistencia en Español  
24 Hour Support  
2 Years Warranty**

**www.bext.com  
Tel 619 239 8462  
Fax 619 239 8474  
bext@bext.com**



**NEW**

**EXCITERS/TRANSMITTERS  
w/stereo generator & audio limiter,  
field programmable FSK ID keyer, all built-in!**



# Need Digital?

Add AES/EBU digital ports to your composite STL with TFT DMM92 Digital Encoder and Decoder.



## Model DMM92 STL Digital Model/Multiplexer

Add AES/EBU to your existing analog EAS with TFT Model 629 Dual Digital Insertion Unit for two AES/EBU digital channels.



## Model 629 EAS Digital Insertion Unit

**Advanced Technology Only From TFT**

# TFT INC

ph:(+1)408-943-9323 fax:(+1)408-432-9218

1953 Concourse Drive, San Jose, CA 95131

**www.TFTInc.com e-mail:info@tftinc.com**

# G/R

## GORMAN-REDLICH

257 W. Union Street, Athens, OH 45701  
Phone: 740-593-3150 – Fax: 740-592-3898

**30 Years Experience with  
Alerting Equipment**



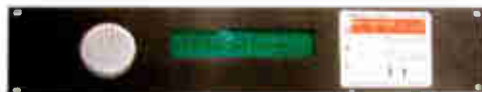
Model CRW-S Weather Receiver

### Model CRW-S Weather Receiver

For receiving alerts from the National Weather Service (NWS).  
Redesign of our Model CRW now with the "SAME" decoder feature.

### Easy to Use and Reliable EAS Equipment\*

- Pre-programmed for your location.
- Program interrupt relays built in.
- Six audio inputs.
- 2 minutes stored audio.
- All operations via keypad.



EAS1 Encoder-Decoder

**EAS1** Encoder-Decoder

**EAS1** Decoder

**EAS1-CG** Encoder Decoder with built-in character generator.

\*Optional DTMF interface available.



Model CMR Digital Antenna Monitor

### Model CMR Digital Antenna Monitor

- Remote Controllable
- True ratio readings.
- Phase sign automatic, no extra operation.

Contact Jim Gorman at: 740-593-3150

[jimg@gorman-redlich.com](mailto:jimg@gorman-redlich.com) • [www.gorman-redlich.com](http://www.gorman-redlich.com)

# AM Ground Systems Co.

[www.amgroundsystems.com](http://www.amgroundsystems.com)

Physical AM Site Services

## 1-877-766-2999

[eng@amgroundsystems.com](mailto:eng@amgroundsystems.com)

- Construction
- Evaluation
- Repair
- MOM Modeling Preparation work
- Sample, Feed & Control Line Replacement & Repair

Serving the Technical and Construction needs of AM Broadcasters for 25 Years



A division of

# KK Broadcast Engineering



# Service Guide Radio Equipment Products and Services

**Personal RF Monitor Value!**



The SafeOne™ alerts to hazardous RF above FCC limits from 10 – 10,000 MHz!

Easy mount to belt or tower harness, rugged nylon holster

Long battery life

Simple operation

SCHOMANDL KATHREIN MAB Booth N9115

Meet OSHA rules for 50% less than competitors!

Call 800-522-4464 or order on line at [www.LBAGroup.com/Safeone](http://www.LBAGroup.com/Safeone)

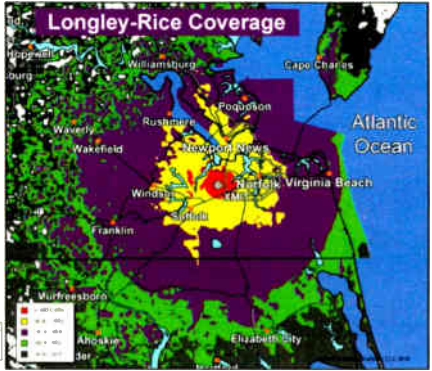
**LBA TECHNOLOGY, INC.**  
Greenville, North Carolina  
RF Systems Since 1963

**VSoft COMMUNICATIONS**  
R.F. Communications Software and Engineering Consulting

**The Leader in Broadcast Engineering Consulting Software!**

- Use Probe 3™ to create stunning "real-world" coverage maps using Longley-Rice and other models.
- Run Terrain-3D™ to plot STL paths and Longley-Rice coverage over 3D terrain.
- Run AM-Pro 2™ to perform AM skywave and groundwave allocation studies, interference analysis, & coverage mapping.
- Use FMCommander™ to study FM allocations using contour-to-contour protections, and minimum spacings.

[www.v-soft.com](http://www.v-soft.com) • [info@v-soft.com](mailto:info@v-soft.com) • 1-800-743-3684



**RF Professional Engineering Services**

- ★ FCC Applications
- ★ Coverage modeling
- ★ RF exposure limit reports
- ★ STL & microwave path analysis
- ★ Co-location and interference studies
- ★ Expert witness testimony by P.E.s

[www.rfengineers.com](http://www.rfengineers.com)

**RFEngineers, Inc. 352-367-1725**

**CCA PARTS & SERVICE**  
V&J Electronics

Can supply all parts, schematics, and manuals for CCA, CSI, Sintronic, and Visual transmitters. Field service and complete rebuild transmitters available.

Call Van or Jerry Meier: 770-907-2694  
Fax: 770-996-8225 – 24/7 Service  
COD, Visa, Master, Discover, NET-15/30  
[www.ccatransmitter.com](http://www.ccatransmitter.com)

**Doug Vernier**  
Telecommunications Consultants

- FCC Applications for AM, FM, TV, DTV, LPTV, STL
- Upgrade and Due Diligence Analysis
- Frequency Searches
- Site Relocations
- Propagation Prediction with Custom Mapping
- Demographic Analysis
- Directional Antenna Design

**VSoft COMMUNICATIONS**  
We use V-Soft Software!  
[www.v-soft.com](http://www.v-soft.com) consulting@v-soft.com 800-743-3684

**AM Ground Systems Co.**

**Ground System Construction, Evaluation & Repair**

**1-877-766-2999**

[www.amgroundsystems.com](http://www.amgroundsystems.com)

**Chris Scott & Associates**  
Visit our website [www.scott-inc.com](http://www.scott-inc.com)

Ph: (270)781-5301  
Fax: (270)781-1232  
Bowling Green, Kentucky

**NRSC Loop Antenna**

**AM-FM Notch Filters**




**Alert Monitors**



enbergelec.com

TRANSMITTING  
**CAPACITORS**  
MICA-VACUUM-CERAMIC



**SURCOM ASSOCIATES, INC.**  
(760) 438-4420  
[LINK@SURCOM.COM](mailto:LINK@SURCOM.COM)

**Silver Plating Powder**  
Silver Plate On-The-Job with Cool-Amp!!

<p><b>Cool-Amp</b> <i>Silver plating powder</i></p> <ul style="list-style-type: none"> <li>*Maintain your RF frequency</li> <li>*Keep your PCBs cool</li> <li>*Increase conductivity</li> <li>*Minimize power loss from corrosion &amp; oxidation</li> </ul>	<p><b>Conducto-Lube</b> <i>Silver based lubricant</i></p> <ul style="list-style-type: none"> <li>*Reduce resistance</li> <li>*Prevent power interruptions</li> <li>*Prevent data errors</li> <li>*Prevent power failure</li> </ul>
--	--

**COOL-AMP COMPANY**  
Ph: 503-624-6426 [www.cool-amp.com](http://www.cool-amp.com)  
60 years customer satisfaction! email: [sales@cool-amp.com](mailto:sales@cool-amp.com) Fax: 503-624-6436

**BAUER TRANSMITTERS, INC.**  
[www.bauertx.com](http://www.bauertx.com)

**BAUER - ELCOM BAUER - SPARTA - CETEC**

Re-Manufactured  
Bauer Transmitters Available

AM/FM – 2.5 kW to 25 kW  
[www.bauertx.com](http://www.bauertx.com) paul@bauertx.com  
915-595-1048 Fax: 915-595-1840

**RF PARTS COMPANY**  
From Milliwatts to Kilowatts™

Eimac • Amperex • Svetlana • M/A-Com  
Motorola • Toshiba • Philips • Mitsubishi

Se Habla Español • We Export

**800-737-2787**  
760-744-0700 Email: [rpf@rfparts.com](mailto:rpf@rfparts.com)  
[www.rfparts.com](http://www.rfparts.com)



**BROADCAST WORKS**

**Full Service Broadcast Engineering**

Project Management - Studio Build Outs  
Transmitter Sites - IBOC Installation  
Automation Systems - STL & RPU Repairs  
Full Service Shop - Emergency Equipment Rental  
24/7/365 Tech Support

We can team up with your engineer to supply extra manpower for big projects – or we can see your project through turn-key.

Serving Broadcasters for over 12 years.  
888-509-2470 • [www.broadcastworks.com](http://www.broadcastworks.com)



# Radio Pipeline

JK Audio – Logitek Electronic Systems – Shively Labs

New Equipment

Updates and Modifications

Industry Information & News

## JK Audio

### Desktop Hybrid for Cell Phone

The JK Audio BlueKeeper Wireless Audio Gateway pairs to your cell phone using Bluetooth Wireless Technology. BlueKeeper provides connections for your favorite microphone and headphones, creating broadcast quality interviews through your cell phone. Use it live or capture interviews through your computer or recorder.



JK Audio BlueKeeper

BlueKeeper functions as a digital hybrid, providing your voice and the caller's voice on separate channels for easy editing. The 3.5 mm stereo output jack on the back of the unit provides your voice (in full fidelity) on one channel and only the caller's voice on the other channel. The balanced XLR output jack contains only the caller's voice. The 3.5 mm line input jack allows recordings to be sent into the Bluetooth device. The 3.5 mm mono output jack provides your full bandwidth send mix, together with the caller audio, on one channel. The headphone output gives you a mix of the XLR input, 3.5 mm input, and Bluetooth audio (in stereo when available).

This is not the overly processed consumer-grade audio you've come to expect from low cost Bluetooth headsets. Our music-grade Bluetooth CODEC bypasses the audio processing in your phone, allowing us to send and receive the digital audio stream directly through the phone. This results in substantially better audio quality than any standard mobile call, substantially better than temperamental wired interfaces.

BlueKeeper also pairs to Bluetooth equipped sound cards and music players in full bandwidth stereo A2DP mode. This is a listen-only connection from the Bluetooth device to the BlueKeeper.

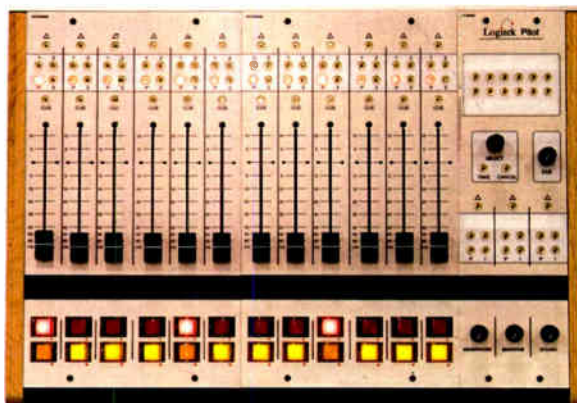
### JK Audio Inc.

800-552-8346 • www.jkaudio.com

## Logitek Electronic Systems

### Pilot Audio Control Surface

Logitek Electronic Systems has introduced the Pilot, an inexpensive audio control surface for IP audio networking systems. Designed to complement the JetStream Mini IP audio router, the Pilot surface has a scalable design that provides up to 24 faders in increments of 6 faders.



Audio sources may be routed as desired to each of the Pilot's faders; change buttons above each fader work in conjunction with a select knob to the side. Each fader may be independently assigned to a Program bus or any of three Auxiliary busses. In addition, a Cue switch above each fader will route that fader's source to a built-in cue speaker; twelve configurable soft keys may be programmed for user-specific functions. The Pilot includes bright, wide angle displays below the faders which have room for 16 character source names and support Unicode characters for display of Chinese or Kanji text. Because the Pilot operates with the JetStream Mini, extensive mix-minus capabilities are provided along with access to analog and digital I/O and IP network audio sources.

The Pilot console is ideal for radio stations that want the flexibility of IP audio routing and mixing at an entry level price. With the Pilot's traditional console styling, the learning curve is very low but the flexibility to assign sources where needed is still available. The Pilot is an ideal surface for both beginners and experienced operators, and is an affordable entry point for IP audio operation.

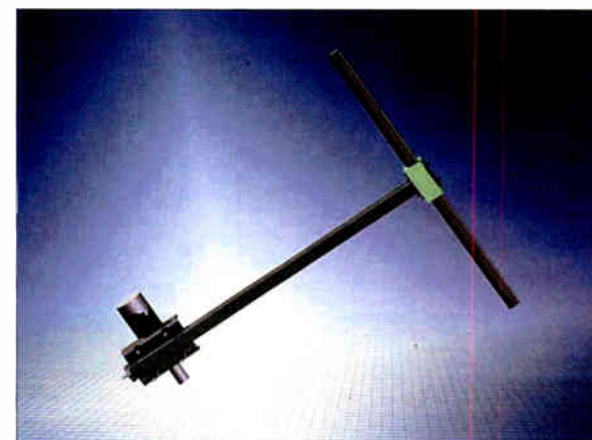
### Logitek

800-231-5870 • www.logitekaudio.com

## Shively Labs

### 6019 Broadband Dipole

The Shively Labs® 6019 broadband dipole is just one of various new antenna lines in the final stages of development. It is designed to be rapidly deployed either singly or in branch fed arrays – ideally suited for standby or emergency situations and is rated at 5 kW per dipole with a 7/8" EIA connector.



A single 6019 offers an input VSWR under 1.3:1 at the band edges, and much less within the mid-band frequencies. We also plan to introduce, at IBC, an additional line of broadband FM panels, based around the 6019 dipoles, designed for either square or triangular towers which will be suitable for lower powers and provide significant savings in costs when compared to the existing and well known 6014 and 6016 high power panels.

Both the dipoles and the panels will be designed to be "flat-packed" for ease of shipment, offering broadcasters worldwide, an efficient, versatile antenna system at low-cost which can be deployed rapidly, when and wherever needed.



Employee Owners of Shively

### Shively Labs

888-744-8359 • www.shively.com

**BESCO**  
INTERNACIONAL

World Leader  
in  
**AM-FM**  
Transmitters  
"Now in our 45th year!"

Complete Inventory at:  
**www.Besco-Int.com**  
Pre-Owned AM-FM units in stock!

R.E. Witkovski - President  
Rob Malany - Vice President

Info: (972)-931-6055

Sales: (321)-960-4001 Email: Sales@Besco-Int.com


Running to the site?  
Time to Remote the site!  
Several Models Available  
Stackley Devices, LLC  
(809) 647-9677

Remotely Control  
Your AC Devices  
Today!

www  
remote-outlet  
com

**StackleyDevices**  
CREATIVE ELECTRONICS & SPECIALTIES

**DA HOOK**      **DA GAP**  
Safety Grounding Hook      Lightning Dissipation Gap

Solid Brass Hook & Hardware  
Fiberglass Rod Handle  
#10 Copper Cable & Alligator Clip

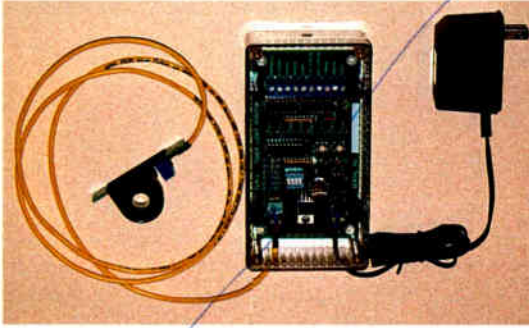
Available with Horn or Ball Gaps  
Patented (#5,661,262)  
Hot Adjust Mechanism

**Wilk Science and Technology Inc.**  
1112 North Grove Avenue, Oak Park, Illinois 60302  
Telephone & Fax: (708) 524-8588



## TLM-1 TOWER LIGHT MONITOR

Avoid Costly FCC Fines for Lighting Violations!



A microprocessor based system designed to monitor the status of FAA type A incandescent tower lights.

- Individual alarms for photocell, flasher, beacon & marker.
- General alarm output for any failure type.
- Status outputs for lights on/off and beacon on/off.
- LED indicators for each alarm and status output.
- Opto-isolated failsafe outputs for each alarm.
- Easy setup – one button calibration.
- Installs inside the transmitter building.

**FM Services**

[www.towermonitor.com](http://www.towermonitor.com) • 336-667-7091

## rf Investigator V 3.0

**FM...AM...or Both**  
**You choose!**

**rfSoftware, Inc.**  
innovative engineering tools

Are you tired of switching from program to program to complete a project?

How about displaying your drive test output on top of your Longley-Rice prediction to SEE how your station is operating.

Save *time, money, and hard drive space*, with software that gives you all the tools in one program to work *smarter not harder*.

Call **352-367-1700** for Details!  
Visit [www.rfsoftware.com](http://www.rfsoftware.com) Today



**MOORETRONIX**  
BROADCAST & INDUSTRIAL ELECTRONICS

## Our 7<sup>th</sup> Year

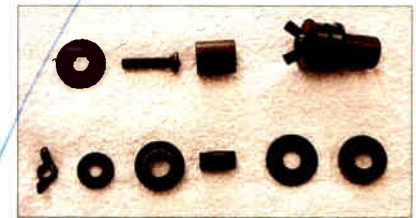
Our client list continues to grow. Thank you for your confidence and equipment purchases.

## We Re-Condition

Pacific Recorders BMX I-II-III, AMX, ABX and RMX, Stereo-Mixer and Mixer News-Mixer products.

We have replacement Wind Screens and Blast Filters for the SM-5B microphone.

We now have SM-5B hanger hardware as shown in the photo.



See the "News-Update" page at our website.

Tel: 800-300-0733 Fax: 231-924-7812

[WWW.MOORETRONIX.COM](http://WWW.MOORETRONIX.COM)

## RECEIVERS

**OUTSTANDING** specifications and pricing on professional quality receivers for **EAS**, station monitoring and translator applications.

The **AFC3** is a three receiver rack mount that is configured for your **EAS** or monitoring specific application.

Our **AF210FM** receivers meet today's Translator application specifications for reliability, linearity and cost.



### DAYTON INDUSTRIAL CORPORATION

2237 Industrial Blvd., Sarasota, FL 34234 Tel: (941) 351 4454  
Quality Receivers Designed and Manufactured in the USA  
Email: [sales@daytonindustrial.com](mailto:sales@daytonindustrial.com) Website: [www.daytonindustrial.com](http://www.daytonindustrial.com)

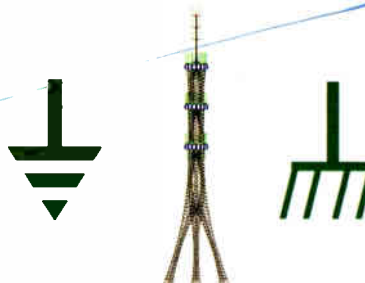
## Radio Works R. F. Consulting

Broadcast & Communications Design & Repairs  
Grounding Systems Design Assistance  
Coaxial & Wave Guide Systems Testing  
Communications Industry Testing from 100 kHz to 20.0 GHz

**Gary A. Minker**

Office (561) 969-9245 • Iden 159\*61\*1957  
7225 Catalina Isle Drive, Lake Worth, FL 33467  
Email: [Gary@radioworksrfconsulting.com](mailto:Gary@radioworksrfconsulting.com)

Please visit our Web Site to download an article on Grounding Methods  
<http://radioworksrfconsulting.com/download.htm>



**Celebrating Our 27th Year**  
**Serving Our Customers**

[www.digitalradioengineering.com](http://www.digitalradioengineering.com)  
Phone: 845-355-4001  
**digitalradio** / engineering

### Professional Broadcast Engineering Services

- Consulting • Project Management • Contract Engineering
- FCC Alternative Inspections • Due Diligence Inspections
- Engineering Staff Oversight • Engineering Staff Assistance
- Facility Inventory • Broadcast Equipment Acquisition
- New & Pre-owned Broadcast Equipment Sales

## McPherson Radio

Specializing in pre-owned QEI transmitter products.

**QEI** – 6 Month Warranty – **QEI**

All equipment tuned and tested on your frequency. MRC has a repair facility to meet your broadcast needs, for repair of QEI exciters and low power transmitters. Other broadcast manufacturer products are welcomed too.

**Bob Brown** at 856-232-1625 Fax: 856-232-2075  
Email: [mcpersonradio@comcast.net](mailto:mcpersonradio@comcast.net)

## TOWER SIGNS

[antennalD@msn.com](mailto:antennalD@msn.com)

E-MAIL US FOR A FREE PDF CATALOG

STANDARD FCC OR MADE TO ORDER METAL SIGNS  
FCC TOWER REGISTRATION SIGNS WITH PHONE #  
COMMERCIAL GRADE - NO FADING - NO EXTRA COST

RED GUY WIRE MARKER BALLS AND YELLOW GUARDS  
COAX & ANTENNA NUMBERED TAGS

**ANTENNA ID PRODUCTS**  
610-458-8418 [www.antennalD.com](http://www.antennalD.com)

## Professional Equipment Repair

- Consoles at Lightner Electronics, Inc.
- Exciters
- STLS
- Automation Systems
- Audio Processors
- Transmitters
- Remote Equipment



Toll Free: 866-239-3888  
[www.LightnerElectronics.com](http://www.LightnerElectronics.com)



# Radio Pipeline

BEXT – Broadcast Supply Worldwide – Tieline

New Equipment

Updates and Modifications

Industry Information & News

## Tieline Bridge-IT Codec

Tieline's new Bridge-IT IP codec delivers low cost, point-to-point and multipoint IP audio links over wired and wireless WANs, LANS, the Internet, satellite IP, Wi-MAX and Wi-Fi.



Bridge-IT will offer optional AAC LC and AAC HE, and delivers 16 Bit, 22 kHz linear audio at less than 10 ms encode delay for uncompromised audio. Standard algorithms include G.711 G.722, MPEG Layer 2 and Tieline Music. Tieline MusicPLUS provides 22 kHz mono, dual mono and stereo with 20 ms encode delay at under 100 kbps, offering huge savings on your IP data bills and outstanding audio quality.

Bridge-IT has broadcast quality XLR input and output connectors with simultaneous analog and digital AES/EBU outputs and a 1/4" (6.35mm) stereo headphone output. It can deliver three multi-unicast streams (upgradeable to 10) and multicast functionality is supported.

It also features an SD card slot for failover playback of prerecorded audio and comprehensive front panel hardware that includes a keypad and LCD display. It is designed for desktop use, or two units can be installed side-by-side in a purpose-built IRU mounting bracket.

Bridge-IT includes Tieline's QoS Performance Engine technology for automatically managing IP network connections, is SIP-compatible and connects to existing Tieline G3 codecs, as well as all major codec brands. It features an onboard web-GUI for codec configuration and interfaces with TieServer, Tieline's Traversal server solution for very simple negotiation of firewalls, automatic address book population of other codecs in your network (codec buddy list) and one-touch dialing.

**Tieline**

800-780-4750 • [www.tieline.com](http://www.tieline.com)

## BEXT Lex 150: 150 Watt FM Exciter/LP Tx

Bext Lex 150 – A 150 W FM Exciter/Low Power Transmitter in one rack space unit.

The Bext Lex 150 joins the highly successful Lex Series which previously included the Lex 30, the Lex 50 and the Lex 100 (30 W, 50 W and 100 W respectively).



The BEXT Lex 150

The new Lex 150 offers 150 Watts of power in the same small size, one rack space enclosure as all the other Lex models, and comes with plenty of broadcaster-friendly features, including all the following:

Direct frequency programmability from front panel; built-in, selectable, very high separation internal stereo generator and fast audio clipper; USB port in the front for PC connection and two independent RS 485 ports in the rear.

The Lex 150 also features: up to seven station presets (frequency, power and audio setup) allowing for ideal back up to multiple stations; built-in, front panel programmable FSK ID Keyer by software for auto-ID of Translators; full telemetry and remote control interface built-in; fast access to all functions and all readings from front panel via user-friendly menu display.

Also found are: proportional auto-foldback of output power in the event of excessive VSWR; adjustable power output from 0 to 150 Watts; soft-start from turn-on; automatic power control maintaining the output at any pre-set level.

The Lex 150 accepts 120 or 230 VAC and an optional DC voltage input. There is also an optional AES-EBU digital audio input (XLR type and optical type); optional sync port to lock frequency onto 1, 2, 2.5, 5 or 10 MHz external reference; optional built-in RDS encoder. The unit includes a low pass/harmonic filter and can be used as a stand-alone transmitter.

**BEXT**

619-239-8462 • [www.bext.com](http://www.bext.com)

## Broadcast Supply Worldwide Mayah Flashman II

Recorder and IP Audio Codec in one: FLASHMAN II from MAYAH Recorder and IP Audio Codec FLASHMAN II.

So far interviews have been recorded on a digital solid state recorder for later editing and sent as a file to the studio. With FLASHMAN II the recording is made simultaneously to the On-Air transmission.

FLASHMAN II has two switchable Microphone/Line inputs with professional XLR connectors – in microphone mode they can utilize 48V phantom power. One line output and one headphone out provide monitoring capabilities.

With no limitations in terms of storage capacity of the used media, it is possible to record hours of mono or stereo audio signals in three basic formats, such as PCM WAV (BWF), MPEG Layer 2 and Layer 3, as well as using the advanced MPEG-4 HE AACv2 coding algorithms.



The exciting new ability – to record locally, while feeding the audio live over IP – now gives a reporter higher control over their material and the ability to edit it after the transmission, for subsequent re-use. Basic connectivity is provided via Ethernet to connect FLASHMAN II to any LAN/WAN or Internet. With the optional interface cards it also can establish bi-directional connections using wireless networks, such as UMTS/3G or Wi-Fi.

With a simple preset, one of the advanced coding algorithms for transmission can be chosen: MPEG-4 HE AACv2, for high quality audio at the lowest bitrates around 20-24 kbps, or AAC ELD for high quality with a very low delay.

FLASHMAN II has a solid aluminum body with a comfortable grip. The monochrome LCD-Display is easily readable in darkness as well as direct sunlight. User interface of FLASHMAN II provides an easy access to all significant settings or functions of the device.

**Broadcast Supply Worldwide**

800-426-8434 • [www.bswusa.com](http://www.bswusa.com)

! WARNING

Wrong Safety Sign.  
When Danger's inside,  
Warning goes outside.

RFSigns.com

- ANSI Z535.2 Compliant
- Easy to order

COMMERCIAL RADIO COMPANY

Original Parts: New and Used  
for RCA, Harris/Gates, Continental/Collins,  
CCA, Bauer, and Raytheon Transmitters

MICA Capacitors • CERAMIC Capacitors  
FIXED and VARIABLE VACUUM Capacitors  
NON-PCB OIL FILLED Capacitor Transmitter Replacement Kits  
Resistors & Rheostats • Weschler AC, DC, and RF Meters.  
Custom Calibration of AC, DC, and RF Meters  
Rebuild, Repair & Calibration of General Radio Co. Instruments

Phone: 802-226-7582 • Fax: 802-226-7738  
[www.commercialradiocompany.us](http://www.commercialradiocompany.us)  
VISA, Mastercard, Discover, AMEX, COD's, and pre-approved PO's

PROGRESSIVE CONCEPTS

Eric Hoppe  
Broadcast Equipment Sales

305 South Bartlett Road  
Streamwood, IL 60107  
(630)736-9822

progres@sbglobal.net  
[www.progressive-concepts.com](http://www.progressive-concepts.com)



# EVENT 5800

## HIGH CAPACITY BIDIRECTIONAL STUDIO TRANSMITTER LINK



**TRANSPORTS UP TO 9 RADIO STATIONS, UNCOMPRESSED, OVER A SINGLE LINK**



EVENT 5800 IDU



EVENT 5800 ODU

The Moseley Event 5800 — is a carrier class T1/E1/IP Ethernet radio link. Combined with the Starlink SL9003T1, the Event 5800 creates a high capacity bidirectional STL/TSL.

**HIGH PAYLOAD CAPACITY**

**HD RADIO™ READY TODAY**

**LEVERAGE IP DEVICES AND APPS**

**EASY DEPLOYMENT**

**EXCELLENT ROI**

# Moseley

[www.moseleysb.com](http://www.moseleysb.com)

Dave Chancey: (805) 968 9621

Bill Gould: (978) 373 6303



# FINAL STAGE



## RADIO ROUNDUP

### The Radio Guide Event Register

Email your dates and info to: [radio@rconnect.com](mailto:radio@rconnect.com)

#### SBE 22 Broadcast and Technology Expo

October 6-7, 2009

Tuning Stone Resort and Casino – Verona, New York  
[www.sbe22expo.org](http://www.sbe22expo.org)

#### 127th AES Convention

October 9-12, 2009

Javits Center – New York  
[www.aes.org/events/127/](http://www.aes.org/events/127/)

#### Wisconsin Broadcasters' Clinic

October 13-15, 2009

Madison, Wisconsin  
[www.wi-broadcasters.org](http://www.wi-broadcasters.org)

#### Pittsburgh SBE Chapter 20, 2009 Equipment Expo

October 19-20, 2009

Pittsburgh Expomart – Monroeville, Pennsylvania  
[www.sbe20.org/expo.html](http://www.sbe20.org/expo.html)

#### 7th Annual Ohio Broadcast Engineering Conf.

November 10, 2009

Columbus, Ohio  
[www.oab.org/engineering](http://www.oab.org/engineering)

#### Consumer Electronics Show (2010)

January 7-10, 2010

Las Vegas, Nevada  
[www.cesweb.org](http://www.cesweb.org)

## Radio Guide Advertiser Info – Sep/Oct 2009

### Advertiser - Page

Altronic - 36  
AM Ground Systems - 41  
Armstrong Transmitters - 40  
Arrakis - 19  
Axia - 17  
Bay Country - 39  
BEXT - 41  
Broadcast Devices - 24  
Broadcast Electronics - 30  
Broadcast Software Intl. - 4  
Broadcast Tools - 35  
BSW - 18  
CircuitWerkes - 25  
Commercial Radio - 37  
Comrex - 1, 5  
D&H Antennas - 40  
Davicom - 10  
Dielectric - 35  
DM Engineering - 47  
Econco Tubes - 39  
Enberg Electronics - 37  
Fanfare - 39  
Gorman Redlich - 41  
Harbach (Peter Dahl) - 47  
Henry Engineering - 2  
Inovonics - 20  
Intrinsicnet (MySine) - 32

### Website

[www.altronic.com](http://www.altronic.com)  
[www.amgroundsystems.com](http://www.amgroundsystems.com)  
[www.armstrongtx.com](http://www.armstrongtx.com)  
[www.arrakis-systems.com](http://www.arrakis-systems.com)  
[www.axiaaudio.com](http://www.axiaaudio.com)  
[www.baycountry.com](http://www.baycountry.com)  
[www.bext.com](http://www.bext.com)  
[www.broadcast-devices.com](http://www.broadcast-devices.com)  
[www.bdcast.com](http://www.bdcast.com)  
[www.bsiusa.com](http://www.bsiusa.com)  
[www.broadcasttools.com](http://www.broadcasttools.com)  
[www.bswusa.com](http://www.bswusa.com)  
[www.circuitwerkes.com](http://www.circuitwerkes.com)  
[www.commercialradiocompany.us](http://www.commercialradiocompany.us)  
[www.comrex.com](http://www.comrex.com)  
[www.dhsatellite.com](http://www.dhsatellite.com)  
[www.davicom.com](http://www.davicom.com)  
[www.dielectric.com](http://www.dielectric.com)  
[www.dmengineering.com](http://www.dmengineering.com)  
[www.econco.com](http://www.econco.com)  
[www.enbergelec.com](http://www.enbergelec.com)  
[www.fanfare.com](http://www.fanfare.com)  
[www.gorman-redlich.com](http://www.gorman-redlich.com)  
[www.pwdahl.com](http://www.pwdahl.com)  
[www.henryeng.com](http://www.henryeng.com)  
[www.inovon.com](http://www.inovon.com)  
[www.plussine.com](http://www.plussine.com)

### Advertiser - Page

Jampro - 37  
JK Audio - 13  
Kintronic Labs - 9  
LARCAN - 22  
LBA Technology - 31  
Lightner Electronics - 28  
Logitek - 23  
Micro Communications - 38  
Moseley - 46  
Nautel - 11  
Nott Ltd. - 39  
OMB America - 33  
Omnia - 48  
Patton - 47  
Pristine - 8  
PSI (Propagation Systems) - 26  
RF Software - 44  
RF Specialties - 21  
SAS - 15  
SCMS - 27  
Shively - 34  
SystemsStore - 47  
Telos - 29  
TFT - 41  
Tieline - 7  
Transcom - 38  
Vorsis (Wheatstone) - 3

### Website

[www.jampro.com](http://www.jampro.com)  
[www.jkaudio.com](http://www.jkaudio.com)  
[www.kintronic.com](http://www.kintronic.com)  
[www.larcanc.com](http://www.larcanc.com)  
[www.lbagroup.com](http://www.lbagroup.com)  
[www.lightnerelectronics.com](http://www.lightnerelectronics.com)  
[www.logitekaudio.com](http://www.logitekaudio.com)  
[www.mcibroadcast.com](http://www.mcibroadcast.com)  
[www.moseleysb.com](http://www.moseleysb.com)  
[www.nautel.com](http://www.nautel.com)  
[www.nottltd.com](http://www.nottltd.com)  
[www.omb.com](http://www.omb.com)  
[www.omniaaudio.com](http://www.omniaaudio.com)  
[www.michaelpatton.com](http://www.michaelpatton.com)  
[www.pristinesys.com](http://www.pristinesys.com)  
[www.psibroadcast.com](http://www.psibroadcast.com)  
[www.rfsoftware.com](http://www.rfsoftware.com)  
[www.rfspecialties.com](http://www.rfspecialties.com)  
[www.sasaudio.com](http://www.sasaudio.com)  
[www.scmsinc.com](http://www.scmsinc.com)  
[www.shively.com](http://www.shively.com)  
[www.systemsstore.com](http://www.systemsstore.com)  
[www.telos-systems.com](http://www.telos-systems.com)  
[www.tftinc.com](http://www.tftinc.com)  
[www.tieline.com](http://www.tieline.com)  
[www.fmamtv.com](http://www.fmamtv.com)  
[www.vorsis.com](http://www.vorsis.com)

## PETER DAHL transformers

Now Available from Harbach Electronics



Magnetics for Broadcast, Communications and Amateur. Also rewinding selected transformers and chokes



### Harbach Electronics, LLC

Phone: 419-945-2359 • Email: [xfmr@pwdahl.com](mailto:xfmr@pwdahl.com)

[www.pwdahl.com](http://www.pwdahl.com)

Baton Rouge, Louisiana

225-752-4189

ENJOY THE SOUND

## Michael Patton & Associates

[www.michaelpatton.com](http://www.michaelpatton.com)

### Expert AM/FM Transmitter Repairs

- Repair/retune service-in our shop or on-site
- Harris MW- & SX- series modules rebuilt
- Solid-state FM IPA module "bricks" rebuilt
- Exciters, STLs, audio processors, etc. repaired

Licensed--Certified--Insured

The Systems  
Specialty Hardware  
Store!



SYSTEMS  
STORE.com

### The Preferred Source For Krone

Punch Blocks, Punch Tools, & Patch Cords In Stock

CBT Classic On-Air Lights – Barix - Gepco - Henry Engineering  
LEA Surge Protection – Middle Atlantic – Neutrik – OC White Mic Arms  
Optelator – Platinum Tools - Switchcraft - Ward Beck

...and Much More

[www.SystemsStore.com](http://www.SystemsStore.com)

[Sales@SystemsStore.com](mailto:Sales@SystemsStore.com) Tel: 407-656-3719 Fax: 407-656-5474

## ENDEC PAPER SALE!



9 meter x 38 mm rolls,  
10 per pack. This is the  
same thermal paper for  
the Sage-Endec we  
have been selling for  
\$25.00 per 10 pack. Now  
available at a reduced  
price for a limited time.

- 1- 10 pack... Now \$20.00 Save \$5
- 2- 10 packs... Now \$18.00 ea. Save \$14
- 3 or more 10 packs... Now \$16.00 ea. Save \$27+

Shipping is by FedEx Ground Service and only the actual shipping charges are added.

[www.dmengineering.com](http://www.dmengineering.com)

1-800-249-0487



2174 Chandler St. Camarillo, CA 93010 805-987-7881 800-249-0487



PRSR STD  
U.S. POSTAGE  
**PAID**  
PERMIT NO. 410  
BEAVER DAM WI

# Radio Guide

Radio Guide: [www.radio-guide.com](http://www.radio-guide.com)

Radio Directory: [www.radiolinks.net](http://www.radiolinks.net)

Used Gear: [www.radio-classifieds.com](http://www.radio-classifieds.com)

Radio History: [www.olderadio.com](http://www.olderadio.com)



# EVERYBODY WANTS ONE.

And who could blame them? Omnia ONE is the most flexible processor ever built. Yes, it can be used for FM processing. Or AM processing. Or netcasting or even studio production and mastering. Everybody wants more for their money. Omnia ONE delivers. And of course, the ONE has the smooth, punchy, brilliant sound that has made Omnia the #1 processor brand in radio. Everybody can now sound amazing. And we do mean everybody. In less than two years, we have sold more than 2,000 units, making ONE the most successful new processor introduction of all time. Go ask a broadcaster who has an Omnia ONE. You won't have any trouble finding ONE.

**Omnia**  
A Telos Company



Radio Never Sleeps. Neither do we. We're here for you, anytime, with free round-the-clock, 24/7 technical support. Call +1-216-622-0247.

© 2009 TLS Corp.  
[OmniaAudio.com](http://OmniaAudio.com)