

WIRELESS WEEKLY

Registered at the G.P.O., Sydney, for

transmission by post as a newspaper.

VOL. 8. No. 12.

FRIDAY, JULY 16, 1926.



Certified Low Loss Condensers

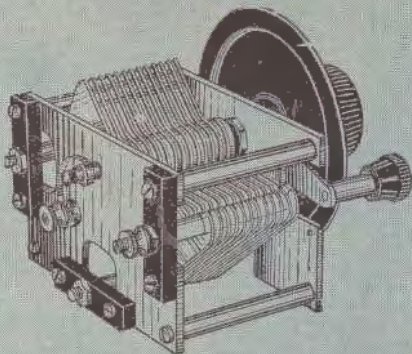
Lowest Losses.

One Hole Fixing.

Pigtail Connection.

Earthed End-Plates.

Hard Rubber Insulation.



Dial and Vernier, 3/- extra.

PRICE:

.0005 or .00035 Plain

12/-

.001 Plain

15/9

"Yours for Lower Prices."

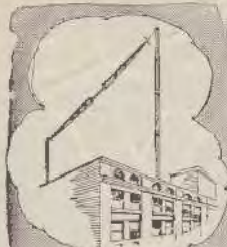
THE ECONOMIC RADIO STORES

28 Royal Arcade, Sydney

Phone M 3049.

569 Hunter St. West, Newcastle.

A Long Distance
SELECTIVE
CRYSTAL
RECEIVER



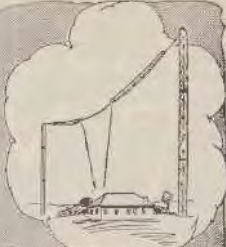
3A.R. MELBOURNE



2K.Y. SYDNEY



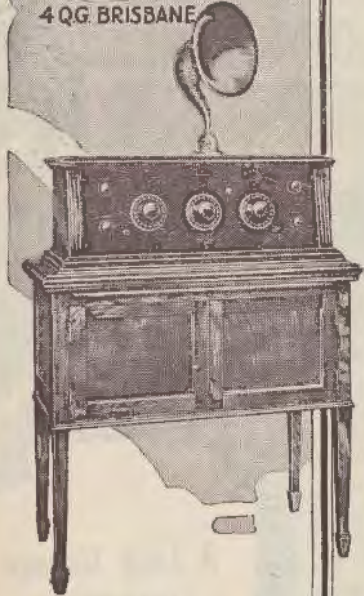
2F.C. SYDNEY



3L.O. MELBOURNE



4Q.G. BRISBANE



Distance no longer a bar!
UDISCO
RADIO RECEIVERS
Lay Australia at your finger-tips.

Matthew Flinders in his frail craft could never have dreamed that his feat of seamanship in circumnavigating Australia would be duplicated nightly but a short century later.

Yet this is so. Nightly, owners of 'UDISCO' Radio Receivers—without stirring from comfortable homes—are accomplishing what to Flinders entailed many weary days of hunger and privation.

All 'UDISCO' Sets, whether 'Eights,' 'Sixes,' 'Fives,' or 'Threes,' are built to a standard of excellence in efficiency and design never before equaled in the world.

Only the best components—sembled with scientific precision by a specially trained corps of radio Engineers—are incorporated.

The 'Capacidyne' circuit employed ensures reception of Stations operating on any wavelength between 20 and 2000 metres. This circuit—a purely Australian invention—gives selectivity, volume without distortion, superlative tone quality and ease of control.

Tuning dials synchronise—wavelengths are controlled with one switch—volume by another.

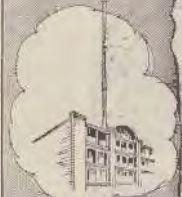
Housed in full polished cabinets of pleasing design, 'UDISCO' Receivers are masterpieces of craftsmanship.

'UDISCO' Eight on Stand with Quam Loud Speaker, Clyde United Wet Accumulator, Ray-O-Vac B Batteries, Valves, and Aerial Equipment. 110 gns.
 'UDISCO' Five with Hawley Speaker, and requisite Batteries. No Stand. £45

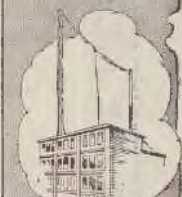
'UDISCO' Special Five on Stand with Quam Loud Speaker, Clyde United Wet Accumulator, Ray-O-Vac B Batteries, Valves and Aerial Equipment. 275.
 'UDISCO' Three, with similar equipment to Five, but with Hawley Junior Speaker. £29/10/-



2B.L. SYDNEY



6W.F. PERTH



7Z.L. HOBART



5C.L. ADELAIDE

SEND FOR illustrated catalogue, folders and literature.

Demonstrations arranged at your own home without any obligation whatever on your part to purchase.

United Distributors Ltd.
 72 CLARENCE ST., SYDNEY.
 MELBOURNE, BRISBANE, ADELAIDE,
 PERTH, WELLINGTON, LAUNCESTON, N.Z.

BRANDES

The Name to Know in Radio

**BRANDES
Table
Talker**



**NOW
45/-
each**

THE TABLE TALKER

The new goose-neck design is the result of research in radio acoustics, which definitely establishes its value in relation to the diaphragm fitted. One feature is the patent material used in the construction of the horn, which eliminates any suggestion of harshness. It is now possible to control volume and sensitivity with the small lever located at the rear of the base. Elegantly shaped, it still has that tasteful neutral brown finish and felt-padded base. Height, 18 in.; bell, 10 in.

45/- each Retail

**The
Brandola**



**NOW
£6:10:0
each**

THE BRANDOLA

Specially built to bring greater volume with minimum current input and exceptional clarity over the full frequency range. A large diaphragm gives new rounded fullness to the low registers and new clarified lightness to the high. The semi-goose-neck horn is constructed of material which eliminates harshness or metallic resonance. Reproduction is controlled by a thumbscrew on the base. Polished walnut plinth with electroplate fittings. Height, 26 in.; bell, 12 in.

£6/10/- each Retail

FACTORY REPRESENTATIVES:

INTERNATIONAL RADIO CO. LTD.

200 Castlereagh St., Sydney.

91-93 Courtenay Place, Wellington, N.Z.

STATE DISTRIBUTORS FOR BRANDES:

VICTORIA: Alexander Mair & Co. Pty. Ltd.,
McEwan House, Elizabeth St., Melbourne.

TASMANIA: W. & G. Genders Pty. Ltd.,
69 Liverpool Street, Hobart.

QUEENSLAND: Home Radio Service Limited,
Courier Buildings, Queen Street, Brisbane.

WEST AUSTRALIA: A. C. McCallum Ltd., 96
Murray Street, Perth.

"Bosch" Radio Receiver

"The Amborola"



In presenting "The Amborola" Radio Receiver, a product of the American Bosch Magneto Corporation, we are offering a set which not only touches the highest peak for efficiency and quality, but is also a finished article of furniture which should be the pride of any home.

"The Amborola" is a powerful 6 valve radio receiver which excels in quality of tone, its simplicity of operation, its precision manufacture, and its beauty of craftsmanship both inside and out. Two indicators only are needed for all tuning. The indicator setting, once established for any station wave length is the setting for that station every time it is wanted. There is no fussing with the dials.

"The Amborola" is extremely selective, insuring a penetration of local or close by stations and the reception of more distant programmes with power and clarity.

Country Agents Wanted.

Call for a demonstration or write for particulars to

SOLE DISTRIBUTORS FOR AUSTRALIA

Weldon Electric Supply Co. Ltd.

352 Kent Street, Sydney.

Telephone: City 6361-2.

Wireless Telephone Installation

HOME FOR INCURABLES, RYDE.

One of the most interesting wireless installations is that installed by Amalgamated Wireless at the Ryde Home for Incurables. It proved an instantaneous success, the inmates being highly delighted with the broadcasting services at their disposal. The set is the Radiola Hospital Installation, Type 2, and has a unique feature, in that each patient listening in has a choice of either Farmer's Broadcasting Service—2FC—or Broadcasters' Ltd., service—2BL.

The installation consists of two receiver sections operating at the same time off one aerial. These two units having distribution panels or amplifiers which in turn provide broadcasting service on seventy-two bedside headphones, and two loud speakers, the latter for the use of the nursing staff. On the wall at the side of each bed, there is affixed a small box in which are two plug sockets, the patient plugging in for whichever service is desired. The headphones, when not in use, are hung on a hook on the plug box. Whilst the volume from the loud speakers is sufficiently loud enough to dance to in comfort, the instrument is so designed that at all times the volume in the headphones never exceeds that of comfort. Furthermore, the wiring of the phones has been so arranged that should all but one of the patients disconnect from one broadcasting station and plug into the other, the volume in the remaining pair of phones in circuit is exactly the same as when the whole seventy-two are being operated.

Should one pair of phones break down, burn out, or otherwise become inoperative, it does not interfere with any of the other listeners-in to any material extent, so it will be seen that all contingencies have been provided for.

The manipulation of the set is exceedingly simple, being confined to four "on" "off" switches for each broadcasting station. A simple change over switch disconnects the accumulators from the set and connects them on to a Tungsar charger, which silently charges them through the night and in the morning they are ready for the next day's work. The instrument is in use at every broadcasting period throughout the day. Five miles of wire were used in the installation. All batteries are housed in special boxes, thus eliminating the untidy features in connection with batteries often seen in large wireless installations. The distribution wires for the telephones throughout the building terminate at a common panel in the wall in the control room immediately under the main distribution panels, into which they are connected by special cords and plugs.

Police Wireless

NEW STATION SOON.

A complete radio transmitting and receiving station will shortly be established at Police Headquarters, Sydney, as the Chief Secretary (Mr. Lazzarini) and Commissioner of Police (Mr. Mitchell) consider that the results obtained with the radio-equipped police patrol cars warrant a substantial development of the system.

Wireless as an aid to the police, says the Commissioner, has been most satisfactory. Mr. Mitchell mentioned the case of a young woman who last week left home with the intention of committing suicide, and who was prevented by the police patrol. The patrol having learned by radio of the girl's intention, hurried to the gap and caught her as she was running to the edge.

But such an occurrence is unusual. It is the every day—or every night—results that give the radio patrol cars their value. Eight, ten, twelve, or more times a night, as the patrol cars drive steadily round the city and suburban streets, the wireless operator picks up a message from the broadcasting station at Willoughby, which sends the car off on a mission of investigation. Perhaps a householder has heard someone trying to break into his home, or a man has been assaulted in a dark lane. Or a motor car left on the street has disappeared or a suspicious character has been lurking round a jeweller's shop. These are typical cases and the wireless message is sent out with such celerity that the police patrol, comprising two detectives besides the driver of the car and the wireless operator, are on the scene in a few minutes, often quickly enough to clean up the case and apprehend a suspect immediately.

The speed with which the minions of the law arrive sometimes astounds those who shout for help. Only this week a man reported to Darlinghurst Police that he had been assaulted. Word flashed through the air and hardly had the victim finished his story when the wireless patrol arrived keen and ready to assist in hunting down the assailants. But the assaulted person had had time to think and he now said he did not wish for police intervention as he was capable of dealing with his enemies in his own way at a future date.

The Commissioner of Police is a keen student of radio so far as it affects his organisation, and when the new station has been erected at police headquarters—transferring the scene of the trans- provide transmitting sets on the patrol cars so that mission from Willoughby—steps will be taken to messages can be answered as well as received.

A word to radio experimenters: The wavelength of the new station will not be made public.



To Get the BEST from your Radio Set



TO GET THE BEST FROM YOUR RADIO SET, KEEP YOUR BATTERIES PROPERLY CHARGED.

With a TUNGAR Battery Charger run-down batteries need not be the reason for missing any broadcast programmes. Very often the Concerts received by the Radio Operators are not sufficiently clear. This is due to the declining strength of the battery. It may often mean an evening of disappointment, for it frequently happens when least expected, and company invited to hear some artist go away without the promised entertainment.

The TUNGAR prevents such disappointment, and by its frequent charging saves the Radio Battery from becoming run down. Enjoy the pleasure of your Radio Set by avoiding these inconveniences which the TUNGAR so readily prevents.

Our new TUNGAR Booklet T, explaining the simplicity of charging your Radio Batteries with a TUNGAR, mailed free. The TUNGAR will also charge your Car Batteries.

AUSTRALIAN GENERAL ELECTRIC CO. LTD.

1/1 Westworth Avenue and Goulburn Street, Sydney.
C/r Queen and Little Collins Streets, Melbourne.
Hunter Street, Newcastle.
Box 187, G.P.O., Brisbane.

AGENTS: Oliver & Oliver Pty. Ltd., Hobart & Launceston.
Chas. Atkins & Co. Ltd., Perth & Adelaide.



Tungar

BATTERY CHARGER

Clarke's "ATLAS" Coil Stands

BRITISH MANUFACTURE.

Our Coil Stands in the two and three-way horizontal types are fitted with Patented Micrometric Adjustment, yielding perfectly even slow movement and preventing the falling over of the moving coils. No fear of missing carrier-waves owing to a too quick movement of the coil. They are suitable for panel mounting, the plug insets being set at standard centres and all the fittings are nickel-finished with a best quality ebonite knob.



THE KING OF COILS— HIGHEST IN EFFICIENCY—
All Wave-Lengths Covered —

Minimum Self-Capacity—Maximum Inductance—Least Resistance to High Frequency Currents—Greatest Air Spacing.

ASK YOUR DEALER FOR OUR COMPONENTS OR CONSULT
THE GENERAL TRADING COMPANY

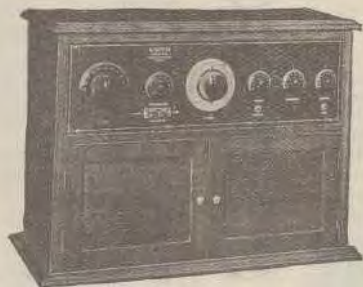
70 PITT STREET, SYDNEY.

Phones: BW 6938 and B 4917. ————— Sole Australian Distributors.

"ATLAS"

"BURGINPHONE" Wireless Receivers

Australia's Best By Test



Manufactured in Australia,
for Australians, by
AUSTRALIANS.

At no time has any receiver stood away from its field of competitors more sharply in point of quality than does the present "Burginphone" models.

Note the way the "BURGINPHONE" is built—no disappointing evidence of cheapening, no hurried workmanship—it's a quality receiver through and through, and it looks it!

All that the eye sees in its appearance of custom-built beauty, its better equipment, its many engineering features, is confirmed by the brilliancy of the machine's performance.

The "BURGINPHONE" trade mark is virtually a guarantee of dependability, of intrinsic worth, of practicability, because every "BURGINPHONE" product is scientific in principle and is not marketed until fully tested by competent Engineers.

BURGIN ELECTRIC CO. LTD.

340 KENT STREET, SYDNEY

Box 734, G.P.O.

'Phones: City 141; City 9886; M 3069.

EVER-READY

DRY BATTERIES

SAFETY FIRST — UTILITY ALWAYS



LOOK FOR THE TRADE MARK

No. 1915. EVER READY FOUNTAIN PEN LAMP.

Neat and portable — ready for use at any time. Carried in the same manner as a fountain pen. Light is produced by a slight pressure on the clip. Length 5 1/2 ins. Weight 2 1/2 ozs.

Price 4/- complete

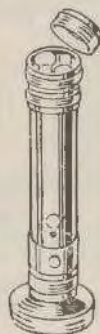


No. 2015. EVER READY SAFETY TORCH.

A new idea in pocket electric torches — absolutely fool proof. When light is required remove end cap, reverse it and replace it in the tube. When light is no longer required reverse the operation. No switch to get out of order. Finished best nickel plate.

5 1/2 x 15/16 ins. Weight 4 ozs.

Price 3/9 complete



Ever-Ready Electric Torches with Bell-mouth reflectors and spare Bell containers.

Price Complete

No. 1548 BM . . . 12/3

No. 1551 BM 3 Cells x 9 1/2 . . . 14/3

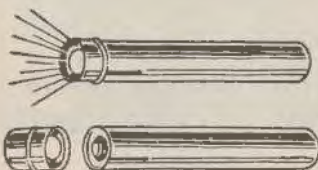
No. 1552 BM x 9 1/2 15/9

Spare Battery.

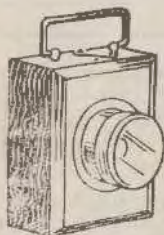
No. 1547, each 1/8

No. 1, each . . . 2/3

No. 1, each . . . 2/3



EVER-READY POCKET LAMPS.



EVER-READY ELECTRIC HAND LAMPS WITH DRY BATTERIES.

No. 1293. The "Popular" Hand Lamp is of excellent quality and finish. The fittings are of solid brass polished and heavily nickel plated. Cases containing dry battery are substantially made of selected hardwoods. Size 5 x 3 1/2 x 2 1/2 in. Weight 1lb. 7ozs.

Price 12/6 complete.



No. 2082.

Covered Leatherette with strongly constructed metal bodies heavily plated solid brass top and bottom caps.

Price . . . 4/- complete



No. 2080.

Leather covered and strong metal body. Top and bottom caps are heavy nickel plated. Solid brass.

Price 3/6 complete.

All Ever-Ready Torches and Lamps are obtainable from Up-to-date dealers throughout Australia



EVER-READY TORCH BATTERIES

From 10/- Each Upwards



Ever-Ready Electrical Torches, Leather Covered

No. 1547, fitted with permanent switch, 8/9 complete.

No. 1890L Price complete 6/6.

No. 1551. Price complete 11/3.

WIRELESS BATTERIES — Write for a copy of the descriptive pamphlet of these, with prices

If unobtainable locally write for address of nearest source of supply

EVER-READY CO. (Gt. Britain) LIMITED

163 PITT STREET, SYDNEY



The Crystal with Valve Power

NEUTRON CRYSTALS operate a loud speaker.

Many owners of crystal sets are now operating loud speakers with NEUTRON CRYSTALS. Next month 2BL promises to increase their volume. This will enable the owner of a crystal set to operate a loud speaker with sufficient volume to fill the house, provided he uses a NEUTRON. THE CRYSTAL IN THE BLACK AND GOLD BOX WITH THE SILVER CATS WHISKER.

FOR SALE AT ALL DEALERS at 2/3
 AUSTRALIAN DISTRIBUTORS: Louis Coen Pty. Ltd., Melbourne.

SOLE AGENTS FOR N.S.W.:

Manufacturers' Products Sales Company

Challis House, 4 Martin Place, SYDNEY (Tel.: B.W. 6753).

PROMPT SHIPMENTS OF NEUTRONS FROM SYDNEY STOCK.



They NEVER Vary!

Not so much the gloriously pure tone or their astonishing range nor the valve-power volume, but it is by their day-in and day-out consistently—the absolute certainty of getting perfect and uninterrupted programmes—that these super crystals have made a new pleasure in Radio. They NEVER vary!

Beware of imitations. Look for the label



Price 1/6 per box.

Obtainable from all Wireless Dealers, or from:

The L. G. Russell Laboratories, 1-7 Hill Street, BIRMINGHAM.

GENUINE Russell's Hertzite PURPLE LABEL

AGENTS:—Messrs. MOREY'S PROPRIETARY LTD., 98 QUEEN STREET, MELBOURNE.

Slingsby & Coles Ltd.

482 Pitt St. (opposite Marcus Clark's)
 (Under Central Station).

MULLARD VALVES.

THE MASTER.

All Types in Stock. From 13/6



DE FOREST - The Quality Valve

Now $13/6$ Each
 Everywhere



Filament, 3 Volts .06 Amp.
 Detector, 16 to 45 Volts.
 Amplifier, 45 Volts to 150 Volts.
 Fits Standard American Socket.



Filament, 5 Volts $\frac{1}{2}$ Amp.
 Detector, 12 to 224 Volts.
 Amplifier, 45 to 180 Volts.
 Fits Standard American Socket.

De Forest Valves were the first made.

Lee De Forest invented the valve, so you can rest assured that De Forest Valves are the best.

DON'T BE MISLED.

DE FOREST is the "QUALITY TUBE," and is correct in design and manufacture.

International Radio Co. Limited

200 Castlereagh Street, Sydney.

91-93 Courtenay Place, Wellington, N.Z.

STATE DISTRIBUTORS:

VICTORIA: Alexander Muir & Co., Elizabeth Street, Melbourne.
 QUEENSLAND: Home Radio Service Ltd., Courier Buildings, Queen Street, Brisbane.

TASMANIA: W. & G. Genders Pty. Ltd., 60 Liverpool Street, Hobart.
 WEST AUSTRALIA: A. O. McCallum Ltd., 86 Murray Street, Perth.



WIRELESS WEEKLY

Published by Publicity Press Ltd., 71-75 Regent St., Sydney, Australia.
Phones: Edfern 964 and 959.

Managing Editor: E. C. MUMFORD.

Editor: A. W. WATT.

Technical Editor: C. W. SLADE.

Advertising Manager: J. T. REEDIE.

The Editor will be glad to consider Technical and Topical Articles of interest to Australian Experimenters. All Manuscripts and Illustrations are sent at the author's risk, and although the greatest care will be taken to return unsuitable matter (if accompanied by stamps), the Editor cannot accept responsibility for its safe return.

Subscription Rates.—Twelve months (52 issues), 13/., post free. Six months (26 issues) 6/6. post free. Single Copies 3d. each, or post free 4d.

Advertising. Copy must be in the hands of the Managing Editor by the Friday preceding each issue. If copy is not received in time, the previous week's advertisement will be repeated.

"Questions and Answers." All requests by non-subscribers calling for technical advice or drawings MUST be accompanied by postal note or stamps to the value of 1/-. A maximum of four questions is allowed.

Agents in Great Britain.—The Colonial Technical Press Ltd., Dudley House, Southampton Street, Strand, W.C. 2.

All accounts should be made payable to Publicity Press Ltd., 71-75 Regent Street, Sydney.

"Wireless Weekly" is fully protected by copyright, and nothing that appears in it may be reprinted, wholly or in part, without special permission. The use of our articles or quotations from them for any purpose whatsoever is never authorised.

CONTENTS

	Page
A Long Distance Selected Crystal Receiver	7
Queries Met by Every Beginner	11
On the Air	14
2KY's New Story-teller . .	21
New High Power Station	27
Broadcasting Notes	29
Amongst the Traders	33
Broadcasting	37

BROADCASTING TO-DAY.

LESS than two years ago, experts gave it as their opinion that Broadcasting would always remain primarily a means of cheap entertainment, but if we may judge from the brief statements in the lay press concerning the various aspects of broadcasting, it is apparent that the old order has changed, and that its true value must be gauged from quite a different angle.

For instance, medical men are beginning to realise the help that radio is able to bring to hospital inmates, so much so that headphones are being very largely used in the big public hospitals, and hundreds of sick patients, provided with a wonderful means of mind relief from their illness, are showering letters of gratitude upon the broadcasting stations.

The aid of the broadcasting stations is now being sought regularly to assist in locating persons wanted urgently. In several cases, these people have been hundreds of miles up-country, and sometimes beyond any other means of speedy communication, but the voice of the announcer has carried the message, which has been picked up by some far-distant listener-in, who has succeeded in passing it on through various channels, until within an incredibly short space of time, it has reached its objective. A definite instance of this was given quite recently, when a Sydney station broadcasted the description of a man who was asked

to return to Sydney immediately, as his wife was seriously ill. The message was handed him at Kempsey in time to permit him boarding the Sydney train immediately.

Country schools are gradually linking up with broadcasting, and, considering the isolated position of a considerable portion of the rural population, it is beyond question that sooner or later radio must be adapted to the spreading of education, partly because of its tremendous scope, and again, because of its vast appeal to the popular imagination.

Consider for a moment, what would have been accomplished in the other branches of science, if their technique could have been popularised as has that of radio. Astronomy, biology, all the others, have phases of great human interest, but they have not discovered the gateway to popularity, the entree to the mind and heart of youth, as radio has done. Naturally enough, for the challenge to universal interest was not put forth.

The broad aspect of radio is, of course, its definite service to the people of the outback, to whom broadcast entertainment is but a secondary consideration compared to the vital fact that it is the means of breaking down that isolation which, previously, was the greatest disability under which they laboured. This, considered from a humanitarian point of view, has a wonderful significance, but perhaps its greatest appeal is that it is ever tending to more closely unite the people of this Commonwealth.

THE HOUSE FOR QUALITY RADIO SUPPLIES

1. Why you should call upon us for your Radio requirements.

We have full stocks of all good apparatus at keenest prices.

Our staff of experts will gladly advise you upon the selection of the right material.

Our premises are the most roomy and up-to-date in Australia.

2. A few selected items from our enormous stocks of better quality parts —

	£	s.	d.		£	s.	d.
Pilot, S.L.F., 13 Plate Condensers	0	12	0	Philips Valves, B406	0	13	6
Pilot, S.L.F., 17 Plate Condensers	0	13	6	Philips Valves, A109	0	13	6
Pilot, S.L.F., 23 Plate Condensers	0	14	3	Philips Valves, C509	0	13	6
R.V.G., S.L.F., 23 Place Condensers	0	13	6	Philips Valves, A306	0	13	6
R.V.G., S.L.F., 23 Plate Condensers	0	13	6	Mullard Valves, P.M.3	0	13	6
densers	1	2	8	Mullard Valves, P.M.4	0	13	6
Igranic Square Law .0005 Condensers	1	15	0	Oesram Valves, H.F. and L.F.	0	13	6
Igranic Square Law .0003 Condensers	1	12	0	Radiotron Valves, UX199	0	13	6
Burgess 45 volt "B" Batteries	1	8	0	Radiotron Valves, UX201A	0	13	6
Ever-Ready W.P.40 Batteries	0	12	6	GECo Valves, RV5	0	13	6
American 45 volt Batteries	1	5	0	Cunningham Valves, CX301A	0	13	6
Rayovac 45 volt Batteries	1	15	0	Radiotechnique, Super Ampli	0	13	6
Rayovac 224 volt Batteries	0	15	9	Amplion Loud Speakers.			
Quam Audio Transformers	1	12	6	C.A.V. Loud Speakers.			
Signal Audio Transformers	1	1	0	Quam Loud Speakers.			
Igranic Audio Transformers, 5-1	1	11	6	GECOPHONE Loud Speakers.			
Igranic Audio Transformers, 3-1	1	9	3				

*Country clients are invited to take advantage
of our Special MAIL ORDER DEPARTMENT*

The Australian Wireless Company

140 Castlereagh Street, Sydney

(Between Market and Park Streets)

'PHONES — M 2037, M 2038

Manufacturers of the well known "RADIATR" Radio Sets.

A Long Distance Selective Crystal Receiver

By "WIRELESS WEEKLY."

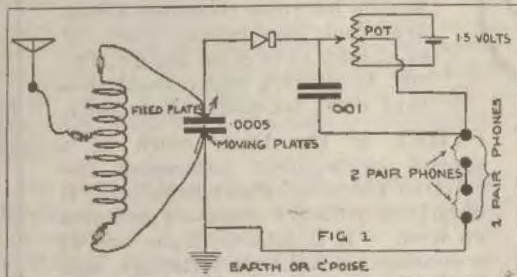
MANY wonderful reports have been received from time to time from "Wireless Weekly" readers concerning long distance crystal reception of N.S.W. and Victorian A class stations. With the object of publishing true and authentic information, we recently constructed the receiver which is herewith described. On completion it was sent to a country subscriber for tests, who, within forty-eight hours after it was despatched, wired us that he had received both 2BL and 2FC, using two pairs of phones. A very long, interesting report has since been

sign of this cheap efficient set is far from being the result of a lucky accident, it does not sacrifice volume for selectivity, nor selectivity for volume, but combines and pleasingly retains the best features of both. Briefly, the circuit is of the adjustable auto coupled type.

Tuning is accomplished with a variable condenser of .0005 capacity. Tests have shown that this circuit (when used with a carborundum crystal) to be fully as selective as any, and far more selective than the majority of crystal hook-ups. Two tuning coils are used, one for the short wave broadcasting stations and one for 2FC. This obviates dead end losses. No. 1 coil is wound with Fifty turns of No. 20 D.C.C. wire on a 4 inch cardboard, rubber or bakelite former, tapped at every 10th turn. No. 2 coil is 140 turns of No. 22 D.C.C. wire wound on the same size former, tapped at every 20th turn.

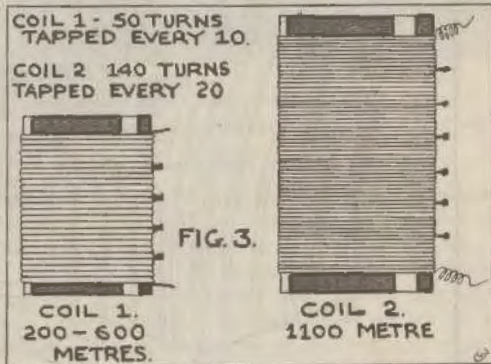
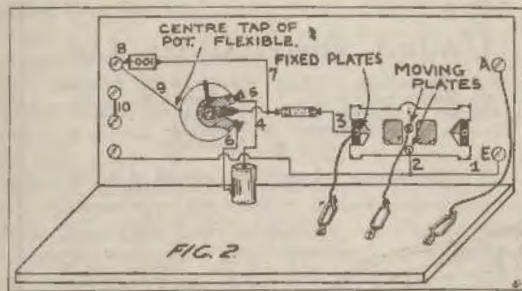
There is nothing difficult about the winding of these coils, and while they are not so imposing as the honeycomb coil types, our tests have proved that they are superior for crystal work. If the wire is wound on tightly there should be no necessity for painting the coil with a binding substance. The variable condenser may be of any good type. A .0005 is recommended.

The crystal detector must be of the carborundum type, in order that its impedance may be regulated by the electrical control unit as shown. This unit is made up of a potentiometer with a tapping taken from the centre of the winding, by means of a standard flexible copper wire. A 1.5 flash light cell is then placed across the two out-

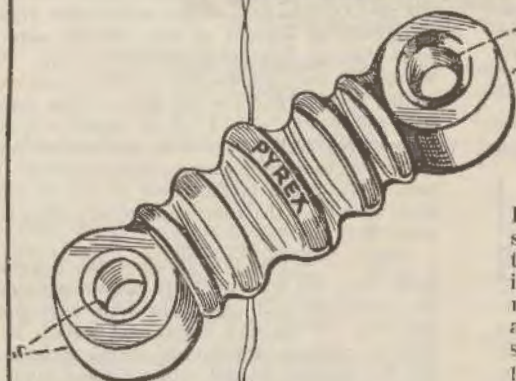


received, which states that this gentleman is consistently receiving these stations, in spite of the fact that the air line distance from Sydney is 149 miles. In view of this fact, we have no hesitation in recommending readers who are situated at distances 100 to 200 miles air line from 2BL or 2FC to build this receiver.

We quite realise there are many country readers who cannot afford valve sets, owing to their heavy initial cost. The parts for building this receiver, however, are reasonably cheap, and the pleasure the completed receiver gives, will more than compensate for the small expense incurred. The de-



THE IMPORTANCE OF *PERFECT INSULATION* EMPHASISED



PYREX Insulators



PYREX INSULATORS have improved his radio reception a hundred fold. Now he gets every bit of energy that is on the air. Pyrex Insulators really insulate—they don't let energy leak away.

PYREX is the trade mark of a special composition possessing distinctive electrical characteristics. It is not an ordinary glass—it contains no lead. It is homogeneous and of a continuous uniform structure, and so does not depend for its insulating properties on the surface glaze.

PYREX does not absorb water or attract moisture, and its smooth permanent surface prevents the collection of dust. It is mechanically strong and light in weight, and undoubtedly is the best insulating material obtainable.

QUAM CONDENSERS—the world's lowest loss condensers use PYREX insulation throughout.

PYREX Broadcast Insulators, 3/6 at all Dealers.

United Distributors Ltd.

72 Clarence St., Sydney 345 Queen St., Brisbane
 Cr. Jervo's Quay & Har. 681 Bourke St., Melb.
 ris St., Wellington, N.Z. 25 Queen St., Perth
 27 Chesser St., Adelaide
 60 Chariss St., Launceston

The transmitting and receiving antennae of the McMillan Arctic Expedition are PYREX insulated. 34 Broadcasting Stations in the U.S.A. have recently replaced other insulators with PYREX. The U.S.A. Navy and Coast Guard, Lighthouses and Air Mail Service specify and use genuine PYREX.



Front Panel View.

side terminals as shown. It is a simple matter to solder connections to these small cells, if the centre contact and the zinc container are first tinned with a hot soldering iron. A very strong point in favour of this electrically controlled crystal detector, is that the damping effect of the detector on the tuned circuit may be regulated through a wide range, resulting in an equally wide selectivity range.

In actual comparisons with the ordinary crystal detector, it will be found that stations spreading over a scale of 10 degrees of the tuning dial with an ordinary detector, may be restricted to two or three degrees by careful adjustment of the potentiometer.

Method and Order of Construction.

First, drill and mount the panel components as shown, viz., variable condenser, potentiometer and six terminals, not forgetting the small holes in the bottom of the panel for securing the baseboard. The wiring may now be commenced in the following order.

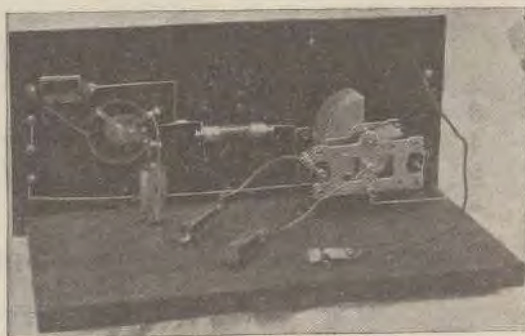
No. 1 links the earth terminal with the phone terminal and is the long connection shown going right across the lower part of the panel. No. 2 is a link taken from No. 1 to the moving arm contact of the condenser. No. 3 is the short link shown from the fixed plate connection to the crystal detector. No. 4 connection goes from the other crystal detector connection to the moving arm contact of the potentiometer. No. 5 and 6 are connected to the end of the 1.5 volt flash light battery. No. 7 is a link taken from No. 4 to one side of the .001 condenser. No. 8 links the other condenser terminal to the top phone connection. No. 9 is the small stranded copper wire which is taken from the centre of potentiometer winding to the top phone terminal. It is not necessary to solder this wire if the open type potentiometer is used, the fine wire may simply be passed around the framework and then twisted together to make a

good contact. No. 10 links the two centre phone terminals together.

Tuning is so simple that it is not necessary to give elaborate instructions. The 50 turn coil tunes all the lower wave stations, the larger 140 turn coil is for use when tuning 2FC only. The tappings and condenser control the wavelength of the tuned circuit, while the potentiometer controls the electrically controlled crystal detector, and increases the selectivity and volume to a very marked degree. The fixed types of carborundum detector obviates the necessity for any further adjustments. The following materials are necessary to build the receiver.

- 1 Panel, 15 x 7 inches.
- 1 Baseboard, 15 x 6 inches.
- 1 .0005 condenser.
- 1 Potentiometer (open type preferred).
- 6 Terminals.
- 1 .001 fixed condenser.
- 1 Carborundum crystal detector.
- 1 1.5 volt flash light battery.
- 3 Battery clips.

(Editor's Note.—This receiver has successfully demonstrated reception of 3LO and 4QG at Croydon, N.S.W. Crystal owners who claim that howling valves cannot be heard with a crystal detector are in for an agreeable surprise.)



View showing Back Panel.

LONG DISTANCE ON CRYSTAL

Showing that the crystal receiving set is successful in receiving 2FC at even a long distance, the following extract from a letter written by Mr. A. W. H. McDonald, of Arcan Farm, Sunny Corner, nearly 130 miles as the crow flies from Sydney, gives ample demonstration. Mr. McDonald writes in regard to the weather reports at midday, and says:—"I can always pick up your station on my crystal set, day or night."

IMPROVE YOUR EQUIPMENT

TO APPROVED CLIENTS

Radio Sets, Loud Speakers, Accumulators A & B Battery
Chargers "B" Battery Eliminators

can be purchased on

TIME PAYMENT

OUR TERMS ARE EASY, 10 per cent DEPOSIT. BALANCE OVER
TWELVE MONTHS. TWELVE MONTHS, GUARANTEE AND FREE
SERVICE.

ALL BUSINESS STRICTLY PRIVATE

Efficient and Selective, complete ready for use

2	Valve Sets	£13	0	0
3	" "	£18	0	0
4	" "	£23	10	0
5	" "	£30	0	0
5	Valve Super	£37	10	0

Think of it, 9d. per day will purchase a valve set for you

'Phone:
City
870

KEOGH

RADIO SUPPLIES

Next
Door to
Joe Davis Ltd.

40a Park St., Sydney, between Pitt & C'reagh Sts.

Queries Met by Every Beginner

'Charging Radio or Car Batteries with Farm Lighting Plants

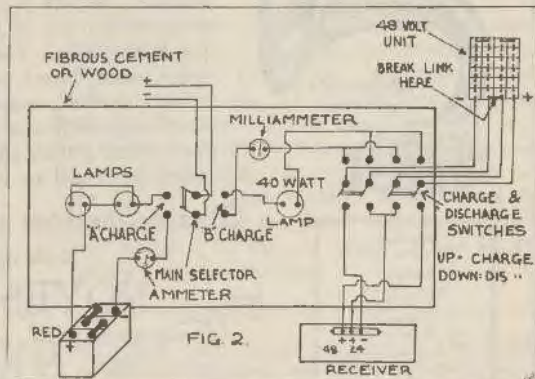
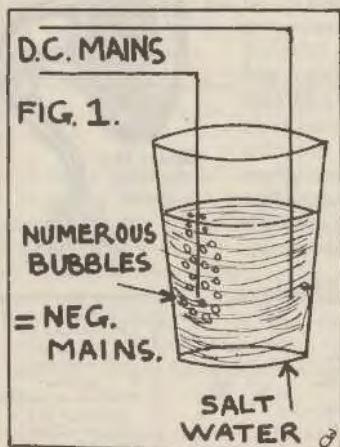
IN compliance with many requests and with the object of further assisting our many country readers to overcome their battery charging difficulties, we are in this article, explaining in as simple a manner as possible, just how they may charge "A," "B" or car accumulators from the small direct current lighting plants which are rapidly becoming so popular with the country squatter.

For those who have very little electrical knowledge, we are showing each connection in full detail, and we hasten to explain that if they follow our diagrams, wire for wire, they need have no fear that the battery or batteries will be reversed charged. It is first necessary to find out which wire of the main lighting leads is positive and which is negative. To do this, all that is necessary is a glass of water in which a spoonful of ordinary salt has been dissolved. The ends of the two wires should next be scraped clean of insulation for about an inch, after which they should be dipped into the salt water with the wires held just as far apart as they can be in the glass. (CAUTION: Be careful that the two un-insulated leads do not come together, or the main house fuses will blow). When the wires are dipped in the glass, one of them will give off a great many more hubbles of gas than the other. This wire is the negative and should be plainly marked, so

that it can be readily identified in the future. See Fig. 1.

Next, secure a piece of dry wood, or, if preferred, fibrous cement, and mount on the necessary switches, etc., as shown in drawing Fig. 2, or Fig. 3. Fig. 2 shows connections for a 48-volt battery and Fig. 3 for a 96-volt battery. A milliammeter and ammeter will be an advantage so that the correct charging rate may always be checked for both A and B batteries. It should, however, be distinctly understood that they are not absolutely necessary providing the D.C. voltage plant does not exceed 32 volts, and the lamps as recommended in table are used. A careful study of Fig 2 shows that the 48-volt battery must be split into two units and the 96-volt battery into four units, each of 24 volts. In the well known Philco battery, all that is necessary is to remove the wire from the two centre clips. Each unit is then permanently wired to the charge and discharge switches as shown. Throwing these switches from one side or the other changes the batteries from the charging line to the radio receiver. All the connections as shown are permanent, so that it will pay to run the connecting wires neatly, being sure that good contacts are made throughout.

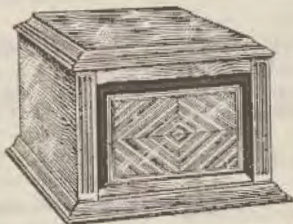
The solid type of porcelain switches with heavy bronze contacts are strongly recommended. The following table, which shows the correct wattage lamp or lamps to be used for various capacity radio or car accumulators must be strictly adhered to.



BRITISH Brown THROUGHOUT



Brown Q.
2000 Ohms.
£21/-



Brown Cabinet Model.
2000 Ohms. £8/10/-



Brown HQ.
2000 Ohms.
£8/10/-

The Incomparable Brown in Seven Superb Models

Now that Broadcasting has awakened such an intense national interest, it is only natural to find that Loud Speakers, in common with many other commodities, Radio or otherwise, must be produced in a variety of types at prices that will be within the reach of all. It is for this reason, therefore, that there are now available seven superb models of Brown Loud Speakers.

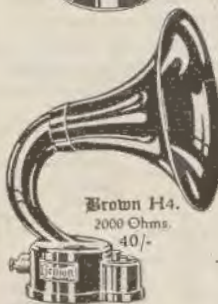
Of all the Loud Speakers on the market to-day, the Brown is unique, because, by a brilliant application of an entirely original principle, it achieves results which can be obtained in no other speaker. Brown principles of design and construction can be found only in Brown Loud Speakers. The famous tuned reed mechanism, which permits the use of a supersensitive cone-shaped aluminium diaphragm as thin as paper, is responsible for a tonal purity and mellowness which must be heard to be fully appreciated.



Brown H1.
2000 Ohms
£7/10/-



Brown H3.
2000 Ohms.
£4/2/6.



Brown H4.
2000 Ohms.
40/-



Brown H2.
2000 Ohms.
£3/5/-

Obtainable from all Radio Dealers.

Sole Agents:

NOYES BROS.

(MELBOURNE) POX. LTD.

(SYDNEY) LTD.

Melbourne,
495 Bourke Street

Adelaide
Darling Building
Franklin Street.

Hobart:
145 Macquarie Street

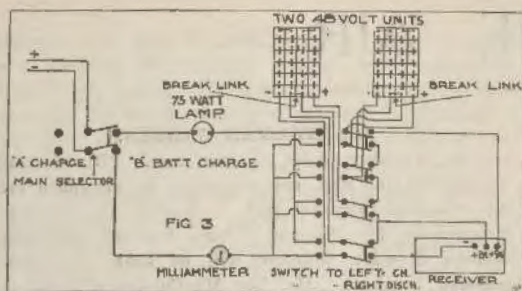
Launceston:
12 St. Charles Street

Sydney,
115 Clarence Street

Newcastle:
11 West Street

Brisbane:
Ferry House, Elizabeth St.

Agents for W.A.:
1 R. W. CARDAM,
138 Murray St., Perth



RADIO OR CAR BATTERY TABLE (6 VOLTS).

Voltage mains.	Capacity of accumulator to be charged.	Size of lamp recommended.	Charging rate approx.
32	20 amps	One 15 watt	.5 amps
32	40 amps	One 30 watt	1 amp
32	60 amps	One 75 watt	2.5 amps
32	80 amps	Two 50 watt	3.4 amps
32	100 amps	Two 50 watt	3.4 amps
32	120 amps	Two 75 watt	5 amps
32	150 amps	Two 75 watt	5 amps

A complete charge in each of the cases given below will require about thirty hours.

With the combination of switches as shown in Figs. 2 and 3, it will be seen that each of the 24 volt units is charged together. The test for completion of charge should be the hydrometer, as this is the only reliable one. The density of the small B accumulators will usually not read higher than 1260 when fully charged. The car or radio batteries, however, will often read as high as 1280 to 1300 when fully charged. The maker's advice which is usually issued with the battery will, however, act as a guide as to the correct density of a fully charged battery.

(Editor's Note.—Readers should distinctly understand that these diagrams are only suitable for D.C. plants.)

Q.: I have constructed the five-valve loop receiver recently described in "Wireless Weekly." The results obtained are all that you claim, except that I find I can get all the local and Interstate stations with the loop in the same position, viz., pointing west. Can you please enlighten "Wireless Weekly" readers as to the cause of this phenomenon, as I feel sure other B.C.L.'s with loop receivers must have experienced the same difficulty.

A.: This phenomenon is very common, and is invariably due to the fact that, somewhere in the

neighbourhood of the receiver, a collection of signals in the form of an aerial, iron roof, or even iron ceilings is reradiating energy. This means that signals will be strongest from almost every direction when they are placed in the direction of this interfering element.

Remedy: Find out where the signals are being re-radiated from by altering the position of the loop until the distant station is a maximum volume. If the direction does not correspond to the compass bearing of that station, you may be sure you have an offending aerial, iron roof, or ceiling in the direction your loop is pointing. Readers who have large iron roof sheds will be wise to earth the iron by taking a wire connection from the water-pipe to the nearest point of the iron. It is a bad policy to have the lead in from an aerial approaching the room where the loop receiver is used, as it will invariably re-radiate, and the directional properties of the loop will be affected.

POINTS FROM LETTERS.

"I have just received my transmitting license and feel it my duty to write and thank you, for I'm sure it's mainly through the course published in "Wireless Weekly" last year that I got the facts." (C.G., Hill End, Q.)

"The two valve receiver described by 'Grid Leak,' in 'Wireless Weekly,' January 1st, 1926, is everything that the writer claims it to be. Used as a single valve receiver, the volume and clarity are wonderful. 2BL, 2FC and 4QG are received at reasonable loud speaker strength" (W.P.H., Long Nose Point).

The following letter has been received from Mr. H. B. James, William Street, Muswellbrook:—

Sir,—I have recently completed and tested the Sure Fire Circuit for 3LO, published in "Wireless Weekly," July 31st, 1925, and have found it a highly efficient set. I get the Sydney stations by day on the loud speaker regularly, just a matter of tuning in, while Brisbane, 4QG, Melbourne, 3LO, and Adelaide, 5CL, come in by night with astounding volume. Last night I heard, through 5CL, Adelaide, possibly the most eloquent appeal I have ever heard. It was on behalf of the South Australian Limbless Soldiers

WANTED.—All kinds Secondhand Wireless Sets, Parts, Speakers, etc. Best prices given. JACK RAPKEN, 16 George Street West. MA 1198.

BURGESS—"Assure Clear Reception"—BATTERIES

ON THE AIR

CENTENARY COMMEMORATION SERVICE.

ON Sunday, July 18, Station 2BL will broadcast the Centenary Commemoration Service of the Scots Church, Church Hill, Wynyard Square. As this historic edifice is being demolished in connection with the new railway, this will be one of the last services the preacher, the Rev. W. Grassick, will deliver. At 3.30 the Bible Class will be transmitted as usual, and at 4 p.m. a programme is being sup-



MRS. DOROTHY JORDAN,

who is a well known speaker and organiser, has joined the staff of 2BL, and will deliver talks on subjects of interest to women.

plied by the Manly Band. The evening service will be from the Newtown Congregational Church, the preacher being the Rev. Mearns Massey, this in turn being followed by a concert from the studio.

THE OPERA 'AIDA.'

On Monday, July 19, the usual daily features as outlined above will be presented by 2BL, and in the afternoon session Mr. J. M. Prentice will deliver a talk on "A Course in Philosophic Thought." David Jones' Tea Room Trio will also be broadcast. During the evening Miss Heather Kinnaird will sing contralto items. A compressed presentation of the opera "Aida" will be presented, in which the principals will be Mr. Robert Harper and Miss Leonore Gotch. The dance of the Nile Maidens will be performed by Broadcasters' Trio. Madame Evelyn Greig, the brilliant Sydney pianist, who has just returned from America, will give the first of a series of talks on "Travel Impressions," dealing with Suva and Honolulu. Al Hammett's Ambassadors' Dance Orchestra will play until midnight.

MR. NORMAN JANSEN.

On Tuesday, July 20, the usual 2BL features throughout the day, and including an afternoon talk on "Modern Psychology." During the evening's programme, Mr. Norman Jansen, baritone, and Miss Helena Stewart, soprano, will be heard in special selected numbers. Mr. Lea MacCullum will also be heard in flute solos. At 8 o'clock Hoyt's Imperial Orchestra will play.

CONSERVATORIUM CONCERT.

Arrangements are being made on Wednesday, July 21, for a concert to broadcast from the Conservatorium Hall, on which occasion the artists will be Messrs. Wilfred Arlom and E. Moore McMahon in a special Beethoven programme. Mr. Frank Marshall, B.Sc., will continue his talks on the "Treatment of Cancer," and Mr. J. M. Prentice will reply to written questions during his talk on "Foreign Affairs." During the evening Bondi Casino Orchestra will entertain the listeners-in.

AMBITIOUS PROGRAMME.

Station 2BL, on Thursday, July 22, will broadcast the regular daily features, and during the afternoon session David Jones' Tea Room Trio will entertain the listeners-in. A particularly ambitious programme is being presented during the evening session. The Ambassadors' Salon Quartet will be heard in special numbers. Mr. W. Lewis, baritone, and Miss Dorrie Ward will be heard in duets and solo



MISS FREDA GILDER,

Contralto, who made her wireless debut with 2BL.

PHILCO—"Ask the man who has one"—BATTERIES

numbers. Mr. Reg. Harrison, comedian, Miss Dulcira Blair, violinist, Mr. Norman Wright, tenor, and Mr. Bryce Carter are all appearing. Lectures will be delivered by Mr. A. H. Lindoo on "The Art of Accompanying," and Miss Mary Edwards will deliver a travel talk.

JENOLAN CAVES TRANSMISSION.

During the evening session on Friday, July 23, the 2BL Studio is being temporarily transported to the Jenolan Caves, and a special programme will be transmitted, the regular session from the bedtime stories on being held actually inside the Jenolan Caves. The artists on this occasion are being specially selected, and will be transported to Jenolan Caves for the purpose of broadcasting the concert. Bandl Casino until midnight.

SPORTING INFORMATION.

Saturday, July 24, will be devoted by 2BL almost entirely to the transmission of sporting information and utility talks. During the evening's programme, Miss Edith Dickerson in songs at the piano and Mr. and Mrs. Sid Owen in banjo numbers. During the evening session Enmore Symphony Orchestra will entertain the listeners-in.

2BL'S BIG PROGRAMME.

Following on the increase of power at their station, 2BL has greatly increased its programmes. For the most part these are intended to provide a utility service for the benefit of the country and city dwellers. Starting at 7.15 with 20 minutes' physical culture, the station provides a new service of local items and fresh materials received from Rugby. Commencing again at 10 there is a further transmission of news and a musical programme until 11 a.m. Sporting talks of a vast amount of varied information, covering mails, shipping, social notes and other matters, is broadcast until midday. At noon a lady speaker deals with household matters and provides information regarding "How to make," "What to wear," and "How to buy." Stock Exchange information and sporting talks continue until 2 o'clock. The afternoon session are as heretofore, but the services of Mr. J. M. Prentice are being increasingly availed of in regard to talks, while bedtime stories have been definitely and permanently fixed at 6. The evening transmission each night throughout the week is carried on until midnight.

WANTED: Youths with mechanical training, must have knowledge of Radio hook-up's and capable of wiring from a diagram. Good opportunity for those who are ambitious. Any "Wireless Weekly" reader who has the above qualifications apply to KEOGH RADIO SUPPLIES, 40a Park Street, SYDNEY.

PHILCO
DYNAMIC RADIO
BATTERIES

The World's Finest



SOCKET POWERS.

Run your Radio from your Electric Light. Just a snap of a switch and full steady current flows to the set. No hum — no distortion.

Ask your Dealer to Demonstrate it.



THE NEW PHILCO "A."

Built with the famous Diamond Grid Plates. Fitted with Bail Handles. Beautiful panelled real mahogany rubber case.

It's the best looking and most efficient battery your dealer can show you. Just ask him.



THE NEW 83X.
Undoubtedly has no equal. Just look at its sturdiness, its beautiful mahogany finish, tightly sealed construction. Visible built in charge indicators. Its super capacity.

You will eventually buy one. Do it Now.

New System Telephones Pty. Ltd.

SYDNEY, MELBOURNE & ADELAIDE.

Before you
Expend
Money on
Radio
Equipment
Consult
Anthony
Horderns'
Wireless
Experts.

Your inspection of the big display of everything that is new in the world of Wireless, is invited.

(Wireless -- Second Floor)

Anthony Hordern & Sons
Limited,

Brickfield Hill, Sydney

Phone C1 7 94

Box 2712 G.P.O.

Clarity - Volume - Efficiency

Three Features of the
WONDERFUL LITTLE

MANHATTAN JUNIOR ADJUSTABLE LOUD SPEAKER

Not merely a headphone attached to a horn, but a specially designed Speaker with large diaphragm, which ensures you the same faithful reproduction and purity of tone without distortion in Speech, Song, or Music.



Height, 22 inches. 10 inch Bell.

The "Manhattan Junior," should meet the demand of the man of modest requirements, for there is no finer Loud Speaker at the price on the market

(Postage: Anywhere in Australia, 2/6)

5 VALVE NEUTRODYNE KITS, Panel Drilled, complete with everything ready to build, 250 to 2,000 metres

37/6

£11

ALL COMPONENT PARTS
"WIRELESS WEEKLY" RECEIVER.
(As featured in this issue)
Can be had at Mick Simmons.
Write us for further particulars.
CARBORUNDUM DETECTORS . . 11/-

BAKELITE PANELS. Cut to any desired size. 3/16 inch, 1d. per square inch

ALL WIRELESS SETS CAN BE PURCHASED FOR CASH OR TERMS.

Mick Simmons Ltd.

"The World's Greatest Sports Store"

Headquarters: HAYMARKET, SYDNEY

**TILTON & WEST.**

Popular Comedians often heard from 2FC.

STUDENTS OF MR. BRASH.

On Friday, 16th, in the afternoon, the vocal students of Mr. James Brash will give a recital from the studio of 2FC, and in the evening the programme will be particularly interesting, as Mr. Raymond Ellis, the English operatic baritone, by permission of J. C. Williamson, sings again at the studio. The Instrumental Trio, consisting of Mr. Lionel Lawson, violinist, Mr. Gladstone Ball, 'cellist, and Mr. Lindley Evans, pianist, will play. Orchestral items from the Crystal Palace, and Mr. Tossau will describe "How a poster is drawn." By permission of J. C. Williamson, an act from "The Climax," featuring Mr. Guy Bates Post, at the Palace, and it is hoped to have a talk from Mr. Post on that evening.

PITT STREET CONGREGATIONAL CHURCH.

From the Pitt Street Congregational Church on Monday, July 19, will be broadcast the midday meeting by the famous evangelist, Gypsy Smith. In the evening choral programme from Beale's Concert Room. The usual programme from the Haymarket Theatre; the talk by Mr. W. F. Jackson on "Continental Hotels and Meals"; a musical act by Louis Evans and Doreen Walsh; the dance programme by the 2FC Dance Band, conducted by Mr. Eric Pearce.

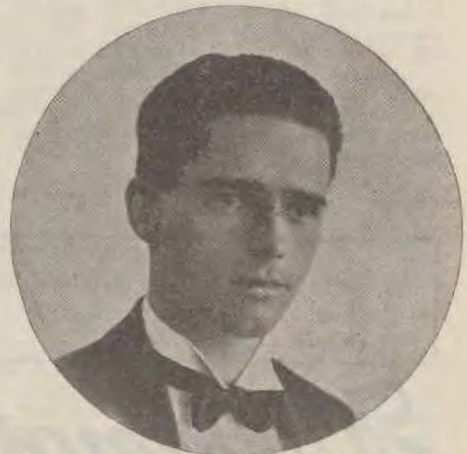
ALL BLACKS' MATCH.

From the Royal Exchange on Tuesday, July 20, a midday lecture by Mr. H. G. Raggat, of the Department of Mines, on "The Divining Rod—its History and Significance." Afternoon: Scores of the match between the All Blacks and N.S.W. Rugby Union. A vocal programme by the pupils of Mr. Hector Fleming. Evening: The Randwick Band will play a programme of music in the studio. Violin

solos by Mr. Lionel Lawson. From the Adyar Hall items will be taken from the Clement Hosking Song Recital. From Paling's Concert Hall, a programme by the Royal Sydney Philharmonic Society, in which this choir of 200 voices will be heard in the principal choral numbers from "Aida," conducted by Mr. Joseph Bradley. In the studio, comic numbers by Miss Grace Savieri, who played the principal part in Captain Frank Hurley's "Jungle Woman."

GYPSY SMITH.

On Wednesday, July 21, from 2FC, midday Gypsy Smith meeting from the Pitt Street Congregational Church. An orchestral programme in the afternoon from the Lyric Wintergarden Theatre. Dickens reading. In the evening some well known artists will appear, including Mr. A. L. Champion, tenor, Miss Jean Grant, soprano, in songs and duets. The English baritone, Mr. Walter Kingsley, will sing, and Mr. Jack Lumsdaine, the song-writer, will continue his "Music While You Wait" novelty, composing in the studio and singing during the evening a song written by him to a title selected by him early in the evening from those suggested on the telephone by listeners. At 8.30, for the first time in Australia, will be broadcast the Radio Auction Bridge, in which Mr. W. F. H. Master, who is an acknowledged expert in the game of Bridge, will conduct with three other players the broadcast of a specially selected hand, in which the whole of the play will be given, and Bridge listeners may 'phone the studio and have their inquiries concerning the game answered by Mr. Masters and broadcast. This Bridge Session will

**MR. CHARLES STEPHENS.**

A 2FC artist heard on the air more than any other tenor in New South Wales, through his constant appearances at the various band concerts.

BURGESS—"Constant satisfaction assured"—BATTERIES

GILFILLAN NEUTRODYNE



The NEUTRODYNE is easily the most selective circuit yet achieved, and the Gilfillan engineers leave nothing to be desired in the design and workmanship of their Neutrodyne. Pure, distortionless music in any locality and simplicity of control have been their goal, and it has been achieved with every success. A feature of the set is the matched dial control, e.g., to tune-in 3LO Melbourne set each of the 3 dials on Number 35—and, lol you have the exact tuning of the big Melbourne Station. It is wonderfully accurate, and a wavelength chart gives you the numbers similarly for any other station.

The GN1 and GN2 Models are 5-Valve Sets finished in two-tone Walnut Cabinets with

“A” and “B” Battery Panel Voltmeter as illustrated above.

The GN3 is a smaller 4-Valve (Dry Cell) Neutrodyne in two-tone Walnut Cabinet.

PRICES (complete with **ALL** Accessories, including Loud Speaker, Accumulator, Aerial Equipment, Batteries, Phones, Valves, Phone Plugs, etc.:-

GN1	Neutrodyne Set.. ..	£89/-/-
GN2	Neutrodyne Set.. ..	£59/17/9
GN3	Neutrodyne Set.. ..	£34/5/-

No Extras to Buy.

ASK FOR SCHEDULE OF EASY TERMS.

NA2 Complete 5-Valve Neutrodyne Kit	(for Home Assembly)	£17/-/-
NA3 Neutrodyne Kit.. .. .		£8/17/6

CUT THIS OUT AND POST TO-DAY.

Please send me Post Free—New Illustrated Radio Catalogue.

Name

Address

Harringtons LTD

Wholesalers and Retailers
Photo. and Radio Warehouses

Sydney .. . 385 George Street
 Katoomba .. . Katoomba Street
 Melbourne .. 260 Collins Street
 Brisbane .. . 93 Queen Street
 Adelaide .. . 10 Rundle Street
 Wellington, N.Z. .. 43 Willis St.
 Auckland, N.Z. .. 140 Queen St.

continue every Wednesday evening until the series is exhausted, and will provide one of the most unique novelties yet heard of in Australian broadcasting.

CELTIC MUSIC.

The majority of the evening programme on Thursday, July 22, will be given to a night of Celtic music arranged by Mr. Livingstone Mote, with the assistance of Mr. Gladstone Bell, 'cello, Mr. Lionel Lawson, violin, and Mr. Lindley Evans, piano, and several well known singers. A play by Mr. Montgomery Stuart. Popular French talk by Monsieur Maurice Byru, and the appearance of Mr. Adree, the well-known Scotch comedian.

2FC SUNDAY SERVICES.

The morning service will be taken from St. Stephen's Presbyterian Church, Phillip Street, and a band concert will be given from the Town Hall by the Metropolitan Band in the afternoon, and in the evening from 8.30 the Leichhardt Band from the Leichhardt Strand Theatre. Mr. Clement Hosking is arranging a vocal programme from the studio between 6 and 7 o'clock, and for the first time in N.S.W. Mr. Gypsy Smith will be heard on the air. The whole of the evening service from the Hippodrome will be broadcast, and as so many will not be able to gain admission, arrangements are being made whereby various halls throughout Sydney will be filled with people who will listen to Mr. Gypsy Smith by means of receiving sets and loud speakers.

LONGEST LAND LINE TRANSMISSION.

Practically the whole of the afternoon of Saturday, July 17, will be adopted to a description from the Show Ground of the match between the All Blacks and N.S.W., the third test match. In the evening, for the first time in the history of the Commonwealth, the longest land line transmission yet attempted in Australia, whereby a complete concert is broadcast, will be a feature of the evening. A special land line has been engaged by 2FC to the Causeway Hall, Canberra, and the whole of the evening's programme from 7.30 till after 10 o'clock will be transmitted from there. Well known Sydney artists will join the 2FC party going to Canberra, including Miss Mabel Batchelor, Mr. Ernest Archer, Mr. Wilfred Thomas, and Mr. R. A. Butterworth. Included in the party will be announcers and mechanics from 2FC studios, and a successful evening is promised. Mr. Ernest Mowle, the well-known conductor and musician, who is now at Canberra, is preparing a very excellent programme, including items from the Canberra Philharmonic Society, consisting of 65 members, assisted by an orchestra of 25. An ambitious programme, including the Sextette from "Lucia," the Miserere from "Il Trovatore," and the Inflammatus from Rossini's "Stabat Mater," and solos by various artists. At the conclusion of the concert the 2FC Dance Band will play until midnight.

PHOTOGRAPHS OF TOTI DAL MONTE.

On the night of the transmission of Signorina Toti Dal Monte from the Sydney Town Hall, Station 2FC offered to give a mounted photograph of the famous artiste to the furthest distant correspondent who commented upon the evening's broadcast.

Many hundreds of letters reached 2FC from this and the adjoining States and New Zealand. The awards have now been allotted as follow:—

New South Wales—Henry Wilkinson, "River-view," Pomona, Wentworth.

Victoria—W. S. Young, Percy Street, Portland.

South Australia—Roy Brook, Nullarbor, Coorabie.

West Australia—J. L. McKenna, Hoffman Mills, via Yarloop.

Tasmania—J. C. Foley, The Observatory, Hobart.

Queensland—Robert Odgers, Anne Street, Charters Towers.

To all of the other correspondents the station is sending a small souvenir print of Signorina Toti Dal Monte. Two hundred and fifty-one towns are included in the addresses of the various correspondents, and they are spread from Yarloop (over 2000 miles away in the west) to Noumea 1800 miles in the south-east, and again to Charters Towers (over 800 miles north). Letters from New Zealand showed that the interest over there was just as intense as in any portion of the Commonwealth.

SALE OF SURPLUS STOCK

Dull Gold Finish Boxes with two doors, suitable for 2 or 3 valves, 12 x 8½ x 8½ inches	2	6	each
Drilled Bakelite Panels, 12 x 8½ x 3/16 inches	2	0	each
Drilled Bakelite Panels, 4½ x 2½ x 3/16 inches	0	3	each
Bakelite Terminal Strips, 5½ x 1¼ x 3/16 inch holes, drilled and engraved	0	3	each
3 inch Bakelite Knobs and Dials, Calibrated 180 degrees or 290 degrees	0	6	each
3 inch Bakelite Dials, Calibrated 180 degrees or 290 degrees	0	1	each
Unmounted Honeycomb Coils, 120, 130, or 137 turns	0	6	each
Polished Maple Boxes, 10½ x 10½ x 4½ inches	3	0	each
Or 2 for	5	0	
Vario-Couplers, with Dial, wound for 1100 metres	3	0	each
A'so Single and Double Silk Winding Wires, etc., etc., at 50ft prices. On View:			

Basement

Amalgamated Wireless (A/sia) Ltd.

97 Clarence Street, Sydney

Country Readers write to "Dept. F," for full Particulars

Jazz and Jollity

brought to
your home
via wireless

Only perfect reception will give you the uninterrupted dance and Philips valves will give you perfect reception. The B406 is the new wonder valve, designed for use with a 4-volt accumulator, and controlled by a rheostat of at least 12 ohms resistance.

The unique purity of tone and wonderful volume given with this valve combined with its low filament consumption of one-tenth amp. make this valve perhaps the most economical, considering its accomplishments, on the market.

The main characteristics are as follows :

Filament voltage, 3.4-4.0 volts.

Filament current, 0.1 amp.

Saturation current, 30 m.a.

Plate voltage, 20-120 volts.

13/6 each.

Let your next valve
be a PHILIPS



PHILIPS
B 406



PHILIPS

RADIO AUCTION BRIDGE

Station 2FC has now completed its arrangements for conducting a series of Radio Auction Bridge Games. Mr. W. F. H. Master, an acknowledged Bridge expert, will conduct the series from 2FC studios. The first game is to be played on Wednesday night, 21st inst., and will commence at 8.30 p.m. The following interesting procedure will be adhered to:—Mr. Master will enter the studio and deal hands for four players. He will then broadcast a description of the cards in each hand, inviting those who are listening to place the cards upon the tables in their homes in like fashion. Mr. Master will then invite the other three players to come into the studio and join him, when the game will be played on its merits by the various contestants. As the bidding is carried on, and each contestant plays his hand, he will make it known through the microphone which will be placed on the table. Listeners may in this way also play the cards in their homes, and as soon as each hand is finished Mr. Master will answer queries to any listener who may care to ring up. The twenty lines on City 11000 will be connected with the studio, and both queries and Mr. Master's replies will be clearly heard on the air. It is hoped that listeners will make the utmost use of these Bridge Sessions to secure any information they may require in regard to this interesting game.

To enable enthusiasts of Auction Bridge—and their name is legion this winter—"Wireless Weekly" has made arrangements whereby the complete play of the "Perfect Hand" dealt each week to the four players at Farmer's Studio can be found in the special columns that will be devoted each week to the Radio Auction Bridge Games which will from week to week form a feature of 2FC's Wednesday evening programmes.

Arrangements are also being made whereby readers of "Wireless Weekly" can write to us asking for the solution of any difficulties which occur to them in the play of the broadcast games or of Bridge generally, and answers will be given each week by Mr. Master in the columns set apart for the purpose.

THEOSOPHICAL STATION.

Mr. Norman D. Hale, Architect of Sydney, and President of the Mosman Radio Research Laboratories has been commissioned to design the operating room and Studio for The Theosophical Broadcasting Station Ltd., at Clifton Gardens, Mosman.

2KY's STORYTELLER



Mr. W. A. Thompson, who tells those wonderfully interesting stories from 2KY, was born at Barraba 35 years ago. He is by profession a teacher with the Education Department, from which duties he was relieved by the Hon. D. T. Mutch in 1922 and officially appointed Story-teller for Hospitals and Schools.

Some idea of the beneficial effect upon children of Mr. Thompson's personality may be gained from the testimonials of well known medical men. For instance, Dr. J. Purdy, Metropolitan Medical Officer for Health, wrote: "I can say, as far as children are concerned, that your work has wonderful possibilities, and if more time could be given thereto I am sure much benefit would result."

Dr. E. V. Littlejohn, Hon. Physician to the Children's Hospital, stated: "I want to say that I regard your story-telling as a valuable factor in hastening convalescence after acute diseases in children, and also helping chronic cases to get better."

Of Mr. Thompson's story-telling to children, Dr. A. J. Collins, formerly Medical Superintendent of R.P.A. Hospital, wrote: "I cannot speak too highly of its great therapeutic value, and hereby certify that, in my opinion, the work of story-telling in children's wards as conducted by Mr. Thompson is of great value."

Mr. Thompson has officially advised American institutions on the effect, medically and mentally, of story-telling in hospitals and schools. He had four years' service with the 30th Battalion, A.I.F., in Egypt and France, and after the Armistice was signed was Educational Superintendent of the 5th Division. Possessing a typically kindly disposition, he is eminently suitable for the position for which he was selected by 2KY.

PHILCO—"You never need guess"—BATTERIES

Wonderful Bargains

In Genuine British

STERLING PRODUCTS

Genuine Sterling Variable Condensers:			s.	d.
A really high grade article. Straight line wavelength. Brass plates				
.00025 Plain		13	6	
A really high grade article. Straight line wavelength. Brass plates				
.0005 Vernier		19	3	
Sterling Radio Frequency Transformers: Complete with four pin holder, each			3	6
Sterling One Stage Amplifiers: A most beautifully made instrument, each		17	6	
Sterling Two Stage Amplifiers: Makes any set work a loud speaker, each		25	0	

YOU HAVE NEVER HEARD PURE RADIO MUSIC

If you have not heard the BOSCH AMBOROLA—CONE SPEAKER

Only a small shipment available at **£4/5/-** each

	s.	d.
Ebonite Panels: Size 12 x 9 x 3/16 inches, suit "W.W." Reflex, each	2	6
Columbia Inside Mounting 3 Coil Holders, each	11	6
Columbia Outside Mounting 3 Coil Holders, each	13	6
Radex Valves: 201A or 199, each	7	6
Ediswan Valves: Type R. American base	3	0
Certified Low Loss Condensers: .00035 or .0005	12	0
Certified Low Loss Condensers: .001	15	9
Variable Condensers: With brown ends, .001, 10/9; .0005,	8	6
Wooden Rotors: For Variocouplers or Variometers, 3½ inch, 9d.; 3 inch	0	7
Supertran Audio Transformers: 5 to 1 or 3½ to 1. Advertised elsewhere at 25/-. Our price	16	6
Midget Low Loss Condensers: 5 plates	3	0
Genuine Fixed Carborundum Detectors:	11	0
Atlas Carbon Compression Rheostats	10	6
Radiotron Valves: UV199, UX199 or UX201A	13	6
Philips Valves: The Famous B406	13	6

We pay carriage on orders 10/- and over except on Batteries and Loud Speakers.

"Yours for Lower Prices."

The ECONOMIC RADIO STORES

28 Royal Arcade

(3 doors from Pitt Street, left side)

SYDNEY

Phone M 3049

569 Hunter St. West

NEWCASTLE

Phone, Newcastle 1622

HEADQUARTERS FOR COMMERCIAL WIRELESS.

Negotiations have been completed for the purchase by Amalgamated Wireless (A'sia) Ltd. of the premises occupied by Messrs. W. E. Ward & Co. Ltd. at 47 York Street, Sydney.

This is a building of seven floors at the head of Wynyard Street, which can be clearly seen from George Street. The building will be altered to accommodate the city accepting office and the central telegraph office for the Amalgamated Wireless Company's Beam telegraph service to England and Canada, and for other wireless telegraph services to New Guinea, New Caledonia, and other parts of the world; also the wireless telegraph service for communicating with all ships in wireless range with Australia. The building will also be used as the headquarters for the numerous other activities of the wireless company.

THE NEW RADIO TEXT BOOK.

The first edition of "Wireless," the text book for radio enthusiasts which was recently published by J. W. Robinson (Director, Queensland Radio Service) and G. Williams (Instructor, Marconi School of Wireless, Sydney), is rapidly selling out. This book, which was recently reviewed in this paper, is claimed to represent the first serious attempt to produce in Australia a reliable wireless text book. In producing it the authors attempted to fill a long-felt want by compiling a work which, while explaining wireless in a very simple manner, contained a full wealth of technical information suitable even to the advanced student.

"Wireless" is now on sale at various news-agents in Sydney, or copies may be obtained from the publishers, the Read Press Ltd., Albert Street, Brisbane. Price 4/-, post free.

RADIO AND HOME BUILDING.**BUILDERS' VIEWPOINT.**

Builders and architects have lately directed their attention to the influence of radio on home construction. It is felt that modern homes require provision not only for the outdoor aeralars which are almost as plentiful as clothes lines in the metropolitan area, but also for indoor aeralars. The latter are coming increasingly into vogue being simply a few stretches of wire over a frame inside a room instead of outside the house. The problem for architects—an easy one—is to provide suitable spaces for the aeralars. Usually they are tucked away between roof and ceiling.

Mr. Alex. Speers, President of the Master Builders' Association, in an official statement points out that radio is bringing pleasure to the home and is increasing home comforts. By thus making the home brighter and happier, he says radio is helping to develop in Australia a home building nation.



HERE ARE WIRELESS SETS AT PRICES WHICH ENABLE EVERY- ONE TO GET ONE NOW!

Standard One valve Set complete with all accessories but not including Loud Speaker. Every set thoroughly tested and guaranteed to give satisfaction. Usually, £8/15/-. Sale Price, £6/15/-

Standard 2 valve set with all accessories but not including Loud Speaker. Usually, £12/10/-. Sale Price, £10/10/-

Standard 3 and 4 valve Sets are also greatly reduced. Complete with all accessories, batteries, valves and loud speaker. Usually .. £30 and £45
Sale Prices £21/10/- and £29

*All further reduced by 2/- in the
£ discount for Cash.*

DAVID JONES' SALE

Greater Volume
Increased Power

Purity



RADIOTECHNIQUE

Scientific Super Valves

RADIOTECHNIQUE SETS A NEW STANDARD OF SUPER QUALITY VALVES AT LOW PRICES.

RADIO MICRO 13/6

The most improved type of Low Consumption Valve. Highly efficient as Detector or Amplifier. Can be worked off dry cells.

Filament, 3.5 volts; .06 amps.; 40-80 volts.

SUPER AMPLI 13/6

Detector, High and Low Frequency Amplifier. Type R46 (201A), 5 volts; .25 amps.; 40-80 volts. Type R41, 3.8 volts; .4 amps.; Plate 40-80 volts.

RADIO AMPLI 8/6

Detector and Amplifier, Fil. 3.8v.; .7 amp.; Plate, 40-80 volts.

Obtainable with English or American Base

If difficulty is experienced in obtaining supplies communicate with Australasian Representatives

BROWN & DUREAU Ltd. BROUGHTON HOUSE, CLARENCE STREET, SYDNEY;
and at Melbourne, Perth, Wellington and Auckland, N.Z.

NEW HIGH-POWER STATION

Opened July 5th

SOME INTERESTING DETAILS

Station 2BL, which was started about 3½ years ago, was the first commercial station in Australia to be actually heard on the air, although it was not the first to be granted a commercial transmitting license. The station, which was originally housed in a temporary erection on the top of the "Daily Guardian" building in Phillip Street, has grown and developed with great rapidity during the time of its existence. The original power was 500 watts, and this has now been increased to a nominal output of 5000 watts. The new apparatus that has been developed for the purpose of transmitting shows an input of 10 K.W. to the main oscillator, the total input to the station being 32 K.W.

This enormous increase of power will have the effect of making 2BL the highest power station operating in the Southern Hemisphere. The transmitting apparatus is housed at Coogee in a station specially constructed of brick, with concrete floors, designed and built for its present purpose, and the aerial is carried on a mast and a steel tower 140 ft. high. The main power supply is provided by the Sydney City Council electric supply, but this is being regenerated before being supplied to the transmitting apparatus to prevent any possible deflection in voltage of supply.

A considerable amount of the apparatus has been developed and manufactured in Australia, and only such items as could not be produced locally have been imported. The valves, for example, are the finest of their type so far manufactured, and are cased with fusc quartz (silica) instead of the ordinary glass, so as to resist the fierce heat which is developed, and they are carefully shielded and cooled with an air blast. The matter of consistent frequency which is sometimes described as maintaining a correct wave length has received special attention, as well as the suppression of harmonics. The object of the increase of power is not only to improve the transmission, but to ensure better daylight reception as well as night throughout the whole of the State, with improvements in tone and clearness generally.

For the accommodation of artists, palatial studios have been provided in the A.M.L. and F. Co.'s Buildings, 4 Bligh Street, where two floors are occupied. The two studios are necessary in order that the requirements of the station can be met, and these were actually designed and erected for the specific purpose.

The artists that have been actually broadcast

from the Studio represent some of the most distinguished who have so far visited Australia, and include such well known names as Messrs. Zacharewitsch, violinist; Arthur Jordan, famous English tenor; Miss Edna Thomas, singer of negro spirituals; Madame Marie Narelle, famous singer of Irish songs; Madame Kate Rooney-Kirkham; Mr. William Henghan, the Scottish basso; Mr. Alfred Cunningham, baritone soloist, who originally came to Australia with the Westminster Glee Singers; Messrs. Gregory Ivanoff and Gerald Walenn, violinists; M. Paul Vinogradoff, pianist.

Other distinguished people who have co-operated with the Studio are Mr. Roland Foster and Mr. Henry Penn. As far as local artists are concerned the utmost opportunity has been given them to develop their artistic careers, and 2BL has been keenly alert to encourage in every way the development of local talent. Practically all the prominent local musicians have been broadcast at various periods. At one period the station provided the greatest number of hours per day as far as transmission was concerned, and this schedule is now being reverted to. The day's transmission now begins at 7.25 a.m. and continues practically till midnight. During the morning session, which lasts from 10 a.m. to 2 p.m., transmission is continuous, and features talks to the community of women, information re mails, shipping, weather, and a host of other matters. During the luncheon hour between 1 and 2 p.m. an orchestra will be broadcast. The afternoon session from 3 p.m. to 5.30 will cover lectures and entertainment generally. Bedtime Stories, which have always been a feature of 2BL's programme, will start at 6 p.m. for three-quarters of an hour, and will be followed in turn by half an hour's dinner music. At 7.15 a special country session will supply cattle, grain, fruit and vegetable information to the worker on the land. The evening session, as heretofore, will be devoted chiefly to music and entertainment. Every night transmission will be continued until midnight, and a special feature will be the provision of dance music programmes.

Interesting features, such as the introduction of a means whereby telephonic questions were received and broadcast simultaneously, together with replies from the Studio, were introduced by 2BL. Many other novelties have originated in the Studio, and further developments in this direction are promised.



**FOR INCREASED
VOLUME
AND CLARITY**

DESIGNED for power amplification with large loud speakers. When inserted in last L.F. stage of receiver gives pure and abundant volume.

MULLARD D.F.A. POWER VALVES.

Type D.F.A. 0 (.35 amp.) for 4 volt accumulator	13/6
Type D.F.A. 1 (.2 amp.) for 6 volt accumulator	13/6
Type D.F.A. 3 (.06 amp.) for 4 dry cells or 6 volt accumulator .	17/6
Type D.F.A. 4 (.2 amp.) for resistance capacity circuits (6 volts).	13/6

HF Amplification.				LF Amplification.				Power Valves.			Detector.	
Type	FIL. Volts	FIL. C'ent	Price	Type	FIL. Volts	FIL. C'ent	Price	Type	FIL. Volts	FIL. C'ent	Price	
HF	2.0	2.0	7/-	LF	2.0	2.0	7/-	DFA.1	5.0	0.25	13/6	When valve is followed by an Inductance Transformer or telephones, use an LF Amplifier or Power Valve. When valve is followed by a Resistance Capacity Interval system, use an HF Amplifying Valve.
D.06	2.0	0.06	12/6	D.06	2.0	0.06	12/6	DFA.2	6.0	0.06	17/4	
D.3	1.5	0.3	12/6	D.5	1.5	0.5	12/6	PMA.4	2.7	0.1	12/6	
DFA.4	2.0	0.25	13/6	DFA.1	5.0	0.25	13/6	DFA.0	2.5	0.25	13/6	
PMA.5	2.10	0.1	12/6	DFA.3	0.0	0.06	17/6	DFA.4	5.0	0.25	13/6	
				PMA.4	2.7	0.1	12/6					

All Mullard Valves are manufactured at Mullard Works, London, England.
OBTAINABLE FROM EVERY RADIO DEALER IN AUSTRALIA.

Mullard

THE MASTER VALVE

(Arks. 4.)

BROADCASTING NOTES

A CHILDHOOD INFLUENCE.

UNTIL the advent of radio, disobedient and offending children were frightened into more pleasing conduct by their parents' tales of bogey men, policemen, and other formidable characters who, it was alleged, were only too pleased to devour had little boys and girls. Broadcasting has changed most of that, apart from the fact that in these enlightened times it is a wise father who knows more than his own child. However, it cannot be denied that the children's hour services maintained by the studios are a great influence. "Billy Bunny," the popular children's entertainer at 3LO Melbourne has received many letters in which parents have thanked him for his influence over their children, and they have stated that a word of gentle advice or admonition from "Billy Bunny" has more effect than all their scolding. In one instance a listener-in stated that his daughter, who suffered severely from nervous trouble, was always calm and free from agitation upon hearing "Billy Bunny's" voice, and that since she had a new interest there had been a decided improvement in her condition.

ANOTHER SONG HIT.

"After the Dawn" has already been established by the "Sun Pictorial" Perfect Programme Competition as the most popular vocal and instrumental number so far as listeners-in are concerned, almost every second programme of the 10,000 entries submitted containing Mr. Jack O'Hagan's popular composition. During the past few days he has been singing from 3LO Melbourne another of his compositions, entitled "I wonder will you think of me," and he anticipates that will be even more popular than "After the Dawn." Already one edition is almost depleted, and inquiries have been received for it from all over Australia. Mr. O'Hagan states that he has received so many congratulatory letters from listeners-in after the Perfect Programme Competition that he has been unable to reply to them all. For a start he answered every one that arrived, but later the mailbag became altogether too heavy. However, he fully appreciates all the good wishes sent to him.

LISTENERS LIKED "BELLE OF NEW YORK."

"The most perfect transmission we have ever had" is the verdict of the thousand listeners-in who wrote to 3LO Melbourne congratulating the studio for the "Belle of New York" programme. Letters in this strain were received by the newspapers, by Major Conder, by the programme arranger, by Messrs. An-

drew and Dudley—in fact, by all concerned, and there is no doubt that the requests for another performance of the musical comedy represents the wishes of all listeners. Therefore, they will be pleased to hear that 3LO Melbourne is arranging for another transmission of the piece with the same caste of characters about the end of July. Only one correspondent had any objection. "It is deplorable," he said, "that some of the characters talked with a decided American accent, and frequently it was noticeable that aitches were dropped indiscriminately." This fastidious listener would, apparently, be annoyed if Shakespeare made any of his characters speak colloquially. The dropped aitches and nasal American tones were necessary to the story of the musical comedy, and there is no reason why character should be departed from even if the microphone takes the place of the footlights.

A NEW PIANIST.

Pianoforte is one of the most generally popular items in broadcasting programmes, partly because of the clearness of transmission and partly because of the excellence of the artists engaged. A newcomer to the ranks of 3LO Melbourne is Miss Kathleen Robinson, L.A.B., a talented young pianist from Creswick who has attracted attention by her prominent position in the highest musical examinations. Miss Robinson received her early musical education in Ballarat, later finishing with Mr. Edward Goll in Melbourne. This young artist is embarking on a career as a concert pianist, and 3LO Melbourne are confident that all those listeners-in who hear her will predict a rosy future. Her father is the Rev. Charles Robinson.

2FC AT NOUMEA.

Station 2FC has received a very interesting letter from Mr. H. Russ, of Noumea, New Caledonia, in which he writes in most complimentary terms on the transmission from the Town Hall of the Toti Dal Monte concert. He also refers to a recent service from St. Andrew's Cathedral, and says that the Sunday services are regularly listened to from 2FC Station down in Noumea, owing to the fact that the atmosphere is much more quiet on Sundays and free from commercial station interference. He says that, although 56 minutes in advance of Sydney time, this does not deter them from tuning-in at the beginning of the 2FC sessions. He refers to hearing Melbourne, Adelaide and New Zealand occasionally, but 2FC he gets regularly. Perth is unattainable.

ANNOUNCEMENT

The increasing demand for our merchandise has necessitated removal of the Company's offices to more commodious premises at

BROUGHTON HOUSE
(BASEMENT)
KING & CLARENCE Sts.
SYDNEY

General Indent & Export Co., Ltd.

Manufacturers Agents for

Acme Apparatus

Southern Cross

Products

Hilco Super Het Kits

Operadio Portable Sets

Filko Stats

Filko Leaks

Fleron Insulators

Kurz Kisch Dials

etc., etc.

MA 1744, MA 1790

NEW STATION FOR THEOSOPHICAL SOCIETY.

By the end of July the first tests of the Theosophical Society's broadcasting station will be made, and before the end of August the station will be on the air with regular programmes. Work has already started.

The Theosophical Society aims to broadcast only the very best in music and speech, and will operate in addition, on Sundays from 10.30 a.m. to noon and for a commencement on three evenings a week, and, from 6.30 to 9.30 p.m. Programmes may thus be short, but it is determined to give only the very best, and the Society considers that the highest standard may not be maintained from the outset if it is to broadcast all day and every day. This station is in a position to produce high-class musical programmes. There will also be talks on all forms of Art, on the problems that confront Australia, and on the methods by which Australia may advance.

The Theosophical broadcasting station is established for propaganda, but, as the Society announces, of propaganda of ideals, propaganda for a great and noble Australia. It does not exist merely to spread Theosophy as such or any other special belief, but will be open to all those who are earnest workers of the World Brotherhood. Difference of opinion and of Commonwealth Brotherhood, and, in the future, of the World Brotherhood. Difference of opinion and of method will be encouraged, provided they are dominated by a brotherly spirit towards all.

The Society is building the station with the help of Mr. F. G. Beard, of United Distributors. The studio, which is on the sixth floor of Adyar House, Bligh Street, Sydney, is practically ready, and work is proceeding rapidly with the transmitting station, which is situated at Clifton Gardens.

Mr. Beard states that, by the use of a Piezo crystal drive, special precautions are being taken to keep the station's wavelength constant, so that it will not interfere with any other station. The masts of the station are 100 ft. and 60 ft. high respectively. The station's license provides for a power of 3,000 watts, but the plant, it is stated, will be capable of developing 10,000 to 15,000 watts without overloading. Philips' water-cooled valves are being used, and they will have a capacity as high as 85,000 watts.

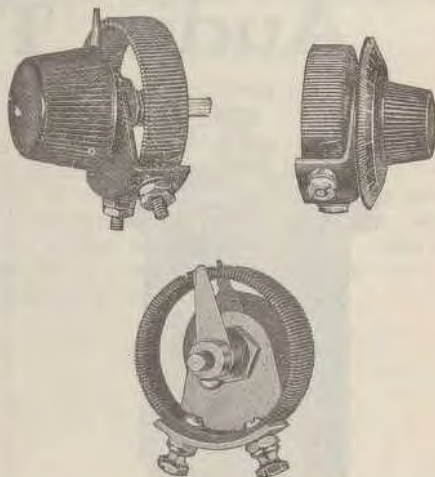
There are five stages of radio between the drive and the aerial, and the method of coupling used is covered by Australian patents. During the last week of July, it is expected, the first small tests on a power of 5 watts will be made, and in the next three weeks the power will be increased to 1,500 watts. Before the end of August the station will be working for the listening public.

H & H

Rheostats

Once Installed, They're Good for Years of
Steady Service.

Rheostats with Dials.
Rheostats with Taper Handles.



A reliable Rheostat for every radio need. Easy to instal, and needs only one panel hole 3/8in. in diameter. Contact lever slides quietly and easily over the wires, positive contact at all times. Edges of contact lever curve upward, which makes for smoothness of operation. Exclusive H. & H. feature is the automatic cut out.

Made in 5, 10, 15, 20, and 30 ohm capacities in both styles.

Prices: 5/9 with 2in. Dial.
5/3 with Taper Knob.

Obtainable from leading Radio Importers in every State

**H. & H. RADIO GOODS
include—**

Sockets (see the No-loss Porcelain Socket).
Rheostats.
Variable Condensers (Low Loss Type).
Mica Condensers.
Transformers (Audio).
Push-Pull Transformers.
Jacks and Plugs.
Potentiometers.
Dials and Knobs.
Battery Switches.
Lever Switches.
Etc., etc.

Send for Complete Catalogue to the

**Australasian Representatives:
BOSWELL & CO.**

51 York St., Sydney.
403 Bourke St., Melbourne.

BURGESS—"Used by American Navy"—BATTERIES

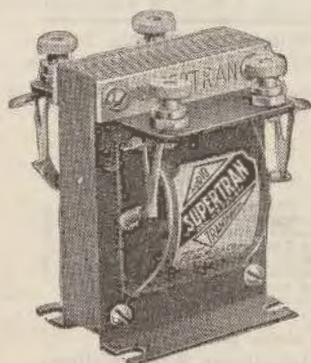
Supertran "Mica Insulated"

Audio Transformers



FMC 18/6 each

Ratios 3-1
5-1



Supertran 25/- each

Ratios 3-1
5-1

These Transformers
give Clear Reception
and stand Higher volt-
age than any other
Transformers

*Constructed for Longevity
and Maximum Performance*

INTERNATIONAL RADIO CO. LTD.

(Wholesale)

200 Castlereagh St.,
SYDNEY, N.S.W.

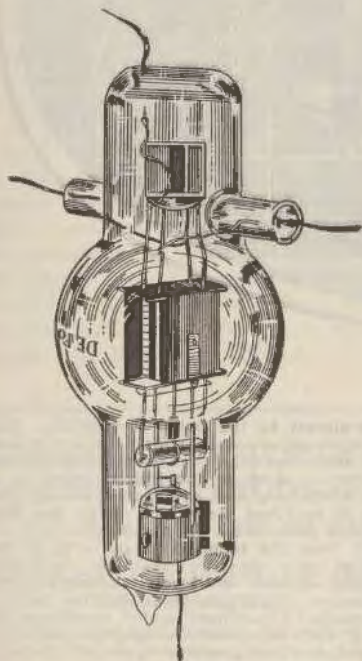
91-93 Courtenay Place
WELLINGTON, N.Z.

AMONGST THE TRADERS

DE FOREST "H" TUBE.

Efficient performance is obtained by the "H" tube on wavelengths of from 1 metre to 200 metres; in fact, on all wavelengths for which a circuit can be provided.

High frequency flash-over does not break down the tube as all leads are brought out at widely separated places.



High plate voltages may be used without fear of damage to any of the elements. Internal construction is rigid and the best of material is used. Both grid and plate are of Molybdenum.

The output ratings given below are approximate, because function and output efficiency depend largely upon the power applied, upon circuit arrangement and upon wavelength.

No base is provided for this tube, in order to give it characteristics of a truly low loss oscillator.

Experiments conducted by the De Forest Laboratories indicate definitely that the new developments embodied in this "H" tube will now permit extremely long distance communication on the high frequencies.

Technical Data.

Plate Voltage, 1,000 to 3,000; Grid Bias Volts, 50 to 500; Filament Volts, 10, Amps. 2.25; Plate Current Milli-amps, 40 to 110; Output R. F. Watts, 20 to 150; Safe Plate Diss. Watts, 170; Grid Leaks Hartley Circuit, ohms, 5,000 to 100,000; Size overall, 6 x 3½ inches.

RADIOTRON, UX.112.

Just as Radiotron UX.120 takes the place of UV.199 in the last stage of dry cell tube radio frequency circuits, so UX.112 takes the place of UV or UX.201A in the last audio stage of storage-battery sets. Radiotron UX.112 will deliver far more energy than the average loud speaker requires. This must be regarded as a distinct advantage. It means not only fine quality but long life.



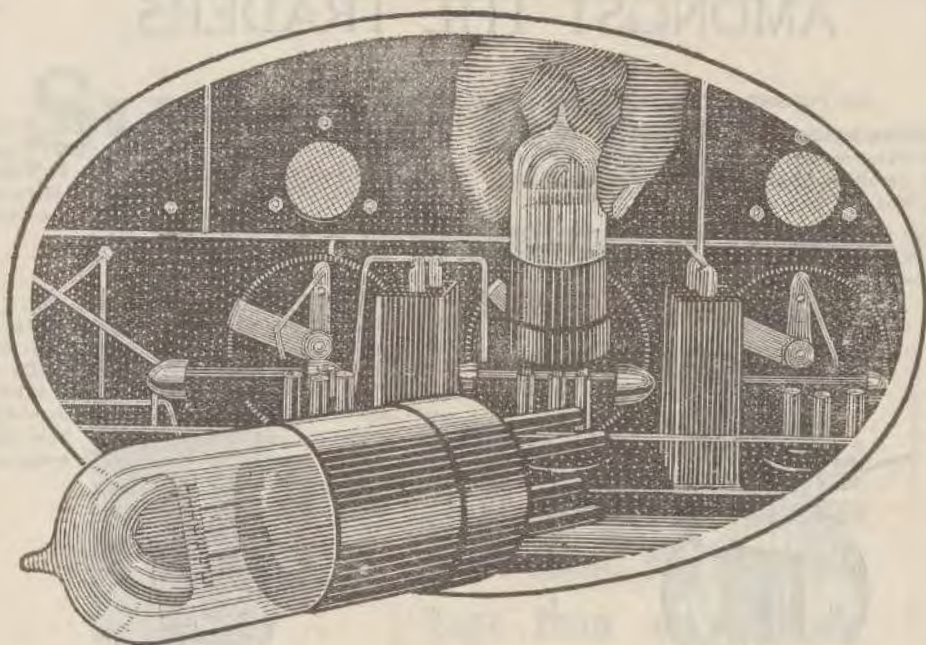
If two UX.112's are used in the audio frequency circuit of a storage battery set results so marvellous are obtained that it is hard to believe that no changes have been made in the hook-up. Agents: Amalgamated Wireless.

IMPROVED SERVICE AT 2KY.

Evening Sessions from 2KY in future will include Editorials by C. G. C. Christie, LL.B. "Thumb-nail sketches" of prominent Labor leaders and "Children's Hour" by Mr. Thompson, who devotes the whole of his days and evenings to story telling in hospitals. The 2KY news organization is now such that items of special news interest are continually being interspersed in the transmissions as they are received, so that the station is gradually achieving the ideal of an aerial newspaper.

PHILCO—"Tremendous Capacity"—BATTERIES

"The Valve That Improves With Age"



FUNDAMENTALLY there is a great gulf between the Wuncell and other Dull Emitter valves. For in the Wuncell there is utilised a filament which actually improves with use. A filament which is built up layer upon layer until it is practically as stout as that used in a bright emitter valve. A filament, moreover, which successfully functions at a temperature low which is almost invisible.

After all, the cost of a valve depends not merely on what you pay for it—the length of service you obtain determines whether that valve has been cheap or expensive. Measured on that basis, the Wuncell valve is by far the most economical Dull Emitter that can be bought—because it lasts longer.

Heat is the great destructive influence which brings most valves to an untimely end. In the ordinary Dull Emitter low current consumption has been obtained by whittling down the diameter of

the filament almost to the point of fragility. But the temperature at which that filament is operated is still very little less than that used in the average bright emitter. And so inevitably there is a tremendous stretching and contracting every time the current is switched on which finds the first weak spot and culminates in a fracture.

Quite apart from the technical superiority of the Cossor design—the electron-retaining Grid and Anode system—which is freely admitted, the Wuncell filament offers you three distinct advantages. An unusual robustness which precludes the possibility of early burn-out. A rigidity—due to its unique three-point suspension—which entirely eliminates microphonic noises.

And, finally, a prolific emission of electrons which tends to increase as the valve becomes mellowed by use. Truly the Wuncell sets a new and higher standard in valve economy. The moment you use one you will appreciate its outstanding merit.

THE WUNCCELL DULL EMITTER.

Voltage, 1.8 volts.

Consumption, .3 amp.

W1 for Detector and Audio, 13/6 each.

W2 for Radio Frequency, 13/6 each.

COSSOR LOUD SPEAKER VALVES.

W3. Voltage, 1.8 volts. Consumption, .5 amp. Price, 12/6.

P3. Voltage, 4.5 volts. Consumption, .175 amp. Price, 24/ each.

All types available. Standard American or English Bases.

Cossor Valves

"THE KEY TO THE ETHER,"

"ALL BRITISH"

Factory Representative and Sole Agent for Australia—

A. H. CARTER, 20 Clarence Street, Sydney, N.S.W.

'Phone, B.2381.

WIRELESS PLAYS ITS PART.

Wireless has once again played a prominent part in bringing aid to a ship wrecked in home waters. On a voyage from Tauranga to Auckland, the s.s. *Manaia*, with 55 passengers and a crew of 38 aboard, piled up on a reef at the south-east point of Slipper Island. The mishap occurred just before midnight on a dark, squally night. Fortunately there was no panic, and as the ship was fast on the rocks there was no immediate danger.

The wireless equipment was at once brought into action, and an attempt was made to get into touch with Auckland. Owing possibly to the intervening Coromandel range of hills the ship was unable to raise VLD, however, and called up the Chathams, which flashed the message to Wellington, and later to Auckland. Meanwhile the auxiliary seow *Mout* had picked up the signals from the *Manaia*, and hastened to the aid of the wrecked steamer. Arriving in the early hours, and being informed that there was no immediate danger, she stood by till morning, when the steamer *Ngapuhi*, which had been diverted by wireless, arrived and took off the passengers. The crew were later transferred to the *Rimu* when it was seen that the position of the wrecked ship was hopeless.

The *Manaia* is a total wreck, but owing to the aid of wireless her passengers suffered hardly any inconvenience whatever. A few years ago, and the story might have been sadly different.

AN ERROR.

ON the back cover of "Wireless Weekly," of Friday, July 9th, appeared a full page advertisement featuring the Siftron, and the well-known Amplion Dragonfly Loud Speaker (Model AR102), the price of which is 25/-. Inadvertently, an illustration shown was that of the AR38, which sells at £3. In order to clear up any doubt in the minds of those who do not happen to be familiar with the appearance of the famous Dragonfly, we are showing below the correct illustration.



BRANSTON AMERICAN SUPER HETERODYNE

IS THE "ROLLS ROYCE" OF RADIO

THERE IS NO EXPERIMENT ABOUT
THE BRANSTON.

It is the tried and proved Super-Het. 7 valves reflexed give the power of 10.

Interstate reception on the loop at full Loud Speaker Strength.

Build your own—we will show you how, and give free service until working satisfactorily. If you cannot build your own, see us—we will advise you.

Come and hear it on the Stations,
including 2FC.

SOLE AGENTS

PARSONS & WHITTEMORE LTD.,
30 MARKET STREET, SYDNEY.

Manufacturing Products Sales Co. (M.P.)

(H. J. HAPGOOD).

CHALLIS HOUSE, MARTIN PLACE,
SYDNEY.

Tel.: BW 6753.

Agents for all Styles of Radio Products.

Agents for Clyde Batteries.

Elec. Meter Mfg. Co., "Emmco."

Renrad Condensers, Leaks and Fixed Rheos.

Airzone Rheos, Pots., Special Coils and Loops.

Radiokes, Honeycomb, Circloid and Special Coils.

Neutron Crystals, Prompt Shipments from Sydney.

In New South Wales for Louis Coen Pty., Ltd., Melbourne.

The most complete line of Radio Products in Australia.

Write for Special Catalogues.

Write for Indent List.

We Represent 34 Foreign Radio Manufacturers.

FERRANTI

INTERVALVE TRANSFORMER

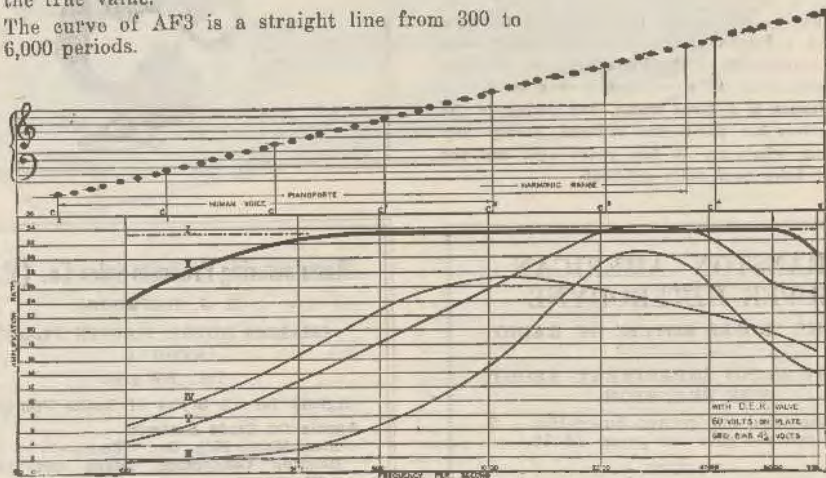
TYPE AF 3

BRITISH MADE

Transformer Amplification curves are of great interest to every Radio user.

The curves must be on the musical scale to give the true value.

The curve of AF3 is a straight line from 300 to 6,000 periods.



Curve I. PERFECTION.

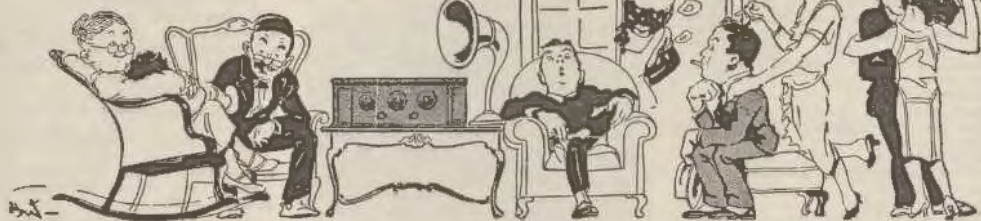
Curve II. FERRANTI AF 3. VERY NEARLY PERFECT.

No BETTER Transformer is available at any Price

Curve III. }
 Curve IV. } Other Transformers on the Market.
 Curve V. }

Wholesale Traders are desired to communicate with
FERRANTI LIMITED, HOLLINWOOD, ENGLAND

Broadcasting



2FC

FARMER'S BROADCASTING SERVICE.

Call Sign: 2FC. Wave Length: 1100 Metres.
Power: 5 Kilowatts.

FRIDAY, JULY 16.

Morning Session.

- 7.—Chimes of 2FC and Announcements.
- 7.5.—Cricket scores, second day's play, Australia v. Lancashire, at Liverpool. These scores will be repeated at 8, 9 and 10 a.m.
- 7.10.—"Sydney Morning Herald" News Service.
- 7.30.—Musical Items from the Studio.
- 8.—Cricket scores. Close down.
- 9.—Chimes of 2FC and Announcements.
- 9.5.—Cricket scores.
- 9.10.—Musical Items from the Studio.
- 10.10.—Weather Information, Commercial News, Shipping Intelligence, Market and News Session.
- 11.—Progress cricket talk.
- 11.5.—Cables.
- 11.15.—Cooking Talk and Recipes by Miss Ruth Furst.
- 11.30.—Close down.

Midday Session.

- 12.—The Chimes of 2FC and Announcements.
- 12.5.—Musical Items from the Studio.
- 12.30.—Morning Call Stock Exchange.
- 12.35.—Musical Items.
- 1.—Time Signals.
- 1.3.—"Evening News" News Service, Weather Information, Commercial News, Musical Items.
- 1.30.—Noon Call Stock Exchange, Musical Items.
- 2.—Close down.

Afternoon Session.

- 2.30.—Chimes of 2FC and Announcements.
- 2.35.—Vocal Recital by the pupils of Mr. James Brash.
- 3.—Oak Hall Trio.
- 3.40.—From the Tea Rooms: Miss Meryl Holliday, contralto.
- 3.45.—Musical Items from the Studio.
- 3.55.—From the Tea Rooms: Miss Jackie Myley, soprano.
- 4.5.—From the Tea Rooms: Oak Hall Trio.
- 4.10.—Music from the Studio.
- 4.20.—From the Tea Rooms: Miss Meryl Holliday, contralto.
- 4.25.—Oak Hall Trio.
- 4.30.—Music from the Studio.
- 4.40.—From the Tea Rooms: Miss Jackie Myley, soprano.
- 4.44.—Afternoon Call Stock Exchange.
- 5.—Close down.

Early Evening Session.

- 6.—The Chimes of 2FC and Announcements.
- 6.5.—The "Hello Man" talks to the Children.
- 6.45.—Broadcast from the Oak Dining Hall: Instrumental items and Miss G. Finister, soprano.
- 7.15.—"Evening News" News Service, and Sporting Information.
- 7.30.—Dalgety's Market Reports (wool, wheat, stock), fruit and vegetable market.
- 7.40.—Close down.

Night Session.

- 7.50.—Broadcast from his dressing room at the Palace Theatre: A talk by the eminent actor, Mr. Guy Bates Post.
- 8.5.—Broadcast from the Palace Theatre (by permission of J. C. Williamson Ltd.): The first act of the new play, "The Climax"—Mr. Guy Bates Post.
- 8.40.—From the Studio: Sydney Instrumental Trio—Mr. Lionel Lawson, violinist; Mr. Gladstone Bell, Cellist; Mr. Lindley Evans, pianist.
- 8.52.—Mr. Raymond Ellis, the English operatic baritone (by permission of J. C. Williamson Ltd.).
- 9.3.—Mr. Lindley Evans, pianist.
- 9.12.—Mr. James Donnelly, tenor.
- 9.20.—"How to Draw a Poster," novelty broadcast.
- 9.27.—Mr. Gladstone Bell, 'cello solos.
- 9.37.—Mr. Raymond Ellis, baritone.
- 9.46.—Sydney Instrumental Trio.
- 10.—Broadcast from the Crystal Palace: Items by the orchestra, under the baton of Mr. Harry Stone.
- 10.30.—Mr. James Donnelly, tenor.
- 10.35.—Mr. Harrison White, banjo solos.
- 10.45.—Mr. James Donnelly, tenor.
- 10.50.—Mr. Harrison White, banjo solos.
- 11.—Broadcast from the Wentworth Hotel, Sydney: Wentworth Cafe Dance Orchestra, under the baton of Mr. Sydney Simpson.
- 12.—National Anthem. Close down.

SATURDAY, JULY 17.

Early Morning Session.

- 7.—The Chimes of 2FC and Announcements.
- Time Signals. Cricket scores 3rd day's play Australia v. Lancashire.
- 7.5.—Music from the Studio.
- 7.10.—"Sydney Morning Herald" News Service.
- 7.40.—Weather Information, Commercial News, Shipping Intelligence and Markets.
- 8.—Time Signals. Music from the Studio. Cricket scores.
- 8.15.—Close down.

Morning Session.

- 9.—Cricket scores.
- 9.15.—The Chimes of 2FC and Programme Announcements.
- 9.20.—Music.
- 10.—Time Signals. Music from the Studio.

- 10.5.—Late "Sydney Morning Herald" News Service.
- 10.15.—Music from the Studio.
- 11.—Cables. Progress Cricket Talk.
- 11.5.—Music.
- 11.15.—A Gardening Talk by "Red-gum."
- 11.30.—Close down.

Midday Session.

- 12.55.—The Chimes of 2FC.
- 1.—Time Signals. "Evening News" Midday News Service. Weather Information, Commercial News.

Afternoon Session.

- 2.55.—The Chimes of 2FC and Announcements.
- 3.—Broadcast from the Agricultural Show Ground, the Second Test Match "All Blacks" v. N.S.W. Rugby Union. The complete match will be described. During the afternoon race results and musical items will be given. At regular intervals results will be given of the Dudley Cup Polo Match played at the Kensington Racecourse.
- 4.30.—Complete resume of the afternoon's sporting events.
- 5.—Close down.

Early Evening Session.

- 6.—Time Signals.
- 6.5.—The "Hello Man" talks to the Children.
- 6.45.—Broadcast from the Hotel Australia: Musical items by the Orchestra.
- 7.15.—From the Studio: Late "Evening News" News Service and Sporting Information.

Night Session.

- 7.25.—The Chimes of 2FC and Announcements.
- 7.30.—Broadcast from the Causway Hall, Canberra (the Federal Capital of the Commonwealth), for the first time, a complete concert programme carried to Sydney over a land line of 200 miles, constituting the longest land line transmission, in which speech and music will be transmitted continuously for three hours, creating an Australian record in this direction.
- 7.30.—Fanfare of Trumpets.
- 7.35.—God Save the King.
- 7.40.—The Story of Canberra. (a) Today. (b) The Future.
- 7.55.—"Advance, Australia (Fair)."—Fanfare of Trumpets.
- 8.5.—The Canberra Philharmonic Orchestra. Conductor, Mr. Ernest Mowle.
- 8.15.—Soprano solo and choros, "Inflammatus" ("Stabat Mater" (Rossini). Miss Mabel Batchelor, soprano, and the Canberra Philharmonic Choir, and Orchestra.
- 8.25.—Aria, "Vesti la giubba" ("Pagliacci") (Leoncavallo), Mr. Ernest Archer, tenor.

- 8.34—Cornet solo, "Air" (D'Hardelot), Mr. L. Edwards.
 8.42—Aria, "Infelice" ("Ernani") (Verdi), Mr. Wilfrid Thomas, baritone.
 8.50—Scenes—Aria and Duet, "Misere-re" ("Il Trovatore") (Verdi), Miss Mabel Batchelor, soprano, Mr. Ernest Archer, tenor, and the Society.
 9—Song and chorus, "Torador" ("Carmen") (Bizet), Mr. E. Butterworth.
 9.10—Interval.
 9.15—Bass solo, "Give a Man a Horse He Can Ride" (O'Hara), Mr. Wilfrid Thomas.
 9.24—Soprano solo, "The Pipes of Pan" (Monckton), Miss Mabel Batchelor.
 9.32—Violin solo.
 9.40—Tenor solo, "The Poet's Song" ("La Boheme") (Puccini), Mr. Ernest Archer.
 9.48—Pianoforte solo.
 9.56—Sextette, "Lucia di Lammermoor" (Donizetti), Miss Mabel Batchelor, Mr. Ernest Archer, Mr. Wilfrid Thomas, Mrs. L. Hoard, Mr. G. C. Fitzpatrick, Mr. E. Butterworth.
 10.5—"God Save the King."
 10.10—Cross back to Farmer's Broadcasting Studios, Sydney, where dance music will be broadcast till 11.15 p.m., supplied by the 2FC Dance Band, conductor, Mr. Eric Pearce.
 11.15—Broadcast from the Wentworth Hotel, Sydney, Wentworth Cafe Dance Orchestra, under the baton of Mr. Sidney Simpson.
 12—National Anthem—Close down.

SUNDAY, JULY 18.

Morning Session.

- 7—Time Signals. The Chimes of 2FC and Announcements.
 7.5—Cricket scores, drawing of stumps at the 1st day's play Australia v. West of Scotland. These scores will be repeated at 8, 9 and 10 a.m.
 10.55—The Chimes of 2FC and Announcements.
 11—Broadcast from St. Stephen's Presbyterian Church, Phillip Street, morning service; preacher, Rev. Hugh Falon.
 12.15—From the Studio: News Session, and cricket scores.
 12.30—Close down.

Afternoon Session.

- 2.55—The Chimes of 2FC and Announcements.
 3—Broadcast from the Sydney Town Hall, Band Recital and Concert by the Metropolitan Band; musical director, Mr. J. Palmer. March, "Ravenswood" (Rimmer), Metropolitan Band.
 3.7—Bertonia solo, "Invictus" (Hubn), Mr. Alfred Cunningham.
 3.15—Cornet solo, "Softly Awakes My Heart" (Saint-Saens), Mr. Walter Lohy.
 3.23—Grand selection, "William Tell" (Rossini), Metropolitan Band.
 3.42—Violin solo, "Ave Maria" (Schubert), Miss Mary Judd.
 3.50—Soprano solo, "Shadow Song" ("Dinorah") (Meyerbeer), Miss Elsie Fearless.
 4—Interval.
 4.5—Selection, "The Mikado" (Sullivan), Metropolitan Band.
 4.7—Song, "The Windmill" (Nelson), Mr. Alfred Cunningham.
 4.25—Violin solo, "Introduction et Tarantelle" (Sarasate), Miss Mary Judd.
 4.33—(a) March ("Marengo") (Gou), (b) Andante, "Viva Celeste" (Baptiste), Metropolitan Band.

- 4.44—Waltz song, "The Beautiful Blue Danube" (Strauss), Miss Elsie Fearless.
 4.54—Quickstep, "Old Commodore" (Talke), Metropolitan Band.
 5—Close down.

Night Session.

- 6—The Chimes of 2FC and Announcements. Broadcast from the Studio: A Vocal Recital by arrangement with Mr. Clement Hosking. "Spring Song" (Pinault), Clement Hosking Quartette; song, "Mayday" (Ben-neth), Miss Sylvia Ley; song, "Glorious Devon" (German), Mr. George Brunner; songs, "Voices of the Woods" (Rubinstein), "Cuckoo" (Shaw), Miss Ethel Jones; "The Chapel" (Krentzer), Clement Hosking Quartette; song, "The Ash Grove" (Old Welsh), Miss Rita Keogh; "Open the Gates of the Temple" (Knapp); "On Wings of Song" (Mendelssohn), Mr. Frederick Turrell; songs, "My Boy Sammy" (Old Scotch), "The Rowan Tree" (Old Scotch), Miss Buntz Stuart; song, "The Shadowless Hour" (Cadmán), Mr. Russell Bix; song, "A Birthday" (Cowen), Miss Elsie Brown, "The Heart that once" (Old Irish), Clem-ent Hosking Quartette. Accompanist—Mrs. Kingston Hewitt.
 8.30—Broadcast from the Strand Theatre, Leichhardt: Leichhardt District Band, under the baton of Mr. E. P. Kerry.
 10—National Anthem. Close down.

MONDAY, JULY 19.

Early Morning Session.

- 7—Time Signals. The Chimes of 2FC & Announcements.
 7.5—Music from the Studio.
 7.10—"Sydney Morning Herald" News Service.
 7.40—Weather Information, Commercial News, Shipping Intelligence and Markets.
 8—Time Signals. Music from the Studio.
 8.15—Close down.
 Morning Session.
 9.15—The Chimes of 2FC and Announcements.
 9.20—Music from the Studio.
 9.45—A Morning Reading.
 10—Time Signals. Music from the Studio.
 10.5—Late "Sydney Morning Herald" News Service.
 10.15—Music from the Studio.
 11—Progress Cricket Talk.
 11.5—Cables.
 11.15—Musical Items.
 11.30—Close down.

Midday Session.

- 12—Time Signals. The Chimes of 2FC and Announcements.
 12.5—Stock Exchange—First Call.
 12.10—Music.
 1—Time Signals. Weather Information. Broadcast from the Pitt Street Congregational Church, Midday Organ Recital by Miss Lillian Frost.
 1.5—Cricket scores.
 1.10—"Evening News" Midday News Service.
 1.20—Rugby Wireless News.
 1.30—Stock Exchange—Second Call.
 1.35—Music from the Studio until 2 p.m.
 2—Time Signals. Close down.

Afternoon Session.

- 3.59—The Chimes of 2FC and Announcements.
 3.35—Recital on the Behning Player PIANO.
 3.50—From Farmer's Tea Room: The Oak Hall Trio (leader, Mr. Horace Kosta).

- 3.40—Miss Gladys Briggs, contralto, "Homing" (Du Riego).
 3.45—Oak Hall Trio.
 3.55—Musical Items from the Studio.
 4—From Farmer's Tea Rooms: Miss May Craven, soprano, "God Bless You" (Dickson).
 4.5—Oak Hall Trio.
 4.15—Musical Items from the Studio.
 4.20—From Farmer's Tea Rooms: Miss Gladys Briggs, contralto, "Still as the Night" (Bohm).
 4.25—Oak Hall Trio.
 4.35—Musical Items from the Studio.
 4.40—From Farmer's Tea Rooms: Miss May Craven, soprano, "Wake Up" (Phillips).
 4.45—Music from the Studio. Afternoon Call, Stock Exchange.
 5—Close down.

Early Evening Session.

- 6—The Chimes of 2FC, Time Signals.
 6.5—The "Hello Man" talks to the children.
 6.15—Broadcast from the Hotel Australia: Orchestral items.
 7.15—From the Studio: "Evening News" late news service. Weather & Sporting Information.
 7.30—Dalgy's Market Reports (wool, wheat, stock), Fruit and Vegetable Markets.

Night Session.

- 7.55—The Chimes of 2FC and Announcements.
 8—Broadcast from the Haymarket Theatre, Sydney: Operatic Orchestra, under the baton of Mr. Stanley Porter.
 8.15—Broadcast from Beale's Concert Salon, a programme supplied by the Royal Sydney Apollo Club; conductor, Mr. Arnold Mole.
 8.50—From the Studio: A talk by Mr. W. F. Jackson on "Continental Hotels, Meals, etc."
 9.5—From the Haymarket Theatre: Vocal Act.
 9.20—From the Studio: A novelty musical act by Miss Lois Evans and Dorreen Walsh.
 9.35—2FC Dance Band; conductor, Mr. Eric Pearce.
 9.45—Further items by Evans & Walsh.
 10—From the Haymarket Theatre: Items by the Operatic Orchestra.
 10.30—2FC Dance Band.
 10.44—Announcements.
 10.48—2FC Dance Band.
 11.15—Broadcast from the Wentworth Hotel, Sydney—Wentworth Cafe Dance Orchestra, under the baton of Mr. Sidney Simpson.
 12—National Anthem—Close down.

TUESDAY, JULY 20.

Early Morning Session.

- 7—The Chimes of 2FC and Announcements.
 7.5—Music from the Studio. Cricket scores Australia v. West of Scotland, 2nd day's play to the drawing of stumps. These scores will be repeated at 8 and 9 a.m.
 7.10—"Sydney Morning Herald" News Service.
 7.40—Weather Information, Commercial News, Shipping Intelligence and Markets.
 8—Time Signals. Music from the Studio. Cricket scores.
 8.15—Close down.

Morning Session.

- 9.15—The Chimes of 2FC and Announcements. Cricket scores.
 9.20—Musical Items from the Studio.
 9.45—A Morning Reading.
 10—Time Signals. Music from the Studio.
 10.4—Late "Sydney Morning Herald" News Service.
 10.15—Music from the Studio.

WEDNESDAY, JULY 21.

- 11—Progress Cricket Talk. Cables.
11.15—Cooking Talk.
11.30—Close down.

Midday Session.

- 12—Time Signals, The Chimes of 2FC and Announcements.
12.5—Stock Exchange—First Call.
12.10—Musical.
1—Time Signals.
1.5—Cricket scores.
1.10—"Evening News" Midday News Service.
1.20—Rugby Wireless News.
1.30—Stock Exchange—Second Call.
Broadcast from the Royal Exchange Building, a lecturette on the "Divining Rod—its history and significance," by Mr. H. G. Ruggatt, B.Sc., Department of Mines.

Afternoon Session.

- 2.30—The Chimes of 2FC and Announcements.
2.35—Recital by the Students of Hector Fleming.
3.30—From Farmer's Tea Rooms: The Oak Hall Trio (Leader, Mr. Horace Keats).
3.40—Miss Peggy Dunbar, mezzo, "My Dear Soul" (Sanderson).
3.45—Oak Hall Trio.
3.55—Musical Items from the Studio.
4—From Farmer's Tea Rooms: Miss Ilka Knight, soprano.
4.5—Oak Hall Trio.
4.15—Musical Items from the Studio.
4.20—From Farmer's Tea Rooms: Miss Peggy Dunbar, mezzo, "Salvum" (Lang).
4.25—Oak Hall Trio.
4.35—Musical Items from the Studio.
4.40—From Farmer's Tea Rooms: Miss Ilka Knight, soprano.
4.45—Music from the Studio. Afternoon Call Stock Exchange. Musical Items.
5—Close down.

Early Evening Session.

- 6—The Chimes of 2FC and Announcements.
6.5—The "Hello Man" talks to the children.
6.45—Broadcast from the Hotel Australia: Orchestral Items.
7.15—From the Studio: "Evening News" late news service. Weather & Sporting Information.
7.30—Dalgety's Market Reports (wool, wheat, stock), Fruit and Vegetable Markets.

Night Session.

- 7.55—The Chimes of 2FC and Announcements.
8—From the Studio: The Randwick Municipal Band.
8.20—Broadcast from Paling's Concert Hall, a programme submitted by the Royal Philharmonic Society, conducted by Joseph Bradley. Following choruses will be given from the opera "Aida," by Verdi (conductor, Mr. Joseph Bradley):—Chorus of Women (beginning of Act 2—"Aida"); Grand Finale of Act 2 for full chorus, with explanatory remarks.
8.55—From the Studio: Randwick Municipal Band.
9.10—From the Adyar Hall: Items from the Vocal Recital by Mr. Clement Hosking.
9.40—From the Studio: Randwick Municipal Band.
9.55—Miss Grace Savieri, entertainer.
10.2—Mr. Lionel Lawson, violin solos.
10.10—Miss Grace Savieri, entertainer.
10.18—M. Lionel Lawson, violin solos.
10.29—Announcements.
10.30—Broadcast from the Wentworth Hotel: Wentworth Cafe Dance Orchestra, under the baton of Mr. Sydney Simpson.
12—National Anthem—Close down.

Early Morning Session.

- 7—Time Signals, The Chimes of 2FC and Announcements.
7.5—Cricket scores. Australia v. West of Scotland. 3rd day's play in the drawing of stumps. These scores will be repeated at 8 and 9 a.m.
7.10—"Sydney Morning Herald" News Service.
7.40—Weather Information, Commercial News, Shipping Intelligence and Markets.
9—Time Signals. Music from the Studio. Cricket scores.
8.15—Close down.

Morning Session.

- 9.15—The Chimes of 2FC and Announcements. Cricket scores.
9.20—Music from the Studio.
9.45—A Morning Reading.
10.4—Late "Sydney Morning Herald" News Service.
10.15—Music from the Studio.
11—Progress Cricket Talk. Cables.
11.15—Cooking Talk.
11.30—Close down.

Midday Session.

- 12—The Chimes of 2FC and Announcements. Time Signals.
12.5—Stock Exchange—First Call.
12.10—Music from the Studio.
1—Time Signals.
1.5—Cricket scores.
1.10—"Evening News" Midday News Service.
1.20—Rugby Wireless News.
1.30—Stock Exchange—Second Call. Midday Meeting by the Gipsy Smith Evangelistic Campaign. Close down.

Afternoon Session.

- 2.30—The Chimes of 2FC and Announcements.
2.35—Items from the Lyric Winter Garden Orchestra; conductor, Mr. Alfred Moulton.
3.10—From the Studio: A Dickens Reading by Mr. A. S. Cochrane.
3.30—From Farmer's Tea Rooms: Oak Hall Trio (Leader, Mr. Horace Keats).
3.35—Miss Dorothy Benbow, contralto.
3.45—Oak Hall Trio.
3.55—Musical Items from the Studio.
4—From Farmer's Tea Rooms: Miss Eileen Crowley, soprano.
4.5—Oak Hall Trio.
4.15—Musical Items from the Studio.
4.20—From Farmer's Tea Rooms: Miss Dorothy Benbow, contralto.
4.25—Oak Hall Trio.
4.35—Musical Items from the Studio.
4.40—From Farmer's Tea Rooms: Miss Eileen Crowley, soprano.
4.44—Afternoon Call, Stock Exchange. Musical Items.
5—Close down.

Early Evening Session.

- 6—The Chimes of 2FC and Announcements.
6.5—The "Hello Man" talks to the children.
6.45—Broadcast from the Hotel Australia: Orchestral Items.
7.15—From the Studio: "Evening News" late news service. Weather Information and Sporting News.
7.30—Dalgety's Market Reports (wool, wheat, stock), Fruit and Vegetable Markets.
7.35—Mr. E. J. Van-de-Velde will continue his talk on Photography.

Night Session.

- 7.55—The Chimes of 2FC and Announcements.
8—Broadcast from the Lyric Wintergarden (by courtesy of Union Theatres Ltd.), orchestra under the baton of

Mr. Alfred Moulton.

- 8.30—From the Studio: Miss Jean Grant, soprano, and Mr. A. Champion, tenor—Duets.
8.35—Mr. Walter Kingsley, baritone.
8.43—Mr. Jack Lumsdaine, songs at the piano.
8.52—Mr. Arthur Champion, tenor.
8.52—Miss Jean Grant, soprano.
9—Broadcast for the first time in Australia, a game of Radio Auction Bridge, in which four players lead by Mr. W. F. H. Master will play through a selected hand of Bridge, of which the complete play will be broadcast. Mr. Master, who alone has the key to the perfect playing of this hand, will answer on the phone, and broadcast simultaneously, inquiries by listeners concerning the game played. The perfect hand as played by expert players in N.S.W. will be available to Bridge enthusiasts each week after the games are played every Wednesday.
9.30—Mr. Walter Kingsley, baritone. Duet by Miss Jean Grant, soprano, and Mr. Arthur Champion, tenor.
9.45—An address by Bishop Long, of Bathurst, on "Cancer and its danger to the community."
10—Mr. Jack Lumsdaine will play and sing the song written by him round the title selected by him from those suggested by listeners in the early part of the evening.
10.12—Broadcast from the Lyric Wintergarden: Orchestral Items.
10.40—Broadcast from the Wentworth Hotel: Wentworth Cafe Dance Orchestra, under the baton of Mr. Sydney Simpson.
12—National Anthem—Close down.

THURSDAY, JULY 22.

Early Morning Session.

- 7—The Chimes of 2FC and Announcements.
7.5—Cricket Scores—1st Day's Play—Australia versus Scotland—1st day's play to the drawing of stumps. These scores will be repeated at 8, 9, and 10 a.m.
7.10—"Sydney Morning Herald" News Service.
7.40—Weather Information, Commercial News, Shipping Intelligence, and Markets.
8—Time Signals—Music from the Studio.
8.15—Close down.

Morning Session.

- 9.15—The Chimes of 2FC and Announcements.
9.20—Music from the Studio.
9.45—A Morning Reading.
10—Time Signals—Music from the Studio.
10.4—Late "Sydney Morning Herald" News Service.
10.15—Music from the Studio.
11—Progress Cricket Talk: Cables.
11.15—Music.
11.30—Close down.

Midday Session.

- 12—The Chimes of 2FC and Announcements.
12.5—Stock Exchange. First Call.
12.10—Music from the Studio.
1—Time Signals.
1.5—Cricket Scores.
1.10—"Evening News" Midday News Service.
1.20—Rugby Wireless News.
1.30—Stock Exchange. Second Call.
1.30—Music from the Studio.
2—Close down.

Afternoon Session.

- 2.35—The Chimes of 2FC and Announcements. A review of New Records.
3.30—From Farmer's Tea Rooms—Oak Hall Trio (Leader: Mr. Horace Keats).
3.40—Miss Joan Shorter, soprano.
3.45—Oak Hall Trio.
3.55—Musical Items from the Studio.
4—From the Tea Rooms—Miss Eileen Temple, contralto: "Luckaday" (Crampton).

- 4.5—Oak Hall Trio.
 4.15—Music from the Studio.
 4.20—From Farmer's Tea Rooms—Miss Joan Shorter, soprano.
 4.25—Oak Hall Trio.
 4.35—Musical Items from the Studio.
 4.40—From Farmer's Tea Rooms, Miss Eileen Semple, contralto: "If my songs were only wined" (Hugo).
 4.44—Afternoon Call Stock Exchange.
 4.45—Musical Items from the Studio.
 5—Close Down.

Early Evening Session.

- 4.—The Chimes of 2FC and Announcements.
 6.5—The "Hello Man" talks to the children.
 6.45—Broadcast from the Hotel Australia: Musical Items.
 7.15—From the Studio—"Evening News" Late News Service; Weather Information and Sporting Information.
 7.40—Daily Market Reports (wheat, wheat, stock), Fruit and Vegetable Markets.
 7.46—Final Talk on Shakespearean subjects set down by the Department of Education. Mr. Walter Hunt will complete the series by dealing with the Subject "Richard II."

Night Session.

- 7.55—The Chimes of 2FC and Announcements.
 8—Sydney Instrumental Trio, will join in with Livingstone Mast in supplying a programme of Celtic Music.
 8.12—Soprano.
 8.20—Mr. Lindley Evans—Piano solos.
 8.32—Baritone solos.
 8.42—Mr. Gladstone Bell—cello solos.
 8.52—Soprano.
 9—Sydney Instrumental Trio.
 9.12—Popular French Talk, by Mons. Maurice Bryn.
 9.24—Mr. Ad. Croc—Scotch comedians.
 9.30—Soprano solos.
 9.42—A One Act Comedy by Montgomerie Stuart, assisted by Myra Leard.
 10—Mr. Ad. Croc—Scotch comedians.
 10.10—Baritone solos.
 10.18—Mr. Stuart in humorous recitation.
 10.30—Broadcast from the Westworth Cafe—Westworth Cafe Dance Orchestra, under the baton of Mr. Danby Simpson.
 12—Close down.

2BL

BROADCASTER (SYDNEY) LTD.
 Call Sign, 2BL. Wavelength, 353 metres.

FRIDAY, JULY 16.

Early Morning Session.

- 7.15—Daily Dozen Exercises.
 7.35—Music from the Studio.
 7.39—Broadcasters News Service, including News from Rugby.
 7.56—Music from the Studio.
 8—G.P.O. Clock and Chimes; Close down.

Morning Session.

- 10—G.P.O. Clock and Chimes; Special News Service from "The Daily Telegraph."
 11—G.P.O. Clock and Chimes; Special Cricket Session.
 11.5—Music from the Studio.
 11.15—Markets.
 11.20—London Metal Quotations.
 11.25—Broadcasters Information Service, including, Mails, Shipping, Weather, Rainfall, Social Fixtures for the following day.
 11.40—Music from the Studio.
 11.50—News from "Sun" Cable Edition.
 12—G.P.O. Clock and Chimes; Talks to Women, by Mrs. Jordan.
 12.30—Morning Calls from the Stock Exchange.
 12.45—Luncheon Orchestras.
 1.30—Sydney Stock Exchange Calls.

- 1.45—Latest Sporting Information from "The Sun."
 2—G.P.O. Clock and Chimes; Close down.

Afternoon Session.

- 3—G.P.O. Clock and Chimes; Weather Report and Social Notes from the "Sun."
 3.15—Music from the Studio.
 3.30—Mr. J. M. Prentice will speak on Modern English Poetry.
 3.45—Hillier's Orchestra, under the direction of Caryl Castling.
 4—G.P.O. Clock and Chimes; Music from the Studio.
 4.30—G.P.O. Clock and Chimes; Serial Story entitled The Seventh Hour.
 4.45—Music from the Studio.
 4.55—G.P.O. Clock and Chimes; the "Sun" News Service.
 5.15—G.P.O. Clock and Chimes. Close down.

Early Evening Session.

- 6—G.P.O. Clock and Chimes; Sporting Resume from the "Sun" Newspapers; the pupils of Miss Monica Scully will entertain the kiddies.
 6.45—Broadcasters' Dinner Orchestra.
 7.15—Talk on land subjects.
 7.25—Australian Mercantile Land & Finance Co.'s Stock and Wool Report.
 7.37—Stock Exchange Reports.
 7.41—Grain and Fodder Reports.
 7.45—News (country) from "The Sun."
 7.55—Close down.

Evening Session.

- 8—G.P.O. Clock and Chimes; Concert from the Studio; Round the World Travologue, by Mr. J. M. Prentice; Palm Grove Orchestra, under the direction of Stan Floweringham; Cec. Morrison and his Glenorchers.
 12—G.P.O. Clock and Chimes; Close down.

SATURDAY, JULY 17.

Early Morning Session.

- 7.15—Daily Dozen Exercises.
 7.35—Music from the Studio.
 7.39—Broadcasters' News Service, including News from Rugby.
 7.56—Music from the Studio.
 8—G.P.O. Clock and Chimes; Close down.

Morning Session.

- 10—G.P.O. Clock and Chimes; Special News Service from "The Daily Telegraph."
 10.15—Music from the Studio.
 11—G.P.O. Clock and Chimes; Special Cricket Session.
 11.5—Music from the Studio.
 11.15—Markets.
 11.20—London Metal Quotations.
 11.25—Broadcasters' Information Service, including, Mails, Shipping, Weather, Rainfall, Social Fixtures for the following day.
 11.40—Music from the Studio.
 11.50—News from "Sun" Cable Edition.
 12—G.P.O. Clock and Chimes; Talks to Women.
 12.30—Morning Calls from the Stock Exchange; News Reports from "Sun" Office; Race Results; News Reports from "Sun" Office.

Afternoon Session.

- 2—G.P.O. Clock and Chimes; Special Sporting Information broadcast direct from "The Sun" Office.
 5.15—G.P.O. Clock and Chimes. Close down.

Early Evening Session.

- 6—G.P.O. Clock and Chimes; Uncle George and the Kiddies.
 7.15—Results of Football, Lacrosse and Sporting Information.
 7.30—Country News from "The Sun."
 7.45—Close down.

Evening Session.

- 8—G.P.O. Clock and Chimes; Concert from the Studio, including the following artists:

- Mr. Fred R. Gough; Mr. Lance Jeffers; Mr. and Mrs. Sid. Owen; Emure Theatre Symphony Orchestra, Conductor, Mr. F. Watkins.
 12—G.P.O. Clock and Chimes; Close down.

SUNDAY, JULY 18.

- 10.55—Special Cricket Session.
 11—Service broadcast from Scot's Church, Hill—Centenary Commemorative Service.
 3.30—Bible Class, conducted by Mr. W. "Calro" Bradley.
 4—Manly Municipal Band.
 5—G.P.O. Clock and Chimes; Uncle George and the Kiddies.
 6.30—Newtown Congregational Church.
 8.30—Concert from the Studio.

MONDAY, JULY 19.

Early Morning Session.

- 7.15—Daily Dozen Exercises.
 7.35—Music from the Studio.
 7.39—Broadcasters' News Service, including News from Rugby.
 7.56—Music from the Studio.
 8—G.P.O. Clock and Chimes; Close down.

Morning Session.

- 10—G.P.O. Clock and Chimes; Special News Service from "The Daily Telegraph."
 10.15—Music from the Studio.
 11—G.P.O. Clock and Chimes; Special Cricket Session.
 11.5—Music from the Studio.

Markets.

- 11.20—London Metal Quotations.
 11.25—Broadcasters' Information Service, including, Mails, Shipping, Weather, Rainfall, Social Fixtures for the following day.
 11.40—Music from the Studio.
 11.50—News from "Sun" Cable Edition.
 12—G.P.O. Clock and Chimes; Talks to Women.

- 12.30—Morning Calls from the Stock Exchange, 12.45—Luncheon Orchestras.
 1.30—Sydney Stock Exchange Calls.
 1.45—Latest Sporting Information from "The Sun."

- 2—G.P.O. Clock and Chimes; Close down.

Afternoon Session.

- 3—G.P.O. Clock and Chimes; Weather Report and Social Notes from "The Sun."
 3.15—David Jones' Tea Room Trio.
 3.30—G.P.O. Clock and Chimes; Philosophic Talk, by Mr. J. M. Prentice.
 3.45—Music from the Studio.
 4—G.P.O. Clock and Chimes; David Jones' Tea Room Trio.

- 4.15—Music from the Studio.
 4.30—G.P.O. Clock and Chimes; Serial Story entitled The Seventh Hour.
 4.45—Music from the Studio.
 4.55—Late Market Reports from the Sun.
 5—G.P.O. Clock and Chimes; "Sun News Service."

- 5.15—G.P.O. Clock and Chimes; Close down.

Early Evening Session.

- 6—G.P.O. Clock and Chimes; Uncle George and the Kiddies.
 7.15—Talk on Land Subjects.
 7.25—Australian Mercantile Land & Finance Co. Ltd., Stock and Wool Report.
 7.30—Stock Exchange Reports.

- 7.37—Producers' Distributing Society's Fruit and Vegetable Report.
 7.41—Grain and Fodder Reports.
 7.45—News (Country) from "The Sun."
 7.55—Close down.

Evening Session.

- 8—G.P.O. Clock and Chimes; Concert from the Studio, including the following artists: Miss Heather Kinnaird; Mr. Harpur; Miss Leonore Gotch; Newtown Band, broadcast from Herby Chambers; Al. Hammett and The Ambassadors' Dance Orchestra; broadcast from the Ambassadors. During the intervals between dances, there will be social notes and a description of frocks by Mrs. Potts.
 12—G.P.O. Clock and Chimes; National Anthem.

TUESDAY, JULY 20.

Early Morning Session.

- 7.15—Daily Dogen Exercises.
- 7.35—Music from the Studio.
- 7.39—Broadcasters' News Service, including News from Rugby.
- 7.56—Music from the Studio.
- 8—G.P.O. Clock and Chimes; Close down.

Morning Session.

- 10—G.P.O. Clock and Chimes; Special News Service from "The Daily Telegraph."
- 10.15—Music from the Studio.
- 11—G.P.O. Clock and Chimes; Special Cricket Session.
- 11.5—Music from the Studio.
- 11.15—Markets.
- 11.20—London Metal Quotations.
- 11.25—Broadcasters' Information Service, including Mails, Shipping, Weather, Rainfall, Social Fixtures for the following day.
- 11.40—Music from the Studio.
- 11.50—News from "Sun" Cable Edition.
- 12—G.P.O. Clock and Chimes; Talks to Women.
- 12.30—Morning Calls from the Stock Exchange.
- 12.45—Luncheon Orchestra.
- 1.30—Sydney Stock Exchange Calls.
- 1.45—Latest Sporting Information from "The Sun."
- 2—G.P.O. Clock and Chimes; Close down.

Afternoon Session.

- 3—G.P.O. Clock and Chimes; Weather Report and Social Notes from the Sun.
- 3.15—Music from the Studio.
- 3.30—G.P.O. Clock and Chimes.
- 3.45—Music from the Studio.
- 4—G.P.O. Clock and Chimes; Music from the Studio.
- 4.30—G.P.O. Clock and Chimes; Serial Story entitled "The Seventh Hunch."
- 4.45—Music from the Studio.
- 4.55—Late Market Reports from The Sun.
- 5—G.P.O. Clock and Chimes; Sun News Service.
- 5.15—G.P.O. Clock and Chimes; Close down.

Early Evening Session.

- 6—G.P.O. Clock and Chimes; Uncle Jack and the Kiddies.
- 7.15—Talk on Land Subjects.
- 7.25—Australian Mercantile Land & Finance Co.'s Stock and Wool Report.
- 7.30—Stock Exchange Reports.
- 7.37—Producers' Distributing Society's Fruit and Vegetable Report.
- 7.51—Grain and Fodder Reports.
- 7.45—News (Country), from "The Sun."
- 7.55—Close down.

Evening Session.

- 8—G.P.O. Clock and Chimes; Concert from the Studio, including the following artists: Mr. Norman Janson; Miss Helen Stewart; Mr. Leslie MacCallum; Hoy's Imperial Orchestra, under the direction of Mr. Lionel Hart, broadcast from Hoy's Theatre.
- 12—G.P.O. Clock and Chimes; National Anthem.

WEDNESDAY, JULY 21.

Early Morning Session.

- 7.15—Daily Dogen Exercises.
- 7.35—Music from the Studio.
- 7.39—Broadcasters' News Service, including News from Rugby.
- 7.56—Music from the Studio.
- 8—G.P.O. Clock and Chimes; Close down.

Morning Session.

- 10—G.P.O. Clock and Chimes; Special News Service from "The Daily Telegraph."
- 10.15—Music from the Studio.
- 11—G.P.O. Clock and Chimes; Special Cricket Session.
- 11.5—Music from the Studio.
- 11.15—Markets.
- 11.20—London Metal Quotations.
- 11.25—Broadcasters' Information Service, including Mails, Shipping, Weather, Rainfall, Social Fixtures for the following day.
- 11.40—Music from the Studio.

- 11.50—News from "Sun" Cable Edition.
- 12—G.P.O. Clock and Chimes; Talks to Women.
- 12.30—Morning Calls from the Stock Exchange.
- 12.45—Luncheon Orchestra.
- 1.30—Sydney Stock Exchange Calls.
- 1.45—Latest Sporting Information from "The Sun."
- 2—G.P.O. Clock and Chimes; Close down.

Afternoon Session.

- 3—G.P.O. Clock and Chimes; Weather Report and Social Notes from the Sun.
- 3.15—Broadcasters' Trio.
- 3.30—G.P.O. Clock and Chimes; Special Operatic Talk by Mr. J. M. Prentice.
- 4—G.P.O. Clock and Chimes; Broadcasters' Trio.
- 4.30—G.P.O. Clock and Chimes; Serial Story entitled "The Seventh Hunch."
- 4.45—Broadcasters' Trio.
- 4.55—Late Market Reports from The Sun.
- 5—G.P.O. Clock and Chimes; Sun News Service.
- 5.15—G.P.O. Clock and Chimes; Close down.

Early Evening Session.

- 6—G.P.O. Clock and Chimes; Uncle George and the Kiddies.
- 7.15—Talk on Land Subjects.
- 7.25—Australian Mercantile Land & Finance Co. Ltd., Stock and Wool Report.
- 7.30—Stock Exchange Reports.
- 7.37—Producers' Distributing Society's Fruit and Vegetable Reports.
- 7.45—News (Country) from "The Sun."
- 7.55—Close down.

Evening Session.

- 8—G.P.O. Clock and Chimes; Mr. Frank Marshall, B.Sc., will talk on "Radium in the Treatment of Cancerous Regions"; Mr. J. M. Prentice will speak on Foreign Affairs; Items by Messrs. Wilfred Arlton and Moore MacMahon, broadcast from The Conservatorium Hall; Cec. Morrison and his Gnomes, broadcast from the Bondi Casino until midnight.
- 12—G.P.O. Clock and Chimes; National Anthem.

THURSDAY, JULY 22.

Early Morning Session.

- 7.15—Daily Dogen Exercises.
- 7.35—Music from the Studio.
- 7.39—Broadcasters' News Service, including News from Rugby.
- 7.56—Music from the Studio.
- 8—G.P.O. Clock and Chimes; Close down.

Morning Session.

- 10—G.P.O. Clock and Chimes; Special News Service from "The Daily Telegraph."
- 10.15—Music from the Studio.
- 11—G.P.O. Clock and Chimes; Special Cricket Session.
- 11.5—Music from the Studio.
- 11.15—Markets.
- 11.20—London Metal Quotations.
- 11.25—Broadcasters' Information Service, including Mails, Shipping, Weather, Rainfall, Social Fixtures for the following day.
- 11.40—Music from the Studio.
- 11.50—News from "Sun" Cable Edition.
- 12—G.P.O. Clock and Chimes; Talks to Women.
- 12.30—Morning Calls from the Stock Exchange.
- 12.45—Luncheon Orchestra.
- 1.30—Sydney Stock Exchange Calls.
- 1.45—Latest Sporting Information from "The Sun."
- 2—G.P.O. Clock and Chimes; Close down.

Afternoon Session.

- 3—G.P.O. Clock and Chimes; Weather Report and Social Notes from "The Sun."
- 3.15—David Jones' Tea Room Trio.
- 3.30—Music from the Studio.
- 4—G.P.O. Clock and Chimes; David Jones' Tea Room Trio.
- 4.15—Music from the Studio.
- 4.30—Serial Story entitled "The Seventh Hunch."
- 4.45—Music from the Studio.
- 4.55—Late Market Reports from "The Sun."
- 5—G.P.O. Clock and Chimes; "Sun" News Service.
- 5.15—G.P.O. Clock and Chimes; Close down.

Early Evening Session.

- 6—G.P.O. Clock and Chimes; Uncle Jack and the Kiddies.
- 7.15—Talk on Land Subjects.
- 7.25—Australian Mercantile Land & Finance Co.'s Stock and Wool Report.
- 7.30—Stock Exchange Reports.
- 7.37—Producers' Distributing Society's Fruit and Vegetable Report.
- 7.45—News (Country) from "The Sun."
- 7.55—Close down.
- 8—G.P.O. Clock and Chimes; Concert from the Studio including the following artists: Ambassadors Salon Quartette; Mr. W. E. Lewis, baritone; Miss Dulcie Blair, violinist; Miss Dorrie Ward, mezzo soprano; Mr. Reg. Harrison, comedian; Resume of following day's Programme; Weather Report and Forecast by courtesy of Mr. C. J. Mars, Govt. Meteorologist; Duet: Miss Ward and Mr. Lewis; Mr. Norman Wright; Mr. Bryce Carter, cello solo; Lecture from the Studio; Broadcasters' Trio; News Reports by courtesy of "Sun" Newspapers; Al. Hammett and The Ambassadors until Midnight.
- 12—G.P.O. Clock and Chimes; National Anthem.

2BE

BURGIN ELECTRIC COMPANY LTD.

Wavelength, 316 metres. Power 100 watts. Every Monday and Thursday evening, from 6.30 p.m. to 9 p.m.
6.30 to 7.30—Meatime Music, consisting of vocal and orchestral items.
7.30 to 9—Lectures, orchestral and vocal items.
2BE will be glad to get into touch with artists willing to give their services to this station.

2HD ('B' CLASS).

H. A. DOUGLAS, NEWCASTLE.
Wavelength, 288 metres. Power, 50 watts.
Transmits from 10 p.m. to 11.30 p.m. daily. Sundays and holidays, 7 p.m. to 10.30 p.m. Vocal and instrumental items, Edison Diamond Disk gramophone, Duo-Art Electric piano, lectures, etc.

5CL

CENTRAL BROADCASTERS LTD.

Call Sign, 5CL. Wavelength, 396 metres. Input, 5 K.W.
FRIDAY, JULY 16.

Morning Session (11.30 a.m. to 2 p.m.)

- 11.30—G.P.O. Chimes.
- 11.31—Featuring a Stack Duo Art number.
- 11.40—"Advertiser" News Service.
- 12—G.P.O. Chimes.
- 12.1—News and Cable Service.
- 12.15—Featuring a Stack Duo Art number: The 5CL Studio Orchestra Selection; cornet solo; fox trot.
- 1—G.P.O. Chimes.
- 1.1—Relay from Adelaide Town Hall, Community Singing.
- 1.55—S. C. Ward & Co.'s Stock Exchange Intelligence and Official Weather Synopsis and Station Announcement.
- 2—G.P.O. Chimes.

Afternoon Session (3 to 5).

- 3—G.P.O. Chimes.
- 3.1—Relay from Maple Leaf Cafe: Orchestral numbers.
- 3.45—Broadcast from Studio: Serial Story.
- 4—G.P.O. Chimes.
- 4.1—Broadcast from Arcadia Cafe: Orchestral numbers.

4.55—Stock Exchange Reports, General Information and Station Announcements.
5—G.P.O. Chimes.

Evening Session (6.30 to 10.30).

5.30—G.P.O. Chimes.
6.31—Bedtime Stories for the Children.
7.30—Stock Exchange, Market Reports and Station Announcements.
7.40—Sporting Talk by "Old Timer."
9—G.P.O. Chimes.
9.1—Programme of popular numbers by Merry-makers' Orchestra, interspersed with vocal numbers.
10.15—Advertiser News Service, International Cricket and General Information.
10.30—Studio Concert Continued.
11—G.P.O. Chimes
11.1—Station Announcements.
11.2—National Anthem, Close down.

SATURDAY, JULY 17.

Morning Session.

10.30—G.P.O. Chimes.
10.31—The SCL Studio Orchestra will play—Overture; violin solo; fox trot; oriental; Spanish Dance; waltz; cornet solo; waltz; finale.
11.45—Station Announcements.

Afternoon Session.

*A.1. Grade football results and sporting when available.

Evening Session.

6.30—G.P.O. Chimes.
6.31—Bedtime Stories for the Children.
7.30—Racing Returns; Football Results and General Sporting Information.
8—G.P.O. Chimes.
8.1—Song, Mr. James.
8.5—Relay from Palais Royal—Tom Swift's Palais Royal Orchestra.
8.15—Song, Miss Wheeler.
9—G.P.O. Chimes.
9.1—Relay from Palais Royal.
9.25—Song, Mr. James.
9.30—Song, Mr. James.
9.35—Relay from Palais Royal.
10.15—Review of Sporting Results.
10.30—Song, Miss Wheeler.
10.35—Relay from Palais Royal.
11—G.P.O. Chimes.
11.1—Station Announcements; National Anthem; Close down.

SUNDAY, JULY 18.

Morning Session:

10.55—Relay from Black Forest Methodist Church—Divine Service.

Afternoon Session.

1—Relay from Exhibition Building—Minds Revolt Concert.

Evening Session:

6.30—G.P.O. Chimes.
6.31—Sunday Story for the Children by Uncle Radio.
6.35—Relay from St. Peter's Cathedral—Divine Service.
8—From the Studio—Holden's Silver Band.
8.20—Mr. P. H. Nichols will speak on "A Confession of Faith."
9—G.P.O. Chimes.
9.1—Holden's Silver Band, continued; Station Announcements; Close down.

MONDAY, JULY 19.

Morning Session (11.30 a.m. to 2 p.m.)

11.30—G.P.O. Chimes.
11.31—Featuring a Steek Duo Art number.
12—G.P.O. Chimes.
12.1—News and Cable Service.
12.16—Featuring a Steek Duo Art number; SCL Studio Orchestra will play: Overture; cornet solo; fox trot; waltz; "Three Four Value"; selection; violin solo; "Men of Sparta"; finale.

1.55—S. C. Ward & Co.'s Stock Exchange Intelligence and Official Weather Synopsis and Station Announcements.
2—G.P.O. Chimes.

Afternoon Session. (3 to 5).

3—G.P.O. Chimes.
3.1—Relay from Maple Leaf Cafe: Orchestral numbers.
3.45—Broadcast from Studio: Serial Story.
4—G.P.O. Chimes.
4.1—Broadcast from Arcadia Cafe: Orchestral numbers.
4.55—Stock Exchange Reports, General Information and Station Announcements.
5—G.P.O. Chimes.

Evening Session (6.30 to 10.30).

6.30—G.P.O. Chimes.
6.31—Bedtime Stories for the Children.
7.40—Dentistry Talk by Mr. Dungey.
7.50—"The History of Leather," given by Mr. J. Alexander.
8—Relay from S.A. Railways Institute—Programme of hand music by South Australian Railways Band, interspersed with vocal items from the Studio by Messrs. Skinner and Broadland Broke, and Miss Grace Casson, A.T.C.L.; Miss Marie Coghill (violinist).
8.20—Frinkler's Boys' Club; The Havenah Synopsators Continued.
11—G.P.O. Chimes.
11.1—Station Announcements.
11.2—National Anthem, Close down.

TUESDAY, JULY 20.

Morning Session (11.30 a.m. to 2 p.m.)

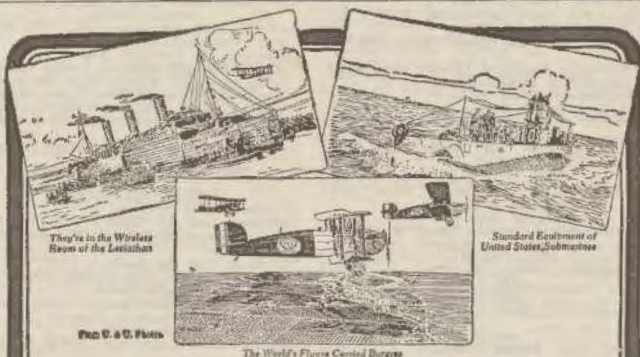
11.30—G.P.O. Chimes.
11.31—Featuring a Steek Duo Art number.
12—G.P.O. Chimes.
12.1—News and Cable Service.
12.16—Featuring a Steek Duo Art number; SCL Studio Orchestra will play: Selection; cello solo; fox trot; waltz; suite; waltz; cornet solo; selection; finale.
1.55—S. C. Ward & Co.'s Stock Exchange Intelligence, Official Weather Synopsis and Station Announcements.
2—G.P.O. Chimes.

Afternoon Session. (3 to 5).

3—G.P.O. Chimes.
3.1—Relay from Maple Leaf Cafe: Orchestral Numbers.
3.45—Broadcast from Studio: Serial Story.
4—G.P.O. Chimes.
4.1—Broadcast from Arcadia Cafe: Orchestral Numbers.
4.55—Stock Exchange Reports, General Information and Station Announcements.
5—G.P.O. Chimes.

Evening Session (6.30 to 10.30).

6.30—G.P.O. Chimes.
6.31—Bedtime Stories.
7.30—Stock Exchange, Market Reports and



The Adventures of BURGESS RADIO BATTERIES

Remarkable are the adventures of Burgess Radio Batteries. And where there's danger—upon, above, or below the earth, sky and sea, will be found Burgess Batteries—laboratory products.

"Ask Any Radio Engineer"

Obtainable only from Quality Radio Dealers.

Wholesale: New System Telephones Pty. Ltd.

BURGESS—"They're on the Leviathan"—BATTERIES

Station Announcements.

- 7.40—Milling Talk, by Mr. Jackett.
- 8—G.P.O. Chimes.
- 8.1—Reading from Dante Alighieri's divine comedy "The Inferno," with atmospheric music.
- 9.3—Programme of popular numbers by the "Cadenza" Quartette, interspersed with vocal numbers.
- 10.30—"Cadenza" Quartette, continued.
- 11—G.P.O. Chimes.
- 11.1—Station Announcements; Close down.

WEDNESDAY, JULY 21.

Morning Session (11.30 a.m. to 2 p.m.)

- 11.30—G.P.O. Chimes.
- 11.31—Steck Duo Art and Aeolian Vocalion Recitals.
- 12—G.P.O. Chimes.
- 12.1—News and Cable Service.
- 12.16—Featuring a Steck Duo Art number; 5CL Studio Orchestra will play: Overture; cornet solo; fox trot; waltz; suite; instrumental trio; selection; intermezzo; finale.
- 1.35—S. C. Ward & Co.'s Stock Exchange Intelligence, Official Weather Synopsis, and Station Announcements.

Afternoon Session. (3 to 5).

- 3—G.P.O. Chimes.
- 3.1—Broadcast from Maple Leaf Cafe: Orchestral Numbers.
- 3.45—Serial Story from the Studio.
- 4—G.P.O. Chimes.
- 4.1—Relay from Arcadia Cafe: Orchestral numbers.
- 4.55—Stock Exchange Reports, General Information and Station Announcements.
- 5—G.P.O. Chimes.

Evening Session (6.30 to 10.30).

- 6.30—G.P.O. Chimes.
- 6.31—Featuring Steck Duo Art Numbers.
- 7.30—Stock Exchange, Market Reports; Station Announcements.
- 7.40—Boy Scouts Corner.
- 8—G.P.O. Chimes.
- 8.1—Relay from Palais Royal—Tom Swift's Palais Royal Orchestra will be heard in a series of dance numbers, interspersed with vocal items.
- 10.15—Advertiser News Service; International Cricket Scores.
- 10.30—Relay from the Palais Royal, continued.
- 11—G.P.O. Chimes.
- 11.1—Station Announcements; Close down.

THURSDAY, JULY 22.

Morning Session.

- 11.40—G.P.O. Chimes.
- 11.41—Featuring a Steck Duo Art number.
- 11.40—"Advertiser" News Service.
- 11.55—Vocalion Number.
- 12—G.P.O. Chimes.
- 12.1—"Advertiser" News Service.
- 12.18—Featuring a Steck Duo Art number; 5CL Studio Orchestra will play: Selection; violin solo; fox trot; waltz; suite; intermezzo; instrumental trio; selection; finale.
- 1.55—Ward & Co.'s Stock Exchange Intelligence, Official weather synopsis, and station announcements.
- 2—G.P.O. Chimes.

Afternoon Session.

- 3—G.P.O. Chimes.
- 3.1—Relay from Maple Leaf Cafe, orchestral numbers.
- 3.45—Broadcast from Studio, Serial Story.
- 4—G.P.O. Chimes.
- 4.1—Broadcast from Arcadia Cafe, orchestral numbers.

4.55—Stock Exchange Reports, general information, and station announcements.

5—G.P.O. Chimes.

Evening Session.

- 6.30—G.P.O. Chimes.
- 6.31—Bedtime Stories.
- 7.15—Health Talk by Mr. A. M. Whittenbury.
- 7.30—Market Reports.
- 7.40—Poultry Talk by Mr. A. M. Whittenbury.
- 8—Studio Orchestra will be heard in a series of classical numbers, interspersed with vocal items.
- 9.3—Studio Orchestra, continued.
- 10.21—"Advertiser" News Service.
- 10.30—Studio Orchestra, Continued.
- 11—G.P.O. Chimes; National Anthem; Good Night.

7ZL

HOBART.

Wave Length, 535 metres. Temporary Power, 250 watts.

FRIDAY, JULY 16.

Morning Session.

- 11—"The Mercury" News, Stock Market, Shipping, Commercial Intelligence, Weather Information, Records from the Studio.
- 12—Time Signal.

Afternoon Session.

- 3—Musical Items from the Studio; Weather Forecasts.
- 3.30—Hobart Stock Exchange Quotations.
- 4—Time Signals.

Early Evening Session.

- 7—Children's Corner by "Big Brother."

Evening Session.

- 8—"The Mercury" Special Tasmanian News Service; Railway Auction Produce Sales; Weather Information.
- 8.5—Hobart Stock Exchange Quotations.
- 8.10—Weekly Gardening Chat by Mr. G. Nation.
- 8.20—"Sports Budget" supplied by M. T. W. Newton, of Hobart Sports Depot.
- 8.30—Miss Ruby Piesse, accompanist; Missa Gwenda Bidencope, mezzo contralto; Miss Dugma Moore, elocutionist; Miss Heather Moore, violinist; Mr. Jack Broadbent, baritone.
- 9.50—"The Mercury" Special Interstate News Service; Weather Synopsis; Station Announcements; National Anthem.

SATURDAY, JULY 17.

Morning Session.

- 11—"The Mercury" News, Stock Market; Shipping, Commercial Intelligence; Weather Information and Sporting Anticipations; Records from the Studio.
- 11.45—Hobart Stock Exchange Quotations.
- 12—Time Signal.

Early Evening Session.

- 7—The Children's Corner by "Big Brother."

Evening Session.

- 8—"The Mercury" special Tasmanian News Service; Railway Auction Produce Sales; Weather Information and Sporting Results.
- 8.5—Hobart Stock Exchange Quotations.
- 8.10—"Come to Tasmania Movement," by Mr. P. J. Batt, Commodore Derwent, Sailing Squadron, "Yachting in Tasmania."
- 8.20—Palais de Danse Band, City Hall.
- 9.50—"The Mercury" Special Interstate News Service; Weather Synopsis; Station Announcements. Close down.

SUNDAY, JULY 18.

Evening Session.

- 7—Service from Memorial Church, Hobart.

Preacher: Reverend Arthur C. Nelson. Subject: Envy.

- 8.45—Concert from the Studio: Miss Ruby Piesse, pianist; Miss Frances Evans, contralto; Mr. W. E. Fuller, recital; Twenty Gallons of Sleep (Story); Master Victor Pharoah, banjo; Mr. Ch. G. Tennant, baritone.

- 9.45—"The Mercury" Special Interstate News Service; Weather Synopsis; Station Announcements, National Anthem.

MONDAY, JULY 19.

Morning Session.

- 11—"The Mercury" News; Stock Market; Shipping; Commercial Intelligence; Weather Information; Records from the Studio.
- 12—Time Signal.

Afternoon Session.

- 3—Musical Items from the Studio; Weather Information.
- 3.30—Hobart Stock Exchange Quotations.
- 4—Time Signal.

Early Evening Session.

- 7—Children's Corner by "Big Brother."

Evening Session.

- 8—"The Mercury" Special Tasmanian News Service; Railway Auction Produce Sales; Weather Forecasts.
- 8.5—Hobart Stock Exchange Quotations.
- 8.10—Miss M. L. Reid, subject: The Tale of a Shirt.
- 8.20—Miss Ruby Piesse, accompanist; Miss Joan Dodds, elocutionist; Miss Hubbard, soprano; Mr. Jack Broadbent, baritone; Mr. Maurice Lauda, accompanist; Mr. William P. Harwood, baritone.
- 9.50—"The Mercury" Special Interstate News Service; Weather Synopsis; Station Announcements, National Anthem.

TUESDAY, JULY 20.

Morning Session.

- 11—"The Mercury" News; Stock Market; Shipping; Commercial Intelligence; Weather Information; Records from the Studio.
- 12—Time Signal.

Afternoon Session.

- 3—Musical Items from the Studio; Weather Information.
- 3.30—Hobart Stock Exchange Quotations.
- 4—Time Signal.

Early Evening Session.

- 7—Children's Corner by "Big Brother."
- 7.15—"The Adventures of George the Bookshelf Cat," "The Cats and the Canaries," by Aunt Stella.

Evening Session.

- 8—"The Mercury" Special Tasmanian News Service; Railway Auction Produce Sales; Weather Information.
- 8.5—Hobart Stock Exchange Quotations.
- 8.10—Library Lapses and Library Lists, by Mr. W. E. Fuller.
- 8.30—Musical Items from the Studio; special request numbers.
- 9—Photographic Talk by Mr. Ch. H. Sims, of Kodak Ltd., Hobart; Making Photographic Enlargements.
- 9.20—Musical Items from the Studio; special request numbers.
- 9.50—"The Mercury" Special Interstate News Service; Weather Synopsis; Station Announcements, National Anthem.

WEDNESDAY, JULY 21.

Morning Session.

- 11—"The Mercury" News; Stock Market; Shipping; Commercial Intelligence; Weather Information and Sporting Anticipations. Records from the Studio.
- 12—Time Signal.

Afternoon Session.

- 3—Musical Items from the Studio; Weather

Information. Story from "Illustrated Tasmanian Mail."

3.30—Hobart Stock Exchange Quotations.
4—Time Signal.

Early Evening Session.

7—Children's Corner by "Big Brother."
7.15—Story from "Illustrated Tasmanian Mail."

Evening Session.

9—"The Mercury" Special Tasmanian News Service; Railway Auction Produce Sales; Weather Information and Sporting Results.

9.5—Hobart Stock Exchange Quotations.

9.10—"The Story of the Union Jack," (Legend of the Crosses), by Captain Ross-Bayliss.
9.30—Palais De Danse Band, City Hall, Hobart.
9.50—"The Mercury" Special Interstate News Service; Weather Synopsis; Station Announcements. Close down.

THURSDAY, JULY 23.

Morning Session.

11—"The Mercury" News; Stock Market; Shipping; Commercial Intelligence; Weather Information; Records from the Studio.
12—Time Signal.

Afternoon Session.

2—Musical Items from the Studio; Weather Information.
2.30—Hobart Stock Exchange Quotations.
4—Time Signal.

Early Evening Session.

7—Children's Corner by "Big Brother."
7.15—The Adventures of George, the Bookshelf Cat. "George makes a mistake," by Aunt Stella.

Evening Session.

9—"The Mercury" Special Tasmanian News Service; Railway Auction Produce Sales; Weather Information.
8.5—Hobart Stock Exchange Quotations.
9.10—Physical Culture Talk by Mr. George Collins.
9.30—Concert from the Studio under the direction of Miss Ruby Pares.
9.50—"The Mercury" Special Interstate News Service; Weather Synopsis; Station Announcements. National Anthem.

4QG

QUEENSLAND RADIO SERVICE.

Wavelength, 385 metres.

FRIDAY, JULY 16.

Midday Session.

12.55—Tune-in.
12.59—Time Signal.
1—Market Reports, Stock Exchange, Weather, "The Daily Mail" News, The "Daily Standard" News.
1.20—Close down.

Afternoon Session.

3.30—A Musical Programme from the Studio.
4.15—"The Telegraph" News.
4.30—Close down.

Early Evening Session.

6.25—Tune-in.
6.30—"The Children's Session. Stories by "The Sandman."
7—The Farmers' Session. Market reports. Lectures: "The Dawson Valley Irrigation Scheme—What is it!" by Mr. A. P. Partridge, Commissioner of Irrigation and Water Supply.
7.20—"The Telegraph" News.
7.30—Close down.

Night Session.

7.45—A talk arranged by the Workers' Educational Association.
8—Studio Entertainment: Overture, the Savoy Orchestra; haritone solo, Mr.

Norman Brown; soprano solo, Miss Ruth Portrate; violin solo, Mr. H. Scott MacCallum; contralto solo, Miss Vera Parker; waltz, the Savoy Orchestra; tenor solo, Mr. J. Treasise; pianoforte solo, Mrs. Hilda Woolmer; fox trot, the Savoy Orchestra; tenor solo, Signor Corti; soprano solo, Miss Ruth Portrate; selection, the Savoy Orchestra.

9—Week-end road information for motorists, officially supplied by the Royal Automobile Club of Queensland. Tenor solo, Signor Corti.

9.10—Novelty one step, the Savoy Orchestra; baritone solo, Mr. N. Brown; contralto solo, Miss Vera Parker; waltz, Mr. H. Jackson (accompanied by the Savoy Orchestra); tenor solo, Mr. J. Treasise; march, the Savoy Orchestra.

9.30—From the Crystal Palace, by courtesy of the proprietors, half an hour's dance music will be relayed from the Crystal Palace, South Brisbane.

10—From the Studio: "The Daily Mail" news service. Close down.

SATURDAY, JULY 17.

11—The complete morning service will be relayed from the Seventh Day Adventist Church, Buranda.

Afternoon Session.

3.25—Tune-in.
3.30—A Matinee Entertainment for Little Listeners.
4.30—Close down.

Early Evening Session.

5.25—Tune-in.
6.30—The Children's Session; Bedtime Stories by "Uncle Ben," assisted by "Mabel Sunshine."
7.15—Sporting News.
7.30—Close down.

Night Session.

7.45—A sporting talk by Rugby League officials.
8—To-night's programme will comprise the broadcasting of a special recital from the studio of Mr. Luis Amadeo Pares ("The Hall of the Muses"), Little Roma St., Brisbane. Violin solo, Miss Marion Wilson; pianoforte solo, Miss Gertrude Anderson; violin solo, Mr. Leslie Murrakami; violin duet, Messrs. Pares and Holly; soprano solo, Madame Bolhova; violin solo, Mr. Leslie Chester; violin solo, Mr. Eddie Basky; duo solo, Capt. Marshall; violin quartet, Mrs. Scott, Miss Wilson, Messrs. Basky, Murrakami and Pares.
8.50—Weather Information officially supplied by The Commonwealth Weather Bureau.
8.55—Announcements.
9—From the "Hall of the Muses": Soprano solo, Madame Bolhova; violin solo, Mr. Luis Amadeo Pares; flute solo, Capt. Marshall; pianoforte solo, Miss Gertrude Anderson; soprano solo, Madame Bolhova (with violin obligato by Mr. L. A. Pares); violin solo, Mr. Luis Amadeo Pares.
10—From the Studio—"The Sunday Mail" News Service. Close down.

SUNDAY, JULY 18.

Morning Session.

Church Service: The complete morning service will be relayed from the Albert Street Methodist Church.
10.45—Tune-in.
10.55—Morning Service; Close down.

Afternoon Session.

3.15—The concert provided in the Brisbane Botanical Gardens by the Excel-

sior Band, under the leadership of Mr. G. Holmes, will be relayed.
4.30—Close down.

Night Session.

Church Service: The complete evening service will be relayed from the Albert Street Methodist Church.
Band Concert: At the conclusion of the service, the concert provided by the Greater Brisbane Municipal Concert Band (conductor, Mr. E. Jackson) will be relayed from Wickham Park.
9.30—Close down.

MONDAY, JULY 19.

Midday Session.

12.55—"Tune-in" Signal.
12.59—Time Signal.
1—Market Reports supplied by the Council of Agriculture; Stock Exchange Information supplied by the Committee of the Brisbane Stock Exchange; Weather Information supplied by the Commonwealth Weather Bureau; News Service supplied by "The Daily Mail" News Service, supplied by "The Daily Standard."
1.20—Close down.

Afternoon Session.

3.30—A Musical Programme from the Studio.
4.15—News Service supplied by "The Telegraph."
4.30—Close down.

Early Evening Session.

6.25—Tune-in.
6.30—"The Children's Session—Stories by The Sandman."
7—The Farmers' Session; Market Reports supplied by the Council of Agriculture; Lectures: Bacon and Eggs for Breakfast, by Mr. E. J. Shelton (Instructor in Pig Raising).
7.30—News Service supplied by "The Standard"; Stock Exchange Information supplied by the Committee of the Brisbane Stock Exchange.
7.30—Close down.

Night Session.

7.45—Lecture Session: The Education of the Deaf and Dumb, by Mr. Stanley E. Hulla (School for Deaf and Blind, South Brisbane).
8—Concert from the Studio including the Federal Band.
9.25—Weather Information, officially supplied by the Commonwealth Weather Bureau.
9.25—Announcements.
9.30—Hawaiian Instrumentalists, The Honolulu Sereaders; latitone solo, Mr. D. K. Symes; pianoforte solo, Miss Rae Phillips; cornet solo, Mr. W. H. Davis; group of bronze numbers by Mr. N. Gouti; Hawaiian Instrumentalists, The Honolulu Sereaders.
10—From the Studio: "The Daily Mail" News Service. Close down.

TUESDAY, JULY 20.

Midday Session.

12.55—Tune-in Signal.
12.59—Time Signal.
1—Market Reports, Stock Exchange, Weather, The Daily Mail News, The Daily Standard News.
1.20—Close down.

Afternoon Session.

3.30—A musical programme from the Studio.
4.15—The Telegraph News.
4.30—Close down.

Early Evening Session.

6.25—Tune-in.
6.30—"The Children's Session; Stories by Uncle Ben and Uncle Jim."
7—The Farmers' Session; Market Reports; Lectures: Fruit Fly Control, by Professor Goddard (University of Queensland).
7.30—"The Standard" News.
7.30—Close down.

Night Session.

- 1.5—A Miscellaneous Programme including the St. Mary's Choir.
- 9.20—Weather Information officially supplied by the Commonwealth Weather Bureau.
- 9.25—Announcements.
- 9.30—From the Centennial Hall—By courtesy of the Lesbo, a programme of dance music by the Centennial Hall Dance Orchestra, will be played from the Hall.
- 10—From the Studio The Daily Mail News Service. Close down.

WEDNESDAY, JULY 21.

Midday Session.

- 12.55—Tune-in.
- 12.58—Time Signal.
- 1—Market Reports, Stock Exchange, Weather, The Daily Mail News, The Daily Standard News.
- 1.20—Close down.

Afternoon Session.

- 3.30—A musical programme from the Studio.
- 4.15—The Telegraph News.
- 4.30—Close down.

Early Evening Session:

- 6.25—Tune-in.
- 6.30—The Children's Session—Stories by Little Miss Brisbane.
- 7—The Farmers' Session: Market Reports; Lecturette: Talks on Stock Feeding, No. 1, General Principles of Feeding Live Stock, by Mr. J. K. Murray (Principal, Agricultural High School).
- 7.20—"The Standard" News.
- 7.30—Close down.

Night Session.

- 7.45—Lecture Session: The Psychology of Success, by Mr. Phillip O'Brien Honore.
- To-night's programme will comprise the broadcasting of the Brisbane Apollo Club's Second Grand Concert of the Season from the Exhibition Hall.
- 10—The Daily Mail News Service; Close down.

THURSDAY, JULY 22.

Midday Session.

- 12.55—Tune-in signal.
- 12.58—Time Signal.
- 1—Market Reports, Stock Exchange information, weather information, "The Daily Mail" News, the "Daily Standard" News.
- 1.20—Close down.

Afternoon Session.

- 3.25—Tune-in.
- 3.30—A programme of Music from the Studio including Instrumental Duets by Mr. N. Gould and S. Jones.
- 4.15—"The Telegraph" News.
- 4.30—Close down.

Early Evening Session:

- 6.25—Tune-in.
- 6.30—The Children's Session—Stories by "The Sandman"
- 7—The Farmers' Session: Market Reports; Lecturette: Talks on Sheep Raising—Stomach Worm, Part 1, by Mr. W. G. Brown (Instructor in Sheep and Wool).
- 7.20—"The Standard" News.
- 7.30—Close down.

Night Session.

- 7.45—Lecture Session: A Talk on Books, by Mr. A. W. Braidon (McLeod's Bookstore).
- 8—A Vocal and Instrumental Programme from the Studio.
- 9.20—Weather Information, officially supplied by the Commonwealth Weather Bureau.
- 9.25—Announcements.
- 9.30—From the Band Room—An Impromptu programme of Music by the Greater Brisbane Municipal Concert Band (under the leadership of Mr. E. Jackson).
- 10—"The Daily Mail" News Service. Close down.

3LO

BROADCASTING CO. OF AUST. PROP. LTD.

Call Sign, 3LO. Power, 5 kilowatts. Wavelength, 371 metres.

FRIDAY, JULY 16.

Midday Session.

- 12—Time Signal. Latest Australian Cricket Eleven scores, by courtesy of Reuters Ltd. British Official Wireless News from Rugby. Reuter and the Australian Press Association Cables. "Argus" and "Herald" News Services. Shipping Intelligence.
- 12.45—Stock Exchange information.
- 12.50—Meteorological information. Weather Forecasts for Victoria, Tasmania, South Australia, and N.S.W. Ocean forecast. River Reports.

- 1—Time Signal.
- 1.1—The Studio Orchestra.
- 1.10—Hedley & Bartlett, comedy musicians.
- 1.20—The Premier Four.
- 1.27—The Studio Orchestra.
- 1.37—Hedley & Bartlett, comedy musicians.
- 1.47—The Premier Four.
- 1.54—Studio Orchestra.
- 2—Close down.
- 2.40—Public Schools Football—"The Captain" will speak from the Ground. The Crowd; Weather Conditions; Topical Remarks.
- 2.45—The Bounce, Scotch versus Xavier.

Afternoon Session.

- 3—Latest Australian Cricket Eleven Scores, by courtesy of Reuters Ltd.
- 3.1—Studio Orchestra.
- 3.10—Public Schools Football, "The Captain"; Quarter-time interval; Story of the first quarter's play; The scores.
- 3.15—Miss Frances Fraser; English Poets in Italy.
- 3.25—Freda Northcote, soprano.
- 3.32—Kathleen Robinson, pianoforte solo.
- 3.40—Public Schools Football; "The Captain"; Half-time interval; Story of second quarter's play; The scores.
- 3.45—Studio Orchestra.
- 3.52—An Fatt, of Messrs. Buckley & Nunn Ltd. Fashion Tak.
- 4.2—J. P. Paterson, tenor.
- 4.9—Studio Orchestra.
- 4.20—Public Schools Football, "The Captain"; Three-quarter-time; Interval; Story of the third quarter's play; The scores.
- 4.25—Freda Northcote, soprano.
- 4.30—Kathleen Robinson, pianoforte solo.
- 4.35—J. D. Paterson, tenor.
- 4.41—Latest Australian Cricket Eleven scores, by courtesy of Reuters Ltd.; "Herald" News Service; Stock Exchange Information.
- 4.45—Public Schools Football, "The Captain"; Final bell; Story of last quarter's play; Best Players; Final scores.
- 5—Close down.

Evening Session.

- 5.45—Children's Hour. Answers to letters and Birthday Greetings.
- 6—Stories by Billy Bony. Little's Fairy Story, The Lost Princess, Back Beauty.
- 6.40—Latest Australian Cricket Eleven scores, by courtesy of Reuters Ltd. "Argus" and "Herald" News Service. Reuters and the Australian Press Association Cables.
- 6.53—Weather Synopsis. Shipping Movements.
- 6.57—Stock Exchange information.
- 7.2—Fish Market Reports by J. R. Borrett Ltd.
- 7.4—Market Reports by the Victorian Producers' Co-operative Co. Ltd. Hay-market Sales. Poultry, grain, chaff, hay, straw, jute, dairy produce, potatoes and onions.

Night Session.

- 7.20—Under the auspices of the Department of Agriculture—Mr. L. C. Bartels, Senior Irrigation Officer, "Irrigated Agriculture—managing Lucerne."
- 7.40—Miss Helen Stransky, now appearing in "White Cargo," at the King's Theatre, will speak to you from her dressing-room, by permission of J. G. Williamson Ltd.
- 8—Collingwood Citizens' Band.
- 8.10—S. Milton Sands, baritone.
- 8.17—Moana Luo Duo, Hawaiian instrumentalists, in ten minutes of melody.
- 8.32—Mr. J. Howlett Ross: The Public Schools of England.
- 8.32—Collingwood Citizens' Band.
- 9.2—Presentation of Prizes to winners of the 3LO-Sun Pictorial Perfect Programme Competition, by Sir William Branton, Lord Mayor of Melbourne.
- 9.12—J. Robinson and A. Franks, cornet duet.
- 9.18—S. Milton Sands, baritone.
- 9.25—Norman Hill, entertainer.
- 9.32—Collingwood Citizens' Band.
- 9.32—Road Reports and Touring Notes—Supplied by the Touring Department of the Royal Automobile Club of Victoria. British Official Wireless News.
- 9.52—Dulcie Cherry, soprano.
- 10—Moana Luo Duo, in more Hawaiian Melodies.
- 10.15—Weather Reports; Announcements; Latest Australian Cricket Eleven scores, by courtesy of Reuters Ltd.
- 10.25—Norman Hill, entertainer.
- 10.32—A. Thorn, trombone solo.
- 10.39—Dulcie Cherry, soprano.
- 10.49—Collingwood Citizens' Band.
- 11—God Save the King.

SATURDAY, JULY 17.

Morning Session.

- 11—Sonora Recital.
- 11.10—Harold Rodgers, pianoforte.
- 11.20—Sonora Recital.
- 11.30—Harold Rodgers, organ.
- 11.45—Sonora Recital.
- 11.52—Harold Rodgers, pianoforte.
- 12—Time Signal. Latest Australian Cricket Eleven scores, by courtesy of Reuters Ltd. British Official Wireless News from Rugby. Reuters and the Australian Press Association Cables. "Argus" and "Herald" News Services. Shipping Intelligence.
- 12.45—Stock Exchange information.
- 12.50—Meteorological information. Weather Forecast for Victoria, Tasmania, South Australia, and N.S.W. Ocean Forecast. River Reports.
- 1—Time Signal.
- 1.1—Studio Orchestra.
- 1.10—The Premier Four.
- 1.17—Kathleen Robinson, pianoforte.
- 1.27—Studio Orchestra.
- 1.37—Result of Leamington Hurdle—Caulfield Races.
- 1.38—The Premier Four.
- 1.44—Kathleen Robinson, pianoforte.
- 1.50—The Studio Orchestra.
- 2—Close down.
- 2.30—Result of Lillimar Two-year-old, Caulfield.

Afternoon Session.

- 3—Latest Australian Cricket Eleven scores by courtesy of Reuters Ltd. Result of Murrumbidgee Handicap, Caulfield.
- 3.1—Carbethon Jazz Orchestra.
- 3.30—Result of the Godfrey Watson Sheepchase.
- 3.31—Carbethon Jazz Orchestra.
- 4—Result of the Kambrook Trial.
- 4.1—Carbethon Jazz Orchestra.
- 4.30—Result of Malvina Welter.
- 4.31—Carbethon Jazz Orchestra.
- 4.45—Latest Australian Cricket Eleven scores, by courtesy of Reuters Ltd.

"Herald" news service. Stock Exchange information. Sporting results. 5—Close down.

Evening Session.

- 6.45—Sporting Results.
6—Children's Hour. Mary Gumbel. Poems: Playing Trains, The Creaky Stair. A trip through the farmyard with Peter Boomerang and Mary Gumbel. Boys and girls: Jake's Adventures.
6.40—Latest Australian Cricket Eleven scores, by courtesy of Reuters Ltd. "Argus" and "Herald" News Services. Sporting Results. Reuters and the Australian Press Association Cables.
6.58—Weather Synopsis; Shipping Movements.
6.57—Stock Exchange information.
7.2—Fish Market Reports by J. R. Borrett Ltd.
7.4—River Reports.
7.6—Market Reports by the Victorian Producers' Co-operative Co. Ltd.; Grain, cloth, hay, straw, jute, dairy produce, potatoes and onions.

Night Session.

- 7.20—Mr. Frederick Chapman: Underground Rivers.
7.40—Dr. Leach: A Hen's Egg.
8—Harry Shugg and his Studio Concert Band.
8.10—J. C. Hickey, tenor.
8.17—Studio Orchestras.
8.27—Announcements.
9.32—H. F. Loft, banjo-volito.
8.44—May Alberta, soprano.
8.51—Harry Shugg and his Studio Concert Band.
9.1—J. Harcourt Bailey, entertainer.
9.8—Harry Shugg and his Studio Concert Band.
9.16—Studio Orchestras.
9.29—British Official Wireless News from Rugby. Latest Australian Cricket Eleven scores, by courtesy of Reuters Ltd.
8.39—Harry Shugg and his Studio Concert Band.
9.48—H. F. Loft twangs the strings of memory.
9.58—May Alberta, soprano.
10.5—Meteorological information, sporting results—race, football, Metropolitan Soccer League, Metropolitan Amateur Association, lacrosse.
10.20—Studio Orchestras.
10.30—J. Harcourt Bailey, entertainer.
10.40—Harry Shugg and his Studio Concert Band.
11—God Save the King.

SUNDAY, JULY 18.

Morning Session.

- 10.40—Express Train information.
10.55—Latest cricket scores, Australia v. West of Scotland, played at Glasgow, by courtesy of Reuters Ltd.
11—Service from Central Mission Wesley Church, Lansdale St., Melbourne, conducted by Rev. J. H. Cain.
12.15—Latest cricket scores, Australia v. West of Scotland, played at Glasgow, by courtesy of Reuters Ltd. British Official Wireless news from Rugby.

Afternoon Session.

- 2.55—Latest Australian Cricket Eleven scores, by courtesy of Reuters Ltd.
3—Pleasant Sunday Afternoon Service, Central Mission Wesley Church, conducted by Rev. J. H. Cain.
4.30—Latest Australian Cricket Eleven Scores, by courtesy of Reuters Ltd.

Evening Session.

- 5.45—Children's Hour. Answers to letters and birthday greetings. Songs by Billy Bunny and his Brer Rabbits. Stories: Mimosa, Lovelost Life, Fantastic Telling.
6.40—Close down.

Night Session.

- 6.55—Latest Australian Cricket Eleven scores, by courtesy of Reuters Ltd.
7—Service from Welsh Church, Latrobe St., Melbourne.
8.30—Cobourg City Band.
8.40—Bernard Manning, baritone.
8.47—Carmen Delprat, violinist; accompanist, Miss Rita Hope.
8.54—Mr. J. Howlett Ross: Story of some great hymns, with recitals.
9.9—Cornet Solo.
9.16—Nora Wilcox, soprano.
9.23—Carmen Delprat, violinist; accompanied by Miss Rita Hope.
9.30—Bernard Manning and Nora Wilcox.
9.37—Cobourg City Band.
9.47—"Argus" news service. Latest Australian Cricket Eleven scores, by courtesy of Reuters Ltd.
10—God Save the King.

MONDAY, JULY 19.

Midday Session.

- 12 Noon—Time Signal. Latest Australian Cricket Eleven Scores, by courtesy of Reuters Ltd. British Official Wireless News from Rugby. Reuters and the Australian Press Association Cables. "Argus" and "Herald" news services. Shipping Intelligence.
12.45—Stock Exchange Intelligence.
12.50—Meteorological Information. Weather Forecasts for Victoria, Tasmania, South Australia and New South Wales. Ocean Forecast. River Reports.
1—Time Signal.
1.15—Studio Orchestras.
1.10—Ross Reaco, siffleur.
1.17—Bessie Gannon, violin.
1.23—Studio Orchestras.
1.30—Community Singing, by the Students of the University of Melbourne, transmitted from the Club House, University Gardens, Carlton.
2—Close down.

Afternoon Session.

- 3—Latest Australian Cricket Eleven scores, by courtesy of Reuters Ltd.
3.15—Studio Orchestras.
3.10—Mr. J. R. Locke: Travel and Adventure during Sojourn in Persia.
3.25—Dan Collins, tenor.
3.32—Agnes Fortune, pianoforte.
3.40—Studio Orchestras.
3.50—Keith Desmond, elocutionist.
3.57—Bliss Flora Foll, Supervisor of Domestic Economy, Education Dept.; Domestic Economy.
4.12—Studio Orchestras.
4.17—Dan Collins, tenor.
4.24—Thama Tierman, 'cello solo.
4.31—Keith Desmond, elocutionist.
4.38—Studio Orchestras.
4.45—"Herald" News Service. Stock Exchange information. Latest Australian Cricket Eleven scores, by courtesy of Reuters Ltd.
5—Close down.

Evening Session.

- 5.45—Children's Hour. Answers to letters and birthday greetings. Little Miss Kookaburra story for the tiny ones will be Fraggie Wanda a-Wooing too, and by means of a story she will explain how to play the game of Kib-narrie.
6.40—Latest Australian Eleven Scores, by courtesy of Reuters Ltd. "Argus" and "Herald" News Service. Reuters and the Australian Press Association Cables.

6.53—Weather Synopsis; Shipping Movements.

6.57—Stock Exchange Information.

7.2—Fish Market Report by J. R. Borrett Ltd.

7.4—River Reports.

7.6—Market Reports by the Victorian Producers Co-operative Co. Ltd., Haff-murkal Sales; Poultry, Grain, Chaff, Hay, Straw, Jute, Dairy Produce, Potatoes and Onions. Market prices of Oranges and Lemons by the Victorian Central Citrus Association Pty. Ltd.

Night Session.

- 7.20—Under the auspices of the Develop Australia League, Mr. Peter McAlister will speak on Cricket Ambassadors.
7.40—Under the auspices of the Department of Agriculture, Mr. J. M. Ward, Supt. of Horticulture: Demining the Orchard.
8—Transmission from the Maryborough Town Hall on the occasion of the visit of the Reso Train. Maryborough Citizens' Brass Band (conductor, A. J. Francis).
8.10—Mayor of Maryborough welcomes the Reso Party and gives a brief historical sketch on Maryborough.
8.20—Maryborough Junior Technical School Choir (conductor, Mr. R. L. Cutter).
8.47—Responsions from Reso Members representing districts.
8.57—J. Harris, cornet solo.
8.43—Member of Reso Party describes typical day's tour of the Reso Train.
8.50—Maryborough Quartette Party.
8.55—From the Studio: Mr. S. M. Roddin, Principal of Working Men's College and President of the Board of Examiners; Registration of Motor Mechanics.
9.15—Short lecture by Mr. Fritz Hart on "Brahma," assisted by Millie McCormack (soprano), Jean Hambleton (contralto), Gertrude Healy and Ida Scott.
10.15—Lo Gassieck Quartette.
10.25—Latest Australian Cricket Eleven scores. British Official Wireless news from Rugby. Announcements.
10.35—Lo Gassieck Quartette.
10.45—"Argus" news service. Meteorological information.
10.50—Lo Gassieck Quartette.
11—God Save the King.

TUESDAY, JULY 20.

Midday Session.

- 12 noon—Time Signal. Latest Australian Cricket Eleven scores, by courtesy of Reuters Ltd. British Official Wireless News from Rugby. Reuters and the Australian Press Association cables. "Argus" and "Herald" News Services. Shipping Intelligence.
12.45—Stock Exchange information.
12.50—Meteorological Information; Weather Forecasts for Victoria, Tasmania, South Australia, and New South Wales; Ocean Forecast; River Reports.
1—Time Signal.
1.1—Studio Orchestras.
1.10—Stanley Adams, violin.
1.15—Walter Smith, horn solo.
1.20—Richard Chung, flute solo.
1.28—Ross Reaco, siffleur.
1.35—E. McMahon, clarinet solo.
1.45—Stanley Adams, violin solo.
1.52—Studio Orchestras.
2—Close down.

Afternoon Session.

- 3—Latest Australian Cricket Eleven scores, by courtesy of Reuters Ltd.
3.1—Studio Orchestras.

WEDNESDAY, JULY 21.

Midday Session.

- 3.16—E. Mason Wood, baritone.
- 3.17—Keith Desmond, monologues.
- 3.25—Romola Hansford, soprano.
- 3.32—Matron Moreland, infant welfare.
- 3.47—Studio Orchestra.
- 3.57—E. Mason Wood, baritone.
- 4.4—Keith Desmond, monologues.
- 4.11—"An Day," of Messrs. Buckley & Nunn, Ltd., fashion talk.
- 4.14—Studio Orchestra.
- 4.15—Latest Australian Cricket Eleven scores, by courtesy of Reuters Ltd. "Herald" News Service. Stock Exchange Information.
- 5—Close down.

Evening Session.

- 5.45—Children's Hour. Answers to letters and birthday greetings.
- 6—Mary Gumleaf. Poems: Garden Folk, Wonderland. Story for the littlest ones: Jenny Wren's Babies. For the boys and girls: Jake's Adventures.
- 6.40—Latest Australian Cricket Eleven scores, by courtesy of Reuters Ltd. "Argus" and "Herald" news services. Reuters and the Australian Press Association Cables.
- 6.53—Weather Synopsis; Shipping Movements.
- 6.58—Stock Exchange Information.
- 7.2—Fish Market Reports by J. R. Borrett Ltd.
- 7.4—River Reports.
- 7.6—Market Reports by the Victorian Producers Co-operative Co. Ltd.; Haymarket Sheep Sales, Poultry, Grain, Chaff, Hay, Straw, Jute, Dairy Produce, Potatoes and Onions.

Night Session.

- 7.50—Madame Soward; French talk.
- 7.40—Under the auspices of the University Extension Board; Prof. A. J. Ewart, Professor of Botany at the University—Ants and Plants.
- 8—Dr. Loftus Hills: Popular Science.
- 8.16—Brighton and District Scottish Society Concert, transmitted from the Brighton Town Hall. Pipe Major Hugh Fraser, pipe solo.
- 8.20—Quartette: Marie Stewart, Winnie Mayberry, Edwin E. Hooke, Ernest Sage.
- 8.26—Marie Stewart, song.
- 8.30—Ernest Sage, song.
- 8.33—Ivy Easton, violin solo.
- 8.47—Duet: Marie Stewart and Edwin E. Hooke.
- 8.52—A few merry moments with Mr. Arthur Douglas.
- 9—From the Studio; Mr. H. G. Penwill, Hon. Sec. Victorian Rugby Union, will talk on Rugby.
- 9.10—Pipe Major Hugh Fraser, pipe solo.
- 9.12—Quartette: Marie Stewart, Winnie Mayberry, Edwin E. Hooke, Ernest Sage.
- 9.17—Winnie Mayberry, song.
- 9.23—Edwin E. Hooke, song.
- 9.30—Ivy Easton, violin solo.
- 9.40—Duet: Winnie Mayberry and Ernest Sage.
- 9.45—A few more moments with Arthur Douglas.
- 10—Quartette and A Body.
- 10.5—From the Studio: Announcements. Latest Australian Cricket Eleven scores. British Official Wireless news from Rugby.
- 10.10—Harry Shugg and his Concert Band.
- 10.23—William Booth, baritone.
- 10.30—Harry Shugg and his Concert Band.
- 10.35—William Booth, baritone.
- 10.42—Harry Shugg and his Concert Band.
- 10.52—"Argus" news service. Weather forecast. Announcements.
- 11—God Save the King.

- 12 Noon—Time Signal. Latest Australian Cricket Eleven scores, by courtesy of Reuters Ltd. British Official Wireless News from Rugby. Reuters News Service. Shipping Intelligence.
- 12.45—Stock Exchange Information.
- 12.50—Meteorological information: Weather forecasts for Victoria, Tasmania, S.A. and N.S.W. Ocean forecast. River reports.
- 1—Time Signal.
- 1.1—Studio Orchestra.
- 1.4—Alma Horlock, soprano.
- 1.15—Studio Orchestra.
- 1.20—Anniversary of St. Paul's Cathedral: Spires Appeal.
- 1.45—Studio Orchestra.
- 1.50—C. Richard Chugg, flute.
- 2—Close down.
- 2.10—Result of Handicap Hurdle, Ballarat Miners' Turf Club Races.
- 2.45—Result of Pony Race.

Afternoon Session.

- 3—Latest cricket scores, by courtesy of Reuters Ltd., Australia v. Scotland, played at Edinburgh.
- 3.1—Studio Orchestra.
- 3.10—Miss S. V. Parker: South Sea Islands.
- 3.25—Result of July Handicap.
- 3.26—Kathleen Robinson, pianoforte.
- 3.32—Lillian Crisp, soprano.
- 3.39—Studio Orchestra.
- 3.50—Result of Novice Handicap.
- 3.51—Keith Desmond, monologues.
- 3.57—Kathleen Robinson, pianoforte.
- 4.3—Lillian Crisp, soprano.
- 4.10—Sister Peck: Mothercraft.
- 4.20—Result of Novelty Pony Race.
- 4.21—Studio Orchestra.
- 4.30—Keith Desmond, monologues.
- 4.38—Studio Orchestra.
- 4.45—"Herald" news service. Stock Exchange Information. Latest Australian Cricket Eleven scores, by courtesy of Reuters Ltd.
- 5—Result of Welter Handicap. Close down.

Evening Session.

- 5.45—Children's Hour. Bobby Bluegum will answer letters and give birthday greetings.
- 6—Musical programme for children arranged by Mr. Fritz Hart.
- 6.40—Latest Australian Cricket Eleven Scores, by courtesy of Reuters Ltd. Argus and Herald News Services. Reuters and the Australian Press Association Cables.
- 6.53—Weather Synopsis. Shipping movements.
- 6.58—Stock Exchange information.
- 7.2—Fish Market Reports by J. R. Borrett Ltd.
- 7.4—River Reports.
- 7.6—Market Reports by the Victorian Producers Co-operative Co. Ltd.; Haymarket Sheep Sales, Poultry, Grain, Chaff, Hay, Straw, Jute, Dairy Produce, Potatoes and Onions. Market prices of Oranges and Lemons by the Victorian Central Citrus Association Pty. Ltd.

Night Session.

- 7.20—Under the Auspices of the Department of Agriculture: Mr. R. Crowe, Exports Supt.—Market Reports and Comments.
- 7.40—Mr. J. C. Stoccombe: Talk on Photography Development.
- 8—Studio Orchestra.
- 8.5—Lady Maudsley, Vice President of the Victoria League, will talk to you on its aims and its work.
- 8.15—Moana Luo Duo, Hawaiian Instrumentalists.
- 8.25—Mr. Dick Shortland, Stage Manager for Gilbert and Sullivan Operas,

- by permission of J. C. Williamson Ltd., will give a talk on Call Boys.
- 8.45—Studio Orchestra.
- 8.55—Mary Mack, contralto.
- 9.2—Capt. Peters: Books, Wise and Otherwise.
- 9.17—Gypsy Music, with introductory remarks by Mr. Reginald Bradley.
- 9.24—Studio Orchestra.
- 9.34—Millicent Osmond, mezzo-soprano.
- 9.41—Reginald Bradley, violin solo.
- 9.48—Millicent McCormack, soprano.
- 9.55—C. Richard Chugg, flute solo.
- 10—Millicent Osmond, mezzo-soprano.
- 10.7—Station Trio.
- 10.12—Millicent McCormack, soprano.
- 10.10—Latest Australian Cricket Eleven scores, by courtesy of Reuters Ltd. "Argus" news service.
- 10.29—Moana Luo Duo; Island Melodies.
- 10.39—Mary Mack, contralto.
- 10.46—Announcements. Meteorological information. British Official Wireless news from Rugby.
- 10.54—Studio Orchestra.
- 11—God Save the King.

THURSDAY, JULY 22.

Midday Session.

- 12 Noon—Time Signal. Latest Australian Cricket Eleven scores, by courtesy of Reuters Ltd. British Official Wireless News from Rugby. Reuters and the Australian Press Association Cables. "Argus" and "Herald" News Services.
- 12.15—Community Singing under the auspices of Community Singers and Concert Goers' Association transmitted from Assembly Hall, Collins St., Melbourne.
- 1.45—Stock Exchange Information; Meteorological information; Weather Forecast for Victoria, Tasmania, South Australia, and New South Wales.
- 2—Close down.
- 2.10—Result of High Weight Handicap—Ballarat Miners' Turf Club.
- 2.45—Result of Trial Handicap—Ballarat Miners' Turf Club.

Afternoon Session.

- Latest Cricket Scores—Australia versus Scotland, Edinburgh, courtesy of Reuters Ltd.
- 3—Studio Orchestra.
- 3.10—Kenneth Inpett, baritone.
- 3.17—Result of Handicap Steeplechase—Ballarat Miners' Turf Club.
- 3.18—Keith Desmond, entertainer.
- 3.22—The Premier Four.
- 3.29—Studio Orchestra.
- 3.39—Mary Gumleaf: A Talk on "The Value of Tolerance"—special selections of Poetry.
- 4—Result of President's Handicap, Ballarat Miners' Turf Club.
- 4.1—Studio Orchestra.
- 4.10—Kenneth Inpett, baritone.
- 4.17—Keith Desmond, entertainer.
- 4.22—Result of Novelty Pony Result.
- 4.23—The Premier Four.
- 4.30—Latest Australian Cricket Eleven scores, by courtesy of Reuters Ltd. "Herald" News Service. Stock Exchange Information.
- 4.45—Evensong, transmitted from St. Paul's Cathedral.
- 5—Close down.

Evening Session.

- 5.45—Children's Hour. Answers to Letters and Birthday Greetings.
- 6—Mary Gumleaf. Poems: The Minuet: What am I. Story for the littlest ones: What the little ones do in other lands; for the boys and girls: Jake's Adventures.
- 6.40—Latest Australian Cricket Eleven scores, by courtesy of Reuters Ltd. "Argus" and "Herald" News Services. Reuters and the Australian Press Association Cables.
- 6.53—Weather synopsis. Shipping movements.

HELLESENS' RADIO BATTERY



—IT LASTS LONGER

—IT IS "ALIVE."

These are two of the reasons why Hellesens' Radio Batteries are appreciated by listeners-in everywhere. Ensure satisfaction from your Wireless Set—instal a Hellesens' Radio battery.

Obtainable at all Radio Dealers.

N.S.W. DISTRIBUTORS:

W. G. WATSON & CO. LIMITED
 279 Clarence Street, Sydney *And All States* 29 Hunter Street, Newcastle

*Yours for
a long,
Useful life*

If you are not using the famous Ediswan Valve Combinations you are sacrificing both quality reception and long valve-life. You are missing many possibilities of your set. Ediswan Valves are the only remedy.

Receiving.	Accumulator or Battery Volts.	Power.
A.R.	4	PV5
A.R.D.E.	2	PV6
A.R.06	3	PV8

With these groups and Ediswan H.T. and L.T. Accumulators the ideal is attained.

All types stocked with English and American Bases.

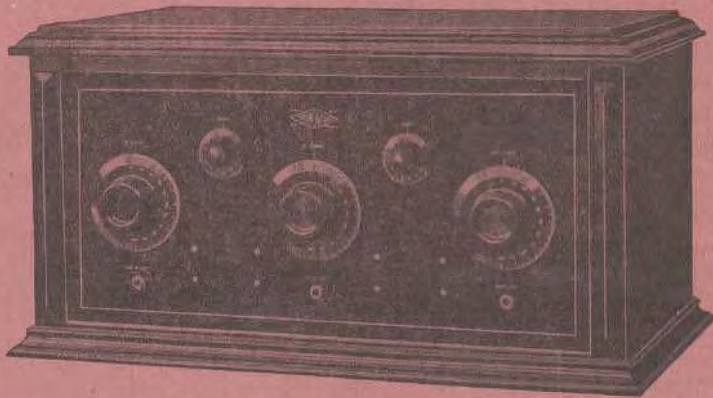
Leading Dealers sell EDISWAN Goods!

EDISWAN VALVES

EDISON SWAN ELECTRIC CO. LTD., 58 Clarence Street, SYDNEY
 —and at Melbourne, Adelaide, and Brisbane.

Colmovox Super Five Models

1926



Price, £52 11 Os.

FULFILS YOUR UTMOST DESIRE IN BEAUTY AND PERFORMANCE.

The 1926 SUPER COLMOVOK is beautiful to look at — lends an atmosphere of dignity and worth to Library or Drawing Room.

Naturally you expect unusual performance from so beautiful a Radio Set and unusual performance is exactly what you get.

Tuning, for example, is controlled by three dials only—so perfectly adjusted that each station comes in always at the same dial settings.

It never varies. Powerful locals may be on full blast, yet you can tune them out completely and bring in distant stations. Tone reproduction is always clear and true, the volume always adequate.

Non regenerative and extremely silent in operation, this Receiver comprises two stages of tuned Radio Frequency Amplification, Detector and Two stages of Distortionless Audio Amplification. Before you choose the receiving set to occupy the place of honour in your home, be sure to see and try the COLMOVOK. Its beauty you will recognise at a glance. Its extraordinary capabilities we will be always glad to demonstrate.

ALL THE ABOVE AND 250,000 OTHER PARTS
OBTAINABLE FROM

COLVILLE MOORE WIRELESS SUPPLIES LIMITED

— 10 ROWE Street (near Hotel Australia) SYDNEY —

AMS PRODUCTS



JERO QUICK CHANGE PLUG.

A good sturdy automatic change plug. Requires no pushing of levers or other manipulation to insert or release the phone cord tips.

Price 2/9



B.M.S. CONNECTORS

For Extension Cords

B.M.S. Connectors are handy devices for set owners who desire extension cords on the loud speaker. Beautifully moulded and equipped with automatic contacts that require no levers.

Price 3/6

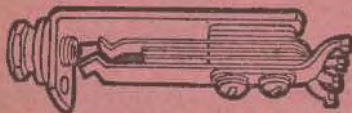


B.M.S. FIXED DETECTORS

B.M.S. Fixed Detectors will give renewed action to reflex or crystal sets. The sensitivity of the mineral is determined by laboratory methods and fixed permanently. Made to withstand high voltage.

Small and enclosed in bakelite. A distinct engineering achievement.

Price 7/3



B.M.S. FANTAIL JACKS

They have made good in every respect, ease in soldering and inspection, quality of materials and moderate price. B.M.S. Fantail Jacks are without a fault.

Price (double circuit) 3/-



B.M.S. SWITCH

The B.M.S. switch is constructed with the fantail cupped lugs for easy soldering. Silver contacts, bakelite insulators, polished nickel plated panel nut; positive snap.

Price 3/6

Obtainable at all Radio Dealers

167-9 Queen Street,
Melbourne

Amalgamated  Wireless
(Australasia) Ltd.

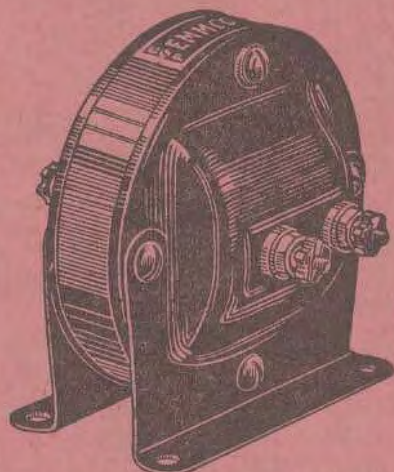
King and King Building,
Queen Street, Brisbane

97 Clarence Street, Sydney

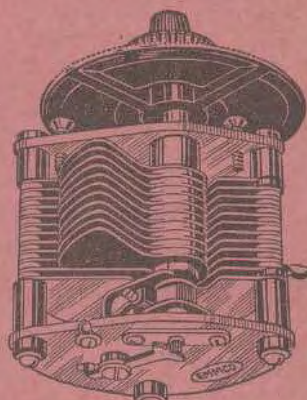
EMMCO PARTS

ADD TO THE EFFICIENCY OF YOUR RADIO SET

Build with the best component parts obtainable. This is the first step towards good radio reception. Remember that, whatever the circuit you employ—whatever you know of its efficiency—your set will be no better than the parts you use. Remember also, that the name EMMCO on a radio part, stands for quality, good value, and the utmost efficiency.



SEE
THEM
AT
YOUR
DEALERS.



EMMCO
CONDENSER.

The transformer plays a most important part in the operation of your receiver. A poor transformer can only result in weak, inaudible signals—or, perhaps, no signals at all. Constructed throughout on the soundest engineering principles, the New EMMCO Transformer, with its rugged strength and handsome appearance, fulfils the very highest demands of discriminating radio users to-day.

Obtainable in Ratios $3\frac{1}{2}$ to 1 and 5 to 1; also 2 to 1 and $7\frac{1}{2}$ to 1.

PRICE, 21/-

There are condensers and condensers, but EMMCO sweeps comparison aside. For the finest tuning on a crowded wave-band—for real selectivity—EMMCO condensers stand alone.

Built like a watch and with the most minute vernier adjustment, it represents the last word in efficiency and workmanship.

Vernier Type.		Plain Type.	
.00025 20/-	.00025 13/6
.0005 21/-	.0005 15/-

Manufactured by
Electricity Meter Manufacturing Company Limited,
Sydney, N.S.W.

Wm. Lambert Hamilton

Radio Specialist

Bring your troubles to me.
What I will do for you.

I will remodel or re-wire your receiver, making every valve give of its best. Let me modernise your receiver.

I will build you a set to suit your local conditions.

I will answer any enquiries immediately.

My charges will be moderate.

I will buy your components for you at ruling city prices and despatch them to you within 24 hours of receipt of order. I will advise you as to the quality of the goods. This service is free.

I am at your service in any radio wants.

City address:
VICKERY'S CHAMBERS,
82 Pitt Street,
SYDNEY.

Phone: B 2104.
Private Address:
16a Ness Avenue,
Dulwich Hill.

HOWELL'S

New Shipment just arrived Ormond Condensers, Square Law Low Loss, Friction Control, and Neutrodyne.

	£	s.	d.		£	s.	d.
3 Plate Condenser	1	0	0	Lighting Arresters	2	6	0
"Jefferson" 4B Transformers	1	0	0	Class Enclosed Crystal Detectors, 1/8, 2/8, and	3	0	0
"Ediswan" Transformers	15	0	0	Remier Switch Arms	25	0	0
12 Point Inductance Switches	2	6	0	.0005 Verner Condensers	1	2	4
Standard 201A Sockets	1	6	0	Front Phones, 10l.	1	1	0
Ediswan Valves	3	0	0	Ormond Square Law Low Loss Condensers .0005, 12/6, Verner	15	6	0
Polymer Phone Plugs	3	0	0	Ormond Low Loss Condensers, .0005	12	6	0
Automatic Phone Plugs	1	4	0	Ormond Low Loss Condensers, .0005 Verner	15	6	0
4 inch Dials, 2/3; 3 inch Dials	1	3	0				
2 inch Dials	1	0	0				
201A Socket	1	0	0				
Bakelite 199 Sockets	3	6	0				
7 Marked Mounted Terminals Spagheti	3	0	0				

Cash with order. Over 10/- post free (Batteries excepted)

HAVE YOU TRIED THE HOWELL REINARTZ?

Blue Prints, Full Size Back Panel, 1, 2, or 3 valve, 2/- each, Post Free.

There's Nothing Better — Let us Rewire your Set
WE GUARANTEE RESULTS.

19 BARLOW STREET, SYDNEY

Open till 9.30 Friday Night

Phone MA 1133

No
More
Distorted
Music



Even the poorest Receiver with its harsh reproduction can be converted into a mellow-toned musical instrument with the new

MACLURCAN

TONE PURIFIER AND STATIC REDUCER

(Patent app. 26131)

NOW READY FOR SALE

PRICE 21/-

WITH A MONEY BACK GUARANTEE

— AN EMMCO PRODUCT —

Particulars from

CHAS. D. MACLURCAN
PRATTEN BUILDING JAMIESON ST., SYDNEY

Manufactured by Electricity Meter Mfg. Co. Ltd., Sydney

Interstate Loud-Speaker (loop) Reception guaranteed.

THE RADIOLA - SUPER 1926 MODEL



Incorporates the five essentials for perfect radio reception—
tone quality, volume, selectivity, distance and easy operation—
in a superlative degree, plus beauty of appearance.

Hear this Truly Remarkable Radiola!

See how amazingly selective it is. Hear its great volume
—note how the tones come in true, clear and melodious.

*Unless you have heard the Radiola Super you
have not heard the best in radio reception.*

We will gladly arrange a demonstration
at your own home at any time of the
day or evening. Telephone—B 7051

*Demonstrations Daily at our Showrooms,
97 Clarence Street.*

Amalgamated  **Wireless**
(Australasia) Ltd.

TO RADIO DEALERS—Write for par-
ticulars of Authorised Radiola Dealer
Appointment.

"It's an AWA Product"

*The exceptional demand for this Radiola has been
such that the whole output of our Sydney Works for
the next three weeks, has been booked.
Orders placed now with authorised Radiola Dealers
or with A.W.A. at 97 Clarence Street
will be for delivery at
the end of the month.*

**The MOST COMPREHENSIVE RANGE of
LOUD SPEAKERS in EXISTENCE**

AMPLION

**The WORLD'S WIRELESS
A Product of The House of Graham**

**STANDARD
LOUD SPEAKER**

*Buy
Your
AMPLION
Now*

The Famous Amplion Loud Speaker Range

The Poster illustrated on this page is being issued free to all Radio Dealers. It represents a complete array of the most comprehensive and varied range of loud speakers ever put on the market by any Manufacturer.

The Poster is strikingly designed and colored, giving full details of the dimensions and NEW REVISED PRICES of every type of Amplion Loud Speaker.

DEALERS WHO HAVE NOT RECEIVED A COPY ARE CORDIALLY INVITED TO WRITE TO:—

Sole Distributors for Australasia :

Amalgamated Wireless
Australasia) Ltd.

Sydney — Melbourne — Adelaide — Brisbane — Perth — Wellington (N.Z.)
Or Direct to: Sole Agents for (A/asia):—Amplion (A/asia) Ltd., 56 Margaret Street, Sydney.
Managing Director:—William Blagg.