

1932



WLS

Family Album

THE
PRAIRIE
FARMER
STATION

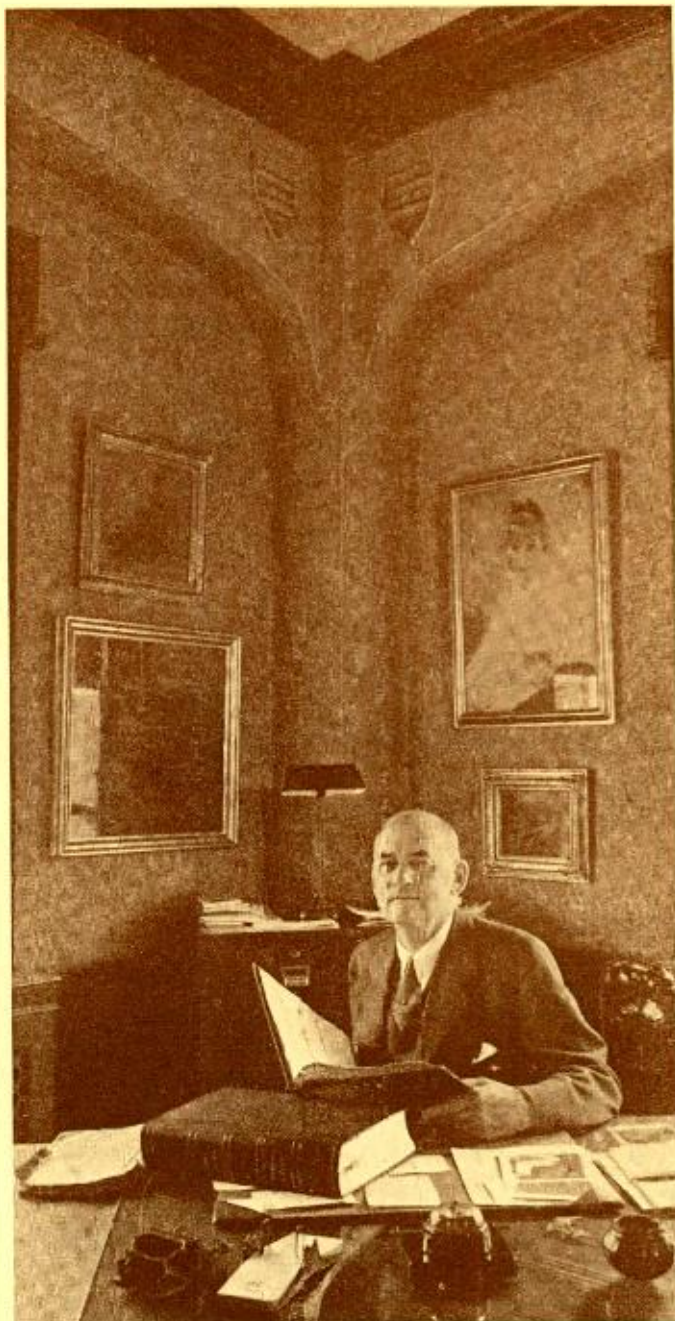


WLS

Family Album
1932

Published By
WLS, The PRAIRIE FARMER Station
1230 West Washington Boulevard Chicago, Illinois
Copyright, 1932, The Agricultural Broadcasting Company

This book is dedicated to you, our listener—our friend. Your cheery letters encourage us; your criticisms guide us. Together we shall continue to build, in WLS, an institution of increasing service to mankind. We want you to think of us always as folks with a handshake and a smile—and remember, here at Prairie Farmer's home, the latchstring is always out.



Burrige Davenal Butler

Publisher of *Prairie Farmer* -- President of WLS

Back of the microphone and the transmitter, back of the program and the business office, is the vision of service. Mr. Butler, with a great heart full of love for humanity, lives with that vision before him. You have seldom heard his voice, but day after day you have felt his vibrant spirit.

"I'm thinking of that home—that father and mother who are trying to bring up a family of good American citizens," he will say when some question of policy comes up,

and somehow that settles any problem.

Mr. Butler wouldn't want us to say much about him, but let us simply write that we know him as a man full of sympathy and understanding, a dreamer of great dreams, and a tireless worker for the rights of everyday folks, the family and the fireside.

In this picture he is holding the volume of *Prairie Farmer* for 1841, the year this paper was founded, ninety years ago.

Three



Program Building

Most listeners now understand that with radio broadcasting operated without cost to the listener, it is necessary for advertising to pay the bills. The advertisers, in harmony with WLS ideals, give splendid cooperation by making programs of high quality and of service value. No product of questionable value is ever brought into your home over WLS.

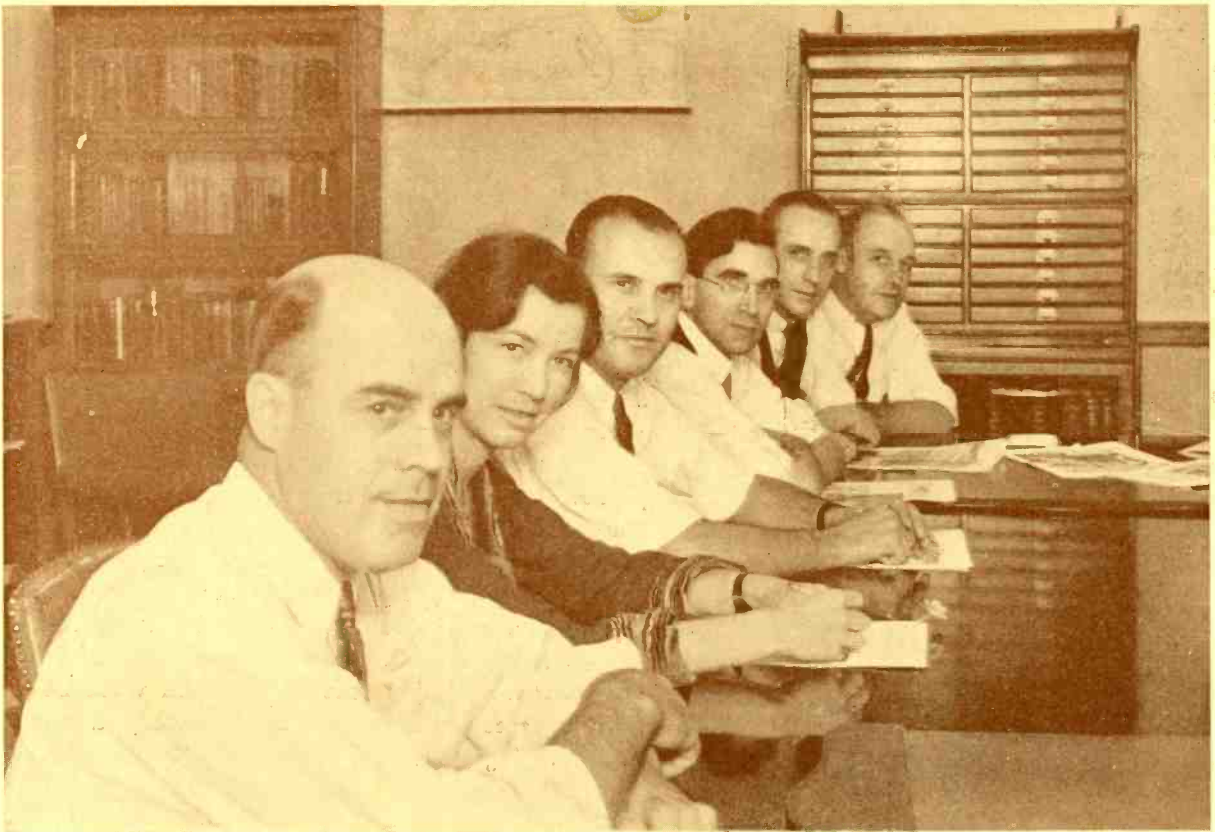
From WLS programs you may learn history, civil government, economics, latest results of scientific research, the finest gems of literature. All this, in addition to agricultural news, markets and music, is arranged by the program department.

Glenn C. Snyder (top), Commercial Manager of WLS, is charged with general supervision of advertising accounts, and it is up to him to see that there is enough income to balance the expenditures. George C. Biggar (center), Program Director, listens to new talent, arranges programs, writes plays and thinks radio night and day. Arthur C. Page (right), is Farm Program Advisor, announces the Dinnerbell Program and is editor of this album.



Below, a program conference in Mr. Snyder's office. A program that requires only fifteen or twenty minutes to give, often represents hours of preparation and research.





Farm Service on WLS

The editorial department of *Prairie Farmer*, in touch with agricultural affairs in every county of the Middle West, makes use of WLS every day as a means of spreading the important news of the farm. In the picture above, from left to right, are Clifford V. Gregory, Editor in Chief; Lois Schenck, Home Editor; Floyd Keepers, Managing Editor; Arthur C. Page, Commercial Editor; Ray Inman, Art Editor; at the end, Dave Thompson, Feature Editor.



Roy Lynnes, above, is *Prairie Farmer's* authority on baby chicks and hatcheries, and is Editor of *The Baby Chick*. You hear his program every Saturday. Next, at the left, is J. A. Sackrison, Manager in the Indianapolis office; then Mrs. Payne Mercer, Assistant Editor in Indiana, and in the lower left-hand corner, John Lacey, Associate Editor in Indiana. This staff, with local correspondents throughout the Middle West, is in close touch with every agricultural development in this most important farm territory.



This program was

Hal O'Halloran

If you are one of the great throng who listen to WLS in the early morning, you need no introduction to Hal, chief announcer. No matter how gloomy the day, or how deep the snowdrifts outside, Hal is always on the job with a cheery "Good Morning" to start the day off right.

Besides being the announcer of morning programs, Hal conducts the Saturday Night Barn Dance, and on Saturday morning he has a special program for the children, "Daddy Hal's Helpers."

Trained as a singer, with a mellow voice that can fill a convention hall, ex-service man, father of two children, he is six feet two inches of Irish good nature. If you should ask him what he is most interested in, he would probably answer: "Boys and girls."



Martha Crane

Martha Crane was born a housewife. She loves to sew and cook and put up pickles and preserves, and she always talks about such things with enthusiasm. The chances are that you have some fruit or vegetables on the shelf right now that were canned according to some of Martha's recipes. You hear her on Homemakers' time, and you may have heard about her also as one of the judges this last year in the National Canning Contest. Martha is a native of Mount Pleasant, Iowa, and her name outside the studio is Mrs. Ray Caris.



Al Rice

Al Rice seldom looks as serious as you see him here. As a member of the Maple City Four, you have often heard him sing, as well as announce. He is an accomplished musician, plays several instruments, once directed an orchestra, and occasionally writes a new composition all his own. He is assistant program director, and does a good deal of listening to "auditions" in which new artists demonstrate their ability before being added to the station staff.

announced by ~

Jack Holden

You first heard Jack Holden's deep voice on WLS in October, 1931. He has been in radio work since 1927, first on WWJ, Detroit, and for three years on WELL, Battle Creek, Michigan. For nearly a year Jack was member of a comedy team in radio and stage appearances. Born in a little town in the Michigan north woods, he is 24 years old, married, has a son two years old, and is in training for the ministry. Before coming to Chicago he served as pastor of the church at Bedford, Michigan.

Although Jack has been a member of WLS family only a short time, he has already made many friends.



Margaret McKay

A varied career as radio writer, announcer, newspaper columnist and writer of poetry distinguishes Margaret Morton McKay of the WLS continuity staff. Margaret was born in Colon, Panama, during the building of the canal. She lived in several southern states before coming to Chicago. In Houston, Texas, she was a member of the KTRH staff. When you see news of WLS and pictures of our artists in newspapers and magazines, you may be sure that Margaret has been busy at her desk, which is covered with radio programs, newspaper clippings and a little bit of everything. Incidentally, she is our "WLS Fan Fare" girl on the air.

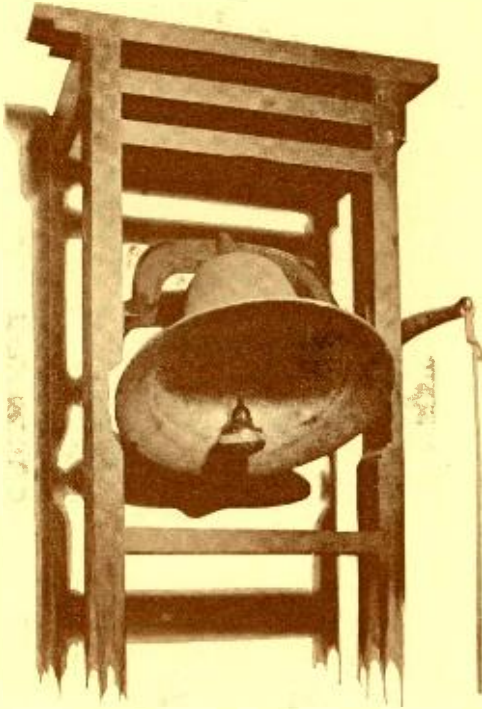


Bill Cline

A farm boy, born in Chippewa County, Wisconsin. Worked in the woods as a lumberjack, and learned to scamper over rolling logs in the river, with peavy and cant-hook. Spent a year in Blackburn College studying for the ministry. Before entering radio was in the production end of an automobile tire factory in Wisconsin. Put on some announcements at Radio Station WTAQ, Eau Claire, Wisconsin, and liked it so well that before long he was in radio work there. Came to WLS in 1931, and helps build and announce a variety of programs.



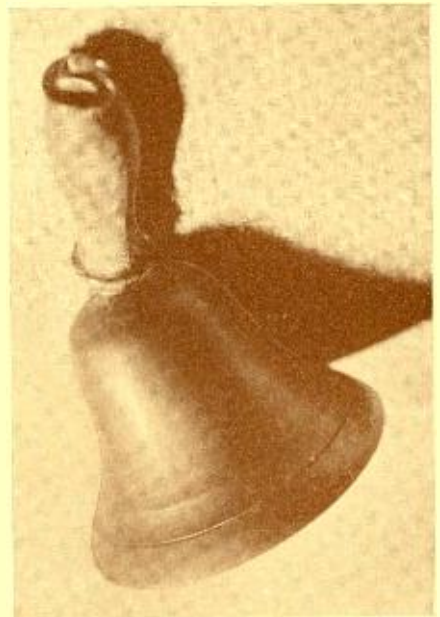
The Bells



Every noon we ring the dinnerbell here at WLS. It has a deep significance. The greatest food-producing territory in the world is here in the Middle West. Our grain, meat, poultry and dairy products go out by trainloads every day, and by shiploads, to supply dinner tables around the world. People by the scores of millions eat at our table. The dinnerbell is symbolic of our great job as producers of food for the world.



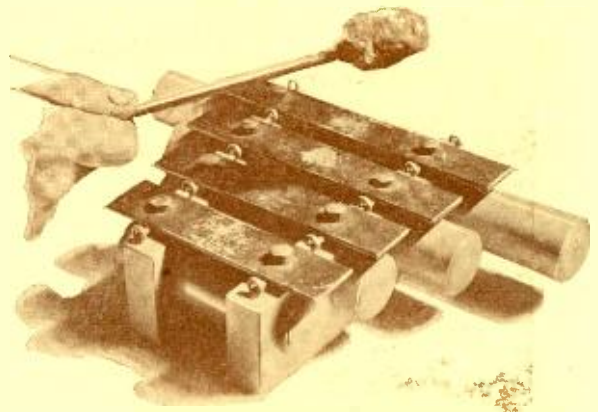
The pioneers first built simple homes for shelter, then churches, then schoolhouses. The pioneer schoolhouse helped to build American citizenship, and many a man and woman yet remembers the cheery call of the old schoolbell.



We call this the Gettysburg Bell. A farm boy in the Union Army picked it up in the midst of the battle of Gettysburg.

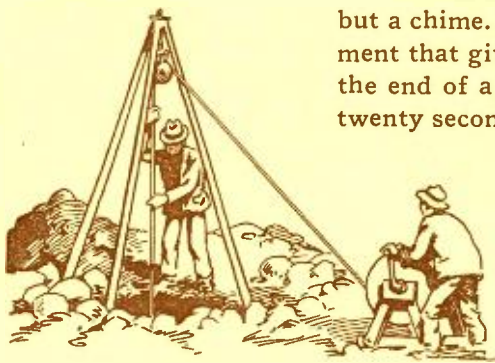


of WLS



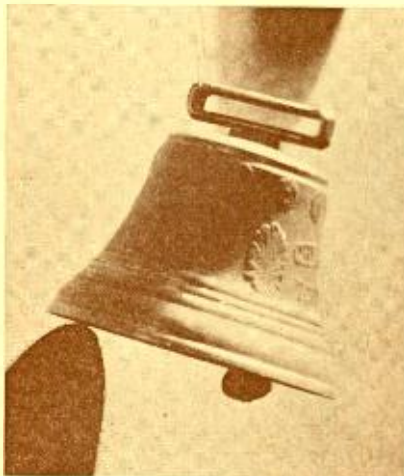
All sorts of stories center around the Bells of WLS. This old specimen—what may be its story? It was dug up from fifteen feet under ground in West Virginia.

From an Alpine dairy farm in Switzerland comes this sweet-toned cowbell, at the right, one of our collection.

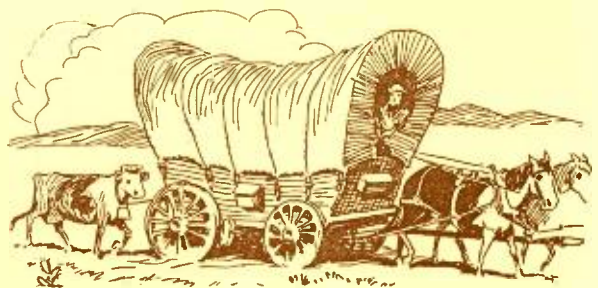
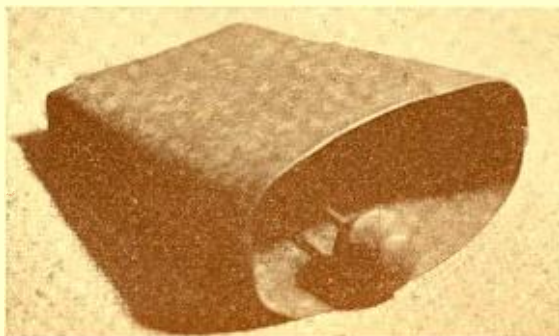


Beside the cowbells that are a century old is a new kind of bell—not really a bell at all, but a chime. This is the mellow-toned instrument that gives you correct time, that tells of the end of a program, that signals a pause of twenty seconds for station announcements. It is a gentle voice, soft and soothing, part of modern radio.

Around these bells centers the romance of agriculture and the history of empire building.



One of the cowbells of WLS was worn by the old family cow, treading the weary miles tied behind an old Conestoga prairie schooner from Pennsylvania to a homestead in the far Northwest—truly a bell that signalled the advance of civilization.



The Maple City 4



The four beloved rogues of WLS. When you hear them, you know which is which, but so you will know their faces in this picture at the left, beginning at the top, they are: Art Janes, Fritz Meissner, Al Rice and Pat Petterson.

When the Maple City Four comes into the studio, the operator takes an extra grip on the control knobs and a hasty glance at the fuses, for he's never sure what's coming. Neither is anybody else. You have heard them as the "Caterpillar Crew" and in the "Heroes in Overalls." Give them a few odds and ends of junk and they have a band or a minstrel show at a moment's notice. The weird looking thing wrapped around Al Rice's neck is the famous "showerbath wheeze."

You have laughed at the comic antics of the boys, and you may have heard them in more serious moments at Hymn Time, when they sing some of the beloved old songs of comfort and inspiration.

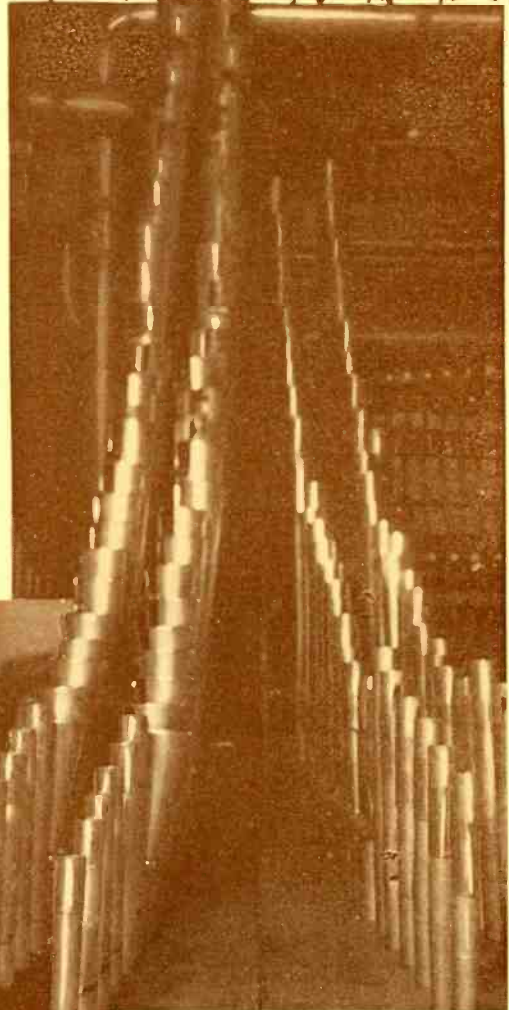
Fritz and Pat are married. As we go to press, Al and Art are not, yet.



Ralph Waldo Emerson

"Laugh and the world laughs with you," might have been written of Ralph Waldo Emerson. Even when he goes padding around the studio in bedroom slippers at six o'clock on a winter morning, he's liable to break out any time with a "ha ha" that starts an echo in 20 or 30 states.

As an organist, Ralph has always been an explorer, looking for adventure. He discovers things in the big organ that even the builders didn't know were there. One time, when he had played "The Battle Hymn of the Republic" in a slow, throbbing rhythm, with startling effect, he explained: "I always see the old boys of the G. A. R. when I play that—they can't march so fast now."



Inside the Organ

Few, even of the people who are in the studio every day, have ever seen the view of the organ pipes shown above. Only the console, or keyboard, is in the studio. The pipes, chimes, drums and thousands of electrical connections are back in a sound-proof room. Still back of that is the great blower, with a five horsepower motor, and the whole responds instantly to the gentlest touch of the organist.

This organ was designed especially for WLS.

Eleven



“Arkie”

THE Arkansas Woodchopper has been called “Arkie” so long that even his closest friends have almost forgotten his real name. Native of the Ozark Mountains, he actually has chopped wood, and “rode leather all day long.”

Why does Arkie laugh right out in the middle of a song? We're sorry we can't show you movies of the real reasons. Imagine the Maple City Four down on all fours like a drove of pigs, and Ralph Emerson waving his arms and chasing them right in front of Arkie. You'd laugh too.



At the Illinois State Fair folks came in at five o'clock in the morning to watch the program as well as listen to it. This picture, with Arkie in the middle, was taken at seven o'clock in the morning as the boys were going out to breakfast.

The picture at the left was taken in the Prairie Farmer tent at the Indiana State Fair. Many thousands of our friends were there, and Arkie and the others are still talking about the good times they had.



This picture of the Cumberland Ridge Runners was taken at the replica of old Fort Dearborn that has been built as part of the 1933 Chicago World's Fair. The boys fit right into the picture, don't they? From left to right, they are: Karl Davis, Hartford Taylor, "Slim" Miller, John Lair and and Hugh Cross.

The Ridge Runners

The Cumberland Ridge Runners are a versatile crew, always happy and willing to do their best, whether it's midnight or six in the morning.

Hugh Cross, "The Boy from Smoky Mountain," is the tenor soloist, playing both guitar and banjo. This husky chap was reared on a mountain farm near Oliver Springs, Tennessee. There's a Mrs. Cross and three fine children—Katherine Doris, 6; Coloris Lou, 3, and Jack, nearly 2. When Hugh wrote "Daddy's Little Girls," he had those two daughters in mind.

Karl Davis and Hartford Taylor, the Renfro Valley Boys, were boyhood pals who secretly practiced on the guitar and mandolin until they considered themselves expert enough to appear in public. Both were born and reared near Mt. Vernon, Kentucky. Karl is a tall, lanky, good-

natured boy who'd give you his last dollar if you needed it. He is the only bachelor of the crew. As for "Harty," he has a help-mate and they're mighty proud of little Betty Taylor, age 2.

The clown of the Ridge Runners is Homer ("Slim") Miller, rated as one of America's best old-time fiddlers. He's usually trying to play a joke on one of his partners or making faces at the control room. Indianapolis is "Slim's" home town. The Millers have a dandy little girl, Betty, age 6.

John Lair is manager of this group and announces their Saturday night programs, often playing the jug with them. Mt. Vernon, Kentucky, is his home town but he has lived in Chicago for several years. Mr. and Mrs. Lair are the parents of Ann, a pretty little miss of 4 years.

Bill Vickland

You hear William Vickland's voice most often in The Book Shop. You heard him a year ago taking the part of Abraham Lincoln in the dramatic series, "The Prairie President." You hear him every Sunday as the lay pastor of the Little Brown Church. He is in charge of dramatic productions at WLS, and has made thousands of friends because of his sincere understanding of everyday folks. The smaller picture was taken as he was visiting the Lincoln Monument in Springfield, Illinois. Last fall, after the Illinois State Fair, he conducted a series, "Footsteps of Lincoln," direct from Springfield.



Critics have said that Vickland's interpretation of the character of Lincoln was the most sympathetic ever presented by a dramatic artist. The reason was that Bill wasn't acting at all — just being himself.

The Sunday School Singers

The Cross Roads Sunday School on WLS every Sunday, brings you songs by these three little girls, Charlotte, Harriet and Marion Cain. This Sunday School service does not replace any other Sunday School, but rather carries its cheerful message to those who otherwise would not be reached by any service.

If you have last year's Album you will see that the three little girls are growing up.





The Orchestra

The WLS Orchestra, under the direction of Herman Felber, Jr., shown at the left, is a group of the finest musicians in Chicago. Every member is a distinguished soloist. Herman's violin is a historic old instrument valued at \$25,000. Of course, it isn't the fiddle that counts, so much as the fiddler, and Herman can make the crudest old instrument yield rich melody.



Stirring marches, dreamy melodies with Theodore DuMoulin leading with the cello, the mellow tones of the wood-winds, the sweetness of strings, all may be heard from this talented group. Sometimes serious, playing an excerpt from a great opera, sometimes gay, as in *The Skipper of Toonerville* or *Drumology*, they are always expert.

The group at the right is The Little German Band, which has specialized in playing music brought in old books from Germany, and possessed by no one else in this country.

This picture was taken in the famous "cornstalk" studio in Prairie Farmer Building, just one minute before they started a Dinnerbell Program.



Oscar Tengblad and Walter Steindel must quit their checker game as Gary Vogt calls them for a program.

McFARLAND and GARDNER

MAC and BOB

The smaller picture, below, shows Mac and Bob and Hugh Cross entertaining the crippled children at Riley Hospital, Indianapolis, Ind.



Robert Gardner and Lester McFarland

"Mac and Bob," our sweet harmony singers, are Lester McFarland and Robert Gardner, originally of Gray, Kentucky, and Oliver Springs, Tennessee, respectively.

Sixteen years ago the two boys met each other while they were studying music in the "Kentucky School for the Blind." Mac was an artist on the piano, cornet, trombone, guitar and mandolin, consequently he became a music teacher, while Bob made his livelihood as a piano tuner, having a perfect ear for pitch and tone. About 10 years ago they teamed up as a harmony duo and their singing soon attracted the attention of phonograph record companies. To date, they have recorded at least 200 songs with sales totaling over a million.

While Mac and Bob are both blind, the boys do not capitalize upon their misfortune, choosing to gain the favor of their audiences solely through the merits of their entertainment.

When Mac and Bob learn a new song, the notes and words are read to them and they punch them out on a sheet using the "point system," as their names are written at the top of this page.



Variety

You hear a wide variety of music over WLS, from the golden harp, the chimes, the orchestra, pipe organ, and a dozen kinds of instruments that never had a name. Some folks like the fiddles, some like the drums, and as we read your letters from day to day, we try to build the kind of programs you like best. Some of our music is very unusual, such as you seldom hear anywhere else.



Princess Tsianina

Here is the charming princess of the Cherokees, who has entertained you with song and legend of the American Indian. You might not recognize the name from the way it is spelled, but the pronunciation is "Chi-ni-na," and it means "wild-flower." The princess is always a welcome guest at WLS.



Cecil and Esther Ward

For several years you have heard Cecil and Esther on the Hawaiian guitars. They are husband and wife, and they have a little Ward at home. They always light up the place with a bright smile when they are on the program.

Grace Wilson



You have known Grace for a long time, too. She sings sometimes with a rhythm that makes you want to snap your fingers and tap your feet, and sometimes with that deep sentiment that makes a catch in your throat and moistens your eyes.

STATION INDEX BY CALL LETTERS

Call Letters	Kilo-cycles	Location	Watts	Dial Setting
KBPS	1420	Portland, Ore.	100	
KBTM	1200	Paragould, Ark.	100	
KCRC	1370	Enid, Okla.	100	
KCRJ	1310	Jerome, Ariz.	100	
KDB	1500	Santa Barbara, Calif.	100	
KDFN	1210	Casper, Wyo.	100	
KDKA	980	Pittsburgh, Pa.	50000	
KDLR	1210	Devils Lake, N. Dak.	100	
KDYL	1290	Salt Lake City, Utah	1000	
KECA	1430	Los Angeles, Calif.	1000	
KELW	780	Burbank, Calif.	500	
KEX	1180	Portland, Ore.	5000	
KFAB	770	Lincoln, Nebr.	5000	
KFAC	1300	Los Angeles, Calif.	1000	
KFBB	1280	Great Falls, Mont.	1000	
KFBI	1050	Milford, Kan.	5000	
KFBK	1310	Sacramento, Calif.	100	
KFBL	1370	Everett, Wash.	50	
KFDM	560	Beaumont, Tex.	500	
KFDY	550	Brookings, S. Dak.	500	
KFEL	920	Denver, Colo.	500	
KFEQ	680	St. Joseph, Mo.	2500	
KFGQ	1310	Boone, Iowa	100	
KFH	1300	Wichita, Kan.	1000	
KFI	640	Los Angeles, Calif.	50000	
KFIO	1120	Spokane, Wash.	100	
KFIZ	1420	Fond du Lac, Wis.	100	
KFJB	1200	Marshalltown, Iowa	100	
KFJF	1480	Oklahoma City, Okla.	5000	
KFJI	1370	Astoria, Ore.	100	
KFJM	1370	Grand Forks, N. Dak.	100	
KFJR	1300	Portland, Ore.	500	
KFJY	1310	Fort Dodge, Iowa	100	
KFJZ	1370	Fort Worth, Tex.	100	
KFKA	880	Greeley, Colo.	500	
KFKU	1220	Lawrence, Kan.	500	
KFKX	1020	Chicago, Ill.	10000	
KFLV	1410	Rockford, Ill.	500	
KFLX	1370	Galveston, Tex.	100	
KFMX	1250	Northfield, Minn.	1000	
KFNF	890	Shenandoah, Iowa	500	
KFOR	1210	Lincoln, Nebr.	100	
KFOX	1250	Long Beach, Calif.	1000	
KFPL	1310	Dublin, Tex.	100	
KFPM	1310	Greenville, Tex.	15	
KFPW	1340	Fort Smith, Ark.	50	
KFPY	1340	Spokane, Wash.	1000	
KFQD	1230	Anchorage, Alaska	100	
KFRG	610	San Francisco, Calif.	1000	
KFRU	630	Columbia, Mo.	500	
KFSD	600	San Diego, Calif.	500	
KFSG	1120	Los Angeles, Calif.	500	

STATION INDEX BY KILOCYCLES

Call Letters	License	Location	Watts	Call Letters	License	Location	Watts
550 KILOCYCLES							
WGR		Buffalo, N. Y.	1000	WLBZ		Bangor, Me.	500
WKRC		Cincinnati, Ohio	1000	WFLA		Clearwater, Fla.	1000
KFUO		Clayton, Mo., Evangelical Lutheran Synod of Missouri, Ohio and other States, Rev. R. Kretzschmar, chairman Board of Control of Concordia Seminary	500	WSUN		and St. Petersburg Chamber of Commerce	1000
KSD		St. Louis, Mo., Pulitzer Publishing Co.	500	WTMJ		Milwaukee, Wis., The Journal Co. (Milwaukee Journal)	1000
KFDY		Brookings, S. Dak., South Dakota State College	500	KGW		Portland, Ore., Oregonian Publishing Co.	1000
KFYR		Bismarck, N. Dak., Meyer Broadcasting Co.	1000	KTAR		Phoenix, Ariz., KTAR Broadcasting Co.	500
KOAC		Corvallis, Ore., Oregon State Agricultural College	1000	620 KILOCYCLES			
560 KILOCYCLES							
WFI		Philadelphia, Pa., Lit Bros.	500	WMAL		Washington, D. C., M. A. Leese	250
WLIT		Philadelphia, Pa., Strawbridge & Clothier	500	WOS		Jefferson City, Mo., Missouri State Marketing Bureau	500
WQAM		Miami, Fla., Miami Broadcasting Co.	1000	KFRU		Columbia, Mo., Stephens College	500
KFDM		Beaumont, Tex., Magnolia Petroleum Co.	500	WGBF		Evansville, Ind., Evansville on the Air (Inc.)	500
WNOX		Knoxville, Tenn., WNOX (Inc.)	1000	640 KILOCYCLES			
WIBO		Chicago, Ill., Nelson Bros. Bond & Mortgage Co.	1000	WAIU		Columbus, Ohio, Associated Radiocasting Corp.	500
WPCC		Chicago, Ill., North Shore Church	500	WOI		Ames, Iowa, Iowa State College of Agriculture and Mechanic Arts	5000
KLZ		Denver, Colo., Reynolds Radio Co. (Inc.)	1000	KFI		Los Angeles, Calif., Earle C. Anthony (Inc.)	50000

1130 KILOCYCLES

WOV	New York City, International Broadcasting Corp.	1000
WJJD	Mooseheart, Ill., Supreme Lodge of the World, Loyal Order of Moose	20000
KSL	Salt Lake City, Utah, Radio Service Corp. of Utah	5000

1140 KILOCYCLES

WAPI	Birmingham, Ala., Alabama Polytechnic Institute, University of Alabama and Alabama College	5000
KVOO	Tulsa, Okla., Southwestern Sales Corporation	5000

1150 KILOCYCLES

WHAM	Rochester, N. Y., Stromberg-Carlson Telephone Manufacturing Co.	5000
------	--	------

1160 KILOCYCLES

WWVA	Wheeling, W. Va., West Virginia Broadcasting Corp.	5000
WOWO	Fort Wayne, Ind., Main Auto Supply Co.	10000

1170 KILOCYCLES

WCAU	Philadelphia, Pa., Universal Broadcasting Co.	10000
------	--	-------

1180 KILOCYCLES

WDGY	Minneapolis, Minn., Dr. George W. Young	1000
KEX	Portland, Ore., Western Broadcasting Co.	5000
KOB	State College, N. Mex., New Mexico College of Agriculture and Mechanic Arts	20000
WGBS	New York, N. Y., General Broadcasting System (Inc.) ..	500
WMAZ	Macon, Ga., Macon Junior Chamber of Commerce	500

1190 KILOCYCLES

WOAI	San Antonio, Tex., Southern Equipment Co.	50000
------	--	-------

WCAX	Burlington, Vt., Burlington Daily News (Inc.)	100
WORC	} Worcester, Mass., Albert Frank Kleindienst	100
WEPS		
WIBX	Utica, N. Y., WIBX (Inc.)	100
WFBE	Cincinnati, Ohio, The Post Publishing Co.	100
WHBC	Canton, Ohio, St. John's Catholic Church	10
WLAP	Louisville, Ky., American Broadcasting Corporation of Kentucky	100
WLBG	Petersburg, Va., WLBG (Inc.)	100
WNBO	Silver Haven, Pa., John Brownlee Spriggs	100
WCOD	Harrisburg, Pa., Keystone Broadcasting Corporation ..	100
WKJC	Lancaster, Pa., Kirk Johnson & Co.	100
WNBW	Carbondale, Pa., C. F. Schiessler and M. E. Stephens, doing business as Home Cut Glass & China Co.	10
KMLB	Monroe, La., J. C. Liner	100
WABZ	New Orleans, La., Samuel D. Reeks	100
WJBW	New Orleans, La., C. Carlson	100
WBBZ	Ponca City, Okla., C. L. Carrell	100
WFBC	Knoxville, Tenn., First Baptist Church	50
WRBL	Columbus, Ga., WRBL Radio Station (Inc.)	50
KGHI	Little Rock, Ark., Berean Bible Class, First Baptist church	100
KBTM	Paragould, Ark., W. J. Beard, Beard's Temple of Music	100
WJBC	La Salle, Ill., Wayne Hummer & H. J. Dee, doing business as Kaskaskia Broadcasting Co.	100
WJBL	Decatur, Ill., Commodore Broadcasting (Inc.)	100
WWAE	Hammond, Ill., Hammond-Calumet Broadcasting Corporation	100
WFAM	Laporte, Ind., The South Bend Tribune	100
KFJB	Marshalltown, Iowa, Marshall Electric Co. (Inc.)	100
KGCU	Mandan, N. Dak., Mandan Radio Association	100
WCAT	Rapid City, S. Dak., South Dakota State School of Mines	100
KGDY	Huron, S. Dak., Voice of South Dakota	100
KFWF	St. Louis, Mo., St. Louis Truth Center (Inc.)	100
KGDE	Fergus Falls, Minn., C. L. Jaren	100
WCLO	Janesville, Wis., WCLO Radio Corporation	100
WHBY	Green Bay, Wis., St. Norbert College	100

STATION INDEX BY CALL LETTERS

Call Letters	Kilo-cycles	Location	Watts	Dial Setting
KOL	1270	Seattle, Wash.	1000	
KOMO	920	Seattle, Wash.	1000	
KONO	1370	San Antonio, Tex.	100	
KOOS	1370	Marshfield, Ore.	100	
KORE	1420	Eugene, Ore.	100	
KOY	1390	Phoenix, Ariz.	500	
KPCB	650	Seattle, Wash.	100	
KPJM	1500	Prescott, Ariz.	100	
KPO	680	San Francisco, Calif.	5000	
KPOF	880	Denver, Colo.	500	
KPPC	1210	Pasadena, Calif.	50	
KPQ	1500	Wenatchee, Wash.	50	
KPRC	920	Houston, Tex.	1000	
KQV	1380	Pittsburgh, Pa.	500	
KQW	1010	San Jose, Calif.	500	
KRE	1370	Berkeley, Calif.	100	
KREG	1500	Santa Ana, Calif.	100	
KRGV	1260	Harlingen, Tex.	500	
KRLD	1040	Dallas, Tex.	10000	
KRMD	1310	Shreveport, La.	50	
KROW	930	Oakland, Calif.	500	
KRSC	1120	Seattle, Wash.	50	
KSAC	580	Manhattan, Kan.	500	
KSCJ	1330	Sioux City, Iowa	1000	
KSD	550	St. Louis, Mo.	500	
KSEI	900	Pocatello, Idaho	250	
KSL	1130	Salt Lake City, Utah	5000	
KSMR	1200	Santa Maria, Calif.	100	
KSO	1380	Clarinda, Iowa	500	
KSOO	1110	Sioux Falls, S. Dak.	2500	
KSTP	1460	St. Paul, Minn.	10000	
KTAB	560	San Francisco, Calif.	1000	
KTAR	620	Phoenix, Ariz.	500	
KTAT	1240	Fort Worth, Tex.	1000	
KTBI	1300	Los Angeles, Calif.	1000	
KTBR	1300	Portland, Ore.	500	
KTBS	1450	Shreveport, La.	1000	
KTFI	1320	Twin Falls, Idaho	250	
KTHS	1040	Hot Spr'gs. Nat. Pk., Ark.	10000	
KTLC	1310	Houston, Tex.	100	
KTM	780	Los Angeles, Calif.	500	
KTRH	1120	Houston, Tex.	500	
KTSA	1290	San Antonio, Tex.	1000	
KTSL	1310	Shreveport, La.	100	
KTSM	1310	El Paso, Tex.	100	
KTW	1220	Seattle, Wash.	1000	
KUJ	1370	Walla Walla, Wash.	100	
KUOA	1390	Fayetteville, Ark.	1000	
KUSD	890	Vermillion, S. Dak.	500	
KUT	1500	Austin, Tex.	100	
KVI	760	Tacoma, Wash.	1000	
KVL	1370	Seattle, Wash.	100	

STATION INDEX BY KILOCYCLES

Call Letters	Location	Licensee	Watts
		1120 KILOCYCLES (Canadian Shared) — Continued	
KRSC	Seattle, Wash., Radio Sales Corporation		50
KPIO	Spokane, Wash., Spokane Broadcasting Corporation		100
		1200 KILOCYCLES (Canadian Shared)	
WABI	Bangor, Me., Pine Tree Broadcasting Corporation		100
WNBX	Springfield, Vt., First Congregational Church Corp.		10

KDKA Pittsburgh, Pa., Westinghouse Electric & Mfg. Co.50000

990 KILOCYCLES

WBZ Boston, Mass., Westinghouse Electric & Mfg. Co. 1000
WBZA Boston, Mass., Westinghouse Electric & Mfg. Co. 500

1000 KILOCYCLES

WHO Des Moines, Iowa, Central Broadcasting Co. 5000
WOC Davenport, Iowa, Central Broadcasting Co. 5000
KFVD Culver City, Calif., Los Angeles Broadcasting Co. 250

1010 KILOCYCLES (Canadian Shared)

WQAO } New York, N. Y., Calvary Baptist Church 250
WPAP }
WHN New York, N. Y., Marcus Loew Booking Agency 250
WRNY New York, N. Y., Aviation Radio Station (Inc.) 250
KGGF South Coffeyville, Okla., Hugh J. Powell and Stanley
Platz, doing business as Powell & Platz 500
WNAD Norman, Okla., University of Oklahoma 500
WIS Columbia, S. C., South Carolina Broadcasting Co.
(Inc.) 500
KQW San Jose, Calif., Pacific Agricultural Foundation
(Ltd.) 500

1020 KILOCYCLES

WRAX Philadelphia, Pa., WRAX Broadcasting Co. 250
KYW }
KFKX } Chicago, Ill., Westinghouse Electric & Mfg. Co.10000

1030 KILOCYCLES (Canadian Exclusive)

1040 KILOCYCLES

WMAK Buffalo, N. Y., Buffalo Broadcasting Corporation 1000
WKAR East Lansing, Mich., Michigan State College 1000
KTHS Hot Springs National Park, Ark., Hot Springs Cham-
ber of Commerce10000
KRLD Dallas, Tex., KRLD Radio Corporation10000

1050 KILOCYCLES

KFBI Milford, Kan., The Farmers and Bankers Life Ins. Co. 5000
KNX Hollywood, Calif., Western Broadcast Co. 5000

KWJJ Portland, Ore., KWJJ Broadcast Co. (Inc.) 500

1070 KILOCYCLES

WTAM Cleveland, Ohio, National Broadcasting Co. (Inc.)50000
WCAZ Carthage, Ill., Superior Broadcasting Service (Inc.).... 50
WDZ Tuscola, Ill., James L. Bush 100
KJBS San Francisco, Calif., Julius Brunton & Sons Co. 100

1080 KILOCYCLES

WBT Charlotte, N. C., Station WBT (Inc.) 5000
WCBF Zion, Ill., Wilbur Glenn Voliva 5000
WMBI Chicago, Ill., The Moody Bible Institute Radio Sta... 5000

1090 KILOCYCLES

KMOX St. Louis, Mo., Voice of St. Louis (Inc.)50000

1100 KILOCYCLES

WPG Atlantic City, N. J., WPG Broadcasting Corporation.. 5000
WLWL New York, N. Y., Missionary Society of St. Paul the
Apostle 5000
KGDM Stockton, Calif., E. F. Peffer 250

1110 KILOCYCLES

WRVA Richmond, Va., Larus & Brother Co. (Inc.) 5000
KSOO Sioux Falls, S. Dak., Sioux Falls Broadcast Associa-
tion (Inc.) 2500

1120 KILOCYCLES (Canadian Shared)

WDEL Wilmington, Del., WDEL (Inc.) 250
WDBO Orlando, Fla., Orlando Broadcasting Co. (Inc.) 500
WTAW College Station, Tex., Agricultural and Mechanical
College of Texas 500
KTRH Houston, Tex., Rice Hotel 500
WISN Milwaukee, Wis., Evening Wisconsin Co. 250
WHAD Milwaukee, Wis., Marquette University 250
KFSG Los Angeles, Calif., Echo Park Evangelistic Assn. 500
KMCS Inglewood, Calif., Dalton's (Inc.) 500

STATION INDEX BY CALL LETTERS

Call Letters	Kilo-cycles	Location	Watts	Dial Setting
KGIZ	1500	Grant City, Mo.	100	
KGJF	890	Little Rock, Ark.	250	
KGKB	1500	Tyler, Tex.	100	
KGKL	1370	San Angelo, Tex.	100	
KGKO	570	Wichita Falls, Tex.	250	
KGKX	1420	Sandpoint, Idaho	100	
KGKY	1500	Scottsbluff, Nebr.	100	
KGMB	1320	Honolulu, Hawaii	250	
KGMP	1210	Elk City, Okla.	100	
KGNF	1430	North Platte, Nebr.	500	
KGNO	1210	Dodge City, Kan.	100	
KGO	790	San Francisco, Calif.	7500	
KGRS	1410	Amarillo, Tex.	1000	
KGU	940	Honolulu, Hawaii	1000	
KGVO	1420	Missoula, Mont.	100	
KGW	620	Portland, Ore.	1000	
KGY	1200	Lacey, Wash.	10	
KHJ	900	Los Angeles, Calif.	1000	
KHQ	590	Spokane, Wash.	1000	
KICK	1420	Red Oak, Iowa	100	
KID	1320	Idaho Falls, Idaho	250	
KIDO	1250	Boise, Idaho	1000	
KIT	1310	Yakima, Wash.	50	
KJBS	1070	San Francisco, Calif.	100	
KJR	970	Seattle, Wash.	5000	
KLCN	1290	Blytheville, Ark.	50	
KLO	1400	Ogden, Utah	500	
KLPM	1420	Minot, N. Dak.	100	
KLRA	1390	Little Rock, Ark.	1000	
KLS	1440	Oakland, Calif.	250	
KLX	880	Oakland, Calif.	550	
KLZ	560	Denver, Colo.	1000	
KMA	930	Shenandoah, Iowa	500	
KMAC	1370	San Antonio, Tex.	100	
KMBC	950	Kansas City, Mo.	1000	
KMCS	1120	Inglewood, Calif.	500	
KMED	1310	Medford, Ore.	100	
KMJ	1210	Fresno, Calif.	100	
KMLB	1200	Monroe, La.	100	
KMMJ	740	Clay Center, Nebr.	1000	
KMO	860	Tacoma, Wash.	500	
KMOX	1090	St. Louis, Mo.	50000	
KMPC	710	Beverly Hills, Calif.	500	
KMTR	570	Los Angeles, Calif.	500	
KNX	1050	Hollywood, Calif.	5000	
KOA	830	Denver, Colo.	12500	
KOAC	550	Corvallis, Ore.	1000	
KOB	1180	State College, N. Mex.	20000	
KOCW	1400	Chickasha, Okla.	250	
KOH	1380	Reno, Nev.	500	
KOIL	1260	Council Bluffs, Iowa	1000	
KOIN	940	Portland, Ore.	1000	

STATION INDEX BY KILOCYCLES

Call Letters	Location	Licensee	Watts
1060 KILOCYCLES			
WBAL	Baltimore, Md., Consolidated Gas Electric Light & Power Company of Baltimore		10000
WTIC	Hartford, Conn., Travelers Broadcasting Service Corporation		5000
WJAG	Norfolk, Nebr., Norfolk Daily News		1000
960 KILOCYCLES (Canadian Exclusive)			
970 KILOCYCLES			
WCFL	Chicago, Ill., Chicago Federation of Labor		1500
KJR	Seattle, Wash., Northwest Broadcasting System (Inc.)		5000
980 KILOCYCLES			

WFAA Dallas, Tex., Dallas News and Dallas Journal A. H. Belo Corporation50000

810 KILOCYCLES

WPCH New York, N. Y., Eastern Broadcasters (Inc.) 500
WCCO Minneapolis, Minn., Northwestern Broadcasting (Inc.) 5000

820 KILOCYCLES

WHAS Louisville, Ky., The Courier Journal Co. and The Louisville Times Co.10000

830 KILOCYCLES

WHDH Boston, Mass., Matheson Radio Co. (Inc.) 1000
WRUF Gainesville, Fla., University of Florida 5000
KOA Denver, Colo., National Broadcasting Co. (Inc.)12500

840 KILOCYCLES (Canadian Exclusive)

850 KILOCYCLES

KWKH Shreveport, La., Hello World Broadcasting Corp.10000
WWL New Orleans, La., Loyola University 5000

860 KILOCYCLES

WABC } New York, N. Y., Atlantic Broadcasting Corp.50000
WBOQ }
WHB } Kansas City, Mo., WHB Broadcasting Co. 500
KMO } Tacoma, Wash., KMO (Inc.) 500

870 KILOCYCLES

WLS Chicago, Ill., Agricultural Broadcasting Co.50000
WENR } Chicago, Ill., National Broadcasting Co. (Inc.)50000
WBCN }

880 KILOCYCLES (Canadian Shared)

WGBI Scranton, Pa., Scranton Broadcasters (Inc.) 250
WQAN Scranton, Pa., E. J. Lynett, prop., the Scranton Times 250
WCOC Meridian, Miss., Mississippi Broadcasting Co. (Inc.) 500
WSUI Iowa City, Iowa, State University of Iowa 500
KLX Oakland, Calif., The Tribune Publishing Co. 500
KPOF Denver, Colo., Pillar of Fire 500
KFKA Greeley, Colo., The Mid-Western Radio Corporation 500

890 KILOCYCLES (Canadian Shared)

WJAR Providence, R. I., The Outlet Co. 250
WKAQ San Juan, P. R., Radio Corporation of Porto Rico 250

WLBL Stevens Point, Wis., State of Wisconsin, Department of Agriculture and Markets 2000
KHJ Los Angeles, Calif., Don Lee (Inc.) 1000
KSEI Pocatello, Idaho, Radio Service Corporation 250
KGBU Ketchikan, Alaska, Alaska Radio and Service Co. (Inc.) 500

910 KILOCYCLES (Canadian Exclusive)

920 KILOCYCLES

WBSO Needham, Mass., Babson's Statistical Organization (Inc.) 500
WWJ Detroit, Mich., The Evening News Association (Inc.) 1000
KPRC Houston, Tex., Houston Printing Co. 1000
WAAF Chicago, Ill., Drivers Journal Publishing Co. 500
KOMO Seattle, Wash., Fisher's Blend Station (Inc.) 1000
KFEL Denver, Colo, Eugene P. O'Fallon (Inc.) 500
KFXF Denver, Colo., Colorado Radio Corporation 500

930 KILOCYCLES (Canadian Shared)

WIBG Elkins Park, Pa., St. Paul's P. E. Church 25
WDBJ Roanoke, Va., Times-World Corporation 250
WBRC Birmingham, Ala., Birmingham Broadcasting Co. (Inc.) 500
KGBZ York, Nebr., Dr. George R. Miller 500
KMA Shenandoah, Iowa, May Seed and Nursery Co. 500
KFWI San Francisco, Calif., Radio Entertainments (Inc.) 500
KROW Oakland, Calif., Educational Broadcasting Corp. 500

940 KILOCYCLES

WAAT Jersey City, N. J., Bremer Broadcasting Corp. 300
WCSH Portland, Me., Congress Square Hotel Co. 1000
WFIW Hopkinsville, Ky., WFIW (Inc.) 1000
WHA Madison, Wis., University of Wisconsin 750
WDAY Fargo, N. Dak., WDAY (Inc.) 1000
KOIN Portland, Ore., KOIN (Inc.) 1000
KGU Honolulu, Hawaii, Marion A. Mulrony and Advertiser Publishing Co. (Ltd.) 1000

950 KILOCYCLES

WRC Washington, D. C., National Broadcasting Co. (Inc.) 500
KMBC Kansas City, Mo., Midland Broadcasting Co. 1000
KFWB Hollywood, Calif., Warner Bros. Broadcasting Corp... 1000
KGHL Billings, Mont., Northwestern Auto Supply Co. (Inc.) 1000

STATION INDEX BY CALL LETTERS

Call Letters	Kilo-cycles	Location	Watts	Dial Setting
KFUL	1290	Galveston, Tex.	500	
KFUO	550	Clayton, Mo.	500	
KFUP	1310	Denver, Colo.	100	
KFVD	1000	Culver City, Calif.	250	
KFVS	1210	Cape Girardeau, Mo.	100	
KFWB	950	Hollywood, Calif.	1000	
KFWF	1200	St. Louis, Mo.	100	
KFWI	930	San Francisco, Calif.	500	
KFXD	1420	Nampa, Idaho	50	
KFXF	920	Denver, Colo.	500	
KFXJ	1310	Grand Junction, Colo.	100	
KFXM	1210	San Bernardino, Calif.	100	
KFXR	1310	Oklahoma City, Okla.	100	
KFXV	1420	Flagstaff, Ariz.	100	
KFYO	1420	Abilene, Tex.	100	
KFYR	550	Bismarck, N. Dak.	1000	
KGA	1470	Spokane, Wash.	5000	
KGAR	1370	Tucson, Ariz.	100	
KGB	1330	San Diego, Calif.	500	
KGBU	900	Ketchikan, Alaska	500	
KGBX	1310	St. Joseph, Mo.	100	
KGBZ	930	York, Nebr.	500	
KGCA	1270	Decorah, Iowa	50	
KGCR	1210	Watertown, S. Dak.	100	
KGCU	1200	Mandan, N. Dak.	100	
KGCV	1310	Wolf Point, Mont.	100	
KGDA	1370	Mitchell, S. Dak.	100	
KGDE	1200	Fergus Falls, Minn.	100	
KGDM	1100	Stockton, Calif.	250	
KGDY	1200	Huron, S. Dak.	100	
KGEF	1300	Los Angeles, Calif.	1000	
KGEK	1200	Yuma, Colo.	50	
KGER	1360	Long Beach, Calif.	1000	
KGEW	1200	Fort Morgan, Colo.	100	
KGEZ	1310	Kalispell, Mont.	100	
KGFF	1420	Shawnee, Okla.	100	
KGFG	1370	Oklahoma City, Okla.	100	
KGFI	1500	Corpus Christi, Tex.	100	
KGFJ	1200	Los Angeles, Calif.	100	
KGFK	1500	Moorhead, Minn.	50	
KGFL	1370	Raton, N. Mex.	50	
KGFW	1310	Ravenna, Nebr.	100	
KGFX	580	Pierre, S. Dak.	200	
KGGC	1420	San Francisco, Calif.	100	
GGGF	1010	South Coffeyville, Okla.	500	
KGGM	1230	Albuquerque, N. Mex.	250	
KGHF	1320	Pueblo, Colo.	250	
KGHI	1200	Little Rock, Ark.	100	
KGHL	950	Billings, Mont.	1000	
KGIR	1360	Butte, Mont.	500	
KGIW	1420	Trinidad, Colo.	100	
KGIX	1420	Las Vegas, Nev.	100	

STATION INDEX BY KILOCYCLES

Call Letters	Location	Licensee	Watts
780 KILOCYCLES (Canadian Shared)			
WEAN	Providence, R. I.	Shepard Broadcasting Service (Inc.)	250
WTAR	Norfolk, Va.	WTAR Radio Corporation	500
WPOR	Memphis, Tenn.	Memphis Commercial Appeal (Inc.)	500
WMC	Burbank, Calif.	Magnolia Park (Ltd.)	500
KELW	Los Angeles, Calif.	Pickwick Broadcasting Corp.	500
KTM			
790 KILOCYCLES			
WGY	Schenectady, N. Y.	General Electric Co.	50000
KGO	San Francisco, Calif.	National Broadcasting Co.	7500
800 KILOCYCLES			
WBAP	Fort Worth, Tex.	Carter Publications (Inc.)	50000
890 KILOCYCLES (Canadian Shared)—Continued			
WMMN	Fairmont, W. Va.	Holt-Rowe Broadcasting Co.	250
WGST	Atlanta, Ga.	Georgia School of Technology	250
KGJF	Little Rock, Ark.	First Church of the Nazarene	250
WILL	Urbana, Ill.	University of Illinois	250
KUSD	Vermillion, S. Dak.	University of South Dakota	500
KFNF	Shenandoah, Iowa	Henry Field Co.	500
900 KILOCYCLES			
WBN	Buffalo, N. Y.	Edward H. Butler, trustee for Ada Butler Mitchell and Edward H. Butler, trading as Buffalo Evening News	1000
WKY	Oklahoma City, Okla.	WKY Radiophone Co.	1000
WJAX	Jacksonville, Fla.	City of Jacksonville	1000

KTAB	San Francisco, Calif., The Associated Broadcasters (Inc.)	1000
------	---	------

570 KILOCYCLES

WNYC	New York, N. Y., City of New York, Department of Plants and Structures	500
WMCA	New York, N. Y., Knickerbocker Broadcasting Co. (Inc.)	500
WSYR } WMAC }	Syracuse, N. Y., Clive B. Meredith	250
WKBN	Youngstown, Ohio, WKBN Broadcasting Corporation	500
WEAO	Columbus, Ohio, Ohio State University	750
WWNC	Asheville, N. C., Citizen Broadcasting Co. (Inc.)	1000
KGKO	Wichita Falls, Tex., Wichita Falls Broadcasting Co.	250
WNAK	Yankton, S. Dak., The House of Gurney (Inc.)	1000
KXA	Seattle, Wash., American Radio Telephone Co.	500
KMTR	Los Angeles, Calif., KMTR Radio Corporation	500

580 KILOCYCLES (Canadian Shared)

WTAG	Worcester, Mass., Worcester Telegram Publishing Co. (Inc.)	250
WOBU	Charleston, W. Va., WOBU (Inc.)	250
WSAZ	Huntington, W. Va., WSAZ (Inc.)	250
KGFX	Pierre, S. Dak., Dana McNeil	200
WIBW	Topeka, Kan., Topeka Broadcasting Assn. (Inc.)	1000
KSAC	Manhattan, Kan., Kansas State Agricultural College	500

590 KILOCYCLES

WEEI	Boston, Mass., Edison Electric Illuminating Co. of Boston	1000
WKZO	Kalamazoo, Mich., WKZO (Inc.)	1000
WCAJ	Lincoln, Nebr., Nebraska Wesleyan University	500
WOW	Omaha, Nebr., Woodman of the World Life Ins. Assn.	1000
KHQ	Spokane, Wash., Louis Wasmer (Inc.)	1000

600 KILOCYCLES (Canadian Shared)

WCAC	Storrs, Conn., Connecticut Agricultural College	250
WCAO	Baltimore, Md., Monumental Radio Co.	250
WREC } WOAN }	Memphis, Tenn., WREC (Inc.)	500
WMT	Waterloo, Iowa, Waterloo Broadcasting Co.	500
KFSD	San Diego, Calif., Airfan Radio Corporation (Ltd.)	500
WICC	Bridgeport, Conn., Bridgeport Broadcasting Station (Inc.)	250

610 KILOCYCLES

WJAY	Cleveland, Ohio, Cleveland Radio Broadcasting Corp.	500
WFAN	Philadelphia, Pa., Keystone Broadcasting Co.	500
WIP	Philadelphia, Pa., Gimble Brothers (Inc.)	500
WDAF	Kansas City, Mo., Kansas City Star Co.	1000
KFRC	San Francisco, Calif., Don Lee (Inc.)	1000

650 KILOCYCLES

WSM	Nashville, Tenn., National Life & Accident Ins. Co.	5000
KPCB	Seattle, Wash., Queen City Broadcasting Co.	100

660 KILOCYCLES

WEAF	New York, N. Y., National Broadcasting Co. (Inc.)	50000
WAAW	Omaha, Nebr., Omaha Grain Exchange	500

670 KILOCYCLES

WMAQ	Chicago, Ill., WMAQ (Inc.)	5000
------	----------------------------	------

680 KILOCYCLES

WPTF	Raleigh, N. C., Durham Life Insurance Co.	1000
KFEQ	St. Joseph, Mo., Scroggin & Co. Bank	2500
KPO	San Francisco, Calif., Hale Bros. Stores (Inc.), and the Chronicle Publishing Co.	5000

690 KILOCYCLES (Canadian Exclusive)

700 KILOCYCLES

WLW	Cincinnati, Ohio, Crosley Radio Corporation	50000
-----	---	-------

710 KILOCYCLES

WOR	Newark, N. J., Bamberger Broadcasting Service (Inc.)	5000
KMPC	Beverly Hills, Calif., R. S. MacMillan	500

720 KILOCYCLES

WGN } WLIB }	Chicago, Ill., The Tribune Co.	25000
-----------------	--------------------------------	-------

730 KILOCYCLES (Canadian Exclusive)

740 KILOCYCLES

WSB	Atlanta, Ga., Atlanta Journal Co.	5000
KMMJ	Clay Center, Nebr., The M. M. Johnson Co.	1000

750 KILOCYCLES

WJR	Detroit, Mich., WJR, The Goodwill Station (Inc.)	5000
-----	--	------

760 KILOCYCLES

WJZ	New York, N. Y., National Broadcasting Co. (Inc.)	30000
WEW	St. Louis, Mo., St. Louis University	1000
KVI	Tacoma, Wash., Puget Sound Broadcasting Co. (Inc.)	1000

770 KILOCYCLES

KFAB	Lincoln, Nebr., KFAB Broadcasting Co.	5000
WBBM	Chicago, Ill., WBBM Broadcasting Corporation	25000

STATION INDEX BY KILOCYCLES

Call Letters	Location	Licensee	Watts
KPPC	Pasadena, Calif., Pasadena Presbyterian Church		50
KDFN	Casper, Wyo., Donald Lewis Hathaway		100

1220 KILOCYCLES

WCAD	Canton, N. Y., St. Lawrence University		500
WCAE	Pittsburgh, Pa., WCAE (Inc.)		1000
WDAE	Tampa, Fla., Tampa Publishing Co.		1000
WREN	Lawrence, Kan., Jenny Wren Co.		1000
KFKU	Lawrence, Kan., University of Kansas		500
KWSC	Pullman, Wash., State College of Washington		1000
KTW	Seattle, Wash., The First Presbyterian Church of Seattle, Washington		1000

1230 KILOCYCLES

WNAC } WBIS }	Boston, Mass., Shepard Broadcasting Service (Inc.)		1000
WPSC	State College, Pa., The Pennsylvania State College		500
WSBT	South Bend, Ind., South Bend Tribune		500
WFBM	Indianapolis, Ind., Indianapolis Power & Light Co.		1000
KGGM	Albuquerque, N. Mex., New Mexico Broadcasting Co.		250
KYA	San Francisco, Calif., Pacific Broadcasting Corp.		1000
KFQD	Anchorage, Alaska, Anchorage Radio Club (Inc.)		100

1240 KILOCYCLES

WXYZ	Detroit, Mich, Kunsy-Trendle Broadcasting Corp.		1000
------	---	--	------

Call Letters	Location	Licensee	Watts
1200 KILOCYCLES (Canadian Shared)—Continued			
WIL	St. Louis, Mo., Missouri Broadcasting Corporation		100
KGFJ	Los Angeles, Calif., Ben S. McGlashan		100
KSMR	Santa Maria, Calif., Santa Maria Radio		100
KWG	Stockton, Calif., Portable Wireless Telephone Co. (Inc.)		100
KGEK	Yuma, Colo., Elmer C. Beehler, trading as Beehler Electrical Equipment Co.		50
KGEW	Fort Morgan, Colo., City of Fort Morgan		100
KVOS	Bellingham, Wash., KVOS (Inc.)		100
KGY	Lacey, Wash., St. Martin's College		10

1210 KILOCYCLES (Canadian Shared)

WMRJ	Jamaica, N. Y., Peter J. Prinz		100
WJBI	Redbank, N. J., Monmouth Broadcasting Co.		100
WGBB	Freeport, N. Y., Harry H. Carman		100
WCOH	Yonkers, N. Y., Westchester Broadcasting Corp.		100
WOCL	Jamestown, N. Y., A. E. Newton		25
WLCI	Ithaca, N. Y., Lutheran Association of Ithaca, N. Y.		50
WPAW	Pawtucket, R. I., Shartenberg & Robinson Co.		100
WPRO	Providence, R. I., Cherry & Webb Broadcasting Co.		100
WSEN	Columbus, Ohio, Columbus Broadcasting Corp.		100
WJW	Mansfield, Ohio, John F. Weimer (owner Mansfield Broadcasting Association)		100
WALR	Zanesville, Ohio, Roy W. Waller		100
WBAX	Wilkes-Barre, Pa., John H. Stenger, Jr.		100
WJBU	Lewisburg, Pa., Bucknell University		100
WBBL	Richmond, Va., Grace Covenant Presbyterian Church		100
WMBG	Richmond, Va., Havens & Martin (Inc.)		100
WSIX	Springfield, Tenn., Jack M. and Louis R. Draughton, doing business as 638 Tire and Vulcanizing Co.		100

Call Letters	Location	Licensee	Watts
1250 KILOCYCLES			
WGCP	Newark, N. J., May Radio Broadcast Corporation		250
WODA	Paterson, N. J., Richard E. O'Dea		1000
WAAM	Newark, N. J., WAAM (Inc.)		1000
WDSU	New Orleans, La., Joseph H. Uhalt		1000
WLB	Minneapolis, Minn., University of Minnesota		1000
WGMS			
WRHM	Minneapolis, Minn., Minnesota Broadcasting Corp.		1000
KFMX	Northfield, Minn., Carlton College		1000
WCAL	Northfield, Minn., St. Olaf College		1000
KFOX	Long Beach, Calif., Nicholas and Warriner (Inc.)		1000
KIDO	Boise, Idaho, Frank L. Hill and C. G. Phillips, doing business as Boise Broadcast Station		1000

1260 KILOCYCLES

WLBW	Oil City, Pa., Radio-Wire Program Corporation of America		500
KWWG	Brownsville, Tex., The Brownsville Herald Publishing Co.		500
WTOC	Savannah, Ga., Savannah Broadcasting Co. (Inc.)		500
KRGV	Harlingen, Tex., KRGV (Inc.)		500
KOIL	Council Bluffs, Iowa, Mona Motor Oil Co.		1000
KVOA	Tucson, Ariz., Robert M. Riculfi		500

1270 KILOCYCLES

Call Letters	Location	Licensee	Watts
1210 KILOCYCLES (Canadian Shared)—Continued			
WSOC	Gastonia, N. C., WSOC (Inc.)		100
WJBY	Gadsden, Ala., Gadsden Broadcasting Co. (Inc.)		50
WQDX	Thomasville, Ga., Stevens Luke		100
KGMP	Elk City, Okla., Homer F. Bryant, trading as Bryant Radio & Electric Co.		100
WRBQ	Greenville, Miss., J. Pat Scully		100
WGCM	Gulfport, Miss., Great Southern Land Co.		100
KWEA	Shreveport, La., Hello World Broadcasting Corp.		100
KDLR	Devils Lake, N. Dak., KDLR (Inc.)		100
KGCR	Watertown, S. Dak., The Greater Kampeska Radio Corporation		100
KFOR	Lincoln, Nebr., Howard A. Shuman		100
WBHU	Anderson, Ind., Citizens Bank		100
KFVS	Cape Girardeau, Mo., Oscar C. Hirsch, trading as Hirsch Battery & Radio Co.		100
WEBQ	Harrisburg, Ill., First Trust & Savings Bank of Harrisburg, Ill.		100
KGNO	Dodge City, Kan., Dodge City Broadcasting Co. (Inc.)		100
WSBC	Chicago, Ill., World Battery Co. (Inc.)		100
WCRW	Chicago, Ill., Clinton R. White		100
WEDC	Chicago, Ill., Emil Denemark (Inc.)		100
WCBS	Springfield, Ill., Chas. H. Messter and Harold L. Dewing		100
WTAX	Springfield, Ill., WTAX (Inc.)		100
WHBF	Rock Island, Ill., Beardsley Specialty Co.		100
WOMT	Manitowoc, Wis., Francis M. Kadow		100
WIBU	Poynette, Wis., William C. Forrest		100
KMJ	Fresno, Calif., James McClatchy Co.		100
KFXM	San Bernardino, Calif., J. C. and E. W. Lee (Lee Brothers Broadcasting Co.)		100

STATION INDEX BY CALL LETTERS

Call Letters	Kilo-cycles	Location	Watts	Dial Setting	Dial Setting	Watts	Location	Kilo-cycles	Call Letters
WBBZ	1200	Ponca City, Okla.	100			1000	Tampa, Fla.	1220	WDAE
WBCM	1410	Bay City, Mich.	500			1000	Kansas City, Mo.	610	WDAF
WBEN	900	Buffalo, N. Y.	1000			1000	Amarillo, Tex.	1410	WDAG
WBEO	1310	Marquette, Mich.	100			100	El Paso, Tex.	1310	WDAH
WBGF	1370	Glens Falls, N. Y.	50			1000	Fargo, N. Dak.	940	WDAY
WBIG	1440	Greensboro, N. C.	500			250	Roanoke, Va.	930	WDBJ
WBIS	1230	Boston, Mass.	1000			500	Orlando, Fla.	1120	WDBO
WBMS	1450	Hackensack, N. J.	250			250	Wilmington, Del.	1120	WDEL
WBNX	1350	New York, N. Y.	250			50	Waterbury, Vt.	1420	WDEV
WBOQ	860	New York, N. Y.	5000			1000	Minneapolis, Minn.	1180	WDGY
WBOV	1310	Terre Haute, Ind.	100			100	Tupelo, Miss.	1500	WDIX
WBRC	930	Birmingham, Ala.	500			1000	Chattanooga, Tenn.	1280	WDOD
WBRE	1310	Wilkes-Barre, Pa.	100			500	Hartford, Conn.	1330	WDRG
WBSO	920	Needham, Mass.	500			1000	New Orleans, La.	1250	WDSU
WBT	1080	Charlotte, N. C.	5000			100	Tuscola, Ill.	1070	WDZ
WBTM	1370	Danville, Va.	100			50000	New York, N. Y.	660	WEAF
WBZ	990	Boston, Mass.	15000			1000	Ithaca, N. Y.	1270	WEAI
WBZA	990	Boston, Mass.	1000			250	Providence, R. I.	780	WEAN
WCAC	600	Storrs, Conn.	250			750	Columbus, Ohio	570	WEAO
WCAD	1220	Canton, N. Y.	500			1000	Superior, Wis.	1290	WEBC
WCAE	1220	Pittsburgh, Pa.	1000			100	Harrisburg, Ill.	1210	WEBQ
WCAH	1430	Columbus, Ohio	500			100	Buffalo, N. Y.	1310	WEBR
WCAJ	590	Lincoln, Nebr.	500			100	Chicago, Ill.	1210	WEDC
WCAL	1250	Northfield, Minn.	1000			100	Erie, Pa.	1420	WEDH
WCAM	1280	Camden, N. J.	500			1000	Boston, Mass.	590	WEEL
WCAO	600	Baltimore, Md.	250			500	Emory, Va.	1350	WEHC
WCAP	1280	Asbury Park, N. J.	500			100	Evanston, Ill.	1420	WEHS
WCAT	1200	Rapid City, S. Dak.	100			100	Philadelphia, Pa.	1370	WELK
WCAU	1170	Philadelphia, Pa.	10000			50	Battle Creek, Mich.	1420	WELL
WCAX	1200	Burlington, Vt.	100			50000	Chicago, Ill.	870	WENR
WCAZ	1070	Carthage, Ill.	50			100	Worcester, Mass.	1200	WEPS
WCBA	1440	Allentown, Pa.	250			500	New York, N. Y.	1300	WEVD
WCBD	1080	Zion, Ill.	5000			1000	St. Louis, Mo.	760	WEW
WCBM	1370	Baltimore, Md.	100			50	Royal Oak, Mich.	1310	WEXL
WCBS	1210	Springfield, Ill.	100			50000	Dallas, Tex.	800	WFAA
WCCO	810	Minneapolis, Minn.	5000			100	La Porte, Ind.	1200	WFAM
WCDA	1350	New York, N. Y.	250			500	Philadelphia, Pa.	610	WFAN
WCFL	970	Chicago, Ill.	1500			50	Knoxville, Tenn.	1200	WFBC
WCGU	1400	Brooklyn, N. Y.	500			100	Cincinnati, Ohio	1200	WFBE
WCHI	1490	Chicago, Ill.	5000			100	Altoona, Pa.	1310	WFBG
WCKY	1490	Covington, Ky.	5000			2500	Syracuse, N. Y.	1360	WFBM
WCLB	1500	Brooklyn, N. Y.	100			1000	Indianapolis, Ind.	1230	WFBM
WGLO	1200	Janesville, Wis.	100			500	Baltimore, Md.	1270	WFBM
WGLS	1310	Joliet, Ill.	100			100	Flint, Mich.	1310	WFDV
WGMA	1400	Culver, Ind.	500			100	Rome, Ga.	1310	WFDV
WGOA	1340	Pensacola, Fla.	500			100	Anniston, Ala.	1420	WFDW
WGOB	880	Meridian, Miss.	500			500	Philadelphia, Pa.	560	WFI
WGOB	1200	Harrisburg, Pa.	100			1000	Hopkinsville, Ky.	940	WFIW
WGOH	1210	Yonkers, N. Y.	100			1000	Clearwater, Fla.	620	WFLA
WGRW	1210	Chicago, Ill.	100			500	Brooklyn, N. Y.	1400	WFOX
WGSC	1360	Charleston, S. C.	500			100	Lancaster, Pa.	1310	WGAL
WGSB	940	Portland, Me.	1000			500	Cleveland, Ohio	1450	WGAR

STATION INDEX BY CALL LETTERS

KTAT Fort Worth, Tex., S. A. T. Broadcast Co. 1000
WACO Waco, Tex., Central Texas Broadcasting Co. (Inc.) 1000
WEAI Ithaca, N. Y., Cornell University 1000
WFBR Baltimore, Md., Baltimore Radio Show (Inc.) 500

Dial Setting	Watts	Location	Kilo-cycles	Call Letters
	100	Freeport, N. Y.	1210	WGBB
	500	Evansville, Ind.	630	WGBF
	250	Scranton, Pa.	880	WGBI
	500	New York, N. Y.	1180	WGBS
	100	Gulfport, Miss.	1210	WGCM
	250	Newark, N. J.	1250	WGCP
	500	Chicago, Ill.	1360	WGES
	100	Newport News, Va.	1310	WGH
	100	Fort Wayne, Ind.	1370	WGL
	1000	Minneapolis, Minn.	1250	WGMS
	25000	Chicago, Ill.	720	WGN
	1000	Buffalo, N. Y.	550	WGR
	250	Atlanta, Ga.	890	WGST
	50000	Schenectady, N. Y.	790	WGY
	750	Madison, Wis.	940	WHA
	250	Milwaukee, Wis.	1120	WHAD
	5000	Rochester, N. Y.	1150	WHAM
	1000	New York, N. Y.	1300	WHAP
	10000	Louisville, Ky.	820	WHAS
	100	Philadelphia, Pa.	1310	WHAT
	500	Troy, N. Y.	1300	WHAZ
	500	Kansas City, Mo.	860	WHB
	10	Canton, Ohio.	1200	WHBC
	100	Mount Orab, Ohio	1370	WHBD
	100	Rock Island, Ill.	1210	WHBF
	500	Sheboygan, Wis.	1410	WHBL
	100	Memphis, Tenn.	1370	WHBQ
	100	Anderson, Ind.	1210	WHBU
	100	Green Bay, Wis.	1200	WHBY
	100	Calumet, Mich.	1370	WHDF
	1000	Boston, Mass.	830	WHDH
	100	Tupper Lake, N. Y.	1420	WHDL
	500	Rochester, N. Y.	1440	WHEC
	100	Cicero, Ill.	1420	WHFC
	250	Bluefield, W. Va.	1410	WHIS
	1000	Cleveland, Ohio	1390	WHK
	250	New York, N. Y.	1010	WHN
	5000	Des Moines, Iowa	1000	WHO
	250	Jersey City, N. J.	1450	WHOM
	500	Harrisburg, Pa.	1430	WHP
	100	Ottumwa, Iowa	1420	WIAS
	500	Madison, Wis.	1280	WIBA
	25	Elkins Park, Pa.	930	WIBG
	100	Jackson, Mich.	1370	WIBM
	1000	Chicago, Ill.	560	WIBO
	50	Steubenville, Ohio	1420	WIBR
	100	Poynette, Wis.	1210	WIBU
	1000	Topeka, Kan.	580	WIBW
	100	Utica, N. Y.	1200	WIBX
	250	Bridgeport, Conn.	600	WICC
	100	St. Louis, Mo.	1200	WIL
	250	Urbana, Ill.	890	WILL

STATION INDEX BY KILOCYCLES

Call Letters	Location	Licensee	Watts
1270 KILOCYCLES—Continued			
WASH	Grand Rapids, Mich.,	WASH Broadcasting Corp.	500
WOOD	Grand Rapids, Mich.,	Kunsky-Trendle Broadcasting Corporation	500
WJDX	Jackson, Miss.,	Lamar Life Insurance Co.	1000
KWLC	Decorah, Iowa,	Luther College	100
KGCA	Decorah, Iowa,	Charles W. Greenley	50
KOL	Seattle, Wash.,	Seattle Broadcasting Co. (Inc.)	1000
KVOR	Colorado Springs, Colo.,	The Reynolds Radio Co. (Inc.)	1000

1280 KILOCYCLES

WCAM	Camden, N. J.,	City of Camden	500
WCAP	Asbury Park, N. J.,	Radio Industries Broadcast Co.	500
WOAX	Trenton, N. J.,	WOAX (Inc.)	500
WDOD	Chattanooga, Tenn.,	WDOD Broadcasting Corp.	1000
WRR	Dallas, Tex.,	City of Dallas, Texas	500
WIBA	Madison, Wis.,	Badger Broadcasting Co.	500
KFBB	Great Falls, Mont.,	Buttrely Broadcast (Inc.)	1000

1290 KILOCYCLES

WNBZ	Saranac Lake, N. Y.,	Earl J. Smith and William Mace, doing business as Smith & Mace	50
WJAS	Pittsburgh, Pa.,	Pittsburgh Radio Supply House	1000
KTSA	San Antonio, Tex.,	Lone Star Broadcasting Co. (Inc.)	1000
KFUL	Galveston, Tex.,	The News Publishing Co.	500
KLCN	Blytheville, Ark.,	Charles Leo Lintzenich	50
WEBC	Superior, Wis.,	Head of the Lakes Broadcasting Co. ..	1000
KDYL	Salt Lake City, Utah,	Intermountain Broadcasting Corporation	1000

1300 KILOCYCLES

Call Letters	Location	Licensee	Watts
1300 KILOCYCLES—Continued			
KGEF	Los Angeles, Calif.,	Trinity Methodist Church, South	1000
KFAC	Los Angeles, Calif.,	Los Angeles Broadcasting Co.	1000
KFJR	Portland, Ore.,	Ashley C. Dixon, trading as Ashley C. Dixon & Son	500
KTBR	Portland, Ore.,	M. E. Brown	500

1310 KILOCYCLES

WKAU	Laconia, N. H.,	Laconia Radio Club	100
WEBR	Buffalo, N. Y.,	Howell Broadcasting Co. (Inc.)	100
WMBO	Auburn, N. Y.,	George I. Stevens, trading as Radio Service Laboratories	100
WNBH	New Bedford, Mass.,	Irving Vermilya, trading as New Bedford Broadcasting Co.	100
WOL	Washington, D. C.,	American Broadcasting Co.	100
WGH	Newport News, Va.,	Hampton Roads Broadcasting Corporation	100
WEXL	Royal Oak, Mich.,	Royal Oak Broadcasting Co.	50
WFDF	Flint, Mich.,	Frank D. Fallain	100
WBEO	Marquette, Mich.,	The Lake Superior Broadcasting Co.	100
WHAT	Philadelphia, Pa.,	Independence Broadcasting Co.	100
WTEL	Philadelphia, Pa.,	Foulkrod Radio Engineering Co.	100
WJAC	Johnstown, Pa.,	Johnstown Automobile Co.	100
WFBG	Altoona, Pa.,	William F. Gable Co.	100
WRAW	Reading, Pa.,	Reading Broadcasting Co.	100
WGAL	Lancaster, Pa.,	WGAL, Incorporated	100
WSAJ	Grove City, Pa.,	Grove City College	100
WBRE	Wilkes-Barre, Pa.,	Louis G. Baltimore	100
WKBC	Birmingham, Ala.,	R. B. Broyles, trading as R. B. Broyles Furniture Co.	100
WTJS	Union City, Tenn.,	The Sun Publishing Co., (Inc.)	100
WROL	Knoxville, Tenn.,	Stuart Broadcasting Corporation	100

STATION INDEX BY CALL LETTERS

Dial Setting	Watts	Location	Kilo-cycles	Call Letters
50	100	Wilmington, Del.	1420	WILM
100	1000	Miami, Fla.	1300	WIOD
100	500	Philadelphia, Pa.	610	WIP
100	500	Columbia, S. C.	1010	WIS
100	250	Milwaukee, Wis.	1120	WISN
100	100	Johnstown, Pa.	1310	WJAC
100	1000	Norfolk, Nebr.	1060	WJAG
15	50	Marion, Ind.	1310	WJAK
100	250	Providence, R. I.	890	WJAR
100	1000	Pittsburgh, Pa.	1290	WJAS
100	1000	Jacksonville, Fla.	900	WJAX
100	500	Cleveland, Ohio	610	WJAY
100	5000	Mount Prospect, Ill.	1490	WJAZ
100	100	La Salle, Ill.	1200	WJBC
100	100	Red Bank, N. J.	1210	WJBI
100	50	Highland Park, Mich.	1370	WJBK
100	100	Decatur, Ill.	1200	WJBL
100	100	New Orleans, La.	1420	WJBO
100	25000	Chicago, Ill.	770	WJBT
100	100	Lewisburg, Pa.	1210	WJBU
100	100	New Orleans, La.	1200	WJBW
100	50	Gadsden, Ala.	1210	WJBY
100	1000	Jackson, Miss.	1270	WJDX
100	20000	Mooseheart, Ill.	1130	WJJD
100	1000	Gary, Ind.	1360	WJKS
100	5000	Detroit, Mich.	750	WJR
100	10000	Alexandria, Va.	1460	WJSV
100	100	Tifton, Ga.	1370	WJTL
100	100	Mansfield, Ohio	1210	WJW
100	30000	New York, N. Y.	760	WJZ
100	250	San Juan, P. R.	890	WKAQ
100	1000	E. Lansing, Mich.	1040	WKAR
100	100	Laconia, N. H.	1310	WKAU
100	100	Joliet, Ill.	1310	WKBB
100	100	Birmingham, Ala.	1310	WKBC
100	500	Indianapolis, Ind.	1400	WKBF
100	1000	La Crosse, Wis.	1380	WKBH
100	100	Cicero, Ill.	1420	WKBI
100	500	Youngstown, Ohio	570	WKBN
100	250	Jersey City, N. J.	1450	WKBO
100	100	Galesburg, Ill.	1310	WKBS
100	100	Connersville, Ind.	1500	WKBV
100	5000	Buffalo, N. Y.	1480	WKBW
100	50	Ludington, Mich.	1500	WKBZ
100	100	Lancaster, Pa.	1200	WKJC
100	1000	Cincinnati, Ohio	550	WKRC
100	1000	Oklahoma City, Okla.	900	WKY
100	1000	Kalamazoo, Mich.	590	WKZO
100	5000	Nashville, Tenn.	1470	WLAC
100	100	Louisville, Ky.	1200	WLAP
100	1000	Minneapolis, Minn.	1250	WLB
100	50	Muncie, Ind.	1310	WLBC

STATION INDEX BY KILOCYCLES

Call Letters	Location	Licensee	Watts
1310 KILOCYCLES—Continued			
WDAH	El Paso, Tex.,	W. S. Bledsoe and W. T. Blackwell	100
KFPL	Dublin, Tex.,	C. C. Baxter	100
KFXR	Oklahoma City, Okla.,	Exchange Avenue Baptist Church	100
WKBS	Galesburg, Ill.,	Permil N. Nelson	100
WCLS	Joliet, Ill.,	WCLS (Inc.)	100
WKBB	Joliet, Ill.,	Sanders Brothers Radio Station	100
KWCR	Cedar Rapids, Iowa,	Harry F. Parr	100
KFJY	Fort Dodge, Iowa,	C. S. Tunwall	100
KFGQ	Boone, Iowa,	Boone Biblical College	100
KGFV	Ravenna, Nebr.,	Central Nebraska Broadcasting Corp.	100
WBOW	Terre Haute, Ind.,	Banks of Wabash (Inc.)	100
WJAK	Marion, Ind.,	Marion Broadcast Co.	50
WLBC	Muncie, Ind.,	Donald A. Burton	50
KGBX	St. Joseph, Mo.,	KGBX (Inc.)	100
KFBK	Sacramento, Calif.,	James McClatchy Co.	100
KCRJ	Jerome, Ariz.,	Charles C. Robinson	100
KGCS	Wolf Point, Mont.,	First State Bank of Vida	100
KGEZ	Kalispell, Mont.,	Donald C. Treloar and Stanley R. Church, doing business as Treloar-Church Broadcasting Co.	100
KFUP	Denver, Colo.,	Fitzsimons General Hospital, U. S. Army	100
KFXJ	Grand Junction, Colo.,	R. G. Howell and Charles Howel, doing business as Western Slope Broadcasting Co.	100
KMED	Medford, Ore.,	Mrs. W. J. Virgin	100
KXRO	Aberdeen, Wash.,	KXRO (Inc.)	100
KIT	Yakima, Wash.,	Carl E. Haymond	50

1320 KILOCYCLES

WADC	Tallmadge, Ohio,	Allen T. Simmons	1000
WSMB	New Orleans, La.,	Saenger Theatres (Inc.) and Maison Blanche Co.	500
KTFI	Twin Falls, Idaho,	Radio Broadcasting Corporation	250
KID	Idaho Falls, Idaho,	KID Broadcasting Co.	250
KGHF	Pueblo, Colo.,	Curtis P. Ritchie and Joe E. Finch	250
KGMB	Honolulu, Hawaii,	Honolulu Broadcasting Co. (Ltd.)	250

Call Letters	Location	Licensee	Watts
1340 KILOCYCLES—Continued			
WCOA	Pensacola, Fla.,	City of Pensacola, Fla.	500
KFPY	Spokane, Wash.,	Symons Broadcasting Co.	1000

1350 KILOCYCLES

WAWZ	Zarephath, N. J.,	Pillar of Fire	250
WMSG	New York, N. Y.,	Madison Square Garden Broadcast Corporation	250
WCDA	New York, N. Y.,	Italian Educational Broadcasting Co. (Inc.)	250
WBNX	New York, N. Y.,	Standard Cahill Co. (Inc.)	250
KWK	St. Louis, Mo.,	Greater St. Louis Broadcasting Corp.	1000
WEHC	Emory, Va.,	Emory & Henry College	500

1360 KILOCYCLES

WFBL	Syracuse, N. Y.,	Onondaga Radio Broadcasting Corp.	1000
WQBC	Vicksburg, Miss.,	Delta Broadcasting Co. (Inc.)	500
WCSC	Charleston, S. C.,	Lewis Burk	500
WJKS	Gary, Ind.,	Johnson-Kennedy Radio Corporation	1000
WGES	Chicago, Ill.,	Oak Leaves Broadcasting Station (Inc.)	500
KGIR	Butte, Mont.,	KGIR (Inc.)	500
KGER	Long Beach, Calif.,	Consolidated Broadcasting Corporation (Ltd.)	500

1370 KILOCYCLES

WRDO	Augusta, Me.,	Albert S. Woodman	100
WQDM	St. Albans, Vt.,	A. J. St. Antoine	100
WLEY	Lexington, Mass.,	Carl S. Wheeler, trading as Lexington Air Stations	100
WSVS	Buffalo, N. Y.,	Elmer S. Pierce, principal, Seneca Vocational High School	50
WBGF	Glens Falls, N. Y.,	W. Neal Parker and Herbert H. Metcalfe	50
WPOE	Patchogue, N. Y.,	Nassau Broadcasting Corporation	100
WCBM	Baltimore, Md.,	Baltimore Broadcasting Corporation	100

STATION INDEX BY KILOCYCLES

Call Letters	Location	Licensee	Watts
1370 KILOCYCLES—Continued			
WHBQ	Memphis, Tenn., Broadcasting Station WHBQ (Inc.)		100
WRAM	Wilmington, N. C., Wilmington Radio Association (Inc.)		100
KGFG	Oklahoma City, Okla., Oklahoma Broadcasting Co. (Inc.)		100
KCRC	Enid, Okla., Enid Radiophone Co.		100
WMBR	Tampa, Fla., F. J. Reynolds		100
KMAC	San Antonio, Tex., W. W. McAllister		100
WJTL	Tifton, Ga., Oglethorpe University		100
KFJZ	Fort Worth, Tex., Margaret Meacham Hightower, Minnie Meacham Smith, and Mary Meacham, ex-extricates of estate of H. C. Meacham, deceased		100
KONO	San Antonio, Tex., Mission Broadcasting Co.		100
KGKL	San Angelo, Tex., KGKL (Inc.)		100
KFLX	Galveston, Tex., George Roy Clough		100
WGL	Fort Wayne, Ind., Fred C. Zeig (Allen-Wayne Co.)		100
KGDA	Mitchell, S. Dak., Mitchell Broadcasting Corporation		100
KFJM	Grand Forks, N. Dak., University of North Dakota		100
KWKC	Kansas City, Mo., Wilson Duncan, trading as Wilson Duncan Broadcasting Co.		100
WRJN	Racine, Wis., Racine Broadcasting Corporation		100
KGAR	Tucson, Ariz., Tucson Motor Service Co.		100
KRE	Berkeley, Calif., First Congregational Church of Berkeley		100
KOOS	Marshfield, Ore., H. H. Hanseth (Inc.)		100
KFBL	Everett, Wash., Otto Leese and Robert Leese, doing business as Leese Bros.		50
KVL	Seattle, Wash., KVL, Incorporated		100
KFJI	Astoria, Ore., KFJI Broadcasters, Inc.		100
KGFL	Raton, N. Mex., KGFL (Inc.)		50
KUJ	Walla Walla, Wash., KUJ (Inc.)		100

1380 KILOCYCLES

WSMK	Dayton, Ohio, Stanley M. Krohn, Jr.		200
KQV	Pittsburgh, Pa., KQV Broadcasting Co.		500
KSO	Clarinda, Iowa, Iowa Broadcasting Co.		500
WKBH	LaCrosse, Wis., WKBH (Inc.)		1000
KOH	Reno., Nev., The Bee (Inc.)		500

1390 KILOCYCLES

WHK	Cleveland, Ohio, Radio Air Service Corporation		1000
KLRA	Little Rock, Ark., Arkansas Broadcasting Co.		1000

Call Letters	Location	Licensee	Watts
1410 KILOCYCLES—Continued			
KGRS	Amarillo, Tex., E. B. Gish (Gish Radio Service)		1000
WDAG	Amarillo, Tex., National Radio Broadcasting Corp.		1000
WODX	Mobile, Ala., Mobile Broadcasting Corporation		500
WSFA	Montgomery, Ala., Montgomery Broadcasting Co. (Inc.)		500
KFLV	Rockford, Ill., Rockford Broadcasters (Inc.)		500
WHBL	Sheboygan, Wis., Press Publishing Co.		500
WHIS	Bluefield, W. Va., Daily Telegraph Printing Co.		250

1420 KILOCYCLES

WHDL	Tupper Lake, N. Y., Tupper Lake Broadcasting Co. (Inc.)		100
WTBO	Cumberland, Md., Associated Broadcasting Corp.		100
WILM	Wilmington, Del., Delaware Broadcasting Co. (Inc.)		100
WPAD	Paducah, Ky., Pierce E. Lackey and S. Houston McNutt, doing business as Paducah Broadcasting Co.		100
WEDH	Erie, Pa., Erie Dispatch-Herald Broadcasting Corp.		100
WMBC	Detroit, Mich., Michigan Broadcasting Co.		100
WDEV	Waterbury, Vt., Harry C. Whitehill		50
WELL	Battle Creek, Mich., Enquirer-News Co.		50
WIBR	Steubenville, Ohio, George W. Robinson		50
WFDW	Anniston, Ala., Raymond C. Hammett		100
WJBO	New Orleans, La., Valdemar Jensen		100
KGFF	Shawnee, Okla., KGFF Broadcasting Co. (Inc.)		100
KABC	San Antonio, Tex., Alamo Broadcasting Co. (Inc.)		100
KXYZ	Houston, Tex., Harris County Broadcast Co.		100
KFYO	Abilene, Tex., T. E. Kirksey, trading as Kirksey Brothers		100
WSPA	Spartanburg, S. C., Virgil V. Evans, trading as The Voice of South Carolina		100
KICK	Red Oak, Iowa, Red Oak Radio Corporation		100
WIAS	Ottumwa, Iowa, Iowa Broadcasting Co.		100
WLBF	Kansas City, Kan., The WLBF Broadcasting Co.		100
WMBH	Joplin, Mo., Edwin Dudley Aber		100
KLPM	Minot, N. Dak., John B. Cooley		100
WEHS	Evanston, Ill., WEHS (Inc.)		100
WHFC	Cicero, Ill., WHFC (Inc.)		100
WKBI	Cicero, Ill., WKBI (Inc.)		100
KFIZ	Fond du Lac, Wis., The Reporter Printing Co.		100
KFXV	Flagstaff, Ariz., Albert H. Schermann		100
KGIX	Las Vegas, Nev., J. M. Heaton		100
KFXD	Nampa, Idaho, Frank E. Hurt		50

STATION INDEX BY CALL LETTERS

KGIW	Trinidad, Colo., Leonard E. Wilson	100
KGKX	Sandpoint, Idaho, C. E. Twiss and F. H. McCann	100
KGCC	San Francisco, Calif., The Golden Gate Broadcasting Co.	100
KGVO	Missoula, Mont., Mosby's (Inc.)	100
KXL	Portland, Ore., KXL Broadcasters	100
KBPS	Portland, Ore., Benson Polytechnic School	100
KORE	Eugene, Ore., Frank L. Hill and C. G. Phillips, doing business as Eugene Broadcast Station	100
1430 KILOCYCLES		
WHP	Harrisburg, Pa., WHP (Inc.)	500
WBAK	Harrisburg, Pa., Pennsylvania State Police, Commonwealth of Pennsylvania	500
WCAH	Columbus, Ohio, Commercial Radio Service Co.	500
WNBR } WGBC }	Memphis, Tenn., Memphis Broadcasting Co.	500
KGNF	North Platte, Nebr., Great Plains Broadcasting Co. (A Corporation)	500

KUOA	Fayetteville, Ark., University of Arkansas	1000
KOY	Phoenix, Ariz., Nielsen Radio and Sporting Goods Co.	500
1400 KILOCYCLES		
WCGU	Brooklyn, N. Y., United States Broadcasting Corp.	500
WFOX	Brooklyn, N. Y., Paramount Broadcasting Corp.	500
WLTH	Brooklyn, N. Y., Voice of Brooklyn (Inc.)	500
WBBC	Brooklyn, N. Y., Brooklyn Broadcasting Corporation	500
KOCW	Chickasha, Okla., Oklahoma College for Women	250
WCMA	Culver, Ind., General Broadcasting Corporation	500
WKBF	Indianapolis, Ind., Indianapolis Broadcasting (Inc.)	500
WBAA	West Lafayette, Ind., Purdue University	500
KLO	Ogden, Utah, Peery Building Co.	500
1410 KILOCYCLES		
WAAB	Boston, Mass., Bay State Broadcasting Corporation	500
WRBX	Roanoke, Va., Richmond Development Corporation	250
WBCM	Bay City, Mich., Jas. E. Davidson	500

Dial Setting	Watts	Location	Kilo-cycles	Call Letters
	500	New York, N. Y.	570	WNYC
	50000	San Antonio, Tex.	1190	WOAI
	500	Memphis, Tenn.	600	WOAN
	500	Trenton, N. J.	1280	WOAX
	250	Charleston, W. Va.	580	WOBW
	5000	Davenport, Iowa	1000	WOC
	25	Jamestown, N. Y.	1210	WOCL
	1000	Paterson, N. J.	1250	WODA
	500	Mobile, Ala.	1410	WODX
	5000	Ames, Iowa	640	WOI
	500	Albany, N. Y.	1440	WOKO
	100	Washington, D. C.	1310	WOL
	100	Manitowoc, Wis.	1210	WOMT
	500	Grand Rapids, Mich.	1270	WOOD
	100	Bristol, Tenn.	1500	WOPI
	1000	Kansas City, Mo.	1300	WOQ
	5000	Newark, N. J.	710	WOR
	100	Worcester, Mass.	1200	WORC
	500	Jefferson City, Mo.	630	WOS
	1000	New York, N. Y.	1130	WOV
	1000	Omaha, Nebr.	590	WOW
	10000	Fort Wayne, Ind.	1160	WOWO
	100	Paducah, Ky.	1420	WPAD
	250	New York, N. Y.	1010	WPAP
	100	Pawtucket, R. I.	1210	WPAW
	500	Chicago, Ill.	560	WPCC
	500	New York, N. Y.	810	WPCH
	100	Philadelphia, Pa.	1500	WPEN
	5000	Atlantic City, N. J.	1100	WPG
	100	Patchogue, N. Y.	1370	WPOE
	500	Norfolk, Va.	780	WPOR
	100	Providence, R. I.	1210	WPRO
	500	State College, Pa.	1230	WPSC
	1000	Raleigh, N. C.	680	WPTF
	1000	Miami, Fla.	560	WQAM
	250	Scranton, Pa.	880	WQAN
	250	New York, N. Y.	1010	WQAO
	500	Vicksburg, Miss.	1360	WQBC
	100	St. Albans, Vt.	1370	WQDM
	100	Thomasville, Ga.	1210	WQDX
	100	Williamsport, Pa.	1370	WRAC
	100	Wilmington, N. C.	1370	WRAM
	100	Reading, Pa.	1310	WRAW
	250	Philadelphia, Pa.	1020	WRAX
	10	Hattiesburg, Miss.	1370	WRBJ
	50	Columbus, Ga.	1200	WRBL
	100	Greenville, Miss.	1210	WRBQ
	250	Roanoke, Va.	1410	WRBX
	500	Washington, D. C.	950	WRC
	100	Augusta, Me.	1370	WRDO
	100	Augusta, Ga.	1500	WRDW
	500	Memphis, Tenn.	600	WREC

STATION INDEX BY KILOCYCLES

Call Letters	Location	License	Watts
1500 KILOCYCLES—Continued			
KGKB	Tyler, Tex., E. M., C. T., and E. E. Wilson, doing business as Eagle Publishing Co.		100
KGIZ	Grant City, Mo., Grant City Park Corporation		100
KGKY	Scottsbluff, Nebr., Hilliard Co. (Inc.)		100
WKBV	Connersville, Ind., William O. Knox, trading as Knox Battery & Electric Co.		100
KGFK	Moorhead, Minn., Red River Broadcasting Co. (Inc.)		50
KPJM	Prescott, Ariz., A. P. Miller		100
KXO	El Centro, Calif., E. R. Irely and F. M. Bowles		100
KDB	Santa Barbara, Calif., Santa Barbara Broadcasters (Ltd.)		100
KREG	Santa Ana, Calif., Pacific-Western Broadcasting Federation (Ltd.)		100
KPQ	Wenatchee, Wash., Wescost Broadcasting Co.		50

From the Far Corners of The World

The same radio waves that bring you daily service and entertainment from WLS here in the United States, also go bounding across the ocean to many distant points. The high power of this station makes it possible for listeners to receive our programs clear on the other side of the world.

During the past year more than a hundred listeners have written in from New Zealand, and there's a very curious thing about their letters. Look at a globe and you will see that they are around on the other side, and below the equator. They hear our Saturday night barn dance program, but when it is Saturday at midnight in Chicago, it is late Sunday afternoon in New Zealand. Not only that, but when it is summer here, it is winter there.

Last July when it was hot in Chicago, a listener in Chile, South America, reported that even though it was very cold, midwinter, where he was, he sat up until midnight to hear the end of the barn dance program.

Call Letters	Location	License	Watts
1430 KILOCYCLES—Continued			
KECA	Los Angeles, Calif., Pacific Development Radio Co.		1000
1440 KILOCYCLES			
WHEC } WABO }	Rochester, N. Y., Hickson Electric & Radio Corp.		500
WOKO	Albany, N. Y., WOKO (Inc.)		500
WCBA	Allentown, Pa., B. Bryan Musselman		250
WSAN	Allentown, Pa., Allentown Call Publishing Co. (Inc.)		250
WBIG	Greensboro, N. C., North Carolina Broadcasting Co. (Inc.)		500
WTAD	Quincy, Ill., Illinois Stock Medicine Broadcasting Corporation		500
WMBD	Peoria Heights, Ill., Peoria Broadcasting Co.		500
KLS	Oakland, Calif., E. N. and S. W. Warner, doing business as Warner Bros.		250

Call Letters	Location	License	Watts
1450 KILOCYCLES			
WBMS	Hackensack, N. J., WBMS Broadcasting Corporation		250
WNJ	Newark, N. J., Radio Investment Co. (Inc.)		250
WHOM	Jersey City, N. J., New Jersey Broadcasting Corp.		250
WKBO	Jersey City, N. J., Camith Corporation		250
WSAR	Fall River, Mass., Doughty & Welch Electric Co. (Inc.)		250
WGAR	Cleveland, Ohio, WGAR Broadcasting Co.		500
WTFI	Toccoa, Ga., Toccoa Falls Broadcasting Co.		500
KTBS	Shreveport, La., Tri State Broadcasting System (Inc.)		1000

Call Letters	Location	License	Watts
1460 KILOCYCLES			
WJSV	Alexandria, Va., Independent Publishing Co.		10000
KSTP	St. Paul, Minn., National Battery Broadcasting Co.		10000

Call Letters	Location	License	Watts
1470 KILOCYCLES			
WLAC	Nashville, Tenn., Life and Casualty Insurance Co.		5000
KGA	Spokane, Wash., Northwest Broadcasting System (Inc.)		5000

Call Letters	Location	License	Watts
1480 KILOCYCLES			
WKBW	Buffalo, N. Y., Buffalo Broadcasting Corporation		5000
KPJJ	Oklahoma City, Okla., National Radio Manufacturing Co.		5000

Call Letters	Location	License	Watts
1490 KILOCYCLES			
WCKY	Covington, Ky., L. B. Wilson (Inc.)		5000

STATION INDEX BY CALL LETTERS

Of course we have thousands of friends in Canada, but in the list of mail from other countries, we have had letters from Nicaragua, Uruguay, Hawaii, Mexico, Honduras, El Salvador, Cuba, Porto Rico and Bermuda. The list also includes Alaska and the Canal Zone. All of these places report hearing the programs sent out from the Prairie Farmer Building, from the studio that is lined with cornstalk board.

Every week during the year 1931, the number of letters received at WLS reached a total of more than 14,000. All of these letters receive careful attention, being opened by a group of efficient girls who forward them to the different members of the staff, or to the advertisers for whom they are intended.

Your letters are always appreciated, and are read with interest. They let us know the things you like, and help us to serve you better.

WJAZ	Mt. Prospect, Ill., Zenith Radio Corporation	5000
WCHI	Chicago, Ill., Peoples Pulpit Association	5000
1500 KILOCYCLES		
WMBA	Newport R. I., LeRoy Joseph Beebe	100
WLOE	Boston, Mass., Boston Broadcasting Co.	100
WNEF	Binghamton, N. Y., Howitt-Wood Radio Co. (Inc.)	100
WMBQ	Brooklyn, N. Y., Paul J. Gollhofer	100
WMIL	Brooklyn, N. Y., Arthur Faske	100
WLBX	Long Island City, N. Y., John N. Brahy	100
WWRL	Woodside, N. Y., Long Island Broadcasting Corp.	100
WSYB	Rutland, Vt., Philip Weiss, trading as Philip Weiss Music Co.	100
WKBBZ	Ludington, Mich., Karl L. Ashbacher	50
WMPC	Lapeer, Mich., First Methodist Protestant Church of Lapeer	100
WPEN	Philadelphia, Pa., Wm. Penn Broadcasting Co.	100
WWSW	Pittsburgh, Pa., William S. Walker	100
WOPI	Bristol, Tenn., Radiophone Broadcasting Station WOPI (Inc.)	100
WDIX	Tupelo, Miss., North Mississippi Broadcasting Corp.	100
WRDW	Augusta, Ga., Musicove (Inc.)	100
KGFI	Corpus Christi, Tex., Eagle Broadcasting Co. (Inc.)	100
KUT	Austin, Tex., Rice Hotel	100

Dial Setting	Watts	Location	Kilo-cycles	Call Letters
		1000 Lawrence, Kan.	1220	WREN
		1000 Minneapolis, Minn.	1250	WRHM
		100 Racine, Wis.	1370	WRJN
		250 New York, N. Y.	1010	WRNY
		100 Knoxville, Tenn.	1310	WROL
		500 Dallas, Tex.	1280	WRR
		5000 Gainesville, Fla.	830	WRUF
		5000 Richmond, Va.	1110	WRVA
		500 Cincinnati, Ohio	1330	WSAI
		100 Grove City, Pa.	1310	WSAJ
		250 Allentown, Pa.	1440	WSAN
		250 Fall River, Mass.	1450	WSAR
		250 Huntington, W. Va.	580	WSAZ
		5000 Atlanta, Ga.	740	WSB
		100 Chicago, Ill.	1210	WSBC
		500 South Bend, Ind.	1230	WSBT
		100 Columbus, Ohio	1210	WSEN
		500 Montgomery, Ala.	1410	WSFA
		100 Springfield, Tenn.	1210	WSIX
		100 Winston-Salem, N. C.	1310	WSJS
		5000 Nashville, Tenn.	650	WSM
		500 New Orleans, La.	1320	WSMB
		200 Dayton, Ohio	1380	WSMK
		100 Gastonia, N. C.	1210	WSOC
		100 Spartanburg, S. C.	1420	WSPA
		1000 Toledo, Ohio	1340	WSPD
		500 Iowa City, Iowa	880	WSUI
		2500 Clearwater, Fla.	620	WSUN
		50 Buffalo, N. Y.	1370	WSVS
		100 Rutland, Vt.	1500	WSYB
		250 Syracuse, N. Y.	570	WSYR
		500 Quincy, Ill.	1440	WTAD
		250 Worcester, Mass.	580	WTAG
		50000 Cleveland, Ohio	1070	WTAM
		1000 Eau Claire, Wis.	1330	WTAQ
		500 Norfolk, Va.	780	WTAR
		500 College Station, Tex.	1120	WTAW
		100 Springfield, Ill.	1210	WTAX
		100 Cumberland, Md.	1420	WTBO
		100 Philadelphia, Pa.	1310	WTEL
		500 Toccoa, Ga.	1450	WTFI
		50000 Hartford, Conn.	1060	WTIC
		1000 Milwaukee, Wis.	620	WTMJ
		500 Savannah, Ga.	1260	WTOC
		100 Hammond, Ind.	1200	WWAE
		1000 Detroit, Mich.	920	WWJ
		5000 New Orleans, La.	850	WWL
		1000 Asheville, N. C.	570	WWNC
		100 Woodside, N. Y.	1500	WWRL
		100 Pittsburgh, Pa.	1500	WWSW
		5000 Wheeling, W. Va.	1160	WWVA
		1000 Detroit, Mich.	1240	WXYZ

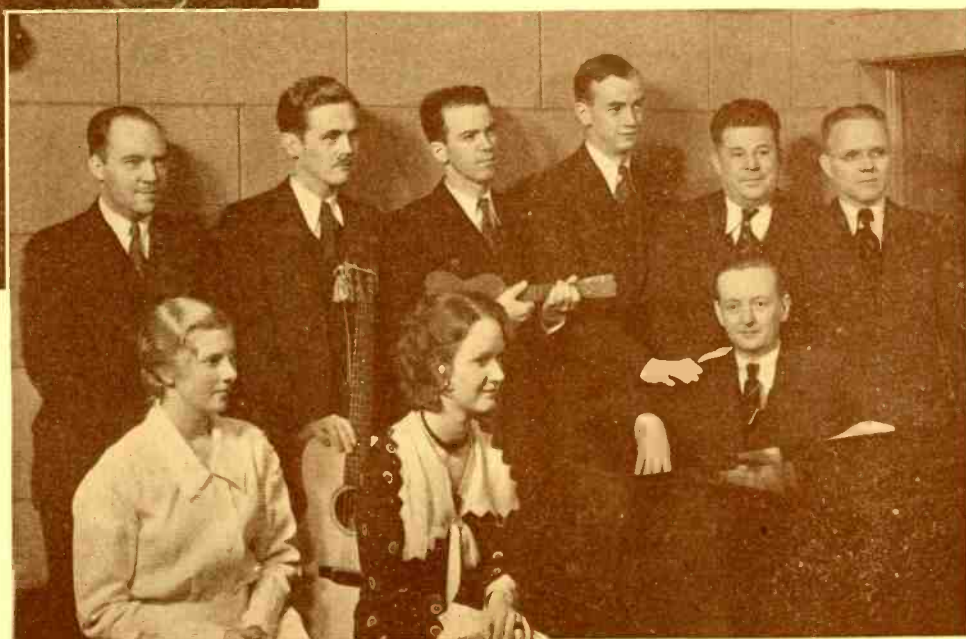
From the Swift &



One of your old friends in radio programs, Swift & Co., has offered entertainment, service and educational features steadily for three years over WLS. They have reached out through the ether and clasped the hand of many a listener.

They have saluted many of the towns and cities in the Middle West by turning the radio spotlight on them with historical information and appropriate musical settings.

Let us introduce you to the director. Kamp Charles (left) arranges and directs, as well as announces, all of the WLS Swift & Co. programs. Mr. Charles was born on a farm in Northern Kansas, now known as the "Valley Point Stock Farm." He served two years as a pilot in the U. S. Air Service overseas, worked on many newspapers; then joined the Department of Agricultural Journalism at Iowa State College, Ames. He has been at the helm of the Swift & Co. radio programs from the start.



"Ozzie" arranges the musical fests and plays the guitar. Phil is a ukelele exponent as well as a baritone, and John Brown is well known for his pianistic attainments. Betty Brian, auburn-haired contralto, sings a great variety of songs and takes part in some of the skits. They are a versatile group and one can always be sure of a well balanced, diversified program when they get together.

The Entertainers on Swift & Co. Time

Here is the entire family. Meet, left to right bottom line, Martha Logan, food expert; Betty Brian, sweet songster, and John Brown, pianist. On top line, left to right, meet Fred Pohlman, first tenor; Osgood (Ozzie) Westley, second tenor; Phil Kaler, baritone; Winfred Stracke, bass; Clifford Soubier ("Old Pappy"), and Kamp Charles. Their good programs help you to remember the fine quality of Swift & Co. products.

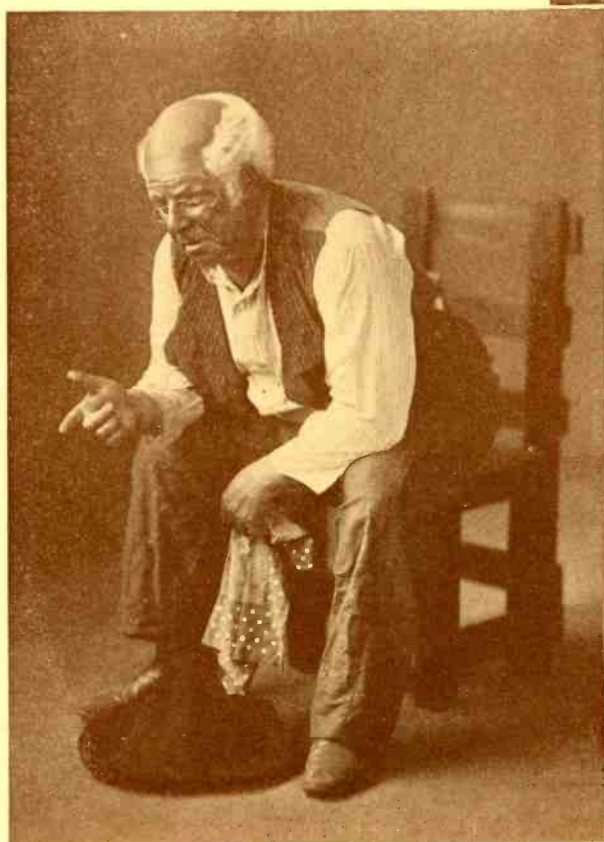
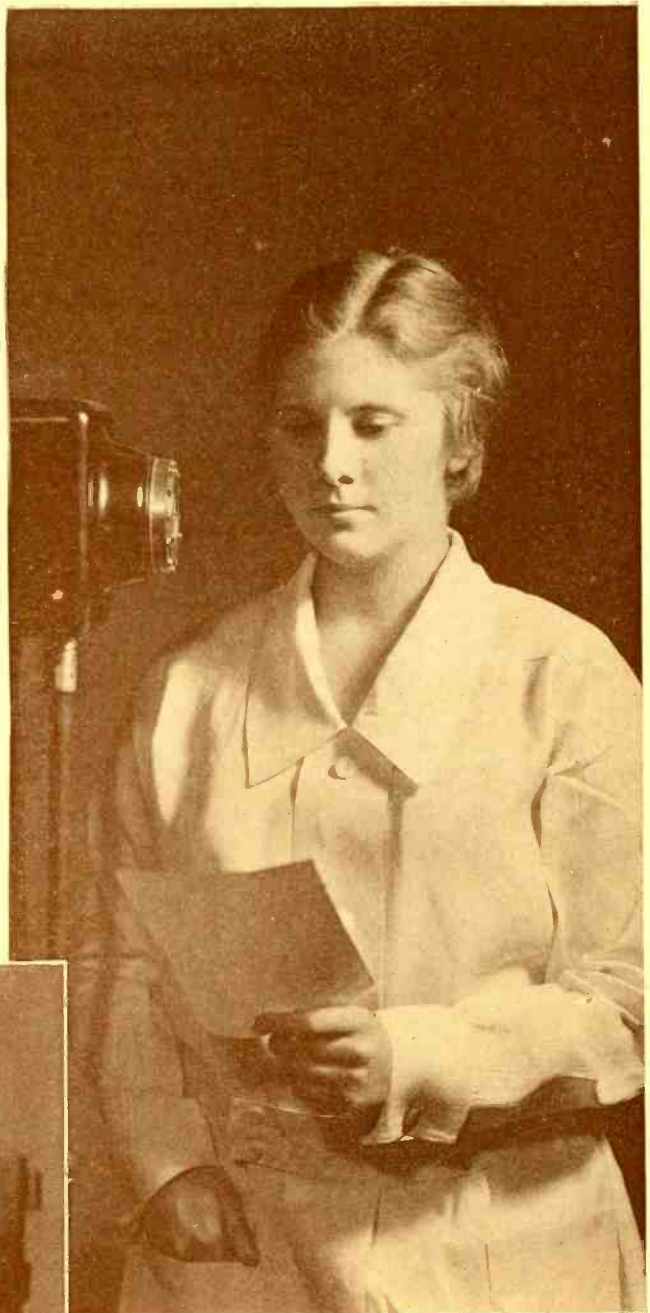
Studios of Company

Martha Logan, at the right, is the nutrition expert on Swift & Co. Time, who has proven so helpful to housewives with her suggestions for marketing, cookery and properly proportioned meals. She is a graduate of the University of Illinois and a post-graduate of Northwestern University, where she made a study of foods.

"Old Pappy"

"Old Pappy," otherwise Clifford Soubier (below), has long fascinated WLS radio audiences with his old darky sketches. His famous animal stories, wherein he gives the power of conversation to the animals, have appealed to both children and adults.

"Old Pappy" and his little boy, "Booker Cephus," are indeed beloved characters, although Booker Cephus is entirely



imaginary. You never actually hear Booker Cephus, but you can always feel his presence when "Old Pappy" talks to him. Clifford Soubier, who gives this fine portrayal, was born in Hamilton, Ontario, Canada, of a theatrical family. While still a child, he donned the curls and white dress for the role of Little Eva in "Uncle Tom's Cabin," and much to his boyish disgust, had to go to heaven every night on a rope. He sang as a soprano soloist in a boys' cathedral choir, and has been all over the country on the stage in productions, stock, minstrels, and is well known in the theatre.

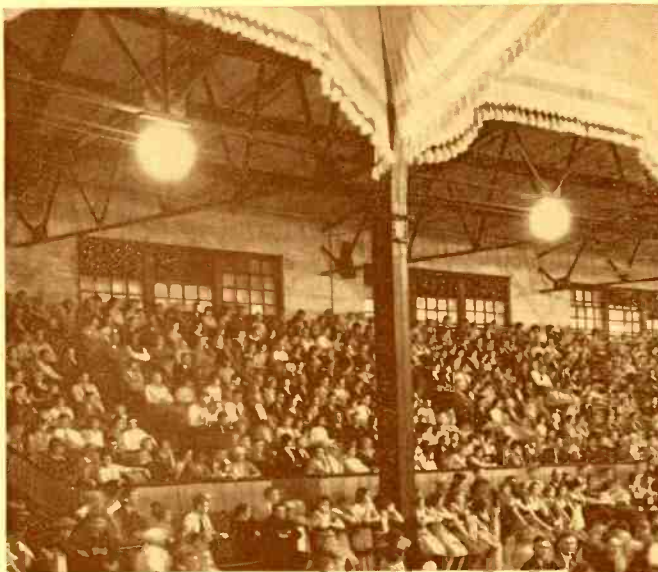
At the



Both the Illinois and Indiana State Fairs in 1931 were launched by a visit of the whole Barn Dance crew from WLS on Saturday night, with a big celebration and entertainment. At Spring-

field, Illinois, this Barn Dance was put on and broadcast direct from the State Arsenal before a crowd of about 3,000 people. At Indianapolis, the big Amphitheatre on the fair grounds became The Old Hayloft for one Saturday night, and 7,000 folks came from all over Indiana.

The picture above shows the Prairie Farmer tent at the Illinois State Fair.



Here is part of the crowd in the Amphitheatre at Indianapolis. The only reason there weren't more was because there wasn't any more room. It is a real treat for the radio artists to be able to see their audience face to face. The management of the Indiana Fair said this was the biggest Saturday night crowd ever seen in the Amphitheatre.



State Fairs

Every Saturday night you hear the happy-go-lucky fiddling of Rube Tronson's cowboys. Here's a picture of them the way they looked as they arrived at the historic barn dances at Springfield and at Indianapolis. Rube himself is sitting on the front fender, second from the right.



This is the crowd that entertained you from the studio on the Illinois State Fair grounds. Every morning at five o'clock, starting with the crowing of all the roosters in the poultry show, this crew started off the day with a smile.



Left to right, in the picture above: Arkie Bill Vickland, Ralph Emerson, Hal O'Halloran, Hugh Cross, Carl Davis, Hartford Taylor, Gene Ruppe, Tommy Rowe. In front, the Maple City 4.

One of the features of the Indianapolis barn dance was an exhibition of real old-time square dancing by a group of farm folks under the direction of Pete Lux. Many people of this generation had never seen these beautiful old-fashioned dances before.





Sue, Anne and Leone

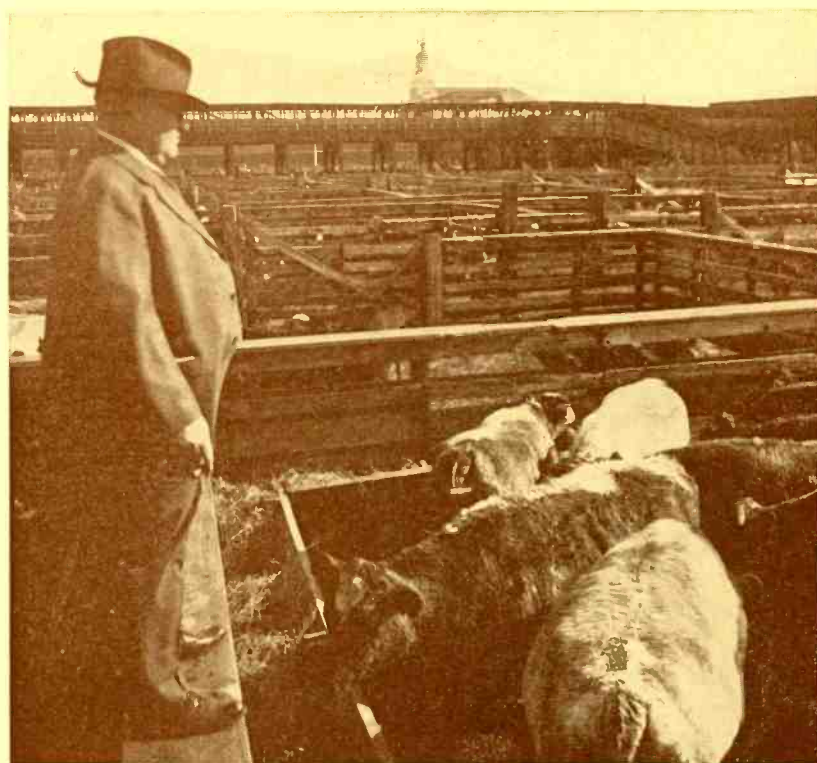


EVERY day these three cheerful girls bring you Home Hints, Style Service and a discussion of cooking. From left to right, they are: Sue Roberts, who talks of all sorts of home problems; Anne Williams, who tells about hats, coats, dresses and all kinds of style matters, and Leone

Heuer, whose specialty is good things to eat. They are the representatives on the air of Sears Roebuck and Company, and they have a great circle of friends among the women listeners of WLS. Now you'll know them better when their cheerful voices come over the air.

Eddie and Lonnie

It's one of the great mysteries how such a little instrument as the harmonica can be made to yield such a volume and variety of music. Eddie Allen, directly at the right, and Lonnie Glos-son, in the corner, specialize in this instrument. Did you ever hear Lonnie play "The Lonesome Freight Train" or the "Fox Chase"? Both the boys are good-natured and always have a cheerful smile for you.



Jim Poole, Chicago Live Stock Exchange

No man in the world is in closer touch with the livestock market than Jim Poole, who brings you news of the market every day on WLS. He has had years of experience, and is called the dean of all livestock reporters. One funny thing is that a lot of folks who are not interested in the market at all say they like to listen to Jim's picturesque descriptions of the cattle and hogs. Thousands of farmers listen and plan their shipments according to the advice in Jim's broadcasts. His information comes direct from the "yards."

The Post Reporter

"How-do-you-do, radio listeners," and then it's five minutes of news from Harry Steele (below), the Chicago Evening Post Reporter. With years of experience in news gathering, he brings world news to your home. Then he closes, "So don't forget, I'll be seein' you."





John Brown and the Three Contraltos

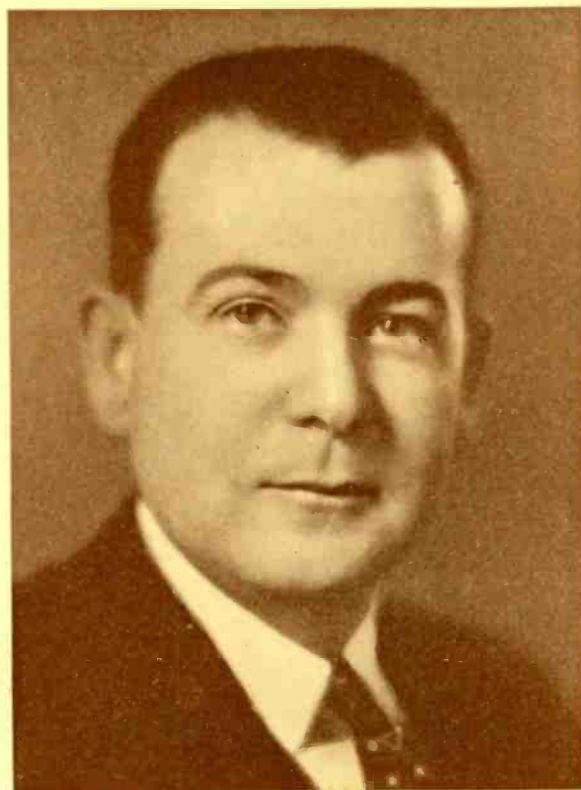
Here is a really good portrait of John Brown, the boy with the flying fingers. Of course it would take a movie camera, and a fast one at that, to catch the speed with which he travels up and down the piano keyboard. If there's any kind of music he can't play, we haven't found it yet. Native of Kansas, pianist at WLS for six years.

Three contraltos, three smiles. These girls with the mellow voices have delighted you many times with their singing of sweet old songs. Each a soloist of note, the three of them together bring a rare combination of harmony. From left to right, they are Margaret Stafford, Maude Sheridan, Adele Brandt.



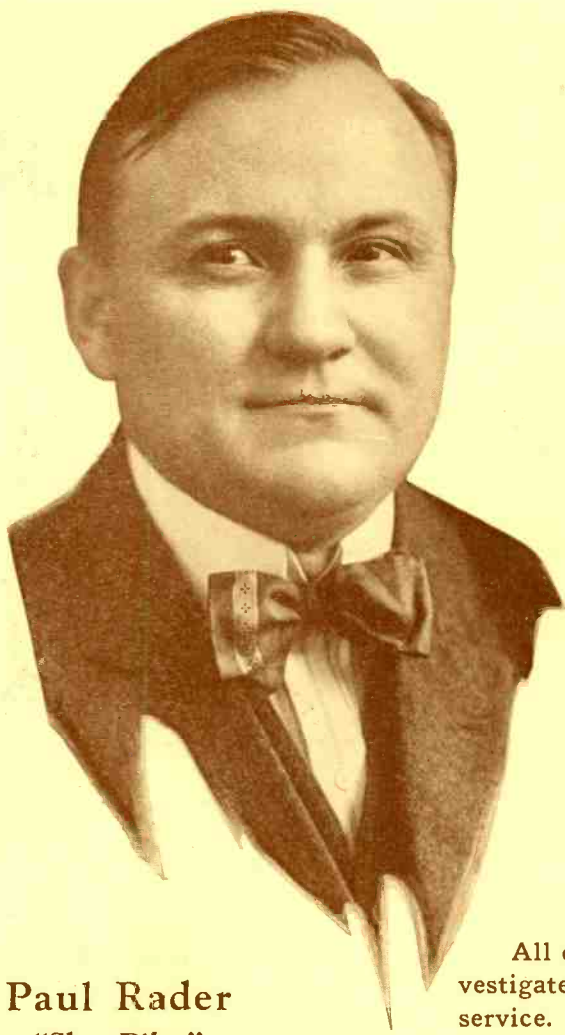
Melodies of Ireland

WHEN the beautiful music of the harp comes through your loud speaker, you are hearing our Irish harpist, Margaret Sweeney, manipulating her deft fingers over the strings of her golden harp. She loves to play the sweet old songs of the Emerald Isle best of all, in spite of the fact that she is expert in playing the most difficult numbers written for her instrument. Margaret was one of the favorite pupils of Enrico Tramonti, world famous harp soloist of the Chicago Symphony Orchestra. She has studied in Paris, France, and Berlin and Leipzig, Germany. Recognition of her artistry has given her the position of harp soloist with both the Chicago Little Symphony and Women's Symphony Orchestra. Always cheerful, Margaret's presence is enjoyed by our entire studio staff.



WILLIAM O'CONNOR, WLS Irish tenor for several years, graduated from the University of Kansas Law School and practiced in his birth-place, Fort Scott, Kansas, for three years. "Then," declares Bill, "I took down my attorney's shingle in 1923 and came to Chicago to try to learn how to sing." Whenever the WLS program department needs a special feature, someone usually suggests, "Let's get Bill O'Connor." His beautiful tenor voice is the signal for countless listeners to stop work and enjoy lilting ballads. He has appeared as soloist with many fine choral organizations, including the Chicago Apollo Musical Club and the North Shore Musical Society.

We don't know how good a lawyer Bill might have been, but if he'd sing "Mother Machree," the jury would never even look at the evidence.



Paul Rader
"Sky Pilot"
of WLS

The Chicago GOSPEL

Every week-day morning from 7:15 until 7:45 you hear the religious service broadcast from The Chicago Gospel Tabernacle.

Paul Rader came to Chicago 18 years ago, and started noon-day meetings in the heart of the business district. After holding meetings in a tent all summer, a huge tabernacle was erected in the fall, seating 5,000 people, which held nightly evangelical services for seven years.

Ten years ago Mr. Rader built the great Chicago Gospel Tabernacle and then began the first gospel broadcasting, in the early days of radio, from a little experimental wooden building on top of the City Hall.

The Gospel Tabernacle is non-sectarian and is devoted to a simple gospel of helpfulness and the salvation of men.

Thousands of families are helped in body, as well as in spirit, by the family work of the Tabernacle. The picture below shows some of the Christmas baskets for the very poor.

All cases that are helped with food and clothing are investigated by volunteer workers who get no pay for their service. It has long been the belief of Mr. Rader and those who work with him, that when a man has little children at home who are hungry or who need clothing, the best way to carry the gospel message is to first minister to his immediate need.



Forty-Eight

TABERNACLE

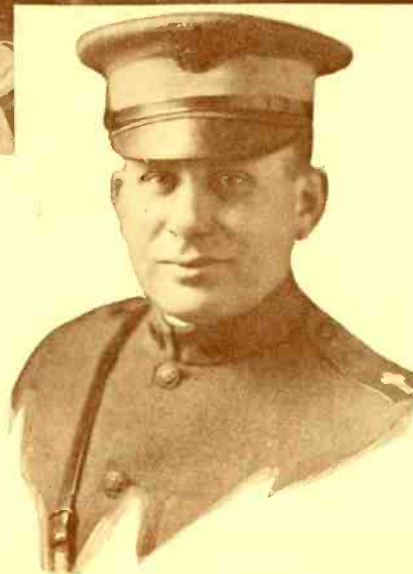


Who can tell how far the spoken word will travel, or what hearts it will touch? Surely there can be no greater opportunity for service than this practical work of carrying comfort and help to the world by radio.

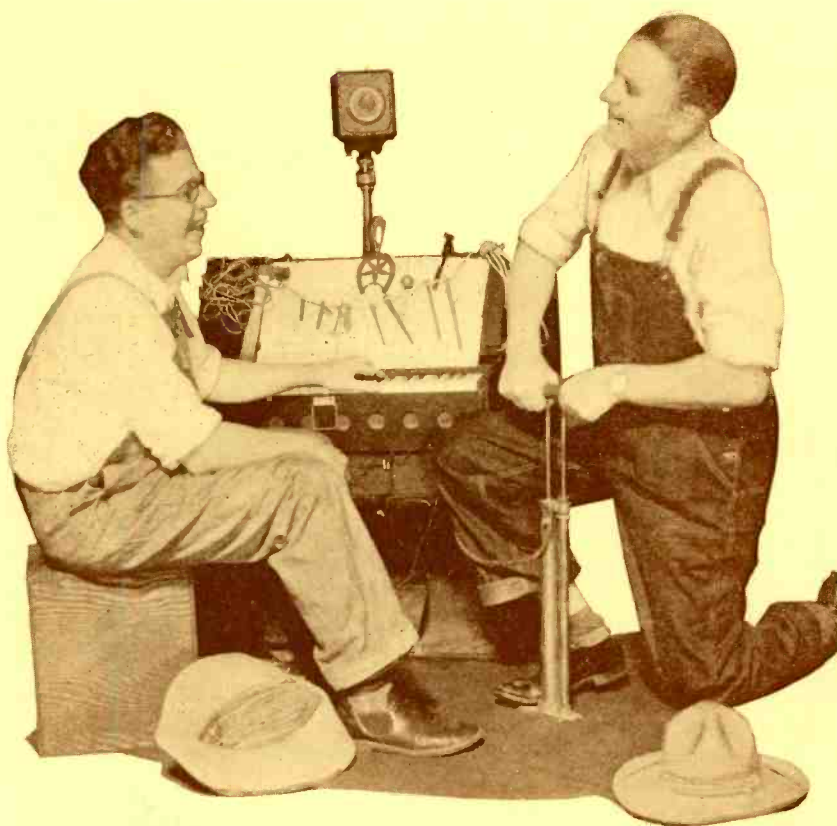


The thousands of letters that come to The Chicago Gospel Tabernacle are earnest, valuable correspondence, some from people in distress, and many from those whose gifts, large and small, make the work of the Tabernacle possible. During ten days of the hottest weather last June, more than 10,000 letters came to the office and were answered, and more than a quarter of a million valuable pieces of inspiring literature were sent out.

You may have heard the singing of the White Shirt Brigade every Saturday morning. Here they are; little boys today, men tomorrow, learning to help.



Dr. W. B. Hogg, often called the Radio Chaplain. As chaplain of the 312th Engineers, then of the 87th Division, then associate chaplain of Base 2, at Bordeaux, France, Dr. Hogg lived a full life of service during the World War. After serving as an associate chaplain of the 3rd Army at Coblenz, he was retired for disability received in line of duty. A vigorous evangelist with a rare sympathy and understanding of the hearts of men.



The Old Timers

Old Timers Ralph and Hal, with the little hay-wire organ. Their specialty is mellow, old-time music, and they claim that no music is really good until it is aged twelve or fifteen years. In this picture Old Timer Hal is pumping up the hay-wire organ, ready for the next spasm. They're lucky if they get through a program without having the organ fall apart. Besides a wonderful collection of old tunes and relics sent in by listeners, they have a weird lot of nails, horseshoes and haywire, sent in to hold the organ together.

Sophia Germanich

Sophia is one of our Prairie Farmer girls. She works every day in the circulation department, but occasionally she leaves her typewriter to come up to the studio and sing. You hear her most often on the Dinnerbell Program, and your letters have told us how well you like her. Sophia has an unusually mellow soprano voice. She sings mostly the old classics, and a classic, you know, is a song you keep on liking after you've heard it for years.



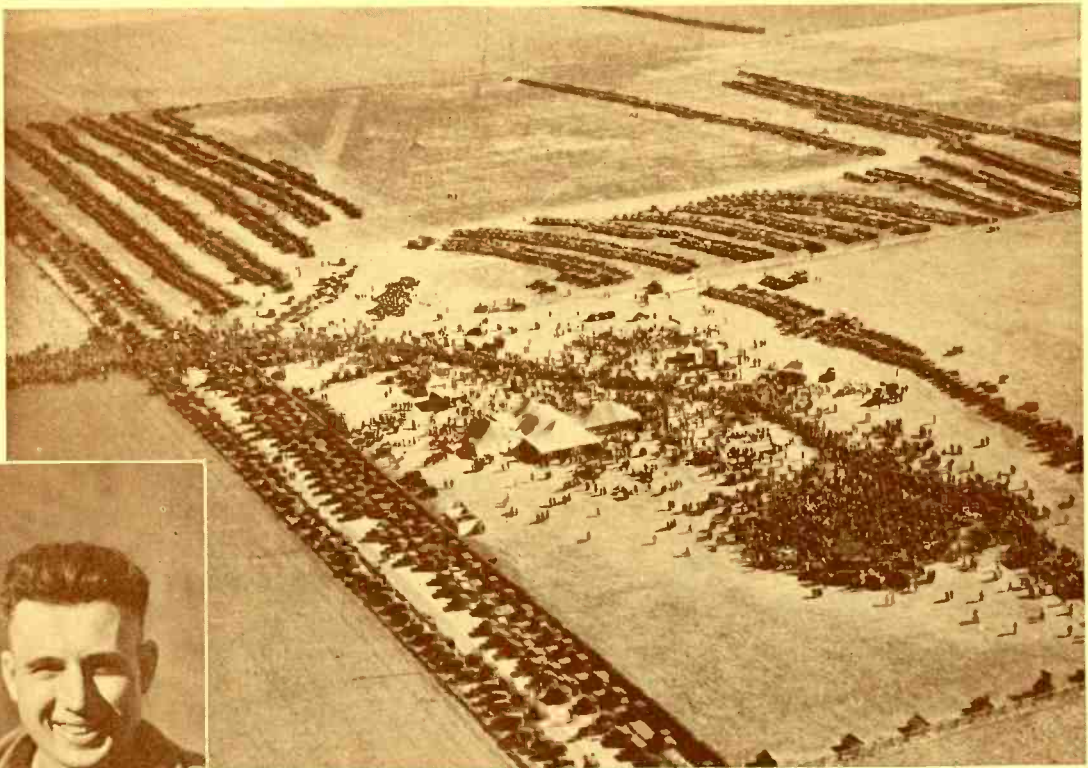
Raymond Warren, artist and biographer of Abraham Lincoln. He was the author of the series, "The Prairie President," which appeared in *Prairie Farmer* and on WLS, and is this year bringing out a new program, featuring some of the highlights of Middle West history. His writings have been based on original research, and his radio plays rank among the classics of the air.

Following the Huskers

Every fall WLS listeners look forward to the broadcasts of the State and National Corn-Husking Contests, the greatest agricultural sporting events in the world. WLS and *Prairie Farmer* are always on the job to bring the story to you.

At the right is Ray Snyder of Marshall-Putnam County, Illinois, a promising youngster fighting his way toward the championship.

Below is an airplane picture showing part of the 30,000 people and the thousands of automobiles at the 1931 state contest in Piatt County, Illinois. WLS broadcast a special program for this crowd.



Orville Welch of Piatt County, Illinois (above), new National Champion husker.



Editor Clifford V. Gregory of *Prairie Farmer* introduces Robert Kitchel, Indiana State Champion, 1931, before a WLS microphone. The 1931 National contest was watched by 60,000 people.

50,000

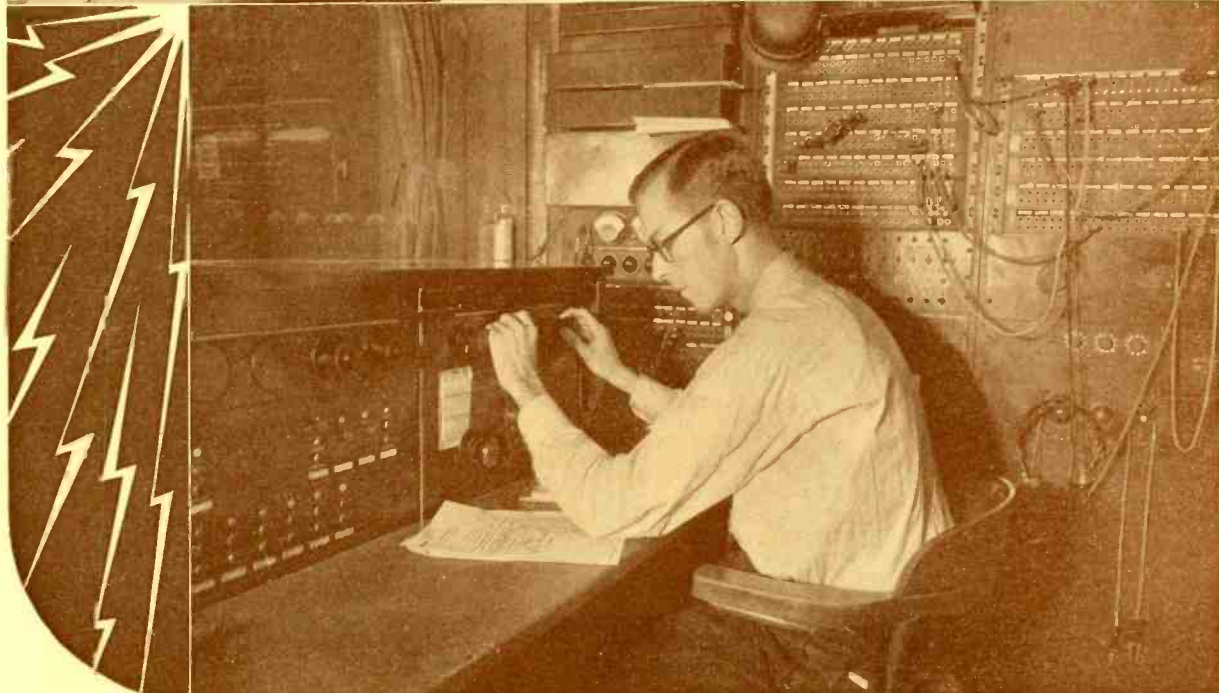
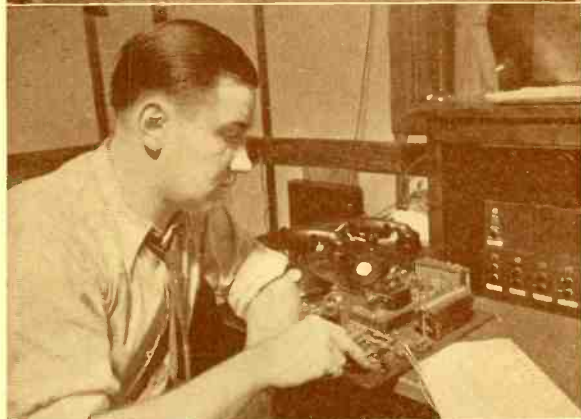
You hear the voice of the announcer, the musicians and entertainers, but you seldom hear anything about the vast amount of machinery and electrical equipment required to send that voice or music out to you.

In the wall of the big studio is a double glass window. Behind this window, with hands on the control knobs constantly, sits one of the operators. He watches what is going on, gets signals from the announcer, switches microphones on or off, softens the music if it comes too loud, or turns on more power if the speaker's voice is too soft.

A little needle on a gauge flutters back and forth registering every tone of the announcer's voice, and if there is some unusual sound—like dropping a cowbell on the floor—the needle jumps across its dial. The operator must be ready with the controls.

The upper picture on this page was taken while the Indiana State Fair broadcast was in progress, and while Andy handled the knobs, Charley Nehlsen was talking by code telegraph to a remote control. Below, William T. Anderson (Andy) is watching a "continuity" to see what comes next.

In the middle picture, directly at left, Charley Nehlsen (Nelly) is talking by telegraph to a remote control. Below, William T. Anderson (Andy) is watching a "continuity" to see what comes next.

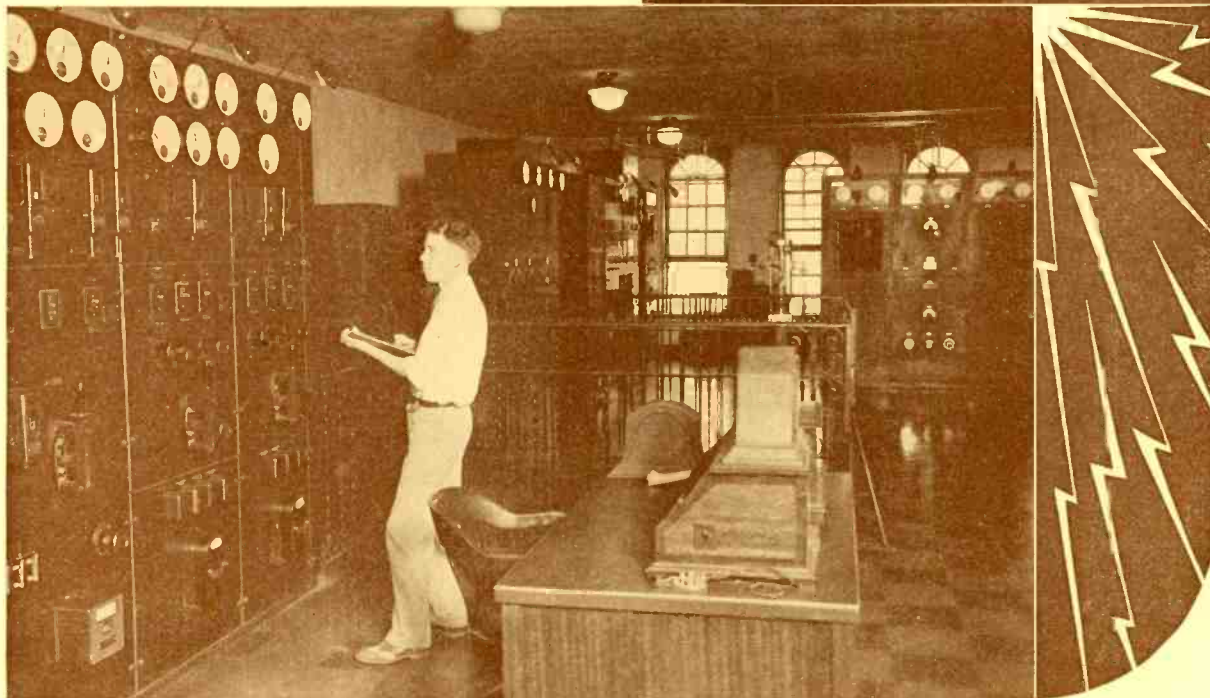
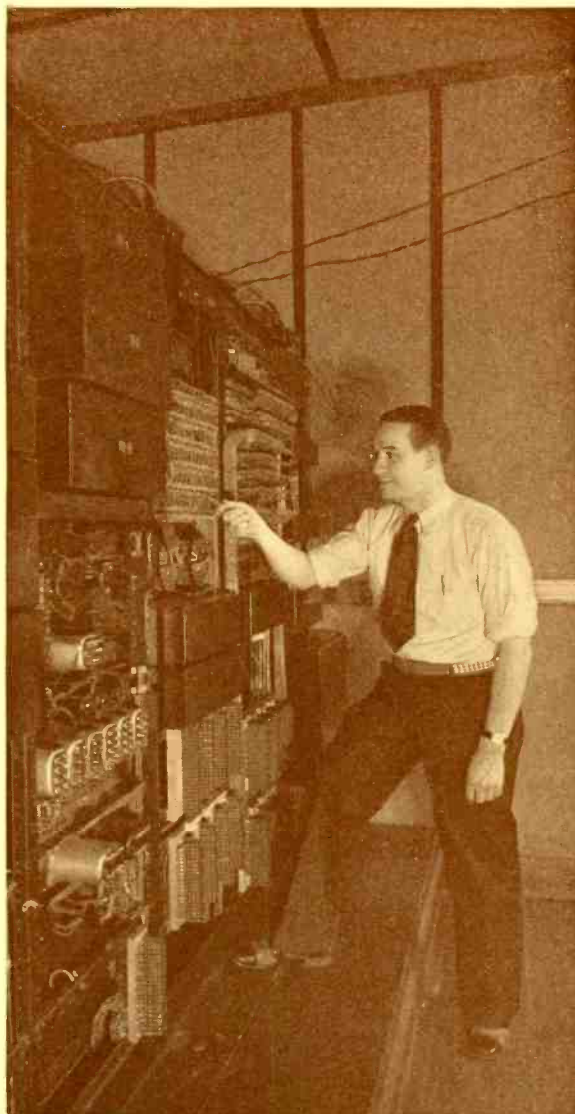


Watts

Every mechanical detail about broadcasting must be exact; nothing can be left to chance. Before every program, many times a day, microphones are tested, power lines checked, apparatus examined. Where there are delicate electrical connections by tens of thousands, and a program going to millions of listeners, there must be no delays nor accidents.

WLS operators have many peculiar tasks, and they must handle unique broadcasts. Both Tommy Rowe and Charley Nehlsen served their apprenticeship as radio operators on the high seas. Rowe tells of his first trip on the salt water—a mere boy—handling the “graveyard watch” when there was a violent storm, the ship broke its steering gear, and in the small hours of the morning with seas breaking over and frightened passengers buckling on life belts, his trembling fingers had to tap out the SOS. He spent five years on the water, sailing the seven seas. Tommy is still under 30 years of age, but an old-timer in radio. It would take a couple of earthquakes to get him excited now.

At the right, Chief Engineer Tommy Rowe is inspecting a few of the thousands of electrical connections. Below, a glimpse in the big sending station at Downers Grove, where the program takes the air.



Our Visitors

Many thousands of people come every year to visit WLS and see the home of Prairie Farmer. 4-H Club boys and girls on trips to Chicago have made it a favorite point in their tours. Groups of farm women have been entertained here, and all have been made welcome, even though the studio has been crowded full.

The largest crowd we ever had at once was this bunch from Ohio, 615 of them. The cornstalk studio was packed full, with just room for the announcer, and it certainly sounded great when they sang one of the 4-H club songs.

You who are regular listeners to WLS will understand the family feeling between us and our listeners. We like our friends, and are glad to have them call.



Miss Viola Mach of South Dakota, national style queen of 4-H Clubs, visited WLS on her way to Washington, D. C., and to Europe.



More than 500 4-H Club boys and girls from Eastern Ohio, and several hundred others from Indiana and Michigan, were visitors at WLS during the summer and fall.

Last summer Harry Hosford, the Town Crier, held a birthday party, and the crowd of cheering women shown below includes part of those who attended. Harry is in the middle.





Upper row, left to right, Grace Cassidy, Bertha Fosler, Clementine Legg. Lower row, Anna Mae Buskee, Ruth Luce, Margaret Connell.

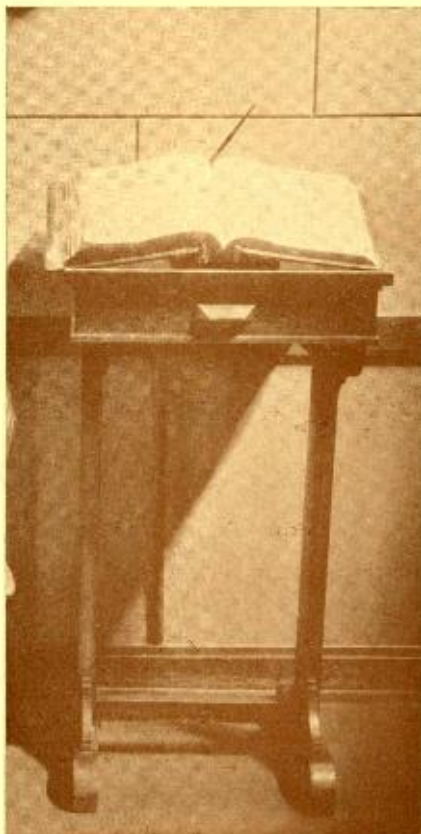
Some of Our Girls at WLS

You only come to know the voices that are "on the air," but there are many others here whose daily work is necessary to take care of the thousands of details in connection with programs and handling of mail. These smiling girls are busy as bees from morning till night.

The girls in the mail department at WLS have handled as many as eight thousand letters a day. They read the mail, then refer it to the person or department interested. In a year they handle three quarters of a million letters.

Left to right, below, Betty Butler, Emma Heitmann, Elizabeth Traub, in charge, Eleanor Swiant, Mathilde Schirbl.





VISITORS have signed the WLS guest book this year from thirty-four states in the union, and from Alaska, Canada, Mexico, Italy, Poland, Russia, England and Syria. We appreciate the friendship which these people express, and we are glad to have them come.

We leave you now, as we greeted you, with a handshake and a smile.