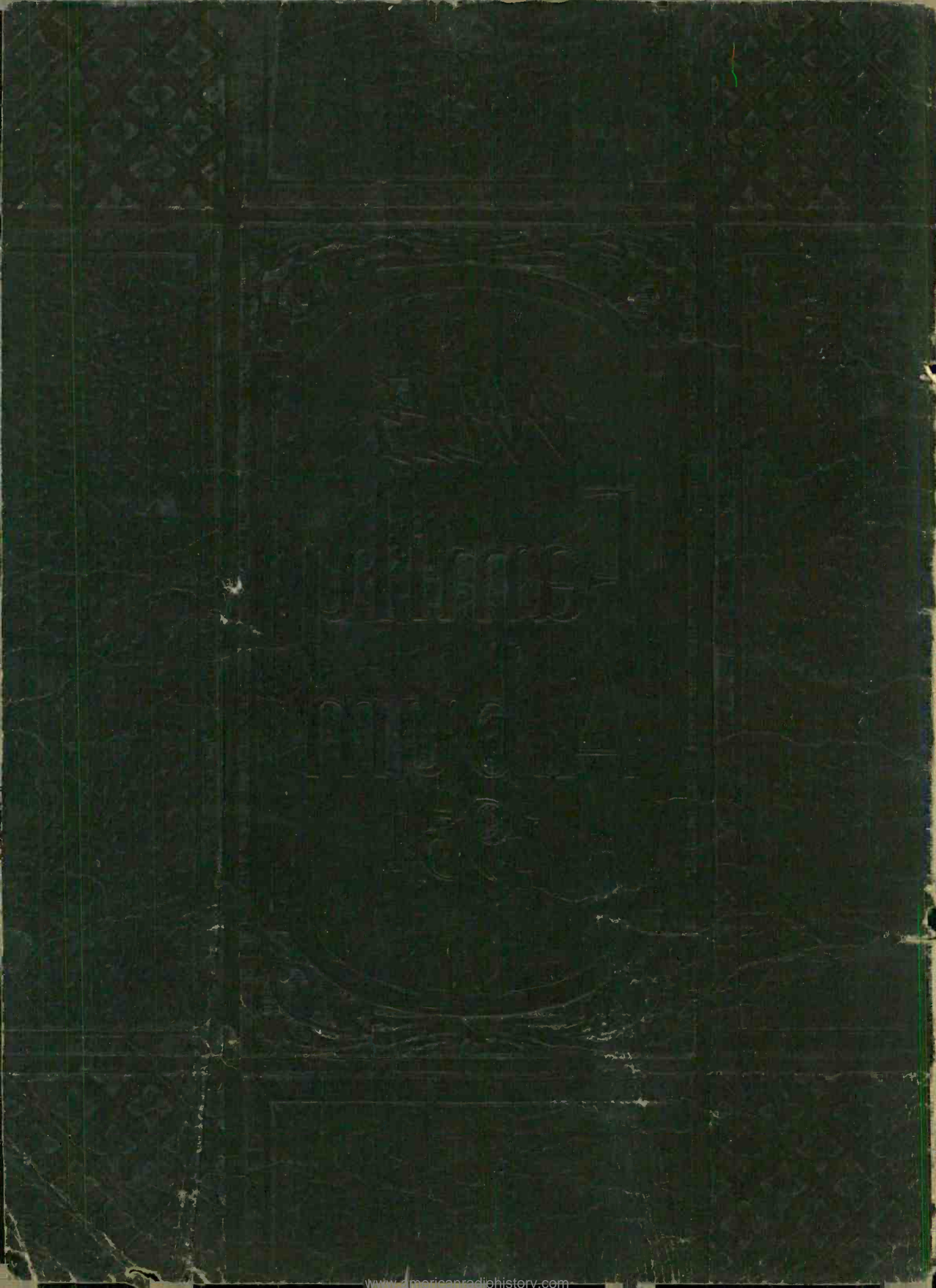


WVLS

Family  
Album  
1931





*The Prairie Farmer Building at 1230 West Washington Blvd., Chicago, "where the latchstring is always out." The WLS studios are on the top floor. The rest of the building is occupied by our editorial and business offices, printshop, and in the basement the big press which prints Prairie Farmer. The large rooms at the left, on the ground floor, are piled high with clothing sent by WLS listeners, being given out to the needy during the winter of 1930-31.*

## A Handshake and A Smile

The richest reward for us who work on Prairie Farmer's WLS is your friendship. We value it more than we can tell. The projects of service, of education, for relief of suffering, in which WLS has embarked, are the practical results of your support.

Last year you asked us for the pictures of WLS folks and information about them, so we published the 1930 Family Album. You liked it and thousands of you have it in your homes.

Now we are bringing you the new 1931 Family Album, because you have asked for it. We hope it will give you many hours of pleasure and help you become better acquainted with the friends you hear "on the air" from the cheery "Good Morning Friends" at 6 A. M. to "Good Night" when we sign off. You have called WLS the station with "a handshake and a smile," and that's the way we want it to be.

THE EDITOR.

Copyright 1931  
The Agricultural Broadcasting Company  
Chicago, Illinois

# An Appreciation

By "A Hoosier Friend"—Hammond, Indiana

"The measure of a man is in his mind,"  
Some genius wise has said—  
Not in the shadow that he casts behind,  
But the vision within his head.

The measure of Prairie Farmer and WLS  
Lies not in pomp and power—  
But the helpful, friendly humanness  
Through every day and hour.

Could we measure the value of hopes renewed  
Or weigh the worth of a smile;  
In mansions, on farms or in cabins crude  
Your "bigness" we might hope to file.

Like millions struggling toward a goal,  
Are hands that turn the dials  
To 870 kilocycles and hope the waves will roll  
WLS across the miles.

We find the tie that binds us in one great  
family,  
That makes all creeds and colors one—  
Your boundless Christian sympathy  
When charity needs be done.

We hear you breathe, we feel the beating of  
your heart,  
So near to us you are,  
With story, song, report of mart—  
Our bright and guiding Star.

## Turning Back the Years of Time

By Evelyn Calhoon—Colorado

*Mrs. George L. Calhoon of Colorado wrote this poem at 1 o'clock in the morning, Mountain Standard Time, after tucking her four little boys into bed and spending a Saturday night listening to WLS. Mr. Calhoon is lamp-man for a coal mine, and he finishes his daily work at midnight.*

On Saturdays, when supper's through, and all  
the chores are done,  
Dad says, "Turn on the radio, Mom, it sure  
is fun  
To listen to that Hayloft Gang, as they go on  
the air."  
And to our faithful radio set, he drags his  
rockin' chair.  
I sit and knit, or hold the youngest baby to  
my breast,  
The other young'uns long ago have settled  
down to rest.  
Dad lights his pipe and turns the knobs and  
gets her set just so,  
And then leans back, contented like, there in  
the lamplight's glow.  
"You-all can have your orchestras, 'n jazz in  
minor key,  
But Brad Kincaid's Houn'-Dawg Guitar's  
Grand Opera to me."  
And me, although I like the fun, and think  
the singing's fine,

I get a lump here in my throat, turning back  
ten years of time.  
When Dad would crank the flivver, and  
through a foot of snow,  
Down to an old red schoolhouse, we'd jolt six  
miles or so;  
Where Saturdays at eight P. M., from all the  
country round,  
From babies to granddaddies, all the ranch  
folk could be found.  
And after Literary, I remember yet, the  
thrill  
When Dad asked "for the pleasure" of the  
first quadrille.  
The music of the fiddles, the banjos ringing  
sweet,  
As he swung me on the corners, and most  
nigh off my feet.  
And how he drove the flivver home, one-hand-  
ed through the snow,  
For his other arm was round my waist—yes  
Dad was my first beau.

### TO ALL OUR POETS:

*We asked you for original poems about WLS. The response was overwhelming, and we thank every contributor. There are twenty other poems, every one a gem, that are left out because there isn't room. We selected these two because they express so well the ideals WLS tries to live up to.*

## The Voice of Agriculture

Two years have demonstrated that agriculture must have a voice on the air. Radio, the most powerful agency ever known for spreading information quickly, is particularly valuable to the men and women on the farm.



We have worked always to have WLS with its cheery voice bring good, clean entertainment into your home.

But behind song and laughter there is deep and serious purpose. Our country today needs right-thinking citizens in solid support of institutions our forefathers gave their lives to build. Throughout the world is disturbance, ideals being lowered, false standards advanced. We thank God for the stability and unyielding conscience of the American farmer and of every right-thinking and square-dealing American citizen.

Without self-seeking, we have demanded and held a place on the air for The Voice of Agriculture. We have kept that Voice clean and straight-forward, and it has made us happy when thousands of you, both on farms and in towns and cities, have backed us up. More than ten thousand letters weekly have been received by WLS this year; an inspiring response from our Prairie Farmer-WLS family. Thank you all.

We are now entering the ninety-first year of Prairie Farmer's life of service, and all of us on Prairie Farmer and WLS wish you a Happy and Prosperous Year.

*Burrage D. Butler*

President, Prairie Farmer-WLS.

# These Men Have Spoken To You

In the past year many leaders of farm organizations have come to WLS to talk to the men and women who produce 67% of America's new wealth every year. It is one of the miracles of radio that these men are able to talk to you, as if they were sitting face to face at your fireside. One of the difficulties in successful farm organization has been the isolation of farmers. Radio has changed that.



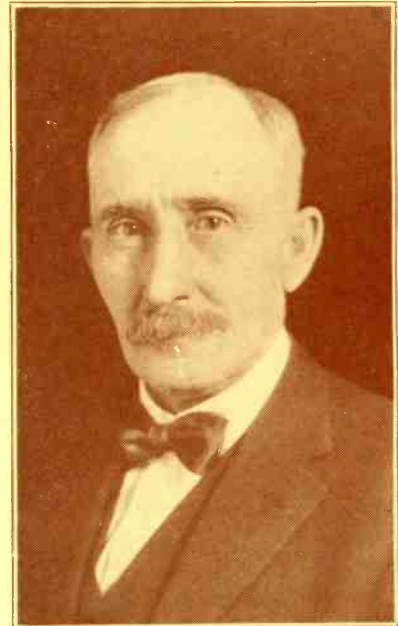
MR. LOWDEN

Frank O. Lowden, with the mind and experience of a statesman and successful business man, one of Illinois' greatest Governors, has always kept his sympathetic understanding of the farmers he met as a boy in his father's blacksmith shop. You have heard him on WLS.



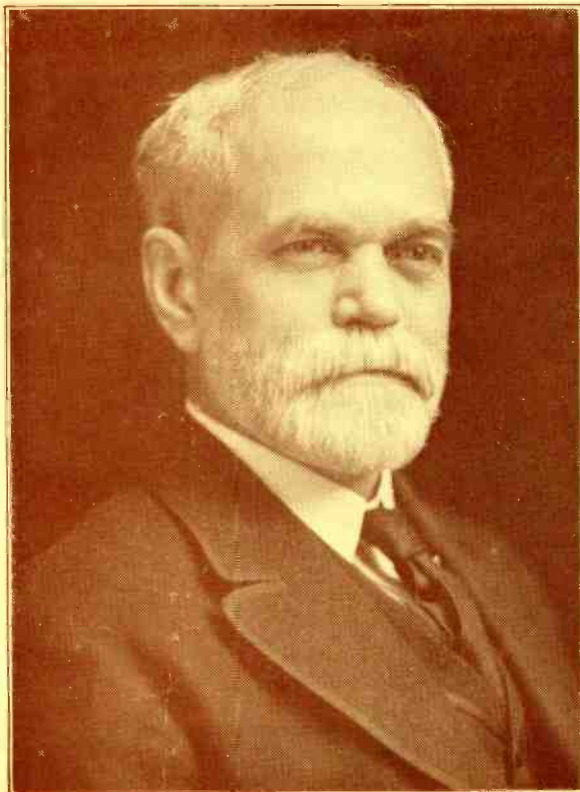
MR. HILL

Charles L. Hill, Commissioner of Agriculture for the State of Wisconsin, known and loved at every cross-roads in his state, as well as having a wide acquaintance in many other states. His voice has come to you over WLS.



MR. THOMPSON

Samuel H. Thompson, President of the American Farm Bureau Federation, usually called Sam, and sometimes "The Grand Old Man of American Agriculture." When you have heard him speak on WLS, you have felt that here was a common man with an uncommon vision, and a complete understanding of the farm and its problems. At home he is a farmer and a country banker.



EUGENE DAVENPORT



MR. SETTLE

William H. Settle, President of the Indiana Farm Bureau Federation. "Bill" Settle needs no introduction in Indiana. He says what he thinks, and he thinks vigorously and well.

Governor Harry G. Leslie of Indiana. He has a great deal to do with the destinies of farmers in the rich Hoosier state. WLS has carried his messages to them.



GOV. LESLIE

Eugene Davenport, Dean Emeritus of the University of Illinois, now living on his farm in Michigan. As a young teacher he saw the beginnings of systematic agricultural education. Now he stands on the mountain top and looks with a clear eye at the long trail behind and the heights ahead. A WLS speaker whom you would stop to listen to in the middle of corn planting time.

# Leadership In Trying Times



EARL C. SMITH

Earl C. Smith, President of the Illinois Agricultural Association, a farm leader with a business man's viewpoint. When he talks on WLS to the thousands of I. A. A. members in Illinois, farmers of many other states listen with interest and profit.

Agriculture, the fundamental industry, is establishing its right to a place at the first table, shoulder to shoulder with the other industrial giants of our nation. To achieve this recognition there must be contact and understanding among farmers everywhere. WLS, with the largest audience of farm listeners in the world, is dedicated to the service of agriculture.

H. W. Mumford, Dean of the College of Agriculture, University of Illinois. When Dean Mumford began his teaching career, college training in agriculture was little appreciated. Through all the years he has been a builder, and many a successful farmer today gives credit to his work.



DEAN MUMFORD

Louis L. Emmerson, Governor of Illinois. Governor Emmerson is a farm-minded man, always sympathetic toward legislation and administrative methods for the good of agriculture. Not only the governor, but every member of his cabinet has spoken over WLS, so that farmers might know how the affairs of the state are managed.



GOV. EMMERSON



MR. MCQUEEN

William C. McQueen, President of the Pure Milk Association, a quiet-speaking, accurate-thinking farmer who has spent years among the controversies of the Chicago milk situation. He is helping to lead dairymen into successful, business-like plans, bringing profit and stability to the industry.



DEAN SKINNER

J. H. Skinner, Dean of the College of Agriculture at Purdue University, Indiana. Dean Skinner wastes no words. He thinks straight, talks straight, and works twenty-four hours a day for agriculture.

Alexander Legge, Chairman of the Federal Farm Board. Behind those tired eyes is a man who resigned from an executive position paying \$100,000 a year, to take up the task of organizing farm marketing and stabilizing prices of farm products. Few men have been attacked so viciously, but with patience and bulldog tenacity, he has driven ahead toward the solution of one of America's greatest problems.

At the height of the decline in wheat prices, when he wanted to speak to the farmers of America he came to WLS, and his words came to you as man to man in your own home.



ALEXANDER LEGGE



Fritz Meissner

Al Rice

Art Janes

Pat Petterson

## The Maple City Four

They get their name from LaPorte, Indiana, which has often been called the Maple City. Fritz Meissner and Art Janes are native Hoosiers. Pat Petterson was born in Evanston, Illinois, and Al Rice in Bloomfield, New Jersey.

The rubber hose around Al Rice's neck is part of the famous showerbath wheeze. You probably know Al also as Professor Duunck.

The boys are probably best known for their merry singing and good cheer on the early morning program which starts at 6:30 "on the dot". They are also famous for their "3-minute minstrels".

P. S. Fritz Meissner doesn't really look like that—the photographer's flashlight did it.



## Pete Lund

You have seldom heard Pete Lund's voice on the microphone. When you did, you recognized a strong Norwegian accent, for Pete was born on an island off the coast of Norway. He is in charge of "continuity", which means the preparation of manuscripts for programs. Pete has traveled all over the world, for two years was a postmaster in China, other years a potato grower in Wisconsin. He is a quiet fellow and has a heart as big as a bushel-basket. Much of the WLS Relief Work this year has been under his direction.



## Adele Brandt

When you come to visit us, Adele will make you feel at home. She was born in Kansas. You have enjoyed hearing her sing.

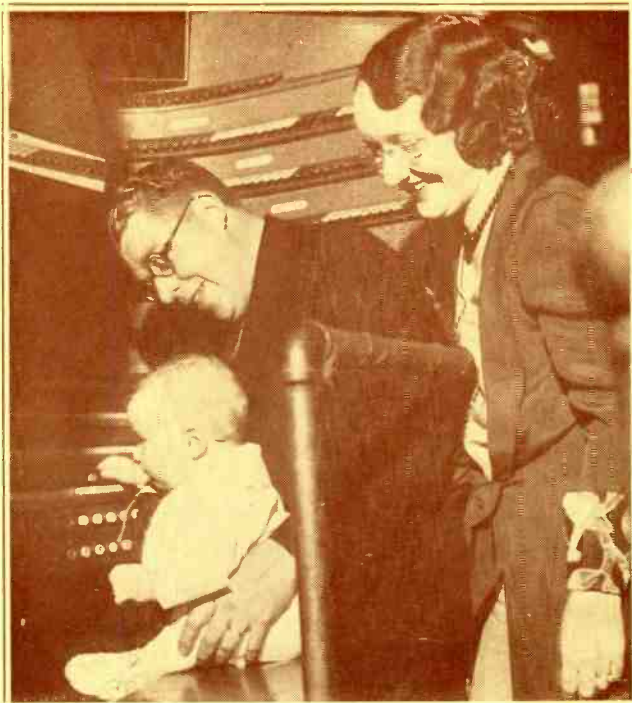


## Three Emersons at the Organ

Here we have Ralph Waldo Emerson, Elsie Mae Emerson, and Ralph Waldo Emerson, Jr. You have often heard Ralph at the pipe organ, or sometimes at the little miniature street organ, or when he played for WLS the largest organ in the world, at the Chicago Stadium. If you have listened to WLS a long time, you may have heard the wedding of Ralph and Elsie Mae, solemnized in the WLS studio before the microphone. Elsie Mae is an organist also, and has often played for WLS.

Baby Ralph is shown here taking his first pipe organ lesson at the console of the great Stadium organ.

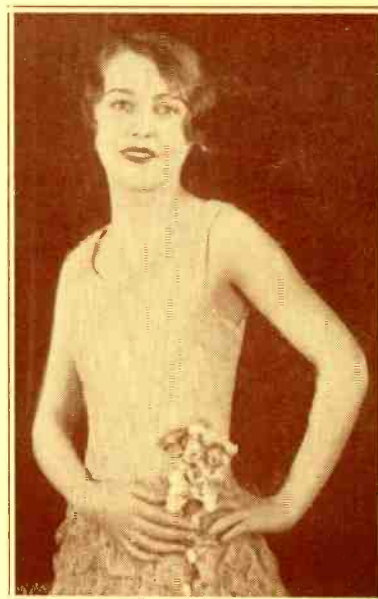
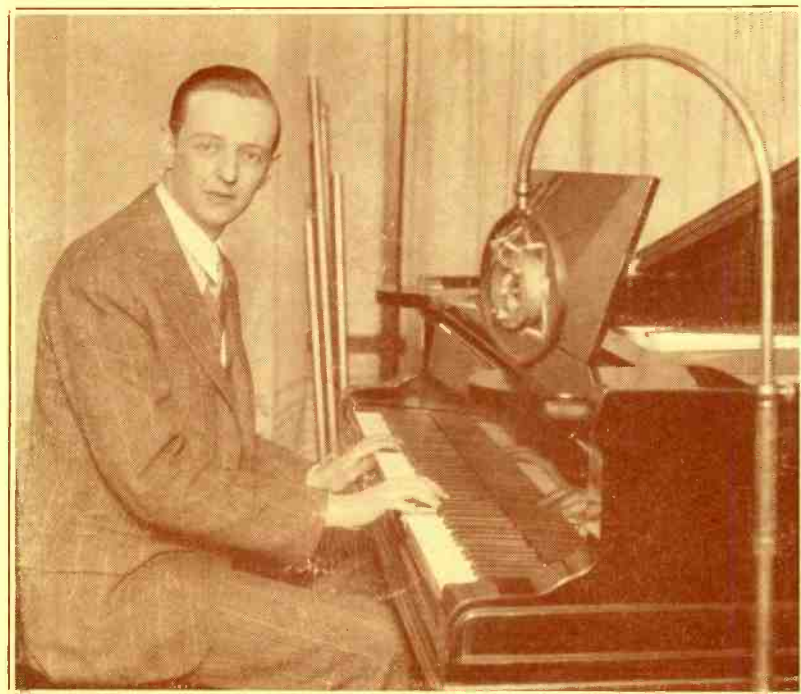
Many folks ask if Ralph's name has anything to do with the earlier Ralph Waldo Emerson. It has. The essayist was his grandfather's cousin. Ralph supervised the selection and the installation of the organ which you are now hearing from the new WLS studio in Prairie Farmer building.



## John Brown at the Piano

You can always tell when it's John Brown, by the little rippling runs up and down the keyboard that are not written in the music at all. He can play anything from the most dignified classical piece to the hilarious accompaniment of the fiddles, banjos and guitars on the Saturday Night Barn Dance. Sometimes he's on the job at 6 o'clock in the morning, and sometimes at midnight. If he ever gets tired or impatient, we have never caught him at it.

John, born in Kansas, has been staff pianist on WLS five years. We're glad he decided to seek fame in Chicago.



## Mrs. John Brown

Only we don't call her that. Her name is Juanita, but the folks around the studio usually call her "June". Some way that seems like an especially appropriate name. You have heard her sing as one of the Milk Maids on the Saturday Night Barn Dance. Her home town is Adrian, Mich.

## Dinner Bell Time

Charlie Stookey presides over the Dinner Bell Program. You hear him also in the morning when he takes over the program from Hal. Charlie was born near Belleville, Illinois, is a graduate of the University of Illinois, and specialized in horticulture. He came to WLS from the editorial force of *Prairie Farmer*, and before that he was producing strawberries for market on a large scale.

To the left is Charlie with the famous Dinner Bell that you hear every day. And to the right he is looking at the thermometer on his back porch, which is perhaps better known than the official government thermometer at Chicago.

There is a Mrs. Stookey and three little Stookeys—all boys.



## WLS Concert Orchestra

At noon, Charley calls it the "Dinner Bell Band," but at night these men constitute our staff concert orchestra—all distinguished musicians. Herman Felber, Jr. (standing) is director.



# One --- Two --- Three Smile!

At 6 o'clock every morning comes the friendly voice of Hal O'Halloran, 6 feet 2 inches of good cheer. Hal says he has to get up at a quarter to four in order to reach the studio to start the 6 o'clock program. Saturday is his biggest and longest day for he is master of ceremonies of the National Barn Dance.

During the World War, he served in France and got to be a Sergeant—but that didn't ruin his disposition. His comrades remember him for many a songfest that livened the dreary hours in the mud.

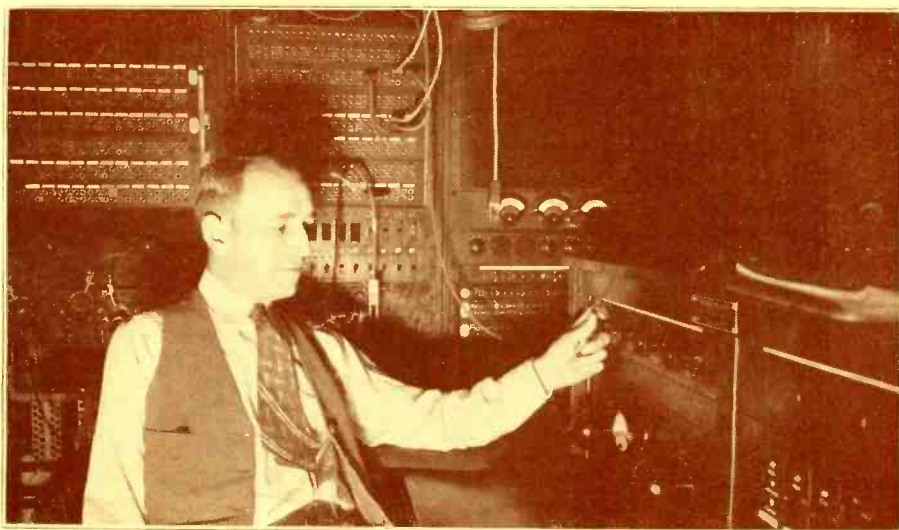
Back in his native Wisconsin he got a job driving a bakery wagon, and that same infectious good nature that you know so well, sold so many pies, cakes and buns that before long he was put in charge of a whole string of bakery wagons. On cold mornings when the streets are covered with sleet, he recalls how he used to have to get out and half lead and half carry his bakery wagon horses to the stable.

Another chapter is the time he was a demonstrator, driving tractors all over the state of Wisconsin. He came to Chicago to complete his training as a singer, and once in a



Hal O'Halloran

while you hear his rich, mellow voice in a solo. The thing Hal does best, however, is smile and make you want to smile with him.



Ernie Nottger, studio operator in the early morning. He is on the job to test the lines and equipment and have everything ready when Hal starts his program at 6 A. M. He is in a characteristic position, holding a control knob and watching the trembling needle

of the meter. If the announcer is too loud, or if there is some unusual noise down goes the power, or if the voice is too soft, a small turn of the knob puts on more power and makes it louder. Nottger gets up at about 4 A. M. every day.



# The Little Brown Church

It is 6:30 on Sunday evening at WLS. Softly the chimes—a hush—and then a kind voice; “The Lord is in His Holy Temple—Let all before Him silence keep!”

For more than 5 years now, the Little Brown Church of the Air—a church with a million seats and an invisible minister—has been broadcasting its services over WLS every Sunday evening at half past six.

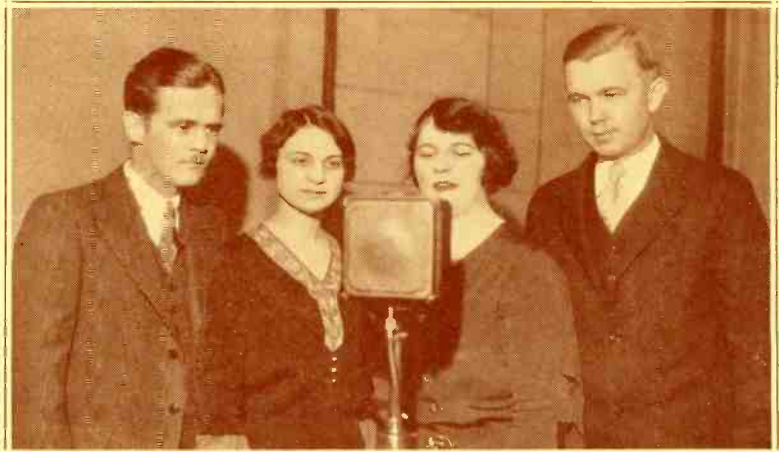
No creeds or dogmas but the presentation of Christian principles of living. A quartet sings favorite hymns, a trio plays, and the pastor (William Vickland) tells a simple sermon-story to carry the lesson of right living.

More than 21 nationalities embracing 17 different creeds listen every Sunday to the Little Brown Church of the Air.

## William Vickland

When you hear Bill Vickland’s quiet, kindly voice on the Little Brown Church, or the Cross Roads Sunday School, you know him as he really is. What you may not know is that he is a graduate of the Conservatory of Music, Ithaca, New York, and for years made regular appearances at Chautauquas. When Bill starts to read poetry, it isn’t necessary to ask people to be quiet, they just naturally stop and listen.

All of the Lincoln plays and many other dramatic productions on WLS have been produced under his direction.



The Little Brown Church Quartet: Osgood Westley, Olive Arthur, Bernice Ozmun and Eugene Leonardson.



## The Cross Roads Sunday School

*At the Highway Cross Roads  
Stands our Sunday School,*

*Built of Love and Kindness*

*By the Golden Rule;*

*Every Sunday afternoon, when the clear  
chimes ring*

*With our happy voices, praise to God we  
sing.*

And then the fresh, sweet voices of three little girls singing the Cross Roads Sunday School song. The Cross Roads Sunday School is heard over WLS every Sunday afternoon at 2:30. The services are conducted by William Vickland, with the assistance of a string trio, and these three little girl singers, Charlotte, Harriet and Marian Cain.

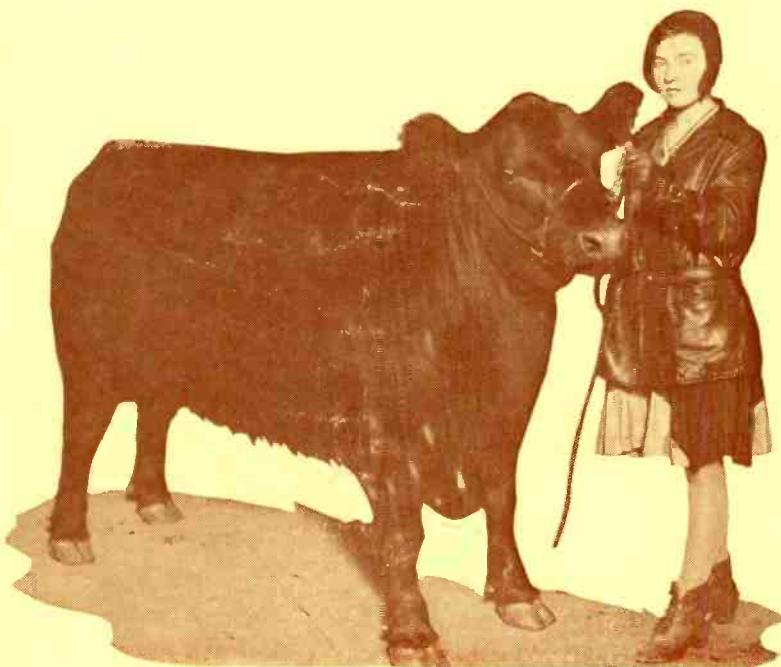


*“In as much as ye did it unto the least of these, ye did it unto Me”*

Due to the generosity of WLS listeners, thousands of unemployed men have been fed, and thousands of men, women and children have been provided with warm clothing.

At the top is a typical line waiting in front of Prairie Farmer building in the morning, to obtain clothing for themselves or members of their family.

The lower picture shows a line waiting to get into the WLS Community Kitchen at 1254 West Madison Street, to be fed.



## Sarah Ann Tolan Helped

The relief work which WLS has engaged in, representing its listeners, has been a wonderful demonstration of unselfishness among people everywhere. Thousands of bundles of clothing, thousands of dollars, whole truckloads of food supplies, were sent in from R. F. D. and small town addresses, and some from large cities.

Sarah Ann Tolan of Sangamon county, Illinois, shown here with her steer calf that won the championship of 4-H Club exhibits at the International Live Stock Exposition, sold the calf at auction and donated half the proceeds to the WLS Community Kitchen.



## Harlow Wilcox

The pleasing new voice on WLS evening programs is that of Harlow Wilcox, our new chief announcer and studio director. He came to us from another Chicago station after many months of experience in national and local announcing and program directing. Born in Nebraska, Harlow spent several years in professional musical and dramatic work. He's a big, friendly fellow and enjoys the cheerful informality that pervades the WLS studios. Numerous radio friends have welcomed him to the Prairie Farmer station.

## The Prairie President

We consider our "Prairie President" series, dramatizing the life of Abraham Lincoln, our outstanding dramatic feature. These weekly episodes are eagerly listened to by teachers, school children, lawyers, doctors, historians and other folks from all walks of life. In each issue of Prairie Farmer appears an illustrated story of the week's radio drama. Raymond Warren (right) has spent the past 20 years delving into original sources of intimate history concerning the life of Lincoln. Mr. Warren is a historian, dramatist and artist. The interest in the 1929-30 series was so great that Mr. Warren published a book, "The Prairie President." There are scores of books about Lincoln but this one, with its wealth of actual, original conversation and correspondence, has been pronounced by leading critics as an outstanding contribution to Lincolniana. Through the dramatization of the life of our martyred president, WLS has set a precedent in the broadcasting.



Above, Harriet Bingham as Ann Rutledge, Raymond Warren, the author, and William Vickland as Abraham Lincoln.



## Rehearsal

The dramatic company of experienced actors and actresses which presents "The Prairie President" must rehearse the actual words used by Lincoln and by members of his cabinet, and by mothers who came pleading for the lives of their sons. William Vickland is directing the rehearsal. The picture shows Douglas Hope, Jack Doty, Mr. Vickland, Jessalyn Delzell, Virginia Calhoun and Clifford Soubier.



## Jim Poole

Jim Poole, whose voice comes to you several times every day, direct from the Union Stock Yards in Chicago, is the most experienced live stock market reporter in America. He has been in the Chicago Stock Yards so many years that only the old timers can remember when he started. He has seen millions of head of live stock pass through this greatest live stock market in the world, and brings to the market quotations each day, experience and insight which make this service of immeasurable value to live stock producers.

## Radio Market Reports Serve

Live stock market reports as put on the air several times a day by WLS, have brought new conditions in marketing. In past years live stock producers received reports from one day to several days late, shipping blindly, hoping that they might be fortunate with their shipments.

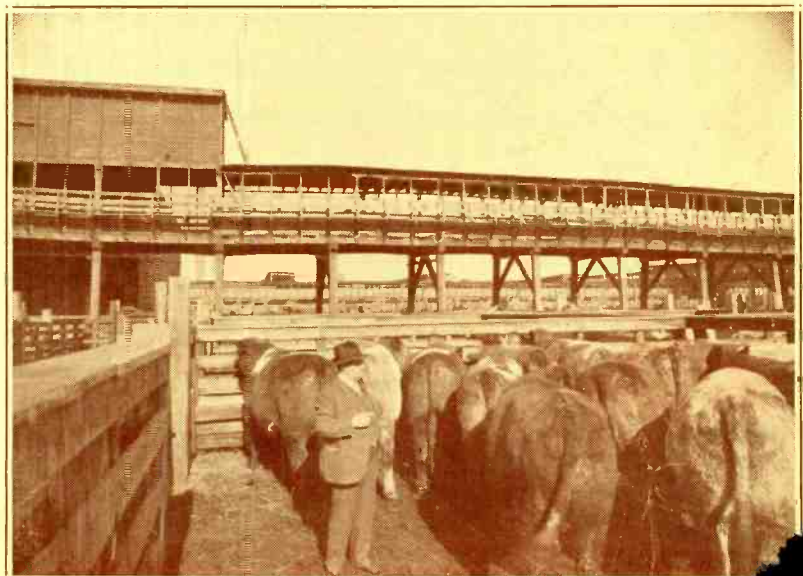
Today thousands of live stock producers watch the trend of the market by radio several times each day.

With the large development of motor truck delivery, shippers very often are able to rush a load to market in time to take advantage of price conditions which they heard on the early morning radio report. If the market is dull, or there is an over-supply of some particular grade of stock, they are warned not to ship.

Probably no single influence in the history of live stock marketing has done more to stabilize the markets and give the farmer a fair chance to get the price that his live stock is worth, on the basis of supply and demand.

Radio has made it possible for the farmer at some distant country point, to know the condition of the market in the Chicago Stock Yards more quickly than if he were actually there in the Yards. Jim Poole, with his experienced eye, is all over the yards every day, constantly gathering the information which he carries back to his office to put on the air a few minutes later. This is a snapshot of him looking over a fine bunch of finished cattle.

WLS has been a leader in farm market and weather service since 1924. We broadcast the latest United States official weather forecasts four times daily. The hay and grain markets are put on the air from WLS personally by F. C. Bisson, grain market expert of the United States Department of Agriculture. The live and dressed poultry and dressed veal quotations are in our daily schedule. Fruit and vegetable growers depend on us for latest reports on the markets for their products. Our Chicago live stock market service is supplemented with wires from four other markets that handle live stock from the Prairie Farmer territory.



# Swift & Company Time



Kamp Charles, who presides over Swift & Company programs daily.

With broad vision and the thought that modern business has a great opportunity for service, as well as selling merchandise, Swift & Company for two years have carried on a program which has made one of the bright spots in broadcasting history. Leaders of agricultural thought, successful farmers, teachers, experiment station men, members

of boys' and girls' clubs, brought before the microphone by Swift & Company, have made a great contribution to the betterment of agriculture.

A home economics program from the Swift & Company kitchens, has been brought daily on Martha Logan Time. Many a husband will testify that new and tasty dishes have appeared on the family table, which, if he only knew, trace their origin directly to Martha Logan Time.

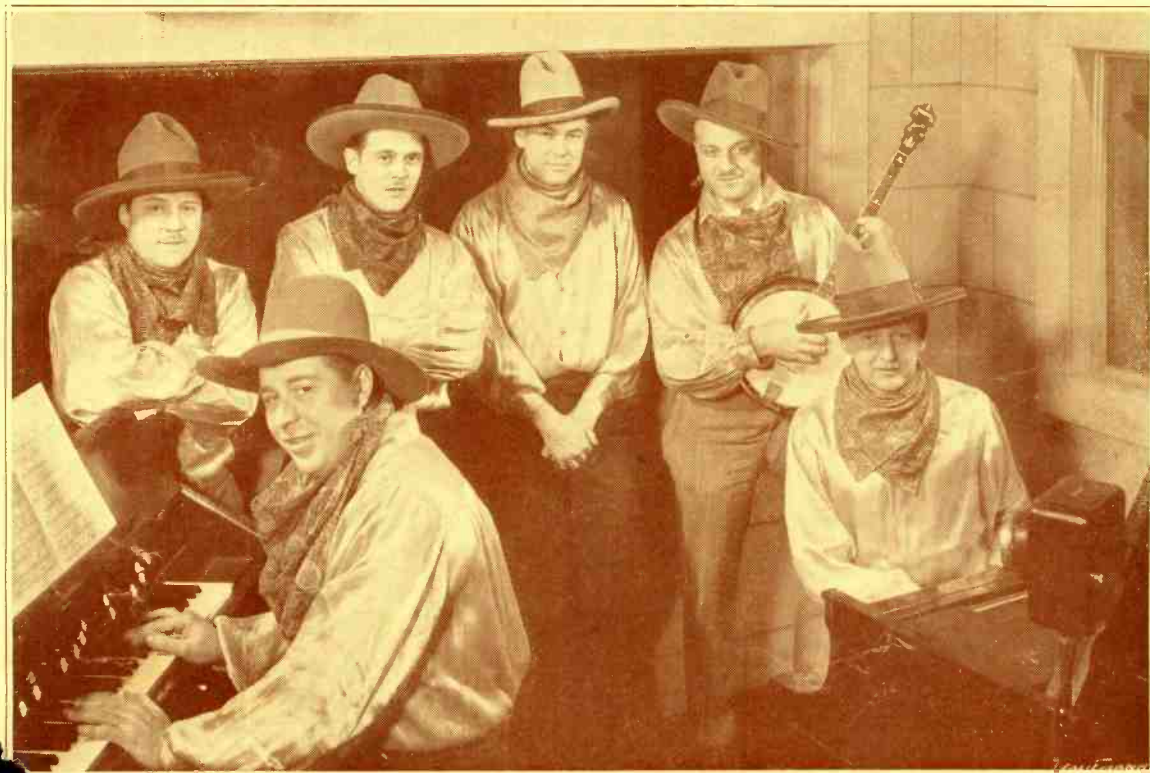
Swift & Company have recognized that modern business and modern farming go hand in hand; that when one prospers they both prosper, and the interests of either are the interests of both.



Martha Logan, home economics expert for Swift & Company, who daily gives lectures and demonstrations on menus and food preparation. Many thousands of housewives plan their meals from suggestions which she gives. Her real name is Mary Ruth Schantz.

## The Swift Rangers

The Swift Rangers who take part in the Swift Roundup each day over WLS. From left to right they are: Fred, who specializes in "songs of long ago;" "Ozzie," who plans and directs the programs; Leonard, whose specialty is baritone solos, and "Big Ben" with his banjo. Seated, Ralph Waldo Emerson, organist, and John Brown, pianist. This picture taken in the Swift Studio, Union Stock Yards.





# BROADCASTING STATIONS UNITED STATES AND CANADA

## NUMERICALLY ARRANGED BY KILOCYCLES

Stations in each frequency having same prefix share time. Lightface type in power column denotes daytime.

Station	Location	Power	Station	Location	Power	Station	Location	Power
<b>1500 kc.</b>								
199.9 Meters								
KDB	Santa Barbara, Calif.	100	†WCBA	Allentown, Pa.	250	†WCGU	Brooklyn, N. Y.	500
KGFI	Corpus Christi, Tex.	250-100	†WMBD	Peoria Heights, Ill.	1000-500	*WCMA	Culver, Ind.	500
KGFK	Moorehead, Minn.	50	†WOKO	Poughkeepsie, N. Y.	500	*WKBF	Indianapolis, Ind.	500
KGIZ	Grant City, Mo.	50	†WSAN	Allentown, Pa.	250	†WLTH	Brooklyn, N. Y.	500
KGKB	Brownwood, Tex.	100	†WTAD	Quincy, Ill.	500	†WSDA }	Brooklyn, N. Y.	500
KGKY	Scottsbluff, Nebr.	100						
KPJM	Prescott, Ariz.	100						
KPQ	Wenatchee, Wash.	50						
KREG	Santa Ana, Calif.	100						
KUJ	Longview, Wash.	100						
KUT	Houston, Tex.	100						
KXO	El Centro, Calif.	100						
bWBBS	Boston, Mass.	50						
aWCLB	Long Beach, N. Y.	100						
WDIX	Tupelo, Miss.	100						
WKBV	Connersville, Ind.	150-100						
WKBZ	Ludington, Mich.	50						
aWLBX	Long Island City, N. Y.	100						
bWLOE	Boston, Mass.	250 100						
WMBA	Newport, R. I.	100						
WMBJ	Pittsburgh, Pa.	100						
aWMBQ	Brooklyn, N. Y.	100						
WMPC	Lapeer, Mich.	100						
WNBF	Binghampton, N. Y.	100						
WOPI	Bristol, Tenn.	100						
WPEN	Philadelphia, Pa.	250-100						
WRDW	Augusta, Ga.	100						
aWWRL	Woodside, N. Y.	100						
<b>1430 kc.</b>								
209.7 Meters								
KECA	Los Angeles, Calif.	1000						
KGNF	North Platte, Nebr.	500						
†WBAK	Harrisburg, Pa.	1000-500						
†WCAH	Columbus, Ohio	500						
†WGBC	Memphis, Tenn.	500						
†WHP	Harrisburg, Pa.	500						
†WNBR	Memphis, Tenn.	500						
<b>1420 kc.</b>								
211.1 Meters								
†KBPS	Portland, Ore.	100						
KFIZ	Fond du Lac, Wis.	100						
†KFQU	Holy City, Calif.	100						
KFQW	Seattle, Wash.	100						
KFXD	Nampa, Idaho	50						
KFXV	Flagstaff, Ariz.	100						
†KFYO	Abilene, Texas	250-100						
KGFF	Alva, Okla.	100						
†KGGC	San Francisco, Cal.	100						
KGIW	Trinidad, Colo.	100						
KGIX	Las Vegas, Nev.	100						
KGKX	Sandpoint, Idaho	100						
KICK	Red Oak, Iowa	100						
KLPM	Minot, N. Dak.	100						
KORE	Eugene, Ore.	100						
KTAP	San Antonio, Tex.	100						
†KXL	Portland, Ore.	100						
KXYZ	Houston, Tex.	100						
WEDH	Erie, Pa.	30						
*WEHS	Cicero, Ill.	100						
WELL	Battle Creek, Mich.	50						
WFDW	Talladega, Ala.	100						
WHDL	Tupper Lake, N. Y.	100						
*WHFC	Cicero, Ill.	100						
WHIS	Bluefield, W. Va.	100						
WIAS	Ottumwa, Iowa	100						
WIBR	Steubenville, Ohio	50						
WILM	Wilmington, Del.	100						
WJBO	New Orleans, La.	100						
*WKBI	Chicago, Ill.	100						
WLBK	Kansas City, Kans.	100						
WMBG	Detroit, Mich.	250-100						
WMBH	Joplin, Mo.	250-100						
WPAD	Paducah, Ky.	100						
WSPA	Spartanburg, S. C.	250-100						
WTBO	Cumberland, Md.	100						
<b>1410 kc.</b>								
212.6 Meters								
*KFLV	Rockford, Ill.	500						
†KGRS	Amarillo, Tex.	1000						
WBCM	Bay City, Mich.	500						
†WDAG	Amarillo, Tex.	250						
*WHL	Sheboygan, Wis.	500						
aWLEX	Lexington, Mass.	500						
aWMAF	Dartmouth, Mass.	500						
†WODX	Mobile, Ala.	500						
WRBX	Roanoke, Va.	250						
†WSFA	Montgomery, Ala.	500						
aWSSH	Boston, Mass.	500						
<b>1400 kc.</b>								
214.2 Meters								
KLO	Ogden, Utah	500						
KOCW	Chickasha, Okla.	500-250						
*WBAA	W. Lafayette, Ind.	1000-500						
†WBBC	Brooklyn, N. Y.	500						
<b>1390 kc.</b>								
215.7 Meters								
†KLRA	Little Rock, Ark.	1000						
KOY	Phoenix, Ariz.	500						
†KUOA	Fayetteville, Ark.	1000						
WHK	Cleveland, Ohio	1000						
<b>1380 kc.</b>								
217.3 Meters								
KOH	Reno, Nevada	500						
*KQV	Pittsburg, Pa.	500						
†KSO	Clarinda, Iowa	500						
†WKBH	LaCrosse, Wis.	1000						
*WSMK	Dayton, Ohio	200						
<b>1370 kc.</b>								
218.8 Meters								
†KCRC	Emid, Okla.	250-100						
bKFBL	Everett, Wash.	50						
KFJI	Astoria, Ore.	100						
KFJM	Grand Forks, N. Dak.	100						
KFJZ	Fort Worth, Texas	100						
KFLX	Galveston, Texas	100						
KGAR	Tucson, Ariz.	250-100						
aKGC	San Antonio, Tex.	100						
KGDA	Mitchell, S. D.	100						
†KGFQ	Oklahoma City, Okla.	100						
KGFL	Raton, N. Mex.	50						
KGKL	San Angelo, Texas	100						
aKONO	San Antonio, Texas	100						
KOOS	Marshfield, Ore.	100						
†KRE	Berkeley, Calif.	100						
bKVL	Seattle, Wash.	100						
KWKC	Kansas City, Mo.	100						
†KZM	Hayward, Calif.	100						
WBG	Glen Falls, N. Y.	50						
*WBTM	Danville, Va.	100						
WCBM	Baltimore, Md.	250-100						
WELK	Philadelphia, Pa.	250-100						
WFDV	Rome, Ga.	100						
WGL	Fort Wayne, Ind.	100						
WHBD	Mount Orab, Ohio	100						
WHBQ	Memphis, Tenn.	100						
WHDF	Calumet, Mich.	250-100						
cWIBM	Jackson, Mich.	100						
cWJBK	Highland Park, Mich.	50						
WLEY	Lexington, Mass.	250-100						
*WLVA	Lynchburg, Va.	100						
WMBR	Tampa, Fla.	100						
WPOE	Patchogue, N. Y.	100						
WQDM	St. Albans, Vt.	5						
WRAM	Williamsport, Pa.	50						
WRBJ	Hattiesburg, Miss.	10						
WRBT	Wilmington, N. C.	100						
WRDO	Augusta, Me.	100						
WRJN	Racine, Wis.	100						
WSVS	Buffalo, N. Y.	50						
<b>1360 kc.</b>								
220.4 Meters								
†KGER	Long Beach, Calif.	1000						
KGIR	Butte, Mont.	500						
†KPSN	Pasadena, Calif.	1900						
WCSC	Charleston, S. C.	500						
WFBL	Syracuse, N. Y.	100						
*WGES	Chicago, Ill.	500						
<b>1490 kc.</b>								
201.2 Meters								
KPWF	Westminster, Calif.	5000 to 10000						
*WCHI	Chicago, Ill.	5000						
*WCKY	Covington, Ky.	5000						
*WJAZ	Chicago, Ill.	5000						
*WORD	Chicago, Ill.	5000						
<b>1480 kc.</b>								
202.6 Meters								
KFJF	Oklahoma City, Okla.	5000						
WKBW	Buffalo, N. Y.	5000						
<b>1470 kc.</b>								
204.0 Meters								
KGA	Spokane, Wash.	5000						
*WLAC	Nashville, Tenn.	5000						
*WTNT	Nashville, Tenn.	5000						
<b>1460 kc.</b>								
205.4 Meters								
KSTP	St. Paul, Minn.	10000						
WJSV	Alexandria, Va.	10000						
<b>1450 kc.</b>								
206.8 Meters								
KTBS	Shreveport, La.	1000						
†WBMS	Hackensack, N. J.	250						
*WCSS	Springfield, Ohio	500						
*WFJC	Akron, Ohio	500						
WGAR	Cleveland, Ohio	500						
†WHOM	Jersey City, N. J.	250						
†WKBO	Jersey City, N. J.	250						
†WNJ	Newark, N. J.	250						
WSAR	Fall River, Mass.	250						
WTFI	Toccoa, Ga.	500						
<b>1440 kc.</b>								
208.2 Meters								
KLK	Oakland, Calif.	250						
†WABO }	Rochester, N. Y.	500						
†WHEC }								
WBIG	Greensboro, N. C.	500						

## Numerically by Kilocycles

Stations in each frequency having same prefix share time. Lightface type in power column denotes daytime.

Station	Location	Power	Station	Location	Power	Station	Location	Power
*WJKS	Gary, Ind.	1250-1000	eWJAC	Johnstown, Pa.	100	<b>1250 kc.</b>		
WQBC	Vicksburg, Miss.	300	‡WJAK	Marion, Ind.	50	239.9 Meters		
<b>1350 kc.</b>			WKAV	Laconia, N. H.	100	xKFMX	Northfield, Minn.	1000
222.1 Meters			‡WKBB	Joliet, Ill.	100	KFOX	Long Beach, Calif.	1000
KWK	St. Louis, Mo.	1000	WKBC	Birmingham, Ala.	100	KIDO	Boise, Idaho	1000
‡WBNY	New York, N. Y.	250	WKBS	Galesburg, Ill.	100	aWAAM	Newark, N. J.	2000-1000
‡WCDA	New York, N. Y.	250	‡WLBC	Muncie, Ind.	50	xWCAL	Northfield, Minn.	1000
‡WKBQ	New York, N. Y.	250	WMBO	Auburn, N. Y.	100	WDSU	New Orleans, La.	1000
‡WMSG	New York, N. Y.	250	WNBH	New Bedford, Mass.	100	aWGCP	Newark, N. J.	250
<b>1340 kc.</b>			WOBT	Union City, Tenn.	250-100	xWLB		
223.7 Meters			WOL	Washington, D. C.	100	xWGM	St. Paul, Minn.	1000
KFPW	Ft. Smith, Ark.	50	*WRAW	Reading, Pa.	50	aWODA	Paterson, N. J.	1000
KFPY	Spokane, Wash.	1000	WRBI	Tifton, Ga.	20	xWRHM	Minneapolis, Minn.	1000
WCOA	Pensacola, Fla.	500	WROL	Knoxville, Tenn.	100	<b>1240 kc.</b>		
WSPD	Toledo, Ohio	1000-500	WSAJ	Grove City, Pa.	100	241.8 Meters		
<b>1330 kc.</b>			WSJS	Winston-Salem, N. C.	100	*KTAT	Fort Worth, Tex.	1000
225.4 Meters			<b>1300 kc.</b>			*WACO	Waco, Texas	1000
KGB	San Diego, Calif.	250	230.6 Meters			WXYZ	Detroit, Mich.	1000
*KSCJ	Sioux City, Iowa	2500-1000	bKFH	Wichita, Kansas	1000	<b>1230 kc.</b>		
WDRC	New Haven, Conn.	500	‡KFJR	Portland, Ore.	500	243.8 Meters		
WSAI	Cincinnati, Ohio	500	‡KGEF	Los Angeles, Calif.	1000	KFQD	Anchorage, Alaska	100
*WTAQ	Eau Claire, Wis.	1000	‡KTBI	Los Angeles, Calif.	1000	KGGM	Albuquerque, N. M.	500-250
<b>1320 kc.</b>			‡KTBR	Portland, Ore.	500	KYA	San Francisco, Calif.	1000
227.1 Meters			KZRC	Cebu, P. I.		‡WFBM	Indianapolis, Ind.	1000
KGHF	Pueblo, Colo.	500-250	aWBRR	Brooklyn, N. Y.	1000	WNAC	Boston,	
*KGIQ	Twin Falls, Idaho	250	aWEVD	New York, N. Y.	500	WBIS	Mass.	1000
KGMB	Honolulu, Hawaii	500	aWHAP	New York, N. Y.	1000	WPSC	State College, Pa.	500
*KID	Idaho Falls, Idaho	500-250	aWHAZ	Troy, N. Y.	500	‡WSBT	South Bend, Ind.	500
WADC	Akron, Ohio	1000	*WIOD	Miami Beach, Fla.	1000	<b>1220 kc.</b>		
WSMB	New Orleans, La.	500	*WMBF	Miami Beach, Fla.	1000	245.8 Meters		
<b>1310 kc.</b>			bWOQ	Kansas City, Mo.	1000	*KFKU	Lawrence, Kans.	500
228.9 Meters			<b>1290 kc.</b>			KWSC	Pullman, Wash.	2000-1000
KCRJ	Jerome, Ariz.	100	234.4 Meters			WCAD	Canton, N. Y.	500
KFBK	Sacramento, Calif.	100	KDYL	Salt Lake City, Utah	1000	WCAE	Pittsburgh, Pa.	1000
*KFGQ	Boone, Iowa	100	*KFUL	Galveston, Tex.	500	WDAE	Tampa, Fla.	1000
KFIU	Juneau, Alaska	10	KLCN	Blytheville, Ark.	50	*WREN	Lawrence, Kans.	1000
*KFJY	Fort Dodge, Ia.	100	*KTSA	San Antonio, Tex.	2000-1000	<b>1210 kc.</b>		
KFPL	Dublin, Tex.	100	WEBC	Superior, Wis.	2500-1000	247.8 Meters		
KFFM	Greenville, Tex.	15	WJAS	Pittsburgh, Pa.	2500-1000	CFCO	Chatham, Ont.	100
‡KFUP	Denver, Colo.	100	WNBZ	Saranac Lake, N. Y.	50	CFNB	Fredericton, N. B.	50
‡KFXX	Edgewater, Colo.	50	<b>1280 kc.</b>			‡CHWK	Chilliwack, B. C.	5
KFXR	Oklahoma Cy., Okla.	250-100	234.2 Meters			‡CJOR	Sea Island, B. C.	50
KGBX	St. Joseph, Mo.	100	KFBB	Great Falls, Mont.	2500-1000	CKMC	Cobalt, Ont.	15
KGCX	Wolf Point, Mont.	250-100	‡WCAM	Camden, N. J.	500	CKPC	Preston, Ont.	25
KGEZ	Kalispell, Mont.	100	WDDO	Chattanooga, Tenn.	2500-1000	KDFN	Casper, Wyo.	100
KGFW	Ravenna, Neb.	100	WIBA	Madison, Wis.	500	KDLR	Devils Lake, N. Dak.	100
KIT	Yakima, Wash.	50	‡WOAX	Trenton, N. J.	500	KFOR	Lincoln, Nebr.	250-100
KMED	Medford, Ore.	50	WRR	Dallas, Tex.	500	*KFVS	Cape Girardeau, Mo.	100
‡KRMD	Shreveport, La.	50	<b>1270 kc.</b>			‡KFXM	San Bernardino, Calif.	100
KTLC	Houston, Tex.	100	236.1 Meters			KGCR	Watertown, S. Dak.	100
*KTSL	Shreveport, La.	100	KFUM	Colorado Springs, Colo.	1000	KGMP	Elk City, Okla.	100
aKTSM	El Paso, Tex.	100	*KGCA	Decorah, Iowa	50	KGNO	Dodge City, Kans.	100
*KWCR	Cedar Rapids, Iowa	100	xKOL	Seattle, Wash.	1000	KMJ	Fresno, Calif.	100
KXRO	Aberdeen, Wash.	75	xKTW	Seattle, Wash.	1000	‡KPPC	Pasadena, Calif.	50
WBOW	Terre Haute, Ind.	100	*KWLC	Decorah, Iowa	100	KWEA	Shreveport, La.	100
WBRE	Wilkes-Barre, Pa.	100	‡WASH	Grand Rapids, Mich.	500	WALR	Zanesville, Ohio	100
‡WCLS	Joliet, Ill.	100	WEAI	Ithaca, N. Y.	1000-500	dWBAX	Wilkes-Barre, Pa.	100
aWDAH	El Paso, Tex.	100	WFBR	Baltimore, Md.	500	bWBBL	Richmond, Va.	100
WEBR	Buffalo, N. Y.	200-100	WJDX	Jackson, Miss.	1000-500	xWBSL	Springfield, Ill.	100
WEXL	Royal Oak, Mich.	50	‡WOOD	Grand Rapids, Mich.	500	aWCOH	Yonkers, N. Y.	100
WFBG	Altoona, Pa.	100	<b>1260 kc.</b>			‡WCRW	Chicago, Ill.	100
WDFD	Flint, Mich.	100	238.0 Meters			eWDWF	Providence, R. I.	100
bWFKD	Philadelphia, Pa.	50	KOIL	Council Bluffs, Ia.	1000	*WEBQ	Harrisburg, Ill.	100
xW GAL	Lancaster, Pa.	100	‡KRGV	Harlingen, Texas	500	‡WEDC	Chicago, Ill.	100
WBN	Newport News, Va.	100	KVOA	Tucson, Ariz.	500	aWGBB	Freeport, N. Y.	100
WBN	Philadelphia, Pa.	100	‡KWVG	Brownsville, Tex.	500	WGCM	Gulfport, Miss.	100
WBN	Wis.	100	WLBW	Oil City, Pa.	1000-500	WHBF	Rock Island, Ill.	100
			WTOC	Savannah, Ga.	500	WHBU	Anderson, Ind.	100

# Numerically by Kilocycles

Stations in each frequency having same prefix share time. Lightface type in power column denotes daytime.

Station	Location	Power	Station	Location	Power	Station	Location	Power
aWJBI	Red Bank, N. J.	100	*KOB	State College, N. M.	20000	<b>1060 kc.</b>		
dWJBU	Lewisburg, Pa.	100	†WDGY	Minneapolis, Minn.	1000	282.8 Meters		
WJBY	Gadsden, Ala.	50	†WHDI	Minneapolis, Minn.	500	KWJJ Portland, Ore. 500		
WJW	Mansfield, Ohio	100	<b>1170 kc.</b>			*WBAL Baltimore, Md. 10000		
WLCI	Ithaca, N. Y.	50	256.3 Meters			WJAG Norfolk, Nebr. 1000		
eWLSI	Providence, R. I.	100	KTNT	Muscatine, Iowa	5000	*WTIC Hartford, Conn. 50000		
bWMBG	Richmond, Va.	100	WCAU	Philadelphia, Pa.	10000	<b>1050 kc.</b>		
aWMRJ	Jamaica, N. Y.	100	<b>1160 kc.</b>			285.5 Meters		
WOCL	Jamestown, N. Y.	25	258.5 Meters			KFKB Milford, Kan. 5000		
WOMT	Manitowoc, Wis.	100	*WOWO	Fort Wayne, Ind.	10000	KNX Los Angeles, Calif. 5000		
eWPAW	Pawtucket, R. I.	100	*WWVA	Wheeling, W. Va.	5000	<b>1040 kc.</b>		
WQDX	Thomasville, Ga.	50	<b>1150 kc.</b>			288.3 Meters		
WRBQ	Greenville, Miss.	100	260.7 Meters			†KRLD Dallas, Texas 10000		
WRBU	Gastonia, N. Car.	100	WHAM	Rochester, N. Y.	5000	†KTHS Hot Springs, Ark. 10000		
†WSBC	Chicago, Ill.	100	<b>1140 kc.</b>			WKAR East Lansing, Mich. 1000		
WSEN	Columbus, Ohio	100	263.0 Meters			WMAK Buffalo, N. Y. 1000		
WSIX	Springfield, Tenn.	100	*KVOO	Tulsa, Okla.	5000	<b>1030 kc.</b>		
xWTAX	Streator, Ill.	100	*WAPI	Birmingham, Ala.	5000	291.1 Meters		
<b>1200 kc.</b>			<b>1130 kc.</b>			CFCF Montreal, Que. 500		
249.9 Meters			265.3 Meters			CNRV Vancouver, B. C. 500		
KBTM	Paragould, Ark.	100	KSL	Salt Lake City, Utah	5000	<b>1020 kc.</b>		
KFHA	Gunnison, Colo.	50	WJJD	Mooseheart, Ill.	20000	293.9 Meters		
KFJB	Marshalltown, Iowa	250-100	WOV	New York, N. Y.	1000	KYW } Chicago, Ill. 10000		
*KFWF	St. Louis, Mo.	100	<b>1120 kc.</b>			WRAX Philadelphia, Pa. 250		
KGCU	Mandan, N. D.	100	267.7 Meters			<b>1010 kc.</b>		
KGDE	Fergus Falls, Minn.	250-100	CFJC	Kamloops, B. C.	15	296.9 Meters		
KGDY	Huron, S. D.	100	CHGS	Summerside, P. E. I.	100	CFLC Prescott, Ont. 50		
xKGEK	Yuma, Colo.	50	CJOC	Lethbridge, Alta.	50	CKCR Waterloo, Ont. 50		
xKGEW	Fort Morgan, Colo.	100	KFIO	Spokane, Wash.	100	*KGGF S. Coffeyville, Okla. 500		
KGFJ	Los Angeles, Calif.	100	†KFSG	Los Angeles, Calif.	500	KQW San Jose, Calif. 50		
KGHI	Little Rock, Ark.	100	†KMCS	Los Angeles, Calif.	500	xWHN New York, N. Y. 25		
KGY	Lacey, Wash.	10	KRSC	Seattle, Wash.	50	WIS Columbia, S. C. 1000-500		
KMLB	Monroe, La.	50	†KTRH	Houston, Tex.	500	*WNAD Norman, Okla. 500		
KSMR	Santa Maria, Calif.	100	WDBO	Orlando, Fla.	1000-500	xWPAP }		
KVOS	Bellingham, Wash.	100	WDEL	Wilmington, Del.	350-250	xWQAO } New York, N. Y. 250		
KWG	Stockton, Calif.	100	xWHAD	Milwaukee, Wis.	250	xWRNY New York, N. Y. 250		
WABI	Bangor, Me.	100	xWISN	Milwaukee, Wis.	250	<b>1000 kc.</b>		
aWABZ	New Orleans, La.	100	†WTAU	College Station, Tex.	500	299.8 Meters		
WBBZ	Ponca City, Okla.	100	<b>1110 kc.</b>			KFVD Culver City, Calif. 250		
xWCAT	Rapid City, S. Dak.	100	270.1 Meters			WOC-WHO { Des Moines, Iowa 5000		
*WCAX	Burlington, Vt.	100	KSOO	Sioux Falls, S. Dak.	2000	{ Davenport, Iowa 5000		
WCLO	Janesville, Wis.	100	KZKZ	Manila, P. I.	100	<b>990 kc.</b>		
†WCOD	Harrisburg, Pa.	100	WRVA	Richmond, Va.	5000	302.8 Meters		
WEHC	Emory, Va.	250-100	<b>1100 kc.</b>			†WBZ E. Springfield, Mass. 15000		
WEPS	Worcester, Mass.	100	272.6 Meters			†WBZA Boston, Mass. 500		
WFBC	Knoxville, Tenn.	50	KGDM	Stockton, Calif.	250	<b>980 kc.</b>		
WFBE	Cincinnati, Ohio	250-100	*WLWL	New York, N. Y.	5000	305.9 Meters		
†WHBC	Canton, Ohio	10	*WPG	Atlantic City, N. J.	5000	KDKA Pittsburgh, Pa. 50000		
WHBY	W. De Pere, Wis.	100	<b>1090 kc.</b>			<b>970 kc.</b>		
WIBX	Utica, N. Y.	300-100	275.1 Meters			309.1 Meters		
†WIL	St. Louis, Mo.	250-100	KMOX	St. Louis, Mo.	50000	KJR Seattle, Wash. 500		
dWJBC	LaSalle, Ill.	100	<b>1080 kc.</b>			WCFL Chicago, Ill. 1500		
dWJBL	Decatur, Ill.	100	277.6 Meters			<b>960 kc.</b>		
aWJBW	New Orleans, La.	30	WBT	Charlotte, N. C.	5000	312.3 Meters		
†WKJC	Lancaster, Pa.	100	*WCBD	Zion, Ill.	5000	*CFYV Charlottetown, P. E. I. 250		
WLAP	Louisville, Ky.	250-100	*WMBI	Chicago, Ill.	5000	CFRB Toronto, Ont. 4000		
WLBG	Petersburg, Va.	250-100	<b>1070 kc.</b>			*CHCK Charlottetown, P. E. I. 30		
*WMAY	St. Louis, Mo.	250-100	280.2 Meters			CHWC Pilot Butte, Sask. 500		
†WNBO	Silver Haven, Pa.	100	KJBS	San Francisco, Calif.	100	†CJBR Regina, Sask.		
WNBW	Carbondale, Pa.	10	WCAZ	Carthage, Ill.	50	†CKCK Regina, Sask.		
*WNBX	Springfield, Vt.	10	WDZ	Tuscola, Ill.	100	†CNRN Regina, Sask.		
WORC	Worcester, Mass.	100	WTAM	Cleveland, Ohio	50000	CNRX Toronto, Ont.		
WPDF	Flint, Mich.	100	<b>1190 kc.</b>					
gWRAF	Laporte, Ind.	100	252.0 Meters					
WRBL	Columbus, Ga.	50	WICC	Bridgeport, Conn.	500			
gWWAE	Hammond, Ind.	100	WOAI	San Antonio, Tex.	50000			
<b>1180 kc.</b>			<b>1190 kc.</b>					
254.1 Meters			252.0 Meters					
*KEX	Portland, Ore.	5000						

# Numerically by Kilocycles

Stations in each frequency having same prefix share time. Lightface type in power column denotes daytime.

Station	Location	Power	Station	Location	Power	Station	Location	Power
<b>950 kc.</b>								
315.6 Meters								
KFWB	Hollywood, Calif.	1000	aCHCS	Hamilton, Ont.	10	KGO	San Francisco, Calif.	7500
KGHL	Billings, Mont.	1000	aCHML	Hamilton, Ont.	50	WGY	Schenectady, N. Y.	50000
KMBC	Kansas City	1000	‡CHRC	Quebec, Que.	100	<b>780 kc.</b>		
WRC	Washington, D. C.	500	CJCB	Sydney, N. S.	50	384.4 Meters		
<b>940 kc.</b>								
319.0 Meters								
KGU	Honolulu, Hawaii	1000	‡CKCI	Quebec, Que.	22 1/2	‡CKY	Winnipeg, Man.	5000
KOIN	Portland, Ore.	1000	‡CKCV	Quebec, Que.	50	‡CNRW	Winnipeg, Man.	5000
WAAT	Jersey City, N. J.	300	aCKOC	Hamilton, Ont.	50	*KELW	Burbank, Calif.	500
WCSH	Portland, Me.	1000	‡CNRQ	Quebec, Que.	50	*KTM	Los Angeles, Calif.	1000-500
WDAY	Fargo, N. D.	1000	*KFKA	Greeley, Colo.	1000-500	WEAN	Providence, R. I.	500-250
WFIW	Hopkinsville, Ky.	1000	KLX	Oakland, Calif.	500	WISJ	Madison, Wisc.	500-250
WHA	Madison, Wis.	750	*KPOF	Denver, Colo.	500	WMC	Memphis, Tenn.	1000-500
			WCOF	Meridian, Miss.	1000-500	WPOR		
			‡WGBI	Scranton, Pa.	250	WTAR	Norfolk, Va.	500
			‡WQAN	Scranton, Pa.	250			
			WSUI	Iowa City, Iowa	500			
<b>930 kc.</b>								
322.4 Meters								
CFRC	Kingston, Ont.	500	<b>870 kc.</b>			<b>770 kc.</b>		
CHNS	Halifax, N. S.	500	344.6 Meters			389.4 Meters		
CJCA	Edmonton, Alta.	500	WBCN			*KFAB	Lincoln, Nebr.	5000
CKIC	Wolfville, N. S.	50	*WENR	Chicago, Ill.	50000	*WBBM		
CKPR	Midland, Ont.	50	*WLS	Chicago, Ill.	5000	*WJBT	Chicago, Ill.	25000
CNRE	Edmonton, Alta.	500	<b>860 kc.</b>			<b>760 kc.</b>		
CNRH	Halifax, N. S.	500	348.6 Meters			394.5 Meters		
*KFWI	San Francisco, Cal.	500	KMO	Tacoma, Wash.	1000-500	KVI	Tacoma, Wash.	1000
‡KGBZ	York, Nebr.	1000-500	WABC			WEW	St. Louis, Mo.	1000
‡KMA	Shenandoah, Iowa	1000-500	WBOQ	New York, N. Y.	5000	WJZ	New York, N. Y.	30000
*KROW	Oakland, Calif.	1000-500	WHB	Kansas City, Mo.	500	<b>750 kc.</b>		
WBRC	Birmingham, Ala.	1000-500				399.8 Meters		
WDBJ	Roanoke, Va.	500-250				WJR	Detroit, Mich.	5000
WIBG	Elkins Park, Pa.	50	<b>850 kc.</b>			<b>740 kc.</b>		
<b>920 kc.</b>								
325.9 Meters								
xKFEL	Denver, Colo.	500	352.7 Meters			405.2 Meters		
xKFXF	Denver, Colo.	500	*KWKH	Shreveport, La.	10000	KMMJ	Clay Center, Nebr.	1000
KOMO	Seattle, Wash.	1000	*WWL	New Orleans, La.	5000	WSB	Atlanta, Ga.	5000
KPRC	Houston, Tex.	2500-1000	<b>840 kc.</b>			<b>730 kc.</b>		
WAAF	Chicago, Ill.	500	356.9 Meters			410.7 Meters		
WBSO	Wellesley Hills, Mass.	500	‡CFCA	Toronto, Ont.	500	xCHLS	Vancouver, B. C.	50
WWJ	Detroit, Mich.	1000	xCHCT	Red Deer, Alta.	1000	‡CHYC	Montreal, Que.	5000
			xCKLC	Red Deer, Alta.	1000	‡CKAC	Montreal, Que.	5000
			xCNRD	Red Deer, Alta.	1000	xCKCD	Vancouver, B. C.	50
			‡CNRT	Toronto, Ont.	500	xCKFC	Vancouver, B. C.	50
			‡WGM	Adamsburg, Pa.	100	xCKMO	Vancouver, B. C.	50
			‡WOOP	Jeannette, Pa.	100	xCKWX	Vancouver, B. C.	100
						‡CNRM	Montreal, Que.	5000
<b>910 kc.</b>								
329.5 Meters								
‡CFQC	Saskatoon, Sask.	500	<b>830 kc.</b>			<b>720 kc.</b>		
xCJGC	London, Ont.	500	361.2 Meters			416.4 Meters		
xCNRL	London, Ont.	500	KOA	Denver, Colo.	12500	WGN		
‡CNRS	Saskatoon, Sask.	500	WHDH	Gloucester, Mass.	1000	WLIB	Chicago, Ill.	25000
			WRUF	Gainesville, Fla.	5000	<b>710 kc.</b>		
			<b>820 kc.</b>			422.3 Meters		
			365.6 Meters			KMPC	Beverly Hills, Calif.	500
			WHAS	Louisville, Ky.	10000	WOR	Newark, N. J.	5000
			<b>810 kc.</b>			<b>700 kc.</b>		
			370.2 Meters			428.3 Meters		
			WCCO	Minneapolis, Minn.	7500	WLW	Cincinnati, Ohio	50000
			WPCH	New York, N. Y.	500	<b>690 kc.</b>		
			<b>800 kc.</b>			434.5 Meters		
			374.8 Meters			xCFAC	Calgary, Alta.	500
			*WBAP	Fort Worth, Texas	10000	xCFCN	Calgary, Alta.	500
			*WFAA	Dallas, Tex.	50000	xCHCA	Calgary, Alta.	500
						CJBC	Toronto, Ont.	5000
						xCJCB	Calgary, Alta.	500
						CJSC	Toronto, Ont.	5000
						‡CKGW	Bowmanville, Ont.	5000
						xCNRG	Calgary, Alta.	500
						‡CPRY	Bowmanville, Ont.	5000
						NAA	Arlington, Va.	1000

# Numerically by Kilocycles

Stations in each frequency having same prefix share time. Lightface type in power column denotes daytime.

Station	Location	Power	Station	Location	Power	Station	Location	Power
<b>680 kc.</b>			<b>610 kc.</b>			<b>570 kc.</b>		
440.9 Meters			491.5 Meters			526.0 Meters		
KFEQ	St. Joseph, Mo.	2500	WLBZ	Bangor, Me.	500	aKSCA	Manhattan, Kans.	1000-500
KPO	San Francisco, Calif.	5000	†WSUN	St. Petersburg, Fla.	2500-1000	aWIBW	Topeka, Kans.	1000
WPTF	Raleigh, N. C.	1000	WTMJ	Milwaukee, Wis.	2500-1000	†WOBU	Charleston, W. Va.	250
<b>670 kc.</b>			<b>600 kc.</b>			<b>560 kc.</b>		
447.5 Meters			499.7 Meters			535.4 Meters		
WMAQ	Chicago, Ill.	5000	KFRC	San Francisco, Calif.	1000	KGKO	Wichita Falls, Tex.	500-250
<b>660 kc.</b>			<b>590 kc.</b>			<b>550 kc.</b>		
454.3 Meters			508.2 Meters			545.1 Meters		
WAAW	Omaha, Nebr.	500	CFCH	Iroquois Falls, Ont.	250	†KFDY	Brookings, S. Dak.	1000-500
WEAF	New York, N. Y.	50000	CJRM	Moosejaw, Sask.	500	†KFUO	St. Louis, Mo.	1000-500
<b>650 kc.</b>			<b>580 kc.</b>			<b>500 kc.</b>		
461.3 Meters			516.9 Meters			475.9 Meters		
KPCB	Seattle, Wash.	100	CJRW	Fleming, Sask.	500	CFCT	Victoria, B. C.	500
WSM	Nashville, Tenn.	5000	CNRO	Ottawa, Ont.	500	CJGX	Yorkton, Sask.	500
<b>640 kc.</b>			<b>500 kc.</b>			<b>400 kc.</b>		
468.5 Meters			499.7 Meters			475.9 Meters		
KFI	Los Angeles, Calif.	5000	KFSD	San Diego, Calif.	1000-500	†KFRU	Columbia, Mo.	500
WAIU	Columbus, Ohio	500	†WCAC	Storrs, Conn.	250	*WGBF	Evansville, Ind.	500
WOI	Ames, Iowa	5000	WCAO	Baltimore, Md.	250	WMAL	Washington, D. C.	500-250
<b>630 kc.</b>			<b>400 kc.</b>			<b>300 kc.</b>		
475.9 Meters			499.7 Meters			475.9 Meters		
CFCT	Victoria, B. C.	500	†WGBS	New York, N. Y.	250-500	*WOS	Jefferson City, Mo.	500
CJGX	Yorkton, Sask.	500	WMT	Waterloo, Iowa	500			
CNRA	Moncton, N. B.	500	*WOAN					
*KFRU	Columbia, Mo.	500	*WREC	Memphis, Tenn.	1000-500			
*WGBF	Evansville, Ind.	500						
WMAL	Washington, D. C.	500-250						
*WOS	Jefferson City, Mo.	500						
<b>620 kc.</b>			<b>300 kc.</b>			<b>200 kc.</b>		
483.6 Meters			516.9 Meters			545.1 Meters		
KGW	Portland, Ore.	1000	xCHMA	Edmonton, Alta.	250	†KFDY	Brookings, S. Dak.	1000-500
KTAR	Phoenix, Ariz.	1000-500	†CKCL			†KFUO	St. Louis, Mo.	1000-500
†WFLA	Clearwater, Fla.	2500-1000	†CFCL	Toronto, Ont.	500	†KFYR	Bismarck, N. D.	1000-500
			†CKNC	Toronto, Ont.	500	KOAC	Corvallis, Ore.	1000
			xCKUA	Edmonton, Alta.	500	†KSD	St. Louis, Mo.	500
			KGFX	Pierre, S. Dak.	200	WGR	Buffalo, N. Y.	1000
						WKRC	Cincinnati, Ohio	1000

## BROADCASTING STATIONS CUBA AND MEXICO

### ALPHABETICALLY ARRANGED BY CALL LETTERS

#### CUBAN LIST AND LOG

Station	Kc.	Mtr.	Location	Owner	Power	Reading
CMBC	1225-244.7		Havana	Domingo Fernandez Cruz	100	
CMBY	1405-213.4		Havana	Lino E. Cosculluela	200	
CMBZ	1010-296.8		Havana	Manuel y Guillermo Salas	100	
CMC	840-357		Havana	Cuban Telephone Co.	500	
CMCE	1285-233.4		Havana	Julio E. Power	100	
CMCF	1010-296.8		Havana	Raul Karman	250	
CMCQ	955-313.8		Havana	Andres Martinez	500	
CMGA	834-360		Colon	Leopoldo V. Figueroa	300	
CMHA	1154-260		Cienfuegos	Jose Ganduxy	200	
CMHC	791-379		Tuinucu	Frank H. Jones	500	
CMHD	920-325		Caibarien	M. A. Alvarez	250	
CMI	775-387		Havana	Institute Provincial	500	
CMK	730-418.8		Havana	Cuban Broadcasting Corp.	3000	
CMKC	1364-220		Santiago de Cuba	M. P. Martinez	150	
CMQ	1225-244.7		Havana	Jose Fernandez Suviaur	150	
CMW	595-504		Havana	Columbus Com'l & Radio Co.	1000	
CMX	900-333.1		Havana	Francisco Lavin	250	

#### MEXICAN LIST AND LOG

Station	Kc.	Location	Owner	Power
XEA	1200-249.9	Guadalajara		100
XEB	895-335	Mexico City		1000
XED	960-312.3	Reynosa		10000
XEF	1130-265.3	Oaxaca		100
XEH	965-311	Monterrey		100
XEI	100-299.8	Morella		100
XEN	730-410.7	Mexico City	General Electric Co.	1000
XEW	780-384.4	Mexico City		6000
XEX	920-325.9	Mexico City	Excelsior Cia Editorial	500
XFC	630-475.9	Jalapa		250
XFF	920-325.9	Chihuahua		250
XFG	592-507	Mexico City	Government	2000
XFI	590-508.2	Mexico City	Department Industries (Gvt.)	1000
XFX	910-329.5	Mexico City	Mexican Daily News	1000

# BROADCASTING STATIONS UNITED STATES AND CANADA

## ARRANGED BY CITIES, STATES AND PROVINCES

### UNITED STATES

#### ALABAMA

Birmingham, WAPI,  
WBRC, WKBC  
Gadsden, WJBY  
Mobile, WODX  
Montgomery, WSFA  
Talladega, WFDW

#### ARIZONA

Flagstaff, KFXV  
Jerome, KCRJ  
Phoenix, KOY, KTAR  
Prescott, KPJM  
Tucson, KGAR, KVOA

#### ARKANSAS

Blytheville, KLCN  
Fayetteville, KUOA  
Ft. Smith, KFPW  
Hot Springs, KTHS  
Little Rock, KGHJ, KGJF,  
KLRA  
Paragould, KBTM

#### CALIFORNIA

Alameda, KROW  
Berkeley, KRE, KROW  
Beverly Hills, KPMP  
Burbank, KELW  
Culver City, KFVD  
El Centro, KXO  
Fresno, KMJ  
Hayward, KZM  
Hollywood, KFVB  
Holy City, KFQU  
Long Beach, KPOX, KGER  
Los Angeles, KECA, KFI,  
KFSG, KGEF, KGFJ,  
KHJ, KMCS, KMTR,  
KNX, KTLI, KTM  
Oakland, KLS, KLV,  
KROW  
Pasadena, KPCC, KPNS  
Richmond, KROW  
Sacramento, KFBK  
San Bernardino, KFDM  
San Diego, KPSD, KGB  
San Francisco, KFRC,  
KFWL, KGGC, KGO,  
KJBS, KPO, KTAB, KYA  
San Jose, KQW  
Santa Ana, KREG  
Santa Barbara, KDB  
Santa Maria, KSMR  
Stockton, KGDM, KWG  
Westminster, KPWF

#### COLORADO

Colorado Springs, KFUM  
Denver, KFEL, KFUP,  
KFNF, KLZ, KOA, KPOF  
Edgewater, KFXJ  
Fort Morgan, KGEW  
Greeley, KFKA  
Gunnison, KFHA  
Pueblo, KGHF  
Trinidad, KGIW  
Yuma, KGEK

#### CONNECTICUT

Bridgeport, WICC  
Hartford, WTIC  
New Haven, WDRC  
Storrs, WCAC

#### DELAWARE

Wilmington, WILM

### DISTRICT OF COLUMBIA

Washington, WMAL, WOL,  
WRC

#### FLORIDA

Clearwater, WFLA  
Gainesville, WRUF  
Jacksonville, WJAX  
Miami, WQAM  
Miami Beach, WIOD-  
WMBF  
Orlando, WDBO  
Pensacola, WCOA  
St. Petersburg, WSUN  
Tampa, WDAE, WMBR

#### GEORGIA

Atlanta, WGST, WSB  
Augusta, WRDW  
Columbus, WRBL  
Macon, WMAZ  
Rome, WFDV  
Savannah, WTOG  
Thomasville, WQDX  
Tifton, WRBI  
Toccoa, WTFI

#### IDAHO

Boise, KIDO  
Idaho Falls, KID  
Nampa, KFSD  
Pocatello, KSEI  
Sandpoint, KGKX  
Twin Falls, KGIQ

#### ILLINOIS

Carthage, WCAZ  
Chicago, KYW-KFKX,  
WAAF, WBBM-WJBT,  
WBCN, WCFL, WCHI,  
WCRW, WEDC, WENR,  
WGES, WGN - WLIE,  
WIBO, WJAZ, WKBI,  
WGN, WLS, WMAQ,  
WMBI, WORD, WPCB,  
WSBC

Cicero, WEHS, WHFC  
Decatur, WJBL  
Galesburg, WKBS  
Harrisburg, WEBQ  
Joliet, WCLS, WKBB  
La Salle, WJBC  
Mooseheart, WJJD  
Peoria Heights, WMBD  
Quincy, WTAD  
Rockford, KPLV  
Rock Island, WHBF  
Springfield, WCBS  
Streator, WTAX  
Tuscola, WZ  
Urbana, WILL  
Zion, WCBD

#### INDIANA

Anderson, WHBU  
Connersville, WKBY  
Culver, WCMA  
Evansville, WGBF  
Fort Wayne, WGL, WOWO  
Gary, WJKS  
Hammond, WWAE  
Indianapolis, WFBM,  
WKBF  
Laporte, WRAF  
Marion, WJAK  
Muncie, WLBC  
South Bend, WSBT  
Terre Haute, WBOW  
W. Lafayette, WBAA

### IOWA

Ames, WOI  
Boone, KFCQ  
Cedar Rapids, KWCR  
Clarinda, KSO  
Council Bluffs, KOIL  
Davenport, WOC  
Decorah, KGCA, KWLC  
Des Moines, WHO  
Fort Dodge, KFJY  
Iowa City, WSUI  
Marshalltown, KFJB  
Muscatine, KTNT  
Ottumwa, WIAS  
Red Oak, KICK  
Shenandoah, KFNF, KMA  
Sioux City, KSCJ  
Waterloo, WMT

#### KANSAS

Dodge City, KGNO  
Kansas City, WLBF  
Lawrence, KFBU, WREN  
Manhattan, KSAC  
Miford, KFKB  
Topeka, WIBW  
Wichita, KFH

#### KENTUCKY

Covington, WCKY  
Hopkinsville, WFIW  
Louisville, WHAS, WLAP  
Paducah, WPAD

#### LOUISIANA

Monroe, KMLB  
New Orleans, WABZ,  
WDSU, WJBO, WJBW,  
WSMB, WWL  
Shreveport, KRMD, KTBS,  
KTSL, KWEA, KWKH

#### MAINE

Augusta, WRDO  
Bangor, WABI, WLBZ  
Portland, WCSH

#### MARYLAND

Baltimore, WBAL, WCAO,  
WCBM, WFBR  
Cumberland, WTBO

#### MASSACHUSETTS

Boston, WBBS, WBZA,  
WEEI, WLOE,  
WNAC-WBIS, WSSH  
Dartmouth, WMAF  
E. Springfield, WBZ  
Fall River, WSAR  
Gloucester, WHDH  
Lexington, WLEX, WLEY  
Needham, WBOS  
New Bedford, WNBH  
Wellesley Hills, WBSO  
Worcester, WEPS - WORC,  
WTAG

#### MICHIGAN

Battle Creek, WELL  
Bay City, WRCM  
Berrien Springs, WKZO  
Calmont, WHDF  
Detroit, WJR, WMBC,  
WWJ, WXYZ  
East Lansing, WKAR  
Flint, WDFD, WPDF  
Grand Rapids, WASH,  
WOOD  
Highland Park, WJBK  
Jackson, WIBM  
Lapeer, WMPC  
Ludington, WKBZ  
Royal Oak, WEXL

### MINNESOTA

Fergus Falls, KGDE  
Minneapolis, WCCO,  
WDGY, WHDI, WRHM  
Moorehead, KGFK  
Northfield, KFMX, WCAL  
St. Paul, KSTP, WGMS,  
WLB

#### MISSISSIPPI

Greenville, WRBQ  
Gulfport, WGCM  
Hattiesburg, WRBJ  
Jackson, WJDX  
Meridian, WCOG  
Tupelo, WDX  
Vicksburg, WQBC

#### MISSOURI

Cape Girardeau, KFVS  
Columbia, KFRU  
Grant City, KGIZ  
Jefferson City, WOS  
Joplin, WMBH  
Kansas City, KMBC,  
KWKC, WDAF, WHB,  
WOQ  
St. Joseph, KFEQ, KGBX  
St. Louis, KFUD, KFWE,  
KMOX, KSD, KWK,  
WEW, WIL, WMAX

#### MONTANA

Billings, KGHL  
Butte, KGIR  
Great Falls, KFBB  
Kalispell, KGEZ  
Wolf Point, KGCC

#### NEBRASKA

Clay Center, KMMJ  
Lincoln, KFAB, KFOR,  
WCAJ  
Norfolk, WJAG  
North Platte, KGNF  
Omaha, WAAW, WOW  
Ravenna, KGFV  
Scottsbluff, KGKY  
York, KGBZ

#### NEVADA

Las Vegas, KGIX  
Reno, KOH

#### NEW HAMPSHIRE

Laconia, WKAJ

#### NEW JERSEY

Asbury Park, WCAP  
Atlantic City, WPG  
Camden, WCAM  
Hackensack, WBMS  
Jersey City, WAAT,  
WHOM, WKBO  
Newark, WAAM, WGCP,  
WNJ, WOR  
Paterson, WODA  
Red Bank, WJBI  
Trenton, WOAX

#### NEW MEXICO

Albuquerque, KGGM  
Raton, KGFL  
State College, KOB

# Alphabetically by Cities, States and Provinces

## NEW YORK

Auburn, WMBO  
 Binghamton, WNBE  
 Brooklyn, WBBC, WBBR,  
 WCGU, WLTH, WMBQ,  
 WSGH-WSDA  
 Buffalo, WBEN, WEBR,  
 WGR, WKBW, WMAK,  
 WSVS  
 Canton, WCAD  
 Freeport, WGBB  
 Glen Falls, WBGF  
 Ithaca, WEAI, WLCI  
 Jamaica, WMRJ  
 Jamestown, WOCL  
 Long Beach, WCLB  
 Long Island City, WL BX  
 New York, WABC-WBOQ,  
 WBNY, WCDA, WEAF,  
 WEVD, WGBS, WHAP,  
 WHN, WJZ, WKBQ,  
 WLWL, WMCA, WMSG,  
 WNYC, WOV, WPCB,  
 WQAO-WPAP, WRNY  
 Patchogue, WPOE  
 Poughkeepsie, WOKO  
 Rochester, WABO-WHEC,  
 WHAM  
 Saranac Lake, WNBZ  
 Schenectady, WGY  
 Syracuse, WFBL, WMAC,  
 WSYR  
 Troy, WHAZ  
 Tupper Lake, WHDL  
 Utica, WIBX  
 Woodside, WWRL  
 Yonkers, WCOH

## NORTH CAROLINA

Asheville, WWNC  
 Charlotte, WBT  
 Gastonia, WRBU  
 Greensboro, WBIG  
 Raleigh, WPTF  
 Wilmington, WRBT  
 Winston-Salem, WSJS

## NORTH DAKOTA

Bismarek, KFYR  
 Devils Lake, KDLR  
 Fargo, WDAY  
 Grand Forks, KFJM  
 Mandan, KGCU  
 Minot, KLPB

## OHIO

Akron, WADC, WFJC  
 Canton, WHBC  
 Cincinnati, WFBE, WKRC,  
 WLW, WSAI  
 Cleveland, WGAR, WHK  
 WJAY, WTAM  
 Columbus, WAIU, WCAH,  
 WEAO, WSEN  
 Dayton, WSMK  
 Mansfield, WJW  
 Mount Orab, WHBD  
 Springfield, WCSO  
 Steubenville, WIBR  
 Toledo, WSPD  
 Youngstown, WKBN  
 Zanesville, WALR

## OKLAHOMA

Alva, KGFF  
 Chickasha, KOCW  
 Elk City, KGMP  
 Enid, KCRC  
 Norman, WNAD  
 Oklahoma City, KFJF,  
 KFXX, KGGF, WKY

Ponca City, WBBZ  
 S. Coffeyville, KGGF  
 Tulsa, KVOO

## OREGON

Astoria, KFJI  
 Corvallis, KOAC  
 Eugene, KORE  
 Marshfield, KOOS  
 Medford, KMED  
 Portland, KBPS, KEX,  
 KFJR, KGW, KOIN,  
 KTBR, KWJJ, KXL

## PENNSYLVANIA

Adamsburg, WGM  
 Allentown, WCBA, WSN  
 Altoona, WFBG  
 Carbondale, WNBW  
 Elkins Park, WIBG  
 Erie, WEDH  
 Grove City, WSAJ  
 Harrisburg, WBAK, WCOD,  
 WHP  
 Jeannette, WOOP  
 Johnstown, WJAC  
 Lancaster, WGAL, WKJC  
 Lewisburg, WJBU  
 Oil City, WLBW  
 Philadelphia, WCAU,  
 WELK, WFAN, WFI,  
 WFKD, WHAT, WIP,  
 WLIT, WPEW, WRAX  
 Pittsburgh, KDKA, KQV,  
 WCAE, WJAS, WMBJ  
 Reading, WRAW  
 Scranton, WGBI, WQAN  
 Silver Haven, WNBO  
 State College, WPSB  
 Wilkes-Barre, WBAX,  
 WBRE  
 Williamsport, WRAK

## RHODE ISLAND

Newport, WMBA  
 Pawtucket, WPAW  
 Providence, WDFW-WLSI,  
 WEAN, WJAR

## SOUTH CAROLINA

Charleston, WCSC  
 Columbia, WIS  
 Spartanburg, WSPA

## SOUTH DAKOTA

Brookings, KFDY  
 Huron, KGDY  
 Mitchell, KGDA  
 Pierre, KGFX  
 Rapid City, WCAT  
 Sioux Falls, KSOO  
 Vermillion, KUSD  
 Watertown, KGCR  
 Yankton, WNAX

## TENNESSEE

Bristol, WOPI  
 Chattanooga, WDD  
 Knoxville, WFBC, WNOX,  
 WROL  
 Memphis, WGBC, WHBQ,  
 WMC, WNBR, WREC-  
 WOAN  
 Nashville, WLAC, WSM,  
 WTNT  
 Springfield, WSIX  
 Union City, WOBT

## TEXAS

Abilene, KFYO  
 Amarillo, KGRS, WDAQ  
 Beaumont, KFDM

Brownsville, KWWG  
 Brownwood, KGKB  
 College Station, WTAW  
 Corpus Christi, KGFI  
 Dallas, KRLD, WFAA, WRR  
 Dublin, KPPL  
 El Paso, KTSM, WDAH  
 Fort Worth, KFJZ, KTAT,  
 WBAP  
 Galveston, KFLX, KFUL  
 Greenville, KFPM  
 Harlingen, KRGV  
 Houston, KPRC, KTLC,  
 KTRH, KUT, KXYZ  
 San Angelo, KGKL  
 San Antonio, KGCI, KONO,  
 KTAP, K TSA, WOAI  
 Waco, WACO  
 Wichita Falls, KGKO

## UTAH

Ogden, KLO  
 Salt Lake City, KDYL, KSL

## VERMONT

Burlington, WCAH  
 St. Albans, WQDM  
 Springfield, WNBX

## VIRGINIA

Alexandria, WJSV  
 Arlington, NAA  
 Danville, WBTM  
 Emory, WEHC  
 Lynchburg, WLVA  
 Newport News, WGH  
 Norfolk, WFOR-WTAR  
 Petersburg, WLBG  
 Richmond, WBBL, WMBG,  
 WRVA  
 Roanoke, WDBJ, WRBX

## WASHINGTON

Aberdeen, KXRO  
 Bellingham, KVO5  
 Everett, KFBL  
 Lacey, KGY  
 Longview, KUJ  
 Pullman, KWSC  
 Seattle, KFQW, KJR, KOL,  
 KOMO, KPCB, KRSC,  
 KTW, KVL, KXA  
 Spokane, KFIO, KFPY,  
 KGA, KHQ  
 Tacoma, KMO, KVI  
 Wenatchee, KPQ  
 Yakima, KIT

## WEST VIRGINIA

Bluefield, WHIS  
 Charleston, WOBU  
 Fairmont, WMMN  
 Huntington, WSAZ  
 Wheeling, WVVVA

## WISCONSIN

Eau Claire, WTAQ  
 Fond du Lac, KFIZ  
 Janesville, WCLO  
 La Crosse, WKBH  
 Madison, WHA, WIBA,  
 WISJ  
 Manitowoc, WOMET  
 Milwaukee, WHAD, WISN,  
 WTMJ  
 Poynette, WIBU  
 Racine, WRJN  
 Sheboygan, WHBL  
 Stevens Point, WLEL  
 Superior, WIBC  
 W. De Pere, WHBY

## WYOMING

Casper, KDFN

## CANADA ALBERTA

Calgary, CFAC, CFCN,  
 CHCA, CJCJ, CNRC  
 Edmonton, CHMA, CJCA,  
 CKUA, CNRE  
 Lethbridge, CJOC  
 Red Deer, CHCT, CKLC,  
 CNRD

## BRITISH COLUMBIA

Chilliwack, CHWK  
 Kamloops, CFJC  
 Sea Island, CJOR  
 Vancouver, CHLS, CKCD,  
 CKFC, CKMO, CKWX,  
 CNRV  
 Victoria, CFCT

## MANITOBA

Brandon, CKX  
 Winnipeg, CKY, CNRW

## NEW BRUNSWICK

Fredericton, CFNB  
 Moncton, CNRA  
 St. John, CFBO

## NOVA SCOTIA

Halifax, CHNS, CNRH  
 Sydney, CJCB  
 Wolfville, CKIC

## ONTARIO

Bowmanville, CKGW,  
 CPYR  
 Chatham, CFBO  
 Cobalt, CKMC  
 Hamilton, CHCS, CHML,  
 CKOC  
 Iroquois Falls, CFCH  
 Kingston, CFRC  
 London, CJGC, CNRL  
 Midland, CKPR  
 Ottawa, CKCO, CNRO  
 Prescott, CFLC  
 Preston, CFPC  
 Toronto, CFCA, CFCL,  
 CFRB, CJBC, CJSC,  
 CKCL, CKNC, CNRT,  
 CNRX  
 Waterloo, CKCR

## PRINCE EDWARD ISLAND

Charlottetown, CFCY,  
 CHCK  
 Summerside, CHGS

## QUEBEC

Montreal, CFCF, CHYC,  
 CKAC, CNRM  
 Quebec, CHRC, CKCI,  
 CKCV, CNRQ

## SASKATCHEWAN

Fleming, CJRW  
 Moose Jaw, CJRM  
 Pilot Butte, CHWC  
 Regina, CJBR, CKCK,  
 CNRR  
 Saskatoon, CFQC, CNRS  
 Yorkton, CJGX

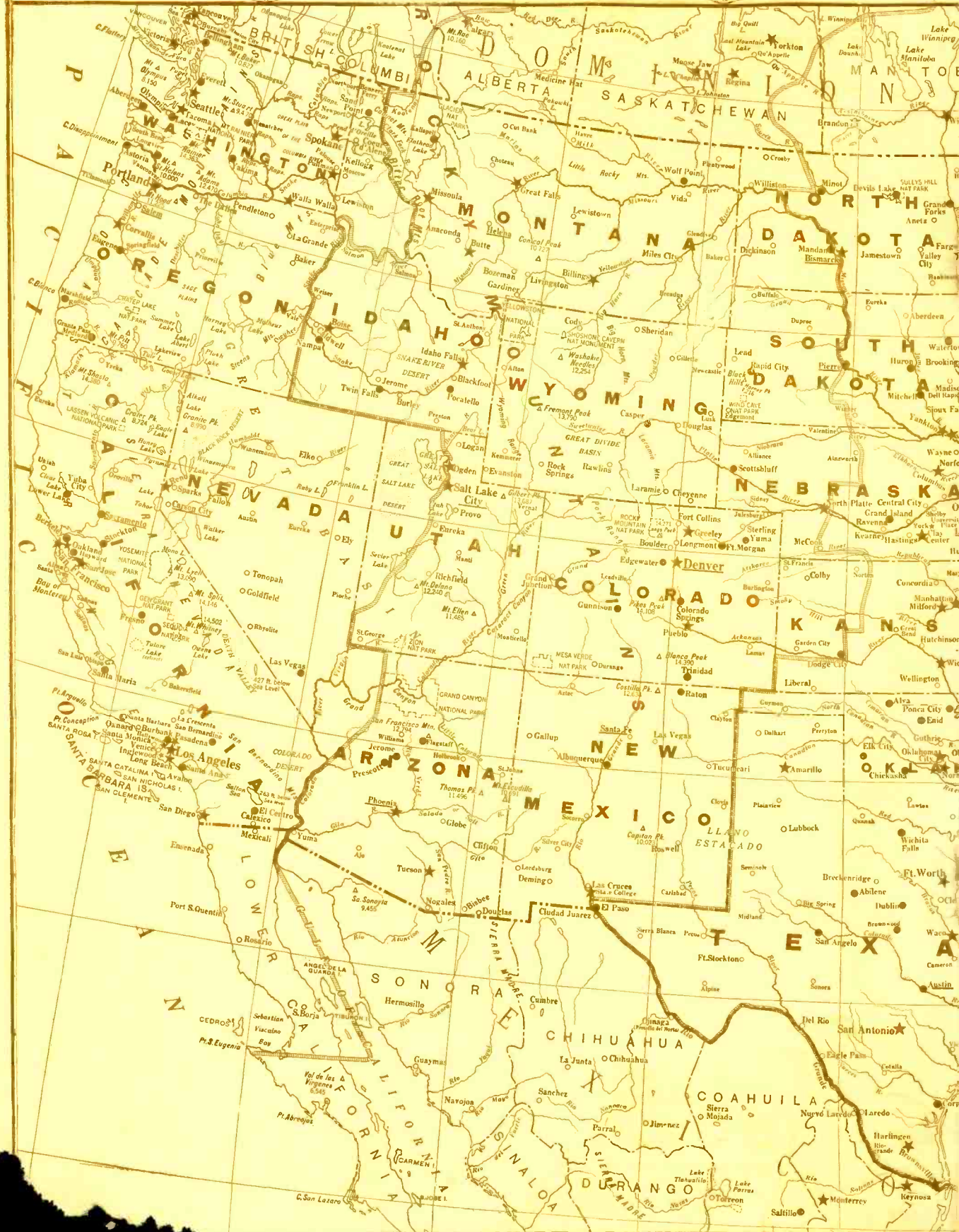
## U. S. POSSESSIONS

Anchorage, Alaska, KFQD  
 Cebu, P. I., KZRC  
 Honolulu, Hawaii, KGMB,  
 KGU  
 Juneau, Alaska, KFII  
 Ketchikan, Alaska,  
 Manila, P. I., KZIB  
 KZRM  
 San Juan, P. R.

PACIFIC TIME



MOUNTAIN TIME





CENTRAL TIME



TIME

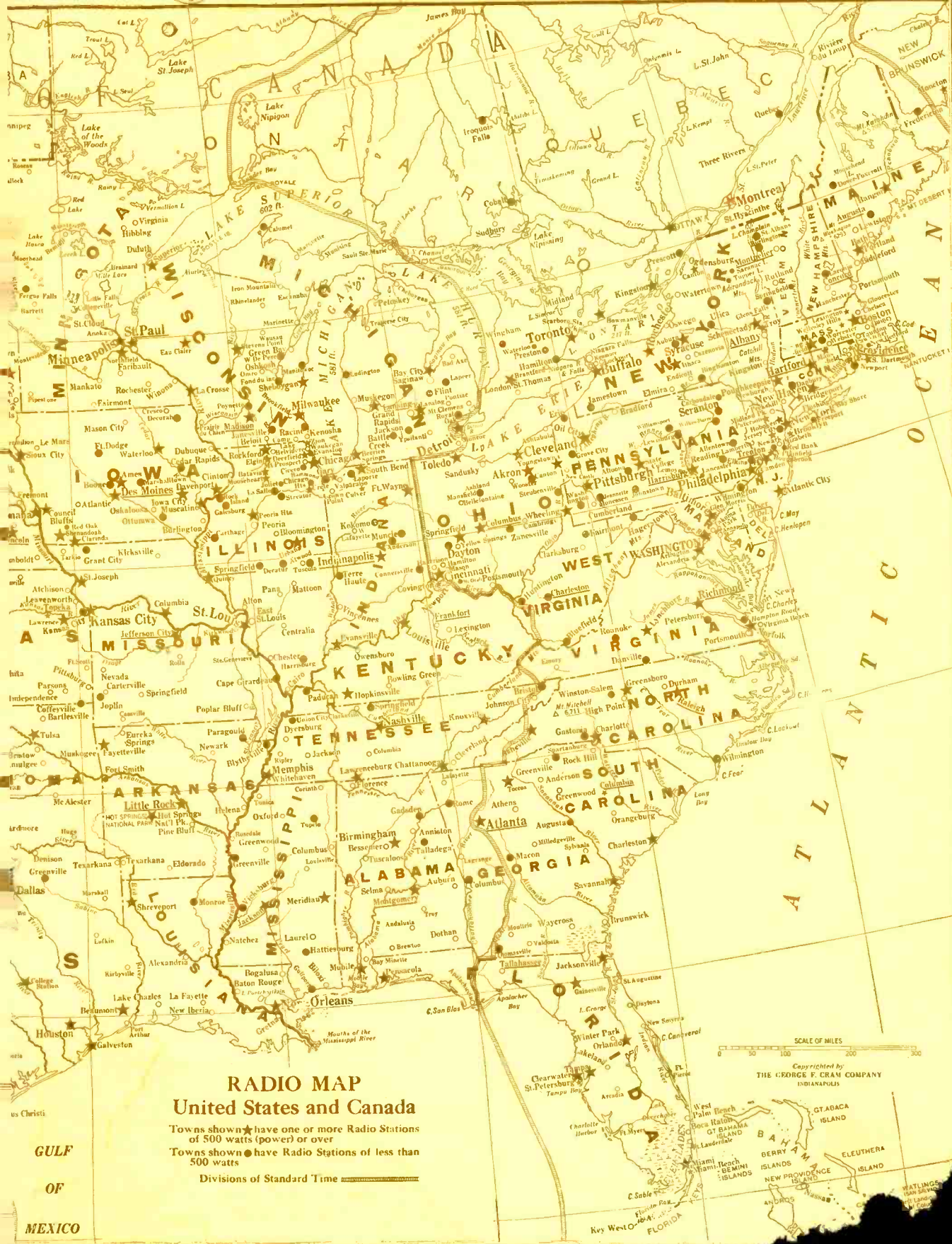
EASTERN TIME



TIME



ATLANTIC TIME



### RADIO MAP United States and Canada

Towns shown \* have one or more Radio Stations of 500 watts (power) or over  
Towns shown ● have Radio Stations of less than 500 watts

Divisions of Standard Time

GULF OF MEXICO

Copyrighted by THE GEORGE F. GRAY COMPANY  
INDIANAPOLIS





# Alphabetically Arranged by Call Letters

*Lightface type in Power column denotes daytime.*

Station	Kc.	Location	Owner	Power	Station	Kc.	Location	Owner	Power
KFH	1300	Wichita, Kan., KFII Co.		1000	KGAR	1370	Tucson, Ariz., Tucson Motor Service Co.		250-100
KFHA	1200	Gunnison, Colo., Hawkins-Craig Syndicate.		50	KGB	1330	San Diego, Calif., Pickwick Broadcasting Corp.		250
KFI	640	Los Angeles, Calif., Earle C. Anthony, Inc.		5000	KGBU	900	Ketchikan, Alaska, Alaska Radio & Service Co., Inc.		500
KFIO	1120	Spokane, Wash., Spokane Broadcasting Corp.		100	KGBX	1310	St. Joseph, Mo., KGBX, Inc.		100
KFIU	1310	Juneau, Alaska, Alaska Elec. Light & Power Co.		10	KGBZ	930	York, Neb., Dr. G. R. Miller		1000-500
KFIZ	1420	Fond du Lac, Wis., The Reporter Printing Co.		100 <sup>b</sup>	KGCA	1270	Decorah, Iowa, Charles W. Greenley		50
KFJB	1200	Marshalltown, Iowa, Marshall Electric Co.		250-100	KGCI	1370	San Antonio, Texas, W. W. McAllister		100
KFJF	1480	Oklahoma City, Okla., National Radio Mfg. Co.		5000	KGCR	1210	Watertown, S. D., Cutler's Radio Brdc. Serv., Inc.		100
KFJI	1370	Astoria, Ore., KFJI Broadcasters, Inc.		100	KGCU	1200	Mandan, N. D., Mandan Radio Association		100
KFJM	1370	Grand Forks, N. D., University of North Dakota		100	KG CX	1310	Wolf Point, Mont., First State Bank of Vida		250-100
KFJR	1300	Portland, Ore., Ashley C. Dixon & Son		500	KGDA	1370	Mitchell, S. Dak., Mitchell Broadcasting Corp.		100
KFJY	1310	Fort Dodge, Iowa, C. S. Tunwall		100	KGDE	1200	Fergus Falls, Minn., Jaren Drug Co.		250-100
KFJZ	1370	Ft. Worth, Texas, H. C. Meacham Estate		100	KGDM	1100	Stockton, Calif., E. F. Peffer		250
KFKA	880	Greeley, Colo., Mid-Western Radio Corporation		1000-500	KG DY	1200	Huron, S. D., Loesch & Wright		100
KFKB	1050	Milford, Kan., KFKB Br. Assn., Inc.		5000	KGEF	1300	Los Angeles, Calif., Trinity Methodist Church		1000
KFKU	1220	Lawrence, Kan., University of Kansas		500	KGEK	1200	Yuma, Colo., Beehler Electrical Equipment Co.		50
KFKX	1020	Chicago, Ill., Herald and Examiner		10000	KGER	1360	Long Beach, Calif., C. Merwin Dobyms		1000
KFLV	1410	Rockford, Ill., Rockford Broadcasters, Inc.		500	KGEW	1200	Ft. Morgan, Colo., City of Ft. Morgan		100
KFLX	1370	Galveston, Texas, George R. Clough		100	KGEZ	1310	Kalispell, Mont., Kalispell Chamber of Commerce		100
KFMX	1250	Northfield, Minn., Carleton College		1000	KGFF	1420	Alva, Okla., KGFF Broadcasting Co.		100
KFNF	890	Shenandoah, Iowa, Henry Field Seed Co.		1000-500	KGFG	1370	Oklahoma City, Okla., Okla. Broadcasting Co., Inc.		100
KFOR	1210	Lincoln, Neb., H. A. Shuman		250-100	KGFI	1500	Corpus Christi, Tex., Eagle Brdctng Co., Inc.		250-100
KFOX	1250	Long Beach, Calif., Nichols & Warinner, Inc.		1000	KG FJ	1200	Los Angeles, Calif., Ben S. McGlashan		100
KFPL	1310	Dublin, Texas, C. C. Baxter		100	KGFK	1500	Moorehead, Minn., Red River Broadcasting Co., Inc.		50
KFPM	1310	Greenville, Texas, New Furniture Co.		15	KGFL	1370	Raton, N. M., W. E. Whitmore		50
KFPW	1340	Ft. Smith, Ark., John Brown Schools		50	KGFW	1310	Ravenna, Neb., Sotjman & McConnell		100
KFPY	1340	Spokane, Wash., Symons Broadcasting Co.		1000	KGFX	580	Pierre, S. D., Dana McNeil		200
KFQD	1230	Anchorage, Alaska, Anchorage Radio Club		100	KG GC	1420	San Francisco, Calif., Golden Gate Broadcasting Co.		100
KFQU	1420	Holy City, Calif., W. E. Riker		100	KG GF	1010	S. Coffeyville, Okla., Coffeyville (Kan.) Journal		500
KFQW	1420	Seattle, Wash., KFQW, Inc.		100	KG GM	1230	Albuquerque, N. M., N. Mex. Broadcasting Co.		500-250
KFRC	610	San Francisco, Calif., Don Lee, Inc.		1000	KG HF	1320	Pueblo, Colo., C. P. Ritchie & J. E. Finch		500-250
KFRU	630	Columbia, Mo., Stephens College		500	KG HI	1200	Little Rock, Ark., Berean Bible Class, Fst. Bap. Ch.		100
KFSD	600	San Diego, Calif., Airfan Radio Corp., Ltd.		1000-500	KG HL	950	Billings, Mont., Northwestern Auto Sup. Co., Inc.		1000
KFSG	1120	Los Angeles, Calif., Echo Park Evangelical Assn.		500	KG IQ	1320	Twin Falls, Idaho, Radio Broadcasting Corp.		250
KFUL	1290	Galveston, Texas, Will H. Ford		500	KG IR	1360	Butte, Mont., KGIR, Inc.		500
KFUM	1270	Colorado Springs, Colo., W. D. Corley		1000	KG IW	1420	Trinidad, Colo., Leonard E. Wilson		100
KFUO	550	St. Louis, Mo., Concordia Theo. Sem.		1000-500	KG IX	1420	Las Vegas, Nev., J. M. Heaton		100
KFUP	1310	Denver, Colo., Fitzsimons General Hospital		100	KG IZ	1500	Grant City, Mo., Grant City Park Corp.		50
KFVD	1000	Culver City, Calif., Los Angeles Broadcasting Co.		250	KG JF	890	Little Rock, Ark., First Church of Nazarene		250
KFVS	1210	Cape Girardeau, Mo., Hirsch Battery & Radio Co.		100	KG KB	1500	Brownwood, Texas, Eagle Publishing Co.		100
KFWB	950	Hollywood, Calif., Warner Bros. Brdc.		1000	KG KL	1370	San Angelo, Texas, KGKL, Inc.		100
KFWF	1200	St. Louis, Mo., St. Louis Truth Center, Inc.		100	KG KO	570	Wichita Falls, Tex., Wichita Falls Brdestg Co.		500-250
KFWI	930	San Francisco, Calif., Radio Entertainments, Inc.		500	KG KX	1420	Sandpoint, Idaho, C. E. Twiss & F. H. McCann		100
KFXD	1420	Nampa, Idaho, Service Radio Co.		50	KG KY	1500	Scottsbluff, Neb., Hilliard Co., Inc.		100
KFXF	920	Denver, Colo., Colorado Radio Corp.		500	KG MB	1320	Honolulu, Hawaii, Honolulu Broadcasting Co., Ltd.		500
KFXJ	1310	Edgewater, Colo., Western Slope Brdc. Co.		50	KG MP	1210	Elk City, Okla., Bryant Radio & Electric Co.		100
KFXM	1210	San Bernardino, Calif., J. C. & E. W. Lee		100	KG NF	1430	North Platte, Neb., Herbert L. Spencer		500
KFXR	1310	Oklahoma City, Okla., Exchange Ave. Bap. Ch.		250-100	KG NO	1210	Dodge City, Kan., Dodge City Broadcasting Co.		100
KFX Y	1420	Flagstaff, Ariz., Mary M. Costigan		100	KG O	790	San Francisco, Cal., Nat'l Broadcasting Co., Inc.		7500
KFYO	1420	Abilene, Texas, Kirksey Bros.		250-100	KG RS	1410	Amarillo, Texas, Gish Radio Service		1000
KFYR	550	Bismarek, N. D., Meyer Broadcasting Co.		1000-500	KG U	940	Honolulu, Hawaii, M. A. Mulrony & Adv. Pbg.		
KGA	1470	Spokane, Wash., Northwest Broadcasting System		5000	KG W	620	Portland, Ore., Oregonian Publish.		

# Alphabetically Arranged by Call Letters

*Lightface type in Power column denotes daytime.*

Station	Kc.	Location	Owner	Power	Station	Kc.	Location	Owner	Power
KGY	1200	Lacey, Wash., St. Martins College.....		10	KRE	1370	Berkeley, Calif., First Congregational Church.....		100
KHJ	900	Los Angeles, Calif., Don Lee, Inc.....		1000	KREG	1500	Santa Ana, Calif., Pac. Wn. Broadcasting Fed.....		100
KHQ	590	Spokane, Wash., Louis Wasmer, Inc.....		2000-1000	KRGV	1260	Harlingen, Texas, KRGV, Inc.....		500
KICK	1420	Red Oak, Iowa, Red Oak Radio Corp.....		100	KRLD	1040	Dallas, Texas, KRLD Radio Corp.....		10000
KID	1320	Idaho Falls, Idaho, Kid Broadcasting Co.....		500-250	KRMD	1310	Shreveport, La., R. M. Dean.....		50
KIDO	1250	Boise, Idaho, Boise Broadcasting Station.....		1000	KROW	930	Oakland, Cal., Educ. Brdestg. Corp.....		1000-500
KIT	1310	Yakima, Wash., Carl E. Hammond.....		50	KRSC	1120	Seattle, Wash., Radio Sales Corp.....		50
KJBS	1070	San Francisco, Calif., J. Brunton & Sons Co.....		100	KSAC	580	Manhattan, Kan., Kansas State Agric. College.....		1000-500
KJR	970	Seattle, Wash., Northwest Broadcasting System....		5000	KSCJ	1330	Sioux City, Iowa, Perkins Bros. Co.....		2500-1000
KLCN	1290	Blytheville, Ark., C. L. Lintzenich.....		50	KSD	550	St. Louis, Mo., Pulitzer Pub. Co.....		500
KLO	1400	Ogden, Utah, Peery Building Co.....		500	KSEI	900	Pocatello, Idaho, KSEI Broadcasting Assn., Inc....		250
KLPM	1420	Minot, N. D., John B. Cooley.....		100	KSL	1130	Salt Lake City, Utah, Radio Service Corp. of Utah.....		5000
KLRA	1390	Little Rock, Ark., Arkansas Broadcasting Co.....		1000	KSMR	1200	Santa Maria, Calif., Santa Maria Valley Radio.....		100
KLS	1440	Oakland, Calif., Warner Bros.....		250	KSO	1380	Clarinda, Iowa, Berry Seed Co.....		500
KLX	880	Oakland, Calif., Tribune Publishing Co.....		500	KS00	1110	Sioux Falls, S. D., Sioux Falls Brdest. Assn., Inc....		2000
KLZ	560	Denver, Colo., Reynolds Radio Co., Inc.....		1000	KSTP	1460	St. Paul, Minn., Nat. Bat. Broadcasting Co.....		10000
KMA	930	Shenandoah, Iowa, May Seed & Nursery Co....		1000-500	KTAB	560	San Francisco, Cal., Associated Broadcasters.....		1000
KMBC	950	Kansas City, Mo., Midland Broadcasting Co.....		1000	KTAP	1420	San Antonio, Texas, Alamo Broadcast Co.....		100
KMCS	1120	Los Angeles, Calif., Dalton's Inc.....		500	KTAR	620	Phoenix, Ariz., KTAR Broadcasting Co.....		1000-500
KMED	1310	Medford, Ore., Mrs. W. J. Virgin.....		50	KTAT	1240	Ft. Worth, Texas, T.A.T. Broadcasting Co.....		1000
KMJ	1210	Fresno, Calif., Jas. McClatchy Co.....		100	KTBI	1300	Los Angeles, Calif., Bible Institute of L. A.....		1000
KMLB	1200	Monroe, La., J. C. Liner.....		50	KTBR	1300	Portland, Ore., M. E. Brown.....		500
KMMJ	740	Clay Center, Neb., M. M. Johnson Co.....		1000	KTBS	1450	Shreveport, La., Tri-State Brdc. System, Inc.....		1000
KMO	860	Tacoma, Wash., KMO, Inc.....		1000	KTHS	1040	Hot Springs, Ark., Ch. of Com.....		10000
KMOX	1090	St. Louis, Mo., Voice of St. Louis, Inc.....		50000	KTLC	1310	Houston, Texas, Houston Broadcasting Co.....		100
KMPC	710	Beverly Hills, Calif., R. S. MacMillan.....		500	KTM	780	Los Angeles, Cal., Pickwick Brd. Corp.....		1000-500
KMTR	570	Los Angeles, Calif., KMTR Radio Corp.....		500	KTNT	1170	Muscatine, Iowa, Norman Baker.....		5000
KNX	1050	Los Angeles, Calif., Western Broadcasting Co....		5000	KTRH	1120	Houston, Texas, Rice Hotel.....		500
KOA	830	Denver, Colo., National Broadcasting Co., Inc....		12500	KTSA	1290	San Antonio, Lone Star Brdc. Co.....		2000-1000
KOAC	550	Corvallis, Ore., Oregon State Agricultural College..		1000	KTSL	1310	Shreveport, La., G. A. Houseman.....		100
KOB	1180	State College, N. M., New Mexico State College..		20000	KTSM	1310	El Paso, Texas, W. S. Bledsoe & W. T. Blackwell..		100
KOCW	1400	Chickasha, Okla., Oklahoma College for Women.....		500-250	KTW	1270	Seattle, Wash., First Presbyterian Church.....		1000
KOH	1380	Reno, Nev., J. Peters, Inc.....		500	KUJ	1500	Longview, Wash., Paul R. Heitmeyer.....		100
KOIL	1260	Council Bluffs, Iowa, Mona Motor Oil Co.....		1000	KUOA	1390	Fayetteville, Ark., University of Arkansas.....		1000
KOIN	940	Portland, Ore., KOIN, Inc.....		1000	KUSD	890	Vermillion, S. D., University of South Dakota.....		750-500
KOL	1270	Seattle, Wash., Seattle Broadcasting Co., Inc....		1000	KUT	1500	Houston, Texas, Rice Hotel.....		100
KOMO	920	Seattle, Wash., Fisher's Blend Station, Inc.....		1000	KVI	760	Tacoma, Puget Sound Brd. Co.....		1000
KONO	1370	San Antonio, Texas, Mission Broadcasting Co.....		100	KVL	1370	Seattle, Wash., KVL, Inc.....		100
KOOS	1370	Marshfield, Ore., H. H. Hanseth, Inc.....		100	KVOA	1260	Tucson, Ariz., R. M. Rieulfi.....		500
KORE	1420	Eugene, Ore., Eugene Broadcast Station.....		100	KVOO	1140	Tulsa, Okla., Southwestern Sales Corp.....		5000
KOY	1390	Phoenix, Ariz., Nielson Radio & Sporting Goods Co..		500	KVOS	1200	Bellingham, Wash., KVOS, Inc.....		100
KPCB	650	Seattle, Wash., Wescoast Broadcasting Co.....		100	KWCR	1310	Cedar Rapids, Iowa, Harry F. Paar.....		100
KPJM	1500	Prescott, Ariz., Miller & Klahn.....		100	KWEA	1210	Shreveport, La., Hello World Broadcasting Corp....		100
KPO	680	San Francisco, Calif., Hale Bros. & The Chronicle..		5000	KWG	1200	Stockton, Calif., Portable Wireless Tel. Co., Inc....		100
KPOF	880	Denver, Colo., Pillar of Fire, Inc.....		500	KWJJ	1060	Portland, Ore., KWJJ Broadcast Co., Inc.....		500
KPPC	1210	Pasadena, Calif., Pasadena Presbyterian Church.....		50	KWK	1350	St. Louis, Mo., Greater St. L. Broadcasting Corp....		1000
KPQ	1500	Wenatchee, Wash., Wescoast Broadcasting Co.....		50	KWKC	1370	Kansas City, Mo., Wilson Duncan Broadcasting Co..		100
KPRC	920	Houston, Tex., Houston Printing Co.....		2500-1000	KWKH	850	Shreveport, La., Hello World Broadcast. Corp....		10000
KPSN	1360	Pasadena, Calif., Pasadena Star-News Publish. Co..		1000	KWLC	1270	Decorah, Iowa, Luther College.....		100
KPT	1490	Westminster, Calif., Pac. Wn. Broadcasting Fed....		10000	KWSC	1220	Pullman, Wash., State College of Wash.....		2000-1000
KPT	1380	Pittsburgh, Pa., Doubleday-Hill Electric Co.....		500	KWWG	1260	Brownsville, Texas, Brownsville Herald Pub. Co....		500
KPT	1380	San Diego, Calif., Pacific Agril. Foundation, Ltd....		500	KXA	570	Seattle, Wash., American Radio Tel. Co.....		500

# Alphabetically Arranged by Call Letters

Lightface type in Power Column denotes daytime.

Station	Kc.	Location	Owner	Power	Station	Kc.	Location	Owner	Power
KXL	1420	Portland, Ore.	KXL Broadcasters, Inc.	100	WBZ	990	E. Springfield, Mass.	Westinghse. El. & Mfg. Co.	15000
KXO	1500	El Centro, Calif.	E. R. Irey & F. M. Bowles	100	WBZA	990	Boston, Mass.	Westinghouse Elec. & Mfg. Co.	500
KXRO	1310	Aberdeen, Wash.	KXRO, Inc.	75	WCAC	600	Storrs, Conn.	Connecticut Agricultural College	250
KXYZ	1420	Houston, Texas	Harris County Broadcasting Co.	100	WCAD	1220	Canton, N. Y.	St. Lawrence University	500
KYA	1230	San Francisco, Calif.	Pacific Broadcasting Corp.	1000	WCAE	1220	Pittsburgh, Pa.	Gimbel Bros.	1000
KYW	1020	Chicago, Chicago Herald and Examiner		10000	WCAH	1430	Columbus, Ohio	Commercial Radio Service Co.	500
KZIB	1153	Manila, P. I.	I. Beck	20	WCAJ	590	Lincoln, Neb.	Nebraska Wesleyan University	500
KZKZ	1110	Manila, P. I.	Elec. Supply Co.	100	WCAL	1250	Northfield, Minn.	St. Olaf College	1000
KZM	1370	Hayward, Calif.	L. P. Tenney	100	WCAM	1280	Camden, N. J.	City of Camden	500
KZRC	1300	Cebu, P. I.	Radio Corp. of the Philippines		WCAO	600	Baltimore, Md.	Monumental Radio, Inc.	250
KZRM	726	Manila, P. I.	Radio Corp. of Philippines	1000	WCAP	1280	Asbury Park, N. J.	Radio Industries Brdest. Co.	500
NAA	690	Arlington, Va.	U. S. Navy	1000	WCAT	1200	Rapid City, S. Dak.	S. Dak. State School of Mines	100
WAAF	920	Chicago, Ill.	Chicago Drivers Journal Pub. Co.	500	WCAU	1170	Philadelphia, Pa.	Univ. Broadcasting Co.	10000
WAAM	1250	Newark, N. J.	WAAM, Inc.	2000-1000	WCAX	1200	Burlington, Vt.	Univ. Vt. State Agri. College	100
WAAT	940	Jersey City, N. J.	Bremer Broadcasting Corp.	300	WCAZ	1070	Carthage, Ill.	Superior Broadcasting Serv., Inc.	50
WAAW	660	Omaha, Nebr.	Omaha Grain Exchange	500	WCBA	1440	Allentown, Pa.	B. Bryan Musselman	250
WABC	860	New York, N. Y.	Atlantic Broadcasting Corp.	5000	WCBD	1080	Zion, Ill.	Wilbur Glenn Voliva	5000
WABI	1200	Bangor, Me.	Pine Tree Broadcasting Corp.	100	WCBM	1370	Baltimore, Md.	Baltimore Broadcasting Corp.	250-100
WABO	1440	Rochester, N. Y.	Hickson Elec. & Radio Corp.	500	WCBS	1210	Springfield, Ill.	H. L. Dewing & C. H. Messter	100
WABZ	1200	New Orleans, La.	Coliseum Place Baptist Church	100	WCCO	810	Minneapolis, Minn.	Northw. Brdestg., Inc.	7500
WACO	1240	Waco, Texas	Central Texas Broadcast Co., Inc.	1000	WCDA	1350	New York, Italian Educ. Brde. Corp.	250	
WADC	1320	Akron, Ohio	Allen T. Simmons	1000	WCFL	970	Chicago, Ill.	Chicago Federation of Labor	1500
WAIU	640	Columbus, Ohio	American Insurance Union	500	WCGU	1400	Brooklyn, N. Y.	U. S. Brde. Corp.	500
WALR	1210	Zanesville, Ohio	Roy W. Waller	100	WCHI	1490	Chicago, Ill.	WCHI Brde. Co.	5000
WAPI	1140	Birmingham, Ala.	A.P.J.—U.A.—A.C.—City	5000	WCKY	1490	Covington, Ky.	L. B. Wilson, Inc.	5000
WASH	1270	Grand Rapids, Mich.	WASH Brde. Corp.	500	WCLB	1500	Long Beach, N. Y.	Arthur Faske	100
WBAA	1400	W. Lafayette, Ind.	Purdue University	1000-500	WCLO	1200	Janesville, Wis.	WCLO Radio Corp.	100
WBAK	1430	Harrisburg, Pa.	Pennsylvania State Police	1000-500	WCLS	1310	Joliet, Ill.	WCLS, Inc.	100
WBAL	1060	Baltimore, Md.	Consol. Gas, Elec. L. & P. Co.	10000	WCMA	1400	Culver, Ind.	General Broadcasting Corp.	500
WBAP	800	Ft. Worth, Tex.	Carter Pub., Inc.	10000	WCOA	1340	Pensacola, Fla.	City of Pensacola	500
WBAX	1210	Wilkes-Barre, Pa.	J. H. Stenger, Jr.	100	WCOC	880	Meridian, Miss.	Mississippi Broade. Co., Inc.	1000-500
WBBC	1400	Brooklyn, N. Y.	Brooklyn Broadcasting Corp.	500	WCOD	1200	Harrisburg, Pa.	Norman R. Hoffman	100
WBBL	1210	Richmond, Va.	Grace Covenant Presby. Church	100	WCOH	1210	Yonkers, N. Y.	Westchester Broadcasting Co.	100
WBBM	770	Chicago, Ill.	Atlas Co., Inc.	25000	WCRW	1210	Chicago, Ill.	Clinton R. White	100
WBBR	1300	Brooklyn, N. Y.	Peoples Pulpit Association	1000	WCSC	1360	Charleston, S. C.	Fred Jordan & Lewis Burk	500
WBBS	1500	Boston, Mass.	Boston Broadcasting Co.	50	WCSH	940	Portland, Me.	Congress Sq. Hotel Co.	1000
WBBZ	1200	Ponca City, Okla.	C. L. Carrell	100	WCSO	1450	Springfield, Ohio	WGAR Broadcasting Co.	500
WBCM	1410	Bay City, Mich.	Jas. E. Davidson	500	WDAE	1220	Tampa, Fla.	Tampa Publishing Co.	1000
WBCN	870	Chicago, Great Lakes Broadcasting Co.		50000	WDAF	610	Kansas City, Mo.	Kansas City Star Co.	1000
WBEN	900	Buffalo, N. Y.	Buffalo Evening News	1000	WDAG	1410	Amarillo, Texas	Nat. Radio & Brde. Corp.	250
WBGF	1370	Glen Falls, N. Y.	W. N. Parker & H. H. Metcalf	50	WDAH	1310	El Paso, Texas	Eagle Broadcasting Co., Inc.	100
WBIG	1440	Greensboro, N. C.	N. Car. Broadcasting Co.	500	WDAY	940	Fargo, N. Dak.	WDAY, Inc.	1000
WBIS	1230	Boston, Mass.	Shepard Brde. Service	1000	WDBJ	930	Roanoke, Va.	Richardson-Wayland Elec. Corp.	500-250
WBMS	1450	Hackensack, N. J.	WBMS Broadcasting Corp.	250	WDBO	1120	Orlando, Fla.	Orlando Broadcasting Co., Inc.	1000-500
WBNY	1350	New York, N. Y.	Pillar of Fire	250	WDEL	1120	Wilmington, Del.	WDEL, Inc.	350-250
WBOQ	860	New York, N. Y.	Atlantic Brde. Corp.	5000	WDGY	1180	Minneapolis, Minn.	Dr. Geo. W. Young	1000
WBOW	1310	Terre Haute, Ind.	Banks of Wabash, Incorporated	100	WDIX	1500	Tupelo, Miss.	W. A. Blair & J. R. Anderson	100
WBRC	930	Birmingham, Ala.	Birmingham Brdestg. Co.	1000-500	WDOD	1280	Chattanooga, Tenn.	WDOD Brde. Corp.	3500-1000
WBRE	1310	Wilkes-Barre, Pa.	L. G. Baltimore	100	WDRC	1330	New Haven, Conn.	Doolittle Radio Corp.	500
WBSO	920	Wellesley Hills, Mass.	Babson's Statis. Org., Inc.	500	WDSU	1250	New Orleans, La.	Joseph H. Uhalt	
WBT	1080	Charlotte, N. C.	Station WBT, Inc.	5000	WDWF	1210	Providence, R. I.	D. W. Flint-Lincoln	
WBTM	1370	Danville, Va.	Clarke Electric Co.	100	WDZ	1070	Tuscola, Ill.	James L. Bush	

# Alphabetically Arranged by Call Letters

Lightface type in Power Column denotes daytime.

Station	Kc.	Location	Owner	Power	Station	Kc.	Location	Owner	Power
WEAF	660	New York, N. Y.,	Nat. Brd. Co., Inc.	50000	WGY	790	Schenectady, N. Y.,	General Electric Co.	50000
WEAI	1270	Ithaca, N. Y.,	Cornell University	1000-500	WHA	940	Madison, Wis.,	Univ. of Wisconsin	750
WEAN	780	Providence, R. I.,	Shepard Brdc. Service, Inc.	500-250	WHAD	1120	Milwaukee, Wis.,	Marquette University	250
WEAO	570	Columbus, Ohio,	Ohio State University	750	WHAM	1150	Rochester, N. Y.,	Stromberg-Carlson Tel. Mfg.	5000
WEBC	1290	Superior, Wis.,	Head of Lakes Brdc. Co.	2500-1000	WHAP	1300	New York,	Defenders of Truth Soc., Inc.	1000
WEBQ	1210	Harrisburg, Ill.,	First Trust & Savings Bank	100	WHAS	820	Louisville, Ky.,	Courier-Jour. & Times	10000
WEBR	1310	Buffalo, N. Y.,	Howell Broadcasting Co., Inc.	200-100	WHAT	1310	Philadelphia, Pa.,	Independence Broadcasting Co.	100
WEDC	1210	Chicago, Ill.,	Emil Denmark, Inc.	100	WHAZ	1300	Troy, N. Y.,	Rensselaer Polytechnic Institute	500
WEDH	1420	Erie, Pa.,	Erie Dispatch-Herald Brdg. Corp.	30	WHB	860	Kansas City, Mo.,	WHB Broadcasting Co.	500
WEEL	590	Boston, Mass.,	Edison El. Illuminating Co.	1000	WHBC	1200	Canton, Ohio,	St. John's Catholic Church	10
WEHC	1200	Emory, Va.,	Emory & Henry College	250-100	WHBD	1370	Mount Orab, Ohio,	F. P. Moler	100
WEHS	1420	Cicero, Ill.,	WEHS, Inc.	100	WHBF	1210	Rock Island, Ill.,	Beardsley Specialty Co.	100
WELK	1370	Philadelphia, Pa.,	WELK Brdestg. Corp.	250-100	WHBL	1410	Sheboygan, Wis.,	Press Publ. Co.	500
WELL	1420	Battle Creek, Mich.,	Enquirer-News Co.	50	WHBQ	1370	Memphis, Tenn.,	WHBQ, Inc.	100
WENR	870	Chicago	Grt Lakes Brdestg.	50000	WHBU	1210	Anderson, Ind.,	Citizens Bank	100
WEPS	1200	Worcester, Mass.,	A. F. Kleindienst	100	WHBY	1200	W. De Pere, Wis.,	St. Norbert Col.	100
WEVD	1300	New York, N. Y.,	Debs Memorial Radio Fund, Inc.	500	WHDF	1370	Calumet, Mich.,	Upper Mich. Broadcasting Co.	250-100
WEW	760	St. Louis, Mo.,	St. Louis University	1000	WHDH	830	Gloucester, Mass.,	Matheson Rad. Co., Inc.	1000
WEXL	1310	Royal Oak, Mich.,	Royal Oak Brdc. Co.	50	WHDI	1180	Minneapolis, Minn.,	Wm. Hood Dunwoody Ind. Inst.	500
WFAA	800	Dallas, Texas,	Dallas News & Journal	50000	WHDL	1420	Tupper Lake, N. Y.,	Tupper Lake Brdc. Co., Inc.	100
WFAN	610	Philadelphia, Pa.,	Keystone Broadcasting Co.	500	WHEC	1440	Rochester, N. Y.,	Hickson Elec. & Radio Corp.	500
WFBC	1200	Knoxville, Tenn.,	First Baptist Church	50	WHFC	1420	Cicero, Ill.,	Triangle Broadcasters	100
WFBE	1200	Cincinnati, Ohio,	WFBE, Inc.	250-100	WHIS	1420	Bluefield, W. Va.,	Daily Telegraph Printing Co.	100
WFBG	1310	Altoona, Pa.,	Wm. F. Gable Co.	100	WHK	1390	Cleveland, Ohio,	Radio Air Serv. Corp.	1000
WFBL	1360	Syracuse, N. Y.,	The Onondaga Rad. Brdc. Corp.	1000	WHN	1010	New York, N. Y.,	Marcus Loew Booking Agency	250
WFBM	1230	Indianapolis, Ind.,	Indianapolis Power & Light Co.	1000	WHO	1000	Des Moines, Ia.,	Central Broadcasting Co.	5000
WFBR	1270	Baltimore, Md.,	Baltimore Radio Show, Inc.	500	WHOM	1450	Jersey City, N. J.,	N. J. Broadcasting Corp.	250
WFDF	1310	Flint, Mich.,	Frank D. Fallain	100	WHP	1430	Harrisburg, Pa.,	WHP, Inc.	500
WFDV	1370	Rome, Ga.,	Dohies Goings	100	WIAS	1420	Ottumwa, Iowa,	Poling Electric Co.	100
WFDW	1420	Talladega, Ala.,	Raymond C. Hammett	100	WIBA	1280	Madison, Wis.,	Capital Times Co.	500
WFI	560	Philadelphia, Pa.,	Strawbridge & Clothier Co.	500	WIBG	930	Elkins Pk., Pa.,	St. Paul's (Episcopal) Church	50
WFIW	940	Hopkinsville, Ky.,	WFIW, Inc.	1000	WIBM	1370	Jackson, Mich.,	WIBM, Inc.	100
WFJC	1450	Akron, Ohio,	WGAR Broadcasting Co.	500	WIBO	560	Chicago, Ill.,	Nelson Bros. Bond & M. Co.	1500-1000
WFKD	1310	Philadelphia, Pa.,	Foukrod Radio Engineering Co.	50	WIBR	1420	Steubenville, Ohio,	George W. Robinson	50
WFLA	620	Clearwater, Fla.,	Chamber of Commerce	2500-1000	WIBU	1310	Poynette, Wis.,	Wm. Forrest	100
WGAL	1310	Lancaster, Pa.,	WGAL, Inc.	100	WIBW	580	Topeka, Kan.,	Topeka Broadcasting Assn., Inc.	1000
WGAR	1450	Cleveland, Ohio,	WGAR Brdc. Co.	500	WIBX	1200	Utica, N. Y.,	WIBX, Inc.	300-100
WGBB	1210	Freeport, N. Y.,	Harry H. Carman	100	WICC	1190	Bridgeport, Conn.,	Bridgeport Brdc. Sta., Inc.	500
WGBC	1430	Memphis, Tenn.,	Memphis Broadcasting Co.	500	WIL	1200	St. Louis, Mo.,	Missouri Broadcasting Corp.	250-100
WGBF	630	Evansville, Ind.,	Evansville On The Air, Inc.	500	WILL	890	Urbana, Ill.,	University of Illinois	500-250
WGBI	880	Scranton, Pa.,	Scranton Broadcasters, Inc.	250	WILM	1420	Wilmington, Del.,	Del. Brdc. Co., Inc.	100
WGBS	600	New York, N. Y.,	General Brd. Sys., Inc.	250-500	WIOD	1300	Miami Beach, Fla.,	Isle of Drms. Brdestg. Corp.	1000
WGCM	1210	Gulfport, Miss.,	Gt. Southern Land Co., Inc.	100	WIP	610	Philadelphia, Pa.,	Gimbel Bros., Inc.	500
WGCP	1250	Newark, N. J.,	May Radio Broadcast Corp.	250	WIS	1010	Columbia, S. C.,	S. Car. Brdc. Co., Inc.	1000-500
WGES	1360	Chicago, Ill.,	Oak Leaves Brdc. Station, Inc.	1000-500	WISJ	780	Madison, Wis.,	Wis. State Journal Brdc. Co.	500-250
WGH	1310	Newport News, Va.,	Hampton Roads Brdestg. Corp.	100	WISN	1120	Milwaukee, Wis.,	Evening Wisconsin Co.	250
WGL	1370	Fort Wayne, Ind.,	Allen-Wayne Co.	100	WJAC	1310	Johnstown, Pa.,	Johnstown, Automobile Co.	100
WGM	840	Adamsburg, Pa.,	Pioneer Brdc. Co., Inc.	100	WJAG	1060	Norfolk, Neb.,	Norfolk Daily News	1000
WGMS	1250	St. Paul, Minn.,	Univ. of Minn.	1000	WJAK	1310	Marion, Ind.,	Marion Broadcast Co.	50
	720	Chicago, Ill.,	The Chicago Tribune	25000	WJAR	890	Providence, R. I.,	The Outlet Co.	400-250
	750	Buffalo, N. Y.,	Buffalo Brdc. Corp.	1000	WJAS	1290	Pittsburgh, Pa.,	Pittsburgh Radio Sup. House	2500-1000
		Atlanta, Ga.,	Georgia School of Technology	500-250	WJAX	900	Jacksonville, Fla.,	City of Jacksonville	1000

# Alphabetically Arranged by Call Letters

Lightface type in power column denotes daytime

Station	Kc.	Location	Owner	Power	Station	Kc.	Location	Owner	Power
WJAY	610	Cleveland, Ohio,	Cleveland Radio Brdcastg Corp.	500	<b>WLS</b>	870	Chicago, (The Prairie Farmer)	Agricultural Broadcasting Co.	5000
WJAZ	1490	Chicago, Ill.,	Zenith Radio Corp.	5000	WLSI	1210	Providence, R. I.,	W. D. Flint—Lincoln Stud.	100
WJBC	1200	La Salle, Ill.,	Kaskaskia Broadcasting Co.	100	WLTH	1400	Brooklyn, N. Y.,	The Voice of Brooklyn, Inc.	500
WJBI	1210	Red Bank, N. J.,	Monmouth Broadcasting Co.	100	WLVA	1370	Lynchburg, Va.,	Lynchburg Broadcasting Corp.	100
WJBK	1370	Highland Park, Mich.,	James F. Hopkins, Inc.	50	WLW	700	Cincinnati, Ohio,	Crosley Radio Corp.	50000
WJBL	1200	Decatur, Ill.,	Commodore Broadcasting, Inc.	100	WLWL	1100	New York, Miss. Soc. of St. Paul.		5000
WJBO	1420	New Orleans, La.,	Valdemar Jensen.	100	WMAC	570	Syracuse, N. Y.,	Clive B. Meredith.	250
WJBT	770	Chicago, Ill.,	Atlass Co., Inc.	25000	WMAF	1410	Dartmouth, Mass.,	Round Hills Radio Corp.	500
WJBU	1210	Lewisburg, Pa.,	Bucknell University.	100	WMAK	1040	Buffalo, N. Y.,	Buffalo Brde. Corp.	1000
WJBW	1200	New Orleans, La.,	C. Carlson, Jr.	30	WMAL	630	Washington, D. C.,	M. A. Leese.	500-250
WJBY	1210	Gadsden, Ala.,	Gadsden Broadcasting Co., Inc.	50	WMAQ	670	Chicago, Ill.,	WMAQ, Inc.	5000
WJDX	1270	Jackson, Miss.,	Lamar Life Insurance Co.	1000-500	WMAY	1200	St. Louis, Mo.,	Kingshighway Presb. Ch.	250-100
WJJD	1130	Mooseheart, Ill.,	Loyal Order of Moose.	20000	WMAZ	890	Macon, Ga.,	Macon Junior C. of C.	500-250
WJKS	1360	Gary, Ind.,	Johnson Kennedy Radio Corp.	1250-1000	WMBA	1500	Newport, R. I.,	LeRoy Joseph Beebe.	100
WJR	750	Detroit, Mich.,	WJR, Goodwill Sta., Inc.	5000	WMBC	1420	Detroit, Mich.,	Michigan Broadcasting Co., Inc.	250-100
WJSV	1460	Alexandria, Va.,	Independent Pub. Co.	10000	WMBD	1440	Peoria Hgts, Ill.,	Peoria Hgts. Radio Lab.	1000-500
WJW	1210	Mansfield, Ohio,	John F. Weimer	100	WMBF	1300	Miami Beach, Fla.,	Isle of Drms. Brde.	1000
WJZ	760	New York, N. Y.,	National Brde. Co., Inc.	30000	WMBG	1210	Richmond, Va.,	Havens and Martin, Inc.	100
WKAQ	890	San Juan, P. R.,	Radio Corp. of Porto Rico.	500	WMBH	1420	Joplin, Mo.,	Edwin Dudley Aber.	250-100
WKAR	1040	East Lansing, Mich.,	Michigan State College.	1000	WMBI	1080	Chicago, Ill.,	Moody Bible Inst. Radio Station.	5000
WKAV	1310	Laconia, N. H.,	Laconia Radio Club.	100	WMBJ	1500	Pittsburgh, Pa.,	Rev. J. W. Sprunt.	100
WKBB	1310	Joliet, Ill.,	Sanders Bros. Radio Station.	100	WMBO	1310	Auburn, N. Y.,	Radio Service Laboratories.	100
WKBC	1310	Birmingham, Ala.,	R. B. Broyles Furniture Co.	100	WMBQ	1500	Brooklyn, N. Y.,	Paul J. Golhofer.	100
WKBF	1400	Indianapolis, Ind.,	Indianapolis Brdcastg., Inc.	500	WMBR	1370	Tampa, Fla.,	F. J. Reynolds.	100
WKBH	1380	LaCrosse, Wis.,	WKBH, Inc.	1000	WMC	780	Memphis, Tenn.,	Mem. Com. Appeal, Inc.	1000-500
WKBI	1420	Chicago, Ill.,	Fred L. Schoenwolf.	100	WMCA	570	New York, N. Y.,	Kriegerhocker Brd. Co., Inc.	500
WKBN	570	Youngstown, Ohio,	W. P. Williamson, Jr.	500	WMMN	890	Fairmont, W. Va.,	Holt-Rowe Novelty Co.	500-250
WKBQ	1350	New York, N. Y.,	Standard Cahill Co., Inc.	250	WMPC	1500	Lapeer, Mich.,	First Methodist Protestant Church.	100
WKBS	1310	Galesburg, Ill.,	Pernil N. Nelson.	100	WMRJ	1210	Jamaica, N. Y.,	Peter J. Prinz.	100
WKBV	1500	Connersville, Ind.,	Knox Battery & Bl. Co.	150-100	WMSG	1350	New York, N. Y.,	Mad. Sq. Garden Brd. Corp.	250
WKBW	1480	Buffalo, N. Y.,	WKBW, Inc.	5000	WMT	600	Waterloo, Iowa,	Waterloo Broadcasting Co.	500
WKBZ	1500	Ludington, Mich.,	Karl L. Ashbacher.	50	WNAC	1230	Boston, Mass.,	Shepard Brde. Serv., Inc.	1000
WKJC	1200	Lancaster, Pa.,	Kirk Johnson & Co.	100	WNAD	1010	Norman, Okla.,	University of Oklahoma.	500
WKRC	550	Cincinnati, Ohio,	WKRC, Inc.	1000	WNAX	570	Yankton, S. Dak.,	Gurney Seed & Nursery Co.	1000
WKY	900	Oklahoma City, Okla.,	WKY Radiophone Co.	1000	WNBF	1500	Binghamton, N. Y.,	Howitt-Wood Radio Co., Inc.	100
WKZO	590	Berrien Springs, Mich.,	WKZO, Inc.	1000	WNBH	1310	New Bedford, Mass.,	New Bedford Broadcasting Co.	100
WLAC	1470	Nashville, Tenn.,	Life & Casualty Ins. Co.	5000	WNBO	1200	Silver Haven, Pa.,	John Brownlee Springs.	100
WLAP	1200	Louisville, Ky.,	Am. Broadcasting Corp. of Ky.	250-100	WNBR	1430	Memphis, Tenn.,	Memphis Broadcasting Co.	500
WLB	1250	St. Paul, Minn.,	University of Minnesota.	1000	WNBW	1200	Carbondale, Pa.,	Home Cut Glass & China Co.	10
WLBK	1310	Muncie, Ind.,	D. A. Burton.	50	WNBX	1200	Springfield, Vt.,	First Congregational Church Corp.	10
WLBK	1420	Kansas City, Kans.,	WLBK Broadcasting Co.	100	WNBZ	1290	Saranac Lake, N. Y.,	Smith and Mace.	50
WLBG	1200	Petersburg, Va.,	R. A. Gamble.	250-100	WNJ	1450	Newark, N. J.,	Radio Investment Co.	250
WLBL	900	Stevens Point, Wis.,	Wis. Dept. of Agr. & Market.	2000	WNOX	560	Knoxville, Tenn.,	Sterchi Bros.	2000-1000
WLBW	1260	Oil City, Pa.,	Radio-Wire Corp. of Am.	1000-500	WNYC	570	New York, N. Y.,	City of New York.	500
WLBX	1500	Long Island City, N. Y.,	John N. Brady.	100	WOAI	1190	San Antonio, Texas,	Southern Equipment Co.	50000
WLBZ	620	Bangor, Me.,	Maine Broadcasting Co., Inc.	500	WOAN	600	Memphis, Tenn.,	WREC, Inc.	1000-500
WLAI	1210	Ithaca, N. Y.,	Lutheran Association of Ithaca.	50	WOAX	1280	Trenton, N. J.,	WOAX, Inc.	500
WLEX	1410	Lexington, Mass.,	Lexington Air Stations.	500	WOBT	1310	Union City, Tenn.,	Fittworth Rad. & Mus. Shop.	250-100
WLEY	1370	Lexington, Mass.,	Lexington Air Stations.	250-100	WOBV	580	Charleston, W. Va.,	WOBV, Inc.	250
WLIB	720	Chicago, Ill.,	The Chicago Tribune.	25000	WOC	1000	Davenport, Iowa,	Central Broadcasting Co.	
WLIT	560	Philadelphia, Pa.,	Lit Bros.	500	WOCL	1210	Jamestown, N. Y.,	A. E. Newton.	

# Alphabetically Arranged by Call Letters

*Lightface type in Power column denotes daytime.*

Station	Kc.	Location	Owner	Power	Station	Kc.	Location	Owner	Power
WODA	1250	Paterson, N. J.	Richard E. O'Dea	1000	WRHM	1250	Minneapolis, Minn.	Minnesota Brdcastg. Corp.	1000
WODX	1410	Mobile (Springhill), Ala.	Mobile Brdcastg. Corp.	500	WRJN	1370	Racine, Wis.	Racine Broadcasting Corp.	100
WOI	640	Ames, Iowa	Iowa State College	5000	WRNY	1010	New York, N. Y.	Aviation Radio Sta., Inc.	250
WOKO	1440	Poughkeepsie, N. Y.	Hudson Valley Brd. Co.	500	WROL	1310	Knoxville, Tenn.	Stuart Broadcasting Corp.	100
WOL	1310	Washington, D. C.	American Broadcasting Co.	100	WRR	1280	Dallas, Texas	City of Dallas	500
WOMT	1210	Manitowoc, Wis.	Francis M. Kadow	100	WRUF	830	Gainesville, Fla.	University of Florida	5000
WOOD	1270	Grand Rapids (Furnwood), Mich.	W. B. Stiles, Inc.	500	WRVA	1110	Richmond, Va.	Larus & Bros. Co., Inc.	5000
WOOP	840	Jeannette, Pa.	Oakford-Olympia Park Corp.	100	WSAI	1330	Cincinnati, Ohio	Crosley Radio Corp. (Lessee)	500
WOPI	1500	Bristol, Tenn.	Radiophone Brdcastg. Sta. WCet, Inc.	100	WSAJ	1310	Grove City, Pa.	Grove City College	100
WOQ	1300	Kansas City, Mo.	Unity School of Christianity	1000	WSAN	1440	Allentown, Pa.	Call Pub. Co., Inc.	250
WOR	710	Newark, N. J.	Bramberger Brdc. Serv., Inc.	5000	WSAR	1450	Fall River, Mass.	Doughty & Welch Elec. Co., Inc.	250
WORC	1200	Worcester, Mass.	A. F. Kleindienst	100	WSAZ	580	Huntington, W. Va.	WSAZ, Inc.	250
WORD	1490	Chicago, Ill.	Peoples Pulpit Assn.	5000	WSB	740	Atlanta, Ga.	Atlanta Journal Co.	5000
WOS	630	Jefferson City, Mo.	Missouri State Marketing Bureau	500	WSBC	1210	Chicago, Ill.	World Battery Co., Inc.	100
WOV	1130	New York, N. Y.	International Brdc. Corp.	1000	WSBT	1230	South Bend, Ind.	South Bend Tribune	500
WOW	590	Omaha, Neb.	Woodman of the World, L.I.A.	1000	WSDA	1400	Brooklyn, N. Y.	Paramount Brdc. Corp.	500
WOWO	1160	Fort Wayne, Ind.	Main Auto Supply Co.	10000	WSEN	1210	Columbus, Ohio	Columbus Broadcasting Corp.	100
WPAD	1420	Paducah, Ky.	Paducah Broadcasting Co.	100	WSFA	1410	Montgomery, Ala.	Montgomery Broadcasting Co.	500
WPAP	1010	New York, N. Y.	Palisades Amus. Park	250	WSGH	1400	Brooklyn, N. Y.	Paramount Broadcasting Corp.	500
WPAW	1210	Pawtucket, R. I.	Shartenberg & Robinson Co.	100	WSIX	1210	Springfield, Tenn.	638 Tire & Vulcanizing Co.	100
WPCC	560	Chicago, Ill.	North Shore Congregational Church	500	WSJS	1310	Winston-Salem, N. C.	Winston-Salem Journal Co.	100
WPCH	810	New York, N. Y.	Eastern Broadcasting, Inc.	500	WSM	650	Nashville, Tenn.	National Life & Accident Ins. Co.	5000
WPDF	1200	Flint, Mich.	City of Flint	100	WSMB	1320	New Orleans, La.	Saenger Thea., Inc. & M. Blanche Co.	500
WPEN	1500	Philadelphia, Pa.	Wm. Penn Broadcasting Co.	250-100	WSMK	1380	Dayton, Ohio	Stanley M. Krohn, Jr.	200
WPG	1100	Atlantic City, N. J.	WPG Broadcasting Corp.	5000	WSPA	1420	Spartanburg, S. C.	Voice of South Carolina	250-100
WPOE	1370	Patchogue, N. Y.	Nassau Broadcasting Corp.	100	WSPD	1340	Toledo, Ohio	Toledo Broadcasting Co.	1000-500
WPOR	780	Norfolk, Va.	WTAR Radio Corp.	500	WSSH	1410	Boston, Mass.	Tremont Temple Baptist Church	500
WPSC	1230	State College, Pa.	Pennsylvania State College	500	WSUI	880	Iowa City, Iowa	State University of Iowa	500
WPTF	680	Raleigh, N. C.	Durham Life Insurance Co.	1000	WSUN	620	St. Petersburg, Fla.	Chamber of Commerce	2500-1000
WQAM	560	Miami, Fla.	Miami Broadcasting Co.	1000	WSVS	1370	Buffalo, N. Y.	Seneca Vocational H. S.	50
WQAN	880	Scranton, Pa.	The Scranton Times	250	WSYR	570	Syracuse, N. Y.	Clive B. Meredith	250
WQAO	1010	New York, N. Y.	Calvary Bap. Ch.	250	WTAD	1440	Quincy, Ill.	Illinois Stock Med. Broadc. Corp.	500
WQBC	1360	Viicksburg, Miss.	Delta Broadcasting Co.	300	WTAG	580	Worcester, Mass.	The Telegram Pub. Co.	250
WQDM	1370	St. Albans, Vt.	A. J. St. Antoine	5	WTAM	1070	Cleveland, Ohio	National Brdc. Co., Inc.	50000
WQDX	1210	Thomasville, Ga.	Stevens Luke	50	WTAQ	1330	Eau Claire, Wis.	Gillette Rubber Co.	1000
WRAF	1200	LaPorte, Ind.	Chas. Middleton	100	WTAR	780	Norfolk, Va.	WTAR Radio Corp.	500
WRAK	1370	Williamsport, Pa.	Clarence R. Cummins	50	WTAW	1120	College Station, Texas	Agr. & Mech. Col. of Texas	500
WRAW	1310	Reading, Pa.	Reading Broadcasting Co.	50	WTAX	1210	Streator, Ill.	WTAX, Inc.	100
WRAX	1020	Philadelphia, Pa.	WRAX Brdc. Co.	250	WTBO	1420	Cumberland, Md.	Associated Broadcasting Corp.	100
WRBI	1310	Tifton, Ga.	Kents Furniture & Music Store	20	WTFI	1450	Toccoa, Ga.	Toccoa Falls Institute	500
WRBJ	1370	Hattiesburg, Miss.	Woodruff Furniture Co., Inc.	10	WTIC	1060	Hartford, Conn.	Travelers Brdc. Serv. Corp.	50000
WRBL	1200	Columbus, Ga.	David Parmer	50	WTMJ	620	Milwaukee, Wis.	Journal	2500-1000
WRBQ	1210	Greenville, Miss.	J. Pat Scully	100	WTNT	1470	Nashville, Tenn.	Tennessee Publishing Co.	5000
WRBT	1370	Wilmington, N. C.	Wilmington Radio Assn., Inc.	100	WTOC	1260	Savannah, Ga.	Savannah Br. Co., Inc.	500
WRBU	1210	Gastonia, N. C.	A. J. Kirby Music Co.	100	WWAE	1200	Hammond, Ind.	Hammond-Calumet Brdcastg. Corp.	100
WRBX	1410	Roanoke, Va.	Richmond Development Corp.	250	WWJ	920	Detroit, Mich.	Evening News Assn.	1000
WRC	950	Washington, D. C.	National Brdc. Co., Inc.	500	WWL	850	New Orleans, La.	Loyola University	5000
WRDO	1370	Augusta, Me.	Albert S. Woodman	100	WWNC	570	Asheville, N. C.	Citizens Broadcasting Co., Inc.	1000
WRDW	1500	Augusta, Ga.	W. C. Davenport's Musicove, Inc.	100	WWRL	1500	Woodside, N. Y.	Long Island Broadcasting Corp.	100
WREB	600	Memphis, Tenn.	WREC, Inc.	1000-500	WWVA	1160	Wheeling, W. Va.	W. Va., Broadcasting Corp.	5000
WREK	220	Lawrence, Kans.	Jenny Wren Co.	1000	WXYZ	1240	Detroit, Mich.	Kunsky-Trendle Broadcasting Corp.	1000

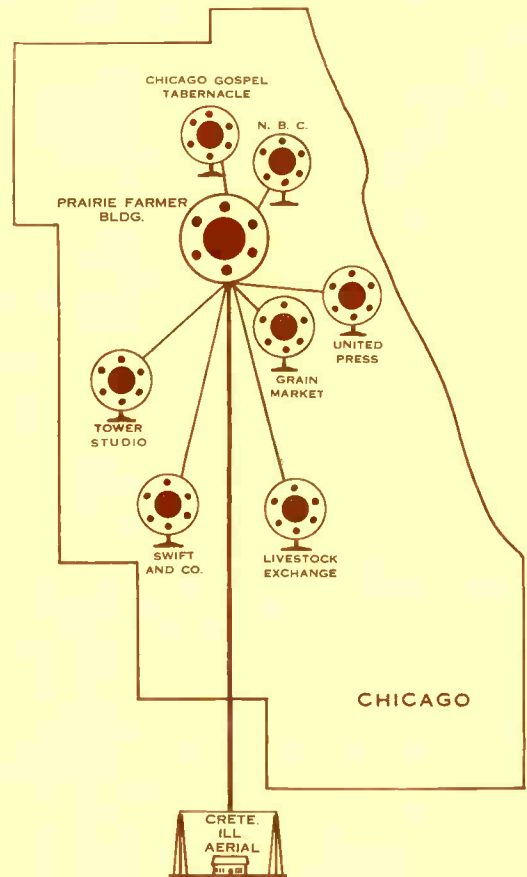


# They Handle The Controls

Behind the scenes in WLS the operators keep the station operating. In the control room at Prairie Farmer Building, and in the transmitter building at Crete, Illinois, is such a maze of equipment that you wonder how anybody can make head or tail of it. These boys live in it.

We are proud of our engineering staff. They aren't afraid of anything in radio. If we want a studio in the middle of an alfalfa field, requiring 26,000 feet of wire along the roadside to reach the telephone cable, or if we want to set up a microphone in a tunnel under Lake Michigan, or carry on two-way conversations with an army airplane flying over Chicago, they merely say, "O K", and the job gets done.

Due to the special types of programs which WLS builds, we have mechanical problems which an ordinary radio station never heard of. The diagram on the right shows the outlying studios which you hear every day.



## Homer Courchene

Homer is in charge at the transmitter, at Crete, Ill. Music, speeches and all must go from the studio control board to his control board, and thence to the wires between the tall steel towers. Homer was a U. S. Navy radio operator, and later an ambulance driver in France during the war.



Don't take it too hard when you blow out a tube in your radio. When the WLS transmitter blows a tube it costs \$325.00 and they keep \$5,000 worth of "spares" on hand.



Charley Nehlsen

Tom Rowe

Charley Townsend

If we had to write a title for these three it would be "Masters of the Gadgets." They watch the program through a double wall of glass, and do a lot of mixing, fading, softening and amplifying which make the program

come through right. Tommy Rowe is in charge of studio engineering. Although under 30 years of age, he was four and a half years on board ship as a radio operator, sailing out of New York to almost every port of the world. Charley Nehlsen, also was a seasoned sea-going operator, sailing for five years before he began to worry about fuses that blow out when somebody drops a cowbell during a Saturday night barn dance. Charley Townsend is newer at the work, but he's going right up the line. "How's everything, boys?" Charley Townsend answered, "Everything's und..."



## “She’ll Be Comin’ Round The Mountain”

Pie Plant Pete, whose songs with the guitar and the harmonica make the old feel young and the young feel gay, is the hilarious young man at the left. Nobody ever calls him by his right name, which is Claud Moye. He was born on a farm in Gallatin County, Illinois, and in his early boyhood learned all about potato bugs, 'possum hunts, and all the kinds of work that a farm boy does. It's one of the great mysteries how Pete can play that guitar at lightning speed, sing a verse of a song, and grab that harmonica with his mouth without missing a beat. Whenever Pete walks into the studio, the operator gets a tighter grip on his control knobs, because he knows something is going to start right then and there.

### Leonard Reinsch

You have sometimes heard Leonard's quiet voice announcing a program, but in recent months he has been doing a great deal of other work in the preparation and supervision of commercial programs.



### The Renfro Valley Boys

Karl Davis, left, and Hartford Taylor, right, bring a type of music all their own. They are from the Renfro Valley, in Kentucky, and their quaint songs and nimble fingers bring many a smile and set your feet tapping. They are right at home on the Saturday night barn dance.



### Speed Freeman

Here's "Speed" Freeman, our southern "blues" singer of Merry-Go-Round fame. Her brothers named her "Speed" because she was so slow. There's lots of melody when she starts strumming her "uke".

# News From Everywhere

A high point in broadcasting was reached at the time of the great Army Show in Chicago, when WLS, by special permission of the U. S. War Department and the Federal Radio Commission, broadcast direct communication between a transmitter located in the Chicago Soldiers Field and two observation type airplanes flying above Chicago and out over Lake Michigan. Our listeners heard both sides of the conversation as our announcer conversed with the observers and pilots in ships AW-1 and AW-2, flying thousands of feet overhead. Lieutenant Schoenlein of the U. S. Army, at the right, is talking into the flying transmitter of the ship AW-1.

For broadcasting the Illinois State Corn Husking Contest in McLean county, Illinois, which was attended by 30,000 farmers, it was necessary to string 26,000 feet of wire in a shallow trench across the fields and along the roadside, to reach a main telephone cable that would bring the broadcast through to the transmitter. The circle on the right shows Editor C. V. Gregory at the microphone, congratulating the winner, Harold Holmes, on the left, while Dave Thompson, on the right, joins in with a big smile.



Lieutenant Schoenlein, of U. S. Army plane AW-1, whose voice came to you over WLS while he was flying around over Chicago and Lake Michigan, during the Army Show.



The United Press Reporter, J. C. Austin. You hear him several times each day with news dispatches from all over the world, as furnished by the United Press.



## We Hear From Strange Places

A lone radio operator on shipboard, sailing across the equator bound for the South Pacific, listened in his little cabin to the WLS program.

\* \* \* \*

A dairy farmer in Champaign county, Illinois, strung a loud speaker out to the dairy barn so they could hear the Good Morning program during milking time.

\* \* \* \*

Mr. and Mrs. Stead, Manitoba, say: "We live 79 miles northeast of Winnipeg, and there are only two radios here."

\* \* \* \*

Two lonely soldiers, night watchmen at an army garage in Washington, D. C., are regular night listeners.

\* \* \* \*

"We live in the center of an island 10 miles long, and there are twelve in our family," says Rupert Cann of Nova Scotia.

\* \* \* \*

O. S. Edwards is on the Pacific Ocean, only fourteen miles from the Mexican border. He listens regularly.

\* \* \* \*

"We live a thousand miles straight north of Chicago in the wilds," writes Mrs. George Cooper of Hornepayne, Ontario. "There are no roads and no autos here. In winter the temperature is 56 to 58 below zero."

\* \* \* \*

And so goes a long list of folks in strange places, where WLS is the only radio in the world. Remember them, now.

# Martha Crane

The presiding genius of Homemakers' Hour. When you meet Martha fact to face—as you are doing now—you find that she is the same friendly, enthusiastic, helpful sort of person that she sounds like on the air. Everybody loves Martha, and she never seems too busy to help somebody else. You have heard her on all kinds of household



programs, sometimes explaining a washing machine or a new cook stove, sometimes talking about canning and preserving, often introducing distinguished speakers on Homemakers' Hour.

Martha was born at Mount Pleasant, Iowa. She grew up in her father's hardware store, and has always loved to cook and sew. She was married a little over a year ago, so her official name is Mrs. Ray Caris, but she is our Martha Crane.

## A Program For The Home

WLS has always been a station for the home, and the programs on Homemakers' Hour have been designed to cover not only

questions of housekeeping, but questions of health, care and education of children, recreation, and a host of other things which are important in family life.

Distinguished doctors and surgeons from the University of Illinois College of Medicine have given thirty-five splendid talks on questions of health and disease. Following one of these talks, a letter came in from a mother, saying, "I want to thank WLS for saving my daughter's life." She told how the information given by a doctor on the Homemakers' program had caused her to recognize symptoms, take her young daughter for an immediate examination, following which she was rushed to a hospital for an emergency operation just in time, the doctor said, to save her life.

Rural school specialists have talked on teacher training, design of school buildings, modern transportation for school children. Weekly talks and suggestions have been given on hot school lunches, particularly for the rural schools. Many plays and entertainments have been given, and copies of them have been sent out to communities which wanted to give them locally.

Representatives of the Illinois Children's Home and Aid Society have talked about the orphan children under their care, resulting



of vegetables to the WLS Com-



Mrs. Clara Ingram Judson, who talks on home problems.

in placing children for adoption in rural homes. Master Farm Homemakers have been featured, farm women's tours arranged, in cooperation with the Household Department of Prairie Farmer. Experts have discussed home gardening and home decorating. Baby experts have talked about the care of small children. Library authorities have given suggestions for good home reading.

Homemakers' Hour has cooperated with the Illinois Federation of Women's Clubs, giving talks on topics under discussion by that group. Hundreds of speakers, representing every phase of the Homemakers' interest, bring up-to-date ideas to this program.



Marian Syndergaard of Iowa and William Bodenhamer of Missouri, 1930 4-H Club Health Champions at the International Live Stock Exposition.

## Home Folks

In every branch of WLS activities the fireside and the family are emphasized. That's because we are home and fireside folks and we love our homes and our families. Our music runs much more to melody and old-time song than to the "thump, thump" and the weird notes of the so-called modern dance rhythm.

It is interesting to look over the list of our staff members, editors, speakers, musicians, and discover that they represent all points of the compass. A very large percentage of them have come either from farms or small towns, and from many different states. Perhaps this is the real reason so many people write us, from so many different places, saying WLS folks seem just like home folks. They really are, just as they seem.



Mrs. Blanche E. Chenoweth, an authority on clothes.



Demonstrating a washing machine.

# Anne and Sue Bring Tower Topics

Anne Williams and Sue Roberts claim the distinction of having the only household program for men on the air in the Middle West. It comes on Tower Topics Time from the Sears, Roebuck and Company studio each Monday morning. Other Tower Topics features are recipes, child welfare, neighborly news, decorating shop and Junior Time.

"Tom and Alice Burke" are eagerly looked forward to by thousands on Sears-Roebuck Matinee Time each Friday afternoon. This one-hour program also brings pleasing numbers of the Maple City Four, Grace Wilson, other artists.

A shoppers' service program by Sue and Anne on Monday and Wednesday afternoons is another Sears feature.

The Sears, Roebuck Agricultural Foundation, Edw. J. Condon, Director, arranges all programs from the Tower Studio.



Sue Roberts. Her specialty is home decoration and she had direct charge of the "Home Beautiful" contest with its tens of thousands of entries. She is a Chicago girl and attended Northwestern University.



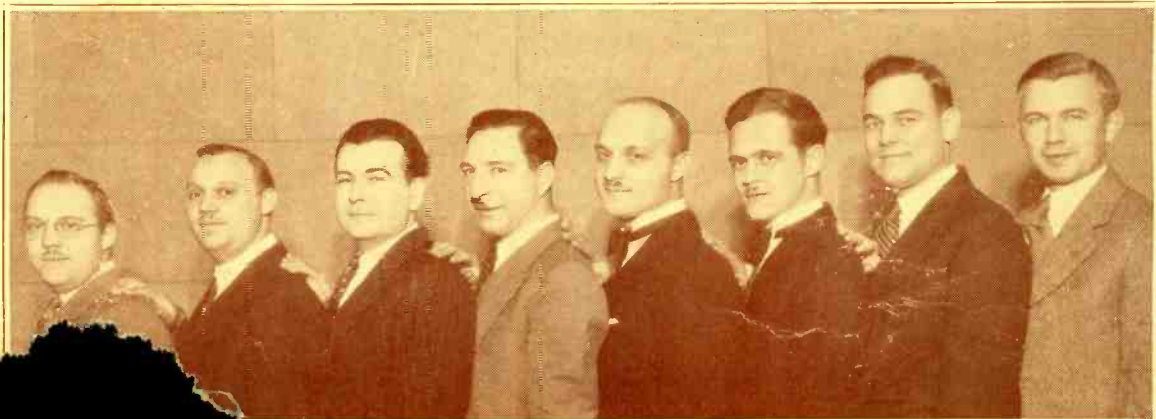
Anne Williams calls Springfield, Illinois, her home town and she is a graduate of the University of Illinois. Anne is a specialist in women's styles and makes trips to New York twice a year to get acquainted with the newest fashions. Yes—she has a husband. She has been heard on WLS for about four years.

Meet Grace Wilson, the "Bringing Home the Bacon" girl. She was one of our first artists on WLS and now appears regularly on Sears programs. Grace can sing "blues" and "sweet" songs with equal appeal. Each broadcast brings her numerous requests.



## The Marching Men

You have enjoyed the spirited and harmonious singing of the Marching Men on many evening programs. From left to right their names are: Wm. Pohlmann, Fred Pohlmann, Wm. O'Connor, Lester Smith, R. A. Benson, Osgood Westley, Leonard Shurtz, Eugene Leonardson.



# Makers of Melody and Comedy



If you're a WLS fan you've heard us broadcast just about every type of music imaginable—old-time, popular, semi-classic, classic, choral, sacred and dialect. You've listened to lots of fun, too, in plays, dialog and minstrel shows. Thousands of artists appear before the WLS "mikes" annually. There's something more than just getting in front of a microphone and singing, playing or talking. A performer, to be successful, must sense the likes and dislikes of the invisible audience and must put his whole personality into his work. And if he has the "real stuff" his fan mail grows every day.

Hoot Mon! It's Andrew Murdison in "A Wee Bit O' Scotch." Andy appears on WLS occasionally, for there are many who enjoy the songs of the heather. He's a genuine Scot with a "brr-r" and has appeared in many concerts.



## Gene and Glenn

WLS friends were happy to welcome Gene and Glenn back during mid-winter. They broadcast each morning as artists of the National Broadcasting Company. Glenn was a pioneer WLS entertainer as a member of the "Big Ford and Little Glenn" team. And you knew Gene when he was half of our "Jack and Gene" team. They're a jolly pair, nationally famous. You're looking at "Jake and Lena," too, even if you don't know it.

Here's a group photo of those old-time melody makers who are gaining fame on WLS—the Cumberland Ridge Runners. They're natives of the Kentucky and Tennessee mountains. That's Gene Ruppe with the fiddle and Hartford Taylor with the guitar. The man with the jug is John Lair, their director. Doc Hopkins, Marine veteran, holds the banjo, and next to him is Karl Davis. Ed Goodreau (with the pumpkin) was calling square dances with them the night the picture was taken. Doc is the sweet singing soloist of the group. Gene makes the fiddle, banjo and harmonica talk, while Hartford and Karl constitute our popular team, the Renfro Valley Boys. They're a happy, music-loving outfit, as versatile as you'll find anywhere.





# Oatesville General Store

(Tel: Two Longs and Two Shorts)

Probably you have been going along with the trials and tribulations of Judge Hiram Higsby and Postmaster Henry Hornsbuckle, proprietors of the Oatesville General Store every morning. They have been through a lot of adventures, sometimes thrilling, sometimes near tragic, and always funny.

Hiram and Henry are natives of Kansas, and a good deal of the uproarious comedy which they portray in the lives of the Justice of the Peace and the Postmaster, sounds so real that they must have picked it up in actual life. They are so completely immersed in the characters Hiram and Henry, that their real names, Trulan Wilder and Merle Housh, are seldom used.

## Hank Richards

You may have wondered just exactly where Oatesville is located. The above picture of Hank Richards shows the exact location. Hank writes the "script" for the Oatesville episodes, and since we must tell you the truth about it, Oatesville exists in his imagination. Hank was a small town boy, and his ideas travel a mile a minute.

Besides Oatesville, he does other writing in connection with some of your favorite programs, and on some of them you hear his genial voice announcing.

When WLS put on its famous Barn Dance at the International Amphitheater in Chicago last year, Hiram and Henry came riding into the arena on these two prancing steeds. Later in the evening the boys convulsed the audience by taking part in the greased pig chase.



## Hiram and Henry

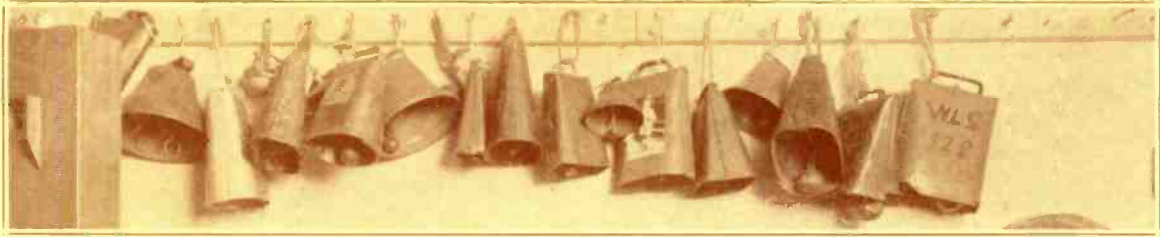
On the left is "Postmaster Henry Hornsbuckle", whose real name is Merle Housh. On the right, "Judge Hiram Higsby", whose other name is Trulan Wilder. Henry is married and has a little daughter. Hiram was married in front of the microphone in the WLS studio last year.



His Jug

e. You'll



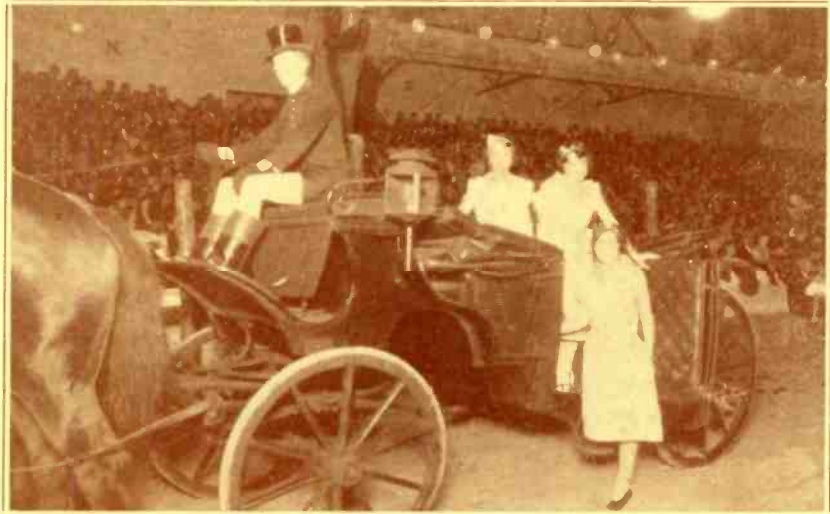


## You Hear These Every Saturday Night

Probably nowhere else can be found a collection of cowbells so unique as those which you hear on the WLS Barn Dance every Saturday night. One of them traveled West in a covered wagon, nearly 100 years ago. Some have been brought from Switzerland. It's a lot of fun when we have a dignified visitor in the studio on Saturday night, to give him a couple of cowbells and ask him to help out.

### Whoa!

The handsome coachman with the tall silk hat and the fancy boots is none other than Charlie Stookey. And the three girls alighting in the arena of the International Amphitheater are the Three Milk Maids, Juanita Brown, Peggy Forbes and Edna Cunningham. This was at the opening of the great public showing of the National Barn Dance.



These are the WLS folks who put on the biggest Barn Dance ever held, November 15, 1930. Thousands of Chicago people, as well as many folks from the country, filled the great International Amphitheater to overflowing, in order to see in person the folks they had heard so often on Saturday night. Probably you heard the broadcast.





## Bradley Kincaid, The Mountain Boy

*(With The Houn' Dog Guitar)*

The life of Bradley Kincaid is a romance so rare that if you found it in a book you'd say it couldn't happen. A barefoot mountain lad, natural ballad singer who learned the guitar almost in infancy, at the age of 33 he has sung his way into the hearts of millions, rich and poor.

The national revival of interest in old American ballads traces largely to Bradley and his songs on WLS. These old songs had been buried in the hill country, in quiet places off the main road. Three years ago he first began to sing them over WLS. They struck a responsive chord. Middle-aged people heard again songs they remembered from childhood—songs that were linked up very closely with the history of the country.

He has published three song books

and has made trips back into the Kentucky mountains to discover more of the old songs. Listeners have purchased more than 200,000 copies of these books.

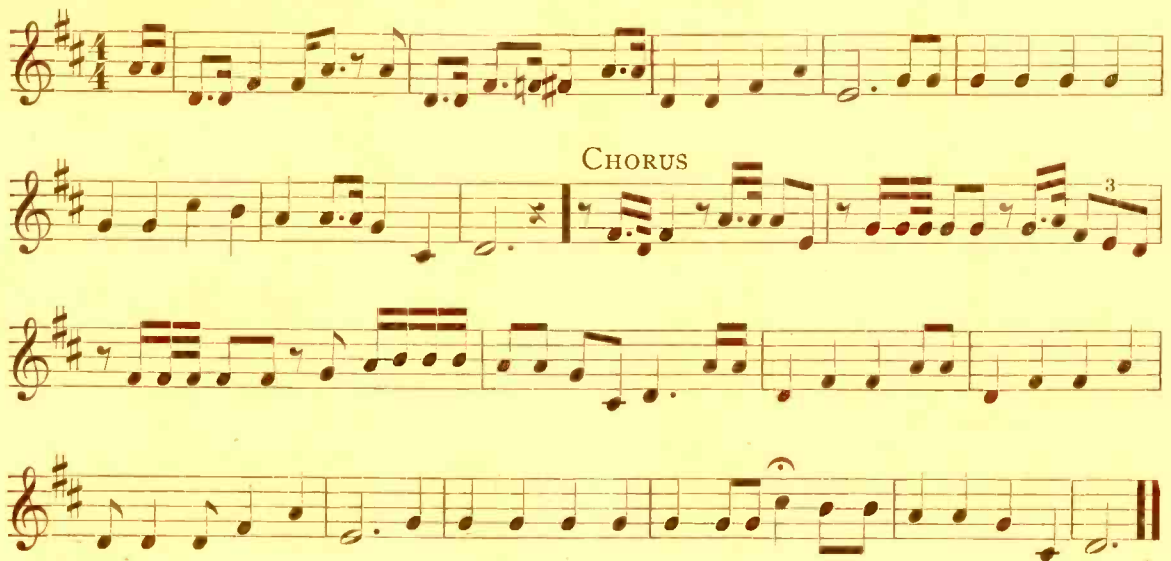
You who are regular listeners have often heard "Methodist Pie", a rollicking old ballad which we give on the next page.

---

In building the musical programs at WLS, we have followed many trails and made many interesting discoveries. These mountain songs, the plaintive and humorous cowboy ballads of the West, the Negro Spirituals and work songs as sung by the Metropolitan Church Choir of 100 Negro voices, native Indian music—these are all a part of WLS. They are a basic part of American life and culture.

# Methodist Pie

(As Sung by Bradley Kincaid)



I was down to camp meetin'  
The other afternoon  
To hear them shout and sing.  
For to tell each other  
How they loved one another  
And to make hallelujah ring.

There's old uncle Daniel  
And brother Ebenezer,  
Uncle Rufus with his lame gal, Sue,  
Aunt Polly and Melinda  
And old Mother Bender,  
Well, I never seen a happier crew.

Well, they all go there  
For to have a good time  
And to eat that grub so sly,  
Have applesauce butter  
With sugar in the gourd  
And a great big Methodist Pie.

Well, you ought to hear the ringing  
When they all get to singing  
That good old bye and bye.  
See Jimmy McGee in the top of a tree  
Saying, how is this for high?

Then they catch a hold of hands  
And march around the ring,  
Kept a singing all the while  
You'd think it was a cyclone  
Coming thru the air,  
You could hear them shout a half a mile.

Then the bell rings loud and the great big crowd  
Breaks ranks and up they fly,  
While I took board  
On the sugar in the gourd  
And I cleaned up the Methodist Pie.

## Chorus:

Oh, little children, I believe,  
Oh, little children, I believe,  
Oh, little children, I believe,  
I'm Methodist till I die.

I'm Methodist, Methodist,  
'Tis my belief,

I'm Methodist till I die.

When old grim death comes knocking at the door  
I'm Methodist till I die.



# The Arkansaw Wood Chopper



One of the most remarkable things about the Arkansas Wood Chopper is that he actually has chopped a lot of wood, and handles the ax as efficiently as he does the guitar or the fiddle bow.

Arkie, whose real name is Luther Ossenbrink, is a native of the Ozarks. He has made many phonograph records, and you may have seen him at personal theater appearances. Many of his cowboy and hill-billy songs are comic, but some are serious, like this one, "The Cowboy's Dream", which you have often heard him sing.

Like other WLS artists, Arkie sings in his own way, which is not like anybody else. That's why you like him—because he sings from the heart, not from the book.

Arkie started fiddling and calling squares dances in his neighborhood when about fifteen. He soon took up singing with guitar and learned all the old-timers that he could find. Two radio stations in Kansas City have featured him.

## The Cowboy's Dream

*f* Last night as I lay on the prairie,  
*f* And looked at the stars in the sky;  
*f* I wondered if ever a cowboy  
*c* Would drift to that sweet by and by.

*c* The road to the bright, happy region  
*c* Is a dim, narrow trail, so they say  
*c* But the broad one that leads to perdition  
*c* Is posted and blazed all the way.

*f* I wonder if ever a cowboy  
*c* Stood ready for that Judgment Day;  
 And could say to the Boss of the Riders,  
*c* "I'm ready, come drive me away."

c7 They say there will be a great round-up,  
c And cowboys, like dogies, will stand  
To be marked by the Riders of Judgment,  
Who are posted and know every brand.

f I know there's many a stray cowboy  
c Who'll be lost at the great, final sale  
When he might have gone in the green pastures  
c Had he known of the dim, narrow trail.

c7 For they, like the cows that are locoed,  
c Stampede at the sight of a hand;  
Are dragged with a rope to the round-up,  
c Or get marked with some crooked man's brand.

f And I'm scared that I'll be a stray yearling  
c A maverick unbranded on high;  
And get cut in the bunch with the "rusties"  
c When the Boss of the Riders goes by.

c7 For they tell of another big owner,  
c Who's ne'er overstocked, so they say  
But who always makes room for the sinner  
c Who drifts from the straight, narrow way.

f They say He will never forget you,  
c That He knows every action and look,  
So, for safety, you'd better get branded,  
c Have your name in the great Tally Book.

## Clem and Harry

Meet our 500 pounds of harmony—Clem and Harry! Clem's the little fellow who tips the scales at 225 pounds, while Harry "tips over" the scales with his 275 pounds. Clem Dacey was born and raised in Lincoln, Illinois. Around 1908-09 he was a member of the Fire Department of that hustling city, and met with a serious accident while fighting a big fire. This resulted in his taking up singing, and he's been at it ever since. He often appeared on WLS as a soloist during our early days. During the World War, Clem was attached to the Personnel Department at Jefferson Barracks, Missouri. Yes, there's a "Mrs. Clem" and young George Dacey, 10 years old at the Dacey home in Wauconda, Illinois.

Harry Hosford first saw the light of day in Erie, Pa. He studied music considerably during his young manhood, little knowing that he would ever make it a profession. Came

the War, and Harry enlisted and was put in charge of a Service Band at Fort Admiral, Md. That was about the time every musician wanted to play the "sax", so when Harry's men reported, 40 out of 60 turned out to be saxophone players. He managed to live that down, and immediately after the War, railroading became his calling. He served as Conductor on Nickel Plate Railroad passenger trains until late in 1919 when an accident incapacitated his left foot. Then Harry took up music in earnest, directing his own orchestras for several years. In 1929, he "teamed up" with Clem and thus was born the team—Clem and Harry.

They gained much popularity last year with their "Riddles and Grins" over WLS. Clem and Harry like nothing better than to sit at the piano with a WLS "mike" beside them with plenty of time to "crack jokes" and sing all types of popular numbers.



Clem

Harry

# Prairie Farmer, America's Oldest Farm Paper

All the resources of Prairie Farmer are back of WLS. Its great editorial and service staff works hand in hand with the staff of WLS, and every member of the organization is headed constantly toward the ideal of service to the public.

Prairie Farmer is just entering its ninety-first year. It was founded by a group of pioneer farmers who organized a society to collect and distribute information about farming on the prairies. In 1841 the little paper first appeared. Its early editorial work centered around the subduing of the new prairie soils, bringing in improved live stock, building more comfortable homes, and organization of farmers into groups that could work out their problems effectively.

Through a long and tremendously interesting history, Prairie Farmer has been a torch-bearer for agriculture. Covered wagons by thousands were driven Westward during Prairie Farmer's early years. At the time gold was discovered in California, in 1849, the paper was going to a few thousand subscribers. When Abraham Lincoln was elected President, it was acknowledged as the leader of agricultural thought throughout this region. All during the weary years of the Civil War and through the period of reconstruction and depression that followed, Prairie Farmer

was mailed regularly, constantly carrying the message of better agriculture, better homes, better opportunities for rural people and their children.

At the time of the Chicago Fire, 1871, Prairie Farmer's presses and property were all destroyed. But with the backing of friends from the country, it not only continued publication, but was the first publication in the mails after the fire, and its engraver drew the first map sent out to the world, showing the area of destruction.

It's a long road through ninety years, which includes the Populist uprising of the '80s, the great depression of '93, the Free Silver days of '96, and the turn of the century, bringing a multitude of new machinery, new ideas and a whole new picture of agriculture. Through all these years Prairie Farmer has never been content to take for agriculture any second place or any kind of a deal less than the best. Prairie Farmer now reaches more than 320,000 subscribers every week.

Radio came, and Prairie Farmer seeing its peculiar adaptation to the service of agriculture, went into this field two and a half years ago, determined to make WLS a great medium of service and a true exponent of the high ideals of rural people, truly the Voice of Agriculture.

## Editorial Staff in Prairie Farmer's Chicago Office

Left to right, standing: Hugh Triplett, Department Editor; Dave Thompson, Feature Editor; W. Floyd Keepers, Managing Editor; Arthur C. Page, Commercial Editor; Ray Inman, Art Editor; Carol Bridge, Art Department. Left to right, seated: Lois Schenck, Home and Household Editor; C. V. Gregory, Editor-in-Chief; Mary Jens, Assistant Editor.



c7 They say there will be a great round-up,  
c And cowboys, like dogies, will stand;  
To be marked by the Riders of Judgment,  
c Who are posted and know every brand.

f I know there's many a stray cowboy,  
c Who'll be lost at the great, final sale;  
When he might have gone in the green pastures,  
c Had he known of the dim, narrow trail.

c7 For they, like the cows that are locoed,  
c Stampede at the sight of a hand;  
Are dragged with a rope to the round-up,  
c Or get marked with some crooked man's brand.

f And I'm scared that I'll be a stray yearling,  
c A maverick unbranded on high;  
And get cut in the bunch with the "rusties",  
c When the Boss of the Riders goes by.

c7 For they tell of another big owner,  
c Who's ne'er overstocked, so they say;  
But who always makes room for the sinner,  
c Who drifts from the straight, narrow way.

f They say He will never forget you,  
c That He knows every action and look;  
So, for safety, you'd better get branded,  
c Have your name in the great Tally Book.

## Clem and Harry

Meet our 500 pounds of harmony—Clem and Harry! Clem's the little fellow who tips the scales at 225 pounds, while Harry "tips over" the scales with his 275 pounds. Clem Dacey was born and raised in Lincoln, Illinois. Around 1908-09 he was a member of the Fire Department of that hustling city, and met with a serious accident while fighting a big fire. This resulted in his taking up singing, and he's been at it ever since. He often appeared on WLS as a soloist during our early days. During the World War, Clem was attached to the Personnel Department at Jefferson Barracks, Missouri. Yes, there's a "Mrs. Clem" and young George Dacey, 10 years old at the Dacey home in Wauconda, Illinois.

Harry Hosford first saw the light of day in Erie, Pa. He studied music considerably during his young manhood, little knowing that he would ever make it a profession. Came

the War, and Harry enlisted and was put in charge of a Service Band at Fort Admiral, Md. That was about the time every musician wanted to play the "sax", so when Harry's men reported, 40 out of 60 turned out to be saxophone players. He managed to live that down, and immediately after the War, railroading became his calling. He served as Conductor on Nickel Plate Railroad passenger trains until late in 1919 when an accident incapacitated his left foot. Then Harry took up music in earnest, directing his own orchestras for several years. In 1929, he "teamed up" with Clem and thus was born the team—Clem and Harry.

They gained much popularity last year with their "Riddles and Grins" over WLS. Clem and Harry like nothing better than to sit at the piano with a WLS "mike" beside them with plenty of time to "crack jokes" and sing all types of popular numbers.



Clem

Harry

# Prairie Farmer, America's Oldest Farm Paper

All the resources of Prairie Farmer are back of WLS. Its great editorial and service staff works hand in hand with the staff of WLS, and every member of the organization is headed constantly toward the ideal of service to the public.

Prairie Farmer is just entering its ninety-first year. It was founded by a group of pioneer farmers who organized a society to collect and distribute information about farming on the prairies. In 1841 the little paper first appeared. Its early editorial work centered around the subduing of the new prairie soils, bringing in improved live stock, building more comfortable homes, and organization of farmers into groups that could work out their problems effectively.

Through a long and tremendously interesting history, Prairie Farmer has been a torch-bearer for agriculture. Covered wagons by thousands were driven Westward during Prairie Farmer's early years. At the time gold was discovered in California, in 1849, the paper was going to a few thousand subscribers. When Abraham Lincoln was elected President, it was acknowledged as the leader of agricultural thought throughout this region. All during the weary years of the Civil War and through the period of reconstruction and depression that followed, Prairie Farmer

was mailed regularly, constantly carrying the message of better agriculture, better homes, better opportunities for rural people and their children.

At the time of the Chicago Fire, 1871, Prairie Farmer's presses and property were all destroyed. But with the backing of friends from the country, it not only continued publication, but was the first publication in the mails after the fire, and its engraver drew the first map sent out to the world, showing the area of destruction.

It's a long road through ninety years, which includes the Populist uprising of the '80s, the great depression of '93, the Free Silver days of '96, and the turn of the century, bringing a multitude of new machinery, new ideas and a whole new picture of agriculture. Through all these years Prairie Farmer has never been content to take for agriculture any second place or any kind of a deal less than the best. Prairie Farmer now reaches more than 320,000 subscribers every week.

Radio came, and Prairie Farmer seeing its peculiar adaptation to the service of agriculture, went into this field two and a half years ago, determined to make WLS a great medium of service and a true exponent of the high ideals of rural people, truly the Voice of Agriculture.

## Editorial Staff in Prairie Farmer's Chicago Office

Left to right, standing: Hugh Triplett, Department Editor; Dave Thompson, Feature Editor; W. Floyd Keepers, Managing Editor; Arthur C. Page, Commercial Editor; Ray Inman, Art Editor; Carol Bridge, Art Department. Left to right, seated: Lois Schenck, Home and Household Editor; C. V. Gregory, Editor-in-Chief; Mary Jens, Assistant Editor.







# From The Front Line



Mrs. Payne Mercer, working from the Indianapolis office of Prairie Farmer, is in close touch with the activities of Indiana women. She edits the Indiana women's page in Prairie Farmer every week, and you have heard her occasionally on WLS.



John Lacey, associate editor of Prairie Farmer, is also part of the great news gathering organization of WLS. He is in the Indianapolis office, but comes to Chicago every little while and discusses on WLS some of the important Indiana problems.



W. E. Renshaw

Out on the front line of the Prairie Farmer—WLS organization are 150 men calling at farms and in town, collecting information, making daily reports. If anything of importance happens in this territory, it is reported to headquarters, either Indianapolis or Chicago, within a few hours.



W. G. Staas

These three men, W. G. Staas, W. E. Renshaw, and A. M. Staas, are in charge of groups of these men. You have met them in many public meetings, discussing rural thievery, prevention of accidents, and new legislative problems for rural betterment.

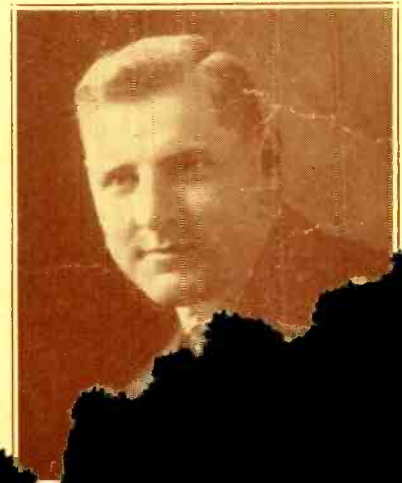


A. M. Staas

J. A. Sackrison, manager of field service in Indiana. Scores of men who work under his direction, making surveys and calling on farmers, keep Prairie Farmer and WLS in touch with every township and crossroads in the state.



Marc Koenig, left, director of the Prairie Farmer—WLS Protective Union. Marc is a relentless pursuer of fakes and frauds. Crooks who would prey upon the farmer, whether by selling fake oil stocks or stealing chickens, grow unhappy in a hurry when Marc gets after them, especially when once a week he goes to the world all about WLS.



# Some Extraordinary Listeners

Mrs. Loretta Welsh, Rockford, Illinois, who was 100 years old November 7, 1930. A constant listener to WLS. She came to Illinois by ox team in 1838.



Mrs. Elizabeth Barnhisel, Akron, Indiana, was 100 years old September 21, 1930. She has lived on the same farm for 77 years, and listens regularly to WLS.



Harold R. Bourke of Michigan is 6 feet 6 inches tall and weighs 356 pounds. He's in the piano business.

J. E. Paxton of Nebraska, below weighs 600 pounds, and he says WLS is his favorite station.



"Big Boy" Wandrei of Indiana, another listener, can grease the windmill without a ladder. He is 6 feet 10 inches tall.

Below is the beautiful family of Mr. and Mrs. G. B. Reeves of Nebraska. Count them. You'll find 9 boys and 9 girls. This is the largest family of listeners we could get a picture of, although one was reported with 21 children.

