

WBBM
Radio Log

1929

Price 25c



GUY LOMBARDO, the genial director of that ace of orchestras, known from coast to coast as "Guy Lombardo and His Royal Canadians." This famous organization is heard nightly from WBBM, and once each week they entertain the entire country on the Wrigley hour which is broadcast over a nationwide network.



Main Studio

A CHARMING environment and inspiration for the never ending happy hours of entertainment from WBBM. The spaciousness of this studio accommodates orchestras of fifty pieces, or choruses of as many as seventy-five. Included in its equipment is the latest Barton organ, built especially for broadcast.



NATE CALDWELL, old WBBM favorite, is again chief announcer.



"PAT" FLANAGAN directs the extensive day time schedule of the WBBM Air Theatre including its farm programs. He is also best and "fastest" in sports and gridiron presentations.

CHARLIE GARLAND, veteran extra-ordinary of WBBM and one of radio's pioneer entertainers. As the happy-go-lucky "Colonel Nut" of the Nutty Club and as "Master of Ceremonies" of the Old Gray Mare Club, WBBM's after midnight features, Charlie's friends and "club members" range clear around the globe. Musically famous also for his compositions and improvisations on the piano.





A PUBLIC gallery, looking into the main studio, is provided for those of our radio fans who wish to "see how it is done."



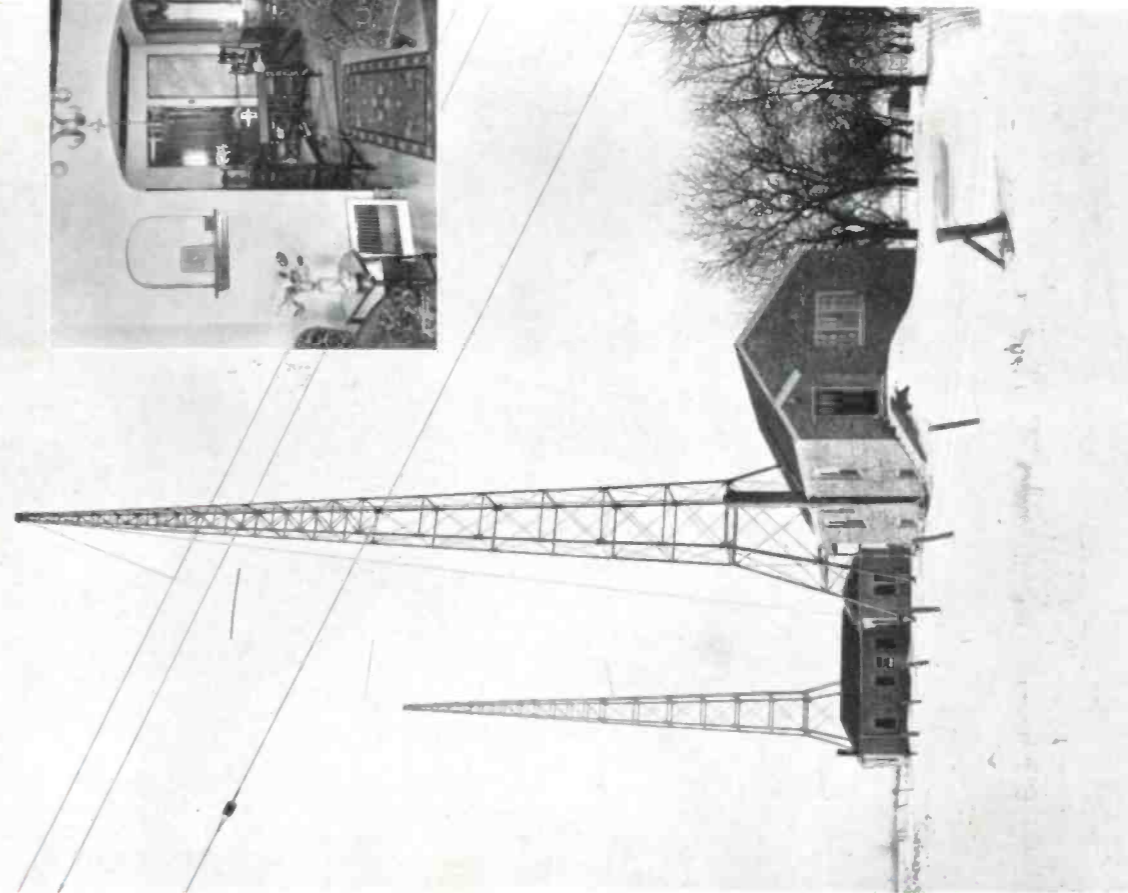
SECUNDARY studios are maintained in order that the programs you hear may be properly rehearsed before presentation.



AN EXECUTIVE office of our Wrigley Building Quarters.



"Behind the scenes of a radio station—the purposely isolated location of the WBBM transmitting station necessitates the "convenience of home for those operators and their families who are on country duty. This interior picture, looking from the living room into the dining room, illustrates the completeness of the WBBM quarters. All modern conveniences such as gas, heat, electrical refrigeration and so forth are embodied in this country home."



THE WBBM transmitting station is located 26 miles northwest of Chicago. Programs originating from all parts of the country often thousands of miles away, are brought here on especially leased telephone wires to be disseminated through the air to our radio audience.

You have also heard the leading stage celebrities of the day; Eddie Cantor, Moran and Mack, Paul Whiteman, Arthur Pryor and His Band; presented from WBBM as a member of the Columbia Broadcasting System.

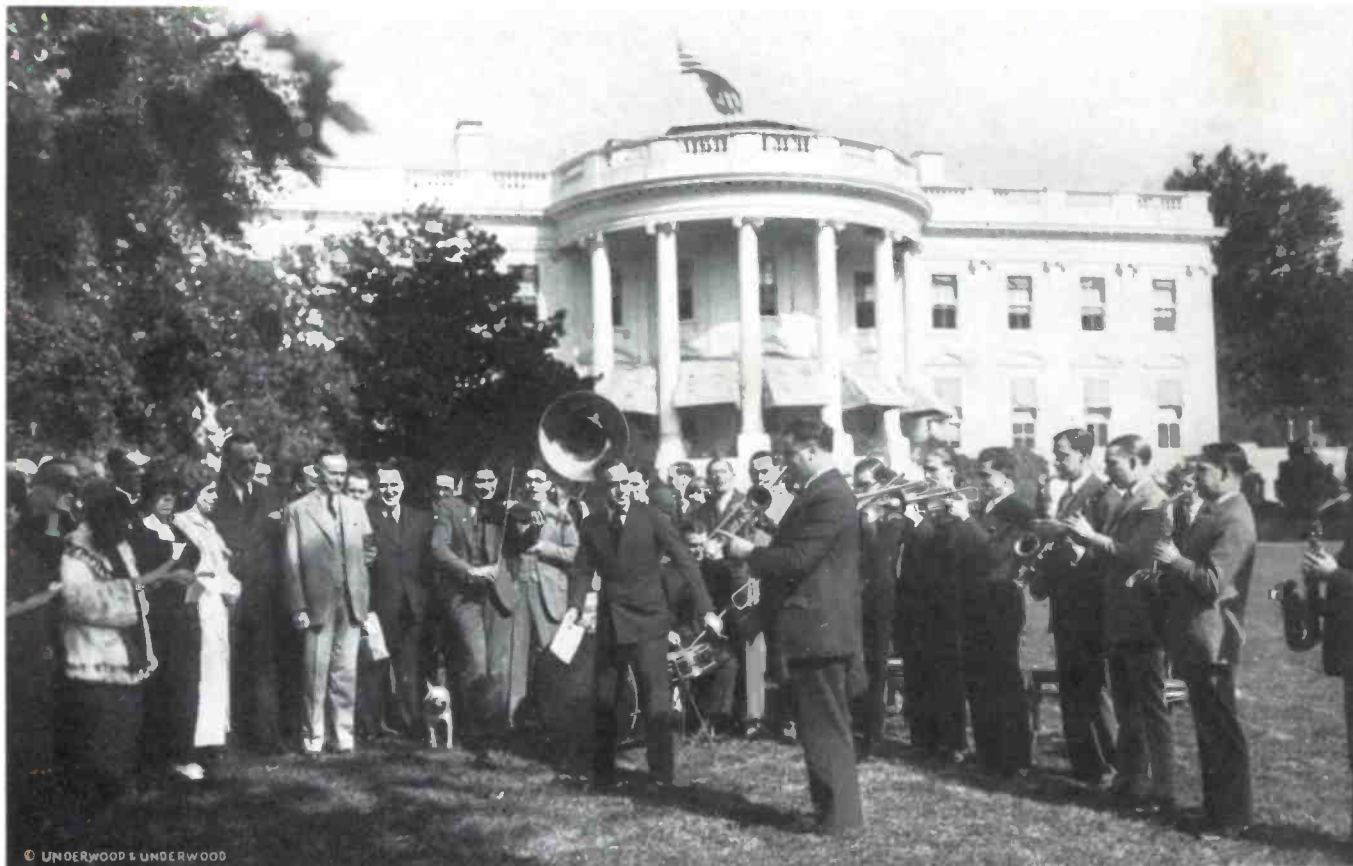
There are few better known characters of the air than our own Charley Garland, Master of Ceremonies to the Nutty Club and the Old Gray Mare Club whose membership ranges from the balmy South Sea Islands into the frozen reaches of far Alaska. Charley, as you know, is a pianist of note and the world's greatest enthusiast when it comes to Marathon Dancing Contests, Long Distance Roller Skating Contests, etc., etc. Among staff features you have been hearing the Illinois Concert Orchestra under the direction of Beulah Rosine, Edward Benedict at the Organ, Dorothy Romaine at the Baldwin accompanying Melba Caldwell and many other pleasing voices. On the announcing staff, Nate Caldwell vies with "Pat" Flanagan in bringing you everything from the classical to the football games.

Every morning at 10:00 o'clock the daily Health Talk comes to you direct from the headquarters of the American Medical Association. These talks touch on subjects of vital interest to you and are prompted in a sincere desire to save many people from the hands of quack doctory and "cure-all" medicines that are preying on innocent victims in all parts of the country. These talks are delivered by eminent authorities in the medical profession and come to you as another indication of our desire to serve our listeners in the most able fashion.

At regular hours in the morning will be found excellent setting-up exercises, special agricultural reports from the Department of Agriculture and other interesting features. In the afternoon come Beauty and Fashion Hints and many things of keen interest to every woman. The Children's Hour and the Dinner-time musicale carry us into the evening of entertainment. Three evenings each week bring enticing programs from the New York studio of the Columbia Broadcasting System. Paul Whiteman, The United Light Opera Company, Hank Simmons and His Show Boat and many other great features are brought to you from New York in order that the WBBM Air Theatre always raises its curtain for you on something new and different and the finest in the air.

And now perhaps you wonder who pays all these thousands of dollars that must be spent each week in order to keep the ether waves humming with music and entertainment from WBBM. So few of us realize all the work and details behind the scenes of a great radio station. Of course, we hear the entertainers, bands, singers and the announcers but we never think of the dozens of skilled operators, engineers, continuity writers, program directors and others who must be constantly on the alert that every minute of every hour brings you, in an unbroken flow, radio's most pleasing entertainments.

All of these things are offered you freely and joyfully, through the courtesy of American business men and industries, who deem it a privilege to entertain you, in spite of the large cost involved. All they ask in return is your goodwill, your friendly consideration. In most foreign countries, even in Canada, every radio set owner must pay a fee for the opportunity of listening to the entertainment provided. Think how different matters are here, where the world's finest talent is brought to you by manufacturers and merchants, glad of the friendly contact this will establish for them in your home. Your support of these advertisers has stimulated an ever increasing use of radio as an advertising medium; and as their use increases, your investment in a radio receiver will bring you added returns of pleasure. Five times more money was expended for programs in 1928 than in 1927. This year will mark a further increase; even now, an amount in excess of one million dollars is spent each month for your entertainment. Symphonies, jazz bands, comedy, dramas. To you, radio listeners, is available in your own homes such a wealth of talent as the finest theatre could not afford.



© UNDERWOOD & UNDERWOOD

RAY MILLER AND HIS COLLEGE INN ORCHESTRA are said to hold the distinction of being the only band that has ever played on the White House lawn aside from the Army and Navy bands. Mrs. Coolidge,

the President, Al Jolson and Ray Miller may be seen prominently in the foreground above. This organization is another of the many distinctive features WBBM's listeners enjoy each evening direct from Hotel Sherman.



GUY LOMBARDO who directs the famous **ROYAL CANADIANS** shares his musical genius in the family. Carmen is a composer of note and Lebert is one of the mainstays of this talented group.

**RED FIGURES INDICATE LATEST ASSIGNMENTS;
BLACK, OLD ASSIGNMENTS**

KDKA	Pittsburgh, Pa.	306 W	316 W	KFYR	Bismarek, N. D.	545 M	250 K	KMOX-KFQA	St. Louis, Mo.	275 S	300 S
KDLR	Devils Lake, N. D.	248 H	231 C	KGA	Spokane, Wash.	204 S	261 Q	KMTR	Hollywood, Cal.	526 O	517 M
KDYL	Salt Lake City	232 O	234 M	KGAR	Tucson, Ariz.	219 H	234 H	KNX	Los Angeles, Cal.	285 S	337 S
KEJK	Los Angeles, Cal.	240 M	252 K	KGB	San Diego, Cal.	220 K	248 H	KOA	Denver, Colo.	361 U	326 S
KELW	Burbank, Cal.	384 M	229 K	KGBU	Ketchikan, Alaska	333 M	400 N	KOAC	Corvallis, Ore.	535 O	270 M
KEX	Portland, Ore.	254 S	278 R	KGBZ	St. Joseph, Mo.	219 H	288 H	KOB	State College, N. M.	254 T	394 S
KFAB	Lincoln, Nebr.	389 S	319 S	KGCB	York, Nebr.	322 M	213 H	KOCW	Chickasha, Okla.	211 H	252 K
KFAD	Phoenix, Ariz.	484 M	322 M	KGCE	Decorah, Ia.	236 F	248 B	KOIL	Council Bluffs, Ia.	238 O	319 S
KFBK	Havre, Mont.	220 K	275 F	KGCF	Oklahoma City, Okla.	248 F	216 F	KOIN	Portland, Ore.	319 O	319 O
KFBK	Sacramento, Cal.	229 H	275 H	KGCI	San Antonio, Tex.	219 H	220 K	KOMO	Seattle, Wash.	326 O	309 O
KFBL	Everett, Wash.	200 F	224 F	KGCN	Concordia, Kan.	211 F	208 F	KORE	Eugene, Ore.	211 H	200 F
KFBW	Laramie, Wyo.	500 M	484 M	KGCR	Brookings, S. D.	248 H	208 C	KOW	Denver, Colo.	216 M	219 K
KFCB	Phoenix, Ariz.	229 H	244 H	KGCU	Mandan, N. D.	250 H	240 H	KPCB	Seattle, Wash.	248 H	231 H
KFCR	Santa Barbara, Cal.	200 H	211 H	KGCV	Vida, Mont.	211 B	244 B	KPJM	Prescott, Ariz.	200 C	214 C
KFDM	Beaumont, Tex.	535 O	484 M	KGDA	Dell Rapids, S. D.	219 C	254 C	KPLA	Los Angeles, Cal.	526 O	288 M
KFDY	Shreveport, La.	248 H	236 K	KGDE	Fergus Falls, Minn.	250 F	205 F	KPO	San Francisco, Cal.	441 S	422 O
KFDY	Brookings, S. D.	545 M	545 M	KGDM	Stoekton, Cal.	261 F	217 B	KPOF	Denver, Colo.	341 M	201 M
KFEC	Portland, Ore.	219 F	214 F	KGDP	Pueblo, Colo.	248 B	224 B	KPPC	Pasadena, Cal.	250 F	316 F
KFEL	Denver, Colo.	319 F	227 K	KGDR	San Antonio, Tex.	200 H	207 C	KPQ	Seattle, Wash.	248 H	321 H
KFEQ	St. Joseph, Mo.	535 R	231 O	KGDY	Oldham, S. D.	250 C	207 C	KPRC	Houston, Tex.	326 O	294 O
KFEQ	Kellogg, Idaho	248 B	232 B	KGEE	Los Angeles, Cal.	231 O	263 O	KPSN	Pasadena, Cal.	316 O	315 O
KFGQ	Boone, Ia.	229 B	210 B	KGEK	Yuma, Colo.	250 B	263 F	KQV	Pittsburgh, Pa.	217 M	270 M
KFH	Wichita, Kan.	231 O	246 M	KGER	Long Beach, Cal.	219 H	216 H	KQW	San Jose, Cal.	297 M	297 M
KFHA	Gunnison, Colo.	250 F	250 F	KGEW	Fort Morgan, Colo.	250 H	219 H	KRE	Berkeley, Cal.	219 H	231 H
KFI	Los Angeles, Cal.	468 W	468 S	KGEZ	Kalispell, Mont.	229 H	294 H	KRGV	Harlingen, Tex.	238 M	236 H
KFIF	Portland, Ore.	211 F	229 F	KGFF	Alva, Okla.	211 M	205 E	KRLD	Dallas, Texas	288 T	461 M
KFIO	Spokane, Wash.	248 H	246 H	KGFJ	Oklahoma City, Okla.	219 F	216 F	KRMD	Shreveport, La.	229 F	220 F
KFIU	Juneau, Alaska	229 B	225 B	KGFH	Glendale, Cal.	300 K	263 K	KRSC	Seattle, Wash.	268 F	273 F
KFIU	Fond du Lac, Wis.	211 H	268 H	KGFI	San Angelo, Tex.	229 C	220 C	KSAC	Manhattan, Kan.	517 M	333 M
KFJB	Marshalltown, Ia.	250 H	248 S	KGFJ	Los Angeles, Cal.	211 H	213 H	KSBA	San Francisco, Cal.	207 O	268 O
KFJF	Oklahoma City, Okla.	204 S	273 H	KGFK	Hullock, Minn.	250 F	224 F	KSCJ	Sioux City, Ia.	225 O	244 M
KFJM	Astoria, Ore.	219 F	250 F	KGFL	Raton, N. M.	219 F	222 F	KSD	Sioux Falls, S. D.	545 M	545 M
KFJL	Grand Forks, N. D.	219 M	333 M	KGFM	Ravenna, Nebr.	511 F	297 B	KSEI	Pocatello, Ida.	333 K	333 K
KFJR	Portland, Ore.	231 M	240 M	KGFX	Pierre, S. D.	217 J	254 J	KSL	Salt Lake City, Utah	268 S	303 S
KFJY	Fort Dodge, Ia.	229 H	232 H	KGGF	Picher, Okla.	297 M	207 H	KSMR	Santa Maria, Cal.	250 H	273 H
KFJZ	Fort Worth, Tex.	219 H	250 F	KGGH	Cedar Grove, La.	229 F	213 F	KSO	Clarinia, Ia.	217 O	227 M
KFKA	Greeley, Colo.	341 M	250 M	KGGI	Inglewood, Cal. (Port.)	219 H	204 H	KSOO	Sioux Falls, S. D.	270 O	210 K
KFKB	Midford, Kansas	265 S	242 P	KGHA	Pueblo, Colo.	250 F	210 M	KSTP	St. Paul, Minn.	205 T	220 S
KFKU	Lawrence, Kan.	246 O	254 M	KGHB	Honolulu, T. H.	227 K	227 K	KTAB	Oakland, Cal.	545 M	289 M
KFKV	Kirkville, Mo.	250 F	225 C	KGHD	Missoula, Mont.	211 A	232 A	KTAP	San Antonio, Tex.	248 H	220 K
KFLZ	Rockford, Ill.	213 M	268 H	KGHE	Pueblo, Colo.	227 K	210 K	KTAT	Fort Worth, Tex.	242 O	
KFLX	Galveston, Tex.	248 H	270 H	KGHG	McGehee, Ark.	229 F	222 F	KTBI	Los Angeles, Cal.	231 O	275 O
KFMX	Northfield, Minn.	240 O	236 M	KGHI	Little Rock, Ark.	200 C	261 C	KTBR	Portland, Ore.	231 M	229 M
KFNF	Shenandoah, Ia.	337 M	461 O	KGHL	Billings, Mont.	316 K	222 K	KTHS	Hot Springs, Ark.	375 O	500 O
KFOA	Seattle, Wash.	236 O	447 O	KGHX	Richmond, Tex.	200 F		KTM	Santa Monica, Cal.	394 M	
KFOR	Lincoln, Nebr.	248 H	217 H	KGIO	Taho Falls, Idaho	227 K		KTNT	Muscataine, Ia.	256 S	256 Q
KFOX	Los Angeles, Cal.	240 O	242 O	KGIQ	Twin Falls, Idaho	227 K		KTSA	San Antonio, Tex.	232 O	265 Q
KFPM	Dublin, Tex.	229 C	231 C	KGIR	Butte, Mont.	220 K		KTUE	Houston, Tex.	319 A	231 A
KFPW	Silsam Springs, Ark.	224 F	263 F	KGJF	Little Rock, Ark.	337 K	278 K	KTW	Seattle, Wash.	236 O	394 O
KFPY	Spokane, Wash.	216 M	246 K	KGKL	Goldthwaite, Tex.	200 H	280 H	KUJ	Longview, Wash.	200 B	200 B
KFOD	Anchorage, Alaska	244 H	345 H	KGKO	Georgetown, Tex.	219 H	232 H	KUOA	Fayetteville, Ark.	216 M	297 O
KFOU	Holy City, Cal.	211 H	220 H	KGLO	Wichita Falls, Tex.	526 K		KUOM	Missoula, Mont.	526 M	461 M
KFOV	Wenatchee, Wash.	211 H	217 H	KGRC	Oakland, Cal.	380 T	384 S	KUSD	Vermillion, S. D.	337 M	484 K
KFQZ	Hollywood, Cal.	353 K	232 K	KGRS	San Antonio, Texas	229 H	220 K	KUT	Austin, Tex.	268 M	232 M
KFRU	San Francisco, Cal.	491 O	454 O	KGRT	Amarillo, Tex.	213 O	244 K	KVI	Tacoma, Wash.	224 O	283 K
KFSB	Columbia, Mo.	476 M	250 M	KGTT	San Francisco, Cal.	215 F	220 F	KVL	Seattle, Wash.	200 H	273 H
KFSG	San Diego, Cal.	500 M	441 M	KGU	Honolulu, Hawaii	319 M	270 M	KVVO	Tulsa, Okla.	263 O	349 S
KFUL	Los Angeles, Cal.	268 M	252 M	KGW	Portland, Ore.	484 O	491 O	KVOS	Bellingham, Wash.	250 K	210 K
KFUL	Galveston, Tex.	232 M	256 M	KGY	Lacey, Wash.	208 F	246 F	KWBS	Portland, Ore.	200 C	200 C
KFUM	Colorado Springs, Colo.	236 O	484 O	KHJ	Los Angeles, Cal.	333 O	400 O	KWCR	Cedar Rapids, Ia.	229 H	240 K
KFUO	St. Louis, Mo.	545 M	545 O	KHO	Spokane, Wash.	508 O	370 O	KWEA	Shreveport, La.	248 H	213 K
KFUP	Denver, Colo.	229 H	227 H	KICK	Red Oak, Iowa	211 H	322 H	KWG	Stockton, Cal.	250 H	345 H
KFVJ	Ogden, Utah	428 K	216 K	KIDO	Boise, Idaho	240 O	285 Q	KWJ	Portland, Ore.	262 M	250 F
KFVJ	Culver City, Cal.	219 F	225 F	KJBS	San Francisco, Cal.	273 H	246 H	KWK	St. Louis, Mo.	222 O	234 O
KFVJ	Cape Girardeau, Mo.	248 F	224 F	KJR	Seattle, Wash.	309 S	349 R	KWKK	Kansas City, Mo.	219 H	222 H
KFWB	Hollywood, Cal.	316 O	361 O	KKP	Seattle, Wash.	218 C	273 C	KWLC	Shreveport, La.	353 S	394 R
KFWC	Ontario, Cal.	250 H	248 H	KLCC	Blytheville, Ark.	232 F	285 F	KWLC	Decorah, Ia.	236 F	248 F
KFWF	St. Louis, Mo.	250 H	214 H	KLS	Oakland, Cal.	208 H	246 K	KWSC	Pullman, Wash.	216 M	394 M
KFWJ	San Francisco, Cal.	322 M	268 M	KLX	Oakland, Cal.	341 M	508 M	KWTC	Santa Ana, Cal.	200 H	273 H
KFWM	Oakland, Cal.	322 M	236 M	KLZ	Denver, Colo.	535 O	353 O	KWUC	Le Mars, Ia.		244 P
KFXD	Jerome, Ida.	211 F	204 C	KMA	Shenandoah, Ia.	322 M	394 O	KWWG	Brownsville, Tex.	238 M	278 M
KFXF	Denver, Colo.	319 K	283 K	KMBC-KLDS	Kansas City, Mo.	316 M	270 P	KXA	Seattle, Wash.	526 M	535 M
KFXJ	Edgewater, Colo.	200 F	210 F	KMED	Medford, Oregon	211 F	220 F	KXL	Portland, Ore.	240 M	220 K
KFXR	Oklahoma City, Okla.	229 F	224 F	KMIC	Inclewood, Cal.	268 K	274 K	KXO	El Centro, Cal.	250 C	225 H
KFYI	Flagstaff, Ariz.	211 H	205 H	KMMJ	Fresno, Cal.	250 F	365 F	KXRO	Aberdeen, Wash.	211 F	224 F
KFYO	Breckenridge, Tex.	200 H	211 H	KMMJ	Clay Center, Nebr.	405 O	285 K	KYA	San Francisco, Cal.	244 O	353 O
					Tacoma, Wash.	224 M	254 M	KYW-KFKX	Chicago, Ill.	294 S	526 S

POWER CODE 5 A 10 B 15 C 20 D 25 E 50 F 75 G 100 H 150 I 200 J 250 K 300 L 500 M 750 N 1000 O 1500 P 2000 Q 2500 R 5000 S 10000 T 15000 U 30000 V 50000 W

RED FIGURES INDICATE LATEST ASSIGNMENTS;
BLACK, OLD ASSIGNMENTS

Main table listing radio stations with columns for call letters, city, and power ratings. Includes stations like KZIB Manila, WABC-WBOQ Richmond Hill, N.Y., WAFB Kingston, Pa., etc.

Main table listing radio stations with columns for call letters, city, and power ratings. Includes stations like WDAF Kansas City, Mo., WDAQ Amarillo, Tex., WDAY Fargo, N. D., etc.

Power Code A B C D E F G H I J K L M N O P Q R S T U V W

CANADIAN

Table listing Canadian radio stations with call letters and city information. Includes stations like CFAC Calgary, CHNC Toronto, CJKC Regina, etc.

CUBAN

Table listing Cuban radio stations with call letters and city information. Includes stations like 2 EP Havana, 6 KW Tuinucu, 7 SR Elia, etc.

MEXICAN

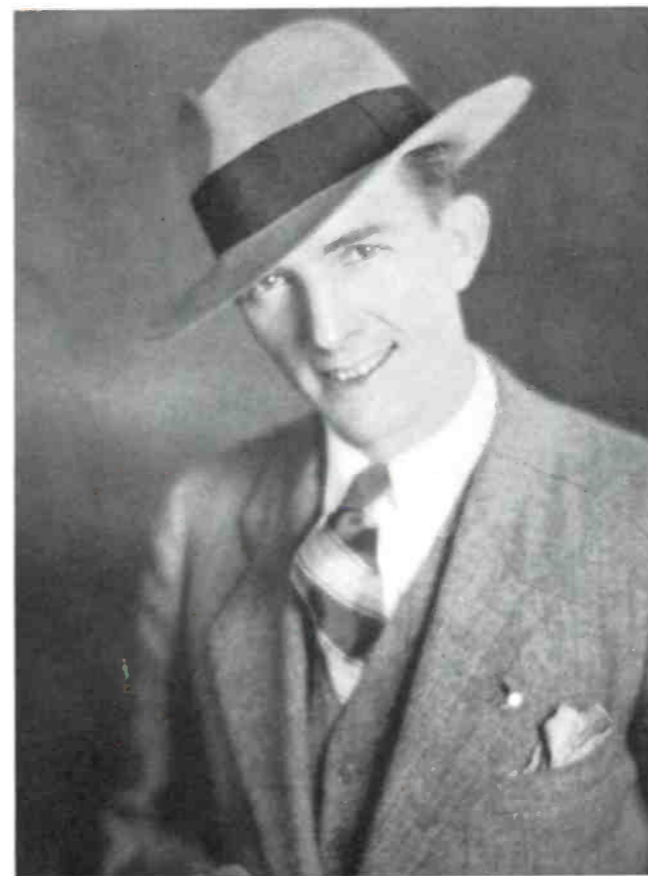
Table listing Mexican radio stations with call letters and city information. Includes stations like CVB Mexico City, CYJ Mexico City, etc.



PAUL RADER, radio's best known evangelist. Mr. Rader and the members of his great organization keep the ether waves humming far and wide on the Sabbath Day.



Some of the young musicians who make things lively in Paul Rader's church studio.



BOB NOLAN, the boy with a tear in his voice. Famous recording artist heard over WBBM from College Inn.



RAY MILLER, genial director of the College Inn orchestra at the Hotel Sherman, Chicago.

Time Schedule of W B B M

TUESDAY AND THURSDAY

3:00-6:00 P. M.
Tea Dance Program
College Inn Orchestra
Illinois Concert Orchestra
Barton Organ

10:00-12:00 P. M.
Feature Programs

9:30-10:00 P. M.
Guy Lombardo
and
His Royal Canadians

THURSDAY

12:00 Midnight
OLD GRAY MARE CLUB

SUNDAY

7:30-9:30 Columbia Network 12:00 Midnight Nutty Club

DAILY

- 9:00-10:00 A.M. *Women's Hour, with Entertainment and Educational Features from New York*
- 10:00-10:30 A.M. *Public Health Service—American Medical Association and Chicago Dental Society*
- 10:30-12:00 A.M. *Markets, News Flashes, Morning Exercises for the Housewife, Beauty Information for Milady*
- 12:00- 1:00 P.M. *Agricultural Program, Complete Markets, Talks, Orchestra*
- 1:00- 2:00 P.M. *Variety Musical Hour*
- 2:00- 3:00 P.M. *Women's Hour, Beauty Chats, Music*
- 4:00- 6:00 P.M. *Entertainment, Orchestra, Organ, News of the Day*
- 8:00-10:00 P.M. *Feature Programs, including Columbia Broadcasting System*

The Theatre of the Air

Radio, the infant prodigy of the entertainment field, has outdistanced in a span of four or five years its older competitors that have been bringing laughter and tears to the human race since the dawn of civilization. Never in all our scientific progress had we dreamed that some day all the world might sit entranced in one great theatre and enjoy and listen to the world's greatest educators, musicians, actors, actresses and the great events of the times.

You probably know that WBBM is one of the oldest radio stations in the middle west and it has been our chief desire since back in 1923 to place on the air only the very best in entertainment features that would please the greatest possible number of people and deserve their silent applause. It is very gratifying to us that we have succeeded in our purpose so well that instead of silent applause, countless thousands of our good audience all over the world have written interesting letters telling us how they like this or that particular part of WBBM's Air Theatre presentations. These kind words have been a source of constant stimulation to our efforts and we have brought to bear all the ingenuity of this large organization in order that WBBM's programs may continue to grow "bigger and better" and always come to you as the "pick of the air." You must remember that WBBM is in reality your Air Theatre, catering solely to your desires and for your entertainment and happiness. To be a truly good public servant and to best serve your interests and desires is the motive force behind our endeavors. Don't be afraid to give us suggestions now and then.

During the past year WBBM has steadily added to its long list of outstanding features both educational and entertaining. Very few of you but have listened to the sparkling dance music of America's foremost bands, Guy Lombardo and His Royal Canadians, Ray Miller and His College Inn Orchestra, Art Kassel and His Artists, and America's pianist extraordinary, the famous recording artist Charlie Garland, regularly over WBBM.

ART KASSEL AND HIS ARTISTS who are heard nightly from the beautiful Terrace Gardens of the New Morrison Hotel are rapidly making air fame for themselves as one of America's outstanding dance bands.



A part of Terrace Gardens in the New Morrison Hotel, Chicago.



BONNIE BLUE, with the modernistic background sings the most modern blue songs over WBBM.



BILLY ALLEN HOFF, dainty and petite. Playing her own accompaniment she has sung her way into the hearts of millions in WBBM's radio audience.



REMOTE control orchestras which you hear broadcast from WBBM come over special telephone wires arranged by H. A. Carlson.



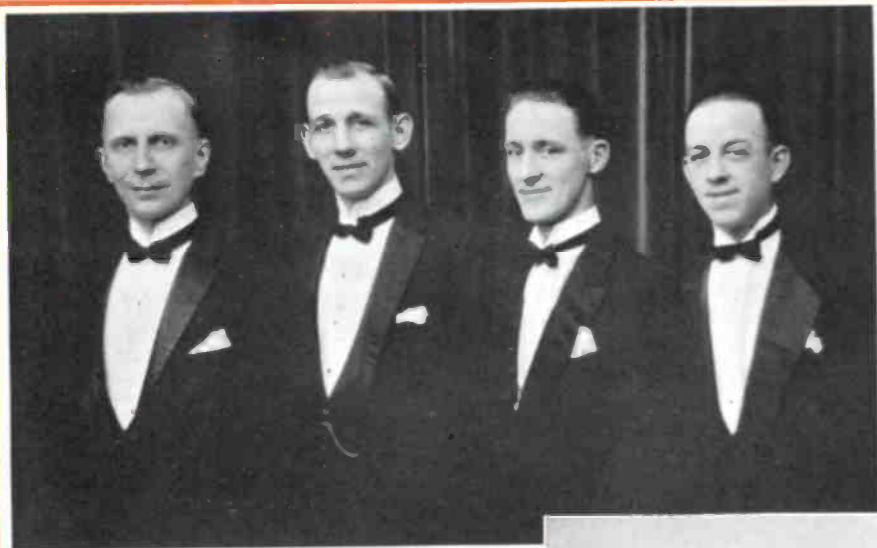
KAY DAVIDSON, the Little Blue Bird of radio. Kay proves the old adage that some mighty good things come in small packages.



LEE SIMS, the 20th century's greatest exponent of syncopation at the black and white ivory keys. Lee is another regular reason for WBBM's popularity.



MUSICAL comedies of the past and show hits of the present season are a regular feature of the WBBM Air Theatre. Patricia Ann, formerly a star of the "Student Prince", sings the leading roles.



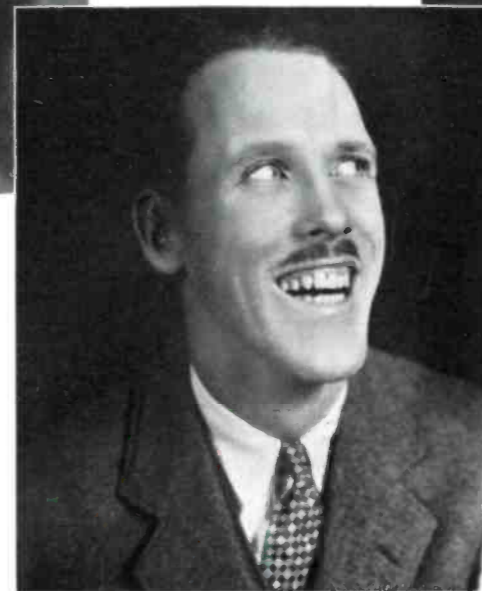
THE INDIANA MALE
QUARTETTE provide
harmony that is hard to beat.



PLANTATION JUBILEE
SINGERS, voices of the
real south who bring us
spirituals just as they are
"writ."



BEULAH ROSINE, talent-
ed director of the Illi-
nois Concert Orchestra, a
staff feature of WBBM
studio.



PAUL MALLORY, well
known concert tenor, fre-
quently heard on WBBM in
recital with the Illinois Con-
cert Orchestra.



WENDELL HALL,
the red-headed
music maker, is fre-
quently heard with
Guy Lombardo and
his Royal Canadians
on the Tuesday and
Thursday evening
broadcast which
WBBM presents over
the Columbia Broad-
casting System.



PAUL WHITEMAN
now presented regularly from WBBM by the Columbia Broadcasting System.



BERNICE YANACEK,
the best looking member of the Benedict-Yanacek Piano and Organ Duo.



EDWARD BENEDICT
who presides at the mighty organs and directs all organ programs presented from WBBM. Each day Mr. Benedict presents some feature recital.



GUY LOMBARDO
and his **ROYAL CANADIANS**—exclusively over WBBM and the most famous and popular band on the air.

THE "NUTTY CLUB" boasts an international membership. It is estimated that over a million listeners have wired, 'phoned, or written in, to be included in this club program. Conducted by Charlie Garland and ably assisted by Guy Lombardo and his Royal Canadians, it goes into its fifth year of meetings. Sunday at midnight from the Granada Cafe.





THE SILVER CUP, awarded W B B M in the largest national popularity contest ever conducted. The great listening public acclaimed W B B M the sixth most popular station in the United States. Entertainment de-luxe as provided by Guy Lombardo, the Illinois Concert Orchestra, Lee Sims and Charlie Garland, combined with the best in educational and public service features, has won a deserving reward.