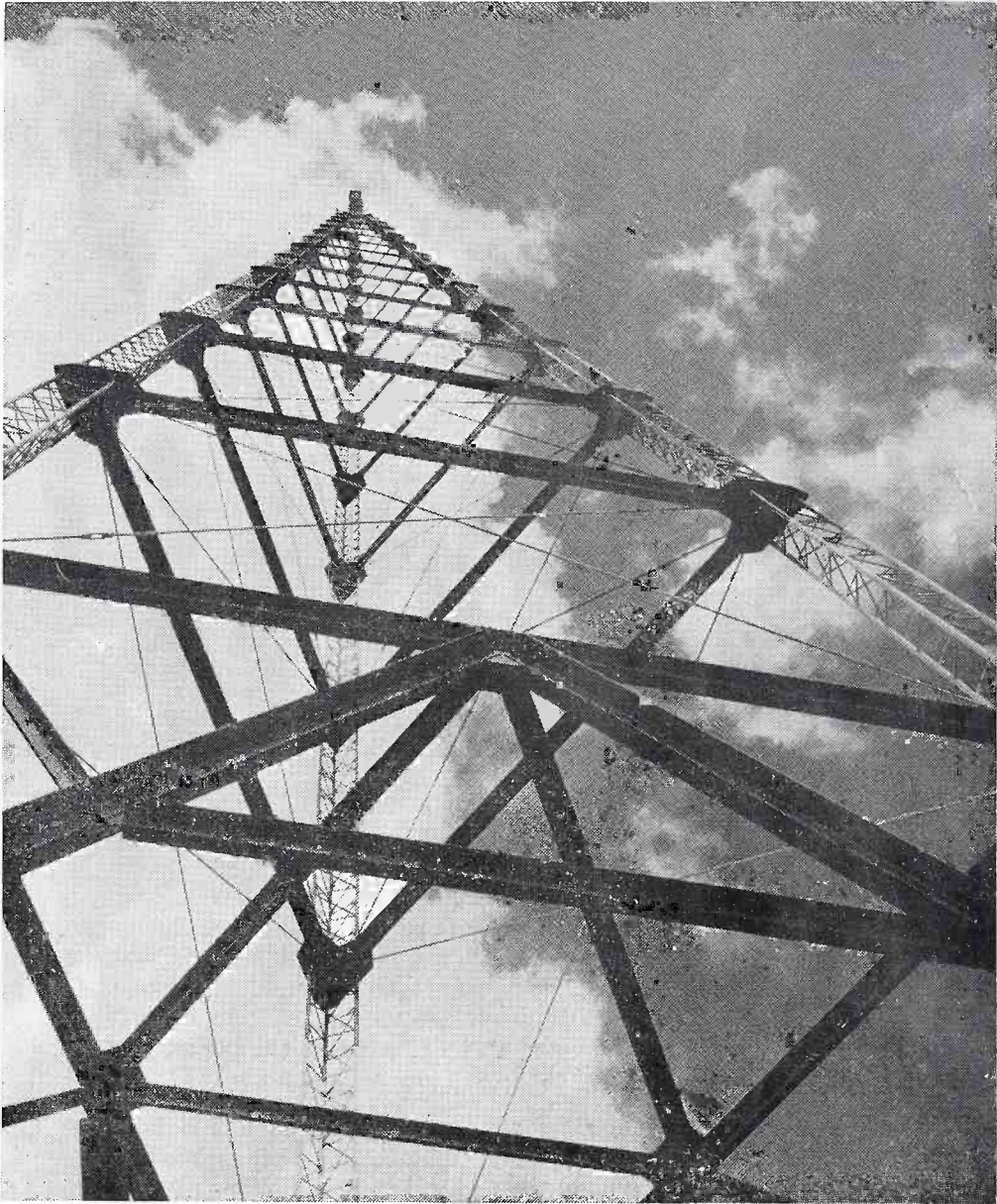


# *May Seed and KMA Radio*



**A Guide For Tour Visitors**

# *Earl May Test Gardens...*



We're particularly proud of the 76-acre Test Gardens you will see today. Every year we test approximately 1300 varieties of Vegetable and Flower seeds here . . . carefully comparing them for stand and yield. They are tested under conditions identical to those on your own farm or garden. This assures you none but the most outstanding and best adapted varieties.

And we're proud, too, that our Test Gardens have been selected as one of the 26 "All-America" Trials in the United States and Canada, where 45 new vegetables and 60 flowers will compete this year for coveted All-America Awards. This is the only All-America Flower test in our section . . . the closest ones being in Minneapolis, St. Louis and Salt Lake City.

Many of our seeds and plants are produced for us a long way from Shenandoah: vegetable seeds in Idaho, roses in California, vegetable plants in Texas. Some flower seeds come all the way from Japan, and of course we import tulip bulbs from Holland, and lilies from France.



## *Mount Arbor Nurseries...*

Another highlight of your tour will be a visit to Mount Arbor Nurseries, the source of the May Seed Company's Nursery stock. Mount Arbor has 3000 acres under cultivation here with over 300 employees maintaining them. Approximately 2000 items are grown in this area, among which are perennials, shade trees, fruit trees, and shrubbery.

To give you an idea of the immensity of this operation, one could drive over fifty miles touring these acres without seeing the same farm twice. Time permitting, you'll see Mount Arbor's air conditioned rose storage room . . . large enough to hold over a million dollars worth of roses.

Mount Arbor was founded by E. S. Welch, father of Mrs. Earl May. George Welch, president of Mount Arbor, is Mrs. May's cousin. She is vice president of the company, while both she and Edward May serve on the nursery's board of directors.

Pictured below is a field of chrysanthemums, in bloom in the fall.

