



The  
**KWANGUIDE**

May, 1963

MAY, 1963

Vol. 9

No. 5

Our cover picture this month is Mrs. Earl May with Aunt Mary Malone, who is a sprightly 89 years old. Mrs. May visited Aunt Mary at her home in Mobile, Alabama last month and Aunt Mary returned with her to Iowa for her first visit since three years ago. The picture was taken on the back enclosed porch area of Mrs. May's home. The background is to the west overlooking the back lawn and beyond to the beautiful Nishna Valley. Doris Murphy's Party Line column has more details of Mrs. May's trip into the southland and Aunt Mary's return visit on page 8.

The KMA Guide is published the first of each month by the Tom Thumb Publishing Co., 205 North Elm St., Shenandoah, Iowa. Tony Koelker editorial chairman; Duane Modrow, editor; Doris Murphy, featured editor; Susan Eckley, copy editor. Subscription price \$1 per year (12 issues) in the United States, foreign countries, \$1.50 per year. Allow two week's notice for change of address and be sure to send old as well as new address.



## Mail Bag

Three months back we initiated the use of a red star by the name and address on the back cover of the Guide. The red star will appear when your subscription has expired. It's an easy reminder for you, and saves us a lot of mail handling. So, when you see the red star on your Guide, just send in a dollar with your name and address and we'll extend your subscription for another year . . . the biggest little magazine bargain today.

"Here's my dime for the Martha Logan new cookie book. I don't want to miss one. I have enjoyed using every recipe booklet I have received. I also look forward every month for my KMA Guide. It's such a newsy letter from you all."

Mrs. C. A.  
Rock Port, Mo.

Thank you, Mrs. C. A., for those nice comments. Many Guide subscribers have also wisely taken advantage of the opportunity to obtain all the many fine recipe books offered to Guide subscribers. We are always on the alert for good recipe books for you Guide readers. Our latest, Martha Logan's "Our Best Cooky Recipes", is really a dandy! They must be good because they are going out at a fast clip. Our advice to everyone is not to put off sending in your dime for your copy. We have only a limited supply, so order right now. Just send a dime with your name and address and we'll get yours right out to you.

"Enclosed you will find \$1 for the renewal of my subscription to the KMA Guide. The red star by my name on my last number (April) is a good reminder. I don't want to miss a single number."

Mrs. H. E. F.  
Centerville, Iowa

Here's a cute poem submitted by a subscriber in Cortland, Nebraska. This subscriber is 80 years old and has sent us a verse every time she renewed her Guide. It is called simply "A Poem".

"Cooking is an art, or supposed to be,  
So I never go by a recipe.  
Soups, salads, cakes, or pies;  
I cook ad lib, I improvise.  
A dab of that, a little of this,  
I throw it together hit or miss;  
For art's not art if you bind and curb it.  
So be it beans or banana sherbet  
I blithely sing — a fig for the book;  
And golly, am I a lousy cook!"

Here's one which gave us a surprise. . . "I am a charter member of your subscribers. I haven't missed a copy since your first issue. KMA has always been our favorite station, and now it is more so, as our son, Dale Eichor, is your newest announcer. Keep up the good work. It's a fine little magazine."

Mrs. Hugh Eichor  
Casey, Iowa

How about that? Dale, who is our night-time announcer, didn't tell us the Guide had been in the family all these years! He is a very fine addition to our announcing staff. Is it possible the Guide had some underlying influence in his pursuit of radio as his life's work? We'd like to think so.



## A Chat With Edward May

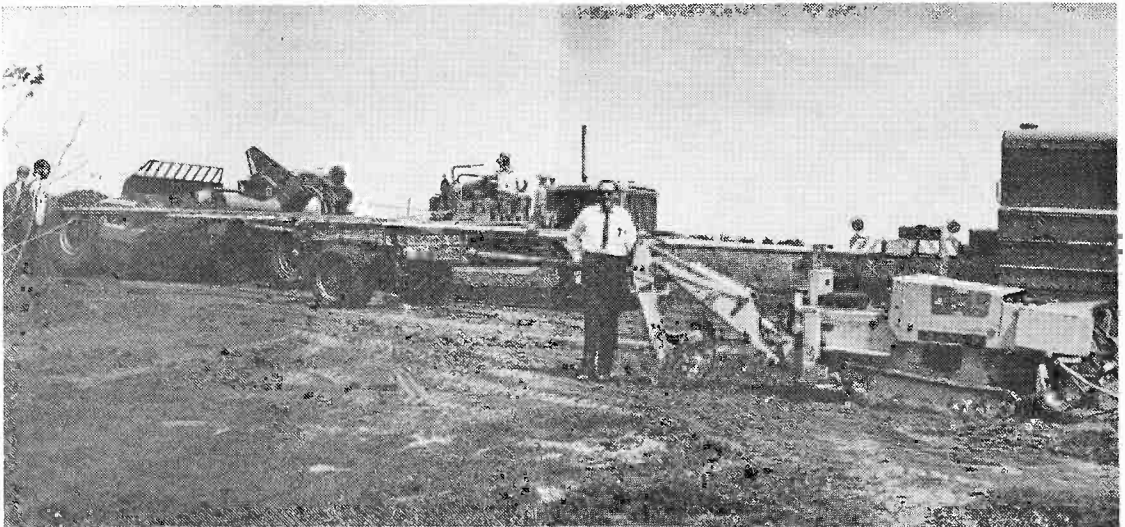
Once again the month of May has rolled around, which means another class of students is about to finish their school days and receive their diploma. Some of these will be going on to college, whereas others will be going out into the world to start a completely new and different life. If you are a graduating student, whichever you choose I wish you well.

We have several KMA people involved in high school graduation. We are involved at our house as Annette completes her high school career the last of May. Her desire is to continue with her schooling and she has been accepted for enrollment at Grinnell College, Grinnell, Iowa. Annette has been looking forward to college for quite some time, and, since Grinnell is her first choice, we are naturally very pleased she has been accepted. We had a few anxious moments, because considerable time lapsed from the day she sent in her application until she received word of her acceptance. We are also pleased Annette will be attending college not too far from home as we will have the opportunity of seeing her more often than if she were to attend a college far away.

Other KMA family graduates are Mike Childs, Carol Burrichter, and Sharon Roulstone.

The picture on this page was taken in our back yard Tuesday, April 16. For two days our yard was a beehive of activity with workmen from the telephone company, light and power company, electricians, plumbers, etc. We recently acquired a strip of land directly behind our house, and as you can see, workmen moved in and started leveling this ground in order to incorporate it into our back yard. The bulldozer started work at 7:00 o'clock and, within a matter of 45 minutes, all of our planting—including a 15 ft. Concolor Fir, a 12-14 ft. Colorado Blue Spruce, a Red Bud tree in full bloom, a Clump Birch, and Ornamental Plum plus several shrubs—were completely grubbed out. As the bulldozer approached the 10-year old Concolor Fir, my wife turned her back and said, "I can't stand to see it go." About the same time, Eddie came rushing into the kitchen and he said, "Mommie! Mommie! They are tearing out all of our trees, our whole back yard! Tell me, 'Has Dad flipped his lid?'" I hope I haven't and don't believe I have, and when the project is completed it will be a fine addition to our backyard. Naturally, it will mean all new plantings, but when they are in we will have many more flowers and, in due course of time, the trees will grow to sufficient height to provide ample shade.

Continued on Page 15



# Frank Comments

By FRANK FIELD

The picture this month was taken on Easter Sunday, April 14, and shows our grandchildren, Mr. and Mrs. John Fishbaugh, examining one of our dwarf Plum trees. John and Donna were married last June and are both attending Buena Vista College at Storm Lake. They have a nice apartment near the campus and are getting along very nicely. Like most college students, they had a short Easter vacation this year so they divided their time between her folks and his folks.

The tree they are looking at is a dwarf Plum which has been planted for five years and never has borne a crop of fruit yet. It is a Sapa Plum which ordinarily bears fruit at a very early age but this particular tree has had tough luck for three successive years. It had quite a few blossoms the second year but we had a hard frost while it was blooming which very effectively put a stop to any fruit for that year.

Then the third year it bloomed quite heavily but the same thing happened again—a hard frost while it was in bloom. We wound up the season with one plum, which was delicious. We divided it between the two of us. Then the fourth year, last year, the season was nearly two weeks late and it was about the first of May before the

tree came out into full bloom—you guessed it—another frost, and again we wound up with one plum! This year the season is about two weeks early and the little Sapa tree was in full bloom by the 10th of April, and we quite often have killing frosts in this area as late as May 10, so our chances of harvesting a crop of Sapa Plums is only about 50 - 50.

Remember, I told you last year that I planted ten dwarf fruit trees down over the hill behind the house, where we have our vegetable garden? Nine out of the ten lived and made a good growth last year, and the surprising thing is that two of the trees are blooming fairly heavy, and we have hopes of getting a little fruit off them if the frost holds off. One is a Superior Plum and the other a Red Max Bartlett Pear. It is true that dwarf fruit trees will bear several years earlier than the standard trees but it certainly is out of the ordinary to have them bloom the second year.

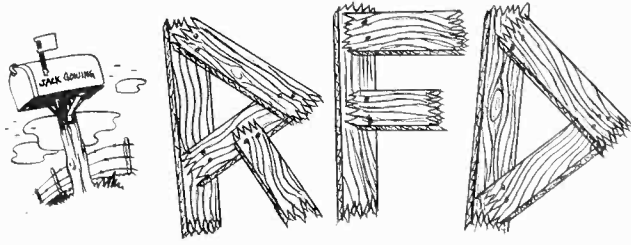
The early garden is up and doing nicely as I got it all planted along in March when we were having plenty of rain. This includes peas, beets, radishes, onion sets and plants. On April 5, I planted two short rows of Golden Beauty Sweet Corn just to see what would happen and it is just coming through the ground as I am writing this, on April 16. The forecasts yesterday called for fairly heavy rain for today, so last night, April 15, I planted two rows of Dinner Belle Sweet Corn and two rows of Contender Beans. The beans are pretty much of a gamble, planted this early, but if they don't get frozen off, we will sure have some early beans. If they do get frosted, I am only out 10-15¢ for seed and they can always be replanted. In fact, I expect to make successive plantings about every ten days from now until about the fourth of July so as to have a succession of green beans coming on all summer.

No, we do not have any tomatoes out yet as they would be too much of a gamble. The last week in April will be plenty early and even then they will be protected by Hot Kaps.

See you next month!

The KMA Guide





by  
Jack  
Gowing



I promised you a picture from the Pierce Creek Watershed area and here it is. This is taken just a few hundred feet upstream from what will be the lower or last structure in the gully. I think you can get a pretty good idea as to just how big the gully is and yet the entire watershed is relatively small.

The entire watershed covers 3,812 acres or just under 6 square miles. As you might guess, the major problem is gully erosion and affects everyone of the 45 farms that are in the watershed. To date, owners of 2,530 acres or about 66 percent of the agricultural area of the watershed are cooperating with the Page County Soil Conservation District for installing land treatment measures.

Basic farm plans have been developed on 2,240 acres or 59 per cent of the Agricultural area. Soil losses are estimated to be about 6 tons per acre. Land use in the watershed is divided as follows: 2,870 cropland acres or 75.3 per cent; 682 pasture acres or 17.9 per cent; and 260 acres for other uses (woodland, wildlife, farmsteads, roads, idle, etc.) or 6.8 per cent.

There are 8 structures proposed, one of which will impound water that will cover about 37 acres. This will be the largest structure. Most of us living in the watershed are quite anxious for some of the construction to start on the major structures.

The KMA area has tremendous possibilities for recreational areas under the watershed program. I think it is unfortunate that we need the conservation work done but since it should and can be done we should take advantage of the potential that is here.

In the years ahead I believe that water will become one of our most valuable resources and probably will be one of the hardest to find. Through watershed development programs we could develop an area where people would want to live the year

around which would mean a reversal of the population trend and also develop some wonderful vacation spots. If we take advantage of this potential we could change the entire income picture over the entire area, many small businesses and industries would be needed to serve the increase in population and many more for the tourists that would be vacationing in the area.

The Bluffs area along the Missouri River is another area which has a lot of beauty the year around but we don't think to promote it. I wonder how many of you Guide readers have taken a leisurely drive through the Bluffs, over the narrow dirt roads. If you haven't you are missing some beautiful sights.

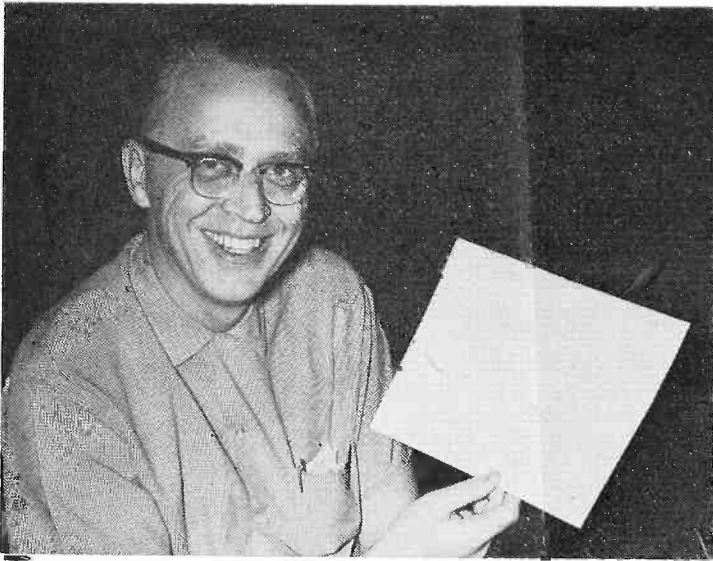
I'm sure there would be many points of interest to travelers in our area which are quite commonplace to you and me because we see it often or because it is too close to home.

I would like to hear from you about some of the interesting places near where you live. If you will send me the information we will try and tell about some of them in the coming issues of the Guide.



## All Smiles

Well in advance of tour deadline, Mike Heuer already has 29 folks rarin' to go on the KMA tour to Nashville, Tennessee, the nation's capital of Country Western Music. Mike's minimum number for the chartered bus is 33, so only a few more are needed to assure the required number. Mike continues to make special arrangements in Nashville for unusual side-light events in addition to Grand Ole Opry. For complete details, contact Mike Heuer c/o KMA.



## Master Farmer

On the left with KMA Associate Farm Director, Tom Beavers, is Joe O'Hara who was one of four to receive the coveted Iowa Master Farmer Award. Joe is very familiar around the state, active in many farm organizations and President of Iowa Soil Conservation Districts. He farms 712 acres, feeds out 150-200 steers, raises 800-900 hogs, and keeps 25 to 30 shorthorn beef cows.



## Capitol News

This year's Iowa legislature is working overtime to iron out an exceptional number of highly publicized and controversial bills. Pictured are KMA news director, Dean Naven (right) with Senator Vern Lisle (center) and Representative Paul McElroy of Fremont County discussing action at both houses in Des Moines on the weekly Sunday program "Legislative Report", 12:15 p.m. Senator Lisle is a regular guest on the show; Representative McElroy is one of many special guests who have appeared this session.



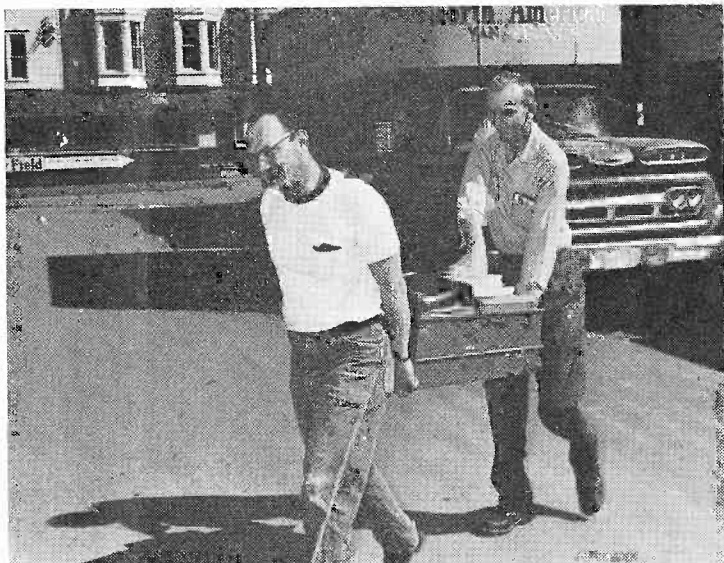
# Moving Day!

Wednesday, April 17 was M-Day at the KMA business offices. The old building, pictured on page 15, is to be razed and a bright new replacement to take its place, which will house the entire KMA business and broadcasting operation. The new building will be the same width, but extend considerably deeper to make additional room for facilities which are now housed in the auditorium.

While razing and construction are under way it was necessary to find new quarters for everyone. Preparations were made and on moving day the flurry of activity reminded one of a hive of bees moving all their possessions to a new hive. Movers, office girls, engineers, department heads, everyone grabbed everything and carried or rolled it across the street to temporary quarters. By mid-afternoon, and many, many trips back and forth, the job was complete. What looked like chaos at ten was a full functioning business again at two.

Top picture shows Andy Andersen, salesman and sports announcer, rolling material on a two-wheeler, while Nancy O'Day of continuity takes advantage of a typewriter stand to also transport a load of office records. Nancy is holding down loose paper because the wind was gusting very strongly. The strong wind is evident in the center picture, which shows Farrell Turnbull, Traffic Manager, and Evalyn Saner, Managerial Secretary, as they buck the wind with armloads of material.

Pictured at bottom is Warren Nielson, Production Manager, with engineer Norm Kling bringing up the rear as they transport a drawer full the hard way. Everyone was happy to be evicted with October the proposed date to move back across the street into bright, shiny new quarters. We'll keep you posted on building progress in each issue of the Guide.



# On the KMA PARTY LINE

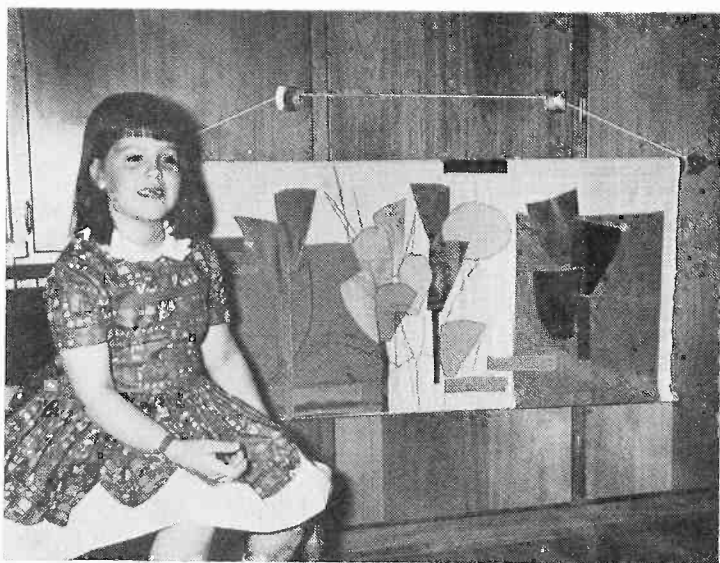
By DORIS MURPHY

Annette May, Shenandoah High School Senior and daughter of Mr. and Mrs. Edward May, was a recent national winner in the Quill and Scroll annual National Writing Contest in the editorial division. Her winning entry: "The Student Council Is a Useful Tool?" appeared in the January 14th issue of the Shen-Hi-Can. As a national winner, Annette was awarded Quill and Scroll's National Gold Key and the Edward J. Neil Memorial Scholarships in Journalism. These scholarships have a value of \$500 each, to be paid in two equal installments after the beginning of the freshman and sophomore years of study at any college or university offering a major in journalism. Applicants are required to sign a statement signifying their intention of majoring in journalism. Annette's entry, with the entries of two other students, were sent in by the Shen-Hi-Can sponsor, Mrs. Adella Shoemaker. Congratulations to Annette for winning this high honor.

Even though she will be 89 in August, Mrs. Mary Malone of Mobile, Alabama is young in heart and in spirit, and when her niece, Mrs. Gertrude May, wrote she was taking a vacation trip to Texas in March, and invited "Aunt Mary" to come home with her for a visit, she was delighted.

"Aunt Mary" is a sister of Mrs. May's father, the late E. S. Welch, founder of the Mount Arbor Nursery. She is thoroughly enjoying the beauty of springtime in Iowa, having formerly lived in the Midwest, before going south to make her home with her daughter. Mrs. May was accompanied on her motor trip South by Mrs. Edna Buntz, going to Dallas, then to Lockhart, Texas, where they visited friends who are neighbors near the May's summer cottage at Mercer, Wisconsin. Next stop was at Corpus Christie, then thru the Rio Grande Valley. At McAllen they saw Mr. and Mrs. Ed Squire of Shenandoah who were vacationing in the south. With them they took sight seeing trips into Old Mexico. At San Antonio, Mrs. Buntz took a plane to Casa Grande, Arizona where she visited friends and relatives in San Antonio, New Orleans and Mobile. Mrs. J. D. Rankin, Jr., flew to New Orleans and accompanied her mother on the return trip home, assisting with the driving. Photographer Duane Modrow took the picture of Aunt Mary with Mrs. May.

Pat Koelker, wife of Station Mgr. Tony Koelker, is an artist in many ways. She paints pictures, carves figures out of wood, covers lamp shades, sews clothes for the family, makes bedspreads and drapes . . . even paints the walls of her home. After getting her brand new Slantomatic sewing machine recently, she was thrilled at the many things she could make with this amazing machine. She could make fancy stitching of all kinds, button holes and could sew on buttons without a bit of hand work. Inspired by the new sewing machine, she made two suits and a dress for herself, eight dresses for her daughter Malia, plus nine pairs of pedal pushers, three pairs of shorts and five tops. It was so much fun, she decided to try her hand at "Creative Stitchery". You will see the result of her artistic effort, in the beautiful and unusual wall hanging pictured on this page, in back of Malia in her pretty



Pat Koelker, versatile sewing talents.



Easter dress which was also made by mother. This "Fabric Collage" is made of beige rough silk, with pieces of bright colored silk applied on by machine, in a pattern resembling a modern painting. Shades of bright yellow, orange, greens, blues, and purples, were used to give a most striking effect. The "Collage" is hung by means of a rod across the top, then hung with a silk cord. No telling what else Pat will come up with, when her sewing machine gets to going again. Naturally Malia was proud of her Easter dress, and according to Pat, there was not a stitch by hand, on the dress. Pat loves to keep busy and when Tony went to a radio convention in Chicago recently, she painted three pictures for the Joslyn Art Museum in Omaha and painted the walls of the family room while he was gone! If YOU enjoy sewing, maybe you will like trying your hand at "Creative Stitchery". It will be interesting to see what original ideas you can come up with!

Her first year playing in the great outdoors, has Marcie, 3 year old daughter of Guide Editor Duane Modrow, real excited! Whenever her mother brings her in the house she screams and wants to go right back out to play. For awhile her mother could lock the combination aluminum door from the inside by pushing a button, and Marcie couldn't get out. But in no time at all, Marcie discovered how to open the door, even when it was locked. She would push a little pin on the side of the lock and out she would go. Her parents didn't even know the door could be opened in this manner, and Marcie got outdoors several times before her mother realized how she was doing it. Now, it is a struggle to keep her in the house, since she has learned the secret of unlocking the door. There are so many interesting things out in the big wide world for this cute little 3 year old to see, that she can't stand to stay in the house!

Knowing the KMA personnel would soon be moving to temporary quarters in the May Seed building, while the new KMA studios and offices are being built this summer gave Warren Nielson the inspiration to clean out his desk. He was a little embarrassed when he realized it must have been quite a number of years since he had given the desk a good cleaning, as he found an unused 2¢ postal card, an old 1960 fishing license, information on the 1959 Ford cars and lots of other items along past usage. But Secretary Evalyn Saner topped HIS finds, when she came across a perfectly good ONE cent postal card while cleaning out a file! It has probably been TEN years since we have had one cent postcards and the 2¢ cards went up to 3¢ back in August, 1958. My, it is a good thing we have to move occasionally so we can have a good house cleaning!

It was Farm Service Director Jack Gowing's birthday, and the event apparently had his young son Randy in a reminiscent mood. That evening when Jack was getting Randy ready for bed, he didn't want his dad to leave. So Jack lay down on the bed with him for awhile. They got to talking about Jack's birthday. "What were things like way back when you were born?" asked Randy. Quickly his dad replied: "Do you think I could remember?" After much deep thought Randy came up with the answer. "No I don't suppose you could, because I can't remember when I was born!"

Typical of all 6-year-olds who never walk down the stairs but jump down, KIM, daughter of the Dean Navens was jumping down the stairs, then stopping as though listening, then jumping another step and stopping to listen again. The mystery was solved when she walked over to her daddy and said: "Daddy, listen to my water wiggle!" Her stomach was full of water and she had found it fun listening to it gurgle, as she hopped down the stairs!

KMA announcer Mike Heuer has been selected for the leading role in the play: "Send Me No Flowers", to be presented by the Southwest Iowa Theater Group May 3, 4, and 5. Mike will take the part of George Kimball, a hypochondriac in the comedy. Other KMA personalities in the cast include: Dean Naven, a cemetery plot salesman; and Barbara, wife of announcer Jim Ross who will play the part of "a girl." Since Mike is on stage most of the time, he has a great many lines to learn, so every spare moment is spent in learning his part. "Send Me No Flowers" will also be a challenge to John Sawyer, the lighting

Continued on Page 15



Dean Naven introduces Gov. Hughes

# A Letter From Mary Williams

Dear Friends,

Spring fever has certainly hit the Williamses—all four, maybe I should say five, since the children always include our dog, Lassie, when they count the family members.

After our recent afternoon excursion and picnic to Waubonsie State Park, near Sidney, Iowa, Charlie (my husband) decided it would soon be time to check out the camping equipment. He, like the rest of us, was impressed by the lovely, clean grassy campground at the park. Incidentally, one of the largest and loveliest redbud trees we saw this year was growing in the middle of that campground. It looked like a clump of redbuds which had grown together to form one glorious tree. This particular tree is one of few trees of any size in the campground. Many trees have been planted there but are still quite small.

About the time you are reading this Charlie will probably be in New York state at beautiful Lake George attending a convention for his company, Central Surveys. Sometime I would like to see that area because Charlie has always talked about how beautiful the scenery is, even though it is rather inaccessible. There are no trains or buses making a direct connection to the lake resort. However, I can't make the trip this year because of too many commitments of my own and of course, the children will still be in school.

Since last month, the two members of our families who are in the army have made news for our relatives. First, Charlie's older brother, Hal Williams, who is a psychologist with the Walter Reed Army Re-

search Institute has been promoted to the rank of Lieutenant-Colonel, and naturally we are all very proud of him. He and his wife, Bette, and family reside in Silver Spring, Maryland. Then my young nephew, Jerry Romdall, who recently finished some training in Georgia has been sent overseas to Germany. His wife, Jane, returned to Mexico, Missouri, (their hometown where both their parents live) to stay until he can return to the states. When we went to Missouri at Christmas time, we were lucky enough to be there while Jerry and Jane were visiting also.

In the picture on this page you see me as I was interviewing Mrs. Polly Stoehr. She is a beloved duchess of the International Flying Farmers and came to Shenandoah for the Iowa Flying Farmers convention. At 73, this energetic woman has the buoyancy and verve of one half her age. The fact that she learned to fly at 64, encouraged by her husband, Fred, who is a lawyer in Pasadena, California, and also a flyer, shows that she knows how to stay young.

Our interview took place at the Tall Corn Motel in Shenandoah where the Flying Farmers convened. In the picture, Polly is holding her duchess crown and also her "brain bag" as she calls it because it contains her navigational maps and other pertinent flying information. Printed on the bag is the inscription "I'd rather fly," and Polly lives up to that motto since she has logged over 1300 hours in these few years of flying.

As you may know, I did some flying several years ago and actually got my license so just talking to Polly really gave me the "bug" to fly again. Polly flew from Pasadena to Dalhart, Texas, carrying a couple of passengers. At Dalhart she picked up her sister who accompanied her to Shenandoah. Her sister is also a flyer and owns her own plane.

Polly and her husband have two planes so if they want to go different directions they can. Because of her joyous attitude and engaging personality, Polly is a person you like to be around, and I was especially glad when she came to church Sunday she was in Shenandoah, and later that Sunday afternoon, my family and I went out to see her off with the very sincere hope that we shall meet again.



Mary interviews vivacious duchess of Flying Farmers

# Getting To Know You



## Vacation Showcase May 25 and 26

The above dates promise to bring Shenandoah visitors an outstanding extravaganza of vacation ware all on display in one area. Plans are reaching a feverish pitch as the 1963 KMA Vacation Showcase approaches.

All of the spacious indoor and outdoor facilities of Sportsman's Park on the north edge of the city will be used for indoor booths, large outdoor action demonstrations, stage shows and special amusements for the youngsters. Admission is free to the general public.

Exhibitors are expected to have every conceivable type of vacation-oriented merchandise under the sun for visitors to browse over. There will be items of interest for every member of the family, all keyed to the vacation theme — where to go, how to go, what to do.

One of the unusual features of the exhibits will be large outdoor demonstrations which will include such items of interest as trapshooting, fly casting, golfing, swimming, camping, outdoor cooking, and many other exhibits not normally seen in auditorium displays.

The 1963 KMA Vacation Showcase will officially open at 12 o'clock noon, Saturday, May 25. Indoor exhibits will be located in the new Armory Building, stage shows in the Rose Garden Theatre Building. There will be two shows each day, afternoon and evening. Specific times will be announced.

Vacation Showcase is timed just right to give vacation-minded KMA-landers ample suggestions and a first-hand look at all types of items for vacation fun, leisure, and pleasure.

Stay tuned to KMA for complete details and plan right now to bring the whole family.

## May is National Radio Month

During the month of May KMA will join thousands of other radio stations throughout the nation in celebrating National Radio Month. This year's theme will be "Radio—the mobile medium". The mobility of radio is its most unique feature.

Radio not only moves to where events are happening, but brings them to you wherever you are. Radio is your constant companion while you're on the move—in your pocket, purse, auto, or home. Radio brings the world to your ear.

### THINGS I REALLY LIKE

1. The first warm day of spring.
2. A good meal.
3. About 60 minutes of nap on the couch on Sunday afternoon.
4. The white board fences you see on so many farms these days.
5. Country music and the people involved.
6. Being in a little theatre group.
7. To hear a good arrangement of a song.
8. To watch and listen to a good entertainer.

### THINGS I REALLY DON'T CARE FOR

1. The first cold winter day.
2. A trip to the dentist.
3. Yard work and other so called odd jobs around the house.
4. A full grown beard on most people.
5. A fair-weather friend.
6. A snob.
7. A bee-hive hair-do.
8. People who are not prompt with their appointments.
9. People who dial the wrong number and hang up without apologizing.
10. The approximate - 20 pounds I'm carrying around.

### THINGS I REALLY LAUGH AT

1. Some of the teen-age rock and roll records.
2. Someone putting on the dog.
3. Certain politicians.
4. A good comedian.
5. Abstract art.

### THINGS I NOTICE AND ADMIRE

1. A well-kept home.
2. A beautiful woman (what man doesn't!)
3. When a town I'm traveling through has a beautiful down-town section.
4. Some one else's talent.

### MY HOPELESS AMBITION

To travel to any part of the world when I desire, and for as long as I desire.

### I'M A SUCKER FOR

My kids

MY NAME: Mike Heuer

May, 1963

# "My Best" Recipe Selection for May

## SCALLOPED CHICKEN

This unusual recipe combines chicken, stuffing and rich sauce. Delicious! Will serve 12. Good for buffet supper dish.

1st Step: Put a fat 5 lb. hen in a large pot with a carrot, a sliced onion, 2 t. salt and 2 quarts boiling water. Cook very slowly 2½ hours, or until the meat begins to leave bones. Let bird cool in liquid. When cool, take out and pull meat off bones and skin off the meat. Put skin through the meat chopper and cook giblets in salted water.

2nd Step: While hen cooks, make stuffing. Crumble 1 loaf (day old) white bread. (Save crusts to grind up and use other ways). Melt ½ c. butter in very heavy skillet. Cut up 6 sprigs parsley and one medium onion, 2 large pieces celery (use celery tips, too). Cook giblets in the melted butter over low fire 5 minutes. Mix bread crumbs with this mixture lightly with fork to keep dressing fluffy. Grind cooked giblets and mix in. Add 1 t. salt, good dash white pepper and 1 t. poultry seasoning. Finally, mix 6 T. chicken broth — no more or dressing will be heavy.

3rd Step: SAUCE: Skim off top of chicken broth and melt 1 c. in large sauce pan. If you do not have that much fat, make up difference with butter. Heat 4 c. chicken broth and 1 c. milk together — do not boil. Stir 1 c. flour into melted fat until smooth. Add broth and milk, mixing gradually — stir constantly. Add 2 t. salt and cook until very thick, stirring all the time. When cooked, beat 4 eggs slightly and mix in a little of the sauce (thick to keep the eggs from cooking up). Then combine sauce and eggs and cook over low fire another 3 or 4 minutes. Keep stirring. When you take it off the stove add chicken skin.

4th Step: Grease 1 large and 2 small casseroles. Put stuffing in the bottom carefully. Pour over it ½ the sauce. On the top of this cut up the chicken meat with scissors in nice pieces and add remaining sauce. Take 1 c. dry bread crumbs and toss in 4 T. melted butter — sprinkle on top. Put casserole in moderate oven (375°) and bake 20 minutes or until the crumbs are a golden brown and scalloped chicken is piping hot all the way through.

\* \* \*

## VEGETABLE SUPREME

- 1 can string beans
- 2 eggs
- 1½ c. liquid (milk and bean liquid)
- 4 slices bread, cubed
- 1 c. grated cheese
- salt and pepper

Combine well-beaten eggs, milk, salt and pepper. Alternate layers of beans, bread and cheese in a buttered casserole. Add milk mixture and bake 45 minutes.

## ESCALLOPED ASPARAGUS

- 2 14 oz. cans canned asparagus
- 20 stuffed olives
- 1 3 oz. can mushrooms
- salt

Arrange in layers in 11 x 11 pan and cover with white sauce. Top with buttered cracker crumbs. Bake at 375° for 30-40 minutes.

### WHITE SAUCE:

- 4 T. butter
- 3 T. flour
- 1½ c. milk
- salt, pepper

### CRUMBS:

- ¼ lb. melted butter
- 24 crackers

## HAM LOAF

- 1½ lb. ground beef
- ½ lb. ground smoked ham
- 2 eggs, beaten
- 1 c. dry bread crumbs
- ½ or ¾ c. tomato juice
- ½ t. salt

Mix all well, form into loaf and put in small roaster or pan with cover. On top, put 3 or 4 thick slices of onion.

### GLAZE FOR HAM LOAF:

- 1 c. tomato juice
- 3 T. vinegar
- ½ c. brown sugar
- ½ t. black pepper

Mix well and pour over the loaf. Baste every 20 minutes, until all liquid is thick and loaf glazed. Bake loaf 1½ hours in 350° oven. The last 20 minutes, you can leave cover off so liquid will be very thick and will coat the loaf well.

\* \* \*

## FREEZING ASPARAGUS

If you grow asparagus in your garden or if you're a city dweller with a freezer who wants to take advantage of the seasonally low price of asparagus, try freezing some.

Home frozen asparagus will keep as long as 12 months in a freezer held at 0° F. or below.

Just follow these directions from the U.S. Department of Agriculture's Agricultural Research Service.

Select young, tender stalks with compact tips.

Wash asparagus thoroughly and cut or break off and discard the tough parts. Leave spears in lengths to fit the package or cut them into 2-inch lengths.

Heat stalks, in boiling water according to thickness of stalk — 2 minutes for small stalks; 3 minutes, medium; 4 minutes, large.

Cool promptly in cold water and drain. Pack in containers. Seal and freeze.

One to 1½ pounds of fresh asparagus will yield 1 pint frozen.

# Springtime Treats

## FROZEN FRUIT SALAD

- 1/4 c. sugar
- 1/2 t. salt
- 1 1/2 T. flour
- 1 egg
- 3/4 c. pineapple juice
- 2 T. lemon juice
- 1 c. cream, whipped
- 3 bananas, mashed
- 1 c. diced pineapple
- 1 c. diced pears
- 1/2 c. maraschino cherries, sliced

Combine sugar, salt and flour and stir in pineapple juice. Cook over low heat until thickened. Remove from heat and stir a small amount of the mixture into slightly beaten egg. Return to heat and cook one minute longer. Cool. Add remaining ingredients and freeze in freezing compartment of refrigerator until firm. Remove from freezing compartment one hour before serving. Cut into squares to serve. Serves six.

\* \* \*

## SPRING SALAD

SALT the following diced vegetables:

- 1 c. tomatoes
- 1 c. celery
- 3 T. green pepper
- 3 T. cucumber
- 1 t. onion

PREPARE one package lemon Jello in one cup boiling water. When partially set beat in:

- 1/2 c. mayonnaise
- 1/2 c. whipped cream

ADD:

- 1/2 c. cheddar cheese (grated)
- (1 1/2 tomatoes for cupful, and about 1/3 pepper for 3 T.)

\* \* \*

## PINEAPPLE ICE BOX DESSERT

Dissolve 1 package lemon gelatin, according to directions on box. Let set until ropey. Combine:

- 1 small can crushed pineapple drained
- 12 cut marshmallows or small ones (half a sack)
- 1/2 pint whipping cream flavored and sweetened
- 1/2 c. English walnuts

While gelatin is ropey, combine all ingredients together. Line bottom of large pyrex baking dish with vanilla wafers; then pour one-half of mixture over them, another layer of vanilla wafers, and the rest of the mixture. Then crush a few wafers, and sprinkle on top. It can be served in about 2 hours. Will serve 8 to 12. One box of vanilla wafers is usually required for this recipe.

## HAWAIIAN CHEESE CAKE

- 2 c. crushed pineapple, drained
- 2 oz. cream cheese
- 1/2 c. sugar
- 4 T. melted butter
- 1 pt. slightly soured cream
- 3 T. sugar
- 24 graham crackers, crushed fine
- 2 eggs
- 1/4 t. cinnamon
- 2 T. sugar
- 1 t. vanilla

Mix drained pineapple with cream cheese, eggs, 1/2 c. sugar in cinnamon. Beat with beater. Butter 9 inch spring mold and line with mixture of half of graham crackers, butter and 2 T. sugar.

Pour cheese mixture into crumb lined pan. Bake in 375° oven for 20 minutes. Combine sour cream, 3 T. sugar, and vanilla. Pour over baked mixture. Cover with remaining crumbs and return to 375° oven for 5 minutes. Serve chilled.

\* \* \*

## FROZEN LEMON PIE

COMBINE:

- 2 egg yolks, slightly beaten
- 1/3 c. sugar
- 2 T. lemon juice
- 1/2 t. lemon rind

Cook together until thick — low heat — then cool. Beat egg whites until stiff. Add 2 T. sugar to egg whites, fold in with lemon mixture. Then fold in 1 c. cream, whipped. Put graham cracker crumbs on bottom of freezer tray and put in filling. Top with graham cracker crumbs.

\* \* \*

## ROYAL MINT DAZZLER DESSERT

- 2 c. vanilla wafer crumbs
- 1/4 c. melted butter
- 1 pkg. chocolate pudding mix
- 1 c. whipped cream
- 1 c. miniature marshmallows
- 1/2 c. crushed peppermint candy

Blend together crumbs and butter. Press firmly into 8 inch square pan. Chill. Prepare pudding according to directions. Cool. Spoon over the crumbs. Whip cream and gently fold in marshmallows. Spread whipped cream over chocolate layer. Sprinkle with crushed peppermint candy. Chill.

\* \* \*

## ICE CREAM SALAD

- 1 c. hot water
- 1 package lime gelatin
- 1 pt. vanilla ice cream
- 1/3 c. grated cheese
- 1/2 c. grated carrots
- 1 small can crushed pineapple, not drained

Dissolve gelatin in hot water. Add ice cream and mix until melted. Add grated carrots, cheese and pineapple to gelatin and ice cream. Mix well. Pour in pan to set.

960 ON YOUR DIAL

5,000 WATTS—ABC

**DAILY DAYTIME PROGRAM****MONDAY THROUGH FRIDAY**

5:00 a.m.—Town & Country Hour  
 6:00 a.m.—News & Weather  
 6:15 a.m.—Western Star Time  
 6:30 a.m.—RFD 960  
 7:00 a.m.—Dean Naven, News  
 7:15 a.m.—Frank Field  
 7:30 a.m.—Markets  
 7:35 a.m.—Lawrence Welk's Show  
 7:45 a.m.—Morning Headlines  
 8:00 a.m.—Accent On Music  
 9:00 a.m.—Breakfast Club  
 9:55 a.m.—News  
 10:05 a.m.—KMA Community Calendar  
 10:10 a.m.—Housewives Serenade  
 10:30 a.m.—Mary Williams Show  
 11:00 a.m.—Back To The Bible  
 11:30 a.m.—Informacast  
 12:00 noon—Dean Naven, News  
 12:15 p.m.—Edward May  
 12:30 p.m.—Tom Beavers  
 12:45 p.m.—Markets  
 1:00 p.m.—Jim Ross Show  
 4:00 p.m.—Mike's Matinee  
 5:40 p.m.—Tom Harmon Sports  
 5:50 p.m.—Alex Dreier  
 6:00 p.m.—Life Line  
 6:15 p.m.—Paul Harvey  
 6:20 p.m.—On The Line With Bob Considine  
 6:25 p.m.—As Naven Sees It  
 6:30 p.m.—Ralph Childs, News  
 6:45 p.m.—Mkts. & Weather

**MONDAY NIGHT**

7:00 p.m.—Night Flight  
 10:00 p.m.—Ralph Childs, News  
 10:15 p.m.—Music In The Night  
 11:00 p.m.—News  
 11:05 p.m.—Music In The Night  
 11:30 p.m.—Back To The Bible

**TUESDAY NIGHT**

7:00 p.m.—Night Flight  
 10:00 p.m.—Ralph Childs, News  
 10:15 p.m.—Music In The Night  
 11:00 p.m.—News  
 11:05 p.m.—Music In The Night  
 11:30 p.m.—Back To The Bible

**WEDNESDAY NIGHT**

7:00 p.m.—Night Flight  
 10:00 p.m.—Ralph Childs, News  
 10:15 p.m.—Music In The Night  
 11:00 p.m.—News  
 11:05 p.m.—Music In The Night  
 11:30 p.m.—Back To The Bible

**THURSDAY NIGHT**

7:00 p.m.—Night Flight  
 10:00 p.m.—Ralph Childs, News  
 10:15 p.m.—Music In The Night  
 11:00 p.m.—News  
 11:05 p.m.—Music In The Night  
 11:30 p.m.—Back To The Bible

**FRIDAY NIGHT**

7:00 p.m.—Night Flight  
 10:00 p.m.—Ralph Childs, News  
 10:15 p.m.—Music In The Night  
 11:00 p.m.—News  
 11:05 p.m.—Music In The Night  
 11:30 p.m.—Back To The Bible

**SATURDAY PROGRAMS**

5:00 a.m.—Town & Country Hour  
 6:00 a.m.—News & Weather  
 6:15 a.m.—Western Star Time  
 6:30 a.m.—RFD 960  
 7:00 a.m.—News  
 7:15 a.m.—Frank Field  
 7:30 a.m.—Lawrence Welks Band  
 7:45 a.m.—Morning Headlines  
 8:00 a.m.—Accent On Music  
 9:00 a.m.—Saturday Shopper  
 10:30 a.m.—Mary Williams Show  
 11:00 a.m.—Back To The Bible  
 11:30 a.m.—Polka Party  
 12:00 noon—News  
 12:15 p.m.—Edward May  
 12:30 p.m.—Tom Beavers  
 12:45 p.m.—Market Review  
 1:00 p.m.—Auction Time  
 1:15 p.m.—Saturday Matinee  
 6:00 p.m.—Life Line  
 6:15 p.m.—Music on Deck  
 6:30 p.m.—News  
 6:45 p.m.—Don Beesley & His Midwestern Country Gentlemen  
 7:00 p.m.—KMA Bandstand Country Style  
 10:00 p.m.—News  
 10:15 p.m.—KMA Bandstand Country Style  
 11:00 p.m.—News  
 11:05 p.m.—KMA Bandstand Country Style  
 11:55 p.m.—News

**SUNDAY PROGRAMS**

6:30 a.m.—Back To The Bible  
 7:00 a.m.—News & Weather  
 7:15 a.m.—Hymn Time  
 7:30 a.m.—Sun. Worship Service  
 7:45 a.m.—Morning Headlines  
 8:00 a.m.—Radio Bible Class  
 8:30 a.m.—Your Worship Hour  
 9:00 a.m.—Sunday School Lesson  
 9:15 a.m.—Bible Truth  
 9:30 a.m.—Sunday Album  
 12:00 noon—News  
 12:15 p.m.—Legislative Report  
 12:45 p.m.—Sunday Album  
 3:55 p.m.—Mon. Morn. Headlines  
 4:10 p.m.—Sunday Album  
 6:30 p.m.—News  
 6:45 p.m.—Radio Liberty  
 7:00 p.m.—Freedom Calls  
 7:30 p.m.—Revival Hour  
 8:00 p.m.—Sunday Album  
 8:30 p.m.—Issues & Answers  
 9:00 p.m.—Hour of Decision  
 9:30 p.m.—Pilgrimage  
 10:00 p.m.—News  
 10:15 p.m.—Erwin Canham  
 10:30 p.m.—Revival Time  
 11:00 p.m.—Music In The Night  
 11:55 p.m.—News

Every Afternoon  
 Monday Through Saturday

ABC Network News 5 minutes  
 before the hour

Local News on the hour

## A CHAT WITH EDWARD MAY

Continued from Page 3

Now that school is about out I hope you have a pleasant summer, and have a chance to do some traveling and visit grandma or other relatives. We haven't made any definite plans as our summer activities hinge around Karen; namely, what plans the plastic surgeon may have for Karen re-entering the hospital. She is doing very nicely following her car accident and will re-enter the hospital early in August for about four days. The doctor is very pleased with Karen's progress and he wants to have everything finished by the time school starts in September. The doctor told Karen to exercise regularly throughout the summer, particularly the month preceding the time she enters the hospital. The doctor said if she will exercise vigorously, it will make his job that much easier. Mother Nature does a wonderful job, and if we cooperate I think all of us would be better off.

A good many changes are taking place at KMA. The entire office personnel has moved out of the old building and a new one is being built. People are scattered here and things might be a little upset for the next few weeks, but everyone is anticipating the completion of our new office and studios. Each issue of the Guide will keep you up-to-date on its progress.

### PARTY LINE

Continued from Page 9

expert. He has many intricate lighting effects to work out, before the play is perfected for the opening night.

Instead of winding up the winter weather in Iowa this year, my family and I headed

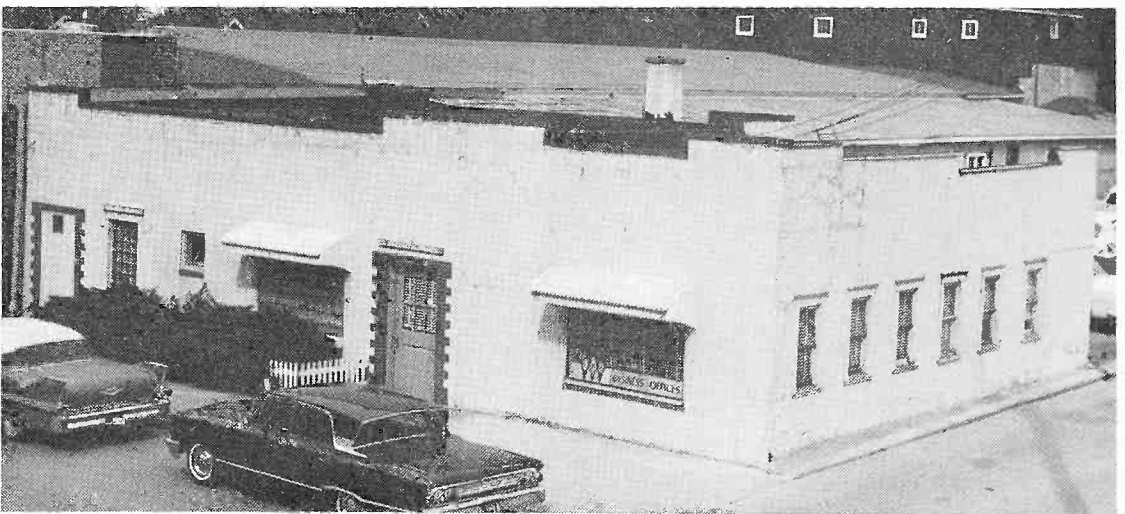
the car south on March 2nd, and drove to Phoenix, Arizona for a month's vacation. With me were my aunt, Miss Lillian Paul, my sister Carol Ambler, and Mr. and Mrs. Roy Murphy. We had a wonderful time visiting my sister, Mrs. Edward Plaster and family, while the Roy Murphys visited in the home of their daughter and husband, Dr. and Mrs. Don Ciochetti. The trip to Phoenix was very pleasant, driving the Kansas Turnpike, and covering the distance of 1471 miles in three days. Much of the last day we drove in mountains covered with snow, from Socoro, New Mexico, until about 100 miles out of Phoenix. While there we enjoyed many rides to points of interest, such as Sun City, Scottsdale, Litchfield Park where the Luke Air Force Base is located, and many more places. We were delighted when my son Tom wrote from New York, he was flying to San Francisco to an IBM convention, and would be able to fly to Phoenix and spend the weekend with us. Enroute home we came thru Flagstaff and the Grand Canyon. By the time we arrived home, the grass was beginning to turn green, and the first flowers were in bloom. Spring had come to Iowa!

I have no idea to whom I am indebted for this lovely thought, but it's well worth sharing:

This little strip of light  
'Twixt night and night  
Let me keep bright today.

Let no sorrow of tomorrow  
Nor sadness from dead yesterday,  
Gainsay my happiness today.

For if tomorrow shall be sad  
Or never come at all,  
I've had at least today!



Former KMA Business Offices, at one time Earl May Cafe, which many old time visitors will recall. Building will be stripped and demolished, replaced by new structure. Present building is 59 feet across front, 38 feet deep. New building will be one-story, same width and extend to 90 feet deep, housing entire broadcast operation, excluding transmitter.

**POSTMASTER**

**"Return Requested"**

**Tom Thumb Publishing Co.  
Shenandoah, Iowa**

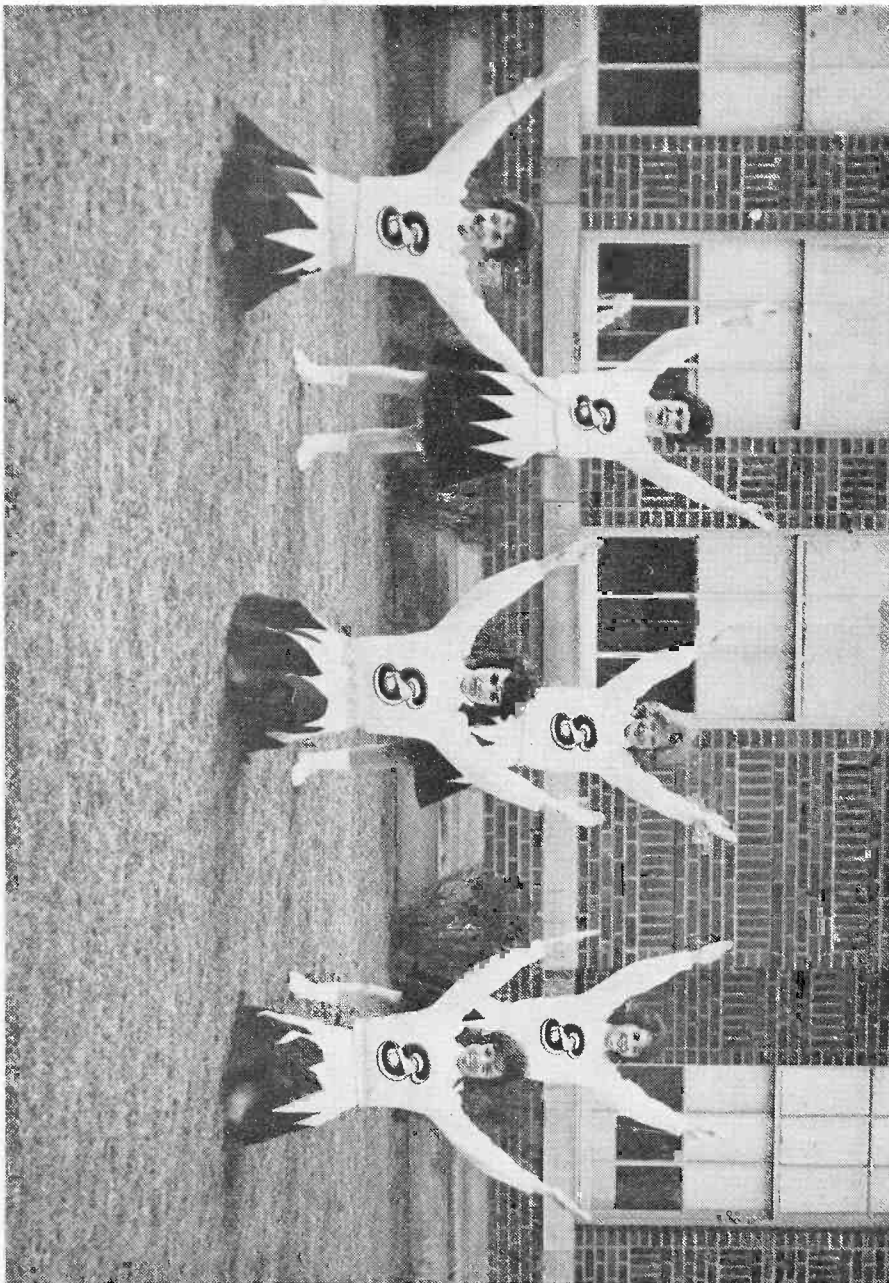
**LOIS ADELUNG  
108 E GRANT  
SHENANDOAH, IOWA**

**JULY**

**Bulk Rate  
U.S. Postage  
- PAID -  
Permit No. 1  
Shenandoah, Ia.**

**NOTE**

**If a red star appears by your name above, this indicates your subscription expires with this issue of the Guide. Send \$1.00 with your name and address for renewal.**



No, these girls don't sing soap commercials; they're the cheerleading section of Shenandoah High School. Two of the girls are daughters of KMA staff members. On the far right in the front row is Connie Burrichter, daughter of chief engineer, Don Burrichter. At center in the back row is Sharon Roulstone, daughter of morning announcer, Merl Douglas. The girls look real sharp in new outfits which were acquired at mid-season this year. L to R (front row) June Bosley, Pam Book, Connie, (back row) Carla Johnson, Sharon, and Jamie Schlick.