

The

KMA GUIDE

Vol. 9

JUNE, 1952

No. 6



KMA's

Frank Field

(See Page 6)



Hopkins, Missouri . . . I want to thank you for the check I received for winning the dog contest which was in the April issue. We sure enjoy Doris Murphy's column in the KMA GUIDE. In fact, we enjoy all of the people at KMA and couldn't get along without the GUIDE. I am also enclosing some recipes which I want to be entered in the recipe contest.

Mrs. C. H. Duffield
(Congratulations again, Mrs. Duffield.)

* * * * *

Panora, Iowa . . . Here is my entry for your "Favorite Recipe Contest". Rather I should say here is part of my entry. One envelope simply would not hold all the recipes. It's a good thing you did not limit me to one favorite recipe. That would never do for I could never decide on just one! Recipes are my hobby and I never will have too many. Your KMA GUIDE recipes and the recipes your home-makers' give on their programs are added to my collection. I'll be anxious for the June GUIDE to arrive.

Bonnie Jackson
(For a list of the winners in the recipe contest see page 10 of this issue.)

* * * * *

Mount Ayr, Iowa . . . I wish to enter the recipe contest mentioned in the May KMA GUIDE, so here are two of our favorite recipes. The meat dish is the one my husband's grandmother used. It was in a cook book which was dated 1909. The vegetable recipe is easy to serve and it tastes, "Oh, so good".

Mrs. Robert Poush

* * * * *

Hopkins, Missouri . . . Enclosed please find six of my favorite recipes which I want to enter in your recipe contest. I have enjoyed entering every contest the KMA GUIDE has. Keep them coming!

Annice Owens

* * * * *

Humeston, Iowa . . . My recipes for the contest are enclosed. We enjoy the KMA GUIDE so much and can hardly wait from one month to the next. We especially enjoy hearing Frank Field and reading his page in the GUIDE.

Mrs. Loyd Hickok

The KMA Guide is published the first of each month by the Tom Thumb Publishing Co., 205 North Elm St., Shenandoah, Iowa. Owen Saddler, editorial chairman; Harold B. Arkoff, editor; Doris Murphy, feature editor. Subscription price \$1 per year (12 issues) in the United States; foreign countries, \$1.50 per year. Allow two weeks' notice for changes of address and be sure to send old as well as new address.

New Afternoon Polka Program Now On KMA

A new daily program of polka tunes, "Polka Time", is now heard each afternoon at 1 pm on KMA. Genial Merl Douglas spins the polka records on this new platter show which will become a regular KMA daily feature.

WAHOO, NEBRASKA MAN ON KMA ENGINEERING STAFF

Harold Horak of Wahoo, Nebraska has begun his duties on the KMA engineering staff as a summer replacement. Harold and his wife have rented an apartment in Shenandoah.

KMA PRESENTS "YOUR STATE PARK" SERIES

KMA is now presenting a special series of programs on state parks in the Iowa, Nebraska, Missouri and Kansas areas served by KMA as a method of informing residents of this area of the recreational facilities available close to home.

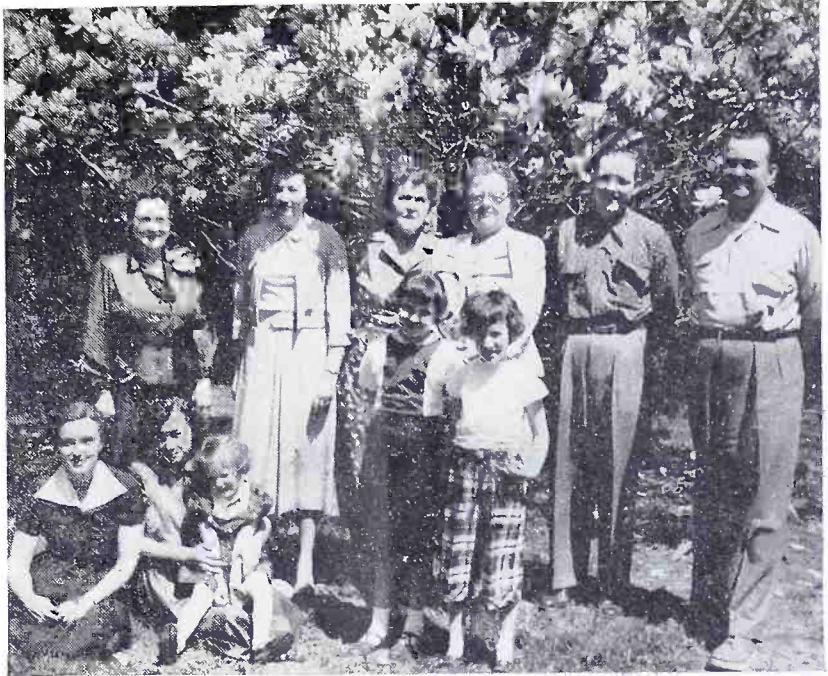
Narrated by special events man Warren Nielson, the series has featured visits to Lake of Three Fires, Bedford, Iowa; Wau-bonsie State Park near Hamburg, Iowa; Lake Manawa State Park near Council Bluffs, Iowa; and Arbor Lodge State Park, Nebraska City, Nebraska.

Future broadcasts will include: Nemaha State Park, Seneca, Kansas (June 5 broadcast); and Big Lake State Park, Fortesque, Missouri (June 12).

The programs are heard on KMA at 9:30 pm, Thursdays.

JUNE 9 IS KMA FARM FIELD DAY!

A Chat With Edward May



Left to right: (Back row) Mrs. E. S. Welch, Frances, Edna Buntz, Mrs. Earl May, Ed. J. D. Rankin, Jr. (Front row) Eleanor, Betty Jane, Karen, Annette and Diane.

One month ago we were all concerned about the Missouri River floods and the ravaging damages caused by the torrents of water. Finally, the river is now back in its channel. Farmers have displayed the pioneering spirit and have gone back onto the land and are busy planting their crops. In some cases the land can't be worked but it is surprising what a high percentage of the land, which only a few weeks ago was under several feet of water, is today being farmed and will probably produce a good crop.

The flood waters had played some cruel tricks on some farms by depositing piles of sand from one to five feet deep on top of rich midwestern farm land. Fortunately, that's the exception rather than the rule. On other farms, in fact, you can see the wheat still growing on land that had been covered with 10 feet of water for days!

We are happy to report to you flower lovers that this year's flowers are as beautiful as ever. Many thousands of people have visited Shenandoah and saw the acres and acres of peonies when they were in full bloom. At the nursery, peonies put on the first big show of color and the parade of flowers continues until the season ends with the passing of the chrysanthemums in the fall.

We who live away from the big cities are particularly lucky around this time of the year! Instead of having to enjoy the beauty of flowers from a florist's window or a window box we can actually live

amidst acres and acres of growing things - flowers, shrubs and trees.

To my way of thinking, there is an unexpressable beauty about a budding flower, nodding its petals toward the sun, that can never be matched by a man-made monument of brick, steel girders and cement.

Speaking of flowers, the above picture shows a magnolia tree which every spring provides a mass effect of beautiful blooms. This particular tree is a magnolia soulangeana and is located in mother's back yard. It is approximately 15 years old and has been given no winter protection during that time. This year the blooms were as large as saucers and I would estimate the tree had a minimum of 1,000 blooms. The occasion of the picture was to celebrate my sister's birthday and helping to celebrate the occasion was my mother, her cousin who lives with her, Edna Buntz, Mrs. E. S. Welch, Frances, J.D., their children Betty Jane and Diane; Eleanor, Annette, Karen and myself.

The Early Bird Gardeners are reporting their activities and several have had a batch or two of peas from their own garden. If you live in the KMA area, notify me by card or letter the first time you pick peas, beans, sweet corn or tomatoes from your garden. If you are the first to report from your county I will send you a nice prize.

Edith Hansen, Haden Family, Prizes Highlight June 6 Homemakers Celebration

All ladies in KMA-Land are invited to be on hand in the KMA Auditorium June 6 for a big "Edith Hansen Day" celebration!

Present in person for the festivities will be Edith and her assistants, Kay Wilkins and Jane Robinson; the "Carl Haden Family" of radio and TV fame; Glenn Harris and his "Penny Auction"; and KMA



Edith Hansen

Homemakers Adella Shoemaker, Bernice Currier, plus other KMA personalities.

In addition to the afternoon program, which will begin at 2 pm, there will be a special morning show beginning at 10 am. The morning show will feature the broadcast of Edith Hansen's "Kitchen Club" direct from the stage of the KMA Auditorium followed by a special program by "The Haden Family".

More than \$1000 worth of gifts and prizes will be given away during the afternoon festivities including gifts of Tidy House Products Co. merchandise and premiums to EVERY LADY in attendance!

The event will honor Edith Hansen's 10th Anniversary on KMA. Since she began broadcasting on KMA on June 2, 1942, Edith's program has grown in popularity until now it is heard daily on 53 radio stations all over the United States, sponsored

by the Tidy House Products Co., a Shenandoah-born firm for which Edith now does all her broadcasting. Also planning on being on hand for the activities will be the founders of the Tidy House firm, J. C. Rapp, president; and vice-president A. W. Ramsey. The celebration will be a "homecoming" for both men as Mr. Rapp is a former general manager of KMA and Mr. Ramsey was formerly KMA sales manager.

Edith, Kay Wilkins, Jane Robinson, Adella Shoemaker, Bernice Currier, Doris Murphy and others will be on hand most of the day in the lobby of the KMA auditorium to greet the homemaker's day guests.

* * * * *

KMA listeners will remember the Haden Family from their numerous broadcasts over KMA. Carl Haden, Sr. is director, master of ceremonies, announcer, and all-around producer for this talented family. All of the Hadens have grown up behind the microphone. They are undoubtedly one of the greatest family groups in the country.

* * * * *

As there will be a huge crowd for the afternoon program, it is recommended that as many persons as possible try to attend the morning show. For both programs it will be first-come first-serve and we suggest that you plan on arriving as early as possible.



Kay Wilkins

* * * * *

An interesting part of the afternoon program will include some reminiscing about the early days of KMA with such old-timers as Frank Field, Edward May, Bernice Currier, Doris Murphy and others.



Jane Robinson

The KMA Guide

**TO APPEAR
JUNE 6 - THE
HADEN FAM-
ILY (Back Row)**
Charlie, Mary
Elizabeth, Jim-
my, Carl Jr., Mrs.
Haden and Carl
Sr. (Front Row)
Doc Martin,
Sharon Kaye and
Tommy. The Ha-
dens will be on
hand for both
the special morn-
ing show and
the afternoon
program.



"MOVIETOWN RADIO THEATRE" BEGINS NEW KMA SERIES

A new series of radio plays "Movietown Radio Theatre", featuring top stars from Hollywood is now heard on KMA every Wednesday evening at 9 pm.

Here is a list of the June programs and the featured star:

- June 11: "Velvet Nocturne" with Cesar Romero.
- June 19: "Schirzo-Scherzo" with Jeanne Cagney.
- June 25: "Mulligan the Mighty" with James Gleason.

KMA AUDITORIUM SCENE OF JUNE 20 BEAUTY PAGEANT

The Southwest Iowa Beauty Pageant, a preliminary to the Atlantic City "Miss America" contest, will again be held in the KMA Mayfair Auditorium this year. The event is scheduled for the night of June 20.

The winner of the Shenandoah pageant will be chosen from entries from Page, Fremont, Mills and Montgomery counties and will be crowned "Miss Southwest Iowa". During the past two years, the winner of this title has gone on to capture the title of "Miss Iowa" and represent the state in Atlantic City.

KMA will broadcast interviews with many of the contestants in the days preceding the June 20th pageant.

DON'T FORGET!

KMA Farm Day - June 9

June, 1952

Forecasts For The Month



BIRTHDAYS:

- June 4—Evalyn Saner, traffic manager.
- June 7—Merle Douglas, announcer.
- June 8—Lyn Soflin, staff artist.
- June 13—Carol Doiel, mail department.
- June 16—Cynthia Ellen Hawkins, daughter of Ezra Hawkins, staff artist.
- June 19—Wayne Beavers, program director.
- June 20—Margaret Kling, wife of Norman Kling, control room operator.
- June 21—Martha Nielson, mother of Warren Nielson, chief announcer.
- June 29—Ralph Childs, newseditor.

ANNIVERSARIES:

- June 10—Erva Nell and Walter Ely, engineer.
- June 11—Ruth and Gail Bank, announcer.
- June 12—Florence and Warren Nielson, chief announcer.
- June 16—Ruth and Merle Douglas, announcer.

BIRTHSTONE: Pearl.

FLOWER: Rose.

KMA GUIDE CELEBRATES EIGHTH ANNIVERSARY WITH THIS ISSUE

This issue of the KMA GUIDE begins the ninth year of publication for the magazine. The first issue of the KMA GUIDE was printed in June, 1944. This is the 97th consecutive month of publication.

Frank Comments

By FRANK FIELD

Yes, little Bill is not so little any more. He celebrated his seventh birthday on May the 7th. This picture was taken just as he was getting ready to blow out the seven candles on the cake.

Since he was going to be seven years old, Bill's mother told him that he could have seven at his birthday party, including himself. If he had been allowed to have his way he would have had seventeen or maybe even seventy, but Elsie thought that seven kids would be about all she could handle. He had a hard time deciding who the six would be, since two out of the six would undoubtedly have to be his cousins, Johnny and Shannon.

Yes, I know there are only six shown in the picture. It just happened that one of the invited guests took down with the measles the morning of the party, after it was too late to invite anyone else. The missing guest was Sharon Douglas, Merle Douglas' little girl, who lives next door. Reading from left to right they are, Larry Pulley, Johnny Fishbaugh, John Hutson, Bill Field, Connie White and Shannon Bellamy. Needless to say, a good time was had by all.

Then after the birthday party was all over I took Jenny out to the hospital that evening, and the next morning she had a major operation. She was in the hospital for eight days, and as I write this, she has been home ten days and is gradually getting her strength back, and by the time you read this she will be pretty nearly back to normal, as she is getting along very nicely. Of course, she isn't doing any lifting or reaching. Zo and Peg have been awfully good about helping with the housework and the clothes have been going to the laundry.

Jenny wants me to thank you folks again for the hundreds and

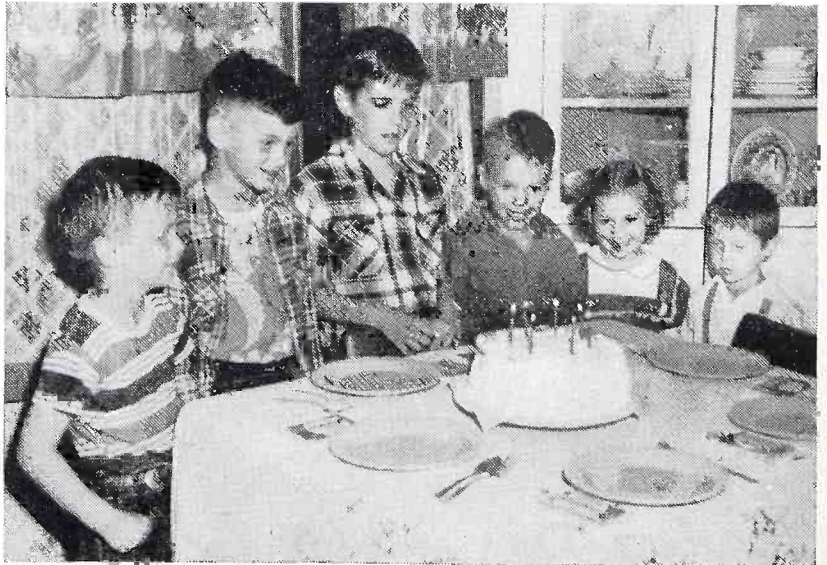
hundreds of cards and letters she received, and she enjoys them a lot even though she can't acknowledge them.

There was still more excitement in the Field tribe during the past month. Little Danny Field is going around all taped up and with his shoulder in a brace. He is so active that Maxine has to chase him just constantly. John moved the screen door hooks quite high, so that Danny couldn't reach them. This way Maxine could keep him in the house when it wasn't convenient to watch him out of doors. Danny soon learned to push a chair up to the door and reach the hook and open the door. However, this one particular time he didn't have the chair placed quite right and in reaching out for the hook he lost his balance and fell quite heavily on his right shoulder. The result was a broken collar-bone. The doctor says it will have to be firmly held in place by the tape and the brace for at least six weeks. Danny is very unhappy about the whole thing.

Jenny's mother and her sister Dolly have been visiting in Shenandoah for the past week and have been having a grand visit. They have been dividing their time between our place, Zo's place and Peg's place, but rather concentrating on Peg, as Jim is down in Texas this week on a business trip.

COVER PICTURE

On this month's cover is Frank working in his vegetable garden. Gardening is a hobby of Frank's and from the looks of the picture he really knows his hobby!



KMA Farm Field Day To Feature Rain Maker, Weathermen, Rodeo Acts

An exhibition in rainmaking, talks by weathermen, movies, rodeo events, and farm exhibits makes Monday, June 9, a "Red Letter" Day for people in the KMA area. Under the supervision of farm director Merrill Langfitt a full day's program of activities will make this Farm Field Day the finest in KMA's history!

The theme of the day's activities will be "Rainmaking and its Relation to Agriculture" with the art of weather forecasting explained in detail.

The morning's program will begin in the KMA Mayfair Auditorium with a welcome by Edward May. Following the welcome, Tom Swearingen, a nationally-known weatherman and rainmaker of the Water Resources Development Corporation of Denver, Colorado, will show sound and color motion pictures: "Pipeline To The Clouds" and "Seeding the Clouds to Increase Rain". Frank Field will then give an explanation of weather forecasting.

Following this part of the program the KMA entertainers will present a show beginning at 11:30 A.M.

After the noon recess the activities move to the Shenandoah Airport at 1:30. The KMA entertainers start the afternoon program. Following will be a demonstration by Mr. Swearingen on cloud seeding with silver iodide crystals. Ed Stapowich, of Omaha, a noted weatherman of the United States Weather Bureau, will also explain the various aspects of weather in relation to agriculture.

A special entertainment feature will start at the airport at 3:45 P.M. with a riding demonstration by the Washington Rough Riders, with participants from many Iowa and Missouri communities. The crowd will see rodeo acts, stunts, and precision riding. A topnotch group of 40 riders and 70 horses will present acts that have made them famous throughout the midwest.

The hangers at the Shenandoah Airport will house commercial exhibits and a gadget display. The gadget display will be of special interest to all would be inventors. On exhibit will be home-made machinery

THE PROGRAM

Morning Program:

(At KMA Auditorium)

- 10 am: Welcome by Edward May
- 10:10: Explanation of Rainmaking by Tom Swearingen, Water Resources Development Corp. Presentation of sound films, "Pipeline To The Clouds" and "Seeding The Clouds To Increase Rain".
- 11 am: Forecasting the Weather - With Frank Field
- 11:30: KMA Entertainers

(Noon Recess)

Afternoon Program:

(At Shenandoah Airport)

- 1:30 pm: KMA Entertainers
- 2 pm: Actual demonstration on Rainmaking by Mr. Swearingen.
- 3 pm: The Weatherman - With Ed Stapowich, Omaha, representative of United States Weather Bureau.
- 3:45: Washington Rough Riders - Rodeo events, stunt riding and horse demonstrations.

items and devices constructed by farmers, townsmen, and homemakers of this area to provide assistance in their work and comfort in their homes. Prizes of \$25.00, \$15.00, and \$10.00 will be awarded to the top entries. On the airport grounds will be machinery exhibits by leading manufacturers.

This promises to be an extremely interesting and informative day to everyone. The entire program is free and KMA extends a welcome to everyone to attend this special event. Mark this date on your calendar now: Monday, June 9, the KMA Farm Field Day, beginning at 10:00 A.M. in the Mayfair Auditorium in Shenandoah.



On the KMA PARTY LINE

With **DORIS MURPHY**

About the time the snow flies in December something mighty important is going to happen in the MERL DOUGLAS Family. If MERL's announcing seems unusually happy the next few months, you'll know it is because he is looking forward to the coming event . . . a new arrival in the family.

Sunday, June 1st, was the date of the marriage of DONALD SHOEMAKER, Jr., son of KMA's afternoon Homemaker ADELLA SHOEMAKER and husband, to MISS MARGIE MOODY. The wedding occurred at 4:30 p.m., at the Rustin Ave. Methodist Church in Sioux City, Iowa. A reception followed in the church parlors. The bride is a daughter of Mr. and Mrs. Lee Moody of Sioux City. GEORGE SHOEMAKER, a brother of the groom was soloist at the wedding, and John Squire of Shenandoah, a student at Iowa State College, was best man. The couple are honeymooning in The Black Hills. Following his graduation from Morning-

side College next Christmas, DONALD will resume his study for the ministry at Moody Bible Institute in Chicago. Watch the July issue for a picture of the bridal couple.

Here's the members of KMA's Women's Bowling team proudly displaying the red rose horse shoe wreath presented them by Asst. Sta. Mgr. and Mrs. A. J. KOELKER, in honor of their winning the championship of their league, as well as City League Championship. This is the second straight year, the women's bowling team of KMA has been the winner of their league. This year they won 64 and lost 41 games. Their averages are: INEZ KEETON, 133; LOIS JEAN WARNER, 128; Captain GAYLE MAHER, 143; LORRAINE GLEASON, 132; and MARTHA JO YATES, 125. A trophy was also presented to each of the girls by Don Tebbe, bowling alley manager, for winning the title of City League Champions, comprised of 24 teams. They each received a gold cup presented by EDWARD MAY on behalf of the May Broadcasting Company. To win this honor, a

total of 2,127 scratch pins were bowled. Gen. Mgr. OWEN SADDLER has declared a half-holiday for the team.

Among those enjoying the excitement and thrills of the big political convention in Chicago in early July, will be KMA's Chief Newscaster RALPH CHILDS. RALPH and son DAVID, also plan to visit RALPH's sister in Elmhurst, Ill. Other members of the CHILDS family have interesting va-



THE CHAMPS — Left to Right: Inez Keeton, Lois Warner, Gayle Maher, Lorraine Gleason and Martha Yates.

◆

EDITH AND HER AIDS —
H o m e m a k e r
 Edith Hansen and her two assistants visit in Edith's kitchen prior to their KMA broadcast. Left to Right: Kay, Jane and Edith.

◆



cation plans too! Seven year old MICHAEL has been invited to join a neighboring family, the Duane Burdicks on a trip to Estes Park as company for their little daughter Linda, and his brother STEVIE may attend a boys camp. Just so Mother and little SUSIE will have a vacation too, the family may go to the lakes for a few days later in the summer.

May 12 had a significant meaning for entertainer MICKEY COTTEY! It was his first anniversary on KMA.

After driving 900 miles . . . appearing in two afternoon stage shows . . . and playing for two evening dances . . . all within 2 days . . . six KMA entertainers were mighty tired and sleepy by the time they reached home from a personal appearance trip to Colby, Kans. Because of the floods, they were forced to drive a long way round to reach Colby, making it a distance of 450 miles each way. They left at 6:30 a.m. Friday morning, and drove all night Saturday night, reaching Shenandoah at 9:30 Sunday morning. The members of the staff making the personal appearance at the Northwest Kansas Tractor Club celebration were: WAYNE BEAVERS, Master of Ceremonies, DOC EMBREE, EZRA HAWKINS, BOB STOTTS, CURLY DALE, and COY MARTIN. ESTHER EMBREE, who had planned to make the trip, was unable to go because of the illness of their son JOHNNIE who was taken to the hospital ill with a virus infection, the night before they were to leave.

Say fellows . . . here's a tip on how to keep the wife happy! DOC EMBREE spent \$30.00 on fishing tackle. As an after-thought he bought his wife ESTHER, a necklace and ear rings that cost \$2.44. And to think . . . it worked!

With a third homemaker added to the Tidy House Products Co. staff, we thought you might like to see a picture of the three women whose voices you hear on KMA, 10 to 10:30 each weekday morning, KAY WILKENS, EDITH HANSEN, and the new member of the staff, JANE ROBINSON formerly of New Ulm, Minn. JANE has been in radio since 1942, having been connected with stations in Harrisonburg, Va., Fairmont, West Va., and in Minn. Prior to her entrance into radio, she edited a country newspaper and served as advertising manager of a large department store. The ROBINSONS have an eight yr. old daughter, BLISS. You will have the opportunity of meeting all three together with Homemakers ADELLA SHOEMAKER and BERNICE CURRIER on Friday, June 6th at Homemaker's Day honoring the Tenth Anniversary of EDITH HANSEN on KMA. EDITH HANSEN DAY on KMA, sponsored by Tidy House Products Co., will be held in the KMA Auditorium at 2 P.M. Several hundred dollars worth of gifts will be given away. The Carl Haden Family, formerly of KMA and now heard regularly on KMTV, will present a musical program, followed by "Penny Auction" emceed by GLENN HARRIS of KMTV. We hope you will be our guest Homemaker's Day, June 6!

Name This Recipe And Win The Third Monthly KMA Guide Contest!

This third contest, in the series of monthly KMA GUIDE contests, is an easy one to enter because all you have to do is give the recipe that is listed below a name. Read over the ingredients. Prepare it in your own home if you wish. Then think up a name for this recipe and send it to Contest, KMA GUIDE, Shenandoah, Iowa.

You can send in as many names as you like. Your entry must be postmarked not later than midnight, June 21 in order to be eligible to win. The most apt and descriptive name submitted will be judged the winner and receive a check for \$10.00.

The first name that comes to your mind may be the winner. It doesn't have to be anything fancy. You can send your entry in on the back of a postcard. There is nothing to buy, no box tops to submit. Here is the recipe:

- 1 cup pineapple
- 1 cup sugar
- 1 envelope plain gelatin
- 1 cup whipped cream
- 1 cup grated cheese
- 1/2 cup nutmeats, finely chopped
- 1 bottle of chopped maraschino cherries.

Boil together the pineapple and sugar until it spins a thread. Dissolve envelope of plain gelatin into 1/4 cup water and add to the hot mixture. Blend well and cool. When cool, add 1 cup whipped cream, 1 cup grated cheese, 1/2 cup nutmeats and 1 bottle of chopped maraschino cherries.

By Request—

THE GIRL'S TRIO

In answer to the many requests sent in to the GUIDE for a picture of KMA's girl's trio, here they are! Left to right: Lyn, Esther and Betty are shown rehearsing a number before one of their KMA programs.

The trio is a regular feature of KMA's variety musical show, the "Midwesterners", daily early afternoon bright spot on KMA at 2:30 pm.

There you have it. So, sit down and think up a name for this recipe today and send your entry in soon. You may win the \$10 prize!

Winners of May Recipe Contest Are Announced

Here are the winners to the KMA GUIDE recipe contest, rules for which were printed in the May issue. There were hundreds upon hundreds of delicious recipes submitted.

Each of the winners has been sent a check for \$4.

Division 1: Meat, Fish and Fowl dishes — Winner: Mrs. Alva Lee Crouse, Rt. 1, Cainsville, Missouri.

Division 2: Salads - Winner: Mrs. Robert Shoemaker, 513 Ogden St., Ottumwa, Iowa.

Division 3: Bread and Rolls — Winner: Mrs. Henry Kerger, Moorhead, Iowa.

Division 4: Vegetables and Casseroles — Winner: Mrs. Herman J. Hines, Rt. 1, Box 146, Minden, Iowa.

Division 5: Desserts — Winner: Mildred Haehlen, Marion, Iowa.

Mrs. Shoemaker of Ottumwa, winner in Division 2, is no relation to KMA's afternoon homemaker, Adella Shoemaker.





HOMEMAKER'S GUIDE

Kitchen Klinik

By ADELLA SHOEMAKER

LIGHTNING SOUR CREAM CHOCOLATE CAKE

- Sift these dry ingredients into a bowl:
- 1 cup sugar
 - 1 1/4 cups sifted all purpose flour
 - 1 teaspoon salt
 - 1 teaspoon soda
 - 3 tablespoons cocoa
- Add 2 whole eggs
1 cup thick sour cream
1 teaspoon vanilla

Beat all together until thoroughly mixed. Put in two 8" greased layer pans and bake 25-30 minutes in 350° oven or in one large oblong pan and bake 35-40 minutes in 350° oven.

STRAWBERRY OR PEACH FREEZER ICE CREAM

- 2 cups sugar
 - 2 tall cans evaporated milk
 - 1 teaspoon vanilla
 - 12 mashed peaches or 1 quart strawberries
- Water

Combine sugar, milk, vanilla and strawberries or peaches. Fill up with water not quite to the top. Makes 1 gallon of ice cream.

LEMON-NUT REFRIGERATOR COOKIES

- 1 cup shortening
- 1/2 cup brown sugar
- 1/2 cup granulated sugar
- 1 egg, well beaten
- 2 tablespoons lemon juice
- 1 tablespoon grated lemon rind
- 2 cups sifted flour
- 1/4 teaspoon baking soda
- 1/4 teaspoon salt
- 1/2 cup chopped nutmeats

Cream the shortening, and add the sugars gradually while creaming. Add the egg and lemon juice and rind, and mix well. Add the sifted dry ingredients and the nutmeats, and mix thoroughly. Form into a roll about 2" in diameter,

wrap in waxed paper, and chill in the refrigerator until ready to use. Cut into 1/4" slices and bake in a 400° oven for 10 to 12 minutes. Makes about 4 1/2 dozen cookies.

* * * * *

STRAWBERRY PRESERVES NO. 1

Use this proportion: One less cup of sugar to given amount of berries, 4 cups sugar to 5 cups berries. Let stand over night. Simmer slowly 15 minutes. Put in flat granite or glass pan. Stir once in awhile. Do this in the morning and can cold at night.

* * * * *

STRAWBERRY PRESERVES NO. 2

Wash berries and drain well. Use just as many cups of sugar as you have strawberries. Moisten sugar with a little water and boil until it threads from a spoon. Add berries and let boil hard for 8 minutes. Skim. Set off stove, and let stand overnight in pan. Place in sterilized glasses and cover with paraffin.

* * * * *

SUPER-SPECIAL STRAWBERRY PRESERVES NO. 3

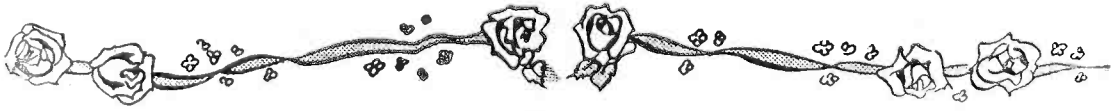
Boil 1 quart washed and stemmed berries and 2 tablespoons vinegar. Boil for three minutes, stirring a little. Add 1 quart (4 cups) sugar and heat again, making sure that it boils for six more minutes. Let stand overnight and tip pan from side to side often to force out all air from fruit. Can cold in sterilized jars. They keep shape, bright red color, and best of all their fresh fruit flavor.

* * * * *

PRESSED BEEF FOR SANDWICHES

- 3 pounds neck or other boiling meat
- 2 quarts water
- 2 tablespoons salt
- 1 bay leaf
- 4 whole peppers
- 1 sliced onion

Simmer all ingredients together for three hours, or until meat is very tender. Cool in broth. Remove spices, and shred meat. Press meat firmly into a loaf pan. Boil broth down to 1/2 cup, and pour over meat. Chill several hours until firm enough to slice.



Homemaker Visit

By BERNICE CURRIER

RICE CRISPIE OATMEAL COOKIES

A good cookie for overseas mailing.

- A—1 cup shortening
- 1 cup brown sugar
- 1 cup white sugar
- B—2 eggs
- 1 teaspoon vanilla
- C—2 cups sifted flour
- 1 1/2 teaspoons soda
- 1 1/2 teaspoons baking powder
- 1/2 teaspoon salt
- D—2 cups rice crispies
- 2 cups quick oatmeal
- 2 cups coconut

Cream A, add B and beat, add C, then add D. Drop by spoonful on greased cookie sheet, bake 10 min. at 400°.

* * * * *

ZIPPY SUMMER SALAD

- A—2 packages lime gelatin
- 3 3/4 cups hot water
- B—2 teaspoons grated onion
- 1 teaspoon salt
- Dash pepper
- C—1/2 cup sliced scored cucumber
- D—1/4 cup finely diced green pepper
- 1 cup cottage cheese
- 1/4 cup finely diced carrot
- 1/4 cup finely diced cucumber

Dissolve A. Add B. Turn 1 cup of mixture into 10"x5"x3" loaf pan and chill until slightly thickened. Arrange C slightly standing in this mixture. Chill till firm. Chill remaining gelatin until slightly thickened. To 1 1/2 cups add D. Pour onto firm gelatin in mold. Chill until firm. Then pour remaining 1 1/4 cups gelatin over it and chill until firm. Slice and serve on crisp lettuce with mayonnaise. Makes 8 to 10 servings.

* * * * *

FROZEN CHICKEN SALAD

- A—1 cup cooked diced chicken
- 1/2 cup diced celery
- 1/2 teaspoon salt
- 1/2 cup sliced stuffed olives
- 1 cup salad dressing
- 1/4 cup minced green pepper
- 1 cup cottage cheese
- B—1/2 cup whipped cream
- 8 tomatoes
- Cole slaw

Combine A and toss lightly. Fold in B. Pack in freezing tray oiled with salad oil. Freeze until firm. Unmold on crisp lettuce leaf. Border with tomatoes stuffed with cole slaw. To serve, cut frozen salad into slices and serve on salad plate with a tomato, stuffed with cole slaw.

* * * * *

NAPOLEON'S TORTE

- 1 cup butter
- 1 cup sugar
- 1 cup almond paste or 1 cup crushed almonds
- 1 cup sifted flour

Mix all together well. Divide into 3 parts and roll each out on lightly floured board into square or rectangle that will cut 9 or 10 squares about 2 1/2" across. Bake each on ungreased cookie sheet in 350° oven until very lightly browned. On serving tray put one layer and cover with raspberry jam. Put second layer on top and cover with unpeeled, cored apples cooked and run thru colander and cooked with sugar. Put on third layer, cover with custard made with 1 rounded teaspoon flour, 2 teaspoons sugar, 1 cup milk, 1 egg beaten and 1/2 teaspoon vanilla cooked over low heat or in double boiler until it coats spoon. Then top with a little more jam. Cut in squares and serve.

* * * * *

JELLIED SHRIMP AND TOMATO SALAD

- A—2 1/2 cups canned tomatoes or fresh tomatoes chopped
- 1/2 teaspoon salt
- 1 stalk celery cut up
- Dash cayenne
- B—1 envelope unflavored gelatin
- 1/4 cup cold water
- 1 tablespoon vinegar or lemon juice
- 1 tablespoon minced onion
- 1 cup cooked or canned shrimp
- Lettuce

Combine A in saucepan and boil for 10 min. Soften B and add to A. Add vinegar. Stir till dissolved and strain. Add onion and shrimp from which black vein has been removed. Pour into 6 small molds and chill. When firm unmold on lettuce. Garnish with mayonnaise. Makes 6 servings. For luncheon serve this salad with a cream soup, crisped crackers, toasted English muffins with a spread of cottage cheese and chopped olives. Serve fresh fruit cup and hot or iced coffee.

NEW YORK AWARD GOES TO "TOM CORBETT, SPACE CADET"

The greater New York Council of the Boy Scouts of America has announced the presentation of its annual award to the ABC adventure series, "Tom Corbett, Space Cadet", heard over KMA each Tuesday and Thursday afternoons at 5:30.

The award reads, "... presented to 'Tom Corbett, Space Cadet' for the outstanding family entertainment of the year".

The Scout award was made in connection with the Scout-O-Rama of the Boy Scouts of Greater New York, held at Madison Square Garden during the last week of May. Frankie Thomas, star of "Tom Corbett, Space Cadet," appeared at the Scout-O-Rama on Sunday, May 25.

KMA Installs New 5,000 Watt Transmitter

Getting ready to go into operation soon is KMA's new 5,000 watt transmitter that will provide the station with the latest broadcasting equipment available.

The equipment has now been fully installed, but will be subject to several "trial runs" before put into regular service sometime next month.

The old KMA transmitter has been in operation for nearly 17 years. It is still in excellent working condition and will be retained for use as an emergency transmitter when mechanical difficulties might arise.

Ray Schroeder is KMA chief engineer, and Don Burrichter is the engineering supervisor.

TOP: Don Burrichter (left) and Ralph Lund, engineers, begin the job of uncrating the new transmitter.

BOTTOM: Don and Roger Peters (right) begin to assemble the new equipment.

ED MAY COMMENTARY TO BE BROADCAST BY ARMED FORCES RADIO

A commentary by Edward May concerning hometown news from communities in KMA-Land will be broadcast at various future dates by Armed Forces Radio, short wave radio and in veteran hospitals to keep servicemen from the area up on the happenings at home.

The recorded program made by Ed, with the assistance of KMA special events man Warren Nielson, is one in a series being released by the Army Home Town News Bureau.

The KMA program also invites servicemen to mail in requests for dedications on regular KMA musical programs.



KMA DAILY PROGRAMS FOR JUNE, 1952

960 ON YOUR DIAL — 5000 WATTS — ABC

DAILY DAYTIME PROGRAMS MONDAY THROUGH FRIDAY

5:00 a.m.—Hillbilly Jamboree
6:00 a.m.—News & Weather, Pippert
6:15 a.m.—Bob Stotts
6:30 a.m.—Merrill Langfitt
7:00 a.m.—Paul Pippert, News
7:15 a.m.—Frank Field
7:30 a.m.—Betty & Lyn
7:45 a.m.—Morning Headlines—Pippert

8:00 a.m.

DON McNEILL'S "BREAKFAST CLUB"

A full hour of
fun and music!



9:00 a.m.—Bernice Currier
9:25 a.m.—Whispering Streets
9:45 a.m.—Against The Storm
10:00 a.m.—Edith Hansen
10:30 a.m.—Break The Bank
11:00 a.m.—Jack Berch
11:15 a.m.—Victor H. Lindlahr
11:30 a.m.—Doc & Esther
11:45 a.m.—KMA Cowboys

12:00 p.m.

RALPH CHILDS

and the news
Listen also at
6:30 and 10 p.m. daily



12:15 p.m.—Edward May
12:30 p.m.—Half Past Nooners
12:45 p.m.—Market Reports, Childs
1:00 p.m.—Polka Time
1:15 p.m.—Camp Meeting Time
1:30 p.m.—Nishna Valley Neighbors
1:45 p.m.—Bob Stotts
2:00 p.m.—The Midwesterners
2:30 p.m.—Mary Marlin
2:45 p.m.—Evelyn Winters
3:00 p.m.—Betty Crocker
3:15 p.m.—Music For You
3:30 p.m.—Adella Shoemaker
4:10 p.m.—Merl Douglas Show
4:30 p.m.—P. Pippert, News
4:45 p.m.—Mickey Cottey
5:00 p.m.—Bar Nothin Ranch
5:30 p.m.—Fun Factory (M.W.F.)
5:30 p.m.—Space Cadet (T.Th.)
5:55 p.m.—Baseball Roundup

6:00 p.m.—Sports Parade—Douglas
6:15 p.m.—Mickey Cottey (M.W.F.)
6:20 p.m.—Let's Go Visiting (T.Th.)
6:30 p.m.—Ralph Childs, News
6:45 p.m.—Edw. May, Mkts. & Weather

MONDAY NIGHT

7:00 p.m.—Lone Ranger
7:30 p.m.—Your Land And Mine
7:45 p.m.—Outdoor Mid-America
8:00 p.m.—Paul Whiteman's Teen Club
9:00 p.m.—The Big Hand
9:30 p.m.—Stars For Defense
9:45 p.m.—Elmer Davis
10:00 p.m.—Ralph Childs, News
10:15 p.m.—Sports Report
10:30 p.m.—Time For Defense
11:00 p.m.—Newstime — Bank
11:15 p.m.—Music In The Night

TUESDAY NIGHT

7:00 p.m.—Silver Eagle
7:30 p.m.—Escape With Me
8:00 p.m.—Am. Town Meeting
8:45 p.m.—American Air Power
9:00 p.m.—Serenade In Blue
9:15 p.m.—Dream Harbor
9:30 p.m.—Guest Star
9:45 p.m.—Elmer Davis
10:00 p.m.—Ralph Childs, News
10:15 p.m.—Sports Report
10:30 p.m.—Newstand Theatre
11:00 p.m.—Newstime — Bank
11:15 p.m.—Music In The Night

WEDNESDAY NIGHT

7:00 p.m.—Lone Ranger
7:30 p.m.—Mystery Theatre
8:00 p.m.—Richard Diamond
8:30 p.m.—The Top Guy
9:00 p.m.—Movietown Theatre
9:30 p.m.—Here's To Veterans
9:45 p.m.—Elmer Davis
10:00 p.m.—Ralph Childs, News
10:15 p.m.—Sports Report
10:30 p.m.—Mr. President
11:00 p.m.—Newstime — Bank
11:15 p.m.—Music In The Night

THURSDAY NIGHT

7:00 p.m.—Silver Eagle
7:30 p.m.—Defense Attorney
8:00 p.m.—Amateur Hour
8:45 p.m.—I Covered The Story
9:00 p.m.—Cafe Istanbul
9:30 p.m.—By Pass of War
9:45 p.m.—Elmer Davis
10:00 p.m.—Ralph Childs, News
10:15 p.m.—Sports Report
10:30 p.m.—Dance Orchestra
11:00 p.m.—Newstime — Bank
11:15 p.m.—Music In The Night

FRIDAY NIGHT

7:00 p.m.—Lone Ranger
 7:30 p.m.—This Is Your FBI
 8:00 p.m.—Ozzie & Harriet
 8:30 p.m.—Mr. District Attorney
 8:55 p.m.—Sanka News Roundup
 9:00 p.m.—Boxing Bout
 9:45 p.m.—Elmer Davis
 10:00 p.m.—Ralph Childs, News
 10:15 p.m.—Sports Report
 10:30 p.m.—Proudly We Hail
 11:00 p.m.—Newstime — Bank
 11:15 p.m.—Music In The Night

SATURDAY PROGRAMS

5:00 a.m.—Hillbilly Jamboree
 6:00 a.m.—News & Weather—Childs
 6:15 a.m.—Bob Stotts
 6:30 a.m.—Merrill Langfitt
 7:00 a.m.—Ralph Childs, News
 7:15 a.m.—Frank Field
 7:30 a.m.—Betty & Lyn
 7:45 a.m.—Morning Headlines—Childs
 8:00 a.m.—Saturday Shopper
 9:00 a.m.—Bernice Currier
 9:30 a.m.—Space Patrol
 10:00 a.m.—For Kids Only
 10:30 a.m.—Pvt. Eddie Fisher
 11:00 a.m.—101 Ranch Boys
 11:30 a.m.—Am. Farmer
 12:00 noon—Ralph Childs, News
 12:15 p.m.—Edward May
 12:30 p.m.—Half Past Nooners
 12:45 p.m.—This Week On The Farm
 1:00 p.m.—Polka Time
 1:15 p.m.—Camp Meeting Time
 1:30 p.m.—Nishna Valley Neighbors
 1:45 p.m.—Bob Stotts
 2:00 p.m.—The Midwesterners
 2:15 p.m.—Hank Thompson
 2:30 p.m.—Lone Pine Mountaineers
 3:00 p.m.—Hawkeye Hawaiians
 3:15 p.m.—Music For You

3:30 p.m.

ADELLA SHOEMAKER

Every day at 3:30 p.m.
 Monday thru Sat.



4:05 p.m.—Merl Douglas Show
 4:30 p.m.—Ralph Childs, News
 4:45 p.m.—Mickey Cottey
 5:00 p.m.—Bar Nothing Ranch
 5:30 p.m.—Junior Junction
 6:00 p.m.—Sports Parade—Douglas
 6:15 p.m.—Una Mae Carlisle

6:30 p.m.—Ralph Childs, News
 6:45 p.m.—Dinner Music
 7:00 p.m.—Dancing Party
 9:00 p.m.—Sat. At The Shamrock
 9:30 p.m.—The Three Suns
 10:00 p.m.—Merl Douglas, News
 10:15 p.m.—Buddy Weed's Trio
 10:30 p.m.—Dance Band
 11:00 p.m.—Newstime — Douglas
 11:15 p.m.—Music In The Night

SUNDAY PROGRAMS

7:00 a.m.—News
 7:15 a.m.—Favorite Hymns
 7:30 p.m.—Worship Service
 8:00 a.m.—Rev. Gene Phillips
 8:30 a.m.—Your Worship Hour
 9:00 a.m.—Sunday School Lesson
 9:15 a.m.—Bible Truth
 9:30 a.m.—Lutheran Gospel Hour
 10:00 a.m.—News — Bank
 10:15 a.m.—Morning Song
 10:30 a.m.—Milton Cross Opera Album
 11:00 a.m.—Coast Guard Salute
 11:30 a.m.—Piano Playhouse
 12:00 noon—Gail Bank, News
 12:15 p.m.—U. N. Story
 12:30 p.m.—Frank Devol Presents
 1:00 p.m.—Fine Arts Quartet
 1:30 p.m.—Back To The Bible
 2:00 p.m.—Newstime — Pippert
 2:15 p.m.—Your Voice Of America
 2:30 p.m.—Hour Of Decision
 3:00 p.m.—Revival Hour
 4:00 p.m.—San Francisco Sketchbook
 4:30 p.m.—Heart Strings
 5:00 p.m.—Geo. E. Sokolsky
 5:15 p.m.—Monday Morning Headlines
 5:30 p.m.—Great Adventure

6:00 p.m.

"STOP THE MUSIC"

with Bert Parks
 A Fortune in Prizes!



7:00 p.m.—Here Comes The Band
 7:30 p.m.—Musical Etchings
 8:00 p.m.—Drew Pearson
 8:15 p.m.—Corliss Archer
 8:45 p.m.—The Three Sons
 9:00 p.m.—Let's Be Healthy
 9:15 p.m.—Gloria Parker
 9:30 p.m.—Bill Tusher
 9:45 p.m.—Vacationland U.S.A.
 10:00 p.m.—News
 10:15 p.m.—Thoughts In Passing
 10:30 p.m.—This Week Around World
 11:00 p.m.—Newstime
 11:15 p.m.—Music In The Night

Listings Correct at Time of Publication
 However, all Programs Are Subject to Change

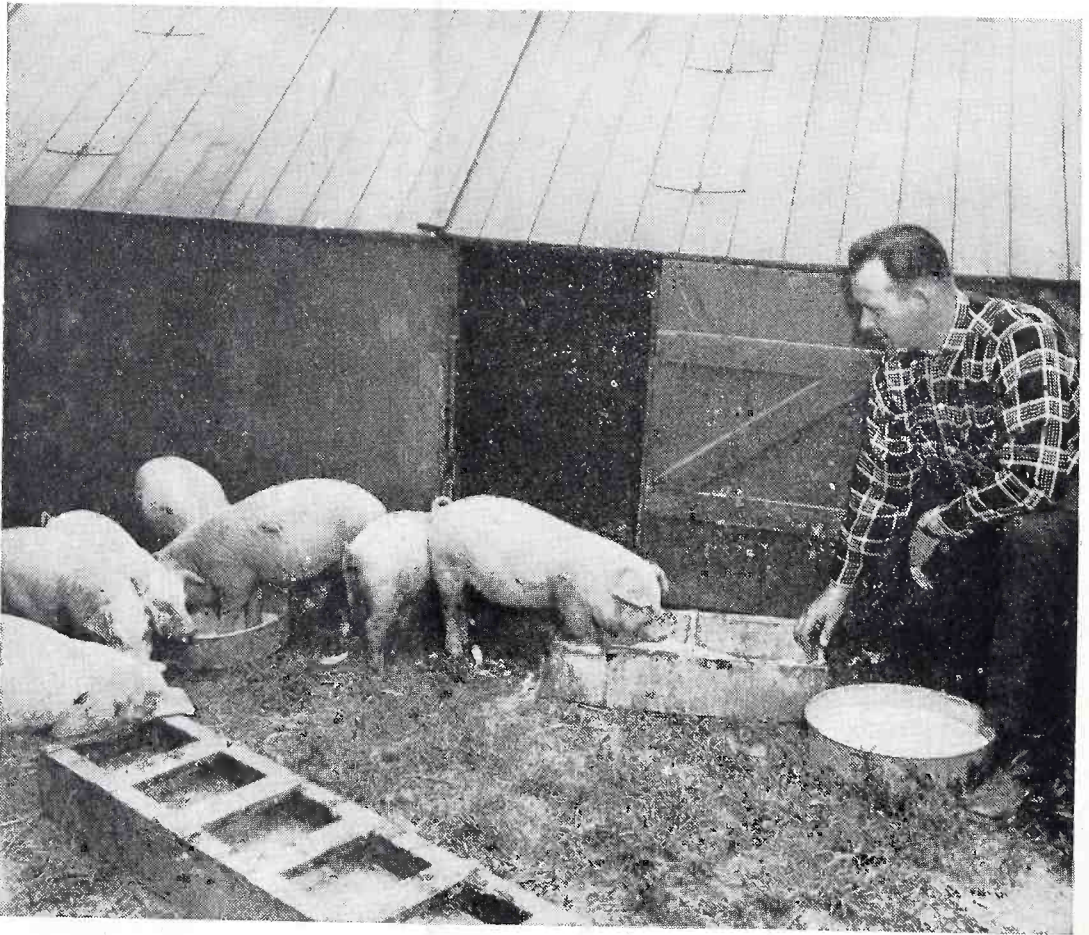
Return postage guaranteed.

POSTMASTER. If addressee has moved and forwarding order is on file, send form 3547, postage for which is guaranteed. If undelivered for any other reason, return to sender.

Tom Thumb Publishing Co.
Shenandoah, Iowa

MISS LOIS ADELUNG
108 EAST GRANT
SHENANDOAH IOWA

Sec. 34.66
P. L. & R.
U. S. Postage
Paid
Permit No. 1
Shenandoah, Ia.



Langfitt's "Bottle Piggies" Progressing Rapidly On Sow's Milk Supplement

The husky little porkers in the picture above with Merrill Langfitt, KMA farm service director, don't look like they are little orphans raised away from their mothers, but that's exactly what they are!

They are part of a large herd of registered Chester Whites being raised by Merrill, in partnership with Howard Phipps on Phipps' farm near Farragut, Iowa.

The little pigs were taken from their sows right after farrowing and raised on a milk supplement, and the "bottle piggies" really seem to like it.

"Best of all," explains Merrill, "It means you can have both the spring litters and the fall litters during warm weather as the sows can be bred for farrowing again right after they've had their litter, without waiting for the pigs to be weaned."

The sows are all top-grade registered Chester Whites from some of the best herds in the midwest.

KMA FARM DAY JUNE 9 ● Plan To Attend Now
● Read Details on Page 7