

The

KMA GUIDE

Vol. 9

FEBRUARY, 1952

No. 2



The Comers - KMA's Valentine Family

(Story on Page 2)



Creston, Iowa . . . I was chosen as the honored shut-in on your "Favorite Hymn" program recently. I wish to thank you very much for sending me the GUIDE. I am glad to receive it and I am getting lots of enjoyment from it. It is very nice of you to do this and I hope you continue to remember those that are shut-in. Also from the announcement that was made on the program, I received lots of nice cards and letters and enjoyed them more than I can say.

Mrs. Arthur Parker

(It is always a pleasure to do something for someone when they show their gratitude by sending us such a nice letter of thanks. "Your Favorite Hymn" program is heard every Sunday morning at 7:15 over KMA.)

* * * * *

Dunbar, Nebraska . . . Here's our renewal! We would certainly hate to have our name taken off the subscription list. We take many magazines, but THE KMA GUIDE is always the best. Keep up the good work!

Ernest Johns

* * * * *

Omaha, Nebraska . . . Would you please put a picture of Gail Bank, your new night announcer, and his family in the February issue?

Mrs. George Anderson

(See page 8.)

* * * * *

Sabetha, Kansas . . . Enclosed is \$2 for two more years subscription to the KMA GUIDE. We enjoy the magazine very much, as the above will indicate.

Mrs. Harry E. Snook

* * * * *

Smith Center, Kansas . . . I am sending you a dollar to renew my GUIDE. There are three families who get to read my magazine each month. We enjoy all the pictures and stories very much.

Mrs. Robert Drew

* * * * *

Council Bluffs, Iowa . . . After I saw the cover picture on the January issue I decided to go out and sleigh ride with the children.

Mrs. Clyde Hopkins

(If you knew this GUIDE was coming you would probably have baked a cake. Huh??)

The KMA Guide is published the first of each month by the Tom Thumb Publishing Co., 205 North Elm St., Shenandoah, Iowa. Owen Saddler, editorial chairman; Harold B. Arkoff, editor; Doris Murphy, feature editor. Subscription price \$1 per year (12 issues) in the United States; foreign countries, \$1.50 per year. Allow two weeks' notice for changes of address and be sure to send old as well as new address.

Cover Family—

February is Important

Month for Comer Family

February, the month for valentines, has been an eventful month for the family of Eddie Comer, who has been entertaining KMA listeners with his clarinet and saxophone for six years. That's why we made them our "cover family" for this month's GUIDE.

Left to right on the front cover they are: son Donnie, Eddie, Gladys, and daughter Vicki. Here are a few of the reasons February has been so important to the Comers.

First of all, February 8th is Eddie's sixth anniversary as a KMA musician and entertainer, as the big "sixes" on the cake in the cover picture indicate.

Then, too, February 23rd will be the fifteenth wedding anniversary for Eddie and Gladys, and February 11th is Vicki's fourteenth birthday!

Papa Eddie is one of radio's most talented musicians and has been playing over the air for over 18 years! He first started taking clarinet lessons when he was only six. Later, Eddie majored in music when he was a student at Oklahoma University.

Some of his talent has been rubbing off on the children. Young Donnie has been taking accordion lessons and is rapidly developing into a talented young musician. He's also a cub scout, a choir member and plays with the grade school basketball and bowling teams.

Vicki, not to be outdone, is a member of her school's camera club, pep club, mixed chorus, girl's glee club and bowling team, as well as also singing in the church choir.

And, Gladys? "I'm just the family's doctor, lawyer, chief cook and bottle washer, and general foreman", she said.

A Chat With Edward May

February has made its entrance and it brought something new to our house — a mild case of chicken pox. Several members of Annette's class have been out of school with this disease, so it was inevitable that Annette would have the chicken pox too. I presume by the time the March issue of the GUIDE is off the press, Karen will have it. Fortunately, most of the cases in Shenandoah have been mild and we are particularly anxious to get these children's diseases out of the way. They are usually far less serious when taken as a child rather than when an adult.

Spring is still several weeks away but whenever we have two or three nice days it is easy to get a touch of spring fever. Particularly when one goes down to the nursery storage. The picture here was taken in one of the storage rooms showing me inspecting a few of the several thousand rose bushes in the photo. These have been graded and tied in bundles to be shipped later at the proper planting time. You can see the rose bushes are large and have a prolific root system. A few months from now these same bushes will be supplying many beautiful bouquets to those who plant them.

February is also the time when many of us look through the seed catalogs and decide what items we are going to plant this coming spring. I recently read a poem entitled "Seed Catalogue Time", by Grace Welsh Lutgen, which I think is very appropriate. Here it is:

The postman brought a catalogue
Of trees and shrubs and seed,
You'd think it the best seller
The way I sit and read.
Ignoring cold and ice and snow,
I revel in the sight
Of flowers in every shade and hue
From climbers to great height.

I vision each, adding their bit
About our cottage door,
Regretting those I must discard
From lack of space for more.
Discretion says they may not grow—
Best save for daily bread.
I heed half-heartedly, then send
An order off instead.

What is the first item of business on your calendar when you are able to be out doors? If you intend to sow grass seed you will do well if you sow that seed on one of our last snows. By doing this the seed works its way down through the snow to the ground and with the alternate thawing and freez-



ing, Mother Nature sows that seed the exact way it should be sowed.

I sincerely hope you have been well during the Winter and the arrival of Spring will find you able to be outside enjoying your yard and garden.

It isn't too early, either, to start thinking about paying us a visit this Spring. Just as soon as warm weather is here, flowers will be bursting out all over. It is really a beautiful sight that we want to share with you.

Bill Hare Spins The Records On Relaxing "Music For You" Program

The brand new, mid-afternoon record show "Music For You", with popular emcee-disc jockey Bill Hare spinning the records, has been making a lot of new friends quickly in its 3 p. m. Monday through Saturday slot.

Bill has designed "Music For You" as a restful half-hour when Mrs. Housewife can take a break from her housework and relax for a few moments until that time when the front door slams open and a few young voices scream out, "Ma, we're home from school!"

That's why Bill features relaxing pops and old favorites on the program. As a matter of fact sometimes the program gets so relaxing that Bill just kind of cuddles up in a corner and dozes off himself to the soft rhythm of a dreamy tune. (O.K., Bill, we'll admit the photo was posed!)



Trumpet-playing Bill, a former dance band leader, also has a Saturday morning popular platter show, "The Saturday Shopper," from eight to nine.

KMA To Broadcast Political Conventions

KMA will carry broadcasts direct from both the Republican and Democratic National conventions in Chicago this summer, according to information released recently by Anthony Koelker, station manager.

Broadcasts direct from the convention floor will be carried each afternoon and evening while the conventions are in session. The Republican convention begins Monday, July 7 and the Democratic convention Monday, July 21. The conventions normally continue through the Thursday of the same week.

Among the ABC commentators participating on the broadcasts will be John Daly, Elmer Davis, Drew Pearson, Paul Harvey, George Gallup, and Mary Margaret McBride. Exact times for the broadcasts will be announced later.

Esther's Back After Recent Operation

Esther Embree, looking as hale and hearty as ever, has started to resume her regular KMA schedule after undergoing a major operation in Kansas City, January 17th.

She is heard every morning at 11:30 on KMA, with hubby Doc, on the "Doc and Esther" show.

While a patient in the hospital, Esther received baskets full of get-well cards from thousands of friends, as well as many bouquets of flowers. "I want to thank everybody for being so nice to me", Esther said.

* * * * *

Incidentally, a new premium plan has been introduced by "Doc and Esther's" sponsor, Gooch's Best Food Products, that gives valuable merchandise away in exchange for Gooch's Best red circles! Doc and Esther tell their listeners all about the merchandise they can own by collecting red circles every morning on their 11:30 program.

There's No Relaxing On Merl Douglas' Zippy Afternoon Music and Laughs Show!

Every afternoon, right after Adella Shoemaker's popular homemakers show, Merl Douglas takes over the turn tables for 25 minutes of anything goes on "The Merl Douglas Show" (4:05 to 4:30 P. M.)!

Zany Merl keeps his listeners hopping through novelty and other fast-tempoed numbers, interspersed with some singing or guitar and harmonica playing of his own.

For Merl, like Bill Hare (see story on opposite page) is a talented musician, and Merl has been singing and playing since he was old enough to talk. And, sometimes you can't even tell where the record leaves off and Merl begins because he likes nothing better than to sing along, duet-style, with the Bing Crosbys and the Judy Garlands! The best part of it is — he's pretty good at it!

"I like to give my listeners something to laugh at", says Merl. "A little fun and some peppy music always had 10 times the power of penicillin in my book!"

Born on a farm in Cherokee County, Iowa (near Larrabee), Merl got his start in radio in 1943 and, incidentally, met his wife in the process.

Merl had applied for a position on the staff of a Spencer, Iowa radio station. His future wife-to-be, Ruth, who was unknown to Merl at the time, had applied for the same job. Ruth returned to the station after her audition to find out that Merl had already been hired for the job and it was then that the two met for the first time.

"Well, I called her up for a date that evening," Merl recalls, "And, we've been 'dating' pretty regularly ever since!"

To top it off, the Douglases were married on June 16th, 1944, a year to the day

from the time Merl got that first radio job! They have a six year old daughter, Sharon Lynne.

Merl is a devoted fan of almost every type of music from hillbilly and westerns (which he likes to sing and play) to dixieland and jazz. The favorite song of both he and his wife is "Always".

"As a matter of fact, I like almost everything except Vaughan Monroe," said Merl.

So, the next time you are listening to KMA at 4:05 in the afternoon and hear the theme "Walking and Whistling Blues" you will know that 25 minutes with laughable Merl are just around the corner.



* * * * *

THERE GOES ANOTHER MONROE RECORD! — Merl Douglas is caught in the act of destroying another recent waxing of Vaughan Monroe. ("I can't stand the guy", says Merl.)

Frank Comments

By FRANK FIELD

This picture was taken looking through the door into my office while I was hard at work dictating letters, trying to get caught up on my correspondence. The office is so small that Ethel had to stand out in her office and shoot through the doorway in order to show anything. In fact, the room is only 8 feet wide by 11 feet long.

Several years ago this page carried a picture of me at this same desk when it was located out in the main part of the store. At that time I told you something of the history of this desk and how it originally belonged to A. W. Murphy when he was president of the old Shendoah National Bank.

The modern style in desks calls for a plain flat topped desk, but I am rather old-fashioned and this old style, roll top desk, suits me just fine. The bookcase you see in the background is one that my father bought about 50 years ago when he lived out at Sleepy Hollow. Even the ediphone I am using is an old model, at least 15 years old, as you can see by the old style speaking tube. The modern machines operate electronically and instead of a speaking tube you use a microphone.

However, the telephone is not out dated yet, and although this particular instrument is at least 10 years old it still is a current model.

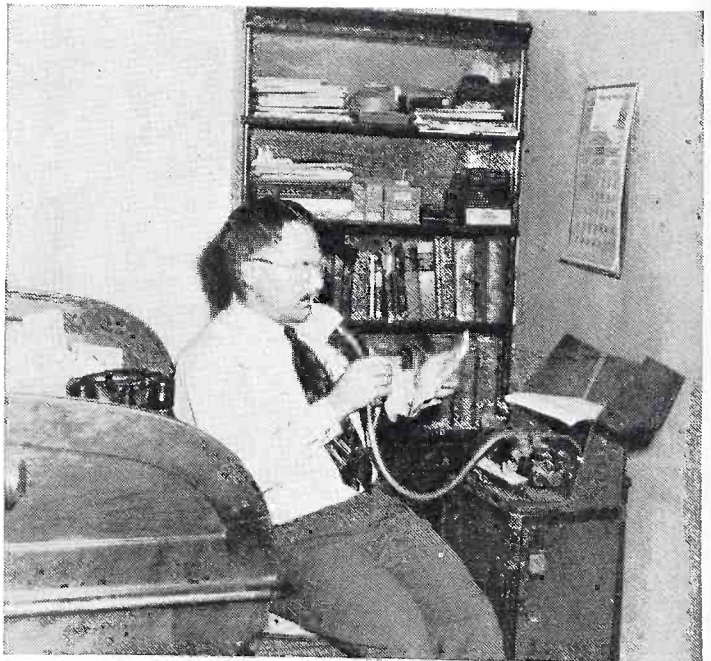
Yes, that red tie I am wearing is a Christmas gift from the listener in Ralston.

That dark colored case on the bottom shelf of the bookcase showing just above the loop of the speaking tube, is my slide projector for showing colored pictures, and those books on the next two shelves are all reference books from which I dig out the proper answers for some of the tougher questions you folks write in. The three big books just behind the letter in my left hand, are Bailey's Encyclopedia of Horticulture. Those dark looking things at the right end of the upper shelf are loaded

plate holders for taking pictures such as this one. The smaller ones on top are for the 4x5 Speed Graphic and the larger ones on the bottom are for the 5x7 View camera. The gray boxes in the center of the upper shelf contain colored slides of individual specimens of flowers. Those happen to be mostly chrysanthemums and gladiolus.

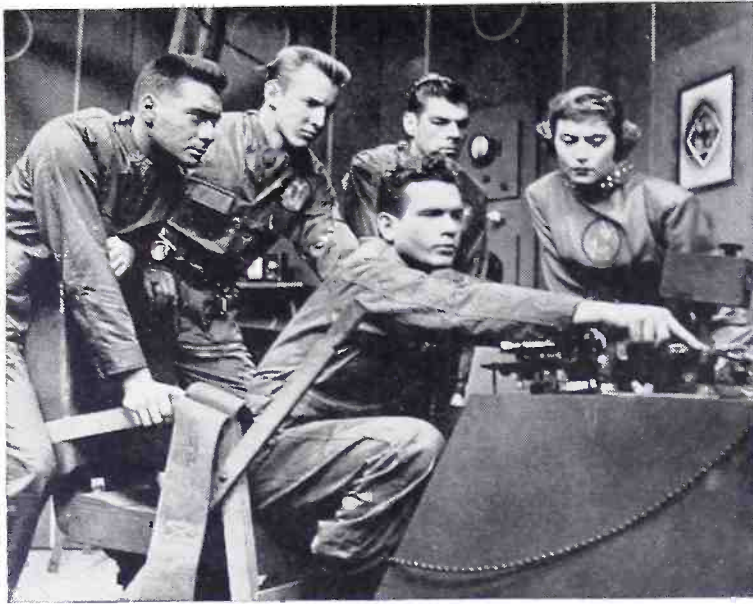
Then just above my head, on top of that pile of government bulletins, you can see my Eastman Kodak 35 with which I take all the colored pictures of flowers and vegetables which you see scattered throughout the spring catalog. Directly behind me on a table at the north end of the desk where they don't show, is where I keep the other cameras and the motion picture projector.

John and Maxine and Danny finally found



FRANK FIELD

a house down at Hamburg and got moved last week. We haven't seen anything of them since the day they moved, but apparently they are getting along all right, because the Hamburg Reporter is still being issued every Thursday. John couldn't dig up his tulip bulbs and take them with him, but he did find a place along the east side of the house where the ground was so dry that it hadn't frozen, so he dug a trench there and planted two or three dozen tulip bulbs and gave them a good thorough soaking just ahead of this last cold spell. Will let you know later how they do.



SPACE CADET CAST (left to right): Al Markim ("Astro"), Jan Merlin ("Roger Manning"), Ed Bryce ("Capt. Strong"), Margaret Garland ("Dr. Joan Dale") and, seated Frankie Thomas ("Tom Corbett").

"Space Cadet" Introduces New Space Language

"They're rocketing on all tubes" might be a very apt description of the action-packed science-fiction radio series, "Tom Corbett, Space Cadet", heard over KMA-ABC every Tuesday and Thursday at 5:30 p. m. The above phrase, as any followers of the program can tell you, is simply a 24th century version of our common expression—"They're cooking on all burners."

Concerned with adventure among the planets of outer space 400 years hence, "Tom Corbett,

"Space Cadet" has evolved a language all its own. Here are just a few of the terms of this "space talk" of the future that you may hear spoken by the small fry of the neighborhood (listed with English "translation"):

Plug your jets — shut up.

Blast me for a Martian mouse — boy, am I a dope.

Cut your jets — lay off.

He's as unstable as a heavy isotope — he's "teched" in the head.

Blow up some meteor dust — paint the town red.

Blast off — scram!

"BREAKFAST CLUB'S" AUNT FANNY IS NATIVE IOWAN

Loveable Aunt Fanny of "Don McNeill's Breakfast Club" (8 a. m. daily on KMA) was born and raised in Iowa and taught school in the state before undertaking a radio career.

"Breakfast Club" fans know her as the gossipy authority who converses with a wide assortment of peculiar, fictitious acquaintances including Ed and Nettie Kennicut, Bert and Bertie Beerbower, Orphie Hacket, Toodie Teeter, Euly Norks, and others.

Aunt Fanny was born in La Porte City, Iowa. Her real name is Fran Allison.

Elmer Davis Now On KMA Daily at 9:45 P. M.

Elmer Davis, noted Washington commentator, is now heard each evening, Monday through Friday, at 9:45 on KMA with his dependable interpretations of the news. Preceding Ralph Childs' 10 P. M. newscast, the new Elmer Davis program means that KMA listeners can now look forward to a full half-hour of news and commentary each evening.

Davis is a three-time winner of the famed Peabody Award, the radio counterpart of the Hollywood "Oscar" and the literary Pulitzer prize.

When Davis was awarded his third Peabody Award in 1951, he was saluted in these words: "The Peabody Award for the best reporting and interpretation of the news goes for the third time to Elmer Davis. In a year of great anxiety and bitter partisanship, it has been reassuring and edifying to hear the sanity, the horse sense, and that dry Hoosier wit with which Mr. Davis contemplates a troubled world. To his broadcasts he brings diligence, integrity, and a writing skill unmatched in radio today."

Other KMA newscasts are heard each day at 6 A. M., 7 A. M., 7:45 A. M., 12 Noon, 4:30 P. M., 6:30 P. M. and 11 P. M.



On the KMA PARTY LINE

With Doris Murphy

Imagine singing about something as bright as the moon, and right in the midst of the song have everything go black. That's what happened to BOB STOTTS. Just as he was singing "Mr. Moon" . . . the electricity failed . . . cutting the station off the air and leaving the studio in complete darkness. Looked like a total eclipse had happened! It was an hour before electricians had the broken wire repaired and KMA resumed broadcasting.

Shucks . . . a feller can't get away with a thing! Entertainer DOC EMBREE tried to cover up one of his absent minded mistakes . . . but not a chance! ESTHER caught up with him. Since she was not feeling well, she had wrapped the family wash in a sheet and told DOC to take it to the laundry. It so happened the dirty wash bundle had been put on top of a basket of clean clothes that had been sprinkled ready for ironing that morning. Without thinking, DOC grabbed up both the clean and

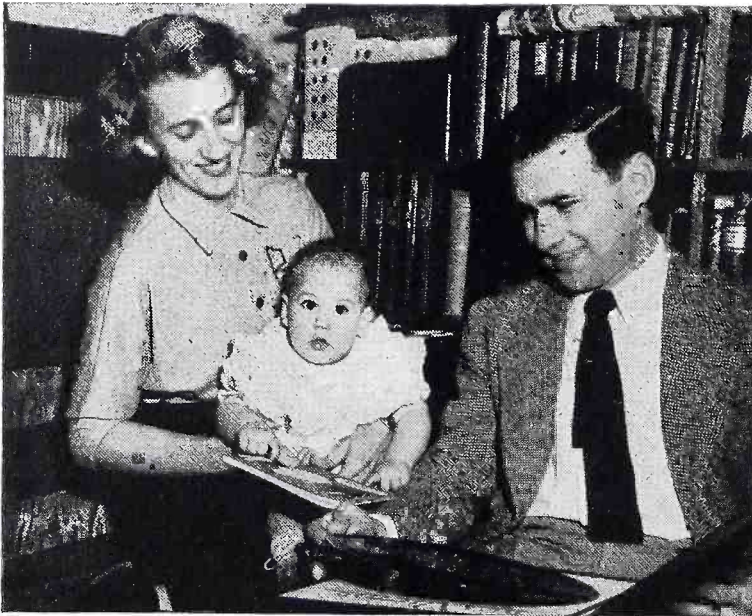
dirty clothes and took them to the laundry. Not long after he had gone, ESTHER started looking for the clothes to iron. No where could they be found in the trailer. Then it dawned on her what had happened. Sure enough . . . upon his return . . . DOC admitted the basket of clean clothes was out in the car. Laughing he said: "I knew I'd be in the dog house, so I didn't bring them in!"

Do you know the pet name announcer MERL DOUGLAS calls his wife? It's "MY SWEET PICKLE". She comes by it honestly though, because her maiden name was Ruth Pickle. MERL got his "sweet pickle" down at Rogersville, Mo.

Looks as if DENISE SUSAN, 10 mo. old daughter of night announcer GAIL BANK and wife RUTH, is just as interested in daddy's records as he is! After moving into an apartment, GAIL built three long shelves to house their large collection of books and 250 records. Another of his projects, was the building of the large speaker shown in the picture, just back of

his wife. This speaker 3 ft. tall and 2½ ft. wide, is connected to their radio and record player. Included in their record collection are 150 classical and operatic numbers, while the other 100 consist of very old records. GAIL'S hobby is collecting old records, and if any of you readers have old recordings you would like to donate to his collection he will be happy to have them. MRS. BANK came from Dike, Iowa, and is a graduate nurse. The couple met in Denver.

Its an even "half dozen" grandchildren for KMA Homemaker BERNICE CURRIER now. Her sixth grandchild . . . a boy, was born Jan. 20 to Dr. and Mrs. J. T. ARM-



The Bank family — Ruth, Denise and Gail.

STRONG of Houston, Texas. This is the fourth child born to her daughter, **HELEN**. He weighed 8½ pounds.

"Now I know why electricians charge so much to put up television aerials", laughingly remarked **KMA** engineer **JACK JOSEPHSON**, as he completed the installation of an aerial on the roof of his own home. Then . . . he turned around to prove his point. We knew what he meant, when we saw the big long tear in the seat of his trousers! And **THAT** was all that saved him from falling **OFF** the roof! Yes . . . **JACK's** aerial is **UP** . . . but his trousers took such a beating that day, they ended up in the discard heap.

Entertainers find loading a car with instruments for personal appearances, is much like packing a suitcase. You always have a hard time getting everything to fit. One night entertainer **MICKEY COTTEY** took his spare tire out of the trunk, while he loaded the instrument cases. At last, he got them all in and shut up the trunk! The boys could have played the show all right, but we shudder to think what might have happened if they had had a flat tire! Because **MICKEY** had forgotten to put the spare back in the trunk! The tire, on the ground, was discovered just before they left town.

Wouldn't it be nice if everyone in this old world is as happy as 4½ yr. old **SUSIE**, daughter of newscaster **RALPH CHILDS**? She sings all the time. Makes up her own words . . . her own tunes . . . or listens to records and learns songs. Yes . . . **SUSIE** really has a song in her heart! If you are feeling a little blue . . . try **SUSIE's** formula for keeping happy . . . **SING**.

Nothing stops a hunter! Entertainer **CURLY DALE** proved this last fall when the pheasant season opened. He was to join other hunters 15 miles north of Des Moines on Sunday noon, the first day of the season. Playing for a dance in Shenandoah the night previous, made it midnight before he headed for Des Moines. At 2 a. m.



Warren Nielson and his 45-lb. beaver.

just outside Guthrie Center he noticed the oil pressure gauge on his car showed he was low on oil. Realizing it might burn out the bearings he stopped, hoping to find an oil station open. But everything was closed, except the hotel. He went in and contacted the telephone operator. She proved very accommodating and after calling half-a-dozen oil station operators out of bed, she finally succeeded in routing out one in the hotel, who agreed to give **CURLY** a lift. After putting in 5 quarts of oil and tightening up the loose fuel pump bolts, **CURLY** was on his way again, arriving in Des Moines at 5 a. m. Then he went to bed for 2 hours, arising at 7 to continue his trip. Hunting wasn't very good that day . . . so poor **CURLY** didn't have anything to show for all the hardships he had gone through!

See that big 45 lb. brown beaver **WARREN NIELSON** is proudly toting on his back? Well . . . it's true . . . he really caught it during the last trapping season. The skin brought \$15.00 on the market, but that was nothing to compare with the thrill it gave **WARREN** to catch his first beaver. **WARREN**, moderator of the "Outdoor Mid-America" program on **KMA** each Monday at 7:45 p. m., spends much of his spare time trapping, hunting and fishing, in order to bring you listeners first hand knowledge of outdoor sports. This year he trapped several muskrats, and tried all season to get a mink . . . but didn't succeed.



Marlene Dietrich Stars in "Cafe Istanbul"

The dark and intrigue-filled streets of Istanbul, Turkey are the settings for the new KMA-ABC mystery thrillers of "Cafe Istanbul". Starring glamorous Marlene Dietrich (pictured at left), the program is heard at 8:15 every Sunday evening.

Miss Dietrich is ideally suited for her role in "Cafe Istanbul". German-born Marlene has played the role of a sophisticated, international beauty many times in Hollywood and on radio.

Istanbul itself has been the hub of cloak and dagger history for the last twenty years. During World War II both the Allies and the Axis used the city as a clearing point for the gathering of important military and state secrets. It was a common sight, during that period, to see men in the uniforms of both sides sitting side-by-side in the sidewalk cafes and night-clubs. Although the "Cafe Istanbul" series is not related to actual events, the background of the city itself and the superb acting of Marlene Dietrich give the mysteries an air of reality.

★ Forecasts For The Month ★

BIRTHDAYS:

- Feb. 1—Ezra Hawkins, staff artist.
- Feb. 2—Ralph Lund, transmitter engineer.
- Feb. 3—Betty Soflin, staff artist.
- Feb. 11—Vicki Comer, daughter of Eddie Comer, staff artist.
- Feb. 22—Beverly Langfitt, daughter of Merrill Langfitt, farm news commentator.

- Feb. 24—Walter Ely, transmitter engineer.
- Feb. 26—Jon Peterson, son of Howard Peterson, general sales manager.

ANNIVERSARIES:

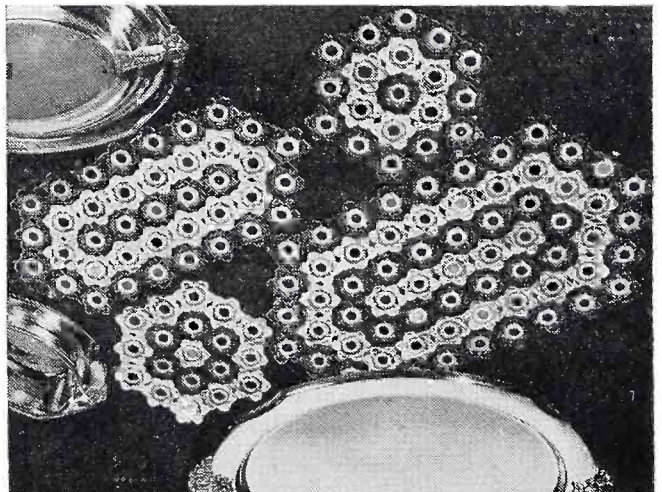
- Feb. 6—Betty and Ralph Lund, transmitter engineer.
- Feb. 19—Ruth and Ray Schroeder, chief engineer.
- Feb. 23—Gladys and Eddie Comer, staff artist.

* * * * *

Pattern For The Month —Decorative Hot Mats

Little bone rings covered and edged with crochet to look like flowers are joined to make these striking hot plate mats. Three sizes are shown here but other sizes and shapes are possible. Dark yellow is used for the center of each flower, white and green for the petals.

To receive the above pattern, free of charge, send a self-addressed stamped envelope to THE KMA GUIDE, Shenandoah, Iowa. Ask for Leaflet No. FV-385.





HOMEMAKER'S GUIDE

Kitchen Klinik

By ADELLA SHOEMAKER

CHERRY UPSIDE DOWN DESSERT

In the baking, the cherries go down and the dough rises to form a top crust.

- 1/2 cup butter (or substitute)
- 1 cup sugar
- 1 cup milk
- 2 cups flour
- 2 teaspoons baking powder
- 1/8 teaspoon salt
- 1 quart canned red pitted pie cherries (or 2 No. 2 cans)
- Water
- 1 1/2 cups sugar

Make a batter by creaming the butter and 1 cup of sugar together. Sift the dry ingredients, and add alternately with the milk. Spread in the bottom of a greased pan. An 8"x12"x2" pan is about right. Drain the cherries, and add enough water to the juice to make 2 cups. Heat cherries, juice and 1 1/2 cups sugar to boiling. Pour on top of batter. Bake in a moderately hot oven 375° for 30-40 minutes or until dough is done. Serve hot or cold, with whipped cream. Serves 8.

* * * * *

SWEDISH RYE BREAD

This recipe came from Sweden. The daughter-in-law watched the bread being made, and wrote down the measurements. A half-pint jar held exactly the amount the cup did that the mother used. All measurements are level. This is a delicious bread. It stays moist for nearly a week.

- 1/2 cake yeast
 - 2 cups boiling water
 - 1 1/4 measure rye-graham flour (The term measure means half pint jar)
 - 1 measure warm water
 - 1 teaspoon salt
 - 1 tablespoon lard
 - 3/4 measure sorghum
 - 6 1/2 measures white flour
- Put yeast to soak in 1/4 cup water in

which 1 tablespoon sugar has been added.

Put rye-graham flour in large bowl. Pour boiling water over it. Beat vigorously with a spoon. (The more you beat it the better). Add lard, sorghum, and salt. Mix well. Add warm water and yeast. Then add white flour. Knead. The dough will be sticky, not smooth, and dry like white bread. Cover and let rise to double its bulk. Shape in 3 loaves. Let rise again. Bake in 350° oven till brown-about one hour. Brush top with mixture of 1/4 cup warm water and 1 tablespoon sorghum.

* * * * *

CHOCOLATE DUMPLINGS

Here is a delicious, easy and inexpensive hot dessert. Its a triple star recipe!

- 1 cup water
- 1 tablespoon cocoa
- 1/8 teaspoon salt
- 1 tablespoon butter
- 1 cup sugar
- 2 tablespoons flour
- 1/4 teaspoon vanilla

Beat all together until smooth. Cook until thick, stirring constantly. Set off flame until ready for the dumplings to go in.

DUMPLINGS

- 1/2 cup flour
- 2 tablespoons sugar
- 1/4 teaspoon vanilla
- 1/2 teaspoon baking powder
- 1/8 teaspoon salt
- 1 tablespoon butter
- 1 egg
- 2 tablespoons milk

Put flour, baking powder, salt and sugar in a bowl, and work butter into it. Add beaten egg, vanilla and milk. Have the syrup boiling, and drop the dumplings in. Cover and cook 20 minutes. Don't stir. Just spoon out into serving dishes and enjoy while still hot, with cream. Note: the batter will seem thinner than ordinary dumplings. Just "dot" it off your spoon as quickly as you can, over the surface of the boiling syrup.



Cut Along This Line And Save



Homemaker Visit

By BERNICE CURRIER

FESTIVE FEBRUARY LUNCHEON

Individual Upside Down Ham Loaves baked in muffin tins and topped with bright red cherries.

Whipped Potatoes garnished with chopped parsley.

Green Peas

Spiced Peaches

Raw Relishes

Valentine Party Torte or

Lincoln Log Cake

* * * * *

UPSIDE DOWN HAM LOAF

- A—1 pound ground ham
- 1 pound ground pork or beef
- 1 cup dry bread crumbs
- 1/2 cup milk
- 1 beaten egg
- B—1 small can pineapple pieces
- C—1/4 cup brown sugar
- 1/8 teaspoon ground cloves

Combine A and mix well. Drain B and spread in muffin tins. Combine C and sprinkle over B. Place A on this and pat down. Bake about 3/4 hour in 350° oven. Turn upside down on brown paper or paper toweling and top with cherries.

* * * * *

VALENTINE PARTY TORTE

- A—1 cup flour
- 1 teaspoon baking powder
- 1/4 teaspoon salt
- B—1/3 cup shortening
- 2/3 cup sugar
- C—3 egg whites unbeaten
- D—1/2 teaspoon vanilla
- 1/3 cup milk

Sift A. Cream B till fluffy, add C and beat. Alternately add D and A. Pour into waxed paper lined and greased 8" layer pan and bake in 375° oven for 30 min. Slice through center by marking with toothpicks around cake. Spread cherry filling on lower half. Replace top and frost with 7 min. icing or with Powdered Sugar Frosting or with whipped cream, topped with maraschino cherries.

For the Cherry Filling—

- A—1/2 cup sugar

- 1/4 cup flour
- 1/2 teaspoon salt
- B—2/3 cup cherry juice
- C—3 egg yolks beaten
- D—2/3 cup cherries drained
- E—1 tablespoon butter
- 1/2 teaspoon vanilla

Combine A. Gradually add B and cook till thick stirring constantly. Pour into C, add D and cook in double boiler 5 min. stirring constantly. Remove from heat and add E. Spread between halves of torte when cool.

* * * * *

LINCOLN LOGS

- A—6 tablespoons sifted cake flour
- 6 tablespoons sifted cocoa
- 1 teaspoon baking powder
- 1/4 teaspoon salt
- 4 eggs separated
- 3/4 cup sugar
- 2 tablespoons water
- Powdered sugar
- 2 pints vanilla ice cream

Sift A. Beat egg whites until stiff, add half the sugar gradually, beating until very stiff. Add water to egg yolks and beat until light, gradually beating in remaining sugar. Fold in sifted dry ingredients. Fold into beaten egg whites. Line a shallow pan 10" x 15" with waxed paper having paper extend 1" beyond edge of pan. Turn batter into pan and bake in 400° oven 12 to 15 min. Sift powdered sugar onto brown paper. Turn the cake out on this and quickly remove waxed paper. Roll up like a jelly roll. Wrap with cloth to hold firmly in place. When ready to serve, carefully unroll. Spread ice cream over cake, re-roll and cut lengthwise. Serve at once. Make 8 servings.

* * * * *

BEEET GELATIN SALAD

Combine 1 package lemon gelatin with 1 cup boiling water and 3/4 cup beet juice. Chill until about like white of an egg. Add 1 cup diced beets, 3/4 cup diced celery, 3 tablespoons vinegar, 2 tablespoons horseradish, 2 tablespoons grated onion and 1/2 teaspoon salt. Chill in molds. Serve with whipped mayonnaise.



Grass Root Notes

By **MERRILL LANGFITT**
KMA Farm Service Director

Here is the latest addition to the Langfitt family. As most of you know, I am very much interested in good livestock. In the beef cattle line my first love, of course, is the Hereford breed. While on the farm last year I started a small herd of registered Herefords and the calf you see pictured is the first offspring that has come along since I bought my first heifers.

This young fellow has quite a proud ancestry. He is out of a W H R Helsman 83rd sire which is one of the good blood lines of the Wyoming Hereford Ranch. The Helmsman 83rd is owned by George Peterson near Bethesda, Iowa and I am working very closely with him on my Hereford breeding program.

It will be a happy day for me when I can look out across a nice brome and alfalfa pasture and see about 50 head of these high quality herefords grazing. That will, of course, take a few years to accomplish.

It is my opinion that one can take an average to good string of cows and heifers and by using outstanding bulls, develop the kind of quality we want. We are breeding toward a larger type of Hereford. More size is required today to meet the demands of the commercial cattle feeder.

We think we have some outstanding



Merrill Langfitt holds his new Hereford calf.

quality in our modest foundation herd and hope to make even more quality improvements as we go along through the years.

You are always welcome to stop in and take a look at what we are doing. My set-up is not fancy at all — in fact, quite typical of the area. We do not have anything resembling a show place. We just go about our business of talking agricultural problems and having fun with a wonderful and fascinating hobby.

Gretta Bellamy Has Been KMA Organist Since 1928

Ever since 1928, when she was an organist for the silent movies shown in the KMA auditorium, Gretta Bellamy (pictured at left) has been the KMA organist.

Gretta, who now plays for KMA's "Sunday Morning Worship Service" (7:30 a. m., Sundays) and for special events, was a member of the original "KMA Country School Gang".



KMA DAILY PROGRAMS FOR FEBRUARY, 1952

960 ON YOUR DIAL — 5000 WATTS

DAILY DAYTIME PROGRAMS

MONDAY THROUGH FRIDAY

5:00 a.m.—Hillbilly Jamboree
6:00 a.m.—RFD 960—News & Weather
(Pippert)
6:15 a.m.—Bob Stotts
6:30 a.m.—RFD 960—Langfitt
7:00 a.m.—Paul Pippert, News
7:15 a.m.—Frank Field
7:30 a.m.—Betty & Lyn
7:45 a.m.—Morning Headlines—Pippert
8:00 a.m.—Breakfast Club
9:00 a.m.—Homemaker Visit—Bernice
Currier
9:25 a.m.—Edward Arnold
9:30 a.m.—Betty Crocker
9:45 a.m.—Against The Storm
10:00 a.m.—Edith Hansen
10:30 a.m.—Break The Bank
11:00 a.m.—Jack Berch
11:15 a.m.—Victor H. Lindlahr
11:30 a.m.—Doc & Esther
11:45 a.m.—KMA Cowboys
12:00 noon—Ralph Childs, News
12:15 p.m.—Edward May
12:30 p.m.—Half Past Nooners
12:45 p.m.—Market Reports, Childs
1:00 p.m.—Western Hit Tunes
1:15 p.m.—Camp Meeting Time
1:30 p.m.—Nishna Valley Neighbors
1:45 p.m.—Bob Stotts
2:00 p.m.—The Midwesterners
2:30 p.m.—Joyce Jordan, M. D.
2:45 p.m.—Evelyn Winters
3:00 p.m.—Music For You
3:30 p.m.—Kitchen Klinik—Adella
Shoemaker
4:05 p.m.—Merl Douglas Show
4:30 p.m.—P. Pippert, News
4:45 p.m.—Mickey Cottey
5:00 p.m.—Bar Nothing Ranch
5:30 p.m.—Fun Factory (M.W.F.)
5:30 p.m.—Space Cadet (T. Th.)
5:55 p.m.—World Flight Reporter

MONDAY NIGHT

6:00 p.m.—Sports Parade — Douglas
6:15 p.m.—Mickey Cottey
6:30 p.m.—Ralph Childs, News
6:45 p.m.—Edw. May, Mkts. & Weather
7:00 p.m.—Lone Ranger
7:30 p.m.—Henry J. Taylor
7:45 p.m.—Outdoor Mid-America

8:00 p.m.—Paul Whiteman's Teen Club
9:00 p.m.—The Big Hand
9:30 p.m.—Bob Crosby
9:45 p.m.—Elmer Davis
10:00 p.m.—Ralph Childs, News
10:15 p.m.—Sports Report
10:30 p.m.—Time For Defense
11:00 p.m.—Newstime — Bank
11:15 p.m.—Music By Lamplight
11:55 p.m.—News

TUESDAY NIGHT

6:00 p.m.—Sports Parade—Douglas
6:20 p.m.—Let's Go Visiting
6:30 p.m.—Ralph Childs, News
6:45 p.m.—Edw. May, Mkts. & Weather
7:00 p.m.—Silver Eagle
7:30 p.m.—Newstand Theatre
8:00 p.m.—Am. Town Meeting
8:45 p.m.—KMA Showcase
9:00 p.m.—Serenade In Blue
9:15 p.m.—Dream Harbor
9:30 p.m.—Guest Star
9:45 p.m.—Elmer Davis
10:00 p.m.—Ralph Childs, News
10:15 p.m.—Sports Report
10:30 p.m.—Autumn Serenade
11:00 p.m.—Newstime — Bank
11:15 p.m.—Music By Lamplight
11:55 p.m.—News

WEDNESDAY NIGHT

6:00 p.m.—Sports Parade—Douglas
6:15 p.m.—Mickey Cottey
6:30 p.m.—Ralph Childs, News
6:45 p.m.—Edw. May, Mkts. & Weather
7:00 p.m.—Lone Ranger
7:30 p.m.—Mystery Theatre
8:00 p.m.—Richard Diamond
8:30 p.m.—The Top Guy
9:00 p.m.—Mr. President
9:30 p.m.—Here's To Vets
9:45 p.m.—Elmer Davis
10:00 p.m.—Ralph Childs, News
10:15 p.m.—Sports Report
10:30 p.m.—Pan American Union
11:00 p.m.—Newstime — Bank
11:15 p.m.—Music By Lamplight
11:55 p.m.—News

THURSDAY NIGHT

6:00 p.m.—Sports Parade—Douglas
6:20 p.m.—Let's Go Visiting
6:30 p.m.—Ralph Childs, News
6:45 p.m.—Edw. May, Mkts. & Weather

AMERICAN BROAD

CASTING COMPANY



7:00 p.m.—Silver Eagle
 7:30 p.m.—Defense Attorney
 8:00 p.m.—Amateur Hour
 8:45 p.m.—Foreign Reporter
 9:00 p.m.—The Red Head
 9:30 p.m.—To Be Announced
 9:45 p.m.—Elmer Davis
 10:00 p.m.—Ralph Childs, News
 10:15 p.m.—Sports Report
 10:30 p.m.—Dance Orchestra
 11:00 p.m.—Newstime — Bank
 11:15 p.m.—Music By Lamplight
 11:55 p.m.—News

FRIDAY NIGHT

6:00 p.m.—Sports Parade—Douglas
 6:15 p.m.—Mickey Cottey
 6:30 p.m.—Ralph Childs, News
 6:45 p.m.—Edw. May, Mkts. & Weather
 7:00 p.m.—Lone Ranger
 7:30 p.m.—This Is Your FBI
 8:00 p.m.—Ozzie & Harriet
 8:30 p.m.—Mr. District Attorney
 8:55 p.m.—Sanka News Roundup
 9:00 p.m.—Boxing Bout
 9:45 p.m.—Elmer Davis
 10:00 p.m.—Ralph Childs, News
 10:15 p.m.—Sports Report
 10:30 p.m.—Dance Orchestra
 11:00 p.m.—Newstime — Bank
 11:15 p.m.—Music By Lamplight
 11:55 p.m.—News

SATURDAY PROGRAMS

5:00 a.m.—Hillbilly Jamboree
 6:00 a.m.—News & Weather—Childs
 6:15 p.m.—Bob Stotts
 6:30 a.m.—RFD 960—Langfitt
 7:00 a.m.—Ralph Childs, News
 7:15 a.m.—Frank Field
 7:30 a.m.—Betty & Lyn
 7:45 a.m.—Morning Headlines—Childs
 8:00 a.m.—Saturday Shopper
 9:00 a.m.—Homemaker's Visit—
 Bernice Currier
 9:30 a.m.—Space Patrol
 10:00 a.m.—For Kids Only
 10:15 a.m.—Holland Calling
 10:30 a.m.—Pvt. Eddie Fisher
 11:00 a.m.—101 Ranch Boys
 11:30 a.m.—Am. Farmer
 12:00 noon—Ralph Childs, News
 12:15 p.m.—Edward May
 12:30 p.m.—Half Past Nooners
 12:45 p.m.—This Week On The Farm
 1:00 p.m.—Western Caravan
 1:15 p.m.—Camp Meeting Time
 1:30 p.m.—Nishna Valley Neighbors
 1:45 p.m.—Bob Stotts
 2:00 p.m.—Western Swingsters
 2:15 p.m.—Polka Party
 2:30 p.m.—KMA Hillbilly Hits
 3:00 p.m.—Music For You

3:30 p.m.—Kitchen Klinik—Adella
 Shoemaker
 4:05 p.m.—Merl Douglas Show
 4:30 p.m.—Ralph Childs, News
 4:45 p.m.—Mickey Cottey
 5:00 p.m.—Bar Nothing Ranch
 5:30 p.m.—Junior Junction
 6:00 p.m.—Sports Parade—Douglas
 6:15 p.m.—Alert America
 6:30 p.m.—Ralph Childs, News
 6:45 p.m.—Una Mae Carlisle
 7:00 p.m.—Dancing Party
 9:00 p.m.—The Buccaneers
 9:15 p.m.—Country Music Time
 9:30 p.m.—Sat. At The Shamrock
 10:00 p.m.—Merl Douglas, News
 10:15 p.m.—Buddy Weed's Trio
 10:30 p.m.—Dance Orchestra
 11:00 p.m.—Newstime — Douglas
 11:15 p.m.—Music By Lamplight
 11:55 p.m.—News

SUNDAY PROGRAMS

6:55 a.m.—Weather Summary — Bank
 7:00 a.m.—News
 7:15 a.m.—Favorite Hymns
 7:30 a.m.—Worship Service
 8:00 a.m.—Rev. Gene Phillips
 8:30 p.m.—Your Worship Hour
 9:00 a.m.—Sunday School Lesson
 9:15 a.m.—Bible Truth
 9:30 a.m.—News — Bank
 9:45 a.m.—Morning Song
 10:00 a.m.—Negro College Choir
 10:30 a.m.—Milton Cross Opera Album
 11:00 a.m.—Navy Band
 11:30 a.m.—Piano Playhouse
 12:00 noon—Gail Bank, News
 12:15 p.m.—U. N. Story
 12:30 p.m.—Frank Devoll
 1:00 p.m.—Marines In Review
 1:30 p.m.—Back To The Bible
 2:00 p.m.—Newstime — Pippert
 2:15 p.m.—Songs For America
 2:30 p.m.—Hour Of Decision
 3:00 p.m.—Revival Hour
 4:00 p.m.—Concert Of Europe
 4:30 p.m.—Greatest Story Ever Told
 5:00 p.m.—Drew Pearson
 5:15 p.m.—Monday Morning Headlines
 5:30 p.m.—CBC Symphonies
 6:30 p.m.—The Great Adventure
 7:00 p.m.—Stop The Music
 8:00 p.m.—Walter Winchell
 8:15 p.m.—Cafe Istanbul
 8:45 p.m.—The Three Sons
 9:00 p.m.—Let's Be Healthy
 9:15 p.m.—Gloria Parker
 9:30 p.m.—Proudly We Hail
 10:00 p.m.—News
 10:15 p.m.—Thoughts In Passing
 10:30 p.m.—Dance Orchestra
 11:00 p.m.—Newstime — Pippert
 11:15 p.m.—Music By Lamplight
 11:55 p.m.—News

Listings Correct at Time of Publication
 However, all Programs Are Subject to Change

KMA DAILY PROGRAMS FOR FEBRUARY, 1952

960 ON YOUR DIAL — 5000 WATTS

DAILY DAYTIME PROGRAMS

MONDAY THROUGH FRIDAY

5:00 a.m.—Hillbilly Jamboree
6:00 a.m.—RFD 960—News & Weather
(Pippert)
6:15 a.m.—Bob Stotts
6:30 a.m.—RFD 960—Langfitt
7:00 a.m.—Paul Pippert, News
7:15 a.m.—Frank Field
7:30 a.m.—Betty & Lyn
7:45 a.m.—Morning Headlines—Pippert
8:00 a.m.—Breakfast Club
9:00 a.m.—Homemaker Visit—Bernice
Currier
9:25 a.m.—Edward Arnold
9:30 a.m.—Betty Crocker
9:45 a.m.—Against The Storm
10:00 a.m.—Edith Hansen
10:30 a.m.—Break The Bank
11:00 a.m.—Jack Berch
11:15 a.m.—Victor H. Lindlahr
11:30 a.m.—Doc & Esther
11:45 a.m.—KMA Cowboys
12:00 noon—Ralph Childs, News
12:15 p.m.—Edward May
12:30 p.m.—Half Past Nooners
12:45 p.m.—Market Reports, Childs
1:00 p.m.—Western Hit Tunes
1:15 p.m.—Camp Meeting Time
1:30 p.m.—Nishna Valley Neighbors
1:45 p.m.—Bob Stotts
2:00 p.m.—The Midwesterners
2:30 p.m.—Joyce Jordan, M. D.
2:45 p.m.—Evelyn Winters
3:00 p.m.—Music For You
3:30 p.m.—Kitchen Klinik—Adella
Shoemaker
4:05 p.m.—Merl Douglas Show
4:30 p.m.—P. Pippert, News
4:45 p.m.—Mickey Cottey
5:00 p.m.—Bar Nothing Ranch
5:30 p.m.—Fun Factory (M.W.F.)
5:30 p.m.—Space Cadet (T. Th.)
5:55 p.m.—World Flight Reporter

MONDAY NIGHT

6:00 p.m.—Sports Parade — Douglas
6:15 p.m.—Mickey Cottey
6:30 p.m.—Ralph Childs, News
6:45 p.m.—Edw. May, Mkts. & Weather
7:00 p.m.—Lone Ranger
7:30 p.m.—Henry J. Taylor
7:45 p.m.—Outdoor Mid-America

8:00 p.m.—Paul Whiteman's Teen Club
9:00 p.m.—The Big Hand
9:30 p.m.—Bob Crosby
9:45 p.m.—Elmer Davis
10:00 p.m.—Ralph Childs, News
10:15 p.m.—Sports Report
10:30 p.m.—Time For Defense
11:00 p.m.—Newstime — Bank
11:15 p.m.—Music By Lamplight
11:55 p.m.—News

TUESDAY NIGHT

6:00 p.m.—Sports Parade—Douglas
6:20 p.m.—Let's Go Visiting
6:30 p.m.—Ralph Childs, News
6:45 p.m.—Edw. May, Mkts. & Weather
7:00 p.m.—Silver Eagle
7:30 p.m.—Newstand Theatre
8:00 p.m.—Am. Town Meeting
8:45 p.m.—KMA Showcase
9:00 p.m.—Serenade In Blue
9:15 p.m.—Dream Harbor
9:30 p.m.—Guest Star
9:45 p.m.—Elmer Davis
10:00 p.m.—Ralph Childs, News
10:15 p.m.—Sports Report
10:30 p.m.—Autumn Serenade
11:00 p.m.—Newstime — Bank
11:15 p.m.—Music By Lamplight
11:55 p.m.—News

WEDNESDAY NIGHT

6:00 p.m.—Sports Parade—Douglas
6:15 p.m.—Mickey Cottey
6:30 p.m.—Ralph Childs, News
6:45 p.m.—Edw. May, Mkts. & Weather
7:00 p.m.—Lone Ranger
7:30 p.m.—Mystery Theatre
8:00 p.m.—Richard Diamond
8:30 p.m.—The Top Guy
9:00 p.m.—Mr. President
9:30 p.m.—Here's To Vets
9:45 p.m.—Elmer Davis
10:00 p.m.—Ralph Childs, News
10:15 p.m.—Sports Report
10:30 p.m.—Pan American Union
11:00 p.m.—Newstime — Bank
11:15 p.m.—Music By Lamplight
11:55 p.m.—News

THURSDAY NIGHT

6:00 p.m.—Sports Parade—Douglas
6:20 p.m.—Let's Go Visiting
6:30 p.m.—Ralph Childs, News
6:45 p.m.—Edw. May, Mkts. & Weather

AMERICAN BROAD

CASTING COMPANY



7:00 p.m.—Silver Eagle
 7:30 p.m.—Defense Attorney
 8:00 p.m.—Amateur Hour
 8:45 p.m.—Foreign Reporter
 9:00 p.m.—The Red Head
 9:30 p.m.—To Be Announced
 9:45 p.m.—Elmer Davis
 10:00 p.m.—Ralph Childs, News
 10:15 p.m.—Sports Report
 10:30 p.m.—Dance Orchestra
 11:00 p.m.—Newstime — Bank
 11:15 p.m.—Music By Lamplight
 11:55 p.m.—News

FRIDAY NIGHT

6:00 p.m.—Sports Parade—Douglas
 6:15 p.m.—Mickey Cottey
 6:30 p.m.—Ralph Childs, News
 6:45 p.m.—Edw. May, Mkts. & Weather
 7:00 p.m.—Lone Ranger
 7:30 p.m.—This Is Your FBI
 8:00 p.m.—Ozzie & Harriet
 8:30 p.m.—Mr. District Attorney
 8:55 p.m.—Sanka News Roundup
 9:00 p.m.—Boxing Bout
 9:45 p.m.—Elmer Davis
 10:00 p.m.—Ralph Childs, News
 10:15 p.m.—Sports Report
 10:30 p.m.—Dance Orchestra
 11:00 p.m.—Newstime — Bank
 11:15 p.m.—Music By Lamplight
 11:55 p.m.—News

SATURDAY PROGRAMS

5:00 a.m.—Hillbilly Jamboree
 6:00 a.m.—News & Weather—Childs
 6:15 p.m.—Bob Stotts
 6:30 a.m.—RFD 960—Langfitt
 7:00 a.m.—Ralph Childs, News
 7:15 a.m.—Frank Field
 7:30 a.m.—Betty & Lyn
 7:45 a.m.—Morning Headlines—Childs
 8:00 a.m.—Saturday Shopper
 9:00 a.m.—Homemaker's Visit—
 Bernice Carrier
 9:30 a.m.—Space Patrol
 10:00 a.m.—For Kids Only
 10:15 a.m.—Holland Calling
 10:30 a.m.—Pvt. Eddie Fisher
 11:00 a.m.—101 Ranch Boys
 11:30 a.m.—Am. Farmer
 12:00 noon—Ralph Childs, News
 12:15 p.m.—Edward May
 12:30 p.m.—Half Past Nooners
 12:45 p.m.—This Week On The Farm
 1:00 p.m.—Western Caravan
 1:15 p.m.—Camp Meeting Time
 1:30 p.m.—Nishna Valley Neighbors
 1:45 p.m.—Bob Stotts
 2:00 p.m.—Western Swingsters
 2:15 p.m.—Polka Party
 2:30 p.m.—KMA Hillbilly Hits
 3:00 p.m.—Music For You

3:30 p.m.—Kitchen Klinik—Adella
 Shoemaker
 4:05 p.m.—Merl Douglas Show
 4:30 p.m.—Ralph Childs, News
 4:45 p.m.—Mickey Cottey
 5:00 p.m.—Bar Nothing Ranch
 5:30 p.m.—Junior Junction
 6:00 p.m.—Sports Parade—Douglas
 6:15 p.m.—Alert America
 6:30 p.m.—Ralph Childs, News
 6:45 p.m.—Una Mae Carlisle
 7:00 p.m.—Dancing Party
 9:00 p.m.—The Buccaneers
 9:15 p.m.—Country Music Time
 9:30 p.m.—Sat. At The Shamrock
 10:00 p.m.—Merl Douglas, News
 10:15 p.m.—Buddy Weed's Trio
 10:30 p.m.—Dance Orchestra
 11:00 p.m.—Newstime — Douglas
 11:15 p.m.—Music By Lamplight
 11:55 p.m.—News

SUNDAY PROGRAMS

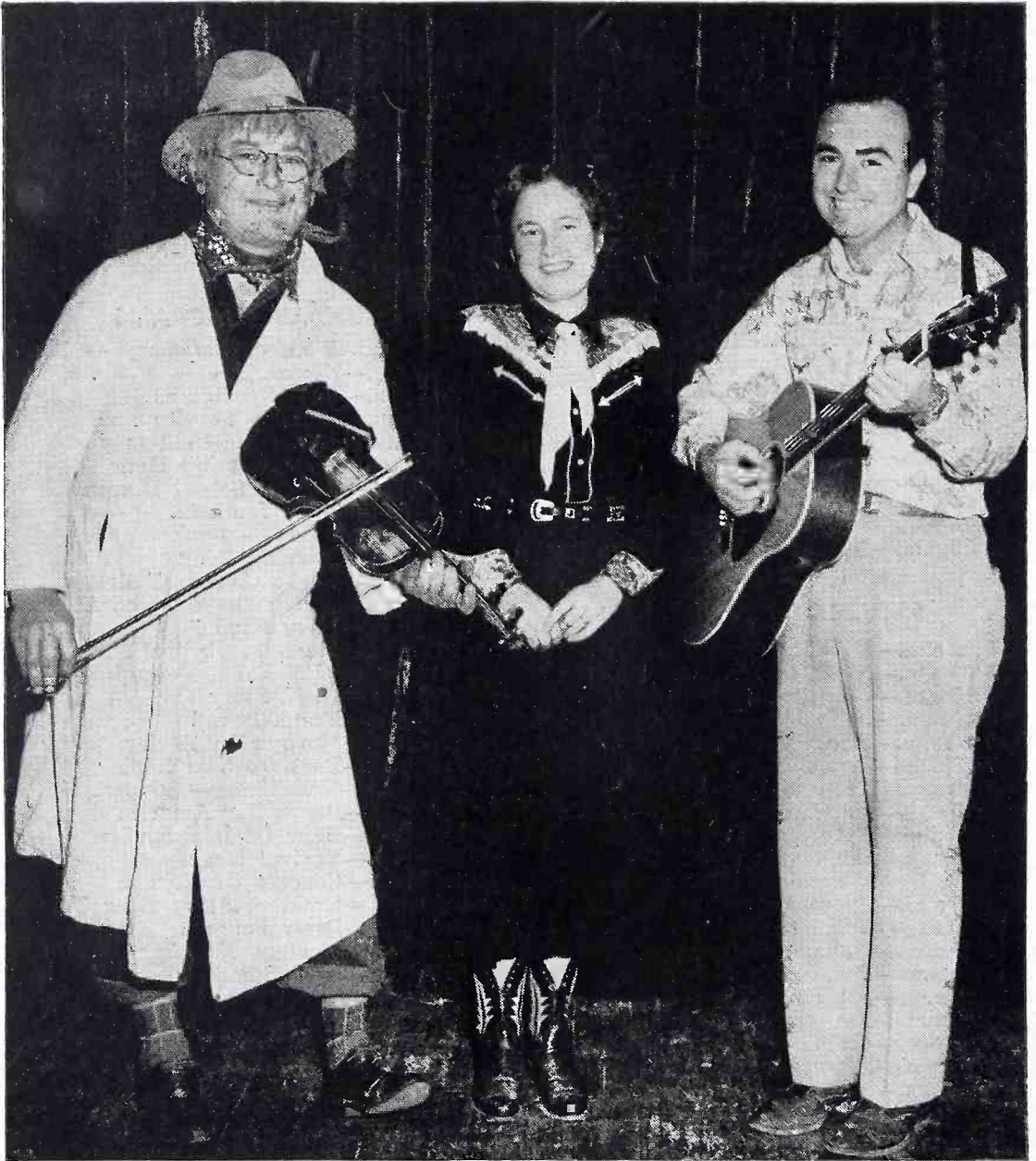
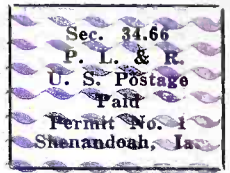
6:55 a.m.—Weather Summary — Bank
 7:00 a.m.—News
 7:15 a.m.—Favorite Hymns
 7:30 a.m.—Worship Service
 8:00 a.m.—Rev. Gene Phillips
 8:30 p.m.—Your Worship Hour
 9:00 a.m.—Sunday School Lesson
 9:15 a.m.—Bible Truth
 9:30 a.m.—News — Bank
 9:45 a.m.—Morning Song
 10:00 a.m.—Negro College Choir
 10:30 a.m.—Milton Cross Opera Album
 11:00 a.m.—Navy Band
 11:30 a.m.—Piano Playhouse
 12:00 noon—Gail Bank, News
 12:15 p.m.—U. N. Story
 12:30 p.m.—Frank Devoll
 1:00 p.m.—Marines In Review
 1:30 p.m.—Back To The Bible
 2:00 p.m.—Newstime — Pippert
 2:15 p.m.—Songs For America
 2:30 p.m.—Hour Of Decision
 3:00 p.m.—Revival Hour
 4:00 p.m.—Concert Of Europe
 4:30 p.m.—Greatest Story Ever Told
 5:00 p.m.—Drew Pearson
 5:15 p.m.—Monday Morning Headlines
 5:30 p.m.—CBC Symphonies
 6:30 p.m.—The Great Adventure
 7:00 p.m.—Stop The Music
 8:00 p.m.—Walter Winchell
 8:15 p.m.—Cafe Istanbul
 8:45 p.m.—The Three Sons
 9:00 p.m.—Let's Be Healthy
 9:15 p.m.—Gloria Parker
 9:30 p.m.—Proudly We Hail
 10:00 p.m.—News
 10:15 p.m.—Thoughts In Passing
 10:30 p.m.—Dance Orchestra
 11:00 p.m.—Newstime — Pippert
 11:15 p.m.—Music By Lamplight
 11:55 p.m.—News

Listings Correct at Time of Publication
 However, all Programs Are Subject to Change

Return postage guaranteed.

POSTMASTER. If addressee has moved and forwarding order is on file, send form 3547, postage for which is guaranteed. If undelivered for any other reason, return to sender.

Tom Thumb Publishing Co.
Shenandoah, Iowa



EZRA, ESTHER AND DOC SEARCH FOR TALENT — A series of personal appearances in many communities around the midwest by Ezra Hawkins and Doc and Esther Embree has given many amateur entertainers a chance to appear in person on KMA and display their talents for the radio audience. Entitled "The Bar Nothin Ranch Search for Talent", the threesome have had as many as 25 amateurs appear on a single program and then Ezra, Doc and Esther round out an evening's festivities with some songs and merry-making of their own.

In addition to providing an enjoyable 2-hour show, the Bar Nothin Talent programs have helped raise funds to finance the activities of many clubs and organizations. Ezra is in charge of arrangements for personal appearances of the group.