

# SPEEDX

*the dx radio magazine for active shortwave listeners*

Keynotes	<i>ellsworth</i>	2
DX Montage	<i>brooks</i>	4
Technical Topics	<i>kollb</i>	6
HAPpenings	<i>moser</i>	7
SWBC DX		
Western Hemisphere	<i>whitehead</i>	8
Europe-Africa	<i>butterfield</i>	15
Asia-Oceania	<i>hickman</i>	22
Station Skeds	<i>koukol</i>	28
Utility Report	<i>handler</i>	30
QSL Section	<i>snyder</i>	35
Tips and Topics	<i>getxel</i>	43
Speedx Contributors	<i>ellsworth</i>	47

1974

*world dx handicapped aid year*

Aug. 1974



Vol. IV — No. VIII



# KEYNOTES



## ANNOUNCEMENT

John Trautschold SPEEDX-GRAM Editor and Oliver Ellsworth SPEEDX Managing Editor has been appointed to fill the un-expired term of Art Glover and Dave Thorne, who have recently resigned as directors.

Both Art and Dave are founder members of SPEEDX. Art Glover having served for three years as President, and Dave Thorne served as Business Manager, Treasure & Secretary for those three years. Due to their devotion and effort, SPEEDX has become one of the leading short wave clubs in North America. Art and Dave have found it necessary to resign due to pressing out side activities. Both will be missed on the Board, but fortunately they are available for advice and guidance.

Thanks to Art and Dave for their superb leadership.

The Board of Directors  
by Oliver Ellsworth

\*\*\*

## CONGRATULATIONS TO 4 NEW FULL MEMBERS

DAVID C. CHAFFIN, M.D.  
UNITED REPUBLIC OF CAMEROON

WILLIAM CRAWFORD  
SCOTLAND, GREAT BRITAIN

EARL CHAPMAN  
HARRISBURG, PA.

MICHAEL CHABAK  
BOULDER, CO.

Certificates of Full Membership and a copy of the SPEEDX Constitution were mailed to each of the above Full Members in July.

\*\*\*

## CONGRATULATIONS ARE IN ORDER

The Board of Directors have unanimously elected E. James Whitehead as President. Jim, the BOD is looking forward to working with you as the new Chairman of the Board.

\*\*\*

## SPEEDX WELCOMES THE FOLLOWING NEW ASSOCIATE MEMBERS

JOHNNY KARLSSON  
SWEEDEN

SKIPPER THURMAN  
CHICAGO, IL

MICHAEL THOMAS  
BARTLESVILLE, OK

TED CHIAPPARI  
ELK GROVE, CA

CHARLES WOOTTEN  
BETHESDA, MD

DON GARY  
THIBODAUX, LA

NIGEL PIMBLETT  
ALB. CANADA

THOM SKEER  
SAN DIEGO, CA

GARY FROEMMING  
GLENDALE, AZ

JAMES DAVIS  
TRAVIS AFB, CA

NEIL GREENIDGE  
BRONX, NY

JAY LEVIN  
NEW YORK, NY

MARC CHAMPANGE  
QUE. CANADA

LEE JINNAK  
CRAFTON, MD

R. S. DUNHAM  
RICHMOND, VA

A. H. ROGERS  
AUSTRALIA

We are looking forward to hearing from you often. SPEEDX urges you to support the various columns and sections, share your loggings with the full membership.

## NOGADS NORTHERN CALIF. DXERS

Meet tentatively scheduled Oct. 26-27. See OSJ Section for full details.

Financial report for the period 1 July 1973 to 30 June 1974 inclusive. This is a summary of SPEEDX General account only. Detailed report to BOD.

BALANCE ON HAND 1 JULY 1973 . . . . .	\$1,407.45
RECEIPTS: New Subscribers . . . . .	\$1,828.10
Renewals . . . . .	2,350.89
Sample sales . . . . .	151.53
Rubber Stamp sales . . . . .	46.00
Loan Repayment(SPEEDXTRAS) . . . . .	332.00
Refunds . . . . .	83.00
	<hr/>
TOTAL RECEIPTS - - - - -	\$4,745.52

\*\*\*\*\*

DISBURSEMENTS:

SPEEDX Printing . . . . .	\$2,058.41
Printing(GRAM, Flyers, Forms) . . . . .	198.52
Postage(Bulletin) . . . . .	1,119.30
Postage(GRAM, HQs, etc.) . . . . .	247.69
Mailing Labels . . . . .	245.35
Misc.(ANARC dues,HQ supplies) . . . . .	20.61
Supply Purch.(Rubber Stamps, etc) . . . . .	222.15
Loan to SPEEDXTRAS(Mostly repaid) . . . . .	532.00
	<hr/>

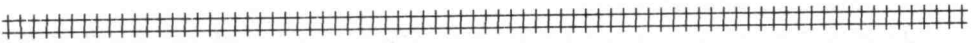
TOTAL DISBURSEMENTS - - - - - \$4,644.03

BALANCE ON HAND 30 JUNE 1974 . . . . . \$1,508.94

\*\*\*\*\*

I certify that this summary of SPEEDX General account for period 7/1/73 to 6/30/74 is correct and accurate to the best of my knowledge.

*Don Johnson*  
 \_\_\_\_\_  
 DON JOHNSON  
 Treasurer/Business Manager



SCADS SOUTHERN CALIF. AREA DXERS

SCADS will meet August 17-18 at the home of Mr. & Mrs. Verlin Shinn, 23942 Iong Valley Road, Hidden Hills, CA 91302 (Phone 213-347-2638.) Please let the Shinns or HQs know that you plan to be there. Bring a towel if you plan to take a dip in the pool.

\*\*\*

PROPER REPORTING GUIDE

An updated reception reporting guide is available from ASWJC 16182 Ballad Jane, Huntington Beach, CA. Reports in SP, PORT, FR and ENG. Cost is \$3.00 Make check payable to American Shortwave Listeners Club. Helpful in OSIing those stations that do not broadcast in English.

\*\*\*

SUNSET-SUNRISE CHART Have you ordered your copy from HQs - \$1.00, .75¢ to full members.

**SPE  
DX**

# DX MONTAGE

by A. V. BROOKS  
74 Massachusetts Road  
Oakdale, Connecticut 06370

# ANARC '74

**HOT?... I'LL SAY IT WAS HOT!:** The '74 Convention of the Association of North American Radio Clubs opened in the Concordia College campus with coincidental arrival by North America's most unbelievable heatwave and North America's most unbelievable conventioners. Through the luck of the draw...and Marc Fisher's room assignments...your editor and Jim Whitehead ended up as roommates and would soon be known far and wide as the "awed" couple. After the fine reception and evening repast we all gratefully gathered to hear the report on the HAF activities... though it was rumored that the excellent attendance had something to do with the fact that the room was air-conditioned. Gilfer associate Perry Ferrell mercifully kept us from wandering out into the oppressive heat by presenting a most informative discussion on the state of the receiver market...though some considered his evangelistic zeal a blatant attempt at "single or double conversion". One of the more revolutionary items to come out of this session was the speculation that the newest receiver of Soviet manufacture has a built-in device which automatically jams all known frequencies used by Radio Free Europe...and then it was off for the usual informal gatherings which dot any ANARC scene. Once we succeeded in tucking away Dave Shelton and his Teddy bear the remaining wee hours degenerated into various conclaves...one of which featured Bill Shaw's clandestine collection of mail-order memorabilia...and the midnight meeting of the Lutherer Toledo Fan Club, the solitude of which was shattered by the appearance of the official convention streaker...with his head, but nothing else, wisely enshrouded by a pink towel...

**BAN THOSE NOISY RICE KRISPIES!:** Even the hour of a delayed breakfast can arrive too early when it is immediately preceded by night-long gabfests...and there is nothing quite so sad as the sight of Woody Seymour crawling into the dining hall with a plaintive request for a "quiet" cereal. More soothing for some was the drawing for door prizes...with the "Luck Of The Irish" holding for Mike Macken, winner of the digital clock. SPEEDX resident south-of-the-border aficionado, Jaime Cabezablanca, devoted the remainder of the morning to an explanation of the vagaries of latin American DX. We came away armed with the knowledge that studio-produced heterodyne is a distinct possibility and that one Central American station utilizes "Dixie" at sign-on...a point proffered by a Carolina attendee, of course. Following lunch, utility expert Paul Mayo made his "point-to-point" with an offering which included guidance in writing a utility report...and neatly ignoring a question from the audience on "how to determine the sex of the speaker on single sideband without a product detector" ...and was, in turn, followed by S-2 staffer Tom Sundstrom...appearing by the province of Dr. Carl McIntyre and Friend...presenting an historic outline of Radio Free America. Among the closing remarks was a brief delineation of Dr. McIntyre's future speculation of placing RFA pirate stations on both coasts and in the Gulf in order to blanket the continental U.S. with his transmissions. Choice of an effective frequency was a problem until a voice from the audience suggested 455 KHz...

**GARBLED KABUL:** Certainly one of the convention highlights was the Saturday session on propagation conducted by Dr. David Meisel...who explained in a most fascinating fashion why it is that Chris Lobdell can hear Afghanistan on 15195 and I can't. After doing again what we actually did best...eat...we all devoted our attention to the superbly presented subject of "Trends In Communications" as outlined by our banquet speaker, Josef C. Nichols, Chief of International Communications for the United Nations. Congratulations are due Ed Tafel for his expertise in quiet, mid-speech fielding of hot, errant flash bulbs...indeed, a lost art. Following the lively post-speech question and answer period the Saturday evening informalities commenced with resumption of Rich Shaftan's introductory adventures in educational zymurgy...complete with demonstration. Later, memories of ANARC '73 would be evoked by one of our BCB buffs who passed around a verie card from station WEIT...while the nocturnal gatherings elsewhere produced the initial meeting and subsequent founding of a club for former DX column editors...to be known, we presume, as "X-DX"...

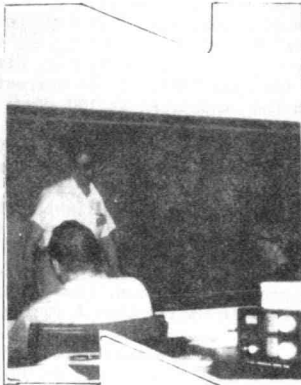
**...AND THE EVENING AND THE MORNING WERE THE THIRD DAY:** The final day of ANARC '74 dawned bright and just a bit early. Among the activities would be reports, a film, taped greetings from prominent international DXers, and a discussion on what to do in a "binding situation" as demonstrated by Chris Hansen...who, incidentally, owes Woody Seymour a new camera lens and Radio Australia a new film. Naturally, there were other incidental events between the 5th and 7th of July the hilarity of which remains in the name of decency to be passed on solely by word of mouth. Such are the things of which legend is made. To find out what they were you'll just have to plan on attending ANARC '75...



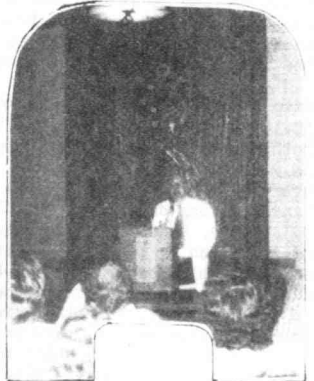
# PHOTO ALBUM



DR. DAVID FETSEL  
PUTS CAVITIES IN  
OUR IONOSPHERE



"DR. WADLEIGH,  
I PRESUME?"-  
FERRY FERRELL



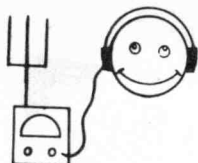
JOSEY NICHOLS LEADS  
BANQUET ATTENDEES IN A  
JAPANESE LESSON



MAKING WOODY SEYMOUR FOR BREAKFAST  
WASN'T ALWAYS EASY AS "HOUSE MOTHER"  
CHRIS HANSEN FINDS OUT HERE



A RARE PHOTO AS MIKE MACKEN,  
WORLD'S MOST INACTIVE DXER,  
MEETS AN ACTUAL RADIO RECEIVER



JOHN L. KOLB  
12532 ARABIAN WAY  
POWAY, CA 92064

## TECHNICAL TOPICS

Hi there! Lots of questions received here this month, but then, that's what I'm here for. If you have questions about the technical side of this hobby, sent them in, I promise an answer, sooner or later, either in print or direct.

Mr. and Mrs. Leistner are having trouble with their SPR-4, and would like to know where to have it fixed. I don't know of anyone to recommend in the L. A. area, so can only recommend returning it to Drake for repair. A quality communications receiver is not something to trust to your local Radio-TV shop. In the old days, a failure was most likely a tube burning out, which is not hard to find, but modern equipment requires good test equipment, and is not for amateurs. As far as I've heard, Drake's shop rates are reasonable, and they are the best qualified, so why save a few dollars and get a poor repair job?

Otto Schilling would like to know how to use the crystal calibrator on his NC-190. The NC-190 is one of the few (only?) radios built with the bandspread control calibrated for both Ham bands, and SWBC. A crystal (xtal) calibrator is an **internal** oscillator available on most radios to set the dial more accurately. This supplies a series of markers, usually every 100 kHz. Thus, with xtal cal turned on, tuning across the 31 meter band, you would find a strong carrier at exactly 9.5, 9.6, 9.7, ect. MHz. First find out how your dial is calibrated. Some are set up for the main tuning to be correct with the bandspread at zero; others, such as the HQ-180, with the bandspread at 100. Tune to WWV on 5, 10 or 15 MHz, and note which **setting** of the bandspread makes the main dial most correct. On a set with a calibrated bandspread for the band of interest, either SWBC if you're lucky, or maybe in the Ham bands, turn the main tuning to the index mark; now with the bandspread near the normal calibrated end, tune to bandspread to the nearest 100 kHz point, say 14.4 MHz on the 20 meter band. Now shift the main tuning very slightly, until the 14.4 carrier is heard. With a little familiarity with the band, it will be obvious if you get the wrong marker. For example, if you find R. Japan on 9605 instead of 9505. A xtal calibrator can also be used to form a graph converting the 0-100 logging into a calibrated bandspread for bands not covered on your normal bandspread calibration. (Huh?) For more info on this, write Hqdrs and ask for BIP-2, "Improving the Calibration & Tuning Operation ..."

SPR-4 owners: Al Sizer has a two page article available on "How to Improve your Drake SPR-4", by Turner and Ingelstron. Send a SASE to Al at 22 Country Way, North Haven CT. 06473.

Wendell Vogel is using a Hy Gain SW-9, and would like to know if a 25 ft. long wire would be worth putting up. The SW-9 is a 9 ft. vertical. I think so, I've always liked having several antennas to choose from. Usually one or the other of my long wires will outperform my SWV-7 vertical. It's a question I can't really answer, you'll have to try it.

Hobart Beal is interested in the Heathkit SB-313 and would like a comparison with the SW-4A. I would prefer the SB-313. I started serious DXing with a Heath SB-310, about the same except it had tubes, instead of being solid state, and liked it very much. I got rid of it to go into utility DXing. The SW-4A can be modified, over certain limits, in freq. coverage simply by changing crystals. To change the freq range of the SB-313 would require extensive engineering changes. The SB-313 has a built in xtal cal; the Drake does not. The Heath has a better filter available (at a price) for selectivity (delux SSB filter). The Drake has both tubes and transistors; tubes age and eventually fail. The one problem I had with the SB-310 was IF feedthrough. Costal CW stations near 8995 kHz came straight through the RF Amp and mixer into the IF amp, and were audible in the speaker whenever I was tuned to the 41 or 31 meter band. Weak but annoying.

Hobart also would like to know if the Mosley SWL-7 antenna would be better than the 42 ft long wire under the eaves of his house (most definately) and is it okay to use the ground of the wall socket in the house. As a protective ground to prevent shock hazzard, yes. As an effective RF ground, no. See last months column for more on grounds. However, with a half wave dipole such as the SWL-7, a ground shouldn't make much difference.

Someone else (I misplaced their letter-gasp!) wanted a comparison between the DX-150 and the Lafayette HA-600. I'm not overly familiar with either, but judging from numbers owned (A very poor practice, admittedly) the DX-150 wins about 20 to 1. See you all at SCADS, Hidden Hills on Aug. 17 & 18.



# HAP PENINGS

## HANDICAPPED AID PROGRAM

GENE MOSER - HAP DIRECTOR  
6805 Woodland Court  
Coloma, Michigan 49038 USA



"1974 WORLD DX HANDICAPPED AID YEAR"

WORLD DX HANDICAPPED AID CAMPAIGN is the proposed "name change" of 1974 WDXHAY. The year has been dropped as it caused so much concern with several clubs & organizations. It is sincerely hoped, by this editor, that all SWLs, DXers, Clubs & SW bodies will use 1974 as a time for planning and considering the tremendous good you can do for those who can greatly benefit from YOUR efforts. To promote our hobby in the best way possible R. Nederlands DX JUKE BOX is issuing a special QSL to honor WORLD DX HANDICAPPED AID CAMPAIGN. It's red, white, and blue, with bottom portion in Braille.

HAP INTERNATIONAL COORDINATING COMMITTEE(H.I.C.C.) IAN McFARLAN of R. Canada SW Club has become the first HICC Representative within the B C industry. Mr. RAM MOHAN of the UDXI has become our first HICC Rep. in India. Full details on HICC are available to any official of a club, SW station or, organized SW body.

— BOOK REVIEW —

— BOOK REVIEW —

In late June a new book came out from Tab Books. THE COMPLETE SHORTWAVE LISTENER'S HANDBOOK was written and compiled by noted DXer & NNRC SW Editor HANK BENNETT. If you are not an advanced DXer this handbook is one you should have in your SW library. All those questions you have about this hobby are answered here! No more looking in 3 or 4 different books to find what you need to know! It's all in THE COMPLETE SW LISTENER'S HANDBOOK! 288 pages cover radio receivers & antennas, frequencys & logbooks, propagation & how it affects radio reception, DXing on the longwave & MW bands, card swapping, & much, much more! Price is \$6.95 in softcover, \$9.95 in hardcover. Make checks/MOs payable to & order from: HANK BENNETT, P O BOX 333, CHERRY HILL, NJ 08002. Hank recently lost his father. My sincere sympathy to a good friend.

HAP PRODUCT SERVICE has our famous HAPpy face rubber stamp for sale. We have re-ordered 5 times! The price is \$2. Our new HAP BALL POINT PEN is only \$1.25. Add'l pens are \$1 when ordered at same time. The colorful HAP JACKET PATCH is still available in limited quantities. When they are gone there will be no more. Only \$1 each! Order today! Checks/MO's made payable to HANDICAPPED AID PROGRAM.

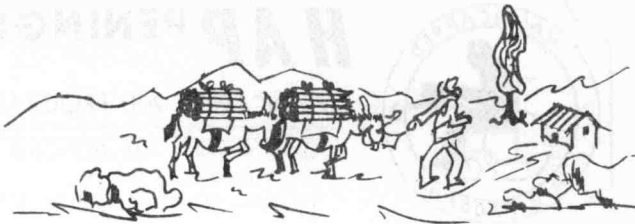
ARTIST WANTED If you have artistic talent I need your help. This is a one time job. You must have the tools to do lettering. Also you will have to draw a circular design like the HAP crest in my masthead. This is an urgent request! If you can help please submit 2 or 3 samples of your work. Lettering & design both. Finished work should be no more than 2 inches in diameter. Black ink on white paper. If you are chosen you will receive 1 pen, patch, and HAPpy stamp free. 2 credit points will also be given. Any member, non-member, editor, etc., should apply. Please do not let me down on this most important project.

*Gene*

# SWBC DX - Western Hemisphere

— EDITOR —

E.J. "Jim" Whitehead  
177 Pine Ridge Road  
Reading, Mass. 01867



## REFRAN

"Hombre prevenido nunca fue vencido"

## PANAMANIAN HOXO TO ADD SHORTWAVE

It was a bargain they just couldn't pass up! That was the way Steve Hunter, Director of Research and Development for the World Radio Missionary Fellowship described HOXO's acquisition of an army-surplus shortwave transmitter for \$600.00. And, because of that bargain, HCJB's Panamanian sister station will soon be able to extend its coverage, now limited to AM and FM, to Panamanians in the country.

The transmitter purchased is a 5000 watt unit formerly employed in code transmission service. As it lacks a modulator stage for voice transmission, plans are now underway to build one. In fact, HCJB design engineer Herb Jacobson will be in Panama City in September to work out the details for the addition of the modulator as well as to check out the new transmitter. Once overhauled, this new transmitter will, if all goes well, begin operations via a simple lazy-H type antenna.

Plans are to operate in one of the tropical bands but, as yet, no frequency selection has been made. This will, no doubt, depend on the Panamanian licensing authorities. The broadcasting license has yet to be applied for but, no troubles are anticipated in crossing this minor hurdle.

In fact, about the only major hurdle yet to overcome is money. HOXO's budget was severely battered by an 85% increase in the cost of power not to mention the fact that wages were raised 10-15% by decree earlier in the year. Unlike HCJB, HOXO is not self supporting and thus contributions from its service area must be supplemented from outside. Consequently, should you feel so inclined as to do something for HOXO I'm certain the World Radio Missionary Fellowship wouldn't turn it down.

Now in its 25th year, HOXO broadcasts a mixture of cultural, religious, service, and children's programs to a Panama City audience. These broadcasts are aired 16 hours daily and are in both English and Spanish. The staff is nearly 100% Panamanian and headed by Ricardo Ley.

HOXO shortwave will be a blessing in many ways. For HOXO it will mean its ministry will be unshackled from its present limited area and be extended to the country man. And, for DXers, HOXO shortwave will bring an opportunity to log a new and rarely heard country.

## SEA LAW CONFERENCE SPARKS VENEZUELAN INTERNATIONAL SERVICE

Radio Nacional de Venezuela has activated an International Service for the duration of the Third International Conference on the Law of the Sea now underway in Caracas. This service is broadcast in two languages, English and Spanish, and is beamed to Europe and Africa from 1000-1200 GMT as well as to North, South, and Central America from 0000-0200 GMT. The frequencies used are 11750 kilohertz and 15390 kilohertz with only the former in use in the 1000-1200 GMT time slot.

This new service is extremely informative as well as entertaining.



Programs consist of a news roundup, interviews with conference personalities, short talks on conference topics, Venezuelan music, and short talks on Venezuela all of which are presented in a pleasing, smooth-flowing and informal manner. The music portions, in particular, are extremely informative and provide valuable insight into what is typical Venezuelan music and how to recognize it.

Unfortunately, it appears that this new International Service will terminate with the end of the Conference of the Law of the Sea. The announcers of the service seem enthusiastic to continue but admit that, at present, there are no plans to continue beyond the 23rd of August. So, DXers who do not understand Spanish would be well advised to make haste to log this Latin American broadcaster.

### HCJB PLANS 500 KW SUPERPOWER TRANSMITTER

HCJB has recently announced plans to build a 500,000 watt super-power shortwave transmitter to be located at their existing transmitter site in Pifo. Work is now underway with the present schedule calling for a Fall 1976 completion. Concurrent with this project is the construction of a steerable antenna which will be used in conjunction with the new transmitter.

The new transmitter will be constructed in Elkhart, Indiana and work is expected to begin shortly. Once started, work will then proceed as rapidly as the fund raising permits. The steerable antenna will be erected by HCJB engineers in Ecuador. Materials for this project have already been purchased.

### HCJB KAYOED BY TORRENTIAL RAINS

The recent brief departure of HCJB from the airwaves noted by many observers here in North America can be traced directly to the recent torrential rains which plagued Ecuador. According to an HCJB spokesman, debris carried along by the raging rivers passed through two trash barriers and entered the turbines which generate the power that runs HCJB's many transmitters. Fortunately, the turbines were not seriously damaged but it was necessary to pull the generator off-line for inspection and to clear the debris from the intake.

Normally when the power plant is down HCJB switches to diesel-driven emergency generators and continues operating but this was not to be this time. The local power company was also kayoed by the same conditions and asked HCJB to use its emergency generating capability to feed a power starved Quito. This was done and, until repairs were effected, broadcasting was suspended.

HCJB is probably the only broadcaster in the world that sells power to the power company rather than buy it. This is because the hydroelectric plant HCJB operates generates more power than it consumes. This will be true even after the new 500 kw transmitters come on line as presently HCJB sells in excess of 1000 kwh to the local power company.

### ON TO THE LOGGINGS

Yes Charlie, there really are loggings this month. But, before I get down to business I should mention that last month's refrain is translated "Don't put off till tomorrow what you can do today" And, I'd like to say a hearty THANK YOU to the 1974 ANARC Convention Committee for the tremendous convention they put on in Bronxville. It was a great one guys!!

### ARGENTINA

5985 0902 LRS2 R. Splendid:Sp.w/OM tlks,ID (232,6/14;Paschke-WI)  
6060 0901 LRA31 R. Nacional:Sp.w/sign on,news headlines,music (354,  
6/23;Lanoue-MA)

**PANAMANIANs**  
are listening  
to radio

says  
**Ricardo**  
**Bay**



they're  
listening to  
radio station **HOMO**

ARGENTINA (cont.)

- 9690 0635 LRA32 Radiodifusión Argentina al Exterior:Eng.w/ARGENTINE  
 CHRONICLE pgm w/tlk abt cola drinks in Argentina (444,6/13;  
 DeAngelis-CA) (433,0300,6/14;Suddick-MI) (222,0400,6/13;Miller-  
 CA) (333,0345,6/24;Cleveland-CA) (444,0020,6/20;Stephenson-CA)  
 (433,0004,6/9;Meehan-CA) (545,0630,7/2;Beal-WA) (454,0045,6/28;  
 Szot-CA) (444,0100,6/7;Gaede-CA) (444,0520,6/15;Earhart-PA)
- 11710 2300 LRA35 Radiodifusión Argentina al Exterior:Eng.w/nx of Argentine  
 (322,7/5;Kratter-NY) (344,2323,6/14;Meehan-CA) (353,2330,6/26;  
 Radtke-CA) (434,2335,5/7;Stephenson-CA)

BRAZIL

- 4755 0845 ZYF23 R. Dif. do Maranhão:  
 Port.w/ **SEDE PRÓPRIA**  
 tlk,mx RUA DR. SOUZA ALVES, 960 — TAUBATÉ - S.P. — FONES, 2-4558 · 2-4559 · 2-3854 — PBX 20 RAMAIS  
 (453,6/24;Zilmer-WI) **ZYE - 58 720 KHZ - 1 KW**  
**ZYR - 61 4.855 KHZ - 1 KW**  
 C. U. C. N.º 722308,01
- 4865 0900 PRC5 R. Clube do Pará:  
 Port.w/music,talk  
 (433,6/24;Zilmer-WI)
- 4887 0915 ZYG26 R. Pioneira de Teresina:Port.w/tlk,mx (433,6/24;Zilmer-WI)
- 4995 0811 ZYK2 R. Brasil Central:Port.w/OM DJ,mx,IDs (343,6/29;Szot-CA) (232,0911,6/20;Paschke-WI) (333,0212,6/16;Earhart-PA)
- 5965 0933 ZYU60 R. Guaíba:Port.w/nx,pgm w/mx,comls (343,7/4;Lanoue-MA)
- 6000 0920 PRK5 R. Inconfidência:Port.w/OM tlks,ID,mx (322,6/14;Paschke-WI)
- 6035 1000 ZYZ26 R. Globo:Port.w/comls,tlk (242,7/5;Jones-MS)
- 6135 0820 PRC21 R. TV Gaúcha:Port.w/tlk,mx,ads (333,7/3;Zilmer-WI)
- 6155 0100 ZYN29 R. Cultura da Bahia:Port.w/spts event (433,7/3;Zilmer-WI)
- 9505 0157 PRB22 R. Record:Port.w/comls,definite IDs,promos, in the clear much to my surprise (343,7/6;Lanoue-MA) Probably because of the solar flares that occurred over the 4th of July weekend.
- 9595 2315 ZYN29 R. Cultura da Bahia:Port.w/tlk,mx,jingles (443,6/26;Zilmer-  
 WI)
- 9635 0918 ZYE236 R. Aparecida:Port.w/tlk,ID,mx (333,6/16;Earhart-PA)
- 9695 2210 ZYB61 R. Rio Mar:Port.w/mx,some Eng. rock mx (343,7/6;Zilmer-WI)
- 11720 0130 PRL8 R. Nacional de Brasília:Port.w/spts event (422,7/3;Zilmer-  
 WI)
- 11765 0140 ZYB8 R. Tupi (São Paulo):Port.w/spts event (422,7/3;Zilmer-WI)
- 11785 2337 ZYU61 R. Guaíba:Port.w/Brazilian mx,comls (454,7/5;Lanoue-MA)
- 11805 2342 ZYZ36 R. Globo:Port.w/basketball game,IDs (444,7/5;Lanoue-MA) (211,0220,6/22;Trubee-HI) (433,0145,6/30;Zilmer-WI)
- 11925 1045 ZYR78 R. Bandeirantes:Port.w/tlk,mx (232,6/24;Zilmer-WI)
- 11935 1030 ZYS35 R. Clube Paranaense:Port.w/tlk,music (343,6/24;Zilmer-WI)
- 15155 0300 ZYB9 R. Tupi (São Paulo):Port.w/Brazilian mx,ads,ID (322,6/26; Levin-NY) (343,0400,7/4;Jones-MS) (354,2213,6/30;Lanoue-MA) (433,0050,7/8;Cleveland-CA) (353,0245,6/26;Earhart-PA)
- 15190 2153 PRK9 R. Inconfidência:Port.w/nx,many mentions of Brazil but no ID heard so must stay TENTATIVE (353,6/27;Earhart-PA)
- 15245 2000 PRL8 R. Nacional de Brasília:Eng.w/RETROSPECTIVE PROGRAM, replays best pgms of previous week (433,6/23;Brooks-CT) (343,2100,6/16;Getzel-NY) (-4,2109,6/20;Famularo-NJ) (333,2100,6/12;Kratter-NY) (544,2130,6/15;Rodriguez-PR)
- 15417 0020 ZYR216 R. Clube Ribeirão Preto:Port.w/Brazilian ballads,comls (343,7/2;Miller-OH) (343,0010,6/10;Earhart-PA)
- 15445 1924 PRL8 R. Nacional de Brasília:Port.w/amnts,Brazilian mx (322,6/23;Lanoue-MA)

CANADA

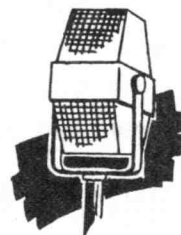
- 5960 0230 CBC Northern Service:Eng.w/INSIDE FROM THE OUTSIDE comedy pgm (434,6/27;Beck-OH)
- 5970 1215 R. Canada Intl.:Eng.w/nx,THE WORLD THIS WEEK pgm (554,6/15; Suddick-MI)
- 6005 1255 CFCX, Montreal:Eng.w/mx,ID,comls.,news (--2,6/25;Famularo-NJ)
- 6070 1555 CFRX, Toronto:Eng.w/mx,tlk,TCs,wx (444,6/20;Wells-NY) (--2,1640,6/23;Famularo-NJ) (333,0450,6/20;Cleveland-CA) (444,1238,6/9; Suddick-MI)
- 6085 0910 R. Canada Intl.:Eng.w/science pgm,nx,off 0930 (--4,6/13;Famularo-NJ) (454,0112,6/23;Stine-ID) (444,0100,6/11;Suddick-MI)
- 6135 0400 R. Canada Intl.:Eng.w/nx,cmntry,stk mkt rept. (554,7/2;Beal-WA) (555,0500,6/10;Gaede-CA)
- 6140 0650 R. Canada Intl.:Eng.w/tlk abt the Canada Courier, an export trade pamphlet (554,6/25;Gaede-CA)
- 6160 0700 CKZU, Vancouver:Eng.w/IL reading nx,ID as"CBU,Vancouver" (353,6/20;Szot-CA) (554,0730,6/25;Beal-WA) (333,6/22;Cleveland-CA)

CANADA (cont.)

- 9480 0600 CBC Armed Forces Svc.:Eng.w/nx, // 5925 to Eur. (454,6/20; Szot-CA)  
 9535 0140 R. Canada Intl.:Eng.w/stamp pgm (544,6/19; Zelasco-IN) (554,0035, 6/7; Gaede-CA)  
 9610 1400 CBC Northern Svc.:Eng.w/C+W mx (353,7/4; Radtke-CA)  
 9625 1700 CBC Northern Svc.:Eng.w/nx,mx,comedy pgm (--4,6/23; Famularo-NJ) (343,1600,6/20; Wells-NY) (554,0830,7/4; Gaede-CA)  
 9655 0515 R. Canada Intl.:Eng.w/magazine pgm (554,6/22; Beal-WA) (554,0556, 6/10; Gaede-CA)  
 9755 0100 R. Canada Intl.:Eng.w/nx, sports nx, stock mkt rept. (554,6/16; DeAngelis-CA) (554,0100,6/13; Suddick-MI) (444,0100,7/7; Beck-OH)  
 11720 1313 CBC Northern Svc.:Eng./Fr. w/nx, poem, pop mx (444,6/14; Smith-FL) (554,2332,6/16; Suddick-MI) (554,2210,7/4; Gaede-CA)  
 15325 2146 R. Canada Intl.:Eng.w/nx, pgm to Europe (554,6/9; Suddick-MI)  
 17820 2133 R. Canada Intl.:Eng.w/tlk on American TV and its influence in and on Canada (554,6/12; Yajko-PA)

CHILE

- 9572 0230 CE957 Emisora Diego Portales:Sp.w/comedy show, ads (322,6/28; Szot-CA)  
 9750 1100 CE975 R. Minería:Sp.w/nxcast (422,7/1; Zilmer-WI)  
 15150 2340 CE1515 R. Nacional de Chile:German w/nx, cmntry (222,6/20; Trubee-HI) (423,2212,6/22; Zilmer-WI) (232,0200,7/6; Hardester-CA) (353,0100,6/28; Radtke-CA)



COLOMBIA

- 3280 2231 HJJU R. Meridiano 70:Sp.w/LA mx pgm, ID (443,7/14; Rodriguez-PR)  
 4775 0423 HJKC Emisora Nuevo Mundo:Sp.w/"Encuentro" pgm (543,6/10; Rodriguez-PR)  
 4785 1026 HJLW Ecos del Combeima:Sp.w/LA music (323,7/10; Jones-MS)  
 4845 0955 HJGF R. Bucaramanga:Sp.w/lt. mx, ID, nx pgm (353,7/4; Earhart-PA)  
 4865 0540 HJLZ LV del Cinaruco:Sp.w/LA mx pgm, ID (443,6/27; Cleveland-CA)  
 4945 0925 HJDH R. Colosal:Sp.w/local nx, mentions of rival station in Neiva, LV de Huila (444,6/24; Zilmer-WI) VERY CONFUSING SO BEWARE!!! (433,0530,7/10; Redman-IL) (354,0435,6/22; Lanoue-MA) (444,0345, 6/21; Miller-CA)  
 4955 0315 HJGQ R. Nacional:Sp.w/ID, tlk (424,6/28; Levin-NY) (433,0300,7/10; Redman-IL) (343,1045,7/4; Earhart-PA) (333,0400,6/25; Cleveland-CA)  
 4965 0530 HJAF R. Santa Fe:Sp.w/Tango mx, several IDs (444,6/26; Redman-IL) (454,0523,6/20; Szot-CA) (353,0535,7/7; Lanoue-MA) (343,0738,6/29; Paschke-WI)  
 5016 0109 HJ Ecos del Atrato:Sp.w/ASI CANTA ARGENTINA pgm of Argentine mx, ID @ 0130 as "Somos TODELAR, somos profesionales, somos Ecos del Atrato", into CORTESTIAS MUSICALES 1400 pgm of deds, Colombian mx, request for reception reports with address as Aéreo 78, Quibdó, Choco as per WRTVH address for MW outlet. (433,w/CW QRM annoying,7/13,7/16; Whitehead-MA) Is NEW STN!!  
 5075 1032 HJGC R. Sutatenza:Sp.w/LA mx pgm, IDs, // 5095 (444,7/3; Jones-MS)  
 5095 1035 HJGG R. Sutatenza:Sp.w/LA mx pgm, IDs, // 5075 (444,7/3; Jones-MS) (343,0330,6/19; Cleveland-CA)  
 6040 0435 HJLB LV del Tolima:Sp.w/LA mx, TCs, ID (332,6/22; Cleveland-CA) (353,1107,7/4; Miller-OH)  
 6065 2345 HJAX R. Super:Sp.w/SUPER NOTICIAS nx pgm, severe QRM from YVSR (212,7/16; Rodriguez-PR) (454,0910,6/23; Lanoue-MA) (333,0455, 6/20; Cleveland-CA)  
 6075 0921 HJID R. Sutatenza:Sp.w/OM tlks, ID, LA mx (343,6/20; Paschke-WI)  
 6115 0955 HJIE LV del Llano:Sp.w/uninterrupted mx, s/on @ 1000 w/anthem (353,7/4; Lanoue-MA)  
 6125 0649 HJKE R. Continental:Sp.w/mx, ID by OM, TC (343,6/20; Szot-CA) (433, 0700,6/28; Redman-IL)  
 6140 0423 HJNE R. El Sol:Sp.w/Political Discussion (333,7/4; Lanoue-MA)  
 6150 0920 HJ?? LV del Huila:Sp.w/LA mx pgm, TC "Hora Super.", ID as "Super Voz del Huila" (423,6/30; Agner-NJ) (332,0655,6/20; Szot-CA) (444,0715,6/28; Redman-IL) (333,0544,6/15; Lanoue-MA) (433,0815, 6/24; Zilmer-WI) (333,0501,6/22; Cleveland-CA)  
 6160 0115 HJKJ Emisora Nueva Grenada:Sp.w/LA mx, RCN IDs, IDs, TCs (333,7/6; Lanoue-MA)  
 6170 1045 HJBJ LV de la Selva:Sp.w/tlk, mx (322,7/4; Zilmer-WI)

COSTA RICA

- 4832 0055 TIHB R. Capital:Sp.w/ID, into nx roundup (333,6/26; Oliver-NH) (444,0300,6/24; Agner-NJ) (333,0410,6/25; Cleveland-CA) (333,0014,6/21; Rodriguez-PR) (454,0518,6/20; Szot-CA) (444,0545,6/26; Redman-IL) 6/29; Paschke-WI)
- 5954 0750 TIQ R. Casino:Sp.w/YL in special pgm, ID, tlk in Eng. & Sp. (343,6/29; Paschke-WI)
- 6006 0857 TIHB R. Relo1:Sp.w/LA mx pgm, TC/ID (454,6/23; Lanoue-MA) (433,0513,6/10; Rodriguez-PR) (343,0825,6/29; Szot-CA)
- 6175 1003 TIFC Faro del Caribe:Sp.w/IDs, into rel. pgm (343,7/9; Jones-MS)
- 9645 1134 TIFC Faro del Caribe:Sp.w/Rel. Svc., tlk, music (242,7/7; Miller-OH) (423,0410,7/5; Agner-NJ)

CUBA

- 9525 0700 R. Habana Cuba:Eng.w/usual pgms (544,6/19; Beal-WA) (554,0630,6/11; Gaede-CA)
- 9550 1100 R. Habana Cuba:Lang.w/nx, tlks, mx (333,6/26; Miller-CA) (444,0600,6/10; Gaede-CA)
- 9680 2349 R. Habana Cuba:Sp.w/music, talk (343,6/9; Meehan-CA) (444,2245,6/27; Gaede-CA)
- 11725 0410 R. Habana Cuba:Eng.w/mailbag pgm (232,7/1; Lovett-OH) (111,0235,6/22; Trubee-HI) (243,0100,6/12; Miller-CA)
- 11760 0400 R. Habana Cuba:Eng.w/mx "From the Land of Music for your listening pleasure" (554,7/1; Lovett-OH) (--4,0308,6/13; Famularo-NJ) (554,1700,6/6; Gaede-CA)
- 11815 0335 R. Habana Cuba:Eng.w/VOICE OF VIETNAM pgm (444,6/18; Beal-WA)
- 11930 0317 R. Habana Cuba:Eng.w/PHILATELY IN CUBA pgm (544,6/17; Zelasko-IN) (554,0315,6/18; Beal-WA) (--3,0157,6/27; Famularo-NJ) (353,0100,7/2; Radtke-CA) (--4,0200,6/28; Thompson-NM) (534,0225,6/16; DeAngelis-CA)
- 11960 1555 R. Habana Cuba:Sp.w/mx, then nx (353,7/8; Earhart-PA)
- 15155 2135 R. Habana Cuba:Eng.w/mx pgm, anthem & off (444,6/16; Getzel-NY) (545,2103,6/26; Beck-OH) (434,2137,6/22; Yajko-PA)
- 17855 1508 R. Habana Cuba:Sp.w/LV DE LA REVOLUCION pgm (333,6/18; Szot-CA)

DOMINICAN REPUBLIC

- 4775 0320 HIAS Onda Musical:Sp.w/LA mx, IDs (333,7/7; Redman-IL) (444,0103,6/28; Lanoue-MA) (434,0205,6/11; Rodriguez-PR)
- 4850 0116 HIRL R. Clarin:Sp.w/LA NOCHE Y EL MUNDO pgm (333,6/16; Rodriguez-PR) (444,0718,6/20; Szot-CA) (433,0210,7/11; Redman-IL) (444,0028,6/20; Agner-NJ)
- 4882 0545 HIJP R. Comercial:Sp.w/OM tlks, IDs, LA mx (343,6/29; Paschke-WI) (433,0545,6/28; Redman-IL)
- 4930 0905 HIBE R. Mil:Sp.w/wake-up music (454,7/4; Lanoue-MA)
- 5030 0558 HIBB LV del Papagayo:Sp.w/ID "Transmite HIBB, LV del Papagayo, 5030 khz, banda internacional de 60 metros", uninterrupted lt. LA style mx (353,7/7; Lanoue-MA)
- 9505 0315 HISD R. Television Dominicana:Sp.w/lt. classical mx, ID (343,6/26; Cleveland-CA)

ECUADOR

- 3390 1026 HCOT1 R. Zaracay:Sp.w/comls, LA mx, ID (343,7/3; Jones-MS) (443,0530,6/27; Cleveland-CA) (242,0930,6/14; Paschke-WI)
- 3985 1018 HCEB5 R. Escuelas Radiofonicas Populares:Sp.w/LA mx pgm, much RTTY QRM (211,6/20; Szot-CA)
- 4688 0531 HCWE1 R. Nacional Espejo:Sp.w/Andean mx (353,6/14; Moore-PA) (444,0520,6/28; Redman-IL) (342,0105,7/7; Rodriguez-PR)
- 4765 1047 HCAJ2 R. CRE:Sp.w/full ID, mx pgm (323,7/10; Jones-MS)
- 4800 0523 HCMB5 R. Popular Independiente:Sp.w/OM tlk, ID, Andean mx pgm (354,6/14; Moore-PA) (353,0545,7/12; Rodriguez-PR)
- 4825 0431 HCAV3 R. Luz y Vida:Sp.w/Lively LA mx, ID (322,7/7; Miller-OH) (433,0610,6/28; Redman-IL)
- 4923 0200 HCRQ1 R. Quito:Sp.w/Andean & pop mx (333,6/28; Miller-CA)
- 5020 0413 HCVC3 R. Centinela del Sur:Sp.w/LA mx, ID, TC, full ID w/freqs. @ 0425 (343,6/29; Cleveland-CA)
- 6085 0730 HCJB LV de los Andes:Eng.w/tlk abt Simon Bolivar (444,6/25; Gaede-CA) (343,0901,6/22; Earhart-PA)
- 9560 0230 HCJB LV de los Andes:Eng.w/DX PARTY LINE pgm (343,6/16; Wells-NY) (554,0557,6/10; Gaede-CA) (434,0230,6/23; Miller-CA)
- 11740 1230 HCJB LV de los Andes:Eng.w/rel. mx (434,6/20; Yajko-PA) (353,0300,7/5; Radtke-CA) (554,1308,6/15; Suddick-MI)



ECUADOR (cont.)

- 11915 0300 HCJB LV de los Andes:Eng.w/CALL OF THE ANDES pgm (444,6/18;  
Beal-WA) (454,0527,6/20;Szot-CA) (555,0235,7/7;Levin-NY)  
(434,0145,7/10;Lovett-OH) (444,0445,7/3;Gaede-CA) (555,0400,  
6/21;Rodriguez-PR) (--4,0225,6/28;Thompson-NM)
- 15115 0200 HCJB LV de los Andes:Eng.w/mx pgm (555,6/11;Kelley-FL) (--3,  
1233,6/21;Famularo-NJ) (433,1235,6/20;Yajko-PA) (212,0230,  
6/25;Miller-CA)
- 15150 2346 HCJB LV de los Andes:Sp.w/tlk,like drama (444,6/16;Getzel-NY)
- 17780 1420 HCJB LV de los Andes:Eng.w/rel. pgm (555,6/16;Suddick-MI)

EL SALVADOR

- 5980 0037 YSS R. Nacional:Sp.w/LA mx pgm, ID (322,6/18;  
McLain-CA)

FRENCH GUIANA

- 3385 0921 O.R.T.F. Cayenne:Fr.w/pop mx,tlks, ID (323,  
6/27;Jones-MS) (232,0900,6/20;Paschke-WI)

GUATEMALA

- 3300 0300 TGNC R. Cultural:Eng.w/BACK TO THE BIBLE pgm  
(--4,6/29;Thompson-NM) (342,0355,7/5;Cleveland-CA)
- 3360 0420 TGVN LV de Nahualá:Sp.w/LA mx pgm (333,7/7;Miller-OH) (252,0358,  
6/14;Moore-PA)

GUYANA

- 5950 0852 GBS Action Radio:Eng.w/mx,tlk,greetings to listeners,pop mx &  
oriental mx. ID as "Action Radio" (332,7/15;Jones-MS)

HAITI

- 11835 1930 4VEJ R. 4VEH:Eng.w/MOMENTS OF MELODY pgm, ID (544,7/7;DeAngelis-  
CA) (--3,1230,7/1;Thompson-NM) (444,1130,6/10;Suddick-MI)

HONDURAS

- 4820 0336 HRVC LV Evangélica:Eng.w/discussion on marriage and divorce (333,  
6/16;McLain-CA) (232,0303,6/18;Szot-CA) (444,0310,7/7;Redman-  
IL) (232,1011,6/20;Paschke-WI) (433,0331,6/14;Rodriguez-PR)  
(343,1101,7/7;Miller-OH)
- 4920 0230 HRPL3 R. Progreso:Sp.w/LA mx,IDs,Coke ads (433,7/3;Redman-IL)  
(343,0440,6/20;Cleveland-CA)
- 5875 0307 HRN LV de Honduras:Sp.w/spts event,ads (454,7/7;Szot-CA) (322,  
0345,6/26;Kratte-NY)

MEXICO

- 6005 0956 XEOI R. Mil:Sp.w/US + LA pop mx,frequent anmts as "R. Mil".  
No sign R. Reloj (343,7/14;Jones-MS) Very nice Jack!!
- 6115 2100 XEUDS R. Universidad de Sonora:Sp.w/US folk mx mixed with pop  
mx (--4,6/23;Thompson-NM) You sure, this doesn't sound like  
XEUDS format and they haven't been reported active lately?
- 9705 0005 XERMX R. México:Sp.w/LA mx pgm (233,6/9;Meehan-CA) (444,0022,6/11;  
Gaede-CA)
- 11770 2300 XERMX R. México:Sp.w/LA vocals (353,7/6;Radtke-CA) (333,0030,6/11;  
Gaede-CA) (--4,0135,6/28;Thompson-NM)
- 15125 0206 XERMX R. México:Sp.w/CORREO DEL AIRE pgm (544,6/18;Rodriguez-PR)  
(444,0440,7/8;Cleveland-CA) (353,0230,6/28;Radtke-CA)

NETHERLANDS ANTILLES

- 6150 0440 R. Nederland,Bonaire:Dutch w/language lessons (554,6/10;Gaede-CA)
- 6165 0500 R. Nederland,Bonaire:Eng.w/DX Jukebox // 9715 (554,6/28;Szot-CA)  
(6/20;Agner-NJ) (7/5;Radtke-CA) (6/19;Wells-NY) (6/21;Rodriguez-  
PR) (6/21;Trubee-HI) (6/29;Thompson-NM) (6/10;Gaede-CA)
- 9590 0310 R. Nederland,Bonaire:Sp.w/mx pgm (554,6/10;Gaede-CA)
- 9715 0540 R. Nederland,Bonaire:Eng.w/HAPPY STATION pgm (554,6/10;Gaede-CA)
- 9760 0425 Trans World Radio:Lang. w/ID,tlk (343,6/18;Szot-CA) (433,0425,  
6/11;Meehan-CA)
- 11785 0300 Trans World Radio:Sp.w/tlk on life and death (544,7/7;Levin-NY)
- 11815 0045 Trans World Radio:Eng.w/DX SPECIAL pgm (444,7/11;Thurman-IL) (7/3;  
Szot-CA) (6/16;Beal-WA) (6/9;Meehan-CA) (6/25;Lovett-OH) (6/11;  
Kelley-FL) (6/6;Sridhar-INDIA) (6/20;Wells-NY) (6/10;Suddick-MI)  
(6/29;Thompson-NM) (6/16;DeAngelis-CA)
- 15285 2255 R. Nederland,Bonaire:Port.w/IS,s/on,nx (242,6/12;Trubee-HI)
- 15350 0115 Trans World Radio:German w/rock mx (444,6/11;Kelley-FL) (433,  
0145,6/25;Levin-NY)



NICARAGUA9585 1330 YNTP R. Mar:Sp.w/LA pop mx pgm,frequent IDs (343,6/23;Brooks-CT)PERU

4789v 0550 OAX8F R. Atlántida:Sp.w/mx,tlk, ID (333,6/12;Trubee-HI) (323,1034,7/10;Jones-MS) (333,0404,6/10;Rodriguez-PR) (343,0505,6/29; Earhart-PA) (333,0550,6/28;Redman-IL)  
 4825 0300 OAX8R LV de la Selva:Sp.w/nx,Peruvian mx,some tlk (222,6/15; Miller-CA) (433,????,6/24;Zilmer-WI)  
 4995 0532 OAZ4C R. Andina:Sp.w/soft LA mx (322,6/11;McLain-CA) (243,0508,6/14;Moore-PA) (332,0403,6/29;Cleveland-CA)  
 5010 0914 OAX8V R. Eco:Sp.w/Andean mx,anmts,TCs (243,7/4;Lanoue-MA) (333,6/29;Cleveland-CA)  
 5040 0320 OAX2Z R. Libertad:Sp.w/Andean mx, ID (342,6/19;Cleveland-CA) (453,0830,6/24;Zilmer-WI) (353,0615,6/17;Earhart-PA)  
 5970 0415 OBX4Q R. El Sol:Sp.w/ID,Peruvian mx (444,6/18;Szot-CA) (432,0455,7/2;Cleveland-CA) (342,1030,7/4;Zilmer-WI)  
 9562 1130 OAX4R R. Nacional de Peru:Sp.w/Local mx (322,6/30;Zilmer-WI)

URUGUAY11835 0105 CXA19 R. El Espectador:Sp.w/classical mx incl. "Wedding March" (333,6/18;McLain-CA) (343,0140,7/6;Lanoue-MA)VENEZUELA

3215 0155 YVZV Ondas Panamericanas:Sp.w/LA mx pgm (343,7/16;Rodriguez-PR)  
 3245 0155 YVKT R. Libertador:Sp.w/political speech (343,6/29;Miller-OH) (343,2340,7/15,w/pgm on automobiles;Rodriguez-PR)  
 3275 2211 YVMC R. Mara:Sp.w/TU MOMENTO ROMANTICO pgm (343,7/14;Rodriguez-PR)  
 3365 0156 YVQP R. Puerto La Cruz:Sp.w/LA mx,comls,frequent IDs (343,7/2; Jones-MS)  
 3395 0357 YVOJ R. Universidad:Sp.w/LA mx pgm (453,7/13;Rodriguez-PR)  
 4770 0015 YVNW R. Bolívar:Sp.w/cigarette ad,ID,mx (444,7/5;Agner-NJ) (454,0055,6/28;Lanoue-MA) (332,0240,6/26;Cleveland-CA) (433,0031,6/21;Rodriguez  
 4800 1012 YVMO R. Lara:Sp.w/ID,TC,LA mx (323,7/3;Jones-MS) (444,0120,7/5;Agner-NJ) (333,2357,6/20;Lanoue-MA) (343,0251,6/18;Szot-CA) (433,0008,6/21;Rodriguez-PR)  
 4810 1000 YVMG R. Popular:Sp.w/OM tlks,ID LA mx pgm (232,6/20;Paschke-WI) (343,0258,6/18;Szot-CA)  
 4860 0128 YVQE R. Maracaibo:Sp.w/LA mx pgm,IDs,comls (444,6/27;Lanoue-MA) (444,0212,7/16,w/COMPLACIENDO PETICIONES mx pgm;Rodriguez-PR)  
 4880 0300 YVMS R. Universo:Sp.w/ID,TC,LA mx pgm (332,6/26;Cleveland-CA) (453,0005,6/26;Lanoue-MA) (443,0000,6/21;Rodriguez-PR)  
 4890 0400 YVNE R. Difusora Venezuela:Sp.w/ID as "790,su estación en Venezuela",off @ 0404 w/ anthem (454,6/18;Szot-CA) (433,0345,7/5;Redman-IL) (444,0010,7/5;Agner-NJ) (233,2350,6/23;Lanoue-MA) (343,0350,6/25;Cleveland-CA)  
 4900 0300 YVNK R. Juventud:Sp.w/rock mx (433,7/7;Redman-IL) (353,2315,6/26; Lanoue-MA) (454,0200,6/26;Oliver-NH) (342,0250,6/26;Cleveland-CA)  
 4940 0345 YVPA R. Yaracuy:Sp.w/LA mx pgm,TCs,IDs as "La emisora más CA) popular del centro" (343,6/26;Cleveland-CA) (433,0245,7/7; Redman-IL)  
 4950 0353 YVNM R. Coro:Sp.w/LA mx,ID,off @ 0357 (343,6/26;Cleveland-CA)  
 4960 1626 YVAO R. Sucre:Sp.w/mx,many ads (433,7/15;Rodriguez-PR)  
 4970 0902 YVLK R. Rumbos:Sp.w/NA,full ID w/call,freqs (323,6/27;Jones-MS)  
 4980 0220 YVOC Ecos del Torbes:Sp.w/mx,ID,ads,TCs (534,6/28;Levin-NY) (434,6/26;Lovett-OH)  
 6070 0140 YVSR R. San Sebastián:Sp.w/LA mx pgm (434,6/21;Rodriguez-PR)  
 6120 0947 YVSC R. Angostura:Sp.w/comls,network pgm (322,6/29;Lanoue-MA)  
 9640 0956 YVSC R. Nacional:Sp.w/OM tlks,ID (243,6/14;Paschke-WI)  
 11750 0000 YVRN R. Nacional:Eng.w/nx,folk mx,tlks,mixing badly with BBC (322,7/12;Whitehead-MA) (422,2100,7/10;Zilmer-WI)  
 15390 0105 YVRO R. Nacional:Eng.w/clk by OM,mx,into Sp. @ 0110 (333,6/26; Oliver-NH) (333,2230,7/8;Kannry-NY) (353,0056,7/8;Jones-MS) (433,2100,7/10;Zilmer-WI) Tnx Wayne for the fone tip!! ejw

**Corai radio tropical**

RADIO ANUNCIADORA INTERNACIONAL, C. A.

EDIFICIO TORRE DEL OESTE PRIMER PISO-EL SILENCIO  
TELEFONOS 42.11.61 - 5 APARTADO POSTAL 3674  
CARACAS - VENEZUELA

# SWBC DX - EUROPE/AFRICA



Deadline: 15th  
Times & Dates: GMT  
Frequencies: kHz

**Robert Butterfield**  
38 Hamilton Road  
Belmont, Massachusetts  
02178

-Europe-

## ALBANIA

- 6200 0235 R. Tirana: Eng nx & comtry (555 6/15 Suddick-MI);(343 0245 6/20 Wells-NY)  
7065 0000 R. Tirana: Eng ID, nx (333 7/2 Alvord-IL);(454 7/1 Lanoue-MA)  
7300 \*0130 R. Tirana: Eng s/on, nx, tlks (--4 6/23 Famularo-NJ);(0145 --4 6/29 Thompson-NM);(444 0300 6/20 Wells-NY);(311 0430 6/24 Cleveland-CA)  
9350 1245 R. Tirana: Eng tlks, ID @ 1253 (--3 7/5 Thompson-NM)

## AUSTRIA

- 6155 0130 Osterreichischer Rundfunk: Eng w/ "Report from Austria" (433 6/16 Suddick-MI)  
9770 0130 ORF: Eng nx (333 6/14 Suddick-MI);(222 0340 7/4 Bodell-OR)  
15200 1900 ORF: Eng "Report from Austria" (222 6/14 Wells-NY)

## BELGIUM

- 6055 0040 Radiodiffusion-Television Belge: Eng "Belgium Speaking" (433 7/3 Zilmer-WI);(555 0045 6/24 Agner-NJ)  
9655 \*2245 RTB: Eng "Belgium Speaking" (333 7/4 Jones-MS);(555 2300 6/16 Suddick-MI);(444 2311 6/12 Yajko-PA)

## BULGARIA

- 9700 2142 R. Sofia: Eng w/ mx, tlk, ID @ 2151 (--4 7/2 Famularo-NJ);(333 0000 6/20 Wells-NY);(332 0008 7/2 Alvord-IL);(333 0400 6/17 Bodell-OR);(233 0400 7/2 Radtke-CA);(333 0423 6/25 Cleveland-CA)



## CZECHOSLOVAKIA

- 5930 0130 R. Prague: Eng comtry (444 6/13 Suddick-MI);(432 0350 7/5 Cleveland-CA)  
7345 0100 R. Prague: Eng nx, comtry, mx (232 6/20 Wells-NY)  
9505 0350 R. Prague: Eng comtry (444 6/29 Levin-NY)  
9540 0100 R. Prague: Eng s/on, fqys, nx, comtry (333 Gaede-CA) 6/11  
9740 0115 R. Prague: Eng w/ "Topics of the Day" // 5930 7345  
9540 (443 7/3 Zilmer-WI);(333 0313 6/26 Cleveland-CA)  
11990 0100 R. Prague: Eng nx, comtry, mx (444 6/20 Wells-NY)

## DENMARK

- 9520 2358 R. Denmark: Eng IS, ID, into Danish progr (333 6/21 Miller-OH)  
15165 1130 R. Denmark: Eng ID into Danish nx (434 6/2 Crawford-SCOTLAND)

## FINLAND

- 9550 1400 R. Finland: Eng nx, feature (544 6/10 Crawford-SCOTLAND)  
15185 1407 R. Finland: Eng tlk, mx (--3 6/22 Famularo-NJ)

FRANCE

11710 0517 Office de Radiodiffusion Television Francaise: Eng ID, nx  
mx to Africa // 11735 (444 6/24 Griffith-MO)  
15155 1100 ORTF: Eng "Paris calling Africa" // 15295 (443 7/2 Zilmer-  
WI)  
21580 1032 ORTF: Eng "Paris calling Africa" (444 6/13 Chaffin-  
CAMEROON)

GERMANY, EAST

9730 0100 RBI: Eng nx (433 7/3 Zilmer-WI);(--4 6/16 Famularo-NJ)  
11840 0356 RBI: Eng tlk (434 7/3 Zimarowski-MA)  
11970 0356 RBI: Eng comtry // 11840 (434 6/17 Bodell-CR)

GERMANY, WEST

6040 0148 Deutsche Welle: Eng comtry (444 6/21 Yajko-PA);(555 0249\*  
6/15 Suddick-MI);(222 0515 6/18 Beal-WA)  
6075 0204 DW: Eng mx, tlks, "German by Radio" (--4 6/13 Famularo-  
NJ)  
6085 0440 DW: Eng nx, comtry (444 7/2 Beal-WA);(555 0520 7/3  
Gaede-CA)  
9545 0155 DW: Eng story (333 6/21 Kelly-FL);(343 0345 7/10 Bodell-OR)  
9605 0249 DW: Eng s/off (555 6/16 Suddick-MI);(444 0440 6/24 Cleveland-  
CA);(554 0505 6/13 Beal-WA);(555 0515 7/3 Gaede-CA)  
9640 0225 DW: Eng "German by Radio" (444 6/21 Kelly-FL)  
9690 \*0130 DW: Eng s/on, nx, spts (--4 6/22 Famularo-NJ);(434 0227  
6/23 Yajko-PA)  
11945 0120 DW: Eng nx (434 6/12 Sridhar-INDIA)

GREAT BRITAIN

5975 0015 BBC: Eng w/ tlks (454 6/26 Oliver-NH)  
6050 0440 BBC: Eng w/ Al Jolson songs (242 6/19 Jones-MS)  
7185 0330 BBC: Eng w/ cl mx (443 6/14 Smith-FL)  
7325 0150 BBC: Eng comtry (454 6/17 Jones-MS);(544 0154 6/20 Yajko-  
PA);(--3 0214 6/18 Famularo-NJ);(555 0200 6/14 Suddick-MI)  
9750 0310 BBC: Eng nx (434 6/10 Yajko-PA)  
11960 1643 VOA, Wooferton: Eng/Czech w/ nx, Wooferton ID 1700 ...  
definitely not Kavala (333 6/22 Lanoue-MA) cf Jun 74 SPEEDX.  
rfb.  
15145 2215 BBC: Eng tlk (243 7/1 Alvord-IL)  
17840 2300 BBC: Eng nx (444 6/19 Beal-WA)

GREECE

7170 0159 VOA, Kavala: Eng/Ukrainian w/ s/on and local ID, feature,  
already QSL'ed (354 6/28 Lanoue-MA)  
11845 0550 VOA: Eng "Breakfast Show" (444 6/19 Bodell-OR)

HOLLAND

6165 \*0200 R. Nederland: Eng s/on, nx, comtry (--4 6/18 Famularo-  
NJ);(555 6/11 Suddick-MI);(444 0252 6/29 Zelasko-IN);  
(555 0500 6/12 Crews-FL);(544 0528 7/2 Beal-WA)  
9715 2145 R. Nederland: Eng w/ "His & Hers" (443 6/19 Wells-NY);  
(555 0510 7/5 Levin-NY)  
11730 2200 R. Nederland: Eng progr (333 6/11 Kelly-FL)

HUNGARY

9833 0100 R. Budapest: Eng nx, comtry (433 6/14 Suddick-MI);(232  
6/25 Trzaskus-IL);(343 0110 6/20 Wells-NY);(434 0305 6/10  
Yajko-PA);(433 2130 7/2 Zimarowski-MA)  
11910 0415 R. Budapest: Eng w/ nx, tlks (333 6/24 Cleveland-CA);(343  
0416 7/10 Bodell-OR);(444 0110 6/20 Wells-NY)

ITALY

9575 0100 Radiotelevisione Italiana: Eng nx (433 6/13 Suddick-MI);  
(434 0120 6/13 Jones-MS) // 11810  
11810 0100 RAI: Eng nx, nx (444 6/20 Wells-NY)



INTERNATIONAL WATERS

6210v 0030 Radio Norse International: Eng w/  
rock mx like "Stairway to Heaven"  
by Led Zeppelin (343 6/23 Lanoue-  
MA); (212 0000 6/27 Gelfand-NY);  
(433 6/23 0035 Agner-NJ); (343  
0051 6/20 Smith-TN); (232 0110  
6/11 Suddick-MI)

LUXEMBOURG

6090 0025 R. Luxembourg: Eng w/ rock mx, ID,  
strong signal! (544 6/23 Agner-NJ);  
(333 6/12 0010 Sridhar-INDIA); (444  
0000 6/11 Suddick-MI); (333 0015 6/25  
Stine-ID); (323 0015 6/27 Gelfand-NY);  
(343 0020 6/26 Oliver-NH); (222 0045  
6/19 Wells-NY)

NORWAY

9645 0422 R. Norway; Eng tlk, ID, fqys, s/off 0428 (333 6/24  
Cleveland-CA)  
9655 0411 R. Norway: Eng country (444 6/17 Bodell-OR)  
11850 0227 R. Norway: Eng tlk, ID, s/off @ 0241 (--4 6/4 Famularo-NJ);  
(554 0610 6/16 DeAngelis-CA) // 11860 17825  
11860 0020 R. Norway: Eng mailbag (434 7/1 Lanoue-MA)  
15175 1600 R. Norway: Eng "Norway this week" (333 6/23 Zilmer-WI)  
17800 1430 R. Norway: Eng s/off (433 6/16 Yajko-PA)

POLAND

9675 0300 Polish R.: Eng w/ fqy sked, mx, nx (422 6/19 Zilmer-WI);  
(343 6/22 0317 Smith-TN)  
11810 0330 Polish R.: Eng w/ mx, s/off @ 0335 // 11815 (333 6/25  
Gaede-CA)  
11815 0215 Polish R. Eng progr (332 6/24 Cleveland-CA); (232 6/25 0315  
Gaede-CA)  
15120 0205 Polish R.: Eng nx, country (333 6/11 Kelly-FL); (433 0300  
6/23 Zilmer-WI); (333 0309 6/23 Jones-MS)

PORTUGAL

6025 0209 R. Portugal: Eng nx, country (--3 6/29 Thompson-NM); (555  
0200 6/13 Suddick-MI); (434 0235 6/30 Zimarowski-MA);  
11840 0400 R. Portugal: Eng country, mx (443 6/23 Zilmer-WI)  
11935 0210 R. Portugal: Eng country (332 6/16 DeAngelis-CA); (555 6/15  
Suddick-MI); (544 0400 6/29 Levin-NY)  
21425 0815 R. Portugal: Eng mx, country (544 6/15 Crawford-SCOTLAND)

ROMANIA

9570 0158 R. Bucharest: Eng mailbag progr (434 6/17 Getzel-NY); (333  
0205 6/21 Kelly-FL)  
9640 2100 R. Bucharest: Eng nx (333 7/4 Zilmer-WI)  
11840 0550 R. Bucharest: Eng w/ mailbag (444 6/19 Bodell-OR)  
11940 0400 R. Bucharest: Eng nx, various tlks (333 6/19 Miller-CA)

SPAIN

9630 0209 Radio Nacional de Espana: Sp tlks w/ Eng rock mx (433 7/6  
Trzaskus-IL)  
11925 0105 RNE: Eng nx, mx (444 6/20 Wells-NY); (353 0300 6/23 Radtke-  
CA)

SWEDEN

6065 2045 R. Sweden: Eng nx, SCDX'ers (333 6/25 Oliver-NH)  
11805 0030 R. Sweden: Eng nx, SCDX'ers (433 6/26 Zilmer-WI)  
11940 0253 R. Sweden: Eng w/ end of progr into Swedish @ 0300 (555 6/22  
Smith-FL); (--4 0245 6/5 Famularo-NJ)

SWEDEN (cont.)

11955 \*0230 R. Sweden: Eng w/ s/on nx, "Swedish by Radio" (534 6/24 Trzaskus-IL);(343 0230 7/3 Radtke-CA);(334 0258 6/3 Smith-TN);(433 0255 6/23 Yajko-PA);(443 0254 6/16 DeAngelis-CA); (.21 0130 6/19 Miller-CA)

17710 1312 R. Sweden: Eng w/ spts, ID (344 7/2 Alvord-IL)

SWITZERLAND

6165 2120 SBC: Eng w/ tlk (444 6/25 Oliver-RH)

7210 1705 Radio International Red Cross: Eng nx items from the International Committee of the Red Cross, Geneva, over SBC facilities (444 5/29 Crawford-SCOTLAND)

9535 \*0145 SBC: Eng nx & "Dateline" features (333 6/21 Kelly-FL);(444 0145 6/18 Yajko-PA);(533 0258 6/25 Trzaskus-IL)

9725 0435 SBC: Eng jazz progr (443 6/24 Cleveland-CA);(555 0456 7/1 Gaede-CA);(544 0430 6/16 DeAngelis-CA)

11715 0145 SBC: Eng w/ special "SW Merry-go-round" show (444 6/23 Miller-CA);(444 0148 6/18 Yajko-PA);(433 0205 6/24 Cleveland-CA);(444 0430 7/10 Bodell-OR);(555 0455 7/3 Gaede-CA)

11775 \*0700 SBC: Eng s/on w/ IS, ID, TC, Dateline nx & commtry,(444 7/12 Crews-CA)

11870 2100 SBC: Eng progr to Africa (252 7/5 Griffith-MO)

15140 1315 SBC: Eng Sunday progr (333 6/30 Zilmer-WI)

15315 0150 SBC: Eng nx (555 6/18 Yajko-PA)

USSR, EUROPEAN

11700 0005 R. Peace and Progress: Eng nx (343 6/12 Kelly-FL)

17900 2300 R. Moscow: Eng nx (332 6/25 Zilmer-WI)

VATICAN STATE

9605 0100 R. Vaticana: Eng rel tlk (555 6/13 Suddick-MI);(252 0111 6/16 DeAngelis-CA)

11705 2215 R. Vaticana: Eng rel nx (322 6/29 Zilmer-WI)

11845 0100 R. Vaticana: Eng tlk (--4 7/1 Thompson-NM)

15210 1632 R. Vaticana: Eng rel tlk (322 6/29 Miller-Oh)

21485 1054 R. Vaticana: Eng rel nx (544 5/30 Chaffin-CAMEROON)

YUGOSLAVIA

9620 2200 R. Belgrade: Eng nx, commtry, press review (434 6/12 Crawford-SCOTLAND)

-Africa-

ALGERIA

15420 2300 Radiodiffusion-Télévision Algérienne: Fr w/ tlks, mx (422 7/7 Zilmer-WI)

ASCENSION ISLAND

9510 2300 BBC, Atlantic Relay: Eng nx (242 7/6 Radtke-CA)

15260 2200 BBC: Eng nx (344 7/1 Alvord-IL)

17840 1430 BBC: Eng progr (444 6/16 Suddick-MI);(433 1450 6/21 Zimarowski-MA)

CANARY ISLANDS

11800 0230 R. Nacional de Espana, Tenerife: Sp w/ cl guitar mx (252 7/5 Radtke-CA)

15365 0300 RNE: Sp nx, intvw (353 7/2 Radtke-CA);(454 0335 6/25 Cleveland-CA)

CENTRAL AFRICAN REPUBLIC

7220 1600 Radiodiffusion Nationale Centrafricaine: Fr mx, tlk (333 5/20 Chaffin-CAMEROON)

CHAD

4904.5 2310 Radiodiffusion Nationale Tchadienne: Fr w/ rel tlk, hymn  
(353 6/23 Lanoue-MA)

CONGO, PEOPLE'S REPUBLIC OF THE

15190 1915 Radiodiffusion Television Congolaise: Fr tlk, ID (333  
6/26 Zimarowski-MA)

EGYPT, ARAB REPUBLIC OF

9475 0200 R. Cairo: Eng w/ mx prgr (444 6/23 Eckman-NB);(252 0200  
6/16 DeAngelis-CA);(443 0200 6/20 Miller-CA);(555 0200  
6/14 Suddick-MI);(--4 0203 6/28 Getzel-NY);(--4 0225 6/25  
Famularo-NJ);(433 0230 6/16 Zelasko-IN);(333 0308 6/10  
Yajko-PA)  
9805 2145 R. Cairo: Eng s/on w/ mx, nx (434 7/2 Zimarowski-MA)  
15335 0115 R. Cairo: Sp w/ Ar mx (333 7/2 Whitehead-MA);(322 0158  
w/ s/off in Eng into Eur Serv IS (322 6/30 Zilmer-WI)

ETHIOPIA

11900 1430 ETLF: Hindi rel prgr, s/off w/ ID @ 1510, to India (545  
6/10 Sridhar-INDIA)  
15245 1320 ETLF: Eng rel tlk, mx, ID @ 1330 into lang (444 6/23  
Miller-OH)

GABON

4777 2300 Radiodiffusion Television Gabonaise: Fr nx, tlks and afro  
mx (434 6/17 Thibaudeau-QUEBEC);(454 2320 6/20 Lanoue-MA)

GHANA

4915 0550 Ghana Broadcasting Corporation: U/lang w/ nat mx, 0600 IS,  
ID into Eng nx (444 6/27 Cleveland-CA);(433 0555 7/11 Crews-  
FL);(222 0600 6/15 Stephenson-CA)  
11850 2015 GBC: Eng nx (444 6/19 Wells-NY)

IVORY COAST

4940 \*0603 Radiodiffusion Television Ivoirienne: Fr w/ s/on, nx (333  
6/27 Cleveland-CA)  
11920 0700 RTVI: Fr tlk (333 6/25 Zimarowski-MA);(333 1925 6/16  
Suddick-MI)

LIBERIA

7140 0500 VOA, Monrovia: Eng nx (323 6/28 Miller-CA)  
7280 0635 VOA: Eng nx, "African Safari" (544 0635 6/11 Crews-FL);  
(333 0400 5/23 Eckman-NB)  
11940 2048 ELWA: Eng nx, wiped out by neighbor's air-conditioner  
(332 6/30 Miller-OH)  
11950 0715 ELWA: Eng OM ID, drums, rel prgr (444 7/7 Crews-FL)

MALAGASY REPUBLIC

11740 1400 R. Nederland, Talata: Eng "His and Hers" (444 6/11 Sridhar-  
INDIA)

MOROCCO

7270 0700 VOA, Tangier: Eng nx, "Breakfast Show" (323 7/11 Crews-  
FL)

NIGERIA

11770 0620 Voice of Nigeria (NBC): Eng mx prgr "Morning Melodies" and  
commtry, not listed in WRTH (555 7/11 Crews-FL)

RWANDA

11925 0100 Deutsche Welle, Kigali: Ger nx,  
then Fr ID mentioning Kigali (444  
6/20 Agner-NJ)  
15410 0105\* DW: Ger s/off w/ anthem and ancmts  
(343 6/11 Kelly-FL);(343 1210 6/29  
Miller-OH)

SENEGAL

4890 2205 Radiodiffusion du Senegal: Fr w/ ID © 2205 (433 7/11  
Oliver-NH)

SEYCHELLES

15325 1530 Far East Broadcasting Association: Eng w/ BBC newsreel  
(545 6/11 Sridhar-INDIA)

SOUTH AFRICA

3250 0140 SABC: Eng w/ pop mx, ads (443 6/29 Miller-OH);(322 6/22  
Kratter-NY)  
3285 0430 SABC: Eng rel progr (332 6/20 Cleveland-CA);(323 0503 6/29  
Bodell-OR)  
3997 0405 SABC: Eng w/ mx, commls nx at 0430 (454 6/30 Lanoue-MA) //  
3250  
4875 0300 SABC: Eng nx (342 6/26 Cleveland-CA)  
5980 0400 R. RSA: Eng nx, mx, blocked by R. Nacional, El Salvador  
(111 6/25 Miller-CA)  
6035 2320 R. RSA: Eng s/on (555 6/16 Suddick-MI)  
9525 2140 R. RSA: Eng nx (544 6/16 Suddick-MI)  
9585 2245 R. RSA: Eng tlk (444 7/4 Gaede-CA)  
9695 2230 R. RSA: Eng nx, comntry (555 7/4 Gaede-CA)  
11900 1400 R. RSA: Eng w/ quiz show (554 6/25 Miller-CA)  
21535 1100 R. RSA: Eng mx (544 6/16 Crawford-SCOTLAND)

TOGO

5047 2255 Radiodiffusion du Togo: Fr w/ rock mx, nx, ID (433 6/24  
Agner-NJ)

ZAMBIA

11990a 1512 Zambian Broadcasting Service: Eng w/ comntry, positive ID  
(443 6/15 DeAngelis-CA) 11880 or 11990 Kevin? rfb.

-Clandestine-

CLANDESTINE

6240t 0720 R. Liberation: U/lang, some tlk (222 7/3 Gaede-CA)

\*\*\*\*\*

## Europe/Africa Roundup

Ciao! Once again our thanks go to new reporters Dempsey Crews, Joseph Kannry, J. Levin, Glenn Thompson, and John Wells. Thanks to y'all! Would like to take some time to mention the fact that many of you, in fact more than usual are sending in loggings that are way too old. Please, no loggings that are older than five days before the previous month's deadline. Thus loggings for the August issue should not be older than July 10. Those of you in foreign countries or out of the way spots need but



simply ask me how much time it took for me to receive your loggings. I'll be glad to let you know and you can then plan accordingly. We would also like to remind everyone to use SIO codes when reporting reception quality.

Thanks to all of you who sent in items for the Roundup section. Hope that more of you will also. If you hear of something of interest on DX program, jot it down on a post card and send it on over here. While you are at it drop us a line on what you would like to see or not see. Don Griffith in Missouri would like to see more Radio Moscow loggings and the appropriate sites if known. I must say that part of the reason why I significantly cut down these loggings (significantly to almost none - hi!) was that most Moscow loggings with sites were only accompanied by an "L" for listed and not much else. We are going to try and make an effort to improve reporting on Moscow sites, with your help it'll be a lot easier.

Well on to some news, all remains the same.

"We're no 'Washington Post' but ...": Let it suffice to say that the following items were gleaned from local newspapers, that of Ethiopia by Jim Whitehead and the other by your editor, and are not direct reports from the scene, but may provide some interest ...

Boston Globe

July 9, 1974:

**Morocco vows to annex Spanish Sahara**  
RABAT, Morocco—The Moroccan government has vowed to assert its "territorial integrity" next year by annexing neighboring Spanish Sahara, the last major colony in Spain's once-sprawling overseas empire. King Hassan said last night 1975 "will be a year of mobilizing, both inside the kingdom and outside, to liberate the still occupied Moroccan territories."

Radio Clube de Mocambique: It has been reported that this station has been put under "military administration. The station was said to provide false information about Portuguese political events."

(WWDXC)

Tanzania - Radio Tanzania: This station has been reported with several differences in the published sked: from 0330-0530 on 6135, from 0900-1050 on 9750, from 1600-1830 on 4785, from 1600-1655 on 6105, from 1700-2200 on 15435 and additional 4825.

(WWDXC)

Malta - Deutsche Welle relay at Nigret: Test transmissions should be beginning by the end of July from this station and follows is a sked of these transmissions received direct: in German: from 0120-0400 on 9745, from 0120-0510 on 11865, from 0440-0515 on 6065, from 1600-1750 on 11705 and 17875, from 1800-1850 on 7160 and 9590, from 2140-2230 on 5955, from 2140-2240 on 11865, and from 2300-0110 on 11865 and 15225. In the Arabic language: from 0520-0650 on 6025 and 9680, from 1910-2100 on 9625 and 11850. In one additional language from 2105-2130 on 9625 and 11795.

That's all for now,

73,

Bst

# Ethiopian Radio Stations Occupied

Addis Ababa, Ethiopia (U.S.) - shaken by military mutinies, Ethiopian armed forces occupied widespread strikes and violent demonstrations.  
government and private radio stations in Addis Ababa on television stations in Addis Ababa and day amidst reports that the military might possibly take control. force the government radio and the Radio Voice of the Gospel.  
Army broadcasts pledged a Lutheran missionary station.  
loyalty to the head of state, Emperor Haile Selassie. day broadcast statements on political arrest in the country to demanding cooperation from have brought the feudal empire close to anarchy. The moves were not seen as a coup against the civilian cabinet of Prime Minister Endalkatchew Makonnen, an aristocrat.  
The military has been the single most powerful force in Ethiopia since February, when the 2,500-year-old empire first was toward open military rule.

# ASIA-OCEANIA

**MEL HICKMAN**  
 Editor, Asia/Oceania  
 7409 S.E. 82nd  
 Portland, Oregon 97266  
 DEADLINE: 15<sup>th</sup> of the month



Frequencies in kiloHertz Time and Date GMT Deadline: 15th  
 A = approximate L = listed M = measured T = tentative \*0000 = S/On 0000\* = S/Off

FRBQ TIME SIO LOCATION

## ASIA

### AFGHANISTAN

4650A \*1400 323 INDIA Radio Afghanistan: Eng nx after Urdu and Eng ID. (Sridhar 6/6)  
 15195 1130 353 MA RA: Eng nx, wx, cmt, and Afghan music. 1200\*. (Compton 6/19)

### BANGLADESH

11607 1529 ??? CA Radio Bangladesh: Eng ID, into U/lang. (Hill 6/9)

### BRUNEI

7215 1325 333 CA Radio Brunei: Eng police bulletin about a murder. (Sزت 7/4)  
 1330 243 CA RB: English pop songs. (Radtko 6/29)  
 1400 332 CA RB: Eng program of Jerome Kern music. (Cleveland 6/19)

### BURMA

BBS = Burma Broadcasting Service

5040 1345 444 CA BBS: Burmese (WRTH) w/native vocal music. (Cleveland 6/28)

### CHINA, P. R. OF

PLA = People's Liberation Army CPA = China Press Agency

3574 1205 343 CA Radio Peking: Spanish ID by OM, OM/YL talk. (Sزت 6/20)  
 4035 1310 --2 CA RP: U/Chinese/lang w/OM and YL alternating. (Hill 6/9) Lhasa.  
 5075 1410 243 CA RP: Chinese vocal music. (Cleveland 6/28)  
 5170 1355 454 CA PLA: Chinese OM/YL talk // 5240 (354), 1400 mx. (Cleveland 6/28)  
 6290 1237 332 CA RP: English news review by YL. (Sزت 7/1)  
 6765 1024 354 CA PLA: Chinese mx, YL talk with musical voice. (Sزت 6/29)  
 6950 1300 444 CA RP: Korean IS, fanfare, ID by OM and YL. (Sزت 7/1)  
 7010 1255 232 CA RP: Chinese music and singing. (Sزت 7/1)  
 7325 1440 332 CA RP: Eng talk // 9860 (343) and 15095 (333). (Cleveland 6/20)  
 8450 1440 333 CA RP: Chinese YL talk, possibly news. (Sزت 7/2)  
 8660 1438 354 CA RP: Chinese march music, OM/YL talk. (Sزت 7/2)  
 9065 1435 454 CA RP: Chinese w/"usual home service program". (Sزت 7/4)  
 9150 1640 --4 CA CPA: Chinese news by YL // 9266 (--4). (Hill 6/9)  
 9170 1457 353 CA RP: Chinese YL with news and ID. (Sزت 7/4)  
 9215 1400 444 CA PLA: U/lang with talks. (Miller 6/17)  
 9290 1455 243 CA RP: Chinese music and OM ID. (Sزت 7/3)  
 9340 1445 454 CA RP: Chinese OM singing, ID. (Sزت 7/4)  
 9860 1400 444 INDIA RP: Tamil cnty on China's allies, Eng at 1500. (Sridhar 6/7)  
 1447 433 CA RP: Eng tx on farming, 1454 ID, 1455\*. (Cleveland 6/24)  
 9880 1511 454 CA RP: Eng YL tx on Korea and Peron's death. (Sزت 7/4)  
 9940T 2105 233 CA RP: French talk. (Meehan 6/11)  
 10246 1415 ??? CA RP: Chinese opera on home service // 11290. (Hill 6/9)  
 10260 1528 444 CA RP: Chinese music and singing, also at 2340 (343). (Sزت 6/29)  
 11290 1532 444 CA RP: Chinese musical program. (Gaede 6/13)  
 11945A 2100 433 CAMER RP: English sign on after IS. (Chaffin 5/25)  
 15030 2025\* 555 CAMER RP: English s/off by YL. (Chaffin 5/25)  
 15110M 1415 333 WA RP: Eng talk about revolution and boxers. (Beal 7/7)  
 15385 0400 343 CA RP: Eng talk on electrical power production. (Cleveland 6/24)

### CHINA, REP. OF

VOFC = Voice of Free China (Radio Taiwan)

3230 1225 --3 CA BCC RED31: Chinese songs by YL, into YL talk. (Hill 6/9)  
 11825 1905 333 CAMER VOFC: English talk and music. (Chaffin 6/3)  
 17720 0210 252 FA VOFC: Eng nx, OM cmt, lots of QRN. (Vecchiola 6/8)  
 17890 0330 243 CA VOFC: Eng YL with Chinese songs. (Radtko 7/2)

CYPRUS

15420 0410 253 PA BBC Limassol: Eng world news to Africa. (Moore 6/9)

INDIA AIR = All India Radio

7260 0123 --2 CA AIR Madras: U/lang IS, 0125 OM talk, into music. (Hill ??/?)  
 9525 1700 222 NB AIR: English music. (Eckman 5/22)  
 9530 1924 333 CAMER AIR: English YL with letterbox program. (Chaffin 5/20)  
 9575 1640 ??? CA AIR: U/lang with instrumental music, OM/YL talk. (Hill 6/16)  
 9912T 0006 221 PA AIR: U/Mid-East lang news. (Vecchiola 6/13)  
 11620 2200 232 WI AIR: English news and music. (Zilmer 6/29)  
 11775 1800 242 CA AIR: Hindi world news. (Radtke 6/16)  
 11810 1418 332 CA AIR: Eng mx of India, comment on Bangladesh. (Cleveland 7/2)  
 11895 2315 322 HI AIR: English program notes by YL. (Trubee 6/12)

INDONESIA RRI = Radio Republik Indonesia VOI = Voice of Indonesia

3242 1231 ??? CA RRI Ambon: Indonesian pop mx, talk, more mx. (Hill 6/9)  
 3250 1240 --3 CA RRI Banjarmasin: Indo songs by OM/YL in duet. (Hill 6/9)  
 4719 1254 354 CA RRI Ujung Padang: Indo with quiet music. (Sztot 7/11)  
 4765 1345 332 CA RRI Medan: Indo pops, 1359 IS and ID. (Cleveland 6/21)  
 4885 1112 333 CA RRI Bukittinggi: Indo ID, mx program w/lots of tx. (Sztot 7/11)  
 4932 1210 333 CA RRI Surakarta: Indo relay of Jakarta news. (Sztot 7/11)  
 5047 1403 343 CA RRI Jogjakarta: Indonesian world news. (Cleveland 6/18)  
 5987 1417 433 CA RRI Manado: Indo news by OM, 1421 ID. (Cleveland 6/20)  
 11790V 0113 ??? CA VOI: Indo pops, OM/YL talk, ID, chimes, mx. (Hill 6/21)  
 11790V\*0900 333 CA VOI: English music, news by OM. (Leistner 7/8)  
 11790V 1130 322 WI VOI: Eng music, local news and commentary. (Zilmer 7/4)

IRAN VOI = Voice of Iran

9022 0000 343 PA VOI: Arabic YL ID, into Arabic music. (Vecchiola 6/13)  
 \*2000 444 NY VOI: English talks. (Semko 5/24)  
 2002 343 MA VOI: Eng news, commentary, press review. (Compton 6/26)  
 15084 1515 343 OH VOI: Farsi OM tx, bits of march mx. (Miller 6/23)  
 1630 343 IL VOI: Farsi w/Mid-East music, talk. (Alvord 6/11)

IRAQ RBI = Radio Baghdad International

9745 1848 --2 NJ RBI: Arabic music and talks to Europe. (Famularo 6/23)  
 1945 231 IL RBI: English music. (Alvord 7/1)

ISRAEL IBA = Israel Broadcasting Authority

9009 0100 232 CA IBA: Hebrew music and folk songs. (Miller 6/20)  
 9495 \*2000 322 WI IBA: English news. (Zilmer 6/23)  
 2100 474 NY IBA: Hebrew news and music. (Levin 6/29)  
 2140 353 MA IBA: French (?) w/U.S. folk mx. (Lanoue 7/9) WRTH shows Russian.  
 9785 \*0345 343 PA IBA: U/lang s/on with OM talk. (Earhart 6/14)  
 9815 2030 422 WI IBA: Eng Calling All Listeners. (Zilmer 6/22)  
 10250 \*2000 222 WI IBA: English news. (Zilmer 7/4) // 12000 (222) and 12025 (433).  
 12025 2020 454 NH IBA: Eng music and news magazine. (Oliver 6/12)  
 15100 \*1130 252 WI IBA: English news. (Zilmer 6/21)  
 \*2000 333 NY IBA: English s/on and news. (Wells 6/20)  
 2012 221 NY IBA: English talking // 15490. (Getzel 6/16)  
 15130 \*1130 443 WI IBA: English news. (Zilmer 6/22)  
 15460 2030\* 443 NY IBA: English sign off, IS. (Wells 6/19)  
 15490 \*2000 454 FL IBA: Eng IS, ID, into news. (Klett 6/20)  
 2030 443 WI IBA: Eng dx program. (Zilmer 6/22)  
 2045\* 444 PA IBA: English sign off. (Yajko 6/12)

JAPAN NSB = Nihon Short-Wave Broadcasting Co. FEN = Far East Network (AFRTS)

3970 1113 221 CA NHK Sapporo: Japanese sports event, crowd noises. (Sztot 6/20)  
 6010 1335 454 CA VOA Okinawa: Eng comment on legislative action. (Cleveland 7/2)  
 6055 1159 444 OR NSB: Japanese programming, ID at 1200. (Bodell 7/7) // 3925.  
 1430 454 CA NSB: YL reading princess and pea fairy tale, Eng. (Cleveland 6/20)  
 6155 1000 444 WA FEN: Eng nx, wx, mx. (Beal 7/4)  
 1410 433 CA FEN: English light music. (Cleveland 6/21)  
 7195 1045\* 354 CA Radio Japan: Eng s/off after Chinese program. (Sztot 6/29)  
 9595 1049 454 CA NSB: Eng lessons in Japanese, uh, make that the other way around  
 (Sztot 7/11) Blew it again, didn't I?...MLH.  
 1405 454 CA NSB: Japanese OM DJ with U.S. pops. (Cleveland 6/19)  
 9605 0930 454 CA Radio Japan: Japanese IS, // 9530 (454) and 11705(353). (Sztot 6/29)  
 1129 242 OH RJ: Spanish IS, ID, and sign off. (Miller 6/29)  
 9700 1835 243 CA RJ: English news to Europe. (Meehan 6/11)

JAPAN (CONTINUED)

11705 2043 544 CAMER RJ: Eng Japan Today, into French at 2045. (Chaffin 5/22)  
 11875 0932 454 CA RJ: English news by OM // 15235. (Szot 6/22)  
     1115 343 WI RJ: English news // 9675 (333). (Zilmer 6/30)  
 11960 1848 ??? CA RJ: English to Europe, into Russian at 1900. (Hill 6/17)  
 15260 1257 --2 CA FBN: Eng public service announcement on gas. (Hill 6/12)  
 15270 \*2345 342 WI RJ: English news by OM. (Paschke 6/21)  
 15300 1711 242 CA RJ: English current topics. (Meehan 6/11)  
 17880 \*0200 444 CA RJ: Eng s/on of G. S., into news. (Gaede 6/10)

JORDAN

11810 1845 233 NY Radio Jordan: Arabic talks, chants, mx, etc. (Senko 6/23)

KHMER REPUBLIC

4907 1350 333 RNK = Radiodiffusion Nationale Khmere  
 CA RNK: Cambodian (WRTH) play (?), 1400 ID. (Cleveland 6/27)

KOREA, D. P. R.

KCBS = Korean Central Broadcasting Committee  
 2600 1142 --3 CA KCBS Wonsan: Korean YL tx, music // 2670 (Sariwon) --1, 2750 (Chongjin) --2, 2775 (Hamhung) --3, 2850. (Hill 6/9)  
 5870T 1403 443 CA Radio Pyongyang (?): Korean IS, anthem, YL with long series of 3-4 word phrases (#'s?), no ID. (Cleveland 6/24)  
 7405 1035 242 OH RP: English with Korean songs, YL cnty. (Miller 7/6) 1051\*.  
 7580 1340 432 CA RP: Eng OM/YL commentary on politics. (Cleveland 6/30)  
 9980 \*0500 111 HI RP: English propaganda tx, poor modulation. (Trubee 6/21)  
 9985A 0712 242 CA RP: Eng tx, mx, YL ID. (Szot 6/22) Same as above???? MLH

KOREA, REP. OF

KBS = Korean Broadcasting System  
 3918 1200 343 CA KBS: Korean mx. (Szot 6/29)  
 9640 0907 454 CA Radio Korea: Eng mx. (Szot 6/29)  
     1915 333 OR RK: Eng tx by YL. (Bodell 7/7)  
 11925 0925 342 PA RK: Eng (?) orchestral mx. (Earhart 6/22)  
     1430 252 CA RK: Eng cmt on ship building. (Radtke 7/4)

KUWAIT

15345 0600 544 INDIA Radio Kuwait: English news. (Sridhar 6/2)  
 15415 1820 333 FL RK: Eng soap opera. (Kelly 6/23)  
     1900 344 QU RK: English news. (Thibaudeau 6/16)  
     1940 443 NY RK: Eng mx, OM tx. (Getzel 6/16)

LEBANON

11965 0220 433 NY Radio Lebanon: English music and news. (Levin 7/2)  
     0230 211 CA RL: Eng OM and YL mx and cnty. (Leistner 7/11)  
     0230 534 OH RL: Eng mx and mx. (Lovett 7/1)  
     0234 444 TN RL: English news and music. (Smith 7/3)  
     0353 231 CA RL: English YL talks. (DeAngelis 6/16)

MALAYSIA

4845 1350 433 CA RM Kuala Lumpur: Indian (WRTH) OM DJ, native mx. (Cleveland 7/1)  
 6195 1218 --3 NM BBC Tebrau: Eng pop mx, world news. (Thompson 6/28)  
 7180 1415 443 CA BBC Tebrau: Bengali (WRTH) YL tx, lively mx. (Cleveland 7/1)  
 9740 1600 343 CA BBC Tebrau: Eng cmt on nuclear development. (Radtke 6/29)  
 11750 1420 454 CA BBC Tebrau: Eng mx from "Music Man". (Cleveland 6/21)  
 15275 \*1530 444 INDIA Radio Malaysia: Arabic s/on after IS. (Sridhar 6/6)

MALDIVES

4740T 0520 111 HI Radio Maldives: U/lang with music and talk. (Trubee 6/22)

PAKISTAN

15130 \*1100 444 SCOT Radio Pakistan: English talks, native mx. (Crawford 6/3)  
 15325 \*0200 333 WI RP: Indo (WRTH) IS, into talk and music. (Zilmer 6/24)  
 17845 1300 222 WI RP: English news. (Zilmer 6/23)  
     1430 333 CA RP: English cricket coverage. (Gaede 6/11)

PHILIPPINES

7225 1318 --3 NM FEBC: Indonesian w/religious music. (Thompson 6/28)  
 9580 1510 444 CA Voice of the Philippines: Eng listeners letters. (Cleveland 6/14)  
 9605 1320 --3 NM VOA Tinang: English news, 1330 into Korean. (Thompson 7/3)  
 11920 0845 433 CA FEBC: English commentary. (Leistner 6/26)  
 11930 1520 353 CA VOA Tinang: Indonesian mx, Eng ID, 1530\*. (Szot 7/4)  
 11950 1235 333 OR VOP: English talks. (Bodell 7/7)

**RADIO KUWAIT**

PHILIPPINES (CONTINUED)

15300 0055 ??? CA FEBC: U/lang w/hymn, YL talk, NHK QRM. (Hill 6/21)  
 15345 1220 343 OH VOA Tinang: Eng letters from listeners. (Miller 7/7)  
 1220 343 PA VOA Tinang: Eng chamber music. (Earhart 7/4)  
 15440 1535 333 CA FEBC: English Asian news. (Stephenson 7/1) Welcome back, Norm.

SABAH RMS = Radio Malaysia Sabah

4970 1352 333 CA RMS: Malay (?) w/two OM talking, 1400 ID. (Cleveland 6/26)

SARAWAK RMS = Radio Malaysia Sarawak

4835 1340 433 CA RMS: Malay (WRTH) YL DJ with native mx. (Cleveland 7/1)  
 4895 1401 343 CA RMS: Iban (WRTH) OM with news (?). (Cleveland 6/27)  
 4950 1400 333 CA RMS: English world news. (Cleveland 6/21)  
 5005nf 1259 -4 CA RMS: Malay with "Inilah R. M. Kuching" ID. (Hill 6/11) // 4895.  
 1350 333 CA RMS: Malay (?) chanting, 1400 news. (Sztot 6/18)  
 5030 1234 454 CA RMS: Bidayah (WRTH) news by OM. (Sztot 7/11)

SINGAPORE

5010 1335 332 CA Radio Singapore: Eng OM nx, WRTH shows Chinese. (Cleveland 6/27)  
 5052 1240 232 CA RS: English music program. (Sztot 7/11)  
 7170 0015 222 INDIA RS: Tamil w/flute mx, news at 0030. (Sridhar 6/12)  
 11940 1300 243 CA RS: English golden oldies. (Radtko 7/4)

SRI LANKA SLBC = Sri Lanka Broadcasting Corporation

11725 1300 333 OR English news. (Bodell 7/7) This from SLBC.  
 11800 1530 242 CA SLBC: Hindi music. (Radtko 6/23)

SYRIAN ARAB REPUBLIC

15165T 2345 343 PA Radio Damascus: Arabic music, 2400\* after anthem. (Earhart 6/6)

THAILAND BMR = Bangkok Meteorological Radio

7863 1139 353 OH BMR: Thai with old U.S. tunes. (Miller 7/4)  
 1320 343 CA BMR: Eng wx, Eng/Thai s/off at 1336, anthem. (Sztot 6/29)

TURKEY VOT = Voice of Turkey

9515 0250 322 NY VOT: Eng ID, News, music. (Levin 6/29)  
 0421 333 OR VOT: Turkish (WRTH) chanting and music. (Bodell 7/10)  
 11880 \*2200 222 NY VOT: English news, talks, etc. (Semko 6/24)  
 \*2200 222 CA VOT: English news, talk, music. (Miller 6/26)  
 2208 242 OH VOT: Eng nx. (Miller 7/5)  
 2210 332 IL VOT: Eng nx, mx. (Alvord 6/24)

UNION OF SOVIET SOCIALIST REPUBLICSArmenian SSR

15405 0320 --3 OR Radio Yerevan: English news. (Bodell/Hickman 7/4) // 15180.

Asiatic RSFSR

5015 1400 454 CA Vladivostok H.S. in Russian with light mx. (Miller 6/24)  
 7310 1350 444 CA H.S. II (Majak) w/classical mx, 1400 ID. (Cleveland 6/20)  
 15455 2315 353 PA Radio Moscow (Vladivostok (ITU)): Eng comment. (Vecchiola 6/12)

Unlocated

11780 0620 211 HI H.S. in Russian with continuous music. (Trubee 6/12)  
 15115 0630 454 HI Radio Moscow here in Chinese with talks. (Trubee 6/13)  
 17840 0710 323 HI Radio Moscow with English commentary. (Trubee 6/6)

Uzbek SSR

15115 1203 333 MA Radio Tashkent: English YL news, 1208 ID. (Compton 6/19)

VIETNAM, D. R. OF VOV = Voice of Vietnam

10040 0949 151 PA VOV: Korean (WRTH) tx, Viet music. (Moore 6/12)  
 1310 253 CA VOV: English news by YL and OM. (Sztot 7/11)  
 1350 454 CA VOV: French nx, cat not // 15012 (silent). (Cleveland 6/19)  
 15012 0200 444 INDIA VOV: English news by YL, also at 1000. (Sridhar 6/12)

VIETNAM, REP. OF VTVN = Broadcasting System of Vietnam

6165 1332 454 CA VTVN: Viet vocal mx, tx, ID, 1400 Moscow QRM. (Cleveland 7/3)  
 7175 1019 442 NJ VTVN: Viet tx, light music, Asian mx. (Hambright 5/12)  
 7245 1304 343 CA VTVN: Viet with Oriental music. (Sztot 7/11)



# OCEANIA



## AUSTRALIA

4920	0950	554	FL	ABC Brisbane: Eng mkt rpt, mx, nx. (Smith 6/18)
5995	1100	332	PA	Radio Australia: English news. (Earhart 6/22)
6090	1355	232	CA	ABC Sydney: Eng nx and s/off at 1402. (Cleveland 6/24)
6140	1345	432	CA	ABC Perth: Eng w/light classical music. (Cleveland 7/3)
6150	1335	433	CA	ABC Melbourne: Eng light and pop music. (Cleveland 6/25)
7235	1135	332	PA	RA: Indonesian pop mx, 1145 news. (Earhart 7/10)
	1220	--3	NM	RA: Indonesian pop mx, news reports, ID. (Thompson 6/29)
9540	1800	333	CA	RA: Eng Bible reading to Pacific Islands. (Miller 6/26)
9570	0715	333	FL	RA: Eng ID, nx, Australian Newsreel. (Crews 7/12)
	0722	333	CA	RA: Eng talk on government. (Gaede 6/11)
9610	1015	353	MA	RA: Eng time check, light music. (Lanoue 6/29)
	1245	333	IL	RA: English quiz show. (Alvord 6/11)
	1424	433	CA	RA: Eng rock and roll oldies. (Meehan 6/27)
9650	1120	342	PA	RA: Eng sports mx, 1125 ID and freqs. (Earhart 7/4)
	1210	322	NH	RA: English news. (Oliver 6/26)
	1220	333	IL	RA: Eng pop mx and ID. (Alvord 6/11)
9660	0938	454	NJ	ABC Brisbane: Eng mx by Melbourne Symphony. (Hambricht 5/12)
9680	0732	544	WA	ABC Melbourne: Eng with nx, wx, stock report. (Beal 6/20)
	0832	333	CA	ABC Melbourne: Eng classical music. (Gaede 7/4)
	1145	242	OH	ABC Melbourne: Eng symphony mx with comments. (Miller 7/5)
	1205	333	NH	ABC Melbourne: Eng national news. (Oliver 6/26)
9695	1155	332	PA	RA: Cantonese mx, 1201 news. (Earhart 7/4)
	*1230	333	IL	RA: Mandarin IS and sign on. (Alvord 6/11)
9760	0730	333	CA	RA: Eng news, QRM de HCJB. (Gaede 6/11)
11710	*1114	--3	NJ	RA: Eng s/on, music, and news. (Famularo 6/25)
11765	0845	222	CA	RA: Eng sports results, QRM de Russian. (Gaede 7/4)
11790	1155	332	PA	RA: English ID, nx. (Earhart 6/25) Indonesia also here, MLH.
11885	0850	222	CA	RA: English musical program. (Gaede 7/4)
15160	0322	333	MS	RA: English market reports. (Jones 6/19)
	0346	444	FL	RA: English classical mx, OM ID at 1400. (Crews 7/12)
	0430	322	NY	RA: English with music. (Kratzer 7/5)
	0700	333	CA	RA: Eng news. (Gaede 6/16)
15320	0106	444	NY	RA: English nx, mx, tx // 17795 (444). (Kannry 6/18)
	0125	333	FL	RA: English play, then news. (Kelley 6/11)
	0150	354	NB	RA: English up to Waltzing Matilda at 0200. (Eckman 5/23)
	0510	544	NY	RA: French mx, nx to Pacific. (Levin 7/4)
15355	0200	333	CA	RA: Eng freq data, time checks. (Gaede 7/1)
	0255	242	CA	RA: Eng pop music to Asia and Pacific. (Meehan 6/14)
15405	0820	443	WA	RA: Eng music requests. (Beal 7/3)
15485	0430	544	INDIA	RA: Eng pop music program. (Sridhar 6/8)
17795	0132	323	IL	RA: Eng nx, talk show, 0147 fade out. (Trzaskus 7/6)
	2300	--3	AZ	RA: Eng news and music. (Froemming 7/10)
21550	0316	252	NJ	RA: Eng YL stock report // 17870 (353). (Hambricht 5/13)
	0318	333	CA	RA: Eng Melbourne stock market report. (Gaede 6/10)
21665	0245	--3	CA	RA: Eng new freq // 21550 with pop music. (Hill 6/10)

## NEW CALEDONIA

### RN = Radio Noumea

7170	0710	333	IL	RN: French with English lessons. (Alvord 7/2)
	0830	444	CA	RN: French commentary and music. (Leistner 7/7)
	0930	243	WI	RN: French OM/YL talks, jokes, music. (Paschke 6/29)
	1034	343	MS	RN: French w/Judy Garland Concert. (Jones 6/17)

## NEW ZEALAND

### NZBC = New Zealand Broadcasting Corporation

6080	0655	444	CA	NZBC: Eng New Zealand Calling w/QRM de 6085. (Gaede 6/25)
9540	0658	555	WA	NZBC: English music. (Beal 7/2)
	0725	321	IL	NZBC: English news. (Alvord 7/2)
	0800	443	WI	NZBC: English news. (Zilmer 6/24)
15110	0000	353	CA	NZBC: English news, music, weather. (Radtko 6/28)
	0326	333	MS	NZBC: English mx, tx, time checks, wx. (Jones 6/19)
	0330	353	FL	NZBC: Eng OM ID, quiz program. (Crews 7/12)
17770	0025	242	FL	NZBC: Eng music into news at 0030. (Kelley 6/11)

## PAPUA NEW GUINEA

2340	1130	252	CA	R. New West Britain: U/lang ID by OM, jingle, mx. (Szot 6/29)
2376	1234	252	IL	R. Chimbu: ??? with rock and C/W music. (Szot 6/29)



PAPUA NEW GUINEA (CONTINUED)

2410	1115	253	CA	R. Goroka: Eng/Pidgin w/C & W music. (Szot 6/29)
2428	1035	232	CA	R. New Ireland: Pidgin C & W mx, YL ID. (Szot 6/20)
2450	1222	252	CA	R. Western Highlands: Pidgin/Eng mx, Eng s/off. (Szot 6/29)
2468	1149	252	CA	R. Northern District: U/lang with mx, ID's. (Szot 6/29)
3322	0715	322	HI	R. Bougainville: U/lang local music. (Trubee 6/16)
	1102	343	CA	RB: Pidgin with church music. (Szot 7/1)
3335	1150	353	CA	R. Wewak: U/lang YL DJ, mx, ID's. (Szot 6/29)
3385	0655	242	HI	R. Rabaul: Pidgin music and talks. (Trubee 6/16)
	0836	353	CA	RR: Pidgin talk on PNG. (Szot 6/20)
	1345	443	CA	RR: Pidgin C & W music, 1400* w/GSTQ. (Cleveland 6/18)
3925	0800	222	CA	PNGBC: English news by OM, 0930 NSB QRM. (Szot 6/20)
	1340	332	CA	PNGBC: Eng group singing hymns. (Cleveland 6/26)
4890	0828	253	MA	PNGBC: Eng feature, religious talk at 0830. (Lanoue 6/23)
	1026	343	OH	PNGBC: Eng with American pop music. (Miller 6/29)
	1107	444	CA	PNGBC: English news by OM. (Szot 7/11)
	1235	--3	NM	PNGBC: Eng pop music, frequent ID's. (Thompson 6/28)
5985	0625	454	HI	Radio Rabaul: Pidgin rock music and tx. (Trubee 6/16)
9520	0730	333	FL	PNGBC: Eng pop tunes and requests. (Crews 7/12)

SOLOMON ISLANDSSIBS = Solomon Islands Broadcasting Service

3995	1000	232	CA	SIBS: English BBC news. (Szot 6/20)
------	------	-----	----	-------------------------------------

TAHITI

11825	0310	434	FL	Radio Tahiti: Tahitian music // 15170. (Kelley 6/23)
	0345	343	WI	RT: Tahitian tx and mixed mx. (Paschke 6/14)
	0645	444	CA	RT: French pop mx, 0700 sign off. (Gaede 6/30)
15170	*0245	444	MS	RT: French s/on after flute IS. (Jones 6/28)
	0305	444	CA	RT: Tahitian with that good island mx. (Leistner 7/9)
	0344	323	IL	RT: Tahitian with tx, island mx. (Trzaskus 7/6)

CLANDESTINE

4121V	1330	252	CA	VRPR: Korean with long talks, poor modulation. (Szot 7/11)
6350V	1345	332	CA	V. of Hope: Korean ID, tx, and music. (Szot 7/1)
7015.5	1255	???	CA	VNUFK: ??? with exotic songs, drama // 9988, 10079. (Hill 6/14)
9421V	1430	444	CA	V. of the Thai People: Thai IS, ID, fanfare. (Szot 6/29)
	1432T	332	CA	VOTP: Laotian (?) OM/YL talk, no ID. (Cleveland 6/24)
9988	1344	444	CA	VNUFK: Khmer with native mx, 1350* // 7012. (Cleveland 6/27)
10010V	1430	253	CA	Liberation R.: English s/on, into news. (Szot 7/4)
10079V	1318	454	CA	VNUFK: Khmer ID by YL, long comment // 9988 (443). (Szot 7/1)
	1345	454	CA	VNUFK: Khmer martial music, tx, vocal music. (Cleveland 7/1)
14490	2055*	342	WI	LR: Eng s/off giving location as S. Vietnam. (Zilmer 6/23)

DATELINE.....

CLANDESTINES --- From SCDX comes this identification given by "The Voice of the Revolutionary Party for Reunification" (VRPR), "Tong-il Hyongmyongdang mokusori Pangsong". Probable location is D. P. R. of Korea with transmissions beamed to the Republic of Korea. Schedule for Korean includes 2100-2300, 0300-0500, and 1000-1400 on 1135 and 4557 kiloHertz. For the 1000-1400 broadcast, the station adds 4120 kHz. English is carried at 1400-1430 on all frequencies. (Report forwarded by Kevin Szot.)

HAWAII --- George M. Wilson, executive vice president of the Billy Graham Evangelistic Association, notes that the proposed short wave station of Hawaii has not received full acceptance from the FCC and "it will be some considerable time before any plans are made to build the station."

PAPUA NEW GUINEA --- Hope more of you caught the good opening into this area around the 26th and 29th of June. Check Kevin Szot's reports. I, for one, missed it (Sob!!) We'll have more on it in the next issue.

TURKEY --- VOT has added a new program, "Turkish Kitchen" on Mondays at 2200. They will also air a special Victory Day program on August 30. (Brandon Lovett)

ALBANIA --- Just a note to remind the membership that Radio Peking broadcasts on 7120, 9490, and 9780 are relayed by Tirana and should be reported to Mr. Butterfield.

PORTLAND, OREGON --- All of you out there are to be congratulated on an excellent turn out of reports this month. A total of 420 individual reports were received from 52 reporters. There were 95 reports for Australia alone. Naturally, I couldn't squeeze them all in to my six pages. This column is going into the mail on the 17th, so you know I am not kidding about the 15th of the month deadline. Until next time, 73's,

# STATION SKEDS

**ORF**  
ÖSTERREICH



MARK KOUKOL  
Apt. E-I, High Meadows  
1400 W. Lincoln Hwy.  
De Kalb, Il. 60540  
DEADLINE: July 14th

Mark will be back next month. Be sure to send your reports to him. A lot of new schedules this month.

From Jay Levine comes the following "Israel's" IBA 'B' Network (simultaneous relay of home programs abroad) is supposed to be a 24-hour-a-day broadcast, due to a labor dispute, they are NOT transmitting between 2200 and 0300 GMT.

DEUTSCHE WELLE-MALTA 'Test Broadcasts' starting about July 15, 1974

<u>Language</u>	<u>Time-G.M.T.</u>	<u>Frequency /kHz</u>
German	0120-0400	9745
"	0120-0510	11865
"	0440-0515	6065
"	1600-1750	17875
"	1800-1850	7160 & 9590
"	2140-2240	11865
"	2140-2240	11865 & 15225
"	2300-0110	11865 & 15225
Arabic	0520-0650	6025 & 9680
"	1910-2100	9625 & 11850
Maghreb	2105-2130	9625 & 11795

RADIO TASHKENT

English Language programmes

1st broadcast	1200-1230	15460 kc/s
2nd broadcast	1400-1430	15115

Hindi language programmes

1st broadcast	1300-1330	11925
2nd broadcast	1500-1530	11730

Urdu language programmes

1st broadcast	1230-1300	see above
2nd broadcast	1330-1400	see above

Persian language programmes

one broadcast	2100-2130 (Tehran St. Time)	11925 kc/s
---------------	-----------------------------	------------

Arabic programmes

one broadcast	1830-1900 (Cairo Summer Time)	11700
---------------	-------------------------------	-------

Uzbek language programmes

1st broadcast	1600-1630	9600
2nd broadcast	1700-1730	7145

RADIO MOSCOW NORTH AMERICAN SERVICE, VALID FROM APRIL TO OCTOBER 1974

6:00-7:30 EST PM	17720	15210	11720	9500	7150
	17770	15450	11730	9520	7290
	17900		11770	9530	
			11790	9600	
			11850	9650	
			11870	9660	
			12000	9720	
			12050		
			12070		

STATION SCHEDULESRADIO MOSCOW (con't)

8:00-9:00 PM EST	17720	15210	11720	9500	7150	
	17770	15450	11730	9520	7290	
	17900		11770	9530		
			11790	9600		
			11850	9650		
			11870	9660		
			12050	9700		
			12070	9720		
	9:00-10:00 PM EST	17720	15210	11720	9500	
		17770		11770	9520	
17900			11790	9530		
			11870	9600		
			12000	9650		
			12050	9660		
			12070	9680		
				9700		
				9720		
10:00-11:00 PM EST				11720	9500	7150
			11730	9530		
			11770	9600		
			11790	9660		
			12070	9680		
				9700		
				9720		
11:00-12:00 PM EST			11720	9500	7150	
			11730	9520		
			11770	9530		
			11790	9600		
			12000	9660		
			12070	9680		
				9720		

PACIFIC COAST SERVICE (all times PST)

7:30-9:30 PM	17720	15130	11690	9730
	17880	15180	11720	
	17900	15210	11850	
		15240	12020	
			12050	
9:30-10:00 PM	17880	15100	11690	9730
		15130	11720	
		15180	11750	
		15210	11850	
		15240	12020	
		15100	11690	
	10:00-11:30 PM	17880	15100	11690
		15130	11720	
		15180	11750	
		15210	11850	
		15240	12020	
		15400	12050	

RADIO PRAGUE (PRAHA) NORTH AMERICAN SERVICE

0100-0200 GMT                      0300-0400 GMT                      5930, 7245, 9540, 9740, 11990 KCs

Their address is INTERPROGRAMME, RADIO PRAGUE, 120 99 Prague, Czechoslovakia.

Well thats all for this month-

Good DX

*Stu*

# UTILITY REPORT



**STEVEN J. HANDLER**

1270 Carol Lane  
Deerfield, IL. 60015

Deadline: 13<sup>th</sup> of the month

**NEWS:** THE FOLLOWING SCHEDULE IS FROM HIGH SEAS RADIO-TELEPHONE STATION WOM  
American Telephone & Telegraph Company, Ft. Lauderdale, Florida.

<u>FREQUENCY DESIGNATOR</u>	<u>SHIP TRANSMITS ON</u>	<u>SHORE TRANSMITS ON</u>
4-1	4120.4 KHz	4419.0 KHz
4-2	4126.8	4425.4
4-9	4117.2	4415.8
8-1	8262.0	8796.0
8-2	8258.8	8792.8
8-4	8242.8	8776.8
8-5	8239.6	8773.6
8-10	8271.6	8805.6
8-11	8274.8	8808.0
13-1	12361.5	13140.5
13-2	12358.0	13137.0
13-7	12407.0	13186.0
13-8	12414.0	13193.0
17-1	16491.5	17286.5
17-2	16530.0	17325.0
17-7	16474.0	17269.0
17-8	16544.0	17339.0

UTILITY QSLs.....UTILITY QSLs.....UTILITY QSLs.....

U.S.A.: USCG CUTTER DUANE NRDD 2670 PFC 300w w/QTH 41N 71-07W in 18days(Simon)  
 USCG CASTLE HILL, RI 2670 PFC 100w /s/CWO3 A.N.Braz Jr in 7 days (Simon)  
 USCG LIGHT STATION-BUZZARD'S TOWER NMF23 2694 PFC 80w in 19 days (Simon)  
 USCG LITTLE CREEK, VA 2702 PFC 95w in 7 days (Simon)  
 USCG MILFORD HAVEN, VA NMN8 2702 PFC 100w in 7 days.(Simon)QTH:Hudgins, VA  
 USCG CUTTER CAPE GEORGE NYRW 2694 20w in 12 days (Simon)  
 USCG OCEAN CITY, MD NMN77 2702 PFC 40w in 5 days (Simon)  
 USCG CHINCOTEAGUE, VA NMN70 2702 PFC 40w in 5 days (Simon)  
 USCG CUTTER POINT JACKSON 2694 PFC 25w in 4 days (Simon)  
 USCG SANDY HOOK, NJ NMY52 PFC 2663.5 50w in 6 days (Simon)  
 USCG LIGHT STATION COVE POINT, MD NMN5 2670 PFC in 10days (Simon)  
 USS MCGLOY NZBI (DE-1038) Destroyer Escort)2716 PFC in 7 days 30w (Simon)  
 KSS-HOSUTON, TX 12424.5 PFC 150w with WYU8115 AMERICAN DELTA III address:  
 Seiscom Delta Inc., 7636 Harwin, Hosuton, Tx 77036 in 8 days (Simon)  
 RCA GLOBAL COMMUNICATIONS INC, NYC WER46 16015 kc/s, AM, usual red, white, & black card  
 with data for rept pf WMCA, NY w/Yankee Baseball Network (Griffith)  
 F.A.A.-SAYVILLE, NY WSY70 16280 kcs/ to Santa Maria, SSB sent form letter w/slight  
 info in 7 days (Griffith)  
 USCG ST SIMONS ISLD, GA NMB2 sent PFC for 2182 recptn (Holbrook)  
 FAA BEACON 'OK' OKLAHOMA CITY, OK 406 kHz sent veri. (Holbrook)  
 V.O.A.-5745 sent full data letter and card in 3 months (Day)  
 KFS-ITT San Francisco Radio returned PFC (Testa)  
 US NAVY NFG SAN FRANCISCO sent black & white card w/10 weeks full data less  
 frequency. card has US NAVY SEAL on it (Vecchiola)  
 USCG CUTTER POINT LEDGE WPB82334 2662 in 15 days for PFC (Chabak)

NEWS: ON Tuesday March 19, 1974 the FEDERAL REGISTER carried notice that the following stations have asked the F.C.C. for permission to cease operation:  
 IT&T WSF-New York, NY; Maryland Port Authority Station WMH, Baltimore;  
 RCA Stations in Lantana Florida (WOE), Tropical Radio Corp. Station in Hialeah, Florida (WAX);, KLG-IT&T Arcadia, Texas; and KFS-IT&T San Francisco.

ALASKA: USCG LORAN STATION NMJ22 ATTU ISLD 6935 kHz 0840 GMT SSB 750w in 35days(Chabak)

## SPECIAL REPORT:

Station WSL's H.F. transmitters are located at Brentwood, Long Island, New York, which is 50 miles east of New York City. They were formerly located at Amagansett, Long Island, New York which was 120 miles from New York City, but were moved to afford better antenna facilities and transmitter power.

The control for the Marine transmitters is located at the ship-to-shore receiving site in Southampton, New York (100 miles East of New York City) where the Coastal Station Radio Operators are located.

Formerly owned and operated by Mackay Radio & Telegraph Company, WSL is now owned and operated by ITT WORLD COMMUNICATIONS INC, a subsidiary of the International Telephone and Telegraph Company.

The address is: Coastal Radio Station WSL  
ITT World Communications Inc.  
P.O. Box MM  
Southampton, NY 11968

(Above via WSL)

WSL DATA IS BELOW

0105 GMT	Traffic list-primary frequencies in use & IF
0500	Weather broadcast-8514 kHz & IF
0550	Traffic list-8658 KHz and IF
0750	" " " "
1100	Weather broadcast 8514 & 13024 KHz & IF
1150	Traffic list, all primaries and IF
1350	" " , Ambrose Weather-All primaries & IF
1550	" " , All primaries and IF
1700	Weather broadcast 8514 & 13024 KHz and IF
1950	Traffic list all primaries
2150	traffic list, all primaries and IF
2300	Weather broadcast-8514 and 13024 and IF
2350	Traffic list-primary frequencies and IF (IF is normally 418 KHz but it may be 476 KHz)

WSL PRIMARY FREQUENCIES: 22485- 16997.6- 13078.5- 12997.5- 8658- 6418 KHz

WSL SECONDARY FREQUENCIES: 17021.6- 13024.9- 8514- 4343 KHz

WSL TRANSMITTS THE ARA PRESS EVERY SUNDAY STARTING AT 1818 GMT ON THE FOLLOWING FREQUENCIES: 22485 17021.6 13078.5 13024.9 8514 KHz

WSL TRANSMITTS UPI PRESS EVERY EVENING STARTING AT 0300 ON THE FOLLOWING FREQUENCIES: 12997.5 8514 6418 4343 KHz

WSL TRANSMITTS ALL BROADCASTS ON CW, TRAFFIC LISTS AND ARA PRESSCASTS @ 22WPM, WEATHER BROADCASTS @ 23 WPM AND UPI PRESSCASTS @ 25 WPM.

## WSL MAXIMUM POWER INPUTS:

22485-17021.6-16997.6-13078.5-13024.9-12997.5- 30kW  
8658-8514- 20kW  
6418-4343- 10kW

## WSL ANTENNA TYPES:

22485 & 17021.6-2-Forked log periodics -80/180 degrees  
16007.6 & 13078.5-Array -70/180 degrees  
13024.9-Array -80/177 degrees  
12997.5- Array -80/180 degrees  
8658-same as above  
8514 Array -80/177 degrees  
6418-2 forked log periodics -80/180 degrees  
4343-same as above.

ALL OF THE ABOVE INFORMATION IS VIA WSL, ITT, SOUTHAMPTON, NY.

QSLs CONTINUED:

ASCENSION ISLAND: CABLE & WIRELESS LTD sent map card folder in 33 days for ms. 7 $\frac{1}{2}$ kW 9885 khz ZBI43 USB (Simon)

AUSTRALIA: OTC-VIS42 22474 sent full data card in 31 days for 2 IRCs (Hardester) OTC-Doonside 17390 CW 2kW full data card VKS5 in 22 days for 1 IRC (Griffith)

BERMUDA: C&W ST GEORGES ZFD44 9907.5 SSB, 3,5kW in 15 days. Folder card (Griffith)

**BERMUDA:** came in 9months for 2 IRCs (Smith) 10635 rest same in 7 months(Raymond) same ZFD44 9907 in 11 weeks rest the same (Jim Vecchioca)

**BELGIUM:** 8805,6 CoSTENDE RADIO sent nice card in 2 months for 1-IRC (Raymond)

**CANADA:** Gander Aeradio 3001 sent personal letter in 21 days for No RP(Crawford)

**COTC-DRUMMONDVILLE CGA4 9332 ISB 30kW rhombic** to England, Portugal and Germany full data PFC. Used for RCI INT'L relay in 23 days for 1-IRC.(Griffith) same report sent to RCI-Montreal, and full data card received in 46 days.(Griffith)

**JAMAICA:** KINGSTON COAST GUARD H.M.J.S. CAGWAY, WTH PORT ROYAL, 6YX, 0445 5696 KHz in commucatiосn with USCG. Power .1kW (Chabak)

**INDIA:** OVERSEAS COMMUNICATIONS SERVICE-POONA ATJ71 20535 kHz,SSB 30kW,18mHz, sent EE Aerogramme w/data /s/R.G.Mankeekar,Assistant Engineer (TT) for Director(PB) rcvd in 20 days after followup total time 22 months for 2 IRCs. (Griffith) Address:Office of the Director (PB);Government of India,Overseas Communications Service, Beam Wireless Station, Poona 15, India.

**JORDAN:** TELECOMMUNICATIONS CORP.-AMMAN JYA63, 13950 KHz, ISB, 7.5kW, to Bahrain, sent nive EE ltr veru /s/Akef Nasser in 22 days for 2 IRCs. letter states 1st report from the states! (Griffith) Address: Telecommunications Corporation, P.O. Box 1689, Amman, Jordan.

**TAHITI:** PTT PA EETE 19362,5 KHz SSB sent form ltr from Paris w.Papeete text. 43 days for report to Papeete. (Griffith) Address:Direction des Telecommunications du Reseau International; Immeuble PTT Bercy; 246,Rue de Bercy,246; 75584 Paris Cedex, 12; FRANCE.

THE SCHEDULE BELOW IS FOR STATIONS JCS,JCT,JCU AND JDC, CHOSHI RADIO,JAPAN.  
(Via Mike Hardester)

銚子無線電報局運用時間表

〔JCS.JCT.JCU.JDC〕

昭和47年3月25日現在

呼号	周波数(KHz)	時間
JCS M/F	4,349	15:00-17:00 (JST)
JCT 4,385	4,385	01:00-02:00
JCS 6,467	6,467	01:00-02:00 (JCS4)
JCU 6,485	6,485	01:00-02:00 (JCS12)
JCS 8,653.6	8,653.6	01:00-02:00 (JCS12)
JCT 8,688	8,688	01:00-02:00 (JCS4)
JCU 8,479	8,479	01:00-02:00 (JCS12)
JDC 8,647.5	8,647.5	01:00-02:00 (JCS4)
JCS 12,828.5	12,828.5	01:00-02:00 (JCS12)
JCT 13,108.5	13,108.5	01:00-02:00 (JCS4)
JCU 12,873	12,873	01:00-02:00 (JCS12)
JDC 13,154	13,154	01:00-02:00 (JCS4)
JCS 17,112.6	17,112.6	01:00-02:00 (JCS12)
JCT 17,196.45	17,196.45	01:00-02:00 (JCS4)
JCU 17,043.2	17,043.2	01:00-02:00 (JCS12)
JDC 16,998.5	16,998.5	01:00-02:00 (JCS4)
JCS 22,419	22,419	01:00-02:00 (JCS12)
JCT 22,386	22,386	01:00-02:00 (JCS4)
JCU 22,463	22,463	01:00-02:00 (JCS12)

- (注) 1. 点線の時間はスカコン内の周波数と周波数を示します。  
 2. 日線は夜間の時間と示します。  
 (1) 赤線の時間は運用休止。  
 (2) JCU6; JCU8 と、JCT13; JCT17 と JCU22; JCU17 と それぞれ同周波数。



From Steve d'Adolf comes the following information about station KKN50. This station has been the source of much speculation. Many people have thought this station to be the C.I.A.. However in a letter from John H. Swafford of the U.S. Department of State the following was learned-"...Department of State Station KKN50 operating on 6926 KHZ.(Earlier indicated KKN50 is the base station). The reception of our large base station located in Northern Virginia near Washington DC. The station provides full duplex RTTY record communications with many of our Embassies abroad. The transmitters are a combination of Gates, Collins and TMC design operating on powers of 1 to 10kW. Antennas are practically all omni-directional/rhombics, & fixed log periodics types. Receivers include the latest Collins made 651S-1 and 51S-1 and R-390. Several other makes of receivers are also used. Both transmitter and receiver facilities employ equipment of the latest and proven design. The transmitters are all inter-connected with antennas by a remotely/electricly operated matrix switching system. This switching matrix is designed to handle transmitters with 40kW power and is manufactured by Delta Electronics."

This the Mysterious KKN50 Station has now been positively identified!

More information about Embassy Communications is available in Utility Information pamphlet 'US Embassy Stations Located Abroad'.

Due to an unexpected business arrangement this column will have to be cut short this month.

I am in need on an Assistant Editor for Utility Report. If you are interested, please let me know.

Remember that copies of the WORLD UTILITY DXERS HANDBOOK are still available, if you haven't purchased your copy up to now what are you waiting for?

73's

*Steve*

VERIFICATION OF RECEPTION  
VERIFICACION DE RECEPCION

This card is verification of reception by Hank Holbrook  
Esta tarjeta es verificacion de recepcion a Hank Holbrook

Station B D A Location KINDLEY FIELD NAS  
Estacion B D A Localidad HAMILTON, BERMUDA

Frequency 295 kc/s. Power Output 750 Kk. W  
Frecuencia 295 kc/s. Potencia 750 Kk. W

Date December 7, 1973 Time 0243-0307 G  
Fecha December 7, 1973 Hora 0243-0307 G

Signature [Signature]  
Firma [Signature]

---

\*\*\*\*\*  
FRANCE CABLES ET RADIO  
Ouagadougou, Upper Volta  
\*\*\*\*\*

Nous confirmons David Simon's réception d'une de nos transmissions radioélectriques sur 5813 KHz., le 2/9/73 de 20.00h à 19 à 2400 GMT. La station que vous avez capté était XTA (l'indicatif d'appel) avec 500 KW de rigée à Abidjan. Louis [Signature]

**FRANCE CABLES RADIO** [Signature]  
Centre de Ouagadougou (Signez et imprimez s.v.p)

P.O. Box 2884,  
WINDHOEK, S.W.A.  
19th June, 1967.

319

Dear Mr. Peters,

I have today received your letter dd 10th instant regarding the signal which you picked up, and am passing it to Mr. Makkink, of our radio Engineering section, and I am not writing in any official capacity, irrespective of the fact that I am in Charge of the Windhoek Radio Station, call sign ZUN33, which is mainly the callsign for use by Post Office and Mobile radio stations within South West Africa.

The marker which you picked up was communication between the Republic and ourselves, which is used in addition to the normal landlines to the Republic.

I am positive that Mr. Makkink would be able to supply you with the necessary information, and would be personally interested to know whether you are in possession of a transmitter with an indication of transmitting frequencies etc.

Should you at any time wish to know anything about South West Africa, please feel free to communicate and it would give me pleasure to be of assistance.

Yours truly,

*all/George*

ITALCABLE

Roma 31-8 1965

We QSL your kind report dated 24-12-1964 0025 GMT. The emission you heard was one transmitter of ours, namely IRE24, installed at Rome-TELECOM 2475 Kc/s, 10 Kw/antenna, on logarithmic aerial, directed NW. Type of emission A9B for PHONE ttc, with GELDA.

At the time covered by your report, our station was TRANSMITTING STANDARD SPEECH

Note:

ITALCABLE

ITALCABLE

*[Handwritten signatures]*

Kindest regards



**SPEEDX'S Q S L SECTION**

*Laborum dulce lenimen*

**EDITOR:**  
Doug Snyder  
3130 Woodmont Drive  
San Jose, California  
95118  
PH: 408-266-0590

**SPEEDX**  
Countries  
Verified  
1974  

---

152

**Deadline: 15th of the month**

You can't win 'em all!

A warm August welcome to all! We'd like to thank new SPEEDX'ers Bart Beal, Gary Froemming, Joseph Kannry, Jay Levin, Wes Mullen, Eduardo Rodriguez and special thanks to HAPpiles Dempsey Crews (HAP 39) and Joe Morris (HAP 11) for enhancing this edition of the QSL Section. Mr. Crews has sent me a copy of a QSL that he received in 1940 and it is included this month. Mr. Morris sent a copy of his Syrian verification, also included within these pages. Other than that, I'll try to make this a short column in order to include a QSL letter or two. Concerning QSL letters, I feel that only english written letters or those that include a translation into english should be printed in this section. How many people take the time to read someone else's letter written in a foreign language?

Tom Gavaras has the spotlight this month as his veries from ORTN, Niger; R. Moscow site in Riga, Latvian SSR; and Radio Baku, Azerbaijan SSR make me sigh with wonderment. And then there is Alan Brooks who reports another Syria QSL and Don Griffith reports a rare catch: 2nd harmonic of R. Nderland's Bonaire transmission on 6165 kHz. (12330 kHz). Don also comments on my lack of printing which particular service (North Am. Service, African S., Asian Service, etc) the Radio Moscow verifications list when they verify the frequency and transmitter site. I'm glad he brought this to my attention and it will be corrected; so be sure to include this item in your reports. SPEEDXer Ken Earhart would like to see the time of reception included in the QSL Section. Personally, I don't know how helpful this would be to dx'ers as QSL reports are rather dated. Let me know how you feel on this subject. Ron Lanoue sent these comments on the use of mint stamps: "The DX Stamp Service, at least, sells commemoratives, which are as likely to be stashed away in someone's collection as used to send off a QSL. Also, banana-republic inflation makes the contents of those glassine envelopes often insufficient for a first-weight air mail response. I can only twice remember getting back on an envelope the same type of stamps I sent to a station." My experience is similar to Ron's; however, I find that those stations that I do send mint stamps to, respond better, in general, than those of the same type that I send IRC's to, whether or not they use the stamps I sent them. DX Stamp Service is a very useful service and I highly recommend it. The answer to last month's question was Equatorial Guinea; the first correct answer I received was from Bob Hill. Congrat's Bob-you'll be hearing from me soon.

The latest on NOCAD's: tentatively scheduled on Veteran's Day Weekend, Oct. 26&27; please write or call if interested in attending, as if enough interest is expressed, it promises to be a memorable weekend. More info next month, but please let me know. Thanx. (More info at end of column!)

I just bought a copy of Hank Bennett's "The Complete Short Wave Listener's Handbook" and I can say it is about the best SWL book I have seen. If you're interested, write Hank at P.O. Box 333, Cherry Hill, New Jersey 08002.

I'll not disclose the answer to my June QSL question, as it was a toughie. Instead, I'll think up more clues for that one. My August question should be easy: A STATION OF RENOWN I'M NOT;

BUT A GREAT QSL AWAITS YOU  
IF I'M CAUGHT.

I'M GENERALLY FOUND IN THE  
KITCHEN, BUT IF NOT THERE,  
TRY THE PACIFIC OCEAN.

And finally, avid readers, to close out this lengthy page, a reminder to all SPEEDXers who have never reported to any SPEEDX column. Shame, Shame. We're really waiting to hear from you and what you're hearing over the shortwaves. Try it! We'll all be a little bit better because of you. Honest!

## EUROPE

- ALBANIA: R. Tirana, 6200; Folding type card w/pic of building inside; full data, unreadable; 153d, no rp, EE rpt. (MOSMAN IL)
- AUSTRIA: ORF, Vienna, 6155; Lake Constance f/data card + sked in 25d sur.; no rp. (CRAWFORD SCOT.) 11960; F/data card, no rp, 59d. (RODRIGUEZ PR) 15210; Happy Holidays Post Card + sked, stamps, tourist info in 32d air, no rp. (PARIS MI) 17850; Lakeland Paradise card, 24d air, no rp. (CHAFFIN)
- AZERBAIJAN SSR: Radio Baku, Baku, 9840; plain QSL verification in 87d air for 3IRC & EE, Persian report. (GAVARAS MN)
- BELGIUM: ORU, 6055; Gray Map card w/date & freq only in 19d air, no rp, EE rpt.; also rec'd new pennant. (VOGEL PA) Same, 22d, no rp. (RODRIGUEZ PR)
- CZECHOSLOVAKIA: R. Praha, 11990; Vysoke Tatry card in 97d air for 1IRC: F/data. (SEMKO NY)
- DENMARK: R. Denmark, 9520; f/data Radiohouse aerial tower card in 19d for no rp. (LEVIN NY)
- FINLAND: R. Finland, 15185; Spring In Finland card w/freq. & Antenna info + "Hear Finland" w/sked; in 18d air, no rp. (BEAL WA) Winter In Finland card, 22d air, no rp. (PARIS MI) F/data Autumn In Finland card. (RODRIGUEZ)
- GERMANY (DEM. REP.): R. Berlin International, 9500; F/data Serie DDR-1 card in 27d air, no rp. (LEVIN NY) 9730; F/data green card w/castle - old car & steering wheel silhouettes; in 37d air, no rp. & local PC (VOGEL PA) 11840; "Venceremos" (or 'we shall win') on Chilean flag card in 31d air for EE rpt., no rp. F/data. (BODELL OR) 11970; Orange building card in 15d air, no rp; + mag about East Germany. (MILLER CA)
- GERMANY (FED. REP.): Deutsche Welle, Koln, 6040; F/data 20th Anniversary card w/globe on one side & multicolored circles on other; in 115d air, no rp; also rec'd pennant & sked. (KANNRY NY) 6075; DW, Julich; same f/d card in 240d air, no rp. (STRAUMANIS IL) 21600; World cup football card + pennant in 49d surface, no rp. (CRAWFORD SCOT.)
- Radio Liberty, Lampertheim, 7295; Full data blue-yellow card + sked in 12d air, no rp., EE rpt. (MAYER IL)
- GREAT BRITAIN: BBC, 7300; No data Thames card, 19d air, no rp. (LEVIN NY) 9550; Same, + sked in 21d air, no rp. (BEAL WA)
- VOA, Woofferton, 7200; F/data Antenna card, 8d, no rp. (CHAPMAN PA)
- RCI, Daventry relay, 6110; Mic/globe card, 21d air, no rp. (TRUBEE HI)
- GREECE: VOA, Kavala, 9770; New Capitol Bldg. card in 7d; f/data. (LEVIN NY)
- HOLLAND: R. Nederland, 6165; DX Handicapped Aid QSL in 11d air for 2IRC. (TESTA'S MA) I agree, Frank! 6165; Card w/Tom Meyer toasting Happy Station's 45th Anniversary; in 25d air, 2IRC; V.S: Tom Meyer. (YAJKO PA)
- Royal Family card, 15d air, no rp. (BEAL WA) 11730; Same, 60d, no rp. (VOCKEROTH PA) Yours is the first rpt. of that John, concerning WYFR.
- HUNGARY: R. Budapest, 9833; green card w/pic of building + info on DX club in 45d air, no rp. (MILLER CA) Orange card, 54d surface, norp. (VOGEL)
- ITALY: RAI, 6010; Painting card in 64d air, 2IRC. (STINE MD) 6050; In 94d air, art repro. card of "La Partenza di Tobio", no rp. (BROOKS CT) 7275; Painting card + booklet, sked in 22d air, no rp. (CRAWFORD SCOT.)
- LATVIAN SSR: R. Moscow, Riga, 12020; Green & white card in 60d air, after sending card back because the x'mitter location was not marked. First sent to French service, then sent to English service for them to mark the location on the card; no rp; 1st rpt in FF, 2nd in EE. (GAVARAS MN)
- LITHUANIAN SSR: R. Moscow, Kaunas, 11870; f/data card including site rcvd via air from N.A. Service in 22d. (GRIFFITH MO)
- LUXEMBOURG: R. Luxembourg, 6090; F/data Antenna Towers card w/crest in 130 days air for 2IRC, EE rpt. (COMPTON MA) Same crd, 45d, 1IRC, EE rpt, full data. (VOCKEROTH PA) 15350; Same card, 17d, 2IRC, EE rpt. (McLAIN CA)
- MONACO: TWR, Monte Carlo, 7100; B&W photo card w/full data showing building & a VW; + sked, paper pennant & info; 120d air, 2IRC. (STRAUMANIS IL)
- NORWAY: R. Norway, 15175; F/data card w/pic of Mt. Skridulaupen in 46d, 2IRC, EE rpt. (MOSMAN IL) F/data 'In the Mountains' card. (CRAWFORD SCOT.)
- POLAND: Polish Radio, Warsaw, 6135, 9540, 9675; Orange "Poznan" region map card, 43d air, no rp; Copernicus card & Heraldic Arms of Polish Towns card in 30d air, no rp.; pennants #5&6 in 32d air. V/s: L. Stanislawski. (BROOKS CT) Thanks Alan, for all the material! PR, 15120; F/data card & pers. ltr. + sked in 36d air, 1IRC, EE rpt. (LEISTNER CA)
- PORTUGAL: R. Portugal, Lisbon, 6025; Card in 20d air of Naval sailing ship in port w/castle in background; 1IRC, EE rpt. (FROEMMING AZ) 11955; Same card, 15d air, no rp, PP rpt. (LEVIN NY) 21495; No data full color, man weaving blanket on hand loom - #12 in DX Club series verifying South East Asia Service; 16d, no rp, EE rpt. (DuRANT THAILAND) Naval vessel card in 43d air, no rp, PP rpt. (CHAPMAN PA)
- Adventist World Radio, 9670; Europe map card in 55days air, no rp. (CRAWFORD SCOT.)

ROMANIA: R. Bucharest, 5990; F/data card showing The National Theater and Hotel in Bucharest; 88d and no rp. Surface. (SEMKO NY) 15250; Color card showing Romanian Folk instruments; f/data + ltr. & info on Listeners Club, sked; in 83d air, no rp. (CHAPMAN PA)

RSFSR (EUROPEAN): R. Moscow, Moscow, 9685; F/data card, 16d air from the N.A. Service. (GRIFFITH MO) 11790; R. Moscow, Ryazan & 12000; Armavir; 2 f/data cards via air from NA Service in 22d. (GRIFFITH MO) 11990; R.M., From African Service, via Tula, card w/emblems of the different soviet regions; in 24d air, no rp. (HARDESTER CA)

SPAIN: RNE, 6065; f/data card w/photo of building, but with wrong date; in 49d air, EE rpt, no rp. Also rec'd sked. (STRAUMANIS IL)

Radio Liberty, Playa de Pals, 5955; F/data blue/yellow card + sked in 12d air, no rp, EE rpt. (MAYER IL) 15130; Card w/pic of mic, tower & map of Russia in 28d air, 1IRC, EE rpt. (GAVARAS MN)

SWEDEN: R. Sweden, 6035; F/data blue/white/yellow map card but w/ wrong frequency (@#%!!); in 9d air, no rp. V/s: Andirs Wollter. (STRAUMANIS) 6165; F/data 25th Anniversary of Sweden Calling DX'ers card in 14d, no rp. (VOCKEROTH PA) 11955; Map card, 28d, no rp. (LEVIN NY)

SWITZERLAND: SBC, 9535, 9635; 'Old Town Of Berne' card, 73d surface, no rp. V/s: J. Chisholm. (BROOKS CT) Old Bridge card in 21d surface, no rp; also a note saying they do not have pennants. (MEEHAN CA) 11715; F/data card of Holbein Fountain, Basle, in 20d air, no rp. (LEVIN NY)

UKRAINIAN SSR: R. Moscow, 11735; Vinnitsa & 11770, Kiev; 2 F/data cards including sites rec'd via air from N.A. Svce in 16d & 22d. (GRIFFITH MO)

USSR (No Site): R. Kiev, 7200; F/data card w/ drawing of two children above shoulders, 94d, no rp, EE rpt. (MOSMAN IL)

R. St. Peace & Progress, 11900; Yellow/white/red card in 70d surface for no rp. (PARIS MI) 12000; F/data blue paper form, 100d sur. (COMPTON CA)

## africa

ALGERIA: R. Diff. TV Algerienne, 11965; F/data white card w/blue writing; written in AA & EE; in 78d sur., MS (not used), FF rpt. (SNYDER CA)

CHAD: R. National Tchadienne, 4904.5; tri-view card, no frequency listed; in 46d air for 3IRC, EE rpt. (CHAFFIN CAMEROON)

EGYPT: R. Cairo, 9475; Ancient Ruins card, w/freq; 90d air, no rp. (BEAL WA)

1st Serial, 1st Scene card in 35d for 2IRC; also rec'd sked. (KOLB CA)

F/data PC of Nile River in 71d air, no rp. (McLAIN CA)

ETHIOPIA: ETLF, Addis Ababa, 11775; blue data card + sked in 18d 2nd class air, no rp. (CHAFFIN CAM.) 11960; Same card, 78d for 1IRC and EE rpt. Also rec'd white/green pennant and sked. (SEMKO NY)



This is the QSL that Mr. Dempsey Crews sent to me and which he received in the early part of 1940. The actual QSL looks better than this, but due to the light copy, I had to go over it with pencil. Some QSL's sure haven't changed over the years, have they? The same old Africa map with the antenna tower and radiating lines. But it's great to see a card out of the past. THANKS, DEMPSEY!

GUINEA (REP.): La Voix de la Revolution, Conakry, 9650; f/d small brown ltr. in 65d air, no rp, FF rpt. (GIANNINI IL)  
LIBERIA: ELWA, 15170; Native drummer card in 76d surface, no rp. Rpt'd in EE. Also rec'd note saying no pennants. F/data card. (SEMKO NY)  
MALAGASY REP.: R. Nederland, Tananarive, 11740; World Time Zone Map card w/f/data in 193d air after f/up; no rp. (BODELL OR) DX Handicapped QSL card & EDXC (European DX Council) card in 14d & 10d for no rp & 2IRCs; Both cards full data. (DURANT THAILAND)  
NIGER: ORTN, Niamey, 5020; 'Ici Niamey' card in 256d air for 3IRCs; reported in English and French. (GAVARAS MN)  
NIGERIA: Voice of Nigeria, Lagos, 7275; card in 23d air; 1IRC returned; EE rpt. (TESTA'S MA)  
 NBC, Enugu, 6025; F/data card, 76d for no rp. (HAMBRIGHT NJ)  
 R.TV Kaduna, Kaduna, 9570; f/data green/gray card, 22d a, 1IRC, EE (MAYER)  
RWANDA: Deutsche Welle, Kigali, 9765 et al; no data pic card #2376 in 41d air for no rp and EE rpt. V/s: Thiele. (CHAFFIN CAMEROON)  
TOGO: R. Diff. du Togo, 5047; Togo map card, 24da, 2IRC, FF rpt (HARDESTER CA)  
TUNISIA: R. Diffusion TV Tunisienne, Tunis, 11970; F/data card w/pic of YL fetching water; no rp, EE rpt; 21d air. (GIANNINI IL)

## Asia-Oceania

BRUNEI: R. Brunei, 7215; Map/palace card w/date, freq. only in 30d air for 2IRC, EE rpt; card folded to fit in envelope. Drat's. (HARDESTER CA) Yep!  
CHINA (PEOPLES REP.): R. Peking, 15060; 'Night Cruise through the Yangtze Gorges' card, 15d, norp; also rec'd sked, ltr. (MEEHAN CA) Same card + ltr., sked, pocket & wall calendars, PC of Peking Zoo & Chin. stamps. (BROOKS)  
INDIA: All India Radio, New Delhi, 11810; Repro of old painting card, 'Radha & Krishna' in 28d air, no rp. (PARIS MI)  
INDONESIA: RRI Ujung Padang, Celebes, 4719; EE ltr & B/W card w/pic of studio in 204d air after II&EE registered f/up w/2IRCs. Card has full data. V/s: Slamet Poedjono. (HARDESTER CA) Same card, no time in 114d air registered for EE rpt & MS (mint stamps). (GIANNINI IL)  
 RRI Menado, 5987; Indo. ltr in 20d air, 2IRC, II rpt.; V/s: Rein Wuisang. pretty sure this is a verie, but I can't read Indo! (HARDESTER CA)  
IRAN: Voice Of Iran, 9022; F/data blue/white card w/color photo of TV production center, Rezaieh + plastic pennant, skeds & tourist info; in 181d air for no rp, EE rpt. (COMPTON MA) Same card + road map in 150d air for 2IRC (VECCHIOLA PA) Same, 51d air, sent regist. rpt, 2IRCs (HAMBRIGHT NJ)  
IRAQ: R. Baghdad, 9745; Iraq map card w/pic of bridge in corner in 67d air for 2IRC, EE rpt. (STINE DC) Same, f/data, no rp. (RODRIGUEZ PR)  
ISRAEL: IBA, 6170; Knesseth Menorah card + sked, rpt. forms in 21d air, no no rp. (PARIS MI) 9009; Same, 60d air, 1IRC (TRZASKUS IL) 2495; Full data card w/old map of Jerusalem; in 27d for no rp & Hebrew rpt. (LEVIN NY)  
JAPAN: R. Japan, 9505; Yokozuna, Sumo wrestler card, 15d, no rp (MILLER CA) 11815, 11875; Same card + Festivals folder & Imp. Palace PC, 17d (DuRANT) 15105; Yarko, Royal footman card, 12d, no rp. (SMITH TN) Sumo wrestler cd. in 10d, 2IRC (returned) (MULLEN MT) 15445; 'NOH' music text card in 19d air. (PARIS MI) 17855; Sumo card, no time, 23d, no rp. (CHAFFIN CAMER.)  
 NHK, Sapporo, 3970; (domestic Svc.); F/data card, PWR-1KW, 7d air, no rp, EE rpt.; also rec'd info on R. Japan., & PC. (SZOT CA)  
 Far East Network, Tokyo, 6155; W/white/blue w/QLS & Mic in blue, 63d for no rp. (BEAL WA) Same, no time, 18d, airmail stamp (not used) (JONES MS)  
KOREA (REP.): R. Korea, 9640; F/data panoramic view of Seoul, in color; data on back; in 70d air for EE rpt. MS; also rec'd pennant, sked (DuRANT TH.)  
KUWAIT: F/data card, 51d air; 15415; 1 IRC. (RODRIGUEZ PR)  
MALAYSIA: R. Malaysia, Penang, 7295; beautiful f/data folder card in 300 days for 2IRCs (HAMBRIGHT NJ)  
PHILIPPINES: V. of the Philippines, 9580; Pink 'VOP' card & filled in form ltr. verie; in 179d surface for MS, EE rpt. V/s: E.G. Madrid. (BROOKS CT)  
 FEBC, 11920; Staff photo card, f/data; 60d, 2IRC, V/s: Judy Sulphen (KOLB)  
 VOA, Poro/Tinang, 15210; F/data Capitol Bldg card, 7d. (LEVIN NY) 17830; Old Antenna card w/date, freq. only in 8d. V/s: Monica Vall. (STRAUMANIS IL)  
RSFSR (ASIATIC): R. Moscow, 9700; Nikolayevsk; f/data card + site via air from N.A. Svce. in 16d (GRIFFITH MO) 12050; R.M. via Khabarovsk; card & sked + pennant in 21d air, no rp (MAHONEY IN) 17895; Komsmsck-on-Amur; f/data card in 23d air, no rp.; used R.M. rpt. form. (MAYER IL)  
SINGAPORE: R. Singapore, 5010; Non QSL ltr since I omitted freq.; in 21d for 2IRCs; also rec'd sked. V/s: G.O. D'Souza. (KOLB CA) Initials: GOD  
SYRIA: R. Damascus, 15165; White 'Globe & Antenna' card in 147d air for 2IRC & MS, EE rpt.; also rec'd ltr. & pennant; 4th try since '71. (BROOKS CT)  
TURKEY: TRT, Ankara, 11880; Large colorful Harem Istanbul card in 37d surface for no rp, EE rpt.; f/data card. (SEMKO NY)



UZBEK SSR: R. Tashkent, 9600; F/data red/white/blue building card + sked in 106d air for no rp. (STRAUMANIS IL) 11925; QSL Map card, 112d air, 1IRC, EE RPT. (GAVARAS MN) Chimes Tower f/data card, 78d air. (CRAWFORD SCOT.)  
VIETNAM (DEM. REP.): Voice Of Vietnam, 15012; f/data plain QSL in 90d for used US stamps. (HAMBRIGHT NJ) Same, 1IRC; also rec; d newspaper, sked. (SEMKO NY)  
VIETNAM (REP.): VTVN, Saigon, 7175; F/data card in 30d for NASWA Viet. rpt. & MS + US used stamps. (HAMBRIGHT NJ) Same globe card, 42d, MS. (YAMRON PA)



Contributed by Joe Morris (HAP 11)

AUSTRALIA: R. Australia, 9570, Shepparton; Grey Bush Pea card, 90d surface, no rp. (MEEHAN CA) 9580, Shepp.; Wild Flower series, Lambs Tails card in 101d sur., no rp. (TESTA'S MA) Mama & baby Kangaroo card in 22d air for 2IRCS; V/s: Peter Homfray. (TRZASKUS IL) 11885; Brisbane, 10KW; Flannel Flower card w/f/data via air in 17d for 1IRC; this is R.A.'s backup x'mitter in Brisbane. (GRIFFITH MO) 17295; Shepp., Drooping Mistletoe card, 90d sur., no rp. (MEEHAN CA) Wild Flower card, 120d surface; sent via N.Y. office. no rp. (NEBRON CA) Allan-17870 is used by both Shep&Darw. also-please send for QSWL rpt. forms from Don in Elsinore. Much easier. ABC, Perth, 9610; VLW9; ABC Map card, 102d air, no rp. (BEAL WA) ABC, Brisbane, 9660, VLQ9; F/data new 'Queensland' Map card, 12d air for 2IRCS. (HAMBRIGHT NJ)  
NEW BRITAIN: R. Rabaul, 3385; Map letter card, 12X12, full data; V/s: R. Safat, Station Manager; New Address: PO BOX 393, Rabaul, East New Britain District; in 30d for 3IRC. (KOLB CA)  
NEW CALEDONIA: ORTF, Noumea, 7170; blue/black/white map card w/date only in 79d air for 2IRC, FF rpt. (McLAIN CA)  
NEW GUINEA: R. Madang, Yomba, 3260; PNG type large folder card w/f/data in 25d air, 2IRC, EE rpt.; V/s: Jon E. Koniel. (HARDESTER CA)  
NEW ZEALAND: NZEC, Wellington, 11780; Usual globe card w/no time + sked & tourist info in 90d surface, no rp. (SZOT CA)  
PAPUA: R. Milne Bay, 3360; veri ltr. on NBC stationary due to being out of QSL's; V/s: Simon Muraga; in 14d, 3IRC; no time, freq. listed. (KOLB CA)  
 R. Northern District, 2468; PNG data sheet w/freq, date & an '8' in the time slot. Does not fit GMT or lcl time heard. In 150d, 3IRC. (HAMBRIGHT NJ)  
SOLOMON ISLANDS: SIBS, VQ04, 3995; F/data map card, 18d air, 2IRC (SZOT CA)

## south america

BRAZIL: R. Nacional de Brasilia, 15445; F/data color PC of Brasil Turist-ico at nite; in 31d, 2IRC, EE rpt.; also rec'd pennant. (MOSMAN IL)  
CHILE: La Voz de Chile, 15150; Color PC of flowers & lake in 36d air for 2IRC & EE rpt. V/s: Gustavo Heitmann S. (ELLSWORTH CA) Card w/geese & dirt road & bldg. in 35d air, no rp, SS rpt. (BEAL WA) Color photo card of "Hosteria de Ancud" + ltr & sked in 32d air, MS, EE rpt. (BROOKS CT)  
COLOMBIA: Emisora Nuevo Mundo, 4775; Caracol card w/date & freq. in 7d air for MS and SS rpt. (YAMRON PA)  
 R. Guatapuri, Valledupar, 4915; Short ltr gives veri statement only; also beautiful multicolor pennant. V/s: Glenix Peraza Moron, Secretaria. in 135d air for MS, SS rpt. (LANOUE MA) Same, 56d (GIANNINI IL) 108d (MOORE)

COLOMBIA(CON'T):R. Colosal, 4945; SS form ltr w/personal note gives date & freq;+large blue pennant.V/s:Jorge Enrique Sanchez, Departamento Artístico. In 75d air, SS rpt., MS.(LANOUE MA)  
 R. Mira, 6015; Chatty ltr. gives date,freq, station data;also very nice PC & pennant; in 60d air,SS rpt,MS(used), PC.V/s:Carmen Obando, Secretaria General. (LANOUE MA)  
 R. Super, 6065; F/data card w/info on Bogota; in 135d surf,2IRC, SS rpt.(SZOT CA)Plain white card, no freq,21d air,1IRC,SS rpt.(SMITH TN)  
 La Voz Del Llano,6115; Ltr. w/verie statement & beautiful color fotos of Villavicencio.In 60d for MS.V/s:Jairo E. Cifuentes,Gerente(YAMRON PA)  
 ECUADOR: HCJB, 9560; Mt. Chimborazo card + sked in 35d air,2IRC,(TRZASKUS)  
 11915; Great Circle Map cards in 30d air, 2 IRC ea. (TESTA'S MA)  
 15115; Mt. Chimborazo card,33d air, 2IRC.(YAJKO PA)  
 R. Nacional "Progreso", Loja, 4780; Long personal ltr (ss) w/date; says that they are now on 5060kHz; also rec'd tape w/Ec. mx, a 1 sucre coin, a pix of Loja, and a request for me to be pen-pal. For rp, desires MS or money.In 213d air,2IRC,SS rpt.V/s:Efrain Herrera Guerrero(SZOT CA)  
 R. Luz y Vida, Loja, 4825; Graphic B/W mountain scene w/f/data on the back;in 150d air,2IRC,SS rpt.;VS:Her.Amado Campos D.;pennant(MAHONEY IN)  
 FRENCH GUIANA: ORTF,3385; Form ltr. w/date,freq stamped in; + sked in 75d air, 2IRC, FF rpt. (LANOUE MA)  
 GUYANA:GBS, Action Radio, 3290; F/data & station info on ltr; in 20d air for EE rpt. VS:Mrs. Desiree Mars. (PARIS MI)  
 PERU: R/ Quillabamba, 5025; SS no data ltr.,but nice pennant in 76d air for MS(different ones used),SS rpt.VS:P.Joaquin Barriales. (SMITH TN)  
 VENEZUELA: R.Tachira,San Cristobal, 4880;nice f/data personal ltr. & pruple -black-yellow pennant;91dA,MS,SSrpt;VS:Juan A.Chacon-Dir.(WHITEHEAD MA)  
 R.Tropical,4870;date only ltr.in28dA,2IRC,SSrpt;VS:Angelo Grasso-Dir. Also rec'd small pennant.(CLEVELAND CA)  
 R.Universo,4880;Network card w/date,fqy;16dA,MS,SSrpt. (HARDESTER CA)  
 Ecos Del Torbes,4980;no data ltr,pennant;39dA,SS rpt.(PARIS MI)  
 R/Nacional,6170;no data ltr. & 15 inch pennant in 370dS, 3IRC, SS rpt; VS:Zobeida R. de Quijada,Jefe de Relaciones Publicas.(CLEVELAND CA)

## NORTH AMERICA

CANADA: RCI,6085; F/data blue/green Natural Resources Map card,35d(VOCKEROTH 9655; Mic/globe card,60d for no rp.(MEEHAN CA)  
 CBC No.SVC, 9625;Eskimo Sculpture card in 30dS,no rp;EE/FF rpt.(SMITH FL) 11720; Same card,37d S, no rp.(SMITH FL)  
 CHU,Ottawa,7335; Card w/picture of Sir Sanford Fleming w/freq. only! in 20d S, no rp.(LEVIN NY)  
 BBC,Sackville,6175;Thames card,site only,15dA,no rp.(HARDESTER CA)  
 DW,Sackville,9605; Circle card,380d A,no rp,EE rpt.(MEEHAN CA)  
 CUBA: RHC,11930; Circle card(I now have five different circle cards) in 90d A, no rp.(MILLER CA)  
 DOMINICAN REP.: R. Clarin,4850; No data mimeo ltr + red/blue on white pennant; 48dA,MS,SSrpt.VS:Neit Rafael Nivar Baez,Administrator.(WHITEHEAD)  
 GUATEMALA: R. Maya de Barillas, 2360; F/data 'Warrior' card;PWR=250W; in 90dA,2IRC,SSrpt.VS:Loran W.Vieth Jr.,Gerente.(SZOT CA)  
 NETHERLAND ANTILLES: R. Nederland, Bonaire, 12330; Propagation card w/date time & "second harmonic of 6165kHz,12330kHz." 46dA.(GRIFFITH MO) Nice! 15385;F/data Radiotelescope card, no rp.(LEVIN NY) Time?  
 TWR,Bonaire,11815; card w/B&W photo of studio in 200d S, no rp; EE rpt also rec'd red/white pennant & DX Special info. (SEMKO NY)  
 USA: KGEL,San Francisco, 9515; FEBC green "Globe and Ray" card + SF PC, sked, pennant; 30d S, MS,EE rpt.(BROOKS CT)  
 WYFR,Oakland,New York, Scituate, & Kookamunga, 9690; Grey,blk& red Mic card,17d S,MS.(BROOKS CT) 21530; Mic card,22d A,no rp.(CHAFFIN CAM.)  
 To John V.- yours is first rpt. of no QSL from WYFR, just request for \$.  
 ENDNEND

The latest development on NOCAD's is good news: arrangements have been made to take a guided tour of the facilities of La Voz de la Amistad, otherwise known as international radio station KGEL. + other surprises!

For you address buff's, here is an address change: Thai TV Radio, Soi Aree, Paholyothin Road, Bangkok 4, Thailand. And another helpful tip: CBC station CKZU, 6160kHz, Vancouver is listed in WRVW74 as 400watts; a recently arrived QSL shows 500 watts, and they should know!

In your next Spanish reports to South America, you might want to try these phrases to spice up your report: Puede usted planchar mi pantalon? (Can you press my trousers?) or Creo haber comido algo en malas condiciones.(I think I have food poisoning.) or finally, that old American standby: Se prohíbe pisar la hierba.(Keep off the grass!) 73's All.

Printed below is the translated version of the letter Bill Cleveland received several months ago. A second page, not shown here, gives station information. The most interesting fact is the power of the station: 350 watts.

Reminder to all: if you have any unusual QSL's or letters, I would very much like to print them in this column. If you are unable to make a copy, send the original by registered mail and I will reimburse you when I mail it.

**RADIO KHUSUS PEMERINTAH DAERAH  
(R K P D)**

**PROPINSI JAWA TIMUR**

JALAN PAHLAWAN NO 18  
S U R A B A Y A

Getombang 53,95 meter.

Surabaya, <sup>18</sup> April 1974.

Keperluan

Nomor : RKP/66/SK  
Lampiran : 1(satu)  
Perihal : Penjelasan siaran  
RKP Prop. Jawa Timur  
US  
-----

Yth. Sdr. William R. Cleveland  
2041 Fairview Drive  
Visalia, California 93277  
United States of America  
-----

Subject: Receiving Government Radio East Java  
broadcast in the U.S.

In answer to your letter dated 20 February, 1974, concerning the above mentioned subject, I would like to thank you in behalf of the Staff of the Government Radio, area East Java Province, for the letter and report in connection with our broadcast that you received.

Your response to our broadcast from 19 February, 1974, that you have mentioned in your letter, was extremely fast. For your information I hereby enclose the data from our transmitter and antenna system.

I also like to inform you that the RKP East Java Province broadcast reports for the Government of East Java Province, concerning Health, Welfare, Education and Housing and Urban Development. Also, RKP East Java Province, functions as a tool to educate the people from East Java to relieve burdens.

In the meantime the two Cities Kabupaten and Kotamadya in East Java, also have their own transmitters with the same purposes; to relay information, educate and relieve burdens in their own resort.

Finally in the hope that my explanations are to your satisfaction, I sincerely thank you.

Government Radio Station Area East Java  
Head of the Studio,

Signed: SOEHARTONO

V.G. GRANT,  
Information Officer,  
Grand Turk,  
Turks and Caicos Islands.

18th October, 1973.

Mr. Henderson,  
317 Brock Bridge Road,  
Laurel, Maryland, 20810,  
U.S.A.

Dear Mr Henderson,

Thanks for your letter. I noticed you asked the reason for the loss of carrier during my broadcast.

The reason is: The microphone and the desk are operated by one main switch. Sometimes when I switch from one to the other the amplifier gets a little overloaded and the transmitter which is automatically equipped cuts itself off.

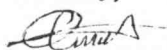
There is no doubt as to your accuracy of hearing my station. It was indeed VS18 4.788 on the 60 metre band.

Mr Mattocks passed your correspondence over to me because I am the Government Information Officer for the Turks and Caicos Islands and am also in charge of broadcasting.

I am indeed happy to hear that you can pick up our wave signal as far north as Maryland. I would like you to make as many suggestions as possible which may help me to create a better programme for my listening audience. Please write as early as possible.

I would also appreciate some sundry goodies from your country such as what you will find enclosed in this letter.

Sincerely,



W.G. Grant,  
INFORMATION OFFICER.

# Tips and Topics

The Feature Section of SPEEDX

SPEEDX Editor: Arthur S. Getzel - 70-29 Kissena Blvd - Flushing - NY 11367

## SHORTWAVE LISTENING IN THE DEVELOPING COUNTRIES

### Part I - The Audience by Ron Lanoue

The myriad polls of shortwave listeners organized by hobby clubs--even the very few with returns sizeable enough to mean anything, e.g. the triannual International SW Club survey--are of little help in measuring the size of SW audiences. They represent only the highly select group of SWL's who are conscious of shortwave radio being a hobby, and are therefore of no value to the broadcasters except as far as this one group of listeners goes. Analysis of listener's letters on the other hand can prove invaluable to broadcasters concerning programming, reception quality, etc.; however this also leaves much to be desired, as a station's mail represents another small slice of the audience, those motivated enough by a transmission to take pen in hand (and who aren't too poor to afford the writing material, and aren't afraid of governmental restrictions on contacts with foreigners).

Thus, what little secondary survey data is available on this subject is of a very great interest, since of course only a poll of the general population of an area can tell what the percentages of listeners are in that population. Fortunately, the U.S. Information Agency, as part of its regular series of worldwide surveys, has been asking questions on listenership of foreign broadcasts. The figures that follow represent only a few selected countries; however they are the most recent data available on an international scale which the U.S.I.A. has declassified

The size of the group who listen regularly to foreign broadcasts is seen to vary widely among the different cities surveyed (Table 1). However, in all but a few of the Latin American cities, the shortwave audience represents a significant chunk of the population. In other words, far from being a hobby engaged in by a select few, as in the United States, SWling is a major source of entertainment and information for the inhabitants of these areas.

A word of caution is needed in interpreting these figures: the samples represent only the capital cities of these countries, and thus those who are much more likely to own a radio, in comparison with the rural sector. However, the question of receiver ownership may indicate that these figures, gathered during the earlier years of the "transistor revolution" in these countries, now grossly underrepresent the international broadcast audiences. Only 50-70% of those questioned in Latin America, for example, (an area with a per-capita income twice of that of Africa and Asia) owned radios in 1965. From all indications set ownership has mushroomed throughout the Third World in the last decade, and audiences would be correspondingly larger today.

Table 1 The Shortwave Audience in the 1960's<sup>1</sup>

1964	% who "ever listen"	1965	% listening "at least once a month"
Rio de Janeiro	5		
Buenos Aires	3	Manila (literate)	30
Caracas	20	Kuala Lumpur	22
Mexico City	9	Singapore	10
Karachi, Pakistan	65	Seoul	27

1960 % listening "at least once or twice a month"

Accra, Ghana	54
Lagos, Nigeria	46
Abidjan, Ivory Coast	37
Dakar, Senegal	33

As an example of what may be expected today, a 1962 Karachi Pakistan survey of 700 radio owners showed that the percentages of those listening to specific foreign stations were two to five times the similar percentages for the population as a whole in 1964, while only five to six percent of the set owners said they never listened to foreign broadcasts!

Because of the expectedly greater radio ownership in Latin America, the lower levels of shortwave listening might seem incongruous. One possible explanation for this is the nature of the domestic broadcasting. While there are dozens of stations within each country south of the border, the African and Asian populations usually have only one or two state-controlled programs to listen to; thus the latter may tune to foreign stations out of sheer boredom.

The megawatt race among the various world broadcasters thus becomes readily understandable. They are competing not for some meaningless propagandistic symbol e.g. first moon landing, but for the ears, hearts, and minds of a rapidly increasing portion of the two billion people living in the underdeveloped countries. While we in this country are made aware of the world's events from grammar school on, and are constantly bombarded by new information from various broadcast and print media, by friends, etc., the outside world for the villager in India or the alum dweller in Rio de Janeiro may exist only through his portable radio. His or her choice of station will determine his view of these events of the day, and is thus a matter of vital importance for the nations competing in the radio war.

<sup>1</sup>Figures based on USIA surveys conducted by local market research firms, with sample sizes near 500 except in the four West African cities which were near 1400.

Part II will be next month.

---

"THE POWER GAME": A REBUTTAL

Part I By Bob Hill

The incessant power escalation by international broadcasters must be stopped before the entire SWBC spectrum degenerates into a shambles. That, I'm sure, is how Serge Neumann feels; and that's how I feel, too. But we disagree about the causes of the present chaos and we also disagree about how best to stem the tide.

First of all, anyone who really believes that the term "power game" is inaccurate or misleading has failed to come to grips with the realities of modern-day international broadcasting. Check your dictionary for definitions of the word "game"; I did, and I found, among others: "...a procedure or strategy for gaining an end...a competition conducted according to rules with the participants in direct opposition to each other...a situation that involves contest, rivalry or struggle."

"Power game" an inaccurate or misleading term? On the contrary, take the definitions quoted above and you have all the elements of today's SWBC jungle warfare. There are all kinds of games, ranging from the innocuous (hopsotch) to the deadly (war). The broadcast power struggle falls somewhere in the middle.

In order to understand how the present intolerable situation developed, we have to understand the fundamental purposes of international SWBC, with particular emphasis on government-controlled stations. Why, exactly, do so many nations indulge in international broadcasting?



Well, the most-frequently cited reason, both by the broadcasters and by SWLs, is to inform, educate and entertain listeners in other lands; to help bridge the cultural gap between various peoples; to promote understanding, tolerance, and all those other good things. That's very commendable--but is it (and I'm considering all the foregoing as one reason) the primary purpose that governments hammer away night and day with their half-megawatt monsters?

The answer to that question has to be derived from evidence that is largely circumstantial; therefore any answer will be "probable" or "likely" rather than "right" or "wrong." But let's consider some probabilities.

Let's assume that Radio Allovvia beams a nightly program in English to North America, with the by-now customary 250 to 500 kilowatts, on at least three frequencies in two different SWBC bands. How many people would you estimate are listening to that program on any given night? Of those, how many are actually digesting or trying to digest, the program content? How many listeners are tuned in only to gather enough material to obtain a verification from the station? How many DXers are also tuned to that frequency, cursing Radio Allovvia for completely blotting out a juicy catch struggling along on the same channel with 5 KW? And, getting back to those listeners who are really listening, how many are truly affected by the propaganda (and I use the word in its literal sense of a message trying to persuade or convince) to the extent that their attitudes are changed in any important way?

It is my opinion that perhaps a few thousand people are tuned to this broadcast. Of those, three quarters are either casual SWLs, verie seekers or DXers. The remaining 25% are indeed listening to the program; and of these possibly 5% might be impressionable enough to be influenced by the message, whatever it may be. Of this 5%, only the most minuscule fraction would ever translate that conviction into any sort to action that would ever benefit the country from which the broadcast originates.

So you wonder. Does it make any sense at all for a government to spend untold millions of dollars (rubles, piasters, whatever) on a broadcasting operation whose substantive political influence is felt by such a tiny, tiny number of foreigners? Can the results possibly justify this kind of extravagant largesse?

Unless your sense of logic is totally anesthetized, you must agree that behind the ostensible reason of promoting information, education and entertainment must lie some other reason or reasons for the existence of international broadcasting.

I believe there are at least two other aims that are more important to the broadcasters than their stated purpose. I believe that the majority of governments are actually transmitting to each other: that is, the opinion-makers of one nation are attempting to convey attitudes and subtle nuances of diplomacy via the airwave to the opinion-makers of another nation. When Radio Moscow beams English to the United Kingdom, it is being monitored by the BBC and a digest of its propaganda is furnished to Her Majesty's government. Radio Moscow knows this and uses it for its own purposes. As for the rest of the listeners in the United Kingdom, Moscow couldn't care less.

The other reason for international SWBC has to do with national vanity. Just about any country with any pretensions to power, in the political sense, wants to be able to flex its transmitting power muscles, too. It's a way of saying "Look, I'm a big shot just like you and the others!" This kind of thinking explains why several underdeveloped, impoverished countries spend fortunes on their SWBC operations while their people go hungry. And, of course, when Nation ABC raises power from 250 to 500 kw, Nation XYZ must do so, too. After all, it wouldn't do to lose face, would it?

All of this foregoing is my attempt to suggest that the needs and wishes of you and me, the SWLs and DXers, are not exactly paramount in the eyes of SW broadcasters. The point I'm trying to make is that for us to adopt a posture of "tolerance, cooperation and reason," as Serge recommends, is not going to improve the situation. Tolerance, cooperation and reason--who can attack such virtues? It's like God, motherhood and the

flag. But we've been tolerant, cooperative and reasonable (or, depending on your viewpoint, apathetic, passive and wishy-washy) for fifteen years or more, while the big boys just keep getting bigger.

Serge says, "The problem is simple enough. There are about three times too many transmissions on the air than the bands can handle; There is abundant co-channel and adjacent channel interference; the signals are not getting through to the listener."

Nobody in his right mind can disagree with the analysis! But how did this mess evolve? Because of the "power game" Serge seems to believe non-existent! And, in line with my earlier comment about lack of logic, how's this for some more: when Station ABC doubles its power in order to better its signal vis a vis interfering station XYZ, what does XYZ do in response? Why, promptly double its power, naturally! And where are we now? You figure it out...

Part II will be in next months column.

---

### HOW TO MAKE YOUR OWN 24 HOUR CLOCK

by Bart Beal

If, when you were a beginner, you had to make a chart, showing local time in one column and GMT in another, then every time you wanted to make an entry in your log, you had to check your watch, or clock, then check your chart to find GMT, you must have felt, like I, that you had just triped over the International Date Line, flat on your face.

Actually it's very simple. For \$54.95 you can get a Heathkit Digital Clock with special instructions on how you can wire it for a 24 hour format. If you don't happen to have the bread on hand, you can charge it. \$10 a month. 18% annual finance charge.

On the other hand if you have someone around like my wife, with a few brains and a little ingenuity, you can make your own 24 hour clock.

Any old clock will suffice, an old Westclox, a young electric wall clock --just so it's dial is large enough your myopic eyes can see it and there is sufficient space to add 00 and 13 to 23. Now--get a sign painters camel hair brush and a can of--no! Instead get yourself a Stenso Quick Lettering Set. 79%. Read the directions carefully, which are: 1. Place on surface to be lettered. 2. Rub lightly with ball point pen or pencil. After you've finished, if you didn't put the letters on upside down, or thought GMT meant General Moon Time, you will have a professional looking 24 hour clock a lesser informed person will think it is a chronometer.

---

### A BIT OF NOSTALGIA

by W. J. Estes

About four years ago, I started the exciting but sometimes limited hobby of DXing. What I mean about limited is at that time I didn't know the difference between a tube and a transistor. I wanted to log stations but due to my inexperience I couldn't pick up much more then HCJB or Radio Moscow.

I soon acquired "Communications World," which is still a great asset. Near the back of the magazine there was a section about radio clubs. The one I noticed was the ASWLC. The reason for this was because the magazine commented that the club had a good QSL section.

I wrote a letter to the secretary to get more information about the club. I soon got a letter from Dave Thorne and he told me that some kind of revolution had started against the publisher and that some of the members had started a new club. I wrote back sending a dollar to see what kind of club this was. I soon received the first SPEEDX in July 1971. I was impressed with the bulletin. I thought if they could do such a good job in a few weeks just think what SPEEDX would be like in a few months. Well, I was right. The club went off with a blast and was soon breaking records. I can safely say that in my opinion SPEEDX is the best SW club around.

CONTRIBUTORS TO SWBC QSL AND UTE COLUMNS

Number indicates credits earned. Credits for columns/sections other than those shown above are recorded separately at Headquarters.

2	AGNER MIKE	NV...SX-110	1	MAYER, ALAN	IL...SB-310
3	ALVORD, ROBERT	IL...SX-28A	1	MAYO, PAUL	NY...HQ-180
4	BEAL, BART	VA...DX-150B	3	MCGILAIN IOIS	CA...SPR4
1	BECK, ROBERT	OH....NC88	4	MEEHAN, JIM	CA...SX-190
2	BODELL, ROBERT	OR...TR-6002	3	MILLER, AL	OH...HRO-500
1	BROOKS, ALAN	CT...DX-150A	5	MILLER, GUS	CA...DX-150A
4	CHAFFIN, DAVID	CAM...55-626	3	MOORE, DON	PA...XCR-30
1	CHAPMAN, EARL	PA.....R4C	1	MORRIS, JOE	ENG.....??
4	CLEVELAND, BILL	CA....SPR4	1	MOSMAN, JOHN	IL.....SW4A
2	COMPTON, KEN	MA...DX-150A	1	MULIEN, WES	MT...SX-190
3	CRAWFORD, WM.	SCOT...TR-865	1	NEBRON, LARRY	CA...SX-190
3	CREWS, DEMPSEY	FL..DX-150B	3	OLIVER, WAYNE	NH..DX-150A
1	DAWSON, ARCH	CA....SPR4	2	PARIS, GREG	MI.....??
1	DAY, EDWARD	CA...SX-190	4	PASCHKE, BILL	WI.....R530
3	DEANGELIS, KEVIN	CA..DX-150B	1	RAYMOND, BOB & M	MA..DX-150A
1	DENNIS, AMEL	IN...SX-190	2	REDMAN, RON	IL..PR-1660
1	DURANT, HENRY	THAI...R-7000	2	RADTKE, CARL	CA....SPR4
2	EARHART, KEN	PA...SX-190	2	RODRIOEZ, ED.	P-RICO..D-7000Y
2	ECKMAN, MARK	NB...D-7000	3	SEMKO, GEORGE	NY..DX-150A
1	ELLSWORTH, OLIVER	CA...SX-190	1	SIMON, DAVID	NY...SX-190
3	FAMULARO, RALPH	NJ.RDS92311	5	SMITH, TOM	FL..HA-600A
2	FROEMMING, GARY	AZ...DX-150	3	SMITH, WOODY	TN..TRANS-O
5	GAEDE, ALLAN	CA...HQ-180	2	SRIDHAR, R	INDIA..EBS-124
1	GAVARAS, TOM	MN...HQ-180	3	STEPHENSON, NORM	CA....SPR4
1	GELFAND, STEVE	NY..NC-183D	5	STINE, MICHAEL	MD.....??
3	GETZEL, ARTHUR	NY..HA-600A	1	STRAUMANIS, ANDRIS	IL..SW-717
1	GIANNINI, ROGER	IL.....SPR4	3	SUDDICK, KEVIN	MI....S-120
1	GREENALL, DAN	ONT..DX-150B	3	SZOT, KEVIN	CA...NC-183
4	GRIFFITH, DON	MO.....R4B	2	TESTA, FRANK	MA...DX-150
2	HAMBRIGHT, JEFF	NJ....SPR4	2	THIBAudeau, LEO	QUE...HQ-100
3	HARDESTER, MIKE	CA...XCR-30	3	THOMPSON, GLENN	NM..HQ-145A
1	HICKMAN, MEL	OR....A2515	2	THURMAN, SKIPPER	IL.....??
1	HILL, ROBERT	CA.....??	3	TRUBEE, BILL	HI.....SW4A
1	HOLBROOK, HANK	MD...SP-600	3	TRZASKUS, ROSEMARY	IL....S-125
4	JONES, JACK	MS...DX-150A	3	VEGGHIOIA, JAMES	PA.....R4C
5	KANNRY, JOSEPH	NY...XCR-30	1	VOCKEROTH, JOHN	PA...SX-190
4	KELLEY, EUGENE	FL...SX-190	1	VOGEL, WENDELL	PA...SZ-122
2	KLETT, WM	FL....SPR-4	3	WELLS, JOHN	NY...GE-12
1	KOIB, JOHN	CA....SPR-4	2	WHITEHEAD, JIM	MA...SX-190
3	KRATTER, JAY	NY...XCR-30	4	YAJKO, ROBERT	PA...DX-120
4	LANOUE, RON	MA.SEARS-20	1	YAMRON, LARRY	PA...SX-190
1	LEISTNER, L & E	CA....SPR-4	2	ZEIASKO, LEO	IN....SPR4
6	LEVIN, JAY	NY...DX-160	3	ZILMER, BOB	WI.....SPR4
2	LOVETT, BRANDON	OH..DX-150A	1	ZIMAROWSKI, MARK	MA...DX-150
1	MAHONEY, MIKE	IN.....S20R			

A great big welcome to our new reporters: Dempsey Crews, of FL, Gary Froemming of AZ, Jay Levin of NY, Glenn Thompson of NM, Scott (Skipper) Thurman of IL and John Wells of NY. We certainly appreciate your loggings and contributions to SPEEDX. 89 contributors this month, the smallest group of contributors this year, which is due to the poor summer DX. Gud DXing will start next month. We hope, we hope.

\*\*\*\*

NASWA is offering to North American listeners only, a list of English transmissions for a large SASE (USA). Outside USA a self addressed envelope with 1 IRC. North American Shortwave Association, P.O. Box 8452 South Charleston, WV 25303.

\*\*\*\*

That is all until next month.

*Steve*



THE OFFICIAL DX MAGAZINE PUBLISHED MONTHLY BY SPEEDX

BOARD OF DIRECTORS

JIM WHITEHEAD, PRES. MA  
 DON JOHNSON CA  
 STEVE D'ADOLF ND  
 OLIVER ELLSMORTH, VP CA  
 JOHN TRAUTSCHOLD WI

MANAGING EDITOR

OLIVER ELLSMORTH CA

BUSINESS MANAGER

DON JOHNSON CA

PUBLISHER

WENDELL BENEDETTI CA

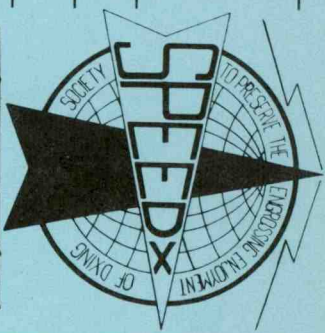
SPEEDX-GRAM

JOHN TRAUTSCHOLD WI

SPEED-XTRAS

ART GLOVER WA

SPEEDX IS A FULL  
 MEMBER OF ANARC.  
 ASSOCIATION OF NORTH  
 AMERICAN RADIO CLUBS



SUBSCRIPTION RATES PER YEAR (12 ISSUES)

FIRST CLASS IN USA . . . (ADD \$1 for AIRMAIL) . . . \$10.00  
 FIRST CLASS TO CANADA . . . . . 11.00  
 AO TO SOUTH AMERICA/EUROPE . . . . . 18.50  
 AO TO ASIA/AFRICA/OCEANIA . . . . . 21.00  
 SURFACE MAIL WORLD WIDE . . . . . 12.00  
 SAMPLE COPY WORLD WIDE . . . . . 1.00  
 (MAKE ALL FUNDS PAYABLE IN US DOLLARS)

PERMISSION IS GRANTED TO BROADCAST, PUBLISH, OR REPRODUCE ANY MATERIAL CONTAINED HEREIN (EXCEPTING ITEMS WHICH STATE THAT THEY APPEAR BY PERMISSION FROM OTHER SOURCES) PROVIDING CREDIT IS GIVEN TO: SPEEDX, PO BOX E, ELSINORE, CALIFORNIA, 92330, USA, AND TO AUTHOR OR CONTRIBUTOR WHEN STATED.

**S P E E D X**  
 P O BOX E  
 ELSINORE CALIFORNIA  
 9 2 3 3 0 U S A

**FIRST CLASS**

ADDRESS CORRECTION REQUESTED