

SPEEDX

the dx radio magazine for active shortwave listeners

Keynotes	<i>staff</i>	2
Features	<i>staff</i>	3
DX Montage	<i>neumann</i>	5
Speedxtras	<i>white</i>	6
SWBC DX		
Western Hemisphere	<i>whitehead</i>	9
Europe — Africa	<i>Ladolf</i>	15
Asia — Oceania	<i>bundy</i>	22
Station Skeds	<i>butterfield</i>	28
Utility Chaser's Corner	<i>mayo</i>	29
Utility QSL Report	<i>koukol</i>	32
QSL Section	<i>lobdell</i>	33
QSL Features	<i>lobdell</i>	39
Features	<i>mahoney</i>	40
Speedx Contributors	<i>neumann</i>	47

Oct. 1972



Vol. II - No. X

KEYNOTES

IN MEMORY OF
BILL EDDINGS, EXECUTIVE EDITOR OF NASWA
August 23, 1972

"The best gifts are those we give from the heart and are wrapped in the intangible qualities of love, appreciation and good will." Let us share our happiness in hobby with our fellow members and friends." let us work side by side, each doing our part as best we can, as oft we can, not for ourselves alone, but for the everyone overall." "To be worthy, to be successful, a goal must be set, and to attain it we must employ heart as well as head, we must have peace within and betwix ourselves."

The quotations are from Bill's Hqs. Sections in FRENEX.
We of SPEEDX mourn his passing.

SPEEDXer, Chris Hansen, P.O.Box 426; Marblehead, MA. 01945 is interested in hosting the 1973 ANARC convention at Columbia University New York City, New York.

Chris, is aware that it takes a lot of work to host a convention that was as successful as the 1972 ANARC convention in Wakefield, Mass. Therefore Chris is putting in his oar early, for the recruitment of New York Metropolitan DXERS. Those of you, that heard Christian's appeal that Sunday morning in Wakefield, knows that he is Gung-Ho.

Any-one interested in seeing the next convention in New York, please contact Chris at the above address.

The following press release has been received from the production studios of L.B. Swanson, P.O.Box 9 Cedar Falls, Iowa 50613.

NEW DX PROGRAM PIANNED

This fall, I will produce a weekly DX program covering short-wave and --- broadcast bands. This Dx program will be aired on a 50 kw. BC station --- located in the central U.S. Exact times not yet known but expect it to be between 0600 - 1000 GMT. More details to be announced later.

I need assistance in originating a suitable name for the program and also suggestions and tips for the format.

A transistor radio will be given to ~~the~~ DX'er who submits the most suitable program name and a transistor radio for the most informative letter on --- suggestions and tips.

A special QSL card will be issued for the DX broadcast.

All correspondence should be sent to L.B. Swanson, P.O. Box 9 Cedar Falls Iowa 50613 USA..

CONGRATULATIONS TO

David Curvin, TX and Carl R. Iease, CA

CERTIFICATES OF FULL MEMBERSHIP and a copy of the SPEEDX CONSTITUTION have been mailed to them on their achievement of becoming full Members.

RADIO



NEDERLAND

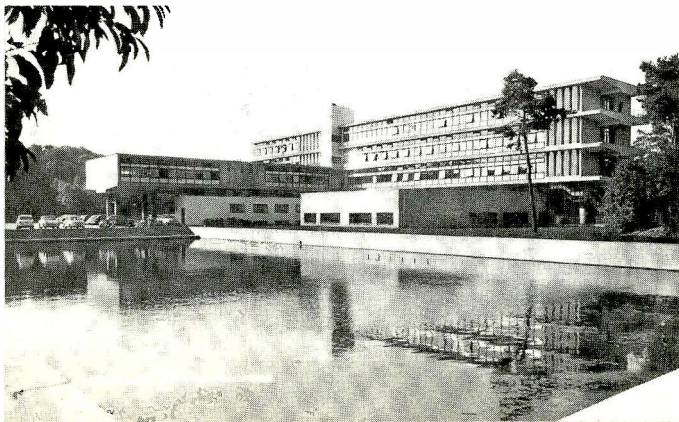
RADIO NEDERLAND, the Dutch World Broadcasting System in Hilversum, Holland, was set up on April 15, 1947 as a link with Dutch nationals in other parts of the world, and to promote the interests of the Netherlands abroad. Radio Nederland has become a source of unbiased information on European and world affairs, with directed programs not only of appeal to listeners in the technically and economically advanced countries, but also to the young, emergent communities where radio can be a welcome force in helping to pave the way to full development.

Radio Nederland's roots go back much further than the quarter-century of its official existence. Toward the end of the twenties, Holland, as the first country on the European continent, started experimental shortwave broadcasting at the Philips factories in Eindhoven. The broadcasts were picked up in Indonesia (then known as the Dutch East Indies). Later, a suitable site was found near Hilversum, where a unique antenna system was designed. The masts were wooden structures mounted on a circular platform, and were made to rotate on rails so that they could be turned in any direction. The station's call letters were PCJ. The second world war and the occupation of the Netherlands called a five-year halt to shortwave broadcasting from this country, but after the liberation and an initial period of transition, 1947 saw Radio Nederland established as an independent Foundation. The station has never been government-controlled or financed, its funds being drawn from the radio-license revenue, subscribed by the Dutch radio set owners. The programming is controlled solely by its Board of Governors. Today, Radio Nederland broadcasts in Dutch, English, Indonesian, Spanish, Arabic, Afrikaans and French via transmitters in Lopik in Central Holland (3 of 100 kW, 1 of 50 kW and 1 of 10 kW); on the island of Bonaire in the Caribbean (2 shortwave transmitters of 300 kW each and 1 medium wave (broadcast band) transmitter of 525 kW), and on the island of Madagascar (2 shortwave transmitters of 300 kW each).

Besides being responsible for some 50 direct daily transmissions, Radio Nederland is also a big "exporter" of transcription programs, made in the Hilversum studios for local broadcasting by stations in other countries. In 1971 Radio Nederland supplied 114,000 of these programs- musical, documentary, informative or entertaining- recorded on tape or disc in a variety of languages and tailored to the specific requirements of the countries concerned.

Since 1959 Radio Nederland has been among the top three in the major popularity poll to determine the most popular shortwave radio station. In 1965 and 1968 Radio Nederland was voted first place by a worldwide electorate of shortwave listeners. Other recognitions include the Merit Award of the National Association of Educational Broadcasters (U.S.A.).

(Item- courtesy Radio Nederland)



Radiodifusora

La Voz del Rio Carrizal

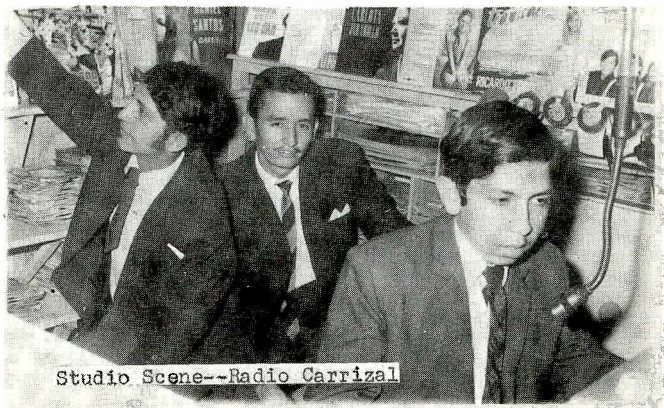
by Phil Schnabel



The sounds of Radiodifusora "La Voz del Rio Carrizal" (Radio Carrizal"), located within thirty miles of the Pacific surf in Calceta, Manabi, were first aired on December 1, 1959. In the context of commercial broadcasting, it has been a herald of local events and a source of entertainment to its nation-wide audience, serving as a link between Calceta and the far corners of the nation.

Advances have been instituted by Manager Rogue Navarrete Velasquez, Programming Director Ovido Velasquez, and their sons, L. Velasquez, E. Velasquez N., and V. Navarrete V., who act as technical and administrative personnel. Affiliation with the ASOCIACION ECUATORIANA DE RADIODIFFUSORA NUCLEO DE LA PROVINCIA DE MANABI has proved an asset in widening the scope of programming to relate to a provincial and national audience.

Consistent with the local accent of much Ecuadorian programming, musical selections aired by Radio Carrizal reflect the tastes of their origin, the coastal plain. Contrasting many Ecuadorian broadcasters primarily serving audiences located within a village or province, Radio Carrizal has amassed a national audience by operating solely on shortwave "para todo el pais".



Studio Scene--Radio Carrizal

The station has advanced technically and now provides better reception in distant quarters. In 1970 the transmitter output was upgraded from 500 watts to 2000 watts.

Until June 22nd Radio Carrizal nominally operated on 3630 khz. Transmission on 3570 khz was due to a maladjustment of the transmitter crystal. A CAMBIADO DE FRECUENCIA, ordered by the Military Government, has been enacted. From June 24th broadcasts have been aired on 3260 khz. The frequency shift was ordered in the government's desire to systemize the technical side of Ecuadorian broadcasting. The manager has requested reception reports on the new frequency.

Reception of HCOS4 has been noted around 0300 GMT; sign-off is shortly thereafter. Radio Carrizal, reflecting the Ecuadorian commercial broadcasting scene with regard to its community-oriented programming and progressive spirit, should be an interesting target for the DXer.

BEGINNING WITH THE NOVEMBER SPEEDX, DX MONTAGE WILL BE EDITED BY A VERY WELCOME ADDITION TO THE SPEEDX STAFF. HE'S ALAN W. BROOKS, 74 MASSACHUSETTS AVENUE, OAKDALE, CONNECTICUT 06370.



DX MONTAGE: CHANGING HANDS
WHO-WHAT-WHEN-WHERE-WHY

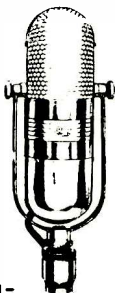


Editor: SERGE C.P. NEUMANN

THERE IS NO GREAT "STORY" BEHIND THIS CHANGE. HOWEVER, IN ALL FAIRNESS, IT SHOULD BE EX-

ALAN W. BROOKS: AN INTRODUCTION

...33 YEARS OLD, HAPPILY MARRIED (MY WIFE TELLS ME). THE CHILDREN, AGES 6 AND 4 (GIRLS) WITH ONE SON, AGE 5, ARE MINE (MY WIFE TELLS ME).
...A NAVAL ARCHITECT BY PROFESSION
...A NATIVE OF PORTSMOUTH N.HAMP-SHIRE (POPULATION 25,000) RECENTLY RELOCATED IN OAKDALE, CONNECTICUT (POPULATION 500), IN THE SUB-URBAN HILLS OF AL SIZER COUNTRY...
...INVOLVED IN FOUR UNIQUE HOBBIES: POLITICAL AND HISTORICAL RESEARCH PROJECTS, SPORTS STATISTICIAN AND RADIO BASKETBALL COMMENTARY (THIS MAY WELL BE OVER SINCE THE WORK WAS DONE FOR TWO N.H. MW OUTLETS AND THE NET CHANNEL AS WELL), NATIONALLY RECOGNIZED INSTRUCTOR, ARRANGER, AND ADJUDICATOR FOR MARCHING BANDS AND DRUM AND BUGLE CORPS, AND OF COURSE, SHORTWAVE RADIO...
...AM AN SWL, WHO OCCASIONALLY GETS INVOLVED IN DXING. IF ANY SPECIALTIES, I SUPPOSE THEY'D BE EUROPEAN SWBC & UTILITIES (EUROPE VIC ON SWBC AT 331)
...BEGAN SHORTWAVE ACTIVITY IN 1969; CURRENTLY USING THE DX-150A. MONITOR FOR DEUTSCHE WELLE'S GERMAN LANGUAGE PROGRAMMING. (EVERYTHING ABOVE OCCURRED ACCIDENTALLY - INCLUDING THE THREE CHILDREN...) ...PRIOR TO THIS, HAVE HAD JOUSTS WITH LANCE OF JOURNALISTIC ENDEAVOR - INCLUDING 10 YEARS AS A REGULAR COLUMNIST FOR A MUSICAL PUBLICATION AND OCCASIONAL CONTRIBUTIONS TO HISTORICAL JOURNALS... THE ATHLETIC BODY OF YESTERYEAR IS RAPIDLY DISAPPEARING...MY DOCTOR CLAIMS I'M 30 POUNDS OVERWEIGHT---I CLAIM I'M JUST SUDDENLY SIX INCHES TOO SHORT.
...GENERALLY OF GOOD HUMOR.....A STATEMENT WHICH MAY BE CHALLENGED BY THOSE SITTING IN ON THE "WHAT'S WRONG WITH DX CLUBS?" FORUM AT THE RECENT ANARC CONVENTION.....AND, ALONG WITH CHRIS LOBDELL, I HAVE THE LARGEST COLLECTION OF POLISH ANTS IN THE DX WORLD...



/s/ ALAN W. BROOKS

PLAINED, THAT REASONS FOR MY RESIGNATION AS EDITOR ARE AS FOLLOWS: 1) NEW & ADDED FUNCTIONS AS ASSISTANT MANAGING EDITOR, 2) VARIED SPEEDX-RELATED DUTIES, AND OF COURSE, 3) PERSONAL OBLIGATIONS. DUTIES AS ASSISTANT MANAGING EDITOR HAVE TAKEN UP MOST OF MY TIME. CERTAINLY, ANY COLUMN DESERVES AN EDITOR'S FULL ATTENTION - SOMETHING WHICH I WASN'T ABLE TO GIVE TO DX MONTAGE.

MY SINCERE THANKS TO ALL OF YOU FOR CONSISTENT SUPPORT - NOT ONLY FOR DX MONTAGE, BUT FOR ALL OF SPEEDX.

IT'S WITH GREAT PRIDE THAT I'M ABLE TO TURN THIS COLUMN INTO THE VERY CAPABLE HANDS OF ALAN W. BROOKS.

73s,
Serge C.P. Neumann

The Jammers

Ever since the cold war began, the Soviet Union has been one of the world's leading broadcasters of radio propaganda. Even today, Moscow beams some 1,900 hours of radio per week at foreign audiences in more than 80 languages. Yet the Russians have always been exceedingly sensitive to foreign broadcasts beamed at them in return, and through the years they have traditionally jammed such broadcasts electronically.

Now, it turns out, they are worried about a new threat: the advent of satellite-transmitted television broadcasting. In a letter to U.N. Secretary-General Kurt Waldheim last week, Soviet Foreign Minister Andrei Gromyko called for an international treaty to prohibit such broadcasting from one nation to another---except by mutual consent---as "interference in the internal affairs of other states."

Primarily, the Soviets are concerned about TV broadcasts from the U.S. and China that might some day be transmitted to Russia without a ground relay station. Any government is capable of jamming satellite TV broadcasts. Gromyko's proposal calls for the legalization of such jamming. By implication, it would also permit nations to destroy offending foreign satellites. The Soviets evidently intend to push hard for their proposal at this fall's General Assembly session. Western countries are bound to regard the Russian proposal as an outrageous attempt to paralyze the free international movement of thought.

*TIME, AUGUST 21, 1972

---ITEM FROM
RON LANOUÉ.

DEADLINE FOR
DX MONTAGE
ITEMS IS
THE 15TH OF
THE MONTH.

ALL ITEMS
FOR DX
MONTAGE GO
TO:

ALAN W. BROOKS, EDITOR
74 MASSACHUSETTS AVENUE
OAKDALE, CT. 06370

SPEEDXTRAS

JACK WHITE
780 NW WALLULA
GRESHAM, OREGON
97030

MERRY CHRISTMAS — SPEEDX STYLE

Each year we receive a number of Christmas messages from other SWLs. The sentiments are certainly appreciated to say the least, but sometimes we wonder if perhaps something more closely related to the true inspiration of the season—and extending well beyond it—might be accomplished by introducing a slight "modification".

What we are proposing is that SPEEDXers who would normally send holiday greetings cards to other SPEEDXers determine the amount (cards and postage) they might expect to spend for this...and instead donate that money to HAP for the purpose of assisting disabled persons of limited means into the SWling hobby. All those electing to do so prior to the publication deadline for the December issue will have their names included on a special "Holiday Greetings" page. In this way, we will still be able to exchange our Christmas messages, and in addition will be contributing toward brightening the outlook for someone less fortunate than ourselves for a long time to come.

Those wishing to join in this plan are asked to send their "card and postage equivalent" (cash, check, or money order) to: SPEEDX HEADQUARTERS, PO Box 321, Santa Ana CA 92702. Be sure to indicate the money is for "HAP Sponsorship", and for your name to be included on the special "Greetings" page, it must be received by 23 November 1972. Any check is already in.....Care to join me??

USCG DX HANDBOOK

Compilation of the SPEEDX "US Coast Guard DX Handbook" is progressing well, although a number of last minute changes to the data sections have been necessary due to an unexpected influx of information from official Coast Guard sources contacted several months ago. Rather than including this as "addenda", we have elected to go back and revise the original text in an effort to produce the most easily usable and up-to-date reference possible.

The "Directory Section" of the handbook (which resulted from the research project of this past summer) will contain over 450 listings of USCG installations along with complete postal information, as well as call signs and other information for most. Another section details the more than 250 daily broadcasts conducted by the CG, and still another presents a run-down on the most commonly used frequencies as well as the type of traffic to be heard over them. There are smaller sections related to off-shore facilities, ocean stations, ice patrols, and much more...plus a roster, including call sign and home port, of all types of CG vessels over approximately 40 feet in length.

However, the real piece-de-resistance is the section entitled "Search and Rescue Monitoring" prepared by David Curvin. In this article Mr Curvin, who is probably the leading expert on this specialized branch of SWling, passes along in a very easily understood manner many tips and hints to whet the appetite of novice and veteran alike. A MUST FOR ALL REALLY SERIOUS DXERS!!!

Publication of the "US Coast Guard DX Handbook" is scheduled for late October with full ordering information to be announced in the November issue....Watch for it!!!

NOVICE ORIENTATION

Contrary to what we expected, it seems there are more SWLs interested in preparing short novice-oriented articles on technical subjects rather than other general topics. This might lead one to suspect that those of us with a degree of technical knowledge can more vividly recall the time and effort spent in acquiring our backgrounds and wish to spare others as much of the same as possible. At any rate, there are still a number of topics still requiring coverage...a sampling: "Setting up and Maintaining a Log", "Preparing a Simple Reception Report", "Useful References: What's in them and how to use them", etc etc. As mentioned last month, we aren't looking for a potential Pulitzer Prize-winner, just a few paragraphs written in simple terms and aimed at assisting the newcomer during his or her apprenticeship period. Contact SPEEDXTRAS for full details.

ATTENTION CW DXERS

This editor often receives requests from certain maritime or coastal stations asking for detailed reception reports. Since these transmissions are conducted in the CW mode, a regular full-scale SPEEDX survey is not indicated. However for DXers copying AI at about 10 wpm or better, there is an opportunity to obtain a personalized or special QSL or two. One such chance presently exists. Contact SPEEDXTRAS for details.

A friend departs. In speaking of another, Bill Eddings himself said it all:

"A PLEASURE TO HAVE KNOWN HIM"

HAPPENINGS

Gene Moser, HAP Chrmn.
6805 Woodland Court
Coloma, Mich. 49038

There is much to say this month, and most of it is good. However, before I go on there is some sad news. On September 11 over HCJB's "DX Party Line" I heard the report of the death of Bill Eddings. This is a big loss to the hobby he served so well. My condolences to Bill's family and NASWA.

SPEEDX stamp sales have been extremely good, and if you want yours, order now!! The first supply will be gone soon. Send your check or money order for US\$4.00 to me and made payable to GENDA. When these stamps are gone, you will have a wait of two to three weeks. Support HAP, and get something for your money. (See Sept issue for foreign prices).

Due to the efforts of Dave Thorne, HAP has moved another step forward. We are supplying a blind young man with a receiver and complete guidance. Another DXer is receiving help in the form of a search. We are consulting one of the midwest's largest electronics distributors for certain items. A free SPEEDX subscription is being arranged for a four year veteran of DXing. The point of showing you our progress is to let you know what HAP and SPEEDX have accomplished in ten short months!!

The untapped talent found in the handicapped is there. HAP is slowly uncovering it. This should give you a glow, because without your donations of equipment, dollars, purchase of rubber stamps, handbooks, and service on a HAP project when requested; what has, and will have, happened would not. HAP is a success because of those on my staff, and all of you out there. Thanks!!

Radio Nederland's Harry van Gelder has been very helpful in supplying air time to HAP. As yet, no date for the program has been received. Tentative date: the end of September or beginning to middle of October. So you may have heard it by now. Radio Nederland has once more held out the hand of friendship. When sending a report, technical question, or request for literature to DX Jukebox, let them know your appreciation. Thanks.

Winter brings with it a time for relaxing at the receiver, and logging some stations that summer has kept us from. At this season you and I have an excellent opportunity to promote our hobby. One way to do this is to contact your local public library, camera club, or Lion's Club. These people are always looking for speakers. Arrange for space on their calendar, and give a talk on your favorite area of the hobby. VA hospitals and rehabilitation centers are great locations too!! Prepare tapes of the strongest stations you hear, and play them back at certain points of your presentation. Slides and a QSL display would also fit in well. If you want to include HAP in your talk, send me a letter. I'll furnish you with any information you need. Don't put it off, as long winters have a way of slipping away also.

Thanks to Radio Vienna, Radio Belgium, and the BBC for their supply of free materials. These will be included in packets sent to handicapped persons we will be trying to interest in SWling.

One of the biggest pleasures of chairing any committee or project is to see the building go up. When our foundation was laid, the first framework made it possible for us to look around and bring the handicapped inside our walls. The second step was to help the blind into the hobby. Thanks to veteran DXer Arthur Cushen, HAP has been able to make our home more complete. In response to a request, Ar Cushen has generously agreed to put together the first course of its kind for the sightless!!Anyone legally or totally blind will now be able to obtain expert instruction on the use of a receiver and tape recorder.

This course will be in the form of taped comments by Ar Cushen, and will be offered to any sightless person in or out of the hobby...in or out of SPEEDX...in a VA hospital or rehabilitation center. On cassettes at first, but later by reel-to-reel too!! Project completion date: End of January 1973.

Recently Alan Brooks offered his services to HAP. I failed to recognize him as a SPEEDXer...my apologies Alan!! Welcome aboard!! Do you realize HAP has some of the best talent and unselfish SWLs around today on its staff? My buttons pop when I see the names of Brooks, Compton, Glover, Hyndman, Lanoue, Sackman, Schnabel, and White!! All too often you see only one name here...mine. Without these people on my staff, HAP would not be where it is now. Thanks gentlemen.

If you have a regional meeting at your QTH soon and want to kick the HAP idea around, I'll be HAPPY to send you info.

HAP Assistants: In conjunction with DX Juke Box's promotion of 1973 as World Friendship Year, let's all use the phrase: "73s in 1973" on all HAP mail.

One final item: Next month we will be bringing news of how you can become a HAP PAL by writing to a novice disabled SWL/DXer.

Good Health and 73,

Gene

*Editor's Note: New Zealander Arthur Cushen, himself blind, has earned a long-standing international reputation for his SWling expertise, and for several years has been quite active in promoting the hobby among the sightless. All of us with SPEEDX are indeed proud that HAP offers the means to further this work.

SPEEDX Supports 1973 As World DX Friendship Year

THE SOCIETY TO PRESERVE THE ENGROSSING ENJOYMENT OF DXING

R E S O L U T I O N

- W H E R E A S It has been proposed that 1973 be designated a "World DX Friendship Year"; and,
- W H E R E A S That "73" has long since stood as a symbol of friendship between radio hobbyists, and,
- W H E R E A S This proposal is an excellent one with great potential, and as such, deserves consideration, and,
- W H E R E A S This proposal could well be the catalyst that could spur cooperation and friendship between various radio hobby organizations, and,
- W H E R E A S Mr. Harry Van Gelder of Radio Nederland has taken the initiative, and has moved toward promoting this concept, and has asked for support from the various DX radio hobby organizations,

T H E R E F O R E

- BE IT RESOLVED That the Board of Directors of "The Society to Preserve the Engrossing Enjoyment of DXing", ("SPEEDX"), hereby unanimously vote to support the movement of designating 1973 "WORLD DX FRIENDSHIP YEAR", amongst radio hobbyists everywhere, and radio hobby organizations everywhere, and further,
- BE IT RESOLVED That the Board of Directors of SPEEDX supports Mr. Harry Van Gelder, and Radio Nederland in their move to encourage the promotion of 1973 as "WORLD DX FRIENDSHIP YEAR", and further,
- BE IT RESOLVED That the Board of Directors of SPEEDX stands ready to offer support and assistance to the furthering of this idea and movement, in whatever capacity it is possible.

THE SPEEDX BOARD OF DIRECTORS -

Art Glover
Art Glover - President

Christopher R. Lobbell
Chris Lobbell - Vice President

Serge C. P. Neuman
Serge Neumann - Assistant Managing Editor

Dave Thorne
Dave Thorne - Business Manager

Bill Flynn
Bill Flynn - Managing Editor

7 September 1972 - SPEEDX, P.O. Box 321, Santa Ana, California 92702 U.S.A.



SWBC DX - Western Hemisphere

- EDITOR -

E.J. "Jim" Whitehead
177 Pine Ridge Road
Reading, Mass. 01867



-REFRAN-

"Lo que no se empieza no se termina"

SISTEMAS DE CORREO EN COLOMBIA

Although the US Postal Service has only recently been confronted by a competitive delivery service, Colombia has had two competing mail delivery systems since 1919. There the famous CORREO AEREO air mail service, run by AVIANCA airlines, competes with the nationally administered CORREO NACIONAL surface mail system.

The CORREO AEREO, as its name implies, handles only air, special delivery (ENTREGA INMEDIATA) and registered mail. If mailed from within Colombia, a letter must carry a stamp bearing the word aereo to be accepted or else it will be treated as surface mail and delivered by the CORREO NACIONAL, a slower but dependable service. Incoming air mail is also carried by the AVIANCA postmen whose speed and service have captured the bulk of business correspondence in Colombia.

The CORREO NACIONAL handles all surface mail, undeliverable mail, and exchange of IRCs. Primarily used for intra-city mail, the national service has no special delivery service, is less convenient, and slower in delivery. Undeliverable letters, including those addressed to Emisora HJXX, Bogota etc., are collected by the Lista de Correos branch of the CORREO NACIONAL and placed on a list posted at the main post office. Then, after seven days, the list is removed. Unlike the US Dead Letter Branch, no further effort is made to deliver the letter. It pays, therefore, to be sure your address is as complete and as legible as you can make it. It also pays to send mint stamps as return postage since most stations use the CORREO AEREO system exclusively and the aereo stamps cannot be obtained in exchange for IRCs.

Mail from the United States usually takes 2 to 3 days to reach Bogota and 1 to 2 additional days to reach other major cities. The same holds true for the return trip which, incidentally, costs about Col\$ 2.00 in postage. Little is gained by special delivery but, the use of registered express can speed delivery.

The next time you report a Colombian station be sure to double check your address, enclose mint stamps for return postage and make it as friendly and informative as you can make it. The results will surprise you for, collectively, the Colombians are among the best verifiers in Latin America.

!!BELIZE IS BACK!!

Yes indeed, your old editor will have the not so unpleasant chore of squeezing in another Latin American shortwave country. Do you suppose they knew last month's refrain "That which today is lost you gain tomorrow"? Look for them in this month's loggings which follow and on their frequency of 3300 khz. The usual reminder that all times are GMT and all dates are in the American or month/day system gets the ball rolling for yet another month.

ARGENTINA

9690 0600 LRA32 Rdif. al Exterior RAE:Eng.w/mx, IDs, short talks
(gd,9/9;Johnson-CA)(pr,0300,8/24;Zilmer-WI)
9740 1233 LRS1 R Splendid:Sp.w/ID, nx, cmtry-fade out 1243 (fair-
poor,9/5;Compton-MA)
15345 0215 LRA 33 R. Nacional:Sp.w/mx, ID,s/off(gd,8/23;Mappin-WA)

BOLIVIA

5874 0000 CP75 La Cruz del Sur:Sp.w/amnts & LA mx(fr,9/13;Fay-MA)
 5045 0638 CP38 R. Altiplano:Sp.w/nx (poor,8/3;Betz-CO)

BRAZIL

3375T 0815 ZYK28 R. Olinda Pernambuco:Port.w/LA mx (weak,9/8;Magne-PA)
 3385T 0814 ZYG22 R.Clube Teresina:Port.w/pretty Brazilian mx, amnts,
 but no ID so must be TENTATIVE(pr,8/26;Patterson-GA)
 4755 0806 ZYF23 Rdif. do Maranhão:Port.w/s/on,IDs, announces 5 kw
 as per WRTH (poor,8/14;Magne-PA)
 4795 0902 ZYF37 R. Congonhas:Port.w/OM ancr,Brazilian rhythms, IDs,
 overmodulated (fr,but gd LSB,8/13&14;Magne-PA)
 4805 0012 ZYV71 R.Por um Mundo Melhor:Port.w/OM talk, ID "Rdif....
 Melhor MUNDO!", no sign of ZYS8(pr,8/20;Magne-PA)
 4806 0930 ZYS8 Rdif do Amazonas:Port.w/echo IDs,OM talk (fair,8/13;
 Magne-Campbell-PA)
 4840 2315 ZYA1 Rdif. Roraima:Port.w/many IDs "R. Roraima presenta
 Brazil",Studio 5 pgm of live mx, off w/3 gongs O314.
 New freq ex-4835 (fair @ 2315, pr @ s/off,9/6;Magne-PA)
 4845 0816 ZYU8 Rdif Teresina:Port.w/soft inst. mx, comls (fr,8/22;
 Lazear-OH)
 4855T 0925 ZYR61 Rdif Taubaté:Port.w/OM talk, mx (pr,8/14;Magne-PA)
 4865 0845 PRG5 R. Clube do Pará:Port.w/talks (gd,8/22;Lazear-OH)
 (fair, highly unstable,0825,8/31;Magne-PA)
 4875 0835 ZYZ30 R. Jornal do Brasil:Port.w/mx, suddenly off @ 0837
 (gd,8/13;Kamp-CA)(pr,On 4874,0930,8/14;Magne-PA)
 (gd,0900,8/22;Lazear-OH)
 4915 0814 ZYE2 Rdif Macapá:Port.w/various IDs, local ads (poor,8/13;
 Magne-Campbell-PA)
 4945 0900 ZYE23 R. Educadora de Bragança:Port.w/YL ancr, mixing with
 the Colombian also here (poor,8/13;Magne-Campbell-PA)
 4956 0836 PRF7 R Cultura de Campos:Port.w/dull pops, ID as "Radio
 Cultura" (poor-fair,8/13;Magne-Campbell-PA)
 4975 0745 ZYV9 R Timbira:Port.w/lively rhythms, clear IDs as "Radio
 Timbira"(fair,8/25;Magne-PA)
 4996 0130 ZYX2 R. Brasil Central:Port.w/lt LA mx,talks, IDs (fair-
 good,9/5;Johnson-CA)
 5015T 0905 ZYF208 Rdif. Poços de Caldas:Port.?? w/neo mexican folk mx,
 calm OM ancr,IDs unreadable(poor,8/27;Magne-PA)
 5965 0050 ZYU60 R Guaíba:Port.w/mx (good,9/13;Fay-MA)
 5998 0052 PRK5 R. Inconfidência:Port.w/ music,IDs (fair,9/13;Fay-MA)
 6035 0054 ZYZ26 R. Globo:Port.w/talk by OM (fair,9/11;Fay-MA)
 6055 0055 PRB21 R. Panamericana:Port.w/Brazilian mx(fr,9/11;Fay-MA)
 6065 0718 PRL R. Nacional de Brasília:Port.w/fast LA mx,IDs (good,
 8/15;Ellsworth-CA)(fair,0057,9/11;Fay-MA)
 6085 0020 ZYK2 R. Jornal do Comércio:Port.w/pop US & Port. mx, word
 "flashback" used for old hit, singing ID with "Comercio"
 in echo (very good,9/8;Wilson-MA)
 6115 0100 ZYC7 R.Tupi (Rio):Port.w/amnts, mx (poor,9/11;Fay-MA)
 6125 0102 PRG9 R. Nacional,São Paulo:Port.w/amnts,mx(fr,9/11;Fay-MA)
 6165 0105 ZYR58 R. Cultura:Port.w/music, ID (poor,9/11;Fay-MA)
 6185 0830 ZYR77 R. Bandeirantes:Port.w/mx,ads,IDs (gd,8/19;Slowey-IL)
 6195 0107 PRD21 Emiss. Continental:Port.w/music pgm (pr,9/11;Fay-MA)
 9675 0925 ZYT29 R.Diário da Manhã:Port.w/DJ show,mx, live spots,IDs
 (poor,8/26;Kamp-CA)(pr,1015,8/27;Zilmer-WI)
 9695 2330 ZYB22 R.Rio Mar:Port.w/talk,QRM from RSA(pr,8/30;Zilmer-WI)
 11720 0800 PRL R. Nacional de Brasília:Port.w/Home Svc. no sign of
 Eng. Foreign Svc. (fair,9/7;Magne-PA)
 11865 0110 PRB3 R.Cl de Pernambuco:Port.w/mx (poor,9/11;Fay-MA)
 (gd, until DW s/on 2315,2250,8/18;Slowey-IL)
 11925 0122 ZYR78 R. Bandeirantes:Port.w/mx (fair,9/11;Fay-MA)
 15155 0000 ZYB9 R.Tupi (São Paulo):Port.w/Brazilian mx,comls, ID (fr,
 9/6;Schwartzmyer-NY)(gd,0115,9/11;Fay-MA)(gd,2242,9/3;
 Collier-NY)(gd,0100,8/30;Betz-CO)(gd,2230,9/3;Johnson-CA)
 15415 2315 ZYR216 R.Cl de Ribeirão Preto:Port.w/YL & OM talk (fair,
 8/21;Zilmer-WI)
 15450 2220 ZYN32 R. Nacional de Brasília:Eng.w/mx,IDs by YL & OM (pr,
 8/21;Griffith-CO)(pr,0130,9/6;Bye-PA)(fr,0120,9/11;Fay-
 MA)(gd,0400,8/26;Mapnin-WA)(fr,0145,8/19;Shaw-PA)(gd,
 0415,8/22;Fischer-PA)

BRITISH HONDURAS

3300 0443 Radio Belize:Eng. w/NA pops & C&W mx, many anmts, ID as "This is Radio Belize", OM anc'r (poor, EXTREME QRM & QRN, 9/2; Patterson-GA) (fair, 0300, w/ID exactly as in WRTH, BBC nx, pop mx; 9/3, Slowey-IL) (gd, 0300, 9/4; Neumann-IN) (poor, 0250-0510s/off, 9/8; Magne-PA) Looks like you are in there first Pat. Good luck with QSL!

CANADA

6005 1231 CFCX, Montreal:Eng.w/OM anc'r, spts nx, mx, comls (Fr, 8/19; Eichenhorn-MI) (exc, 1030, 9/5; Howard-MD) (fair, 2000, 9/1; Shaw-PA) Bill, glad to hear your 100% again.
 6010 0305 CJCX, Sydney:Eng.w/"All Night Show", singing IDs, wx (fr, 9/2; Slowey-IL) (fr, 0316, 9/2; Seymour-NC)
 6070 0915 CFRX, Toronto:Eng.w/"Owls' Nest" pgm, Knobhill Farm comls (poor, 8/20; Redman-IL) (poor, 1510, 8/28; Fischer-PA) (gd, 0034, 9/1; Howard-MD) (gd, 1945, 9/1; Shaw-PA)
 6085 0115 Radio Canada International:Eng.w/"Radio Canada Shortwave Club" with new host Bob MacGregor on this new freq. (gd-exc, 9/10; Seymour-NC) Is 100 kw.
 6130 2015 CHNX, Halifax:Eng.w/nx, mx, IDs and hamburger ads (fair, 9/1; Shaw-PA) (fair, 1238, 8/20; Sellers-ONT)
 9625 1200 Radio Canada International:Eng.w/"News and Views" (exc, 8/25; Oliver-NH) (fr, 1300, 8/20; Eichenhorn-MI) (exc, 2316, 8/12; Sellers-ONT) (exc, 2316, 9/9; Trauttschold-WI) (exc, 0100, 9/7; Harrington-CO) (exc, 8/26, 1230, Compton-MA) (fr, 9/3; Slowey-IL) (fr, 1040, 9/5; Zilmer-WI)
 9700 0100 Radio Canada Intl:Eng.w/hockey match (pr, under DW, 9/3; Zilmer-WI)
 11720 0259 CBC Northern Svc:Eng.w/play, CBC nx (fair, 8/14; Collier-NY)
 11945 0130 Radio Canada Intl: Eng.w/spts & nx (exc, 8/20; Shaw-PA)
 15315 1645 Radio Canada Intl: Eng.w/nx in Fr. & Eng. (exc, 8/12; Sellers-ONT)
 15325 1835 Radio Canada Intl: Eng.w/nx followed by "All Points Canada" (good, 8/20; Redman-IL)

CHILE

9570 2330 CE957 R. Portales:Sp.w/talk, hrd only because of solar storm (pr, 8/24; Zilmer-WI) (gd, 0005, 9/13; Fay-MA)
 9590 0010 CE959 R. Presidente Balmaceda:Sp.w/amnts, nx, mx (poor, 9/13; Fay-MA)
 15150 0012 CE1515 R. Corporación:Sp.w/LA mx (fair, 9/13; Fay-MA)

COLOMBIA

4755 0440 HJKC Emisora Nuevo Mundo:Sp.w/mx, "CARACOL" IDs (good, 8/14; Zabransky-IL) (fr, 0530, 8/28; Fischer-PA) Jim, don't see any convenient trees to hang an antenna from. Do they have trees in Iowa??? Hil Nice new school anyway unless the picture on the PC was taken years ago.
 I refer, of course to Jim's new QTH, Divine Word Seminary.
 4885 0430 HJIG Ondas del Meta:Sp.w/mx, ID every 3 min until 0458 s/off (fr, 9/3; Slowey-IL) (fr, 1040, 9/5; Zilmer-WI)
 4906 0200 HJAH Emisora Atlántico:Sp.w/jingles, LA mx, IDs (good, 9/1; Howard-MD) (fr, 0110, 8/19; Slowey-IL)
 4915 0400 HJSG R. Guatapurí:Sp.w/LA mx, vocals, ID (fr, 9/8; Schwartzmyer-NY) (gd, 0453, 9/12; Collier-NY) (fr, 0400, 9/8; Johnson-CA) (gd, 0400, ???; Goldenburg-MO) (fr, 0442, 8/13; Sellers-ONT)
 4945 0500 HJHD R. Colosal:Sp.w/mx, nx (good, 8/28; Fischer-PA)
 4965 0300 HJAE R. Santa Fé:Sp.w/ID, comls, mx (gd, 8/30; Raymond-MA) (fr, 0445, 8/28; Fischer-PA) (fr, 0413, 8/13; Sellers-ONT) (fair, 0325, 9/5; Zilmer-WI)
 4955 0330 HJCO R. Nacional:Sp.w/classical mx (good, 9/4; Zilmer-WI) (good, 0045, 8/27; Redman-IL)
 5075 0230 HJGC R. Sutatenza:Sp.w/nx, talk, mx, IDs (fair, 9/6; Johnson-CA) (gd, 0200, 8/12; Zabransky-IL) (fr, 0253, 9/12; Betz-CO) (fr, 0330, 9/8; Schwartzmyer-NY) (fr, 0300, 9/5; Zilmer-WI) (gd, 0402, 8/13; Sellers-ONT)
 5095 0130 HJGG R. Sutatenza:Sp.w/mx, nx, some rel programming (gd, ??; Goldenburg-MO) (gd, 1030, 9/8; Zilmer-WI)
 5962v 0710 HJKV LV de Bogotá:Sp.w/ID, anmts, LA mx (weak, 8/13; Sellers-ONT) (gd, 0115, 9/13; Fay-MA) (fr, 0740, 8/26; Fischer-PA) John, note frequency. Change from listed 5955 khz.
 6015 1055 HJDF R. Mira:Sp.w/mx, ID (good, 9/6; Zilmer-WI)

COLOMBIA (cont.)

- 6040 0053 HJLB LV del Tolima:Sp.w/music,IDs, usual LA fare (fr,8/31; Zabransky-IA)(fr,0415,9/10;Slowey-IL)(fr,0105,9/12;Fay)
- 6065 0600 HJAX R.Super:Sp.w/music, many IDs as "R. Super...Colombia" (v.gd,9/1;Ellsworth-CA)(gd,1050,9/5;Zilmer-WI)(gd,0107,9/12;Fay-MA)(fr,0712,8/13;Sellers-ONT)(fr,0715,8/21; Fischer-PA)
- 6075 0109 HJID R. Sutaenza:Sp.w/local nx (gd,9/12;Fay-MA)(fr,1045,9/7;Zilmer-WI)
- 6095 0205 HJIW LV del Centro:Sp.w/many ads,IDs,TCs, mx. QRM from DW (fair,9/12;Slowey-IL)
- 6105 1045 HJNV R Visión:Sp.w/talk,mx (fair,9/7;Zilmer-WI)
- 6115 0900 HJIE LV del Llano:Sp.w/mx, ID, on all nite??(v.gd,8/19; Slowey-IL)(pr,0115,9/13;Fay-MA) Bob, I know of only 3 Colombians operating 24 hrs on 49m. These are HJKV, HJNE & HJKJ. HJIE lists 0930 s/on. On early perhaps?
- 6125 0112 HJKE R. Continental:Sp.w/mx (fair,9/12;Fay-MA)
- 6140 1022 HJNE R El Sol:Sp.w/ID,LA mx pgm(fair-good,8/20;Miller-OH)(fair,0730,8/16;Redman-IL)(fr,0630,8/13;Betz-CO)(gd,0600,9/7;Johnson-CA)(gd,0700,8/30;Ellsworth-CA)(pr-fr,0520,9/2;Seymour-NC)(good,1030,9/6;Zilmer-WI)
- 6160 0730 HJKJ Emisora Nueva Grenada:Sp.w/mx,ads,IDs and talk.(fr,9/7; talk (fr,9/7;Johnson-CA)(gd,0640,8/13;Betz-CO)(gd,0845,8/20;Redman-IL)(fr,0114,9/12;Fay-MA)(gd,0653,8/21; Fischer-PA)(v.gd,0712,8/14;Ellsworth-CA)
- 9635 1140 HJZM R. Nacional:Sp.w/music (fair,8/19;Zilmer-WI)
- 15335 2225 HJZP R. Nacional:Sp.w/classical mx, talks by YL (pr,8/27; Redman-IL)

COSTA RICA

- 4832 0225 TIHB R Capital:Sp.w/ID "R. Capital para usted", LA pops, frequent TCs (ex,9/2;Wilson-MA)(gd,0505,8/28;Fischer-PA)(fr-gd,0024,9/4;Miller-OH)(gd,0500,8/17;Redman-IL)(fr,0145,9/12;Betz-CO)(fr/gd,0300,9/10;Johnson-CA)(v.gd,0448,8/13;Sellers-ONT)
- 5954 0530 TIQ R. Casino:w/English at this time instead of Spanish as listed here last month.
- 6005 0612 TIHB R. Reloj:Sp.w/music(pr,9/13;Betz-CO)
- 6037 0118 TIFC Faro del Caribe:Sp.w/mx program (fr,9/12;Fay-MA)
- 6150 0100 TIRS R. Atenea:Sp.w/classical mx,amnts(fr,8/15;Ellsworth-CA)
- 9645 0120 TIFC Faro del Caribe:Sp.w/talks,mixing with German station also here (fair,9/12;Fay-MA)

CUBA

- 11910 0430 Radio Habana Cuba:Eng.w/new freq to HA ex 11815. // 11930. (good,9/7;Magne-PA)
- 11930 0425 Radio Habana Cuba:Eng.w/YL ID, contest amnt, mx (exc,8/25; Eichenhorn-MI)(gd,0415,8/31;Shaw-PA)(fr,0330,9/8; Johnson-CA)(good,0425,8/30;Fischer-PA)
- 15270 0440 Radio Habana Cuba:Eng.w/pgm //11760. This frequency not announced. Technical error?(gd,9/7;Magne-PA)
- 15285 2125 Radio Habana Cuba:Eng.w/"From the Land of Music" pgm (good,8/27;Redman-IL)
- 15340 0220 Radio Habana Cuba:Sp.w/mx pgm (good,8/26;Fischer-PA)
- 17715 2100 Radio Habana Cuba:Eng.w/s/on, nx, commentary (good,9/9; Trautschold-WI)

DOMINICAN REPUBLIC

- 3218 0416 HIDB R. Libertad:Sp.w/LA pops,ID. Extreme noise but strong signal (fr,9/2;Patterson-GA)(gd,0430,9/1;Raymond-MA)
- 4775 0230 HIAS Onda Musical:Sp.w/soft LA mx,ads (gd,9/4;Johnson-CA)
- 4880 0530 HIJP R. Comercial:Sp.w/freq IDs,comls,mx (gd,???,Raymond-MA)(fr,0530,9/9;Betz-MA)(fr,0535,9/5;Redman-IL)
- 4930 0115 HIBE R. Mil:Sp.w/ID,LA mx (poor,9/1;Howard-MD)(fr,0340,9/4; Zilmer-WI)(gd,0430,??;Goldenburg-MO)(gd,0515,9/2; Zabransky-IL)(fr,0100,9/4;Johnson-CA)(fr,0525,8/20; Redman-IL)(gd,0630,8/23;Fischer-PA)
- 5010 1030 HIMI R.Cristal:Sp.w/talk,mx (poor,9/5;Zilmer-WI)
- 9505v 1200 HISD R. Televisión Dominicana:Sp.w/pgm of mx (gd,daily, occasionally drifting around 5010;Fay-MA)(pr,1930,8/17; Fischer-PA)

ECUADOR

- 3315 0404 HCRP7 R. Pastaza:Sp.w/mournful Andean songs,ID as "Radio Pastaza, LV del Oriente" (fair,8/12;Schnabel-NY)

ECUADOR (cont.)

- 3325 0350 HCHA2 Ondas Quevedeñas:Sp.w/amnts,Andean mx, seems 24 hrs (gd, after Venezuelan s/off @ 0402,9/8;Magne-PA)
- 3355 0415 HC??1 R. Cotachachi:Sp.w/"LV de la Noche" pgm,mentions of Ibarra, s/off @ 0500(0545 SUN). Listed @ 500 watts on Govt. list via Dexter (poor,8/13,9/8,9/10;Magne-PA) This NEW station!!!
- 3261 0300 HCOS4 LV del Rio Carrizal:Sp.w/mx,YL ancr(pr,8/22;Schnabel-NY)
- 3380 0440 HCRY4 R. Iris:Sp.w/mx,ID, comls,s/off w/anthem (fair,8/30; Zabransky-IA) (fr/pr,0245,9/6;Johnson-CA)
- 3390 0510 HCOT1 R. Zaracay:Sp.w/LA vocals,ID(fr,8/21;Lazear-OH) (fr,0400,8/13;Schnabel-NY) (fr/pr,0610,9/4;Johnson-CA) (pr,1030,9/5; Zilmer-WI)
- 4680 0600 HCEW1 R. Nac Espejo:Sp.w/LA mx,ID (fair,9/5;Redman-IL)
- 4745 0230 HCBK2 R. El Mundo:Sp.w/request pgm,S9 sigs(fr,8/14;Schnabel-NY)
- 4765 1030 HCAJ2 CRE:Sp.w/mx incl John Mathias disc(fr,gd,9/8;Zilmer-WI) (gd,0335,8/15;Lazear-OH) (gd,0310,8/25;Magne-PA)
- 4778 0700 HCEH3 R. El Progreso:Sp.w/IDs as "Radio Progreso", Andean mx, mention of Quito (poor,8/30;Magne-PA)
- 4794 0350 HCAS4 LV de los Carás:Sp.w/pops,full ID (fair,8/25;Magne;PA)
- 4807 0735 HCMB5 R. Popular Independiente:Sp.w/lively mx(fr,8/30;Magne-PA)
- 4815 0400 HCRF4 Canal Manabita:Sp.w/amnt,LA songs (fr,8/13;Schnabel-NY) (fair,0632,8/13;Magne-Campbell-PA)
- 4820 0924 HCRT6 R. Paz y Bien:Sp.w/trumpet mx,IDs(gd,8/10;Zabransky-IL)
- 4925 0545 HCAV3 R. Luz y Vida:Sp.w/request pgm(fair,8/13;Schnabel-NY)
- 4923 0428 HCRQ1 R. Quito:Sp.w/complete ID @ s/off(fr,7/15;Lazear-OH)
- 4930 0235 HCCR1 R. Casa de la Cultura Ecuatoriana:Sp.w/ID,music,(gd, until sudden reappearance of R.Mil @ 0250,9/7;Slowey-IL)
- 6150 1000 HCLV1 R. El Sol:Sp.w/pop mx.TCs (fr,8/16;Fischer-PA)
- 9605 0530 HCJB LV de los Andes:Eng.w/nx(exc,8/19;Redman-IL) (gd,0542,8/13; Sellers-ONT)
- 11745 0300 HCJB LV de los Andes:Eng.w/"HCJB Hour" (good,9/4;Shaw-PA)
- 17905 1325 HCJB LV de los Andes:Eng.w/mx,sermon(fr,8/19;Eichenhorn-MI)

EL SALVADOR

- 5980 0320 YSS R. Nacional:Sp.w/gd mx,s/off w/"William Tell Overture" (gd, 8/14;Ellsworth-CA) (fr-gd,0105,8/21;Miller-OH) (fr,0125,9/13; Fay-MA) (fr,1200,8/29;Seymour-NC) (gd,0200,9/10;Johnson-CA)
- 9533 0124 YSS R. Nacional:Sp.w/YL talk,mx,Moscow QRM(pr,9/13;Fay-MA)

FRENCH GUIANA

- 3385 0918 ORTF, Cayenne:Fr.w/mx,chimes,TC (v. pr.,9/2;Sellers-ONT)

GUATEMALA

- 3325 1045 TCBA R. Maya de Barillas:Sp.w/martial mx,amnt,pops (gd,8/22;Patterson-CA) (fr,1135,8/15;Sellers-ONT) (gd,1135,8/26;Kamp-CA)
- 3380 1118 TCCH R. Chortis:Sp.w/ID as "R. Chortis" in tik(gd,8/16;Lovell-KY)
- 6005 0116 TIHB R. Reloj:Sp.w/talks,mix w/Canada (fair,9/12;Fay-MA)
- 6180 0315 TCWB LV de Guatemala:Sp.w/marimba mx (fair,8/24;Zilmer-WI)
- 9505 0330 TCNB R. Cultural:Eng.w/"New Life" pgm (fair,8/31;Magne-PA)

GUYANA

- 3290 0115 GBS Action Radio:Eng.w/US Oldies (pr,8/21;Miller-OH) (gd,0340,8/26;Patterson-CA) (fr,0315,9/4;Zilmer-WI) (gd,9/2;Sellers-ONT)

HAITI

- 9770 1645 4VEH, R. 4VEH:Eng.w/pgm about Mozart (fr,8/18;Fischer-PA)
- 11835 1153 4VEJ, R. 4VEH:Eng.w/"Light of Life" pgm(gd,8/20;Compton-MA) (gd, 1600,9/1;Seymour-NC) (fr,0034,8/12;Howard-MD) (v gd,1200,8/25; Eichenhorn-MI) (gd,1705,8/17;Fischer-PA) (fr,0000,8/17;Shaw-PA)
- 15280 0030 4VWL, R. 4VEH:Eng.w/ID,mx(pr,8/20;Eichenhorn-MI) (gd,9/4;Miller-OH)

HONDURAS

- 4780 1050 HRRZ R. Juticalpa:Sp.w/talk,ranchera mx (pr,8/18;Zabransky-IL)
- 4820 1115 HRVC LV Evangelica:Sp.w/religious pgm (pr,9/3;Zilmer-WI)
- 4930 0137 HRPL3 R. Progreso:Sp.w/ID,LA mx(gd,9/1;Howard-MD) (fr,0340,9/4; Zilmer-WI) (pr,0005,8/27;Redman-IL)
- 5875 1102 HRN LV de Honduras:Sp.w/comls,mx,promos,"Informativo de la Manana"(gd,8/30;Kamp-CA) (fr,0125,9/12;Fay-MA)

MARTINIQUE

- 3315 0155 ORTF Fort de France:Fr.w/mx(fr,9/1;Schnabel-NY) (fr,0115,9/12, w/lengthy talk on Olympics;Neumann-IN)
- 5995 0128 ORTF Fort de France:Fr.w/mx, no VOAll (good,9/12;Fay-MA)

MEXICO

6115 1045 XEUDS R.Univ. de Sonora:Sp.w/talk,mx(poor,8/26;Zilmer-WI)
 6165 0545 XEWW LV de América Latina:Sp.w/interviews of GOP delegates at Miami Convention (good,8/24;Ellsworth-CA)
 9515 1215 XEWW LV de América Latina:Sp.w/old nx, cmntry(fr,8/19;Fischer-PA)
 11770 1732 XBERMX R. México:Sp/Eng. w/mx,anmts(gd,9/4;Oliver-WH)(fr-gd,1400,8/24;Eichenhorn-MI)
 11820 2100 XEBR Radio BH:Sp.w/music & ads (gd,8/20;Stephenson-CA)(v.gd,0228,8/20;Eichenhorn-MI)(gd,2000,9/4;Johnson-CA)(pr,8/27;Zilmer-WI)
 15160 1500 XEWS LV de América Latina:Sp.w/talk & mx (poor,8/26;Zilmer-WI)

NICARAGUA

11875 0435 YNM R.Nacional:Sp.w/ID,Tango mx (fr-gd,8/10;Eichenhorn-MI)

PERU

4785 0446 OAX8F.R.Atlántida:Sp.w/Andean flute mx(pr,8/12;Schnabel-NY)
 5005 0315 OAX2S.R.Jaén:Sp.w/anmts afr each 3 mx(pr,8/30;Schnabel-NY)
 5010 0420 OAX8V.R.Eco:Sp.w/ID as "En Radio Eco" w/echo effect,LA mx, hrd during absence of R.Cristal HIMI (fr-pr,8/30;Schnabel-NY)
 5970 0430 OBX4Q R.El Sol:Sp.w/LA & Eng. pops (fr,9/8;Johnson-CA)(fr,1045,8/18;Zilmer-WI)
 5980 1250 OBX4M R. Panamericana:Sp.w/nx,OM cmntry(pr,8/19;Eichenhorn-MI)
 6020 0645 OAX4Q R.Victoria:Sp.w/lively mx,off @ 0711(gd,8/15;Ellsworth-CA)
 6045 0035 OXY4H R.Santa Rosa:Sp.w/anmts,mx (fr,9/13;Fay-MA)
 6175 0030 OAX7C R.Tanantisuvo:Sp.w/talks (poor,9/13;Fay-MA)
 9520 1120 OAX4J R.La Crónica:Sp.w/mx,ads,jingles(fair,8/19;Zilmer-WI)(fair,0035,9/13;Fay-MA)
 9675 1145 OAZ4C R. del Pacífico:Sp.w/religious mx,tlk (pr,8/19;Zilmer-WI)

URUGUAY

11835 1000 CXA19 R.El Espectador:Sp.w/ID by OM,TC (fair,8/26;Griffith-CO)

VENEZUELA

3215 1015 YVZV Ondas Panamericanas:Sp.w/ads,ID (pr,9/1;Patterson-GA)
 3225 0200 YVTC R.Occidente:Sp.w/echoing ID @ s/off(fr,8/10;Schnabel-NY)
 3275 0324 YVMC R.Mara:Sp.w/LA mx,US pops,comls (fr,9/2;Patterson-GA)
 3295 1016 YVOG R.Trujillo:Sp.w/"Buenas Dias Ven."(fr,8/25;Patterson-GA)
 3325 0954 YVRA R.Monagas:Sp.w/mx,anmts,IDs (fr,8/25;Patterson-GA)
 3385 0300 YVQI R.Barcelona:Sp.w/mx,IDs,TCs (poor,9/6;Johnson-CA)
 3395 0359 YVOJ R.Universidad:Sp.w/IDed by FM outlet ancmnt, s/off w/natl anthem (poor,8/13;Magne-Campbell-PA)
 4780 0935 YVLA LV de Carabobo:Sp.w/nx,spots (fair,8/24;Kamp-CA)
 4790 0020 YVQN Ondas Porteñas:Sp.w/usual format,ID (fr,9/4;Miller-OH)
 4810 0100 YVMG R.Popular:Sp.w/ID,LA mx,mentions of Maracaibo (fr,9/2;Howard,MD)(fr,0140,9/12;Batz-CO)(fr,1045,9/5;Zilmer-WI)(fair,0455,8/13;Sellers-ONT)
 4860 0959 YVQE R.Maracaibo:Sp.w/s/on(gd,8/26;Kamp-CA)(fr,1045,9/5;Zilmer)
 4890 0215 YVKE Rdif. Venezuela:Sp.w/US pops,ID (gd,8/27;Redman-IL)(fr,0355,9/4;Zilmer-WI)(gd,0955,8/26;Kamp-CA)(fr,0030,9/4;Johnson-CA)
 4900 0315 YVNK R. Juventud:Sp.w/LA & US pop mx (good,9/6;Johnson-CA)(fair,0345,9/4;Zilmer-WI)
 4940 0108 YVPA R. Yaracuy:Sp.w/usual LA format (good,9/1;Howard-MD)(fair,0335,9/4;Zilmer-WI)
 4970 0430 YVLK R.Rumbos:Sp.w/mx(fr,9/5;Zilmer-WI)(gd,0430,9/9;Johnson-CA)
 4980 0130 YVOC Ecos del Torbes:Sp.w/LA mx,talk,IDs (gd,9/6;Johnson-CA)(fr,0305,9/5;Zilmer-WI)
 4990 0310 YVMQ R. Barquisimeto:Sp.w/comls,mx (gd,9/2;Schwartzmyer-NY)(fr,0100,9/5;Johnson-CA)(fr,0400,9/12;Betz-CO)(gd,0330,9/4;Zilmer)
 5030 0435 YVMK R. Reloj Continente:Sp.w/IDs,TCs,mx (fr,9/2;Zabransky-IL)(fair,0310,9/5;Zilmer-WI)(fair,0957,8/13;Magne-PA)(fr,0200,9/8;Johnson-CA)(fr,0330,9/8;Schwartzmyer-NY)(fr,0405,8/13;Sellers-ONT)
 5050 0300 YVKD R. Mundial:Sp.w/LA mx,ID as "R. Mundial,la famosa" (gd,9/3;Wilson-MA)(fr,0948,8/27;Magne-PA)
 9660 0948 YVLM R. Rumbos:Sp.w/ID, lite LA mx(fr,9/2;Sellers-ONT)
 11725 0045 YVLS R.Nacional:Sp.w/mx,QRM noted (fr,9/13;Fay-MA)

WINDWARD ISLANDS

5015 2315 WIBS R. Grenada:Eng.w/local & intl nx (gd,9/13;Oliver-IH)(gd,0002,8/14(Sun),w/running late;Howard-MD)
 11975 0200 WIBS R. Grenada:Eng.w/native mx,OM ancr,ID,YL w/prayer @ s/off (pr,8/20;Eichenhorn-MI)(gd,0115,9/2;Howard-MD)(gd,9/13;Fay-MA)

Well, that is it for another month. My apologies to the US and Netherlands Antilles who didn't quite make it this month. My thanks to you 39 great guys who made it another great listing. Keep those reports coming. OK?? Regards, Jim

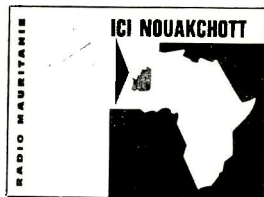
SWBC DX

EUROPE

AFRICA

-editor-
 Steven P. d'Adolf
 P.O. Box 488
 Madison, NJ 07940

NEW ADDRESS



Frequencies are in khz * Deadline: 15th of the month * Times are in GMT

Attention

Note the new address above. If you have already mailed your report to the old address, don't worry, it should be forwarded in plenty of time. If you haven't mailed it yet please use the new address.

Rhodesia has been reported on the East Coast and São Tomé on the West Coast. We also spotlight "Tropical Band DXing: Africa." Also note tentative Mauritius.

EUROPE

ALBANIA

- 9480 0630 R. Tirana: Eng nx bulletin (fair 8/24 Fischer-PA)
- 9500 2200 R. Tirana: IS, then lang to 2210 when jammer blocked signal, //9525 (poor 8/26 Zilmer-WI)
- 9505 1830 R. Tirana: Eng nx, cmtry (fair 8/26 Compton-MA)
- 9780 0005 R. Tirana: Eng YL w/cmtry on Israel-US Relations (good 8/30 Eichenhorn-MI);(good 0000 8/12 Trautschild-WI);(v.good 0020 8/13 Sellers-ONT);(good on 9778.5 0020 8/18 Griffith-CO)
- 11985 1425 R. Tirana: Eng w/cmtry, s/off (fair 9/1 Griffith-CO)
- 11995 0035 R. Tirana: Eng nx, propaganda (good 8/22 Catey-IL)

AUSTRIA

- 9770 0145 ORF, Vienna: Eng w/"Report from Austria" on Austrian business (good 8/24 Day-CA);(good 0030 8/4 Eichenhorn-MI)
- 11725 0330 ORF: Ger w/mx to SA (fair 8/29 Zilmer-WI)
- 15210 1833 ORF: Eng nx by OM (fair 9/12 Griffith-CO) WI)
- 15335 1830 ORF: Eng "Report from Austria", QRM ORTF (poor 8/19 Zilmer-

BELGIUM

- 15165 0045 RTB: Eng "Belgium Speaking", then Fr pgm (v.good 9/6 Schwartzmyer-NY)

BULGARIA

- 9700 R. Sofia: reported by 16 reporters
- 11765 2100 R. Sofia: Eng nx, cmtry, mx, //15310 (poor Zilmer-WI)

CZECHOSLOVAKIA

- 7345 0300 R. Prague: s/on w/Eng pgm, nx, "Topics of the Day", mx, "Sports Review", "Introducing Czechoslovakia", "Monitor Club Session" (exc 8/21 Straumanis-NY);(v.good 0330 9/10 Donegan-GA);(v.good 0335 8/13 Sellers-ONT);(good 0330 8/14 Eichenhorn-MI)
- 11990 0300 R. Prague: Eng w/"Sat Night Jukebox", stamp pgm (v.good 9/3 Donegan-GA);(good 8/31 Johnson-CA);(good 0105 9/7 Redman-IL);(good 0112 8/27 Compton-MA);(good 0315 8/18 Fischer-PA);(good 0100 9/3 Imbert-VA);(good 0300 8/31 Shaw-PA)

FRANCE

- 11730 0120 ORTF: Sp lang lesson, Sp nx, to 0200 s/off (v.good 9/3 Zilmer-WI)
- 11860 0540 ORTF: Eng nx, Olympic result (fair/good 9/2 Seymour-NC);(fair 0534 9/6 Griffith-CO)

FRANCE (continued)

11965 2200 ORTF: Fr to NA on new test freq for Olympics, ancs will continue if reports suggest it is well received (it is!), //21675, 21620, 17800NF, 17765, 15245, 15120, 11725, 9570, to 2330 s/off (exc 8/27 Magne-PA);(good 2300 8/26 Zilmer-WI)
 15120 2320 ORTF: Fr w/mx, ID by OM, mx, nx (exc 8/12 Eichenhorn-MI); (fair 1935 8/17 Fischer-PA)
 15295 0535 ORTF: Eng w/nx bulletin, mx req pgm (fair 8/24 Fischer-PA)
 15335 1600 ORTF: European lang svc to Europe (fair 8/21 Zilmer-WI)
 21580 1640 ORTF: Fr nx, //21620, 21645, 21675 (good 9/4 Bye-PA)
 21645 1540 ORTF: Eng nx, IS, Fr ID, Fr talk pgm, //21620 (v.good) (exc 8/16 Trautschold-WI)

GERMANY, EAST

9650 0340 RBI: Eng editorials (fair 9/1 Stephenson-CA);(good 0400 8/23 Fischer-PA)
 11700 0515 RBI: Ar ID for RBI:"Huna Berlin", OM & YL into talk about Vietnam (v.good 9/5 Day-CA)
 11824 0335 RBI: Eng nx y YL, ID @0344, mx, Press Review @ 0345 (fair 8/25 Griffith-CO);(11825 0330 8/24 Eichenhorn-MI)
 21520 1315 RBI: Eng nx to Centr Amer, QRM SBC (fair 9/4 Zilmer-WI)
 21540 1400 RBI: Eng nx to SEA, QRM DW, //17700 (good 9/10 Zilmer-WI); (poor 1438 9/3 Griffith-CO)

GERMANY, WEST

6170 0130 DW: W. Ger propaganda in Eng, //6040, 6070, 9545, 9690, (exc 8/14 Boomer-WV) (Why do they need all these freq's when 6170/9545 both are exc? DW & R. Canada are getting worse than Moscow for cluttering up the bands. Ger svc of DW seems to use about lo freq's at a time: Boomer)
 6185 0405 DW: Ger w/nx by OM, ID (good 8/19 Eichenhorn-MI)
 7235 0301 DW: IS to 0315 s/on in Swahili per WRTH, 0345 apparent Eng Olympic nx, QRN, QRM (poor 9/11 Griffith-CO)
 9510 2200 DW: Eng mx, ID's, TT, req for reports (fair 8/21 Imbert-VA)
 9565 0000 DW: German news (v.dood 9/1 Ladenburger-IL)
 9615 0215 DW: Eng Olympic report to NA (good 9/3 Zilmer-WI)
 9725 0425 RFE: from Germany in Czech per WRTH, nx by OM, mx (poor 8/16 Eichenhorn-MI)
 9760 1100 VOA, Munich: News: Olympic, General and of Ficher-Spasky (good 9/4 Leistner-CA) Did you hear a Munich ID for this transmission? My sched shows 9760 1100-1600 is via the Philippines. SPD
 11795 0930 DW: Eng pgm w/ID by OM, to E. Asia/Austr/NZ (v.poor 8/26 Griffith-CO)
 11925 0035 DW: Ger European nx (fair 8/22 Stephenson-CA)
 11945 0350 DW: Sp to SA, mx, s/off (good 8/18 Fischer-PA)
 15395 2115 DW: IS, then Ger pgm (poor 8/16 Jessen-OR)

HOLLAND

9715 2130 R. Nederland: s/on w/Eng pgm "It's a Small World", "Ancrs Choice" (good 9/6 Donegan-GA)
 15425 1355 RN; Lopik (per WRTH): IS to 1400 s/on in lang, over R. Moscow (fair 9/4 Griffith-CO)

INTERNATIONAL WATERS

6207 0040 RNI: Eng pop mx, measured w/BC-221 (good 9/1 Howard-MD); (exc, like a local 0501 9/7 Magne-PA);on 6205: (good 0415 9/2 Shaw-PA);(fair 0405 8/20 Fischer-PA);(fair 2350 8/21 Sellers-ONT)

ITALY

9575 0100 RAI: Eng nx, cmtry, mx //11810 (good)(good 9/5 Johnson-CA)
 11810 0100 RAI: Eng nx, Ital mx (exc 9/4 Wilson-MA);(good 0059 9/3 Griffith-CO);(good 0100 9/2 Ladenburger-IL);(good 0305 8/21 Day-CA);(good 0100 8/12 Howard-MD);(good 0105 9/6 Redman-IL);(exc 0010 9/5 Mappin-WA)
 15330 0535 RAI: IS, anthem, Ar listed to near East (good 8/16 Stuart-?)
 15385 0140 RAI: new freq?, s/on and Sp to LA (fair 9/4 Bye-PA)
 17755 1400 RAI: Ital w/YL calling Montreal & Toronto, WRTH lists 17770 (poor 8/31 Eichenhorn-MI)

MONACO

7293 0654 TWR: Eng rel pgm, ID @ 0658 (fair 9/8 Griffith-CO)

NORWAY

15345 2224 R. Norway: ID by YL, nx in Nor, Eng ID @ 2229 by OM, s/off (good 8/11 Griffith-CO)
 21730 1400 R. Norway: Norway This Week in Eng (fair 9/10 Zilmer-WI); (1402 to W. Afr, 9/3 Griffith-CO)

POLAND
 9675 0300 Polish R.: Eng pgm to NA, //11815, 11840 (poor 8/24 Zilmer-WI)
 11815 0200 Polish R.: Eng nx, talk, mx, //11840, 15120 (poor)(good 9/6 Johnson-CA);(fair 0300 8/24 Zilmer-WI);(v.good 0200 9/5 PA Day-CA);(fair 0300 8/24 Eichenhorn-MI);(good 0310 9/4 Shaw-Polish R.: IS, 0200 s/on to NA in Eng w/mx, cmtry, mailbag, covered by Portugal 0215, //15120, 11815, 9665, 7270 etc, (fair until 0215 then v.poor 9/9 Griffith-CO)
 11840 0159 Polish R.: Eng w/mx pgm to Afr, 2025 s/off (fair 9/12 Griffith-CO)
 15275 2020 Polish R.: Eng w/mx pgm to Afr, 2025 s/off (fair 9/12 Griffith-CO)
 PORTUGAL
 6025 0205 R. Portugal: Eng nx pgm (fair 9/6 Redman-IL)
 9670 1947 IBRA R. via Radio Trans Europe: Eng rel pgm, mx, ID at 1958 (poor 9/1 Imbert-VA)
 11815 1930 RFE: talk in Hungarian (fair 8/20 Sellers-ONT) Harold, if you ID'd this as Portugal by using the WRTH, don't be afraid to say so. SPD
 11840 0300 R. Portugal: Eng pgm w/nx, ancd as Int'l svc from Lisbon (8/23 Mappin-WA);(good 0312 8/18 Griffith-CO);(v.good 0300 8/20 Eichenhorn-MI);(good 0315 9/8 Redman-IL);(good 0305 8/17 Day-CA)
 11935 0200 R. Portugal: s/on & Eng cmtry, nx, spec features (fair 8/12 trautschold-WI);(good 0200 8/20 Shaw-PA);(good 0350 9/10 Donegan-GA);(good/fair 0410 8/9 Eichenhorn-MI);(good 0345 9/1 Stephenson-CA);(good 0424 8/12 Donegan-GA)
 21495 1830 R. Portugal: Eng to Afr w/"DX Magazine of the Air", pop mx, nx, cmtry (good 8/28 Compton-MA)
 ROMANIA
 6150 0310 R. Bucharest: Eng cmtry on UN problems (poor 8/23 Stephenson-CA)
 15350 1315 R. Bucharest: Eng mx req pgm (good 9/4 Zilmer-WI)
 RSFSR, EUROPEAN
 7190 0330 R. Kiev: Eng pgm w/nx (good 9/8 Zilmer-WI)
 7355 2225 R. Moscow: Eng w/"50 Years" Contest, 2226 s/off (fair 9/9 Trautschold-WI)
 9530 0000 R. Moscow: Eng svc with nx (good 8/19 Catey-IL)
 9610 0050 R. Vilnius: Eng w/talk on elderly Lithuanian farmers, s/off 2 0058 (good 9/11 Griffith-CO)
 9615 0040 R. Vilnius: Eng w/DX pgm, mailbag, 0058 t/o (exc 9/10 Compton-MA)
 9655a 0038 R. Vilnius: Eng pgm w/cmtry on Bangladesh & China, mailbag, cmtry on "New School Year", mx, s/off 0057 (exc 9/2 Straumanis-NY)
 9660 0345 R. Kiev: Eng pgm w/violin mx (fair 8/18 Fischer-PA)
 9665 2338 R. Moscow: Eng pgm to NA w/talk (fair 8/12 Sellers-ONT)
 9685 0003 R. Moscow: Eng to NA w/talk, //9665 (fair 8/13 Sellers-ONT)
 9685 0040 R. Vilnius: Eng pgm w/ailbag, cmtry (good 9/3 Imbert-VA); (fair 0034 9/10 Griffith-CO)
 9700 0200 R. Moscow: Eng nx, cmtry, //9665,9685 (good 9/3 Zilmer-WI)
 9745 0330 R. Kiev: Eng nx, cmtry, mx, new //7290, 7205, 7150 (fair/good 9/8 Johnson-CA)
 11800 0430 R. Moscow: Eng pgm w/"Soviet Way of Life", nx, views, cmtry (good 8/31 Shaw-PA)
 11850 2235 R. Vilnius: Eng nx, talks about Lithuania (good 8/16 Redman-IL);(good 2240 8/20 Eichenhorn-MI)
 11850 0400 R. Peace & Progress: Sp nx. cmtry (good 8/22 Fischer-PA-VA)
 11850 2300 R. Moscow: Eng pgm w/"Vietnam Fights Back" (good 8/20 Imbert-VA)
 11850 2330 R.S. Atlantica: unk lang, followd RM (good 8/20 Imbert-VA)
 11870 2305 R. Moscow: Eng w/"Vietnam Fights Back", //11900 (fair/poor 8/20 Eichenhorn-MI)
 11890 0522 R. Moscow: Eng w/nx, cmtry, to Afr, s/off 0528 (fair 9/8 Griffith-CO)
 11900 0031 R. Kiev: Eng w/nx, talk, "The Kiev Mailbag Show", ancd sked as Mon, Thurs, Sat only, At 7:30 pm EST on 11.90, 7.29, & 7.20 and at 10 pm EST on 9.74, 7.29, 7.20 & 7.15 (good 9/3 Griffith-CO);(poor/fair 0330 8/20 Day-CA);(good 0340 8/18 Fischer-PA);(good 0353 8/25 Griffith-CO)
 11900 2340 R. Moscow: Eng w/"Vietnam Fights Back" (fair 8/20 Eichenhorn-
 11925 1215 R. Tashkent: Eng pgm w/talk, ID (fair 9/2 Sellers-ONT)
 11965 1912 R. Moscow: lang (hausa?) pgm w/nx, ID, Afr mx (fair 9/1 Sellers-ONT)
 11950 1920 R. Moscow: Majak pgm in Rus w/talk (good 9/1 Sellers-ONT)

RSFSR, EUROPEAN (continued)

11965 1912 R. Moscow: lang (hausa?) pgm w/nx, ID, Afr mx (fair 9/1 Sellers-ONT) Sorry repeated this one, previously out of order. SPD

12040 0450 R. Moscow: Eng mx pgm (exc 8/27 Mappin-WA)

12050 0321 R. Yerevan: s/on in Eng as "The Voice of Yerevan", nx, mx, ancd only freq's of 15.1 & 17.8. Eng pgms on Tues, Wed, Fri & Sat ancd. s/off @ 0325 (good 9/10 Griffith-CO)

12050 0445 R. Vilnius (listed): Eng prop about Vietnam (good 8/27 Mappin-WA) Doesn't sound like Vilnius to me. SPD

15140 1506 R. Moscow: Eng pgm w/nx, cmtry, Soviet Red Cross sending aid to the Philippines, 1528 s/off (fair 8/19 Griffith-CO)

15140 1530 R. Peace & Progress: Eng nx roundup (fair 9/9 Zilmer-WI); (fair 1530 8/19 Griffith-CO)

15200 1530 R. Peace & Progress: Eng pgm of nx, talk, mx, //11795 (fair), (good 9/1 Johnson-CA)

15295 1543 R. Peace & Progress: Eng w/ID, talk, adr, 1558 s/off w/IS (fair 9/4 Griffith-CO)

15295 1600 R. Moscow: IS, s/on w/Eng to S. & SE Asia, w/"The World Today", //15175, s/off @ 1628 (fair 9/4 Griffith-CO)

15350 1430 R. Peace & Progress : Eng nx to Afr (fair 9/3 Zilmer-WI); (poor 1440 8/19 Griffith-CO) NC

15455 1630 R.S. Atlantica: Rus w/opera mx, ID @ 1648 (fair 9/3 Seymour-NC)

17720 1446 R. Peace & Progress: Eng w/cmtry, ID, IS & 1458 s/off (s/on is at 1430) (fair 9/5 Griffith-CO)

17795 1545 R. Peace & Progress: Eng w/nx, ID, IS, anti-capitalism talk, (fair 8/16 Trautschold-WI)

17795 1605 R. Moscow: Eng w/nx highlights by OM, cmtry on Armenian people (poor 8/13 Eichenhorn-MI)

17815 1549 R. Moscow: Eng w/talk, ID, E. Afr review, off at 1558, to Africa (fair 9/5 Griffith-CO)

17875 0615 R. Moscow: Eng pgm w/talk on aspects of Mars, water & pwr resources of Russia, //17860 (exc), 15130 (fair), 15180 (exc), 11690 (hvy QRM), 12050 (good), these freq's correspond to recent sked received. (exc 8/25 The Leistners-CA)

17900 1341 R. Peace & Progress: Fr w/ID, IS & nx (good 8/24 Griffith-CO)

21460 1528 R. Moscow, Tula (WRTH): lang talk, RM IS @ 1530 (poor 8/25 Jessen-OR)

Another month of Russian loggings like that and we may need a separate column and/or editor for them, hi! SPD

SWEDEN

11705 0343 R. Sweden: Eng w/cmtry on oil & ecology, 0345 Swedish lang lesson (fair 9/3 Howard-MD); (exc 0300 9/1 Harrington-CO); (good 0347 8/25 Griffith-CO); (v.good 0330 9/5 Day-CA) -WI

15105 1230 R. Sweden: Eng nx to Asia on new freq (poor/fair 9/3 Zilmer)

15240 1845 R. Sweden: Eng w/"Panorama, SCDX @ 1850, 1859 Eng pgm s/off, into Swedish (fair 9/12 Griffith-CO) MI

15310 1405 R. Sweden: Eng w/mx (True Grit), skit (fair 8/19 Eichenhorn-NC)

17815 1400 R. Sweden: new freq w/Eng nx at 1400 and weird mx @ 1520 in a Fr pgm, tuned in at those two times (fair/good 9/4 Seymour-NC); (fair 1400 9/9 Zilmer-WI)

SWITZERLAND

17830 1525 SBC: IS, ID by YL & s/on for Eng pgm @ 1530, TC, to ME & Afr, //15430, 21520 (fair 9/3, 9/5 Griffith-CO)

YUGOSLAVIA

9620 0011 R. Belgrade: Sp pgm w/ID, talk by YL & OM (poor 8/23 Miller-OH); (poor 2201 9/10 Griffith-CO); (good 2200 8/24 Donegan-GA)

AFRICAAFARS & ISSAS

4780 0730 ORTF, Djibouti: Fr pop mx, ID in Fr @0730 (RTF 8/21 Hancheruk-QUE) New sked? SPD

ASCENSION ISLAND

6005 0315 BBC: Eng Press Report (fair/good 9/2 Seymour-NC)

11820 1925 BBC: Eng to Afr w/talk on youth (fair 8/20 Sellers-ONT); (fair 2100 8/20 Redman-IL)

11860 0858 BBC: Eng w/end of African Theater, TC @ 0900, nx, under VOFC in Jap (poor 8/26 Griffith-CO)

15260 2115 BBC: Eng nx, views events (good 8/17 Shaw-PA)

CAMEROUN

4972.5 2212 R. Yaounde: Fr talk (poor/fair RTTY QRM 8/21 Boomer-WV)

CANARY ISLANDS

11800 0332 RNE: Sp w/Sp mx, ID as "emisor Atlantico de R. Nac de España (good 8/29 Lanoue-MA);(good 0355 8/18 Fischer-PA)

CHAD

4904 2235 RNT: Fr pgm of mx, OM anmts, 2301 anthem & off (good 8/26 Lovell-KY)

CONGO, PEOPLE'S REPUBLIC

9715 1950 RTWC, Brazzaville: Fr/Afro mx, anmts (fair 9/1 Fay-MA)

21500 1030 ORTF, Brazzaville: Eng "Paris Int'l" nx, mx, tk on Olympics (fair 9/3 Fay-MA)

DAHOMAY

4870m 2145 Rdf du Dahomey: 2145-2158 uninterrupted instr mx, ID in vernac @ 2158, bells @ 2159, 4 pips, 2200 Rel tk & hymn by OM, 2206 anthem and off (fair/good 9/16 d'Adolf-MA) This was a Sat and they are sked to 2300 on weekends so was surprised to hear 2206 s/off. SPD

ETHIOPIA

11795 0258 ETLF: IS, ID as transmitting to Madagascar, into Fr (good 8/23 Day-CA)

11890 0530 ETLF: IS, Eng ID & nx (fair 9/2 Seymour-NC)

GABON

4777 2224 RTG: mx w/frequent anmts in Fr (v.good 8/26 Lovell-KY); (fair 2257 8/20 Boomer-WV)

GAMBIA, THE

4820 0700 R. Gambia: BBC W. Svc nx preceded by anmt by YL (good 8/21 Lazear-OH);(fair 0700 8/28 Hancheruk-QUE);(fair/good w/UTE sta QRM after 0708 8/22 Kamp-CA);(fair/poor 0700 9/5 Johnson-CA);(good 0700 date? Raymond-MA);(good 0700 8/31 Fay-MA);(poor 0700 8/16 Stuart-?)

GHANA

3366 2247 R. Ghana: Eng nx (fair 9/8 Boomer-WV)

9545 2210 R. Ghana: Eng pgm w/YL ID, mx (good/fair Eichenhorn-MI); (good 1250 8/31 Fay-MA)

21545 1520 GBC, Tema: Eng w/economic nx about Ghana (good 9/4 Miller-OH)

IVORY COAST

4940 2345 RTI: Fr pgm w/Polynesian type mx, s/off 0000 (fair 9/5 Redman-IL);(fair 2258 8/20 Boomer-WV)

LIBYA

11795 0330 R. Tripoli: Ar(WRTH) w/ID by OM (poor 8/17 Eichenhorn-MI) Was this under Ethiopia? SPD

MALAGASY REPUBLIC

11740 1400 R. Nederland: Happy Station to SEA on a new freq, //15260, 17810 (fair 9/10 Zilmer-WI);(fair 1400 9/10 Day-CA);(v.good 1358 8/25 Lovell-KY);(fair/poor (tentative) 1425 9/2 Howard-RN: Eng w/nx to Austr (poor 9/12 Griffith-CO); (MD) (poor 2215 9/9 Zilmer-WI)

15330 1227 RN: IS, ID anthem, Indo pgm w/nx, march mx, sports pgm, have been trying to hear them w/o success for months; now 2 loggings in a week! hi! (good 8/28 Lanoue-MA)

17810 1518 RN: Eng "Happy Station" to SEA, new xmsn added for Sept/Oct (fair 9/3 Griffith-CO);(fair/good 1400 9/10 Zilmer-WI); (fair/good Sweden QRM, 1400 9/4 Seymour-NC)

MALI

4843 2302 R. Mali: s/off w/anthem (fair 8/20 Boomer-WV)

MAURITANIA

4850 2256 RNM: Ar chanting under RTTY (poor 8/20 Boomer-WV);(fair w/ Ar/Fr pgm 0717 9/21 Lazear-OH)

MAURITIUS

9709.4v 1123 MBC, Forest Side (tentative): chanting like singing to 1130 ID by OM but not completely readable due to QRM de HGJB and QRN, then Indian subcontinental mx, useless by 1150, fits sked, but no definite ID hrd, so tentative, (poor 9/6 and worse daily since. Thanks to tip from Henderson, Magne-PA)

MOZAMBIQUE

6050 1400 RCM: lang/Eng pgm w/mx, ID's, ads (fair 8/28 Johnson-CA)

15293 1320 RCM: Port pgm w/Eng pops and Port anmts by OM (poor 8/26 Griffith-CO)

NIGERIA
 7235V 0500 ECSCBS: s/on w/drum type IS, Eng nx, mx, tks (fair 9/2 Fay-MA)
 RHODESIA
 3396 0400 RBC; Salisbury: Eng nx, (v.good 9/8 Raymond-MA)
 SÃO TOME
 4807 0557 R. Cl de São Tome: Port pgm w/Violin Concerto, 0600 ID & suddenly off (poor 8/25 Jessen-OR)
 SEYCHELLES
 15265 1530 FEBA: Eng w/BBC nx, "Show Me A Penny" pgm (fair/good 8/28 Johnson-CA)
 15270 1340 FEBA: IS, Eng ID's, Rel pgm (fair 8/27 Fay-MA)

Are they on 15265 or 15270 or both? SPD

SOUTH AFRICA

3250 0005 SABC: Eng All Night Svc, 1t mx (fair 8/18 Sellers-ONT)
 3285 0230 SABC: pop mx (good 8/30 Raymond-MA)
 3965 0420 SABC: Eng pgm w/1t classical mx, ad for Lexington cigarette (good date? Schwartzmyer-NY)
 4945 2352 SABC: Afrk/Eng pgm w/"Goodnight Irene" and others like it (fair 9/3 Miller-OH);(fair 2342 9/3 Redman-IL);(fair sevrl dates Boomer-WV);(good 0130 9/6 Johnson-CA)
 4995 0310 SABC: Eng/Afrk ads, mx (fair 9/5 Zilmer-WI)
 9525 0535 R. RSA: Eng nx, cmtry on Chess Championship (poor 8/16 Eichenhorn-MI)
 11790 1400 SABC: Eng ID, TC, nx, ID as Radio South Africa, in the clear after R. Austr s/off at 1500, to 1520 s/off (poor/fair 8/31 Griffith-CO)
 11935 0715 SABC: Eng pgm w/ads, mx, ads, talks, ads, ads, ads, ads (good 9/5 Johnson-CA);(fair 1315 9/3 Zilmer-WI)

South Africa does not have TV and does not have FM Radio. MW and SW therefore are the outlets for commercials.

15220 1145 R. RSA: Eng mx, nx (good 9/3 Shaw-PA)
 21535 1545 R. RSA: OM in lang, IS 1550-1600 s/on, ID, TC, Eng nx by YL (poor 8/21 Griffith-CO)
 25790 1300 R. RSA: Eng Sports Roundup to Afr. (fair 9/2 Zilmer-WI)

CLANDESTINE & UNIDENTIFIED

4969.8 0620 Radio of the NLF of the Republic of Guinea, (Port Guinea?): 0620 s/on, usual IS and s/on by same OM (seems to be taped), US jazz, QRN, 0705 f/o w/Fr vernac (poor 8/26, 8/29 Magne-PA)
 9775 0510 Voice of Truth (Bulgaria?): s/on 0510 to 0545 s/off, this and the freq were the only reliable ID methods (poor 8/13 Kamp-CA)
 11735 0135 Unid: unk sta with Ar chanting (v.weak 9/2 Sellers-ONT)
 11905 0810 Unid: Ar lang sta with countless xmtr failures, to 0835 (fair 9/7, not hrd since, Magne-PA)
 11950 2115 Unid: Eng pgm w/European classical mx, couldn't find in WRTH, no ID given but IS at 2129 goes like this:



Any musical minded DXers around to help out? (good 8/26 Trautschold-WI)

**Across the
 editor's
 desk**



Welcome to new reporters Ron Redman, Bob Raymond, Andris Straumanis, Rick Ladenburger, Jerry Stuart, Norman Mancheruk, and Rob Harrington.

Continued thanks to all the guys who reported this month. You make the column what it is.

For those who are unaware of the number of loggings that come in each month, I would like to point out that all loggings received each month can not be printed. To get a more complete picture of the frequencies being used by the various broadcasters you should consult two or three consecutive issues of SPEEDX.

TROPICAL BAND DX'ING: AFRICA

THE TROPICAL AREA of the World is generally considered to be that area on and between the Tropic of Cancer and the Tropic of Capricorn. A characteristic of this area is the almost daily occurrence of thunderstorms. The high static noise level originating from these thunderstorms limits the service area of medium wave stations. As a result the ITU (International Telecommunications Union) has assigned the frequency range of 4750-5060 khz (60 meter band) for domestic broadcasting in Tropical areas.

Broadcasting during the daylight hours over long distances on 60 meters is not possible due to ionization of the D-layer and E-layer, thereby attenuating the radio signal before it reaches the reflective F-layer. This absorption is stronger during the Summer months. A station that broadcasts on 60 meters during hours of darkness will switch to higher frequencies for daylight broadcasting if they want to be heard over long distances. A station that is intended for local broadcasting only will stay on 60 meters during the day and reception is then limited to the ground wave path which can cover a distance of about 30 miles.

INTERFERENCE AND NOISE on 60 meters can be a problem even during the hours of darkness. A major source of interference is the large number of Utility stations using the band. The 60 meter band has been assigned to these UTE stations, located outside the Tropical areas, by the ITU. During the Summer months some of these stations move to higher frequencies. Also UTE activity is reduced by some 30% on the weekends because many calls are business related and these concerns are closed on Saturday and/or Sunday.

Noise from Thunderstorms can be annoying. Static noise can be heard because it can be reflected by the E and F layers.

TROPICAL BAND is a nice challenge and can be very rewarding. Some DXers spend almost all of their time listening to the 60 meter band.

CALENDAR

The following indicated holidays might result in extended broadcasts from the indicated country, or if not, you might just want to wish them a happy holiday with your next report.

- Oct. 9: Ramadan starts: Moslem countries
- Oct. 10: Kruger Day in South Africa
- Oct. 12: Flag Day in Somali Rep., Independence Day in Fernando Poo and Columbus Day in Spain
- Oct. 13: Assination of the National Hero in Burundi
- Oct. 14: National Holiday in the Malagasy Republic
- Oct. 17: Mother's Day in Malawi
- Oct. 20: Kemyatta Day in Kenya
- Oct. 21: Revolution Day in the Somali Republic
- Oct. 23: Republic Day in Rhodesia
- Oct. 24: Independence Day in Zambia and UN Day in the Somali Republic
- Oct. 26: National Holiday in Austria, Government Holiday in Rwanda
- Oct. 28: Independence Day in Czechoslovakia, National Day in Greece
- Nov. 1: Revolution Day in Algeria, All Saint's Day in many countries.
- Nov. 6: Thanksgiving Day in Liberia
- Nov. 7,8: Anniversary of the Socialist Revolution : Communist countries
- Nov. 11: Independence Day in Rhodesia, Armistice Day WWI in France, Victory Day in Monaco.

DEUTSCHE WELLE LISTENER MAIL

Did you ever wonder how much mail an International Broadcaster like Deutsche Welle receives over a full year? Here are the figures they have provided in the DW Handbook 72.

Received from and quantity in 1970. The total received was 91,074.

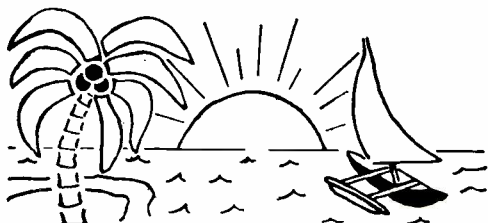
East Asia/South Asia: 26,008	North America: 9,341
Middle East: 8,859	Eastern Europe(incl. SE Europe)8,185
Africa: 14,064	Western Europe: 7,925
South America/Latin America: 9,186	Germany (incl. S Europe): 6,946

T3, Steve

ASIA-OCEANIA

editor

H Robert Bundy
Box 114
Truk Islands
Caroline Islands 96942



Frequencies are in kilohertz Deadline: 15th of the month Times are in GMT

--- ASIA ---

- AFGHANISTAN** 15265 *1800-1830* in Eng to Europe best bet
15265 1759 R Afghanistan, Kabul: s/on w/ID & Eng nx, 1805 mx, to 1828 s/off (poor 9/3 Griffith-CO) (good sev dates Fay-MA) (fair @ 1815 8/30 Johnson-CA)
- BANGLADESH** Best times are 1230 on 17935v and 1715 on 11650v
11650v 1712 R Bangladesh, Dacca: IS, s/on in GOS in Eng (good at first then QRN 9/10 Day-CA) (poor on 11652@1745 8/31 Fay-MA) (fair on 11659@1715 Johnson-CA)
15520 0130 RB, Dacca: music in HS (poor 8/27 Fay-MA); 0230 Eng GOS (poor 8/28 Zilmer-17935v 1230 RB, Dacca: GOS in Eng 1230-1300; fq varied 17930-17947 (fair 8/26 /WI) thru 9/4 Zilmer-WI) (poor@1247 8/24 Griffith-CO) (good daily Fay-MA) (fair @ 1245 w/"Listener's Letterbox" 9/2 Compton-MA)
- BRUNEI** Eng HS 1200-1430 on 7215 is widely heard
7215 1228 R Brunei: Eng pops & Eng ID at 1231 (poor 8/25 Griffith-CO) (fair@1200 9/11 Johnson-CA); TENT in Chi at 1050 (poor 9/3 Fay-MA)
- BURMA** 5040 w/Eng at 1430 is good bet for WC DXers...For EC DXers try earlier in Burmese on 5040 or in local dialects on 4725
5040 1430 BBS, Rangoon: Eng w/mx to 1445 Eng news; f/o 1450 (poor 9/5 Johnson-CA) ...If you are ever to log 955MW (// 5040), now is the time!...
- CHINA, People's Republic of** Stick to Eng pgms if its a "QSL" that you want
RP broadcasts in Eng to the Americas 0000-0500 on various frequencies
6560v 1000 R Peking HS: s/on in new Korean HS pgm to 1045 s/off; Russian service at 1100 (fair 9/8, 9/9 Magne-PA) ...Larry points out before the "Cultural Revolution" RP broadcast in several minority languages in HS. Some of of these pgms have been reactivated. So far Korean, Mongolian, Kazakh, and Uighur pgms have been here & "verified" by BBC MS. These programs are relayed by some regional stations also...
6840 1030 Inner Mongolia, Hu-ho-hao-t'e; Chi HS (fair 9/8 Magne-PA)
6973.8 1020 Inner Mongolia, Hu-ho-hao-t'e; Mongolian HS relaying new RP HS on 7201.7 and // 7201.7 (poor 9/8 Magne-PA)
7050.2 1115 Sinkiang Prov Stn, Urumchi: OM talk in Uighur HS (lang confirmed by BBC MS) (fair 9/8 Magne-PA) ...// 4110, 5441... ID at 1202 "Sinkiang Khalk Radyo Stansky" (fair 8/24 BB)
7120 0330 R Peking (this is Tirana relay): Eng talk on Vietnam (good 9/2 Shaw-PA)
7201.7 1025 R Peking HS: new Mongolian HS and relayed by Hu-ho-hao-t'e-6973.8 (poor 9/8 Magne-PA)
7350 1620 RP: Chi to 1629 s/off (poor 8/25 Jessen-OR) ...sked Urdu 1600-1630...
8195 1030 Fukien Front Stn: Clear Chi IDs by OM & YL (fair 8/30 Magne-PA)
8240 1021 RP: Cantonese (per BBC MS) Chi rev mx (poor 8/30 Magne-PA)
8425 1027 RP: Malaysian s/off "Inilah R Peking", Int & off (poor 8/30 Magne-PA)
9020 1245 RP HS 2: OM Chi talk & mx; TENT ID, but not // 11290 (fair 8/15 Sellers-ONT) ...look for //s 10260, 7770, 6345...
9064a 1240 RP HS 1: Chi YL talk // 11290 (fair 8/15 Sellers-ONT) ...could be 9080...
9440 1750 RP: Chi (Mandarin to Eur/Afper BBC MS--BB) talk, 1800 ID (poor 8/15 Jessen)
9780 0325 RP (This is also Tirana relay): Eng cmtry on Chi spirit (fair 8/13 Eichenhorn)
9820 1130 RP HS (presumed): Chi mx s/on 1130-1230 s/off with no IS, ID, or /-MI) amnts; is not daily (good 8/24 BB); RP Uighur HS s/on 1300-1345 s/off and relayed by Sinkiang 7050 & 4110 (good 8/23, 24 BB)
10660 0040 China Press Agency: Chi dict; first time hrd this fq // 11120, 14416, 16105, 16342, 16373, 16345, 17221, 17504; sked 0000-0200a (poor 8/16 BB)
11685 1200 RP: Eng nx // 11650 (fair 8/22 Zilmer) (fair 9/2 Sellers-ONT)

CHINA, P. R. (continued)

11720 1000 RF: Eng cmtry (good 8/27 Zilmer-WI) (fair@1020 8/23 Griffith-CO)
15094.5 1508 RP: nx in Eng (good 8/24 Griffith-CO)
15119.5 0930 RP: s/on seemingly in Tagalog // 12110 on new fq (good 8/30 Magne-PA)
15550 1215 RP: Chi pgm of Chi mx to 1228 s/off (fair 8/29 Shaw-PA)
17673 0045 RP: Eng reports of progress in China (good 8/26 Shaw-PA)
17855 0145 RF: Eng talks about Korea to 0157 s/off (good 8/26 Shaw-PA)

CHINA (TAIWAN)

VOFC 15345, & 17890 in Eng @ 0200 are best bets
11860 0850 VOFC: Jap pgm w/nice mx; // 11825-good (good 8/26 Griffith-CO)
11905 1520 VOFC: Chi talk & mx, 1530 Chi ID; jammed (v poor 8/16 Jessen-OR)
15345 0200 VOFC: Eng nx, cmtry; // 17890-poor, 17720-poor (fair 9/6 Johnson)
17720 0200 VOFC: Eng nx & features (poor 8/25 Hanchenuk-QUE) /-CA)
(poor 9/9 Catey-IL)

聲
之
國
中
由
自

CYPRUS

7140 0200 BBC Limassol: Eng ID, then Persian (p WRTH) nx (fair 8/14)
15740 0520 BBC Limassol: Eng "Morning Show" (poor/fair /Collier-NY)
9/4 Seymour-NC); also fair at 1345 (Seymour-NC)

INDIA

AIR GOS on 11810 1330-1500 is easiest going
7125 1325 AIR Delhi: 1328 IS, 1330 s/on in lang, 1332 Eng anmts, 1334 lang
past 1345 (fair 9/5 Griffith-CO)
9525 2200 AIR Delhi/Aligarh: Eng nx // 9912, 11620, 11740 (v Poor 8/26 Zilmer-WI)
9535 1225 AIR Delhi: Eng nx to 1235, then Hindi in HS (poor 9/5 Fay-MA)
9705 1245 AIR Delhi: Tibetan nx to Bhutan (fair 9/5 Fay-MA) ...How did you ID this?
9912 2200 AIR Delhi: Eng nx // 9525, 11620, 11740 (v poor 9/3 Zilmer-WI)
11710 2250 AIR Delhi: mx, 2300 Eng nx in GOS (poor 8/21 Griffith-CO)
11735 1225 AIR ?Delhi?: Eng in HS 1225-1235 // 9535, 15430 (poor 9/4 Zilmer-WI)
11740 2200 AIR Delhi/Aligarh: Eng nx cmtry beamed to Aust/NZ (poor 9/3 Zilmer-WI)
11775 1000 AIR Delhi: Eng nx, cmtry to Aust (fair 8/3; Fay-MA) (fair@1032 8/23
Griffith-CO) (fair@1052 9/3 Zilmer-WI)
11810 1330 AIR Delhi: nx in Eng @ s/on, 1340 cmtry (good 8/29 Shaw-PA); // 15335-
fair (v good@1330 9/3 Zilmer-WI) (good@1328 sev days Fay-MA)
(fair@1346 8/10 Griffith-CO) (fair@1400 8/20 Eichenhorn-MI)
11850 1225 AIR Delhi: Eng in HS to 1235 (fair 9/5 Fay-MA)
11865 1245 AIR Delhi: Tibetan nx to Bhutan (good 9/5 Fay-MA) ...// 9705?...
11950 1945 AIR ?Delhi?: Eng to Africa on new fq, ex-11960 (poor 8/15 Fay-MA)
15080 1900 AIR Bombay: Eng nx, cmtry (fair 9/3 Johnson-CA)
15205 1055 AIR Delhi: Eng prog preview to 1100 s/off (fair 9/1 Zilmer-WI)
15235 0100 AIR Delhi: Eng nx, mx to Asia (fair 9/1 Zilmer-WI)
15335 1330 AIR Delhi: Eng nx, cmtry, mx (fair 8/24 Zilmer-WI) ...I believe (per
WRTH) that this mxn from Delhi while Tamil 1:30-1230 from Madras...
17845 1225 AIR Delhi: Eng nx to 1235 (fair 9/5 Fay-MA) (poor 9/2 Zilmer-WI)
...QTHs per WRTH; if you have other info please let us know...

INDONESIA

One possibility is VOI-11793 in various languages 1100-1600;
but WRTH sked is obsolete. Among regionals RRI Jogjakarta 5047 is widely
heard and QSLd w/Eng around 1130 or 1145.
3223 1503 RRI Mataram (presumed): Indo nx to 1520 "Love Ambon" w/RRI IDs, off at
1255; static covered QTH during ID (fair w/A20 & using LSB 8/25 BB)
3414 1320 RRI Medan; Sumatra: Indo talks // 5084 (poor w/A20 8/25 BB)
4872 1127 RRI Sorong, West Irian: Indo mx & talk; severe QRN (v poor 9/2 Zabransky-
5054 0910 RRI Bandung, Java: Indo anmts & Indo mx, 0958 clear ID on this /IA)
new fq (good 8/25 BB)
5560 1045 UNID: Indo pgm, 1158 seeming non-RRI ID, however relayed RRI nx at 1200
7165.6 ??? RRI Djajapura, West Irian (unid put here by BB); modern / (poor 8/25 BB)
Asian mx; QRM VOA-7165 (poor 9/6 Magne-PA) ...Djajapura heard here irregu-
larly--9/15 on about 0850 // 3905 w/severe QRM de Fukien-7165; jammers on
at 0930 presumably w/VOA-7165...

11793 1145 VOI Djakarta, Java: in lang, then chimes (1200?) & Fr ID "Ici Djakarta la
Voix de l'Indonesie" (fair 8/23 Zilmer-WI) ...So Fr 1200-1230?...

IRAN

15084 1330 R Iran, Teheran: Farsi HS at various times (v good@1330 9/3 Fay-MA) (fair
@ 1335 8/19 Eichenhorn-MI) (v good@1815 9/7 Ladenburger-IL) (good@2056
8/20 Collier-NY) ...Anyone trace FS? A cursory check of 12165 zero here...

IRAQ

9745 1930 R Baghdad: bird IS w/IDs, Eng nx, mx (v good 8/27+ Fay-MA) (fair 9/1 Sey-
15400 0330 R Baghdad: bird IS, Arab ID, chants (fair 8/28 Faw-MA) /mour-NC)

NOTES: As a service to beginning DXers who are still building their country
list, I have pointed out some the best chances for hearing various countries.
Let me know whether or not you find this useful.

ISRAEL

- Eng 2035-2115 on 9625 seems best bet
 9009 0410 IEA, Jerusalem; Russian heavily jammed to new s/off time 0446 // 9625, 11855 (useless 8/31 Magne-PA); Eng at 2045 (v poor 9/4 Zilmer-WI)
 9625 2035 IEA: Eng nx & various features (good 8/29 Fay-MA) (fair 9/3 Miller-OH) (9/1 Seymour-NC) (good 8/23 Shaw-PA) (fair 8/28 Zilmer-WI)
 11855 1940 IEA: new fq for 300 kw tx (ex-11760/11715/6170/7225) w/Hebrew, Russ, Eng, Fr, Russ to 2251 s/off; // 9009, 9625; listed 9725 not heard; broadcaster QRM & effective jamming at times (useless to exc 8/20 & after Magne-PA)

JAPAN

- NA sce of NHK 2345-0045 & 0100-0300 on 17825 et al
 3910 0950 FEN Tokyo: Eng pgm of mx (poor 9/3 Fay-MA)
 6055 1025 NSB Tokyo: Jap talks, mx (fair 8/31 Fay-MA)
 6155 0753 FEN Tokyo: drug abuse PSA, mx, 0800 ID & nx (good 8/15 Griffith-CO)
 7195 0941 NHK Tokyo: IS w/Jap & Eng IDs, 0945 Chi s/on in SEA ser; // 9705 & 11940
 9560 1300 NHK Tokyo: Eng nx in GOS (poor 9/4 Zilmer-WI) //(good 8/25 Griffith-CO)
 9595 1045 NSB Tokyo: "Let's Learn Japanese" in Eng (good 8/31 Fay-MA)
 9655 0629 JKH2, NHK HS1, Tokyo: sporting event in Jap (good 8/16 Jessen-OR)
 11780 0940 NHK Tokyo: IS w/Jap & Eng IDs, 0945 s/on to LA (good 8/26 Griffith-CO)
 11815 1300 NHK Tokyo: Eng nx (fair 9/4 Zilmer-WI)
 11875 1015 NHK Tokyo: Eng ser to A/NZ // 15235; cmtry on US pres race "The only difference between the two political parties can be compared to different brands of toothpaste" (fair 8/25 Griffith-CO) (fair 8/28 Zilmer-WI)
 11940 0945 NHK Tokyo: Chi s/on to SEA (poor 8/23 Griffith-CO)
 15105 1600 NHK Tokyo: Eng in GOS (fair 8/24 Zilmer-WI) (fair@2108 8/21 Jessen-OR)
 15235 0945 NHK Tokyo: Eng "Melody Time" to A/NZ (poor 8/27 Zilmer-WI)
 15260 0625 FEN Tokyo: Eng pops, 0630 ID (poor 9/8 Griffith-CO)
 15300 1200 NHK Tokyo: GOS in Eng/Jap (fair 8/19 Fay-MA)
 15420 2030 NHK Tokyo: Eng nx in Eur ser (fair 8/16 Jessen-OR)
 17825 0030 NHK Tokyo: Eng features in NA ser (good 8/23 Shaw-PA) (fair 9/4 Miller-OH)
 17855 0900 NHK Tokyo: Eng nx in GOS (fair 8/16 Stuart-OK)

KOREA, North

- Eng at 1200 on 9515 can be heard with fair sigs
 9515 1200 R Pyongyang: IS, Eng IDs, nx & cmtry to SEA (fair sev dates Fay-MA) (poor 9/2 Zilmer-WI) (fair@1213 8/25 Griffith-CO) (v good@1245 9/10 Day-CA) (good 8/31 Fay-MA) ...// 95151...
 15150 0800 R Pyongyang: Eng nx & cmtry, mx (good 9/11 Johnson-CA); Eng at 1200 /CA

KOREA, South

- For good results try 9640 at 0900 or 1200
 9640 0907 WOFK: Eng nx by OM, 0909 cmtry (fair/good 8/25,26 Griffith-CO)
 9640 1200 WOFK: Eng nx & cmtry (fair 9/10 Johnson-CA) (poor 9/3 Zilmer-WI) (fair 8/31 Ladenburger-IL) (fair 8/30 Fay-MA)
 15335 0905 WOFK: Eng nx & ID by OM (poor 8/23 Griffith-CO) ...// 9640...
 KUWAIT
 15345 0545 R Kuwait: Eng pgm of light pops (poor/fair 9/2 Seymour-NC)
 15415 1730 R Kuwait: s/on w/Eng nx, wx, pops, 1800 hard rock, 1900 Arabic (fair 8/26 Seymour-NC) (fair 8/28 Eichenhorn-MI) (good 8/29 Fay-MA) (good 9/4 Miller-OH) ...Does this freq replace 15345 at 1600?...
 15425 1745 R Kuwait: Eng w/mx requests; definitely this fq (fair 8/27 Fischer-PA) ...must have been one day only...

LEBANON

- Best time is 0230 w/Eng in FS on 9550 // 11955
 9550 0230 V o Lebanon, Beirut: XL w/Eng ID & fq info, then Eng nx (good 9/6 Estand-TX) (fair/good 9/3 Zilmer-WI) ...// 11955...
 11955 0230 V o Lebanon: as above w/mx after nx (good 8/31 Shaw-PA) (good 8/14 Lanoue-MA) (fair 8/29 Johnson-CA) (good 8/28 Fay-MA)

MALAYSIA

- You might try for R Malaysia in Eng around 1100 on 9665
 Several BBC fqs are widely heard, but for a real QSL stick to R Malaysia
 BBC Tebrau: Eng "Sport's Review" (fair 8/27 Zilmer-WI)
 7110 1540 R Malaysia, Kuala Lumpur (presumed): Chi vocal mx, 1600 Chi nx (fair 8/14 Jessen-OR) ...Look for ID simply as "R Malaysia, Kuala Lumpur" on half-hour
 7180 1429 BBC Tebrau: Eng IDs, 1430 TC, then into lang (fair 9/5 Griffith-CO)
 9665 1115 R Malaysia, KL: business nx, mx, ads all in Eng (good 8/26 Griffith-CO)
 9740 1300 BBC Tebrau: Eng nx to Asia (poor 9/4 Zilmer-WI) (fair@1615 8/14 Jessen-OR)
 11750 1133 BBC Tebrau: Eng pgm on Otto Preminger (good 8/25 Griffith-CO)
 11850 1915 BBC Tebrau: Eng "Outlook" (fair/good 9/1 Seymour-NC)
 15310 1200 BBC Tebrau: Eng "Radio News Reel" (fair 8/25 Zilmer-WI)

MONGOLIA

- This is a toughie...Cf A/O for July & August
 8893 1230 R Ulan Bator: OM w/talks on Mongolia, 1238 soft instr mx, 1241 ID, talks to 1248s/off (all in English) (poor/fair 9/9 Johnson-CA) ...This freq is supposedly a spurious emission from 17786...However I suspect that it is intentionally maintained as they do verify reports...
 11860 2200 R Ulan Bator: definite ID at Eng s/on, then nx (poor 8/8 Trautschold-WI) ...nice catch!...

Remember to report any new frequencies being heard!!!

PAKISTAN 15520v & 21590 are widely hrd... See below for times
 11672 2000 R Pakistan, Karachi: Eng to Europe (v good 8/31 Fay-MA)
 11973v 2115 RP: Sylheti to Eur on new fq // 11671v, 15524v w/IDs as "West Pakistan"; don't know if fq still in use (fair 8/27 Magne-PA)... don't hear it here...
 15520v 2035 RP: Eng pgm "Music by Request" of Pak mx (fair 9/3 Whitehead-MA); Eng dict nx at 1746 (fair 9/1 Ladenburger-IL) (fr/gd 8/30 Johnson-CA) (poor @ 1813 9/1 Griffith-CO) (good @ 2000 often Fay-MA) (fair on 15523 @ 2030 Zilmer-MA)
 17840 1335 RP: Eng dict nx // 21590 on new fq (fair 8/29 Fay-MA) (WI)
 21590 1330 RP: Eng dict nx to 1345 at new time (ex-1335-1350) (good 9/3 Zilmer-WI) (fair 9/3 Griffith-CO) (v good 8/31 Fay-MA)

PHILIPPINES Why not try V of Phil on 9582v around 0800 to 1115 or so
 9582v 0757 V o Philippines: "Music as You Like It" to 0800, ID as R Filipinas, Overseas Ser of VoPhil, "Personalities & Events" daily 0800-0900, 0900 "Filipiniana" (folk mx); IDs at 1400 s/off give sked as *0300-1400* & freq as 9580 & 11950 (good except when RA-9580 s/on at 1115 sev dates Griffith-CO) ... I don't find 11950 either, Don... (good @ 0800 8/25 Day-CA) (fair 8/27 Zilmer-WI) (fair 8/31 Fay-MA)
 11775 1715 VOA Porot: in lang to Eng ID at 1800 s/off (fair 8/12 Jessen-OR)
 11890 0930 FEBC Manila: Eng "Back to the Bible" (fair 8/27 Zilmer-WI) (poor @ 0855 8/28 Eichenhorn-MI) (fair @ 0830 8/25 Lovell-KY)
 11920 1259 FEBC Manila: talk on stamps, then "Back to the Bible" (fair 8/25 Eichenhorn-MI) (poor/fair @ 1258 9/4 Miller-OH) (fair to 1400* 8/31 Fay-MA) (weak @ 1220 9/2 Sellers-ONT) (good 8/25 @ 1320 Griffith-CO)
 15440 1100 FEBC Manila: Eng rlg pgms (poor 8/25 Zilmer-WI) (fair @ 1245 8/29 Shaw-PA); Eng IDs then Indian pgm at 1600 (poor 8/24 Griffith-CO)

RSFSR, Asiatic
 4485 0930 Petropavlovsk (per BBC MS): OM Russian drama, but no ID hrd (poor 8/27 Magne 5960 0915 R Moscow: IS & s/on in Jap pgm (fair 8/15 Griffith-CO) (-PA)
 11905 0450 Nikolaevsk (WRTH): cl piano mx, 0500 IS, then Russ talk (fair 8/16 Jessen-OR)

R YUK YU ISLANDS
 7165 1650 VOA: Jap to Eng ID at 1700 s/off (good 8/15 Jessen-OR) (fair @ 1100 in Eng 8/20 Hanchenuk-QUE)

SABAH 5980 is best bet w/Eng @ 1100 & 1330
 5980 1345 R Malaysia, Kota Kinabalu: mx to 1400 network nx from Kuala Lumpur; // 4970-poor (fair/good 9/8 Johnson-CA)

SARAWAK 4950 & 7160 on WC, rarely reported from EC
 4950 1501 R Malaysia, Kuching: Eng nx, 1510 Eng ID (fair 8/25 Jessen-OR)
 7160 1409 R Malaysia, Kuching: Eng nx in progress, 1413 ID (poor 8/25 Griffith-CO)

SINGAPORE 11940 in Eng is a good bet
 11940 1355 R Singapore: mx w/ Eng IDs & TC's, 1530 Eng nx (poor 8/25 Griffith-CO) (Fair @ 1430 8/9 Stephenson-CA) (poor @ 1530 9/5 Fay-MA) (fair @ 1510 8/11 Jessen-OR)

SRI LANKA (a.k.a. Ceylon) Eng 1230-1700 to S Asia on 15120 is best choice
 9720 1230 R Ceylon: Eng w/mx requests (poor 9/3 Zilmer-WI)
 11800 1210 R Ceylon: Hindi mx & Hindi bnmts (fair 9/5 Collier-NY)
 15120 1520 R Ceylon: Eng pops, 1600 BBC nx (fair 9/3 Griffith-CO) (good 8/28 Johnson-CA) (fair @ 1650 9/4 Day-CA)

SYRIAN ARAB REPUBLIC
 9655 2030 R Damascus: Eng nx hrd thru hvy DW QRM (v poor 9/5 Fay-MA)

TIBET Some DXers count this as a country, but don't expect to get a QSL
 9490 1035 Lhasa: Chi HS to 1102 t/out, talks less militant than a year ago; severe QRM from R Peking Russ ser at times (fair when RP off 8/30 Magne-PA)
 Eng at 2200 on 15195 should be an easy catch

TURKEY
 9515 2200 R Ankara: Eng news (poor 9/6 Ladenburger-IL)
 11880 1755 R Ankara: Turk pgm w/native mx; mix w/unid (fair 8/31 Fay-MA) (v good @ 1920 8/20 Sellers-ONT) (good @ 0450 9/1 Harrington-CO)
 15195 2200 R Ankara: Eng nx, "Travels in Turkey", pop mx; *2200-2230* (exc 9/3 Compton-MA) (poor 8/12 Eichenhorn-MI) (fair 8/28 Fischer-PA) (fair 9/2 Griffith-CO) (fair 9/3 Johnson-CA) (good 9/1 Seymour-NC)

UZBEK SSR Transmitter QTHs for these stations might not be in Uzbek
 11730 1200 R Tashkent: Eng "Panorama" at s/on (poor 9/10 Day-CA) (fair 8/22 Lanoue-MA)
 11925 1200 R Tashkent: 1200 s/on w/pgm notes & nx in Eng (fair 8/25 Griffith-CO)

VIETNAM, North
 12018v 1247 VOV Hanoi: t/in to Jap pgm to 1257 s/off, s/on 1300 in Eng to 1327 s/off (poor 8/10, 25 Griffith-CO) (fair 9/10 Johnson-CA); POW tape at 1547 (poor 8/30 Griffith-CO)
 15006v 1300 VOV Hanoi: Eng to GIs (poor 8/25 Fay-MA) ... // 12018v...

VIETNAM, South Look for Viet HS on 6165, 7175, 7245, 9620, 11950
 7245 1025 VTVN Saigon: Viet ID, anmts, mx pgm (good 8/25 Fay-MA)
 11950.4 1030 VTVN Saigon: ID & TC by YL (fair 8/25 Griffith-CO)

YEMEN

5804 0300 R Sana: Ar s/on w/anthem, into chants (fair 8/27 Fay-MA)

CLANDESTINE

7006v 1105 VNUFK (Cambodia) (tent): OM talk; nothing else known here (poor 9/8 Magne-PA) ...That's what I hear here...

7216 1040 V of the Patriotic Militiamen's Front (CIA black clandestine) (S Vietnam): Viet lang, def accordion IS de VoPMF at 1100, usual fare, fade/out soon after; not // 9430 which s/off earlier; hets w/presumed Brunei-7214.7 & weak strn on 7215 (poor 9/6 Magne-PA)

9422.8 1000 V of the Thai People (China): 1000 Thai s/on daily, 1100 White Meo s/on Tu/Th/Sa only, chimes IS, IDs, nx (22322 8/30 et al Magne-PA)

9430v 0915 VoPMF (cf 7216): now daily in Viet to 0955 to 1005 variable s/off w/drums/cymbals; hrd as early as 0915; poor on new s/off time (ex-1100v) (24322 8/27 etc Magne-PA)

9988 1115 VNUFK: mx, Khmer talks (fair 9/3 Fay-MA) // 12005

14996.2 1457 SWN Liberation R (tent): YL & OM w/talk & short musical interludes past normal s/off time of 1700; RTTY (poor 9/4 Griffith-CO) ...Lib R has been reported 1600-2000 in Viet to Eur, but not confirmed here...

OPINIONS WANTED: Two of the above loggings have utilized the SINPO rating system in place of our usual quality rating. Obviously more information can be given in the same amount of space. Another possibility is the SIO code: (strength/interference/overall quality). What are your opinions regarding the possible introduction of one of these codes on an optional basis? Let the SWBC editors know how you feel.

--- OCEANIA ---

AUSTRALIA A full report this month on RA/ABC activities

4920 1355 VLM4, ABC Brisbane: Eng nx summary, 1400 s/off w/GSTQ (fair 8/9 Jessen-OH) (poor@1100 9/3 Zilmer-WI)

5995 1215 RA, Lyndhurst: pops in Eng (fair 8/19 Eichenhorn-MI) ...Pac Isles Ser...

6090 1130 VLI6, ABC Sydney: Eng anmts, mx (fair 9/5 Fay-MA) (fair 8/27 Zilmer-WI)

6150 1055 VLR6 ABC Melbourne: Eng w/ mx (fair 8/28 Zilmer-WI)

7140 1346 RA Shepparton: "World of Music" in Eng (fair 9/5 Griffith-CO) (fair @ 1205 9/5 Fay-MA) ...South Asia Service... *1100-1500*

9570 0745 RA, Shep: mx pgm in Eng (fair 8/21 Fischer-PA) ...to Pac *0700-0930*...

9570 1200 RA, Shep: light mx in Eng; not // 9580 (fair 8/28 Seymour-NC) (fair @ 1114 8/8 Eichenhorn-MI) ...SEA Ser *0930-1500*...

9580 1200 RA, Shep: "Club Forum" featuring the recorded voice of Steve d'Adolf (good 8/26 Brooks-CT) (good 8/8 Eichenhorn-MI) ...NA Ser *1115-1300*...

9610 1150 VLW9, ABC Perth: radio play in Eng (good 9/5 Fay-MA); drama at 1215 (good 9/3 Brooks-CT) (fair@1315 8/20 Eichenhorn-MI)

9660 1130 VLQ9, ABC Brisbane: "ABC Radio" w/instr mx (fair/poor 9/5 Collier-NY) (fair@1045 8/28 Zilmer-WI)

9680 0945 VLI9, ABC Melbourne: Eng nx (fr/pr 9/2 Sellers-ONT) (fr/pr@1203 9/5 Compton-MA) (fair@1226 Lanoue-WA 9/3) (fr/gd 9/4 Miller-OH) (fair@1230 Brooks-CT)

9680 1531 RA, Shep: "Nx reel"; Herbie won the Annual Lizard Race (fair 8/23 BB)

11710 1120 RA, Shep: Aust ed opinion in NA ser; // 9580-good (good 8/25 Griffith-CO) 1150 "Letterbox", 1200 "DXers Calling" (Sat) (good 8/27 Compton-MA) (v good@1215 8/27 Hanchenuk-QUE) (good@1110 8/30 Harrington-CO)

11765 0740 RA, Shep: Eng feature in Pac Is/Eur Ser (fair 8/21 Fischer-PA) *0645-0915*

11790 1109 RA, Shep: Eng to Asia at new time to 1500 s/off; QTH per QSL (fair 8/10,25 Griffith-CO) (good@1200 8/18 Shaw-PA) (fair@1210 9/5 Fay-MA)

11810 1104 RA, Shep: Eng nx to E Asia & NW Pacific (fair 8/25 Griffith-CO); // 11790 at 1210 (good 9/5 Fay-MA)

11945 1025 RA, Darwin: "Aust Nx Reel" on new fq; QTH per QSL (fair 8/25 Griffith-CO) (good@1000 8/27 Zilmer-WI)

15160 0505 RA, Lynd: Eng nx to mid-Pacific (fair 8/21 Fischer-PA) ...*2000-0830*...

15240 0600 RA, Lynd: Eng nx (fair 8/21 Fischer-PA) ...*0130-0800*...

15320 0130 RA, Shep: Eng nx (fair 9/4 Bye-PA) ...to NA *0100-0300*...

15320 0400 RA, Shep: French news (fair 8/20 Fischer-PA) ...new time as was *0430-0630*.

15320 0920 RA, Shep: Indonesian w/Eng pops to SEA (fair 8/23 Griffith-CO)

15395 0909 RA, Darwin: Eng nx ending (poor 8/23 Griffith-CO)

15425 0730 VLW15, ABC Perth: "Yours For the Asking" & ABC nx (exc 9/4 Leistner-CA); sporting event at 0810 (good 8/26 Fischer-PA)

17750 0240 RA, ???: Eng "News Reel" (good 8/16 Catey-LL) ...new fq?..

17795 0200 RA, Shep: Eng story of early settlers (good 9/6 Bye-PA) (good@0130 8/26 Shaw-PA) (good@0235 8/18 Stuart-OK)

REMEMBER: Use AIRMAIL when writing to Truk...It's only 11¢

FIJI ISLANDS

If you haven't logged Fiji yet, you had better hurry

3230 0645 Fiji Radio: Fijian talks, 0700 Eng ID; heavy QRN (poor 8/9 Jessen-OR)

NEW CALEDONIA

7170 1055 ORTF Noumea: Fr pgm w/mx (fair 8/28 Zilmer-WI)

11710 0605 ORTF Noumea: talks w/pop mx--French (good 8/26 Seymour-NC) (good @ 0845 8/31 Fay-MA) (fair @ 0930 8/27 Zilmer-WI)

NEW ZEALAND

9520 1115 RNZ Wellington: various features in Eng to 1144 s/off w/GSTQ (fair 8/18 Shaw-PA); Arthur Cushen DX Report at 1030 // 11705 (fair 9/6 Zilmer-WI) (v poor @ 1100 8/28 Eichenhorn-ML) (fair @ 0950 8/20 Griffith-CO) (34433 @ 1014 8/16 Lanoue-MA)

9540 0555 RNZ: IS & IDs at s/on; mix w/Poland (poor 9/3 Seymour-NC); 0600 BBC nx // 6080-poor (fair 9/9 Johnson-CA) (good @ 0716 8/20 Griffith-CO)

11705 1015 RNZ: Eng w/sports (fair 8/23 Griffith-CO) (good @ 1030 9/6 Zilmer-WI)

17770 0215 RNZ: "Afternoon Concert" cl mx (poor 9/6 Bye-PA)

15110 0445 RNZ: Eng w/opera mx to Pac Isles (v good 8/25 Jessen-OR)

PAPUA / NEW GUINEA Look for R Milne Bay now on 3360 w/increased power

3335 1108 R Wewak: C&W mx/Island mx w/Pidgin anmts (poor/fair 9/4 Miller-OH)

3360 0900 R Milne Bay: finally made the move w/vastly improved signals tho w/tech problems on this particular night (good 9/4 BB)

3925 0945 VLK3, ABC Pt Moresby: Eng w/mx (poor 9/3 Fay-MA)

4890 0800 VLT4, ABC Pt Moresby: National news in Eng (fair 8/24 Hanchenuk-QUE);

Radio drama at 1118 (fair 9/4 Miller-OH) (good @ 1050 9/6 Lanoue-MA) (fair @ 1100 9/3 Zilmer-WI)

9520 0755 VLT9, ABC Pt Moresby: "Listener's Choice" to 0800 s/off (good 8/20 Griffith SOLOMON ISLANDS /-CO)

3995 0940 SIBS Honiara: Eng anmts, mx (poor 9/3 Fay-MA)

TAHITI All frequencies are in parallel

9738v 0820 ORTF Papeete: in French on Sunday to 0900 late s/off; Tahitian & rock mx, 0900 Tahitian ID, "Marseillaise" & off; very unstable tx; // 11825-exc (fair 9/10 Magné-PA)

11825 0315 ORTF Papeete: lovely Hawaiian-like music, Tahitian lang (good 9/4 Shaw-PA) 0300 instr mx; // 15170-good (fair 9/2 Seymour-NC)

15170 0300 ORTF Papeete: s/on w/IS, ID, into mx pgm w/Tahitian anmts (good daily Whitehead-MA) (good daily & 9/2 Stephenson-CA) (good 8/26 Bye-PA) (good @ 0415 8/25 Hanchenuk-QUE) (good @ 0525 8/21 Fischer-PA) (fair 0657-0900 9/3 Leistner-CA)

A special welcome goes out to first time (to A/O) reporters: Bob Estand, Norman Hanchenuk, Rob Harrington, Rick Ladenburger, Terry Stuart, and John Trautschold. To new reporters, you can obtain reporting forms from Jim Whitehead. (Send him a SASE.) If you don't use forms, be sure to leave a space between loggings, write your name with each logging, and write on one side of the paper only. It's easy!

Mong ông trả lời. Chào Ông. 301

**Q.S.L. from
RADIO VILA**



Power 2KW GTH-2
TRANSMITTER: Rodion G40-60W
AERIAL: Dipole, direction North-South

This confirms your reception of Radio Vila on
... 3945 kHz between 0707.G and 0731.G on

..... June 5 1972

John A. ...

New Hebrides Broadcasting Service, Vila, New Hebrides

SWBC DX - Station Skeds



Times: GMT
 Deadline: 15th
 Dates: GMT

Robert Butterfield
 38 Hamilton Road
 Belmont, Massachusetts
 02178

WEST GERMANY

Deutsche Welle: Fall program sked.

Eastern North America;						
00.00-02.15	9.565	6.170	6.145	6.100		German
01.30-02.50	9.615	9.545	6.075	6.040	<u>6.010</u>	English
Central North America;						
02.00-04.15	9.735	6.170	6.145	6.100		German
Western North America;						
04.00-06.10	9.735	6.185	6.155	6.100		German
04.35-05.55	9.765	9.545	6.145	6.075		English

CANADA

Deutsche Welle: Sackville relay.

Central North America;						
02.00-04.15	9.605	<u>6.085</u>				German

Underlined frequencies are new.

(Richard Wood and direct)

KUWAIT

Radio Kuwait: Sked as announced.

17.30-19.00	15.415					English (Woody Seymour)
-------------	--------	--	--	--	--	----------------------------

MALAYSIA

BBC: The BBC relay at Tebrau has change the freq. of its beam to Western North America from 9.580 mHz to 9.740 mHz. A parallel transmission on 11.750 is also broadcast. Transmission time is 15.00-16.30.

(Richard Wood)

PORTUGAL

Radio Portugal: Fall schedule.

Eastern United States;						
02.00-02.45	11.935	6.025				English
Western United States;						
03.45-04.30	11.935	6.025				English
Canada;						
03.00-03.45	11.840					English (direct)

CANADA

Radio Canada: Fall schedule.

North America;						
01.00-02.00	9.635	6.085				English
Europe, North America, Caribbean;						
12.15-13.15	17.820	15.325	15.315	11.720	5.970	English
Caribbean Area, Latin America, North America;						
23.00-23.30	15.190	11.945	9.625			English

(Bill Stevens, Simon Petravick, Sandy Eichenhorn and Richard Wood)

AFARS AND ISSAS

O.R.T.F.: Djibouti

09.00-20.00	4.780	(weekdays)
05.00-20.00	4.780	(Sundays and holidays)

French at 05.00, 10.15, 17.00; Afars at 09.45, 18.00; Somali at 10.00, 16.00; Arabic at 05.15, 11.00, and 15.45 hours.

(Norman Hancheruk)

ALGERIA

Radiodiffusion-Television Algerienne: This station appears to have made many schedule changes. It has been noted with Arabic service sign-on at 06.00 on new 6.000 and 15.410, apparently replacing 9.510 and 11.810. Arabic also noted on 21.607 at 14.00-16.00.

(Richard Wood)

SORRY FOR THE
 SHORT COLUMN, WILL
 GET BACK TO NORMAL
 NEXT MONTH. 731 Bob

Utility Chaser's Corner

PAUL MAYO
2409 Ocean Parkway
Brooklyn, New York 11235

Deadlines: 15th of the month

North & Central America

<u>ALASKA:</u>	6738	Elmendorf Aer (USAF) w/tfc @ 0835-USB	(Griffith)
	8989	Elmendorf Aer (USAF) w/Mac00445 @ 0936-SSB	(Kamp)
	13250a	Elmendorf Aer (USAF) w/Skyking bc @ 2207-SSB	(Kamp)
<u>BARBADOS:</u>	9970	8PX43,C&W,Carrington w/Eng/TT @ 0324-SSB	(Greenall)
	11475	8PX52,C&W,Carrington w/HIA @ 1222-CW	(Compton)
	11515	8PX53,C&W,Carrington w/Eng/TT @ 0710-LSB	(Griffith)
<u>BERMUDA:</u>	10635	ZFD49,C&W,St Georges w/Eng/TT @ 1755-SSB	(Imbert)
		@ 1245-SSB (Lay)	
<u>CANADA:</u>	15032	St Johns Mil, Nfd w/Wx bc @ 2142-SSB	(Greenall)
	2600	VBH,Sarnia Rad w/MAFOR bul @ 0035-AM	(Williamson)
	12849	CFH,Ellerhouse w/NAWS mkr @ 1327-CW	(Compton)
	12876	VAI,Vancouver w/CQ mkr @ 0022-CW	(Compton)
<u>CANAL ZONE:</u>	12883	NBA, Balboa w/CQ mkr @ 0148-CW	(Compton)
<u>CUBA:</u>	7930	CLA269,IRTS,Bauta w/Eng/Sp/TT @ 0020-SSB	(Sellers)
	8690	CLA21,Havana w/CQ mkr @ 0133-CW	(Compton)
	13062	CLA21,Havana w/CQ mkr @ 1530-CW	(Compton)
	14505	CML38,IRTS,Bauta w/Eng/Sp/TT @ 2254-SSB	(Kamp)
	18175	CML52,IRTS,Bauta w/Eng/Sp/TT @ 1850-SSB	(Imbert)
	18840	CML56,IRTS,Bauta w/Eng/Sp/TT @ 1500-SSB	(Imbert)
	19708	CLA234,IRTS,Bauta w/Eng/Sp/TT @ 0223-SSB	(Tafel)
	19955	CML60,IRTS,Bauta w/Eng/Sp/TT @ 1840-USB/RC	(Griffith)
<u>GUANTANAMO:</u>	11110a	AACR,Guantanamo Bay w/Eng/TT @ 0338-SSB	(Lay)
	13750a	AACR,Guantanamo Bay w/Eng/TT @ 1850-SSB	(Sellers)
	15500a	AACR,Guantanamo Bay w/Eng/TT @ 0000-SSB	(Oliver)
<u>MARTINIQUE:</u>	8675	FPP,Ft de France w/CQ mkr & tfc list @ 0442-CW	(Kolb)
	22700a	FUF,Ft de France w/"FAAN de PUF" @ 2349-CW	(Compton)
<u>MEXICO:</u>	8514	XFL,Mazatlan Rad w/CQ mkr @ 0540-CW	(Kolb)
	20150	XDD276,PTT w/Eng/Fr/Sp/Jap/TT @ 1830-LSB/RC	(Griffith)
<u>PANAMA:</u>	9132.5	HPI,TRT,Panama City w/Eng/Sp/TT @ 0237-RCSSB	(Greenall)
	10670	HPH,TRT,Panama City w/Eng/Sp/TT @ 1246-RCSSB	(Lay)
<u>U.S.A.:</u>	2182	NOY,Galveston,TX w/tfc @ 0512-AM	(Sellers)
	2514	WBL,Buffalo,NY w/MAFOR @ 2330	(Oliver)(Williamson)
	5484	WSY70, NY Aer w/Argentina 321 @ 0247-AM	(Sellers)
	5870	NSS,Annapolis,MD w/V mkr @ 0015-CW	(Greenall)
	7515	AAC32,Carlisle Barracks,PA w/Eng/TT @ 1030-LSB	(Griffith)
	8570	WNU(TRT),Pearl River,LA w/CQ mkr @ 0138-CW	(Greenall)
	8595	KOK,Los Angeles,CA w/CQ mkr @ 1151-CW	(Eaton)
	8618	KPH,San Francisco,CA w/V mkr @ 2215-CW	(Nudelman)
	8790a	Ocean Stn Charlie w/Boston Rad @ 0105-AM	(Compton)
	9277.5	NFG,Dixon,CA w/V mkr @ 2125-CW	(Nudelman)
	10700a	AFA,MD w/long count mkr @ 0802-SSB	(Kamp)
	12704.5	WLO,Mobile,AL w/mkr @ 0156-CW	(Compton)
	12970.5	WOE(RCA), Lake North,FLA w/V mkr @ 2104-CW	(Greenall)
	12997.5	WSL,Amaganset,NY w/CQ mkr @ 2110-CW	(Compton)
	16820a	NUW(USN),Wilbey Is w/V mkr @ 0015-CW	(Compton)
	17208.8	KLC,Galveston,TX w/CQ mkr @ 2130-CW	(Compton)
	17440	WFK27,ITT,NYC w/Eng/TT @ 1336-LSB/RC	(Griffith)
	18023	MacDill Aer,FLA w/tfc @ 1800-USB	(Griffith)

South America

<u>ARGENTINA:</u>	17045.6	LPD46,Gen Pacheco Rad w/V mkr @ 2233-CW	(Compton)
<u>BRAZIL:</u>	13105.5	PPR,Rio de Janeiro w/tfc @ 0140-CW	(Compton)
	22800a	EMBRATEL,Rio w/Eng/Pt/TT @ 1625-SSB	(Lay)
<u>CHILE:</u>	8065	CCS,Santiago w/mkr @ 0100-CW	(Lucier)
<u>COLOMBIA:</u>	13087.5	HKB,Bogota w/CQ mkr @ 2031-CW	(Compton)
<u>ECUADOR:</u>	10038	HDA63,ENTEL,Quito w/Sp/TT @ 0100-SSB	(Greenall)
	15610	HDA78,ENTEL,Quito w/Sp/TT @ 1844-SSB	(Boomer)
	19605	HDA86,ENTEL,Quito w/Sp/TT @ 1653-SSB	(Tafel)
	19920a	ENTEL,Quito w/Sp/TT @ 1237-RCSSB	(Compton)
<u>GUYANA,FR:</u>	19512.5	FZC95,FTS,Cayenne w/Fr/Eng/TT @ 1649-SSB	(Tafel)
		@ 1448-SSB (Compton)	
	19700a	FTS,Cayenne w/Eng/TT @ 1759-SSB	(Boomer)

NETHERLAND 13042.5 PJC, Curacao Rad w/CQ mkr @ 2159-CW (Compton)
W. INDIES: 19744 PJN19, GRTA, Curacao w/Eng/TT @ 1445-SSB (Oliver)
PARAGUAY: 14580 ZPN, ANTELCO, Asuncion w/Eng/Sp/TT @ 2300-SSB (Lay)
SURINAM: 17676 PZB48, LTT, Paramaribo clg NY @ 1153-SSB (Williamson)
TRINIDAD: 18075 9YD85, T&T Tel w/Eng/TT @ 1242-SSB (Tafel)
URUGUAY: 11660 CXL25, PTT, Montevideo w/Sp time @ 1010-USB/RC (Griffith)
VENEZUELA: 17591 YWM, Maracaibo clg NBA @ 1952-CW (Griffith)

Europe - What's so interesting about FTS??
AZORES: 6425a CUG33, Pt delgada w/CQ GBJ5 @ 0010-CW (Compton)
DENMARK: 8598 OXZ4, Lyngby w/CQ mkr @ 0253-CW (Greenall)
ENGLAND: 13030 BPO, Portishead w/Eng/TT @ 0014-SSB (Compton)
 17285 BPO, Portishead w/Eng/TT @ 1840-SSB (Tordoff)
FINLAND: 6425 OFJ7, Helsinki Rad w/Eng/Fi/TT @ 1514-AM (Compton)
FRANCE: 6400a FUE, Brest Rad w/V mkr @ 0042-CW (Compton)
 8751.2 FPL32, St Lys Rad w/Fr/TT & MM @ 0405-SSB (Lay)
 10745 FTK74, FTS, Paris w/Eng/Fr/TT @ 0240-SSB (Imbert)
 11200a FTK56A, Paris w/QRA mkr @ 1824-CW (Compton)
 18805 FTS8Ø, FTS, Lyon w/Eng/Fr/TT @ 1715-USB/RC (Griffith)
 18890 FTS99, FTS, Lyon w/Eng/Fr/TT @ 1915-SSB (Imbert)
 19255a FTS, Paris w/Eng/Fr/TT @ 1820-SSB (Tordoff)
 19830 FLE38, FTS, Paris w/Eng/Fr/TT @ 1755-SSB (Tordoff)
 20080 FTU8, FTS, Paris w/Eng/Fr/TT @ 1520-LSB (Griffith)
 24460 FLE65, FTS, Paris w/Eng/Fr/TT @ 1655-SSB (Imbert)
GERMANY, E: 8660 DHS, Reugen Rad w/V mkr @ 1404-CW (Greenall)
 20060 DKC6, ORTS, Nauen w/Eng/Fr/Ger/TT @ 1207-SSB (Williamson)
 20505 ORTS, Nauen w/Eng/Fr/Ger/TT @ 1153-SSB (Raymond)
GREECE: 8690 SVA, Athina1 Rad w/V mkr @ 0250-CW (Greenall)
 1318A SVA, Athina1 Rad w/Eng/Grk/TT @ 0348-AM (Boomer)
ICELAND: 12175 TFJ, Reykjavik Rad w/Eng/Ic/TT @ 1825-AM (Compton)
 @ 2125-AM (Greenall) @ 2053-AM (Boomer)
ITALY: 8649.5 ICB, Genova Rad w/V mkr @ 0250-CW (Greenall)
 8679 IQX, Trieste w/V mkr @ 0041-CW (Compton)
 10135 IRR31, ITALCABLE w/Eng/It/TT @ 0522-SSB (Sellers)
 13011 IQH, Napoli P.T. w/V mkr @ 2136-CW (Compton)
 13147.5 IAR, Rome w/Eng/It/TT @ 0039-AM (Kamp)
 14485 IRL24, ITALCABLE w/Eng/Fr/Sp/It/TT @ 2125-RCSSB (Compton)
 19684 IRR46, ITALCABLE w/Eng/Fr/Sp/It/TT @ 1805-SSB (Tordoff)
 20430 IRS24, ITALCABLE w/Eng/Fr/Sp/It/TT @ 1843-SSB (Tafel)
NETHERLANDS: 8708 PBC, Goeree w/V mkr @ 0330-CW (Peters)
 10735 PCL5Ø, PTT, Kootwijk w/Eng/TT @ 0025-SSB (Sellers)
 @ 0055-SSB (Imbert)
 17103.5 PCH93, Scheveningen Rad w/CQ mkr @ 2140-CW (Compton)
 20055 PBK7Ø, PTT, Kootwijk w/Eng/TT @ 1910-LSB (Sellers) (Griffith)
NORWAY: 8036 LHU, Jeloey w/V mkr @ 2345-CW (Peters)
 18001.5 LMA, Fanaraaken w/V mkr @ 1306-CW (Griffith)
POLAND: 13295a PTT, Warsaw w/Eng/TT @ 0345-SSB (Lay)
PORTUGAL: 8490 CUL7, Lisbon Rad w/tfc @ 0030-CW (Compton)
 13042.5 CTV3, Monsanto Rad w/CTAA @ 1844-CW (Compton)
RSFSR, EUR: 13196 UDH, Riga Rad w/CQ mkr @ 0120-CW (Compton)
 15540 ROW23, PTT, Moscow w/Eng/TT @ 1430-USB/RC (Griffith)
 17155 UPB, Odessa Rad w/CQ mkr @ 2148-CW (Compton)
 18870 RFG26, PTT, Moscow w/Eng/TT @ 1132-SSB (Compton)
SPAIN: 12950a EBA, Madrid w/id mkr @ 0012-CW (Compton)
SWITZERLAND: 19565 HEØ8, PTT, Schwarzenburg w/Eng/Fr/Sp/TT @ 1610-SSB (Lay)
 @ 1855-SSB (Imbert)
YUGOSLAVIA: 16242 YTG9, PTT, Belgrade w/Eng/TT @ 1420-RCSSB (Lay)
 8700 YUZ, Rijeka Rad w/V mkr @ 0115-CW (Compton)

Africa
ALGERIA: 19200a PTT, Algiers w/Eng/Fr/TT @ 1820-SSB (Raymond)
ASCENSION: 23545 ZBI234, C&W w/Eng/TT @ 1450-SSB (Imbert)
 23583 ZBI235, C&W w/Eng/TT @ 1435-SSB (Oliver)
CAMEROUN: 19890 TJP98, FCR, Douala w/Fr/Eng/TT @ 1715-SSB (Raymond)
 @ 1452-SSB (Imbert)
 20832m FCR, Douala w/Fr/Eng/TT @ 1805-SSB (Tordoff)
ETHIOPIA: 14430 AEZ, Asmara w/Eng/TT @ 0235-SSB (Sellers)
 17435 ETQ44, IBOT, Addis Ababa w/Eng/Amh/TT @ 2027-SSB (Lay)
GAMBIA: 8796 VSH, Bathurst w/Eng/TT @ 0053-SSB (Compton)
GUINEA: 19100a PTT, Conakry w/Eng/Fr/TT @ 1350-SSB (Imbert)

IVORY COAST: 12115 TUP21,INTELCI,Abidjan w/Fr/Eng/TT @ 0225-SSB (Sellers)
LIBERIA: 19940 ELA29,Lib Tel,Monrovia w/Eng/TT @ 1146-SSB (Raymond)
 20122 KKN44,US Embassy,Monrovia w/QRA mkr @ 1522-CW (Griffith)
MALI: 22983m TIM,Bamako w/Fr/TT @ 1425-USB (Griffith)
MAURITIUS: 12988.5 GZC(BRN),Vacoas w/V mkr @ 2148-CW (Compton)
NIGER: 15931 5UA,FCR,Niamey w/Fr/Eng/TT @ 0213-SSB (Tafel)
SENEGAL: 20327.5 6VK221,FCR,Dakar w/Fr/Eng/TT @ 1452 (Griffith) @ 0139 (Tafel) @ 2017 (Compton) @ 1405 (Raymond) @ 1124 (Williamson) all on DSB/RC
 23650a 6WW(Fr Navy), Dakar c/q FAAE @ 2057-AM (Compton)
SOUTH AFRICA: 8686 ZSC,Capetown w/CQ mkr @ 0248-CW (Greenall) According to Jack White, ZSC needs reception reports on various frequencies!!!!
 15950 ZUD78,Olifantsfontein w/Eng/Afr/TT @ 0705-LSB/RC (Griffith)
 22770 ZUD96,Olifantsfontein w/Eng/Afr/TT @ 1610-SSB (Lay)
TOGO: 14777 5VH347,FCR,Lome w/Eng/Fr/TT @ 0230-SSB (Greenall)

Asia
CHINA, PDR: 15000 BPV,Shanghai w/cw id's @ 1530-CW (Griffith)
CHINA, REP: 18375 BCT28,Taipei w/QRA mkr @ 0650-CW/A2 (Griffith)
CYPRUS: 10141 5BC46,CTA,Nicosia w/Eng/TT @ 2240-SSB (Greenall)
 19155 5BC91,CTA,Nicosia w/Eng/TT @ 1723-LSB/RC (Griffith)
HONG KONG: 8903 Hong Kong Aer (Volmet) w/Wx @ 0940-AM (Leistner)
IRAN: 18560 EPJ,PTT,Tehran w/Eng/Fr/Per/TT @ 1255-SSB (Lay)
 18750a PTT,Tehran w/Eng/Per/Fr/TT @ 1340-SSB (Imbert)
IRAQ: 18900 YIG87,PTT,Baghdad w/Eng/Ar/TT @ 1725-USB(Boomer) (Griffith)
ISRAEL: 13051.5 4X0,Tel Aviv w/CQ mkr @ 2149-CW (Compton)
 20072.5 4XX20,PTT,Tel Aviv w/Eng/TT @ 1440-USB/RC (Griffith)
 20105 4XX30,PTT,Tel Aviv w/Eng/TT @ 1615-USB (Griffith)
 20280 4XX40,PTT,Tel Aviv w/Eng/TT @ 1450-USB/RC (Griffith)
KUWAIT: 11576 9KT29,PTT w/Eng/Ar/TT @ 1345-LSB/RC (Griffith)
JAPAN: 13008 JOR,Nagasaki w/CQ mkr @ 1335-CW (Nudelman)
 13340 Tokyo Volmet w/Wx @ 1110-AM (Williamson)
LEBANON: 13101 ODR,Beyrouth w/CQ mkr @ 2041-CW (Compton)
TURKEY: 6425a TBA,Ankara w/V mkr @ 0007-CW (Compton)

Oceania-Excellent catch....Cook Islands!!!
AUSTRALIA: 10017 SYNGE Volmet w/Wx @1232-AM(Sellers) @ 1100(Williamson)
 12000 VNE,Lyndhurst w/time pips @ 0554-AM (Sellers)
 22474 VIS6,Sydney w/ V mkr @ 2157-CW (Compton)
COOK IS: 15725 ZKS4,Govt Stn w/Eng/TT @ 0415-SSB (Peters)
GUAM: 8853.5 KCD72,Guam Aer w/tfc @ 0933-AM (8854 list) (Griffith)
 12786 NPN (USN) w/V mkr @ 1346-CW (Nudelman)
HAWAII: 13215.5 AGA,Hickam APB w/tfc @ 0740-USB (Leistner)
NEW ZEALAND: 8770.4 ZLW,Wellington Rad w/NZPO @ 0920-USB/RC (Griffith)
 11630m NZPO,Himatangi w/Eng/TT @ 0600-USB/RC (Griffith)
 22533 ZLB4,Awarua w/id mkr @ 2330-CW (Peters)
TAHITI: 8461 FJA,Mahina Rad w/mkr @0454-CW (Nudelman)
 11665 FZP6,FTS,Papeete w/Fr/TT @ 0550-LSB/RC (Griffith)
 19305 FZP93,FTS,Papeete w/Fr/TT @ 1415-USB (Griffith)

UN-ID & MILITARY: 5810 Numbers in Eng @ 2306-AM (Lovell)
 8989 MAC50274 wkg Loring AFB,ME @ 0935-SSB (Kamp)
 15054 Butterfield,Determinent & Stonewall w/tfc @ 1635-USB (Griffith)
 17590 Numbers in German @ 1506-AM(under jammer!) (Griffith)
 23120 Numbers in German @ 1708-DSB (Griffith)

Thanks again to 20 reporters! Welcome newcomers Greenall, Lucier, Oliver and Raymond. Special thanks to Ken Compton & Don Griffith who helped supply the meat to this months column!

Recent communications with the United States Air Force shows that they will QSL (witness their new card Sept Ute QSL Report). The USAF will QSL on frequencies of "common knowledge." These frequencies are those listed in ITU lists (List of Fixed Stations). They will not QSL any tactical broadcasts,such as Skykings!

till next month

73s

Paul

UTILITY QSL REPORT

EDITOR: Mark L. Koukol, 1232 N. Eagle St., Naperville, Illinois 60540

NEXT DEADLINE: tentatively October 17 (if things work out monthly)

The fall DX season is now upon us, and with the new loggings will hopefully come the QSLs! SWBC DXers: try tuning between the meter bands as well as within; South Crkney Is. on 13100 is as rewarding as Comoro Is. on 7260! As indicated in the deadline, if this column goes 1 page monthly reports for Nov. should be here by Oct. 17.

AUSTRIA: PTT Linz, 16160, sent full data cd w/drawing of station in 12D air; 2 IRC(Oliver-NH)
AZORES: CUW Lajes AFB, 7.7MHz, rtrnd PFC & ltr w/all data sans direction in 33D air, v/s John E. Causey; MS sent, not used(Lester-IL)
CAMEROON: FCR Doula, 12015, sent form ltr w/freq & date in 16M; Fr report, 2 IRC(d'Adolf-MA) FCR, 15755, form ltr w/freq & Xmr details only in 9M air; 1 IRC(Mayo-NY)
CAROLINE IS.(W.): USCG NRV7, 11606, rtrnd PFC w/all data plus nice ltr & station cd 17D air, v/s RM2 H.P. Ross; MS(Griffith-CO)FB Don! Which island? 11606 is a hot DX frequency-ed
CUBA: IRTS Havana, 17696, pers Eng ltr w/all data sans time in 3M sea, v/s Joel Raurell Vidal; 2 IRC, Eng rpt(Lobdell-MA) IRTS, 15945, ltr from above v/s w/all data in 12D; 1 IRC(Tordoff-CA)
ENGLAND: AJE Barford, St. John, 7411, rtrnd PFC w/all data & nice ltr in 13D air after f/up(total 202D), v/s Thomas E. Stahl;MS(Griffith-CO)
GERMANY(W.): DEB Hamburg, 18290, pers. typed Eng PC w/all data in 45D air; 3 IRC(Griffith-CO)
GREECE: Athenai Radio, 17314.5, large blue cd w/all data in 40D; v/s C. Piliagouras; 2 IRC(Tordoff-CA)
IRAN: PTT, 18560, pers. ltr w/all data in 22D reg. air; 3 IRC(Griffith)
IRAQ: PTT, 18900, Eng ltr w/all data in 55D reg. air, v/s Saadi N. Al. Jebouri; 3 IRC(Griffith-CO)
MALAGASY: STIMAD Tananarive, 10515, form ltr w/date in 123D sea; Fr rpt, 2 IRC(Lester-IL)
MOZAMBIQUE: CPRM, 20970, Eng. ltr w/all data in 97D from Lisbon; 3 IRC(Griffith-CO)
PANAMA: TRT, 9132.5, QSL in 5M 28D, v/s Gregory J. Nixon; (Testa-MA) Panama IFSS WHZ, ?, sent ltr w/all data sans time 8D air; MS(Mayo-NY)
POLAND: Polish R-T, 13793, sent cd w/pic of Warsaw & all data in 22D air; 2 IRC(Oliver-NH)
NIGER: FCR Niamey, 10846, sent cd w/all data in 7M(f/up); Fr/Eng rptk f/up, 2 IRC, MS(Tafel-NY)
SPAIN: AOK, 16216, color cd w/freq only & ltr in 80D, v/s RM2 James T. Young Jr.; MS(Griffith-CO)
SURINAM: LTT, 20605, nice color folder w/full data in 14D air; 2 IRC(Griffith-CO)
SWEDEN: STA Farsta, 18150, world map cd w/thanks only in 13M air, v/s V. Billienbeys; 2 IRC(Lobdell-MA) STA, 18172.5, no data cd in 11M air, 2 IRC(Mayo-NY)
SYRIA: PTT, 20195, Eng ltr w/date & freq in 31D reg. air; 3 IRC(Griffith)
U.S.A.: Boston Marine Operator WGU, 2450, rtrnd PFC in 9D; no RF(Oliver-NH) USCG Escanaba, 2670, rtrnd PFC, ship ot of New Bedford, MA in 45D, * personal ltr from RM2 explaining Ocean Station 3; MS rtrnd (d'Adolf-MA) AFA Davidsonville MD, full data QSL sans freq in 2M, no RP(Oliver-NH) WAY Lake Bluff IL, 4415.8, QSL written on rpt in 8D, v/s Durmeyer;(Testa-MA) USAF AFA, 16100, new 3WL cd w/all data in 18D, v/s Clifford R. Rasmussen; MS(Griffith-CO) WMI Lorain OH, 2514, full data cd in 22D; no RP(Oliver-NH)
VENEZUELA: YVTO, ?, sent cd in 2M air(Stuart-OK)

Please remember to include all of the following in your QSL reports: Country, Station & Location, Frequency of QSL, Completeness of QSL (full data, no time, etc), Time of delay between rpt & QSL(in days/months), v/s & RP if any, mode of reply(air/sea), type of QSL, Comments if any & changes in address. Please also indicate your name & state after each report entry. SPEEDX QSL Report Forms are recommended.

P.S. check 11256.5 for

Antarctic tpc around 0300-0430

73s, Mark W01TXV/
WB9FKP

QSL SECTION

CHRIS LOBDELL
BOX 1622 C
700 COMMONWEALTH AVE.
BOSTON,
MASSACHUSETTS 02215

DEADLINE: 15 OCTOBER

This month we do not have that many interesting verifications to report, but there are some. My reply was finally received from Radio Moscow with the Tbilisi transmitter site. Radiodiffusion du Dahomey replied to a follow-up report of Mike Collier's. Steve Kamp of California was happy to get his reply from Radio Madang in New Guinea. In Latin America there is Gregg Calkin's Radio Universidad de Chihuahua and Phil Schnabel's goodie from La Voz de Altiplano in Bolivia.

EUROPE

AUSTRIA: Austrian Radio, 6155/15335/15145, "Steiermark", "Niederosterreich" full data color cards and plain silver card by air in 2 months; no RP. (Galvan-NJ) 9770, village landscape scene by air in 62 days for 2 IRCs; sked and nxpaper also sent. (Johnson-CA)
BELGIUM: ORU/RTB-Erussels, 9550, blue/yellow/red/white map & antenna card containing full data came by air in a month; 2 IRCs sent. (Day-CA) 15235, 2 months air w/sked, mailbag notes and pennant. (Johnson-CA)
BULGARIA: Radio Sofia, 9700, festival card in 5 months air w/sked and pennant; no RP. (Nudelman-WA) Sofia U. card w/full data in 11 weeks sea mail. (Johnson-CA) "View of Melnik" w/all data, by air in 3 months for 2 IRCs; final card in series. (Lovell-KY) University card w/full info, sked & pennant in 93 days; no RP. (Mayer-IL)
CZECHOSLOVAKIA: Radio Prague, 7345, photo card of cave w/full data, by air in 45 days; no RP. (Eichenhorn-MI) 11990, 2 picture post cards w/complete info in 82/68 days sea mail. (Imbert-VA)
FINLAND: FBC-Helsinki, 15185, map/headphones style card w/full data by air in 24 days. (Shaw-PA)
FRANCE: ORTF-Paris, 15120, photo card w/full data in 3 weeks. (Eichenhorn-MI) "shots of studios" card in 24 days air for an IRC; sked also sent. (Nudelman-WA) 3½ weeks air for an IRC. (Oliver-NH) 15295, full data B&W photo card of studios in 3 months air for 1 IRC. (Leistner-CA)
GEORGIAN SSR: Radio Moscow, 11820, red/yellow/black card from African service w/site as Tbilisi; all data except frequency. By sea in 5 months w/personal letter, sked and post cards. (Lobdell-MA)
GERMANY (Dem. Rep.): RBI-Berlin, 9650, "six flags" card in 2 months. (Harrington-CO) sent sports series card w/pix of discus thrower Karin Illgen; full data reply in 2½ months. (Lobdell-MA)
(Fed Rep.): Deutsche Welle, 6075, olympic runner card in 2½ months for 2 IRCs. (Oliver-NH) 9735, olympic card by air in 67 days for Julich transmitter site. (Testa-MA) 9765, 15 days air w/full data for Wertachtal xmtr; 1 IRC sent. (Day-CA) 11795, full data card by air in 74 days. (Johnson-CA) 9 weeks air for no RP. (Collier-NY)
GREECE: HNBI-Athens, 15345, full data B&W card in a month for 1 IRC. (Greenall-ONT)
HOLLAND: Radio Nederland, 11730, 25th anniversary card & program sked in 1½ months. (Eichenhorn-MI) 3 weeks air. (Shaw-PA)
HUNGARY: Radio Budapest, 9833, full data card showing parliament building; sea mail in 2 months. (Galvan-NJ)
ITALY: RAI-Rome, 11810, antenna card w/full info., pennant, & sked in 93 days for 2 IRCs. (Mayer-IL) 17795, usual card w/the map, air reply in 30 days. (Shaw-PA) usual card in 2½ months w/full data; 1 IRC. (Petrvick-IL) pennant & Italian flag in 2 months. (Stuart-OK)
NORWAY: Radio Norway, 17795, color photo card showing sculptures in Fragner Park, a full verie from C.K. Dahl in 7 weeks. (Galvan-NJ)
POLAND: Polish radio, 7270, full data orange/blue map card of Poland, sked, report form, 7 Polish stamps by air in 4 weeks. (Galvan-NJ) 9675, full data card in 21 days for 2 IRCs. (Oliver-NH) 15120, 1st card in map series, sked and report form in 25 days. (Sellers-ONT)

PORTUGAL: R. Portugal, 11840, usual map/explorers card w/full data, air in 14 days for 1 IRC. (Griffith-CO) 11935, post card verie w/full data reply by air in 11 days; no RP. (Trautschold-WI)

ROMANIA: Radio Bucharest, 11940, multi-colored full data card, air in 63 days. (Johnson-CA)

RSFSR (European): Radio Moscow, 15210, full data card including site location as Moscow.

SPAIN: RNE-Madrid, sent full data card and pennant in 11 days for report w/3 IRCs. (Straumanis-NY)

SWITZERLAND: SBC-Berne, 6120, B&W photo card of sailboat race w/full data on back; 45 days sea mail from /s/: J.A. Chisholm. (Shaw-PA)

USSR (no sites): Radio Kiev, 9680, card, sked & newspaper in 5 weeks. (Goldenberg-MO) 15230, 1 month; no RP. (Schnabel-NY)

Radio Moscow, 11900, brown/white card received in a month's time. (Eichenhorn-MI) 12060, card along w/report forms from the Australia/New Zealand service by air in 25 days. (Griffith-CO) 15210, blue colored card (full data) in 1½ months; no RP. (Eichenhorn-MI) 18135, reject card saying this freq not used to BC to NA, air in 45 days for 1 IRC. (Griffith-CO)

Radio Station Peace & Progress, 15350, yellow card w/full verification information in 3 months sea mail. (Eichenhorn-MI) 17790/17900, 3 months sea mail. (Johnson-CA)

Radio Vilnius, 11850, white/red/green "birds in a tree" card w/full data, sea in 51 days for no RP. (Day-CA)

AFRICA

ANGOLA: Radio Angola, 11875, schoolyard scene card came in 3 months sea mail for 2 IRCs; full data included. (Johnson-CA)

CAMEROON: Radio Yaounde, 4972½, world map card w/full info by air in 7½ months air for 3 IRCs; reported in French. Cameroon map card came the next day. (Slowey-IL)

DAHOMEY: Radiodiffusion du Dahomey, 4870, multi-colored card came by air in 10 days (1 year after f/up) for 1 IRC and a French report. (Collier-NY)

ETHIOPIA: ETLF-Addis Ababa, 7145, long blue card w/white lettering came by 2nd class air in 3 months for 2 IRCs. /s/: Menkir Esayas. (Lobdell-MA) card and sked in 2½ months; no RP. (Collier-NY) 9730, 11 weeks air for 3 IRCs. (Johnson-CA) 82 days airmail. (Hunt-CA) 11910, sent reject letter in 6 months sea mail; 2 IRCs sent. (Pay-MA) 15250, 1 month for 1 IRC. (Goldenberg-MO) 13 days air for 2 IRCs. (Oliver-NH) full data card in 2½ months for 3 IRCs. /s/: Menkir Esayas. (Petravick-IL) 15400, 81 days for an IRC. (Mayer-IL)

GAMBIA: Radio Gambia, 4820, form letter w/date and frequency, by air in 21 days for 2 IRCs. (Imbert-VA)

GHANA: Radio Ghana, 11850, red/gold/green bordered card, by air in 39 days for 2 IRCs. (Hunt-CA) card in 52 days air for 2 IRCs; thank you form letter came two weeks before. (Testa-MA)

LESOTHO: Radio Lesotho, 4800, usual flag card containing full verification data, air in 5 weeks for 2 IRCs. (Marshall-ONT)

MALAGASY REP: Radio-TV Malagasy, 17730, card w/drawing of station and full verie data written in on the back, air 141 days for an English report w/4 IRCs. (Lagomaggiore-NY)

MALI: Radio Mali, 7110, usual "OCORA" map card w/EE sked to NA included on back; 9 months for 2 IRCs. (Greenall-ONT)

MAURITANIA: Radiodiff. Nationale de Mauritanie-Nouakchott, 4850, full data multi-colored card came in 103 days; no RP. Sked written on back. (Greenall-ONT)

MOROCCO: VOA-Tangiers, 15205, anniversary card w/frequency, date and site info in 26 days from pretty /s/: Paulette Busi. (Mayer-IL)

NIGERIA: NBC-Calabar, 6145, full data airletter verie in 14 weeks from /s/ E.B. Ntekim. Station wants reports on daylight reception. (Marshall) Voice of Nigeria-Lagos, 7275, flag card w/all details & sked by air in a month; no RP. (Sellers-ONT) 15185, green card w/coat-of-arms by air in 1½ months; no RP. (Eichenhorn-MI) full data verie in 29 days air; no RP. (Petravick-IL) 1½ months for 1 IRC. (Goldenberg-MO) 78 days air. (Hunt-CA)

RHODESIA: RBC-Gwelo, usual gazelle card for 3396 kHz in 6 weeks for 1 IRC. (Kamp-CA)

OSL SECTION

RWANDA: Deutsche Welle-Kigali, 11905, yellow/blue map card by air in 2½ months from /s/: G.G. Thiele. (Lazear-OH) 4 months air for 3 IRCs. (Lovell-KY)

SEYCHELLES: FEBA-Victoria, 11955, full data card by air in 24 days for 3 IRCs from Marry Berry. (Mayer-IL)

SOUTH AFRICA: RSA, 11970, full data photo card showing two lions came in 15 days; no RP. (Eichenhorn-MI)

ZAIR: La Voix du Zaire-Kinshasa, personal letter in French from Nikuna Diavioka w/all verie data & power as 100 kw; air in 46 days for an English report w/1 IRC. (Lagomaggiore-NY) 8 months for 15245 kHz; reported in French w/1 IRC. (Greenall-ONT)

ASIA

BANGLADESH: Radio Bangladesh-Dacca, 11650, plain white full data card, by air in 2 months for 3 IRCs. (Johnson-CA) 15520, full data card in 15 days from M. Habibullah. (Collier-NY) 17935, 56 days air; no RP. (Compton-MA)

CEYLON: Radio Ceylon, 11800, full data "Kandyan Drummer" card; replied by air in 2 months for 3 IRCs. (Pistek-IL) 2 cards, both w/full data in 45/52 days; 3 IRCs sent. (Lagomaggiore-NY) 15120, "Independence Hall" card, by air in 25 days for 2 IRCs. (Nudelman-WA)

CHINA (People's Rep): Radio Peking, 17735, "Red Detachment Of Women" card giving date & frequency, air in 19 days; sked also sent. (Day-CA)

CHINA (Republic): Voice Of Free China, 17890, card and sked, air in 29 days (Stuart-OK)

CYPRUS: BBC, 7140, no data Thames card in 14 days; no RP. (Collier-NY) 15105, 20 days via London for an IRC. (Stuart-OK)

INDIA: All India Radio-Delhi, 9912, "old Fort" full data p/card verie & sked in 5 months; no RP. (Greenall-ONT)

IRAN: Radio Tehran, 15084, white card air in a month for 3 IRCs along with some travel info. /s/: E. Golesorki. (Fay-MA)

JAPAN: Far East Network(FEN), 3910, full data card in 15 days from San Francisco address; no RP. (Schnabel-NY)

Radio Japan, 9505, "Bingata" card w/date & frequency only, pennant, post card, sked, report form and a copy of Radio Japan News; all this by air in 3 weeks. (Sellers-ONT) 12 days; returned my 3 IRCs. (Straumanis-NY) 9530/9605/9675/11940, "Bingata" cards by air in 11 days; no RP. (Griffith-CO) 15105, card by air in 22 days. (Hoover-NE) 15445, "Fireworks Over Village" card w/all data except time, air in 24 days. (Galvan-NJ) 17825, 12 days w/new sked. (Shaw-PA) 17825, 10 days; no RP. (Day-CA)

KOREA (South): Voice Of Free Korea-Seoul, 15335, "The Ring Fight" card w/a large yellow pennant; replied by air in 25 days for 3 IRCs. (Ellsworth-CA)

MALAYSIA: BBC-Tebrau, 11750, usual card w/site only in 12 days. (Mayer-IL)

PHILIPPINES: FEBC-Manila, 11920, FEBC globe card came by air in 5 months w/full data for 3 IRCs. (Petrvick-IL) card and sked, air in 5 months for 1 IRC. (Stuart-OK) red card, sked, and religious material in 84 days for 3 IRCs. (Mayer-IL) 17810, 3 months air for report w/3 IRCs. (Nudelman-WA)

VOA-Poro/Tingang, 15345, typical card in one week's time; no RP. (Oliver-NH)

RSSSR (Asiatic): Radio Moscow, 11690, card giving site as Vladivostok; 12050, site as Khabarovsk in 20/23 days; no RP. (Griffith-CO)

OCEANIA

AUSTRALIA: ABC-Perth, 9610, full data map card of Western Australia came in 3 weeks; no RP. (Eichenhorn-MI) 9 days air. (Oliver-NH)

Radio Australia, 9580, full data red card in 2 months for no RP. (Eichenhorn-MI) 3 months. (Shaw-PA) 24 weeks sea mail. (Straumanis-NY) 9580/11710, morse code/opera house cards w/full verie info, 3 report cards, pennant, and sked in 15 days air for 3 IRCs/339 days for no RP. (Griffith-CO) 11715, opera house card & pennant showing kangaroo, air in 14 days for a report w/2 IRCs. (Compton-MA) 15160, full data card in 2 months; no RP. (Eichenhorn-MI)

NEW BRITAIN: Radio Rabual, 3385, folder style card w/date & time, plus info on other stations; replied by air in 12 days for 5 IRCs. /s/: Paul Cox. (Lazear-OH)

NEW GUINEA: Radio Madang, 3260, folder card from /s/: Philip N. Charley in a month for an IRC. (Kamp-CA)

QSL SECTION

NEW ZEALAND: Radio New Zealand, 11780, blue globe card (all data except the time) & sked in 5 months for an IRC. (Goldenberg-MO) 17770, 124 days sea mail from /s/: H. Taylor Smith; no RP sent. (Mayer-IL)
SOLOMON IS: SIBS-Honiara, 3995, map card w/full details, sea mail in 1½ months for 5 IRCs. Sent 3-3/4 IPS tape recording. (Lazear-OH) 3 months for 3 IRCs. (Fay-MA)

NORTH AND CENTRAL AMERICA

CANADA: CFCX-Montreal, 6005, long white card w/station photograph, gives date & frequency but no time; surface mail in 143 days for 1 IRC and tape recording. (Day-CA) 27 weeks for mint stamps. (Imbert-VA) 6 months; no return postage sent. (Testa-MA)

CHNX-Halifax, 6130, plain white card giving frequency only in 16 days; mint stamps sent. (Mayer-IL)

CJXC-Sydney, 6010, plain green/white card w/date only; 5 days for mint stamps. (Slowey-IL)

Radio Canada International, 9625, red/blue photo card showing new Radio Canada building w/complete verie info; two weeks from Brian Townley. (Galvan-NJ) 11945, 23 days; no RP. (Schnabel-NY) 20 days. (Collier-NY) 15190, card in 20 days surface mail. (Stuart-OK) 15325, 10 days. (Sellers-ONT)

COSTA RICA: Faro del Caribe(TIFC), 9645, red/white card, travel info., and sked were received in a month; 1 IRC sent. (Goldenberg-MO)

Radio Casino(TIQ), 5954, green/black card w/all verie info except time; 8½ months for an IRC. (Greenall-ONT)

CUBA: Radio Havana, 9680, multi-colored card came by air in 4 months; no RP. (Eichenhorn-MI) 11930, "bull's eye" card w/verie info on front; 2 months air for no RP. Letter says newspapers are to follow. (Testa-MA)

DOMINICAN REPUBLIC: La Voz de Fuerzas Armadas(HIFA), map card w/date & verie statement only, pennant, and tourist info in 8 months; reported in English w/no RP. (Greenall-ONT)

Radio-TV Dominicana-Santo Domingo, 9505, letter in Spanish giving thanks, but no verie data; replied by air in 3 weeks for a report written in Spanish w/mint stamps. Pennant & cancelled stamps also received. (Zabransky-IL) 1 month for 3 IRCs and a Spanish report from R.A. Pont Bernard. (Fay-MA)

EL SALVADOR: Radio Nacional, 9555, sent usual blue/white card in 3 weeks; no RP sent. (Greenall-ONT)

GUATEMALA: La Voz de Nahuala, 3360, "flame on mountain" styled card w/full data along w/a personal letter in 1½ months from /s/: Antonio Ixmata Hernandez, Locutor Encargado de Reportes Internacionales. (Calkin-MX)

HAITI: Radio Station 4VEH, 11835, B&W photo card showing a war monument w/full verie, report form and a souvenir pen also sent; by sea mail in 10 weeks from Mrs. Claude Beachy. Report sent to Port-au-Prince address but qsl mailed from Greenwood, Ind. (Galvan-NJ) full data folder card in 2 months for 2 IRCs. (Straumanis-NY)

HONDURAS: Radio Juticalpa, 4780, nice long Spanish letter w/verie statement only, air in 19 days from Victor Rubi Zapata. (Zabransky-IA)

Radio Progreso, 4920, form letter in Spanish w/full data; replied by air in 15 days from /s/: Jerry E. Tolle for an English report w/mint stamps. Green/black pennant also received. (Zabransky-IA)

Radio Suyapa, 6125, detailed letter & full data card, not to mention the nice pennant also sent by air in a month from the /s/: Francisco E. Ipparaguirre; reported in Spanish w/mint stamps. (Slowey-IL)

MEXICO: Radio Universidad de Chihuahua(XERUU), 6140, sent 2 page personal letter in Spanish in 6½ months (1 month after f/up) for a Spanish language report and an SASE, /s/: Alfonso Varona T., Director. (Calkin-MX)

NETHERLANDS ANTILLES: Radio Nederland-Bonaire, 11730, 25th anniversary card w/all data, by air in 11 days. (Imbert-VA) 21570, "Happy Station" card w/full data by air in 18 days; 2 IRCs sent. (Johnson-CA)

Trans World Radio, 11815, full data card showing transmitter building and power plant; replied by air in 3 weeks for 1 IRC. Bumper sticker also sent. (Straumanis-NY) 2 months sea mail; no RP sent. (Collier-NY)

UNITED STATES: KGEI-Belmont, 11920, blue FEBC full data card, sea mail in 66 days; mint stamps sent. (Johnson-CA)


United Nations Radio-Greenville, 21670, full data card received in 3 weeks; no RP. (Oliver-NH)

QSL SECTION

UNITED STATES: WINB-Red Lion, Pa, 17720, plain white printed card, sea in 9 days from /s/: Rev. John M. Norris. (Petravick-IL)
 WWV-Ft. Collins, Co, 10000, full data card by air in 16 days. (Hoover-NB) 15000, full data card in 11 days; no RP. (Trautschold)

SOUTH AMERICA

BOLIVIA: Radiodifusoras Altiplano (CP38)-La Paz, 5045, card w/verie statement & date only, by air in 23 days; reported in Spanish w/mint stamps & a 45 rpm pop disc. (Schnabel-NY)

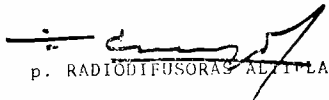


ALTIPLANO

LA PAZ BOLIVIA 9 de agosto 1972.
 Al Sr. Philip Paul Schnabel.....

Estimado señor:

Recibimos su preciosa comunicación de fecha 24/7/72, a la que respondimos. Sus telefonos sobre nuestras intenciones y propuestas están de acuerdo con las condiciones de ALTIPLANO al 25/6/72... Así deseamos su atención y al momento a sus ordenes, le ofrecemos las condiciones de gestión de la radiodifusión.


 p. RADIODIFUSORAS ALTIPLANO

**DESDE LA CUMBRE DEL MUNDO HASTA EL PUNTO PRECISO DE SU DIAL
 ALTIPLANO EN SINTONIA 24 HORAS AL DIA**

DIRECCIONES:
 ESTUDIOS
 Av. CAMACHO 1468
 CASILLA 1081
 TELS 10906-25946-21770
 11684
 PLANTA DE TRANSMISION
 Av. LAS PALMERAS
 (CALACOTO) TEL 32384

CP 35-38
ONDAS
 MEDIA-810 Kc
 CORTA-5045 Kc
 FM-50 Mj

BRAZIL: Radio Brasil Central-Goiania, 4995, form letter in English & Portuguese giving full details was received in 29 days by air mail; reported in English w/2 IRCs. (Marshall-ONT)

Radio Nacional-Brasilia, 11720, p/card of "Municipal Square" w/date only, air in 2 months from /s/: Walter M. Barbosa. Blue, green & yellow international service pennant also sent. (Lovell-KY) 15445, p/card of fountain at night & pennant, by air in 80 days for 2 IRCs. (Ellsworth-CA) short letter w/verie statement (no data), air in 26 days from Luthero Toledo; mint stamps sent. (Imbert-VA) card showing bus terminal, air in 10 weeks along w/letter, post card & pennant. (Johnson-CA)

Radio Rural, 15105, small antenna card w/info in PP/SS/EE, freq. and verie statement given only, in 3 months for 1 IRC. (Greenall-ONT)

COLOMBIA: Em. Nueva Granada, 6160, letter in Spanish giving date only by air in 15 days; mint stamps sent. /s/: Lucy Rodriguez C. (Sellers-ONT)

Em. Nuevo Mundo, 4755, large card w/thank you and date only, air in 13 days for a Spanish report & mint stamps. /s/: Mario Fric. (Slowey-IL) 3 weeks air for a Spanish report w/mint stamps. (Zabransky-IL)

Radio Bucaramanga, 4845, letter w/verie statement only & blue pennant; replied by sea mail in 8 months for a Spanish report w/mint stamps. /s/: Gustavo Sorzano J. (Slowey-IL)

Radio Super, 6065, letter w/verie statement and nice pennant, air in 13 days from /s/: Gustavo Rivera Mendez. Sent a Spanish report w/mint stamps. (Slowey-IL)

ECUADOR: Canal Manabita, 4810, long letter stating frequency, sea mail in 6 months from /s/: Ramon F. Cevallos; replied in 6 months for a Spanish report w/mint stamps. (Zabransky-IA)

HCJB-Quito, 17380, sent the Galapagos cactus card w/full data by air in 15 days for 2 IRCs. (Compton-BA)

GUYANA: Radio Demerara, 3265, card showing broadcasting house came by air in 20 days; mint stamps sent. (Schnabel-NY)

VENEZUELA: Ecos del Torbes, 4980, letter in Spanish giving a verie statement only; replied in 49 days for an English report w/2 IRCs. /s/: Carlos Sarmientos. (Mayer-IL)

Radio Barquisimeto, 4990, red/white/green card and sticker, in 1 1/2 months for an IRC. (Goldenberg-MO)

Radio Nacional-Caracas, 11725, letter w/full data and nice large pennant in 9 months sea; 2 IRCs sent. (Testa-MA)

Radio Popular, 4810, large "thank you" card w/no data, air in 17 days for a Spanish report w/mint stamps. Apologized for not answering: too much work. (Zabransky-IA)

CLANDESTINE

CLANDESTINE: Radio Espana Independiente, 10110, map/dove styled card w/full data in 47 days for 3 IRCs; sent to Prague address. (Greenall-ONT)

News and Notes

Just a reminder: Reporting forms for the qsl section are available for the asking. Just send me a large (business size) self-addressed stamped envelope for a free supply.

COUNTRY Antarctica STATION Voice Of The South

CITY Testaville FREQUENCY RPTD 15070 CARD? OR LETTER?

DESCRIPTION full data card showing penguins sunning themselves

TOTAL ELAPSED TIME 50 days RECEIVED BY: AIR SURFACE RETURN POSTAGE?

IRCS (AMT) MINT STAMPS? RPTD IN Esperanto LANG. SIGNER Kenneth Compton

OTHER REMARKS _____ NAME Louden boomer - vfi

Now that I'm living in a college dormitory, life is a little bit different than at home. I happen to be situated on the western side of an 18 storey dormitory on the 16th floor. Stringing a suitable antenna has been quite a problem. I've been experimenting with vertical long wires that I hang out the window. The last one went down to the 11th floor and was weighted down by a can of Campbell's tomato soup. It didn't work too bad at all. If any members have some ideas on constructing vertical long wires or other ideas for dorm suitable antennas, please let me know.

Please remember that good/clear/well-contrasted Xerox copies of qsl letters and cards are needed for this column. Please send copies of what you consider to be your rare or good catches. If you're unable to make a good clear copy, why not send the original to me? It will be returned within a couple of weeks unharmed.

I would like to thank all those fine members that contributed to the column this month, including newcomers: Jerry Stuart of Oklahoma; Wayne Oliver of New Hampshire; John Trautschold of Wisconsin; Don Greenall of Ontario; Andris Straumanis of New York; Joe Goldenberg of Missouri; Rob Harrington of Colorado; and Robb Hoover of Nebraska. Keep those reports coming in!

See you next month.

73s,
Chris
Chris

QSL FEATURES

THANK YOU FOR YOUR RECEPTION REPORT WHICH IS HEREBY VERIFIED

This acknowledges your communication and interest in broadcasting by the Administration of Papua and New Guinea.

RADIO BOUGAINVILLE - VI.9BA - 3322.5 KHZ - 90 M. BAND
0850 - 0715 GMT - 8/8/72.

Keith Jackson...
Station Manager

All announcing and presentation is done by Papuans and New Guineans. Programmes are designed exclusively for the people of Papua and New Guinea. They range from traditional and pop music; features on health, agriculture and business; children's programmes; to broadcasts of local government council meetings. Local and overseas news is broadcast, as well as background talks to current affairs. The function of the Administration Stations is that of communication, and maximum use is made of area languages.

ADAM

OFFICE DE RADIODIFFUSION - TÉLÉVISION FRANÇAISE
RADIO TAHITI BOITE POSTALE 125
PAPEETE

Nous avons le plaisir de confirmer votre rapport d'écoute
du 15 AOUT 72 de 06 H 02 heures G.M.T. à 06 H 30
Nous émettons tous les jours de la semaine de 15.170 FHz
16h 15 à 18h 30 G.M.T.
21h 00 à 23h 30 G.M.T. Voir programme
24h 00 à 8h 00 G.M.T. joint
et le dimanche de 19 h 00 à 23 h 30 et de 3 h 00 à 8 h 00 G.M.T.
sur les longueurs d'ondes ou fréquences suivantes

Gamme	Fréquences	Long. d'onde	Puissance
OM	740 KHz	405 m 40	20 KW
OC	3.213 KHz	93 m 09	4 KW
OC	6 135 KHz	48 m 90	4 KW
OC	11.825 KHz	25 m 37	20 KW
- OC	15.170 KHz	19 m 78	20 KW

U.S.A. 90057
LOS ANGELES, CALIF.
408 S. OCCIDENTAL
MR. WENDEL BENEDETTI
POLYNESE FRANÇAISE

AVION

"SWBCing in the Tropical Region"

Oct. '72



S F S

SPECIAL FEATURE SECTION

Edited by:

Michael P. Mahoney
426 Janney Avenue
Muncie, Indiana 47304

Some of the most ignored, and yet, most intriguing aspects of SWling, is DXing the tropical bands. Many people are a little scared of them due to the problems encountered in trying to understand some of the foreign language programming heard on these bands; and others do not even know that these bands exist! This is most unfortunate, because these SWlers are missing a great chance to listen to programming reflecting other cultures not presented by international broadcasters. And another advantage, if you are DXer - here are four more bands to play around with!

These four bands are: a) the 60 metre band, where the majority of the stations can be found between 4700 and 5100 kHz; b) the 75 metre band between 3950 - 4000 kHz; c) the 90 metre band between 3200 - 3400 kHz; and d) the 120 metre band between 2350 - 2500 kHz.

These sets of frequencies are allocated to the tropical regions of the world by the International Telecommunications Union, in Geneva, Switzerland. In the Western Hemisphere, tropical band frequencies can be used by stations located in the area between 30° North and 30° South Latitudes. That is, from Central Texas and Florida in the North, down to Northern Argentina and Chile in the South. In other areas of the world, the tropical broadcast regions' boundaries fluctuate in latitude somewhat.

Some of you are probably wondering why these frequencies were set aside for tropical broadcasting. Well, here are the major factors that facilitated the need for tropical frequencies: 1) Most countries in the Equatorial Region are underdeveloped, thus there is a need for a few reliable stations to cover vast regions; 2) Since the tropical regions are in the Torrid Zone, electrical storms occur throughout the year, making low-powered medium wave transmissions almost impossible at times; 3) The international broadcast bands (e.g. 25, 31, and 49 metres) are already overcrowded without adding on a few thousand domestic stations to the jam; 4) Since frequencies below 6 MHz cannot always be relied upon for long-distance performance, the tropical bands seem to be the ideal place for stations that want to cover distances of 1000 - 2000 km at the most, and in many cases, less distance than this.

As tropical band stations are used for domestic purposes, one is likely to come across many languages not otherwise heard outside the tropical bands. And, along with the trouble of trying to understand the Spanish and Portuguese of Latin America, the vernaculars of Africa and Asia, and colonial languages such as French, English can also present a problem to the SWler! Particularly if one listens to African stations broadcasting in English, one will notice a strong accent or even a dialect of English in that region alone, which is very difficult to understand.

But, to counterbalance the language problem (unintentionally helping the DXer), more and more tropical band stations are carrying commercial advertising. And, a large number of these commercials are for products which are known to American consumers.

The largest number of tropical band stations concentrated in one region, is in Latin America. The majority of these stations are owned by private commercial firms, similar to the broadcasting scheme in North America. These stations are supported solely by their advertising revenue. This is quite evident when some radio stations carry as many as 18 commercials in a row just to kill time between programmes!

The broadcasting scene in Asia and Africa is a little different from the Latin American approach. Almost all the broadcasting stations are owned by or associated with the governments of the countries concerned. Many of these radio services are supported by the radio license fees and/or government subsidies. Commercial broadcasting has only begun in recent years. The best countries to find radio advertising campaigns in would be: South Africa, Rhodesia, Mozambique, Swaziland, Kenya, Malawi, Ghana, and Nigeria.

In the region of Oceania, all of the shortwave stations are connected with the governments. Although Australia (and now New Zealand) have private commercial radio services on medium wave, shortwave broadcasting is reserved for the government agencies. Some of the best heard tropical band stations from Oceania belong to the Australian/next page/

"SWBCing in Tropical Regions" /cont./

Broadcasting Commission. There is some limited advertising in Oceania, from: the British Solomon Islands, Fiji, and New Caledonia, for example.

Now that we have a little insight into what tropical broadcasting is, we should talk about a few ways to contact these stations for the purpose of reporting reception. Try to run through this checklist for each reception report you send to tropical stations:

- 1) Try to send reports in the language of the broadcast heard, or in the language of the country of the station involved.
- 2) Be more explicit when reporting details of reception: e.g. explain the condition of reception in words, as well as SINPO code.
- 3) Try to include specific names of musical pieces heard, if possible. If there are "Ad" spots, jot down the names of products and sponsors mentioned. (At many Latin American stations, this is the only way they can determine whether a DXer actually heard the station or not.)
- 4) Remember that these stations are broadcasting for the consumption by domestic audiences. Many stations are not equipped to handle alot of mail from overseas listeners. At least two or more International Reply Coupons (IRCs) should be included with each report. And, if the station is located in a frontier area "off the beaten track", it would be advisable to send along mint stamps of the country, instead of IRCS, as the local post office might not honor IRCS.
- 5) Send a souvenir or post card from your city or region, along with the report. This is a nice little gesture of friendship and goodwill.
- 6) Most important of all, **DO NOT DEMAND A QSL-VERIFICATION!** A QSL is a favor from a station to a reporter. In tropical broadcasting, it is even more of a gesture of goodwill on the station's part, because they are QSLing reports for which they never asked, and possibly had no use for.

Now, before closing, I should like to recall one important rule in tropical band listening - - These frequencies are only useful for long-distance reception in total, or near-total paths of darkness. So, look for Africa during the late evening/early morning, and late afternoon/early evening hours. Oceania and Asia can be found on the bands during the morning. Latin America can be heard from dusk to dawn.

"What Has Happened to Our Hobby?"

by Larry A. Lundberg

Part Two

/Ed. Note: This is the second part of a continuing series comparing the Hobby of Yesterday, with that of Today. This series was first published in the April, 1972 issue of "Hello DXers" - the bulletin of the CDXQuebec (Canada)./

I, Larry A. Lundberg, became interested in Radio at the tender age of nine, back in 1923. My first boy friend obtained his license and became a CW Ham Operator. My first radio was a hand made crystal set. I still have the original head-phones and I can vividly remember the thrill of hearing the first local Radio Station (WLAG, The Gold Medal Station, now the powerful WWC0). The bed spring of my bed was used as an antenna. I can also remember the first battery operated 6 tube set a friend had given to me. Three dials had to be set to bring in the desired frequency. My various experiments trying out many different types of antennas and grounds still remain keenly in my memory. My folks were poor and it was not until 1929 that they were able to afford their first electric set, a nine tube Burley. It was quite by accident, that I wrote a card to WFDV Rome, Ga., 1500 kc with a power of 100 watts, on April 2, 1933. To my surprise, they sent me a verification of my reception. This was born this wonderful hobby of Radio DXing. Station upon station was heard, reported to and verified. Wonderful education to learn geography on Cities, States, and Countries. Many wonderful friendships were originated and formed. Many Radio Clubs I joined and I had what I considered, the most wonderful and exciting Hobby that ever existed in the world. I became interested in the short wave bands in 1936. I purchased a 23 tube Midwest which later on was replaced with a Hammarlund H4L20X. I retired from the Hobby in 1940. It was again quite by accident that the old bug once again bit me in Dec. 1967, 27 years later. Once again I plunged into seeking that elusive catch and during 1968 built up my VIC list considerably and started to become active with Radio Clubs and the

/cont. on next page/

Clubs of various Radio Stations. Then a horrible thing was learned. "WHAT HAD HAPPENED TO OUR HOBBY?" What strange elements were happening? Was this the same hobby I had in 1940? By all means, IT WAS NOT! It is these things that I am going to ask of all of you that are interested in this fascinating Hobby of Radio....

"A Humane Project for All DXers"

by Kim Andrew Elliott

/Ed. Note: Although this article is primarily directed towards students, the general suggestion put forth in it could be put to use by many of SPEEDX's readers. Remember, working on a project of this sort could be a boon to the Hobby!/
/

The 1972-1973 academic year is beginning, and now would be a good time to inform SPEEDX members who are students, that there is an excellent opportunity to put your receivers to work in the interest of international goodwill and friendship.

Each year, students from all over the world come to the U. S. A. to attend classes at high schools and colleges throughout the country. After a few weeks from home, these foreign students generally begin to feel somewhat homesick, and they would certainly like to hear from their native lands. This is where the SWL/DXer steps in. You can easily befriend a foreign student by using an excellent icebreaking statement that only a radio listener can make: "So you are from.....; I listen to your country quite often on my shortwave radio." This will usually result in the foreigner's eyes lighting up at the prospect of hearing his homeland live and direct.

At the college I formerly attended (Missouri Western College), there were several students from Iran. Fortunately, Tehran's transmitter on 15084 kHz put through a fine signal in Missouri from sunrise until afternoon. The Persians were pleasantly surprised to know that they could hear news and information in Farsi as well as Iranian music, which they especially enjoyed. They also listened to the Farsi broadcasts of the BBC. Some of them purchased their own shortwave radios and became avid SWLers.

My college also had students from France who were able to listen to the loud and clear signal of the ORTF. But some of my friends from overseas were not so lucky. I had an anthropology prof from Pakistan who had to wait for several weeks before I could obtain a useful signal from Karachi. Also, a girl from Argentina and I had difficulties in getting decent reception from RAE, and when Buenos Aires finally did come in intelligibly at 12:30 am, we had to watch out for the head resident at the dormitory -- that was hardly a legal time for a girl to be in a guy's room at that conservative Midwestern College. To be sure, there will be no way to satisfy all the foreign students in America, so beware of inducing false hopes in your friends from Afghanistan, Nepal, Paraguay, etc.

You can get in touch with the foreign students at your college or high school by contacting the foreign students' club there, or through your students activity director. And educational institutions are not the only places to find appreciative overseas visitors. You can find opportunities through the cultural exchange programmes of service and religious organizations, or, if you're lucky, you might just happen to meet someone visiting the U. S. A. on his own. In any case, offering your radio facilities to help make a foreign visitor's stay in our country more enjoyable is good publicity for the hobby and the U.S.A., as well as being a personally rewarding experience.

DID YOU KNOW?that the CBC - Radio Canada has gone a step beyond bilingualism by issuing its first news release in Eskimo, in addition to English and French? (N.Y. Times, via Steve Kamp)that construction will begin on Antigua in 1973 for the joint BBC / Deutsche Welle Caribbean relay? The station will have 250 kW transmitters. (SHORTWAVE NEWSLETTER, via Steve Kamp)that the U. S. A. is the only country in the world where there are more radios than people? (from the WORLD RADIO-TV HANDBOOK 1972)



William S. Sparks
1100 Hearst Building
San Francisco, California 94103

ANARC REPORT

QSL Committee Report: The only item not previously reported in the current ANARC Newsletter is the yearly report on the ANARC QSL Committee by Chairman Edward Pyatt.

The QSL Committee endeavors to contact stations on shortwave only which are known to be poor verifiers, and acquaint them with verification procedures of other stations, and urge them to verify correct reception reports from listeners. The committee does not instruct stations how to verify, but only seeks to get them to send a reporter some form of communication that confirms that a listener did hear their station. The committee has learned that some stations are intimidated by DXers who send in reports and virtually demand a QSL card. DXers must remember that receiving a QSL is a privilege, not a right.

The committee usually send to each station contacted, a QSL card with full data, as a suggested model for their own verifications. This is only a suggestion. The committee cannot coerce stations into verifying with "full data." Hence, we feel that any communication, no matter how flimsy it may be, from a station that says that a listener did hear the station, should be accepted as a bona fide QSL.

The work of the committee has been slow and agonizing. There have been few spectacular breakthroughs, but progress has been made. In deciding which stations to contact, we took into consideration: (1) stations which are notorious non-verifiers, (2) the various "White Lists" or "Missing Countries" listings published by the clubs, and (3) stations that committee members have personally had trouble with. A summary of the work for the year is as follows:

Letters have been sent out to Radio Mogadishu in the Somali Republic, Radio Fiji, Radio Malaysia, Radio Encarnacion in Paraguay, Radio Splendid in Argentina, S.O.D.R.E. in Uruguay, Radio Maldives, Radio Sahara in Spanish Sahara, Radio America in Honduras, Radio Nacional del Ecuador, La Voz del Barú in Panama, and Ondas del Meta in Colombia.

Radio Maldives replied that correct reports are verified, and that IRCs are not required. Reports can be sent to: Radio Maldives, Department of Information and Broadcasting, Male, Republic of Maldives.

During the coming year, the committee plans to concentrate more of its efforts on the smaller stations of Central and South America, with the hope that more will be led to verify correct reports.

SPEEDX SFS SPEEDX SFS SPEEDX SFS SPEEDX SFS SPEEDX SFS SPEEDX SFS

SPECIAL FEATURES SECTION NOTEBOOK: Support is picking up for the column more and more.

Let's keep up the good work, folks! Unfortunately, Mark S. Konen has had to resign from his position on the SFS, due to a lack of time. But he says he may be able to write occasionally for the SFS in the future. I would like to hear from all of you on what articles you liked, or disliked, and why? Also, what would you like to see? If there is any specific subject, station, etc. you would like to see discussed, you are most invited to drop a line to:

Michael P. Mahoney
426 Janney Avenue
Muncie, Indiana 47304

(P.S. Your articles are also very welcome!)

REMEMBER: This is YOUR column!

The SPEEDX SFS Theme Scheme:

November - "Shortwave Panorama" (A General Information Month)
December - "Special Christmas Issue" (About Christmas customs around the world, and the special Christmas programming on stations.)



MEMORIES
ARE
MIGHTY
SHORT...

so, write
to SFS now!



Sprinkled amongst the large number of Latin American broadcasters are a handful of noncommercial stations struggling to upgrade the educational and cultural level of the population against almost unsurmountable odds. Considering the constant struggle to obtain funds, to find adequate personnel, and to keep outdated equipment on the line, it is a small miracle that these stations continue year after year and it is, perhaps, because they do God's work that they somehow survive. One such broadcaster is TIFC, Faro del Caribe.

Faro del Caribe, as we know it today, was built upon the foundation laid by the evangelist Clarence Jones in 1945. In that year Jones, conscious of the need for a Christian radio in Costa Rica, founded a radio station with the call letters TIFA. Jones' control of TIFA was short-lived, however, and ownership soon passed to Francisco Arie, an Italian Costa Rican. Arie, in turn, sold TIFA to the Latin American Mission (LAM) in 1947, an event that began the modern history of TIFC.

Shortly after assuming control of TIFA, the LAM began an extensive drive to upgrade facilities and recruit additional personnel. Funds were raised in a successful drive spearheaded by Dr. Kenneth Stachan and the antiquated transmitting equipment was replaced. Additional personnel, in the form of an engineer turned missionary and two helpers, were also recruited and, on Christmas Day 1947, TIFC began test broadcasting with an airing of Handel's Messiah. It was not until February of the following year, however, that regularly scheduled transmissions were initiated.

THE STATION TODAY

The name Faro del Caribe, Spanish for Lighthouse of the Caribbean, reflects the stations goal of lighting the way to a better life for its audience. To this end, TIFC (TI for Costa Rica, FC for Faro del Caribe) seeks to develop the intellectual and moral faculties of the nation it serves while giving its listeners their "daily bread" through evangelical programming.

As a noncommercial station, TIFC is supported solely by the contributions of the people it serves, namely the evangelicals of Costa Rica who, despite their limited resources, have generously supported the station. Over \$US 300,000 has been raised and invested in new equipment and facilities and, at present, a drive to raise an additional \$20,000 is in progress.

The station operates with a staff of twelve from a single-story, white, barracks-like building located in San Jose, the Capital City of Costa Rica. Headed by manager Don Federico Picado O., the staff also includes two secretaries; three announcers; Israel Zuniga, Franklin Valverde, and Rafael Martinez; a program director, Manuel Viquez; an administrative assistant; and a three-man engineering department consisting of an engineer, Thelvin Cabezas, and two technicians.

In carrying the message of the Bible to its Central American and Caribbean listeners, Faro del Caribe utilizes two languages and four frequencies. The majority of its programming is in the Spanish language, beginning at 1000 hours GMT daily. However, English

programming for Caribbean listeners is also aired daily, beginning at 0300 hours GMT. A new 5-kilowatt transmitter is used for medium wave (1057 kilohertz) transmissions while older, 1-kilowatt transmitters are employed on the familiar frequencies of 6037 and 9645 kilohertz shortwave. 97.1 Megahertz FM is also utilized but power there is a meagre 250 watts. A vertical tower 240 feet in height radiates medium wave signals, while dipole and lazy-H type antennae serve for shortwave transmissions.

In its nightly 70 minute (90 on weekends) English language broadcast, Faro del Caribe presents a news roundup "Noticed VOA" and a variety of religious programs. "Shew Me a Penny", "Hour of Decision", "Baptist Hour", "Unshackled", and "The Hobby of Kings" are among the features, music, and inspirational messages aired by TIFC.



Thousands of letters pour in each year bringing testimony to the effectiveness of its evangelizing. All correspondence is acknowledged and correct reception reports, between 70 and 180 of which are received each month, are rewarded with a QSL, a friendly letter, and a little food for the soul. Penants are not available at the present time, but one is planned for release during next year's anniversary celebration. The one pictured here was pink and white on felt and commemorated the station's 21st anniversary.

A TIME OF CRISIS

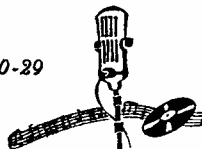
TIFC is seriously understaffed, a problem which constantly threatens the normal operation of the station. So grave is the situation that the loss of a key individual, such as may soon occur, would threaten the viability of the operation. Sharon Saylor, TIFC Secretary for English Correspondence, explains the situation this way. "We need at least two steady technicians (engineers). We have one but he can't be there every minute and the helpers are not always available. Recently we received the bad news that the technician we have now might have to leave for another job. We would appreciate your prayers.

A GLIMMER OF HOPE

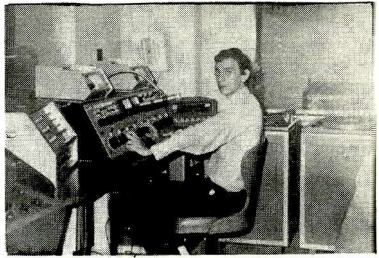
As it approaches its 25th anniversary, TIFC looks forward to the future with the hope that today's problems will be favorably resolved. Thus, despite its present problems, Faro del Caribe is well along on a project to improve reception in rural Costa Rica by expanding into the sixty-meter band. Permission to operate on a frequency of 5020 kilohertz in this band has already been obtained from the Costa Rican Government and, if the drive currently in progress to raise money for a transmitter to operate on this new frequency is successful, service could begin next year.

Although TIFC has a worldwide reach, its primary target area is Costa Rica. There amongst the banana and coffee trees, Faro del Caribe, with the dual purpose of evangelizing the souls and enlightening the minds of its listeners, tirelessly labors to light the way to a better life for all those who will follow. Lend them an ear sometime, won't you. You'll be glad you did.

"Iluminando el Sendero de la Vida"
San José, C. R. - C. F. Apt 2710 Cel. 21-40-29



Tropi- Tip



Radio Progreso
HRPL & HRPL-3
Apartado 20
El Progreso, Honduras, C.A.

Frequencies in use:

HRPL 1110 kHz (mw) 5 kW
HRPL-3 4920 kHz (sw) 1 kW

R. Progreso control room

Broadcast times: 1000 - 0400 GMT daily

Major advertisers: Coca-Cola, Cerveza-Tropical, Cere-Nervón, Ferretería Jorge J. Handal y Cía. (hardware), Cigarros Pinares y Imperial, Almacén Novedades (novelty warehouse), Café El Molino, Matamebas, Aceite Corona, Lotificación Bendeck, and others.

News broadcasts: 1200 GMT (VOA rebost), 1230 GMT (VOA rebost), 1300 GMT (local origination), 1800 GMT ("Noticiero Independiente", local news), and 0300 GMT.

Station Equipment:

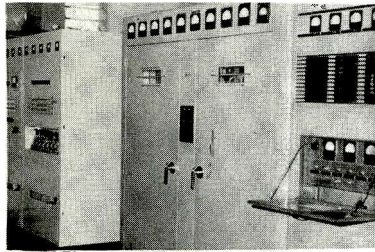
For medium-wave; two transmitters are used - a 5,000 watt Westinghouse 10 HV-1, and a Gates BC-1F, 1,000 watt stand-by transmitter.

For short-wave; a CBS custom-built 1,000 watt transmitter. (QSL says RP now with 1,500 watts.)

Antennas:

For medium-wave; a 210 ft. quarter wave.

For short-wave; standard dipole.



Announcers include: Roy Arturo Maradiaga, Oscar Alberto Girón, Rodimiro Ortiz. Staff technician is Felipe Pick.

Reporting to the station: Foreign reports are wanted. Of the 15-or-so foreign reports received each month, one-third are from North America. The use of the SIMPO code is encouraged, and reports can be in Spanish, or English, French, Italian and Portuguese. The station discourages the use of International Reply Coupon because El Progreso postal officials don't honor them.

Station slogan: "La Voz de un Pueblo en Marcha," or "The Voice of People on the Move."

QSL Policy: R. Progreso's QSL policy has been extremely good, usually with a prompt reply. However the mode of verification seems to vary from hand-written letters to detailed form-letter & pennant. Reports should be sent to: "El Señor Gerente". At present he's Mr. Jerry E. Tolle.

Our thanks to Radio Progreso's staff for their cooperation.

¡Mil gracias!

For GMT add
6 hours

3:00 DISCOTECA POPULAR RADIO PROGRESO, - II (Dedicatorias).
4:00 CLASES de las ESCUELAS RADIOFONICAS.
6:00 TRIBUNA RADIAL PROGRESO, Noticias y comentarios
6:30 CARAVANA DEPORTIVA.
7:15 ELLA Y EL, Programa para Matrimonios.
7:30 FORJANDO UN PUEBLO, Programa del Centro de Capacitación La Fragua.
8:00 DISCOMANIA JUVENIL '72 - I.
8:30 ARCO IRIS MUSICAL, Música Popular de Muchos Países.
9:00 DISCOMANIA JUVENIL '72 - II
9:30 ESTRELLAS ENTRE PINOS, Música para la Noche.
9:55 ORACION DE RADIO PROGRESO.
10:00 CIERRE DE RADIO PROGRESO.

Portion of R. Progreso's schedule

Each contributor's name is preceded by a number---which indicates the number of columns reported to this month. Those denoted by an (*) include credit for Sept. Station Skeds which was delayed in the mails.

Please note that late reports are not used nor credited. We urge all contributors to closely observe column deadlines. Thank You!

- 2 BETZ, George (CO).....SPR-4
- 2 BOOMER, Bruce (WV).....HQ-200
- 1 BROOKS, Alan (CT).....DX-150
- 1 BUNDY, H.Robert (TRUK).....SPR-4
- 2 *BUTTERFIELD, Bob (MA).....HQ-100
- 4 EYE, M.Harlan (PA).....SPR-4
- incl. 1 credit for Aug. omission
- 1 CALKIN, Gregg (DF MEXICO).....
- 2 CATEY, Robert (IL).....S-120
- 6 COLLIER, Mike (NY).....HQ-129X
- incl. 1 credit for Aug. omission
- 6 *COMPTON, Ken (MA).....DX-150
- 3 *d'ADOLF, Steve (NJ).....R-530
- 2 DAY, Edward (CA).....DX-150A
- 1 *DEEKE, V.Charles (IL).....DX-150
- 1 DONEGAN, Paul (GA).....R-100A
- 1 EATON, Billy Ray (TX).....DX-150A
- 6 *EICHENHORN, Sandy W. (MI)..SX-190
- 1 ELLIOTT, Kim A. (DC).....SPR-4
- 2 ELLSWORTH, Oliver (CA).....SX-190
- 2 ESTAND, Bob (TX).....SPR-4
- 4 FAY, John (MA).....SB-310
- 3 FISCHER, John, Jr. (CT).....S-200
- 1 GALVAN, Don (NJ).....GR-212
- 3 GOLDENBERG, Joe (MO).....TFM-1600
- 2 GREENALL, Dan (ONT).....S-52
- 7 GRIFFITH, Don (CO).....R-4B
- 5 *HANCHERUK, Norman (Pq).....CRF-150
- 1 HARDESTER, Mike (CA).....HQ-129X
- 4 HARRINGTON, Rob (CO).....SW-4A
- 2 HOOVER, Robb (NE).....Sony Port.
- 2 HOWARD, Ron (MD).....SB-310
- 1 HUNT, Ken (CA).....R-7000-1
- 3 LMBERT, Martin (VA).....DX-150A
- 2 JESSEN, Wilbur (OR).....R-530
- 4 JOHNSON, Don. C. (CA).....SPR-4
- 6 KAMP, Steve (CA).....HQ-140X
- 2 LADENBURGER, Rick (IL).....
- 1 LAGOMAGGIORE, John (NY).....
- 1 KOLB, John (CA).....SPR-4

- 3 LANOUÉ, Ron (MA).....Sears Port.
- 1 LAY, Russell (VA).....HQ-180
- 3 LAZEAR, Ken (OH).....SX-130
- 5 LEISTNER, Louis (CA).....SPR-4
- 2 LESTER, Jack (IL).....GR-64
- 2 LOBDELL, Chris (MA).....SW-4A
- 5 LOVELL, Jim (KY).....
- 1 LUCIER, Robert (PA).....SX-99
- 1 LUNDBERG, Larry (MN).....
- 3 MAGNE, Larry (PA).....R-4B
- 2 MAPPIN, J.Russ (WA).....SPR-4/HQ-160
- 1 MARSHALL, Cedric (ONT).....AGS-38
- 1 MATTHEWS, William (OH).....SS-IBS
- 1 MAYER, Alan (IL).....
- 1 MAYO, Paul (NY).....HQ-180AC
- 1 MCCELLAN, Doug (NM).....GR-64
- 3 MILLER, Al (OH).....HRG-500
- 3 *MOSEB, Gene (MI).....Exploair
- 1 NEUMANN, Serge (IN).....S-20R
- 2 NUDELMAN, David (WA).....HA-600
- 4 OLIVER, Wayne (NH).....DX-150A

contributors

compiled for SPEEDX by
Serge Neumann

- 1 PATTERSON, Pat (GA).....SX-99
- 1 PETERS, Frank (IL).....51-51
- 2 PETRAVICK, Simon (IL).....
- 1 PISTEK, Richard (IL).....HQ-180A
- 3 RAYMOND, Bob (MA).....DX-150A
- 2 REDMAN, Ron (IL).....PrIs.1660
- 1 ROGERS, John (SPAIN).....
- 1 ROSEN, Evan (NY).....SX-133
- 1 *SACKMAN, Gleason (ND).....
- 4 *SCHNABEL, Phil (NY).....HQ-200
- 2 SCHWARTZMYER, Paul (NY).....DX-150A
- 6 SELLERS, Harold (ONT).....9R-59D
- 6 SEYMOUR, Woody (NC).....SX-190
- 4 SHAW, William (PA).....SPR-4
- 2 SLOWEY, Bob (IL).....DX-150A
- 1 SMITH, Wade (PA).....SX-190
- 1 SPARKS, William (CA).....R-4B
- 3 STEPHENSON, Norman L. (CA)..SPR-4
- 1 STEVENS, Bill (PA).....
- 2 STRAUMANIS, Andrie (NY).....SW-717
- 4 STUART, Terry (OK).....SX-190
- 2 TAFEL, Edward (NY).....HQ-180
- 2 TESTA, Frank (MA).....
- 3 TORDOFF, Jack (CA).....SX-130
- 2 TRAUTSCHOLD, John (WI).....SB-310
- 1 WATKINS, David (IL).....R-630
- 3 WHITEHEAD, E.J. (MA).....DX-120
- 1 WILLIAMSON, Dr. Thomas(ONT)HQ-180
- 2 WILSON, Dave (MA).....SPR-4
- 1 WOOD, Dr. Richard E. (LA).....
- 3 ZABRANSKI, Jim (IA).....SB-310
- 3 ZILMER, Robert (WI).....SPR-4

A particular welcome to Msers, Greenall, Lucier, Oliver, Redman, Raymond, Ladenburger, Harrington, Hancheruk, Straumanis, Stuart, Hoover, Seymour, Sackman, Smith, Watkins...

Our THANKS to all 90 Contributors!!!



SPEEDX

The Official DX Magazine published monthly by-

"The Society to Preserve the Engrossing Enjoyment of DXing"

BOARD OF DIRECTORS- ART GLOVER- PORT ANGELES, WA- PRESIDENT
DAVE THORNE- SANTA ANA, CA- BUSINESS MANAGER
BILL FLYNN- MOUNTAIN VIEW, CA- MANAGING EDITOR
SERGE NEUMANN- MUNCIE, IN- ASSISTANT MANAGING EDITOR
CHRIS LOBDELL- READING, MA- EDITOR, QSL SECTION & VP..

EDITORIAL STAFF- JIM WHITEHEAD- READING, MA- SWBC DX, W. HEMISPHERE
STEVEN D'ADOLF- WOBURN, MA- SWBC DX, EUROPE/AFRICA
BOB BUNDY- TRUK, E. CAROLINE IS.- SWBC DX, ASIA/OCEANIA
BOB BUTTERFIELD- BELMONT, MA- SWBC DX, STATION SKEDS
JACK WHITE- GRESHAM, OR- SPEEDXTRAS, & PROPAGATION ED.
PAUL WAYO- BROOKLYN, NY- UTILITY CHASER'S CORNER
MARK KOUKOL- NAPERVILLE, IL- UTILITY USL
STEVEN HANDLER- EVANSTON, IL- UTILITY SPOTLIGHT
BILL SPARKS- SAN FRANCISCO, CA- ANARC NEWS
MARK KONEN- MEQUON, WI- KONEN'S KORNER
WENDELL BENEDETTI- LOS ANGELES, CA-
OLIVER ELLSWORTH- LOS ANGELES, CA-

SUBSCRIPTION RATES (PER YEAR):

Via First Class Mail to United States.....\$ 10.00 (U.S)
FORCIGN: Please write for rates. Available via Air or Seamaill.

SAMPLE COPY: Postpaid worldwide.....\$ 1.00 (U.S.)

BACK ISSUES: Available as supply lasts - ppd. \$ 1.00 (U.S.)

INTERNATIONAL ADDRESS: SPEEDX, PO BOX 321, SANTA ANA, CALIFORNIA 92702 USA.

(Make all checks, money orders, & bank drafts payable to SPEEDX.)

SPEEDX grants permission to reproduce articles and information contained herein, either for publishing and/or broadcasting; PROVIDED that credit is given to SPEEDX and that SPEEDX, PO Box 321, Santa Ana, CA, 92702 is mentioned. PERMISSION CANNOT BE GRANTED BY SPEEDX for articles or items contained herein that SPEEDX has used by permission from other sources, which are listed as-"used with permission". Thank you.

The accuracy of station listings and loggings in SPEEDX cannot be guaranteed due to the frequently changing schedules of many stations.

PRINTING BY- KWIK PRINT, Santa Ana, CA 92701 USA.

SPEEDX

P.O. Box 321

SANTA ANA, CALIF. 92702

U.S.A.

ADDRESS CORRECTION REQUESTED



JOHN E. DAY

13334 LA BARR MEADOWS RD

GRASS VALLEY CA 95945

FIRST CLASS MAIL