

SPEEDX



**THE DX RADIO MAGAZINE FOR
ACTIVE SHORTWAVE LISTENERS**

Volume Two—# 2

Feb. 1972

contents

News & Views _____	2
ANARC News _____	3
DX Montage _____	4
Konen's Korner _____	6
Speedxtras _____	7
Propagation _____	8
SWBC DX _____	10
Western Hemisphere _____	10
Europe — Africa _____	16
Asia — Oceania _____	22
Station Skeds _____	28
Utility Chasers Corner _____	30
Utility Spotlight _____	33
QSL Section _____	34
QSL Features _____	41
Special - A Visit to WNYW _____	43

**SPEEDX zooms
over 200
member mark!!**



NEWS and VIEWS

SPEEDX membership zooms over 200!

The total "Associate Membership" of SPEEDX hit 200 on 19 January 1972! This was just 19 days short of our goal of "200 by 1/1/72", but is without a doubt a record of some kind for DX organizations. Also in this same six month period the "Full Membership" has risen to an amazing 51! - with many, many more SPEEDXers well on their way towards qualifying for FULL MEMBERSHIP! Would you believe that this means that over 25% of the total subscribers have made worthwhile contributions to the magazine ON A REGULAR BASIS? Yes it's true! Stick with SPEEDX, the DX organization that is going someplace!

Since the first list of Full Members appeared in the December SPEEDX, the following DXers have qualified and are now full members.

John Kolb - San Diego, Calif.
Oliver Ellsworth - Los Angeles, CA
Andy Kerr - Creswell, OR
Mark Konen - Mequon, WI
Paul Koutnik - Shawnee, KS
Ralph Perry - Champaign, IL

John Tordoff - Redwood City, CA
Jim Whitehead - Reading, MA
Norman Stephenson - Long Beach, CA
Steve Kemp - San Jose, CA
Stephen Dildine - Arlington, VA
Jerry Berg - Woburn, MA
James Mappin - Spokane, WA

All of the above should have received their copy of the SPEEDX Constitution by now. The staff of SPEEDX and the membership welcomes each and everyone of you. Well done, and THANKS!

FLASH ...

Ralph Perry sent this last minute information to SPEEDX HQ -

- a) WRTVH '72 lists the controversial Nigerian unid. xman on 4900 kHz as Maiduguri North Eastern State program.
- b) We've all been wondering where the 7235 SIBS (Solomon Islands) xman has been for the last month or so; WRTVH advises that this is to be replaced (in operation yet???) by a 5 kw xman on the unbelievably benevolent freq, on the edge of a band, of 9775 kHz!! If this is the case, I imagine that they will be available with ABC power signals in the future, to be tuned by Tom, Dick or Charlie with a Star Roamer. I couldn't be more pleased!!! And relax, all you die-hard rare country chasers-- SIBS will retain in parallel the 3995 xman. The call of the 51 kb station is VQ07 "Looks like Christmas came early in 1972!! I'll be watching this frequency!"

Radio Nederland offers ...

SHORTWAVE PROPAGATION COURSE



This is to draw your attention to the fact that Radio Nederland will be broadcasting a Shortwave Propagation Course in its weekly programme "DX Juke Box" as from Thursday, March 9, 1972.

The course will deal with many problems related to short wave propagation, how it is influenced by distance, season and time of day, and how it is affected by atmosphere, solar and cosmic disturbances, and will cover such other subjects as ground and sky waves, ionospheric layers, one-hop and multi-hop trajectories, absorption, fading, the sunspot cycle, solar flares and storms, signal strength in relation to radio noise, and propagation of VHF signals.

Printed text material will be made available free of charge to active participants, and full details of the times and wavelength of the broadcasts will be sent together with the first four lessons and the complete set of diagrams.

No technical knowledge is required to follow the course. The compiler is J. Vastenhou, author of "Shortwave Listening" and several of our other technical courses.

Enrolment is now open. Applications should be addressed to DX Juke Box, c/o Radio Nederland, P.O. Box 222, Hilversum, Holland.

ANARC NEWS

BILL SPARKS

1100 Hearst Building,
San Francisco, Ca. 94103

SPEEDX INTERESTED IN ANARC MEMBERSHIP ANARC has received an inquiry from SPEEDX President Art Glover concerning the possibility of ANARC membership for SPEEDX. A membership application form and other information have been sent to Art. There will be more news on this subject in the future.

DXERS SUBJECTED TO FRAUD ATTEMPTS. The International Radio Club of America's DX MONITOR warns DXers of fraudulent schemes for obtaining money from them. A person or persons using the address, Mail Office, GPO, Accra, Ghana, is attempting to obtain money from DXers with requests for small amounts of money to buy a radio. Those short wave DXers who have sent reports to Radio Ghana seem to be the most likely targets. Also DXers whose names and addresses have been published in the Radio Japan News and similar listener newsletters of other broadcast organizations have been subjected to various forms of attempted fraud.

DX STAMP SERVICE. As of January 1, 1972, DX Stamp Service has a new address: G. N. Robertson, W2AZX, 83 Roder Parkway, Ontario, New York 14519. For those not familiar with this service, DX Stamp Service has, for several years, supplied DXers with current mint stamps of almost every country of the world. Many of these stamps would be difficult, if not impossible, to obtain from any other source.

In view of the recent devaluation of the U. S. dollar on the world market, it would probably be a good idea to get a current price list from DX Stamp Service before placing an order.

BENELUX SPANISH MEDIUM WAVE STATION LIST. The National Radio Club reports the availability of a 31 page list of information on Spanish Medium Wave stations. The list, prepared by Jan Burger of the BENELUX DX CLUB, contains details on networks, a station index arranged by province, and a station list by frequency giving power, network, address, director's name, schedule, telephone number, and QSL policy. It also contains a Spanish/English form letter and a list of Spanish DXing terms. The list is available for six International Reply Coupons from BENELUX DX CLUB, P. O. Box 2027, Den Bosch 4004, Holland.

CLANDESTINE STATION LIST. The Japan Radio Club has available a new listing of clandestine stations. The list includes frequencies and mailing addresses for the stations. It will be sent air mail for two International Reply Coupons. Requests should be directed to: Japan Radio Club, Terou Kataoka, 21-10, Koshien 7-Bancho, Nishinomiya 663, Japan.

WORLDWIDE TV FM DX ASSOCIATION. Effective January 1, 1972, WTFDA has a new address: 1203 Kenton Road, Deerfield, Illinois 60015.

EUROPEAN DX COUNCIL. EDXC has a new member club, DX INTERNATIONAL OF WEST GERMANY. The club was founded in 1970 and at present has 105 members. The club covers all areas of DXing, but especially shortwave. Their annual membership fee is 12.00 DM. President of the club is Bernd Kreh, and secretary is Heinz-Dieter Muerkoster. The club publication, WELLENREITER, is issued monthly with 12 offset printed pages. None of the bulletin is in English. The club's address is D-71 Heilbronn, Faistst 12/1, West Germany.

Please excuse any errors in typing. The newsletter arrived after my normal deadline making a rush job necessary.

Bill Sparks

- Dacca Radio: 'Under New Management'
- Deutsche Welle - Wertachtal: Moving Right Along
- Vastenhoud: to leave RN DX Juke Box post
- Looking ahead: An Editorial

SPEEDX MONTAGE



Editor: Serge C.P. Neumann, 286 Scheidler Apts., Muncie, Indiana 47304

----- Editorial -----

While Deutsche Welle and other International broadcasters build and plan for future transmitter sites, I can look ahead and only wonder..."Is radio listening, as we know it, going down a dead-end street?"

To lend some credence to that belief, an article entitled 'Hawaii U. Uses Satellite System for Pacific Education Network' (New York Times, 15 January, 1972) is paraphrased by SPEEDXer Larry Magne:

'(the article) points out how, using transceiving facilities costing US \$1,200 each, voice radio + facsimile communications are maintained between or among any two or more points in the Pacific region.

The man responsible for the design and construction of this remarkably inexpensive satellite communications facility, 56-year-old Prof. Katashi Nose of the Physics Department of the Univ. of Hawaii, has indicated similar commercially-constructed facilities might cost around 5 - 7,000 dollars, although presumably these would be individually constructed + not mass-produced. This contrasts with the usual cost for a satellite ground station of 5-7 million US \$.

Although this equipment is presently being used only in the 2,500-2,690 MHz range, it presumably could be used anywhere in the VHF, UHF, or SHF and EHF range.

The implications of this are staggering. Given the usual economies of scale and that listeners need only receiving facilities, it doesn't seem unreasonable to suppose, that equipment similar to that designed and built by Professor Nose could be mass-produced for the international radio listener market, at a price well within the reach of most middle income families.

(Continued on page two of DXM!)

REMEMBER this new address:

DX Stamp Service
83 Roder Pky.
Ontario, NY 14519
(Item from R.Stephen Dildine...)

Dacca Radio: Under New Management!

The 'People's Republic of Bangladesh' (one word) is the name of the new south-Asian nation, formerly East Pakistan. SPEEDX and DX Montage suggest reception reports for Dacca should now be addressed to:



RADIO BANGLADESH
Mr. M.R. Akhtar
Director of News + Information
Dacca
People's Rep. of Bangladesh.

Wertachtal: Deutsche Welle builds!

The construction of Deutsche Welle transmitting facility at Wertachtal south of Augsburg is continuing according to plans. In September, the first six of 25 - 400 ft. high towers was erected. The antenna systems for the North American and Near East transmissions are already in place.

Transmitters were built for DW by AEG Telefunken, GMBH. Construction is expected to be completed well in advance of the 1972 Olympic games at München. Ribbon cutting is set for May. The initial frequency will be 9610 kHz for the 1500-1800 GMT programs to the Near East. Power: 500kW.

Look for test transmissions possibly as early as March, 1972.

When completed, there will be six 500kW transmitters and two 500kW's as standby transmitters. The North American transmissions will carry a beam of 270 degrees.

Deutsche Welle has recently issued a booklet called "DW Handbuch 72". In it you'll find extremely fascinating articles written in German and English. For the 166-page booklet write to Radio Deutsche Welle!

Items for DX Montage should be mailed sothat they reach the editor by the 20th of each month! We appreciate your cooperation....

Editorial...continued from DXM Pg. 1

Technical advantages of such an arrangement are profound, too. First, the frequency range of international non-utility broadcasting could be vastly extended. Secondly, the vagaries of the ionosphere would be eliminated. Thirdly, jamming could be accomplished only by use of ground waves. The effect of all this is to vastly reduce the chances for poor quality reception due to QRM or poor propagation conditions.

While this initial hurdle can be overcome, the next, and probably the most difficult, is political. While most countries are anxious to transmit to foreign countries, few are anxious to have 'foreign propaganda' beamed to their citizenry.

One thing for certain, is that Professor Nose's efforts will sooner or later have a revolutionary effect on international radio and even television communications. Given the present conditions, it hasn't come a minute too soon.'

Editor's note: I must agree with Larry's observations. But at this time, it is difficult to assess how such new developments would change our hobby. But when these changes do come...if our hobby as we know it is to survive...then we must all be willing to change with it.

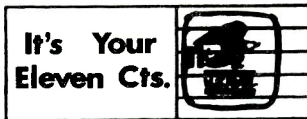
Vastenhoud: R.Nederland, etc., usw.

Jim Vastenhoud is stepping down as compiler of DX Juke Box. Most recently, Jim has been in charge of the new Malagasy relay construction. He will continue on with RN in other capacities. (Credit Andy Kerr)

On Thursday, March 9, 1972, Radio Nederland will broadcast a propagation course via DX Juke Box. Printed text available free to active participants. Write: DX Juke Box, Radio Nederland, P.O. Box 222, Hilversum, Holland. (Credit Robert Butterfield)

SHORT NOTES: Have you noticed the new BBC time signal format?...Worthwhile reminder from Dr. Wood: In reception reports to Malaysian stations, avoid words Malaya or Malay. The official language is Bahasa Malaysia or just Malaysian Language. By calling it Malay or Malay, you are possibly giving them a back-handed slap, because nations that do not recognize Malaysia still call it Malaya, of the rebel station Voice of the Malay Revolution... 'What Others Think' will continue next month... Tho not all reports could be used, we thank:

Anthony Marks, Dr. Richard E. Wood, R.Stephen Dildine, Larry Magne, Julian J. Kratter, Mike 'Doc' Hardester, Steve Kamp, Mike Mahoney, Robert Butterfield, Jim Whitehead, Andy Kerr, Ralph Perry, O.P. Ferrell



From Anthony Marks: (on new Allied SX-190 receiver) "I am going to try to use a 3.0 - 3.5 mHz crystal, and I believe it will work...there is space enough on the preselector to go down to 3.0 and I see no reason why it shouldn't."

Steve Kamp: "One handy aid for SW DX is the set of 'Worldwide Sunrise-Sunset' maps which are offered by the IRCA (International Radio Club of America). These maps are excellent for predicting fade-in/fade-out times..." Write: IRCA, 6059 Essex St. Riverside, CA 92504. 12 maps for 25¢.

Mike 'Doc' Hardester: "I, like many enjoy receiving pennants, but I do not request pennants from stations of certain size...(It has been considered publishing a listing of stations which send out pennants-Ed...) I'm afraid that if such a list of stations is published, that many stations (that occasionally reply w/ pennants, but cannot do so with each reception report) may stop sending pennants all together and may even cease to QSL the 'best' report."

Jim Whitehead: CFCX Montreal, 6005 kHz, has been sold to CHUM Ltd. of Toronto as part of a three-station, 19-million dollar deal. CFCX formerly owned by Canadian Marconi.

Julian J. Kratter: (on portables as receivers) "During my approx. 18 months ownership of my Grundig Satellit, I have received QSLs from 60-65 countries and heard another five or so...am currently using a 'Joystick' indoors...(Julian has limited antenna space) Tuning above 5 mHz is fairly simple, but due to mechanical differences in the bands adjustments have to be made each band. Below 5 mHz sensitivity drops off drastically and tuning becomes quite difficult."

Dr. Richard E. Wood: "There's an amusing mistake on p. 37 of January SPEEDX, in the QSL section. The veri signer for R.Singapura is given as 'Selamat M. Lagi'. This almost had me fooled for a minute...inscription at bottom of R.Singapura's well-known QSL card is 'Selamat Mendengar Lagi' which can be translated as 'Greetings and Tune in again.' It's as if an English-language QSL card saying 'Good Listening,' were interpreted as verification signer 'Mr. G. Listening.'"

Good DX! Sags

Konen's DX Korner

Mark S. Konen 11819 N. Country la. Mequon, WI. 53092

WHERE IS SHORTWAVE RADIO HEADED? Part I

Is shortwave radio on the way out, or is it currently enjoying an upswing in popularity?

Off-hand to some it would appear to be on the decline when you see stations like Radio Belize, Radio Tarawa, and possibly Austrian Radio abandoning their shortwave services in favor of medium wave radio instead. But in the past couple years new shortwave facilities have been planned and opened. FEBA-Seychelles, R. Nederland-Malagasy, Deutsche Welle-Kigali, and soon Malta. But why did some stations dump their shortwave outlets? In at least one case, poor and uneconomical frequency choice forced the station to close its shortwave and instead rely on its better medium-wave outlet. In some places, broadcasters are turning to medium-wave for their domestic services rather than shortwave because it is more economical and the equipment is easier to maintain. There are other key reasons why many shortwave have folded. Briefly, they are: Politics, lack of funds, lack of audience, Outmoded equipment, poor frequency choice, and other economic troubles. As a result, you can expect more stations to close, especially the smaller stations. (The rich get richer AND stronger, while the poor get poorer AND weaker!) But don't paint a completely pessimistic picture for shortwave radio as a whole. Many stations have found shortwave to their benefit and have opened new services because of it. A few of the superpower stations have opened relay stations all over the world because there IS apparently a large enough audience to warrant this. Stations like the VOA, Deutsche Welle, Radio Nederland, etc., have found the audiences in fairly large numbers so they built various relay sites all over the world so as to allow better receiving conditions for their listeners.

In the coming decade, with all of our technological advances, look for shortwave broadcasters to widen their scope. There will be more "superpower" relays as well as the possibility of satellite communications and SSB being part of the shortwave scene. So although there may be some setbacks, shortwave will flourish and grow in the coming years.

PART II: Shortwave radio in the view of their listeners

-----*****-----
MR. JOHN OBENCHAIN, of Sonora, Mexico has a suggestion that he feels may be of some help "to the fellow just getting his feet wet." He would like to see a special tape made that includes all the bewildering sounds the new DXer hears when roaming the dials. This would include jamming, QEN, utility stations, ship-to-shore, station IDs as well as a few interval signals. He also believes SPEEDXTRAS could make these available to anyone wanting them and willing to pay a reasonable amount for them. He says that this could be a good way to add money to the SPEEDX coffers. What do you think? Send your suggestions and ideas to the above address. Until next month,

73's & Good DXing,



SPEEDXTRAS

The Projects Division of SPEEDX

780 NW WALLULA GRESHAM, ORE 97030

The response to the "Classified Ads" placed in last month's issue has been outstanding to say the least. As a result, framework for several very promising projects is now taking shape.

perhaps the most rewarding of these is something just a bit innovative for SWLING..... It goes generally like this: 1) A group of monitors tape record selected educational and/or cultural broadcasts, 2) These recordings are then forwarded to the committee head for copying, splicing, dubbing, or editing (whatever might be required for the purpose), and following this, the finished product is 3) Donated to a school for handicapped children!!! There are a few minor details still pending, but the program should be functional in the very near future.

There will certainly be no limit placed upon the number of recording monitors, and anyone wishing to devote an occasional half-hour or so to cutting a tape for this project, or perhaps contribute a 3/4 inch (600 ft) reel of 0.5 mil tape to help get the plan going, may contact SPEEDXTRAS. In addition to acquiring earned-credit points, a measure of personal satisfaction is guaranteed to result.

More on this, and other, SPEEDX membership participation projects in the March issue.

RADIO NEDERLAND

As of this writing, the scheduled 28 January RN reception survey is still a couple of days hence, and it is hoped that a large response will result.

Those participating by forwarding reception reports of the selected broadcasts to this section will receive an especially marked-for-the-occasion QSL directly from Holland for their effort. Thanks are indeed in order to Radio Nederland for their interest in, and assistance with, this project. All SPEEDXers are encouraged to join in their celebration of 25 years of broadcasting service on 15 April 1972 by tuning in on that date (a little bird just flying in from Hilversum mentions a color QSL card to commemorate the occasion).

UTE HANDBOOK

Distribution of the UTILITIES DXers HANDBOOK was delayed a couple of extra days beyond the scheduled 15 January date due to an invasion of flu

microbes upon the Projects Coordinator and a desire by the printer to deliver top-notch quality. All advance-sale orders have been shipped and delivery of regular orders may be expected within a week of their receipt here.

From early feed-back it would seem the UH is meeting with uncommonly high approval.... Messrs Mayo and Handler are to be congratulated for developing this extremely useful and comprehensive reference.

Orders for the UTILITIES DXers HANDBOOK may be sent directly to SPEEDXTRAS at the above address.

	Regular Price	SPEEDX members (must be qualified)
US, Canada, Mexico (via First Class mail) or all other countries (via surface mail)	3.00 ppd	2.50 ppd
Air Mail to South & Central America	3.50 "	3.00 "
Air Mail to Europe	3.75 "	3.25 "
Air Mail to Africa, Asia, Oceania	4.00 "	3.50 "

SWEEPSTAKES

With the closing date for eligible loggings coming up 28 February, a lot of pencil-pushing and "guesstimating" appears to be going on. Several

have written expressing concern that they have been unable as yet to log peanut-whistles on all six continents (Asia and Europe seem especially elusive). As mentioned several times earlier, there are a lot of kinks connected with this contest, and it is extremely doubtful that very many (if any) of the nine winners will hold a QSL from flea-powered outlets on every continent!!! Remember, contestants are competing against only others with similar experience and interests.... Hang in there gents.... The results may well surprise you, and after all, it only costs a stamp to enter the finals come April.

MINI-ANTENNA

The aforementioned heavy response to the January Classified Ads has dictated a brief delay in drawing up the blueprints for this construction

project (perhaps the Ads should have also contained a request for "secretarial aid"). At any rate, the required data is now being assembled in readable form and should be ready near the latter part of February. For full members of SPEEDX a SASE will deliver the complete construction details.... those who have not as yet qualified for membership are requested to enclose an IRC in addition to a SASE when ordering.

The unit's main claim for fame lies in its abbreviated length (roughly 30 inches), economy of construction (total parts and materials cost runs \$2 - \$3), and ease of erection (soldering is not necessary). It won't outperform the larger exterior arrays, but will do a creditable job for an SWL operating in cramped quarters and can provide a useful accessory for DXing with portable gear.

INSIGNIA

President Art Glover reports that Alan Brooks' original design is the winner of the SPEEDX insignia competition. After consulting with Mr Brooks

concerning a very minor change, work will begin to convert this excellent emblem drawing into "cuts" for reproduction on stationery and perhaps a rubber stamp. Those who wish implant the seal of SPEEDX in mailbags throughout the world, stay tuned to SPEEDXTRAS.

PROPAGATION

JACK WHITE
780 NW WALLULA
GRESHAM, OREGON
97030

Periodically the mail brings inquiries from utilities DXers asking about the possibility of preparing a forecast chart geared to that particular branch of SWling. Certainly a reasonable request considering the recent increased interest in working the uts, but also one that poses a number of peculiar problems not encountered in prognosticating SWBC reception..

As a title in point, let's consider one of the more popular hunting grounds for the utilities DXer...point-to-point radiotelephone. These are the stations that direct telephone calls throughout the World, and exist for the singular purpose of providing the means of conversation between two widely separated persons (or often computers). "Ma Bell" recently enclosed an international telephone rate schedule with the writer's monthly statement, and while the charges quoted therein seemed more than reasonable in consideration of the service performed, it is doubtful that very many calls of a personal nature would be economically feasible. Therefore, it is the commercial user that supports the overseas radiotelephone...and thereby results the largest challenge to forecasting reception of such transmissions originating at distant points.

Let's have a look at a radiotelephone station located in North Africa for a moment. Most of the commercial trade ties for that part of the World are linked to Europe, so the volume of communications traffic would be across the Mediterranean Sea and conducted during normal business hours common to both areas. This would place the North African station as being on the air with any degree of regularity between roughly 0900 and 1400 hours GMT. In this particular example, and during the current season, the most propagationally suitable frequency range would be around 21 megahertz for such a circuit at these hours.... ..one that had only the barest of chances to reach North America!! A prediction for North America/North Africa for the same time period would show the 10 MHz band as being the most suitable for a DXer attempting to work the Sahara region, but considering the local hour on this side of the Atlantic as well as limited traffic potential, it is quite doubtful that a point-to-point terminal would be operating in this direction from over there.

"Well and good", you say, "but sometime during the day there must be some date importer in New Jersey that wants to contact his supplier in Malagasy. Can't we predict when he might be doing it and grab the precontact test tape?!"...Maybe yes, maybe no. Once again it's a question of the most suitable band, only in this case a circuit reliability factor also enters the picture. If the direct signal path during the most heavily used hours is not as propagationally suitable as it might be, the telephone call will be relayed using one or more intermediate points that quite likely might be receiving the transmission on one frequency and sending it on via an entirely different one. The aforementioned New Jersey/Malagasy call might then be initiated from New York to Paris in the 12 MHz band and then passed from there (via the FCR network) to its destination in the 19MHz portion of the spectrum. If a 19 MHz channel was not considered reliable for direct communications, then the DXer would have little if any chance at logging Tananarive in this situation either.

Summing up then, a forecast for point-to-point reception strictly based upon propagation conditions would hardly reflect things as they actually were, and to adjust the predictions to accommodate at least most of the variables would require facilities well beyond those presently available to this section.

Two more items merit at least casual mention...limited facilities in some countries, as well as a relatively low volume of international telephone traffic, have resulted in scheduling of such service only during certain brief periods (it is only possible to complete a call from Western North America to Peru during one of two daily time periods for example). The other aspect is that radiotelephone frequency band allocations are sufficiently numerous to permit shifting either up or down from day to day right along with daily variations in ionospheric characteristics....once again "reliable" and "suitable" enter the picture.

Summing up then, a forecast for point-to-point reception based only upon the propagation conditions would hardly reflect things as they actually were, and to adjust the predictions to accommodate at least the most significant of the variables would require facilities well beyond those presently available to this section. Perhaps it is this grab-bag aspect that provides some of the interest in ute chasing.

While all of the various services lumped into the "utilities" category present problems to reasonable accurate forecasting, there is one band and service that can nearly always be counted upon to perform with a fair degree of continuity...the 8.8 MHz aero band. Nearly every International Flight Service Station throughout the World as well as the aircraft they service are equipped to function in this range and generally do. On this band there are regularly scheduled weather broadcasts and dozens of air-to-ground communications channels.

As an aid to utilities DXers, the forecast chart for this month will contain a notation "8A". This will indicate the hours during which reception from the particular region seems most likely on the 8.8 MHz aircraft band. If this addition proves useful to the users, it will be included on a regular basis; and perhaps some expansion into other less complicated ute bands might develop also.

For detailed information concerning VOLMET (weather) broadcasts and other aircraft station data, such references as the SPEEDY UTILITIES DXers HANDBOOK should be consulted.



WORLDWIDE FORECAST

February 1972

GMT	RCVR ZONE	SOUTH & CENTRAL AMERICA	EUROPE MID EAST N AFRICA	CENTRAL ASIA FAR EAST	SOUTH & CENTRAL AFRICA	AUSTRALIA SOUTH PACIFIC
0000 to 0300	E	31G 49G 60G (8A)	25F 31F 49F (8A)	16F 19F 25M	19F 49F 60F (8A)	19F 25M
	W	25G 31G 49G (8A)	25F 31G 49G (8A)	19G 25F	25F 31F 49F (8A)	19F
0300 to 0600	E	49G 60G (8A)	31G 41G 49F (8A)	25F 31M	31G 49G 60F (8A)	25G
	W	49G 60G (8A)	31G 41F 49F (8A)	25G 31F	31F 49F 60F (8A)	25F
0600 to 0900	E	49G 60G (8A)	31G 41G 49F (8A)	31G 49G 25F (8A)	31F 49F (8A)	31G 25F 49F (8A)
	W	49G 60G (8A)	31F 49F (8A)	31G 49F 60F (8A)	31F 49F (8A)	31G 25F 49F (8A)
0900 to 1200	E	49G 60G (8A)	31G 41F 49F	31G 25F 49F (8A)	25F 31F	31F 49F 60F (8A)
	W	49G 60G (8A)	31F 41F 49F	31G 49G 60F (8A)	49F 31M	49G 60G 31F (8A)
1200 to 1500	E	31G 49F	19G 16F	16F 19F	19F	31G 25F
	W	49G 60F (8A)	31G 25F	31G 25F 49F (8A)	25F 60M	31G 49F 60F (8A)
1500 to 1800	E	19F 25F	19F 16F	19G 16F	19F	Nil
	W	25F 31F	19G	19F 25M	16F 19F	25F 31F
1800 to 2100	E	19F	16G 19G	19F	19F 16F	25M
	W	19F	19G 16F	16F 19F	19F	19F
2100 to 2400	E	19G 25F 49F (8A)	19F 25F 31F (8A)	19F 25F	25G 31G (8A)	19F
	W	19G 25G 31F 49F	25G 31F 19F	19F	25G	19F

RCVR ZONE indicates the listener's region. "E" represents EST & CST time zones, and "W" is for MST & PST. Reading down to the proper GMT and RCVR ZONE, and then across to the area from which reception is desired, will indicate the band(s) most likely to be open at the time. Quality of the openings is given by G, F, or M...Good, Fair, or Marginal.

16 Meter Band	17700-17900 khz	41 Meter Band	7100-7300 khz
19 " "	15100-15450	60 " "	4750-5050
25 " "	11700-11975	49 " "	5950-6200
31 " "	9500-9775	(8A) Aero Band	8F15-9040

SWBC DX - Western Hemisphere

- EDITOR -

E.J. "Jim" Whitehead
177 Pine Ridge Road
Reading, Mass. 01867



- REFRAN -

"Quien todo lo quiere todo lo pierde"

PERU CLAMPS DOWN ON FOREIGN OWNED BROADCASTERS

Look for changes in the programming of Peruvian stations. In what amounts to a partial nationalization of the broadcasting industry, the military government of Peru has issued a harsh set of rules which require 25% government participation in ownership, profit sharing with employees, and more educational and peruvian produced programs. These moves, according to press reports of the government statement issued with the new rules, are designed to reduce the number of foreign produced serials, soap operas etc. that are imposing "foreign values" on Peruvians.

RADIO MEXICO WANTS REPORTS

XERMX Radio Mexico is anxious to receive reports on its broadcasts. Address per latest WRTH is Apartado 20-620, Mexico 20, D.F., Mexico and I am sure that none of us wants to see them leave the air so lets get those reports off today.

RECORD 49 REPORTERS

Yes that's right, 49 great guys sent in reports this month so I have my work cut out for me. Thanks guys!!! So, without further ado, on to the reports with the usual reminder that all times are GMT and all frequencies are in kilohertz.

ARGENTINA

5989	1120	<u>LRS2 R. Splendid</u> : Sp w/ID,TC,& freq. (poor,12/26;Shaw-VA)
6060	0755	<u>LRA31 R.Nacional,Buenos Aires</u> : Sp w/ OM hosting all LA mx "Consistently best Argentine hrd (good,1/1;Shaw-VA)
6090	0200	<u>LRV1 R.Belgrano</u> : Sp w/ID & nx (poor,12/30;Caldwell-CA)
9690	0300	<u>LRA32 R.Nacional,Buenos Aires</u> : Eng. w/nx,mx, & features (fair,1/6;Lmbert-VA) (gd,0600,1/4;Caldwell-CA) (fair,0000, 1/8;Brooks-NH) (gd,0605,12/31;d'Adolf-MA) (poor,0115,1/3; Zilmer-WI) (gd,0625,12/16;Betz;CO) (fair,0400,12/18; Leonhardt,IN) (fair,0305,12/21;Deeke-IL)
11710	2301	<u>LRA35 R.Nacional</u> : Eng. w/ID by a woman followed by a talk by a man (poor 1/4;Lobdell-MA)
15290	0859	<u>LRU R. El Mundo</u> : Sp w/ IDs,&jingles (poor 1/5;Lobdell-MA)

BOLIVIA

4875	0950	<u>CP75 LaCruz del Sur</u> : Sp w/s/on,regional mx,talk,& many IDs (good,12/23;Benadetti-CA)
------	------	---

BRAZIL

3385	0815	<u>ZYG22 R.Clube Teresina</u> : Presumably the station hrd here with news. Not hrd at 0750 so s/on is 0800. (qual??, date??;Ferguson-WV) 0800 is correct per WRTH hi! ejw
4805	0750	<u>ZYS8 R. Dif. do Amazonas</u> : Port. w/nx,ID,& comls (good, 1/1;Slowe-IL)
4865	0340	<u>PRC5 R.Clube do Pará</u> :Port. w/ID&mx (gd,1/8;Lester-IL) (v gd,0356s/off,1/8;Slowe-IL) (exc,0200,12/26;Kamp-CA)
4875	0920	<u>ZYZ30 R.Jornal do Brazil</u> :Port. w/ads,nx,IDs (good,12/27; Lazear-OH)

BRAZIL (cont.)

4995 0030 ZYX2 R. Brazil Central: Port. w/talk and many mentions of Christmas(fair,12/25;Rodgers-UK)(v gd,0030,1/3; Schnabel-NY)(good,0150,1/3;Sparks-CA)(poor to fair, 0158,1/1;Miller-OH)

5965 0804 ZYU60 R.Guabiaba:Port. w/ piano&orch mx. WRTH 72 listing of 1800-0100 clearly incorrect(qual?,date?;Ferguson-WV)

6000 0800 PRK5 R. Inconfidência:Port. w/IDs & pop mx(fair to poor, 12/28;Day-CA)(gd,2315,12/20;Perry-IL)(poor,0155,12/29; Leonhardt-IN)(qual?,Date?;Ferguson-WV)

6035 2220 ZYZ25 R.Globo:Port. w/movie mx, jingles, nx @ 2230. Slight het.(good,12/20;Perry-IL)(qual?,2330,date?;Ferguson-WV)

6145 2330 ZYZ3+ R.Nacional, Rio de Janeiro:Port. ID into program of 1t mx(gd,12/21;Kamp-CA)(poor,0040,1/5;Zilmer-WI)(fair, 0410,12/31;Sparks-CA)

6176 0515 ZYV7+ R.Guarani:Port. w/ID@28min past hr twice(fair,12/30, Sparks-CA)(fair,0030,1/3;Zilmer-WI)(gd,0500,1/2; Caldwell-CA)

9635 0929 ZYR83 R.Aparecida:Port. w/ID&vocals (gd,12/31;Lobdell-MA)

11785 0058 ZYU61 R.Guabiaba:Port.w/Eng.&Port.vocals, ID @ 0058 (poor, 12/30;Collier-NY)

11795 2030 ZYZ39 R.Nacional, Rio: Port.w/ID (fair,12/18;Rodgers-UK)

11805 0205 ZYZ36 R.Globo:Port w/ID,mx,ads(good,12/14;Pay-MA)(good, 2215,12/18;Rodgers-UK)(good,2320,12/19;Slowey-IL)

11925 0200 ZYR78 R.Bandeirantes: Port.w/mx & ID(gd,12/25;Rodgers-UK)

11950 0236 PRL3 R. Ministério da Educação: Port. w/choral mx to ID @ 0303(fair,1/4;Lobdell-MA)(fair,0000,1/3;Zilmer-WI)

15105 2323 ZYZ32 R.Rural Brasileira:Port.W/ID&mx(gd,12/16;Slowey-IL)

15125 1245 ZYN32 R.Soc. da Bahia:Port.w/mx (fair,1/9;Zilmer-WI)

15450 0130 ZYN32 R.Nacional Brasilia:Port. w/mx,IDs (v gd,1/3; Caldwell-CA)(poor,0200,1/16;Whitehead-MA)

CANADA

5975 0715 R. Canada Intl.:Eng.w/mailbag to 0745(??,??;Ferguson-WV)

6005 1505 CFCK Montreal:Eng.w/nx ads(poor,12/24;Imbert-VA)

6010 1245 CJCK Sydney:Eng. w.mx,wx,nx&comls(poor,12/6;Slade-MA)

6070 0625 CFRX Toronto:Eng. w/OwlsNest pgm(fair,12/21;Redman-IL)
(fair,1500,12/24&1/8;Imbert-VA)(very gd,0700,12/22; Day-CA)(fair,0125,12/26;McClellan-NM)

6080 0326 CFKK Vancouver:Eng. w/pop mx (fair,12/21;Jessen-OR)

6130 0948 CHNX Halifax:Eng. w/mx & ID (good,12/13;Mrs.Ely-Fla)(poor, 1450,12/24;Imbert-VA)(fair,0705,12/19;Redman-IL)(good, 0204,12/29;Leonhardt-IN)(poor,1230,12/30;Deeke-IL)
(fair,0747,12/25;Lazear-OH)(fair,1238,12/26;Slade-MA)
(fair,2100,1/2;Galvan-NJ)

6160 1808 CKZU Vancouver: Eng. w/opera selections(exc,12/22; Jessen-OR) This not in WRTH 72. This new one to me since St.Johns Newfoundland also here. ejw

7335 1033 CHU Ottawa: TC in Fr.&Eng. (gd,12/10;Mrs. Ely-Fla)

9605 2200 CBC: Armed Forces Svc w/nx & stories(fair,1/9;Imbert-VA)

9625 0935 R.Canada Intl.:Eng.w/ID & mx (good,12/31;Tafel-NY)(exc., 2044,12/31;Mrs.Ely-FL)(v.gd,1245,12/27;Shaw-PA)(exc., 0831,12/12;Washbon-CA)

11720 0400 R.Canada Intl.:Eng.w/mx incl Irish songs(gd,12/29;Shaw-PA)

CHILE

9570 0445 CE957 R.Portales:Sp w/talks,mx, ID (good,12/24;Lanoue-MA)
(exc,0545,12/16;Betz-CO)(fair,0005,12/26;Shaw-VA)(poor, 0650,12/16;Day-CA)(poor,0205,12/28;Leonhardt-IN)

9590 0400 CE959 R.Presidente Balmaceda: Sp w/nx(gd,12/29;Caldwell-CA)

15150 2300 CE1515 R.Corporación:Sp w/IDs & mx (fair,12/29;Fay-MA)

COLOMBIA

4755 1115 HJKC Em. Nuevo Mundo: FENATIVE Sp w/ID for network "...
...Radial Colombiana..." talk,LA mx, but no mention of Nuevo Mundo.(fair,1/9;d'Adolf-MA)

4905 0426 HJAH Emisora Atlántico:Sp w/comls.,nx,IDs (fair,1/8; Slowey-IL)(good,0410,1/8;Lester-IL)

4915 0440 HJSG R.Guatapuri:Sp w/LA mx,TCs (good,12/24;Redman-IL)

4945 0645 HJDH R.Colosal:Sp w/LA mx and Caracol IDs,local ID @0700 didn't know this stn. was a member of CARACOL. (fair, 1/7;Benton-NB)(good,0624,12/29;Glover-WA)(exc,0930,12/ 12/28;Redman-IL)(good,0530,12/9;Betz-CO)

Last months REFRAN is translated "He who seeks, finds." An easy one. So is this months. Did you get it? Do you like this feature or should I discontinue it? Your comments would be appreciated. ejw 11

COLOMBIA (cont.)

- 4955 0015 HJCC R. Nacional:Sp.w/opera (good,1/9;Estes-MS)(fair,0500,1/17;Redman-IL)(gd,1150,12/30;Deeke-IL)(v. Good,0200,12/30;Collier-NY)
- 4965 0259 HJAF R. Santa Fé:Sp.w/LAmx & IDs(poor,1/2;Nudelman-WA)(fair,0430,1/25;Zilmer-WI)(gd,0630,12/28;Redman-IL)(good,0615,12/17;Imbert-VA)(gd,0635,1/4;Day-CA)(gd,0205,12/30;Fay-MA)(fr,0430,12/10;Fischer-PA)(fair,0635,1/6;Benton-NE)(v gd,0426,12/24;Perry-IL)(fair,0020,12/18;Rodgers-UK)(fair,0140,12/30;Deeke-IL)
- 5020 0208 HJFW Transmisora Caldas:Sp.w/LA vocal mx, ID (good,12/31;Collier-NY)(fair,0425,12/30;Whitehead-MA)
- 5075 0300 HJGC R. Sutatenza:Sp.w/LA mx & ID (gd,1/1;Shaw-PA)(gd,0455,12/31;Betz-CO)(fair,0050,1/3;Zilmer-WI)
- 5095 0147 HJGG R. Sutatenza:Sp.w/LAmx&talk(gd,12/10;Glover-WA)(fair,0147,1/5;Deeke-IL)(good,0055,1/3;Zilmer-WI)
- 5120 2400 HJGG R. Sutatenza:Sp. // 5075 up from 5095?? (pr,12/25 Shaw-VA) You sure of this Ed??? HJGG not known to drift
- 6030 0259 HJCT R. Nacional:Sp.w/ID into nx (??,??;Ferguson-WV)
- 6065 0615 HJAK R. Super:Sp.w/fiesta mx & ID after each selection (gd,12/31;Sparks-CA)(v gd,0650,1/4;Day-CA)
- 6075 0230 HJCT R. Sutatenza:Sp.w/LA mx (fair,1/4;Caldwell-CA)(fair,0045,1/3;Zilmer-WI)(good,0908,12/27;Lazear-OH)
- 6105 1157 HJDV R. Visión:Sp.w/nx, IDs, ads, talks (fair,12/18;Lazear-OH)
- 6125 0637 HJKE R. Continental:Sp.w/LA mx and ads for "Dorada, la super cerveza"(gd,12/17;Day-CA)(??,0820,??;Ferguson-WV)(gd,0715,12/12;Perry-IL)(fair,0045,1/5;Zilmer-WI)(fair,0645,12/18;Sparks-CA)(fair,0715,12/28;Redman-IL)(good,0130,12/29;Leonhardt-IN)
- 6160 0315 HJKJ Emisora Nueva Granada:Sp.w/spts (fair,12/21;Leonhardt-IN)(fair,0055,12/21;Christmas mx;Deeke-IL)
- 9635 1135 HJCC R. Nacional:Sp.w/nx & address given(gd,1/3;Fischer-PA)(fair,1/3,0100;Zilmer-WI)(gd,0401,12/20;Jessen-OR)(good,0330,1/3;Caldwell-CA)(fair,0100,12/12;ejw-MA)

COSTA RICA

- 4832 0050 TIHB R. Capital:Sp.w/relay of telephone calls & 5 min Eng. segment(gd,12/24;Perry-IL)(fair,1219,1/2;Miller-OH)(gd,0515,12/17;Redman-IL)(gd,0645,1/1;Shaw-VA)(fair,0300,12/28;Fay-MA)(gd,0421,12/31;Collier-NY)(gd,0508,12/31;Widner-IN)(gd,0415,12/19;Zilmer-WI)
- 6006 1240 TIHBG R. Reloj:Sp.w/clk by OM (exc,12/28;Konen-WI)(poor,0856,1/1;Widner-IN)(??,0000-0400,??;Ferguson-WV)(fair,0823,1/1;Betz-CO)(gd,0230,12/28;Fay-MA)(v. gd,0215,1/1;McClellan-MM)(fair,0450,12/30;Slowey-IL)(gd,1035,1/2;Redman-IL)(fair,0310,12/26;Glover-WA)
- 6150 0500 TIHS R. Atenas:Sp.w/ID, mx (gd,12/30;Lester-IL)(gd,0500,1/5;Caldwell-CA)

CUBA

- 3600 0656 LV de Cuba:Sp w/IS, ID (gd,1/1;Hauser-TX)
- 5305 0148 R. Rebelde:Sp.w/mx & Fiedel's wisdom(fair,1/3;Schnabel-NY) probably a harmonic or spur. //590,600,550&720(hrd)
- 6060 0010 Radio Havana Cuba:Sp.w/nx (gd,1/6;Estes-MS)
- 11270 1131 Radio Havana Cuba: // 11760 tx fault? (fair,12/11;Magne-PA)
- 11760 0500 Radio Havana Cuba: // w/unlisted 10.800khz w/OM&YL anncrs. (good,12/30;Tafel-NY)(fair,0530,1/4;Shaw-PA)
- 19280 1915 Radio Havana Cuba:Sp.w/Classical mx(gd,12/12;Shaw-PA)

DOMINICAN REPUBLIC

- 3215 0128 HIDB R. Libertad:Sp.w/IDs,ads,LA mx(fair,1/1;Miller-OH)(exc,0325,12/17;Perry-IL)(fair,0307,12/26;Widner-IL)(gd,0330,12/29;Fay-MA)(fair-poor,0240,12/15;Collier-NY)
- 3365 0356 HTRL R. Exitos:Sp.w/soft mx+IDs(gd,12/27;Lazear-OH)(good,0220,1/2;Collier-NY)
- 3406 2342 HI?? R. Clarín:Sp.w/U.S. mx,ads,& Ids as "Radio Clarin, Santo Domingo"(fair,12/15;Miller-OH) Not listed in WRTH 72. Anyone else hearing this one?? ejw
- 4775 0330 HIAS Onda Musical:Sp.w/LA pops & ID Noted here since 1/7. (strong,1/8;Sparks-CA)(Also listed by "Ralphus"Perry-IL)
- 4825 2245 HIFA LV de las Fuerzas Armadas:Sp.w/mx,nx @ 2300(fair,1/4;Brooks-NH)
- 4881 0530 HIJP R. Comercial:Sp.w/talks & LA pops (fair,12/22;Benton-NB)(gd,0613,1/1;Deeke-IL)(gd,0645,12/23;Redman-IL)(fair,0753,12/21;Benedetti-CA)(gd,0914,12/28,w/"Educacion Campesina"pgm;Kamp-CA)(gd,0523,12/23;Lazear-OH)

DOMINICAN REPUBLIC (cont.)

- 4930 0810 HIBE R.Mil:Sp.w/LA mx,ads,IDs as "R.Mil,la primera"(gd, 12/21;Redman-IL)(gd,0600,12/19;Betz-CO)(exc,0618,12/29; Glover-WA)(gd,0610,1/1;Deeke-IL)(fair,0432,12/19; Zilmer-WI)(gd,0117,12/30;Collier-NY)(gd,0244,1/5; Leonhardt-IN)
 4962 0500 HICN R.Antillas:Sp.w/fiesta mx,ID as "Esta es R.Antillas desde Santo Domingo" severe het from HJAF (fair,12/23; Patterson-GA) (poor,2330,1/9;Whitehead-MA) nom 4960-ejw

ECUADOR

- 3390 1036 HCOT1 R.Zaracay:Sp.w/LA mx,few IDs (fair,12/24;Miller-OH) (fair,0251,1/3;Widner-IN)
 4680 0545 HCWE1 R. Nac. Espejo:Sp.w/Andean songs,ID w/call,freq,& QTH @0547(gd,1/2;Schnabel-NY)(gd,0620,12/28;Redman-IL) (??,0640,1/1;Shaw-VA)
 4740A 0836 HCBK2 R.El Mundo:Sp.w/mx,little talk & ID (poor,12/25; Burns-MO) WRTH72 lists as 4750. A move?? ejw
 4765 0450 HCAJ2 C.R.E.:Sp.w/nx,IDs (fair,12/17;Redman-IL)(not hrd 0545. Still active after 0500?;Ferguson-WV) WRTH72 lists s/off 0500 but they occasionally relay other mw network members after that. ejw
 4795 0315 HCAS4 LV de los Carás:Sp.w/rock mx (poor,12/18;Perry-IL)
 4815 0730 HCRF4 R.Canal Manabita:Sp.w/mx,ID every thr mentioning "Canal Manabita" (poor,1/9;Burns-MO)
 4824 0410 HCAV3 R.Luz y Vida:Sp.w/classical mx, ID@430 s/off(poor, 12/10;Glover-WA) (poor,0825,12/25;Perry-IL)(fair,1013, 12/26;Shaw-VA)
 4910 0315 HCMJ1 Ems Gran Colombia:Sp.w/"Informa Gran Colombia para C.R.E."(fair,1/8;Slowey-IL)(fair,0528,12/14;Burns-MO) (gd,0515,12/31;Glover-WA)(gd,0315,1/8;Betz-CO)
 4923 0140 HCRQ1 R. Quito:Sp.w/LA mx,IDs (gd,1/5;Deeke-IL)(gd,0302, 12/28;Slowey-IL)
 6050 0206 HCJB LV de los Andes:Sp.w/mx & ID (gd,12/30;Galvan-NJ)
 9587 0525 HCJB LV de los Andes:Eng.notcd spur from 9615 here (Ferguson-WV)
 11735 0730 HCJB LV de los Andes:Eng.w/rel. pgm (fair,1/4;Shaw-PA)
 11745 0145 HCJB LV de los Andes:Eng.w/talk (gd,12/31;Shaw-PA)
 15115 1313 HCJB LV de los Andes:Eng.w/rel.talk(exc,1/1;Mrs Ely-FL) (v.gd.,0505,1/4;Shaw-PA)
 17740 1900 HCJB LV de los Andes:new freq.to europe(gd,12/18;Galvan-NJ)

EL SALVADOR

- 5980 2355 YSS R.Nacional:Sp.w/mx(poor,12/30;Leonhardt-IN)(fair, 1245,12/21;Zilmer-WI)
 9553 0315 YSS R.Nacional:Sp.w/talk,IDs (v.gd,12/18;McClellan-NM) (v.poor,2300,1/9;Zilmer-WI)

FRENCH GUIANA

- 3385 0912 O.R.T.F. Cayenne:French w/IS and s/on @ 0915 after "La Marsiellaise" (fair,12/28;Collier-NY)

GUATAMALA

- 2860 0019 TGAG R. Huehuetenango:Sp.w/Mex.mx (??,12/19;Hauser-TX)
 3325 1207 TGBA R. Maya de Barillas:Sp.w/Guat. noel tunes,talks, // 2360 where v. poor (fair,12/21;Schnabel-NY)
 3360 0255 TGVN LV de Nahualá:Sp.w/mx,IDs,anmts (fair,12/30;Widner-IN) (gd,0315,1/9;Slowey-IL)(gd,0315,1/9;Betz-CO)
 3380 0345 TGCH R. Chorifig:Sp.w/marimba mx,IDs (fair,1/10;Slowey-IL)
 5567 1250 TGWA LV de Guatemala:Sp.w/"Hoy en el Mundo" after Indian Lang. to 1303. Spur probably (??,12/31;Hauser-TX)
 6180 0005 TCWB LV de Guatemala:Sp.w/nx by OM (gd,1/6;Estes-MS) (fair,1230,1/4;Zilmer-WI)
 9505 1315 TGNB R.Cultural:Sp.w/rel pgm,nx(fair,1/9;Brooks-NH)(v gd, 0426,1/1;Galvan-NJ)(gd,0328,12/18;Lazear-OH)(poor,0400, 1/4;Imbert-VA)(gd,2330,12/29;McClellan-NM)(gd,1/1;Burns-MO)

GUYANA

- 3290 0845 Guyana Broadcasting Service:Eng.w/IDs,mx,New Years Wishes (v.gd,1/1;Konen-WI)(gd,0040,12/14;Fay-MA)(gd,0845,12/31; Imbert-VA)(fair,0737,1/1;Lazear-OH)(gd,0945,12/28; Collier-NY)(fair,0813,1/1;Widner-IN)(fair,0630;Perry-IL)

HAITI

- 2450 2328 4VSO R.4VEH:Creole rel pgm,classical mx (fair,1/2; Schnabel-NY)(gd,0905,12/25;Perry-IL)
 6120 1145 4VE R.4VEH:Eng.w/rel pgm (gd,12/26;Shaw-VA)
 6195 0203 4VHW R. Haiti:Fr w/Parisian mx (fair,1/3;Miller-OH)

HAITI (cont.)

9770 1317 4-VEH R. 4-VEH:Eng.w/rel pgm (fair,1/1;Mrs Ely-FL)(gd,1215,
12/27;Shaw-PA)(gd,1435,12/24;Imbert-VA)(fair,1140,
1/3;Fischer-PA)
11835 1335 4-VEH R. 4-VEH:Eng w/rel mx (fair,12/30;Deeke-IL)(fair,1100,
1/12;Fischer-PA)
15280 1214 4-WVI R. 4-VEH:Eng. w/TC,mx,ID (qual??,Date??;Ferguson-WV)

HONDURAS

4820 0430 HRVC LV Evangelica:Eng.w/Christmas mx (fair,12/19;Perry-IL)
(gd,0355,12/21;Redman-IL)(fair,0307,1/5;Leonhardt-IN)
(gd,0310,12/23;Deeke-IL)(fair,0400,12/30;Pay-MA)(exc,
0357,12/29;Collier-NY)(fair,0450,12/31;Kelly-WI)
(gd,0430,12/23;Glover-WA)(exc,0800,12/25;Ralphus-IL)
4890 0200 HRVL R. Lux:Sp.w/pop mx,IDs,s/off@0300(fair,12/26;Redman-IL)
4919 0835 HRPL R. Progreso:Sp.w/ID by OM (poor,much QRM,12/25;Perry-IL)
5874 0300 HRN LV de Honduras:Sp.w/ID @ 0303 then talk by OM & YL
(gd,12/30;McClellan-NM)(gd,0520,12/25;Ferguson-WV)
6050 0930 HRLP R. America:Sp.w/pop mx, TCs, and IDs as "R. America
Cadena Nacional" (fair,1/2;Redman-IL)

MARTINIQUE

3315 1015 O.R.T.F. Fort de France:Fr.w/mx & occl anmt.(fair,12/18,
TENATIVE, strong het;Konen-WI)

MÉXICO

2280 1327 XEMR Propulsora de Radio:Sp.w/ID 2x1140(gd,12/29;Hauser-TX)
2799 0051 XELH R. XELH:Sp.w/"musica tropical"(??,12/19;Hauser-TX)
2958 0022 XETRH R. Triunfo:Sp.w/ID 2x1479fund. (??,12/19;Hauser-TX)
6045 0400 XEXQOC R. Univ. Nac. Potosina:Sp.w/classical mx, receiving
this 0.25kw stn well recently. (gd,1/4;Caldwell-CA)
6115 0100 XEUDS R. Univ. de Sonora:Sp.w/lt mx, IDs(gd,1/1;McClellan-NM)
(gd,0215,1/4;Caldwell-CA)
6140 2359 XERUU R. Univ. de Chihuahua:Sp.w/mx, ID(gd,1/1;McClellan-NM)
6165 0300 XEWV LV de America Latina:Sp.w/nx,cmtry,mx (v gd,12/29;
Caldwell-CA)(gd,0530,12/28;Widner-IN)
9515 1537 XEWV LV de America Latina:Sp.w/cl mx (gd,1/9;Estes-MS)
9600 0430 XEYU R. Univ. Nac. de México:Sp.w/mx,ed pgm(gd,1/3;Caldwell-CA)
9705 0340 XERMX R. México:Sp.w/Mex.mx to 0400 s/off(v.gd,12/28;Day-CA)
(good,2220,12/21;Widner-IN)
9745 0500 XERMX R. México:Sp.w/nx, IDs (exc.,1/2;Caldwell-CA)
11740 0400 XEMP R. Dif. XEMP:Sp.w/talk &mx (v gd,12/29;Caldwell-CA)
11770 1450 XERMX R. México:Sp.w/LA mx, IDs(gd,12/21;Widner-IN)
(good,1800,1/11;Burns-MO)
11820 0500 XEBR R. Herald de Sonora:Sp.w/mx,comls(gd,1/4;Caldwell-CA)
15160 0530 XEWV LV de America Latina:Sp.w/talk(v gd,1/5;Caldwell-CA)
17835 1830 XERMX R. México:Sp.w/talk & mx (gd,12/12;Shaw-PA)(gd,1405,
1/2;Mrs.Ely-FL)(gd,1919,12/13;Lazear-OH)

NETHERLANDS ANTILLES

15310 1828 R.Nederland Bonaire:Eng. new freq to Africa replacing
17830 (gd,12/18;Galvan-NJ)

NICARAGUA

11875 1324 YNN R. Nacional:Sp.w/mx, ID,rel pgm(gd,1/9;d'Adolf-MA)(exc,
0430,12/18;Glover-WA)(exc,2325,1/12;Kelly-WI)(good,
s/off w/anthem @ 0555,1/12;Burns-MO)

PERU

3230 0350 OBX7D R. El Sol de los Andes:Sp.w/LA mx(fr,12/19;Perry-IL)
4975 0650 OCZ4H R. del Pacifico:Sp.w/rel mx, ID(gd,12/28;Betz-CO)
(strong,nx 0630,12/28;Sparks-CA)(pr,0600,??;Glover-WA)
4996 2232 CAZ4C R. Andina:Sp.w/comls,Andean mx(fair,12/31;Shaw-VA)
6115 0630 OBZ4O R. Unión:Sp.w/LA mx, IDs (very gd,12/26;Day-CA)
9675 1130 CAZ4L R. del Pacifico:Sp.w/singing ID (good,1/4;Leonhardt IN)
(fair,w/Christmas mx @1140,12/24;Slowe-IL)

TURKS & CAICOS ISLANDS

4788 0630 Radio Station VS18:Eng.w/OM&pop mx TENATIVE but fairly
certain considering all (poor,1/1;Shaw-VA)

UNITED STATES OF AMERICA

2980 0423 KVOZ Laredo:noted w/rock mx 2x1490 (QR1,12/9;Hauser-TX)
4555 1348 VOA: New VOA feeder freq RCSSE (exc,12/28;Hauser-TX)
5955 0730 VOA: Hrd here past usual s/off //6040(??,??;Ferguson-WV)
5985 0105 WNYW New York:Eng.w/nx (good,12/17;Miller-OH)
6075 2300 WNYW New York:Eng.w/nx to Europe(gd,12/18;Galvan-NJ)
9565 0859 United Nations Radio:Eng.w/nx(exc,12/25;Mrs.Ely-FL)
9640 0100 United Nations Radio:Eng.s/off,(fair,12/16;Leonhardt-IN)
11855 0025 WNYW New York:Bi-lingual svc (fair-poor,12/23;Day-CA)
15130 2304 WNYW New York:Engnrx to Americas(gd,12/18;Galvan-NJ)
15280 2250 KGEI:S/on w/Sp. Christmas mx (exc,12/20;Glover-WA)

VENEZUELA

3245	0347	<u>YVKT R.Libertador</u> :Sp.w/talk by OH&YL(fair,12/18;R.Perry-IL)
3255	0340	<u>YVQL LV del Tigre</u> :Sp.w/spts evnt (fair,12/19;R.Perry-IL)
3275	0821	<u>YVMC R.Mara</u> :Sp.w/pop mx,IDs (fair,1/1;Widner-IN)(fair, LA mx & ID 0600,1/1;Sparks-CA) WRTH lists 1000-0230 ejw
3325	0550	<u>YVRA R.Monagas</u> :Sp.w/LA mx & ID (fair,1/7;Sparks-CA)(fair, splash from CHU,0401,12/30;Widner-IN) WRTH lists 0400s/off
3385	0235	<u>YVYI R.Barcelona</u> :Sp.w/LA mx "En R. Barcelona",TCs (poor, 1/4;Collier-NY)(fair/gd,0237,1/3;Widner-IN)
3395	0256	<u>YVOJ R.Universidad</u> :Sp.w/ID,lively mx(fair,1/3;Widner-IN)
4770	0955	<u>YVNV R.Bolivar</u> :sp.w/cosmetic comls,LA mx (gd,12/15;Redman- IL)(fair, same pgmging,0455,12/25;Lazear-OH)
4780	0500	<u>YVLA LV de Carabobo</u> :Sp.w/LA mx,comls,IDs by OM-YL team (gd,12/24;Lanoue-MA)(fair,0500,12/29;Benton-NB)(gd, 0536,12/3;Widner-IN)(fair,0400,1/16;Whitehead-MA)
4790	0050	<u>YVNO Ondas Porteñas</u> :Sp.w/LA mx & many mentions of "Ondas Porteñas"(pr,12/24;Rodgers-UK)??,0355,1/1;Sparks-CA)
4800	0215	<u>YVMO R.Lara</u> :Sp.w/nx,TC,&ID (pr,12/27;Slowey-IL)(gd,0310 w/schmaltzy mx,12/18;R.Perry-IL) schmaltzy !!! ejw hill
4810	2330	<u>YVMG R.Popular</u> :Sp.w/pop,ingles,ID(fair,1/4;Brooks-NH)
4860	1103	<u>YVQE R.Maracaibo</u> :Sp.w/nx 1tms(gd,1/4;Leonhardt-IN)(fair, 0232,12/31;Collier-NY)(fair,0231,1/5;Widner-IN)
4870	0308	<u>YVKP R.Tropical</u> :Sp.w/ID &nx (fair,12/30;Slowey-IL)
4880	0947	<u>YVMS R.Universo</u> :Sp.w/"Ven.Buenos Dias"(gd,12/28;Kamp-CA)
4890	0401	<u>YVKB R.Dif. Venezuela</u> :Sp.w/mx,IDs, s/off(gd,12/21;J.Perry-IL) (gd,0400,1/1;Shaw-PA)(gd,0357,1/7;Widner-IN)(gd,0130, 1/5;Deeke-IL)
4900	0430	<u>YVWK R.Juventud</u> :Sp.w/LAMx(fr,12/19;Zilmer-WI)(fr,0000,12/18, Lazear-OH)(gd,0405,1/3;Widner-IN)(fr,0330,1/1;Shaw-PA)
4940	0040	<u>YVPA R.Yaracuy</u> :Sp.w/mx,IDs(fr,12/18;Rodgers-UK)(fair, 0140,12/11;Betz-CO)
4970	0352	<u>YVLR R.Rumbos</u> :Sp.w/anmts,ID,LAMx (gd,12/19;Collier-NY)
4980	0423	<u>YVOD Ecos del Torbes</u> :Sp.w/s/off (gd,1/10;Fischer-PA)(gd, 12/25;Lazear-OH)(gd,1/1;Shaw-PA)(gd,12/17;Rodgers-UK)
4990	0020	<u>YVMQ R.Barquisimeto</u> :Sp.w/IDs,horse race(fair,??;Estes-MS) (gd,0219,12/31;Collier-NY)(fair,1015,1/5;Redman-IL)
5030	0906	<u>YVKM R.Continente</u> :Sp.w/reg mx,talk (fair,12/31;Benedetti-CA) (gd,12/23;Lazear-OH)(exc,12/31;Betz-CO)(exc,12/29; Konon-WI)(gd,w/"musica alegria",12/25;R.Perry-IL)
5062m	0109	<u>YVRK R.Litoral</u> :Sp.w/pop mx,s/off@0258(gd,1/1;d'Adolf-MA)
5985A	1000	<u>YV?? Ecos del Torbes</u> :Sp.w/s/on,ID,new freq??(very weak, 1/2;Widner-IN) Anyone else hear this one?? ejw YVSR ??
5989	0220	<u>YVSR R.San Sebastian</u> :Sp.w/piano mx (het,??,Ferguson-WV)
6100	0305	<u>YVTO Señales Horarios</u> :Sp.w/ ID,TCs(pr,1/4;Konon-WI)??, 0636,??;Ferguson-WV)
6120	0910	<u>YV SX R.Angostura</u> :Sp.w/tlks,anmts,ingles,sound effects (fair,12/31;Lobdell-MA)(fair,0715,12/17;Day-CA)
6170	2300	<u>YVKO R.Nacional</u> :Sp.w/Eng.ID mx // 11725 (fair,1/3;Zilmer-WI) (poor,2340 w/mx,12/30;Leonhardt-IN)
9510	2309	<u>YVXJ R.Barquisimeto</u> :Sp.w/mx before spts evnt(gd,1/7; Brooks-NH)(gd,1115,1/12;Fischer-PA)(fair,2315,12/11; Rodgers-UK)(gd,0020,12/13;Leonhardt-IN)(poor,2102,12/26; Lazear-OH)(gd,2335,12/24;McClellan-NM)
9660	2307	<u>YVLM R.Rumbos</u> :Sp.w/talks,ads (fair,1/9;Lazear-OH)(fair, 1137,1/3;Fischer-PA)(gd,0400,12/18;Leonhardt-IN)
11725	2315	<u>YVLS R.Nacional</u> :Sp.w/mx,Eng.ID (exc,12/12;Ellsworth-CA) (fr,12/27;Nudelman-WA)(exc,12/31;Betz-CO)(exc,12/31; Lester-IL)??,1/4;Hauser-TX)(gd,1/4;Zilmer-WI)(gd,1/6; Benton-NB)(gd,12/29;Shaw-PA)(fr,12/28;Collier-NY)(gd, 12/27;Fay-MA)(gd,1/2;Fischer-PA)(gd,12/30;Day-CA)(gd, 12/30;Galvan-NJ)(gd,1/5;Imbert-VA)(exc,12/21;Brooke-NH)
11770	1742	<u>YV?? R.Monagas</u> :Sp.w/LA mx (gd,12/31;Tafel-NY)
11970	2017	<u>YVKI R.Nacional</u> :Sp.w/vocals,ID (fair,1/4;Lobdell-MA) (fair to good,2008,1/2;Miller-OH)

WINDWARD ISLANDS

3300	0435	<u>W.I.B.S.</u> :Eng. w/ID,world nx,local nx (fair,1/2;Schnabel-NY) (fair,0135,12/25;Fay-MA)(gd,0212,12/14;R.Perry-IL) (fair,0136,1/1;Miller-OH)
5015	2340	<u>W.I.B.S.</u> :Eng.w/"Scrapbook" (gd,1/9;Estes-MS)(poor,2345, 1/4;Leonhardt-IN)(gd,2300,1/11;Whitehead-MA)
11930	2130	<u>W.I.B.S.</u> :Eng. w/s/off @ 2130(gd,12/22;Fischer-PA)(poor, 0200,1/5;Estes-MS)

No room for the cast of characters since 49 great guys fill up six little ole pages quickly. 50 reporters including ed (whose he?? ejw). Let's beat it next month. You guys who reported make this column what it is not me. Lets here all about those catches. OK? OK! Bye!!Bye!!

SWBC DX - Europe / Africa

Steven P. d'Adolf
16 Westgate Drive
Apt. 201
Woburn, MA 01801
U.S.A.

Frequencies are in khz ** Deadline: 15th of the month ** Times are in GMT
Europe

ALBANIA

5060a 0540 R. Tirana: HS, talk, 1t mx 0545-0630, then ID and probably
nx. Their lang sounds a bit like Arabic and for awhile I
thought I had Aden. (hopeless to fair depending on RTTY 1/2
Marshall-Ontario) Cedric, Tirana has been reported on 5063
lately leaving 5060 to Aden. Try 2130-2200 s/off. SPD

AUSTRIA

6000 0415 ORF, Innsbruck: 4kw, mx //6155 mixing w/Riyadh, no sign of
listed Moscow tx at this time (Ferguson-WV)
7250 0544 ORF, Vienna: Report from Austria in Eng (fair 12/11 Miller-OH)
9765 1948 ORF, Vienna: ending Report from Austria in Eng, IS, then
s/off (fair 1/6 Lobdell-MA)
15210 1757 ORF, Vienna: IS, Eng ID at 1800, then Ger (fair 12/31
Galvan-NJ)

BELGIUM

15405 1545 RTB, Brussels: Afr ser, IS followed by ID in Fr, into Afr
nx (good 1/1 Shaw-VA)

BULGARIA

9915 0533 Radiofonikos Stathmos I Poni Tis Alithias (Clandestine):
noted here and //7335 not noted (strong 12/14 R. Perry-IL)
11695 1720 R. Peyk-e-Iran: several ID's at 1724, cmtry in Farsi?,
Eastern mx (exc 12/26 Brooks-NH)

CZECHOSLOVAKIA

9630 0130 R. Prague: Eng prog to U.S. (poor 12/30 Caldwell-CA); (v.
poor //9540 at 0100 1/4 Zilmer-WI)

DENMARK

15165 1330 R. Denmark: Danish nx w/time and freq anmts in Eng (fair
12/17 Donegan-GA); (fair 12/11 Fischer-PA)

ESTONIAN SSR

6055 0425 R. Moscow, Tallin: HS under Kuwait (Ferguson-WV)

FRANCE

5955 0600 ORTF: Fr w/Events in France (exc 1/2 Fischer-PA)
9520 0115 ORTF: Sp w/talk about Chevalier (good 1/3 Fischer-PA)
9585 0600 ORTF: s/on and into Fr prog (Ferguson-WV)
15200 2045 ORTF: mx, World nx to Afr in Eng (fair 12/29 Galvan-NJ)
15185 2035 ORTF: Eng talk about Bangladesh (fair 1/9 Willight-WA)
21580 1710 ORTF: Fr w/Chevalier mx, nx //21620, 21645 (fair 12/28
Jessen-OR)

GEORGIAN SSR

11820 0840 R. Moscow, Tbilisi (listed): talks in Chinese, ID @0900,
more talks (poor 12/17 Benton-NB)

GERMANY, EAST

7300 1900 Voice of Truth (Clandestine): new freq // usual 7335, ¹/₄
Greek ID by woman, flute IS, s/on, via RBI tx (poor-fair
12/30 Magne-PA) Note: Voice of Truth is the English name
for Radiofonikos Stathmos I Poni Tis Alithias. SPD
9730 1800 Bizim Radyo ("Our Radio"): in Turkish via RBI tx, new freq,
no // 's found, IS, ID by man "Burası Bizim Radyo", talks
by man and woman, s/on 1800-1829 s/off (poor 1/1 Magne-PA)
17880 1610 RBI: Eng nx (good 12/28 Deeke-IL); (good 1/3 Zilmer-WI)

GERMANY, WEST

6005 0840 Unid: noted in Ger orchestral ballads by YL in Ger, anmts in Ger on Sat morning, Canadian 6005 absent, 0854 f/o, no ID but I hope R.I.A.S. (1/8 R. Perry-IL) Recent VOA sched and WRTH '72 show RIAS-Berlin 1540-0315 and RIAS-Munich 0325-1540 so this might have been the 100kw Munich. SPD

6030 0800 SDR, Mulacker (listed): Ger nx, listed 20kw (Ferguson-WV)

6075 0245 DW, Köln: Eng/Pr LL off at 0250 (good 12/15 Pay-MA);(fair 1/1 Zilmer-WI);(fair 0220 12/29 Leonhardt-IN);(fair 0515 12/19 Stephenson-CA)

6185 0550 DW, Köln: Ger, musical prog, ID in Ger 00559, IS, s/off with carrier off at 0606 (qual? date? Moser-IL)

11795 0932 DW, Köln: Eng prog w/nx (fair 12/19 Mrs. Ely-FL)

GREECE

6045m 0430 FBS, Athens (assumed): lang, trumpets IS, anthem, voice unreadable (v. poor 12/22 Glover-WA)

HOLLAND

15220 1700 R. Nederland: Dutch prog (fair 12/30 Tafel-NY)

17810 1430 R. Nederland: Eng Happy Station to SEA (fair 12/25 Zilmer-WI)

HUNGARY

6025 2138 R. Budapest: Eng prog about Hungary (fair-good 12/24 Miller-OH);(poor 2130 12/23 Zilmer-WI);(2300 Ferguson-WV)

6165 0105 R. Budapest: Eng prog to NA (good 12/24 McClellan-NM)

9833 0130 R. Budapest: IS at 0127, ID in Sp at 0130 (v.good 1/2 J. Perry-IL)

ITALY

6010 0105 RAI, Rome: Eng discussion on Italian art (fair 12/19 Tordoff-CA);(exc 0058 12/10 Glover-WA);(good 0110 12/27 Galvan-NJ)

21560 1845 RAI, Rome: It, some game or sport, ID at 1905, freq, bird chirping and s/off. (good 12/12 Shaw-PA)

LUXEMBOURG

6090 0100 R. Luxembourg: Eng nx headlines, mx (good 1/5 Leonhardt-IN); (fair-poor 0024 12/30 Galvan-NJ)

POLAND

9675 1530 R. Warsaw: s/on, nx, classical mx, in Esperanto (good 12/18 Brooks-NH)

15120 1200 R. Warsaw: s/on, nx, "On the Polish Scene", sports, etc in Eng to Europe (good 12/20 & 12/21 Brooks-NH)

PORTUGAL

5995 2243 DW, Sines: IS to 2245 s/on, into lang (fair 12/24 Glover-WA)

6025 0410 R. Portugal: DX Magazine in Eng (good 12/21 Kelly-WI);(fair 0206 1/1 Galvan-NJ);(good 0215 12/21 J. Perry-IL);(fair 0355 12/27 Donegan-GA)

11875 1910 R. Portugal: YL w/Eng nx to 1915 s/off w/AP (good 1/2 Shaw-VA)

15340 1753 R. Portugal: Mx and nx in Port //17880 (good 12/28 Jessen-OR)

ROMANIA

10110 0630 R. España Independiente (Clandestine): Sp nx, ID 00647, s/off 00651 (good 1/2 Slovey-IL);(v.good 1/2 Lester-IL) I see Park Forest, IL has a grapevine also, hi! SPD

RFSFR, EUROPEAN

4920 1945 R. Moscow: HS in Rus w/opera, talks, ID (good 12/22 Schnabel-NY) I'd hrd an OM anncr, of a diff sta. also on 4920, fade out about 1940--Who dat? Possibly, the anncr was speaking Eng, which points to---Brisbane??? I doubt it Phil, not at that hour, besides Brisbane is sched for s/off at 1400. How about an early fade/in fade/out of a Latin. SPD

5015 0651 R. Moscow, Arkhangelsk (listed): HS w/Rus pop mx, time pips & ID (which I missed), then nx, some CW/RTTY QRM. (good 12/25 Patterson-GA);(good 0450 12/12 Kamp-CA);(poor 0505 1/3 Schnabel-NY);(poor 1920 1/6 d'Adolf-MA) Pat, due to the times heard everyone has ruled out Vladivostok at 1920, and 0500 so I assume it is still Arkhangelsk at 0700. SPD

RSFSR, EUROPEAN (continued)

5065 0540 R. Moscow, Petrozavodsk: HS relay, mx, talk in Rus, RM ID (fair 1/9 Sparks-CA) Bill, is your info from WRTH or what?

5905 2113 R. Moscow, probably Moscow: nice pop and jazz mx, YL ancr in Rus w/ID @2129 "Radio Moskva", IS, then ID in what seemed to be Ger "Hier ist Moskau", then apparent ariel change as sig strength suddenly dropped. (good 1/1 Bundy-Truk) Bob indicates he this freq is a change from 5900 as he hrd similiar prog this time in Oct on 5900. SPD

6195a 1330 R. Moscow, Moscow: HS w/IS & ID as "Govorit Moscow", not listed but ID definite, classical mx (v.good 1/4 McClellan-NM) Doug, "Govorit Moscow" ID during a HS relay doesn't necessarily mean the xmtr was Moscow. I believe that all HS relays ID that way, WRTH shows a Baku xmtr on 6195. SPD

7310 2230 Radio Vilnius: IS, Eng ID (good 12/31 Galvan-NJ) Don, R. Vilnius prog supposedly comes from Moscow and not Lithuania. SPD

7390 2240 R. Moscow: HS in Rus, not sched at this time according to BBC Monitoring Service (fair 1/1 Magne-PA)

9585 0325 R. Yerevan: Eng New Years predictions, freq list, scheds, new lang at 0329 (good 1/2 Nudelman-WA) Dave, another program that supposedly is via Moscow xmtrs. SPD

SPAIN

6130 0305 RNE: Eng to NA, nx, Sp mx (v.good 12/15 McClellan-NM);(fair 0200 1/10 Fischer-PA)

9510 0000 RNE: Sp nx, mx (good 12/19 J. Perry-IL)

11925 0200 RNE: Eng nx (good 12/22 Pay-MA);(poor 0200 1/5 Caldwell-CA)

SWEDEN

11705 0330 R. Sweden: Eng nx, mailbag, cmtry (v. poor 12/17 Donegan-GA);(v.good 0330 1/4 Caldwell-CA)

15240 1400 R. Sweden: Eng Sat show to S. Asia (good 1/8 Zilmer-WI); (fair 1800 12/30 Galvan-NJ)

SWITZERLAND

3985 0704 SBC: Eng talks about Xmas, into Ger @0730 (good 12/25 Lazear-OH);(fair 0700 1/9 McClellan-NM)

9590 0700 SBC: Eng prog to Austr (poor 12/24 Day-CA)

11775 0657 SBC: IS, prog in Eng at 0700 to Japan, Austr, into Ger at 0729 (qual? date? Moser-IL)

11865 1515 SBC: Eng nx to ME (poor 12/23 Zilmer-WI)

15305 1540 SBC: Eng cmtry (good 12/28 Deeke-IL);(good 1515 12/19 Zilmer-WI) //17830, 21585

UKRAINE SSR

4940 0625 Kiev HS: Rus talk, freq normally dominated by Abidjan on TA openings at this time. Severly weakened by 0630, which would tend to indicate that this wasn't the USSR FE xmtr listed in NASWA's 60m survey (fair 12/18 Kamp-CA);(fair-good 0428 1/3 Schnabel-NY)

7150 0440 R. Kiev, Lvov: Eng to 0457 then Ukrainian or Rus w/mailbag, nx, mx, ID for Radio Kiev, silence at 0459 (fair 12/5 Patterson-GA) Pat, I assume you know it's Lvov from a QSL listing somewhere. SPD

VATICAN STATE

11705 1620 Vatican R.: Church nx of Africa in Eng/Fr (poor 12/15 Stephenson-CA)

11810 1525 Vatican R.: Rel nx in Eng to SEA //15330 and 16m freq. An'cd Eng Wed only at 1515, s/off @1530 (good 12/29 Griffith-CO)

Africa

ALGERIA

6080 0650 RTA.(tent): Ar mx and anmts, probably ID at 0700 but didn't catch it. WRTH says Fr here but definitely Ar. (exc 1/11 Marshall-Ontario);(0640, same note about lang, Ferguson-WV) Recent sched rec'd from Algeria dated Sept. '71 doesn't show 6080 in service at all. SPD

ANGOLA

- 4893 1950 RC do Bie(tent): Drums and cora type instr chants (12/24 Shaw-VA)
 4910 2015 RC do Lobito(tent): Port, piano mx, songs, talks mentioning Angola at times (v.poor 12/22 Schnabel-NY)
 4958 2215 Unknown: Port hrd here but can't find anything listed; since other Angolans coming in - suspect also Angolan (12/24 Shaw-VA) Ed, how about Saurimo listed on 4960. SPD
 4794 2150 R. Commercial de Angola: noted weakly a few times during long checks of freq band around 4788 for VS18 reappearance; Port anmts, soft mx, jingles, ols USA pops, big QRM de Brazilian (fair 12/17 R. Perry-IL)
 5015 1830 RC de Mocamedes(tent): Definite Afr, sounded like Port, overtaken by WIBS by 1900 (12/24 Shaw-VA)
 5033 2115 RC de Cabinda(tent): v.low Port, unmistakable Afr (12/24 Shaw-VA)

ARAB REPUBLIC OF EGYPT

- 9475 0250 R. Cairo: mx, nx, features in Eng to NA, like a local sta (exc 12/12 Lou and Elinor Leistner-CA);(exc 0240 1/5 Glover-WA);(good 0300 12/27 Fay-MA);(v.good 0200 12/21 Donegan-GA); poor 0250 12/29 Stephenson-CA);(v.good 0230 12/25 Shaw-PA); (fair 0200 12/26 Day-CA);(good 0315 12/13 Fischer-PA)
 9515 1856 R. Cairo: chants in Ar (Moser-IL)
 9550 0300 R. Cairo: Eng prog to NA to 0330 (fair 12/31 Tafel-NY)
 11630 1430 R. Cairo: Ar. chanting and mx (fair 1/4 Shaw-PA)
 11640 1500 R. Cairo: Ar. nx, mx (fair 12/14 Shaw-PA)
 11980 2241 R. Cairo(tent): Ar chanting, no ID noted (fair 1/6 Benton-NB)
 17920 1400 R. Cairo: Eng to Asia, Ar by Radio (fair 1/3 Zilmer-WI)

BOTSWANA

- 4845 0420 R. Botswana: nx in heavily accented Eng to 0430, vernac nx to 0444, Afr mx to 0500 time pips and BBC nx, heavy RTTY QRM (poor 1/11 Kamp-CA)

CANARY ISLANDS

- 11800 0130 RNE, Tenerife: Sp, mostly mx (good 12/17 Leonhardt-IN);(good 2000 12/30 Fischer-PA)
 15365 2015 RNE, Tenerife: s/on 1955, mx to 2030, Sp (good 1/2 Fischer-PA)

CAMEROUN

- 4972 0530 R. Yaoundé: Fr and Eng ID and talks, mx (fair 1/2 Lester-IL); (poor 0531 1/2 Slowey-IL);(2230 Ferguson-WV);(poor 0510 12/5 Tordoff-CA)
 7240 1925 R. Garoua: Fr, chanting, ID @1930 then covered by hams (poor 12/31 Schnabel-NY)

CENTRAL AFRICAN REPUBLIC

- 5038 2030 RNC, Bangui: hrd w/10 minute Eng nx at different times on different days noted at 2030, 2040 or 2100 (fair/good on several dates Fay-MA);(fair also Eng 2043 1/10 Lobdell-MA); good 2145 1/10 Marshall-Ontario);(fair 2145 12/22 Zilmer-WI); (fair 2245 12/16 Brooks-NH);(good 2250 12/14 Rogers-England); (good 0430 12/28 Kamp-CA)

COMORO ISLANDS

- 7260 0326 ORTP, Moroni: noted w/"La Marseillaise" anthem at s/on, followed by chanting and talks in native lang, BBC and Moscow QRM (v.poor 1/13 Lobdell-MA)

CONGO, PEOPLE'S REPUBLIC

- 4795 0545 R. Brazzaville(tent): Afr mx, Fr anmts (fair 12/15 Sparks-CA)

GHANA

- 3366 2344 GBC, Accra: Eng rel prog and ID (poor 1/1 Miller-OH)

GUINEA, PORTUGUESE

- 5041 0800 Em Oficial, Bissau: in at this rather late hr w/"A Voz da Provincia" prog (good 12/31 Kamp-CA);(fair 0700 12/18 R. Perry-IL);(fair 2115 12/31 d'Adolf-MA)

IVORY COAST

11920 0300 RTI, Abidjan: nx summary in Fr, s/off @0304, noted next day w/usual 0000 s/off (exc 12/25 Rogers-England); (fair w/Eng ser at 1831 12/17 Brooks-NH); (fair w/Eng ser at 1831 1/11 Bruns-MO); (good 2300 12/25 Zilmer-WI); (good 1830 12/25 Leonhardt-IN); (exc 2350 12/9 Glover-WA); (good 2250 12/8 Konen-WI)

KENYA

4915 0325 E. Kenya, Nairobi: native tunes and Swahili talk (poor 1/2 Konen-WI); (fair 1800 12/14 Rogers-England)

LIBYA

8630 2211 LBS, El Beida: Ar mx past 2225 t/o, also hrd w/similiar format at like time on 12/24, a Libyan holiday (fair 12/18 R. Perry-IL)

MALAGASY REPUBLIC

15260 1405 E. Nederland: Eng mx w/ID aprx 15 min (poor 12/30 Slade-MA); (poor 1357 1/4 Zabransky-IL); (fair 1448 1/10 Koutnik-KS); (fair 1358 12/25 Berg-MA); (weak 1615 12/26 Shaw-VA); (poor 1518 1/9 Leonhardt-IN); (poor 1515 12/31 & 1/2 Brooks-NH); (fair 1515 1/10 Loadell-MA); (poor 1515 1/5 d'Adolf-MA)
QSL's have already come to many of the above. SPD

MALAWI

3380 0317 MBC, Blantyre: Highlife mx w/native anmts, cmcls? at 0330, overriding Chortis (good 12/21 Mahoney-IN); (good 0315 1/10 Slowey-IL); (fair 0440 12/19 R. Perry-IL)

MAURITANIA

7245 0756 E. Mauritania: s/on, chanting, Afr mx & Fr anmts (poor 12/12 Tordoff-CA)

MOZAMBIQUE

4925 0320 R. Cl de Mozambique: "B" prog with top 40 format, British sounding disc jockies, records from the 1950's and few from 1970's, signal better than 11780 (good 12/26 Kamp-CA)

NIGERIA

3204 0615 NBC, Ibadan: Afr mx, Eng ID (fair 1/7 Sparks-CA); (poor 0603 1/2 Schnabel-NY)
4900 any NBC, Where?: WRTH '72 says Maidaguri, QSL to one DXer (via Dan Ferguson) says Maidaguri, Ed Shaw says he hrd "studios at Enugu" mentioned. Also reported by Konen-WI who hrd the Lagos nx ID on 12/29.
6025 0431 NBC, Enugu: audible 0431-0445 while R. Port off air, usually has drums after nx @0431, some nights seems to be in Eng, other nights in lang (Ferguson-WV)
6144 0608 NBC, Calabar: network nx from Lagos, Xmas mx (fair-poor 12/25 Lazear-OH); (v. good 0605 12/31 McClellan-NM); (strong 0615 Ferguson-WV); (good 0600 1/8 R. Perry-IL); (good 0600 12/15 Kamp-CA); (strong 0600 12/31 Sparks-CA)
7255 0535 NBC, Lagos: Drum IS, Afr mx, ID, covered by Fr speaker at 0600 (poor 12/16 Glover-WA)

REUNION

2446 1550 ORTF, St. Denis (tent): traces of pop mx fading in & out but not enough to get anything definite (unusable 12/30 R. Perry-IL)

RHODESIA

3396 0405 RBC, Gwelo: Eng nx by man, ID (good 1/10 Sparks-CA)

RWANDA

6055 0328 Rdif. de la Rep. Rwandaise: IS on stringed instr, Fr ID, varied mx to 0346, talk in Swahili, blocked at 0400 (weak 1/21 Berg-MA)

SUDAN

11835 1630 R. Omdurman: nx in Eng, pop mx, Ar talk @1700, still good after 1830 (good 12/25 & 12/26 Rogers-England)

ZAMBIA

3295 0404 ZBS, Lusaka(tent); pop mx, unk lang, vernac nx relay at 0430, heavy QRN and fading fast by 0445 (fair 12/15 R. Perry-IL)
 3346 0354 ZBS, Lusaka: Eng ID thru RTTY (poor 12/26 Widner-IN);(poor (tent) 0345 1/10 Zabransky-IL);(fair 0318 12/20 R. Perry-IL)
 6060 0720 ZBS, Lusaka: lang talk, mention "R. Zambia" (Ferguson-WV)

ZANZIBAR

3339 0329 R. Tanzania, Zanzibar: ID at s/on, freq info, chants, faded by 0350, QRM de TRRY. I have sent a report in grammatically perfect Swahili to our dear Mr. Omar M. Omar, explaining the SWL/DX/QL complex. IF the previous QSL problem stemmed from a language barrier, this might help. (good 12/13 R. Perry-IL) Good luck Ralph but as I understand it the problem is a political one involving Zanzibar and/or Tanzania.
 (fair 0328 1/12 d'Adolf-MA);(weak (tent) 0340 1/10 Sparks-CA);(v.poor 0332 (tent) 1/8 Zabransky-IL)

UNIDENTIFIED

3355a 0631 Unid: Xmas mx to 0644, drums, vernac nx, Afr mx, drums at 0659 then BBC nx at 0700, gone by 0706 (weak 1/1 Widner-IN) Sounds like Botswana to me. SPD
 3970 2240 Unid: lt instr mx, talks in Port, suspect this wasn't long sought R. Beau but possibly Angolan: R. Cl. Huila, anyone got this? (Schnabel-NY)
 6075 0440 Unid: bird chirping, bells, in lang under SABC (v.poor 1/9 McClellan-NM) Sounds like Italy. SPD
 15240 1810 Unid: type of Electronic Mx, continuous tape, 14 second cycle of beeps and tones. (poor 12/30 Willhight-WA) Sounds like a utility melody marker. SPD

DX-CALENDAR

Feb. 15-16: Appears to be some kind of Carnival Day in the Portuguese speaking countries.
 Feb. 21: Ash Monday for the Greek Orthodox Church
 Feb. 24: National Liberation Day in Ghana
 Mar. 5: National Day in Fernando Poo
 Mar. 6: Independence Day in Ghana
 Mar. 8: International Woman's Day in the U.S.S.R.
 Mar. 11: Decoration Day in Liberia

The following 57 reporters made this months column possible:

Carl Benton, Alliance, NB DX-150	The Leistner, San Ber, CA R7000-1
Jerry Berg, Lexington, MA SB-310	Mac Leonhardt, Liberty, IN SB-310
George Betz, Denver, CO SPR-4	Jack Lester, Park Forest, IL
Alan W. Brooks, Portsmouth, NH DX-150A	Chris Lobbell, Reading, MA SW-4A
Ron Bruns, Ferguson, MO DX-150A	Doug McClellan, Almagordo, NM GR-64
Bob Bundy, Truk, Caroline Is. SPR-4	Larry Magne, Phila, PA R-4B
Dr. William Caldwell, Los Angeles, CA SW-4A	Cedric Marshall, Tor., Ont. AGS-38
Mike Collier, Williamsville, NY HQ-129-X	Mike Mahoney, Muncie, IN GR-64
Edward Day, Grass Valley, CA DX-150A	Al Miller Jr., Youngstn, OH HR0500
V. Charles Deeke, Mascoutah, IL DX-150	Bob Moser, Chicago, IL R-4B
Charles Donegan, Warner Robbins, GA R-100A	Dave Nudelman, Mercer Is, WA B609
Oliver Ellsworth, Los Angeles, CA SX-190	Pat Patterson, Decatur, GA SX-99
Mrs. Marion Ely, Boynton Beach, FL SW-4	John Perry Westchtr, IL Star Rmr
Billy Ray Eaton Jr., San Antonio, TX DX-150A	Ralph Perry, Chpgn, IL S-85
Jon H. Fay, Topsfield, MA DX-150A	John Rogers, London, GB Sat 210
Dan Ferguson, Charleston, WV SB-310	Phil Schnabel, Bronxvle, NY HQ200
John Fischer, Clifton Hgts, PA S-200	Hank Slade, Bedfrd, MA HQ180A
Donald Galvan, Bergenfield, NJ GR-212	Ed Shaw, Norflk, VA SX-190
Art E. Glover, Port Angeles, WA HQ-180A	Bill Shaw, Drexel Hill, PA SPR-4
Don Griffith, Cole Spr., CO HA-350	Bob Slowey, Park Forest, IL DX-150A
Wilbur Jessen, Eugene, OR R-530	Bill Sparks, San Fran, CA R-4B
Steve Kasp, San Jose, CA HQ140X	Norm Stephenson, LB, CA HQ180A
Chris Kelly, River Falls, WI	Ed Tafel, Syracuse, NY
Mark S. Konen, Mequon, WI SX-71	Jack Tordoff, Redwood Cty, CA
Paul Koutnik, Shawnee, KS R-195	Jack Widner, Indplis, IN
Ron Lanoue, N. Adams, MA	Jim Willhight, Snouqualmie, WA GR78
Russ Lay, Va. Beach, VA S-38C	Jim Zabransky, Elmhurst, IL SB-310
Kenneth Lazear, Columbus, OH	Bob Zilmer, Milwaukee, WI SPR-4

and your editor, *Steve* using an R-530

SWBC DX - Asia / Oceania

H. Robert Bundy Box 114 Truk Caroline Islands 96942 U. S. A.

 Frequencies are in khz Deadline: 15th of the month Times are in GMT

- - ASIA - -

BANGLADESH

- 7095 0230 R Bangladesh: FS sked here according to BEC Monitoring Sec (Lagne-PA)
- 9853 1430 R Bangladesh: HS in Eng (fair 1/4 Pierce-MA) ...sked 1315-1630(" ")
- 15520v 1230 R Bangladesh: FS in Eng to 1300 s/off; freq varies daily 15522 to 15591; HS in Eng & Bengali operates here 1100-1220v (poor/fair 1/13 et al BB)

BRUNEI

- 4863 $\frac{1}{2}$ 0920 R Brunei: pretty mx, Malay annor, 0930 "Inilah R Brunei"; het from UTE carrier on 4863 $\frac{1}{2}$ (poor 1/2 BB); same on 4864 at 1100 (fair 1/7 BB)

CEYLON

- 3383 1554 CBC National Sec (tentative): Indian-like mx thru UTE QRM; Ceylon on 3385 per WRTH, but Kashmir has also been mentioned (poor 1/14 BB)
- 7105 1258 VOA Colombo: IS, ID, & nx in English (poor 12/31 Miller-OH)
- 9720 0100 CBC Colombo: s/on w/time pips, YL w/fqs, then oriental mx (bad 12/31 Shaw-VA); 1245 Eng mx request pgm (poor 1/6 Zilmer-WI); 1543 Eng talk, ID, mx (fair 1/1 Miller-OH)
- 11800 1505 CBC Colombo: Eng ID, 1515 lang talk & oriental mx (good 12/14 Shaw-PA); 1430 Eng ads & Hindi lang (poor 12/23 Zilmer-WI); 0145-215 (gud 1/6 Betz-CO)

CHINA, People's Republic of

- 2475 1105 Hangchow: YL talking & opera mx, all Chi (v poor 12/12 Benedetti-CA)
- 3315 1103 unlisted Chi Xmtr: YL/OM in Chi (good 12/30 Kamp-CA)
- 3390 1850 R Peking: Russ sce, 1855 off, 1900 back in Russ, 2001 gone (poor 1/14 BB)
- 3400 1315 PLA Fukien: YL in Chi w/oriental mx //3535, 3900, 4380 (gud 1/5 Mappin-WA)
- 3500 1605 R Peking: unk lang //6995, 7315; 1759 Chi; 1858 French; 2006 Fr //7058 (BB)
- 3520 1615 PLA Fukien: Chi talk & mx //2430, 2600 + above fqs (poor 1/14 BB)
- 3660 1630 R Peking: Eng nonsense, 1701 still Eng, 1801 IS & Ger ID //7010, 1914 unk lang, 2011 Ger again //7010 (fair @ 1630 v poor @ 2011 1/14 BB)
- 3800 $\frac{1}{2}$ 1915 R Peking: unk lang (poor 1/14 BB); 2025 Peking anthem (poor 1/13 BB)
- 4460 2200 R Peking: Russ sce, talks & various kinds of mx (poor 12/21 Schnabel-NY)
- 4835 1000 unlisted Chi Xmtr: OM in Chinese; QTH?? (good 12/30 Kamp-CA) ...China is operating on 4833; Sarawak-4835 in Malay this time--BB...
- 4914 0940 unlisted Chi Xmtr: not as strong as other HS Xmtrs; QTH? (good 12/29 Kamp)
- 4975 0934 Foochow (WRTH71): usual HS fare (good 12/29 Kamp-CA)
- 4990 0930 Changsha (WRTH-71): HS ID, but QTH not caught if mentioned (good 12/29 Kamp)
- 5020 0926 unlisted Chi Xmtr: typical Chi HS pgm; QTH?? (good 1/1 Kamp-CA)
- 5040 0853 R Peking: Chi pgm (good 12/28 Kamp-CA) ...//7095, 6225--BB...
- 5170 1210 Fukien province (as previously assumed in FR&NDX); YL talks in Chi; fair strength but clipped carrier (fair 12/30 Perry-IL)
- 6270 0000 R Peking: s/on, ID in Port?, then propaganda (poor 12/13 Glover-WA)
- 6570 1153 R Peking: Russ sce s/off with "Internationale"; jamming (fair 12/20 Benedetti)
- 6937 1240 Kummig: stern YL Chinese rap (good level 1/2 Perry-IL)
- 7035 1800 R Peking: IS & French ID; CW QRM (good 12/31 Jessen-OR)
- 7120 0100 R Peking: New Year's Day editorials in Eng...lot of "noise" (fair 1/2)
- 7165 0942 Foochow (tentative): long winded Chi talks (fair 12/18 Benton) Donegan-GA)
- 7620 1720 R Peking: OM w/Eng comment on Chi economy (good 1/4 mappin-WA)
- 9020 2350 R Peking: mx, 2400 Chinese ID (fair 1/5 Mappin-WA)
- 9390 0100 R Peking: Eng news & propaganda (fair 12/19 Zilmer-WI)
- 9965 0100 R Peking: Eng to NA (good 1/5 Pierce-MA)
- 11290 0115 R Peking: HS in Chi w/Chi opera; //11330 (weak but fair 1/3 Schnabel-NY)
- 12055 0100 R Peking: Eng nx & propaganda // 12080(good) (fair 1/19 Zilmer-WI)
- 15510 1245 R Peking: Eng w/Chinese music (fair 12/24 Rogers-United kingdom)

CHINA, Republic of

- 71 31 0945 VOFC: Jap talks, 0950 ID & into Korean (good 12/23 benton-NB); 1355 Chinese; het w/7130 (Ferguson-WV) ...I think that 7130 is a Russian--BB...
- 15125 2300 R Liberty: s/on in Russian, 2301 wiped out by jammer (good 12/18 Kamp-CA)

CYPRUS

- 5990 0345 BBC, perhaps Limassol (tho could be Skelton); Ebc Arabic sce to 0545 (Ferguson-WV) ...ATTN AEG--your uID from Jan SP&EDX--BB
- 7140 0330 BBC Limassol: Arabic talk and music (fair 12/29 Shaw-PA)

DODECANESE ISLANDS

- 7110 0400 VOA Rhodes: Arabic service to 0600 (Ferguson-WV)

f/i = fade in f/o = fade out t/i = tune in t/o = tune out

INDIA

- 3205 1725 AIR Lucknow (tentative): Eng cmtry on Pakistan & Bangladesh to 1730, pgm continued but I'm not sure of lang (v poor 1/14 Eb)
 3276 1215 Radio Kashmir (tentative): YL w/Indo-Afghan type mx, 1230 pause & YL w/intelligible ID (weak 12/26 Shaw-VA) ...see Indonesia, QTH unknown--BB
 7215 1900 AIR Delhi: Eng news (fair 12/23 Rogers-United Kingdom)
 9535 1225 AIR Delhi: Eng program preview, news (fair 12/13 Zilmer-WI)
 9575 1410 AIR Bombay: Indian music (Ferguson-WV)
 9912 2145 AIR Delhi: Overseas Sce in Eng, 2200 YL w/nx, Eng ID's (fair 12/12 Shaw-PA)
 11810 1333 AIR Delhi: nx in Eng & cmtry, 1345 GC (good 12/29 Hauser-TX); 1430 Eng by Radio lang lesson, 1445 heavy QRM (fair 12/14 Shaw-PA)
 11850 1225 AIR Delhi: Eng pgm preview, then news (fair 1/6 Zilmer-WI)
 15335 1330 AIR Delhi: Eng nx & cmtry, Christmas carols in Hindu (fair 12/25 Zilmer)

INDONESIA, Celebes & Moluccas

- 4900 1245 RRI Gorontalo: mx, 1257 YL mentioned Gorontalo several times, 1300 8 or 9 chimes, then nx in Indonesian (12/30 BB)
 7140 1235 RRI Ambon: YL amnts in Indo, regional orchestral mx; noted regularly now (good 12/28 Perry-IL)

INDONESIA, Java

- 3385 1030 RRI Kupang (tentative): seemed like snatches of Indo talk during Rabaul pgm breaks; WRTH lists Kupang (useless 1/7 BB)
 5047 1205 RRI Jogjakarta: OM talk in lang (weak 1/2 Perry-IL)
 11720 1500 RRI Djakarta (tentative): OM & YL w/lang news (good 1/4 Shaw-PA)
 11793 0050 VOI Djakarta: nx in Indo, 0055 ID & mx interlude, 0058 YL talked mentioned Djarkarta, 0100 tx off (fair 12/31 BB); 1530 on 11794a Hindu to S Asia, classical music (fair/good 12/23 Zilmer-WI)

INDONESIA, West Irian

- 3905 0759 RRI Djajapura: on w/Hawaiian mx, 0808 s/on ID but too weak to read, 0809 more HI mx, 0815 Eng lang lesson!, 0829 ID "Ini-lah R Republic Indonesia, Studio Djajapura" (fair 1/12 BB)
 6070 0902 RRI Djajapura: West Irian nx in Indonesian //3905, 7165 (poor 1/15 BB)
 6278v 1300 RRI Manokwari: mxn tho tentative often good at 1300; today Indo talk & mention of manokwari at ID; nothing on 6193...checking 6193 for some time & hrd mxn once out perhaps an image--despite the contrary letter recvd here from their manager...Is it possible for them to vary some 80 khz and he not know? Stranger things have happened (1/2 Perry-IL) ...Look for easy copy ID at s/off after 1355 nx...Freq varies 6277-6280--BB
 7165 2215 RRI Djajapura: light mx w/a C&W tint, ID between selections and at 2300 s/off "Inilah R. R. I. Djajapura" (fair 1/14 BB)

INDONESIA, QTH unknown

- 3277 1030 ????: f/i this time w/US country mx, nx around 1100 & 1130, Indo talk w/nx usually by OM, at other times there is a soft-spoken YL who is impossible to read; no RRI ID or IS has been heard; once hrd a partial Eng ID at 1059 "...V of Free?" (Indonesia???, Korea?, China?) (poor 1/7 et al BB)
 4600 1645 RRI, ?where?: looking for Nepal but found Indo musical to 1700 s/off // Jogjakarta-5047; not sure if national or local pgm (poor 1/7 BB)
 5856 1250 RRI, ?where?: Indo talk, 1258 RRI IS, 1300 Djakarta nx feed (fair 1/7 BB)

IRAN

- 3780 0350 R Tehran: HS in Farsi, HE mx, 0400 pips, ID & nx (fair Schnabel-NY)
 7038 R Iran FS sked here 1725-2130, ex-12165 (BEC Monitoring Sce via Magne-PA)

IRAQ

- 3240 1945 R Baghdad: ID in Eng and apparent s/off; likely stn w/ f/in about 1730 w/Arabic chants & music (poor 1/14 BB)
 6030 0330 R Baghdad; presumed the one w/HE mx; low fq het; Also 0425 past 0500, mix w/Moscow & SDR (Germany), splash de Portugal (Ferguson-WV)
 6096 1955 R Baghdad: presumed ID w/all Arab pgm, OM w/nx; well hrd (clear 1/2 Shaw-VA)
 7240 0325 R Baghdad: presumed with Arabic mx, chants (Ferguson-WV)
 11785 2225 R Baghdad: home service w/Arabic talk & music (good 12/23 Rogers-UK)

ISRAEL

- 6170 2045 IBA, Jerusalem: Eng s/on & nx, ancd 6170 as experimental fq to Africa; //9025 tho 6170 best (good 12/20 Fay-MA); 2115 Eng nx (fair 12/18 Zilmer-WI); 2118 nx, then music (fair/good 12/31 Miller-OH)
 7225 0358 IBA, Jerusalem: IS, 0400 Russ pgm, 0430 Eng ID, 0431 lang pgm; slight ARO QRM (good strength Moser-IL)
 9009 2115 IBA, Jerusalem: Eng news (fair 12/18 Zilmer-WI)
 9625 2044 IBA, Jerusalem: IS, 2045 Eng ID & nx, 2059 IS, 2000 Eng cmtry, 2114 IS, 2115 Israeli social events, 2129 IS, 2130 Fr pgm (Moser-IL); 2116 nx (fair 12/17 Glover-WA); 2115 Eng nx (fair 12/18 Zilmer-WI); 2115 (gd 12/12 Shaw-PA)

JAPAN

- 3910 1030 FEN, Tokyo: Eng w/"Radio's Great Change"(?--BB), 1100 ID (fr 12/12 Griffith)
 3925 1300 NSB, Tokyo: OM w/Japanese talk (good 1/5 Nappin-WA)

JAPAN (continued)

- 3945 0630 NSB Sapporo: Jap talk pgm //3925 (poor 12/10 Glover-WA)
 3970 0800 NHK1: HS w/live sports coverage on new freq (fair 1/17 et al Ez)
 6005 0845 NHK1: HS w/sports // 640, 670 et al (fair 1/21 BB)
 6130 0909 NHK2: HS w/Jap talk // many r/w outlets (fair 1/21 BB)
 9560 1400 NHK Tokyo: Eng nx (poor 1/3 Zilmer-WI); 1415 Eng (Ferguson-WV)
 15105 0100 NHK Tokyo: Eng nx & cmtry; anncd 9560,15105,17880 (fair 12/16 Donegan-GA);
 2110 Eng, 2115 Japanese nx (fair 12/16 Donegan-GA)
 15195 2158 NHK Tokyo: IS, then Eng nx, 2215 Japanese // 17785 (good 12/14 Fay-MA)
 2200-2215 Eng nx (fair 12/28 Shaw-PA)
 15445 2342 NHK Tokyo: IS, 2345 Eng nx, 2357 cmtry, 0004 mx (Hoser-IL); 0000-0030 t/o
 Eng nx cmtry & mx to NA (good 1/10 Shaw-PA)
 17825 2345 NHK Tokyo: Eng "Listener's Mailbag" (fair 12/24 Donegan-GA)

JORDAN

- 7155 0550 R Amman (tentative): chants & Arab anmts, 0558 flute-like IS, 0600 Arab
 ID seemed to mention Amman (poor 12/31 Widner-IN)

KHMERE Republic

- 4907a 1605 R Nationale Khmere (tentative): oriental talk to 1615, then mostly Asian
 mx to 1700 s/off (poor/unuseable 12/24 Rogers-UK)
 6092 1142 R Nationale Khmere: oriental vocals to 1211 ID, then waltz mx to 1230 f/o;
 used Fr and oriental lang (Khmer?) (fair 1/9 d'Adolf-MA)

KOREA, Democratic Republic of

- 3320 1545 R Pyongyang: Kor talk seemed //6251 (fair 1/14 BB)
 3560 1900 R Pyongyang: Eng s/on to Africa, 2000 Kor; both //6540 (fair 1/14 BB)
 4410 1000 R Pyongyang: Jap til 1200 // 6540; UTE QRM (poor 12/20 BB)
 5868 1230 R Pyongyang (reported as unID but surely belongs here--BB): OM host w/
 oriental mx & YL singing; sounded very Korean (12/26 Shaw-VA); 0845 home
 sce // 6251, 6400 (good 1/1 BB)
 6250 0735 R Pyongyang: low voices & choral singing (bad 1/1 0735)
 15150 0100 R Pyongyang: Spanish s/on and nx (weak Widner-IN)

KOREA, Republic of

- 15155 0640 VOPK Suwon: Eng nx; sked 0630-0700 (Ferguson-WV)

KUWAIT

- 6055 0400 R Kuwait: Arabic sce starts, nx; past 0500 (Ferguson-WV)
 15345 1600 R Kuwait: IS, Eng pgm preview, mx (good 12/29 Fay-MA); 1620 pop mx w/Eng
 annr (fair 12/17 Donegan-GA)

LEBANON

- 5980 0430 R Lebanon Beirut: Arabic music, talk past 0500 (Ferguson-WV)
 9545 0230 R Lebanon Beirut: Eng to NA, nx, mx; heavy QRM (fair 12/25 Fay-MA); 0245
 pop mx (fair 12/31 Stephenson-CA); 0250 Eng to NA; later Arabic & Spanish
 (excellent 12/30 Glover-WA)

MALAYSIA

- 11750 0858 BBC Tebrau: IS, s/on Eng ID then news (poor 12/15 Benton-NE)
 11955 0000 BBC Tebrau: Eng nx (fair 1/3 Zilmer-WI); 1645 Eng by Radio (fair 1/2 Fay-MA)
 15310 1200 BBC Tebrau: music (poor 12/14 Zilmer-WI)

MALDIVES

- 4740 1407 R Maldives (tentative): s/on is 1500 per V Goonetilleke in ADKN, but some-
 thing was here tho too weak to get something useful, 1435 the usual
 jammer/UTE stn or whatever it is wiped out any hope of an ID (useless 1/7 BB)

NEPAL

- 5000 R Nepal now using this freq // 4600 according to reports in ADKN; I believe
 s/on is 1320; not yet logged in Truk--BB

PAKISTAN

- 11705 1300 R Pakistan Islamabad: Eng then unk lang // 15130 (poor/fair 12/23 Zilmer-WI)
 17935 1335 R Pakistan Karachi: Eng nx to Mid East to 1350 s/off (good 12/18 Fay-MA)
 21590 1335 R Pakistan Karachi: Eng nx at dict speed //17935 (poor 1/2 Zilmer-WI)

PHILIPPINES

- 7225 1220 FEBC Manila: Eng w/ID & TC, 1230 into Malay dropping 11890 (strong 12/21
 Griffith-CO); 1210 WS Mailbag (fair 12/14 Fay-MA)
 9555 1415 VOA Poro: Chinese talks to 1430 (Ferguson-WV)
 11890 0815 FEBC Manila: Eng ID & into French (fair 12/17 Griffith) ...Have I got
 the language correct?--BB
 11920 1345 FEBC Manila: Eng rlg program & mx to 1400 (fair 12/19 Zilmer-WI)

RSPSR, Asiatic

- 3910 1337 Soviet HS (unlisted): concert music // 3995 (fair 1/2 Hauser-TX)
 3995 1340 Soviet HS (unlisted): nat'l mx, Mayak pgm likely, Russ anmts; unusual to find
 such in the 75m band (good 12/28 Hauser-TX); 1130 Mayak IS (poor 1/12 BB)
 4610 1210 Soviet HS Khabarovsk; Russian (weak Ferguson-WV)
 4885 1005 Novosibirsk (WATH); OM & YL in Russ, nx likely (fair 1/1 Kamp-CA)
 4895 0510 Tyumen & Ashkabad (Turkoman SSR) both listed; Russ talk, 0514 mx;
 propagation via N Atlantic path likely (fair 1/1 Kamp-CA)

MSFSK, Asiatic (continued)

- 4940 0627 unknown FE site: russ nS w/usual fair; Kiev in daylight (good 1/1 Kamp-CA)
 4996 1215 Magadan (w/In): russ talks & music (fair 12/22 Schnabel-KY)
 6035 1350 Vladivostok (ITU): nS in russ past :430, //6080, 6115 (Ferguson-WV)
 6165 0800 RP&R Vladivostok (w/In): IS & Chi pgm //11755, 11820, 15265 (fair 1/6 BB)
 ...On 1/4 it was R moscow Chi sce on same freqs & time...Is there any
 schedule for these changes?--BB
 6190 0750 Petropavlovsk: Russ //4820 & 5940 w/possible Magadan ID at 0752, 0800
 moscow HS (v poor 1/2 BB) ...ITU lists this tx for the Kamchatski Pen.
 It's not uncommon for these txs to relay pgms originating elsewhere--Ferguson
 7110 1345 R moscow Omsk: Chi talk, 1400 IS & more Chi (Ferguson-WV)
 7305 1215 Soviet (unlisted): Qm & LL in russian (fair 12/26 Shaw-VA)

RYUKYU ISLANDS

- 7165 1059 VOA Okinawa: s/on ID & Eng pgm (fair 1/2 Widner-IN); 1045 tx on, 1059
 "Okinawa" ID, 1100 Eng nx (good 1/11 BB)

SARAWAK

- 7160 0944 R Malaysia Kuching: Chi talks & oriental mx (fair 12/25 Denton-NB)
 ...Look for Eng about 1100--BB...

SAUDI ARABIA

- 6000 0400 Riyadh: Arabic talk & mx to 0410 & later (Ferguson-WV)

SINGAPORE

- 5010 Forces BC Sce went off the air in the fall of 1971. FBS tx apparently
 being used by R Singapore. (info from Dan Ferguson)
 5010 1155 R Singapore: Eng pgm "Singapore '71" to 1230 ID "R Singapore", // 5052v,
 11940; all 3 fqs still // at 1600; sked s/off is 1630 (fair 12/30 BB)
 5052v 1430 R Singapore: piano mx, ID & YL w/the nx (good 1/5 Mappin-WA)
 ...Frequency has been observed varying from 5050 to 5053--BB...

TADZHIK S S R

- 7135 2345 Dushanbe(listed): Russian (Ferguson-WV)

TURKEY

- 11880 0715 R Ankara: Turkish on a Sun; possibly this late only on Sun (Ferguson-WV)

UZBEK S S R

- 9600 1200 R Tashkent: s/on, Eng nx, & Mailbag w/sprinkling of mx (fair 12/11 Lovell-KY);
 1207 Eng "news" (fair 12/18 Miller-OH); 1400 Eng nx (barely audible Ferguson)
 11925 1200 R Tashkent: Eng nx // 9600 (good 12/20 Fay-VA)

VIETNAM, Democratic Republic of

- 7394⁴ 1110 VOV Hanoi: Viet talks, 1116 ID twice by YL "Dai la Tieng Noi Vietnam",
 then talks by OM (poor 1/5 BB) ...Frequency varies--BB...
 10041 1845 VOV Hanoi: YL Viet talks, Viet mx, TVI, Viet Nat Anthem at 1900, then ID
 "Dai la Tieng Noi Viet Nam...Hanoi" by OM & YL; unlisted here at this time
 (poor/fair 1/1 Magne-PA); 0030 Eng (poor/fair 12/15 Miller-OH); 1155 Viet
 pgm (fair 12/21 Fay-VA)
 12025 1450 VOV Hanoi: Jap sce // 15006, 1457 Hanoi ID & off, 1500 back on in Indonesian
 now // 10041, 1502 ID "Inilah Radio Hanoi" (fair 12/30 BB)
 14995v 1100 VOV Hanoi: HS in Viet, 1115 ID "Dai la Tieng Noi Viet Nam"; //7393v,
 10120v (poor/fair 12/11 Magne-PA)
 15005a 1300 VOV Hanoi: Eng to GI's (poor 12/24 Fay-VA)

VIETNAM, Republic of

- 6165 1010 VTVN Saigon: Viet mx //9620; extreme QRM de unID (useless 12/30 BB)
 7245 1220 VTVN Saigon: Forces Pgm, SEA mx & Viet anmts (weak Perry-IL)
 ...If you need S Viet QSL, this is the sq. Mr. Nguyen the Nam wants reports,
 and will verify them. The catch: Send a greenback w/this one. Hm...Perry
 VTVN Saigon (tentative): talk by OM (in Viet?) (weak Ferguson-WV)
 9620 1410

YEMEN, South

- 5060 1815 S Yemen nS Aden: YL ancr w/low talking, no mx hrd (12/24 Shaw-VA)

CLANDESTINE

- 4650 1000 Pathet Lao: Lao talk & mx //6199, 7479 past 1400; replacing 4660 (poor
 daily BB)
 5905 1:35 ?Clandestine?: OM ancr, mid-east nx mentioned Sadat, Pakistan, Zengalia,
 mx interval, YL anmt, 1140 more mx (xtra good 12/26 Shaw-VA); ...There
 is a VOA SSB feeder operating here. S/on is 1129 w/Delano QTH given, then
 unID lang but suspect is directed to Pakistan //6125//9545--BB...
 7416 2240 S VN Liberation Radio(tentative): Viet nS, YL talk, mx; sked here //10220v
 but not hrd (poor 1/1 Magne-PA); 1210 2 C's in Viet (fair 12/26 Shaw-VA);
 1145 Asian mx, lang anmts (good 12/11 Lovell-KY) ...Jim, I think your
 report belongs here rather than under Hanoi--BB...
 7479 1140 Pathet Lao: stn hetting with Peking Jap sce on 7480 definitely Pathet Lao
 // 6199 (v poor 12/30 BB) ...tentatively reported in Jan SPeBDA...
 7520 1055 Radio Fighters, QTH USSR: s/off following Chi talk, anthem; well over
 jammers (poor/fair 12/11 Magne-PA)

CLANDESTINE (continued)

9730 1800 "Our Radio": s/on IS, ID by OM "Eurasia Bizim Radyo" (poor 1/1 Wagne-PA)
 9919½ 1030 S VN Liberation Radio: Eng to GI's on new fq, ex-10010v, // 7470 not hrd here, but noted loud in Ceylon (and in Truk Hi) & still anncg 7470 and 10010 (poor 12/11 Wagne-PA) ...Note: Fq change is for 0930-1045 only--BE...
 9988 1150 Voice of FUNK: Khmer talks & people's mx (poor 12/29 BE)
 10006a 2330 S VN Liberation Radio: s/on Eng nx, ID "This is Liberation Radio, the Voice of the ????" (poor 12/27 Fay-MA) ...V of the Provisional Revolutionary Government of the Republic of South Vietnam--BE...
 10010 1508 S VN Liberation Radio (assumed): Laotian talk // 7470 to 1530 s/off (poor BB)
 11695 1720 R Peyk-E-Iran: Persian pgm, ID hrd (good 12/11 Fay-MA)
 11829 1108 V of the Malayan Revolution: angry sounding OM in Malay w/Chi accent, many mentions of Malaysia, 1132 revolutionary mx, 1143½ YL w/ID twice "Ini-lah 'mana? Revolusi 'Malayu?", 1144 theme mx, 1145 Chi ID "Malaya-ya? Go-din Tsi-tung Kwang Po Tien Tai" & Chi pgm; QRM de 11830 (poor 1/4 BE)

-- OCEANIA --

AUSTRALIA

5995 1130 R Australia Lyndhurst: Eng sce to Pacific, record requests (good 12/26 Shaw -VA)
 6055 1431 R Australia Darwin: Indonesian; mix w/NHK-HS (Ferguson-WV)
 6140 1500 VLM6 ABC Perth: Eng time check & news (poor 1/2 Miller-OH)
 7235 1500 R Australia Shepparton: Eng nx to SEA; // 9550-poor (v poor 12/23 Zilmer-WL)
 9540 1800 R Australia Shepparton: Eng nx to Pacific; rapid fading (poor 12/28 ??????)
 ...No name on this item...9450 was given, but I suspect a typing error...
 RA does use 9450-Lyndhurst as a feeder for Darwin, but suspect this not it--BB
 9610 1125 VLM9 ABC Perth: radio play in Eng (fair 12/9 Ely-FL); 1300 ABC nx (v good 12/27 Shaw-PA); 2255 Eng (Ferguson-WV)
 11710 1214 R Australia Shepparton: Eng "news from home" (Ely-FL)
 11765 0700 R Australia Shepparton: Eng to Pacific, cmtry & pop mx (good 12/13 Shaw-PA); 0645 IS & Eng ID (good/fair 12/25 Lazear-OH); 0850 Eng (poor 12/18 Benton)
 12000 0655 WNG Lyndhurst: time signals (fair 12/25 Lazear-OH); 0700 (gud 1/4 Shaw-PA)
 15240 2320 R Australia Shepparton: Viet pgm to 2330, then Eng to East Asia; new fq for Viet sce (fair 12/30 BE)
 15240 0600 R Australia Lyndhurst: Eng w/horse race results & cricket report to the Pacific (good 11/12 Shaw-PA)
 15295 2100 R Australia Lyndhurst: Eng to Asia (poor 12/22 Zilmer-WL)
 15425 0000 VLM15 ABC Perth: news in English (fair 1/6 Zilmer-WL)

COOK ISLANDS

5047 0710 R Cook Islands, Rarotonga (tentative); Jan's tentative drifted to this fq, hrd several times w/island mx, YL w/?Maori? talk, f/i about 0700, about 0745 it gets lost under rising Asian noises; seems too early for Jogjakarta (v poor to useless 1/5 et al BB)

FIJI

3230 0645 R Fiji Suva: chimes, Eng ID & mx pgm (poor 12/18 Glover-WA)
 3284 0640 R Fiji Suva: vernacular nat'l mx pgm (poor 12/13 Glover-WA)

HAWAII

15000 0150 WVVH Maui: time anmts by YL (v poor 12/17 Donegan-GA)

New Britain

3385 0900 R Rabaul: Pidgin talks & national mx (fair 1/1 Glover-WA)

NEW CALEDONIA

3355 0700 R Noumea: ID Fr talks & US pops (poor 12/18 Glover-WA)
 7170 0700 R Noumea: Fr ID & nx (good 12/22 Glover-WA); 0830 Fr ID & mx (strong 12/21 Griffith-CO); 0928 Fr w/rock mx, no ID to 0941 t/o (fair 12/18 Benton-NB)
 11710 0630 R Noumea: Fr talk & anmts, Fr & American mx (fair 12/13 Shaw-PA)
 ...All three frequencies operate in parallel--BE...(also 670 HI)

NEW GUINEA

2410 1933 R Goroka noted w/light mx; sked for 1945 s/on (fair 1/14 BB)

NEW HEBRIDES

3945 0720 R Vila: orchestral mx to 0731 s/off anmts in Fr, Eng & Pidgin, drums IS, 0733 tx off; operating new 2kw tx on new fq ex-3905; thanks to Glover and Perry for tips on this one (poor tho no QRM 1/12 BE)

NEW ZEALAND

11780 0625 RNZ Wellington: BBC news, then LA music to Pacific (fair 1/4 Shaw-PA); 0558 IS and Eng ID at s/on to Pacific (good 12/25 Lazear-OH)

PAPUA

3305 1230 R Western District, Daru: s/off anmts in Eng & Pid, 1233 GSTQ; sked s/off for 1200 (fair 1/13 BE)
 3925 0940 ABC Pt Moresby: telephone request pgm featuring locally recorded pop mx in Eng lang (v good 1/7 BE)
 4890 0846 ABC Pt Moresby: Eng w/pgm of children singing (good 12/19 Glover-WA); 0920 Eng nx (fair 12/22 Betz-CO); 1150 (fine 1/2 Perry-LL); &(Fay-WA)

SOLICITORS ISLANDS, Australian

3322 0615 R Bougainville: island mx (v weak 12/17 Glover-WA)
...and lastly everybody's favorite...

TAHITI

- 6135 0735 R Tahiti: beautiful mx & Fr anmts; // 1:025 $\frac{1}{2}$, 15170, but best here (v good 1/2 EB); 0645, Fr play at 0701 (poor 12/15 Benton-NB)
- 9730 0715 R Tahiti: new freq w/ pop records // 11625 (not good Ferguson-WV)
- 11825 0316 R Tahiti; Polynesian mx, 0330 IS, then feature in Tanitania (poor 12/30 Nudelman-WA); 0300 IS, Tahitian (fair 12/29 Miller-OH); 0420 island mx, now Fr (fair 1/2 Mappin-WA); 0439 Fr, "recording quality"(exc 12/18 Glover-WA); 0545 Fr (good 12/13 Shaw-PA); 0615 Fr tale (fair 1/4 Shaw-PA); and Fr talk & Polynesian mx at 0648 (good 12/25 Lazear-OH)
- 15170 2315 R Tahiti: Fr w/ sked info, ID not readable but flute & drums IS quite recognizable (poor 12/26 Stephenson-CA)
...I believe all four frequencies now operating in parallel--BB...

UNIDENTIFIED

- Help wanted Department --
- 3948 1650 unID: talk in unk lang (might be Russ); obscured by jammer; 1659 s/off; 1700 jammer off (v poor 1/14 EB)
- 4565 1352 unID: soft-voice YL in oriental lang, mx, 1357 anmt & theme mx, but not recognized before local QRN hit (good 12/28 Hauser-TX)
- 4615 1420 unID: SEA lang talk to 1432 anthem & s/off; also 1300 (fair 1/7 EB)
- 4914 0910 unID: SEA lingo (perhaps Viet) all talk to 0958, anthem, 1000 switch to Chinese; first words after ID "rao Tse Tung" (fair 1/2 EB)
- 4955 2110 unID: Oh chanting & wailing accompanied by stringed instruments similar to those in Iran/Afghanistan; 2123 f/o (v poor 1/10 Lobdell-MA)
- 6125 1150 unID: Pak lingo w/discourse by OM about India/Pak situation; references to Yahya Khan (v low 12/26 Shaw-PA) ...Suspect this is VOA // 9545 // 5905 (SSB Feeder), apparently w/special programming to Pakistan--BB...
- 7263 0955 unID: Asian language (*Ferguson-WV)
- 9515 2220 unID: Asian lang--not Russ; 2240 sounded like Russ (Ferguson-WV)
...2235 Chinese over jamming, beginning to fade away (fair 1/16 BB)
- 9880 1048 unID: excited YL in Khmer, phrase "Ici Kampuchea" hrd many times, 1105 OM took over, 1115 Asian mx, 1124 the "Internationale", 1125 off (good 12/19 BB)

IDENTIFIED -- Feedback from January's unIDs --

- 5990 The unID in Arabic is BBC Arab Sce, tx QTH unknown (perhaps Cyprus) sked for 0345-0545 (Ferguson-WV)
- 11812 I would guess Algeria as they are usually dominant stn. It can be ID'd by s/off time. If s/off is 0000, then Algeria; if past 0000, then Lebanon. Jordan tx is 5 kw, supposed to leave air 2300 returning 0300 or 0330 (Ferguson-WV)

I was very pleased to find 40 reporters this month. However 12 arrived on 19 January after I had completed my copy. As there were many good items among these I attempted to rewrite a few sections. This proved to be a big hassle, so will not try it again. A few of the late items appear, but most do not. The Post Office is partly to blame as mail is sent the cheaper route rather than the quickest direct route. Please try to mail your reports by the 10th of the month.

Here are this months reporters: (* indicates late report)

- W BENEDETTI*Los Angeles CA; C BENTON Alliance NB; G BETZ Denver CO; A BROOKS*Portsmouth NH; S d'ADOLF Woburn MA; C DONEGAN Warner Robins GA; B EATON*San Antonio TX; O ELLSWORTH Los Angeles CA; Mrs M ELY Boynton Beach FL; J FAY Topsfield MA; D FERGUSON Charleston WV; J FISCHER*Clifton Hts PA; A GLOVER Pt Angeles WA; D GRIFFITH Colorado Springs CO; G HAUSER Von Ormy TX; W JESSEN*Eugene OR; S KAMP*San Jose CA; J KOESTENBAUM San Jose CA; P KOUTNIK*Shawnee KS; K LAZEAR Columbus OH; C LOBDELL*Reading MA; J LOVELL Louisville KY
- D McLELLAN*Alamogordo NM; L MAGNE Philadelphia PA; R MAPPIN Spokane WA; A MILLER Youngstown OH; R MOSER Chicago IL; D NUDELMAN Mercer Island WA; C PATTERSON Decatur GA
- J PERRY*Westchester IL; R PERRY Champaign IL; R PIERCE*Fitchburg MA; J ROGERS London UK; P SCHNAEEL*Bronxville NY; E SHAW Norfolk VA; W SHAW Drexel Hill PA; N STEPHENSON Long Beach CA; J WIDNER Indianapolis IN; R ZILMER Milwaukee WI; & B BUNDY Truck

Last minute items:

- AZERBAIJAN SSR 4785 R Baku: 2009 Russ dialect, mx, 2012 ID "Danishir Baku", then various Russian tunes (fair 1/2 Schnabel-WY)
- KAZAKHSTAN SSR 4990 Alma Ata: 0107 Russ talk, mx likely; no trace of R Barquisimete (good 12/26 Lamp-CA)
- KUWAIT 11925 R Kuwait: 1030 s/on Eng to Eur, 2100 s/off; replaces 11940 (poor 1/9)
- SYRIA 9055 R Damascus: 2030 Eng to Eur w/nx & anti-Israeli cntry. Lobdell-MA
out-dated British pops to 2200 s/off; replaces 15165 (good 1/8 Lobdell)

SWBC DX - Station Skeds

SPEEDX

Robert Butterfield
38 Hamilton Road
Belmont, Massachusetts
02178

SPEEDA

All times GMT Deadline: 15th of the month All dates G.M.T

MADAGASCAR

R. Nederland: At deadline time we have this sked over Tom Myer's Happy Station program. From 14.00-15.20 on 15.260 and from 18.30-19.50 on 6.020.

Please note that R. Nederland's current schedule shows a broadcast from Lopik, Holland that corresponds to the latter one above on 6.020 (see the November 1971 SPEEDX). These xmsns are, of course, subject to change.

UNITED STATES

WNYW: Radio New York Worldwide has this complete winter schedule. Be sure to read Chris Lobdell's article elsewhere in this issue.

Europe;

17.00-19.30	17.845	English
17.00-18.15	21.525	"
18.30-19.45	15.130	"
19.45-23.00	9.690	"
20.00-21.00	11.890	"
21.00-22.15	11.885	"
22.30-23.45	6.075	"

Africa;

17.00-21.00	21.525	English
21.15-22.30	17.845	"

Caribbean and the Americas;

17.00-22.30	17.760	English
22.35-00.00	17.760	Spanish/English
22.45-01.15	15.130	"
23.15-00.30	15.215	"
00.00-02.30	11.855	"
00.15-02.30	5.985	"
00.45-02.30	9.715	"
01.30-02.30	9.615	"

ALGERIA

Radiodiffusion-Television Algerienne:

06.00-24.00	9.685 (Sundays)	Kabyl
06.00-24.00	11.715 (Sundays)	French
06.00-09.00	11.835	"
12.00-14.00	11.835	"
18.00-21.00	15.410 9.660	Arabic
21.00-23.00	15.420 11.835	French

BANGLADESH

Radio Bangladesh: From Dacca xmtrs comes this sked since inauguration of regular service on the first of this year. This schedule is based on info from

the BBC Monitoring Service.

Overseas Service;

02.30-03.00	7.095	English
12.30-13.00	15.522	"

Home Service;

00.30-02.20	7.095
00.30-03.00	4.915
06.30-08.00	7.260 9.560
11.00-12.20	15.522
11.00-13.00	5.855
13.15-16.30	9.853 4.915

News in English: 01.45 07.30 12.05 15.15 - Commentary in English at 15.25

News in Bengali: 01.00 07.00 12.00 12.30 14.15 - Com. in Bengali at 14.25

KUWAIT

Kuwait Broadcasting Service:

Europe;

16.00-18.30	15.345	English
18.30-21.00	11.925	"

U.S.S.R.

R. Tashkent, Uzbek S.S.R.: Winter sked.

India;

12.00-12.30	11.925 9.600	English
14.00-14.30	11.925 9.600	"

ROMANIA

R. Bucharest: #winter schedule.

Eastern North America;										
01.30-02.30	15.250	11.940	11.775	9.690	9.570	6.150	5.980		English	
03.00-03.30	15.250	11.940	11.775	9.690	9.570	6.150	5.980		"	
Western North America;										
06.45-07.15	17.845	15.250	11.940						English	

COSTA RICA

TIFC, El Faro del Caribe: From this missionary in Central America we have this sked.

11.55-19.00	9.645	6.037	(Weekdays)						Spanish	
23.30-03.00	9.645	6.037	(Weekdays)						"	
11.55-03.00	9.645	6.037	(Saturdays and Sundays)						"	
03.00-04.00	9.645	6.037	(Daily)						English	

PORTUGAL

R. Portugal:

Eastern United States;										
02.00-02.45	11.935	6.025							English	
03.45-04.30	11.935	6.025							"	
Canada;										
02.15-03.00	11.840								French	
03.00-03.45	11.840								English	

PORTUGAL

I.B.R.A.: This station broadcasts over Radio Trans Europa, Sines in 18 different languages from 18.00 to 21.00 GMT with a brief break in transmission

from 20.00-20.15. Below are selected broadcasts. Address is IBRA Radio AB, Box 821, 101 31 Stockholm 1, Sweden.

Europe;										
20.45-21.00	9.670		(Sundays and Thursdays)						French	
19.45-20.00	9.670		(Thursdays and Fridays)						English	
19.30-20.00	9.670		(Saturdays)						"	

SOUTH AFRICA

Radio RSA:

North America;										
23.30-01.20	11.970	9.695	9.560	6.080					English	
01.30-02.50	11.975	9.695	9.560	6.080					"	
22.15-23.15	11.970	9.695							"	

IRELAND

Shannon Aeradio, EIP: This station broadcasts aeronautical weather at 25 and 55 minutes after the hour. Nighttime frequencies are 2.889 5.533 8.833

and daytime frequencies are 5.533 8.833 13.312. Consult the Utility DX'ers Handbook for more information.

THAILAND

R. Thailand: Latest sked available.

North America;										
04.15-05.15	11.905	7.115							English	
General Overseas Service;										
10.25-11.20	11.905	7.115							English	
05.30-06.00	11.905	7.115	(except Sundays)						French	

NEW HEBRIDES

R. Vila: With the arrival of a new 2kw transmitter this station will expand its service. The sked is as follows from 00.30-01.30 on 7.260 and from

06.15-07.30 on 3.945 (ex 3.905).

CZECHOSLOVAKIA

R. Prague:

North America;										
01.00-01.55	11.990	9.630	9.540	7.345	5.930				English	
03.00-03.55	11.990	9.630	9.540	7.345	5.930				"	

BELGIUM

ORU: Effective to 5th of March.

23.05-23.15	15.255	9.550							English	
00.50-01.00	15.255	9.550							"	

Many thanks to the following reporters: Steve d'Adolf-Woburn, MA; George Betz-Denver, CO; Alan Brooks-Portsmouth, NH; Jack Doherty-Santa Barbara, CA; Art Getzel-Flushing, NY; Art Glover-Port Angeles, WA; Joshua Koestenbaum-San Jose, CA; Lou & Elinor Leistner-San Bernardino, CA; Christopher Lobdell-Reading, MA; Larry Magne-Philadelphia, PA; Gene Moser-Coloma, MI. Comment: If you haven't gotten your Utility DX'er's Handbook yet, do so right away!! Congrats to Paul Mayo and Steven Handler.

Utility Chaser's Corner

PAUL MAYO
2409 Ocean Parkway
Brooklyn, New York 11235

Deadlines:

15 of the month

From The Log

North & Central America

ALASKA: 8905 Anchorage Aer w/Wx @ 0058 on AM (ED)
BARBADEOS: 7365 8PX31,C&W, Carrington w/Eng/TT @ 0630 on SSB (DG)
 19436 8PX92,C&W, Carrington w/Eng/TT @ 1312 on SSB (SH)
BERMUDA: 6862.5 ZFD28,C&W,St Georges w/Eng/TT @ 2338 on SSB (AB)
 11472 ZFD52,C&W,St Georges w/Eng/TT @ 1927(SH)@ 1252(DG)
 @ 2130 (SP) @1415 (MI) @ 2115 (BS)
CANADA: 2530 VCS,Halifax Rad w/tfc @ 1125 on AM (MI)
 10520 CGC6,COTC,Drummonville w/Eng/TT @ 2100 on SSB(RL)
COSTA RICA: 7985 TEM,RGCR,Las Pavas w/Eng/Sp/TT @0250(ET) 0750(DG)SSB
CUBA: 8478 CLQ, QTH??? w/"V" mkr @ 0658 on CW (JW)
 10400a PTT, Havana w/Eng/Sp/TT @ 2208 on SSB (RHC)
 16157 CLA229,IRTS,Bauta w/Eng/Sp/TT @ 2018 on SSB (JT)
GUADELOUPE: 8153 FZV82, FTS w/Fr/TT @ 1250 on SSB (SH)
 12029a FTS, Destrellan w/Fr/TT @ 0730 on USB/RC (DG)
GUANTANAMO BAY: 7756.25 1TT w/Eng/TT @ 0145 on SSB (RL) See "QSL Report"
 15555 1TT w/ Eng/TT @ 2110 on USB/RC (DG)
HONDURAS: 11150a TRT,Tegucigalpa w/Eng/Sp/TT @ 1310 on SSB (SH)
 14485 HRP, TRT,Tegucigalpa w/Eng/Sp/TT @ 1411 on SSB(ET)
JAMACIA: 9928 6YR43, JITO, Kingston w/Eng/TT @ 1500 on LSB/RC (DG)
MARTINIQUE: 8185 FZB82,PTS w/Fr/TT @ 1250(SH) @ 0548 on SSB (ET)
 20055 FZG, FTS w/Fr/TT @ 1550 on USB/RC(DG) @2010 on SSB(SH)
MEXICO: 10520a PTT, Mexico City w/Eng/Fr/Sp/Jap/TT @ 0025 on SSB(SH)
 20150 XDD276,PTT w/Eng/Fr/Sp/Jap/TT @ 1530 on SSB (AB)
NICARAGUA: 15592.5 YNA15,TRT,Managua w/Eng/Sp/TT @ 1900 on LSB/RC (DG)
PANAMA: 3177 HOD52,TRT w/Eng/Sp/TT @ 0750 on SSB (BC)
 10670 HPH,TRT w/Eng/Sp/TT @ 2346 (AB) @ 1335 on SSB (MI)
 11160 HPG80, TRT w/Eng/Sp/TT @ 2245 on SSB (SP)
PUERTO RICO: 5484 San Juan AR, w/tfc to NY @ 0312 on AM (ET)
 10101.6 WWL20, AACR w/Eng/TT @ 0800 (ED) @ 0324 on SSB (RL)
USA: 4428.3 WOM, Ft Lauderdale w/Wx @ 0800 on AM (BRE)
 4553 VOA Fixed, Dixon? w/Eng feed @ 1348 on RCSSB(GH)
 @ 1100 on RCSSB (WB) @ 1330 on RCSSB (BB)
 8586 WCC, Chatham,MA w/"V" mkr @ 0235 on CW (BRE)
 10515 WED40, ATT, NJ w/Eng/TT @ 1927 on SSB (HS)
 20000 WWV,Ft Collins w/time @ 1815 (RHC) nice catch -pm-

South America

BRAZIL: 14750 EMBRATel,Rio w/Eng/Pt/TT @ 1950 on SSB (SP)
COLUMBIA: 6884a ENTEL,Bogota w/Eng/Sp/TT @ 0855 on LSB/RC (DG)
 13582 HKO50,ENTEL w/Eng/Sp/TT @ 1855 on SSB (RHC)
ECUADOR: 10420 HDN1,ENTEL,Quito w/SP/TT @ 1306 on SSB (SH)
 10960 HDA66,ENTEL,Quito w/Sp/TT @ 2300 on SSB (RL)
 15610 HDA78,ENTEL,Quito w/Sp/TT @ 2220 on DSB/RC (DG)
FRENCH GUYANA: 7990 FZB80,FTS,Cayenne w/Fr/TT @ 0715 on LSB/RC (DG)
 9950a FTS, Cayenne w/Fr/TT @ 0650 on SSB (ED)
NETHERLAND W.I.: 9900 PJN9,GRTA,Willemstad w/Eng/TT @ 1500 on SSB (RL)
 19744 PJN19, Willemstad (Ann Aruba) w/Eng/TT @1515 on USB(DG)
PARAGUAY: 11524 ANTELCO,Asuncion w/Eng/Sp/TT @ 0135 on LSB/RC (DG)

Europe

AUSTRIA: 17560 OEF55,PTA,Linz w/Eng/TT @ 1308 on SSB (SH)
 17620 OEF37,PTA,Linz w/Eng/TT @ 1348 on AM (ET)
AZORES: 5888 CUW,Lajes AFB w/Eng/TT @ 0239 on SSB (KL)
 17747.5 CUW20, Lajes AFB w/Eng/TT @ 0705 on USB (DG)
BELGIUM: 8802.5 Oostende Radio w/Eng/TT @ 2049 on AM (KL)
DENMARK: 17510 OKR57,PTT,Copenhagen w/Dan/TT @ 2030 on USB/RC (DG)
ENGLAND: 17256.8 GKU6,Portishead w/Eng tfc @ 1110 on AM (RHC)
 19105 GCB39,Rugby w/Eng/TT @ 1645 on SSB (RL)
 19736a BPO, London w/Eng/TT @ 1600 on USB/RC (DG)
FRANCE: 8522.5 FFL3/4, St Lys w/"CQ" mkr @ 0634 on CW (JW)
 10230 FTK23,FTS,Paris w/Eng/Fr/TT @ 0750 on SSB (RHC)
 10745 FTK74,FTS,Paris w/Eng/Fr/TT @ 1950 on SSB (MI)
 15530 FTF53,FTS,Paris w/Eng/Fr/TT @ 1705 on LSB/RC (DG)
 18720a FTS,Paris w/Eng/Fr/TT @ 1313 on SSB (SH)

GERMANY, EAST: 13375 DKW5,ORTS,Nauen w/Eng/Ger/TT @ 1530 on SSB (MI)
GERMANY, WEST: 6887 DFF88,DBF,Franfurt w/Eng/Ger/TT @ 0944 on LSB/RC(DG)
 8483.5 DAN,Norddeich w/"CQ" mkr @ 0705 on CW (JW)
 8511.9 DAL,Norddeich w/"V" mkr @ 0640 on CW (JW)
GREECE: 13168.5 SVA,Athens w/Eng/Grk/TT @ 0558 on AM (RHC)
ICELAND: 12175 TFJ,Reykjavik w/Eng/Ic/TT @2345(MI) @ 2345 on AM(GH)
IRELAND: 5533 EIP,Shannon Aer w/Wx @ 0615 (BS) @ 0345 on AM (MI)
ITALY: 8764 Genova Radio w/Eng/It/TT @ 0517 on SSB (KL)
 13015.5 IAR, Rome w/"V" mkr @ 0635 on CW (RHC)
 19592 IRR35,ITALCABLE w/Eng/Fr/Sp/It/TT @ 1500 on SSB (SP)
NETHERLANDS: 12853.5 PCH7,Scheveninger w/"CQ" mkr @ 1035 on CW (RHC)
 20045 PBK50,PTT,Kootwijk w/Eng/TT @ 1539 on SSB (PM)
 20745 PBN80,PTT,Kootwijk w/Eng/TT @ 1620 on SSB(SP)@1308(SH)
POLAND: 7404 SOH24,PTT,Warsaw w/Eng/TT @ 0225 on SSB (RL) @0440
 (MI) @ 0355 (DG) @ 0450 (BC) @ 0400 (PM) all SSB
PORTUGAL: 13141.9 SPO,Szczecin w/Eng/Pol/TT @ 1239 on AM (RHC)
 16150 CPM,Alfrazgide w/New Year Program relay of
 Emissora Nacional @ 2259 (GH)
RSFSR, EUROPEAN: 9915 RDZ72,Moscow R&T w/Eng/TT @ 1305 on SSB (SH)
 10000 RWM, w/ time, 1d in CW @ 2040 (RHC)
 13710 RGD222,Moscow R&T w/Eng/TT @ 1810 on SSB (SP)
SPAIN: 10610 AOK,Rota w/Eng/TT (1d Pawnee) @ 1940(MI) @0015(RL)
 15785 AOK,Rota w/Eng/TT @ 1900 on SSB (SH)
SWEDEN: 18175 SDA4,Swed Telcom w/Eng/TT @ 1635(RL)@1215 on SSB(AB)
SWITZERLAND: 10405 HEK33,Swiss T&T w/Eng/Fr/Sp/TT @ 1945 on SSB (RHC)
 19565 HEK6, Swiss T&T w/Eng/Fr/Sp/TT @ 1455 on LSB (DG)

Africa

CAMEROON: 12015 TJF20,FCR,Douala w/Eng/Fr/TT @ 2210 on SSB (RL)
 15832 TJF58,FCR,Douala w/Eng/Fr/TT @ 1840 on LSB/RC (DG)
CHAD: 10855 TTA410,FCR,Ft Lamy w/Eng/Fr/TT @ 2355 on SSB (AB)
CONGO, P.R.: 18430 TNH84,FCR,Brazzaville w/Eng/Fr/TT @ 1500 on USB/RC(DG)
DAHOMEY: 14750a FCR, Cotonou w/Fr/TT @ 2145 on USB/RC (DG)
ETHIOPIA: 7952 AEZ, Asmara w/Eng/TT @ 2234 on SSB (KL)
 10585 Same @ 1920 on SSB (MI)
 10862.5 ETJ86,IBOT,Addis Ababa w/Eng/Amh/TT @ 2300 on SSB(RL)
 19910 9GS22,ETS,Accra w/Eng/??/TT @ 1607 on SSB (SPD)
GHANA: 7530 FGC57,PTT, Conakry w/Eng/Fr/TT & MM @ 0830 on LSB(DG)
GUINEA REP: 7570 TUP75,INTELCI,Abidjan w/Eng/Fr/TT @ 0510 on SSB(BS)
IVORY COAST: 9473 TUA59,INTELCI w/Eng/Fr/TT @ 0840(DG) @0800 on LSB(SP)
KENYA: 15477 5YF72,EAETC,Nairobi w/Eng/TT @ 1555 on USB/RC (DG)
LIBERIA: 19665 5LF19,FCR,Monrovia w/Eng/Fr/TT @ 2020 on USB/RC(DG)
MADIRA: 4614.5 CUB3,CPRM,Funchal w/Pt/TT & MM @ 0445 on SSB (SPD)
MALAGASY REP: 10515 5RY5,STIMAD w/Eng/Fr/TT @ 2000 on SSB (BS)
 12275 5RY23,STIMAD w/Eng/Fr/TT @ 2230 on SSB (RL)
MAURITIUS: 12988.5 GZCS,Naval Rad w/"V" mkr @ 2205 on CW (RHC)
 15820a GZC,BRN, Vacos w/"V" mkr @ 1510 on CW (DG)
MOROCCO: 7483 Electr Center,Rabat w/Fr/TT @ 0900 on LSB (DG)
NIGER: 7688 5UR76,FCR,Niamey w/Fr/TT @ 0700 on LSB/RC (DG)
NIGERIA: 20715 5OU99,NET,Lagos w/Eng/Fr/TT @ 1533 on SSB (SPD)
REUNION IS.: 16095 FZS60,PTS,St Denis w/Fr/TT @ 1826 on LSB (DG)
SENEGAL: 7557 6VA97,FCR,Dakar w/Eng/Fr/TT @ 0650 on LSB/RC (DG)
 8896 Dakar Volmet w/Wx @ 2355 on AM (ED)
SIERRA LEONE: 8029 9LL35,ETL,Freetown w/Eng/Fr/TT @ 0850 on LSB/RC(DG)
SOUTH AFRICA: 7458a ZUD,Olifantsfontein w/Eng/Afr/TT @ 0110 on LSB (DG)
 8575 ZRH2/3/4/5,Simonstown w/"V" mkr @ 0548 on CW (JW)
 9048 ZUD73 w/Eng/Afr/TT @ 0018 on SSB (AB)
TOGO: 7940 5VP79,FCR,Lome w/Eng/Fr/TT @ 0735(ED)@0725 on DSB(DG)
ZAIRE REPUBLIC: 19430 9RE394,Lubumbashi Tel w/Eng/Fr/TT @ 2055 on SSB(MI)
ZAMBIA: 20410 9JA26,GPO,Lusaka w/Eng/TT @ 1548 on SSB (SPD)

Asia

CHINA, P.R.: 7505 BA088,Shang Int, Chenju w/Eng/Fr/MM on LSB @ 1440(DG)
CYPRUS: 6960 5BC28,CTA,Nicosia w/Eng/TT @ 0555 on SSB (SPD)
 10141 5BC46,CTA Nicosia w/Eng/TT @ 2100 on SSB (MI)
INDONESIA: 6996 Un-Id Indonesian net @ 1030 on SSB w/Sorong (BB)
 18248a Dept of Civil Av,Djakarta w/Eng/TT @ 0740 on SSB(RHC)
ISRAEL: 20827 4XA80,PTT,Tel Aviv w/Eng/TT @ 1425 on SSB(ET)(PM)
JAPAN: 8653.5 JCS,Choshi w/"CQ" mkr @ 1915 on CW (RHC)
 10105a KDD, Tokyo w/Eng/Jap/TT @ 0345 on SSB (ED)
KOREA, SOUTH: 11622a HLL, Seoul w/"CQ" mkr @ 1530 on CW (DG)
KUWAIT: 7900a PTT,Kuwait w/Arab/Eng/TT @ 1430 on LSB/RC (DG)

PHILIPPINES: 8589 DZG(ITT), Manila w/"CQ" mkr @ 1015 on CW (DG)
12852 DZR(RCA), Manila w/"CW" mkr @ 1040 on CW (RHC)

SAUDI ARABIA: 18365 HQZ836, PTT, Jeddah w/Eng/Arab/TT @ 1322 on SSB(ET)
@ 1530 on SSB (SP) @ 1600 on USB/RC(DG) @ 1310(SH)

SINGAPORE: 12781.5 GYS5, Naval Radio w/"V" mkr @ 2110 on CW (RHC)

Oceania

AUSTRALIA: 8488 VHP2-7, Belconnen w/"V" mkr @ 0712 on CW (JW)
8760.8 VIP, Perth w/Eng/TT @ 1225 on USB/RC (DG)
10017 Sydney Aeradio w/Wx @ 1530 on AM (JT)

CAROLINE IS.: 4600 Missionary nets KUT40, Palau(40 Koror), KUT56(56-Yap)
in QSO w/KUT30(30-Tunnuk), Truk @ 0750 on SSB (BB)

GUAM: 10698 NPN, Agana w/"V" mkr @ 0955 on CW (RHC)

HAWAII: 5715a NPM, Honolulu w/Eng/TT @ 0645 on SSB (ED)

NEW CALEDONIA: 16095 FZM60, FTS, Noumea w/Eng/TT @ 1900 on LSB/RC (DG)

NEW ZEALAND: 8770.4 ZLW, Wellington Rad w/Eng/TT @ 1045 on AM (DG)

22533 ZLE7, Awarua w/id mkr in CW @ 2305 (RHC)

TAHITI: 9053 FTS, Papeete w/Fr/TT @ 1318 on SSB (SH)
14831a FTS, Papeete w/Fr /TT @ 1845 on SSB (RHC)

UN-ID: 15240 - Electronic music (MM), various beeps & tones in
14 sec tape @ 1810 (JWS)
15580 Ice Burg Control w/McMurdo @ 1400 on SSB (BB)

Thanks this month to:

AB Alan Brooks, Portsmouth, NH	JW Jack White Gresham, ORE
BB Bob Bundy, E. Caroline Is.	JWS Jim Willhight, Snoqualmie, WA
BC Bill Coleman, Raleigh, NC	KL Ken Lazear, Columbus, OH
BRE Bill Ray Eaton, San Antonio, TX	MI Martin Imbert, Virginia Beach, VA
BS Bob Slowey, Park Forest, Ill	PM Paul Mayo, Brooklyn, NY
DG Don Griffith, Colorado Springs, CO	RHC Robert H Chester, Cheltenham, Australia
ED Edward Day, Grass Valley, CA	RF Robert French, District Heights, MD
ET Edward Tafel, Syracuse, NY	RL Russ Lay, Virginia Beach, VA
FT Frank Testa, Brockton, MA	SP Steve Page, Sanford, ME
GH Glenn Hauser, Kelly AFB, TX	SPD Steve P d'Adolf, Woburn, MA
HS Hank Slade, Bedford, MA	SH Steve Handler, Evanston, ILL
JL Jack Lester, Park Forest, ILL	WB Wendell Benedetti, Los Angeles, CA
JT Jack Tordoff, Redwood City, CA	

Many thanks to the above 25 contributors. We had over 300 loggings submitted this month and due to space limitations we could use only 150. Special thanks to Don Griffith and Bob Chester who submitted far too many loggings than we could use. Keep it up! With this we wish to announce a new section which will appear bi-monthly and which will handle Utility QSLs. Mark Koukol who now does "Spotlight" will handle it. This will allow us more room for loggings and will insure you of getting your QSL reports printed. To all those that submitted QSL reports this month I will forward them to Mark to be used next month. The "Utility Spotlight" will continue to appear, but now bi-monthly. Send your ideas for this section to Steve Handler.

UTILITY QSLs & NEWS

BARBADOES.....FLASH.... C&W LTD, Carrington has verified!!! Letter received from D.O. Smith stating thanks for the report and giving quite a few station details w/all data. Though I've seen better verie statements, it appears that there is a change of policy in the wings!! (ED)

CANAL ZONE: ACA, 7500a sent letter in 36d, air, MS (JL)

CUBA: New station on the Guantanamo Naval Base is operated by ITT (ids as (AACR) Russ Lay is the first to verify this station with a letter w/ all data an apologies for no letterhead. Station began operation in DEC 71
Addr: ITT, All American Cables & Radio, Inc, Nav Sta Box 87, PPO NY, NY 09593

ENGLAND.....Flash.... British PO verifies !!!!! Don Griffith received card with globe which is used for coastal & international circuits similar to that of HTO in Greece card states date, time & freq. This replaces reject letter.

KERGUELEN IS.: FJY2, 7990khz, Sent Letter in 1 year, via air (RF)

PUERTO RICO: AACR, 101.6. Sent commonwealth C in 24d, air, MS(JL) same(PT)

SAUDI ARABIA: PTT, Jeddah, Sent L after followup , total time 6m, register ed seamail(RL) same in 17w, air registered (PT)

YUGOSLAVIA: PTT, Belgrade sent L in 116d, 3 IRCs (ET)
that it! till next month

73s

Paul

Paul

Utility Spotlight

UTILITY SPECIAL UTILITY SPECIAL UTILITY SPECIAL UTILITY SPECIAL

BY

STEVEN JOEL HANDLER

In the past few months Spotlight has dealt with the so called 'spy stations. Along the same lines, I have a few interesting facts.

Have you ever been listening to a station, only to be interrupted by a buzz saw/cricket type noise that seems to be sending CW? This is not jarring or natural interference as you might assume. It is what's called a digital transmission. This method is used by the Military as a secure safe way to transmit messages. The message to be sent is converted into computer language. This computer language can only be understood by another computer on the receiving end. After receiving the message the computer translates it into English and prints it out decoded. What sounds like ultra fast CW is really bursts of computer language. One computer talking to another, and hopefully these two machines are the only ones that can understand what is going on.

Digital transmission equipment is quite complex. Often due to the complexity of the system, the messages transmitted are not able to be interpreted or are not even received. It is speculated that the message sent to the USS Liberty, telling it to leave Israeli waters, and the problem of the USS Pueblo not being able to send out a message to Japan about her encounter, were due to failures in the digital transmission equipment. In order for digital messages to be received and understood, both computers must be synchronized. If they are not the message may be lost or take many hours to translate.

Although the above information is nice to know, it is of little practical use. For even if you hear one of these transmissions, you have no way of finding out the source much less getting a verification. In my case I heard one of these transmissions, and sent a tape of it to the Federal Communications Commission. They sent back a letter saying, that for security reasons, they could not divulge any information about the station or nature of the transmission. Letters to the Army, Navy, and Air Force netted the same answer.

According to an article in the November 22, 1971 issue of Newsweek about 90% of the nations raw intelligence information comes from Communications interception. The old U-2 Airplanes and Pueblo type spy ships have been phased about. Instead, radio reception equipment is now aboard satellites. These spy satellites (U.S.) are capable of picking up every form of electronic communication except those sent on land telephone lines and line of sight microwave transmissions. These satellites can also read radar pulses from ground stations and in flight missiles as well. These super spy satellites are also supplemented by C-121 Super Constellation aircraft; that can fly over a target area for 6 to 8 hours. Aboard the aircraft is enough communications equipment to run a small telephone company. The above mentioned satellites work in pairs and are part of the Project 647 surveillance satellite system. They orbit the earth 22,000 miles high. Beside communications gear they house TV cameras, infra-red cameras, microwave radar and other sensing units. One of these satellites can detect a submerged nuclear submarine by the slightly warmer water it leaves, in the wake of its reactors.

The major part of America's radio interception for intelligence purposes is carried out by global network of ground stations manned by more than 50,000 Army, Navy, Marine and Air Force specialists. These stations are located all over the globe, from Okinawa, to Germany to the Aleutian Islands.

Our own Voice of America makes use of RTTY to send out official "information". The VOA transmitters transmit radio-teletype messages above their regular broadcasts. The RTTY signals are inaudible to the listener but can be heard with the use of a special converter. This system was developed by Dr. Peter Goldmark of CBS Labs. It permits the US Foreign Service offices overseas to exchange information with headquarters here in the US any time of day. This system provides a secure means of communications between government offices without using additional space on the frequency spectrum, which is ever now vastly overcrowded. The RTY signals (60 words a minute) are superimposed over the regular transmission. Converters are currently being used at Greenville, Monrovia, Tangier, Rhodes and Colombo. Beside regular VOA information, one can guess what else is transmitted via this method.

During the 1967 Arab-Israeli war, Israel obtained substantial information by monitoring the Arab telecommunications circuits. Both strategic military and political information was obtained via the monitoring. It has been said, that when the USS Liberty was attacked, she was monitoring both Arab and Israeli communications.

The above was a brief look at some stations one might classify as SPY stations. Although you can't verify them, they are interesting to try to listen to. You never know, the next voice you hear may be James Bonds!

QSL SECTION

CHRISTOPHER LOBDELL
149 WALNUT STREET
READING, MASS 01867

DEADLINE: FEBRUARY 15TH

EUROPE

ALBANIA: R. Tirana, 7120, black/white building card came by sea in 11 weeks; 1 IRC. (Howard-MD) 9780, folder card w/full data in 115 days sea mail; 1 IRC. (Doherty-CA)

AUSTRIA: Austrian Army Radio-Leistung, 6255, white and silver antenna card w/full data, in 11 weeks; states power as 1 kw. Reported in English and German w/tape recording: 4 IRCs sent. (Magne-PA)

ORF-Vienna, 6155, card w/full data by air mail in 71 days; no return postage. (Schmuck-IL) 15230, "Vorarlberg" card w/full data, by air in 62 days; 3 IRCs. (Griffith-CO)

BELGIUM: ORU-Brussels, 9550, card w/full data, sked and mailbag letter by air in 41 days; no RP (Schmuck-IL)

BULGARIA: R. Sofia, 9700, colorful photo card (4th in series), by sea mail in 73 days; no RP. (Brooks-NH) "Sofia U." card w/full data, along with sked in 74 days; no RP (Schmuck-IL)

BYELORUSSIA: R. Moscow-Minsk, 9655, full data card w/site stated, by air in 2 months; no RP. (Page-ME)

CZECHOSLOVAKIA: R. Prague, 7345, black/white photo card w/full data in 6 weeks sea mail; no RP (Shaw-PA) 7345/9540/9630/11990, three cards by air/sea in 77D. Sent to Portsmouth, England by air, then by sea; 1 IRC. (BrooksS) 5930/11990, two black/white view cards in 4½ months; no RP. (Page-ME)

DENMARK: R. Denmark, 15165, tower card w/full data in 2 weeks; no RP. (Pierce-MA) full data card in 52 days; no RP. (Betz-CO)

FINLAND: FBC-Helsinki, sent map card w/full data in 83 days; no RP. (Betz-CO)

FRANCE: ORTF-Paris, 15295, black/white photo card w/full data, by air in 62 days; no RP. (Slade-MA)

GERMANY (Dem Rep): RBI-Berlin, 9730, card in "Sports Series" received in 3½ months; 1 IRC. (Fay-MA) "Atlas Museum" card (2nd in series) w/full data in 57 days; no RP. (Griffith-CO)

GERMANY (Fed Rep): D/W, Köln, 9545, usual map card by air in 99 days; 1 IRC sent. (Doherty-CA) 9735, full data card, sked by air in 69 days. (Schmuck) VOA-Munich, 3980, usual VOA "star card" in 8 days. /s/: Dorothy Hill. (d'Adolf-MA)

GREAT BRITAIN: BBC, 15200, two "Bush House" cards in 61 days; 2 IRCs sent. (Testa-MA) regular no data card in 3 months; 2 IRCs. (Lagomaggiore-NY)

HUNGARY: R. Budapest, 6165, yellow card w/full data by air in 39 days; 2 IRCs. (Fischer-PA) 9833, parliament building card by sea in 9 weeks; no RP. (Page-ME)

LITHUANIA: R. Vilnius, 11775/12030/12050, red/green/orange flower cards, by sea in 100 days; no RP (Brooks-NH)

LUXEMBOURG: R. Luxembourg, 6090, antenna/crest card w/full data in 3½ months; 2 IRCs. (Marshall-ONT)

MONACO: TWR-Monte Carlo, 7290, post card of antenna complex, by air in 44 days; 2 IRCs. (Fischer-PA) full data card in 40 days; 2 IRCs. (Griffith-CO)

POLAND: Polish R., 6135, map card and personal letter by air in 2 months; 1 IRC sent. /s/: Lech Stanislawski. (Howard-MD)

PORTUGAL: IBRA Radio, 9670, orange/white tower card by air in a month; 2 IRCs. Reported to Sweden. (d'Adolf-MA)

R. Trans Europe, 9670, "Voice of Hope" QSL showing antenna and map of Europe w/full data in 3 weeks; 2 IRCs. (Slowey-IL)

QSL SECTION

ROMANIA: R. Bucharest, 11940/15250, color cards for three reports in 70 days for no RP. (Brooks-NH) 15250, arch./folk card by sea mail in 66 days; 2 IRCs sent. (Testa-MA)

RSFSR(European): R. Moscow, 7150, card in 5 weeks by air; no RP. Site as Sverdlovsk. (d'Adolf-MA)

R. Moscow-Armavir, 7205, card in 5 weeks air w/site; no RP. (d'Adolf-MA)

R. Moscow-Moscow, 7290, typical card, by air in 5 weeks; no RP. (d'Adolf-MA)

Radio Moscow-Tula, 9610, full data card w/site by air in 52 days; no RP, but US mint stamps sent. (Doherty-CA)

Radio Moscow-Ivano Frankovsk, 9660, orange & brown card received by air in 2 months; no IRCs. (Fischer-PA)

R. Moscow-Simferopol, 15130, full data card by air in 72 days; no RP. (Griffith-CO)

SPAIN: RNE-Madrid, 9570, full data card in only 9 days by air; no RP sent. (Lester-IL)

SWITZERLAND: SBC-Berne, 3985, card w/full data QSLing European Service transmission; by air in 13 days for 1 IRC. (Lazear-OH) 11715, antenna card, report forms and stamps in 2 months sea; no RP. (Page-ME) post card of "Sargan's Castle", not a QSL in 75 days. (Griffith-CO).

UKRAINIAN SSR: Radio Kiev, 11850, card w/full data in 5 weeks; no RP. (Pierce-MA)

USSR(No Site Stated): Radio Moscow, 9650, map card w/full data in 30 days air; used their report form. (Schmuck-IL)

VATICAN STATE: Vatican R., 11725, "studio" card by air in 10 days; 1 IRC sent. (Hansen-AZ)

AFRICA

ANGOLA: Emisora Oficial-Luanda, 9535/7245, four photo cards w/full data ranging from 4 months to one year! Must be making up a backlog. (Perry-IL) 11875, black & white fisherman card w/full data in 110 days; 2 IRCs sent. (Slowey-IL)

ASCENSION IS: BBC, 7105, usual no data card in 60 days; no RP. (Griffith-CO) 15105, Thames River card w/"Atlantic Relay" typed on back; no details. Came by air in 26 days. (Fischer-PA)

CANARY ISLANDS: RNE-Tenerife, 11800, color post card showing antenna complex, direct from Tenerife in 126 days; 1 IRC. (Doherty-CA)

CENTRAL AFRICAN REPUBLIC: RNC-Bangui, 5035, form letter w/date and time only by air in 90 days; 3 IRCs sent. Three pennies/used Canadian stamps as gifts. (Marshall-ONT) form letter in 14 weeks air; 2 IRCs and French report. (Slowey-IL) form letter w/full data; note explains that they're out of QSLs; by air in 73 days for 3 IRCs. (Konen-WI)

CHAD: R. Nationale Tchadienne-Ft. Lamy, 4904, usual card (see last month's "QSL Features") by sea mail in a year; 1 IRC sent, French rpt. (Boomer-GA)

CONGO: R. Brazzaville, 15190, yellow card w/map of Africa w/brown native head superimposed; by air mail in 22 days w/English rpt & no RP. (Fisher-PA)

GAMBIA: R. Gambia-Bathurst, 482Q form letter received by air in 5 weeks; 1 IRC and post card sent. (Boomer-GA) form letter in 35 days. (Bruns-MO)

GHANA: GBC-Ejura/Tema, 4915/4980, usual card and letter received by air in 86 days; reported in English w/2 IRCs. (Brooks-NH)

R. Ghana-Ejura, 11850, acknowledgement letter and card in 4½ months sea mail; 2 IRCs sent. (Koutnik-KS) 11850, usual "colored border" card by air in 70 days; 3 IRCs sent. (Doherty-CA) full data card, sked, by air in 70 days; no RP. (Schmuck-IL)

GUINEA(Portuguese): Emisora Regional-Bissau, 5041, full data card w/personal note in 30 days airmail; reported in Port w/3 IRCs. (Glover-WA) green folder card in 2 months after 1 f/up; reported in Port. /s/: Concecio ... (Perry-IL)

QSL SECTION

LESOTHO: Radio Lesotho, 4800, flag card w/full data in 2 weeks by airmail; 3 IRCs sent. (Perry-IL) I'll be lucky if I manage to QSL the ute station on 4800; whatdoya use for program details?? -crl-

LIBERIA: ELWA-Monrovia, 11940, full data card received in a months time by air; 2 IRCs sent. (Lagomaggiore-NY)

MALAGASY REPUBLIC: R. Nederland relay-Tananarive, 15260, special Madagascar Map QSL card w/full data (including site), by air in 8 days; 1 IRC sent. (d'Adolf-MA) same in 9 days for 1 IRC. (Brooks) no RP (Berg-MA) full data map card in 2 weeks; no RP. (Slade-MA) two cards, "Happy Station" card in 19 days & Madagascar map card in 22 days; both w/full data and both came by air mail; 2 IRCs sent. (Lobdell-MA)

MALI: Radio Mali-Bamako, 5995, yellow/brown map card w/full data in 1½ months air mail; reported in French w/2 IRCs. (Lanoue-MA) 11960, OCORA card w/full data (except fqy); by air in 4 months for 4 IRCs and English report. (Berg-MA)

MOROCCO: R-Tv Marocaine, 6170, folder card w/no data, received in only 14 days; reported in English w/2 IRCs. (Mahoney-IN)

VOA-Tangier, 9740, "star card" w/all data except time in 10 days. (Doherty-CA)

NIGERIA: NBC-Calabar, 6143, old "NBC" card--green on white, from '50s; by sea in 60 days; 1 IRC sent. /s/: Obera?? (Flynn-CA)

VON-Lagos, 15200, flag card w/full data in 3 weeks air; no RP. /s/: M. Deptleku. (Lagomaggiore-NY)

RWANDA: D/W-Kigali, 11785, usual map card w/full data in 145 days sea; no RP. (Getzel-NY) 11950, same in 49 days. (Willhight-WA) 11965, same in 41 days; reported to Koln. (Lester-IL)

SENEGAL: R. Sénégal-Dakar, 4890, black & white photo card of native instrument in 23 days; reported in French w/mint stamps. (Howard-MD) card w/date and time only, by air in 3 weeks; French report & mint stamps. (Slowey-IL)

SEYCHELLES: FEBA-Victoria, 11935, full data card by air in 3 weeks; mint stamps sent. /s/: Brenda Bacon. (Lagomaggiore-NY) 11950, white card with full data in a month; 3 IRCs. (Fay-MA) blue/white card in 30 days; 2 IRCs (Lester-IL)

SOMALI REPUBLIC: R. Mogadishu, 6093, "towers" card w/full data, by air in 23 days; mint stamps sent. (Slowey-IL)

SOUTH AFRICA: SABC, 4965, color "industries" card and sked by 2nd class air mail in 36 days; 1 IRC. (Howard-MD) 5955, full data card, by air in 1 month for 2 IRCs. (Lanoue-MA) 6195, card w/full data in 1½ months; 1 IRC sent. (Fay-MA)

SUDAN: SBS-Omdurman, 11835, full data form letter & tourist info, by air in 3 weeks; 1 IRC sent. /s/: A. Rahman Basit. (Lagomaggiore-NY)

TOGO: R. Togo-Lomé, 5047, globe & map card, by air in 2 weeks; 1 IRC sent along w/a post card and US mint stamps. (Page-ME)

U.A.R.: R. Cairo, 9475, card, sked and info sheet, sea mail in 113 days; no RP. (Dickey-MN) letter w/full data; QSLs still being printed, by sea in 106 days; 2 IRCs. (Fischer-PA) letter w/full data in 4 months; 3 IRCs. (Lagomaggiore-NY) 17920, 2 colored mummy cards, very pretty (are they sexy lookin', Bill?), by air in 3 months; 1 IRC sent. (Shaw-PA)

ZAIRE: La Voix du Zaire-Kinshasa, 7115, letter in French in 38 days; reported in French w/no RP. /s/: V. Nikuna. (Howard-MD) They've been "out of cards" since at least 1968, I wonder when they're going to have 'em printed up?? -crl-

ASIA

BRUNEI: R. Brunei-Tutong, 7215, mosque/map card w/date & fqy received by air in 20 days; 3 IRCs sent. (Hansen-AZ)

CHINA (People's Rep): R. Peking, 7200, "Tien An Men Square" card w/no data, by air in 28 days; 2 IRCs. (Testa-MA) 9780, "Red Detachment of Woman" card w/full data, by air in 42 days; no RP. (Fischer-PA) 15060, same card

QSL SECTION

CHINA (continued): by air in 27 days; no RP (Schmuck-IL) card w/all data except time in 36 days air mail. (Doherty-CA)

CHINA (Taiwan): VOF-C-Taipei, 17720, full data card, sked, calender and newspaper by air in 2 months; 1 IRC sent (Leistner-CA)

Voice of Righteousness-Taipei, 7200, yellow card w/date and QSL statement & personal letter received in 5 weeks air mail for 3 IRCs.

Station's correct address is: 210 Yan San Lee/Shihlin/Taipei; is incorrect in WRTVH. /s/: Chou Chi-wei, chief for program division. (Berg-MA)

INDIA: AIR-Delhi, 9912, card w/full data, sked and pamphlet on stamps, by air in 121 days. (Getzel-NY) 11810, "Red Fort" color card in 107 days air mail; 1 IRC. (Doherty-CA)

INDONESIA (Sumatra): RRI-Palembang, 4855, detailed letter in English, by air in 6½ months; mint stamps w/SASE sent and used on 4th try! /s/: Slamet-Poedjono. (Flynn-CA)

ISRAEL: IBA-Jerusalem, 9625, "Old Jerusalem" card w/full data in 37 days air; 3 IRCs. (Doherty-CA)

JAPAN: Far East Network-Tokyo, card w/incomplete verie in 2 weeks air mail; 2 IRCs. (Glover-WA)

R. Japan, 15105, "Sacred Cranes" card in 17 days air (Griffith-CO) 15445, 3 cards for 3 reports in 12 days air; no RP (Fischer-PA) 17825, "Sacred Cranes" card in 2½ weeks air; no RP. (Page-ME) 17825, snow festival card in 12 days air mail; no RP. (Schmuck-IL)

KUWAIT: R. Kuwait, 15345, folder card w/full data in 16 days by registered mail on 3rd try. Reported w/mint stamps by registered mail. /s/: Jawad Al-Mazeedi. (Brooks-NH) folder card in 2 months air mail on 2nd try; 2 IRCs sent. (Howard-MD) glossy folder card w/flag on front w/full data in a month after f/up. (Tordoff-CA)

LEBANON: R. Lebanon-Beirut, 11955, studio drawing card w/full data; received by registered airmail in 5 weeks; no RP. (Pierce-MA)

MALAYSIA: Voice of Malaysia, 11900, flag/map card, received by sea in 97 days w/no data. (Ellsworth-CA)

PHILIPPINES: FEBC-Manila, 7225, yellow card received in 2 months by air for 1 IRC. /s/: Mrs. J. Sutphen. (Fay-MA) 15235, small globe card w/full data in 49 days air mail; 3 IRCs. (Griffith-CO)

Radio Veritas, 15315, blue and white card w/full data and brief personal letter; by air in a month; 3 IRCs. (Sizer-CT)

RSFSR (Asiatic): R. Moscow-Petropavlovsk-Kam., 15180, card by air mail in 18 days; no RP. (Flynn-CA)

RYUKYU ISLANDS: VOA-Okinawa, 7255, star card w/site and date only in 85 days. (Rogers-GB)

SINGAPORE: R. Singapura, 11940, antenna card w/date only by air mail in 12 days; 3 IRCs sent. (Hansen-AZ)

SOUTH YEMEN: PDRS YBS-Aden, 5060, pink card w/antenna hand drawn w/all data except time in 2 months; no RP. (Perry-IL)

SYRIA: R. Damascus, 15290, globe card w/full data in 5 months by registered air mail; 2 f/ups w/IRCs needed to "do the trick". (Perry-IL) globe card in 167 days; 3 IRCs. (Bruns-MO).

THAILAND: R. Thailand, 11910, full data card along w/tourist info received by airmail in 7 months for 3 IRCs. /s/: Visitop Lainy. (Lagomaggiore-NY)

Thai TV Company, 6012, full data letter in 30 days by registered mail; 3 IRCs. /s/: Visit Amphavorn. (Glover-WA)

TURKEY: Voice of Turkey, 15195, color card of native dancers by sea mail in 5 months. /s/: E. Selanik. (Flynn-CA)

VIETNAM (North): Voice of Vietnam-Hanoi, 10040, full data card by air in 104 days; no RP. Reported to and received directly from Hanoi. (Rogers-GB) paper thin card w/full data in 213 days. (Bruns-MO)

OCEANIA

AUSTRALIA: ABC-Brisbane, 4920, usual ABC map card in 96 days sea mail; 2 IRCs. (Whitehead-MA)

ABC-Perth, 9610, full data card & sked received by sea in 127 days; no RP. (Getzel-NY)

R. Australia-Shepparton, 11710/17795, "Ayers Rock" card w/full data in 6 months sea mail along w/calender & report forms. (Macken-MA)

VNG-Lyndhurst (time station), 7500/12000, colorful folder card w/full data by air in 12 days; RP was returned. /s/: Claire Dodan (Griffith-CO)

FIJI: Radio Fiji-Suva, 3230, beach scene card w/full data received in 5 months; IRCs sent. /s/: P.L. Littin. (Boomer-WV)

NEW CALEDONIA: ORTF/R. Noumea, 7170, antenna & map card w/all information came by air in 49 days; 1 IRC sent. (Getzel-NY)

NEW HEBRIDES: Radio Vila, 3905, card (see QSL FEATURES) w/full data & personal letter, by air in 17 days. Letter says: "yours is the first reception report from the USA which we have been able to confirm for at least a year". 3 IRCs sent. /s/: John McNeil. (Glover-WA)

PAPUA: ABC(VLT4)-Pt. Moresby, 4890, ABC card w/full data in 70 days sea mail for 1 IRC. (Getzel-NY) same in 32 days air mail for 2 IRCs. (Lanoue-MA) full data map card in 2 months; 1 IRC. (Leistner-CA)

SOLOMON ISLANDS: SIBS-Honiara, 7235, full data card in 4 months sea mail; 1 IRC sent. (Boomer-GA) usual map card w/full data in 110 days sea for 1 IRC. (Doherty-CA)

NORTH AND CENTRAL AMERICA

CANADA: CHNX-Halifax, 6130, full data verie on white card in 11 days; 2 IRCs. (Lazear-OH) black/white card w/date, time & fqy, by surface mail in 12 days; no RP. /s/: K. Porter. (Slade-MA) 6133, blue on white card plus letter confirming "technical difficulties" in 10 days; mint stamps sent. (Flynn-CA)

CJXC-Sydney, 6010, green and black card w/date only, by air in 10 days. (Slade-MA)

CKZU-Vancouver, 6160, blue/black/white card w/all data except time in 20 days; 1 IRC. (Doherty-CA)

R. Canada International, 9625, new style six scene photo card in 21 days surface mail; no RP. /s/: B. Townsley. (Brooks-NH) 15190, card w/full data in 10 days; no RP. (Griffith-CO)

DOMINICAN REPUBLIC: La Voz de Fuerzas Armadas (HIFA)-Santo Domingo, 4825, yellow map card w/no data, by sea mail in 9 months; reported in Spanish w/mint stamps (SASE not used). Pennant also sent. (Flynn-CA)

GREENLAND: Grønlands Radio-Godthåb, 5980, folder QSL card w/power as 1 kw in 2½ months air mail; 2 IRCs sent. /s/: H. Rasmussen. (Howard-MD) 11745, letter containing full data in 4 months & sked in Danish; no RP. (Pierce)

GUATEMALA: La Voz de Guatemala (TGWB), 6180, QSLed w/blue & white card containing full data when presented to Luis Alberto Pimentel G., during a recent visit to the station. QSL card was printed back in 67 but has not (except for Jerry Berg) been reported before. Station prefers reports with mint stamps because IRCs have a very low rate of exchange; no IRCs or stamps but one airline ticket to Guatemala needed (hi) (Calkin-MX)

Radio Chortis-Jocotan, 3380, sent Christmas card w/thank you for report in Spanish in 23 days air; reported in Spanish w/mint stamps. /s/: Casasola. (Howard-MD)

TGNA-Guatemala City, 9505, card in 21 days airmail; 1 IRC sent. /s/: David Keeler. (Dickey-MN) "Quetzal Bird" card in 51 days; reported in English w/3 IRCs. (Ellsworth-CA)

HONDURAS: HRVC-Tegucigalpa, 4820, card w/full data received by air in 59 days; 1 IRC sent. (Dickey-MN) full data card and sked, by air in 33 days; 1 IRC sent. (Howard-MD) black/pink card w/full data in 32 days. (Slade-MA)

QSL SECTION

MARTINIQUE: ORTF-Fort de France, 3315, friendly letter in French received by air in a month; 2 IRCs sent. /s/: L.M. Cohic. (Howard-MD)

MEXICO: La Voz de Veracruz, 9545, letter in Spanish stating time and date in 26 days; reported in Spanish w/mint stamps. /s/: Vicente Gomez Breton. (Slowey-IL)

R. Mexico (XERMX), 11770, full data verie on onion skin paper in Spanish letter along w/pennant in 18 days air; 1 IRC. /s/: Victoria E. Perez de Leon. (Ellsworth-CA) full data card in 71 days air; 3 IRCs sent. (Rogers-GB)

XEBR-Hermosillo, 11820, QSLed month old report w/brown and white card w/details typed on reverse when presented w/f/up during visit to the station. Card received from Gerente Sr. Luis Höeffler Obregon who will verify correct reports addressed to him in English or Spanish; the station's name is not as is given in WRTVH and it calls itself either "Radio BH" or "La pantera del aire". (Calkin-MX)

U.S.A.: AFRTS-Delano, 6110, card in 9 days surface mail along w/skeds; no RP. (Doherty-CA).

KGFI-San Francisco, 15280, card w/all the data in 20 days; reported in Spanish w/mint stamps. (Schmuck-IL)

United Nations Radio, 11900, full data card in 16 days & sked for 1 IRC. (schmuck-IL) 11900/15415, two blue/white cards in 17 days; mint stamps sent. (d'Adolf-MA)

VOA-Greenville, 6020, star card in 113 days; no RP. /s/: Anita Milavec. (Testa-MA)

WNYW-Scituate, 6075, card w/all data in 23 days; mint stamps sent. (Schmuck-IL)

WVV-Ft. Collins, Co- 10000, brown & white folder card w/full data in 7 days; no RP. (Griffith-CO)

SOUTH AMERICA

BRAZIL: R. Clube do Para-Belem, letter in Portuguese w/verie statement & date in 2½ months air mail; reported in Portuguese w/mint stamps and 3 Canadian pennies as a gift. /s/: Lourival Penalber. (Marshall-ONT) detailed letter in Portuguese for report on 4865 kHz in 3 weeks. (Patterson-GA)

R. Diario da Manha-Florianopolis, 9675, sent Christmas card w/verie statement in English in only (??) 20 months. (Patterson-GA) Congrats, Pat. I've been trying to QSL this one since 68! -crl-

Radio Globo-Rio, 6035, full data "scenes of Brazil" card in 7 weeks; mint stamps sent. (Lazear-OH)

R. Jornal do Comercio-Recife, 15145, friendly letter (QSL received last month) in English along w/pennant in 13 days air; reported in English w/mint stamps. /s/: Artur Miranda. (Howard-MD)

CHILE: R. Corporación-Santiago, 15150, card showing winter scene in the Andes received in 27 days air mail; reported in Spanish w/2 IRCs. /s/: Gustavo Heitmanns, Technical Chief. (Fischer-PA) Excellent!

COLOMBIA: R. Colosal-Neiva, 4945, Spanish letter giving info on Colombia along w/pennant in a month; reported in Spanish w/2 IRCs along w/some used US stamps. /s/: Rafael Navarro, Gerente. (Howard-MD)

R. Sutatenza-Bogota, black and white photo card of transmitters received in 115 days after f/up; reported in Spanish w/mint stamps. (Brunns)

R. Vision-Medellin, 6105, letter in Spanish along with some Colombian stamps in 11 days air mail; reported in Spanish w/2 IRCs. /s/: Maria Elena Vasque U. (Howard-MD) letter in 10 days; reported in Spanish w/mint stamps. (Lester-IL) 6200, letter in Spanish w/date only, by air in 13 days; didn't mention drifting fqy. (Slowey-IL)

ECUADOR: HCJB-Quito, 11745, card w/farm scene (horses and natives). by air in 22 days; 2 IRCs sent. (Testa-MA) full data card of "World Radio Chapel" in 38 days air mail; 2 IRCs. (Lobdell-MA)

Radiodifusora "Cenit"-Bahia de Caraquez, large business type card and pennant received from Beverly Hills (!!) in 6 weeks; report sent to Guayaquil. (Mahoney-IN)

OSL SECTION

ECUADOR: (continued) Radio Quito, 4923, blue station card w/Spanish note for Happy New Year (Feliz Navidad?) in 20 days airmail; reported in Spanish w/mint stamps. Card has no data, pennant was also sent. /s/: Jose Almeida. (Howard-MD)

GUYANA: GBS-Georgetown, 3290, form letter in English w/full data filled in in 21 days air; mint stamps sent. /s/: M.O. Denny. (Brooks-NH) 18 days for mint stamps. (Bruno-MO) 27 days air mail; 2 IRCs. (Fay-MA) 2 weeks for 2 IRCs. (Howard-MD) 20 days air mail; 2 IRCs. (Pappas-IL)

PERU: R. Atlantida-Iquitos, 4850, date and verie statement letter, pennant and Peruvian stamps in 3 weeks air mail; mint stamps + 1 & 7/8 IPS tape sent. (Marshall-ONT) letter in Spanish, Peruvian stamps and pennant received by air in 11 days, returned my IRCs. Reported in Spanish. (Howard)

URUGUAY: R. El Espectador-Montevideo, 11835, black & white card w/full data along w/pennant in a month; reported in Spanish w/mint stamps. /s/: Hector Amengual. (Slowey-IL)

VENEZUELA: Ecos del Torbes, 4980, letter in Spanish w/date and verie statement, by air in a month; mint stamps and Spanish report. /s/: Carlos Alviarez Sarmiento. (Slowey-IL)

Radio Barquisimeto, 9510, green & white globe card, received by air in 31 days; reported in English w/1 IRC. (Ellsworth-CA)

R. Difusora de Venezuela-Caracas, 4890, letter in 10 days for report in Spanish and mint stamps. (Lester-IL)

R. Juventud-Barquisimeto, 4900, network card w/all data except time in 19 days air mail; reported in Spanish w/2 IRCs. (Rogers-GB)

CLANDESTINE VERIFICATIONS


VENEZUELA: R. Euzkadi, 13281, Christmas card w/note in English giving thanks for helpful report, by air in 15 weeks; reported in English w/3 IRCs (Berg-MA)

I WOULD LIKE TO TAKE THIS TIME TO THANK THE FOLLOWING 47 REPORTERS FOR THEIR FINE SUPPORT!

STEVE P. d'ADOLF, Woburn, MA	RON LANOUE, North Adams, MA
WENDELL BENEDETTI, Los Angeles, CA	KEN LAZEAR, Columbus, OH
JERRY BERG, Lexington, MA	LOU/ELINOR LEISTNER, San Bernad., CA
GEORGE BETZ, Denver, Colorado	JACK LESTER, Park Forest, IL
BRUCE BOOMER, Atlanta, GA	MIKE MACKEN, Winthrop, MA
ALAN BROOKS, Portsmouth, NH	LARRY MAGNE, Philadelphia, PA
RON BRUNS, Ferguson, MO	MIKE MAHONEY, Muncie, IN
GREGG CALKIN, Mexico City, MX	CEDRIC MARSHALL, Toronto, ONT
DONALD D. DICKEY, Minneapolis, MN	DAVE J. NEUDELMAN, Mercer Is., WA
JACK DOHERTY, Santa Barbara, CA	STEPHEN PAGE, Sanford, ME
BILLY RAY EATON, San Antonio, TX	ANDREW PAPPAS, Chicago, IL
OLIVER ELLSWORTH, Los Angeles, CA	C.R. PATTERSON, Decatur, GA
JON FAY, Topsfield, MA	RALPH PERRY, Champaign, IL
JOHN FISCHER, Clifton Hts, PA	ROBERT PIERCE, Fitchburg, MA
BILL FLYNN, Mountain View, CA	JOHN ROGERS, London, England, GB
ART S. GETZEL, Flushing, NY	JIM SCHMUCK, Niles, IL
ART GLOVER, Pt. Angeles, WA	WILLIAM W. SHAW, Drexel Hill, PA
DON GRIFFITH, Colorado Springs, CO	AL SIZER, North Haven, CT
GEORGE HANSEN, Phoenix, AZ	HANK SLADE, Bedford, MA
RON HOWARD, Gaithersburg, MD	BOB SLOWEY, Park Forest, IL
MARK S. KONEN, Mequon, WI	FRANK TESTA, Brockton, MA
PAUL G. KOUTNIK, Shawnee, KS	JACK TORDOFF, Redwood City, CA
JOHN LAGOMAGGIORE, Niagara Flls, NY	E.J. WHITEHEAD, Reading, MA
JIM WILLHIGHT, Snoqualmie, WA	

73 and Good DX,

**Q.S.L. from
RADIO VILA**




TRANSMITTER: Redifon G40, 500W
AERIAL: Dipole, direction North-South

This confirms your reception of Radio Vila on
3905..... kHz between5975..... G and6125..... G on
December 10..... 1971

Art Glover

THANKS GO TO ART GLOVER OF PORT ANGELES, WASHINGTON FOR THIS RARE CATCH OF RADIO VILLA IN THE NEW HEBRIDES. ACCORDING TO THE STATION, ART'S WAS THE ONLY CORRECT REPORT FROM THE USA IN OVER A YEAR!!

АЛМА АТА
Академия наук Казахской ССР
Academy of Sciences of the
Kazakh SSR



А10216—65 г.
4а-421. II. 2 н.

Уважаемый господин Брэг Алан Бумер!

На Ваше письмо от 31 марта 1969г. Казахское радио отвечает, что правильность приема наших передач на частоте 10530кГц от 23час.59мин.-00час.18мин. подтверждаем.

✓ ---апрель 1969г.

Фото Д. Смирнова

Напечатано в СССР

WHAT IS THIS, YOU MAY ASK? IT IS BRUCE BOOMER'S FULL DATA QSL FROM RADIO ALMA-ATA OPERATING ON 10,530 KILOHERTZ. BRUCE IS ONE OF THE FEW DXers TO VERIFY THE KAZAKH SSR DIRECT AND WITH FULL DATA!

<p>This special QSL card is issued to commemorate the starting up in 1971 of Radio Nederland's second relay station: this time on the island of Madagascar. It verifies your report on our transmission</p> <p>via: Madagascar</p> <p>date: 31.12.1971; 2/1/1972</p> <p>time: 1514-1521 GMT</p> <p>frequency: 15260 KHz</p> <p>RADIO NEDERLAND P.O. Box 222 Hilversum Holland</p>	<p>RADIO NEDERLAND</p> <p>FRIDOMROFF</p> <p>030 CENT FR 9333</p> <p>Mr. A.W. Brooks 491 Marcy St. PORTSMOUTH, N.H. 03801 USA</p> <p>AIRMAIL</p>
---	---

SHOWN HERE IS ALAN BROOKS' QSL OF RADIO NEDERLANDS RELAY BASE, LOCATED AT TANANARIVE, MADAGASCAR. AT PRESS TIME, THEY WERE STILL TESTING ON 15260 KILOHERTZ FROM 14:00 to 15:20 HOURS, G.M.T.

Dear Mr. Doherty,

We are glad to have your reception report on our program transmitted on 15000 kc/s dated October 27, 1971.

Your further reception reports on our broadcasts are welcome.

RADIO PEKING

RED DETACHMENT OF WOMEN
A Modern Revolutionary Day & Dream
Fighters of the women's comedy perform a spirited riddle drill

RECENTLY, THERE HAS BEEN A CHANGE IN RADIO PEKING'S USUAL NO DATA QSL POLICY. HERE IS JACK DOHERTY'S VERIE WHICH GIVES BOTH THE DATE AND FREQUENCY OF RECEPTION. THINGS ARE LOOKING UP.

WNYW at Scituate a visit by the "BAD GUYS"

Ever since I began to listen to shortwave radio back in 1963, a visit to a shortwave station has always been my goal. Finally, on November 24th, 1971, I made it. I, along with SPEEDX members Bob Butterfield and Mike Macken, visited the transmitter facilities of Radio New York Worldwide (WNYW), located on the coast of Massachusetts.

The station can be found just to the north of Scituate harbor, off of Hatherly Road. During World War One, it was a testing site for large coastal land-based artillery placements. Amid the antenna towers, the remnants of the base can still be seen. The main transmitter building is located about a quarter mile from the ocean atop a slight rise.

As we arrived at the station, we were greeted by our host, James Howard. Mr. Howard is the chief engineer at the station. Due to a strong "RF" field created by the nearby transmitters, we could not tape record an interview as was hoped. It seems that a strong "RF" field may cause some damage to "FETS" (field effect transistors) in electronic devices. Anyway, Mike Macken didn't want to take any chances. Mr. Howard, whom we found to be a very friendly man, was happy to show us around, allow us to take photographs, and answer any questions that we had.

We asked him if he could give us a short history of the station's operations:

In the 1930's, WRUL (the station's original call letters) had both its studios and transmitters in Boston. The studios were located on Commonwealth Avenue, not too far from the present site of Boston University. In fact, the call letters WRUL at one time stood for "World Radio University". In 1939, the transmitters were moved to their present site in Scituate, some 20 odd miles to the southeast of Boston. In 1951, new studios were established in New York City where they still are today. In 1966, the call letters were changed from WRUL to WNYW, more in keeping with the station's name of Radio New York Worldwide.

April of 1967 marked one of the more tragic events in the history of this station: a fire of still undetermined origin completely destroyed the transmitting facilities. In order to keep on the air, WNYW had to borrow transmitters used by RCA in New Jersey. At about the same time, the station had plans to construct a new transmitting site somewhere in that same state. Sometime later, this "New Jersey Plan" was discarded without any actual start of construction. Transmitting facilities will remain at Scituate, Massachusetts.

The current owner of WNYW is Bonneville International, a part of the Mormon Church. They purchased the station from Metromedia about ten years ago. When questioned by Mike Macken, Mr. Howard knew nothing about the impending purchase by Family Broadcasting which was mentioned recently in "Sweden Calling DXers".

WNYW uses a total of four transmitters; two 50 and 100 kilowatt rigs to beam to Europe, Africa and the Americas. The antennas are all of rhombic design and beam towards the above mentioned areas. Sign-on of the English service comes at 1700 hours, GMT. Most of the daytime English programs are taken from the CBS network. Favorites such as "Dear Abby", "Arthur Godfrey Time" and the "Mid-day Report" can be heard by WNYW's over seas listeners. However, "Music From New York" is produced by the station it- ➤

WNYW AT SCITUATE

self. It can be a bit dated since it is recorded on tape months ahead of time. All network commercials are left out and in their place one might hear an AD for the World Radio-TV Handbook. This is done at the Scituate site with the aid of a cartridge machine. At 2330 hours GMT, the all-English service comes to an end. From then until sign-off at 0230 GMT, a unique bi-lingual program in Spanish and English is broadcast to Latin America. These programs, which contain a definite Latin flavor, are broadcast by announcers fluent in Spanish.

Due to the long time freeze on all non-governmental shortwave licenses by the Federal Communications Commission, WNYW is one of the few commercial shortwave outlets in the United States. If you ever get a chance to visit the Scituate site, I am sure that you will find it to be worthwhile.

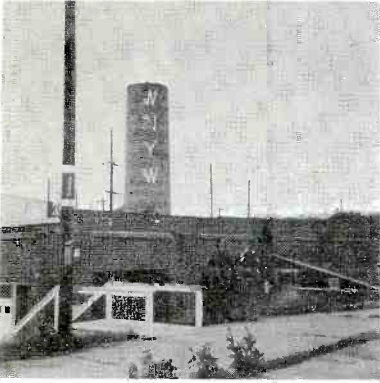
PHOTOGRAPHS

- 1.) WNYW-Scituate transmitter building with "BAD GUYS" Mike Macken (right) and Bob Butterfield in the foreground.
- 2.) James Howard, WNYW chief engineer, takes an admiring glance at his complimentary copy of SPEEDX. Receiver in background is an SW-4.
- 3.) Staff technician Wayne Kestila operates a cartridge machine in WNYW's control room.
- 4.) Mr. Kestila is shown adjusting one of the four transmitters used by the station.
- 5.) Mike Macken gives the station's van a close-up inspection.
- 6.) One of the numerous towers that help support those rhombic antennas.

WNYW VERIFICATION CARD ISSUED FROM NEW YORK

Radio New York Worldwide - WNYW		
Q S L	This verifies your report of: 17 April 1968	
ON: 21-525	TIME: 1610 GMT	
INTERNATIONAL STATION WNYW 485 Madison Avenue New York, N. Y. 10022, U.S.A.		

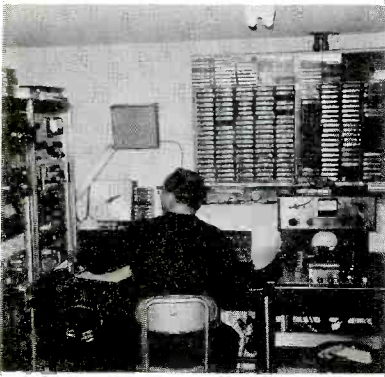
WNYW



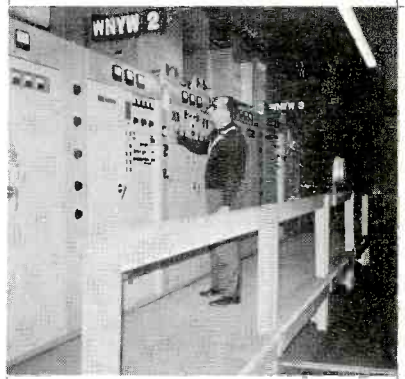
1*



2*



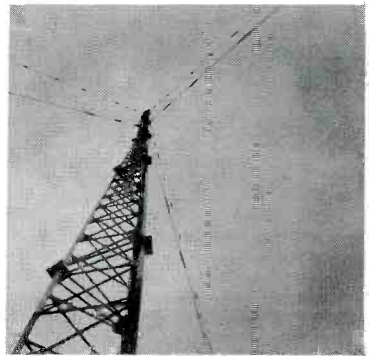
3*



4*



5*



6*

SPEEDX MEMBERSHIP REQUIREMENTS OUTLINED

A membership committee has been designated to maintain a continuing record of each subscriber's contributing efforts to SPEEDX, and to select those who qualify for full membership.

Basically, the minimum requirement for full membership has been set at ten (10) earned credit points per year. Once earned, membership will remain effective so long as the annual points requirement is maintained. It shall cease to be valid immediately following any twelve (12) month period during which the required credits have not been earned. Full membership is intended to reward those who choose to actively participate in the Society; it is in no way compulsory, and those who are satisfied to be merely subscribers to the SPEEDX bulletin will always be entirely welcome - as associate members of the Society.

The following Earned Credits Schedule is intended only as a guideline for record-keeping and evaluation purposes. In practice, the membership committee is to use reason and good judgment in assigning credits, but will strive for leniency while judging each case on its individual merit. In cases, particularly, of those who become staff associates, or officials, of SPEEDX, some or all of the full membership privileges may be granted by the committee whenever practicable to do so.

EARNED CREDITS ALLOWANCE:

- a. Reports to any column (SWBC, QSL, etc.) ... 1 point per mo., each col. reported to.
- b. Articles accepted (divide points if co-authored)... 2 points per page or fraction.
(plus 1-5 merit points)
- c. Filler items accepted 1 point each item.
- d. Projects assistance rendered 1 point per month.
(plus 1-5 merit points)
- e. Financial contributions/donations 1 point per dollar.
- f. Staff assistance (labor, advisory, etc.) Merit; 1-5 points per month
of assistance.
- g. Staff & Officials, Earned Credits:
 - (1) President..... 3 points per month.
 - (2) Vice-President 2 points per month.
 - (3) Director (Exc. Pres. & VP). 1 point per month.
 - (4) Managing Editor..... 3 points per month.
 - (5) Business Manager 3 points per month.
 - (6) Projects Coordinator 3 points per month.
 - (7) Treasurer 2 points per month.
 - (8) Secretary 2 points per month.
 - (9) Editors 1 point per month.
 - (10) Chairmen, misc..... 1 point per month.

FINANCIAL REPORT - 1971

SPEEDX

SPEEDX

BALANCE ON HAND 1 June 1971 - - - - - 00.00

RECEIPTS:

Donations - - - - -	308.94
Leans - - - - -	90.00
Subscription receipts - - - - -	1,706.70
Supply sales - - - - -	14.90
Sample requests - - - - -	88.40
Misc. income - - - - -	2.50

TOTAL RECEIPTS (6/1/71 - 12/31/71) - - - - - 2,211.44 - - - - - 2,211.44

FINANCIAL REPORT continued...

DISBURSEMENTS:

Bulletin printing - - - - -	716.02
Misc. printing (Constitution etc.) - -	51.30
Bulletin postage - - - - -	279.77
Secretary postage (Samples etc.) - -	66.53
Loan payment - - - - -	90.00
Equipment purchases - - - - -	51.95
Mailing and addressing expenses - - -	65.05
Art and layout supplies expense - -	41.06
Secretary expense - - - - -	64.55

TOTAL DISBURSEMENTS (6/1/71 - 12/31/71) - - - - - 1,470.25 - - - - - 1,470.25

BALANCE ON HAND - 1 January 1972 - - - - - 741.19

I hereby certify that the above report is accurate and correct to the best of my knowledge,

(signed) David W. Thorne
 David W. Thorne - Secretary/Treasurer SPEEDX

NOTE: This is only a summary report designed for publication. A three page complete Treasurers report was sent to SPEEDX President Art Glover on 1/1/72. DWT.

*** NEWS from**

PO. Box 239 Park Ridge, N.J. 07656 Telephone 201/391-7887

GILFER Associates, Inc.

MODEL A-20 PRESELECTOR TUNES/AMPLIFIES 3.9-22.5 MHz ONLY, \$48.00

The GILFER Model A-20 PreSelector is selling fast. Pre-production offering price is only \$48.00, delivered. Quantities will be limited until full production begins in May. Tests are continuing and the Model A-20 has been used with Heath, Hallicrafters, Radio Shack, Eddystone, Squires-Sanders, National, Hammarlund, Drake, etc. receivers. All receivers showed improvement in weak signal sensitivity. Can be used with short length of wire (about 20-25 feet) in an apartment in place of Joystick.

1972 WORLD RADIO-TV HANDBOOK

Content of 1972 edition much improved with fewer obvious errors. More station data and fewer TV ads. No Summer Supplement in 1972. At request of many buyers desiring a "spare" copy, GILFER will mail 2 copies (same order, same day, same address) for \$13.00, postpaid. SPEEDX subscribers who have ordered from GILFER may obtain a second, or spare copy, for \$6.25, postpaid. This offer good until March 15, 1972.

ITU AND EBU FREQUENCY LISTS AND CALLBOOKS

Stocks of all major ITU publications are now in Park Ridge. We should have the new List VI of "Radiodetermination and Special Service Stations" by about April 1. The price is expected to be about \$8.00. The EBU LF/MF List is available for \$9.25.

(Paid Advertisement)

GA

RADIO MONITORING EQUIPMENT / SERVICES / PUBLISHERS / BOOKSELLERS

SPEEDX

The Official DX Bulletin published monthly by the -

"Society for the Preservation of the Engrossing Enjoyment of Dying"

BOARD OF DIRECTORS - ART GLOVER - PORTAGE, WISCONSIN - PRESIDENT
DAVE THORNE - SANTA ANA, CALIF. - BUSINESS MANAGER
BILL FINNER - MT. VIEW, CALIF. - MANAGING EDITOR

EDITORIAL STAFF

- SERGE C. P. NEWMANN - MUNCIE, IN - EDITOR, DX MONTHLY
- CHIEF LINDSELL - READING, MASS. - EDITOR, QSL SECTION
- JOHN WHITEHEAD - READING, MASS. - S'BC DX, VE, HEMISPHERE
- STEVEN d'ADOLF - YONKERS, MASS. - S'BC DX, EUROPE/AFRICA
- BOB RUNDY - PEIK, E. CAROLINE IS. S'BC DX, ASIA/OCEANIA
- BOB BUTTERFIELD - BELMONT, MASS. - S'BC DX, STATION SIGNS
- JACK WHITE - GRESHAM, OR - SPEEDXPLUS and PROPAGATION ED.
- PAUL NARO - BROOKLYN, NY - UTILITY CHASER'S CORNER
- HANK KOKMEL - MAPERVILLE, IL - UTILITY SPOTLIGHT
- STEVEN HANGLER - EVANSTON, IL - UTILITY SPOTLIGHT
- BILL SPARKS - SAN FRANCISCO, CA - AIRCRAFT NEWS
- MARK KONEN - MEDFORD, WISCONSIN - KONEN'S DX KRONER

SUBSCRIPTION RATES (PER YEAR):

Via first class mail to U.S., CANADA, & MEXICO - \$10.00 US
FOREIGN: please write for rates. Available via Air or Seamail. \$ 1.00 US
SAMPLE COPY: - postpaid worldwide - \$ 1.00 US
BACK ISSUES: - available as supply lasts - pld \$ 1.00 US
INTERNATIONAL ADDRESS:

SPEEDX
P. O. Box 321
SANTA ANA, CALIFORNIA 92702
U. S. A.

MAKE ALL CHECKS, MONEY ORDERS, & BANK DRAFTS PAYABLE TO**SPEEDX**

SPEEDX grants permission to reproduce articles and information contained herein, either for publishing and/or broadcasting;

PROVIDING that credit is given to SPEEDX and that SPEEDX, PO Box 321, Santa Ana, Calif. 92702 is mentioned. Permission cannot be granted by SPEEDX for articles/information contained herein that SPEEDX has used by permission from other sources, which are listed as - "used with permission". Thank you.

The accuracy of station listings and loggings in SPEEDX cannot be guaranteed due to the frequently changing schedules of many stations

PRINTING BY - KIX PRINT, Santa Ana, California 92701 U.S.A.

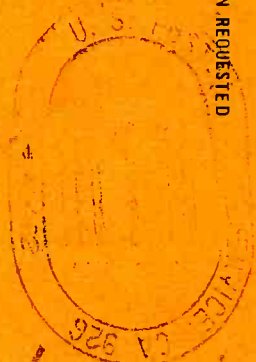
SPEEDX

P.O. Box 321

SANTA ANA, CALIF. 92702

U.S.A.

ADDRESS CORRECTION REQUESTED



SERGE G.P. NEWMANN
SCHEIDLER APARTMENTS, *286
MUNCIE, INDIANA 47304

FIRST CLASS MAIL