

# ET/D

JULY 1978 • \$1.00 ✓

**ELECTRONIC TECHNICIAN/DEALER**  
LEADING THE CONSUMER AND  
INDUSTRIAL SERVICE MARKETS



## Operational amplifiers

IC's tip the scales of circuit design

## New test gear

Report from NEWCOM

## Single Sideband

How it works

KOWR2646832-X2-  
47938A4M  
RAY KOWECK  
27734 DENMAR  
WARREN

-676-

AA

APR 79  
-AS

MI 48093



A HARCOURT BRACE JOVANOVIICH PUBLICATION

**PTS...**  
**'Our high standards  
of quality service  
set us apart  
from our  
competition.'**

**ROLAND NOBIS**  
President & Founder





# ET/D

ELECTRONIC TECHNICIAN/DEALER  
LEADING THE CONSUMER AND  
INDUSTRIAL SERVICE MARKETS

JULY 1978, VOL. 100, NO. 7

RICHARD W. LAY  
Editor

DON W. MASON  
Managing Editor

ALFRED A. MENEGUS  
Publisher

DAVID J. HAGELIN  
Associate Publisher

TOM GRENEY  
Publishing Director

JOHN PASZAK  
Graphic Design

RONI SEGER  
Production Manager

LILLIE PEARSON  
Circulation Fulfillment

## FEATURES

### NEWCOM Report

*A review of new test bench equipment seen at NEWCOM* \_\_\_\_\_ 18

### OP Amps

*A look at the most versatile of all the linear integrated circuits* \_\_\_\_\_ 23

### CB Signals

*Why you get more for your money with SSB transmission* \_\_\_\_\_ 27



**On the cover:** IC technology has expanded the uses and reduced the size of OP-AMPS dramatically—progress shown symbolically on this month's cover. (See OP Amps, page 23).

## DEPARTMENTS

INDUSTRY REPORT	2
FROM THE EDITOR'S DESK	8
NEWSLINE	10
LETTERS	12
SERVICE SEMINAR	14
BULLETIN BOARD	30
TEST INSTRUMENT REPORT	34
DEALER'S SHOWCASE	36
NEW PRODUCTS	40
CLASSIFIED ADS	46
ADVERTISING INDEX	48
READERS SERVICE	49
TEKFAX	51



A HARCOURT BRACE JOVANOVIICH PUBLICATION



HARCOURT BRACE JOVANOVIICH PUBLICATIONS. Robert L. Edgell, Chairman, Richard Moeller, President/Treasurer, Lars Fladmark, Senior Vice President, Joe Bilderbach, Vice President, James Gherna, Vice President, George Glenn, Vice President, Thomas Greney, Vice President, Ezra Pincus, Vice President, Harry Ramaley, Vice President, Lois Sanders, Vice President.

ELECTRONIC TECHNICIAN/DEALER is published monthly by Harcourt Brace Jovanovich Publications. Corporate offices: 757 Third Avenue, New York, New York 10017. Advertising offices: 757 Third Avenue, New York, New York 10017 and 43 East Ohio Street, Chicago, Illinois 60611. Editorial offices: 43 East Ohio Street, Chicago, Illinois 60611. Accounting, Advertising Production and Circulation offices: 1 East First Street, Duluth, Minnesota 55802. Subscription rates: one year, \$9, two years, \$15, three years, \$19 in the United States and Canada. All other countries: one year, \$20, two years, \$35, three years, \$45. Single copies: \$1 in the United States and Canada; all other countries: \$3. Second class postage paid at Duluth, Minnesota 55806 and at additional mailing offices. Copyright © 1978 by Harcourt Brace Jovanovich, Inc. All rights reserved. No part of this publication may be reproduced or transmitted in any form or by any means, electronic or mechanical, including photocopy, recording or any information storage and retrieval system, without permission in writing from the publisher. ELECTRONIC TECHNICIAN/DEALER is a registered trademark of Harcourt Brace Jovanovich, Inc.

POSTMASTER: Send Form 3579 to ELECTRONIC TECHNICIAN/DEALER, P.O. Box 6016, Duluth, MN 55806.

# INDUSTRY REPORT

## Two National Service Organizations Set for Record August Convention Sessions .... ET/D Sponsors Golf Meets

Rapidly changing service industry patterns, particularly developments in video cassette recorders, projection television, and even microprocessors, are expected to generate record turnouts next month when the nation's two national electronic service associations meet in convention.

The National Electronic Service Dealers (NESDA) Association is scheduled to meet Aug. 7-13 at Portland, Ore., and this meeting will be followed by the four-day gathering of the National Association of Television and Electronic Servicers of America (NATESA) at Great Chateau Louise Resort, Dundee, Ill., beginning Aug. 24.

Electronic Technician/Dealer magazine will schedule golf tournaments in conjunction with both conventions. Both tournaments are scheduled for the first day of each convention.

According to NESDA convention chairman Nolan Boone, attendance at Portland is expected to top even that drawn last year to Orlando, Fla. because "the revolutionary new VCRs, projection TVs and microprocessors" are placing new pressures on electronic servicers to learn more about their future in electronics. "We have already received four times the number of advance registrations we had received by this time last year," Boone said.

As usual, both conventions are again being conducted on a work and pleasure basis. In addition to plenty of free time for recreational purposes, the real "meat" of the gatherings will be the seminars—business management, new technology, and troubleshooting sessions—which will keep participants active during their stays. In addition, special discussions dealing with such topics as falling rates of television service activity and with other industry problems will be held.

## Wescon Meeting Underscores Microprocessor's Impact

The accelerating impact which microprocessors are now exerting on electronics will be the underlying theme of this year's Wescon '78 show Sept. 12-14 at the Los Angeles Convention Center.

According to show manager Don Larson, eight special categories, including home, industry, automotive,

energy, games and toys, are among those which will be selected for special microprocessing awards as part of this year's show.

"The microprocessor revolution, in development for several years, is now beginning to show in finished products that save time, energy, money, and life," he said.

## Redesigned Sony Chassis Emphasize Energy Consumption-Price

Electronic tuning and low power chassis are emphasized in the completely redesigned color line introduced by Sony for 1979. In addition, a new two-hour Betamax (VCR) and a battery operated portable Betamax and color camera were previewed by Sony and are scheduled to be introduced before year's end.

Sony, which earlier this year announced a realignment of its marketing structure in the wake of disappointing financial results, has initiated price cuts ranging up to \$50 on 17 and 21 inch color models made in the United States.

In addition to the new chassis, Sony said the new sets will contain a newly designed picture tube, said to be 30 per cent brighter, and all models, except the 5 and 9 inch versions, will be equipped with touchbutton electronic tuning.



Figure 2—Sony's New Betamax with built-in timer and remote control.

## SHARP Introduces Projection Television System

Sharp Electronics Corporation has introduced a new, three projection tube, large screen projection system retailing in the \$3,000 area.

According to a company spokesman, the two-piece unit consists of a 72-inch screen, and projector, which are scheduled for introduction this October.

The system uses three projection tubes, a tri-potential electrostatic focus coil, and a comb filter circuit. A special "setting string" and "built in cross line pattern generator" permit user set up and adjustment, according to Sharp.

The unit also has a soft touch electronic channel selector which can instantly turn on any one of 12 pre-selected, channels. An ultrasonic remote control is also available.

Sharp reports the horizontal resolution is 400 lines and the projection dis-

# ET/D

Richard W. Lay, *Editor*  
(Chicago)

Don W. Mason, *Managing Editor*  
(Duluth)

Alfred A. Menegus, *Publisher*  
(New York)

David Hagelin, *Assoc. Publisher*  
(Chicago)

Tom Greney, *Group Vice President*  
(Chicago)

John Paszak, *Graphic Design*

Roni Seger, *Production Manager*

Debbie Porkkonen, *Prod. Supervisor*

Lillie Pearson, *Circulation Supervisor*

Gene Bailey, *Reader Service*

Dawn Anderson, *Classified Ad Mgr.*

Please submit editorial  
manuscripts to:  
Editor, ET/D, 43 East Ohio St.  
Chicago, Ill., 60611

## ADVERTISING SALES

Please send all advertising  
material to:

ET/D,  
Production Mgr.  
1 East First Street  
Duluth, Minn. 55802  
(218) 727-8511

### East Region

Alfred A. Menegus  
757 Third Avenue  
New York, N.Y. 10017  
(212) 888-4382

### Midwest Region

David J. Hagelin  
43 East Ohio Street  
Chicago, Ill. 60611  
(312) 467-0670

### Southern & Western Region

Chuck Cummings  
613 N. O'Connor  
Irving, TX 75061  
(214) 253-8678



HARCOURT BRACE JOVANOVIH  
PUBLICATIONS

Robert L. Edgell, *Chairman*  
Richard Moeller, *President/Treasurer*  
Lars Fladmark, *Senior Vice President*  
Joe Bilderbach, *Vice President*  
James T. Gherna, *Vice President*  
George A. Glenn, *Vice President*  
Thomas Greney, *Vice President*  
Ezra Pincus, *Vice President*  
Harry D. Ramaley, *Vice President*  
Lois Sanders, *Vice President*

**AVAILABLE NOW!** ONLY \$5.90  
Add \$1.00 postage and handling  
**JAPANESE TRANSISTOR SUBSTITUTION MANUAL**



An invaluable Japanese to Japanese substitution guide for approximately 3000 transistors.

Covers the 2SA, 2SB, 2SC, and 2SD series.

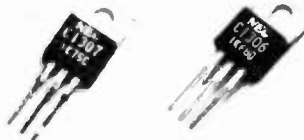
Introduction includes a guide to understanding Japanese transistors.

A 90-page, 8 1/2" by 11", soft cover book.

# JULY SPECIAL

**DON'T MISS OUT THIS TIME!**

**ORDER NOW!**  
LIMITED QTY



2SC 1306 \$1.90 REG \$2.90  
2SC 1307 \$2.90 REG \$3.90

NO FURTHER DISCOUNT  
ON SPECIAL OFFER

## Seeking Original Japanese Replacement Parts for CB, TV and Stereo Repair Use?

<b>2SA</b>		2SA 744 4.90	2SA 745R 4.90	2SA 747 5.00	2SA 748 1.80	2SA 750 .59	2SA 755 1.60	2SA 756 3.70	2SA 758 5.40	2SA 764 4.80	2SA 765 4.90	2SA 774 .59	2SA 794A 1.00	2SA 798 1.00	2SA 814 .90	2SA 815 1.00	2SA 816 .70	2SA 818 1.30	2SA 837 2.80	2SA 839 2.15	2SA 841 .59	2SA 847 .59	2SA 850 .59	2SA 872A .59	2SA 885 .70	2SA 908 11.00	2SA 913 1.20																																																																																																																																																																																															
		2SA 49 .59	2SA 52 .59	2SA 53 .59	2SA 70 1.10	2SA 101 .45	2SA 102 .59	2SA 234 .59	2SA 235 1.00	2SA 240 .90	2SA 329 .70	2SA 342 .90	2SA 353 .70	2SA 377 2.00	2SA 436 2.50	2SA 440 .90	2SA 473 .70	2SA 483 3.00	2SA 484 2.50	2SA 485 2.00	2SA 489 1.60	2SA 490 .90	2SA 493 .59	2SA 495 .45	2SA 496 1.10	2SA 497 1.60	2SA 505 1.20	2SA 509 .70	2SA 525 .70	2SA 530 1.30	2SA 537A 2.25	2SA 539 .59	2SA 545 .59	2SA 561 .59	2SA 562 .59	2SA 564A .59	2SA 565 1.10	2SA 566 3.40	2SA 606 1.60	2SA 607 1.60	2SA 624 1.10	2SA 627 3.60	2SA 628 .59	2SA 634 .70	2SA 640 .59	2SA 642 .70	2SA 643 .70	2SA 653 2.80	2SA 659 .59	2SA 661 .70	2SA 663 4.90	2SA 666 .70	2SA 671 1.40	2SA 672 .70	2SA 673 .70	2SA 678 .70	2SA 679 4.90	2SA 680 4.90	2SA 687 1.50	2SA 683 .70	2SA 684 .70	2SA 695 .70	2SA 697 .70	2SA 699A .90	2SA 705 .70	2SA 706 1.60	2SA 715 1.40	2SA 719 .59	2SA 720 .59	2SA 721 .59	2SA 725 .59	2SA 726 .59	2SA 733 .59	2SA 738 .70	2SA 740 2.65	2SA 743A 1.60																																																																																																																																														
		2SB 537 1.60	2SB 539 4.90	2SB 541 4.40	2SB 554 10.00	2SB 556 4.90	2SB 557 3.40	2SB 561B .70	2SB 564 .70	2SB 595 1.90	2SB 596 1.60	2SB 600 7.00	<b>2SC</b>		2SC 183 .59	2SC 184 .59	2SC 281 .59	2SC 283 .59	2SC 284 1.20	2SC 317 1.20	2SC 352A 2.50	2SC 353A 2.50	2SC 367 .90	2SC 369 .59	2SC 371 .59	2SC 372 .45	2SC 373 .45	2SC 374 .59	2SC 377 .70	2SC 380 .59	2SC 381 .59	2SC 382 .59	2SC 383 .90	2SC 387A .59	2SC 388A 1.00	2SC 394 .59	2SC 403 .59	2SC 430 .90	2SC 454 .59	2SC 458 .59	2SC 460 .59	2SC 461 .59	2SC 478 1.10	2SC 481 1.60	2SC 482 1.50	2SC 484 1.60	2SC 485 1.60	2SC 486 1.60	2SC 493 3.90	2SC 495 .90	2SC 496 .90	2SC 497 1.60	2SC 509 .70	2SC 515A 1.40	2SC 517 3.95	2SC 535 .59	2SC 536 .59	2SC 537 .59	2SC 538A .70	2SC 562 .70	2SC 563 1.10	2SC 605 .70	2SC 619 .59	2SC 620 .59	2SC 627 2.25	2SC 631 .90	2SC 632A .45	2SC 634A .59	2SC 642A 5.90	2SC 644 .45	2SC 645 .70	2SC 650 1.30	2SC 665H 8.50	2SC 668 .45	2SC 680 2.80	2SC 681A 5.80	2SC 684 1.10	2SC 693B .59																																																																																																																																												
		2SC 696 1.95	2SC 708 1.90	2SC 710 .45	2SC 711 .45	2SC 712 .59	2SC 717 .59	2SC 727 1.90	2SC 730 4.40	2SC 731 5.80	2SC 732 .59	2SC 733 .59	2SC 734 .59	2SC 735 .59	2SC 736 .59	2SC 756 2.80	2SC 756A 3.00	2SC 763 .59	2SC 772 .45	2SC 773 .70	2SC 774 2.00	2SC 775 1.95	2SC 776 2.65	2SC 777 3.50	2SC 778 3.60	2SC 781 2.65	2SC 783B 3.60	2SC 784 .59	2SC 785 .59	2SC 789 1.00	2SC 790 1.40	2SC 793 2.80	2SC 799 3.60	2SC 802 3.60	2SC 815 .59	2SC 828 .45	2SC 829 .45	2SC 830H 5.90	2SC 838 .59	2SC 839 .59	2SC 853 .90	2SC 867 4.25	2SC 870 .59	2SC 871 .59	2SC 895 4.90	2SC 897 3.40	2SC 898 4.40	2SC 900 .45	2SC 923 .45	2SC 929 .45	2SC 930 .45	2SC 941 .59	2SC 943 .59	2SC 945 .45	2SC 959 1.50	2SC 971 1.00	2SC 982 .90	2SC 983 1.00	2SC 984 .90	2SC 994 3.90	2SC 996 3.40	2SC 1000BL .59	2SC 1012 1.50	2SC 1013 1.10	2SC 1014 1.10	2SC 1017 1.40	2SC 1018 1.20	2SC 1030C 2.80	2SC 1047 .70	2SC 1051 4.40	2SC 1060 1.40	2SC 1061 1.40	2SC 1076 39.00	2SC 1079 5.90	2SC 1080 4.40	2SC 1096 1.00	2SC 1098 1.10	2SC 1111 3.40	2SC 1114 3.70																																																																																																																																											
		2SC 1115 4.40	2SC 1116 4.90	2SC 1116A 6.60	2SC 1124 1.30	2SC 1127 1.40	2SC 1161 1.90	2SC 1162 1.00	2SC 1166 .59	2SC 1167 6.60	2SC 1170B 6.60	2SC 1172B 8.50	2SC 1173 .90	2SC 1175 .90	2SC 1177 14.00	2SC 1189 1.20	2SC 1209 .70	2SC 1211D .59	2SC 1212A 1.40	2SC 1213 .70	2SC 1215 .70	2SC 1222 .45	2SC 1226A .90	2SC 1237 2.25	2SC 1239 3.90	2SC 1279 .70	2SC 1306 2.90	2SC 1307 3.90	2SC 1310 .59	2SC 1312 .59	2SC 1313G .59	2SC 1316 8.50	2SC 1317 .45	2SC 1318 .45	2SC 1325A 7.60	2SC 1327 .59	2SC 1330 .70	2SC 1335 .70	2SC 1342 .59	2SC 1344 .59	2SC 1345D .59	2SC 1346 .70	2SC 1347 .70	2SC 1358 5.90	2SC 1359 .59	2SC 1360 1.00	2SC 1362 .59	2SC 1364 .70	2SC 1377 4.90	2SC 1383 .59	2SC 1384 .59	2SC 1396 .70	2SC 1398 1.10	2SC 1400 .59	2SC 1402 4.90	2SC 1403 4.90	2SC 1407 .90	2SC 1419 1.10	2SC 1444 2.80	2SC 1445 3.00	2SC 1447 1.60	2SC 1448 1.60	2SC 1449 1.00	2SC 1451 2.25	2SC 1454 5.60	2SC 1475 1.40	2SC 1478S .70	2SC 1509 1.10	2SC 1567 .70	2SC 1567A 1.10	2SC 1584 8.50	2SC 1586 7.60	2SC 1624 1.30	2SC 1626 1.10	2SC 1628 1.30	2SC 1647 1.00	2SC 1667 3.40	2SC 1669 1.60	2SC 1674 .59																																																																																																																																											
		2SC 1675 .59	2SC 1678 2.25	2SC 1679 4.25	2SC 1681 .70	2SC 1682 .45	2SC 1684 .59	2SC 1687 .70	2SC 1688 .70	2SC 1708 .59	2SC 1728 1.90	2SC 1730 .59	2SC 1756 1.40	2SC 1760 1.90	2SC 1765 8.80	2SC 1775 4.50	2SC 1816 3.90	2SC 1846 .70	2SC 1885 .70	2SC 1908 .59	2SC 1909 3.90	2SC 1913 1.20	2SC 1945 5.60	2SC 1951 1.10	2SC 1957 1.20	2SC 1969 4.90	2SC 1973 1.10	2SC 1974 1.90	2SC 1975 4.40	2SC 2028 .90	2SC 2029 3.90	2SC 2074 1.90	2SC 2076 5.90	2SC 2091 2.80	2SC 2092 3.90	2SC 2098 4.90	<b>2SD</b>		2SD 16 5.90	2SD 28 2.50	2SD 72 1.10	2SD 75 .59	2SD 77 .59	2SD 81 3.00	2SD 90 1.60	2SD 91 1.60	2SD 92 1.90	2SD 93 2.80	2SD 118 4.40	2SD 130 1.20	2SD 141 1.40	2SD 142 2.00	2SD 143 2.80	2SD 178 1.10	2SD 180 2.50	2SD 187 .59	2SD 188 3.00	2SD 201 3.40	2SD 202 3.90	2SD 204 1.40	2SD 205 1.40	2SD 213 5.90	2SD 217 4.40	2SD 218 4.40	2SD 220 2.50	2SD 223 1.90	2SD 224 1.90	2SD 226A 1.60	2SD 227 .45	2SD 234 1.00	2SD 235 1.00	2SD 236 1.60	2SD 255 1.60	2SD 261 .60	2SD 287 3.70	2SD 288 1.40	2SD 291 2.80	2SD 300 5.60																																																																																																																																												
		2SD 313 1.10	2SD 314 1.20	2SD 315 1.20	2SD 325 1.10	2SD 330 1.00	2SD 341 5.60	2SD 350 5.90	2SD 352 .90	2SD 356D 1.10	2SD 357D 1.00	2SD 358 1.30	2SD 359 1.00	2SD 360 1.20	2SD 361 1.00	2SD 370 3.00	2SD 371S 2.80	2SD 380 7.60	2SD 381 1.40	2SD 382 1.40	2SD 388 3.40	2SD 388A 4.40	2SD 389 .90	2SD 390 1.00	2SD 421 8.50	2SD 424 8.50	2SD 425 6.50	2SD 426 4.60	2SD 427 3.00	2SD 525 1.60	2SD 526 1.10	2SD 555A 6.60	2SD 610 1.90	SG 613(tv) 5.95	<b>FET</b>		2SK 19BL .90	2SK 23 1.10	2SK 30 .70	2SK 33 1.10	2SK 34 1.10	2SK 40 .70	2SK 41 1.10	2SK 49 1.30	2SK 55 1.30	2SK 61 1.40	2SK 68 1.30	3SK 22Y 2.55	3SK 35 2.25	3SK 37 3.00	3SK 39 2.25	3SK 40 2.25	3SK 41 2.50	3SK 45 2.50	3SK 48 5.90	3SK 49 2.50	MK 10 2.00	<b>IC</b>		AN 203 2.50	AN 214Q 3.00	AN 217 1.90	AN 239 7.00	AN 247 4.40	AN 274 3.40	AN 277B 2.40	AN 315 3.00	AN 328 3.90	BA 362 3.00	BA 511 2.90	BA 521 2.90	HA 1137 4.90	HA 1138 4.40	HA 1149 5.60	HA 1151 4.40	HA 1156 3.00	HA 1158 5.30	HA 1159 5.80	HA 1196 4.90	HA 1197 3.90	HA 1201 1.50	HA 1202 2.25	HA 1211 1.50	HA 1306W 3.70	HA 1322 4.40	HA 1339 4.40	HA 1339A 4.40	HA 1342A 4.40	LA 1111P 2.50	LA 1201 2.50	LA 1364 4.40	LA 3300 3.00	LA 3301 3.00	LA 4030P 3.00	LA 4031P 3.00	LA 4032P 3.40	LA 4051P 3.70	LA 4400 3.70	LD 3120 2.50	M51513L 4.90	M5152L 2.50	M51841P 2.80	M5320P 2.25	M53273P 2.80	M53274P 2.50	M53393 7.60	M54730 P 8.80	MPS U31 1.90	STK 011 7.60	STK 014 9.50	STK 015 8.60	STK 016 6.50	STK 022 11.00	STK 032 14.00	STK 435 8.50	STK 439 11.00	STK 502 8.80	STK 503 9.60	TA 7027M 3.70	TA 7045M 3.00	TA 7054P 2.50	TA 7055P 3.00	TA 7060P 1.60	TA 7061AP 1.90	TA 7062P 1.90	TA 7063P 1.60	TA 7064P 1.90	TA 7066P 2.00	TA 7074P 4.90	TA 7075P 4.90	TA 7076P 4.90	TA 7089P 3.00	TA 7102 5.00	TA 7106P 4.90	TA 7108P 1.90	TA 7109P 3.40	TA 7120P 1.90	TA 7122AP 1.90	TA 7124P 1.60	TA 7129P 1.60	TA 7130P 2.80	TA 7136P 1.30	TA 7146P 4.20	TA 7150P 4.40	TA 7159P 2.50	TA 7200P 4.60	TA 7201P 4.60	TA 7203P 3.70	TA 7204P 3.40	TA 7205P 2.90	TA 7310P 3.95	TA 78005M 5.80	TA 78005P 5.80	TA 78012M 6.60	TA 78012P 5.80	TA 78015M 6.50	TA 78015P 5.80	TBA 810 SH 3.70	TC 5080P 5.80	TC 5081P 3.40	TC 5082 3.90	TD 3505AP 8.50	UHC 002 5.80	UHC 004 5.80	UHC 005 5.80	UPC 20C 4.40	UPC 41C 3.70	UPC 554C 2.80	UPC 555H 2.25	UPC 563 3.70	UPC 566H 1.60	UPC 576 3.70	UPC 577H 2.25	UPC 592HZ 1.60	UPC 1001H 4.90	UPC 1008C 7.00	UPC 1016C 3.00	UPC 1020M 3.70	UPC 1025 3.40	UPC 1026C 3.70	UPC 1032 2.25	UPC 1152H 3.40	UPC 1156 3.00	UPD 858C 9.50	PLL 01A 8.80	PLL 02A 8.80	SN 7400 .15	SN 7490 .60	78L05 1.10	IS 84 .60	IS 188 .25	IS 332 .45	IS 953 .25	IS 1007 .45	IS 1209 .45	IS 1211 .45	IS 1555 .25	IS 1588 .25	IS 1885 .25	IS 2076 .25	IS 2093 .45	IS 2473 .25	IN 34 .25	IN 60 .25	10D1 4.40	10D10 6.00	VD 6B .60	VD 6C .40	ZENER DIODES	WZ 050 .45	WZ 052 .45	WZ 061 .45	WZ 071 .45	WZ 075 .45	WZ 081 .45	WZ 192 .45	WZ 260 .45	WZ 280 .45

PRICES MAY CHANGE WITHOUT NOTICE COD ORDERS WELCOMED

Minimum order \$5.00 Ohio residents add 4% sales tax. Add \$1.00 postage and handling  
Quantity discount prices. Ask For Our Complete Price List. Mfg. inquiries Welcomed  
All parts guaranteed against factory defect

IMMEDIATE DELIVERY  
WITHIN 48 HOURS

# TOLL FREE TELEPHONE

Nationwide 800/543-1607 Local 513/874-0220  
Ohio 800/582-1630 874-0223  
Hours: Mon. thru Fri. 10-7 Sat. 11-5

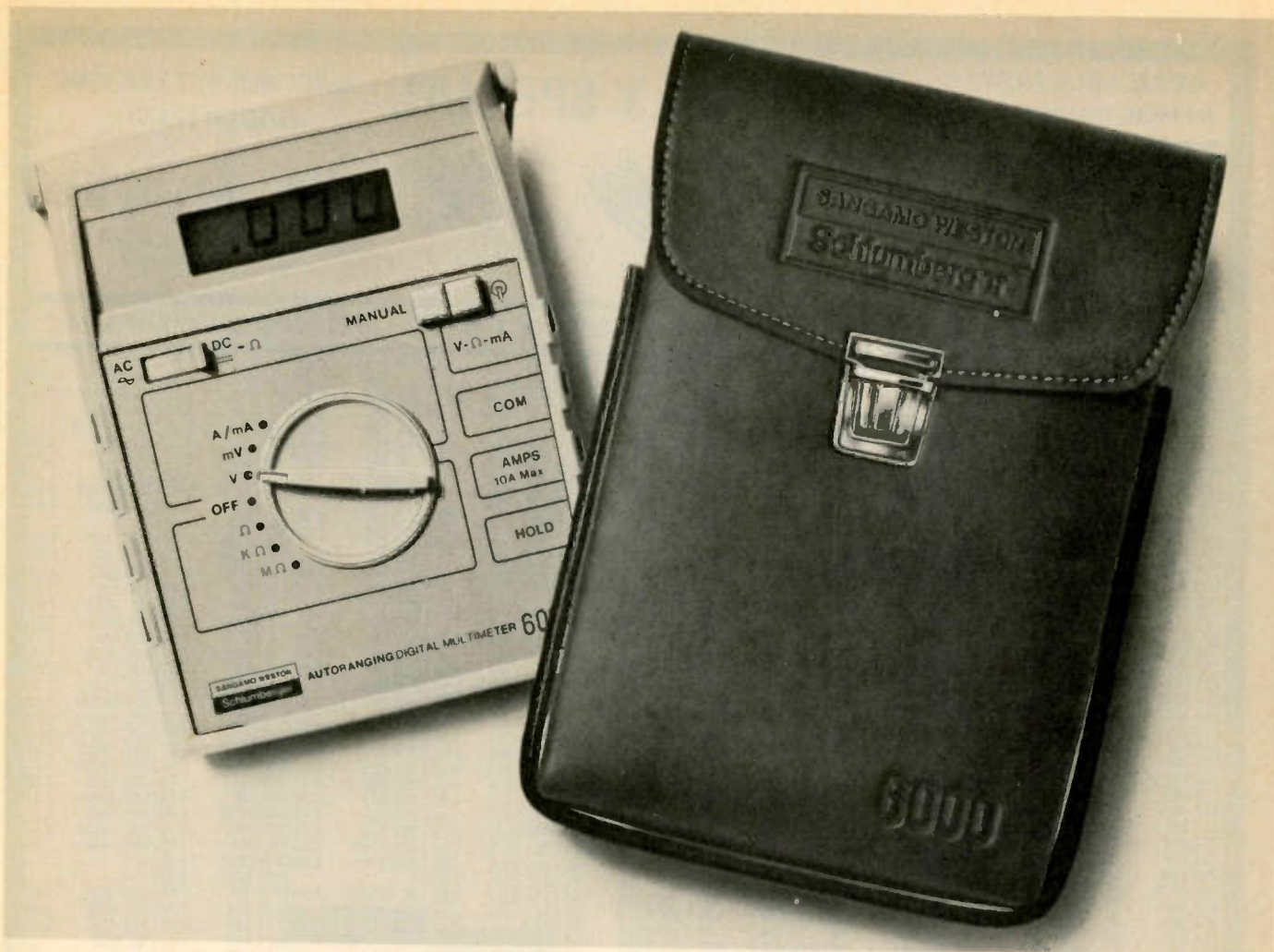
# FUJI-SVEA ENTERPRISE

a division of Fuji-Svea Incorporated

Dept. E/T  
P.O. BOX 40325 CINCINNATI, OHIO 45240  
TELEX-2114732

Circle No. 117 on Reader Inquiry Card





## For a limited time only WESTON offers this handsome carrying case...FREE...with any Model 6000 DMM you buy.

That's right! With any Weston Model 6000 DMM you buy between May 1 and August 31, you will get . . . absolutely FREE . . . this handsome, sturdy carrying case. Leather grained for a look of elegance, the expanded vinyl is rugged and easy to keep clean. The pouch style makes it simple to remove or replace the meter. The case, worth more than \$15, comes with a handle for easy carrying, and a snap-loop for hanging from a belt.

The Model 6000 is the renowned "Drop-Proofed" digital multimeter with standard built-in autoranging for its five measurement functions over 26 broad ranges. All ranges, including resistance, are provided with complete overload protection and automatic zero calibration.

The Model 6000 comes with a "Hold" feature to retain the LCD reading after the probe is removed. This allows measurements to be made in crowded circuitry or high voltage areas with greater safety. The meter is housed in a high impact molded plastic case to isolate inputs and to provide greater ruggedness and durability. The inside of the 6000 is coated with a conductive paint to shield the circuits

from industrial radio frequency interference noise and insure more accurate readings. A sturdy, patented plastic handle makes the meter easy to carry, acts as a tilt stand during bench operation, and folds down to protect the display face during storage.

The Model 6000 also has two new optional features . . . a manual range hold button to override autoranging, and a display backlight button for reading the meter in very low illumination areas.

You get all of these features in the Weston Model 6000 DMM . . . and you also get, absolutely FREE, a handsome, sturdy carrying case for extra protection. Be sure to get in on this FREE, limited-time offer. Call your nearest Weston sales office now!

SANGAMO WESTON

**Schlumberger**

WESTON INSTRUMENTS

a DIVISION OF SANGAMO WESTON, INC.

614 Frelinghuysen Avenue, Newark, New Jersey 07114 Tel. (201) 242-2600

Canada: 1480 Dundas Highway, Mississauga, Ontario (416) 277-3191

Europe: Ingolstadter Str. 67a 8München 46, W. Germany (49-89) 31-70-31

# WESTON®

## FREE Case Offer

Contact Your Nearest Distributor

**ALABAMA**  
Brownell Electro  
Mobile (205) 765-2222  
Cramer/Alabama  
Huntsville (205) 539-5722  
Forbes  
Decatur (205) 353-4762

**ARIZONA**  
Cramer/Arizona  
Phoenix (602) 263-1112

**CALIFORNIA**  
Acro  
San Diego (714) 282-8115  
Cramer/Los Angeles  
Irvine (714) 979-3000  
Cramer/San Diego  
San Diego (714) 565-1881  
Cramer/San Francisco  
Sunnyvale (408) 739-3011  
Dunlap Electronics  
Sacramento (916) 444-8070  
Metermaster, Inc.  
Palo Alto (415) 968-0313  
Metermaster, Inc.  
Los Angeles (213) 685-4340  
Wemco  
Oakland (415) 452-1936  
Western Electronics Supply  
Glendale (213) 849-3451

**COLORADO**  
Cramer/Denver  
Denver (303) 758-2100

**CONNECTICUT**  
Cramer/Connecticut  
North Haven (203) 239-5641  
The Mancini Company  
Middletown (203) 346-6646

**FLORIDA**  
Brownell Electro, Inc.  
Orlando (305) 843-6775  
Cramer/E. W. Hollywood  
Hollywood (305) 923-8181  
Cramer/E. W. Orlando  
Orlando (305) 894-1511

**GEORGIA**  
Brownell Electro, Inc.  
Atlanta (Mapeville) (404) 762-5181  
Cramer/Atlanta  
Norcross (404) 448-9050

**ILLINOIS**  
Cramer/Chicago  
Mt. Prospect (312) 593-8230  
Newark Electronics Corp.  
Chicago (312) 638-4411  
McNamara Supply  
Chicago (312) 922-5032  
Pacific Indicator  
Oak Park (312) 261-1330  
W. H. Leary Co.  
Chicago (312) 721-3832

**LOUISIANA**  
Butler & Land, Inc.  
Kenner (504) 722-6363  
Industrial Electronic Supply  
Shreveport (318) 222-9459  
Industrial Instruments Works  
Harahan (504) 733-8355  
Ralph Electronics  
Lafayette (318) 234-4507

**MARYLAND**  
Cramer/E. W. Washington  
Gaithersburg (301) 948-0110  
Cramer/E. W. Baltimore  
Hanover (301) 796-5790  
Pioneer Instrumentation  
Gaithersburg (301) 948-1012

**MASSACHUSETTS**  
Brownell Electro, Inc.  
Cambridge (617) 864-7500  
Cramer Electronics, Inc.  
Newton (617) 969-7700  
Metermaster  
Billerica (617) 667-8346

**MICHIGAN**  
Ram Meter, Inc.  
Ferndale (313) 547-1000

**MINNESOTA**  
Cramer/Bonn  
Edina (612) 835-7811  
Instrumentation Services, Inc.  
Minneapolis (612) 544-8916

**MISSOURI**  
Industrial Service Labs  
St. Louis (314) 535-5760  
Dlve Electronics  
St. Louis

**MONTANA**  
Flamand Electronics Supply  
Belgrade (406) 388-6606

**NEW JERSEY**  
Brownell Electro, Inc.  
South Plainfield (201) 753-4600  
Cramer/Pennsylvania  
Cherry Hill (609) 424-5993  
Cramer/New Jersey  
Moonachie (201) 935-5600

**NEW MEXICO**  
Cramer/New Mexico  
Albuquerque (505) 265-5767

**NEW YORK**  
Baldwin Hall Co. Inc.  
Syracuse (315) 463-9251  
Cramer/Long Island  
Hauppauge (516) 231-5600  
Cramer/Rochester Inc.  
Rochester (716) 275-0300  
Cramer/Syracuse  
Syracuse (315) 437-6671  
Electronic Devices Co.  
Albuquerque (505) 293-1935  
E. E. Taylor Company, Inc.  
Albany (518) 489-5600  
Summit Distributors  
Buffalo (716) 884-3450  
Trott Electronics  
Clarence (716) 634-8500

**NORTH CAROLINA**  
Cramer/Winston-Salem  
Winston-Salem (919) 725-8711

**OHIO**  
Cramer/Cleveland  
Cleveland (216) 248-8400  
Hughes-Peters, Inc.  
Columbus (614) 294-5351  
Pioneer  
Cleveland (216) 587-3600  
Pioneer/Dayton  
Dayton (513) 236-9900

**OKLAHOMA**  
Electronics Supply  
Oklahoma City (405) 232-5215  
Hunzicker Bros., Inc.  
Oklahoma City (405) 239-7771  
Tri-State Instrument Lab, Inc.  
Tulsa (918) 838-8883

**PENNSYLVANIA**  
Pioneer/Pittsburgh  
Pittsburgh (412) 782-2300  
Process Engineering  
Pittsburgh (412) 516-5050

**TEXAS**  
Butler & Land  
Houston (713) 464-4662  
Meters & Instruments  
Houston (713) 644-1631  
Straught Electronics, Inc.  
Beaumont (713) 838-4563

**UTAH**  
Cramer/Utah  
Salt Lake City (801) 487-4131

**WASHINGTON**  
Almac/Strom Electronics  
Seattle (206) 763-2300  
Branom Instrument Corp.  
Seattle (206) 762-6050  
Cramer/Seattle  
Seattle (206) 762-5755

**WISCONSIN**  
Electro-Mechano Co.  
Milwaukee (414) 272-4050

**VIRGINIA**  
Instrument Technical Reps  
Richmond (804) 285-3931

tance is 83 inches. Controls include color, tint, picture balance, brightness, sharpness, crossline pattern, vertical hold and AFT switch.

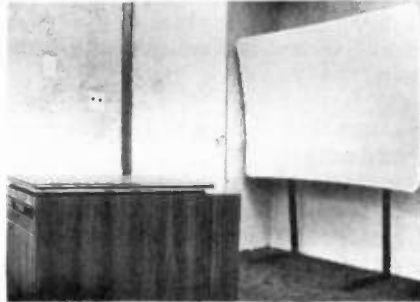


Figure 1—Sharp's \$3,000 large screen TV system

### RCA Introduces 1978 Consumer Line

RCA has taken another major step in its active video/VCR promotional campaign with the recent introductions of a low priced color camera, a programmable VCR timer, and a new single module 19-inch chassis that is expected to be out this December.

The new chassis, part of RCA's ColorTrak line which is using RCA's new frequency synthesizer "Chan- neLock" tuning, is said to reduce the number of connectors from previous chassis from 115 to 30 and the number of solder joints from 200 to 75.

Also part of the new RCA line for 1979 is a new 17-inch chassis, basically a continuation of a 13-inch chassis introduced in February, which replaced the phased out 15-inch models.

In the VCR end of the business, RCA gave further indications of its seemingly unflinching faith by coming up with a low-cost color home video camera which is expected to retail in the neighborhood of \$800, about half the price of the JVC model RCA also offers.

RCA also broadened its VCR line, introducing two models to go with the standard model it has been offering since it entered the market last August. One of these models is available with a revised version of Matsushita's 7-day, programmable television-VCR controller, first shown at the winter CES last January in Las Vegas (see ET/D March, p.26).

Prices are expected to remain basically the same for the video recorder, partly in response to heavy competition and partly in response to consumer sales softness.

One interesting sidelight to this current plunge into "second generation" VCR marketing, is that electronically the unit itself is slated for redesign.

While outward cosmetic appearances will change little to not-at-all, the guts of the machine are being modified to keep pace with the rapid

advance of LSI technology. Of course this is another reason for price stability.

### Philco Announces VCR Entry, New TV Models

Philco has revealed it would market the Matsushita-manufactured four-hour video-cassette recorder during its product introduction show recently. Also included are a new Philco line of 25, 21, 19, and 15-inch color television receivers—all equipped with Philco's first "Color-Rite" automatic color control system.

Color-Rite, according to the company, locks in color, tint, contrast, and brightness to levels set by the viewer.

In addition Philco has announced plans to market its own model of VCR, the V1000 Color Video Recorder. A built-in electronic digital clock and timer activates the system to record any program during a 24-hour period.

Philco officials said the unit has a suggested retail price of \$995 and it is available from outlets in conjunction with a black and white television camera with a suggested retail of \$319.95.

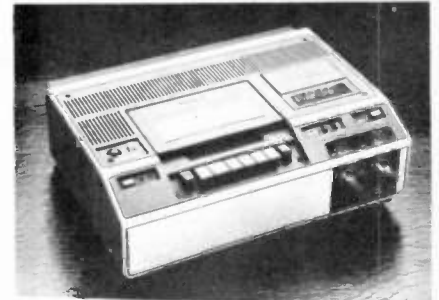


Figure 3—Philco's four-hour Matsushita-made VCR entry

### Sylvania adds VIR Circuitry and "Little Giant" Model

GTE Sylvania, the only American manufacturer to introduce its 1979 line outside the United States this year (Toronto), has introduced what it called the most fully automatic color sets now available.

According to GTE President Robert O'Neil, the 1979 chassis line includes the industry's first self-adjusting color system; a new color correcting computer controller which includes VIR circuitry, and automatic sharpness circuitry. According to O'Neil a special analog computer controls the "SUPERSET's" two built-in color correction circuits.

Viewers have the option to pre-set their own picture levels with regular manual controls or they may lock onto the incoming VIR broadcast signal. O'Neil said five 25-inch consoles are equipped with the computer controller system. They will retail about \$750.

Additionally, the company said a new 31,500 GT-400 chassis has been added to accommodate Sylvania's Dark Lite 50 color tube.

# ideal, all-around iron

BY  
**Weller®**



## FOR ELECTRONIC SOLDERING

Model WP-25. Popular 25-watt, pencil-type iron for general purpose work. Handy size: 7 $\frac{7}{8}$ " long. Lightweight: 1 $\frac{3}{4}$  oz. Comfortable to hold. Perfect for crowded areas. Easily stored. Long-life, double-coated,  $\frac{1}{8}$ " screwdriver tip quickly changed to other available styles and sizes. Rugged stainless steel barrel. Use with or without optional, mounted or free-standing bench stand PH-25.

Ask your local distributor or write...



**The Cooper Group**  
**Electronics Division**

WELLER® • WISS® • XCELITE®

P.O. BOX 728, APEX, NORTH CAROLINA 27502, 919/362-7511

Circle No. 109 on Reader Inquiry Card

Sylvania also introduced its "Little Giant" models, a unique combination of a 25-inch chassis, driving a 21-inch CRT,—all enclosed in a conventional sized 19-inch cabinet. All high end features can be obtained in the "Little Giant" series, according to the company.

### Panasonic Shows 1979 Products

Panasonic has unveiled two new 25-inch color models and nine color portables at its recently concluded home entertainment products show.

The 25-inch models include VIR chip circuitry as well as ColorPilot—Panasonic's system for color correction. Both new 25-inch models contain CATV/Master antenna connectors, according to the firm.

Additionally, the nine new portables range in screen size from 12 to 19 inches. The CT-978—a 19-inch model—is available with synthesizer electronic tuning, remote control, VIR chip circuitry, and the Quntrix II, in-line CRT.

Panasonic also revealed two new black and white portables for its "Outsider" line, the TR-3000 and the TR-555R, three and five inch models respectively.

Both models have been equipped with am/FM radios and electronic tuning.



Figure 4—Panasonic's AC-DC portable, 3-inch set.

### First Quarter TV Imports Down

Electronic Industries Association figures show that first quarter color television imports were down 8.8 per cent in comparison to the same period a year ago.

EIA said this year's first quarter results were 551,823 units, compared to 605,182 imported units during the first quarter of 1977. Black and white TV imports, however, jumped 15.2 per cent—from 1,032,421 last year to 1,188,901 for the first quarter of this year.

For video tape recorders (color and black and white), some 108,039 units

were brought into the United States during the first three months of the year, a gain of some 285 per cent over the 28,253 units imported during the comparable period in 1977.

### G.E. Adds New Chips

General Electric has announced three new transistor and 10 integrated circuits to its replacement parts inventory.

Among the integrated circuits being introduced are a complete TV (2 watt) sound system, a TV AFT circuit, a 4 and a 5 watt audio amplifier, and a dual channel AF power output (2 watts per channel).

Other new semiconductors are an AF high power amp, a low noise UHF amp, and a medium power AF power amp.

### New Antenna Firm Is Formed

Two ex-E.F. Johnson employees have formed a new CB antenna manufacturing firm to be called AVA, Inc. Located in Waseca, Minnesota, the new firm will produce a totally new line of 40 channel CB mobile antennas.

The two men are Gaillard Childs, former VP of engineering at E.F. Johnson, and Bill Oelke, former Johnson component applications engineer. Childs will be AVA president and chief engineer, and Oelke will be AVA VP of marketing.

"Consistent high performance and customer convenience, including easy installation and low maintenance backed by a full warranty program are our objectives," Oelke stated.

### Explosive Growth Predicted For VCR Market

A new research report from Frost & Sullivan, Inc., a New York-based market research firm, indicates that sales in the U.S. of video cassette recorders will show an increase of 97% by 1980.

The report says that "the consumer market responded so favorably from 1976 to 1977 that VCR production increased 96% and exports from Japan to the U.S. rose 245%.

The research firm points out in its report that many different industries will benefit from the video-cassette recorder, because its introduction has created a series of products which comprise a total system. Since the VCR is a completely modular system, each additional component generates incremental demand as it enhances the total capability of the system. The array of products that could be applied ranges from carrying cases to lighting equipment to the most sophisticated control devices for future video buffs.

In addition, the report indicates, as the price of VCRs drops below the current level of \$700, the uses for the system will multiply.



# TUNER SERVICE CORPORATION

## SUBSTITUNER



**\$54<sup>95</sup>** U.S.A. ONLY

WITH CABLES

ONE YEAR GUARANTEE



**\$11<sup>95</sup>** U.S.A. ONLY

MAJOR PARTS AND SHIPPING CHARGED AT COST

### FEATURES

- A UHF Tuner with 70 channels which are detented and indicated just like VHF channels.
- A VHF Hi Gain Solid-State Tuner
- AC Powered
- 90-Day Warranty

Demonstrate the **SUBSTITUNER** to your customers and show improved reception with their TV sets.

You may place your order through any of the Centers listed below.

PROVIDES YOU WITH A COMPLETE SERVICE FOR ALL YOUR TELEVISION TUNER REQUIREMENTS.

### TUNER REPAIRS

VHF OR UHF ANY TYPE ..... (U.S.A. ONLY) \$11.95  
 UHF/VHF COMBINATION ..... (U.S.A. ONLY) \$17.95  
 MAJOR PARTS AND SHIPPING CHARGED AT COST

- Fast, efficient service at any of the conveniently located service centers listed below.
- ONLY ORIGINAL FACTORY PARTS USED
- All tuners ultrasonically cleaned, repaired and realigned.

### EXACT REPLACEMENT

Exact Replacement Tuners are available at a cost of \$14.95 and up. (U.S.A. Only)

- Send in your original tuner for comparison purposes to any of the Centers listed below.

### UNIVERSAL REPLACEMENT

UNIVERSAL REPLACEMENT TUNER ..... (U.S.A. ONLY) \$13.95

- This price buys you a complete new tuner built specifically for this purpose.
- All shafts have a maximum length of 10 1/2" which can be cut to 1 1/2".
- Specify heater type parallel and series 450mA or 600mA.

FLASH

NOW AVAILABLE—TUNER SERVICE PARTS CATALOG OF ALL SARKES TARZIAN VHF AND UHF TUNERS, INCLUDING EXPLODED VIEW DRAWINGS. OVER 200 PAGES. ORDER YOUR COPY TODAY. SEND \$2.50 WITH ORDER TO BLOOMINGTON HEAD OFFICE.



WATCH US GROW

HEADQUARTERS	BLOOMINGTON, INDIANA 47401	537 South Walnut Street	Tel. 812-334-0411
ALABAMA	BIRMINGHAM, ALABAMA 35212	5623 1st Ave., N.	Tel. 205-592-9150
ARKANSAS	LITTLE ROCK, ARKANSAS 72204	4200-C Asher Avenue	Tel. 501-661-0393
CALIFORNIA	NORTH HOLLYWOOD, CALIF. 91601	10654 Magnolia Boulevard	Tel. 213-769-2720
	MODESTO, CALIF. 95351	123 Phoenix Avenue	Tel. 209-521-8051
	SAN MATEO, CALIF. 94402	600 S. Amphlett Blvd.	Tel. 415-348-3292
FLORIDA	TAMPA, FLORIDA 33606	1505 Cypress Street	Tel. 813-253-0324
	FT. LAUDERDALE, FLA. 33309	3516 N.W. 10th Avenue	Tel. 305-566-4882
GEORGIA	ATLANTA, GEORGIA 30310	646 Evans Street, S.W.	Tel. 404-258-2232
ILLINOIS	SPRINGFIELD, ILLINOIS 60076	5110 West Brown Street	Tel. 312-675-0230
	URBANA, ILLINOIS 61801	908 E. Main St.	Tel. 217-384-2052
INDIANA	INDIANAPOLIS, INDIANA 46204	1124 West St. Clair Street	Tel. 317-632-3493
KENTUCKY	LOUISVILLE, KENTUCKY 40217	27 Dahlem Cir., 825 Eastern Pky.	Tel. 502-634-0498
LOUISIANA	SHREVEPORT, LOUISIANA 71104	2423 Southern Avenue	Tel. 318-221-3027
MASSACHUSETTS	SPRINGFIELD, MASSACHUSETTS 01109	144 Boston Rd.	Tel. 413-788-8206
MISSOURI	ST. LOUIS, MISSOURI 63132	9577 Page Avenue	Tel. 314-429-0633
NEVADA	LAS VEGAS, NEVADA 89102	1114 Sputh Casino Center Blvd.	Tel. 702-384-4235
NEW JERSEY	TRENTON, NEW JERSEY 08638	1139 Pennsylvania Avenue	Tel. 609-393-0999
	JERSEY CITY, NEW JERSEY 07307	454 Central Avenue	Tel. 201-792-3730
NEW YORK	ROCHESTER, NEW YORK 14606	25 Howard Rd.	Tel. 716-647-9180
NO. CAROLINA	GREENSBORO, NO. CAROLINA 27405	2914 E. Market St.	Tel. 919-273-6276
OHIO	CLEVELAND, OHIO 44109	4525 Pennil Road	Tel. 216-741-2314
OREGON	PORTLAND, OREGON 97210	1792 N.W. 25th Ave. P.O. Box 10141	Tel. 503-222-9059
PENNSYLVANIA	PITTSBURGH, PA. 15209	515 Grant Avenue	Tel. 412-821-4004
TENNESSEE	MEMPHIS, TENNESSEE 38111	3158 Barton Avenue	Tel. 901-458-2355
TEXAS	DALLAS, TEXAS 75218	11540 Garland Road	Tel. 214-327-8413
CANADA	ST. LAURENT, QUEBEC H4N-2L7	305 Decarie Boulevard	Tel. 514-748-8803
	CALGARY, ALBERTA T2H-1Y3	P.O. Box 5823, SIn. "A"	Tel. 403-243-0971

IF YOU WANT TO BRANCH OUT INTO THE TV TUNER REPAIR BUSINESS, WRITE TO THE BLOOMINGTON HEADQUARTERS ABOUT A FRANCHISE.

# FROM THE EDITOR'S DESK



This July issue, comprised primarily of material which ET/D's editors obtained during the recent New Communications (NEWCOM) show in Las Vegas, plus our recent return from last month's successful Summer Consumer Electronics (CES) show in Chicago, provides ample evidence of the vast changes impacting consumer electronics.

Meetings such as these two comprise a very important role in helping us take the pulse of an industry that is exploding with manufacturing and electronic design technology.

Such meetings also allow us to take stock and assess the future editorial direction of ET/D, based on what we—the editors—feel will be the key developments in consumer electronics servicing in the *near* future.

And, so far, from what we've been shown at these shows, the future of consumer electronics servicing will rely heavily on the service industry's ability to come to grips with concepts involving medium and large scale (chip) integration design techniques, plus a hefty (and ever increasing) diet of digital concepts and applications.

Having taken an initial look at much of the new circuitry in many of the 1979 lines of television sets which have just recently been unveiled by manufacturers, I feel safe in saying that in most cases, the discrete transistor is quickly going the way of the electron tube insofar as consumer applications are concerned.

Having also taken a look at the hardware inside of today's modern and highly accurate test gear, this feeling was doubly reinforced.

In this day and age of chip voltage regulators, chip chroma sections, chip IF strips—FM audio as well as video—to say nothing of the digital chips you are now seeing in the maddening dash to electronic tuning—anyone not possessing a strong familiarity with the functional aspects of integrated circuit use, is virtually lost from the very beginning.

All of this, in my view, points to the inescapable conclusion that chip technology is already into consumer electronics in a big way and digital comprises a major portion of it—especially in the test gear which you are now beginning to use.

Speaking of test gear, our lead story this month features the newest of the new which we found at the NEWCOM meeting. It's equipment which is just now making its way into your distributor's showrooms, and equipment which we felt was important enough to give you a brief preview.

I might mention a first for ET/D in regard to this story. It is the first time—to our staff's recollection—we have ever used four color photographs inside ET/D as part of a news or feature article. If you agree with this format, why not let us hear from you? Maybe we could do it more often in the future.

Sincerely

*Richard M. Lay*



# Fed up trying to find the right semiconductors? Look to the Mallory PTC line to help you out.

Your Mallory distributor has a complete up-to-date line of quality PTC semiconductors keyed to your needs.

He also has the Mallory complete semiconductor guide and cross reference to take the guesswork out of buying.

Components for the latest TV, stereo, Hi-Fi, CB radio and many MRO applications are available now in convenient poly-bag pack-

ages. Contents are clearly marked, so you can't go wrong.

See your Mallory distributor for the convenience and economy of simplified one-source buying or contact us for more information. Mallory Capacitor/Distributor Products Company, a division of P. R. Mallory & Co. Inc., Box 1284, Indianapolis, Indiana 46206. (317) 856-3731.



# MALLORY

Circle No. 12\* on Reader Inquiry Card



NEW VCR PRODUCTS INTRODUCED BY MAGNAVOX. A new programmable video cassette recorder and a new lightweight, color TV camera for use with VCRs have been introduced by Magnavox. The new VCR can be programmed in advance to record up to four different channels over a seven day period, and features a touch-tune, fourteen channel push-button electronic tuner. Shipments to dealers of the new micro-processor-controlled VCR will begin this fall. The new VCR color camera, called Chromavue, will be priced upward from \$895, and has been designed as a companion to the company's VHS video cassette recorder. It will also work with any VCR with appropriate camera jacks. It also has a self-contained battery compartment which will permit portable operation when battery power VCR units are introduced. It is designed for 'hand-held' operation but can be used with a tripod.

RCA TO OPERATE JOB CORPS CENTERS IN NEW YORK AND ILLINOIS. Multi-million dollar contracts from the U.S. Department of Labor have been awarded to the RCA Service Company for the operation of Job Corps Centers in Joliet, Illinois and New York State. Both centers will provide basic education, vocational skills training, counseling, and a full range of support services for male and female disadvantaged youth from 16 through 21 years of age. Vocational courses to be offered at the Centers will include automotive, electrical/electronic, construction/mechanical, clerical, food services, and health occupations. Full enrollment will be reached at the centers by late December.

CB MARKET FORECAST FOR A 17 PER CENT GROWTH BY 1982. The CB radio market, stalled in 1978 with no growth projected over 1977, will move slightly ahead at a 2½ percent growth rate in 1979, then settle into a strong growth rate of 15 to 17 percent through 1982 to a level of \$629 million at wholesale, according to a 5-year forecast recently released by Stephen R. Davis, president, Acoustic Fiber Sound Systems. The sale of CB speakers, which AFS produces, offers a slightly better outlook, according to Davis. "After a stagnant 1978, sales will increase 16 percent in 1979 and 20-25 percent annually thereafter through 1982 to a wholesale level of \$20 million," Davis revealed.

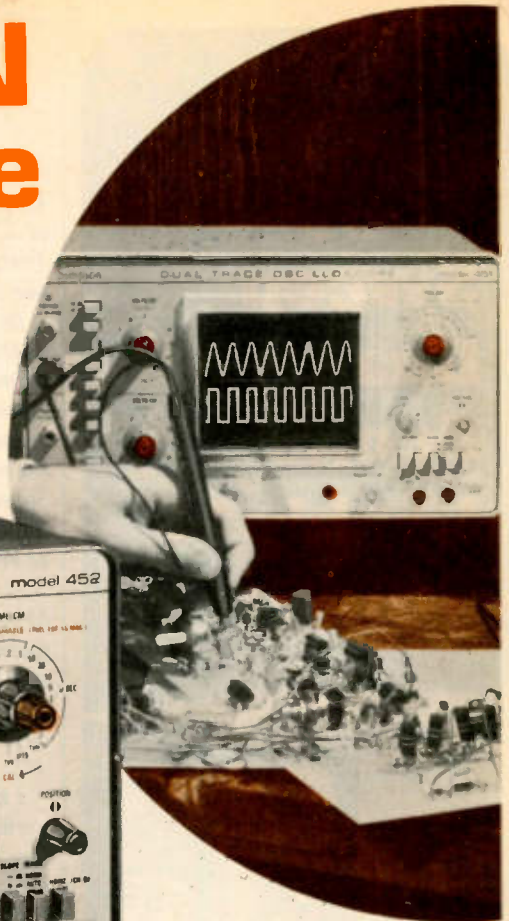
METAL TAPE FOR AUDIO CASSETTES IS NEW FROM 3M. The first metal-particle tape in audio cassette version will be manufactured by the 3-M Company later this year. It is said to have performance characteristics sharply higher than oxide tapes used now and will eventually have applications in video tape. The new metal tape uses less tape but requires different heads and circuit changes. It will probably be used someday for portable VCRs.

NESDA AND NATESA CONVENTIONS TO FEATURE SAME SPEAKER. Both electronic service associations -- NESDA AND NATESA -- will feature RCA's Arthur J. Holst, popular humorist, as guest speaker at their national conventions in August in Portland, Oregon, and Chicago.



# New SIMPSON 5" Dual-Trace 15-MHz Scope

with triggered sweep. Reliable, versatile and easy to use. It's your best scope buy.



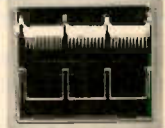
**MODEL 452 \$698**

- For design, development and service of digital circuitry, communications, audio, TV equipment . . . in lab, shop or field.
- Differential vertical amplifier stages provide wide DC to 15 MHz bandwidth with smooth rolloff useable thru 27 MHz.
- Reliable integrated circuitry, all-solid-state (except CRT)
- Triggering — internal, external, TVV, TVH, VITS
- Automatically shifts between CHOP and ALTERNATE as you change sweep time.
- 24 nanosecond rise time
- Front-panel X-Y operation, dual matched vertical amplifiers.
- Displays CH A, B, A&B, A + B, A-B
- 0.5V peak-to-peak 1kHz square wave calibrator
- Voltage-calibrated vertical and horizontal inputs (eleven steps in 1-2-5 sequence)
- X5 magnification
- Human-engineered front panel controls

See Your Local Electronics Distributor or Write for Bulletin T-837.



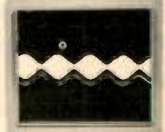
Check logic including countdowns and PLL



Display composite video and AGC pulse



Display op-amp input/output, A/D converter



27 MHz "CB" envelope and modulating signal



Check phase shift and distortion in amplifiers

**Simpson**  
INSTRUMENTS THAT STAY ACCURATE

**SIMPSON ELECTRIC COMPANY**  
853 Dundee Avenue, Elgin, Illinois 60120  
(312) 697-2260 • Cable SIMELCO • Telex 72-2416



Circle No. 129 on Reader Inquiry Card

# 15MHz Triggered Sweep Dual Trace Scope Usable to 30 MHz



B & K-PRECISION MODEL 1472C \$740  
INCLUDING PROBES

Normally rated at 15MHz (-3dB), it easily syncs and displays a 30MHz signal with sure triggering.

- Automatically selects chopped or alternate trace display
- Maintains calibration accuracy over 105-130VAC range.
- 11 sensitivity ranges, 10mV to 20V/cm.
- 19 sweep ranges, 0.5μSEC to 0.5SEC/cm.
- 24nSEC rise time.
- Front panel X-Y operation with matched phase-shift and sensitivity inputs.
- P31 blue phosphor
- Algebraic addition and subtraction

Available from your distributor.

**BK PRECISION**

**DYNASCAN CORPORATION**

6460 West Cortland Avenue  
Chicago, Illinois 60635 • 312/889-9087

In Canada: Atlas Electronics, Ontario  
Int'l. Sis. Empire Exp. 270 Newtown Rd., Plainville, LI, NY 11803

Circle No. 107 on Reader Inquiry Card

12 / ET/D - July 1978

## LETTERS

### ANTENNA ARTICLE A DISSERVICE

The article published in the March issue of ET/D: "TV Antenna Development—Thirty Years in Review" performs a disservice to your many readers.

Its title implies that the article is an overview of the state of the TV antenna art over the past thirty years. In actuality, it was not. Instead it was "puff" in the guise of impartial and perceptive editorial reporting that left the reader with the impression that all major antenna concepts of the last 30 years were the result of Winegard Co. engineering.

Many outstanding antenna designs have been successfully developed and marketed since the advent of commercial TV by Telrex, Channel Master, Jerrold, RCA, Kay Townes, Finney Co. and other antenna manufacturers as well as JFD.

I believe it is incumbent upon Electronic Technician/Dealer to inform their readers that this particular article is not representative of its implied purpose.

If ET/D was to publish an overview of TV antenna design events during the last 30 years, it should have been han-

dled by a staff reporter who personally interviewed all major antenna manufacturers and personally wrote the article accordingly.

James C. Sarayiotos  
National Marketing Manager  
JFD Electronics Corp.  
Oxford, North Carolina

EDITOR: Yours is not the first complaint we've received over the publication of this article in the March issue of ET/D. Your point is well taken.

Indeed the tradeoff between time saved and basic accuracy by employing an "industry expert" to provide such an article can—as ET/D has learned—be most disappointing.

Your suggestion for staff-originated articles in regard to similar articles in the future certainly seems the most appropriate way to proceed.

### WANTS MORE AUDIO INFO

I used to be a TV tech and have been receiving your magazine for two years now. I quit servicing TVs because I got bored by them, and I started doing strictly high power musical instrument amplifiers, special effects, etc.

The one thing that bothers me is that I have never seen a technical article on them or schematics (which aren't always easy to find) in ET/D.

Now surely I can't be the only guy (in fact, I know I'm not) who longs to see something written for his majority interest which seems to be (but isn't) a minority in the service world. Please!

Also, I would like to hear from other techs so we can exchange schematics and common problems with various makes. Thanks.

Rolf-Dieter Burckhardt  
26 Hillside Road  
Wanaque, N.J. 07465

EDITOR: Thanks for the idea. We'll take it under serious consideration.

### MORE HELP WITH WHOLESALE

In response to a letter from Richard W. Dambrun, Hazel Park, Mich., he did bring up some good points in his letter. We read it with interest.

My husband has been in the TV repair and retail sales business for five years and we've run into the same problems. He worked for a couple of TV repairmen before opening his own business in another town. He was able to come in contact with salesmen from various 'wholesale' companies on that job.

Our biggest help with problems that have come up in the business has come from the Wisconsin Electronic Service Dealers Association, as well as the Na-

## 3 YEARS WARRANTY!

EXACT Replacements For  
**SYLVANIA ECG**

### Semiconductors

ECG #	ECG #	ECG #	ECG #	ECG #	ECG #
100	.94	163	8.10	220	1.90
101	.98	164	5.75	221	1.90
102	1.04	165	8.95	222	1.99
102A	.98	171	1.37	223	2.79
103	1.05	172A	.72	224	5.06
103A	1.11	175	1.62	225	4.34
104	1.20	176	2.06	226	1.67
105	2.60	177	.49	228	1.21
106	.80	179	5.69	229	1.06
107	.79	180	6.39	230	3.60
108	.89	181	5.40	231	4.40
121	2.38	182	3.35	232	.70
123	.79	183	3.63	233	.74
123A	.79	184	1.37	234	.72
124	1.53	185	1.70	235	3.83
126	1.16	186A	1.46	236	7.57
127	4.60	187A	1.46	237	5.07
128	1.37	188	1.59	238	8.95
129	1.56	189	1.59	239	3.25
130	1.95	190	1.85	241	1.71
131	1.98	191	2.07	242	1.90
132	1.01	192	.98	276	8.72
133	1.14	193	1.04	278	2.36
152	1.43	194	.82	279	5.85
153	1.85	195A	2.96	280	5.06
154	2.34	196	2.06	281	6.35
155	2.02	197	1.89	282	4.24
157	1.63	198	1.95	283	6.32
158	1.08	199	.59	284	7.35
159	.86	210	1.37	285	7.99
160	1.43	211	1.56	286	5.75
161	.98	218	3.08	287	.69
162	5.75	219	4.36	288	.74
					.96

- F-A-S-T Same Day Shipping-In Stock!
  - FREE Freight on all prepaid orders
  - EXCLUSIVE 3 YEAR CONDITIONAL WARRANTY!
  - Limited time only-Dist. pricing for Dealers
  - NO Min. Order-Quantity Discounts Available
  - EXCLUSIVE INVENTORY ADJUSTMENT!
  - Longer Hours-Mon-Sat. 9a-10p, Sun. 1-7 p.
- CALL TODAY . . . To place your order  
(518) 462-6060 or 465-3367

### Communications & T.V. Unlimited

17 Washington St., Rensselaer, N.Y. 12144  
Exact Japanese Transistors & IC's Available  
T.V.—C.B.—AMATEUR RADIO—STEREO—  
MONITORS—ELECTRONIC PARTS

Circle No. 108 on Reader Inquiry Card



tional Electronic Service Dealers Association.

In attending the state convention, and getting together with other people in the business, we've helped our business greatly. We would encourage Mr. Dambrun to join his local association or the State association and go to the meetings. There are top speakers who present a specific talk on the many areas of the TV business. I'm sure his questions would get answered through these meetings. Even with talking to others in our business he may get the answers.

Local businessmen, especially in a small town like ours, are very reluctant to say anything about their operations for fear of someone taking business away from them. This doesn't happen at the Association meetings or State conventions. We're all there to improve our business techniques, productivity, and all important profit.

Mrs. Arlen Halvorson  
Spooner, Wisconsin 54801

#### HELP NEEDED IN CANADA

For several months now, I have been reading the "Letters to Ed" section and have noticed the "help needed" letters, so I'm going to make a try.

Two years ago I retired from the radio-TV business in Madison, N.J. (where I had been established for 25 years). I moved up to Canada, and in moving dozens of pieces of equipment, many manuals were lost, including that for my two Precise 300 triggered scopes. Fifteen years ago, these scopes were ahead of the whole field and even today, they're ahead of many in the \$500 and \$600 category.

I've been trying hard to get a service manual for these scopes, with no success. Even wrote to B&K who purchased Precision, but they had nothing.

If anyone knows where to find the manuals, or has a copy, I, of course, will be happy to pay any charges involved.

Also, that letter from Mr. Dambrun certainly hit the nail on the head. Everything he said was so true. There is no such thing as wholesale.

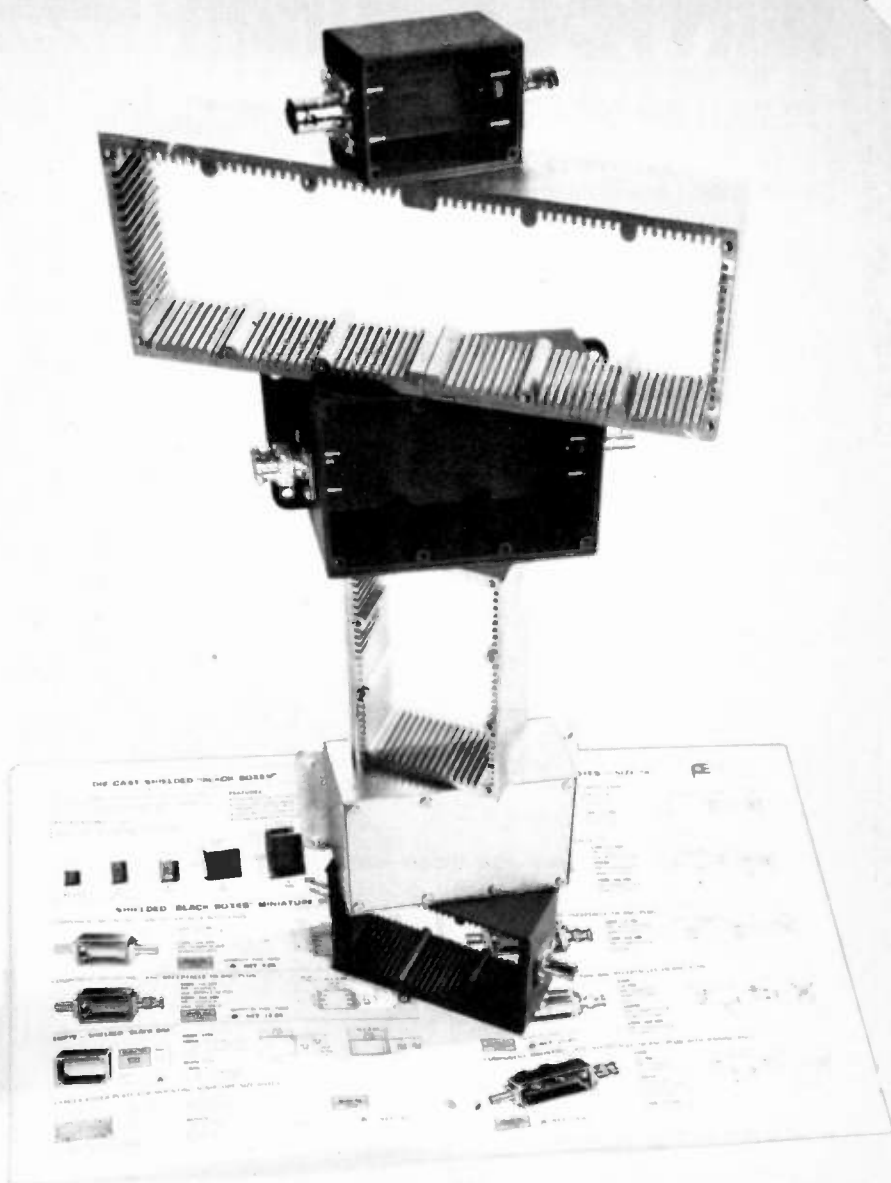
George Jeranek  
Economy R.R. #1, N.S.  
Canada.

#### THANKS TO ET/D

Have obtained meter repairs and parts for my Amphenol 870 FET meter through your "Letters" column. I now have the meter back in operation. Many thanks for your help.

Ed Scribner  
Schoharie, N.Y.

Circle No. 126 on Reader Inquiry Card →



## We're in the book under Boxes.

The book: ITT Pomona Electronics big 90-page catalog of electronic test accessories and equipment.

The boxes: Our complete line of shielded "black boxes" built for RF applications.

There are ten different series of models in all, each with a noise rejection greater than 70db. Sizes range from 1.50" x 1.13" x 0.88" up to 8.0" x 4.0" x 1.50".

Housings are die cast or extruded aluminum alloy with

choice of blue baked enamel or unpainted finish. Covers are clear anodized aluminum alloy.

They're available blank or with various coaxial connectors, with or without PC card guides, and with choice of mounting flanges or bottom mounting plates. Covers and mounting screws are supplied with all models.

Send for free catalog or see your favorite electronic parts distributor. See our pages in EEM.

AVAILABLE THROUGH YOUR FAVORITE ELECTRONIC PARTS DISTRIBUTOR

# ITT POMONA ELECTRONICS

1500 East Ninth St., Pomona, Calif. 91766  
Telephone (714) 623-3463 • TWX: 910-581-3822

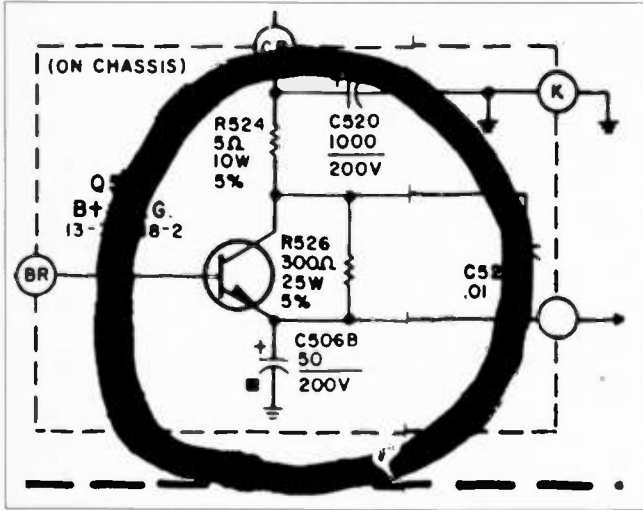


# SERVICE SEMINAR

## GTE SYLVANIA

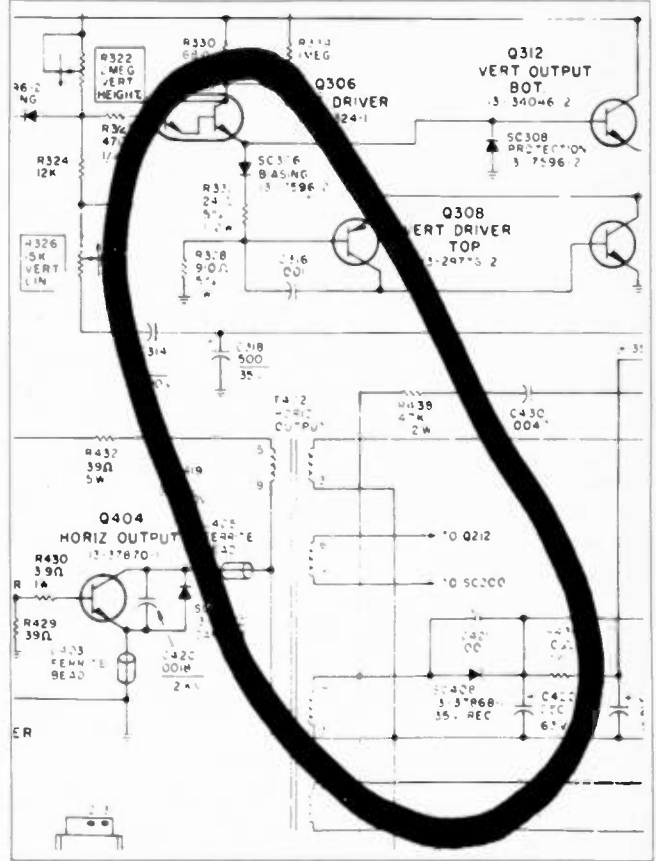
**E21-3 Chassis**—The regulated B+ supply stopped 70 volts, with a ticking sound from the flyback.

The cause is probably an open 50mfd, 200V section filter capacitor C506B. Replace capacitor.



**A12 Chassis**—No sound—no video—and SC408 shorts when replaced.

The cause is a partially short SC306, causing vertical stage to load down the 35V supply. To repair, replace both diodes—SC306 and SC408.



## How To Protect Your Independence

Protect yourself from being swept away by O.E.M. service organizations. Help keep your independent status. You can... everytime you replace a flyback, yoke or voltage multiplier. How? Specify Thordarson — the leading independent supplier of flame retardant replacement flybacks, yokes and voltage multipliers for all brands.

Thordarson replacements fit exactly. They are designed and built better than the original being replaced. The replacement is fast and easy because Thordarson offers you accurate cross-reference data that is constantly updated.

To stay independent... buy replacements from your independent electronic parts distributor — where your best buy is Thordarson.

Thordarson Meissner, Inc.  
Electronic Center  
Mt. Carmel, Illinois 62863  
In Canada—  
GTE Sylvania Canada Corporation



Circle No. 132 on Reader Inquiry Card

## Original Japanese parts

AND OTHER SERVICE AIDS

### SPECIALS

2SC1061 .....	.75
2SC1306 .....	1.90
2SC1307 .....	2.90

**BUY 12 GET ONE FREE**  
**WRITE FOR A COMPLETE LIST!**



### FIND IT FAST™

**\$24.95**

Japanese Hardware Pack

Stop looking for those hard to find screws

I.S.O. (Japanese Standard)

- Screws
- Nuts
- "E" Ring
- Washers

and more

**CALL TOLL FREE: (800) 423-5336**  
**IN CALIF.: (213) 881-0338**



### ELCAPAK

**\$24.95**

Electrolytic Capacitor Pack

A great assortment in the palm of your hand

- Radial Lead (P.C.B.)
- .47 to 1,000 µF
- 16v to 50v
- Average cost less than 15¢ each

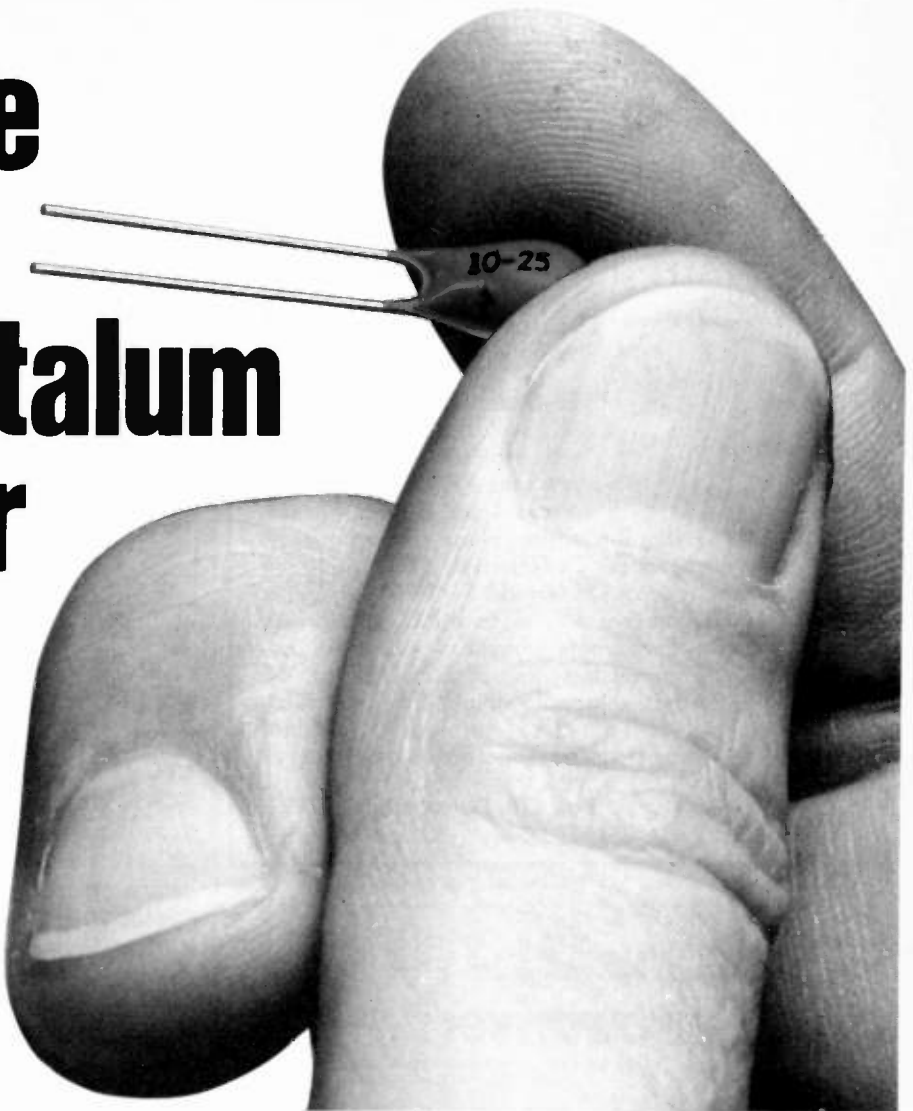


**ORA ELECTRONICS**

7235 CANBY AVENUE DEPT. ET  
RESEDA, CA 91335

Circle No. 124 on Reader Inquiry Card

# Best way to replace a dipped solid-tantalum capacitor

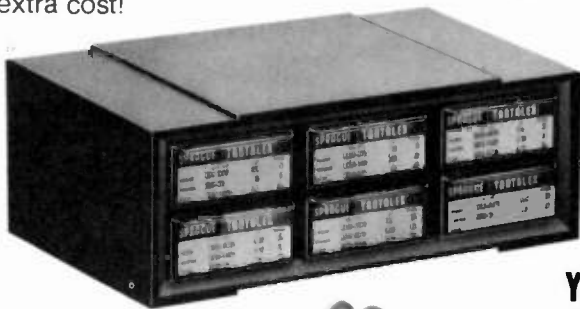


Use a Sprague Type SD Tantalex® Replacement Capacitor. You can count on its matching or exceeding the original quality of the capacitor it replaces. Quality features include:

- High stability with very little capacitance change even at outer limits of operating temperature range of  $-55^{\circ}\text{C}$  to  $+85^{\circ}\text{C}$  ( $-67^{\circ}\text{F}$  to  $+185^{\circ}\text{F}$ ).
- Low dissipation factor permits higher ripple currents.
- Capacitance tolerances of  $\pm 10\%$ .
- Hard epoxy coating that's highly resistant to moisture and mechanical damage.

## Sprague makes it easy

Cabinet assortment KT-10 contains 70 Type SD Dipped Tantalex Solid-Tantalum Capacitors in 16 most-frequently-used ratings. They're prefiled for easy finding in six compartmentalized and labeled drawers. You pay for the capacitors only . . . the cabinet is yours at no extra cost!



KT-10 ASSORTMENT (All units 35 WVDC)					
Quan.	Cat. No.	$\mu\text{F}$	Quan.	Cat. No.	$\mu\text{F}$
4	SD35-R109	.1	4	SD35-2R29	2.2
2	SD35-R159	.15	1	SD35-3R39	3.3
2	SD35-R229	.22	8	SD35-4R79	4.7
2	SD35-R339	.33	8	SD35-6R89	6.8
5	SD35-R479	.47	10	SD35-109	10
2	SD35-R689	.68	2	SD35-159	15
8	SD35-19	1.0	8	SD35-229	22
2	SD35-1R59	1.5	2	SD35-339	33

YOUR COST, ONLY **\$39.45**

. . . Order Type SD capacitors from your Sprague Distributor . . . or write for Catalog C-621 to Sprague Products Company, 65 Marshall St., North Adams, Mass. 01247.



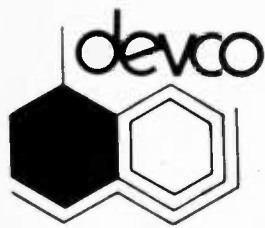
SPRAGUE PRODUCTS COMPANY Distributors' Division of Sprague Electric Co.

**THE PRIME SUPPLIER OF ELECTRONIC COMPONENTS**

Circle No. 130 on Reader Inquiry Card







## ATTENTION SERVICE DEALERS

Buy directly—  
Top Line  
Solid State Replacements

40% Off Dealer Cost  
2 Year Warranty Devices

These are professional devices which replace over 130,000 industry types, and you buy them at substantial savings.

To Order: Send us the ECG, SK, or GE numbers and we will promptly ship you the premium PR direct Replacements—plus a free PR Replacement Guide. Remember, these are top quality, no culls, no seconds. Orders over \$25.00 shipped free. Orders up to \$25.00 add \$1 UPS. All orders over \$100.00 receive 5% discount. C.O.D. orders welcome. To approximate amount of your order, deduct 40% from dealers cost of ECG, SK or GE types. All orders shipped within 24 hours. Also, send or call for our free catalog of original Japanese transistors at substantial savings.

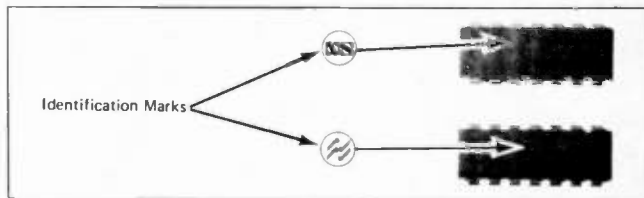
DEVCO P.O. Box 270, Garwood, NJ 07027  
(201) 688-0300

Circle No. 110 on Reader Inquiry Card

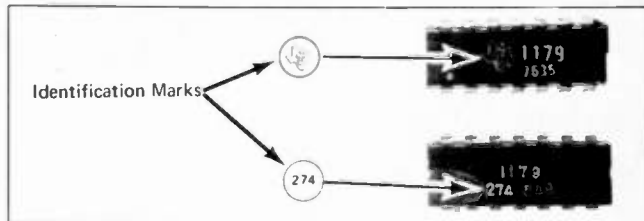
## GENERAL ELECTRIC

### YM Chassis—Audio Hum

Some YM chassis sets manufactured between June and October 1977 can have an audio hum because of a peculiarity of certain audio IC's (IC190). These are shown below:



To repair, replace IC's shown above with the replacement IC's shown below:

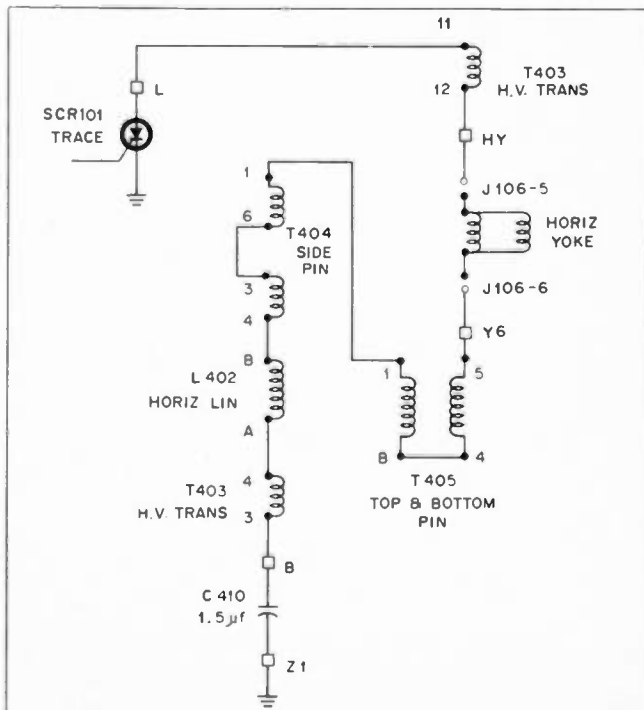


The new catalog number is EP84X38.

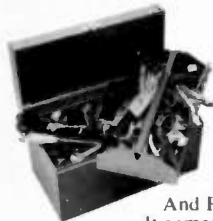
## RCA

### CTC 46 Chassis—Checking continuity of, and replacing SCR101 (trace).

If during servicing, it is determined that the Trace SCR (SCR101) is defective, the following checks should be made before replacement. (1) Measure continuity from PW400-L to PW400-B. Resistance should measure approximately 1 ohm. If an open is indicated, further resistance checks of the series path shown in the partial schematic below should be made to isolate the open. (2) If continuity is normal between PW400-L and PW400-B check for the possibility of an open in the SCR socket and/or the circuitry associated with the yoke return capacitor, C410. (3) Repair any open circuits located in Steps 1 and 2 then replace the SCR. **ETD**



## Where's the screwdriver?



In a tool box, tools and parts are everywhere. They're hard to find. They get lost. (And they get dirty.)

With a Platt tool case, that wouldn't happen. It's designed so you'll know where everything is. Smaller tools are in individual pockets in our patented one-piece pallet. Larger tools and parts are in compartments. And papers and order book are in lid pockets. (Everything is neat and clean.)

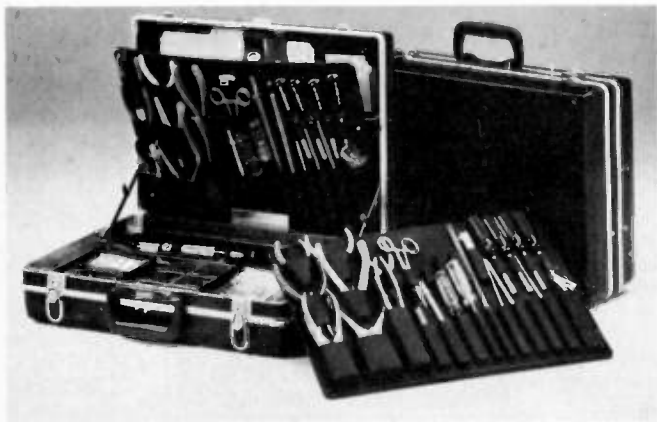
And Platt's tool case helps you look more professional. It comes in handsome, lightweight, durable ABS Thermoplastic. Or rich looking vinyl reinforced by ABS Thermoplastic.

What's more, it also has a 5 year guarantee. Contact us for complete information on Platt's full line of tool cases and your nearest distributor.

Pat. No. 3,880,285

Cases for business and industry.

2301 S. Prairie Ave., Chicago, Ill. 60616 (312) 225-6670



Circle No. 125 on Reader Inquiry Card



## THE FASTEST WAY TO ORDER GENERAL ELECTRIC TV PARTS IS FREE.

General Electric has the magic number. A toll-free hotline connecting you directly with the GE Parts Center in most all areas. And the simple key to using it is charging your order to VISA, Master Charge or an approved GE Open Credit Account.

That's one way we're making your business easier. But it's not the only way. We're continuing to increase stocks throughout our national computer-linked parts distribution system. And striving to fill orders faster than ever before.

To make GE Performance Television even easier to service, we're packing a new Mini Manual into the back of every color set. It gives

you the right schematic diagram, parts list, symptom repair information and safety features for the set you're working on. Which makes your job a lot easier.

For our list of toll-free numbers and everything you need to order GE TV parts fast fill out and send in the coupon below. **It's our business to make your business easier.**

"DUTCH" MEYER  
GENERAL ELECTRIC TELEVISION  
ONE COLLEGE BOULEVARD  
PORTSMOUTH, VIRGINIA 23705

ETO 78

Please send the following:

- Brochure covering GE toll-free ordering numbers.
- Listing of Parts Distributors.
- Master Charge and VISA information.
- GE Open Credit Account information.

Name \_\_\_\_\_

Service Company \_\_\_\_\_

Address \_\_\_\_\_

City \_\_\_\_\_ State \_\_\_\_\_ Zip \_\_\_\_\_

GENERAL  ELECTRIC

# NEWCOM 1978

The shape of things to come

This year's show leaves no question that you're getting added sophistication, greater accuracy and more for your money on your test bench.

By Richard W. Lay

The growing functional utility, greater accuracy, and timesaving characteristics built into the new breed of test gear shown this year in Las Vegas during NEWCOM '78 leaves little doubt that the consumer and industrial service markets are reaping full benefits from space age electronics technology.

ET/D, in viewing the latest in test equipment, antennas and amplifiers, and during conversations with manufacturers from coast to coast, found these general trends sweeping the test gear market:

1—"Pocket Portability" is fast becoming a reality. With the impact of large scale integration in IC chips, even the concept of a shirt pocket oscilloscope seems within grasp at this point in time.

2—Multi-function test gear in the past six months has made heavy inroads into electronics service markets and its impact is increasing. Instead of just voltmeters and current meters we now see volt/current meters combined with regulated power supplies; instead of seeing oscilloscopes and counters separately, we now are beginning to see combinations of units planned for various service markets (see April issue of ET/D p. 21).

*(EDITOR'S NOTE: We are including special reader's service numbers on the new products shown in this NEWCOM feature report. Circle number on Reader Inquiry Card.)*



Fig. 1—Leader TV-Analyzer Generator —#200

3—And, price stability. In general we have noted a trend in these newer combination units toward greater price utility. While the multi-functional pieces of equipment carry a higher price tag than a single unit, the price is usually under the individual prices that you would pay for buying the same pieces of equipment singly.

From the standpoint of time saving devices for the service technician on the bench or in the field, from the standpoint of elimination of guesswork in troubleshooting and taking measurements, this year's NEWCOM Show was a platform for the most advanced pieces of equipment, yet aimed at the consumer electronics servicing market.

For your review, we will present the highlights of the show as a preview of

what you will soon be seeing in your distributor's showcases in the way of equipment, amplifiers and antennas.

Leader Instruments Corporation showed the production prototype of its compact, fully portable 18 pattern color bar generator which it calls the TV Analyzer-Generator. According to a company spokesman, the unit has scope trigger and composite video outputs. Built on LSI technology, the small, 1-1/2 pound unit operates on 4 "C" cells with optional AC adapter, and among the signal outputs are the RF, IF and composite video and an unmodulated RF carrier, color subcarrier and zero-level black raster. It will sell in the \$200 category, according to Leader.

Another unit from Leader, scheduled tentatively for fall introduction, will be a



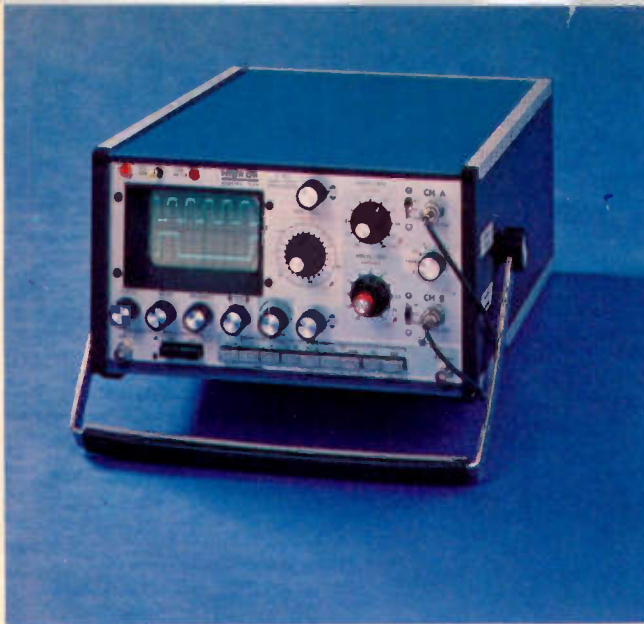


Fig. 2—The Hickok Model 532, 30 MHz Dual Trace —#201



Fig. 3—Sencore Portable CB49 CB Analyzer —#202

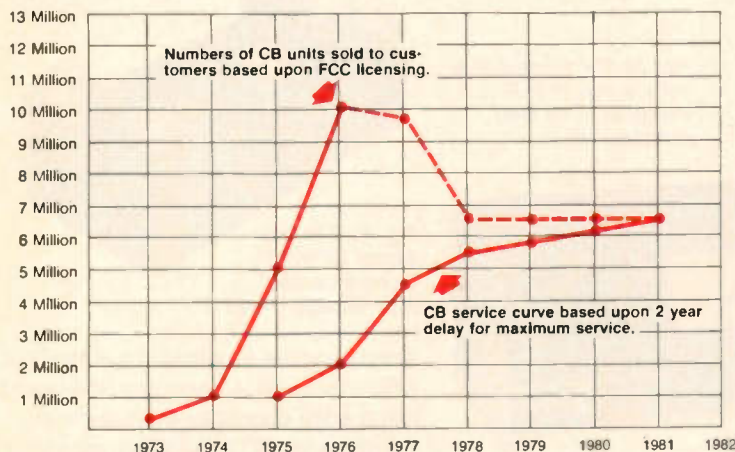


Fig. 4—CB Service Demand Chart (Courtesy Sencore)



Fig. 5—Leader's LDC 823, 8-digit counter —#203

250 MHz, 8-digit frequency counter with period function. The unit will be aimed at industrial, communications, VTR and video usage.

Hickok's newest scope, the Model 532 Dual Trace 30 MHz unit for industrial, service and video applications, was on display. This scope features built-in delay line for leading edge viewing of fast risetime pulses, a must for use in digital logic circuits. In addition, the 532 features color-coded front panel pushbuttons for quick association of functions.

Also, this unit features a 4-times expander. This special horizontal position control allows any pulse train up to four screen widths (40 full divisions) without the use of a multiplier switch.

Sencore is soon to be out with a portable version of a CB Analyzer (to complement its previously introduced CB42 CB Analyzer). According to Sencore forecasts, CB servicing is just beginning to cash in on the CB transceiver sales boom of 1975 and 1976 (see Figure 4). By Sencore's logic, CB service demand will lag behind

transceiver sales by some two years and this company's calculations indicate CB service demand will not peak before 1981.

The new Sencore unit, the CB49 Analyzer is a completely automatic and portable CB analyzer and performance tester. Included in the 10 pound battery operated (AC adapter available) unit are an RF wattmeter; a percent of modulation tester; a distortion checker; an RF generator; a unique "percent off channel tester" for which a patent has been applied; an automatic sensitivity checker; an audio wattmeter; an IF amp tester; and a signal sideband EIA tester.

Also aimed at communications service markets is Sencore's newest frequency counter, a 1 GHz unit (selling under \$1,000) for use in newly opened bands. Specific applicability is in the new 806-947 MHz two-way communications, business and police band; for the UHF TV band; for the 902-928 MHz medical electronic and industrial scientific band; plus future anticipated allocations from the FCC in the above 600 MHz band.

Among special features of the FC51,

which is AC or 12-volt DC operated, are a built in crystal checker, sensitivity adjustments for stabilizing complex waveforms, a 12-volt vehicle battery plug, a signal pick-up loop antenna for minimum loading effects in sensitive circuits, plus a 10 MHz frequency clock which can be used for calibrating less sensitive frequency counters and oscilloscope time bases, according to Sencore.

Another variety of the many combination units we saw at NEWCOM was displayed by VIZ with the introduction of its "DC Power Supply" series of regulated supplies and volt/current units. VIZ says the units provide power regulated at better than .075% and they will indicate two independent external DC voltages from 0-99.9 volts on twin 3-digit LED readouts. These same LEDs also indicate supply output voltage and current—at the flip of a switch.

According to the manufacturer, these latest units are being brought to the marketplace because "with the present trend towards electronics in everything



Fig. 6—The first 1 GHz counter aimed at the consumer market, Sencore's FC51 —#204



Fig. 7—Regulated triple DC supply and volt/current meter combo, VIZ's "Triple Supplst" —#205

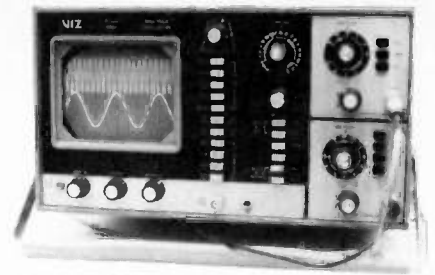


Fig. 8—The W0555 from VIZ, another channel has been added —#206



Fig. 12—Non-Linear has added another channel to its portable "Miniscope," this one called the Model MS 215 —#210

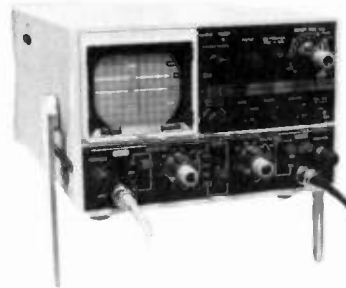


Fig. 13—The newest dual trace scope from B & K Precision, a 15 MHz portable —#211



Fig. 14—B & K's 3010 Function Generator —#212



Fig. 19—The new Model LS 4040 four-way splitter from Winegard —#217

from kitchen ranges to washing machines, in-line electronic testing is becoming more and more necessary."

One of the Supplst's models is a "Triple Supplst" with three completely isolated DC supplies, two 0-20 volts at 0-2 amps, and the third is a fixed 5 volt supply at 4 amps.

Also from VIZ is an updated version of their 15 MHz single trace 527A oscilloscope (see ET/D, May, p. 36). This newest unit, the W0555, is also a 15 MHz scope with add and subtract features.

PTS Electronics offers three new servicing aids, two regulated power supplies and a unique universal component tester for \$54.95. This handy component tester, to be used in conjunction with your oscilloscope, is aimed at cutting servicing time when troubleshooting solid state circuitry in TVs, stereos, computers, CB and many other electronic devices.

The Model 8001 Component Analyzer works in or out of circuit. The technician, by familiarizing himself with the standard expected waveforms when testing a transistor, capacitor, or resistor, can determine at a glance whether the component under test is functional or not.

A high medium and low range switch on the 8001 matches the impedance of the component being tested. It also houses a comparator circuit and it can be used for in-circuit testing of electrolytics.

The new PTS DC-1 Digital Power Supply can be used as an external source for powering many types of



Fig. 18—A dual SWR/Watt meter from Telco, called the "Swattmeter" —#216

consumer devices. The third unit, the PTS DG-4 Voltage Control Center produces, independently, four variable DC voltages for substituting critical control voltages for television electronic (varactor) tuners. One of the main problems in servicing varactors has been found to be inaccurate supply voltages to the tuner rather than a defective tuner itself and this unit is designed to quickly isolate the problem.

Another excellent servicing timesaver—applicable to most Zenith and RCA solid state chassis service work, is being offered by GTE Sylvania. Known as Chek-a-Board, the new troubleshooting aid is a module extension cable kit which permits in-circuit module testing by extending the module onto your test bench, thus making all test points readily available.

Additionally, each side of the cable is colored differently for quick identification. The overall length, some two feet, permits extension well away from the chassis.

According to Sylvania, Chek-a-Board

extensions are available in two kit sizes which are for RCA Accucolor Series sets using edge connector modules and Zenith series EC through JC, except for several non-modular models.

Non-Linear, another manufacturer concentrating on the portability aspects of test gear, is out with an upgraded version of its previously released "miniscope." The company has added a second channel to the 15 MHz unit, a battery operated, hand-held set weighing only three pounds. The MS-215 Miniscope, retailing at \$395, features external or internal triggering, .1 microseconds to .5 seconds per division in 21 steps, and battery or line operation. It also has chopped or alternate mode operation.

B & K Precision's newest oscilloscope entry continues the heavy emphasis now going toward the dual trace. According to the firm, the Model 1432 portable unit, featuring 2 millivolt sensitivity is "conservatively" rated at 15 MHz bandwidth with a usable response "well beyond 30 MHz." Designed for field or lab use, according to B & K Precision, the scope includes X-Y operation, addition and subtraction of channels A and B, and a times five multiplier for close-in viewing of displayed waveforms and signals. The 1432 also provides automatic selection





Fig. 9—PTS Electronic's 8001 Component Checker —#207



Fig. 10—This special "variable" four-way supply from PTS Electronics has special applications for electronic tuner servicing —#208

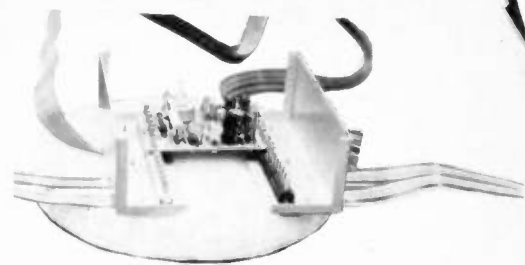


Fig. 11—GTE Sylvania's visionary Check-a-Board for solid state RCA and Zenith sets —#209



Fig. 15—The Model 2830 DMM from B & K Precision —#213



Fig. 16—One of the more unique units to watch for this Fall is B & K's low cost Model 820 Capacitance Meter —#214

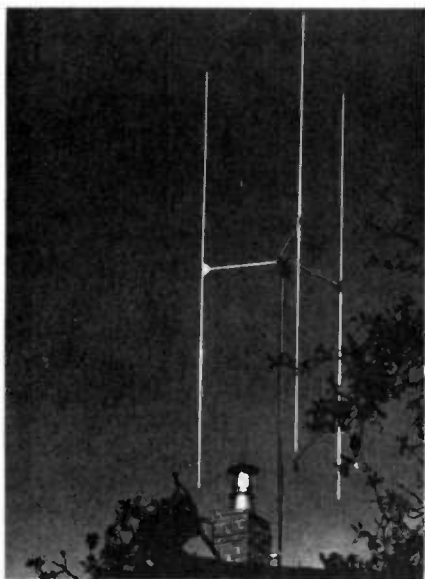


Fig. 20—Antenna Specialist's Model MS119 SuperScanner serves as both a beam and omnidirectional antenna —#218



Fig. 21—Eico's Model 272 DMM —#219



Fig. 17—Sylvania's new variable gain SD-400 microphone —#215



Fig. 22—Simpson's new Model 462 autoranging DMM. —#220

of chopped or alternate mode as well as automatic selection of TV line and frame sync.

Another new B & K Precision unit displayed was the 3010 Function Generator, a \$175 unit, featuring sine, square and triangle waveforms from .1 Hz to 1 MHz in six steps. One of the unique features of the 3010, according to the manufacturer, is its voltage controlled oscillator and VCO external input. A ramp voltage applied to the VCO external input allows the 3010 to be used as a sweep generator in audio and I-F circuits and an audio signal applied in place of the ramp allows the 3010 to produce a direct FM output.

Several new digital multimeters that will soon be making their way to test benches across the nation were viewed during NEWCOM. Among them was Weston's 6000 autoranging liquid crystal display model. Capable of handling a full 10 amps of AC or DC current, the 6000 encompasses a

special "measurement hold," that is, once the reading is established the technician may remove the probe from the circuit under test and the reading will remain on the LCD display. This unit also features auto zeroing, a special light meter attachment permitting measurement of light intensity in foot candles and, the portable unit is powered by two nine volt transistor batteries capable of some 350 hours of operation, according to the manufacturer.

Simpson was at NEWCOM with its newest DMM, a super portable 3½ digit, pushbutton-operated Model 462. This is the autoranging version of its previously released Model 461. This handy unit, based on LSI technology, is less than 6 inches across and weighs only 1½ pounds, has automatic zero and polarity indication, .25 per cent DC voltage accuracy and will run eight hours on batteries. Twenty-six pushbuttons select all ranges.

Eico's new 272 unit, available later this summer of Fall also was available for viewing during the show. This is a portable, battery operated automatic zeroing and polarity unit with three digit LED readout. It is capable of reading up to 1000 volts DC and 600 volts AC.

B & K Precision also unveiled a pushbutton 3½ digit multimeter that is just now hitting the market. Suited for lab or bench work, according to the manufacturer, the Model 2830 provides .5% DC accuracy, with a current measurement capability of up to 20 amps. The auto zeroing unit will read up to 1000 volts DC and 750 AC.

One of the rare breed of test instruments, but certainly one that can save anyone who's ever replaced a faulty capacitor with another faulty one a lot of trouble, was also shown by B & K Precision. That instrument—ostensibly to be on the market this Fall, was the 820 Capacitance meter. This welcome

*Continued on p. 44*



# SPEED

## transceiver, audio or broadcast testing...



### With HP's new 339A Distortion Measurement Set.

Automatic frequency nulling and auto set level features of the 339A speed your total harmonic distortion measurements (THD). And true-rms detection means accurate measurements as low as 0.0018% (-95 dB) from 10 Hz to 110 kHz. Just select the frequency of the built-in oscillator and the 339A's "tun signal" indicators show you how to make the proper range settings. Whether you're testing transceivers, sophisticated audio equipment or broadcast performance, here's how the 339A, priced at \$1900\*, can help you make quick and accurate measurements.

**Transceiver testing.** Automatic setting of the 100% reference level over a 10 dB input range means fewer critical adjustments. And true-rms detection lets you accurately determine thermal noise and harmonic components in making SINAD measurements.

**Audio testing.** In addition to the time-saving convenience of auto set level and auto null, you have the benefits of a built-in tracking oscillator for testing high-quality audio equipment.

**Broadcast compliance testing.** An AM detector, 30 kHz low-pass filter, switchable VU meter ballistics, and

a +2 to -12 dBm (600Ω) meter scale reduce your set-up time when checking your equipment for compliance with operating regulations.

**For a separate low-distortion oscillator,** investigate HP's new 239A, priced at \$575: Like the built-in oscillator of the 339A, it provides less than -95 dB THD over the audio range. For details contact your local HP field engineer.



09753R

\* Domestic U.S.A. price only.

HEWLETT  PACKARD

1507 Page Mill Road, Palo Alto, California 94304

For assistance call: Washington (301) 948-6370, Chicago (312) 255-9800, Atlanta (404) 955-1500, Los Angeles (213) 877-1282

Circle No. 119 on Reader Inquiry Card

# Operational amplifiers

A detailed look at Op-Amps

Originally in the domain of the analog computer, these easily manipulated devices are finding more and more acceptance in consumer applications.

By Joseph J. Carr, C.E.T.

The operational amplifier has been with us for over two decades in one form or the other, and in integrated circuit form since about the mid-sixties. As their generic name *operational* amplifiers seems to imply, the applications for these devices were once restricted to performing mathematic operations in analog computers and scientific instruments. Indeed, certain differential equations could only be solved easily on an op-amp based analog computer. Today, on the other hand, the operational amplifier finds many applications, even in consumer electronics. Certain properties of op-amps, coupled with their very low cost in IC form, has made them very popular with circuit designers.

## Fundamental Properties

There are several mathematical methods for describing the behavior of the operational amplifier, but they are a little too rigorous for our current discussion. We can describe the behavior of the operational amplifier in terms of Ohm's Law, and Kirchoff's Current Law, if we will only accept five basic properties of the op-amp as given:

1. It has infinite input impedance ( $Z_{in} = \infty$ )
2. It has infinite open-loop (no negative or positive feedback) voltage gain.
3. The output impedance is zero ( $Z_o = 0$ )
4. It has infinite bandwidth.
5. Both inputs *track* each other. That is to say they stay together—setting conditions at one input

allows us to treat the other input as if the same conditions are also applied to it (more on this shortly).

Of course, these properties apply in the literal sense only to ideal operational amplifiers. Real operational amplifiers only approximate these properties—even though some of them get very close to the ideal if one is willing to pay the price. Consideration of an "ideal case" allows us to derive the voltage gain formulas without resorting to any math greater than Ohm's Law (whew!).

Fig. 1A shows the basic circuit symbol for an operational amplifier. The two inputs are labelled "inverting" (-) and "noninverting" (+) because they have equal, but opposite phase, effect on the output voltage. This means that the two inputs form a *differential* input pair. If the same potential were applied to both inputs simultaneously the difference would be zero, so there is no output voltage created. Such an input voltage is called *common mode* potential because it is applied to both inputs at once.

Note that there is no ground terminal on the operational amplifier, and this fact causes some people a little consternation. The positive power supply terminal (Vcc) goes to a source that is positive with respect to ground, while the negative power supply terminal (Vee) goes to a source that is negative with respect to ground. An example of a bipolar op-amp power supply is shown in Fig. 1B.

It is very often the case that the Vcc and Vee power supply connections for the op-amp are deleted on circuit diagrams. This is not to say that no power is applied, however, and you must assume that the supplies are connected but not shown schematically. This is actually the practice in many IC circuit diagrams, not just in op-amp drawings. We sometimes see a little block to one side of the drawing giving the power supply pinouts.

## Negative feedback effects

Fig. 2 shows the *inverting follower* amplifier configuration. Recall property number five on our list? It tells us that both inputs "stay together." Since the noninverting input is grounded, we may, in fact must, treat the inverting input as if it were also grounded. Some op-amp textbooks like to call the situation at point "A," the inverting input, a "virtual ground." If you actually take a voltmeter and measure that it is the same as the noninverting input—0-volts.

An implication of property number one ( $Z_{in} = \infty$ ) is that the input terminal of the operational amplifier neither sinks nor sources current. That is to say it neither produces nor accepts a current. The only two currents in the circuit are I1 and I2, and by Kirchoff's current law:

$$-I_1 = I_2 \quad (1)$$

By Ohm's Law we know that the input current is produced by dropping the

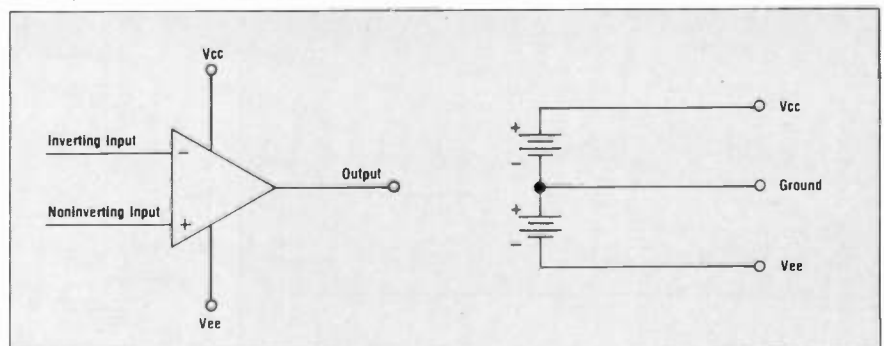


Fig. 1 a) Op-amp circuit symbol b) Dual polarity power supply used for Vcc and Vee

input signal voltage across the input resistor (remember point "A" is at ground potential), so

$$I_1 = E_{in}/R_1 \quad (2)$$

In order to understand where  $I_2$  comes from, we must consider the operational amplifier as a "black box" that somehow manages to produce an output voltage that will create a value of  $I_2$  that will allow point "A" to obey Kirchoff's law: it must equal  $I_1$ . We can say, then:

$$I_2 = E_{out}/R_2 \quad (3)$$

By the arithmetic trick of substituting (2) and (3) into (1) we obtain:

$$-E_{in}/R_1 = E_{out}/R_2 \quad (4)$$

and solving (4) to find  $E_{out}$ :

$$E_{out} = -E_{in}(R_2/R_1) \quad (5)$$

Equation (5) is called the transfer function of the inverting follower. For any amplifier the transfer function is  $E_{out} = E_{in}(A)$ , where  $A$  is the gain, or amplification. In this case the gain, then, is  $-R_2/R_1$ . The minus sign tells us that the amplifier inverts the input signal, so the output will be 180 degrees out of phase with the input.

The neatest implication of the transfer function for the inverting follower is that we can set overall circuit gain merely by setting the ratio of two resistors,  $R_1$  and  $R_2$ ! If, for example, we wanted a gain of

100, we need only find a pair of resistors with a ratio of 100. 1-megohm for  $R_2$  and 10 Kohms for  $R_1$  meets this qualification, so they would result in an amplifier that had a voltage gain of 100 from DC to the upper frequency limit of the particular device (real op-amps have a lot lower bandwidth than infinity!).

### Noninverting circuit

The noninverting configuration is shown in Fig. 3. Since the noninverting input is at a potential of  $E_{in}$  we must treat the inverting input as if it were also at a potential of  $E_{in}$ . If you actually measure the voltage at point "A" you would find that it is equal to  $E_{in}$ . By the same sort of reasoning as we used in the previous case:

$$I_1 = I_2 \quad (6)$$

Note the "-" sign at  $I_1$  is dropped

$$I_1 = E_{in}/R_1 \quad (7)$$

$$I_2 = (E_{out} - E_{in})/R_2 \quad (8)$$

$$E_{in}/R_1 = (E_{out} - E_{in})/R_2 \quad (9)$$

Solving (9) for  $E_{out}$  gives us the transfer function for this type of circuit:

$$(R_2 E_{in})/R_1 = E_{out} - E_{in} \quad (10)$$

Or in the form more often seen:

$$E_{out} = E_{in} \left( \frac{R_2}{R_1} + 1 \right) \quad (11)$$

The voltage gain of the noninverting follower is, therefore, equal to  $1 + R_2/R_1$ . Gain is once again given by a simple formula that depends upon the ratio of two resistors.

Note that a special case originates when  $R_2$  is equal to zero. In that case we could also delete  $R_1$  since it would have no effect. If  $R_2$  is 0-Ohms, that is to say the output terminal is shorted to the inverting input, the quantity  $R_2/R_1$  becomes zero, but note that the gain does not go to zero, it is +1. This version of the noninverting follower is usually called the *unity gain* noninverting follower, and it is used for applications such as buffering, with no gain or loss, and impedance transformation (high to low).

There is quite a difference between the input impedances of the inverting and noninverting followers. The input resistor limits the maximum impedance seen by circuits feeding signal to the inverting follower (point "A" is essentially grounded, after all). In the noninverting follower the input impedance is ideally infinite, because it is the op-amp input itself. In real op-amp devices the actual impedance will be greater than 50-Kohms in the cheapest rejects to over 1-terraohm ( $10^{12}$  ohms!) in those that have MOSFET input stages. For most common op-amps the input impedance is on the order of 500-Kohms to 5-megohms.

### A.C. amplifiers

The operational amplifier circuits shown thus far will operate from DC to the upper frequency limit of the device. The circuit in Fig. 4, however, is a noninverting AC signal amplifier. Note that it is essentially the same as the noninverting amplifier in Fig. 3.

The main difference between the AC and DC versions is the use of coupling capacitors  $C_1$  and  $C_2$  in Fig. 4. The output coupling capacitor ( $C_2$ ) serves to keep the DC level that will exist at the output terminal from getting into the next stage, while  $C_1$  serves to keep the "ground" end of  $R_1$  above actual ground

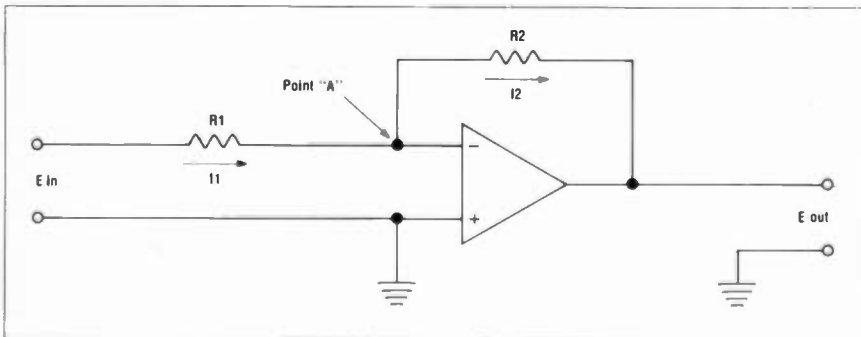


Fig. 2 Inverting follower

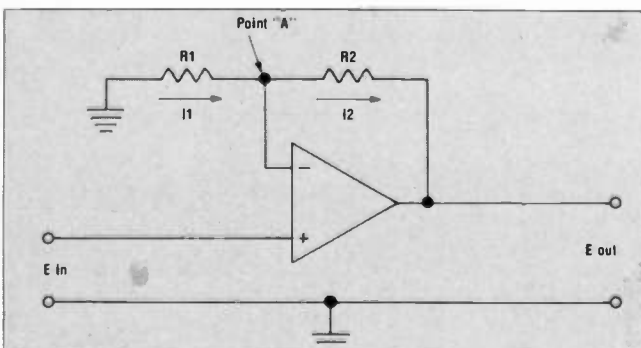


Fig. 3 Noninverting follower

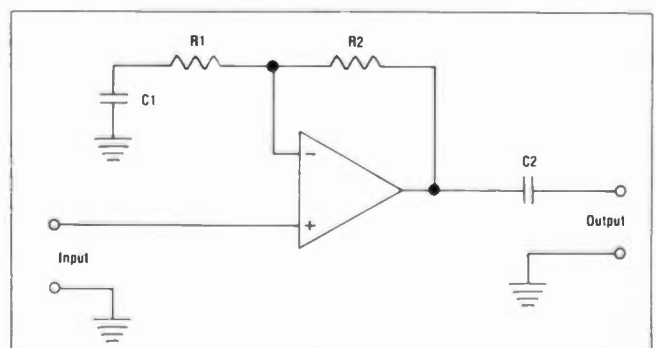


Fig. 4 A.C. coupled noninverting follower



for DC, but at ground for AC. The reactance of C1 should be one-tenth of the resistance of R1 at the low frequency 3 dB point.

Figure 5 shows a biasing technique for using a single power supply to power an op-amp circuit. In this example Vcc is connected to a positive-to-ground power supply, and Vee is grounded.

Ordinarily, this would cause the output terminal to saturate at a potential only slightly less than Vcc, but in this case we have two resistors (R1 and R2) that are used to raise the operating point to some positive potential. If the resistors are equal, then the quiescent output potential will be  $\frac{1}{2}V_{cc}$ .

### A phono preamplifier

Fig. 6A shows the phono preamplifier circuit as used in the Magnavox R247 stereo receiver chassis (Sams MHF-61 or the Magnavox service manual). This circuit uses a dual operational amplifier IC (two op-amps in one 14-in DIP package), p/n 612008-2. This device is approximately the same as the Motorola Semiconductor Products, Inc. type number MC1303P and the Fairchild uA739, both of which appear to be substitutes for the Magnavox part. Note that these numbers are industrial type numbers, not equipment manufacturer part numbers. Fig. 6A shows only the left channel, the right channel being identical except for pinouts.

The circuit in this example is essentially the noninverting AC amplifier discussed earlier, with some added refinements that suit it to phono preamplifier service. The low frequency gain (near DC) is set by the ratio  $(R1 + R2)/R3$ , which calculates out to about 900. But phono amplifiers do not have a flat frequency response because they must equalize the signal using the RIAA de-emphasis curve. Recall that there are two breaks in the downward slope of the standard RIAA curve, indicating that we need a different gain characteristic in the respective regions of the frequency spectrum.

It is to account for the two breaks in the RIAA curve that they use two feedback resistors, each shunted by a capacitor. The reactance of a capacitor drops as frequency is increased. A capacitor across the negative feedback resistor of an operational amplifier will feedback higher frequencies more than lower frequencies, so the gain at those frequencies will be lower. Since two breaks are in the RIAA curve we need two such networks.

The custom tailoring of the response curve in the phono preamplifier circuit

points out one of the most appealing properties of designing with op-amps. The overall circuit response is set by manipulating only the negative feedback loop!

The op-amp used in this circuit has a wideband open loop frequency response. The unity gain crossover point may be on the order of 1-MHz or more! Without some sort of frequency compensation, however, the phase shifts in the circuit may add up to 360 degrees at a frequency where the op-amp has more than unity gain, so oscillation will occur at that frequency.

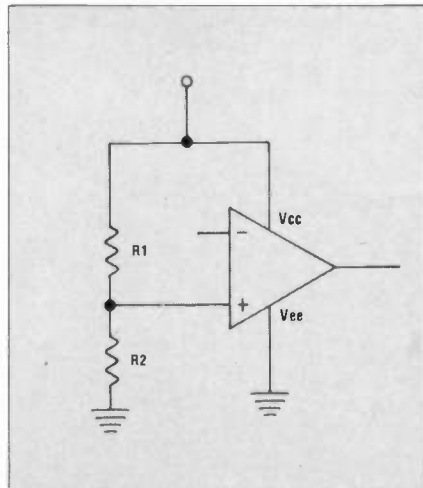


Fig. 5 Resistors R1 and R2 biases the noninverting input up so that a single power supply may be used.

Pins 3 and 4 form a pair of frequency compensation terminals for op-amp Ala, while 10 and 11 do the same in op-amp Alb. Fig. 6B shows the output of an uncompensated op-amp. The 1000-Hz output signal is combined with a 350-kHz "carrier," because the op-amp is oscillating. In Fig. 6C we see the effects of connecting as little as 33-pf across the frequency compensation terminals (i.e. 3 & 4 or 10 & 11). Note that the oscillation has stopped.

Some op-amps, notably those of the 741 family, are designed to be "frequency compensated" internally. The price for being unconditionally stable, however, is to drop the frequency response so low that no 360 degree phase shifts can occur at a point where the gain is greater than unity. Some of these devices have a -3 dB point as low as 8-KHz, and the rolloff above the -3 dB point is rapid. Such op-amps cannot be used in high fidelity service, although they are occasionally found in P.A. or communications audio circuits.

The Magnavox R247 chassis uses a single polarity power supply for the phono preamplifier. The Vcc terminal of the MC1303P/uA739 (pin #4) is tied to the +18-volt DC source, and Vee is grounded. To compensate for the DC unbalance this creates it is necessary to form a bias network consisting of

Continued on p. 45

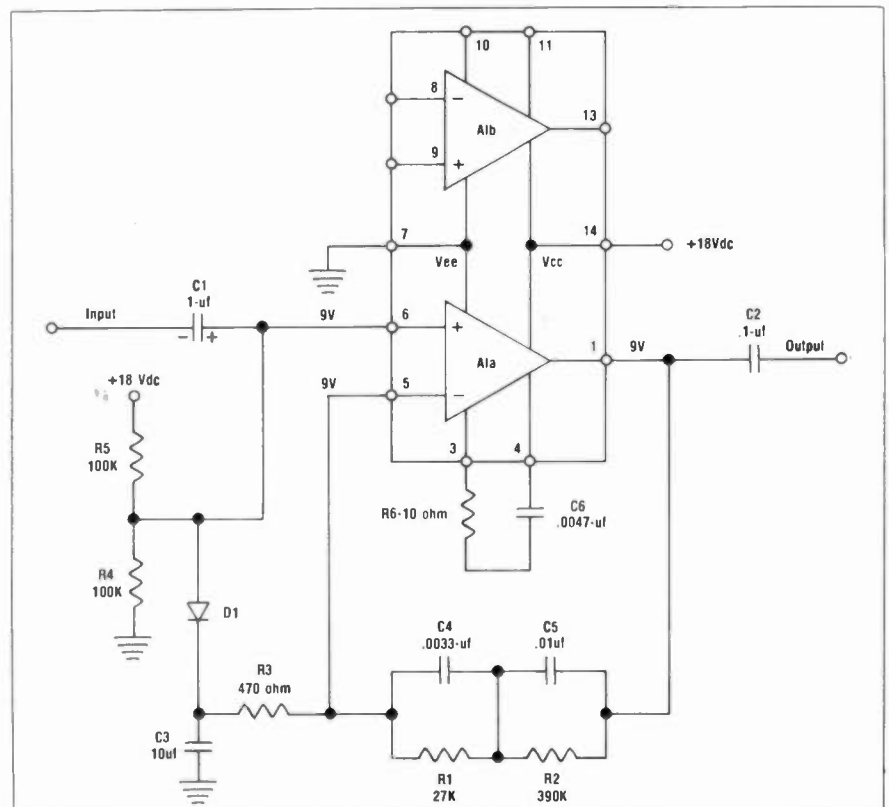
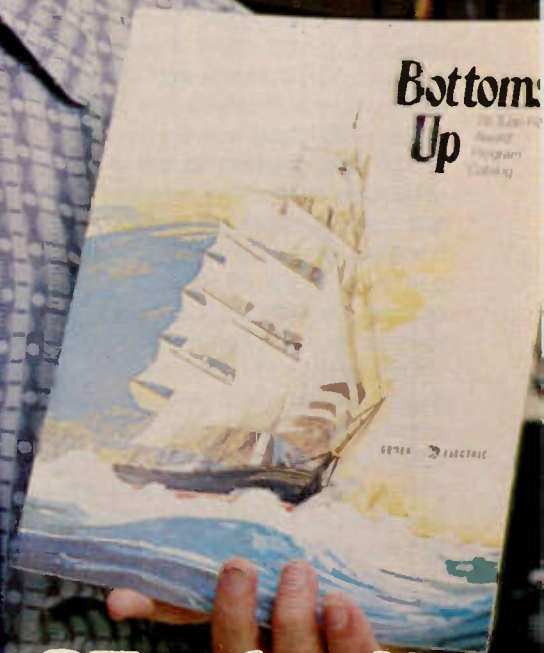


Fig. 6 (a) Phono preamplifier from the Magnavox R247 stereo chassis (b) Oscillations occur unless frequency compensation is used (c) Effect of only 33-pf across pins 3 and 4 of the op-amp.

Tibor Komoroczy,  
Service Manager  
Howard Roach TV & Appliance  
300 East Valley Blvd.  
San Gabriel, CA 91776



**“Don't throw away that GE tube flap  
and lose award points. Get your  
Bottoms Up Catalog and win!”**

Your reputation is our reputation

Tube Products Department • Owensboro, Kentucky 42301

GENERAL  ELECTRIC



# CB signal characteristics

## Why some CBs work better than others

We look at AM and SSB transmission and discuss performance differences

By Ed Piller

Have you ever wondered why some CB sets perform beautifully and others fall completely apart when the going gets rough? The basic answer normally lies in the type of receiver used and the features incorporated in it. In many cases, it can spell the difference between good communication under communication at all.

Many of these differences may not be noticed when operating in remote areas where you and your contact may be the only signals on the band. The acid test comes when communicating on a busy highway in an urban area during the peak travel hours.

Front end overload will cause the inadequate receiver to lose sensitivity and even blank out completely from an out of channel transmission of another nearby transmitter. This type of overloading can appear when the vehicles are within several blocks of one another and increase as the separation lessens. Poor immunity to ignition noise from your own or an adjacent auto's electrical system can knock out communication. Noise limiters and noise blankers will help this situation. Noise limiters (clippers) normally clip the interference at a level near the peak of the detected audio signal. (See Figures 1A and 1B). Clipping lower than this point will introduce distortion in the audio output. As clipping is done after detection, the noise pulse can be stretched by a sharp I.F. filter.

Noise blankers, if properly functioning, are superior to noise



B&K's CB Service Analyzer

limiters. The blanker samples the incoming noise pulse and generates a blanking pulse of the same duration which effectively cuts off a front end stage and makes the receiver inoperative during the time of the ignition pulse. (See Figures 1C and 1D). A good blanker normally operates near the front end of the system ahead of the I.F. filter. Pulse stretching is thereby eliminated.

Adjacent channel splatter can become annoying if there is insufficient selectivity in the receiver. Even with selective receivers, strong adjacent channel signals, either overmodulated or with an improperly adjusted power mike, will cause splatter products on nearby channels.

### Crystal vs. phase locked loop

Transceivers using crystal banks to control the receive and transmit frequencies may suffer from the effects of aging crystals. This aging process causes crystals to slowly change or

even jump frequency. This can be detected by a distorted or weaker received signal in one or more channels and an out-of-tolerance receiver or transmit crystal frequency. The newer CB transceivers, using frequency synthesis, employ electronic circuitry which locks all frequencies to one crystal. If this frequency is correct, then all other frequencies will also fall right in.

Lack of sensitivity in a CB set may be caused by a faulty antenna or transmission line, by a poorly designed set or one which is malfunctioning. A quick test can be made by setting up the receiver on a quiet channel in a location which is free of ignition and other signals. With the squelch circuit turned off, a rushing noise caused by front end thermal effects should be heard. If the output is silent, chances are that the receiver is lacking sensitivity and should be checked with a signal generator.

One of the more serious causes of communications problems on CB is the use of an improperly adjusted power microphone. By utilizing an audio clipper which is included in the power microphone the average talk power can be increased. However, if the power mike does not employ a filter after clipping, then sideband energy due to harmonics of the clipped signal can be generated. These harmonics, which increase with larger amounts of clipping, cause distortion of the inband signal and strong adjacent channel splatter. If a noise cancelling microphone is not used in this process, then the background road noise will increase and make the signal more difficult to copy. Many strong but unintelligible signals have been heard on the citizens' band which suffer from this problem.

### AM vs SSB

The use of single sideband (SSB) has proven advantageous, for many years





Hickok's CommLine integrated C.B. system.



Sencore's CB42 Analyzer

on amateur and commercial frequencies, over amplitude modulation (AM). The advantages of SSB can be shown by referring to Figures 2A and 2B.

A spectrum analyzer display is shown of a 100% tone modulated AM signal. Let's assume that the total unmodulated carrier output is four watts. As the total power in the carrier (at 100% modulation) is twice that of the power in the sidebands, each sideband will contain one watt of power. If we examine



Leader LSG-227 Signal Generator

the double sideband AM signal, it can be seen that the same information is contained in the upper and lower sideband. Therefore, only one sideband need be transmitted. Demodulation of the SSB signal can be accomplished at the receiver by inserting the carrier at the correct frequency at the tail end of the I.F. system in the detector.

It is thus shown that we can eliminate a sideband and carrier and put all the transmitter power into the one sideband.

This gives us a power advantage of four times (or 6 db). Furthermore, the transmitted signal takes up only half the spectrum space and can be copied on a receiver whose bandwidth is one half of that for an AM signal. Therefore, another 3 dB of power advantage is realized when using SSB. Consequently, it is shown that the use of SSB gives a power advantage of 6 to 9 dB (4 to 8 times) over that of AM.

An added advantage of SSB will be noticed on a busy channel. When the correct frequency is inserted at the receiver by tuning to demodulate the SSB, only the signals that are within 50Hz of the SSB signal will be demodulated. All other signals which could be as much as 1 to 2KHz off frequency will sound like monkey chatter.

### Performance testing a transceiver

The AM or SSB receiving characteristics of a CB can be conveniently checked

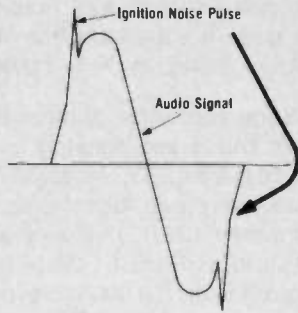


Fig. 1A Unclipped Noise on Audio Signal

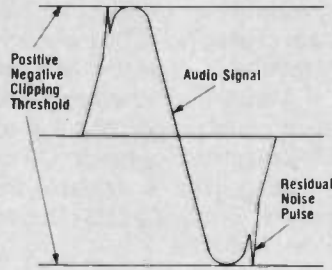


Fig. 1B Clipped Noise

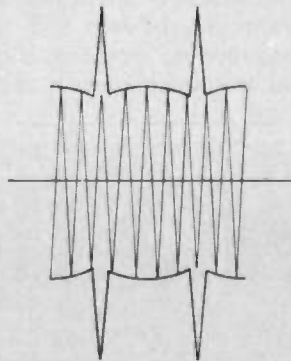


Fig. 1C Noise on RF Signal

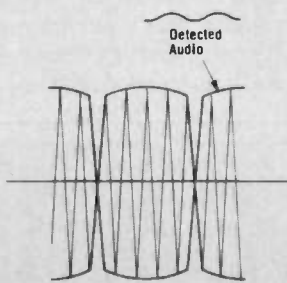


Fig. 1D Effect of blanked noise on RF signal and detected audio

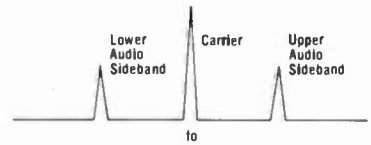


Fig. 2A Spectrum Display of 100% tone modulated A.M. Signal

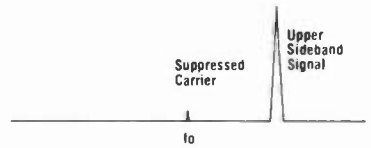


Fig. 2B Spectrum Display of fully modulated upper sideband SSB Signal

using the proper combination of test instruments. Many integrated CB test units are conveniently available today from a number of manufacturers. Included in this list would be the Leader LSG-227 unit; B & K Precision's CB Servicemaster; Hickok's CommLine units; and Sencore's CB 42 Automatic CB Analyzer. A set-up for testing these parameters is shown in figure 3.

As an example, the Leader LSG-227 provides the following features:

1. Forty channel synthesizer controlled signal source
2. Metered signal output level from .05 to 100,000 microvolts
3. Metered modulation level from 0 to 100% for 0.4, 1, and 2.5KHz tones plus C.W. and external modulation
4. Calibrated variable channel frequency of  $\pm 5$ KHz
5. SSB test features such as plus and minus 1KHz offset at channel for USB and LSB tests
6. Internal noise generator for noise limiter and blanker tests

The receiver tests which can easily be performed include the following:

- AM receiver sensitivity test
- AM receiver AGC test
- Squelch characteristic test
- Noise blanker and ANL tests
- Audio output and distortion tests

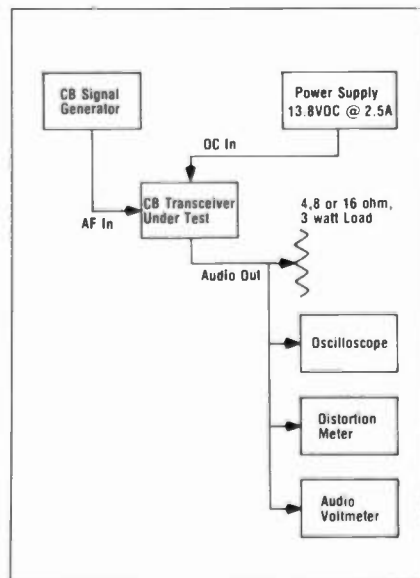


Fig. 3 Equipment hookup for CB receiver characteristic measurements

SSB receiver sensitivity test  
A typical CB receiver test set-up is shown in Figure 3.

### CB transmitter testing

A setup for testing the transmitter section of a CB set is shown in Figure 4. With this, the following parameters can be observed: R.F. power output, channel frequency, and an oscilloscope

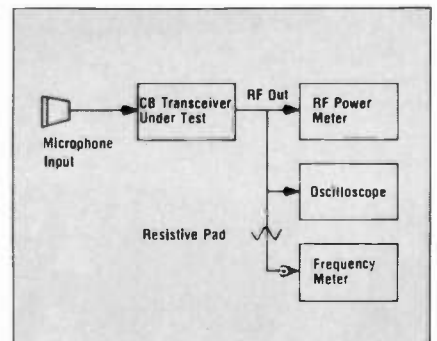


Fig. 4 Equipment hookup for CB transmitter measurements

display of the R.F. modulated waveform. The last characteristic is important as under or overmodulation effects can be readily observed.

The major consideration in getting clear intelligible communication is in microphone technique. The microphone should be held at the side of the mouth and talking should be done across the microphone so that speech distortion is not caused by the breath impinging on the diaphragm of the microphone. The internal microphone gain setting should be adjusted by a qualified technician to prevent overmodulation with its attendant distortion effects. Many sets are not properly adjusted for transmit audio gain by the manufacturer.

# BULLETIN BOARD

**Microminiature Lamps** are featured in the latest data sheet from Chicago Miniature Lamp Works. The new publication covers the firm's recently expanded line of T $\frac{1}{4}$ , T- $\frac{3}{8}$  and T $\frac{1}{2}$  lamps and includes detailed drawings of each. These extremely small lamps are designed primarily for LCD watches and other applications which require the smallest lamp available. They are available in four configurations with eight ratings. The data sheet is free from *Chicago Miniature Lamp Works*, 4433 N. Ravenswood Avenue, Chicago, IL 60640.

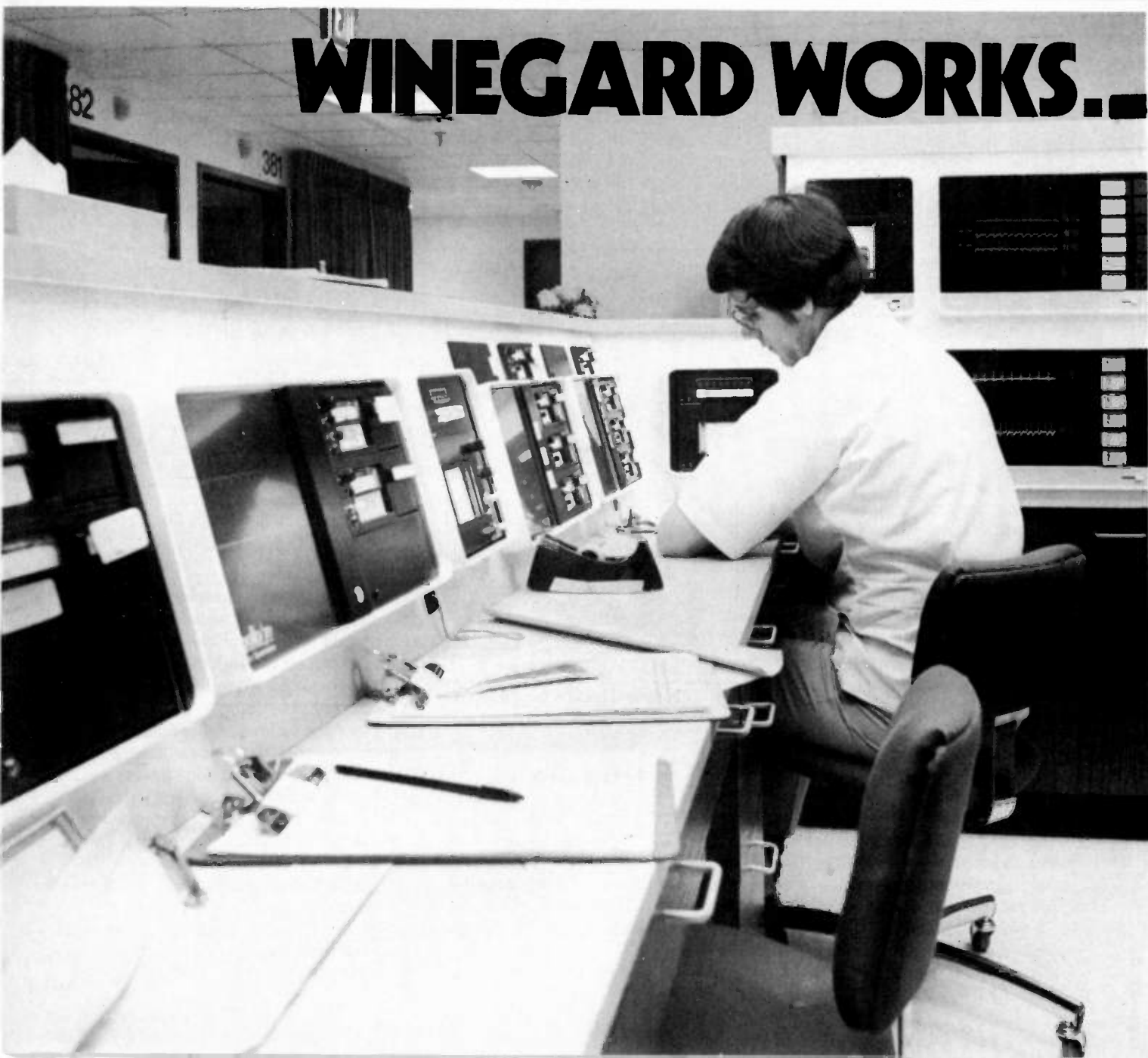
**Test Instruments**, including analog and digital panel meters, meter relays, and controllers are listed in the latest 60-page four-color Stock Instrument catalog from Simpson Electric. New products in catalog No. 4700 include the firm's Model 461 digital multimeter priced at \$142.50 and the new series 2860 digital panel meters. Both the 461 and 2860 utilize state-of-the-art LSI circuitry. Catalog 4700 is available free from *Simpson Electric Co.*, 853 Dundee Ave., Elgin, IL 60120.

**Different Soldering Applications** requiring a combination of the right alloy and flux are covered in a new "Solder User's Guide" available now from Multicore. The guide lists in an easy, quick reference chart most applications, the alloy to use, a description of the product

and the part numbers in a variety of different convenience packaging. Also included are accessories such as a desoldering wick for removing solder from a joint quickly and cleanly. Free copies of the guide are available from *Multicore Solders*, Westbury, N.Y. 11590.

**A Semiconductor Master Replacement Guide and Catalog** for 1978 is available from GTE Sylvania. The guide cross references, alphanumeric order, more than 137,000 industry part numbers to the Sylvania ECG line. It contains approximately 18,000 more part numbers than previous editions. It includes outline drawings, circuit diagrams, and technical descriptions of the listed transistors, diodes, rectifiers, SCRs, TRIACs, Zener diodes, modules, digital and linear integrated circuits and special

## WINEGARD WORKS..





purpose devices. Available for \$2.95 from Sylvania distributors, or *GTE Marketing Services Center*, 70 Empire Dr., West Seneca, N.Y. 14224.

**Test Instruments** are detailed in two new catalogs available from VIZ Test Instruments. One catalog is an 8-page short-form publication that provides highlights of 36 popular VIZ instruments. The other is a 4-page full-line catalog that gives specifications and technical information on more than 55 products, including oscilloscopes, digital VOMs, VoltOhmysts, frequency counters, rf, audio, pulse, function, and color bar generators. Many of the products featured are new and appear in print for the first time. Available free from Robert Liska, *VIZ Test Instruments Co.*, 335 E. Price St., Philadelphia, PA 19144.

**A Crimp Tool Guide** that describes crimp insertion and extraction tools has been published by ITT Cannon Electric. Catalog CCTG contains 52 charts, six photographs and six drawings. The charts include such information as contact size, wire size, pin and socket part numbers. Additional chart information covers crimp tool part number locator, extraction tool number, insertion/extraction tool number and tool colors. Available free from *ITT Cannon Electric*, 666 E. Dyer Rd., Santa Ana, Calif. 92702.

**Universal Replacement Antennas** for television sets, portable radios, and CB walkie-talkies are cross referenced in a new guide published by RMS Electronics. The brochure features full size illustrations of all replacement dipoles

and back of the set antennas with complete listings of all set manufacturers brands and set model numbers where applicable. The actual size diagrams facilitate correct matching of replacements required since the technician can see the complete bracket and connecting terminal details. Available free from *RMS Electronics, Inc.*, 50 Antin Place, Bronx, N.Y. 10462.

**The Newest In Electronic Kits** is covered in Heath Company's 104-page Spring 1978 catalog. New products include games software for the H8 computer system, a professional-quality low-cost engine analyzer, a metal detector with adjustable discrimination, a variable-speed ceiling fan that is both attractive and efficient, a bi-directional wattmeter for use in amateur radio, CB,

# in Cardiac Care.

It's a life or death matter.

Winegard equipment helps doctors, nurses, and biomedical technicians keep a constant watch on the heartbeats of cardiac patients.

Telemetric equipment, such as that developed, manufactured and installed by Spacelabs, Inc., Chatsworth, CA, uses Winegard TV reception products as components in the continuous monitoring of ambulatory patients' heart rhythms.



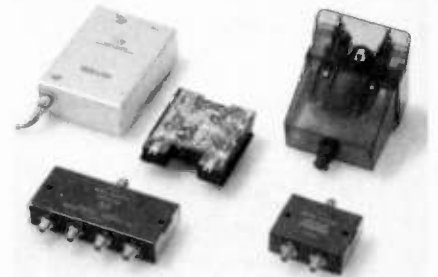
In St. Mary's Medical Center, Racine, WI, heart signals are displayed on Micro-computer Arrhythmia Detection Units, products of Spacelabs, Inc. Mobile patients are equipped with low output transmitters, which feed impulses from 18" electrode leads to an antenna. Biomedical Telemetry systems operate in the VHF television band, (174 through 216 MHz) providing vital signs information to the hospital staff on up to 70 Cardiac Care Patients in a single

unused television channel. From the antenna to the monitors, Winegard equipment is totally involved, using various combinations and models of low-noise, high-gain preamplifiers, power supplies, splitters and couplers, depending on size and type of installation. Ambulatory patients stay within a 300 foot radius of the antenna.

Heart telemetry is especially valuable in getting patients up and moving around as part of recovery, and in opening up beds for other cardiac cases. This aids in reducing costs to patients by getting them out of bed at the earliest time.

An important feature of Spacelabs systems is the capability of monitoring units to be programmed to alert the Critical Care Nurse, if heartbeats exceed upper and lower limits determined by the physician, and to print out ECG tapes that carry each patient's code number, time and date. This telemetry system provides diagnostic quality monitoring for the physician, equal to that obtained from hard-wired systems, while permitting patient mobility. Spacelabs, Inc., specifies Winegard off-the-shelf TV reception products as telemetry components

for dependability and performance. Winegard preamps are vital in attaining adequate gain at receiving units. Limited power of transmitters



through electrode leads, and the necessarily small size of omnidirectional antennas result in a low signal. Low-noise preamps are important in boosting signals to monitors, and extending workable range of the system. Efficient splitters and couplers are required to combine antenna lines, and to split combined signals to feed various monitors tuned to the different frequencies. Winegard power supplies provide the capacity to power from 3 to 24 preamps. Winegard...at the heart of quality reception, where performance is paramount.

**WINEGARD WORKS... Everywhere!**



# WINEGARD

The Winegard Company • 3000 Kirkwood Street • Burlington, Iowa 52601  
Circle No. 136 on Reader Inquiry Card

ET/D - July 1978 / 31

# You can be sure

more times in more circuits in more places  
than with any other multimeters on the market today

Each Sencore DVM is backed  
with 15 Megohm input imped-  
ance for one third less cir-

cuit loading on every measure-  
ment. That means 50% higher  
accuracy than other DVMs.

## DVM38 \$395

3½ DIGIT .1% DCV ACCURACY  
AUTO-RANGING DVM

A "prime" standard at your fingertips for measurements you can trust. Auto-ranging for extended low-level range and ease of operation. 15 Megohm input impedance assures .1% reading accuracy is maintained in solid state circuits. Highly sensitive, yet fully protected to 2000 VDC overloads. Hi-Lo Power Ohms circuit simplifies in-circuit resistance measurements.

## DVM37 New \$268

3½ DIGIT .1% DCV ACCURACY  
PORTABLE DVM

Prime standard .1% accuracy on the bench or in the field for less than \$250. The DVM37 is the most accurate portable DVM you can buy, with 15 Megohm input impedance for 50% more accuracy. Includes automatic features—Auto Zero, Polarity, Decimal, Overrange. Fully protected inside to over 2000V on all functions, including Ohms, and protected outside with super-rugged case. Full ranges for every test. Fingertip "Push-On" switch in probe saves batteries as power is applied only when needed.

## DVM32 \$225

3½ DIGIT .5% DCV ACCURACY  
PORTABLE DIGITAL MULTIMETER

Bench and field master for digital accuracy measurements anywhere. 0.5% DCV accuracy, backed with 15 Megohm input impedance. Exclusive battery-saving Auto-Display turns the display on automatically when you make a measurement. 2000V input protection on all functions and ranges—including Ohms.

## DVM36 \$158

3½ DIGIT .5% DCV ACCURACY  
POCKET PORTABLE DVM

Pocket portable lab accurate performance that fits every budget with highest performance-to-price benefits of any meter. .5% DCV accuracy, backed with 15 Megohm input impedance for lowest circuit loading. Full protection to 1000 V on all functions and ranges—including ohms. Drop-proof case. Battery-saving "Push On" button in probe.

## DVM35 \$134

3 DIGIT 1% DCV ACCURACY  
POCKET PORTABLE DVM

Fast, direct reading digital accuracy for the man on the go. Same features as DVM36, except 3-digit, 1% DCV accuracy, backed by 15 Megohm input impedance that is ten times more accurate than analog meters.

aircraft and marine radio, and the HW-2036A 2-meter radio for the amateur radio enthusiast. The catalog is free from the *Heath Company*, Benton Harbor, Michigan 49022.

**Portable Electrical Testing Equipment** is detailed in the latest full line, short form catalog and price sheet from a.w. Sperry Instruments. The new catalog, MES-100, contains detailed specifications for the firm's line of Snap-Around ammeters, multi-testers, insulation testers, voltage indicators, and accessories. An accompanying price sheet lists the suggested trade prices along with instructions for purchase. The literature is free from *a.w. Sperry Instruments, Inc.*, 245 Marcus Boulevard, Hauppauge, N.Y. 11787.

**Module Extension Cable Kits**, a new servicing aid, are described and illustrated in a new fact sheet from Sylvania. The literature, ET1372, details the new Chek-A-Board products, designed for troubleshooting plug-in modules for RCA and Zenith color TV receivers. The cable kits permit in-circuit module testing without pulling the chassis. The fact sheets are free from Sylvania distributors, or from *GTE Marketing Services Center*, 70 Empire Dr., West Seneca, N.Y. 14224.

**The Proper Use & Care of Hand Tools** is the subject of a new booklet from Klein Tools. The 88 page, 2-color booklet contains hundreds of illustrations which show how to select the proper tool for various jobs, the care and maintenance of tools and many of the hazards which can result from misuse of tools. Cartoon characters are frequently used to emphasize the text. Available free from *Klein Tools, Inc.*, 7200 McCormick Road, Chicago, IL 60645.

**Variable Transformers** are described and illustrated in the latest 60-page catalog from Superior Electric. Designated Catalog P178, the new literature consolidates descriptive and technical data on their complete product line. Included are ratings, dimensions, performance curves and schematic connection diagrams in an easy-to-read format. It includes metric equivalents and covers new 1.5 amp type 9 and 575 volt series as well as information on manual, motorized, enclosed laboratory, metered knob, 40-volt, square frame, multiwound, line corrector models and adjustable speed motor drives. Free from *The Superior Electric Co.*, 383 Middle St., Bristol, CT 06010. **ETD**



New DVM37



DVM38



DVM32



DVM36

In stock at your favorite local  
Sencore Full Line Distributor.  
In Canada: Superior Electronics

**SENCORE**  
DIGITAL MULTIMETER SPECIALISTS  
3700 SENCORE DRIVE SIOUX FALLS, SD 57107 (605) 339-0100

# SOMETHING YOU ALWAYS WANTED BUT WERE NEVER ABLE TO OBTAIN...

## ET/D's Modern Serviceshop Management Manual

... It's a textbook for the independent electronics service technician who is actively engaged in consumer and industrial service markets.

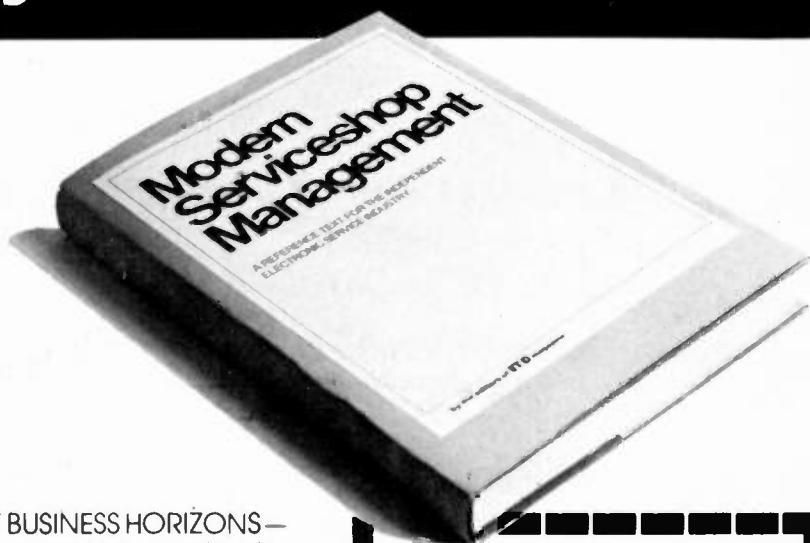
Prepared by the editors of ELECTRONIC TECHNICIAN/DEALER, this comprehensive management guide is must reading for all service technicians and dealers who have to cope with the day-by-day problems of running a small business.

ET/D "Modern Serviceshop Management" will focus on three major categories:

- BUSINESS MANAGEMENT — with chapters on basic accounting procedures, ratio analysis, planning for profit in the business environment and current asset management.
- SERVICING OF ELECTRONICS EQUIPMENT — with chapters on troubleshooting transistorized circuits, modern test equipment, digital electronics, industrial control systems and modern serviceshop layout.

- NEW BUSINESS HORIZONS — with chapters on whether to expand your business, contract service, business opportunities in medical electronics and service business opportunities in small industrial settings.

This manual is in the works now, so order your copy now by sending in your order with remittance. No service shop should be without this manual from one of the outstanding book publishing houses in the country.



ELECTRONIC TECHNICIAN DEALER  
LEADING THE CONSUMER AND  
INDUSTRIAL SERVICE MARKETS

**HBJ** A Harcourt Brace Jovanovich Publication

CLIP AND MAIL TO:

ET/D MAGAZINE  
1 East 1st Street  
Duluth, Minnesota 55802

Please send \_\_\_\_\_ copy(ies) of ET/D's Modern Serviceshop Management at \$12.95\* per copy. Enclosed is a check for \$\_\_\_\_\_ to cover the cost of the textbook plus shipping and handling expenses. ET/D Modern Serviceshop Management will be shipped immediately following publication.

NAME \_\_\_\_\_

COMPANY NAME \_\_\_\_\_

ADDRESS \_\_\_\_\_

CITY \_\_\_\_\_ STATE \_\_\_\_\_ ZIP \_\_\_\_\_

Mail this order blank along with your payment to:  
Book Dept. ET/D Magazine  
1 East 1st St.  
Duluth, Minnesota 55802

\*Please add \$1.50 per order to cover postage and handling. On multiple copy orders add 25c for each additional copy (for example, two copies would cost \$1.75 for postage and handling).

Publication Date: September 1, 1978-Orders will be fulfilled within 60 days of the publication date or within 60 days of the date of order, if received after publication date.



# TEST INSTRUMENT REPORT

The practical applications for a function generator are so numerous that it is hard to imagine a modern electronics serviceshop without at least one of these efficient units on the bench.

While the cost may have been a factor in the past in deciding whether or not to invest in such an "ancillary" unit, the advance of modern manufacturing

need more accuracy than that we suggest you hook it to your own frequency counter to verify the output.

The Model 3010 has so many basic applications it is hard to know just exactly where to begin, so let's start by mentioning a few. It can be used as a basic signal source for checking amplifier response, for basic calibration work in oscillator circuits, as a regulated low-current DC power supply, variable from plus or minus 10 volts (600 ohms internal impedance), or when used in conjunction with its VCO (voltage controlled oscillator) back panel jack, it may be used as a sweep generator for AM and communications receiver alignment work—or it will provide a direct FM output.

In addition to the on-off, frequency selection, and function pushbuttons and the variable frequency dial, the other front panel controls are an amplitude control which varies the 600 ohm output from minimum to 20 volts peak to peak (open circuit) or 10 volts peak to peak (into 600 ohms), plus a DC offset knob. When using the 3010 on higher frequency ranges, especially with square wave output, it must be terminated into 600 ohms to minimize ringing and overshoot.

The DC offset control can be used to add a positive or negative component (plus or minus 5 volts into 600 ohms) to the AC output found at the regular 600 ohm output. (The TTL square wave output is independent of both the amplitude and offset controls). The DC offset feature allows the 3010 to be used as a bias or regulated supply (when all of the function and frequency select pushbuttons are disengaged) and, this feature also has applications for testing AC circuit bias conditions or in design work. The offset, when used in conjunction with the sine, triangle or square wave outputs, permits clipping of these waveforms at various amplitudes—as you can readily see by connecting the 3010 up to your scope.

Another unique feature of the 3010 is the VCO backpanel input. The unit is designed so that a 0-to-5.5volt ramp wave applied here will provide an output frequency change of 100 to 1. That is, if a 0-to-+5.5 volt (maximum) ramp is applied to the VCO jack, when the range selector is set on 10 kHz and the dial is set for 0.1, the output frequency when the ramp reaches +5.5 volts will be 100 kHz, for a total sweep of 1 kHz to 100 kHz.

*Continued on p. 45*



*For more information about this test instrument circle 140 on the Reader Service card in this issue.*

## B&K-Precision's 3010 Function Generator

Applications abound

By Richard Lay

technology has effectively negated this decision for us.

One of the very latest low cost (suggested retail \$175) function generators to come onto the market in recent months is B & K-Precision's Model 3010, which I first saw at this year's NEWCOM show. It is the subject of this month's test instrument report.

The 3010 has three basic waveform outputs, triangle, sine and square wave in six basic frequency ranges from 0.1 Hz to 1 MHz. However, a fourth front panel output, for work in digital TTL circuits, is a 0-to-+5 volt pulse waveform. But, don't go away, because a variable frequency control is used in combination with the basic frequency selector pushbuttons to change the basic 0.1-to-10 dial to a multiple determined by its pushbutton value—or any frequency from 0.1 Hz to 1 MHz.

And, according to tests run on ET/D's bench, we found the accuracy of the range expander dial throughout its range to approximate 97 per cent of the designated multiplier (2% better than manufacturer's specifications). If you



# How to tell the parts apart.

When you've got the industry's broadest line of parts, one replacement guide is not always enough. That's why we've got a library.

We've got the book, our "ECG Semiconductor Master Replacement Guide," the most complete handbook available.

And then there's our specialized manuals: The "CB Replacement Guide" that cross-references more than 5,500 parts for 73 different brands of CB equipment; our "Industrial MRO Replacement Guide" that lists ICs and

power devices used in  
 "Module & IC Replacement  
 3,000 non-repairable  
 summer electronics e  
 & IC Tech Manual'  
 for linear circuit  
 You can get

st  
 mu  
 bet  
 pus.  
 Ec  
 gene  
 Comp  
 811 Sh  
 871-891



**SYL**

36 / ETID - July 197

# DEALER'S SHOWCASE



## Total CB System

Circle No. 141 on Reader Inquiry Card

A 'total CB system' concept, patterned after amateur radio products, has been introduced by *Stoner*. The concept includes the PRO-40 CB transceiver, a matching speaker, AM adaptor, operator console, ham radio adaptor, monitor oscilloscope, meter console and a computer interface modem. The speaker is a bass reflex type with internal damping, the adaptor permits incorporation of AM into the system, and the operator's console can energize the entire system at any present time with a

digital clock controller. The console also incorporates a full fidelity phone patch for connecting mobile and distant stations into the local telephone network, and it has the provision to record and playback incoming stations on a customer supplied tape recorder.

## Microwave Radiation Detector

Circle No. 142 on Reader Inquiry Card

A new easy-to-use electronic instrument that checks microwave ovens for potential radiation leakage has been introduced by *Tanray Associates*. Designed for use by the consumer, the hand-held, lightweight device requires no batteries or AC power. Tests are conducted by

# SIGNAL GENERATION PURE AND SIMPLE.



Our SMG40 stereo generator and RE101 signal generator together provide the cleanest, most precise wave-form for AM, FM, and FM stereo testing. And both are compact and easy to operate.

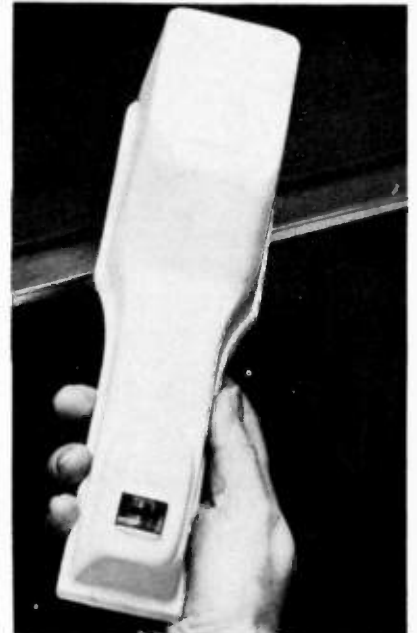
The RE101 has frequency ranges of 87-130 MHz and 0.15-30 MHz. In addition to providing digital display of the carrier frequency, this low leakage signal generator can simultaneously modulate FM and AM...with very little distortion.

For testing of high-quality stereo decoders and Hi-Fi stereo receivers, the SMG40 offers more than just a time multiplexed composite signal. It also features L-R separation greater than 65 dB, distortion less than 0.03% and easy pushbutton operation.

For a demonstration or more information on signal generation pure and simple, call or write The London Company, U.S. representative for Radiometer Electronics, 10000 Madison Drive, Cleveland, OH 44145. Telephone (216) 431-7000.

 **Radiometer Electronics** <sup>INC.</sup>

...for FREE demonstration circle 101 on Reader Service Card  
...for more details circle 120 on Reader Service Card



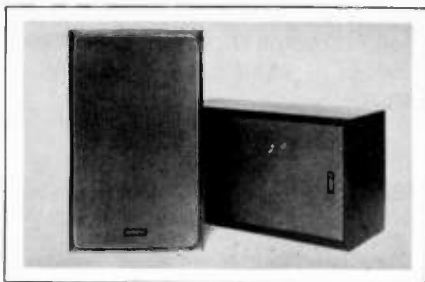
turning on the oven and moving the instrument, called a Guard-Rod, along the space between the oven door and the oven itself. If the pointer on the meter swings to the red portion of the scale, leakage may exist. The instrument retails for \$19.95.

## Loudspeaker System

Circle No. 143 on Reader Inquiry Card

A new loudspeaker system designed to provide maximum audible performance in the \$100 price range has been announced by the *Advent Corporation*. Called the Advent/1, it is a two-way system incorporating a 1-3/8 inch cone tweeter with ferro-fluid damping, and a nominal 10 inch acoustic suspension woofer. The result is a frequency range including a deep bass response that is said to be similar to that of the widest range speakers available. A minimum of 15 watts per channel is recommended for





the 8-ohm system, which measures 22 inches by 13¼ inches by 9¼ inches deep. Two cabinet finishes are available; walnut grained vinyl at \$99.95 and genuine walnut veneer at \$120.

### CB Whip Antenna

Circle No. 144 on Reader Inquiry Card

A new gutter mount CB whip antenna has been introduced by *Electronic Industries, Inc.* Designated Model 224C, the new antenna features a quick mount spring clamp and a center loaded coil. Stainless steel construction offers dura-



bility to the whip, and the unit is easily adjustable for lowest possible SWR. The new antenna comes with a hex key wrench and a 10 foot 10 inch 58U coaxial cable with PL-259 connector. Finished in heavy chrome, the antenna has a black coil jacket and is packaged on an attractive display card. Suggested retail price is \$14.95.

### Attache Public Address

Circle No. 145 on Reader Inquiry Card

A new public address system contained in an attache case weighing only 22 pounds is being introduced by *Perma*

# Minimum Investment Required



Workman's all new **WEP** Semiconductor line affords the broadest coverage of entertainment semiconductors, yet minimizes your investment for inventory requirements while insuring very liberal and uniform profit margins to all steps of distribution.

What's more, Workman's new **WEP** Semiconductor Catalog and Cross Reference Guide is the most complete and up-to-date reference work in the industry.

⊃ packaged in either attractive space-saving stock boxes or blister hanger cards carrying complete cross reference and technical specifications, the new **WEP** line is available through the nationwide chain of Workman distributors.

Your business card or letterhead will bring immediate response from one of our factory representatives. Ask for Catalog X78.

**WEP** Semiconductors From  
The Parts Specialists

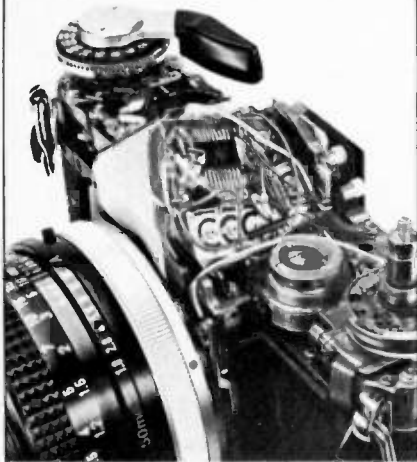
**WORKMAN**

ELECTRONIC PRODUCTS, INC.

SARASOTA, FLA. 33578\*  
P.O. Box 3828 (813) 371-4242  
TWX 810-864-0401 Workman Sara

Circle No. 137 on Reader Inquiry Card

## for an experience in electronics,



## get into cameras

Improve your income by acquiring additional skills as a camera repair technician. Increasing use of electronics in cameras is creating still more opportunities for camera repair specialists. Take advantage.

### Performance Training

National Camera developed the first comprehensive technical training for camera repair technicians in the '50's. More practicing technicians have received training from us than from any other single source. Now this better-than-ever professional program is as close to you as your mailbox. Learn at home!

### Complete Package

You get texts, tools, practice equipment — a complete program including the latest additions in photographic electronics — not available anywhere else.

### Free catalog

Find out about great training programs in camera repair technology. You can learn at home, keeping your present job, or at our one-year resident school in Colorful Colorado. For free information, use the card in this publication or write us today.



**National Camera**  
Technical Training Division, Dept. ECA  
2000 West Union Ave.,  
Englewood, Colorado 80110

Accredited member: NHSC, NATTS

Circle No. 123 on Reader Inquiry Card

38 | ET/D - July 1978

**Power Electronics.** Identified as Model S-210A, the system includes a 35 watt amplifier, a cardioid microphone, and a full-fidelity speaker built right into the at-



tache case, with 40 feet of cable. The mike can be worn in the lavalier holder, or in the desk or floor stand holder. The new system is battery operated, can be used indoors or out, and will operate up to 200 hours on one set of alkaline flashlight batteries. It can also be accessorized with an AC adapter for plug-in use.

### Power Base Microphone

Circle No. 146 on Reader Inquiry Card

Two new power microphones for CB base station use with both AM and SSB have been announced by *GC Electronics*. They are: Range Booster II, an amplified microphone with amplifier gain of up to 26 dB, and Range Booster III which incorporates variable compres-



sion and amplifier gain up to 56 dB. The speech compressor in Booster III is said to increase total average modulation by reducing instantaneous peak voice sounds and eliminating possible overload distortion in the transmitter. Amount of compression is variable with a control

on the mike. A 6-wire configuration is used, and mikes are solid-state. Booster II retails at \$53.10 and Booster III at \$63.72.

### Hand Held Transceiver

Circle No. 147 on Reader Inquiry Card

A new hand held transceiver, designed for personal or business communication in the 460-470 MHz General Mobile Radio Service FM-CB band has been introduced by *Standard Communications Corp.* Designated Model GMR-2, the new unit has 2 watts power output, with two crystal controlled channels for



point-to-point, or direct communication with another hand held, mobile unit or base station. The second channel is to key up a repeater station. The GMR-2 uses rechargeable Ni-Cad battery packs, and measures 3 inches by 1-3/4 inches by 8 inches. Accessories available include carrying case, small flexible antennas, battery chargers and tone encoders. **ET/D**

An Extraordinary Offer to introduce you to the benefits of Membership in

# ELECTRONICS BOOK CLUB

take any **3** of these unique electronics books (value to \$51<sup>75</sup>) for only **99¢** each

with a Trial Membership in the Book Club that guarantees to save you 25% to 75% on a wide selection of electronics books

All two-book sets count as only one of your three Selections.

1010-200 p.—Tower's International Transistor Selector—2nd Edition (\$9.95)

861-252 p.—Display Electronics (\$8.95)

743-224 p.—Electronic Music Circuit Guidebook (\$9.95)

563/536-344 p.—TWO BOOKS—Beginner's Guide to TV Repair & Installing TV and FM Antennas (\$15.90)

800-602 p.—Master Handbook of 1001 Practical Electronic Circuits (\$12.95)

510/628-487 p.—TWO BOOKS—How to Read Electronic Circuit Diagrams & Basic Electricity & Beginning Electronics (\$17.90)

905-294 p.—Build-It Book of Digital Electronic Timepieces (\$9.95)

785-294 p.—Microprocessor/Microprogramming Handbook (\$9.95)

754-238 p.—Practical CB Radio Troubleshooting and Repair (\$8.95)

913-476 p.—The Complete Handbook of Electrical & House Wiring (\$10.95)

780/790-350 p.—TWO BOOKS—111 Digital & Linear IC Projects & 21 Simple Transistor Radios You Can Build (\$15.90)

909-140 p.—How to Build Metal/Treasure Locators (\$7.95)

919-434 p.—Color TV Trouble Factbook—Problems & Solutions (\$9.95)

841-238 p.—Build Your Own Working Robot (\$8.95)

The Complete Handbook of Electrical & House Wiring

582-444 p.—Commercial FCC License Handbook (\$9.95)

21 SIMPLE TRANSISTOR RADIOS YOU CAN BUILD

101-416 p.—Electronic Circuit Design Handbook (\$17.95)

**M**ay we send you the choice of these 3 practical, time-and-money-saving books as part of an unusual offer of a Trial Membership in Electronics Book Club?

Here are quality hardbound volumes, each especially designed to help you increase your know-how, earning power, and enjoyment of electronics. Whatever your interest in electronics, you'll find Electronics Book Club offers practical, quality books that you can put to immediate use and benefit.

This extraordinary offer is intended to prove to you, through your own experience, that these very real advantages can be yours...that it is possible to keep up with the literature published in your areas of interest, and to save substantially while so doing. As part of your Trial Membership, you need purchase as few as four books during the coming 12 months. You would probably buy at least this many anyway...without the substantial savings offered through Club Membership.

To start your Membership on these attractive terms, simply fill out and mail the coupon today. You will receive the 3 books of your choice for 10-day inspection. **YOU NEED SEND NO MONEY!** If you are not delighted, return the books within 10 days and your Trial Membership will be cancelled without cost or obligation.

ELECTRONICS BOOK CLUB, P.O. Box 10, Blue Ridge Summit, Pa. 17214

## Facts About Club Membership

- The 3 introductory books of your choice carry publishers' retail prices of up to \$51.75. They are yours for only 99¢ each (plus postage and handling) with your Trial Membership.
- You will receive the Club News, describing the current Selection, Alternates and other offerings, every 4 weeks (13 times a year).
- If you want the Selection, do nothing. It will be sent to you automatically. If you do not wish to receive the Selection, or if you want to order one of the many Alternates offered, you simply give instructions on the reply form (and in the envelope) provided, and return it to us by the date specified. This date allows you at least 10 days in which to return the form. If because of late mail delivery, you do not have 10 days to make a decision and so receive an unwanted Selection, you may return it at Club expense.
- Personal service for your account—no computers used!
- To complete your Trial Membership, you need buy only four additional monthly selections or alternates during the next 12 months. You may cancel your Membership any time after you purchase these four books.
- All books—including the Introductory Offer—are fully refundable after 10 days if you're not completely satisfied.
- All books are offered at low Member prices, plus a small postage and handling charge. Prepaid orders shipped postpaid.
- **Continuing Bonus:** If you continue after this Trial Membership, you will earn a Dividend Certificate for every book you purchase. Three Certificates, plus payment of the nominal sum of \$1.99, will entitle you to a valuable Book Dividend of your choice which you may choose from a list provided Members.

## ELECTRONICS BOOK CLUB

P.O. Box 10  
Blue Ridge Summit, Pa. 17214

Please open my Trial Membership in **ELECTRONICS BOOK CLUB** and send me the 3 books circled below. I understand the cost of the books I have selected is only 99¢ each, plus a small shipping charge. If not delighted, I may return the books within 10 days and owe nothing, and have my Trial Membership cancelled. I agree to purchase at least four additional books during the next 12 months, after which I may cancel my membership at any time.

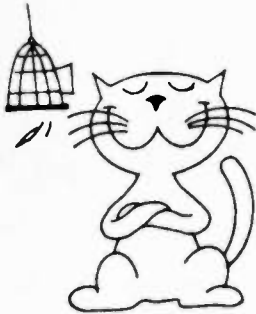
101	563/636	510/628	582	743
780/790	754	785	800	841
861	905	909	913	919
			1010	

Name \_\_\_\_\_ Phone \_\_\_\_\_  
 Address \_\_\_\_\_  
 City \_\_\_\_\_  
 State \_\_\_\_\_ Zip \_\_\_\_\_  
 (This offer valid for new Members only. Foreign and Canada add 10%.) T-78

Circle No. 111 on Reader Inquiry Card



**I'VE GOT A SECRET.**



**DID YOU KNOW THAT WE ARE "THE" MODULE REBUILDERS?**

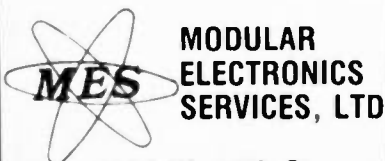
M.E.S. WILL GIVE YOU A HIGHER GUARANTEED PROFIT RETURN. PLUS, WE'LL THROW IN THAT WORKMANSHIP WE'RE BECOMING FAMOUS FOR!

**WE...Specialize in all MAGNAVOX & G.E. MODULES.**

- SERVICE ALL MAGNAVOX REMOTE CONTROLS, INCLUDING THE STAR.
- FINAL CHECK ALL MODULES ON AN OPERATING CHASSIS.
- USE ONLY FACTORY SPECS PARTS FOR REPAIRS.
- HAVE BEEN IN TV SERVICING FOR 20 YEARS.
- ARE FACTORY TRAINED, CET's & STATE LICENSED.
- GIVE YOU A 1 YEAR LIMITED GUARANTEE.

**SEND YOUR MODULES NOW...! 48 HOURS IN SHOP SERVICE**

**RELY ON THE MODULE REBUILDER**



**MODULAR ELECTRONICS SERVICES, LTD**  
 4024 W. 10th St  
 Indianapolis, IN 46222  
 (317) 243-8347

Circle No. 122 on Reader Inquiry Card

40 | ET/D - July 1978

# NEW PRODUCTS



## Modulation Meters

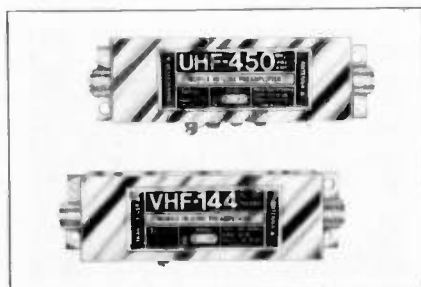
Circle No. 148 on Reader Inquiry Card

Two new modulation meters that offer frequency range coverage to 2 GHz and automatic tuning and amplitude leveling have been introduced by *Racal-Dana*. They are Models 9008 and 9009. Both instruments are reported to provide fully automatic measurement of AM and FM signals in approximately one second. They permit measurements on equipment operating at frequencies in the MF, VHF and UHF bands. Model 9008 is remotely programmable and has frequency coverage from 1.5MHz to 2GHz, while Model 9009 provides frequency coverage from 10MHz to 1.5GHz. Both units are portable and operate from either AC or an optional rechargeable battery pack. Model 9009 is priced at \$1495, and Model 9008 at \$1295.

## Mobile Preamplifiers

Circle No. 149 on Reader Inquiry Card

Two new mobile inline receiver preamplifiers designed for amateur, police, emergency, business band, and Class A CB transceivers have been announced by *Telco Products*. The new preamps are models VHF 144 and UHF 450. Each features an RF 'sniffer' circuit that allows the preamplifier to sense when the transceiver is keyed, effectively switching the preamplifier off during the transmit mode. Thus, the preamp can be



connected directly into the coax line without modification to the system. VHF 144, priced at \$49.95, has a frequency range of 140-180 MHz, with a 5 MHz bandwidth. UHF 450, priced at \$59.95, has a frequency range of 400-512 MHz, with a 1 MHz bandwidth.

## CATV Drop Cable

Circle No. 150 on Reader Inquiry Card

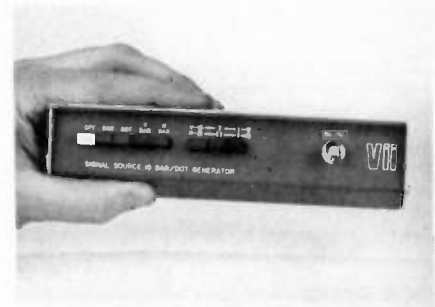
CATV operators can now get a free vinyl carrying case for each 25,000 ft. of coaxial drop cable ordered in *Belden's* dispenser cartons. The dispenser cartons, called the Unreel method, is said to offer savings in installation time compared with conventional reel-type cable dispensing. Further handling convenience



is provided by a tough blue vinyl case, with two sling-type carrying straps. Cable pays out drag- and tangle-free directly from the dispenser port of the carton.

## Industrial TV Tester

Circle No. 151 on Reader Inquiry Card



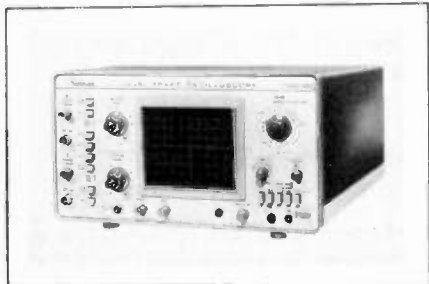
A new test instrument that develops a set of display setup signals for use in portable industrial television testing has been announced by *Visual Information Institute*. The composite video signal generated by the unit is also valuable for "go-no-go" video signal transmission testing in industrial distribution systems. Called Signal Source 10, the new pocket-sized generator develops bars, dots, H bars or V bars in one of three modes—21 x 15, 11 x 7 or 1 x 1 ele-

ments. The output signal is industrial interlace for the 525/60scan rate, at a level of 1.0V overall at a 75 ohm source impedance. Powered by two 9 volt batteries. Priced at \$149.95.

### Dual Trace Scope

Circle No. 152 on Reader Inquiry Card

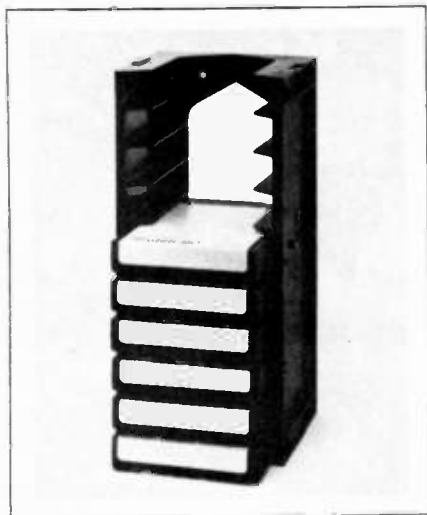
Simpson's newest oscilloscope is a 15MHz (usable to 27MHz, according to the manufacturer) dual trace triggered sweep unit, retailing for \$675. Called the Model 452, the scope features a 5-inch CRT with P31 blue phosphor, internal or



external triggering with TVV, TVH and VITS positions, and X-Y capability with matched vertical amplifiers. It also includes a times-5 magnifier for close inspection of waveforms, channel A or B display, channel A and B display, channels A plus B, and channels A minus B. With a 24 nanosecond rise time, it is capable of digital work. It features a built-in .5 volt peak-to-peak square wave (1KHz) calibrator, and is compatible with 120 or 230 volts AC.

### Cassette Storage System

Circle No. 153 on Reader Inquiry Card



A new 'rack-n-stack' cassette storage and filing system with a cartridge rack for 8-track tapes is new from J.L. Alger, Inc. The new system files and protects ten 8-track cartridges in each unit. It also

# You have your own calculator. Why not a DMM?



Finally, a digital multimeter that's yours, just like your pocket calculator, and more useful. Only \$169.\*

You pack only 13 ozs. in your pocket or service kit, but size is deceptive. The 8020A has more useful features than any other multimeter available—at any price! Features like 26 ranges and seven functions, including *conductance*. 2000-count resolution. Hi/lo power ohms.

And it's rugged. The high-impact case protects a minimum number of component parts (47 in all), and they're all readily available from any of the worldwide Fluke service centers. Your 8020A is factory calibrated by NBS traceable equipment. And we guaran-

tee it'll live up to published specs for a full year.

The 8020A is a true field instrument, designed with a highly readable LCD display, and inexpensive 9V transistor battery power for continuous use up to 200 hours. Reliability, quality and value: *that's* Fluke tradition.

To get your hands on one, call (800) 426-0361, toll free. Give us your charge-card number and we'll ship an 8020A the same day. Or, we'll tell you the location of the closest Fluke office or distributor (where you can save by buying a ten-pack of 8020As for only \$1521\*).

\*U.S. price only.

## Fluke 8020A DMM for Field Service: \$169.

1807-7004



Circle No. 115 on Reader Inquiry Card

interlocks to additional units for a wall-mounted system. Cartridge titles are clearly shown and rapid removal and insertion of cartridges is easy. The cartridge rack is molded of polystyrene in five colors.

### Power Mike for CB

Circle No. 154 on Reader Inquiry Card

A new counter card merchandising program for selling power microphones and adapters for CB is available now to authorized distributors and dealers from



the GTE Consumer Electronics Group. Designed to help sell Sylvania SDX-100 power mikes and adapters, the counter card consists of a two-color, point-of-purchase display and is designed as a supplement to other CB advertising. The SDX-100 power microphone features variable gain control and is reported to offer maximum voice amplification without clipping, a 4dB increase in average modulated power, and negligible audible distortion. The adapter system, called the Match-All system, is said to eliminate wiring and soldering.

### Proximity Sensor

Circle No. 155 on Reader Inquiry Card

A new miniaturized, self-contained 120VAC powered infra-red proximity sensor utilizing integrated circuits and without the need of a separate power supply or amplifier has been announced by Scientific Technology, Inc. Designated Series 6030, the new sensor provides either an opto-isolated open collector output or a solid state AC Triac output or a reed relay output. An epoxy-encapsulated package permits operation in harsh industrial environments. Detection without physical contact alleviates contamination or abrasion con-



cerns. Operating range is in excess of 12 inches to nearly any object. A visible LED indicator lamp is provided for alignment purposes. Single unit price is \$49.95.

### Desoldering Tool

Circle No. 156 on Reader Inquiry Card

A new self-contained, lightweight desoldering vacuum tool is new from Edsyn, Inc. Called the Soldapull III, the new tool features a precision molded plastic barrel and a low mass plunger assembly that is said to create an instant high vacuum impulse upon release of the trigger mechanism. Other features include a fully enclosed plunger shaft for safety

### AR Semiconductors

★ Exact ECG Replacements ★

ECG #	COST	ECG #	COST	ECG #	COST	ECG #	COST
100	.80	129	.93	177	.45	229	.77
101	.88	130	1.90	178MP	.48	233	.51
102	.79	130MP	3.80	179	4.44	234	.50
102A	.84	131	1.42	180	4.42	235	3.15
103	.92	131MP	2.84	181	3.75	236	5.20
103A	.90	132	.73	182	2.20	237	4.05
104	.80	133	.90	183	2.50	241	1.15
104MP	1.60	152	1.10	184	1.00	242	1.26
105	1.82	153	1.25	185	1.15	243	1.35
106	.48	154	1.65	186	1.15	244	1.82
107	.68	155	1.71	187	1.25	245	2.20
108	.77	156	.65	188	1.10	246	2.90
109	.17	157	1.08	189	1.25	247	2.39
110MP	.27	158	.93	190	1.55	248	3.21
112	.44	159	.77	191	1.90	249	4.19
113	.40	160	1.08	192	.90	250	4.25
114	.40	161	.80	193	.93	251	4.19
116	.33	162	4.20	194	.53	252	4.25
117	.30	163	5.38	195A	1.98	253	1.03
118	1.48	164	4.20	196	1.35	254	1.21
120	.45	165	6.75	197	1.26	261	.96
121	1.59	166	.81	198	1.33	262	1.08
121MP	3.18	167	1.03	199	.41	263	.98
122	1.65	168	1.13	210	1.00	264	.147
123	.53	169	1.53	211	1.15	274	1.40
123A	.66	170	2.48	218	2.63	280	3.15
124	1.15	171	1.08	219	3.25	281	4.10
125	.40	172	.45	220	1.25	284	5.05
126	.93	173BP	3.05	221	1.34	285	5.48
127	3.75	175	1.13	222	1.45	287	.43
128	.78	176	1.88	224	4.05	288	.47

- ★ 2 Year Unconditional Warranty
- ★ Same Day Shipping
- ★ No Minimum Order

- ★ Prepaid or C.O.D. Accepted
- ★ Orders over \$15.00 Shipped Free, under \$15.00 Please Add \$1.00 UPS

AR Semiconductors, P.O. Box 976, Union, N.J. 07083

Circle No. 106 on Reader Inquiry Card

WORLD'S MOST PRACTICAL SOLDER HANDLING TOOLS

**SOLDERING +  
DESOLDERING +  
RESOLDERING =**

**SOLDER Ability** ELEMENTARY TO ELITE

ESPECIALLY DESIGNED FOR YOU!

**Vacuum Impulse Products**

**ENSIST NOW** on The Civilian Air Force of Electronic Tools!

**EDSYN** 144 PAGE TRAINING MANUAL  
NEW! OVER 1,000 ILLUSTRATIONS

15528 ARLENITA ST. VAN NUYS, CALIF. 91406  
24 HR. PHONES Local (213) 949-2324 L.A. (213) 973-5115  
CABLE: EDSYNE 2 VAN TEL: 62-1469

Circle No. 112 on Reader Inquiry Card



and a high/low vacuum adjustment ring for miniature or standard desoldering requirements. A disconnect feature al-



lows fast separation of the barrel from the trigger housing for routine cleaning of solder accumulation.

### Portable Frequency Counter

Circle No. 157 on Reader Inquiry Card

A new 8-digit portable frequency counter has been introduced by *Communications Modifications, Inc.* Designated the FC101-K, the new 45 MHz counter reads 8 digits in KHz or 7 digits in MHz with memory mode. It is accurate within .0025 per cent, has a time base of .001 PPM, sensitivity of 10-30 mv, resolution of 1 Hz in KHz position, an RF shielded metal case and uses less than 250 ma, supplied by 7.5 to 15 VDC. Includes: a remote inductively coupled tap

off box, an RF line cord, DC power cord, AC adapter, Portable antenna and mounting bracket. Suggest retail price is \$149.95.

### Intrusion Alarm

Circle No. 158 on Reader Inquiry Card

A new type of portable, battery-powered intrusion alarm for use at home or travel has been introduced by the *Mallory Company*. Called the "Door Sentry", the new device hangs on a doorknob by a metal chain and is triggered by anyone who touches the knob. It is powered by a



9-volt alkaline battery. When activated, the alarm gives off a high-pitched noise that cuts through background sounds and can be heard through the door by a potential intruder. The noise is made by an electronic tone generator developed by Mallory. It does not require special wiring or installation, and is about the size of a small transistor radio. Suggested retail price is \$29.95.

### Clear Vinyl Splices

Circle No. 159 on Reader Inquiry Card

A new line of splices and disconnects with clear vinyl insulation that lets the installer see the wire during installation



has been introduced by the *Panduit Corporation*. The clear vinyl allows for proper tool positioning and proper wire insertion length. Insulation is color tinted for wire size identification. The splices

# VIZ TEST INSTRUMENTS

Formerly  
**RCA**  
Instruments



Color T.V. Pattern Generator

MODEL **WR-515A**

- All patterns output RF, IF, Video, 75 $\Omega$  or 300 $\Omega$ .
- Color bars with bar marker, dots, cross-hatch, blank raster.
- Professional "super-pulse" white window signal for over-all receiver analysis, with sync control.
- Ideal for MATV, CATV, CCTV systems.



Scope Dual-Tracer

MODEL **WM-541A**

- Convert single trace scope to dual trace.
- Freq. response DC to 4 MHz - 3dB, input imp. 1M $\Omega$  shunted by 45 pF.
- Choice of variable "alternate" or "chopped" switch rate.
- 1, 2, 4 ratio attenuators. CMOS circuitry, BNC connectors.

### COLOR PATTERN GENERATOR

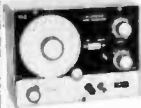
MODEL **WR-508B**



- Latest IC circuits, reliable glass circuit board.
- Compact, small for portability.
- Extremely stable.
- Low cost, high performance.
- Provides basic test patterns.
- Switches from AC-line to battery operation.
- Output on Ch. 3...Adj. to Ch. 2 or 4.

### Audio Sine/Sq. — Wave Generator

MODEL **WA-504B/44D**



- Output 20 Hz to 200 kHz in 4 ranges, stability 0.5% and 5% dial cal.
- Voltage output 4 ranges 0.01 to 10V at 600 $\Omega$ .
- All solid-state, through out 3 wire AC cord.
- Sine wave harmonic distortion 0.15% sq. wave rise and fall 150 ns, titl 2%.
- All solid-state, through out 3 wire AC cord.



### RF Signal Generator

MODEL **WR-50C**

- Tunable on fundamental 5 ranges 45 kHz to 40 MHz 2% with sweep output at 455 kHz and 16.7 MHz plus External stat.

- RF output 0.05V rms, 2 step 10 to 1 plus fine adj. attenuator.
- Internal Modulating freq. 600 Hz adj. to 80%.
- Audio output 6V rms across 15  $\Omega$  load.
- FE $\gamma$  amplifier for rugged stability, 3 wire AC cord.



### Color/B&W Picture Tube Tester/Restorer

MODEL **WT-333B**

- Complete with 5 socket adapters including in-line type.
- Easy to use, compact, rugged ABS plastic case.

- 3 meter design permits all three guns of color picture tube to be tested simultaneously.
- Effective cathode-emission restorer adds life to weak picture tubes.

### Ruggedized Color Bar Generator

MODEL **WR-538A**



- Die-cast aluminum case, tough-glass PC boxed shock mounted pattern switch, oper. temp. 5 F to 145 F.
- 100% digital IC crystal control.
- Color bars with markers, dots, crosshatch, super-pulse and sync control, 3 line AC cord.

### Senior VoltOhmyst

MODEL **WV-98C**



- 3 color meter face and panel for positive function identification peak to peak and rms scales.
- Meter electronically protected against overload.
- Response to 3 MHz, 11M $\Omega$  input resistance.
- Die-cast aluminum case.
- Easy-to-read 6 $\frac{1}{2}$ " (16.4 cm) mirror-scale meter.

- Measures from 0.2 $\Omega$ , 0.01 VDC, 0.95 VAC to 1000M $\Omega$ , 1500 volts DC and AC,  $\pm$  3% accuracy all functions.

### Master VoltOhmyst

MODEL **WV-510A**

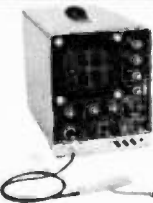


- Excellent stability.
- Battery or AC operation.
- Measures from 0.01 milliamperes to 1.8 amperes in 7 ranges.
- Measures from 0.2 ohms to 1000 megohms in 7 ranges.
- Measures from 0.01 volt to 1500 volts DC in 8 ranges.

- Measures from 0.2 to 1500 rms AC volts in 7 ranges.
- Measures peak-to-peak voltages of complex waveforms from 0.5 to 4200 volts in 7 ranges.
- 21-megohm resistance on all DC ranges,  $\pm$  3% F.S. accuracy all function.
- Supplied with DC/AC Ohms probe with flexible shielded input cable (BNC connector), and current test leads.
- Mirror scale meter—movement electrically protected against burnout.

### 5-inch Oscilloscope

MODEL **WO-535 A**



- All solid-state.
- DC/AC input.
- Preset TV "V" and "H" frequencies for instant lock-in.
- Flat-face 5-inch CRT.
- Illuminated graph screen calibrated directly in volts.
- Regulated power supply prevents trace bounce, excellent stability.



Before you buy, check our prices...

Call TOLL FREE (800) 645-9518

N.Y. State call (516) 752-0050

**FORDHAM** RADIO SUPPLY CO. INC.  
855R Conklin St.  
Farmingdale N.Y. 11735

YOUR ONE STOP DISCOUNT CENTER

Send for new 1978 catalog of over 3,000 items 164 pages of test equipment.  
CR. tools, tubes, components and electronic supplies.



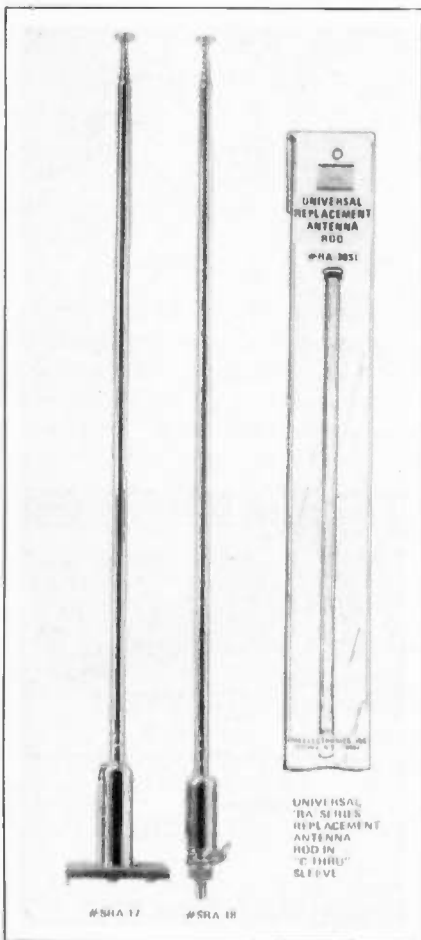
Mastercharge,  
BankAmericard,  
VISA and  
C.O.D. accepted  
ADD \$3.00 TO COVER  
SHIPPING HANDLING &  
INSURANCE N.Y. Res add  
adprop sales tax

and disconnects, which cover a wire range from No. 22 through No. 10 AWG, include internal wire barrel serrations that assure maximum tensile strength and wire contact when crimped.

## Antenna Rod Replacements

Circle No. 160 on Reader Inquiry Card

Two new TV antenna rod replacements for Sharp and other private label sets are now available from *RMS Electronics, Inc.* The new items are the No. SRA-17 and 18. The SRA-17 is for Sharp models 19A73, 19A75, 19A77, 19A79, 19A83 and 19A87, and Monitor sets XR214B, C-2050, and C-19876. The SRA-18 is



for Sharp sets 63-12327, 63-12547, 63-12541, C9000, C15141, C1541X, and others. Both replacement antenna rods have 5 telescoping sections which extend to 42 inches. The length of the rod when fully collapsed is 10-3/4 inches. Both replacements are individually skin-packed on a peg-hand card with a list price of \$5.15.

## Automatic Frequency Counter

Circle No. 161 on Reader Inquiry Card

A new 520 MHz automatic frequency counter is new from *Philips*. Designated the PM6664-01, the new counter has an



LED display of 8 digits, with resolution of 1 Hz up to 80 MHz and 10 Hz above 80 MHz. It can handle various power requirements automatically, and features a wide range of automatic input sensitivity from 20 mV rms (100 Hz—520 MHz) to 1 Vrms. Input attenuation is automatic and continuously variable, ensuring accurate measurements. Is is priced at \$545. **ET/D**

## NEWCOM

*continued from page 21*

addition to any test bench will, according to the manufacturer, measure anything from .1 pica to 1 farad. The battery operated, portable meter is rated at .5 percent accuracy, is fuse protected and carries a four digit LED display.

According to B & K the unit is especially applicable for measuring cable capacitance, matching capacitors, setting trimmers, or measuring the capacitance in series parallel networks.

GTE Sylvania's special markets division also announced the addition of three multi-purpose CB meters to their line of CB accessories. They are the SWM 20 portable SWR/field strength meter; the SWM 40 SWR/Power/Modulation meter equipped with illuminated scales; and the SWM 60, an SWR/Power/Modulation and antenna tuner. This latter unit is capable of modulation readings from zero to 100 percent, SWR readings of 1:1-3:1, and power readings of zero to 100 watts.

Sylvania also unveiled its SDX 400 base station power mike at the NEWCOM. This new variable gain microphone will broadcast up to 20 dB gain with output impedance ranging from zero to 25-hundred ohms and a maximum sensitivity of minus 45 dBs.

Another communications equipment manufacturer, Telco Products Corporation of Glen Cove, N.Y., is out with a "Swattmeter," a combination SWR-wattmeter. The Model 10-10 is described by the manufacturer as carrying three laboratory calibrated watts scales switchable from 10, 100 and 1000 watts and calibrated for 3

percent accuracy. It will retail at \$59.95.

JFD showed its new line of JFD SuperNova TV/FM antennas. The SuperNova line consists of six new "modest cost" designs and six advanced design antennas for use in areas where higher gain is required on UHF channels.

The new designs, JFD said, combine interleaved colinear element design to eliminate parasitic elements and they also contain a corner reflector/bowtie section to increase the vertical capture of UHF channels (on SuperNova-C models only).

Blonder-Tongue Laboratories was on hand to display its brand new Galaxy line of preamplifiers. According to the manufacturer the Galaxy features the lowest noise figure of any boosters on the market today.

Unique to the Galaxy is that these preamps employ separate amplifiers for VHF low band (channels 2-6), VHF high (Channels 7-13), and UHF (all the way to 83), according to the manufacturer. This arrangement, Blonder-Tongue says, prevents harmonics of low band channels from "wiping out" high band VHF signals. In addition, the Galaxy line is four-way lightning and surge protected.

Taco/Jerrold showed its new line of TV-FM antenna amplifiers plus a new TV remote control.

The amplifiers, seven new models known as the Maximizer line, offer very low noise figures and high gain. They feature a new all-weather housing which seals the input and output terminals and each Maximizer system comprises an outdoor preamp and an indoor power supply with either one or two TV outlets.

The TV remote, Model TRC-82, is adjustable for either channel 3 or 4 output and provides instant random access tuning of all VHF and UHF stations.

Winegard Company presented the introduction of two new splitters, one a two-way, the other four-way. Both encapsulated in polypropylene to permit outdoor installation. Winegard also showed a new back-of-the-TV set separator, its Model CS 3010 which adapts either twin-lead or coaxial cable to 75 ohm VHF and 300 ohm UHF to the set's antenna terminals.

In CB antennas, Antenna Specialists showed their MS119 Superscanner. According to the firm the SuperScanner is both omnidirectional and a beam antenna. An electronic control unit allows CB users to select "scan" with a 5.75 dB omnidirectional gain, or "beam" with a gain of 8.75 dB. **ET/D**

## OPERATIONAL AMPS

continued from page 25

resistors R4 and R5. Since both are 100-Kohm resistors the noninverting input is set to +9 volts DC. For reasons discussed earlier this places the inverting input and the output terminals also at +9-volts.

### Troubleshooting

Most of the problems associated with operational amplifier circuits, except possibly for oscillations, will affect the DC levels at the inputs and output terminal. The problem is to tell whether these DC changes are due to defects in the op-amp, or in the external circuit.

Examine again the circuit in Fig. 6A. I recently saw a case in which the voltage at the noninverting input was approximately 2-volts DC, and that at the inverting input was only 0.7-volts. I should have immediately recognized that the I.C. was probably bad because property number five had been violated! The situation became clearer though after Jerry Hennings (of Sheffield Electronics in Annandale, VA.) unsoldered the two input pins and left them floating. The DC voltages at the printed circuit pads for those pins were measured again, and were correct—about +9-volts. The I.C. was indeed bad.

Another troubleshooting technique, although not one to be taken lightly, is to short together the two inputs. This can only be guaranteed for circuits using dual polarity power supplies, and does not apply all the time if there is direct coupled circuitry following the op-amp.

If the two input terminals are shorted together in a classic two-polarity circuit, the differential voltage becomes zero, so the output voltage should also drop to zero. If it does not, then the chip is defective.

Three cautionary notes are in order regarding this troubleshooting technique. First, make sure the darn thing is actually an op-amp. Not all I.C.s are so forgiving of shorts across inputs! Second, make sure the pins being shorted are the input pins. Use of other pins will destroy the I.C., and thirdly, do not use the method if there is direct coupled circuitry following the op-amp. The op-amp will not be harmed if the inputs are shorted together, but some other component downstream might be, especially if it depends upon having a certain d.c. level from the op-amp at all times.

Recommended reading list:

1. *Op-amp Circuit Design & Applications*. by Joseph J. Carr; TAB Books, Blue Ridge Summit, PA, 17214; Cat. #787.
2. *Operational Amplifiers: Theory and Servicing* by Edward Bannon; Reston Publishing Company, 11480 Sunset Hills Rd., Reston, VA, 22090.
3. *Handbook of Operational Amplifier Circuit Design* by Stout and Kaufman, McGraw-Hill Book Co., P.O. Box 400, Hightstown, NJ 08520. **ETD**

### TEST INSTR.

continued from page 34

Operation of the 3010 in this mode, of course, allows the unit to be used as a sweep generator.

To obtain a direct frequency modulated signal from the unit, apply an AC signal (no DC component) and the output will vary above and below the frequency set by the range switch according to the ratio 100 per cent for each 5.5 volt peak to peak signal applied.

**SPECIFICATIONS** (provided by the

manufacturer)

RANGES: 0.1 Hz to 1 Mhz in six steps with each range variable from .1 to 10 times the frequency of the range selected.  
EXTERNAL CONTROL: Rear panel VCO input with expansion capability of up to 100 times that shown on any frequency range.  
ACCURACY: 5% of full scale on all ranges  
STABILITY: .05% (after 15 minutes)  
FUNCTIONS: Sine, triangle, square, TTL square waves  
Square wave variable, TTL square wave fixed.  
SYMMETRY: 99% of 1 to 100 kHz  
DISTORTION: Less than 1% to 100 kHz. Less than 0.5% typical.  
RISETIME: 100 ns at maximum output; greater than 25ns with TTL output  
TRIANGLE WAVE LINEARITY: 99% at 100 KHz  
OUTPUT: 20v p-p open circuit; 10v p-p into 600 ohms  
CONTROL: Continuously variable with greater than 30 dB range.  
D.C. OFFSET: Continuously variable from minus 10 to plus 10 volts open circuit, or from minus 5 to plus 5 volts into 600 ohms.  
POWER: 105-130VAC, 60Hz, 8watts **ETD**

## You can pay more. You can pay less. But you can't buy a better FET VOM.

The ultimate VoltOhmyst®

- Measures AC or DC volts. 0.05V to 1500V.
- Current from 0.15mA to 1.5A
- Hi- or Lo-power ohms (R X 1 to R X 1 Meg), with pushbutton polarity reversal.
- Autopolarity, taut-band mirror-scale meter with 3 color-coded scales, separate polarity-indicating meter
- AC or battery operation.

**WV-534A**  
**\$150.00**



See it at your VIZ distributor  
**VIZ Test  
Instruments Group**  
of VIZ Mfg. Co.

335 E. Price St.  
Phila. PA 19144

© VIZ  
6643 A

Formerly  
**RCA**  
Instruments

Circle No. 134 on Reader Inquiry Card

ET/D - July 1978 / 45



# CLASSIFIED

**RATES:** 40 cents per word (minimum charge, \$10). Bold face words or words in all capital letters charged at 50 cents per word. Boxed or display ads charged at \$46 per column inch (one inch minimum). For ads using blind box number, add \$5 to total cost of ad. Send ad copy with payment to: Dawn Anderson, ELECTRONIC TECHNICIAN/DEALER, 1 East First Street, Duluth, MN. 55802.

**BOX NUMBER REPLIES:** Mail box number replies to: ELECTRONIC TECHNICIAN/DEALER, Classified Ad Department, One East First Street, Duluth, MN 55802. Please include box number in address.

## WANTED

### PICTURE TUBE MACHINE

We buy and sell NEW AND USED CRT rebuilding machinery. COMPLETE TRAINING. Buy with CONFIDENCE from the ORIGINAL MFR. For complete details, send name, address and zip code to:

#### LAKESIDE INDUSTRIES

3520 W. Fullerton Ave., Chicago, IL 60647  
Phone: 312-342-3399

## HELP WANTED

**INDUSTRIAL ELECTRONICS INSTRUCTOR.** Teach theory and laboratory work. B.S. degree in Electrical Engineering. Master's degree preferable. Current industrial experience required. Teaching experience desirable. Position available September 1978. John C. Vander Molen, Acting Department Head, Ferris State College, Big Rapids, MI 49307. AN EQUAL OPPORTUNITY/AFFIRMATIVE ACTION EMPLOYER. 8/78

## BUSINESS OPPORTUNITIES

TV sales and service shop, eastern New York, excellent ski country. 53 year old, one owner business. Owner must retire. Well stocked inventory, latest test equipment. FCC licensed technician will remain. Practically no competition. Appliance business adjoining available. Write ET/D Box 121. 7/78

### GET OUT OF THE TV RUT

Start making money now with Paltronix portable security systems. No technical hassles to keep up with. Full training provided. Good margins to work with. Plus your chance to diversify your services. For full details contact Don Musil, 48 West Golden Lake Road, Circle Pines, MN, 55014 (612) 786-4244. 9/78

**MECHANICALLY INCLINED INDIVIDUALS—BUILD ELECTRONIC DEVICES IN YOUR HOME. GET STARTED IN YOUR SPARE TIME. \$300 TO \$600/WK POSSIBLE. EXPERIENCE NOT NECESSARY. WRITE FOR FREE LITERATURE. ELECTRONIC DEVELOPMENT LAB., BOX 1535 (B), PINELLAS PARK, FLA., 33565. TF**

**ELECTRONICS/AVIONICS EMPLOYMENT OPPORTUNITIES.** Report on jobs now open. Details FREE. Aviation Employment Information Service, Box 240Y, Northport, New York 11768. 8/78

**COMPUTER FUTURE—**We are looking for qualified radio-television and electronic shops to handle our sales, service and supplies. We provide training and a protected area. S/D COMPUTER TECHNOLOGY, P.O. Box 1283, Albany, N.Y. 12201. 9/78

### WANT THAT SAMS FAST!

Usually within 3 days. Slow repairs are bad for business. For details, write Technical Data, #10 Moats St., Parkersburg, WV 26101. 9/78

**T.V. Service Co.,** St. Louis, MO. In business since 1941. Same location—1977 Gross 96,000. 3 Man operation—Owner forced to sell due to poor health—Will consider partner as future buyer. 5220 Columbia, St. Louis, MO. 63139. 7/78

**BROADCAST STATION.** Start your own, any type! Unique cable FM station requires no investment/experience. Receive free tapes, records. Learn how. Free details. "Broadcasting," Box 5516-ET6, Walnut Creek, CA 94596 8/78

**T.V. Business for sale.** 20 years in large shopping center in So. Fla. Zenith-Sony-RCA sales and rental service. Year round. Over \$100,000 gross. Excellent opportunity. Write to Jeff Cohen, 19B Madeira Ave., Coral Gables, Fla. 33134. TF

**TV AND STEREO SALES AND SERVICE BUSINESS FOR SALE.** Authorized Zenith Warranty Service Center. Established over 20 years in major suburb of southern New Jersey. Includes all stock, merchandise, new modern equipment and customers. Three man shop with 2 trucks. Grosses \$75,000 to \$100,000 a year. Cherry Hill TV Service, 11 West Main Street, Maple Shade, NJ 08052. (609) 667-8881. 7/78

**"Rent Lease TV's anyone can!"** Easy to start and operate. Even from your home. Send \$2.00 for basic information. Perry's TV, P. O. Box 1407, Santa Maria, CA 93454. 12/78

## FOR SALE

**TUBES—**Receiving, Industrial and Semiconductors, factory boxed. Free price list. Low, low prices. **TRANSELETRONIC INC.** 1365-39th Street, Brooklyn, N.Y. 11218E 800-221-5802, 212-633-2800. 4/79

**REPAIR TV TUNERS—**High earnings, Complete Course Details, 12 Repair Tricks, Many Plans, Two lessons, all for \$2. Refundable. Frank Bocek, Box 3236, Ent., Redding, CA 96001. TF

**FREE MONTHLY LISTING** of IC's, transistors, regulators, opamps at super savings e.g. SN7400-.08, 2N2222A-.08, LM309K-.50, LM709C-.13. Many, many more great buys. Write us to be put on our monthly m/l. Industrial Semiconductors Inc., 97 Rantoul St., Beverly, MA 01915. 9/78

Send All Blind Box Number  
Replies to:

## ELECTRONIC TECHNICIAN/DEALER

One East First St.  
Duluth, MN 55802

### MATV—CATV INSTALLERS

Get lowest prices on antenna accessories, fastest service from ANTSCO CORPORATION. Call collect, ask for catalog & prices. All orders shipped same day. Sierra Madre, CA 91024. 213-355-2510. 8/78

**TRANSISTOR REPLACEMENT. PHYLTRON ELECTRONICS LX REPLACEMENT LINE REPLACES THE MOST POPULAR REPLACEMENT TYPES AT OR BELOW DISTRIBUTOR COST.** One year unconditional guarantee. Buy direct and save. Write for free catalog. Phyltron Electronics, 487 Springfield Ave., Summit, N.J. 07901. TF

**BUGGING & WIRETAPPING** is a growing public concern. Are you equipped to answer your customers' questions—and get your share of the 'de-bugging' profits? 'ELECTRONIC SPYING' is the most simplified and comprehensive book ever written on the subject of electronic surveillance, and will tell you all you need to know. Order direct from publisher for only \$7.95: MENTOR PUBLICATIONS, Dept. 120, 135-53 No. Blvd., Flushing, N.Y. 11354. 7/78

Heathkit Model 10-104 Scope, EICO Model 324 R-F Signal Generator, Both Excellent Condition, \$350.00. Call (412) 341-0830 7/78

**ELECTRONIC BARGAINS, CLOSEOUTS, SURPLUS!** Parts, equipment, stereo, industrial, educational. Amazing values! Fascinating items unavailable in stores or catalogs anywhere. Unusual FREE catalog. ET/CO-013, Box 762, Plattsburgh, NY 12901. TF

TV-117 NPN same as ECG-196 90 V 7 Amp 50 watt better repl for SK-3054 GE-66 .75—TV-116 PNP complement .75—AC-100 NPN TO-3 case same as ECG-283 excellent vert defl repl 800 V 15 Amp 100 watt 2.95—2SC1172 Hor output same as ECG-165 ECG-238 121-831 121-1015 SK3115 GE-38 3.99—2SC685A NPN TO-66 repl ECG-124 GE-12 SK-3021 .75—Varo tripler-excellent repl for 221-128 32-33057-4 14.95—Zenith tripler 212-139 8.95. David Sims Enterprises, Inc., 665 E. Jericho Turnpike, Huntington Station, NY 11746. 8/78

**LINEAR AMPLIFIER,** 2-30 MHz, 150 watt solid state. **FREQUENCY COUNTER,** 300 MHz, 7 digit portable/mobile. **OMNIPOLARIZED BASE ANTENNAS** (CB-6M-2M). Construction plans \$3.00 each. \$7.50/all. Others! Catalog with order. **PANAXIS** Productions, Box 5516-ET6. Walnut Creek, CA 94596 8/78

B&K MODEL 415 SWEEP/MARKER GENERATOR—BRAND NEW. Purchased a few months ago, but not even used once. \$375. Richard Knightly, Mt. Vernon, ME. 04352 7/78

SAMS FOR SALE!! #772-1738. (9-65—5-78). \$1900.00 prepaid. DB Electronics, 609-465-5005. 8/78

EARLY SAMS PHOTOFACET SETS—OUT OF PRINT: \$5.00, IN PRINT: \$3.50. Limited quantity, maybe used, good condition. Gusdorf Electronics, 649 Camino de la Luz, Santa Fe, N.M. 87501 7/78

IF YOU'RE A PROFESSIONAL, you need a professional Service Invoice. Write for our Catalog of Service Forms, Pricing Guides and Invoices and see why they're better. Tech Spray, Box 949, Amarillo, TX 79105. 7/78

INCREASE BUSINESS/STORE TRAFFIC—Changeable message announcement/bulletin signs attract customers. Both outdoor/indoor, permanent/portable models. All aluminum. 20 year guarantee. Large outdoor models low as \$307. Indoor bulletin boards from \$24. Berloc Sign Co., 6818 Vine-land, N. Hollywood, CA 91608. 7/78

TV AND RADIO TUBES .36¢ EA!! Send for free color parts catalog. Your order free if not shipped in 24 hours. Cornell Electronics 4215-17 University San Diego California 92105. TF

THERE'S NO NEED TO BUY ORIGINAL JAPANESE TRANSISTORS WHEN OUR REPLACEMENTS WILL DO THE JOB of many original types. Phyltron's LX123A replaces over 50 Japanese types in our catalog. Don't tie yourself up with excessive inventory, buy Phyltron Electronics replacement transistors and save.

Write for free catalog. One year unconditional guarantee. Phyltron Electronics, 487 Springfield Ave., Summit, NJ 07901. TF

TUNER SUB, \$19.95, wired, tested, complete with batteries and ready to use on tube or transistor sets. Tunes all VHF channels. This unit is without knobs or cabinet but very compact with no wires or controls dangling. Easy to use, simply connect set's coax to sub and view picture (instructions provided). Only \$19.95 and we pay shipping or will ship C.O.D. (\$1.85 C.O.D. charge). Phone Toll Free 1-800-433-7124. MASTER CHARGE and VISA accepted. This is not a gimmick. If not COMPLETELY satisfied, return within 10 days for full refund. TEXAS TUNER SUPPLY, 4210 N.E. 28th Street, Fort Worth, Texas 76117. 9/78

REPLACEMENT COLOR YOKES-DEALERS ONLY. Zenith 95-2501-2532-2638-2667-S89633 etc. \$16.95. Magnavox 361380-1 \$18.95 etc. Sylvania, G.E. etc. \$14.95 to \$19.95. Request for price list on your letterhead. David Sims Enterprises, Inc., 665 Jerricho Turnpike, Huntington Station, N.Y. 11746 TF

GENUINE SONY SEMICONDUCTORS—CHECK THESE PRICES!!

EG. 1-9/ 10-24—SG613-8.50/7.30-SID 30-15 2.60/2.30, -2SC867A 5.10/4.90-2SC1114 5.50/4.80-2SC1358 6.50/5.70, -2SC1124 1.50/1.30-2SC634A 0.45/0.41. Contact us for complete list of Japanese semiconductors and pricing information. Bescor, 547 S. Broadway, Hickville, NY 11801 (516) 822-3988 7/78

### ALARM SYSTEMS

DON'T PURCHASE any burglar-fire alarm equipment before getting our free value packed catalog. Super savings on Dialers, master controls, infrared detectors, wireless Automatic panic buttons and much more. No shipping charges. Sasco, 5619-E. St. John, Kansas City, MO 64123. (816) 483-4612. 7/78

**Use classified to: Secure reps... Secure wholesalers, jobbers or distributors... Sell used machinery or equipment... Seek new employment positions... For business opportunities ... For franchise offerings... Real estate for sale... Seek business connections, etc.**

# send a message... ...write here.

1. Number of insertions: (circle) 1 2 3 6 12
2. Start with (month) \_\_\_\_\_ issue (Copy must be in by 1st of month preceding)
3. Amount enclosed: \$ \_\_\_\_\_

PAYMENT MUST ACCOMPANY ORDER. WE'LL BILL RATED FIRMS.

NAME \_\_\_\_\_ COMPANY \_\_\_\_\_

STREET \_\_\_\_\_

CITY \_\_\_\_\_ STATE \_\_\_\_\_ ZIP \_\_\_\_\_

MAIL AD COPY TO: DAWN ANDERSON, ELECTRONIC TECHNICIAN/DEALER, 1 EAST FIRST STREET, DULUTH, MN. 55802.

**RATES:** 40 cents per word (minimum charge, \$10). Bold face words or words in all capital letters charged at 50 cents per word. Boxed or display ads charged at \$46 per column inch (one inch minimum). For ads using blind box number, add \$5 to total cost of ad.

# ET/D Classified

Includes  
Functional  
Tilt Stand!



## NEW EICO 270 3 1/2 DIGIT DMM KIT ONLY \$79.95

Introductory Offer—FREE AC ADAPTOR

The first and only lab accuracy portable DMM Kit featuring MOS/LSI IC economy and reliability. Measures DC/AC Volts, Kilohms, DC/AC milliamps in 21 ranges. Polarity indicators and overload protection are provided, and 0.5 inch LED displays give easiest-to-read digital readout to 9999. The 270 features a basic 0.5% DC accuracy, 10 Megohm input impedance, low voltage drop in all current ranges and automatically-flashing overrange indicator. **Assembled \$109.95**

### FREE '78 EICO CATALOG

Check reader service card or send 50¢ for first class mail. See your local EICO Dealer or call (516) 681-9300, 9:00 a.m.-5:00 p.m. EST. Major credit cards accepted.

EICO—108 New South Rd.  
Hicksville, N.Y. 11801



Circle No. 113 on Reader Inquiry Card

## READER SERVICE INDEX ADVERTISER'S INDEX

107 B & K Precision	12
108 Communications & T.V. Unlimited	12
109 Cooper Group, The	6
106 DEVCO AR Semiconductors	42
110 DEVCO	16
111 Electronics Book Club	39
<b>ELECTRONIC TECHNICIAN/DEALER</b>	

112 Edsyn Inc.	42
113 EICO	48
114 Enterprise Development Corp.	48
115 Fluke Mfg.	41
116 Fordham Radio Supply	43
117 Fuji-Svea	3
118 GTE Sylvania	35
G.E. Television	17
G.E. Tube	26

119 Hewlett-Packard	22
101 London Co., The (for demo.)	36
120 London Co., The (for info.)	36
121 Mallory Distrib. Prod.	9

122 Modular Elec. Services, Ltd.	40
----------------------------------	----

123 National Camera	38
---------------------	----

124 ORA Electronics	14
---------------------	----

102 PTS Electronics	Cov. 2
---------------------	--------

125 Platt Luggage	16
-------------------	----

126 Pomona Electronics	13
------------------------	----

127 Projector-Recorder Belt Corp.	48
-----------------------------------	----

128 Sencore, Inc.	32
-------------------	----

129 Simpson Electric Co.	11
--------------------------	----

130 Sprague Prod. Co.	15
-----------------------	----

131 Texas Tuner Supply	48
------------------------	----

132 Thordarson Meissner, Inc.	14
-------------------------------	----

104 Triplett Corp. (for demo.)	Cov. 4
--------------------------------	--------

105 Triplett Corp. (for info.)	Cov. 4
--------------------------------	--------

133 Tuner Service Corp.	7
-------------------------	---

134 VIZ Test Instruments	45
--------------------------	----

135 Weston Instruments	4, 5
------------------------	------

136 Winegard Co., The	30, 31
-----------------------	--------

137 Workman Electronic Prod.	37
------------------------------	----

103 Zenith Radio Corp.	Cov. 3
------------------------	--------

This index is furnished for the readers' convenience. However, the publisher can not guarantee its accuracy due to circumstances beyond our control.

## SERVICE AIDS



GREAT SAVINGS

Toll Free **1-800-558-9572** Toll Free

- ★ CHEMICALS
- ★ CLEANERS
- ★ COOLERS
- ★ ADHESIVES
- ★ LUBRICANTS
- ★ SOLDER

WRITE FOR FREE CATALOG

### PROJECTOR-RECORDER

BELT CORP.



200 Clay Street  
P.O. Box 176  
Whitewater, WI 53190  
414-473-2151

Circle No. 127 on Reader Inquiry Card

### NEW TUNERS

NOT universal or customized. NOT seconds, culls, dogs, or oddballs. Only \$24.95 for ANY new tuner. Over 5,000 in stock including Philco TT192.

CALL TOLL FREE 1-800-433-7124

TEXAS TUNER SUPPLY  
4210 N.E. 28th St., Ft. Worth, TX 76117

Circle No. 131 on Reader Inquiry Card

WOODSY OWL HOOTS:



GIVE A HOOT. DON'T POLLUTE



## endeco soldering & desoldering equipment

### SOLDERING IRONS



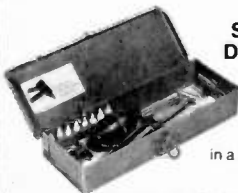
Pencil style. Safety light. Two heats — 20w and 40w. 6 tips. Unbreakable handle. 2 and 3 wire neoprene cords.

### DESOLDERING IRONS



Pencil style. Safety light. Some operate at 40w, idle at 20w. 8 tip sizes. 2 and 3 wire neoprene cords.

### SOLDERING & DESOLDERING KITS



Everything needed to solder or desolder or both. All in a handy lifetime metal box with hasp.

See your distributor or write ...

### Enterprise Development Corp.

5127 E. 65th St. • Indianapolis IN 46220  
PHONE (317) 251-1231

Circle No. 114 on Reader Inquiry Card



Now from **ZENITH**

212-85

# One numbering system of exact and selected semiconductor replacements for the industry

121-888

121-831

121-988

212-76

It's the closest yet to an all-purpose line of semiconductor replacements with one numbering system.

Covers not only Zenith exact replacement devices, but also the most popular types in the industry.

A great money-maker, too!

Eliminates the need for duplicates. Reduces your inventory. Reduces your total investment. And many of Zenith's high-quality devices are priced lower than those from other sources.

Switch now, if you haven't already, to Zenith Universal Semiconductors and see how well your shop shapes up. Your bottom line, too. Your Zenith distributor is standing by to help you

with the latest Zenith Universal Semiconductor cross-reference guide containing over 130,000 cross-references. Call him now!

121-Z9000-A

For your own reputation and in your customers' best interest, always specify Zenith exact replacement parts and accessories.

**ZENITH**  
The quality goes in before the name goes on.

121-745



# The 70-range circuit reader. 630-NA.

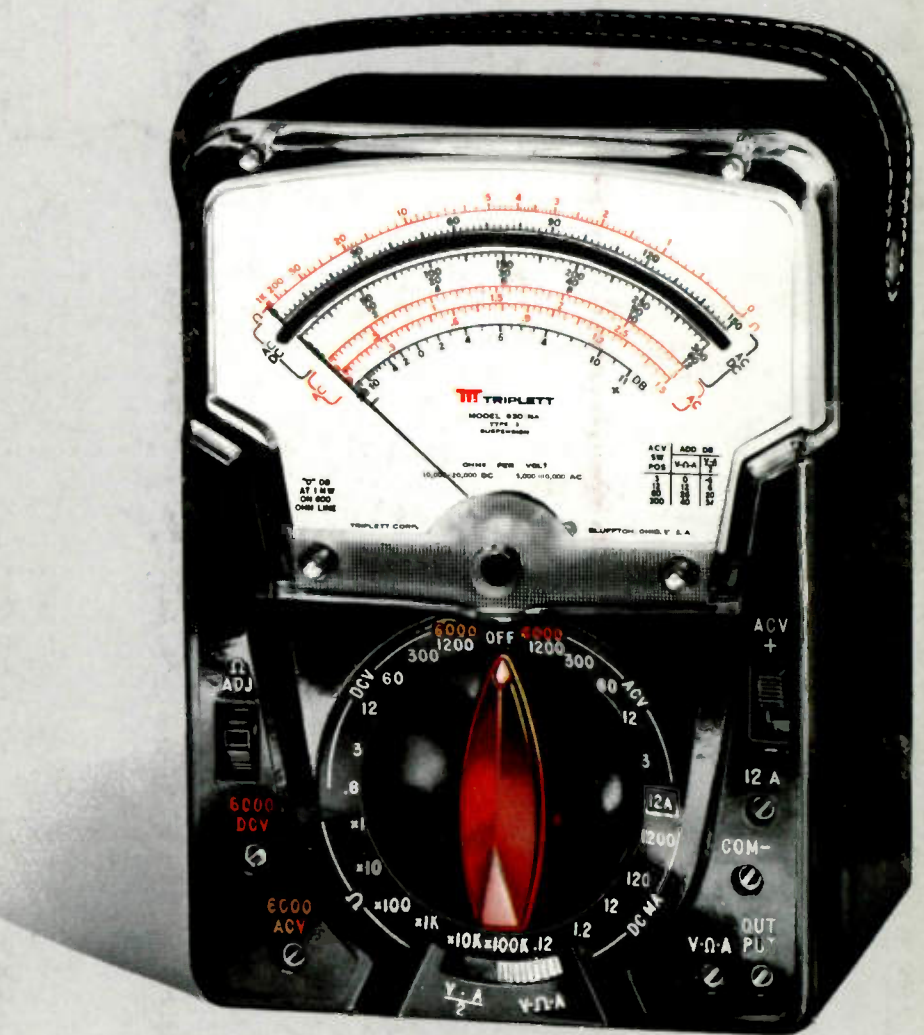
This versatile, general purpose V-O-M ideal for communications/computer circuits, Triplet Model 630-NA, is priced at just \$126.

The electronics equipment designer likes the 630-NA's 1½% DC accuracy, ease of operation, sensitivity, and reliability. So do the men who maintain communications equipment, computers, and satellite electronics. Still, it's no delicate flower. These strengths plus rugged dependability have put the 630-NA to work wherever a general purpose tester is needed: construction, electrical machinery, fabricated metal products, transportation systems, consumer electronic products, utilities, and radio, TV and appliance service.

You'll also like these features:

1. 70-range V-O-M with single range switch and DC polarity-reversing switch.
2. Accuracy 1½% DC and 3% AC; mirrored scale.
3. Diode overload-protected suspension movement with temperature compensation.

The 630-NA measures DC volts from 120 mV to 6,000 volts (10,000 or 20,000 ohms/volt). There are AC voltage ranges from 1.5 to 6,000 volts (5,000 or 10,000 ohms/volt). Six resistance ranges to 100 M Ω are provided.



Need higher ohms per volt, greater sensitivity? Then you'll want Triplet's 630-NS at just \$156. Up to 200,000 ohms per volt DC and 20,000 ohms per volt AC; down to 150 mV at 60 microamperes.

See for yourself. Try them. Have your Triplet distributor or sales representative give you a free demonstration

of the tester that most fits your needs. You'll be glad you did. Do it today. Triplet Corporation, Bluffton, Ohio 45817.

**TRIPLET**  
ALL YOU'LL EVER NEED IN V-O-M's.

...for FREE demonstration circle 104 on Reader Service Card  
...for more details circle 105 on Reader Service Card

## Triplet. The easy readers.