

New 1930

Now 15c.

The RADIO DIAL

REGISTERED U. S. PATENT OFFICE

International Radio Pal—Programs—Atlas—Logs



ROMANY PATTARAN

A program of traditional Gypsy airs, under the direction of Emory Deutsch, heard regularly over the C.B.S. network.

HOLLAND RADIO & APPLIANCE CO.

Everything in Music

RCA RADIOLA, STROMBERG-CARLSON, ATWATER KENT,
MAJESTIC, VICTOR RADIOS

ELECTRIC WASHERS, REFRIGERATORS, VACUUM SWEEPERS

Victor 3250

Radio Service

Open Evenings

1633 S. Broadway

A Tip . . .

from

Andrew Carnegie

Asked to explain his phenomenal success, Andrew Carnegie blandly attributed it to his ability to get men to work for him who knew more than he did.

And that's a formula for success. Nobody who is really successful does all the work himself. He employs other people's minds and efforts.

Do you do the same in the intricate business of running your home and taking care of your family? You can, quite easily.

You can employ specialists in diet and beauty culture; you can have the advice of style authorities in selecting your shoes, or furnishing your home, of whole scientific laboratories in preserving your health, or reliable counsel on investments and transportation, by reading the material offered to you without charge through the Radio Dial—Inquiry Division.

All the newest knowledge—knowledge millions of dollars and years of effort have won—is contained in this literature.

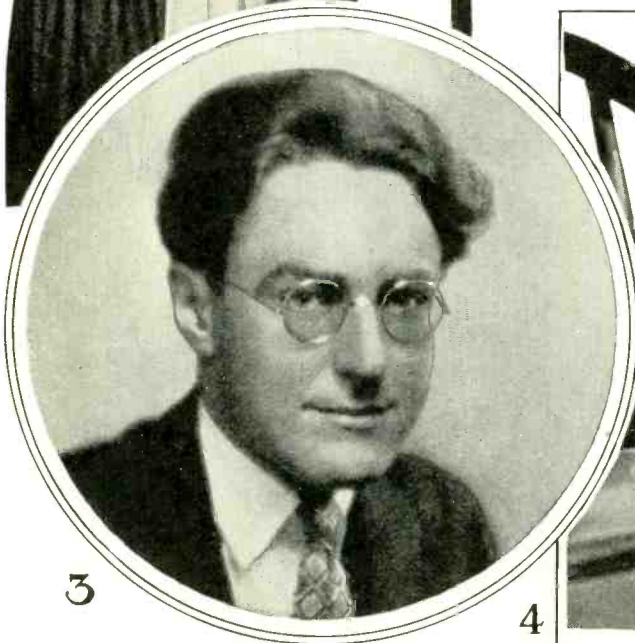
If you will use the information you get from the Inquiry Division as Andrew Carnegie used men who knew more than he did, every dollar you spend will be spent wisely, economically, and will return full measure of satisfaction. That's the way to be a success in the greatest business in the world—making a home.

**USE THE INQUIRY DIVISION NOW
EVERYTHING IS FREE**

(1) Down in Quakertown. Lois Bennett, soprano, featured artist of the Armstrong Quakers, heard every Thursday evening.



(2) Scoop! Jimmy Otis, hero reporter of the Johnson & Johnson Musical Melodrama, on the air each Tuesday evening. Away from the "mike" he is Loren Baker.



(3) One of the youngest of leading conductors, Don Voorhees, who wields the baton every Monday evening during the General Motors Family Party.

(4) To the rescue! Nora Stirling, who plays Dorothy Brent, Red Cross nurse, in the Johnson & Johnson Musical Melodrama.



RUDY VALLEE

THE RADIO DIAL

International Radio Pal—Programs - Atlas - Logs

VOLUME III

164TH THOUSAND—1930 EDITION

NUMBER 4

THE following changes and additions to the official list of broadcasting stations have just been made by the Federal Radio Commission.

WBSO—Wellesley Hills, Mass., 920.	KDFN—Casper, Wyo., 1210.
WCOA—Pensacola, Fla., 1340.	KECA—Formerly FPLA, Los Angeles, Cal., 1430.
WDAE—Tampa, Fla., 1220.	KEJK—Beverly Hills, Cal., 710.
WDAY—West Fargo, N. Dak., 940.	KFEL—Denver, Colo., 920.
WDBO—Orlando, Fla., 1120.	KFEQ—St. Joseph, Mo., 680.
WEAN—Providence, R. I., 780.	KFPY—Spokane, Wash., 1340.
WEBC—Superior, Wis., 1290.	KFVD—Culver City, Cal., 1000.
WEBW—Beloit, Wis., 560.	KFXF—Denver, Colo., 920.
WEHC—Emory, Va., 1370.	KFXM—Formerly KFWC, San Bernardino, Cal., 1210.
WEHS—Evanston, Ill., 1420.	KGB—San Diego, Cal., 1330.
WFBL—Syracuse, N. Y., 1490.	KGCX—Wolf Point, Mont., 1310.
WFDV—Rome, Ga., 1370.	KGER—Long Beach, Cal., 1360.
WFDW—Talladega, Ala., 1420.	KGFJ—Los Angeles, Cal., 1200.
WFLA-WSUN—Clearwater, Fla., 620.	KGHI—Little Rock, Ark., 1200.
WGBS—New York, N. Y., 600.	KGKY—Scottsbluff, Nebr., 1500.
WGTB—Columbia, S. C., 1010.	KGMB—Honolulu, Hawaii, 1320.
WHAT—Formerly WNAT, Philadelphia, Pa., 1310.	KGMC—Jerome, Ariz., 1310.
WHB—Kansas City, Mo., 860.	KGMD—Roswell, N. Mex., 1500.
WHFC—Cicero, Ill., 1420.	KJR—Seattle, Wash., 760.
WIBO—Des Plaines, Ill., 560.	KMJ—Fresno, Cal., 1210.
WIBW—Topeka, Kans., 580.	KMO—Tacoma, Wash., 860.
WIOD-WMBF—Miami Beach, Fla., 1300.	KOAC—Corwallis, Ore., 550.
WJAX—Jacksonville, Fla., 900.	KOMO—Seattle, Wash., 970.
WJDW—Emory, Va., 1370.	KPPC—Pasadena, Cal., 1210.
WKBI—Chicago, Ill., 1420.	KPSN—Pasadena, Cal., 1360.
WMBR—Tampa, Fla., 1370.	KREG—Formerly KWTC, Santa Ana, Cal., 1500.
WMT—Waterloo, Iowa, 600.	KSAT—Formerly KTAT, Fort Worth, Tex., 1240.
WODX—Mobile, Ala., 1410.	KTAR—Formerly KFAD, Phoenix, Ariz., 620.
WOI—Ames, Iowa., 640.	KTAB—Oakland, Cal., 560.
WOQ—Kansas City, Mo., 1300.	KTLC—Formerly KGHX, Houston, Tex., 1500.
WPCC—Chicago, Ill., 560.	KIRH—Formerly KUT, Houston, Tex., 1120.
WPOE—Patchogue, N. Y., 1370.	KVEP—Formerly KWBS, Portland, Ore., 1500.
WQAM—Miami, Fla., 560.	KWSC—Pullman, Wash., 1220.
WRUF—Gainesville, Fla., 830.	KXL—Portland, Ore., 1420.
WSFA—Montgomery, Ala., 1410.	KXRO—Aberdeen, Wash., 1310.
WSJS—Winston-Salem, N. C., 1310.	KZRC—Cebu, P. I., 1300.
WSUI—Iowa City, Iowa, 880.	
WTOC—Formerly WSGP, Savannah, Ga., 1260.	
KBTM—Paragould, Ark., 1200.	

CONTENTS

Frontispiece—Romany Patteran	
Evening Stars	3
Rudy Vallee	4
Evening Stars	6
U. S. Broadcasting Stations— Listed by States and Cities.....	7-14
Canada Broadcasting Stations— Listed by Provinces and Cities.	15
Evening Stars	16
Short Wave Broadcasting Stations of the World	17
Map of U. S. and Southern Canada with Divisions of Standard Time	18-19
What's on the Air Tonight.....	20-21
Map of Mexico, West Indies, Cen- tral and South America.....	22
Foreign Broadcasting Stations ...	23
Radio Map of the World—Com- parative Time and Distances... ..	24
Prague Broadcasting Frequency Plan	25
Channel Chart—Numerical Listing by Kilocycles	26-30
The Radio Dial—Inquiry Division.	31
Household Periods on the Air—	32
Index to Call Letters—U. S. and Canada Stations	33-44

THE Radio Dial is in keeping with THIS DEALER'S thorough service to radio owners. In providing you with this interesting and reliable book of radio information at a small cost, the Dealer does not ask a profit—he only seeks to serve you.

Single copies 15c. Yearly subscription (four issues, February, April, September, and November) for 50c. You may either send stamps, coin or check to the radio dealer whose name appears on the front cover or you may mail it direct to our executive offices.

HAROLD A. SIDEY, *Managing Editor*

MARTIN J. GARREN, *Circulation Director*

101 WEST 42nd STREET, NEW YORK CITY

Telephone: Bryant 6843

Representatives

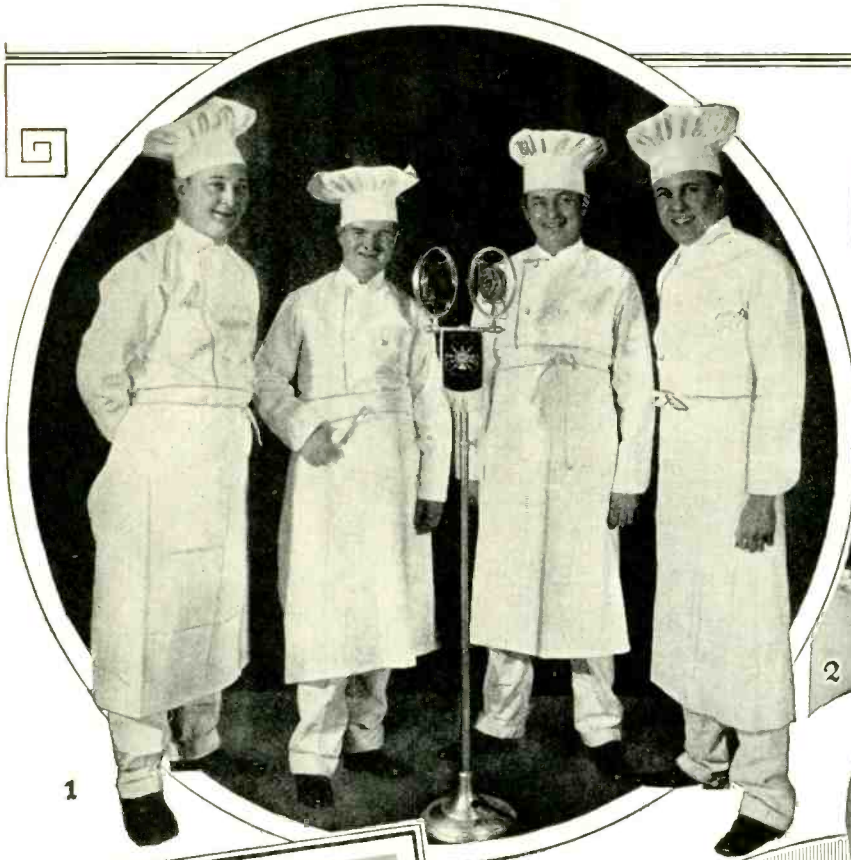
Chicago: J. Polk, 1507 South Michigan Avenue
Philadelphia: Harry J. Lewis, 45 North Seventh Street
Detroit: Frank E. Lyons, 2917 Montgomery Street
Cleveland: Prima Products Co., 12810 Penobscot Avenue
Kansas City, Mo.: Cannon Sales Co., 3916 Campbell Street
Toronto, Canada: Stanley F. Pearson, c/o Consolidated Press Ltd., 73 Richmond Street West

Baltimore: E. V. B. Edmond, 1241 N. George St., York, Pa.
Buffalo: A. A. Carlisle, 270 W. Genesee Street
Seattle: Jas. J. Backer Co., 1409 Syndicate Trust Bldg.
Dallas: Ray E. Simpson Co., Inc., 947 So. Lamar Street
Omaha: Wm. E. Kavan, 517 Sunderland Building

Copyright 1930 by The Radio Dial, Inc., New York City

(1) All ready to raise the "do"! The Happy Wonder Bakers Trio and accompanist. *Left to right:* Jack Parker, tenor; Will Donaldson, accompanist and director; Frank Luther, tenor; and Phil Duey, baritone.

(2) Winsome Julia Sanderson, formerly musical comedy star, heard every Tuesday on the Blackstone Program.



(3) Josef Pasternack, conductor of the Atwater Kent Orchestra.

(4) The other half of the Blackstone Program starring team—Frank Crumit, ukulele specialist and topical song singer.

U. S. BROADCASTING STATIONS

Listed According to States and Cities

Location Kilo. • Meters • Power • Owner • Station Readings

ALABAMA

Birmingham	1140 — 263. — 5000 Alabama Poly. Inst.	WAPI		
	930 — 322.4 — 500 Birmingham Br. Co.	WBRC		
	1310 — 228.9 — 100 Broyles Furniture Co.	WKBC		
Gadsden	1210 — 247.8 — 50 Chas. J. Black	WJBY		

ALASKA

Anchorage	1230 — 243.8 — 100 Anchorage Radio Club	KFQD		
Ketchikan	900 — 333.1 — 500 Alaska Radio & Service Co.	KGBU		

ARIZONA

Flagstaff	1420 — 211.1 — 100 Mary M. Costigan	KFXV		
Phoenix	620 — 483.6 — 500 Elec. Equip. Co.	KFAD		
	1390 — 215.7 — 500 Neilson Radio Supply Co.	KOY		
Prescott	1500 — 199.9 — 100 Miller & Klahn	KPJM		
Tucson	1370 — 218.8 — 100 Tucson Motor Ser. Co.	KGAR		
	1260 — 238.0 — 500 Robt. M. Riculfi	KVOA		

ARKANSAS

Blytheville	1290 — 232.4 — 50 Charles Leo Lintzenich	KLCN		
Fayetteville	1390 — 215.7 — 1000 Univ. of Arkansas	KUOA		
Hot Springs	1040 — 288.3 — 10000 Nat'l Park Ch. of Commerce	KTHS		
Little Rock	1500 — 199.9 — 100 Berean Bible Class	KGHI		
	890 — 336.9 — 250 1st Ch. of Nazarene	KGJF		
	1390 — 215.7 — 1000 Ark. Broadcast. Co.	KLRA		
McGehee	1310 — 228.9 — 50 Chas. W. McCollum	KGHG		
Siloam Springs	1340 — 223.7 — 50 Rev. L. W. Stewart	KFPW		

CALIFORNIA

Berkeley	1370 — 218.8 — 100 1st. Cong. Church of Berkeley	KRE		
Beverly Hills	1170 — 256.3 — 500 R. S. MacMillan	KEJK		
Burbank	780 — 384.4 — 500 E. L. White	KELW		
Culver City	710 — 422.3 — 250 Los Angeles Br. Co.	KFVD		
El Centro	1200 — 249.9 — 100 E. Irey & F. Bowles	KXO		
Fresno	1200 — 249.9 — 100 The Fresno Bee	KMJ		
Hayward	1370 — 218.8 — 100 Leon P. Tenney	KZM		
Hollywood	950 — 315.6 — 1000 Warner Bros. Br. Corp.	KFWB		
	570 — 526.0 — 500 KMTR Radio Corp.	KMTR		
	1050 — 285.5 — 5000 Western Broadcast. Co.	KNX		
Holy City	1420 — 211.1 — 100 W. E. Riker	KFQU		
Inglewood	1120 — 267.7 — 500 Dalton's Inc.	KMIC		
Long Beach	1250 — 239.9 — 1000 Nichols & Warinner, Inc.	KFOX		
	1370 — 218.8 — 100 C. Merwin Dobyns	KGER		

Location Kilo. • Meters • Power • Owner • Station Readings

Los Angeles	640 — 468.5 — 5000 E. C. Anthony, Inc.	KFI		
	1120 — 267.7 — 500 Echo Park Evan.	KFSG		
	860 — 348.6 — 250 Taft Radio & Br. Co., Inc.	KFQZ		
	1300 — 230.6 — 1000 Trinity Methodist Ch.	KGEF		
	1420 — 211.1 — 100 Ben S. McGlashan	KGFJ		
	900 — 333.1 — 1000 Don Lee, Inc.	KHJ		
	1000 — 299.8 — 1000 Pacific Dev. Radio Co.	KPLA		
	1300 — 230.6 — 750 Bible Inst. of Los Ang.	KTBI		
	780 — 384.4 — 1000 Pickwick Br. Corp.	KTM		
Oakland	930 — 322.4 — 500 Oakland Educ. Soc.	KFWM		
	790 — 379.5 — 7500 General Elec. Co.	KGO		
	1440 — 208.2 — 250 Warner Bros.	KLS		
	880 — 340.7 — 500 Tribune Pub. Co.	KLX		
	550 — 545.1 — 500 Asso. Broadcasters	KTAB		
Pasadena	1200 — 249.9 — 50 Pasa. Pres. Church	KPPC		
	950 — 315.6 — 1000 Pas. Star News Pub. Co.	KPSN		
Pomona	1200 — 249.9 — 100 James R. Fouch	KFWC		
Santa Ana	1500 — 199.9 — 100 Pacific Broadcast. Fed.	KWTC		
Santa Barbara	1500 — 199.9 — 100 S. Barbara Broadcast Co.	KDB		
San Diego	600 — 499.7 — 1000 Airfan Radio Corp.	KFSD		
	1360 — 220.4 — 250 Pickwick Br. Corp.	KGB		
San Francisco	610 — 491.5 — 1000 Don Lee, Inc.	KFRC		
	930 — 322.4 — 500 Radio Entertainments, Inc.	KFWI		
	1420 — 211.1 — 50 The Golden Gate Br. Co.	KGCC		
	1070 — 280.2 — 100 J. Brunton & Sons, Co.	KJBS		
	680 — 440.9 — 5000 Hales Bros. & The Chronicle	KPO		
	1230 — 243.8 — 1000 Pac. Broadcast. Corp.	KYA		
San Jose	1010 — 296.9 — 500 First Baptist Church	KQW		
Sacramento	1310 — 228.9 — 100 James McClatchy Co.	KFBK		
Santa Maria	1200 — 249.9 — 100 S. M. Valley R. R. Co.	KSMR		
Stockton	1100 — 272.6 — 50 E. F. Peffer	KGDM		
	1200 — 249.9 — 100 Portable Wireless Tel Co.	KWG		
Westminster	1490 — 201.2 — 10000 Pacific-Western Br. Co.	KPWF		

COLORADO

Colorado Sps.	1270 — 236.1 — 1000 W. D. Corley	KFUM		
Denver	940 — 319. — 250 E. P. O'Fallon	KFEL		
	1310 — 228.9 — 100 Fitzsimmons Gen'l. Hosp.	KFUP		
	940 — 319. — 250 Pikes Peak Br. Co.	KFXF		
	830 — 361.2 — 12,500 General Elec. Co.	KOA		
	880 — 340.7 — 500 Pillar of Fire, Inc.	KPOF		
Dupont	560 — 535.4 — 1000 Reynolds Radio Co.	KLZ		

U.S. Broadcasting Stations Continued

Location	Kilo.	Meters	Power	Owner	Station	Readings
Edgewater	1310	—	228.9	—	50 KFXJ	
					R. G. Howell	
Fort Morgan	1200	—	249.9	—	100 KGEW	
					City of Ft. Morgan	
Greeley	880	—	340.7	—	1000 KFKA	
					Col. St. Teachers Col.	
Gunnison	1200	—	249.9	—	100 KFHA	
					Western State College of Col.	
Trinidad	1420	—	211.1	—	100 KGIW	
					Trin. Creamery Co., Inc.	
	1320	—	227.1	—	250 KGHF	
					C. P. Ritchie & J. E. Finch	
Yuma	1200	—	249.9	—	50 KGEK	
					Beehler Elec. Equip. Co.	

CONNECTICUT

Bridgeport	1190	—	252.0	—	500 WICC	
					Bridgeport Br. Sta., Inc.	
Hartford	1060	—	282.8	—	50,000 WTIC	
					Travellers Ins. Co.	
New Haven	1330	—	225.4	—	500 WDRC	
					Doolittle Radio Corp.	
Storrs	600	—	499.7	—	250 WCAC	
					Conn. Agri. College	

DELAWARE

Wilmington	1120	—	267.7	—	350 WDEL	
					WDEL, Inc.	
	1420	—	211.1	—	100 WILM	
					Del. Broadcasting Co., Inc.	

DISTRICT of COLUMBIA

Washington	630	—	475.9	—	500 WMAL	
					M. A. Leese Co.	
	1310	—	228.9	—	100 WOL	
					Amer. Broadcasting Co.	
	950	—	315.6	—	500 WRC	
					Radio Corp. of A.	

FLORIDA

Clearwater	900	—	333.1	—	1000 WFLA	
					Clearwater & St. P. C. of C.	
Gainesville	1470	—	204.0	—	5000 WRUF	
					Univ. of Florida	
Jacksonville	1260	—	238.0	—	1000 WJAX	
					City of Jacksonville	
Lakeland	1310	—	228.9	—	100 WMBL	
					Benforch Radio Stu.	
Miami Beach	560	—	535.4	—	1000 WIOD	
					Isle of Dreams Brdcstg. Co.	
Miami	1240	—	241.8	—	1000 WQAM	
					Miami Brdcstg. Co.	
Orlando	620	—	483.6	—	1000 WDBO	
					Rollins College	
Pensacola	1120	—	267.7	—	500 WCOA	
					City of Pensacola	
Tampa	620	—	483.6	—	1000 WDAE	
					Tampa Publishg. Co.	
	1210	—	247.8	—	100 WMBR	
					F. J. Reynolds	

GEORGIA

Atlanta	890	—	336.9	—	500 WGST	
					Geo. School of Tech.	
	740	—	405.2	—	5000 WSB	
					Atlanta Journal Co.	
Columbus	1200	—	249.9	—	50 WRBL	
					R. E. Martin	
Macon	890	—	336.9	—	500 WMAZ	
					Macon Junior Ch. of Com.	
Savannah	1410	—	212.6	—	1000 WSGP	
					Chamber of Commerce	
	1210	—	247.8	—	100 WSIX	
					638 Tire & Vulcan. Co.	
Tifton	1310	—	228.9	—	20 WRBI	
					Kent's Furn. & Music Store	
Toccoa	1450	—	206.8	—	250 WTFI	
					Toccoa Falls Inst.	

Location	Kilo.	Meters	Power	Owner	Station	Readings
HAWAII						
Honolulu	940	—	319.	—	500 KGU	
					M. A. Mulrony	

IDAHO

Boise	1250	—	239.9	—	1000 KIDO	
					Phillips & Hill	
Idaho Falls	1320	—	227.1	—	250 KID	
					Jack W. Duckworth, Jr.	
Jerome	1420	—	211.1	—	50 KFXD	
					Service Radio Co.	
Pocatello	900	—	333.1	—	250 KSEI	
					KSEI Br. Ass'n.	
Sandpoint	1420	—	211.1	—	15 KGKX	
					C. E. Twiss	
Twin Falls	1320	—	227.1	—	250 KGIQ	
					Idaho Radio Br. Corp.	

ILLINOIS

Carthage	1070	—	230.2	—	50 WCAZ	
					Carthage College	
Chicago	920	—	325.9	—	500 WAAF	
					Drovers Journ. Pub. Co.	
	770	—	389.4	—	25,000 WBBM	
					Atlas Invest. Co.	
	970	—	309.1	—	1500 WCFL	
					Chicago Fed. of Lab.	
	1210	—	247.8	—	100 WCRW	
					Clinton R. White	
	1210	—	247.8	—	100 WEDC	
					Emil Denemark, Inc.	
	870	—	344.6	—	50,000 WENR	
					Gr. Lakes Rad. Bdcst. Co.	
	1360	—	220.4	—	500 WGES	
					Oak Leaves Br. Corp., Inc.	
	570	—	526.0	—	1500 WIBO	
					Nelson Bros. B. & M. Co.	
	1480	—	202.6	—	5000 WJAZ	
					Zenith Radio Corp.	
	1310	—	228.9	—	50 WKBI	
					Fred L. Schoenwolf	
	870	—	344.6	—	5000 WLS	
					Agricultural Br. Co.	
	670	—	447.5	—	5000 WMAQ	
					Chicago Daily News	
	1080	—	277.6	—	5000 WMBI	
					The Moody Bible Inst.	
	1480	—	202.6	—	5000 WORD	
					People's Pulpit Assn.	
	570	—	526.	—	500 WPCC	
					North Shore Cong. Ch.	
	1210	—	247.8	—	100 WSBC	
					World Battery Co.	
	1020	—	293.9	—	5000 KYW	
					Westinghouse E. & M. Co.	
	1020	—	293.9	—	5000 KYWA	
					Westinghouse E. & M. Co.	
Cicero	1310	—	228.9	—	100 WHFC	
					Triangle Broadcasters	
Decatur	1200	—	249.9	—	100 WJBL	
					Wm. Gushard Dry Goods Co.	
Elgin	720	—	416.4	—	25,000 WGN	
					The Tribune Co.	
Evanston	1310	—	228.9	—	100 WEHS	
					V. C. Carlson	
Forest Park	1480	—	202.6	—	5000 WSOA	
					Radiophone Brdcstg. Corp.	
Galesburg	1310	—	228.9	—	100 WKBS	
					Pernall N. Nelson	
Harrisburg	1210	—	247.8	—	100 WEBQ	
					First Trust & Savings Bank	
Joliet	1310	—	228.9	—	100 WCLS	
					WCLS, Inc.	
	1310	—	228.9	—	100 WKBB	
					Sanders Bros.	
La Salle	1200	—	249.9	—	100 WJBC	
					Hummer Furn. Co.	
Mooseheart	1130	—	265.3	—	20,000 WJJD	
					Sup. Lodge of World. L.O.O.M.	
Peoria	1440	—	208.2	—	1000 WMBD	
					Peoria. Hts. R. Lab.	
Quincy	1440	—	208.2	—	500 WTAD	
					Ill. St. Med. Br. Cor.	
Rockford	1410	—	212.6	—	500 KFLV	
					A. T. Frykman	

U.S. Broadcasting Stations Continued

Location	Kilo.	Meters	Power	Owner	Station	Readings
Rock Island	1210	—	247.8	—	100 Beardsley Spec. Co.	WHBF
Springfield	1210	—	247.8	—	100 H. L. Dewing & C. H. Messter	WCBS
Streator	1210	—	247.8	—	50 Williams Hdw. Co.	WTAX
Tuscola	1070	—	280.2	—	100 Jas. L. Bush	WDZ
Urbana	890	—	336.9	—	500 University of Ill.	WILL
Zion	1080	—	277.6	—	5000 Wilbur Glenn Voliva	WCBD

INDIANA

Anderson	1210	—	247.8	—	100 Citizens Bank	WHBU
Brookville	1500	—	199.9	—	100 Knox Bat. & Elec. Co.	WKBV
Culver	1400	—	214.2	—	500 Culver Military Ac.	WCMA
Evansville	630	—	475.9	—	500 Evansville on the Air	WGFB
Fort Wayne	1370	—	218.8	—	100 Allen Wayne Co.	WGL
	1160	—	258.5	—	10,000 Main Auto Sup. Co.	WOWO
Gary	1360	—	220.4	—	500 J. Kennedy Ra. Corp.	WJKS
Hammond	1200	—	249.9	—	100 Hammond-Calumet Br. Corp.	WWAE
Indianapolis	1230	—	243.8	—	1000 Indianapolis P. & L. Co.	WFBM
	1400	—	214.2	—	500 Indianapolis Br. Co.	WKBF
La Porte	1200	—	249.9	—	10 The Radio Club, Inc.	WRAF
Marion	1310	—	228.9	—	50 Marion Brdsg. Co.	WJAK
Muncie	1310	—	228.9	—	50 Donald A. Burton	WLBC
South Bend	1230	—	243.8	—	500 South Bend Tribune	WSBT
Terre Haute	1310	—	228.9	—	100 Banks of Wabash Br. Assn.	WBOW
Valparaiso	1240	—	241.8	—	500 Immanuel Luther. Ch.	WRBC

IOWA

Ames	560	—	535.4	—	5000 Iowa State College	WOI
Boone	1310	—	228.9	—	100 Boone Biblical Col.	KFGQ
Cedar Rapids	1310	—	228.9	—	100 H. F. Paar	KWCR
Clarinda	1380	—	217.3	—	500 Berry Seed Co.	KSO
Council Bluffs	1260	—	238.0	—	2500 Mona Motor Oil Co.	KOIL
Davenport	1000	—	299.8	—	5000 Palmer School of Chiro.	WOC
Decorah	1270	—	236.1	—	50 C. W. Greenley	KGCA
	1270	—	236.1	—	100 Luther College	KWLC
Des Moines	1000	—	299.8	—	5000 Bankers' Life Co.	WHO
Fort Dodge	1310	—	228.9	—	100 C. S. Tunwall	KFJY
Iowa City	580	—	516.9	—	500 State Univ. of Iowa	WSUI
Marshalltown	1200	—	249.9	—	100 Marshall Elec. Co.	KFJB
Muscatine	1170	—	256.3	—	5000 N. Baker	KTNT
Ottumwa	1420	—	211.1	—	100 Poling Elec. Co.	WIAS
Red Oak	1420	—	211.1	—	100 Red Oak Radio Corp.	KICK
Shenandoah	890	—	336.9	—	1000 Henry Field Co.	KFNF
	930	—	322.4	—	1000 May Seed & Nursery Co.	KMA
Sloux City	1330	—	225.4	—	1000 The Journal	KSCJ
Waterloo	1200	—	249.9	—	250 Waterloo Br. Co.	WMT

Location	Kilo.	Meters	Power	Owner	Station	Readings
KANSAS						
Kansas City	1420	—	211.1	—	100 E. L. Dillard	WLBF
Lawrence	1220	—	245.8	—	1000 Univ. of Kansas	KFKU
	1220	—	245.8	—	1000 Jenny Wren Co.	WREN
Manhattan	580	—	516.9	—	1000 Kan. State Agri. Col.	KSAC
Millford	1050	—	285.5	—	5000 Dr. J. R. Brinkley	KFKB
Topeka	1300	—	230.6	—	1000 Topeka Br. Assn., Inc.	WIBW
Wichita	1300	—	230.6	—	1000 Radio Station KFH Co.	KFH

KENTUCKY

Covington	1480	—	202.6	—	5000 L. B. Wilson, Inc.	WCKY
Hopkinsville	940	—	319.	—	1000 The Acme Mills	WFIW
Louisville	820	—	365.6	—	10,000 Courier & Louisville Times	WHAS
	1200	—	249.9	—	30 Amer. Br. Corp. of Ky.	WLAP

LOUISIANA

Kennerwood	850	—	352.7	—	10,000 W. K. Henderson	KWKH
New Orleans	1200	—	249.9	—	100 Coliseum Pl. Bap. Ch.	WABZ
	1250	—	239.9	—	1000 J. H. Uhalt	WDSU
	1370	—	218.8	—	100 V. Jensen	WJBO
	1200	—	249.9	—	30 C. Carlson, Jr.	WJBW
	1320	—	227.1	—	500 Saenger Theatres	WSMB
	850	—	352.7	—	5000 Loyola University	WWL
Shreveport	1310	—	228.9	—	50 R. M. Dean	KRMD
	1450	—	206.8	—	500 S. R. Elliott & A. C. Steere	KTBS
	1310	—	228.9	—	100 Houseman Sheet Metal Wks.	KTSL
	1210	—	247.8	—	100 W. E. Antony	KWEA

MAINE

Bangor	1200	—	249.9	—	100 1st Universalist Ch.	WABI
	620	—	483.6	—	500 Maine Brdsg. Co.	WLBZ
Portland	940	—	319.	—	500 Cong. Sq. Hotel Co.	WCSH

MARYLAND

Baltimore	1060	—	282.8	—	10,000 Cons. Gas E. L & P. Co.	WBAL
	600	—	499.7	—	250 Monumental Radio Inc.	WCAO
	1370	—	218.8	—	100 Baltimore Br. Corp.	WCBM
	1270	—	236.1	—	250 Baltimore Radio Show, Inc.	WFBR
Cumberland	1420	—	211.1	—	50 Cumberland Brdsg. Co.	WTBO

MASSACHUSETTS

Auburn	1200	—	249.9	—	100 A. F. Kleindienst	WORC
Babson Park	780	—	384.4	—	250 Babson's Stat. Org., Inc.	WBSO
Boston	990	—	302.8	—	500 Westinghouse E. & M. Co.	WBZA
	1500	—	199.9	—	250 Boston Brdsg. Co.	WLOE
	1500	—	199.9	—	50 Mass. Edu. Society	WMES

U.S. Broadcasting Stations Continued

Location	Kilo.	Meters	Power	Owner	Station	Readings
Boston	1230	— 243.8	— 1000	The Shepard Stores	WNAC	
	1420	— 211.1	— 250	Tremont Temple Baptist Ch.	WSSH	
Fall River	1450	— 206.8	— 250	Doughty & Welch Elec. Co.	WSAR	
Gloucester	1200	— 249.9	— 100	Matheson Radio Co.	WEPS	
	830	— 361.2	— 1000	Matheson Radio Co., Inc.	WHDH	
Lexington	1360	— 220.4	— 500	Lexington Air Station	WLEX	
	1420	— 211.1	— 100	Lexington Air Stations	WLEY	
New Bedford	1310	— 228.9	— 100	New Bedford Br. Co.	WNBH	
Springfield	990	— 302.8	— 15,000	Westinghouse E. & M. Co.	WBZ	
S. Dartmouth	1360	— 220.4	— 500	Round Hills Radio Corp.	WMAF	
Weymouth	590	— 508.2	— 1000	Edison Elec. Illum. Co. of Bos.	WEEI	
Worcester	580	— 516.9	— 250	Worcester Tel. Pub. Co.	WTAG	

MICHIGAN

Battle Creek	1420	— 211.1	— 50	Enquirer News Co.	WKBP	
Bay City	1410	— 212.6	— 500	Jas. E. Davidson	WBCM	
Berrien Spgs.	590	— 508.2	— 1000	Emanuel Miss. Col.	WEMC	
Calumet	1370	— 218.8	— 250	Upper Mich. Br. Co.	WHDF	
Detroit	1240	— 241.8	— 750	American Br. Corp.	WGHP	
	750	— 399.8	— 5000	W. J. R., Inc.	WJR	
	1420	— 211.1	— 100	Mich. Br. Co.	WMBC	
	920	— 325.9	— 1000	The Detroit News	WWJ	
Flint	1310	— 228.9	— 100	F. D. Fallam	WFDF	
Grand Rapids	1270	— 236.1	— 500	W. B. Siles, Inc.	WOOD	
	1270	— 236.1	— 500	Wash. Br. Corp.	WASH	
Jackson	1370	— 218.8	— 100	C. L. Carrell	WIBM	
Lansing	1040	— 288.3	— 1000	Mich. State College	WKAR	
Lapeer	1500	— 199.9	— 100	1st Meth. Epis. Ch.	WMPC	
Ludington	1500	— 199.9	— 50	K. L. Ashbacher	WKBZ	
Royal Oak	1310	— 228.9	— 50	R. L. Miller	WAGM	
Ypsilanti	1370	— 218.8	— 50	James F. Hopkins	WJBK	

MINNESOTA

Collegeville	1370	— 218.8	— 100	St. John's Univ.	WFBJ	
Duluth	1280	— 234.2	— 1000	Head of the Lakes Br. Co.	WEBC	
Fergus Falls	1200	— 249.9	— 50	Chas. L. Jaren	KGDE	
Hallock	1200	— 249.9	— 50	Lautzenheiser & Mitchell	KGFK	
Minneapolis	810	— 370.2	— 7500	Washburn Crosby Corp.	WCCO	
	1180	— 254.1	— 1000	Dr. G. W. Young	WDGY	
	1180	— 254.1	— 1500	W. H. Dunwoody Ind. Inst.	WHDI	
	1250	— 239.9	— 500	Univ. of Minnesota	WLB	
	1250	— 239.9	— 1000	Rosedale Hosp. Co., Inc.	WRHM	
Northfield	1250	— 239.9	— 1000	Carlton College	KFMX	
	1250	— 239.9	— 1000	St. Olaf College	WCAL	
Westcott	1460	— 205.4	— 10,000	Nat. Battery Br. Co.	KSTP	

Location	Kilo.	Meters	Power	Owner	Station	Readings
MISSISSIPPI						
Columbus	880	— 340.7	— 500	Crystal Oil Co.	WCOC	
Greenville	1210	— 247.8	— 100	J. P. Scully	WRBQ	
Gulfport	1210	— 247.8	— 100	Gulf Coast Music Co.	WGCM	
Hattiesburg	1420	— 211.1	— 100	Woodruff Furn. Co.	WRBJ	
Utica	1360	— 220.4	— 300	Utica Ch. of Com.	WQBC	

MISSOURI

Cape Girardeau	1210	— 247.8	— 50	Hirsch B. & R. Co.	KFVS	
Clayton	550	— 545.1	— 500	E. L. Synod of Mo., Ohio & other states	KFUO	
Columbia	630	— 475.9	— 500	Stephens College	KFRU	
Independence	950	— 315.6	— 2500	Midland Br. Co.	KMBC	
Jefferson City	630	— 475.9	— 500	State Marketing Bu.	WOS	
Joplin	1420	— 211.1	— 250	E. D. Aber	WMBH	
Kansas City	1370	— 218.8	— 100	W. Duncan Br. Co.	KWKC	
	610	— 491.5	— 1000	K. C. Star Co.	WDAF	
	950	— 315.6	— 500	Sweeney Auto School	WHB	
	610	— 491.5	— 1000	Unity School of Christ.	WOQ	
Kirksville	1200	— 249.9	— 15	N.E. Mo. State Teachers Col.	KFKZ	
St. Joseph	560	— 535.4	— 2500	Seroggin Bank	KFEQ	
	1370	— 218.8	— 100	Foster-Hall Tire Co.	KGBX	
St. Louis	1200	— 249.9	— 100	St. Louis Truth Center	KFWF	
	1090	— 275.1	— 50,000	Voice of St. Louis	KMOX	
	550	— 545.1	— 500	Pulitzer Pub. Co.	KSD	
	1350	— 222.1	— 1000	Gr. St. Louis Br. Corp.	KWK	
	760	— 394.5	— 1000	St. Louis University	WEW	
	1200	— 249.9	— 250	Missouri Br. Co.	WIL	
	1200	— 249.9	— 250	Kingshighway Pres. Ch.	WMAY	

MONTANA

Billings	950	— 315.6	— 500	N. W. Auto Sup. Co.	KGHL	
Butte	1360	— 222.1	— 250	Symons Brdcatg. Co.	KGIR	
Havre	1360	— 220.4	— 500	F. A. Buttrey Co.	KFBB	
Kalspell	1310	— 228.9	— 100	Chamber of Commerce	KGEZ	
Missoula	570	— 526.	— 500	State U. of Mont.	KUOM	
Vida	1420	— 211.1	— 10	1st State Bank of Vida	KGCCX	

NEBRASKA

Clay Center	740	— 405.2	— 1000	The M. M. Johnson Co.	KMMJ	
Lincoln	770	— 389.4	— 5000	Neb. Buick Auto Co.	KFAB	
	1210	— 247.8	— 100	H. A. Shuman	KFOR	
	590	— 508.2	— 500	Neb. Wesleyan Univ.	WCAJ	
Norfolk	1060	— 282.8	— 1000	Norfolk Daily News	WJAG	
Omaha	660	— 454.3	— 500	Omaha Grain Exch.	WAAW	
	590	— 508.2	— 1000	W. O. W. Life Ins. Assn.	WOW	

U.S. Broadcasting Stations Continued

Location	Kilo.	Meters	Power	Owner	Station	Readings
Ravenna	1310	— 228.9	— 50	O. F. Sothman	KGFW	
York	930	— 322.4	— 1000	G. R. Miller	KGBZ	

NEVADA

Las Vegas	1420	— 211.1	— 100	J. M. Heaton	KGIX	
Reno	1370	— 218.8	— 100	Jay Peters, Inc.	KOH	

NEW HAMPSHIRE

Laconia	1310	— 228.9	— 50	Laconia Radio Club	WKAV	
Tilton	1430	— 209.7	— 500	Booth Radio Labs.	WBRL	

NEW JERSEY

Asbury Park	1280	— 234.2	— 500	Radio Ind. Br. Co.	WCAP	
Atlantic City	1100	— 272.6	— 5000	Municipality of A. C.	WPG	
Camden	1280	— 234.2	— 500	City of Camden	WCAM	
Elizabeth	1450	— 206.8	— 250	N. J. Broad. Corp.	WIBS	
Fort Lee	1450	— 206.8	— 250	WBMS Brdstg. Corp.	WBMS	
Jersey City	1070	— 280.2	— 300	Bremer Br. Corp.	WAAT	
	1450	— 206.8	— 250	Camith Corp.	WKBO	
Newark	1250	— 239.9	— 2000	W. A. A. M., Inc.	WAAM	
	1250	— 239.9	— 250	May Rad. Br. Corp.	WGCP	
	1450	— 206.8	— 250	Radio Investment Co.	WNJ	
	710	— 422.3	— 5000	L. Bamberger & Co.	WOR	
Paterson	1250	— 239.9	— 1000	R. E. O'Dea	WODA	
Red Bank	1210	— 247.8	— 100	R. S. Johnson	WJBI	
Trenton	1280	— 234.2	— 500	F. J. Wolff	WOAX	

NEW MEXICO

Albuquerque	1230	— 243.8	— 500	New Mexico Brdstg. Co.	KGGM	
Raton	1370	— 218.8	— 50	Hubbard & Murphy	KGFL	
State College	1180	— 254.1	— 20,000	Col. of Agri. & Mech. Arts	KOB	

NEW YORK

Amherst	550	— 545.1	— 1000	Radio Sta. WGR, Inc.	WGR	
Auburn	1370	— 218.8	— 100	Radio Service Labs	WMBO	
Bay Shore	1210	— 247.8	— 100	Radiotel Mfg. Co.	WINR	
Binghamton	1500	— 199.9	— 50	Hewitt-Wood Radio Co., Inc.	WNBF	
Brooklyn	1400	— 214.2	— 500	Brooklyn Br. Corp.	WBBC	
	1400	— 214.2	— 500	Voice of Brooklyn	WLTH	
	1500	— 199.9	— 100	P. J. Gollhofer	WMBQ	
	1400	— 214.2	— 500	Amateur Radio Spec. Co.	WSGH	
Buffalo	1310	— 228.9	— 100	H. H. Howell	WEBR	
	1470	— 204.	— 5000	Churchill Evan. Assn.	WKBW	
	1040	— 288.3	— 1000	Radio. Sta. WKEN	WKEN	

Location	Kilo.	Meters	Power	Owner	Station	Readings
	900	— 333.1	— 750	WMAK Br. System, Inc.	WMAK	
	1370	— 218.8	— 50	Seneca Vocation. Sch.	WSVS	
Canton	1220	— 245.6	— 500	S. Lawrence Univ.	WCAD	
Cazenovia	570	— 526.0	— 250	Olive B. Meredith	WMAC	
Coney Island	1400	— 214.2	— 500	U. S. Broad. Corp.	WCGU	
Freeport	1210	— 247.8	— 100	H. H. Carman	WGBB	
Ithaca	1210	— 247.8	— 50	Lutheran As. of Ith.	WLCI	
	1270	— 236.1	— 500	Cornell University	WEAI	
Jamaica	1420	— 211.1	— 10	P. J. Prinz	WMRJ	
Jamestown	1210	— 247.8	— 25	A. E. Newton	WOCL	
Long Beach	1500	— 199.9	— 100	A. Faske	WCLB	
Long Island City	1500	— 199.9	— 100	J. N. Brahy	WLBX	
New York	860	— 348.6	— 5000	Atlantic Broad. Corp.	WABC	
	1350	— 222.1	— 250	Baruchrome Corp.	WBNY	
	1350	— 222.1	— 250	Italian Edu. Br. Co.	WCDA	
	660	— 454.3	— 50,000	National Br. Corp.	WEAF	
	1300	— 230.6	— 500	Debs Mem. Radio Fund, Inc.	WEVD	
	1180	— 254.1	— 500	General Br., Inc.	WGBS	
	1300	— 230.6	— 1000	Defenders of Truth So.	WHAP	
	1010	— 296.9	— 250	Marcus Loew Booking Agency	WHN	
	760	— 394.5	— 30,000	Radio Corp. of Amer.	WJZ	
	1350	— 222.1	— 250	Standard Cahill Co.	WKBQ	
	1100	— 272.6	— 5000	Miss. Soc. of St. Paul the Apostle	WLWL	
	570	— 526.	— 500	Knickerbocker Br. Co.	WMCA	
	1350	— 222.1	— 250	Mad. Sq. Garden Br. Corp.	WMSG	
	570	— 526.	— 500	Dept. of P. & S.	WNYC	
	1130	— 265.3	— 1000	International Br. Corp.	WOV	
	810	— 370.2	— 500	Eastern Br., Inc.	WPCH	
	1010	— 296.9	— 250	Calvary Baptist Ch.	WQAO	
	1010	— 296.9	— 250	Aviation Radio Station	WRNY	
Patchogue	1420	— 211.1	— 100	Nassau Br. Corp.	WPOE	
Poughkeepsie	1440	— 208.2	— 500	Harold E. Smith	WOKO	
Rochester	1150	— 260.7	— 5000	Stromberg Carlson Mfg. Co.	WHAM	
	1440	— 208.2	— 500	Hickson Elec. Co.	WHEC	
Rossville	1300	— 230.6	— 1000	People's Pulpit As.	WBBR	
Saranac Lake	1290	— 232.4	— 50	Smith & Mace	WNBZ	
Schenectady	790	— 379.5	— 50,000	General Elec. Co.	WGY	
Syracuse	900	— 333.1	— 750	The Onandago Co.	WFBL	
	570	— 526.	— 250	O. B. Meredith	WSYR	
Troy	1300	— 230.6	— 500	Rensselaer Poly. Inst.	WHAZ	
Tupper Lake	1420	— 211.1	— 10	George Franklin Bissell	WHDL	
Utica	1200	— 249.9	— 300	WIBX, Inc.	WIBX	
Woodside	1500	— 199.9	— 100	W. H. Reuman	WWRL	
Yonkers	1210	— 247.8	— 100	Westchester Br. Corp.	WCOH	

U.S. Broadcasting Stations Continued

Location	Kilo.-Meters - Power - Owner - Station	Readings
NORTH CAROLINA		
Asheville	570 — 526. — 1000 Citizens Brdcstg. Co.	WWNC
Charlotte	1080 — 277.6 — 5000 Station WBT, Inc.	WBT
Gastonia	1210 — 247.8 — 100 A. J. Kirby Music Co.	WRBU
Greensboro	1440 — 208.2 — 500 W. M. Nelson	WNRC
Raleigh	680 — 440.9 — 10,000 Durham Life Ins. Co.	WPTF
Wilmington	1370 — 218.8 — 100 Wilmington Radio As.	WRBT

NORTH DAKOTA		
Bismarek	550 — 545.1 — 500 Hoskins-Meyer	KFYR
Devils Lake	1210 — 247.8 — 100 Radio Elec. Co.	KDLR
Fargo	1280 — 234.2 — 1000 WDAY, Inc.	WDAY
Grand Forks	1370 — 218.8 — 100 University of N. D.	KFJM
Mandan	1200 — 249.9 — 100 Mandan Radio Assn.	KGCU
Minot	1420 — 211.1 — 100 E. C. Reineke	KGKG

OHIO		
Akron	1320 — 227.1 — 1000 A. T. Simmons	WADC
	1450 — 206.8 — 500 W. F. Jones Br., Inc.	WFJC
Bellevue	1370 — 218.8 — 100 F. P. Moler	WBBD
Cambridge	1210 — 247.8 — 100 R. N. Waller	WEBE
Canton	1200 — 249.9 — 10 St. John's Cath. Ch.	WHBC
	550 — 545.1 — 500 Kodel Radio Corp.	WKRC
	700 — 428.3 — 50,000 Crosley Radio Corp.	WLW
	1330 — 225.4 — 500 Crosley Radio Corp. (lessee)	WSAI
Cleveland	1070 — 280.2 — 1000 WTAM & WEAR, Inc.	WEAR
	1390 — 215.7 — 1000 Radio Air Serv. Corp.	WHK
	620 — 483.6 — 500 Cleveland Radio Br. Corp.	WJAY
	1070 — 280.2 — 3500 WTAM & WEAR, Inc.	WTAM
Columbus	640 — 468.5 — 500 Amer. Ins. Union	WAIU
	1430 — 209.7 — 500 Com. Radio Serv. Co.	WCAH
	570 — 526.0 — 750 Ohio State University	WEAO
	1210 — 247.8 — 50 W. E. Heskit	WMAN
Dayton	570 — 526. — 200 S. M. Krohn, Jr.	WSMK
Hamilton	1310 — 228.9 — 100 Doron & Slade	WRK
Mansfield	1210 — 247.8 — 100 Mansfield Br. Assn.	WJW
Stuebenville	1420 — 211.1 — 50 George W. Robinson	WIBR
Springfield	1450 — 206.8 — 500 Wittenberg College	WCSO
Toledo	1340 — 223.7 — 500 Toledo Br. Co.	WSPD
Youngstown	570 — 526. — 500 W. P. Williamson, Jr.	WKBN

OKLAHOMA		
Alva	1420 — 211.1 — 100 D. R. Wallace	KGFF
Chickasha	1400 — 214.2 — 500 Okla. Col. for Women	KOCW
Ed	1370 — 218.8 — 250 Champ'n Refining Co.	KCRC
Norman	1010 — 296.9 — 500 University of Okla.	WNAD

Location	Kilo.-Meters - Power - Owner - Station	Readings
Oklahoma City	1470 — 204. — 5000 Nat. Radio Mfg. Co.	KFJF
	1310 — 228.9 — 50 Exch. Ave. Bap. Ch.	KFXR
	1370 — 218.8 — 100 Faith Tabernacle Assn.	KGFG
	900 — 333.1 — 1000 WKY Radiophone Co.	WKY
Picher	1010 — 296.9 — 500 D. L. Connell, M. D.	KGGF
Ponca City	1200 — 249.9 — 100 C. L. Carrell	WBBZ
Tulsa	1140 — 263.0 — 5000 S. W. Sales Corp.	KVOO

OREGON		
Astoria	1370 — 218.8 — 100 Geo. Kincaid	KFJI
Corvallis	560 — 535.4 — 1000 Ore. State Agri. Col.	KOAC
Engene	1420 — 211.1 — 100 Eugene Br. Station	KORE
Marshfield	1370 — 218.8 — 50 H. H. Hanseth	KOOS
Medford	1310 — 228.9 — 50 W. J. Virgin	KMED
Portland	1180 — 254.1 — 5000 Western Br. Co.	KEX
	1420 — 211.1 — 100 Benson Poly. School	KFIF
	1300 — 230.6 — 500 A. C. Dixon & Son	KFJR
	620 — 483.6 — 1000 Oregonian Pub. Co.	KGW
	940 — 319. — 1000 KOIN, Inc.	KOIN
	1300 — 230.6 — 500 M. E. Brown	KTBR
	1500 — 199.9 — 15 Schaeffer Radio Co.	KWBS
	1060 — 282.8 — 500 W. Jerman	KWJJ
	1250 — 239.9 — 500 KXL Broadcasters	KXL

PENNSYLVANIA		
Allentown	1440 — 208.2 — 250 B. B. Musselmann	WCBA
	1440 — 208.2 — 250 Allentn. Call Pub. Co.	WSAN
Altoona	1310 — 228.9 — 100 W. F. Gable Co.	WFBG
Carbondale	1200 — 249.9 — 10 Home Cut Glass & China Co.	WNBW
Elkins Park	930 — 322.4 — 50 St. Paul's P. E. Ch.	WIBG
Erie	1420 — 211.1 — 30 Erie Dispatch Herald	WEDH
	1370 — 218.8 — 50 C. R. Cummins	WRAK
Grove City	1310 — 228.9 — 100 Grove City College	WSAJ
Harrisburg	1430 — 209.7 — 500 Penna. State Police	WBAK
	1200 — 249.9 — 100 N. R. Hoffman	WCOD
	1430 — 209.7 — 500 Pennsylvania Br. Co.	WHP
Johnstown	1310 — 228.9 — 100 Johnstown Auto Co.	WJAC
Lancaster	1310 — 228.9 — 15 Lancaster Elec. Sup. Co.	WGAL
	1200 — 249.9 — 100 Kirk Johnson & Co.	WKJC
Lewisburg	1210 — 247.8 — 100 Bucknell University	WJBU
Oil City	1260 — 238. — 500 Petroleum Tel. Co.	WLBW
Philadelphia	1170 — 256.3 — 10,000 Universal Br. Co.	WCAU
	1370 — 218.8 — 100 Howard R. Miller	WELK
	610 — 491.5 — 500 Keystone Br. Corp.	WFAN
	560 — 535.4 — 500 Strawbridge & Clothier	WFI

U.S. Broadcasting Stations Continued

Location	Kilo.	Meters	Power	Owner	Station	Readings
Philadelphia	1310	—	228.9	—	50 Foulkrod Radio Eng. Co.	WFKD
	610	—	491.5	—	500 Gimbel Bros.	WIP
	560	—	535.4	—	500 Lit Bros.	WLIT
	1310	—	228.9	—	100 Lennig Bros.	WNAT
	1500	—	199.9	—	250 Wm. Penn. Br. Co.	WPEN
Pittsburgh	1020	—	293.9	—	250 Berachah Church	WRAX
	980	—	305.9	—	50,000 Westinghouse E. & M. Co.	KDKA
	1380	—	217.3	—	500 Doubleday, Hill Elec. Co.	KQV
	1220	—	245.8	—	500 Kaufman & Baer	WCAE
	1290	—	232.4	—	1000 Pitts. Rad. Sup. House	WJAS
Reading	1500	—	199.9	—	100 Rev. John W. Sproul	WMBJ
	1310	—	228.9	—	100 Ave. Radio & Elec. Shop	WRAW
Scranton	880	—	340.7	—	250 Scranton Broadcasters	WGBI
	880	—	340.7	—	250 Scranton Times	WQAN
State College	1230	—	243.8	—	500 Penn State College	WPSC
Washington	1200	—	249.9	—	100 J. B. Spriggs	WNBO
Wilkes-Barre	1210	—	247.8	—	100 J. H. Stenger, Jr.	WBAX
	1310	—	228.9	—	100 L. G. Baltimore	WBRE

PORTO RICO

San Juan	890	—	336.9	—	500 Radio Corp. of P. R.	WKAQ
----------	-----	---	-------	---	--------------------------	------

RHODE ISLAND

Newport	1500	—	199.9	—	100 LeRoy J. Beebe	WMBA
Pawtucket	1210	—	247.8	—	100 Shartenberg & Co.	WPAW
Providence	1210	—	247.8	—	100 D. W. Flint & Lincoln Stu.	WDFW
	550	—	545.1	—	500 The Shepard Co.	WEAN
	890	—	336.9	—	400 The Outlet Co.	WJAR

SOUTH CAROLINA

Charleston	1200	—	249.9	—	75 Wash. Light Infantry	WBBY
------------	------	---	-------	---	-------------------------	------

SOUTH DAKOTA

Brookings	550	—	545.1	—	1000 S. D. State College	KFDY
Dell Rapids	1370	—	218.8	—	50 J. R. Nelson	KGDA
Oldham	1200	—	249.9	—	15 J. A. Loesch	KGDY
Pierre	580	—	516.9	—	200 D. McNeill	KGFX
Rapid City	1200	—	249.9	—	100 S. D. St. School of Mines	WCAT
Sioux Falls	1110	—	270.1	—	2000 S. F. Broadcast As.	KSOO
Vermilion	890	—	336.9	—	750 University of S. D.	KUSD
Watertown	1210	—	247.8	—	100 Cutler's Rad. Br. Ser. Co.	KGCR
Yankton	570	—	526.0	—	1000 Guerney Seed & Nursery Co.	WNAX

TENNESSEE

Bristol	1500	—	199.9	—	100 Radiophone Service Co.	WOPI
Chattanooga	1280	—	234.2	—	2500 Chattanooga Radio Co.	WDOD
Knoxville	1200	—	249.9	—	50 First Baptist Ch.	WFBC
	1310	—	228.9	—	50 Lonsdale Baptist Ch.	WNBK
	560	—	535.4	—	2000 Sterchi Bros.	WNOX
Lawrenceburg	600	—	499.7	—	500 Vaughan S. of Music	WOAN
Memphis	1430	—	209.7	—	500 First Baptist Ch.	WGBC
	1370	—	218.8	—	100 Br. Sta. WHBQ, Inc.	WHBQ
	570	—	526.0	—	1000 Mem. Commercial Appeal	WMC
	1430	—	209.7	—	500 J. Ulrich	WNBR
	600	—	499.7	—	1000 WREC, Inc.	WREC
Nashville	1490	—	201.2	—	5000 Life & Casualty Ins. Co.	WLAC
	650	—	461.3	—	5000 Nat. Life & Ac. Ins. Co.	WSM
	1490	—	201.2	—	5000 Tenn. Pub. Co.	WTNT
Union City	1310	—	228.9	—	250 Tittsworth's Radio Shop	WOBT

TEXAS

Ablene	1420	—	211.1	—	250 T. E. Kirksey	KFYO
Amarillo	1410	—	212.6	—	1000 Gish Radio Service	KGRS
	1410	—	212.6	—	250 Nat'l. Radio & Brdcstg.	WDAG
Austin	1120	—	267.7	—	500 KUT Broadcasting Co.	KUT
Beaumont	560	—	535.4	—	1000 Magnolia Pet. Co.	KFDM
Brownsville	1260	—	238.0	—	500 Cham. of Commerce	KWWG
Brownwood	1500	—	199.9	—	100 Eagle Pub. Co.	KGKB
College Sta.	1120	—	267.7	—	500 Agri. & Mech. Col.	WTAW
Corpus Christi	1500	—	199.9	—	100 Eagle Brdcstg. Co., Inc.	KGFI
Dallas	1040	—	288.3	—	10,000 KRLD, Inc.	KRLD
	800	—	374.8	—	50,000 The Dallas News & Dallas Jour.	WFAA
	1280	—	234.2	—	500 City of Dallas	WRR
Dublin	1310	—	228.9	—	15 C. C. Baxter	KFPL
El Paso	1310	—	228.9	—	100 Trinity Meth. Church	WDAH
	1310	—	228.9	—	100 Bledsoe & Blackwell	KTSM
Fort Worth	1370	—	218.8	—	100 H. C. Allison	KFJZ
	1240	—	241.8	—	1000 Texas Air Trspt Br. Co.	KTAT
	800	—	374.8	—	50,000 Carter Pub., Inc.	WBAP
Galveston	1370	—	218.8	—	100 G. R. Clough	KFLX
	1290	—	232.4	—	1000 W. H. Ford	KFUL
Greenville	1310	—	228.9	—	15 The New Furniture Co.	KFPM
Harlingen	1260	—	238.0	—	500 Valley Radio-Elec. Corp.	KRGV
Houston	920	—	325.9	—	1000 Houston Ptg. Co.	KPRC
	1420	—	211.1	—	100 Uhalt Electric	KTUE
Richmond	1500	—	199.9	—	50 F. Bend Co. Sch. Bd.	KGHX
San Angelo	1370	—	218.8	—	100 KGKL, Incorporated	KGKL

U.S. Broadcasting Stations Continued

Location	Kilo.	Meters	Power	Owner	Station	Readings
San Antonio	1370	—	218.8	—	100 Liberto Radio Sales	KGCI
San Antonio	1500	—	199.9	—	100 KGDR Broadcasting Co.	KGDR
	1370	—	218.8	—	100 E. J. Roth	KGRC
	1420	—	211.1	—	100 Alamo Br. Company	KTAP
	1290	—	232.4	—	2000 Lone Star Br. Co., Inc.	KTSA
	1190	—	252.	—	5000 Southern Equip. Co.	WOAI
Waco	1240	—	241.8	—	1000 F. P. Jackson	WJAD
Wichita Falls	570	—	526.0	—	500 Wichita Falls Br. Co.	KGKO

UTAH

Ogden	1370	—	218.8	—	200 Perry Bldg. Co.	KLO
Salt Lake City	1290	—	232.4	—	1000 Intermountain Br. Corp.	KDYL
	1130	—	265.3	—	5000 Radio Service Corp.	KSL

VIRGINIA

Mt. Vernon Hills	1460	—	205.4	—	10,000 Independent Pub. Co.	WJSV
Newport News	1310	—	228.9	—	100 Virginia Br. Co.	WGH
Norfolk	780	—	384.4	—	500 WTAR Radio Corp.	WTAR
Petersburg	1200	—	249.9	—	250 R. A. Gamble	WLBG
Richmond	1370	—	218.8	—	100 Grace Cove. Pres. Ch.	WBBL
	1210	—	247.8	—	100 Havens & Martin	WMBG
	1110	—	270.1	—	1000 Larus & Bro. Co.	WRVA
	1210	—	247.8	—	15 Reynolds & McGuire	WTAZ
Roanoke	930	—	322.4	—	500 Richardson Wayland Elec. Co.	WDBJ

VERMONT

Springfield	1200	—	249.9	—	10 First Cong. Ch.	WNBX
-------------	------	---	-------	---	-----------------------	------

WASHINGTON

Aberdeen	1420	—	211.1	—	75 KXRO, Inc.	KXRO
Bellingham	1200	—	249.9	—	100 KVOS, Inc.	KVOS
Everett	1370	—	218.8	—	50 Leese Bros.	KFBL
Lacey	1200	—	249.9	—	50 St. Martin's College	KGY
Longview	1500	—	199.9	—	10 Columbia Br. Co., Inc.	KUJ
Oulma	1390	—	215.7	—	500 State Col. of Wash.	KWSC
Seattle	1270	—	236.1	—	1000 Seattle Br. Co., Inc.	KOL
	1420	—	211.1	—	100 KFQW, Inc.	KFQW
	970	—	309.01	—	5000 N. W. Radio Ser. Co.	KJR
	920	—	325.9	—	1000 Fisher's Blend Sta.	KOMO
	1210	—	247.8	—	50 Pac. Coast Biscuit Co.	KPCB

Location	Kilo.	Meters	Power	Owner	Station	Readings
Seattle	1210	—	247.8	—	100 Taft & Wasmer	KPQ
	1120	—	267.7	—	50 Radio Sales Corp.	KRSC
	1270	—	236.1	—	1000 First Pres. Church	KTW
	1370	—	218.8	—	100 A. C. Dailey	KVL
	570	—	526.	—	500 Amer. Radio Tel. Co.	KXA
Spokane	1230	—	243.8	—	100 No. Central High School	KFIO
	1390	—	215.7	—	500 Symons Invest. Co.	KFPY
	1470	—	204.	—	5000 N. W. Radio Serv. Co.	KGA
	590	—	508.2	—	2000 L. Wasmer, Inc.	KHQ
Tacoma	1340	—	223.7	—	500 KMO, Inc.	KMO
	760	—	394.5	—	1000 Puget Sound Radio Br. Co.	KVI
Yakima	1370	—	218.8	—	50 Carl E. Haymond	KIT

WEST VIRGINIA

Bluefield	1420	—	211.1	—	100 Daily Telegraph Print. Co.	WHIS
Charlestown	580	—	516.9	—	250 Charlestown Radio Br. Co.	WOBU
Fairmont	890	—	336.9	—	500 Holt, Rome Nov. Co.	WMMN
Huntington	580	—	516.9	—	250 WSAZ, Inc.	WSAZ
Weirton	1420	—	211.1	—	60 J. H. Thompson	WQBZ
Wheeling	1160	—	258.5	—	250 W. Va. Br. Corp.	WWVA

WISCONSIN

Beloit	600	—	499.7	—	350 Beloit College	WEBW
Eau Claire	1330	—	225.4	—	1000 Gillette Rubber Co.	WTAQ
Fond du Lac	1420	—	211.1	—	100 Commonwealth Reporter	KFIZ
Kenosha	1200	—	249.9	—	100 C. E. Whitmore	WCLO
La Crosse	1380	—	217.3	—	1000 Callaway Music Co.	WKBH
Madison	940	—	319.0	—	750 University of Wis.	WHA
	1210	—	247.8	—	100 Capital Times—Strand Thea.	WIBA
Manitowoc	1210	—	247.8	—	100 Francis M. Kadow	WOMT
Milwaukee	1120	—	267.7	—	250 Marquette University	WHAD
	1120	—	267.7	—	250 Evening Wis. Co.	WISN
	620	—	483.6	—	2500 Milwaukee Journal	WTMJ
Poynette	1310	—	228.9	—	100 Wm. C. Forrest	WIBU
Racine	1370	—	218.8	—	100 Racine Br. Corp.	WRJN
Sheboygan	1410	—	212.6	—	500 Press Pub. Co. & Carrell	WHBL
Stevens Pt.	900	—	333.1	—	3000 Wis. Dep. of Markets	WLBL
Superior	1280	—	234.2	—	1000 Hd. of the Lakes Br. Corp.	WEBC
West De Pere	1200	—	249.9	—	100 St. Norbert's Col.	WHBY

WYOMING

Laramie	600	—	499.7	—	500 Bishop N. S. Thomas	KWYO
---------	-----	---	-------	---	----------------------------	------

CANADA BROADCASTING STATIONS

Listed According to Provinces and Cities

Location	Kilo. • Meters • Power • Owner • Station	Readings
ALBERTA		
Calgary	690 — 434.5 — 500 The Calgary Herald	CFAC
	690 — 434.5 — 500 Western Br. Co.	CFCN
	690 — 434.5 — 500 The Albertan Pub. Co., Ltd.	CHCA
	690 — 434.5 — 250 The Albertan Pub. Co., Ltd.	CJCJ
	690 — 434.5 — 500 Canadian Nat'l. Railways	CNRC
Edmonton	580 — 516.9 — 250 Christ. & Mis. Alliance	CHMA
	580 — 516.9 — 500 The Edmonton Journal, Ltd.	CJCA
	580 — 516.9 — 500 University of Alberta	CKUA
	580 — 516.9 — 500 Canadian Nat'l. Railways	CNRE
Lethbridge	1120 — 267.7 — 50 Harold R. Carson	CJOC
Red Deer	840 — 356.9 — 1000 Messrs. Tull & Arden	CHCT
	840 — 356.9 — 1000 Ala. Pac. Grain Co., Ltd.	CKLC

BRITISH COLUMBIA		
Chilliwack	1210 — 247.8 — 5 Chilli. Brdestg. Co., Ltd.	CHWK
Kamloops	1120 — 267.7 — 15 Dulgeish & Weller & Weller	CFJC
Sea Island	1030 — 291.1 — 50 G. C. Chandler	CJOR
Vancouver	730 — 410.7 — 50 W. G. Hassell	CHLS
	730 — 410.7 — 50 Vancouver Daily Province	CKCD
	730 — 410.7 — 50 United Church of Canada	CKFC
	730 — 410.7 — 50 Sprott-Shaw Radio	CKMO
	730 — 410.7 — 100 A. Holstead & Wm. Hanlon	CKWX
	1030 — 291.1 — 50 Canadian Nat'l. Railways	CNRV
Victoria	630 — 475.9 — 500 Victoria Bdestg. As.	CFCT

MANITOBA		
Brandon	540 — 555.6 — 500 Manitoba Tele. Sys.	CKX
Winnipeg	780 — 384.4 — 5000 Manitoba Tele. Sys.	CKY
	780 — 384.4 — 5000 Canadian Nat'l. Railways	CNRW

NEW BRUNSWICK		
Fredericton	1210 — 247.8 — 50 James. S. Neill & Sons, Ltd.	CFNB
Moncton	630 — 475.9 — 500 Canadian Nat'l. Railways	CNRA
St. John	890 — 336.9 — 50 Imperial Theatre	CFBO

NOVA SCOTIA		
Halifax	930 — 322.4 — 500 Hal. Herald, Ltd.	CHNS
Sydney	880 — 340.7 — 50 N. Nathanson	CJCB
Wolfville	930 — 322.4 — 50 Acadia University	CKIC

ONTARIO		
Bowmanville	960 — 312.3 — 5000 Gooderham & Worts	CKGW
Brantford	1010 — 296.9 — 50 John Patterson	CKCR
Chatham	1210 — 247.8 — 50 W. Ont. "Better Radio Club"	CFCO
Cobalt	1210 — 247.8 — 15 R. L. MacAdam	CKMC
Hamilton	880 — 340.7 — 10 The Hamilton Spectator	CHCS
	880 — 340.7 — 50 Maple Leaf Radio Co., Ltd.	CHML

Location	Kilo. • Meters • Power • Owner • Station	Readings
Hamilton	880 — 340.7 — 50 Wentworth R. & A. Sup. Co.	CKOC
Iroquois Falls	600 — 499.7 — 500 Abitibi Power & Paper Co.	CFCH
Kingston	1120 — 267.7 — 500 Queen's University	CFRC
King, York Co.	960 — 312.3 — 4000 Stand. Radio Mfg. Corp.	CFRB
London	910 — 329.5 — 500 London Free Press Ptg. Co.	CJGC
	910 — 329.5 — 500 Canadian Nat'l. Railways	CNRL
Midland	1120 — 267.7 — 50 Midland Br. Corp.	CKPR
Ottawa	690 — 434.5 — 100 Dr. G. M. Geldert	CKCO
	690 — 434.5 — 500 Canadian Nat'l. Railways	CNRO
Prescott	1010 — 296.9 — 50 Radio Ass. of Prescott	CFLC
Preston	1210 — 247.8 — 50 Wallace Russ	CKPC
Toronto	840 — 356.9 — 500 Star Pub. & Ptg. Co.	CFCA
	960 — 312.3 — 5000 Jarvis St. Bap. Ch.	CJBC
	580 — 516.9 — 500 The Evening Teleg.	CJSC
	580 — 516.9 — 500 The Dominion Bat. Co., Ltd.	CKCL
	580 — 516.9 — 500 Can. Nat. Carbon Co.	CKNC
	840 — 356.9 — 500 Nestle's Food Co. of Canada	CKOW
	840 — 356.9 — 500 Canadian Nat'l. Railways	CNRT

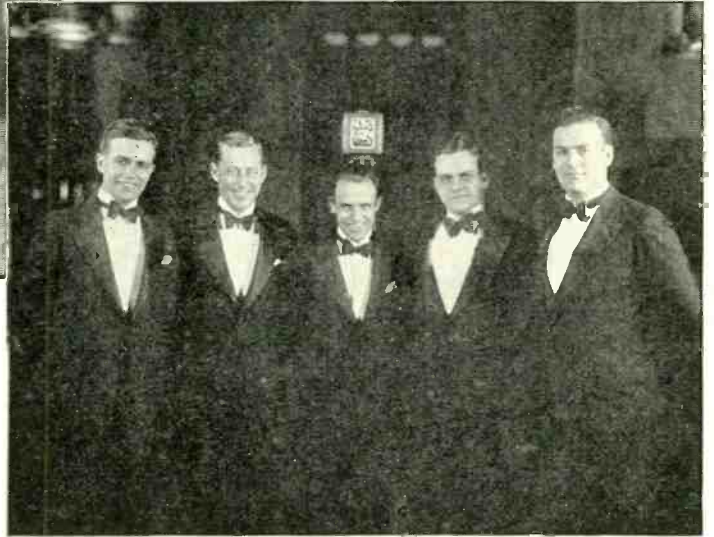
PRINCE EDWARD ISLAND		
Charlottetown	960 — 312.3 — 250 The Island Radio Co.	CFCY
	960 — 312.3 — 30 W. E. Burke	CHCK
Summerside	1120 — 267.7 — 25 R. T. Holman, Ltd.	CHGS

QUEBEC		
Montreal	1030 — 291.1 — 1650 Canadian Marconi Co.	CFCF
	730 — 410.7 — 500 North. Elec. Co., Ltd.	CHYC
	730 — 410.7 — 5000 La Presse Pub. Co., Ltd.	CKAC
	730 — 410.7 — 5000 Canadian Nat'l. Railways	CNRM
Quebec	880 — 340.7 — 25 E. Fontaine	CHRC
	880 — 340.7 — 22.5 Le "Soleil," Ltd.	CKCI
	880 — 340.7 — 50 G. A. Vandry	CKCV
	880 — 340.7 — 50 Canadian Nat'l. Railways	CNRQ
St. Hyacinthe	1010 — 296.9 — 50 City of St. Hyacinthe, P. Q.	CKSH

SASKATCHEWAN		
Fleming	600 — 499.7 — 500 Jas. Richardson & Sons	CJRW
Moose Jaw	600 — 499.7 — 500 Jas. Richardson & Sons	CJRM
Pilot Butte	960 — 312.3 — 500 R. H. Williams & Sons	CHWG
Regina	960 — 312.3 — 500 Sask. Co-op. Wheat Pro.	CJBR
	960 — 312.3 — 500 Leader Pub. Co.	CKCK
	960 — 312.3 — 500 Canadian Nat'l. Railways	CNRR
Saskatoon	910 — 329.5 — 500 The Elec. Shop, Ltd.	CFQC
	910 — 329.5 — 250 Radio Service, Ltd.	CJHS
	910 — 329.5 — 500 Canadian Nat'l. Railways	CNRS
Yorkton	630 — 475.9 — 500 The Winnipeg Grain Ex.	CJGX



(Left) Olive Palmer, exclusive Palmolive soprano, who has justly been called Radio's Queen. N.B.C., Wednesday 10 P.M. E.S.T.



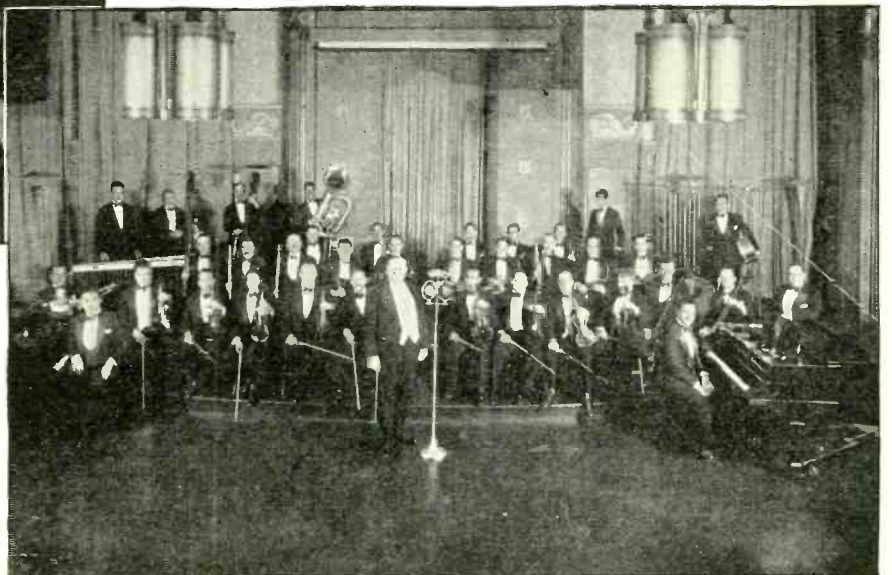
(Above) The Cities Service Cavaliers. N.B.C., Friday, 8 P.M., E.S.T.



(Above) Nathaniel Shilkret, conductor of the current RCA-Victor series. N.B.C., Thursday, 10:30 P.M., E.S.T.

Some of the leading radio broadcast accounts directed and placed by

**LORD & THOMAS
& LOGAN, Inc.**



(Above) B. A. Rolfe and his Lucky Strike Dance Orchestra, N.B.C., Saturday, 10 P.M., E.S.T.

Short Wave Broadcasting Stations of the World

UNITED STATES

Station	Location	Meters	Readings
WAAM (2XBA)	Newark, N. J.	65.18	
WAAB (2XE)	Richmond Hill, N. Y.	58.50	
WAJ	Rocky Point, N. Y.	22.48	
WBRL (1XY)	Tilton, N. H.	109.00	
WIZ	Springfield, Mass.	70.00	
WCFI	Chicago, Ill.	37.24	
WCGU (2XBH)	Brooklyn, N. Y.	54.00	
WCSH (1XAB)	Portland, Me.	63.79	
WCX	Pontiac, Mich.	32.00	
WEAJ	Rocky Point, N. Y.	22.48	
WEAO (8XJ)	Columbus, O.	54.02	
WGY (2XAD)	Schenectady, N. Y.	21.96	
(2XAF)	Schenectady, N. Y.	31.40	
WHK (8XF)	Cleveland, O.	66.04	
WIZ	New Brunswick, N. J.	43.45	
WJR-WCX-(8XAO)	Pontiac, Mich.	32.00	
WJZ (3XL)	New York, N. Y.	59.96	
WLW (8XAL)	Cincinnati, O.	52.02	
WNAL (9XAB)	Omaha, Neb.	105.00	
WNB	Elgin, Ill.	35.50	
WND	Ocean Township, N. J.	46.48	
WOR (2XAQ)	Kearny, N. J.	65.40	
WOWO	Fort Wayne, Ind.	22.80	
WRNY (2XAL)	New York, N. Y.	30.91	
WSM (4XD)	Nashville, Tenn.	31.43	
WTFP	Mt. Vernon, Va.	56.00	
KDKA (8XK)	East Pittsburgh, Pa.	62.50	
(8XS, 8XP-Portable)		42.75	
KEJK (6XAN)	Los Angeles, Cal.	105.90	
KFPY (7XAB)	Spokane, Wash.	105.90	
KFQU (6XRB)	Holy City, Cal.	31.00	
KFQZ (6XAL)	Hollywood, Cal.	108.20	
KFVD (6XBX)	Culver City, Cal.	105.00	
KFWB (6XBR, auto)	Los Angeles, Cal.	105.00	
KFWO (6XAD)	Avalon, Cal.	53.07	
KGB	San Diego, Cal.	65.18	
KGDE	Barrett, Minn.	40.00	
KGER (6XBV)	Long Beach, Cal.	48.86	
KGO (6XAX, 6XN)	San Francisco, Cal.	10 to 40	
KHJ (6XAU)	Los Angeles, Cal.	104.10	
KJBS (6XAR)	San Francisco, Cal.	62.00	
KJR (7XC, 7XO)	Seattle, Wash.	105.20	
KMOX	St. Louis, Mo.	49.00	
KMTR	Los Angeles, Cal.	108.20	
KNRC (6XAF)	Santa Monica, Cal.	108.20	
KNX (6XA)	Los Angeles, Cal.	107.10	
KOIL (9XU)	Council Bluffs, Ia.	61.06	
KWE-KEWE	Bolinas, Cal.	14.10	
KWJJ (7XAO)	Portland, Oregon	53.54	

AFRICA

AIN	Casablanca, Morocco	51.00	
SKR	Constantine, Tunisia	42.8	
JB	Johannesburg, U. S. Africa	32.00	
7LO	Nairobi, Kenya	35.00	
TUA	Tunis, Tunisia	45.00	

AUSTRALIA

2BL	Sydney	32.50	
2FC	Sydney	32.50	
2ME	Sydney	28.50	
3AR	Melbourne	55.00	
3LO	Melbourne	32.00	
6AG	Perth, West Australia	32.90	

AUSTRIA

OHK2	Vienna	70.00	
EATH	Vienna	37.00	
	Vienna	22.20	

BELGIUM

EB4A2	Brussels	42.00	
-------	----------	-------	--

BRAZIL

SQBE	Bahia	24.00	
	Para	34.00	

CANADA

CF	Drummondville, Quebec	32.00	
CJRX	Winnipeg, Man.	25.6	

DENMARK

D7MK	Copenhagen	32.05	
D7RL	Copenhagen	42.12 and 84.25	

ENGLAND

Station	Location	Meters	Readings
5SW	Daventry	24.00	
2NM	Catherham	32.50	
GBS	Rugby	24.40	

FRANCE

2BD	Agen	30.75	
FL	Eiffel Tower, Paris	32.00	
YN	Lyons	58.00	
YR	Lyons—"Radio Lyon"	40.20	
	Nancy	15.50	
F8A	Nogent sur Seine	80.00	
Radio Vitus	Paris	37.00	
F8GC	Paris—"Radio LL"	61.00	
FW	Ste. Assise	24.50	

GERMANY

AFI	Konigswusterhausen	14.00	
AFK	Berlin (Doberitz)	37.65-67.65	
AFL	Hamburg	52.00	
AFT	Konigswusterhausen	14.00	
AFU	Konigswusterhausen	14.00	
HEA	Nauen	11.00	
AGC	Berlin	17.20	
AGJ	Nauen	56.70	
AGK	Nauen	11.00	
LA	Langenberg	43.90	
POF	Nauen	11.00	
POZ	Nauen	18.10	
	Stuttgart	41.00	

HOLLAND

PCJJ	Hilversum	30.20-31.40	
PCKK	Kootwijk	16.00	
PCLL	Kootwijk	18.10	
PCMM	The Hague	46.50	
PCPP	Kootwijk	16.50	
PCRR	Kootwijk	37.00	
PCTT	Kootwijk	21.00	
PCUU	The Hague	37.00	

ITALY

11AX	Rome	45.00	
1AY	Placenza	20.00-45.00	

JAPAN

JFAV	Taipch, Formosa	39.50	
JHBB	Ibarakiken	37.50	
JIPP	Tokio	20.00	
JKZB	Tokio	20.00	
JOAK	Tokio	30.00-60.00-35.00-70.00	
IAA	Iwatsuki	40.00	

JAVA

ANE	Bandoeng	15.93	
ANF	Malabar	56.00	
ANH	Bandoeng	17.00	

MEXICO

XC51	Mexico City	44.00	
XFA	Mexico City	(0-14) (42-43)	

NORWAY

LGN	Bergen	30.00	
LCHO	Oslo	33.00	

U. S. S. R. (RUSSIA)

RDW	Moscow	83.00	
-----	--------	-------	--

U. S. S. R. (SIBERIA)

RFM	Khabarovsk	70.20	
RA19	Tomsk	37.00	

SPAIN

EAR55	Barcelona		
EAM	Madrid	30.70	

SWEDEN

SAA	Karlskrona	44.40	
SAJ	Karlsborg	47.00	
SAS	Karlsborg	52.50	
SMHA	Stockholm	41.00	

SWITZERLAND

EH90C	Berne	32.00	
EH9XD	Zurich	32.00	

Information Welcomed From Fans on New Short Wave Calls Heard



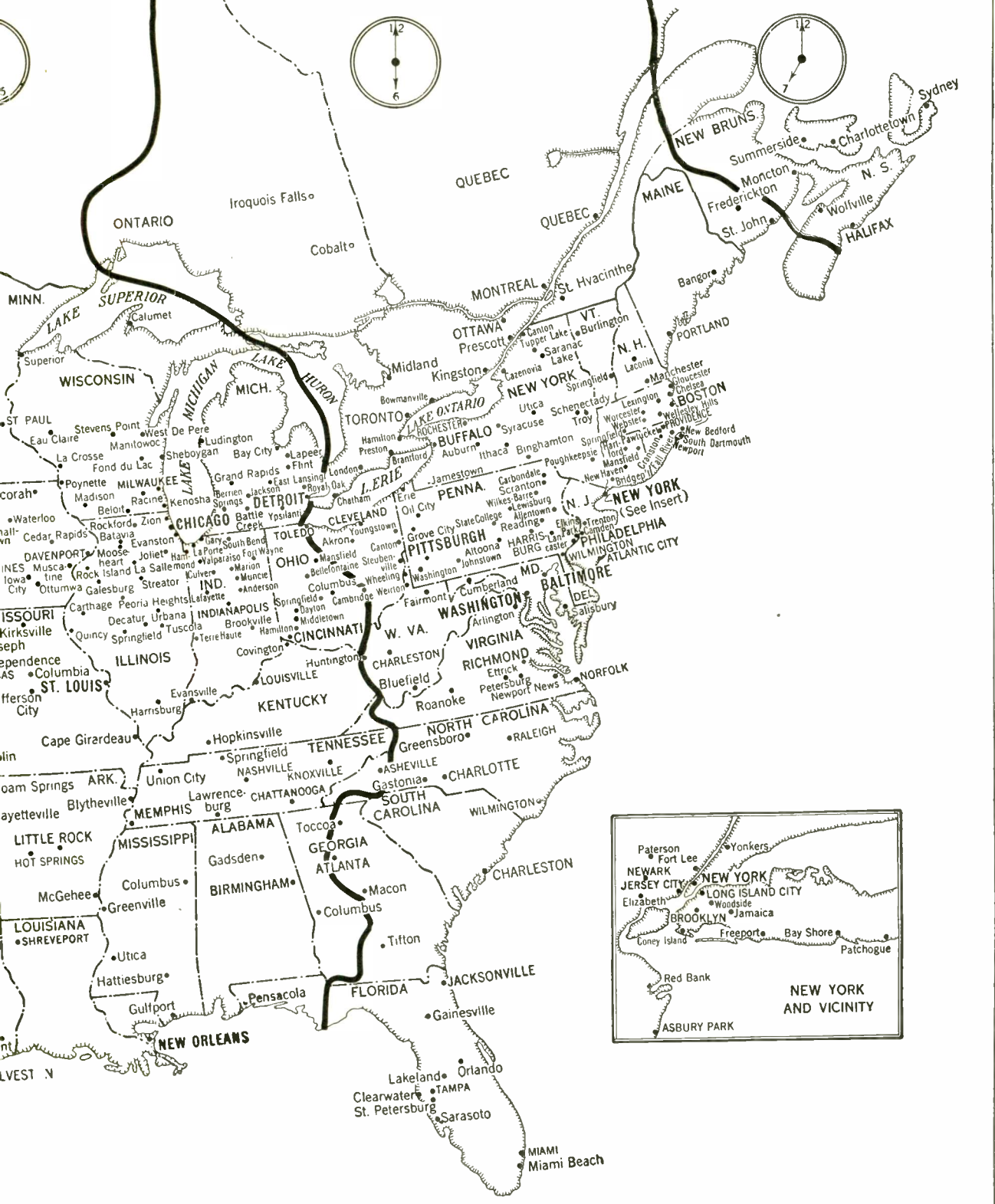
RADIO MAP OF UNITED STATES AND SOUTHERN CANADA

COPYRIGHTED BY THE RADIO DIAL, NEW YORK

TIME

EASTERN TIME

ATLANTIC OR INTERCOLONIAL TIME



S. NEWMAN, NEW YORK

WHAT'S ON THE AIR TONIGHT

First line: N.B.C. Key Station WEAJ.
 Second line: N.B.C. Key Station WJZ.
 Third line: C.B.S. Key Station WABC.

RECORD YOUR DIAL NUMBERS OPPOSITE THE PROGRAM IN THE SPACE PROVIDED SO YOU MAY KNOW WHERE TO TUNE IN TO HEAR IT AGAIN

Mark your choice in the order of preference 1, 2, 3.

STANDARD TIME				Dial	SUNDAY	Dial	MONDAY	Dial	TUESDAY
Pacific	M'tn	Central	Eastern						
3	4	5	6				Black and Gold Orchestra		Black and Gold Orchestra
					Twilight Voices		Mormon Tab. Choir and Organ		
					Fox Fur Trappers		Ben Pollack's Silver Slipper Orch.		
3.30	4.30	5.30	6.30		Old Company's Songalogue		American Home Banquet		American Home Banquet
					In the Spotlight		Armour & Co.		Savannah Liner's Orchestra
					Acousticon Program		H. V. Kaltenborn, Cur. Events		From Dusty Pages
4	5	6	7		Heroes of the World--Sketch				Voter's Service
							Amos 'n' Andy		Amos 'n' Andy, Comedians
					Our Romantic Ancestors		Bernhard Levitow and his Commodore Ensemble		Carborundum Hour
4.30	5.30	6.30	7.30		Capitol Th. Family, Maj. Bowes				Soconyland Sketches
							Roxy and His Gang		Lew White Organ Recital
					French Trio		Voices from Filmland		Carborundum Hour
5	6	7	8		Capitol Th. Family, Maj. Bowes		Voice of Firestone		
					Enna Jettick Melodies		Roxy and His Gang		Pure Oil Band Concert
					La Palina Rhapsodizers		Henry--George		Blackstone Plantation
5.30	6.30	7.30	8.30		Chase and Sanborn Choral Orch.		A. & P. Gypsies		
					Collier's Hour		Ipana Troubadors		Around the World with Libby
					Sonatron Program		Ce-Co. Couriers, Henry Burbig, Humorist		True Romances
6	7	8	9		Our Gov't--David Lawrence		A. & P. Gypsies		Eveready Hour
					Collier's Hour		Edison Program		Johnson & Johnson Program
					Majestic Theatre of the Air		Physical Culture Mag. Hour		Old Gold--P. Whiteman Hour
6.30	7.30	8.30	9.30		Atwater Kent Radio Hour		General Motors Family Party		Happy Wonder Bakers
					Salon Singers with Lew White		Real Folks		
					Majestic Theatre of the Air		Evening in Paris		Old Gold--P. Whiteman Hour
7	8	9	10		Atwater Kent Radio Hour		Whittall Anglo-Persians		
					Penrod		Stromberg-Carlson Program		
					Royal's Poet of the Organ		Burns Panatela Country Club		Graybar's "Mr. & Mrs."
7.30	8.30	9.30	10.30		Studebaker Champion Orch.		Strings and Bows		Radio-Keith-Orpheum Hour
							Empire Builders		
					Arabesque -- A Modern Thousand and One Nights		Voice of Columbia		Conclave of Nations
8	9	10	11		Sketch--Sunday at Seth Parker's		Bernie Cummins' Hotel New Yorker Orch.		Radio-Keith-Orpheum Hour
							Slumber Music		Slumber Music
					"Back Home" Hour		Hank Simmons' Show Boat		Will Osborne and His Orch.
8.30	9.30	10.30	11.30		Russian Cathedral Choir				Phil Spitalny's Music
					South Sea Islanders		Slumber Music		Slumber Music
					"Back Home" Hour		Hank Simmons' Show Boat		Publix Radio-Vue

WHAT'S ON THE AIR TONIGHT

First line: N.B.C. Key Station WEAf.
 Second line: N.B.C. Key Station WJZ.
 Third line: C.B.S. Key Station WABC.

RECORD YOUR DIAL NUMBERS OPPOSITE THE PROGRAM IN THE SPACE PROVIDED SO YOU MAY KNOW WHERE TO TUNE IN TO HEAR IT AGAIN

Mark your choice in the order of preference 1, 2, 3.

Dial	WEDNESDAY	Dial	THURSDAY	Dial	FRIDAY	Dial	SATURDAY
	Black and Gold Orchestra		Black and Gold Orchestra		Black and Gold Orchestra		Black and Gold Orchestra
	New Yorker Hotel Orchestra				Whyte's Orchestra		
	Closing Market Prices and "Going to Press"		Hotel Shelton Orch.		Closing Market Prices and The Lone Wolf		Hotel Shelton Orch.
	American Home Banquet		American Home Banquet		American Home Banquet		Black and Gold Orchestra
	New Yorker Hotel Orchestra						Bernie Cummins' Hotel New Yorker Orch.
			Civic Repertory Plays — Eva Le Gallienne		Will Osborne and His Orch.		
	Jeddo Highlanders		Midweek Federation Hymn Sing				
	Amos 'n' Andy, Comedians		Amos 'n' Andy, Comedians		Amos 'n' Andy, Comedians		Amos 'n' Andy, Comedians
	Bernhard Levitow and his Commodore Ensemble		Bernhard Levitow and his Commodore Ensemble		Hotel Paramount Orch.		Bernhard Levitow and his Commodore Ensemble
	Hindermeyer & Tuckerman		Coward Comfort Hour		Raybestos Twins		
			The Seven Elevens		Dixie Circus		The Fuller Man
			Ward's Tip Top Club		Howard Fashion Plates		Bernhard Levitow and his Commodore Ensemble
	Mobiloil Orchestra		Fleischman Sunshine Hour		Cities Service Concert Orch. and Cavaliers		The New Business World
	The Yeast Foamers		Lehn & Fink Serenade		Ben Bernie's Orch.		The Pickard Family
	General Mills Fast Freight		The Vagabonds		Brown-Bilt Footlights		Dr. Arthur Torrence
			Fleischman Sunshine Hour		Cities Service Concert Orch. and Cavaliers		Laundryland Lyrics
	Sylvania Foresters		Champion Sparkers				The Silver Flute
	Forty Fathom Trawlers—Sketch		Manhattan Moods		Wahl Eversharp Penman		Dixie Echoes
	Halsey Stuart Program — The Old Counsellor		Seiberling Singers		Clicquot Club Eskimos		Gen'l Elec. Hour—W. Damrosch
			Smith Brothers		Interwoven Pair—Billy Jones and Ernie Hare		The Cub Reporter
	U. S. Navy Band		True Detective Mysteries		True Story Hour		Nit Wit Hour of Burlesque
	Palmolive Hour		Jack Frost's Melody Moments				Gen'l Elec. Hour—W. Damrosch
	Cuckoo		Maxwell House Concert		Armour Program		Dutch Masters Minstrels
	La Palina Smoker		In a Russian Village		True Story Hour		Around the Samovar—Russian Music
	Palmolive Hour		R. C. A. Victor Hour				Lucky Strike Dance Orchestra
			Atwater Kent Program		Armstrong Quakers		
	Philco Hour				Brunswick Program		Paramount-Publix Radio Hour
	F. Gibbons, Headline Hunter				Mystery House		Lucky Strike Dance Orchestra
	St. Regis Hotel Orchestra		Atwater Kent Program				
			Nat. Forum from Washington		Curtis Institute of Music		Paramount-Publix Radio Hour
	Lew White Organ Recital		National Grand Opera		St. Regis Hotel Orchestra		
	Slumber Music		Continental Oil Co.				Slumber Music
			The Dream Boat—Melodies from the Land of Nod		Sleepy Hall's Orch.		Guy Lombardo and His Royal Canadians
	Central Park Casino Orch.				St. Regis Hotel Orchestra		
	Slumber Music		Slumber Music		Slumber Music		Slumber Music
					Ben Pollack's Silver Slipper Orch.		Hotel Paramount Orchestra

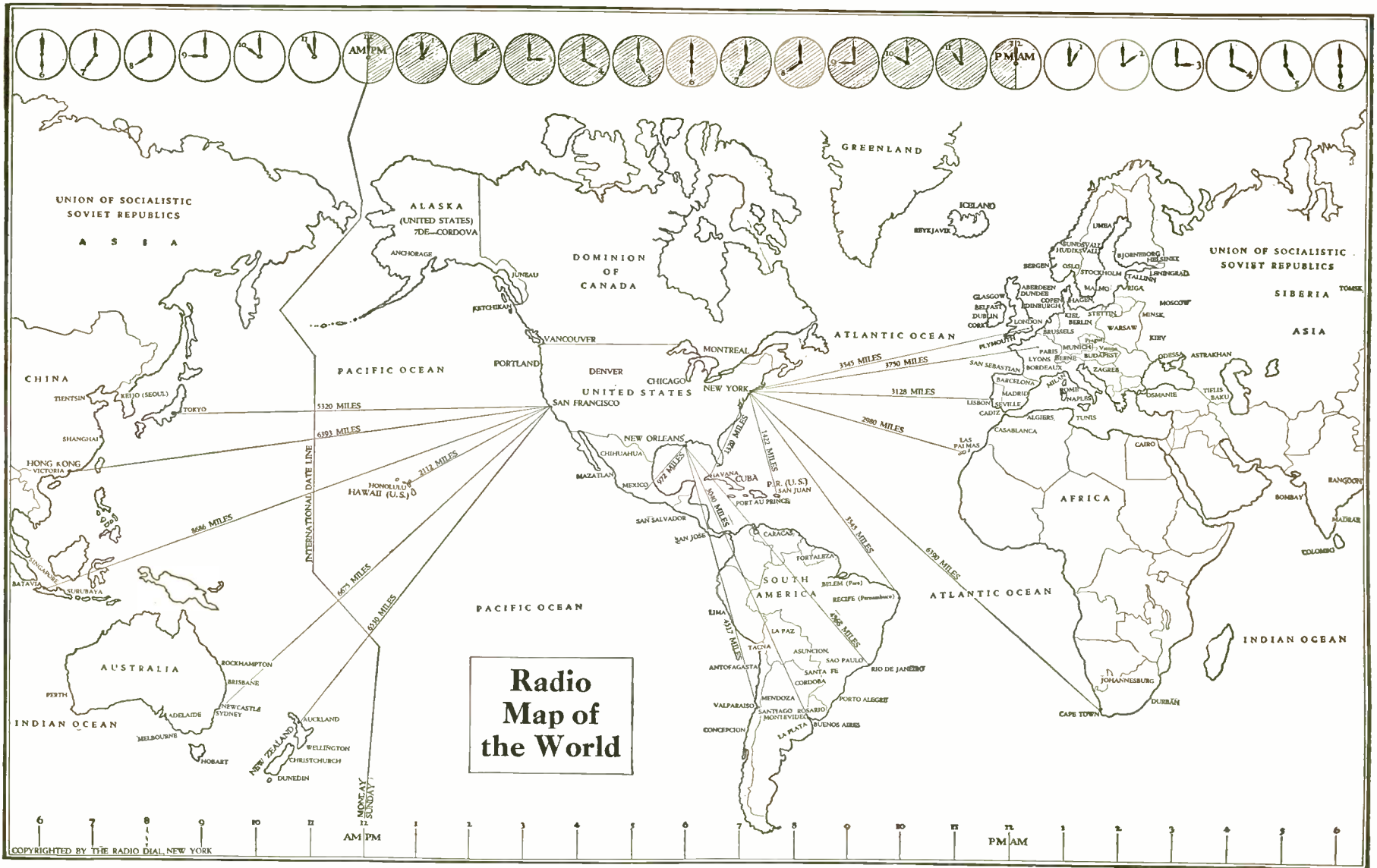
RADIO STATIONS IN MEXICO, WEST INDIES, CENTRAL & SOUTH AMERICA



Foreign Broadcasting Stations

MEXICO — WEST INDIES — CENTRAL AND SOUTH AMERICA

Station	Meters	Location	Power (Watts)	Station	Meters	Location	Power (Watts)
ARGENTINA				CM2JP	245.5	Habana	15
B2	275	Buenos Aires	100	CM2OH	300	Habana	15
D3	253.3	Buenos Aires	100	CM2OK	360	Habana	100
LOJ	270	Buenos Aires	1000	CM2RK	326	Habana	50
LOL	236	Buenos Aires	2000	CM2SE	211	Habana	10
LON	210	Buenos Aires	5000	CM2TW	270	Habana	10
LOO	252	Buenos Aires	1000	CM2UF	228	Habana	100
LOQ	261.8	Buenos Aires	3000	CM2WX	261	Habana	150
LOR	344.8	Buenos Aires	1000	CM2XA	230	Habana	200
LOS	291.2	Buenos Aires	5000	CM2XX	225	Habana	10
LOT	400	Buenos Aires	1000	CM2FG	226	Hershey	20
LOV	361.5	Buenos Aires	1000	CM2JF	252	Marianao	15
LOW	303	Buenos Aires	1000	CM2JL	294	Marianao	7½
LOX	380	Buenos Aires	1000	CM2MA	277	Marianao	50
LOY	315.2	Buenos Aires	1000	CM2SW	274	Marianao	7½
LOZ	330	Buenos Aires	1000	CM7NM	264	Nuevitas	20
H5	275	Cordoba	100	CM6HS	200	Sagua la Grande	10
H6	250	Cordoba	20	CM6KP	280	Sancti Spiritus	20
LOP	425	La Plata	1000	CM6MN	210	Santa Clara	20
LOU	380	Mendoza	500	CM8HS	200	Santiago	30
M6	348	Mendoza	10	CM8BY	150	Santiago	30
F2	270	Rosario	100	CM8KW	250	Santiago	15
F1	279	Santa Fe	20	CM6KW	368	Tuinucu	100
BOLIVIA				GUATEMALA			
.....	175	La Paz	50	310	Guatemala	1000
.....	300	La Paz	50	HAITI			
.....	...	La Paz	..	HHK	361.2	Port au Prince	1000
BRAZIL				MEXICO			
SKV	600	Bahia	50	XFF	325	Chihuahua	250
SQBE	24	Bahia	..	XEA	250	Guadalajara	100
SQAF	340	Curytiba	8	XFC	475	Jalapa	350
SQAY	380	Juiz de Fora	200	XES	250	Lerdo	250
.....	34	Para	..	XEY	548.6	Merida	100
.....	310	Pernambuco	300	XEB	450	Mexico City	1000
.....	...	Porto Alegre	..	XEN	410	Mexico City	1000
SQAA	400	Rio de Janeiro	2000	XEX	325	Mexico City	500
SQAB	310	Rio de Janeiro	500	XFA	500-600	Mexico City	50
SQAJ	260	Rio de Janeiro	500	XFG	470	Mexico City	2000
SQAI	280	Santos	10	XFI	507	Mexico City	1000
SQBO	225.4	Sao Paulo	1000	XFX	357	Mexico City	500
SQAG	360	Sao Paulo	1000	XEH	311	Monterrey	100
SQAK	350	Sao Paulo	10	XEI	300	Morelia	100
.....	425	Sorocaba	..	XEF	265	Oaxaca	100
CHILE				XEE	312	Puebla	100
CMAO	...	Antofagasta	..	PARAGUAY			
CMAI	345	Concepcion	1500	Asuncion	12
CMAD	320	Santiago	1000	PERU			
CMAE	280	Santiago	100	OAX	360	Lima	1500
CMAT	550	Tacna	200	SALVADOR			
.....	...	Talcahuano	..	AQM	482	Salvador	500
CMAK	245	Temuco	100	URUGUAY			
.....	400	Valparaiso	50	CWOA	428.4	Montevideo	1000
CUBA				CWOF	300	Montevideo	100
CM6EV	250	Caibarien	50	CWOG	280	Montevideo	10
CM6LO	325	Caibarien	250	CWOH	300	Montevideo	50
CM7AZ	225	Camaguey	10	CWOK	260	Montevideo	50
CM7GT	195	Camaguey	5	CWOL	272	Montevideo	100
CM7LO	230	Camaguey	20	CWOM	265.5	Montevideo	20
CM6YR	200	Camajuani	20	CWON	256.5	Montevideo	200
CM7BY	235	Ciego de Avila	20	CWOO	294	Montevideo	50
CM7FU	200	Ciego de Avila	15	CWOR	350	Montevideo	500
CM7HS	192	Ciego de Avila	15	CWOS	380	Montevideo	500
CM6BY	260	Cienfuegos	200	CWOW	...	Montevideo	500
CM5EV	360	Colon	106	CWOI	272	Salta	50
CMIAZ	275	Guanajay	30	CWOJ	250	Salta	10
CM1	365	Habana	500	VENEZUELA			
CMC	347	Habana	500	AYRE	375	Caracas	1000
CM2AB	250	Habana	10				
CM2AR	341	Habana	75				
CM2AZ	334	Habana	30				
CM2CP	280	Habana	10				
CM2HP	205	Habana	200				



THE PRAGUE BROADCASTING FREQUENCY PLAN

The first frequency plan to receive the collective assent of the European governments was formulated at the Prague conference which terminated recently. Known as the Prague Plan, the new measure follows upon the decisions at the Washington Radio Convention, 1927, which provided that broadcasting frequencies should be dealt with by government action. The plan, which is notable for the inclusion of Russian stations, is due to come into operation on June 30, 1929.

The official list of Foreign Broadcasting Stations published by the International Bureau of the Telegraph Union, Berne, Switzerland, is not yet available but the complete list of call signals and frequency assignments will appear in the next edition of *The Radio Dial*.

Frequencies in kilocycles, approximate meters in parentheses

LOW FREQUENCIES

Frequencies in kilocycles, approximate meters in parentheses	Country
160 (1,875)	Holland
167 (1,800)	Finland
174 (1,725)	France
183.5 (1,635)	Germany
193 (1,553)	Great Britain
202.5 (1,481)	Russia
207.5 (1,444)	Aviation
212.5 (1,411)	Poland
217.5 (1,380)	Aviation
222.5 (1,348)	Sweden
230 (1,304)	Russia
250 (1,200)	Turkey
250 (1,200)	Iceland
260 (1,153)	Denmark
280 (1,072)	Norway
297 (1,010)	Switzerland

MEDIUM FREQUENCIES

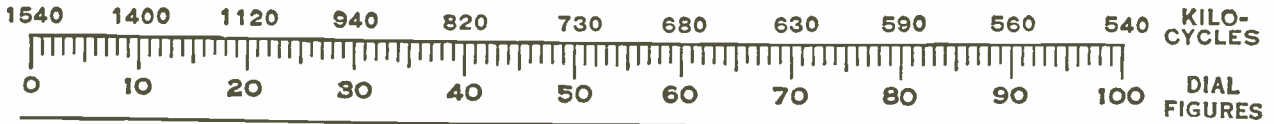
320 (930)	Russia
364 (825)	Russia
375 (800)	Russia
385 (778)	Russia
395 (760)	Switzerland
442 (680)	Switzerland
527 (572)	Germany
527 (572)	Yugoslavia
531.5 (565)	Russia
536 (560)	Germany
545 (550)	Hungary
554 (542)	Sweden
563 (533)	Germany
572 (525)	Latvia
581 (517)	Austria
585.5 (511)	Russia
590 (507)	Belgium
599 (501)	Italy
603.5 (497)	Russia
617 (487)	Czechoslovakia
621.5 (483)	Russia
626 (479)	Great Britain
630.5 (476)	Russia
635 (473)	Germany
644 (466)	France
653 (459)	Switzerland
666.5 (450)	Russia
666 (453)	Common wave
671 (447)	France
680 (441)	Italy
689 (436)	Sweden
698 (429)	Yugoslavia
702.5 (427)	Russia
707 (424)	Spain
716 (418)	Germany
725 (413)	Ireland
729.5 (411)	Russia
734 (408)	Poland
743 (403)	Switzerland
747.5 (401)	Russia
753 (399)	Great Britain
761 (394)	Rumania
770 (390)	Germany
779 (385)	Poland and Italy
783.5 (383)	Russia
788 (381)	France
792.5 (379)	Russia
797 (377)	Great Britain
806 (372)	Germany
810.5 (375)	Russia
815 (368)	Spain
819.5 (366)	Russia
824 (364)	Norway
833 (360)	Germany

Frequencies in kilocycles, approximate meters in parentheses

MEDIUM FREQUENCIES (Continued)

Frequencies in kilocycles, approximate meters in parentheses	Country
842 (356)	Great Britain
851 (352)	Austria
855.5 (351)	Russia
860 (349)	Spain
869 (345)	France
878 (342)	Czechoslovakia
887 (339)	Belgium
891.5 (337)	Russia
896 (335)	Poland
905 (332)	Italy
914 (329)	France
923 (325)	Germany
932 (322)	Sweden
941 (318)	Bulgaria
950* (316)	France
959 (313)	Poland
968 (310)	Great Britain
977 (307)	Yugoslavia
986 (304)	France
995 (301)	Great Britain
1,004 (298)	Holland
1,013 (295)	Estonia
1,022 (293)	France
1,022 (293)	Czechoslovakia
1,031 (291)	Finland
1,040 (289)	Great Britain
1,049 (286)	France
1,058 (283)	Portugal
1,067 (281)	Denmark
1,076 (279)	Czechoslovakia
1,085 (276)	Germany
1,094 (274)	Italy
1,103 (273)	France
1,112 (270)	Greece
1,121 (268)	Spain
1,130 (265)	France
1,139 (263)	Czechoslovakia
1,148 (261)	Great Britain
1,157 (259)	Germany
1,166 (257)	Sweden
1,175 (255)	France
1,184 (253)	Germany
1,193 (251)	Spain
1,202 (250)	Czechoslovakia
1,211 (248)	Italy
1,220 (246)	Common wave
1,229 (244)	Albania (provisionally Poland)
1,238 (242)	Great Britain
1,274 (240)	Norway
1,274 (240)	Germany
1,256 (239)	Italy
1,265 (237)	Divided between Monaco, Nice, and Corsica
1,274 (235)	Norway
1,301 (231)	Sweden
1,310 (229)	Spain
1,319 (227)	Germany
1,328 (226)	Rumania
1,337 (225)	Ireland
1,346 (223)	Luxembourg
1,355 (221)	Finland
1,364 (220)	France
1,373 (218)	Common wave
1,382 (217)	Common wave
1,391 (216)	Common wave
1,400 (214)	Poland
1,410 (213)	Italy
1,420 (211)	Rumania
1,430 (210)	Hungary
1,440 (208)	Belgium
1,450 (207)	Common wave
1,460 (206)	Common wave
1,470 (204)	Common wave
1,480 (203)	Common wave
1,490 (202)	Common wave
1,500 (200)	Free

CHANNEL CHART



550 Kilocycles—545.1 Meters

Station	Location	Power (Watts)
WEAN	Providence, R. I.	500
WGR	Amherst, N. Y.	1,000
WKRC	Cincinnati, Ohio	500
KFUO	St. Louis, Mo.	1,000
KFDY	Brookings, S. D.	1,000
KFYR	Bismarck, N. D.	500
KSD	St. Louis, Mo.	500
KTAB	Oakland, Cal.	500

560 Kilocycles—535.4 Meters

Approximate Dial Readings 90

Station	Location	Power (Watts)
WFI	Philadelphia, Pa.	500
WIOD	Miami Beach, Fla.	1,000
WLIT	Philadelphia, Pa.	500
WNOX	Knoxville, Tenn.	2,000
WOI	Ames, Iowa	5,000
KFDM	Beaumont, Tex.	1,000
KFEQ	St. Joseph, Mo.	2,500
KLZ	Dupont, Colo.	1,000
KOAC	Corvallis, Ore.	1,000

570 Kilocycles—526.0 Meters

Station	Location	Power (Watts)
WEAO	Columbus, Ohio	750
WIBO	Chicago, Ill.	1,500
WKBN	Youngstown, Ohio	500
WMCA	Cazenovia, N. Y.	250
WNAX	New York City	500
WNYC	Yankton, S. D.	1,000
WPCC	New York City	500
WSMK	Chicago, Ill.	500
WSYR	Dayton, Ohio	200
WSYR	Syracuse, N. Y.	250
WWNC	Asheville, N. C.	1,000
KGKO	Wichita Falls, Tex.	500
KMTR	Hollywood, Calif.	1,000
KUOM	Missoula, Mont.	500
KXA	Seattle, Wash.	500

580 Kilocycles—516.9 Meters

Station	Location	Power (Watts)
WOBV	Charleston, W. Va.	250
WSAZ	Huntington, W. Va.	250
WSUI	Iowa City, Iowa	500
WTAG	Worcester, Mass.	250
KGFX	Pierre, S. D.	200
KSAC	Manhattan, Kan.	1,000
CHMA	Edmonton, Alta.	250
CJCA	Edmonton, Alta.	500
CJSC	Toronto, Ont.	500
CKCL	Toronto, Ont.	500
CKNC	Toronto, Ont.	500
CKUA	Edmonton, Alta.	500
CNRE	Edmonton, Alta.	500

590 Kilocycles—508.2 Meters

Approximate Dial Readings 80

Station	Location	Power (Watts)
WCAJ	Lincoln, Neb.	500
WEFI	Weymouth, Mass.	1,000
WEMC	Berrien Springs, Mich.	1,000
WOW	Omaha, Neb.	1,000
KHQ	Spokane, Wash.	2,000

600 Kilocycles—499.7 Meters

Station	Location	Power (Watts)
WCAC	Storrs, Conn.	250
WCAO	Baltimore, Md.	250
WEBW	Beloit, Wis.	350
WOAN	Lawrenceburg, Tenn.	500
WREC	Whitehaven, Tenn.	1,000
KFSD	San Diego, Cal.	1,000
KWYO	Laramie, Wyo.	500
CFCH	Iroquois Falls, Ont.	250
CJRM	Moose Jaw, Sask.	500
CJRW	Fleming, Sask.	500

610 Kilocycles—491.5 Meters

Station	Location	Power (Watts)
WDAF	Kansas City, Mo.	1,000
WFAN	Philadelphia, Pa.	500
WIP	Philadelphia, Pa.	500
WOQ	Kansas City, Mo.	1,000
KFRC	San Francisco, Cal.	1,000

620 Kilocycles—483.6 Meters

Station	Location	Power (Watts)
WDAE	Tampa, Fla.	1,000
WBDO	Orlando, Fla.	1,000
WIBZ	Bangor, Me.	500
WJAY	Cleveland, Ohio	500
WTMJ	Brookfield, Wis.	2,500
KFAD	Phoenix, Ariz.	500
KGW	Portland, Ore.	1,000

630 Kilocycles—475.9 Meters

Approximate Dial Readings 70

Station	Location	Power (Watts)
WGBF	Evansville, Ind.	500
WMAL	Washington, D. C.	500
WOS	Jefferson City, Mo.	1,000
KFRU	Columbia, Mo.	500
CFCT	Victoria, B. C.	500
CJGX	Yorktown, Sask.	500
CNRA	Moncton, N. B.	500

640 Kilocycles—468.5 Meters

Station	Location	Power (Watts)
WAIU	Columbus, Ohio	500
KFI	Los Angeles, Calif.	5,000

650 Kilocycles—461.3 Meters

Station	Location	Power (Watts)
WSM	Nashville, Tenn.	5,000

660 Kilocycles—454.3 Meters

Station	Location	Power (Watts)
WAAW	Omaha, Neb.	500
WEAF	New York, N. Y.	50,000

670 Kilocycles—447.5 Meters

Station	Location	Power (Watts)
WMAQ	Chicago, Ill.	5,000

680 Kilocycles—440.9 Meters

Approximate Dial Readings 60

Station	Location	Power (Watts)
WPTF	Raleigh, N. C.	1,000
KPO	San Francisco, Cal.	5,000

690 Kilocycles—434.5 Meters

Station	Location	Power (Watts)
CFAC	Calgary, Alta.	500
CFCN	Calgary, Alta.	1,800
CHCA	Calgary, Alta.	250
CJCY	Calgary, Alta.	250
CKCO	Ottawa, Ont.	100
CNRC	Calgary, Alta.	500
CNRO	Ottawa, Ont.	500

700 Kilocycles—428.3 Meters

Station	Location	Power (Watts)
WLW	Cincinnati, Ohio	50,000

710 Kilocycles—422.3 Meters

Station	Location	Power (Watts)
WOR	Newark, N. J.	5,000
KFVD	Culver City, Cal.	250

720 Kilocycles—416.4 Meters

Station	Location	Power (Watts)
WGN-WLIB	Chicago, Ill.	25,000

730 Kilocycles—410.7 Meters

Approximate Dial Readings 50

Station	Location	Power (Watts)
CHLS	Vancouver, B. C.	50
CHYC	Montreal, Que.	750
CKAC	Montreal, Que.	1,200
CKCD	Vancouver, B. C.	50
CKFC	Vancouver, B. C.	50
CKMO	Vancouver, B. C.	50
CKWX	Vancouver, B. C.	100
CNRM	Montreal, P. Q.	1,000-1,650

740 Kilocycles—405.2 Meters

Station	Location	Power (Watts)
WSB	Atlanta, Ga.	5,000
KMMJ	Clay Center, Neb.	1,000

750 Kilocycles—399.8 Meters

Station	Location	Power (Watts)
WJR	Detroit, Mich.	5,000

760 Kilocycles—394.5 Meters

Station	Location	Power (Watts)
WEW	St. Louis, Mo.	1,000
WJZ	New York, N. Y.	30,000
KVI	Tacoma, Wash.	1,000

770 Kilocycles—389.4 Meters

Station	Location	Power (Watts)
WBBM-WJBT	Chicago, Ill.	10,000
KFAB	Lincoln, Neb.	5,000

780 Kilocycles—384.4 Meters

Station	Location	Power (Watts)
WBSO	Babson Park, Mass.	250
WMC	Memphis, Tenn.	1,000
WTAR-WPOR	Norfolk, Va.	500
KELW	Burbank, Cal.	500
KTM	Los Angeles, Cal.	1,000
CKY	Winnipeg, Man.	500
CNRW	Winnipeg, Man.	500

790 Kilocycles—379.5 Meters

Station	Location	Power (Watts)
WGY	Schenectady, N. Y.	50,000
KGO	Oakland, Cal.	7,500

800 Kilocycles—374.8 Meters

Station	Location	Power (Watts)
WBAP	Ft. Worth, Texas	50,000
WFAA	Dallas, Tex.	50,000

Channel Chart Continued

Station Location Power (Watts)
810 Kilocycles—370.2 Meters

--	--	--

WCCO Minneapolis, Minn. 7,500
 WPCH New York, N. Y. 500

820 Kilocycles—365.6 Meters
 Approximate Dial Readings 40

--	--	--

WHAS Louisville, Ky. 5,000

830 Kilocycles—361.2 Meters

--	--	--

WHDH Gloucester, Mass. 1,000
 KOA Denver, Colo. 12,500

840 Kilocycles—356.9 Meters

--	--	--

CFCA Toronto, Ont. 500
 CHCT Red Deer, Alta. 1,000
 CKLC Red Deer, Alta. 1,000
 CKOW Toronto, Ont. 500
 CNRT Toronto, Ont. 500

850 Kilocycles—352.7 Meters

--	--	--

WWL New Orleans, La. 5,000
 KWKH Kennonwood, La. 10,000

860 Kilocycles—348.6 Meters

--	--	--

WABC-WBOQ New York, N. Y. 5,000
 KFQZ Hollywood, Cal. 250

870 Kilocycles—344.6 Meters

--	--	--

WENR-WBCN Chicago, Ill. 50,000
 WLS Chicago, Ill. 5,000

880 Kilocycles—340.7 Meters

--	--	--

WCOC Columbus, Miss. 500
 WGBI Scranton, Pa. 250
 WQAN Scranton, Pa. 250
 KFKA Greeley, Colo. 1,000
 KLLX Oakland, Cal. 500
 KPOF Denver, Colo. 500
 CHCS Hamilton, Ont. 10
 CHML Hamilton, Ont. 50
 CHRC Quebec, Que. 5
 CJCB Sydney, N. S. 50
 CKCI Quebec, Que. 22.5
 CKCV Quebec, P. Q. 50
 CKOC Hamilton, Ont. 100
 CNRQ Quebec, P. Q. 500

890 Kilocycles—336.9 Meters

--	--	--

WGST Atlanta, Ga. 500
 WILL Urbana, Ill. 500
 WJAR Providence, R. I. 400
 WKAQ San Juan, P. R. 500
 WMAZ Macom, Ga. 500
 WMN Fairmont, W. Va. 500
 KPXF Shenandoah, Iowa 1,000
 KGFJ Little Rock, Ark. 250
 KUSD Vermillion, S. D. 750
 CFBO St. John, N. B. 50

Station Location Power (Watts)
900 Kilocycles—333.1 Meters

--	--	--

WFBL Syracuse, N. Y. 750
 WFLA-WSUN Clearwater, Fla. . 2,500
 WKY Oklahoma City, Okla. . . 1,000
 WLBL Stevens Point, Wis. 2,000
 WMAK Buffalo, N. Y. 750
 KGBU Ketchikan, Alaska 500
 KHJ Los Angeles, Cal. 1,000
 KSEI Pocatello, Ida. 250

910 Kilocycles—329.5 Meters

--	--	--

CFQC Saskatoon, Sask. 500
 CJGC London, Ont. 500
 CJHS Saskatoon, Sask. 250
 CNRL London, Ont. 500
 CNRS Saskatoon, Sask. 500

920 Kilocycles—325.9 Meters

--	--	--

WAAF Chicago, Ill. 500
 WWJ Detroit, Mich. 1,000
 KOMO Seattle, Wash. 1,000
 KPRC Houston, Texas 1,000

930 Kilocycles—322.4 Meters

--	--	--

WBRC Birmingham, Ala. 500
 WDBJ Roanoke, Va. 500
 WIBG Elkins Park, Pa. 50
 KFWI San Francisco, Calif. 500
 KFWM Oakland, Calif. 500
 KGBZ York, Neb. 1,000
 KMA Shenandoah, Iowa 1,000
 CHNS Halifax, N. S. 500
 CKIC Wolfville, N. S. 50

940 Kilocycles—319.0 Meters
 Approximate Dial Readings 30

--	--	--

WCSH Portland, Maine 500
 WFTW Hopkinsville, Ky. 1,000
 WHA Madison, Wis. 750
 KFEL Denver, Colo. 250
 KFXX Denver, Colo. 250
 KGU Honolulu, T. H. 500
 KOIN Portland, Ore. 1,000

950 Kilocycles—315.6 Meters

--	--	--

WHB Kansas City, Mo. 500
 WRC Washington, D. C. 500
 KFWB Hollywood, Cal. 1,000
 KGHL Billings, Mont. 500
 KMBC Independence, Mo. 2,500
 KPSN Pasadena, Calif. 1,000

960 Kilocycles—312.3 Meters

--	--	--

CFCY Charlottetown, P. E. I. . . 100
 CFRB King, York County, Ont. . 1,000
 CHCK Charlottetown, P. E. I. . 30
 CHWG Pilot Butte, Sask. 15
 CJBC Toronto, Ont. 1,000-5,000
 CJBR Regina, Sask. 500
 CKCK Regina, Sask. 500
 CKGW Bowmanville, Ont. 5,000
 CNRR Regina, Sask. 500

970 Kilocycles—309.1 Meters

--	--	--

WCFL Chicago, Ill. 1,500
 KJR Seattle, Wash. 5,000

Station Location Power (Watts)
980 Kilocycles—305.9 Meters

--	--	--

KDKA Pittsburgh, Pa. 50,000

990 Kilocycles—302.8 Meters

--	--	--

WBZ E. Springfield, Mass. ... 15,000
 WBZA Boston, Mass. 500

1000 Kilocycles—299.8 Meters

--	--	--

WHO Des Moines, Iowa 5,000
 WOC Davenport, Iowa 5,000
 KPLA Los Angeles, Cal. 1,000

1010 Kilocycles—296.9 Meters

--	--	--

WHN New York, N. Y. 250
 WNAD Norman, Okla. 500
 WQAO-WPAP New York, N. Y. . 250
 WRNY New York, N. Y. 250
 KGGF Picher, Okla. 500
 KQW San Jose, Calif. 500
 CFLC Prescott, Ont. 50
 CKCR Brantford, Ont. 50
 CKSH St. Hyacinthe, P. Q. . . 50

1020 Kilocycles—293.9 Meters

--	--	--

WRAX Philadelphia, Pa. 250
 KYWA Chicago, Ill. 500
 KYW-KFKX Chicago, Ill. 5,000

1030 Kilocycles—291.1 Meters

--	--	--

CFCF Montreal, Que. 1,650
 CJOR Sea Island, B. C. 50
 CNRV Vancouver, B. C. 500

1040 Kilocycles—288.3 Meters

--	--	--

WKAR Lansing, Mich. 1,000
 WKEN Buffalo, N. Y. 1,000
 KRLD Dallas, Tex. 10,000
 KTBS Hot Springs, Ark. 10,000

1050 Kilocycles—285.5 Meters

--	--	--

KFKB Milford, Kans. 5,000
 KNX Hollywood, Calif. 5,000

1060 Kilocycles—282.8 Meters

--	--	--

WBAL Baltimore, Md. 50,000
 WJAG Norfolk, Neb. 1,000
 WTIC Hartford, Conn. 50,000
 KWJJ Portland, Ore. 500

1070 Kilocycles—280.2 Meters

--	--	--

WAAT Jersey City, N. J. 300
 WCAZ Carthage, Ill. 50
 WDBZ Tuscola, Ill. 100
 WEAR Cleveland, Ohio 1,000
 WTAM Cleveland, Ohio 3,500
 KJBS San Francisco, Cal. . . 100

Channel Chart Continued

1080 Kilocycles—277.6 Meters

--	--	--

WBT	Charlotte, N. C.	5,000
WCBD	Zion, Ill.	5,000
WBBI	Chicago, Ill.	5,000

1090 Kilocycles—275.1 Meters

--	--	--

KMOX-KFQA	St. Louis, Mo.	50,000
-----------	----------------	--------

1100 Kilocycles—272.6 Meters

--	--	--

WLWL	New York, N. Y.	5,000
WPG	Atlantic City, N. J.	5,000
KGIM	Stockton, Cal.	50

1110 Kilocycles—270.1 Meters

--	--	--

WRVA	Richmond, Va.	1,000
KSOO	Sioux Falls, S. D.	1,000

1120 Kilocycles—267.7 Meters

Approximate Dial Readings 20

--	--	--

WCOA	Pensacola, Fla.	500
WDEL	Wilmington, Del.	350
WHAD	Milwaukee, Wis.	250
WISN	Milwaukee, Wis.	250
WTAM	College Station, Tex.	500
KPSG	Los Angeles, Calif.	500
KMIC	Inglewood, Calif.	500
KRSC	Seattle, Wash.	50
KUT	Austin, Tex.	500
CFJC	Kamloops, B. C.	15
CFRC	Kingston, Ont.	500
CHGS	Summerside, P. E. I.	25
CJOC	Lethbridge, Alta.	50
CKPR	Midland, Ont.	50

1130 Kilocycles—265.3 Meters

--	--	--

WJJD	Mooseheart, Ill.	20,000
WOV	New York, N. Y.	1,000
KSL	Salt Lake City, Utah	5,000

1140 Kilocycles—263.0 Meters

--	--	--

WAPI	Birmingham, Ala.	5,000
KVOO	Tulsa, Okla.	5,000

1150 Kilocycles—260.7 Meters

--	--	--

WHAM	Rochester, N. Y.	5,000
------	------------------	-------

1160 Kilocycles—258.5 Meters

--	--	--

WWVA	Wheeling, W. Va.	250
WOWO	Ft. Wayne, Ind.	10,000

1170 Kilocycles—256.3 Meters

--	--	--

WCAU	Philadelphia, Pa.	10,000
KEJK	Beverly Hills, Cal.	500
KTNT	Muscöline, Iowa	5,000

1180 Kilocycles—254.1 Meters

--	--	--

WDGY	Minneapolis, Minn.	500
WGBS	New York, N. Y.	500
WHDI	Minneapolis, Minn.	500
KEX	Portland, Ore.	5,000
KOB	State College, N. Mex.	20,000

1190 Kilocycles—252.0 Meters

--	--	--

WICC	Bridgeport, Conn.	500
WOAI	San Antonio, Tex.	5,000

1200 Kilocycles—249.9 Meters

--	--	--

WABI	Bangor, Me.	100
WABZ	New Orleans, La.	100
WBBY	Charleston, S. C.	75
WBBZ	Ponca City, Okla.	100
WCAT	Rapid City, S. D.	100
WCLO	Kenosha, Wis.	100
WCOD	Harrisburg, Pa.	100
WEPS	Gloucester, Mass.	100
WFBC	Knoxville, Tenn.	50
WHBC	Canton, Ohio	10
WHBY	West De Pere, Wis.	100
WIBX	Utica, N. Y.	300
WIL	St. Louis, Mo.	250
WJBC	La Salle, Ill.	100
WJBL	Decatur, Ill.	100
WJBW	New Orleans, La.	30
WKJC	Lancaster, Pa.	100
WLAP	Louisville, Ky.	30
WLBG	Petersburg, Va.	250
WMAY	St. Louis, Mo.	250
WMT	Waterloo, Iowa	250
WNBO	Washington, Pa.	100
WNBW	Carbondale, Pa.	10
WNBX	Springfield, Vt.	10
WORC	Auburn, Mass.	100
WRAF	La Porte, Ind.	100
WRBL	Columbus, Ga.	50
WWAE	Hammond, Ind.	100
KFHA	Gunnison, Colo.	100
KFJB	Marshalltown, Ia.	100
KFKZ	Kirksville, Mo.	15
KFWC	Ontario, Calif.	100
KFWF	St. Louis, Mo.	100
KGCU	Mandan, N. D.	100
KGDE	Fergus Falls, Minn.	50
KGDY	Oldham, S. D.	15
KGEK	Yuma, Colo.	50
KGEW	Ft. Morgan, Colo.	100
KGFK	Hallock, Minn.	50
KGY	Lacey, Wash.	50
KMJ	Fresno, Calif.	100
KPPC	Pasadena, Calif.	50
KSMR	Santa Maria, Calif.	100
KVOS	Bellingham, Wash.	100
KWG	Stockton, Calif.	100
KXO	El Centro, Cal.	100

1210 Kilocycles—247.8 Meters

--	--	--

WBAX	Wilkes-Barre, Pa.	100
WCBS	Springfield, Ill.	100
WCOH	Yonkers, N. Y.	100
WCRW	Chicago, Ill.	100
WDWF	WLSI Providence, R. I.	100
WEBE	Cambridge, Ohio	100
WEBQ	Harrisburg, Ill.	100
WEDC	Chicago, Ill.	100
WGBB	Freeport, N. Y.	100
WGCM	Gulfport, Miss.	100
WHBF	Rock Island, Ill.	100
WHBU	Anderson, Ind.	100
WIBA	Madison, Wis.	100
WINR	Bayshore, N. Y.	100
WJBI	Redbank, N. J.	100
WJBU	Lewisburg, Pa.	100
WJBY	Gadsden, Ala.	50
WJW	Mansfield, Ohio	100
WLCI	Ithaca, N. Y.	50
WMAN	Columbus, Ohio	50
WMBG	Richmond, Va.	100
WMBR	Tampa, Fla.	100
WOCL	Jamesstown, N. Y.	25
WOMT	Manitowoc, Wis.	100
WPAW	Pawtucket, R. I.	100
WRBQ	Greenville, Miss.	100
WRBU	Gastonia, N. C.	100
WSBC	Chicago, Ill.	100
WSIX	Springfield, Tenn.	100
WTAX	Streator, Ill.	50
WTAZ	Richmond, Va.	15
KDLR	Devils Lake, N. D.	100
KFOR	Lincoln, Neb.	100
KFVS	Cape Girardeau, Mo.	100
KGCR	Brookings, S. D.	100
KPCB	Seattle, Wash.	50
KPQ	Seattle, Wash.	100
KWEA	Shreveport, La.	100
CFCO	Chatham, Ont.	25
CFNB	Fredericton, N. B.	50
CHWK	Chilliwack, B. C.	5
CKMC	Cobalt, Ont.	15
CKPC	Preston, Ont.	25

1220 Kilocycles—245.8 Meters

--	--	--

WCAD	Canton, N. Y.	500
WCAE	Pittsburgh, Pa.	500
WREN	Lawrence, Kan.	1,000
KFKU	Lawrence, Kan.	1,000

1230 Kilocycles—243.8 Meters

--	--	--

WFBM	Indianapolis, Ind.	1,000
WNAC-WBIS	Boston, Mass.	1,000
WPSC	State College, Pa.	500
WSBT	South Bend, Ind.	500
KFIO	Spokane, Wash.	100
KFQD	Anchorage, Alaska	100
KGGM	Albuquerque, N. Mex.	500
KYA	San Francisco, Calif.	1,000

1240 Kilocycles—241.8 Meters

--	--	--

WGHP	Detroit, Mich.	750
WJAD	Waco, Tex.	1,000
WQAM	Miami, Fla.	1,000
WRBC	Valparaiso, Ind.	500
KTAT	Fort Worth, Tex.	1,000

Channel Chart Continued

Station Location Power (Watts)

1250 Kilocycles—239.9 Meters



WAAM	Newark, N. J.	2,000
WCAL	Northfield, Minn.	1,000
WDSU	New Orleans, La.	1,000
WGCP	Newark, N. J.	250
WLB-WGMS	Minneapolis, Minn.	500
WODA	Paterson, N. J.	1,000
WRHM	Minneapolis, Minn.	1,000
KFOX	Long Beach, Cal.	1,000
KFMX	Northfield, Minn.	1,000
KIDO	Boise, Idaho	1,000
KXLI	Portland, Ore.	500

1260 Kilocycles—238.0 Meters



WJAX	Jacksonville, Fla.	1,000
WLBW	Oil City, Pa.	500
KOIL	Council Bluffs, Ia.	2,500
KRGV	Harlingen, Texas	500
KVOA	Tucson, Ariz.	500
KWWG	Brownsville, Texas	500

1270 Kilocycles—236.1 Meters



WASH	Grand Rapids, Mich.	250
WEAI	Ithaca, N. Y.	500
WFBR	Baltimore, Md.	250
WOOD	Grand Rapids, Mich.	500
KFUM	Colorado Springs, Colo.	1,000
KGCA	Decorah, Ia.	50
KOL	Seattle, Wash.	1,000
KTW	Seattle, Wash.	1,000
KWLC	Decorah, Ia.	100

1280 Kilocycles—234.2 Meters



WCAM	Camden, N. J.	500
WCAP	Asbury Park, N. J.	500
WDAY	Fargo, N. D.	1,000
WDOO	Chattanooga, Tenn.	2,500
WFBC	Duluth, Minn.	1,000
WOAX	Trenton, N. J.	500
WRR	Dallas, Tex.	500

1290 Kilocycles—232.4 Meters



WJAS	Pittsburgh, Pa.	1,000
WNBZ	Saranac Lake, N. Y.	50
KDYI	Salt Lake City, Utah	1,000
KFUL	Galveston, Tex.	1,000
KLCN	Blytheville, Ark.	50
KTSA	San Antonio, Tex.	2,000

1300 Kilocycles—230.6 Meters



WBBR	Rossville, N. Y.	1,000
WEVD	New York, N. Y.	50
WHAP	New York, N. Y.	1,000
WHAZ	Troy, N. Y.	500
WIBW	Topeka, Kan.	2,500
KFH	Wichita, Kan.	1,000
KFJR	Portland, Ore.	500
KGEF	Los Angeles, Calif.	1,000
KTBI	Los Angeles, Cal.	750
KTBR	Portland, Ore.	500

Station Location Power (Watts)

1310 Kilocycles—228.9 Meters



WAGM	Royal Oak, Mich.	50
WBOW	Terre Haute, Ind.	100
WBRE	Wilkes-Barre, Pa.	100
WCLJ	Joliet, Ill.	100
WDAH	El Paso, Tex.	100
WEBR	Buffalo, N. Y.	200
WEHS	Evanston, Ill.	100
WFBG	Altoona, Pa.	100
WFDF	Flint, Mich.	100
WFKD	Philadelphia, Pa.	50
WGAL	Lancaster, Pa.	15
WGH	Newport News, Va.	100
WHFC	Cicero, Ill.	100
WIBU	Poynette, Wis.	100
WJAC	Johnstown, Pa.	100
WJAK	Marion, Ind.	50
WKAV	Laconia, N. H.	100
WKBB	Joliet, Ill.	100
WKBI	Chicago, Ill.	50
WKBC	Birmingham, Ala.	100
WKBS	Galesburg, Ill.	100
WLBC	Muncie, Ind.	50
WMBL	Lakeland, Fla.	100
WOBT	Union City, Tenn.	250
WOL	Washington, D. C.	100
WNAT	Philadelphia, Pa.	100
WNBH	New Bedford, Mass.	100
WNBK	Knoxville, Tenn.	50
WRAP	Reading, Pa.	100
WRBI	Tifton, Ga.	20
WRK	Hamilton, Ohio	100
WSAJ	Grove City, Pa.	100
KFBK	Sacramento, Calif.	100
KFGQ	Boone, Ia.	100
KFJY	Ft. Dodge, Ia.	100
KFPL	Dublin, Tex.	15
KFPM	Greenville, Tex.	15
KFPJ	Denver, Colo.	100
KFXJ	Edgewater, Colo.	50
KFXR	Oklahoma City, Okla.	100
KGEZ	Kalispell, Mont.	100
KGFW	Ravena, Neb.	50
KGHG	McGehee, Ark.	50
KMED	Medford, Ore.	50
KRMD	Shreveport, La.	50
KTSL	Shreveport, La.	100
KTSM	El Paso, Tex.	100
KWCR	Cedar Rapids, Ia.	100

1320 Kilocycles—227.1 Meters



WADC	Akron, Ohio	1,000
WSMB	New Orleans, La.	500
KGHF	Pueblo, Colo.	250
KGIO	Idaho Falls, Ida.	250
KGIQ	Twin Falls, Ida.	250
KID	Idaho Falls, Idaho	250

1330 Kilocycles—225.4 Meters



WDRC	New Haven, Conn.	500
WTAQ	Eau Claire, Wis.	1,000
WSAI	Cincinnati, O.	500
KSCJ	Sioux City, Ia.	2,500

1340 Kilocycles—223.7 Meters



WSPD	Toledo, Ohio	500
KFPW	Siloam Springs, Ark.	50
KMO	Tacoma, Wash.	500

Station Location Power (Watts)

1350 Kilocycles—222.1 Meters



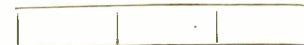
WBNY	New York, N. Y.	250
WCDA	New York, N. Y.	250
WKBQ	New York, N. Y.	250
WMSG	New York, N. Y.	250
KWK	St. Louis, Mo.	1,000

1360 Kilocycles—220.4 Meters



WGES	Chicago, Ill.	500
WJKS	Gary, Ind.	1,250
WLEX	Lexington, Mass.	500
WMAF	S. Dartmouth, Mass.	500
WQBC	Utica, Miss.	300
KFBB	Havre, Mont.	500
KGB	San Diego, Calif.	250
KGIR	Butte, Mont.	250

1370 Kilocycles—218.8 Meters



WBBL	Richmond, Va.	100
WCBM	Baltimore, Md.	100
WELK	Philadelphia, Pa.	100
WFBJ	Collegeville, Minn.	100
WGL	Ft. Wayne, Ind.	100
WHBD	Bellefontaine, O.	100
WHBQ	Memphis, Tenn.	100
WHDF	Calumet, Mich.	250
WIBM	Jackson, Mich.	100
WJBB	Ypsilanti, Mich.	50
WJBO	New Orleans, La.	100
WMOB	Auburn, N. Y.	100
WRAP	Erie, Pa.	50
WRBT	Wilmington, N. C.	100
WRJN	Racine, Wis.	100
WSVS	Buffalo, N. Y.	50
KCRC	Enid, Okla.	250
KPBL	Everett, Wash.	50
KFJI	Astoria, Ore.	100
KFJM	Grand Forks, N. D.	100
KFJZ	Ft. Worth, Tex.	100
KFLX	Galveston, Tex.	100
KGAR	Tucson, Ariz.	100
KG BX	St. Joseph, Mo.	100
KGCI	San Antonio, Tex.	100
KGDA	Dell Rapids, S. D.	50
KGFR	Long Beach, Calif.	100
KGFG	Oklahoma City, Okla.	100
KGFL	Raton, N. M.	50
KGKL	San Angelo, Tex.	100
KGRC	San Antonio, Tex.	100
KIT	Yakima, Wash.	50
KLO	Ogden, Utah	200
KOH	Reno, Nevada	100
KOOS	Marshfield, Ore.	50
KRE	Berkeley, Calif.	100
KVL	Seattle, Wash.	100
KWKC	Kansas City, Mo.	100
KZM	Hayward, Calif.	100

1380 Kilocycles—217.3 Meters



WKBH	LaCrosse, Wis.	1,000
KQV	Pittsburgh, Pa.	500
KSO	Clarinda, Ia.	500

1390 Kilocycles—215.7 Meters



WHK	Cleveland, Ohio	1,000
KFPY	Spokane, Wash.	500
KOY	Phoenix, Ariz.	500
KLRA	Little Rock, Ark.	1,000
KUOA	Payetteville, Ark.	1,000
KWSC	Pullman, Wash.	500

Channel Chart Continued

Station Location Power (Watts)

1400 Kilocycles—214.2 Meters

Approximate Dial Readings 10

--	--	--

WBBC	Brooklyn, N. Y.	500
WCGU	Coney Island, N. Y.	500
WCMA	Culver, Ind.	500
WKBF	Indianapolis, Ind.	500
WLTH	Brooklyn, N. Y.	500
WSGH-WSDA	Brooklyn, N. Y.	500
KOCW	Chickasha, Okla.	500

1410 Kilocycles—212.6 Meters

--	--	--

WBCM	Bay City, Mich.	500
WDAG	Amarillo, Tex.	500
WHBL	Sheboygan, Wis.	500
WGGP	Savannah, Ga.	1,000
KFLV	Rockford, Ill.	500
KGRS	Amarillo, Tex.	1,000

1420 Kilocycles—211.1 Meters

--	--	--

WEDH	Erie, Pa.	30
WHDL	Tupper Lake, N. Y.	10
WHIS	Bluefield, W. Va.	100
WIAS	Ottumwa, Iowa	100
WIBR	Steubenville, Ohio	50
WILM	Wilmington, Del.	100
WKBP	Battle Creek, Mich.	50
WLBF	Kansas City, Kan.	100
WLEY	Lexington, Mass.	250
WMBC	Detroit, Mich.	100
WMBH	Joplin, Mo.	250
WMRJ	Jamaica, N. Y.	10
WPOE	Patchogue, N. Y.	30
WQBZ	Weirton, W. Va.	60
WRBJ	Hattiesburg, Mass.	100
WSSH	Boston, Mass.	250
WTBO	Cumberland, Md.	50
KFIF	Portland, Ore.	100
KFIZ	Fon du Lac, Wis.	100
KFQU	Holy City, Calif.	100
KFQW	Seattle, Wash.	100
KFXD	Jerome, Idaho	50
KFFY	Flagstaff, Ariz.	100
KFYO	Abilene, Tex.	250
KGCX	Vida, Mont.	10
KGFF	Alva, Okla.	100
KGFJ	Los Angeles, Cal.	100
KGGC	San Francisco, Cal.	50
KGIW	Trinidad, Colo.	100
KGIX	Las Vegas, Nev.	100
KGKG	Minot, N. D.	100
KGKX	Sandpoint, Idaho	15
KICK	Red Oak, Iowa	100
KORE	Eugene, Ore.	100
KTAP	San Antonio, Tex.	100
KTUE	Houston, Tex.	100
KXRO	Aberdeen, Wash.	75

1430 Kilocycles—209.7 Meters

--	--	--

WBAK	Harrisburg, Pa.	500
WBRL	Tilton, N. H.	500
WCAH	Columbus, Ohio	500
WGBC	Memphis, Tenn.	500
WHP	Harrisburg, Pa.	500
WNBR	Memphis, Tenn.	500

1440 Kilocycles—208.2 Meters

--	--	--

WCBA	Allentown, Pa.	250
WHEC-WABO	Rochester, N. Y.	500
WMBD	Peoria Hts., Ill.	1,000
WNRC	Greensboro, N. C.	250
WOKO	Poughkeepsie, N. Y.	500
WSAN	Allentown, Pa.	250
WTAD	Quincy, Ill.	500
KLS	Oakland, Calif.	250

Station Location Power (Watts)

1450 Kilocycles—206.8 Meters

--	--	--

WBMS	Fort Lee, N. J.	250
WCSSO	Springfield, Ohio	500
WFJC	Akron, Ohio	500
WIBS	Elizabeth, N. J.	250
WKBO	Jersey City, N. J.	250
WNJ	Newark, N. J.	250
WSAR	Fall River, Mass.	250
WTFI	Toccoa, Ga.	250
KTBS	Shreveport, La.	500

1460 Kilocycles—205.4 Meters

--	--	--

WJSV	Mt. Vernon Hills, Va.	10,000
KSTP	St. Paul, Minn.	10,000

1470 Kilocycles—204.0 Meters

--	--	--

WKBW	Buffalo, N. Y.	5,000
WRUF	Gainesville, Fla.	5,000
KFJF	Oklahoma City, Okla.	5,000
KGA	Spokane, Wash.	5,000

1480 Kilocycles—202.6 Meters

--	--	--

WCKY	Covington, Ky.	5,000
WJAZ	Chicago, Ill.	5,000
WORD	Chicago, Ill.	5,000
WSOA	Forest Park, Ill.	5,000

1490 Kilocycles—201.2 Meters

--	--	--

WLAC	Nashville, Tenn.	5,000
WTNT	Nashville, Tenn.	5,000
KPWF	Westminster, Cal.	10,000

1500 Kilocycles—199.9 Meters

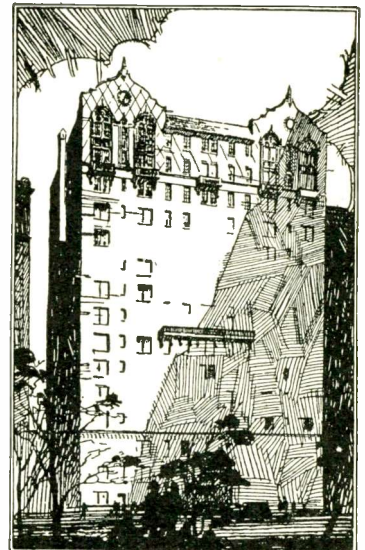
--	--	--

WCLB	Long Beach, N. Y.	100
WKBV	Brookville, Ind.	150
WKBZ	Ludington, Mich.	50
WLBX	Long Island City, N. Y.	100
WLOE	Boston, Mass.	250
WMBA	Newport, R. I.	100
WMBJ	Pittsburgh, Pa.	100
WMBQ	Brooklyn, N. Y.	100
WMES	Boston, Mass.	50
WMPC	Lapeer, Mich.	100
WNBF	Binghamton, N. Y.	50
WOPI	Bristol, Tenn.	100
WPEN	Philadelphia, Pa.	250
WWRL	Woodside, N. Y.	100
KDB	Santa Barbara, Cal.	100
KGDR	San Antonio, Tex.	100
KGFI	Corpus Christi, Tex.	100
KGHI	Little Rock, Ark.	100
KGHX	Richmond, Tex.	50
KGKB	Brownwood, Tex.	100
KPJM	Prescott, Ariz.	100
KVJ	Long View, Wash.	10
KWBS	Portland, Ore.	15
KWTC	Santa Ana, Calif.	100

WHEN IN NEW YORK

RESIDE at the magnificent Apartment Hotel overlooking Central Park, and facing Museum Gardens. Only a few minutes from Broadway, Fifth Avenue and the shopping and theater centers. Dining service unsurpassed. Residential and transient.

Send for illustrated booklet



Standish Hall A Residential Hotel

45 W. 81st St. New York

Direction of M. SPARK

John J. Scofield, Manager

RATES

2 Room Suites from \$1600 per year up; 3 Rooms 2 Baths from \$2700 per year up; Larger Suites can be arranged if desired.

TRANSIENT RATES

2 Room Suite from \$6.00 per day
3 Room Suite from \$10.00 per day

Patent Your Ideas

Send me a sketch or simple model of your invention. SATISFACTORY TERMS.

Free Confidential advice. Illustrated Literature.

DO IT NOW!



ZOLTAN H. POLACHEK

REG. PATENT ATTORNEY
CONSULTING ENGINEER

1234 BROADWAY

One-Two-Three-Four Broadway
NEW YORK

The Radio Dial — Inquiry Division

Nearly every day and always sometime during the week you want news or information regarding some radio feature that you are particularly interested in. Every issue there is published a list of all the new material just released by the sponsors of radio programs. Tell us which of them you want, instead of writing each individually, and we will see that you get them at no cost to you and without delay.

The Inquiry Division can make a store of information usefully available to you for the asking.

CHECK OPPOSITE ITEMS WANTED

<i>Title</i>	<i>Courtesy</i>	<input type="checkbox"/>
To Wives Who Want to Stay Young.....	ARMSTRONG CORK COMPANY	<input type="checkbox"/>
Forty Fathom Cook Book.....	BAY STATE FISHING CO.	<input type="checkbox"/>
Ipana Troubadors' Souvenir	BRISTOL-MYERS CO.	<input type="checkbox"/>
Carborundum Pocket Sharpening Stone.....	CARBORUNDUM COMPANY	<input type="checkbox"/>
Henry Burbig's latest monologue.....	CECO MFG. CO.	<input type="checkbox"/>
Thompkins' Corners Enterprise	CHESEBROUGH MFG. CO.	<input type="checkbox"/>
Personal Budget Book	CITIES SERVICE CO.	<input type="checkbox"/>
Smoke Your Troubles Away, Henry George Theme Song.....	CONSOLIDATED CIGAR CORP.	<input type="checkbox"/>
The Wonder Sandwich Book	CONTINENTAL BAKING CO.	<input type="checkbox"/>
Edison's Part in Radio	EDISON, INC., THOMAS A.	<input type="checkbox"/>
Frigidaire Automatic Refrigeration.....	FRIGIDAIRE-GENERAL MOTORS CORP.	<input type="checkbox"/>
The Care of Feet.....	GRATON & KNIGHT CO.	<input type="checkbox"/>
The Call of the Mountains.....	GREAT NORTHERN RAILWAY	<input type="checkbox"/>
The Scenic Northwest.....	GREAT NORTHERN RAILWAY	<input type="checkbox"/>
Voice of the Air.....	GRIGSBY-GRUNOW CO.	<input type="checkbox"/>
The Old Counsellor Says	HALSEY STUART & Co.	<input type="checkbox"/>
Household Hand Book	JOHNSON & JOHNSON	<input type="checkbox"/>
Alice in Laundryland	LAUNDRY OWNERS NATIONAL ASSN.	<input type="checkbox"/>
True-Story Hour Log	MACFADDEN PUBLICATIONS	<input type="checkbox"/>
Exercise Chart.....	METROPOLITAN LIFE INSURANCE CO.	<input type="checkbox"/>
World's Biggest Gym Class.....	METROPOLITAN LIFE INSURANCE CO.	<input type="checkbox"/>
About the Eveready Hour	NATIONAL CARBON CO.	<input type="checkbox"/>
Radio Home Makers.....	NATIONAL RADIO HOME-MAKERS' CLUB	<input type="checkbox"/>
Yeast Foamers March.....	NORTHWESTERN YEAST CO.	<input type="checkbox"/>
Keeping that School Girl Complexion the world over.....	PALMOLIVE CO.	<input type="checkbox"/>
Palmolive's Surprise	PALMOLIVE CO.	<input type="checkbox"/>
The Peanut Game.....	PLANTERS NUT & CHOCOLATE CO.	<input type="checkbox"/>
Comfort in Safety	RAYBESTOS CO.	<input type="checkbox"/>
Schrader's Tire Pressure Disc.....	SCHRADER'S SON, INC. A.	<input type="checkbox"/>
The Selby Fashion Observer.....	SELBY SHOE COMPANY	<input type="checkbox"/>
Chimes that cast a spell of Old World Witchery	SESSIONS CLOCK CO.	<input type="checkbox"/>
Socony Touring Service—Road Maps of Atlantic States.....	STANDARD OIL CO., OF N. Y.	<input type="checkbox"/>
"Sky Words"—A glossary of Aeronautical terms	VACUUM OIL COMPANY	<input type="checkbox"/>
Color Harmony in the Home	WHITTALL ASSOCIATES	<input type="checkbox"/>
The Romance of the Magic Carpet	WHITTALL ASSOCIATES	<input type="checkbox"/>
The Story of Whittall Rugs and Carpets.....	WHITTALL ASSOCIATES	<input type="checkbox"/>

Remarks:

If you want The Radio Dial for one whole year, enclose herewith 50 cents with your dealer's name.

Name

Address

City State

TEAR THIS PAGE OUT AND MAIL TO *The Radio Dial*, Inquiry Division, 101 WEST 42ND ST., N. Y.

HOUSEHOLD PERIODS ON THE AIR

This Issue—*National Radio Home-Makers Club*—C. B. S.

By DIALER

ON THE fifteenth floor of a tall building at Columbus Park overlooking Central Park visitors to New York will find one of the most unique, interesting and popular clubs in the United States. Millions of women from coast to coast and from border to border listen in to the daily meetings of this great national institution, the National Radio Home-Makers Club, over the stations of the Columbia Broadcasting System.

To these millions of women the name of Mrs. Ida Bailey Allen, the club's president, symbolizes everything that makes for better, happier homes with less work and more time for pleasure as a result of efficient methods in carrying on home-making.

For more than a year the club meetings were broadcast over the basic network of the Columbia Broadcasting System but through popular demand the entire network was employed from ten to twelve noon every weekday morning with the exception of Saturday, starting in December, 1929.

After noting these requests over a period of a year, during which time over 250,000 letters were received, it was decided to give the home-makers of the United States a two hour program to meet every need of home-making.

On Monday, the period from ten to ten-thirty deals with fundamental foods, cooking and nutrition and is conducted by Mrs. Ida Bailey Allen. Following this comes a decorating talk by Joan Barrett, the interior decorator who is a graduate of the Pratt Institute of Fine and Applied Arts, of the Ecole des Beaux Arts, Fontainbleau, France. Directly afterwards, Grace White talks on speed housekeeping. Miss White is a graduate of the Boston School of Domestic Science and is a trained lecturer.

Carolyn Cornell then gives a talk on beauty, with a practical demonstration by Helen Lewis, the club beautician. Ben and Helen follow in the dramatic skit that has interested thousands of the club members, of a young couple and their funny experiences with the budget.

Louise Baker follows in "The Children's Corner," speaking on child culture with Stanley Maxted singing songs by A. A. Milne. Mrs. Baker is a well-known child educator, a graduate of Vassar College and the New York School of Philanthropy, with residence and experience in educational work in Italy, Germany, London and Switzerland. She is a trained lecturer and writer whose work has appeared frequently in "The Ladies' Home Journal," "Atlantic Monthly," "Delineator," etc.

Janet Lee, graduate dietitian of the Peter Bent Brigham Hospital of Boston closes the Monday program with a talk on dietetics.

On Tuesday, Mrs. Ida Bailey Allen opens the club meeting again with the fundamental food broadcast. Carolyn Cornell follows in the department, "Strolling Down the Avenue." Miss Cornell is a fashion expert of



Mrs. Ida Bailey Allen

the highest type, who has been editor of a large fashion magazine for eleven years. A talk on hair beauty by Jean Carroll follows from the beauty boudoir. Then comes "R.S.V.P." conducted by Janet Lee, a period devoted to etiquette. Senator Arthur Capper then speaks from Washington, D. C., on the government and its relationship to the home.

Joan Barrett follows with talk on money making at home; and "Mr. Fixit" closes the Tuesday program with a humorous monologue, stressing household repairing, during which he sings character songs. The music during the morning is furnished by the Columbia orchestra, delightful duets by Genevieve McKenna and Stanley Maxted and Vincent Sorey and his orchestra.

On Wednesday, the first talk on Fundamental Foods is given from the Kitchen-Laboratory by Mrs. Ida Bailey Allen. The second is on home decorating which Mrs. Allen also conducts, from the Home Decorating Studio. The "Party House" follows with Janet Lee and the "Party House Gang" and Julie Wintz and his jazz orchestra. At eleven-thirty, Grace White takes the air with a

talk on marketing and the Ebony Twins play two piano duets. At eleven forty-five a feature speaker is introduced each week.

On Thursday the club opens again with a fundamental food broadcast. Joan Barrett follows with a talk on handcraft with a practical demonstration. Helen Chase follows in a talk on complexion beauty from the Beauty Boudoir. At eleven o'clock the Sewing Circle meets with the Columbia ladies' trio, the members of the Sewing Circle themselves, and Carolyn Cornell in a helpful, humorous skit dealing with sewing.

On Friday morning Mrs. Allen opens with a fundamental food broadcast. At ten-thirty Grace White conducts "Three Men in a Tub," the club department which deals with laundry, cleaning and allied problems, with the Columbia male trio as the Three Men in a Tub. The Friday morning program goes off the air at ten forty-five but is resumed at eleven-thirty with the department, "The Week-Enders," with Janet Lee discussing week-end problems and menus.

The aim of the National Radio Home-Makers Club is stated in its motto: "Let Us Have Better, Happier Homes and Mutual Helpfulness."

There is a Kitchen-Laboratory, a Home Decorating Studio, and a Beauty Salon. The demonstration cooking, the demonstration decorating, and the demonstration beauty work is actually carried on during the broadcasts.

Home-making is dramatized—through the drama of realism—in this "Magazine of the Air." It is linked with music, the arts and progressive, practical education.

And as Mrs. Allen says, "And every one of you, from coast to coast, is cordially invited—not only to listen-in—but to come and see for yourself."

Broadcasting Stations—United States and Canada

Listed According to Call Letters

S—Where studio location differs from transmitter, same is shown below transmitter location.

WAAF	Chicago, Ill.	WDWF	Cranston, R. I.	WIBA	Madison, Wis.	WLTH	Brooklyn, N. Y.
WAAM	Newark, N. J.	WEAN	S—Providence	WIBG	Elkins Pk., Pa.	WLW	Mason, Ohio
WAAT	Jersey City, N. J.	WDZ	Tuscola, Ill.	WIBM	Jackson, Mich.	S—Cincinnati	
WAAW	Omaha, Neb.	WEAF	Bellmore, N. Y.	WIBO	Desplaines, Ill.	Kearny, N. J.	
WABC	Queens County S—New York	WEAI	S—New York	WIBR	S—Chicago	S—New York	
WABI	Bangor, Me.	WEAN	Ithaca, N. Y.	WIBS	Stuebenville, Ohio	WMAC	Cazenovia, N. Y.
WABO	See WHEC	WEAO	Providence, R. I.	WIBW	Kenilworth, N. J.	WMAF	S. Dartmouth, Mass.
WABZ	New Orleans, La.	WEAR	Columbus, Ohio	WIBX	S—Elizabeth	WMAK	S—Buffalo
WADC	Akron, Ohio	WEBC	Cleveland, Ohio	WIBU	Poynette, Wis.	WMAL	Washington, D. C.
WAGM	Royal Oak, Mich.	WEBE	Superior, Wis.	WIBW	Topeka, Kan.	WMAN	Columbus, Ohio
WAU	Columbus, Ohio	WEBC	S—Duluth, Minn.	WICC	Utica, N. Y.	WMAQ	Addison, Ill.
WAPI	Birmingham	WEBC	Cambridge, Ohio	WIL	S—Bridgeport	WMAY	St. Louis, Mo.
WASH	Grand Rapids, Mich.	WEBC	Harrisburg, Ill.	WILL	St. Louis, Mo.	WMAZ	Macomb, Ga.
WBAK	Harrisburg, Pa.	WEBC	Buffalo, N. Y.	WILM	Urbana, Ill.	WMBA	Newport, R. I.
WBAL	Glen Morris, Md. S—Baltimore	WEBC	Beloit, Wis.	WIRN	Wilmington, Del.	WMBB	Chicago, Ill.
WBAP	Ft. Worth, Texas	WEBC	Chicago, Ill.	WIOD	Bay Shore, N. Y.	WMBC	Detroit, Mich.
WBAX	Wilkes-Barre, Pa.	WEBC	Erie, Pa.	WIP	Miami Beach, Fla.	WMBD	Peoria Heights, Ill.
WBBC	Brooklyn, N. Y.	WEBC	Weymouth, Mass.	WISN	Philadelphia, Pa.	WMBG	Richmond, Va.
WBBL	Richmond, Va.	WEBC	Evanston, Ill.	WIAC	Johnstown, Pa.	WMBH	Joplin, Mo.
WBBM	Glenview, Ill. S—Chicago	WEBC	Philadelph., Pa.	WIAD	Waco, Texas	WMBI	Addison, Ill.
WBBR	Rossville, N. Y.	WEBC	Berrien Sprgs. Mich.	WIAG	Norfolk, Neb.	WMBJ	S—Chicago
WBBY	Charleston, S. C.	WEBC	Chicago, Ill.	WIJK	Marion, Ind.	WMBL	Wilksburg, Pa.
WBBZ	Ponca City, Okla.	WEBC	S—New York	WIJA	Pittsburgh, Pa.	WMBL	Lakeland, Fla.
WBCM	Hampton Twp., Mich. S—Bay City	WEBC	St. Louis, Mo.	WIJB	Jacksonville, Fla.	WMBQ	Auburn, N. Y.
WBCN	See WENR	WEBC	Dallas, Texas	WIJC	Cleveland, Ohio	WMBR	Brooklyn, N. Y.
WBIS	See WNAC	WEBC	Philadelph., Pa.	WIJD	Cleveland, Ohio	WMBR	Tampa, Fla.
WBNS	Fort Lee, N. J.	WEBC	Knoxville, Tenn.	WIJE	Mt. Prospect, Ill.	WMC	Memphis, Tenn.
WBNY	New York, N. Y.	WEBC	Altoona, Pa.	WIJE	S—Chicago	WMCA	Hoboken, N. J.
WBOQ	See WABC	WEBC	Collegeville, Minn.	WJBC	La Salle, Ill.	WMD	S—New York
WBOW	Terre Haute, Ind.	WEBC	Syracuse, N. Y.	WJBI	Red Bank, N. J.	WMD	Highland Park, Mich.
WBRC	Birmingham, Ala.	WEBC	Indianapolis, Ind.	WJBK	Ypsilanti, Mich.	WMES	Boston, Mass.
WBRE	Wilkes-Barre, Pa.	WEBC	Baltimore, Md.	WJBL	Decatur, Ill.	WMFN	Fairmont, V. Va.
WBRL	Tilton, N. Hamp.	WEBC	Flint, Mich.	WJBT	See WBBM	WMPD	Lapeer, Mich.
WBRO	Babson Park, Mass.	WEBC	Philadelph., Pa.	WJBU	Lewisburg, Pa.	WMRJ	Jamaica, N. Y.
WBT	Charlotte, N. C.	WEBC	Hopkinsville, Ky.	WJBW	New Orleans, La.	WMSG	New York, N. Y.
WBZ	Springfield, Mass.	WEBC	Akron, Ohio	WJBY	Gadsden, Ala.	WMT	Waterloo, Iowa
WBZA	Boston, Mass.	WEBC	Wissinoming, Pa.	WJJD	Mooseheart, Ill.	WNAC	Quincy, Mass.
WCAC	Storrs, Conn.	WEBC	S—Philadelph., Pa.	WJKS	Gary, Ind.	WNAD	S—Boston
WCAD	Canton, N. Y.	WEBC	Clearwater, Fla.	WJL	Sylvan Lake, Mich.	WNAT	Norman, Okla.
WCAE	Pittsburgh, Pa.	WEBC	Lancaster, Pa.	WJLV	S—Detroit	WNAX	Philadelph., Pa.
WCAH	Columbus, Ohio	WEBC	Freeport, N. Y.	WJMW	Mt. Vernon Hills, Va.	WNB	Yankton, S. D.
WCAJ	Lincoln, Neb.	WEBC	Memphis, Tenn.	WJWB	Mansfield, Ohio	WNB	Binghamton, N. Y.
WCAL	Camden, N. J.	WEBC	Evansville, Ind.	WJW	Bound Brook, N. J.	WNBH	New Bedford, Mass.
WCAM	Baltimore, Md.	WEBC	Scranton, Pa.	WJZ	S—New York	WNB	Knoxville, Tenn.
WCAP	Asbury Park, N. J.	WEBC	Astoria, L. I., N. Y.	WKAQ	San Juan, P. R.	WNB	Washington, Pa.
WCAT	Rapid City, S. Dak.	WEBC	S—New York	WKA	East Lansing, Mich.	WNB	Memphis, Tenn.
WCAU	Byberry, Pa. S—Philadelph.	WEBC	Gulfport, Miss.	WKA	Lansing, Mich.	WNB	Carbondale, Pa.
WCAZ	Carthage, Ill.	WEBC	Newark, N. J.	WKA	Joliet, Ill.	WNB	Springfield, Vt.
WCBA	Allentown, Pa.	WEBC	Chicago, Ill.	WKA	Birmingham, Ala.	WNB	Saranac Lake, N. Y.
WCBD	Zion, Ill.	WEBC	S—Detroit	WKA	Indianapolis, Ind.	WNB	Newark, N. J.
WCBM	Baltimore, Md.	WEBC	Fort Wayne, Ind.	WKA	LaCrosse, Wis.	WNB	Knoxville, Tenn.
WCBS	Springfield, Ill.	WEBC	See WLB	WKA	Chicago, Ill.	WNB	Greensboro, N. C.
WCCO	Anoka, Minn. S—Minneapolis	WEBC	Elgin, Ill.	WKA	Youngstown, Ohio	WNB	New York, N. Y.
WCDA	Cliffside Park, N. J. S—New York	WEBC	Amherst, N. Y.	WKA	Jersey City, N. J.	WNB	San Antonio, Texas
WCFL	Chicago, Ill.	WEBC	Atlanta, Ga.	WKA	Battle Creek, Mich.	WNB	Lawrenceburg, Tenn.
WCGU	Coney Island, N. Y.	WEBC	Schenectady, N. Y.	WKA	New York, N. Y.	WNB	Trenton, N. J.
WCKY	Villa Madonna, Ky. S—Covington, Ky.	WEBC	Madison, Wis.	WKA	Galesburg, Ill.	WNB	Union City, Tenn.
WCLB	Long Beach, N. Y.	WEBC	Madison, Wis.	WKA	Brookville, Ind.	WNB	Charleston, W. Va.
WCLO	Kenosha, Wis.	WEBC	Milwaukee, Wis.	WKA	S—Buffalo	WNB	Davenport, Iowa
WCLS	Joliet, Ill.	WEBC	Victor Twp., N. Y.	WKA	Ludington, Mich.	WNB	Jamestown, N. Y.
WCMA	Culver, Ind.	WEBC	S—Rochester	WKA	Grand Island, N. Y.	WNB	Paterson, N. J.
WCOA	Pensacola, Fla.	WEBC	Carlstadt, N. J.	WKA	S—Buffalo	WNB	Ames, Iowa
WCOC	Columbus, Miss.	WEBC	Jeffersontown, Ky.	WKA	Lancaster, Pa.	WNB	See WMBB
WCOD	Harrisburg, Pa.	WEBC	S—Louisville, Ky.	WKA	Cincinnati, Ohio	WNB	Mt. Beacon, N. Y.
WCOH	Greenville, N. Y. S—Yonkers	WEBC	Troy, N. Y.	WKA	Cincinnati, Ohio	WNB	S—Poughkeepsie
WCRW	Chicago, Ill.	WEBC	Kansas City, Mo.	WKA	Oklahoma City, Okla.	WNB	Washington, D. C.
WCSH	Portland, Me.	WEBC	Canton, Ohio	WKA	Nashville, Tenn.	WNB	Manitowoc, Wis.
WCSS	Springfield, Ohio	WEBC	Bellefontaine, Ohio	WKA	Louisville, Ky.	WNB	Furnwood, Mich.
WDAE	Tampa, Fla.	WEBC	Rock Island, Ill.	WKA	Minneapolis, Minn.	WNB	S—Grand Rapids
WDAF	Kansas City, Mo.	WEBC	Sheboygan, Wis.	WKA	Muncie, Ind.	WNB	Bristol, Tenn.
WDAG	Amarillo, Texas	WEBC	Memphis, Tenn.	WKA	Kansas City, Kas.	WNB	Kansas City, Mo.
WDAM	El Paso, Texas	WEBC	Anderson Ind.	WKA	Ettrick, Va.	WNB	Kearny, N. J.
WDAY	Fargo, N. D.	WEBC	West De Pere, Wis.	WKA	S—Petersburg	WNB	S—Newark
WDBJ	Roanoke, Va.	WEBC	Calumet, Mich.	WKA	Stevens Point, Wis.	WNB	Auburn, Mass.
WDBO	Orlando, Fla.	WEBC	Gloucester, Mass.	WKA	Oil City, Pa.	WNB	Batavia, Ill.
WDEL	Wilmington, Del.	WEBC	Minneapolis, Minn.	WKA	Long Is. City, N. Y.	WNB	S—Chicago
WDGY	Minneapolis, Minn.	WEBC	Tupper Lake, N. Y.	WKA	Bangor, Me.	WNB	Jefferson City, Mo.
WDOD	Chattanooga, Tenn.	WEBC	Rochester, N. Y.	WKA	Ithaca, N. Y.	WNB	S—New York
WDRC	New Haven, Conn.	WEBC	Cicero, Ill.	WKA	Lexington, Mass.	WNB	Omaha, Neb.
WDSU	New Orleans, La.	WEBC	Bluefield, W. Va.	WKA	See WGN	WNB	Fort Wayne, Ind.
		WEBC	Cleveland, Ohio	WKA	Philadelphia, Pa.	WNB	See WQAO
		WEBC	New York, N. Y.	WKA	Chelsea, Mass.	WNB	Patucket, R. I.
		WEBC	Des Moines, Iowa	WKA	S—Boston	WNB	Chicago, Ill.
		WEBC	Lemoyne, Pa.	WKA	Crete, Ill.	WNB	Hohoken, N. J.
		WEBC	S—Harrisburg	WKA	S—Chicago	WNB	S—New York
		WEBC	Ottumwa, Iowa	WKA	See WDWF	WNB	Philadelph., Pa.

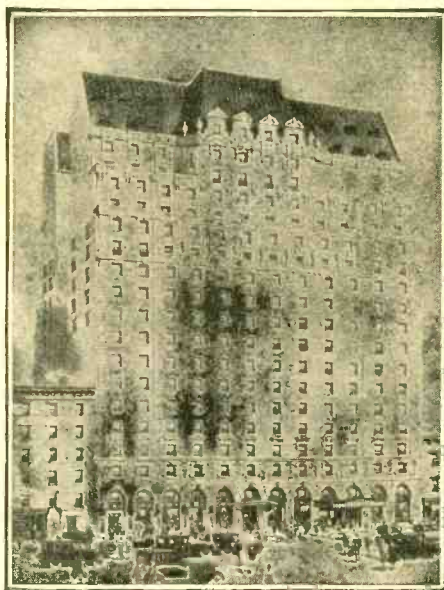
Broadcasting Stations Continued

WPG	Atlantic City, N. J.	KFH	Wichita, Kan.	KGKG	Minot, N. Dak.	KVOO	Tulsa, Okla.
WPOE	Patchogue, N. Y.	KFHA	Gunnison, Colo.	KGKL	San Angelo, Tex.	KVOS	Bellingham, Wash.
WPOR	See WTAR	KFI	Los Angeles, Calif.	KGKO	Wichita Falls, Tex.	KWBS	Portland, Ore.
WPSC	State College, Pa.	KFIF	Portland, Ore.	KGKX	Sandpoint, Idaho	KWCR	Cedar Rapids, Iowa
WPTF	Raleigh, N. C.	KFIO	Spokane, Wash.	KGQ	Oakland, Calif.	KWEA	Shreveport, La.
WQAM	Miami, Fla.	KFIZ	Fon du Lac, Wis.	KGRC	San Antonio, Texas	KWG	Stockton, Cal.
WQAN	Scranton, Pa.	KFJB	Marshalltown, Iowa	KGRS	Amarillo, Texas	KWJJ	Portland, Ore.
WQAO	Cliffside, N. J.	KFJF	Oklahoma City, Okla.	KGU	Honolulu, Hawaii	KWK	St. Louis, Mo.
	S—New York	KFJI	Astoria, Ore.	KGW	Portland, Ore.	KWKC	Kansas City, Mo.
WQBC	Utica, Miss.	KFJM	Grand Forks, N. D.	KGW	Lacey, Wash.	KWKH	Kennonwood, La.
WQBZ	Weirton, W. Va.	KFJR	Portland, Ore.	KHJ	Los Angeles, Calif.	KWLC	Decorah, Iowa
WRAF	LaPorte, Ind.	KFJY	Fort Dodge, Iowa	KHQ	Spokane, Wash.	KWSC	Pullman, Wash.
WRAK	Erie, Pa.	KFJZ	Ft. Worth, Texas	KICK	Red Oak, Iowa	KWTC	Santa Ana, Cal.
WRAW	Reading, Pa.	KFKA	Greeley, Colo.	KID	Idaho Falls, Idaho	KWVG	Brownsville, Texas
WRAX	Philadelphia, Pa.	KFKB	Millford, Kan.	KIDO	Boise, Idaho	KWYO	Laramie, Wyo.
WRBC	Valparaiso, Ind.	KFKU	Lawrence, Kan.	KIT	Yakima, Wash.	KXA	Seattle, Wash.
WRBI	Tifton, Ga.	KFKZ	See KYW	KJBS	San Francisco, Cal.	KXL	Portland, Ore.
WRBJ	Hattiesburg, Miss.	KFKZ	Kirksville, Mo.	KJR	Seattle, Wash.	KXO	El Centro, Cal.
WRBL	Columbus, Ga.	KFLV	Rockford, Ill.	KLCN	Blytheville, Ark.	KXRO	Aberdeen, Wash.
WRBG	Greenville, Miss.	KFLX	Galveston, Tex.	KLO	Ogden, Utah	KYA	San Francisco, Cal.
WRBT	Wilmington, N. C.	KFMX	Northfield, Minn.	KLRA	Little Rock, Ark.	KYW	Chicago, Ill.
WRBU	Gastonia, N. C.	KFNF	Shenandoah, Iowa	KLS	Oakland, Cal.	KYWA	Chicago, Ill.
WRC	Washington, D. C.	KFOR	Lincoln, Neb.	KLX	Oakland, Cal.	KZM	Hayward, Cal.
WREC	Whitehaven, Tenn.	KFOX	Long Beach, Cal.	KLZ	Dupont, Colo.	CFAC	Calgary, Alta.
	S—Memphis	KFPL	Dublin, Texas	KMA	Shenandoah, Iowa	CFBO	St. John, N. B.
WREN	Lawrence, Kans.	KFPM	Greenville, Texas	KMBC	Independence, Mo.	CFCA	Toronto, Ont.
WRHM	Fridley, Minn.	KFPW	Siloam Springs, Ark.	KMED	Medford, Ore.	CFCH	Montreal, Que.
	S—Minneapolis	KFPY	Spokane, Wash.	KMIC	Inglewood, Cal.	CFCH	Iroquois Falls, Ont.
WRJN	Racine, Wis.	KFQA	See KMOX	KMJ	Fresno, Cal.	CFCA	Calgary, Alta.
WRK	Hamilton, Ohio	KFQD	Anchorage, Alaska	KMMJ	Clay Center, Neb.	CFCA	Calgary, Alta.
WRNY	Coytesville, N. J.	KFQU	Holy City, Cal.	KMO	Tacoma, Wash.	CFCT	Victoria, B. C.
	S—New York	KFQW	Seattle, Wash.	KMOX	Kirkwood, Mo.	CFCY	Charlottetown, P.E.I.
WRR	Dallas, Texas	KFQZ	Hollywood, Cal.		S—St. Louis	CFJC	Kamloops, B. C.
WRUF	Gainesville, Fla.		S—Los Angeles	KMTR	Hollywood, Cal.	CFJC	Frescott, Ont.
WRVA	Richmond, Va.	KFRC	San Francisco, Cal.	KNX	Los Angeles, Cal.	CFNB	Fredericton, N. B.
WSAI	Harrison, Ohio	KFRU	Columbia, Mo.		S—Hollywood	CFQC	Saskatoon, Sask.
	S—Cincinnati	KFSB	San Diego, Calif.	KOA	Denver, Colo.	CFRC	King, York Co., Ont.
WSAJ	Grove City, Pa.	KFSG	Los Angeles, Cal.	KOAC	Corvallis, Ore.	CFRC	Kingston, Ont.
WSAN	Allentown, Pa.	KFUL	Galveston, Texas	KOB	State College, N. Mex.	CHCA	Calgary, Alta.
WSAR	Fall River, Mass.	KFUM	Colorado Sprs., Colo.	KOCW	Chickasha, Okla.	CHCK	Charlottetown, P.E.I.
WSAZ	Huntington, W. Va.	KFUO	Clayton, Mo.	KOH	Reno, Nevada	CHCS	Hamilton, Ont.
WSB	Atlanta, Ga.	KFUP	Denver, Colo.	KOIL	Council Bluffs, Iowa	CHCT	Red Deer, Alta.
WSBC	Chicago, Ill.	KFVD	Culver City, Calif.	KOIN	Sylvan, Oregon	CHGS	Summerside, P.E.I.
WSBT	South Bend, Ind.	KFVS	Cape Girardeau, Mo.		S—Portland	CHLS	Vancouver, B. C.
WSDA	See WSGH	KFWB	Hollywood, Cal.	KOL	Seattle, Wash.	CHMA	Edmonton, Alta.
WSGH	Brooklyn, N. Y.	KFWC	Ontario, Cal.	KOMO	Seattle, Wash.	CHML	Mount Hamilton, Ont.
WSGP	Savannah, Ga.		S—Pomona, Cal.	KOOS	Marshfield, Ore.	CHNS	Halifax, N. S.
WSIX	Springfield, Tenn.	KFWF	St. Louis, Mo.	KORE	Eugene, Ore.	CHRC	Quebec, Que.
WSM	Nashville, Tenn.	KFWI	San Francisco, Cal.	KOY	Phoenix, Ariz.	CHWG	Pilot Butte, Sask.
WSMB	New Orleans, La.	KFWM	Oakland, Calif.	KPCB	Seattle, Wash.	CHWK	Chilliwack, B. C.
WSMK	Dayton, Ohio	KFXD	Jerome, Idaho	KPJM	Prescott, Ariz.	CHYC	Montreal, Que.
WSOA	Deerfield, Ill.	KFXE	Denver, Colo.	KPLA	Los Angeles, Cal.	CJCB	Toronto, Ont.
	S—Forest Park, Ill.	KFXJ	Edgewater, Colo.	KPO	San Francisco, Cal.	CJBR	Regina, Sask.
WSPD	Toledo, Ohio	KFXR	Oklahoma City, Okla.	KPOF	Denver, Colo.	CJCA	Edmonton, Alta.
WSSH	Boston, Mass.	KFXY	Flagstaff, Ariz.	KPPC	Pasadena, Cal.	CJCB	Sydney, N. S.
WSUI	Iowa City, Iowa	KFYO	Abilene, Tex.	KPQ	Seattle, Wash.	CJCA	Calgary, Alta.
WSUN	See WFLA	KFYR	Bismarck, N. D.	KPRC	Houston, Texas	CJGC	London, Ont.
WSVS	Buffalo, N. Y.	KGA	Spokane, Wash.	KPSN	Pasadena, Cal.	CJGC	Yorkton, Sask.
WSYR	Syracuse, N. Y.	KGAR	Tucson, Ariz.	KPWF	Westminster, Cal.	CJHS	Saskatoon, Sask.
WTAD	Quincy, Ill.	KGK	San Diego, Cal.	KQV	Pittsburgh, Pa.	CJOC	Lethbridge, Alta.
WTAG	Worcester, Mass.	KGBU	Ketchikan, Alaska	KQW	San Jose, Cal.	CJOR	Sea Island, B. C.
WTAM	Cleveland, Ohio	KGBX	St. Joseph, Mo.	KRE	Berkeley, Cal.	CJRM	Moose Jaw, Sask.
WTAQ	Twp. of Washington, Wis.	KGBZ	York, Neb.	KRGV	Harlingen, Tex.	CJRW	Fleming, Sask.
	S—Eau Claire, Wis.	KGCA	Decorah, Iowa	KRLD	Dallas, Texas	CJSC	Toronto, Ont.
WTAR	Norfolk, Va.	KGCI	San Antonio, Tex.	KRMD	Shreveport, La.	CKAC	Montreal, Que.
WTAW	College Station, Texas	KGCR	Watertown, S. Dak.	KRSC	Seattle, Wash.	CKCD	Vancouver, B. C.
WTAX	Streator, Ill.	KGCU	Mandan, N. Dak.	KSAC	Manhattan, Kan.	CKCI	Quebec, Que.
WTAZ	Richmond, Va.	KGCV	Vida, Mont.	KSBJ	Sioux City, Iowa	CKCK	Regina, Sask.
WTBO	Cumberland, Md.	KGDA	Dell Rapids, S. Dak.	KSD	St. Louis, Mo.	CKCL	Toronto, Ont.
WTFI	Toccoa Falls, Ga.	KDGE	Fergus Falls, Minn.	KSEI	Pocatello, Idaho	CKCO	Ottawa, Ont.
WTIC	Avon, Conn.	KGDM	Stockton, Calif.	KSL	Salt Lake City, Utah	CKCR	Brantford, Ont.
	S—Hartford	KGDR	San Antonio, Tex.	KSMR	Santa Maria, Cal.	CKCV	Vancouver, B. C.
WTMJ	Brookfield, Wis.	KGDY	Oldham, S. D.	KSO	Clarinda, Iowa	CKFC	Vancouver, B. C.
	S—Milwaukee	KGEF	Los Angeles, Calif.	KSOO	Sioux Falls, S. Dak.	CKGW	Bowmanville, Ont.
WTNT	Nashville, Tenn.	KGEK	Yuma, Colo.	KSTP	Westcott, Minn.	CKIC	Wolfville, N. S.
WVAE	Hammond, Ind.	KGER	Long Beach, Calif.		S—St. Paul	CKLC	Red Deer, Alta.
WWJ	Detroit, Mich.	KGEW	Ft. Morgan, Colo.	KTAB	Oakland, Cal.	CKMK	Cobalt, Ont.
WWL	New Orleans, La.	KGEZ	Kalispell, Mont.	KTAP	San Antonio, Tex.	CKMO	Vancouver, B. C.
WWNC	Asheville, N. C.	KGFF	Alva, Okla.	KTAT	Fort Worth, Tex.	CKNC	Toronto, Ont.
WWRL	Woodside, N. Y.	KGFG	Oklahoma City, Okla.	KTBI	Los Angeles, Cal.	CKOC	Hamilton, Ont.
WWVA	Wheeling, West Va.	KGFI	Corpus Christi, Tex.	KTBR	Portland, Ore.	CKOW	Toronto, Ont.
KCRC	Enid, Okla.	KGJJ	Los Angeles, Calif.	KTBS	Shreveport, La.	CKPC	Preston, Ont.
KDB	Santa Barbara, Cal.	KGFK	Hallock, Minn.	KTHS	Hot Springs, Ark.	CKPR	Midland, Ont.
KDKA	Saxonburg, Pa.	KGFL	Raton, N. Mex.	KTM	Santa Monica, Cal.	CKSH	St. Hyacinthe, P. Q.
	S—Pittsburgh	KGFW	Ravenna, Neb.	KTNT	Muscatine, Iowa	CKUA	Edmonton, Alta.
KDLR	Devils Lake, N. D.	KGFX	Pierre, S. Dak.	KTSA	San Antonio, Texas	CKWX	Vancouver, B. C.
KDYL	Salt Lake City, Utah	KGGC	San Francisco, Cal.	KTSL	Cedar Grove, La.	CKX	Brantford, Man.
KEJK	Beverly Hills, Calif.	GGGF	Picher, Okla.		S—Shreveport	CKY	Winnipeg, Man.
KELW	Burbank, Calif.	KGGM	Albuquerque, N. M.	KTSF	El Paso, Tex.	CNRA	Moncton, N. B.
KEX	Portland, Ore.	KGHF	Pueblo, Colo.	KTUE	Houston, Texas	CNRC	Calgary, Alta.
KFAB	Lincoln, Neb.	KGHI	McGehee, Ark.	KTW	Seattle, Wash.	CNRE	Edmonton, Alta.
KFAD	Phoenix, Ariz.	KGHI	Little Rock, Ark.	KUJ	Longview, Wash.	CNRI	London, Ont.
KFBB	Havre, Mont.	KGHL	Billings, Mont.	KUOA	Fayetteville, Ark.	CNRM	Montreal, P. Q.
KFBK	Sacramento, Cal.	KGHX	Richmond, Texas	KUOM	Missoula, Mont.	CNRO	Ottawa, Ont.
KFBL	Everett, Wash.	KGHQ	Twin Falls, Idaho	KUSD	Vermilion, S. Dak.	CNRQ	Quebec, P. Q.
KFDM	Beaumont, Tex.	KGIR	Butte, Mont.	KUT	Austin, Texas	CNRH	Regina, Sask.
KFDY	Brookings, S. D.	KGIW	Trinidad, Colo.	KVI	Des Moines, Wash.	CNRS	Saskatoon, Sask.
KFEI	Denver, Colo.	KGIX	Las Vegas, Nev.		S—Tacoma, Wash.	CNRT	Toronto, Ont.
KFEQ	St. Joseph, Mo.	KGJF	Little Rock, Ark.	KVL	Seattle, Wash.	CNRV	Vancouver, B. C.
KFGQ	Boone, Iowa	KGKB	Brownwood, Tex.	KVOA	Tucson, Ariz.	CNRW	Winnipeg, Man.

The
NEW and BEAUTIFUL
PARAMOUNT HOTEL

46th St. just West of Broadway
New York City

A
Hotel Home
of
ELEGANCE
BEAUTY
and
COMFORT



700
ROOMS
each with BATH

Circulating
Iced Water
In Every Room

SINGLE
\$3.50, \$4.00, \$5.00

DOUBLE
\$5.00, \$6.00, \$7.00

Home of the World's
MOST LUXURIOUS GRILL

[Healthful, Cool, Refreshing Atmosphere of Manufactured Weather]

"One of the most exquisite, if not breath-taking, dining and dancing retreats seen in this town in a number of years is the grill room of this hotel. How to begin a description of this lovely room is rather difficult, and to say it is very beautiful is rather a feeble attempt."
—*Eve. Post*, July 3rd, 1928

LUNCHEON—DINNER—SUPPER

Dancing during Luncheon and continuously from 6:30 P.M. to closing

DE LUXE ENTERTAINMENT

Cover charge daily and Sunday \$1.00 } only after 10:30 P.M.
Saturdays and holidays \$2.00 }

ROY INGRAHAM and his
PARAMOUNT HOTEL ORCHESTRA

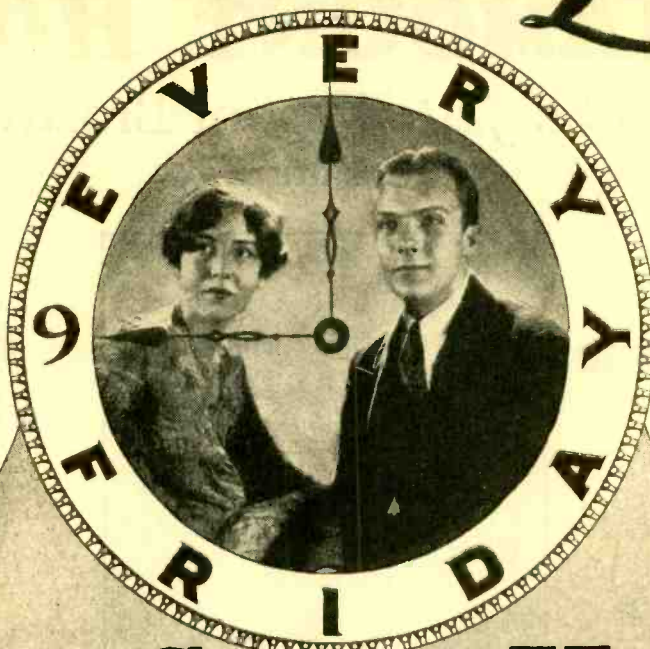
A. LINCOLN SCOTT, Managing Director

CHickering 7580

Tune in on Life!

First
Presentation
9 P.M.
Eastern
Time

Second
Presentation
9 P.M.
Pacific
Time



True Story Hour

Makes You Glad You Own a Radio Set!
Symphonic and Vocal Music—Absorbing Travelogue
A DRAMATIZED TRUE STORY

Tune In on Any of These Forty-Two Stations

East and West Chain

WABC—New York
WEAN—Providence
WNAC—Boston
WFBL—Syracuse
WMAK—Buffalo
WCAU—Philadelphia
WLBW—Oil City

WIAS—Pittsburgh
WOWO—Fort Wayne
WMAL—Washington, D. C.
WADC—Akron
KOIL—Council Bluffs
WHEC—Rochester
WCCO—Minneapolis
WHK—Cleveland

WGHP—Detroit
WMAQ—Chicago
KMOX—St. Louis
WCAO—Baltimore
KMBC—Kansas City
WSPD—Toledo
WKRC—Cincinnati

Southern Chain

WWNC—Asheville
WBRC—Birmingham
WLAC—Nashville
KLRA—Little Rock

WTAR—Norfolk
WDOD—Chattanooga
WDSU—New Orleans
KFJF—Oklahoma City
KFH—Wichita

WDEJ—Roanoke
WREC—Memphis
KRLD—Dallas
KTSA—San Antonio

West Coast Chain

KLZ—Denver
KFRC—San Francisco

KDYL—Salt Lake City
KFPY—Spokane
KVI—Seattle

KHJ—Los Angeles
KOIN—Portland

EVERY FRIDAY NIGHT