

1938 PHILCO RADIO LOG

AMERICAN AND FOREIGN STATIONS



NO SQUAT



NO STOOP



NO SQUINT

REGARDING YOUR NEW RADIO

The modern radio receivers of today are far advanced over their predecessors of a few years ago. They are far more sensitive — they are keyed up for greater distance and range. They require more careful operation if one would secure the greatest amount of pleasure from their ownership. Read carefully and understand everything printed on these pages — it will aid you in the operation of your set.

Since the modern receiver is built to bring in greater distance over the entire Radio Spectrum, it is possible that its sensitivity may be misinterpreted by the new owner, due to the fact that static interference seems more noticeable until you become used to its operation. Do not let this disturb you — but spend a few evenings tuning your set and adjusting its controls until you have become thoroughly familiar with its operation.

Man-made static, such as street cars, motors of all kinds, elevators, washing machines, vacuum cleaners, sewing machines or any appliance, often cause interference, and if you experience trouble due to "noisy reception" it is wise to make a careful check of all appliances in use nearby.

STANDARD BAND TUNING

The following data will help you to operate the radio dial more easily, and help you to GET OUT of the receiver the full radio enjoyment BUILT INTO it at the factory.

THE RADIO SPECTRUM shows the general classification of services to which broadcasting facilities are assigned. Identities of stations in the Broadcast Band "B" appear on the next four pages. Geographical divisions group the stations most likely heard in your community whether on the west coast, central area, or east coast. Enter your exact dial readings for these stations in the blank center column. Fill in the rest of the blank spaces for stations you pick up at intermediate points. Stations with power of T, U, V, W and Z can generally be heard from coast to coast at night, frequently more clearly than stations nearer to you with lower power. Those with H, K, M and O power on same kilocycle with super-power stations operate only in daylight hours.

KILOCYCLES BECOME MEGACYCLES

Note that the spectrum, your log and your dial use a decimal instead of a comma below 1600 and 1650 Kilocycles becomes 1.65 Megacycles.

SHORT WAVE

"V" indicates short wave channels offering Voice entertainment. They are listed on pages 10 to 13. Time of operation is of greatest importance. By ruling out FOUR rows of hour figures on page 10 the chart is converted to your receiving time. The two symbols between each hour line represent one half hour. Pointed up, morning is indicated; down for afternoon. Follow the column for time you are tuning, if station is shown to be operating; to the left you can see whether the program is "daily"; "W & Sat"; or on what schedule. If all three figures of the megacycle number are bold, the reception of the program should be good. If only one is bold, it is likely to be only fair.

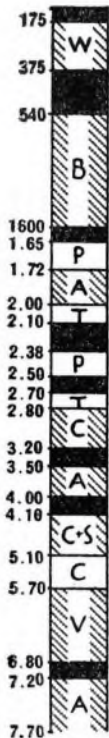
Spots in the spectrum marked "A" are used by some 30,000 amateurs. "C" for Aircraft. "P" for Municipal Police Broadcasts, "S" Ships, "T" Television, "W" for Government Weather and Air Beacon Stations. And on those not marked will be heard phone and commercial stations, etc. mostly in code.

European and other foreign short wave stations operate *only a portion of the time*. Consult the schedule for days and hours.

SHORT WAVE TUNING TIPS

Turn the dial pointer to the approximate setting required. Increase your volume. If your set has tone control turn it to low pitch if atmospheric conditions are noisy. Now tune with extreme care, slowly and evenly. When you locate a station move your tuning knob back and forth until you are satisfied it is the exact point. Re-adjust volume and tone control to suit you. Enter your dial reading for each station. It will be useful for getting the station again and become a reference point for locating stations at adjacent frequencies. Foreign stations sometimes vary slightly from their assigned megacycle and the number you may have recorded.

With slow, careful tuning, faint signals can frequently be developed to great strength. Simply because a station is broadcasting at a given time, do not blame your radio if you are unable to get it. Remember, there are many forces over which man has no control which prevent you from getting reception at times—skip distances—storms—directional antennas of stations, etc.



Revision 56 *Columbia; †NBC Red; ‡NBC Blue; †NBC Red & Blue; ^Mutual

WESTERN <i>Wash., Ore., Cal., Utah, Etc.</i>		MIDDLE WESTERN <i>Minn., Ia., Neb., Mo., Tex., Etc.</i>		KILO.	Dial No.	CENTRAL <i>Ill., Mich., Ohio, Tenn., Etc.</i>		EASTERN <i>Mass., N. Y., Pa., N. C., Etc.</i>	
CJRM	Moose Jaw, Sask.	0		540					
KOAC	Corvallis, Ore.	0	†KSD-KFUD	550		*WKRC Cincinnati, Ohio	0	0	CFNB Fredericton, N. B.
†KFYR	Bismarck, N. D.	0	*KTSA	550		WSVA Staunton, Va.	M	0	WGR Buffalo, N. Y.
†KLZ	Denver, Colo.	0	KWTO	560		WIND Chicago-Gary	0	0	WDEF Waterbury Vt.
*KSFO	San Francisco, Cal.	0	KFDM	560		†WIS	0	0	WVFL Philadelphia, Pa.
*KVI	Tacoma, Wash.	0	†WNA3	570		WKBN Youngstown, Ohio	M	0	*WQAM
KMTR	Los Angeles, Cal.	0	*KCKO	570		WOSU Columbus, Ohio	0	0	WVBC Asheville, N. C.
CKUA	Edmonton, Alta.	M	†WBW	580		WILL Urbana, Ill.	K	0	WMCAN New York (WWSYR)
†KMJ	Fresno, Cal.	0	KSAC	580		*WCHS	0	0	WTAG Worcester, Mass.
†KHQ	Spokane, Wash.	0	XEPN	590		†WKZO	0	0	*WDBO
CJOR	Vancouver, B. C.	M	†WOW	590		CMW	0	0	*WEEI
†KFSD	San Diego, Cal.	M	WMT	600		†CFOP	0	0	†WICC
†KFRC	San Francisco, Cal.	0	*WREC	600		CRCW	0	0	WCCO
†KFRC	San Francisco, Cal.	0	†WDAF	610		CMW	0	0	WIP
†KGW	Portland, Ore.	0		610		WJAY	0	0	WLBZ
†KTAR	Phoenix, Ariz.	0		620		†WTMJ	0	0	WHJB
CJRC	Winnipeg, Man.	M	KFRU	630		WFLA	0	0	CFCY
KGFX	Pierre, S. D.	J	WOI	640		WGBF	0	0	WPRO
†KFI	Los Angeles, Cal.	W		650		WMLA	0	0	WGAN
			WAAW	660		†WSM	0	0	WEAF
				670		XEAL	0	0	†WPTF
†KPO	San Francisco, Cal.	W	KFEQ	680		†WMAQ	0	0	†WPTF
CJGJ	Calgary, Alta.	M	XET	690			0	0	*CFRB
				700		NAA	0	0	*CFRB
KIRO	Seattle, Wash.	0		710		†WLW	0	0	*WOR
KMPC	Beverly Hills, Cal.	M		720		*WGN	0	0	*CKAC
CJCA	Edmonton, Alta.	0	KMMJ	730		CMCL	0	0	*CKAC
KTRB	Modesto, Cal.	K		740		†WSB	0	0	WHEB
†KGU	Honolulu, Hawaii	R		750		*WJR	0	0	†WJZ
KXA	Seattle, Wash.	K	WEW	760		*WBBM	0	0	CMBF
XEOK	Tia Juana, Mex.	R	*KFAB	770		CKSO	0	0	†WEAN
			KFDY	780		WMC	0	0	†WTAR
†KQHL	Billings, Mont.	0	XEYZ	790		HIX	0	0	†WGY
KEHE	Los Angeles, Cal.	0	KOAM	800		*WHAS	0	0	WTBO
†KGO	San Francisco, Cal.	T	†WFAA	810		WRUF	0	0	WNYC
			*WCCO	820		WKAR	0	0	WHDH
XEBG	Tia Juana, Mex.	0	KOA	830		†WENR	0	0	WEEU
CFQC	Saskatoon, Sask.	0	XERA	840		CRCO	0	0	†CRCT
KIEV	Glendale, Cal.	K	*WWL	850		WCCO	0	0	*WESG
XEMO	Tia Juana, Mex.	S	*WHB	860		WMMN	0	0	*WABC
			WSUI	870		WBLI	0	0	WGBI
KLX	Oakland, Cal.	0	KFKA	880		†WJAX	0	0	WPHR
*KFPY	Spokane, Wash.	0	KFNF	890		WBA3	0	0	†WJAR
KARK	Little Rock, Ark.	M	XEW	900		WMMN	0	0	WGST
KGBU	Ketchikan, Alaska	0	WTAD	910		WVBC	0	0	WBNB
KSEI	Pocatello, Idaho	K	WKY	920		†WVBC	0	0	WELI
†KHJ	Los Angeles, Cal.	0	XENT	930		WVBC	0	0	CRCM
CJAT	Trail, B.C.	0	†KPRC	940		WVBC	0	0	WROL
†KOMO	Seattle, Wash.	0	KPEL	950		WVBC	0	0	WBA3
KROW	Oakland, Cal.	0	KMA	960		WVBC	0	0	CHNS
*KOIN	Portland, Ore.	0	WDAY	970		WVBC	0	0	WDBJ
KFWB	Hollywood, Cal.	0	WHA	980		WVBC	0	0	WESH
			*KMBC	990		WVBC	0	0	WAAT
†KJR	Seattle, Wash.	S	XEAW	1000		WVBC	0	0	WRC
			WFO	1010		WVBC	0	0	CHNC
KFVD	Los Angeles, Cal.	0	†WHO	1020		WVBC	0	0	WBG
CKCK	Regina, Sk.	M	KGGF	1030		WVBC	0	0	†KDKA
KQW	San Jose, Cal.	0	WNAO	1040		WVBC	0	0	WVBC
			XEJ	1050		WVBC	0	0	WVBC
CFCN	Calgary, Alta.	T	XEB			WVBC	0	0	WVBC
KWJJ	Portland, Ore.	M	*KRLD			WVBC	0	0	WVBC
KYOS	Merced, Cal.	K	KFBI			WVBC	0	0	WVBC
*KNX	Los Angeles, Cal.	W				WVBC	0	0	WVBC

NO SQUAT



NO STOOP

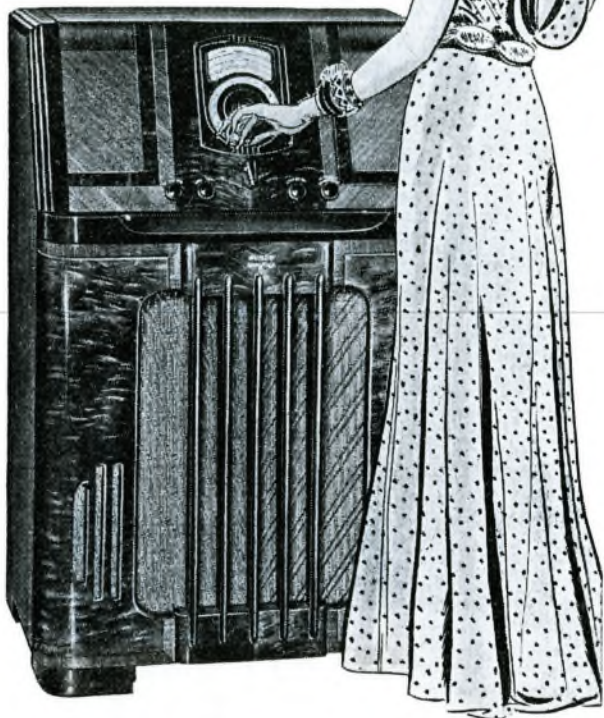
NO SQUINT



With the
**New 1938
AUTOMATIC
TUNING
PHILCO**

NOW . . . for only a few dollars down . . . you can own an entirely new kind of radio . . . the 1938 Philco Double-X! Built for your convenience, with an **INCLINED CONTROL PANEL . . . INCLINED** for tuning with ease and grace, whether you're sitting or standing!

One glance, and you spot your favorite stations . . . one motion, and Philco Automatic Tuning gets them perfectly! Tone perfection made possible by the famous Inclined Sounding Board . . . overseas reception such as only the Philco Foreign Tuning System can give . . . cabinets of superb beauty! Seven big-value Double-X Philcos from which to choose!



**Come in and tune
one of the new
1938 Double-X
PHILCOS**

EASY TERMS — BIG TRADE-IN ALLOWANCE

Copy	hour numbers	from	previous	page																	
	9.50	HJ1ABE	Cartagena, Col. ex. Su.		31.58																
	9.51	HJU	Buenaventura, Col. MW&F		31.55																
	9.51	GSB	London, Eng. Daily		31.55	◆	◆	▼	▼	▼	▼	▼	▼	▼	▼	▼	▼	▼	▼	▼	▼
	9.52	HJ4ABH	Armenia, Col. ex. Su.		31.51																
	9.52	ZBW-3	HongHong, China Daily		31.49																
	9.53	W2XAF	Schenectady Daily		31.48																
	9.54	DJN	Berlin, Ger. Daily		31.45	▲	▲	▲	▲	▲	▲	▲	▲	▲	▲	▲	▲	▲	▲	▲	▲
	9.56	DJA	Berlin, Ger. Daily		31.38	▲	▲	▲	▲	▲	▲	▲	▲	▲	▲	▲	▲	▲	▲	▲	▲
	9.57	W1XK	Springfield, Mass. Daily		31.36	▼	▼	▼	▼	▼	▼	▼	▼	▼	▼	▼	▼	▼	▼	▼	▼
	9.58	VK3LR	Melbourne, Aus. Daily		31.32																
	9.58	GSC	London, Eng. Daily		31.30																
	9.59	W3XAU	Philadelphia Daily		31.28	▼	▼	▼	▼	▼	▼	▼	▼	▼	▼	▼	▼	▼	▼	▼	▼
	9.59	PCJ	Eindhoven, Holland W & Su		31.25																
	9.59	VK2ME	Sydney, Aus. Sun		31.28	◆	◆	▼	▼	▼	▼	▼	▼	▼	▼	▼	▼	▼	▼	▼	▼
	9.60	HP5J	Panama City Daily		31.25																
	9.60	RAN	Moscow, USSR Daily		31.25																
	9.61	HJ1ABP	Cartagena, Col. ex. Su.		31.20																
	9.63	I 2RO3	Rome, Italy Daily		31.15	▼	▼	▼	▼	▼	▼	▼	▼	▼	▼	▼	▼	▼	▼	▼	▼
	9.64	HH3W	Port-au-Pr., Haiti ex. Su.		31.01																
	9.65	CT1AA	Lisbon, Port. T, T&Sa		31.01																
	9.66	LRX	BuenosAires, Arg. Daily		31.02																
	9.86	EAQ	Madrid, Spain Daily		30.44	▼	▼														
	9.94	CSW	Lisbon, Port. Daily		30.21																
	10.33	ORK	Brussels, Belg. Daily		29.04																
	10.35	LSX	BuenosAires, Arg. Daily		28.98																
	10.66	JVN	Nazaki, Japan Daily		28.13																
	11.00	PLP	Bandoeng, Java Daily		27.27																
	11.72	TPA 4	Paris, France Daily		25.60																
	11.72	CJRX	Winnipeg, Man. Daily		25.60	▲	▲	▲	▲	▲	▲	▲	▲	▲	▲	▲	▲	▲	▲	▲	▲
	11.75	GSD	London, Eng. Daily		25.53	◆	◆	▼	▼	▼	▼	▼	▼	▼	▼	▼	▼	▼	▼	▼	▼
	11.77	DJD	Berlin, Ger. Daily		25.49	▼	▼	▼	▼	▼	▼	▼	▼	▼	▼	▼	▼	▼	▼	▼	▼
	11.79	W1XAL	Boston, Mass. Daily		25.45																
	11.80	JZJ	Tokyo, Japan Daily		25.41	▲	▲														
	11.81	I 2RO 4	Rome, Italy Daily		25.40	▼															
	11.83	W2XE	Wayne, N.J. Daily		25.36																

	11.84	OLR4A	Prague, Czech Daily		25.34																
	11.87	W8XK	Pittsburgh Daily		25.27																
	11.88	TPA 3	Paris, France Daily		25.23	▼	▼	▼	▼	▼	▼	▼	▼	▼	▼	▼	▼	▼	▼	▼	▼
	12.06	RNE	Moscow, USSR W & Su.		24.88																
S	13.63	SPW	Warsaw, Pol. MW&F		22.01	▼															
A	14.91	LZA	Sofia, Bulgaria Daily		20.11	▼	▼	▼	▼	▼	▼	▼	▼	▼	▼	▼	▼	▼	▼	▼	▼
	15.04	RKI	Moscow, USSR Daily		19.95																
	15.11	DJL	Berlin, Ger. Daily		19.86	◆	◆	▼	▼	▼	▼	▼	▼	▼	▼	▼	▼	▼	▼	▼	▼
	15.12	HVJ	VaticanCity, It. ex. Su.		19.84																
	15.14	GSF	London, Eng. Daily		19.82																
	15.15	YDC	Sourabaya, Java Daily		19.81																
	15.18	GSO	London, Eng. Daily		19.75	▲	▲	▲	▲	▲	▲	▲	▲	▲	▲	▲	▲	▲	▲	▲	▲
	15.20	DJB	Berlin, Ger. Daily		19.73	◆	◆	▼	▼	▼	▼	▼	▼	▼	▼	▼	▼	▼	▼	▼	▼
	15.21	W8XK	Pittsburgh, Pa. Daily		19.72	▼	▼	▼	▼	▼	▼	▼	▼	▼	▼	▼	▼	▼	▼	▼	▼
	15.24	TPA 2	Paris, France Daily		19.68																
	15.26	GSI	London, Eng. Daily		19.66	▼	▼	▼	▼	▼	▼	▼	▼	▼	▼	▼	▼	▼	▼	▼	▼
	15.27	W2XE	Wayne, N.J. Daily		19.65	▼	▼	▼	▼	▼	▼	▼	▼	▼	▼	▼	▼	▼	▼	▼	▼
	15.28	DJQ	Berlin, Ger. Daily		19.64	◆	◆	▲	▲	▲	▲	▲	▲	▲	▲	▲	▲	▲	▲	▲	▲
	15.29	LRU	Buenos Aires, Arg. Daily		19.62																
	15.31	GSP	London, Eng. Daily		19.60																
	15.33	W2XAD	Schenectady Daily		19.56																
	15.34	DJR	Berlin, Ger. Daily		19.56																
	15.37	HAS 3	Budapest, Hung. Su		19.52																
S	17.76	DJE	Berlin, Ger. Daily		16.89	◆	◆	▲	▲	▲	▲	▲	▲	▲	▲	▲	▲	▲	▲	▲	▲
	17 77	PHI	Huisen, Hol. ex. Tu & W		16.88																
	17.78	W2XAL	Boundbrook, N.J. Daily		16.87	▼	▼	▼	▼	▼	▼	▼	▼	▼	▼	▼	▼	▼	▼	▼	▼
	17.79	GSG	London, Eng. Daily		16.86	◆	◆	▼	▼	▼	▼	▼	▼	▼	▼	▼	▼	▼	▼	▼	▼
	21.47	GSH	London, Eng. Daily		13.97																
	21.52	W2XE	New York City. Daily		13.94																
	21.53	GSJ	London, Eng. Daily		13.93																
	21.54	W8XK	Pittsburgh, Pa. Daily		13.92																

Twenty-six issues of the Chicago Short Wave Radio Club's splendid bi-weekly bulletins will be mailed during one year for \$1.00. They will keep you up-to-the-minute with all important shortwave information and enable you to derive the full enjoyment your receiver provides. Ten or more revisions of this Radio Log, during 2 1/2 years, are mailed to subscribers for \$1.00. Two dollars, for both services may be sent to Haynes' Radio Log, 161 West Harrison St., Chicago.

ALASKA
Ketchikan KGBU 900 O

ALABAMA
Birmingham ↑WAPI 1140 S
*WBRC 930 O
Mobile *WALA 1380 M
Montgomery *WSFA 1410 M

ARIZONA
Phoenix *KOY 1390 O
↑KTAR 620 O
Tucson KVOA 1260 O

ARKANSAS
Hot Springs ↑KTHS 1060 T
Little Rock *KLRA 1390 O

CALIFORNIA
Bakersfield *KPMC 1550 O
Fresno ↑KMF 580 O
Long Beach KFOK 1250 O
KGER 1360 O
Los Angeles KECA 1430 O
KEHE 780 O KFAC 1300 O
↑KFI 640 W KFVD 1000 O
KFWB 950 O *KHJ 900 O
KMTR 570 O *KNX 1050 W
KRCD 1120 M
Oakland KJLX 880 O
KROW 930 O
Sacramento ↑KFBK 1490 S
S. Diego KGB 1300 KFSD 600 O
San Francisco *KFRC 610 O
↑KGO 790 T KFOK 680 W
*KFSO 560 O KYA 1230 O
San Jose KQW 1010 O

COLORADO
Colorado Springs *KVOR 1270 O
Denver *KLZ 560 O
↑KOA 830 W *KFEL 920 M
Pueblo KGHF 11320 M

CONNECTICUT
Bridgeport ↑WIOC 600 M
Hartford ↑WVIC 1040 W
*WDRB 1300 O
Waterbury *WBRY 1530 O

DISTRICT OF COLUMBIA
Washington *WJWS 1460 T
*WOL 1230 O ↑WRC 950 M

FLORIDA
Clearwater ↑WFLA 620 O
Gainesville WRUF 830 S
Jacksonville ↑WJAX 900 O
Miami ↑WIOD 1300 O
*WQAM 560 O
Orlando *WDBO 580 O

MAINE
Bangor *WLBZ 620 O
Portland ↑WCHS 940 O

MARYLAND
Baltimore ↑WBAL 1060 T
↑WBAL 760 R *WCAO 600 M

MASSACHUSETTS
Boston ↑WVZ 990 W
↑WVX 6.04-11.79
*WEHI 590 O WHDH 830 O
WORLD 920 M *WNAC1230O
Fall River *WSAR 1450 O
Worcester ↑WTAG 580 O

MICHIGAN
Bay City WBCM 1410 O
Detroit *WJR 750 W
↑WVJ 920 W WXYZ 1240 O
Grand Rapids ↑WOOD 1270 M
Lansing WKAR 850 O

MINNESOTA
Duluth ↑WBCB 1290 O
Minneapolis *WCCO 810 W
WDG 1180 O WLB 1250 O
St. Paul ↑KSTP 1460 V

MISSISSIPPI
Jackson ↑WJDX 1270 O
Vicksburg WQBC 1360 O

MISSOURI
Kansas City *KMBC 950 O
↑WDAF 610 O KXBY 1530 O
Springfield *KWTO 560 O
St. Louis *KMOW 1090 W
↑KSD 550 O ↑KWK 1350 O

MONTANA
Billings ↑KGLH 780 O
Butte ↑KGRB 1340 O
Great Falls *KIFB 1280 O
Missoula *KGVO 1260 O
Wolf Point KGGK 1450 O

NEBRASKA
Lincoln *KFAB 770 T
North Platte KGNF 1430 O
Omaha WAAW 660 M
↑WOW 590 S ↑KOLL 1260 O

NEVADA
Reno *KOH 1380 M

NEW HAMPSHIRE
Manchester ↑WFEA 1340 M

NEW JERSEY
Atlantic City *WPG 1100 S
Newark *WOR 710 W

PENNSYLVANIA (Cont.)
Pittsburgh ↑KDKA 980 W
↑WXXK 6.14-11.87-15.21-21.54
↑WCAR 1220 O *WJAS 1290 O
Reading WREU 830 O
York WORL 1320 O

PUERTO RICO
WKAQ San Juan 1240 O

RHODE ISLAND
Providence ↑WEAN 780 O
↑WJAR 890 M *WPRO 630 O

SOUTH CAROLINA
Columbia ↑WIS 560 O
Greenville ↑WFCB 1300 O

SOUTH DAKOTA
Brookings KFDY 780 O
Sioux Falls KGOO 1110 R
Yankton *WNAX 570 O

TENNESSEE
Chattanooga *WDOD 1280 O
Knoxville *WNOX 1010 O
Memphis ↑WMC 780 O
WNNR 1430 M *WRECF 600 O
Nashville *WLAC 1470 S
↑WSM 650 W

TEXAS
Amarillo KGNC 1410 O
Beaumont KFDM 560 O
Dallas *KRLD 1040 T
↑WFAA 800 W WRR 1280 M
Ft. Worth *WBAP 800 W
↑KAT 1240 O
Houston ↑KPRC 920 O
*KTRH 1290 O KXYZ 1440 O
San Antonio *K TSA 550 O
↑WOAI 1190 W

UTAH
Orden ↑KLO 1400 M
Salt Lake City ↑KDYL 1290 O
*KSL 1130 W

VERMONT
St. Albans WQDM 1390 O
Waterbury WDEV 550 M

VIRGINIA
Norfolk ↑WTVR 780 M
Richmond ↑WRVA 1110 S
Roanoke *WDBJ 930 O
Staunton WSVA 550 M

SASKATCHEWAN
Moscow Joe CJRM 540 O
Regina CHWC-CKCK 1010 M
Saskatoon CFQC 840 O

ARGENTINA
Buenos Aires L SX 10.35
LRU 129 LRX 9.66

AUSTRALIA
Melbourne VK3ME 9.50
3LR 9.58
Sydney VK2ME 9.59

BRAZIL
Rio de Janeiro PRF5 9.50

BULGARIA
Sofia LZA 14.87

CHILI
Santiago CEC 10.67

COLOMBIA
Barranquilla HJ1AB-6.04-6.11
Bogota HJN 5.95
HJ3AB-6.01-6.05-6.12-6.07
Cali HJ5ABD 6.08
Cartagena HJ1AB-9.50-9.61
Ibaque HJ4AB 6.09
Manizales HJ4AB 6.11
Medellin HJ4AB-6.03-6.10-6.14

COSTA RICA
San Jose TIGPH 5.83
TIEP 6.41 TIEP 6.68

CUBA
Havana CMBC 630 O
CMCY 1030 O CMK 730 M
CMW 600 M CMX 920 P
COCD 1.33 COCH 9.43

ECUADOR
Guayaquil HC2CW 8.25
HC2RL 6.66
Riobamba PRADO 6.62

ENGLAND
London GS-9.51-9.58-11.75-
15.14-15.31-17.79-21.47

FRANCE
Paris TPA-11.72-11.88-15.24

GERMANY
Berlin DJ-6.02-9.54-9.56-
11.77-15.11-15.20-15.28-17.76

HAITI
Port au Prince HHK 920 O
HH2S 5.91 HH3W 9.64

Pensacola *WCOA 1340 M
Tampa *WDAE 1220 O

GEORGIA
Atlanta *WGST 890 O
↑WSB 740 W WTFI 1450 M
Macon WMAZ 1180 O
Savannah *WTOC 1260 O

HAWAII
Honolulu ↑KGU 750 R
*KGMB 1320 O

IDAHO
Boise KIDO 1350 O

ILLINOIS
Chicago *WBBM 770 W
↑WCFB 970 S ↑W9XAA 6.08
↑WGNR 870 W W9XFM 6.10
*WGN 720 W WLS 870 W
↑WMAQ 670 W WMBI 1080 S
Peoria *WMBD 1440 M
Rockford WROK 1410 M

INDIANA
Evansville WGBF 630 M
Ft. Wayne ↑WOWO 1160 T
Gary WIND 560 O
Hammond WHIP 1480 S
Indianapolis *WFBM 1230 O
↑WIRE 1400 O WGVA 1050 O
Lafayette WBAA 890 O

IOWA
Ames WOI 640 S
Cedar Rapids ↑WMT 600 O
Des Moines *KRNT 1320 O
↑KSO 1430 M ↑WHO 1000 W
Sioux City *KSCJ 1330 O

KANSAS
Abilene KFBI 1050 S
Colleyville KGGF 1010 O
Lawrence KFKU 1220 O
Pittsburgh KOAM 790 O
Topeka *WIBW 580 O
Wichita *KFH 1300 O

KENTUCKY
Covington ↑WCKY 1490 T
Louisville ↑WAVE 940 O
*WHAS 820 W

LOUISIANA
New Orleans WDSU 1250 O
↑WSMB 1320 M *WVL 850 T
Shreveport ↑TBS 1450 O
KWKH 1100 O

NEW MEXICO
Albuquerque KOB 1180 S

NEW YORK
Buffalo ↑WBBN 900 O
*WGR 550 O *WKBB 1480 S
Elmira *WESG 850 O
Long Island City WQXR 1550 O
New York *WABC 860 W
*W2XE 6.12-11.83-15.27-21.52
↑WEAF 660 W ↑W3XL 6.10-17.8
WHN 1010 O WINS 1180 O
↑WJZ 760 W WLWL 1100 S
WMC 570 M WNEW 1250 O
WNYC 810 O WOV 1130 O
Rochester ↑WHAM 1150 W
Schenectady ↑WGY 790 W
↑W2XAF 9.53-15.33
Syracuse *WFLB 1360 O

NORTH CAROLINA
Asheville ↑WWNC 570 O
Charlotte *WBT 1080 W
Greensboro WBIG 1440 O
Raleigh ↑WPTE 680 S

NORTH DAKOTA
Bismarck KBT 550 O
Fargo ↑WDAY 940 O
Grand Forks KFJM 1410 M

OHIO
Akron *WADC 1320 O
Cincinnati *WKRC 550 O
↑WLV 700 Z ↑WSAI 1330 O
*W3XAL 1400 T
Cleveland ↑GAR 1450 M
*WHK 1390 O ↑WTAM 1070 W
*WBNS 1430 M WOSU 570 O
Columbus WHKC 640 M
Dayton *WHIO 1260 O
Toledo ↑WSPD 1340 O

OKLAHOMA
Norman W9AD 1010 O
Okla. City *KOMA 1480 S
↑WKY 900 O
Tulsa ↑KVOO 1140 V
*KTUL 1400 M

OREGON
Corvallis KOAC 550 O
Portland KEX 1180 S
↑KGW 620 O *KOIN 940 O

PENNSYLVANIA
Philadelphia *KYW 1020 T
*VCU 1170 W ↑WFLI 560 O
*W3XAU 6.06-9.59 WIP 610 O

WASHINGTON
Seattle KIRO 710 O
↑KJR 970 S *KOL 1270 O
↑KOMO 920 O KTW 1220 O
Spokane *KFPY 890 O
↑KAC 1470 O KHKQ 590 O
Tacoma *KVI 570 O

WEST VIRGINIA
Charleston ↑WCHS 580 M
Fairmont *WMMN 890 M
Huntington WSAZ 1190 O
Wheeling *WVVA 1160 S

WISCONSIN
Green Bay WTAQ 1330 O
La Crosse WKBB 1380 O
Madison WHA 940 S
↑WIBA 1280 O
Milwaukee ↑WTMJ 620 O
Stevens Point WLBL 900 S

WYOMING
Casper KDFN 1440 M

CANADA

ALBERTA
Calgary CFQC 1030 T
Edmonton CJCA 730 O

BRITISH COLUMBIA
Trail CJAT 910 O
Vancouver CJOR 600 M

MANITOBA
Winnipeg CKY 910 U
CJRO 6.14 CJRX 11.72

NOVA SCOTIA
Halifax CHNS 930 O
Sydney CJCB 1240 O 6.13

ONTARIO
Hamilton CKOC 1120 M
Ottawa CRCO 880 O
Sudbury CKSO 780 O
Toronto *CFRB 690 T
↑CRCT 840 S CJRX 6.09
Windsor *CKLW 1030 S

PRINCE EDWARD ISLAND
Charlottetown CFQC 630 O

QUEBEC
Montreal ↑CFBC 600 M
*CKAC 730 S CRCM 910 S
New Carlisle CHNQ 960 O
Quebec CRCK 1050 O

HOLLAND
Eindhoven PCJ 9.59-15.22
Hulsen PHI 17.57

HONDURAS
Tegucigalpa HRN 5.87
San Pedro HRP1 6.36

HUNGARY
Budapest HAS-3 15.37
HAT-4 9.12

ITALY
Rome I2RO-9.63 11.81
Vatican City HVJ 15.12

JAPAN
Tokio JVM 1074 JZJ 11.90

MEXICO
Mexico City XEB 1030 T
XEBT 6.00 XEFO 940 S
XEN 780 O XEN 890 W
New Laredo XENT 910 X
Piedras Negras XELO 1110 W
XEPN 580 X
Reynosa XEAW 960 W
Tijuana XEAMO 860 S
Villa Acuna XERA 840 Z

PANAMA
HP5-6.03-6.08-9.60

PERU
Lima OXAX-6.78-6.26

POLAND
Warsaw SPW 13.63

PORTUGAL
Lisbon CTIAA 965. CSW 9.94

RUSSIA
Moscow RNE 12.00 RAN 9.60

SANTO DOMINGO
Puerto Plata HIIS 6.42
Santiago HIA 6.19
Trujillo HIN 6.24
HIT 6.63 HIZ 6.31-6.34

SPAIN
Madrid EQ 9.48-9.86

SWITZERLAND
Geneva HB-7.80-9.65

VENEZUELA
Caracas YV5R-5.80-6.15-6.27
YV5RI 6.40
Maracaibo YV1R-5.85-6.39
Mayaguez YV4R 6.30
Valencia YV4R-5.91-6.52



with

PHILCO TUBES

THE high quality, sturdy construction and precision design of Philco Tubes will put your radio in shape for all the big broadcasts. Don't put up with faulty reception . . . get the finest performance your set is capable of giving . . . with a set of new Philco Tubes! They cost so little . . . yet do so much to improve radio reception!



FREE TEST OFFER!

Bring in your old tubes.
We will check them for
you absolutely FREE . . .
no obligation whatever!

EXPERT REPAIRS!