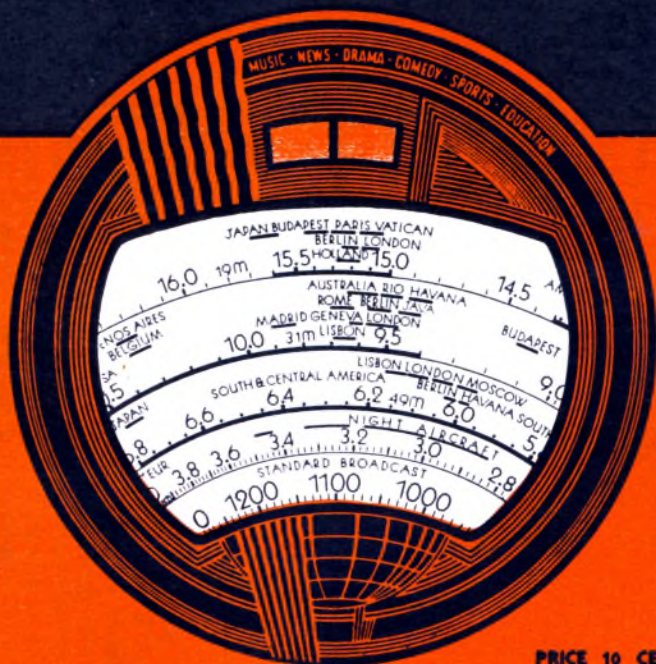


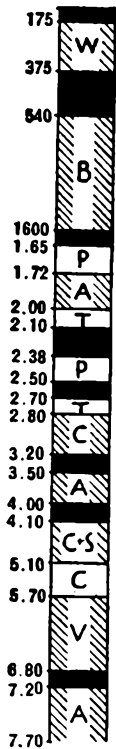
# PHILCO RADIO LOG

AMERICAN AND FOREIGN STATIONS



PRICE 10 CENTS

GOLLIN & SPALDING INC.  
9 SOUTH SPRING ST.  
PHONE 4099 ELGIN, ILL.



The following data will help you to operate the radio dial more easily, and help you to **GET OUT** of the receiver the full radio enjoyment **BUILT INTO** it at the factory.

**THE RADIO SPECTRUM** shows the general classification of services to which broadcasting facilities are assigned. Identities of stations in the Broadcast Band "B" appear on the next four pages. Geographical divisions group the stations most likely heard in your community whether on the west coast, central area, or east coast. Enter your exact dial readings for these stations in the blank center column. Fill in the rest of the blank columns with stations you pick up at intermediate points. Stations with power of T, U, V, W and Z can generally be heard from coast to coast at night, frequently more clearly than stations nearer to you with lower power. Those with H, K, M and O power on same kilocycle with super-power stations operate only in daylight hours.

### POLICE CALLS

Police Assignment "P" are listed in a similar manner on page 10. With many operating on a single point, you will usually get the one nearest you on a single megacycle number. Note that the spectrum, the log and your dial use a decimal instead of a comma. For example, 1658 kilocycles becomes 1.66 megacycles.

### SHORT WAVE

"V" indicates short wave channels offering Voice entertainment. They are listed on pages 11 to 14. Time of operation is of greatest importance. By ruling out **FOUR** rows of hour figures on page 11 the chart is converted to your receiving time. The two symbols between each hour line represent one half hour. Pointed up, morning is indicated; down for afternoon. Follow the column for time you are tuning, if station is shown to be operating; to the left you can see whether the program is "daily"; "W & Sat"; or on what schedule. If all three figures of the megacycle number are bold, the reception of the program should be good. If only one is bold, it is likely to be only fair.



Spots in the spectrum marked "A" are used by some 30,000 amateurs. "C" for Aircraft. "S" Ships, "T" Television, "W" for Government Weather and Air Beacon Stations. And on those not marked will be heard phone and commercial stations, etc. mostly in code.

### SHORT WAVE TUNING TIPS

Turn the dial pointer to the approximate setting required. Increase your volume. If your set has tone control turn it to low pitch if atmospheric conditions are noisy. Now tune with extreme care, slowly and evenly. When you locate a station move your tuning knob back and forth until you are satisfied it is the exact point. Re-adjust volume and tone control to suit you. Enter your dial reading for each station. It will be useful for getting the station again and become a reference point for locating stations at adjacent frequencies. Foreign stations sometimes vary slightly from their assigned megacycle and the number you may have recorded.

With slow, careful tuning, faint signals can frequently be developed to great strength. Simply because a station is broadcasting at a given time, do not blame your radio if you are unable to get it. Remember, there are many forces over which man has no control which prevent you from getting reception at times—skip distances—storms—directional antennas of stations, etc.

### INTERNATIONAL MORSE CODE

A	..—	G	—.—.	M	— —	S	...	Y	— . — —	4	....—
B	—....	H	....	N	— .	T	—	Z	— — — .	5	.....
C	— . — .	I	..	O	— — —	U	.. —	6	—....		
D	— ..	J	.. — — —	P	.. — .	V	... —	7	— — — .		
E	.	K	— . —	Q	— — . —	W	.. — —	8	— — — .		
F	.. — .	L	.. — .	R	.. — .	X	— . — .	9	— — — .		

Nothing could be more simple than this chart. Understand it thoroughly. Read instructions on the preceding page.

100 150 200 250 300 500 750 1000 1500 2000 WATTS POWER 2500 5000 10000 15000 25000 50000 100,000 250,000 500,000  
 H I J K L M N O P Q CODE R S T U V W X Y Z

Revision 54

\*Columbia; †NBC Red; ‡NBC Blue; †NBC Red & Blue; ^Mutual

WESTERN		MIDDLE WESTERN		KILO.	Dial No.	CENTRAL		EASTERN	
Wash., Ore., Cal., Utah, Etc.		Minn., Ia., Neb., Mo., Tex., Etc.				Ill., Mich., Ohio, Tenn., Etc.		Mass., N. Y., Pa., N. C., Etc.	
CJRM	Moose Jaw, Sask. . . . .	O		54o					
KOAC	Corvallis, Ore. . . . .	†	KSD-KFUO St. Louis, Mo. . . . .	55o		•WKRC Cincinnati, Ohio. . . . .	O	•CFNE Fredericton, N.B. . . . .	M
KFYR	Bismarck, N. D. . . . .	O	*K TSA San Antonio, Tex. . . . .	56o		WVA Staunton, Va. . . . .	M	•WGR Buffalo, N. Y. . . . .	O
•KLZ	Denver, Colo. . . . .	O	KWTO Springfield, Mo. . . . .	57o		WIND Chicago-Gary . . . . .	O	†WDEV Waterbury Vt. . . . .	M
•KSFO	San Francisco, Cal. . . . .	O	KFDM Beaumont, Tex. . . . .	58o		•WIS Columbia, S.C. . . . .	O	†WFIL Philadelphia, Pa. . . . .	O
•KVI	Tacoma, Wash. . . . .	O	•WNAX Yankton, S. D. . . . .	59o		•WKBN Youngstown, Ohio. . . . .	M	•WQAM Miami, Fla. . . . .	O
•KMTR	Los Angeles, Cal. . . . .	O	•KGKO Ft. Worth, Tex. . . . .	60o		WOSU Columbus, Ohio. . . . .	O	•WUNC Asheville, N. C. . . . .	O
CKUA	Edmonton, Alta. . . . .	M	•WIBW Topeka, Kas. . . . .	61o		WILL Urbana, Ill. . . . .	K	†WMCANew York (†WSVR) . . . . .	M
•KMJ	Fresno, Cal. . . . .	M	KSAC Manhattan, Kas. . . . .	62o		WCHS Charleston, W. Va. . . . .	M	†WTAG Worcester, Mass. . . . .	O
†KHQ	Spokane, Wash. . . . .	O	†WOW Omaha, Neb. . . . .	63o		•WKZO Kalamazoo, Mich. . . . .	K	•WDBO Orlando, Fla. . . . .	O
CJOR	Vancouver B.C. . . . .	M	XEPN Pedras Negras, Coah W	64o		CMW Havana, Cuba . . . . .	P	•WEEI Boston, Mass. . . . .	O
•KFSD	San Diego, Cal. . . . .	M	†WMT Cedar Rapids, Ia. . . . .	65o		†CFCF Montreal, Que. . . . .	M	†WICC Bridgeport, Conn. . . . .	M
•KFRC	San Francisco, Cal. . . . .	O	•WREC Memphis, Tenn. . . . .	66o		CRCW Windsor Ont. . . . .	M	•WCAO Baltimore, Md. . . . .	M
•KGW	Portland, Ore. . . . .	O	†WDAF Kansas City, Mo. . . . .	67o		WJAY Cleveland, Ohio. . . . .	M	WIP Philadelphia, Pa. . . . .	O
•KTAR	Phoenix, Ariz. . . . .	O	XFX Mexico City . . . . .	68o		•WTMJ Milwaukee, Wis. . . . .	O	•WLBZ Bangor, Maine. . . . .	O
CJRC	Winnipeg, Man. . . . .	M		69o		•WFLA-; WSUN Florida . . . . .	O	•WHJB Greensburg, Pa. . . . .	K
•KGFY	Pierre, S.D. . . . .	J	KFRU Columbia, Mo. . . . .	70o		WGBF Evansville, Ind. . . . .	M	•CFBY Charlottetown, PEI. . . . .	O
†KFI	Los Angeles, Cal. . . . .	W	WOI Ames, Iowa. . . . .	71o		•WMAL Washington, D. C. . . . .	K	•WPRO Providence, R. I. . . . .	M
				72o		WAIU Columbus, Ohio. . . . .	M	•WAIM Anderson, S.C. . . . .	O
				73o		†WSM Nashville, Tenn. . . . .	W	•WGAN Portland, Me. . . . .	M
			WAAW Omaha, Nebr. . . . .	74o				†WEAF New York City. . . . .	W
†KPO	San Francisco, Cal. . . . .	W		75o		†WMAQ Chicago, Ill. . . . .	W	•WPTF Raleigh, N. C. . . . .	O
CJ CJ	Calgary, Alta. . . . .	M	KFEQ St. Joseph, Mo. . . . .	76o		NAA Arlington, Va. . . . .	O	•CFRB Toronto, Ont. . . . .	S
			XET Monterey, Mex. . . . .			†WLV Cincinnati, Ohio. . . . .	Z		
KIRO	Seattle, Wash. . . . .	O				•WGN Chicago, Ill. . . . .	W	•WOR Newark, N. J. . . . .	W
KMPC	Beverly Hills, Cal. . . . .	M	XEN Mexico City . . . . .			CMK Havana, Cuba. . . . .	R	•CKAC Montreal, Que. . . . .	S
CJCA	Edmonton, Alta. . . . .	O				†WSB Atlanta, Ga. . . . .	W	WHEB Portsmouth, N. H. . . . .	K
KTRB	Modesto, Cal. . . . .	K	KMMJ Clay Center, Neb. . . . .			•WJR Detroit, Mich. . . . .	W		
•KGU	Honolulu, Hawaii. . . . .	R				CMHX Cienfuego, Cuba. . . . .	M	†WJZ New York (WBAL) . . . . .	W
KXA	Seattle, Wash. . . . .	K	WEW St. Louis, Mo. . . . .						
XEOK	Tia Juana, Mex. . . . .	K							

<b>KFQB</b> Anchorage, Alaska. K	<b>*KFAB</b> Lincoln, Nebr. . . . . T	77	<b>*WBBM</b> Chicago, Ill. . . . . W
<b>KGHL</b> Billings, Mont. . . . . O	<b>KFDY</b> Brookings, S. D. . . . . O	78	<b>CKSO</b> Sudbury, Ont. . . . . O
<b>KEHE</b> Los Angeles (KELW) O	<b>KFYZ</b> Mexico City, Mex. . . . . T	79	<b>WMC</b> Memphis, Tenn. . . . . O
<b>KGO</b> San Francisco, Cal. . . . . T	<b>KOAM</b> Pittsburg, Kas. . . . . O	80	<b>CMJK</b> Camaguey, Cuba M
	<b>WFAA</b> Dallas, (WBAP) W	81	<b>HIX</b> Santo Domingo, RD. . . . . N
	<b>*WCCO</b> Minneapolis, Min W	82	<b>*WHAS</b> Louisville, Ky. . . . . W
		83	<b>WRUF</b> Gainesville, Fla. . . . . S
	<b>KOA</b> Denver, Colo. . . . . W	84	
<b>CFQC</b> Saskatoon, Sask. . . . . O	<b>XERA</b> Villa Acuna, Mex. . . . . Y	85	<b>WKAR</b> E. Lansing, Mich. . . . . O
<b>KIEV</b> Glendale, Cal. . . . . K	<b>*WWL</b> New Orleans, La. . . . . T	86	
<b>XEMO</b> Tijuana Mex. . . . . S	<b>*WHB</b> Kansas City, Mo. . . . . O	87	<b>WENR-WLS</b> Chicago. . . . . W
		88	<b>CRCO</b> Ottawa, Ont. . . . . O
<b>KLX</b> Oakland, Cal. . . . . O	<b>WSUI</b> Iowa City, Ia. . . . . M	89	<b>WCOC</b> Meridian, Miss. . . . . M
<b>*KFPY</b> Spokane, Wash. . . . . O	<b>KFKA-KPOF</b> Colorado. . . . . M	90	<b>WBAA</b> Lafayette Ind. . . . . K
<b>KARK</b> Little Rock, Ark. . . . . M	<b>KFNF</b> Shenandoah (KUSD) M	91	<b>*WMMN</b> Fairmont, W. Va. M
<b>KGBU</b> Ketchikan, Alaska O	<b>XEW</b> Mexico City. . . . . W	92	<b>WLBL</b> Stevens Pt., Wis. . . . . S
<b>KSEI</b> Pocatello, Idaho. . . . . K	<b>WTAD</b> Quincy, Ill. . . . . O	93	<b>WJAX</b> Jacksonville, Fla. . . . . O
<b>*KHJ</b> Los Angeles, Cal. . . . . O	<b>WKY</b> Okla. City, Okla. . . . . O	94	<b>CKY</b> Winnipeg, Man. . . . . U
<b>CJAT</b> Trall, B.C. . . . . O	<b>XENT</b> Nueve Laredo, Mex. X	95	<b>WJWJ</b> Detroit, Mich. . . . . O
<b>KOMO</b> Seattle, Wash. . . . . O	<b>KPRC</b> Houston, Texas. . . . . O	96	<b>WAAF</b> Chicago, Ill. . . . . M
	<b>KFEL</b> KVOO Denver. . . . . M	97	<b>*WBRC</b> Birmingham, Ala. . . . . O
<b>KROW</b> Oakland, Cal. . . . . O	<b>KMA</b> Shenandoah, Ia. . . . . O	98	<b>WAVE</b> Louisville, Ky. . . . . O
<b>*KOIN</b> Portland, Ore. . . . . O	<b>KGBZ</b> York Nebr. . . . . O	99	<b>XFO-XEFO</b> Mexico City. . . . . S
<b>KHSL</b> Chico, Cal. . . . . K	<b>WDAY</b> Fargo, N. D. . . . . O	100	<b>CMCD</b> Havana, Cuba. . . . . M
<b>KFWB</b> Hollywood, Cal. . . . . O	<b>WHA</b> Madison, Wis. . . . . S	101	
	<b>*KMBC</b> Kansas City, Mo. . . . . O	102	<b>WCFI</b> Chicago, Ill. . . . . S
<b>KJR</b> Seattle, Wash. . . . . S	<b>XEAW</b> Reynosa, Tama. . . . . W	103	
	<b>XES</b> Tampico, Mex. . . . . M		<b>*WNOX</b> Knoxville, Tenn. . . . . O
<b>KFVD</b> Los Angeles, Cal. . . . . O	<b>XEAF</b> Nogales, Mexico. . . . . M		<b>WDZ</b> Tuscola, Ill. . . . . K
<b>CKCK-CHWC</b> Regina, Sk. . . . . M	<b>WWHO</b> Des Moines, Iowa. W		<b>*CKLW</b> Windsor-Detroit. . . . . S
<b>KQW</b> San Jose, Cal. . . . . O	<b>KGGF</b> Coffeyville, Kas. . . . . O		<b>WBN</b> New York City. . . . . O
	<b>WNAD</b> Norman, Okla. . . . . O		<b>KYW</b> Philadelphia, Pa. . . . . T
<b>CFCN</b> Calgary, Alta. . . . . T	<b>XEJ</b> Juarez, Mex. . . . . O		<b>CMCY</b> Havana, Cuba. . . . . M
	<b>XEB</b> Mexico City, Mex. . . . . T		
			<b>*WEAN</b> Providence, R.I. . . . . O
			<b>WTAR</b> Norfolk, Va. . . . . O
			<b>WGY</b> Schenectady, N. Y. W
			<b>WTBO</b> Cumberland, Md. . . . . K
			<b>WNYC</b> New York City. . . . . O
			<b>WHDH</b> Boston, Mass. . . . . O
			<b>WEEU</b> Reading, Pa. . . . . O
			<b>CRCT</b> Toronto, Ont. . . . . S
			<b>*WESG</b> Elmira, N.Y. . . . . O
			<b>*WABC-WBOQ</b> N. York. W
			<b>WGBI-WQAN</b> Scranton, Pa. M
			<b>WPHR</b> Petersburg, Va. . . . . M
			<b>WJAR</b> Providence, R. I. . . . . M
			<b>*WGST</b> Atlanta, Ga. . . . . O
			<b>WBEI</b> Buffalo, N. Y. . . . . O
			<b>WELI</b> New Haven, Conn. M
			<b>CRCM</b> Montreal, Que. . . . . S
			<b>WORL</b> Boston, Mass. . . . . M
			<b>WRAX-WPEN</b> Philadelphia K
			<b>CHNS</b> Halifax, N.S. . . . . M
			<b>*WDBJ</b> Roanoke, Va. . . . . O
			<b>WCSH</b> Portland, Maine. . . . . O
			<b>WAAT</b> Jersey City, N. J. . . . . M
			<b>WRC</b> Washington, D.C. . . . . M
			<b>CHNC</b> New Carlisle, Que. . . . . O
			<b>WIBG</b> Glenside, Pa. . . . . H
			<b>KDKA</b> Pittsburgh, Pa. . . . . W
			<b>WBZ-WBZA</b> Boston. . . . . W

For quick reference and the convenience of your family and friends, circle or mark the call letters of LOCAL stations.

100 H	150 I	200 J	250 K	300 L	500 M	750 N	1000 O	1500 P	2000 Q	WATTS CODE	POWER R	2500 S	5000 T	10000 U	15000 V	25000 W	50000 X	100,000 Y	250,000 Z	500,000	
WESTERN					MIDDLE WESTERN					KILO	DiA.No.	CENTRAL					EASTERN				
KWJJ Portland, Ore. .... M					*KRDL Dallas, Tex. .... T					104o		WEAU Eau Claire, Wis. .... O					†WTIC Hartford, Conn. ... W				
KYOS Merced, Cal. .... K					KFBI Abilene, Kas. .... S					105o		XEA Guadalajara, Mex. ... M					CRCK Quebec Que. .... O				
*KNX Los Angeles, Cal. ... W					†KTHS Hot Springs, Ark. ... T					106o		†WTAM Cleveland, Ohio ... W					†WBAL Baltimore, Md. ... T				
WJAG Norfolk, Nebr. .... O					WCAZ Carthage, Ill. .... H					107o		WMBI Chicago, Ill. (WCBD) S					*WBT Charlotte, N. C. ... W				
KJBS San Francisco, Cal. ... M					*KMOX St. Louis, Mo. ... W					108o											
										109o											
CRCV Vancouver, B. C. ... S					*KWKH Shreveport, La. ... T					110o		XELO Piedras Negras, Mex. T					WLWL New York City. ... S				
*KGDH Stockton, Cal. .... O					KSOO Sioux Falls, S. D. ... R					111o		CKOC Hamilton, Ont. .... M					*WPG Atlantic City, N. J. ... S				
KFIO-KRSC Washington ... H					WTAW College Station, Tex M					112o		*WISN Milwaukee, Wis. .... K					†WRVA Richmond, Va. ... S				
KFSG-KRKL Los Angeles M										113o		WJJD Chicago, Ill. .... U					WCOP Boston, Mass. .... M				
*KSL Salt Lake City, Utah. W					†KVOO Tulsa, Okla. .... V					114o		†WAPI Birmingham, Ala. ... S					WDEL Wilmington, Del. ... K				
					XEH Monterey, Mex. .... K					115o		*WOWO Ft. Wayne, Ind. ... T					WVOV New York City. .... O				
					XED Guadalajara, Mex. .... M					116o							†WSPR Springfield, Mass. ... M				
										117o							†WHAM Rochester, N. Y. ... W				
KEX Portland, Ore. .... S					WDGY Minneapolis, Minn. ... O					118o		WMAZ Macon, Ga. .... O					*WVVA Wheeling, W. Va. S				
KOB Albuquerque, N. M. ... T					†WOAI San Antonio, Tex. W					119o		XEFA Mexico City. .... M					*WCAU Philadelphia, Pa. W				
†KWG-KVEV-KFXJ-KVOS					KADA-WHBY-WOLO-WJRD							WSAZ Huntington, W. Va. ... O					WINS New York City. .... O				
KUN-KGEM-KCFJ-KFXD					-WBBZ-WCAZ-WIL-KMLB-					120o		WJW-WALR-WMFN-WPAX					WATR Waterbury, Conn. ... H				
KDNC-KVEC-KOOS-KELO					KGDE-KFJB-KBTM-KGHI							†WCOL-WHBU-WSIX-WJBY					WABI-WNRI-CTB-WLVA				
KGY-KFJI-KASA*KDON					KFVS-KGLO-KANS-WEBQ					121o		WBC-WCRW-WEDC-WJIM					WIBX-WKBO-WMFR-WOLS				
KIEM*KFXM-KPPC-KLAH					*KFOR KWTN-WTAX-KFPW							*WDAE Tampa, Fla. .... O					WHTH-WHBC-WRBL-WCAX				
KIUL-KDLR-KANS-WMFG					WBF-WOMT-KVSO-WIBU					122o		*WFBM Indianapolis, Ind. ... O					WBRB-WGBB-WBBL-WFAS				
KTW Seattle. (KWSC) ... O					†WREN-KFKU Kansas City O					123o		†WXYZ Detroit, Mich. .... O					WGNV-WSAY-WBAX-WKOK				
CJOC Lethbridge, Alta. ... H					†KGBX Springfield, Mo. ... M							WDSU New Orleans, La. ... O					*WMBG-WJEJ-WSOC-WJTN				
KYA San Francisco, Cal. ... O					KGGM Albuquerque, N.M. M					124o		*WHIO Dayton, O. .... O					†WCAE Pittsburgh (WCAD) O				
KGGU Mandan No. Dakota K					KLPM Minot, N. D. .... K							*WTOC Savannah, Ga. .... O					†WNAC Boston, Mass. .... O				
KTFI Twin Falls, Idaho. ... M					KTAT Ft. Worth, Tex. .... O					125o		†WASH, WOOD Gr. Rpds. M					†WOL Washington, D.C. ... O				
KFOX Long Beach, Cal. ... O					WLB†WTCN Minneapolis M							†WJDX Jackson, Miss. ... M					CJCB Sydney, N.S. .... O				
*KQVO Missoula, Mont. ... O					WAL Northfield, Minn. ... O					126o		*WDOD Chattanooga, Tenn. O					WKAQ San Juan, P. R. ... O				
KVOA Tucson, Arizona ... O					†KOIL Omaha, Nebr. .... O												WNEW New York (WHBI) O				
*KOL Seattle, Wash. .... O					KPAC Port Arthur (KRGV) O					127o							WAIK Winston-Salem, N.C. K				
*KFBF Great Falls, Mont. ... O					KWLC-KGCA Decorah, Ia H												WNBX Springfield, Vt. .... M				
KLS Oakland, Cal. .... K					*KFOR Colo. Springs, Colo. ... O					128o							†WFBR Baltimore, Md. .... M				
					†WIBA Madison, Wis. .... O												*WORC Worcester, Mass. ... M				
					WRR Dallas, Tex. .... M												WTNJ-WCMB-WCAP NJ M				

1 KDYL Salt Lake City . . . . . O	1 WBCB Duluth, Minn. . . . . O	129o			* WJAS Pittsburgh, Pa. . . . . O
KALE-KFJR Portland, Ore. M	* KTRH Houston, Tex. . . . . O				WNEL San Juan, P. R. . . . . M
KFAC Los Angeles, Cal. . . . . O	WHBL Sheboygan, Wis. . . . . M	130o		: WFBC Greenville S.C. . . . . O	WBRR-WFAB New York. . . . . O
KINY-KXRO-KFYO-KRRV	* KFH Wichita, Kas. . . . . O			: WIOD-WMBF Miami, Fla. O	WEVD-WHAZ New York. . . . . O
KHUB-KFPL-KGEZ-KRQA	KVOX-KCKN-KAND-KWOS	131o		WTRC-WAML-WSGN-WTAL	WBRE-WLNH-WEBR-WTEL
KCRJ-KIT-KGFW-CFJC	KROC-WLBC-WBEO-WEMP			WEXL-WTJS-WDFW-WCFI	WGH-WHAT*WSJS*WNBH
KSRO-KROY-KSUB-KRMC	KTSM-KFXR-WCLS			WBOW-WMBO-WROL-KVOL	WJAC-WFBG-WSAJ-CJLS
KID Idaho Falls, Idaho . . . . . M	KRMT-KPDN-WDAH				WRAW-WMFF-WLAK
* KMB Honolulu . . . . . O	* KRNT Des Moines, Iowa. . . . . O	132o		* WADC Akron, Ohio. . . . . O	WORK York, Pa. . . . . O
KMO Tacoma, Wash. . . . . O	* KGHF Pueblo, Colo. . . . . M			* WSMB New Orleans, La. . . . . O	
* KGB San Diego, Cal. . . . . O	* KSCJ Sloux City, Ia. . . . . O	133o		† WSAI Cincinnati, Ohio. . . . . O	* WDRC Hartford, Conn. . . . . O
† KGIR Butte, Mont. . . . . M	WTAQ Green Bay, Wis. . . . . O			† WSPD Toledo, Ohio. . . . . O	† WFEA Manchester N.H. M
KIDO Boise, Idaho. . . . . O	KGDY Huron, S.D. . . . . K	134o			* WCOA Pensacola, Fla. . . . . M
KGER Long Beach, Cal. . . . . O	KGNO Dodge City Kas. . . . . K				WBNX New York (WAWZ) K
KAST-KGFL-KIUP-KSLM	† KWK St. Louis, Mo. . . . . O	135o		WGES Chicago, Ill. . . . . M	* WFBL Syracuse, N. Y. . . . . O
KGAR-KRKO-KICA-KOBH	KKRC Enid, Okla. . . . . K			* WSTB South Bend, Ind. . . . . M	* WCSC Charleston, S. C. . . . . M
KRE-KEEN-KUJ; KERN	WQBC Vicksburg, Miss. . . . . O	136o		WAGFWMFO*WMBRWEQA	* WLLH-WSVS-WCBM-WRDO
* KOH Reno, Nev. . . . . M	KELD-KFGQ-KFJZ-KWYO			WHDF-WPAY-WIBM-WFOR	WRAK-WDAS-WBLK-WBTM
KLRC Lewiston, Ida. . . . . K	KFGD-KMAC-KONO-KFRO	137o		WGL-WHBQ-WCRC-WATL	WABY-WBNY-WMFD-WPRA
KOY Phoenix, Ariz. . . . . O	KGLB-KLUF-KCMO-*WOC			WSMK Dayton, Ohio. . . . . J	WNBC New Britain, Conn. . . . . K
† KLO Ogden, Utah (KHBC) M	WHLB-WMIN-WRJN	138o		* WALA Mobile Ala. . . . . M	KQV Pittsburgh, Pa. . . . . M
KMED Medford, Ore. . . . . K	WKBH La Crosse, Wis. . . . . O			* WHK Cleveland, Ohio. . . . . O	WQDM St Albans, Vt. . . . . O
† KGNC Amarillo, Tex. . . . . O	* KLRA Little Rock, Ark. . . . . O	139o		† WIRE Indianapolis, Ind. . . . . O	WARD-WVFW-WBBC NY M
KABR-KEUB-KCMC	* KTUL Tulsa, Okla. . . . . M	140o		WBCM Bay City, Mich. . . . . O	* WAAB Boston, Mass. . . . . M
KGFF-KUMA-KORE-KBPS	KFJM Grand Forks, Nebr. M			* WSFA Montgomery Ala. . . . . M	WHIS Bluefield Va. . . . . K
KGCC-KXL-KGIW-KIDW	WROK Rockford, Ill. . . . . M	141o		WLPW-WMSD-WGCP-WAPO	WAZL-WEED-WMFJ-WJBR
† KECA Los Angeles, Cal. . . . . O	KIUN-KNET-KLRH-KWBG			WELL-WMBC-WPAD-WPAR	WLEU-WILM-WJMS-WCHV
KDFN Casper, Wyo. . . . . M	WMBH-KABC-WJBO	142o		WHFC Cicero, Ill. (WCBS) H	WPRP WAGM-WJNY*WMAS
CFCT Victoria, B.C. . . . . F	KFIZ-KRBC *WADC-KALB			* WBNS Columbus, Ohio. . . . . M	* WHEC Rochester (*WOKO) M
KGCX Wolf Point, Mont. . . . . O	† KSO Des Moines, Ia. . . . . K	143o		WNR Memphis, Tenn. . . . . M	* WHP Harrisburg Pa. . . . . M
	KGNF No. Platte, Neb. . . . . O			* WBIG Greensboro, N. C. . . . . M	WCBA-WSAN Allentown . . . . . M
	* WMBD Peoria, Ill. . . . . M	144o		† WGAR Cleveland, Ohio. . . . . M	* WSAR Fall River, Mass. . . . . O
	KXYZ Houston, Tex. . . . . O			WTFI Atlanta Ga. . . . . M	WHOM Jersey City, N. J. . . . . K
	† KTBS Shreveport, La. . . . . O	145o			* WJSV Washington, D. C. . . . . T
	† KSTP St. Paul-Minnpolls. T	146o			WMEX Boston, Mass. . . . . S
† KGA Spokane, Wash. . . . . S	* KOMA Oklahoma City, OkS	147o		* WLAC Nashville, Tenn. . . . . S	* WKBW Buffalo, N. Y. . . . . S
† KFBK Sacramento, Cal. . . . . S		148o			
* KVOE*KDB-KRNR-KBST	KOTN*KNOW-KPLC-WTMV	149o		† WCKY Covington, Ky. . . . . S	WCNW *WDNC
KXO-KGFK-KPQ-KGKB	WHEF-KGKY-KGFI-WKBB	150o		WJBK-WKEU-WRDW	WWSW-WRGA-WGAL-WNBF
KUTA-KBST-KPLT-KAWM	KNEL-KBIX-KSJS-KOVC	151o		WKBZ-WKBV-WOPI-WHBB	WSYB-WMBQ-WWRL-WNLC
		152o		CKCR Waterloo, Ont. . . . . H	CFRC Kingston, Ont. . . . . H
	KXBY Kansas City, Mo. . . . . O	153o			* WBRY Waterbury, Conn. . . . . O
* KPMC Bakersfield, Cal. . . . . O		155o			WQXR Long Island Cy, N. Y. O

For a desired City, or State, follow its geographical column, then look at your recorded dial number in center column.

A black and white illustration of a hand turning a radio dial. The dial has several call letters: WPRR, WMDM, WEBB, and WPRD. A sign with the text 'PHILCO AUTOMATIC TUNING!' is positioned over the dial. The background shows the inner mechanism of the dial.

# PHILCO AUTOMATIC TUNING!

**CLICK... THERE'S YOUR STATION!**

We will replace mythical call letters shown on the dial with those of your favorite American stations.

**INSTANTLY!**



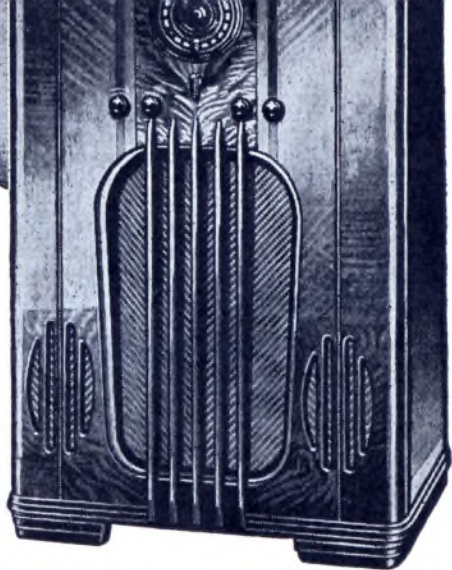
**AUTOMATICALLY!**

*Perfectly!*

Here's the new way to tune! One twirl . . . and your favorite American station comes in instantly, automatically! More accurate than eye or ear can tune! Let us demonstrate Philco Automatic Tuning the most talked-of feature in radio. Try it yourself . . . see how it works!

**FINER FOREIGN RECEPTION, TOO!**

See and Hear the New 1937 Philcos!  
52 Models — \$20 to \$600



**EASY TERMS--LIBERAL TRADE-IN ALLOWANCE**

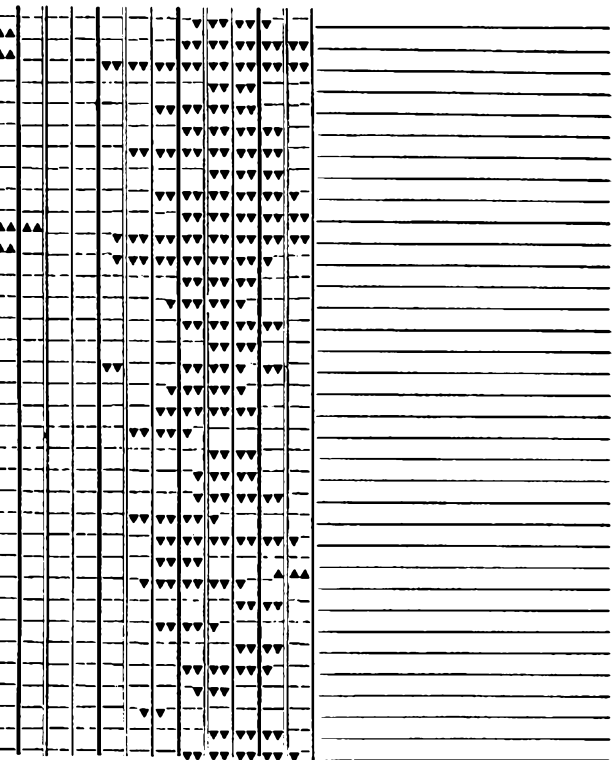
# POLICE BROADCASTS GEOGRAPHICAL BY MEGACYCLES

<b>CAL.</b> Berkeley		<b>1.658</b>		
<b>CAL.</b> Palo Alto, Santa Cruz		<b>1.674</b>		
	<b>MO.</b> St. Louis	<b>1.706</b>		<b>KY.</b> Lexington <b>OHIO</b> Cincinnati
<b>CAL.</b> Los Angeles, Pasadena Pomona, San Bernardino, Whittier <b>T.H.</b> Honolulu	<b>TEX.</b> Beaumont, Cleburne, Dallas, Denton, Galveston, Gladwater, Houston, Waco	<b>1.712</b>		<b>ILL.</b> Chicago, Oak Park, Waukegan <b>PA.</b> Pittsburgh
<b>TEX.</b> Brownsville, Corpus Christi	<b>MINN.</b> Duluth	<b>2.382</b>		<b>ALA.</b> Birmingham, Mobile <b>WIS.</b> Green Bay, Oshkosh
<b>UTAH</b> Salt Lake City	<b>ARK.</b> Ft. Smith, Little Rock	<b>2.406</b>		
<b>CAL.</b> Bakersfield, Fresno, Lodi, Santa Barbara, Tulare <b>WASH.</b> Aberdeen, Centralia, Everett, Olympia, Seattle, Spokane, Tacoma, Yakima Bellingham, Wenatchee.	<b>TEX.</b> El Paso  <b>N. M.</b> Albuquerque, Clovis, Santa Fe	<b>2.414</b>		<b>GA.</b> Atlanta, Augusta, Columbus, Macon <b>MICH.</b> Belle Isle, Detroit, Highland Park, Grosse Point
<b>CAL.</b> Eureka, Sacramento. <b>ORE.</b> Klamath Falls, Portland, Salem	<b>KAS.</b> Atkinson, Leavenworth, Topeka <b>MO.</b> Kansas City	<b>2.422</b>		<b>N. Y.</b> Buffalo, Niagra Falls,, Rochester
<b>ARIZ.</b> Phoenix, Prescott	<b>LA.</b> New Orleans, Shreveport, <b>MINN.</b> Minneapolis, St. Paul	<b>2.430</b>		<b>OHIO</b> Columbus, Dayton, Lan- caster, Portsmouth, Zanesville
<b>ORE.</b> Portland, Salem	<b>COLO.</b> Denver <b>KAS.</b> Salina <b>N. D.</b> Fargo <b>TEX.</b> Austin	<b>2.442</b>		<b>IND.</b> Indianapolis, Lafayette, Muncie, Richmond <b>KY.</b> Louisville <b>MICH.</b> Grand Rapids, Lansing, Muskegon, Saginaw
<b>OKLA.</b> Ada, Chickasha, Dun- can, Lawton, Muskogee, Okla. & Ponca Cy., Seminole, Tulsa	<b>KAS.</b> Chanute, Coffeyville, Hutchinson, Wichita <b>S. D.</b> Rapid City	<b>2.450</b>		<b>VA.</b> Bristol, Lynchburg, Peters- burg, Richmond, Roanoke <b>WIS.</b> Kenosha, Milwaukee
<b>IDA.</b> Idaho Falls	<b>TEX.</b> Brownwood, Lubbock, Wichita Falls, Big Springs	<b>2.458</b>		<b>ILL.</b> Ottawa, Rockford <b>OHIO</b> Akron, Cleveland, Steu- benville, Youngstown
<b>CAL.</b> San Francisco, San Jose	<b>IOWA</b> Cedar Rapids, Davenport Des Moines, Sioux City <b>NEBR.</b> Omaha	<b>2.466</b>		<b>MICH.</b> Bay City, Flint, Jackson Port Huron <b>TENN.</b> Memphis <b>FLA.</b> Clearw'r, Gaines'v'e, Tampa
<b>NEV.</b> Las Vegas, Reno	<b>KAS.</b> Dodge City, Garden City	<b>2.474</b>		<b>OHIO</b> Mansfi'd, Sand'ky, Toledo <b>TENN.</b> Chattanooga, Elizabeth- ton, Johnson City, Knoxville
		<b>2.482</b>		
<b>CAL.</b> Compton, El Centro, San Diego, Santa Ana	<b>NEBR.</b> Lincoln, Norfolk	<b>2.490</b>		<b>IND.</b> Ft. Wayne, Huntington, Kokomo,, Marion, So. Bend, <b>VA.</b> Norfolk
				<b>MASS.</b> Arlington, Boston, Co- llassot, Everett, Medford, New Bedford, Newton, Somerville <b>R. I.</b> Providence
				<b>N. Y.</b> Auburn, Syracuse
				<b>MD.</b> Baltimore <b>N. Y.</b> Albany, Oneonta, Utica Ilerkimer
				<b>D. C.</b> Washington <b>ME.</b> Portland <b>N. H.</b> Nashua
				<b>N. J.</b> Hackensack, Bloomfield S. C. Charleston
				<b>FLA.</b> Jacksonville, Lakeland, Miami Beach, Orlando, Palm Beach, Winter Haven <b>N.Y.</b> Binghamton, Yonkers <b>PA.</b> Reading, Wilkes Barre
				<b>N.Y.</b> Bronx, Brooklyn, New York City
				<b>N.C.</b> Charlotte
				<b>CONN.</b> Bridgeport, New Haven <b>MASS.</b> Fitchburg, Worcester <b>R. I.</b> Cranston, Pawtucket Woonsocket
				<b>N. C.</b> Asheville <b>PA.</b> Philadelphia, Swarthmore
				<b>PA.</b> Monessen, New Castle, Oil City, Sharon
				<b>N. Y.</b> Huntington, Mineola <b>W. VA.</b> Charleston, Clarksburg, Fairmont, Parkersburg



Copy hour numbers from previous page

6.10	HJ4ABE	Medellin, Col. Daily	49.19
6.10	W9XF	Chicago TTF&Sn	49.18
6.10	W3XAL	Boundbr'k,N.J. Daily	49.18
6.11	HJ4ABB	Manizales,Col. ex.Su	49.08
6.11	HJ1ABB	Barranquilla,Col.ex.Su	49.08
6.12	HJ3ABX	Bogota, Col. ex. Su.	49.00
6.13	VE9HX	Halifax, N. S. Daily	48.92
6.13	COCD	Havana,Cuba Daily	48.92
6.14	HJ4ABD	Medellin,Col. ex.Su.	48.86
6.14	W8XK	Pittsburgh Daily	48.86
6.15	CJRO	Winnipeg,Man. Daily	48.78
6.15	YV3RC	Caracas,Ven. Daily	48.78
6.17	HJ2ABA	Tunja, Col. ex.Su.	48.62
6.19	HI1A	Santiago, R. D. ex. Su.	48.47
6.24	HRD	LaCeiba, Honduras ex Su.	48.11
6.24	HIN	Trujillo, R.D. ex.Su.	47.99
6.26	OAX4G	Lima, Peru Daily	47.86
6.27	YV5RP	Caracas,Ven. ex.Su.	47.80
6.30	YV12RM	Maracay, Venez ex.Su.	47.62
6.31	HIZ	Santo Domingo ex.Su	47.50
6.34	HIX	TrujilloCity,R.D. Tu.&Fr.	47.32
6.36	HRP 1	SanPedro, Hond.ex.Su.	47.24
6.39	YV1RH	Maracaibo,Ven. Daily	46.97
6.40	YV9RC	Caracas, Venez ex.Su.	46.88
6.41	TiPG	San Jose, C.R. Daily	46.80
6.42	HI 1S	PuertoPlata,R.D.Daily	46.73
6.52	YV6RV	Valencia,Venez. Daily	46.01
6.62	PRADO	Riobamba,Ecu. Th.	45.31
6.63	HIT	Trujillo, R.D. ex.Su.	45.25
6.66	HC2RL	Guayaquil,Ec. Tu	45.00
6.88	TIEP	SanJose,C.R. ex.Su	44.88
6.78	HIH	San Pedro, R.D.ex.Su.	44.07
A 7.80	HBP	Geneva,Switz. Sat	38.47
8.20	HC2CW	Guayaquil,Ecu. ex.Su.	36.56
8.95	HCJB	Quito, Ec. ex. Su.	34.51





**Copy hour numbers from previous pages**

	11.75	GSD	London, Eng.	Daily	25.53	▽	▽	▽	▽	▽	▽	▽	▽	▽	▽	▽	▽	▽	▽	▽	△
	11.77	DJD	Berlin, Ger.	Daily	25.49	▽	▽	▽	▽	▽	▽	▽	▽	▽	▽	▽	▽	▽	▽	▽	△
	11.79	W1XAL	Boston, Mass.	Daily	25.45																
	11.81	I2RO 4	Rome, Italy	Daily	25.40																
	11.83	W2XE	Wayne, N.J.	Daily	25.36																
	11.87	W8XK	Pittsburgh	Daily	25.27																
	11.88	TPA 3	Paris, France	Daily	25.23	▽	▽	◆	◆	◆	◆	▽	▽	▽	▽	▽					△
	12.00	RNE	Moscow, USSR	Daily	25.00																
S	13.63	SPW	Warsaw, Pol.	MW&F	22.01																
A	14.87	LZA	Sofia, Bulgaria	ST&Th.	20.15	▽	▽	▽	▽	▽	▽	▽	▽								△
	15.11	DJL	Berlin, Ger.	Daily	19.86	◆	◆														△
	15.12	HVJ	Vatican City, It.	ex.Su	19.84																△
	15.14	GSF	London, Eng.	Daily	19.82																
	15.15	YDC	Sourabaya, Java	Daily	19.81																
	15.20	DJB	Berlin, Ger.	Daily	19.73	◆	△	△	△	△	△	△	△	△	△	△	△	△	△	△	△
	15.21	W8XK	Pittsburgh, Pa.	Daily	19.72	▽	▽	▽	▽												△
	15.22	PCJ	Eindhoven, Hol.	W&Sa	19.71																
	15.24	TPA 2	Paris, France	Daily	19.68	△	△														
	15.27	W2XE	Wayne, N.J.	Daily	19.65	▽	▽	▽	▽	▽											
	15.28	DJQ	Berlin, Ger.	Daily	19.64	▽															
	15.29	LRU	Buenos Aires, Arg.	Daily	19.62	▽	▽	▽	▽	▽	▽	▽	▽	▽	△	△	△	△	△	△	△
	15.33	W2XAD	Schenectady	Daily	19.56																
	15.37	HAS 3	Budapest, Hung.	Su	19.52																
S	17.76	DJE	Berlin, Ger.	Daily	16.89	△	△	△	△	△	△	△	△	△	△	△	△	△	△	△	△
	17.77	PHI	Huisen, Hol., ex. Tu&W		16.88																
	17.78	W3XAL	Boundbrook, N.J.	Daily	16.87	▽	▽	▽	▽												△
	17.79	GSG	London, Eng.	Daily	16.86																
	21.47	GSH	London, Eng.	Daily	13.97																
	21.52	W2XE	New York City	Daily	13.94																
	21.54	W8XK	Pittsburgh, Pa.	Daily	13.92	▽	▽	▽													

Twenty-six issues of the Chicago Short Wave Radio Club's splendid bi-weekly bulletins will be mailed during one year for \$1.00. They will keep you up-to-the-minute with all important shortwave information and enable you to derive the full enjoyment your receiver provides. Ten or more revisions of this Radio Log, during 2½ years, are mailed to subscribers for \$1.00. Two dollars, for both services may be sent to Haynes' Radio Log, 161 West Harrison St., Chicago.

CENTRAL  
STANDARD  
TIME

# RADIO NETWORK PROGRAMS

	SUNDAY	MONDAY	TUESDAY	WEDNESDAY
MR. 6 00	Jack Benny ← On the 1st line, WEAF, WGY, WTAM, WWJ, WSAI or WLW, WMAQ, WHO, WDAF, etc. ← On the 2nd line, WJZ, KDKA, WGAR, WXYZ, WLW or WKCY, WENR, KSO, WREN, etc. ← On the 3rd line, WABC, WJAS, WHX, WJR, WKRC, WBBM, WMT, KMOX, KMBC, etc.			
6 30	Am Radiator Believe It or Not Gulf Headliners	Lum & Abner Boake Carter (6:45)	Lum & Abner	Lum & Abner
7 00	Chase & Sanborn Nelson Eddy	Fibber McGee Helen Hayes Alamite Program	Leo Retsman Log Cabin Bar Z Music Hall	One Man's Family Revue de Paroe History Drama
7 30	Chase & Sanborn Eddie Cantor	Voice of Firestone Sweet 'n' Love Songs Pick & Pat	Lady Esther—King Edgar Guest Al Jolson	Wayne King Ethel Barrymore Burns & Allen
8 00	Merry-Go-Round Walter Winchell Ford Sun. Eve. Hour	Warden Lawes Lux Radio Theatre	Sidewalk Interv'ws Ben Bernie Al Pearce Gang	Town Hall Tonight Chesterfield
8 30	Familiar Music Woodbury Progr'm Ford Sun. Eve. Hour	Studeb'r Champs Jack Pearl Lux Radio Theatre	Fred Astaire Husbands & Wives Jack Oakie's Coll.	Town Hall Tonight Jessica Dragonette
9 00	Gen. Mot's Concert Real Silk Community Sing	Carnation Program Wayne King	Fred Astaire Jack Oakie's Coll.	Hit Parade Gang Busters
9 30	Gen. Mot's Concert Community Sing	National Forum	Jimmy Fidler Phillips' Follies	Talos of Opera
	THURSDAY	FRIDAY	SATURDAY	
6 30	Lum & Abner Alexander Woolcott	Lum & Abner	Uncle Jim's Question Bee Carborundum Band	
7 00	Rudy Vallee Kate Smith Show	Cities Service Welch-Irene Itch Broadway Varieties	Saturday Night Party Ed Wynn Swing with the Strings	
7 30	Rudy Vallee Kate Smith Show	Cities Service Death Valley Days Chesterfield	Saturday Night Party	
8 00	Max. Hse. Show Boat Maj. Bowes' Amateurs	Waltz Time Universal Rhythm Hollywood Hotel	Snow Village Sketches Nat'l Barn Dance Floyd Gibbons	
8 30	Max. Hse. Show Boat America's Town Meeting Maj. Bowes' Amateurs	True Story Hour Twin Stars Hollywood Hotel	Shell Chateau Barn Dance Your Pet Program	
9 00	Crosby & Bob Burns America's Town Meeting Floyd Gibbons	First Nighter Philadelphia Symphony	Shell Chateau Your Hit Parade	
9 30	Crosby & Bob Burns	Pontiac Program	Irvin S. Cobb	
30	March of Time		Courteous Colonels	

BY ENTERING YOUR DIAL NUMBERS IN THE SPACES BELOW, YOU  
WILL BE SURE TO TUNE IN YOUR FAVORITE PROGRAMS DAILY.

HOUR	SUNDAY	MONDAY	TUESDAY	WEDNESDAY	THURSDAY	FRIDAY	SATURDAY
7							
8							
9							
10							
11:00							
11:30							
12:00							
12:30							
1:00							
1:30							
2:00							
2:30							
3:00							
3:30							
4:00							
4:30							
5:00							
5:30							
6:00							
6:15							
6:30							
6:45							
7:00							
7:15							
7:30							
7:45							
8:00							
8:15							
8:30							
8:45							
9:00							
9:15							
9:30							
9:45							
10:00							
10:15							
10:30							
10:45							

*Make your set  
perform its best!*

You won't know that present receiver of yours, with brand new Philco High-Efficiency tubes in every socket.

You'll be surprised at the way these particularly rugged and capable tubes step up the tone quality, the clarity, the sensitivity. Buy a new set today. And be SURE they're Philco.

**NEW  
LOW  
PRICES**

**PHILCO**  
**HIGH-EFFICIENCY  
TUBES**

**Tubes Tested Free!**

Bring in your old tubes . . . we'll check them for you FREE!

