



PHILCO

All-Wave

RADIO LOG

New 1934 Edition

PRICE **10** CENTS

KELLY *furniture* **STORES**

13743 Woodward Avenue
HIGHLAND PARK

1657 Fort Street
LINCOLN PARK

50 75 100 150 200 250 300 500 750 1000 POWER 1500 2000 2500 5000 10000 15000 25000 50000
 F G H I J K L M N O P Q R S T U V W

There are only 97 numbers on YOUR dial to accommodate more than 700 radio stations of North America. Stations at each number are listed MAP-LIKE beside 97 blank spaces. The 97 groups are in exact order, so YOUR dial number recorded every 5th, or 10th, space enables you to estimate those skipped To identify those heard by chance, station announcements will seldom be necessary. You can expect to hear stations of greater power, from greater distances. Note the letter at the extreme right and code above *Columbia (WABC) †National Red (WEAF) †National Blue (WJZ) †National Red OR Blue Network

Revision 41 COPYRIGHT 1934 — BY HAYNES' RADIO LOG 161 WEST HARRISON ST., CHICAGO, ILLINOIS

SPRING 1934

WESTERN		MIDDLE WESTERN		KILO		Dial No.		CENTRAL		EASTERN	
<i>Wash., Ore., Cal., Utah, Etc.</i>		<i>Minn., Ia., Neb., Mo., Tex., Etc.</i>				<i>Ill., Mich., Ohio, Tenn., Etc.</i>		<i>Mass., N. Y., Pa., N. C., Etc.</i>			
CJRM	Moose Jaw, Sask. M	†KSD	KFUS St. Louis, Mo. M	540		*WKRC	Cincinnati, Ohio. O		*WGR	Buffalo, N. Y. O	
KFDY	Brookings, S. D. O	†KFYR	Bismarck, N. D. O	550		*WIND	Chicago-Gary. O		WDEY	Waterbury Vt. M	
KOAC	Corvallis, Ore. O	†KWTG	Springfield, Mo. M	560		*WNOX	Knoxville, Tenn. O		†WFI	WLIT Philadelphia. M	
KLZ	Denver, Colo. O	*WNAK	Yankton, S. D. O	570		†WKBN	Youngstown, Ohio. M		*WQAM	Miami, Fla. O	
KTAB	San Francisco, Cal. O	†KGO	Wichita Falls, Tex. K	580		WOSU	Columbus, Ohio. O		†WWNC	Asheville, N. C. O	
*KVI	Tacoma, Wash. O	*WIBW	Topeka, Kas. M	590		WOBU	Charleston, W. Va. O		WMCAN	New York (WSYR). M	
KMTR	Los Angeles, Cal. M	†KSAC	Manhattan, Kas. M	600		*WDBO	Orlando, Fla. K		CRCA	Moncton, N. B. M	
CKUA	CHMA Edmonton. M	†WOW	Omaha, Neb. O	610		WKKO	Kalamazoo, Mich. O		†WTAG	Worcester, Mass. M	
KMJ	Fresno, Cal. M	*XEPN	Pedras Negras, Coah. W	620		†CFCF	Montreal, Que. M		†WEEI	Boston, Mass. O	
†KHQ	Spokane, Wash. O	*WMT	Waterloo, Iowa. M	630		†WREC	Memphis, Tenn. M		WICC	Bridgeport (WCAC) M	
KFDY	Anchorage, Al. K	†WDAF	Kansas City, Mo. O	640		WJAY	Cleveland, Ohio. M		WCAO	Baltimore, Md. M	
†KFSD	San Diego, Cal. M	KFRU	Columbia, Mo. M	650		†WTMJ	Milwaukee, Wis. O		*WIP	Philadelphia, Pa. M	
*KFRC	San Francisco, Cal. O	WOS	Jefferson City, Mo. M	660		WGBF	Evansville, Ind. M		WLBZ	Bangor, Maine. O	
†KGW	Portland, Ore. O	WOI	Ames, Iowa. S	670		WAIU	Columbus, Ohio. M		†WFLA	WSUN Florida. O	
†KTAR	Phoenix, Ariz. M	XFG	Mexico City, D. F. O	680		WEM	Matamoros, Tams. W		CFCY	Charlottetown, PEI M	
CJGX	Yorkton, Sask. M	WAAW	Omaha, Nebr. M	690		WAIU	Columbus, Ohio. M		†WMAL	Washington, D. C. K	
†KFI	Los Angeles, Cal. W	KFEQ	St. Joseph, Mo. R	700		†WSM	Nashville, Tenn. W		†WEAF	New York City. W	
KPCB	Seattle, Wash. H	XET	Monterey, Mex. M			XEM	Matamoros, Tams. W		†WPTF	Raleigh, N. C. S	
†KPO	San Francisco, Cal. W					†WMAQ	Chicago, Ill. S		*CFRB	Toronto, Ont. S	
CJGJ	Calgary, Alta. M					CMAF	Havana, Cuba. O		†WLW	Cincinnati, Ohio. W	

50 F	75 G	100 H	150 I	200 J	250 K	300 L	500 M	750 N	1000 O	POWER CODE	KILO	Dial No.	1500 P	2000 Q	2500 R	5000 S	10000 T	15000 U	25000 V	50000 W					
											WESTERN					MIDDLE WESTERN					EASTERN				
KFVD	Los Angeles, Cal.	K									1000									WORK York, Pa.					
CKQC	CHWC Regina, Sk.	M									1010									WHN New York City					
KQW	San Jose, Cal.	M									1020									WRAX Philadelphia, Pa.					
CFCN	Calgary, Alta.	T									1030									CFNB Fredericton, N.B.					
KNX	Los Angeles, Cal.	V									1040									WESG Elmira, N. Y.					
KWJJ	Portland, Ore.	M									1050									CHNS Halifax, N. S.					
KJBS	San Francisco, Cal.	H									1060									†WTIC Hartford, Conn.					
CRCV	Vancouver, B. C.	O									1070									†WBAL Baltimore, Md.					
KGDM	Stockton, Cal.	K									1080									*WBT Charlotte, N. C.					
KFIO	KRSC Washington	H									1100									WLWL New York City					
KFSG	KRKD Los Angeles	M									1110									*WPG Atlanta City, N. J.					
*KSL	Salt Lake City, Utah	W									1120									†WRVA Richmond, Va.					
XETA	Mexico City	O									1130									CHGS Summerside, P. E. I.					
†KEX	Portland, Ore.	S									1140									WDEL Wilmington, Del.					
KOB	Albuquerque, N. M.	T									1150									WOV New York City					
KERN	KWG-COV-KVOS	H									1160									†WHAM Rochester, N. Y.					
KSUN	KGEK-KGFJ-KFXD	H									1170									*WVVA Wheeling, W. Va.					
KGY	KFJL-KASA	H									1180									*WCAU Philadelphia, Pa.					
KIEM	KFXM-KPPC-Cal.	H									1190									WINS New York City					
KTN	KWSC Wash.	O									1200									WSAZ Huntington, W. Va.					
CFQC	Saskatoon, Sask.	M									1210									WABI-WNBO-WPHR-CKTB					
†KYA	San Francisco, Cal.	O									1220									WIBX-WKBO					
KGCU	MandanNo, Dakota	K									1230									WKJC-WHBC-WRBL-WCAX					
KTFI	Twin Falls, Idaho	M									1240									WJBI-WGBB-WBBL-WFAS					
KFOX	Long Beach, Cal.	O									1250									WQDX-WPRO-WBAX-WKOK					
																				*WMBGWSOC-WJEJ					
																				†WCAE Pittsburgh, Pa.					
																				*WNAK Boston, Mass.					
																				WKAQ San Juan, P. R.					
																				WNEW New York					
																				WGCP Newark N. J.					

KVOA-KWWG-KRGV Tex M	1260	↑ KOIL Council Bluffs, Ia.	0	† WTQC Savannah, Ga.	M	* WLBW Erie, Pa.	0
* KOL Seattle, Wash.	1270	KWLC-KGCA Decorah, Ia	H	† WASH-WOOD Gr. Rpd.	M	† WFBR Baltimore, Md.	0
KFBB Great Falls, Mont.	1280	* KVR Colo. Springs, Colo.	0	† WJDX Jackson, Miss.	M	* WORC Worcester, Mass.	0
† KDYL Salt Lake City.	1290	† WIBA Madison, Wis.	M	* WDDO Chattanooga, Tenn.	0	† WTJN-WCAM-WCAP-NJ	0
* KALE-KFJR Portland, Ore	1300	† WRR Dallas, Tex.	M	* WJAS Pittsburgh, Pa.	0	* WNEL San Juan, P. R.	0
KFAC Los Angeles, Cal.	1310	* KFH Wichita, Kas.	0	† WIOD-WMBF Miami, Fla.	0	WBFR-WFAB New York.	0
KMED-KFBK-KXRO-KFYO	1320	WQQ Kansas City, Mo.	0	WTRC-WRAW-WBRE	0	WEVD-WHAZ New York.	M
KIFH-KGCX-KFPL-WDAH	1330	KTSM-WKBC-KFXR-	0	WEXL-WTJL-WDFD-WBEO	0	WOL-WKAV-WEBR-WTEL	0
KCRJ-KIT-KGFV-CFJC	1340	WAML-KRMD-KGEZ.	0	WBOW-WMBQ-WROL-WLBC	0	WGH-WHAT*WSJS WNBH	0
KID Idaho Falls, Idaho.	1350	KGFH Pueblo, Colo.	K	† WSMB New Orleans, La.	M	WJAC-WFBG-WGAL-WSAJ	0
KMO Tacoma, Wash.	1360	* KSCJ Sioux City, Ia.	0	† WSAI Cincinnati, Ohio.	0	* WADC Akron, Ohio.	0
* KGB San Diego, Cal.	1370	† WTAQ Eau Claire, Wis.	0	† WSPD Toledo, Ohio.	0	* WDRC Hartford, Conn.	0
* KFPY Spokane, Wash.	1380	† KWK St. Louis, Mo.	0	WEHC Charlottesville, Va.	M	WCOA Pensacola, Fla.	M
KIDO Boise, Idaho.	1390	† KGIR Butte, Mont.	M	WGES Chicago, Ill.	M	WNBX New York (WA WZ) K	0
KGER Long Beach, Cal.	1400	WQBC Vicksburg, Miss.	0	† WHDF-WHBD-WJBK-WIBM	0	* WFBL Syracuse, N. Y.	0
KGAR-KFJM-KFBL-KICA	1410	KGKL-KLUF-KWKK-IKSO	0	* WGL-WHBQ-WRJN-WJTL	0	WCSG Charleston, S. C.	0
KOOS-KRE-KVL-KUJ	1420	* WKBH La Crosse, Wis.	0	WSMK Dayton, Ohio.	J	WLEY-WSVS-WCBM-WRDO	0
* KOH Reno, Nev.	1430	* KLRA Little Rock, Ark.	0	† WHK Cleveland, Ohio.	0	WRAK-WDAS-WRAM-WBTT	0
* KOY Phoenix, Ariz.	1440	KTUL Tulsa, Okla.	0	† WKBFB Indianapolis (WBAA)	0	WGLC-WLVA-WMBR	0
KLO Ogden, Utah.	1450	WHBL Sheboygan, Wis.	K	* WBCM Bay City, Mich.	M	KQV Pittsburgh, Pa.	M
KGRS-WDAG Amarillo, Tex	1460	KFLV Rockford, Ill.	M	* WODX*WSFA Alabama.	M	WARD-WVFW-WBBC NY M	0
KGIX-WACO	1470	WMBH-WLBF-KABC-WJBO	0	WELL-WMBC-WPAD-WAMC	0	* WAAB Boston, Mass.	M
KGGF-KUMA-KORE-KBPS	1480	KFIZ-KICKIKWCR-KCMC	0	* WCAC Columbus, Ohio.	M	WHIS Bluefield. (WRBX) H	0
KGGC-KXL-KGIW-KIDW	1490	KGNF No. Platte, Neb.	M	WNBK Memphis, Tenn.	M	WLEU-WTBO-WILM-WJMS	0
CFCT Victoria, B. C.	1500	* WMBD Peoria, Ill.	M	* WBIG Greensboro, N. C.	M	WSPA-WAGM-WHDL*WMA5	0
† KECA Los Angeles, Cal.		WTDAD Quincy, Ill.	M	† WGAR Cleveland, Ohio.	M	* WFEA Manchester N. H.	M
KDFN Casper, Wyo.		CKX Brandon, Man.	M	WTFI Athens, Ga.	M	* WHP*WBAK*WHEC-WOKO	0
KLS Oakland, Cal.		† KSTB St. Paul-Minneapolis.	U	* WLAC Nashville, Tenn.	S	WCSA-WSAN Allentown. . K	0
† KGA Spokane, Wash.		* KOMA Oklahoma City, Oklas	S	† WCKY Covington, Ky.	S	WSAR Fall River, Mass. . K	0
		KGKB-KNOW-KPJM		WKBZ-WKBV-WOPI-CRCS		WHOM Jersey City, N. J. . K	0
KREG-KDB California.		WHEF-KGKY-KGFI				* WJSV Washington, D. C. . . T	0
KXO-KGFK-KPQ						* WKBW Buffalo, N. Y. . . . S	0
						WWSW-WFDV-WNBFW-WCNW	
						WSYB-WMBQ-WWRLL	

Of the 97 frequencies, 40 are used individually by super-power stations at night; 640 to 870; 980 to 1170; 1460 to 1490. How many of them can you tune in?

Principal Short Wave Stations Being Heard in America

In the list below, we have endeavored to give the Short Wave Listener something tangible to shoot at with reasonable likelihood of success. The Time is for Central Standard. You will note Megacycles (Megs) continue the Kilocycle numbers on preceding pages, except that a decimal is used in place of a comma. 1.71 Megs is identical to 1,710 Kilocycles. **SHORT WAVE TUNING IS DIFFERENT!** Do not expect to hear short wave stations from all over the world at any time the receiver is turned on. Tune systematically. Refer to this list and try for those stations that are operating at the time you are tuning (usually evening hours at the point of broadcast). Simply because a station is on the air, do not assume that it should necessarily be heard in your location. There are skip distances to be considered, storms between you and the station, as well as other obstacles to overcome. A station may be heard on schedule one day, and not the next. Tune slowly and carefully. Be guided by side notes and notice that stations shift assignments with hours of the day. Very few foreign stations will be heard below 6.00 Megacycles. These suggestions are offered as practical tips on tuning. There are always possible exceptions to the rule.

"Squad car number 43. Go to 537 Smart Street. A woman killed." There's a lurid murder story in the making and YOU are a jump ahead of Sherlock Holmes himself! See the map on page 11, for frequencies and locations.

The Olympic gods had nothing on you who sit in snug safety before your radio listening to an aviator reporting his battle with a mountain snowstorm to the ground station many miles distant.

There are perhaps 30,000 amateurs having wide spots on your dial. About 1.87, 3.98 and 14.40 megacycles. You'll hear them from surprising distances. Amateurs, or "hams", receive and transmit messages among themselves.

To radio fans who are lovers of music Zeesen, Germany, has become synonymous with the best in music from the great chorals of Bach to the timeless symphonies of Beethoven.

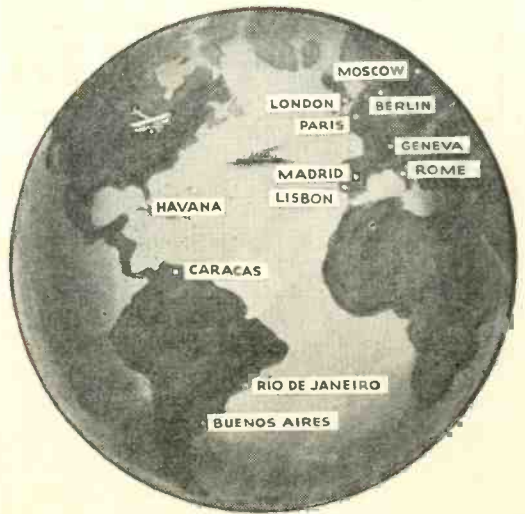
Typical of the land of Russia are the canorous chimes of the Kremlin and the polygrot propaganda that one may hear, if one's lucky, from Moscow's Soviet station.

Megs.	Mtrs.	Police	Airplanes	After dark	Nighttime best
1.71	175.2			6:30 to 8:30 except Mon.	
2.41	124.2			2:00 to 7 AM	
2.42	123.8			Daytime	
2.43	123.3			4-6:30 AM	
2.44	122.8			7-10 PM	
2.45	122.4			6:30-9:00 PM	
2.46	122.0			6-10 M; 7-9 T; 7-10 W.F.	
2.47	122.1			6:30-9 PM Sun.; 7-9 Tu.Fr.	
3.46	86.77			3:00-5:00 PM	
3.98	75.40			1-1:15 PM, 4-4:30 AM Sun.	
4.00	75.00	Quito, Ecuador		1-5 PM Daily	
4.24	70.65	Khabarovsk, USSR		5:00-10:00 PM	
4.54	66.00	Ships at Sea		10A-12N; 1:45-7 PM	
5.67	52.98	Airplanes		7-12 PM (WCAU)	
5.68	52.82	Melbourne, Australia			
5.70	52.65	Quito, Ecuador			
5.83	51.49	Tunja, Colombia			
5.86	51.20	Medellin, Colombia			
5.95	50.40	Santo Domingo			
5.97	50.25	Havana, Cuba			
5.97	50.26	Vatican City			
6.00	50.00	Moscow, USSR			
6.02	49.83	Zeesen, Germany			
6.04	49.67	Miami Beach, Fla.			
6.04	49.60	Davenport, England			
6.06	49.50	Philadelphia, Pa.			

Tune-in the World!

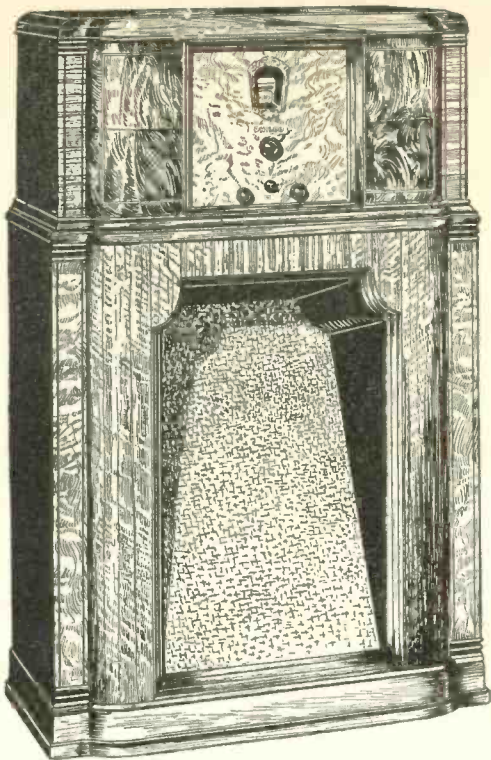
New 1934 All-Wave

PHILCO



Listen to England, Germany, France, Russia, South America, etc. etc.

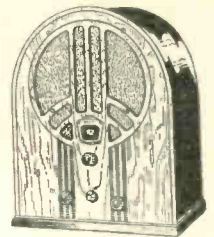
Across the seas—or across the street—it's all the same to the new 1934 PHILCO All-Wave Models—the finest ever designed! You've never heard such marvelous standard and short-wave reception as provided by these sensational new PHILCOS. Tune-in foreign stations *regularly, clearly and at full room volume*—all in addition to receiving your favorite American programs, of course, as only PHILCO can bring them in!



All-Wave PHILCOS at All Prices

Be sure to hear these startling new All-Wave PHILCOS. Latest features, including Two Tuning Ratios, Wave-Band Switch, Bass Compensating Tone Control, Patented Inclined Sounding Board, Shadow Tuning, etc.

Call at our store. You'll find a wide selection of new 1934 PHILCOS, for both standard and short-wave reception, in table models and consoles, also D.C. and Battery-Operated sets—**AT ALL PRICES!**



EASIEST TERMS

*Extra-Liberal
Trade-In Allowances*

HEAR

Boake Carter, Philco's news commentator, Mondays to Fridays, 7:45 P.M., E.S.T., over Key Columbia Stations.

EARLY EVENING

Megs. Mtrs.	
9.60 31.27 HBL	Geneva, Switz.
9.60 31.25 XETE	Mexico City
9.60 31.25 CT/EA	Lisbon, Portugal
9.67 31.00 TIANRH	Merida, C. R.
10.00 30.00 EAQ	Madrid, Spain
10.35 29.98 LSX	Buenos Aires, Arg.
10.61 29.28 W2XBJ	Rocky Point, N. Y.
10.85 27.65 DFL	Germany
11.18 26.83 CT3AQ	Funchal, Madeira
11.54 26.00 XAM	Merida, Yucatan
11.70 25.63 VE9JR	Pontoise, France
11.72 25.60 PH1	Winnipeg, Man.
11.73 25.57 GZE	Huizen, Holland
11.75 25.53 GSD	Davenport, England
11.76 25.52 DJD	Zeesen, Germany
11.76 25.50 XDA	Mexico City
11.76 25.45 WJXAL	Boston, Mass.
11.81 25.40 I2RO	Rome, Italy
11.83 25.36 W2XE	Wayne, N. J.
11.86 25.28 GSE	Davenport, England
11.87 25.27 W8XK	Pittsburgh, Pa.
11.90 25.20 RNE	Pontoise, France
12.83 23.38 CNR	Moscow, USSR
13.19 22.75 KFZ	Rabat, Morocco
13.20 22.70	Byrd Expedition
14.40 20.83	Ships at Sea
15.12 19.84 HVJ	Amateurs
15.15 19.81 GSF	Vatican City
15.20 19.73 DJB	Davenport, England
15.21 19.72 W8XK	Zeesen, Germany
15.24 19.68	Pittsburgh, Pa.
15.27 19.64 W2XE	Pontoise, France
15.33 19.57 W2XAD	Wayne, N. J.
17.02 17.62 KFZ	Schneetady, N. Y.
17.78 16.87 W3XAL	Byrd Expedition
17.79 16.86 GSG	Boundbrook, N. J.
21.52 13.94 GSH	Davenport, England
21.56 13.92 W8XK	Davenport, England

(Continued from Page 7)

If you have tone control, set it at "deeq" for short wave tuning. It takes harshness from interfering noises. To avoid passing stations, turn volume knob up until you hear "s-h-h-h-h" which indicates tube oscillation. Again, tune S-1-o-w-1-y and CAREFULLY. Faint signals often develop to good strength if tuned with care. A fading signal may be good at its peak. A Megacycle is 1000 Kilocycles.

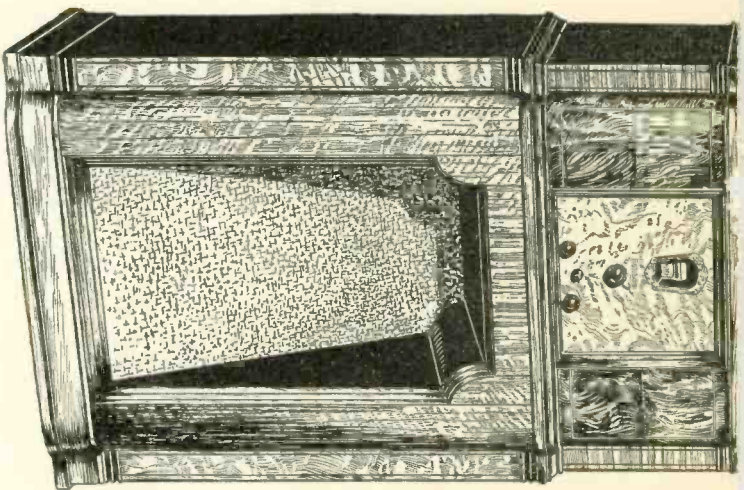
DAYTIME BEST

4:30-5:15 PM Sat.	4:30-7 PM daily, N-2 PM Sat.
Evensing, Irregular	Int. tests with Byrd
3:40-6 PM Tues. & Fri.	Tests with U. S.
6-7 PM	4:5-30 PM Tu. & Th.
4:30-7 PM daily, N-2 PM Sat.	Int. tests with XDA
2-5 PM; later irregular	
5-9:30 PM daily	
7-9 AM Daily: 10 S. & S.	
12:15-2 PM	
Noon to 3:30 PM	
Irregular	
Irregular (WEEI)	
10-11 AM: 1-15-5 PM	
2-4 PM (WABC)	
6-7:45-8-10 AM	
3:30-9 PM (KDCA)	
10:15 AM-1:15 PM: 2-5 PM	
7:30-9:00 AM Mon.	
6:30-8 AM Sundays	
Irregular	
4:4-15 AM	
1:30-3:30 AM	
7:00-10:00 AM	
9 AM-3:30 PM (KDCA)	
7-10 AM	
10 AM-12 Noon (WABC)	
3-4 PM (WGY)	
Irregular	
9 AM-3 PM (NBC)	
6-7:45 AM	
Irregular	
6 AM-1 PM (KDCA)	

Here is a tip for short wave listeners! A group has met in Chicago, for "fringhty" for several years, exchanging experiences in tuning, supplemented by letters from stations all over the world. Detailed reports, mimeographed for members in the past, are now being printed. In the interest of short wave generally, if you wish to benefit from their wholesale experiences, send 25c to Chicago Short Wave Club, Box 240, Chicago, and TWO successive fortnightly reports will be mailed to you.

ASK YOUR PHILCO DEALER FIRST, many of those in and around Chicago have copies.

From advance programs of the three major networks, we compile RADIO MENU. It lists the three programs to be heard during each of the sixteen 15-minute periods each evening of the week in a new and compact form. Most repeat from week-to-week so they are reasonably accurate for a month or more. A number appears after each listing, directing you to one of six small maps, which shows the area served by that program. Listeners outside those areas will be guided to desired programs by the symbols *, †, ‡ and § designating the network stations on the first four pages of this log. Those within the area are guided in the same manner to a local or nearby station. It is readily adapted to any time zone. Radio Menu serves to remind listeners of their favorite programs which might otherwise be forgotten and acquaint them of many splendid features that are not listed in their local papers.



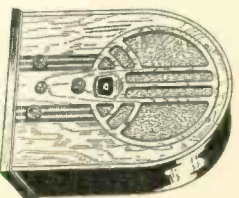
regularly, clearly and at full room volume—
all in addition to receiving your favorite American programs, of course, as only PHILCO can bring them in!

All-Wave PHILCOS at All Prices

Be sure to hear these startling new All-Wave PHILCOS. Latest features, including Two Tuning Ratios, Wave-Band Switch, Bass Compensating Tone Control, Patented Inclined Sounding Board, Shadow Tuning, etc.

*Call at our store. You'll find a wide selection of new 1934 PHILCOS, for both standard and short-wave reception, in table models and consoles, also D.C. and Battery-Operated sets—**AT ALL PRICES!***

EASIEST TERMS
Extra-Liberal
Trade-In Allowances



HEAR

Boake Carter, Philco's news commentator, Mondays to Fridays, 7:45 P.M., E.S.T., over Key Columbia Stations.

*Time-in the
World!*

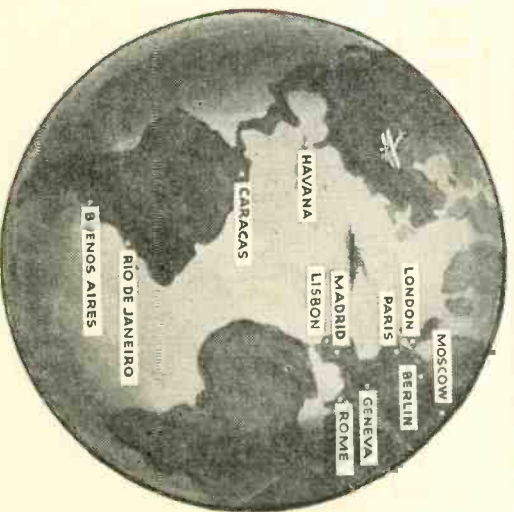
New 1934 All-Wave

PHILCO

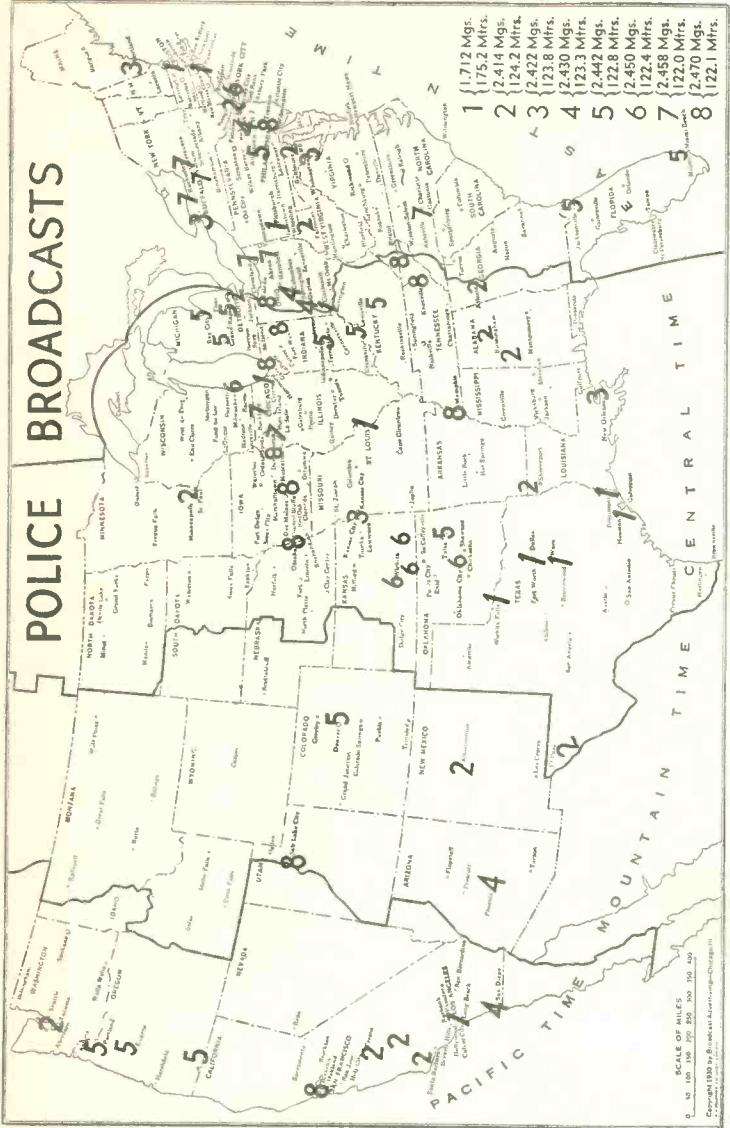
Listen to England, Germany, France, Russia, South America, etc. etc.

Across the seas—or across the street—it's all the same to the new 1934 PHILCO All-Wave Models—the finest ever designed! You've never heard such marvelous standard and short-

wave reception as provided by these sensational new PHILCOS. Time-in foreign stations



POLICE BROADCASTS



SCALE OF MILES
0 50 100 150 200 250 300 350 400

COPYRIGHT 1930 BY BROADCASTING-ENGINEERS

OF COURSE, IT HAS HAPPENED TO YOU

Someone has left his phone number at your home or office. Is it something important, or a matter you wish to avoid? The operator will give you no clue and there is no directory to give his identity.

More frequently in radio, you hear a station accident ally, wonder what it is, but don't want to wait 15 minutes, or 30, to find out. Even if you did wait A, J and K sound similar, as do F, S and X to say nothing of B, C, D, E, G, P, T, V and Z. All of this difficulty is over, with the chart at the front of this book before you.

You simply adjust YOUR dial to IT by entering YOUR dial numbers in the center column, and, after you have a few recorded, you'll be surprised how you can turn from one end of your dial to another and know instantly nearly every station you hear, many of them for the first time.

For a dollar bill sent to Haynes' Radio Log, 161 West Harrison Street, Chicago, you'll receive, during the year, twelve Radio Menus, at least four revisions of this Log and other features. Since 1925, the BEST, and now, almost the ONLY radio log.

ALPHABETICAL INDEX OF RADIO STATIONS

KABC	San Antonio, Tex 1420 H	KREG	Santa Ana, Cal 1500 H
KALE	Portland, Ore 1300 M	KRGV	Harlingen, Tex 1260 M
KARK	Little Rock, Ark 890 M	KRKD	Los Angeles, Cal 1120 M
KASA	Elk City, Okl 1210 H	KRLD	Dallas, Tex 1040 T
KBPS	Portland, Ore 1420 H	KRMD	Shreveport, La 1310 H
KBTM	Jonesboro, Ark 1200 H	KRWD	Oakland, Cal 930 H
KCMC	Texasarkana, Ark 1420 H	KRSC	Seattle, Was 1120 H
KCRC	Enid, Okla 1370 H	KSCA	Manhattan, Kan 580 M
KCRJ	Jerome, Arl 1310 H	KSCJ	Sloux City, Ia 1330 R
KCDB	Santa Barb, Cal 1500 H	KSD	St. Louis, Mo 550 M
KDFN	Casper, Wyo 1440 M	KSEI	Pocahontas, Ida 890 M
KDKA	Pittsburgh, Pa 980 W	KSO	Salt Lake City, U 1130 W
KDLR	Devils Lake, N. D. 1210 H	KSOO	Des Moines, Ia 1370 K
KDEY	Salt Lake City, U 1290 O	KSTP	St. Paul, Minn 1460 V
KECA	Los Angeles, Cal 1430 O	KSUN	Lowell, Ariz 1200 H
KELN	Burbank, Cal 780 M	KTAB	San Francisco, Cal 560 M
KERN	Bakersfield, Cal 1200 H	KTIAR	Phoenix, Ari 620 O
KEXB	Portland, Ore 1180 S	KTIAT	Ft. Worth, Tex 1240 O
KFAB	Lincoln, Neb 770 V	KTTBS	Shreveport, La 1450 O
KFBB	Los Angeles, Cal 1300 O	KTFI	Twin Falls, Ida 1240 M
KFBK	Great Falls, Mont 1280 S	KTHS	Hot Springs, Ark 1040 O
KFBK	Ablene, Kas 1050 S	KTIH	Los Angeles, Cal 780 O
KFBK	Sacramento, Cal 1310 F	KTIH	Houston, Tex 1120 O
KFDM	Everett, Was 1370 F	KTIH	San Antonio, Tex 1290 O
KFEL	Beaumont, Tex 560 M	KTSM	El Paso, Tex 1310 H
KFEL	Brookings, S. D. 550 O	KTLW	Tulsa, Okla, Was 1400 K
KFEL	Denver, Co 920 M	KUJ	Seattle, Was 1220 O
KFGG	St. Joseph, Mo 830 R	KUJ	Yuma, Wala, Wash 1370 H
KFGG	Boone, Iowa 1310 H	KUJ	Walla Walla, Wash 1470 H
KFH	Wichita, Kan 1300 O		
KHQA	Spokane, N. M 1370 H		
KHQA	Glovis, N. M 1370 H		
KHQA	Carter Lake, Ia 1420 H		
KHQA	Idaho Falls, Ida 1320 M		
KHQA	Boise, Ida 1350 O		
KHQA	Lamar, Col 1420 H		
KHQA	Eureka, Cal 1210 H		
KHQA	Glendale, Cal 850 H		
KHQA	Juneau, Alaska 1310 H		
KHQA	Yakima, Was 1310 H		
KHQA	San Francisco, Cal 1070 H		
KHQA	Seattle, Was 970 S		
KHQA	Bytheville, Ark 1290 H		
KHQA	Ogden, Utah 1400 M		
KHQA	Minot, N. D. 1240 K		
KHQA	Little Rock, Ark 1390 O		
KHQA	Oakland, Cal 1440 K		
KHQA	Galveston, Tex 1370 H		
KHQA	Oakland, Cal 880 O		
KHQA	Denver, Col 560 O		
KHQA	Shenandoah, Ia 930 M		
KHQA	San Antonio, Tex 1370 H		
KHQA	Kansas City, Mo 950 O		
KHQA	Medford, Ore 1310 H		
KHQA	Fresno, Ia 1700 H		
KHQA	Monroe, La 1200 O		
KHQA	Clay Center, Neb 740 O		
KHQA	Tacoma, Was 1330 W		
KHQA	St. Louis, Mo 1090 W		
KHQA	Beverly Hills, Cal 710 M		

KFI Los Angeles... Cal 640 W
KFIO Spokane... Was 1120 H
KFJB Fond du Lac, Wis 1420 H
KFJZ Marshalltown, Ia 1200 H
KFJM Klamath Falls, Ore 1210 H
KFJH Gd. Forks, ND 1370 H
KFJR Portland... Ore 1300 M
KFJZ Ft. Worth... Tex 1370 H
KFKA Greeley... Col 880 M
KFKU Lawrence... Kan 1220 O
KFLV Rockford... Ill 1410 M
KFNR Shenandoah... Ia 890 M
KFOR Lincoln... Neb 1210 K
KFOX Long Beach, Cal 1250 O
KFPL Dublin, Tex 1310 H
KFPW Greenville... Tex 1310 H
KFPV Ft. Smith... Ark 1210 H
KFPY Spokane... Was 1340 O
KFFD Anchorage, Alaska 600 K
KFRU San Francisco, Cal 630 O
KFRD Columbia... Mo 610 M
KFSD San Diego... Cal 600 O
KFSG Los Angeles... Cal 1120 W
KFUD St. Louis... Mo 350 M
KFVJ Los Angeles, Cal 1000 K
KFVS C. Girardeau, Mo 1210 H

CANADIAN

CFAC Calgary... Alta 930 M
CFBO St. John, N.B. 1210 H
CFCH Montreal... Que 600 M
CFCH North Bay... Ont 930 H
CFCC Calgary... Alta 1030 T
CFCC Calgary... Alta 1030 T
CFJC Charlotte, PEI 630 M
CFJC Kamloops... B.C. 1310 H
CFNB Prescott... Ont 930 H
CFPL Fredericton, N.B. 1030 H
CFRC Saskatoon... Sask 1230 M
CFRB Toronto... Ont 690 T
CFRC Kingston... Ont 1510 H
CHCK Charlottetown, PEI 1310 H
CHGS Summerside, PEI 1120 H
CHLP Montreal... Que 1120 H
CHMA Edmonton... Alta 580 K
CHNS Halifax... N.S. 1050 M
CHRC Quebec... Que 645 H
CHWC Regina... Sask 1010 M

KGFW Ravenna... Neb 1310 H
KGPI Pierre... S. D. 630 J
KGGF San Francisco, Cal 1420 M
KGGF Coffeyville, Kan 1010 M
KGHF Albuquerque, N.M. 1230 M
KGHI Pueblo... Col 1370 K
KGHL Little Rock, Ark 1200 K
KGIR Billings... Mont 950 O
KGIW Butte... Mont 1360 M
KGIW Alamoosa... Cal 1420 H
KGIZ Las Vegas, Nev 1420 H
KGKB Grant City... Mo 560 M
KGKL Tyler... Tex 1500 H
KGKL San Angelo... Tex 1370 H
KGKY Wichita Falls, Tex 570 K
KGMB Scotts Bluff, Neb 1560 H
KGNF Honolulu... T. H. 1320 K
KGNF No. Piate... Neb 4430 M
KGO Dodge City, Kas 1340 K
KGRS Amarillo... Tex 1410 O
KGU Honolulu, Hawaii 750 R
KGV Missouri... Mont 1200 H
KGW Portland... Ore 220 O
KGY Olympia... Was 1210 H
KHJ Los Angeles... Cal 900 O

CUBAN

CKPR Ft. William, Ont 720 H
CKBT St. Catharine, Ont 1200 H
CKUA Edmonton, Alta 580 M
CKWX Vancouver, B.C. 1010 H
CKY Brandon, Man 1450 M
CKY Winnipeg... Man 910 S
CRCA Montreal... N.B. 580 M
CRCO Montreal... Que 910 S
CRCS Ottawa... Ont 880 O
CRCS Chicoutimi... Que 1500 H
CRCT Toronto... Ont 960 S
CMAF Vancouver, B.C. 1100 O
CMF Havana, Cuba 680 O
CMCQ Havana, Cuba 840 M
CMCQ Havana, Cuba 780 M
CMJK Havana, Cuba 1335 O
CMJK Camaguey, Cuba 790 M
CMK Havana, Cuba 730 S
CMK Havana, Cuba 630 M
CMX Havana, Cuba 890 M
CMW Havana... Cuba 600 P

KMTR Los Angeles... Cal 570 M
KKNW Austin... Tex 1500 H
KKNX Los Angeles... Cal 1050 W
KOA Denver... Col 830 W
KOAC Corvallis... Ore 550 O
KOB Albuquerque, N.M. 1180 T
KOH Reno, Nev 1380 M
KOIL Council Bluffs, Ia 1260 O
KOIN Portland... Ore 940 O
KOL Seattle... Was 1270 H
KOMA Okla. City, Okla 1480 S
KONO San Antonio, Tex 920 O
KOOS San Antonio, Tex 1370 H
KORE Marshfield... Ore 1470 H
KOR Eugene... Ore 1420 H
KPCB Phoenix... Arl 1390 M
KPJM Seattle... Was 650 H
KPJM Prescott... Arl 1800 H
KPOF San Francisco, Cal 880 W
KPPC Denver... Col 880 M
KPO Pasadena... Cal 1210 F
KPRC Waukegan... Wis 1500 H
KQV Houston... Tex 920 M
KQW Pittsburgh... Pa 3380 M
KRW San Jose... Cal 1010 M
KRE Berkeley... Cal 1370 H

MEXICAN

HHK Portau Prince, Haiti 920 O
HEAF Tijuana... Mex 980 Q
XEAW Juarez... Mex 750 S
XEAW Reynosa... Mex 965 T
XEBF Mexico City, Mex 1030 T
XEFO Tijuana... Mex 855 R
XEFO Mexico City, Mex 940 S
XEJ Juarez... Mex 1015 M
XEM Matamoros, Mex 660 W
XENT Mexico City, Mex 711 O
XENT New Laredo, Mex 1115 W
XEPN Mexico City, Mex 760 O
XER Piedras Negras... 585 W
XET Villa Ahuna... Mex 735 W
XET Monterey... Mex 690 M
XETR Matamoros, Mex 845 W
XETR Mexico City, Mex 610 O
XFG Mexico City, Mex 910 S
XFI Mexico City, Mex 638 Q

KUOA Fayetteville... Ark 1260 O
KUSD Vermillion... S. D. 890 W
KVL Tacoma... Was 870 W
KVDA Seattle... Was 1370 H
KVDA Tucson... Arl 1260 M
KVDA Tulsa... Okla 1140 V
KVOR Colo. Spgs... Col 1270 O
KWCR Bellingham, Was 1200 H
KWCR Cedar Rapids... Ia 1420 H
KWEA Shreveport... La 1210 H
KWFF Hilo... T. H. 1210 H
KWJJ Stockton... Cal 1200 H
KWJJ Portland... Ore 1060 M
KWKC St. Louis... Mo 1350 W
KWKC Kansas City... Mo 1370 O
KWKH Shreveport... La 850 T
KWLC Decatur... Ia 1270 H
KWSC Pullman... Was 1220 O
KXAA Brownsville... Tex 1260 M
KXLA Seattle... Was 760 W
KXLA Portland... Ore 1420 H
KXRO El Centro... Cal 1500 H
KXRY Aberdeen... Was 1310 H
KYA Houston... Tex 1440 H
KYA San Francisco, Cal 1230 O
KYW Chicago... Ill 1020 T

ENJOY

improved reception

with the **NEW**

PHILCO

High-Efficiency

TUBES

Put your radio in the finest condition to get all the big programs on the air. Replace your old, worn-out tubes with the remarkable new PHILCO High-Efficiency Tubes which improve the performance of ANY radio! You will be amazed at the small cost of a complete new set of these tubes—and equally surprised at the added enjoyment they will provide.



PHILCO HIGH-EFFICIENCY TUBES
are more compact, more efficient and
consume less current

TUBES TESTED FREE!

Bring in your old tubes—we'll test them for you FREE on our accurate tube tester.

Printed in U.S.A.