

THE DIALIST

DEC.

OFFICIAL PUBLICATION

1934

OF THE

NEWARK NEWS RADIO CLUB



¢
10
A COPY

BROADCASTING STATIONS BY FREQUENCIES
AND CALL LETTERS
WHAT IS A DX STATION?
SHORT WAVE LOG
NEWS OF RADIO STARS

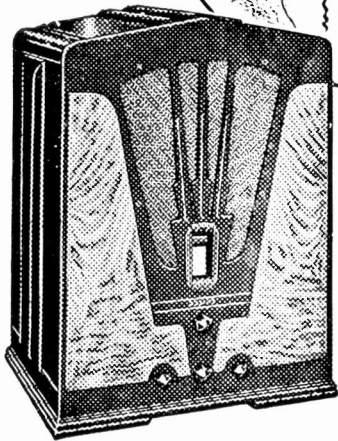
BUY YOUR RADIO AT BAKER BROS.

"Your Membership Card will be Recognized"

Round the World

WITH THIS NEW 1935

PHILCO



1935 PHILCO 16B

Combined here are features no other Baby Grand has ever possessed. Five Tuning Bands, Super Class "A" Audio System, Over-size Electro-Dynamic Speaker, Bass Compensation, Four-Point Tone Control, Automatic Volume Control, Shadow Tuning, PHILCO High-Efficiency Tubes, etc. Newly designed cabinet of Butt Walnut and old ivory trim. Hand-rubbed finish.

This superb PHILCO brings in short-wave foreign and American broadcasts, plus standard American programs. You'll find a new thrill when you listen to programs from London, Paris, Berlin, Rome, Madrid, Buenos Aires and countless other stations.

Foreign Broadcast PHILCOS

as low as \$ **39.95**

EASIEST TERMS

PHILCOS that tune-in the world may be had in a wide variety of prices and models, to suit your purse and purpose. Come in and look them over!

Trade-in your present radio

49 NEW 1935
PHILCOS

for your selection

\$20.00 up

CALL US FOR RELIABLE AND HONEST SERVICE

BAKER BROS.

ESTABLISHED 1914

Member of Newark News Radio Club

481 CLINTON AVENUE

at Bergen Street

NEWARK, N. J.

Open Evenings

— Tel. Bigelow 3-2632-2633



E. H. SCOTT
designer and custom-builder of
Super-powered Radio Receivers
since 1924

I INVITE THE RADIO INDUSTRY TO A COMPETITIVE TEST

Let's cut out the "bunk" in radio selling

..HERE'S MY PROPOSITION

It's no wonder that you are confused by all the hue and cry of various all-wave manufacturers. Obviously, there can be but one "Best!" How are you to know which one? My suggestion to you—and my challenge to the radio industry—is that you be allowed to find out for yourself by actual trial in your own home. I have sufficient confidence in the superiority of the SCOTT ALL-WAVE XV—above any other all-wave receiver on the market today—to willingly abide by your findings.

YOU Make This Test..In Your Own Home..You to be the Final Judge!

Get a SCOTT ALL-WAVE XV—direct from the Laboratory where it is custom-built—install it in your home and test it side by side with any other all-wave receiver in the world. If, at the end of thirty days' competitive trial, you are not entirely satisfied that the SCOTT ALL-WAVE XV brings in more stations, from greater distances, with more volume and better tone, on both the short waves and the broadcast band than any other all-wave receiver built, you can return it without question.

Don't Be "Sold" a Radio—Buy it on Facts

Disregard all claims—remember that adjectives and fancy phrases can be used by anyone. Your investment in an all-wave receiver is a sizeable one, and deserves serious consideration. Make the receiver you finally select prove itself in actual operation over a long enough period of time to be conclusive.

You Can't Buy Custom-built Quality for \$39.50 or \$59.50

Radio receivers can be built only by the "production line" system—where sets are turned out cheaply in great volume—or by the custom-building system—where exquisite care and micrometrically exact technical handcraft goes into the slow and painstaking construction of each individual receiver. Probably the SCOTT ALL-WAVE XV is the only all-wave receiver on the market today that is truly "custom-built." It is the only one entirely designed, built with scientific precision, and sold in its manufacturer's own technical laboratories. Your own judgment tells you that such construction can't be accomplished at a selling price of \$39.50, \$59.50, or \$79.50—particularly when to manufacturing costs must be added liberal profit to jobbers and dealers.

Dollar for Dollar—the SCOTT ALL-WAVE XV Is the Biggest Value in All-Wave Radio Today

If you could look at the "insides" of other all-wave receivers in comparison you would immediately see why the SCOTT ALL-WAVE XV is such a big value, even if you knew absolutely nothing about radio construction. You would find oversize and over-strength construction everywhere, and innumerable points of superiority that would instantly explain to you why this is the only all-wave receiver given a five-year warranty by a responsible manufacturer. Why not take advantage of the opportunity of making an actual, convincing test yourself through side-by-side comparison of any other all-wave receiver during a 30-day trial period.

E. H. SCOTT RADIO LABORATORIES, INC.

4422 Ravenswood Ave. Dept. 16W4 Chicago, Ill.

Why I Dare Make This Bold Offer

The SCOTT ALL-WAVE XV is built with greater care and technical exactness . . . Hold most authenticated records for distance reception . . . Tested on most accurate and delicate measuring devices where each must show perfection . . . All-wave receivers exclusively for nearly six years . . . The prospective all-wave radio buyer deserves a square deal.



Custom-built
**SCOTT
ALL-WAVE
XV**

**MAIL
THIS
COUPON**

E. H. SCOTT RADIO LABORATORIES, INC.
4422 Ravenswood Ave., Dept. 16W4 Chicago, Ill.

Send me at once all particulars regarding the SCOTT ALL-WAVE XV, and of your 30-day trial offer for competitive test.

Name.....
Address.....
City..... State.....

The Dialist

CONTENTS

FRONTISPIECE—Muriel (Honey) Dean	
EDITORIAL	3
TRANS-ATLANTIC RECEPTION	3
STUDIO GOSSIP	4
THE DXERS' CORNER	6
DEFINING A DX STATION	8
MONTHLY FREQUENCY TESTS	9
CANADIAN FREQUENCY TESTS	11
AUSTRALIAN AND NEW ZEALAND STATIONS.....	11
THE MONTH'S CHANGES	11
MICRO CHATS	12
BROADCASTING STATIONS (By Frequencies)	14
BROADCASTING STATIONS (By Call Letters)	28
NNRC HAM NOTES	34
SHORT WAVE NOTES	35
PRINCIPAL SHORT WAVE STATIONS OF THE WORLD	36
INTERESTING RADIO CALLS	39

EDITOR

IRVING R. POTTS

ASSOCIATE EDITORS

ALFRED W. OPPEL

HERMAN A. WITTENBERG

Published monthly by The Newark News Radio Club, 215 Market Street, Newark, N. J. Subscription price \$1.00 per year.

— Copyrighted 1934 —

EDITORIAL

IN presenting the third issue of The Dialist its editors have endeavored to include information and items of interest to all classes of radio listeners. It will be noted that the log of broadcasting stations which heretofore has appeared in frequency arrangement, has been augmented by an alphabetical list which will serve as a further reference to quickly locate stations.

We consider these logs and the lists of frequency tests, both by stations in the United States and Canada, to be most up-to-date and it is hoped that the columns devoted to short wave activities will meet with the approval of listeners interested in that phase of reception. The short wave log has been compiled by one of the country's foremost authorities, Captain Horace L. Hall.

It is the intention to make The Dialist even still better in subsequent issues and in that direction suggestions and constructive criticism are welcomed from both readers and NNRC members.

The editors take this opportunity to extend holiday greetings to readers of The Dialist, to the officials of The Newark Evening News, to the National Broadcasting Co., the Columbia and American Broadcasting Systems and to all those whose excellent co-operation has made this publication possible.

TRANS-ATLANTIC RECEPTION

The present DX season has been unusual in that listeners along the Atlantic Coast and even in sections farther inland have been hearing consistently, a number of European broadcasters, including Poste Parisien, 959 kilocycles, Paris and Radio Toulouse, 914 kilocycles, Toulouse, all in France, during the late afternoon

Last year Poste Parisien and Radio Normandie, 1458 kcs., Fecamps, France, were logged on early morning programs by thousands of DXers. It will be remembered that the former rebroadcast Australian cricket matches received by telegraph direct from "down under". Here and there reports of reception of European stations were received but these were confined chiefly to the New England States and Maritime Provinces of Canada.

The 1934-35 season had hardly gotten under way when headquarters of The Newark News Radio Club was deluged with listeners' mail and in almost every instance the writers were amazed at the

signal strength and clarity of the signals of our friends across the Atlantic.

Among the regulars this year are Poste Parisien, Radio Normandie, Radio Toulouse and Radio Strasbourg, all in France. The latter is assigned to 859 kcs.



Rosemary (left) and Priscilla Lane, with Fred Waring's program, are probably the only sisters in radio heard as individual soloists and not as a harmony team.

The Germans too, are frequent visitors to these shores. Best bets in that country are Cologne, 660 kcs.; Munich, 745; Leipzig, 785; Hamburg, 904, and Frankfurt, 1195 kcs.

HAL, 545 kcs. Budapest, Hungary, is also being reported although not as regularly as the others. Another infrequent one is Radio Beromunster, 555 kcs., Switzerland.

Copenhagen, Denmark, 1178 kcs., has been logged on various occasions while IITO, Turin, Italy, 1140, and Trieste, also in Italy, and on 1223 kcs., might be classed with the regulars.

The scarcity of reports of European reception from DXers in the middle and far West is causing quite some comment as to the eccentricities of Trans-Atlantic reception inasmuch as the signal strength of stations in Europe
(Continued on Page 34)

STUDIO GOSSIP

Fire Chief Ed Wynn has a fan note from the "Last of the Carrs," in response to a letter signed by "Caboose," which he read on the air recently.

Arthur Allen, NBC character actor, in his early days trouped with a repertoire company. Invariably, he was cast as an English butler. After exclaiming "Yes, me Lord," something like 10,000 times Allen sickened of stock acting and got himself a radio job.

Wendell Hall, the Red Headed Music Maker, who is heard over an NBC-WEAF network each Sunday at 7:45 P. M., EST, is, measure for measure, probably the highest paid composer on record. He received more than \$6,000 per bar for writing "It Ain't Gonna Rain No Mo" because the whole song contained only eight bars of music. The rest was repetition and the song netted Wendell more than \$50,000 while it was selling two million copies of sheet music.

JOEY'S DIFFERENT

Joey Nash, the tenor who sings with Richard Humber and his Champions over an NBC network Monday evening at 8 works so hard crooning love songs and learning new ones that he hasn't time left to make them a personal interest.

Some singers believe they find inspiration in singing to some loved one, but Joey thinks differently. "In order to give a song its proper interpretation and do it justice," he says, "you have to concentrate on it alone. You can't do that while singing the number and thinking of someone or something else."

Joey is so busy learning such songs as "I'll Never Forget You," "Will You Remember Me?" "To Hold You and Enfold You" and "I Love You," that he hasn't had a chance to find out what "This Thing Called Love" really is. Sometime in the future he intends to investigate for himself.

Those Amos 'N' Andy episodes you hear nightly, except Saturday and Sunday, are written only a few hours before they are broadcast. There's none of this getting ahead in scripts with Freeman F. Gosden (Amos) and Charles J. Correll (Andy). They write every script the day it is broadcast. They've done so for several years, because they find they can work better that way. For one thing, the episode is fresh in their minds when it is broadcast only a short while after it is written. This is especially important in



Frank Luther, has appeared on many NBC network programs as soloist and with quartets and trios. A composer, his arrangements of favorite cowboy and hill billy songs are always in demand.

view of the fact that Amos 'n' Andy never rehearse their program. They write it together, Correll typing one original and one carbon copy, single spaced, and then he puts both copies in his hip pocket, where they remain until he produces them in the studio during the playing of the theme song. But that is not the only reason Amos 'n' Andy work so close to their broadcast schedule. Several years ago, when they sometimes wrote several episodes ahead of schedule, they found they wasted more time getting started on their job of writing than they did on the writing itself, because they knew it didn't have to be done that day. It could be postponed. Now, when they know that an episode must be written before evening they settle down to work without preliminaries.

Many persons marvel that they can keep producing daily episodes after so many years on the air. But it's simple, according to Gosden and Correll. "We've written more than 1,900 Amos 'n' Andy episodes already," they explain. "And every time the job seems difficult, we tell each other that if we've written 1,900 of them we ought to be able to do just one more. And we do!"

The twelfth anniversary of one of radio's pioneer features was celebrated Sunday morning, Nov. 18, when the 624th consecutive weekly program emanated from the Capitol Theatre in New York over an NBC network. The Capitol program first went on the air to crystal and peanut tube set listeners November 19, 1922. It immediately established itself as top rank radio entertainment, a position it has maintained through the many years despite the increasing competition of many other fine programs. During the 624 Sundays on which it has been broadcast, the Capitol Theatre program has brought to millions of listeners scores of entertainers who have achieved national radio popularity.

Major Edward Bowes, manager of the big Broadway screen house, inaugurated the now famous Capitol Family series in July, 1925. With only a few absences, most of them due to illness, the Major appeared each Sunday as the genial master of ceremonies in the widely-heard program, and his readings of appropriately topical and inspirational verse have become a feature looked forward to by millions of listeners from coast to coast.

ALLENS BUSY

Weekends aren't holidays for Fred Allen. The impresario of the Mighty Allen Art Players and star of the Town Hall Tonight broadcasts spends Saturday and Sunday working on next week's script. The script must be ready at 9 A. M. Monday, when preparation for the Wednesday program begins and very often Allen works until six or seven Monday morning before he is satisfied with the result. His right hand assistant in these long sessions is none other than Portland (Peek-a-boo) Hoffa, herself a Town Hall Tonight star and Mrs. Allen outside the studios. Weekend for the Allens actually comes in the middle of the week. They begin at 1 Thursday morning, when Town Hall Tonight signs off its repeat broadcast for Pacific coast listeners; it lasts until the cycle starts again on Saturday morning.

When Harry Richman steps up to the microphone listeners to his comic and vocal presentations may forget his other capabilities. Besides being the star of an NBC program Wednesday nights at 10.30, EST, he is a successful composer of songs. One of his early compositions was that astronomical hit "There Ought to be a Moonlight Saving Time." "Walking My Baby Back Home," and "Roll-Roll-Rolling Along," are two more that gained national recognition. Richman is tall and athletic

and has had a varied career. In turn he has been pianist for Mae West and later the Dolly Sisters; a side-show spieler, a cowboy, Atlantic City lifesaver, a dress salesman, one of America's foremost night club entertainers and a gob in the United States Navy. Richman is one of radio's pioneers and attributes the greater part of his present popularity to his air programs. His chief hobbies are yachting and gun collecting. Between programs he takes out parties of friends to cruise in nearby waters. He is aided on his programs by the music of Jack Denny and the commentator, John B. Kennedy.

Gladys Swarthout, celebrated Metropolitan Opera mezzo-soprano, will be soloist with William Daly's symphonic orchestra in the new Winter series.

WFBR TO DX

Elaborate preparations are being made by WFBR, Baltimore, for their second annual DX broadcast in conjunction with The Newark News Radio Club December 23. A new antenna has been erected since their DX program last Winter and it should materially increase WFBR's signal strength and gain many new listeners in all parts of the country.

The new voice of WFBR's transmitter is a Blaw Knox self-supporting vertical steel radiator and engineers report that its efficiency corresponds to more than double the present power. The signal is sharper, clearer and miles have been added to the station's coverage. This vertical radiator is a single tower soaring 227 feet into the air; it is the loftiest radio tower in Maryland. It has a specially designed ground system utilizing 12,000 feet of copper wire and strip. With twenty-seven tons of steel in this tower radiating the full volume of speech throughout its entire length, WFBR now has the newest and most effective broadcasting equipment.

Thus, WFBR has added another chapter to its fast moving story of success. Maryland's pioneer broadcast station first went on the air back in 1922 on a frequency of 1270 kilocycles. In 1931 they joined the NRC red network.

WFBR's NNRC program will start at 1.30 A. M., EST, immediately after the close of a sponsored three-hour dance program on the red network the night of December 22.

THE DXER'S CORNER

Henry T. Tyndall, Jr., 285 North Street, Burlington, Vt., writes: "The only catches in November were W1XBS, KYW, (in Philly); XEAF, XEK, and COA. COA was plenty tough as there was plenty of interference and a high noise level; was able however, to get his announcements and a number of selections for verification. XEK was fairly good but XEAF was weak and not on 990. I found him to be nearer 1005 kcs., and he was pretty close to KYW. Only new veries are from WLLH, WTCN and the short waver, ORK. Tuned in COH at 5.15 P. M., November 21; he came in very well."

Identifying the mystery station on 1015 kcs., as XEJ, Albert J. Bartholomew, Bradford, N. Y., adds that the Mexican is on every morning until 1.30, EST, or later, with a program of American dance music. Announcements are in English and Spanish with the selection "Sophisticated Lady," as their sign-off number. Al says: "I am hearing WAAW nearly every morning at 7, EST, when they come on the air but so far have been unable to identify any musical numbers to verify. Announcements are usually clear. Caught WABY, CKCD and CJKL Sunday morning, November 25."

Harold Gordon, 98 Second Street, Newark, N. J., informs us that while tuning in with his RCA-Victor the night of November 21 he logged KGMB, Hawaii, requesting listeners to send in reports of reception.

Says Ralph Metzger, 95 Eastern Parkway, Brooklyn, N. Y.: "When things pick up I intend to join the NNRC. I have 416 verifications at present. Do you know which station was operating on 570 kilocycles November 17 from 4 to 6 A. M.?" Our guess is TGW, 565 kcs., Guatemala City, Guatemala. Ralph also heard another foreign station on 680 that morning about 5.20 but was unable to get its call. He wonders if someone can help him identify it.

LIKES THE LS

Admitting he is keenly interested in South American stations, William Goerbig, 515 Orlinda Avenue, Scotia, N. Y.,

says he listened to LR5's NNRC broadcast November 4 and enjoyed every bit of it. School work has curtailed "The Scotia DXer's" radio activities this season but he expects to devote more time to his log from now on. We will be expecting a good DX report from that quarter before long.

Walter H. Kniffin, 7335 Ingleside avenue, Chicago, heard TGW's special program for The Newark News Radio Club November 25, and it prompted him to request membership information and an application. Mr. Kniffin adds: "I have often heard your club mentioned in connection with DX broadcasts."

Orville Brown, 419 Eighth Street, Devils Lake, N. D., believes the present DX season will be a bumper one. So far he has added TGW, LR5 and CMBC, his first stations outside of the United States, Canada and Mexico. Other new ones are CKBI and CKCH. Orville's log now includes 335 stations and 221 veries. He is determined to boost the latter number past the 300 mark before next Spring or "bust" in the attempt.

CMBC TO DX

John Clarke, 387 Fourteenth street, Buffalo, is in receipt of a verification from CMBC, 1030 kcs., Havana, whose DX announcer, Ovidio Fernandez, writes that they will transmit a special program for the NNRC December 18 from 1 to 2 A. M., EST.

DXers who might wish to obtain information concerning European BC stations can do so by writing to Hartley Phillips, R. F. D. No. 2, Flemington, N. J., enclosing return postage. Hartley has devoted considerable time and effort to the broadcasters across the Atlantic and as the result, his compilations are valuable for reference purposes.

Reporting verifications from CJLS, CKBI, WGPC, WDNC, and WAGF, William Benz, 4717 Morganford Road, St. Louis, advises he heard TGX, Guatemala City, recently, testing on about 595 megacycles. They announced they were the only short wave station in Guatemala and gave their schedule as follows: 8 A. M., to 9 A. M.; 1 to 2 P. M., and 8 P. M., to midnight, EST. To date, Mr. Benz has acquired 666 confirmations of reception.

Carl Forestieri, (The Bronx Owl) 463 East 185th Street, New York City, added three new ones to his log the morning of November 25—WABY, testing

on 1370 kcs., from Albany, N. Y.; CJKL and KTRB. Says Carl: "The Europeans and trans-Pacifcics seem to go up a side street when they reach this neighborhood and VOGY eluded me Honor certificates and hope to be able you see I have my eyes on one of those once more November 25."

WANTS HONOR CERTIFICATE

"From now on I am going to spend all the time I possibly can at my radio; to obtain one before the end of the present season," writes Harry M. Emrick, Shanksville, Pa. "I need forty-five veries, fifteen of which must be 2,000 milers, in order to qualify. So far this Fall, I have only been able to add twenty-five new stations to my log, increasing it to 774. My best verifications this season are KOTN, KWYO, KIDO, KPAC, (completing Texas); CHWC, WHEF, CJGX, and CJLS for a total of 755."

Submitting a resume of his DXing activities, Lloyd S. Hahn, 2810 Laurens Street, Baltimore, states he has added thirty-three new ones this season including YV1RC, LS2, TGW, CKBI, CKGX, NEMO and KFKU. Lloyd's log now contains 790 stations of which 650 are verified and 105 are 1,900 milers. Eighty-one of the latter have confirmed his reception.

James Dunigan, (The Knight of the Burning Candle) 194 North Street, New Britain, Conn., has received 692 stations and 268 verifications, thirty-four of which are in the 2,000-mile category. Jimmy's new catches are CKCK, CMBC, COX, CJKL, KOB, KADA, WKZO, WBRE, WNEI, WNBH, WTAO, WBAA, WINBS, VONF, XEBC, XEK and YV1RC. His only SW addition is COA, Havana, Cuba. Confirmations have come in from CJLS, KTSA, KTM, KFGA, KGA, KVOD, KFBB, WHJB, WPRO, WPTF, WMBI, WOV, WEDC, WHBI, WIBA, WNBH, WSJS, WADC, WLLH, WAGM, WLAP, WOKO, WMBQ and XEAW. Jimmy is having difficulty procuring verifications from WMEX, Chelsea, Mass., and WIP, Philadelphia. The return postal card scheme has worked with WMEX but we are at a loss to understand WIP's laxity. Perhaps some other DXer can give Jimmy the combination of that one.

Andrew Hill, (The Night Owl) 14 Worthley Street, Red Bank, N. J., has boosted his log a few notches higher through the acquisition of CRCS and CHNC, both 100 watt Canadians. He



Loretta Lee, torch singer, featured with George Hall's orchestra and on her own broadcast every Thursday at 5 P. M., E.S.T., over CBS.

now has 562 BC stations. These of you dial twisters who would like to correspond with Andy will find it worthwhile. He'll come right back at you and nine times out of ten you will find his letters contain some good DX tips.

LORD CLOSE TO 900

DXing, according to Carleton Lord, 637 North Highland Avenue, Akron, O., has been spotty for some time now. Carl says he found September and the early part of October most favorable with everything pointing to a good old-fashioned season. However, static and local interference have increased tremendously the last month and his chances of hearing a few Aussies and Zedders were null and void. Despite the QRM, Carl has added thirty-four new ones since September to bring his log total to 891. Best catches were XEXX, 2BL, XEJ, XEK, and XEAF.

On its initial broadcast of a series of Newark News Radio Club programs, November 4, LR5, Buenos Aires, was received with excellent signal strength up in Portland, Ore., by Chester H. Monnich. Commenting about his reception, Chester says: "LR5 was perfect and I sure was glad to be able to

(Continued on Page 39)

DEFINING A DX STATION

We are asked: "What is a DX station?" many times during the course of a season by the uninitiated. Some want to know if distance, power, or lack of power are requisites to classify a station as a DX catch. We therefore mention the circumstances, or combination of circumstances, whereby any broadcasting station may be in that category, depending upon your geographical location.

For example: KFI, 640 kcs., Los Angeles, only a few years back used 5,000 watts and was then considered a good catch. Now that it has 50,000 watts, few listeners on this continent consider it as such but in South America, Europe, Asia, Australia or New Zealand, it still is alluring to the dial twister.

Another example: In Omaha, Nebr., is located station WAAW which operates on 660 kilocycles with 500 watts. To listeners in the western section of this country WAAW is perhaps an ordinary catch but in those other sections covered by WEA, assigned to the same frequency, WAAW is very desirable and until several months ago it was missing from many a DXer's log. The reason? WAAW signs on and signs off while WEA is operating with its 50,000 watts. Ordinarily, a 500 watt station, on a clear channel and on a fairly decent DX night can be heard in almost every part of the northern hemisphere but not when it is blanketed by another with 100 times greater power. It will now be understood why the announcement that WAAW would broadcast a series of special early morning programs was hailed with glee by the DXing fraternity.

DAYTIMERS RARE

Daytime stations, outside of their normal coverage area, are usually considered to be good DX catches. Stations that rarely transmit special, early morning programs, and especially those on crowded channels are also good catches. For instance: KGGC,

San Francisco, a 100 watt on 1420 kilocycles has always been and still is considered to be a desirable addition to DXers' lists, not alone because of its distance from other parts of the country but primarily because it has seldom been on the air during the early morning hours. Stations with inferior transmitting equipment and with transmitters located in sections where they do not operate with a maximum of efficiency, may also be included in the seldom heard category.

Summed up, the situation is this: When a station is assigned to day-time operation only and with low power, its coverage is limited to but a few hundred miles; such a station's effectiveness is further reduced when it is

assigned to a frequency with other stations of equal or greater power. Those assigned to such frequencies as 1200, 1210, 1310, 1370 or 1420 kcs., with partial time on the air, may also be classed as hard to get outside of their immediate areas. Poor transmitter locations and broadcasting equipment are the reasons why some stations are classed as DXes. Finally, the distance of a station from the point of reception is a factor in determining its classification; in other words, a broadcaster 2,000 miles or more away and operating with low power falls into that category.



Whispering Jack Smith, who claims to have originated the low, intimate type of vocalizing, is a veteran radio and recording artist.

Many stations have been rarities among the dial twisters until they were persuaded by the courtesy programs committees of the various clubs to transmit DX programs or a series of programs. As a consequence, they have become better known and their verifications part of the records of the great majority of DXers.

In the final analysis we can answer our questioners who ask: "Is such and such a station a DX catch?" by saying: "It depends upon where you live."

MONTHLY FREQUENCY TESTS

(Time is A.M., Eastern Standard; Frequencies in Kilocycles)

FIRST MONDAY

2.00 to 2.20	1500—WCNW, Brooklyn, N. Y. 1310—WJAC, Johnstown, Pa.
2.10 to 2.30	1210—WFAS, White Plains, N. Y. 1370—WRAK, Williamsport, Pa.
2.20 to 2.40	1500—WNBK, Binghamton, N. Y. 580—WCHS, Charleston, W. Va.
2.30 to 2.50	1420—WAGM, Presque Isle, Me. 1370—WBTM, Danville, Va.
2.40 to 3.00	1200—WLVA, Lynchburg, Va.
2.50 to 3.10	1420—WHDL, Olean, N. Y. 1310—WHAT, Philadelphia, Pa.
3.00 to 3.20	1200—WCAX, Burlington, Vt.
3.10 to 3.30	1500—WSYB, Rutland, Vt. 1310—WVTE, Philadelphia, Pa.
3.20 to 3.40	1200—WIBX, Utica, N. Y.
3.30 to 3.50	1370—WQDM, St. Albans, Vt. 1210—WKOK, Sunbury, Pa.
3.40 to 4.00	1310—WMBO, Auburn, N. Y.
3.50 to 4.10	1370—WABY, Albany, N. Y. 1210—WBAX, Wilkes-Barre, Pa.
4.00 to 4.20	1220—WCAD, Canton, N. Y. 1200—KOOS, Marshfield, Ore.
4.10 to 4.30	1210—WBBL, Richmond, Va. 900—KGBU, Ketchikan, Alaska.
4.20 to 4.40	1290—WNBZ, Saranac Lake, N. Y. 1310—WBRE, Wilkes-Barre, Pa. 1200—KGVO, Missoula, Mont.
4.30 to 4.50	1200—WNBO, Washington, Pa. 1500—KPO, Wenatchee, Wash. 1310—WRAW, Reading, Pa. 1210—KGY, Olympia, Wash.
4.40 to 5.00	
4.50 to 5.10	940—WAAT, Jersey City, N. J. 1370—KRKO, Everett, Wash.
5.00 to 5.20	570—WSYR-WSYU, Syracuse, N.Y. 1200—KFED, Nampa, Idaho.
5.10 to 5.30	600—WCAC, Storrs, Conn. 1370—KVL, Seattle, Wash.
5.20 to 5.40	1310—KGEZ, Kallispell, Mont.
5.30 to 5.50	1370—KUJ, Walla Walla, Wash.
5.40 to 6.00	1310—KGCK, Wolf Point, Mont.
5.50 to 6.10	780—KFQD, Anchorage, Alaska.
6.00 to 6.20	880—KSEI, Pocatello, Idaho.
6.10 to 6.30	1200—KVOS, Bellingham, Wash.
6.20 to 6.40	1310—KIT, Yakima, Wash.
6.30 to 6.50	1120—KRSC, Seattle, Wash.
6.40 to 7.00	1310—KXRO, Aberdeen, Wash.
6.50 to 7.10	1120—KFIO, Spokane, Wash.
7.00 to 7.20	1210—KFJI, Klamath Falls, Ore.
7.10 to 7.30	1310—KMED, Medford, Ore.
7.20 to 7.40	1420—KORE, Eugene, Ore.

FIRST TUESDAY

2.00 to 2.20	1210—WPAX, Thomasville, Ga.
2.10 to 2.30	1200—WBHS, Huntsville, Ala.
2.20 to 2.40	1370—WHBQ, Memphis, Tenn.
2.30 to 2.50	1420—WEED, Rocky Mount, N. C.
2.40 to 3.00	1500—WPOI, Bristol, Tenn.
2.50 to 3.10	1320—WSMB, New Orleans, La.
3.00 to 3.20	1370—WMBR, Jacksonville, Fla.
3.10 to 3.30	1420—WNRA, Muscle Shoals, Ala.
3.20 to 3.40	1310—WSJS, Winston-Salem, N. C.
3.30 to 3.50	1500—WHEF, Kosciusko, Miss.
3.40 to 4.00	1200—KMLB, Monroe, La.
3.50 to 4.10	1370—WAGF, Dothan, Ala.

4.00 to 4.20	1200—KWG, Stockton, Calif. 1290—WNEL, San Juan, P. R.
4.10 to 4.30	1310—WTJS, Jackson, Tenn. 1500—KPJM, Prescott, Ariz.
4.20 to 4.40	1370—WPFB, Hattiesburg, Miss. 1370—KERN, Bakersfield, Calif.
4.30 to 4.50	1420—WGPC, Albany, Ga. 1500—KXO, El Centro, Calif.
4.40 to 5.00	1200—WBNO, New Orleans, La. 1210—KIEM, Eureka, Calif.
4.50 to 5.10	1310—WROL, Knoxville, Tenn. 1440—KLS, Oakland, Calif.
5.00 to 5.20	1500—WDNC, Durham, N. C. 1420—KGIX, Las Vegas, Nev.
5.10 to 5.30	1200—WJBW, New Orleans, La. 1320—KGM, Honolulu, Hawaii.
5.20 to 5.40	1310—WAML, Laurel, Miss. 1370—KRE, Berkeley, Calif.
5.30 to 5.50	1210—WSIX, Springfield, Tenn. 750—KGU, Honolulu, Hawaii.
5.40 to 6.00	1370—KGAR, Tucson, Ariz.
5.50 to 6.10	1310—KCRJ, Jerome, Ariz.
6.00 to 6.20	1100—KGD, Stockton, Calif.
6.10 to 6.30	1200—KSUN, Lowell, Ariz.
6.20 to 6.40	740—KTRB, Modesto, Calif.

FIRST WEDNESDAY

2.00 to 2.20	1310—WEBR, Buffalo, N. Y.
2.10 to 2.30	920—WPEN, Philadelphia, Pa.
2.20 to 2.40	1310—WSAJ, Grove City, Pa.
2.30 to 2.50	1410—WHIS, Bluefield, West Va.
2.40 to 3.00	1310—WFBG, Altoona, Pa.
2.50 to 3.10	880—WPHR, Petersburg, Va.
3.00 to 3.20	1370—WDAS, Philadelphia, Pa. 1500—WKBB, East Dubuque, Ill.
3.10 to 3.30	1410—WRBX, Roanoke, Va. 1200—WHBC, Canton, O. 1420—KGIW, Trinidad, Colo.
3.20 to 3.40	1210—WMBG, Richmond, Va. 1310—WTRC, Elkhart, Ind. 1370—KICA, Clovis, N. M.
3.30 to 3.50	1370—WVSV, Buffalo, N. Y. 1410—WBCM, Bay City, Mich. 1200—KGHI, Little Rock, Ark.
3.40 to 4.00	1310—WGH, Newport News, Va. 630—WGBF, Evansville, Ind. 1420—KIDW, Lamar, Colo.
3.50 to 4.10	1210—WCOL, Jamestown, N. Y. 1410—WROK, Rockford, Ill. 1200—KBTM, Jonesboro, Ark. 880—WQAN, Scranton, Pa.
4.00 to 4.20	1310—WBOW, Terre Haute, Ind. 1280—KFBB, Great Falls, Mont.
4.10 to 4.30	1430—WHEC, Rochester, N. Y. 570—WOSU, Columbus, Ohio. 1370—KGFL, Roswell, N. M.
4.20 to 4.40	1190—WSAZ, Huntington, W. Va. 1310—WBEO, Marquette, Mich.
4.30 to 4.50	1500—WGAL, Lancaster, Pa. 570—WKBN, Youngstown, Ohio.
4.40 to 5.00	1250—WCAL, Northfield, Minn. 1070—WCAZ, Carthage, Ill. 1200—KFJB, Marshalltown, Ia.
4.50 to 5.10	1400—WKBF, Indianapolis, Ind. 1420—WACO, Waco, Tex.

5.00 to 5.20 1070—WDZ, Tuscola, Ill.
1200—KGDE, Fergus, Falls, Minn.

5.10 to 5.30 900—WLBL, Stevens Point, Wis.
1250—WLB, Minneapolis, Minn.

5.20 to 5.40 890—WBAA, West Lafayette, Ind.
1200—WIL, St. Louis, Mo.

5.30 to 5.50 1440—WTAD, Quincy, Ill.
1320—KGHF, Pueblo, Colo.

5.40 to 6.00 1240—WXYZ, Detroit, Mich.

FIRST THURSDAY

2.00 to 2.20 1210—WSOC, Charlotte, N. C.

2.10 to 2.30 920—WSPA, Spartanburg, S. C.

2.30 to 2.50 1310—WSGN, Birmingham, Ala.

2.40 to 3.00 1420—WJBO, Baton Rouge, La.

2.50 to 3.10 1210—WGCM, Gulfport, Miss.

3.00 to 3.20 1500—WRDW, Augusta, Ga.
1200—WHBY, Green Bay, Wis.
1310—WDAH, El Paso, Tex.

3.10 to 3.30 1240—WKAQ, San Juan, P. R.
1420—WJMS, Ironwood, Mich.
1370—KLUF, Galveston, Tex.

3.20 to 3.40 1360—WCSC, Charleston, S. C.
1210—WEDC, Chicago, Ill.
1310—KTSM, El Paso, Tex.

3.30 to 3.50 1440—WBIG, Greensboro, N. C.
1370—KGKL, San Angelo, Tex.

3.40 to 4.00 1340—WCOA, Pensacola, Fla.
1210—WSBC, Chicago, Ill.
1310—KFPJ, Greenville, Tex.

3.50 to 4.10 1360—WQBC, Vicksburg, Miss.
1420—KFIZ, Fond du Lac, Wis.
1370—KMAC, San Antonio, Tex.

4.00 to 4.20 580—WDBO, Orlando, Fla.
1210—WEBQ, Harrisburg, Ill.
1310—KFYO, Lubbock, Tex.

4.10 to 4.30 1430—WNBR, Memphis, Tenn.
1200—WMPC, Lapeer, Mich.
1370—KONO, San Antonio, Tex.

4.20 to 4.40 560—WQAM, Miami, Fla.
1210—WHBF, Rock Island, Ill.

4.30 to 4.50 1220—WDAE, Tampa, Fla.
1500—WKBZ, Muskegon, Mich.
1370—KFJM, Grand Forks, N. D.

4.40 to 5.00 1210—WCBS, Springfield, Ill.

4.50 to 5.10 880—WCOC, Meridian, Miss.
1500—WKBV, Richmond, Ind.

5.00 to 5.20 1300—WIOD, Miami, Fla.
1210—WTAX, Springfield, Ill.
1230—KGBX, Springfield, Mo.

5.10 to 5.30 1260—WTOC, Savannah, Ga.
1370—WHBD, Mt. Orab, O.
1420—KCMC, Texarkana, Ark.

5.20 to 5.40 1210—WHBU, Anderson, Ind.

5.30 to 5.50 1370—WIBM, Jackson, Mich.
1420—KGFJ, Shawnee, Okla.

5.40 to 6.00 1210—WOMT, Manitowoc, Wis.
1500—KNOW, Austin, Tex.

FIRST FRIDAY

3.00 to 3.20 1210—WJW, Akron, O.
1310—KRMD, Shreveport, La.

3.10 to 3.30 1420—WPAD, Paducah, Ky.
1500—KOTN, Pine Bluff, Ark.

3.20 to 3.40 1210—WCOL, Columbus, O.
1310—KFXR, Oklahoma City, Okla.

3.30 to 3.50 1420—WELL, Battle Creek, Mich.
1200—KGEK, Sterling, Colo.

3.40 to 4.00 1210—WALR, Zanesville, O.
1310—KFPL, Dublin, Tex.

3.50 to 4.10 1420—WMBC, Detroit, Mich.
1200—WCAAT, Rapid City, S. D.

4.00 to 4.20 1310—WFDF, Flint, Mich.
1240—KGCU, Mandan, N. D.

4.10 to 4.30 1200—WFBE, Cincinnati, O.
1370—KWYO, Sheridan, Wyo.

4.20 to 4.40 1450—WGAR, Cleveland, O.
1240—KLPJ, Minot, N. D.

4.30 to 4.50 1200—WCLD, Janesville, Wis.
1370—KGFJ, Oklahoma City, Okla.

4.40 to 5.00 1310—WCLS, Joliet, Ill.
1420—KABC, San Antonio, Tex.

4.50 to 5.10 1200—WJBL, Decatur, Ill.
1370—KFJZ, Fort Worth, Tex.

5.00 to 5.20 1500—WJBK, Detroit, Mich.
1430—KWCR, Des Moines, Ia.

5.10 to 5.30 1210—WIBU, Poyette, Wis.
1500—KGFJ, Corpus Christi, Tex.

5.20 to 5.40 1370—WHDF, Calumet, Mich.
1420—WLBK, Kansas City, Kan.

5.30 to 5.50 1210—WCRW, Chicago, Ill.
1500—KGGK, Tyler, Tex.

5.40 to 6.00 1330—WTAQ, Eau Claire, Wis.
1420—WMBH, Joplin, Mo.

5.50 to 6.10 1210—WJIM, Lansing, Mich.

FIRST SATURDAY

2.10 to 2.30 1210—WBRB, Red Bank, N. J.

2.20 to 2.40 1500—WWRL, Woodside, N. Y.

2.30 to 2.50 1210—WGNV, Chester Twp. N. Y.

2.40 to 3.00 1500—WMBQ, Brooklyn, N. Y.

2.50 to 3.10 1210—WGBB, Freeport, N. Y.

3.00 to 3.20 1430—WOKO, Albany, N. Y.
1200—WJBC, Bloomington, Ill.
1290—KTRH, Houston, Tex.

3.10 to 3.30 1370—WGI, Fort Wayne, Ind.
1210—KFPW, Fort Smith, Ark.
810—WNYC, New York City.

3.20 to 3.40 1200—WWAE, Hammond, Ind.
1120—WTAU, College Station, Tex.

3.30 to 3.50 1130—WQV, New York City.
1310—WLBC, Muncie, Ind.
1210—KASA, Elk City, Okla.

3.40 to 4.00 1180—WINS, New York City.
1200—WFAM, South Bend, Ind.
1270—KWLC, Decorah, Ia.

3.50 to 4.10 1280—WCAP, Asbury Park, N. J.

4.00 to 4.20 610—WJAY, Cleveland, O.
1270—KGCA, Decorah, Ia.

4.10 to 4.30 1280—WTNJ, Trenton, N. J.
1430—WBNS, Columbus, O.
1210—KFVS, Cape Girardeau, Mo.

4.20 to 4.40 920—WWJ, Detroit, Mich.
780—KGHJ, Billings, Mont.

4.30 to 4.50 1380—KQV, Pittsburgh, Pa.
1210—KDLR, Devils Lake, N. D.

4.40 to 5.00 1420—WLAP, Lexington, Ky.

4.50 to 5.10 1380—WSMK, Dayton, O.
1200—KFXJ, Grand Junction, Colo.

5.00 to 5.20 940—WAVE, Louisville, Ky.
560—KFDM, Beaumont, Tex.

5.10 to 5.30 1320—WADC, Akron, O.
1210—KWTN, Watertown, S. D.

5.20 to 5.40 1340—WSPD, Toledo, O.
 760—WEW, St. Louis, Mo.
 5.30 to 5.59 1210—KWEA, Shreveport, La.
 5.40 to 6.00 880—WSUI, Iowa City, Ia.
 5.50 to 6.10 1230—KGGM, Albuquerque, N. M.

FIRST SUNDAY

3.00 to 3.20 1290—KLCN, Blytheville, Ark.
 3.30 to 3.50 1440—KXYZ, Houston, Tex.
 3.59 to 4.10 1400—KTUL, Tulsa, Okla.
 4.00 to 4.20 1260—KPAQ, Port Arthur, Tex.
 4.10 to 4.30 1340—KGDY, Huron, S. D.
 4.20 to 4.40 1260—KRGV, Weslaco, Tex.
 4.50 to 5.10 890—KARK, Little Rock, Ark.
 5.00 to 5.20 570—KGKO, Wichita, Falls, Tex.
 5.20 to 5.40 1010—WNAD, Norman, Okla.
 5.40 to 6.00 1260—KUOA, Fayetteville, Ark

CANADIAN FREQUENCY CHECKS

Following is a list of eastern Canadian stations required to transmit special test programs the 19th and 20th of each month for the CRC monitor at Ottawa. Time is A. M., and Eastern Standard:

1.11 to 1.19 CHNS, 930 kes., Halifax Nova Scotia.
 1.21 to 1.29 CFCY, 630 kes., Charlottetown, P. E. I.
 1.31 to 1.39 CJLS, 1310 kes., Yarmouth, Nova Scotia.
 1.41 to 1.49 CRCS, 950 kes., Chicoutimi, Quebec.
 1.51 to 1.59 CHNJ, 1120 kes., St. John, N. B.
 2.01 to 2.09 CFNB, 550 kes., Fredericton, N. B.
 2.11 to 2.19 CHRC, 580 kes., Quebec City, Quebec.
 2.21 to 2.29 CFCU, 930 kes., North Bay, Ontario.
 2.31 to 2.39 CFTL, 730 kes., London, Ontario.
 2.41 to 2.49 CJKL, 1310 kes., Kirkland Lake, Ontario.
 2.51 to 2.59 CKCL, 580 kes., Toronto, Ontario.
 3.01 to 3.09 CKTB, 1200 kes., Port Dalhousie, Ontario.
 3.11 to 3.19 CHNC, 1210 kes., New Carlisle, Quebec.
 3.21 to 3.29 CKNC, 1410 kes., Toronto, Ontario.
 3.31 to 3.39 CFCO, 600 kes., Chatham, Ontario.

THE MONTH'S CHANGES

DELETIONS

1210 WKFI Greenville, Miss.

FREQUENCIES

560 WIS, Columbia, S. C., from 1010
 920 CMX, Havana, Cuba, from 900
 910 XENT, Nuevo Laredo, Tamps, from 1110
 1230 KGBX, Springfield, Mo., from 1310
 1290 KTRH, Houston, Tex., from 1330
 1375 CMCU, Havana, Cuba, from 1220
 1410 CKGB, Timmins, Ont., from 1420
 1410 CKNC, Toronto, Ont., from 1420
 1435 CHGS, Summerside, P. E. I., from 1500
 1450 COK, Havana, Cuba, from 1370

POWER

630 CFCY, Charlottetown, P. E. I., from 500 to 1000
 920 WPEN, Phila., Pa., from 100 to 250
 930 CHNS, Halifax, N. S., from 500 to 1000
 990 XEAF, Nogales, Son., from 750 to 500
 1320 KSO, Des Moines, Ia., from 250 to 500
 1450 CFCT, Victoria, B. C., from 50 to 75

LOCATION

1020 KYW, to Philadelphia, Pa.
 1430 KWCR to Des Moines, Ia.
 1500 WKEU, to Griffin, Ga.

NEW STATIONS AND CALLS

900 WMFI, New Haven, Conn.
 1120 CKX, Brandon, Man.
 1120 WMFH, Boston, Mass.
 1210 WMFG, Hibbing, Minn.
 1210 WPAX, Thomasville, Ga., (from WQDX)
 1260 CFRN, Edmonton, Alta. (from CFTP).
 1280 XEG, Ensenada, B. C., Mex.
 1310 KIUF, Santa Fe, N. Mex.
 1310 WMFF, Plattsburg, N. Y.
 1370 KFRO, Longview, Tex.
 1370 WMFD, Wilmington, N. C.
 1380 WMFE, New Britain, Conn.
 1420 KABR, Aberdeen, S. D.

OWNERSHIP

1210—WPAX, Thomasville, Ga., (was WQDX) to H. Wimpy.

AUSTRALIAN AND NEW ZEALAND STATIONS

CALL	LOCATION	POWER	KCS.	CALL	LOCATION	POWER	KCS.
2CO	Corowa, Aust.	7500	560	3LO	Melbourne, Aust.	4500	800
2YA	Wellington, N. Z.	5000	570	2BL	Sydney, Aust.	4000	855
7ZL	Hobart, Aust.	3000	580	6PR	Perth, Aust.	500	880
3AR	Melbourne, Aust.	4500	610	4RK	Rockhampton, Aust.	5000	910
4ZP	Invercargill, N. Z.	500	620	3UZ	Melbourne, Aust.	500	930
5CK	Crystal Brook, Aust.	7500	630	2GB	Sydney, Aust.	3000	949
1YA	Auckland, N. Z.	500	650	2UE	Sydney, Aust.	3000	1025
2FC	Sydney, Aust.	4000	665	5PI	Crystal Brook, Aust.	2000	1041
6WF	Perth, Aust.	5000	690	2CA	Canberra, Aust.	500	1050
3YA	Christchurch, N. Z.	2500	720	2KY	Sydney, Aust.	1000	1070
5CL	Adelaide, Aust.	5000	730	6AM	Northam, Aust.	500	1090
4QG	Brisbane, Aust.	5000	760	2HD	Newcastle, Aust.	500	1110
4YA	Dunedin, N. Z.	2500	790				

MICRO CHATS

Twenty-one years ago a runaway boy from New York dodged the hook long enough to make fifty cents in an amateur night show at the old Bowdoin Square theatre in Boston. The fifty cents looked big because Phil Baker was hungry and broke. Now, the famous jester is back in Boston to star in Lew Browne's musical revue, "Calling All Stars," which opened recently, and to continue his weekly broadcasts over NBC networks from that city. After that night twenty-one years ago, newsboy Phil went back to New York. Eventually he became secretary to Carl Laemmle at the old IMP film studios where Mary and Lottie Pickford and King Baggot were the reigning stars. He spent leisure hours at a movie house around the corner. One night the pianist was taken ill and Phil stepped in to pinch hit. That was his real start in the show business. Then into vaudeville with a chap named Ben Bernie changing over from piano to accordion. From that time his path led straight and sure through musical comedy, night clubs and movies to his present starring program.

Ralph Kirberry, (The Dream Singer) whose baritone solos are heard during the Treasure Chest broadcasts on the NBC-WEAF network Sundays at 2 P. M., EST, and each Thursday at noon, EST, may soon be singing on the other side of the Atlantic. Several English managers are negotiating with Kirberry for a London music hall engagement. They were attracted by his voice on phonograph recordings and discovering his radio and stage popularity in this country, decided to try to present him to their audiences.

Two elaborate three-hour radio shows, star-studded with operatic, movie, theatrical and literary figures, will be presented over the nationwide WABC-Columbia network as Christmas and New Year gifts to the radio listeners of the country by a leading automobile manufacturer. It is expected that 100 stations will carry these marathon revues to loud speakers in the homes of the nation. Lionel Barrymore, distinguished actor of stage and screen, will make his microphone debut as "Scrooge" in a condensed version of "A Christmas Carol" in the Christmas Day show. The addition of the three-hour period on New Year's day will constitute radio's greatest combination of concentrated time, talent and coverage

ever attempted by a single sponsor. This heralding of 1935, with entertainment galore, will come from New York, Chicago and Hollywood.



Tony Wons, friendly host of "The House by the Side of the Road" program on NBC-WEAF network every Sunday afternoon at 5:30, E.S.T.

Plans of the American Broadcasting System-WMCA network to broadcast a ghost story from what was said to be a haunted house went awry when the occupants of the place in Astoria, Long Island, denied it was overrun with ghosts. There had been reported the presence of a poltergeist and the spirit of a murdered woman and an investigator was sent out by the network to seek permission to make the broadcast. It is a rooming house and the landlady declared someone in the neighborhood was trying to ruin her business by circulating rumors of apparitions and strange happenings in her house. The investigator admits, however, that he wouldn't want to spend a night there.

Ben Bernie is one of the few entertainers who ad libs on the air. His monologue specialties, before, during and after song numbers are extemporaneous. Dialogue, with others participating in the NBC broadcasts, is first reduced to writing and then rehearsed,

but when the old maestro is alone at the mike he speaks as his fancy dictates.

Intended directly for listeners who are afflicted or confined to their beds, a new program called the "Shut-In Hour" is on the ABS-WMCA network every Monday, Wednesday and Friday from 1:30 to 1:45 P. M., EST.

An entirely new note in radio showmanship was successfully executed recently when Enoch Light and his orchestra, heard regularly over the Columbia network, abandoned all accepted audition methods, substituted originality, and won the most coveted winter engagement of the year at the Roney-Plaza, Miami Beach, Fla. He devised a plan after thirty-seven bands had auditioned and been turned down. Light figured the right time for his idea had arrived. First, instead of showing up at the studios in ordinary mufti like other bandsmen, Light appeared in full dress. Secondly, a half hour before the audition was scheduled to start, he roamed through Columbia's offices and studios recruiting young people to dance to his music. In other words, he had an idea that if he could create a ball-room illusion, with people actually dancing to and enjoying his music and with his band appearing just as they would on an important engagement, he would have a good chance of succeeding. He was right.

When Jane Froman, radio and Ziegfeld star, now being featured over the NBC-WEAF network each Sunday at 10:30 P. M., EST, comes to check up on her living expenses for the current year, there will be quite an item for long distance telephone calls. And the calls will all have been made to one destination, Columbia, Mo., for before Jane sings a single song on her program, she calls her mother at Columbia and sings the song over the telephone to her. Jane's mother makes suggestions and corrections and then, and only then, is Jane ready to sing that song on the air. Her mother was Anna Barcafer, a famed vocal teacher and coach, and it was she who started Jane singing when the young soprano was only six years old.

Behind those smooth and apparently effortless rhythms of Guy Lombardo's Royal Canadians during their Wednesday night NBC broadcasts is the story of hours of painstaking rehearsal. Every number must bear the stamp of the distinctive Lombardo style before it receives its final approval of Guy. This approval comes only after prolonged

experiment in placing the instruments in relation to the microphone after conferences with the studio engineer and after Guy himself has laid aside the baton and heard the tune in the studio monitoring room exactly as the listener will hear it. Back in the days when the Lombardo organization was being formed, even before Guy and his three brothers left their native Ontario, Canada, he found a tempo that appealed to him and all through the "hot" music years he held to it. Now it is the same style, so peculiarly his own, that distinguishes the Royal Canadians from other orchestras.

Wayne King, the waltz king of America, will reign for another year on NBC as his contract has been renewed. The renewal marks the fourth year on NBC networks under the same sponsor. He went on the air for the sponsor September 27, 1931, with one program and proved such a tremendous success that other broadcasts soon were added.



Gina Vanna, young operatic soprano, is featured soloist of "The House By the Side of the Road" program.

Elaine Melchior, the Ardala of "Buck Rogers in the 25th Century," was married to Leon F. Anspacher, New York business man, November 15, thereby proving that the villainess can win her man, too.

BROADCASTING STATIONS

(BY FREQUENCIES)

HEARD VERIFIED

540 Kilocycles 555.2 Meters

<input type="checkbox"/>	<input type="checkbox"/>	CJRM	Moose Jaw, Sask.	1000	Jas. Richardson & Sons, Ltd.
<input type="checkbox"/>	<input type="checkbox"/>	HAL	Budapest, No. 1, Hungary	546 120000	

550 Kilocycles 545.1 Meters

<input type="checkbox"/>	<input type="checkbox"/>	CFNB	Fredericton, N. B.	500	Jas. S. Neill & Sons, Ltd.
<input type="checkbox"/>	<input type="checkbox"/>	KFUO	St. Louis, Mo.	500	Evangelical Lutheran Church.
<input type="checkbox"/>	<input type="checkbox"/>	KFYR	Bismarck, N. D.	1000	Mayer Broadcasting Co.
<input type="checkbox"/>	<input type="checkbox"/>	KOAC	Corvallis, Ore.	1000	Oregon State Agr. College.
<input type="checkbox"/>	<input type="checkbox"/>	KSD	St. Louis, Mo.	500	Pu'titzer Publishing Co.
<input type="checkbox"/>	<input type="checkbox"/>	KTSA	San Antonio, Tex.	1000	Southwest Broadcasting Co.
<input type="checkbox"/>	<input type="checkbox"/>	TISO	San Jose, Costa Rica	250	P. F. Saborio.
<input type="checkbox"/>	<input type="checkbox"/>	WDEV	Waterbury, Vt.	500	Harry C. Whitehill.
<input type="checkbox"/>	<input type="checkbox"/>	WGR	Buffalo, N. Y.	1000	Buffalo Broadcasting Corp.
<input type="checkbox"/>	<input type="checkbox"/>	WKRC	Cincinnati, Ohio	1000	WKRC, Inc.
<input type="checkbox"/>	<input type="checkbox"/>	WSVA	Staunton, Va.	500	Marion K. Gilliam.
<input type="checkbox"/>	<input type="checkbox"/>		Beromunster, Switz.	556 120000	

560 Kilocycles 535.4 Meters

<input type="checkbox"/>	<input type="checkbox"/>	KFDM	Beaumont, Texas	500	Sabine Broadcasting Co.
<input type="checkbox"/>	<input type="checkbox"/>	KLZ	Denver, Colo.	1000	Reynolds Radio Co., Inc.
<input type="checkbox"/>	<input type="checkbox"/>	KTAB	San Francisco, Cal.	1000	Associated Broadcasters, Ltd.
<input type="checkbox"/>	<input type="checkbox"/>	KWTO	Springfield, Mo.	1000	KGBX, Inc.
<input type="checkbox"/>	<input type="checkbox"/>	TGWV	Guatemala City, Gua.	10000	Radio Nacional de Guatemala
<input type="checkbox"/>	<input type="checkbox"/>	WFI	Philadelphia, Pa.	500	WFI Broadcasting Co.
<input type="checkbox"/>	<input type="checkbox"/>	WIND	Gary, Ind.	1000	Johnson-Kennedy Broadcasting Corp.
<input type="checkbox"/>	<input type="checkbox"/>	WIS	Columbia, S. C.	1000	WIS, Inc.
<input type="checkbox"/>	<input type="checkbox"/>	WLIT	Philadelphia, Pa.	500	Lit Bros. Broadcasting System, Inc.
<input type="checkbox"/>	<input type="checkbox"/>	WNOX	Knoxville, Tenn.	1000	WNOX, Inc.
<input type="checkbox"/>	<input type="checkbox"/>	WQAM	Miami, Fla.	1000	Miami Broadcasting Co., Inc.
<input type="checkbox"/>	<input type="checkbox"/>	XEAO	Mexicali, Baja Cal.	250	Luis L. Castro.

570 Kilocycles 526.0 Meters

<input type="checkbox"/>	<input type="checkbox"/>	KGKO	Wichita Falls, Texas	250	Wichita Falls Broadcasting Co.
<input type="checkbox"/>	<input type="checkbox"/>	KMTR	Hollywood, Cal.	1000	KMTR Radio Corp.
<input type="checkbox"/>	<input type="checkbox"/>	KVI	Tacoma, Wash.	1000	Puget Sound Broadcasting Co.
<input type="checkbox"/>	<input type="checkbox"/>	WKBN	Youngstown, Ohio	500	WKBN Broadcasting Corp.
<input type="checkbox"/>	<input type="checkbox"/>	WMCA	New York, N. Y.	500	Federal Broadcasting Corp.
<input type="checkbox"/>	<input type="checkbox"/>	WNAX	Yankton, S. D.	1000	The House of Gurney, Inc.
<input type="checkbox"/>	<input type="checkbox"/>	WOSU	Columbus, Ohio	750	Ohio State University
<input type="checkbox"/>	<input type="checkbox"/>	WSYR	Syracuse, N. Y.	250	Central New York Broadcasting Corp.
<input type="checkbox"/>	<input type="checkbox"/>	WSYU	Syracuse, N. Y.	250	Syracuse University
<input type="checkbox"/>	<input type="checkbox"/>	WWNC	Asheville, N. C.	1000	Citizen Broadcasting Co., Inc.
<input type="checkbox"/>	<input type="checkbox"/>	2YA	Wellington, N. Z.	20000	New Zealand Broadcasting Board.
<input type="checkbox"/>	<input type="checkbox"/>		Stuttgart, Germany	574 100000	Rundfunk Stuttgart.

580 Kilocycles 516.9 Meters

<input type="checkbox"/>	<input type="checkbox"/>	CHRC	Quebec, Que.	100	CHRC, Ltd.
<input type="checkbox"/>	<input type="checkbox"/>	CKCL	Toronto, Ont.	100	Dominion Battery Co., Ltd.
<input type="checkbox"/>	<input type="checkbox"/>	CKUA	Edmonton, Alta.	500	University of Alberta.
<input type="checkbox"/>	<input type="checkbox"/>	KMJ	Fresno, Cal.	500	James McClatchy Co.
<input type="checkbox"/>	<input type="checkbox"/>	KSAC	Manhattan, Kans.	500	State College of Agriculture.
<input type="checkbox"/>	<input type="checkbox"/>	WCBS	Charleston, W. Va.	500	Charleston Broadcasting Corp.
<input type="checkbox"/>	<input type="checkbox"/>	WDBO	Orlando, Fla.	250	Orlando Broadcasting Co., Inc.
<input type="checkbox"/>	<input type="checkbox"/>	WIBW	Topeka, Kans.	1000	Topeka Broadcasting Assn., Inc.
<input type="checkbox"/>	<input type="checkbox"/>	WTAG	Worcester, Mass.	500	Worcester Telegram Pub. Co.

590 Kilocycles 508.2 Meters

<input type="checkbox"/>	<input type="checkbox"/>	KHQ	Spokane, Wash.	1000	Louis Wasmer, Inc.
<input type="checkbox"/>	<input type="checkbox"/>	LS10	Buenos Aires, Arg.	3500	Casa America.
<input type="checkbox"/>	<input type="checkbox"/>	WEEI	Boston, Mass.	1000	Edison Electric Illuminating Co.
<input type="checkbox"/>	<input type="checkbox"/>	WKZO	Kalamazoo, Mich.	1000	John E. Fetzer.
<input type="checkbox"/>	<input type="checkbox"/>	WOW	Omaha, Neb.	1000	Woodmen of the World.
<input type="checkbox"/>	<input type="checkbox"/>	XEPN	Piedras Negras, Coah.	50000	Piedras Negras Broadcasting Co.

600 Kilocycles 499.7 Meters

<input type="checkbox"/>	<input type="checkbox"/>	CFCF	Montreal, Que.	500	Canadian Marconi Co.
<input type="checkbox"/>	<input type="checkbox"/>	CFCO	Chatham, Ont.	100	John Beardall.
<input type="checkbox"/>	<input type="checkbox"/>	CJOR	Vancouver, B. C.	500	G. C. Chandler.
<input type="checkbox"/>	<input type="checkbox"/>	KFSD	San Diego, Cal.	1000	Airfan Radio Corp., Ltd.
<input type="checkbox"/>	<input type="checkbox"/>	WCAC	Storrs, Conn.	500	Connecticut State College.
<input type="checkbox"/>	<input type="checkbox"/>	WCAB	Baltimore, Md.	500	Monumental Radio Co.
<input type="checkbox"/>	<input type="checkbox"/>	WICC	Bridgeport, Conn.	500	Southern Connecticut Broadcasting Corp.
<input type="checkbox"/>	<input type="checkbox"/>	WMT	Waterloo, Iowa	1000	Waterloo Broadcasting Co.
<input type="checkbox"/>	<input type="checkbox"/>	WREC	Memphis, Tenn.	1000	WREC, Inc.

HEARD VERIFIED

610 Kilocycles 491.5 Meters

□	□	CX4	Havana, Cuba	250	Raoul Karman.
□	□	CX4	Montevideo, Uruguay	1000	
□	□	FXN	St. Pierre, Miquelon Is.	250	St. Pierre Radio Club.
□	□	KFRG	San Francisco, Cal.	1000	Don Lee, Inc.
□	□	KZRM	Manila, P. I.	50000	
□	□	WDAF	Kansas City, Mo.	1000	Kansas City Star Co.
□	□	WIP	Philadelphia, Pa.	500	Pennsylvania Broadcasting Co.
□	□	WJAY	Cleveland, Ohio	500	Cleveland Radio Broadcasting Corp.
□	□	XFX	Mexico City, D. F.	500	Secretaria de Educacion Publica.
□	□	3AR	Melbourne, Australia	4500	National Broadcasting Service.

620 Kilocycles 483.6 Meters

□	□	KGW	Portland, Ore.	1000	Oregonian Publishing Co.
□	□	KTAR	Phoenix, Ariz.	1000	KTAR Broadcasting Co.
□	□	WFLA	Clearwater, Fla.	1000	Florida West Coast Broadcasting Co.
□	□	WJJB	Greensburg, Pa.	250	Pennsylvania Radio Supply House
□	□	WLBZ	Bangor, Me.	500	Maine Broadcasting Co., Inc.
□	□	WSUN	St. Petersburg, Fla.	1000	Florida West Coast Broadcasting Co.
□	□	WTMJ	Milwaukee, Wisc.	1000	The Journal Co.

630 Kilocycles 475.9 Meters

□	□	CFCY	Charlottetown, P. E. I.	1000	Island Radio Broadcasting Co.
□	□	CJGX	Yorkton, Sask.	500	Dawson, Richardson Publications, Ltd.
□	□	CKOV	Kelowna, B. C.	100	Okanagan Broadcasters, Ltd.
□	□	CMBY	Havana, Cuba	250	Callajas-Estafani
□	□	KFRU	Columbia, Mo.	500	KFRU, Inc.
□	□	KGFX	Pierre, S. D.	200	Dana McNeil.
□	□	LS3	Buenos Aires, Arg.	4500	"Mayo".
□	□	WGBF	Evansville, Ind.	500	Evansville On The Air, Inc.
□	□	WMAL	Washington, D. C.	250	National Broadcasting Co., Inc.
□	□	WOS	Jefferson City, Mo.	500	State Highway Control.
□	□	WPRO	Providence, R. I.	250	Cherry & Webb Broadcasting Co.
□	□	5CK	Crystal Brook, Aus.	7500	National Broadcasting Service.

640 Kilocycles 468.2 Meters

□	□	KFI	Los Angeles, Cal.	50000	Earle C. Anthony, Inc.
□	□	WAIU	Columbus, Ohio	500	Associated Broadcasting Corp.
□	□	WOI	Ames, Iowa	5000	Iowa State College.
□	□	XEOX	Saltillo, Coah.	250	

650 Kilocycles 461.3 Meters

□	□	CX5	Montevideo, Uruguay	5000	Ministerio Instruccion Publica.
□	□	WSM	Nashville, Tenn.	50000	National Life & Accident Insurance Co.
□	□	1YA	Auckland, N. Z.	500	N. Z. Broadcasting Board.

660 Kilocycles 454.3 Meters

□	□	WAAW	Omaha, Neb.	500	Omaha Grain Exchange.
□	□	WEAF	New York, N. Y.	50000	National Broadcasting Co., Inc.
□	□	XEAL	Mexico City, D. F.	1000	Pan American Radio Co.
□	□		Cologne, Germany	100000	Rundfunk Cologne

670 Kilocycles 447.5 Meters

□	□	LS4	Buenos Aires, Arg.	6000	Juan G. Gonzales Speroni.
□	□	WMAQ	Chicago, Ill.	50000	National Broadcasting Co., Inc.

680 Kilocycles 440.9 Meters

□	□	CMAF	Havana, Cuba	1000	International Broadcasting Co.
□	□	CMCQ	Havana, Cuba	1000	Andres Martinez.
□	□	HJN	Bogota, Colombia	500	Ministry of Posts.
□	□	KFEQ	St. Joseph, Mo.	2500	Seroggin & Co. Bank.
□	□	KPO	San Francisco, Cal.	50000	National Broadcasting Co., Inc.
□	□	RDN	San Salvador, E. S.	500	Republic of El Salvador.
□	□	VAS	Glace Bay, N. S.	2000	Canadian Marconi Co., Ltd.
□	□	WOWR	St. John's, Nfld.	500	Wesley United Church.
□	□	WPTF	Raleigh, N. C.	1000	Durham Life Insurance Co.

690 Kilocycles 434.5 Meters

□	□	CFRB	Toronto, Ont.	10000	Rogers Majestic Co., Ltd.
□	□	CJGJ	Calgary, Alta.	100	Albertan Publishing Co., Ltd.
□	□	NAA	Arlington, Va.	1000	United States Navy.
□	□	XET	Monterrey, N. L.	500	Cadena Radiodifusora Mexicana, S. A.

700 Kilocycles 428.3 Meters

□	□	WLW	Cincinnati, Ohio	500000	Crosley Radio Corp.
---	---	-----	------------------	--------	---------------------

HEARD VERIFIED

710 Kilocycles	422.3 Meters		
☐	KMPC	Beverly Hills, Cal.	500 Beverly Hills Broadcasting Corp.
☐	KPCB	Seattle, Wash.	250 Queen City Broadcasting Co.
☐	LSI	Buenos Aires, Arg.	5000 Municipalidad de Buenos Aires.
☐	WOR	Newark, N. J.	5000 Bamberger Broadcasting Service, Inc.
☐	XEN	Mexico City, D. F.	1000 Cerveceria Modelo, S. A.
720 Kilocycles	416.4 Meters		
☐	KZEG	Manila, P. I.	1000 Erlanger & Galinger, Inc.
☐	WGN	Chicago, Ill.	50000 WGN, Inc.
☐	3YA	Christchurch, N. Z.	2500 N. Z. Broadcasting Board.
730 Kilocycles	410.7 Meters		
☐	CFPL	London, Ont.	100 Free Press & Printing Co.
☐	CJCA	Edmonton, Alta.	500 Taylor & Pearson, Ltd.
☐	CKAC	Montreal, Que.	5000 La Presse Publishing Co., Ltd.
☐	CMK	Havana, Cuba	3150 National Broadcasting Co. of Cuba
☐	5CL	Adelaide, Australia	5000 National Broadcasting Service.
740 Kilocycles	405.2 Meters		
☐	KMMJ	Clay Center, Neb.	1000 M. M. Johnson Co.
☐	KTRB	Modesto, Cal.	250 T. R. McTammany & W. H. Bates, Jr.
☐	WHEB	Portsmouth, N. H.	250 Granite State Broadcasting Corp.
☐	WSB	Atlanta, Ga.	50000 Atlanta Journal.
☐		Munich, Germany	745 10000 Rundfunk Munich.
750 Kilocycles	399.8 Meters		
☐	CMCW	Havana, Cuba	150 Vilarino y Cervantes
☐	KGU	Honolulu, Hawaii	2500 Advertiser Publishing Co.
☐	WJR	Detroit, Mich.	10000 WJR, Inc.
☐	XEAM	Nuevo Laredo, Tams.	50 Edificio Banco Longoria
760 Kilocycles	394.5 Meters		
☐	KXA	Seattle, Wash.	250 American Radio Telephone Co.
☐	WBAL	Baltimore, Md.	10000 WBAL Broadcasting Co.
☐	WEW	St. Louis, Mo.	1000 St. Louis University
☐	WJZ	New York, N. Y.	50000 National Broadcasting Co., Inc.
☐	XEBC	Agua Caliente, B. C.	5000 Agua Caliente Broadcasting Station.
☐	4QG	Brisbane, Australia	5000 National Broadcasting Service.
770 Kilocycles	389.4 Meters		
☐	KFAB	Lincoln, Neb.	5000 KFAB Broadcasting Co.
☐	WBBM	Chicago, Ill.	25000 WBBM Broadcasting Corp.
780 Kilocycles	384.4 Meters		
☐	CHWK	Chilliwack, B. C.	100 Chilliwack Broadcasting Co., Ltd.
☐	CMBS	Havana, Cuba	150 Enrique Artalajo
☐	KELW	Burbank, Cal.	500 Evening Herald Publishing Co.
☐	KFDY	Brookings, S. D.	1000 South Dakota State College.
☐	KFQD	Anchorage, Alaska	250 Anchorage Radio Club, Inc.
☐	KGIL	Billings, Mont.	1000 N. W. Auto Supply Co.
☐	KTM	Los Angeles, Cal.	500 Evening Herald Publishing Co.
☐	WEAN	Providence, R. I.	500 Shepard Broadcasting Service, Inc.
☐	WMC	Memphis, Tenn.	1000 WMC, Inc.
☐	WTAR	Norfolk, Va.	500 WTAR Radio Corp.
☐	XEYZ	Mexico, D. F.	10000 Angel M. Diez.
☐		Leipzig, Germany	785 12000 Rundfunk Leipzig.
790 Kilocycles	379.5 Meters		
☐	CMJK	Camaguey, Cuba	150 Comp. Cubana Nacl. de Radio.
☐	KGO	San Francisco, Cal.	7500 National Broadcasting Co., Inc.
☐	LR10	Buenos Aires, Arg.	8000 "Cultura."
☐	WGY	Schenectady, N. Y.	50000 National Broadcasting Co., Inc.
800 Kilocycles	374.8 Meters		
☐	TIGP	San Jose, Costa Rica	75 Gonzalo Pinto.
☐	WBAP	Fort Worth, Texas	50000 Carter Publications, Inc.
☐	WFAA	Dallas, Texas	50000 Morning News and Journal.
☐	WTBO	Cumberland, Md.	250 Associated Broadcast Corp.
☐	3LO	Melbourne, Australia	4500 National Broadcasting Service.
810 Kilocycles	370.2 Meters		
☐	WCCO	Minneapolis, Minn.	50000 N. W. Broadcasting, Inc.
☐	WNYC	New York, N. Y.	1000 City of New York.
☐	XFC	Agua Calientes, Arg.	350
820 Kilocycles	365.6 Meters		
☐	WHAS	Louisville, Ky.	50000 Courier Journal.
☐	XEP	Mexico, D. F.	500 Cia Difusora de Mexico, S. A.
☐	XETW	Mexico, D. F.	500 Rafael M. Pena.

HEARD VERIFIED

830 Kilocycles 361.2 Meters

□	□	CMC	Havana, Cuba.	500	Radio Corp. of Cuba.
□	□	KOA	Denver, Colo.	50000	General Electric Co.
□	□	LR5	Buenos Aires, Arg.	27000	A. B. Dougall.
□	□	WEEU	Reading, Pa.	1000	Berks Broadcasting Co.
□	□	WHDH	Boston, Mass.	1000	Matheson Radio Co.
□	□	WRUF	Gainesville, Fla.	5000	State University.

840 Kilocycles 356.9 Meters

□	□	CFQC	Saskatoon, Sask.	1000	Electric Shop, Ltd.
□	□	CMQ	Havana, Cuba	5000	Jose Fernandez.
□	□	CRCT	Toronto, Ont.	5000	Canadian Radio Broadcasting Com.
□	□	VOGY	St. John's, Nfd.	400	Newfoundland Broadcasting Co.

850 Kilocycles 352.7 Meters

□	□	KIEV	Glendale, Cal.	250	Cannon System, Ltd.
□	□	WWL	New Orleans, La.	100000	Loyola University.
□	□	WWPA	Clarion, Pa.	250	Clarion Broadcasting Co.
□	□	XEXX	Mexico, D. F.	500	
□	□	2BL	Sydney, Australia	5000	National Broadcasting Service.

860 Kilocycles 348.6 Meters

□	□	CMCX	Havana, Cuba	150	New Station.
□	□	WABC	New York, N. Y.	50000	Atlantic Broadcasting Corp.
□	□	WBOQ	New York, N. Y.	50000	Atlantic Broadcasting Co.
□	□	W4B	Kansas City, Mo.	500	WHB Broadcasting Co.
□	□	XEMO	Tijuana, B. C.	2500	Radio Station XEMO.

870 Kilocycles 344.6 Meters

□	□	WENR	Chicago, Ill.	50000	Great Lakes Broadcasting Co.
□	□	WLS	Chicago, Ill.	50000	Agricultural Broadcasting Co.

880 Kilocycles 340.7 Meters

□	□	CFJC	Kamloops, B. C.	100	Review Publishing Co., Ltd.
□	□	CRCO	Ottawa, Ont.	1000	Canadian Radio Com.
□	□	KFKA	Greeley, Colo.	500	Mid-Western Radio Corp.
□	□	KLX	Oakland, Cal.	1000	Tribune Publishing Co.
□	□	KPOF	Denver, Colo.	500	Pillar of Fire.
□	□	WCOC	Meridian, Miss.	500	Mississippi Broadcasting Co., Inc.
□	□	WGBI	Scranton, Pa.	500	Scranton Broadcasting, Inc.
□	□	WPHR	Petersburg, Va.	500	WLBG, Inc.
□	□	WQAN	Scranton, Pa.	250	Scranton Times.
□	□	WSUI	Iowa City, Iowa	500	State University of Iowa.
□	□	YV2RC	Caracas, Venezuela	100	

890 Kilocycles 336.9 Meters

□	□	CJIC	S. Ste. Marie, Ont.	100	J. G. Hyland & J. C. Whitby.
□	□	KARK	Little Rock, Ark.	250	Arkansas Radio & Equipment Co.
□	□	KFNF	Shenandoah, Iowa	500	Henry Field Co.
□	□	KUSD	Vermillion, S. D.	500	University of South Dakota.
□	□	WBAA	West Lafayette, Ind.	1000	Purdue University.
□	□	WGST	Atlanta, Ga.	500	Georgia School of Technology.
□	□	WILL	Urbana, Ill.	250	University of Illinois.
□	□	WJAR	Providence, R. I.	500	Outlet Co.
□	□	WMMN	Fairmont, W. Va.	250	A. M. Rowe, Inc.
□	□	XEW	Mexico City, D. F.	50000	Cadena Radiodifusora Mexicana.

900 Kilocycles 333.1 Meters

□	□	KGA	Spokane, Wash.	5000	N. W. Broadcasting Co., Inc.
□	□	KGBU	Ketchikan, Alaska	500	Alaska Radio & Service Corp.
□	□	KHJ	Los Angeles, Cal.	1000	Don Lee Broadcasting System.
□	□	KSEI	Pocatello, Idaho	250	Radio Service Corp.
□	□	WBEN	Buffalo, N. Y.	1000	Buffalo Evening News.
□	□	WJAX	Jacksonville, Fla.	1000	City of Jacksonville.
□	□	WKY	Oklahoma City, Okla.	1000	Oklahoma Publishing Co.
□	□	WLBL	Stevens Point, Wisc.	2500	Wisconsin Dept. of Agriculture & Markets.
□	□	WMFI	New Haven, Conn.	500	Patrick H. Coole.
□	□		Hamburg, Germany	100000	Nordischer Rundfunk.

910 Kilocycles 329.6 Meters

□	□	CJAT	Trail, B. C.	250	Kootenay Broadcasting Co., Ltd.
□	□	CMHW	Cienfuegos, Cuba	100	
□	□	CRCM	Montreal, Que.	5000	Canadian Radio Com.
□	□	LR2	Buenos Aires, Arg.	8500	Alfredo Schroeder.
□	□	TICR	San Jose, Costa Rica	75	Government of Costa Rica.
□	□	XENT	Nuevo Laredo, Tamps.	70000	Cia Industrial Universal, S. A.
□	□	4RK	Rockhampton, Aus.	5000	National Broadcasting Service.
□	□		Toulouse, France	913 60000	"Radio Toulouse"

HEARD VERIFIED

920 Kilocycles 325.9 Meters

□	□	CMX	Havana, Cuba	1000	Casa "Lavin."
□	□	HHK	Port-au-Prince, Haiti	1000	Haitian Government.
□	□	KFEL	Denver, Colo.	500	Eugene O'Fallon.
□	□	KOMO	Seattle, Wash.	1000	Fishers Blend Station.
□	□	KPRC	Houston, Texas	1000	Houston Printing Co.
□	□	KVOD	Denver, Colo.	500	Colorado Radio Corp.
□	□	WAAF	Chicago, Ill.	500	Drivers Journal.
□	□	WBSO	Boston, Mass.	500	Broadcasting Service Organization.
□	□	WPEN	Philadelphia, Pa.	250	Wm. Penn Broadcasting Co.
□	□	WRAX	Philadelphia, Pa.	250	WRAX Broadcasting Co.
□	□	WSPA	Spartanburg, S. C.	1000	Virgil V. Evans.
□	□	WWJ	Detroit, Mich.	1000	Evening News Association.
□	□	XEAA	Mexicali, B. C.	200	
□	□	XEKL	Leon, Guan.	500	

930 Kilocycles 322.4 Meters

□	□	CFAC	Calgary, Alta.	100	Calgary Herald.
□	□	CFCH	North Bay, Ont.	100	Northern Broadcasting Co., Ltd.
□	□	CFCL	Prescott, Ont.	100	Radio Association of Prescott.
□	□	CHNS	Halifax, N. S.	1000	Maritime Broadcasting Co., Ltd.
□	□	CKPC	Brantford, Ont.	100	Telephone City Broadcast, Ltd.
□	□	CKPR	Fort William, Ont.	50	Dougall Motor Co., Ltd.
□	□	CMJF	Camaguey, Cuba	200	John L. Stowers.
□	□	CMW	Havana, Cuba	1400	Troncosa y Gil.
□	□	KGBZ	York, Neb.	1000	KGBZ Broadcasting Corp.
□	□	KMA	Sherandoah, Iowa	1000	Earl E. May Seed Co.
□	□	KROW	Oakland, Cal.	500	Educational Broadcasting Corp.
□	□	WBRC	Birmingham, Ala.	1000	Birmingham Broadcasting Co., Inc.
□	□	WDBJ	Roanoke, Va.	1000	Times World Corp.

940 Kilocycles 319.0 Meters

□	□	CMKM	Manzanillo, Cuba	100	Jesus Armeste, Merchant y Figuerado.
□	□	KOIN	Portland, Ore.	1000	KOIN, Inc.
□	□	VOAS	St. John's, Nfd.	100	Ayre & Sons, Ltd.
□	□	WAAT	Jersey City, N. J.	500	Bremer Broadcasting Corp.
□	□	WAVE	Louisville, Ky.	1000	WAVE, Inc.
□	□	WCSH	Portland, Me.	1000	Congress Square Hotel Co.
□	□	WDAY	Fargo, N. D.	1000	WDAY, Inc.
□	□	WHA	Madison, Wisc.	1000	University of Wisconsin.
□	□	XEFO	Mexico City, D. F.	5000	Partido Nael. Revolucionario.

950 Kilocycles 315.6 Meters

□	□	CMCD	Havana, Cuba	250	
□	□	CMHD	Caibarien, Cuba	250	Manuel Alvarez.
□	□	CRCS	Chicoutimi, Que.	100	Canadian Radio Commission.
□	□	KFWB	Hollywood, Cal.	1000	Warner Bros.
□	□	KMBC	Kansas City, Mo.	1000	Midland Broadcasting Co.
□	□	LR3	Buenos Aires, Arg.	12000	"Nacional."
□	□	VONF	St. John's Nfd.	5000	Dominion Broadcasting Co., Ltd.
□	□	WRC	Washington, D. C.	500	National Broadcasting Co., Inc.
□	□		Breslau, Germany	60000	Schlessische Funkstude, A. G.

960 Kilocycles 312.3 Meters

□	□	CKY	Winnipeg, Man.	15000	Manitoba Telephone System.
□	□	CMJL	Camaguey, Cuba	50	Enrique Artime.
□	□	XEAW	Reynosa, Tamps.	10000	International Broadcasting Co., S. A.
□	□	YVIRC	Caracas, Venez.	5000	Cia Ama Almacan Americana.
□	□		Paris, France	100000	Poste Parisien.

970 Kilocycles 309.1 Meters

□	□	CMGF	Matanzas, Cuba	100	Bernabe R. de la Torre.
□	□	KJR	Seattle, Wash.	5000	Fishers Blend Station, Inc.
□	□	WCFL	Chicago, Ill.	1500	Chicago Federation of Labor.
□	□	WIBG	Glenside, Pa.	100	WIBG, Inc.
□	□	XES	Tampico, Tams.	250	Fernando Sada.

980 Kilocycles 305.9 Meters

□	□	KDKA	Pittsburgh, Pa.	50000	Westinghouse Electric & Mfg. Co.
□	□	XEAE	Mexicali, B. C.	200	
□	□	XEU	Veracruz, Vera.	250	Fernando Pazos Sosa.

990 Kilocycles 302.8 Meters

□	□	LR4	Buenos Aires, Arg.	20000	"Radio Splendid."
□	□	WBZ	Boston, Mass.	50000	Westinghouse Electric & Mfg. Co.
□	□	WBZA	Springfield, Mass.	1000	Westinghouse Electric & Mfg. Co.
□	□	XEAF	Nogales, Son.	500	Francisco G. Elias.
□	□	XEK	Mexico City, D. F.	100	Arturo Martinez.

HEARD VERIFIED

1000 Kilocycles 299.8 Meters

☐	☐	CMBZ	Havana, Cuba	100	Manuel y G. Salas
☐	☐	KFVD	Los Angeles, Cal.	250	E. L. Cord.
☐	☐	WHO	Des Moines, Iowa	50000	Central Broadcasting Co.

1010 Kilocycles 296.9 Meters

☐	☐	CHML	Hamilton, Ont.	50	Maple Leaf Radio Co., Ltd.
☐	☐	CHWC	Regina, Sask.	500	R. H. Williams & Sons, Ltd.
☐	☐	CKCK	Vancouver, B. C.	100	Vancouver Daily Province.
☐	☐	CKCK	Regina, Sask.	500	Leader-Post, Ltd.
☐	☐	CKCO	Ottawa, Ont.	100	Dr. G. M. Geldert.
☐	☐	CKIC	Wolfville, N. S.	50	Acadia University.
☐	☐	CKWX	Vancouver, B. C.	100	Western Broadcasting Co., Ltd.
☐	☐	CMJO	Ciego de Avila, Cuba	50	Jose M. Rey.
☐	☐	KGGF	Coffeyville, Kans.	1000	H. J. Powell & Stanley Platz.
☐	☐	KQW	San Jose, Cal.	1000	Pacific Agricultural Foundation.
☐	☐	WHN	New York, N. Y.	1000	Marcus Loew Booking Agency.
☐	☐	WNAD	Norman, Okla.	1000	University of Oklahoma.

1020 Kilocycles 293.9 Meters

☐	☐	KYW	Philadelphia, Pa.	10000	Westinghouse Electric & Mfg. Co.
☐	☐	XEJ	Juarez, Chih.	250	Juan G. Buttner.

1030 Kilocycles 291.1 Meters

☐	☐	CFCN	Calgary, Alta.	10000	W. W. Grant & H. G. Love.
☐	☐	CKLW	Windsor, Ont.	5000	Western Ont. Broadcasting Co., Ltd.
☐	☐	CMBC	Havana, Cuba	150	Domingo Fernandez.
☐	☐	CMHI	Santa Clara, Cuba	150	Lavis y Paz.
☐	☐	CMKC	Santiago, Cuba	150	Pinol Batlle y Cia.
☐	☐	LR9	Buenos Aires, Arg.	5000	Gregorio Echeverria.
☐	☐	XEB	Mexico City, D. F.	10000	El Buen Tono, S. A.
☐	☐		Heilsburg, Germany	60000	Deutsche Stunde in Bayern.

1040 Kilocycles 288.3 Meters

☐	☐	CMGH	Matanzas, Cuba	15	Octavui y Julio Alvarez.
☐	☐	KRLD	Dallas, Tex.	10000	KRLD Radio Corp.
☐	☐	KWJJ	Portland, Ore.	500	KWJJ Broadcast Co.
☐	☐	WKAR	East Lansing, Mich.	1000	Michigan State College.
☐	☐	WTIC	Hartford, Conn.	50000	Travelers Broadcasting Service.
☐	☐		Kennes, France	120000	PTT.

1050 Kilocycles 285.5 Meters

☐	☐	CMJG	Camaguey, Cuba	50	Jose Antonio Lefran.
☐	☐	CRCK	Quebec, P. of Q.	1000	Canadian Radio Commission.
☐	☐	CX26	Montevideo, Uruguay	2000	Figuera, Canepa y Cia
☐	☐	KFBI	Abilene, Kans.	5000	Farmers & Bankers Life Insurance Co.
☐	☐	KNX	Hollywood, Cal.	50000	Western Broadcast Co., Inc.

1060 Kilocycles 282.8 Meters

☐	☐	CMCB	Havana, Cuba	150	Metropolitan Building.
☐	☐	KTHS	Hot Springs, Ark.	10000	Chamber of Commerce.
☐	☐	WBAL	Baltimore, Md.	10000	WBAL Broadcasting Co.
☐	☐	WJAG	Norfolk, Neb.	1000	Norfolk Daily News.
☐	☐	XEA	Guadalajara, Jal.	125	Alberto Pato Souza.

1070 Kilocycles 280.2 Meters

☐	☐	KJBS	San Francisco, Cal.	100	Julius Brunton & Sons Co.
☐	☐	WCAZ	Carthage, Ill.	100	Superior Broadcasting Service.
☐	☐	WDZ	Tuscola, Ill.	100	James L. Bush.
☐	☐	WTAM	Cleveland, Ohio	50000	National Broadcasting Co.

1080 Kilocycles 277.6 Meters

☐	☐	WBT	Charlotte, N. C.	50000	Station WBT, Inc.
☐	☐	WCBD	Waukegan, Ill.	5000	Wilbur Glenn Voliva.
☐	☐	WMBI	Chicago, Ill.	5000	Moody Bible Institute.
☐	☐	XEMA	Tampico, Tams.	50	Manuel M. Pier

1090 Kilocycles 275.1 Meters

☐	☐	CMGI	Colon, Cuba	30	Armando Linanza.
☐	☐	CX28	Montevideo, Uruguay	2000	Miquel Biere.
☐	☐	KMOX	St. Louis, Mo.	50000	The Voice of St. Louis, Inc.
☐	☐	WESG	Elmira, N. Y.	1000	Elmira Star Gazette, Inc.

HEARD VERIFIED

1100 Kilocycles 272.6 Meters

□	□	CMCY	Havana, Cuba	500	M. D. Autran.
□	□	CMHA	Sagua la Grande, Cuba	50	Abelardo Menocal.
□	□	CRCV	Vancouver, B. C.	1000	Canadian Radio Com.
□	□	KGDM	Stockton, Cal.	250	E. F. Peffer.
□	□	KWKH	Shreveport, La.	10000	International Broadcasting Corp.
□	□	TIRCA	San Jose, Costa Rica	500	Perry Girton.
□	□	WLWL	New York, N. Y.	5000	Society of St. Paul.
□	□	WPG	Atlantic City, N. J.	5000	Columbia Broadcasting System.
□	□	XEFG	Mexico City, D. F.	250	Ricardo Gonzales Montero.

1110 Kilocycles 270.1 Meters

□	□	KSOO	Sioux Falls, S. D.	1000	Sioux Falls Broadcasting Association.
□	□	LS5	Buenos Aires, Arg.	5000	Rafael Diaz.
□	□	WRVA	Richmond, Va.	5000	Larus & Bro. Co., Inc.

1120 Kilocycles 267.7 Meters

□	□	CHLP	Montreal, Que.	100	La Patrie Publishing Co., Ltd.
□	□	CHSJ	St. John, N. B.	100	N. B. Broadcasting Corp., Ltd.
□	□	CKOC	Hamilton, Ont.	500	Wentworth Radio Broadcasting Co.
□	□	CKX	Brandon, Man.	100	
□	□	CMCG	Havana, Cuba	150	E. Pareda.
□	□	CMHJ	Cienfuegos, Cuba	60	Victorino Lopez Hontanon.
□	□	KFIO	Spokane, Wash.	100	Spokane Broadcasting Co.
□	□	KFSG	Los Angeles, Cal.	500	Echo Park Evang. Assn.
□	□	KRRD	Los Angeles, Cal.	500	Radio Broadcasters, Inc.
□	□	KRSC	Seattle, Wash.	100	Radio Sales Corp.
□	□	WDEL	Wilmington, Del.	250	WDEL, Inc.
□	□	WISN	Milwaukee, Wisc.	250	American Radio News Corp.
□	□	WMFH	Boston, Mass.	500	Joseph M. Kirby.
□	□	WTAW	College Station, Texas	500	Agric. & Mech. College.

1130 Kilocycles 265.3 Meters

□	□	KSL	Salt Lake City, Utah	50000	Radio Service Corp. of Utah.
□	□	WJJD	Chicago, Ill.	20000	WJJD, Inc.
□	□	WOV	New York, N. Y.	1000	International Broadcasting Corp.
□	□	SBH	Horby, Sweden	10000	Royal Board of Telegraphs.

1140 Kilocycles 263.0 Meters

□	□	KVOO	Tulsa, Okla.	25000	Southwestern Sales Corp.
□	□	WAPI	Birmingham, Ala.	5000	WAPI Broadcasting Corp.
□	□	IITO	Turin, Italy	7000	E. I. A. R.

1150 Kilocycles 260.7 Meters

□	□	CMBG	Havana, Cuba	25	John L. Stowers.
□	□	CMJH	Ciego de Avila, Cuba	50	Luis Marauri Mendosa.
□	□	LRS	Buenos Aires, Arg.	5000	C. R. Sherrer y Cia.
□	□	WHAM	Rochester, N. Y.	50000	Stromberg-Carlson Tel. Mfg. Co.
□	□	XEH	Monterrey, N. L.	250	Tarnava y Cia.
□	□	XEWZ	Mexico, D. F.	100	Medellin e Insurgentes.

1160 Kilocycles 258.5 Meters

□	□	WOWO	Fort Wayne, Ind.	10000	Main Auto Supply Co.
□	□	WWVA	Wheeling, W. Va.	5000	W. Va. Broadcasting Corp.
□	□	XED	Gundalahjara, Jal.	500	Radiofonographica de Guadalajara, S. A.

1170 Kilocycles 256.3 Meters

□	□	CMJE	Camaguey, Cuba	50	Manuel Fernandez.
□	□	COA	Havana, Cuba	500	New Station.
□	□	WCAU	Philadelphia, Pa.	50000	WCAU Broadcasting Co.

1180 Kilocycles 254.1 Meters

□	□	KEX	Portland, Ore.	5000	Western Broadcasting Co.
□	□	KOB	Albuquerque, N. M.	10000	Albuquerque Journal.
□	□	WDGY	Minneapolis, Minn.	1000	Dr. Geo. W. Young.
□	□	WINS	New York, N. Y.	1000	Am. Radio News Corp.
□	□	WMAZ	Macon, Ga.	1000	Southeastern Broadcasting Co.
□	□	XEFA	Mexico, D. F.	500	Eduardo Limon Segui.

1190 Kilocycles 252.0 Meters

□	□	LS2	Buenos Aires, Arg.	50000	Radio Prieto.
□	□	VE9EK	Montmagny, Que.	10	J. A. Marquis.
□	□	WATR	Waterbury, Conn.	100	The WATR Co., Inc.
□	□	WOAI	San Antonio, Texas	50000	Southern Industries, Inc.
□	□	WSAZ	Huntington, W. Va.	1000	WSAZ, Inc.
□	□		Frankfurt-am-Main, Ger.	17000	

HEARD VERIFIED

1200 Kilocycles 249.9 Meters

□	CHAB	Moose Jaw, Sask.	100	Moose Jaw Radio Assn.
□	CKTG	St. Catharines, Ont.	100	E. T. Sandell.
□	CMCJ	Hav. na, Cuba	500	Rafael Rodriguez
□	KADA	Ada, Okla.	100	C. C. Morris.
□	KBTM	Jonesboro, Ark.	100	J. P. Beard.
□	KFJB	Marshalltown, Iowa	100	Marshall Electric Co.
□	KFXD	Nampa, Idaho	100	Frank E. Hurt.
□	KFXJ	Grand Junction, Colo.	100	Western Slope Broadcasting Co.
□	KGDE	Fergus Falls, Minn.	100	C. L. Jaren.
□	KGEK	Sterling, Colo.	100	Elmer G. Beehler.
□	KGFJ	Los Angeles, Cal.	100	Ben S. McGlashan.
□	KGHI	Little Rock, Ark.	100	Lloyd Judd Co.
□	KGVO	Missoula, Mont.	100	Mosby's Inc.
□	KMLB	Monroe, La.	100	Liner's Broadcasting Station, Inc.
□	KOOS	Marshfield, Ore.	100	H. H. Hanseth
□	KSUN	Lowell, Ariz.	100	Copper Electric Co., Inc
□	KVOS	Bellingham, Wash.	100	KVOS, Inc.
□	KWG	Stockton, Cal.	100	McClatchy Newspapers, Inc.
□	WABI	Bangor, Me.	100	1st Universalist Society.
□	WBBZ	Ponca City, Okla.	100	Estate of C. L. Carrell, deceased.
□	WBHS	Huntsville, Ala.	100	Radio Station WBHS, Inc.
□	WBNO	New Orleans, La.	100	Samuel D. Reeks.
□	WCAT	Rapid City, S. D.	100	State School of Mines.
□	WCAX	Burlington, Vt.	100	Burlington Daily News, Inc.
□	WCLO	Janesville, Wisc.	100	Gazette Printing Co., Inc.
□	WFAM	South Bend, Ind.	100	South Bend Tribune.
□	WFBE	Cincinnati, Ohio	100	WFBE, Inc.
□	WHBC	Canton, Ohio	100	Edw. P. Graham.
□	WHBY	Green Bay, Wisc.	100	WHBY, Inc.
□	WIBX	Utica, N. Y.	100	WIBX, Inc.
□	WIL	St. Louis, Mo.	100	Missouri Broadcasting Corp.
□	WJBC	Bloomington, Ill.	100	
□	WJBL	Decatur, Ill.	100	Commodore Broadcasting, Inc.
□	WJBW	New Orleans, La.	100	C. C. Carlson.
□	WKBO	Harrisburg, Pa.	100	Keystone Broadcasting Corp.
□	WKJC	Lancaster, Pa.	100	Lancaster Broadcasting Service.
□	WLVA	Lynchburg, Va.	100	Lynchburg Broadcasting Corp.
□	WMPC	Lapeer, Mich.	100	1st Methodist Protestant Church.
□	WNBO	Washington, Pa.	100	J. B. Spriggs.
□	WRBL	Columbus, Ga.	100	WRBL Radio Station, Inc.
□	WWAE	Hammond, Ind.	100	Hammond Calumet Broadcasting Corp.
□	YV3RC	Caracas, Venez.	1000	Degwitz & Siblesz
□	10AK	Stratford, Ont.	15	M. I. Higgins.
□	10BP	Wingham, Ont.	25	W. T. Cruickshank.
□	10BQ	Brantford, Ont.	15	
□	10BU	Canora, Sask.	50	Canora Radio Assoc.

1210 Kilocycles 247.8 Meters

□	CHNC	New Carlisle, Que.	100	Gaspesian Broadcasting Co.
□	CKBI	Prince Albert, Sask.	100	Prince Albert Radio Club.
□	CKCH	Hull, Que.	100	Radio Broadcasting of Hull, Ltd.
□	CKMC	Cobalt, Ont.	50	R. L. MacAdam.
□	CMJI	Ciego de Avila	150	Gilberto Gessa Lopez.
□	KASA	Elk City, Okla.	100	E. M. Woody.
□	KDLR	Devils Lake, N. D.	100	KDLR, Inc.
□	KFJI	Klamath Falls, Ore.	100	KFJI Broadcasters, Inc.
□	KFOR	Lincoln, Neb.	100	Howard Shuman.
□	KFPW	Fort Smith, Ark.	100	Southwestern Hotel Co.
□	KFVS	Cape Girardeau, Mo.	100	Oscar C. Hirsch.
□	KFXM	San Bernardino, Cal.	100	Lee Bros. Broadcasting Co.
□	KGY	Olympia, Wash.	100	KGY, Inc.
□	KIEM	Eureka, Cal.	100	H. H. Hanseth.
□	KPPC	Pasadena, Cal.	100	Pasadena Presbyt. Church.
□	KWEA	Shreveport, La.	100	International Broadcasting Corp.
□	KWFFV	Hilo, T. H.	100	Hilo Broadcasting Co., Ltd.
□	KWTN	Watertown, S. D.	100	Greater Kampeska Radio Corp.
□	WALR	Zanesville, Ohio	100	WALR Broadcasting Corp.
□	WBAX	Wilkes-Barre, Pa.	100	John H. Stenger, Jr.
□	WBBL	Richmond, Va.	100	Grace Covenant Presby. Church.
□	WBRB	Red Bank, N. J.	100	Monmouth Broadcasting Co., Inc.
□	WCBS	Springfield, Ill.	100	WCBS, Inc.
□	WCOL	Columbus, Ohio	100	WCOL, Inc.
□	WCRW	Chicago, Ill.	100	Clinton R. White.
□	WEBQ	Harrisburg, Ill.	100	Harrisburg Broadcasting Co.
□	WEDC	Chicago, Ill.	100	Emil Denmark.
□	WFAS	White Plains, N. Y.	100	Westchester Broadcasting Corp.
□	WGBB	Freeport, N. Y.	100	H. H. Carman.
□	WGCM	Gulfport, Miss.	100	Great Southern Land Co.
□	WGNV	Chester, N. Y.	100	Peter Goelet.
□	WHBF	Rock Island, Ill.	100	Rock Island Broadcasting Co.
□	WHBU	Anderson, Ind.	100	Anderson Broadcasting Corp.
□	WIBU	Poyntette, Wisc.	100	Wm. C. Forrest.

HEARD VERIFIED

□	□	WJBY	Gadsden, Ala.	100	Gadsden Broadcasting Co.
□	□	WJEJ	Hagerstown, Md.	100	Hagerstown Broadcasting Co., Inc.
□	□	WJIM	Lansing, Mich.	100	Capitol City Broadcasting Co.
□	□	WJW	Akron, Ohio	100	WJW, Inc.
□	□	WKOK	Sunbury, Pa.	100	Sunbury Broadcasting Co.
□	□	WMBG	Richmond, Va.	100	Havens & Martin, Inc.
□	□	WMEG	Hibbing, Minn.	100	Head of Lakes Broadcasting Co.
□	□	WOCL	Jamestown, N. Y.	100	A. E. Newton.
□	□	WOMT	Manitowoc, Wisc.	100	Francis M. Kadow.
□	□	WPAX	Thomasville, Ga.	100	H. Wimpy.
□	□	WSBC	Chicago, Ill.	100	Gene T. Dyer.
□	□	WSIX	Springfield, Tenn.	100	638 Tire & Vulcanizing Co.
□	□	WSOC	Charlotte, N. C.	100	WSOC, Inc.
□	□	WTAX	Springfield, Ill.	100	WTAX, Inc.
□	□	XEC	Toluca, D. F.	50	
□	□	XEE	Durango, Dgo.	50	
□	□	XEFJ	Monterrey, N. L.	100	R. Junco de la Vega
□	□	XEFV	Juarez, Chlh.	100	J. Onfre Meza.
□	□	XEMZ	Tijuana, B. C.	30	Adolfo Labsatda, Jr.
□	□	XETH	Puebla, Pue.	100	Ramon Huertag.

1220 Kilocycles 245.8 Meters

□	□	CMHK	Cruces, Cuba	50	Virgilio Villaeuva Fernandez.
□	□	KFKU	Lawrence, Kans.	1000	University of Kansas.
□	□	KTW	Seattle, Wash.	1000	First Presbyterian Church.
□	□	KWSC	Pullman, Wash.	1000	State College of Wash.
□	□	WCAD	Canton, N. Y.	500	St. Lawrence University.
□	□	WCAE	Pittsburgh, Pa.	1000	WCAE, Inc.
□	□	WDAE	Tampa, Fla.	1000	Tampa Times Co.
□	□	WREN	Lawrence, Kans.	1000	Jenny Wren Co.
□	□	IITR	Trieste, Italy	10000	E. I. A. R.

1230 Kilocycles 243.8 Meters

□	□	CJOC	Lethbridge, Alta.	100	H. R. Carson, Ltd.
□	□	CMCA	Havana, Cuba	150	J. M. Gonzales.
□	□	KGBX	Springfield, Mo.	500	KGBX, Inc.
□	□	KGGM	Albuquerque, N. M.	250	New Mex. Broadcasting Co.
□	□	KYA	San Francisco, Cal.	1000	Pacific Broadcasting Corp.
□	□	LS8	Buenos Aires, Arg.	20000	Confed. Esperitista Arg.
□	□	WFBM	Indianapolis, Ind.	1000	Indianapolis Pow. & Lt. Co.
□	□	WNAC	Boston, Mass.	1000	Shepard Broadcasting Service, Inc.

1240 Kilocycles 241.8 Meters

□	□	CJCB	Sydney, N. S.	1000	N. Nathanson.
□	□	CMHB	San Spiritus, Cuba	30	
□	□	KGCU	Mandan, N. D.	250	Mandan Radio Assn.
□	□	KLPM	Minot, N. D.	250	John B. Cooley.
□	□	KTAT	Fort Worth, Texas	1000	Southwest Broadcasting Co.
□	□	KTFI	Twin Falls, Idaho	1000	Radio Broadcasting Corp.
□	□	WKAQ	San Juan, P. R.	1000	Radio Corp. of P. R.
□	□	WXYZ	Detroit, Mich.	1000	Kunsky-Trendle Broadcasting Corp.
□	□	XEAI	Mexico, D. F.	100	Carlos Gonzales Caballero.

1250 Kilocycles 239.9 Meters

□	□	KFOX	Long Beach, Cal.	1000	Nicholas & Warinner, Inc.
□	□	WCAL	Northfield, Minn.	1000	St. Olaf College.
□	□	WDSU	New Orleans, La.	1000	Jos. H. Uhalt.
□	□	WHBI	Newark, N. J.	1000	Hoyt Bros., Inc.
□	□	WLB	Minneapolis, Minn.	1000	Univ. of Minnesota.
□	□	WNEW	Newark, N. J.	1000	WODAAAM Corp.
□	□	WTCN	Minneapolis, Minn.	1000	Minnesota Broadcasting Corp.

1260 Kilocycles 238.0 Meters

□	□	CFRN	Edmonton, Alta.	100	G. R. A. Rice.
□	□	KOIL	Council Bluffs, Iowa	1000	Mona Motor Oil Co.
□	□	KPAC	Port Arthur, Tex.	500	Port Arthur College.
□	□	KRGV	Weslaco, Texas	500	KRGV, Inc.
□	□	KUOA	Fayetteville, Ark.	1000	KUOA, Inc.
□	□	KVOA	Tucson, Ariz.	500	Arizona Broadcasting Co.
□	□	WLBW	Eric, Pa.	1000	The Miami Valley Broadcasting Corp.
□	□	WNBX	Springfield, Vt.	1000	WNBX Broadcasting Corp.
□	□	WTOC	Savannah, Ga.	500	Savannah Broadcasting Co., Inc.

1270 Kilocycles 236.1 Meters

□	□	HIX	Santo Domingo, D. R.	1000	Dominican Republic, J. R. Saladin, Dir.
□	□	KGCA	Decorah, Iowa	100	Chas. W. Greenley.
□	□	KOL	Seattle, Wash.	1000	Seattle Broadcasting Co.
□	□	KVOR	Colorado Springs, Col.	1000	S. H. Patterson.

HEARD VERIFIED

<input type="checkbox"/>	<input type="checkbox"/>	KWLC	Decorah, Iowa	100	Luther College.
<input type="checkbox"/>	<input type="checkbox"/>	LS9	Buenos Aires, Arg.	5000	Tagliaferro, Raffo y Cia.
<input type="checkbox"/>	<input type="checkbox"/>	WASH	Grand Rapids, Mich.	500	Kunsky-Trendle Broadcasting Corp.
<input type="checkbox"/>	<input type="checkbox"/>	WFB	Baltimore, Md.	500	Baltimore Radio Show, Inc.
<input type="checkbox"/>	<input type="checkbox"/>	WJDX	Jackson, Miss.	1000	Lamar Life Ins. Co.
<input type="checkbox"/>	<input type="checkbox"/>	WOOD	Grand Rapids, Mich.	500	Kunsky-Trendle Broadcasting Corp.
<input type="checkbox"/>	<input type="checkbox"/>	XFB	Jalapa, Ver.	1000	Gobierno Estado de Veracruz.

1280 Kilocycles 234.2 Meters

<input type="checkbox"/>	<input type="checkbox"/>	CMCO	Havana, Cuba	150	Assn. De'os Del Comercio.
<input type="checkbox"/>	<input type="checkbox"/>	KFBB	Great Falls, Mont.	1000	Buttrey Broadcasting Co.
<input type="checkbox"/>	<input type="checkbox"/>	LU7	Bahia Blanca, Arg.	5000	
<input type="checkbox"/>	<input type="checkbox"/>	WCAM	Camden, N. J.	500	City of Camden.
<input type="checkbox"/>	<input type="checkbox"/>	WCAP	Asbury Park, N. J.	500	Radio Industries Broadcasting Co.
<input type="checkbox"/>	<input type="checkbox"/>	WDOD	Chattanooga, Tenn.	1000	WDOD Broadcasting Corp.
<input type="checkbox"/>	<input type="checkbox"/>	WIBA	Madison, Wisc.	500	Badger Broadcasting Co., Inc.
<input type="checkbox"/>	<input type="checkbox"/>	WORC	Worcester, Mass.	500	A. F. Kleindienst.
<input type="checkbox"/>	<input type="checkbox"/>	WRR	Dallas, Texas	500	City of Dallas.
<input type="checkbox"/>	<input type="checkbox"/>	WTNJ	Trenton, N. J.	500	WOAX, Inc.
<input type="checkbox"/>	<input type="checkbox"/>	XEG	Ensenada, B. C.	250	

1290 Kilocycles 232.4 Meters

<input type="checkbox"/>	<input type="checkbox"/>	KDYL	Salt Lake City, Utah	1000	Intermountain Broadcasting Corp.
<input type="checkbox"/>	<input type="checkbox"/>	KLCN	Blytheville, Ark.	100	C. L. Lintzenich.
<input type="checkbox"/>	<input type="checkbox"/>	KTRH	Houston, Texas	500	KTRH Broadcasting Co.
<input type="checkbox"/>	<input type="checkbox"/>	WEBC	Superior, Wisc.	1000	Head of Lakes Broadcasting Co.
<input type="checkbox"/>	<input type="checkbox"/>	WJAS	Pittsburgh, Pa.	1000	Pitts. Radio Supply House.
<input type="checkbox"/>	<input type="checkbox"/>	WNBZ	Saranac Lake, N. Y.	50	Smith & Mace.
<input type="checkbox"/>	<input type="checkbox"/>	WNEL	San Juan, P. R.	500	Juan Piza.

1300 Kilocycles 230.6 Meters

<input type="checkbox"/>	<input type="checkbox"/>	CMKJ	Guantanamo, Cuba	20	Luis Morlote.
<input type="checkbox"/>	<input type="checkbox"/>	KALE	Portland, Ore.	500	KALE, Inc.
<input type="checkbox"/>	<input type="checkbox"/>	KFAC	Los Angeles, Cal.	1000	Los Angeles Broadcasting Co., Inc.
<input type="checkbox"/>	<input type="checkbox"/>	KFH	Wichita, Kans.	1000	Radio Station KPH Co.
<input type="checkbox"/>	<input type="checkbox"/>	KFJR	Portland, Ore.	500	Ashley C. Dixon.
<input type="checkbox"/>	<input type="checkbox"/>	VOAC	St. John's, Nfd.	40	
<input type="checkbox"/>	<input type="checkbox"/>	WBRR	Brooklyn, N. Y.	1000	Peoples Pulpit Assn.
<input type="checkbox"/>	<input type="checkbox"/>	WEVD	New York, N. Y.	1000	Jewish Daily Forward.
<input type="checkbox"/>	<input type="checkbox"/>	WFAB	New York, N. Y.	1000	5th Ave. Broadcasting Corp.
<input type="checkbox"/>	<input type="checkbox"/>	WFBC	Greenville, S. C.	1000	Greenville News-Piedmont Co.
<input type="checkbox"/>	<input type="checkbox"/>	WHAZ	Troy, N. Y.	500	Rensselaer Poly. Inst.
<input type="checkbox"/>	<input type="checkbox"/>	WIOD	Miami, Fla.	1000	Isle of Dreams Broadcasting Corp.

1310 Kilocycles 228.9 Meters

<input type="checkbox"/>	<input type="checkbox"/>	CHCK	Charlottetown, P. E. I.	50	W. E. Burke & J. A. Gesner.
<input type="checkbox"/>	<input type="checkbox"/>	CJKL	Kirkland Lake, Ont.	100	Northern Broadcasting Co., Ltd.
<input type="checkbox"/>	<input type="checkbox"/>	CJLS	Yarmouth, N. S.	100	Laurie L. Smith
<input type="checkbox"/>	<input type="checkbox"/>	CKCV	Quebec, Que.	50	Vandry, Inc.
<input type="checkbox"/>	<input type="checkbox"/>	KCRJ	Jerome, Ariz.	100	Chas. C. Robinson.
<input type="checkbox"/>	<input type="checkbox"/>	KFBK	Sacramento, Cal.	100	Jas. McCatchy Pub. Co.
<input type="checkbox"/>	<input type="checkbox"/>	KFPL	Dublin, Texas	100	C. C. Baxter.
<input type="checkbox"/>	<input type="checkbox"/>	KFFM	Greenville, Texas	15	New Furniture Co.
<input type="checkbox"/>	<input type="checkbox"/>	KFXR	Oklahoma City, Okla.	100	Exchange Ave. Baptist Church.
<input type="checkbox"/>	<input type="checkbox"/>	KFYD	Lubbock, Texas	100	Kirksey Bros.
<input type="checkbox"/>	<input type="checkbox"/>	KGEX	Wolf Point, Mont.	100	E. E. Krebsbach.
<input type="checkbox"/>	<input type="checkbox"/>	KGEZ	Kalspell, Mont.	100	Donald C. Treloar.
<input type="checkbox"/>	<input type="checkbox"/>	KGFV	Kearney, Neb.	100	Cent. Neb. Broadcasting Corp.
<input type="checkbox"/>	<input type="checkbox"/>	KIT	Yakima, Wash.	100	Valley Broadcasters, Inc.
<input type="checkbox"/>	<input type="checkbox"/>	KIUJ	Santa Fe, N. Mex.	100	J. H. Speck.
<input type="checkbox"/>	<input type="checkbox"/>	KMED	Medford, Ore.	100	Mrs. W. J. Virgin.
<input type="checkbox"/>	<input type="checkbox"/>	KRMD	Shreveport, La.	100	Radio Station KRMD, Inc.
<input type="checkbox"/>	<input type="checkbox"/>	KTNM	El Paso, Texas	100	Tri-State Broadcasting Co., Inc.
<input type="checkbox"/>	<input type="checkbox"/>	KXRO	Aberdeen, Wash.	100	KXRO, Inc.
<input type="checkbox"/>	<input type="checkbox"/>	WAML	Laurel, Miss.	100	Southland Radio Corp.
<input type="checkbox"/>	<input type="checkbox"/>	WBEO	Marquette, Mich.	100	Lake Superior Broadcasting Co., Inc.
<input type="checkbox"/>	<input type="checkbox"/>	WBOW	Terre Haute, Ind.	100	Banks of Wabash, Inc.
<input type="checkbox"/>	<input type="checkbox"/>	WBRE	Wilkes-Barre, Pa.	100	Louis G. Baltimore.
<input type="checkbox"/>	<input type="checkbox"/>	WCLS	Joliet, Ill.	100	WCLS, Inc.
<input type="checkbox"/>	<input type="checkbox"/>	WDAH	El Paso, Texas	100	Tri-State Broadcasting Co., Inc.
<input type="checkbox"/>	<input type="checkbox"/>	WEBR	Buffalo, N. Y.	500	Howell Broadcasting Co., Inc.
<input type="checkbox"/>	<input type="checkbox"/>	WEXL	Royal Oak, Mich.	50	Royal Oak Broadcasting Co.
<input type="checkbox"/>	<input type="checkbox"/>	WFBG	Altoona, Pa.	100	Gable Broadcasting Co.
<input type="checkbox"/>	<input type="checkbox"/>	WFDF	Flint, Mich.	100	Flint Broadcasting Co.
<input type="checkbox"/>	<input type="checkbox"/>	WGH	Newport News, Va.	100	Hampton Rds. Broadcasting Corp.
<input type="checkbox"/>	<input type="checkbox"/>	WHAT	Philadelphia, Pa.	100	Curtis-Martin Newspapers, Inc.
<input type="checkbox"/>	<input type="checkbox"/>	WJAC	Johnstown, Pa.	100	WJAC, Inc.
<input type="checkbox"/>	<input type="checkbox"/>	WLBC	Muncie, Ind.	50	D. A. Burton.
<input type="checkbox"/>	<input type="checkbox"/>	WLNH	Laconia, N. H.	100	Northern Broadcasting Co., Inc.
<input type="checkbox"/>	<input type="checkbox"/>	WMBO	Auburn, N. Y.	100	WMBO, Inc.
<input type="checkbox"/>	<input type="checkbox"/>	WMFF	Plattsburg, N. Y.	100	Plattsburg Broadcasting Corp.

HEARD VERIFIED

□	□	WNBH	New Bedford, Mass.	100	E. Anthony & Sons, Inc.
□	□	WOL	Washington, D. C.	100	American Broadcasting Co.
□	□	WRBW	Reading, Pa.	100	Reading Broadcasting Co.
□	□	WROL	Knoxville, Tenn.	100	Stuart Broadcasting Corp.
□	□	WSAJ	Grove City, Pa.	100	Grove City College.
□	□	WSGN	Birmingham, Ala.	100	R. B. Broyles.
□	□	WSJS	Winston-Salem, N. C.	100	Winston-Salem Journal.
□	□	WTEL	Philadelphia, Pa.	100	Foull'rod Radio Eng. Co., Inc.
□	□	WTJS	Jackson, Tenn.	100	Sun Publishing Co.
□	□	WTRC	Elkhart, Ind.	50	Truth Radio Corp.
□	□	XECW	Mexico City, D. F.	10	Maria Elena Bravo de Cardero.
□	□	XEFC	Merida, Yuc.	100	J. Molina.
□	□	XEFW	Tampico, Tamps.	70	J. Exposito Martinez.
□	□	XETB	Torreón, Coah.	125	Jose A. Berumen.
□	□	XEX	Monterrey, N. L.	125	L. F. Petit Jean.
□	□	XFA	Aguascalientes, Ags.	5	

1320 Kilocycles 227.1 Meters

□	□	CMBD	Havana, Cuba	150	Luis Perez Garcia
□	□	COX	Havana, Cuba	200	New Station.
□	□	KGHF	Pueblo, Colo.	500	C. P. Ritchie.
□	□	KGMB	Honolulu, T. H.	250	Honolu'u Broadcasting Co.
□	□	KID	Idaho Falls, Idaho	250	KID Broadcasting Co., Inc.
□	□	KSO	Des Moines, Iowa	500	Des Moines Register.
□	□	WADC	Akron, Ohio	1000	Allen T. Simmons.
□	□	WORK	York, Pa.	1000	York Broadcasting Co.
□	□	WSMB	New Orleans, La.	500	WSMB, Inc.

1330 Kilocycles 225.4 Meters

□	□	KGB	San Diego, Cal.	1000	Don Lee, Inc.
□	□	KMO	Tacoma, Wash.	250	KMO, Inc.
□	□	KSCJ	Sioux City, Iowa	1000	Perkins Bros. Co.
□	□	WDRG	Hartford, Conn.	1000	WDRG, Inc.
□	□	WSAI	Cincinnati, Ohio	1000	Crosley Radio Corp.
□	□	WTAQ	Eau Claire, Wis.	1000	Gillette Rubber Co.

1340 Kilocycles 223.7 Meters

□	□	KFPY	Spokane, Wash.	1000	Symons Broadcasting Corp.
□	□	KGDY	Huron, S. D.	250	Voice of So. Dakota, Inc.
□	□	KGNO	Dodge City, Kans.	250	KGNO Broadcasting Station.
□	□	WCOA	Pensacola, Fla.	500	Pensacola Broadcasting Co.
□	□	WFEA	Manchester, N. H.	500	New Hampshire Broadcasting Co.
□	□	WSPD	Toledo, Ohio	1000	Toledo Broadcasting Co.
□	□	XFD	Orizaba, Ver.	250	Gobierno Estado de Veracruz.
□	□		Montpellier, France	30000	PTT

1350 Kilocycles 222.1 Meters

□	□	KIDO	Boise, Idaho	1000	C. G. Phillips & F. L. Hill.
□	□	KWK	St. Louis, Mo.	1000	Thomas Patrick, Inc.
□	□	WAWZ	Zarephath, N. J.	250	Pillar of Fire.
□	□	WBXK	New York, N. Y.	250	Standard Cahill Co.

1360 Kilocycles 220.4 Meters

□	□	CMJP	Moron, Cuba	75	Cesar Canail.
□	□	CMKF	Holguin, Cuba	30	Libertad Esq. Arias
□	□	KGER	Long Beach, Cal.	1000	Consolidated Broadcasting Co.
□	□	KGIR	Butte, Mont.	1000	KGIR, Inc.
□	□	WCSC	Charleston, S. C.	500	So. Car. Broadcasting Co., Inc.
□	□	WFBL	Syracuse, N. Y.	1000	Onondaga Radio Broadcasting Corp.
□	□	WGES	Chicago, Ill.	500	Oak Leaves Broadcasting Station, Inc.
□	□	WQBC	Vicksburg, Miss.	500	Delta Broadcasting Co.
□	□	WSBT	South Bend, Ind.	500	S. B. Tribune.

1370 Kilocycles 218.8 Meters

□	□	CKCW	Moncton, N. B.	100	Moncton Broadcasting Co., Ltd.
□	□	CMCU	Havana, Cuba	150	Jorge Garcia Serra.
□	□	CMGE	Cardenas, Cuba	30	Genaro Sebatel.
□	□	KCRC	Enid, Okla.	100	Enid Radiophone Co.
□	□	KERN	Bakersfield, Cal.	100	Bee Bakersfield Broadcasting Co.
□	□	KFGQ	Boone, Iowa	100	Boone Biblical College.
□	□	KEJM	Grand Forks, N. D.	100	Univ. of No. Dakota.
□	□	KEJZ	Fort Worth, Texas	100	Ft. Worth Broadcasters, Inc.
□	□	KFRJ	Longview, Texas	100	Voice of Longview.
□	□	KGAR	Tucson, Ariz.	100	Tucson Motor Service Co.
□	□	KGFG	Oklahoma City, Okla.	100	Oklahoma Broadcasting Co.

HEARD VERIFIED

□	□	KGFL	Roswell, N. M.
□	□	KGKL	San Angelo, Texas
□	□	KICA	Clovis, N. M.
□	□	KLUF	Galveston, Texas
□	□	KMAC	San Antonio, Texas
□	□	KONO	San Antonio, Texas
□	□	KRE	Berkeley, Cal.
□	□	KRKO	Everett, Wash.
□	□	KSLM	Salem, Ore.
□	□	KUJ	Walla Walla, Wash.
□	□	KVL	Seattle, Wash.
□	□	KWKC	Kansas City, Mo.
□	□	KWYO	Sheridan, Wyo.
□	□	WABY	Albany, N. Y.
□	□	WAGF	Dothan, Ala.
□	□	WBTM	Danville, Va.
□	□	WCBM	Baltimore, Md.
□	□	WDAS	Philadelphia, Pa.
□	□	WGL	Fort Wayne, Ind.
□	□	WHBD	Mt. Orab, Ohio
□	□	WHBQ	Memphis, Tenn.
□	□	WHDF	Calumet, Mich.
□	□	WIBM	Jackson, Mich.
□	□	WJTL	Atlanta, Ga.
□	□	WLLH	Lowell, Mass.
□	□	WMBR	Jacksonville, Fla.
□	□	WMFD	Wilmington, N. C.
□	□	WOC	Davenport, Ia.
□	□	WPFH	Hattiesburg, Miss.
□	□	WQDM	St. Albans, Vt.
□	□	WRAK	Williamsport, Pa.
□	□	WRDO	Angusta, Me.
□	□	WRJN	Racine, Wisc.
□	□	WSVS	Buffalo, N. Y.
□	□	XEFE	Nuevo Laredo, Tamps.
□	□	XEFZ	Mexico City, D. F.
□	□	XEI	Morelia, Meh.
□	□	XEZZ	San Luis Potosi, Slp.

100	KGFL, Inc.
100	KGKL, Inc.
100	Southwest Broadcasting Co.
100	George R. Clough.
100	W. W. McAllister.
100	Mission Broadcasting Co.
100	1st Congregational Church.
50	Lee E. Mudgett.
100	Oregon Radio, Inc.
100	KUJ, Inc.
100	KVL, Inc.
100	Wilson Duncan Broadcasting Co.
100	Big Horn Broadcasting Co.
100	WOKO, Inc.
100	Dothan Broadcasting Corp.
100	Piedmont Broadcasting Corp.
100	Baltimore Broadcasting Corp.
100	WDAS Broadcasting Co., Inc.
100	F. C. Zieg.
100	Veebee Corp.
100	Broadcasting Station WHBQ, Inc.
100	Upper Mich. Broadcasting Co.
100	WIBM, Inc.
100	Oglethorpe University.
100	Albert S. Moffat.
100	F. J. Reynolds.
100	Richard A. Dunlea.
100	Palmer School of Chiropractic.
100	Otis Perry Eure.
100	A. J. St. Antoine & E. J. Regan.
100	WRAK, Inc.
100	WRDO, Inc.
100	Racine Broadcasting Corp.
50	Seneca Voca. High School.
100	R. T. Carranza.
100	Manuel Zetina.
125	Carlos Gutierrez.
100	Emilio Delgado.

1380 Kilocycles 217.3 Meters

□	□	CMJC	Camaguey, Cuba
□	□	KOH	Reno, Nev.
□	□	KQV	Pittsburgh, Pa.
□	□	WALA	Mobile, Ala.
□	□	WKBH	La Crosse, Wisc.
□	□	WMFE	New Britain, Conn.
□	□	WSMK	Dayton, Ohio

150	Feliciano Isaac.
500	The Bee, Inc.
500	KQV Broadcasting Co.
500	Pape Broadcasting Corp.
1000	WKBH, Inc.
250	William J. Sanders.
200	WSMK, Inc.

1390 Kilocycles 215.7 Meters

□	□	CJRC	Winnipeg, Man.
□	□	HHH	S. Pedro de Macoris, D.R.
□	□	KLRA	Little Rock, Ark.
□	□	KOY	Phoenix, Ariz.
□	□	WHK	Cleveland, Ohio

100	Jas. Richardson & Sons, Ltd.
15	Domingo Dominguez.
1000	Arkansas Broadcasting Co.
500	Nielson Radio, Sptg. Gds. Co.
1000	Radio Air Service Corp.

1400 Kilocycles 214.2 Meters

□	□	CMCR	Havana, Cuba
□	□	KLO	Ogden, Utah
□	□	KTUL	Tulsa, Okla.
□	□	TGX	Guatemala City, Gua.
□	□	WARD	Brooklyn, N. Y.
□	□	WBBC	Brooklyn, N. Y.
□	□	WKBF	Indianapolis, Ind.
□	□	WLTH	Brooklyn, N. Y.
□	□	WVFW	Brooklyn, N. Y.

150	Antonio Givard.
500	Interstate Broadcasting Co.
250	Tulsa Broadcasting Co., Inc.
150	
500	U. S. Broadcasting Corp.
500	Brooklyn Broadcasting Corp.
500	Indianapolis Broadcasting, Inc.
500	Voice of Brooklyn, N. Y.
500	Paramount Broadcasting Corp.

1410 Kilocycles 212.6 Meters

□	□	CKGB	Timmins, Ont.
□	□	CKFC	Vancouver, B. C.
□	□	CKNC	Toronto, Ont.
□	□	CKMO	Vancouver, B. C.
□	□	KGRS	Amarillo, Texas
□	□	WAAB	Boston, Mass.
□	□	WBCM	Bay City, Mich.
□	□	WDAG	Amarillo, Texas
□	□	WHBL	Sheboygan, Wisc.
□	□	WHIS	Bluefield, W. Va.
□	□	WRBX	Roanoke, Va.
□	□	WROK	Rockford, Ill.
□	□	WSFA	Montgomery, Ala.

100	Northern Broadcasting Co., Ltd.
50	United Church of Canada.
100	Canadian National Carbon, Ltd.
100	Sprott-Shaw Radio Co.
1000	E. B. Gish.
500	Bay State Broadcasting Corp.
500	James E. Davidson.
1000	Natl. Radio & Broadcasting Corp.
500	Press Publishing Co.
250	Daily Telegraph Printing Co.
250	Richmond Development Corp.
500	Rockford Broadcasters, Ltd.
500	Montgomery Broadcasting Co., Inc.

HEARD VERIFIED

1420 Kilocycles 211.1 Meters

<input type="checkbox"/>	<input type="checkbox"/>	CMBX	Havana, Cuba	150	Alberto Alvarez.
<input type="checkbox"/>	<input type="checkbox"/>	KABC	San Antonio, Texas	100	Alamo Broadcasting Co., Inc.
<input type="checkbox"/>	<input type="checkbox"/>	KABR	Aberdeen, Wash.	100	Aberdeen Broadcasting Co.
<input type="checkbox"/>	<input type="checkbox"/>	KBFS	Portland, Ore.	100	Benson Polytech. School.
<input type="checkbox"/>	<input type="checkbox"/>	KCMC	Texarkana, Ark.	100	M. P. Mims.
<input type="checkbox"/>	<input type="checkbox"/>	KFIZ	Fond du Lac, Wisc.	100	Reporter Printing Co.
<input type="checkbox"/>	<input type="checkbox"/>	KGFF	Shawnee, Okla.	100	KGFF Broadcasting Co., Inc.
<input type="checkbox"/>	<input type="checkbox"/>	KGGC	San Francisco, Cal.	100	Golden Gate Broadcasting Co.
<input type="checkbox"/>	<input type="checkbox"/>	KGIW	Alamosa, Colo.	100	Leonard E. Wilson.
<input type="checkbox"/>	<input type="checkbox"/>	KGIX	Las Vegas, Nev.	100	J. M. Heaton.
<input type="checkbox"/>	<input type="checkbox"/>	KIDW	Lamar, Colo.	100	Lamar Broadcasting Co.
<input type="checkbox"/>	<input type="checkbox"/>	KORE	Eugene, Ore.	100	C. G. Phillips & F. L. Hill.
<input type="checkbox"/>	<input type="checkbox"/>	KUMA	Yuma, Ariz.	100	Dr. A. H. Schermann.
<input type="checkbox"/>	<input type="checkbox"/>	KXL	Portland, Ore.	100	KXL Broadcasters.
<input type="checkbox"/>	<input type="checkbox"/>		Daytona Beach, Fla.	100	W. W. Esch.
<input type="checkbox"/>	<input type="checkbox"/>	WACO	Waco, Texas	100	Southwest Broadcasting Co.
<input type="checkbox"/>	<input type="checkbox"/>	WAGM	Presque Isle, Me.	100	Aroostook Broadcasting Corp.
<input type="checkbox"/>	<input type="checkbox"/>	WAZL	Hazelton, Pa.	100	Hazelton Broadcasting Service, Inc.
<input type="checkbox"/>	<input type="checkbox"/>	WEED	Rocky Point, N. C.	100	Wm. Avera Wynne.
<input type="checkbox"/>	<input type="checkbox"/>	WEUC	Charlottesville, Va.	100	Community Broadcasting Corp.
<input type="checkbox"/>	<input type="checkbox"/>	WEHS	Cicero, Ill.	100	WEHS, Inc.
<input type="checkbox"/>	<input type="checkbox"/>	WELL	Battle Creek, Mich.	50	Enquirer News Co.
<input type="checkbox"/>	<input type="checkbox"/>	WGFC	Albany, Ga.	100	Americus Broadcasting Corp.
<input type="checkbox"/>	<input type="checkbox"/>	WHDL	Olean, N. Y.	100	Tupper Lake Broadcasting Co.
<input type="checkbox"/>	<input type="checkbox"/>	WHFC	Cicero, Ill.	100	WHFC, Inc.
<input type="checkbox"/>	<input type="checkbox"/>	WILM	Wilmington, Del.	100	Delaware Broadcasting Co., Inc.
<input type="checkbox"/>	<input type="checkbox"/>	WJBO	Baton Rouge, La.	100	Baton Rouge Broadcasting Co., Inc.
<input type="checkbox"/>	<input type="checkbox"/>	WJMS	Ironwood, Mich.	100	WJMS, Inc.
<input type="checkbox"/>	<input type="checkbox"/>	WKBI	Cicero, Ill.	100	WKBI, Inc.
<input type="checkbox"/>	<input type="checkbox"/>	WLAP	Lexington, Ky.	100	Amer. Broadcasting Corp. of Ky.
<input type="checkbox"/>	<input type="checkbox"/>	WLBF	Kansas City, Kans.	100	WLBF Broadcasting Co.
<input type="checkbox"/>	<input type="checkbox"/>	WLEU	Erie, Pa.	100	Leo J. Omelian.
<input type="checkbox"/>	<input type="checkbox"/>	WMAS	Springfield, Mass.	100	WMAS, Inc.
<input type="checkbox"/>	<input type="checkbox"/>	WMBH	Detroit, Mich.	100	Michigan Broadcasting Co.
<input type="checkbox"/>	<input type="checkbox"/>	WMBH	Joplin, Mo.	100	W. M. Robertson.
<input type="checkbox"/>	<input type="checkbox"/>	WNRA	Muscle Shoals, Ala.	100	Muscle Shoals Broadcasting Corp.
<input type="checkbox"/>	<input type="checkbox"/>	WPAD	Paducah, Ky.	100	Paducah Broadcasting Co., Inc.
<input type="checkbox"/>	<input type="checkbox"/>	XEFB	Monterrey, N. L.	100	Jesus Quantanilla.

1430 Kilocycles 209.7 Meters

<input type="checkbox"/>	<input type="checkbox"/>	CHGS	Summerside, P. E. I.	50	R. T. Holman, Ltd.
<input type="checkbox"/>	<input type="checkbox"/>	KECA	Los Angeles, Cal.	1000	Earle C. Anthony, Inc.
<input type="checkbox"/>	<input type="checkbox"/>	KGFR	North Platte, Neb.	500	Great Plains Broadcasting Co.
<input type="checkbox"/>	<input type="checkbox"/>	KWCR	Des Moines, Iowa.	250	Cedar Rapids Broadcasting Co.
<input type="checkbox"/>	<input type="checkbox"/>	WBNS	Columbus, Ohio	500	Internat. Bible Students Assn.
<input type="checkbox"/>	<input type="checkbox"/>	WHEC	Rochester, N. Y.	500	WHEC, Inc.
<input type="checkbox"/>	<input type="checkbox"/>	WHP	Harrisburg, Pa.	500	Harrisburg Telegraph.
<input type="checkbox"/>	<input type="checkbox"/>	WNBR	Memphis, Tenn.	500	Memphis Broadcasting Co.
<input type="checkbox"/>	<input type="checkbox"/>	WOKO	Albany, N. Y.	500	WOKO, Inc.

1440 Kilocycles 208.2 Meters

<input type="checkbox"/>	<input type="checkbox"/>	KDFN	Casper, Wyo.	500	D. L. Hathaway.
<input type="checkbox"/>	<input type="checkbox"/>	KLS	Oakland, Cal.	250	Warner Bros.
<input type="checkbox"/>	<input type="checkbox"/>	KXYZ	Houston, Texas	250	Harris County Broadcasting Co.
<input type="checkbox"/>	<input type="checkbox"/>	WBIG	Greensboro, N. C.	500	No. Car. Broadcasting Co., Inc.
<input type="checkbox"/>	<input type="checkbox"/>	WCBA	Allentown, Pa.	250	Lehigh Valley Broadcasting Co.
<input type="checkbox"/>	<input type="checkbox"/>	WMBD	Peoria, Ill.	500	Peoria Broadcasting Co.
<input type="checkbox"/>	<input type="checkbox"/>	WSAN	Allentown, Pa.	250	WSAN, Inc.
<input type="checkbox"/>	<input type="checkbox"/>	WTAD	Quincy, Ill.	500	Illinois Broadcasting Corp.
<input type="checkbox"/>	<input type="checkbox"/>	XEFI	Chihuahua, Chih.	250	Feliciano Lopez.

1450 Kilocycles 206.8 Meters

<input type="checkbox"/>	<input type="checkbox"/>	CFCT	Victoria, B. C.	75	Victoria Broadcasting Assn.
<input type="checkbox"/>	<input type="checkbox"/>	COK	Havana, Cuba	250	Rafael Valdez.
<input type="checkbox"/>	<input type="checkbox"/>	KTBS	Shreveport, La.	1000	Tri-State Broadcasting System.
<input type="checkbox"/>	<input type="checkbox"/>	WGAR	Cleveland, Ohio	500	WGAR Broadcasting Co.
<input type="checkbox"/>	<input type="checkbox"/>	WHOM	Jersey, City N. J.	250	N. J. Broadcasting Corp.
<input type="checkbox"/>	<input type="checkbox"/>	WSAR	Fall River, Mass.	250	Doughty & Welch Elec. Co., Inc.
<input type="checkbox"/>	<input type="checkbox"/>	WTFI	Athens, Ga.	500	Liberty Broadcasting Co.
<input type="checkbox"/>	<input type="checkbox"/>		Fecamp, France	10000	"Radio Normandie."

1460 Kilocycles 205.4 Meters

<input type="checkbox"/>	<input type="checkbox"/>	KSTP	St. Paul-Mpls., Minn.	10000	Natl. Battery Broadcasting Co.
<input type="checkbox"/>	<input type="checkbox"/>	WJSV	Washington, D. C.	10000	Old Dominion Broadcasting Corp.

1470 Kilocycles 204.0 Meters

<input type="checkbox"/>	<input type="checkbox"/>	WLAC	Nashville, Tenn.	5000	Life & Casualty Ins. Co.
--------------------------	--------------------------	------	------------------	------	--------------------------

1480 Kilocycles 202.6 Meters

<input type="checkbox"/>	<input type="checkbox"/>	KOMA	Oklahoma City, Okla.	5000	Natl. Radio Mfg. Co.
<input type="checkbox"/>	<input type="checkbox"/>	WKBW	Buffalo, N. Y.	5000	Buffalo Broadcasting Co.

HEARD VERIFIED

1490 Kilocycles 201.2 Meters

- WCKY Covington, Ky. 5000 L. B. Wilson, Inc.

1500 Kilocycles 199.9 Meters

- | | | | |
|--------------------------|--------------------------|----------------------------|--|
| <input type="checkbox"/> | <input type="checkbox"/> | CMCN Havana, Cuba | 250 Aurelio Hernandez. |
| <input type="checkbox"/> | <input type="checkbox"/> | KDB Santa Barbara, Cal. | 100 Santa Barbara Broadcasters. |
| <input type="checkbox"/> | <input type="checkbox"/> | KGFI Corpus Christi, Texas | 100 Eagle Broadcasting Co., Inc. |
| <input type="checkbox"/> | <input type="checkbox"/> | KGFK Moorhead, Minn. | 100 Red River Broadcasting Co., Inc. |
| <input type="checkbox"/> | <input type="checkbox"/> | KGKB Tyler, Texas | 100 East Texas Broadcasting Co. |
| <input type="checkbox"/> | <input type="checkbox"/> | KGKY Scottsbluff, Neb. | 100 Hilliard Co., Inc. |
| <input type="checkbox"/> | <input type="checkbox"/> | KNOW Austin, Texas | 100 Southwest Broadcasting Co. |
| <input type="checkbox"/> | <input type="checkbox"/> | KOTN Pine Bluff, Ark. | 100 William F. Chaplin. |
| <input type="checkbox"/> | <input type="checkbox"/> | KPJM Prescott, Ariz. | 100 Frank Mauthe. |
| <input type="checkbox"/> | <input type="checkbox"/> | KPQ Wenatchee, Wash. | 100 Westcoast Broadcasting Co. |
| <input type="checkbox"/> | <input type="checkbox"/> | KREG Santa Ana, Cal. | 100 Voice of the Orange Empire. |
| <input type="checkbox"/> | <input type="checkbox"/> | KXO El Centro, Cal. | 100 E. R. Irey & F. M. Bowles. |
| <input type="checkbox"/> | <input type="checkbox"/> | WCNW Brooklyn, N. Y. | 100 Arthur Faske. |
| <input type="checkbox"/> | <input type="checkbox"/> | WDNC Durham, N. C. | 100 Durham Radio Corp. |
| <input type="checkbox"/> | <input type="checkbox"/> | WGAL Lancaster, Pa. | 100 WGAL, Inc. |
| <input type="checkbox"/> | <input type="checkbox"/> | WHEF Kosciusko, Miss. | 100 Attala Broadcasting Corp. |
| <input type="checkbox"/> | <input type="checkbox"/> | WJBK Detroit, Mich. | 100 Sanders Bros. Radio Station. |
| <input type="checkbox"/> | <input type="checkbox"/> | WKBB East Dubuque, Ill. | 100 James F. Hopkins, Inc. |
| <input type="checkbox"/> | <input type="checkbox"/> | WKBV Richmond, Ind. | 100 Wm. O. Knox. |
| <input type="checkbox"/> | <input type="checkbox"/> | WKBZ Muskegon, Mich. | 100 K. L. Ashbacker & Sons. |
| <input type="checkbox"/> | <input type="checkbox"/> | WKEU Griffin, Ga. | 100 Radio Station WKEU. |
| <input type="checkbox"/> | <input type="checkbox"/> | WMBQ Brooklyn, N. Y. | 100 Paul J. Gollhofer. |
| <input type="checkbox"/> | <input type="checkbox"/> | WMEX Chelsea, Mass. | 100 Northern Radio Corp. |
| <input type="checkbox"/> | <input type="checkbox"/> | WNBK Binghamton, N. Y. | 100 Howitt-Wood Radio Co., Inc. |
| <input type="checkbox"/> | <input type="checkbox"/> | WOPI Bristol, Tenn. | 100 Radiophone Broadcasting Sta. WOPI. |
| <input type="checkbox"/> | <input type="checkbox"/> | WRDW Augusta, Ga. | 100 Virgil V. Evans Co. |
| <input type="checkbox"/> | <input type="checkbox"/> | WRGA Rome, Ga. | 100 Ithome Broadcasting Corp. |
| <input type="checkbox"/> | <input type="checkbox"/> | WSYB Rutland, Vt. | 100 Philip Weiss Music Co. |
| <input type="checkbox"/> | <input type="checkbox"/> | WWRL Woodside, N. Y. | 100 Long Island Broadcasting Corp. |
| <input type="checkbox"/> | <input type="checkbox"/> | WWSW Pittsburgh, Pa. | 100 Walker & Downing Radio Corp. |

1510 Kilocycles 198.6 Meters

- CFRC Kingston, Ont. 100 Queen's University.
- CKCR Waterloo, Ont. 100 W. C. Mitchell & G. Liddle.

1530 Kilocycles 196.0 Meters

- W1XBS Waterbury, Conn. 1000 Waterbury Republican.
- W9XBY Kansas City, Mo. 1000 First National Television, Inc.

1550 Kilocycles 193.5 Meters

- W2XR Long Island City, N. Y. 1000 John V. L. Hogan.
- W6XAI Bakersfield, Cal. 1000 Pioneer Mercantile Co.

SUBSCRIPTION BLANK

Newark News Radio Club
 215 Market Street
 Newark, N. J.

Enclosed please find \$ for which send me postpaid my choice of your offers as checked below:

- One trial copy of THE DIALIST 10c
- Trial subscription, next five issues 50c
- One year subscription or ten copies \$1.00

Above rates apply to anywhere in the northern hemisphere. Above rates apply to members of The Newark News Radio Club in all sections of the world.

FOREIGN RATES—NON-MEMBERS

- One trial copy of THE DIALIST 20c
- Trial subscription, next five issues 75c
- One year subscription or ten copies \$1.25

Name
 Street and No.
 City, State and Country

(Please Print)

BROADCASTING STATIONS

(BY CALL LETTERS)

CALL	LOCATION	KCYS.	CALL	LOCATION	KCYS.
CFAC	—Calgary, Alta.	930	CKY	—Winnipeg, Man.	960
CFCF	—Montreal, Que.	600	CMAF	—Havana, Cuba	680
CFCH	—North Bay, Ont.	930	CMBC	—Havana, Cuba	1030
CFCN	—Calgary, Alta.	1030	CMBD	—Havana, Cuba	1320
CFCO	—Chatham, Ont.	600	CMBG	—Havana, Cuba	1150
CFCT	—Victoria, B. C.	1450	CMBS	—Havana, Cuba	780
CFCY	—Charlottetown, P. E. I.	630	CMBG	—Havana, Cuba	1150
CFJC	—Kamloops, B. C.	880	CMBX	—Havana, Cuba	1425
CFLC	—Prescott, Ont.	930	CMBY	—Havana, Cuba	635
CFNB	—Fredericton, N. B.	550	CMBZ	—Havana, Cuba	1005
CFPL	—London, Ont.	730	CMC	—Havana, Cuba	835
CFQC	—Saskatoon, Sask.	1230	CMCA	—Havana, Cuba	1230
CFRB	—Toronto, Ont.	690	CMCB	—Havana, Cuba	1060
CFRC	—Kingston, Ont.	1510	CMCD	—Havana, Cuba	955
CFRN	—Edmonton, Alta.	1260	CMCE	—Havana, Cuba	610
CHAB	—Moose Jaw, Sask.	1200	CMCG	—Havana, Cuba	1120
CHCK	—Charlottetown, P. E. I.	1310	CMCH	—Havana, Cuba	1200
CHGS	—Summerside, P. E. I.	1435	CMCM	—Havana, Cuba	1405
CHLP	—Montreal, Que.	1120	CMCN	—Havana, Cuba	1500
CHMI	—Hamilton, Ont.	1010	CMCO	—Havana, Cuba	1280
CHNC	—New Carlisle, Que.	1210	CMCQ	—Havana, Cuba	680
CHNS	—Halifax, N. S.	930	CMCR	—Havana, Cuba	1400
CHRC	—Quebec, Que.	580	CMCU	—Havana, Cuba	1375
CHSJ	—St. John, N. B.	1120	CMCW	—Havana, Cuba	750
CHWC	—Regina, Sask.	1010	CMCY	—Havana, Cuba	1100
CHWK	—Chilliwack, B. C.	780	CMCX	—Havana, Cuba	860
CJAT	—Trail, B. C.	910	CMGE	—Cardenas, Cuba	1375
CJCA	—Edmonton, Alta.	730	CMGF	—Matanzas, Cuba	970
CJCB	—Sydney, N. S.	1240	CMGH	—Matanzas, Cuba	1040
CJGJ	—Calgary, Alta.	690	CMGI	—Colon, Cuba	1090
CJGX	—Yorkton, Sask.	630	CMHA	—Sagua la Grande, Cuba	1103
CJIC	—Sault Ste. Marie, Ont.	890	CMHB	—San Spiritus, Cuba	1245
CJKL	—Kirkland Lake, Ont.	1310	CMHD	—Caibarien, Cuba	950
CJLS	—Yarmouth, N. S.	1310	CMHI	—Santa Clara, Cuba	1037
CJOC	—Lethbridge, Alta.	1230	CMHJ	—Cienfuegos, Cuba	1125
CJOR	—Vancouver, B. C.	600	CMHK	—Cruces, Cuba	1225
CJRC	—Winnipeg, Man.	1390	CMHW	—Cienfuegos, Cuba	910
CJRM	—Moose Jaw, Sask.	540	CMJC	—Camaguey, Cuba	1382
CKAC	—Montreal, Que.	730	CMJE	—Camaguey, Cuba	1170
CKBI	—Prince Albert, Sask.	1210	CMJF	—Camaguey, Cuba	930
CKCD	—Vancouver, B. C.	1010	CMJG	—Camaguey, Cuba	1050
CKCH	—Hull, Que.	1210	CMJH	—Ciego de Avila, Cuba	1150
CKCK	—Regina, Sask.	1010	CMJI	—Ciego de Avila, Cuba	1210
CKCL	—Toronto, Ont.	580	CMJK	—Camaguey, Cuba	790
CKCO	—Ottawa, Ont.	1010	CMJL	—Camaguey, Cuba	960
CKCR	—Waterloo, Ont.	1510	CMJO	—Ciego de Avila, Cuba	1010
CKCV	—Quebec, Que.	1310	CMJP	—Moron, Cuba	1360
CKCW	—Moncton, N. B.	1370	CMK	—Havana, Cuba	730
CKFC	—Vancouver, B. C.	1410	CMKC	—Santiago, Cuba	1034
CKGB	—Timmins, Ont.	1410	CMKE	—Holquin, Cuba	1363
CKIC	—Wolfville, N. S.	1010	CMKJ	—Guantanamo, Cuba	1300
CKLW	—Windsor, Ont.	1030	CMKM	—Manzanillo, Cuba	940
CKMC	—Cobalt, Ont.	1210	CMQ	—Havana, Cuba	840
CKMO	—Vancouver, B. C.	1410	CMW	—Havana, Cuba	930
CKNC	—Toronto, Ont.	1410	CMX	—Havana, Cuba	918
CKOC	—Hamilton, Ont.	1120	COA	—Havana, Cuba	1175
CKOV	—Kelowna, B. C.	630	COK	—Havana, Cuba	1450
CKPC	—Brantford, Ont.	930	COX	—Havana, Cuba	1320
CKPR	—Fort William, Ont.	930	CRCK	—Quebec, Que.	1050
CKTB	—St. Catharines, Ont.	1200	CRCM	—Montreal, Que.	910
CKUA	—Edmonton, Alta.	580	CRCO	—Ottawa, Ont.	880
CKWX	—Vancouver, B. C.	1010	CRCS	—Chicoutimi, Que.	950
CKX	—Brandon, Man.	1120	CRCT	—Toronto, Ont.	840

CALL	LOCATION	KCYS.	CALL	LOCATION	KCYS.
CRCV	Vancouver, B. C.	1100	KFXD	Nampa, Idaho	1200
CX4	Montevideo, Uruguay	610	KFXJ	Grand Junction, Colo.	1200
CX5	Montevideo, Uruguay	650	KFXM	San Bernardino, Cal.	1210
CX26	Montevideo, Uruguay	1050	KFXR	Oklahoma City, Okla.	1310
CX28	Montevideo, Uruguay	1090	KFYO	Lubbock, Texas	1310
FQN	St. Pierre, Miq. Is.	609	KFYR	Bismarck, N. D.	550
HHK	Port-au-Prince, Haiti	920	KGA	Spokane, Wash.	900
HHH	San Pedro de Macoris, D. R.	1395	KGAR	Tucson, Ariz.	1370
HIX	Santo Domingo, D. R.	1270	KGB	San Diego, Cal.	1330
HJN	Bogata, Colombia	680	KGBU	Ketchikan, Alaska	900
KABC	San Antonio, Tex.	1420	KGBX	Springfield, Mo.	1230
KABR	Aberdeen, S.D.	1420	KGBZ	York, Neb.	930
KADA	Ada, Okla.	1200	KGCA	Decorah, Iowa	1270
KALE	Portland, Ore.	1300	KGCU	Mandan, N. D.	1240
KARK	Little Rock, Ark.	890	KGCX	Wolf Point, Mont.	1310
KASA	Elk City, Okla.	1210	KGDE	Fergus Falls, Minn.	1200
KBPS	Portland, Ore.	1420	KGDM	Stockton, Cal.	1100
KBTM	Jonesboro, Ark.	1200	KGDY	Huron, S. D.	1340
KCMC	Texarkana, Ark.	1420	KGEG	Sterling, Colo.	1200
KCRC	Enid, Okla.	1370	KGER	Long Beach, Cal.	1360
KCRJ	Jerome, Ariz.	1310	KGEZ	Kalispell, Mont.	1310
KDB	Santa Barbara, Cal.	1500	KGFF	Shawnee, Okla.	1420
KDFN	Casper, Wyo.	1440	KGFG	Oklahoma City, Okla.	1370
KDKA	Pittsburgh, Pa.	980	KGFI	Corpus Christi, Texas	1500
KDLR	Devils Lake, N. D.	1210	KGFJ	Los Angeles, Cal.	1200
KDYL	Salt Lake City, Utah	1290	KGFK	Moorhead, Minn.	1500
KECA	Los Angeles, Cal.	1430	KGFL	Roswell, N. Mex.	1370
KELW	Burbank, Cal.	780	KGFV	Kearney, Neb.	1310
KERN	Bakersfield, Cal.	1370	KGFX	Pierre, S. D.	630
KEX	Portland, Ore.	1180	KGGC	San Francisco, Cal.	1420
KFAB	Lincoln Neb.	770	KGGF	Coffeyville, Kans.	1010
KFAC	Los Angeles, Cal.	1300	GGGM	Albuquerque, N. Mex.	1230
KFBB	Great Falls, Mont.	1280	KGHF	Pueblo, Colo.	1320
KFBI	Abilene, Kans.	1050	KGHI	Little Rock, Ark.	1200
KFBK	Sacramento, Cal.	1310	KGHL	Billings, Mont.	780
KFDM	Beaumont, Texas	560	KGIR	Butte, Mont.	1360
KFDY	Brookings, S. D.	780	KGIW	Alamosa, Colo.	1420
KFEL	Denver, Colo.	920	KGIX	Las Vegas, Nev.	1420
KFEQ	St. Joseph, Mo.	680	KGKB	Tyler, Texas	1500
KFGQ	Boone, Iowa	1370	KGKL	San Angelo, Texas	1370
KFH	Wichita, Kans.	1300	KGKO	Wichita Falls, Texas	570
KFI	Los Angeles, Cal.	640	KGKY	Scottsbluff, Neb.	1500
KFIO	Spokane, Wash.	1120	KGMB	Honolulu, Hawaii	1320
KFIZ	Fond du Lac, Wis.	1420	KGNE	North Platte, Neb.	1430
KFJB	Marshalltown, Iowa	1200	KGNO	Dodge City, Kans.	1340
KFJI	Klamath Falls, Ore.	1210	KGOS	San Francisco, Cal.	790
KFJM	Grand Forks, N. D.	1370	KGRS	Amarillo, Texas	1410
KFJR	Portland, Ore.	1300	KGU	Honolulu, Hawaii	750
KFJZ	Fort Worth, Texas	1370	KGVO	Missoula, Mont.	1200
KFKA	Greeley, Colo.	880	KGW	Portland, Ore.	620
KFKU	Lawrence, Kans.	1220	KGY	Olympia, Wash.	1210
KFNF	Shenandoah, Iowa	890	KHJ	Los Angeles, Cal.	900
KFOR	Lincoln, Neb.	1210	KHQ	Spokane, Wash.	590
KFOX	Long Beach, Cal.	1250	KICA	Clovis, N. Mex.	1370
KFPL	Dublin, Texas	1310	KID	Idaho Falls, Idaho	1320
KFPM	Greenville, Texas	1310	KIDO	Boise, Idaho	1350
KFPW	Fort Smith, Ark.	1210	KIDW	Lamar, Colo.	1420
KFPY	Spokane, Wash.	1340	KIEM	Eureka, Cal.	1210
KFQD	Anchorage, Alaska	780	KIEV	Glendale, Cal.	850
KFRC	San Francisco, Cal.	610	KIT	Yakima, Wash.	1310
KFRO	Longview, Texas	1370	KJBS	San Francisco, Cal.	1070
KFRU	Columbia, Mo.	630	KJR	Seattle, Wash.	970
KFSD	San Diego, Cal.	600	KLCN	Blytheville, Ark.	1290
KFSG	Los Angeles, Cal.	1120	KLO	Ogden, Utah	1400
KFUO	St. Louis, Mo.	550	KLPM	Minot, N. D.	1240
KFVD	Los Angeles, Cal.	1000	KLRA	Little Rock, Ark.	1390
KFVS	Cape Girardeau, Mo.	1210	KLS	Oakland, Cal.	1440
KFWB	Hollywood, Cal.	950	KLUF	Galveston, Tex.	1370

CALL	LOCATION	KCY5.	CALL	LOCATION	KCY5.
KLX	Oakland, Cal.	880	KTSA	San Antonio, Texas	550
KLZ	Denver, Colo.	560	KTSM	El Paso, Texas	1310
KMA	Shenandoah, Iowa	930	KTUL	Tulsa, Okla.	1400
KMAC	San Antonio, Tex.	1370	KTW	Seattle, Wash.	1220
KMBC	Kansas City, Mo.	950	KUJ	Walla Walla, Wash.	1370
KMED	Medford, Ore.	1310	KUMA	Yuma, Ariz.	1420
KMJ	Fresno, Cal.	580	KUOA	Fayetteville, Ark.	1260
KMLB	Monroe, La.	1200	KUSD	Vermillion, S. D.	890
KMMJ	Clay Center, Neb.	740	KVI	Tacoma, Wash.	570
KMO	Tacoma, Wash.	1330	KVL	Seattle, Wash.	1370
KMOX	St. Louis, Mo.	1090	KVOA	Tucson, Ariz.	1260
KMPC	Beverly Hills, Cal.	710	KVOD	Denver, Colo.	920
KMTR	Los Angeles, Cal.	570	KVOO	Tulsa, Okla.	1140
KNOW	Austin, Texas	1500	KVOR	Colorado Springs, Colo.	1270
KNX	Hollywood, Cal.	1050	KVOS	Bellingham, Wash.	1200
KOA	Denver, Colo.	830	KWCR	Cedar Rapids, Iowa	1430
KOAC	Corvallis, Ore.	550	KWEA	Shreveport, La.	1210
KOB	Albuquerque, N. Mex.	1180	KWFV	Hilo, Hawaii	1210
KOH	Reno, Nev.	1380	KWG	Stockton, Cal.	1200
KOHL	Council Bluffs, Ia.	1260	KWJJ	Portland, Ore.	1040
KOIN	Portland, Ore.	940	KWK	St. Louis, Mo.	1350
KOL	Seattle, Wash.	1270	KWKC	Kansas City, Mo.	1370
KOMA	Oklahoma City, Okla.	1480	KWKH	Shreveport, La.	1190
KOMO	Seattle, Wash.	920	KWLC	Decorah, Iowa	1270
KONO	San Antonio, Tex.	1370	KWSC	Pullman, Wash.	1220
KOOS	Marshfield, Ore.	1200	KWTN	Watertown, S. D.	1210
KORE	Eugene, Ore.	1420	KWTO	Springfield, Mo.	560
KOTN	Pine Bluff, Ark.	1500	KWYO	Sheridan, Wyo.	1370
KOY	Phoenix, Ariz.	1390	KXA	Seattle, Wash.	760
KPAC	Port Arthur, Texas	1260	KXL	Portland, Ore.	1420
KPCB	Seattle, Wash.	710	KXO	El Centro, Cal.	1590
KPJM	Prescott, Ariz.	1500	KXRO	Aberdeen, Wash.	1310
KPO	San Francisco, Cal.	680	KXYZ	Houston, Tex.	1440
KPOF	Denver, Colo.	880	KYA	San Francisco, Cal.	1230
KPPC	Pasadena, Cal.	1210	KYW	Chicago, Ill.	1020
KPQ	Wenatchee, Wash.	1500	KZEG	Manila, P. I.	720
KPRC	Houston, Texas	920	KZRM	Manila, P. I.	618.5
KQV	Pittsburgh, Pa.	1380	LR2	Buenos Aires, Arg.	910
KQW	San Jose, Cal.	1010	LR3	Buenos Aires, Arg.	950
KRF	Berkeley, Cal.	1370	LR4	Buenos Aires, Arg.	990
KREG	Santa Ana, Cal.	1500	LR5	Buenos Aires, Arg.	830
KRGV	Weslaco, Texas	1260	LR6	Buenos Aires, Arg.	1150
KRKD	Los Angeles, Cal.	1120	LR9	Buenos Aires, Arg.	1030
KRKO	Everett, Wash.	1370	LR10	Buenos Aires, Arg.	790
KRLD	Dallas, Texas	1040	LS1	Buenos Aires, Arg.	710
KRMD	Shreveport, La.	1310	LS2	Buenos Aires, Arg.	1190
KROW	Oakland, Cal.	930	LS3	Buenos Aires, Arg.	630
KRSC	Seattle, Wash.	1120	LS4	Buenos Aires, Arg.	670
KSAC	Manhattan, Kans.	580	LS5	Buenos Aires, Arg.	1110
KSCJ	Sioux City, Iowa	1330	LS8	Buenos Aires, Arg.	1230
KSD	St. Louis, Mo.	550	LS9	Buenos Aires, Arg.	1270
KSEI	Pocatello, Idaho	900	LS10	Buenos Aires, Arg.	590
KSL	Salt Lake City, Utah	1130	LU7	Bahia Blanca, Arg.	1280
KSLM	Salem, Ore.	1370	NAA	Arlington, Va.	690
KSO	Des Moines, Iowa	1320	RDN	San Salvador, Sal.	680
KSOO	Sioux Falls, S. D.	1110	TGW	Guatemala City, Guat.	565
KSTP	St. Paul-Minneapolis, Minn.	1460	TGX	Guatemala City, Guat.	1400
KSN	Lowell, Ariz.	1200	TICR	San Jose, C. R.	912
KTAB	San Francisco, Cal.	560	TIGP	San Jose, C. R.	800
KTAR	Phoenix, Ariz.	620	TIRCA	San Jose, C. R.	1100
KTAT	Fort Worth, Tex.	1240	TISO	San Jose, C. R.	550
KTBS	Shreveport, La.	1450	VAS	Glace Bay, N. S.	685
KTFI	Twin Falls, Idaho	1240	VE9EK	Montmagny, Que.	1195
KTHS	Hot Springs, Ark.	1060	VOAC	St. John's, Nfd.	1300
KTM	Los Angeles, Cal.	780	VOAS	St. John's, Nfd.	940
KTRB	Modesto, Cal.	740	VOGY	St. John's, Nfd.	840
KTRH	Houston, Texas	1290	VONF	St. John's, Nfd.	955
			VOWR	St. John's, Nfd.	681

CALL	LOCATION	KCYS.	CALL	LOCATION	KCYS.
WAAB	Boston, Mass.	1410	WCLO	Jamesville, Wis.	1200
WAAF	Chicago, Ill.	920	WCLS	Joliet, Ill.	1310
WAAT	Jersey City, N. J.	940	WCNW	Brooklyn, N. Y.	1500
WAAW	Omaha, Neb.	660	WCOA	Pensacola, Fla.	1340
WABC	New York, N. Y.	860	WCOC	Meridian, Miss.	880
WABI	Bangor, Me.	1209	WCOL	Columbus, Ohio	1210
WABY	Albany, N. Y.	1370	WCRW	Chicago, Ill.	1210
WACO	Waco, Texas	1420	WCSC	Charleston, S. C.	1360
WADC	Akron, Ohio	1320	WCSH	Portland, Me.	940
WAGF	Dothan, Ala.	1370	WDAE	Tampa, Fla.	1220
WAGM	Presque Isle, Maine	1420	WDAF	Kansas City, Mo.	610
WAIU	Columbus, Ohio	640	WDAG	Amarillo, Texas	1410
WALA	Mobile, Ala.	1380	WDAH	El Paso, Texas	1310
WALR	Zanesville, Ohio	1210	WDAS	Philadelphia, Pa.	1370
WAML	Laurel, Miss.	1310	WDAY	Fargo, N. D.	940
WAPI	Birmingham, Ala.	1140	WDBJ	Roanoke, Va.	930
WARD	Brooklyn, N. Y.	1400	WDBO	Orlando, Fla.	580
WASH	Grand Rapids, Mich.	1270	WDEL	Wilmington, Del.	1120
WATR	Waterbury, Conn.	1190	WDEV	Waterbury, Vt.	550
WAVE	Louisville, Ky.	940	WDGY	Minneapolis, Minn.	1180
WAWZ	Zarephath, N. J.	1350	WDNC	Durham, N. C.	1500
WAZL	Hazleton, Pa.	1420	WDOD	Chattanooga, Tenn.	1280
WBAA	W. Lafayette, Ind.	890	WDRC	Hartford, Conn.	1330
WBAL	Baltimore, Md.	760-1060	WDSU	New Orleans, La.	1250
WBAP	Ft. Worth, Tex.	800	WDZ	Tuscola, Ill.	1070
WBAX	Wilkes-Barre, Pa.	1210	WEAF	New York, N. Y.	660
WBBC	Brooklyn, N. Y.	1400	WEAN	Providence, R. I.	780
WBBL	Richmond, Va.	1210	WEBC	Superior, Wis.	1290
WBBS	Chicago, Ill.	770	WEBQ	Harrisburg, Ill.	1210
WBBR	Brooklyn, N. Y.	1300	WEBR	Buffalo, N. Y.	1310
WBBZ	Ponca City, Okla.	1200	WEDC	Chicago, Ill.	1210
WBCM	Bay City, Mich.	1410	WEED	Rocky Mount, N. C.	1420
WBEN	Buffalo, N. Y.	900	WEEI	Boston, Mass.	599
WBEO	Marquette, Mich.	1310	WEEU	Reading, Pa.	830
WBHS	Huntsville, Ala.	1200	WEHC	Charlottesville, Va.	1350
WBIG	Greensboro, N. C.	1440	WEHS	Cicero, Ill.	1420
WBNO	New Orleans, La.	1200	WELL	Battle Creek, Mich.	1420
WBNS	Columbus, O.	1430	WENR	Chicago, Ill.	870
WBNX	New York, N. Y.	1350	WESG	Elmira, N. Y.	1090
WBOQ	New York, N. Y.	860	WEVD	New York, N. Y.	1300
WBOW	Terre Haute, Ind.	1310	WFW	St. Louis, Mo.	760
WBRB	Red Bank, N. J.	1200	WEXL	Royal Oak, Mich.	1310
WBRC	Birmingham, Ala.	930	WFAA	Dallas, Texas	890
WBRE	Wilkes-Barre, Pa.	1310	WFAB	New York, N. Y.	1300
WBRO	Babson Park, Mass.	920	WFAM	South Bend, Ind.	1200
WBT	Charlotte, N. C.	1080	WFAS	White Plains, N. Y.	1210
WBTM	Danville, Va.	1370	WFBC	Greenville, S. C.	1390
WBZ	Boston, Mass.	990	WFBE	Cincinnati, Ohio	1200
WBZA	Springfield, Mass.	990	WFBG	Altoona, Pa.	1310
WCAC	Storrs, Conn.	600	WFBL	Syracuse, N. Y.	1360
WCAD	Canton, N. Y.	1220	WFBM	Indianapolis, Ind.	1230
WCAE	Pittsburgh, Pa.	1220	WFBR	Baltimore, Md.	1270
WCAL	Northfield, Minn.	1250	WFDF	Flint, Mich.	1310
WCAM	Camden, N. J.	1280	WFEA	Manchester, N. H.	1340
WCAO	Baltimore, Md.	600	WFI	Philadelphia, Pa.	560
WCAP	Asbury Park, N. J.	1280	WFLA	Clearwater, Fla.	620
WCAT	Rapid City, S. D.	1200	WGAL	Lancaster, Pa.	1500
WCAU	Philadelphia, Pa.	1170	WGAR	Cleveland, Ohio	1450
WCAX	Burlington, Vt.	1200	WGBB	Freeport, N. Y.	1210
WCAZ	Carthage, Ill.	1070	WGBF	Evansville, Ind.	630
WCBA	Allentown, Pa.	1440	WGBI	Scranton, Pa.	880
WCBD	Zion, Ill.	1080	WGCM	Gulfport, Miss.	1210
WCBM	Baltimore, Md.	1370	WGES	Chicago, Ill.	1360
WCBS	Springfield, Ill.	1210	WGH	Newport News, Va.	1310
WCCO	Minneapolis-St. Paul, Minn.	810	WGL	Fort Wayne, Ind.	1370
WCFL	Chicago, Ill.	970	WGN	Chicago, Ill.	720
WCHS	Charleston, W. Va.	580	WGNV	Chester, N. Y.	1210
WCKY	Covington, Ky.	1490	WGPC	Albany, Ga.	1420

CALL	LOCATION	KCYS.	CALL	LOCATION	KCYS.
WGR	Buffalo, N. Y.	550	WJZ	New York, N. Y.	760
WGST	Atlanta, Ga.	890	WKAQ	San Juan, P. R.	1240
WGY	Schenectady, N. Y.	790	WKAR	East Lansing, Mich.	1040
WHA	Madison, Wis.	940	WKBB	East Dubuque, Ill.	1500
WHAM	Rochester, N. Y.	1150	WKBF	Indianapolis, Ind.	1400
WHAS	Louisville, Ky.	820	WKBH	La Crosse, Wis.	1380
WHAT	Philadelphia, Pa.	1310	WKBI	Cicero, Ill.	1420
WHAZ	Troy, N. Y.	1300	WKBN	Youngstown, Ohio	570
WHB	Kansas City, Mo.	860	WKBO	Harrisburg, Pa.	1200
WHBC	Canton, Ohio	1200	WKBV	Richmond, Ind.	1500
WHBD	Mt. Orab, Ohio	1370	WKBW	Buffalo, N. Y.	1480
WHBF	Rock Island, Ill.	1210	WKBZ	Muskegon, Mich.	1500
WHBI	Newark, N. J.	1250	WKEU	Griffin, Ga.	1500
WHBL	Sheboygan, Wis.	1410	WKJC	Lancaster, Pa.	1200
WHBQ	Memphis, Tenn.	1370	WKOK	Sunbury, Pa.	1210
WHBU	Anderson, Ind.	1210	WKRC	Cincinnati, Ohio	550
WHBY	Green Bay, Wis.	1200	WKY	Oklahoma City, Okla.	900
WHDF	Calumet, Mich.	1370	WKZO	Kalamazoo, Mich.	590
WHDH	Boston, Mass.	870	WLAC	Nashville, Tenn.	1470
WHDL	Olean, N. Y.	1420	WLAP	Lexington, Ky.	1420
WHEB	Portsmouth, N. H.	740	WLE	Minneapolis-St. Paul, Minn.	1250
WHEC	Rochester, N. Y.	1430	WLBC	Muncie, Ind.	1310
WHEF	Kosciusko, Miss.	1500	WLBF	Kansas City, Kans.	1420
WHFC	Chicago, Ill.	1420	WLBL	Stevens Point, Wis.	900
WHIS	Bluefield, W. Va.	1410	WLBW	Erie, Pa.	1260
WHJB	Greensburg, Pa.	620	WLBZ	Bangor, Me.	620
WHK	Cleveland, Ohio	1390	WLEU	Erie, Pa.	1420
WHN	New York, N. Y.	1010	WLIT	Philadelphia, Pa.	560
WHO	Des Moines, Ia.	1000	WLLH	Lowell, Mass.	1370
WHOM	Jersey City, N. J.	1450	WLNH	Laconia, N. H.	1310
WHP	Harrisburg, Pa.	1430	WLS	Chicago, Ill.	870
WIBA	Madison, Wis.	1280	WLTH	Brooklyn, N. Y.	1400
WIBG	Glenside, Pa.	970	WLVA	Lynchburg, Va.	1200
WIBM	Jackson, Mich.	1370	WLW	Cincinnati, Ohio	700
WIBU	Poynette, Wis.	1210	WLWL	New York, N. Y.	1100
WIBW	Topeka, Kans.	580	WMAL	Washington, D. C.	630
WIBX	Utica, N. Y.	1200	WMAQ	Chicago, Ill.	670
WICC	Bridgeport, Conn.	600	WMAS	Springfield, Mass.	1420
WIL	St. Louis, Mo.	1200	WMAZ	Macon, Ga.	1180
WILL	Urbana, Ill.	890	WMBC	Detroit, Mich.	1420
WILM	Wilmington, Del.	1420	WMBD	Peoria, Ill.	1440
WIND	Gary, Ind.	560	WMBG	Richmond, Va.	1210
WINS	New York, N. Y.	1180	WMBH	Joplin, Mo.	1420
WIOD	Miami, Fla.	1300	WMBI	Chicago, Ill.	1080
WIP	Philadelphia, Pa.	610	WMBO	Auburn, N. Y.	1310
WIS	Columbia, S. C.	560	WMBQ	Brooklyn, N. Y.	1500
WISN	Milwaukee, Wis.	1120	WMBR	Jacksonville, Fla.	1370
WJAC	Johnstown, Pa.	1310	WMC	Memphis, Tenn.	780
WJAG	Norfolk, Neb.	1060	WMCA	New York, N. Y.	570
WJAR	Providence, R. I.	890	WMEX	Chelsea, Mass.	1500
WJAS	Pittsburgh, Pa.	1290	WMFG	Hibbing, Minn.	1210
WJAX	Jacksonville, Fla.	900	WMFF	Plattsburg, N. Y.	1310
WJAY	Cleveland, Ohio	610	WMFD	Wilmington, N. C.	1370
WJBC	Bloomington, Ill.	1200	WMFE	New Britain, Conn.	1420
WJBK	Detroit, Mich.	1500	WMMN	Fairmont, W. Va.	890
WJBL	Decatur, Ill.	1200	WMPC	Lapeer, Mich.	1200
WJBO	Baton Rouge, La.	1420	WMT	Waterloo, Iowa	600
WJBW	New Orleans, La.	1200	WNAC	Boston, Mass.	1230
WJBY	Gadsden, Ala.	1210	WNAD	Norman, Okla.	1010
WJDX	Jackson, Miss.	1270	WNAX	Yankton, S. D.	570
WJEJ	Hagerstown, Md.	1210	WNB	Binghamton, N. Y.	1500
WJIM	Lansing, Mich.	1210	WNBH	New Bedford, Mass.	1310
WJJD	Chicago, Ill.	1130	WNBO	Washington, Pa.	1200
WJMS	Ironwood, Mich.	1420	WNBR	Memphis, Tenn.	1430
WJR	Detroit, Mich.	750	WNBX	Springfield, Vt.	1260
WJSV	Washington, D. C.	1460	WNBZ	Saranac Lake, N. Y.	1290
WJTL	Atlanta, Ga.	1370	WNEL	San Juan, P. R.	1290
WJW	Akron, Ohio	1210	WNEW	Newark, N. J.	1250

CALL	LOCATION	KCYS.	CALL	LOCATION	KCYS.
WNOX	Knoxville, Tenn.	560	WSUN	St. Petersburg, Fla.	620
WNRA	Muscle Shoals, Ala.	1420	WSVA	Staunton, Va.	550
WNYC	New York, N. Y.	810	WSVS	Buffalo, N. Y.	1370
WOAI	San Antonio, Texas	1190	WSYB	Rutland, Vt.	1500
WOC	Davenport, Iowa	1370	WSYR	Syracuse, N. Y.	570
WOCL	Jamestown, N. Y.	1210	WSYU	Syracuse, N. Y.	570
WOI	Ames, Iowa	640	WTAD	Quincy, Ill.	1400
WOKO	Albany, N. Y.	1430	WTAG	Worcester, Mass.	580
WOL	Washington, D. C.	1310	WTAM	Cleveland, Ohio	1070
WOMT	Manitowoc, Wis.	1210	WTAQ	Eau Claire, Wis.	1330
WOOD	Grand Rapids, Mich.	1270	WTAR	Norfolk, Va.	780
WOPI	Bristol, Tenn.	1500	WTAW	College Station, Texas	1120
WOR	Newark, N. J.	710	WTAX	Springfield, Ill.	1210
WORC	Worcester, Mass.	1280	WTBO	Cumberland, Md.	800
WORK	York, Pa.	1320	WTCN	Minneapolis-St. Paul, Minn.	1250
WOS	Jefferson City, Mo.	630	WTEL	Philadelphia, Pa.	1310
WOSU	Columbus, Ohio	570	WTFI	Athens, Ga.	1450
WOV	New York, N. Y.	1130	WTIC	Hartford, Conn.	1040
WOW	Omaha, Neb.	590	WTJS	Jackson, Tenn.	1310
WOWO	Fort Wayne, Ind.	1160	WTMJ	Milwaukee, Wis.	620
WPAD	Paducah, Ky.	1420	WTNJ	Trenton, N. J.	1280
WPAX	Thomasville, Ga.	1210	WTOC	Savannah, Ga.	1260
WPEN	Philadelphia, Pa.	920	WTRC	Elkhart, Ind.	1310
WPFB	Hattiesburg, Miss.	1370	WVFW	Brooklyn, N. Y.	1400
WPG	Atlantic City, N. J.	1100	WWAE	Hammond, Ind.	1200
WPHR	Petersburg, Va.	880	WWPA	Clarion, Pa.	850
WPRO	Providence, R. I.	630	WWJ	Detroit, Mich.	920
WPTF	Raleigh, N. C.	680	WWL	New Orleans, La.	850
WQAM	Miami, Fla.	560	WWNC	Asheville, N. C.	570
WQAN	Scranton, Pa.	880	WWRL	Woodside, N. Y.	1500
WQBC	Vicksburg, Miss.	1360	WWSW	Pittsburgh, Pa.	1500
WQDM	St. Albans, Vt.	1370	WWVA	Wheeling, W. Va.	1160
WRAK	Williamsport, Pa.	1370	WXYZ	Detroit, Mich.	1240
WRAW	Reading, Pa.	1310	WYBN	Waterbury, Conn.	1530
WRAX	Philadelphia, Pa.	920	W2XR	Long Island City, N. Y.	1550
WRBL	Columbus, Ga.	1200	W6XAI	Bakersfield, Cal.	1550
WRBX	Roanoke, Va.	1410	W9XBY	Kansas City, Mo.	1530
WRC	Washington, D. C.	950	XEA	Guadalajara, Jal.	1060
WRDO	Augusta, Me.	1370	XEAE	Tijuana, B. C.	980
WRDW	Augusta, Ga.	1500	XEAP	Nogales, Sonora	990
WREC	Memphis, Tenn.	600	XEAL	Mexico City, D. F.	1240
WREN	Lawrence, Kans.	1220	XEAL	Mexico City, D. F.	660
WRGA	Rome, Ga.	1500	XEAM	Nuevo Laredo, Tamps	750
WRJN	Racine, Wis.	1370	XEAO	Mexicali, B. C.	560
WROK	Rockford, Ill.	1410	XEAW	Reynosa, Tamps.	960
WROL	Knoxville, Tenn.	1310	XEAZ	Leon, Guan.	1420
WRR	Dallas, Texas	1280	XEB	Mexico City, D. F.	1030
WRUF	Gainesville, Fla.	830	XEBC	Agua Caliente, B. C.	760
WRVA	Richmond, Va.	1110	XECW	Mexico City, D. F.	1310
WSAI	Cincinnati, Ohio	1330	XED	Guadalajara, Jal.	1160
WSAJ	Grove City, Pa.	1310	XEE	Durango, Durango	1210
WSAN	Allentown, Pa.	1440	XEFA	Mexico City, D. F.	1180
WSAR	Fall River, Mass.	1450	XEFB	Monterrey, N. L.	1420
WSAZ	Huntington, W. Va.	1190	XEFC	Merida, Yuc.	1310
WSB	Atlanta, Ga.	740	XEFE	Nuevo Laredo, Tamps.	1370
WSBC	Chicago, Ill.	1210	XEFG	Mexico City, D. F.	1100
WSBT	South Bend, Ind.	1360	XEFI	Chihuahua, Chih.	720
WSFA	Montgomery, Ala.	1410	XEFJ	Monterrey, N. L.	1210
WSGN	Birmingham, Ala.	1310	XEFO	Mexico City, D. F.	940
WSIX	Springfield, Tenn.	1210	XEFV	Juarez, Chih.	1210
WSJS	Winston-Salem, N. C.	1310	XEFW	Tampico, Tamps.	1310
WSM	Nashville, Tenn.	650	XEFZ	Mexico City, D. F.	1370
WSMB	New Orleans, La.	1320	XEG	Ensenada, B. C.	1280
WSMK	Dayton, Ohio	1380	XEH	Monterrey, N. L.	1150
WSOC	Charlotte, N. C.	1210	XEI	Morelia, Mich.	1370
WSPA	Spartanburg, S. C.	1420	XEJ	Juarez, Chih.	1020
WSPD	Toledo, Ohio	1340	XEK	Mexico City, D. F.	990
WSUI	Iowa City, Iowa	880	XEKL	Leon, Guan.	920

CALL	LOCATION	KCYS.
XEMA	Tampico, Tamps.	1080
XEMO	Tijuana, B. C.	860
XEMZ	Tijuana, B. C.	1210
XEN	Mexico City, D. F.	710
XENT	Nuevo Laredo, Tamps.	910
XEOX	Saltillo, Coah.	640
XEP	Mexico City, D. F.	820
XEPN	Piedras Negras, Coah.	590
XES	Tampico, Tamps.	970
XET	Monterrey, N. L.	690
XETB	Torreón, Coah.	1310
XETH	Puebla, Puebla	1210
XETW	Mexico City, D. F.	820
XEU	Veracruz, V. C.	980
XEW	Mexico City, D. F.	890
XEWZ	Mexico City, D. F.	1150
XFX	Monterrey, N. L.	1310
XEXX	Mexico City, D. F.	850
XFY	Merida, Yuc.	1200
XFYZ	Mexico City, D. F.	780
XZZZ	San Luis Potosí, S. L. P.	1370
XFA	Aguascalientes, Ags.	1310
XFB	Jalapa, V. C.	1270
XFC	Aguascalientes, Ags.	810
XFD	Orizaba, V. C.	1340
XFO	Mexico City, D. F.	940
XFY	Mexico City, D. F.	610
YV1RC	Caracas, Venezuela	960
YV2RC	Caracas, Venezuela	880
YV3RC	Caracas, Venezuela	1200
10AK	Stratford, Ont.	1200
10BP	Wingham, Ont.	1200
10BQ	Brantford, Ont.	1200
10BU	Canora, Sask.	1200
1YA	Auckland, N. Z.	650
2YA	Wellington, N. Z.	570
3YA	Christchurch, N. Z.	720
4QG	Brisbane, Aust.	760
5CK	Crystal Brook, Aust.	630
5CL	Adelaide, Aust.	730
2BI	Sydney, Aust.	855
3LO	Melbourne, Aust.	806
4RK	Rockhampton, Aust.	910
3AR	Melbourne, Aust.	610

The fifth annual radio party of the International Radio Club is to be held at the Miami Biltmore Hotel in Coral Gables, Fla., January 7, 8 and 9, according to its president, Jack Rice. More than 300 radio stations and scores of radio notables will participate in this nation-wide series of broadcasts to promote good will between Miami and other communities.

(Continued from Page 3)
has been exceptionally good along the eastern seaboard. Various reasons have been advanced for this phenomena but it is safe to say that in most instances it is by reason of the use of super power which seems to be in vogue with broadcasters in all sections of the world. European stations are in most cases, quite prompt in answering listeners letters and in verifying correct reports of reception.

NNRC HAM NOTES

Although a recent addition to the club, William E. Mays, Linden, N. J., is an old timer on the ham frequencies where he is known as W2CEJ. Bill acquired his call back in '28, is mostly CW on 80 and 20 meters, likes to chew the rag and will never let a QSP go by. Two rigs of low and medium power are used, both crystal controlled.

Our eminent Jersey City DXer, Charles M. O'Brien, owns the two amateur calls W2EQS and W3DPY. Charlie has relayed important traffic, has worked sixes and sevens, likes rag chews and thinks ham radio is a great game and a swell hobby. W2EQS will soon burst forth with a new crystal controlled rig working fone on 160 and CW on 80, 40 and 20 meters.

Howard B. Beidleman, the club's technical advisor, has long owned a ham license and the call W2FHC. Howard, believe it or not, likes his rag chews and can be found near the low frequency end of the 80 meter band with an M.O.P.A., using a pair of hard-pushed 'tens in the final. Class A fone is contemplated when the depression is over.

W2FXE is Bill Tucker's ham name. Bill hails from Irvington, N. J., and has worked practically all the bands with both fone and CW, including some commendable 5 meter activities. At present W2FXE keys a 47 crystal oscillator on 7280 Kcs., and invites ham members to chew the rag any evening. Bill enjoys entering contests, welcomes a QSP and has worked all of the U. S. and a number of foreigners.

Up in West Hartford, Conn., Sidnev Kaufman operates crystal controlled 160 meter fone under the call W11FH. Although licensed only a few months, Sid has a fine business QSO log, having worked the 1st, 2nd, 3rd and 8th call districts. Like most of the fone men, W11FH likes to chat over the mike, but would not turn down any DX that came his way.

W 2 H R N

APPLICATION FOR MEMBERSHIP

I am interested in receiving membership information from The Newark News Radio Club and a copy of your special program listings issued weekly:

Name

Street and No.

City and State

(Please Print)

SHORT WAVE NOTES

THEY TELL US . . . that ZHI, Malay States, 6,012 kcs., is coming through weakly, but regularly, Monday, Wednesday and Thursday from 5.45 to 8.15 A. M., EST; their address is Radio Service Co., 20 Orchard Street, Singapore, Malaya . . . that ZGE, Kuala Lumpur, 6,130 kcs., is heard Sunday, Tuesday and Friday from 6.45 to 8.45 A. M., EST. . . that FZR, Saigon, French Indo-China, has been heard in communication with Paris on 16,210 kcs., Wednesdays, from 7 to 8 A. M., EST., and irregularly between 10 and 11 A. M. An identifying note of a three-tone chime is used . . . that harmonics from the following are liable to confuse SW fans: CFCT, Victoria, B. C., a broadcast station on 1450 kcs., is sometimes heard on 50 meters; XEBC, Agua Caliente, Mexico, 760 kcs., is heard on 9,900, or close to EAQ in Madrid, Spain. As previously mentioned, XENT, Nuevo Laredo, Mexico, has a harmonic on about 6,720 kcs., and also on 4,610 kcs., although on a broadcast frequency of 1118 kcs. . . . that VK3LR, Melbourne, Aust., have changed schedule; they now start at 11 P. M., instead of 1 A. M. . . . that VK3ME, Melbourne, Aust., also broadcasts Sunday from 5 to 7 A. M., EST., in addition to the regular Wednesday and Saturday transmissions of 5 to 6.30 and 5 to 1 A. M., EST., respectively. A frequency of 9,510 kcs. is being used.

That if you want real Cuban music, listen to COC, Havana, 6010 kcs., every Saturday starting at 11.30 P. M., . . . that COA, a new Cuban, on 9,500 kcs., broadcasts nightly from 8 to 10:30. . . . that our old friend Frank Jones (of 6KW fame) is transmitting under the call CM6XS, from Tunucucu, Cuba, on 8250 kcs., and is being heard from 10 to 10:30 in the evening. . . . that PRADO, Ecuador, is being heard very nicely Thursdays from 9 to 11:30 P. M. . . . that KQH, Kahuku, Hawaii, changes frequency to 14,920 kcs., that you SWLs who want to log Russia will find RV15, Khabarovsk, Siberia, on 4250 kcs., best from 4 to 9 A. M. . . . that RKI and RNE (15040 and 12,001 kcs., respectively) are going to test (or already are) for American SW fans every Saturday between 9 and 11 A. M., with WQP, Rocky Point, on 13901 kcs. . . . that when writing for a verification to Russia, address as U. S. S. R. . . . that HJ3ABB, Bogota, Columbia, will send gifts to those reporting reception of advertising programs. They use 7400 kcs., and the time of these broadcasts is from 7 to 10:30 P. M. . . . that the 49 meter band is now at its best, which, of course, is only natural at this time of the year.

JAPANESE SCHEDULE

According to Carroll H. Weyrich, 4310 Evans Chapel Road, Baltimore, three Japanese stations are to enter the super-power class during the coming year. JOAK-1, Tokyo, is to jump from 10,000 up to 150,000 watts, while JOGK, Kumamoto, and JOBK-1, Osaka, are to use 100,000 each instead of their present 10,000 watts.

Daily programs of JOAK-1 are relayed by all J stations except JOBK, JODK-1, JOAK-2, JFAK and JQAK.

JOBK, JODK-2, JFAK, JFBK and JQAK relay at times, JOAK-1, while JOAK-2 has its own programs which are often relayed by JOCK-2 and JOBK-2.

The operating time for all stations transmitting programs of JOAK-1 is from 7 A. M., to 21.45 P. M., Japanese central time, in November, December, January, February and March. In the other months of the year they are on the air at 6 A. M., JCT. From April to October, JFAK, JFBK and JQAK operate one hour later than all other J stations, due to the difference in time.

NNRC LISTENING POSTS

- 1 -E. L. Peters, Box 65, Westport, Nova Scotia, Canada.
- 2 -Louis J. McVey, Route 10, Box 144B, Sparrows Point, Md.
- 3 -Raymond Mitchell, 219 Third Avenue, North, Nashville, Tenn.
- 4 -James Woonton, R. R. No. 7, London, Ontario, Canada
- 5 -Donald Hill, Broken Bow, Nebraska.
- 6 -Paul Sampson, 1820 College Avenue, Regina, Sask. Canada.
- 7 -John P. Kramer, 4401 Fourth Avenue, Brooklyn, N. Y.
- 8 - E. A. Feichtner, 53 Holmes Street, Erie, Pa.
- 9 -Carl Forestieri, 463 East 185th Street, New York City.
- 10-Ray E. Everly, 102 West Washington Street, Newton, Ill.
- 11-George C. Valentine, 55 Searing Street, Dover, N. J.
- 12-James A. Dunnigan, 194 North Street, New Britain, Conn.
- 14-Herbert J. Blythe, 3 North Cornwall Ave; Ventnor City, N. J.
- 15-Irwin Beitman, 249 Gates Avenue, Elyria, Ohio.
- 16-John A. Shanks, Russellville, Tenn.

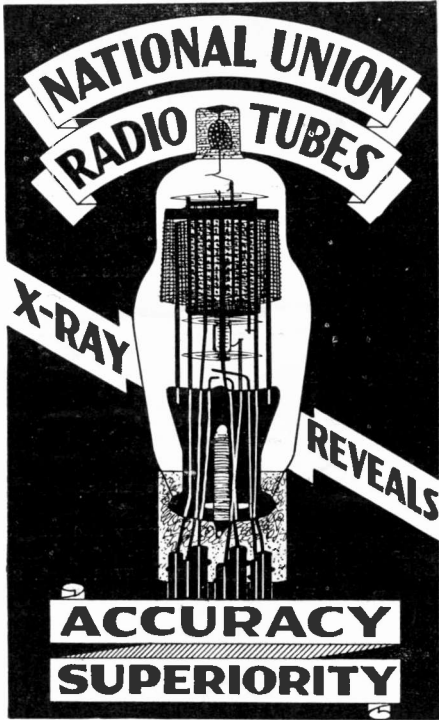
PRINCIPAL SHORT WAVE STATIONS OF THE WORLD

Dial	Meters	Kes.	Call	Location	Time (EST)
X	13.93	21530	W8XK	Pittsburgh, Pa.	7 A. M. to 3 P. M.
—	14.38	20860	EDM	Madrid, Spain	Mornings
—	14.49	20700	LSY	Monte Grande, Arg.	Mornings
—	14.97	20040	OPL	Leopoldville, Congo	Mornings
—	15.06	19920	HSJ	Bangkok, Siam	Early mornings
—	15.24	19690	CEC	La Granja, Chile	Early mornings
—	15.37	19520	IRW	Torrenova, Italy	Irregular
—	15.50	19350	FTM	St. Assise, France	Early mornings
—	15.62	19210	ORG	Ruyselede, Belgium	Phones Belgium Congo mornings
—	15.88	18890	ZSS	Kilpheuvel, S. Africa	Early mornings
—	15.93	18830	PLE	Bandoeng, Java	Irregular
—	16.04	18700	DFQ	Nauen, Germany	Early mornings
—	16.04	18700	IRZ	Torrenova, Italy	Early mornings
—	16.11	18620	GAU	Rugby, England	Phones early morning
—	16.47	18210	KUS	Manila, P. I.	Phones Germany and Japan
—	16.55	18130	PMC	Bandoeng, Java	Irregular
—	16.85	17800	PCV	Kootwijk, Holland	Early mornings
—	16.86	17790	XGBB	Shanghai, China	Early mornings
—	16.86	17790	GSG	Daventry, England	6 to 7.30 A. M.
X	16.87	17780	W3XAL	Bound Brook, N. J.	10 A. M. to 1 P. M.
—	19.04	15760	JYT	Tokyo, Japan	Irregular
—	19.20	15620	JVF	Nasaki, Japan	Phones KWU in evening
—	19.46	15420	KWO	Dixon, Calif.	Phones KWU in evening
X	19.56	15330	W2XAD	Schenectady, N. Y.	2.30 to 3.30 P. M.
X	19.64	15270	W2XE	Wayne, N. J.	11 A. M. to 1 P. M.
X	19.67	15250	RIM	Tachkent, USSR.	Phone
X	19.68	15243		Poitouise, France	7.30 to 11 P. M.
X	19.72	15210	W8XK	Pittsburg, Pa.	11 A. M. to 5.15 P. M.
X	19.73	15200	DJB	Zeesen, Germany	8 to 11.30 A. M. and 4 to 5.30 A. M., Sunday
X	19.84	15123	HVJ	Vatican City, Italy	5 to 5.15 A. M. and 10 to 10.40 A. M. Sat.
—	19.95	15000	RKI	Moscow, USSR.	Sunday mornings
—	20.65	14530	XDA	Mexico D. F., Mexico	Phone
—	20.78	14440	GBW	Rugby, England	Phone
—	21.93	13685	HASZ	Budapest, Hungary	7 to 9.30 A. M., irregularly
—	22.66	13240	KBJ	Manila, P. I.	Phone
—	24.83	12082	CT1CT	Lisbon, Portugal	7 to 9 A. M., Sunday and 4 to 6 P. M. Thurs.
—	25.00	12000	RNE	Moscow, USSR.	6 to 7 A. M. and 10 to 11 A. M., Sunday
—	25.02	11990	FZS	Saigon, Indo China	Phones irregularly
X	25.25	11880	FFF	Poitouise, France	11.15 A. M. to 2.15 P. M. and 4 to 6 P. M.
X	25.29	11860	GSE	Daventry, England	9.15 A. M. to 12.45 P. M.
X	25.36	11830	W2XE	Wayne, N. J.	3 to 5 P. M.
—	25.51	11760	DJD	Zeesen, Germany	Noon to 4.30 P. M. and 5.30 to 10.45 P. M.
—	25.53	11750	GSD	Daventry, England	2.15 to 4.15 A. M. and 1 to 5.45 P. M.
—	25.57	11725	PHI	Huizen, Holland	8.30 to 10.30 A. M., except Tues. or Wed.
—	25.58	11720	CJRX	Winnipeg, Manitoba	Irregular
—	25.63	11705		Poitouise, France	3 to 6, 6.15 to 9.15, 10 to 12 P. M.
—	27.93	10740	JVM	Nasaki, Japan	Saturday, 11 P. M. and irregular
—	28.91	10370	WCG	Rocky Point, N. Y.	Works LSX and KFZ
—	28.99	10350	LSX	Buenos Aires, Arg.	Relays Byrd broadcasts
—	29.04	10330	ORK	Ruyselede, Belgium	2.45 to 4.15 P. M.
—	29.24	10260	PMN	Bandoeng, Java	Phones Sydney irregularly
—	29.59	10140	OPM	Belgian Congo	Irregular
—	29.79	10070	ENY	Madrid, Spain	Irregular
—	29.84	10050	ZFB	Hamilton, Bermuda	Irregular
X	30.03	9990	LSN	Buenos Aires, Arg.	Irregular
X	30.43	9860	EAQ	Aranjuez, Spain	5.15 to 7 P. M., and Saturday 1 to 3 P. M.
—	30.52	9830	IRM	Rome, Italy	Irregular
—	31.25	9600	CT1AA	Lisbon, Portugal	3.30 to 6 P. M., Tuesday to Friday
—	31.27	9595	HBL	Prangins, Switzerland	5.30 to 6.15 P. M. Saturday 11.30 A. M.
—	31.28	9590	VK2ME	Sydney, Australia	12.30 to 2.30, 4.30 to 8.30, 9.30 A. M., (Sunday only)
X	31.28	9590	W3XAU	Philadelphia, Pa.	Noon to 8 P. M.
X	31.30	9580	GSC	Daventry, England	6 to 8 P. M.
X	31.32	9579	VK3LR	Melbourne, Aust.	3.15 to 7.30 A. M. except Sundays.
X	31.36	9570	W1XAZ	Springfield, Mass.	7 to 1 A. M., Sunday 9 to 1 A. M.
—	31.38	9560	DJA	Zeesen, Germany	8 to 11.30 A. M. and 5.15 to 9.15 P. M.

*KWU
FV2RC
Dixon Calif*

Dial	Meters	Kes.	Call	Location	Time (EST)
X	31.45	9540	LCL	Jeloy, Norway	Irregular
X	31.48	9530	W2XAF	Schenectady, N. Y.	7.30 to 11 P. M.
X	31.55	9510	VK3ME	Meibourne, Aust.	5 to 6.30 A. M., Wednesday to Saturday
X	31.55	9510	GSB	Daventry, England	2.15 to 4.15 A.M. and 10.45 A.M. to 5.45 P.M.
X	31.57	9500	PRF5	Rio de Janeiro, Brazil	5.30 to 6.15 P. M., not Sunday.
X	31.61	9490	WEF	Rocky Point, N. Y.	Contacts LSX and KPF
X	31.90	9415	PLV	Bandoeng, Java	Irregular
X	32.15	9332	CGA	CJA2, Dartmouth, Canada	Phones Rugby
X	32.33	9280	GBB	Rugby, England	Phone
X	34.56	8680	GBC	Rugby, England	Phone
X	35.80	8380	IAC	Coltano, Italy	Phone
X	37.33	8035	CNR	Radio Rabat, Morocco	3 to 4 P. M., Sundays
X	37.65	7970	HSP	Bangkok, Siam	Phone irregularly
X	38.47	7800	HBP	Frangins, Switzerland	5.30 to 6.15 P. M., Saturdays
X	39.89	7520	RKI	Moscow, USSR.	Phones irregularly
X	40.50	7410	EA8AB	Tenerife, Canarias	Not in operation at present
X	40.55	7400	HJ3ABD	Bogota, Colombia	7 to 11 P. M.
X	40.60	7390	ZLT	Wellington, N. Z.	Phone
X	41.80	7180	CR6AA	Lobito, Angola, Africa	2.30 to 4.30 P. M.
X	42.00	7140	HJ4ABB	Manizales, Colombia	8 to 10 P. M.
X	43.17	6950	YNLF	Managua, Nicaragua	Irregular nights
X	43.86	6840	HAT2	Budapest, Hungary	Phone irregularly
X	44.14	6750	JVT	Nasaki, Japan	4 to 7.40 A. M.
X	44.71	6710	TIEP	San Jose, Costa Rica	7 to 10 P. M., except Sunday
X	44.96	6670	YVQ	Maracay, Venezuela	Phone irregularly
X	45.00	6668	HC2RL	Guayaquil, Ecuador	5.45 to 8 P.M. Sunday and 9.15 to 11.15 P.M.
X	45.31	6620	PRADO	Riobamba, Ecuador	9 to 11.30 Thursday
X	45.38	6610	REN	Moscow, USSR.	4 to 5 P. M. Mon., Wed., Fri., Sat.
X	46.25	6485	HI4D	Santo Domingo, D. R.	Evenings
X	46.30	6480	HJ5ABD	Call, Colombia	7 to 10 P. M. except Sunday
X	46.60	6440	HJ1ABB	Baranquilla, Colombia	6 to 10 P. M.
X	47.50	6310	HIZ	Santo Domingo, D. R.	11 P. M. to 12.30 A. M.
X	48.62	6170	HJ3ABF	Bogota, Colombia	7 to 11 P. M. except Sunday
X	48.78	6150	YV3RC	Caracas, Venezuela	4.30 to 10 P. M.
X	48.78	6150	HJ2ABA	Tunja, Colombia	6 to 9 P. M. Tuesday, Thursday, Saturday
X	48.83	6140	CJRO	Winnipeg, Manitoba	Nightly
X	48.92	6130	ZGE	Kuala Lumpur, FMS.	6.40 A. M. to 8.40 A. M. Sun., Tues., Fri.
X	49.00	6122	ZTJ	Johannesburg, S. A.	11.45 P. M. to 12.30 A. M. and 3.30 to 7 A. M.
X	49.02	6120	YDA	Bandoeng, Java	5.30 to 11.30 A. M. (N. I. R. O. M.)
X	49.02	6120	W2XE	Wayne, New Jersey	6 P. M. to 11 P. M.
X	49.08	6110	YV2RC	Caracas, Venezuela	5.15 to 9.30 P. M.
X	49.09	6110	VE9HX	Halifax, N. S.	5 to 11 P. M.
X	49.10	6110	VUC	Calcutta, India	10.30 A. M. to 1 P. M. except Fri. and Sat.
X	49.18	6100	W3XAL	Bound Brook, N. J.	6.30 P. M. to 1 A. M. Mon., Wed., Sat.
X	49.20	6090	HJ1ABD	Cartagena, Colom.	7 to 9 P.M. F. and Sa. 7 A.M. to 12 P.M. etc.
X	49.34	6080	OXY	Skamteback, Denmark	From 1 P. M.
X	49.34	6080	W9XAA	Chicago, Illinois	3 to 4 P. M. Tu., Th., Sat., 3 P. M. to 1 A. M.
X	49.40	6080	CP5	La Paz, Bolivia	7.45 to 9.15 P. M.
X	49.40	6070	HJN	Bogota, Colombia	8.15 P. M. on, irregular
X	49.41	6070	OER2	Vienna, Austria	9 A. M. to 5 P. M.
X	49.42	6070	YV5RMO	Maracaibo, Venez.	5.15 to 9.30 P. M.
X	49.50	6060	W3XAU	Philadelphia, Pa.	8 to 11 P. M.
X	49.50	6060	VQ7LO	Nairobi, Kenya, Afr.	11 A. M. to 2 P. M., 3 to 4 A. M. Tu. 8 to 9 A. M. Thursday
X	49.59	6050	GSA	Daventry, England	6 to 8 P. M.
X	49.65	6040	HJ1ABG	Barranquilla, Col.	6.30 to 10 P. M. except Sunday
X	49.67	6040	W1XAL	Boston, Mass.	5.45 to 7.15 P. M. and 7.30 to 9.30 P. M. Sat.
X	49.75	6030	YV6RV	Valencia, Venezuela	Irregular
X	49.80	6020	HIX	Santo Domingo, D. R.	8.10 to 10.10 P. M. Tuesday and Friday
X	49.83	6020	DJC	Zeesen, Germany	Noon to 4.30, 5.30 to 10.45 P. M.
X	49.83	6020	CQN	Macao, Macao	7 to 9 A. M. Monday, Wednesday, Friday
X	49.90	6010	ZIH	Singapore, S. S.	5.40 to 8.10 P. M. Mon., Wed., Thurs., etc.
X	49.90	6010	COC	Havana, Cuba	4 to 10 P. M.
X	49.92	6010	XEBT	Mexico, D. F.	All evening
X	50.00	6000	RV59	Moscow, USSR.	2 to 6 P. M.
X	50.02	6000	YV4RC	Caracas, Venezuela	4.30 to 10 P. M.
X	51.00	5880	HJ2ABC	Cucuta, Colombia	6.30 to 9 P. M.
X	51.99	5770	OA4AD	Lima, Peru	Tuesday and Thursday evenings irregular

WON Lawrenceville



Manufacturers of

TUBES

for all

Types of Radios

PAVEY ENVELOPE & TAG CO.

ENVELOPES

OF EVERY DESCRIPTION

Tags for Any Purpose — Plain or Printed

36 GREEN ST., NEWARK, N. J.

Telephone Market 3-0088

THE DXER'S CORNER.

(Continued from Page 7)

hear it as I have never heard a BC station south of Mexico City." Other 1934-35 additions are CFTP, CRCT and WTMJ.

Although a late starter this season, George Bezilla, Morann, Pa., has verified KIDO, Boise, Ida., and WQBC, Vicksburg, Miss. From now on, George intends to do some intensive dialing; we'll be interested in his results.

A VETERAN

Edward Fletcher, 7616 Clyde Avenue, Chicago, has been DXing for eight years, four under the colors of the NNRC. He writes: "I am beginning to feel like a veteran. My verified list stands at 496. Latest confirmations are from KTUL, KPAC, KGDM, WHEF, CRCM, CRCK, CRCO, CHCK, CFPL, CJLS, and WNEL. Reports are out to WMEX, WNBH, WOSU, WKBN, WPRO, KFDY, CHSJ, CHNC, XEJ, XEMO and LR5."

With fifty new catches received during the past two months and which bring his log close to the 400 mark, J. Herbert Hyde, P. O. Box 82, Elmwood, Conn., is well on his way to acquiring an Ace certificate. Herb lists LR5 and VE9EK as his best catches so far this season.

According to A. Stephen Walbridge, 43 Burton Avenue, Westmount, Quebec, static has been bothersome all this fall. Despite this handicap and restricted time, Steve has listed a number of good ones including XEAF, WHEF, VONF, KPAC, KGDM, and WNRA. His log includes 620 stations of which 466 are verified. Unlike so many other dial twisters, he experienced no trouble procuring his verification from WMEX. Steve advises that hereafter he is resorting to the double postal card method of reporting reception.

LEON HOCHMAN

170 EAST 94th STREET
BROOKLYN, N. Y.

Radios of all Makes and Types
Serviced and Repaired

REASONABLE RATES

Interesting Radio calls

WVFW—Veterans Foreign Wars
KTRH—The Rice Hotel
WIOD—Wonderful Isle of Dreams
WEVD—Eugene V. Debs.
KTHS—Kum To Hot Springs
WINS—International News Service
VONF—Voice of Newfoundland
KWSC—Washington State College
KTAT—Texas Air Transport
KFWB—Warner Brothers
WTAG—Worcester Telegram and Gazette
CFNB—Fredericton, New Brunswick
WLIT—Lit Brothers
WTMJ—The Milwaukee Journal
WSVS—Seneca Vocational School
KLRA—Little Rock, Arkansas
KSTP—St. Paul
WATR—Waterbury Republican
WCRW—Clinton R. White
WFAS—Frank A. Seitz
WSBT—South Bend Tribune
CHLP—La Patrie
CMBC—Cuba My Beautiful Cuba
WLAC—Life and Casualty
WSM—We Shield Millions
WGST—Georgia State Tech
KFYO—Kum Find Your Opportunity
KRGV—Rio Grande Valley

KLX, 880 Kilocycles, Oakland, Calif., are on the air every last Friday morning of the month from 2 to 3, EST, with Stuart Hamblen's Roundup presenting hill billy numbers and popular selections of the day. The programs are announced by Douglas G. Montell, who is anxious to hear from listeners in all sections with comment. KLX's December 28 broadcast will be dedicated to The Newark News Radio Club.

It is rumored that WFI and WLIT, both in Philadelphia, will merge shortly after January 1, under the call WFIL with a change in staff, location and power. With the entrance of KYW into the City of Brotherly Love, these two outlets will split the NBC-WJZ network with KYW becoming the Philadelphia key station for NBC-WEAF.

CHRISTMAS GREETINGS

A Merry Xmas and a Happy New Year

Director and Mrs. E. J. Obert

The Season's Greetings to NNRCers

Vice President and Mrs. W. H. Applegate

Merry Christmas and a Prosperous New Year

Director and Mrs. Lloyd Hahn

Greetings of the season to my fellow members

Director Jack B. Schneider

A Joyous Xmas and a Happy New Year

Director John W. Reichert

Happy Holiday Greetings and a New Year of good DXing

Director A. J. Koempel

To the host of radio listeners who comprise that great fraternity, The Newark News Radio Club, a very Merry Xmas and a Happy and Prosperous New Year

Director Walter E. Doty

Happy and Prosperous Holiday Season

Director Dale Kennedy

Merry Christmas and Happy New Year to my friends, members and correspondents

Alfred W. Oppel, Executive Secretary

Greetings of the Season to all my club friends

Lester Kraemer, Treasurer

A Happy Yuletide and a Prosperous New Year

Vice President Frank Scott

To my friends and members of the NNRC
—Christmas and New Year's greetings.

*Margaret Shafer,
Recording Secretary.*

Christmas greetings and a New Year of happiness and success

Irving R. Potts, President.

COMMENT

John Beardall, director, CFCO, Chatham, Ontario: "I find The Dialist contains many interesting items which I shall be pleased to make use of and quote from during our special radio club broadcast. May I congratulate you upon the excellent setup of your magazine."

Clermont M. Zimmerman, 1026 Wolvertown Street, Sunbury, Pa.: "I am glad to say The Dialist is up to expectations. It will fill a long-felt need of space for the activities of the NNRC members and will surely be a success."

Henry Bowe, 431 Belmont Avenue, Newark, N. J.: "As a charter member of The Newark News Radio Club I'll be a charter subscriber to The Dialist. It is the best magazine for DXers and club news that I have ever seen."

Herbert J. Blythe, 3 North Caldwell Avenue, Ventnor City, N. J.: "I am enclosing a dollar bill for a year's subscription. I think it will double the return on my investment. I would rename The Dialist 'The DXers' Paradise.'"

Edward Fletcher, 7616 Clyde Avenue, Chicago: "I want those responsible for The Dialist to know it is fine. It is another Newark News Radio Club masterpiece, worthy of the organization. I especially like the listing of frequently heard foreign stations in the main log and I am glad that every little 5, 10 or 15 watter in Angora or Patagonia is omitted."

Just as it does with its BC members, The Newark News Radio Club now classifies its short wave DXers according to the number of stations logged and verified. Certificates will be awarded for the following grades: Junior, 100 stations heard, 50 verified; Senior, 150 stations heard, 75 verified; Ace, 200 stations heard and 100 verified.

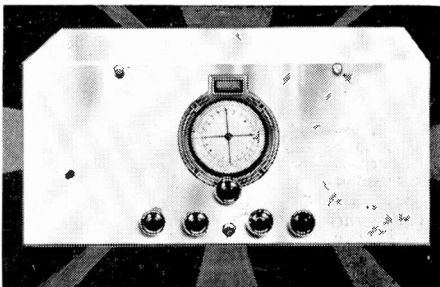
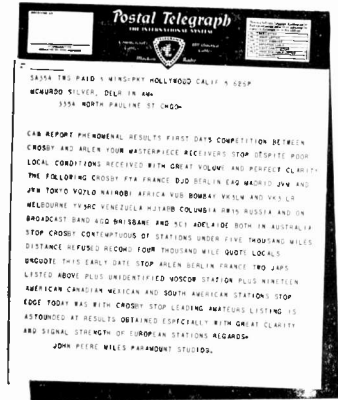
The charming person who answers the telephone in James Melton's apartment, makes appointments for the singing star of "Town Hall Tonight," and identifies herself as the NBC's tenor's "secretary," is Mrs. Melton. Beautiful and blonde, she really does her husband's secretarial work, answering fan letters, among other things. Mrs. Melton thinks it keeps everything on a more impersonal and business-like plan if she calls herself a secretary.

MASTERPIECE III

Smashes All Distance Reception Records in California Contest

Everyone who has tuned and heard Masterpiece III wants to keep it. Columbia Broadcasting System heard it, tested it, then installed it as official studio receiver in Chicago. You can put Masterpiece III to the same tests, under your own reception conditions . . . without risking one cent of your money.

Bing Crosby and Richard Arlen, each using a Masterpiece III, have broken all established records for domestic broadcast and foreign short wave reception. 122 stations in a week! 28 foreign countries logged! Every station at least 5000 miles away! The Masterpiece III, that I will build to your order, will be fully as capable as the two receivers used by these two famous people in the Hollywood International DX Contest. Masterpiece III, by any standard of measurement, by any kind of competitive tests, and in the opinion of everyone who has seen it in action, we believe, is the most complete, the most capable, the most outstanding all-wave radio receiver ever engineered. It will not only out-perform anything else in laboratory demonstrations, but is positively and unconditionally guaranteed to out-perform any other radio receiver in existence . . . right in your own home!



Mc MURDO SILVER, Inc.
 3354 N. PAULINA STREET
 CHICAGO, U.S.A.

10 DAY TRIAL

You can try it 10 full days, then send it back if you want to. It's just as simple as that. Check the coupon and mail it at once, for particulars and full details of Masterpiece III's most amazing specifications.

MCMURDO SILVER, INC.
 3354 N. Paulina St.,
 Chicago, U. S. A.

Send me full particulars and specifications of Masterpiece III

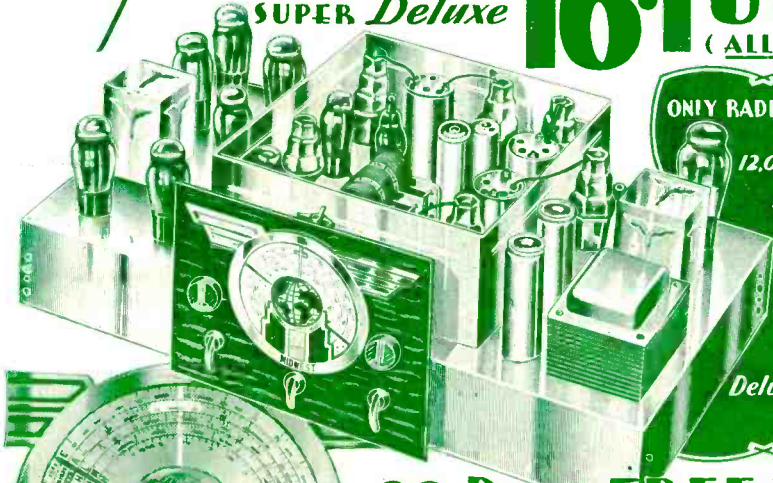
Name

Street

Town State

SAVE **50%** by BUYING YOUR RADIO *Direct from* **MIDWEST LABORATORIES**

Thrill to Guaranteed World-Wide HIGH FIDELITY Performance with This Amazing New 1935 **MIDWEST SUPER Deluxe 16-TUBE ALL-WAVE Radio!** (ALL FIVE WAVE BANDS)



ONLY RADIO COVERING 9 TO 2.400 METERS. 12,000 MILE TUNING RANGE

WORLD'S GREATEST RADIO VALUE

\$57.50 with New **Deluxe Auditorium-Type SPEAKER** (LESS TUBES)

30 Days FREE Trial!

TERMS as low as **\$5.00 DOWN**

BEFORE you buy any radio write for the new FREE 1935 Midwest "Fifteenth Anniversary" catalog and see for yourself the many reasons why 110,000 satisfied customers bought their radios direct from the Midwest Laboratories and saved from $\frac{1}{3}$ to $\frac{1}{2}$. Why pay more than the direct-to-you laboratory price? You, too, can make a positive saving of from 30% to 50% by buying this more economical way. Learn why Midwest outperforms best costing up to \$200.00 and more. Never before so much radio for so little money! Midwest gives you triple protection with: **One-Year Guarantee, Foreign Reception Guarantee, Money-Back Guarantee.**

50 ADVANCED 1935 FEATURES

Many exclusive features include: Micro-Tenuator... Fidel-A-Stat... Separate Audio Generator... Ceramic Coil Forms, etc. Only Midwest covers a tuning range of 9 to 2400 meters (33 Megacycles to 125 KC)—enabling you to easily and successfully tune in even low-powered foreign stations up to 12,000 miles away with crystal-clear, loud-speaker reception.

All 5 Wave Bands enable you to enjoy today's finest High Fidelity American programs. In addition, you get Canadian, police, amateur, commercial, airplane and ship broadcasts and derive new delight and new excitement from un-

equalled world-wide broadcasts... England, France, Germany, Spain, Italy, Russia, Australia, etc. Send today for money-saving facts!

SENSATIONAL HIGH FIDELITY RECEPTION

This bigger, better, more powerful, clearer-toned, super selective, 16-tube radio gives you absolute realism—assures you of life-like, crystal-clear tone—unlike anything you have ever experienced before. You will hear one more octave—overtones—that cannot be brought in with ordinary radios. Now, hear every instrument, every voice, every shade and inflection of speech.



Take advantage of the amazing 30-day FREE trial offer. Send for FREE catalog.

Only Midwest Gives You Multi-Function Dial

This dial was designed in keeping with the trend of the times, yet is not an airplane dial! It is a many-purpose dial that performs many functions. Now, Midwest guarantees that inexperienced persons can secure good foreign reception. Send for FREE miniature of actual rotating dial which clearly shows these outstanding advantages:

1. Dial calibrated in Kilocycles, Megacycles and Meters;
2. Call letters of American Broadcast Stations printed on dial and illuminated;
3. Slow-Fast, Smooth-Acting Tuning;
4. Station Group Locator;
5. Simplified Tuning Guide Lights;
6. Automatic Select-O-Band Indicator;
7. Illuminated Pointer Indicator;
8. Silent Shadow Tuning—Improvement on Meter Tuning;
9. Centralized Tuning.



New Style Consoles

The Midwest 36-page catalog pictures a complete line of beautiful, artistic de luxe console and chassis in four colors. Write for new FREE catalog today! Midwest long-range radios are priced at **\$27.50** low as...

DEAL DIRECT WITH LABORATORIES

Increasing costs are sure to result in higher radio prices soon. Buy before the big advance...NOW...while you can take advantage of Midwest's sensational values...no middlemen's profits to pay. You can order your 1935 High Fidelity radio from the new Midwest catalog with as much certainty of satisfaction as if you were to select it in our great radio laboratories. You save 30% to 50% when you buy this popular way. You get 30 days FREE trial...as little as \$5.00 down puts a Midwest radio in your home. Satisfaction guaranteed or money back. Write for new FREE catalog today.

SAVE UP TO 50%

MAIL COUPON TODAY FOR AMAZING 30-DAY FREE TRIAL OFFER AND NEW 1935 CATALOG

MIDWEST RADIO CORP., Dept. 854, Cincinnati, Ohio.

Without obligation on my part send me your new FREE 1935 catalog, FREE Miniature Dial, and complete details of your liberal 30-day FREE trial offer. This is NOT an order.

Name _____ Address _____ Town _____ State _____

User-Agents Meet Easy Extra Money

Check Here for Details

Listeners to World-Wide Reception

Midwest... Have one of the stations heard: EAC, Madrid... Spain... GSH, GSF, Daventry, England... VK3ME, Melbourne, Australia... HJ2BA, Sydney, Australia... HJ4AB, HJ4ABF, Columbus, S. A., and many more. Golden Hatfield, 2202 Grand Avenue.



Peruvian Prizes Foreign Reception

Peru... We have heard the five continents with your Midwest. Have received... Buenos Aires, London, Paris, Vienna, Moscow, Madrid, New York, Shanghai, Tokio, and also South American transmitters. Marcia H. Buchanan, Apartado 90, Pisco San Martin, 171.



MIDWEST RADIO CORP.
DEPT. 854 - CINCINNATI, OHIO, U. S. A.
Established 1920 Cable Address Miraco... All Codes