

# Radio Doings

Trade Mark Reg. U. S. Pat. Off.

*New York Office*  
**J. W. HASTIE**  
 155 East 42nd Street  
 Vanderbilt 4661

*Los Angeles Office*  
**HORWOOD PUB. CO.**  
 407 East Pico Street  
 Westmore 1401

*San Francisco Office*  
**H. H. CONGER CO.**  
 929-30 Hearst Bldg.  
 Garfield 8990

**CLOYD MARSHALL, JR., Editor**

**K. G. ORMISTON, Technical Editor**

**DOROTHY HUMMEL, Studio Editor**

Copyright, 1930, by Horwood Publishing Co.

RADIO DOINGS, July 26, 1930. Issued weekly at 407 East Pico, Suite 400, Los Angeles, Calif. Volume 17, No. 5. Subscription \$3.00 a year. Entered as second class matter, November 25, 1922, Los Angeles, Calif., Post Office, under Act of March 3, 1879.

## CONTENTS

Radio Topics of the Day.....	9	Quantity, Quality, or Both.....	19
Studio News .....	11	Timely Trade Topics.....	47

## DIRECTORY OF DETAILED PROGRAMS

Call Letters	Location	Freq.	Page	Call Letters	Location	Freq.	Page
KECA..	Los Angeles	1430	30	KHJ....	Los Angeles	900	27
KELW..	Burbank	780	33	KJR....	Seattle	970	44
KEX....	Portland	1170	43	KMIC...	Inglewood	1120	37
KFI....	Los Angeles	640	23	KMPC..	Beverly Hills	710	33
KFOX..	Long Beach	1250	36	KMTR..	Hollywood	570	31
KFRC..	San Francisco	610	41	KNX...	Hollywood	1050	28
KFSD..	San Diego	600	38	KOMO..	Seattle	920	45
KFSG..	Los Angeles	1120	39	KPO....	San Francisco	680	40
KFVD..	Culver City	1000	34	KQW...	San Jose	1010	39
KFWB..	Hollywood	950	29	KTAB..	San Francisco	650	42
KGB....	San Diego	1330	37	KTBI...	Los Angeles	1300	32
KGEF..	Los Angeles	1300	31	KTM...	Los Angeles	780	32
KGER..	Long Beach	1360	35	Columbia Broadcasting System			26
KGFJ...	Los Angeles	1200	34	National Broadcasting Co.			22
KGO....	Oakland	790	40	University of So. California			29

## HERE IS YOUR STATION DIRECTORY!

You will appreciate RADIO DOINGS, the up-to-the-minute station and program guide, delivered to your home each week. There is no trouble or worry on your part; simply enclose a \$3.00 check with this coupon and RADIO DOINGS will begin at once for a whole year.

Name \_\_\_\_\_

Address \_\_\_\_\_

Mail to 407 East Pico St., Los Angeles, Calif.

# FIRST As Always

*Any Radio Part or Accessory at Your Command—  
Only a Few Hours Away at the Most*

TRANSMITTING, THEATRE, SHORT WAVE, PUBLIC ADDRESS EQUIPMENT

## Any Part--Any Time

Alco Loops	Eby Binding Posts	Polymet Condensers
Acme Apparatus	Ekko Ground Clamps	Presto Pickups
Acme Wire	Electrad Products	Preston DX Ground
Advance Crystals	Elkon Chargers	Racon Horns
Aero-Products	Erla Pickups	Radiall Co. Amperites
Aerovox Wireless Products	Essenbee Ball Aerial	Radio Owls
All-American Products	Fidelity Speakers	Ray-O-Vac Batteries
American Beauty Irons	Flewelling Tester	Raytheon Tubes
Amertran Products	Formica Insulation Co.	Readrite Meters
Amperites	Franco Batteries	REL Aparatus
Amsco Condensers	Frost Products	Remler Products
Arcturus Tubes	Goodrich Rubber Panels	Samson Products
Audak Pickups	Gosilco Wire	Sangamo Condensers
Baldwin Units	Hammarlund Products	Sensory Insulators
Baldor Motors	Hedgehog Transformers	Skindervicken Buttons
Benjamin Elec. Mfg. Co.	H-K Sodderdip Lugs	Silver Mast Antenna
Benwood Linze Rectifiers	Hoosick Parts	Silver-Marshall Products
Birnbach Products	Jefferson Products	Spaulding Bakelite
Bodine Loops and Coils	Karas Products	Sprague Condensers
Branston Honeycomb Coils	Ken-Rad Tubes	Steinite Eliminators
Cardwell Condensers	Kellogg Parts	Sterling Testers
Carter Products	Kersten Theatre Horns	Super Ball Antennas
CeCo Tubes	Knapp Power Units	Sunset Aerials and Grounds
Celeron Panels	Kodel Products	Sylvania Tubes
C R L Resistance	Kurz-Kasch Dials	Thordarson Transformers
Chicago Kester Solder	Kuprox Chargers	Tom Mack Products
Clarostats	Lynch Leaks	Tower Exercisers
Corning Pyrex Insulators	Magnavox Dynamics	Universal Battery Clips
Daven Resistors	Marco Products	Universal Microphones
DeJur Rheostats	Master Voltage Controls	Utah Units
DeLux Products	Mueller Universal Clips	Ward Leonard Products
Dictogrand Units	NaAld Parts	Weston Meters
Dubilier Condenser Corp.	National Soldering Irons	Webster Pickups
Dudlo Mfg. Co. Wire	National Co. Parts	Wright-DeCoster Dynamics
Dunham Loops	Parvolt Condensers	X. L. Variodensers
Dunton Solder	Phonovox Pickups	Yaxley Products
Pilot Kits		

SILVER-MARSHALL 692 THEATRE AMPLIFIER IN STOCK

## RADIO SUPPLY CO.

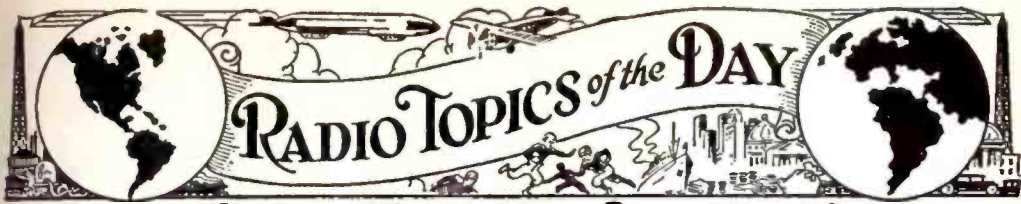
H. A. DEMAREST, President

912-914 S. Broadway VA. 3178, 3179

Los Angeles

WHOLESALE

*Largest Radio Parts Jobber West of Chicago*



*Weekly Review of Radio News-Thought and Opinion*

## A SHOT AT HENDERSON

Perhaps the Louisiana House of Representatives is gunning for W. K. Henderson, operator of Station KWKH, Shreveport, and perhaps not. But, any rate, the legislators have passed a law "to prohibit slander over, through, or by means of what is commonly known as the radio."

The bill provides a penalty of a fine of not more than \$100 or imprisonment in jail for not more than 30 days, or both. California was the first state to enact a radio slander law.

## RADIO COMMISSION MOVES

Although the mid-summer, especially in Washington, is not the time most people choose for moving, the Federal Radio Commission has transferred all its offices, personal, and equipment from the Interior Department to the National Press Building.

The Commission has been in cramped quarters for sometime. In its new location it will occupy an entire floor, and all of its agencies will be connected instead of being scattered as in its former home.

The Commission began its career in the Department of Commerce and remained there from March 15, 1927, when it moved into the Interior Department building.

## OVERDOSE OF ADVERTISING

Declaring that radio is intended for a higher use than now made of it, Judge Ira E. Robinson, Federal Radio Commissioner, declared in a recent address before the Institute for Education by Radio at Columbus, O., that listeners "are becoming sick of commercial advertising given them hourly. "Auctioneering speeches, sales talks,

price quoting, and the like have become so prevalent that the very excess of the same will do good in reminding the people of radio's real province and worth," he said.

## LITTLE RADIO LEGISLATION PASSED BY CONGRESS

The tumult and the shouting over alleged radio trusts and monopolies and injustices to certain States and sections by the Federal Radio Commission heard frequently in the halls of both the House of Representatives and the Senate during the last seven months have died down until next December.

A survey of the legislative activity in radio during the past congressional session reveals little in the way of accomplishment, despite the fact that many bills were launched and a prolonged hearing on radio communications was conducted by the Senate Committee on Interstate Commerce.

Probably the most significant achievement of either branch of the national legislature was the inquiry and subsequent demands made upon the Department of Justice by certain Senators that led to the filing of an anti-trust suit against the Radio Corporation of America and its affiliated companies in the Federal District Court at Wilmington, Del.

## LICENSES EXTENDED AGAIN

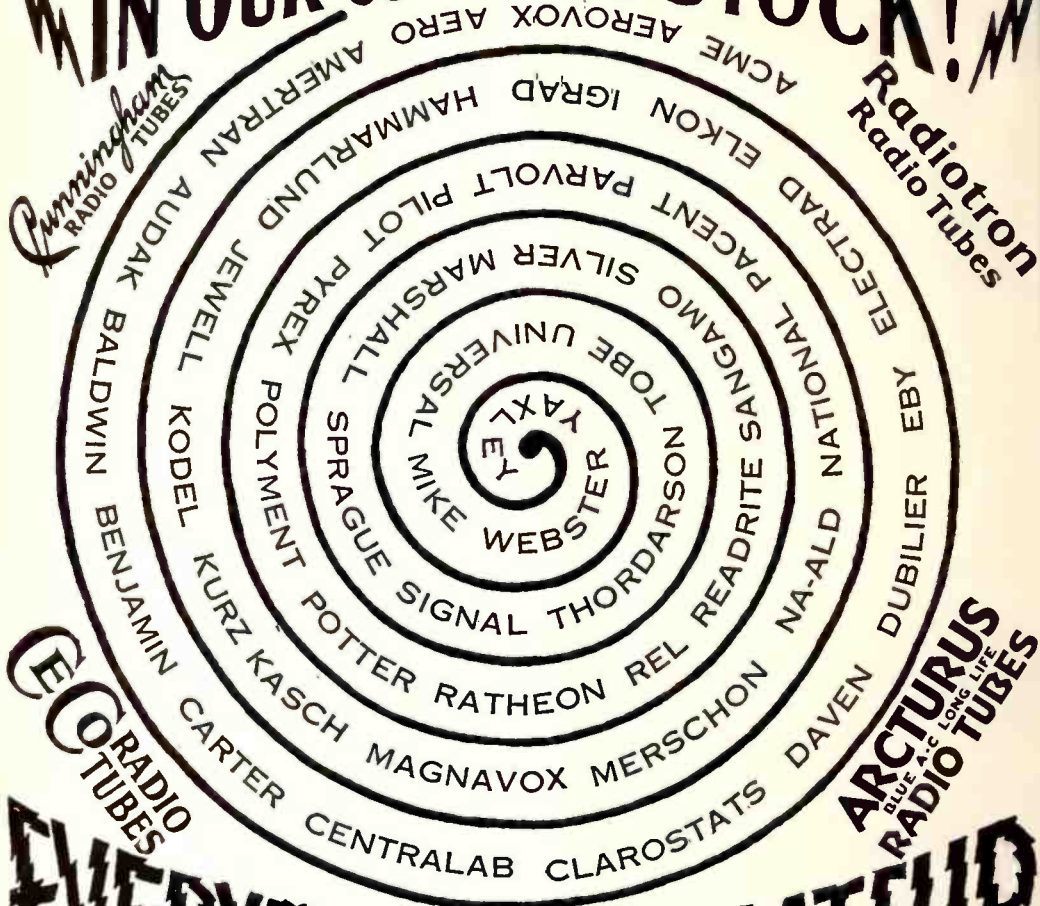
All broadcasting stations which filed applications for renewals of licenses have been given an extended life of the customary ninety days beginning August 1.

The Federal Radio Commission made a blanket extension of all stations except three which are operating on channels prescribed by the Court of Appeals of the District Columbia following appeals in the recent reallocation proposal that is still in litigation.



**EVERY LEADING RADIO MANUFACTURER REPRESENTED**

**IN OUR COMPLETE STOCK!**



**EVERYTHING for the AMATEUR**

**INSIDE PARKING FREE TO OUR PATRONS**

**WHOLESALE and RETAIL**

**RADIO MANUFACTURERS SUPPLY CO.**

**1000 So. Broadway**

**CORNER 10TH ST., "THE FAMOUS RADIO CORNER"**

**LOS ANGELES**



# STUDIO NEWS

Saturday evenings at 7:15 over KECA. Grace Valentine, whose picture appears on this week's cover, sings the part of "The Puritas Skipper" on the program of the California Consolidated Water Company. Each week "The Skipper and His Parrot" take the audience on colorful adventures before the mast on the water ways to health. In the comparatively short time that this rollicking program has been on the air, formerly over KFI on Mondays, it has won an amazingly large audience, probably due to its originality and the fact that Valentine's rich voice is so admirably suited to the sea songs which are featured. Note the flattering attention given by the parrot.

Not content with a Yehudi Menuhin and a Riggiero Ricci as prodigies of the violin, California is now producing an entire orchestra of one hundred children! It's happening at KNX, Hollywood, and the orchestra consists of boys ranging from 2¼ to 6 years of age. Benito Mussolini, dictator of Italy, has written that he is publicizing the orchestra of tiny ones in the newspapers of Rome, and the secretary of the King of Norway has written requesting an autographed photograph of the group for His Majesty. The man responsible for this orchestra is Professor Karl Moldrem, and KNX through "Big Brother Ken" is fortunate in having Moldrem do the task. This unique orchestra is heard on Big Brother's hour every evening at 5:15.

The following is the political speech campaign schedule for the week of July 26 to August 2: The National Broadcasting Company presents Governor Young Monday night at 7:15 through KGO, KFI and KFSD. Wednesday night the same speaker at 7:45 through KGO and KFI. Friday night at 7:15 Mayor James H. Phelan, Jr. will tell why he will make a record Governor, over KFI, KGO and KFSD, and on Wednesday at 8 p. m. he will talk from KTM. KHJ and KFRC

have scheduled Mayor Rolph from KFRC on Monday, July 28th, at 7:30. During the S. & W. Forum, Tuesday at 8:30, Governor Young is scheduled to speak, although this is not definite at this writing. Wednesday over the above stations Buron Fitts will speak at 7 p. m.

No matter what your taste in entertainment is, you are bound to be entertained at least once during KHJ's Review, which has been extended to an hour, 7 to 8, on Saturday nights. The program presents the cream of the week's entertainment all in one bottle.

The Banjo Boys, well known to a large audience in Los Angeles and vicinity, have changed the hour of their program from afternoon time to 9:30 p. m. every night, including Sunday, over KMTR, when they are heard in the same pattern, songs, banjo tunes and good-humored remarks about everybody and everything.

The Westlake String Ensemble over KMTR every day except Sunday at 11 a. m., furnishes a program of semi-classical as well as popular ballad selections—a pleasant interlude.

For listeners who have been touring Southern California with Seymour Hastings over several local stations, the following revised schedule will enable you to continue these enjoyable trips without missing a one. KFI, Tuesday and Friday, 12:30 to 1 p. m.; KGER, Tuesday and Friday, 3:15-3:45 p. m.; KHJ, Wednesday, 5 to 5:30.

To cheer up sleepy Sunday evenings, KFVD, in Culver City, is offering an hour and a half of pep—Radio on Parade. There is to be quite an array of well-known radio and talking picture talent, representing many types of entertainment. Tune in to KFVD on Sunday evening at 9:30 and begin the week with a smile.

# New Concern Distributes Bosch

Formation of Collins-Lane Co., to be Southern California distributors of Bosch radio products, was announced this week. The new distributors are already actively engaged in merchandising the Bosch line, which includes motor car radio and motor boat radio, as well as the household sets.

The new company is headed by Wilbur H. Collins, for five years California distributor for Kelvinator. The Collins-Kelvinator Company is the largest distributor of Kelvinator in the country and has led in sales during the past five years.

Sales and promotion will be under the management of George Lane, widely known to the radio trade through ten years of merchandising experience. He was, until the formation of Collins-Lane Co., in charge of Southern California sales for American Bosch Magneto Corporation.

The new company brings to the radio field a wealth of experience and a financial strength comparable with any in the West.

Besides the men mentioned above, the personnel includes R. H. Collins and L. D. Robertson, both identified with the Collins-Kelvinator Company and other distributing organizations.

R. H. Collins was formerly sales manager for Buick Motor Company and was director in General Motors. Later he was president of the Cadillac Company, and on his retirement, came to the West with his three sons to embark upon distribution activities in the automotive and electrical fields.

Wilbur H. Collins has been prominent in the distributor field in Los Angeles for seven years, five of which he has headed the Kelvinator distribution company. Previous to that association, he was Chrysler distributor for Chicago, and has been in the distribution end of business for more than twenty years.

Ten years of radio merchandising stand behind George Lane, who in 1920 opened the radio department of Barker Brothers, coming to that position from six years' experience as a wireless operator on board various ships.

In 1923, Lane was named Pacific Coast manager for the Colin B. Kennedy Corporation, and held this position for three years, when he accepted a managerial position with John G. Rapp, Kolster and Crosley distributors.

In 1927, Lane became Southern California representative for the manufacturers of Bosch Radio, and his present connection serves to carry on a brilliant record in radio merchandising.

Simultaneous with the announcement of the new company and its appointment as Bosch distributors, came the announcement of a special dealer preview of the new Bosch radio line. Wide enthusiasm has been registered for the new Bosch Radio models, which, the new distributors say, include every refinement now claimed as a part of modern radio.

The sales staff includes some of the best known men in radio merchandising who have been organized as a "flying squadron" to hasten the introduction of dealers to the new and phenomenal Bosch line.

Included in the sales organization are R. E. Farra, C. D. Tanner, T. A. Churchill, J. W. Duckworth and R. E. Tarney.

Engineering and service departments will be under the supervision of Tommy Poulsen, who has been familiar with Bosch engineered sets in the past.

Dealers were invited to a special three-day preview on Monday, Tuesday and Wednesday of this week, and many of them expressed the belief that the new Bosch will be the outstanding radio receiver this year.



## Lane Predicts Better Business

That high-grade radio merchandise is going to enjoy an excellent year's business was the statement this week of George Lane of Collins-Lane Co., newly appointed distributors in Southern California for Bosch Radio Products.

"There are three important factors in the radio situation today," said Mr. Lane. "One of these is the general attitude of the public, another is the situation of dealers, and the third has to do with condition of business.

"The public generally is alert to values in radio. Following the chaos which hit the radio business last season, the general public has become wary of instability, lack of quality, poor radio investment, and inferior performance. For this reason I believe only superlative merchandise has a chance to be outstanding this season.

"The dealers who pulled through the tough season we have just witnessed are strong, smart and disposed to be extremely cautious as to the number of lines they will represent, and the type of merchandise they will carry. This again points to success for better grade merchandise, provided proper assistance is given the retailer by his distributor. Dealers naturally look to profits. The radio lines which succeed this year must pay profits.

"The general situation of business is

constantly improving. We have information that all the large associations of business concerns in Southern California are preparing for a good selling season between now and January 1. Everything points to better business not later than August or September.

"Surveys made for us indicate that department stores are actively engaged in outlining large promotion efforts during the final six months of the year, and the department store is an excellent index as to sales possibilities.

"All of these things are encouraging to us as Bosch radio distributors. We feel that there is every reason for optimism and the belief that business is going to be good.

"The new de luxe Bosch radio is an outstanding set. It is the only one we have seen which combines all the modern improvements and refinements in one receiver.

"The new Bosch has tone selector, volume control, electric meter tuning, speaker mute, and many other special Bosch features.

"One of the most interesting developments is custom-tuning. This means that every Bosch set will be individually balanced to the home wherein it plays, and will be tuned to the aerial and ground set-up. This means, of course, that the new de luxe Bosch will establish unusual performance records," concluded Lane.

---

## Lafount to Visit Small Stations

Declaring that satisfactory operation of small broadcasting stations is just as important as that of high power broadcasters, Radio Commissioner Harold A. Lafount will leave Washington July 23 on a tour of inspection of smaller radio plants in the Western area between the Mississippi River and the Pacific Coast. He will not return until the middle of August.

Most of the area included in Commissioner Lafount's itinerary has never before been visited by an administrative radio official. The tour will also include the site of Boulder Dam so that the radio needs of the horde of workers and their families during the next

seven years of construction may be determined.

Commissioner Lafount's itinerary follows: Leaving Washington July 23, returning August 15: Cheyenne, Wyo., July 25; Laramie, Wyo., July 26; Salt Lake City, Utah, July 28; Ogden, Utah, July 29; Pocatello, Idaho, July 30; Boise, Idaho, July 31; Twin Falls, Idaho, Aug. 1; Reno, Nev., Aug. 2; Las Vegas and Boulder Dam, Nev., Aug. 4; Prescott, Ariz., Aug. 5; Jerome, Ariz., Aug. 6; Flagstaff, Ariz., Aug. 6; Albuquerque, N. Mex., Aug. 7; Raton, N. Mex., Aug. 8; Trinidad, Colo., Aug. 9; Kansas City, Mo., Aug. 11; St. Louis, Mo., Aug. 13.

# Enjoy radio tone and radio realism from your phonograph with the

## NEW PACENT MASTER PHONOVOX

**M**AKE your phonograph a modern, 1930 model instrument with a Pacent Master Phonovox. New musical treats are in store for you!—your favorite records, played with all the animation and realism and brilliant tone quality of the finest radio.



Model  
107

\$15.25

## PACENT

### Electric Pickup Booster

**H**UNDREDS of owners of certain popular model radio receivers have found that their sets give admirable radio reproduction but do not give the desired volume from records played electrically. These receivers need only the addition of a booster stage to give wonderful volume and quality from phonograph records.

Here is a compact, inexpensive unit for use with radio sets having a power detector and one stage of audio, that gives a tremendous boost to pickup volume without distortion.

Can be connected by anyone in two minutes. Write for literature.



No. 43  
\$10.50 less  
tube

Especially recommended for  
BOSCH SPARTON  
PHILCO MAJESTIC  
RADIOLA  
and other A. C. sets having  
only one stage of audio

**PACENT ELECTRIC CO., Inc., 91 Seventh Ave., New York, N. Y.**

*Pioneers in Radio and Electric Reproduction for over 20 years*

Representatives—J. P. Hermans, 585 Mission St., San Francisco;  
Marshank Sales Co., 224 E. 16th St., Los Angeles; D. H. Burcham 383 Oak St., Portland, Ore.

Licensee for Canada: White Radio Limited, Hamilton, Ont.



# Quantity, Quality or Both?

By K. G. Ormiston

Judge Eugene O. Sykes, vice-chairman of the Federal Radio Commission was in Los Angeles from July 16 to 21, during which time he held official hearings pertaining to certain short-wave stations and channels, and informally interviewed the local broadcasters, complaining listeners, and applicants for new stations. He is returning to Washington, via San Francisco, Denver, and his home in Mississippi.

As is usual, most of the broadcasters had a bad attack of the "gimmies," and endeavored to convince the Judge that they should have more power, more time, better frequencies, etc. A committee of listeners contended that they could not get Amos 'n' Andy in their locality, and wanted something done about it. Another group believed that their town should have a radio station, as the summertime service from existing stations is poor.

We do not know just what general impression of our radio conditions the Judge took away with him. We know that he is of the opinion that we have too many stations, and that in the survival of the fittest and the elimination of the weak, the slogan of the Commission (and the Law), "public interest, convenience, or necessity," will automatically be the governing factor.

We do not agree with Judge Sykes in his belief that we have too much broadcasting in Southern California. We take exception to the QUALITY, and not the QUANTITY. We haven't too much broadcasting, but we have too much POOR broadcasting. We feel that Southern California should be permitted to retain all of its present facilities,—channels, power and time. We believe that some of these facilities can be put to much better use in the public welfare than at present. We agree with the Judge that some of our present stations have no business on the air, but in their elimination, we do not want to lose radio units which they represent. We want them replaced with stations that

will render a worthwhile public service. If all of our present stations were doing a first-class job, you would never hear the statement that we have too much broadcasting. If every one of the present carriers brought us a good program of interest and entertainment to a large number of people, each station would have justified its existence, and there would be no complaints. It is a pity that any one of these few and priceless channels should be assigned to a station which does not serve the public to the maximum, commensurate with the time and power available. But in our anxiety to eliminate it, let us not lose the service which that channel is capable of rendering in proper hands. If a franchised street car company gave us poor service on a certain street, we would not tear up the tracks and have NO service on that street. We would franchise someone who WOULD give good service.

Our second firm conviction is that no station located in the metropolitan area of Los Angeles should be permitted to operate with more than 1000 watts power. Stations of 5000 watts belong out in the country. When KNX increased its power to 5000 watts, they moved out in accord with the Commission's instructions. KFI has operated with 5000 watts in the heart of the city, with the understanding that it was but temporary, pending the erection of their 50,000-watt station at an outside point. With the removal of KFI, we believe that the Commission should insist that any station which obtains a power assignment over 1000 watts, must locate outside the metropolitan area.

We believe in high power, because more useful power expended in each channel means more listeners reached. And high power is necessary if we are to serve the population of the small towns and farms which are at a distance from major stations. BUT, wherever high power is used, it is essential that we do not blanket a vast city population within a few miles of the station.

# General Motors Radio Dealers Meet

When the General Motors Radio Corporation called a dealer meeting, the dealers responded 100 per cent, as every dealer was in from Arizona and Southern California. The hottest day of the summer was picked to hold the meeting, July 14th, and in spite of the heat and

become expert sales managers and conduct their business in a thorough business-like manner knowing that each step that they are taking is one which fits them for the moremost position in the Radio industry today.

The dealers present decided that it



Don Wallace, Zone Manager, Addressing Dealers

in spite of the fact that the whole meeting was devoted entirely to business the dealers were well pleased.

The remarks from some of the prominent dealers were as follows:

Mr. Charleston Dow, president Fitzgerald Music Company, "I am not generally in favor of such dealer meetings but this one was a revelation to me. It was the best dealer meeting I have ever attended."

Mr. Roger Howell, owner and manager of Reliable Radio Shop, Long Beach, California. "I have attended a lot of dealer meetings but I have never been to one that held my interest so thoroughly and which was devoted so entirely to business."

Mr. C. W. Mills, of Bauersfeld and Mills, Phoenix, Arizona. "The more I think of this, the more I realize that we have just been thru a wonderful session."

The meeting as a whole was devoted almost in its entirety to the presentation of the General Motors plan of "Management and Compensation of Retail Salesmen." By the use of this plan they can

would be advisable to go into the Los Angeles Radio Show and so General Motors Radio will be represented at the "Radio Show Beautiful" with representative dealers in attendance.

Mr. L. E. Martin, factory production engineer told of factory straight line production and the General Motors "No Overhead" methods of operation.

Mr. George E. Dyna, assistant to the Zone Manager made all arrangements for the meeting and the dealers were unanimous in their opinion that the arrangements, orderliness and fine attention to details thruout the entire meeting were typical of the General Motors way of doing things.

General Motors Acceptance Corporation was represented by Mr. A. E. Vogt who explained the GMAC plan both wholesale and retail.

Regional Manager, Mr. L. C. Warner told of the background behind the General Motors Radio Corporation factory and how General Motors have been surveying the field for the past three years and have now decided that the time is

(Continued on Page 36)

# The New Brunswick Radio

By K. G. O.

It is particularly gratifying to us that Warner Brothers was the first motion picture producer to promote synchronous sound reproduction, while other producers laughed at the new innovation. It is equally gratifying that Warner Brothers has entered the radio receiver business in purchasing Brunswick.

Our personal interest is based on the fact that more than five years ago we were instrumental in interesting Sam and Jack Warner in radio broadcasting. In fact, we engineered and installed the original KFWB in the studios on Sunset Boulevard early in 1925. It was their interest in radio and their contact thus established with the Western Electric Company which caused them to lend a responsive ear to the fantastic story of Vitaphone, when others scoffed. And now, because they have long been "radio minded," we find them in the radio business, manufacturing a line of remarkable receivers under the famous name of Brunswick.

The Brunswick chassis is particularly interesting to the technically minded for the reason that the designing engineers have departed from the worn-out paths of the plagiarists and have injected some originality into the set. The volume control, for example, is new and yet absurdly simple. It consists of a tiny variable condenser which controls the energy reaching the grid of the second RF stage. And having no sliding contact of any description, it must forever remain noiseless in operation!

There are no transformers in the radio circuits, other than the input to the dynamic speaker and the power transformer in the power supply unit. The output stage consists of two '45 type power tubes, but they are connected in parallel, and not in push-pull. This increases the handling capacity. The screen-grid power detector which feeds the output stage through resistance coupling in conjunction with a filter, operates with a higher plate voltage than the usual design and has a greater distortionless output.

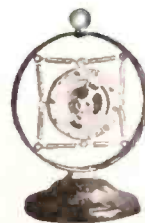
The controls are mounted concentrically, so that the set is turned on or

off, tuned, set for local or distance reception, and the volume regulated without moving the hand from the one central control knob. A small secondary knob operates the tone control whereby the high register may be suppressed in order to emphasize the bass notes or to reduce static and electrical interference.

The transparent dial strip carrying the kilocycle numbers moves by the escutcheon window horizontally, and space is available to write in the station call letters with a pencil. This is a new and very attractive dial arrangement.

The chassis is finished with the precision and nicety of a high-grade scientific instrument. The "tin-can" type of construction, to which we have been more or less accustomed, is utterly absent in the Brunswick.

We borrowed one of the new sets from Les Taufenbach of Western Radio, Inc., the Southern California and Arizona distributors, for a few days and studied its performance carefully. And while the midget manufacturers have used up all of the descriptive possibilities in eulogizing their products and have left no adjectives for the really fine radio receivers, a more obvious endorsement is the fact that the performance of the Brunswick has so impressed 118 leading radio merchants that they are banking on it to be one of the best sellers this season. We personally found it to be a very satisfactory receiver from every standpoint. It is a particularly nice receiver to handle. The local-distance switching arrangement permits reducing the volume on powerful locals,—the volume control is smooth and uniform. The sensitivity, selectivity and tone quality are as unusual and advanced as all of the other outstanding features of the set.



## MICROPHONES

All Sizes and Prices for All Practical Uses. Mountings, Cables and Expert Repairs.

**Universal Microphone Co., Ltd.**

THornwall 0600  
1163 Hdye Park Blvd.  
Inglewood, Calif.

Handled by All Dealers, Wholesalers and Jobbers Everywhere.



The essential features of these programs are identical with those sent us by the stations



HOWARD MILHOLLANO

# National Broadcasting Co., Inc.

## PACIFIC COAST NETWORK

111 Sutter St., San Francisco, Calif.  
Tel. SUTTER 1920

**KGO KGW KOMO  
KFI KECA KPO  
KHQ KOA KSL  
KTAR KFSD**

Howard Milhollano  
Program Director  
Jenning Pierce  
Chief Announcer

### DAILY EXCEPT SUNDAY

- 7:30 a. m.—Sunrise Serenaders.  
8:00 a. m.—Financial Service. KGO.  
8:15 a. m.—Morning Melodies.  
8:30 a. m.—Cross Cuts of the Day. KGO.  
9:00 a. m.—Meet the Folks. KGO.  
10:30 a. m.—Woman's Magazine of the Air (except Thursday).  
7:30 p. m.—Amos 'n' Andy.  
11:00 p. m.—Laughner-Harris Hotel St. Francis Dance Orchestra (Wed., 11:30) (except Thursday and Saturday). KGO.

### SUNDAY, JULY 27

- 9:00 a. m.—Bible Stories.  
10:00 a. m.—The Quiet Road—Ballads by Announcer's Quartette.  
11:00 a. m.—The Friendly Hour—familiar old songs and a talk.  
12:00 noon.—National Sunday Forum—"Morals in the Machine Age," talk.  
1:00 p. m.—Sabbath Reveries—Mixed Sextette.  
2:00 p. m.—Catholic Hour—Rev. Francis L. Keenan, and music.  
3:00 p. m.—Sunday Concert, Austin Mosher, baritone.  
4:00 p. m.—Enna Jettick Melodies—Mixed Quartette and Orchestra.  
4:00 p. m.—The Blue Boys, (KGO and KECA).  
4:15 p. m.—Hacienda Melodies—Spanish Music.  
4:30 p. m.—Goldman Band Concert.  
5:00 p. m.—News Service.  
5:15 p. m.—Atwater Kent Program—Musical Comedy melodies.  
5:15 p. m.—Candle-Light Silhouettes.  
5:45 p. m.—The Olympians—Male Quartette.  
5:45 p. m.—In The Time of Roses—Poetry and music.  
6:15 p. m.—Studebaker Champions—Popular music.  
6:45 p. m.—Sunday at Seth Parker's—Semi-religious program.  
7:15 p. m.—World Wanderings to Holland.  
7:45 p. m.—Hotel St. Francis Salon Orchestra.  
8:00 p. m.—Enna Jettick Melodies.  
8:15 p. m.—Hotel St. Francis Orchestra.  
8:30 p. m.—Gunnar Johansen, pianist.  
9:00 p. m.—Borden program—Male Quartet and soloist.  
9:30 p. m.—The Reader's Guide—Literary questions and answers.  
10:00 p. m.—Concert Jewels.  
11:00 p. m.—The Blue Boys.

### MONDAY, JULY 28

- 9:30 a. m.—Radio Rambblings.  
10:15 a. m.—Josephine B. Gibson, food talk.  
11:30 a. m.—NBC Philharmonic Organ Recital.  
12:00 noon.—Denver Municipal Band.  
1:00 p. m.—The Blue Boys.  
2:00 p. m.—Mormon Tabernacle Choir and Organ.  
2:30 p. m.—Matinee Time.  
3:15 p. m.—The World Today—By James G. McDonald.  
3:30 p. m.—Phil Cook, The Quaker Man.  
3:45 p. m.—Roxy and His Gang.  
4:00 p. m.—A Half Hour in The Nation's Capital.  
4:30 p. m.—Crime Prevention Program.  
5:00 p. m.—Maytag Orchestra with Tom, Dick and Harry, songs.  
5:30 p. m.—General Motors Family Party—Don Voorhees' Orchestra.  
6:00 p. m.—Stromberg-Carlson Program—Classical Con.  
6:30 p. m.—Piano Capers.  
7:00 p. m.—Governor Young Campaign Program.  
7:45 p. m.—John and Ned.  
7:45 p. m.—Senator Tibbs Campaign Program.  
8:00 p. m.—Rudy Selger's Shell Symphonists.  
8:00 p. m.—Cotton Blossom Minstrels.  
9:00 p. m.—Pacific Serenaders—Ensemble of string and

- woodwinds.  
9:30 p. m.—House of Myths—Satirical drama, "How the World Began."  
10:00 p. m.—Harp Harmony.  
10:30 p. m.—Yir Frien' Scotty.  
10:45 p. m.—Hot Spot of Radio—four vocal numbers and piano solo.

### TUESDAY, JULY 29

- 9:30 a. m.—William Don.  
9:45 a. m.—The Entertainers.  
10:15 a. m.—Color Harmony Program.  
11:30 a. m.—NBC Philharmonic Organ Recital.  
11:45 a. m.—The Canny Cook.  
12:00 noon.—Pacific Vagabonds.  
1:00 p. m.—Hotel Sir Francis Drake Orchestra.  
2:00 p. m.—Black and Gold Room Orchestra.  
2:30 p. m.—Hindermeyer and Tuckerman—Music and humor.  
2:45 p. m.—Matinee Time.  
3:00 p. m.—Erva Giles, soprano.  
3:15 p. m.—Laws That Safeguard Society.  
3:30 p. m.—Phil Cook, The Quaker Man.  
3:45 p. m.—NBC Philharmonic Organ Recital.  
4:00 p. m.—Hotel St. Francis Salon Orchestra.  
4:45 p. m.—News Service.  
5:00 p. m.—Everyready Program—features John Goss, English concert soloist.  
5:30 p. m.—Happy Wonder Bakers—Quintet of songs.  
6:00 p. m.—Westinghouse Salute honors Baltimore, Md.  
6:30 p. m.—Radio-Keith-Orpheum Hour—Vaudeville Headliners.  
7:00 p. m.—Evening Reveries.  
7:45 p. m.—Sperry Sweethearts.  
8:00 p. m.—The Cosmopolitans—Enchanting melodies from foreign lands.  
8:30 p. m.—Pacific National Singers.  
9:00 p. m.—Piano Paintings—Two piano numbers.  
9:30 p. m.—The Blue Boys.  
10:00 p. m.—Gems of The Drama—Melodrama.

### WEDNESDAY, JULY 30

- 9:45 a. m.—Betty Crocker Gold Medal Home Service Talks.  
9:45 a. m.—Morning Glories.  
10:15 a. m.—Mary Martin's Household Period.  
11:30 a. m.—Evening Stars of Radio.  
1:00 p. m.—Series of Talks.  
1:15 p. m.—Breen and De Rose.  
1:30 p. m.—Tea Timers.  
2:00 p. m.—Whyte's Orchestra.  
2:30 p. m.—John B. Kennedy Talk.  
2:35 p. m.—Whyte's Orchestra.  
2:45 p. m.—The Blue Boys.  
3:30 p. m.—Phil Cook, The Quaker Man.  
3:45 p. m.—Back of The News in Washington.  
4:00 p. m.—East of Carlo—Four travelers investigate Calcutta.  
4:30 p. m.—Hotel St. Francis Salon Orchestra.  
4:45 p. m.—News Service.  
5:00 p. m.—Halsey, Stuart Program—financial advice.  
5:30 p. m.—Palmyrie Hour—Elizabeth Lennox, contralto and Paul Oliver.  
6:30 p. m.—Coca Cola Program—Grantland Rice interviews Johnny Weismuller.  
7:00 p. m.—Parks Sisters.  
7:15 p. m.—The Hot Spot of Radio.  
7:45 p. m.—Governor Young Campaign Program.  
8:00 p. m.—Let's Get Associated—Closing chapter of Lola Montez.  
8:00 p. m.—Parisian Quintet—"Fagliacci" will be reviewed and quintet plays selections.  
8:30 p. m.—Hill Billy Boys.  
9:00 p. m.—Miniature Biographies—Sidney Lanier.  
9:30 p. m.—Camel Pleasure Hour—musical extravaganza with Betty Kelly.  
10:30 p. m.—Yir Frien' Scotty.  
10:45 p. m.—Sarah Kreindler, violinist.

### THURSDAY, JULY 31

- 9:30 a. m.—The Entertainers.  
9:45 a. m.—Safeguard The Nation's Food and Drug Supply.  
10:00 a. m.—Woman's Magazine of the Air.  
11:00 a. m.—NBC Organ Recital.  
11:45 a. m.—The Canny Cook.

(Continued on Page 46)

The essential features of these programs are identical with those sent us by the stations



HARRY HALL

# KFI Los Angeles, Calif.—640 Kc.

5000 WATTS—468.5 METERS

Radio Central Super-Station of Earle C. Anthony, Inc.  
1000 S. Hope, Phone WE. 0331. After 5 P. M., WE. 0337

## DAILY EXCEPT SUNDAY

- 6:30 a. m.—Opening Market Quotations by E. A. Pierce & Co.  
6:45 a. m.—Health Exercises, Louis Rueb.  
7:30 a. m.—Leslie Brigham, baso (except Saturday).  
8:00 a. m.—Shell Happy Time, from KPO.  
12:00 noon.—U. C. Department of Agriculture.  
12:15 p. m.—Federal and State Market Reports.  
4:15 p. m.—KFI News Bureau (except Wednesday).  
4:30 p. m.—Big Brother Don (except Saturday).  
5:00 p. m.—Baron Keyes, the Story Man, Union Oil (except Saturday).  
5:45 p. m.—Stock Market Reports by E. A. Pierce & Co.  
11:00 p. m.—Laughner-Harris Hotel St. Francis Orchestra (ex. Mon. and Sat.).

## SUNDAY, JULY 27

- 10:00 a. m.—The Lure of India.  
10:15 a. m.—Mabel Lewis—Musical Memories, with Nancy Gray and Grace Mead, ballads.  
10:35 a. m.—Investment talk.  
10:50 a. m.—Third Church of Christ, Scientist.  
12:10 p. m.—Karl Brandenburg, tenor.  
12:30 p. m.—Helen Guest, ballads.  
1:00 p. m.—National Thrift Temple of the Golden Hour, with Virginia Flohri, James Burroughs and Pryor Moore Orchestra, Pryor Moore, dir. NBC.\*  
2:00 p. m.—Sylvia's Happy Hour.  
3:30 p. m.—"Advanced Thought"—Leila Castberg.  
4:00 p. m.—Enna Jettick Melodies, NBC.\*  
4:15 p. m.—Aeolian Organ recital.  
5:15 p. m.—Atwater Kent Hour, NBC.\*  
5:45 p. m.—Melody Makers String Ensemble.  
6:15 p. m.—Studebaker Champions, NBC.\*  
6:45 p. m.—Virginia Flohri, Luis Alvarez and Los Caballeros.  
7:15 p. m.—Purcell Mayer, violin recital.  
7:45 p. m.—Frank Kneeland, baritone.  
8:00 p. m.—Ira Hunsaker, tenor.  
8:15 p. m.—Sarah Padden Players.  
9:00 p. m.—Studebaker Champions, NBC.\*  
9:30 p. m.—Jane Green and Ron Wilson, vaudeville headlines.  
10:00 p. m.—Wally Perri's Packard Dance Orch.; Mart and Lil, soloists.  
11:00 p. m.—Blue Boys, NBC.\*

## MONDAY, JULY 28

- 9:00 a. m.—Herb Scharlin, popular songs.  
9:30 a. m.—Sound Magazine and talk by Clella Collins.  
9:45 a. m.—Karl Brandenburg on the M R K Tablet program.  
10:00 a. m.—Wall Street Journal.  
10:00 a. m.—Josephine Gibson Food talks, NBC.\*  
10:30 a. m.—Woman's Magazine of the Air, NBC.\*  
11:30 a. m.—Jules Garrison, "The Passer By."  
11:45 a. m.—Spanish lesson by Annette Doherty.  
12:30-2:30 p. m.—Silent.  
2:30 p. m.—Minnie Fields Moore, travelogue.  
2:45 p. m.—Leonard Van Berg, popular melodies.  
3:00 p. m.—Los Angeles Public Library.  
3:45 p. m.—Karl Brandenburg, tenor.  
5:30 p. m.—Care of the Hair, by Sadye Nathan.  
6:00 p. m.—Stromberg-Carlson program, NBC.\*  
6:30 p. m.—Lou Gordon, tenor.  
7:00 p. m.—Governor Young, campaign talk, NBC.\*  
7:30 p. m.—Anna Kristina, Swedish Character Sketches.  
7:45 p. m.—Senator Tubbs, campaign talk, NBC.  
8:00 p. m.—Shell Symphonists, NBC.\*  
9:00 p. m.—Program of Songs, Virginia Flohri.  
9:30 p. m.—Solree Intime—with Mildred Laughlin, soloist; Margaret Duncan, accompanist; Ivan Ivanoff, pianist; Zhay Clark, harp.  
11:00 p. m.—Laughner-Harris Hotel St. Francis Dance Orchestra, NBC.\*

## TUESDAY, JULY 29

- 9:00 a. m.—Bess Kilmer's Hints to Housewives.  
9:15 a. m.—Karl Brandenburg, popular melodies; MRK Tablet program.  
9:30 a. m.—Beauty talk by Mrs. Betty L. Bucholz.  
10:00 a. m.—Wall Street Journal.  
10:15 a. m.—Bass-Hueter Paint Co. program, NBC.\*  
10:30 a. m.—Woman's Magazine of the Air, NBC.\*  
11:30 a. m.—Sarah Ellen Barnes, talk on Music of the Hollywood Bowl.

- 12:30 p. m.—Seeing Southern California.  
1:00-2:30 p. m.—Off the air until 2:30 p. m.  
2:45 p. m.—Sally and Russell Hill.  
3:00 p. m.—Jack Parker, tenor.  
3:30 p. m.—Wedgwood Nowell.  
4:00 p. m.—Wedgwood Nowell-Katherine McDonald program.  
4:20 p. m.—Dr. John T. Miller—Human Nature Around the World.  
5:30 p. m.—American Chiropractic Association.  
6:00 p. m.—Earl Kass, baritone.  
6:15 p. m.—Anna and Oscar.  
6:30 p. m.—Vernon Elkins' Cotton Pickers' Orchestra.  
7:00 p. m.—Arthur Lang, baritone, and North American Ensemble.  
8:00 p. m.—Purcell Mayer Trio—Mildred Laughlin, contralto; Ivan Ivanoff, pianist; Margaret Duncan, accompanist; Zhay Clark, harpist.  
10:00 p. m.—Aeolian Organ recital, with Kelly Alexander, pianist.

## WEDNESDAY, JULY 30

- 9:00 a. m.—Bess Kilmer's Helpful Hints to Housewives.  
9:15 a. m.—Karl Brandenburg, popular melodies; MRK Tablet program.  
9:30 a. m.—Betty Crocker Gold Medal Home Service talk, NBC.\*  
9:45 a. m.—Mr. and Mrs. C. Godwin, violin and piano; Grace Hale Beauty talk.  
10:00 a. m.—Wall Street Journal.  
10:15 a. m.—Mary Hale Martin, talk, NBC.\*  
10:30 a. m.—Woman's Magazine of the Air, NBC.\*  
11:30 a. m.—W. Jules Garrison—"The Passer By."  
11:45 a. m.—French lesson by Annette Doherty.  
12:30 p. m.—Seeing Southern California.  
12:45-2:30 p. m.—Silent.  
2:30 p. m.—Winnie Fields Moore, travelogue.  
2:45 p. m.—Sally and Russell Hill.  
3:00 p. m.—Sylvia's Happy Hour.  
3:45 p. m.—Eddie Armstrong, ballads.  
4:00 p. m.—Noreen Gammill—Original Character Sketches.  
5:30 p. m.—Beauty talk by Sadye Nathan.  
5:45 p. m.—Closing Stock Market reports.  
6:00 p. m.—Nick Harris program.  
6:30 p. m.—Sierra Male Quintette.  
7:00 p. m.—Bob and Monte—"Buggyride Program."  
7:30 p. m.—Vernon Elkins' Cotton Pickers' Orchestra.  
7:45 p. m.—Governor Young, campaign talk, NBC.\*  
8:00 p. m.—Let's Get Associated, NBC.\*  
8:30 p. m.—Tom Terris—Vagabond Movie Director.  
9:00 p. m.—Eva Olivotti, James Burroughs and Orch.  
10:00 p. m.—Packard Concert Orchestra, Pryor Moore, director, with Gretchen Garrett.

## THURSDAY, JULY 31

- 9:00 a. m.—Herbie Scharlin, popular melodies.  
9:30 a. m.—Mine. Brehani, vocal, and investment talk by Clella Collins.  
9:45 a. m.—Wall Street Journal.  
10:00 a. m.—Woman's Magazine of the Air, NBC.\*  
11:00 a. m.—Sylvia's Happy Hour.  
11:30 a. m.—Sarah Ellen Barnes, Music of Hollywood Bowl.  
12:30-2:30 p. m.—Silent.  
2:30 p. m.—Winnie Fields Moore, travelogue.  
2:45 p. m.—Jack Miller's Paramount Trio.  
3:00 p. m.—Better America Federation.  
3:15 p. m.—Red Hilton nad his Golden State Colle-gians.

(Continued on Page 46)

# Brunswick

## The RADIO OTHER

... has been selected by these leading Radio and Music Merchants. Any of them will gladly show you Brunswick's distinctive and amazing selectivity ... possible only with the revolutionary

NOT A YEAR AHEAD ... BUT "YEARS" AHEAD

### DOWNTOWN LOS ANGELES

Wiley B. Allen Co., 720 So. Broadway  
Barker Bros., Inc., 840 West 7th Street  
Barnes Music Co., 344 South Broadway  
B. & B. Coast Furn. Co., 861 S. Figueroa  
Broadway Dept. Store, 4th and Broadway  
Eastern Outfitting Co., 620 S. Main Street  
Electric Lighting Supply Co., 216 W. 3rd St.  
Hill Street Furniture, 1101 S. Hill St.  
Richardson's, Inc., 730 W. 7th Street  
Schwabacher Frey Co., 736 S. Broadway

### LOS ANGELES

Associated Radio Service, 4162 Beverly Blvd.  
A. A. Bitter Radio, 6615 S. Western Ave.  
California Music Co., 2107 Brooklyn Ave.  
Chapman & Perliter, 4377 S. Figueroa  
A. W. Cooper, 1315 West 39th Street  
Conner Music Co., 1108 West 7th Street  
Daynes Music, 4633 Whittier Blvd.  
Eastern Outfitting Co., 4717 S. Broadway  
Eastern Outfitting Co., 4768 Whittier Blvd.  
Forer Tire Co., 412 W. Pico Street  
Greater Broadway Furniture Co., 5900 So. Broadway  
Ray Harding Radio Co., 5326 Wilshire Blvd.  
Helss Radio Shop, 4579 W. Pico  
Kelly Music Co., 122 S. Vermont Ave.  
Larchmont Radio Salon, Inc., 139 N. Larchmont Blvd.  
Markson Electric Co., 3936 S. Western Ave.  
Metro Radio, 4718 W. Washington  
Robinson Radio, 4528 S. Western Ave.  
Ruppert Radio Service, 7767 Santa Monica Blvd.  
C. J. Sharrock, 4378 W. Adams  
Sky-Pilot Radio, 5184 W. Adams  
Universal Music Co., 1607 S. Maple Ave.  
Wolfe Radio Co., 547 S. Western Ave.  
Wilshire-Robertson Radio Store, 8764 Wilshire Blvd.

### ALHAMBRA

Ashton Radio Electric, 26 N. Garfield

### ANAHEIM

Knipe Music Co., 217 E. Center Street  
Llewellyn Harmony Shop, 245 W. Center St.

### ARTESIA

Edward Corcoran, 438 Main Street

### BAKERSFIELD

Grant Radio Company, 1526 18th Street

### BALBOA

Eldredge Electric Shop, 702 Central

### BANNING

L. L. Boswell, 22 San Geronio Street

### BEVERLY HILLS

Wiley B. Allen Co., 345 N. Beverly Drive  
A. A. Crawford, 445 Beverly Blvd.

### BISHOP

F. V. Craig

### BRAWLEY

Nerbogvig Music Co.

### BURBANK

F. Collins, 223 E. San Fernando

### CLAREMONT

J. E. Lewis, 251 W. First Street

### COLTON

Bollong & Son, 161 East 1st Street

### COMPTON

Compton Music Co., 239 E. Main St.

### CORONADO

Coronado Radio Co., 1120 Orange Ave.

### DOWNEY

W. B. Redfield, 1213 S. Crawford

### EL CENTRO

Imperial Music Co., 534 Main St.

### ESCONDIDO

H. W. Maddux, 119 N. Broadway

### FILLMORE

Ellsworth & Morley

### FULLERTON

Fullerton

### GARDENA

O. B. Curran

### GLENDALE

Glendale

J. A. New

### HERMOSA BEACH

J. H. Thor

### HOLLYWOOD

Barker Bro

Glow Elect

Hollywood

Hollywood

Kelly Musi

### HUNTINGTON BEACH

Eastern Ou

O. S. Peter

### LA HABRA

J. E. Jenks

### LONG BEACH

Barker Bro

McGreery M

O. S. Peter

O. S. Peter

Prest & De

### MONROVIA

Chas. P. M

### MONTEREY

Wiley Rad

### OCEAN BEACH

J. A. Bow

### ONTARIO

Ontario Sh

### OXNARD

Carl Newco

WESTERN RADIO, Incorporated . . . 5



# Brunswick

## THE FUTURE

Merchants who are watching the trend of the industry. The sets and demonstrate the startlingly realistic tone and Brunswick circuit and armored chassis.

BRUNSWICK IS TRULY "The Radio of the Future"

- PASADENA**  
Arthur J. Fortier, 1290 N. Fair Oaks.  
Hancock Music Co., 331 E. Colorado  
F. C. Nash Co., 141 E. Colorado  
Radio Doc, 1581 E. Walnut  
Karl O. Woestman, 2025 N. Los Robles
- POMONA**  
Burnley's Radio, 320 W. 2nd St.  
Gilbert's Radio Shop, 155 S. Geary St.
- REDLANDS**  
H. S. Holley, 233 Cajon St.
- REDONDO BEACH**  
Thorpe Music Shop, 126 S. Pacific Ave.
- RIVERSIDE**  
Franzen Hardware Co.
- SAN BERNARDINO**  
Foshee Furniture Co., 683 Third St.  
Thew Radio Co., 514 Fourth St.
- SAN DIEGO**  
Norman F. Maw Music Co., 2912 University  
Parmelee-Dohrmann Co.  
Thearle Music Co., Broadway and 7th
- SAN LUIS OBISPO**  
E. E. Long Piano Co., 777 Marsh St.  
Merrifield Music Co., 786 Higuera St.
- SAN PEDRO**  
O. S. Peterson, 284 W. Sixth St.  
M. Rapaport, 512 Beacon St.  
Zenith Radio Co., 382 W. Sixth St.
- SAN YSIDRO**  
San Ysidro Com. Co.
- SANTA ANA**  
J. C. Horton Furn. Co., Sixth and Main  
O. S. Peterson, 423 W. Fourth St.
- SANTA BARBARA**  
Santa Barbara Music Co., Inc., 819 State  
J. E. Wiley, 15 W. Anapamy St.
- SANTA MARIA**  
Soladin Music Store
- SANTA MONICA**  
Ray E. Schafer, 1501 Fourth St.
- SANTA PAULA**  
Ellsworth & Morley
- TAFT**  
Carter's Art and Music Store
- TEHACHAPI**  
Frank T. Baumgart
- TERMINAL ISLAND**  
Harbor Boat Building Co.
- UPLAND**  
Edna R. Swan, 236 E. Ninth Street
- VENICE**  
Coast Electric Co., 1604 Pacific
- VENTURA**  
Moore & Fazlo, 733 Main Street
- WESTWOOD**  
Kelly Music Co., 1043 Westwood Blvd.
- WHITTIER**  
Whittier Radio Den, 215 W. Philadelphia
- CLARKDALE, ARIZONA**  
B. Tilton
- GLOBE, ARIZONA**  
United Drug & Music
- JEROME, ARIZONA**  
B. Tilton
- MIAMI, ARIZONA**  
Busy Bee, 609 Sullivan St.
- PHOENIX, ARIZONA**  
The Boston Store
- TEMPE, ARIZONA**  
Goodwin Novelty Store

5 Wall St. . . . Westmore 3338 . . .



TED HUSING

# Columbia Broadcasting System

## PACIFIC COAST NETWORK

845 Madison Ave., New York

William S. Paley  
President  
Henry A. Bellows  
Vice-President

**KHJ, KFRC, KVI,  
KFPY, KOIN,  
KOL, KDYL**

WEDNESDAY, JULY 30

DAILY EXCEPT SUNDAY

8:00 a. m.—Columbia Revue (except Saturday).

SUNDAY, JULY 27

- 8:30 a. m.—International Broadcast; Sir Oliver Lodge speaks from London.  
9:00 a. m.—The Aztecs—Latin-American and Spanish Music.  
10:00 a. m.—Ann Leaf at the organ.  
10:30 a. m.—Ballad Hour—Old and New Ballads.  
11:00 a. m.—Paul Tremaine's Orch. from Asbury Park.  
11:30 a. m.—Conclave of Nations.  
12:00 noon.—Cathedral Hour—All Musical Presentation  
1:00 p. m.—The Gauchos, Vincent Sorey's Orchestra.  
1:30 p. m.—The Crockett Mountaineers.  
2:00 p. m.—Fox Fur Trappers.  
2:30 p. m.—The Globe Trotter Act.  
3:00 p. m.—Columbia String Symphony.  
3:30 p. m.—The Round Towners—Male Quartet.  
3:45 p. m.—The World's Business  
4:00 p. m.—Jesse Crawford, organist.  
5:00 p. m.—Majestic Theater of the Air—Variety prog.  
6:00 p. m.—Mayhew Lake and his Band—Dance Music.  
6:30 p. m.—Around the Samovar.  
7:00 p. m.—Back Home Hour from Buffalo  
8:00 p. m.—Coral Islanders—Hawaiian Music  
8:30 p. m.—Ann Leaf at the Organ.

MONDAY, JULY 28

- 8:30 a. m.—Manhattan Towers Orchestra.  
9:30 a. m.—Harold Stern and his Ambassador Orchestra.  
11:00 a. m.—Columbia Ensemble—Emery Deutsch's Orch.  
12:00 noon.—The Merrymakers  
12:30 p. m.—The Aztecs.  
1:00 p. m.—Dancing Troubadours  
1:45 p. m.—Aunt Zelena—Stories and Songs for Children.  
2:00 p. m.—Harry Tucker and his Hotel Barclay Or-  
2:30 p. m.—Carl Rupp and his WGNP Captivators  
2:45 p. m.—The Couple Next Door.  
3:00 p. m.—The Crockett Mountaineers  
3:15 p. m.—Current Events—H. V. Kaltenborn.  
3:45 p. m.—Bernhard Levitow and his Hotel Commo-  
dore Orchestra.  
4:00 p. m.—The Romany Patteran.  
5:30 p. m.—Mardi Gras—Orchestra, Male Quartet,  
6:30 p. m.—Jesse Crawford, Poet of the Organ.  
7:00 p. m.—Bert Low and His Biltmore Orchestra.  
7:15 p. m.—Heywood Broun's Radio Column.  
7:30 p. m.—Bert Low and his Biltmore Orchestra.  
8:00 p. m.—Paul Tremaine and his Orchestra from  
Asbury Park.  
8:30 p. m.—Nocturne—Ann Leaf at the Organ.

TUESDAY, JULY 29

- 8:00 a. m.—Manhattan Towers Orch., dance music.  
9:30 a. m.—Savoy Plaza Orchestra—Concert music.  
11:00 a. m.—Columbia Ensemble—String Ensemble.  
11:00 a. m.—Columbia Educational Features—For Your  
Information.  
12:00 noon.—U. S. Army Band Concert.  
12:30 p. m.—Ann Leaf at the organ.  
1:00 p. m.—Rhythm Kings Dance Orchestra  
1:30 p. m.—Dancing by the Sea, from Atlantic City.  
2:00 p. m.—The New World Symphony—Classical prog.  
2:30 p. m.—Manhattan Towers Orchestra—Dance music.  
2:45 p. m.—National Security League Broadcast Series.  
3:00 p. m.—The Crockett Mountaineers  
3:15 p. m.—Columbia Educational Features—"Internat-  
ional Sidlights."  
3:30 p. m.—Guy Lombardo and his Royal Canadians.  
4:45 p. m.—Melody Musketeers.  
5:30 p. m.—Savino Tone Pictures—Large Orchestra,  
6:00 p. m.—Graybar's "Mr. and Mrs."  
6:15 p. m.—Grand Opera Miniature  
7:15 p. m.—Heywood Broun's Radio Column.  
7:30 p. m.—Chicago Variety program—Waring's Penn-  
sylvanians; Al and Pete.  
8:30 p. m.—Nocturne—Ann Leaf at the Organ.

- 8:30 a. m.—Manhattan Towers Orchestra—Dance music.  
9:30 a. m.—Harry Tucker and his Hotel Barclay Or-  
chestra—Concert Music.  
11:00 a. m.—Columbia Ensemble—String Ensemble, di-  
rected by Emery Deutsch in a Classical program.  
11:30 a. m.—Columbia Educational Features—For Your  
Information.  
12:00 noon.—Musical Album—Columbia Symphony Or-  
chestra, with Lillian Buckman, soprano.  
1:00 p. m.—The Columbia Greasers—Popular Songs.  
1:15 n. m.—Footnotes—Freddie Rich's Dance Orchestra  
1:45 p. m.—Aunt Zelena  
2:00 p. m.—"Bill Schudt's Going to Press."  
2:15 p. m.—Ozzie Nelson's Glen Islanders.  
3:00 p. m.—The Crockett Mountaineers  
3:15 p. m.—Manhattan Towers Orchestra—Dance music  
3:45 p. m.—The Aztecs—Latin-American and Spanish  
4:00 p. m.—Manhattan Moods—Combined Orchestras.  
5:00 p. m.—U. S. Marine Band Concert.  
6:00 p. m.—Voice of Columbia, Toscha Seidel, violin.  
7:15 p. m.—Heywood Broun's Radio Column.  
7:30 p. m.—California Melodies—Orchestra and Movie  
Celebrities.  
8:00 p. m.—Guy Lombardo and his Royal Canadians.  
8:30 p. m.—Demitasse Revue featuring George Olsen's  
music

THURSDAY, JULY 31

- 8:00 a. m.—Manhattan Towers Orchestra—Dance music  
9:30 a. m.—Harold Stern and Ambassador Orchestra.  
11:00 a. m.—Columbia Ensemble—Emery Deutsch's Or-  
chestra.  
11:30 a. m.—Columbia Educational Features—For Your  
Information.  
12:00 noon.—U. S. Navy Band Concert.  
1:00 p. m.—Columbia Educational Features—The Book  
Parade, Harry Hansen.  
1:15 p. m.—Dancing by the Sea, from Atlantic City.  
2:00 p. m.—The New World Symphony.  
1:30 p. m.—The Melody Musketeers—Male Trio.  
3:00 p. m.—The Crockett Mountaineers—Family of Six  
Crocketts.  
4:00 p. m.—Symphonic Interlude—Symphony Orchestra.  
4:15 p. m.—Columbia Educational Features—"The Po-  
litical Situation in Washington Tonight."  
4:30 p. m.—Kalterborn Edits the News.  
4:45 p. m.—Rhythm Kings—Freddie Rich and his Orch.  
5:00 p. m.—Arabesque—A Modern "Thousand and One  
Nights."  
5:30 p. m.—WNAI's Eighth Anniversary program.  
6:30 p. m.—Columbia Educational Features.  
7:00 p. m.—Dream Boat—Emery Deutsch and his Orch.  
7:15 p. m.—Heywood Broun's Radio Column.  
7:30 p. m.—Guy Lombardo and his Royal Canadians.  
8:00 p. m.—Scrappy Lambert and his Woodmansten  
Orchestra.  
8:30 p. m.—Nocturne—Ann Leaf at the Organ.  
9:00 p. m.—Mid-Week Kodak Hour.

FRIDAY, AUGUST 1

- 6:30 a. m.—The Sewing Circle. (KYDL only).  
8:30 a. m.—Manhattan Towers Orchestra—Dance music  
9:30 a. m.—Harry Tucker and his Hotel Barclay Orch.,  
10:00 a. m.—The Aztecs—Latin-American and Spanish  
Music.  
10:30 a. m.—Ann Leaf at the Organ.  
11:00 a. m.—Columbia Ensemble—String Ensemble,  
11:30 a. m.—Columbia Educational Features—Today in  
History.  
11:45 a. m.—August Meteors, Dr. Chas. P. Oliver.  
12:00 noon.—Light Opera Gems.  
12:30 p. m.—Thirty-Minute Men—Freddie Rich and  
Orchestra.  
1:00 p. m.—Carl Rupp and his WXYZ Captivators—  
1:45 p. m.—Aunt Zelena  
2:00 p. m.—Ozzie Nelson's Glen Islanders  
2:45 p. m.—The Couple Next Door.  
3:00 p. m.—The Crockett Mountaineers  
3:15 p. m.—The Vagabonds—Emery Deutsch and his  
Orchestra.  
3:45 p. m.—Bernhard Levitow and his Hotel Commo-  
dore Orchestra—Dance Music.  
4:00 p. m.—Nit Wit Hour.  
4:30 p. m.—U. S. Army Band.  
6:00 p. m.—Columbia Male Chorus.  
6:30 p. m.—Gold Medal Fast Freight.  
7:00 p. m.—Bert Low and his Biltmore Orchestra—  
7:15 p. m.—Heywood Broun's Radio Column.  
(Continued on Page 29)



RAYMOND PAIGE

**KHJ**

**Los Angeles, Calif.—900 Kc.**

1000 WATTS—333.1 METERS  
 Don Lee Bldg., 7th and Bixel Sts. Owned and operated by Don Lee,  
 Calif Dis. for Cadillac and LaSalle, Phone VA. 7111  
 Glenn Dolberg, Manager. Raymond Paige, Musical Director

TUESDAY, JULY 29

Bob Swan  
 Chief Announcer  
 C. M. C. Raymond  
 Commercial Director  
 Harold Peery  
 Chief Engineer  
 Dick Creedon  
 Director of Features  
 Ernest G. Underwood  
 Technical Director

- 8:00 a. m.—CBS.\*
- 8:40 a. m.—Manhattan Towers Orchestra, CBS.\*
- 9:00 a. m.—Scientific Laboratories.
- 9:15 a. m.—Georgia O. George.
- 10:00 a. m.—Leigh Harline—Organ.
- 10:30 a. m.—Recordings.
- 10:45 a. m.—Alaska Pacific "Salmon Loafers."
- 11:00 a. m.—Bureau of Power and Light, Agnes White.
- 11:15 a. m.—Weaver-Jackson, Records.
- 11:45 a. m.—Normalizer.
- 12:45 a. m.—Chamber of Commerce (Sec. Wilbur).
- 3:00 p. m.—Crocket Mountaineers, CBS.\*
- 3:15 p. m.—Safety Conference.
- 3:30 p. m.—Midnight Mission.
- 3:45 p. m.—U. S. C. Period.
- 4:00 p. m.—Charlie Wellman.
- 4:30 p. m.—Western Air Express.
- 5:15 p. m.—Ted White—Songs.
- 5:30 p. m.—Terpezone program.
- 6:00 p. m.—Graybar, CBS.\*
- 6:15 p. m.—Talk by Mr. Tallant Tubbs.
- 6:30 p. m.—Grand Opera, CBS.\*
- 7:00 p. m.—Don Lee Symphony Orchestra.
- 8:00 p. m.—Raymond Paige presentation.
- 8:30 p. m.—S. & W. Forum—Gov. Young.
- 9:30 p. m.—Drama.

WEDNESDAY, JULY 30

- DAILY EXCEPT SUNDAY
- 7:00 a. m.—Records.
  - 7:30 a. m.—Hale and Derry.
  - 7:45 a. m.—Sammy Carr's Ham and Egg Revue.
  - 8:30 a. m.—N. Y. Stock Exchange Quotations.
  - 8:40 a. m.—Yoeng's Orchestra, CBS.\*
  - 9:30 a. m.—Feminine Fancies, KFRC.
  - 11:30 a. m.—Folger coffee.
  - 12:00 noon—L. A. Biltmore Hotel Orchestra.
  - 12:30 and 10 p. m.—News Items, courtesy of L. A. Times (except Monday).
  - 1:30 p. m.—Times Forum.
  - 2:00 p. m.—Happy-Go-Lucky Hour, KFRC (ex. Sat.).
  - 4:45 p. m.—World-wide News (except Monday).
  - 4:55 p. m.—Town Topics.
  - 10:05 p. m.—Earl Burnett's Biltmore Hotel Orchestra.
  - 12:00 midnight—Organ Program by Wesley Tourtellotte.

SUNDAY, JULY 27

- 8:00 a. m.—Recordings.
- 8:15 a. m.—Anthony Ewer.
- 8:30 a. m.—Sir Oliver Lodge, CBS.\*
- 9:00 a. m.—Pacific States Savings & Loan Concert.
- 11:00 a. m.—First M. E. Church of Los Angeles.
- 12:30 p. m.—Cathedral Hour, CBS.\*
- 1:00 p. m.—CBS.\*
- 1:30 p. m.—Whittier Heights Memorial Park.
- 2:30 p. m.—CBS.\*
- 5:00 p. m.—Majestic Program, CBS.\*
- 6:00 p. m.—Mayhew Lake and his band, CBS.\*
- 6:30 p. m.—Around the Samovar, CBS.\*
- 7:00 p. m.—The Back Home Hour, CBS.\*
- 7:30 p. m.—Prof. Chas. Lindsley.
- 8:00 p. m.—Cadillac LaSalle Orch. (from KFRC).
- 9:00 p. m.—Val Valente Orchestra, from KFRC.
- 11:00 p. m.—Organ Recital.

MONDAY, JULY 28

- 7:30 a. m.—Hale & Derry.
- 8:00 a. m.—Columbia Revue, CBS.\*
- 8:40 a. m.—Manhattan Towers Orch., CBS.\*
- 9:15 a. m.—Richardson's Music Lovers' Shop.
- 10:00 a. m.—Ted White & Leigh Harline.
- 10:30 a. m.—American Institute of Food Products.
- 10:45 a. m.—Records.
- 11:00 a. m.—Schaefer Hat Works.
- 11:15 a. m.—Scientific Laboratories.
- 12:45 p. m.—Normalizer.
- 1:00 p. m.—Dancing Troubadours, CBS.\*
- 3:00 p. m.—Colonial Dames Corp.
- 3:15 p. m.—Girl Scouts of America.
- 3:30 p. m.—Matthew Murray, "Home Problems."
- 3:45 p. m.—H. M. Robertson, talk on dogs.
- 4:00 p. m.—Charlie Wellman.
- 4:30 p. m.—Nell Larson, organ.
- 5:00 p. m.—California Dairy Council (from KFRC).
- 5:30 p. m.—Blvd. Furniture Co.
- 6:00 p. m.—Don Lee Symphony Orchestra.
- 6:30 p. m.—Jesse Crawford, CBS.\*
- 7:00 p. m.—Inglewood Park.
- 7:30 p. m.—Talk by Mayor Rolph.
- 8:00 p. m.—Golden State Jamboree.
- 10:00 p. m.—Hotel Mark Hopkins Orchestra.
- 11:00 p. m.—Biltmore Orchestra.

- 8:00 a. m.—CBS Revue, CBS.\*
- 9:15 a. m.—Richardson's.
- 10:00 a. m.—Nell Larson.
- 10:30 a. m.—American Institute of Food Products.
- 10:45 a. m.—Log Cabin Bread, Agnes White.
- 11:00 a. m.—Red Cross Shoes (to CBS).
- 11:45 a. m.—Normalizer.
- 12:45 p. m.—Kiwans Club.
- 3:30 p. m.—Jones' Book Store—Walter B. Murray.
- 3:45 p. m.—L. A. Public Library
- 4:00 p. m.—Charlie Wellman
- 4:30 p. m.—Nell Larson and June Parker.
- 5:15 p. m.—U. S. Marine Band, CBS.\*
- 5:30 p. m.—Blvd. Furniture Co. with Bob Swan.
- 6:00 p. m.—Peggy Hamilton, Romance of Fashions.
- 6:30 p. m.—Prof. Chas. Lindsley and organ.
- 7:00 p. m.—Talk by Mr. Buron Fitts.
- 7:30 p. m.—Melodies from California (to CBS).
- 8:00 p. m.—Standard Oil Co., "Days of '49."
- 8:30 p. m.—MJB Demi-Tasse Revue from Geo. Olsen's, CBS.\*
- 9:00 p. m.—Mood Pictures.
- 9:30 p. m.—Ted White, "Top of the World."
- 3:00 p. m.—Fred C. McNabb, Garden Talk.

THURSDAY, JULY 31

- 8:00 a. m.—Columbia Revue, CBS.\*
- 9:15 a. m.—Georgia O. George.
- 10:00 a. m.—Leigh Harline.
- 10:30 a. m.—Tintex (to Coast Unit).
- 10:45 a. m.—Alaska Pacific Salmon Co.—Agnes White.
- 11:00 a. m.—Agnes White for Bureau of Power & Light
- 11:15 a. m.—Columbia Ensemble, CBS.\*
- 11:45 a. m.—Normalizer.
- 12:45 p. m.—U. S. Navy Band.
- 1:00 p. m.—Book Parade, CBS.\*
- 1:15 p. m.—"Dancing by the Sea," CBS.\*
- 3:00 p. m.—Ted White.
- 3:15 p. m.—U. S. C. Trojan Period
- 3:30 p. m.—Y. M. C. A.
- 3:45 p. m.—Auto Club.
- 4:00 p. m.—Charlie Wellman.
- 4:15 p. m.—Frederick Wm. Wile, CBS.\*
- 4:30 p. m.—Charlie Wellman.
- 5:00 p. m.—Pacific States Savings & Loan Co., organ recital—W. Tourtellotte.
- 5:30 p. m.—Bob Swan.
- 5:45 p. m.—Coast Investor.

See Page 26 for CBS Program

(Continued on Page 43)



Its Service  
 with a Smile

**MAJESTIC**  
 at

**WATSON RADIO CO.**  
 A X ridge 1581 ... 4411 S<sup>o</sup> Broadway.

Pleasant 4092 - 8558 So. Broadway





The essential features of these programs are identical with those sent us by the stations



NAYLOR ROGERS

# KNX

## Hollywood, Calif.—1050 Kc.

5000 WATTS—285.5 METERS—Los Angeles Evening Express  
Paramount-Lasky Studio, 5555 Marathon  
"The Voice of Hollywood"

Phone HEMPSTEAD 4101

Naylor Rogers  
Director-Manager  
Pierre Mellonino  
Program Director

Charles H. Gabriel, Jr.  
Publicity Director  
N. D. Garver  
Technical Engineer

TUESDAY, JULY 29

**DAILY EXCEPT SUNDAY**

6:45 a. m.—"Earlybirds" exercises, Dr. P. M. Seixas.  
7:15 a. m.—"Pep and Glinger" exercises.  
7:45 a. m.—"Home Folks" exercises, Dr. P. M. Seixas.  
8:00 a. m.—Inspirational talk and morning prayer.  
8:15 a. m.—Musical program of popular recordings (except Thursday).  
9:00 a. m.—Time signals from Washington, D. C.  
9:30 a. m.—Radio Shopping News.  
10:00 a. m.—"Be Young and Be Happy," Eddle Albright's Ten o'Clock Family.  
10:30 a. m.—Home Economics talk given by Kate Brew Vaughn, director of Household Economics Dept. (except Friday and Saturday).  
12:00 noon, 7:00 and 10:00 p. m.—Time Signals.  
12:30 p. m.—Broadcasting by remote control from the Silver Slipper.  
1:00 p. m.—Off the Air.  
1:30 p. m.—Eddie Albright's reading of late action.  
2:00 p. m.—Jay, the Jingle Man.  
3:30 p. m.—Lost and Found and stock market (3:00 Monday; 4:00 Wednesday).  
4:30 p. m.—CPR's musical program.  
5:00 p. m.—E. C. Griffith's talk on "Travel."  
5:15 p. m.—"Big Brother Ken's Kiddie Hour."  
5:45 p. m.—Town Crier's Timely Amusement Tips.  
7:00 p. m.—Professor Schnitzel.  
10:00-12:00 midnight.—Hotel Ambassador, Gus Arnheim's Orchestra.  
12:00 midnight.—Midnight Dance music from Madame Zucca's.

SUNDAY, JULY 27

10:00 a. m.—Musical program.  
10:15 a. m.—Musical program of late recordings.  
10:30 a. m.—Chet Mittendorf presenting musical prog.  
11:00 a. m.—First Presbyterian Church of Hollywood.  
12:30 p. m.—Louise Johnson, astro-analyst.  
1:00 p. m.—International Bible Students Association.  
2:00 p. m.—City Park Board musical program.  
4:00 p. m.—Musical program of recordings.  
4:30 p. m.—First Radio Church of the Air.  
5:30 p. m.—Scriptural Research Bureau.  
6:00 p. m.—Dr. Ernest Holmes, Institute of Religious Science and Philosophy.  
6:30 p. m.—Dr. Theodore Curtis Abel.  
7:00 p. m.—Horse Fly and His Wranglers.  
8:00 p. m.—First Presbyterian Church of Hollywood.  
9:00 p. m.—Calmon Luboviski, master violinist; Claire Mellonino, pianist; Rosalie Barker Frye, contralto.

MONDAY, JULY 28

8:30 a. m.—Musical program of popular recordings.  
9:00 a. m.—Program of recordings.  
11:00 a. m.—Musical program of recordings.  
11:30 a. m.—Kip Corp. presenting a musical program.  
11:45 a. m.—Beauty Secrets.  
12:00 noon.—Tom Wallace, baritone, and the KNX Symphony.  
2:30 p. m.—Musical program of popular recordings.  
3:05 p. m.—Lucie Lee at the Wurlitzer organ.  
3:30 p. m.—Program presenting Hungarian Ensemble.  
4:00 p. m.—Musical program of popular recordings.  
6:00 p. m.—Lucie Lee at the Wurlitzer organ.  
6:30 p. m.—Feature program presenting Hungarian Ensemble.  
7:08 p. m.—Presenting "Under the Make-Up."  
7:38 p. m.—Program presenting KNX Symphony.  
8:00 p. m.—One-act playlet directed by Georgia Fifield.  
8:30 p. m.—Luboviski Violin Choir and Claire Mellonino, pianist.  
9:00 p. m.—Rio Grande Male Quartet and Plano Twins.  
9:30 p. m.—Rev. Ethel Duncan, the Question and Answer Lady.

8:30 a. m.—Clinic of the Air; questions answered.  
9:00 a. m.—Program of musical recordings.  
9:10 a. m.—"Seeing Southern California."  
9:20 a. m.—Golden Rule Health Service.  
11:00 a. m.—Kate Brew Vaughn.  
11:15 a. m.—"Miss Iris" in popular songs.  
11:30 a. m.—Musical program.  
12:00 noon.—Kip Corp. presenting a musical program.  
12:15 p. m.—Talk on "Belco."  
2:30 p. m.—KNX Symphony Orchestra.  
3:30 p. m.—Lucie Lee at the Wurlitzer Studio organ.  
4:00 p. m.—Program presenting the KNX Symphonette.  
6:00 p. m.—Musical program presenting Hungarian Ensemble.  
6:30 p. m.—Eno Rubber Corp., presenting Lucie Lee at the Wurlitzer Studio organ in Hotel Ambassador.  
7:08 p. m.—Popular Science talk by Dr. Mars Baumgardt.  
7:30 p. m.—Margit Hegedus, violinist; Tudor Williams, basso; Elizabeth Proehl, accompanist.  
8:00 p. m.—Horse Fly and his Wranglers.  
8:30 p. m.—KNX Symphonette.  
9:00 p. m.—Hap and Sap, the Royal Vagabonds.  
9:30 p. m.—Presenting the "Radio Detective."

WEDNESDAY, JULY 30

8:30 a. m.—Musical program of late recordings.  
9:10 a. m.—"Seeing Southern California."  
9:20 a. m.—Musical program.  
11:00 a. m.—Program presenting the KNX Symphony.  
12:00 noon.—Kip Corp. presenting a musical program.  
12:15 p. m.—Talk on "Belco," given by H. F. Allen.  
2:30 p. m.—Recording of Famous Figures in Music.  
2:45 p. m.—Bundy & Albright's musical program.  
3:05 p. m.—Lucie Lee on the Wurlitzer organ.  
3:30 p. m.—Program presenting Hungarian Ensemble.  
4:00 p. m.—Musical program of recordings.  
6:00 p. m.—Lucie Lee at the Wurlitzer organ.  
6:30 p. m.—Program presenting KNX Little Symphon.  
7:08 p. m.—Mr. and Mrs. Radio Skit, featuring Georgia Fifield and Eddie Albright, courtesy Edington Gasoline & Refining Co.  
7:38 p. m.—Sargon "Cycle of Songs."  
8:00 p. m.—Bert Butterworth and his Airdales, courtesy Brown's.  
8:30 p. m.—Horse Fly and His Wranglers.  
9:00 p. m.—Sherman Oaks Serenaders.  
9:30 p. m.—Rev. Ethel Duncan, the Question and Answer Lady.

THURSDAY, JULY 31

8:15 a. m.—Hollywood Breakfast Club.  
9:15 a. m.—Golden Rule Health Service.  
11:00 a. m.—Natl. Canners Association program.  
11:15 a. m.—Miss Iris in popular songs and interesting Food Facts.  
11:30 a. m.—"Old Witch Ammonia," courtesy program.  
11:45 a. m.—Talk on "Belco" by H. F. Allen.  
12:00 noon.—Kip Corporation courtesy program.  
12:15 p. m.—KNX Symphonette.  
2:30 p. m.—Prof. Edgard Leon giving French lessons  
3:00 p. m.—Organ program given by Lucie Lee.  
3:35 p. m.—Louise Johnson, astro-analyst.  
4:00 p. m.—Hungarian Ensemble.  
6:00 p. m.—Organ program by Lucie Lee.  
6:30 p. m.—Horse Fly and His Wranglers.  
7:08 p. m.—Loff O'Graffs.  
7:38 p. m.—Horse Fly and his Wranglers.  
8:00 p. m.—Bill Hatch's Quartet.  
8:30 p. m.—KNX Symphonette.  
9:00 p. m.—The Nomads.  
9:30 p. m.—KNX Trio and Theodore Kittay.

FRIDAY, AUGUST 1

8:30 a. m.—Musical program of recordings.  
9:10 a. m.—"Seeing Southern California."  
10:30 a. m.—Musical program of popular recordings.  
10:45 a. m.—Kip Corporation courtesy program.  
11:00 a. m.—First Radio Church of the Air.  
11:45 a. m.—Marmola Co. presents "Musical Contrasts."  
12:00 noon.—Musical program featuring KNX Symphony.  
2:30 p. m.—Musical program of recordings.  
3:15 p. m.—Presenting Little Joyce Coad, little movie star.  
3:30 p. m.—Federation Women's Clubs program.  
4:00 p. m.—Program presenting the KNX Symphony.  
6:00 p. m.—The KNX Symphony.

(Continued on Page 38)

The essential features of these programs are identical with those sent us by the stations



GERALD KING

# KFWB

Phone HO. 0315

Gerald L. King  
Manager

Leslie Hewitt  
Chief Technician

## Hollywood, Calif.—950 Kc.

1000 WATTS—315.6 METERS  
WARNER BROS. MOTION PICTURE STUDIOS  
Warner Brothers' Theater, 6425 Hollywood Boulevard

9:00 p. m.—Jack Joy Continuity.  
10:00 p. m.—Ben Bernie and his Orchestra.  
10:30 p. m.—George Olsen and his Music.  
11:00 p. m.—Dance Music from Montmartre Cafe.

### THURSDAY, JULY 31

10:15 a. m.—Kathleen Clifford.  
7:10 p. m.—KFWB Concert Orch.; Lewis Mehan, tenor.  
8:00 p. m.—Ben Bernie and his Orchestra.  
8:30 p. m.—A detective story presented by Edward Murphy.  
9:00 p. m.—David Percy, baritone; KFWB Salon Orch.  
9:30 p. m.—"An Old Tintype."  
10:00 p. m.—Ben Bernie and his Orchestra.  
10:30 p. m.—George Olsen and his Music.  
11:00 p. m.—Dance Music from Montmartre Cafe.  
Signing off at 11:30 p. m.

### FRIDAY, AUGUST 1

6:00 p. m.—Herb Sharlin, popular songs.  
7:10 p. m.—Larry Ceballos' Revue.  
7:45 p. m.—Mac and Al.  
8:00 p. m.—Billy Van.  
8:30 p. m.—"Dancing Through the Years."  
9:00 p. m.—Sports Interview by Dick Hyland.  
9:30 p. m.—The National Life Concert Orch.  
10:00 p. m.—Ben Bernie and his orchestra.  
10:30 p. m.—George Olsen and his Music.  
11:00 p. m.—Dance Music from Montmartre Cafe.

### SATURDAY, AUGUST 2

10:15 a. m.—Kathleen Clifford.  
12:30 p. m.—Variety Serenaders.  
6:00 p. m.—Julius K. Johnson at Vitaphone Organ.  
7:10 p. m.—KFWB Concert Orchestra.  
7:30 p. m.—Ted Dahl's Band and Loyce Whiteman.  
8:00 p. m.—Mona Motor Oilers; Lewis Meehan.  
9:00 p. m.—KFWB Salon Orchestra; Emma Kimmel.  
10:00 p. m.—Ben Bernie and his Orchestra.  
10:30 p. m.—George Olsen and his Music.  
11:00 p. m.—Dance Music from Montmartre Cafe.

## Columbia Program

(Continued from Page 26)

7:30 p. m.—Guy Lombardo's Royal Canadians.  
8:00 p. m.—Cotton Club Band—Dance Music.  
9:30 p. m.—Nocturne—Ann Leaf at the Organ.

### SATURDAY, AUGUST 2

8:00 a. m.—Adventures of Helen and Mary—Drama for Children.  
8:30 a. m.—Manhattan Towers Orchestra.  
9:30 a. m.—Savoy Plaza Orchestra—Concert Music.  
11:00 a. m.—Columbia Ensemble—Vincent Sorey's Orch.  
11:30 a. m.—Columbia Educational Features—For Your Information. Today in History.  
12:00 noon—The Aztecs—Latin-American and Spanish music, played and sung by Quartet under direction of Luis Zamudio.  
12:30 p. m.—French Trio—Classical Music.  
1:00 p. m.—Ozzie Nelson's Glenn Islanders.  
2:00 p. m.—Tom, Dick and Harry.  
2:15 p. m.—Husins' Sportslants.  
3:15 p. m.—The Melo-Maniac.  
4:00 p. m.—Columbia Educational Features—Dr. Arthur Torrance.  
4:15 p. m.—Columbia Educational Features—Romance of American Industry.  
4:30 p. m.—Dixie Echoes—Spiritual Singers, with Taylor Gordon.  
5:00 p. m.—Hank Simmons' Show Boat.  
6:00 p. m.—Paramount Publix Hour—Guest Screen Stars; Paul Ash with Stage Show; Paramount Orchestra; Jesse Crawford, Organist; Marcia Freer.  
7:00 p. m.—Will Osborne and his Orchestra—Dance Music.  
7:30 p. m.—Guy Lombardo and his Royal Canadians—Dance Music.  
8:00 p. m.—Bert Lown and his Biltmore Orchestra—Dance Music.  
8:30 p. m.—Nocturne—Ann Leaf at the Organ.

8:00 p. m.—Art Pabst and his Banjo.  
2:30 p. m.—Ann Grey, popular songs, accompanied by Don Warner.  
3:00 p. m.—Art and Artie in popular songs.  
3:30 p. m.—Don Warner and Ron Wilson, two pianos.  
4:00 p. m.—Rae and her Pals.  
6:00 p. m.—Forum Theater organ; Buster Dees.  
7:10 p. m.—Ted Dahl's Band.  
7:30 p. m.—Platt Music Company.  
7:45 p. m.—Talk on Dogs by Douglas Hertz.  
8:00 p. m.—"Musical Portrait."  
8:30 p. m.—Dance Program.  
9:00 p. m.—Sierra Male Quintet.  
10:00 p. m.—Ben Bernie and his orchestra.  
10:30 p. m.—George Olsen and his Music.  
11:00 p. m.—Dance Music from Montmartre Cafe.  
11:30 p. m.—Ben Bernie and his orchestra.

### TUESDAY, JULY 29

10:15 a. m.—Kathleen Clifford.  
6:00 p. m.—Julius K. Johnson at Warner Bros. organ.  
7:10 p. m.—KFWB Concert Orchestra.  
8:00 p. m.—Ben Bernie and his Orchestra.  
8:30 p. m.—Strings and Bows; Maxina Castie, soprano.  
9:00 p. m.—The Edgeworth Plantation Club.  
9:30 p. m.—Main Bout from the Olympic Auditorium.  
10:30 p. m.—Ben Bernie and his Orchestra.  
11:00 p. m.—Dance Music from Montmartre Cafe.

### WEDNESDAY, JULY 30

6:00 p. m.—KFWB Salon Orchestra.  
7:10 p. m.—Ted Dahl's Band; Buster Dees.  
7:30 p. m.—Jean Leonard, "Wizard of the Ivories."  
7:45 p. m.—George Gramlich, tenor.  
8:00 p. m.—Carmelita, soprano; Saldana's Castillians.



The essential features of these programs are identical with those sent us by the stations



DON WILSON

# KECA

Carl Haverlin  
Commercial Manager

Robert Hurd  
Program Manager

## Los Angeles, Cal.—1430 Kc.

209.7 METERS—1000 WATTS

EARL C. ANTHONY, INC.

1000 South Hope St.

Westmore 0331

- 5:00 p. m.—NBC, Halsey Stuart program.  
5:30 p. m.—NBC, Palmolive Hour.  
6:30 p. m.—NBC, Coca-Cola program.  
7:00 p. m.—Noreen Gammill, "Original Character Sketches."  
7:15 p. m.—Vincent and Howard.  
7:45 p. m.—Jack and Jill, Gene Lewis and Bebe.  
8:00 p. m.—NBC, Parisian Quintette.  
8:45 p. m.—Winnie Fields Moore, travelogue.  
9:00 p. m.—Will Rounds Ensemble.  
9:30 p. m.—NBC, Camels Pleasure Hour.

### THURSDAY, JULY 31

- 11:30 a. m.—Mabel Lewis, musical memories.  
3:15 p. m.—Max Mellinger, "Drop a Line Program."  
3:30 p. m.—NBC, Phil Cook, the Quaker Man.  
3:45 p. m.—Haven Johnson, "The Melody Man."  
4:00 p. m.—NBC, Fleishman Sunshine Hour.  
5:00 p. m.—NBC, Arco Birthday Party.  
5:30 p. m.—NBC, Maxwell House Melodies.  
6:00 p. m.—Buster Wilson's Orchestra.  
6:30 p. m.—"Armand," popular songs.  
6:45 p. m.—Lydia Aldrich, soprano.  
7:00 p. m.—Wedgwood Nowell, "Playgoers' Memories."  
7:45 p. m.—Bob and Monte.  
8:00 p. m.—NBC, Lucky Strike program.  
9:00 p. m.—NBC, Memory Lane program.  
9:30 p. m.—Saddle Armstrong.  
10:00 p. m.—Wm. Kalani, Hawaiian baritone.
- 2:00 p. m.—Catholic Services.  
3:00 p. m.—"Trio Half Hour," with Three Skippers and Three Minstrelles.  
3:30 p. m.—Helen C. Dudley—Concert Pianist.  
4:00 p. m.—NBC, The Blue Boys.  
5:00 p. m.—Manley P. Hall, psychology.  
5:30 p. m.—Dr. Walter Raymond, University Christian Church.  
5:45 p. m.—Mamie Stark, contra contralto.  
6:00 p. m.—Jimmie West and his Campus Orchestra, with Tim Garrett and guitar.  
7:00 p. m.—Margaret Ruth Kernan, diversified melodies.  
7:15 p. m.—Noreen Gammill, original character sketches  
7:45 p. m.—String Ensemble.  
9:00 p. m.—NBC, Enna Jettick Melodies.  
8:15 p. m.—String Ensemble.  
9:00 p. m.—Symphonette, with Raine Bennett, poet of the air.  
10:00 p. m.—NBC, The Gay Classics.

### MONDAY, JULY 28

- 11:45 a. m.—Mabel Lewis, musical memories.  
3:00 p. m.—Katherine Spangler, whistler.  
3:15 p. m.—Leonard Van Berg, popular melodies.  
3:50 p. m.—NBC, Phil Cook, the Quaker Man.  
3:45 p. m.—Haven Johnson, "The Melody Man."  
4:00 p. m.—NBC, Half Hour in the Nation's Capital.  
4:30 p. m.—Herb Scharlin, popular songs.  
4:45 p. m.—Dr. Hirsch.  
5:00 p. m.—NBC, The Maytag Orchestra.  
5:30 p. m.—NBC, General Motors Family Party.  
6:00 p. m.—Buster Wilson's Orchestra.  
6:30 p. m.—Elton Hey's Virginia Ballroom Orchestra, with Two Shades of Blue.  
7:15 p. m.—Yellow Cab Quartette.  
7:45 p. m.—Jack and Jill, Gene Lewis and Bebe.  
8:00 p. m.—NBC, Cotton Blossom Minstrels.  
9:00 p. m.—Ray Van Dyne's Orchestra, with Jean Dunn, soloist.  
10:00 p. m.—James Anderson, baritone.

### TUESDAY, JULY 29

- 11:45 a. m.—Mabel Lewis, musical memories.  
12:00 noon.—Seeing Southern California.  
12:15-3:00 p. m.—Silent.  
3:00 p. m.—California Cotton Pickers' Orchestra.  
3:15 p. m.—NBC, Laws That Safeguard Society.  
3:30 p. m.—Phil Cook, the Quaker Man.  
3:45 p. m.—Frederick V. Bowers, composer.  
4:00 p. m.—Carmen Ray.  
4:30 p. m.—Winslow Allen's "Six Clouds of Joy."  
5:00 p. m.—Annette Petite, character songs.  
5:15 p. m.—Max Mellinger, popular melodies.  
5:30 p. m.—NBC, Happy Wonder Bakers.  
6:00 p. m.—Westinghouse Salute.  
6:30 p. m.—NBC, RKO Hour.  
7:00 p. m.—Moments Impromptu.  
7:15 p. m.—Vincent and Howard.  
7:45 p. m.—Lou Handman, with Dorothy Taylor.  
8:00 p. m.—Royal Hildagos.  
8:30 p. m.—Nick Harris program.  
9:00 p. m.—Ray Van Dyne's Orch., with Jean Dunn.

### WEDNESDAY, JULY 30

- 11:45 a. m.—Mabel Lewis, musical memories.  
12:00 noon.—Seeing Southern California.  
3:00 p. m.—Harry Coe, popular melodies.  
3:30 p. m.—NBC, Phil Cook, the Quaker Man.  
3:45 p. m.—NBC, Back of the News in Washington.  
4:00 p. m.—Elmer Herling.  
4:15 p. m.—Happy Charpies, songs of tomorrow.  
4:30 p. m.—Winslow Allen's "Six Clouds of Joy."

### FRIDAY, AUGUST 1

- 12:45 a. m.—Carl Brandenburg, baritone; Lella Isbell.  
12:00 noon.—Seeing Southern California.  
3:00 p. m.—Armand, baritone, popular ballads.  
3:15 p. m.—NBC, Universal Safety Series.  
3:30 p. m.—NBC, Phil Cook, the Quaker Man.  
3:45 p. m.—Haven Johnson, "The Melody Man."  
4:00 p. m.—NBC, Cities Service Hour.  
5:00 p. m.—NBC, Interwoven Pair.  
5:30 p. m.—NBC, Armour Hour.  
6:00 p. m.—Nick Harris program.  
6:30 p. m.—NBC, Raleigh Review.  
7:00 p. m.—NBC, The Elgin program.  
7:15 p. m.—Otto Platz, songs and popular music.  
7:45 p. m.—Jack and Jill, Gene Lewis and Bebe.  
8:00 p. m.—Mrs. June Snow, bridge lesson.  
8:15 p. m.—Gwen Evans, soprano, and Leonard Van Berg, tenor.  
8:45 p. m.—Anna and Oscar.  
9:00 p. m.—Winifred Donaldson, soprano; Catherine Dixon, concert pianist.  
10:00 p. m.—Eddie Armstrong, ballads.

### SATURDAY, AUGUST 2

- 3:15 p. m.—Max Mellinger, "Drop a Line Program."  
3:30 p. m.—NBC, The Fuller Man program.  
4:00 p. m.—Hendricks' Music Makers.  
5:00 p. m.—Haven Johnson, "The Melody Man."  
5:15 p. m.—Ynez Allen, violinist.  
5:30 p. m.—NBC, General Electric Hour.  
6:00 p. m.—Elton Hey's Virginia Ballroom Orchestra.  
6:30 p. m.—Billy Hobbs' Old-Time Orchestra.  
7:00 p. m.—Eddie Armstrong, popular tenor.  
7:45 p. m.—NBC, Sperry Hotcakes.  
8:00 p. m.—NBC, Nights in Spain.  
8:30 p. m.—String Ensemble.  
9:00 p. m.—NBC, Rainbow Harmonies.  
9:30 p. m.—String Ensemble.  
10:00 p. m.—NBC, Spotlight Review.

James Regan and a capable cast will present "Circumstantial Evidence" to KFI listeners on Thursday evening at 8:45. Radio dramas are gaining in popularity and are indeed a welcome relief to an audience surfeited with musical programs. Stuart Buchanan's dramatic presentations over KHJ are among the finest bits of radio work that the Studio Editor has heard. Let's hear more from Mr. Buchanan.



The essential features of these programs are identical with those sent us by the stations



GERREE MIDDLETON

# KMTR

## Hollywood, Calif.—570 Kc.

500 WATTS—526 METERS  
 KMTR Radio Station, 1025 N. Highland Ave. Holly 3026  
 The Official Broadcasting Station of the  
 Los Angeles Evening Herald

V. G. Freitag  
 General Manager  
 Harry Geise  
 Program Director  
 Ray Bailey  
 Musical Director  
 Eugene Inge  
 Press Relations  
 Tom Scholtz  
 Kenneth Lee  
 Announcers  
 C. L. Whitney  
 Technical Director

- 7:00 p. m.—Preston Lodwick, xylophone novelties.
- 7:30 p. m.—S. C. Collegians and Lucille Scott, pianist.
- 8:00 p. m.—"From Behind the Footlights."
- 9:00 p. m.—"Vibrant Melodies," KMTR Orchestra.
- 9:30 p. m.—Banjo Boys.
- 10:00 p. m.—"The Old and the New," KMTR Orchestra

**MONDAY, JULY 28**

- DAILY EXCEPT SUNDAY**
- 6:00 a. m.—"Top of the Morning" program.
  - 7:00 a. m.—New Idea Man's Wholesome Food Breakfast Club.
  - 8:00 a. m.—Early Stock Reports.
  - 9:00 a. m.—Mildred Kitchen, Home Economies.
  - 9:30 a. m.—"Good Will Program."
  - 10:00 a. m.—All-Colored Minstrel Marathon, Maywood.
  - 10:15 a. m.—Louise Howatt, Happiness Girl.
  - 11:00 a. m.—Westlake String Ensemble.
  - 11:45 a. m.—Public and Civic Officials' Broadcast, direct from City Hall.
  - 12:00 noon.—"World in Review," News Bulletin.
  - 12:15 p. m.—"Prosperity Hour," Truman Bradley; Pauline Holden; Alex Buechner; Wm. Markowitz.
  - 1:15 p. m.—Records.
  - 2:15 p. m.—Popular program.
  - 2:30 p. m.—Spanish program.
  - 3:00 p. m.—Records.
  - 4:30 p. m.—Trading Post program.
  - 5:30 p. m.—Selected records.
  - 7:15 p. m.—All-Colored Marathon, Maywood.
  - 9:30 p. m.—Banjo Boys.
  - 10:00 p. m.—"The Old and the New," KMTR Orchestra (except Saturday).
  - 11:00 p. m.—All-Colored Marathon.
  - 11:30 p. m.—Ocean Park Walkathon.
  - 12:00 midnight—8-Ball and Charley Lung.

- 10:30 a. m.—Records.
- 6:00 p. m.—City Prosecutor, Lloyd S. Nix.
- 7:00 p. m.—Talk, Chamber of Commerce.
- 7:30 p. m.—"Broadway Hits."
- 8:00 p. m.—"Talking Picture Song Hits," Orchestra.
- 8:30 p. m.—"Galloping Gophers."
- 9:00 p. m.—"Serenaders."

**TUESDAY, JULY 29**

- 5:55 p. m.—Talk on Traffic, Judge Valentine.
- 6:30 p. m.—"Novelty Five."
- 7:00 p. m.—Lucille Scott in "Piano Moods."
- 8:00 p. m.—"Varieties," New Idea Man and Gang.
- 9:00 p. m.—"Moss-Covered Melodies," Orchestra.
- 10:00 p. m.—"The Old and the New."

**WEDNESDAY, JULY 30**

- 10:30 a. m.—Records.
- 6:30 p. m.—Galloping Gophers.
- 7:00 p. m.—Hallcrofter's Book Review.
- 7:30 p. m.—"Tone Poems."
- 8:00 p. m.—"Talking Picture Song Hits," Orchestra.
- 8:30 p. m.—"Star Reporter," playlet.
- 9:00 p. m.—Male Chorus.

**THURSDAY, JULY 31**

- 6:30 p. m.—"Pennant Collegians."
- 8:00 p. m.—"Musical Pictures."
- 8:30 p. m.—Fred Rose and His Orch., by remote from Deauville Beach Club.
- 10:00 p. m.—"The Old and The New."

**FRIDAY, AUGUST 1**

- 10:30 a. m.—Records.
- 6:30 p. m.—"Talking Picture Song Hits."
- 7:30 p. m.—Salon Trio.
- 8:00 p. m.—"Metropolitan Skyhawks."
- 9:00 p. m.—Gems from Broadway."

**SATURDAY, AUGUST 2**

- 6:30 p. m.—Ben Berman and Studio Boys.
- 7:00 p. m.—Hollycrofters Book Review.
- 8:30 p. m.—Lucille Scott, pianist moderne.
- 9:00 p. m.—Ray Bailey's Musical Masquers.
- 10:00 p. m.—Fred Rose and Orchestra by remote control from Deauville Beach Club.

The essential features of these programs are identical with those sent us by the stations

# KGEF

## Los Angeles, Calif.—1300 Kc.

1000 WATTS—230.6 METERS  
 TRINITY METHODIST CHURCH, BOB SHULER, Pastor  
 Phone WEtmore 8867

C. C. Hooper  
 Manager  
 J. Dale Stentz  
 Announcer  
 M. J. Hankins  
 Technician

**SUNDAY, JULY 27**

- 8:30 a. m.—Morning Watch Quartet.
- 9:30 a. m.—Radio Sunday School.
- 10:00 a. m.—Claude L. Heskett.
- 10:45 a. m.—Trinity Church.
- 12:00 noon.—Signing off.
- 2:30 p. m.—Studio program.
- 4:00 p. m.—Lutheran Churches of Southern California.
- 4:30 p. m.—Dorothy Hankins and Associated Artists.
- 5:00 p. m.—Vesper Hour.
- 6:00 p. m.—Signing off.
- 7:00 p. m.—Trinity Church.

**TUESDAY, JULY 29**

- 6:00 p. m.—Poetry and Music Club.
- 6:30 p. m.—W. W. Newberry.
- 7:00 p. m.—John Unfried, radio evangelist.
- 7:15 p. m.—Woman's Civic Hour, Mrs. Stentz.
- 7:45 p. m.—Jock McGillp.
- 8:00 p. m.—Bob Shuler's Civic Hour.

- 9:00 p. m.—South Park Christian Church Bereans.
- 9:30 p. m.—Torrance Methodist Church.
- 10:00 p. m.—Jess Blankenship, Old-Time Fiddlers.

**WEDNESDAY, JULY 30**

- 6:00 p. m.—Mother Hubbard.
- 6:40 p. m.—Mr. Rogers, soloist.
- 7:00 p. m.—Conrey Bible Class.
- 7:45 p. m.—Union Rescue Mission.
- 8:30 p. m.—Rev. E. E. Wall.
- 9:00 p. m.—Old Songs Quartet.
- 10:00 p. m.—Volunteers of America.

**THURSDAY, JULY 31**

- 6:00 p. m.—Trinity Church Ensemble, alt. with Mrs. Tom Murray.
- 7:00 p. m.—Dr. Fredus Nelson Peters.
- 7:30 p. m.—The Hired Man.
- 8:00 p. m.—Bob Shuler's Civic Hour.
- 9:00 p. m.—Sylvia and Al.
- 10:00 p. m.—The Two Janitors.
- 10:30 p. m.—Studio program.

The essential features of these programs are identical with those sent us by the stations



FRANK GAGE

# KTM

Glennhall Taylor  
Manager

J. J. Quinn  
Commercial Manager  
Frank Gage  
Program Director  
Don Allen

Asst. Program Director  
Marillah Ollney  
Dramatics  
Dick License  
Announcer

## Los Angeles, Cal.—780 Kc.

1000 WATTS—384.4 METERS  
Transmitter in Santa Monica, Calif.  
Los Angeles Studio: 3636 Beverly Blvd. EXposition 1341  
Pickwick Broadcasting Corporation  
Henry A. Hohman, General Manager  
Clarence B. Juneau, Chief Transmission Engineer

9:00 p. m.—Ranch Hour.  
10:00 p. m.—Readers Hour.  
11:00 p. m.—Spizzerintum.

MONDAY, JULY 28

1:30 p. m.—Don Allen.  
3:00 p. m.—Spanish Troubadours.  
8:00 p. m.—Pickwickians.  
8:30 p. m.—Charmers of History.  
9:00 p. m.—Ranch Hour.  
10:00 p. m.—Georgians.  
10:30 p. m.—Radio Music Makers.

TUESDAY, JULY 29

3:00 p. m.—Spanish Troubadours.  
8:00 p. m.—Highway Highlights.  
10:30 p. m.—Poem Pictures.

WEDNESDAY, JULY 30

1:30 p. m.—Walter Brown Murray.  
1:45 p. m.—Organ.  
3:00 p. m.—Spanish Troubadours.  
8:00 p. m.—Rolph for Governor—Talk.  
8:30 p. m.—Little Theatre.  
8:55 p. m.—Santa Monica Band.  
10:30 p. m.—Radio Music Makers, Salvatore Santaella's Orchestra.

THURSDAY, JULY 31

8:00 a. m.—Watchtower IBSA.  
1:30 p. m.—Pezel's Popularities.  
2:45 p. m.—Pickwickians.  
3:00 p. m.—Spanish Troubadours.  
8:00 p. m.—Highway Highlights.  
10:30 p. m.—Frankie and Johnnie.

FRIDAY, AUGUST 1

1:30 p. m.—Don Allen.  
8:00 p. m.—Santa Monica Band.  
8:30 p. m.—Intimate Sketches of Famous Composers.  
Instrumental Quartet.  
10:30 p. m.—Radio Music Makers.

SATURDAY, AUGUST 2

8:15 a. m.—Spanish Troubadours.  
1:30 p. m.—Peppy Bits of Melody.  
3:00 p. m.—L. A. Paygrounds—Children's program.  
8:00 p. m.—Pepper Box Revue.  
10:00 p. m.—Georgians.  
10:30 p. m.—Radio Music Makers.

DAILY EXCEPT SUNDAY

6:00 a. m.—Eye Opener.  
7:00 a. m.—Morning Revette.  
8:00 a. m.—Popular Tunes.  
8:15 a. m.—Semi-Classical Program.  
9:45 a. m.—Inspirational Poetrv.  
9:00 a. m.—Bert's Best Bets.  
10:00-1:00 p. m.—Silent.  
1:00 p. m.—Organ Echoes.  
2:00 p. m.—Popular Tunes.  
2:30 p. m.—Health Man.  
2:45 p. m.—The Pickwickians.  
3:00 p. m.—Santa Monica Band.  
3:30 p. m.—Danceland Melodies.  
4:30 p. m.—Pezel's Popularities.  
5:00-8:00 p. m.—Silent.  
9:00 p. m.—The Ranch Hour  
10:00 p. m.—The Georgians. Santaella's Orchestra.  
11:00 p. m.—Spizzerintum.  
12:00 midnight—Midnight Organ Recital.

SUNDAY, JULY 27

8:00 a. m.—Eye Opener.  
8:30 a. m.—Moments with the Masters.  
9:00 a. m.—Watchtower I. B. S. A.  
10:00-1:00 p. m.—Silent.  
1:00 p. m.—Organ Echoes.  
1:30 p. m.—Inspirational Poetrv.  
2:00 p. m.—Spanish Troubadours.  
2:30 p. m.—Santa Monica Band.  
3:30 p. m.—Sacred Concert.  
4:00 p. m.—Interesting Items.  
4:30 p. m.—Masters Album.  
5:00-8:00 p. m.—Silent.  
8:00 p. m.—Santa Monica Band.

# KTBI

## Los Angeles, Calif.—1300 Kc.

1000 Watts—230.6 Meters—1300 Kc.—Bible Institute of L. A.  
Phone MA. 1641



CHRISTIAN M. BOOKS

Christian M. Books  
Program Director and  
Announcer

Howard C. Wilson  
Technician

Gordon E. Hooker  
Accompanist

11:30 a. m.—Verna Rempie, soprano.  
7:00 p. m.—C. A. Haskett.  
7:30 p. m.—Rev. Milo Jamison.  
8:00 p. m.—Union Rescue Mission musical program.

TUESDAY, JULY 29

8:45 a. m.—Ira L. Eldridge Bible Class.  
9:45 a. m.—Rev. C. H. Buell.  
10:35 a. m.—H. A. Matthews.  
11:30 a. m.—Dr. W. E. Edmonds.

WEDNESDAY, JULY 30

8:45 a. m.—Rev. W. Darsey.  
9:45 a. m.—Prof. H. W. Kellogg.  
10:35 a. m.—Rev. L. S. Bauman.  
11:30 a. m.—Book Review, Mrs. C. B. Whitwell.

THURSDAY, JULY 31

8:45 a. m.—Ira L. Eldridge Bible Class.  
9:45 a. m.—Miss Christina Braskamp.  
10:35 a. m.—Rev. H. C. Matthews.  
11:30 a. m.—Rev. Earl Edwards, Book of Romans.

FRIDAY, AUGUST 1

8:45 a. m.—Correspondence Course Bible Lesson.  
9:15 a. m.—Rev. W. Ogg.  
9:45 a. m.—Lecture.  
10:35 a. m.—A. P. Howells.  
11:30 a. m.—Book Review, Mrs. C. B. Whitnell.  
7:00 p. m.—International Sunday School Lesson.  
8:00 p. m.—Musical program.

DAILY EXCEPT SATURDAY AND SUNDAY

8:00 a. m.—Announcer's Bible Story.  
8:15 a. m.—Devotional Hour.  
9:15 a. m.—Radio Bible Course (except Friday).  
12:00 noon—Noonday Chimes.

SUNDAY, JULY 27

6:00 p. m.—Studio Vesper Service. Rev. Ford Canfield.  
8:00 p. m.—Church of the Open Door. Dr. Cortland Myera.

9:00 p. m.—Bible Institute After-Church Service.

MONDAY, JULY 28

8:45 a. m.—Rev. I. Moon.  
9:45 a. m.—Rev. J. Nelson.  
10:35 a. m.—Rev. A. K. Stewart.

The essential features of these programs are identical with those sent us by the stations



# KMP C Beverly Hills, Cal.—710 Kc.

500 WATTS—422.3 METERS  
Operated by Macmillan Petroleum Co.  
Crestview 3101. Wilshire Blvd. at Camden Drive

**Glen Rice**  
Manager  
**Don Chisholm**  
**John McIntyre**  
**Margaret Macdonald**  
Announcers  
**Ray Howell**  
Chief Technician

**GLEN RICE**  
**DAILY EXCEPT SUNDAY**

- 7:00 a. m.—Up and At 'Em Exercises, Haydon Phythian
- 7:30 a. m.—'Pot O' Gold.
- 8:00 a. m.—Sooner Birds Exercises, Haydon Phythian.
- 8:30 a. m.—Classified.
- 9:00 a. m.—Morning Musicales (ex. Wed. and Sat.).
- 9:30 a. m.—The Very Latest.
- 9:45 a. m.—Dan Maxwell—the King of Scotland.
- 10:00 a. m.—Fred Fred Forest—the Stove Man.
- 11:00 a. m.—Rollicking Radiollers.
- 12:00 noon.—Modes and Fashions.
- 1:00 p. m.—Mountain Valley Water—Piano Solos.
- 1:15 p. m.—Gene Taylor—Piano.
- 1:30 p. m.—Griffith (Remote).
- 1:45 p. m.—Boh, Bunny and Junior.
- 2:00 p. m.—Classical and Semi Classical Recordings.
- 2:30 p. m.—MacMillan Hawaiian program.
- 5:00 p. m.—Just Kids Club (except Saturday).
- 10:00 p. m.—Beverly Hill Billies (except Monday).
- 11:00 p. m.—Ray Howell, the "And How" Boy (except Monday).

**SUNDAY, JULY 27**

- 9:00 a. m.—Sunday Morning Musicales.
- 10:00 a. m.—Pipe Organ.
- 11:00 a. m.—Studio program.
- 12:00 noon.—Goodan Jenkins program, piano and voice.
- 12:30 p. m.—At the Carnival.
- 1:30 p. m.—On the Shores of Hawaii.
- 3:00 p. m.—Church of the Latter Day Saluts.
- 4:00 p. m.—Fred B. Bowers—Song Writer.
- 4:30 p. m.—Red Seal Hour.
- 5:30 p. m.—Studio Half Hour.
- 6:00 p. m.—Twilight Reveries.
- 8:00 p. m.—Turp and Time.
- 8:15 p. m.—Mike and Simmy—Debaters.
- 8:50 p. m.—John TeGroen and his Trio.
- 9:00 p. m.—Gene Taylor—Music Album.
- 9:30 p. m.—Light and Cook—Truth Tab Troubadours.
- 10:00 p. m.—Beverly Hill Billies

**MONDAY, JULY 28**

- 3:00 p. m.—U. S. C. Lectures.
- 5:30 p. m.—Cuckoo Clock.
- 5:45 p. m.—Harvard Furniture program

- 6:00 p. m.—Spanish American program—Orchestra.
- 8:00 p. m.—Turp and Time.
- 8:15 p. m.—Mike and Simmy.
- 8:30 p. m.—John TeGroen and his Trio.
- 9:00 p. m.—U. S. C. Lectures—Remote.

**TUESDAY, JULY 29**

- 3:15 p. m.—Prof. Zancies, piano.
- 3:30 p. m.—Studio program.
- 4:00 p. m.—Pipe organ.
- 4:30 p. m.—Concert Review.
- 6:00 p. m.—Spanish American program—Orchestra.
- 8:00 p. m.—Turp and Time.
- 8:15 p. m.—Mike and Simmy—Debaters.
- 8:30 p. m.—Trio.
- 9:00 p. m.—Mystery Play.
- 9:30 p. m.—John TeGroen and his Trio.

**WEDNESDAY, JULY 30**

- 3:00 p. m.—U. S. C. Lectures—Remote.
- 5:30 p. m.—Cuckoo Clock.
- 5:45 p. m.—Harvard Furniture program
- 6:00 p. m.—Spanish-American program—Orchestra.
- 8:00 p. m.—Turp and Time.
- 8:15 p. m.—Mike and Simmy.
- 8:30 p. m.—John TeGroen and his Trio.
- 9:00 p. m.—U. S. C. Lectures—Remote.
- 9:30 p. m.—Trio.

**THURSDAY, JULY 31**

- 3:00 p. m.—Pipe Organ.
- 3:30 p. m.—The Carnival.
- 4:00 p. m.—Southern Melodies.
- 4:30 p. m.—Musical Comedy.
- 6:00 p. m.—Spanish-American program—Orchestra.
- 8:00 p. m.—Turp and Time.
- 8:15 p. m.—Mike and Simmy.
- 8:30 p. m.—Trio.
- 9:00 p. m.—John TeGroen's Trio.
- 9:30 p. m.—Marmos Melodists.

**FRIDAY, AUGUST 1**

- 8:30 a. m.—Spanish-American program.
- 3:00 p. m.—Studio program.
- 3:30 p. m.—The Variety program.
- 4:00 p. m.—Fred C. McNabb—Garden Talks.
- 5:45 p. m.—Harvard Furniture program.
- 6:00 p. m.—Spanish-American program—Orchestra.
- 8:00 p. m.—Turp and Time.
- 8:15 p. m.—Mike and Simmy.
- 8:30 p. m.—John TeGroen's Trio.
- 9:00 p. m.—Gene Taylor, piano.
- 9:30 p. m.—Light and Cook.

**SATURDAY, AUGUST 2**

- 8:30 a. m.—Spanish-American program—Orchestra.
- 3:00 p. m.—Hoops and Jingles program.
- 5:30 p. m.—Cuckoo Clock.
- 5:45 p. m.—Harvard Furniture program.
- 8:45 p. m.—Jr. Chamber of Commerce program.

## Radio Correspondence Education Division KMPC University of Southern California

**MONDAY, JULY 28**

- 3:00 p. m.—Financial Current Events. Dr. J. L. Leonard.
- 3:30 p. m.—Broadway Successes and Failures. Laura-belle S. Dietrick.
- 4:00 p. m.—Modern Education. Prof. M. E. Broom. Visiting Professor—State Teachers' College, San Diego, California.
- 4:30 p. m.—Public's Business. Gordon Whitnall. City Planning Commission—Director-Manager.
- 9:00 p. m.—Literature in Motley. Beth Tibbot.
- 9:30 p. m.—Both Waves and Corpuscles. Prof. A. E.

Caswell, Visiting Professor—University of Oregon.

**WEDNESDAY, JULY 30**

- 3:00 p. m.—Our Helen in Magic Story Land. Helen Birdsall.
- 3:30 p. m.—School of Speech. Selected.
- 4:00 p. m.—Early Development of the French Language. Prof. Alfred Solomon, Visiting Professor—University of California—Berkeley, California.
- 4:30 p. m.—Some Dilemmas of Present-Day Science. Dr. R. C. Mullenix, Visiting Professor—Lawrence College—Appleton, Wisconsin.
- 9:00 p. m.—Open.

# KELW

**H. Wadsworth Cole**  
Manager  
**Stuart Walnwright**  
Chief Engineer  
**Harry Moodie**  
**Ralph Pettit**  
Announcers

**DAILY EXCEPT SUNDAY**

- 10:00 a. m.—Roy L. Medcalfe at the Fox Alexander Theater Organ.
- 11:00 a. m.—Mr. Rango, the Zodiac Man.
- 11:30 a. m.—Announcements.
- 12:00 noon.—Dance Orchestra from The Paris Inn.
- 5:00 p. m.—Rango, Zodiac Man.

## Burbank, Calif.—780 Kc.

MAGNOLIA PARK—500 WATTS—384.4 METERS  
"The White Spot of the San Fernando Valley"  
Phones: Burbank 1603—GRanite 3193

- 5:30 p. m.—Recordings.
  - 6:00 p. m.—Organ Concert by Roy L. Medcalfe.
  - 7:00 p. m.—La Vida Hour from the Paris Inn Cafe.
- SUNDAY, JULY 27**
- 10:00 a. m.—Recordings.
  - 12:00 noon.—Rango, Zodiac Man.
  - 5:00 p. m.—Episcopal Vesper Services.
  - 6:00 p. m.—First Baptist Church of Glendale.



The essential features of these programs are identical with those sent us by the stations



BEN S. McGLASHAN

# KGFJ Los Angeles, Calif.—1200 Kc.

100 WATTS—249.9 METERS

J. V. Balwin Bldg., 15th and Figueroa Sts.  
"Keeping Good Folks Joyful 24 Hours a Day"

Ben S. McGlashan  
Owner  
Duke Hancock  
Assistant Manager  
Thelma Kirchner  
Publicity  
Allan Fairchild  
Chief Announcer  
John Smithson  
Technician  
Phone:  
Westmore 7783

11:00 a. m.—KGFJ Concert Orchestra, in series of Musical Travelogues.  
12:00 noon.—Dance Orchestra; Hale Hooper, vocalist.  
1:00 p. m.—Unique String Quintet; Hale Hooper.  
2:00 p. m.—Unique String Quintet; Hazel Jones, negro spirituals; Juanita Terry, pianist.  
3:00 p. m.—Harmony Hawaiian Quartet.  
5:00 p. m.—Organ Recital by Arch Fritz.  
6:00 p. m.—Glenn Edmunds' Orchestra from Elks Club.  
7:00 p. m.—Recordings.  
9:00 p. m.—Mosby's Dixieland Blue Blowers.  
10:00 p. m.—Recordings.  
11:00 p. m.—Recordings.

## MONDAY, JULY 28

10:00 a. m.—Harmony Hawaiian Quartet.  
2:00 p. m.—Dance Orchestra from La Monica Ballroom.  
3:00 p. m.—The Lonely Troubadour.  
5:15 p. m.—Lucky Four.  
10:00 p. m.—Lucky Four.

## TUESDAY, JULY 29

1:00 p. m.—Lani's Hawaiians.  
3:00 p. m.—The Lonely Troubadour; Madame Zoliars'  
5:15 p. m.—Harmony Hawaiian Quartet.

## WEDNESDAY, JULY 30

10:00 a. m.—Harmony Hawaiian Quartet.  
3:00 p. m.—The Lonely Troubadour; Mr. Croquignole.  
5:15 p. m.—Lucky Four.  
11:00 p. m.—Microphone Club Frolic.

## THURSDAY, JULY 31

10:00 a. m.—Lucky Four.  
2:00 p. m.—Les Hite and His Famous Emancipators.  
5:15 p. m.—Harmony Hawaiian Quartet.

## FRIDAY, AUGUST 1

10:00 a. m.—Harmony Hawaiian Quartet.  
3:00 p. m.—The Lonely Troubadour; Madame Zollars'  
Beauty Talk.  
5:15 p. m.—Lucky Four.

## SATURDAY, AUGUST 2

10:00 a. m.—Lucky Four.  
3:00 p. m.—The Lonely Troubadour.  
5:15 p. m.—Harmony Hawaiian Quartet.  
10:30 p. m.—Organ Melodies.

## DAILY EXCEPT SUNDAY

12:00 midnight—Mosby's Dixieland Blue Blowers.  
1:00 a. m.—Madam Lawry's Goodwill program.  
8:30 a. m.—Organ Recital by Arch Fritz.  
9:00 a. m.—Recordings.  
9:30 a. m.—Dean Clinic.  
11:00 a. m.—The Health Man.  
11:30 a. m.—Spanish program.  
12:00 noon.—Recordings.  
12:30 p. m.—Harvey Brooks and His Blackbirds.  
1:30 p. m.—Organ Recital by Arch Fritz.  
2:00 p. m.—Recordings (except Thursday).  
3:00 p. m.—Gainsborough Beauty Shop.  
4:00 p. m.—Recordings.  
5:00 p. m.—Market Reports.  
6:00 p. m.—Glenn Edmunds' Orchestra from Dining-Room of Elks' Club.  
7:00 p. m.—Lucky Seven Orchestra.  
8:00 p. m.—Jack Baldwin, piano and song.  
8:30 p. m.—S. A. Scherer String Quintet.  
9:30 p. m.—Mosby's Dixieland Blue Blowers from Apex Night Club.  
10:30 p. m.—Organ Recital by Arch Fritz.  
11:00 p. m.—Harvey Brooks and His Blackbirds (except Wednesday).

## SUNDAY, JULY 27

12:00 midnight-7:00 a. m.—Ali Request Night Owl prog.  
7:00 a. m.—Recordings.  
10:00 a. m.—Organ Recital by Arch Fritz.



BERTON BENNETT

# KFVD Culver City, Cal.—1000 Kc.

250 WATTS—299.8 METERS

AUBURN-FULLER COMPANY  
Hal E. Roach Motion Picture Studios

Empire 1171  
Culver City 4517  
John W. Swallow  
Vice-Pres. & Gen. Mgr.  
Paul Myers  
Advertising  
Al Welner  
Berton Bennett  
Announcers  
M. S. Adams  
Chief Technician

11:00 a. m.—Harmony Hawaiians.  
1:00 p. m.—"Inspiration," the Magazine of the Air.  
2:30 p. m.—Sacred Half Hour.  
3:00 p. m.—Light Classics on the Organ.  
4:30 p. m.—Selected Recordings.  
9:30 p. m.—KFVD Kut-Ups.  
11:00 p. m.—Organ—J. Newton Yates.

## MONDAY, JULY 28

9:00 a. m.—Helpful Hints to Housewives.  
9:30 a. m.—Zandra's Mystic Hour.  
12:45 p. m.—Waves of Happiness.

## TUESDAY, JULY 29

9:00 a. m.—Beauty Hints.  
12:45 p. m.—Diet Question Box.

## WEDNESDAY, JULY 30

9:30 a. m.—Zandra's Mystic Hour.  
12:45 p. m.—Waves of Happiness.  
9:15 p. m.—Happy-Go-Lucky Trio—Peggy Price, soloist.  
10:00 p. m.—In Old Mexico.

## THURSDAY, JULY 31

9:00 a. m.—Beauty Hints.  
10:30 a. m.—Helpful Hints to Housewives.  
12:45 p. m.—Diet Question Box.

## FRIDAY, AUGUST 1

9:30 a. m.—Zandra's Mystic Hour.  
12:45 p. m.—Waves of Happiness.  
2:00 p. m.—Helpful Hints to Housewives.  
9:15 p. m.—Happy-Go-Lucky Trio—Peggy Price, soloist.

## SATURDAY, AUGUST 2

9:00 a. m.—Beauty Hints.

## DAILY EXCEPT SUNDAY

6:00 a. m.—Spanish program.  
7:00 a. m.—Hal Roach Happy-Go-Lucky Trio.  
11:00 a. m.—Beauty Hour.  
12:00 noon.—The Lonely Troubadour.  
1:00 p. m.—G. Allison's Radio Home.  
2:00 p. m.—Merchants Slogan Contest.  
3:00 p. m.—Auburn Half Hour.  
4:00 p. m.—Merchants Slogan Contest No. 2.  
5:45 p. m.—Timely Topics.  
6:45 p. m.—Health Talk (except Thursday).  
10:00 p. m.—Organ—J. Newton Yates.  
11:00 p. m.—Selected Recordings.  
12:00 midnight—Organ—J. Newton Yates.

## SUNDAY, July 27

8:00 a. m.—Popular Recordings.  
9:00 a. m.—George & Johnny—Peggy Price, blues.  
10:00 a. m.—The Lonely Troubadour.

# KGEM

Long Beach, Cal.—1360 Kc.

1000 WATTS—220.4 METERS

435 Pine Avenue Phone 632-78  
C. Merwin Dobyns, Owner and Director. Bill Ray, Manager.



Herbert R. Connor  
Assistant Manager  
Frank C. Bliss  
Publicity Director  
Dick Dixon  
Program Manager  
Jay Tapp  
Chief Engineer  
Fritz Martin  
Jerry Purcell  
Jack Strook  
Announcers

C. MERWIN DOBYNS

**DAILY EXCEPT SUNDAY**

- 00 a. m.—Sunrise Club, exercises.
- 00 a. m.—Recordings, selected.
- 00 a. m.—Sally's Home Makers' Hour.
- 00 noon.—Studio program.
- 15 p. m.—Silent for fifteen minutes.
- 30 p. m.—Peggy Personality.
- 45 p. m.—Casa Venida Ensemble.
- 15 p. m.—Long Beach Municipal Band (ex. Mon.).
- 30 p. m.—Organ recital.
- 00 p. m.—Organ and string trios.
- 00 p. m.—Silent for thirty minutes.
- 30 p. m.—Senoritas and Serenaders alternating.
- 55 p. m.—Long Beach Sun News Flashes.
- 00 p. m.—Hoagland's Orchestra.
- 00 p. m.—Hoagland's Orchestra.
- 30 p. m.—Quiet Time Tunes, Organ Memories.

**SUNDAY, JULY 27**

- 30 a. m.—M. E. Church radio pulpit.
- 30 a. m.—Taubman's Men's Bible Class.
- 00 a. m.—Studio program
- 00 noon.—Varieties; ensemble at 12:45.
- 00 p. m.—Siesta period.
- 30 p. m.—Long Beach Band concert.
- 00 p. m.—Thru Cathedral Windows, organ.
- 00 p. m.—Hoagland's Orchestra.
- 30 p. m.—Masters' Music Shelf.
- 00 p. m.—Organ and string trio.
- 00 p. m.—Syncopators.
- 30 p. m.—Long Beach Band.
- 00 p. m.—Mariner's Concert Orchestra; news, 8:55.
- 00 p. m.—Hoagland's Orchestra.
- 30 p. m.—Organ and piano.
- 00 p. m.—Ho Hum Revue.
- 00 p. m.—Hoagland's Orchestra.
- 30 p. m.—Organ program.

**MONDAY, JULY 28**

- 00 a. m.—Variety Hour.
- 00 a. m.—Recordings, selected.
- 30 p. m.—Studio program.
- 00 p. m.—Organ and singer.

- 7:00 p. m.—Serenaders.
- 7:30 p. m.—Songs of the Islands.
- 8:00 p. m.—Cavaliers' Concert Orchestra.
- 10:00 p. m.—Cavaliers' Concert Orchestra.
- TUESDAY, JULY 29**
- 10:00 a. m.—Melody Hour.
- 11:00 a. m.—Popular program.
- 1:00 p. m.—Recordings, novelties.
- 7:00 p. m.—Syncopators' Dance Band.
- 7:30 p. m.—Rhythm Makers.
- 8:00 p. m.—Mariners' Concert Orchestra.
- 9:30 p. m.—Olympic Fights.

**WEDNESDAY, JULY 30**

- 10:00 a. m.—Recordings, selected.
- 11:00 a. m.—Melody Hour, song cycle.
- 1:00 p. m.—Siesta period.
- 1:30 p. m.—Organ and tenor.
- 7:00 p. m.—Serenaders' String Trio.
- 7:30 p. m.—Long Beach Municipal Band.
- 8:00 p. m.—Midweek Varieties.
- 9:30 p. m.—Wilmington Bowl Fights.
- 10:30 p. m.—Rhythm Makers.

**THURSDAY, JULY 31**

- 10:00 a. m.—Studio Diversity.
- 11:00 a. m.—Melody Lane program.
- 1:00 p. m.—Studio program.
- 1:30 p. m.—Recordings.
- 7:00 p. m.—Syncopators' Dance Band.
- 7:30 p. m.—Long Beach Band.
- 8:00 p. m.—Minstrel show.
- 9:30 p. m.—Cavaliers' Dance Band.
- 10:00 p. m.—Mariners' Concert Orchestra.
- 10:30 p. m.—Rhythm Makers.

**FRIDAY, AUGUST 1**

- 10:00 a. m.—Recordings, selected.
- 11:00 a. m.—Orchestra and soloists.
- 1:00 p. m.—Studio program.
- 1:30 p. m.—Nature Study talks.
- 7:00 p. m.—Serenaders' String Trio.
- 7:30 p. m.—Long Beach Band concert.
- 8:00 p. m.—Organ and piano.
- 8:30 p. m.—Hi-Steppers' Dance Orchestra.
- 9:30 p. m.—Mariners' Concert Orchestra.
- 10:00 p. m.—Mariners' Concert Orchestra.
- 10:30 p. m.—Rhythm Makers.

**SATURDAY, AUGUST 2**

- 10:00 a. m.—Songs and Ballad Hour.
- 11:00 a. m.—Studio Varieties.
- 1:00 p. m.—Organ.
- 1:30 p. m.—Studio.
- 7:00 p. m.—Syncopators' Dance Band.
- 7:30 p. m.—Long Beach Band.
- 8:00 p. m.—Mariners' Concert Orchestra.
- 9:30 p. m.—Cavaliers' Dance Orchestra.
- 10:00 p. m.—Melodies of Bygone Days.
- 10:30 p. m.—Rhythm Makers.

Have you been numbered yet? Jack e Bell Boy, piloting the all-night program over KMIC from 12:30 until 6 a. every morning, has the unique plan of allotting a number to each requestee he calls in for a selection on the broadcast from 3 to 6 a. m., called the Dawn Patrol." The names and numbers are kept in a book by Jack and after the first call, numbers instead of names are used. The early hours from 12:30 to 2:30 a. m. are devoted to miscellaneous requests and from 2:30 until 3 a. m. the program is known as "The Three Bums" hour, about which there is a certain mystery which may or may not be solved by listening in.

personality and ability to be technical, announcer and telephone operator is winning him scores of friends and listeners on this program.

The Columbia Broadcasting Company promises listeners several features of unusual interest. On August 8th be prepared to hear Colonel Charles Lindbergh, shyest of all national heroes, speak to the world on International Aviation. The talk will originate in the studios of WABC and be broadcast to the world over an international hook-up. The time is from 6 to 6:15 p. m., P. S. T. The second outstanding program will be the presentation of Sir Oliver Lodge speaking from London, England, on Sunday, July 27th, during the International Broadcast at 8:30 a. m. over the CBS System. Consult your local CBS station program.

Jack Bell was a musician by trade until Fate guided him into the technical and announcing field of radio. His

The essential features of these programs are identical with those sent us by the stations



HAL NICHOLS

# KFOX

## Long Beach, Cal.—1250 Kc.

"Where Your Ship Comes In"

1000 WATTS—239.9 METERS—HANCOCK OIL STATION  
Telephone No. 672-81

Owner and Operated by  
Nicholas & Warriner, Inc.  
220 E. Anaheim St.

Hal G. Nichols  
Clarence Gray  
Foster Rucker  
Theodore Bliss  
Announcers

L. W. McDowell  
Chief Technician

MONDAY, JULY 28

12:00 noon.—Sunset Harmony Boys.  
12:45 p. m.—Musical Moments.  
1:00 p. m.—Bill and Co.  
5:00 p. m.—Organ Recital.  
5:30 p. m.—Sunset Boys.  
6:30 p. m.—Campus Sweeties.  
8:00 p. m.—Texas Cowboys.  
8:30 p. m.—"Harmonious Suggestions" by Dr. J. F. Rausch.  
9:00 p. m.—Foster and Doris.  
9:15 p. m.—Organ—Vera Graham.  
9:30 p. m.—Everett Hoagland's Troubadors.  
10:00 p. m.—Itolly & Gene.  
10:15 p. m.—Gene & Cline.  
10:30 p. m.—KFOX Comedy Kompany.  
12:00 midnight—Studio program.

TUESDAY, JULY 29

1:00 p. m.—Kiwanis Luncheon.  
3:45 p. m.—Seing Southern California.  
6:45 p. m.—Dr. Robert Williams.  
8:00 p. m.—The Gossipers.  
8:30 p. m.—Cherrio Boys.  
8:45 p. m.—Texas Cowboys.  
9:00 p. m.—Foster and Doris.  
9:15 p. m.—Organ—Vera Graham.  
9:30 p. m.—Everett Hoagland's Troubadors.  
10:30 p. m.—Weekly Song Story.

WEDNESDAY, JULY 30

3:45 p. m.—Seeing Southern California.  
8:00 p. m.—Seth Parker Singing School.  
9:00 p. m.—Foster, Doris and Gene.  
10:30 p. m.—Ted and Anna.  
10:45 p. m.—Campus Sweeties.

THURSDAY, JULY 31

1:00 p. m.—Dr. Clark—Health and Efficiency.  
4:15 p. m.—Rolly and Gene.  
8:00 p. m.—Bennie Light and Mark Cook.  
9:00 p. m.—Foster and Doris.  
9:15 p. m.—Organ—Vera Graham.  
10:30 p. m.—Minstrel Girls.

FRIDAY, AUGUST 1

1:00 p. m.—Masonic Luncheon.  
3:45 p. m.—Seeing Southern California.  
8:00 p. m.—The Song Story.  
8:15 p. m.—The Cherrio Boys.  
8:30 p. m.—"Harmonious Suggestions" by Dr. J. F. Rausch.  
9:00 p. m.—Foster and Doris.  
9:15 p. m.—Organ—Vera Graham.  
10:30 p. m.—KFOX Comedy Kompany.

SATURDAY, AUGUST 2

1:00 p. m.—Bill and Co.  
8:30 p. m.—Three Vagabonds.  
9:00 p. m.—Foster and Doris.  
9:15 p. m.—Organ—Vera Graham.  
10:00 p. m.—Doris and Harry.  
10:15 p. m.—Gene and Cline.  
10:30 p. m.—The Gossipers.  
10:45 p. m.—Doris and Foster.

### DAILY EXCEPT SUNDAY

1:00-3:00 a. m.—The Knight Fox.  
5:00 a. m.—The Early Bird.  
7:00 a. m.—Hello, Everybody.  
7:30 a. m.—Early News Items.  
7:45 a. m.—Novelty Musical Numbers.  
7:50 a. m.—Bright and Early Hour.  
8:20 a. m.—Music.  
8:30 a. m.—Health and Efficiency.  
8:40 a. m.—Recordings.  
9:00 a. m.—Beauty Talk.  
9:10 a. m.—Phonograph Music.  
10:00 a. m.—Music.  
10:30 a. m.—Organ Recital by Vera Graham.  
11:00 a. m.—Sunset Harmony Boys.  
11:30 a. m.—News Reports by Frank P. Goss.  
12:45 p. m.—Musical Moments.  
1:30 p. m.—Cheerio Boys.  
1:50 p. m.—Dr. Harhottle, Clarence and Doris.  
2:20 p. m.—Rolly Wray.  
2:30 p. m.—Sunset Harmony Boys.  
3:00 p. m.—Campus Sweeties.  
3:15 p. m.—Today In History.  
3:30 p. m.—Organ Recital.  
4:00 p. m.—Late News Report, Press-Telegram.  
4:15 p. m.—Rolly and Gene.  
4:30 p. m.—Violet's Tiny Tots.  
4:45 p. m.—Dick Love and his Accordion.  
6:00 p. m.—Em and Clem.  
6:15 p. m.—Percy at the Phone.  
6:45 p. m.—The Three Vagabonds (except Tuesday).  
7:00 p. m.—Buttercream School Kids.  
10:45 p. m.—Campers' Sweeties.  
11:00 p. m.—Majestic Ballroom Orchestra.

### DAILY EXCEPT MONDAY

11:45 a. m.—Hollywood Girls.  
5:00 p. m.—Hollywood Girls.  
6:30 p. m.—Sunset Harmony Boys.  
7:15 p. m.—Ezra & Abe.  
7:30 p. m.—Vest Pocket Minstrels.  
7:45 p. m.—Cheerio Boys.  
9:30 p. m.—Everett Hoagland's Troubadours from Rendezvous at Balhoa.  
10:00 p. m.—Bill & Co.  
10:15 p. m.—Gene and Cline.  
11:30 p. m.—Everett Hoagland Troubadours.

### SUNDAY, JULY 27

5:00 a. m.—The Early Bird.  
7:00 a. m.—Music.  
8:00 a. m.—Family Circle Hour.  
8:30 a. m.—Clover Leaf program.  
9:00 a. m.—Old Time Music.  
10:00 a. m.—Angeles Abbey Organ Recital.  
11:00 a. m.—St. Luke's Episcopal Church.  
12:30 p. m.—Musical Program for Birkel Music Co.  
1:00 p. m.—Hollywood Girls—Novelty Trio.  
2:00 p. m.—Seth Parker.  
2:30 p. m.—Sacred Songs.  
3:00 p. m.—On With the Show.  
4:00 p. m.—"A Moment with Patriarchs of Old."  
4:15 p. m.—Organ Recital; Vera Graham.  
5:00 p. m.—Everett Hoagland Troubadors.  
Remote from Rendezvous at Balhoa.  
5:30 p. m.—Hollywood Girls.  
6:00 p. m.—"Em & Clem."  
6:15 p. m.—Doris, Foster & Gene.  
6:45 p. m.—Foster and Doris.  
7:00 p. m.—Sunset Harmony Boys.  
7:30 p. m.—Hollywood Girls.  
8:00 p. m.—First Church of Christ, Scientist.  
9:00 p. m.—KFOX Capers.  
12:00 midnight—Records.  
1:00 a. m.—The Knight Fox.

## G. M. Radio Dealers Meet

(Continued from Page 20)

ripe for General Motors to go into Radio to be a leader as they have with 75 other products.

The Keynote of the entire meeting was based on the two General Motors Slogans: "We are Building an Institution in Radio," and "Building for the Future by Building Right."

Don C. Wallace, zone manager, conducted the meeting. Wallace is deserving of a great amount of credit for the showing he has made in the management of his district.



The essential features of these programs are identical with those sent as by the stations



FRANK BULL

# KMIC

V. G. Freltag  
Manager  
Tel. TH. 1121  
Inglewood 1927  
Frank Bull  
Cliff Howell  
Announcers  
Lowrey Heater  
Musical Director  
Charles Whitney  
Engineer

## Inglewood, Calif.—1120 Kc.

500 WATTS—267.7 METERS  
Chamber of Commerce Bldg., Inglewood, Calif.  
Owned and Operated by Dalton's, Inc.

- 7:00 p. m.—"Melodies You Love."
- 7:30 p. m.—"Under Dixie Skies."
- 8:00 p. m.—The Pepters.
- 8:30 p. m.—Lani McIntyre Harmony Hawaiians.
- 9:30 p. m.—Piano Moods.
- 10:30 p. m.—"Musical Mixture."

### TUESDAY, JULY 29

- 2:00 p. m.—Popular records.
- 6:30 p. m.—"Sweethearts' program."
- 7:00 p. m.—"Songs of Yesterday."
- 7:30 p. m.—"Hits of Broadway."
- 8:00 p. m.—Lani McIntyre Harmony Hawaiians.
- 9:00 p. m.—Lloyd S. Nix, City Prosecutor.
- 10:00 p. m.—Frel Rose and Orchestra by remote control from the Deauville Beach Club.

### WEDNESDAY, JULY 30

- 6:00 p. m.—Organ Recital.
- 6:30 p. m.—"Cinema Suggestions."
- 7:00 p. m.—Composers' program.
- 7:30 p. m.—"Half Hour of Pep."
- 8:00 p. m.—Lani McIntyre Harmony Hawaiians.
- 9:00 p. m.—Dot and Dash Duo.
- 9:30 p. m.—Fred Rose and Orchestra by remote control.
- 10:30 p. m.—Hits from Broadway.

### THURSDAY, JULY 31

- 6:30 p. m.—"Popular Hits of Today."
- 7:00 p. m.—"Land of Memories."

### FRIDAY, AUGUST 1

- 6:30 p. m.—Love Songs.
- 7:00 p. m.—Dot and Dash Duo and Rockey Bernard.
- 7:30 p. m.—"Hits of Yesterday."
- 8:00 p. m.—Musical Mixture.
- 9:00 p. m.—Lani McIntyre and Hawaiians.
- 9:00 p. m.—Broadway Hits.
- 10:00 p. m.—Fred Rose and Orchestra by remote control.

### SATURDAY, AUGUST 2

- 6:30 p. m.—Salon Players.
- 7:00 p. m.—"Cinema Suggestions."
- 10:30 p. m.—Records.

- 6:00 a. m.—Andy and Gene.
- 8:00 a. m.—Ocean Park Walkathon.
- 8:15 a. m.—"Arizona Miners."
- 9:00 a. m.—1930 Super Marathon.
- 9:15 a. m.—Records.
- 12:00 noon.—"Radio News Reporter"—direct from City Hall.
- 12:15 p. m.—"Hi-Noon Varieties."
- 1:00 p. m.—Popular Records.
- 5:00 p. m.—1930 Super Marathon, Monterey Park.
- 5:15 p. m.—Requests.
- 6:00 p. m.—Organ Recital.
- 11:00 p. m.—Ocean Park Walkathon.
- 11:30 p. m.—1930 Super Marathon, Monterey Park.
- 12:00 midnight.—Jack the Bell Boy.

### SUNDAY, JULY 27

- 12:30 p. m.—1930 Super Marathon.
- 4:30 p. m.—Selected records.
- 5:30 p. m.—Fred Rose and His Orchestra, by remote control from Deauville Beach Club.
- 11:00 p. m.—Ocean Park Walkathon.
- 11:30 p. m.—1930 Super Marathon, Monterey Park.

### MONDAY, JULY 28

- 9:00 p. m.—Records.
- 6:30 p. m.—"Popular Favorites."



LUTHER PUTNAM

# KGB

## San Diego, Calif.—1330 Kc.

225.4 METERS—250 WATTS  
Pickwick Terminal Hotel—Franklin 6151-2-3  
PICKWICK BROADCASTING CORPORATION  
Henry Hohman, Managing Director

Robert G. Binyon  
Manager  
Luther L. Putnam  
Studio Director  
Lilas Johnson  
Program Director  
Fred Stone  
Lloyd Snow  
Announcers  
Willis F. Farnum  
Chief Technician

- 6:30 p. m.—Classical Recordings.
- 7:00 p. m.—Sponsored program.
- 7:15 p. m.—Belasco Twins, with E. M. Robles.
- 8:00 p. m.—Concert program, with vocalist.
- 9:00 p. m.—"The Real Mexico."
- 10:00 p. m.—Recordings.

### MONDAY, JULY 28

- 10:30 a. m.—Piano lesson—T. Morley Harvey.
- 3:30 p. m.—Church of Jesus Christ of L.D.S.
- 6:00 p. m.—Sponsored Spanish program.
- 7:15 p. m.—Studio program.
- 8:00 p. m.—String Trio, with vocalist.
- 9:00 p. m.—KGB Frolic.

### TUESDAY, JULY 29

- 7:15 p. m.—Aloha Boys' Hawaiian Trio.
- 8:00 p. m.—Highway Highlights—Caliste Conant Hudson and Banjo Duo.
- 9:00 p. m.—Aeolian Male Quartette, with T. Morley Harvey.

### WEDNESDAY, JULY 30

- 7:15 p. m.—San Diego Night Hawks.
- 8:00 p. m.—Belasco Quartette.
- 9:00 p. m.—Classical Interpretations.

### THURSDAY, JULY 31

- 10:30 a. m.—Piano lesson—T. Morley Harvey.
- 7:15 p. m.—Studio program.
- 8:00 p. m.—Concert Review.
- 9:00 p. m.—Agua Caliente Hotel Mexican Serenaders.

### FRIDAY, AUGUST 1

- 7:15 p. m.—Aloha Boys' Hawaiian Trio.
- 8:00 p. m.—Highway Highlights.
- 9:00 p. m.—Collocate Frolic.

### SATURDAY, AUGUST 2

- 3:00 p. m.—KGB Movie Club.
- 7:15 p. m.—Minor Twins and Carolyn Lee.
- 8:15 p. m.—Marshall Mando Trio.
- 9:00 p. m.—Studio program.

- 7:00 a. m.—Popular Recordings.
- 7:45 a. m.—Health Talk.
- 8:00 a. m.—Recordings.
- 9:00 a. m.—July Specials Hour.
- 10:00 a. m.—Recordings (ex. Mon. and Thurs.).
- 2:30 p. m.—Recordings.
- 2:45 p. m.—News, courtesy San Diego Sun.
- 3:00 p. m.—Recordings (ex. Mon. and Sat.).
- 4:30 p. m.—U. S. Dept of Agriculture, Farm Talk.
- 4:40 p. m.—Recordings.
- 5:00 p. m.—Baron Keyes, "Air Castles."
- 5:15 p. m.—Merchants Air Service.
- 5:45 p. m.—Sportologue and Lost and Found.
- 6:00 p. m.—Merchants Air Service (ex. Mon.).
- 6:30 p. m.—Vanity Fair Birthday Party.
- 6:45 p. m.—Recordings.
- 7:00 p. m.—Sponsored Program.
- 10:00 p. m.—Recordings.

### SUNDAY, JULY 27

- 8:00 a. m.—Through the Comics with Uncle Si.
- 9:00 a. m.—Classical Recordings.
- 10:00 a. m.—Watchtower program.
- 11:00 a. m.—Popular Recordings.
- 6:00 p. m.—Church of Jesus Christ of L.D.S.

The essential features of these programs are identical with those sent us by the stations



GENE PERRY

# KFSB

Leslie Adams  
General Manager  
Walter B. Neill  
Advertising Manager  
Glen Litton  
Chief Technician  
Gene Perry  
Announcer  
Leah McMahon  
Program Director

## San Diego, Calif.—600 Kc.

1000 WATTS—499.7 METERS  
"The Air Capitol of the West"  
Telephone Franklin 6353

### DAILY EXCEPT SUNDAY

7:45 a. m.—NBC\*—Aunt Jemima's Boy.  
8:00 a. m.—Morning Musical.  
9:00 a. m.—Good Cheer Program.  
9:45 a. m.—Amy Lou's Shopping Hour.  
11:00 a. m.—Service Hour.  
12:00 noon—James Erickson at Console of Fox California Theater (ex. Tues.).  
2:00 p. m.—Matinee Time (ex. Mon.).  
2:30 p. m.—Balboa Park Organ (ex. Mon.).  
7:45 p. m.—Cecil and Sally.  
10:00 p. m.—Remote Control from Kennedy Cafe.  
11:00 p. m.—Midnight Feature Hour.

### SUNDAY, JULY 27

9:30 a. m.—Studio program.  
10:30 a. m.—Popular program.  
11:00 a. m.—NBC, Friendly Hour.  
12:00-2:00 p. m.—Old-Time program.  
2:00 p. m.—Studio program.  
2:30 p. m.—Organ concert from Balboa Park.  
3:30 p. m.—NBC.\*  
4:00 p. m.—NBC, Enna Jettick Melodies.  
6:45 p. m.—NBC, Sunday at Seth Parkers.  
7:15 p. m.—North American Ensemble.  
8:00 p. m.—NBC, Enna Jettick Melodies.  
8:15 p. m.—Studio program.  
8:30 p. m.—NBC, Guhmar Johannsen.  
9:10 p. m.—Hotel Del Coronado, presenting J. Wardo Hutton's Concert Quartette.  
10:00 p. m.—Kennedys' Cafe.

### MONDAY, JULY 28

9:15 a. m.—Daily Review.  
12:30 p. m.—NBC, Denver Municipal Band.  
1:00 p. m.—NBC, Blue Boys.  
2:00 p. m.—Mormon Tabernacle Choir. NBC.\*  
2:30 p. m.—Matinee program.  
3:30 p. m.—NBC, Phil Cook, the Quaker Man.  
3:45 p. m.—Studio program.  
4:00 p. m.—NBC, Half Hour in the Nation's Capital.  
4:30 p. m.—NBC, Harry Archer and his Orchestra.  
5:00 p. m.—Studio program.  
5:45 p. m.—Late News Items.  
6:00 p. m.—NBC, Stromberg Carlson program.  
6:30 p. m.—NBC, Piano Capers.  
7:00 p. m.—NBC, Governor Young's Campaigning prog.  
8:00 p. m.—Sponsored program.  
8:15 p. m.—Concert Quintette, with Janet Stanley.  
9:00 p. m.—NBC, Pacific Serenaders.  
9:30 p. m.—Breezy Three and Leslie Adams.

### TUESDAY, JULY 29

12:30 p. m.—NBC, Pacific Vagabonds.  
1:00 p. m.—NBC, Hotel Sir Francis Drake Orchestra.  
3:30 p. m.—Studio program.  
3:30 p. m.—NBC, Phil Cook, the Quaker Man.  
3:45-5:45 p. m.—Studio program.  
5:45 p. m.—News Items.  
6:00 p. m.—NBC, Westinghouse Salute.  
6:30 p. m.—NBC, RKO Hour.  
7:00 p. m.—Sponsored program.  
7:15 p. m.—Studio program, with Gene Perry.  
7:30 p. m.—NBC, Amos 'n' Andy.  
8:00 p. m.—San Diego Civic Symphony Orchestra.  
9:00 p. m.—Cliff May's Palm Room Orchestra.

### WEDNESDAY, JULY 30

9:15 a. m.—Daily Review.  
12:30 p. m.—NBC, Radio Guild program.  
1:00 p. m.—NBC, Series of Talks.  
1:15 p. m.—NBC, Breen and Delrose.  
1:30 p. m.—Tea Timers.  
3:00 p. m.—Studio program.  
3:30 p. m.—NBC, Phil Cook, the Quaker Man.

3:45 p. m.—NBC, Back of the News in Washington.  
4:00 p. m.—Feature program.  
5:00 p. m.—Operatic program.  
6:15 p. m.—Late News Items.  
6:30 p. m.—NBC.\*  
7:00 p. m.—Safety program.  
8:00 p. m.—North American Ensemble.  
9:00 p. m.—NBC, Miniature Biographies.  
9:30 p. m.—NBC, Camel Pleasure Hour.  
10:30 p. m.—Kennedy's Cafe.

### THURSDAY, JULY 31

9:15 a. m.—Daily Review.  
12:30-2:00 p. m.—NBC.\*  
3:00 p. m.—Studio program.  
3:30 p. m.—NBC, Phil Cook, the Quaker Man.  
3:45 p. m.—Studio program.  
5:00 p. m.—Spanish program, with Manuel Deliesa.  
6:00 p. m.—Late News Items.  
6:15 p. m.—Sponsored program.  
6:30 p. m.—Cramer's Concert Trio, with John Wells.  
8:00 p. m.—NBC, Lucky Strike Orchestra.  
9:00 p. m.—NBC, Memory Lane.  
9:30 p. m.—NBC, The Olympians.

### FRIDAY, AUGUST 1

9:15 a. m.—Daily Review.  
12:30-2:00 p. m.—NBC.\*  
3:00 p. m.—Studio program.  
3:40 p. m.—NBC, Phil Cook, the Quaker Man.  
3:45 p. m.—Feature program.  
5:00 p. m.—NBC, Interwoven Pair.  
5:30 p. m.—Popular program.  
6:00 p. m.—Late News Items.  
6:15 p. m.—Cliff May's Palm Room Orchestra.  
7:00 p. m.—NBC, Elgin National Watch Co. program.  
7:15 p. m.—NBC, Mayor Rolph's Campaign.  
8:00 p. m.—Old-Time program.  
9:00 p. m.—Quintette, with Mildred Marlin.

### SATURDAY, AUGUST 2

9:15 a. m.—Daily Review.  
2:00 p. m.—NBC.\* British Rebroadcast.  
2:45 p. m.—Matinee program.  
3:15 p. m.—Operatic program.  
5:00 p. m.—Studio program.  
5:30 p. m.—Caliste Konant Hudson.  
5:45 p. m.—Late News Items.  
6:00 p. m.—NBC, Lucky Strike Orchestra.  
7:00 p. m.—Breezy Three.  
8:00 p. m.—Fox Theater program.  
8:30 p. m.—Balboa Park program.  
9:00 p. m.—NBC, Rainbow Harmonies.  
9:30 p. m.—NBC, Golden Legends.

## KNX Program

(Continued from Page 28)

6:30 p. m. Rev. Ethel Duncan, Questions and Answers.  
7:00 p. m. Presenting Prof. Herman Schmitzel.  
7:08 p. m. Stove Poker Ensemble; Country Jane, vocalist.  
8:00 p. m. The Royal Order of Optimistic Do-Nuts.  
9:00 p. m. "Lion Tamers."  
9:45 p. m. Hollywood Legion Stadium.  
**SATURDAY, AUGUST 2**  
8:30 a. m.—Bundy & Albright courtesy program.  
9:00 a. m.—Musical program of popular recordings.  
11:00 a. m.—Courtesy program.  
11:15 a. m.—Musical program of records.  
11:30 a. m.—C. P. R.'s musical program.  
12:00 noon.—KNX Symphonette and Marjorie Healy, soprano.  
1:00 p. m.—First Radio Church of the Air.  
1:30 p. m.—Eddie Albright's reading of late fiction.  
2:00 p. m.—Luella Lee at the console of the Wurlitzer studio organ.  
2:30 p. m.—Program presenting an Opera (recorded).  
6:00 p. m.—Paramount-Public Hour. CBS.\*  
7:08 p. m.—Calmon Luboviskl, master violinist, and Claire Mellonino, pianist.  
8:00 p. m.—Horse Fly and his Wranglers.  
8:30 p. m.—Miniature Golf Tournament.  
9:00 p. m.—Announcements of L. A. Church services.  
9:05 p. m.—The Musical Calangis Family.  
9:45 p. m.—"Musical Contrasts."

The essential features of these programs are identical with those sent us by the stations



FRED J. HART

# KQW San Jose, California—1010 Kc.

CALIFORNIA FARM BUREAU STATION  
500 WATTS—296.6 METERS  
FRED J. HART, Manager

- DAILY EXCEPT SUNDAY**
- 9:00 a. m.—Morning Music.
  - 9:30 a. m.—Weather Report.
  - 9:35 a. m.—Helpful Hour.
  - 11:00 a. m.—Bank Credits Service Program.
  - 12:30 p. m.—Market Report and Weather from S. F.
  - 1:00 p. m.—Hart's Half Hour.
  - 1:30 p. m.—The Friendly Hour.
  - 4:30 p. m.—Children's Program.
  - 5:00 p. m.—Baron Keyes Air Castle (ex. Saturday).
  - 5:15 p. m.—Vesper Music.
  - 5:30 p. m.—San Jose Radionics Institute.
  - 6:00 p. m.—U. S. D. A. Farm Flashes (ex. Sat.).
  - 6:10 p. m.—Farm Topic (except Saturday).
  - 6:30 p. m.—KQW Market Reports.
  - 6:35 p. m.—KQW Market Place.
  - 7:00 p. m.—Weather Reports, News.
- SUNDAY, JULY 27**
- 10:15 a. m.—Sunday School Lessons by Fred J. Hart.
  - 11:00 a. m.—Morning Services, First Baptist Church.
- MONDAY, JULY 28**
- 2:30 p. m.—Recordings.
  - 6:20 p. m.—Amended Canned Fruit Standardization Act
  - 7:15 p. m.—Silas and Susie.

- 7:30 p. m.—Farm Bureau Evening Radio News.
  - 8:00 p. m.—Flits for Governor Radio Hour.
  - 9:00 p. m.—San Jose Pacific Little Symphony.
- TUESDAY, JULY 29**
- 2:30 p. m.—Songs from the Shows.
  - 6:20 p. m.—Estimating Fruit Crops—E. E. Kaufmann.
  - 8:00 p. m.—"You Never Can Tell" program.

- WEDNESDAY, JULY 30**
- 2:30 p. m.—Concert Recordings.
  - 6:20 p. m.—Special Department Broadcast—F. N. Bigelow.
  - 8:00 p. m.—Studio program.
  - 9:00 p. m.—The Two Guitars.
  - 9:30 p. m.—How-do-you do?

- THURSDAY, JULY 31**
- 2:30 p. m.—Variety Recordings.
  - 6:20 p. m.—Fruit and Vegetable Inspection Force—Powell.
  - 8:00 p. m.—Songs of the Old Church Choir.
  - 9:00 p. m.—In Days of Olds.
  - 9:15 p. m.—The Five Pretzels.
  - 9:45 p. m.—San Jose Accordian Club.

- FRIDAY, AUGUST 1**
- 2:30 p. m.—Red Seal Records.
  - 6:20 p. m.—Bangs Disease of Cattle—A. G. Gierke.
  - 6:45 p. m.—Mercury-Herald Sport Review.
  - 8:00 p. m.—KQW Minstrels.
  - 9:00 p. m.—San Jose Pacific Little Symphony.

- SATURDAY, AUGUST 2**
- 6:00 p. m.—United Conservatory program.
  - 6:50 p. m.—KQW Market Place.
  - 7:15 p. m.—San Jose Better Business Bureau.
  - 7:30 p. m.—Musical program.
  - 7:45 p. m.—Studio program.
  - 8:45 p. m.—Italian program.



RODERICK H. MORRISON

# KFSG Los Angeles, Calif.—1120 Kc.

500 WATTS—267.7 METERS  
Angelus Temple, Echo Park, EX. 1141  
"Four Square Gospel!"

- Almee Semple McPherson  
Founder-President
- Roderick H. Morrison  
Station Director
- Noland Tuerker  
Announcer
- Maurice E. Kennedy  
Technical Director
- Flarence E. Wixom  
Program Manager

- DAILY EXCEPT SUNDAY**
- 7:30 a. m. Family Altar Hour.
  - 10:00 a. m.—Sunshine Hour.
  - 11:00 a. m.—Noonday Musicale (except Monday).

- SUNDAY, JULY 27**
- 8:00 a. m.—Sabbath Sunrise and Symphony Orchestra.
  - 10:30 a. m.—Sunday Morning Worship.
  - 2:30 p. m.—Dispensational Message.
  - 6:30 p. m. Musical and Evangelistic Service.
  - 10:00 p. m.—Organ Recital.
- WEDNESDAY, JULY 30**
- 2:30-5:00 p. m.—Divine Healing Service.
- THURSDAY, JULY 31**
- 2:00 p. m. Studio program.
  - 3:00 p. m.—Bethesda Hour.
  - 4:00 p. m.—Twilight Hour.
  - 7:30 p. m. Water Baptismal Service and Symphony Orchestra.
- FRIDAY, AUGUST 1**
- 2:00 p. m. Music Masters' Hour.
  - 3:00 p. m. Bethesda Hour.
  - 4:00 p. m. Kliddes' Hour.
- SATURDAY, AUGUST 2**
- 7:30 p. m.—Divine Healing and Band Concert.

## C. R. SPENCER

### Radio and Sound Laboratories

PUBLIC ADDRESS SYSTEMS — DEALERS' SERVICE  
1109 N. VAN NESS AVE., HOLLYWOOD

Cor. Santa Monica Blvd. Just Four Blocks West of Western Ave.  
Gladstone 5781

We use the famous Supreme Diagonmeter in all service work

GRADE "A" TECHNICAL  
ENGINEERS, CERTIFIED BY THE  
RADIO TRADES ASS'N

Radio service in all parts of California.  
We maintain a special division of our  
Service Department for dealers.

Write Us About Our Special Mail  
Order Service to All Outside Points



The essential features of these programs are identical with those sent us by the stations



J. W. LAUGHLIN

# KPO

## San Francisco, Calif.—680 Kc.

5000 WATTS—440.9 METERS  
HALE BROTHERS AND THE CHRONICLE  
"The Voice of San Francisco"

Phone Kearney 0704

J. W. Laughlin  
Managing Director  
Curtis Peck  
Technical Director

8:30 p. m.—Fifth Summer Symphony Concert, directed by Artur Rodzinski.  
10:00 p. m.—Jesse Stafford's Palace Hotel Dance Orch.  
11:00 p. m.—Joe Wright's Silver Slipper Dance Orch.

### WEDNESDAY, JULY 30

1:00 p. m.—Ann Warner's Home Making Chat.  
1:30 p. m.—Tea Timers, NBC.\*  
2:00 p. m.—Ye Towne Cryer.  
2:10 p. m.—Knickerbocker Piano Duo.  
8:00 p. m.—Let's Get Associated.  
8:30 p. m.—Topsy's Roosters.  
9:00 p. m.—Meeting in the Tavern.  
9:15 p. m.—A Sporting Quarter Hour.  
9:30 p. m.—Earle C. Anthony "Packard program."  
10:00 p. m.—Jesse Stafford's Palace Hotel Dance Orch.  
11:00 p. m.—Joe Wright's Silver Slipper Dance Orch.

### THURSDAY, JULY 31

10:00 a. m.—Woman's Magazine of the Air, NBC.\*  
11:00 a. m.—Floyd Wright, Organ Recital.  
1:00 p. m.—Shrine Luncheon Broadcast from Palace Hotel.  
1:30 p. m.—Jerry Jermaine, balladist.  
2:00 p. m.—Ye Towne Cryer.  
2:10 p. m.—Paul Alexandroff, Russian baritone.  
8:00 p. m.—Lucky Strike Dance Orchestra, NBC.\*  
9:00 p. m.—Cy Trobber's Scrap Book.  
9:30 p. m.—Earle C. Anthony "Packard program."  
10:00 p. m.—Jesse Stafford's Palace Hotel Dance Orch.  
11:00 p. m.—Joe Wright's Silver Slipper Dance Orch.

### FRIDAY, AUGUST 1

12:45 p. m.—Commonwealth Club Luncheon at Palace Hotel.  
1:30 p. m.—Paul Lingle Piano Duo, with KPO Male Trio.  
2:30 p. m.—Ye Towne Cryer.  
2:35 p. m.—California Crooners.  
6:15 p. m.—El Portal Serenader.  
7:00 p. m.—North Americans.  
8:00 p. m.—Caswell Musical Episode.  
8:30 p. m.—Nathan Abas, violin recital.  
9:00 p. m.—Meeting in the Tavern.  
9:15 p. m.—G. Donald Gray, dramatic reader.  
9:30 p. m.—Earle C. Anthony "Packard program."  
10:00 p. m.—Jesse Stafford's Palace Hotel Dance Orch.

### SATURDAY, AUGUST 2

8:00 a. m.—Financial Service, NBC.\*  
8:15 a. m.—Morning Melodies, NBC.\*  
8:30 a. m.—Cross Cuts from the Log of the Day, NBC.\*  
9:00 a. m.—Walter W. Cribbins.  
10:00 a. m.—National Home and Farm Hour, NBC.\*  
11:30 a. m.—Helen Gordon Barker—Art Talk.  
1:00 p. m.—KPO Salon Orchestra, with KPO Sequoians.  
2:00 p. m.—Dance Music from London, NBC.\*  
8:00 p. m.—The Gilmore Circus, NBC.\*  
8:30 p. m.—Hollywood Bowl Symphony Orchestra, NBC.\*  
10:15 p. m.—Jesse Stafford's Palace Hotel Orchestra.

Saturday afternoon, July 27th, at 2 o'clock, the National Broadcasting Company will rebroadcast a dance program from London, England. This is one of a series of broadcasts planned by this company for the entertainment of their listeners. On the Pacific Coast, KGO, KHQ, KOMO, KGW, KPO, KFI, KFSD and KTAR will release the feature.

See Page 22 for NBC Program

# KGO

## Oakland, California—790 Kc.

7500 WATTS—379.5 METERS  
PACIFIC COAST STATION, GENERAL ELECTRIC CO.  
Phone Fruitvale 5980, 557 Hotel St. Francis  
See Page 22 for Detailed Program of KGO

The essential features of these programs are identical with those sent us by the stations



HARRISON HOLLAWAY

# KFRC San Francisco, Calif.—610 Kc.

Owned and Operated by Don Lee, Cal. Dist. for Cadillac & LaSalle  
1000 WATTS—491.5 METERS

1000 Van Ness Telephone Prospect 0100

Harrison Hollaway  
Manager

Edwin Wilson  
Commercial Director

Alan N. Corwack  
Technical Director

Frank Moss  
Musical Director

**DAILY EXCEPT SUNDAY**

- 7:00 a. m.—"Simp'y Fitts" from Seal Rocks.
- 8:00 a. m.—CBS.\*
- 8:30 a. m.—Manhattan Towers Orchestra, CBS.\*
- 9:00 a. m.—S. F. Call Bulletin's News.
- 9:30 a. m.—Feminine Fancies (except Saturday).
- 10:30 a. m.—Wyn's Daily Chat (except Saturday).
- 12:00 noon.—Sherman Clay Concert.
- 1:00 p. m.—Cal King's Country Store.
- 2:00 p. m.—Happy-Go-Lucky Hour (except Saturday).
- 4:45 p. m.—S. F. Call-Bulletin's News Items and Town Topics.
- 10:15 p. m.—Gruen News Flashes (Wednesday, 10:00)
- 12:00 midnight—Dance music.

**SUNDAY, JULY 27**

- 8:00 a. m.—"Chapel of Memories."
- 9:00 a. m.—"Home Sweet Home."
- 11:00 a. m.—Paul Tremaine's Orchestra, CBS.\*
- 11:30 a. m.—Conclave of Nations, CBS.\*
- 12:00 noon.—Sherman Clay Noonday Concert, CBS.\*
- 1:00 p. m.—Jazz Classics.
- 2:00 p. m.—Musical.
- 2:30 p. m.—The Globe Trotter, CBS.\*
- 3:00 p. m.—Classical Concert, featuring Frank Moss.
- 3:45 p. m.—"The World's Business," CBS.\*
- 4:00 p. m.—Jesse Crawford, Poet of the Organ, CBS.\*
- 4:30 p. m.—Tea-Time Recital.
- 5:00-7:00 p. m.—CBS.\*
- 7:00 p. m.—The Melody Hour, with Robert Olsen.
- 8:00 p. m.—Cadillac LaSalle Concert.
- 9:00 p. m.—Val Valente and his Roof Garden Orchestra
- 11:00 p. m.—Organ Recital.

**MONDAY, JULY 28**

- 9:15 a. m.—Manhattan Towers Orchestra, CBS.\*
- 11:00 a. m.—Studio program.
- 11:15 a. m.—Columbia Ensemble, CBS.\*
- 1:30 p. m.—Dancing by the Sea, CBS.\*
- 1:45 p. m.—Aunt Zelena, CBS.\*
- 3:00 p. m.—H. V. Kaitenborn, Current Events, CBS.\*
- 3:30 p. m.—Western Air Express, Aviation Talk
- 3:45-4:45 p. m.—CBS.\*
- 5:00 p. m.—California Dairy Council, featuring "Mac."
- 5:30 p. m.—Mardi Gras, CBS.\*
- 6:00 p. m.—Bobs, noted sports authority.
- 6:15 p. m.—"Your Financial Problems."
- 6:30-7:30 p. m.—CBS.\*
- 7:30 p. m.—Political Talk—Mayor Rolph.
- 8:00 p. m.—"Golden State Blue Monday Jamboree.
- 10:00 p. m.—"Schwartz Ginger Band."
- 10:20 p. m.—Hotel Mark Hopkins Orchestra.
- 11:00 p. m.—Earl Burnett's L. A. Biltmore Orchestra.

**TUESDAY, JULY 29**

- 9:15 a. m.—Georgia O. George.
- 11:00 a. m.—Studio program.
- 11:15 a. m.—Columbia Ensemble, CBS.\*
- 11:30 a. m.—For Your Information, CBS.\*
- 1:30 p. m.—Dancing by the Sea, CBS.\*
- 3:00 p. m.—Beauty Talks.
- 3:15 p. m.—Dr. Arthur Torrence, CBS.\*
- 3:30 p. m.—Guy Lombardo and his Royal Canadians, CBS.\*
- 4:00 p. m.—Siesta Hour.
- 5:00 p. m.—KFRC Dance Band.
- 5:30-6:30 p. m.—CBS.\*
- 6:30 p. m.—Edna Fischer and Norman Nelsen.
- 6:45 p. m.—Grand Opera Miniature, CBS.\*
- 7:00 p. m.—Edna Fischer "Piano Moods."
- 7:15 p. m.—"Musical For-Get-Me-Not's."
- 7:30 p. m.—Chicago Variety program, CBS.\*
- 8:00 p. m.—Masquerade Party.
- 8:30 p. m.—"S. & W. Forum of the Air," Gov. Young
- 9:30 p. m.—Drama from KHJ.
- 10:00 p. m.—Frank Watanabe.

- 10:10 p. m.—Dance Music.
- 10:20 p. m.—Val Valente and his Roof Garden Orch.

**WEDNESDAY, JULY 30**

- 9:15 a. m.—Manhattan Towers Orchestra, CBS.\*
- 11:00 a. m.—Red Cross Shoe program.
- 11:15 a. m.—Columbia Ensemble, CBS.\*
- 11:30 a. m.—For Your Information.
- 1:30 p. m.—CBS.\*
- 3:00 p. m.—The Observer—about new books.
- 3:30 p. m.—Something About Everything.
- 3:35 p. m.—Your English—Electrical Transcription.
- 3:45 p. m.—The Aztecs, CBS.\*
- 4:00 p. m.—Manhattan Moods, CBS.\*
- 4:30 p. m.—Fifteen Hot Minutes.
- 5:00 p. m.—U. S. Marine Band, CBS.\*
- 5:30 p. m.—Dinner Hour Concert.
- 6:30 p. m.—Prof. Linsley—Play.
- 7:00 p. m.—Political Talk—Buron Fitts.
- 7:30 p. m.—California Melodies.
- 8:00 p. m.—Standard Oil Co.'s "Romantic Forty-Niners"
- 8:30 p. m.—Demi Tasse Revue.
- 9:00 p. m.—Top o' the World Night Club.
- 10:05 p. m.—Anson Weeks' Hotel Mark Hopkins' Orch.
- 11:00 p. m.—Earl Burnett's L. A. Biltmore Orchestra.

**THURSDAY, JULY 31**

- 9:15 a. m.—Georgia O. George.
- 11:00 a. m.—Old Witch—Electrical Transcription.
- 11:15 a. m.—Novelties.
- 11:30 a. m.—For Your Information, CBS.\*
- 1:30 p. m.—Dancing by the Sea, CBS.\*
- 3:00 p. m.—Something About Everything.
- 3:15 p. m.—Beauty Talks.
- 3:30 p. m.—KFRC Musical—Dance Orchestra.
- 4:00 p. m.—Symphonic Interlude, CBS.\*
- 4:15 p. m.—Political Situation in Washington—Fred Wm. Wile, CBS.\*
- 4:30 p. m.—Studio program.
- 5:00 p. m.—Pacific States Organ.
- 5:30-7:00 p. m.—CBS.\*
- 7:00 p. m.—Edna Fischer, "Piano Moods."
- 7:15 p. m.—Heywood Brohn's Radio Column, CBS.\*
- 7:30 p. m.—Lights and Shadows.
- 8:00 p. m.—Violet Ray Merry-makers.
- 9:00 p. m.—Eastman Kodak.
- 9:30 p. m.—Drama from KHJ.
- 10:00 p. m.—Frank Watanabe—Eddie Holden.
- 10:10 p. m.—Dance Music.
- 10:20 p. m.—Val Valente and his Roof Garden Orch.
- 11:10 p. m.—Anson Weeks' Hotel Mark Hopkins' Orch.

**FRIDAY, AUGUST 1**

- 9:15 a. m.—Manhattan Towers Orchestra, CBS.\*
- 11:00 a. m.—Studio program.
- 11:15 a. m.—Columbia Ensemble, CBS.\*
- 11:30 a. m.—Auditions.
- 1:30 p. m.—Carl Rupp and WGHP Captivators, CBS.\*
- 1:45 p. m.—Aunt Zelena, CBS.\*
- 3:00 p. m.—Crockett Mountaineers, CBS.\*
- 3:15 p. m.—The Vagabonds, CBS.\*
- 3:30 p. m.—Something About Everything.
- 3:45-4:45 p. m.—CBS.\*
- 5:00 p. m.—Custo Revue.
- 5:30 p. m.—Joe Mondel and his Pep Band.
- 6:00 p. m.—Columbia Male Chorus, CBS.\*
- 6:30 p. m.—Gold Medal Fast Freight, CBS.\*
- 7:00 p. m.—"Mac and Al."
- 7:15 p. m.—Heywood Broun's Radio Column, CBS.\*
- 7:30 p. m.—Silver Strings.
- 7:45 p. m.—"Musical For-Get-Me-Not's."
- 8:00 p. m.—Vedol Vodvil.
- 8:30 p. m.—Studio program.
- 9:00 p. m.—"The Mission Isle of Golden Dreams."
- 9:30 p. m.—Don Lee Symphony.
- 10:00 p. m.—"Schwartz Ginger Band."
- 10:20 p. m.—Anson Weeks' Hotel Mark Hopkins' Orch.
- 11:00 p. m.—Val Valente and his Roof Garden Orch.

**SATURDAY, AUGUST 2**

- 7:30 a. m.—Capt. Vacation—Santa Cruz.
- 8:00 a. m.—Adventures of Helen and Mary, CBS.\*

(Continued on Page 42)



HELEN O'NEILL

# KTAB

Bob Roberts  
General Manager  
Walter J. Rudolph  
Musical Director  
Helen O'Neill  
Program Director

## DAILY EXCEPT SUNDAY

- 7:00 a. m.—Studio program. Frank Wright.  
9:00 a. m.—Morning Prayer Services.  
8:30 a. m.—Talk by Doctor (ex. Mon., Fri. & Sat.).  
10:00 a. m.—Household Hour with Alma LaFarr (except Saturday).  
10:30 a. m.—Dr. Corley.  
11:00 a. m.—Studio program.  
1:00 p. m.—Chapel of Chimes.  
1:45 p. m.—Studio program.  
2:40 p. m.—Baseball from Recreation Park (ex. Mon.).  
1:45 p. m.—Studio program (except Monday).  
5:00 p. m.—The Story Man and His Air Castle.  
6:15 p. m.—Studio program (except Saturday).  
6:30 p. m.—Brother Bob's Frolic.  
6:30 p. m.—Chapel of Chimes.  
9:30 p. m.—Studio.  
10:30 p. m.—Dance Orchestra from Sweet's Ballroom (except Monday).  
11:30 p. m.—Dance Records.

## SUNDAY, JULY 27

- 9:00 a. m.—Dr. B. L. Corley.  
10:00 a. m.—Bible Class from 10th Ave. Baptist Church.  
11:00 a. m.—Church Services from 10th Ave. Baptist Church.  
12:30 p. m.—Chapel of Chimes.  
1:00 p. m.—Church of Latter Day Saints.  
1:30 p. m.—Master's Album.  
2:30 p. m.—Novelty recordings.  
3:00 p. m.—Studio program.  
4:00 p. m.—Marina Tea Room program.  
4:30 p. m.—Musical Appreciation hour.  
5:00 p. m.—Chapel of Chimes.  
6:00 p. m.—Brunswick hour.  
6:30 p. m.—Tindall lecture.  
7:00 p. m.—Joan Ray, contralto; Jane Sargent Sands.  
7:30 p. m.—Chapel of Chimes organ selections.  
7:45 p. m.—Church Services from 10th Ave. Baptist Church.  
9:15 p. m.—Chapel of Chimes.  
9:30 p. m.—Madelaine O'Brien, soprano; Jane Sargent Sands.  
10:00 p. m.—Studio program.  
10:30 p. m.—Sweet's Ballroom Orchestra.

## MONDAY, JULY 28

- 8:00 a. m.—Recordings.  
8:30 a. m.—Town Cryer—Dance records.  
1:30 p. m.—Julia Hayes.  
2:30 p. m.—Musical Appreciation hour.  
3:00 p. m.—Alice Blue "Organ Echoes." with Mabel Payne, soloist.  
3:30 p. m.—Novelty recordings.  
4:00 p. m.—Studio program.  
7:00 p. m.—Dr. Heady—psychologist.  
7:30 p. m.—Alice Blue "Organ Echoes."  
7:45 p. m.—Alice Blue, piano.  
8:00 p. m.—Poem Picture—John Teel, haritone.  
9:00 p. m.—Flashlights of Yesterday.  
10:00 p. m.—Alice Blue "Organ Echoes."

## TUESDAY, JULY 29

- 8:00 a. m.—Dr. Heady—psychologist.  
8:30 a. m.—Recordings.  
1:30 p. m.—Julia Hayes.  
2:30 p. m.—Records.  
4:45 p. m.—Studio program.  
7:00 p. m.—Recordings.  
7:30 p. m.—Alice Blue at the organ.  
7:45 p. m.—Alice Blue and Carl Tobin, tenor.  
8:00 p. m.—"Highway Highlights."  
9:00 p. m.—Orchestra with Madelaine O'Brien.  
10:00 p. m.—"Organ Echoes" with Alice Blue.

## San Francisco—560 Kc.

1000 WATTS—535.4 METERS  
Official Pickwick State Station  
Owned and Operated by the Associated Broadcasters, Inc.  
Pickwick Terminal Hotel, Fifth and Mission Sts.  
Telephone Garfield 4700

### WEDNESDAY, JULY 30

- 8:00 a. m.—Recordings.  
8:30 a. m.—Studio Program.  
1:30 p. m.—Julia Hayes.  
1:45 p. m.—Studio program.  
2:30 p. m.—Records.  
7:00 p. m.—Dr. Heady—psychologist.  
7:30 p. m.—Alice Blue "Organ Echoes."  
7:45 p. m.—Memory Bouquet with Harry McKnight, tenor; Joan Ray.  
8:30 p. m.—Pepper Box program.

### THURSDAY, JULY 31

- 8:00 a. m.—Dr. Heady—psychologist.  
8:30 a. m.—Recordings.  
1:00 p. m.—Chapel of Chimes.  
1:30 p. m.—Julia Hayes.  
4:45 p. m.—Studio program.  
7:00 p. m.—Recordings.  
7:30 p. m.—Alice Blue—"Organ Echoes."  
8:00 p. m.—Miniatures with Joan Ray, contralto.  
9:00 p. m.—Orchestra with Harry McKnight, tenor, and Jane Sargent Sands.  
10:00 p. m.—Current Events and Book Review.  
10:15 p. m.—"Organ Echoes" with Alice Blue.

### FRIDAY, AUGUST 1

- 8:30 a. m.—Studio program.  
1:30 p. m.—Julia Hayes.  
1:45 p. m.—Studio program.  
2:30 p. m.—Recordings.  
4:45 p. m.—Studio program.  
7:00 p. m.—Dr. Heady—psychologist.  
7:30 p. m.—Lou Emmel, popular singer; Alice Blue, pianist.  
7:45 p. m.—Alice Blue—"Organ Echoes."  
8:00 p. m.—"Highway Highlights" with Madelaine O'Brien.  
9:00 p. m.—Lou Emmel's Brevities with Carl Tobin, tenor.  
9:30 p. m.—Orchestra with Joan Ray, contralto.

### SATURDAY, AUGUST 2

- 8:00 a. m.—Dr. Heady—psychologist.  
8:30 a. m.—Studio program.  
1:30 p. m.—Recordings.  
1:45 p. m.—Studio program.  
2:30 p. m.—Records.  
4:45 p. m.—Studio program.  
7:00 p. m.—Recordings.  
7:30 p. m.—Vacation program.  
7:45 p. m.—Dorothy Nichols, cellist; Alice Blue, pianist.  
8:00 p. m.—Walter J. Rudolph, concert pianist.  
8:30 p. m.—Orchestra with Carl Tobin, tenor.  
9:30 p. m.—Orchestra with Lou Emmel, singer, and Alice Blue.

## KFRC Program

(Continued from Page 41)

- 9:15 a. m.—Georgia O. George.  
9:30 a. m.—Junior Artists program.  
10:00 a. m.—Song Recital from KHJ.  
11:00 a. m.—Auditions and Church Announcements.  
1:45 p. m.—Edna Fischer, pianist.  
2:00 p. m.—Tom, Dick and Harry. CBS.\*  
2:15 p. m.—Edna Fischer and Norman Nelson.  
2:45-4:45 p. m.—CBS.\*  
5:00 p. m.—Hank Simmon's Show Boat. CBS.\*  
6:00 p. m.—Paramount Public Radio Hour, CBS.\*  
7:00 p. m.—Edna Fischer, "Piano Moods."  
7:15 p. m.—Will Osborne and his Orchestra. CBS.\*  
7:30 p. m.—Guy Lombardo and his Royal Canadians, CBS.\*  
8:00 p. m.—Williams Oil-O-Matic.  
8:30 p. m.—Musical Cocktails.  
9:00 p. m.—Auto Races from Ascot Speedway.  
10:00 p. m.—Frank Watanabe.  
10:10 p. m.—Dance Music.  
10:20 p. m.—Anson Weeks and his Hotel Mark Hopkins Orchestra.  
11:10 p. m.—Earl Burnett's L. A. Biltmore Orchestra.



The essential features of these programs are identical with those sent us by the stations



WILLIAM L. NORVELL

# KEX Portland, Oregon—1180 Kc.

5000 WATTS—254.1 METERS  
Owned and Operated by WESTERN BROADCASTING COMPANY  
Member of Northwest Broadcasting System, Inc.  
Terminal Sales Building

William L. Norvell  
Station Manager

## DAILY EXCEPT SUNDAY

- 7:00 a. m.—Morning Serenaders.
- 8:00 a. m.—The Clock, Oregon Journal News.
- 9:00 a. m.—Classified.
- 10:00 a. m.—Town Topics, Veiva Weller.
- 12:05 p. m.—Happy Hour Girls.
- 1:05 p. m.—Ron's Rhythm Review.
- 1:30 p. m.—Castle Organ Concert.
- 2:00 p. m.—Dental Lecture.
- 2:30 p. m.—Vagabond's Newsreel.
- 3:30 p. m.—Song Recital (except Tuesday).
- 4:30 p. m.—Warner Stone's Orch. (except Saturday).
- 5:30 p. m.—Baron Keyes' Air Castles (except Saturday)
- 5:45 p. m.—Old Timers.
- 10:00 p. m.—The Angelus.
- 10:30 p. m.—Jack and Jill Tavern Orchestra.
- 11:30 p. m.—Time, Weather, Police Reports.
- 11:40 p. m.—Midnight Revelers; Requests. (Thursday at 12:00.)
- 3:00 a. m.—Sign Off.

## SUNDAY, JULY 27

- 8:00 a. m.—Concert recordings.
- 9:00 a. m.—Tillie the Toiler.
- 9:30 a. m.—Concert recordings.
- 11:00 a. m.—Castle Organ concert.
- 1:00 p. m.—Neapolitan concert.
- 3:00 p. m.—Lyric Trio, NBS.\*
- 4:00 p. m.—Songs of Today, NBS.\*
- 5:00 p. m.—Concert recordings.
- 5:30 p. m.—Radio Gospel Hour.
- 6:00 p. m.—Hour on Broadway, NBS.\*
- 7:00 p. m.—Silent period.
- 8:00 p. m.—Imperial Grand Orchestra, NBS.\*
- 9:00 p. m.—Portland Community Chest program.
- 9:30 p. m.—Los Gauchos Argentines, NBS.\*
- 11:00 p. m.—Warner Stone's Dance Orchestra.
- 12:00 midnight—Castle Organ concert.

## MONDAY, JULY 28

- 4:30 p. m.—Warner Stone's Orchestra; Arcweld Manufacturing Co.
- 5:00 p. m.—Male Quartet concert.
- 6:00 p. m.—Harpers Corners, NBS.\*
- 6:30 p. m.—Hometowners Orchestra, NBS.\*
- 7:00-8:00 p. m.—Silent period.
- 8:00 p. m.—Dance recordings.
- 8:15 p. m.—Farmers' Radio Service Club.
- 8:30 p. m.—Whirlwinds Orchestra, NBS.\*
- 9:00 p. m.—Neapolitans, NBS.\*

## TUESDAY, JULY 29

- 5:00 p. m.—Negro Melodies.
- 6:00 p. m.—The Six O'Clock Steppers.
- 7:00-8:00 p. m.—Silent period.
- 8:00 p. m.—Dance concert.
- 8:15 p. m.—Farmers' Radio Service Club.
- 8:30 p. m.—Gold and Silver Ensemble, NBS.\*
- 9:00 p. m.—Musical Comedy Hour, NBS.\*

## WEDNESDAY, JULY 30

- 5:00 p. m.—Band concert.
- 6:00 p. m.—Harpers Corners, NBS.\*
- 6:30 p. m.—Dubols Motor Corp.
- 7:00-8:00 p. m.—Silent period.
- 8:00 p. m.—Dance concert.
- 8:15 p. m.—Farmers' Radio Service Club.
- 8:30 p. m.—Harmony Aces, NBS.\*
- 9:00 p. m.—Damski's Neapolitans Orchestra, NBS.\*

## THURSDAY, JULY 31

- 5:00 p. m.—Novelty recordings.
- 6:00 p. m.—Hometowners Orchestra, NBS.\*
- 7:00-8:00 p. m.—Silent period.

- 8:00 p. m.—Dance program.
- 8:15 p. m.—Farmers' Radio Service Club.
- 9:00 p. m.—Damski's Wood-Wind Ensemble, NBS.\*

## FRIDAY, AUGUST 1

- 5:00 p. m.—Hawaiian concert.
- 5:30 p. m.—Baron Keyes' Air Castles; Union Oil Co.
- 5:45 p. m.—Old Timers; Keller Furnituro Co.
- 6:00 p. m.—Harpers Corners, NBS.\*
- 6:30 p. m.—Vic Meyers' Recording Orchestra, NBS.\*
- 7:00-8:00 p. m.—Silent period.
- 8:00 p. m.—Dance program.
- 8:15 p. m.—Farmers' Radio Service Club.
- 9:00 p. m.—Damski's Neapolitans, NBS.\*

## SATURDAY, AUGUST 2

- 4:30 p. m.—Afternoon Classic.
- 6:00 p. m.—Saturday Knights, NBS.\*
- 8:00 p. m.—Dance program.
- 8:15 p. m.—Farmers' Radio Service Club.
- 8:30 p. m.—Dance program.
- 8:45 p. m.—Bob and Monte, Renton program.
- 9:00 p. m.—Warner Stone's Orchestra.

# KHJ Program

(Continued from Page 27)

- 6:00 p. m.—Planoville.
- 6:30 p. m.—Arrowhead Springs Beverage Company.
- 7:00 p. m.—Don Lee Symphony.
- 7:30 p. m.—Guy Lombardo and his Royal Canadians, CBS.\*
- 8:00 p. m.—Gen. Petroleum Violet Ray Merry Makers.
- 9:00 p. m.—Don Lee Symphony.
- 9:30 p. m.—Singing Strings.

## FRIDAY, AUGUST 1

- 8:00 a. m.—Columbia Revue, CBS.\*
- 9:15 a. m.—Richardson's.
- 9:30 a. m.—Elvia, June and Nell.
- 10:30 a. m.—American Institute of Food Products.
- 10:45 a. m.—Ted White.
- 11:00 a. m.—Scientific Laboratories.
- 11:15 a. m.—Columbia Ensemble, CBS.\*
- 11:30 a. m.—Folger Coffee Co.
- 11:45 a. m.—Normalizer.
- 12:45 p. m.—California Home Extension.
- 1:00 p. m.—Captivators, CBS.\*
- 3:00 p. m.—Clella Collins.
- 3:15 p. m.—School Program.
- 3:30 p. m.—Council of International Relations.
- 4:00 p. m.—Nit Wits, CBS.\*
- 4:30 p. m.—Charlie Wellman.
- 5:30 p. m.—Bld. Furniture Co.
- 6:00 p. m.—Columbia Male Chorus, CBS.\*
- 6:30 p. m.—Gold Medal Fast Freight, CBS.\*
- 7:00 p. m.—Fidelity Savings & Loan Association.
- 7:30 p. m.—Dance Orchestra.
- 8:00 p. m.—Veedol Odvill (from KFRC).
- 8:30 p. m.—Don Lee Symphony.
- 9:30 p. m.—Orang and singers.

## SATURDAY, AUGUST 2

- 8:00 a. m.—Adventures of Helen and Mary.
- 8:40 a. m.—Terpezoue—Records.
- 9:15 a. m.—Georgia O. George.
- 9:30 a. m.—Southern California Music Co.
- 10:00 a. m.—Novelty Program, Spelling Bee; Elvia Allman.
- 11:00 a. m.—Recordings.
- 11:15 a. m.—CBS.\*
- 11:30 a. m.—Folger Coffee program.
- 7:00 p. m.—KHJ Review.
- 8:00 p. m.—Williams Oil-O-Matics.
- 8:30 p. m.—"Musical Cocktail," courtesy North American Building and Loan Association.
- 9:00 p. m.—Legion Ascot Speedway, auto races.

The essential features of these programs are identical with those sent us by the stations



THOMAS SMITH

# KJR Seattle, Washington—970 Kc.

309.1 METERS—5000 WATTS

Northwest Broadcasting System, Inc.

Thomas F. Smart, Manager I. Schaefer, Press Relations  
Studio Telephone, Seneca 1515—Office Main 2495  
Home Savings Building

Henri Damski  
Musical Director  
John Pearson  
Al Schuse  
Thomas F. Smith  
Chief Announcer  
Frank Coombs  
Ken Stuart  
Announcers  
J. N. Cope  
Technical Director

10:30 p. m.—Bits of Harmony.  
11:00 p. m.—Bob Newell's Plantation Orchestra.

## TUESDAY, JULY 29

10:00 a. m.—Glen Eaton, tenor; Marjorie Robillard, piano.  
11:00 a. m.—Classical program.  
1:45 p. m.—Chet Cathers, baritone; Marjorie Robillard, piano.  
6:00 p. m.—The Six O'Clock Steppers; "Dud and Duane," saxophone.  
7:00 p. m.—Orpheus Ensemble; Betty Andersen, soprano; Hubert Graf, harp; Sydney Dixon, tenor.  
8:00 p. m.—J. E. Drain & Co. Gold and Silver Ensemble; J. E. Drain, speaker.  
9:00 p. m.—Musical Comedy Hour; Betty Andersen and George Maddux, duets; Sydney Dixon, tenor.  
11:00 p. m.—Vic Meyers' Club Victor Orch.

## WEDNESDAY, JULY 30

10:00 a. m.—Elmore Vincent, tenor; Marjorie Robillard, piano.  
6:00 p. m.—Harpers Corners.  
6:30 p. m.—Hometowners; Ragnar Salldin, accordion.  
7:30 p. m.—Old Songs for New.  
8:00 p. m.—Combo Orchestra; Ukelele Bob.  
8:30 p. m.—Harmony Aces; Eulala Dean, blues singer.  
9:00 p. m.—Neapolitans; Betty Andersen, soprano; Jan Russell, violin; Jean Kantner, baritone.  
10:30 p. m.—Music a la Carte.

## THURSDAY, JULY 31

1:00 p. m.—Musical program.  
1:45 p. m.—Robert Monsen, tenor.  
6:00 p. m.—American Institute of Banking.  
6:15 p. m.—Hometowners Orch.; Ed Sheldon, banjo.  
7:00 p. m.—Kelpine Twins.  
7:30 p. m.—Dream Melodies; Betty Andersen, soprano; Sydney Dixon, tenor; Jan Naylor, cello; Stephanie Lewis and Grant Merrill, songalogue.  
8:00 p. m.—Hits of Yesterday; Frank Horsfal, saxophone; Captivators Male Quartet; Glen Eaton, tenor.  
9:00 p. m.—Damski's Wood-Wind Ensemble.  
11:00 p. m.—Vic Meyers' Club Victor Orch.

## FRIDAY, AUGUST 1

10:00 a. m.—Robert Monsen, tenor; Marjorie Robillard, piano.  
1:45 p. m.—Glen Eaton, tenor; Marjorie Robillard, piano.  
6:00 p. m.—Harpers Corners.  
6:30 p. m.—Vic Meyers' Recording Orch.  
7:30 p. m.—Thirty Minutes with the Masters; Harold Strong piano; Sydney Dixon, tenor.  
8:00 p. m.—Gold and Silver Ensemble; Ernest Gill, violin; J. E. Drain, speaker.  
9:00 p. m.—Damski's Neapolitans; Betty Andersen, soprano; Sydney Dixon, tenor; Signor Merigglioli, flute; Sam Meyer, violin.  
10:30 p. m.—Bye Bye Blues; Chet Cathers and Ivan Ditmars.

## SATURDAY, AUGUST 2

10:00 a. m.—Elmore Vincent, tenor; Grant Merrill, piano.  
1:15 p. m.—Uncle Frank's Kiddies program; Kelpine Products Company.  
5:05 p. m.—Labor talk.  
5:15 p. m.—West Coast Air Transport talk.  
6:00 p. m.—Saturday Knights; Pearle Dempsey, piano; Robert Monsen, tenor; Art Pease, accordion.  
7:00 p. m.—Fiji Hour.  
8:00 p. m.—The Gondoliers; Stephanie Lewis, soprano.  
9:00 p. m.—Tucker's Everstate Band.  
11:00 p. m.—Tucker's Everstate Band.

## DAILY EXCEPT SUNDAY

7:00 a. m.—Music, News.  
8:00 a. m. and 11:00 p. m.—Time Signals.  
8:30 a. m.—Thrill Home of the Air.  
9:00 a. m.—Morning Devotional Services (ex. Wednesday and Friday).  
9:40 a. m.—Sally Jo Walker and Grant Merrill.  
10:15 a. m.—Beauty Talk, Helen Andrewa.  
12:00 noon.—World in Review (except Tuesday).  
1:00 p. m.—Musical program.  
2:00 p. m.—Arcweld Entertainers.  
2:45 p. m.—Baseball Game (except Monday).  
5:15 p. m.—Aircastles in the Land of Make-Believe (except Saturday).  
5:50 p. m.—Garden Talk; Cecil Solly.  
10:00 p. m.—Ken Stuart's Sunshine program; Ivan Ditmars, piano.  
10:30 p. m.—Whirlwinds (except Monday).  
12:00 midnight to 3:00 a. m.—Midnight Revelers.

## SUNDAY, JULY 27

8:00 a. m.—Musical program.  
9:00 p. m.—"Joe Comlc," Reading the Funny Papers.  
10:00 a. m.—El Monte Musical Hour; String Orchestra Playing entire Light Opera.  
12:00 noon.—Classical program.  
2:00 p. m.—Emmanuel Tabernacle.  
2:30 p. m.—Music a la Carte, Franca La Pine, soprano.  
3:00 p. m.—Lyric Trio—Jan Naylor, cello; Sam Meyer, violin; Hubert Graf, harp; Stephanie Lewis, soprano.  
4:00 p. m.—Songs of Today.  
5:00 p. m.—Seattle Park Band concert.  
6:00 p. m.—Hour on Broadway, George and Gus in Topics of the Day.  
7:00 p. m.—Hometowners Orch.; Glen Eaton, tenor; Art Pease, accordion; Captivators Male Quartet.  
8:00 p. m.—Damski's Imperial Grand Orch.; Betty Andersen, soprano; Jean Kantner, baritone; Harold Strong, piano.  
9:00 p. m.—Los Gauchos Argentine; Ed Sheldon, mandolin; Stephanie Lewis, soprano.  
10:00 p. m.—Angelus Ensemble; Sydney Dixon, tenor; Hubert Graf, harp; Jean Kantner, baritone; Mahel Mohrman, piano.  
11:00 p. m.—Tucker's Everstate Band.

## MONDAY, JULY 28

10:00 a. m.—Robert Monsen, tenor; Marjorie Robillard, piano.  
1:45 p. m.—Glen Eaton, tenor; Marjorie Robillard.  
3:15 p. m.—Stonewall Jackson, guitar.  
6:00 p. m.—Harpers Corners.  
6:30 p. m.—Hometowners Orch.; Glen Eaton, tenor; Ed Sheldon, banjo.  
7:00 p. m.—Kelpine Twins.  
7:30 p. m.—Dream Melodies.  
8:00 p. m.—Whirlwinds Orchestra; Ukelele Bob; Chet Cathers, baritone; Elmore Vincent, tenor; Eulala Dean, blues singer.  
9:00 p. m.—Damski's Neapolitans; Betty Andersen, soprano; Sydney Dixon, tenor.



GEORGE GOOFREY

# KOMO

## Seattle, Wash.—920 Kc.

FISHER'S BLEND STATION—1000 WATTS—325.9 METERS  
METROPOLITAN CENTER, SEATTLE  
Telephone Elliott 5609

DAILY EXCEPT SUNDAY

7:30 a. m.—Y. M. C. A. Health Exercises.  
7:40 a. m.—Inspirational Services.  
7:45 a. m.—Sunrise Serenaders, NBC.  
8:00 a. m.—Shell Happy Time.  
10:30 a. m.—NBC, Woman's Magazine of the Air (except Thursday).  
12:00 noon—U. S. Farm Talk (except Saturday).  
12:15 p. m.—Totem Broadcasters and Prudence Penny.  
12:30 p. m.—Orchestra and Soloists.  
7:00 p. m.—Garden Patch Children's program (except Tues. and Sat., Fri. 7:15).  
7:30 p. m.—Amos 'n' Andy.  
12:00 midnight—Fox Fifth Avenue Theater program.

### SUNDAY, JULY 27

9:00 a. m.—Fox 5th Ave. Theatre Organ Recital.  
9:00 a. m.—International Bible Students' Assn.  
1:00 a. m.—Vocal Recital.  
1:15 a. m.—Plymouth Congregational Church Service.  
2:15-5:45 p. m.—NBC.\*  
5:45 p. m.—P. S. Navigation Co., Artistic Ensemble.  
5:15 p. m.—Studebaker Champions, NBC.\*  
7:45 p. m.—Sunday at Seth Parker's, NBC.  
7:15 p. m.—Garden Patch program.  
7:45 p. m.—Artistic Ensemble.  
8:00 p. m.—First Church of Christ, Scientist.  
9:00-11:00 p. m.—NBC.\*

### MONDAY, JULY 28

9:00 a. m.—Banjo Duo.  
9:15 a. m.—Julia Hayes Helpful Hints to Housewives.  
9:30 a. m.—Fox 5th Ave. Theatre Organ Recital.  
9:00 a. m.—Way to a Man's Heart.  
9:05 a. m.—Josephine Gibson Food Talk, NBC.\*  
1:00 p. m.—Concert Orchestra and vocalists.  
1:30 p. m.—Blue Boys, NBC.\*  
2:00 p. m.—Salt Lake Tabernacle Choir and Organ Recital, NBC.\*  
2:30 p. m.—Popular Orchestra and vocalists.  
3:00 p. m.—Old Time Orchestra.  
3:30 p. m.—Phil Cook, the Quaker Man, NBC.\*  
3:45 p. m.—Artistic Ensemble.  
4:00 p. m.—NBC.\*  
4:30 p. m.—Crime Prevention Hour, NBC.\*  
4:45 p. m.—Stock Quotations  
5:00-6:30 p. m.—NBC.\*  
6:30 p. m.—Artistic Ensemble and vocalists.  
7:45 p. m.—Mixed Quartet.  
8:00 p. m.—Shell Symphonists, NBC.\*  
9:00 p. m.—Concert Orchestra and vocalists.  
9:00 p. m.—Singing Strings.  
9:05 p. m.—Totem Broadcasters, News Flashes.  
1:00 p. m.—Tiny Burnett's Dance Orchestra.

### TUESDAY, JULY 29

9:00 a. m.—Gordon and Mary.  
9:15 a. m.—Julia Hayes Helpful Hints to Housewives.  
9:30 a. m.—William Don, NBC.\*  
9:45 a. m.—Old Witch Company.  
9:00 a. m.—Way to a Man's Heart.  
9:05 a. m.—Bass-Hueter Paint Co., NBC.\*  
1:30 a. m.—Associated Oil Co., Harmony Kings.  
1:45 a. m.—The Canny Cook, NBC.\*  
1:00 p. m.—Artistic Ensemble.  
1:30 p. m.—Hotel St. Francis Orchestra, NBC.\*  
2:00 p. m.—Orchestra and vocalists.  
2:30 p. m.—Concert Orchestra.  
3:15 p. m.—Laws that Safeguard Society, NBC.\*  
3:30 p. m.—Phil Cook, the Quaker Man, NBC.  
3:45 p. m.—Concert Orchestra.  
4:45 p. m.—Totem Broadcasters, Stock Quotations.  
5:00-7:00 p. m.—NBC.\*  
7:00 p. m.—Artistic Ensemble.  
7:45 p. m.—Sperry Sweethearts, NBC.  
8:00 p. m.—Gold Shield Little Symphony Hour.  
9:00 p. m.—Totem Broadcasters, News Flashes.  
9:15 p. m.—Fisher's Blend Hour.  
9:15 p. m.—Dance Orchestra and vocalists.  
1:15 p. m.—Laughner-Harris St. Francis Hotel Dance Orchestra, NBC.

### WEDNESDAY, JULY 30

9:00 a. m.—Banjo Duo.  
9:15 a. m.—Julia Hayes Helpful Hints to Housewives.  
9:30 a. m.—Gold Medal Home Service Talk, NBC.\*  
9:45 a. m.—Way to a Man's Heart.  
9:00 a. m.—Harmony Kings.  
9:05 a. m.—Mary Hale Martin Hour, NBC.\*  
1:30 a. m.—Evening Star, NBC.\*

1:00 p. m.—Totem Broadcasters, Talk, NBC.\*  
1:15 p. m.—Concert Orchestra and Vocal Trio.  
1:30 p. m.—Tea Timers, NBC.  
2:00 p. m.—Concert Orchestra.  
2:30 p. m.—Popular Orchestra.  
3:30 p. m.—Phil Cook, the Quaker Man, NBC.\*  
3:45-4:45 p. m.—NBC.\*  
4:45 p. m.—Totem Broadcasters, Stock Quotations.  
5:00-7:00 p. m.—NBC.\*  
7:45 p. m.—Sea Chanters.  
8:00 p. m.—Let's Get Associated, NBC.  
8:30 p. m.—Sargon Cycle of Song.  
9:00 p. m.—Chrysler program.  
9:15 p. m.—Violin and Piano Solos.  
9:30 p. m.—Camel Pleasure Hour, NBC.\*  
10:30 p. m.—Dance Orchestra.  
11:30 p. m.—Totem Broadcasters, News Flashes.  
11:45 p. m.—Laughner-Harris Dance Orchestra, NBC.

### THURSDAY, JULY 31

9:00 a. m.—Gordon and Mary.  
9:15 a. m.—Julia Hayes Helpful Hints to Housewives.  
9:30 a. m.—"Safeguarding Nation's Food and Drug Supply."  
9:45 a. m.—Way to a Man's Heart.  
10:00 a. m.—Woman's Magazine of the Air, NBC.\*  
11:00 a. m.—Drama of Music.  
11:45 a. m.—The Canny Cook, NBC.  
2:00 p. m.—Out of a Clear Sky.  
2:30 p. m.—Popular Orchestra.  
3:00 p. m.—Concert Orchestra and vocalists.  
3:30 p. m.—Phil Cook, the Quaker Man, NBC.  
3:45 p. m.—Totem Broadcasters, Stock Quotations.  
4:00-7:00 p. m.—NBC.\*  
7:45 p. m.—Standard Symphony Hour, NBC.  
8:45 p. m.—Mozart Concert Hour.  
9:45 p. m.—Totem Broadcasters, News Flashes.  
10:00 p. m.—Dance Hour.  
11:00 p. m.—Laughner-Harris Orchestra, NBC.

### FRIDAY, AUGUST 1

9:00 a. m.—Blues Chasers.  
9:15 a. m.—Julia Hayes Helpful Hints to Housewives.  
9:30 a. m.—Gold Medal Talk, NBC.\*  
9:45 a. m.—Way to a Man's Heart.  
10:00 a. m.—Blues Chasers.  
10:15 a. m.—Josephine Gibson Food Talk, NBC.\*  
11:30 a. m.—Artistic Ensemble.  
12:00 noon—Radio Visit to Pacific Northwest Dairymen and Poultrymen.  
2:30 p. m.—Artistic Ensemble.  
3:15 p. m.—Universal Safety Series, NBC.\*  
3:30 p. m.—Phil Cook, the Quaker Man, NBC.  
3:45 p. m.—Totem Broadcasters, Stock Quotations.  
4:00-7:15 p. m.—NBC.\*  
7:15 p. m.—Garden Patch program.  
7:45 p. m.—Vocalists.  
8:00 p. m.—News Reel Theatre of the Air.  
8:30 p. m.—"Mac and Ai."  
8:45 p. m.—Tone Pictures, NBC.\*  
9:15 p. m.—Kodak Week End program, NBC.  
9:45 p. m.—Latin Nights.  
10:45 p. m.—Totem Broadcasters, News Flashes.  
11:00 p. m.—Tiny Burnett's Dance Orchestra.

### SATURDAY, AUGUST 2

9:00 a. m.—Gordon and Mary.  
9:15 a. m.—Fox 5th Ave. Theatre, organ recital.  
10:15 a. m.—Fisher Flouring Mills Co. vocal recital.  
11:30 a. m.—Popular Orchestra and soloists.  
1:30 p. m.—Tea Timers, NBC.\*  
2:00 p. m.—Concert Orchestra and vocalists.  
4:00 p. m.—Totem Broadcasters, Stock Quotations.  
4:15 p. m.—Vocal Recital.  
4:30-10:15 p. m.—NBC.\*  
10:15 p. m.—Totem Broadcasters, News Flashes.  
10:30 p. m.—Spotlight Revue, NBC.  
11:30 p. m.—RKO Theatrical Frolic.

See Page 22 for NBC Program



## NBC Program

(Continued from Page 22)

- 12:00 noon.—Hotel Sir Francis Drake Orchestra.  
 1:00 p. m.—Series of Talks.  
 1:15 p. m.—Breen and De Rose.  
 1:30 p. m.—Ballads.  
 1:45 p. m.—Tea Timers.  
 2:00 p. m.—Black and Gold Room Orchestra.  
 2:30 p. m.—Matinee Time.  
 3:30 p. m.—Phil Cook, The Quaker Man.  
 3:45 p. m.—Musical Echoes.  
 4:00 p. m.—Fleischman Hour—Rudy Vallee.  
 5:00 p. m.—Arco Birthday Party—honors Herman Melville, author.  
 5:30 p. m.—Maxwell House Ensemble, Deep River Choir.  
 6:00 p. m.—RCA Hour presents semi-popular music, dance music and concert music by three orchestras.  
 7:00 p. m.—The Speedway to Happiness—Harold Dana and two pianos.  
 7:45 p. m.—Standard Symphony Hour.  
 8:00 p. m.—B. A. Rolfe and His Lucky Strike Dance Orchestra.  
 8:45 p. m.—Parks Sisters.  
 9:00 p. m.—Memory Lane.  
 9:30 p. m.—The Olympians.  
 10:00 p. m.—The National Concert Orchestra and soloists.

## FRIDAY, AUGUST 1

- 9:30 a. m.—Betty Crocker Gold Medal Home Service Talks.  
 9:45 a. m.—Morning Glories.  
 10:00 a. m.—The Recitalists.  
 10:15 a. m.—Josephine B. Gibson, food talk.  
 11:30 a. m.—NBC Philharmonic Organ Recital.  
 12:00 noon.—Pacific Feature Hour presents Mlle. Berthe Baret, violinist.  
 1:00 p. m.—Rembrandt Trio.  
 1:30 p. m.—Hotel St. Francis Salon Orchestra.  
 2:00 p. m.—Black and Gold Room Orchestra.  
 2:30 p. m.—The Blue Boys.  
 3:00 p. m.—Genia Zlitsinska.  
 3:15 p. m.—Universal Safety Series.  
 3:30 p. m.—Phil Cook, The Quaker Man.  
 3:45 p. m.—News Service.  
 4:00 p. m.—Cities Service Concert Orchestra—Jessica Dragonette and the Cavaliers.  
 5:00 p. m.—Interwoven Pair.  
 5:30 p. m.—Armour Program—Concert orchestra and 18 voice chorus.  
 6:00 p. m.—Armstrong Quakers—Duets, quartets and one solo.  
 6:30 p. m.—Raleigh Revue—fast moving variety program.  
 7:00 p. m.—Elgin Program—music and narrative.  
 7:15 p. m.—Mayor Rolph Campaign Program.  
 7:45 p. m.—NBC Concert Favorites.  
 8:00 p. m.—Ole and the Girls—Humorous.  
 8:15 p. m.—The Magic Crystal.  
 8:45 p. m.—Tone Picture—The Rounders, male quartet.  
 9:15 p. m.—Modern Melodies—Arrangements of semi-classics.  
 9:45 p. m.—John and Ned.  
 10:00 p. m.—The Dragon in the Sun—Mystery play.  
 10:30 p. m.—Pacific Nomads.

## SATURDAY, AUGUST 2

- 9:30 a. m.—The Entertainers.  
 9:45 a. m.—National Farm and Home Hour.  
 11:30 a. m.—Chicago Serenade.  
 12:00 noon.—Hotel Sir Francis Drake Orchestra.  
 1:00 p. m.—Dixie Dandles—Three solos and two quartets.  
 1:30 p. m.—Tea Timers.  
 1:45 p. m.—Captain "Bill" Royle.  
 2:00 p. m.—REBROADCAST OF PROGRAM OF DANCE MUSIC FROM LONDON.  
 2:45 p. m.—William Don, English comedian.  
 3:00 p. m.—Whyte's Orchestra.  
 3:30 p. m.—The Fuller Man—1910 and 1930 song hits.  
 4:00 p. m.—Pop Concert.  
 4:30 p. m.—Goldman Band Concert.  
 5:30 p. m.—General Electric Band—Arthur Pryor, dir.  
 6:00 p. m.—B. A. Rolfe and His Lucky Strike Dance Orchestra.  
 7:00 p. m.—Voice of Pan—Flute solos.  
 7:45 p. m.—Sperry Hotcakes.  
 8:00 p. m.—Nights in Spain—Orchestra and soloist.  
 8:00 p. m.—Gilmore Circus.  
 8:30 p. m.—Hollywood Bowl Symphony Concert, conducted by Bernardino Molinari of Rome.  
 9:00 p. m.—Rainbow Harmonies.  
 9:30 p. m.—Golden Legends—Scott's "Marmion."  
 10:00 p. m.—Spotlight Review—Laughs and music.

## KFI Program

(Continued from Page 23)

- 5:30 p. m.—Old Trusty Dog.  
 6:00 p. m.—Victor Radio Hour, NBC.\*  
 7:00 p. m.—The Speedway to Happiness, NBC.\*  
 7:30 p. m.—Edward Hullinger—"Looking Out Upon the World."  
 7:45 p. m.—Standard Symphony Hour, NBC.\*  
 8:45 p. m.—James Regan and Cast—"Circumstantial Evidence."  
 9:15 p. m.—Winifred Donaldson, contralto.  
 9:30 p. m.—Packard Concert Orchestra, and Rose Dimann, soprano, NBC.\*  
 10:00 p. m.—Packard Concert Orchestra, Pryor Moor director, with Rose Dirmann, soprano soloist.  
 10:30 p. m.—Concert String Ensemble, Hans Whipple director.  
 11:00 p. m.—Laughner-Harris Hotel St. Francis Orchestra, NBC.\*

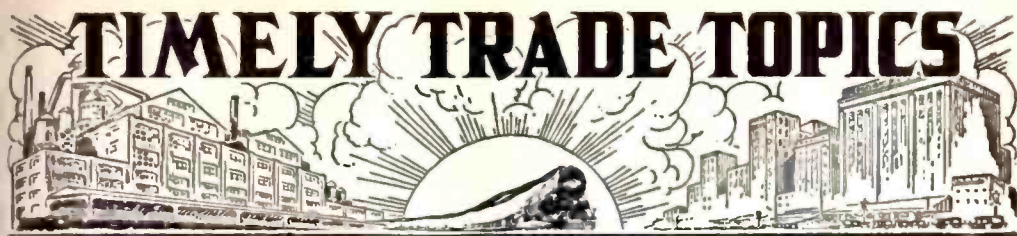
## FRIDAY, AUGUST 1

- 9:00 a. m.—Bess Kilmer's Helpful Hints to Housewives.  
 9:15 a. m.—German lesson by Annette Doherty.  
 9:30 a. m.—Betty Crocker Gold Medal Home Service talks, NBC.\*  
 9:45 a. m.—Mr. and Mrs. C. Godwin, violin and piano, and Grace Hale Beauty talk.  
 10:00 a. m.—Wall Street Journal.  
 10:15 a. m.—Josephine Gibson Food talk, NBC.\*  
 10:30 a. m.—Woman's Magazine of the Air, NBC.\*  
 11:30 a. m.—Sarah Ellen Barnes—talk on Music of Hollywood Bowl.  
 12:30 p. m.—"Seeing Southern California."  
 2:30 p. m.—Winnie Fields Moore, travelogue.  
 2:45 p. m.—Sally and Russell Hill.  
 3:00 p. m.—Herb Seharlin, popular songs; Mrs. Jordan, lecture.  
 3:15 p. m.—Wedgwood Nowell.  
 5:30 p. m.—E. H. Rust, talk.  
 6:00 p. m.—Armstrong Quakers' program, NBC.\*  
 6:30 p. m.—Slavick String Trio.  
 6:45 p. m.—Radio Interference, by G. R. Walters.  
 7:00 p. m.—Bernice Morrison—"Poet of the Air."  
 7:15 p. m.—James Rolph, Jr., campaign talk, NBC.  
 7:30 p. m.—Gordon Bread program.  
 8:00 p. m.—Bernice Morrison—"Poet of the Piano."  
 8:30 p. m.—Two Shades of Blue—Mart and Lill.  
 8:45 p. m.—Tone Pictures, NBC.\*  
 9:15 p. m.—Three Co-Eds.  
 9:30 p. m.—Packard Concert Orchestra, with Evert Stidham, baritone.  
 10:30 p. m.—Bob and Monte—"Buggyride Program."

## SATURDAY, AUGUST 2

- 7:30 a. m.—Gertrude Gusselle, blues, and Karl Brandenburg, tenor.  
 8:15 a. m.—Morning Melodies, NBC.\*  
 8:30 a. m.—Crosscuts from the Log of the Day, NBC.  
 9:00 a. m.—Happy Chappies—Songs of Tomorrow.  
 9:15 a. m.—Wall Street Journal.  
 9:30 a. m.—Mental exercises—Frances Hancock.  
 9:45 a. m.—National Farm and Home Hour, NBC.\*  
 10:30 a. m.—Del Rey Fine Foods program, NBC.\*  
 10:50 a. m.—Woman's Magazine of the Air, NBC.\*  
 11:30 a. m.—Sarah Ellen Barnes—talk on Music of the Hollywood Bowl.  
 2:00 p. m.—Rebroadcast of dance music from London England, NBC.\*  
 2:45 p. m.—Kelley Alexander, baritone.  
 3:15 p. m.—Masked Minstrel's Hour.  
 4:30 p. m.—Two Shades of Blue—Mart and Lill.  
 4:45 p. m.—Don Abbott, tenor.  
 5:00 p. m.—Will E. Wing, Hollywood.  
 6:00 p. m.—Lucky Strike Hour, NBC.\*  
 7:00 p. m.—Forest Lawn program, with "Memories of the Theater" and Eva Olivotti, James Burroughs, Mildred Laughlin, Leslie Brigham, and Pryor Moore's Orchestra.  
 8:00 p. m.—Gilmore Circus, NBC.\*  
 8:30 p. m.—Hollywood Bowl program, NBC.\*  
 10:15 p. m.—George Williams, violinist.  
 10:30 p. m.—Harold Spaulding, tenor.  
 11:00 p. m.—KFI Midnight Frolic.

KGER's news broadcast has been changed from 9 p. m. every night to 8:55 p. m., and Sally's Home Hour over the same station has been lengthened to a full hour every week day at 9 a. m.



Little, but oh my! is an apt description of the compact new "Midget" radio sets which have taken the public by storm.

"Scarcely bigger than a regulation foot-ball, the 'Midget' is nevertheless a complete full-fledged radio in every re-



Lila Lee and Her Midget

fect, simply condensed in size," points out H. R. Curtiss of the company bearing his name, California distributors for the Jackson-Bell Midget Radio. This popular little set is manufactured in Los Angeles.

"How often have you wished for music or entertainment or companionship when such a radio set would have filled the bill exactly? The 'Midget' therefore is the ideal set for the small apartment, the hotel room, the summer cabin, the student's room, or as a second auxiliary set in the home.

"Because of the low price and easy purchase terms, the 'Midget' fills a real

place in radio, providing thousands of people with a convenient, economical means of real radio enjoyment who otherwise would have to forego this pleasure, companionship, and sustaining influence. If you have not seen or heard one of these marvelous 'Midgets,' a surprise and delightful experience awaits you at your nearest radio dealer."



W. C. (Bill) Hitt, the smiling factory representative for Aero-vox products, has returned from a trip throughout the northern territory. He brought back his happy disposition, so things can be so bad in those regions to the north.

Mr. W. Goodwin, general sales manager for the Crowe Name Plate and Manufacturing Company, of Chicago, announced the appointment this last week of Mr. W. B. Knight of 741 South Kohler Street, Los Angeles, as California representative for his company.

The Crowe Name Plate and Manufacturing Company are pioneer manufacturers of escutcheon name plates, dials, etc. Their products are widely used by both local and national manufacturers.

Mr. Goodwin is spending several weeks in Southern California, and remarked that he is more than pleased with the amount of business which they are enjoying in this state.



W. B. Knight



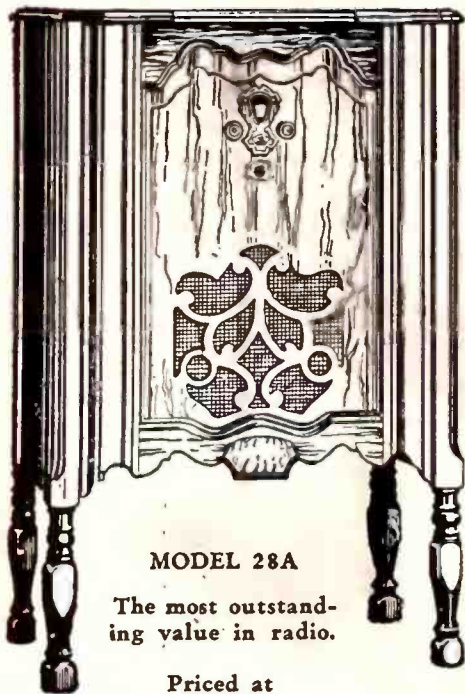


**Here**

**It Is**

UNITED STATES  
**APEX** UNIFIED  
RADIO

SCREEN GRID, OF COURSE • • BY PUBLIC DEMAND



**MODEL 28A**

The most outstanding value in radio.

Priced at

**\$109<sup>50</sup>**

Complete with Tubes  
Installed in Your Home

*Other Apex Models include De Luxe Console 31B at \$135.00, Phonograph-Radio combination at \$182.50, and Electric Remote Control Model 31D at \$192.50. All prices complete with tubes.*

*Exclusive Wholesale Distributor*

**Yale Radio Electric Co.**

1111 Wall Street, Los Angeles

Westmore 3351