

Radio Doings

Trade Mark Reg. U. S. Pat. Off.

New York Office
J. W. HASTIE
 155 East 42nd Street
 Vanderbilt 4661

Los Angeles Office
HORWOOD PUB. CO.
 407 East Pico Street
 Westmore 1401

San Francisco Office
H. H. CONGER CO.
 929-30 Hearst Bldg.
 Garfield 8990

CLOYD MARSHALL, JR., Editor
K. G. ORMISTON, Technical Editor

GEORGE W. MARSHALL, Business Manager
DOROTHY HUMMEL, Studio Editor

Copyright, 1930, by Horwood Publishing Co.

RADIO DOINGS, May 10, 1930. Issued weekly at 407 East Pico, Suite 400, Los Angeles, Calif. Volume 16, No. 20. Subscription \$3.00 a year. Entered as second class matter, November 25, 1922, Los Angeles, Calif., Post Office, under Act of March 3, 1879.

CONTENTS

Radio Topics of the Day.....	9	Around the Dial.....	15
Studio News	11	DX Club	17
Question and Answers.....	13	Time Trade Topics.....	46

DIRECTORY OF DETAILED PROGRAMS

Call Letters	Location	Freq.	Page	Call Letters	Location	Freq.	Page
KECA..	Los Angeles	1430	30	KHJ....	Los Angeles	900	26
KELW..	Burbank	780	30	KJR....	Seattle	970	42
KEX....	Portland	1180	40	KMIC..	Inglewood	1120	36
KFI....	Los Angeles	640	22	KMPC..	Beverly Hills	710	31
KFOX..	Long Beach	1250	34	KMTR..	Hollywood	570	29
KFRC..	San Francisco....	610	38	KNX....	Hollywood	1050	27
KFSD..	San Diego	600	36	KOA....	Denver	830	45
KFSG..	Los Angeles	1120	33	KOL....	Seattle	1270	47
KFVD..	Culver City	1000	29	KOMO..	Seattle	920	43
KFWB..	Hollywood	950	28	KPO...	San Francisco....	680	37
KGB...	San Diego	1330	32	KQW...	San Jose	1010	40
KGEF..	Los Angeles	1300	39	KTAB..	San Francisco....	560	39
KGER..	Long Beach	1360	35	KTBI..	Los Angeles	1300	35
KGFJ..	Los Angeles	1200	32	KTM...	Santa Monica	780	33
KGO...	Oakland	790	37	Columbia Broadcasting System			23
KGW...	Portland	620	44	National Broadcasting Co.			20
				University of So. California			31

HERE IS YOUR STATION DIRECTORY!

You will appreciate RADIO DOINGS, the up-to-the-minute station and program guide, delivered to your home each week. There is no trouble or worry on your part; simply enclose a \$3.00 check with this coupon and RADIO DOINGS will begin at once for a whole year.

Name _____

Address _____

Mail to 407 East Pico St., Los Angeles, Calif.

FIRST As Always

*Any Radio Part or Accessory at Your Command—
Only a Few Hours Away at the Most*

TRANSMITTING, THEATRE, SHORT WAVE, PUBLIC ADDRESS EQUIPMENT

Any Part--Any Time

Alco Loops	Eby Binding Posts	Polymet Condensers
Acme Apparatus	Ekko Ground Clamps	Presto Pickups
Acme Wire	Electrad Products	Preston DX Ground
Advance Crystals	Elkon Chargers	Racon Horns
Aero-Products	Erla Pickups	Radiall Co. Amperites
Aerovox Wireless Products	Essenbee Ball Aerial	Radio Owls
All-American Products	Fidelity Speakers	Ray-O-Vac Batteries
American Beauty Irons	Flewelling Tester	Raytheon Tubes
Amertran Products	Formica Insulation Co.	Readrite Meters
Amperites	Franco Batteries	REL Aparatus
Amsco Condensers	Frost Products	Remler Products
Arcturus Tubes	Goodrich Rubber Panels	Samson Products
Audak Pickups	Gosilco Wire	Sangamo Condensers
Baldwin Units	Hammarlund Products	Sensory Insulators
Baldor Motors	Hedgehog Transformers	Skindervicken Buttons
Benjamin Elec. Mfg. Co.	H-K Sodderdipt Lugs	Silver Mast Antenna
Benwood Linze Rectifiers	Hoosick Parts	Silver-Marshall Products
Birnbach Products	Jefferson Products	Spaulding Bakelite
Bodine Loops and Coils	Karas Products	Sprague Condensers
Branston Honeycomb Coils	Ken-Rad Tubes	Steinitz Eliminators
Cardwell Condensers	Kellogg Parts	Sterling Testers
Carter Products	Kersten Theatre Horns	Super Ball Antennas
CeCo Tubes	Knapp Power Units	Sunset Aerials and Grounds
Celeron Panels	Kodel Products	Sylvania Tubes
C R L Resistance	Kurz-Kasch Dials	Thordarson Transformers
Chicago Kester Solder	Kuprox Chargers	Tom Mack Products
Clarostats	Lynch Leaks	Tower Exercisers
Corning Pyrex Insulators	Magnavox Dynamics	Universal Battery Clips
Daven Resistors	Marco Products	Universal Microphones
DeJur Rheostats	Master Voltage Controls	Utah Units
DeLuxe Products	Mueller Universal Clips	Ward Leonard Products
Dictogrand Units	NaAld Parts	Weston Meters
Dubilier Condenser Corp.	National Soldering Irons	Webster Pickups
Dudlo Mfg. Co. Wire	National Co. Parts	Wright-DeCoster Dynamics
Dunham Loops	Parvolt Condensers	X. L. Variodensers
Dunton Solder	Phonovox Pickups	Yaxley Products
	Pilot Kits	

SILVER-MARSHALL 692 THEATRE AMPLIFIER IN STOCK

RADIO SUPPLY CO.

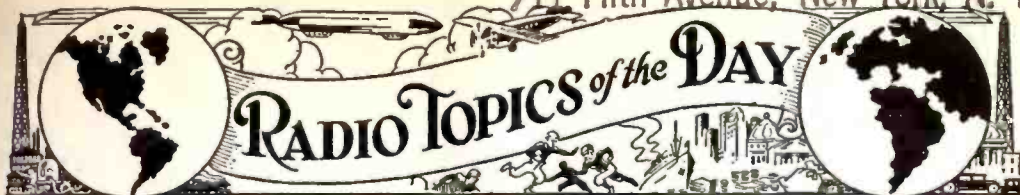
H. A. DEMAREST, President

912-914 S. Broadway VA. 3178, 3179

Los Angeles

WHOLESALE

Largest Radio Parts Jobber West of Chicago



Weekly Review of Radio News-Thought and Opinion

SCHEDULED REALLOCATIONS POSTPONED

After holding desperately onto its plan for reallocating 26 broadcasting stations until almost the eve of the effective date, May 1, the Federal Radio Commission was forced to admit defeat in the first round of the fight with several of the disgruntled broadcasters and to postpone the reassignment order for 90 days.

Three court stay orders were heaped upon the Commission after complaints had failed, and the assignments of a half-dozen or more stations involved were so tied up that the Commissioners saw the impracticability of carrying their plan forward until either the courts or the broadcasters had been convinced of the wisdom of the changes.

The purpose of the reallocations order was to reduce cross talk and interference by increasing the geographical distances between a number of channels. Seventeen cleared channels were involved.

Although the majority of broadcasters accepted the changes without complaint, three stations—KYW, of Chicago; WHAS, of Louisville, and WHAM, of Rochester,—raised enough of a howl to halt the order before it became effective.

The complaints will be formally heard on June 17th by the Commission, and the order—probably revised—will go into effect on July 31st if the courts permit.

RADIO CENSUS EXPLAINED

So many counter-questions have been asked as to why the "Have you a radio?" query was inserted in the census questionnaire that the Secretary of Commerce, Robert P. Lamont, has felt it necessary to explain its "raison d'etre."

The purpose of the tabulation, he

said, is to provide the Federal Radio Commission with valuable information essential to the effective administration of the Radio Law and not for the future purpose of taxing receiving sets. It is also expected to give an index to the American standard of living.

THIRTY BROADCASTERS FACE HEARING

Sixteen broadcasting stations, which are alleged to have violated radio regulations, are on probation for the month of May, after which they will be summoned to a hearing to show cause why their licenses should not be revoked.

Nearly forty of the 600-odd radio stations throughout the country failed to file applications for renewals of licenses May 1 at the proper time, and consequently will have to remain off the air, or suffer the consequences, until the Radio Commission sees fit to renew their permits.

Licenses of all other stations "in good standing," however, have been extended for the customary 90 days, or until July 31. In the future all stations will have to file applications for renewal of licenses 30 days before the expiration of the previous permit, according to a new order adopted by the Commission. This is intended to prevent the usual mad rush the last few days.

SLANDERER VIA RADIO FINED

In the first case of its kind ever tried in Illinois, Frank Broucek, defeated Democratic candidate for police magistrate of Berwyn, Illinois, was fined on each of two charges of "slander over the radio" by a justice of the peace. The charges were made by John H. Ehardt, victor in the police magistrate race.

FIRST As Always

*Any Radio Part or Accessory at Your Command—
Only a Few Hours Away at the Most*

TRANSMITTING, THEATRE, SHORT WAVE, PUBLIC ADDRESS EQUIPMENT

Any Part--Any Time

Alco Loops	Eby Binding Posts	Polymet Condensers
Acme Apparatus	EKKO Ground Clamps	Presto Pickups
Acme Wire	Electrad Products	Preston DX Ground
Advance Crystals	Elkon Chargers	Racon Horns
Aero-Products	Erla Pickups	Radiall Co. Amperites
Aerovox Wireless	Essenbee Ball Aerial	Radio Owls
Products	Fidelity Speakers	Ray-O-Vac Batteries
All-American Products	Flewelling Tester	Raytheon Tubes
American Beauty Irons	Formica Insulation Co.	Readrite Meters
Amertran Products	Franco Batteries	REL Aparatus
Amperites	Frost Products	Remler Products
Amsco Condensers	Goodrich Rubber Panels	Samson Products
Arcturus Tubes	Gosilco Wire	Sangamo Condensers
Audak Pickups	Hammarlund Products	Sensory Insulators
Baldwin Units	Hedgehog Transformers	Skindervicken Buttons
Baldor Motors	H-K Sodderdip Lugs	Silver Mast Antenna
Benjamin Elec. Mfg. Co.	Hoosick Parts	Silver-Marshall Products
Benwood Linze Rectifiers	Jefferson Products	Spaulding Bakelite
Birnbach Products	Karas Products	Sprague Condensers
Bodine Loops and Coils	Ken-Rad Tubes	Steinitz Eliminators
Branston Honeycomb Coils	Kellogg Parts	Sterling Testers
Cardwell Condensers	Kersten Theatre Horns	Super Ball Antennas
Carter Products	Knapp Power Units	Sunset Aerials and Grounds
CeCo Tubes	Kodel Products	Sylvania Tubes
Celeron Panels	Kurz-Kasch Dials	Thordarson Transformers
C R L Resistance	Kuprox Chargers	Tom Mack Products
Chicago Kester Solder	Lynch Leaks	Tower Exercisers
Clarostats	Magnavox Dynamics	Universal Battery Clips
Corning Pyrex Insulators	Marco Products	Universal Microphones
Daven Resistors	Master Voltage Controls	Utah Units
DeJur Rheostats	Mueller Universal Clips	Ward Leonard Products
DeLuxe Products	NaAld Parts	Weston Meters
Dictogrand Units	National Soldering Irons	Webster Pickups
Dubilier Condenser Corp.	National Co. Parts	Wright-DeCoster
Dudlo Mfg. Co. Wire	Parvolt Condensers	Dynamics
Dunham Loops	Phonovox Pickups	X. L. Variodensers
Dunton Solder	Pilot Kits	Yaxley Products

SILVER-MARSHALL 692 THEATRE AMPLIFIER IN STOCK

RADIO SUPPLY CO.

H. A. DEMAREST, President

912-914 S. Broadway VA. 3178, 3179

Los Angeles

WHOLESALE

Largest Radio Parts Jobber West of Chicago



Weekly Review of Radio News—Thought and Opinion

SCHEDULED REALLOCATIONS POSTPONED

After holding desperately onto its plan for reallocating 26 broadcasting stations until almost the eve of the effective date, May 1, the Federal Radio Commission was forced to admit defeat in the first round of the fight with several of the disgruntled broadcasters and to postpone the reassignment order for 90 days.

Three court stay orders were heaped upon the Commission after complaints had failed, and the assignments of a half-dozen or more stations involved were so tied up that the Commissioners saw the impracticability of carrying their plan forward until either the courts or the broadcasters had been convinced of the wisdom of the changes.

The purpose of the reallocations order was to reduce cross talk and interference by increasing the geographical distances between a number of channels. Seventeen cleared channels were involved.

Although the majority of broadcasters accepted the changes without complaint, three stations—KYW, of Chicago; WHAS, of Louisville, and WHAM, of Rochester,—raised enough of a howl to halt the order before it became effective.

The complaints will be formally heard on June 17th by the Commission, and the order—probably revised—will go into effect on July 31st if the courts permit.

RADIO CENSUS EXPLAINED

So many counter-questions have been asked as to why the "Have you a radio?" query was inserted in the census questionnaire that the Secretary of Commerce, Robert P. Lamont, has felt it necessary to explain its "raison d'etre."

The purpose of the tabulation, he

said, is to provide the Federal Radio Commission with valuable information essential to the effective administration of the Radio Law and not for the future purpose of taxing receiving sets. It is also expected to give an index to the American standard of living.

THIRTY BROADCASTERS FACE HEARING

Sixteen broadcasting stations, which are alleged to have violated radio regulations, are on probation for the month of May, after which they will be summoned to a hearing to show cause why their licenses should not be revoked.

Nearly forty of the 600-odd radio stations throughout the country failed to file applications for renewals of licenses May 1 at the proper time, and consequently will have to remain off the air, or suffer the consequences, until the Radio Commission sees fit to renew their permits.

Licenses of all other stations "in good standing," however, have been extended for the customary 90 days, or until July 31. In the future all stations will have to file applications for renewal of licenses 30 days before the expiration of the previous permit, according to a new order adopted by the Commission. This is intended to prevent the usual mad rush the last few days.

SLANDERER VIA RADIO FINED

In the first case of its kind ever tried in Illinois, Frank Broucek, defeated Democratic candidate for police magistrate of Berwyn, Illinois, was fined on each of two charges of "slander over the radio" by a justice of the peace. The charges were made by John H. Ehardt, victor in the police magistrate race.

The New Falck

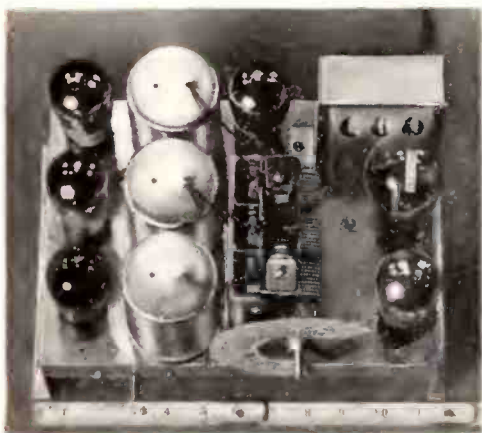
TABLE MODEL

Complete with Tubes
and full
DYNAMIC
SPEAKER

\$59⁵⁰



Note the beautiful rich walnut finish, and the design of this modern cabinet. Dimensions are 17 $\frac{3}{8}$ in. x 14 $\frac{3}{4}$ in. x 9 $\frac{1}{2}$ in.



The chassis of the Falck Model 77 is unusually sturdy, and completely shielded, with all wiring insulated, and the transformer well ventilated and cooled.

Never before has such a high-grade set as this Model 77 FALCK, complete with tubes and Dynamic Speaker, sold for a price anywhere near as low as \$59.50.

It is a set that will blend with its surroundings and that anyone should be proud to own. The cabinet, in beautiful rubbed walnut, is of a striking modern design.

Here are the specifications:

1. Completely licensed under RCA, Hazeltine, and La Tour patents.
2. Complete with all A. C. tubes.
3. Equipped with full Dynamic Speaker.
4. Illuminated kilocycle reading dial.
5. Unusually sturdy, completely shielded chassis.

Don't fail to see this fine set before buying a radio.

ADVANCE ELECTRIC CO.

Established 1915

1260 West 2nd St.

Los Angeles, Calif.



STUDIO NEWS

The boys on the cover this week are the "Pickwick Air and Bus Boys" who appear before the microphone of KGB every Monday, Wednesday, and Friday from 3:00 to 3:30 and Tuesday and Friday from 9:00 to 9:30 p. m. Fred Wesley, right, is the singing member of the duo and Fred Stone arranges and accompanies. The two Freds have several things in common among which we might mention long and varied experience in broadcasting, charter membership in the San Diego 20-30 Club and the very recent acquisition of brand new wives.

Sunday, May 11th is Mother's Day, and all the broadcasting studios are arranging fitting programs to dedicated to the mothers.

The feature continuities being presented on KMTR, "Vibrant Melodies," on Sunday at 9:30 p. m.; "Moss Covered Melodies," on Tuesday at 9:00 p. m., and "Mickey Mouse," on Friday at 6:00 p. m., are prepared by Harry Geise, KMTR's talented Station Director. Mr. Geise is a continuity writer of fame and you will enjoy these unique features.

KJR will have their famous tenor, Sidney Dixon, back in the fold on May 15th. Mr. Dixon has been enjoying a vacation trip down to the Southland singing at various stations en route as guest artist. KJR also is happy to announce the return of "Harpers Corners," one of the most popular skits ever to be put on the air in the West. See detailed program.

Friends of Dave Ward and Frank Jocelyn will be pleased to know that they are once again taking up the full hour from 10:00 to 11:00 each morning except Sunday over KELW. They are known as "Frank and What's His Name."

The National Broadcasting Company has completed arrangements for its

third annual broadcast of the Kentucky Derby and has assigned Graham McNamee, crack announcer, and Clem McCarthy, sports writer and turf authority, to describe the event.

Saturday, May 17, is the date of the famous race at Churchill Downs in Louisville, and the broadcast is scheduled to begin at 2:30 P. S. T. KGO, KGW and KOMO will release the program in the west.

KFWI has a new studio and a new program director. The new studio is in the Bellevue Hotel and the new program director is Mr. Rolf Metcalf, who has been chief announcer for the past six months. Henry C. Blank resigns as program director to join the staff of KGW.

Baron Keyes, whose beloved Air Castle programs are heard nightly except Sunday from KFI, has been busy making records of the Air Castle, and KQW audiences are delighted to have this charming feature a part of their daily program. KQW hears the Air Castle at 5:15 and KFI at 5.

George Redman, pianist, and Burton Bennett, KFVD's new baritone-announcer, are brightening up the early Sunday morning hour from 8 to 10 with piano, guitar and vocal selections, both old and new, popular musical comedy and novelty.

KGFJ has gone cosmopolitan in a large way. It is the Studio Editor's firm conviction that Miss Thelma Kirchner, who efficiently handles public try-outs and what-nots at KGFJ, will be talking a weird jargon of Hawaiian, Spanish, African and Japanese. The point of all this is that KGFJ has some unusually good music from the above mentioned races, and unique indeed is the Japanese program, which we are told is sponsored by the Japanese Radiotising Service every day except Sunday at 12 noon. All Japanese artists participate, and Radio Doings hopes soon to be able to give you a picture of this group.



Questions & Answers

A Weekly Department Conducted by K.G. Ormiston, I.R.E.

QUESTION—Under Q & A in your issue of April 27 I note inquiry by H. T. M. regarding silent hour. From the standpoint of the radio broadcaster it may be all right, but a silent hour or half hour per day would certainly increase interest in radio. My first job as a boy was in a retail store, where I worked from 6 a. m. to 9 p. m. every day and until midnight Saturdays. We tried individually to better our condition, but without avail. Finally we formed a Clerks' Association and were able to get all merchants to open at 7 a. m. and close at 7 p. m., except Saturday, which was from 7 a. m. to 9 p. m. Afterwards the movement became nation-wide, and finally laws were enacted, and today those same houses are doing more business than ever, from 9 a. m. to 6 p. m. Furthermore, when the movement was started there was no falling off of business.

If every station would have a little sympathy for its hearers it could concede a half hour or an hour and still regulate its business so as not to lose one cent.

Again, note your comments on the various changes in frequencies. Well, we can congratulate ourselves that we'll get Salt Lake City, but where do we get off on many others? As you know, and as H. T. M. truthfully states, there are local stations which cover many degrees on the dial, and now stations are being brought closer to those broad broadcasters, and what will be the result?

However, as the minister said to the ladies' guild after having been presented with a supply of brandied peaches, "I thank you, not so much for the peaches, but for the spirit in which they were given."

Don't you think that if listeners-in were to post the Commission on the actual geographical position of stations in the large cities, it would help to straighten out frequencies and power?

For example, in the most congested position of our city we have 6 stations of from 1000 to 5000 watts all located

in an area of about 12 blocks wide by 15 blocks long, and the actual space between most of them is from 2 to 5 blocks. And they are so situated that a radio set owner in the district is actually cut off from all else but locals. Can't even get stations in the northern part of the state. I'd like to see this in print in your little Red Book.

T. M. SIMPSON,

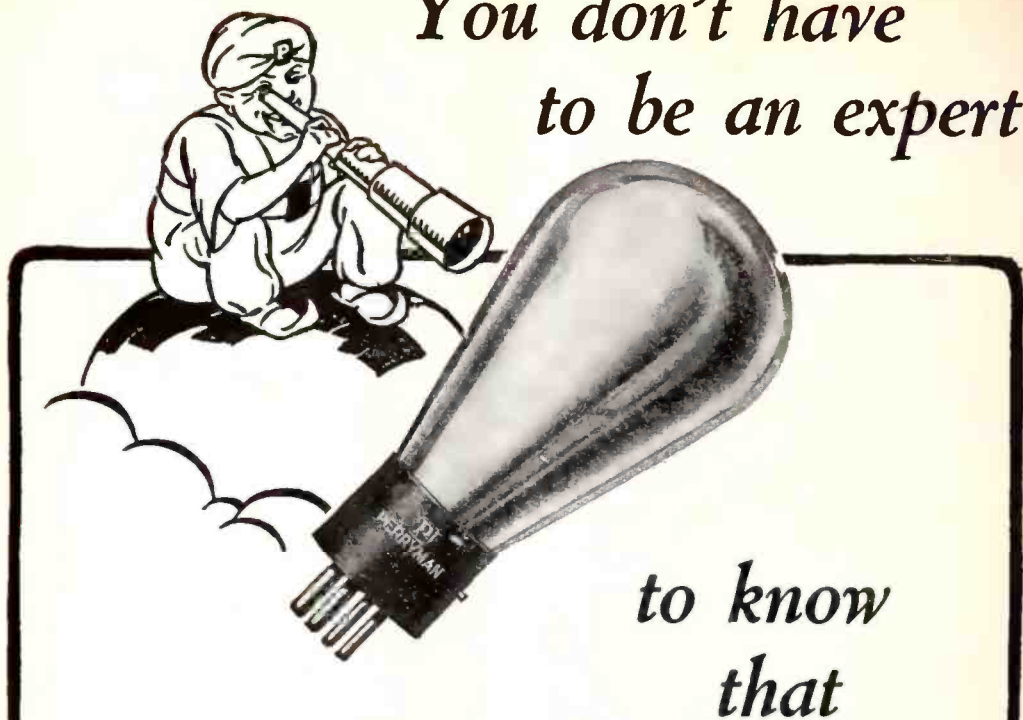
1046 S. Burlington Ave., Los Angeles.

ANSWER—We quite agree with Mr. Simpson's remarks, viewing the situation from his standpoint,—that of a set owner in the particular area described in his letter. All the radio owners in that district will probably agree with him also. But outside that area are about a million people who would rather have those six stations in the downtown district than scattered around through residential sections. They jointly blanket a square mile or so, but take them out into residential sections and they would do more damage in creating interference than they do now. KFI, for example, has fewer set owners within a mile than would be the case in any other location in the city. The only alternative, to eliminate the local blanketing effect, would be to put the station 'way out in the open country, and we would then have a condition where the station's best signal and finest service area would be populated chiefly by gophers and squirrels.

It is a fact that set owners who live in the shadow of a broadcast station are subject to that station's blanketing effect, no matter where the station is located. It is a fact that fewer set owners as a rule are thus affected when the station is in the heart of the business district. And it is a fact that when a station is moved out into the country its local audience is often diminished. WEAf, for example, was formerly located on the Bell Laboratories building, lower Manhattan. They moved to Long Island, increased the power to 30,000 watts, and now they come into New York with less volume

(Continued on Page 19)

*You don't have
to be an expert*



*to know
that*

PERRYMAN TUBES

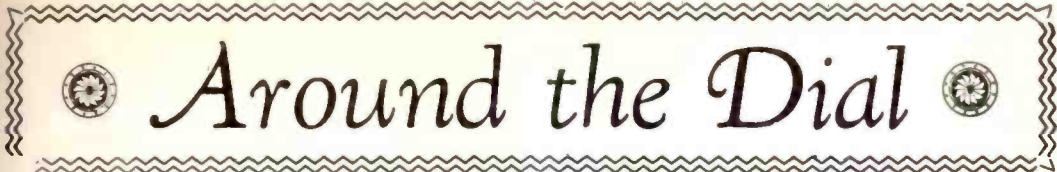
ARE BETTER

Distributed by
H. R. CURTISS CO.
727 Venice Blvd.
Los Angeles, Calif.
Tel. WEstmore 0271

All you have to do is to install a set. Listen to their clear, distinct reception. . . . Actual performance will tell you why Perryman Tubes are one of the fastest sellers in the business.

District Representative
HOWARD D. THOMAS
1851 South Hope St., Los Angeles, Calif.

PERRYMAN
RADIO **P** TUBES



Around the Dial

"Around the Dial":

Yesterday morning and this morning, while hunting for distance, I received the following stations: 2:30, WBRC; 2:50, KGFF (100 watts); 2:45, WMBC (100 watts); 3:00, KOCW; 3:05, WBBC; 3:15, WDAG; 3:25, KFKB; 3:35, WTAR; 3:45, WBCM; 4:00, K TNT; 4:05, WRHM; 4:30, JOAK; and best yet, LS5, Buenos Aires, at 3:50. All stations came in with good volume and were clear enough to identify programs.

Thanks for the many helpful hints received from this department.

W. S. WADE, Jr.

416 E. 55th St., Portland, Ore.

While dialing around on the short waver the other night, we tuned in on a banquet held in the grand ballroom of the Astor Hotel, New York City, broadcast through W3XAL, Bound Brook, N. J., and imagine our embarrassment to hear Ben Bernie's orchestra providing the entertainment! When Ben's physiog. was on our cover last week, with the KFVB degree after his name! This game of "Button, Button, Who's Got Ben Bernie?" is wearing us down. KMTR thought they had him. KFVB thought he was their private pride and joy. One night we actually heard Bernie over KFVB, which, fortunately, justified our last week's cover picture! Then somebody slapped an injunction on the works, and now its anybody's guess. The best way to hear his orchestra, meanwhile, is to partake of one's *patie de foi gras* at the Hollywood Montmartre.

W3XAL gave us an interesting broadcast the night of May 3rd, when they put on the first night baseball game, played at Des Moines by the Des Moines and Wichita teams. The field was illuminated by 50,000,000 candlepower (believe it or not!) and the boys seemed to play ball as well as on the hottest and brightest summer day. The idea seems to be that it will no longer be necessary for the office boy to attend his poor grandmother's funeral so often, and a lot of baseball fans will be able to enjoy baseball without giving up business. In Los Angeles, at 9 p. m., we listened

to the last inning of a baseball game played in Des Moines at 11 p. m., and broadcast by New York at 1 a. m. Laff that off!

Looking back through the years of radio reception to the time when KDKA was regularly heard here on a three-tube regenerative set, we have wondered why many eastern stations with vastly greater power than in those early days, are heard now with such difficulty and with comparatively poor signal strength.

We submit to the reader the conjecture that there were periods during the past ten years or more when there appeared to be some force that suppressed or hindered weak and sometimes strong signals sent out by transmitting stations.

May it not have been possible that when sun spots of 100,000 miles diameter were visible, millions of millions of electrons or ions were discharged with such terrific force from the sun that they increased the normal ionization of the earth's atmosphere to such an extent that the radio waves suffered an excessive absorption?

Sun spots, particularly those of enormous size, appear to the observer in cycles of eleven years. They are at maximum for three or four years and at minimum for a like period. They are expected to be again at maximum size and violence in 1937.

Therefore, it is reasonable to expect that during the fall and winter seasons of the next three years there will be a truce between the solar ions and our radio radiations and that reception will be generally improved.

—Seymour Hastings, Los Angeles.

(Editor's Note—Radio engineers and astronomers have collaborated extensively in determining the relation between radio and sun spots, with the result that both have predicted bigger and better radio reception during the forthcoming period of comparative inactivity on Old Sol.)

Scheduled May 1 reallocations were blocked by Court Order—See Page 9.

MAJESTIC

The Mighty Monarch of the Air

*Go today to one of the authorized Majestic Dealers listed below
for a demonstration of the new Majestic Radio Receivers*

DOWNTOWN
Majestic Radios
Sold on Terms

AMERICAN RADIO CO.

817 So. Main St.

Call for Demonstration

TU. 6028

VA. 9732

It Does Make a Difference Where
You Buy Your Radio

**ORMISTON
RADIO**

4018 W. 10th St. WYoming 2704

SOUTH VERMONT
Liberal Trade-In Allowance
Peoples Outfitting Co.
*Trade Away from Downtown
Congestion*

3990 S. Vermont Ave.
REpublic 5101-2.3

Plenty of Room to Park
Open Daily and Sunday to 9 P. M.

Universal Music Co.

Terms to Suit Every Purse

1632 So. Maple

WE. 3859

SOUTH WESTERN AVE.

Robinson Radio Shop

Certified Service—Open Evenings

4528 S. Western.

VERmont 6683

CULVER CITY

*Convenient Location—Terms
Trade-in Allowance—Service*

Blunt Radio Electric Shop

9620 Culver Blvd.

Phone 2286

De Hoog Bros.

RADIO
OUR BUSINESS — NOT A SIDE LINE —
6120 SOUTH BROADWAY

Phone THornwall 0224



FIRST PRIZE

Sunset Aerial, Courtesy Sunset
Mfg. Co.

"DX Club":

I hereby submit my second DX list to your interesting contest. My first one failed to make the "Little Red Book," so I hope this will win better merit.

The stations were gotten on a Silver-tone Radio equipped with a string of wire 30 feet long for an aerial and a water pipe for a ground. I live near a sub-station and high-tension wires which interfere with DX somewhat. Over half of the included list is verified and the rest of the verifications are in the mail. I think the "Red Book" and the "Radio Doings Call Book" are necessities which no "DXer" should be without. I also have the time and date of every station received.

United States Stations—KCRC, KDB, KDKA, KDYL, KEX, KFAB, KFBB, KFBK, KFDM, KFEQ, KFH, KFKB, KFQU, KFQW, KFRC, KFSD, KFWI, KFWM, KFXF, KGA, KGCS, KGAR, KGB, KGBZ, KGIQ, KGIR, KGIX, KGKY, KGO, KGRS, KGW, KVPE, KHQ, KID, KJR, KLO, KLX, KLZ, KMBC, KMJ, KMMJ, KMO, KMOX, KOA, KOB, KOIN, KOL, KOMO, KPO, KRE, KPRC, KQW, KREG, KSAT, KSL, KTAB, KTAR, KTBR, KTHS, KTW, KTNT, KWG, KWKH, KXA, KXL, KYA, WAAW, WABC, WBAP, WBBM, WCCO, WCHI, WCKY, WEA, WEAF, WEAN, WENR, WFAA, WFIW, WFLA, WGN, WGY, WIBW, WJR, WJZ, WKY, WLAC, WLS, WLW, WMAQ, WMBC, WMC, WNAX, WNOX, WOAI, WOR, WRHM, WSB, WSM, WTAR.

Canadian Stations—CFCN, CFCT, CKMO, CKWX.

Cuban Stations—CMC, CMK.

Hawaii—KGU.

Japanese Stations—JOAK, JOBK, JOCK, JOFK, JOGK, JOHK, JOIK.

Mexican Stations—XEB, XEN.

New Zealand Stations—2YA, 3YA.

Hoping the next DX season will be as good and better than any before, I remain,

Yours very sincerely,
GEORGE SCHMIDT.

1642 West 82nd Street, Los Angeles,
California.

SECOND PRIZE

Sunset Ground, Courtesy Sunset
Mfg. Co.

"DX Club":

I have a Radiola 6 which I bought three months ago. I also got a Radio Doings Call Book, which I find one cannot be without for DX. I have a 40-foot aerial and use a copper coil for a ground. I have verifications from some of the stations which I have logged and many more on the way. Hope this will win me a prize. This is my log:

KFSD, KOA, KPO, WHAS, WLW, KTAB, KFRC, KWKH, KGO, FGW, KSL, KOB, KGA, KOL, KDYL, KYA, KOAC, KHQ, KEX, KDB, KGB, KMOX, KQW, KJR, KFWI, KLX, WFAA, WBAP, WCCO, WLS, KFEL, KDKA, WBT, WOWO, WENR, WBBM, KVI, WTAM, WOC, KPOF, KLO, KGIQ, WJR, KOY, KFBK, WDAG, KMMJ, KOMO, WMBI, KRLD, KFDM, KXA, KYW, KFKB, KXL, KFWM, KFQU, KGGC, KGRS, KREG, KTBR, WCKY, WLAC, WORD, KVL, KGIR, KOH, KOIN, KTAR, KMJ, KFQW, KGIX, WSB, WMAQ, KFKX, KVOO, KSTP, WFIW, KIDO, KFAB, WKY, KFPY, KRE, KVOA, KGBZ, WOW, WTNT, KFJF, WWL, KFUM, WNAX, KLZ, KFEQ, KTSA, KTT, KPRC, KPJM, WMBD, WHK, WCHI, KMO, WHO, WGN, WAAW, WKBW, KWSC, KGDY, KGEZ, WWVA, KVEP, KFBB, KGIW, WGY, WOAI, KGHL, WJDX, CKWX, CKMO, CNRV, CJOR, XEN, XFX, XEB, CMC, CMK, JOBK, JODK, JOAK, JOIK, JOHK, JOFK, JOCK, JOGK, and 19 local stations.

HARRY LAING.

Box 874, Beverly Hills, Calif.



RCA Radiola

MADE BY THE MAKERS OF THE RADIOTRON
Call or telephone today one of the authorized
dealers listed below for a demonstration

DOWNTOWN

EASTMAN KODAK STORES, INC.

RADIOLA MERCHANDISE
EASTMAN SERVICE

643 S. Hill St.

TRinity 0746

DOWNTOWN

Richardson's Music Store

730 W. Seventh St.

TRinity 0194

AUTHORIZED RADIOLA DEALERS AND SERVICE STATION

Bring your radio troubles to us to solve. Prompt, efficient, reasonable—
all work guaranteed.

Our service department is under the supervision of a technician who
was trained for years in the R. C. A. Laboratories.

Telephone
CRestview 4607

J. M. ROUSH

134 Wilshire Blvd.
Beverly Hills, Calif.

KGER Installs Latest Type 1000-Watt Transmitter

Some time during the week of May 12th, KGER, at Long Beach, expects to go on the air with a dedication celebrating the use of its new 1000-watt Radio Victor screen-grid transmitter.

Although this latest development in transmitting equipment has been gradually developed in the laboratories the past few years, the KGER apparatus will be the first one to be placed in actual operation.

The equipment arrived in Long Beach a few days ago, consigned to C. Merwin Dobyns, and technical staff, directed by Pap Tapp, has been working in two shifts to get everything in readiness for the gala program.

Bill Ray, specially imported from Hollywood to guide the destinies of the beach station, has been busily engaged the past week in herding all the available talent into rehearsal for the big moment when the new 1000-watt equipment zooms out into the atmosphere.

Announcements will be made from the station soon as to the actual date and time for the dedicatory program.

Perfect Score in Color Tone Test

Tito Schipa, who passed the Majestic color tone test with a perfect score, made the following comment on it:

"This afternoon I have taken the Majestic color tone test and find it unusually interesting. The Majestic radio combination reproduces the phonograph record with the same surprisingly true-to-life tone it demonstrates in reproduction of radio programs.

"It is a wonderful musical instrument."

Bob & Monte

Singing "Utah Trail"... "Spring Time in the Rockies"... "Old Virginia Lullaby" and other Popular Songs

KECA 7:45 p. m.
every Thursday



For Relief of
**ARTHRITIS
NEURITIS
RHEUMATISM**

Full information from the Renton Co.,
Dept. R.D., Station C, Pasadena, Calif.

Q and A

(Continued from Page 13)

han WOR, a 5000-watter across the river.

As to posting the Commission on station locations, they know the exact location of every station to minutes of attitude and longitude, the number and power of other stations within a radius of one mile, two miles, five miles, etc. This data is required on every license application. Mr. Lafount has visited every city of size in his zone, and is very familiar with the location, power, ownership, policies, type of equipment, nature of programs, financial responsibility, etc., of all of them. KFQZ was recently eliminated because the owner was not financially able to modernize the equipment.

In regard to a silent night, or even an hour or half hour, we believe with Mr. S. that this would certainly increase interest in radio and would be beneficial to the industry and the listening public as a whole. It seems hopeless of attainment, however, as the broadcasters have expressed themselves so emphatically on the subject many, many times. Mr. Simpson's parallel case of the retail store hardly is applicable, since a station's revenue depends upon how many hours it can do business each day, and not how much business it can do per hour. The store simply increases its clerical staff and its hourly volume, but the station has only so many hours to sell. Hence, we find stations like KFOX, which operates 22 hours daily, and KGFJ, the 24-hour station, making more money for their owners than those who do business a fewer number of hours. In fact, the problem with most of the stations is not how to make the most money, but how to operate with the least loss!

We are not trying to defend the situation, but simply look the facts in the face. If the radio industry did the broadcasting, there would exist an obligation to the set owner, and the station would conform with any movement which furthered the interests of radio. But as it is, the broadcaster is more concerned with the promotion of other industries. There is certainly room for improvement, but meanwhile let's accept radio as the tremendously worthwhile thing it is, and enjoy it.

The Famous SUNSET AERIAL



will last indefinitely, because it is cadmium plated.

Produces a maximum signal strength without sacrifice in selectivity because of its great concentrated surface.

Reduces electrical interference to a minimum because of its vertical non-directional mounting.

Used and endorsed by DX fans everywhere.

Only \$5.00

A NEW SUNSET GROUND

with a Filler Spout to Conduct
Water into the Ground

at

\$3.00



and

the Old Reliable

SUNSET GROUND

at

\$2.25

SUNSET MFG. CO.
LOS ANGELES

7471 Melrose

HEmpstead 4941

The essential features of these programs are identical with those sent us by the stations



JENNINGS PIERCE

**KFI KECA KPO
KGO KGW KOMO
KHQ KOA KSL**

Howard Milholland
Program Director

Jennings Pierce
Chief Announcer

National Broadcasting Co., Inc.

PACIFIC COAST NETWORK

8:00 p. m.—Piano Capers; Dell Perry and Oscar Young. KGO.
8:30 p. m.—Harp Harmony.
9:00 p. m.—Voice of Firestone; Easton Kent, tenor; male quartet and Max Dolin's Concert Orch.
9:30 p. m.—Musical Musketeers.
10:00 p. m.—House of Myths.
10:30 p. m.—Hot Spot of Radio; Henry Starr.

TUESDAY, MAY 13

DAILY EXCEPT SUNDAY
7:30 a. m.—Tap Dancing Lessons. KGO (ex. Monday).
7:45 a. m.—Aunt Jemima's Boy.
8:00 a. m.—Financial Service. KGO.
8:15 a. m.—The Chanticleers. KGO.
8:30 a. m.—Cross Cuts of the Day. KGO.
9:00 a. m.—Meet the Folks. KGO.
11:00 a. m.—"Woman's Magazine of the Air" [except Thursday nad Saturday].
11:30 a. m.—NBC, Philharmonic Organ (ex. Thurs.). KGO.
11:45 a. m.—The Hour of the Canny Cook.
7:30 p. m.—Amor 'n' Andy.
7:45 p. m.—Literary Digest Prohibition Poil.
11:00 p. m.—Laughner-Harris Hotel St. Francis Dance Orchestra (except Thursday and Saturday). KGO.

SUNDAY, MAY 11

9:00 a. m.—Bible Stories.
10:00 a. m.—Arion Trio.
11:00 a. m.—National Youth Conference; Dr. Daniel A. Poling, speaker.
12:00 noon—Dr. S. Parke Cadman will speak on "Doubt and Progress."
1:00 p. m.—Sunday Concert; Charles Hart's Orchestra and guest artist.
2:00 p. m.—Catholic Hour; Dr. George Johnson defines the freedom of the will. Religious music.
3:00 p. m.—Musical Musketeers.
4:00 p. m.—Enna Jettick Melodies; individual solos by members of the Quartet.
4:00 p. m.—Gems of the Drama—"Like Unto Gods." Sixth Episode of Corltan F. Morse's "Adventures in Life." KGO.
4:15 p. m.—Collier's Radio Hour—Music dramatized, stories and guest speakers.
5:00 p. m.—News Service.
5:15 p. m.—Atwater Kent Hour; Mme. Louise Homer, Frances Alda, Reginald Wenrenrath.
5:15 p. m.—Candle-light Silhouettes. KGO.
5:45 p. m.—The Olympians, directed by Mynard Jones.
6:15 p. m.—Studehaker Champions; Jean Goldkette's Orchestra.
6:45 p. m.—Sunday at Seth Parker's.
7:15 p. m.—Hotel St. Francis Salon Orchestra.
8:00 p. m.—World Wanderings.
8:30 p. m.—Western Artists' Series; M. Culic Dragoni, operatic baritone.
9:00 p. m.—Borden program; Joseph Hornik's Blue and White Band; Barbara Blanchard, soprano.
9:30 p. m.—The Reader's Guide.
10:00 p. m.—Concert Jewels—Max Dolin's Orchestra

MDNDAY, MAY 12

9:30 a. m.—Radio Ramblings.
10:15 a. m.—Josephine B. Gibson, Food Talk.
12:00 noon—Pacific Vagabonds, playing and singing an hour of popular music.
1:00 p. m.—Rembrandt Trio.
2:00 p. m.—Mormon Tabernacle Choir and Organ
2:30 p. m.—Pacific Coast School of the Air
3:00 p. m.—Rosalle Wolfe sings "Beau Solr."
3:15 p. m.—The World Today, by James G. McDonald.
3:30 p. m.—Roxy and His Gang bring Ruth Darrell.
4:00 p. m.—Matinee Time.
4:45 p. m.—News Service. KGO.
5:00 p. m.—Maytag Orchestra, directed by Victor Young. Popular melodies.
5:30 p. m.—General Motors Family Party; Richard Bonelli, baritone, sings "Bedouin Love Song."
6:00 p. m.—Stromberg-Carlson program; 50-piece orchestra, clyc orchestra and soloist.
6:30 p. m.—Empire Builders; Dramatic presentation.
7:00 p. m.—Hotel Governor Clinton Orchestra. KGO
8:00 p. m.—Rudy Selger's Shell Symphonists

9:30 a. m.—William Don.
9:45 a. m.—The Entertainers. KGO.
10:15 a. m.—Color Harmony program.
12:00 noon—The Novelty Five.
1:00 p. m.—The Lady Next Door.
1:30 p. m.—Pacific Coast School of the Air
2:00 p. m.—Black and Gold Room Orchestra.
2:30 p. m.—Bernie Cummin's Hotel New Yorker Orch.
3:00 p. m.—Voters Service; Felix Frankfurter, professor of law at Harvard, will speak.
3:30 p. m.—Lew White Organ Recital.
4:00 p. m.—Downtown Glee Club Concert of 300 voices.
4:30 p. m.—Hotel St. Francis Salon Orchestra.
4:45 p. m.—News Service.
5:00 p. m.—Eveready program.
5:30 p. m.—Happy Wonder Bakers; Jack Parker, tenor.
6:00 p. m.—Westinghouse Salute; Symphonic music.
6:30 p. m.—Radio-Keith-Orpheum Hour, with Graham McNamee, master of ceremonies.
8:00 p. m.—Parks Sisters.
8:15 p. m.—John and Ned.
8:30 p. m.—Pacific National Singers sing Mendelssohn's "On Wings of Song."
9:00 p. m.—The Magic Crystal; Expose of baffling mystic tricks.
9:30 p. m.—Florsheim Frolic offers Jazz music.
10:00 p. m.—Down Through the Years.

WEDNESDAY, MAY 14

9:30 a. m.—Betty Crocker Gold Medal Home Service Talks.
9:45 a. m.—Betty Kelly.
10:00 a. m.—The Recitalists. KGO.
10:15 a. m.—Mary Hale Martin's Household Period.
12:00 noon—Rembrandt Trio. KGO.
1:00 p. m.—Series of Talks.
1:15 p. m.—Breen and De Rose.
1:30 p. m.—Tea Timers.
2:00 p. m.—Bernie Cummins and His Hotel New Yorker Orchestra.
2:30 p. m.—John B. Kennedy Talk.
2:45 p. m.—Bernie Cummins' Hotel New Yorker Orch.
2:45 p. m.—The Entertainers.
3:00 p. m.—The Voice of Pan.
3:30 p. m.—Back of the News in Washington.
3:45 p. m.—Vincent Lopez and Hoter St. Regis Orch.
4:00 p. m.—Hotel St. Francis Salon Orchestra.
4:45 p. m.—News Service.
5:00 p. m.—Halsey, Stuart program, with the Old Counsellor.
5:30 p. m.—Palmolive Hour, with Olive Palmer and Paul Oliver, sing music of the gay 'nineties.
6:30 p. m.—Coca Cola program; Grantland Rice introduces another celebrity in the world of sports.
7:00 p. m.—Phil Spitalny's music.
8:00 p. m.—Let's Get Associated; Marcus Whitman and his Comrades will be eulogized tonight.
8:00 p. m.—Parisian Quintet Classics. KGO.
8:30 p. m.—I'll Billy Boys.
9:00 p. m.—NBC Concert Favorites.
9:15 p. m.—Violin Recital. KGO.
9:15 p. m.—Montag Melodians, Tunes of the Day.
9:30 p. m.—Miniature Biographies presents Booker T. Washington.

10:00 p. m.—Cotton Blossom Minstrels.

THURSDAY, MAY 15

9:30 a. m.—Morning Glories.
10:00 a. m.—Woman's Magazine of the Air.
11:00 a. m.—Standard School Broadcasts. Form in Music, with Mozart as illustration, will be discussed.
12:00 noon—The Novelty Five.
1:00 p. m.—Series of Talks on South Africa.
1:15 p. m.—Melody Musketeers.
1:30 p. m.—John and Ned.
1:45 p. m.—Tea Timers.
2:00 p. m.—Black and Gold Room Orchestra.
2:30 p. m.—Phill Spitalny's Orchestra.
3:00 p. m.—Vlnettes.

(Continued on Page 42)

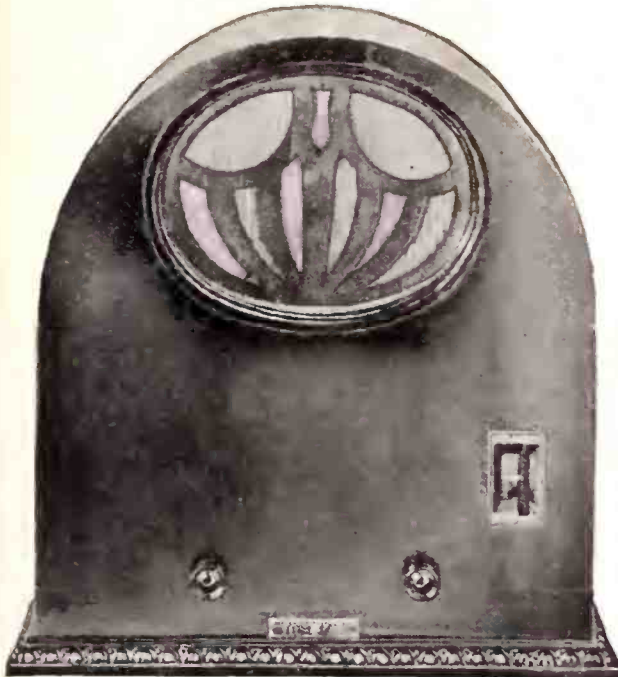
The New 1930 Plymouth Radio

NEWER

FINER

BETTER

DISTINCTIVELY DIFFERENT



\$59⁵⁰

*Complete with
Tubes*

DISTRIBUTERS' FRANCHISES AVAILABLE

For information call CAPITOL 8293, or write to

**PLYMOUTH
RADIO CORP.**
LOS ANGELES, CALIFORNIA

2825 NORTH MAIN STREET

SCREEN GRID

245 POWER
TUBE

POWER
SPEAKER

CABINET,
selected walnut,
two-tone finish

SPRAGUE
ELECTRO-
LYTIC
CONDENSER

SUPERIOR
TONE

SELECTIVITY

VOLUME

DISTANCE

The essential features of these programs are identical with those sent us by the stations



ROBERT HURD

KFI Los Angeles, Calif.—640 Kc.

5000 WATTS—468.5 METERS

Radio Central Super-Station of Earle C. Anthony, Inc.
1000 S. Hope. Phone WE. 0331. After 5 P. M., WE. 0337

DAILY EXCEPT SUNDAY

- 6:30 a. m.—Opening Market Quotations by E. A. Pierce & Co.
8:00 a. m.—Shiel Happy Time, from KPO.
9:45 a. m.—Haas-Baruch program (except Tuesday and Saturday).
10:30 a. m.—Woman's Magazine of the Air (except Sat. and Thurs., 10:00 a. m.).
12:00 noon.—U. C. Department of Agriculture.
12:15 p. m.—Federal and State Market Reports.
4:15 p. m.—KFI News Bureau.
4:30 p. m.—Big Brother (except Saturday).
5:00 p. m.—Baron Keyes, the Story Man, Union Oil (except Saturday).
5:45 p. m.—Stock Market Reports by E. A. Pierce & Co.
10:30-12:00 midnight—Max Fisher Cafe Orchestra.

SUNDAY, MAY 11

- 11:30 a. m.—Helen Guest, ballads.
12:00 noon.—Purcell Mayer, violinist.
12:30 p. m.—"Temple of the Golden Hour," with Virginia Flohri.
1:30 p. m.—Talk on Gardening.
1:45 p. m.—Sylvia's Happy Hour.
3:00 p. m.—Kenmorent String Trio; Karl Brandenburg.
3:30 p. m.—"Advanced Thought," Lella Castberg.
4:00 p. m.—NBC, Enna Jettick Melodies.
4:15 p. m.—NBC, Collier's Radio Hour.
5:15 p. m.—NBC, Atwater Kent Hour.
6:15 p. m.—NBC, Studebaker Champions.
6:45 p. m.—Big Bear Land and Water Company.
7:45 p. m.—Ira D. Morgan, baritone.
8:30 p. m.—Sarah Padden Players.
9:00 p. m.—NBC, Borden Milk program.
9:30 p. m.—Violin recital, Purcell Mayer.
10:00 p. m.—Packard Concert Orch.; Harold Spaulding.

MONDAY, MAY 12

- 6:45 a. m.—Chester Foster Rand, tenor.
7:00 a. m.—Karl Brandenburg, ballads.
7:15 a. m.—Lella Isbell, accompanist.
7:30 a. m.—Leslie Brigham, baritone.
9:00 a. m.—Health Cafeteria, H. Scharlin.
9:30 a. m.—German lesson, Annette Doherty.
10:15 a. m.—NBC, Josephine Gibson Food Talks.
11:30 a. m.—Care of the Hair.
11:45 a. m.—Spanish lesson, by Annette Doherty.
2:15 p. m.—Winnie Fields Moore.
2:30 p. m.—NBC, Pacific Coast School of the Air.
3:00 p. m.—L. A. Public Library Book Review.
3:30 p. m.—Bess Kilmer, Helpful Hints to Housewives.
4:00 p. m.—Better American Federation.
5:30 p. m.—R. W. Valentine, baritone and accomp.
6:00 p. m.—NBC, Stromberg-Carlson.
6:30 p. m.—Empire Builders, NBC.
7:00 p. m.—Ray Van Dyne's Orch., with Jane Green.
8:00 p. m.—NBC, Shell program.
9:00 p. m.—Firestone Tire and Rubber Co., NBC.
9:30 p. m.—Concert Hour; Virginia Flohri, soprano.

TUESDAY, MAY 13

- 6:45 a. m.—Gertrude Gussell, blues, with Paul McNally and guitar.
7:30 a. m.—Leslie Brigham, baritone.
9:00 a. m.—Bess Kilmer's Helpful Hints to Housewives.
9:30 a. m.—U. S. Public Health Service talk.
9:45 a. m.—Sylvia's Happy Hour.
10:15 a. m.—NBC, Bass Hueter Paint Company.
11:30 a. m.—Care of the Hair, the Loyalon Lady.
11:45 a. m.—English lesson, Ayrta Drew.
2:15 p. m.—Winnie Fields Moore, Travelogue.
2:30 p. m.—Grace Hamilton and Jack Stern, ballads.
3:30 p. m.—Wedgwood Nowell, "Playgoers' Memories."
5:30 p. m.—American Chiropractic Association.
6:00 p. m.—Earl Kass, baritone.
6:15 p. m.—Anna and Oscar, character skit.
6:30 p. m.—Pitch and Putt, Jose Wells and Joe Blank.
7:00 p. m.—Arthur Lang, baritone; concert ensemble.
7:30 p. m.—Remote control from Ray West Cafe.
8:00 p. m.—Adohr Opera of the Air.

WEDNESDAY, MAY 14

- 6:45 a. m.—Chester Foster Rand, tenor, with Karl Brandenburg, ballads.
9:00 a. m.—Bess Kilmer's Helpful Hints to Housewives.

- 9:30 a. m.—NBC, Betty Crocker Gold Medal Home Service talk.
10:00 a. m.—Kaai Hawaiian Trio.
10:15 a. m.—NBC, Mary Hale Martin talk.
11:30 a. m.—Care of the Hair, the Loyalon Lady.
2:00 p. m.—Remote control from Ray West Cafe.
2:30 p. m.—Sylvia's Happy Time.
3:30 p. m.—Noreen Gammill, character sketches.
3:45 p. m.—Eddie Armstrong, ballads.
4:00 p. m.—Eddie Guldmecher, jazz pianist.
5:00 p. m.—Della Curley, popular music.
6:00 p. m.—Leonard Van Berg, ballads.
6:30 p. m.—Wimfred Donaldson, contralto.
7:00 p. m.—Martin Jacklin, tenor; Lydia Aldrich, soprano.
7:30 p. m.—Remote control from Ray West Cafe.
8:00 p. m.—NBC, Let's Get Associated.
8:30 p. m.—Three Skippers.
8:45 p. m.—Duci de Kerekjarto, violinist.
9:15 p. m.—Eva Olivotti, soprano; James Burroughs, tenor, with concert orchestra.

THURSDAY, MAY 15

- 6:45 a. m.—Gertrude Gussell, with Karl Brandenburg ballads.
7:45 a. m.—Leslie Brigham, baritone.
9:00 a. m.—Herb Scharlin, ballads.
9:30 a. m.—English lesson, Ayrta Drew.
11:00 a. m.—NBC, Standard School Broadcast.
11:45 a. m.—Care of the Hair, the Loyalon Lady.
2:15 p. m.—Winnie Fields Moore, Travelogue.
2:30 p. m.—Los Angeles Fire Department Orchestra.
3:30 p. m.—Sylvia's Happy Hour.
5:30 p. m.—Dr. H. Edw. Myers, talk on preventive dentistry.
6:00 p. m.—NBC, Radio Victor Hour.
7:00 p. m.—Nick Harris, detective stories.
7:45 p. m.—NBC, Standard Symphony Hour.
8:45 p. m.—Arthur Lang, baritone; concert ensemble.
9:15 p. m.—Jolly Leighton Chefs.

FRIDAY, MAY 16

- 6:45 a. m.—Chester Foster Rand, tenor, with Karl Brandenburg, ballads.
7:45 a. m.—Leslie Brigham, baritone.
9:00 a. m.—Bess Kilmer's Helpful Hints to Housewives.
9:30 a. m.—NBC, Betty Crocker Gold Medal Home Service talk.
10:00 a. m.—NBC, D. Barry Radio talk.
10:15 a. m.—NBC, Josephine Gibson Food talk.
11:30 a. m.—Care of the Hair, the Loyalon Lady.
2:15 p. m.—Winnie Fields Moore, Travelogue.
2:30 p. m.—Grace Hamilton and Jack Stern, duets.
3:00 p. m.—Joe Charles and his guitar.
3:15 p. m.—Wedgwood Nowell, "Playgoers' Memories."
4:00 p. m.—Mother's Legion of the Air.
5:30 p. m.—Talk on Gardening.
6:00 p. m.—NBC, Armstrong Quakers.
6:30 p. m.—Wm. Kalani and his Trio.
7:00 p. m.—Bernice Morrison, "Poet of the Piano."
7:30 p. m.—Paul Roberts and Schonberger Trio.
8:00 p. m.—Remote control from Ray West Cafe.
8:30 p. m.—Two Shades of Blue, duets.
8:45 p. m.—NBC, Union Oil Company.
9:15 p. m.—Three Co-Eds.

(Continued on Page 28)

Copyright 1930 by Earle C. Anthony, Inc.
See Page 20 for NBC Program

Majestic

LARCHMONT RADIO SALON

139 N. Larchmont Blvd.

HEmpstead 5590



TED HUSING

Columbia Broadcasting System

PACIFIC COAST NETWORK

845 Madison Ave., New York

William S. Paley
President

Henry A. Bellows
Vice-President

**KHJ, KFRC, KVI,
KFPY, KOIN,
KOL, KDYL**

WEDNESDAY, MAY 14

- 11:00 a. m.—Columbia Ensemble. KLZ, KDYL, KFPY.
- 11:30 a. m.—Columbia Educational Features. KLZ, KDYL, KFPY.
- 12:00 noon—Musical Album. KLZ, KDYL, KFPY, KOL, KMOX.
- 1:00 p. m.—Columbia Grenadiers. KLZ, KDYL, KFRC, KFPY, KOL.
- 4:00 p. m.—Jesse Crawford's Organ Recital. KLZ, KHJ, KFRC, KFPY, KOL.
- 7:00 p. m.—The Roustabouts. KLZ, KDYL, KFPY, KOL.
- 8:00 p. m.—Bert Lown and his Biltmore Orchestra. KLZ, KDYL, KFPY, KOL.

THURSDAY, MAY 15

- 11:00 a. m.—Columbia Educational Features—American School of the Air. KLZ, KDYL, KFPY, KHJ, KFRC.
- 12:00 noon—U. S. Navy Band Concert. KLZ, KDYL, KFPY.
- 1:30 p. m.—Bert Lown and his Biltmore Orchestra. KLZ, KDYL, KFPY, KFRC.
- 4:00 p. m.—The Vagabonds. KLZ, KHJ, KFRC, KFPY.
- 4:15 p. m.—Columbia Educational Features. KLZ, KHJ, KFRC, KFPY, KOL.
- 4:30 p. m.—U. S. Flag Association Announcements. KLZ, KFRC, KFPY.
- 6:30 p. m.—National Radio Forum. KLZ, KFRC, KFPY, KOL.
- 7:15 p. m.—Dream Boat. KLZ, KDYL, KFRC.
- 7:30 p. m.—Will Osborne's Orch. KLZ, KDYL, KFRC, KFPY.
- 8:00 p. m.—Anson Weeks' Orchestra.
- 9:00 p. m.—Mid-Week Kodak Hour. KLZ, KDYL, KHJ, KFRC, KOIN, KYI, KFPY.

FRIDAY, MAY 16

- 11:00 a. m.—Columbia Ensemble. KLZ, KDYL, KHJ, KFPY.
- 12:30 p. m.—Club Plaza Orchestra. KLZ, KDYL, KFPY, KOL.
- 1:00 p. m.—Don Bigelow and Orchestra. KHJ.
- 1:45 p. m.—Aunt Zelena. KLZ, KDYL, KFPY.
- 2:15 p. m.—The Boy and his Leader. KLZ, KHJ.
- 3:00 p. m.—Bernhard Levitow and his Commodore Ensemble. KLZ, KFRC, KFPY, KOL.
- 4:00 p. m.—Nit Wit Hour. KLZ, KDYL, KHJ, KFRC, KFPY, KOL.
- 4:30 p. m.—U. S. Navy Band.
- 6:00 p. m.—At the Sign of the Green and White. KLZ, KDYL, KHJ, KFRC, KOIN, KFPY, KOL.
- 6:30 p. m.—Gold Medal Fast Freight. KLZ, KDYL, KHJ, KFRC, KOIN, KFPY, KOL.
- 7:30 p. m.—Bert Lown and his Biltmore Orchestra. KLZ, KDYL, KFPY, KOL.
- 8:00 p. m.—Duke Ellington's Cotton Club Band. KLZ, KDYL, KFPY.
- 9:00 p. m.—True Story Hour. KHJ, KFRC, KOL.

SATURDAY, MAY 17

- 8:00 a. m.—Adventures of Helen and Mary. KHJ, KFRC, KOL.
- 12:30 p. m.—Club Plaza Orchestra. KLZ, KDYL, KFPY, KMOX, KOL.
- 1:00 p. m.—French Trio. KLZ, KDYL, KHJ, KFRC, KFPY, KOL.
- 1:30 p. m.—Ebony Twins. KLZ, KDYL, KFRC, KFPY.
- 2:00 p. m.—Hotel Shelton Orchestra. KLZ, KDYL, KHJ, KFRC, KFPY, KOL.
- 2:30 p. m.—"Ted Husing's Sportsclants." KLZ, KHJ, KFPY, KOL.
- 3:00 p. m.—The Capitulators. KLZ, KHJ, KFRC, KFPY.
- 4:00 p. m.—New York Times Mixed Chorus. KFRC, KOL.
- 4:15 p. m.—Industrial America. KHJ, KFRC, KOL.
- 4:30 p. m.—Dixie Echoes. KLZ, KFRC.
- 5:00 p. m.—Blank Simmons' Show Boat. KLZ, KDYL, KHJ, KFRC.
- 6:00 p. m.—Paramount Publix Hour. KLZ, KDYL, KHJ, KFRC, KXX, KOIN, KFPY, KOL.
- 7:00 p. m.—Hotel Paramount Orchestra. KLZ, KDYL, KOL.
- 7:30 p. m.—Anson Weeks' Hotel Roosevelt Orchestra. KLZ, KDYL, KHJ, KOL.
- 8:00 p. m.—Paul Specht and his Manhattan Towners Orchestra. KLZ, KDYL, KOL.

DAILY EXCEPT SUNDAY

- 8:00 a. m.—Columbia Revue (ex. Sat.). KFRC, KFPY. (Wednesday, KHJ.)
- 8:30 p. m.—Yoeng's Restaurant Orch. KFRC. (Wednesday, KHJ.)
- 8:30 p. m.—Midnight Melodies. KLZ, KDYL, KFPY, KOL (ex. Friday).

SUNDAY, MAY 11

- 9:30 a. m.—The Aztecs—Latin American and Spanish music. Direction Luis Zamudio. KLZ, KFPY, KHJ.
- 10:00 a. m.—Ballad Hour. KLZ, KFPY.
- 11:00 a. m.—Ann Leaf at the organ. KLZ, KDYL, KFPY.
- 11:30 a. m.—Conclave of Nations. KLZ, KFPY.
- 12:30 p. m.—Cathedral Hour. KLZ, KDYL, KHJ, KFPY.
- 1:00 p. m.—Toscha Seidel, violinist and John Barelay. KLZ, KDYL, KFPY, KHJ.
- 2:30 p. m.—The Gauchos—Argentine and Spanish music. KLZ, KDYL, KHJ, KFRC, KFPY.
- 3:00 p. m.—The Globe Trotter—Act. KLZ, KFPY, KHJ.
- 3:45 p. m.—The World's Business. KLZ, KDYL, KHJ, KFPY.
- 4:30 p. m.—Around the Samovar. KLZ, KDYL, KFPY.
- 5:00 p. m.—Majestic Theatre of the Air. KLZ, KDYL, KHJ, KFRC, KOIN, KFPY, KOL.
- 6:00 p. m.—Will Rogers. KLZ, KDYL, KHJ, KFRC, KOIN, KFPY, KOL.
- 6:30 p. m.—Arabesque—A Modern "Thousand and One Nights." KLZ, KDYL, KFRC, KFPY.
- 7:00 p. m.—Back Home Hour. KFRC, KFPY, KHJ.
- 8:00 p. m.—Coral Islanders. KLZ, KDYL, KFPY, KHJ.

MONDAY, MAY 12

- 11:00 a. m.—Columbia Ensemble. KLZ, KDYL, KFPY.
- 12:00 noon—U. S. Navy Band Concert. KDYL, KFPY, KOL.
- 1:00 p. m.—National Student Federation. KLZ, KFRC, KFPY, KOL, KHJ.
- 3:00 p. m.—Current Events. KLZ, KFRC, KFPY.
- 3:45 p. m.—Bernhard Levitow and his Commodore Ensemble. KLZ, KFRC, KFPY, KOL.
- 6:30 p. m.—Jesse Crawford, organist. KLZ, KDYL, KHJ, KFRC, KOIN, KFPY.
- 7:00 p. m.—The Columbians. KLZ, KFPY, KOL.
- 7:30 p. m.—Paul Specht and his Manhattan Towers Orchestra. KLZ, KDYL, KFPY, KOL.
- 8:00 p. m.—Anson Weeks' Orchestra from Roosevelt. KLZ, KFPY, KOL.

TUESDAY, MAY 13

- 11:00 a. m.—Columbia Educational Features—American School of the Air. KLZ, KFPY, KHJ, KFRC.
- 12:00 noon—U. S. Army Band Concert. KDYL, KOL, KFPY.
- 1:00 p. m.—Rhythm Kings Dance Orchestra. KLZ, KDYL, KFRC, KFPY.
- 1:30 p. m.—Club Plaza Orchestra. KLZ, KDYL, KFRC, KFPY.
- 3:45 p. m.—Bernhard Levitow and his Commodore Ensemble. KLZ, KDYL, KFRC, KOL.
- 4:30 p. m.—Romany Patteran. KLZ, KFPY.
- 5:00 p. m.—Mardi Gras. KFRC, KLZ, KFPY, KHJ.
- 6:00 p. m.—Graybar's "Mrs. and Mrs." KLZ, KDYL, KHJ, KFRC, KOIN, KFPY, KOL.
- 6:30 p. m.—Musical Comedy Memories. KLZ, KDYL, KHJ, KFRC, KOIN, KFPY, KOL.
- 7:00 p. m.—Ted Weems and his Orchestra. KLZ, KDYL, KFPY, KOL.
- 7:30 p. m.—Bert Lown and his Biltmore Orchestra. KLZ, KDYL, KFPY, KOL.
- 8:00 p. m.—Anson Weeks' Hotel Roosevelt Orchestra. KLZ, KDYL, KFPY.



RULES

1. Contest open to any Majestic owner living in Southern California or Arizona.
2. Majestic dealers, their relatives or employees are not eligible to enter station logs for prizes.
3. Letters must state Serial number of Majestic radio owned and name of dealer from whom purchased.
4. Station list must show date and time station was heard, record of selections broadcast by station at that time, and be certified by a Notary Public.
5. Prizes will be awarded, not only on a basis of the size of the log but will take into consideration location, interference conditions, time, etc. The longest log from a good location may be of less merit than a shorter one from a more difficult location.
6. Logs entered by contestants early in the contest may be supplemented by subsequent lists later in the "DX" season.

JUDGES:

K. G. Ormiston, Tech. Ed. Radio Doings
 Naylor Rogers, Mgr. Radio Station KNX
 Al Farquharson, Sec. L. A. Radio Trades Assn.

PRIZES:

WEEKLY PRIZE Bouldin Cage Antenna Value \$15

GRAND PRIZES

To be Awarded at End of Contest

FIRST PRIZE - \$100
SECOND PRIZE - \$50
THIRD PRIZE - \$25



The
 selecting
 ning let
 Contest,
 An
 winne
 award
 this sp

Address of
 test Judge

Distributors in Southern

X *Contest*
DISTANCE

CINCINNATI
PITTSBURG
PHILADELPHIA
SCHENECTADY
NEW YORK

Contest Judges are busy
the three prize win-
in the Majestic DX
which closed May 1st.

Announcement of the
of the three cash
will be made in
next week.

Submitting logs in this contest to Majestic DX Con-
Radio Doings, 407 E. Pico Street, Los Angeles.

AR & WATSON, Inc.

Arizona

1361 - 63 - 65 South Figueroa Street, Los Angeles

The essential features of these programs are identical with those sent us by the stations



BOB SWAN

KHJ

Los Angeles, Calif.—900 Kc.

1000 WATTS—333.1 METERS
Don Lee Bldg., 7th and Bixel Sta. Owned and operated by Don Lee,
Calif. Dis. for Cadillac and LaSalle. Phone VA. 7111
Glenn Dolberg, Manager Raymond Paige, Musical Director

Lindsay MacHarrie
Production Manager
C. M. C. Raymond
Commercial Director
Leigh Harline
Program Manager
Harold Peery
Chief Engineer
Dick Creedon
Director of Features
Ernest G. Underwood
Technical Director

- 9:15 a. m.—Records, courtesy Scientific Laboratories.
- 10:35 a. m.—Agnes White, Home Economics.
- 11:00 a. m.—American School of the Air, CBS.
- 11:30 a. m.—S. & W. Company.
- 12:45 p. m.—Advertising Club Luncheon from Biltmore.
- 2:30 p. m.—Normalizer.
- 3:00 p. m.—Western Air Express.
- 3:15 p. m.—Midnight Mission.
- 3:45 p. m.—U. S. C. Period.
- 4:00 p. m.—Organ Recital by W. Tourtellotte.
- 5:00 p. m.—CBS.*
- 6:00 p. m.—Graybar, CBS.
- 6:30 p. m.—Thompson's Malted Milk, CBS.
- 7:00 p. m.—Don Lee Symphony.
- 7:30 p. m.—Pelton Motor Co. program.
- 8:00 p. m.—Ice Carnival (from KFRC).
- 8:30 p. m.—City Water and Power program.
- 9:00 p. m.—Don Lee Concert Orchestra.
- 9:30 p. m.—Ballad Crooners.

WEDNESDAY, MAY 14

- 8:00 a. m.—CBS Revue, CBS.
- 8:30 a. m.—Young's Orchestra, CBS.
- 9:15 a. m.—Records.
- 10:35 a. m.—Lor Cabin Bread, Agnes White.
- 11:00 a. m.—Columbia Ensemble, CBS.
- 11:30 a. m.—Richardson's.
- 11:45 a. m.—Normalizer Sales Syndicate.
- 12:45 p. m.—Optimist Club Luncheon from Biltmore.
- 2:50 p. m.—Records.
- 3:00 p. m.—Fred C. McNabb Garden Talk.
- 3:30 p. m.—L. A. Library Book Review.
- 4:00 p. m.—In Russian Village, CBS.
- 4:30 p. m.—Records.
- 5:00 p. m.—Nell Larson at Organ.
- 5:15 p. m.—Police Commissioner Thorpe.
- 5:30 p. m.—Blvd. Furniture Co. with Bob Swan.
- 6:00 p. m.—Peggy Hamilton—Romance of Fashions.
- 6:30 p. m.—Prof. Chas. Lindsay and organ.
- 7:00 p. m.—Don Lee Symphony.
- 8:00 p. m.—Standard Oil Co., "Days of '49."
- 8:30 p. m.—KFRC Dance Band and Soloists (from KFRC).
- 9:00 p. m.—Raymond Paige presentation.
- 9:30 p. m.—Musical Suggestions.

THURSDAY, MAY 15

- 8:00 a. m.—CBS.*
- 8:45 a. m.—Studio program.
- 10:30 a. m.—Tintex (to Coast Unit).
- 10:45 a. m.—Agnes White, Home Economics.
- 11:00 a. m.—American School of the Air, CBS.
- 11:30 a. m.—S. & W. Company.
- 12:45 p. m.—Jr. Chamber of Com. meeting from Biltmore
- 2:30 p. m.—Normalizer.
- 3:00 p. m.—Walter Brown Murray.
- 3:15 p. m.—U. S. C. Trojan Period.
- 3:30 p. m.—YMCA.
- 3:45 p. m.—University of the West.
- 4:00 p. m.—Western Auto Electric Corp.
- 4:30 p. m.—CBS.*
- 5:00 p. m.—Major K's Mementoes, CBS.
- 5:30 p. m.—Charlie Wellman and Nell Larson.
- 5:45 p. m.—Coast Investor.
- 6:00 p. m.—W. Tourtellotte.
- 6:30 p. m.—Studio program.
- 7:00 p. m.—Forest Lawn Memorial Park.
- 8:00 p. m.—Gen. Petroleum Violet Ray Merry Makers.
- 9:00 p. m.—Eastman Kodak, CBS.
- 9:30 p. m.—Organ Recital with KHJ singers.

FRIDAY, MAY 16

- 8:30 a. m.—Young's Orchestra, CBS.
- 10:30 a. m.—Ann Leaf, CBS.
- 11:00 a. m.—Scientific Laboratories.
- 11:15 a. m.—Motion Picture Magazine.

(Continued on Page 41)

- DAILY EXCEPT SUNDAY
- 7:00 a. m.—Recordings.
 - 7:30 a. m.—N. Y. Stock Exchange Quotations.
 - 7:40 a. m.—Coal and Coke.
 - 8:30 a. m.—Recordings.
 - 9:30 a. m.—Feminine Fancies, KFRC.
 - 12:00 noon.—L. A. Biltmore Hotel Orchestra.
 - 12:30 and 10:00 p. m.—News Items, courtesy of L. A. Times (except Monday).
 - 1:30 p. m.—Times Forum.
 - 2:00 p. m.—Happy-Go-Lucky Hour, KFRC (ex. Sat.).
 - 4:45 p. m.—World-wide News (except Monday).
 - 4:55 p. m.—Town Topics.
 - 10:05 p. m.—Earl Burnnett's Biltmore Hotel Orchestra.
 - 12:00 midnight—Organ program by Wesley Tourtellotte.

SUNDAY, MAY 11

- 8:00 a. m.—Terpezone program.
- 9:00 a. m.—Pacific States Savings & Loan Concert.
- 11:00 a. m.—First M. E. Church of Los Angeles.
- 12:30 p. m.—Cathedral Hour, CBS.
- 1:00 p. m.—Toscha Seidel, violinist, CBS.
- 1:30 p. m.—Prof. Lindsay and organ.
- 2:00 p. m.—The Blenders Male Quartet (from KFRC).
- 2:30 p. m.—The Gauchos, CBS.
- 3:00 p. m.—Globe Trotters, CBS.
- 3:30 p. m.—Colonial Dames.
- 3:45 p. m.—Dr. Julius Klein, CBS.
- 4:30 p. m.—Rabbi Edgar Maguin, Inspiration Talk.
- 5:00 p. m.—Majestic program, CBS.
- 6:00 p. m.—Will Rogers, for Squibb, CBS.
- 6:30 p. m.—Los Angeles Brewing Co.
- 7:00 p. m.—Back Home Hour, CBS.
- 8:00 p. m.—Coral Islanders, CBS.
- 8:30 p. m.—Melody Hour (from KFRC).
- 9:00 p. m.—Val Valente Orchestra (from KFRC).
- 11:00 p. m.—Organ Recital.

MONDAY, MAY 12

- 8:00 a. m.—Columbia Revue, CBS.
- 9:15 a. m.—Richardson's Music Lovers Shop.
- 10:30 a. m.—CBS.*
- 11:00 a. m.—Columbia Ensemble, CBS.
- 11:15 a. m.—Scientific Laboratories.
- 11:45 a. m.—Normalizer Sales Syndicate.
- 12:45 p. m.—Records.
- 1:00 p. m.—National Student Federation, CBS.
- 3:00 p. m.—Colonial Dames Corp.
- 3:15 p. m.—Girl Scouts of America, CBS.
- 3:30 p. m.—Matthew Murray, "Home Problems."
- 3:45 p. m.—Automobile Club of Southern California.
- 4:00 p. m.—Viennese Quintet.
- 5:00 p. m.—Hi Moulton and Fire Eaters.
- 5:30 p. m.—Bob Swan, for Blvd. Furniture Co.
- 6:30 p. m.—Jesse Crawford, CBS.
- 7:00 p. m.—Inglewood Park.
- 7:30 p. m.—S. & W. Company.
- 8:00 p. m.—Golden State Blue Monday Jamboree.
- 10:00 p. m.—Ted Florida's Orchestra.
- 11:00 p. m.—Biltmore Orchestra.

TUESDAY, MAY 13

- 8:00 a. m.—CBS.*
- 8:30 a. m.—Young's Orchestra, CBS.



That's Service!
Rushing a
RADIOLA
from
WATSON RADIO CO.
AX ridge-1581... 4411 5th Broadway.



Pleasant 4092 8558 S. Broadway

The essential features of these programs are identical with those sent us by the stations



NAYLOR ROGERS

KNX

Hollywood, Calif.—1050 Kc.

5000 WATTS—285.5 METERS—Los Angeles Evening Express
Evening Express
Paramount-Lasky Studio, 5555 Marathon
"The Voice of Hollywood"

Phone HEMPstead 4101

Naylor Rogers
Director-Manager

Pierre Mellonine
Program Director

N. D. Garver
Technical Engineer

DAILY EXCEPT SUNDAY

Daily Exhibitions of Miniature Portraits (no regular schedule of hours).

- 6:45 a. m.—"Earlybirds" exercises, Dr. P. M. Seixas.
- 7:15 a. m.—"Pep and Ginger" exercises.
- 7:45 a. m.—"Home Folks" exercises Dr. P. M. Seixas.
- 8:00 a. m.—Inspirational talk and morning prayer.
- 8:15 a. m.—Musical program of popular recordings.
- 9:00 a. m.—Time signals from Washington, D. C.
- 9:30 a. m.—Radio Shopping News.
- 10:00 a. m.—"Be Young and Be Happy," Eddie Al-bright's Ten O'Clock Family.
- 10:30 a. m.—Home Economics talk given by Kate Brew Vaughn, director of Household Economics Dept.
- 12:00 noon, 7:00 and 10:00 p. m.—Time Signals.
- 12:00 noon.—"The Musical Lunch Box."
- 12:30 p. m.—CPR's Musical program.
- 1:00 p. m.—Off the Air.
- 1:30 p. m.—Eddie Al-bright's reading of late fiction.
- 2:00 p. m.—Program, courtesy L. A. Evening Express.
- 3:30 p. m.—Lost and Found and stock market.
- 4:30 p. m.—CPR's musical program.
- 5:00 p. m.—E. C. Griffith's talk on "Travel."
- 5:15 p. m.—"Big Brother Ken's Kiddie Hour."
- 5:45 p. m.—Town Crier's Timely Amusement Tips.
- 10:00-12:00 midnight—Hotel Ambassador; Johnny Hamp and his Kentucky Serenaders. (10:45 Friday).

SUNDAY, MAY 11

- 10:00 a. m.—"Home Remedy Hour."
- 10:15 a. m.—Princess Helaine Lab. musical program.
- 10:30 p. m.—Chet Mitendorf, presenting musical prog.
- 11:00 a. m.—First Presbyterian Church of Hollywood.
- 12:30 p. m.—Louise Johnson, astro-analyst.
- 1:00 p. m.—International Bible Students Association.
- 2:00 p. m.—City Park Board musical program.
- 4:00 p. m.—Harold Roberts' Band.
- 4:30 p. m.—First Radio Church of the Air.
- 5:30 p. m.—Scriptural Research Bureau.
- 6:00 p. m.—Dr. Ernest Holmes.
- 6:30 p. m.—O'Connell and White present Marshall's Marimba Band.
- 7:00 p. m.—Pyrol Symphony of twenty musicians.
- 8:00 p. m.—First Presbyterian Church of Hollywood.
- 9:00 p. m.—Booster Symphony and American Singers.

MONDAY, MAY 12

- 8:30 a. m.—Dr. Chas. Dean Clinics.
- 9:00 a. m.—Bundy & Al-bright musical program of pop-ular recordings.
- 11:00 a. m.—"Home Remedy Hour."
- 11:15 a. m.—Beauty Secrets by Georgia Fifield.
- 11:30 a. m.—First Radio Church of the Air.
- 2:30 p. m.—Matinee Symphony.
- 3:35 p. m.—Organ program by Lucie Lee.
- 4:00 p. m.—"The Home Builders."
- 6:00 p. m.—Organ program by Lucie Lee.
- 6:30 p. m.—Bill Hatch's String Quartet.
- 7:00 p. m.—"Under the Make Up."
- 7:30 p. m.—KNX Symphony.
- 8:00 p. m.—One-act playlet, dir. by Georgia Fifield.
- 8:30 p. m.—Luboviski Violin Chorr.

- 9:00 p. m.—Rio Grande Male Quartet.
- 9:30 p. m.—"Radio Detective."

TUESDAY, MAY 13

- 8:30 a. m.—Bundy and Al-bright's musical program.
- 11:00 a. m.—Clinic of the Air.
- 11:30 a. m.—KNX Little Symphony; Tudor Williams, basso.
- 2:30 p. m.—Talk by Major Mott.
- 2:45 p. m.—Fireman's Orchestra of Los Angeles.
- 3:35 p. m.—Clinic of the Air.
- 4:00 p. m.—Harmonica Band.
- 6:00 p. m.—Organ program by Lucie Lee.
- 6:30 p. m.—Musical Calangis Family.
- 7:00 p. m.—Tyrol Symphony and soloists.
- 7:30 p. m.—"The Old Cedar Chest."
- 8:00 p. m.—"Hap and Sap," the Royal Vagabonds.
- 9:00 p. m.—Luboviski Trio; Theo. Kittay.
- 9:30 p. m.—Peggy Mathews, Bill Hatch, piano and song.

WEDNESDAY, MAY 14

- 9:00 a. m.—"Home Remedy Hour."
- 11:00 a. m.—Hungarian Ensemble.
- 11:30 a. m.—Dorothy Chase and the Charis Players.
- 11:45 a. m.—Beauty secrets by Georgia Fifield.
- 3:00 p. m.—Bill Hatch, piano.
- 4:05 p. m.—"The Homo Builders."
- 6:00 p. m.—Lucie Lee at the Wurlitzer.
- 6:30 p. m.—The Northwood Four.
- 7:00 p. m.—Mr. and Mrs. Radio Skit.
- 7:30 p. m.—Sargon Medicine Company.
- 8:00 p. m.—"The Airdales" and Bert Butterworth.
- 8:30 p. m.—AMORC College.
- 9:00 p. m.—Sporting Events.
- 9:30 p. m.—Walter V. Ferner, 'cellist; Rosalie Barker Frye, contralto.

THURSDAY, MAY 15

- 8:15 a. m.—Hollywood Breakfast Club.
- 9:15 a. m.—"Home Remedy Hour."
- 11:00 a. m.—The KNX Symphony.
- 2:30 p. m.—Prof. Edgard Leon, French Lessons.
- 3:00 p. m.—Organ program by Lucie Lee.
- 3:35 p. m.—Louise Johnson, astro-analyst.
- 4:00 p. m.—"The Nutcracker."
- 6:00 p. m.—Fred Forrest's talk on "Iluman Interest."
- 7:00 p. m.—Luboviski Trio; Theodore Kittay.
- 8:00 p. m.—Pyrol Symphony of twenty musicians.
- 9:00 p. m.—"Five Minute Men and the Musical Mus-keteers."
- 9:15 p. m.—The Nomads.
- 9:45 p. m.—"Music drama of the Knights of the Round Table."

FRIDAY, MAY 16

- 8:30 a. m.—Interesting information by Dr. J. Dean.
- 9:00 a. m.—"A Menu for Sunday Dinner."
- 10:30 a. m.—"Ovaltine" Ensemble.
- 10:45 a. m.—"Home Remedy Hour."
- 11:00 a. m.—First Radio Church of the Air.
- 11:30 a. m.—Glidden Paint Company program.
- 11:45 a. m.—"Musical Contrasts."
- 2:30 p. m.—Talk by Major Lawrence Mott.
- 2:45 p. m.—KNX Symphony.
- 3:15 p. m.—Joyce Coad, little movie star.
- 3:30 p. m.—Federation of Women's Clubs program.
- 4:00 p. m.—"Home Builders."
- 6:00 p. m.—Organ program by Lucie Lee.
- 6:30 p. m.—O'Connell and White, piano twins; Trojan Women's Vocal Trio.
- 6:55 p. m.—"Seth Thomas Historical Cameos."
- 7:00 p. m.—Stove Poker Ensemble.
- 8:00 p. m.—Royal Order of Optimistic Do-Nuts.
- 9:00 p. m.—Gilmore "Lion Tamers."
- 9:45 p. m.—Main event, Hollywood Legion Stadium.

(Continued on Page 43)

**ATWATER KENT
IN HOLLYWOOD**

Expert Radio Service

**HOLLY-ANGELES
MUSIC CO.**

6611 HOLLYWOOD BLVD.

Call GR 4876

The essential features of these programs are identical with those sent us by the stations



GERALD KING

KFWB

Phone HO. 0315

Gerald L. King
Manager
H. P. Sampson
Program Arranger
Leslie Howlitt
Chief Technician

Hollywood, Calif.—950 Kc.

1000 WATTS—315.6 METERS
WARNER BROS. MOTION PICTURE STUDIOS
Warner Brothers' Theater, 6425 Hollywood Boulevard

12:30 p. m.—Jean Cowan and the Dixieland Syncopators.
After Game—Johnny TeGroen's Ensemble.
7:10 p. m.—The Southlanders.
8:00 p. m.—George Olsen and his Music.
8:30 p. m.—David Percy, haritone; Pacific Salon Orchestra and soloists.
9:30 p. m.—"Rainbow Trail to Colorland."
10:00 p. m.—Irving Aaronson and his Commanders from the Roosevelt Hotel, Hollywood.
11:00 p. m.—Ben Bernie and his orchestra by remote control from the Montmartre Cafe, Hollywood.

THURSDAY, MAY 15

10:00 a. m.—Ted Dahl's Orchestra.
11:30 a. m.—KFWB String Orchestra; Nelson Case.
7:10 p. m.—"The Daffodils," with "Daffy" Duke Atterhury.
8:00 p. m.—KFWB Dance Orchestra; Ann Grey and Buster Dees, soloists.
9:00 p. m.—"Etchings in Jazz"—continuity program.
9:30 p. m.—The Southlanders and Vernon Rickard.
10:00 p. m.—Irving Aaronson and his Commanders.
10:30 p. m.—Ben Bernie and his Orchestra, direct from Montmartre Cafe, Hollywood.

FRIDAY, MAY 16

10:00 a. m.—Prudence Penny of the Examlner.
11:30 a. m.—Bill Van, courtesy of May Company.
12:00 noon.—KFWB String Orchestra; Nelson Case.
7:10 p. m.—The Southlanders and soloists.
7:45 p. m.—Mac and Al, courtesy of McAleer Body Polish Company.
8:30 p. m.—The National Life Dance Orchestra.
9:00 p. m.—Sports Interview by Mark Kelly.
9:30 p. m.—Hollywood Revelers.
10:00 p. m.—Irving Aaronson and his Commanders.
10:30 p. m.—Ben Bernie and his Orchestra from Montmartre Cafe.

SATURDAY, MAY 17

10:00 a. m.—Ted Dahl's Band.
11:30 a. m.—KFWB String Orchestra; Nelson Case.
7:10 p. m.—Julius K. Johnson at the Vitaphone Recording Organ.
7:30 p. m.—Ted Dahl's Band.
8:00 p. m.—MonaMotor Ollers; Vernon Rickard, tenor; Boswell Sisters.
9:00 p. m.—Don Warner and Ron Wilson, two piano numbers.
9:30 p. m.—Continuity program.
10:00 p. m.—Irving Aaronson and his Commanders from Roosevelt Hotel.
11:00 p. m.—Ben Bernie and his Orchestra from the Montmartre Cafe.
11:30 p. m.—George Olsen and his Music from the "Plantation."

KFI Program

(Continued from Page 22)

9:30 p. m.—Ray Van Dyne's Orchestra, with Helen Guest, soloist.

SATURDAY, MAY 17

6:45 a. m.—Gertrude Gussell, ballads, with Karl Brandenhurg, tenor.
9:00 a. m.—Sylvia's Happy Hour.
9:30 a. m.—Spanish lesson, Annette Doherty.
9:45 a. m.—NBC, National Farm and Home Hour.
11:30 a. m.—Care of the Hair, the Lovalon Lady.
11:45 a. m.—French lesson, Annette Doherty.
2:15 p. m.—Alma and Adele Howell, duets.
2:45 p. m.—Kelly Alexander, ballads.
3:15 p. m.—The Masked Minstrels' Hour.
4:30 p. m.—Pasadena Junior College Band, L. Strong, director.
5:30 p. m.—A. Melvern Christie, tenor.
6:00 p. m.—NBC, Lucky Strike Hour.
7:00 p. m.—Variety Hour, with Three Sisters, Anna Kristina, Happy Chappies and Micky Conti.
8:00 p. m.—NBC, Gilmore Circus.
8:30 p. m.—Robert Hurd and concert orchestra.
9:00 p. m.—NBC, Del Monte program.
9:30 p. m.—James Burroughs and concert ensemble.

TUESDAY, MAY 13

10:00 a. m.—Ted Dahl's Orchestra.
11:30 a. m.—KFWB String Orchestra; Nelson Case.
After Game—Johnny TeGroen's Band.
7:10 p. m.—Julius K. Johnson at the console of the Vitaphone Recording Organ.
7:30 p. m.—Edward Murphey, presenting a recreated world's series baseball game.
8:00 p. m.—The Southlanders; Boswell Sisters.
9:00 p. m.—The Edgeworth Plantation Club.
9:30 p. m.—Main bout from the Olympic Auditorium.
10:30 p. m.—Irving Aaronson and his Commanders.
11:00 p. m.—Ben Bernie's orchestra from the Montmartre Cafe.

WEDNESDAY, MAY 14

8:00 a. m.—The Breakfast Club.
10:00 a. m.—Prudence Penny of the Examlner.
10:30 a. m.—Orpheus Sextet and the Feature Trio.
11:30 a. m.—Billy Van.
12:00 noon.—KFWB String Orchestra; Nelson Case.



HARRY GEISE

KMTR

V. G. Freitag
General Manager
Harry Geise
Program Director
Ray Bailey
Musical Director
Eugene Inge
Press Relations
Tom Scholtz
Day Announcer
C. L. Whitney
Technical Director

DAILY EXCEPT SUNDAY

- 6:00 a. m.—The Discovery Hour.
- 6:30 a. m.—Charlotte de Borde Burgess.
- 7:00 a. m.—New Idea Man's Wholesome Food Breakfast Club.
- 8:00 a. m.—Early Stock Reports.
- 9:00 a. m.—Mildred Kitchen, Home Economics.
- 9:30 a. m.—Popular program.
- 10:00 a. m.—Louise Howatt. Happiness Girl.
- 10:30 a. m.—Ralph Little's Joy Boys (ex. Mon., Wed., Fri.).
- 11:45 a. m.—Departmental Broadcast, direct from City Hall.
- 12:00 noon.—"World In Review," News Bulletins.
- 12:15 p. m.—"Prosperity Hour," Truman Bradley.
- 1:15 p. m.—Banjo Boys.
- 2:15 p. m.—Popular program.
- 2:30 p. m.—Spanish program.
- 3:00 p. m.—Palais Ballroom Orchestra. remote control.
- 4:00 p. m.—Popular program.
- 4:30 p. m.—Trading Post program.
- 5:30 p. m.—Selected Records.
- 5:45 p. m.—"Reporter of the Air"—News.
- 6:00 p. m.—Organ Recital, Egyptian Theater (except Thursday and Friday).
- 10:00 p. m.—Dance Music.
- 11:00 p. m.—"The 11th Hour Musical Revue."
- 12:00 midnight—"8 Ball" and Charley Lung.

SUNDAY, MAY 11

- 7:00 a. m.—Wholesome Food Breakfast Club.
- 9:00 a. m.—John Driscoll's Musical Revue.
- 12:00 noon.—Popular program.
- 1:00 p. m.—Old Irish and English Ballads.
- 2:00 p. m.—Songs of a Few Years Ago.
- 3:00 p. m.—Band Selections and Marches.
- 4:00 p. m.—Musical Comedy and Light Opera.
- 5:00 p. m.—Late Popular Hits.
- 6:00 p. m.—Dare Sisters.

Hollywood, Calif.—570 Kc.

500 WATTS—526 METERS
KMTR Radio Station, 1025 N. Highland Ave. HDilly 3026.
The Official Broadcasting Station of the
Los Angeles Evening Herald

- 7:00 p. m.—Popular Composers Series.
- 8:00 p. m.—"From Behind the Footlights."
- 9:00 p. m.—"Vibrant Melodies," KMTR Orchestra.
- 9:30 p. m.—Harry Geise—Request.
- 10:00 p. m.—"The Discovery Hour," conducted by Natalie Marshall.

MONDAY, MAY 12

- 10:30 a. m.—Tom Mitchell.
- 6:30 p. m.—Popular Ballads.
- 7:00 p. m.—Talk, Chamber of Commerce.
- 7:15 p. m.—"Pianoland."
- 7:30 p. m.—KMTR Orchestra.
- 8:30 p. m.—"Rhythms of Today."
- 9:00 p. m.—Miniature Salon Orchestra.
- 9:30 p. m.—"Happy Harry and Rusco Pete."

TUESDAY, MAY 13

- 6:05 p. m.—Talk on Traffic—Judge Valentine.
- 6:30 p. m.—M. Haigh, violinist; Roy Rockwood, tenor.
- 7:00 p. m.—Evening Herald Travel Talk.
- 7:15 p. m.—"Dot and Mary."
- 8:00 p. m.—"Light Opera."
- 8:30 p. m.—Harry Geise.
- 9:00 p. m.—Moss-Covered Melodies."

WEDNESDAY, MAY 14

- 10:30 a. m.—Tom Mitchell.
- 7:00 p. m.—"Hawaiian" Melodies.
- 8:00 p. m.—Musical Comedy Selections.
- 8:30 p. m.—"Sigmund Romberg" program.
- 9:00 p. m.—Popular Waltz program.
- 9:30 p. m.—"Happy Harry and Rusco Pete."

THURSDAY, MAY 15

- 7:00 p. m.—Travel Talk.
- 7:15 p. m.—Civic Repertory Theater.
- 7:55 p. m.—Fishing Talk—Jack Boag.
- 8:00 p. m.—"Dot and Mary"—piano and songs.
- 8:30 p. m.—Egyptian Theatre of the Air.
- 9:30 p. m.—Recreated Prize Fights.

FRIDAY, MAY 16

- 10:30 a. m.—Tom Mitchell.
- 6:30 p. m.—"Mickey Mouse" program.
- 7:00 p. m.—Miniature Salon Orchestra.
- 8:00 p. m.—"Half Hour of Pep."
- 8:30 p. m.—"Gems from Wales."
- 9:30 p. m.—"Happy Harry and Rusco Pete."

SATURDAY, MAY 17

- 6:30 p. m.—"Heavenly Twins of Radio."
- 7:00 p. m.—"On With the Dance."
- 8:00 p. m.—"Favorite Light Classics"—Orchestra.
- 8:30 p. m.—"Jane and Jean."
- 9:00 p. m.—Palais Ballroom Orchestra—Remote.



PAUL MYERS

KFVD

EMPIRE 1171
Culver City 4517
John W. Swallow
Vice-Pres. & Gen. Mgr.
Paul Myers
Advertising Announcer
Al Weinert
Berton Bennett
Announcers
M. S. Adams
Chief Technician

DAILY EXCEPT SUNDAY

- 6:00 a. m.—Spanish program.
- 7:00 a. m.—Hal Roach Happy-Go-Lucky Trio.
- 11:00 a. m.—Beauty Talk.
- 12:30 p. m.—Tom and Wash.
- 1:00 p. m.—G. Allison's Radio Home program.
- 2:30 p. m.—Eldorado program.
- 3:00 p. m.—Auburn Hour.
- 3:30 p. m.—Pan-American program.
- 5:45 p. m.—Timely Topics.
- 10:00 p. m.—Tom and Wash.
- 10:15 p. m.—J. Newton Yates at the Kilgen organ.
- 11:30 p. m.—Selected Recordings.
- 12:00 midnight—J. Newton Yates at the Kilgen Organ.

SUNDAY, MAY 11

- 8:00 a. m.—Popular Recordings.
- 10:00 a. m.—Songs That Never Grow Old.
- 11:00 a. m.—Harmony Hawaiians.

Culver City, Cal.—1000 Kc.

250 WATTS—299.8 METERS
AUBURN-FULLER COMPANY
Hal E. Roach Motion Picture Studios

- 1:00 p. m.—"Inspiration," the Magazine of the Air.
- 3:00 p. m.—Sacred Half Hour.
- 4:00 p. m.—J. Newton Yates—Organ Recital.
- 9:15 p. m.—Community program.
- 11:00 p. m.—J. Newton Yates—Organ Recital.

MONDAY, MAY 12

- 9:00 a. m.—Helpful Hints to Housewives.
- 12:45 p. m.—Waves of Happiness.
- 5:30 p. m.—Health Talk.

TUESDAY, MAY 13

- 9:00 a. m.—Beauty Talk.
- 12:45 p. m.—Diet Question Box.
- 5:30 p. m.—Health Talk.

WEDNESDAY, MAY 14

- 12:45 p. m.—Waves of Happiness.
- 5:30 p. m.—Health Talk.
- 9:15 p. m.—Pan-American Broadcasting Co.

THURSDAY, MAY 15

- 9:00 a. m.—Beauty Hour.
- 10:30 a. m.—Helpful Hints to Housewives.
- 12:45 p. m.—Diet Question Box.
- 2:30 p. m.—Happy-Go-Lucky Trio.

FRIDAY, MAY 16

- 12:45 p. m.—Waves of Happiness.
- 2:00 p. m.—Helpful Hints to Housewives.
- 5:30 p. m.—Health Talk.
- 9:15 p. m.—Happy-Go-Lucky Trio.

SATURDAY, MAY 17

- 9:00 a. m.—Beauty Talk.
- 12:45 p. m.—Waves of Happiness.
- 5:30 p. m.—Health Talk.

The essential features of these programs are identical with those sent us by the stations



RAY WINTERS

KECA

Los Angeles, Cal.—1430 Kc.

209.7 METERS—1000 WATTS

EARL C. ANTHONY, INC.

1000 South Hope St. Westmore 0331

8:45 p. m.—Anna and Oscar, character skit.

9:00 p. m.—Nick Harris, detective stories.

9:30 p. m.—NBC, Florsheim Frolic.

Carl Haverlin
Commercial Manager

Robert Hurd
Program Manager

WEDNESDAY, MAY 14

- 3:00 p. m.—Jerome Powers, pianist.
3:15 p. m.—German lesson, Annette Doherty.
3:30 p. m.—NBC, Back of the News in Washington.
3:45 p. m.—Eddie Geldmacher, jazz pianist.
4:00 p. m.—Elmer Heiring, ballads.
4:30 p. m.—Dr. Hirsch, talk on good health.
5:00 p. m.—NBC, Halsey-Stuart.
5:30 p. m.—NBC, Palmolive Hour.
6:30 p. m.—NBC, Coca Cola Hour.
7:00 p. m.—Kenmorent String Trio.
7:15 p. m.—Yellow Cab Quartet.
8:00 p. m.—NBC, Parisian Quintet.
8:30 p. m.—Julie Kelier, harp recital.
8:45 p. m.—Winnie Fields Moore, Travelogue.
9:00 p. m.—Wm. Rounds String Ensemble.

THURSDAY, MAY 15

- 3:00 p. m.—Jerome Powers, pianist.
3:15 p. m.—Marcella Burke, Hollywood Chatterer.
3:30 p. m.—NBC, Half Hour in the National Capital.
4:00 p. m.—NBC, Fleishman Sunshine Hour.
5:00 p. m.—NBC, Arco Birthday Party.
5:30 p. m.—NBC, Maxwell House Melodies.
6:00 p. m.—Buster Wilson's Orchestra.
6:30 p. m.—Golden State Quartet.
7:00 p. m.—Wedgewood Nowell, Playgoers Memories.
7:45 p. m.—Bob and Monte.
8:00 p. m.—Aeolian organ recital.
8:45 p. m.—Happy Chappies Happenings.
9:00 p. m.—NBC, Memory Lane
9:30 p. m.—Eddie Armstrong, ballads.

FRIDAY, MAY 16

- 3:00 p. m.—Armand, baritone.
3:15 p. m.—NBC, Universal Safety Series.
3:30 p. m.—California Cotton Pickers Orchestra.
4:00 p. m.—NBC, Cities Service Hour.
5:00 p. m.—NBC, Interwoven Pair.
5:30 p. m.—NBC, Armour Hour.
6:00 p. m.—Buster Wilson's Orchestra.
6:30 p. m.—Raleigh Revue, NBC.
7:00 p. m.—NBC, The Elgin program.
7:15 p. m.—Mrs. June Snow, bridge lesson.
8:00 p. m.—Jimmie West and his Campus Eight.
8:45 p. m.—Anna and Oscar, character skit.
9:00 p. m.—Winifred Donaldson, soprano.
9:15 p. m.—NBC, Kodak Weekend program.
9:45 p. m.—Catherine Childs Dixon, concert pianist.

SATURDAY, MAY 17

- 3:00 p. m.—Remote control from Ray West Cafe.
3:30 p. m.—NBC, The Fuller Man.
4:00 p. m.—NBC, New Business World.
4:30 p. m.—Max Mellinger, ballads.
4:45 p. m.—The Yantis Trio.
5:00 p. m.—NBC, General Electric Hour.
6:00 p. m.—Los Angeles Fire Department Orchestra.
7:00 p. m.—Jack Parker, tenor.
8:00 p. m.—NBC, Pacific Serenaders.
8:30 p. m.—Helen Guest, ballads.
8:45 p. m.—Eddie Armstrong, ballads.
9:00 p. m.—Will Rounds Ensemble, with Jean Dunn, soloist.

DAILY EXCEPT SUNDAY

- 7:30 a. m.—Louis Rube, Health Exercises.
7:45 a. m.—NBC, Aunt Jennima Boy.
8:00 a. m.—Leslie Brigham (ex. Sat.)
11:30 a. m.—Mable Lewis, Musical Memories (ex. Fri. and Sat.)
11:45 a. m.—NBC, Hour of the Canny Cook (ex. Fri. and Sat.)
7:30 p. m.—Amos 'n' Andy, for Pepsodent Co.
7:45 p. m.—Literary Digest (ex. Thurs.)
10:00 p. m.—Ray West Cafe.

SUNDAY, MAY 11

- 2:00 p. m.—NBC, Catholic services.
3:00 p. m.—Nick Harris, detective stories.
4:00 p. m.—NBC, Gems of the Drama.
5:00 p. m.—Helen Clare Dudley, concert pianist.
5:30 p. m.—Noreen Gammill, monologues.
6:00 p. m.—Ralph Romer and his Peplanders.
7:00 p. m.—Margaret Ruth Kernan, soprano.
7:30 p. m.—Grace Hamilton and Jack Stern, duets.
8:00 p. m.—KECA Symphonet, with Raine Bennett.
9:00 p. m.—Wm. Rounds String Ensemble, with Lenore Killian, soloist.
10:00 p. m.—NBC, The Gay Classics.

MONDAY, MAY 12

- 3:00 p. m.—Jerome Powers, pianist.
3:30 p. m.—Inez Small, blues and ballads.
3:45 p. m.—Health Cafeteria, Dr. Hirsch.
4:15 p. m.—Weldronov, "Pianist."
4:30 p. m.—Leonard Van Berg, tenor; P G. Hall, acc.
5:00 p. m.—NBC, "The Maytag Orchestra."
5:30 p. m.—NBC, General Motors Family Party.
6:00 p. m.—Buster Wilson's Orchestra.
6:30 p. m.—Two Shades of Blue—Eiton Hays and Virginia Orchestra.
7:15 p. m.—Yellow Cab Co., "Yellow Cab Quartet."
8:00 p. m.—Piano Capers; Harp Harmony.
9:00 p. m.—Ray Van Dyne Orchestra, with Jean Dunn.

TUESDAY, MAY 13

- 12:00 noon.—Antone Chris and steel guitar.
3:00 p. m.—Calif. Cotton Pickers Orchestra.
3:30 p. m.—Frederick V. Bowers, ballads.
4:00 p. m.—Carmen Ray, ballads.
4:30 p. m.—Winshaw Allen's Six Clouds of Joy.
5:00 p. m.—NBC, Eveready Hour.
5:30 p. m.—NBC, Happy Wonder Bakers.
6:00 p. m.—NBC, Westinghouse Salute.
6:30 p. m.—NBC, RKO Hour.
8:00 p. m.—Winifred Donaldson, contralto.
8:30 p. m.—George Porter, tenor.



DAVE WARD

KELW

Burbank, Calif.—780 Kc.

MAGNOLIA PARK—500 WATTS—384.4 METERS
"The White Spot of the San Fernando Valley"

Phones: Burbank 1601—GRanite 3193

H. Wadsworth Cole
Manager

Dave Ward
Asst. Manager

Stuard Walnwright
Chief Engineer

Dave Ward
Harry Moodie
Announcers

DAILY EXCEPT SUNDAY

- 10:00 a. m.—Frank and What's His Name.
11:00 a. m.—Mr. Rango, the Zodiac Man.
11:30 a. m.—Announcements and Records.
12:00 noon—Coos Bay.
5:00 p. m.—The Story of Mortimer Park.
5:30 p. m.—Recordings.
6:00 p. m.—Roy L. Medcalf at the Fox Alexander Theater organ.
7:00 p. m.—Paris Inn Cafe, La Vida, remote control.

The essential features of these programs are identical with those sent us by the stations



GLEN RICE

KMPC Beverly Hills, Cal.—710 Kc.

500 WATTS—422.3 METERS

Operated by Macmillan Petroleum Co.
Crestview 3101, Wilshire Blvd. at Camden Drive

Glen Rice
Manager
John McIntyre
Margaret Macdonald
Announcers
Ray Howell
Technician
K. G. Ormiston
Technical Supervisor

9:00 p. m.—University of Southern California.
10:00 p. m.—Ray Howell—the "And How" Boy.

TUESDAY, MAY 13

10:30 a. m.—Recordings.
1:30 p. m.—Mr. Hull—the Young Adventurer.
2:00 p. m.—Dr. Coulter—The Care of Your Pets.
2:30 p. m.—Hawaiian program.
3:00 p. m.—Distinctive Music.
4:00 p. m.—Recordings.
4:45 p. m.—Classified.
9:00 p. m.—House Warming—Griffith & Griffith Studio.

WEDNESDAY, MAY 14

10:30 a. m.—Hawaiian program.
1:15 p. m.—Jack Baldwin—the Piano Wizard.
1:30 p. m.—Classical and Semi-Classical program.
2:00 p. m.—Southern Melodies.
2:30 p. m.—Classified.
3:00 p. m.—University of Southern California.
5:30 p. m.—Cuckoo Clock.
9:00 p. m.—University of Southern California.
9:30 p. m.—J. N. Pyle—True Detective Stories.

THURSDAY, MAY 15

9:30 a. m.—What the Well Dressed Woman is Wearing.
10:30 a. m.—George Francis.
1:30 p. m.—A. T. Hull—the Young Adventurer.
1:45 p. m.—Classical and Semi-Classical program.
2:15 p. m.—Recordings.
2:45 p. m.—On the Shores of Hawaii.
3:30 p. m.—Distinctive Music.
4:30 p. m.—Classified.
5:30 p. m.—Sevilla Realty Corporation.
9:00 p. m.—Citizens Water and Power program.
9:30 p. m.—Pelton Motors.

FRIDAY, MAY 16

10:30 a. m.—Studio program.
1:15 p. m.—Jack Baldwin—the Piano Wizard.
1:30 p. m.—On the Shores of Hawaii.
2:00 p. m.—Popular program.
2:30 p. m.—Classical and Semi-Classical Recordings.
3:30 p. m.—Band Music.
4:00 p. m.—Fred C. McNabb—Garden Talks.
9:00 p. m.—Studio program.
9:30 p. m.—Bennie Light—Mark Cook.

SATURDAY, MAY 17

10:30 a. m.—Hawaiian program.
1:30 p. m.—A. T. Hull—the Young Adventurer.
1:45 p. m.—Classical and Semi-Classical program.
2:15 p. m.—Popular program.
3:00 p. m.—Saturday Afternoon Jamhoree.
5:30 p. m.—Cuckoo Clock.
9:00 p. m.—Junior Chamber of Commerce program.

DAILY EXCEPT SUNDAY

7:00 a. m.—Health Exercises—Haydon Pythian.
8:00 a. m.—Sooner Birds Exercises—Haydon Pythian.
8:30 a. m.—The Ad-Visor (except Thursday).
8:45 a. m.—Classified.
9:00 a. m.—"The Rollicking Radioliers"—A Symphony of Sunshine.
9:30 a. m.—Bert Howard, Macmillan More Mileage Optimist (except Thursday).
9:45 a. m.—Lot O'Pep.
10:00 a. m.—Chapel U.S.C.—Remote.
10:15 a. m.—Dan Maxwell. "The King of Scotland."
11:00 a. m.—Records.
11:30 a. m.—Noonday Musicals.
12:00 noon.—Modes and Fashions.
5:00 p. m.—Just Kids Club (except Saturday).
5:45 p. m.—Studio program.
10:00 p. m.—Beverly Hill Billies (except Monday).
11:00 p. m.—Ray Howell, the "And How" Boy (Monday, 10:00 p. m.).

SUNDAY, MAY 11

8:00 a. m.—Musical program.
9:00 a. m.—Popular Recordings.
10:00 a. m.—The Very Latest.
10:30 a. m.—Sunday Morning Musicals.
11:00 a. m.—Pipe Organ Recordings.
12:00 noon.—A Bouquet of Memories.
1:00 p. m.—On the Shores of Hawaii.
1:30 p. m.—Southern Melodies.
3:00 p. m.—Church Latter Day Saints.
4:00 p. m.—Red Seal Hour.
5:00 p. m.—Musical Comedy.
5:30 p. m.—Sunset Melodies.

MONDAY, MAY 12

10:30 a. m.—Hawaiian program.
1:00 p. m.—Studio program.
1:30 p. m.—Macmillan Tour.
2:30 p. m.—Recordings.
3:00 p. m.—University of Southern California.
5:30 p. m.—The Cuckoo Clock.

MONDAY, MAY 12

3:00 p. m.—Color Expression of Southern California. Mary King Hunter. Courtesy of Bullock's Department Store.
3:30 p. m.—College of Music. Varied Program. Under the direction of Prof. Horatio Cogswell.
4:00 p. m.—Population Problems. Dean Reid L. McLunk. S. C. Semi-Centennial Lecture Series on Contemporary Civilization.
4:30 p. m.—Public's Business. Gordon Whitnall. Director Manager, City Planning Commission, Los Angeles.
9:00 p. m.—Preparation of the Budget for Los Angeles. Roy A. Knox. Director Bureau of Budget and Efficiency, Los Angeles County.

9:30 p. m.—Chemistry as Related to Life. Dr. Wilfred W. Scott. S. C. Semi-Centennial Lecture Series on Contemporary Civilization.

WEDNESDAY, MAY 14

3:00 p. m.—Our Helen in Magic Story Land. Helen Birdsall.
3:30 p. m.—Play. Poetry, Music. Sixth Annual Univ. Apollad. School of Speech.
4:00 p. m.—The Lost Continent of Mu. Dr. John G. Hill. Archaeological Excavation Visits.
4:30 p. m.—Artistic Aspects of Speech. Dean Ray K. Immel. S. C. Semi-Centennial Lecture Series on Contemporary Civilization
9:00 p. m.—Extravaganza Specialty. Extravaganza. (Annual production by the students of the University.) Under the direction of Miss Jean Maschio.

Radio Correspondence Education Division KMPC

University of Southern California

Radio Financing

ROBERT E. HOPKINS & CO.

417 South Hill St.

Los Angeles

MUtual 6282

The essential features of these programs are identical with those sent us by the stations



GORDON SMITH

KGFJ Los Angeles, Calif.—1200 Kc.

Ben S. McGlashan
Owner

Duke Hancock
Assistant Manager

Thelma Kirchner
Publicity

John Smithson
Technician

Wm. Miller

Nite Owl

Phone:

WEstmore 7788

DAILY EXCEPT SUNDAY

- 12:00 midnight—Mosby's Dixieland Blue Blowers from Apex Night Club.
1:00 a. m.—Night Owl program.
5:00 a. m.—Gedduker's Club.
7:00 a. m.—Madame Lawrye's Goodwill program.
8:30 a. m.—Gordon Smith's Shopping Guide.
9:30 a. m.—Dr. Dean Health Clinic.
10:00 a. m.—Lani's Harmony Hawaiians.
11:00 a. m.—The Health Man.
1:30 p. m.—Recordings.
12:00 noon.—Japanese Radiotising Service.
12:30 p. m.—The Yellow Jackets from Oaks Tavern.
1:30 p. m.—Recordings.
2:00 p. m.—Studio.
3:00 p. m.—Gainsborough Beauty Shop.
4:00 p. m.—Andrews Radio Company.
4:30 p. m.—Recordings.
5:00 p. m.—Market Reports; Announcements.
5:30 p. m.—Organ Recital by Arch Fritz.
6:00 p. m.—Glen Edmonds' Orch. from Elks' Club.
7:00 p. m.—Gordon Smith's Radiotising Service.
8:00 p. m.—Glen Edmonds' Orch. from Elks' Club.
8:30 p. m.—Studio Orchestra.

100 WATTS—249.9 METERS

J. V. Baldwin Bldg., 15th and Figueroa Sts.
"Keeping Good Folks Joyful 24 Hours a Day"

- 9:30 p. m.—Mosby's Dixieland Blue Blowers from Apex Night Club.
10:30 p. m.—Organ Recital by Arch Fritz.
11:00 p. m.—Airline Service.
SUNDAY, MAY 11
12:00 midnight—Nite Owl program.
7:00 a. m.—Recordings.
10:00 a. m.—Organ Recital by Arch Fritz from Musicians' Club.
11:00 a. m.—KGFJ Concert Orchestra; Virginia Schneider, vocalist; Blauche Cooper.
1:00 p. m.—Unique String Quintet; Gladys Parish, vocalist; Blanche Cooker, pianist.
3:00 p. m.—Harmony Hawaiian Quartet.
5:00 p. m.—Organ Recital by Arch Fritz.
8:00 p. m.—Glenn Edmonds' Orchestra from Elks' Club.
7:00 p. m.—Recordings.
9:00 p. m.—Mosby's Dixieland Blue Blowers.
10:00 p. m.—Recordings.

MONDAY, MAY 12

- 7:00 p. m.—KGFJ Concert Trio; Gladys Parish, vocalist.

TUESDAY, MAY 13

- 7:00 p. m.—Albert Keglovich, violinist; George Cox, 'cello; Chas. Busteye, pianist.

WEDNESDAY, MAY 14

- 2:00 p. m.—Les Hite and His Famous Emancipators.
7:00 p. m.—Meglin Kiddies.

THURSDAY, MAY 15

- 7:00 p. m.—KGFJ Concert Trio; Gladys Parish, vocalist.
10:30 p. m.—Organ Recital.

FRIDAY, MAY 16

- 6:00 p. m.—Glenn Edmonds' Orch. from Elks' Club.
7:00 p. m.—KGFJ Concert Trio.

SATURDAY, MAY 17

- 7:00 p. m.—KGFJ Concert Trio; Gladys Parish, vocalist.



LILAS JOHNSON

KGB San Diego, Calif.—1330 Kc.

225.4 METERS—250 WATTS

Pickwick Terminal Hotel—Franklin 6151-2-3
PICKWICK BROADCASTING CORPORATION
Heary Hohmaa, Managing Director

Robert G. Binyon
Manager
Luther L. Putnam
Studio Director
Lilas Johnson
Program Director
Fred Stone
Studio Accompanist
Lloyd Snow
Announcer
Willis F. Farnum
Chief Technician
Ralph R. Williams
Technician

- 5:00 p. m.—Old-Time Gospel Hour.
5:30 p. m.—Classical Recordings.
6:00 p. m.—Church of Jesus Christ of L.D.S.
7:00 p. m.—Miniature Symphony and Vocalist.
8:00 p. m.—Minor Twins, Caroline Lee & Judith South.
9:00 p. m.—"The Real Mexico."

MONDAY, MAY 12

- 3:00 p. m.—Church of Jesus Christ of L.D.S.
6:00 p. m.—Sponsored Spanish program.
7:00 p. m.—Dr. Tabienco—Bird Interpretations.
7:15 p. m.—East San Diego Christian Church "Little Symphony."
8:00 p. m.—Margie & LeElla Burrus and the Banjo Duo
9:00 p. m.—Highway Highlights.

TUESDAY, MAY 13

- 7:05 p. m.—Aloha Boys' Hawaiian Trio and Helen Kirkham.
8:00 p. m.—Classical Interpretations.
9:00 p. m.—Pickwick Air and Bus Boys.
9:30 p. m.—Melody Trio.

WEDNESDAY, MAY 14

- 7:00 p. m.—"Old Favorites" with Fred Stone.
7:30 p. m.—Community Chest program with Bill Roast.
8:00 p. m.—Banjo Duo.
8:30 p. m.—Lovelei Ensemble with Preston Green.
9:30 p. m.—Johnson Sisters.

THURSDAY, MAY 15

- 4:00 p. m.—Parent-Teacher Association.
7:00 p. m.—Imperial Syncopators and Margie Burrus.
8:00 p. m.—Highway Highlights.
9:00 p. m.—Original Mexican Serenaders.

FRIDAY, MAY 16

- 3:30 p. m.—Aloha Boys' Duo.
7:00 p. m.—Arkansas Old-Timers.
8:00 p. m.—Studio program.
8:30 p. m.—Pickwick Air and Bus Boys.
9:00 p. m.—Chaminade Trio with Latella Pirtle.

SATURDAY, MAY 17

- 3:00 p. m.—KGB Movie Club.
3:30 p. m.—Roseleaf Melaney.
7:00 p. m.—Caliste Conant Hudson & Jack & Jill.
8:00 p. m.—KGB Frolic.

DAILY EXCEPT SUNDAY

- 7:00 a. m.—Popular recordings.
8:30 a. m.—Who's Who.
9:00 a. m.—May Specials.
10:00 a. m.—Recordings.
11:00 a. m.—Sponsored program.
2:30 p. m.—Recordings.
2:45 p. m.—News, courtesy San Diego Sun.
3:00 p. m.—Fred & Otto—Pickwick Bus Boys (except Tuesday and Saturday).
4:00 p. m.—Recordings.
4:50 p. m.—U. S. Dept. of Agriculture—Farm Talk (except Saturday).
5:00 p. m.—"Air Castles."
5:15 p. m.—Merchants' Air Service.
6:00 p. m.—Lost and Found.
6:05 p. m.—Merchants' Air Service (except Monday).
6:45 p. m.—Put & Jake.
7:00 p. m.—Sports and Late News.
10:00 p. m.—Special program.

SUNDAY, MAY 11

- 8:00 a. m.—Through the Comics with Uncle Si—courtesy S. D. Union.
9:00 a. m.—Special Recordings.
10:00 a. m.—International Bible Students Association.
11:00 a. m.—Sponsored program.
12:00 noon—Theater Announcements.

The essential features of these programs are identical with those sent us by the stations



FRANK GAGE

KTM Santa Monica, Cal.—780 Kc.

1900 WATTS—384.4 METERS
Municipal Auditorium, Deean Park, Santa Monica, Calif.
Los Angeles Studio: 3636 Beverly Blvd. EXposition 1341
Pickwick Broadcasting Corporation
Henry A. Hohman, General Manager
Clarence B. Juneau, Chief Transmission Engineer

Glenhall Taylor
Manager
Frank Gage
Program Director
Johnny Mack
Asst. Program Director
Chief Announcer
Don Allen
Continuity
Marillah Olney
Dramatics

TUESDAY, MAY 13

- 9:00 a. m.—Pickwick Securitles, with Cass and Shaw
- 10:00 a. m.—Readers' Hour.
- 1:30 p. m.—Household Hints by Laura Scudder.
- 1:45 p. m.—Organ Echoes.
- 2:45 p. m.—Popular Melodies.
- 4:00 p. m.—Dance Melodies.
- 4:15 p. m.—Popular Songs.
- 4:45 p. m.—Solving Your Problems, by Walter Brown Murray.
- 8:00 p. m.—Five Freshmen.
- 8:30 p. m.—F. A. G. Moth program.
- 8:45 p. m.—Blue Ridge Mountain Duo.
- 9:00 p. m.—Pickwick Securitles program.
- 10:00 p. m.—Readers' Hour.
- 10:30 p. m.—El Patio.

WEDNESDAY, MAY 14

- 9:30 a. m.—Little Readers' Hour.
- 2:45 p. m.—Popular Fox Trots.
- 4:00 p. m.—Popular Melodies.
- 4:25 p. m.—Better Business Bureau Talk.
- 8:00 p. m.—Arthur Shaw and Stewart Blair.
- 8:30 p. m.—Musical Readings.
- 9:00 p. m.—Twilight Memories, Loyce Whiteman.

THURSDAY, MAY 15

- 9:30 a. m.—Little Readers' Hour.
- 2:45 p. m.—Popular Melodies.
- 4:00 p. m.—Popular Melodies.
- 8:00 p. m.—Highway Highlights.
- 9:00 p. m.—KTM Little Theater.
- 9:30 p. m.—Jack Iloss, tenor; Dorothy Dee, organ.

FRIDAY, MAY 16

- 9:30 a. m.—Franky and Johnny.
- 10:00 a. m.—Little Readers' Hour.
- 1:30 p. m.—Household Hints by Laura Scudder.
- 1:45 p. m.—Organ.
- 2:45 p. m.—Novelty Records.
- 8:00 p. m.—Evenings on the Ranch.
- 9:00 p. m.—Harrison Good Luck Melodies.
- 9:30 p. m.—Lani McIntyre's Hawaiians.
- 10:00 p. m.—Little Readers' Hour.
- 10:30 p. m.—El Patio.

SATURDAY, MAY 17

- 9:30 a. m.—Little Readers' Hour.
- 1:00 p. m.—Children's Playground Hour.
- 2:45 p. m.—Popular Melodies.
- 4:00 p. m.—Record Variety Hour.
- 8:00 p. m.—Frank Gage and his Gang.
- 9:30 p. m.—Little Readers' Hour.

DAILY EXCEPT SUNDAY

- 6:00 a. m.—The Eye Opener program.
- 7:00 a. m.—KTM Ranch Hour.
- 8:00 a. m.—Danceland Melodies.
- 8:30 a. m.—Household Topics by Marian Dale.
- 9:00 a. m.—Bert's Request program.
- 10:00 a. m. to 1:00 p. m.—Silent.
- 1:00 p. m.—Puritas Organ Recital.
- 2:00 p. m.—Popular Melodies.
- 2:30 p. m.—The Health Man.
- 3:00 p. m.—Fowler's Food for Thought.
- 4:00 p. m.—Organ Reveries, Arthur Shaw.
- 4:30 p. m.—KTM Date Book.
- 5:00 p. m. to 8:00 p. m.—Silent.
- 10:00 p. m.—Organ Concert (except Monday).
- 11:00 p. m.—Pezel's Popularities.
- 12:00 midnight—Spizzerinktum Club.

SUNDAY, MAY 11

- 8:00 a. m.—The Eye Opener.
- 10:00 a. m.—I. B. S. A. Watch Tower program.
- 1:00 p. m.—Popular Melodies.
- 1:30 p. m.—L. B. program.
- 2:00 p. m.—Concert Masters' Hour.
- 3:00 p. m.—Santa Monica Symphony Orchestra.
- 4:00 p. m.—Sacred program by Stuart Balr, baritone; Arthur Shaw, organ.
- 4:30 p. m.—Christian Unity by Walter Raymond.
- 8:00 p. m.—Moments with Great Masters; Lou Gordon, tenor; Arthur Shaw, organ.
- 9:00 p. m.—Killiam Sisters' Vocal Trio.
- 9:30 p. m.—Little Readers' Hour.
- 10:00 p. m.—Parls Inn.
- 11:00 p. m.—Readers' Hour.
- 12:00 midnight—Spizzerinktum Club.

MONDAY, MAY 12

- 2:45 p. m.—Popular Waltzes.
- 4:00 p. m.—Organ Echoes.
- 8:00 p. m.—Interesting Interviews.
- 8:30 p. m.—Patsy and Tom, the Modern Pair.
- 9:00 p. m.—Highway Highlights.
- 10:00 p. m.—Readers' Hour.
- 10:30 p. m.—Franky & Johnny.



AIMEE SEMPLE McPHERSON

KFSG Los Angeles, Calif.—1120 Kc.

500 WATTS—267.7 METERS
Angelus Temple, Echo Park. EX. 1141
"Four Square Gospel"

Aimee Semple McPherson
Founder-President
Roderick H. Morrison
Station Director
Noland Tucker
Announcer
Maurice E. Kennedy
Technical Director
Essie Binkley Loyc
Program Manager

- 7:00 p. m.—Musical Hour.
 - 8:00 p. m.—Revival Service.
 - 10:00 p. m.—Music Lover's Hour.
- ## MDNDAY, MAY 12
- 11:00 a. m.—Bible Drama.
- ## WEDNESDAY, MAY 14
- 2:00 p. m.—L. I. F. E. Band Concert.
 - 2:40 p. m.—Divine Healing Service.
 - 4:30 p. m.—Lucille with her program of Smiles.
- ## THURSDAY, MAY 15
- 2:00 p. m.—Pasadena Hour.
 - 3:00 p. m.—Bethesda Hour.
 - 4:00 p. m.—L. I. F. E. Jubilee Hour.
 - 8:00 p. m.—Water Baptisml Service.
 - 9:30 p. m.—Foursquare Conservatory and Symphouy Orchestra.

FRIDAY, MAY 16

- 2:00 p. m.—Angelus Temple News Reel.
- 3:00 p. m.—Bethesda Hour.
- 4:00 p. m.—Brother Jack and the Kiddies Hour.

SATURDAY, MAY 17

- 8:00 p. m.—Divine Healing Services.
- 9:30 p. m.—Back Home Hour.

- 7:00 a. m.—Family Altar Hour.
- 10:00 a. m.—Sunshine Hour.
- 11:00 a. m.—Noonday Musicale (except Monday).

SUNDAY, MAY 11

- 8:00 a. m.—Sabhath Sunrise Hour.
- 9:00 a. m.—Symphony Orchestra.
- 10:30 a. m.—Sunday Morning Worship.
- 2:30 p. m.—Dispensational Message.
- 6:30 p. m.—Angelus Temple Silver Band.

The essential features of these programs are identical with those sent us by the stations



CLARENCE CRARY

KFOX

Owned and Operated by
Nichols & Warriner, Inc.
220 E. Anaheim St.
Hal G. Niohels
Clarence Crary
Foster Rucker
Cecil Fry
Heini Orner
Announcers
L. W. McDowell
Chief Technician

Long Beach, Cal.—1250 Kc.

"Where Your Ship Comes In"

1000 WATTS—239.9 METERS—HANCOCK OIL STATION
Telephone No. 672-81

DAILY EXCEPT SUNDAY

- 1:00-3:00 a. m.—The Knight Fox.
5:00 a. m.—The Early Bird.
7:00 a. m.—Hello, Everybody.
7:30 a. m.—Early News Items.
7:45 a. m.—Novelty Musical Numbers.
7:50 a. m.—Bright and Early Hour.
8:20 a. m.—Music.
8:30 a. m.—Health and Efficiency.
8:40 a. m.—Recordings.
9:00 a. m.—Beauty Talk.
9:10 a. m.—Phonograph Music.
10:00 a. m.—Organ Recital by Vera Graham.
11:00 a. m.—Sunset Harmony Boys.
11:30 a. m.—News Reports by Frank P. Goss.
12:45 p. m.—Cheerio Boys.
1:30 p. m.—Cheerio Boys.
1:50 p. m.—Dr. Harbottle, Clarence and Doris.
2:20 p. m.—Rolly Wray.
2:30 p. m.—Sunset Harmony Boys.
3:00 p. m.—KFOX Varieties.
3:15 p. m.—Today in History.
3:30 p. m.—Organ Recital.
4:00 p. m.—Late News Report, Frank P. Goss.
4:15 p. m.—Rolly and Gene.
4:30 p. m.—Violet's Tiny Tots.
4:45 p. m.—Jones Harmony Four.
6:00 p. m.—Em and Clem.
6:15 p. m.—Percy at the Phone.
7:00 p. m.—Buttercream School Klds.
10:00 p. m.—Young Folks at Home.
11:00 p. m.—Majestic Ballroom Orchestra.
12:00 midnight—Organ Recital, Vera Graham.

DAILY EXCEPT MONDAY

- 11:45 a. m.—Hollywood Girls.
5:00 p. m.—Hollywood Girls.
6:30 p. m.—Sunset Harmony Boys.
6:45 p. m.—The Three Vagabonds (ex. Tues.).
7:15 p. m.—Ezra & Abie.
7:30 p. m.—Vest Pocket Minstrels.
9:30 p. m.—Everett Hoagland's Troubadors from Rendezvous at Balboa.

SUNDAY, MAY 11

- 5:00 a. m.—The Early Bird.
7:00 a. m.—Music.
8:00 a. m.—Family Circle Hour.
8:30 a. m.—Clover Leaf program.
9:00 a. m.—Old Time Music.
10:00 a. m.—Angeles Abbey Organ Recital.
11:00 a. m.—St. Luke's Episcopal Church.
12:30 p. m.—Musical program for Birkel Music Co.
1:00 p. m.—Hollywood Girls—Novelty Trio.
2:00 p. m.—Seth Parker.
2:30 p. m.—Kaai Hawaiians.
3:00 p. m.—Planistic Pansy.
3:30 p. m.—Long Beach Municipal Band.
4:00 p. m.—Organ Recital—Vera Graham.

- 5:00 p. m.—The Sky Boat.
5:30 p. m.—Hollywood Girls.
6:00 p. m.—"Em & Clem."
6:30 p. m.—Zadah Stoker and Her Kiddies.
6:45 p. m.—Foster Rucker and Doris.
7:00 p. m.—KFOX Varieties.
8:00 p. m.—Services from First Church of Christ, Scientist.
9:00-12:00 p. m.—Kilpatrick Purity Bread Capers.
12:00 midnight—Organ Recital—Vera Graham.
1:00 a. m.—The Knight Fox.

MONDAY, MAY 12

- 11:45 a. m.—Steinway Duo-Art.
12:00 noon—Sunset Harmony Boys.
1:00 p. m.—Bill and Co.
5:00 p. m.—Organ Recital.
5:30 p. m.—Sunset Harmony Boys.
6:45 p. m.—Cheerio Boys.
8:00 p. m.—Tavern Club.
8:30 p. m.—Texas Cowboys.
9:00 p. m.—Foster and Doris.
9:15 p. m.—Organ, Vera Graham.
9:30 p. m.—Majestic Ballroom Orchestra.

TUESDAY, MAY 13

- 1:00 p. m.—Klwanis Luncheon.
6:45 p. m.—Dr. Robert Williams.
7:45 p. m.—Bill & Co.
8:00 p. m.—The Gossipers.
8:30 p. m.—Texas Cowboys.
9:00 p. m.—KFOX Varieties.

WEDNESDAY, MAY 14

- 1:00 p. m.—Rotary Luncheon.
7:45 p. m.—Cheerio Boys.
8:00 p. m.—Seth Parker Singing School.
8:30 p. m.—Bill & Co.
8:45 p. m.—Cline Chittick.
9:00 p. m.—Pickwick Papers.

THURSDAY, MAY 15

- 1:00 p. m.—Dr. Clark—Health and Efficiency.
7:45 p. m.—Cheerio Boys.
8:00 p. m.—Seth Parker Singing School.
9:00 p. m.—KFOX Varieties.
10:30 p. m.—KFOX Varieties.

FRIDAY, MAY 16

- 1:00 p. m.—Masonic Luncheon.
7:45 p. m.—Cheerio Boys.
8:00 p. m.—The Song Story.
8:15 p. m.—The Cheerio Boys.
8:30 p. m.—Campus Nights.
9:00 p. m.—KFOX Varieties.
10:00 p. m.—Zandra's Mystery Hour.

SATURDAY, MAY 17

- 1:00 p. m.—Bill & Co.
7:45 p. m.—Knights of the Air.
8:00 p. m.—Tavern Club.
8:30 p. m.—Cline Chittick.
8:45 p. m.—Three Vagabonds.
9:00 p. m.—Majestic Ballroom.
10:30 p. m.—KFOX Varieties.

A COMPLETE CATALOG

containing detailed information on condensers and resistors may be had free on request.

AEROVOX

BUILT BETTER
CONDENSERS AND RESISTORS

82 1/2 Washington St., Bklyn., N. Y.

THE RESEARCH WORKER

will keep you abreast of developments in radio. It may be had free on request.

The essential features of these programs are identical with those sent us by the stations



BILL RAY

KGER Long Beach, Cal.—1360 Kc.

1000 WATTS—320.4 METERS
435 Pine Avenue Phone 632-75

C. Merwyn Dobyne
Owner and Director
Bill Ray
Manager
Herbert R. Connor
Assistant Manager
Frank C. Bliss
Publicity Director
Jay Tapp
Chief Engineer
Fritz Martin
Jerry Purcell
Jack Strook
Announcers

DAILY EXCEPT SUNDAY

- 7:30 a. m.—California Revelers.
- 8:00 a. m.—Foot Comfort Talks.
- 9:00 a. m.—Home Makers' Hour.
- 10:15 a. m.—Beauty Talk.
- 11:45 a. m.—Hi-noon, Hi-Jinks (Rhythm Makers).
- 2:15 p. m.—Lost and Found.
- 2:30 p. m.—Long Beach Band (ex. Mon., Thurs.).
- 9:00 p. m.—News Bulletin—Long Beach Sun.
- 10:00 p. m.—Southgate Dance Marathon.
- 11:00 p. m.—Quiet Time Tunas.

SUNDAY, MAY 11

- 8:30 a. m.—Comrades of the Air.
- 9:30 a. m.—Tauhman Men's Bible Class.
- 11:15 a. m.—First Presbyterian Church.
- 2:30 p. m.—Long Beach Band.
- 4:00 p. m.—Cathedral Hour.
- 6:30 p. m.—Aristocrat of the Supper Table.
- 7:00 p. m.—Harmony Trio.
- 7:30 p. m.—Trilolian Trio.
- 9:00 p. m.—Reverie Hour.
- 10:30 p. m.—Sunday Night Frolic to midnight.

MONDAY, MAY 12

- 1:00 p. m.—Nature Study Talk.
- 1:30 p. m.—Wurlitzer Organ.
- 2:00 p. m.—Popular Music.
- 4:45 p. m.—Colonians.
- 8:00 p. m.—The Captivators.
- 8:30 p. m.—Woman's Music Club.
- 9:15 p. m.—Pianistic Moods.

- 9:50 p. m.—Rev. Ethel Duncan.
 - 10:30 p. m.—Songs of the Islands.
- TUESDAY, MAY 13**
- 1:00 p. m.—Dolly Day Dreams.
 - 1:30 p. m.—Popular programs.
 - 2:00 p. m.—Siesta Period.
 - 4:45 p. m.—Wurlitzer Organ.
 - 7:30 p. m.—The Senoritas.
 - 8:30 p. m.—KGER String Ensemble.
 - 9:15 p. m.—George Strange.
 - 10:30 p. m.—Diamond Trio; Charlotte Morgan.

WEDNESDAY, MAY 14

- 1:00 p. m.—Novelties.
- 1:45 p. m.—Rev. Ethel Duncan.
- 4:45 p. m.—The Colonians.
- 7:30 p. m.—The Golden Poppies.
- 8:30 p. m.—KGER String Ensemble.
- 9:30 p. m.—Rev. Ethel Duncan.
- 10:30 p. m.—Rhythm Makers.

THURSDAY, MAY 15

- 1:00 p. m.—Popular programs.
- 1:30 p. m.—Audition Clinic.
- 2:30 p. m.—Siesta Period.
- 3:15 p. m.—Long Beach Band.
- 4:45 p. m.—Wurlitzer Organ
- 7:30 p. m.—The Senoritas.
- 8:00 p. m.—Earl Judy—Request program.
- 8:30 p. m.—The Musical Typist.
- 9:15 p. m.—P. C. C. Musicale.
- 10:30 p. m.—Diamond Trio; Pearl Davis.

FRIDAY, MAY 16

- 1:00 p. m.—Dolly Day Dreams.
- 1:30 p. m.—Novelties.
- 4:45 p. m.—Wurlitzer Organ.
- 7:30 p. m.—The Senoritas; Edna Bond.
- 8:30 p. m.—KGER Players.
- 9:15 p. m.—Ole and His Gang.
- 9:45 p. m.—Geo. Strange.
- 10:30 p. m.—Rhythm Makers.

SATURDAY, MAY 17

- 1:00 p. m.—Popular Music.
- 4:45 p. m.—Wurlitzer Organ.
- 8:00 p. m.—Melodies of Bygone Days.
- 8:30 p. m.—Spotlight Review.
- 10:30 p. m.—Rhythm Makers.



HARRY HERDMAN

KTBI Los Angeles, Calif.—1300 Kc.

1000 Watts—230.6 Meters—1300 Kc.—Bible Institute of L. A.
HARRY P. HERDMAN, Announcer. Phone MA. 1641
HOWARD C. WILSON, Technician
GORDON E. HOOKER, Accompanist
JOHN C. PAGE, Program Director

DAILY EXCEPT SATURDAY AND SUNDAY

- 8:00 a. m.—Uncle Harry's Bible Story.
- 8:15 a. m.—Devotional Hour.
- 9:15 a. m.—Radio Bible Course.
- 10:35 a. m.—Dr. John C. Page.
- 12:00 noon—Noonday Chimes.
- 2:00 p. m.—Visiting Pastor.

- 1:00 p. m.—Hazel Shively and Gordon Hooker.
- 1:30 p. m.—Book Message.

WEDNESDAY, MAY 14

- 8:45 a. m.—Rev. Stanley H. Bailes.
- 9:45 a. m.—Prof. H. W. Kellogg.
- 11:30 a. m.—Dr. J. E. Jaderquist.
- 1:00 p. m.—Musical Half-Hour.
- 1:30 p. m.—Rev. John A. Hubbard.

THURSDAY, MAY 15

- 8:45 a. m.—Announcer's Hour.
- 9:45 a. m.—Missionary Hour.
- 11:30 a. m.—Pastoral Talks on Heart Problems.
- 1:00 p. m.—Gordon Hyde, tenor.
- 1:15 p. m.—Missionary Biographies.

FRIDAY, MAY 16

- 8:45 a. m.—Correspondence Course Bible Lesson.
- 9:45 a. m.—Messages In Song.
- 11:30 a. m.—Dr. J. E. Jaderquist.
- 1:00 p. m.—Jack Wells, haritone.
- 1:15 p. m.—Messages from the Best Books.
- 7:00 p. m.—International Sunday School Lesson.
- 8:00 p. m.—Evening School Lecture.
- 9:00 p. m.—Program of Gospel Music.

SUNDAY, MAY 11

- 6:00 p. m.—Studio Vesper Service.
- 8:00 p. m.—Church of the Open Door.
- 9:00 p. m.—Bible Institute After-Church Service.

MONDAY, MAY 12

- 8:45 a. m.—Rev. Stanley H. Bailes.
- 9:45 a. m.—Messages from the Best Books.
- 11:30 a. m.—Verna Rempie, soprano.
- 1:00 p. m.—Aghavni Hargopian and Dorothy Bonthius.
- 1:15 p. m.—Faculty Music Hour.
- 7:00 p. m.—The President's Half-Hour.
- 7:30 p. m.—Rev. Milo Jamison.
- 8:00 p. m.—Spanish Gospel Service.
- 9:00 p. m.—Dr. David L. Cooper.

TUESDAY, MAY 13

- 8:45 a. m.—News of Christian Work.
- 9:45 a. m.—Bible Question Box.
- 11:30 a. m.—Dr. W. E. Edmonds.

The essential features of these programs are identical with those sent us by the station:



LESLIE ADAMS

KFSB

Leslie Adams
General Manager
Walter B. Nell
Advertising Manager
Glen Litten
Chief Technician
Gene Perry
Announcer
Leah McMahon
Program Director

San Diego, Calif.—600 Kc.

1000 WATTS—499.7 METERS
"The Air Capital of the West"
Telephone Franklin 6353

- DAILY EXCEPT SUNDAY**
- 8:45 a. m.—Good Cheer program.
9:00 a. m.—Morning Musical.
10:00 a. m.—Amy Lou Shopping Hour.
11:00 a. m.—Service Hour.
12:00 noon—James Erickson at Console of Fox Calif. Theatre.
12:30 p. m.—Studio program.
1:00 p. m.—KFSB Matinee Hour.
2:00 p. m.—Story Time (except Saturday).
2:30 p. m.—Balboa Park Organ (except Monday).
4:00 p. m.—Studio program.
5:00 p. m.—Nightly Musical Review.
6:00 p. m.—Late News; Weather Reports.
6:15 p. m.—Your English.
6:30 p. m.—Feature Program.
10:00 p. m.—Sleepy-Time Revelries.
11:00 p. m.—Douglas Nite Club.
- SUNDAY, MAY 11**
- 9:30 a. m.—Sponsored program.
10:30 a. m.—Popular Records.
11:00 a. m.—Yogi Alpha.
11:30 a. m.—Studio program.
12:00 noon.—Old-Time program.
2:00 p. m.—Studio program.
2:30 p. m.—Organ concert from Balboa Park.
8:00 p. m.—Sumner McKnight, accordion; Virgilio Rosado, violin.
8:30 p. m.—Hotel Del Coronado Concert Quartet.

- MONDAY, MAY 12**
- 2:30-5:00 p. m.—Operatic program.
7:00 p. m.—Program from Thearle Music Hall.
8:00 p. m.—Program presenting Ekay Hawaiians.
9:00 p. m.—KFSB Concert Trio with Janet Stanley.

- TUESDAY, MAY 13**
- 7:00 p. m.—Claude Kennedy's Orchestra.
8:00 p. m.—Manuel Dehesa.
8:30 p. m.—Leslie Adams.
9:00 p. m.—Feature program.
9:30 p. m.—Yogi Alpha.

- WEDNESDAY, MAY 14**
- 3:30 p. m.—Mrs. Crow, Child Psychology.
6:30 p. m.—Graham Stevenson's Orchestra.
7:00 p. m.—Union-Tribune Safety program.
7:45 p. m.—Leah McMahon.
8:00 p. m.—North American Ensemble.
9:00 p. m.—The Story Behind the Song.

- THURSDAY, MAY 15**
- 3:30 p. m.—French Lesson.
6:30 p. m.—Manuel Dehesa.
7:00 p. m.—Cramer's Concert Trio.
8:00 p. m.—Ekay's Hawaiians.
9:00 p. m.—Yogi Alpha.
9:30 p. m.—Feature program.

- FRIDAY, MAY 16**
- 3:30 p. m.—Concert.
7:00 p. m.—Program from Thearle Music Hall.
8:00 p. m.—Old-Time program.
9:00 p. m.—North American Ensemble.
- SATURDAY, MAY 17**
- 3:30 p. m.—Wixie Wix in "Echoes from Artists of the Pen."
6:30 p. m.—Orpheus Male Quartet.
7:30 p. m.—Bailey Warren, tenor; Richard Tetley, piano; Mildred Marin, soprano.
8:30 p. m.—Blanche Wood.
9:00 p. m.—Easley Players.
9:30 p. m.—Feature program.



FRANK BULL

KMIC

V. G. Freltag
Manager
Tel. TH. 1121
Inglewood 1927
Frank Bull
Cliff Howell
Announcers
Sonny Nupoff
Musical Director
Charles Whitney
Engineer
Barret Cosby
Chief Technician

Inglewood, Calif.—1120 Kc.

500 WATTS—267.7 METERS
Chamber of Commerce Bldg., Inglewood, Calif.
Owned and Operated by Dalton's, Inc.

- DAILY EXCEPT SUNDAY**
- 6:00 a. m.—Uncle Bim and Andy.
8:00 a. m.—Ethiopian-Oriental Day Club; "8" Ball-Oney, Hotsy-Totsy Gang and Head Hunters.
9:00 a. m.—Roll Call for Walkathon.
9:55 a. m.—News Flashes.
12:00 noon.—News Flashes; American Legion Briefs.
12:15 p. m.—Records.
12:30 p. m.—Loyola University, Educational (ex. Sat.).
1:00 p. m.—Records.
5:00 p. m.—Request records.
6:00 p. m.—Marie Hocking, Organ Recital (Monday, Wednesday and Friday).
6:30 p. m.—Sonny Nupoff's Dance Orch. (ex. Wed.).
12:00 midnight.—Request records.
- SUNDAY, MAY 11**
- 12:30 p. m.—Popular Records.
4:30 p. m.—Selected Records.
11:00 p. m.—1930 Super Marathon.
- MONDAY, MAY 12**
- 2:00 p. m.—Popular Records.
6:00 p. m.—Marie Hocking, Organ Recital.
7:00 p. m.—Old-time Music.
7:30 p. m.—Sonny Nupoff's Dance Orchestra.
8:30 p. m.—Lani McIntyre's Harmony Hawaiians.

- 9:30 p. m.—Swift's Palaise Ballroom.
10:30 p. m.—Records.
11:00 p. m.—1930 Super Marathon.
- TUESDAY, MAY 13**
- 2:00 p. m.—Popular Records.
5:25 p. m.—Judge Valentine—Talk on Traffic.
6:00 p. m.—Marie Hocking, Organ Recital.
6:30 p. m.—Sonny Nupoff's Studio Boys.
7:00 p. m.—Old-time Music.
7:30 p. m.—Sonny Nupoff's Dance Orchestra.
8:30 p. m.—Lani McIntyre's Harmony Hawaiians.
9:00 p. m.—Cavaliers Club.
10:00 p. m.—Popular Records.
11:00 p. m.—1930 Super Marathon.
- WEDNESDAY, MAY 14**
- 6:00 p. m.—Marie Hocking, Organ Recital.
7:00 p. m.—Sonny Nupoff's Dance Orchestra.
7:30 p. m.—Marie Hocking, Organ Recital.
8:00 p. m.—Lani McIntyre's Harmony Hawaiians.
9:00 p. m.—Magazine of the Air.
9:30 p. m.—Swift's Palaise Ballroom.
10:30 p. m.—1930 Super Marathon.
- THURSDAY, MAY 15**
- 6:30 p. m.—Sonny Nupoff's Dance Orchestra.
7:00 p. m.—Old-time Music.
10:30 p. m.—1930 Super Marathon.
- FRIDAY, MAY 16**
- 6:00 p. m.—Sonny Nupoff's Studio Boys.
6:30 p. m.—Marie Hocking, Organ Recital.
10:30 p. m.—1930 Super Marathon.
- SATURDAY, MAY 17**
- 12:30 p. m.—Matinee Frolic.
1:00 p. m.—Popular Records.
2:30 p. m.—Studio program.
3:30 p. m.—Records.
7:00 p. m.—Old-time Music.
10:30 p. m.—1930 Super Marathon.

The essential features of these programs are identical with those sent us by the stations



J. W. LAUGHLIN

KPO

San Francisco, Calif.—680 Kc.

Phone Kearney 0704

J. W. Laughlin
Managing Director
Curtis Peck
Technical Director

5000 WATTS—440.9 METERS
HALE BROTHERS AND THE CHRONICLE
"The Voice of San Francisco"

- 4:30 p. m.—Doug. Richardson, guitarist.
- 8:00 p. m.—NBC.*
- 9:15 p. m.—The Treadors.
- 10:00 p. m.—Palace Hotel Dance Orchestra.

TUESDAY, MAY 13

- 10:00 a. m.—Ann Warner's Home Making Chat.
- 1:00 p. m.—NBC.*
- 2:10 p. m.—California Crooners.
- 2:30 p. m.—The Auburn Girl.
- 8:00 p. m.—Cy Trohhe's Scrap Book.
- 8:30 p. m.—Allan Wilson, tenor.
- 9:15 p. m.—Meeting in the Tavern.
- 9:30 p. m.—Earle C. Anthony "Packard program."
- 10:00 p. m.—Silver Slipper Dance Orchestra.

WEDNESDAY, MAY 14

- 10:00 a. m.—"Helpful Hints for Housewives."
- 1:00 p. m.—Jerry Jermaine, balladist.
- 2:10 p. m.—Doug. Richardson.
- 2:30 p. m.—The Auburn Girl.
- 8:00 p. m.—Let's Get Associated.
- 8:30 p. m.—Nathan Ahas, violin recital.
- 9:15 p. m.—Maurice Gunsky, popular balladist.
- 9:30 p. m.—Earl C. Anthony "Packard program."
- 10:00 p. m.—Palace Hotel Dance Orchestra.
- 11:00 p. m.—Silver Slipper Dance Orchestra.

THURSDAY, MAY 15

- 10:00 a. m.—NBC.*
- 12:30 p. m.—Shrine Luncheon from Palace Hotel.
- 1:30 p. m.—"Helpful Hints for Housewives."
- 2:10 p. m.—Dee and Dee.
- 2:30 p. m.—The Auburn Girl.
- 5:50 p. m.—Federal Business Association Talk.
- 8:00 p. m.—Caswell Musical Episode.
- 8:30 p. m.—Musical Capers.
- 9:15 p. m.—Meeting in the Tavern.
- 9:30 p. m.—Earle C. Anthony "Packard program."
- 10:00 p. m.—Silver Slipper Dance Orchestra.

FRIDAY, MAY 16

- 10:00 a. m.—Ann Warner's Home Making Chats.
- 12:45 p. m.—Commonwealth Club Luncheon.
- 2:10 p. m.—California Crooners.
- 2:30 p. m.—The Auburn Girl.
- 8:00 p. m.—Out West.
- 8:30 p. m.—KPO Salon Orchestra.
- 9:15 p. m.—Roland U. McIntosh in "Plane Journeys."
- 9:30 p. m.—Earle C. Anthony "Packard program."
- 10:00 p. m.—Palace Hotel Dance Orchestra.
- 11:00 p. m.—Silver Slipper Dance Orchestra.

SATURDAY, MAY 17

- 10:00 a. m.—NBC.*
- 2:10 p. m.—The Sequoians.
- 2:30 p. m.—The Auburn Girl.
- 8:00 p. m.—NBC.*
- 8:30 p. m.—KPO Salon Orchestra.
- 9:15 p. m.—Roland U. McIntosh in "Plane Journeys."
- 9:30 p. m.—Earle C. Anthony "Packard program."
- 10:00 p. m.—Palace Hotel Orchestra.
- 11:00 p. m.—Silver Slipper Dance Orchestra.

See Page 20 for NBC Program

KGO

Oakland, California—790 Kc.

7500 WATTS—379.5 METERS
PACIFIC COAST STATION, GENERAL ELECTRIC CO.
Phone Fruitvale 5980. 557 Hotel St. Francis
See Page 20 for Detailed Program of KGO

C. R. SPENCER

5728 SANTA MONICA BOULEVARD
HOLLYWOOD, CALIF. Gladstone 5781

Just Three Blocks West of Western Avenue
Radio Service in All Parts of California

Write Us About Our Special Mail Order Service to
All Outside Points

◆ GRADE "A" TECHNICIANS
◆ CERTIFIED BY THE RA-
DIO TRADES ASS'N.

◆ We Use the Supreme Diagonometer
In All Service Work
◆ We Maintain a Special Division of
Our Service Dept. for Dealers

The essential features of these programs are identical with those sent us by the stations



HARRISON HOLLIDAY

KFRC San Francisco, Calif.—610 Kc.

Owned and Operated by Don Lee, Cal. Dist. for Cadillac & LaSalle
1000 WATTS — 491.5 METERS
1000 Van Ness Telephone Prospect 0100

Harrison Holliday
Manager

Edwin Wilson
Commercial Director

Alan N. Cormack
Technical Director

Frank Moss
Musical Director

DAILY EXCEPT SUNDAY

- 7:00 and 7:32 a. m.—"Simply Fitts" from Seal Rocks.
8:00 a. m.—CBS.*
8:30 a. m.—New York Stock Exchange.
8:30 a. m.—Yoeng's Orchestra, CBS.*
9:00 a. m.—S. F. Call-Bulletin's News.
9:15 a. m.—Yoeng's Orchestra, CBS* (ex. Wed.).
9:30 a. m.—Feminine Fancies (except Saturday).
10:30 a. m.—Wyn's Daily Chat (except Saturday).
12:00 noon.—Sherman Clay Concert.
1:00 p. m.—CBS.*
2:00 p. m.—Happy-Go-Lucky Hour (except Saturday).
4:45 p. m.—S. F. Cal-Bulletin's News Items and Town Topics.

12:00 midnight—Dance music.

SUNDAY, MAY 11

- 9:00 a. m.—"Home, Sweet Home" concert.
12:00 noon.—Sherman & Clay noonday concert.
1:00 p. m.—Jean Wakefield, "Jean and her Shadows."
2:00 p. m.—"The Blenders," male quartette.
2:30 p. m.—The Gauchos (CBS).
3:00 p. m.—Frank Moss, pianist, and Herman Reinberg, cellist.
3:45 p. m.—"The World's Business," CBS.
4:00 p. m.—Tea Time Recital; Lucille Atherton Harker.
4:30 p. m.—Inspirational talk by Dr. Louis I. Newman.
5:00 p. m.—Majestic Theatre of the Air, CBS.
6:00 p. m.—Squibb's program, featuring Will Rogers.
6:30 p. m.—Twilight Hour.
7:00 p. m.—Back Home Hour from Buffalo, CBS.
8:00 p. m.—Cadillac-LaSalle concert.
9:00 p. m.—"Melody Hour," Robert Olsen.
9:30 p. m.—Val Valente and his Roof Garden Orch.
11:00 p. m.—Organ recital.

MONDAY, MAY 12

- 11:00 a. m.—Domestic Science talk.
11:30 a. m.—Auditions.
1:00 p. m.—CBS.*
1:45 p. m.—Three Dainty Misses.
3:00 p. m.—H. V. Kaltenborn, Current Events, CBS.
3:30 p. m.—Western Air Express Aviation talk.
3:45 p. m.—Bernhard Levitow's Commodore Ensemble.
4:00 p. m.—Viennese Quintet.
5:00 p. m.—Wellman and Larsen.
5:30 p. m.—Studio program.
6:00 p. m.—Bobs, noted sports authority.
6:15 p. m.—"Your Financial Problems."
6:30 p. m.—Jesse Crawford, poet of the organ, CBS.
7:00 p. m.—"The Columbians."
7:30 p. m.—Thirty Minutes of Sunshine and Mellow'd Melody.
8:00 p. m.—"Golden State Blue Monday Jamboree."
10:00 p. m.—Cecil Wright, "Little Poison Oaks Himself."
10:15 p. m.—Hotel Mark Hopkins Orchestra.
11:00 p. m.—Earl Burnnett's Orchestra.

TUESDAY, MAY 13

- 11:00 a. m.—American School of the Air, CBS.
11:30 a. m.—Thirty Minutes of Sunshine.
12:00 noon.—Sherman & Clay noonday concert.
1:00 p. m.—Rhythm Kings Dance Orchestra, CBS.
1:30 p. m.—Bert Lown's Biltmore Orchestra, CBS.
3:00 p. m.—Beauty talks.
3:25 p. m.—Something About Everything.
3:30 p. m.—"Heroines of Fiction."
3:45 p. m.—Bernhard Levitow's Commodore Ensemble.
4:00 p. m.—Lindsey MacHarris, Elvia Allman.
5:00 p. m.—Mardi Gras, CBS.
6:00 p. m.—Graybar Electric Company, CBS
6:30 p. m.—Thompson's Malted Milk, CBS.
7:00 p. m.—Edna Fischer, "Piano Moods."
7:15 p. m.—The Joy Boys.
7:30 p. m.—KFRC Dance Band.
8:00 p. m.—Ice Carnival.
8:30 p. m.—Song Recital.
9:00 p. m.—Sierra Symphonists.
9:30 p. m.—Ballad Crooners.

- 10:00 p. m.—"Frank Watanabe," Eddie Holden.
10:10 p. m.—Val Valente and his Roof Garden Orch.

WEDNESDAY, MAY 14

- 9:15 a. m.—Ovaltine; electrical transcription.
11:00 a. m.—Mary Lewis Haines, Domestic Science talk.
11:15 a. m.—Dorothy Chase and the Charis Players.
11:30 a. m.—Glidden So-a-tone.
11:45 a. m.—Barbara Gould Broadcast, beauty talk.
1:00 p. m.—Columbia Grenadiers, CBS.
1:15 p. m.—Footnotes, CBS.
1:45 p. m.—Three Dainty Misses.
3:00 p. m.—The Observer; about new books.
3:30 p. m.—Something About Everything.
3:55 p. m.—"Your English."
4:00 p. m.—In a Russian Village, CBS.*
5:00 p. m.—KFRC Dance Band.
6:10 p. m.—Seth Thomas Clock Company.
6:15 p. m.—Shaler Company program (So-a-tone).
6:30 p. m.—Novelty program from KHJ.
7:00 p. m.—Don Lee Symphony Orchestra and singers.
7:45 p. m.—Studio program from KHJ.
8:00 p. m.—Standard Oil, "Romantic Forty-Niners."
8:30 p. m.—Stanley program.
9:00 p. m.—Lights and Shadows.
9:30 p. m.—"Musical Suggestions."
10:00 p. m.—Ted Fiorita Mark Hopkins Orchestra.
11:00 p. m.—Earl Burnnett's Biltmore Orchestra.

THURSDAY, MAY 15

- 11:00 a. m.—American School of the Air, CBS.
11:30 a. m.—Thirty Minutes of Sunshine.
1:00 p. m.—The Book Parade, Harry Hanson, CBS.
1:15 p. m.—Bert Lown and his Biltmore Orch., CBS.
3:00 p. m.—Walter Brown Murray.
3:15 p. m.—Beauty talks
3:30 p. m.—KFRC Dance Band.
4:00 p. m.—International Sidelites, CBS.
4:15 p. m.—The Political Situation in Washington, CBS.
4:30 p. m.—Manhattan Moods, CBS.
5:30 p. m.—KFRC Dance Band.
6:00 p. m.—"The Joy Boys."
6:30 p. m.—National Radio Forum from Washington.
7:00 p. m.—Edna Fischer, "Piano Moods."
7:15 p. m.—Dream Boat, CBS.*
7:30 p. m.—Will Osborne and his Park Central Orchestra, CBS

8:00 p. m.—Violet Ray Merry Makers.

- 9:00 p. m.—Eastman Kodak.
9:30 p. m.—American Maize Products Company.
10:00 p. m.—"Frank Watanabe," Eddie Holden.
10:10 p. m.—Val Valente and his Roof Garden Orch.
11:10 p. m.—Ted Fiorita Mark Hopkins Orchestra.

FRIDAY, MAY 16

- 11:00 a. m.—Mary Lewis Haines.
11:30 a. m.—Hollywood Gossip.
1:00 p. m.—Don Bigelow and his Orchestra.
1:15 p. m.—Three Dainty Misses.
3:00 p. m.—Bernhard Levitow's Commodore Ensemble.
3:30 p. m.—Something About Everything and records.
3:45-4:45 p. m.—CBS.*
5:00 p. m.—Organ recital.
5:30 p. m.—Custo program.
6:00 p. m.—"At the Sign of the Green and White."
6:30 p. m.—Gold Medal Past Freight.
7:00 p. m.—Thirty Minutes of Sunshine.
7:30 p. m.—C H McAleer Manufacturing Co.
7:45 p. m.—Walter Kelsey, violin recital.
8:00 p. m.—Veedol Vodvil.
8:30 p. m.—Bekin's Californians, novelty program.
9:00 p. m.—True Story Hour.
10:00 p. m.—Cecil Wright, "Little Poison Oak Himself."
10:15 p. m.—Ted Fiorita Hotel Mark Hopkins Orch.
11:00 p. m.—Val Valente and his Roof Garden Orch.

SATURDAY, MAY 17

- 9:30 a. m.—Recordings.
10:00 a. m.—Song Recital from KHJ.
11:00 a. m.—Auditions and church announcements.
1:00 p. m.—Paul Specht and his Manhattan Towners.
2:00-4:45 p. m.—CBS.*
5:00 p. m.—Hank Simmon's Show Boat, CBS.
6:00 p. m.—Paramount Public Radio Hour, CBS.
7:00 p. m.—Edna Fischer, "Piano Moods."
7:15 p. m.—Hotel Paramount Orchestra, CBS.
7:30 p. m.—Anson Weeks' Hotel Roosevelt Orch, CBS.
8:00 p. m.—Williams Oil-O-Matic.
8:30 p. m.—Musical Cocktails.
9:00 p. m.—Chasin' the Blues.
10:00 p. m.—"Frank Watanabe," Eddie Holden.
10:10 p. m.—Ted Fiorita Hotel Mark Hopkins Orch.
11:10 p. m.—Earl Burnnett's Biltmore Hotel Orch.

The essential features of these programs are identical with those sent us by the stations



KTAB

Bob Roberts
General Manager
Walter J. Rudolph
Musical Director
Helen O'Neill
Program Director

San Francisco—560 Kc.

1000 WATTS—535.4 METERS
Official Pickwick State Station
Owned and Operated by the Associated Broadcasters, Inc.
Pickwick Terminal Hotel, 15th and Mission Sts.
Telephone Garfield 4700

HELEN O'NEILL

DAILY EXCEPT SUNDAY

- 6:30 a. m.—Studio program, Frank Wright.
- 6:45 a. m.—Health program.
- 7:00 a. m.—Studio program.
- 7:30 a. m.—Red Hat program.
- 8:30 a. m.—Town Crier (except Wed. and Fri.).
- 9:00 a. m.—Morning Prayer Services.
- 9:30 a. m.—Talk by Doctor.
- 10:00 a. m.—Household Hour with Alma LaMarr (except Saturday).
- 10:30 a. m.—Dr. Corley.
- 11:00 a. m.—Studio program.
- 1:00 p. m.—Chapel of Chimes.
- 1:45 p. m.—Dr. Wade Forrester.
- 2:30 p. m.—Recordings (ex. Mon.).
- 2:40 p. m.—Baseball from Recreation Park (ex. Mon.).
- 4:45 p. m.—Records.
- 5:00 p. m.—The Story Man and His Air Castle.
- 5:15 p. m.—Brother Bob's Frolic.
- 6:00 p. m.—Date Book program.
- 6:15 p. m.—Studio program.
- 6:30 p. m.—Chapel of Chimes.
- 10:30 p. m.—Dance Orchestra from Sweet's Ballroom (ex. Mon.).
- 11:30 p. m.—Dance Records.

SUNDAY, MAY 11

- 9:00 a. m.—Dr. B. L. Corley, Health Talk.
- 10:00 a. m.—10th Ave. Baptist Church.
- 12:30 p. m.—Chapel of Chimes.
- 1:00 p. m.—Church of Latter Day Saints.
- 1:30 p. m.—Masters Album.
- 2:30 p. m.—Novelty Records.
- 3:00 p. m.—"Organ Echoes" with Alice Blue.
- 3:30 p. m.—Jack Riley, song artist.
- 4:00 p. m.—Musical Appreciation Hour.
- 5:00 p. m.—Chapel of Chimes.
- 6:00 p. m.—Brunswick Hour.
- 6:30 p. m.—Lecturer for Seven Day Adventists.
- 7:00 p. m.—Joan Ray, contralto; Jane Sargent Sands.
- 7:30 p. m.—Chapel of Chimes.
- 7:45 p. m.—Services from 10th Ave. Baptist Church.

- 9:15 p. m.—Chapel of Chimes.
- 9:30 p. m.—Elbert Bellows, tenor; Jane Sands.
- 10:00 p. m.—Studio program.
- 10:30 p. m.—Dance Orchestra from Sweet's Ballroom.

MONDAY, MAY 12

- 8:00 a. m.—Selected Classical Records.
- 2:30 p. m.—Musical Appreciation Hour.
- 3:00 p. m.—"Organ Echoes" with Alice Blue.
- 3:30 p. m.—Novelty Records.
- 7:00 p. m.—"Hall of Fame with Two Franks."
- 7:15 p. m.—Records.
- 7:30 p. m.—"Organ Echoes" with Alice Blue.
- 8:00 p. m.—"Poem Pictures."
- 9:00 p. m.—"Highway Highlights."
- 10:00 p. m.—Alice Blue, organist.
- 10:30 p. m.—Studio program.

TUESDAY, MAY 13

- 8:00 a. m.—Masters Album.
- 7:00 p. m.—Hawaiian program.
- 7:30 p. m.—Jack Riley, songs and ukulele.
- 7:45 p. m.—"Would You Believe It?"
- 8:00 p. m.—"Flashlights of Yesterday."
- 9:00 p. m.—"Melody Quintet."
- 10:00 p. m.—Alice Blue at the organ.

WEDNESDAY, MAY 14

- 7:00 p. m.—"Hall of Fame."
- 7:15 p. m.—Recordings.
- 7:30 p. m.—"Memory Bouquet."
- 8:30 p. m.—"Pepper Box" program.

THURSDAY, MAY 14

- 8:00 a. m.—Masters Album.
- 7:00 p. m.—Louis Margis, Hawaiian.
- 7:30 p. m.—Dorothy Nichols, cellist; Walter Rudolph.
- 7:45 p. m.—Medieval program.
- 8:00 p. m.—"Highway Highlights."
- 9:00 p. m.—Melody Quintette.
- 10:00 p. m.—Elizabeth Gerberding.
- 10:15 p. m.—Studio program.

FRIDAY, MAY 16

- 8:00 a. m.—Towne Cryer.
- 7:00 p. m.—"Hall of Fame" program.
- 7:15 p. m.—Records.
- 7:30 p. m.—Jack Riley, songs and ukulele.
- 7:45 p. m.—Alice Blue, pianist.
- 8:00 p. m.—"Miniatures" with Melody Quintette.
- 10:00 p. m.—"Varieties."

SATURDAY, MAY 17

- 8:00 a. m.—Masters Album.
- 7:00 p. m.—Blue Label program; Margi's Hawaiians.
- 7:30 p. m.—Walter J. Rudolph, concert pianist.
- 8:00 p. m.—Dorothy Nichols, cellist; Alice Blue.
- 8:30 p. m.—Melody Quintette.
- 9:30 p. m.—Melody Makers and Alice Blue.

KGEF

C. C. Hooper
Manager
J. Dale Stentz
Announcer
M. J. Hankins
Technician

Los Angeles, Calif.—1300 Kc.

1000 WATTS—230.6 METERS
TRINITY METHODIST CHURCH, BOB SHULER, Pastor
Phone Westmore 8887

SUNDAY, MAY 11

- 8:30 a. m.—Morning Watch Quartet.
- 9:30 a. m.—Radio Sunday School.
- 10:00 a. m.—Claude L. Heskett.
- 10:45 a. m.—Trinity Church.
- 12:00 noon—Signing off.
- 2:00 p. m.—Tower Class, alt. with Alhambra Bap. Ch.
- 2:30 p. m.—Free Methodist Church of Santa Monica, alt. with Southwest Cons. of Music and with the Holliness Assn.
- 3:30 p. m.—W. W. Newberry.
- 4:00 p. m.—Lutheran Churches of So. Calif.
- 4:30 p. m.—Dorothy Hankins and associated artists.
- 5:00 p. m.—Vesper Hour.
- 6:00 p. m.—Signing off.
- 7:00 p. m.—Prelude Message, Rev. Bob Shuler.

TUESDAY, MAY 13

- 6:00 p. m.—Yette Barber Studio.
- 6:20 p. m.—John Unfried, Radio Evangelist.
- 6:45 p. m.—Barbara Jean Ross.
- 7:00 p. m.—Studio program.
- 7:15 p. m.—Woman's Civic Hour with Mrs. Stentz.
- 7:16 p. m.—Jock McGilly.
- 8:00 p. m.—Bob Shuler's Question Hour.

- 9:00 p. m.—South Park Christian Church Bereans.
- 9:30 p. m.—Torrance Methodist Church.
- 10:00 p. m.—Jess Blankenship, Old Time Fiddlers.

WEDNESDAY, MAY 14

- 6:00 p. m.—Mother Hubbard.
- 6:40 p. m.—J. E. Moore, soloist.
- 7:00 p. m.—Conrey Bible Class.
- 7:45 p. m.—Union Rescue Mission.
- 8:30 p. m.—Rev. E. E. Wall.
- 9:00 p. m.—Old Songs Quartet.
- 10:00 p. m.—Volunteers of America.

THURSDAY, MAY 15

- 6:00 p. m.—Trinity Church Ensemble, alt. with Mrs. Tom Murray.
- 7:00 p. m.—Dr. Fredus Nelson Peters.
- 7:30 p. m.—The Hired Man.
- 8:00 p. m.—Bob Shuler's Civic Hour.
- 9:00 p. m.—Studio program.
- 9:30 p. m.—Devere Nicholson and Martha Spangler Nicholson.
- 10:00 p. m.—Southwest College of Music, alt. with Maude Burnette Studio.
- 10:30 p. m.—Hawaiians.



R. A. CASE

KEX

Portland, Oregon—1180 Kc.

5000 WATTS—254.1 METERS
Owned and Operated by WESTERN BROADCASTING COMPANY
Member of Northwest Broadcasting System, Inc.

R. A. Case
Station Director

Louis Teegarden
Program Director

7:15 p. m.—Musical Musketeers.
9:00 p. m.—The Jewel Box.
9:30 p. m.—Neopolitan Orchestra.
10:00 p. m.—Melvin and Merciful.
10:15 p. m.—Novelty Orchestra.

TUESDAY, MAY 13

9:00 a. m.—Piano Concert, featuring Ronald Buck.
4:30 p. m.—Negro Melodies.
6:00 p. m.—Mandolins at Sunset.
6:30 p. m.—DuBois Motor Playmates.
8:00 p. m.—Popular Dance Concert.
9:00 p. m.—Musical Comedy Hour.
10:00 p. m.—Thomas and Tessie.
10:15 p. m.—Novelty Orchestra.

WEDNESDAY, MAY 14

9:00 a. m.—Novelty Recording Concert.
11:30 a. m.—Billy's Hawaiians.
4:30 p. m.—Hill Billy Song Recital.
6:00 p. m.—Blue Streaks.
6:30 p. m.—Hometowners.
7:00 p. m.—Song Blrds.
9:00 p. m.—Damski's Neopolitan Orchestra.
10:00 p. m.—Melvin and Merciful.
10:15 p. m.—Novelty Recording Hour.

THURSDAY, MAY 15

8:00 p. m.—Popular Dance Concert.
9:00 p. m.—Clam Diggers.
9:30 p. m.—Hometowners.
10:00 p. m.—Thomas and Tessie.
10:15 p. m.—Novelty Recording Concert.

FRIDAY, MAY 16

11:30 a. m.—Billy's Hawaiians.
4:30 p. m.—Musical Comedy Song Recital.
6:00 p. m.—Harmony Aces.
6:30 p. m.—DuBois Motor Playmates.
7:30 p. m.—Crescent Entertainers.
9:00 p. m.—The Jewel Box.
9:30 p. m.—The White Wizard.
10:00 p. m.—Melvin and Merciful.
10:15 p. m.—Novelty Recording Orchestra.

SATURDAY, MAY 17

9:00 a. m.—Ronald Buck, piano.
2:00 p. m.—Classic Song Recital.
2:30 p. m.—Bookworm.
5:00 p. m.—KEX Bulletin.
6:00 p. m.—Harmony Aces.
8:00 p. m.—Popular Dance Concert
9:00 p. m.—Old-Timers.
10:00 p. m.—Thomas and Tessie.
10:15 p. m.—Novelty Recording Concert

DAILY EXCEPT SUNDAY

7:00 a. m.—Morning Serenaders.
8:00 a. m.—The Clock and Oregon Journal News.
9:45 a. m.—Devotional Service.
10:00 a. m.—Castle Organ Recital.
10:30 a. m.—KEX Shopping Service.
12:00 noon.—Time, weather, etc.
12:05 p. m.—Happy Hour Girls
1:05 p. m.—Newscasting and Piano (except Saturday).
1:30 p. m.—Castle Organ Recital (except Saturday).
2:00 p. m.—Dental Lecture.
2:30 p. m.—The Bookworm (except Monday).
3:00 p. m.—Afternoon Matinee.
5:15 p. m.—Baron Keyes' Air Castle (ex. Saturday).
5:30 p. m.—KEX Bulletin.
10:30 p. m.—Jack and Jill Tavern Orchestra.
11:30 p. m.—Time, Weather, News.
11:40 p. m.—KEX Midnight Matinee.

SUNDAY, MAY 11

12:00 noon.—Castle Organ Recital.
1:00 p. m.—Popular Concert.
2:00 p. m.—Silent.
5:30 p. m.—Bits of Harmony.
6:00 p. m.—The Hour on Broadway.
7:00 p. m.—The Hometowners.
8:00 p. m.—Damski's Imperial Grand Orchestra.
9:00 p. m.—Los Gauchos Argentine Band.
10:00 p. m.—Angeles Ensemble.
11:00 p. m.—Harmony Aces.
12:00 midnight.—Time, News.

MONDAY, MAY 12

9:00 a. m.—Novelty Recording Concert.
11:30 a. m.—Billy's Hawaiians.
2:30 p. m.—Band Concert.
4:30 p. m.—Popular Song Recital.
6:00 p. m.—Hometowners.



FRED J. HART

KQW San Jose, California—1010 Kc.

CALIFORNIA FARM BUREAU STATION
500 WATTS—296.6 METERS
FRED J. HART, Manager

7:00 p. m.—Weather Reports, News.
7:30 p. m.—Tom and Wash.
7:45 p. m.—Farm Bureau, Cal. Radio News (ex. Sat.)

SUNDAY, MAY 11

10:15 a. m.—Sunday School Lessons by Fred J. Hart.
11:00 a. m.—Services, First Baptist Church.
7:30 p. m.—Services, First Baptist Church.

MONDAY, MAY 12

6:20 p. m.—California's Standardization Act. S. N. Rogers.
8:00 p. m.—Studio programs.

TUESDAY, MAY 13

6:20 p. m.—U. S. Grades for Fruit and Vegetables.
E. J. Powell.
8:00 p. m.—"You Never Can Tell" program.

WEDNESDAY, MAY 14

6:20 p. m.—Why Bees Are Inspected, F. E. Todd.
8:00 p. m.—First Baptist Church.

THURSDAY, MAY 15

6:20 p. m.—A Review of Scales, J. E. Casey.
8:00 p. m.—Songs of the Old Church Choir.
9:00 p. m.—Legends of King Arthur.
9:15 p. m.—Little Symphony.

FRIDAY, MAY 16

6:20 p. m.—The Produce Dealers Act, Fred N. Blizelow.
8:00 p. m.—KQW Minstrels.
9:00 p. m.—Leda Gregory Jackson program.

SATURDAY, MAY 17

6:00 p. m.—Music.
7:15 p. m.—San Jose Better Business Bureau.
7:45 p. m.—Future Farmers of America, Modesto HI.
8:45 p. m.—Italian program.

DAILY EXCEPT SUNDAY

9:00 a. m.—California Market.
9:30 a. m.—Weather Report.
9:35 a. m.—Helpful Hour.
11:00 a. m.—Bank Credits Service program.
11:45 a. m.—Records.
12:15 p. m.—Tom and Wash.
12:30 p. m.—Market Report and Weather from S. F.
1:00 p. m.—Hart's Half-Hour.
1:30 p. m.—The Friendly Hour.
2:30 p. m.—Musical program.
3:00 p. m.—California Market, musical program.
4:30 p. m.—Children's program.
5:00 p. m.—Baron Keyes Air Castle (ex. Saturday).
5:15 p. m.—Music.
5:30 p. m.—San Jose Radionics Institute.
6:00 p. m.—U. S. D. A. Farm Flashes (ex. Sat.).
6:10 p. m.—Market Reports.

The essential features of these programs are identical with those sent us by the stations



FRANCES L. WHITING

KOL Seattle, Washington—1270 Kc.

1000 WATTS—236.1 METERS

Operated by THE SEATTLE BROADCASTING CO., INC.
Northern Life Tower, Seattle. Phone. MAIN 2312

- Mr. E. M. Doernbecher
President
- John W. Sparling
General Manager
- Frances L. Whiting
Studio Director
- Dick Rickard
Chief Announcer
- Paul B. Gale
Engineer

- 12:30 p. m.—Rotary Club Luncheon.
- 4:00 p. m.—Jesse Crawford, CBS.
- 6:00 p. m.—Melody Mates.
- 6:45 p. m.—Men's Special, CBS.
- 7:00 p. m.—The Roustabouts, CBS.
- 7:30 p. m.—Jimmie Bigelow's Dance Band.
- 8:30 p. m.—Midnight Melodies, CBS.
- 10:06 p. m.—Biltmore Hotel Orchestra.

THURSDAY, MAY 15

- 9:30 a. m.—Rhyme and Reason.
- 10:30 a. m.—Tintex program, CBS.
- 12:00 noon.—Slogan Contest.
- 12:30 p. m.—Shrine Luncheon.
- 4:00 p. m.—Studio program.
- 4:15 p. m.—"The Political Situation in Washington Tonight," by Frederic William Wile, CBS.
- 6:00 p. m.—Studio program.
- 6:30 p. m.—National Radio Forum from Washington, CBS.
- 7:00 p. m.—William Coburn's Orchestra.
- 8:00 p. m.—Violet Ray Merry-makers' Frolic.
- 9:00 p. m.—Midweek Kodak Hour, CBS.
- 10:11 p. m.—Val Valente's Roof Garden Orchestra.
- 11:12 p. m.—Mark Hopkins' Hotel Orchestra.

FRIDAY, MAY 16

- 9:30 a. m.—Cynthia Grey.
- 9:55 a. m.—Jo-Cur.
- 12:00 noon.—Light Opera Gems.
- 12:30 p. m.—Chamber of Commerce Luncheon.
- 3:30 p. m.—Commodore Ensemble, CBS.
- 4:00 p. m.—Nit Wit Hour, CBS.
- 6:00 p. m.—At the Sign of the Green and White, CBS.
- 6:30 p. m.—Gold Medal Fast Freight, CBS.
- 7:00 p. m.—Will Osborne and his orchestra, CBS.
- 7:30 p. m.—"Would You Believe It."
- 7:45 p. m.—Melody Mates.
- 8:00 p. m.—Veodol Vodvil.
- 8:30 p. m.—Studio program.
- 9:00 p. m.—Mary and Bob, CBS.
- 10:00 p. m.—Varsity Quartet.
- 10:15 p. m.—Chinese Gardens.

SATURDAY, MAY 17

- 9:30 a. m.—Rhyme and Reason.
- 12:00 noon.—Manlius School Cadet Band, CBS.
- 12:30 p. m.—Club Plaza Orchestra, CBS.
- 1:00 p. m.—French Trio with Kenyon Congdon.
- 2:00 p. m.—Hotel Shelton Orchestra, CBS.
- 2:30 p. m.—"Ted Husing's Sportslants."
- 3:30 p. m.—The Captivators, CBS.
- 4:00 p. m.—"Exploring the Jungles for Science."
- 4:15 p. m.—Industrial American, CBS.
- 6:00 p. m.—Paramount-Public Hour, CBS.
- 7:00 p. m.—Hotel Paramount Orchestra.
- 7:30 p. m.—Royal Canadians, CBS.
- 8:00 p. m.—Bert Lown Biltmore Orchestra, CBS.
- 8:30 p. m.—Midnight Melodies, CBS.
- 9:00-midnight.—The Everstate Club.

- DAILY EXCEPT SUNDAY**
- 7:00 a. m.—Recordings.
 - 8:10-10:30 a. m.—1:30-3:00 p. m.—Slogan Contest.
 - 9:00 a. m.—Thrift Home of the Air.
 - 9:45 a. m.—Household Hints, Mrs. McBraun.
 - 10:00 a. m.—Studio program.
 - 11:00 a. m.—Carnival Hour.
 - 2:00 p. m.—Happy-Go-Lucky Hour (except Saturday).
 - 4:30 p. m.—Mr. Fixit and News Items.
 - 5:00 p. m.—Studio program (except Tuesday).
 - 5:45 p. m.—Show News (except Tuesday).
- SUNDAY, MAY 4**
- 5:00 a. m.—Majestic Theater of the Air, CBS.
 - 6:00 p. m.—Will Rogers, CBS.
 - 7:30 a. m.—President Hoover, CBS.*

MONDAY, MAY 12

- 9:30 a. m.—Cynthia Grey.
- 12:00 noon.—U. S. Navy Band.
- 1:00 p. m.—CBS.*
- 3:30 p. m.—Bernard Levitow and his Commodore Ensemble, CBS.
- 6:30 p. m.—Gold Strand Crusaders, CBS.
- 7:00 p. m.—The Columbians, CBS.
- 7:30 p. m.—Hotel Paramount Orchestra, CBS.
- 8:00 p. m.—Duke Ellington's Cotton Club Band, CBS.
- 8:30 p. m.—Midnight Melodies, CBS.
- 9:00 p. m.—Blue Monday Jamboree.
- 10:00 p. m.—Varsity Quartet.
- 10:15 p. m.—Mark Hopkins' Hotel Orchestra.
- 11:07 p. m.—Midnight—Biltmore Hotel Orchestra.

TUESDAY, MAY 13

- 9:30 a. m.—Rhyme and Reason.
- 9:55 a. m.—Jo-Cur.
- 12:00 noon.—U. S. Army Band, CBS.
- 12:30 p. m.—Kiwanis Club Luncheon.
- 3:30-8:00 p. m.—CBS.*
- 8:00 p. m.—Baxter's Boys.
- 8:30 p. m.—Midnight Melodies, CBS.
- 9:00 p. m.—William Coburn's Orchestra.
- 10:00 p. m.—Chinese Gardens.

WEDNESDAY, MAY 14

- 9:30 a. m.—Cynthia Grey.
- 12:00 noon.—Musical Album, CBS.

KHJ Program

(Continued from Page 26)

- 11:30 a. m.—Richardson's.
- 11:45 a. m.—Normalizer Sales Syndicate.
- 12:45 p. m.—California Home Extension.
- 1:00 p. m.—Don Bigelow Orchestra, CBS.
- 2:30 p. m.—Western Auto Electric Corp.
- 2:45 p. m.—Records.
- 3:00 p. m.—H. M. Robertson—talk on dogs.
- 3:15 p. m.—School program.
- 3:30 p. m.—Council of International Relations.
- 4:00 p. m.—Nit Wits, CBS.
- 4:30 p. m.—Charlie Wellman and Nell Larson.
- 5:00 p. m.—Pacific States Savings & Loan Co.
- 5:30 p. m.—Blrd. Furniture Co.
- 6:00 p. m.—Quaker State Oil, CBS.
- 6:30 p. m.—Gold Medal Fast Freight, CBS.
- 7:00 p. m.—Citizens Water & Power Committee.
- 7:30 p. m.—S. & W. Company.
- 8:00 p. m.—Veodol Vodvil (from KFRC).
- 8:30 p. m.—Bekins Van & Storage Company.

- 9:00 p. m.—True Story Hour, CBS.

SATURDAY, MAY 17

- 8:00 a. m.—Adven. of Helen and Mary, CBS.
- 8:30 a. m.—Young's Orchestra, CBS.
- 9:30 a. m.—Harry Tucker's Orchestra, CBS.
- 9:45 a. m.—Recordings.
- 10:00 a. m.—Song Recital.
- 11:00 a. m.—Records.
- 11:15 a. m.—Columbia Ensemble, CBS.
- 11:30 a. m.—"For Your Information," CBS.
- 12:45 p. m.—French Trio, CBS.
- 1:00 p. m.—Records.
- 2:00 p. m.—Hotel Shelton Orchestra, CBS.
- 2:30 p. m.—Ted Husing's Sportslants, CBS.
- 3:00 p. m.—The Captivators, CBS.
- 4:00 p. m.—Lal Chand Mehra—The Truth About India.
- 4:15 p. m.—Industrial America, CBS.
- 5:00 p. m.—Show Boat, CBS.
- 6:00 p. m.—Paramount Hour, CBS.
- 7:00 p. m.—Don Lee Symphony.
- 7:30 p. m.—Guy Lombardo and his Orchestra, CBS.
- 8:00 p. m.—Williams Oil-O-Matics.
- 8:30 p. m.—Musical Cocktails.
- 9:00 p. m.—"Chasin' the Blues."



KEN STUART

DAILY EXCEPT SUNDAY

- 7:00 a. m.—Music and News.
 9:30 a. m.—Morning Devotional Services (ex. Wednesday and Friday).
 9:40 a. m.—United Team, Sally Jo and Grant.
 10:00 a. m.—Staff Artists.
 10:15 a. m.—Beauty Talk, Helen Andrews.
 12:00 noon.—World in Review.
 1:00 p. m.—Musical Program.
 2:15 p. m.—Arcweld Entertainers.
 3:00 p. m.—Baseball Game (ex. Mon.).
 5:15 p. m.—Aircastles in the Land of Make-believe (ex. Sat.).
 5:30 p. m.—Market Reports (ex. Sat.).
 5:50 p. m.—Garden Talk.
 10:00 p. m.—Ken Stuart, Sunshine Hour (ex. Mon.).
 10:30 p. m.—Whirlwinds.
 11:00 p. m.—Vic Meyers' Club Victor Orchestra.
 12:00 midnight to 3:00 a. m.—Midnight Revelers.

SUNDAY, MAY 11

- 12:00 noon.—Classical program.
 2:00 p. m.—Emmanuel Tabernacle.
 3:00 p. m.—Chet Cathers, baritone; Marjorie Robillard.
 4:30 p. m.—Lyric Trio.
 5:30 p. m.—Bits of Harmony.
 6:00 p. m.—Hour on Broadway; Broadway Quintet.
 7:00 p. m.—Hometowners Orchestra; Glen Eaton.
 8:00 p. m.—Grand Orchestra.
 9:00 p. m.—Los Gauchos Argentine; Ed Sheldon.
 10:00 p. m.—Angelus Ensemble; Sydney Dixon.
 11:00 p. m.—Harmony Aces; Eulala Dean, blues.

MONDAY, MAY 12

- 3:15 p. m.—Song Birds.
 6:00 p. m.—Harper's Corners.
 6:30 p. m.—Hometowners' Orchestra; Glen Eaton.

KJR Seattle, Washington—970 Kc.

309.1 METERS—5000 WATTS

Northwest Broadcasting System, Inc.
 Thomas F. Smart Manager I. Schaefer, Press Relations
 Studio Telephone, Seneca 1515—Office, Main 2495
 Home Savings Building

Henri Damski
 Musical Director
 John Pearson
 Al Schuss
 Allen Strickfaden
 Ken Stuart
 Announcers
 J. N. Cope
 Technical Director

- 7:00 p. m.—Kelpine Pair.
 7:30 p. m.—Washington Fireman.
 8:00 p. m.—Mission Mixer's Aces; Ukelele Bob.
 8:30 p. m.—Harmony Aces; Chet Cathers.
 9:00 p. m.—Damski's Neapolitans; Agatha Turley.
 9:30 p. m.—Wrestling Match—Ken Stuart, announcer.

TUESDAY, MAY 13

- 11:00 a. m.—Classical program.
 6:00 p. m.—Mandolins at Sunset.
 7:00 p. m.—Orpheus Ensemble.
 8:00 p. m.—Gold and Silver Ensemble.
 9:00 p. m.—Musical Comedy Hour.

WEDNESDAY, MAY 14

- 9:00 a. m.—Morning Devotional Services.
 6:00 p. m.—American Institute of Banking.
 6:30 p. m.—Seahold Oil's Hometowners.
 7:00 p. m.—Williams Oil-O-Matics' Harmony Aces.
 7:30 p. m.—Ringletto's Captivators.
 8:00 p. m.—Seattle Retail Grocers and Merchants.
 8:30 p. m.—Spanish Kings Orchestra.
 9:00 p. m.—Puget Sound Power and Light Co.'s Orch.

THURSDAY, MAY 15

- 6:00 p. m.—Organ Concert; Harry Reed, organist.
 6:30 p. m.—Dream Melodies.
 7:00 p. m.—Kelpino Pair.
 7:30 p. m.—Hits of Yesterday.
 8:00 p. m.—Hour with the Operas.
 9:00 p. m.—Mr. R. Clam program.
 9:30 p. m.—An Evening in Paris.

FRIDAY, MAY 16

- 6:00 p. m.—Blue Streaks.
 7:00 p. m.—Seattle Retail Grocers and Merchants.
 7:30 p. m.—Crescent Mig. Co.'s Orch., Ellen Reep.
 8:00 p. m.—Gold and Silver Ensemble.
 9:00 p. m.—Damski's Neapolitans.
 9:30 p. m.—A Night in India with the White Wizard.

SATURDAY, MAY 17

- 1:15 p. m.—Uncle Frank's Kiddies program.
 2:30 p. m.—Matinee program.
 5:30 p. m.—Dinner Concert.
 6:00 p. m.—Blue Streaks.
 7:00 p. m.—Saturday Knights.
 8:00 p. m.—Song Recital.
 8:30 p. m.—Captivators Male Quartet.
 9:00 p. m.—The Gondollers.

NBC Program

(Continued from Page 20)

- 3:30 p. m.—"A Half Hour in the Nation's Capital."
 4:00 p. m.—Fleischmann Hour; Rudy Vallee and his Connecticut Yankees.
 5:00 p. m.—Arco Birthday Party; Mario Chamlee.
 5:30 p. m.—Maxwell House Melodies.
 6:00 p. m.—"10" A Hour presents Friml compositions.
 7:00 p. m.—The Three Boys.
 7:45 p. m.—Standard Symphony Hour
 8:45 p. m.—Parks Sisters.
 9:00 p. m.—Memory Lane, playlet.
 9:30 p. m.—The Olympians, male singers.
 10:00 p. m.—The National Concert Orchestra

FRIDAY, MAY 16

- 9:30 a. m.—Betty Crocker Gold Medal Home Service Talks.
 9:45 a. m.—Parks Sisters.
 10:00 a. m.—Du Barry Radio program.
 10:15 a. m.—Josephine B. Gibson, Food Talk.
 12:00 noon.—Pacific Feature Hour, with Max Dolin.
 1:00 p. m.—Rembrandt Trio.
 2:00 p. m.—Black and Gold Room Orchestra.
 2:15 p. m.—The World in Music, by Pierre Key.
 2:30 p. m.—Don Bixelow and his Hotel Park Central Orchestra.
 3:00 p. m.—Genia Ziellnska, soprano of National Grand Opera Co.
 3:15 p. m.—Universal Safety Series.
 3:30 p. m.—Grace Adams East.
 3:45 p. m.—News Service.
 4:00 p. m.—Cities Service Concert Orchestra; Jessica Dragonette and the Cavaliers.
 5:00 p. m.—Interwoven Pair.
 5:30 p. m.—Armour program.
 6:00 p. m.—Armstrong Quakers; Musical evening at home.

- 6:30 p. m.—Raleigh Revue, opens with "Frivolity."
 7:00 p. m.—The Elgin program.
 7:15 p. m.—Three Violins; Max Dolin, Alexander Law and Caesar Linder.
 8:00 p. m.—Ole and the Girls.
 8:15 p. m.—Piano Paintings.
 8:45 p. m.—Tone Pictures present the Rounders.
 9:15 p. m.—Kodak Week-End Hour, Popular music.
 9:45 p. m.—John and Ned.
 10:00 p. m.—Mystery Serial, "The Cross-Eyed Parrot."
 10:30 p. m.—Pacific Nomads; Caesar Linden plays "Fantasie."

SATURDAY, MAY 17

- 9:20 a. m.—Eddie Bernard.
 9:45 a. m.—National Farm and Home Hour.
 12:00 noon.—The Novelty Five.
 1:00 p. m.—Dixie Dandies.
 1:30 p. m.—Tea Timers.
 1:45 p. m.—Matinee Time.
 2:00 p. m.—Black and Gold Room Orchestra.
 2:30 p. m.—The Kentucky Derby from Churchill Downs, Louisville; Graham McNamee describing the colorful event. Lord Derby will be introduced.
 3:00 p. m.—William Don.
 3:30 p. m.—The Fuller Iian.
 4:00 p. m.—The New Business World.
 4:30 p. m.—Captain "Bill" Royle.
 4:45 p. m.—News Service.
 5:00 p. m.—General Electric Hour
 6:00 p. m.—B. A. Rolfe and his Lucky Strike Orchestra; new arrangements of old favorites.
 7:00 p. m.—Bernie Cummins and New Yorker Hotel Orchestra.
 8:00 p. m.—Pacific Screenaders, KGO.
 8:00 p. m.—Gilmore Circus.
 8:30 p. m.—Melody Memories.
 9:00 p. m.—Del Monte program; John Boles in "Captain of the Guard."
 9:30 p. m.—Penrod.
 10:00 p. m.—Spotlight Review.

The essential features of these programs are identical with those sent us by the stations



GEORGE GODFREY

KOMO

Seattle, Wash.—920 Kc.

FISHER'S BLEND STATION—1000 WATTS—325.9 METERS
METROPOLITAN CENTER, SEATTLE
Telephone Elliott 5809

DAILY EXCEPT SUNDAY

- 7:40 a. m.—Inspirational Services.
- 7:45 a. m.—Aunt Jemima Boy, NBC.
- 8:00 a. m.—Shell Happy Time.
- 10:30 a. m.—NBC Women's Magazine of the Air (ex. Thurs.).
- 11:45 a. m.—The Hour of the Canny Cook (ex. Fri. and Sat.).
- 12:00 noon.—U. S. Farm Talk (except Saturday).
- 12:15 p. m.—Totem Broadcasters and Prudence Penny.
- 12:30 p. m.—Orchestra and Soloists.
- 7:00 p. m.—Garden Patch Children's program (except Tuesday and Saturday).
- 7:30 p. m.—Amos 'n' Andy.
- 7:45 p. m.—Literary Digest (except Thursday and Saturday).
- 12:00 midnight—Fox Fifth Avenue Theater Program.

SUNDAY, MAY 11

- 9:00 a. m.—Fox 5th Ave. Theatre Organ Recital.
- 10:00 a. m.—International Bible Students' Association.
- 11:00 a. m.—Fisher Flouring Mills, vocal recital.
- 11:15 a. m.—Plymouth Congregational Church Service.
- 12:15-3:00 p. m.—NBC.*
- 3:00 p. m.—Artistic Ensemble.
- 4:00-7:15 p. m.—NBC.*
- 7:15 p. m.—Garden Patch Children's program.
- 7:45 p. m.—Vocal Ensemble.
- 8:00 p. m.—First Church of Christ, Scientist.
- 9:00 p. m.—NBC.*

MONDAY, MAY 12

- 0:00 a. m.—Julia Hayes, Hints to Housewives.
- 9:30 a. m.—Fox 5th Ave. Theatre Organ Recital.
- 9:45 a. m.—Securities Public Mkt. Cooking School.
- 10:15 a. m.—NBC.*
- 11:30 a. m.—Vocal Trio.
- 2:00 p. m.—NBC.*
- 3:00 p. m.—Schwabacher Bros. & Co., Inc., Orchestra.
- 3:30 p. m.—NBC.*
- 4:00 p. m.—Orchestra and Vocal.
- 4:15 p. m.—Stock Quotations.
- 4:30 p. m.—Artistic Ensemble.
- 5:00-9:30 p. m.—NBC.*
- 9:30 p. m.—P. S. Power & Light Co., Orchestra.
- 10:00 p. m.—University of Washington Hour.
- 10:30 p. m.—NBC.*
- 10:45 p. m.—Totem Broadcasters, News Flashes.
- 11:00 p. m.—Olympic Hotel Dance Orchestra.

TUESDAY, MAY 13

- 0:00 a. m.—Gordon and Mary.
- 9:15 a. m.—NBC.*
- 10:15 a. m.—NBC.*
- 11:30 a. m.—P. S. Navigation Co., Orchestra.
- 1:00 p. m.—Concert Orchestra.
- 1:30 p. m.—Pacific Coast School of Air.
- 2:00 p. m.—Artistic Ensemble.
- 3:00 p. m.—NBC.*
- 4:00 p. m.—Orchestra and Vocal.
- 5:00-8:00 p. m.—NBC.*
- 8:00 p. m.—Sargon program.
- 8:30 p. m.—Totem Broadcasters; News Flashes.
- 9:00 p. m.—Don Amaizo, the Wizard.
- 9:30 p. m.—NBC.*
- 10:00 p. m.—Gold Shield Little Symphony Hour.
- 11:00 p. m.—Popular Orchestra.

WEDNESDAY, MAY 14

- 9:00 a. m.—Julia Hayes Hints to Housewives.
- 9:30 a. m.—NBC.*
- 9:45 a. m.—Securities Public Mkt. Cooking School.
- 10:00 a. m.—Ovaltine program.
- 10:15 a. m.—NBC.*
- 11:30 a. m.—Dorothy Chase and Charis Players.
- 1:00 p. m.—NBC.*
- 1:15 p. m.—Orchestra and Vocal.
- 3:30 p. m.—NBC.*
- 4:00 p. m.—Orchestra and Vocal.
- 5:00-8:30 p. m.—NBC.*
- 8:30 p. m.—Lesson in Contract Bridge.
- 9:00 p. m.—NBC.*
- 9:30 p. m.—Fisher Flouring Mills program.
- 11:00 p. m.—Uncle Hank.
- 11:15 p. m.—Totem Broadcasters; News Flashes.
- 11:30 p. m.—NBC.*

THURSDAY, MAY 15

- 9:00 a. m.—Gordon and Mary.
- 9:15 a. m.—NBC.*
- 9:30 a. m.—Glidden Paint Co. program.
- 9:45 a. m.—Securities Public Mkt. Cooking School.
- 10:00 a. m.—NBC.*
- 1:00 p. m.—Popular Orchestra.
- 2:00 p. m.—NBC.*

See Page 20 for NBC Program

- 2:15 p. m.—Concert Orchestra.
- 3:00 p. m.—Julia Hayes Hints to Housewives.
- 3:30 p. m.—Orchestra and vocalists.
- 3:45 p. m.—Totem Broadcasters; Stock Quotations.
- 4:00-9:00 p. m.—NBC.*
- 9:00 p. m.—Mozart Concert Hour.
- 9:45 p. m.—Totem Broadcasters; News Flashes.
- 10:00 p. m.—Associated Dance Hour.
- 11:00 p. m.—Fulops, Herman Kenin's Dance Orch.

FRIDAY, MAY 16

- 9:00 a. m.—Julia Hayes Hints to Housewives.
- 9:30 a. m.—NBC.*
- 9:45 a. m.—Securities Public Mkt., Cooking School.
- 10:00 a. m.—NBC.*
- 11:10 a. m.—Orchestra and Vocalists.
- 11:45 a. m.—Barbara Gould.
- 12:30 p. m.—NBC.*
- 1:00 p. m.—Associated Oil Co., Orchestra.
- 1:30 p. m.—Popular Orchestra.
- 2:00 p. m.—Artistic Ensemble.
- 2:30 p. m.—NBC.*
- 2:45 p. m.—Pacific Fruit & Produce Co., Orchestra.
- 3:15 p. m.—NBC.*
- 3:30 p. m.—Male Quartet.
- 3:45 p. m.—Totem Broadcasters; Stock Quotations.
- 4:00-8:00 p. m.—NBC.*
- 8:00 p. m.—Orchestra and Vocalists.
- 8:30 p. m.—"Mac and Al."
- 8:45 p. m.—NBC.*
- 9:45 p. m.—Totem Broadcasters, News Flashes.
- 10:00 p. m.—Latin Knights.
- 11:00 p. m.—Olympic Hotel Dance Orchestra.

SATURDAY, MAY 17

- 9:00 a. m.—Gordon and Mary.
- 9:15 a. m.—Fox 5th Ave. Theatre Organ Recital.
- 10:15 a. m.—Vocal Recital.
- 11:30 a. m.—NBC.*
- 1:00 p. m.—NBC.*
- 1:45 p. m.—Orchestra and Vocalists.
- 2:15 p. m.—NBC.*
- 2:45 p. m.—Associated Oil Company Orchestra.
- 3:15 p. m.—Totem Broadcasters, Stock Quotations.
- 3:30 p. m.—NBC.*
- 4:30 p. m.—Popular Orchestra.
- 5:00 p. m.—NBC.*
- 7:00 p. m.—Newsreel Theatre of the Air.
- 8:00 p. m.—NBC.*
- 8:45 p. m.—Dunn Bush program.
- 9:00 p. m.—NBC.*
- 9:30 p. m.—Lowe Bros.' Famous Composers' Concert.
- 10:00 p. m.—NBC.*
- 11:15 p. m.—Totem Broadcasters, News Flashes.
- 11:30 p. m.—Totem Broadcasters, RKO Theatrical Frollic.

KNX Program

(Continued from Page 27)

SATURDAY MAY 17

- 8:30 a. m.—Bundy & Alhright courtesy program.
- 9:00 a. m.—Organ program by Lucie Lee.
- 11:00 a. m.—"Home Remedy Hour."
- 11:15 a. m.—The KNX Little Symphony.
- 1:00 p. m.—First Radio Church of the Air.
- 2:00 p. m.—Organ program by Lucie Lee.
- 2:30 p. m.—Presenting an Opera (recorded).
- 6:00 p. m.—Paramount Puhlik Hour.
- 7:00 p. m.—Western Ensemble.
- 7:15 p. m.—KNX Ensemble.
- 7:30 p. m.—Announcements of Church Services.
- 7:35 p. m.—Organ program by Lucie Lee.
- 8:00 p. m.—Robin Hood.
- 9:00 p. m.—Hollywood Plaza.
- 9:45 p. m.—"Musical Contrasts."

The essential features of these programs are identical with those sent us by the stations



ALBERT GILLETTE

KGW

Portland, Oregon—620 Kc.

1000 WATTS—483.6 METERS
THE MORNING OREGONIAN
"Keep Growing Wiser"

Paul R. Heltmeyer
Manager

Jane Burns
Program Director

Abe Burkovitz
Director of Music

Vern Haybarker
Chief Engineer

- 1:30 p. m.—Department of Commerce Talk.
- 1:45 p. m.—Teatimers, NBC.
- 2:00 p. m.—Among ourselves.
- 2:30 p. m.—Masterworks.
- 3:00 p. m.—Movie Club.
- 3:30 p. m.—Back of the News, NBC.
- 3:45 p. m.—Vincent Lopez Orchestra, NBC.
- 4:00 p. m.—Marian Miller.
- 4:15 p. m.—Hotel St. Francis Orchestra, NBC.
- 4:30 p. m.—Palace Laundry Features.
- 5:00 p. m.—Halsey Stuart, NBC.
- 5:30 p. m.—Palmolive program, NBC.
- 6:30 p. m.—Coca Cola program, NBC.
- 7:15 p. m.—Stein's Bakery program.
- 8:00 p. m.—Let's Get Associated, NBC.
- 9:00 p. m.—Concert Favorites, NBC.
- 9:15 p. m.—Montag Melodians, NBC.
- 9:30 p. m.—Fisher's Blend Hour, KOMO.
- 10:15 p. m.—Fisher Mills program, KOMO.
- 11:00 p. m.—Multnomah Club Dance.

THURSDAY, MAY 15

- DAILY EXCEPT SUNDAY**
- 6:45 a. m.—Devotional Exercises.
 - 7:00 a. m.—Organ.
 - 7:45 a. m.—Aunt Jemima, NBC.
 - 8:00 a. m.—Shell Happy Time, NBC (ex. Tuesday).
 - 9:00 a. m.—Columbia National Bank.
 - 9:06 a. m.—Town Crier.
 - 10:30 a. m.—Woman's Magazine of the Air, NBC (ex. Thursday and Saturday).
 - 11:45 a. m.—Hour of the Canny Cook, NBC (except Friday and Saturday).
 - 12:00 noon.—Powers' Pled Piper.
 - 12:30 p. m.—Grand Central Marketeers.
 - 7:30 p. m.—Amos 'n' Andy, NBC.
 - 7:45 p. m.—Literary Digest, NBC (except Thursday).
 - 10:00 p. m.—Cecll and Sally (except Monday).

SUNDAY, MAY 11

- 8:30 a. m.—Organ recital.
- 9:30 a. m.—American Legion program.
- 10:00 a. m.—International Bible Students.
- 11:00 a. m.—Church Services.
- 12:00 noon.—Dr. Cadman's Hour, NBC.
- 1:00 p. m.—Sunday Concert, NBC.
- 1:45 p. m.—Book Chat.
- 2:00 p. m.—Catholic Hour, NBC.
- 3:00 p. m.—Colonial Organ.
- 3:30 to 8:00 p. m.—NBC.*
- 8:00 p. m.—Cecll and Sally.
- 8:15 p. m.—Baby's Boudoir program.
- 8:30 p. m.—Edwards' Home Furnisher.
- 9:00 p. m.—Borden's Milk program, NBC.
- 9:30 p. m.—First National Bank Orchestra.
- 10:00 p. m.—Little Symphony Hour.
- 11:00 p. m.—Organ Recital.

MONDAY, MAY 12

- 10:15 a. m.—Helnz food talk, NBC.
- 11:30 a. m.—Glidden program.
- 1:30 p. m.—Traffic talk.
- 2:00 p. m.—Mormon Tabernacle, NBC.
- 2:30 p. m.—School of the Air, NBC.
- 3:00 p. m.—Among ourselves.
- 3:30 p. m.—Masterworks.
- 4:00 p. m.—Marian Miller.
- 4:15 p. m.—Afternoon muscalle, NBC.
- 4:30 p. m.—Palace Laundry Teatimers.
- 5:00 to 10:00 p. m.—NBC.*
- 10:00 p. m.—Ben Selling's Boys.
- 11:00 p. m.—Olympic Hotel Orchestra.

TUESDAY, MAY 13

- 8:00 a. m.—Portland Breakfast club.
- 10:00 a. m.—Ovaltine program.
- 10:15 a. m.—Bass-Ileuter program, NBC.
- 11:30 a. m.—Masterworks.
- 1:30 p. m.—School of the Air, NBC.
- 2:00 p. m.—Among ourselves.
- 2:30 p. m.—Black and Gold Room, NBC.
- 3:00 p. m.—Voters' Service, NBC.
- 3:30 p. m.—Musical Masterworks.
- 4:00 p. m.—Marian Miller.
- 4:15 p. m.—Hotel St. Francis Orchestra, NBC.
- 4:30 p. m.—Palace Laundry Features.
- 5:00 to 8:00 p. m.—NBC.*
- 8:00 p. m.—To be announced.
- 8:45 p. m.—Nunn Bush program.
- 9:00 p. m.—Don Amalzo, the Wizard.
- 9:30 p. m.—Florsheim Frolic, NBC.
- 10:15 p. m.—Gold Shield Symphony, KOMO.
- 11:00 p. m.—Puget Sound Navigation Company.

WEDNESDAY, MAY 14

- 9:30 a. m.—Betty Crocker, NBC.
- 9:45 a. m.—Town Crier.
- 10:15 a. m.—Mary Hale Martin, NBC.
- 11:30 a. m.—Dorothy Chase and Charis Players.

- 9:45 a. m.—Barbara Gould.
- 10:00 a. m.—Woman's Magazine of the Air, NBC.
- 11:00 a. m.—Standard School Broadcast, NBC.
- 1:30 p. m.—Lady Next Door, NBC.
- 2:00 p. m.—Among ourselves.
- 2:30 p. m.—Vignettes, NBC.
- 3:00 p. m.—Masterworks.
- 3:45 p. m.—Marian Miller.
- 4:00 p. m.—Fleischmann Sunshine Hour, NBC.
- 5:00 p. m.—Palace Laundry Features.
- 5:30 p. m.—Maxwell House Melodies, NBC.
- 6:00 p. m.—RCA Hour, NBC.
- 6:30 p. m.—18th annual meeting of Chamber of Commerce of U. S., NBC.
- 7:00 p. m.—Songs of Romance.
- 7:45 p. m.—Standard Symphony Hour, NBC.
- 8:45 p. m.—Mac and Al.
- 9:00 p. m.—Memory Lane, NBC.
- 9:30 p. m.—Tommy Luke's Flower Girls.
- 10:45 p. m.—Boyer, the Society Perfumer.
- 10:15 p. m.—Associated Dance Band, KOMO.
- 11:00 p. m.—Fulops' program.

FRIDAY, MAY 16

- 9:30 a. m.—Betty Crocker, NBC.
- 9:45 a. m.—Town Crier.
- 10:00 a. m.—DuBarry Talk, NBC.
- 10:15 a. m.—Helnz Food Talk, NBC.
- 11:30 a. m.—Masterworks.
- 1:30 p. m.—Air Transport Talk.
- 1:45 p. m.—Rembrandt Trio, NBC.
- 2:00 p. m.—Among ourselves.
- 2:30 p. m.—Masterworks.
- 3:15 p. m.—Marian Miller.
- 3:30 p. m.—Palace Laundry Features.
- 4:00 to 7:15 p. m.—NBC.*
- 7:15 p. m.—Benefit Savings & Loan.
- 8:00 p. m.—Seth Thomas Clock program.
- 8:05 p. m.—Gill Seed Talk.
- 8:15 p. m.—Walk Over Stroller.
- 8:45 p. m.—Tone Pictures, NBC.
- 9:15 p. m.—Kodak Week End program, NBC.
- 9:45 p. m.—Froskist Ice Cream company.
- 10:15 p. m.—Hoot Owls.

SATURDAY, MAY 17

- 10:30 a. m.—O. M. Plummer, talk.
- 10:45 a. m.—Woman's Magazine of the Air, NBC.
- 11:30 a. m.—Masterworks.
- 1:30 p. m.—Teatimers, NBC.
- 1:45 p. m.—The Entertainers, NBC.
- 2:00 p. m.—Among ourselves.
- 2:30 p. m.—Masterworks.
- 3:15 p. m.—Marian Miller.
- 3:30 p. m.—The Fuller Man, NBC.
- 4:00 p. m.—New Business World, NBC.
- 4:30 p. m.—Palace Laundry Teatimers.
- 5:00 p. m.—General Electric, NBC.
- 6:00 p. m.—Lucky Strike Hour, NBC.
- 7:00 p. m.—First National Bank.
- 8:00 p. m.—Gilmore Circus, NBC.
- 8:30 p. m.—Scrapbook Tunes, NBC.
- 8:45 p. m.—Yellow Cab program.
- 9:00 p. m.—Del Monte Coffee, NBC.
- 9:30 p. m.—An Evening in Paris.
- 10:15 p. m.—Old Fashioned Mill.
- 10:45 p. m.—Hi Jinks.

The essential features of these programs are identical with those sent us by the stations



FREEMAN H. TALBOT

KOA

Denver, Colorado—830 Kc.

12,500 WATTS—361.2 METERS GENERAL ELECTRIC CO

Pacific Standard Time. Telephone York 5090

"Rocky Mountain Broadcasting Station"

Program Furnished by the National Broadcasting Company

DAILY EXCEPT SATURDAY AND SUNDAY

- 6:00 a. m.—Morning Revelers (except Thursday).
- 8:00 a. m.—The Luncheon Five (except Wednesday).
- 9:00 a. m.—The Gotham Trio (except Thursday).
- 8:30 a. m.—As Heard Over the Telephone.
- 9:45 a. m.—National Farm and Home Hour, NBC., (including Saturday).
- 10:45 a. m.—Weather, Stock and Market Reports (except Monday).
- 11:00 a. m.—Organ Recital, Ogden Theatre (except Monday).
- 11:45 a. m.—National Cannery Association (except Friday).
- 7:30 p. m.—Amos 'n' Andy (including Saturday).
- 7:45 p. m.—Literary Digest Prohibition Poll and News Flashes (except Monday).

- SUNDAY, MAY 11**
- 10:00 a. m.—Central Presbyterian Church.
 - 11:00 a. m.—Henry Halstead and His Orchestra.
 - 12:00 noon.—Dr. S. Parkes Cadman.
 - 1:00 p. m.—National Religious Service.
 - 2:00 p. m.—Catholic Religious Hour.
 - 3:00 p. m.—Los Argentinos.
 - 3:30 p. m.—Williams Ollomatics.
 - 4:00 p. m.—Erna Jettick Melodies.
 - 4:15 p. m.—Cotler's Radio Hour.
 - 5:15 p. m.—Atwater Kent Hour.
 - 6:15 p. m.—Studebaker Champions.
 - 6:45 p. m.—Sunday at Seth Parker's.
 - 8:15 p. m.—The Solitaire Cowboys.
 - 8:45 p. m.—Everett E. Foster, haritone.
 - 9:00 p. m.—Borden program.
 - 9:30 p. m.—The Reader's Guide.
 - 10:00 p. m.—The Gay Classics.

- MONDAY, MAY 12**
- 7:00 a. m.—Blue Streaks.
 - 7:30 p. m.—The Recitalists.
 - 10:30 a. m.—Woman's Magazine of the Air.
 - 11:30 a. m.—NBC. Philharmonic Organ Recital.
 - 12:00 noon.—Pacific Vagabonds.
 - 1:02 p. m.—Mixed Quartet and Matinee String Trio.
 - 1:45 p. m.—"Colorado Birds," Robert B. Rockwell.
 - 2:00 p. m.—Mormon Tabernacle Choir and Organ.
 - 2:30 p. m.—Book Ends—Lessons in French.
 - 3:00 p. m.—Rosalie Wolfe.
 - 5:00 p. m.—Maytag Symphonic Dance Orchestra.
 - 5:30 p. m.—General Motors Family Party.
 - 6:00 p. m.—Stromberg-Carlson program.
 - 6:30 p. m.—Empire Builders.
 - 7:00 p. m.—Hotel Governor Clinton Orchestra.
 - 8:00 p. m.—Supreme Serenaders.
 - 8:30 p. m.—KOA String Trio.
 - 9:00 p. m.—Musical Musketeers.
 - 10:00 p. m.—Hot Spot of Radio.
 - 10:30 p. m.—House of Myths.

- TUESDAY, MAY 13**
- 7:00 a. m.—Your Child.
 - 7:30 a. m.—WEAF Studio.
 - 12:00 noon.—Matinee Gems.
 - 1:00 p. m.—The Lady Next Door.
 - 1:30 p. m.—Tea Timers.
 - 2:00 p. m.—Black and Gold Room Orchestra.
 - 3:00 p. m.—American Chiropractic Association.
 - 3:15 p. m.—Voters' Service.
 - 4:00 p. m.—Down Town Glee Club.
 - 4:30 p. m.—News bulletins and road reports.
 - 5:00 p. m.—Eveready Hour.
 - 5:30 p. m.—Happy Wonder Bakers.
 - 6:00 p. m.—Westinghouse Salutes.
 - 6:30 p. m.—Radio-Kelth-Orpheum Hour.
 - 8:00 p. m.—Farm Question Box.
 - 8:30 p. m.—Concert Album.
 - 9:30 p. m.—Florsheim Frolic.
 - 10:00 p. m.—Down Through the Years.

- WEDNESDAY, MAY 14**
- 7:00 a. m.—Radio Calendar.
 - 7:30 a. m.—The Recitalists.
 - 8:00 a. m.—The Twelve O'Clock Trio.
 - 8:15 a. m.—The Luncheon Five.
 - 9:00 a. m.—Gotham Trio.
 - 10:00 a. m.—Mary Hale Martin's Household Period.
 - 12:00 noon.—Radio Guild.
 - 1:15 p. m.—Melody Musketeers.
 - 1:30 p. m.—Tea Timers.
 - 2:00 p. m.—Hotel New Yorker Orchestra.
 - 3:30 p. m.—Back of the News in Washington.
 - 3:45 p. m.—Hotel St. Regis Orchestra.
 - 4:00 p. m.—Weather, produce and road reports.
 - 4:30 p. m.—Mohiloli Concert.

- 5:00 p. m.—Halsey, Stuart program.
- 5:30 p. m.—Palmolive Hour.
- 6:30 p. m.—Coca Cola Topnotchers.
- 7:00 p. m.—Extension Service, Colo. Agri. College.
- 8:30 p. m.—Hill Billy Boys.
- 9:00 p. m.—General Electric Hour.
- 10:00 p. m.—Cotton Blossom Minstrels.

THURSDAY, MAY 15

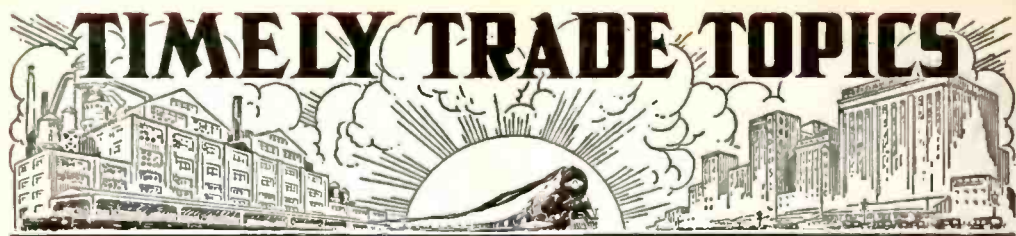
- 6:00 a. m.—Hits and Bits.
- 6:15 a. m.—Network program.
- 6:30 a. m.—Morning Revelers.
- 9:00 a. m.—The Poet's Corner.
- 9:15 a. m.—The Clever Coeds.
- 10:20 a. m.—Woman's Magazine of the Air.
- 12:00 noon.—U. S. Army Band.
- 1:15 p. m.—Melody Musketeers.
- 1:30 p. m.—The Lady Next Door.
- 2:00 p. m.—Black and Gold Room Orchestra.
- 2:15 p. m.—Elementary Bridge Lesson.
- 3:30 p. m.—Half Hour in the Nation's Capitol.
- 4:00 p. m.—Fleischmann Hour.
- 5:00 p. m.—American Radiator program.
- 5:30 p. m.—Maxwell House Melodies.
- 6:00 p. m.—RCA Hour.
- 7:00 p. m.—Conoco Adventurers.
- 8:00 p. m.—Denver Civic Symphony Orchestra.
- 9:00 p. m.—The Cellar Mystery.
- 9:30 p. m.—The Olympians.
- 10:00 p. m.—National Concert Orchestra.

FRIDAY, MAY 16

- 7:00 a. m.—Blue Streaks.
- 7:45 a. m.—Founding of a Nation.
- 12:00 noon.—Pacific Feature Hour.
- 1:00 p. m.—A Recipe a Day.
- 1:02 p. m.—"The Peddler of Hearts," KOA Players.
- 2:00 p. m.—Black and Gold Room Orchestra.
- 2:30 p. m.—Fitzsimons Friday Frolic.
- 3:30 p. m.—Raybestos Twins.
- 4:00 p. m.—Cities Service Concert Orchestra.
- 5:00 p. m.—Interwoven Pair.
- 5:30 p. m.—Armour program.
- 6:00 p. m.—Armstrong Quakers.
- 6:30 p. m.—Raleigh Revue.
- 7:00 p. m.—Network program.
- 8:00 p. m.—Sally Mason, crooner.
- 8:30 p. m.—Colorado Sunshiners.
- 8:45 p. m.—The Old Stagecoachers.
- 9:15 p. m.—Kodak Week End program.
- 9:45 p. m.—Aces of Harmony.
- 10:00 p. m.—Mystery Serial.
- 10:30 p. m.—Pacific Nomads.
- 11:00 p. m.—Henry Halstead and His Orchestra.

SATURDAY, MAY 17

- 6:00 a. m.—Hits and Bits.
- 7:00 a. m.—The Recitalists.
- 8:45 a. m.—The Children's Hour Organ Recital.
- 12:00 noon.—Westchester Choral Society.
- 1:30 p. m.—Tea Timers.
- 2:00 p. m.—Black and Gold Room Orchestra.
- 3:00 p. m.—Weather, market and road reports.
- 3:15 p. m.—RCA Therman Ether Wave Musicale.
- 3:30 p. m.—The Fuller Man.
- 4:00 p. m.—The New Business World.
- 5:00 p. m.—General Electric Hour.
- 6:00 p. m.—B. A. Rolfe and His Lucky Strike Orch.
- 7:00 p. m.—Bernie Cummins and His Hotel New Yorker Orchestra.
- 8:00 p. m.—Yassar Chocolates Girl.
- 8:30 p. m.—Preview of International Sunday School Lesson.
- 9:00 p. m.—Del Monte program.
- 9:30 p. m.—Penrod Stories.
- 10:00 p. m.—Henry Halstead and His Orchestra.



Mr. George Stephenson, who has been in the radio business for many years, has joined the sales force of the Smith-Griffin Manufacturing Co., Los Angeles. "After testing a great many of the midget sets, I came to the conclusion that the "Royale" was the greatest radio value offered to the public, and I wanted the opportunity to sell them. My proposition was accepted by Mr. Smith, so now I am offering the best Midget set made to a select number of dealers in my territory," said Mr. Stephenson.

Mr. Claude Foote has just announced that the H. R. Curtiss Company, of 727 Venice Boulevard, has been appointed exclusive Southern California distributor for Perryman tubes. The Curtiss Co. is able to make immediate delivery from their large local stock.

The Western Radio Sales and Distributing Company, of 1268 South Alvarado Street, Los Angeles, are doing an excellent business. Both their console and clock models are in great demand, according to Mr. Tindell, president of the company.

The Midget radio set has become so popular and in such constant demand that Mr. R. B. Yale, of the Yale Radio Electric Co., Los Angeles, has decided to distribute one. The Kenmore, All-Electric, Magnavox X-Core Dynamic equipped mantle type midget set, is now being offered to the trade, and as the present stock is not too large, those who want them had better put in their order now.

Charles Walter, of Barrett & Walter, 701 Allied Crafts Bldg., Los Angeles, announces their appointment as factory representatives for the state of California, for Davison-Haynes Manufacturing Company, manufacturers of the very popular Angelus Midget radio receiver.

Both Mr. Walter and Mr. Barrett are old-timers in the radio industry. Mr. Walter has been associated with Listenwalter & Gough for the past twelve years, and has been in charge of their radio department for the last six years. Mr. Barrett has acted in the same capacity for this firm in San Francisco. Both men made enviable records in the successful merchandising of different radio lines decided to strike out for themselves, hence the firm of Barrett & Walter.

When the Angelus receiver was demonstrated, officials of Listenwalter & Gough were so impressed with its performance that they decided to distribute this mighty midget in the state of California. The response with which the public has met the Angelus proves the wisdom of L. & G.'s choice.

We have just received word from Mr. Spencer Peirce, sales manager of the Supreme Instruments Corporation, that James P. Hermans of 585 Mission street, San Francisco, has been appointed Northern California factory representative, and Dave Marshank, 224 East 16th street, Los Angeles, as the Southern California representative.

The Supreme Products are continuing as leaders in the radio servicing and testing field.

WANTED!!! — RADIO STOCKS!!

Dealers' Complete Radio Stocks Bought for Cash

See R. S. SHELLEY

LIQUIDATIONS - ASSIGNMENTS - BANKRUPTCY

MUtual 4906

422 West 4th Street

Los Angeles