

RADIO DOINGS

RED BOOK OF RADIO

*The Radio Authority
of
Pacific Coast*

10¢
WEEKLY

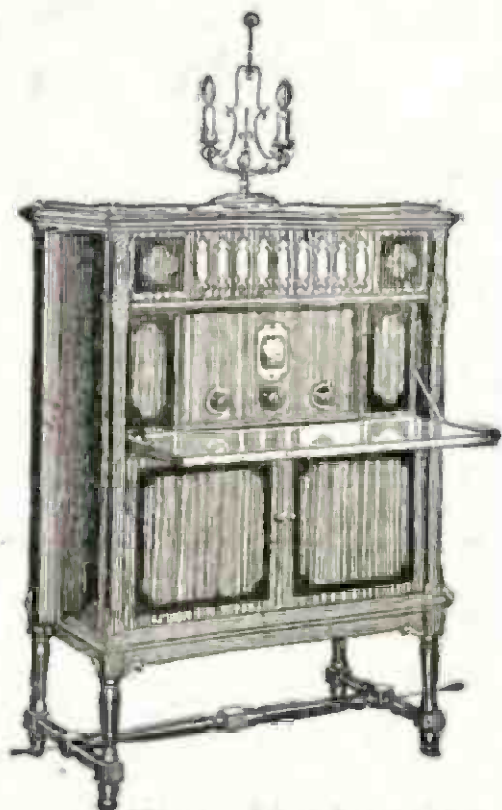


William Wrigley, Jr., and Major Lawrence Mott
(See Page 27)

Vol. X

APRIL 10-16, 1927

No. 15



Kolster Radio

*Does Not Need
To Be Backed by
Superlative
Statements*

We could tell you that Kolster Radio sets are extra selective and super-sensitive. But we prefer to make no claims.

We simply say, "Come in and hear a Kolster Radio, or let us give you a demonstration in your home if you prefer."

Your ear is the best guide to your judgment in choosing a radio.

Why not let one of the franchised Kolster dealers on the opposite page give you a demonstration? You incur no obligation in so doing.

**KOLSTER - CROSLY - BRANDES - BURGESS BATTERIES
RADIOTRONS - TUNGAR - AMRAD - VESTA - ACME
KODEL - MODERN - WESTINGHOUSE "A" AUTOPOWER**

Distributed by

H. Earle Wright, Incorporated

123-129 Second Street
SAN FRANCISCO

415 East Eighth Street
LOS ANGELES

The Famous "Parade of Stations" Takes Place
Daily and Nightly on the

Kolster Radio

Ask one of these Authorized Dealers for a demonstration any
day or evening:

LOS ANGELES

Hollywood

C. R. HAUSER
4310 Melrose Ave.
OLympia 2666

HOLLYWOOD RADIO CO.
709 N. Western Ave.
GLadstone 2897

OTTO K. OLESON
ILLUMINATING CO.
6548 Hollywood Blvd.
GLadstone 5194

Northeast

BROOKLYN RADIO SHOP
1521 Brooklyn Ave.
ANgelus 3296

South

JENKINS RADIO SHOP
8450-52 S. Broadway
THornwall 4460

STURGIS MUSIC Co.
4711 S. Broadway
AXridge 7106

Southern California

ALHAMBRA

ALHAMBRA RADIO ELEC.
1855 W. Main St.
Alhambra 2366

GLENDALE

BUDWIG RADIO Co.
201 N. Brand Blvd.
Glendale 1801

SUPERIOR RADIO SHOP
107 W. Broadway
Glendale 1780

INGLEWOOD

SEVILLE RADIO SHOPPE
213 S. Market
Inglewood 1607

LONG BEACH

RIALTO RADIO Co.
430 American Ave.
Long Beach 653-171

MONTEREY PARK

MONTEREY PARK MUSIC Co.
102 E. Garvey
Alhambra 1182-M

PASADENA

ASHTON'S RADIOELECTRIC
STORE
1762 E. Colorado St.
Colorado 4042

POMONA

JOHN BURNLEY
120 E. Second St.
Pomona 1472

SAN GABRIEL

MURPHY & HENDRICKX
243 S. San Gabriel Blvd.
San Gabriel 3122

SAN DIEGO

MARYLAND AUTO SUPPLY
650 F Street
Main 3590

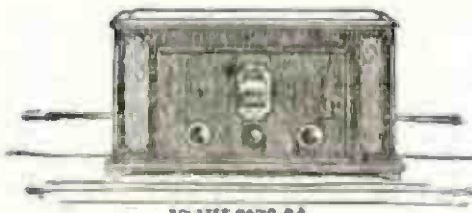
MILLER BROTHERS
30th and University
Hillcrest 200

JACK M. WHITLEY
411 C Street
Main 4512

SANTA BARBARA

J. E. WILEY
San Marcos Bldg.
Santa Barbara 3971

"Rich
Tone-Quality"



"Clear-Cut
Selectivity"

KOLSTER RADIO 6A

Walbert's Isofarad

Operates Direct From Light Socket

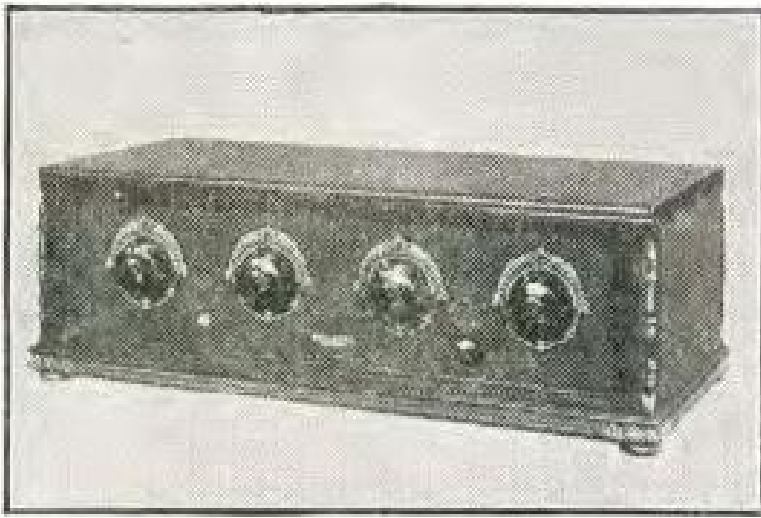
N
O

B
A
T
T
E
R
I
E
S

A

C

T
U
B
E
S



N
O

T
R
I
C
K
L
E

C
H
A
R
G
E
R

47-P. T. \$400.00 Complete With Tubes

A four-dial seven tube receiver for radio skeptics—those who have been disappointed with the ordinary radio sets—those who don't believe the receiver is made that will do what they expect of it. Those who must have selectivity, distance and quality.

Electric Models, \$350.00 to \$470.00

Battery Models, \$75.00 to \$270.00

Home of Utah Speakers

C. W. SMITH CO.

1125 Wall St., Los Angeles

Westmore 3291

DON'T BLAME the OLD SET

It's probably as good as it ever was. But Radio is making progress fast: your tastes are improving; you want more from your Radio.



The Answer Is

The Orthoformer, \$17.50
(In Canada, \$21.00)

Modernize Your Set with the **Orthoformer**

Get pipe organ music, clear, full and sweet, from merest whisper to crashing crescendo. Get the rich, deep throb of the bass in band or orchestra. Hear the human voice in all the purity of its perfection. Bring back the thrill your set gave you when Radio was new; get more than Radio ever has given you before. You can, with the **ORTHOFORMER**

Simply plug this unit into your old set and enjoy the most recent advance in Radio . . . you can with **ORTHOFORMER**. Hook up your old set with any type of Battery Eliminator you want . . . you can with **ORTHOFORMER**.

Balance your set to the impedance of any type of Loud Speaker you want . . . you can with **ORTHOFORMER**.

The Most Advanced New Sets Will Have It Tomorrow; You Can Have It Today

Simply Send
the Coupon
for Free
Home Trial.

International Distributors Corp.,
 Union Insurance Bldg., Sixth and Beaudry,
 Los Angeles, California:
 Without expense or obligation to me please have dealer
ATTACH AN ORTHOFORMER TO MY SET FOR A FREE HOME TRIAL.

Name.....
 Street.....
 City.....
 Phone No..... Make of Set.....

CeCo

New

MAP OF U.S. SHOWING
CROWDED CONDITION
OF BROADCASTING
STATIONS



LOS ANGELES CE-CO DEALERS

J. C. Reandler
625 S. Main
Philea Sales & Service
1514 South Hope
Standard Radio
417 W. Pico
Walkers Radio
5835 S. Vermont
Glen H. Deamer
6507 S. Kansas
Vermont Center Radio
6219 S. Vermont Ave.
Rogers Electric
1263 S. Norton
H. H. Walker
1323 Venice Blvd
Sturgis Music
4713 S. Broadway
Nilsson & Nelson
4320 Avalon
Tivoli Radio Shop
4204 S. Central
Wilkins Radio Mfg. Co.
5317 S. Central
Phair Radio Co.
242 E. Florence
Hines Radio
7322 S. Broadway
McWhorters Radio
8625 S. Vermont
Henderson Radio Store
1805 Whittier
C. S. Young
3713 East First
Johnson Auto Supply
765 Atlantic Blvd.
Atwater Radio Shop
3208 Glendale Blvd.
Holland Electric Shop
5632 Pasadena Ave.
McNeil Music Co.
5711 Pasadena Ave.
Bright & Bushard
1719 W. Adams



"K" TUBES

IMPROVE ANY SET

YOU

- Want selectivity!
- Want undistorted tone quality!
- Want increased volume!

EQUIP YOUR SET WITH CE-CO TUBES

Any CeCo Dealer will gladly demonstrate the vast improvement

C. J. Tobey Co.

Radio Accessory Jobbers

15th and Hope Sts.

HOLLYWOOD

Cutler Radio
930 N. Western
Hollywood Radio
709 N. Western
Hollywood Electric
6656 Hollywood Blvd.
Mahawk Battery & Radio
2115 Sunset Blvd.
Doran Electric Shop
7515 Sunset Blvd.
Loving-Melrose Radio
4428 Melrose
Melrose Radio
5663 Melrose
Washoly Radio
7406 Melrose
Carmel Radio
6165 Santa Monica Blvd
Hotel Radio
7915 Santa Monica Blvd

OUT-OF-TOWN CE-CO DEALERS

ALHAMBRA
Baird Radio Shop
226 W. Main St.
MONTEARY PARK
Monteary Park Music Co.
102 E. Carey
GARDEN GROVE
W. E. Ashley

PASADENA

Thomas & Summerville
241 N. Broadway
Webster Electric Garage
100 E. Union
Radio Sterns
560 E. Colorado Blvd

GLENDORA

F. A. Seimore
LANKERSHIM
Lankershim Music Co.
Lankershim Radio and
Service Shop
3241 Lankershim Blvd

VAN NUYS

Van Nuys Music Co.
Marsons Electric
CULVER CITY
H. E. Blunt
6808 Putnam
INGLEWOOD
Inglewood Mercantile Co.
120 N. Commercial St

AVALON

Avalon Radio
607 Crescent
WILMINGTON
Wilmington Variety
716 W. Anaheim
LONG BEACH

KALM

Cor. 4th and Locust
HUNTINGTON PARK
H. L. "Radio" King
116 E. Irvington
P. A. Dougherty
158 Pacific Blvd.

BELFLLOWER

H. L. Peterson Shoppe
Pacific and Mayne
DOWNEY
Darsell Electric Shop
1147 Crawford St.

WEATMORE 4038

POMONA
Falls Tire & Battery Co.
201 E. 2nd St.
COLTON
H. C. Bliss
TUSTIN
Williams Super Service
Coast Highway
ELSINORE
Elsinore Plumb. & Elec.
REDLAND
Dunn El Silger
State and Third St
ANAHEIM
Caverley Radio
217 W. Center
BREA
Bonnet's Radio
Murray Pharmacy & Service
Station
CARLSBAD
Carlsbad Pharmacy
EL CAJON
El Cajon Electric
CORONADO
W. C. Bechel Liberty
Garage & Batt. Serv.
718 Third St.
PACIFIC BEACH
Sunset Super Service
Station
1602 Carnott
SAN DIEGO
Collego Service
Park and El Cajon
Maryland Auto Supply
7th and F St.
E. C. Grube
5th and Imperial
Kinney Bros.
30th and A St

There are Many

Very good kits on the market from which you can build yourself a set that will out-perform most factory built sets.

SILVER-MARSHALL SHIELDED SIX
SILVER COCKADAY II
MADISON MOORE SUPER
INFRADYNE
BROWNING-DRAKE
KARAS EQUIMATIC
BOULEDADIO EIGHT-IN-LINE
HAMMARLUND HI Q

Your Dealer Has These Kits — Let Him Help You Pick
Your Set.

We can also offer you a very large assortment of Battery Power Units—for both A and B Batteries. Trickle Chargers. Also Horn type of Cone Speakers.

DEALERS: Park Next Door at Our Expense

RADIO SUPPLY CO.

WHOLESALE

920 S. Broadway

VA. 6063

Los Angeles

New 1927 Catalogue Now Ready—Send For It

LET THE RADIO SUPPLY CO.

Fill your Parts orders. We distribute the best known quality lines and carry large stocks at all times to handle your needs.

READ OVER THIS LIST OF PARTS

Alco Loops	Dubilier Condenser Corp.	Nauid Truptionic Units, Etc.
Accuratune Dials	Dudlo Mfg. Co. Wire	National Co. Parts
Acme Apparatus	Dunham Loops	Paent Products
Acme Trickle Chargers	Eby Binding Posts	Peetrolia Kita
Advance Crystals	Eight-in-Line Super Unit	Polymet Mfg. Co. Condensers
Aero Products	Ekko Ground Clamps	Premier Parts
Aerovox Wireless Products	Electrad Products	Raco Aerial Wire
Aiden Mfg. Co. Parts	Electrohot Soldering Irons	Radial Co. Amperites
All-American Products	Elkon Chargers	Ranland Lyric Transformers
Amertran Products	Formica Insulation Co.	Raytheon Tubes
Amperites	Franco B. Batteries	Remler Products
Ameco Condensers	Frost Products	Samsom Transformers
Arco Coils	General Radio Parts	Sangamo Condensers
Balkite Chargers, Etc.	Goodrich Rubber Panels	Sensory Insulators
Benjamin Elec. Mfg. Products	Hammerlund Products	Silite Trickle Chargers
Bodine Loops	Harkness Kita	Silver Marshall Products
Boulderadio Eight-in-Line Super Unit	Hedgehog Transformers	Spaulding Bakelite
Branston Coils	H-K Sudderdipt Lugs	Steinlite Eliminators
Bremer-Tully Products	Hoonick Parts	Sterling Meters and Testers
Bruno Coils	Jefferson Products	Stevens Tools
Camfield Coils	Karna Products	Tentrite Hydrometers
Carborundum Products	Kelbrackets	Thordarson Transformers
Cardwell Condensers	Kellogg Parts	Thorola Coils
Carter Products	Kodal Products	Tube Condensers
Ceco Tubes	Kurs-Kauch Dials and Knobs	Tom Mack Products
C R L Var High Resistances	Leaf-Burkhard Cone Speakers	Tower Speakers
Chicago Kester Solder	Lemco Transformers	Trim Cone Speakers
Cirrostal	Madison Moore Units	Universal Battery Clips
Crescent Transformers	Marco Products	Vesta Power Units
Daven Radio Parts	Mignon S. L. F. Condensers	Victoreen Parts
DeJur Rheostats	Mueller Universal Clips	Weston Products
DeLuxe Products	Muter Lightening Arrestors	Willard Batteries
Dicktrand Speakers		X. L. Variodensers
		Yaxley Products

THORDARSON, ALL-AMERICAN AND MAGNAVOX REPLACEMENT TRANSFORMERS IN STOCK

VESTA 35 and 50 Amp. and HOBCO A Power Units

ACME, GENERAL RADIO, ALL-AMERICAN, KODEL, BALKITE, SILVER MARSHALL, STERLING and WEBSTER ELMINATORS

ACME, STERLING, VESTA, BALKITE, TUNGAR and SILITE TRICKLE CHARGERS

DEALERS: Park Next Door at Our Expense

RADIO SUPPLY CO.

WHOLESALE

920 S. Broadway

VA. 6063

Los Angeles

New 1927 Catalogue Now Ready—Send For It

The New

Hexadyne 6-Tube

PORTABLE



**NEW IMPROVEMENTS WITH BEAUTY AND
SIMPLICITY**

**SINGLE DIAL CONTROL
OPERATES WITH A LOOP
EXCEPTIONAL DISTANCE**

The Hexadyne stands today not only as the leader in the portable field but the recognized standard of advanced radio engineering. No other portable radio on the market compares with the Hexadyne for beauty of tone and simplicity of operation.

**List Price \$125.00 Complete with All Accessories
Including the New Power Tube**

Dealers Write at Once for Attractive Proposition

**Manufactured by W. D. Hunt Co., Inc., 4961 Sunset Blvd., Los Angeles
Telephone OL 3104**

WHOLESALE DISTRIBUTORS

**C. W. Smith Co.
1125 Wall St., Los Angeles**

**Pacific Wholesale, Inc.
1320 S. San Pedro, Los Angeles**

Radiograms

From

CLOYD MARSHALL, JR.

The Desert

Two people standing on Mt. San Jacinto looking over the vast Colorado Desert of California will invariably receive opposite impressions from the remarkable view. One, immune to the surging thrill of far-reaching distances, sees only the simmering barrenness, the stark emptiness and the deadening immobility of all that he beholds. The other, sensing the grandeur and beauty in this arid expression of nature would be spellbound at the overwhelming magnitude of land and sky, then, more probably would perceive the golden possibility of tremendous productivity from the magic touch of water and cultivation. He could visualize the expansive waste turned into miles of green pastures and farm lands, such as Imperial Valley to the South.

Coming down the mountain to the desert itself they would again react, perhaps, very differently to its characteristics. The other, failing to observe with searching or understanding eyes, would be repelled by the gray, dusty greasewood, the forbidding cactus and the dry, stunted vegetation. The one would breathe deeply of the odd but pleasing fragrance of greasewood and see the tiny shrubs that would soon bloom exuberantly with the Spring. The delicate colors and blending tints of sand and rock would add to the wonder of the desert.

One might think these sandy regions devoid of life because of the lack of human habitations. But closer investigation reveals numerous varieties of insect and small animal life. Although the desert appears hot, barren and inhospitable, these little denizens, particularly the ants, find it a land of plenty. If watched closely they can be seen constantly at work going to and from their homes. In some places you can find small paths, half an inch deep, worn down by their tiny feet. It is like the old San Antonio trail in Texas, which the constant travel of people, horses and wagons during the last 100 years

has worn here and there a path eight feet deep.

To those who understand and learn to love the desert, it imbues them with a feeling of content, peace and harmony. It is a calm and charming land that has been dozing for countless centuries in the brilliant sunlight. It has seemed too vast and menacing to be much disturbed, but at last the end of its formidable but economically useless power is in sight. Irrigation engineers are planning to make productive soil of the sands that will support numerous farms to feed the millions that will soon reside in the great southwestern desert.

It is too bad that more people are not endowed with the desert spirit, calm, peaceful, tolerant, yet powerful, instead of being like small mountain streams, babbling, noisy and shallow.

Go down and see this magnificent land for the desert flowers are now coming into bloom and the grey of the desert is being transformed into a beautiful and gorgeous purple.

Determination

Speed, accuracy and high pressure are all essential in business, but in the final analysis of every great success in life and business you will find that perseverance and determination play the biggest parts.

A study of the lives of our ablest statesmen, scientists, philosophers and merchants will convince you that the forces pushing them forward to greater attainments, to greater accomplishments, to that topmost step in the ladder of life, SUCCESS, were perseverance and the determination to get there.

These qualities can be injected in our every endeavor. If we set before us a goal and work toward it faithfully, determining within ourselves that we will be a success in our particular sphere, we are almost sure to attain our objective.

Persevering work and determination are bound to bring success.



After the Dinner Hour
at the
Los Angeles Biltmore Hotel



In entertainment, as in every other appointment, this famous hotel provides royally for the enjoyment and comfort of its guests.

Kemper Portable Radio receivers are furnished guests for a nominal rental charge.

LOS ANGELES BILTMORE HOTEL.



Radio Topics of the Day

A Weekly Review of Radio News, Thought and Opinion

LARGE RADIO SHIPMENT TO JAPAN

Who said that the Japanese were not interested in Radio? Mr. William Gobel, vice president of the Precision Electric Manufacturing Company of Los Angeles, California, reports that six large trucks, each with a trailer, were needed to carry to the harbor the Pemco "A" & "B" Power Units shipped on one large order to a big wholesaler in Kobe, Japan.

A RADIO SIBERIA?

It has been suggested that if following the public hearings the radio commission widens the broadcasting range to include the 150 to 200-meter band that this may, at least in the beginning, prove to be a sort of radio Siberia, to which fractious or disobedient stations may be banished if their past records are bad, together with those which may cause trouble in the future. After a time it is assumed that most of the existing sets and possibly all the new sets, will be adjusted so as to receive stations in this band, but for the time-being the broadcasters assigned here will very likely have small audiences.

Quite another supposition is that the little 100 and 50-watt broadcasters may be given these momentarily undersirable wave lengths. Certainly someone will have to blaze the trail and it is to be assumed that it will not be the more powerful or popular stations.

NOW THEIR BOSS

There was an unusual situation when radio supervisors from various parts of the country gathered at Washington for the radio hearings in that they found their old associate, Col. J. F. Dillon, formerly radio supervisor of San Francisco, elevated to the rank of their superior. Oddly enough, this also held for W. D. Terrell, chief radio supervisor. Inasmuch as Colonel Dillon is now the member of the radio commission from the Pacific Coast he is in a position to give them all orders.

Those supervisors present at the hearings were C. C. Kolster, Boston; Arthur Batcheller, New York City; Major Walter Van Nostrand, Atlanta; T. G. Deiler, New Orleans; O. R. Redfern, Seattle; S. W. Edwards, Detroit, and E. A. Beane, Chicago.

The supervisors were summoned to Washington so as to get first-hand information as to what their duties would be under the new law and to make the personal acquaintance of the new commissioners.

No successor to Colonel Dillon at San Francisco has as yet been appointed.

Wow!

Our new \$50,000 radio commission soliciting the fans for tips on what the dickens to do is a good deal like Walter Johnson, asking the crowd in the bleachers to tell him how to pitch the game. —*Washington Post.*

“Wired Radio?”

By K. G. ORMISTON

The press, with its usual spectacular flourish and inaccuracy, recently published a news story from New York under the heading, “RADIO TO POUR FROM LIGHT SOCKETS SOON.” The story dealt with the plans of the Wired Radio Company, and stated that next Fall, probably by October 1st, it will be possible for any householder in New York “to press a button on his electrically attached device and receive at will one of three programs which will POUR through the single electric light cable to his home.”

It is stated that this device in the home will be rented by the electric light companies to their subscribers for two dollars per month. From a central studio in New York three programs of “different appeal” will be transmitted by the carrier current or wired wireless method over the entire system of the New York Edison Company and thereby made available wherever electric lights are used. The subscriber simply plugs his “device” into a convenient light socket and takes his pick of the three programs by pressing the buttons.

It is further stated that this system of “pouring radio out of the light socket” will spread throughout the nation with the help of the American Telephone and Telegraph Company; will shortly become universal, and the inference is that radio broadcasting will then become a thing of the past.

Now, lest our readers, who have invested their good hard-earned money in radio receiving equipment and have ever kept faith through all the trials and tribulations of the infant industry, should take too seriously the publicity given this system of entertainment distribution, the writer rises to make a few remarks on behalf of radio.

In the first place this new system is NOT radio. It is a method of transmitting and distributing entertainment over wires. Radio, as defined by the Standardization Committee of the Institute of Radio Engineers, is “the transmission of signals through SPACE by means of electromagnetic waves.”

The promoters of this system of transmission (which has long been developed but has lacked the very necessary cooperation of the power and telephone companies) make free use of the word “radio,” in order to trade upon the tremendous popularity and appeal which radio has attained in the public mind. But it is NOT radio, nor can it ever replace radio, for it lacks the elements of appeal,—the romance, the fascination, the mystery which intrigues the imagination and makes an ardent enthusiast of the most base of individuals. Define it if you can!

It was only a little more than six years ago that the Westinghouse Company made their timid experiment in East Pittsburg and radio broadcasting toddled out to be accepted or rejected by the public fancy. What was the result? I will tell you briefly. In 1926 the sales of radio equipment in the United States reached \$500,000,000! The total sales accredited to the radio industry during the six years of its short life is \$1,492,000,000—a billion dollar industry developed in six years! Six million homes are equipped with receiving sets, and more than 700 broadcast stations nightly flood the ether with programs!

Has all this resulted because in radio there was found a cheap means of reproducing entertainment programs in the home? Is that all there is to radio? Ask yourself—ask any of the other 5,999,999 set owners! How many of

“Wired Radio?”

you would trade your set for a device which will reproduce your choice of three perfect programs every night without tuning, static or interference, and come in over the light circuit wires? Would you want to know in advance exactly what you are going to hear, just where it will come from and that it is going to be perfect in spite of you?

Having once known the thrill of DX, having enjoyed the UNCERTAINTY of the thing, having fought static and interference, learned to cuss and to brag, and reached the point where you are more enthusiastic about radio than anything except your wife,—would you swap it all for a perfect program coming in on a wire? Would you?

'Tis a wonderful thing, this “wired radio”—understand me, I am not saying a word against it, only that it is NOT RADIO. Some day it may provide a service to the public in the distribution of entertainment and education greater than radio can hope to do, because it can be made available for \$2 per month, or less. But I make the assertion that it can never hope to replace radio, because it can never grip the human imagination and interest as radio has done. It is too matter-of-fact; too understandable.

So fear not that the days of broadcasting are numbered. As long as you, the listeners, are willing to listen, the ether will be jam full of voices and music. There will be DX and static and interference and power-leaks and bloopers and rotten programs with the good,—and you will like it because radio is radio and the darned thing has got under your hide and into your blood.

You will probably subscribe some day to the “wired” service (and so will I), but somewhere near that neat little arrangement with its three buttons, will be a box with a flock of dials to twist

(Dial Page 76)

Picked Out of the Air

By HEARL LA VERN CROWTHERS

Destructive criticism is always the result of ignorance.

Strange as it may seem, rests are put into true music for the sake of harmony.

Joy and misery will not long live in the same house. To which would you prefer being the host?

Patrick Henry said, “Give me liberty or give me death.” A wise bird was Pat. He knew for what he was asking.

Some people are called intellectuals because they are so far away from intelligence.

One does not have to look at a sea to behold drifting dead wood. Do not drift, for if you do you, too, will become dead wood.

No foolin', try and think of a man as you would have him. Think good of him, and the result will surprise even yourself.

The bar of justice has only two drinks to serve, the wine of freedom and that of bitters. We may order whichever we wish.

If you know that you know a thing it is useless to dwell upon that one thing alone; begin to learn and know something else.

If one speak ill of you, liken yourself unto a mountain, and the ill speaker as standing down in the valley. When he speaks he hears his own voice as well as the echo.

Suggested Form of Questionnaire for Broadcasting Stations

By "The Voice of Catalina Island"—KFWO

Having just finished—by dint of deep thought and many references to Electrical Tomes—the Formidable Document that is required of all Station Owners who would continue to warble on the gentle airs of Heaven, the indubitable fact struck me that the Questionnaire submitted by the Honorable Radio Commission of these United States is NOT as all-embracing in the nature of its questions—as it really SHOULD be! So . . . It is that with the idea of lending the aforesaid Commission a hand in the matter that I venture to submit to them and to all of our far-and-wide flung readers, the following Questionnaire that—as is self-evident—very thoroughly covers the ground in re. matters that both the Commissioners AND the Dear Publik . . . ought to know:

1. What is a Broadcasting Station? And why is it?
2. What Stations heterodyne your wave? Why do you permit this.
3. How much do you charge per hour for your Studio facilities, and who is fool enough to pay it?
4. Are you non-sexarian by denomination?
5. Do you know precisely how many tubes there are in your transmitter?
6. Do you measure your power input by the temperature of the operating room, or by the reading of the antenna meter?
7. Does your Station time so sharply that any one voice of a quartette may be eliminated from the program without disturbing the others?
8. What is an SOS? When this phenomena occurs, how much do you increase power? Why?
9. Is your announcer truthful about the distances your station has been heard? Why is he not?
10. Do you preach that Jazz is the National Music of the Nation? Why not?
11. Under the new Law all stations have at least forty sopranos at their beck and call. Have you provided for this?
12. Is your station inland, on an island—or outlandish?
13. What else beside BLAH can be put in the input panel? And when heard over loud speakers does it resemble anything liquid? Solid?
14. Can your motor-generator be used as (a) lawn mower? (b) To operate laundry ringer? (c) Vacuum cleaner?
15. What do you shoot condensers with? And why?
16. What is your exact language when you blow a tube in the middle of a program?
17. How soon after a Radio Inspector visits your station do you resume full power?
18. How often does your announcer ask for letters from listeners? Why does he not do so more often?
19. How many cat's whiskers in the common—or—garden type of transmitter? What species of feline grow the best whiskers for the purpose? (Be specific.)
20. If a B battery is used as a C battery, what relation does an A battery bear to the above two, and can the situation be reversed? How?
21. How does the Coipitts-Hartley circuit differ from an immoderately loose-coupled circuit of any description? (Draw full diagram.)
22. What breed of chickens do you prefer in your studio? Blondes? Brunettes? Why?
23. Do you permit any loose living, loose lying, or anything loose in your

Questionnaire

studio? Is your clock fast? How fast is it?

24. Do you permit Wet Prohibition stories?

25. How much soft soaping of listeners does it take to sell 1 Vacuum Cleaner?

26. Have you ever been convicted of giving anything of value away?

27. Do you ever answer correspondence? Why do you?

28. Do you think your programs are the best on the air? Prove it by higher mathematics, using Logarithms and Biology in your calculations.

29. If a guest in the studio knocks the microphone off the stand what is the proper language for the occasion? Why?

30. Is your announcer sufficiently cognizant with the Call Letters of your station to say them in his sleep? Why so?

31. How many letters does your station receive per diem? (This question is to be briefly answered in thousands, only, and shall be sworn to before several Notary Publics.)

32. What is the Retort Courteous when listeners telephone in that your program is non compus? Give exact reply.

33. Is the term of address, "Friends of Radioland." COMPULSORY in your studio? Why not?

34. How far have you ever stretched the truth over your microphones without breaking it? Give answer in thousandths of an inch.

35. Do you give a HOOT about the Public? Two HOOTS?

36. Is your station operated to please it's Owner or to please the Public? Does it do either? When? For what specific reasons? (Two single-spaced, typed pages will be allowed for this reply).

The Last Word in RADIO RECEPTION Obtained Only With a "Super Ball" Antenna



RADIO RECEPTION AT ITS BEST

LESS STATIC
NON-DIRECTIONAL
MORE STATIONS LOGGED
MORE SELECTIVE
LESS INTERFERENCE
EASY TO INSTALL
EASIER TO TUNE
DOES NOT CORRODE

Important: There is only one genuine "Super-Ball" Antenna, manufactured exclusively by

YAHR-LANGE

INCORPORATED

Milwaukee, Wis.

Detroit, Mich

Distributed by

Pacific States Elec- tric Co. Los Angeles	Pacific Wholesale, Inc. Los Angeles
Electric Corp. Los Angeles	Radio Supply Co. Los Angeles

Thearle Music Co.
San Diego

Western Representatives
UNIVERSAL AGENCIES
San Francisco Los Angeles
Telephone GRavite 4810

"Forbes Van Why" Also Approves It!

C.H. PRESTON'S

"DX"

Long Distance
Radio Ground

PATENT APPLIED FOR

PRICE \$8⁰⁰

Notice to Dealers

If you haven't yet written for our dealer proposition and stocked the Preston "DX" Radio Ground, you are losing sales and profits every day. Every radio owner will buy this new accessory. WRITE FOR PARTICULARS NOW.

Probably no radio accessory ever introduced on the Pacific Coast has met with such unqualified approval of expert radio technicians as has been accorded the Preston "DX" Radio Ground. This new and positive ground connection, developed after two years' experimenting and tested under practical every day usage for eight months before being offered for sale, is being talked about every place radio is discussed.

Experts agree that it will, when properly installed, increase both selectivity and volume, decrease extraneous noises due to faulty grounds, and deliver to the receiver clear, undistorted signals from distant stations, making possible reception of decidedly better quality.

The Preston "DX" Radio Ground will not wear out. It is easily installed. You do not have to dig up the wife's flower garden to make the proper installation. A hole three feet deep, six-inch diameter, is all that is necessary.

Get one of these sensationally performing grounds from your dealer today . . . bury when you go home . . . listen in and see the difference in your radio reception.

UNGAR & WATSON, Inc.
National Distributors
1366 South Figueroa Street - Los Angeles

THE SEROY CO.
Distributors for the Calif. Group in Washington
122 Broadway - Oakland, Calif.

RADIO STATION KMTR

K.M.T.R. Radio Corporation

Los Angeles, California

March 23, 1927

Los Angeles, California

Los Angeles, California



Hollywood, California
March 23, 1927

Mr. C. H. Preston,
Los Angeles, Calif.

My dear Mr. Preston:

of the DX GROUND. Complete tests have been made covering action and operation

As you well know, I have personally waged a fight during the past few years against counterpoise, going so far as to mention the history of this "artificial ground," where and how it has been used in commercial radio work. I am therefore greatly interested in a device which gives to commercial radio what has been obtaining as easily needed, viz., a "true earth contact."

As pleased to note that your DX GROUND gives a "true earth contact" by virtue of its general composition, chief among which is the slight seepage which tends to render the adjacent earth moist and of high conductivity.

May I compliment you upon the chemical formula contained within your instrument, which causes the conductivity to earth to grow daily rather than eat away the copper container, which is quite an accomplishment.

In lieu of the fact that the ground circuit has been sadly neglected by countless radiofans, and since in my mind it is as important if not more so than the general antenna system, I am firmly convinced that you have made a discovery of great benefit to the radio public, and I therefore wish you well.

Very truly yours,

Forbes William Van Why
ENGINEER IN CHARGE KMTR.
(A. I. E. E., A. S. E. E.)

Forbes Van Why

Note that Mr. Van Why refers to the tendency of blue vitriol to eat away the copper container of most so-called blue vitriol grounds. So far as we know, Preston's "DX" Radio Ground is the original blue vitriol ground that has received no such comment in the Radio Doing "DX" Club. The neutralizing chemicals in Preston's secret formula absolutely prevent the eating away of the container. The "DX" Radio Ground DOES NOT WEAR OUT. Its efficiency increases day by day.

C. H. Preston, Inventor of "DX" Ground, Signs Contract



The inventor of the "DX" Long Distance Radio Ground that has set the western radio world in a turmoil during the past few weeks has just signed a long term contract with Ungar & Watson, Inc., Los Angeles firm, for the exclusive national distribution of his invention. Arrangements are being made for the rapid expansion of sales throughout the United States. In the photograph, H. A. Ungar, of Ungar & Watson, tells Preston where to sign his name.

The Facts Regarding New R.C.A. Alternating Current Tubes

Additional information concerning the AC tube recently press-agented in the daily papers with their usual theatrical effects, has been received from E. T. Cunningham, Inc. Some of these press notices wildly predicted that "the use of the new tube will eliminate all B batteries, trickle chargers, storage batteries, dry cells, current supply devices and A and B eliminators."

It was proclaimed the "greatest contribution to the revolutionary developments of radio," so on and so forth. It is exceedingly regrettable that such hokum should be placed before the public; that our newspapers, in their mad endeavor to be spectacular so often widely diverge from the truth. One carelessly written story by an ignorant but ambitious reporter can do vast harm to a great industry, and Radio Doings herewith hastens to correct the false impression given, by printing in full the following statement from E. T. Cunningham, Inc.:

THE FACTS—"Type CX 325, our equivalent to the Radiotron UX-225, referred to in the recent press notices,

has been in an experimental and developmental stage for nearly two years. Its output and capabilities are similar to those of all our well-known type CX-301A. In CX325 we are attempting to replace the filament with a cathode heated directly by house A. C. supplied through a step-down transformer. When, and if successful, this tube would eliminate the A battery, substituting raw A. C. It will not eliminate the B, and C, batteries or B eliminators. This tube has not yet reached a commercial stage. It is difficult to manufacture and would have to sell at a price from \$8.00 to \$9.00 each. It is our opinion that the practical difficulties connected with the manufacture of CX-325 will prevent it ever being commercialized. If perfected, it could not by any stretch of the imagination be called a revolutionary development. CX-325 could not be used in present equipment without substantial wiring changes, and then would not improve reception but merely eliminate the A battery.

HERBERT H. FROST,
General Sales Manager, E. T. Cunningham, Inc.

LOOK INTO THIS ONLY \$25.00

We will build your present radio set, home or factory built, into a super-selective 5 tube combination set that will get through the local stations and bring in distance. Complete separation on all local stations.

Bring or Ship Your Old Set to

**Buck's Radio
Rebuilding Shop**

7621 S. San Pedro St. Los Angeles

BOOSTS SALARIES IN A HURRY

"Salary value of a radio 'name' for actors was demonstrated when 'Sam 'n' Henry' (Correll and Gosden) opened at the Chicago for a tour of the three B & K houses at \$2,000 a week.

"A year and a half ago this team came to Chicago and opened at McVicker's for about \$250. Later they signed for a nightly broadcast over WGN. The difference in the two salaries is a result of radio reputation."—Variety (N. Y.)

Tupper Again Show Manager

Waldo Tupper will again be the manager of the Los Angeles Radio Show. The Radio Show Committee, at a meeting held in the offices of the Radio Trades Association, decided that Mr. Tupper had made such a phenomenal success of both the 1925 and 1926 Shows that they wanted him to again take charge of their exposition.

The eyes of the Radio World are more and more being turned towards Los Angeles because of the large amount of Radio material sold here the year around and for the successful Radio Shows.

Local Manufacturer Returns from Eastern Trip

Mr. Gage, president of the Precision Electric Manufacturing Company of Los Angeles, has just returned from a six weeks' trip throughout the East and Middle West. He stopped in Chicago, New York, Philadelphia, Kansas City, St. Louis, Omaha, Denver and Salt Lake.

The purpose of Mr. Gage's trip was to call on the manufacturers who supply him with the parts to manufacture his famous Pemco "A" & "B" Power Units and to thoroughly investigate the Radio situation and markets of the East and Middle West.

EDISON CELLS

Last a lifetime in Radio Service

Offer limited number A-6 Cells,
\$3.50 each, while they last

ELECTRIC COMMERCIAL GARAGE

301 Westinghouse Bldg.
420 South San Pedro Street
TRinity 0487

CeCo Type K Popular

It is a strange thing about radio; it seems to develop in spurts. Simultaneously we have cone speakers, patented grounds and socket-power. Now comes a special radio frequency amplifier tube, the CeCo type K.

While it has been on the market less than two months, A. J. Tobey, the local distributor, has received scores of testimonials and letters praising its value.

"Fans write that distortion and discordant noises are now unknown," says Mr. Tobey. "They tell us that their selectivity is greatly increased, and as one man put it—the new tube gives crystal quality with super-vacuum-tube efficiency."

Can You Hear a Thought?

In an effort to prove that "thoughts are things," a series of experiments in mental telepathy are being conducted each Thursday evening from Los Angeles station KFXB. Mr. Pierson W. Banning is the psychologist having charge of the tests. Persons in the studio concentrate their minds upon certain objects, and the multitude of listeners-in become "thinkers-in" and try to receive the impressions being silently broadcast. The local tests are given on the programs of the Bell Post, American Legion, and a prize of \$100 is offered. For a novel and interesting feature we can recommend the...

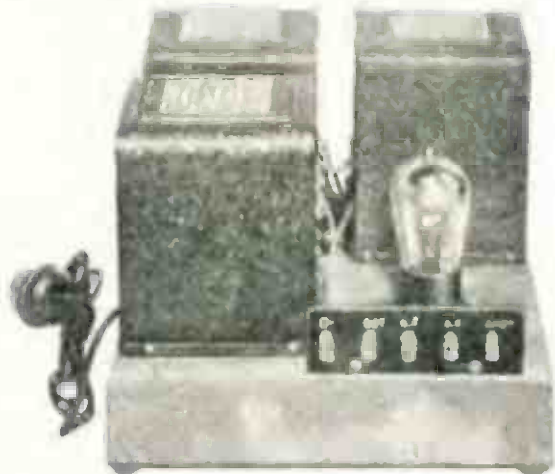
Burgess Batteries Cunningham Tubes

FIGUEROA RADIO SHOP RADIOTRICIANS KOLSTER

Crowley Sets and Speakers
Expert Service on All Makes of Sets
TUcker 6763 747 S. Figueroa St.

National "B" Supply Unit

There is so much interest in socket-power units that we feel an illustration and brief description of the various types on the market will be of interest



to our readers. The subject was treated in a general way in a recent issue.

This week we are illustrating the Na-

tional B-Supply Unit, Type M. It is very rigidly constructed on sound engineering principles and is capable of furnishing all the plate current required by even the largest sets.

The power transformer, which steps up the 110v A. C., is adaptable either to the use of the Raytheon filamentless rectifier tube or the UX-213 full-wave rectifier tube. The condenser block is a special Tobe unit, made expressly for the National B-Supply units and power amplifiers. These condensers are designed to meet voltage requirements far in excess of those handled in the unit. The filter chokes are able to carry 80 milliamperes continuously without heating or change in electrical characteristics. Their inductance values are large, so that the

(Dial Page 76)

PATENTED SUBANTENNA!

THE AMAZING, NEW UNDERGROUND ANTENNA SYSTEM

Eliminates All Interference
INCREASES DISTANCE—KILLS STATIC

SCIENCE
Now offers a Positive Means to Enjoyable Long Distance Reception

How often, when for days you have anticipated listening to a certain program from some distant station your set has failed you—because of the condition of the air. And how often "man-made" static, such as leaky power lines, or some other nuisance has spoiled your radio evening. Indeed, there has been a dire need for some means of overcoming these obstacles. SUBANTENNA is the answer, for it not only cleans up the reception before it reaches the set, but it actually gives greater distance, higher volume to weak signals and finer selectivity. Send coupon for particulars and Trial offer.



SUBANTENNA positively makes every night a good radio night. No matter what the season, the condition of the weather, you get clean, clear reception, free of the annoying crackles that make distant reception an impossibility with a regular antenna.

DISTANT MUSIC CLEAR AS LOCAL

No longer need static, air noises, arc intrus, leaky power lines, street car trolleys and other disturbances spoil your radio enjoyment. For SUBANTENNA—The new underground pick-up system gets nothing but the pure radio waves.

USE FILTERED GROUND WAVES NOT AISY AIR WAVES

Being buried in the ground and shielded, SUBANTENNA is sensitive only to the continuous broadcast waves. Intermittent impulses such as static, etc., are filtered out before they reach SUBANTENNA. Hence, you get greater distance because the radio signal is not held back by the interfering noise level.

NOTHING ELSE LIKE IT
SUBANTENNA is not just a wire. It is a patented device consisting of a specially treated wire, sheathed in a lead jacket, and containing three specially constructed pick-ups or built-up-up coils. Nothing else will do what SUBANTENNA does.

MAKE THIS TEST

Connect our set to your regular aerial. Then connect it to SUBANTENNA. If you do not get the results we promise, we agree to promptly refund your money.

Send Coupon for TRIAL OFFER

Right now—decide to hear clean, clear, that unshakably, headache combination of static and wires that is obsolete. Just send the coupon and we'll mail you full particulars of SUBANTENNA—the first and only really practical system of radio reception. Mail the coupon NOW for special TRIAL offer. Clip at once!

CLIP AND MAIL NOW

Chemical Manufacturing Co.,
 2714-S South Canal Street, Chicago.
 At once—send me full particulars of SUBANTENNA, also tell me about your special introductory TRIAL OFFER.
 Name
 Address

Cloverleaf Mfg. Co.

2714-S South Canal St., CHICAGO

THE TROUBLE SHOOTER



ASK K.G.O.
The Answer Man

KENNETH G. ORMISTON
Technical Editor



Blue Vitriol Ground

This department daily receives inquiries as to whether or not the Preston "DX" ground advertised in our columns is the same as the "blue vitriol" ground so often referred to in the letters which appear in our DX Club.

When Preston first developed his ground it was called a blue vitriol ground, because at that time all it comprised was a copper plate and blue vitriol. However, blue vitriol used alone in contact with copper quickly acts chemically upon the copper, with the result that the copper plate soon becomes conspicuous by its absence. Hence, the original blue vitriol ground as described by Preston is a very temporary affair.

This is not to be confused with the marketed Preston DX Ground, in which the inventor has worked out a chemical formula wherein neutralizing chemicals in conjunction with blue vitriol preserve the copper in its original state and permit the action of the sulphate to grow new spongy copper on the can. Buried in moist earth the vitriol permeates the surrounding soil and raises the conductivity.

If our readers will therefore note that the DX Ground is the far-famed "blue vitriol" ground, plus the very vital improvement of permanency, it will perhaps save me the necessity of writing so many letters to that effect.

Intermediate Eliminator Voltages

Readers sometimes run up against the problem of requiring an intermediate voltage from an eliminator when there is no tap supplied on the eliminator for the purpose. This can be answered by simply connecting a Claro-

stat or other suitable variable resistance unit from the maximum voltage tap of the eliminator to the desired connection on the set, and by adjustment of the resistance any voltage may be had.

For example, it is often desirable to use 67½ volts on the plates of RF amplifiers. When the eliminator is furnished with 45 and 90 volt taps only, in addition to the power tap, fans have had to choose whichever of these gave best results and let it go at that. Hence, this little tip, concerning the use of a Clarostat, will, in many cases, improve over-all efficiency.

What is the Orthoformer?

Whenever an advertiser springs something new our friends seem to feel that KGO will give them the low-down on it and they waste no time writing, "Is it any good?" "What is it?" "What will it do?" etc.

The Orthoformer is an audio frequency amplifier unit. It uses three 301A or 301A tubes. It plugs into the first audio socket in your set. It incorporates an entirely new method of tube coupling. Engineers have long struggled with transformer coupling, resistance coupling, impedance coupling, etc., their aim always being the production of a straight-line amplification curve over the entire band of audio frequencies. No audio amplifier has yet achieved this aim, though approximating it more or less closely.

In the Orthoformer, none of the standard and heretofore used means of tube coupling are used. The Orthoformer is designed to give quality over a very wide audio range and sufficient volume without distortion for all practical purposes.

(Dial Page 76)

Two Real Sportsmen

The picture on the cover is of two of the best known sportsmen on the Pacific Coast. William Wrigley, Jr., owner of Catalina Island and Major Lawrence Mott, the famous owner of broadcasting station KFWO.

William Wrigley, Jr. is convinced that outdoor sports will make better men and women and he has done everything within his power to get the young people out in the open.

He has made Catalina an enchanted isle—has put there everything possible for the enjoyment of the people, both young and old. He has lowered the rates on his transportation system and on his hotels until even those of very moderate means are able to afford the pleasure of this trip. We, of Southern California, have much to thank Mr. Wrigley for, because not only has he equipped Catalina so thoroughly for the enjoyment of all of us, but he has also built one of the best Baseball Stadiums in the country, so that we of Los Angeles may enjoy Big League Baseball.

Major Mott has not only given pleasure to thousands of people throughout the West by the delightful programs which he has broadcasted from KFWO, but he has also given the fishermen a great deal of information about the habits of the sword fish and the tuna that are to be found off the Island of Catalina.

Both of these men are real sportsmen and we hope they will continue their good work.

SPECIALIST ON:

**DX Aerials — DX Grounds
DX Sets**

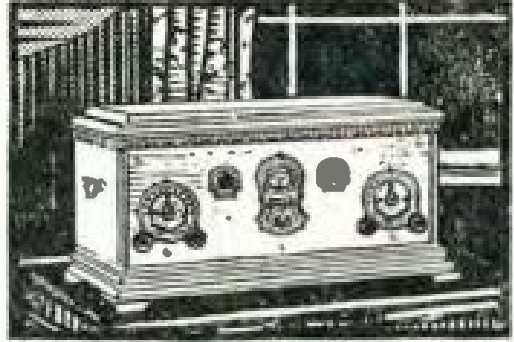
**Bremer-Tully Counterphase
6 and 8**

D. W. McVEAN

Terrace 9503

1100 E. Walnut

Pasadena, Calif.



STROMBERG-CARLSON LEADERSHIP CONFIRMED

By Unbiased Judges



The Sesqui-Centennial International Exposition, by its Gold Medal Award, has endorsed every claim made by the Stromberg-Carlson Company for scientific total shielding which is the basis for the famed Stromberg-Carlson selectivity, distance ability and accuracy of tone.

The Radio-Art Studio

Authorized Dealer

Stromberg-Carlson

3831 Wilshire Blvd.

Between Western and Manhattan

Phone WASHINGTON 4095

Open Evenings Until Nine



WOMAN'S PAGE

By CAREY PRESTON RITTMEISTER



"C. P. R."

Radio must have put an "awful crimp" in the Chautauqua business! But, ten years ago, Chautauqua companies had the radio artists of today touring here and there, all over the country.

At that time I was a member of a trio, violin, 'cello and piano—and one Summer we toured the Middle West from the Canadian border to Southern Missouri. The 'cellist of our trio was an excitable Dane, and the hardships and strain of long jumps between one-night stands did not tend to lessen his excitability and temperament.

From time to time, like ships in passing, we would ride for a few miles with a troupe of a rival Chautauqua organization, exchange sympathy and commiseration, and then drop off for our day's stunt, never seeing each other again.

One hot morning we boarded a train in Missouri, settled ourselves in the day-coach, and were soon asleep, for we had come to the state where we could sleep at any time and in any place. Our 'cellist had stood his instrument upright on the vacant seat in the front end of the coach, in sight of the entire length of the car.

We were just nicely settled, when down the aisle from somewhere back of us rushed a slim young fellow, who made straight for the 'cello, grasped it firmly by the neck, and strode toward the back of the car. In alarm, our Dane sprang from his seat and ran quickly after the 'cello. The two were well matched in size, and equally excited,

and we were all aroused by the flow of language—Danish and Russian—which was passing between them.

When he reached the end of the car, the young man with the taking ways stopped, placed the 'cello in the corner, then rubbed his eyes, for there were two 'cellos, as like as two peas in their canvas coats. He, too, played the 'cello, touring with Elsie Baker in Chautauqua; had awakened from a nap just



Mischa Gogna

in time to see our Danish friend placing his instrument on the seat, and thinking that someone had had the temerity to move his 'cello, had immediately set about to put it where he had left it at the other end of the coach. Voluble ex-

(Dial Page 76)

Koo-Koo Kolyum

By HAL DAVIS

HALP! SUCCOR! S. O. S., and all that sort of thing!

Dere Reeders: Contributions to this here now Kolyum will be welcomed with the proverbial open arms by Ye Edetur. Shoot 'em along, Fello Nutz—anything bad enuf will surely be printed; cracks on Radio or otherwise. Come on in, it's great to be koo-koo!

"Sedentary work," said the college lecturer, "tends to lessen the endurance."

"In other words," butted in the smart student, "the more one sits, the less one can stand."

"Exactly," retorted the professor, "and if one lies a great deal, one's standing is lost completely."

—Proof from Rice's.

RADIO TROUBLES IN THE CITY OF THE ANGELS, SOUTHEAST:

(Letter received by Mr. Carl A. Stone, well-known radio wholesaler of Los Angeles):

Mr. Carl Stone, Radio Equipment Authority

will you kindly invogate all the Radios between Mc Kliney and Central ave on 47 E and 48th Street East. I can hear some one talking to me all time I dont have one minute fur myself and it is awful dirty talk when I sat down and read paper it read for me if I look from one article to nother he do the same I dont get no rest nights is jest same only when I sleep soon as I wake the talk is making me very nervous.

Please be so kind invogastate has been that way sance 19 of Febury 1926 your Oblige

— — — — — E 48 St., Los Angeles.

Mr. Stone has referred this grave matter to the Federal Radio Commission.

MORE DISTANCE

Greater Selectivity
Increased Volume
With the

"DX"

LONG DISTANCE GROUND



No matter what make of Radio you have, or where you are located, you cannot afford to be without this latest Radio Improvement.

PRICE

\$800 Complete Postpaid Anywhere

Shipment Made Same Day Order is Received

ORDER NOW

DEXTER SUPPLY Co.

487 Chamber of Commerce Bldg.
1151 South Broadway

Westmore 9137 Los Angeles

Note: Snappy Service to Dealers



DX ON WINTER CREEK

DX Club:

Read your book faithfully and find it an incomplete week if same does not arrive on time.

I am the proprietor of Hoegge's Camp, situated six and one-half miles up on the Sturtevant Trail back of Sierra Madre and under Mt. Wilson. Elevation 3000 feet. Our supplies come in on mules and occasionally something gets lost, so when it happens to be my Radio Doings I miss it greatly.

I am very much interested in radio and the DX work so am sending in a list of my most distant stations received in the past two months. Reception here is very good. Have a Radiola 20 using an antenna straight up and down 90 feet long and a good ground made out of old batteries, blue vitrol, etc.

Trusting this DX stuff may be of some interest to you people, I am with best wishes.

WILLIAM MURPHY.

(Editor's Note—Mr. Murphy's list includes 140 stations all the way from Atlantic City to Tokio, Japan, and from Vancouver to Mexico City. We've envied him his location!)

ANOTHER LOCAL BOOSTER

DX Club:

I read each week with great interest, the Club news, and was very much interested in last week's issue in a letter from Mr. Huntington giving his stations received over his Gillian neudrodyne. I also have a Gillian, model GN 2, two years old, without power tube. I have a forty foot indoor aerial and water pipe ground. I am not going to bore you with a long list of stations received, but can say that I have Ekko stamps from fourteen Chicago stations, also from such cities as Cleveland, Cincinnati, St. Louis, St. Paul, Pittsburg, Kansas City, and from practically all the middle western stations.

What has always been most interesting to me in DX, was picking up smaller stations, 50 to 100 watts as well as the bigger fellows. I am situated right close to the L. A. and Hollywood stations and yet have tuned in the following

small stations: WSM, Nashville, WGHB Clearwater, KSEI Pocatello, Idaho, WSBC and WGES, Chicago.

P. E. DONNELLY.

901 Third Ave., Los Angeles, Cal.

WELCOME, DOUGLAS!

DX Club:

Have been reading your Little Red Book for a long time and I certainly enjoy it, especially the DX Club.

Lots of fellows think they have to put up with interference, but if they lived in a town where there are three smelters, they would know what interference really is. However, I've had pretty good luck on mild nights. Here is my record. . . . All these on loud speaker. I have a home-made six-tube resistance coupled set, with special detector tube. Let's hear from some of you fellows who have made your own sets.

GUS ELMENDORF.

Douglas, Arizona.

(Note—Gus sends us a list from the burning sands that would be the envy of any DX fan. It includes pretty near all the nation and shows how busy our new member is in the intervals when the smelters don't smelt!)

WITHOUT ANTENNA

DX Club:

I am always very much interested in the DX Club page in the Red Book. Most of the correspondents are outside the city and in locations where selectivity is not so vitally essential. In my location the interference is such that it is extremely difficult to tune in DX with the locals on. I use a Fača neudrodyne and have solved the selectivity problem by using an Antenaliminator. In the first evening after I had attached it I managed to tune in the following stations with all the locals on: KMOX, KOA, KFSD, KSL, KOWW, KFAU, etc. This is without an antenna of any description. Just the Antenaliminator and water-pipe ground.

L. C. WESTBROOK.

5903 Pasadena Ave., Los Angeles.

All You Members

of the



Listen to this

**C.H. Preston's
"DX" Radio Ground
can now be
bought by mail!**

The Preston "DX" Radio Ground was first introduced to Radio Doings readers through letters published in the "DX" Club columns by Preston which described its wonderful performance. It is the original BLUE VITRIOL GROUND, so called because blue vitriol, or copper sulphate, is used in the secret chemical formula that makes the ground so effective.

This new radio development increases both volume and selectivity, gives clearer signals from distant stations and improves tone qualities amazingly. It is easily installed . . . it will not wear out . . . we will ship direct to you by return mail on receipt of price.

"DX" Radio Ground
Ready for \$8.00
Installation **POST PAID**

If you would prefer to receive full information regarding this sensational new radio development, before you decide to purchase it, WRITE TODAY for FREE literature and copies of letters from enthusiastic owners. All inquiries answered promptly.

Radio Test Laboratories
3036 Fifth Avenue
LOS ANGELES, CALIFORNIA

TYPE J-71 CeCo Power Tubes

RATING
FIL.
VOLTS
5.0

FIL.
AMPS.
.5



LIST
PRICE

\$4.50

The "J-71" will handle sufficient power to operate the largest loud speaker at full volume. Does not require high voltage plate supply. At ninety volts it will give twelve times the undistorted power of the ordinary "A" type.

This CeCo "J-71" type is to be used only in receivers where a separate "C" battery connection for the last tube is furnished, an be used on voltage up to 180 with enormous volume output, provided a special output circuit is used to protect the loud speaker.

The following are characteristics at a ninety volt plate potential with a sixteen and one-half volt negative bias:

Filament 5 Volts— $\frac{1}{2}$ Ampere
Plate Current 9.0 Mil. Amp.
Plate Resistance 2500 Ohms
Amplification Constant 3.0
Mutual Conductance 1200

CeCo Tubes make a Good Receiver Better

Manufactured by

C. E. MFG. CO., INC.
PROVIDENCE, R. I.

Largest Plant in the World devoted exclusively to the making of Radio Tubes

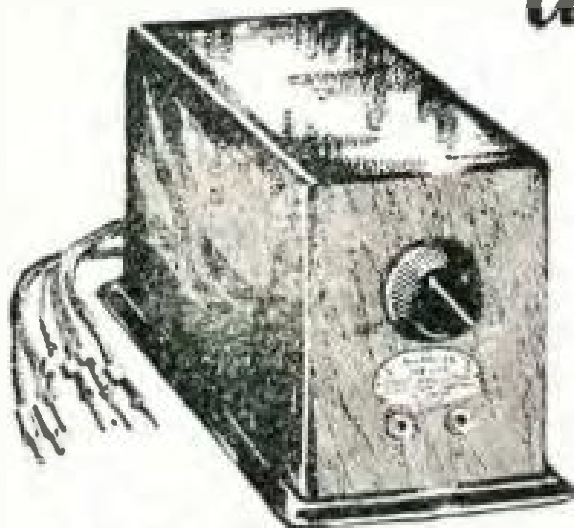
Pacific Coast Representative

B. KRUEGER & CO.
500 North Huntley Drive
West Hollywood, Calif.

Sherman P. O.

Tel. OX. 3897

Add a Power Stage to any Set!



POWER amplification is essential to clear, true radio reproduction because plenty of power is required to amplify all tones equally. Your present set will equal or surpass the new 1927 models when equipped with the Centralab Tone Amplifier because it conveniently adds this necessary power stage.

Model 100, for sets with 6-volt "A" Battery. Uses CX 371 or UX 171 tube.
Model 200, for dry cell operated sets only. Uses UX 120 or CX 220 tube.

\$ 16⁰⁰

Either Model—walnut finish cabinet—without tube.



New Centralab Station Selector

Biggest \$1.00 value in Radio. Makes your set more selective. Tunes out short wave length local interferences.

Ask your dealer, or send a dollar.
Satisfaction Guaranteed.

CENTRALAB Tone Amplifier adds an extra stage of amplification, using the UX 171 power tube. Immediately increases volume on all stations and gives the full rounded tones that seem to move the radio artists right into your own home. The speaker is protected by a tone filter; volume is fully controlled from a whisper to maximum by a single knob. The greatest radio improvement in years, and you can quickly attach it to your set without tools or alterations.

Let your dealer demonstrate the improvement the wonderful new Centralab Tone Amplifier assures, or write us for literature.

CENTRAL RADIO LABORATORIES
16-A Keeffe Avenue Milwaukee, Wis.

Parts makers for 69 manufacturers of leading standard sets.

Centralab

Pacific Coast Representative

THE SPECTOR COMPANY Rialto Building, San Francisco

SUNDAY TIME TABLE

ALL TIME TABLES ADJUSTED TO PACIFIC TIME
(X) Indicates Station Is On the Air

10-12 A.M.		12-2 P.M.		2-4 P.M.		4-8 P.M.		STATIONS				6-8 P.M.		8-10 P.M.		10-12 P.M.															
10 00-10 30	10 30-11 00	11 00-11 30	11 30-12 00	12 00-12 30	12 30-1 00	1 00-1 30	1 30-2 00	2 00-2 30	2 30-3 00	3 00-3 30	3 30-4 00	4 00-4 30	4 30-5 00	5 00-5 30	5 30-6 00	CALL	Wave Length Meters	Power In Watts	STATION	6 00-6 30	6 30-7 00	7 00-7 30	7 30-8 00	8 00-8 30	8 30-9 00	9 00-9 30	9 30-10 00	10 00-10 30	10 30-11 00	11 00-11 30	11 30-12 00
SOUTHERN CALIFORNIA																															
								X	X	X	X					KELW	535	250	Burbank												
	X	X											X	X		KGEF	517	1000	Los Angeles			X	X	X	X	X	X				
X	X	X	X						X	X						KFI	467	4000	Los Angeles	X	X	X	X	X	X	X	X	X	X	X	
			X	X												KFCR	413	50	Santa Barbara					X	X						
X	X	X	X	X												KHJ	406	500	Los Angeles			X	X	X	X	X	X				
	X	X														KMIC	387	900	Inglewood			X	X	X	X						
																KFBC	380	50	San Diego			X									
													X	X	M	KMTR	370	500	Hollywood	X	X	X	X	X	X	X					
X	X	X	X	X	X	X	X					X	X	X	X	KFXB	353	1000	Los Angeles	X	X	X	X	X	X	X	X	X			
X	X	X	X					X	X	X	X	X	X			KNX	337	750	Los Angeles			X	X	X	X	X					
	X	X														KPSN	316	1000	Pasadena	X	X										
X	X	X	X									X	X			KFWC	295	200	San Bernardino						X	X	X	X	X	X	
	X	X	X	X						X	X					KTBI	294	750	Los Angeles	X	X	X	X	X	X	X					
	X	X	X	X						X	X	X	X			KFSG	275	500	Los Angeles			X	X	X	X	X	X	X	X	X	
																KWTC	263	250	Santa Ana			X	X								
	X							X	X							KFWB	252	500	Hollywood						X	X	X	X	X	X	
										X	X					KFSD	246	1000	San Diego												
X	X	X						X				X	X			KNRC	238	1000	Santa Monica	X	X	X	X	X	X	X	X	X	X	X	
	X	X	X					X	X	X	X	X	X	X	X	KFON	233	750	Ling Beach	X	X	X	X	X	X	X	X	X	X	X	
	X	X	X	X												KPPC	229	50	Pasadena			X	X	X	X						
																KFQZ	226	500	Hollywood					X	X	X	X	X	X	X	
				X	X							X	X			KFWO	211	250	Castille	X	X	X	X	X	X	X	X	X	X	X	
	X															KFVD	206	500	Venice	X	X	X	X	X	X	X	X	X	X	X	
NORTHERN CALIFORNIA																															
X	X							X	X	X	X					KPO	428	1000	San Francisco	X	X	X	X	X	X	X	X	X	X	X	
	X	X	X	X	X											KYA	400	1000	San Francisco					X	X	X					
	X	X	X					X	X	X	X					KGO	361	4000	Oakland			X	X	X	X	X	X	X			
X	X	X	X	X												KQW	333	500	San Jose					X	X	X	X				
X	X	X	X	X												KTAB	303	1000	Oakland					X	X	X					
												X	X			KFRC	268	500	San Francisco	X	X	X	X	X							
		X	X													KFUS	256	50	Oakland					X	X	X					
X	X															KRE	256	100	Berkeley												
						X	X	X								KFWI	250	500	San Francisco	X	X	X	X	X	X	X	X	X	X	X	
NORTHERN AND WESTERN STATES																															
	X	X	X	X								X	X	X	X	KGW	491	1000	Portland					X	X	X	X	X			
								X	X	X	X	X	X	X	X	KEX	447	5000	Portland	X	X	X	X	X	X	X	X	X	X	X	
X	X	X														CFAC	435	2000	Calgary												
		X	X													KJR	384	20M	Seattle					X	X	X	X	X	X	X	
																KLZ	384	500	Denver			X	X	X	X						
X	X	X	X									X	X	X		KOA	322	5000	Denver			X	X	X							
																KOIN	319	1000	Portland	X	X			X	X	X	X	X			
X	X	X	X	X	X	X										KOMO	306	1000	Seattle	X	X	X	X	X	X	X	X	X			
X	X					X	X									KSL	300	1000	Salt Lake City			X	X	X	X						
	X	X	X													KMO	250	500	Tacoma	X	X										

Hours Shown as Submitted by These Stations. For DX Schedule See Page 42

COUNTERPHASE for DX: H. A. Everest, 1032 N. Ogden Dr. GR. 9915

WILL SACRIFICE a \$150 a month, well-appointed, two-room office suite in the I. N. Van Nuys Building, Seventh and Spring Streets, Los Angeles, for \$100 per month. Lease has one year to run.

Inquire at
RADIO DOINGS

407 East Pico St.

Westmore 1-401

Los Angeles, Calif.

WEDNESDAY TIME TABLE

ALL TIME TABLES ADJUSTED TO PACIFIC TIME
(X) Indicates Station Is On the Air

10-12 A.M.		12-2 P.M.		2-4 P.M.		4-6 P.M.		STATIONS				6-8 P.M.		8-10 P.M.		10-12 P.M.															
10 00-10 30	10 30-11 00	11 00-11 30	11 30-12 00	12 00-12 30	12 30-1 00	1 00-1 30	1 30-2 00	2 00-2 30	2 30-3 00	3 00-3 30	3 30-4 00	4 00-4 30	4 30-5 00	5 00-5 30	5 30-6 00	CALL	Wave Length Meters	Power In Watts	STATION	6 00-6 30	6 30-7 00	7 00-7 30	7 30-8 00	8 00-8 30	8 30-9 00	9 00-9 30	9 30-10 00	10 00-10 30	10 30-11 00	11 00-11 30	11 30-12 00
SOUTHERN CALIFORNIA																															
																	KELW	535	250	Burbank	X	X	X	X	X	X	X	X			
																	KGEF	517	1000	Los Angeles	X	X	X	X	X	X					
X	X	X														X	KFI	467	3000	Los Angeles	X	X	X	X	X	X	X	X	X	X	
			X	X													KFCR	413	50	Santa Barbara			X	X							
								X	X								KHJ	485	500	Los Angeles		X	X	X	X	X	X	X	X	X	
																X	KMIC	387	500	Inglewood	X	X	X	X	X	X	X				
			X	X													KFBC	380	50	San Diego		X		X	X	X	X				
X	X		X	X	X	X	X	X	X	X	X	X	X	X	X	X	KMTR	370	500	Hollywood	X	X	X	X	X	X	X	X	X	X	
			X	X	X	X	X	X	X	X	X	X	X	X	X		KFXB	353	1000	Los Angeles	X	X	X	X	X	X	X				
X	X		X	X	X	X	X	X	X	X	X	X	X	X	X	X	KNX	337	750	Los Angeles	X	X	X	X	X	X	X	X	X	X	
			X	X													KGER	326	100	Long Beach	X	X									
			X														KPSN	316	1000	Pasadena	X	X									
			X	X	X	X	X	X	X	X	X	X	X	X	X		AMB	301	100	Tia Juana, Mex											
		X	X	X												X	KFWC	295	100	San Bernardino							X	X	X	X	
								X	X								KTBI	294	750	Los Angeles		X	X	X	X						
																	KSMR	283	100	Santa Maria		X	X	X	X	X	X				
X	X	X	X					X	X	X	X	X	X	X	X		KFSG	275	500	Los Angeles	X	X	X	X	X	X					
																	KWTC	263	250	Santa Ana		X	X								
X			X	X									X	X	X		KFWB	252	500	Hollywood	X	X	X	X	X	X	X	X	X	X	
																	KFSD	246	1000	San Diego	X	X	X	X	X	X	X	X	X	X	
								X	X								KNRC	238	1000	Santa Monica	X	X	X	X	X	X	X	X	X	X	
X	X	X	X	X	X	X	X	X	X	X	X	X	X	X	X	X	KFON	233	750	Long Beach	X	X	X	X	X	X	X	X	X	X	
X	X	X	X														KPPC	229	50	Pasadena		X	X	X	X						
			X	X													KFQZ	226	500	Hollywood	X	X	X	X	X	X	X	X	X	X	
																	KGFH	219	100	La Crescenta					X	X	X	X			
			X	X													KFWO	211	250	Catalina	X	X	X	X	X						
			X	X	X							X	X	X	X		KFVD	205	500	Venice	X	X	X	X	X	X	X	X	X	X	
NORTHERN CALIFORNIA																															
																	KLX	502	500	Oakland		X	X		X	X	X	X			
X			X	X	X				X	X	X	X	X	X	X	X	KPO	428	1000	San Francisco	X	X	X	X	X	X	X	X	X	X	
			X	X	X												KYA	400	1000	San Francisco		X	X		X	X	X	X	X		
		X	X	X	X	X	X	X	X	X	X	X	X	X	X	X	KGO	361	4000	Oakland	X	X	X		X	X	X				
X																	KQW	333	500	San Jose	X	X	X	X	X	X					
																X	KTAB	303	1000	Oakland		X	X		X	X	X				
X	X	X	X	X	X	X	X					X	X	X	X	X	KFRC	268	500	San Francisco	X	X	X		X	X	X	X	X	X	
																X	KRE	256	100	Berkeley											
						X	X										KFWI	250	500	San Francisco	X	X	X		X	X	X	X	X	X	
																	KZM	240	100	Oakland		X									
NORTHERN AND WESTERN STATES																															
X	X	X															KGW	491	1000	Portland	X	X	X	X	X	X	X	X			
					X	X	X					X					KFOA	454	1000	Seattle		X									
																	KEX	447	4000	Portland	X	X	X	X	X	X					
			X	X													CFAC	435	2000	Calgary		X	X								
																	KFXF	422	1000	Denver		X	X	X	X	X	X	X	X	X	
X	X	X										X	X	X	X	X	KJR	384	20M	Seattle	X						X	X	X	X	
																X	KLZ	384	500	Denver	X	X	X	X							
	X	X	X	X													KOA	322	5000	Denver		X	X	X	X	X					
	X	X										X	X	X	X	X	KOIN	319	1000	Portland	X	X	X	X	X	X	X	X	X	X	
X	X	X	X	X	X	X	X	X	X	X	X	X	X	X	X	X	KOMO	306	1000	Seattle	X	X		X	X	X	X	X	X	X	
																X	KSL	300	1000	Salt Lake City	X	X	X	X	X	X	X	X	X	X	
																	KOWW	285	500	Walla Walla		X				X	X	X	X	X	
																	KOAC	280	500	Corvallis, Ora.		X	X	X	X						
X	X																KFWH	254	100	Eureka					X	X	X	X			
X	X																KMO	250	500	Tacoma					X	X					

Hours Shown as Submitted by These Stations. For DX Schedule See Page 42

FRIDAY TIME TABLE

ALL TIME TABLES ADJUSTED TO PACIFIC TIME
(X) Indicates Station Is On the Air

10-12 A.M.		12-2 P.M.		2-4 P.M.		4-6 P.M.		STATIONS			6-8 P.M.		8-10 P.M.		10-12 P.M.																										
10 00-10 30	10 30-11 00	11 00-11 30	11 30-12 00	12 00-12 30	12 30-1 00	1 00-1 30	1 30-2 00	2 00-2 30	2 30-3 00	3 00-3 30	3 30-4 00	4 00-4 30	4 30-5 00	5 00-5 30	5 30-6 00	CALL	Wave Length Meters	Power in Watts	STATION	6 00-6 30	6 30-7 00	7 00-7 30	7 30-8 00	8 00-8 30	8 30-9 00	9 00-9 30	9 30-10 00	10 00-10 30	10 30-11 00	11 00-11 30	11 30-12 00										
SOUTHERN CALIFORNIA																																									
																	KELW	535	250	Burbank	X	X	X	X	X	X	X	X													
																	KGEF	517	1000	Los Angeles	X	X	X	X	X	X	X	X													
X	X	X															KFCR	413	50	Santa Barbara					X	X															
			X	X													KHJ	405	500	Los Angeles				X	X	X	X	X	X												
																	KMIC	387	500	Inglewood	X	X	X	X	X	X	X	X													
																	KFBC	360	50	San Diego					X	X	X	X													
X	X		X	X	X	X	X	X	X	X	X	X	X	X	X		KMTR	370	500	Hollywood	X	X	X	X	X	X	X	X	X	X	X	X	X	X	X	X					
			X	X	X	X	X	X	X	X	X	X	X	X	X		KFXB	253	1000	Los Angeles	X	X	X	X	X	X	X	X	X												
X	X		X	X	X	X	X	X	X	X	X	X	X	X	X		KNX	337	750	Los Angeles	X	X	X	X	X	X	X	X	X	X	X	X	X	X	X	X					
			X														KPSN	318	1000	Pasadena	X	X			X	X	X														
			X	X	X	X	X	X	X	X	X	X	X	X	X		AMB	301	100	Tia Juana, Mex				X	X	X	X	X	X												
																	KFWC	286	100	San Bernardino	X																				
								X	X								KTBI	294	750	Los Angeles	X	X	X	X	X	X															
X	X	X	X							X	X	X	X				KFSG	275	500	Los Angeles			X	X	X	X	X	X			X	X									
																	KWTC	283	250	Santa Ana			X	X																	
X				X	X												KFWB	262	500	Hollywood	X	X	X	X	X	X	X	X	X	X	X	X	X	X	X	X	X				
																	KFSD	248	1000	San Diego	X	X	X	X	X	X	X	X	X	X	X	X	X	X	X	X	X				
								X	X	X	X	X	X	X	X		KNRC	239	1000	Santa Monica	X	X	X	X	X	X	X	X	X	X	X	X	X	X	X	X	X	X			
X	X	X	X	X	X	X	X	X	X	X	X	X	X	X	X		KFON	233	750	Long Beach	X	X	X	X	X	X	X	X	X	X	X	X	X	X	X	X	X	X			
																	KFQZ	226	500	Hollywood	X	X	X	X	X	X	X	X	X	X	X	X	X	X	X	X	X				
																	KGFH	219	100	La Brea					X	X	X	X													
						X	X							X	X		KFWO	211	250	Catalina	X	X	X	X																	
X												X	X	X	X		KFVD	205	500	Venice	X	X	X	X	X	X	X	X	X	X	X	X	X	X	X	X	X				
NORTHERN CALIFORNIA																																									
																	KLY	508	500	Oakland			X		X	X	X	X	X												
X			X	X	X				X	X	X	X	X	X	X		KPO	428	1000	San Francisco	X	X	X	X	X	X	X	X	X	X	X	X	X	X	X	X	X	X			
X	X			X	X	X											KYA	400	1000	San Francisco		X	X		X	X	X	X	X	X	X	X	X	X	X	X	X	X			
		X	X	X	X	X											KGO	391	4000	Oakland	X	X	X		X	X	X	X													
X																	KQW	373	500	San Jose	X	X	X	X	X	X															
																	KTAB	303	1000	Oakland			X		X	X	X	X													
																	KSMR	283	100	Santa Maria		X	X	X	X	X	X														
X	X	X	X	X	X	X	X			X	X	X	X	X	X		KFRC	268	500	San Francisco	X	X	X		X	X	X	X	X	X	X	X	X	X	X	X	X	X	X		
		X															KRE	256	100	Berkeley			X																		
X	X		X					X									KFWH	254	100	Eureka					X	X	X	X													
						X	X										KFWI	230	500	San Francisco	X	X	X		X	X	X	X													
																	KZM	240	100	Oakland			X																		
NORTHERN AND WESTERN STATES																																									
X	X	X		X	X	X	X										KGW	491	1000	Portland	X	X	X	X	X	X	X	X	X	X	X	X	X	X	X	X	X	X			
			X	X	X	X			X								KFOA	484	1000	Seattle		X	X	X	X	X	X	X	X	X	X	X	X	X	X	X	X	X	X		
																	KEX	447	4000	Portland	X	X	X	X	X	X															
																	KFXF	422	1000	Denver		X	X	X	X	X	X	X	X	X	X	X	X	X	X	X	X	X	X		
																	KHQ	394	1000	Spokane	X	X	X	X					X	X	X	X	X	X	X	X	X	X	X	X	
																	KLZ	384	500	Denver		X	X																		
X	X	X						X	X								KJR	348	29M	Seattle	X						X	X	X												
X	X	X	X	X	X			X	X	X	X		X				KOA	322	5000	Denver	X	X	X	X	X	X															
		X	X							X	X						KOIN	319	1000	Portland	X	X	X		X	X	X	X													
X	X	X	X	X	X	X	X	X	X	X	X	X	X	X	X		KOMO	306	1000	Seattle	X	X		X	X	X	X	X	X	X	X	X	X	X	X	X	X	X	X	X	
										X	X	X	X				KSL	300	1000	Salt Lake City	X	X	X	X	X	X															
																	CNRV	291	5000	Vancouver, B. C.		X	X	X	X	X	X	X													
																	KOWW	285	500	Walla Walla		X		X	X	X	X	X	X	X	X	X	X	X	X	X	X	X	X	X	
																	KOAC	280	500	Corvallis, Ore.		X	X	X	X																
X	X							X	X	X	X						KMO	250	500	Tacoma	X	X	X	X				X	X	X	X	X	X	X	X	X	X	X	X	X	
																	KFOX	233	1000	Seattle							X	X	X	X	X	X	X	X	X	X	X	X	X	X	

Hours Shown as Submitted by These Stations. For DX Schedule See Page 42

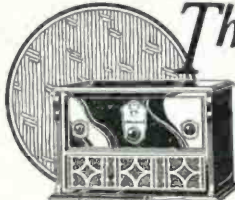
SATURDAY TIME TABLE

ALL TIME TABLES ADJUSTED TO PACIFIC TIME
(X) Indicates Station Is On the Air

10-12 A.M.		12-2 P.M.		2-4 P.M.		4-6 P.M.		STATIONS				6-8 P.M.		8-10 P.M.		10-12 P.M.																	
10-00-10-30	10-30-11-00	11-00-11-30	11-30-12-00	12-00-12-30	12-30-1-00	1-00-1-30	1-30-2-00	2-00-2-30	2-30-3-00	3-00-3-30	3-30-4-00	4-00-4-30	4-30-5-00	5-00-5-30	5-30-6-00	CALL	Wave Length Meters	Power In Watts	STATION	6-00-6-30	6-30-7-00	7-00-7-30	7-30-8-00	8-00-8-30	8-30-9-00	9-00-9-30	9-30-10-00	10-00-10-30	10-30-11-00	11-00-11-30	11-30-12-00		
SOUTHERN CALIFORNIA																																	
																			KELW	635	250	Burbank	X	X	X	X	X	X	X	X			
																X			KFI	487	4000	Los Angeles	X	X	X	X	X	X	X	X	X	X	X
				X	X														KFCR	413	50	Santa Barbara			X	X							
																			KHJ	405	500	Los Angeles	X	X		X	X	X	X				
																X			KMIC	387	500	Inglewood	X	X	X	X	X	X	X				
		X	X																KFBC	380	50	San Diego				X	X	X	X	X	X	X	
X		X	X	X	X	X	X	X	X	X	X	X	X	X	X	X	X	X	KMTR	370	500	Hollywood	X	X	X	X	X	X	X	X	X	X	
				X	X	X	X	X	X	X	X	X	X	X	X	X	X	X	KFXB	353	1000	Los Angeles	X	X	X	X	X	X	X	X			
X	X			X	X														KNX	337	750	Los Angeles	X	X	X	X	X	X	X	X	X	X	
																X			KPSN	316	1000	Pasadena	X	X		X	X	X					
																X	X	X	AMB	301	100	Tia Juana, Mex.											
																			KSMR	223	100	Santa Maria			X								
X	X	X	X							X	X	X	X						KFSG	275	500	Los Angeles	X	X	X	X	X	X					
																			KWTC	263	250	Santa Ana	X	X		X	X	X				X	X
				X	X											X			KFWB	252	500	Hollywood	X	X	X	X	X	X	X	X	X	X	
																			KFSD	246	1000	San Diego	X	X	X	X	X	X	X	X	X	X	
										X	X	X							KNRC	238	1000	Santa Monica	X	X	X	X	X	X	X	X	X	X	
X	X	X	X			X	X	X	X	X	X	X	X	X	X	X	X	X	KFON	233	750	Long Beach	X	X	X	X	X	X	X	X	X	X	
				X	X														KFQZ	226	500	Hollywood	X	X	X	X	X	X	X	X	X	X	
																X			KFYF	214	25	Oxnard, Calif.	X										
						X	X			X	X	X							KFWO	211	250	Catalina	X	X	X	X							
X						X	X												KFVD	205	500	Venice	X	X	X	X	X	X	X	X	X	X	
NORTHERN CALIFORNIA																																	
																			KFBK	535	100	Sacramento			X	X	X	X	X				
																			KLX	508	500	Oakland		X									
X		X		X	X				X	X	X	X							KPO	426	1000	San Francisco	X	X	X	X	X	X	X	X	X	X	
				X	X	X													KYA	400	1000	San Francisco	X	X		X	X	X	X	X	X	X	
		X	X	X															KGO	381	4000	Oakland				X	X	X	X	X	X	X	
X																			KQW	333	500	San Jose	X	X	X	X	X						
																			KTAB	303	1000	Oakland		X									
				X	X	X	X					X	X	X	X	X	X	X	KFRC	288	500	San Francisco	X	X	X	X	X	X	X	X	X	X	
																X			KRE	258	100	Berkeley											
								X	X										KFUS	256	50	Oakland	X	X									
																			KNWI	250	500	San Francisco						X	X	X	X	X	
																			KZM	240	100	Oakland	X										
																			KFOU	231	250	Holy City, Calif.				X	X						
X	X			X				X											KFWH	225	100	Eureka											
NORTHERN AND WESTERN STATES																																	
X	X	X			X	X													KGW	451	1000	Portland	X	X	X	X	X	X	X	X	X	X	
							X					X							KFOA	434	1000	Seattle	X	X	X	X	X	X					
																X			KEX	447	4000	Portland	X	X	X	X	X	X	X	X	X	X	
																			KFFP	422	1000	Denver	X	X	X	X	X	X	X	X	X	X	
																			KCD	410	2000	Vancouver, B. C.				X	X						
X								X	X										KHQ	394	1000	Spokane	X	X									
X	X	X																	KJR	384	20M	Seattle	X					X	X	X	X	X	
																			KLZ	384	500	Denver			X	X	X						
X	X	X	X									X	X	X	X	X	X	X	KOA	322	5000	Denver							X	X	X		
												X	X	X	X	X	X	X	KOIN	319	1000	Portland	X	X	X	X	X	X	X	X	X	X	
X	X	X	X	X	X	X	X	X	X	X	X	X	X	X	X	X	X	X	KOMO	306	1000	Seattle	X	X		X	X	X	X	X	X	X	
																			KSL	300	1000	Salt Lake City	X	X	X	X	X	X	X	X			
																			KFJR	283	50	Portland											
X	X							X	X	X	X								KMO	250	500	Tacoma	X	X	X	X	X	X	X	X	X	X	

Hours Shown as Submitted by These Stations. For DX Schedule See Page 42

COUNTERPHASE for DX: H. A. Everest, 1032 N. Ogden Dr. GR. 9915



Model 350—\$115.00
with built-in Reproducer

The Model 350, a table receiver with enclosed reproducer, and the Model 355, a magnificent console attractively priced, have been praised by acoustic experts for their splendid tone. The reproduction unit used in these models is the same as that

For radio enthusiasts who prefer a receiver that stresses the "simplicity of operation" feature, Stewart-Warner offers several models with single dial control. These efficient receivers, to be secured in both table and console types, have a six-tube receiving circuit of proved efficiency.

Any Stewart-Warner dealer will gladly demonstrate either the five or six tube Stewart-Warner receivers in your own home. Arrange for a demonstration today . . . You'll be surprised at their efficiency . . . at the exceptionally moderate terms on which they can be purchased.



Model 345—\$82.50 with the
New Model 415 Reproducer—\$31.50

employed in the Stewart-Warner Model 415 Reproducer . . . an exclusive Stewart-Warner development that has done much to establish the splendid reputation of Matched Unit Radio.

Los Angeles Dealers

ATWATER RADIO & ELEG. CO.
2008 Glendale Blvd.
BENSON H. BARRIS
2100 N. Vermont Ave.
BIRKBEIN HARDWARE COMPANY
416 South Broadway
BIRDING & BUSHARD
1217 W. Adams St.
CALIFORNIA RADIO SHOP
507 South Figueroa St.
CHAPMAN HOUSE SALES CO.
4571-72 S. Figueroa St.
CLIFF'S RADIO SERVICE
2835 Dayton Ave.
DON FINKLE
2207 Van Jefferson
A. W. COOPER
1315 W. 2ND St.
HARRY SAVOY
528 W. Jefferson St.
HOLLAND ELECTRIC SHOP
7628 Pasadena Ave.
HIDLEY RADIO & BIKE HOUSE
817 South Main St.
HINES RADIO
7322 South Broadway
INTERPHONE ELECTRIC CO.
2510 Sierra Vista St.
LESTER RADIO & ELEG. CO.
458 North Broadway
LOVINER'S MELROSE RADIO
SHOP, 4136 Melrose Ave.
RAY LYON
1020 Compton Ave.
RAY LYON
1020 Compton Ave.
MANCHESTER RADIO CO.
1522 E. Manchester Ave.

MOORE RADIO SALES CO.
2324 N. Arroyo Blvd.
MORAWAK BAY & RAD. CO.
2112 Shuman Blvd.
NILSSON & NELSON
4520 Arroyo Blvd.
NORTON & NORTON
721 N. Broadway
POTTER RADIO SALES CO.
1217 W. 2ND St.
R & R ELECTRIC CO.
524 South Vermont Ave.
RADIO SUPER SERVICE CO.
2041 Venice Blvd.
RADIO SUPER SERVICE CO.
4010 Hussey Ave., at Vermont
OHAS. A. ROBINSON
4202 S. Normandie
RADIO ELECTRIC SHOP
A. W. COOPER
A. C. SINGER
4127 Pasadena Ave.
SOUTHWEST ELECTRIC &
RADIO CO., 802 W. Figueroa Ave.
WEST STATES ELEC. CO.
8751 North Broadway

Hollywood Dealers

BARRIS & CONKRIGHT
2345 S. Olive
DORAN'S ELECTRIC SHOP
7315 Sunset Blvd.
DORAN'S ELECTRIC SHOP
8020 Buena Vista Blvd.
DOW ELECTRIC CO.
610 Hollywood Blvd.
MELROSE RADIO SHOP
2022 Melrose Ave.
C. W. PRESTON & SON
12888 Ventura Blvd.
North Hollywood

Southern California Dealers

ALHAMBRA, LeRoy G. Franklin
64 W. Main
ANAHAIM, Holland Electric Co.
377 W. Center St.
ARROYO GRANDE, J. D. Tritt
Arroyo Grande Plumbing and
Electric Shop
ARTESIA, Wm. B. Hayes
325 N. Main St.
BAKERSFIELD, Chilton-Grant
Radio Co.
1814 Westlark St.
BARSTOW, Barstow Radio Shop
501 Bennett St.
BREA, Bennett's Radio Shop
222 N. Pomona Ave.
CHINO, Woods Radio Company
113 Ninth St.
COLTON, E. Blum
219 West "I" St.
Covina, Harold R. Houser
715 Calaver St.
CULVER CITY, Culver City Radio &
Elec. Co.
4715 Washington Blvd.
DOWNEY, H. M. Spahr
60 and Crawford
EATLE ROCK, Weaver & King
3115 Lake Road Blvd.
EL REGUNDO, B. W. McAllister
119 Grand Ave.
EL MONTE, Weaver & King
121 Monte Hyde, Cal.
GARDENA, Don Spears
725 W. 145th St.

GLENDALE, Willard Hellman
(Broadway Ede.)
201 E. Broadway
GLENDORA, James M. Reed
HEMOSA BEACH, Rose Radio Store
210 Camino Real
HUNTINGTON PARK, H. L. Radio
King
116 E. Irvington St.
HYMES, Van & Jenkins
INGLEWOOD, R. D. Aylsworth
311 N. Market St.
LANCASTER, E. A. Knob
BISHOP, Grimm Bros.
LONG BEACH, Atkey & Crandall
118 American Ave.
LONG BEACH, The Electric
Radio Co.
1719 E. Anaheim
LONG BEACH, W. L. Harrell
740 Pine St.
LYNDLE, Reed & Gilbert
LYNWOOD, Lynwood Elec. Co.
204 N. Long Beach Blvd.

NEWMALL, C. E. Graban
OCEAN PARK, Crescent Tire and
Service Co.
1047 and Main Sts.
ORANGE, Roy Des. Larzer
143 N. Glassell St.
PALMS, Birkell Radio Elec. Co.
1204 Washington Blvd.
PASADENA, Wyckoff & Verlander
1517 North Lake St.
PASADENA, Premier Radio
11 California St.
PASADENA, DeWitt Radio
Laboratory
2048 East Colorado Ave.
PICO, Pine Radio Shop
POMONA, George W. Matt
183 E. Third St.
REDONDO, L. & L. Sales Co.
210 Diamond St.
REDLANDS, J. L. Young
10451 Clinton Ave.
RIVERSIDE, Frank W. Chaney
608 Market St.

SAN BERNARDINO, Burr. Smith
&
439 Fourth St.
SAN FERNANDO, Wills Rows
SAN GABRIEL, A. Barvas
3240 E. Huntington Dr.
SAN LUIS OBISPO, Cline Elec. Co.
295 Monterey St.
SANTA ANA, Shaffer's Music Store
415 N. Main St.
SANTA BARBARA, Val Folger
722 State St.
SANTA MARIA, Ford & Smart
118 E. Main St.
SANTA MONICA, J. S. Selts
825 Wilshire
SANTA PAULA, The Music Shop
124 W. Main St.
SATICUM, H. M. Wright
Sixth and D Sts.
TAFT, L. H. Bird
610 Center St.
TONOPAH, NEVADA
Tonopah Electric Company
UPLAND, Jay St. Reno
VENICE, Stewart-Warner Radio
Shop
1029 Washington Blvd.
WALNUT PARK, Terminal Electric
1200 Seattle St.
WESTMINSTER, Martin Esch
WHITTIER, H. C. Odham
128 S. Greenleaf
WILMINGTON, G. F. Chausse
214 W. Anaheim St.

Remember—Stewart-Warner Radio Uses
the Famous U.S. Navy Receiving Circuit—
Stewart-Warner Products Service Station
{ Wholesale Distributors Stewart-Warner Radio }
366 South Figueroa Street ~ LOS ANGELES

Schedule of DX Stations

Call Letters	Location	W. L. Meters	Power Watts	Schedule of Concert and Dance Music						
				Sun.	Mon.	Tue.	Wed.	Thu.	Fri.	Sat.
WBBM...	Chicago	228	1500	6-10	S.	6-10	6-10	6-10	6-7	6-10
WIBO...	Chicago	226	1000		4-5				10-12	
WOWO...	Ft. Wayne, Ind.	227	1000		5-9		5-9	5-9		
WHT...	Chicago	238-400	3500		S.	8-10	8-10	8-10	8-10	8-10
WWAE...	Plainfield, Ill.	242	5000	S.	6-9	6-9	6-9	6-9	6-9	6-9
WOOD...	Grand Rapids, Mich.	242	1000						8-10	8-10
WBAL...	Baltimore, Md.	246	1000	5-6	5-9	5-9	S.	5-9	5-9	S.
WRVA...	Richmond, Va.	256	1000		6-8		6-8	6-8	6-8	
WKAF...	Milwaukee	261	5000		6-8		6-8	6-8	6-8	
WCAR...	San Antonio, Tex.	263	6000		8-9		8-9		8-10	
WENR...	Chicago	266	1000		6-8	6-8	6-8	6-8	6-8	6-8
WGHP...	Detroit	270	1500		S.	5-6	5-6	5-6	5-7	6-6
KGU...	Honolulu	270	500	4-6	5-7	5-7	5-7	6-9	6-9	S.
WHK...	Cleveland	273	1000	9-11	9-11	11-12		9-11	9-11	9-11
KFAL...	Balse, Idaho	280	750	5-7	S.	5-8	5-7	5-8	5-6	6-8
KMOX...	St. Louis	280	5000			7-9		7-9		
WSM...	Nashville, Tenn.	282	1000	4-11	4-11	4-11	4-11	S.	4-11	4-11
WMBF...	Miami, Fla.	284	5000		8-10		8-10			8-10
WPG...	Atlantic City	300	5000	6-10	5-9	5-9	5-10	6-9	S.	5-10
WGN...	Chicago	303	1000	6-8	5-9	5-9	S.	5-9	5-9	5-9
WLIB...	Chicago	303	4000	6-8	8-9	6-9	6-9	6-9	6-9	6-9
KOIL...	Council Bluffs	306	500			6-9	6-9	6-9	6-9	6-9
KDKA...	Pittsburg	309	1000		5-11	8-10	8-10	8-10	8-10	8-10
WABC...	New York	316	5000	S.	6-9	S.	6-9	S.	S.	9-11
WJAZ...	Chicago	330	1500	5-7		6-10	5-9	5-7	5-7	5-7
WBZ...	Springfield, Mass.	333	2000			6-9	6-9	6-9	6-9	6-10
KFAB...	Lincoln, Neb.	341	1000	4-7	5-8	5-9	5-9	5-9	5-9	5-9
WLS...	Chicago	346	5000			6-9		6-9		
WWJ...	Detroit	353	1000	6-9		6-9	6-9	6-9	6-9	6-9
WDAF...	Kansas City	366	1000	4-7	6-7	5-7	5-8	5-8	5-8	5-8
WJJD...	Mooseheart, Ill.	370	1000	S.	6-11	6-11	6-11	6-11	6-11	6-11
KFBU...	Laramie, Wyo.	375	500			6-11	6-11	6-11	6-11	6-11
KTBS...	Hot Springs, Ark.	375	1000		8-10		8-10		8-10	
WGY...	Schenectady, N. Y.	380	5000	7-10	7-10	7-10	7-9	7-9	7-10	7-9
WEAR...	Cleveland	389	1000	6-7	S.	6-9	5-9	6-9	5-9	5-9
WTAM...	Cleveland	389	1000	5-9	5-6	5-9	6-10	5-9	5-9	6-10
WOAI...	San Antonio, Tex.	394	5000	5-7	S.	6-8	6-8	6-8	6-8	S.
PWX...	Havana, Cuba	400	1000	5-7	5-9	5-8	5-8	5-8	5-8	5-7
CYJ...	Mexico City	410	1000	5-7		5-8		5-8	5-8	
KFQB...	Ft. Worth, Tex.	412	2500		6-10	6-10		6-10	6-10	6-10
WCCO...	St. Paul, Minn.	416	5000		5-8	5-8	5-8	5-8		5-8
KFXF...	Denver	422	500	S.	5-11	5-11	5-11	S.	5-11	5-11
WLW...	Cincinnati	422	5000	4-6	4-7	4-7	4-9	4-10	S.	4-7
WSB...	Atlanta, Ga.	428	1000	4-6	5-9	5-9	5-9	5-9	5-9	5-9
WQJ...	Chicago	447	500	5-7	S.	7-11	7-11	7-11	7-11	7-12
WMAQ...	Chicago	448	1000	S.	4-5	4-8	4-8	4-8	4-9	4-9
WJZ...	New York, N. Y.	454	50000	4-8	5-9	5-9	5-9	5-9	5-9	5-9
WBAP...	Ft. Worth, Tex.	476	1500	7-9	7-10	7-9	S.	7-10	7-10	7-10
CYL...	Mexico City	480	1000		7-9	7-9	7-10	7-9	7-9	7-10
WOC...	Davenport, Iowa	484	5000	4-9	S.	5-9	5-9	5-9	5-9	5-8
WEAF...	New York City	491	5000		5-9	5-9	5-9	5-9	5-9	5-9
WJR...	Detroit	517	5000	7-8	S.	5-7	7-9	6-7	S.	8-9
WOW...	Omaha	526	1000	7-9	7-9	7-9	S.	7-9	7-9	7-9
WNYC...	New York City	526	1000		5-8	5-8	5-8	5-8	5-8	5-8
WHO...	Des Moines	526	5000	5-8	5-10	5-10	5-10	5-10	5-10	S.
KYW...	Chicago	536	3500	6-9	4-5	6-10	6-10	6-10	6-10	6-10
KSD...	St. Louis	545	600	5-7	6-8	5-7		5-7	5-8	5-8

Hours Shown as Submitted by These Stations Adjusted to Pacific Standard Time

DISTANCE-SELECTIVITY "DX FILTER" ACHIEVES BOTH
CHILDS LAB., 1187 W. 24th ST., L. A.

BOSCH RADIO

*Watch This Space for the Announcement of the
New Line of Bosch Creations to be Released Soon*

**The New Royal and Imperial Cruisers Are Now on Display
at Your Local Franchised Dealers**

The new super-sensitive seven-tube set, forty per cent more efficient than the discontinued Amborada, will be announced at an early date.

**SOLD THROUGH FRANCHISED
DEALERS ONLY**

Reiman Wholesale Electric Co.

218 to 228 East Third St.

Los Angeles

Distributors for Southern California



LESLIE ADAMS
Announcer

Los Angeles, California—467 Meters

KFI

4000 WATTS—840 KILOCYCLES

Radio Central Super-Station of Earle C. Anthony, Inc.
1000 S. Hope. Phone WE. 0331. After 5 P.M., WE. 0337
Class "B" 5000-Watt W. E. Sta., Operating on 4000 Watts

ROBERT HURD, Program Manager

DAILY EXCEPT SUNDAY—

6:15 p. m.—Radiatorial.

MONDAY, WEDNESDAY AND FRIDAY—

KFI Woman's Interest Dept. Under the Direction of Agnes White.
10:20 to 10:40 a. m.—Furnishings for the home by Agnes White,
director of the Dept.

10:40 to 11:00 a. m.—Betty Crocker—Home Service Talks.

WEEK COMMENCING SUNDAY, APRIL 10, 1927

SUNDAY, APRIL 10

- 10:00 a. m.—Morning service under direction of L. A. Church Federation.
- 6:00 p. m.—Program by Russian Academy of Musical Art Trio. Boris Myronoff, piano; Mischa Spiegel, violin; Alex Borrisoff, cello.
- 6:58 p. m.—Father Ricard's Sunspot Weather Forecast.
- 7:00 p. m.—Aeolian organ recital; Alex Reilly at the console.
- *8:00 p. m.—Packard Classic Hour. Program by California Federation of Music Clubs.
- 9:00 p. m.—Bob Bottger and his Venetians Dance Orchestra; Lois Whiteman and Winnie Parker, duets.
- 10:00 p. m.—Packard Six Orchestra; Bill Hennessey, director; Dolly MacDonald, soloist; Esther Walker, pianist.

MONDAY, APRIL 11

- 5:30 p. m.—Virgil Ray's Winter Garden Orchestra.
- 8:15 p. m.—Radiatorial. George Wilder Cartwright, talking on the Constitution of the United States.
- 6:30 p. m.—Gomut Male Quartet.
- 7:00 p. m.—Johnston and Farrell's Music Box Hour, direction of Gene Johnston with Jim, Jack and Gene Trio and soloists.
- *8:00 p. m.—Piano Recital by Will Garroway. Classical selections.
- 9:00 p. m.—Program of Italian Musical Classics.
- 10:00 p. m.—Weekly program of vaudeville artists, by Melkejohn Bros.

TUESDAY, APRIL 12

- 5:30 to 6:00 p. m.—The Dragon Hawaiians.
- 6:15 p. m.—Music Appreciation Chat.
- 6:30 p. m.—Bertha Miller English, pianist; Katherine and Malcolm Curney, duets.
- 7:00 p. m.—Los Angeles Fire Dept. Orchestra, with Hale Hooper, tenor.
- 8:00 p. m.—Program by the Gattone String Quartet, with James Burroughs, tenor.
- 9:00 p. m.—Program by Grace Mead, soprano; musical comedy selections.
- *10:00 p. m.—The Azure Music Club, featuring Edna Cook, blues singer, and Glenn Edmunds and his Collegians Dance Orch.

WEDNESDAY, APRIL 13

- KFI Woman's Interest Department
- 10:20 a. m.—Talk on "How and What to Plant" for Wagner Nurseries, by Margaret Etheridge.
- 5:30 p. m.—Sebastians Cotton Club Orch.
- 6:15 p. m.—Radiatorial Period.
- 6:30 p. m.—Scott Blakeley, Scotch comedian.
- 7:00 p. m.—Ray Fisher's Original Victorians Dance Orchestra.
- 7:30 p. m.—Nick Harris, Detective will continue his detective stories, and talks on

- "Why Crime Does Not Pay."
- 7:45 p. m.—Blues singer.
- *8:00 p. m.—James Burroughs on the California Petroleum Corporation program.
- 9:00 p. m.—Program by Irene Wynn, contralto.
- 10:00 p. m.—Program of classic music by the Sunset Instrumental Quartet; Dorothy Ruth Miller, concert pianist, and Virginia McCoy, contra-contralto.

THURSDAY, APRIL 14

- 5:30 p. m.—Legion Night Club Orchestra.
- 6:15 p. m.—Radiatorial. Radio University, presenting professors from the University of Southern California.
- 6:30 p. m.—Clarice Russell and Leslie Adams, popular songs and piano solos.
- 7:00 p. m.—Semi-classical program presented by the University of Southern California.
- 8:00 p. m.—KFI Drama Hour.
- *9:00 p. m.—Program arranged by Norma West, soprano. Classical numbers.
- 10:00 p. m.—Weekly program of Modern Classical Music.

FRIDAY, APRIL 15

- 5:30 p. m.—Henry Starr, pianist and vocalist.
- 6:15 p. m.—Madame Nelson, psychologist.
- 6:30 p. m.—Vest Pocket Period. Harmony singers.
- 7:00 p. m.—Alex Reilly at the console of the Aeolian organ.
- 8:00 p. m.—Beverly Hills Community Presbyterian Church Choir presents "The Seven Last Words of Christ," sacred cantata by Theodore Debols, with Mrs. Fredrick Rice, Robert Hurd, Reginald Taylor, Paul Taylor, director, and Edna Lillian Taylor, organist.
- 9:00 p. m.—Program of classical selections arranged by Alma Frances Gordon, contralto, and Lilyan Ariel, pianist.
- 10:00 p. m.—Packard Ballad Hour.

SATURDAY, APRIL 16

- 6:15 p. m.—Radiatorial Period, presenting Francis Sullivan with Literary Talks.
- 6:30 p. m.—The Collegiate Aeolians Dance Orchestra, with the Tarvin Sisters (Imogene and Evelyn).
- 7:30 p. m.—Felipe Delgado, Spanish baritone, with Edna Clark Muir, pianist; Media Hora Espanola.
- 8:00 p. m.—Program of instrumental music.
- 9:00 p. m.—Program of semi-classical selections.
- *10:00 p. m.—Packard Radio Club, with Esther Walker, pianist; Helen Guest, ballad singer; Red Wyatt and his Uke, and the Harmony Twins. Hale Hooper, tenor.
- 11:00 p. m.—KFI Midnight Frolic, with Virgil Ray's Winter Garden Orchestra, and Mosby's Dixieland Blue Blowers, with soloists.

New and Improved McKinley Junior "B" Eliminator

No Tubes to Blow
Out
No Harmful Acids
Uses Non-Acid
Electrolyte
Variable Voltage

\$12.75
(Up to 120 volts)

\$18.74
(Up to 150 volts)



Will Operate Any Radio Up to 6 Tubes

INCLUDING POWER TUBE:

Sold by the following Dealers:

DeHoog Bros. Radio Electric Co.
6120 S. Broadway—TH. 0224
Los Angeles

Goodwork Cabinet Shop
6715 Avalon Blvd.—TH. 3159
Los Angeles

Clark Radio Store
9114 S. Vermont Ave.—VE. 1914
Los Angeles

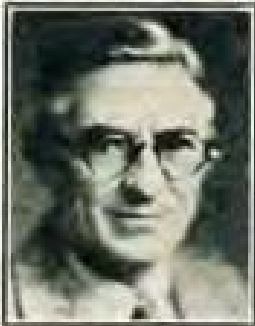
W. J. Church
2017 Le Droit Drive
Eliot 2019—GARfield 9618
South Pasadena, Calif.

Smith's Music Shop
111 East Florence
Walnut Park, Calif.

DEALERS: WRITE FOR OUR ATTRACTIVE DEALER PROPOSITION

MAIL ORDERS GIVEN IMMEDIATE ATTENTION

McKINLEY RADIO MFG. CO.
10905 S. Main St. YOrk 1828 Los Angeles



"Uncle John" Daggett
Announcer

Los Angeles, California—405.2 Meters

KHJ

500 WATTS—740 KILOCYCLES

Times Bldg., First and Broadway, Los Angeles
Owned and Operated by Los Angeles Times

JOHN S. DAGGETT, Manager and Program Announcer
Phone ME 1, 0700

"Kindness, Happiness and Joy"

NIGHTLY EXCEPT SUNDAY AND MONDAY—

6:00 to 6:30 p. m.—KHJ Concert Trio and J. Walter Leopold.
7:30 p. m.—Scripture Reading.

WEEK COMMENCING SUNDAY, APRIL 10, 1927

SUNDAY, APRIL 10

- 10:00 a. m.—Sermon from the KHJ studio by Rev. Newell J. Elliott, pastor of Southwest Presbyterian Church.
10:30 a. m.—Morning service from the First Methodist Episcopal Church; Arthur Blakeley, organist.
7:00 to 8:00 p. m.—Evening services from the First Methodist Episcopal Church.
8:00 to 10:00 p. m.—Studio program, presenting Frederick MacMurray, viola and violin; Grace Curry, harpist; Louise Miller, pianist, and others. Also news items and weather report.

MONDAY, APRIL 11

Silent all day.

TUESDAY, APRIL 12

- 2:30 p. m.—Bridge game.
6:30 p. m.—Children's hour with the Radio Fairies, Queen Titania and her Sandman; Playground Department Harmonica Band; George Kerr, mandolin soloist, and Marguerite Bringham, "Nightingale."
7:30 p. m.—H. M. Robertson, "Dogs."
8:00 to 9:15 p. m.—News items; musical program.
9:15 to 10:00 p. m.—Harold Roberts' Golden State Band.
10:00 to 11:00 p. m.—Los Angeles Railway Orchestra.

WEDNESDAY, APRIL 13

- 12:00 Noon to 12:00 Midnight—Fifth birthday anniversary program of KHJ. Every hour divided into fifteen-minute periods. Each first period opens with orchestra, third introduces a prominent speaker, second and third quarters devoted to vocal and instrumental talent.

THURSDAY, APRIL 14

- 6:30 p. m.—Children's program, presenting Dickie Brandon, reader; June Brandon, contralto; Joyce Coad, "Little Red Riding

Hood;" Jeanne De Bard, "Bonnie Jeanne of Radioland;" Rosetta Lewin, "Curley Locks," and others.

7:40 p. m.—Dr. Philip M. Lovell, "Care of the Body."

8:00 to 10:00 p. m.—News items; program de luxe with Zoellner Quartet; international artists, Leo H. Sansiper, Russian baritone; Louise Miller, pianist.

9:00 p. m.—Arthur Edwin Wake, assistant pastor of the Wilshire Presbyterian Church.

10:00 to 11:00 p. m.—Glenn Edmunds and Varsity Four.

FRIDAY, APRIL 15

- 6:30 p. m.—Children's hour with Richard Headrick, "Little Minister;" Roberta Bush, "Firefly of KHJ;" Henrietta Poland, "Forget-Me-Not;" Clyvus Holland, juvenile Shakespearean reader; Margaret Bond, violinist; Bettlemas Pfefferkorn, "Bob-o-Link;" Catherine Cotter, "Sweetheart" of Radioland;" Billy Lord, "Police Comrade."
7:40 p. m.—Thomas F. Ford, "Book Reviews."

8:00 to 10:00 p. m.—News items; feature program from the studio.

9:00 p. m.—Talk on international relations.

SATURDAY, APRIL 16

- 6:30 p. m.—Children's program, presenting Nona Clepp, "Sunshine Fairy;" Leon Ramon, monologist; Dolly Wright, "Dolly of Radioland;" Arthur Stevens, "King Arthur;" Marjorie Genevieve Lowe, "June Bug;" Mercedes Marlowe, "Boy Girl," and others.

8:00 to 10:00 p. m.—News items; frolic evening, presenting Mr. and Mrs. Benjamin Sears, old-time fiddler; E. A. Mulford, "Dixie Dan;" and Mammy Lou of KHJ, and others.

Program Published as Submitted by the Station.

PALMER RADIO LABORATORY

Established 1923

Specializing in

SUPER-HETERODYNES AND INFRADYNES

Intermediate Transformers Made and Calibrated

Also all other types of receivers made to operate efficiently

• Satisfaction Guaranteed or No Charge

Advice Free

Open Evenings Till 9 P. M.

Courtesy to All

4529 S. Vermont, Los Angeles. Phone VERmont 7883

Direct From Factory To Customer

*A Policy Backed by a Sales Organization That Merits the
Reputation of Its Merchandise*



*Kemper
Radio Sales Force
Los Angeles, California*

Factory representatives of the Kemper Radio Corporation entertain officials of KNX at Marchetti's at one of their monthly banquets.

The high class personnel of this organization is largely responsible for the thousands of satisfied owners of Kemper Portable Radio Receivers in Southern California.

ON DISPLAY IN LOS ANGELES AT
The Ambassador Hotel The Biltmore Hotel
Subway Terminal Waiting Room (between 4th and 5th on Hill St.)
13 Mercantile Arcade

Distributed by
Johnson Radio Co., 688 Geary Street, San Francisco
The Radio Studios, 1207 Fourth Ave., Seattle

KEMPER RADIO CORPORATION
1236 Santee St. LOS ANGELES WEStmore 1439
Makers of Kemper Ampliphonic Console



HAROLD ISBELL
Announcer

Hollywood, California—337 Meters

KNX

750 WATTS—890 KILOCYCLES
LOS ANGELES EVENING EXPRESS
Paul G. Hoffman's Studebaker Bldg., 6116 Hollywood
Blvd., Hollywood. Phone HEMstead 4101
NAYLOR ROGERS, Manager and Program Director
GLEN RICE, Asst. Manager.
"The Voice of Hollywood"

DAILY EXCEPT SUNDAY—

- 8:45 to 9:00 a. m.—Exercises by Dr. P. M. Selzas, courtesy of Producers of Mission Orange Juice.
- 9:00 a. m.—Inspirational talk and morning prayer.
- 9:55 a. m.—Time signals from Washington, D. C.
- 9:00 a. m.—Radio Shopping News by Carey Preston Rittmeister.
- 10:00 a. m.—Town Crier of the Day's morning message.
- 10:30 a. m.—Kate Brew Vaughn Director Household Economics Dept., Evening Express, except Friday and Saturday.

- 12 noon.—Magnavox Radio Orchestra, courtesy of Listenwailer & Cough.
- 12:30 p. m.—W. F. Alder Travelogue.
- 1:30 p. m.—Radio Trades Ass'n Program.
- 4:00 p. m.—Lost and Found Column.
- 4:55 p. m.—Market reports.
- 5:00 p. m.—Optimists Daily Messages, presenting the Optimist Male Quartet.
- 5:30 p. m.—Howard Clarke.
- 6:45 p. m.—The Town Tattler.
- 6:00 p. m.—Biltmore Hotel Orchestra, broadcast from the Biltmore Dining Room.
- 6:30 p. m.—Dinner hour concert presenting the Yale Radio Battery Orchestra.

DAILY EXCEPT SUNDAY AND TUESDAY—

- 11:00 p. m.—Hotel Ambassador, Gus Arnheim's Coconut Grove Orchestra

WEEK COMMENCING SUNDAY, APRIL 10, 1927

SUNDAY, APRIL 10

- 10:00 a. m.—First Presbyterian Church of Hollywood, Rev. Stewart P. MacLennan.
- 2:00 to 4:00 p. m.—City Park Board musical program.
- 5:15 p. m.—All Souls' Church.
- 6:30 p. m.—Hollywood Unitarian Church.
- 7:00 p. m.—First Presbyterian Church of Hollywood, Rev. Stewart P. MacLennan.
- 8:00 p. m.—Circle Theatre Concert Orchestra and organ recital.
- 9:00 p. m.—Feature program.

MONDAY, APRIL 11

- 12:45 p. m.—C. P. R.'s musical program.
- 3:00 p. m.—First Presbyterian Church of Hollywood.
- 4:30 p. m.—"Own Your Own Home."
- 7:00 p. m.—George J. Birkel Music Co. presenting the Brunswick Panatlope.
- 7:30 p. m.—Playlet, courtesy Overall Furniture Company.
- 8:00 p. m.—L. W. Stockwell Co. courtesy program, presenting Calmon Luboviski, master violinist, and Claire Mellonino, concert pianist.
- 9:00 p. m.—Feature Program.
- 10:00 p. m.—Biltmore Hotel Orchestra.

TUESDAY, APRIL 12

- 11:00 a. m.—Dr. R. H. Gerber, specialist, Eye Strain and Nervous Diseases.
- 12:45 p. m.—Advertising Club Luncheon from Biltmore Hotel.
- 4:00 p. m.—Radio Matinee with Louise Howatt, contralto.
- 7:00 p. m.—Wilshire Ionaco Company courtesy program presenting Charles Hamp.
- 7:30 p. m.—Fitzgerald Music So. presenting the Ampico Knabe Piano.
- 8:00 p. m.—Tufts-Lyon courtesy program.
- 9:00 p. m.—Feature program.
- 10:00 p. m.—Hotel Ambassador; Gus Arnheim's Coconut Grove Orchestra.

WEDNESDAY, APRIL 13

- 12:45 p. m.—C. P. R.'s musical program.

- 3:00 p. m.—Paul Hugon.
- 3:30 p. m.—Don Warner, pianist.
- 4:00 p. m.—Garden talk by Dewey Kruckeberg.
- 7:00 p. m.—George J. Birkel Music Co. courtesy program.
- 8:00 to 10:00 p. m.—Feature program.

THURSDAY, APRIL 14

- 12:45 p. m.—"C. P. R.'s" musical program.
- 7:00 p. m.—Carthey Circle Theatre organ recital, courtesy Overall Furniture Co.
- 8:00 p. m.—National Home Equipment Co. courtesy program.
- 9:00 to 10:00 p. m.—Tucker and Charleson.
- 10:00 p. m.—Earl Burnette Biltmore Orch.

FRIDAY, APRIL 15

- 12:45 p. m.—Charles Weeks, talking on "Intensive Little Farms."
- 3:00 p. m.—L. A. District Federation of Women's Clubs musical program.
- 4:00 p. m.—C. P. R.'s musical program.
- 7:00 p. m.—Fitzgerald Music Co. presenting the Ampico Knabe Piano.
- 7:30 p. m.—Dearden's Furniture Company, courtesy program.
- 8:00 p. m.—Davis Perfection Bread Co., courtesy program, presenting the Royal Order of Optimistic Do-Nuts.
- 9:00 p. m.—Feature program.
- 10:00 p. m.—Main events from the American Legion Stadium.

SATURDAY, APRIL 16

- 12:45 p. m.—C. P. R.'s musical program.
- 3:00 p. m.—Town Crier of the Day and his Pals.
- 7:00 p. m.—Stories of Insect Life by Harry W. McSpadden.
- 7:15 p. m.—Announcement of Sunday services of the leading Los Angeles churches.
- 7:30 p. m. to 10:00 p. m.—Feature program.
- 10:00 p. m.—Earl Burnett's Biltmore Hotel Orchestra, through the courtesy of Mullen & Bluett.
- 12:00 m.—KNX Frolic from the Main Studio.

Program Published as Submitted by the Station.

ATWATER KENT RADIO



Model 32
Seven-Tube
ONE DIAL
Receiver
\$145
(Less
Accessories)

Power to Spare

No matter how difficult the task, Model 32 Atwater Kent Receiver is called upon to perform, it is always ready.

Whether it is bringing in a far distant station, operating 30 to 50 radio speakers on one circuit, or filling an entire assembly hall with music and speech, its power is always under control and always dependable.

Any Atwater Kent Dealer will be glad to demonstrate—in your own home, if you prefer.

RAY THOMAS INC.
Atwater Kent Distributor

1248 S. Hope St. WE 6334

LOS ANGELES



BILL RAY
Announcer

Hollywood, California—252 Meters

KFWB

500 WATTS—1190 KILOCYCLES
WARNER BROS. MOTION PICTURE STUDIOS
Warner Bros. West Coast Studio, 5842 Sunset Blvd.
GERALD L. KING, Mgr. WM. RAY, Asst. Mgr.
Phone GL. 9461
"Music Land"

DAILY EXCEPT SUNDAY—

12:30 to 1:30 p. m.—Classified Hour.
5:40 to 6:00 p. m.—Beauty Talk.
6:00 to 7:00 p. m.—Pontiac Six Dinner Hour.
10:00 to 11:00 p. m.—Musical program from Mayfair Hotel.
Courtesy of Bundy & Albright.
11:00 to 12:00 p. m.—Dance music from El Patio Ballroom

MONDAY, TUESDAY AND WEDNESDAY—

5:00 to 5:40 p. m.—Children's Hour.

WEEK COMMENCING SUNDAY, APRIL 10, 1927

SUNDAY, APRIL 10

2:00 to 3:00 p. m.—Organ Recital on the world's mightiest organ, located in Roosevelt Memorial Park, Los Angeles.
8:30 to 9:00 p. m.—Program by courtesy of Southern California Music Company.
9:00 to 11:00 p. m.—Warner Bros. Frolic, introducing Ed Robinson, popular songs. John Canton, tenor; Ina Mitchell Butler, ballads; Harry G. Keiper and his Movie Land Orchestra.

MONDAY, APRIL 11

9:50 to 10:30 a. m.—Georgia O. George on "Physiology and Psychology of Beauty."
12:00 to 12:30 p. m.—Pacific Electric Art.
7:00 to 8:00 p. m.—Program by courtesy of J. N. Pyles National Detective Service, introducing King Collins baritons; Pyles National Detectives Concert Orchestra. Mr. J. N. Pyles will give a brief talk.
8:00 to 9:00 p. m.—Georgia Brazell, blues songs; Sol Hoopii's Hawaiian Quartet.
9:00 to 10:00 p. m.—Vernon Rickard, tenor; Warner Bros. European Novelty Orch.

TUESDAY, APRIL 12

1:30 to 2:10 p. m.—Georgia O. George on "Physiology and Psychology of Beauty."
4:45 to 5:00 p. m.—Dr. L. P. Clarke on "Diet."
7:00 to 7:30 p. m.—Program by courtesy of the Consolidated Cleaners.
7:30 to 8:00 p. m.—Program by courtesy of the Molo Laboratories, introducing the Molo Melody Maids and Julius Phillips, tenor.
8:00 to 8:30 p. m.—Program by courtesy of Southern California Music Co.
8:30 to 10:00 p. m.—Ernest Burley, tenor; Hollywood Orchestral Quartet.

WEDNESDAY, APRIL 13

10:45 to 11:00 a. m.—Enid Carnett on "Feminine Fads and Fancies."

7:00 to 7:30 p. m.—Thirty minutes of sunshine by Charles W. Hamp.
7:30 to 8:00 p. m.—Warner Bros. Orchestra.
8:00 to 9:00 p. m.—Program by courtesy of Stewart-Warner Products, Inc.
9:00 to 10:00 p. m.—Franklyn Colson, dramatic tenor; LeGrand Concert Ensemble.

THURSDAY, APRIL 14

1:30 to 2:10 p. m.—Georgia O. George on "Physiology and Psychology of Beauty."
7:00 to 7:30 p. m.—Program by courtesy of Southern California Music Co.
7:30 to 8:00 p. m.—Program by courtesy of Molo Laboratory, featuring the Molo Melody Maids and John Canton, tenor.
8:15 to 9:00 p. m.—Dan Santos' Hawaiian Trio; Mabel Leonard and Howard Stevenson in double piano numbers; Jackie Lucas, blues songs.
9:00 to 10:00 p. m.—Emma Kimmel, soprano; Ray Hall and Earle Taylor, violin and piano organ.

FRIDAY, APRIL 15

7:00 to 8:00 p. m.—Warner Bros. Orchestra; Virginia King, blues songs; LeRoy Kullberg and his ukulele.
8:00 to 9:00 p. m.—Alma Brown, soprano; Ray Bailey's String Trio.
9:00 to 10:00 p. m.—Melody Makers' Hour; Studio Chatter at 9:30.

SATURDAY APRIL 16

6:00 to 7:00 p. m.—Dinner Hour Concert.
7:00 to 8:00 p. m.—Carl Dye and his Melody Makers; Kenneth Gillum, popular songs.
8:00 to 9:00 p. m.—Program by courtesy of Mona Motor Oil Co., introducing Frank Barry, tenor; Mona Motor Oil Co. String Orchestra.
9:00 to 10:00 p. m.—Henry Halstead and his orchestra by remote control from the El Patio Ballroom.

Program Published as Submitted by the Station.

RADIOLA 20 OWNERS, ATTENTION!

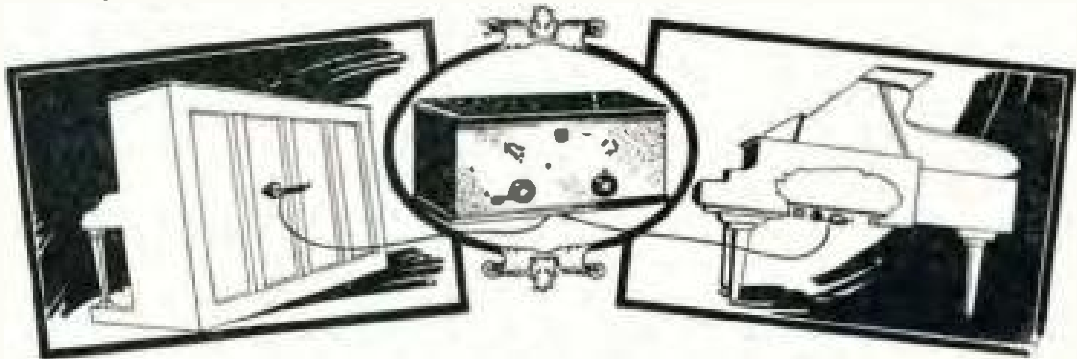
You can make a simple change in your receiver so that nearby local stations will not interfere. Double your volume on distance. Anyone can make this change in a few minutes. No soldering or rewiring. It is not an attachment.

Results Unconditionally Guaranteed
Instruction and Material Sent Prepaid for \$1.50

G. HOFFMAN COMPANY, 306 East Fourth Street, Long Beach, California

Your Piano Makes the Best Loud Speaker You Ever Heard

Your drawing room—the lights are low—your guests wait expectantly. Suddenly from your piano sweeps the full throated strains of a great orchestra—almost as if it were in the room. Amazement—then exclamations of delight! It is a hidden HOLMES Rotofor Radio Piano Speaker.



A Factory Expert Will Install This Speaker on Your Piano and Guarantee Satisfaction!

The HOLMES is easily and quickly installed by a factory expert on the sounding board of your piano, where it is out of the way. It does not harm or change in the least the finest piano.

Once this Speaker is installed you will hear tones you never heard on your present speaker. You will hear reproduction such as you never dreamed of. Send the coupon today and put new enjoyment in Radio Hours.

Manufactured by the
INTERNATIONAL RADIO CORPORATION
148 Pacific Electric Bldg., Los Angeles

HOLMES ROTOFOR RADIO Piano Speaker

TEAR OUT AND MAIL TO

A. J. Tobey Co.

Send a factory expert to my address to install a HOLMES Radio Piano Speaker. I understand you GUARANTEE satisfaction, and the price to be \$28.00 installed.

Name.....

Address..... Phone.....

Hour when you wish him to call..... Date.....

My Dealer's Name.....

Address.....



G. ALLISON PHELPS
Manager and Announcer

Hollywood, California—370.2 Meters

KMTR

500 WATTS
KMTR RADIO STATION
1025 N. Highland Avenue. Telephone HOLLY 3030
Owned and Operated by C. C. JULIAN
FORBES W. VAN WHY, Engineer-in-Charge

DAILY EXCEPT SUNDAY—

- 7:00 to 7:30 a. m.—Prof. Barclay L. Severn's Setting-Up Exercises.
8:45 to 9:00 a. m.—Time signals from Washington, D. C., and musical selections.
12:00 to 12:30 p. m.—Leighton's Arcade Cafeteria Orchestra.
12:30 to 1:30 p. m.—Who's Who and What's Happening.
1:30 to 2:30 p. m.—Radio Press Agent Hour.
2:30 to 3:30 p. m.—KMTR Tea Dance Program.
8:30 to 6:00 p. m.—White King Male Quartet courtesy Los Angeles Soap Co.
6:00 to 6:15 p. m.—Nightly Doings.
6:15 to 6:45 p. m.—Rancho Vista Avocado courtesy program
6:45 to 7:30 p. m.—Fitzgerald Music Company, courtesy program.
10:00 to 11:00 p. m.—Miller's Cafe Lafayette Dance Orchestra.

WEEK COMMENCING SUNDAY, APRIL 10, 1927

SUNDAY, APRIL 10

- 8:30 to 6:15 p. m.—White King Male Quartet and Mona Content, concert pianist, courtesy of Los Angeles Soap Company.
6:15 to 6:30 p. m.—Nightly Doings.
6:30 to 7:00 p. m.—Half hour of Cheer with Burr McIntosh.
7:00 to 8:00 p. m.—Miller's Cafe Lafayette Concert Orchestra.
8:00 to 9:30 p. m.—Walker's Fifth Street Store courtesy program.

MONDAY, APRIL 11

- 11:45 to 12:00 noon—Golf talk by S. E. Connolly of the Los Angeles Athletic Club.
12:30 to 1:30 p. m.—Who's Who and What's Happening in Pomona.
4:00 to 4:30 p. m.—Talk by J. P. Redding, representing the Iona Company.
7:30 to 8:00 p. m.—Ohrmund Bros., furnace manufacturers, courtesy program.
8:00 to 9:00 p. m.—Eureka Vacuum Cleaner Co. courtesy program.
9:30 to 10:00 p. m.—Hollywood Storage Co. courtesy program.

TUESDAY, APRIL 12

- 9:00 to 9:45 a. m.—Sylvia, the Blind Cook.
9:45 to 10:00 a. m.—Charles Hamp, representing the Iona Company.
10:00 to 11:00 a. m.—Georgia O. George, "The Psychology and Physiology of Beauty."
11:00 to 12:00 noon—Madame Alena's talk.
12:30 to 1:30 p. m.—Who's Who and What's Happening in Whittier.
4:00 to 4:30 p. m.—Advance Elect. Co. courtesy program.
8:15 to 8:30 p. m.—Talk on health by Dr. Robert T. Williams.
7:30 to 8:00 p. m.—Overell Furniture Co. courtesy program.
8:00 to 9:00 p. m.—Maxwell House Coffee Co. courtesy program.
4:30 to 5:15 p. m.—LeRoy Parry and his
9:00 to 9:30 p. m.—L. A. Investment Co. courtesy program.
9:30 to 10:00 p. m.—Hollywood Storage Co. courtesy program.

WEDNESDAY, APRIL 13

- 10:00 to 10:30 a. m.—Travel talk by Dr. S. J. Mathieson.
12:30 to 1:30 p. m.—Who's Who and What's Happening in Anaheim.
5:00 to 5:30 p. m.—Dr. Wesley M. Barrett, "Perfect Eyesight Without Glasses."
7:30 to 8:30 p. m.—Walker's Fifth Street Store courtesy program.

- 8:30 to 10:00 p. m.—Suburban Realty Company courtesy program.

THURSDAY, APRIL 14

- 9:00 to 10:00 a. m.—Sylvia, the Blind Cook.
10:00 to 10:15 a. m.—Charles Hamp, representing the Iona Company.
10:15 to 10:45 a. m.—Dr. Paul J. Dorosh.
10:45 to 11:45 a. m.—Georgia O. George, "Psychology and Physiology of Beauty."
11:45 to 12:00 noon—Golf talk by S. E. Connolly of the Los Angeles Athletic Club.
12:30 to 1:30 p. m.—Who's Who and What's Happening in Glendale.
4:00 to 4:30 p. m.—Talk by J. P. Redding, representing the Iona Company.
4:45 p. m.—Gleanings of the Bookworm.
7:30 to 8:00 p. m.—Winslow B. Felts, Chevrolet dealer, courtesy program.
8:00 to 10:00 p. m.—Hollywood Storage Co. courtesy program.

FRIDAY, APRIL 15

- 11:45 to 12:00 noon—Beauty talk by Irene Hobson.
12:30 to 1:30 p. m.—Who's Who and What's Happening in Santa Ana.
4:00 to 4:30 p. m.—Advance Elect. Co. courtesy program.
4:30 to 4:45 p. m.—Dr. Lowell C. Frost.
5:00 to 5:30 p. m.—Dr. Wesley M. Barrett, "Perfect Eyesight Without Glasses."
7:30 to 8:00 p. m.—Thirty Minutes of Sunshine with Charles Hamp.
8:00 to 9:00 p. m.—Walker's Fifth Street Store courtesy program.
9:00 to 9:30 p. m.—L. A. Investment Co. courtesy program.
9:30 to 10:00 p. m.—Hollywood Storage Co. courtesy program.

SATURDAY, APRIL 16

- 9:00 to 10:00 a. m.—Sylvia, the Blind Cook.
10:00 to 10:15 a. m.—Charles Hamp, representing the Iona Company.
11:30 to 12:00 noon—Gordon Whitnall of the City Planning Commission.
12:30 to 1:30 p. m.—Who's Who and What's Happening—special program.
4:00 p. m.—Radio talk to Radio Fans by Forbes Van Why, Chief Engineer KMTR.
7:30 to 7:40 p. m.—Talk by Mr. Benesh of the Sheriff's Office.
7:40 to 8:00 p. m.—KMTR Movie Club.
8:00 to 8:30 p. m.—Lun Park courtesy program; Loren Powell's Little Symphony.
8:30 to 9:00 p. m.—Hollywood Storage Co. courtesy program.
9:00 to 10:00 p. m.—Los Angeles Police Department program.

Selling Like Hot Cakes

The Powell 'B' Eliminator

Uncondition-
ally
Guaranteed



\$12²⁵

Absolutely No Hum

Operates any set from light socket without the use of expensive and troublesome "B" batteries. A large surplus of power at 100 volts and at a cost of only a few cents a year.

MORE VOLUME . . . MORE DISTANCE
GREATER SATISFACTION
BETTER QUALITY . . . BETTER PRICE

No Tubes, No Acid and Nothing Else to Buy

A ten-day trial with absolute satisfaction or money back

GUARANTEE

This instrument is the result of months of experimenting and exhaustive tests. The best of materials and workmanship have been combined to insure its satisfaction with the user and it is guaranteed unconditionally for one year. If for any reason it fails to perform satisfactorily it should be returned to the seller, who is instructed to repair or replace, free of charge.

Call or Telephone VERmont 1619 for Information

Will deliver and install Eliminator in any part of the city free of charge

Powell Manufacturing Co.

4009 S. Western Ave.

Los Angeles, Calif.

KFXB**Los Angeles, California—352.7 Meters****1000 WATTS—880 KILOCYCLES**

Commercial Exchange Bldg., Eighth and Olive Sts., Los Angeles

MERLE J. GRINDLE, ManagerAnnouncers: **CHARLES W. HAMP, ALLAN FAIRCHILD.****LITTLE EDDIE BARNES****BERT O. HELLER, Technical Director****DAILY EXCEPT SUNDAY—**

- 12:00 to 1:00 p. m.—Program by remote control from the studio of the Wurlitzer Company.
816 South Broadway.
- 1:00 to 2:00 p. m.—Program by KFXB Studio Artists.
- 2:00 to 4:00 p. m.—Ralph Markey and his Musical Keys by remote control from Palais de Dance, 616½ South Hill Street.
- 4:00 to 5:00 p. m.—Educational Hour.
- 5:00 to 5:45 p. m.—Request program of old popular songs by Little Eddie Barnes.
- 5:45 to 6:00 p. m.—Amusement Suggestions.
- 6:00 to 7:00 p. m.—Pipe organ recital by remote control from the studio of Albert Hay Malotte.
- 10:00 to 11:00 p. m.—Palais de Dance and Ralph Murray with his Musical Keys by remote control.

WEEK COMMENCING SUNDAY, APRIL 10, 1927**SUNDAY, APRIL 10**

- 9:30 a. m. to 2:00 p. m.—Popular musical programs.
- 4:00 to 5:00 p. m.—Program by Bud Riley's Hawaiian Conservatory of Music.
- 5:00 to 6:00 p. m.—Pope and his Californians.
- 6:00 to 7:00 p. m.—KFXB Collegians.
- 7:00 to 8:00 p. m.—Florentine Trio.
- 8:00 to 9:00 p. m.—Arthur Lempka and his Studio Boys, with Mildred Kirth, contralto.
- 9:00 to 10:00 p. m.—Billy London and his Orchestra.

MONDAY, APRIL 11

- 7:00 to 8:00 p. m.—Irene Franklin and her Girl Band.
- 8:00 to 8:30 p. m.—Ann and Lou Morris, Flapper Twin Harmonica, with KFXB boys.
- 8:30 to 9:00 p. m.—Charlie Diamond, steel guitar soloist, with Wint Cotton.
- 9:00 to 10:00 p. m.—Pope and his Californians.

TUESDAY, APRIL 12

- 7:00 to 8:00 p. m.—Program of Star Furniture Co.
- 8:00 to 8:30 p. m.—Maurice Chapman, baritone; Chas. Ott, yodler.
- 8:30 to 9:00 p. m.—Blanche Albin, Octavia Marx and Ruth Pratt.
- 9:00 to 10:00 p. m.—Barker Bros, King Players, with E. Gordon Reynolds.

WEDNESDAY, APRIL 13

- 7:00 to 7:30 p. m.—Angelus Trio, with Wanda Whitcomb Phillips, contralto.
- 7:30 to 8:00 p. m.—Cactus Kid program.
- 8:00 to 8:30 p. m.—Mabel Reed, soprano, with Meryl Holmes Trio.

- 8:30 to 9:00 p. m.—Jimmy Kessel, tenor; Phillip Kerr, pianist, Luille Ray, contralto.

- 9:00 to 10:00 p. m.—Arthur Clark and his band, with Jimmy Collins, tenor.

THURSDAY, APRIL 14

- 7:00 to 7:30 p. m.—Program of Radio Manufacturing Co.
- 7:30 to 8:00 p. m.—James Mulligan, baritone; Lorin Norcross and Winona L. Norcross.
- 8:00 to 8:30 p. m.—The Stark Sisters; E. Ruth Donegan, soprano; the KFXB Boys.
- 8:30 to 9:00 p. m.—The Novelty Duo: Marian Hoogari; Eric Lawrence.
- 9:00 to 9:30 p. m.—Luis K. Lake, mezzo; Hazel Linkogel, piano and violin; KFXB Boys.
- 9:30 to 10:00 p. m.—Hanson and Seaso, the Red-headed Twins of Radio.

FRIDAY, APRIL 15

- 7:00 to 8:00 p. m.—Costello Marimba Band; J. T. Rumbles, baritone; Dora Greenwood, pianist; Fern Alston, pianist.
- 8:00 to 9:00 p. m.—Frank Martin, Mabel Linahan, Margaret Clark, the KFXB Boys.
- 9:00 to 10:00 p. m.—The Stark Sisters, with Ray Fisher and his Band.

SATURDAY, APRIL 16

- 7:00 to 7:30 p. m.—Bill Livingstone and his Radio Boys, with Ray T. Davis, whistler.
- 7:30 to 8:00 p. m.—Shirley Fenster, pianist; Henrietta Bouillon, violinist; KFXB Boys.
- 8:00 to 9:00 p. m.—L. A. Police Department program.
- 9:00 to 10:00 p. m.—KFXB Saturday Night Frolic.

Program Published as Submitted by the Station.

You Are Invited to Visit Willy's Over-Air Practical Radio Laboratory

One of the Best Equipped Private Laboratories on the Pacific Coast

WE HAVE THE WORST LOCATION IN LOS ANGELES, with maximum interference from nearby stations. This has given us skill in building sets that are highly selective in any location.

Calibration of all wave lengths and frequencies for both standard and amateur apparatus. Special instrument with amplifier for calibrating intermediate radio frequency transformers for super-heterodynes.

WILLY'S OVER-AIR PRACTICAL RADIO LABORATORY

2021 Temple St., Near Alvarado,

Los Angeles, Calif.

Phone Fitzroy 1781

Open Evenings Until 10 o'Clock

Anten-A-Liminator

Why Bother with an Unsightly Antenna?

The Anten-A-Liminator, easily and quickly installed on any radio, regardless of make or model, makes it possible to secure 100% radio performance without using unsightly cage aerials . . . make-shift antennae installations.

This tested and guaranteed antennae eliminator will, without question, increase both volume and selectivity of your radio. It will make it possible for you to tune in short wave stations without background or distortion.

Small—Compact—Easily Installed

The Anten-A-Liminator is the biggest radio value ever offered in a small package . . . it is but 5 inches in diameter . . . only $1\frac{3}{4}$ inches thick . . . it will even fit inside your radio receiver. It is sold on a guarantee of satisfactory performance . . . you have nothing to lose by trying it. Ask your dealer.

Manufactured by George E. Browning Co., Ogden, Utah

SCOTT SALES COMPANY

Distributors

443 South San Pedro Street

LOS ANGELES

Phone VAndike 3297

\$8.50

Performance Guaranteed

NOTICE TO DEALERS

Write, wire or telephone NOW for full details regarding the Anten-A-Liminator. Sales and profits on this number will surprise you. DON'T DELAY.





M. E. CARRIER
Announcer

Los Angeles, California—294 Meters

KTBI

750 WATTS—1020 KILOCYCLES
BIBLE INSTITUTE OF LOS ANGELES
MR. M. E. CARRIER, Manager
PROF. H. G. TOVEY, Director of Programs
Phone ME. 6701

DAILY EXCEPT SUNDAY—

8:45 to 9:15 a. m.—Devotional Hour.
2:00 to 3:00 p. m.—Inspirational Hour.

DAILY EXCEPT FRIDAY AND SUNDAY—

7:15 to 8:00 p. m.—Aunt Martha's Children's Hour.

WEEK COMMENCING SUNDAY, APRIL 10, 1927

SUNDAY, APRIL 10

10:45 a. m. to 12:30 p. m.—Regular service of the Church of the Open Door.
3:00 to 4:00 p. m.—Jewish Radio Hour.
6:00 to 7:00 p. m.—Radio Vesper service.
7:15 to 9:30 p. m.—Regular evening service of the Church of the Open Door.

MONDAY, APRIL 11

8:00 to 9:00 p. m.—Bible exposition by Rev. Ben Pearson.

TUESDAY, APRIL 12

8:00 to 9:00 p. m.—Bible exposition by Rev. W. H. Manshardt.

WEDNESDAY, APRIL 13

8:00 to 9:00 p. m.—Bible exposition by Dr. John McNeill.

THURSDAY, APRIL 14

8:00 to 9:00 p. m.—Bible exposition by Rev. C. E. Larrabee.

FRIDAY, APRIL 15

6:15 to 7:00 p. m.—Aunt Martha's Children's Hour.

7:00 to 8:00 p. m.—Exposition of International Sunday School lesson.

8:00 to 9:00 p. m.—Bible exposition by Dr. John McNeill.

Los Angeles, California—275.1 Meters

KFSG

ANGELUS TEMPLE, ECHO PARK. Fitzroy 5121
AIMEE SEMPLE McPHERSON, Founder, President
RODERICKE MORRISON, Program Manager
ESTHER FRICKE GREENE, Organist
GLADWYN N. NICHOLS, Musical Director & Announcer
P. S. LUCAS, Technician in Charge
"Four Square Gospel"

DAILY EXCEPT SUNDAY AND MONDAY—

10:30 to 11:30 a. m.—Sunshine Hour.
11:30 a. m. to 12:30 p. m.—Noonday Musical.
6:30 to 7:30 p. m.—Angelus Hour.

DAILY EXCEPT SUNDAY, MONDAY, WEDNESDAY, SATURDAY—

2:30 to 3:30 p. m.—Gray Studio Program.

WEEK COMMENCING SUNDAY, APRIL 10, 1927

SUNDAY, APRIL 10

10:30 a. m. to 12:30 p. m.—Sunday morning worship by Aimee Semple McPherson.
2:30 to 4:30 p. m.—Afternoon Service.
6:30 to 8:00 p. m.—Musical Hour. Angelus Temple Band and choir.
8:00 to 9:30 p. m.—Revival service by Aimee Semple McPherson.
10:00 to 11:00 p. m.—Organ Recital by Esther Fricke Greene.

TUESDAY, APRIL 12

3:30 to 4:30 p. m.—Vesper Hour. Organ Recital by B. Earnest Ballard.
6:30 to 7:30 p. m.—Angelus Hour. Program arranged by Rodericke H. Morrison.
7:30 to 9:30 p. m.—Evangelistic services by Student Evangelists.

WEDNESDAY, APRIL 13

2:30 to 5:30 p. m.—Divine Healing Service
6:30 to 7:30 p. m.—Angelus Hour. Program arranged by Rodericke H. Morrison.
7:30 to 9:30 p. m.—Regular mid-week prayer service by Aimee Semple McPherson.

THURSDAY, APRIL 14

3:30 to 4:30 p. m.—Vesper Hour. Organ recital by B. Earnest Ballard.
6:30 to 7:30 p. m.—Angelus Hour.
7:30 to 9:30 p. m.—Regular Water Baptismal Service. Aimee Semple McPherson.
9:15 to 10:00 p. m.—Gray Studio Program.
10:00 to 11:00 p. m.—Organ Recital by Esther Fricke Greene.

FRIDAY, APRIL 15

3:30 to 4:30 p. m.—Vesper Hour. Organ Recital by Esther Fricke Greene. Angelus Hour. Angelus Temple Band.
7:30 to 9:30 p. m.—Crusader Rally Sermon by Aimee Semple McPherson.
10:00 to 11:00 p. m.—Back Home Hour.

SATURDAY, APRIL 16

3:30 to 4:30 p. m.—The Children's Happy Hour.
6:30 to 7:30 p. m.—Angelus Hour.
7:30 to 9:30 p. m.—Divine Healing Service. Conducted by Aimee Semple McPherson.

Program Published as Submitted by the Station.



G. N. NICHOLS
Announcer



Dave Ward

Hollywood, California—226 Meters

KFQZ

1641 North Argyle Ave., Hollywood, California
 Gladstone 3197; Gladstone 3198
 DAVE WARD, Program Director and Announcer
 L. E. TAFT, Technical Engineer
 "The Palace Bangalore Studio"

DAILY EXCEPT SUNDAY—

6:00 to 7:00 p. m.—Panatrops Dinner Hour.

MONDAY, TUESDAY, WEDNESDAY, THURSDAY—

12:00 to 1:00 p. m.—Hazel McCauley and the Office Boy.

3:30 p. m.—Thursday. Try-outs (not broadcast).

WEEK COMMENCING SUNDAY, APRIL 10, 1927

SUNDAY, APRIL 10

8:00 p. m.—Columbia Viva Tonal Recordings.

9:00 p. m.—Yellow Jackets. Virginia King.

MONDAY, APRIL 11

7:00 p. m.—Leslie E. Taft on Radio Technology.

7:30 p. m.—Lincoln High Triple Quartet.

8:00 p. m.—Barrows Motor Company, courtesy program.

9:00 p. m.—Semi-Classical Hour, presented by Myra Belle Vickers.

10:00 p. m.—Yellow Jackets. Wendell Smith and Virginia King.

TUESDAY, APRIL 12

7:00 p. m.—"The Novelty Duo:" Peterson, Overbeck and Sherry, The Campus Trio.

8:00 p. m.—Neapolitan 4

9:00 p. m.—Yellow Jackets. Hob Swan and Ned Miller.

WEDNESDAY, APRIL 13

12:00 Noon—Sam Kalania's Hawaiian Trio.

7:00 p. m.—Clint Stevenson's Hawaiian Trio and Ed Pose.

8:00—Charlie Dimond and soloists, Art Goodstein, Lee Belin.

9:00 p. m.—Yellow Jackets.

TUESDAY, APRIL 12

7:00 p. m.—Leslie E. Taft on Radio Technology.

7:30 p. m.—Novelties.

8:00 p. m.—Barrows Motor Company, courtesy program.

9:00 p. m.—Los Angeles Railway Orchestra. Frankie and Eddie.

FRIDAY, APRIL 15

12:00 Noon—Greenwich Village Orchestra and Libbette Barker.

7:00 p. m.—Joe Kalih'i's Hawaiian Trio, Male Hooper, Margaret Kernon.

8:00 p. m.—Chuck Henry's Collegians, Dot Jordan and Glenda Boston.

9:00 p. m.—Aram Calanlan's Orchestra. Helen McCoil, Bill Henry.

SATURDAY, APRIL 16

12:00 Noon—Paris Inn Cafe Orchestra. Bert Roverre, soloist.

7:00 p. m.—Joey Starr's Orchestra and Dick Powers.

8:00 p. m.—California Melody Kings and E. Ruth Donigan.

9:00 p. m.—Yellow Jackets, Bud Riley, Don Stevens and Royal Wallace. Isabel Block Trio.

Signing off nightly at 11:00 p. m.

Program Published as Submitted by the Station.



GEORGE FRENGER
Announcer

Pasadena, California — 315.6 Meters

KPSN

PASADENA STAR-NEWS
 1000 WATTS—950 KILOCYCLES
 GEORGE CECIL COWING, Managing Director
 GEORGE FRENGER, Program Manager
 HERSHEL SATTERFIELD, Engineer-in-Charge
 PERCY C. PRYOR, Studio Office
 Phone, Wakefield 3111

DAILY EXCEPT SUNDAY—

12:00 to 12:15 p. m.—News Bulletin.

6:00 to 7:00 p. m.—Dinner-time News Report.

WEEK COMMENCING SUNDAY, APRIL 10, 1927

SUNDAY, APRIL 10

10:30 a. m.—Family Altar Service by the United Church Brotherhoods.

11:00 a. m.—Services from the Pasadena Presbyterian Church.

6:00 to 7:00 p. m.—Star-News concert, with Adolf Tandler and the Ensemble.

MONDAY, APRIL 11

8:00 to 9:15 p. m.—Star-News concert, with Adolf Tandler and the Ensemble.

TUESDAY, APRIL 12

8:00 to 9:15 p. m.—Star-News concert, with Adolf Tandler and the Ensemble.

THURSDAY, APRIL 14

8:00 to 9:15 p. m.—Star-News concert, with Adolf Tandler and the Ensemble.

FRIDAY, APRIL 15

8:00 to 9:15 p. m.—Star-News concert, with Adolf Tandler and the Ensemble.

SATURDAY, APRIL 16

8:00 to 9:15 p. m.—Star-News concert, with Adolf Tandler and the Ensemble.

Program Published as Submitted by the Station.

Inglewood, California—387 Meters

KMIC

500 WATTS—775 KILOCYCLES

Owned and Operated by JAMES R. FOUCH
Chamber of Commerce Building, Inglewood, Cal.**DAILY EXCEPT SUNDAY—**

6:00 to 7:00 p. m.—Shopping news, with Victor Electrola Review.

WEEK COMMENCING SUNDAY, APRIL 10, 1927**SUNDAY, APRIL 10**

11:00 a. m. to 12:15 p. m.—Centinella Baptist Church.

MONDAY, APRIL 11

7:00 to 8:00 p. m.—Lambert Sales Co. Courtesy Program with Eddie Hoffman and his Radio Boys—Geraldine Gordon

8:00 to 9:00 p. m.—City of Inglewood program with KMIC Concert Orchestra.

9:00 to 9:30 p. m.—Geo. M. Sutton courtesy program with Eddie Hoffman and his Radio Boys—Don Miner, tenor; Louise White, soprano.

9:30 to 10:00 p. m.—Studio program

TUESDAY, APRIL 12

7:00 to 7:15 p. m.—Skinner Mfg. Co. courtesy program.

7:15 to 7:45 p. m.—Reliable Radio Sales & Service Co., courtesy program, with Milt Gardner and his Radio Boys—Larry and Verne Cannon, harmony—Doc Williams.

7:45 to 8:00 p. m.—The Little Ant Man.

8:00 to 8:30 p. m.—H. R. McCellen Duco Co., courtesy program, with Martin Wallace Orchestra—Abe Jacobson, Bill Henry, Geo. Thieroy, Harry Von Zell, Jimmy Collins, Neva Negis, warbler.

8:30 to 10:00 p. m.—Studio program.

WEDNESDAY, APRIL 13

7:00 to 7:30 p. m.—Studio program.

7:30 to 8:00 p. m.—Malloy-Clint, courtesy program, with Wes Woodford and his Bachelor Four

8:00 to 8:30 p. m.—Lindburg Studio of Photography, courtesy program, with L. A. R. Orchestra or String Quartette.

8:30 to 10:00 p. m.—Studio program, with Wes Woodford and his Bachelor Four; Geraldine Gordon, baritone;

THURSDAY, APRIL 14

7:00 to 7:30 p. m.—Studio program.

7:30 to 8:00 p. m.—Ross O. Porter Tire Co. courtesy program, with the Six Syncopettes, Larry and Verne Cannon, harmony; Bill Henry and Helen McCall; Fred Wesley,

8:00 to 8:30 p. m.—Inglewood Furniture Co. courtesy program, with Waterbury's Syncopettes: Jimmie Collins, tenor; Doc Williams, the wandering minstrel of the air; Neva Negis, warbler.

8:30 to 10:00 p. m.—Studio program.

FRIDAY, APRIL 15

7:00 to 7:30 p. m.—Studio program.

7:30 to 8:00 p. m.—Skinner Mfg. Co., courtesy program.

8:00 to 8:30 p. m.—H. R. McCellen Duco Co. courtesy program, with Jack Lemple and his Radio Boys; Geo. and Harry, ukies and harmony; Fred Wesley, blues; Carol Agnew, pianist.

8:30 to 8:45 p. m.—The Little Ant Man.

8:45 to 10:00 p. m.—Studio program.

10:00 to 12:00 p. m.—Inglewood Post No. 188, American Legion Frolic.

SATURDAY, APRIL 16

7:00 to 8:00 p. m.—Studio program; Larry and Verne Cannon, buddies in harmony; Bud Riley, tenor guitar.

8:00 to 9:00 p. m.—Bill Livingston and his Radio Boys; Evie and Peggy, KMIC harmony girls; Neva Negis, warbler.

9:00 to 10:00 p. m.—Studio program; Bill Henry and Dov Williams.

Los Angeles, Calif.—517 Meters

KGEF

1000 WATTS—680 KILOCYCLES

TRINITY METHODIST CHURCH

BOB SHULER, Pastor

Phone WEStmore 9834

C. C. HOOPER, Manager

M. J. HANKINS, Technician

WEEK COMMENCING SUNDAY, APRIL 10, 1927**SUNDAY, APRIL 10**

10:45 a. m. to 12:30 p. m.—Morning service.

5:00 to 8:00 p. m.—Vesper Hour.

7:00 to 8:00 p. m.—Musical program.

8:00 to 9:00 p. m.—Sermon by Rev. Shuler.

9:00 to 10:00 p. m.—Old Songs Quartet.

10:00 to 10:30 p. m.—Family Altar Service.

7:00 to 7:45 p. m.—O. D. Couray's Bible Class.

7:45 to 8:30 p. m.—Musical Program.

8:30 to 9:30 p. m.—Bob Shuler's Hour.

9:30 to 10:00 p. m.—Musical program.

FRIDAY, APRIL 15

6:30 to 7:00 p. m.—Brunswick Panatropé.

7:00 to 7:30 p. m.—Radio Bible Class.

7:30 to 8:00 p. m.—Musical program.

8:00 to 8:30 p. m.—Bob Shuler's Civic Talk.

8:30 to 9:30 p. m.—So. Calif. Holiness Assn.

9:30 to 10:00 p. m.—Musical program.

E. C. Buckaber
Announcer**TUESDAY, APRIL 12**

6:30 to 7:00 p. m.—Brunswick Panatropé

7:00 to 7:30 p. m.—Dr. J. A. B. Fry.

7:30 to 8:00 p. m.—Trinity Male Quartet.

8:00 to 8:30 p. m.—L. A. Church Federation.

8:30 to 9:00 p. m.—Trinity Male Quartet.

9:00 to 9:30 p. m.—Bob Shuler's Talk.

9:30 to 10:00 p. m.—Brunswick Panatropé.

WEDNESDAY, APRIL 13

6:00 to 7:00 p. m.—Dorothy Spencer's Children's Hour

SERVICE DIRECTORY

There is a Service Man in Your Neighborhood. Call or see him.

SOUTHEAST	S E R V I C E	SOUTHWEST
6120 South Broadway TH. 0224 <small>(Equipped to handle any job)</small> DE HOOG BROS. RADIO COMPANY		Cnr. Figueroa at Vernon AX. 8382 CHAPMAN-HOUSE SALES CO.
WILSHIRE		SOUTHWEST
214 South Western Ave. WA. 5413 HENSEL ELECTRIC STORE		4617 S. WESTERN UNiversity 3901 <small>The Atwater-Kent and Zenith Sales & Service Co. Distance Guaranteed.</small> J. N. PITTS CO.
HOLLYWOOD		LARCHMONT
7406 Melrose ORegon 4702 <small>(Accurate Service On All Types of Sets)</small> Wesholly Radio Service C. V. (Jack) Schiefer		218 North Larchmont GL. 7298 SMITH-SCOTT CO.
LONG BEACH		DOWNTOWN
430 American Ave. Phone 653-171 RIALTO RADIO CO.		221 West Second St. ME. 4832 <small>OPEN EVENINGS</small> LESTER Radio and Electric Store

Those listed on this page are competent and efficient Radio Technicians and are recommended to you for your patronage.



TOM MITCHELL
Announcer

Santa Monica, California—238 Meters

KNRC

1000 WATTS CAPACITY
Owned and Operated by KEIRULFF & RAVENS-
CROFT COMPANY
Municipal Auditorium, Ocean Park, Santa Monica,
Calif. Phone Santa Monica 63-101.
TOM MITCHELL, Studio Manager and Announcer.
C. B. JUNEAU, Transmission Engineer.
"The Station with a Smile"

DAILY EXCEPT SUNDAY—

4:00 to 4:45 p. m.—Smiling Circle with Tom.
2:00 to 2:30 p. m.—Shopping Tour.
2:30 to 4:00 p. m.—Santa Monica Municipal Band.
6:00 to 7:00 p. m.—Club Casa Del Mar.
7:00 to 8:00 p. m.—Merchants Preview Hour.
10:00 to 11:00 p. m.—Club Casa Del Mar.
11:00 to 12:00 p. m.—La Monica Ballroom Orchestra.

DAILY EXCEPT MONDAY—

8:00 to 9:00 p. m.—Band Concert.
2:30 p. m.—Band Concert.

WEEK COMMENCING SUNDAY, APRIL 10, 1927

SUNDAY, APRIL 10

10:45 to 11:45 a. m.—Pilgrim Lutheran Church Services, remote control.
2:30 to 4:00 p. m.—Santa Monica Municipal Band Concert.
5:15 to 6:15 p. m.—The Pirate Band.
6:15 to 7:00 p. m.—Pilgrim Lutheran Church Services, remote control.
7:00 to 8:00 p. m.—Club Casa Del Mar, remote control.
8:00 to 9:00 p. m.—Santa Monica Municipal Band Concert
9:00 to 10:00 p. m.—Club Casa Del Mar, remote control.
10:00 to 11:00 p. m.—La Monica Ballroom Orchestra, remote control.

MONDAY, APRIL 11

8:00 to 10:00 p. m.—Main Studio program, featuring the Black and Tan Orchestra.

TUESDAY, APRIL 12

3:00 to 3:15 p. m.—Bay Builders' Exchange Booster program.
8:00 to 9:00 p. m.—Santa Monica Municipal Band Concert.
9:00 to 10:00 p. m.—Main Studio program, featuring the Southern Dons Orchestra; Novelty Duo, Marion Boogar and Earl Lawrence.

WEDNESDAY, APRIL 13

3:00 to 3:15 p. m.—Bay Builders' Exchange Booster program.
7:30 p. m.—Talk by Undersheriff Eugene Biscailuz.
8:00 to 9:00 p. m.—Santa Monica Municipal Band Concert.
9:00 to 9:30 p. m.—Club Casa Del Mar.
9:30 to 10:30 p. m.—Broadcasting of the Fights from the Ocean Park Arena.

THURSDAY, APRIL 14

8:00 to 9:00 p. m.—Santa Monica Municipal Band Concert.
9:00 to 10:00 p. m.—Main Studio program,

FRIDAY, APRIL 15

3:00 to 3:15 p. m.—Bay Builders' Exchange Booster program.
8:00 to 9:00 p. m.—Santa Monica Municipal Band Concert.

SATURDAY, APRIL 16

3:00 to 3:15 p. m.—Bay Builders' Exchange Booster program.
8:00 to 9:00 p. m.—Santa Monica Municipal Band Concert.
9:00 to 10:00 p. m.—Main Studio program, featuring Clyde Pearson, soprano; Kathleen Williamson, blues singer, accompanied by Eleanor Swall.



Major Lawrence Mott
Announcer

Avalon, California—211.1 Meters

KFWO

THE CATALINA ISLAND STATION
(Non-Commercial)
Power 250 Watts—Western Electric Equipment
"Catalina for Wonderful Outings"
MAJOR LAWRENCE MOTT, Owner-Operator
MISS FRANCES HEWITT, Studio & Program Dir.
"The Isle with a Smile"

DAILY EXCEPT MONDAY—

12:30 to 1:30—Hotel St. Catherine Orchestra.
6:30 to 8:00—St. Catherine Orchestra.

DAILY EXCEPT MONDAY, THURSDAY AND SUNDAY—

6:00 to 6:30—Studio.

MONDAYS

Silent.

TUESDAYS

5:30 to 6:00 p. m.—Miss Hewitt's Golden Hour.
6:00 to 8:00 p. m.—Studio.

WEDNESDAYS

8:00 to 9:00 p. m.—Studio Program.
9:00 to 12:00 Midnight—Overseas.

THURSDAYS

8:00 to 9:00 p. m.—Studio Program.

FRIDAYS

5:00 to 6:00 p. m.—Miss Hewitt's Golden Hour.
6:00 to 6:30 p. m.—Wrigley Chimes.

SATURDAYS

3:00 to 4:30 p. m.—Rebroadcast of KNX.
9:15 to 10:00 p. m.—Studio.

SUNDAYS

5:00 to 6:00 p. m.—Miss Hewitt's Golden Hour.
6:00 to 6:30 p. m.—Wrigley Chimes.
8:00 to 9:15 p. m.—Lobby Concert.
Victor Electrola used during all programs.

“A” and “B” POWER For Your Radio Set



WILLARD "A" POWER UNIT



WILLARD "B" POWER UNIT

Each of these units represents the best in engineering in the Power Unit field. Workmanship and materials are of the highest quality. No hum or distortion from them. They connect with the house lighting circuit.

Ask about our Time Payment Plan. Why not buy them now?

Willard Service Stations

OF SOUTHERN CALIFORNIA
OR
YOUR NEAREST RADIO DEALER

Venice, California—208 Meters

KFVD

1440 KILOCYCLES—500 WATTS

McWHINNIE ELECTRIC CO., VENICE BALLROOM
Venice, Cal. Phone 65969

MARY ELIZABETH CARTER, Mgr. and Announcer

DAILY EXCEPT SUNDAY—

9:00 to 11:00 a. m.—Music and shopping news.
11:00 to 11:30 a. m.—Mary Elizabeth Garden.
5:30 to 7:00 p. m.—Music and shopping guide.
10:00 to 12:00 p. m.—Cush Branch and orchestra Venice ballroom.

WEEK COMMENCING, MONDAY, APRIL 11, 1927

MONDAY, APRIL 11

8:00 to 10:00 p. m.—The Doty Twins and Harl; Eddie Hoffman and His Knights of Synecaption; Roy T. Davis; Jimmy Collins; Fred Wesley; Elizabeth Blair Davis.
12:00 p. m. to 2:00 a. m.—Tommy Jacobs and His Shop Cafe Orchestra.

TUESDAY, APRIL 12

8:00 to 10:00 p. m.—Dale Fulton; Lallah Fulton; Geraldine Barnett; Edith Hancock; Scott McConnell; Theo. Schaeffer; Harry Dinnawitzer; Bud Russell.

WEDNESDAY, APRIL 13

12:15 to 1:15 p. m.—Lions Club of Venice, Children's Hour.
8:00 to 10:00 p. m.—Frankie Anderson's Orchestra; Dorothy Smith's Hawaiian Trio; Lyman Wood; Dorothy Maltby; Nina Fry.

THURSDAY, APRIL 14

8:00 to 10:00 p. m.—Hal Denny and His Harmony Heards; Bob Davis; Sally; J. Shull; Marie Miller; Ansley; Bobby Sidman.

FRIDAY, APRIL 15

4:00 to 5:00 p. m.—Children's Hour.
8:00 to 10:00 p. m.—Marbelite Corporation of America, Courtesy program, featuring Tessie Weiss, Morris Lensky, Dr. Delevante, Barkeys Mandolin Band.

SATURDAY, APRIL 16

1:00 to 2:00 p. m.—Harry Judson, Walter Lyon, Addie Carson.
8:00 to 10:00 p. m.—Merchants of Venice Frolic.

SUNDAY, APRIL 17

8:00 to 12:00 p. m.—Cush Branch and His Orchestra.

Program Published as Submitted by the Station.

RADIOLA SPECIALISTS

We make any RCA SUPER HETERODYNE include in its tuning range the stations between 200 and 230 meters, at a nominal cost. Not an attachment but a fundamentally sound improvement in the circuit. We have also developed improvements for the Radiola 20 and the Radiola 28.

Our Electrical Phonograph

is creating a furor among the music lovers who demand the last word in quality reproduction. We build portable and console models, or this equipment can be installed in your old phonograph. Furthermore we guarantee as faithful reproduction as that given by any machine offered to the public.

MAKERS OF THE PROFESSIONAL MODEL RECEIVER

LABORATORY OF RADIO STANDARDS

*2408 West Vernon — VERmont 6543

E. K. HAYES

Los Angeles, Calif.

V. M. BITZ

5 Tube Falck



*Beautiful
Mahogany
Console*



Plug in your light socket as you would your electric iron. No batteries, no acid, no muss, no fuss. Operates without aerial. One dial control. Something everybody wants, at a low cost. Cash credit for your old set.

Phone VE. 9589

**For Home
Demonstration**



EASY TIME PAYMENTS

**FLETCHER
RADIO MUSIC CO.**

**4705 S. Vermont Ave. VE. 9589
Los Angeles**

Hear this no battery Falck Radio in your home

Once seen and heard, the Falck becomes the choice of the discriminating purchaser. For in this one radio are all the features found in the latest and most expensive sets: *No A, B, or C batteries . . . A Selective One-Dial Control . . . Built-in Speaker* —(cone or horn) . . . all in a *beautifully modeled solid mahogany cabinet.*

You may hear the Falck at any authorized dealer, or Phone MUTual 1724 for free demonstration in your home.



The Falck

Made in Los Angeles by the ADVANCE ELECTRIC CO. — \$150.00 complete. (Slight extra charge for cone.)





"HAL" G. NICHOLS
Announcer

Long Beach, California—233 Meters

KFON

1290 KILOCYCLES—750 WATTS
NICHOLS & WARINNER, INC.
Studio 211 Jergins Trust Bldg. Phones 617-19, 614-60
Business Office, 212 Jergins Trust Bldg.
Phones: 617-19, 614-60
"Where Your Ship Comes In"

DAILY EXCEPT SUNDAY—

9:30 to 10:15 a. m.—Pacific Coast Club organ.
10:15 to 10:30 a. m.—"Devotion Period."
10:30 to 11:30 a. m.—Physiology of Beauty, Georgia O. George.
11:30 a. m. to 12:00 noon—Press-Telegram news.
12:00 noon—Lost and found announcements.
12:00 to 12:30 p. m.—Musical program.
2:30 to 4:00 p. m.—Long Beach Municipal Band.
4:00 to 4:30 p. m.—Press-Telegram Late News.

4:30 to 6:00 p. m.—KFON Concert Orchestra.

6:00 to 6:15 p. m.—Request Program by Clarence and Doris.

6:15 to 7:00 p. m.—KFON Concert Orchestra.

10:00 to 11:00 p. m.—Capital Theater Organ Recital.

11:00 to 12:00 p. m.—Majestic Ball Room Orchestra by remote control.

DAILY EXCEPT SUNDAY AND MONDAY—

8:00 to 9:00 p. m.—Press-Telegram presenting Long Beach Municipal Band.

WEEK COMMENCING SUNDAY, APRIL 10, 1927

SUNDAY, APRIL 10

11:00 a. m. to 12:30 p. m.—Church of the Nazarene; Rev. L. A. Reed.

12:30 to 1:00 p. m.—Musical program, sponsored by Markwell Talt Water Taffy Shop.

1:00 to 2:00 p. m.—Musical program, sponsored by Birkel Music Co.

2:00 to 2:30 p. m.—Pacific Coast Club Organ, Herbert Nixon at the console.

4:00 to 5:00 p. m.—Vesper Hour.

5:00 to 6:00 p. m.—Piggly Wiggly Concert Orchestra.

7:00 to 7:45 p. m.—Studio program.

7:45 to 9:00 p. m.—Services from the First Church of Christ, Scientist.

9:00 to 12:00 p. m.—"Everybody's Night."

MONDAY, APRIL 11

7:00 to 8:00 p. m.—Thirty Sandy Program.

8:00 to 8:15 p. m.—Lure of the Sky.

8:15 to 9:00 p. m.—"Piggly Wiggly Haymakers"—featuring old-time dance music.

9:00 to 12:00 p. m.—"Kiwanis Frolic."

TUESDAY, APRIL 12

12:30 to 1:00 p. m.—Beauty Talk and Musical Program.

1:00 to 1:30 p. m.—Kiwanis Club Luncheon.

1:30 to 2:30 p. m.—Woman's Music Study Club—direction of Ruth Parkinson.

7:00 to 7:30 p. m.—Poly High School Oral Expression Class.

7:30 to 8:00 p. m.—"Chat for Booklovers"

9:00 to 10:00 p. m.—Piggly Wiggly Hour.

WEDNESDAY, APRIL 13

1:00 to 1:30 p. m.—Rotary Club Luncheon.

1:30 to 2:00 p. m.—Wilshire Ionoca Company program.

2:00 to 2:30 p. m.—Department of Numerology.

7:00 to 7:30 p. m.—Texas Cowboys in old-time dance music.

7:30 to 8:00 p. m.—Press-Telegram, presenting Long Beach Municipal Band.

8:00 to 8:15 p. m.—"The Woman and the Law"—by Herbert Middleditch.

9:00 to 10:00 p. m.—Pacific Coast Club Orchestra.

THURSDAY, APRIL 14

2:00 to 2:30 p. m.—Health and Efficiency.

7:00 to 8:00 p. m.—Studio Program.

9:00 to 10:00 p. m.—Shell Oil Company's Orchestra.

FRIDAY, APRIL 15

1:00 to 1:30 p. m.—Wilshire Ionoca Co.

2:00 to 2:30 p. m.—Department of Numerology.

7:00 to 7:30 p. m.—Church of Christ.

7:30 to 7:45 p. m.—"A Selma Sizer Program."

7:45 to 8:00 p. m.—"Lucky Jim" Investment Chat—by Seaboard Bond & Mortgage Co.

9:00 to 10:00 p. m.—Guskill Manufacturing Co., and Missman Radio Co.

10:00 to 12:00 p. m.—Elks' Frolic.

SATURDAY, APRIL 16

1:30 to 2:30 p. m.—Studio Program.

7:00 to 8:00 p. m.—"Piggly Wiggly Minstrels."

9:00 to 10:00 p. m.—Los Angeles District of the Federation Program.

10:00 to 12:00 p. m.—Pacific Coast Club Orchestra.

\$1 Down

Will place a

MAJESTIC

—"B" SUPPLY—

—In Your Home

Then **\$1** A Week

\$6 Brandes Navy Phones \$3.95 - \$5 Brandes Superior Phones \$2.45

Write For Special Circular
ESTAB. 1904

625 So. Main -
Opposite
P. E. Depot
OPEN EVENINGS

J. C. RENDLER

Radio Parts—Kits—Sets

TRinity 4281
Los Angeles

MAIL ORDERS



Eveready Layerbilt "B" Battery No. 486, the Heavy-Duty battery that should be specified for all loud-speaker sets. Price \$5.00.

The Layerbilt patented construction revealed.

Radio is better with *Battery* Power

RADIO receivers designed for quality reproduction operate best on well-made dry cell "B" batteries. What your car tells you about the performance of battery-run sets is confirmed by laboratory tests that reveal that batteries alone provide steady, noiseless "B" current, taking nothing from and adding nothing to radio reception. Batteries, and batteries alone, provide pure DC (Direct Current). Only such current can give you the best results of which your set is capable.

Battery Power is dependable, convenient, and reliable, under your sole control, ever ready to serve you when you turn on your set. As your "B" batteries approach the end of their usefulness, a slight drop in volume warns you in ample time. You need never miss a single concert if your set is battery-equipped.

Not only in results, convenience and reliability are "B" batteries unequalled, but they are also unapproachable in

economy, provided, of course, the correct size batteries are used. That means the Heavy-Duty type for all receivers operating loud speakers, as most do nowadays. Smaller batteries are not as economical, though they give you the quality advantages of Battery Power.

For best economy, choose the Eveready Layerbilt "B" Battery No. 486. In every test and trial this has proved conclusively to be the longest-lasting "B" battery ever built. Its unique, patented internal construction is responsible for its astonishingly long life. It is, we believe, the most economical, as well as the most satisfactory, convenient and reliable source of "B" current available. Just remember this: Radio is better with *Battery* Power, and the extraordinary Eveready Layerbilt "B" Battery No. 486 offers you that power most economically.

NATIONAL CARBON CO., Inc.
New York San Francisco

Unit of Union Carbide and Carbon Corporation



TOM SEXTON
Announcer

San Diego, California—245.8 Meters

KFSD

1000 WATTS—1220 KILOCYCLES
AIRFAN RADIO CORPORATION
U. S. Grant Hotel, 328 Broadway, San Diego, Main 8461
H. C. ROGERS, President and General Manager
TOM SEXTON, Announcer

"Kiss From San Diego"

DAILY EXCEPT SUNDAY—

6:00 to 7:00 p. m.—Nightly musical review.

10:00 to 11:00 p. m.—Harvey Ball and his U. S. Grant Hotel Orche-

DAILY EXCEPT SUNDAY AND MONDAY—

9:00 to 10:00 p. m.—La Bohemian Dance Program.

WEEK COMMENCING SUNDAY, APRIL 10, 1927

SUNDAY, APRIL 10

3:00 to 4:00 p. m.—Temple service of the Theosophical University.

MONDAY, APRIL 11

7:00 to 8:00 p. m.—Studio hour.

8:00 to 9:00 p. m.—First Unitarian Church program, Howard B. Bard.

9:00 to 10:00 p. m.—Mixed musical program.

TUESDAY, APRIL 12

7:00 to 8:00 p. m.—Studio hour.

8:00 to 9:00 p. m.—Union Title Company "Classic Hour" program.

9:00 to 10:00 p. m.—Mixed musical program.

WEDNESDAY, APRIL 13

7:00 to 7:30 p. m.—Courtesy program by Wilshire's Ionaco Company.

7:30 to 8:30 p. m.—Concert program furnished by the Theosophical University.

8:30 to 9:30 p. m.—Request Program.

9:30 to 10:00 p. m.—Request Program.

THURSDAY, APRIL 14

7:00 to 8:00 p. m.—Police program, dance music and concert music.

8:00 to 9:00 p. m.—Mixed musical program.

FRIDAY, APRIL 15

7:00 to 8:00 p. m.—Studio hour.

8:00 to 9:00 p. m.—Studio program.

SATURDAY, APRIL 16

7:00 to 8:00 p. m.—San Diego Senior High School program.

8:00 to 9:00 p. m.—Mme. de Beauviere. "Franco-American hour."

Program Published as Submitted by the Station

LESTER'S RADIO

Headquarters for Sales and Service

Stewart-Warner

The Set That Got Japan—Hear It!

\$52.50, less accessories

Open Evenings

MUtual 0871

452 South Broadway
Los Angeles

PERSONALITY SHOP

TRinity 2914



24
Years In
Business

Newbery Service

AND THE
FAMOUS
RADIOLA 20

A Real Combination

NEWBERY ELECTRIC CORP.

726 South Olive St.

TRinity 2914



Los Angeles, Cal.

AT LAST



THE WONDERFUL RADIOLA 20

(Shown above with Loudspeaker 100) is brought within the reach of all by the new price reduction. Now \$78.00, less accessories. Five tube, single dial control, extreme selectivity and rich tone quality. Combined with the 100 Loudspeaker, it is the best buy in Radio today. Ask one of these authorized dealers for a demonstration:

LOS ANGELES

Beverly Hills
CRAWFORD'S RADIO-MUSIC
445 Beverly Drive
OXford 6801

Echo Park
MOHAWK BATTERY &
RADIO Co.
2115 Sunset Blvd.
DRexel 1112

Hollywood
HETZEL COMPANY
7915 Santa Monica Blvd.
GRanite 5874
HOLLYWOOD MUSIC Co.
6019 Hollywood Blvd.
HOLlywood 0364

Lincoln Heights
FRANK GRAYES SASH, DOOR
& MILL Co., HDW. DEPT.
2012 Pasadena Ave.
CApitol 2071

Southwest
C & G ELEC. & RADIO Co.
1501 W. Santa Barbara.
at Dalton
VERmont 5205

L. A. DUNCAN
2891 W. Pico St.
EMpire 1141
TECH. LAB. N. E. BROWN
6805 S. Western Ave.
THornwall 0270

Hollenbeck Heights
PHONOGRAPH REPAIR SHOP
(N. E. Worobieff)
1826 E. First St.
ANGelus 6349

Southeast
CENTRAL ELECTRIC Co.
3802 Central Ave.
HUmbolt 2337

Wilshire
WOLFE RADIO Co.
543 S. Western Ave.
WAshington 5711

Downtown
THE ELECTRICAL APPLI-
ANCE SHOP
336 S. Broadway
TUcker 2932

HARRY W. HARRISON
848 S. Flower St.
TRinity 9777
MARTIN MUSIC Co.
734 S. Hill St.
TRinity 9621

ALHAMBRA

FRED B. GILLENWATER
RADIO STUDIO
127 W. Main St.
Alhambra 2032

BELL

BAKER AVE. ELECTRIC Co.
910 Baker Ave.
DElaware 1871

BELLFLOWER

W. W. WERNER
517 Somerset Ave.
Downey 7265

EL MONTE

COAST RADIO Co.
308 W. Main St.
El Monte 110

PASADENA

LEE RADIO SHOP
922 E. Colorado St.
Terrace 1420

WILMINGTON

WILMINGTON HDWE. Co.
300 Avalon Blvd.
Wilmington 20-J

Consult These Men, Too, for Expert Advice and Service on All Radiola Models

RCA-Radiola

MADE BY THE MAKERS OF RADIOTRONS



CURTIS PECK
Announcer

San Francisco, California—428.3 Meters

KPO

1000 WATTS—700 KILOCYCLES
HALE BROTHERS AND THE CHRONICLE
J. W. LAUGHLIN, Managing Director
MRS. FREDERICK CROWE, Program Director
ALBERT J. HODGES, Technical Director
Phone Kearney 5777

"The Voice of San Francisco"

DAILY EXCEPT SUNDAY—

- 6:45, 7:15 and 7:45 a.m.—Daily health drill by Hugh Barrett Dobbs.
- 10:30 a.m.—"Ye Towne Crier."
- 10:45 a.m.—Cooking Hints.
- 12:00 noon—Time signals and Scripture reading.
- 1:00 to 2:00 p.m.—Rudy Seiger's Fairmont Hotel Orchestra.
- 3:30 to 5:30 p.m.—Palace Hotel Concert Orchestra.
- 5:30 to 6:15 p.m.—Children's Hour.
- 6:15 to 6:30 p.m.—"Ye Towne Crier."
- 6:30 to 7:00 p.m.—States Restaurant Orchestra.
- 7:00 to 7:30 p.m.—Rudy Seiger's Fairmont Hotel Orchestra.
- 7:30 to 8:00 p.m.—Silent.
- 10:00 to 11:00 p.m.—Dance Program.

WEEK COMMENCING SUNDAY, APRIL 10, 1927

SUNDAY, APRIL 10

- 9:45 to 10:45 a.m.—Undenominational and non-sectarian church service. Uda Waldrop at the organ.
- 10:45 a.m.—"Ye Towne Crier," giving the United States weather forecast and general information.
- 2:30 to 4:30 p.m.—Baseball Game, Recreation Park.
- 6:00 to 6:30 p.m.—States Restaurant Orchestra, Waldemar Lind, director.
- 6:30 p.m.—"Ye Towne Crier," giving general information.
- 6:35 to 8:35 p.m.—Palace Hotel Concert Orchestra, Cyrus Trobba, director.
- 8:35 to 10:00 p.m.—Rudy Seiger's Fairmont Hotel Concert Orchestra.
- 10:00 to 12:00 p.m.—John Wolohan and his Californians at the Trianon Ballroom.

MONDAY, APRIL 11

- 8:00 to 8:10 p.m.—Chamber of Commerce talk on "Industrial San Francisco," by Capen A. Fleming, director, Industrial Department.

- 8 to 9 p.m.—Program by National Broadcasting Co.
- 9 to 10 p.m.—Studio program.
- 11:00 to 12:00 p.m.—KPO's Variety Hour.

TUESDAY, APRIL 12

- 8:00 to 9:00 p.m.—"Una Waldrop Hour" organ program.
- 9:00 to 9:30 p.m.—Bridge lesson No. 25.
- 9:30 to 10:00 p.m.—Studio program.

WEDNESDAY, APRIL 13

- 8:00 to 9:00 p.m.—Program by the Atwater-Kent Artists, under the auspices of Ernest Ingold, Inc.
- 9:00 to 10:00 p.m.—Studio program.

THURSDAY, APRIL 14

- 8:00 to 10:00 p.m.—Studio program.

FRIDAY, APRIL 15

- 8:00 to 10:00 p.m.—Walter Krausgrill's Orchestra.

SATURDAY, APRIL 16

- 6:30 to 7:30 p.m.—States Restaurant Orchestra, Waldemar Lind, director.
- 8:00 to 9:00 p.m.—Studio program.

Program Published as Submitted by the Station.

\$1

**RADIO BATTERIES RECHARGED
RENTAL BATTERIES FURNISHED**

\$1

Called For and Delivered—Within 4-Mile Radius
Small Added Charges over 4 Miles

LUDLUM & STEELE, Willard Dealers

965 Venice Blvd.

Call Westmore 6974

Los Angeles

The World's Best Receiver

The Super-Heterodyne is the Circuit most used by leading Radio Engineers
For Tone Quality, Selectivity, and Distance.

We specialize on Super's, so bring us your troubles. RESULTS GUARANTEED or no charges.

SNIDER'S RADIO SERVICE

4682 Hollywood Blvd. (Just East of Vermont)

Open Evenings

Phone OLYMPIA 4111

Remember we give you the same guaranteed Service on all Standard Circuits

NOW THE **SUPREME R-F 5** IS SOLD
FACTORY DIRECT TO YOU
5-Tube Console Complete



\$59

Built-in speaker, large tubes, 100 A. H. Rubber Case Battery even the inside aerial is included—nothing else to buy.

Selectivity :: Quality :: Distance

New Modified S. L. F. condensers allow ample separation of low wave lengths and gives absolute selectivity on all stations. Using Kellogg's laboratory grade transformers assures you of tone perfection, and for distance the utmost in sensitivity has been achieved through proper design of condensers and inductance.

Made of Finest Parts Obtainable

The Supreme—Made of the finest of material such as Kellogg, Yaxley, Carter, C. R. L., Benjamin, Bakelite coils.

Order Your Set Today

and you'll say, like everyone else that hears the Supreme. "That's the best receiver I ever heard—it's wonderful." It's simply not equalled for purity of tone or fidelity of reproduction. Remember every part is guaranteed to you—you take no chances.

THE PATTERSON FACTORY TO YOU SALES PLAN

puts a guaranteed \$155 console, 5-tube receiver in your home for cash at about \$35 less than the actual wholesale price. Volume production is the answer.

Patterson Radio Manufacturing Co.

Established 1921

239 S. Los Angeles St.—VA. 8139

Los Angeles, Calif.



Howard I. Milholland
Announcer

Oakland, California—361.2 Meters

KGO

4000 WATTS—830 KILOCYCLES
PACIFIC COAST STATION, GENERAL ELECTRIC CO
Phone Fruitvale 5980

DAILY EXCEPT SUNDAY—

11:30 a. m. to 1:00 p. m.—Hotel Leamington concert.

DAILY EXCEPT SATURDAY AND SUNDAY—

1:30 and 6:00 p. m.—Stock and weather reports. Base ball scores.

6:00 to 6:55 p. m.—Bem's Little Symphony Orchestra.

6:55 to 7:30 p. m.—Weather and stock reports.

WEEK COMMENCING SUNDAY, APRIL 10, 1927

SUNDAY, APRIL 10

11:00 a. m.—First Baptist Church service.
4:00 p. m.—Vesper service, Grace Cathedral,
San Francisco.
6:30 to 7:30 p. m.—Concert by Bem's Little
Symphony Orchestra.
7:30 p. m.—Weather Bureau report.
7:35 p. m.—First Baptist Church service.
9:00 to 10:00 p. m.—Concert by Bem's Little
Symphony Orchestra.

MONDAY, APRIL 11

4:00 to 5:00 p. m.—California Federation of
Women's Clubs.
5:30 to 6:00 p. m.—KGO Kiddies' Klub.

TUESDAY, APRIL 12

5:00 p. m.—"Mental Measurements" lectures
by Dr. Virgil E. Dickson.
8:00 to 9:00 p. m.—The Pilgrims.
9:20 p. m.—Surprise broadcast.

WEDNESDAY, APRIL 13

8:00 p. m.—S. F. Studio—Farm program, co-
operating with U. S. Dept. of Agriculture,
California State Dept. of Agriculture, Cali-
fornia Farm Radio Council, and the Cali-
fornia Dairy Council. Music by W. O. W.
Male Trio.

9:00 p. m.—W. O. W. Male Trio.

THURSDAY, APRIL 14

10:40 a. m.—Classroom instruction, Oakland
Public Schools.
5:00 to 6:00 p. m.—George W. Ludlow,
"Friend to Boys."
8:00 p. m.—"The Climbers," a play in four
acts, by KGO players.
9:30 p. m. to 12:00 midnight—Dance music
program by Jack Coakley's Band.

FRIDAY, APRIL 15

11:30 a. m. to 1:00 p. m.—Hotel Leamington
concert.
5:30 p. m.—Ray-Day-O, children's story
teller from Land-O-Health.
8:00 p. m.—Western Artist Series concert
by the Rembrandt Ensemble.

SATURDAY, APRIL 16

8:00 p. m.—"Weekly Sport Review," by Al
Santoro.
8:15 to 9:15 p. m.—Concert by Henri Welch
and his Symphonic Masters.
9:15 p. m. to 1:00 a. m.—Dance music, Wilt
Gunsendorfer's Hotel Whitecomb Band, San
Francisco.

Program Published as Submitted by the Station.

Alternating Current Transformers

A B C Power
Plant
\$35.00

I Specialize on Operating Sets
Without Batteries

Power Pack
Amplifier
\$75.00

RAY CAMPBELL.

1217 Dwiggin's Street, near N. Huntington Drive, Two Blocks from Sierra Vista Station
LOS ANGELES, CALIF. Phone GARfield 7891

THE 1930 RECEIVER

DISTANCE
SELECTIVITY



STONE QUALITY
LESS STATIC

E. M. Sargent, Infradyne Inventor, Recommends
the

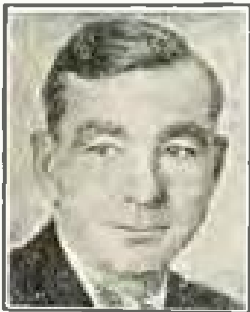
ELECTRIC LIGHTING SUPPLY CO.

C. F. BAKER

Open Saturday Evenings

216 W. Third St.

TRinity 3781



"MAC"

San Francisco, California—268 Meters

KFRC

Owned and Operated by Don Lee,
California Distributor for Cadillac Motor Car.
50 WATTS—1120 KILOCYCLES
HARRISON HOLLIWAY, Manager
FRANK MOSS, Musical Director
"Keep Forever Radiating Cheer"

DAILY EXCEPT SUNDAY—

- 7:00 to 8:00 a. m.—Breakfast concert.
- 10:00 to 11:00 a. m.—Sherman-Clay concert.
- 11:00 to 11:30 a. m.—Household Hints.
- 11:30 a. m. to Noon—Tryouts.
- 12:00 to 2:00 p. m.—Mark Hopkins Concert Orchestra.
- 4:00 to 5:30 p. m.—Mark Hopkins Concert Orchestra.
- 5:30 to 6:30 p. m.—Mac and his Gang. Stage and Screen.
- 6:30 to 7:00 p. m.—Cecilian Trio.

WEEK COMMENCING SUNDAY, APRIL 10, 1927

SUNDAY, APRIL 10

- 5:00 to 6:00 p. m.—Twilight Recital. Vocal and instrumental selections, baritone solos.
- 6:00 p. m.—Stage, Screen and Police Reports.
- 6:30 to 8:30 p. m.—Hotel Mark Hopkins Concert Orchestra.

MONDAY, APRIL 11

- 7:00 to 7:30 p. m.—Western Motors Hawaiians.
- 8:00 to 10:00 p. m.—Blue Monday Jamboree.
- 10:00 to 12:00 p. m.—Eddie Harkness Mark Hopkins Hotel Dance Orchestra.

TUESDAY, APRIL 12

- 7:00 to 7:20 p. m. — Russell-Colvin Trio: Mary Pasmore, violinist; Frank Moss, pianist; Herman Reinberg, cellist.
- 7:20 to 7:30 p. m.—"Investment Securities" talk by Agnes N. Alwyn.
- 8:00 to 8:08 p. m.—Latest "Sam 'n' Henry" Victor Record.
- 8:05 to 8:40 p. m. — KFRC Radio Movie Club, with Bill Hawley and "Puss" Donahoo, comedy duo.
- 8:40 to 8:50 p. m.—"Topics of the Night and Day" by Professor Herman Schnitzel.
- 8:45 to 12:00 p. m.—Eddie Harkness' Mark Hopkins Dance Orchestra.

WEDNESDAY, APRIL 13

- 7:00 to 8:00 a. m.—Breakfast concert.
- 1:00 to 7:30 p. m.—"Puss" Donahoo and his Orchestra.

- 8:00 to 9:00 p. m.—KFRC Trio, with Adelaide Harlan, soprano soloist.
- 9:00 to 9:15 p. m.—"The Panama Canal"—the first of a series of educational talks.
- 9:15 to 10:00 p. m.—KFRC Trio, with Doris Ashdowne, mezzo-soprano soloist.
- 10:00 to 12:00 p. m.—Eddie Harkness' Mark Hopkins Dance Orchestra.

THURSDAY, APRIL 14

- 7:00 to 7:03 p. m.—Western Motors Trio.
- 8:00 to 9:00 p. m.—Mona Motor Oil program
- 9:00 to 10:00 p. m. — Organ Recital by Theodore Strong at Aeolian Duo-Art Pipe Organ.
- 10:00 to 12:00 p. m.—Eddie Harkness' Mark Hopkins Dance Orchestra.

FRIDAY, APRIL 15

- 7:00 to 7:30 p. m.—KFRC Encyclopedia Period.
- 8:00 to 10:00 p. m. — Gillfillan Neutrodyne Evening of Music.
- 8:00 to 9:00 p. m.—Compositions of French Composers.
- 9:00 to 10:00 p. m.—Program, featuring selections from grand opera, "La Tosca," by Puccini.
- 10:00 to 12:00 p. m.—Eddie Harkness' Mark Hopkins Hotel Dance Orchestra.

SATURDAY, APRIL 16

- 7:00 to 7:30 p. m.—Club Carlton Orchestra.
- 8:00 p. m. to 1:00 a. m. — Eddie Harkness' Mark Hopkins Dance Orchestra.

Program Published as Submitted by the Station.

MAKE YOUR RADIO REALLY SELECTIVE

THE SELECTATONE

Will Eliminate These Interfering Stations and Enable You to Get Stations You Have Never Heard Before.

Connected to Antenna and Radio in One Minute.

SOLD ON A POSITIVE GUARANTEE

SEASIDE ELECTRIC CO.

63 S. Magnolia Ave.

Phone 668-238

Long Beach, Calif.



STEPHEN L. GAYLORD
Announcer

Portland, Oregon—491.5 Meters

KGW

1000 WATTS—610 KILOCYCLES
THE MORNING OREGONIAN
"Keep Growing Wiser"

DAILY EXCEPT SUNDAY—

7:18 a. m.—Setting up exercises.
9:45 to 10:00 a. m.—Women's health exercises.
10:00 to 11:30 a. m.—Town Crier, weather reports, news items
12:30 to 1:30 p. m.—Noon concert.
6:00 to 7:00 p. m.—Dinner Concert.
7:30 to 7:45 p. m.—Weather and market reports.

WEEK COMMENCING SUNDAY, APRIL 10, 1927

SUNDAY, APRIL 10

10:55 to 12:30 noon—Morning services from the Church of Our Father.
1:00 to 2:00 p. m.—Mock Crest "Home and Fireside Hour" concert.
4:00 to 6:00 p. m.—KGW Salon Orchestra.
7:30 to 9:00 p. m.—Evening services from the First Presbyterian Church.
9:00 to 10:00 p. m.—Public Service Little Symphony Orchestra.

MONDAY, APRIL 11

7:00 to 7:30 p. m.—Childrens Program.
8:00 to 9:00 p. m.—Vaudeville entertainment.
9:00 to 10:00 p. m.—Venetian Hour.
10:00 to 12:00 midnight—Dance Music by Cole McElroy's Spanish Ballroom Dance Band.

TUESDAY, APRIL 12

2:00 to 3:00 p. m.—Women's Matinee.
8:00 to 11:00 p. m.—Inaugural Program of the Pacific Coast unit of the Red Net Work of the National Broadcasting Company from KGO.
10:00 to 12:00 midnight—Dance Music, feature Herman Kenin and his Orchestra.

WEDNESDAY, APRIL 13

7:00 to 7:15 p. m.—Utility Service.

8:00 to 9:00 p. m.—Concert by the Western Giant Cord Trio.
9:00 to 10:00 p. m.—Concert by Maxwell-House Coffee Orchestra, simultaneously with KFOA and KHQ.

THURSDAY, APRIL 14

7:00 to 7:15 p. m.—Old Hickory Smoked Salt Talk.
7:45 to 8:00 p. m.—Lecture, given under the auspices of the Catholic Truth Society of Oregon.
9:00 to 10:00 p. m.—Vaudeville program.

FRIDAY, APRIL 15

2:00 to 3:00 p. m.—Women's Matinee.
7:00 to 7:30 p. m.—Utility service.
8:00 to 9:00 p. m.—Concert by the Mission Bell Orchestra with Soloists, courtesy Los Angeles Soap Company from KGW thru KFOA and KHQ.
9:00 to 10:30 p. m.—Dance Music by Cole McElroy's Spanish Ballroom Dance Band.
10:30 to 12:00 midnight—Weekly Frolic of the Keep Growing Wiser Order of Hoot Owls.

SATURDAY, APRIL 16

10:00 to 12:00 midnight—Dance Music, featuring Herman Kenin and his Orchestra.

Program Published as Submitted by the Station.

NOTICE! To Owners of the 'COUNTERPHASE POWER SIX'
Is Your Set Selective? Will It Separate KTBI and KSL? Can You get KFSD,
San Diego? WOC, Davenport?

IF NOT CALL:

H. A. EVEREST

1032 N. Ogden Drive

Hollywood, Calif.

PHONE Granite 9915

NIGHTLY DEMONSTRATIONS

SHEPHERD RADIO SERVICE

Authorized Dealer for

Stromberg-Carlson, Federal Ortho-Sonic Receiving Sets

We specialize in correcting balky receivers. 'Super-Heterodynes, Infradynes,
Roberts, etc., made to perform efficiently.

Transformers Matched, Coils Balanced

Phone Us Your Troubles. Our Service Will Please
Batteries Changed, Tubes Reactivated. Work Called for and Delivered

GRanite 7482

7562 Sunset Boulevard

Hollywood, California

OUR EXCEPTIONAL OFFER

*Get Two Great Magazines For Almost
the Price of One!*

SAVE \$2.00

RADIO NEWS—The National Radio Monthly
with the largest circulation and following of
any Radio publication in the world—

or
SCIENCE AND INVENTION

or
AMAZING STORIES
Regular Price \$2.50

and
RADIO DOINGS—The Leading Pacific Coast
Radio Weekly — the Radio authority of the
Pacific Coast—

Regular Price \$3.00

These leaders in their respective fields—the great National
Monthly, Radio and Scientific Magazines and the great
Pacific Coast Weekly—

BOTH NOW FOR \$3.50

You Can't Afford to Pass This Offer By

Attach Money Order, Check or Currency to the Coupon and Mail to Us
Right Now

RADIO DOINGS,
407 E. Pico Street,
Los Angeles, Calif.

Or Conger & Moody,
Sharon Bldg., San Francisco, Calif.

*Send me RADIO DOINGS and "RADIO NEWS," SCIENCE &
INVENTION or AMAZING STORIES for one year. I enclose \$3.50.*

Name.....

Address.....

City and State.....

(Specify NEW or RENEWAL)

R-1



FREEMAN H. TALBOT
Announcer

Denver, Colorado—322.4 Meters

KOA

930 KILOCYCLES—5000 WATTS
GENERAL ELECTRIC COMPANY
Pacific Standard Time

"Rocky Mountain Broadcasting Station"

DAILY EXCEPT SATURDAY AND SUNDAY—

10:45 a. m.—Weather, Stock and Produce Reports
5:00 p. m.—Stock and Market Reports.
8:30 p. m.—Musical Program.

DAILY EXCEPT SUNDAY—

11:15 a. m.—Organ recital.

WEEK COMMENCING SUNDAY, APRIL 10, 1927

SUNDAY, APRIL 10

- 10:00 a. m.—Services of Central Presbyterian church, Denver. Sermon—"The Kinship of Christ," Rev. Martin E. Anderson, D.D. pastor.
- 4:30 p. m.—Organ recital from Central Presbyterian church, Denver; Clarence Reynolds, organist.
- 6:30 p. m.—Dinner concert, Brawn Palace orchestra, Howard Tillotson, director.
- 8:45 p. m.—Service of Central Presbyterian church, Denver. Sermon—"The Primacy of the Cross," Rev. Martin E. Anderson, D.D., pastor.

MONDAY, APRIL 11

- 6:30 p. m.—Children's hour.
- 7:00 p. m.—Instrumental program by Scheuerman's Colorado orchestra.
- 7:15 p. m.—D. & R. Theaters program, featuring the Egyptian Theater orchestra.

TUESDAY, 4 APRIL 12

- 2:15 p. m.—Talk—"The Gentle Art," given by Anne McKeen Schuler.
- 2:15 p. m.—Talk—"The Gentle Art, given by Anne McKeen Schuler.
- 2:30 p. m.—Housewives' matinee, arranged by Helen Olin Roberts.
- 3:30 p. m.—Question box.
- 3:45 p. m.—Fashion review, given by the Cano-Downs company, Denver.
- 6:30 p. m.—Farm question box George C. Wheeler, editor, Western Farm Life.
- 8:00 p. m.—Radio instruction in auction bridge, conducted by studio players.

WEDNESDAY, APRIL 13

- 6:30 p. m.—Wynken, Blynken and Nod time.
- 7:00 p. m.—Instrumental program by Scheuerman's Colorado orchestra.
- 7:15 p. m.—Public Service company program.

THURSDAY, APRIL 14

- 2:15 p. m.—Talk—"The Gentle Art," given by Anne McKeen Schuler.
- 2:30 p. m.—Housewives' matinee, "The Little Poor Man," presented by Jefferson Dramatic Society of St. Elizabeth's church.
- 3:30 p. m.—Fashion review, given by the Cano-Downs company, Denver.
- 4:00 p. m.—Stocks, markets, livestock, produce and news bulletins.
Silent Night.

FRIDAY, APRIL 15

- 10:00 a. m.—Lenten service in the studio. Sermon—"The Religion of the Cross," Rev. Robert Hopkin, pastor of First Congregational church, Denver.
- 11:15 p. m.—Instrumental concert by Denver Union Pacific Shop Employees' band.
- 12:00 Noon—Organ recital Aladdin theater.
- 6:00 p. m.—"Aggie Kickoffs," Colorado Agricultural college.
- 6:30 p. m.—Preview of International Sunday school lesson.
- 7:00 p. m.—Good Friday service, a cantata, "The Crucifixion," by Sir John Stainer, to be presented at Central Presbyterian church, Denver.

SATURDAY, APRIL 16

- 9:15 p. m.—Dance program, Scheuerman's Colorado orchestra, from the Cathedral ballroom, Albany hotel, Denver.

**CROSLEY SPECIALISTS HAVE YOUR CROSLEY BALANCED
CHILDS' LAB., 1187 W. 24th St., L. A.**

STANDARD RADIO CO.

417 West Pico St., Los Angeles, Calif.

FADA, ATWATER KENT, FEDERAL AND WESTERN ELECTRIC DEALER

We Carry a Complete Line

Open Model Atwater Kent Wave Length Cut Down to 200 Meters.
We Are Also Making a Specialty of Sharpening Tuning in Any Radio Set.
Two-Tube Harkness Changed to 3-Tube, Guaranteed Perfect Tune-out on
Local Stations

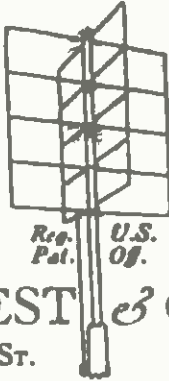
Telephone WESTmore 1560

Open Saturday Evenings Until 9 o'clock

*You will never
regret buying it!*

BECAUSE the GILCREST-CROSS *Non-directional* Aerial arrests the Broadcast waves perpendicularly, it avoids much of the interference so common with horizontal aerials, giving clearer reception. Rises 18 feet above roof—easy to install.

Sold on money-back guarantee, direct or through your dealer.



Once in use you will join thousands of other users in recommending it.

24 in. - \$9.00
30 in. - 10.00
Prepaid anywhere

Reg. Pat. U.S. Of.

GILCREST & QUINN
2052 MARKET ST. SAN FRANCISCO

Los Angeles Distributors:
W. B. HANKINS, 4113 West Washington Blvd.

WEBSTER B and C Socket Power

**Raytheon Equipped
5 Controls**

Easily set to exact current value needed for every tube in receiver to get best tone, greatest distance and most volume. Gets amazing results out of H.F.L. 11 (8 standard, 2 No. 112 and 1 No. 171 tubes) and other high power sets.

Before buying an eliminator write for **FREE** booklet, "Improving Your Radio."

THE WEBSTER COMPANY
854 Blackhawk Street
Chicago, Ill.

SCOTT SALES CO.
443 South San Pedro St.
Los Angeles

JOHNSON'S CABINET WORKS

(Formerly Lowe's Cabinet Works)

3635 Avalon Blvd. Los Angeles, Calif.
AXridge 8662

Open Evenings Till 6:15

ANNOUNCEMENT

To introduce our complete line of Radio Cabinets, we are specializing on the Console Model shown on this page.

This console will accommodate panel 7x12-30 in. Has ample space for batteries and loud speaker. Made of two-toned Walnut or Mahogany.

It is not knock-down.

We are equipped to build any design of cabinet that will meet your requirements and taste.

**INVESTIGATE OUR LINE OF SPEAKERS
\$1.50 UP**

**MAIL ORDERS GIVEN IMMEDIATE
ATTENTION**



**Model 50
Price \$12.50**

Phone AXridge 8662 and Estimates and Advice will be Freely Given

“Wired Radio?”

(Continued from Page 16)

and an eliminator, a cone and what-not, and when the perfect “wired” program becomes a bit boresome, we’ll try for a peep out of Shenandoah, Iowa,—no matter if he is playing a broken-down phonograph accompanied by King Static himself! And if we get him—Oh, Boy! That’s what we will rave about the next day; not the wonderful soprano we heard when we punched button No. 2!

Woman’s Page

(Continued from Page 28)

planations ensued, and, of course, everyone in the car laughed at the joke.

When I first met Misha Gegna at KNX a year or so ago, one of those haunting memories, which sometimes possess one, persistently whispered, “Where have I seen him?” Then, one day, the little comedy enacted on that day-coach in Missouri flashed through my mind, and I asked Misha, “Have you quit running away with other people’s ‘cellos?”

Yes, it was Misha Gegna. You can see from the picture he still has “taking ways.”

EASTER MEANS CLOTHES

Let’s talk about clothes! That’s really all we should talk about until Easter, and there’s something to talk about this Spring, for women are threatening to wear more clothes, and there is a tendency to choose our clothes with reference to character and personality.

First of all, this Spring there’s a waist line. Many of the new modes for Spring and Summer show the waist line, some showing it where it belongs. The bodice and bolero are to be very popular all Spring and Summer. A Zouave effect in skirts is worn with these boleros. Even a bustle effect in a modified form, is shown in some costumes. Though small hats will be stead-

ily worn by well dressed women, still there is a demand for large-brimmed hats in dyed leghorn and panamas trimmed with grosgrain ribbon. Reptile shoes will be worn, and suede shoes in colors, to match the costume, are shown for Spring.

B-Power Unit

(Continued from Page 25)

smoothing action is unusually good.

These three units, the power transformer, condenser block, and chokes, together with the socket for the tube are mounted on cored metal base, which conceals and protects the wiring.

The output is in four values, three of which are variable. The detector voltage, the intermediate or RF amplifier voltage, and the 90-volt audio amplifier voltage are adjustable by means of variable resistance units. The maximum or power tube current supply is fixed, being in the neighborhood of 180 volts.

By means of these variable controls every tube in the set may receive the exact voltage which will result in the most efficient operation. When once the B-power unit is balanced to the set, the controls on the unit should be left alone.

The current consumed by this type of eliminator is about the same as that required by a 25-watt electric lamp.

Next week we will give a description of the Pemco A-B unit.

Trouble Shooter

(Continued from Page 26)

The audio tubes are removed from the set, and three A tubes placed in the Orthoformer. The new unit is then plugged into the first audio socket, certain battery connections are made, the loud speaker connected to the new terminals, and away she goes. There is an adjustment on the Orthoformer, which is left alone after being once set for maximum quality. An additional article on this device and some interesting experiments performed with it will appear in a future issue.

Timely Trade Topics

The Kemper Radio Company have made arrangements with the Los Angeles Biltmore Hotel to supply portable sets for the use of guests in all rooms on a very reasonable rental basis.

One of the new Kemper Ampliphonic Consoles has recently been installed in the luxurious lounge rooms of this famous hotel.

The Philadelphia Storage Battery Company, manufacturers of Philco Socket Power Units and batteries, have opened a branch factory at 1149 South Wall street, Los Angeles. H. A. Fore, Southern California representative, will also maintain his office at the same address.

R. B. Yale, of Yale Radio Electric Company, and W. C. Hitt, representative of Aerovox and Excell, have recently returned from a business trip to San Francisco.

Listenwaller & Gough have been appointed distributors for Mohawk receivers.

The Radio Exchange, at 1809 West Seventh street, Los Angeles, is displaying a remarkable line of receivers housed in Egyptian model cabinets, hand carved and decorated by J. P. Dunky, who received his artistic training in Hungary. One large console model is particularly striking, tapering from top to bottom in "pyramid" style, with a formal procession of Egyptian figures around the lower part of the cabinet. The receiver itself is the Silverton, made by R. B. Silverton, a member of the firm.

Chanslor & Lyon of Los Angeles and San Francisco, Zenith distributors, announce the arrival of the first shipment

of "Zenith Model 12," the new six-tube set which has recently been added to the Zenith family. "Model 12" is contained in a simple but attractive table-type cabinet, has full metal shielding, one control knob, is self-logging and electrically illuminated. It is very moderately priced, but seems to be, nevertheless, a worthy companion for the famous ten-tube Super Zenith.

The McKinley Radio Mfg. Co. of 10905 South Main street, Los Angeles, are now in production with their new and improved "B" Eliminator. Mr. McKinley has spent several months in his laboratory perfecting his latest type of eliminator, and from the orders already received his new type is meeting with instant favor. Owing to the business of the McKinley Radio Mfg. Co. increasing to such an extent, they are forced to occupy larger quarters, to which they will remove as soon as their new building is ready for occupancy.

When Mr. Gage, president of the Precision Electric Manufacturing Company, returned from the East, he held a Sales Meeting to discuss the plans for the coming year and to tell his salesmen and employees the result of his investigation of the market conditions in the East.

During the week of April 3rd they held a general sales meeting for their Pacific Coats and Intermountain Distributors. The Pemco A & B Power Unit is in great demand, orders coming in faster than they can be filled. Mr. Gage reports that sales in March exceeded their big month in 1926, and they have over 350 units now on back order.

The next regular meeting of the Radio Manufacturers' Agents Association will be held at the Elite, 633 So. Flower St., Los Angeles, at noon, April 8.

Broadcasters' Digest

We are indeed glad to see Walter Biddick, our "Goodwill via Radio" friend, active in the radio field.

For several months last year he and Mrs. Biddick traveled throughout the eleven Western States visiting the many broadcast stations.

He is back in the harness again, and with his knowledge of radio in general, and radio entertainment in particular, we may well expect some more real features from him.

While much commotion and excitement are in evidence at KHJ, Los Angeles, in preparation for its fifth birthday to be observed on April 13, the tiny studio canaries will not be forgotten. For five long years the tiny feathered friends have been residents of the studio and their cherry solos have done much to endear the studio to the heart of radio audiences. Named after the station letters of KHJ, the birds, known as Kindness, Happiness and Joy, have been a distinctive part of the studio equipment and programs.

Joseph Diskay, famous Hungarian tenor, who has been an exclusive KNX, the Evening Express, radio star for many months, was on the Orpheum last week. He received a flattering contract for the week and is considering a tour engagement.

During the week the theatre extended the courtesy of the house to artists from the radio station, one night being declared KNX night.

The inaugural program of the Orange Network, the Pacific Coast chain of the National Broadcasting Company, affords an indication of what Western fans may expect in the future from the new consolidation.

More than 3400 miles of telephone and telegraph wires were used to tie

the seven great radio stations together and the services of fifty engineers who supervised the circuits.

The National Broadcasting Company, Inc., whose Red and Blue network of broadcasting stations cover the entire East, Middle West and South, have established the "Orange Network" as the Pacific Division is known, making it possible for grouping in the chain of KGO, Oakland; KPO, San Francisco; KFI, Los Angeles; KGW, Portland; KHQ, Spokane; KOMO and KFOA, Seattle. These stations stretch from Los Angeles to Seattle, and the area their broadcasting reaches will cover the entire West, parts of Canada and Mexico. This will enable families who are unable to get to one of the centers where the various musical events are staged to get the programs in their own homes. It is the plan of the National Broadcasting Company to chain broadcast all distinctly important events throughout their entire circuit. Radio fans will remember the President's speech on Washington's birthday. An example of what the National Broadcasting Company, Inc., has in store for them in the future.

It has been about 15 months since the Wurlitzer company signed off the air in Los Angeles; but they are now broadcasting by remote control from their studio in the Wurlitzer building on South Broadway over KFXB. The programs were started Monday, April 4, and are on the air six days a week as a noon-hour feature. An interesting variety of vocal and instrumental numbers is promised each day, it being planned to make them include a large number of artists.

Bobby—What is "status quo?"

Father—Something that comes in over the radio, I think.—Judge.

RAY-O-VAC

The French Battery Company of Madison, Wisconsin, is one of the largest manufacturers in the dry battery and flashlight field. The Company's products, advertised and sold under the trade name of Ray-O-Vac, are universally known for their high quality. This reputation the Company goes to great lengths to maintain. The secret of long service given by Ray-O-Vac products is the care taken in selecting raw materials, as well as in the process of manufacture. The purchaser of Ray-O-Vacs is certain to get the best that can be obtained.



The new radio batteries are the very latest effort to make Ray-O-Vac products the most serviceable of their kind to radio fans. The improved reception, with either of these batteries in the circuits, is very noticeable, due to their low internal resistance. Owing to a new type of construction they are light in weight, internal "shorting" is eliminated, and unusual dependability secured. These batteries are, indeed, "Radio's Best Battery."

FRENCH BATTERY COMPANY

Madison, Wisconsin

737 Terminal St.

Los Angeles



FEDERAL Ortho-Sonic

*You will be Satisfied
With*

Federal value
Federal tone quality
Federal performance
and best of all with
Federal service offered
by authorized dealers
all over Southern Cali-
fornia.



PRICED FROM \$100 TO \$1000

We Recommend

Eliminators

Elkon
Modern
Sterling
Balkite

Cunningham
RADIO TUBES

Since 1915-
Standard for all Sets
In the orange and blue carton

Speakers

Amplion
Enchanter
Herald
Fine Arts

Wholesale Distributors

Yale Radio Electric Co.

LOS ANGELES

1111 Wall Street

WEstmore 3351

This file including all text and images are from scans of a private personal collection and have been scanned for archival and research purposes. This file may be freely distributed, but not sold on ebay or on any commercial sites, catalogs, booths or kiosks, either as reprints or by electronic methods. This file may be downloaded without charge from the Radio Researchers Group website at <http://www.otrr.org/>

Please help in the preservation of old time radio by supporting legitimate organizations who strive to preserve and restore the programs and related information.